

# CHO 4 Employment Report: JUL 2023

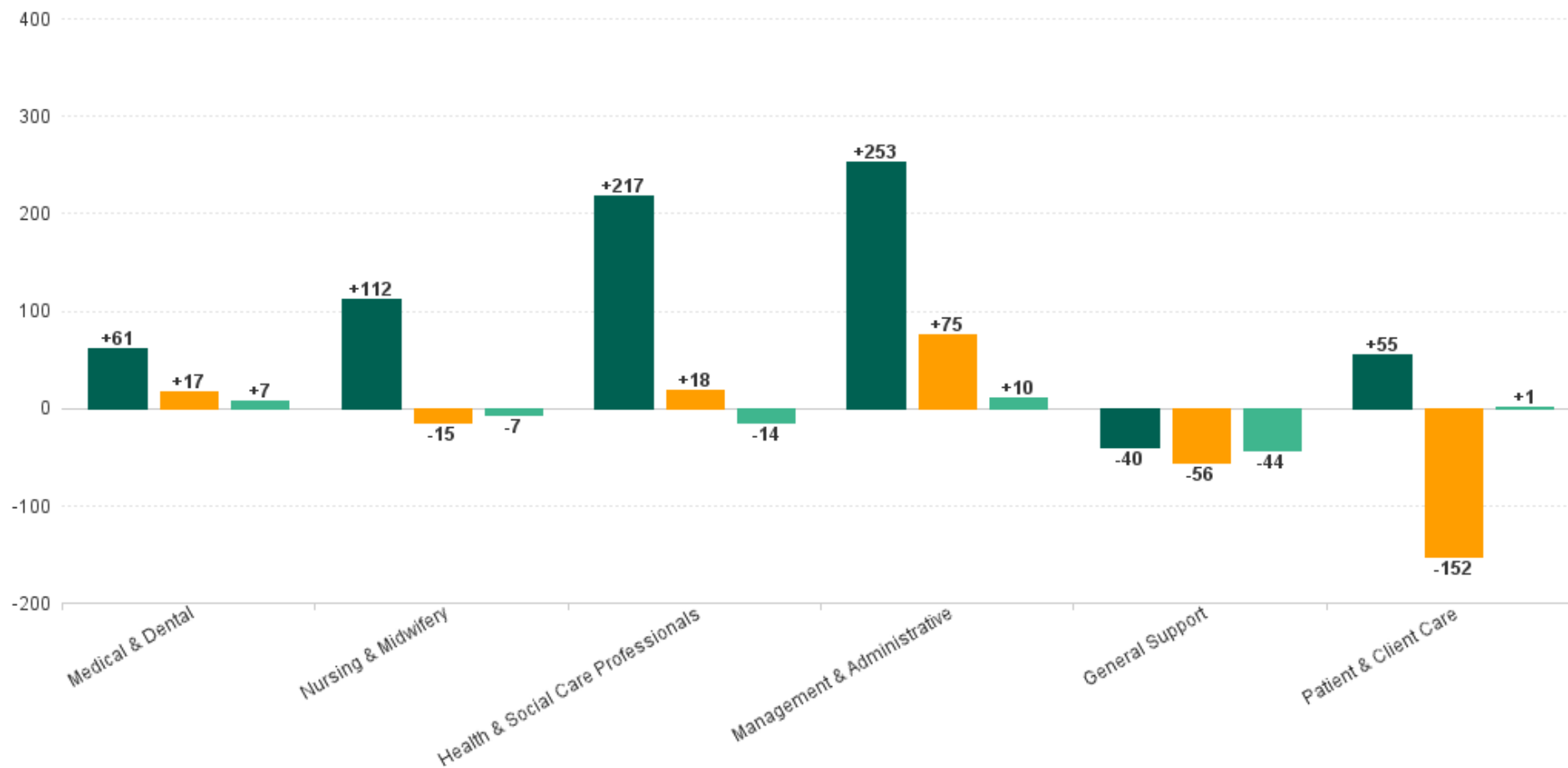
## Employment Report : JUL 2023

Employment by Staff Group JUL 2023	WTE DEC 2019	WTE DEC 2022	WTE JUN 2023	WTE JUL 2023	WTE change since DEC 2019	% WTE Change since Dec 2019	WTE change since DEC 2022	% WTE Change since Dec 2022	WTE change since JUN 2023	No. JUL 2023
<b>Overall</b>	<b>8,189</b>	<b>8,961</b>	<b>8,893</b>	<b>8,848</b>	<b>+659</b>	<b>+8.0%</b>	<b>-113</b>	<b>-1.3%</b>	<b>-46</b>	<b>10,916</b>
Consultants	55	70	69	71	+16	+28.4%	+1	+1.2%	+1	83
Registrars	103	96	106	123	+20	+19.3%	+27	+28.6%	+18	130
SHO/ Interns	38	46	50	47	+9	+22.7%	+0	+0.8%	-4	49
Medical/ Dental, other	111	140	136	128	+17	+15.1%	-12	-8.2%	-8	243
<b>Medical &amp; Dental</b>	<b>308</b>	<b>352</b>	<b>361</b>	<b>369</b>	<b>+61</b>	<b>+19.8%</b>	<b>+17</b>	<b>+4.9%</b>	<b>+7</b>	<b>505</b>
Nurse/ Midwife Manager	433	490	491	498	+66	+15.2%	+9	+1.8%	+7	542
Nurse/ Midwife Specialist & AN/MP	81	106	131	136	+55	+67.6%	+30	+28.3%	+4	147
Staff Nurse/ Staff Midwife	1,446	1,532	1,476	1,465	+20	+1.4%	-67	-4.4%	-11	1,755
Public Health Nurse	216	216	209	205	-11	-5.0%	-11	-5.2%	-3	261
<i>Nursing/ Midwifery awaiting registration</i>	32				-32	-100.0%				
<i>Post-registration Nurse/ Midwife Student</i>	19	11	13	8	-11	-58.4%	-3	-26.9%	-5	8
<i>Pre-registration Nurse/ Midwife Intern</i>	9	7	34	34	+25	+282.0%	+27	+365.9%	0	69
Nursing/ Midwifery Student	60	18	47	42	-17	-29.1%	+24	+131.2%	-5	77
Nursing/ Midwifery other	1	1	1	1	+0	+96.1%	+0	+0.0%	+0	1
<b>Nursing &amp; Midwifery</b>	<b>2,235</b>	<b>2,363</b>	<b>2,355</b>	<b>2,348</b>	<b>+112</b>	<b>+5.0%</b>	<b>-15</b>	<b>-0.6%</b>	<b>-7</b>	<b>2,783</b>
Therapy Professions	448	549	566	558	+111	+24.7%	+9	+1.6%	-7	655
Health Science/ Diagnostics	12	14	12	12	+0	+2.7%	-2	-15.1%	0	14
Social Care	240	272	270	271	+31	+13.0%	-1	-0.4%	+1	311
Pharmacy	8	9	12	12	+4	+55.4%	+4	+44.9%	+0	19
Psychologists	138	156	158	152	+14	+10.4%	-4	-2.3%	-5	174
Social Workers	115	147	157	155	+40	+35.0%	+8	+5.5%	-2	179
H&SC, Other	60	72	77	76	+16	+26.8%	+4	+5.9%	0	106
<b>Health &amp; Social Care Professionals</b>	<b>1,020</b>	<b>1,219</b>	<b>1,252</b>	<b>1,238</b>	<b>+217</b>	<b>+21.3%</b>	<b>+18</b>	<b>+1.5%</b>	<b>-14</b>	<b>1,458</b>
Management (VIII & above)	73	90	104	99	+26	+35.8%	+9	+9.5%	-5	101
Administrative/ Supervisory (V to VII)	161	254	281	287	+126	+78.5%	+33	+13.1%	+6	309
Clerical (III & IV)	505	572	596	605	+101	+19.9%	+33	+5.8%	+9	729
<b>Management &amp; Administrative</b>	<b>738</b>	<b>916</b>	<b>981</b>	<b>991</b>	<b>+253</b>	<b>+34.3%</b>	<b>+75</b>	<b>+8.2%</b>	<b>+10</b>	<b>1,139</b>
Support	337	353	340	299	-38	-11.3%	-55	-15.4%	-42	378
Maintenance/ Technical	22	22	22	20	-2	-8.6%	-2	-7.5%	-2	26
<b>General Support</b>	<b>359</b>	<b>375</b>	<b>363</b>	<b>319</b>	<b>-40</b>	<b>-11.2%</b>	<b>-56</b>	<b>-15.0%</b>	<b>-44</b>	<b>404</b>
Health Care Assistants	1,954	2,135	2,091	2,126	+172	+8.8%	-8	-0.4%	+35	2,460
Home Help	1,124	1,076	947	932	-192	-17.1%	-144	-13.4%	-15	1,522
Care, other	450	524	543	525	+75	+16.7%	+0	+0.1%	-19	645
<b>Patient &amp; Client Care</b>	<b>3,528</b>	<b>3,735</b>	<b>3,582</b>	<b>3,583</b>	<b>+55</b>	<b>+1.6%</b>	<b>-152</b>	<b>-4.1%</b>	<b>+1</b>	<b>4,627</b>



## WTE Change by Staff Category

■ WTE change since DEC 2019 ■ WTE change since DEC 2022 ■ WTE change since JUN 2023



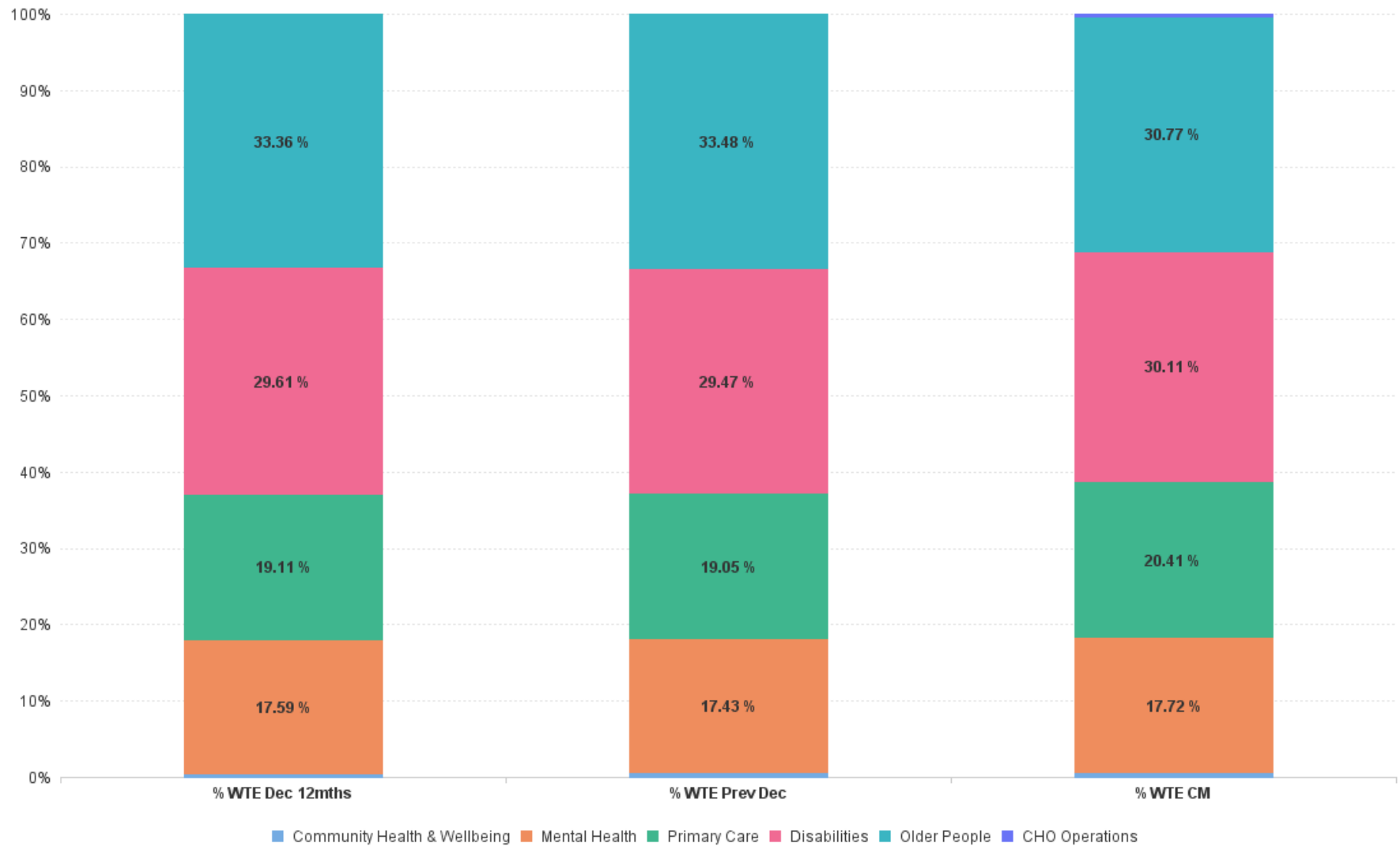
# Employment Report by Care Group : JUL 2023

CHO 4 JUL 2023

Care Group JUL 2023	WTE DEC 2019	WTE DEC 2022	WTE JUN 2023	WTE JUL 2023	WTE change since DEC 2019	% WTE Change since Dec 2019	WTE change since DEC 2022	% WTE Change since Dec 2022	WTE change since JUN 2023	No. JUL 2023
<b>Overall</b>	<b>8,189</b>	<b>8,961</b>	<b>8,893</b>	<b>8,848</b>	<b>+659</b>	<b>+8.0%</b>	<b>-113</b>	<b>-1.3%</b>	<b>-46</b>	<b>10,916</b>
Community Health & Wellbeing		52	53	45	+45		-7	-13.6%	-8	81
Mental Health	1,499	1,562	1,575	1,568	+69	+4.6%	+6	+0.4%	-7	1,752
Primary Care	1,346	1,707	1,783	1,806	+460	+34.2%	+99	+5.8%	+23	2,241
Disabilities	2,425	2,640	2,693	2,664	+239	+9.9%	+24	+0.9%	-29	3,153
Older People	2,919	3,000	2,759	2,722	-197	-6.7%	-278	-9.3%	-37	3,643
CHO Operations			31	43	+43		+43		+12	46
<b>Community Services</b>	<b>8,189</b>	<b>8,961</b>	<b>8,893</b>	<b>8,848</b>	<b>+659</b>	<b>+8.0%</b>	<b>-113</b>	<b>-1.3%</b>	<b>-46</b>	<b>10,916</b>



## % Total by Care Group



# Employment Report by HSE/S38 : JUL 2023

CHO 4 JUL 2023

Administration JUL 2023	WTE DEC 2019	WTE DEC 2022	WTE JUN 2023	WTE JUL 2023	WTE change since DEC 2019	% WTE Change since Dec 2019	WTE change since DEC 2022	% WTE Change since Dec 2022	WTE change since JUN 2023	No. JUL 2023
<b>Overall</b>	<b>8,189</b>	<b>8,961</b>	<b>8,893</b>	<b>8,848</b>	<b>+659</b>	<b>+8.0%</b>	<b>-113</b>	<b>-1.3%</b>	<b>-46</b>	<b>10,916</b>
Health Service Executive	5,939	6,531	6,399	6,391	+452	+7.6%	-140	-2.1%	-7	7,923
Section 38 Voluntary Agencies	2,249	2,429	2,495	2,456	+207	+9.2%	+27	+1.1%	-38	2,993



# Employment Report by HSE.S38: JUL 2023

## Health Service Executive

HSE&S38 JUL 2023	WTE DEC 2019	WTE DEC 2022	WTE JUN 2023	WTE JUL 2023	WTE change since DEC 2019	% WTE Change since Dec 2019	WTE change since DEC 2022	% WTE Change since Dec 2022	WTE change since JUN 2023	No. JUL 2023
<b>Total Health Service Executive</b>	<b>5,939</b>	<b>6,531</b>	<b>6,399</b>	<b>6,391</b>	<b>+452</b>	<b>+7.6%</b>	<b>-140</b>	<b>-2.1%</b>	<b>-7</b>	<b>7,923</b>
Consultants	55	66	65	66	+11	+20.8%	+1	+1.3%	+1	78
Registrars	98	93	103	121	+22	+22.8%	+28	+29.9%	+18	127
SHO/ Interns	32	42	47	44	+12	+36.9%	+1	+3.2%	-4	46
Medical/ Dental, other	98	120	116	113	+14	+14.7%	-7	-6.1%	-3	189
<b>Medical &amp; Dental</b>	<b>284</b>	<b>321</b>	<b>331</b>	<b>344</b>	<b>+60</b>	<b>+21.2%</b>	<b>+23</b>	<b>+7.1%</b>	<b>+12</b>	<b>440</b>
Nurse/ Midwife Manager	358	405	407	414	+56	+15.6%	+9	+2.2%	+7	446
Nurse/ Midwife Specialist & AN/MP	68	93	118	122	+54	+79.2%	+30	+32.3%	+4	133
Staff Nurse/ Staff Midwife	1,161	1,261	1,198	1,191	+29	+2.5%	-70	-5.6%	-7	1,413
Public Health Nurse	216	216	209	205	-11	-5.0%	-11	-5.2%	-3	261
<i>Nursing/ Midwifery awaiting registration</i>	32				-32	-100.0%				
<i>Post-registration Nurse/ Midwife Student</i>	19	11	13	8	-11	-58.4%	-9	-26.9%	-5	8
<i>Pre-registration Nurse/ Midwife Intern</i>	3	7	24	24	+21	+712.7%	+0	+230.4%	-0	49
Nursing/ Midwifery Student	54	18	37	32	-21	-39.8%	+14	+76.7%	-5	57
<b>Nursing &amp; Midwifery</b>	<b>1,857</b>	<b>1,993</b>	<b>1,969</b>	<b>1,965</b>	<b>+107</b>	<b>+5.8%</b>	<b>-29</b>	<b>-1.4%</b>	<b>-4</b>	<b>2,310</b>
Therapy Professions	359	459	476	470	+111	+31.0%	+11	+2.5%	-6	549
Health Science/ Diagnostics	10	12	10	10	+0	+3.2%	-2	-17.6%	-0	12
Social Care	39	44	42	43	+4	+10.7%	-1	-3.3%	+1	47
Pharmacy	8	9	12	12	+4	+55.4%	+4	+44.9%	+0	19
Psychologists	107	123	126	120	+13	+12.1%	-3	-2.2%	-6	137
Social Workers	88	119	131	131	+43	+48.7%	+11	+9.6%	-0	148
H&SC, Other	56	67	72	72	+15	+27.3%	+4	+6.4%	-0	99
<b>Health &amp; Social Care Professionals</b>	<b>667</b>	<b>833</b>	<b>869</b>	<b>858</b>	<b>+191</b>	<b>+28.7%</b>	<b>+25</b>	<b>+3.0%</b>	<b>-11</b>	<b>1,011</b>
Management (VIII & above)	58	73	84	81	+23	+40.6%	+8	+10.4%	-3	83
Administrative/ Supervisory (V to VII)	123	204	230	232	+109	+88.2%	+29	+14.0%	+2	251
Clerical (III & IV)	415	479	503	512	+97	+23.3%	+33	+6.9%	+9	597
<b>Management &amp; Administrative</b>	<b>596</b>	<b>756</b>	<b>817</b>	<b>825</b>	<b>+229</b>	<b>+38.4%</b>	<b>+69</b>	<b>+9.2%</b>	<b>+8</b>	<b>931</b>
Support	207	222	207	206	-1	-0.4%	-16	-7.3%	-1	238
Maintenance/ Technical	13	13	12	10	-3	-20.3%	-3	-20.2%	-2	13
<b>General Support</b>	<b>220</b>	<b>235</b>	<b>219</b>	<b>216</b>	<b>-4</b>	<b>-1.6%</b>	<b>-19</b>	<b>-8.0%</b>	<b>-3</b>	<b>251</b>
Health Care Assistants	1,079	1,166	1,093	1,101	+23	+2.1%	-64	-5.5%	+9	1,255
Home Help	1,124	1,076	947	932	-192	-17.1%	-144	-13.4%	-15	1,522
Care, other	113	151	153	150	+37	+32.4%	-1	-0.9%	-3	203
<b>Patient &amp; Client Care</b>	<b>2,316</b>	<b>2,393</b>	<b>2,193</b>	<b>2,184</b>	<b>-132</b>	<b>-5.7%</b>	<b>-209</b>	<b>-8.7%</b>	<b>-10</b>	<b>2,980</b>

## Section 38 Voluntary Agencies

HSE&S38 JUL 2023	WTE DEC 2019	WTE DEC 2022	WTE JUN 2023	WTE JUL 2023	WTE change since DEC 2019	% WTE Change since Dec 2019	WTE change since DEC 2022	% WTE Change since Dec 2022	WTE change since JUN 2023	No. JUL 2023
<b>Total Section 38 Voluntary Agencies</b>	<b>2,249</b>	<b>2,429</b>	<b>2,495</b>	<b>2,456</b>	<b>+207</b>	<b>+9.2%</b>	<b>+27</b>	<b>+1.1%</b>	<b>-38</b>	<b>2,993</b>
Consultants		4	4	4	+4		+0	+0.0%	+0	5
Registrars	5	3	3	3	-2	-48.0%	-0	-13.3%	+0	3
SHO/ Interns	6	4	3	3	-3	-51.2%	-1	-25.0%	+0	3
Medical/ Dental, other	13	20	20	15	+2	+18.4%	-4	-21.4%	-5	54
<b>Medical &amp; Dental</b>	<b>24</b>	<b>31</b>	<b>30</b>	<b>25</b>	<b>+1</b>	<b>+4.0%</b>	<b>-6</b>	<b>-18.2%</b>	<b>-5</b>	<b>65</b>
Nurse/ Midwife Manager	75	85	84	84	+10	+13.2%	-0	-0.2%	+0	96
Nurse/ Midwife Specialist & AN/MP	12	13	13	13	+1	+4.2%	+0	+0.0%	+0	14
Staff Nurse/ Staff Midwife	284	271	278	274	-10	-3.4%	+4	+1.3%	-3	342
<i>Pre-registration Nurse/ Midwife Intern</i>	6		10	10	+4	+66.7%	-1		+0	20
Nursing/ Midwifery Student	6		10	10	+4	+66.7%	+10		+0	20
Nursing/ Midwifery other	1	1	1	1	+0	+96.1%	+0	+0.0%	+0	1
<b>Nursing &amp; Midwifery</b>	<b>378</b>	<b>369</b>	<b>386</b>	<b>383</b>	<b>+5</b>	<b>+1.3%</b>	<b>+13</b>	<b>+3.6%</b>	<b>-3</b>	<b>473</b>
Therapy Professions	89	90	89	88	-1	-0.6%	-2	-2.7%	-1	106
Health Science/ Diagnostics	2	2	2	2	+0	+0.0%	+0	+0.0%	+0	2
Social Care	201	228	228	228	+27	+13.4%	+0	+0.1%	+0	264
Psychologists	31	33	32	32	+1	+4.4%	-1	-2.6%	+0	37
Social Workers	27	28	26	24	-3	-9.7%	-3	-12.3%	-2	31
H&SC, Other	4	5	5	5	+1	+19.0%	+0	+0.0%	+0	7
<b>Health &amp; Social Care Professionals</b>	<b>354</b>	<b>386</b>	<b>383</b>	<b>380</b>	<b>+26</b>	<b>+7.3%</b>	<b>-6</b>	<b>-1.7%</b>	<b>-3</b>	<b>447</b>
Management (VIII & above)	15	17	20	18	+3	+17.3%	+1	+5.6%	-2	18
Administrative/ Supervisory (V to VII)	38	51	51	55	+18	+46.8%	+5	+9.3%	+4	58
Clerical (III & IV)	89	93	93	93	+4	+4.3%	-0	0.0%	+0	132
<b>Management &amp; Administrative</b>	<b>142</b>	<b>161</b>	<b>164</b>	<b>166</b>	<b>+24</b>	<b>+16.9%</b>	<b>+6</b>	<b>+3.5%</b>	<b>+2</b>	<b>208</b>
Support	130	131	134	93	-37	-28.7%	-38	-29.2%	-41	140
Maintenance/ Technical	9	9	10	10	+1	+8.0%	+1	+11.2%	+0	13
<b>General Support</b>	<b>139</b>	<b>140</b>	<b>144</b>	<b>103</b>	<b>-37</b>	<b>-26.2%</b>	<b>-37</b>	<b>-26.7%</b>	<b>-41</b>	<b>153</b>
Health Care Assistants	875	969	998	1,025	+149	+17.0%	+56	+5.7%	+27	1,205
Care, other	336	373	390	375	+38	+11.4%	+2	+0.5%	-15	442
<b>Patient &amp; Client Care</b>	<b>1,212</b>	<b>1,342</b>	<b>1,388</b>	<b>1,399</b>	<b>+188</b>	<b>+15.5%</b>	<b>+57</b>	<b>+4.3%</b>	<b>+11</b>	<b>1,647</b>

## CHO 4 by S38 Agency: JUL 2023

### Bros. of Charity Southern

JUL 2023	WTE DEC 2019	WTE DEC 2022	WTE JUN 2023	WTE JUL 2023	WTE change since DEC 2019	% WTE Change since Dec 2019	WTE change since DEC 2022	% WTE Change since Dec 2022	WTE change since JUN 2023	No. JUL 2023
<b>Total Bros. of Charity Southern</b>	<b>740</b>	<b>827</b>	<b>851</b>	<b>851</b>	<b>+110.5</b>	<b>+14.9%</b>	<b>+23.9</b>	<b>+2.9%</b>	<b>+0.4</b>	<b>1,054</b>
Nurse/ Midwife Manager	15	16	17	17	+1.6	+10.6%	+0.6	+3.5%	-0.1	18
Nurse/ Midwife Specialist & AN/MP	3	2	2	2	-0.9	-31.6%	+0.0	+0.0%	+0.0	3
Staff Nurse/ Staff Midwife	59	52	53	51	-7.8	-13.2%	-1.2	-2.2%	-1.8	72
<b>Nursing &amp; Midwifery</b>	<b>77</b>	<b>71</b>	<b>72</b>	<b>70</b>	<b>-7.2</b>	<b>-9.3%</b>	<b>-0.6</b>	<b>-0.8%</b>	<b>-1.9</b>	<b>93</b>
Therapy Professions	48	49	47	46	-1.5	-3.0%	-2.9	-6.0%	-1.0	59
Social Care	124	133	135	135	+10.1	+8.1%	+1.9	+1.4%	-0.4	157
Psychologists	20	19	18	18	-1.6	-8.2%	-0.9	-4.6%	+0.3	22
Social Workers	17	16	15	13	-3.8	-22.1%	-3.0	-18.4%	-1.7	18
<b>Health &amp; Social Care Professionals</b>	<b>209</b>	<b>217</b>	<b>215</b>	<b>212</b>	<b>+3.3</b>	<b>+1.6%</b>	<b>-4.9</b>	<b>-2.3%</b>	<b>-2.9</b>	<b>256</b>
Management (VIII & above)	8	7	10	8	+0.4	+5.3%	+1.0	+14.3%	-2.0	8
Administrative/ Supervisory (V to VII)	9	12	11	16	+6.5	+70.7%	+3.6	+29.6%	+4.8	16
Clerical (III & IV)	33	35	36	35	+1.7	+5.3%	-0.1	-0.4%	-1.3	51
<b>Management &amp; Administrative</b>	<b>50</b>	<b>54</b>	<b>57</b>	<b>59</b>	<b>+8.6</b>	<b>+17.3%</b>	<b>+4.5</b>	<b>+8.3%</b>	<b>+1.6</b>	<b>75</b>
Support	15	12	12	11	-3.3	-22.8%	-0.3	-2.3%	-1.0	30
Maintenance/ Technical	2	3	4	4	+2.0	+132.5%	+1.0	+39.8%	+0.0	4
<b>General Support</b>	<b>16</b>	<b>14</b>	<b>16</b>	<b>15</b>	<b>-1.3</b>	<b>-8.3%</b>	<b>+0.7</b>	<b>+5.2%</b>	<b>-1.0</b>	<b>34</b>
Health Care Assistants	207	260	275	290	+83.3	+40.3%	+30.4	+11.7%	+15.0	353
Care, other	181	211	216	205	+23.8	+13.1%	-6.2	-2.9%	-10.4	243
<b>Patient &amp; Client Care</b>	<b>388</b>	<b>471</b>	<b>491</b>	<b>495</b>	<b>+107.1</b>	<b>+27.6%</b>	<b>+24.2</b>	<b>+5.1%</b>	<b>+4.6</b>	<b>596</b>



## Cope Foundation

JUL 2023	WTE DEC 2019	WTE DEC 2022	WTE JUN 2023	WTE JUL 2023	WTE change since DEC 2019	% WTE Change since Dec 2019	WTE change since DEC 2022	% WTE Change since Dec 2022	WTE change since JUN 2023	No. JUL 2023
<b>Total Cope Foundation</b>	<b>1,091</b>	<b>1,163</b>	<b>1,197</b>	<b>1,168</b>	<b>+77.6</b>	<b>+7.1%</b>	<b>+4.9</b>	<b>+0.4%</b>	<b>-28.7</b>	<b>1,352</b>
Nurse/ Midwife Manager	41	50	50	50	+8.7	+21.1%	+0.0	+0.0%	+0.0	59
Nurse/ Midwife Specialist & AN/MP	10	11	11	11	+1.5	+15.2%	+0.0	+0.0%	+0.0	11
Staff Nurse/ Staff Midwife	169	174	174	174	+5.0	+3.0%	+0.6	+0.4%	+0.0	204
Nursing/ Midwifery Student	6		10	10	+4.0	+66.7%	+10.0		+0.0	20
Nursing/ Midwifery other	1	1	1	1	+0.5	+96.1%	+0.0	+0.0%	+0.0	1
<b>Nursing &amp; Midwifery</b>	<b>227</b>	<b>236</b>	<b>246</b>	<b>246</b>	<b>+19.7</b>	<b>+8.7%</b>	<b>+10.6</b>	<b>+4.5%</b>	<b>+0.0</b>	<b>295</b>
Therapy Professions	37	39	39	39	+1.4	+3.8%	+0.0	+0.0%	+0.0	44
Social Care	32	43	43	43	+11.6	+36.8%	+0.0	+0.0%	+0.0	49
Psychologists	10	13	13	13	+3.8	+39.6%	+0.0	+0.0%	+0.0	14
Social Workers	9	10	10	10	+1.6	+17.9%	+0.0	+0.0%	+0.0	12
H&SC, Other	3	2	2	2	-1.0	-33.3%	+0.0	+0.0%	+0.0	2
<b>Health &amp; Social Care Professionals</b>	<b>90</b>	<b>108</b>	<b>108</b>	<b>108</b>	<b>+17.4</b>	<b>+19.2%</b>	<b>+0.0</b>	<b>+0.0%</b>	<b>+0.0</b>	<b>121</b>
Management (VIII & above)	6	7	7	7	+1.3	+22.9%	+0.0	+0.0%	+0.0	7
Administrative/ Supervisory (V to VII)	19	26	26	26	+7.0	+36.7%	+0.0	+0.0%	+0.0	27
Clerical (III & IV)	23	27	27	27	+3.1	+13.0%	+0.0	+0.0%	+0.0	31
<b>Management &amp; Administrative</b>	<b>48</b>	<b>59</b>	<b>59</b>	<b>59</b>	<b>+11.3</b>	<b>+23.6%</b>	<b>+0.0</b>	<b>+0.0%</b>	<b>+0.0</b>	<b>65</b>
Support	77	81	81	41	-36.2	-47.0%	-40.2	-49.6%	-40.2	60
Maintenance/ Technical	6	5	5	5	-0.3	-4.6%	+0.0	+0.0%	+0.0	8
<b>General Support</b>	<b>83</b>	<b>86</b>	<b>86</b>	<b>46</b>	<b>-36.5</b>	<b>-44.1%</b>	<b>-40.2</b>	<b>-46.5%</b>	<b>-40.2</b>	<b>68</b>
Health Care Assistants	563	594	607	619	+55.3	+9.8%	+24.5	+4.1%	+11.5	704
Care, other	79	80	90	90	+10.4	+13.1%	+9.9	+12.4%	+0.0	99
<b>Patient &amp; Client Care</b>	<b>643</b>	<b>674</b>	<b>697</b>	<b>708</b>	<b>+65.7</b>	<b>+10.2%</b>	<b>+34.5</b>	<b>+5.1%</b>	<b>+11.5</b>	<b>803</b>

Cork Dental Hospital

JUL 2023	WTE DEC 2019	WTE DEC 2022	WTE JUN 2023	WTE JUL 2023	WTE change since DEC 2019	% WTE Change since Dec 2019	WTE change since DEC 2022	% WTE Change since Dec 2022	WTE change since JUN 2023	No. JUL 2023
Total Cork Dental Hospital	103	117	120	113	+10.0	+9.7%	-4.4	-3.7%	-6.8	188
Consultants		4	4	4	+4.1		+0.0	+0.0%	+0.0	5
Registrars	5	3	3	3	-2.4	-48.0%	-0.4	-13.3%	+0.0	3
SHO/ Interns	6	4	3	3	-3.2	-51.2%	-1.0	-25.0%	+0.0	3
Medical/ Dental, other	13	20	20	15	+2.4	+18.4%	-4.2	-21.4%	-5.0	54
Medical & Dental	24	31	30	25	+1.0	+4.0%	-5.6	-18.2%	-5.0	65
Nurse/ Midwife Manager	3	3	2	3	+0.1	+2.0%	-0.8	-22.7%	+0.1	3
Staff Nurse/ Staff Midwife	7	4	5	5	-2.1	-31.1%	+0.9	+23.3%	-0.2	9
Nursing & Midwifery	9	7	7	7	-2.1	-22.1%	+0.1	+1.8%	-0.2	12
Health Science/ Diagnostics	2	2	2	2	+0.0	+0.0%	+0.0	+0.0%	+0.0	2
H&SC, Other	1	3	3	3	+1.8	+176.0%	+0.0	+0.0%	+0.0	5
Health & Social Care Professionals	3	5	5	5	+1.8	+58.7%	+0.0	+0.0%	+0.0	7
Management (VIII & above)	1	1	1	1	+0.0	+0.0%	+0.0	+0.0%	+0.0	1
Administrative/ Supervisory (V to VII)	2	2	3	3	+1.0	+50.0%	+1.0	+50.0%	+0.0	3
Clerical (III & IV)	23	24	22	24	+0.8	+3.2%	-0.1	-0.6%	+1.5	38
Management & Administrative	26	27	26	28	+1.8	+6.7%	+0.9	+3.2%	+1.5	42
Support	11	12	15	15	+4.2	+38.4%	+2.6	+21.0%	-0.3	17
General Support	11	12	15	15	+4.2	+38.4%	+2.6	+21.0%	-0.3	17
Care, other	30	35	36	33	+3.4	+11.6%	-2.4	-6.7%	-3.0	45
Patient & Client Care	30	35	36	33	+3.4	+11.6%	-2.4	-6.7%	-3.0	45

## St. John of God Kerry

JUL 2023	WTE DEC 2019	WTE DEC 2022	WTE JUN 2023	WTE JUL 2023	WTE change since DEC 2019	% WTE Change since Dec 2019	WTE change since DEC 2022	% WTE Change since Dec 2022	WTE change since JUN 2023	No. JUL 2023
<b>Total St. John of God Kerry</b>	<b>315</b>	<b>321</b>	<b>327</b>	<b>324</b>	<b>+8.9</b>	<b>+2.8%</b>	<b>+2.6</b>	<b>+0.8%</b>	<b>-3.2</b>	<b>399</b>
Nurse/ Midwife Manager	16	15	15	15	-0.6	-3.5%	+0.0	+0.2%	+0.1	16
Staff Nurse/ Staff Midwife	49	41	45	44	-4.8	-9.9%	+3.2	+7.8%	-1.2	57
<b>Nursing &amp; Midwifery</b>	<b>64</b>	<b>56</b>	<b>60</b>	<b>59</b>	<b>-5.4</b>	<b>-8.4%</b>	<b>+3.2</b>	<b>+5.7%</b>	<b>-1.1</b>	<b>73</b>
Therapy Professions	4	3	3	3	-0.5	-14.3%	+0.5	+20.0%	+0.0	3
Social Care	45	52	50	51	+5.3	+11.7%	-1.6	-3.1%	+0.5	58
Psychologists	2	1	1	1	-0.8	-54.7%	+0.0	+3.0%	-0.1	1
Social Workers	1	1	1	1	-0.4	-40.0%	-0.4	-40.0%	-0.4	1
<b>Health &amp; Social Care Professionals</b>	<b>51</b>	<b>56</b>	<b>55</b>	<b>55</b>	<b>+3.6</b>	<b>+7.0%</b>	<b>-1.5</b>	<b>-2.7%</b>	<b>+0.1</b>	<b>63</b>
Management (VIII & above)	1	2	2	2	+1.0	+95.0%	-0.1	-2.5%	+0.1	2
Administrative/ Supervisory (V to VII)	7	10	11	10	+3.1	+42.2%	+0.1	+1.0%	-0.7	12
Clerical (III & IV)	10	8	8	8	-1.7	-18.2%	+0.2	+3.0%	-0.2	12
<b>Management &amp; Administrative</b>	<b>18</b>	<b>20</b>	<b>21</b>	<b>20</b>	<b>+2.3</b>	<b>+12.9%</b>	<b>+0.3</b>	<b>+1.4%</b>	<b>-0.9</b>	<b>26</b>
Support	28	26	25	26	-2.0	-7.0%	-0.6	-2.1%	+0.5	33
Maintenance/ Technical	2	1	1	1	-1.0	-50.0%	+0.0	+0.0%	+0.0	1
<b>General Support</b>	<b>30</b>	<b>27</b>	<b>26</b>	<b>27</b>	<b>-3.0</b>	<b>-9.9%</b>	<b>-0.6</b>	<b>-2.0%</b>	<b>+0.5</b>	<b>34</b>
Health Care Assistants	105	115	116	116	+10.7	+10.1%	+0.8	+0.7%	+0.1	148
Care, other	46	46	49	47	+0.7	+1.4%	+0.4	+0.9%	-1.9	55
<b>Patient &amp; Client Care</b>	<b>152</b>	<b>162</b>	<b>165</b>	<b>163</b>	<b>+11.3</b>	<b>+7.5%</b>	<b>+1.2</b>	<b>+0.7%</b>	<b>-1.8</b>	<b>203</b>

# Employment Report by Community Health & Wellbeing JUL 2023

CHO 4 JUL 2023

Community Health & Wellbeing JUL 2023	WTE DEC 2019	WTE DEC 2022	WTE JUN 2023	WTE JUL 2023	WTE change since DEC 2019	% WTE Change since Dec 2019	WTE change since DEC 2022	% WTE Change since Dec 2022	WTE change since JUN 2023	No. JUL 2023
<b>Overall</b>		<b>103</b>	<b>106</b>	<b>89</b>	<b>+89</b>		<b>-14</b>	<b>-13.6%</b>	<b>-17</b>	<b>162</b>
Consultants			0	0	+0		+0		0	2
Medical/ Dental, other		3	4	2	+2		-1	-39.3%	-2	8
<b>Medical &amp; Dental</b>		<b>3</b>	<b>5</b>	<b>2</b>	<b>+2</b>		<b>-1</b>	<b>-34.4%</b>	<b>-3</b>	<b>10</b>
Nurse/ Midwife Manager		7	6	6	+6		0	-5.0%	+0	8
<b>Nursing &amp; Midwifery</b>		<b>7</b>	<b>6</b>	<b>6</b>	<b>+6</b>		<b>0</b>	<b>-5.0%</b>	<b>+0</b>	<b>8</b>
Therapy Professions		5	3	3	+3		-2	-32.5%	+0	4
H&SC, Other		17	13	11	+11		-6	-37.7%	-3	48
<b>Health &amp; Social Care Professionals</b>		<b>22</b>	<b>17</b>	<b>14</b>	<b>+14</b>		<b>-8</b>	<b>-36.6%</b>	<b>-3</b>	<b>52</b>
Management (VIII & above)		2	2	2	+2		+0	+0.0%	+0	2
Administrative/ Supervisory (V to VII)		25	23	22	+22		-3	-12.1%	-1	24
Clerical (III & IV)		15	16	10	+10		-5	-33.3%	-6	18
<b>Management &amp; Administrative</b>		<b>42</b>	<b>41</b>	<b>34</b>	<b>+34</b>		<b>-8</b>	<b>-19.0%</b>	<b>-7</b>	<b>44</b>
Maintenance/ Technical		2	2				-2	-100.0%	-2	
<b>General Support</b>		<b>2</b>	<b>2</b>				<b>-2</b>	<b>-100.0%</b>	<b>-2</b>	
Health Care Assistants		1	0	0	+0		0	-52.0%	0	2
Care, other		27	35	33	+33		+6	+20.8%	-2	46
<b>Patient &amp; Client Care</b>		<b>28</b>	<b>36</b>	<b>33</b>	<b>+33</b>		<b>+5</b>	<b>+19.5%</b>	<b>-3</b>	<b>48</b>



# Employment Report by Mental Health JUL 2023

CHO 4 JUL 2023

Mental HealthJUL 2023	WTE DEC 2019	WTE DEC 2022	WTE JUN 2023	WTE JUL 2023	WTE change since DEC 2019	% WTE Change since Dec 2019	WTE change since DEC 2022	% WTE Change since Dec 2022	WTE change since JUN 2023	No. JUL 2023
<b>Overall</b>	<b>1,499</b>	<b>1,562</b>	<b>1,575</b>	<b>1,568</b>	<b>+69</b>	<b>+4.6%</b>	<b>+6</b>	<b>+0.4%</b>	<b>-7</b>	<b>1,752</b>
Consultants	50	60	60	61	+11	+23.0%	+1	+1.7%	+1	68
Registrars	46	56	47	49	+3	+6.7%	-8	-13.3%	+2	52
SHO/ Interns	31	42	46	43	+12	+38.1%	+0	+0.9%	-4	45
Medical/ Dental, other	2	1	1	1	-1	-51.5%	+0	+1.0%	+0	4
<b>Medical &amp; Dental</b>	<b>129</b>	<b>160</b>	<b>154</b>	<b>154</b>	<b>+25</b>	<b>+19.7%</b>	<b>-6</b>	<b>-3.8%</b>	<b>0</b>	<b>169</b>
Nurse/ Midwife Manager	171	207	201	206	+34	+20.0%	-1	-0.6%	+5	219
Nurse/ Midwife Specialist & AN/MP	60	72	77	78	+18	+30.0%	+6	+7.9%	+1	83
Staff Nurse/ Staff Midwife	505	479	464	452	-54	-10.7%	-27	-5.7%	-12	489
Nursing/ Midwifery awaiting registration	30				-30	-100.0%				
Post-registration Nurse/ Midwife Student	1				-1	-100.0%				
Pre-registration Nurse/ Midwife Intern	3	7	24	24	+21	+712.7%	+18	+264.4%	0	49
Nursing/ Midwifery Student	34	7	24	24	-9	-27.2%	+18	+264.4%	0	49
<b>Nursing &amp; Midwifery</b>	<b>770</b>	<b>765</b>	<b>766</b>	<b>760</b>	<b>-11</b>	<b>-1.4%</b>	<b>-5</b>	<b>-0.7%</b>	<b>-6</b>	<b>840</b>
Therapy Professions	74	79	85	87	+13	+17.8%	+8	+10.4%	+2	99
Social Care	4	6	5	5	+2	+39.8%	0	-7.9%	+1	7
Pharmacy	2	2	1	1	-1	-41.5%	-1	-38.6%	0	3
Psychologists	83	96	94	89	+6	+7.5%	-7	-7.2%	-5	102
Social Workers	53	73	75	75	+22	+40.9%	+2	+2.5%	+0	88
H&SC, Other	11	18	17	17	+6	+57.3%	-1	-3.9%	0	20
<b>Health &amp; Social Care Professionals</b>	<b>227</b>	<b>273</b>	<b>277</b>	<b>274</b>	<b>+48</b>	<b>+21.0%</b>	<b>+1</b>	<b>+0.4%</b>	<b>-3</b>	<b>319</b>
Management (VIII & above)	1	3	4	4	+3	+260.0%	+1	+20.0%	0	4
Administrative/ Supervisory (V to VII)	22	26	29	30	+7	+31.3%	+3	+11.7%	+0	31
Clerical (III & IV)	87	87	93	95	+8	+8.9%	+8	+9.7%	+2	106
<b>Management &amp; Administrative</b>	<b>111</b>	<b>116</b>	<b>126</b>	<b>128</b>	<b>+17</b>	<b>+15.7%</b>	<b>+12</b>	<b>+10.4%</b>	<b>+2</b>	<b>141</b>
Support	81	75	64	63	-17	-21.5%	-11	-15.1%	0	74
Maintenance/ Technical	6	5	5	5	-1	-16.4%	+0	+0.2%	+0	6
<b>General Support</b>	<b>87</b>	<b>80</b>	<b>69</b>	<b>69</b>	<b>-18</b>	<b>-21.1%</b>	<b>-11</b>	<b>-14.2%</b>	<b>0</b>	<b>80</b>
Health Care Assistants	168	162	177	177	+9	+5.2%	+15	+9.2%	0	190
Care, other	7	5	6	6	-1	-17.1%	+1	+14.9%	0	13
<b>Patient &amp; Client Care</b>	<b>176</b>	<b>167</b>	<b>183</b>	<b>183</b>	<b>+7</b>	<b>+4.2%</b>	<b>+16</b>	<b>+9.4%</b>	<b>0</b>	<b>203</b>



# Employment Report by Primary Care JUL 2023

CHO 4 JUL 2023

Primary Care JUL 2023	WTE DEC 2019	WTE DEC 2022	WTE JUN 2023	WTE JUL 2023	WTE change since DEC 2019	% WTE Change since Dec 2019	WTE change since DEC 2022	% WTE Change since Dec 2022	WTE change since JUN 2023	No. JUL 2023
<b>Overall</b>	<b>1,346</b>	<b>1,707</b>	<b>1,783</b>	<b>1,806</b>	<b>+460</b>	<b>+34.2%</b>	<b>+99</b>	<b>+5.8%</b>	<b>+23</b>	<b>2,241</b>
Consultants	3	7	7	7	+4	+151.3%	0	-3.5%	0	10
Registrars	55	40	57	75	+20	+36.5%	+35	+88.3%	+18	78
SHO/ Interns	6	4	3	3	-3	-51.2%	-1	-25.0%	+0	3
Medical/ Dental, other	88	110	108	101	+13	+15.0%	-9	-7.8%	-6	181
<b>Medical &amp; Dental</b>	<b>152</b>	<b>160</b>	<b>174</b>	<b>186</b>	<b>+34</b>	<b>+22.4%</b>	<b>+25</b>	<b>+15.7%</b>	<b>+11</b>	<b>272</b>
Nurse/ Midwife Manager	56	72	68	70	+13	+23.7%	-3	-3.6%	+1	76
Nurse/ Midwife Specialist & AN/MP	4	14	31	34	+29	+698.3%	+19	+131.7%	+2	38
Staff Nurse/ Staff Midwife	119	177	189	198	+79	+66.4%	+22	+12.4%	+10	271
Public Health Nurse	211	210	204	201	-10	-4.8%	-9	-4.4%	-3	255
Post-registration Nurse/ Midwife Student	17	11	13	8	-9	-53.6%	-3	-26.9%	-5	8
Nursing/ Midwifery Student	17	11	13	8	-9	-53.6%	-3	-26.9%	-5	8
<b>Nursing &amp; Midwifery</b>	<b>408</b>	<b>484</b>	<b>505</b>	<b>510</b>	<b>+102</b>	<b>+25.1%</b>	<b>+26</b>	<b>+5.4%</b>	<b>+5</b>	<b>648</b>
Therapy Professions	222	327	345	341	+119	+53.5%	+14	+4.2%	-4	401
Health Science/ Diagnostics	11	13	11	11	+0	+1.5%	-2	-16.6%	0	12
Social Care	8	7	6	6	-1	-18.7%	0	-3.5%	0	7
Pharmacy	3	2	5	5	+2	+55.7%	+3	+166.5%	+0	5
Psychologists	20	23	30	30	+10	+47.4%	+7	+28.6%	+0	34
Social Workers	24	37	42	43	+18	+76.0%	+6	+16.5%	+0	46
H&SC, Other	41	39	45	46	+5	+11.1%	+7	+17.3%	+0	53
<b>Health &amp; Social Care Professionals</b>	<b>329</b>	<b>447</b>	<b>484</b>	<b>481</b>	<b>+152</b>	<b>+46.1%</b>	<b>+34</b>	<b>+7.5%</b>	<b>-4</b>	<b>558</b>
Management (VIII & above)	37	44	45	43	+6	+15.7%	-2	-3.5%	-2	44
Administrative/ Supervisory (V to VII)	68	114	115	118	+50	+72.9%	+4	+3.7%	+3	129
Clerical (III & IV)	205	255	268	279	+74	+36.0%	+24	+9.4%	+11	334
<b>Management &amp; Administrative</b>	<b>310</b>	<b>412</b>	<b>427</b>	<b>439</b>	<b>+129</b>	<b>+41.7%</b>	<b>+26</b>	<b>+6.4%</b>	<b>+12</b>	<b>507</b>
Support	16	16	20	20	+4	+27.7%	+3	+21.1%	0	32
Maintenance/ Technical		1	1	1	+1		+0	+0.0%	+0	1
<b>General Support</b>	<b>16</b>	<b>17</b>	<b>21</b>	<b>21</b>	<b>+5</b>	<b>+34.1%</b>	<b>+3</b>	<b>+19.9%</b>	<b>0</b>	<b>33</b>
Health Care Assistants	17	47	32	34	+16	+94.1%	-13	-28.1%	+1	38
Home Help	10	8	12	12	+2	+21.4%	+4	+48.1%	+0	26
Care, other	105	130	126	123	+19	+18.0%	-7	-5.0%	-3	159
<b>Patient &amp; Client Care</b>	<b>132</b>	<b>185</b>	<b>171</b>	<b>169</b>	<b>+37</b>	<b>+28.2%</b>	<b>-16</b>	<b>-8.5%</b>	<b>-1</b>	<b>223</b>

## Employment Report by Disabilities JUL 2023

CHO 4 JUL 2023

Disabilities JUL 2023	WTE DEC 2019	WTE DEC 2022	WTE JUN 2023	WTE JUL 2023	WTE change since DEC 2019	% WTE Change since Dec 2019	WTE change since DEC 2022	% WTE Change since Dec 2022	WTE change since JUN 2023	No. JUL 2023
<b>Overall</b>	<b>2,425</b>	<b>2,640</b>	<b>2,693</b>	<b>2,664</b>	<b>+239</b>	<b>+9.9%</b>	<b>+24</b>	<b>+0.9%</b>	<b>-29</b>	<b>3,153</b>
Consultants	2	2	2	2	+0	+2.0%	+0	+0.0%	+0	2
Medical/ Dental, other	0	0	0	0	+0	+12.1%	+0	+0.0%	+0	1
<b>Medical &amp; Dental</b>	<b>2</b>	<b>2</b>	<b>2</b>	<b>2</b>	<b>+0</b>	<b>+3.8%</b>	<b>+0</b>	<b>+0.0%</b>	<b>+0</b>	<b>3</b>
Nurse/ Midwife Manager	87	98	100	100	+13	+14.7%	+2	+2.3%	+1	113
Nurse/ Midwife Specialist & AN/MP	13	13	13	13	0	-3.6%	+0	+0.0%	+0	14
Staff Nurse/ Staff Midwife	306	301	308	307	+1	+0.4%	+6	+2.0%	-1	373
Nursing/ Midwifery awaiting registration	1				-1	-100.0%				
Pre-registration Nurse/ Midwife Intern	6	1	10	10	+4	+66.7%	+9	+1,349.3%	+0	20
Nursing/ Midwifery Student	7	1	10	10	+3	+42.9%	+9	+1,349.3%	+0	20
Nursing/ Midwifery other	1	1	1	1	+0	+96.1%	+0	+0.0%	+0	1
<b>Nursing &amp; Midwifery</b>	<b>414</b>	<b>414</b>	<b>432</b>	<b>431</b>	<b>+17</b>	<b>+4.2%</b>	<b>+17</b>	<b>+4.2%</b>	<b>0</b>	<b>521</b>
Therapy Professions	108	105	101	100	-7	-6.9%	-4	-4.1%	0	121
Social Care	227	259	258	258	+32	+13.9%	-1	-0.2%	+0	295
Psychologists	35	37	34	33	-2	-4.5%	-3	-9.1%	-1	38
Social Workers	27	28	26	24	-3	-9.7%	-3	-12.3%	-2	31
H&SC, Other	8	7	8	8	-1	-10.6%	+0	+6.8%	0	8
<b>Health &amp; Social Care Professionals</b>	<b>405</b>	<b>435</b>	<b>426</b>	<b>424</b>	<b>+19</b>	<b>+4.7%</b>	<b>-11</b>	<b>-2.5%</b>	<b>-3</b>	<b>493</b>
Management (VIII & above)	22	23	28	25	+3	+11.8%	+2	+8.5%	-3	25
Administrative/ Supervisory (V to VII)	53	72	76	80	+27	+50.0%	+8	+10.8%	+4	86
Clerical (III & IV)	84	93	96	96	+12	+13.9%	+2	+2.5%	0	125
<b>Management &amp; Administrative</b>	<b>160</b>	<b>189</b>	<b>200</b>	<b>201</b>	<b>+41</b>	<b>+25.7%</b>	<b>+12</b>	<b>+6.4%</b>	<b>+1</b>	<b>236</b>
Support	140	138	135	94	-46	-32.7%	-44	-31.9%	-41	140
Maintenance/ Technical	10	10	11	11	+0	+3.3%	+1	+6.0%	+0	14
<b>General Support</b>	<b>150</b>	<b>148</b>	<b>146</b>	<b>105</b>	<b>-46</b>	<b>-30.3%</b>	<b>-43</b>	<b>-29.3%</b>	<b>-41</b>	<b>154</b>
Health Care Assistants	987	1,111	1,131	1,158	+171	+17.3%	+47	+4.2%	+26	1,346
Care, other	307	342	356	344	+37	+11.9%	+2	+0.6%	-12	400
<b>Patient &amp; Client Care</b>	<b>1,295</b>	<b>1,453</b>	<b>1,488</b>	<b>1,502</b>	<b>+207</b>	<b>+16.0%</b>	<b>+49</b>	<b>+3.4%</b>	<b>+14</b>	<b>1,746</b>



# Employment Report by Older People JUL 2023

CHO 4 JUL 2023

Older People JUL 2023	WTE DEC 2019	WTE DEC 2022	WTE JUN 2023	WTE JUL 2023	WTE change since DEC 2019	% WTE Change since Dec 2019	WTE change since DEC 2022	% WTE Change since Dec 2022	WTE change since JUN 2023	No. JUL 2023
<b>Overall</b>	<b>2,919</b>	<b>3,000</b>	<b>2,759</b>	<b>2,722</b>	<b>-197</b>	<b>-6.7%</b>	<b>-278</b>	<b>-9.3%</b>	<b>-37</b>	<b>3,643</b>
Consultants	1	1	1	1	+0	+6.0%	+0	+0.0%	+0	2
Registrars	3	0	2		-3	-100.0%	0	-100.0%	-2	
SHO/ Interns	1		1	1	+0	+0.0%	+1		+0	1
Medical/ Dental, other	21	27	25	24	+4	+17.1%	-2	-8.5%	-1	53
<b>Medical &amp; Dental</b>	<b>26</b>	<b>28</b>	<b>29</b>	<b>26</b>	<b>+1</b>	<b>+2.4%</b>	<b>-1</b>	<b>-4.7%</b>	<b>-2</b>	<b>56</b>
Nurse/ Midwife Manager	118	109	114	114	-3	-2.8%	+5	+4.9%	+0	124
Nurse/ Midwife Specialist & AN/MP	3	6	9	10	+7	+210.3%	+4	+71.3%	+1	11
Staff Nurse/ Staff Midwife	515	575	515	508	-7	-1.4%	-67	-11.7%	-7	622
Public Health Nurse	5	6	5	4	-1	-12.0%	-2	-30.2%	0	6
Nursing/ Midwifery awaiting registration	1				-1	-100.0%				
Post-registration Nurse/ Midwife Student	1				-1	-100.0%				
Nursing/ Midwifery Student	2				-2	-100.0%				
<b>Nursing &amp; Midwifery</b>	<b>643</b>	<b>697</b>	<b>643</b>	<b>637</b>	<b>-6</b>	<b>-0.9%</b>	<b>-60</b>	<b>-8.5%</b>	<b>-6</b>	<b>763</b>
Therapy Professions	44	37	33	29	-15	-34.6%	-8	-21.1%	-4	32
Health Science/ Diagnostics	1	1	1	1	+0	+14.0%	+0	+0.0%	+0	2
Social Care	2	1	1	1	0	-26.4%	+0	+0.8%	+0	2
Pharmacy	3	5	4	4	+2	+70.7%	0	-2.2%	+0	9
Social Workers	10	9	10		-10	-100.0%	-9	-100.0%	-10	
H&SC, Other				1	+1		+1		+1	1
<b>Health &amp; Social Care Professionals</b>	<b>60</b>	<b>53</b>	<b>50</b>	<b>37</b>	<b>-23</b>	<b>-38.5%</b>	<b>-16</b>	<b>-30.7%</b>	<b>-13</b>	<b>46</b>
Management (VIII & above)	13	19	23	23	+10	+79.2%	+4	+18.9%	0	23
Administrative/ Supervisory (V to VII)	17	29	40	38	+21	+123.9%	+9	+29.6%	-2	40
Clerical (III & IV)	128	130	125	124	-5	-3.7%	-6	-4.8%	-1	147
<b>Management &amp; Administrative</b>	<b>158</b>	<b>178</b>	<b>189</b>	<b>185</b>	<b>+27</b>	<b>+16.8%</b>	<b>+6</b>	<b>+3.5%</b>	<b>-4</b>	<b>210</b>
Support	101	124	122	121	+21	+20.6%	-3	-2.1%	0	132
Maintenance/ Technical	6	5	5	4	-2	-37.5%	-1	-25.0%	-1	5
<b>General Support</b>	<b>107</b>	<b>129</b>	<b>126</b>	<b>125</b>	<b>+18</b>	<b>+17.3%</b>	<b>-4</b>	<b>-3.0%</b>	<b>-1</b>	<b>137</b>
Health Care Assistants	781	814	750	758	-24	-3.1%	-57	-7.0%	+8	885
Home Help	1,113	1,068	935	920	-194	-17.4%	-148	-13.9%	-15	1496
Care, other	31	34	38	35	+4	+14.5%	+1	+3.8%	-3	50
<b>Patient &amp; Client Care</b>	<b>1,925</b>	<b>1,916</b>	<b>1,722</b>	<b>1,712</b>	<b>-213</b>	<b>-11.1%</b>	<b>-204</b>	<b>-10.6%</b>	<b>-10</b>	<b>2431</b>





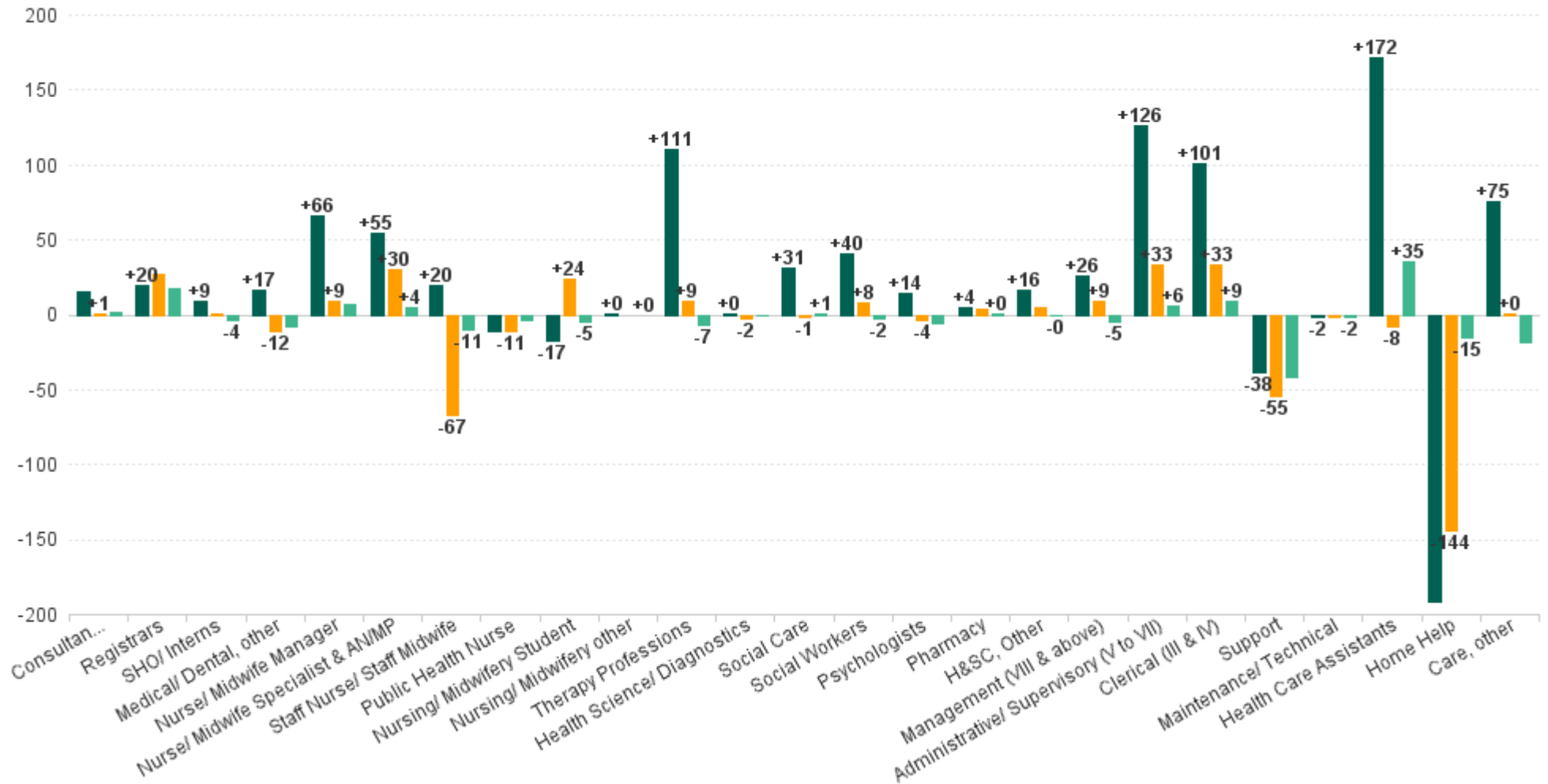
## Employment Report by CHO Operations JUL 2023

CHO 4 JUL 2023

CHO Operations JUL 2023	WTE DEC 2019	WTE DEC 2022	WTE JUN 2023	WTE JUL 2023	WTE change since DEC 2019	% WTE Change since Dec 2019	WTE change since DEC 2022	% WTE Change since Dec 2022	WTE change since JUN 2023	No. JUL 2023
<b>Overall</b>			<b>31</b>	<b>43</b>	<b>+43</b>		<b>+43</b>		<b>+12</b>	<b>46</b>
Nurse/ Midwife Manager			5	5	+5		+5		0	6
Nurse/ Midwife Specialist & AN/MP			1	1	+1		+1		+0	1
<b>Nursing &amp; Midwifery</b>			<b>6</b>	<b>6</b>	<b>+6</b>		<b>+6</b>		<b>0</b>	<b>7</b>
Pharmacy			2	2	+2		+2		+0	2
Social Workers			4	13	+13		+13		+9	14
<b>Health &amp; Social Care Professionals</b>			<b>6</b>	<b>15</b>	<b>+15</b>		<b>+15</b>		<b>+9</b>	<b>16</b>
Management (VIII & above)			3	4	+4		+4		+1	4
Administrative/ Supervisory (V to VII)			10	11	+11		+11		+1	11
Clerical (III & IV)			6	7	+7		+7		+1	8
<b>Management &amp; Administrative</b>			<b>19</b>	<b>22</b>	<b>+22</b>		<b>+22</b>		<b>+3</b>	<b>23</b>

## WTE Change by Staff Group

■ WTE change since DEC 2019 ■ WTE change since DEC 2022 ■ WTE change since JUN 2023



Employment Report by WTE, Headcount, Gender, Full-Time / Part-Time etc. JUL 2023

CHO 4 JUL 2023

JUL 2023	WTE JUL 2023	No. JUL 2023	WTE : No	Number Male %	Number Female %	Male WTE : No.	Female WTE : No	Perm Count %	Perm Count Male %	Perm Count Female %	Fulltime Count %	Part time Count %	FT Count Male %	FT Count Female %
<b>Total</b>	<b>8,848</b>	<b>10,916</b>	<b>1:0.8</b>	<b>16.68%</b>	<b>83.32%</b>	<b>1:0.9</b>	<b>1:0.8</b>	<b>72.51%</b>	<b>10.95%</b>	<b>61.56%</b>	<b>58.00%</b>	<b>42.00%</b>	<b>75.62%</b>	<b>54.47%</b>
Consultant Anaesthesia	0	1	1:0.1	100.00%		1:0.1	1:	100.00%	100.00%			100.00%		
Consultant Dentistry	5	5	1:0.9	40.00%	60.00%	1:1	1:0.9	80.00%	40.00%	40.00%	80.00%		100.00%	66.67%
Consultant Medicine	1	4	1:0.3	25.00%	75.00%	1:0.5	1:0.2	100.00%	25.00%	75.00%		100.00%		
Consultant Paediatrics	1	2	1:0.5		100.00%	1:	1:0.5	100.00%		100.00%		100.00%		
Consultant Psychiatry	62	69	1:0.9	37.68%	62.32%	1:0.9	1:0.9	23.19%	8.70%	14.49%	82.61%	17.39%	84.62%	81.40%
Consultant Surgery	1	2	1:0.7	100.00%		1:0.7	1:	100.00%	100.00%		50.00%	50.00%	50.00%	
<b>Consultants</b>	<b>71</b>	<b>83</b>	<b>1:0.8</b>	<b>38.55%</b>	<b>61.45%</b>	<b>1:0.9</b>	<b>1:0.8</b>	<b>34.94%</b>	<b>14.46%</b>	<b>20.48%</b>	<b>74.70%</b>	<b>25.30%</b>	<b>78.13%</b>	<b>72.55%</b>
Dentists	66	125	1:0.5	27.20%	72.80%	1:0.4	1:0.6	68.80%	18.40%	50.40%	22.40%	77.60%	17.65%	24.18%
Other Medical	62	118	1:0.5	39.83%	60.17%	1:0.4	1:0.6	41.53%	10.17%	31.36%	16.10%	83.90%	17.02%	15.49%
<b>Medical/ Dental, other</b>	<b>128</b>	<b>243</b>	<b>1:0.5</b>	<b>33.33%</b>	<b>66.67%</b>	<b>1:0.4</b>	<b>1:0.6</b>	<b>55.56%</b>	<b>14.40%</b>	<b>41.15%</b>	<b>19.34%</b>	<b>80.66%</b>	<b>17.28%</b>	<b>20.37%</b>
Registrar	107	112	1:1	43.75%	56.25%	1:1	1:1				97.32%	2.68%	97.96%	96.83%
Senior Registrar	14	15	1:0.9	40.00%	60.00%	1:1	1:0.9				86.67%	13.33%	100.00%	77.78%
Specialist Registrar	3	3	1:0.9		100.00%	1:	1:0.9	66.67%		66.67%	66.67%	33.33%		66.67%
<b>Registrars</b>	<b>123</b>	<b>130</b>	<b>1:0.9</b>	<b>42.31%</b>	<b>57.69%</b>	<b>1:1</b>	<b>1:0.9</b>	<b>1.54%</b>		<b>1.54%</b>	<b>95.38%</b>	<b>4.62%</b>	<b>98.18%</b>	<b>93.33%</b>
Interns	3	4	1:0.7	75.00%	25.00%	1:0.8	1:0.5				100.00%		100.00%	100.00%
Senior House Officer	44	45	1:1	53.33%	46.67%	1:1	1:1				97.78%	2.22%	100.00%	95.24%
<b>SHO/ Interns</b>	<b>47</b>	<b>49</b>	<b>1:1</b>	<b>55.10%</b>	<b>44.90%</b>	<b>1:1</b>	<b>1:0.9</b>				<b>97.96%</b>	<b>2.04%</b>	<b>100.00%</b>	<b>95.45%</b>
<b>Medical &amp; Dental</b>	<b>369</b>	<b>505</b>	<b>1:0.7</b>	<b>38.61%</b>	<b>61.39%</b>	<b>1:0.7</b>	<b>1:0.7</b>	<b>32.87%</b>	<b>9.31%</b>	<b>23.56%</b>	<b>55.64%</b>	<b>44.36%</b>	<b>61.54%</b>	<b>51.94%</b>
Clinical Nurse/ Midwife Manager	380	419	1:0.9	16.71%	83.29%	1:1	1:0.9	94.27%	15.99%	78.28%	82.10%	17.90%	97.14%	79.08%
Director Nursing/Midwifery, Assistant	79	82	1:1	15.85%	84.15%	1:1	1:1	98.78%	15.85%	82.93%	89.02%	10.98%	92.31%	88.41%
Director of Nursing/Midwifery	39	41	1:1	4.88%	95.12%	1:1	1:0.9	87.80%	4.88%	82.93%	90.24%	9.76%	100.00%	89.74%
<b>Nurse/ Midwife Manager</b>	<b>498</b>	<b>542</b>	<b>1:0.9</b>	<b>15.68%</b>	<b>84.32%</b>	<b>1:1</b>	<b>1:0.9</b>	<b>94.46%</b>	<b>15.13%</b>	<b>79.34%</b>	<b>83.76%</b>	<b>16.24%</b>	<b>96.47%</b>	<b>81.40%</b>
Advanced Nurse/ Midwife Practitioner	17	18	1:0.9	22.22%	77.78%	1:1	1:0.9	88.89%	22.22%	66.67%	94.44%	5.56%	100.00%	92.86%
Clinical Nurse/ Midwife Specialist	119	129	1:0.9	11.63%	88.37%	1:1	1:0.9	98.45%	11.63%	86.82%	76.74%	23.26%	100.00%	73.68%
<b>Nurse/ Midwife Specialist &amp; AN/MP</b>	<b>136</b>	<b>147</b>	<b>1:0.9</b>	<b>12.93%</b>	<b>87.07%</b>	<b>1:1</b>	<b>1:0.9</b>	<b>97.28%</b>	<b>12.93%</b>	<b>84.35%</b>	<b>78.91%</b>	<b>21.09%</b>	<b>100.00%</b>	<b>75.78%</b>
Nursing Education/Clinical	1	1	1:1	100.00%		1:	1:1	100.00%		100.00%	100.00%			100.00%
<b>Nursing/ Midwifery other</b>	<b>1</b>	<b>1</b>	<b>1:1</b>	<b>100.00%</b>	<b>1:</b>	<b>1:1</b>	<b>1:1</b>	<b>100.00%</b>	<b>100.00%</b>	<b>100.00%</b>	<b>100.00%</b>			<b>100.00%</b>
Post-registration Nurse/ Midwife Student	8	8	1:1		100.00%	1:	1:1	62.50%		62.50%	100.00%			100.00%
Pre-registration Nurse/ Midwife Intern	34	69	1:0.5	15.94%	84.06%	1:0.5	1:0.5				100.00%		100.00%	100.00%
<b>Nursing/ Midwifery Student</b>	<b>42</b>	<b>77</b>	<b>1:0.6</b>	<b>14.29%</b>	<b>85.71%</b>	<b>1:0.5</b>	<b>1:0.6</b>	<b>6.49%</b>		<b>6.49%</b>	<b>100.00%</b>		<b>100.00%</b>	<b>100.00%</b>
Public Health Nurse	205	261	1:0.8		100.00%	1:	1:0.8	88.12%		88.12%	54.41%	45.59%		54.41%
<b>Public Health Nurse</b>	<b>205</b>	<b>261</b>	<b>1:0.8</b>		<b>100.00%</b>	<b>1:</b>	<b>1:0.8</b>	<b>88.12%</b>		<b>88.12%</b>	<b>54.41%</b>	<b>45.59%</b>		<b>54.41%</b>
Staff Midwives	3	4	1:0.7		100.00%	1:	1:0.7	75.00%		75.00%	25.00%	75.00%		25.00%
Staff Nurse [Intellectual Disability]	156	194	1:0.8	6.70%	93.30%	1:0.8	1:0.8	99.48%	6.70%	92.78%	77.32%	22.68%	100.00%	75.69%
Staff Nurse [Psychiatric]	425	462	1:0.9	29.44%	70.56%	1:1	1:0.9	78.14%	22.73%	55.41%	86.80%	13.20%	93.38%	84.05%
Staff Nurses [General/ Children's]	881	1,095	1:0.8	5.48%	94.52%	1:0.9	1:0.8	67.40%	3.20%	64.20%	46.48%	53.52%	78.33%	44.64%
<b>Staff Nurse/ Staff Midwife</b>	<b>1,465</b>	<b>1,755</b>	<b>1:0.8</b>	<b>11.91%</b>	<b>88.09%</b>	<b>1:0.9</b>	<b>1:0.8</b>	<b>73.79%</b>	<b>8.72%</b>	<b>65.07%</b>	<b>60.46%</b>	<b>39.54%</b>	<b>89.47%</b>	<b>56.53%</b>
<b>Nursing &amp; Midwifery</b>	<b>2,348</b>	<b>2,783</b>	<b>1:0.8</b>	<b>11.64%</b>	<b>88.36%</b>	<b>1:0.9</b>	<b>1:0.8</b>	<b>78.55%</b>	<b>9.13%</b>	<b>69.42%</b>	<b>66.51%</b>	<b>33.49%</b>	<b>92.28%</b>	<b>63.12%</b>
Audiology	7	8	1:0.9	25.00%	75.00%	1:1	1:0.9	75.00%	25.00%	50.00%	75.00%	25.00%	100.00%	66.67%
Physicists	2	2	1:0.8		100.00%	1:	1:0.8	100.00%		100.00%	100.00%			100.00%
Radiographers	3	4	1:0.8		100.00%	1:	1:0.8	75.00%		75.00%	75.00%	25.00%		75.00%
<b>Health Science/ Diagnostics</b>	<b>12</b>	<b>14</b>	<b>1:0.9</b>	<b>14.29%</b>	<b>85.71%</b>	<b>1:1</b>	<b>1:0.9</b>	<b>78.57%</b>	<b>14.29%</b>	<b>64.29%</b>	<b>78.57%</b>	<b>21.43%</b>	<b>100.00%</b>	<b>75.00%</b>
Counsellor Therapists	49	53	1:0.9	39.62%	60.38%	1:0.9	1:0.9	92.45%	39.62%	52.83%	83.02%	16.98%	90.48%	78.13%
Dental Hygienists	10	14	1:0.7	7.14%	92.86%	1:1	1:0.7	100.00%	7.14%	92.86%	42.86%	57.14%	100.00%	38.46%
Other Health & Social Care	10	12	1:0.8	33.33%	66.67%	1:0.9	1:0.8	75.00%	25.00%	50.00%	58.33%	41.67%	75.00%	50.00%
Play Therapists/ Specialists	2	3	1:0.8		100.00%	1:	1:0.8	100.00%		100.00%	33.33%	66.67%		33.33%
Vaccinators	5	24	1:0.2	16.67%	83.33%	1:0.2	1:0.2					100.00%		
<b>H&amp;SC, Other</b>	<b>76</b>	<b>106</b>	<b>1:0.7</b>	<b>28.30%</b>	<b>71.70%</b>	<b>1:0.8</b>	<b>1:0.7</b>	<b>70.75%</b>	<b>23.58%</b>	<b>47.17%</b>	<b>54.72%</b>	<b>45.28%</b>	<b>76.67%</b>	<b>46.05%</b>
Pharmacists	11	17	1:0.6	23.53%	76.47%	1:0.4	1:0.7	70.59%	17.65%	52.94%	47.06%	52.94%	25.00%	53.85%
Pharmacy Technicians	2	2	1:0.9		100.00%	1:	1:0.9	50.00%		50.00%	100.00%			100.00%
<b>Pharmacy</b>	<b>12</b>	<b>19</b>	<b>1:0.7</b>	<b>21.05%</b>	<b>78.95%</b>	<b>1:0.4</b>	<b>1:0.7</b>	<b>68.42%</b>	<b>15.79%</b>	<b>52.63%</b>	<b>52.63%</b>	<b>47.37%</b>	<b>25.00%</b>	<b>60.00%</b>
<b>Psychologists</b>	<b>152</b>	<b>174</b>	<b>1:0.9</b>	<b>17.82%</b>	<b>82.18%</b>	<b>1:1</b>	<b>1:0.9</b>	<b>72.41%</b>	<b>14.37%</b>	<b>58.05%</b>	<b>72.99%</b>	<b>27.01%</b>	<b>100.00%</b>	<b>67.13%</b>
<b>Social Care</b>	<b>271</b>	<b>311</b>	<b>1:0.9</b>	<b>17.68%</b>	<b>82.32%</b>	<b>1:1</b>	<b>1:0.9</b>	<b>87.78%</b>	<b>13.50%</b>	<b>74.28%</b>	<b>75.24%</b>	<b>24.76%</b>	<b>92.73%</b>	<b>71.48%</b>
<b>Social Workers</b>	<b>155</b>	<b>179</b>	<b>1:0.9</b>	<b>18.99%</b>	<b>81.01%</b>	<b>1:1</b>	<b>1:0.8</b>	<b>79.89%</b>	<b>14.53%</b>	<b>65.36%</b>	<b>81.56%</b>	<b>18.44%</b>	<b>94.12%</b>	<b>78.62%</b>



JUL 2023	WTE JUL 2023	No. JUL 2023	WTE : No	Number Male %	Number Female %	Male WTE : No.	Female WTE : No	Perm Count %	Perm Count Male %	Perm Count Female %	Fulltime Count %	Part time Count %	FT Count Male %	FT Count Female %
<b>Total</b>	<b>8,848</b>	<b>10,916</b>	<b>1:0.8</b>	<b>16.68%</b>	<b>83.32%</b>	<b>1:0.9</b>	<b>1:0.8</b>	<b>72.51%</b>	<b>10.95%</b>	<b>61.56%</b>	<b>58.00%</b>	<b>42.00%</b>	<b>75.62%</b>	<b>54.47%</b>
Dietitians	41	49	1:0.8		100.00%	1:	1:0.8	91.84%		91.84%	67.35%	32.65%		67.35%
Occupational Therapists	228	264	1:0.9	6.82%	93.18%	1:0.9	1:0.9	84.85%	5.30%	79.55%	78.03%	21.97%	72.22%	78.46%
Orthoptists	1	1	1:0.5		100.00%	1:	1:0.5	100.00%		100.00%		100.00%		
Physiotherapists	129	153	1:0.8	19.61%	80.39%	1:1	1:0.8	79.74%	14.38%	65.36%	64.71%	35.29%	90.00%	58.54%
Podiatrists & Chiropodists	16	18	1:0.9	11.11%	88.89%	1:1	1:0.9	83.33%	11.11%	72.22%	77.78%	22.22%	100.00%	75.00%
Speech & Language Therapists	143	170	1:0.8	2.35%	97.65%	1:1	1:0.8	85.88%	1.18%	84.71%	67.65%	32.35%	75.00%	67.47%
<b>Therapy Professions</b>	<b>558</b>	<b>655</b>	<b>1:0.9</b>	<b>8.24%</b>	<b>91.76%</b>	<b>1:1</b>	<b>1:0.8</b>	<b>84.43%</b>	<b>6.11%</b>	<b>78.32%</b>	<b>71.30%</b>	<b>28.70%</b>	<b>83.33%</b>	<b>70.22%</b>
<b>Health &amp; Social Care Professionals</b>	<b>1,238</b>	<b>1,458</b>	<b>1:0.8</b>	<b>14.40%</b>	<b>85.60%</b>	<b>1:0.9</b>	<b>1:0.8</b>	<b>81.89%</b>	<b>11.18%</b>	<b>70.71%</b>	<b>72.22%</b>	<b>27.78%</b>	<b>88.10%</b>	<b>69.55%</b>
Middle Management (V-VII)	287	309	1:0.9	16.50%	83.50%	1:1	1:0.9	94.17%	15.86%	78.32%	87.06%	12.94%	94.12%	85.66%
<b>Administrative/ Supervisory (V to VII)</b>	<b>287</b>	<b>309</b>	<b>1:0.9</b>	<b>16.50%</b>	<b>83.50%</b>	<b>1:1</b>	<b>1:0.9</b>	<b>94.17%</b>	<b>15.86%</b>	<b>78.32%</b>	<b>87.06%</b>	<b>12.94%</b>	<b>94.12%</b>	<b>85.66%</b>
General Administrative (III & IV)	605	729	1:0.8	8.92%	91.08%	1:0.9	1:0.8	72.70%	5.35%	67.35%	59.67%	40.33%	80.00%	57.68%
<b>Clerical (III &amp; IV)</b>	<b>605</b>	<b>729</b>	<b>1:0.8</b>	<b>8.92%</b>	<b>91.08%</b>	<b>1:0.9</b>	<b>1:0.8</b>	<b>72.70%</b>	<b>5.35%</b>	<b>67.35%</b>	<b>59.67%</b>	<b>40.33%</b>	<b>80.00%</b>	<b>57.68%</b>
Executive Management	18	18	1:1	16.67%	83.33%	1:1	1:1	94.44%	16.67%	77.78%	100.00%		100.00%	100.00%
Senior Management (VIII & GM)	81	83	1:1	25.30%	74.70%	1:1	1:1	93.98%	25.30%	68.67%	96.39%	3.61%	100.00%	95.16%
<b>Management (VIII &amp; above)</b>	<b>99</b>	<b>101</b>	<b>1:1</b>	<b>23.76%</b>	<b>76.24%</b>	<b>1:1</b>	<b>1:1</b>	<b>94.06%</b>	<b>23.76%</b>	<b>70.30%</b>	<b>97.03%</b>	<b>2.97%</b>	<b>100.00%</b>	<b>96.10%</b>
<b>Management &amp; Administrative</b>	<b>991</b>	<b>1,139</b>	<b>1:0.9</b>	<b>12.29%</b>	<b>87.71%</b>	<b>1:0.9</b>	<b>1:0.9</b>	<b>80.42%</b>	<b>9.83%</b>	<b>70.59%</b>	<b>70.41%</b>	<b>29.59%</b>	<b>88.57%</b>	<b>67.87%</b>
Maintenance	17	23	1:0.8	78.26%	21.74%	1:0.7	1:0.8	82.61%	60.87%	21.74%	65.22%	34.78%	72.22%	40.00%
Technical Services	3	3	1:1	66.67%	33.33%	1:1	1:1	100.00%	66.67%	33.33%	100.00%		100.00%	100.00%
<b>Maintenance/ Technical</b>	<b>20</b>	<b>26</b>	<b>1:0.8</b>	<b>76.92%</b>	<b>23.08%</b>	<b>1:0.8</b>	<b>1:0.8</b>	<b>84.62%</b>	<b>61.54%</b>	<b>23.08%</b>	<b>69.23%</b>	<b>30.77%</b>	<b>75.00%</b>	<b>50.00%</b>
Catering	50	57	1:0.9	31.58%	68.42%	1:1	1:0.8	84.21%	22.81%	61.40%	80.70%	19.30%	94.44%	74.36%
Household Services	197	254	1:0.8	24.80%	75.20%	1:0.8	1:0.8	59.45%	13.78%	45.67%	57.87%	42.13%	74.60%	52.36%
Other Support	36	47	1:0.8	53.19%	46.81%	1:0.9	1:0.6	57.45%	42.55%	14.89%	65.96%	34.04%	88.00%	40.91%
Portering	15	20	1:0.8	100.00%		1:0.8	1:	100.00%	100.00%		65.00%	35.00%	65.00%	
<b>Support</b>	<b>299</b>	<b>378</b>	<b>1:0.8</b>	<b>33.33%</b>	<b>66.67%</b>	<b>1:0.9</b>	<b>1:0.8</b>	<b>65.08%</b>	<b>23.28%</b>	<b>41.80%</b>	<b>62.70%</b>	<b>37.30%</b>	<b>78.57%</b>	<b>54.76%</b>
<b>General Support</b>	<b>319</b>	<b>404</b>	<b>1:0.8</b>	<b>36.14%</b>	<b>63.86%</b>	<b>1:0.8</b>	<b>1:0.8</b>	<b>66.34%</b>	<b>25.74%</b>	<b>40.59%</b>	<b>63.12%</b>	<b>36.88%</b>	<b>78.08%</b>	<b>54.65%</b>
Health Promotion	13	20	1:0.7		100.00%	1:	1:0.7	100.00%		100.00%	45.00%	55.00%		45.00%
Home Care Services	34	41	1:0.8	12.20%	87.80%	1:0.7	1:0.9	75.61%	4.88%	70.73%	65.85%	34.15%	40.00%	69.44%
Other Care Grades	154	192	1:0.8	3.65%	96.35%	1:1	1:0.8	89.58%	3.13%	86.46%	52.08%	47.92%	100.00%	50.27%
Pastoral Care	5	21	1:0.3	90.48%	9.52%	1:0.2	1:0.6	14.29%	9.52%	4.76%		100.00%		
Workshop Services	318	371	1:0.9	25.88%	74.12%	1:0.9	1:0.8	74.12%	19.14%	54.99%	63.88%	36.12%	76.04%	59.64%
<b>Care, other</b>	<b>525</b>	<b>645</b>	<b>1:0.8</b>	<b>19.69%</b>	<b>80.31%</b>	<b>1:0.8</b>	<b>1:0.8</b>	<b>77.67%</b>	<b>12.56%</b>	<b>65.12%</b>	<b>57.83%</b>	<b>42.17%</b>	<b>64.57%</b>	<b>56.18%</b>
Attendant/ Aide	528	621	1:0.9	19.00%	81.00%	1:0.9	1:0.8	67.15%	10.63%	56.52%	49.76%	50.24%	74.58%	43.94%
Health Care Assistant/ Care Assistant	1,569	1,806	1:0.9	24.25%	75.75%	1:0.9	1:0.8	78.46%	18.77%	59.69%	69.60%	30.40%	75.34%	67.76%
Health & Social Care Assistants	30	33	1:0.9	21.21%	78.79%	1:0.9	1:0.9	21.21%	6.06%	15.15%	90.91%	9.09%	100.00%	88.46%
<b>Health Care Assistants</b>	<b>2,126</b>	<b>2,460</b>	<b>1:0.9</b>	<b>22.89%</b>	<b>77.11%</b>	<b>1:0.9</b>	<b>1:0.8</b>	<b>74.84%</b>	<b>16.54%</b>	<b>58.29%</b>	<b>64.88%</b>	<b>35.12%</b>	<b>75.49%</b>	<b>61.73%</b>
Home Helps	932	1,522	1:0.6	7.62%	92.38%	1:0.8	1:0.6	55.39%	1.77%	53.61%	7.88%	92.12%	24.14%	6.54%
<b>Home Help</b>	<b>932</b>	<b>1,522</b>	<b>1:0.6</b>	<b>7.62%</b>	<b>92.38%</b>	<b>1:0.8</b>	<b>1:0.6</b>	<b>55.39%</b>	<b>1.77%</b>	<b>53.61%</b>	<b>7.88%</b>	<b>92.12%</b>	<b>24.14%</b>	<b>6.54%</b>
<b>Patient &amp; Client Care</b>	<b>3,583</b>	<b>4,627</b>	<b>1:0.8</b>	<b>17.42%</b>	<b>82.58%</b>	<b>1:0.9</b>	<b>1:0.8</b>	<b>68.84%</b>	<b>11.13%</b>	<b>57.70%</b>	<b>45.15%</b>	<b>54.85%</b>	<b>66.38%</b>	<b>40.67%</b>

## Employment Report by WTE, Headcount, Gender, Full-Time / Part-Time etc. JUL 2023

CHO 4 JUL 2023

JUL 2023	WTE JUL 2023	No. JUL 2023	WTE : No	Number Male %	Number Female %	Male WTE : No.	Female WTE : No	Perm Count %	Number Male %	Number Female %	Fulltime Count %	Part time Count %	FT Count Male %	FT Count Female %
<b>Total</b>	<b>8,848</b>	<b>10,916</b>	<b>1:0.8</b>	<b>16.68%</b>	<b>83.32%</b>	<b>1:0.9</b>	<b>1:0.8</b>	<b>72.51%</b>	<b>10.95%</b>	<b>61.56%</b>	<b>58.00%</b>	<b>42.00%</b>	<b>75.62%</b>	<b>54.47%</b>
Community Health & Wellbeing	45	81	1:0.5	18.52%	81.48%	1:0.3	1:0.6	51.85%	2.47%	49.38%	37.04%	62.96%	20.00%	40.91%
Disabilities	2,664	3,153	1:0.8	20.62%	79.38%	1:0.9	1:0.8	83.44%	16.62%	66.83%	70.73%	29.27%	76.15%	69.32%
Mental Health	1,568	1,752	1:0.9	26.08%	73.92%	1:0.9	1:0.9	71.06%	16.84%	54.22%	82.76%	17.24%	91.90%	79.54%
Older People	2,722	3,643	1:0.7	12.49%	87.51%	1:0.8	1:0.7	63.49%	6.34%	57.15%	35.30%	64.70%	62.20%	31.46%
Primary Care	1,806	2,241	1:0.8	10.66%	89.34%	1:0.8	1:0.8	73.27%	6.16%	67.11%	57.61%	42.39%	71.55%	55.94%
CHO Operations	43	46	1:0.9	10.87%	89.13%	1:1	1:0.9	91.30%	10.87%	80.43%	95.65%	4.35%	100.00%	95.12%



Employment by Grade Group JUL 2023	WTE DEC 2019	WTE DEC 2022	WTE JUN 2023	WTE JUL 2023	WTE change since DEC 2019	% WTE Change since Dec 2019	WTE change since DEC 2022	% WTE Change since Dec 2022	WTE change since JUN 2023	No. JUL 2023
<b>Overall</b>	<b>8,189</b>	<b>8,961</b>	<b>8,893</b>	<b>8,848</b>	<b>+659</b>	<b>+8.0%</b>	<b>-113</b>	<b>-1.3%</b>	<b>-46</b>	<b>10,916</b>
Consultant Anaesthesia			0	0	+0		+0		0	1
Consultant Dentistry	2	5	5	5	+3	+130.0%	0	-4.2%	0	5
Consultant Medicine	1	1	1	1	+0	+4.5%	0	-3.3%	+0	4
Consultant Paediatrics	1	1	1	1	+0	+6.0%	+0	+0.0%	+0	2
Consultant Psychiatry	51	61	61	62	+11	+22.6%	+1	+1.6%	+1	69
Consultant Surgery		1	1	1	+1		+0	+0.0%	+0	2
<b>Consultants</b>	<b>55</b>	<b>70</b>	<b>69</b>	<b>71</b>	<b>+16</b>	<b>+28.4%</b>	<b>+1</b>	<b>+1.2%</b>	<b>+1</b>	<b>83</b>
Registrar	85	76	88	107	+23	+26.6%	+32	+41.8%	+19	112
Senior Registrar	12	17	14	14	+2	+15.9%	-4	-21.4%	0	15
Specialist Registrar	7	3	4	3	-4	-62.9%	0	-13.3%	-2	3
<b>Registrars</b>	<b>103</b>	<b>96</b>	<b>106</b>	<b>123</b>	<b>+20</b>	<b>+19.3%</b>	<b>+27</b>	<b>+28.6%</b>	<b>+18</b>	<b>130</b>
Interns	3	1	2	3	0	-1.0%	+2	+200.0%	+1	4
Senior House Officer	35	45	48	44	+9	+24.8%	-2	-3.5%	-4	45
<b>SHO/ Interns</b>	<b>38</b>	<b>46</b>	<b>50</b>	<b>47</b>	<b>+9</b>	<b>+22.7%</b>	<b>+0</b>	<b>+0.8%</b>	<b>-4</b>	<b>49</b>
Dentists	62	69	73	66	+4	+5.8%	-4	-5.1%	-7	125
Other Medical	49	70	64	62	+13	+26.9%	-8	-11.3%	-1	118
<b>Medical/ Dental, other</b>	<b>111</b>	<b>140</b>	<b>136</b>	<b>128</b>	<b>+17</b>	<b>+15.1%</b>	<b>-12</b>	<b>-8.2%</b>	<b>-8</b>	<b>243</b>
<b>Medical &amp; Dental</b>	<b>308</b>	<b>352</b>	<b>361</b>	<b>369</b>	<b>+61.0</b>	<b>+19.8%</b>	<b>+18.4</b>	<b>+4.9%</b>	<b>7.39</b>	<b>+505</b>
Clinical Nurse/ Midwife Manager	337	381	375	380	+43	+12.7%	-1	-0.3%	+5	419
Director Nursing/Midwifery, Assistant	60	69	75	79	+19	+31.7%	+10	+15.0%	+5	82
Director of Nursing/Midwifery	35	40	42	39	+4	+10.8%	0	-1.2%	-3	41
<b>Nurse/ Midwife Manager</b>	<b>433</b>	<b>490</b>	<b>491</b>	<b>498</b>	<b>+66</b>	<b>+15.2%</b>	<b>+9</b>	<b>+1.8%</b>	<b>+7</b>	<b>542</b>
Advanced Nurse/ Midwife Practitioner	7	9	17	17	+10	+153.3%	+8	+79.6%	0	18
Clinical Nurse/ Midwife Specialist	74	96	114	119	+44	+59.8%	+22	+23.3%	+4	129
<b>Nurse/ Midwife Specialist &amp; AN/MP</b>	<b>81</b>	<b>106</b>	<b>131</b>	<b>136</b>	<b>+55</b>	<b>+67.6%</b>	<b>+30</b>	<b>+28.3%</b>	<b>+4</b>	<b>147</b>
Staff Midwives	8	4	3	3	-5	-66.1%	-1	-28.0%	+0	4
Staff Nurse [Intellectual Disability]	87	152	156	156	+70	+80.2%	+4	+2.8%	+0	194
Staff Nurse [Psychiatric]	469	447	437	425	-44	-9.3%	-22	-4.9%	-12	462
Staff Nurses [General/ Children's]	882	929	880	881	-1	-0.1%	-48	-5.2%	+1	1,095
<b>Staff Nurse/ Staff Midwife</b>	<b>1,446</b>	<b>1,532</b>	<b>1,476</b>	<b>1,465</b>	<b>+20</b>	<b>+1.4%</b>	<b>-67</b>	<b>-4.4%</b>	<b>-11</b>	<b>1,755</b>
Public Health Nurse	216	216	209	205	-11	-5.0%	-11	-5.2%	-3	261
<b>Public Health Nurse</b>	<b>216</b>	<b>216</b>	<b>209</b>	<b>205</b>	<b>-11</b>	<b>-5.0%</b>	<b>-11</b>	<b>-5.2%</b>	<b>-3</b>	<b>261</b>
Nursing/ Midwifery awaiting registration	32				-32	-100.0%				
Post-registration Nurse/ Midwife Student	19	11	13	8	-11	-58.4%	-3	-26.9%	-5	8
Pre-registration Nurse/ Midwife Intern	9	7	34	34	+25	+282.0%	+27	+365.9%	0	69
<b>Nursing/ Midwifery Student</b>	<b>60</b>	<b>18</b>	<b>47</b>	<b>42</b>	<b>-17</b>	<b>-29.1%</b>	<b>+24</b>	<b>+131.2%</b>	<b>-5</b>	<b>77</b>
Nursing Education/Clinical	1	1	1	1	+0	+96.1%	+0	+0.0%	+0	1
<b>Nursing/ Midwifery other</b>	<b>1</b>	<b>1</b>	<b>1</b>	<b>1</b>	<b>+0</b>	<b>+96.1%</b>	<b>+0</b>	<b>+0.0%</b>	<b>+0</b>	<b>1</b>
<b>Nursing &amp; Midwifery</b>	<b>2,235</b>	<b>2,363</b>	<b>2,355</b>	<b>2,348</b>	<b>+112.4</b>	<b>+5.0%</b>	<b>+29.3</b>	<b>-0.6%</b>	<b>-7.46</b>	<b>+2,783</b>
Dietitians	28	36	42	41	+13	+48.1%	+5	+13.6%	-1	49
Occupational Therapists	169	227	231	228	+59	+34.7%	+1	+0.6%	-3	264
Orthoptists	3	1	1	1	-3	-84.8%	-1	-50.0%	+0	1
Physiotherapists	106	126	132	129	+23	+21.2%	+3	+2.4%	-3	153

Employment by Grade Group JUL 2023	WTE DEC 2019	WTE DEC 2022	WTE JUN 2023	WTE JUL 2023	WTE change since DEC 2019	% WTE Change since Dec 2019	WTE change since DEC 2022	% WTE Change since Dec 2022	WTE change since JUN 2023	No. JUL 2023
<b>Overall</b>	<b>8,189</b>	<b>8,961</b>	<b>8,893</b>	<b>8,848</b>	<b>+659</b>	<b>+8.0%</b>	<b>-113</b>	<b>-1.3%</b>	<b>-46</b>	<b>10,916</b>
Podiatrists & Chiropractors	6	16	16	16	+10	+153.6%	+1	+5.6%	0	18
Speech & Language Therapists	134	144	143	143	+9	+6.6%	-1	-0.4%	+0	170
<b>Therapy Professions</b>	<b>448</b>	<b>549</b>	<b>566</b>	<b>558</b>	<b>+111</b>	<b>+24.7%</b>	<b>+9</b>	<b>+1.6%</b>	<b>-7</b>	<b>655</b>
Audiology	7	9	7	7	+1	+8.0%	-2	-23.0%	0	8
Physicists	2	2	2	2	0	-19.0%	+0	+0.0%	0	2
Radiographers	3	3	3	3	+0	+5.1%	+0	+0.0%	+0	4
<b>Health Science/ Diagnostics</b>	<b>12</b>	<b>14</b>	<b>12</b>	<b>12</b>	<b>+0</b>	<b>+2.7%</b>	<b>-2</b>	<b>-15.1%</b>	<b>0</b>	<b>14</b>
Social Care	240	272	270	271	+31	+13.0%	-1	-0.4%	+1	311
<b>Social Care</b>	<b>240</b>	<b>272</b>	<b>270</b>	<b>271</b>	<b>+31</b>	<b>+13.0%</b>	<b>-1</b>	<b>-0.4%</b>	<b>+1</b>	<b>311</b>
Pharmacists	7	8	11	11	+3	+47.7%	+3	+40.3%	+0	17
Pharmacy Technicians	1	1	2	2	+1	+125.0%	+1	+80.0%	+0	2
<b>Pharmacy</b>	<b>8</b>	<b>9</b>	<b>12</b>	<b>12</b>	<b>+4</b>	<b>+55.4%</b>	<b>+4</b>	<b>+44.9%</b>	<b>+0</b>	<b>19</b>
Psychologists	138	156	158	152	+14	+10.4%	-4	-2.3%	-5	174
<b>Psychologists</b>	<b>138</b>	<b>156</b>	<b>158</b>	<b>152</b>	<b>+14</b>	<b>+10.4%</b>	<b>-4</b>	<b>-2.3%</b>	<b>-5</b>	<b>174</b>
Social Workers	115	147	157	155	+40	+35.0%	+8	+5.5%	-2	179
<b>Social Workers</b>	<b>115</b>	<b>147</b>	<b>157</b>	<b>155</b>	<b>+40</b>	<b>+35.0%</b>	<b>+8</b>	<b>+5.5%</b>	<b>-2</b>	<b>179</b>
Counsellor Therapists	41	43	49	49	+8	+20.7%	+6	+14.7%	+0	53
Dental Hygienists	8	9	10	10	+1	+18.1%	+0	+4.3%	0	14
Other Health & Social Care	11	9	9	10	-1	-8.2%	+1	+9.1%	+1	12
Play Therapists/ Specialists	1	2	2	2	+2	+284.1%	+0	+0.4%	+0	3
Vaccinators		9	7	5	+5		-3	-37.7%	-1	24
<b>H&amp;SC, Other</b>	<b>60</b>	<b>72</b>	<b>77</b>	<b>76</b>	<b>+16</b>	<b>+26.8%</b>	<b>+4</b>	<b>+5.9%</b>	<b>0</b>	<b>106</b>
<b>Health &amp; Social Care Professionals</b>	<b>1,020</b>	<b>1,219</b>	<b>1,252</b>	<b>1,238</b>	<b>+217.3</b>	<b>+21.3%</b>	<b>+38.5</b>	<b>+1.5%</b>	<b>-14.19</b>	<b>+1,458</b>
Executive Management	15	16	18	18	+3	+17.3%	+2	+10.0%	0	18
Senior Management (VIII & GM)	58	74	86	81	+23	+40.6%	+7	+9.4%	-5	83
<b>Management (VIII &amp; above)</b>	<b>73</b>	<b>90</b>	<b>104</b>	<b>99</b>	<b>+26</b>	<b>+35.8%</b>	<b>+9</b>	<b>+9.5%</b>	<b>-5</b>	<b>101</b>
Middle Management (V-VII)	161	254	281	287	+126	+78.5%	+33	+13.1%	+6	309
<b>Administrative/ Supervisory (V to VII)</b>	<b>161</b>	<b>254</b>	<b>281</b>	<b>287</b>	<b>+126</b>	<b>+78.5%</b>	<b>+33</b>	<b>+13.1%</b>	<b>+6</b>	<b>309</b>
General Administrative (III & IV)	505	572	596	605	+101	+19.9%	+33	+5.8%	+9	729
<b>Clerical (III &amp; IV)</b>	<b>505</b>	<b>572</b>	<b>596</b>	<b>605</b>	<b>+101</b>	<b>+19.9%</b>	<b>+33</b>	<b>+5.8%</b>	<b>+9</b>	<b>729</b>
<b>Management &amp; Administrative</b>	<b>738</b>	<b>916</b>	<b>981</b>	<b>991</b>	<b>+252.9</b>	<b>+34.3%</b>	<b>+48.6</b>	<b>+8.2%</b>	<b>10.45</b>	<b>+1,139</b>
Catering	60	53	51	50	-10	-16.3%	-2	-4.7%	0	57
Household Services	190	213	197	197	+7	+3.9%	-16	-7.5%	+0	254
Other Support	74	75	78	36	-38	-51.4%	-39	-52.1%	-42	47
Portering	13	12	15	15	+2	+17.3%	+3	+24.4%	+0	20
<b>Support</b>	<b>337</b>	<b>353</b>	<b>340</b>	<b>299</b>	<b>-38</b>	<b>-11.3%</b>	<b>-55</b>	<b>-15.4%</b>	<b>-42</b>	<b>378</b>
Maintenance	21	19	19	17	-4	-18.4%	-2	-8.6%	-2	23
Technical Services	1	3	3	3	+2	+200.0%	+0	+0.0%	+0	3
<b>Maintenance/ Technical</b>	<b>22</b>	<b>22</b>	<b>22</b>	<b>20</b>	<b>-2</b>	<b>-8.6%</b>	<b>-2</b>	<b>-7.5%</b>	<b>-2</b>	<b>26</b>
<b>General Support</b>	<b>359</b>	<b>375</b>	<b>363</b>	<b>319</b>	<b>-40.1</b>	<b>-11.2%</b>	<b>-10.1</b>	<b>-15.0%</b>	<b>-43.53</b>	<b>+404</b>
Attendant/ Aide	701	554	526	528	-173	-24.7%	-26	-4.8%	+2	621
Health & Social Care Assistants	8	16	29	30	+21	+266.9%	+14	+89.2%	+0	33
Health Care Assistant/ Care Assistant	1,245	1,565	1,536	1,569	+324	+26.0%	+4	+0.3%	+33	1,806
<b>Health Care Assistants</b>	<b>1,954</b>	<b>2,135</b>	<b>2,091</b>	<b>2,126</b>	<b>+172</b>	<b>+8.8%</b>	<b>-8</b>	<b>-0.4%</b>	<b>+35</b>	<b>2,460</b>
Home Helps	1,124	1,076	947	932	-192	-17.1%	-144	-13.4%	-15	1,522
<b>Home Help</b>	<b>1,124</b>	<b>1,076</b>	<b>947</b>	<b>932</b>	<b>-192</b>	<b>-17.1%</b>	<b>-144</b>	<b>-13.4%</b>	<b>-15</b>	<b>1,522</b>
Health Promotion		15	14	13	+13		-1	-8.1%	0	20



Employment by Grade Group JUL 2023	WTE DEC 2019	WTE DEC 2022	WTE JUN 2023	WTE JUL 2023	WTE change since DEC 2019	% WTE Change since Dec 2019	WTE change since DEC 2022	% WTE Change since Dec 2022	WTE change since JUN 2023	No. JUL 2023
<b>Overall</b>	<b>8,189</b>	<b>8,961</b>	<b>8,893</b>	<b>8,848</b>	<b>+659</b>	<b>+8.0%</b>	<b>-113</b>	<b>-1.3%</b>	<b>-46</b>	<b>10,916</b>
Home Care Services	29	32	37	34	+6	+19.3%	+2	+6.5%	-3	41
Other Care Grades	127	163	159	154	+26	+20.5%	-10	-5.9%	-5	192
Pastoral Care	7	5	5	5	-1	-18.5%	+1	+20.4%	+0	21
Workshop Services	287	310	329	318	+31	+10.9%	+8	+2.7%	-10	371
<b>Care, other</b>	<b>450</b>	<b>524</b>	<b>543</b>	<b>525</b>	<b>+75</b>	<b>+16.7%</b>	<b>+0</b>	<b>+0.1%</b>	<b>-19</b>	<b>645</b>
<b>Patient &amp; Client Care</b>	<b>3,528</b>	<b>3,735</b>	<b>3,582</b>	<b>3,583</b>	<b>+55.4</b>	<b>+1.6%</b>	<b>-19.0</b>	<b>-4.1%</b>	<b>1.46</b>	<b>+4,627</b>





## CHO 4 Employment Report: JUL 2023

### Month-on-Month Summary

Month-on-Month Summary	% WTE change since JUN 2023	WTE change since JUN 2023	Community Health & Wellbeing	Mental Health	Primary Care	Disabilities	Older People	CHO Operations
Consultants	+1.8%	+1.3	-0.1	+1.5	-0.1	+0.0	+0.0	
Registrars	+16.8%	+17.8		+1.8	+17.5		-1.5	
SHO/ Interns	-7.0%	-3.5		-3.5	+0.0		+0.0	
Medical/ Dental, other	-6.0%	-8.2	-1.1	+0.0	-6.3	+0.0	-0.8	
<b>Medical &amp; Dental</b>	<b>+2.0%</b>	<b>+7.4</b>	<b>-1.3</b>	<b>-0.3</b>	<b>+11.2</b>	<b>+0.0</b>	<b>-2.3</b>	
Nurse/ Midwife Manager	+1.5%	+7.2	+0.0	+5.1	+1.2	+0.7	+0.2	-0.0
Nurse/ Midwife Specialist & AN/MP	+3.2%	+4.3		+1.2	+2.2	+0.0	+0.8	+0.0
Staff Nurse/ Staff Midwife	-0.7%	-10.5		-12.3	+9.6	-0.9	-7.0	
Public Health Nurse	-1.6%	-3.4			-3.3		-0.1	
Nursing/ Midwifery Student	-10.6%	-5.0		-0.0	-5.0	+0.0		
Nursing/ Midwifery other	+0.0%	+0.0				+0.0		
<b>Nursing &amp; Midwifery</b>	<b>-0.3%</b>	<b>-7.5</b>	<b>+0.0</b>	<b>-6.0</b>	<b>+4.8</b>	<b>-0.2</b>	<b>-6.1</b>	<b>-0.0</b>
Therapy Professions	-1.3%	-7.1	+0.0	+1.6	-4.3	-0.1	-4.4	
Health Science/ Diagnostics	-1.1%	-0.1			-0.1		+0.0	
Social Care	+0.3%	+0.8		+0.5	-0.0	+0.3	+0.0	
Pharmacy	+0.2%	+0.0		-0.0	+0.1		+0.0	+0.0
Psychologists	-3.5%	-5.4		-4.8	+0.1	-0.8		
Social Workers	-1.4%	-2.2		+0.1	+0.2	-2.1	-9.5	+9.0



H&SC, Other	-0.1%	-0.1	-1.4	-0.0	+0.4	-0.0	+1.0	
<b>Health &amp; Social Care Professionals</b>	<b>-1.1%</b>	<b>-14.2</b>	<b>-1.4</b>	<b>-2.6</b>	<b>-3.6</b>	<b>-2.7</b>	<b>-12.9</b>	<b>+9.0</b>
Management (VIII & above)	-4.6%	-4.7	+0.0	-0.2	-2.2	-2.9	-0.5	+1.0
Administrative/ Supervisory (V to VII)	+2.1%	+6.0	-0.4	+0.1	+3.1	+4.1	-2.2	+1.3
Clerical (III & IV)	+1.5%	+9.2	-3.1	+2.4	+11.0	-0.4	-1.3	+0.7
<b>Management &amp; Administrative</b>	<b>+1.1%</b>	<b>+10.5</b>	<b>-3.5</b>	<b>+2.3</b>	<b>+11.9</b>	<b>+0.8</b>	<b>-4.0</b>	<b>+3.0</b>
Support	-12.2%	-41.7		-0.3	-0.3	-40.8	-0.4	
Maintenance/ Technical	-8.3%	-1.8	-1.0	+0.0	+0.0	+0.0	-0.8	
<b>General Support</b>	<b>-12.0%</b>	<b>-43.5</b>	<b>-1.0</b>	<b>-0.3</b>	<b>-0.3</b>	<b>-40.8</b>	<b>-1.2</b>	
Health Care Assistants	+1.7%	+35.1	-0.1	-0.1	+1.3	+26.3	+7.8	
Home Help	-1.6%	-15.2			+0.1		-15.3	
Care, other	-3.4%	-18.5	-1.2	-0.0	-2.5	-12.1	-2.6	
<b>Patient &amp; Client Care</b>	<b>+0.0%</b>	<b>+1.5</b>	<b>-1.3</b>	<b>-0.1</b>	<b>-1.1</b>	<b>+14.1</b>	<b>-10.2</b>	



## CHO 4 Employment Report: JUL 2023

### Year-to-Date Summary

Year-to-Date Summary	% WTE change since DEC 2022	WTE change since DEC 2022	Community Health & Wellbeing	Mental Health	Primary Care	Disabilities	Older People	CHO Operations
Consultants	+1.2%	+0.9	+0.1	+1.0	-0.2	+0.0	+0.0	
Registrars	+28.6%	+27.4		-7.5	+35.0		-0.0	
SHO/ Interns	+0.8%	+0.4		+0.4	-1.0		+1.0	
Medical/ Dental, other	-8.2%	-11.5	-0.6	+0.0	-8.6	+0.0	-2.3	
<b>Medical &amp; Dental</b>	<b>+4.9%</b>	<b>+17.1</b>	<b>-0.6</b>	<b>-6.1</b>	<b>+25.1</b>	<b>+0.0</b>	<b>-1.3</b>	
Nurse/ Midwife Manager	+1.8%	+8.9	-0.2	-1.3	-2.6	+2.2	+5.4	+5.3
Nurse/ Midwife Specialist & AN/MP	+28.3%	+29.9		+5.7	+19.1	+0.0	+4.3	+0.9
Staff Nurse/ Staff Midwife	-4.4%	-66.8		-27.5	+21.9	+5.9	-67.2	
Public Health Nurse	-5.2%	-11.2			-9.3		-1.9	
Nursing/ Midwifery Student	+131.2%	+24.1		+17.7	-3.0	+9.3		
Nursing/ Midwifery other	+0.0%	+0.0				+0.0		
<b>Nursing &amp; Midwifery</b>	<b>-0.6%</b>	<b>-15.2</b>	<b>-0.2</b>	<b>-5.3</b>	<b>+26.1</b>	<b>+17.5</b>	<b>-59.5</b>	<b>+6.2</b>
Therapy Professions	+1.6%	+9.0	-0.8	+8.2	+13.6	-4.3	-7.7	
Health Science/ Diagnostics	-15.1%	-2.2			-2.2		+0.0	
Social Care	-0.4%	-1.2		-0.5	-0.2	-0.5	+0.0	
Pharmacy	+44.9%	+3.9		-0.9	+2.9		-0.1	+2.0



Psychologists	-2.3%	-3.6		-6.9	+6.7	-3.3		
Social Workers	+5.5%	+8.0		+1.9	+6.1	-3.4	-9.5	+13.0
H&SC, Other	+5.9%	+4.3	-3.2	-0.7	+6.7	+0.5	+1.0	
<b>Health &amp; Social Care Professionals</b>	<b>+1.5%</b>	<b>+18.2</b>	<b>-4.0</b>	<b>+1.0</b>	<b>+33.5</b>	<b>-11.1</b>	<b>-16.3</b>	<b>+15.0</b>
Management (VIII & above)	+9.5%	+8.6	+0.0	+0.6	-1.5	+2.0	+3.6	+3.9
Administrative/ Supervisory (V to VII)	+13.1%	+33.2	-1.5	+3.1	+4.2	+7.8	+8.7	+11.0
Clerical (III & IV)	+5.8%	+33.1	-2.4	+8.4	+23.9	+2.3	-6.2	+7.2
<b>Management &amp; Administrative</b>	<b>+8.2%</b>	<b>+74.9</b>	<b>-4.0</b>	<b>+12.1</b>	<b>+26.5</b>	<b>+12.1</b>	<b>+6.2</b>	<b>+22.0</b>
Support	-15.4%	-54.5		-11.3	+3.5	-44.1	-2.6	
Maintenance/ Technical	-7.5%	-1.6	-1.0	+0.0	+0.0	+0.6	-1.3	
<b>General Support</b>	<b>-15.0%</b>	<b>-56.2</b>	<b>-1.0</b>	<b>-11.3</b>	<b>+3.5</b>	<b>-43.5</b>	<b>-3.9</b>	
Health Care Assistants	-0.4%	-8.4	-0.1	+14.9	-13.2	+46.9	-57.0	
Home Help	-13.4%	-143.9			+4.0		-148.0	
Care, other	+0.1%	+0.5	+2.8	+0.8	-6.5	+2.1	+1.3	
<b>Patient &amp; Client Care</b>	<b>-4.1%</b>	<b>-151.9</b>	<b>+2.7</b>	<b>+15.7</b>	<b>-15.7</b>	<b>+49.1</b>	<b>-203.6</b>	



## CHO 4 Employment Report: JUL 2023

### Year-on-Year Summary

Year-on-Year Summary	% WTE change since JUL 2022	WTE change since JUL 2022	Community Health & Wellbeing	Mental Health	Primary Care	Disabilities	Older People	CHO Operations
Consultants	+10.8%	+6.9	+0.1	+6.3	+0.4	+0.0	+0.0	
Registrars	+21.9%	+22.2		-5.5	+28.7		-1.1	
SHO/ Interns	+21.5%	+8.3		+7.3	+1.0		+0.0	
Medical/ Dental, other	-1.3%	-1.6	+1.0	-1.0	-1.2	+0.0	-0.5	
<b>Medical &amp; Dental</b>	<b>+10.7%</b>	<b>+35.7</b>	<b>+1.1</b>	<b>+7.2</b>	<b>+28.9</b>	<b>+0.0</b>	<b>-1.5</b>	
Nurse/ Midwife Manager	+0.5%	+2.7	-0.1	-6.7	-1.4	-0.6	+6.0	+5.3
Nurse/ Midwife Specialist & AN/MP	+36.4%	+36.1		+7.1	+21.9	+0.5	+5.8	+0.9
Staff Nurse/ Staff Midwife	-2.7%	-40.7		-35.1	+34.8	-0.5	-39.9	
Public Health Nurse	-3.0%	-6.3			-4.3		-2.0	
Nursing/ Midwifery Student	-18.4%	-9.6		+1.4	-8.9	-2.0		
Nursing/ Midwifery other	+0.0%	+0.0				+0.0		
<b>Nursing &amp; Midwifery</b>	<b>-0.7%</b>	<b>-17.7</b>	<b>-0.1</b>	<b>-33.2</b>	<b>+42.0</b>	<b>-2.6</b>	<b>-30.1</b>	<b>+6.2</b>
Therapy Professions	+5.1%	+26.9	-0.9	+10.2	+23.5	+3.4	-9.2	
Health Science/ Diagnostics	-9.9%	-1.3			-2.3		+1.0	
Social Care	+0.8%	+2.1		-1.6	-1.2	+4.7	+0.2	
Pharmacy	+21.2%	+2.2		+0.1	+0.4		-0.3	+2.0
Psychologists	+5.5%	+8.0		-7.1	+14.5	+0.5		
Social Workers	+13.7%	+18.6		+6.0	+12.7	-3.1	-10.0	+13.0

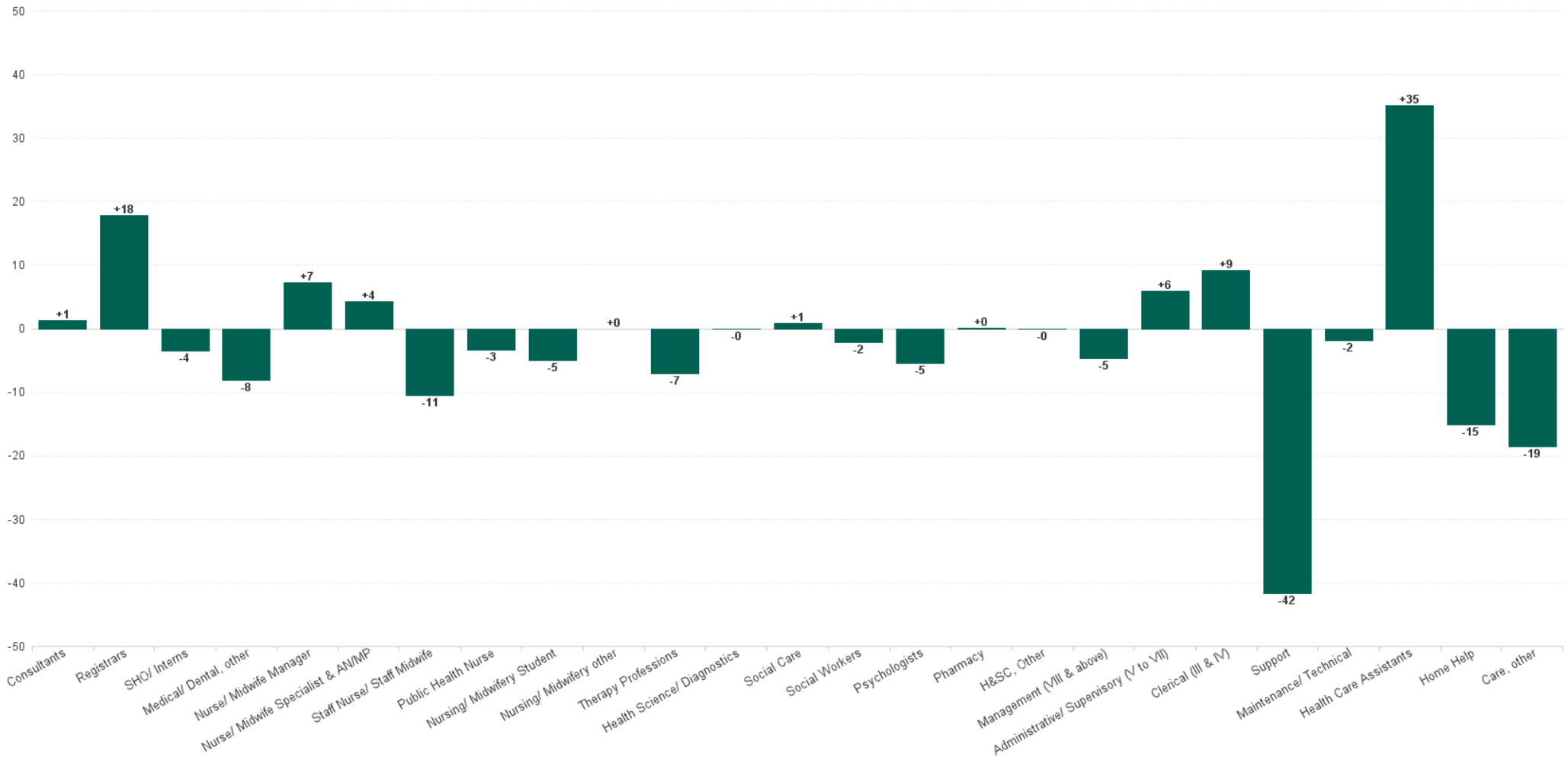


H&SC, Other	+5.3%	+3.8	-3.0	-1.6	+6.6	+0.9	+1.0	
<b>Health &amp; Social Care Professionals</b>	<b>+5.1%</b>	<b>+60.3</b>	<b>-3.9</b>	<b>+6.1</b>	<b>+54.0</b>	<b>+6.4</b>	<b>-17.3</b>	<b>+15.0</b>
Management (VIII & above)	+14.8%	+12.8	+0.0	+0.6	+0.2	+3.4	+4.6	+3.9
Administrative/ Supervisory (V to VII)	+23.4%	+54.5	+0.5	+5.2	+10.0	+18.3	+9.7	+11.0
Clerical (III & IV)	+5.9%	+33.8	-4.2	+5.5	+19.0	+7.5	-1.2	+7.2
<b>Management &amp; Administrative</b>	<b>+11.3%</b>	<b>+101.0</b>	<b>-3.7</b>	<b>+11.2</b>	<b>+29.2</b>	<b>+29.2</b>	<b>+13.1</b>	<b>+22.0</b>
Support	-16.0%	-56.9		-14.6	+4.1	-43.4	-2.9	
Maintenance/ Technical	-11.1%	-2.6	-1.0	+0.0	+0.0	-0.3	-1.3	
<b>General Support</b>	<b>-15.7%</b>	<b>-59.4</b>	<b>-1.0</b>	<b>-14.6</b>	<b>+4.1</b>	<b>-43.7</b>	<b>-4.1</b>	
Health Care Assistants	-5.4%	-121.7	+0.0	+12.8	-75.7	+8.0	-66.7	
Home Help	-8.9%	-90.7			+3.0		-93.8	
Care, other	+0.9%	+4.7	+3.6	+0.5	-12.2	+15.5	-2.6	
<b>Patient &amp; Client Care</b>	<b>-5.5%</b>	<b>-207.7</b>	<b>+3.6</b>	<b>+13.2</b>	<b>-84.9</b>	<b>+23.5</b>	<b>-163.1</b>	



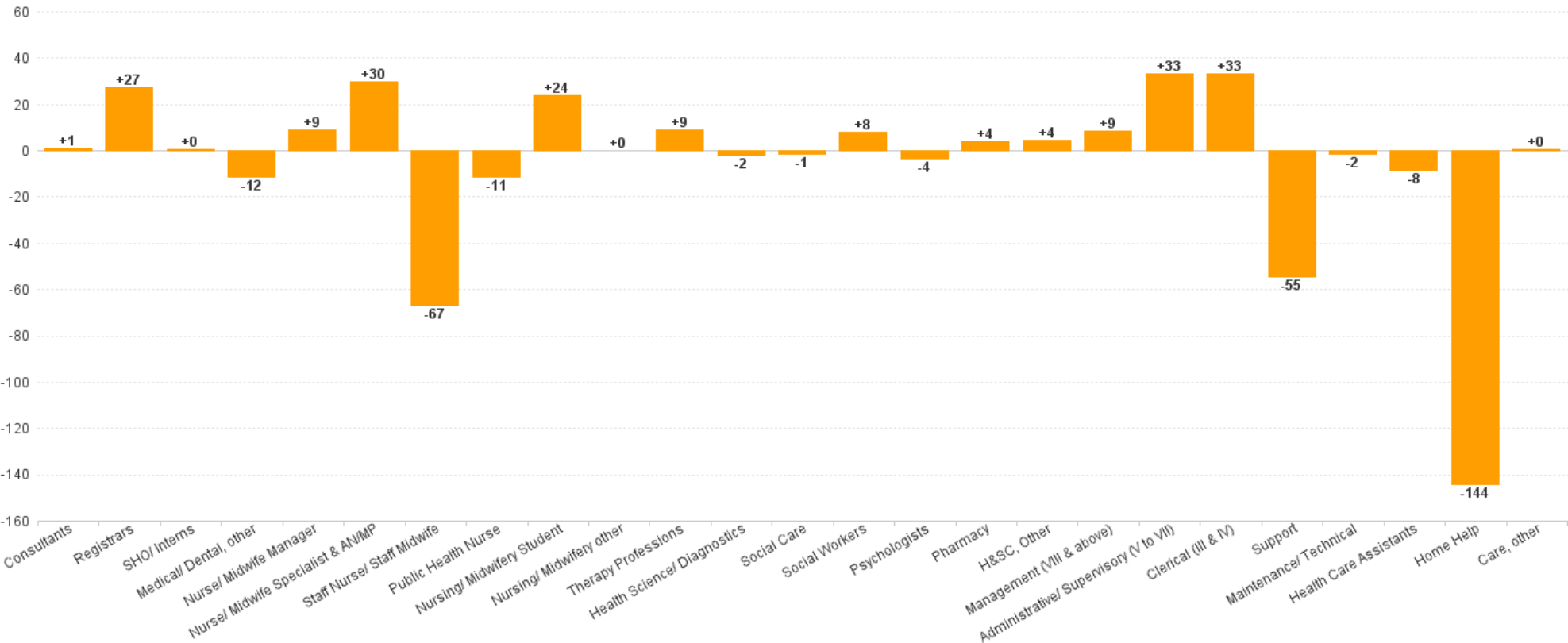
## CHO 4 Employment Report: JUL 2023

### Month-on-Month Summary Chart: Change since JUN 2023



CHO 4 Employment Report: JUL 2023

Year-to-Date Summary Chart: Change since DEC 2022





## CHO 4 Employment Report: JUL 2023

Year-on-Year Summary Chart: Change since JUL 2022

