

## CHO 9 Employment Report: JUL 2023

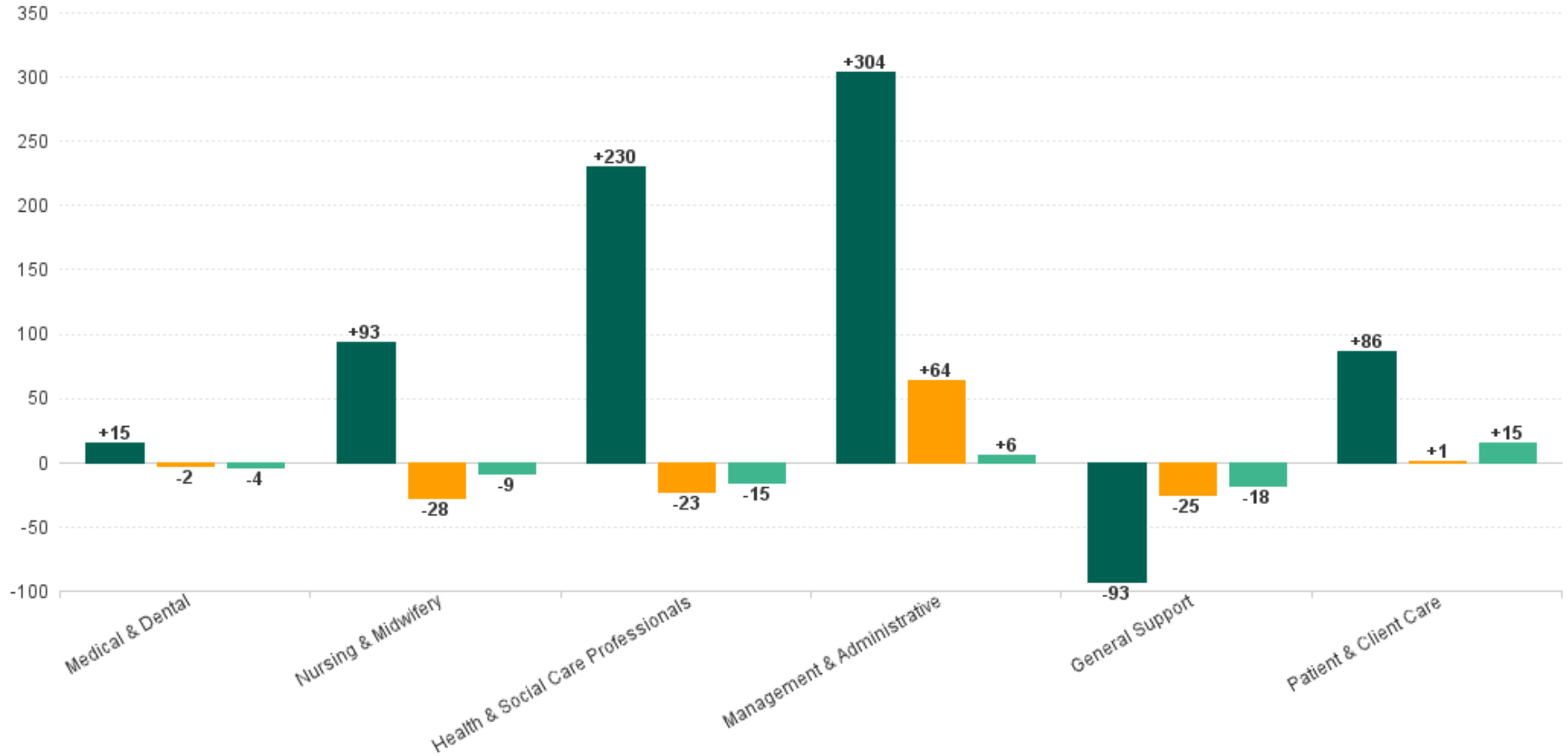
### Employment Report : JUL 2023

Employment by Staff Group JUL 2023	WTE DEC 2019	WTE DEC 2022	WTE JUN 2023	WTE JUL 2023	WTE change since DEC 2019	% WTE Change since Dec 2019	WTE change since DEC 2022	% WTE Change since Dec 2022	WTE change since JUN 2023	No. JUL 2023
<b>Overall</b>	<b>6,582</b>	<b>7,230</b>	<b>7,243</b>	<b>7,217</b>	<b>+635</b>	<b>+9.7%</b>	<b>-13</b>	<b>-0.2%</b>	<b>-26</b>	<b>8,371</b>
Consultants	68	71	72	71	+2	+3.4%	+0	+0.4%	-1	78
Registrars	98	128	123	120	+22	+22.1%	-8	-6.3%	-3	155
SHO/ Interns	66	52	58	59	-7	-10.8%	+7	+13.9%	+1	79
Medical/ Dental, other	57	56	56	55	-2	-3.7%	-2	-2.7%	-2	72
<b>Medical &amp; Dental</b>	<b>290</b>	<b>306</b>	<b>309</b>	<b>304</b>	<b>+15</b>	<b>+5.1%</b>	<b>-2</b>	<b>-0.7%</b>	<b>-4</b>	<b>384</b>
Nurse/ Midwife Manager	435	488	502	508	+73	+16.8%	+20	+4.0%	+6	547
Nurse/ Midwife Specialist & AN/MP	85	149	157	160	+75	+88.4%	+11	+7.4%	+3	172
Staff Nurse/ Staff Midwife	1,196	1,214	1,185	1,158	-38	-3.2%	-56	-4.6%	-27	1,301
Public Health Nurse	176	172	163	173	-3	-1.7%	+1	+0.3%	+9	210
<i>Nursing/ Midwifery awaiting registration</i>	<i>11</i>	<i>16</i>	<i>5</i>	<i>5</i>	<i>-6</i>	<i>-53.7%</i>	<i>-11</i>	<i>-68.3%</i>	<i>+0</i>	<i>5</i>
<i>Post-registration Nurse/ Midwife Student</i>	<i>26</i>	<i>19</i>	<i>1</i>	<i>1</i>	<i>-25</i>	<i>-96.2%</i>	<i>-18</i>	<i>-94.7%</i>	<i>+0</i>	<i>1</i>
<i>Pre-registration Nurse/ Midwife Intern</i>	<i>18</i>	<i>8</i>	<i>38</i>	<i>38</i>	<i>+20</i>	<i>+112.6%</i>	<i>+30</i>	<i>+375.0%</i>	<i>+0</i>	<i>76</i>
Nursing/ Midwifery Student	55	43	44	44	-11	-19.5%	+1	+3.3%	+0	82
Nursing/ Midwifery other	20	20	16	16	-3	-16.9%	-4	-18.6%	+0	18
<b>Nursing &amp; Midwifery</b>	<b>1,966</b>	<b>2,087</b>	<b>2,068</b>	<b>2,059</b>	<b>+93</b>	<b>+4.7%</b>	<b>-28</b>	<b>-1.3%</b>	<b>-9</b>	<b>2,330</b>
Therapy Professions	486	587	571	575	+88	+18.1%	-12	-2.0%	+3	656
Health Science/ Diagnostics	37	26	28	28	-9	-23.6%	+2	+8.4%	+0	29
Social Care	695	804	798	793	+98	+14.1%	-11	-1.3%	-5	965
Pharmacy	25	27	28	27	+2	+9.4%	+0	+0.6%	-1	36
Psychologists	164	187	190	184	+20	+12.3%	-3	-1.5%	-6	201
Social Workers	125	161	163	158	+33	+26.3%	-2	-1.5%	-5	175
H&SC, Other	71	64	69	67	-3	-4.7%	+3	+4.4%	-2	77
<b>Health &amp; Social Care Professionals</b>	<b>1,603</b>	<b>1,856</b>	<b>1,848</b>	<b>1,833</b>	<b>+230</b>	<b>+14.3%</b>	<b>-23</b>	<b>-1.2%</b>	<b>-15</b>	<b>2,139</b>
Management (VIII & above)	79	97	102	99	+19	+24.5%	+2	+2.2%	-4	101
Administrative/ Supervisory (V to VII)	208	360	387	398	+190	+91.5%	+38	+10.6%	+11	421
Clerical (III & IV)	451	522	547	546	+95	+21.0%	+24	+4.6%	-1	630
<b>Management &amp; Administrative</b>	<b>739</b>	<b>979</b>	<b>1,037</b>	<b>1,043</b>	<b>+304</b>	<b>+41.2%</b>	<b>+64</b>	<b>+6.6%</b>	<b>+6</b>	<b>1,152</b>
Support	452	383	377	359	-93	-20.5%	-24	-6.2%	-18	438
Maintenance/ Technical	35	36	35	35	-1	-1.9%	-1	-2.5%	0	37
<b>General Support</b>	<b>487</b>	<b>419</b>	<b>412</b>	<b>394</b>	<b>-93</b>	<b>-19.1%</b>	<b>-25</b>	<b>-5.9%</b>	<b>-18</b>	<b>475</b>
Health Care Assistants	1,278	1,315	1,311	1,332	+54	+4.2%	+17	+1.3%	+21	1,598
Care, other	221	269	259	253	+32	+14.4%	-16	-5.9%	-7	293
<b>Patient &amp; Client Care</b>	<b>1,499</b>	<b>1,584</b>	<b>1,570</b>	<b>1,585</b>	<b>+86</b>	<b>+5.8%</b>	<b>+1</b>	<b>+0.0%</b>	<b>+15</b>	<b>1,891</b>



## WTE Change by Staff Category

■ WTE change since DEC 2019 ■ WTE change since DEC 2022 ■ WTE change since JUN 2023



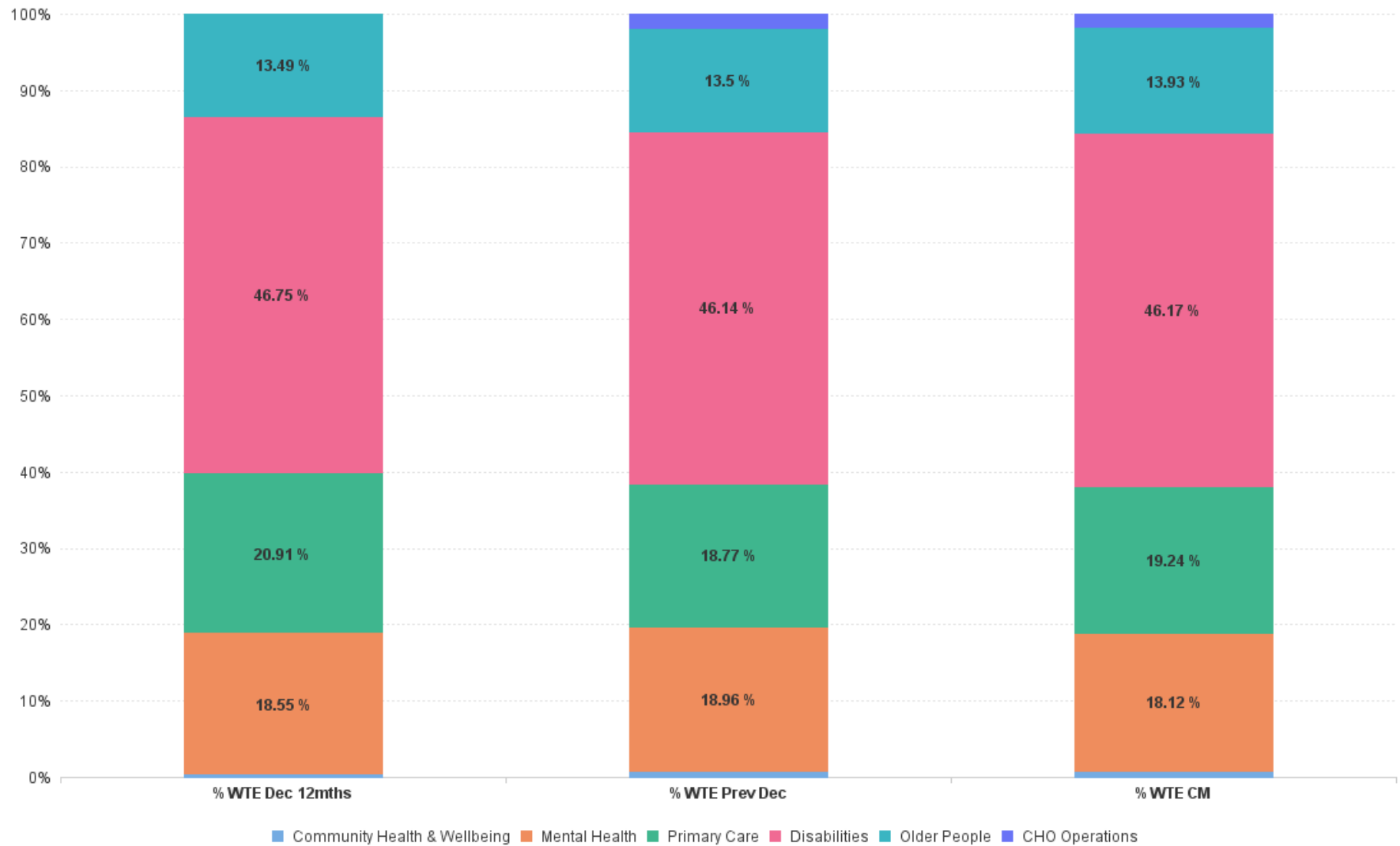
# Employment Report by Care Group : JUL 2023

CHO 9 JUL 2023

Care Group JUL 2023	WTE DEC 2019	WTE DEC 2022	WTE JUN 2023	WTE JUL 2023	WTE change since DEC 2019	% WTE Change since Dec 2019	WTE change since DEC 2022	% WTE Change since Dec 2022	WTE change since JUN 2023	No. JUL 2023
<b>Overall</b>	<b>6,582</b>	<b>7,230</b>	<b>7,243</b>	<b>7,217</b>	<b>+635</b>	<b>+9.7%</b>	<b>-13</b>	<b>-0.2%</b>	<b>-26</b>	<b>8,371</b>
Community Health & Wellbeing		46	48	49	+49		+3	+7.0%	+1	52
Mental Health	1,272	1,371	1,327	1,308	+36	+2.9%	-63	-4.6%	-19	1,485
Primary Care	1,247	1,357	1,379	1,389	+142	+11.4%	+32	+2.3%	+10	1,601
Disabilities	3,194	3,336	3,343	3,332	+139	+4.3%	-4	-0.1%	-10	3,955
Older People	870	976	1,013	1,006	+136	+15.6%	+30	+3.0%	-7	1,136
CHO Operations		144	133	134	+134		-11	-7.4%	+1	142
<b>Community Services</b>	<b>6,582</b>	<b>7,230</b>	<b>7,243</b>	<b>7,217</b>	<b>+635</b>	<b>+9.7%</b>	<b>-13</b>	<b>-0.2%</b>	<b>-26</b>	<b>8,371</b>



## % Total by Care Group



# Employment Report by HSE/S38 : JUL 2023

CHO 9 JUL 2023

Administration JUL 2023	WTE DEC 2019	WTE DEC 2022	WTE JUN 2023	WTE JUL 2023	WTE change since DEC 2019	% WTE Change since Dec 2019	WTE change since DEC 2022	% WTE Change since Dec 2022	WTE change since JUN 2023	No. JUL 2023
<b>Overall</b>	<b>6,582</b>	<b>7,230</b>	<b>7,243</b>	<b>7,217</b>	<b>+635</b>	<b>+9.7%</b>	<b>-13</b>	<b>-0.2%</b>	<b>-26</b>	<b>8,371</b>
Health Service Executive	3,407	3,905	3,964	3,952	+544	+16.0%	+47	+1.2%	-12	4,458
Section 38 Voluntary Agencies	3,175	3,325	3,280	3,266	+91	+2.9%	-59	-1.8%	-14	3,913



# Employment Report by HSE.S38: JUL 2023

## Health Service Executive

HSE&S38 JUL 2023	WTE DEC 2019	WTE DEC 2022	WTE JUN 2023	WTE JUL 2023	WTE change since DEC 2019	% WTE Change since Dec 2019	WTE change since DEC 2022	% WTE Change since Dec 2022	WTE change since JUN 2023	No. JUL 2023
<b>Total Health Service Executive</b>	<b>3,407</b>	<b>3,905</b>	<b>3,964</b>	<b>3,952</b>	<b>+544</b>	<b>+16.0%</b>	<b>+47</b>	<b>+1.2%</b>	<b>-12</b>	<b>4,458</b>
Consultants	56	59	61	59	+3	+5.3%	-0	-0.4%	-2	63
Registrars	90	123	116	113	+23	+25.7%	-10	-7.9%	-3	147
SHO/ Interns	60	47	51	51	-9	-15.2%	+4	+9.0%	+0	71
Medical/ Dental, other	51	50	50	49	-2	-3.8%	-1	-2.5%	-2	64
<b>Medical &amp; Dental</b>	<b>257</b>	<b>279</b>	<b>278</b>	<b>272</b>	<b>+15</b>	<b>+5.8%</b>	<b>-7</b>	<b>-2.5%</b>	<b>-6</b>	<b>345</b>
Nurse/ Midwife Manager	248	287	297	304	+57	+22.9%	+17	+6.0%	+7	325
Nurse/ Midwife Specialist & AN/MP	75	134	144	146	+71	+95.6%	+12	+8.9%	+3	157
Staff Nurse/ Staff Midwife	693	726	748	730	+36	+5.2%	+3	+0.4%	-18	803
Public Health Nurse	176	172	163	173	-3	-1.7%	+1	+0.3%	+9	210
Post-registration Nurse/ Midwife Student	26	19	1	1	-25	-96.2%	-3	-94.7%	+0	1
Pre-registration Nurse/ Midwife Intern	3		19	19	+16	+463.8%	-5		+0	38
Nursing/ Midwifery awaiting registration	11	15	5	5	-6	-53.7%	+3	-66.2%	+0	5
Nursing/ Midwifery Student	40	34	25	25	-15	-37.8%	-9	-25.6%	+0	44
Nursing/ Midwifery other	13	12	12	12	-1	-8.1%	-0	-2.1%	+0	13
<b>Nursing &amp; Midwifery</b>	<b>1,244</b>	<b>1,365</b>	<b>1,389</b>	<b>1,389</b>	<b>+145</b>	<b>+11.7%</b>	<b>+24</b>	<b>+1.8%</b>	<b>+1</b>	<b>1,552</b>
Therapy Professions	300	363	360	359	+59	+19.8%	-3	-1.0%	-1	416
Health Science/ Diagnostics	21	13	14	14	-7	-32.3%	+1	+9.0%	+0	14
Social Care	7	11	10	10	+3	+36.4%	-1	-12.9%	+0	11
Pharmacy	18	20	20	20	+2	+10.4%	+1	+3.4%	-0	28
Psychologists	124	138	141	138	+14	+11.5%	+0	+0.2%	-3	151
Social Workers	78	103	103	102	+24	+30.8%	-1	-0.9%	-1	112
H&SC, Other	57	54	59	58	+1	+2.6%	+4	+7.6%	-1	65
<b>Health &amp; Social Care Professionals</b>	<b>605</b>	<b>701</b>	<b>708</b>	<b>702</b>	<b>+97</b>	<b>+16.0%</b>	<b>+0</b>	<b>+0.1%</b>	<b>-7</b>	<b>797</b>
Management (VIII & above)	44	58	62	61	+17	+39.3%	+4	+6.1%	-1	63
Administrative/ Supervisory (V to VII)	112	241	247	252	+139	+124.4%	+10	+4.2%	+4	264
Clerical (III & IV)	303	374	393	395	+92	+30.2%	+21	+5.7%	+2	444
<b>Management &amp; Administrative</b>	<b>459</b>	<b>673</b>	<b>703</b>	<b>708</b>	<b>+248</b>	<b>+54.1%</b>	<b>+35</b>	<b>+5.2%</b>	<b>+5</b>	<b>771</b>
Support	198	182	179	175	-23	-11.8%	-7	-3.8%	-5	199
Maintenance/ Technical	9	10	10	10	+1	+9.2%	-0	-1.2%	-0	11
<b>General Support</b>	<b>207</b>	<b>192</b>	<b>190</b>	<b>185</b>	<b>-22</b>	<b>-10.8%</b>	<b>-7</b>	<b>-3.7%</b>	<b>-5</b>	<b>210</b>
Health Care Assistants	510	527	524	525	+15	+2.9%	-2	-0.3%	+1	587
Care, other	125	168	173	171	+46	+37.1%	+3	+1.9%	-2	196
<b>Patient &amp; Client Care</b>	<b>635</b>	<b>694</b>	<b>697</b>	<b>696</b>	<b>+61</b>	<b>+9.6%</b>	<b>+1</b>	<b>+0.2%</b>	<b>-1</b>	<b>783</b>

## Section 38 Voluntary Agencies

HSE&S38 JUL 2023	WTE DEC 2019	WTE DEC 2022	WTE JUN 2023	WTE JUL 2023	WTE change since DEC 2019	% WTE Change since Dec 2019	WTE change since DEC 2022	% WTE Change since Dec 2022	WTE change since JUN 2023	No. JUL 2023
<b>Total Section 38 Voluntary Agencies</b>	<b>3,175</b>	<b>3,325</b>	<b>3,280</b>	<b>3,266</b>	<b>+91</b>	<b>+2.9%</b>	<b>-59</b>	<b>-1.8%</b>	<b>-14</b>	<b>3,913</b>
Consultants	12	11	11	12	-1	-5.0%	+1	+4.9%	+1	15
Registrars	8	5	7	7	-1	-17.8%	+2	+31.6%	-0	8
SHO/ Interns	6	5	7	8	+2	+33.3%	+3	+60.0%	+1	8
Medical/ Dental, other	6	6	6	6	-0	-3.2%	-0	-4.0%	+0	8
<b>Medical &amp; Dental</b>	<b>32</b>	<b>27</b>	<b>31</b>	<b>32</b>	<b>-0</b>	<b>-0.7%</b>	<b>+5</b>	<b>+17.8%</b>	<b>+1</b>	<b>39</b>
Nurse/ Midwife Manager	188	201	205	204	+16	+8.7%	+2	+1.1%	-1	222
Nurse/ Midwife Specialist & AN/MP	10	15	14	14	+4	+35.4%	-1	-6.8%	+0	15
Staff Nurse/ Staff Midwife	502	488	437	428	-74	-14.7%	-60	-12.2%	-9	498
<i>Pre-registration Nurse/ Midwife Intern</i>	<i>15</i>	<i>8</i>	<i>19</i>	<i>19</i>	<i>+5</i>	<i>+31.0%</i>	<i>+1</i>	<i>+137.5%</i>	<i>+0</i>	<i>38</i>
<i>Nursing/ Midwifery awaiting registration</i>		<i>1</i>						<i>-100.0%</i>		
Nursing/ Midwifery Student	15	9	19	19	+5	+31.0%	+10	+111.1%	+0	38
Nursing/ Midwifery other	7	8	5	5	-2	-33.5%	-4	-43.5%	+0	5
<b>Nursing &amp; Midwifery</b>	<b>721</b>	<b>721</b>	<b>679</b>	<b>669</b>	<b>-52</b>	<b>-7.2%</b>	<b>-52</b>	<b>-7.2%</b>	<b>-10</b>	<b>778</b>
Therapy Professions	186	224	211	215	+29	+15.5%	-9	-3.8%	+5	240
Health Science/ Diagnostics	16	13	14	14	-2	-12.5%	+1	+7.7%	+0	15
Social Care	688	793	789	784	+96	+13.9%	-9	-1.2%	-5	954
Pharmacy	6	7	8	7	+0	+6.8%	-1	-6.8%	-1	8
Psychologists	40	49	48	46	+6	+14.7%	-3	-6.4%	-2	50
Social Workers	47	58	60	56	+9	+19.0%	-1	-2.5%	-4	63
H&SC, Other	14	10	10	9	-5	-34.6%	-1	-12.3%	-1	12
<b>Health &amp; Social Care Professionals</b>	<b>998</b>	<b>1,154</b>	<b>1,140</b>	<b>1,131</b>	<b>+133</b>	<b>+13.3%</b>	<b>-23</b>	<b>-2.0%</b>	<b>-9</b>	<b>1,342</b>
Management (VIII & above)	35	39	40	38	+2	+6.1%	-1	-3.6%	-2	38
Administrative/ Supervisory (V to VII)	96	119	140	146	+51	+52.9%	+28	+23.5%	+7	157
Clerical (III & IV)	148	149	154	151	+3	+2.0%	+3	+1.8%	-3	186
<b>Management &amp; Administrative</b>	<b>279</b>	<b>306</b>	<b>334</b>	<b>335</b>	<b>+56</b>	<b>+20.0%</b>	<b>+29</b>	<b>+9.5%</b>	<b>+1</b>	<b>381</b>
Support	254	202	198	185	-69	-27.3%	-17	-8.4%	-14	239
Maintenance/ Technical	26	25	25	24	-2	-5.8%	-1	-3.0%	-0	26
<b>General Support</b>	<b>280</b>	<b>227</b>	<b>223</b>	<b>209</b>	<b>-71</b>	<b>-25.3%</b>	<b>-18</b>	<b>-7.8%</b>	<b>-14</b>	<b>265</b>
Health Care Assistants	768	789	786	807	+39	+5.1%	+18	+2.3%	+21	1,011
Care, other	96	101	87	82	-14	-14.9%	-19	-18.9%	-5	97
<b>Patient &amp; Client Care</b>	<b>864</b>	<b>890</b>	<b>873</b>	<b>889</b>	<b>+25</b>	<b>+2.9%</b>	<b>-1</b>	<b>-0.1%</b>	<b>+16</b>	<b>1,108</b>

## CHO 9 by S38 Agency: JUL 2023

### Avista Dublin

JUL 2023	WTE DEC 2019	WTE DEC 2022	WTE JUN 2023	WTE JUL 2023	WTE change since DEC 2019	% WTE Change since Dec 2019	WTE change since DEC 2022	% WTE Change since Dec 2022	WTE change since JUN 2023	No. JUL 2023
<b>Total Avista Dublin</b>	<b>1,034</b>	<b>1,078</b>	<b>1,062</b>	<b>1,067</b>	<b>+32.4</b>	<b>+3.1%</b>	<b>-10.9</b>	<b>-1.0%</b>	<b>+4.6</b>	<b>1,257</b>
Consultants	1	3	3	3	+1.5	+115.8%	+0.0	+0.0%	+0.0	4
Registrars		1	1	2	+2.0		+1.0	+100.0%	+1.0	2
Medical/ Dental, other	2	2	2	2	+0.0	+0.0%	+0.0	+0.0%	+0.0	2
<b>Medical &amp; Dental</b>	<b>3</b>	<b>6</b>	<b>6</b>	<b>7</b>	<b>+3.5</b>	<b>+106.3%</b>	<b>+1.0</b>	<b>+17.0%</b>	<b>+1.0</b>	<b>8</b>
Nurse/ Midwife Manager	62	61	63	63	+1.4	+2.3%	+2.5	+4.1%	+0.0	68
Nurse/ Midwife Specialist & AN/MP	8	13	13	13	+4.5	+55.3%	+0.0	+0.0%	+0.0	13
Staff Nurse/ Staff Midwife	186	186	171	171	-15.5	-8.3%	-15.7	-8.4%	+0.0	192
Nursing/ Midwifery Student	8		11	11	+3.0	+40.0%	+10.5		+0.0	21
Nursing/ Midwifery other	4	5	5	5	+0.2	+4.8%	+0.0	+0.0%	+0.0	5
<b>Nursing &amp; Midwifery</b>	<b>268</b>	<b>264</b>	<b>261</b>	<b>261</b>	<b>-6.3</b>	<b>-2.4%</b>	<b>-2.7</b>	<b>-1.0%</b>	<b>+0.0</b>	<b>299</b>
Therapy Professions	33	44	41	40	+7.5	+22.6%	-4.0	-9.1%	-0.5	43
Social Care	163	191	187	187	+24.0	+14.8%	-4.2	-2.2%	+0.0	225
Pharmacy	2	2	2	2	+0.0	+0.0%	+0.0	+0.0%	+0.0	2
Psychologists	7	12	12	11	+3.3	+45.7%	-1.0	-8.6%	-1.0	11
Social Workers	10	14	14	14	+4.5	+44.6%	+0.0	+0.0%	+0.0	15
H&SC, Other	4	3	3	3	-1.4	-33.8%	+0.0	+0.0%	+0.0	3
<b>Health &amp; Social Care Professionals</b>	<b>219</b>	<b>266</b>	<b>259</b>	<b>257</b>	<b>+38.0</b>	<b>+17.3%</b>	<b>-9.2</b>	<b>-3.5%</b>	<b>-1.5</b>	<b>299</b>
Management (VIII & above)	6	9	9	9	+3.0	+50.0%	+0.0	+0.0%	+0.0	9
Administrative/ Supervisory (V to VII)	25	40	44	46	+20.9	+84.1%	+6.0	+15.0%	+2.0	47
Clerical (III & IV)	33	35	34	34	+0.9	+2.6%	-0.5	-1.5%	+0.0	42
<b>Management &amp; Administrative</b>	<b>64</b>	<b>83</b>	<b>87</b>	<b>89</b>	<b>+24.8</b>	<b>+38.7%</b>	<b>+5.5</b>	<b>+6.6%</b>	<b>+2.0</b>	<b>98</b>
Support	79	72	73	73	-5.3	-6.8%	+1.1	+1.5%	+0.0	96
Maintenance/ Technical	8	7	7	7	-1.0	-12.7%	+0.0	+0.0%	+0.0	7
<b>General Support</b>	<b>87</b>	<b>79</b>	<b>80</b>	<b>80</b>	<b>-6.3</b>	<b>-7.3%</b>	<b>+1.1</b>	<b>+1.4%</b>	<b>+0.0</b>	<b>103</b>
Health Care Assistants	362	358	352	355	-6.8	-1.9%	-3.8	-1.0%	+3.1	430
Care, other	32	20	17	17	-14.4	-45.3%	-2.9	-14.2%	+0.0	20
<b>Patient &amp; Client Care</b>	<b>393</b>	<b>379</b>	<b>369</b>	<b>372</b>	<b>-21.2</b>	<b>-5.4%</b>	<b>-6.6</b>	<b>-1.7%</b>	<b>+3.1</b>	<b>450</b>



Central Remedial Clinic

JUL 2023	WTE DEC 2019	WTE DEC 2022	WTE JUN 2023	WTE JUL 2023	WTE change since DEC 2019	% WTE Change since Dec 2019	WTE change since DEC 2022	% WTE Change since Dec 2022	WTE change since JUN 2023	No. JUL 2023
Total Central Remedial Clinic	278	340	324	321	+42.7	+15.3%	-18.5	-5.4%	-3.0	372
Consultants	1				-1.2	-100.0%				
Medical/ Dental, other	0	0	0	0	+0.1	+12.2%	+0.0	+0.0%	+0.0	1
Medical & Dental	2	0	0	0	-1.2	-71.6%	+0.0	+0.0%	+0.0	1
Nurse/ Midwife Manager	2	5	5	5	+2.7	+117.9%	+0.0	+0.0%	+0.0	6
Nurse/ Midwife Specialist & AN/MP	1	1	1	1	+0.6	+116.0%	+0.0	+0.0%	+0.0	2
Staff Nurse/ Staff Midwife	4	5	4	4	+0.0	+0.6%	-1.2	-24.6%	-0.8	6
Nursing/ Midwifery other		1					-1.0	-100.0%		
Nursing & Midwifery	6	12	10	10	+3.3	+51.9%	-2.2	-18.3%	-0.8	14
Therapy Professions	78	93	80	84	+6.7	+8.7%	-9.3	-9.9%	+4.1	94
Health Science/ Diagnostics	15	12	13	13	-2.0	-13.3%	+1.0	+8.3%	+0.0	13
Social Care		1	1	1	+1.0		+0.0	+0.0%	+0.0	1
Psychologists	11	8	9	8	-2.5	-23.4%	+0.3	+4.2%	-0.3	9
Social Workers	8	11	10	8	+0.2	+1.9%	-2.9	-26.7%	-1.5	9
Health & Social Care Professionals	111	125	112	114	+3.3	+3.0%	-10.8	-8.6%	+2.3	126
Management (VIII & above)	7	9	9	7	+0.0	+0.0%	-2.0	-22.2%	-2.0	7
Administrative/ Supervisory (V to VII)	15	17	28	31	+15.8	+102.5%	+14.5	+86.4%	+3.0	34
Clerical (III & IV)	32	41	41	40	+7.6	+23.6%	-0.8	-1.9%	-1.0	49
Management & Administrative	55	66	78	78	+23.5	+42.8%	+11.7	+17.7%	+0.0	90
Support	14	14	13	13	-0.7	-4.9%	-1.0	-6.9%	+0.0	16
Maintenance/ Technical	1	2	2	2	+1.0	+100.0%	+0.0	+0.0%	+0.0	2
General Support	15	16	15	15	+0.3	+2.1%	-1.0	-6.1%	+0.0	18
Health Care Assistants	51	60	59	58	+7.6	+14.9%	-1.3	-2.2%	-1.0	72
Care, other	39	59	48	45	+5.9	+15.3%	-14.9	-25.1%	-3.5	51
Patient & Client Care	90	119	108	103	+13.5	+15.1%	-16.3	-13.6%	-4.5	123

Incorporated Orthopaedic Hospital

JUL 2023	WTE DEC 2019	WTE DEC 2022	WTE JUN 2023	WTE JUL 2023	WTE change since DEC 2019	% WTE Change since Dec 2019	WTE change since DEC 2022	% WTE Change since Dec 2022	WTE change since JUN 2023	No. JUL 2023
Total Incorporated Orthopaedic Hos	226	273	294	284	+58.7	+26.0%	+10.8	+4.0%	-9.2	331
Consultants	1	2	2	2	+0.9	+150.0%	+0.0	+0.0%	+0.0	2
Registrars	2	2	3	3	+1.0	+50.0%	+1.0	+50.0%	+0.0	3
SHO/ Interns	5	4	6	7	+2.0	+40.0%	+3.0	+75.0%	+1.0	7
Medical & Dental	8	8	11	12	+3.9	+51.3%	+4.0	+53.3%	+1.0	12
Nurse/ Midwife Manager	18	18	19	19	+0.5	+2.8%	+0.7	+3.7%	-0.5	22
Staff Nurse/ Staff Midwife	60	69	74	65	+5.1	+8.6%	-4.4	-6.3%	-9.8	74
Nursing & Midwifery	78	87	93	83	+5.6	+7.2%	-3.7	-4.3%	-10.3	96
Therapy Professions	20	34	35	38	+17.8	+89.0%	+4.0	+11.7%	+2.6	41
Health Science/ Diagnostics	1	1	1	1	+0.0	+0.0%	+0.0	+0.0%	+0.0	2
Pharmacy	3	4	4	3	-0.3	-9.7%	-1.0	-28.6%	-1.0	3
Social Workers	7	9	10	10	+2.1	+28.6%	+0.8	+9.2%	-0.2	11
Health & Social Care Professionals	31	47	49	51	+19.6	+63.0%	+3.8	+8.0%	+1.4	57
Management (VIII & above)	1	2	2	2	+1.0	+100.0%	+0.0	+0.0%	+0.0	2
Administrative/ Supervisory (V to VII)	6	8	8	10	+3.7	+56.7%	+2.5	+33.2%	+2.5	11
Clerical (III & IV)	10	11	12	9	-1.1	-10.8%	-2.7	-23.7%	-3.3	14
Management & Administrative	17	21	22	21	+3.6	+21.0%	-0.2	-0.8%	-0.8	27
Support	34	46	46	33	-0.4	-1.2%	-12.4	-27.2%	-12.4	41
Maintenance/ Technical	2	2	2	2	+0.0	+0.0%	+0.0	+0.0%	+0.0	2
General Support	36	48	48	35	-0.4	-1.1%	-12.4	-26.0%	-12.4	43
Health Care Assistants	56	63	71	82	+26.4	+47.1%	+19.4	+30.8%	+11.9	94
Care, other	0	0	0	0	+0.0	+1.5%	+0.0	+0.0%	+0.0	2
Patient & Client Care	56	63	71	83	+26.4	+46.9%	+19.4	+30.6%	+11.9	96

St. Michael's House Dublin

JUL 2023	WTE DEC 2019	WTE DEC 2022	WTE JUN 2023	WTE JUL 2023	WTE change since DEC 2019	% WTE Change since Dec 2019	WTE change since DEC 2022	% WTE Change since Dec 2022	WTE change since JUN 2023	No. JUL 2023
Total St. Michael's House Dublin	1,431	1,449	1,464	1,459	+28.4	+2.0%	+9.5	+0.7%	-4.8	1,788
Consultants	8	6	6	6	-1.7	-21.0%	+0.7	+12.9%	+0.6	8
Registrars	4	1	1	0	-3.9	-98.0%	-0.9	-92.0%	-0.9	1
Medical/ Dental, other	4	4	4	4	-0.3	-6.7%	-0.3	-6.7%	+0.0	5
Medical & Dental	16	10	10	10	-5.8	-37.2%	-0.5	-4.4%	-0.3	14
Nurse/ Midwife Manager	84	100	102	103	+18.8	+22.4%	+3.2	+3.2%	+0.6	111
Staff Nurse/ Staff Midwife	162	149	144	147	-14.6	-9.0%	-2.3	-1.5%	+2.9	181
Nursing & Midwifery	246	249	246	250	+4.2	+1.7%	+0.9	+0.4%	+3.5	292
Therapy Professions	51	48	54	52	+0.8	+1.6%	+4.0	+8.3%	-1.6	60
Social Care	525	601	601	596	+70.6	+13.4%	-5.2	-0.9%	-5.0	728
Psychologists	18	27	26	24	+6.0	+32.3%	-2.6	-9.6%	-1.2	27
Social Workers	20	21	25	23	+3.2	+16.1%	+1.7	+7.9%	-2.2	27
H&SC, Other	10	8	7	6	-3.5	-35.0%	-1.3	-16.5%	-0.8	9
Health & Social Care Professionals	625	705	713	702	+77.1	+12.3%	-3.3	-0.5%	-10.8	851
Management (VIII & above)	21	19	19	19	-2.8	-13.2%	-0.4	-2.1%	-0.4	19
Administrative/ Supervisory (V to VII)	43	47	52	52	+9.1	+21.2%	+4.7	+10.0%	+0.0	56
Clerical (III & IV)	54	45	52	53	-1.1	-2.0%	+7.3	+16.0%	+0.5	61
Management & Administrative	118	112	123	123	+5.2	+4.4%	+11.6	+10.4%	+0.2	136
Support	96	40	40	37	-59.0	-61.4%	-3.1	-7.6%	-2.6	49
Maintenance/ Technical	12	11	12	12	-0.5	-4.3%	+0.2	+2.0%	-0.0	13
General Support	108	52	51	49	-59.5	-55.0%	-2.8	-5.5%	-2.6	62
Health Care Assistants	293	302	300	307	+13.1	+4.5%	+4.9	+1.6%	+6.7	410
Care, other	25	20	20	19	-5.9	-24.0%	-1.3	-6.6%	-1.4	23
Patient & Client Care	318	322	320	325	+7.2	+2.3%	+3.6	+1.1%	+5.3	433

St. Vincent's Fairview

JUL 2023	WTE DEC 2019	WTE DEC 2022	WTE JUN 2023	WTE JUL 2023	WTE change since DEC 2019	% WTE Change since Dec 2019	WTE change since DEC 2022	% WTE Change since Dec 2022	WTE change since JUN 2023	No. JUL 2023
Total St. Vincent's Fairview	206	185	136	135	-71.3	-34.6%	-50.4	-27.2%	-1.5	165
Consultants	1	1	1	1	-0.2	-15.3%	-0.2	-15.3%	+0.0	1
Registrars	2	1	2	2	-0.5	-25.0%	+0.5	+50.0%	-0.5	2
SHO/ Interns	1	1	1	1	+0.0	+0.0%	+0.0	+0.0%	+0.0	1
Medical & Dental	4	3	4	4	-0.7	-16.3%	+0.3	+10.1%	-0.5	4
Nurse/ Midwife Manager	21	18	15	14	-7.1	-33.1%	-4.1	-22.0%	-1.0	15
Nurse/ Midwife Specialist & AN/MP	2	1			-1.5	-100.0%	-1.0	-100.0%		
Staff Nurse/ Staff Midwife	91	78	43	42	-49.1	-53.7%	-36.1	-46.0%	-1.0	45
Nursing/ Midwifery Student	7	9	9	9	+1.5	+21.4%	-0.5	-5.6%	+0.0	17
Nursing/ Midwifery other	3	3			-2.5	-100.0%	-2.5	-100.0%		
Nursing & Midwifery	124	109	67	65	-58.7	-47.4%	-44.1	-40.4%	-2.0	77
Therapy Professions	5	4	1	1	-3.9	-85.8%	-3.2	-83.3%	+0.0	2
Pharmacy	2	2	2	2	+0.7	+43.8%	+0.5	+27.8%	+0.0	3
Psychologists	4	3	3	3	-0.9	-25.7%	+0.1	+4.0%	+0.0	3
Social Workers	2	2	1	1	-1.0	-50.0%	-1.0	-50.0%	+0.0	1
Health & Social Care Professionals	12	10	7	7	-5.1	-43.7%	-3.6	-35.4%	+0.0	9
Management (VIII & above)			1	1	+1.0		+1.0		+0.0	1
Administrative/ Supervisory (V to VII)	6	7	8	7	+1.1	+18.3%	+0.1	+1.8%	-1.0	9
Clerical (III & IV)	19	16	15	16	-3.4	-17.8%	-0.7	-4.4%	+0.6	20
Management & Administrative	25	24	24	24	-1.3	-5.0%	+0.4	+1.7%	-0.4	30
Support	31	29	26	28	-3.8	-12.1%	-1.6	-5.5%	+1.4	37
Maintenance/ Technical	3	3	2	2	-1.0	-33.3%	-1.0	-33.3%	+0.0	2
General Support	34	32	28	30	-4.8	-14.0%	-2.6	-8.1%	+1.4	39
Health Care Assistants	6	6	5	5	-0.8	-13.3%	-0.8	-13.3%	+0.0	5
Care, other	1	1	1	1	+0.0	+0.0%	+0.0	+0.0%	+0.0	1
Patient & Client Care	7	7	6	6	-0.8	-11.4%	-0.8	-11.4%	+0.0	6

# Employment Report by Community Health & Wellbeing JUL 2023

CHO 9 JUL 2023

Community Health & Wellbeing JUL 2023	WTE DEC 2019	WTE DEC 2022	WTE JUN 2023	WTE JUL 2023	WTE change since DEC 2019	% WTE Change since Dec 2019	WTE change since DEC 2022	% WTE Change since Dec 2022	WTE change since JUN 2023	No. JUL 2023
<b>Overall</b>		<b>91</b>	<b>96</b>	<b>98</b>	<b>+98</b>		<b>+6</b>	<b>+7.0%</b>	<b>+2</b>	<b>104</b>
Therapy Professions		4	4	4	+4		+0	+1.1%	+0	4
<b>Health &amp; Social Care Professionals</b>		<b>4</b>	<b>4</b>	<b>4</b>	<b>+4</b>		<b>+0</b>	<b>+1.1%</b>	<b>+0</b>	<b>4</b>
Management (VIII & above)		4	6	6	+6		+2	+51.9%	0	6
Administrative/ Supervisory (V to VII)		13	13	14	+14		+0	+1.3%	+1	14
Clerical (III & IV)		10	12	12	+12		+2	+14.9%	+0	14
<b>Management &amp; Administrative</b>		<b>28</b>	<b>30</b>	<b>31</b>	<b>+31</b>		<b>+4</b>	<b>+13.2%</b>	<b>+1</b>	<b>34</b>
Care, other		60	62	63	+63		+3	+4.5%	+1	66
<b>Patient &amp; Client Care</b>		<b>60</b>	<b>62</b>	<b>63</b>	<b>+63</b>		<b>+3</b>	<b>+4.5%</b>	<b>+1</b>	<b>66</b>



# Employment Report by Mental Health JUL 2023

CHO 9 JUL 2023

Mental HealthJUL 2023	WTE DEC 2019	WTE DEC 2022	WTE JUN 2023	WTE JUL 2023	WTE change since DEC 2019	% WTE Change since Dec 2019	WTE change since DEC 2022	% WTE Change since Dec 2022	WTE change since JUN 2023	No. JUL 2023
<b>Overall</b>	<b>1,272</b>	<b>1,371</b>	<b>1,327</b>	<b>1,308</b>	<b>+36</b>	<b>+2.9%</b>	<b>-63</b>	<b>-4.6%</b>	<b>-19</b>	<b>1,485</b>
Consultants	50	55	55	53	+3	+6.1%	-2	-3.8%	-2	56
Registrars	31	57	59	51	+20	+63.4%	-7	-11.5%	-9	73
SHO/ Interns	53	36	36	33	-20	-37.4%	-3	-7.0%	-3	48
<b>Medical &amp; Dental</b>	<b>134</b>	<b>148</b>	<b>150</b>	<b>137</b>	<b>+3</b>	<b>+2.1%</b>	<b>-11</b>	<b>-7.6%</b>	<b>-13</b>	<b>177</b>
Nurse/ Midwife Manager	132	138	134	137	+5	+3.7%	-1	-0.6%	+3	147
Nurse/ Midwife Specialist & AN/MP	65	99	100	102	+37	+56.2%	+3	+3.0%	+2	107
Staff Nurse/ Staff Midwife	351	351	318	308	-43	-12.4%	-43	-12.3%	-10	335
Pre-registration Nurse/ Midwife Intern	10	8	23	23	+13	+127.3%	+15	+187.5%	+0	46
Nursing/ Midwifery awaiting registration	11	14	3	3	-8	-72.2%	-11	-78.3%	+0	3
Nursing/ Midwifery Student	21	22	26	26	+5	+24.3%	+4	+19.3%	+0	49
Nursing/ Midwifery other	11	9	6	7	-4	-36.0%	-2	-22.0%	+1	8
<b>Nursing &amp; Midwifery</b>	<b>581</b>	<b>619</b>	<b>584</b>	<b>580</b>	<b>-1</b>	<b>-0.2%</b>	<b>-39</b>	<b>-6.3%</b>	<b>-4</b>	<b>646</b>
Therapy Professions	55	60	55	54	-1	-1.4%	-6	-9.8%	-1	60
Social Care	1	1	1	1	+0	+11.1%	+0	+1.0%	+0	1
Pharmacy	8	7	8	8	0	-5.2%	+1	+7.8%	0	13
Psychologists	46	56	55	55	+9	+20.3%	-1	-2.0%	0	61
Social Workers	43	57	55	55	+12	+27.2%	-1	-2.2%	+0	62
H&SC, Other	15	17	18	18	+3	+21.5%	+0	+1.4%	0	19
<b>Health &amp; Social Care Professionals</b>	<b>167</b>	<b>198</b>	<b>192</b>	<b>190</b>	<b>+23</b>	<b>+13.8%</b>	<b>-7</b>	<b>-3.8%</b>	<b>-2</b>	<b>216</b>
Management (VIII & above)	5	5	6	6	+1	+20.0%	+1	+21.5%	0	6
Administrative/ Supervisory (V to VII)	28	38	41	41	+13	+47.2%	+3	+7.0%	+0	44
Clerical (III & IV)	104	109	109	109	+5	+5.3%	+1	+0.7%	+1	124
<b>Management &amp; Administrative</b>	<b>137</b>	<b>152</b>	<b>155</b>	<b>156</b>	<b>+20</b>	<b>+14.4%</b>	<b>+5</b>	<b>+3.0%</b>	<b>+1</b>	<b>174</b>
Support	103	95	89	88	-15	-14.5%	-7	-6.9%	0	104
Maintenance/ Technical	11	11	10	10	-1	-10.3%	-1	-10.3%	0	10
<b>General Support</b>	<b>114</b>	<b>106</b>	<b>99</b>	<b>98</b>	<b>-16</b>	<b>-14.1%</b>	<b>-8</b>	<b>-7.2%</b>	<b>0</b>	<b>114</b>
Health Care Assistants	126	137	136	135	+9	+7.1%	-2	-1.3%	-1	145
Care, other	13	12	12	12	-1	-9.1%	-1	-6.0%	0	13
<b>Patient &amp; Client Care</b>	<b>139</b>	<b>149</b>	<b>148</b>	<b>147</b>	<b>+8</b>	<b>+5.6%</b>	<b>-2</b>	<b>-1.7%</b>	<b>-2</b>	<b>158</b>



# Employment Report by Primary Care JUL 2023

CHO 9 JUL 2023

Primary Care JUL 2023	WTE DEC 2019	WTE DEC 2022	WTE JUN 2023	WTE JUL 2023	WTE change since DEC 2019	% WTE Change since Dec 2019	WTE change since DEC 2022	% WTE Change since Dec 2022	WTE change since JUN 2023	No. JUL 2023
<b>Overall</b>	<b>1,247</b>	<b>1,357</b>	<b>1,379</b>	<b>1,389</b>	<b>+142</b>	<b>+11.4%</b>	<b>+32</b>	<b>+2.3%</b>	<b>+10</b>	<b>1,601</b>
Consultants	4	3	4	4	0	-4.6%	+1	+21.9%	+0	5
Registrars	56	60	52	58	+3	+4.5%	-2	-3.6%	+6	67
SHO/ Interns	1	7	7	10	+9	+876.0%	+3	+40.8%	+2	10
Medical/ Dental, other	50	50	50	49	-1	-1.8%	-1	-2.5%	-2	64
<b>Medical &amp; Dental</b>	<b>111</b>	<b>121</b>	<b>114</b>	<b>121</b>	<b>+10</b>	<b>+9.2%</b>	<b>+0</b>	<b>+0.1%</b>	<b>+7</b>	<b>146</b>
Nurse/ Midwife Manager	37	53	60	60	+23	+63.6%	+7	+13.1%	+1	67
Nurse/ Midwife Specialist & AN/MP	6	23	27	28	+22	+340.1%	+5	+24.4%	+1	33
Staff Nurse/ Staff Midwife	100	105	128	119	+18	+18.3%	+14	+12.9%	-9	139
Public Health Nurse	175	171	162	172	-4	-2.1%	+0	+0.3%	+9	209
Post-registration Nurse/ Midwife Student	26	19	1	1	-25	-96.2%	-18	-94.7%	+0	1
Nursing/ Midwifery Student	26	19	1	1	-25	-96.2%	-18	-94.7%	+0	1
Nursing/ Midwifery other		2	2	2	+2		+0	+0.0%	0	2
<b>Nursing &amp; Midwifery</b>	<b>345</b>	<b>373</b>	<b>380</b>	<b>381</b>	<b>+37</b>	<b>+10.6%</b>	<b>+9</b>	<b>+2.3%</b>	<b>+1</b>	<b>451</b>
Therapy Professions	196	229	230	229	+33	+16.6%	-1	-0.3%	-1	269
Health Science/ Diagnostics	20	13	14	14	-6	-30.8%	+1	+9.0%	+0	14
Social Care	4	6	5	5	+1	+26.5%	-1	-14.1%	+0	6
Pharmacy	12	13	14	14	+2	+16.7%	+1	+4.5%	+0	17
Psychologists	65	72	76	74	+9	+13.4%	+2	+2.8%	-2	81
Social Workers	17	23	24	24	+7	+44.5%	+1	+2.8%	0	25
H&SC, Other	37	33	38	37	+0	+0.4%	+4	+11.5%	-1	42
<b>Health &amp; Social Care Professionals</b>	<b>351</b>	<b>390</b>	<b>401</b>	<b>397</b>	<b>+46</b>	<b>+13.0%</b>	<b>+7</b>	<b>+1.7%</b>	<b>-4</b>	<b>454</b>
Management (VIII & above)	28	15	20	19	-9	-32.8%	+4	+23.9%	-1	20
Administrative/ Supervisory (V to VII)	77	93	98	103	+26	+33.2%	+10	+11.2%	+5	108
Clerical (III & IV)	182	185	195	200	+18	+9.8%	+15	+8.2%	+5	226
<b>Management &amp; Administrative</b>	<b>288</b>	<b>293</b>	<b>314</b>	<b>322</b>	<b>+34</b>	<b>+11.9%</b>	<b>+29</b>	<b>+10.0%</b>	<b>+8</b>	<b>354</b>
Support	35	27	29	30	-5	-14.6%	+2	+8.1%	+0	35
<b>General Support</b>	<b>35</b>	<b>27</b>	<b>29</b>	<b>30</b>	<b>-5</b>	<b>-14.6%</b>	<b>+2</b>	<b>+8.1%</b>	<b>+0</b>	<b>35</b>
Health Care Assistants	13	35	26	24	+11	+86.0%	-10	-29.4%	-1	27
Care, other	105	118	114	113	+8	+8.1%	-5	-4.1%	-1	134
<b>Patient &amp; Client Care</b>	<b>118</b>	<b>153</b>	<b>140</b>	<b>138</b>	<b>+20</b>	<b>+16.7%</b>	<b>-15</b>	<b>-9.8%</b>	<b>-2</b>	<b>161</b>

# Employment Report by Disabilities JUL 2023

CHO 9 JUL 2023

Disabilities JUL 2023	WTE DEC 2019	WTE DEC 2022	WTE JUN 2023	WTE JUL 2023	WTE change since DEC 2019	% WTE Change since Dec 2019	WTE change since DEC 2022	% WTE Change since Dec 2022	WTE change since JUN 2023	No. JUL 2023
<b>Overall</b>	<b>3,194</b>	<b>3,336</b>	<b>3,343</b>	<b>3,332</b>	<b>+139</b>	<b>+4.3%</b>	<b>-4</b>	<b>-0.1%</b>	<b>-10</b>	<b>3,955</b>
Consultants	13	9	11	11	-1	-11.0%	+2	+17.8%	+1	14
Registrars	6	3	3	3	-3	-48.7%	+0	+3.0%	+0	4
SHO/ Interns		1	2	2	+2		+1	+102.0%	+0	3
Medical/ Dental, other	6	6	6	6	0	-3.2%	0	-4.0%	+0	8
<b>Medical &amp; Dental</b>	<b>25</b>	<b>20</b>	<b>22</b>	<b>22</b>	<b>-3</b>	<b>-10.1%</b>	<b>+3</b>	<b>+12.9%</b>	<b>+1</b>	<b>29</b>
Nurse/ Midwife Manager	192	211	216	217	+25	+13.2%	+6	+3.0%	+1	233
Nurse/ Midwife Specialist & AN/MP	9	16	17	17	+8	+93.4%	+0	+2.0%	+0	18
Staff Nurse/ Staff Midwife	517	501	478	478	-39	-7.5%	-22	-4.5%	+1	554
Pre-registration Nurse/ Midwife Intern	8		15	15	+7	+93.5%	+15		+0	30
Nursing/ Midwifery awaiting registration		2	2	2	+2		+0	+1.0%	+0	2
Nursing/ Midwifery Student	8	2	17	17	+9	+119.4%	+15	+758.6%	+0	32
Nursing/ Midwifery other	7	9	8	7	0	-2.3%	-2	-19.2%	-1	8
<b>Nursing &amp; Midwifery</b>	<b>732</b>	<b>739</b>	<b>736</b>	<b>736</b>	<b>+4</b>	<b>+0.5%</b>	<b>-2</b>	<b>-0.3%</b>	<b>+0</b>	<b>845</b>
Therapy Professions	181	208	199	201	+20	+11.0%	-7	-3.2%	+1	225
Health Science/ Diagnostics	15	12	13	13	-2	-13.3%	+1	+8.3%	+0	13
Social Care	689	796	792	787	+98	+14.2%	-9	-1.2%	-5	957
Pharmacy	2	2	2	2	+0	+0.0%	+0	+0.0%	+0	2
Psychologists	53	57	58	54	+1	+2.1%	-3	-6.0%	-4	58
Social Workers	44	54	56	52	+8	+18.5%	-2	-3.3%	-4	59
H&SC, Other	19	13	13	12	-7	-36.0%	-1	-9.3%	-1	15
<b>Health &amp; Social Care Professionals</b>	<b>1,003</b>	<b>1,142</b>	<b>1,133</b>	<b>1,121</b>	<b>+118</b>	<b>+11.8%</b>	<b>-21</b>	<b>-1.9%</b>	<b>-12</b>	<b>1,329</b>
Management (VIII & above)	37	45	45	43	+5	+13.7%	-2	-5.0%	-2	43
Administrative/ Supervisory (V to VII)	88	129	149	152	+65	+73.8%	+23	+18.1%	+3	162
Clerical (III & IV)	125	137	146	144	+19	+15.2%	+7	+5.1%	-2	173
<b>Management &amp; Administrative</b>	<b>250</b>	<b>311</b>	<b>340</b>	<b>339</b>	<b>+89</b>	<b>+35.5%</b>	<b>+28</b>	<b>+9.1%</b>	<b>-1</b>	<b>378</b>
Support	196	136	135	132	-63	-32.5%	-4	-3.0%	-3	170
Maintenance/ Technical	22	20	21	20	-2	-6.9%	+0	+1.1%	0	22
<b>General Support</b>	<b>218</b>	<b>156</b>	<b>156</b>	<b>153</b>	<b>-65</b>	<b>-29.9%</b>	<b>-4</b>	<b>-2.5%</b>	<b>-3</b>	<b>192</b>
Health Care Assistants	869	866	864	872	+3	+0.4%	+6	+0.7%	+8	1,079
Care, other	97	102	93	89	-8	-7.8%	-12	-12.1%	-4	103
<b>Patient &amp; Client Care</b>	<b>966</b>	<b>968</b>	<b>957</b>	<b>962</b>	<b>-4</b>	<b>-0.4%</b>	<b>-6</b>	<b>-0.7%</b>	<b>+4</b>	<b>1,182</b>





# Employment Report by Older People JUL 2023

CHO 9 JUL 2023

Older People JUL 2023	WTE DEC 2019	WTE DEC 2022	WTE JUN 2023	WTE JUL 2023	WTE change since DEC 2019	% WTE Change since Dec 2019	WTE change since DEC 2022	% WTE Change since Dec 2022	WTE change since JUN 2023	No. JUL 2023
<b>Overall</b>	<b>870</b>	<b>976</b>	<b>1,013</b>	<b>1,006</b>	<b>+136</b>	<b>+15.6%</b>	<b>+30</b>	<b>+3.0%</b>	<b>-7</b>	<b>1,136</b>
Consultants	2	3	3	3	+1	+56.3%	+0	+0.0%	+0	3
Registrars	6	6	9	8	+3	+45.4%	+2	+23.8%	0	11
SHO/ Interns	12	8	12	14	+2	+16.2%	+6	+73.0%	+2	18
Medical/ Dental, other	1				-1	-100.0%				
<b>Medical &amp; Dental</b>	<b>20</b>	<b>17</b>	<b>23</b>	<b>24</b>	<b>+4</b>	<b>+21.6%</b>	<b>+7</b>	<b>+43.6%</b>	<b>+1</b>	<b>32</b>
Nurse/ Midwife Manager	75	79	84	86	+11	+14.7%	+7	+8.2%	+1	91
Nurse/ Midwife Specialist & AN/MP	5	11	13	14	+9	+183.4%	+2	+19.3%	+0	14
Staff Nurse/ Staff Midwife	227	255	261	253	+26	+11.5%	-2	-0.6%	-8	273
Public Health Nurse	0	1	1	1	+1	+163.2%	+0	+1.0%	+0	1
Nursing/ Midwifery other	1				-1	-100.0%				
<b>Nursing &amp; Midwifery</b>	<b>308</b>	<b>346</b>	<b>360</b>	<b>353</b>	<b>+45</b>	<b>+14.8%</b>	<b>+7</b>	<b>+2.1%</b>	<b>-7</b>	<b>379</b>
Therapy Professions	54	88	85	89	+35	+63.8%	+1	+1.5%	+4	100
Health Science/ Diagnostics	1	1	1	1	0	-31.0%	+0	+0.0%	+0	2
Social Care	1	1	0	0	-1	-62.0%	-1	-61.6%	0	1
Pharmacy	3	4	4	3	0	-9.7%	-1	-28.6%	-1	3
Psychologists		1	1	1	+1		0	-21.9%	+0	1
Social Workers	21	19	19	18	-3	-15.8%	-1	-5.7%	-1	20
H&SC, Other	0	1	1	1	+0	+58.3%	+0	+1.8%	0	1
<b>Health &amp; Social Care Professionals</b>	<b>81</b>	<b>114</b>	<b>111</b>	<b>112</b>	<b>+31</b>	<b>+38.5%</b>	<b>-2</b>	<b>-1.5%</b>	<b>+2</b>	<b>128</b>
Management (VIII & above)	9	13	14	14	+5	+56.2%	+1	+9.6%	0	14
Administrative/ Supervisory (V to VII)	15	27	26	29	+14	+94.5%	+2	+7.3%	+3	31
Clerical (III & IV)	40	56	60	55	+15	+36.8%	-1	-1.9%	-5	65
<b>Management &amp; Administrative</b>	<b>64</b>	<b>96</b>	<b>100</b>	<b>98</b>	<b>+34</b>	<b>+53.0%</b>	<b>+2</b>	<b>+2.2%</b>	<b>-2</b>	<b>110</b>
Support	118	119	123	108	-11	-8.9%	-12	-9.7%	-15	127
Maintenance/ Technical	2	2	2	2	0	-0.4%	0	-0.4%	0	3
<b>General Support</b>	<b>121</b>	<b>122</b>	<b>125</b>	<b>110</b>	<b>-11</b>	<b>-8.7%</b>	<b>-12</b>	<b>-9.5%</b>	<b>-15</b>	<b>130</b>
Health Care Assistants	270	275	285	300	+31	+11.4%	+26	+9.3%	+16	347
Care, other	6	6	9	7	+1	+11.0%	+1	+8.9%	-2	10
<b>Patient &amp; Client Care</b>	<b>276</b>	<b>281</b>	<b>294</b>	<b>307</b>	<b>+32</b>	<b>+11.4%</b>	<b>+26</b>	<b>+9.3%</b>	<b>+14</b>	<b>357</b>



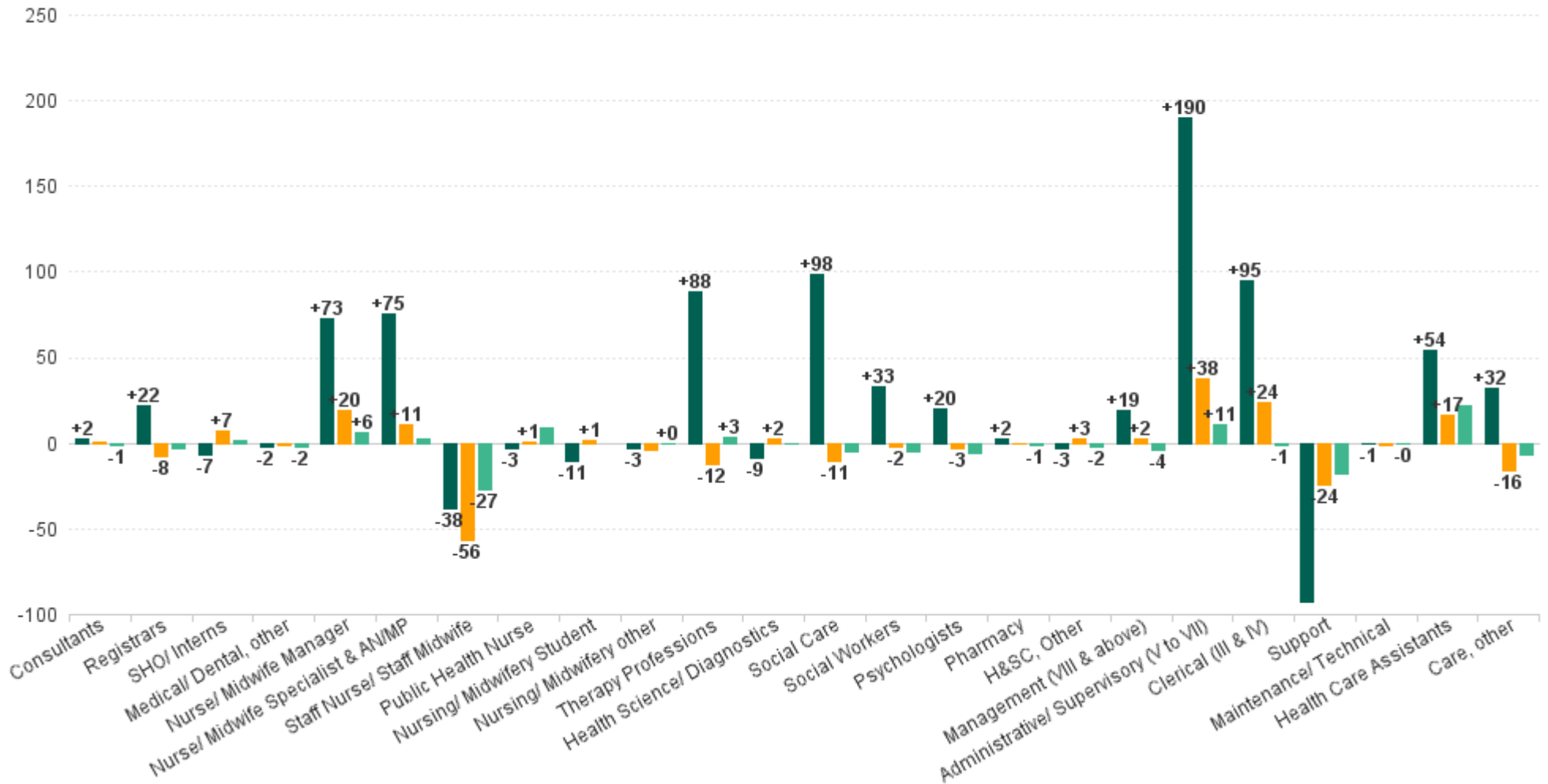
# Employment Report by CHO Operations JUL 2023

CHO 9 JUL 2023

CHO Operations JUL 2023	WTE DEC 2019	WTE DEC 2022	WTE JUN 2023	WTE JUL 2023	WTE change since DEC 2019	% WTE Change since Dec 2019	WTE change since DEC 2022	% WTE Change since Dec 2022	WTE change since JUN 2023	No. JUL 2023
<b>Overall</b>		<b>144</b>	<b>133</b>	<b>134</b>	<b>+134</b>		<b>-11</b>	<b>-7.4%</b>	<b>+1</b>	<b>142</b>
Registrars		1					-1	-100.0%		
<b>Medical &amp; Dental</b>		<b>1</b>					<b>-1</b>	<b>-100.0%</b>		
Nurse/ Midwife Manager		8	8	8	+8		+1	+8.6%	+1	9
Staff Nurse/ Staff Midwife		3					-3	-100.0%		
<b>Nursing &amp; Midwifery</b>		<b>11</b>	<b>8</b>	<b>8</b>	<b>+8</b>		<b>-2</b>	<b>-21.9%</b>	<b>+1</b>	<b>9</b>
Pharmacy		1	1	1	+1		+0	+2.0%	+0	1
Social Workers		8	9	9	+9		+1	+13.9%	+0	9
<b>Health &amp; Social Care Professionals</b>		<b>9</b>	<b>10</b>	<b>10</b>	<b>+10</b>		<b>+1</b>	<b>+12.6%</b>	<b>+0</b>	<b>10</b>
Management (VIII & above)		17	15	15	+15		-3	-14.6%	0	15
Administrative/ Supervisory (V to VII)		66	67	66	+66		0	-0.6%	-1	69
Clerical (III & IV)		30	30	32	+32		+1	+4.3%	+1	35
<b>Management &amp; Administrative</b>		<b>113</b>	<b>112</b>	<b>112</b>	<b>+112</b>		<b>-2</b>	<b>-1.4%</b>	<b>+0</b>	<b>119</b>
Support		5	2	2	+2		-4	-72.3%	+0	2
Maintenance/ Technical		2	2	2	+2		+0	+0.5%	0	2
<b>General Support</b>		<b>7</b>	<b>4</b>	<b>4</b>	<b>+4</b>		<b>-4</b>	<b>-53.0%</b>	<b>0</b>	<b>4</b>
Health Care Assistants		3					-3	-100.0%		
<b>Patient &amp; Client Care</b>		<b>3</b>					<b>-3</b>	<b>-100.0%</b>		

## WTE Change by Staff Group

■ WTE change since DEC 2019 ■ WTE change since DEC 2022 ■ WTE change since JUN 2023



# Employment Report by WTE, Headcount, Gender, Full-Time / Part-Time etc. JUL 2023

CHO 9 JUL 2023

JUL 2023	WTE JUL 2023	No. JUL 2023	WTE : No	Number Male %	Number Female %	Male WTE : No.	Female WTE : No	Perm Count %	Perm Count Male %	Perm Count Female %	Fulltime Count %	Part time Count %	FT Count Male %	FT Count Female %
<b>Total</b>	<b>7,217</b>	<b>8,371</b>	<b>1:0.9</b>	<b>18.19%</b>	<b>81.81%</b>	<b>1:0.9</b>	<b>1:0.8</b>	<b>88.51%</b>	<b>15.94%</b>	<b>72.57%</b>	<b>67.98%</b>	<b>32.02%</b>	<b>83.65%</b>	<b>64.50%</b>
Consultant Dentistry	1	1	1:0.8		100.00%	1:	1:0.8	100.00%		100.00%		100.00%		
Consultant Medicine	3	3	1:0.8		100.00%	1:	1:0.8	66.67%		66.67%	66.67%	33.33%		66.67%
Consultant Paediatrics	1	1	1:1		100.00%	1:	1:1	100.00%		100.00%	100.00%			100.00%
Consultant Psychiatry	67	73	1:0.9	34.25%	65.75%	1:1	1:0.9	91.78%	30.14%	61.64%	86.30%	13.70%	92.00%	83.33%
<b>Consultants</b>	<b>71</b>	<b>78</b>	<b>1:0.9</b>	<b>32.05%</b>	<b>67.95%</b>	<b>1:1</b>	<b>1:0.9</b>	<b>91.03%</b>	<b>28.21%</b>	<b>62.82%</b>	<b>84.62%</b>	<b>15.38%</b>	<b>92.00%</b>	<b>81.13%</b>
Dentists	35	43	1:0.8	16.28%	83.72%	1:1	1:0.8	95.35%	16.28%	79.07%	67.44%	32.56%	85.71%	63.89%
Other Medical	19	29	1:0.7	17.24%	82.76%	1:0.5	1:0.7	79.31%	6.90%	72.41%	44.83%	55.17%	20.00%	50.00%
<b>Medical/ Dental, other</b>	<b>55</b>	<b>72</b>	<b>1:0.8</b>	<b>16.67%</b>	<b>83.33%</b>	<b>1:0.7</b>	<b>1:0.8</b>	<b>88.89%</b>	<b>12.50%</b>	<b>76.39%</b>	<b>58.33%</b>	<b>41.67%</b>	<b>58.33%</b>	<b>58.33%</b>
Registrar	98	120	1:0.8	30.83%	69.17%	1:0.8	1:0.8	3.33%	1.67%	1.67%	99.17%	0.83%	100.00%	98.80%
Senior Registrar	20	32	1:0.6	25.00%	75.00%	1:0.5	1:0.7				90.63%	9.38%	87.50%	91.67%
Specialist Registrar	1	3	1:0.4		100.00%	1:	1:0.4				66.67%	33.33%		66.67%
<b>Registrars</b>	<b>120</b>	<b>155</b>	<b>1:0.8</b>	<b>29.03%</b>	<b>70.97%</b>	<b>1:0.8</b>	<b>1:0.8</b>	<b>2.58%</b>	<b>1.29%</b>	<b>1.29%</b>	<b>96.77%</b>	<b>3.23%</b>	<b>97.78%</b>	<b>96.36%</b>
Interns	1	1	1:0.8	100.00%		1:0.8	1:				100.00%		100.00%	
Senior House Officer	58	78	1:0.7	28.21%	71.79%	1:0.9	1:0.7	1.28%		1.28%	100.00%		100.00%	100.00%
<b>SHO/ Interns</b>	<b>59</b>	<b>79</b>	<b>1:0.7</b>	<b>29.11%</b>	<b>70.89%</b>	<b>1:0.9</b>	<b>1:0.7</b>	<b>1.27%</b>		<b>1.27%</b>	<b>100.00%</b>		<b>100.00%</b>	<b>100.00%</b>
<b>Medical &amp; Dental</b>	<b>304</b>	<b>384</b>	<b>1:0.8</b>	<b>27.34%</b>	<b>72.66%</b>	<b>1:0.8</b>	<b>1:0.8</b>	<b>36.46%</b>	<b>8.59%</b>	<b>27.86%</b>	<b>87.76%</b>	<b>12.24%</b>	<b>92.38%</b>	<b>86.02%</b>
Clinical Nurse/ Midwife Manager	397	430	1:0.9	19.07%	80.93%	1:1	1:0.9	96.74%	18.84%	77.91%	83.02%	16.98%	95.12%	80.17%
Director Nursing/Midwifery, Assistant	80	85	1:0.9	15.29%	84.71%	1:0.9	1:0.9	97.65%	14.12%	83.53%	91.76%	8.24%	100.00%	90.28%
Director of Nursing/Midwifery	31	32	1:1	18.75%	81.25%	1:1	1:1	96.88%	18.75%	78.13%	96.88%	3.13%	100.00%	96.15%
<b>Nurse/ Midwife Manager</b>	<b>508</b>	<b>547</b>	<b>1:0.9</b>	<b>18.46%</b>	<b>81.54%</b>	<b>1:1</b>	<b>1:0.9</b>	<b>96.89%</b>	<b>18.10%</b>	<b>78.79%</b>	<b>85.19%</b>	<b>14.81%</b>	<b>96.04%</b>	<b>82.74%</b>
Advanced Nurse/ Midwife Practitioner	23	24	1:1	4.17%	95.83%	1:1	1:1	95.83%	4.17%	91.67%	100.00%		100.00%	100.00%
Clinical Nurse/ Midwife Specialist	137	148	1:0.9	12.84%	87.16%	1:1	1:0.9	97.97%	12.84%	85.14%	87.16%	12.84%	100.00%	85.27%
<b>Nurse/ Midwife Specialist &amp; AN/MP</b>	<b>160</b>	<b>172</b>	<b>1:0.9</b>	<b>11.63%</b>	<b>88.37%</b>	<b>1:1</b>	<b>1:0.9</b>	<b>97.67%</b>	<b>11.63%</b>	<b>86.05%</b>	<b>88.95%</b>	<b>11.05%</b>	<b>100.00%</b>	<b>87.50%</b>
Nursing Education/Clinical	16	18	1:0.9	5.56%	94.44%	1:1	1:0.9	100.00%	5.56%	94.44%	77.78%	22.22%	100.00%	76.47%
<b>Nursing/ Midwifery other</b>	<b>16</b>	<b>18</b>	<b>1:0.9</b>	<b>5.56%</b>	<b>94.44%</b>	<b>1:1</b>	<b>1:0.9</b>	<b>100.00%</b>	<b>5.56%</b>	<b>94.44%</b>	<b>77.78%</b>	<b>22.22%</b>	<b>100.00%</b>	<b>76.47%</b>
Nursing/ Midwifery awaiting registration	5	5	1:1	40.00%	60.00%	1:1	1:1	60.00%	20.00%	40.00%	100.00%		100.00%	100.00%
Post-registration Nurse/ Midwife Student	1	1	1:1		100.00%	1:	1:1	100.00%		100.00%	100.00%			100.00%
Pre-registration Nurse/ Midwife Intern	38	76	1:0.5	9.21%	90.79%	1:0.5	1:0.5	27.63%		27.63%	72.37%	27.63%	100.00%	69.57%
<b>Nursing/ Midwifery Student</b>	<b>44</b>	<b>82</b>	<b>1:0.5</b>	<b>10.98%</b>	<b>89.02%</b>	<b>1:0.6</b>	<b>1:0.5</b>	<b>30.49%</b>	<b>1.22%</b>	<b>29.27%</b>	<b>74.39%</b>	<b>25.61%</b>	<b>100.00%</b>	<b>71.23%</b>
Public Health Nurse	173	210	1:0.8	1.43%	98.57%	1:1	1:0.8	98.10%	1.43%	96.67%	72.86%	27.14%	100.00%	72.46%
<b>Public Health Nurse</b>	<b>173</b>	<b>210</b>	<b>1:0.8</b>	<b>1.43%</b>	<b>98.57%</b>	<b>1:1</b>	<b>1:0.8</b>	<b>98.10%</b>	<b>1.43%</b>	<b>96.67%</b>	<b>72.86%</b>	<b>27.14%</b>	<b>100.00%</b>	<b>72.46%</b>
Staff Nurse [Intellectual Disability]	298	356	1:0.8	12.92%	87.08%	1:0.9	1:0.8	92.13%	11.80%	80.34%	59.27%	40.73%	84.78%	55.48%
Staff Nurse [Psychiatric]	313	346	1:0.9	22.54%	77.46%	1:0.9	1:0.9	92.20%	19.94%	72.25%	83.24%	16.76%	89.74%	81.34%
Staff Nurses [General/ Children's]	547	599	1:0.9	14.02%	85.98%	1:1	1:0.9	91.65%	12.69%	78.96%	82.14%	17.86%	95.24%	80.00%
<b>Staff Nurse/ Staff Midwife</b>	<b>1,158</b>	<b>1,301</b>	<b>1:0.9</b>	<b>15.99%</b>	<b>84.01%</b>	<b>1:0.9</b>	<b>1:0.9</b>	<b>91.93%</b>	<b>14.37%</b>	<b>77.56%</b>	<b>76.17%</b>	<b>23.83%</b>	<b>90.87%</b>	<b>73.38%</b>
<b>Nursing &amp; Midwifery</b>	<b>2,059</b>	<b>2,330</b>	<b>1:0.9</b>	<b>14.68%</b>	<b>85.32%</b>	<b>1:0.9</b>	<b>1:0.9</b>	<b>91.97%</b>	<b>13.35%</b>	<b>78.63%</b>	<b>78.88%</b>	<b>21.12%</b>	<b>93.27%</b>	<b>76.41%</b>
Audiology	9	9	1:1	11.11%	88.89%	1:1	1:1	88.89%	11.11%	77.78%	100.00%		100.00%	100.00%
Clinical Engineering	15	15	1:1	93.33%	6.67%	1:1	1:1	100.00%	93.33%	6.67%	100.00%		100.00%	100.00%
Medical Science	3	3	1:1	66.67%	33.33%	1:1	1:1	66.67%	33.33%	33.33%	100.00%		100.00%	100.00%
Radiographers	1	2	1:0.5		100.00%	1:	1:0.5	100.00%		100.00%		100.00%		
<b>Health Science/ Diagnostics</b>	<b>28</b>	<b>29</b>	<b>1:1</b>	<b>58.62%</b>	<b>41.38%</b>	<b>1:1</b>	<b>1:0.9</b>	<b>93.10%</b>	<b>55.17%</b>	<b>37.93%</b>	<b>93.10%</b>	<b>6.90%</b>	<b>100.00%</b>	<b>83.33%</b>
Counsellor Therapists	39	42	1:0.9	33.33%	66.67%	1:0.9	1:0.9	95.24%	28.57%	66.67%	88.10%	11.90%	92.86%	85.71%
Dental Hygienists	6	8	1:0.8		100.00%	1:	1:0.8	100.00%		100.00%	25.00%	75.00%		25.00%
Other Health & Social Care	16	21	1:0.8	19.05%	80.95%	1:0.7	1:0.8	95.24%	19.05%	76.19%	47.62%	52.38%	50.00%	47.06%
Play Therapists/ Specialists	2	2	1:1		100.00%	1:	1:1	100.00%		100.00%	100.00%			100.00%
Vaccinators	4	4	1:0.9		100.00%	1:	1:0.9					100.00%		
<b>H&amp;SC, Other</b>	<b>67</b>	<b>77</b>	<b>1:0.9</b>	<b>23.38%</b>	<b>76.62%</b>	<b>1:0.9</b>	<b>1:0.9</b>	<b>90.91%</b>	<b>20.78%</b>	<b>70.13%</b>	<b>66.23%</b>	<b>33.77%</b>	<b>83.33%</b>	<b>61.02%</b>
Pharmacists	22	29	1:0.8	17.24%	82.76%	1:0.8	1:0.8	86.21%	13.79%	72.41%	65.52%	34.48%	60.00%	66.67%
Pharmacy Technicians	5	7	1:0.7		100.00%	1:	1:0.7	100.00%		100.00%	42.86%	57.14%		42.86%
<b>Pharmacy</b>	<b>27</b>	<b>36</b>	<b>1:0.8</b>	<b>13.89%</b>	<b>86.11%</b>	<b>1:0.8</b>	<b>1:0.7</b>	<b>88.89%</b>	<b>11.11%</b>	<b>77.78%</b>	<b>61.11%</b>	<b>38.89%</b>	<b>60.00%</b>	<b>61.29%</b>
<b>Psychologists</b>	<b>184</b>	<b>201</b>	<b>1:0.9</b>	<b>13.43%</b>	<b>86.57%</b>	<b>1:1</b>	<b>1:0.9</b>	<b>70.65%</b>	<b>9.95%</b>	<b>60.70%</b>	<b>82.09%</b>	<b>17.91%</b>	<b>100.00%</b>	<b>79.31%</b>
<b>Social Care</b>	<b>793</b>	<b>965</b>	<b>1:0.8</b>	<b>12.23%</b>	<b>87.77%</b>	<b>1:0.9</b>	<b>1:0.8</b>	<b>92.02%</b>	<b>11.40%</b>	<b>80.62%</b>	<b>38.65%</b>	<b>61.35%</b>	<b>47.46%</b>	<b>73.43%</b>
<b>Social Workers</b>	<b>158</b>	<b>175</b>	<b>1:0.9</b>	<b>20.57%</b>	<b>79.43%</b>	<b>1:1</b>	<b>1:0.9</b>	<b>95.43%</b>	<b>18.86%</b>	<b>76.57%</b>	<b>77.71%</b>	<b>22.29%</b>	<b>94.44%</b>	<b>73.38%</b>
Dietitians	45	55	1:0.8	5.45%	94.55%	1:1	1:0.8	92.73%	5.45%	87.27%	67.27%	32.73%	100.00%	65.38%



JUL 2023	WTE JUL 2023	No. JUL 2023	WTE : No	Number Male %	Number Female %	Male WTE : No.	Female WTE : No	Perm Count %	Perm Count Male %	Perm Count Female %	Fulltime Count %	Part time Count %	FT Count Male %	FT Count Female %
<b>Total</b>	<b>7,217</b>	<b>8,371</b>	<b>1:0.9</b>	<b>18.19%</b>	<b>81.81%</b>	<b>1:0.9</b>	<b>1:0.8</b>	<b>88.51%</b>	<b>15.94%</b>	<b>72.57%</b>	<b>67.98%</b>	<b>32.02%</b>	<b>83.65%</b>	<b>64.50%</b>
Occupational Therapists	217	237	1:0.9	9.28%	90.72%	1:1	1:0.9	97.89%	9.28%	88.61%	83.54%	16.46%	100.00%	81.86%
Orthoptists	2	3	1:0.7		100.00%	1:	1:0.7	66.67%		66.67%	66.67%	33.33%		66.67%
Physiotherapists	153	181	1:0.8	15.47%	84.53%	1:0.9	1:0.8	94.48%	14.36%	80.11%	60.77%	39.23%	78.57%	57.52%
Podiatrists & Chiropodists	9	10	1:0.9		100.00%	1:	1:0.9	100.00%		100.00%	70.00%	30.00%		70.00%
Speech & Language Therapists	148	170	1:0.9	1.18%	98.82%	1:1	1:0.9	96.47%	1.18%	95.29%	76.47%	23.53%	100.00%	76.19%
<b>Therapy Professions</b>	<b>575</b>	<b>656</b>	<b>1:0.9</b>	<b>8.38%</b>	<b>91.62%</b>	<b>1:1</b>	<b>1:0.9</b>	<b>96.04%</b>	<b>8.08%</b>	<b>87.96%</b>	<b>73.78%</b>	<b>26.22%</b>	<b>89.09%</b>	<b>72.38%</b>
<b>Health &amp; Social Care Professionals</b>	<b>1,833</b>	<b>2,139</b>	<b>1:0.9</b>	<b>12.90%</b>	<b>87.10%</b>	<b>1:0.9</b>	<b>1:0.8</b>	<b>91.44%</b>	<b>11.78%</b>	<b>79.66%</b>	<b>58.81%</b>	<b>41.19%</b>	<b>72.83%</b>	<b>56.74%</b>
Middle Management (V-VII)	389	412	1:0.9	19.42%	80.58%	1:1	1:0.9	91.75%	17.72%	74.03%	86.89%	13.11%	100.00%	83.73%
Other Administrative	9	9	1:1	11.11%	88.89%	1:1	1:1	88.89%	11.11%	77.78%	88.89%	11.11%	100.00%	87.50%
<b>Administrative/ Supervisory (V to VII)</b>	<b>398</b>	<b>421</b>	<b>1:0.9</b>	<b>19.24%</b>	<b>80.76%</b>	<b>1:1</b>	<b>1:0.9</b>	<b>91.69%</b>	<b>17.58%</b>	<b>74.11%</b>	<b>86.94%</b>	<b>13.06%</b>	<b>100.00%</b>	<b>83.82%</b>
General Administrative (III & IV)	546	630	1:0.9	12.38%	87.62%	1:0.9	1:0.9	90.48%	11.11%	79.37%	71.11%	28.89%	89.74%	68.48%
<b>Clerical (III &amp; IV)</b>	<b>546</b>	<b>630</b>	<b>1:0.9</b>	<b>12.38%</b>	<b>87.62%</b>	<b>1:0.9</b>	<b>1:0.9</b>	<b>90.48%</b>	<b>11.11%</b>	<b>79.37%</b>	<b>71.11%</b>	<b>28.89%</b>	<b>89.74%</b>	<b>68.48%</b>
Executive Management	14	14	1:1	28.57%	71.43%	1:1	1:1	85.71%	21.43%	64.29%	100.00%		100.00%	100.00%
Senior Management (VIII & GM)	85	87	1:1	33.33%	66.67%	1:1	1:1	91.95%	29.89%	62.07%	97.70%	2.30%	100.00%	96.55%
<b>Management (VIII &amp; above)</b>	<b>99</b>	<b>101</b>	<b>1:1</b>	<b>32.67%</b>	<b>67.33%</b>	<b>1:1</b>	<b>1:1</b>	<b>91.09%</b>	<b>28.71%</b>	<b>62.38%</b>	<b>98.02%</b>	<b>1.98%</b>	<b>100.00%</b>	<b>97.06%</b>
<b>Management &amp; Administrative</b>	<b>1,043</b>	<b>1,152</b>	<b>1:0.9</b>	<b>16.67%</b>	<b>83.33%</b>	<b>1:1</b>	<b>1:0.9</b>	<b>90.97%</b>	<b>15.02%</b>	<b>75.95%</b>	<b>79.25%</b>	<b>20.75%</b>	<b>95.83%</b>	<b>75.94%</b>
Maintenance	29	31	1:0.9	93.55%	6.45%	1:0.9	1:0.9	100.00%	93.55%	6.45%	61.29%	38.71%	62.07%	50.00%
Technical Services	6	6	1:1	83.33%	16.67%	1:0.9	1:1	50.00%	33.33%	16.67%	66.67%	33.33%	60.00%	100.00%
<b>Maintenance/ Technical</b>	<b>35</b>	<b>37</b>	<b>1:0.9</b>	<b>91.89%</b>	<b>8.11%</b>	<b>1:0.9</b>	<b>1:1</b>	<b>91.89%</b>	<b>83.78%</b>	<b>8.11%</b>	<b>62.16%</b>	<b>37.84%</b>	<b>61.76%</b>	<b>66.67%</b>
Catering	66	76	1:0.9	39.47%	60.53%	1:1	1:0.8	97.37%	39.47%	57.89%	67.11%	32.89%	93.33%	50.00%
Household Services	188	243	1:0.8	12.35%	87.65%	1:1	1:0.7	94.65%	11.52%	83.13%	41.15%	58.85%	90.00%	34.27%
Other Support	35	42	1:0.8	69.05%	30.95%	1:0.9	1:0.8	85.71%	59.52%	26.19%	40.48%	59.52%	51.72%	15.38%
Portering	70	77	1:0.9	93.51%	6.49%	1:0.9	1:0.8	88.31%	84.42%	3.90%	85.71%	14.29%	87.50%	60.00%
<b>Support</b>	<b>359</b>	<b>438</b>	<b>1:0.8</b>	<b>36.76%</b>	<b>63.24%</b>	<b>1:0.9</b>	<b>1:0.8</b>	<b>93.15%</b>	<b>33.79%</b>	<b>59.36%</b>	<b>53.42%</b>	<b>46.58%</b>	<b>82.61%</b>	<b>36.46%</b>
<b>General Support</b>	<b>394</b>	<b>475</b>	<b>1:0.8</b>	<b>41.05%</b>	<b>58.95%</b>	<b>1:0.9</b>	<b>1:0.8</b>	<b>93.05%</b>	<b>37.68%</b>	<b>55.37%</b>	<b>54.11%</b>	<b>45.89%</b>	<b>78.97%</b>	<b>36.79%</b>
Home Care Services	5	5	1:1		100.00%	1:	1:1	100.00%		100.00%	80.00%	20.00%		80.00%
Other Care Grades	199	229	1:0.9	32.75%	67.25%	1:0.9	1:0.9	93.01%	28.38%	64.63%	72.05%	27.95%	73.33%	71.43%
Pastoral Care	2	4	1:0.5	25.00%	75.00%	1:0.2	1:0.6	100.00%	25.00%	75.00%	25.00%	75.00%		33.33%
Workshop Services	46	55	1:0.8	20.00%	80.00%	1:0.9	1:0.8	74.55%	12.73%	61.82%	41.82%	58.18%	72.73%	34.09%
<b>Care, other</b>	<b>253</b>	<b>293</b>	<b>1:0.9</b>	<b>29.69%</b>	<b>70.31%</b>	<b>1:0.9</b>	<b>1:0.9</b>	<b>89.76%</b>	<b>24.91%</b>	<b>64.85%</b>	<b>65.87%</b>	<b>34.13%</b>	<b>72.41%</b>	<b>63.11%</b>
Attendant/ Aide	49	62	1:0.8	25.81%	74.19%	1:0.9	1:0.8	96.77%	24.19%	72.58%	45.16%	54.84%	75.00%	34.78%
Health Care Assistant/ Care Assistant	1,234	1,481	1:0.8	20.32%	79.68%	1:0.9	1:0.8	88.99%	19.58%	69.41%	55.57%	44.43%	78.41%	49.75%
Health & Social Care Assistants	49	55	1:0.9	16.36%	83.64%	1:0.9	1:0.9	70.91%	14.55%	56.36%	80.00%	20.00%	88.89%	78.26%
<b>Health Care Assistants</b>	<b>1,332</b>	<b>1,598</b>	<b>1:0.8</b>	<b>20.40%</b>	<b>79.60%</b>	<b>1:0.9</b>	<b>1:0.8</b>	<b>88.67%</b>	<b>19.59%</b>	<b>69.09%</b>	<b>56.01%</b>	<b>43.99%</b>	<b>78.53%</b>	<b>50.24%</b>
<b>Patient &amp; Client Care</b>	<b>1,585</b>	<b>1,891</b>	<b>1:0.8</b>	<b>21.84%</b>	<b>78.16%</b>	<b>1:0.9</b>	<b>1:0.8</b>	<b>88.84%</b>	<b>20.41%</b>	<b>68.43%</b>	<b>57.54%</b>	<b>42.46%</b>	<b>77.24%</b>	<b>52.03%</b>

## Employment Report by WTE, Headcount, Gender, Full-Time / Part-Time etc. JUL 2023

CHO 9 JUL 2023

JUL 2023	WTE JUL 2023	No. JUL 2023	WTE : No	Number Male %	Number Female %	Male WTE : No.	Female WTE : No	Perm Count %	Number Male %	Number Female %	Fulltime Count %	Part time Count %	FT Count Male %	FT Count Female %
<b>Total</b>	<b>7,217</b>	<b>8,371</b>	<b>1:0.9</b>	<b>18.19%</b>	<b>81.81%</b>	<b>1:0.9</b>	<b>1:0.8</b>	<b>88.51%</b>	<b>15.94%</b>	<b>72.57%</b>	<b>67.98%</b>	<b>32.02%</b>	<b>83.65%</b>	<b>64.50%</b>
CHO Operations	134	142	1:0.9	19.72%	80.28%	1:1	1:0.9	95.07%	17.61%	77.46%	92.25%	7.75%	96.43%	91.23%
Disabilities	3,332	3,955	1:0.8	15.65%	84.35%	1:0.9	1:0.8	90.01%	14.34%	75.68%	54.36%	45.64%	70.76%	51.32%
Mental Health	1,308	1,485	1:0.9	27.68%	72.32%	1:0.9	1:0.9	84.11%	23.03%	61.08%	85.93%	14.07%	96.11%	82.03%
Older People	1,006	1,136	1:0.9	21.04%	78.96%	1:0.9	1:0.9	91.29%	18.93%	72.36%	76.41%	23.59%	88.28%	73.24%
Primary Care	1,389	1,601	1:0.9	13.43%	86.57%	1:0.9	1:0.9	86.01%	10.87%	75.14%	76.01%	23.99%	89.30%	73.95%
Community Health & Wellbeing	49	52	1:0.9	21.15%	78.85%	1:1	1:0.9	98.08%	21.15%	76.92%	94.23%	5.77%	100.00%	92.68%



Employment by Grade Group JUL 2023	WTE DEC 2019	WTE DEC 2022	WTE JUN 2023	WTE JUL 2023	WTE change since DEC 2019	% WTE Change since Dec 2019	WTE change since DEC 2022	% WTE Change since Dec 2022	WTE change since JUN 2023	No. JUL 2023
<b>Overall</b>	<b>6,582</b>	<b>7,230</b>	<b>7,243</b>	<b>7,217</b>	<b>+635</b>	<b>+9.7%</b>	<b>-13</b>	<b>-0.2%</b>	<b>-26</b>	<b>8,371</b>
Consultant Medicine	2	3	3	3	+1	+56.3%	+0	+0.0%	+0	3
Consultant Psychiatry	66	67	68	67	+1	+1.4%	0	-0.7%	-1	73
Consultant Paediatrics	1	1	1	1	0	-17.4%	+0	+0.0%	+0	1
Consultant Dentistry			1	1	+1		+1		+0	1
<b>Consultants</b>	<b>68</b>	<b>71</b>	<b>72</b>	<b>71</b>	<b>+2</b>	<b>+3.4%</b>	<b>+0</b>	<b>+0.4%</b>	<b>-1</b>	<b>78</b>
Registrar	78	104	99	98	+20	+26.0%	-6	-5.7%	0	120
Senior Registrar	16	22	22	20	+4	+27.2%	-1	-5.4%	-2	32
Specialist Registrar	4	2	2	1	-3	-73.0%	-1	-45.7%	-1	3
<b>Registrars</b>	<b>98</b>	<b>128</b>	<b>123</b>	<b>120</b>	<b>+22</b>	<b>+22.1%</b>	<b>-8</b>	<b>-6.3%</b>	<b>-3</b>	<b>155</b>
Senior House Officer	64	52	58	58	-6	-9.3%	+6	+12.4%	+1	78
Interns	2			1	-1	-60.5%	+1		+1	1
<b>SHO/ Interns</b>	<b>66</b>	<b>52</b>	<b>58</b>	<b>59</b>	<b>-7</b>	<b>-10.8%</b>	<b>+7</b>	<b>+13.9%</b>	<b>+1</b>	<b>79</b>
Other Medical	25	22	20	19	-6	-23.7%	-3	-13.2%	-1	29
Dentists	31	34	36	35	+4	+12.4%	+1	+4.2%	-1	43
<b>Medical/ Dental, other</b>	<b>57</b>	<b>56</b>	<b>56</b>	<b>55</b>	<b>-2</b>	<b>-3.7%</b>	<b>-2</b>	<b>-2.7%</b>	<b>-2</b>	<b>72</b>
<b>Medical &amp; Dental</b>	<b>290</b>	<b>306</b>	<b>309</b>	<b>304</b>	<b>+14.8</b>	<b>+5.1%</b>	<b>+16.3</b>	<b>-0.7%</b>	<b>-4.41</b>	<b>+384</b>
Clinical Nurse/ Midwife Manager	349	381	388	397	+48	+13.7%	+15	+4.0%	+8	430
Director Nursing/Midwifery, Assistant	61	78	82	80	+19	+30.2%	+2	+2.6%	-2	85
Director of Nursing/Midwifery	25	29	31	31	+7	+26.0%	+2	+7.4%	+0	32
<b>Nurse/ Midwife Manager</b>	<b>435</b>	<b>488</b>	<b>502</b>	<b>508</b>	<b>+73</b>	<b>+16.8%</b>	<b>+20</b>	<b>+4.0%</b>	<b>+6</b>	<b>547</b>
Advanced Nurse/ Midwife Practitioner	7	20	22	23	+16	+241.1%	+3	+15.7%	+1	24
Clinical Nurse/ Midwife Specialist	78	129	135	137	+59	+75.1%	+8	+6.1%	+2	148
<b>Nurse/ Midwife Specialist &amp; AN/MP</b>	<b>85</b>	<b>149</b>	<b>157</b>	<b>160</b>	<b>+75</b>	<b>+88.4%</b>	<b>+11</b>	<b>+7.4%</b>	<b>+3</b>	<b>172</b>
Staff Nurse [Intellectual Disability]	421	316	189	298	-123	-29.3%	-19	-6.0%	+109	356
Staff Nurse [Psychiatric]	371	363	365	313	-57	-15.5%	-50	-13.7%	-52	346
Staff Nurses [General/ Children's]	404	535	630	547	+143	+35.3%	+12	+2.3%	-83	599
<b>Staff Nurse/ Staff Midwife</b>	<b>1,196</b>	<b>1,214</b>	<b>1,185</b>	<b>1,158</b>	<b>-38</b>	<b>-3.2%</b>	<b>-56</b>	<b>-4.6%</b>	<b>-27</b>	<b>1,301</b>
Public Health Nurse	176	172	163	173	-3	-1.7%	+1	+0.3%	+9	210
<b>Public Health Nurse</b>	<b>176</b>	<b>172</b>	<b>163</b>	<b>173</b>	<b>-3</b>	<b>-1.7%</b>	<b>+1</b>	<b>+0.3%</b>	<b>+9</b>	<b>210</b>
Post-registration Nurse/ Midwife Student	26	19	1	1	-25	-96.2%	-18	-94.7%	+0	1
Pre-registration Nurse/ Midwife Intern	18	8	38	38	+20	+112.6%	+30	+375.0%	+0	76
Nursing/ Midwifery awaiting registration	11	16	5	5	-6	-53.7%	-11	-68.3%	+0	5
<b>Nursing/ Midwifery Student</b>	<b>55</b>	<b>43</b>	<b>44</b>	<b>44</b>	<b>-11</b>	<b>-19.5%</b>	<b>+1</b>	<b>+3.3%</b>	<b>+0</b>	<b>82</b>
Nursing Education/Clinical	20	20	16	16	-3	-16.9%	-4	-18.6%	+0	18
<b>Nursing/ Midwifery other</b>	<b>20</b>	<b>20</b>	<b>16</b>	<b>16</b>	<b>-3</b>	<b>-16.9%</b>	<b>-4</b>	<b>-18.6%</b>	<b>+0</b>	<b>18</b>
<b>Nursing &amp; Midwifery</b>	<b>1,966</b>	<b>2,087</b>	<b>2,068</b>	<b>2,059</b>	<b>+93.3</b>	<b>+4.7%</b>	<b>+8.4</b>	<b>-1.3%</b>	<b>-8.72</b>	<b>+2,330</b>
Dietitians	21	40	43	45	+24	+113.5%	+5	+12.3%	+3	55
Occupational Therapists	182	229	218	217	+35	+19.1%	-11	-5.0%	-1	237
Orthoptists	5	3	2	2	-3	-57.8%	-1	-20.3%	+0	3
Physiotherapists	144	158	153	153	+10	+6.7%	-5	-2.9%	+1	181
Podiatrists & Chiropodists	1	6	8	9	+8	+770.0%	+3	+53.2%	+1	10
Speech & Language Therapists	133	152	148	148	+15	+11.2%	-3	-2.3%	0	170
<b>Therapy Professions</b>	<b>486</b>	<b>587</b>	<b>571</b>	<b>575</b>	<b>+88</b>	<b>+18.1%</b>	<b>-12</b>	<b>-2.0%</b>	<b>+3</b>	<b>656</b>

Employment by Grade Group JUL 2023	WTE DEC 2019	WTE DEC 2022	WTE JUN 2023	WTE JUL 2023	WTE change since DEC 2019	% WTE Change since Dec 2019	WTE change since DEC 2022	% WTE Change since Dec 2022	WTE change since JUN 2023	No. JUL 2023
<b>Overall</b>	<b>6,582</b>	<b>7,230</b>	<b>7,243</b>	<b>7,217</b>	<b>+635</b>	<b>+9.7%</b>	<b>-13</b>	<b>-0.2%</b>	<b>-26</b>	<b>8,371</b>
Audiology	15	8	9	9	-6	-40.9%	+1	+14.1%	+0	9
Radiographers	1	1	1	1	0	-31.0%	+0	+0.0%	+0	2
Clinical Engineering	16	13	15	15	-1	-6.3%	+2	+15.8%	+0	15
Medical Science	4	4	3	3	-1	-25.0%	-1	-25.0%	+0	3
<b>Health Science/ Diagnostics</b>	<b>37</b>	<b>26</b>	<b>28</b>	<b>28</b>	<b>-9</b>	<b>-23.6%</b>	<b>+2</b>	<b>+8.4%</b>	<b>+0</b>	<b>29</b>
Social Care	695	804	798	793	+98	+14.1%	-11	-1.3%	-5	965
<b>Social Care</b>	<b>695</b>	<b>804</b>	<b>798</b>	<b>793</b>	<b>+98</b>	<b>+14.1%</b>	<b>-11</b>	<b>-1.3%</b>	<b>-5</b>	<b>965</b>
Pharmacists	22	23	23	22	+0	+2.0%	-1	-3.0%	-1	29
Pharmacy Technicians	3	4	5	5	+2	+62.8%	+1	+21.3%	+0	7
<b>Pharmacy</b>	<b>25</b>	<b>27</b>	<b>28</b>	<b>27</b>	<b>+2</b>	<b>+9.4%</b>	<b>+0</b>	<b>+0.6%</b>	<b>-1</b>	<b>36</b>
Psychologists	164	187	190	184	+20	+12.3%	-3	-1.5%	-6	201
<b>Psychologists</b>	<b>164</b>	<b>187</b>	<b>190</b>	<b>184</b>	<b>+20</b>	<b>+12.3%</b>	<b>-3</b>	<b>-1.5%</b>	<b>-6</b>	<b>201</b>
Social Workers	125	161	163	158	+33	+26.3%	-2	-1.5%	-5	175
<b>Social Workers</b>	<b>125</b>	<b>161</b>	<b>163</b>	<b>158</b>	<b>+33</b>	<b>+26.3%</b>	<b>-2</b>	<b>-1.5%</b>	<b>-5</b>	<b>175</b>
Counsellor Therapists	42	36	40	39	-3	-6.2%	+3	+8.8%	-1	42
Dental Hygienists	6	6	6	6	0	-4.7%	0	-1.8%	0	8
Other Health & Social Care	20	17	17	16	-4	-18.8%	-1	-4.6%	-1	21
Play Therapists/ Specialists	2	1	2	2	0	-12.3%	+1	+34.2%	+0	2
Vaccinators		4	4	4	+4		+0	+0.0%	0	4
<b>H&amp;SC, Other</b>	<b>71</b>	<b>64</b>	<b>69</b>	<b>67</b>	<b>-3</b>	<b>-4.7%</b>	<b>+3</b>	<b>+4.4%</b>	<b>-2</b>	<b>77</b>
<b>Health &amp; Social Care Professionals</b>	<b>1,603</b>	<b>1,856</b>	<b>1,848</b>	<b>1,833</b>	<b>+229.9</b>	<b>+14.3%</b>	<b>+18.2</b>	<b>-1.2%</b>	<b>-15.24</b>	<b>+2,139</b>
Executive Management	11	13	14	14	+3	+31.9%	+1	+8.4%	0	14
Senior Management (VIII & GM)	69	84	89	85	+16	+23.3%	+1	+1.3%	-4	87
<b>Management (VIII &amp; above)</b>	<b>79</b>	<b>97</b>	<b>102</b>	<b>99</b>	<b>+19</b>	<b>+24.5%</b>	<b>+2</b>	<b>+2.2%</b>	<b>-4</b>	<b>101</b>
Middle Management (V-VII)	199	351	379	389	+190	+95.4%	+38	+10.8%	+11	412
Other Administrative	9	9	9	9	+0	+0.4%	+0	+0.5%	+0	9
<b>Administrative/ Supervisory (V to VII)</b>	<b>208</b>	<b>360</b>	<b>387</b>	<b>398</b>	<b>+190</b>	<b>+91.5%</b>	<b>+38</b>	<b>+10.6%</b>	<b>+11</b>	<b>421</b>
General Administrative (III & IV)	451	522	547	546	+95	+21.0%	+24	+4.6%	-1	630
<b>Clerical (III &amp; IV)</b>	<b>451</b>	<b>522</b>	<b>547</b>	<b>546</b>	<b>+95</b>	<b>+21.0%</b>	<b>+24</b>	<b>+4.6%</b>	<b>-1</b>	<b>630</b>
<b>Management &amp; Administrative</b>	<b>739</b>	<b>979</b>	<b>1,037</b>	<b>1,043</b>	<b>+304.2</b>	<b>+41.2%</b>	<b>+28.8</b>	<b>+6.6%</b>	<b>6.18</b>	<b>+1,152</b>
Catering	61	62	64	66	+5	+8.0%	+4	+6.3%	+2	76
Household Services	220	208	205	188	-33	-14.9%	-20	-9.8%	-17	243
Other Support	95	42	36	35	-59	-62.6%	-6	-15.4%	-1	42
Portering	76	71	72	70	-5	-6.9%	-1	-1.4%	-2	77
<b>Support</b>	<b>452</b>	<b>383</b>	<b>377</b>	<b>359</b>	<b>-93</b>	<b>-20.5%</b>	<b>-24</b>	<b>-6.2%</b>	<b>-18</b>	<b>438</b>
Maintenance	33	31	30	29	-4	-13.1%	-2	-5.6%	-1	31
Technical Services	2	5	5	6	+4	+185.0%	+1	+16.8%	+1	6
<b>Maintenance/ Technical</b>	<b>35</b>	<b>36</b>	<b>35</b>	<b>35</b>	<b>-1</b>	<b>-1.9%</b>	<b>-1</b>	<b>-2.5%</b>	<b>0</b>	<b>37</b>
<b>General Support</b>	<b>487</b>	<b>419</b>	<b>412</b>	<b>394</b>	<b>-93.2</b>	<b>-19.1%</b>	<b>-13.0</b>	<b>-5.9%</b>	<b>-18.45</b>	<b>+475</b>
Attendant/ Aide	102	50	48	49	-53	-52.1%	-1	-2.1%	+1	62
Health & Social Care Assistants	12	42	53	49	+37	+300.7%	+7	+17.6%	-4	55
Health Care Assistant/ Care Assistant	1,163	1,224	1,210	1,234	+70	+6.0%	+10	+0.8%	+24	1,481
<b>Health Care Assistants</b>	<b>1,278</b>	<b>1,315</b>	<b>1,311</b>	<b>1,332</b>	<b>+54</b>	<b>+4.2%</b>	<b>+17</b>	<b>+1.3%</b>	<b>+21</b>	<b>1,598</b>
Home Care Services	13	8	6	5	-8	-61.1%	-3	-37.0%	-1	5
Other Care Grades	136	202	201	199	+63	+46.7%	-3	-1.3%	-2	229
Pastoral Care	3	2	2	2	-1	-33.4%	+0	+0.5%	+0	4
Workshop Services	69	57	50	46	-23	-32.9%	-10	-18.2%	-4	55





Employment by Grade Group JUL 2023	WTE DEC 2019	WTE DEC 2022	WTE JUN 2023	WTE JUL 2023	WTE change since DEC 2019	% WTE Change since Dec 2019	WTE change since DEC 2022	% WTE Change since Dec 2022	WTE change since JUN 2023	No. JUL 2023
Overall	6,582	7,230	7,243	7,217	+635	+9.7%	-13	-0.2%	-26	8,371
Care, other	221	269	259	253	+32	+14.4%	-16	-5.9%	-7	293
Patient & Client Care	1,499	1,584	1,570	1,585	+86.2	+5.8%	+6.0	+0.0%	14.9	+1,891



## CHO 9 Employment Report: JUL 2023

### Month-on-Month Summary

Month-on-Month Summary	% WTE change since JUN 2023	WTE change since JUN 2023	Community Health & Wellbeing	Mental Health	Primary Care	Disabilities	Older People	CHO Operations
Consultants	-1.3%	-0.9		-1.5	+0.1	+0.6	+0.0	
Registrars	-2.6%	-3.2		-8.6	+5.7	+0.1	-0.5	
SHO/ Interns	+2.4%	+1.4		-2.6	+2.5	+0.0	+1.5	
Medical/ Dental, other	-3.0%	-1.7			-1.7	+0.0		
<b>Medical &amp; Dental</b>	<b>-1.4%</b>	<b>-4.4</b>		<b>-12.7</b>	<b>+6.6</b>	<b>+0.7</b>	<b>+1.1</b>	
Nurse/ Midwife Manager	+1.2%	+6.2		+3.1	+0.6	+0.7	+1.3	+0.5
Nurse/ Midwife Specialist & AN/MP	+1.7%	+2.6		+1.9	+0.6	+0.0	+0.1	
Staff Nurse/ Staff Midwife	-2.2%	-26.6		-9.7	-9.3	+0.5	-8.2	
Public Health Nurse	+5.5%	+9.0			+9.0		+0.0	
Nursing/ Midwifery Student	+0.0%	+0.0		+0.0	+0.0	+0.0		
Nursing/ Midwifery other	+0.6%	+0.1		+0.9	-0.0	-0.8		
<b>Nursing &amp; Midwifery</b>	<b>-0.4%</b>	<b>-8.7</b>		<b>-3.9</b>	<b>+0.9</b>	<b>+0.5</b>	<b>-6.7</b>	<b>+0.5</b>
Therapy Professions	+0.6%	+3.3	+0.0	-1.3	-1.0	+1.5	+4.1	
Health Science/ Diagnostics	+0.0%	+0.0			+0.0	+0.0	+0.0	
Social Care	-0.6%	-5.0		+0.0	+0.0	-5.0	-0.0	
Pharmacy	-4.2%	-1.2		-0.2	+0.0	+0.0	-1.0	+0.0
Psychologists	-3.0%	-5.6		-0.3	-1.6	-3.7	+0.0	
Social Workers	-3.0%	-4.9		+0.2	-0.3	-3.7	-1.1	+0.0



H&SC, Other	-2.7%	-1.9		-0.2	-0.9	-0.8	-0.0	
<b>Health &amp; Social Care Professionals</b>	<b>-0.8%</b>	<b>-15.2</b>	<b>+0.0</b>	<b>-1.8</b>	<b>-3.8</b>	<b>-11.6</b>	<b>+2.0</b>	<b>+0.0</b>
Management (VIII & above)	-3.5%	-3.6	-0.1	-0.0	-1.1	-2.4	-0.0	-0.0
Administrative/ Supervisory (V to VII)	+2.8%	+10.7	+0.5	+0.3	+4.8	+3.5	+2.8	-1.1
Clerical (III & IV)	-0.2%	-0.9	+0.0	+0.6	+4.6	-2.2	-5.2	+1.2
<b>Management &amp; Administrative</b>	<b>+0.6%</b>	<b>+6.2</b>	<b>+0.4</b>	<b>+0.9</b>	<b>+8.4</b>	<b>-1.1</b>	<b>-2.4</b>	<b>+0.1</b>
Support	-4.8%	-18.2		-0.3	+0.1	-3.2	-14.9	+0.0
Maintenance/ Technical	-0.7%	-0.2		-0.2		-0.0	-0.0	-0.0
<b>General Support</b>	<b>-4.5%</b>	<b>-18.5</b>		<b>-0.5</b>	<b>+0.1</b>	<b>-3.3</b>	<b>-14.9</b>	<b>-0.0</b>
Health Care Assistants	+1.6%	+21.4		-1.3	-1.2	+8.3	+15.6	
Care, other	-2.5%	-6.5	+0.4	-0.3	-0.9	-3.9	-1.9	
<b>Patient &amp; Client Care</b>	<b>+0.9%</b>	<b>+14.9</b>	<b>+0.4</b>	<b>-1.6</b>	<b>-2.1</b>	<b>+4.5</b>	<b>+13.7</b>	



## CHO 9 Employment Report: JUL 2023

### Year-to-Date Summary

Year-to-Date Summary	% WTE change since DEC 2022	WTE change since DEC 2022	Community Health & Wellbeing	Mental Health	Primary Care	Disabilities	Older People	CHO Operations
Consultants	+0.4%	+0.3		-2.1	+0.8	+1.7	+0.0	
Registrars	-6.3%	-8.1		-6.6	-2.2	+0.1	+1.5	-1.0
SHO/ Interns	+13.9%	+7.2		-2.5	+2.8	+1.0	+5.9	
Medical/ Dental, other	-2.7%	-1.5			-1.3	-0.3		
<b>Medical &amp; Dental</b>	<b>-0.7%</b>	<b>-2.1</b>		<b>-11.2</b>	<b>+0.2</b>	<b>+2.5</b>	<b>+7.4</b>	<b>-1.0</b>
Nurse/ Midwife Manager	+4.0%	+19.6		-0.9	+7.0	+6.3	+6.5	+0.7
Nurse/ Midwife Specialist & AN/MP	+7.4%	+11.0		+3.0	+5.5	+0.3	+2.2	
Staff Nurse/ Staff Midwife	-4.6%	-56.4		-43.1	+13.6	-22.3	-1.5	-3.0
Public Health Nurse	+0.3%	+0.5			+0.5		+0.0	
Nursing/ Midwifery Student	+3.3%	+1.4		+4.2	-17.8	+15.0		
Nursing/ Midwifery other	-18.6%	-3.8		-2.1	+0.0	-1.7		
<b>Nursing &amp; Midwifery</b>	<b>-1.3%</b>	<b>-27.7</b>		<b>-38.9</b>	<b>+8.7</b>	<b>-2.4</b>	<b>+7.2</b>	<b>-2.3</b>
Therapy Professions	-2.0%	-12.0	+0.0	-5.9	-0.8	-6.7	+1.3	
Health Science/ Diagnostics	+8.4%	+2.2			+1.2	+1.0	+0.0	
Social Care	-1.3%	-10.8		+0.0	-0.9	-9.3	-0.6	
Pharmacy	+0.6%	+0.2		+0.5	+0.6	+0.0	-1.0	+0.0



Psychologists	-1.5%	-2.8		-1.1	+2.1	-3.5	-0.3	
Social Workers	-1.5%	-2.3		-1.3	+0.7	-1.8	-1.1	+1.1
H&SC, Other	+4.4%	+2.8		+0.3	+3.8	-1.3	+0.0	
<b>Health &amp; Social Care Professionals</b>	<b>-1.2%</b>	<b>-22.8</b>	<b>+0.0</b>	<b>-7.4</b>	<b>+6.6</b>	<b>-21.5</b>	<b>-1.7</b>	<b>+1.1</b>
Management (VIII & above)	+2.2%	+2.1	+1.0	+1.1	+3.6	-2.2	+1.2	-2.5
Administrative/ Supervisory (V to VII)	+10.6%	+38.1	+0.1	+2.7	+10.4	+23.4	+2.0	-0.4
Clerical (III & IV)	+4.6%	+24.0	+0.8	+0.8	+15.2	+7.0	-1.0	+1.3
<b>Management &amp; Administrative</b>	<b>+6.6%</b>	<b>+64.2</b>	<b>+1.8</b>	<b>+4.5</b>	<b>+29.2</b>	<b>+28.2</b>	<b>+2.2</b>	<b>-1.6</b>
Support	-6.2%	-23.9		-6.5	+2.2	-4.1	-11.6	-4.0
Maintenance/ Technical	-2.5%	-0.9		-1.1		+0.2	-0.0	+0.0
<b>General Support</b>	<b>-5.9%</b>	<b>-24.8</b>		<b>-7.6</b>	<b>+2.2</b>	<b>-3.8</b>	<b>-11.6</b>	<b>-3.9</b>
Health Care Assistants	+1.3%	+16.6		-1.7	-10.2	+5.8	+25.6	-2.9
Care, other	-5.9%	-15.9	+1.4	-0.7	-4.8	-12.3	+0.6	
<b>Patient &amp; Client Care</b>	<b>+0.0%</b>	<b>+0.6</b>	<b>+1.4</b>	<b>-2.5</b>	<b>-15.0</b>	<b>-6.5</b>	<b>+26.1</b>	<b>-2.9</b>



## CHO 9 Employment Report: JUL 2023

### Year-on-Year Summary

Year-on-Year Summary	% WTE change since JUL 2022	WTE change since JUL 2022	Community Health & Wellbeing	Mental Health	Primary Care	Disabilities	Older People	CHO Operations
Consultants	+1.4%	+1.0		+1.3	+0.8	-1.0	-0.1	
Registrars	+16.2%	+16.7		+7.5	+8.9	-0.5	+0.8	
SHO/ Interns	+55.1%	+21.0		+12.3	+2.8	+1.0	+4.9	
Medical/ Dental, other	-3.8%	-2.1			-1.8	-0.3	-0.1	
<b>Medical &amp; Dental</b>	<b>+13.6%</b>	<b>+36.5</b>		<b>+21.1</b>	<b>+10.6</b>	<b>-0.7</b>	<b>+5.5</b>	
Nurse/ Midwife Manager	+5.7%	+27.3		-2.3	+12.1	+12.8	+5.3	-0.6
Nurse/ Midwife Specialist & AN/MP	+16.0%	+22.1		+7.3	+14.7	-0.9	+0.9	
Staff Nurse/ Staff Midwife	-4.5%	-54.5		-56.0	+10.2	+0.9	-6.1	-3.5
Public Health Nurse	-3.9%	-7.0			-7.0		+0.0	
Nursing/ Midwifery Student	-9.2%	-4.5		+1.0	-3.0	-2.5		
Nursing/ Midwifery other	-11.7%	-2.2		-1.9	-0.0	-0.3		
<b>Nursing &amp; Midwifery</b>	<b>-0.9%</b>	<b>-18.7</b>		<b>-51.9</b>	<b>+27.1</b>	<b>+10.1</b>	<b>+0.1</b>	<b>-4.1</b>
Therapy Professions	+0.4%	+2.1	+1.1	-5.8	+1.4	+8.1	-2.8	
Health Science/ Diagnostics	+3.7%	+1.0			+1.0	+0.0	+0.0	
Social Care	-0.1%	-0.5		+0.0	+2.0	-1.9	-0.6	
Pharmacy	-2.5%	-0.7		-1.0	+1.3	+0.0	-1.0	+0.0
Psychologists	+0.0%	+0.1		-0.6	+1.6	-0.3	-0.6	
Social Workers	+7.5%	+11.0		+7.7	-0.8	+2.4	-1.3	+3.0

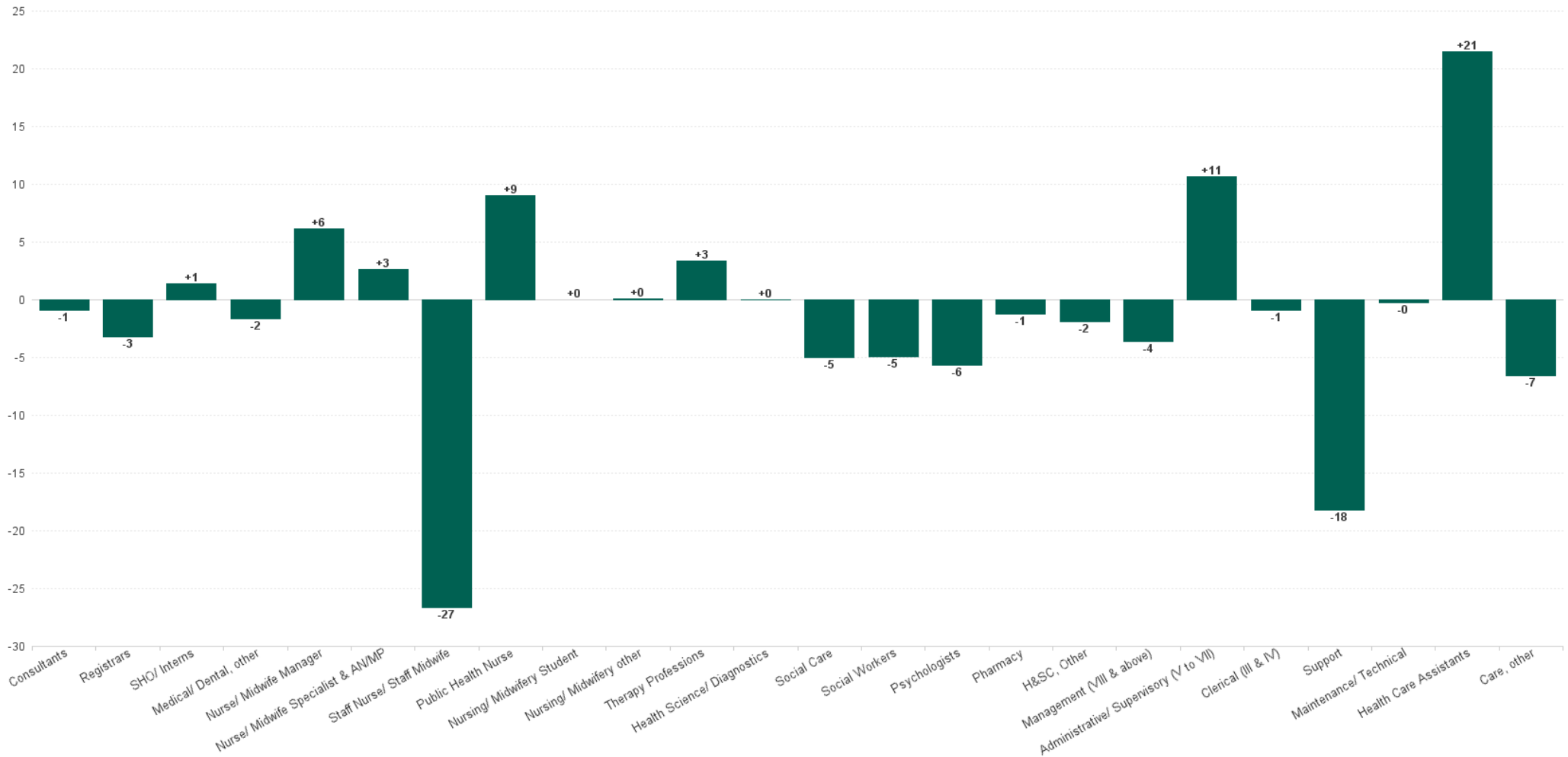


H&SC, Other	+2.5%	+1.6		+0.8	+3.0	-2.3	+0.0	
<b>Health &amp; Social Care Professionals</b>	<b>+0.8%</b>	<b>+14.6</b>	<b>+1.1</b>	<b>+1.2</b>	<b>+9.6</b>	<b>+6.0</b>	<b>-6.3</b>	<b>+3.0</b>
Management (VIII & above)	-3.8%	-3.9	+0.9	+2.0	+1.2	-4.1	-0.2	-3.7
Administrative/ Supervisory (V to VII)	+23.3%	+75.2	-0.1	+7.8	+16.3	+36.9	+5.9	+8.4
Clerical (III & IV)	+1.5%	+7.9	+1.9	-8.3	+16.2	+3.8	-2.9	-2.7
<b>Management &amp; Administrative</b>	<b>+8.2%</b>	<b>+79.3</b>	<b>+2.7</b>	<b>+1.5</b>	<b>+33.8</b>	<b>+36.6</b>	<b>+2.8</b>	<b>+2.0</b>
Support	-8.4%	-33.1		-13.0	+0.2	-7.2	-9.1	-4.0
Maintenance/ Technical	+2.9%	+1.0		-0.7		+0.7	-0.0	+1.0
<b>General Support</b>	<b>-7.5%</b>	<b>-32.1</b>		<b>-13.7</b>	<b>+0.2</b>	<b>-6.5</b>	<b>-9.1</b>	<b>-3.0</b>
Health Care Assistants	+0.8%	+10.8		-0.0	-30.8	+19.1	+25.4	-2.9
Care, other	-6.0%	-16.2	+3.9	-3.1	-3.8	-13.7	+0.5	
<b>Patient &amp; Client Care</b>	<b>-0.3%</b>	<b>-5.4</b>	<b>+3.9</b>	<b>-3.1</b>	<b>-34.6</b>	<b>+5.4</b>	<b>+25.9</b>	<b>-2.9</b>



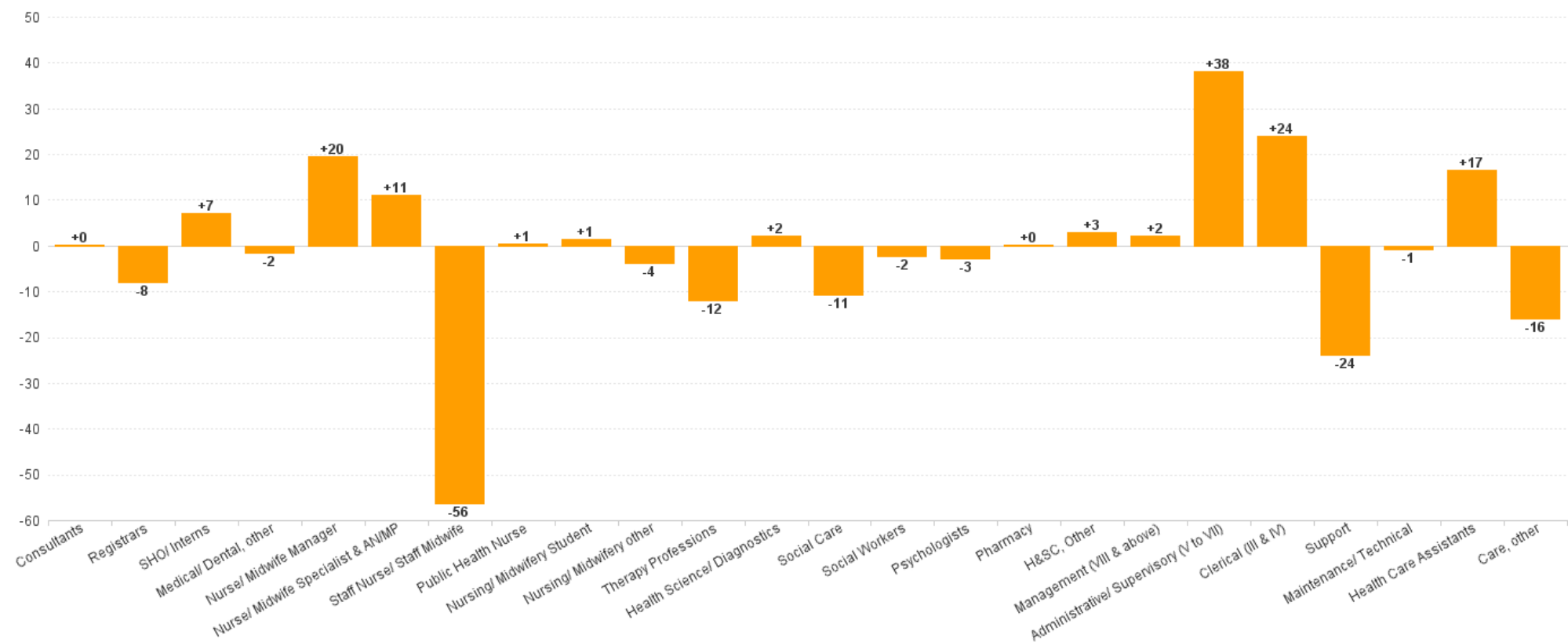
## CHO 9 Employment Report: JUL 2023

### Month-on-Month Summary Chart: Change since JUN 2023





Year-to-Date Summary Chart: Change since DEC 2022



## CHO 9 Employment Report: JUL 2023

### Year-on-Year Summary Chart: Change since JUL 2022

