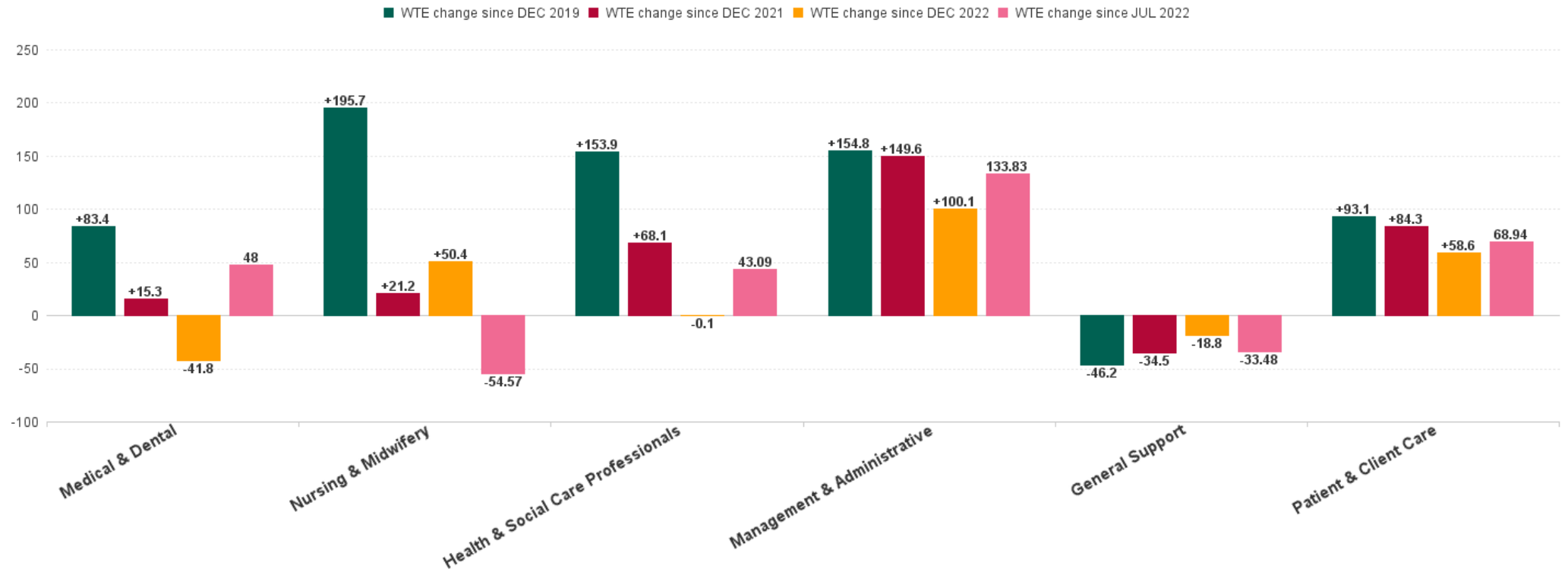


Mental Health Employment Report : JUL 2023

Mental Health Employment Report by Staff Group

JUL 2023	WTE DEC 2019	WTE DEC 2022	WTE JUN 2023	WTE JUL 2023	WTE change since DEC 2019	% WTE change since Dec 2019	WTE change since DEC 2022	% WTE change since Dec 2022	WTE change since JUN 2023	No. JUL 2023
Overall	9,967	10,453	10,656	10,602	+635	+6.4%	+148	+1.4%	-54	11,813
Consultants	353	397	406	404	+52	+14.7%	+7	+1.8%	-2	443
Registrars	269	345	343	334	+65	+24.2%	-11	-3.1%	-9	423
SHO/ Interns	261	267	245	230	-32	-12.1%	-37	-14.0%	-15	279
Medical/ Dental, other	5	4	3	3	-2	-40.6%	-1	-24.0%	+0	6
Medical & Dental	888	1,013	997	971	+83	+9.4%	-42	-4.1%	-27	1,151
Nurse/ Midwife Manager	1,201	1,245	1,232	1,237	+36	+3.0%	-8	-0.7%	+5	1,300
Nurse/ Midwife Specialist & AN/MP	460	631	684	692	+232	+50.3%	+61	+9.7%	+7	737
Staff Nurse/ Staff Midwife	3,002	2,948	2,871	2,841	-162	-5.4%	-107	-3.6%	-30	3,079
Pre-registration Nurse/ Midwife Intern	25	26	166	166	+141	+563.1%	+140	+528.5%	-0	332
Post-registration Nurse/ Midwife Student	1				-1	-100.0%				
Nursing/ Midwifery awaiting registration	57	39	5	5	-51	-90.4%	-33	-85.9%	-0	6
Nursing/ Midwifery Student	83	65	172	171	+88	+106.7%	+106	+163.1%	-0	338
Nursing/ Midwifery other	32	34	32	33	+1	+4.4%	-1	-4.2%	+1	36
Nursing & Midwifery	4,778	4,924	4,990	4,974	+196	+4.1%	+50	+1.0%	-16	5,490
Therapy Professions	420	435	445	433	+13	+3.1%	-2	-0.5%	-12	492
Social Care	74	72	66	63	-10	-14.1%	-9	-12.1%	-3	73
Social Workers	350	414	420	415	+65	+18.5%	+2	+0.4%	-5	466
Psychologists	394	448	462	456	+61	+15.6%	+8	+1.8%	-7	507
Pharmacy	19	19	22	21	+2	+12.0%	+2	+7.9%	-1	31
H&SC, Other	107	130	130	130	+23	+21.3%	-0	-0.3%	-0	148
Health & Social Care Professionals	1,364	1,518	1,545	1,518	+154	+11.3%	-0	0.0%	-27	1,717
Management (VIII & above)	58	75	78	76	+17	+29.8%	+1	+1.6%	-2	77
Administrative/ Supervisory (V to VII)	238	287	314	310	+72	+30.5%	+23	+8.1%	-4	332
Clerical (III & IV)	717	707	776	782	+65	+9.0%	+76	+10.7%	+6	876
Management & Administrative	1,014	1,068	1,168	1,168	+155	+15.3%	+100	+9.4%	+0	1,285
Support	585	556	531	534	-51	-8.7%	-22	-3.9%	+2	608
Maintenance/ Technical	127	129	128	132	+5	+3.9%	+3	+2.5%	+4	137
General Support	712	685	660	666	-46	-6.5%	-19	-2.7%	+6	745
Health Care Assistants	996	1,030	1,069	1,075	+80	+8.0%	+45	+4.4%	+6	1,156
Care, other	216	216	226	229	+14	+6.3%	+14	+6.3%	+3	269
Patient & Client Care	1,212	1,246	1,295	1,305	+93	+7.7%	+59	+4.7%	+9	1,425

WTE Change by Staff Category



Mental Health Report by CHO: JUL 2023

JUL 2023	WTE DEC 2019	WTE DEC 2022	WTE JUN 2023	WTE JUL 2023	WTE change since DEC 2019	% WTE change since Dec 2019	WTE change since DEC 2022	% WTE change since Dec 2022	WTE change since JUN 2023	No. JUL 2023
Overall	9,967	10,453	10,656	10,602	+635	+6.4%	+148	+1.4%	-54	11,813
CHO 1	953	1,024	1,060	1,056	+103	+10.8%	+32	+3.1%	-4	1,162
CHO 2	1,308	1,329	1,344	1,323	+14	+1.1%	-6	-0.5%	-21	1,454
CHO 3	795	814	822	814	+19	+2.4%	+0	+0.0%	-8	901
CHO 4	1,499	1,562	1,575	1,568	+69	+4.6%	+6	+0.4%	-7	1,752
CHO 5	1,177	1,224	1,287	1,291	+114	+9.7%	+67	+5.4%	+4	1,436
CHO 6	593	650	664	663	+71	+11.9%	+14	+2.1%	-1	767
CHO 7	835	879	905	901	+66	+7.9%	+23	+2.6%	-3	1,026
CHO 8	1,098	1,091	1,138	1,131	+33	+3.0%	+41	+3.7%	-7	1,244
CHO 9	1,272	1,371	1,327	1,308	+36	+2.9%	-63	-4.6%	-19	1,485
other Community Services	438	511	535	547	+109	+25.0%	+36	+7.0%	+11	586



% Total by CHO



Mental Health Employment Report by HSE/S38: JUL 2023

JUL 2023	WTE DEC 2019	WTE DEC 2022	WTE JUN 2023	WTE JUL 2023	WTE change since DEC 2019	% WTE change since Dec 2019	WTE change since DEC 2022	% WTE change since Dec 2022	WTE change since JUN 2023	No. JUL 2023
Overall	9,967	10,453	10,656	10,602	+635	+6.4%	+148	+1.4%	-54	11,813
Health Service Executive	9,526	10,023	10,266	10,214	+688	+7.2%	+191	+1.9%	-53	11,328
Section 38 Voluntary Agencies	441	431	390	388	-53	-12.1%	-43	-9.9%	-2	485



Mental Health Employment Report by HSE: JUL 2023

JUL 2023	WTE DEC 2019	WTE DEC 2022	WTE JUN 2023	WTE JUL 2023	WTE change since DEC 2019	% WTE change since Dec 2019	WTE change since DEC 2022	% WTE change since Dec 2022	WTE change since JUN 2023	No. JUL 2023
Total HSE	9,526	10,023	10,266	10,214	+688	+7.2%	+191	+1.9%	-53	11,328
Consultants	333	372	380	377	+45	+13.4%	+5	+1.5%	-3	411
Registrars	250	325	322	317	+67	+26.6%	-8	-2.5%	-6	389
SHO/ Interns	255	260	240	222	-34	-13.1%	-39	-14.8%	-18	266
Medical/ Dental, other	5	4	3	3	-2	-40.6%	-1	-24.0%	+0	6
Medical & Dental	843	961	945	918	+76	+9.0%	-42	-4.4%	-27	1,072
Nurse/ Midwife Manager	1,163	1,211	1,200	1,207	+44	+3.8%	-5	-0.4%	+6	1,268
Nurse/ Midwife Specialist & AN/MP	453	620	671	678	+225	+49.6%	+58	+9.4%	+8	720
Staff Nurse/ Staff Midwife	2,879	2,838	2,792	2,764	-115	-4.0%	-74	-2.6%	-28	2,995
Nursing/ Midwifery awaiting registration	57	38	5	5	-39	-90.4%	+3	-85.6%	-0	6
Post-registration Nurse/ Midwife Student	1				-1	-100.0%				
Pre-registration Nurse Intern (COVID-19)					+1					
Pre-registration Nurse/ Midwife Intern	18	18	158	157	+3	+773.4%	+7	+755.4%	-0	315
Nursing/ Midwifery Student	76	56	163	163	+87	+114.6%	+107	+190.2%	-0	321
Nursing/ Midwifery other	29	32	32	33	+4	+13.4%	+1	+3.3%	+1	36
Nursing & Midwifery	4,601	4,758	4,857	4,845	+244	+5.3%	+87	+1.8%	-13	5,340
Therapy Professions	389	407	423	411	+22	+5.7%	+4	+1.0%	-12	461
Social Care	48	44	40	37	-11	-23.2%	-7	-15.8%	-3	44
Social Workers	331	394	400	396	+65	+19.7%	+2	+0.6%	-4	444
Psychologists	379	423	440	434	+56	+14.7%	+11	+2.6%	-6	479
Pharmacy	17	17	19	18	+2	+9.0%	+1	+5.9%	-1	28
H&SC, Other	102	130	129	127	+25	+24.6%	-2	-1.9%	-1	144
Health & Social Care Professionals	1,265	1,415	1,451	1,424	+159	+12.5%	+9	+0.6%	-27	1,600
Management (VIII & above)	56	73	75	73	+16	+29.1%	+0	+0.2%	-2	74
Administrative/ Supervisory (V to VII)	217	264	290	288	+72	+33.1%	+25	+9.4%	-2	305
Clerical (III & IV)	673	670	736	741	+69	+10.2%	+71	+10.6%	+5	826
Management & Administrative	946	1,006	1,101	1,102	+157	+16.6%	+96	+9.5%	+1	1,205
Support	547	523	502	503	-44	-8.1%	-20	-3.8%	+1	566
Maintenance/ Technical	121	123	122	125	+4	+3.1%	+2	+1.6%	+2	129
General Support	668	646	624	628	-40	-6.0%	-18	-2.8%	+3	695
Health Care Assistants	990	1,024	1,064	1,070	+80	+8.1%	+46	+4.5%	+6	1,151
Care, other	213	213	223	226	+13	+6.1%	+14	+6.4%	+3	265
Patient & Client Care	1,203	1,237	1,287	1,296	+93	+7.8%	+59	+4.8%	+9	1,416

Mental Health Employment Report by S38 Vols: JUL 2023

JUL 2023	WTE DEC 2019	WTE DEC 2022	WTE JUN 2023	WTE JUL 2023	WTE change since DEC 2019	% WTE change since Dec 2019	WTE change since DEC 2022	% WTE change since Dec 2022	WTE change since JUN 2023	No. JUL 2023
Total S38 Vols	441	431	390	388	-53	-12.1%	-43	-9.9%	-2	485
Consultants	20	25	27	27	+7	+35.8%	+2	+7.3%	+1	32
Registrars	19	20	21	17	-1	-7.7%	-3	-12.7%	-4	34
SHO/ Interns	6	7	5	8	+2	+34.0%	+1	+14.9%	+3	13
Medical & Dental	45	52	52	52	+8	+17.2%	+0	+0.7%	+0	79
Nurse/ Midwife Manager	38	34	31	30	-8	-20.3%	-4	-10.7%	-1	32
Nurse/ Midwife Specialist & AN/MP	7	11	14	14	+7	+102.4%	+3	+26.2%	-0	17
Staff Nurse/ Staff Midwife	123	109	79	77	-46	-37.7%	-33	-29.9%	-2	84
Nursing/ Midwifery awaiting registration		1						-100.0%		
Pre-registration Nurse/ Midwife Intern	7	8	9	9	+0	+21.4%	+2	+6.3%	+0	17
Nursing/ Midwifery Student	7	9	9	9	+2	+21.4%	-1	-5.6%	+0	17
Nursing/ Midwifery other	3	3			-3	-100.0%	-3	-100.0%		
Nursing & Midwifery	177	166	133	129	-48	-27.2%	-36	-22.0%	-4	150
Therapy Professions	31	28	22	22	-9	-29.8%	-6	-21.7%	+0	31
Social Care	25	28	26	26	+1	+3.1%	-2	-6.4%	+0	29
Social Workers	20	20	20	19	-0	-1.3%	-1	-2.7%	-0	22
Psychologists	16	25	22	22	+6	+35.4%	-3	-12.3%	-1	28
Pharmacy	2	2	2	2	+1	+43.8%	+1	+27.8%	+0	3
H&SC, Other	5	0	1	3	-2	-47.1%	+2	+433.3%	+1	4
Health & Social Care Professionals	99	103	94	94	-5	-4.8%	-9	-8.6%	+0	117
Management (VIII & above)	2	2	3	3	+1	+50.0%	+1	+50.0%	+0	3
Administrative/ Supervisory (V to VII)	21	23	24	22	+1	+3.5%	-2	-6.7%	-2	27
Clerical (III & IV)	45	36	40	41	-4	-8.1%	+5	+12.8%	+2	50
Management & Administrative	68	62	67	66	-2	-2.8%	+4	+6.6%	-1	80
Support	38	33	29	31	-7	-18.6%	-2	-6.7%	+1	42
Maintenance/ Technical	6	6	6	7	+1	+20.5%	+1	+20.5%	+1	8
General Support	44	39	35	38	-6	-13.2%	-1	-2.5%	+3	50
Health Care Assistants	6	6	5	5	-1	-13.3%	-1	-13.3%	+0	5
Care, other	3	3	3	3	+1	+18.4%	-0	-0.9%	-0	4
Patient & Client Care	9	9	8	8	-0	-2.9%	-1	-8.8%	-0	9

Mental Health Employment Report by Grade Group: JUL 2023

CHO 1

JUL 2023	WTE DEC 2019	WTE DEC 2022	WTE JUN 2023	WTE JUL 2023	WTE change since DEC 2019	% WTE change since Dec 2019	WTE change since DEC 2022	% WTE change since Dec 2022	WTE change since JUN 2023	No. JUL 2023
Total CHO 1	953	1024	1060	1056	+103	+10.8%	+32	+3.1%	-4	1,162
Consultants	31	34	36	35	+4	+12.3%	+1	+2.5%	-2	36
Registrars	24	35	37	42	+17	+71.2%	+7	+20.6%	+5	48
SHO/ Interns	25	21	23	20	-5	-21.7%	-1	-4.9%	-3	26
Medical & Dental	81	89	96	96	+16	+19.5%	+7	+7.8%	+1	110
Nurse/ Midwife Manager	117	118	123	124	+7	+6.0%	+6	+5.3%	+1	129
Nurse/ Midwife Specialist & AN/MP	67	91	93	95	+28	+41.0%	+4	+4.0%	+2	101
Staff Nurse/ Staff Midwife	297	294	296	296	-1	-0.4%	+2	+0.8%	-0	315
<i>Nursing/ Midwifery awaiting registration</i>		3					-3	-100.0%		
<i>Pre-registration Nurse/ Midwife Intern</i>		2	15	15	+15		+13	+733.3%	+0	30
Nursing/ Midwifery Student		5	15	15	+15		+10	+213.8%	+0	30
Nursing/ Midwifery other		2	1	1	+1		-1	-47.1%	+0	1
Nursing & Midwifery	482	510	529	531	+49	+10.2%	+22	+4.2%	+3	576
Therapy Professions	36	40	43	41	+5	+13.3%	+0	+0.1%	-2	44
Social Care	4	4	3	2	-1	-36.3%	-1	-38.3%	-1	3
Social Workers	39	48	47	45	+6	+15.3%	-3	-5.6%	-2	49
Psychologists	21	25	31	31	+10	+50.4%	+7	+26.6%	-0	34
Pharmacy	1	1	1	1	+0	+12.5%	+0	+11.1%	+0	1
H&SC, Other	13	18	18	17	+4	+30.8%	-1	-6.9%	-1	20
Health & Social Care Professionals	113	136	144	137	+24	+21.2%	+1	+0.9%	-7	151
Management (VIII & above)	6	9	7	6	+1	+14.3%	-2	-25.8%	-1	7
Administrative/ Supervisory (V to VII)	30	30	35	34	+4	+13.3%	+4	+12.6%	-1	37
Clerical (III & IV)	85	89	94	92	+7	+8.3%	+3	+3.5%	-2	104
Management & Administrative	121	128	136	133	+12	+9.8%	+5	+3.7%	-4	148
Support	62	58	60	61	-1	-1.7%	+3	+5.7%	+2	68
Maintenance/ Technical	17	16	14	16	-1	-7.1%	-1	-4.6%	+1	16
General Support	79	74	74	77	-2	-2.8%	+3	+3.4%	+3	84
Health Care Assistants	66	75	72	72	+6	+8.4%	-3	-3.6%	-0	81
Care, other	11	12	9	10	-1	-9.7%	-2	-17.8%	+0	12
Patient & Client Care	77	86	81	82	+5	+5.9%	-5	-5.6%	+0	93

Mental Health Employment Report by Grade Group: JUL 2023

CHO 2

JUL 2023	WTE DEC 2019	WTE DEC 2022	WTE JUN 2023	WTE JUL 2023	WTE change since DEC 2019	% WTE change since Dec 2019	WTE change since DEC 2022	% WTE change since Dec 2022	WTE change since JUN 2023	No. JUL 2023
Total CHO 2	1308	1329	1344	1323	+14	+1.1%	-6	-0.5%	-21	1,454
Consultants	38	37	39	39	+2	+4.9%	+3	+6.8%	-0	45
Registrars	33	37	35	37	+3	+10.3%	-0	-0.9%	+2	38
SHO/ Interns	35	39	38	28	-7	-19.3%	-11	-27.5%	-10	30
Medical/ Dental, other	1	1			-1	-100.0%	-1	-100.0%		
Medical & Dental	107	114	112	104	-3	-2.4%	-10	-8.4%	-8	113
Nurse/ Midwife Manager	146	142	147	148	+2	+1.4%	+6	+4.0%	+1	156
Nurse/ Midwife Specialist & AN/MP	67	88	96	96	+28	+41.7%	+8	+8.9%	-1	101
Staff Nurse/ Staff Midwife	357	353	339	333	-24	-6.7%	-20	-5.6%	-6	360
<i>Nursing/ Midwifery awaiting registration</i>	5	7	0	1	-4	-89.5%	-7	-92.9%	+0	1
<i>Pre-registration Nurse/ Midwife Intern</i>	0	4	23	23	+23	+19,066.7%	+19	+467.9%	+0	46
Nursing/ Midwifery Student	5	11	23	24	+19	+382.5%	+12	+112.7%	+0	47
Nursing/ Midwifery other	2	4	5	5	+3	+125.0%	+1	+12.5%	-0	5
Nursing & Midwifery	577	598	610	605	+27	+4.7%	+7	+1.1%	-6	669
Therapy Professions	45	55	56	53	+8	+17.1%	-1	-2.7%	-3	60
Social Care	15	14	13	12	-3	-19.6%	-2	-14.1%	-1	13
Social Workers	41	44	43	42	+2	+4.4%	-1	-3.1%	-1	48
Psychologists	34	37	41	41	+8	+23.6%	+4	+11.9%	+1	46
Pharmacy	3	3	2	2	-0	-2.0%	-0	-1.2%	-0	3
H&SC, Other	3	3	3	3	-0	-4.7%	+0	+1.1%	-0	3
Health & Social Care Professionals	140	155	158	154	+14	+10.3%	-0	-0.2%	-4	173
Management (VIII & above)	5	3	3	3	-2	-40.4%	-0	-0.7%	-0	3
Administrative/ Supervisory (V to VII)	24	25	27	25	+1	+5.9%	-0	-0.7%	-2	27
Clerical (III & IV)	109	98	105	102	-7	-6.3%	+5	+4.6%	-3	117
Management & Administrative	138	126	134	130	-8	-5.5%	+4	+3.4%	-4	147
Support	36	27	23	23	-13	-36.1%	-3	-12.9%	-0	25
Maintenance/ Technical	27	36	36	35	+8	+29.2%	-1	-2.8%	-1	35
General Support	63	62	59	58	-5	-8.2%	-4	-7.1%	-1	60
Health Care Assistants	215	202	202	201	-14	-6.4%	-1	-0.5%	-1	211
Care, other	69	73	69	71	+2	+2.5%	-2	-2.5%	+2	81
Patient & Client Care	284	275	271	272	-12	-4.2%	-3	-1.0%	+1	292

Mental Health Employment Report by Grade Group: JUL 2023

CHO 3

JUL 2023	WTE DEC 2019	WTE DEC 2022	WTE JUN 2023	WTE JUL 2023	WTE change since DEC 2019	% WTE change since Dec 2019	WTE change since DEC 2022	% WTE change since Dec 2022	WTE change since JUN 2023	No. JUL 2023
Total CHO 3	795	814	822	814	+19	+2.4%	+0	+0.0%	-8	901
Consultants	23	29	30	30	+7	+28.5%	+1	+3.2%	+0	34
Registrars	18	15	28	23	+5	+26.2%	+7	+48.4%	-5	25
SHO/ Interns	19	33	14	13	-6	-30.3%	-20	-60.4%	-1	14
Medical & Dental	60	78	71	66	+6	+9.3%	-12	-15.2%	-6	73
Nurse/ Midwife Manager	88	87	84	82	-6	-6.6%	-5	-5.8%	-3	88
Nurse/ Midwife Specialist & AN/MP	39	44	47	48	+9	+23.1%	+4	+8.5%	+1	52
Staff Nurse/ Staff Midwife	245	243	234	237	-8	-3.4%	-6	-2.4%	+3	258
Pre-registration Nurse/ Midwife Intern	9	4	17	17	+8	+87.6%	+12	+290.0%	-0	34
Nursing/ Midwifery Student	9	4	17	17	+8	+87.6%	+12	+290.0%	-0	34
Nursing/ Midwifery other		1	1	1	+1		+0	+1.0%	+0	1
Nursing & Midwifery	381	380	383	385	+4	+0.9%	+5	+1.4%	+2	433
Therapy Professions	26	30	32	30	+4	+14.9%	-0	-0.1%	-1	35
Social Care	3	2	1	1	-2	-65.2%	-1	-44.8%	-0	1
Social Workers	25	28	26	26	+1	+2.5%	-2	-7.2%	-1	28
Psychologists	92	93	90	89	-3	-3.3%	-4	-4.4%	-1	92
Pharmacy	3	3	3	3	+0	+0.0%	-0	-0.7%	+0	3
H&SC, Other	10	10	10	10	+1	+8.2%	+1	+7.5%	+0	11
Health & Social Care Professionals	159	166	163	159	+0	+0.3%	-6	-3.8%	-3	170
Management (VIII & above)	2	4	4	4	+2	+102.5%	+0	+1.0%	-0	4
Administrative/ Supervisory (V to VII)	17	16	16	18	+1	+7.5%	+2	+12.5%	+2	19
Clerical (III & IV)	56	50	60	59	+3	+5.5%	+9	+17.4%	-1	64
Management & Administrative	75	70	80	81	+6	+8.5%	+11	+15.3%	+1	87
Support	32	30	31	32	-1	-2.0%	+2	+5.2%	+1	35
Maintenance/ Technical	11	7	7	7	-4	-36.4%	+0	+1.0%	+0	7
General Support	43	37	38	39	-5	-10.7%	+2	+4.4%	+1	42
Health Care Assistants	75	82	84	81	+6	+7.9%	-0	-0.4%	-2	92
Care, other	2	2	3	3	+2	+100.0%	+1	+36.9%	-0	4
Patient & Client Care	77	84	87	85	+8	+9.9%	+1	+0.7%	-3	96

Mental Health Employment Report by Grade Group: JUL 2023

CHO 4

JUL 2023	WTE DEC 2019	WTE DEC 2022	WTE JUN 2023	WTE JUL 2023	WTE change since DEC 2019	% WTE change since Dec 2019	WTE change since DEC 2022	% WTE change since Dec 2022	WTE change since JUN 2023	No. JUL 2023
Total CHO 4	1499	1562	1575	1568	+69	+4.6%	+6	+0.4%	-7	1,752
Consultants	50	60	60	61	+11	+23.0%	+1	+1.7%	+1	68
Registrars	46	56	47	49	+3	+6.7%	-8	-13.3%	+2	52
SHO/ Interns	31	42	46	43	+12	+38.1%	+0	+0.9%	-4	45
Medical/ Dental, other	2	1	1	1	-1	-51.5%	+0	+1.0%	+0	4
Medical & Dental	129	160	154	154	+25	+19.7%	-6	-3.8%	-0	169
Nurse/ Midwife Manager	171	207	201	206	+34	+20.0%	-1	-0.6%	+5	219
Nurse/ Midwife Specialist & AN/MP	60	72	77	78	+18	+30.0%	+6	+7.9%	+1	83
Staff Nurse/ Staff Midwife	505	479	464	452	-54	-10.7%	-27	-5.7%	-12	489
<i>Nursing/ Midwifery awaiting registration</i>	30				-30	-100.0%				
<i>Post-registration Nurse/ Midwife Student</i>	1				-1	-100.0%				
<i>Pre-registration Nurse/ Midwife Intern</i>	3	7	24	24	+21	+712.7%	+18	+264.4%	-0	49
Nursing/ Midwifery Student	34	7	24	24	-9	-27.2%	+18	+264.4%	-0	49
Nursing & Midwifery	770	765	766	760	-11	-1.4%	-5	-0.7%	-6	840
Therapy Professions	74	79	85	87	+13	+17.8%	+8	+10.4%	+2	99
Social Care	4	6	5	5	+2	+39.8%	-0	-7.9%	+1	7
Social Workers	53	73	75	75	+22	+40.9%	+2	+2.5%	+0	88
Psychologists	83	96	94	89	+6	+7.5%	-7	-7.2%	-5	102
Pharmacy	2	2	1	1	-1	-41.5%	-1	-38.6%	-0	3
H&SC, Other	11	18	17	17	+6	+57.3%	-1	-3.9%	-0	20
Health & Social Care Professionals	227	273	277	274	+48	+21.0%	+1	+0.4%	-3	319
Management (VIII & above)	1	3	4	4	+3	+260.0%	+1	+20.0%	-0	4
Administrative/ Supervisory (V to VII)	22	26	29	30	+7	+31.3%	+3	+11.7%	+0	31
Clerical (III & IV)	87	87	93	95	+8	+8.9%	+8	+9.7%	+2	106
Management & Administrative	111	116	126	128	+17	+15.7%	+12	+10.4%	+2	141
Support	81	75	64	63	-17	-21.5%	-11	-15.1%	-0	74
Maintenance/ Technical	6	5	5	5	-1	-16.4%	+0	+0.2%	+0	6
General Support	87	80	69	69	-18	-21.1%	-11	-14.2%	-0	80
Health Care Assistants	168	162	177	177	+9	+5.2%	+15	+9.2%	-0	190
Care, other	7	5	6	6	-1	-17.1%	+1	+14.9%	-0	13
Patient & Client Care	176	167	183	183	+7	+4.2%	+16	+9.4%	-0	203

Mental Health Employment Report by Grade Group: JUL 2023

CHO 5

JUL 2023	WTE DEC 2019	WTE DEC 2022	WTE JUN 2023	WTE JUL 2023	WTE change since DEC 2019	% WTE change since Dec 2019	WTE change since DEC 2022	% WTE change since Dec 2022	WTE change since JUN 2023	No. JUL 2023
Total CHO 5	1177	1224	1287	1291	+114	+9.7%	+67	+5.4%	+4	1,436
Consultants	26	33	32	31	+5	+19.6%	-2	-5.8%	-0	34
Registrars	10	12	20	18	+8	+83.7%	+6	+54.6%	-2	19
SHO/ Interns	32	32	27	25	-7	-21.1%	-7	-21.9%	-1	26
Medical/ Dental, other	2	2	2	2	+0	+0.0%	+0	+2.6%	+0	2
Medical & Dental	70	80	80	77	+7	+9.6%	-2	-3.1%	-3	81
Nurse/ Midwife Manager	171	175	162	161	-10	-6.1%	-14	-8.3%	-1	168
Nurse/ Midwife Specialist & AN/MP	43	68	85	87	+44	+102.0%	+19	+28.2%	+2	92
Staff Nurse/ Staff Midwife	412	398	390	392	-20	-4.8%	-6	-1.5%	+3	437
<i>Nursing/ Midwifery awaiting registration</i>		6	1	1	+1		-5	-82.1%	+0	1
<i>Pre-registration Nurse/ Midwife Intern</i>	1	1	18	18	+17	+1,737.0%	+17	+1,774.5%	+1	37
Nursing/ Midwifery Student	1	7	19	19	+18	+1,837.0%	+13	+194.4%	+1	38
Nursing/ Midwifery other	4	4	5	5	+1	+25.3%	+1	+27.4%	-0	5
Nursing & Midwifery	631	651	660	664	+33	+5.2%	+13	+2.0%	+4	740
Therapy Professions	38	34	36	33	-5	-13.5%	-1	-2.2%	-3	38
Social Care	5	4	4	4	-1	-10.7%	+1	+14.9%	-0	5
Social Workers	28	29	30	31	+2	+8.1%	+2	+6.1%	+0	34
Psychologists	21	27	34	34	+13	+62.6%	+7	+26.3%	+0	39
H&SC, Other	9	23	23	22	+13	+148.4%	-1	-3.3%	-0	24
Health & Social Care Professionals	101	117	127	124	+23	+22.9%	+8	+6.8%	-3	140
Management (VIII & above)	4	6	6	5	+1	+25.0%	-1	-12.1%	-1	5
Administrative/ Supervisory (V to VII)	21	23	28	27	+5	+26.0%	+3	+13.3%	-1	28
Clerical (III & IV)	74	74	89	92	+19	+25.3%	+18	+24.2%	+4	101
Management & Administrative	99	104	122	124	+25	+25.5%	+20	+19.8%	+2	134
Support	171	175	177	180	+9	+5.3%	+6	+3.3%	+3	206
Maintenance/ Technical	19	14	15	15	-4	-20.8%	+1	+8.7%	+0	16
General Support	190	189	192	196	+5	+2.7%	+7	+3.7%	+3	222
Health Care Assistants	73	73	89	90	+18	+24.4%	+17	+23.5%	+1	96
Care, other	13	12	15	16	+3	+22.1%	+4	+32.3%	+0	23
Patient & Client Care	85	85	105	106	+21	+24.1%	+21	+24.7%	+1	119

Mental Health Employment Report by Grade Group: JUL 2023

CHO 6

JUL 2023	WTE DEC 2019	WTE DEC 2022	WTE JUN 2023	WTE JUL 2023	WTE change since DEC 2019	% WTE change since Dec 2019	WTE change since DEC 2022	% WTE change since Dec 2022	WTE change since JUN 2023	No. JUL 2023
Total CHO 6	593	650	664	663	+71	+11.9%	+14	+2.1%	-1	767
Consultants	36	45	47	47	+11	+31.6%	+2	+4.9%	+0	54
Registrars	22	30	26	26	+4	+18.5%	-4	-13.1%	-1	45
SHO/ Interns	9	9	8	10	+1	+14.3%	+1	+14.7%	+2	17
Medical & Dental	67	84	82	83	+17	+25.0%	-0	-0.4%	+2	116
Nurse/ Midwife Manager	76	75	73	72	-5	-6.0%	-3	-3.9%	-1	74
Nurse/ Midwife Specialist & AN/MP	14	27	34	32	+18	+134.3%	+5	+19.3%	-2	36
Staff Nurse/ Staff Midwife	139	151	155	152	+12	+8.9%	+0	+0.1%	-4	165
Pre-registration Nurse/ Midwife Intern			6	6	+6		+6		+0	11
Nursing/ Midwifery Student			6	6	+6		+6		+0	11
Nursing/ Midwifery other	2	4	2	3	+1	+50.0%	-1	-20.2%	+1	3
Nursing & Midwifery	231	257	270	264	+33	+14.4%	+8	+3.0%	-6	289
Therapy Professions	43	41	38	39	-4	-9.1%	-2	-5.2%	+1	49
Social Care	26	28	26	26	+0	+0.8%	-2	-6.4%	+0	29
Social Workers	30	36	39	39	+9	+31.2%	+3	+7.8%	+0	43
Psychologists	22	38	36	35	+13	+59.3%	-3	-6.7%	-1	45
H&SC, Other	9	6	6	9	-0	-1.1%	+2	+34.1%	+2	11
Health & Social Care Professionals	130	150	146	148	+19	+14.3%	-1	-0.9%	+2	177
Management (VIII & above)	3	5	5	5	+2	+66.7%	+0	+0.6%	+0	5
Administrative/ Supervisory (V to VII)	27	31	30	29	+2	+8.2%	-2	-6.0%	-1	33
Clerical (III & IV)	42	29	34	35	-8	-17.9%	+6	+19.0%	+1	40
Management & Administrative	72	65	69	68	-3	-4.6%	+4	+5.7%	-0	78
Support	36	29	28	28	-8	-23.3%	-1	-4.4%	-0	32
Maintenance/ Technical	6	5	6	7	+1	+22.0%	+2	+44.8%	+1	8
General Support	42	34	34	35	-7	-17.0%	+1	+2.7%	+1	40
Health Care Assistants	46	54	57	57	+12	+25.4%	+4	+6.6%	+0	59
Care, other	5	7	7	7	+1	+24.1%	-0	-3.5%	-0	8
Patient & Client Care	51	60	64	64	+13	+25.3%	+3	+5.4%	-0	67

Mental Health Employment Report by Grade Group: JUL 2023

CHO 7

JUL 2023	WTE DEC 2019	WTE DEC 2022	WTE JUN 2023	WTE JUL 2023	WTE change since DEC 2019	% WTE change since Dec 2019	WTE change since DEC 2022	% WTE change since Dec 2022	WTE change since JUN 2023	No. JUL 2023
Total CHO 7	835	879	905	901	+66	+7.9%	+23	+2.6%	-3	1,026
Consultants	48	52	55	55	+7	+14.5%	+2	+4.6%	-0	59
Registrars	46	55	52	46	+0	+0.2%	-9	-15.8%	-5	66
SHO/ Interns	21	26	18	25	+4	+17.9%	-1	-3.9%	+7	40
Medical & Dental	115	133	124	126	+11	+9.4%	-7	-5.5%	+1	165
Nurse/ Midwife Manager	117	109	112	111	-6	-5.0%	+1	+1.3%	-1	116
Nurse/ Midwife Specialist & AN/MP	40	56	64	65	+25	+61.8%	+9	+15.5%	+0	68
Staff Nurse/ Staff Midwife	194	205	201	198	+4	+2.0%	-6	-3.1%	-3	220
<i>Nursing/ Midwifery awaiting registration</i>	<i>10</i>	<i>1</i>			<i>-10</i>	<i>-100.0%</i>	<i>-1</i>	<i>-100.0%</i>		
<i>Pre-registration Nurse/ Midwife Intern</i>	<i>1</i>	<i>0</i>	<i>15</i>	<i>16</i>	<i>+14</i>	<i>+1,031.4%</i>	<i>+15</i>	<i>+15,400.0%</i>	<i>+0</i>	<i>31</i>
Nursing/ Midwifery Student	11	1	15	16	+4	+38.0%	+14	+1,322.0%	+0	31
Nursing/ Midwifery other	8	6	7	7	-1	-11.5%	+1	+12.5%	-0	8
Nursing & Midwifery	370	377	399	396	+26	+7.1%	+19	+5.0%	-4	443
Therapy Professions	48	51	53	50	+2	+4.7%	-1	-1.6%	-2	55
Social Care	8	7	6	6	-2	-20.2%	-1	-9.2%	+0	7
Social Workers	34	38	42	39	+5	+13.5%	+0	+0.7%	-3	43
Psychologists	31	35	39	39	+8	+25.2%	+5	+13.1%	+0	44
Pharmacy	1	0	1	1	-0	-40.0%	+0	+200.0%	-0	1
H&SC, Other	18	19	18	17	-1	-5.1%	-2	-8.6%	-1	20
Health & Social Care Professionals	140	150	159	152	+12	+8.5%	+2	+1.5%	-7	170
Management (VIII & above)	3	5	5	5	+2	+72.2%	+0	+1.7%	+0	5
Administrative/ Supervisory (V to VII)	16	22	25	26	+10	+62.2%	+3	+13.6%	+1	26
Clerical (III & IV)	47	55	59	61	+14	+30.0%	+5	+9.8%	+2	68
Management & Administrative	65	83	89	91	+26	+39.6%	+9	+10.4%	+3	99
Support	18	16	13	13	-5	-25.4%	-3	-17.8%	-0	15
Maintenance/ Technical	2	2	2	2	+0	+7.5%	+0	+3.1%	+0	2
General Support	20	18	15	15	-4	-22.3%	-3	-15.5%	-0	17
Health Care Assistants	33	31	30	31	-3	-8.3%	+0	+0.4%	+1	33
Care, other	92	88	89	91	-2	-1.6%	+3	+3.2%	+2	99
Patient & Client Care	125	118	118	121	-4	-3.4%	+3	+2.5%	+3	132

Mental Health Employment Report by Grade Group: JUL 2023

CHO 8

JUL 2023	WTE DEC 2019	WTE DEC 2022	WTE JUN 2023	WTE JUL 2023	WTE change since DEC 2019	% WTE change since Dec 2019	WTE change since DEC 2022	% WTE change since Dec 2022	WTE change since JUN 2023	No. JUL 2023
Total CHO 8	1098	1091	1138	1131	+33	+3.0%	+41	+3.7%	-7	1,244
Consultants	35	36	37	37	+1	+3.5%	+0	+0.8%	-0	39
Registrars	26	29	27	28	+3	+10.2%	-1	-2.7%	+1	29
SHO/ Interns	36	29	34	32	-5	-12.5%	+3	+8.8%	-2	32
Medical & Dental	97	94	97	96	-1	-0.6%	+2	+2.2%	-1	100
Nurse/ Midwife Manager	121	114	115	116	-5	-4.2%	+2	+1.5%	+1	119
Nurse/ Midwife Specialist & AN/MP	56	75	78	79	+23	+40.9%	+5	+6.1%	+1	85
Staff Nurse/ Staff Midwife	332	323	322	318	-14	-4.2%	-6	-1.8%	-4	340
<i>Nursing/ Midwifery awaiting registration</i>	2	8	1	1	-1	-52.5%	-7	-88.6%	-0	1
<i>Pre-registration Nurse/ Midwife Intern</i>	1	1	24	24	+24	+4,700.0%	+24	+4,700.0%	-0	48
Nursing/ Midwifery Student	3	9	25	25	+22	+898.0%	+16	+181.3%	-0	49
Nursing/ Midwifery other	4	3	3	3	-1	-26.6%	+0	+0.0%	+0	3
Nursing & Midwifery	515	523	542	540	+25	+4.9%	+17	+3.2%	-2	596
Therapy Professions	44	36	38	37	-7	-16.8%	+1	+2.7%	-1	42
Social Care	7	6	5	4	-3	-43.2%	-2	-35.0%	-1	6
Social Workers	41	50	49	50	+9	+21.8%	+0	+0.8%	+1	57
Psychologists	39	36	38	38	-2	-3.8%	+1	+4.0%	-0	40
Pharmacy	1	2	3	3	+2	+152.0%	+1	+58.5%	+0	4
H&SC, Other	20	16	17	17	-3	-16.9%	+1	+4.8%	+0	20
Health & Social Care Professionals	154	146	150	148	-5	-3.3%	+2	+1.6%	-1	169
Management (VIII & above)	3	3	3	3	+0	+2.0%	+0	+0.0%	+0	3
Administrative/ Supervisory (V to VII)	22	28	27	25	+3	+11.4%	-3	-11.5%	-2	27
Clerical (III & IV)	88	88	107	107	+18	+20.8%	+19	+21.6%	-0	120
Management & Administrative	114	119	136	135	+21	+18.4%	+16	+13.2%	-2	150
Support	33	27	27	25	-8	-24.8%	-2	-9.2%	-2	28
Maintenance/ Technical	26	25	27	28	+2	+6.7%	+3	+13.1%	+0	29
General Support	59	52	54	52	-6	-10.7%	+1	+1.4%	-2	57
Health Care Assistants	157	152	154	156	-1	-0.5%	+4	+2.9%	+2	168
Care, other	4	5	4	3	-0	-11.9%	-1	-30.7%	-1	4
Patient & Client Care	160	156	158	159	-1	-0.7%	+3	+1.9%	+1	172

Mental Health Employment Report by Grade Group: JUL 2023

CHO 9

JUL 2023	WTE DEC 2019	WTE DEC 2022	WTE JUN 2023	WTE JUL 2023	WTE change since DEC 2019	% WTE change since Dec 2019	WTE change since DEC 2022	% WTE change since Dec 2022	WTE change since JUN 2023	No. JUL 2023
Total CHO 9	1272	1371	1327	1308	+36	+2.9%	-63	-4.6%	-19	1,485
Consultants	50	55	55	53	+3	+6.1%	-2	-3.8%	-2	56
Registrars	31	57	59	51	+20	+63.4%	-7	-11.5%	-9	73
SHO/ Interns	53	36	36	33	-20	-37.4%	-3	-7.0%	-3	48
Medical & Dental	134	148	150	137	+3	+2.1%	-11	-7.6%	-13	177
Nurse/ Midwife Manager	132	138	134	137	+5	+3.7%	-1	-0.6%	+3	147
Nurse/ Midwife Specialist & AN/MP	65	99	100	102	+37	+56.2%	+3	+3.0%	+2	107
Staff Nurse/ Staff Midwife	351	351	318	308	-43	-12.4%	-43	-12.3%	-10	335
<i>Nursing/ Midwifery awaiting registration</i>	<i>11</i>	<i>14</i>	<i>3</i>	<i>3</i>	<i>-8</i>	<i>-72.2%</i>	<i>-11</i>	<i>-78.3%</i>	<i>+0</i>	<i>3</i>
<i>Pre-registration Nurse/ Midwife Intern</i>	<i>10</i>	<i>8</i>	<i>23</i>	<i>23</i>	<i>+13</i>	<i>+127.3%</i>	<i>+15</i>	<i>+187.5%</i>	<i>+0</i>	<i>46</i>
Nursing/ Midwifery Student	21	22	26	26	+5	+24.3%	+4	+19.3%	+0	49
Nursing/ Midwifery other	11	9	6	7	-4	-36.0%	-2	-22.0%	+1	8
Nursing & Midwifery	581	619	584	580	-1	-0.2%	-39	-6.3%	-4	646
Therapy Professions	55	60	55	54	-1	-1.4%	-6	-9.8%	-1	60
Social Care	1	1	1	1	+0	+11.1%	+0	+1.0%	+0	1
Social Workers	43	57	55	55	+12	+27.2%	-1	-2.2%	+0	62
Psychologists	46	56	55	55	+9	+20.3%	-1	-2.0%	-0	61
Pharmacy	8	7	8	8	-0	-5.2%	+1	+7.8%	-0	13
H&SC, Other	15	17	18	18	+3	+21.5%	+0	+1.4%	-0	19
Health & Social Care Professionals	167	198	192	190	+23	+13.8%	-7	-3.8%	-2	216
Management (VIII & above)	5	5	6	6	+1	+20.0%	+1	+21.5%	-0	6
Administrative/ Supervisory (V to VII)	28	38	41	41	+13	+47.2%	+3	+7.0%	+0	44
Clerical (III & IV)	104	109	109	109	+5	+5.3%	+1	+0.7%	+1	124
Management & Administrative	137	152	155	156	+20	+14.4%	+5	+3.0%	+1	174
Support	103	95	89	88	-15	-14.5%	-7	-6.9%	-0	104
Maintenance/ Technical	11	11	10	10	-1	-10.3%	-1	-10.3%	-0	10
General Support	114	106	99	98	-16	-14.1%	-8	-7.2%	-0	114
Health Care Assistants	126	137	136	135	+9	+7.1%	-2	-1.3%	-1	145
Care, other	13	12	12	12	-1	-9.1%	-1	-6.0%	-0	13
Patient & Client Care	139	149	148	147	+8	+5.6%	-2	-1.7%	-2	158



Mental Health Employment Report by Grade Group: JUL 2023

other Community Services

JUL 2023	WTE DEC 2019	WTE DEC 2022	WTE JUN 2023	WTE JUL 2023	WTE change since DEC 2019	% WTE change since Dec 2019	WTE change since DEC 2022	% WTE change since Dec 2022	WTE change since JUN 2023	No. JUL 2023
Total other Community Services	438	511	535	547	+109	+25.0%	+36	+7.0%	+11	586
Consultants	16	15	16	16	+0	+2.2%	+1	+8.3%	-0	18
Registrars	13	19	13	15	+2	+13.7%	-4	-21.5%	+1	28
SHO/ Interns			2	1	+1		+1		-1	1
Medical & Dental	29	34	32	32	+3	+10.1%	-2	-6.2%	-0	47
Nurse/ Midwife Manager	62	81	82	82	+20	+31.3%	+1	+1.4%	+0	84
Nurse/ Midwife Specialist & AN/MP	8	11	11	10	+2	+27.2%	-1	-4.6%	-0	12
Staff Nurse/ Staff Midwife	169	151	152	156	-13	-7.8%	+5	+3.0%	+3	160
Pre-registration Nurse/ Midwife Intern			1						-1	
Nursing/ Midwifery Student			1						-1	
Nursing/ Midwifery other	1	2	2	2	+1	+100.0%	+0	+1.5%	+0	2
Nursing & Midwifery	240	245	247	250	+10	+4.0%	+5	+2.1%	+2	258
Therapy Professions	11	10	10	9	-2	-14.2%	-0	-3.0%	-1	10
Social Care	2	1	1	1	-1	-49.0%	+0	+1.0%	+0	1
Social Workers	15	11	13	13	-2	-15.6%	+2	+16.6%	+0	14
Psychologists	6	5	4	4	-2	-33.3%	-1	-25.7%	+0	4
Pharmacy		2	3	3	+3		+1	+26.3%	-1	3
Health & Social Care Professionals	34	29	31	30	-4	-12.9%	+1	+2.3%	-1	32
Management (VIII & above)	27	33	35	35	+8	+29.3%	+2	+7.1%	-0	35
Administrative/ Supervisory (V to VII)	31	46	57	57	+26	+82.2%	+11	+23.5%	-0	60
Clerical (III & IV)	25	28	28	30	+5	+19.2%	+2	+7.8%	+2	32
Management & Administrative	83	106	120	122	+38	+46.0%	+15	+14.4%	+2	127
Support	12	25	20	20	+8	+64.2%	-5	-18.9%	+0	21
Maintenance/ Technical	2	8	6	7	+5	+261.0%	-1	-9.4%	+1	8
General Support	14	33	26	27	+13	+91.9%	-5	-16.6%	+1	29
Health Care Assistants	37	64	69	75	+38	+104.2%	+11	+16.5%	+6	81
Care, other	1	0	12	12	+11	+2,282.0%	+11	+2,434.0%	+0	12
Patient & Client Care	37	65	80	87	+50	+133.5%	+22	+34.0%	+7	93

Mental Health Employment Report by Grade Group: JUL 2023

JUL 2023	WTE DEC 2019	WTE DEC 2022	WTE JUN 2023	WTE JUL 2023	WTE change since DEC 2019	% WTE change since Dec 2019	WTE change since DEC 2022	% WTE change since Dec 2022	WTE change since JUN 2023	No. JUL 2023
Overall	9,967	10,453	10,656	10,602	+635	+6.4%	+148	+1.4%	-54	11,813
Consultant Medicine	1	1	1	1	+0	+0.0%	+0	+0.0%	+0	1
Consultant Psychiatry	352	396	405	403	+52	+14.7%	+7	+1.8%	-2	442
Consultants	353	397	406	404	+52	+14.7%	+7	+1.8%	-2	443
Registrar	169	217	225	210	+41	+24.1%	-7	-3.3%	-15	262
Senior Registrar	97	126	116	122	+25	+25.6%	-4	-2.9%	+6	159
Specialist Registrar	3	2	2	2	-1	-20.8%	-0	-0.5%	-0	2
Registrars	269	345	343	334	+65	+24.2%	-11	-3.1%	-9	423
Interns	8	5	5	9	+1	+15.5%	+4	+87.8%	+4	12
Senior House Officer	253	262	240	220	-33	-12.9%	-42	-15.9%	-19	267
SHO/ Interns	261	267	245	230	-32	-12.1%	-37	-14.0%	-15	279
Other Medical	5	4	3	3	-2	-40.6%	-1	-24.0%	+0	6
Medical/ Dental, other	5	4	3	3	-2	-40.6%	-1	-24.0%	+0	6
Medical & Dental	888	1,013	997	971	+83	+9.4%	-42	-4.1%	-27	1,151
Clinical Nurse/ Midwife Manager	1,008	1,036	1,021	1,031	+23	+2.3%	-5	-0.5%	+10	1,089
Director Nursing/Midwifery, Assistant	165	176	178	177	+12	+7.2%	+0	+0.3%	-2	181
Director of Nursing/Midwifery	29	34	32	30	+1	+3.6%	-4	-11.2%	-2	30
Nurse/ Midwife Manager	1,201	1,245	1,232	1,237	+36	+3.0%	-8	-0.7%	+5	1,300
Advanced Nurse/ Midwife Practitioner	30	68	75	77	+48	+159.8%	+9	+13.2%	+2	81
Clinical Nurse/ Midwife Specialist	430	563	609	614	+184	+42.8%	+52	+9.2%	+5	656
Nurse/ Midwife Specialist & AN/MP	460	631	684	692	+232	+50.3%	+61	+9.7%	+7	737
Staff Nurse [Intellectual Disability]	5	7	11	8	+4	+79.5%	+1	+22.3%	-2	9
Staff Nurse [Psychiatric]	2,890	2,835	2,755	2,737	-153	-5.3%	-98	-3.5%	-18	2,966
Staff Nurses [General/ Children's]	108	106	105	96	-12	-11.2%	-11	-9.9%	-9	104
Staff Nurse/ Staff Midwife	3,002	2,948	2,871	2,841	-162	-5.4%	-107	-3.6%	-30	3,079
Nursing/ Midwifery awaiting registration	57	39	5	5	-51	-90.4%	-33	-85.9%	-0	6
Post-registration Nurse/ Midwife Student	1				-1	-100.0%				
Pre-registration Nurse/ Midwife Intern	25	26	166	166	+141	+563.1%	+140	+528.5%	-0	332
Nursing/ Midwifery Student	83	65	172	171	+88	+106.7%	+106	+163.1%	-0	338
Nursing Education/Clinical	32	34	32	33	+1	+4.4%	-1	-4.2%	+1	36
Nursing/ Midwifery other	32	34	32	33	+1	+4.4%	-1	-4.2%	+1	36
Nursing & Midwifery	4,778	4,924	4,990	4,974	+196	+4.1%	+50	+1.0%	-16	5,490
Dietitians	19	18	20	19	+0	+0.5%	+1	+6.3%	-1	22
Occupational Therapists	337	346	352	347	+10	+3.1%	+1	+0.2%	-5	388
Physiotherapists	2	3	2	1	-1	-60.1%	-2	-69.7%	-1	2
Podiatrists & Chiropodists	1	1	1		-1	-100.0%	-1	-100.0%	-1	
Speech & Language Therapists	62	68	70	66	+5	+7.5%	-1	-1.9%	-4	80
Therapy Professions	420	435	445	433	+13	+3.1%	-2	-0.5%	-12	492
Social Care	74	72	66	63	-10	-14.1%	-9	-12.1%	-3	73
Social Care	74	72	66	63	-10	-14.1%	-9	-12.1%	-3	73
Social Workers	350	414	420	415	+65	+18.5%	+2	+0.4%	-5	466
Social Workers	350	414	420	415	+65	+18.5%	+2	+0.4%	-5	466
Psychologists	394	448	462	456	+61	+15.6%	+8	+1.8%	-7	507
Psychologists	394	448	462	456	+61	+15.6%	+8	+1.8%	-7	507
Pharmacists	16	16	17	16	+0	+0.9%	+1	+4.4%	-1	24
Pharmacy Technicians	2	4	5	5	+2	+84.6%	+1	+22.6%	+0	7
Pharmacy	19	19	22	21	+2	+12.0%	+2	+7.9%	-1	31
Counsellor Therapists	95	124	123	122	+28	+29.0%	-2	-1.6%	-0	136
Other Health & Social Care	11	3	4	4	-7	-67.3%	+1	+18.7%	+0	7
Play Therapists/ Specialists	1	3	4	4	+3	+181.5%	+1	+32.2%	+0	5
H&SC, Other	107	130	130	130	+23	+21.3%	-0	-0.3%	-0	148
Health & Social Care Professionals	1,364	1,518	1,545	1,518	+154	+11.3%	-0	0.0%	-27	1,717
Executive Management	11	14	17	17	+6	+50.5%	+3	+19.1%	-0	17
Senior Management (VIII & GM)	47	61	61	59	+12	+25.0%	-1	-2.4%	-2	60
Management (VIII & above)	58	75	78	76	+17	+29.8%	+1	+1.6%	-2	77

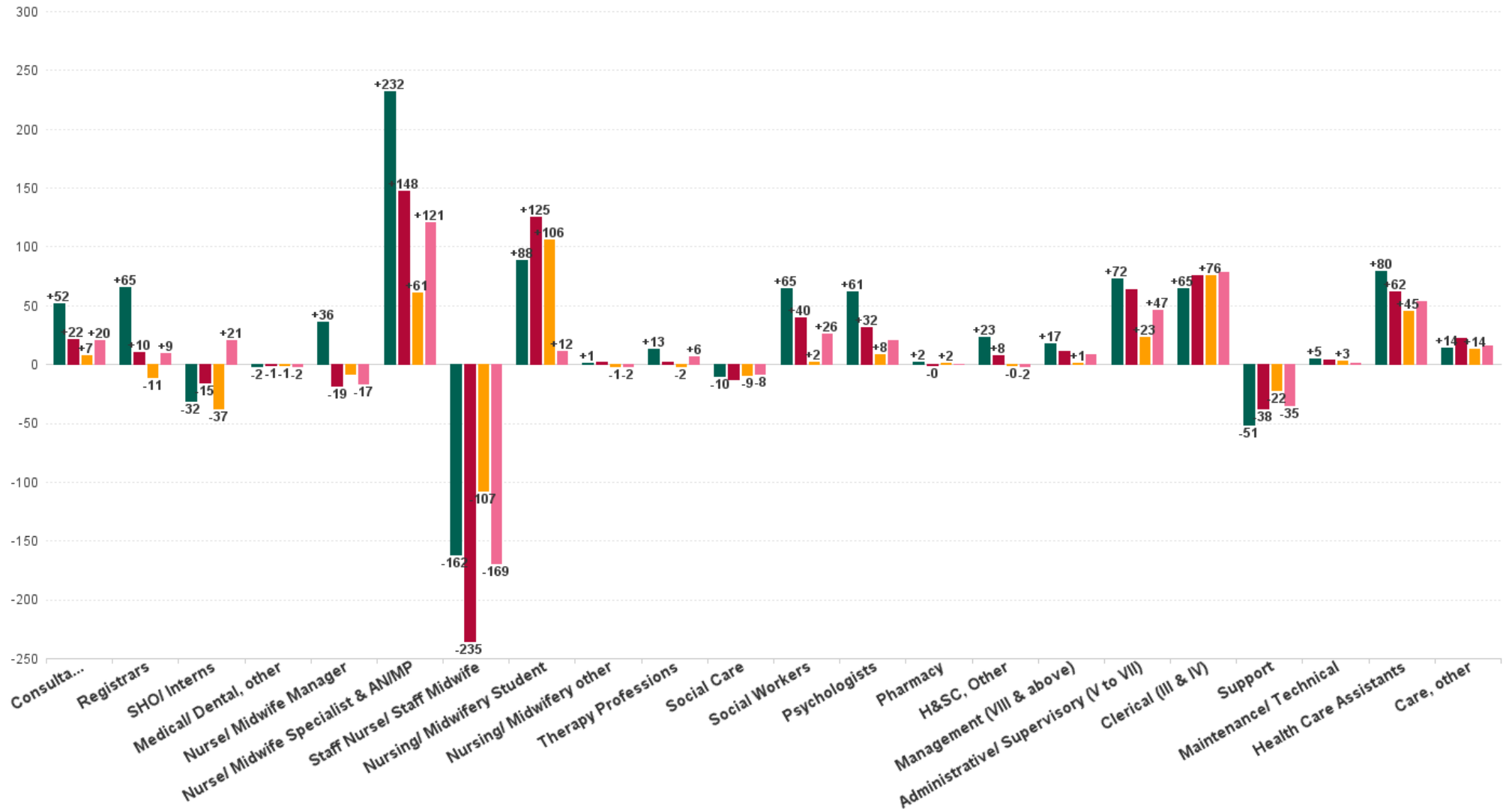


JUL 2023	WTE DEC 2019	WTE DEC 2022	WTE JUN 2023	WTE JUL 2023	WTE change since DEC 2019	% WTE change since Dec 2019	WTE change since DEC 2022	% WTE change since Dec 2022	WTE change since JUN 2023	No. JUL 2023
Overall	9,967	10,453	10,656	10,602	+635	+6.4%	+148	+1.4%	-54	11,813
Middle Management (V-VII)	236	285	312	308	+71	+30.2%	+22	+7.8%	-4	329
Other Administrative	2	2	3	3	+1	+65.6%	+1	+65.6%	+0	3
Administrative/ Supervisory (V to VII)	238	287	314	310	+72	+30.5%	+23	+8.1%	-4	332
General Administrative (III & IV)	717	707	776	782	+65	+9.0%	+76	+10.7%	+6	876
Clerical (III & IV)	717	707	776	782	+65	+9.0%	+76	+10.7%	+6	876
Management & Administrative	1,014	1,068	1,168	1,168	+155	+15.3%	+100	+9.4%	+0	1,285
Catering	66	68	66	68	+2	+2.7%	-0	0.0%	+2	73
Household Services	424	397	388	388	-36	-8.5%	-9	-2.3%	+0	449
Other Support	47	40	34	35	-12	-24.7%	-5	-12.6%	+1	41
Portering	48	51	44	43	-5	-10.9%	-8	-15.2%	-1	45
Support	585	556	531	534	-51	-8.7%	-22	-3.9%	+2	608
Maintenance	127	129	128	132	+5	+3.9%	+3	+2.5%	+4	137
Maintenance/ Technical	127	129	128	132	+5	+3.9%	+3	+2.5%	+4	137
General Support	712	685	660	666	-46	-6.5%	-19	-2.7%	+6	745
Attendant/ Aide	605	423	412	413	-192	-31.8%	-10	-2.3%	+1	457
Health Care Assistant/ Care Assistant	382	588	628	632	+250	+65.5%	+43	+7.4%	+3	662
Health & Social Care Assistants	9	19	29	31	+22	+242.5%	+11	+60.0%	+2	37
Health Care Assistants	996	1,030	1,069	1,075	+80	+8.0%	+45	+4.4%	+6	1,156
Home Care Services	16	23	20	20	+4	+27.0%	-3	-13.3%	+0	29
Other Care Grades	23	19	38	37	+15	+65.8%	+18	+94.5%	-0	42
Pastoral Care	13	9	9	9	-3	-26.1%	-0	-1.2%	-0	14
Workshop Services	165	164	159	163	-2	-1.3%	-1	-0.9%	+3	184
Care, other	216	216	226	229	+14	+6.3%	+14	+6.3%	+3	269
Patient & Client Care	1,212	1,246	1,295	1,305	+93	+7.7%	+59	+4.7%	+9	1,425



WTE Change by Staff Category

■ WTE change since DEC 2019 ■ WTE change since DEC 2021 ■ WTE change since DEC 2022 ■ WTE change since JUL 2022



Mental Health Employment Report by WTE, Headcount, Gender, Full-Time / Part-Time etc. JUL 2023

JUL 2023	WTE JUL 2023	No. JUL 2023	WTE : No	% Male	% Female	Male WTE : No.	Female WTE : No	Perm Count %	Perm Count Male %	Perm Count Female %	Fulltime Count %	Part time Count %	FT Count Male %	FT Count Female %
Total	10,602	11,813	1:0.9	26.83%	73.17%	1:0.9	1:0.9	83.16%	21.48%	61.68%	85.91%	14.09%	93.72%	83.05%
Consultants	404.32	443	1:0.9	41.08%	58.92%	1:0.9	1:0.9	67.72%	28.67%	39.05%	87.13%	12.87%	92.31%	83.52%
Registrars	333.99	423	1:0.8	42.79%	57.21%	1:0.8	1:0.8	2.60%	1.18%	1.42%	94.56%	5.44%	98.34%	91.74%
SHO/ Interns	229.64	279	1:0.8	39.78%	60.22%	1:0.9	1:0.8	0.36%	0.36%		98.92%	1.08%	100.00%	98.21%
Medical/ Dental, other	2.97	6	1:0.5	50.00%	50.00%	1:0.4	1:0.5	50.00%	16.67%	33.33%	33.33%	66.67%	33.33%	33.33%
Medical & Dental	971	1,151	1:0.8	41.44%	58.56%	1:0.9	1:0.8	27.37%	11.64%	15.73%	92.44%	7.56%	96.02%	89.91%
Nurse/ Midwife Manager	1,237.12	1,300	1:1	36.77%	63.23%	1:1	1:0.9	98.77%	36.15%	62.62%	94.85%	5.15%	98.54%	92.70%
Nurse/ Midwife Specialist & AN/MP	691.69	737	1:0.9	17.91%	82.09%	1:1	1:0.9	99.59%	17.91%	81.68%	93.08%	6.92%	97.73%	92.07%
Staff Nurse/ Staff Midwife	2,840.69	3,079	1:0.9	24.91%	75.09%	1:0.9	1:0.9	91.72%	22.05%	69.67%	87.37%	12.63%	91.26%	86.07%
Nursing/ Midwifery Student	171.43	338	1:0.5	17.46%	82.54%	1:0.5	1:0.5	1.48%	0.30%	1.18%	100.00%		100.00%	100.00%
Nursing/ Midwifery other	32.94	36	1:0.9	11.11%	88.89%	1:1	1:0.9	100.00%	11.11%	88.89%	88.89%	11.11%	100.00%	87.50%
Nursing & Midwifery	4,974	5,490	1:0.9	26.23%	73.77%	1:0.9	1:0.9	88.94%	23.42%	65.52%	90.69%	9.31%	94.65%	89.28%
Therapy Professions	433.3	492	1:0.9	9.55%	90.45%	1:0.9	1:0.9	93.70%	9.15%	84.55%	84.35%	15.65%	89.36%	83.82%
Social Care	63.13	73	1:0.9	20.55%	79.45%	1:1	1:0.8	90.41%	16.44%	73.97%	69.86%	30.14%	80.00%	67.24%
Social Workers	415.26	466	1:0.9	17.17%	82.83%	1:0.9	1:0.9	93.78%	16.09%	77.68%	83.26%	16.74%	95.00%	80.83%
Psychologists	455.85	507	1:0.9	20.71%	79.29%	1:1	1:0.9	74.95%	15.98%	58.97%	82.25%	17.75%	97.14%	78.36%
Pharmacy	20.74	31	1:0.7	16.13%	83.87%	1:0.9	1:0.6	93.55%	12.90%	80.65%	51.61%	48.39%	80.00%	46.15%
H&SC, Other	129.94	148	1:0.9	20.27%	79.73%	1:0.9	1:0.9	91.89%	18.24%	73.65%	72.97%	27.03%	90.00%	68.64%
Health & Social Care Professionals	1,518	1,717	1:0.9	16.42%	83.58%	1:1	1:0.9	87.89%	14.21%	73.68%	81.25%	18.75%	93.26%	78.89%
Management (VIII & above)	75.76	77	1:1	29.87%	70.13%	1:1	1:1	96.10%	28.57%	67.53%	97.40%	2.60%	95.65%	98.15%
Administrative/ Supervisory (V to VII)	310.31	332	1:0.9	20.18%	79.82%	1:1	1:0.9	94.58%	18.67%	75.90%	89.76%	10.24%	98.51%	87.55%
Clerical (III & IV)	782.3	876	1:0.9	9.02%	90.98%	1:1	1:0.9	85.73%	7.88%	77.85%	78.54%	21.46%	93.67%	77.04%
Management & Administrative	1,168	1,285	1:0.9	13.15%	86.85%	1:1	1:0.9	88.64%	11.91%	76.73%	82.57%	17.43%	95.86%	80.56%
Support	533.88	608	1:0.9	28.95%	71.05%	1:1	1:0.8	93.26%	26.81%	66.45%	63.98%	36.02%	89.77%	53.47%
Maintenance/ Technical	131.91	137	1:1	99.27%	0.73%	1:1	1:1	94.89%	94.16%	0.73%	97.08%	2.92%	97.06%	100.00%
General Support	666	745	1:0.9	41.88%	58.12%	1:1	1:0.8	93.56%	39.19%	54.36%	70.07%	29.93%	92.95%	53.58%
Health Care Assistants	1,075.19	1,156	1:0.9	31.83%	68.17%	1:0.9	1:0.9	90.83%	28.37%	62.46%	81.23%	18.77%	91.30%	76.52%
Care, other	229.48	269	1:0.9	45.35%	54.65%	1:0.9	1:0.8	85.87%	37.55%	48.33%	70.26%	29.74%	81.15%	61.22%
Patient & Client Care	1,305	1,425	1:0.9	34.39%	65.61%	1:0.9	1:0.9	89.89%	30.11%	59.79%	79.16%	20.84%	88.78%	74.12%



Mental Health Employment Report by WTE, Headcount, Gender, Full-Time / Part-Time etc. JUL 2023

JUL 2023	WTE JUL 2023	No. JUL 2023	WTE : No	% Male	% Female	Male WTE : No.	Female WTE : No	Perm Count %	Number Male %	Number Female %	Fulltime Count %	Part time Count %	FT Count Male %	FT Count Female %
Total	10,602	11,813	1:0.9	26.83%	73.17%	1:0.9	1:0.9	83.16%	21.48%	61.68%	85.91%	14.09%	93.72%	83.05%
CHO 1	1,056	1,162	1:0.9	26.08%	73.92%	1:0.9	1:0.9	88.21%	21.77%	66.44%	88.12%	11.88%	96.37%	85.22%
CHO 2	1,323	1,454	1:0.9	28.13%	71.87%	1:0.9	1:0.9	85.97%	23.25%	62.72%	85.90%	14.10%	91.93%	83.54%
CHO 3	814	901	1:0.9	21.09%	78.91%	1:0.9	1:0.9	81.47%	17.31%	64.15%	86.90%	13.10%	91.58%	85.65%
CHO 4	1,568	1,752	1:0.9	26.08%	73.92%	1:0.9	1:0.9	71.06%	16.84%	54.22%	82.76%	17.24%	91.90%	79.54%
CHO 5	1,291	1,436	1:0.9	24.93%	75.07%	1:0.9	1:0.9	88.58%	21.45%	67.13%	81.27%	18.73%	91.34%	77.92%
CHO 6	663	767	1:0.9	29.34%	70.66%	1:0.9	1:0.8	85.53%	24.51%	61.02%	83.31%	16.69%	91.56%	79.89%
CHO 7	901	1,026	1:0.9	23.68%	76.32%	1:0.9	1:0.9	79.34%	17.45%	61.89%	89.67%	10.33%	96.30%	87.61%
CHO 8	1,131	1,244	1:0.9	24.52%	75.48%	1:1	1:0.9	85.29%	20.02%	65.27%	87.06%	12.94%	96.39%	84.03%
CHO 9	1,308	1,485	1:0.9	27.68%	72.32%	1:0.9	1:0.9	84.11%	23.03%	61.08%	85.93%	14.07%	96.11%	82.03%
other Community Services	547	586	1:0.9	45.90%	54.10%	1:0.9	1:0.9	88.40%	39.25%	49.15%	95.22%	4.78%	94.05%	96.21%



Previous Month Summary

	% WTE change since JUN 2023	WTE change since DEC 2022	CHO 1	CHO 2	CHO 3	CHO 4	CHO 5	CHO 6	CHO 7	CHO 8	CHO 9	other Communi ty Services
Total	-0.5%	+148.4	+32.1	-6.2	+0.2	+6.1	+66.7	+13.8	+22.5	+40.5	-63.1	+35.8
Consultants	-0.5%	+7.3	+0.8	+2.5	+0.9	+1.0	-1.9	+2.2	+2.4	+0.3	-2.1	+1.2
Registrars	-2.7%	-10.8	+7.2	-0.3	+7.4	-7.5	+6.5	-3.9	-8.7	-0.8	-6.6	-4.0
SHO/ Interns	-6.2%	-37.5	-1.0	-10.7	-20.2	+0.4	-7.1	+1.3	-1.0	+2.6	-2.5	+0.8
Medical/ Dental, other	+0.0%	-0.9		-1.0		+0.0	+0.1					
Medical & Dental	-2.7%	-41.8	+7.0	-9.5	-11.8	-6.1	-2.5	-0.3	-7.3	+2.1	-11.2	-2.1
Nurse/ Midwife Manager	+0.4%	-8.3	+6.3	+5.7	-5.0	-1.3	-14.5	-2.9	+1.4	+1.7	-0.9	+1.1
Nurse/ Midwife Specialist & AN/MP	+1.1%	+60.9	+3.7	+7.8	+3.8	+5.7	+19.2	+5.2	+8.7	+4.5	+3.0	-0.5
Staff Nurse/ Staff Midwife	-1.1%	-107.1	+2.3	-19.9	-5.9	-27.5	-5.8	+0.1	-6.3	-5.7	-43.1	+4.6
Nursing/ Midwifery Student	-0.2%	+106.3	+10.2	+12.5	+12.4	+17.7	+12.8	+6.0	+14.4	+16.1	+4.2	
Nursing/ Midwifery other	+4.4%	-1.4	-0.9	+0.5	+0.0		+1.0	-0.8	+0.7	+0.0	-2.1	+0.0
Nursing & Midwifery	-0.3%	+50.4	+21.5	+6.6	+5.2	-5.3	+12.7	+7.7	+18.9	+16.7	-38.9	+5.3
Therapy Professions	-2.6%	-2.1	+0.0	-1.5	-0.0	+8.2	-0.7	-2.2	-0.8	+1.0	-5.9	-0.3
Social Care	-4.2%	-8.7	-1.5	-2.0	-0.8	-0.5	+0.5	-1.8	-0.6	-2.2	+0.0	+0.0
Social Workers	-1.1%	+1.7	-2.7	-1.4	-2.0	+1.9	+1.8	+2.8	+0.3	+0.4	-1.3	+1.8
Psychologists	-1.4%	+8.0	+6.5	+4.4	-4.1	-6.9	+7.1	-2.5	+4.5	+1.5	-1.1	-1.4
Pharmacy	-3.8%	+1.5	+0.1	-0.0	-0.0	-0.9			+0.4	+0.9	+0.5	+0.5



H&SC, Other	-0.2%	-0.4	-1.3	+0.0	+0.7	-0.7	-0.8	+2.2	-1.6	+0.8	+0.3	
Health & Social Care Professionals	-1.7%	-0.1	+1.2	-0.4	-6.2	+1.0	+7.9	-1.4	+2.2	+2.3	-7.4	+0.7
Management (VIII & above)	-2.4%	+1.2	-2.3	-0.0	+0.0	+0.6	-0.7	+0.0	+0.1	+0.0	+1.1	+2.3
Administrative/ Supervisory (V to VII)	-1.3%	+23.3	+3.8	-0.2	+2.0	+3.1	+3.1	-1.9	+3.1	-3.3	+2.7	+10.8
Clerical (III & IV)	+0.8%	+75.6	+3.1	+4.5	+8.7	+8.4	+18.0	+5.5	+5.5	+19.0	+0.8	+2.2
Management & Administrative	+0.0%	+100.1	+4.7	+4.3	+10.8	+12.1	+20.5	+3.7	+8.6	+15.7	+4.5	+15.3
Support	+0.4%	-21.9	+3.3	-3.4	+1.6	-11.3	+5.8	-1.3	-2.9	-2.5	-6.5	-4.7
Maintenance/ Technical	+2.8%	+3.2	-0.8	-1.0	+0.1	+0.0	+1.2	+2.2	+0.1	+3.2	-1.1	-0.8
General Support	+0.9%	-18.8	+2.5	-4.5	+1.6	-11.3	+7.0	+0.9	-2.8	+0.7	-7.6	-5.4
Health Care Assistants	+0.6%	+45.1	-2.7	-1.0	-0.3	+14.9	+17.2	+3.5	+0.1	+4.4	-1.7	+10.7
Care, other	+1.4%	+13.5	-2.1	-1.8	+0.9	+0.8	+3.8	-0.2	+2.8	-1.4	-0.7	+11.4
Patient & Client Care	+0.7%	+58.6	-4.8	-2.8	+0.6	+15.7	+21.0	+3.3	+2.9	+3.0	-2.5	+22.1



Year on Year Summary

	% WTE change since JUL 2022	WTE change since JUL 2022	CHO 1	CHO 2	CHO 3	CHO 4	CHO 5	CHO 6	CHO 7	CHO 8	CHO 9	other Communi ty Services
Total	-0.5%	+205.8	+32.9	+27.7	-6.3	-10.2	+69.0	+24.4	+13.7	+43.9	-45.0	+55.7
Consultants	-0.5%	+20.0	+0.7	+1.3	+4.3	+6.3	-1.7	+8.8	+2.7	-4.6	+1.3	+0.8
Registrars	-2.7%	+9.2	+10.7	-2.9	+7.0	-5.5	+4.5	+0.6	-1.2	-6.9	+7.5	-4.6
SHO/ Interns	-6.2%	+20.8	-0.1	+0.6	-5.7	+7.3	-6.1	+1.2	-0.2	+10.8	+12.3	+0.8
Medical/ Dental, other	+0.0%	-1.9		-1.0		-1.0	+0.1					
Medical & Dental	-2.7%	+48.0	+11.4	-2.0	+5.6	+7.2	-3.3	+10.5	+1.2	-0.8	+21.1	-3.0
Nurse/ Midwife Manager	+0.4%	-16.6	+8.8	+3.4	-9.5	-6.7	-8.9	-2.4	-4.5	+0.7	-2.3	+4.7
Nurse/ Midwife Specialist & AN/MP	+1.1%	+121.1	+12.9	+14.8	+10.3	+7.1	+31.9	+11.5	+9.9	+14.2	+7.3	+1.2
Staff Nurse/ Staff Midwife	-1.1%	-169.1	-4.3	-17.8	-18.4	-35.1	-12.5	-6.7	-13.6	-4.5	-56.0	-0.2
Nursing/ Midwifery Student	-0.2%	+11.6	+0.9	+0.5	+4.7	+1.4	+1.4	+1.4	-0.4	+0.8	+1.0	
Nursing/ Midwifery other	+4.4%	-1.6	-0.9	+1.5	+0.0		+1.0	-0.8	-0.5	+0.0	-1.9	+0.0
Nursing & Midwifery	-0.3%	-54.6	+17.3	+2.4	-12.8	-33.2	+12.9	+3.0	-9.1	+11.2	-51.9	+5.6
Therapy Professions	-2.6%	+6.3	-3.1	+6.5	-1.2	+10.2	-3.1	-0.2	-0.1	+3.2	-5.8	-0.2
Social Care	-4.2%	-8.1	-1.4	-0.9	-1.5	-1.6	-0.0	+0.3	-0.8	-2.1	+0.0	+0.0
Social Workers	-1.1%	+25.7	+1.3	-0.9	+1.1	+6.0	+4.8	+5.0	+0.3	-0.3	+7.7	+0.6
Psychologists	-1.4%	+20.8	+6.1	+5.0	+0.3	-7.1	+10.6	-2.3	+10.6	+0.1	-0.6	-2.0
Pharmacy	-3.8%	+0.3	+0.1	+0.0	-0.0	+0.1			-0.4	-0.0	-1.0	+1.5



H&SC, Other	-0.2%	-2.0	-0.5	+0.0	-0.3	-1.6	-0.2	+1.3	-2.2	+0.6	+0.8	
Health & Social Care Professionals	-1.7%	+43.1	+2.5	+9.8	-1.6	+6.1	+12.2	+4.0	+7.4	+1.6	+1.2	-0.1
Management (VIII & above)	-2.4%	+8.6	-2.3	+1.0	+1.0	+0.6	-1.0	+1.0	+0.0	+1.0	+2.0	+5.4
Administrative/ Supervisory (V to VII)	-1.3%	+46.6	+0.8	+0.9	+2.3	+5.2	+4.0	+0.7	+7.0	+3.8	+7.8	+14.1
Clerical (III & IV)	+0.8%	+78.6	+5.9	+11.0	+4.2	+5.5	+22.3	+0.1	+8.3	+19.3	-8.3	+10.3
Management & Administrative	+0.0%	+133.8	+4.4	+12.9	+7.6	+11.2	+25.3	+1.8	+15.4	+24.1	+1.5	+29.7
Support	+0.4%	-35.0	+1.7	-3.6	-1.1	-14.6	+7.2	-2.8	-3.3	-5.9	-13.0	+0.4
Maintenance/ Technical	+2.8%	+1.5	-1.1	+1.9	+0.0	+0.0	-0.7	+1.2	+0.0	+3.7	-0.7	-2.8
General Support	+0.9%	-33.5	+0.6	-1.8	-1.1	-14.6	+6.5	-1.6	-3.3	-2.2	-13.7	-2.4
Health Care Assistants	+0.6%	+53.5	-1.1	+3.5	-6.4	+12.8	+13.6	+6.5	-0.5	+11.2	-0.0	+13.9
Care, other	+1.4%	+15.5	-2.3	+2.8	+2.3	+0.5	+1.8	+0.1	+2.6	-1.2	-3.1	+11.9
Patient & Client Care	+0.7%	+68.9	-3.3	+6.3	-4.0	+13.2	+15.4	+6.6	+2.1	+10.0	-3.1	+25.8



Year to Date Summary

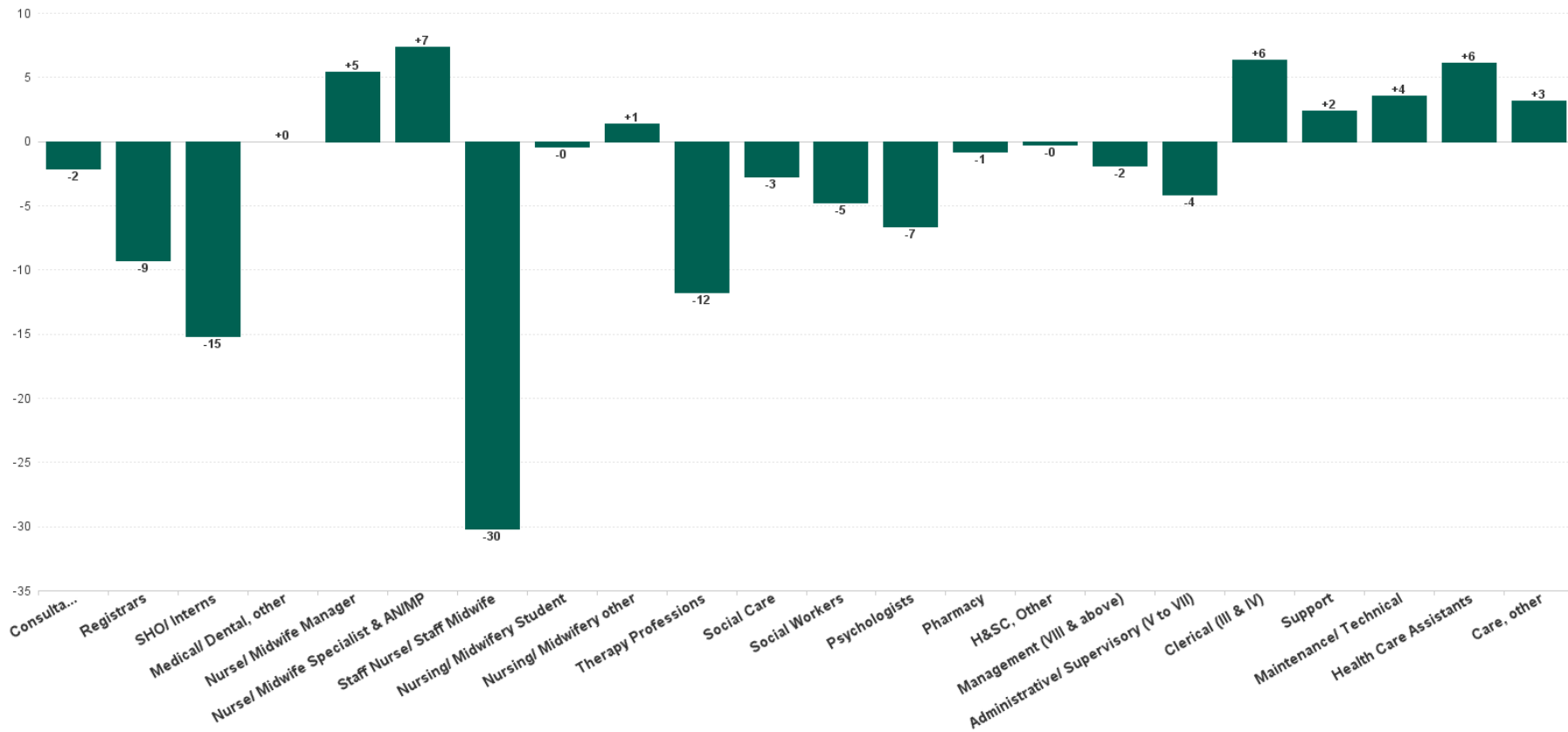
	% WTE change since JUL 2022	WTE change since DEC 2022	CHO 1	CHO 2	CHO 3	CHO 4	CHO 5	CHO 6	CHO 7	CHO 8	CHO 9	other Communi ty Services
Total	+1.4%	+148.4	+32.1	-6.2	+0.2	+6.1	+66.7	+13.8	+22.5	+40.5	-63.1	+35.8
Consultants	+1.8%	+7.3	+0.8	+2.5	+0.9	+1.0	-1.9	+2.2	+2.4	+0.3	-2.1	+1.2
Registrars	-3.1%	-10.8	+7.2	-0.3	+7.4	-7.5	+6.5	-3.9	-8.7	-0.8	-6.6	-4.0
SHO/ Interns	-14.0%	-37.5	-1.0	-10.7	-20.2	+0.4	-7.1	+1.3	-1.0	+2.6	-2.5	+0.8
Medical/ Dental, other	-24.0%	-0.9		-1.0		+0.0	+0.1					
Medical & Dental	-4.1%	-41.8	+7.0	-9.5	-11.8	-6.1	-2.5	-0.3	-7.3	+2.1	-11.2	-2.1
Nurse/ Midwife Manager	-0.7%	-8.3	+6.3	+5.7	-5.0	-1.3	-14.5	-2.9	+1.4	+1.7	-0.9	+1.1
Nurse/ Midwife Specialist & AN/MP	+9.7%	+60.9	+3.7	+7.8	+3.8	+5.7	+19.2	+5.2	+8.7	+4.5	+3.0	-0.5
Staff Nurse/ Staff Midwife	-3.6%	-107.1	+2.3	-19.9	-5.9	-27.5	-5.8	+0.1	-6.3	-5.7	-43.1	+4.6
Nursing/ Midwifery Student	+163.1%	+106.3	+10.2	+12.5	+12.4	+17.7	+12.8	+6.0	+14.4	+16.1	+4.2	
Nursing/ Midwifery other	-4.2%	-1.4	-0.9	+0.5	+0.0		+1.0	-0.8	+0.7	+0.0	-2.1	+0.0
Nursing & Midwifery	+1.0%	+50.4	+21.5	+6.6	+5.2	-5.3	+12.7	+7.7	+18.9	+16.7	-38.9	+5.3
Therapy Professions	-0.5%	-2.1	+0.0	-1.5	-0.0	+8.2	-0.7	-2.2	-0.8	+1.0	-5.9	-0.3
Social Care	-12.1%	-8.7	-1.5	-2.0	-0.8	-0.5	+0.5	-1.8	-0.6	-2.2	+0.0	+0.0
Social Workers	+0.4%	+1.7	-2.7	-1.4	-2.0	+1.9	+1.8	+2.8	+0.3	+0.4	-1.3	+1.8
Psychologists	+1.8%	+8.0	+6.5	+4.4	-4.1	-6.9	+7.1	-2.5	+4.5	+1.5	-1.1	-1.4
Pharmacy	+7.9%	+1.5	+0.1	-0.0	-0.0	-0.9			+0.4	+0.9	+0.5	+0.5
H&SC, Other	-0.3%	-0.4	-1.3	+0.0	+0.7	-0.7	-0.8	+2.2	-1.6	+0.8	+0.3	
Health & Social Care Professionals	0.0%	-0.1	+1.2	-0.4	-6.2	+1.0	+7.9	-1.4	+2.2	+2.3	-7.4	+0.7
Management (VIII & above)	+1.6%	+1.2	-2.3	-0.0	+0.0	+0.6	-0.7	+0.0	+0.1	+0.0	+1.1	+2.3
Administrative/ Supervisory (V to VII)	+8.1%	+23.3	+3.8	-0.2	+2.0	+3.1	+3.1	-1.9	+3.1	-3.3	+2.7	+10.8
Clerical (III & IV)	+10.7%	+75.6	+3.1	+4.5	+8.7	+8.4	+18.0	+5.5	+5.5	+19.0	+0.8	+2.2
Management & Administrative	+9.4%	+100.1	+4.7	+4.3	+10.8	+12.1	+20.5	+3.7	+8.6	+15.7	+4.5	+15.3
Support	-3.9%	-21.9	+3.3	-3.4	+1.6	-11.3	+5.8	-1.3	-2.9	-2.5	-6.5	-4.7



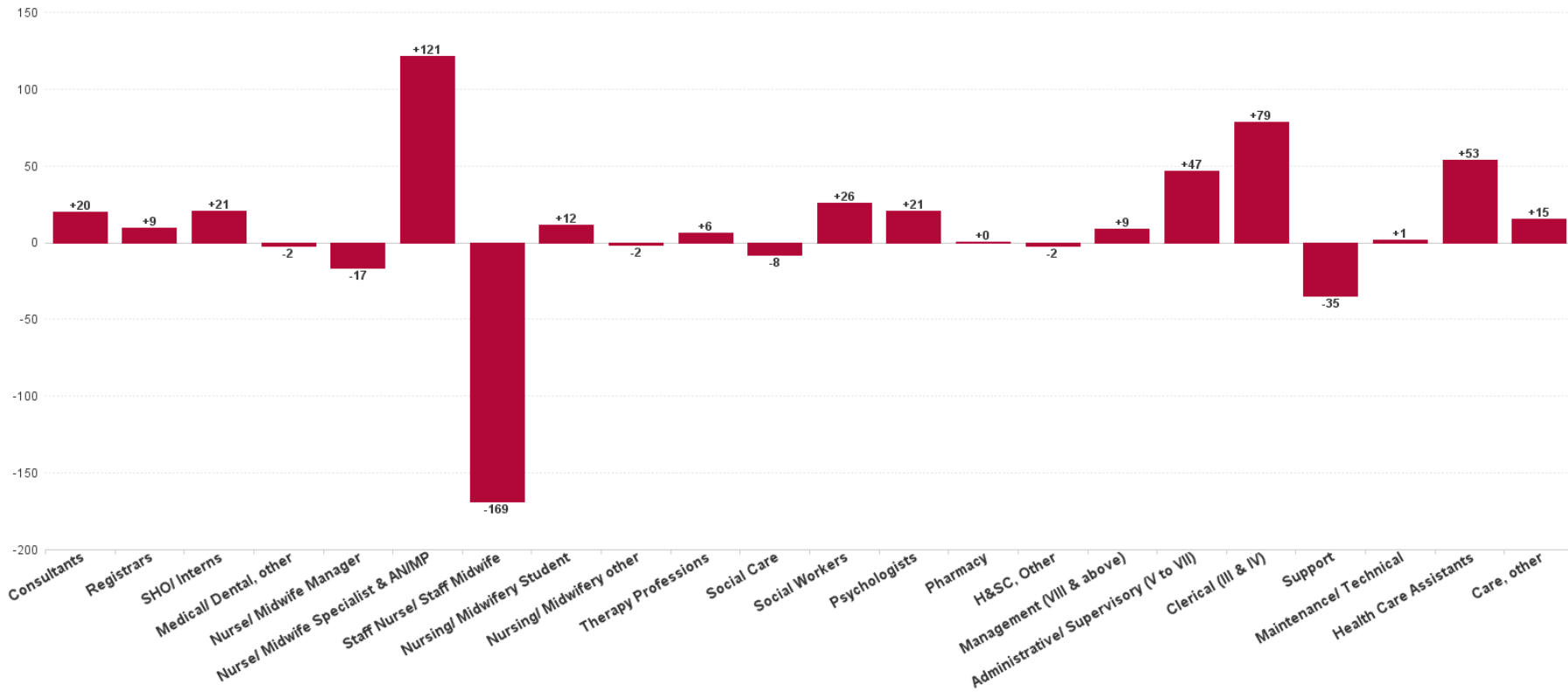
Maintenance/ Technical	+2.5%	+3.2	-0.8	-1.0	+0.1	+0.0	+1.2	+2.2	+0.1	+3.2	-1.1	-0.8
General Support	-2.7%	-18.8	+2.5	-4.5	+1.6	-11.3	+7.0	+0.9	-2.8	+0.7	-7.6	-5.4
Health Care Assistants	+4.4%	+45.1	-2.7	-1.0	-0.3	+14.9	+17.2	+3.5	+0.1	+4.4	-1.7	+10.7
Care, other	+6.3%	+13.5	-2.1	-1.8	+0.9	+0.8	+3.8	-0.2	+2.8	-1.4	-0.7	+11.4
Patient & Client Care	+4.7%	+58.6	-4.8	-2.8	+0.6	+15.7	+21.0	+3.3	+2.9	+3.0	-2.5	+22.1



Previous Month Summary Chart: Change since JUN 2023



Previous Year Summary Chart: Change since JUL 2022



YTD Summary Chart: Change since DEC 2022

