

# Mental Health Service Employment Report: June 2021

## Employment by Staff Group

Jun 2021 (Dec 2020 figure: 10,301)	WTE Apr 2021	WTE Jun 2021	WTE change since Apr 21	% change since Apr 21	WTE change since Dec 20	WTE change since Jun 20
<b>Overall</b>	<b>10,486</b>	<b>10,486</b>	<b>-0</b>	<b>-0.0%</b>	<b>+184</b>	<b>+217</b>
Consultants	377	382	+4	+1.1%	+12	+19
Registrars	310	308	-2	-0.7%	+27	+42
SHO/ Interns	246	248	+2	+0.9%	-28	+4
Medical/ Dental, other	4	4	-0	-9.2%	-1	-1
<b>Medical &amp; Dental</b>	<b>938</b>	<b>942</b>	<b>+4</b>	<b>+0.4%</b>	<b>+10</b>	<b>+65</b>
Nurse/ Midwife Manager	1,238	1,225	-13	-1.0%	-14	-14
Nurse/ Midwife Specialist & AN/MP	527	523	-3	-0.7%	-6	+30
Staff Nurse/ Staff Midwife	3,115	3,135	+21	+0.7%	+59	+123
<i>Pre-registration Nurse/ Midwife Intern</i>	<i>171</i>	<i>171</i>	<i>+0</i>	<i>+0.2%</i>	<i>+144</i>	<i>+169</i>
<i>Pre-registration Nurse Intern (COVID-19)</i>	<i>5</i>	<i>4</i>	<i>-0</i>	<i>-9.9%</i>	<i>+4</i>	<i>-227</i>
<i>Post-registration Nurse/ Midwife Student</i>	<i>1</i>	<i>1</i>				<i>+1</i>
<i>Nursing/ Midwifery awaiting registration</i>	<i>4</i>	<i>3</i>	<i>-1</i>	<i>-23.1%</i>	<i>-56</i>	<i>-9</i>
Nursing/ Midwifery Student	180	179	-1	-0.6%	+120	-66
Nursing/ Midwifery other	32	29	-3	-9.6%	-3	-3
<b>Nursing &amp; Midwifery</b>	<b>5,092</b>	<b>5,092</b>	<b>+1</b>	<b>+0.0%</b>	<b>+157</b>	<b>+70</b>
Therapy Professions	452	446	-6	-1.3%	+7	+10
Social Care	79	76	-3	-3.3%	-4	-0
Social Workers	380	379	-0	-0.1%	+7	+12
Psychologists	429	427	-2	-0.5%	+3	+24
Pharmacy	20	20	+0	+1.5%	-1	-1
H&SC, Other	104	108	+4	+3.7%	-0	-4
<b>Health &amp; Social Care Professionals</b>	<b>1,463</b>	<b>1,456</b>	<b>-7</b>	<b>-0.5%</b>	<b>+12</b>	<b>+40</b>
Management (VIII & above)	63	57	-5	-8.7%	-10	-1
Administrative/ Supervisory (V to VII)	242	246	+4	+1.5%	+1	+4
Clerical (III & IV)	729	723	-6	-0.8%	+1	+18
<b>Management &amp; Administrative</b>	<b>1,034</b>	<b>1,026</b>	<b>-7</b>	<b>-0.7%</b>	<b>-8</b>	<b>+22</b>
Support	590	585	-5	-0.8%	-9	-1
Maintenance/ Technical	137	135	-2	-1.4%	-2	+2
<b>General Support</b>	<b>727</b>	<b>720</b>	<b>-7</b>	<b>-1.0%</b>	<b>-11</b>	<b>+1</b>
Health Care Assistants	1,029	1,040	+11	+1.1%	+18	+21
Care, other	204	209	+5	+2.7%	+6	-3
<b>Patient &amp; Client Care</b>	<b>1,232</b>	<b>1,249</b>	<b>+17</b>	<b>+1.4%</b>	<b>+24</b>	<b>+18</b>

## Mental Health Services Employment by Administration (HSE / S38): June 2021

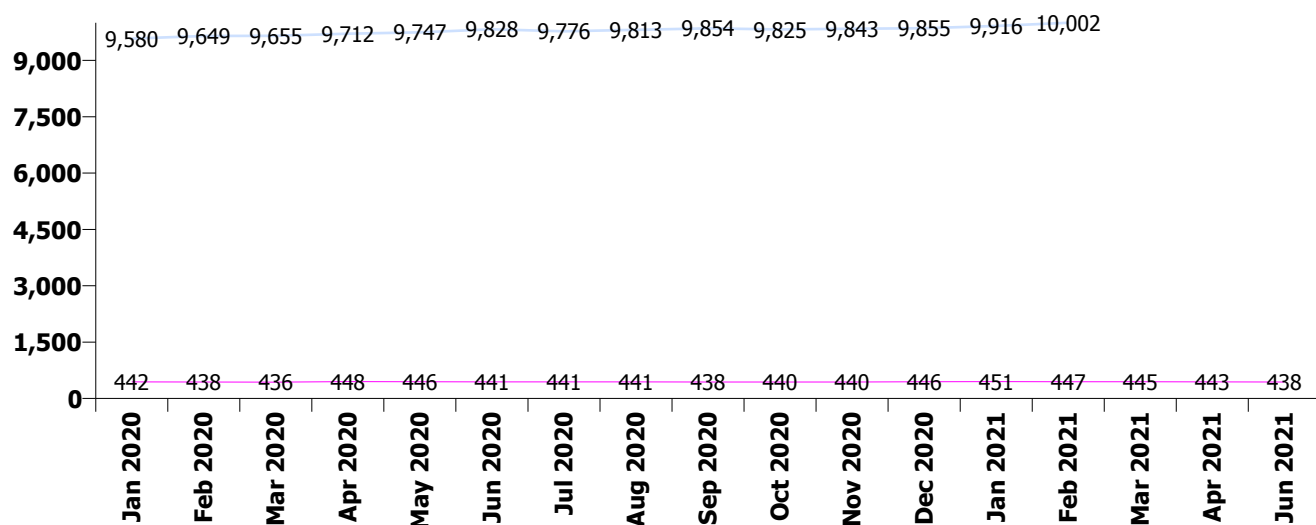
Jun 2021 (Dec 2020 figure: 10,301)	WTE Apr 2021	WTE Jun 2021	WTE change since Apr 21	% change since Apr 21	WTE change since Dec 20	WTE change since Jun 20
<b>Overall</b>	<b>10,486</b>	<b>10,486</b>	<b>-0</b>	<b>-0.0%</b>	<b>+184</b>	<b>+217</b>
<b>HSE</b>	<b>10,043</b>	<b>10,048</b>	<b>+5</b>	<b>+0.0%</b>	<b>+193</b>	<b>+220</b>
<b>Section 38 Voluntary Agencies</b>	<b>443</b>	<b>438</b>	<b>-5</b>	<b>-1.1%</b>	<b>-9</b>	<b>-3</b>

### HSE

Jun 2021 (Dec 2020 figure: 9,855)	WTE Apr 2021	WTE Jun 2021	WTE change since Apr 21	% change since Apr 21	WTE change since Dec 20	WTE change since Jun 20
<b>Overall</b>	<b>10,043</b>	<b>10,048</b>	<b>+5</b>	<b>+0.0%</b>	<b>+193</b>	<b>+220</b>
Consultants	357	360	+4	+1.0%	+12	+18
Registrars	290	289	-2	-0.6%	+23	+39
SHO/ Interns	238	240	+2	+0.9%	-27	+4
Medical/ Dental, other	4	4	-0	-9.2%	-1	-1
<b>Medical &amp; Dental</b>	<b>890</b>	<b>893</b>	<b>+4</b>	<b>+0.4%</b>	<b>+7</b>	<b>+60</b>
Nurse/ Midwife Manager	1,200	1,188	-12	-1.0%	-14	-12
Nurse/ Midwife Specialist & AN/MP	518	515	-3	-0.6%	-5	+30
Staff Nurse/ Staff Midwife	2,991	3,011	+19	+0.6%	+57	+120
<i>Pre-registration Nurse/ Midwife Intern</i>	161	161	+0	+0.2%	+141	+159
<i>Pre-registration Nurse Intern (COVID-19)</i>	5	4	-0	-9.9%	+4	-214
<i>Post-registration Nurse/ Midwife Student</i>	1	1				+1
<i>Nursing/ Midwifery awaiting registration</i>	4	3	-1	-23.1%	-56	-9
Nursing/ Midwifery Student	170	169	-1	-0.6%	+121	-63
Nursing/ Midwifery other	30	27	-3	-10.4%	-3	-3
<b>Nursing &amp; Midwifery</b>	<b>4,910</b>	<b>4,910</b>	<b>+0</b>	<b>+0.0%</b>	<b>+158</b>	<b>+72</b>
Therapy Professions	425	420	-5	-1.2%	+8	+12
Social Care	51	49	-2	-3.2%	-3	-1
Social Workers	361	363	+1	+0.4%	+9	+17
Psychologists	410	408	-2	-0.5%	+6	+20
Pharmacy	18	18	+0	+1.6%	-1	-1
H&SC, Other	103	107	+3	+3.2%	-1	-4
<b>Health &amp; Social Care Professionals</b>	<b>1,369</b>	<b>1,365</b>	<b>-4</b>	<b>-0.3%</b>	<b>+19</b>	<b>+43</b>
Management (VIII & above)	60	54	-5	-9.1%	-11	-2
Administrative/ Supervisory (V to VII)	222	228	+6	+2.5%	+4	+7
Clerical (III & IV)	686	681	-6	-0.8%	+1	+20
<b>Management &amp; Administrative</b>	<b>968</b>	<b>963</b>	<b>-6</b>	<b>-0.6%</b>	<b>-6</b>	<b>+25</b>
Support	553	549	-4	-0.7%	-7	+2
Maintenance/ Technical	130	128	-2	-1.5%	-2	+0
<b>General Support</b>	<b>684</b>	<b>678</b>	<b>-6</b>	<b>-0.9%</b>	<b>-9</b>	<b>+2</b>
Health Care Assistants	1,023	1,034	+11	+1.1%	+18	+21
Care, other	200	206	+6	+2.8%	+6	-4
<b>Patient &amp; Client Care</b>	<b>1,223</b>	<b>1,240</b>	<b>+17</b>	<b>+1.4%</b>	<b>+24</b>	<b>+17</b>

## Section 38 Voluntary Agencies

Jun 2021 (Dec 2020 figure: 446)	WTE Apr 2021	WTE Jun 2021	WTE change since Apr 21	% change since Apr 21	WTE change since Dec 20	WTE change since Jun 20
<b>Overall</b>	<b>443</b>	<b>438</b>	<b>-5</b>	<b>-1.1%</b>	<b>-9</b>	<b>-3</b>
Consultants	20	21	+1	+3.7%	+0	+1
Registrars	20	19	-1	-2.7%	+4	+4
SHO/ Interns	8	8			-1	
<b>Medical &amp; Dental</b>	<b>48</b>	<b>48</b>	<b>+0</b>	<b>+0.4%</b>	<b>+3</b>	<b>+5</b>
Nurse/ Midwife Manager	38	37	-1	-1.5%	-1	-2
Nurse/ Midwife Specialist & AN/MP	8	8	-0	-2.6%	-1	+0
Staff Nurse/ Staff Midwife	123	125	+1	+1.1%	+2	+3
Pre-registration Nurse/ Midwife Intern	10	10			+3	+10
Pre-registration Nurse Intern (COVID-19)				-100.0%		-13
Nursing/ Midwifery Student	10	10			-1	-3
Nursing/ Midwifery other	3	3				
<b>Nursing &amp; Midwifery</b>	<b>182</b>	<b>182</b>	<b>+1</b>	<b>+0.3%</b>	<b>-1</b>	<b>-2</b>
Therapy Professions	27	26	-1	-2.2%	-1	-2
Social Care	28	27	-1	-3.6%	-1	+1
Social Workers	18	16	-2	-9.0%	-2	-5
Psychologists	20	19	-0	-1.1%	-3	+4
Pharmacy	2	2				
H&SC, Other	0	1	+1	+118.8%	+0	+0
<b>Health &amp; Social Care Professionals</b>	<b>95</b>	<b>92</b>	<b>-3</b>	<b>-3.0%</b>	<b>-7</b>	<b>-2</b>
Management (VIII & above)	3	3			+1	+1
Administrative/ Supervisory (V to VII)	20	18	-2	-9.6%	-3	-2
Clerical (III & IV)	42	42	+0	+0.4%	-1	-2
<b>Management &amp; Administrative</b>	<b>65</b>	<b>63</b>	<b>-2</b>	<b>-2.7%</b>	<b>-2</b>	<b>-4</b>
Support	37	36	-1	-2.3%	-2	-3
Maintenance/ Technical	7	7				+2
<b>General Support</b>	<b>44</b>	<b>43</b>	<b>-1</b>	<b>-1.9%</b>	<b>-2</b>	<b>-1</b>
Health Care Assistants	6	6				
Care, other	4	4	-0	-3.3%	+0	+1
<b>Patient &amp; Client Care</b>	<b>9</b>	<b>9</b>	<b>-0</b>	<b>-1.3%</b>	<b>+0</b>	<b>+1</b>



## Mental Health Services Employment by CHO: Jun 2021

Jun 2021 (Dec 2020 figure: 10,301)	WTE Apr 2021	WTE Jun 2021	WTE change since Apr 21	% change since Apr 21	WTE change since Dec 20	WTE change since Jun 20
<b>Overall</b>	<b>10,486</b>	<b>10,486</b>	<b>-0</b>	<b>-0.0%</b>	<b>+184</b>	<b>+217</b>
<b>CHO 1</b>	<b>1,003</b>	<b>1,004</b>	<b>+1</b>	<b>+0.1%</b>	<b>+29</b>	<b>+26</b>
<b>CHO 2</b>	<b>1,370</b>	<b>1,366</b>	<b>-3</b>	<b>-0.3%</b>	<b>+26</b>	<b>+25</b>
<b>CHO 3</b>	<b>838</b>	<b>828</b>	<b>-10</b>	<b>-1.1%</b>	<b>+19</b>	<b>+11</b>
<b>CHO 4</b>	<b>1,570</b>	<b>1,567</b>	<b>-2</b>	<b>-0.1%</b>	<b>+4</b>	<b>-17</b>
<b>CHO 5</b>	<b>1,223</b>	<b>1,213</b>	<b>-10</b>	<b>-0.8%</b>	<b>+25</b>	<b>+30</b>
<b>CHO 6</b>	<b>634</b>	<b>630</b>	<b>-5</b>	<b>-0.7%</b>	<b>+3</b>	<b>+34</b>
<b>CHO 7</b>	<b>879</b>	<b>887</b>	<b>+8</b>	<b>+1.0%</b>	<b>+26</b>	<b>+21</b>
<b>CHO 8</b>	<b>1,122</b>	<b>1,126</b>	<b>+4</b>	<b>+0.3%</b>	<b>+14</b>	<b>+4</b>
<b>CHO 9</b>	<b>1,330</b>	<b>1,341</b>	<b>+10</b>	<b>+0.8%</b>	<b>+10</b>	<b>+33</b>
<b>other Community Services</b>	<b>517</b>	<b>523</b>	<b>+6</b>	<b>+1.2%</b>	<b>+29</b>	<b>+50</b>

## Mental Health Services Employment by CHO etc. Jun 2021

### CHO 1

Jun 2021 (Dec 2020 figure: 976)	WTE Apr 2021	WTE Jun 2021	WTE change since Apr 21	% change since Apr 21	WTE change since Dec 20	WTE change since Jun 20
<b>Overall</b>	<b>1,003</b>	<b>1,004</b>	<b>+1</b>	<b>+0.1%</b>	<b>+29</b>	<b>+26</b>
Consultants	36	36	+0	+0%	+2	+3
Registrars	33	32	-1	-3%	+2	+8
SHO/ Interns	19	20	+1	+5%	-3	-7
<b>Medical &amp; Dental</b>	<b>87</b>	<b>87</b>	<b>-0</b>	<b>-0.0%</b>	<b>+1</b>	<b>+5</b>
Nurse/ Midwife Manager	123	121	-2	-2%	+1	+1
Nurse/ Midwife Specialist & AN/MP	71	71	-0	-0%	-3	+5
Staff Nurse/ Staff Midwife	300	304	+4	+1%	+16	+12
Pre-registration Nurse/ Midwife Intern	16	16	-0	-1%	+16	+16
Pre-registration Nurse Intern (COVID-19)				-100%		-25
Nursing/ Midwifery Student	16	16	-0	-1%	+13	-10
Nursing/ Midwifery other	2	2	0		+1	+1
<b>Nursing &amp; Midwifery</b>	<b>511</b>	<b>513</b>	<b>+2</b>	<b>+0.4%</b>	<b>+28</b>	<b>+9</b>
Therapy Professions	38	37	-1	-3%	+1	+0
Social Care	4	4	0		+0	+0
Social Workers	41	41	+0	+0%	-1	+1
Psychologists	24	22	-1	-5%	-1	+0
Pharmacy	1	1	0			
H&SC, Other	14	13	-1	-6%	-0	+1
<b>Health &amp; Social Care Professionals</b>	<b>122</b>	<b>119</b>	<b>-3</b>	<b>-2.7%</b>	<b>-2</b>	<b>+4</b>
Management (VIII & above)	5	4	-1	-19%	-4	-3
Administrative/ Supervisory (V to VII)	31	30	-1	-4%	-1	-1
Clerical (III & IV)	89	91	+2	+2%	+5	+7
<b>Management &amp; Administrative</b>	<b>125</b>	<b>124</b>	<b>-1</b>	<b>-0.5%</b>	<b>+1</b>	<b>+4</b>
Support	63	63	-1	-1%	-2	-1
Maintenance/ Technical	16	16	-0	-0%	-0	-1
<b>General Support</b>	<b>80</b>	<b>79</b>	<b>-1</b>	<b>-1.0%</b>	<b>-2</b>	<b>-1</b>
Health Care Assistants	69	71	+2	+3%	+4	+7
Care, other	9	11	+2	+21%	-1	-1
<b>Patient &amp; Client Care</b>	<b>78</b>	<b>82</b>	<b>+4</b>	<b>+4.9%</b>	<b>+3</b>	<b>+6</b>

## CHO 2

Jun 2021 (Dec 2020 figure: 1,340)	WTE Apr 2021	WTE Jun 2021	WTE change since Apr 21	% change since Apr 21	WTE change since Dec 20	WTE change since Jun 20
<b>Overall</b>	<b>1,370</b>	<b>1,366</b>	<b>-3</b>	<b>-0.3%</b>	<b>+26</b>	<b>+25</b>
Consultants	40	42	+2	+5%	+5	+3
Registrars	38	40	+2	+4%	+3	+4
SHO/ Interns	38	38	-0	-1%	-2	+5
Medical/ Dental, other	1		-1	-100%	-1	-1
<b>Medical &amp; Dental</b>	<b>117</b>	<b>119</b>	<b>+3</b>	<b>+2.2%</b>	<b>+5</b>	<b>+11</b>
Nurse/ Midwife Manager	148	147	-1	-1%	-4	+3
Nurse/ Midwife Specialist & AN/MP	76	78	+1	+2%	-2	+4
Staff Nurse/ Staff Midwife	378	378	-0	-0%	+23	+26
<i>Pre-registration Nurse/ Midwife Intern</i>	21	21	+0	+1%	+21	+21
<i>Pre-registration Nurse Intern (COVID-19)</i>	1	1	-1	-50%	+1	-31
<i>Nursing/ Midwifery awaiting registration</i>				-100%	-5	
Nursing/ Midwifery Student	22	21	-0	-1%	+11	-10
Nursing/ Midwifery other	2	1	-1	-50%	-1	-2
<b>Nursing &amp; Midwifery</b>	<b>626</b>	<b>625</b>	<b>-2</b>	<b>-0.2%</b>	<b>+28</b>	<b>+22</b>
Therapy Professions	56	58	+2	+3%	+3	+6
Social Care	16	15	-1	-4%	-1	+0
Social Workers	41	40	-2	-4%	-2	-3
Psychologists	38	38	+1	+2%	+1	+2
Pharmacy	2	2	0			-1
H&SC, Other	3	3	-0	-5%	-0	-0
<b>Health &amp; Social Care Professionals</b>	<b>156</b>	<b>156</b>	<b>-0</b>	<b>-0.1%</b>	<b>+1</b>	<b>+3</b>
Management (VIII & above)	3	2	-1	-23%	-2	-2
Administrative/ Supervisory (V to VII)	25	25	-0	-1%	-2	+1
Clerical (III & IV)	103	102	-1	-1%	-1	-5
<b>Management &amp; Administrative</b>	<b>130</b>	<b>128</b>	<b>-2</b>	<b>-1.8%</b>	<b>-5</b>	<b>-6</b>
Support	30	31	+1	+2%	-0	-3
Maintenance/ Technical	35	33	-2	-6%	-0	+5
<b>General Support</b>	<b>65</b>	<b>64</b>	<b>-1</b>	<b>-2.2%</b>	<b>-1</b>	<b>+2</b>
Health Care Assistants	208	208	+0	+0%	-3	-4
Care, other	68	67	-1	-1%	+0	-3
<b>Patient &amp; Client Care</b>	<b>276</b>	<b>275</b>	<b>-1</b>	<b>-0.3%</b>	<b>-3</b>	<b>-7</b>

### CHO 3

Jun 2021 (Dec 2020 figure: 809)	WTE Apr 2021	WTE Jun 2021	WTE change since Apr 21	% change since Apr 21	WTE change since Dec 20	WTE change since Jun 20
<b>Overall</b>	<b>838</b>	<b>828</b>	<b>-10</b>	<b>-1.1%</b>	<b>+19</b>	<b>+11</b>
Consultants	24	25	+0	+2%	+0	+2
Registrars	19	19	0		+4	+1
SHO/ Interns	21	22	+0	+2%	+0	+2
<b>Medical &amp; Dental</b>	<b>64</b>	<b>65</b>	<b>+1</b>	<b>+1.3%</b>	<b>+5</b>	<b>+4</b>
Nurse/ Midwife Manager	88	87	-1	-1%	-1	-4
Nurse/ Midwife Specialist & AN/MP	38	32	-5	-14%	-4	-3
Staff Nurse/ Staff Midwife	273	271	-2	-1%	-1	+11
<i>Pre-registration Nurse/ Midwife Intern</i>	14	13	-0	-0%	+5	+13
<i>Pre-registration Nurse Intern (COVID-19)</i>				-100%		-20
Nursing/ Midwifery Student	14	13	-0	-0%	+10	-6
<b>Nursing &amp; Midwifery</b>	<b>412</b>	<b>403</b>	<b>-9</b>	<b>-2.1%</b>	<b>+3</b>	<b>-2</b>
Therapy Professions	30	30	+0	+0%	+5	+5
Social Care	3	3	0			
Social Workers	23	24	+1	+4%	-1	-2
Psychologists	93	92	-1	-1%	+1	+2
Pharmacy	3	3	0			
H&SC, Other	12	11	-1	-9%	-1	-2
<b>Health &amp; Social Care Professionals</b>	<b>163</b>	<b>162</b>	<b>-1</b>	<b>-0.7%</b>	<b>+4</b>	<b>+3</b>
Management (VIII & above)	2	2	+0	+1%		-1
Administrative/ Supervisory (V to VII)	18	19	+1	+5%	-0	
Clerical (III & IV)	54	54	-1	-1%	+3	+1
<b>Management &amp; Administrative</b>	<b>74</b>	<b>74</b>	<b>+0</b>	<b>+0.3%</b>	<b>+3</b>	<b>-0</b>
Support	31	30	-1	-3%	+0	+0
Maintenance/ Technical	9	9	0			-1
<b>General Support</b>	<b>40</b>	<b>39</b>	<b>-1</b>	<b>-2.4%</b>	<b>+0</b>	<b>-1</b>
Health Care Assistants	83	83	+0	+0%	+4	+8
Care, other	1	1	0			
<b>Patient &amp; Client Care</b>	<b>84</b>	<b>84</b>	<b>+0</b>	<b>+0.1%</b>	<b>+4</b>	<b>+8</b>

## CHO 4

Jun 2021 (Dec 2020 figure: 1,564)	WTE Apr 2021	WTE Jun 2021	WTE change since Apr 21	% change since Apr 21	WTE change since Dec 20	WTE change since Jun 20
<b>Overall</b>	<b>1,570</b>	<b>1,567</b>	<b>-2</b>	<b>-0.1%</b>	<b>+4</b>	<b>-17</b>
Consultants	54	56	+2	+4%	+2	+3
Registrars	41	42	+1	+3%	+0	-5
SHO/ Interns	42	43	+1	+2%	+0	+12
Medical/ Dental, other	2	2	+0	+10%	+0	+0
<b>Medical &amp; Dental</b>	<b>139</b>	<b>143</b>	<b>+5</b>	<b>+3.3%</b>	<b>+3</b>	<b>+10</b>
Nurse/ Midwife Manager	196	188	-8	-4%	-4	-2
Nurse/ Midwife Specialist & AN/MP	67	70	+2	+4%	-1	-0
Staff Nurse/ Staff Midwife	507	502	-5	-1%	-17	-5
<i>Pre-registration Nurse/ Midwife Intern</i>	28	27	-1	-2%	+24	+27
<i>Pre-registration Nurse Intern (COVID-19)</i>	1	1	0		+1	-23
<i>Post-registration Nurse/ Midwife Student</i>				-100%	-1	
<i>Nursing/ Midwifery awaiting registration</i>	1	1	+0	+2%	-29	-7
Nursing/ Midwifery Student	29	29	-0	-2%	+25	-3
<b>Nursing &amp; Midwifery</b>	<b>800</b>	<b>789</b>	<b>-11</b>	<b>-1.3%</b>	<b>+3</b>	<b>-10</b>
Therapy Professions	79	77	-2	-2%	-0	-2
Social Care	7	6	-1	-14%	-1	+0
Social Workers	63	65	+1	+2%	+0	+4
Psychologists	93	93	+0	+0%	-1	+5
Pharmacy	2	2	+0	+3%	-1	-2
H&SC, Other	12	12	+0	+0%	-0	-4
<b>Health &amp; Social Care Professionals</b>	<b>256</b>	<b>255</b>	<b>-1</b>	<b>-0.4%</b>	<b>-3</b>	<b>+0</b>
<i>Executive Management</i>	2	1	-1	-36%	+1	-0
<i>Senior Management (VIII &amp; GM)</i>	1	1	0			+1
Management (VIII & above)	3	2	-1	-22%	-1	+1
Administrative/ Supervisory (V to VII)	18	21	+3	+14%	-1	-3
Clerical (III & IV)	94	92	-2	-2%	-2	+3
<b>Management &amp; Administrative</b>	<b>115</b>	<b>115</b>	<b>+0</b>	<b>+0.4%</b>	<b>-4</b>	<b>+1</b>
Support	84	84	-0	-0%	+2	-3
Maintenance/ Technical	5	5	0			-1
<b>General Support</b>	<b>89</b>	<b>89</b>	<b>-0</b>	<b>-0.0%</b>	<b>+2</b>	<b>-4</b>
Health Care Assistants	166	170	+5	+3%	+4	-12
Care, other	6	6	-0	-0%	+0	-2
<b>Patient &amp; Client Care</b>	<b>172</b>	<b>177</b>	<b>+5</b>	<b>+2.7%</b>	<b>+4</b>	<b>-14</b>



## CHO 5

Jun 2021 (Dec 2020 figure: 1,188)	WTE Apr 2021	WTE Jun 2021	WTE change since Apr 21	% change since Apr 21	WTE change since Dec 20	WTE change since Jun 20
<b>Overall</b>	<b>1,223</b>	<b>1,213</b>	<b>-10</b>	<b>-0.8%</b>	<b>+25</b>	<b>+30</b>
Consultants	27	27	+0	+0%	+0	+1
Registrars	10	9	-1	-10%		-5
SHO/ Interns	34	36	+2	+6%	+0	+12
Medical/ Dental, other	2	2	0			
<b>Medical &amp; Dental</b>	<b>73</b>	<b>74</b>	<b>+1</b>	<b>+1.5%</b>	<b>+0</b>	<b>+8</b>
Nurse/ Midwife Manager	163	163	-0	-0%	+2	+4
Nurse/ Midwife Specialist & AN/MP	56	52	-4	-7%	-2	+1
Staff Nurse/ Staff Midwife	424	419	-5	-1%	+8	+15
Pre-registration Nurse/ Midwife Intern	25	24	-0	-0%	+21	+24
Pre-registration Nurse Intern (COVID-19)	2	2	-0	-20%	+2	-22
Nursing/ Midwifery awaiting registration				-100%	-2	
Nursing/ Midwifery Student	27	26	-0	-2%	+13	+2
Nursing/ Midwifery other	4	4	-0	-1%	-0	-0
<b>Nursing &amp; Midwifery</b>	<b>673</b>	<b>663</b>	<b>-10</b>	<b>-1.4%</b>	<b>+21</b>	<b>+22</b>
Therapy Professions	38	35	-3	-7%	-4	-6
Social Care	5	4	-0	-7%	-0	-0
Social Workers	26	27	+1	+4%	-1	+0
Psychologists	22	22	-0	-0%	+1	-1
H&SC, Other	10	15	+5	+51%	+7	+5
<b>Health &amp; Social Care Professionals</b>	<b>100</b>	<b>103</b>	<b>+3</b>	<b>+3.0%</b>	<b>+2</b>	<b>-1</b>
Management (VIII & above)	6	5	-1	-17%	-1	
Administrative/ Supervisory (V to VII)	20	22	+2	+11%	+2	+3
Clerical (III & IV)	76	74	-1	-2%	+6	+4
<b>Management &amp; Administrative</b>	<b>101</b>	<b>101</b>	<b>-0</b>	<b>-0.3%</b>	<b>+7</b>	<b>+7</b>
Support	176	172	-4	-2%	-6	+1
Maintenance/ Technical	18	17	-1	-6%	-3	-7
<b>General Support</b>	<b>194</b>	<b>189</b>	<b>-5</b>	<b>-2.6%</b>	<b>-9</b>	<b>-6</b>
Health Care Assistants	70	71	+1	+1%	+3	+0
Care, other	12	12	0			+0
<b>Patient &amp; Client Care</b>	<b>82</b>	<b>83</b>	<b>+1</b>	<b>+0.9%</b>	<b>+3</b>	<b>+0</b>

## CHO 6

Jun 2021 (Dec 2020 figure: 626)	WTE Apr 2021	WTE Jun 2021	WTE change since Apr 21	% change since Apr 21	WTE change since Dec 20	WTE change since Jun 20
<b>Overall</b>	<b>634</b>	<b>630</b>	<b>-5</b>	<b>-0.7%</b>	<b>+3</b>	<b>+34</b>
Consultants	41	41	+1	+2%	+1	+4
Registrars	24	22	-2	-10%	+3	+4
SHO/ Interns	12	12	+0	+2%	-1	+0
<b>Medical &amp; Dental</b>	<b>77</b>	<b>76</b>	<b>-1</b>	<b>-1.8%</b>	<b>+4</b>	<b>+8</b>
Nurse/ Midwife Manager	75	75	+1	+1%	-2	-1
Nurse/ Midwife Specialist & AN/MP	19	19	-0	-1%	-1	+4
Staff Nurse/ Staff Midwife	150	156	+6	+4%	+4	+6
<i>Pre-registration Nurse/ Midwife Intern</i>	3	4	+0	+1%	+4	+4
<i>Nursing/ Midwifery awaiting registration</i>	1	1	0		+1	+1
Nursing/ Midwifery Student	4	5	+0	+1%	+4	+5
Nursing/ Midwifery other	2	2	0			
<b>Nursing &amp; Midwifery</b>	<b>250</b>	<b>256</b>	<b>+6</b>	<b>+2.5%</b>	<b>+5</b>	<b>+14</b>
Therapy Professions	42	41	-1	-3%	+2	+2
Social Care	28	27	-1	-4%	-2	+0
Social Workers	31	30	-1	-3%	+0	-2
Psychologists	30	30	+0	+1%	-2	+8
H&SC, Other	4	5	+1	+13%	-0	+0
<b>Health &amp; Social Care Professionals</b>	<b>135</b>	<b>133</b>	<b>-3</b>	<b>-1.9%</b>	<b>-1</b>	<b>+8</b>
Management (VIII & above)	3	3	0			
Administrative/ Supervisory (V to VII)	27	23	-4	-14%	-1	-2
Clerical (III & IV)	40	37	-3	-6%	-5	-3
<b>Management &amp; Administrative</b>	<b>69</b>	<b>63</b>	<b>-6</b>	<b>-8.8%</b>	<b>-7</b>	<b>-5</b>
Support	37	36	-1	-2%	-2	-0
Maintenance/ Technical	6	6	0			+2
<b>General Support</b>	<b>43</b>	<b>42</b>	<b>-1</b>	<b>-1.8%</b>	<b>-2</b>	<b>+2</b>
Health Care Assistants	54	53	-0	-1%	+5	+6
Care, other	6	6	+0	+4%	+0	+1
<b>Patient &amp; Client Care</b>	<b>59</b>	<b>59</b>	<b>-0</b>	<b>-0.2%</b>	<b>+5</b>	<b>+7</b>

## CHO 7

Jun 2021 (Dec 2020 figure: 861)	WTE Apr 2021	WTE Jun 2021	WTE change since Apr 21	% change since Apr 21	WTE change since Dec 20	WTE change since Jun 20
<b>Overall</b>	<b>879</b>	<b>887</b>	<b>+8</b>	<b>+1.0%</b>	<b>+26</b>	<b>+21</b>
Consultants	54	54	-0	-1%	+1	+4
Registrars	56	55	-1	-2%	+2	+15
SHO/ Interns	17	18	+1	+8%	-2	-2
<b>Medical &amp; Dental</b>	<b>127</b>	<b>127</b>	<b>-0</b>	<b>-0.1%</b>	<b>+0</b>	<b>+17</b>
Nurse/ Midwife Manager	116	117	+1	+1%	-0	-3
Nurse/ Midwife Specialist & AN/MP	52	49	-3	-5%	+3	+3
Staff Nurse/ Staff Midwife	203	215	+11	+6%	+13	+14
<i>Pre-registration Nurse/ Midwife Intern</i>	14	14	+1	+4%	+13	+14
<i>Pre-registration Nurse Intern (COVID-19)</i>	1	1	+0	+82%	+1	-28
<i>Post-registration Nurse/ Midwife Student</i>	1	1	0		+1	+1
<i>Nursing/ Midwifery awaiting registration</i>	1		-1	-100%	-10	-4
Nursing/ Midwifery Student	16	16	+0	+0%	+9	-16
Nursing/ Midwifery other	7	6	-1	-16%	-0	-1
<b>Nursing &amp; Midwifery</b>	<b>394</b>	<b>404</b>	<b>+9</b>	<b>+2.3%</b>	<b>+24</b>	<b>-2</b>
Therapy Professions	49	48	-1	-3%	-6	+1
Social Care	7	7	+0	+1%	+0	-0
Social Workers	43	41	-2	-4%	+4	+5
Psychologists	28	29	+0	+1%	-1	-0
<i>Pharmacy</i>	1	1	0			
Pharmacy	1	1	0			
H&SC, Other	18	17	-1	-3%	-1	-1
<b>Health &amp; Social Care Professionals</b>	<b>146</b>	<b>143</b>	<b>-3</b>	<b>-2.2%</b>	<b>-3</b>	<b>+5</b>
Management (VIII & above)	4	4	+0	+1%	+0	+1
Administrative/ Supervisory (V to VII)	17	16	-0	-1%	-1	-1
Clerical (III & IV)	50	48	-2	-5%	-2	-1
<b>Management &amp; Administrative</b>	<b>70</b>	<b>68</b>	<b>-3</b>	<b>-3.6%</b>	<b>-2</b>	<b>-1</b>
Support	18	18	-0	-0%	+0	+0
Maintenance/ Technical	2	2	0			
<b>General Support</b>	<b>20</b>	<b>20</b>	<b>-0</b>	<b>-0.1%</b>	<b>+0</b>	<b>+0</b>
Health Care Assistants	35	35	+0	+1%	+1	+0
Care, other	86	91	+5	+6%	+6	+2
<b>Patient &amp; Client Care</b>	<b>120</b>	<b>126</b>	<b>+5</b>	<b>+4.3%</b>	<b>+7</b>	<b>+2</b>

## CHO 8

Jun 2021 (Dec 2020 figure: 1,112)	WTE Apr 2021	WTE Jun 2021	WTE change since Apr 21	% change since Apr 21	WTE change since Dec 20	WTE change since Jun 20
<b>Overall</b>	<b>1,122</b>	<b>1,126</b>	<b>+4</b>	<b>+0.3%</b>	<b>+14</b>	<b>+4</b>
Consultants	38	38	-0	-0%	+2	+3
Registrars	34	34	+0	+1%	+3	+11
SHO/ Interns	25	24	-1	-4%	-2	-9
<b>Medical &amp; Dental</b>	<b>97</b>	<b>97</b>	<b>-1</b>	<b>-0.6%</b>	<b>+3</b>	<b>+4</b>
Nurse/ Midwife Manager	117	117	-0	-0%	-3	-5
Nurse/ Midwife Specialist & AN/MP	59	61	+2	+4%	+1	+2
Staff Nurse/ Staff Midwife	339	341	+1	+0%	-2	+17
<i>Pre-registration Nurse/ Midwife Intern</i>	24	24	+0	+0%	+24	+22
<i>Pre-registration Nurse Intern (COVID-19)</i>				-100%		-26
<i>Nursing/ Midwifery awaiting registration</i>				-100%	-2	
Nursing/ Midwifery Student	24	24	+0	+0%	+23	-4
Nursing/ Midwifery other	3	3	0			-1
<b>Nursing &amp; Midwifery</b>	<b>543</b>	<b>546</b>	<b>+4</b>	<b>+0.7%</b>	<b>+20</b>	<b>+9</b>
Therapy Professions	43	43	-0	-1%	+0	-1
Social Care	7	7	+0	+3%	-0	-0
Social Workers	47	46	-0	-0%	+3	+2
Psychologists	39	40	+1	+2%	+3	+2
Pharmacy	2	2	0			
H&SC, Other	15	15	+0	+0%	-6	-5
<b>Health &amp; Social Care Professionals</b>	<b>152</b>	<b>153</b>	<b>+0</b>	<b>+0.3%</b>	<b>-0</b>	<b>-3</b>
Management (VIII & above)	3	3	+0	+0%	-0	-0
Administrative/ Supervisory (V to VII)	22	23	+1	+6%	+3	+2
Clerical (III & IV)	95	93	-2	-2%	-4	-6
<b>Management &amp; Administrative</b>	<b>119</b>	<b>119</b>	<b>-0</b>	<b>-0.4%</b>	<b>-1</b>	<b>-5</b>
Support	30	30	+0	+0%	-1	-1
Maintenance/ Technical	29	29	+0	+1%	+1	+2
<b>General Support</b>	<b>59</b>	<b>59</b>	<b>+0</b>	<b>+0.5%</b>	<b>-0</b>	<b>+1</b>
Health Care Assistants	149	149	+1	+0%	-7	-2
Care, other	3	3	-0	-6%	-0	-1
<b>Patient &amp; Client Care</b>	<b>152</b>	<b>152</b>	<b>+0</b>	<b>+0.3%</b>	<b>-7</b>	<b>-3</b>

## CHO 9

Jun 2021 (Dec 2020 figure: 1,331)	WTE Apr 2021	WTE Jun 2021	WTE change since Apr 21	% change since Apr 21	WTE change since Dec 20	WTE change since Jun 20
<b>Overall</b>	<b>1,330</b>	<b>1,341</b>	<b>+10</b>	<b>+0.8%</b>	<b>+10</b>	<b>+33</b>
Consultants	46	45	-1	-2%	-1	-2
Registrars	38	38	-0	-0%	+6	+4
SHO/ Interns	38	36	-2	-6%	-18	-8
<b>Medical &amp; Dental</b>	<b>122</b>	<b>119</b>	<b>-3</b>	<b>-2.7%</b>	<b>-13</b>	<b>-6</b>
Nurse/ Midwife Manager	134	134	+0	+0%	-3	-5
Nurse/ Midwife Specialist & AN/MP	78	81	+2	+3%	+5	+12
Staff Nurse/ Staff Midwife	368	370	+2	+0%	-2	+13
<i>Pre-registration Nurse/ Midwife Intern</i>	28	28	+0	+0%	+18	+27
<i>Pre-registration Nurse Intern (COVID-19)</i>				-100%		-52
<i>Nursing/ Midwifery awaiting registration</i>	1	1	+0	+8%	-10	+1
Nursing/ Midwifery Student	29	29	+0	+0%	+13	-24
Nursing/ Midwifery other	11	10	-1	-9%	-3	-1
<b>Nursing &amp; Midwifery</b>	<b>620</b>	<b>623</b>	<b>+3</b>	<b>+0.5%</b>	<b>+10</b>	<b>-5</b>
Therapy Professions	65	66	+1	+2%	+5	+5
Social Care	1	1	-0	-2%	-0	-0
Social Workers	45	47	+1	+3%	+4	+4
Psychologists	53	53	-0	-0%	-0	+3
Pharmacy	9	9	-0	-3%	-0	+1
H&SC, Other	15	16	+1	+6%	+1	+2
<b>Health &amp; Social Care Professionals</b>	<b>188</b>	<b>191</b>	<b>+3</b>	<b>+1.6%</b>	<b>+10</b>	<b>+16</b>
Management (VIII & above)	6	6	+0	+0%	+1	+1
Administrative/ Supervisory (V to VII)	28	28	+1	+3%	-0	+0
Clerical (III & IV)	109	113	+5	+4%	-1	+18
<b>Management &amp; Administrative</b>	<b>142</b>	<b>148</b>	<b>+6</b>	<b>+3.9%</b>	<b>-0</b>	<b>+19</b>
Support	103	103	+0	+0%	-1	+1
Maintenance/ Technical	11	11	-0	-0%	-0	+0
<b>General Support</b>	<b>114</b>	<b>114</b>	<b>+0</b>	<b>+0.1%</b>	<b>-1</b>	<b>+1</b>
Health Care Assistants	132	134	+2	+2%	+5	+8
Care, other	13	12	-0	-3%	-0	-0
<b>Patient &amp; Client Care</b>	<b>144</b>	<b>146</b>	<b>+2</b>	<b>+1.2%</b>	<b>+4</b>	<b>+7</b>

## other Community Services

Jun 2021 (Dec 2020 figure: 494)	WTE Apr 2021	WTE Jun 2021	WTE change since Apr 21	% change since Apr 21	WTE change since Dec 20	WTE change since Jun 20
<b>Overall</b>	<b>517</b>	<b>523</b>	<b>+6</b>	<b>+1.2%</b>	<b>+29</b>	<b>+50</b>
Consultants	16	17	+0	+1%		-0
Registrars	17	17	+0	+0%	+3	+5
<b>Medical &amp; Dental</b>	<b>33</b>	<b>34</b>	<b>+0</b>	<b>+0.4%</b>	<b>+3</b>	<b>+5</b>
Nurse/ Midwife Manager	78	76	-2	-3%	-0	-2
Nurse/ Midwife Specialist & AN/MP	11	11	+0	+2%	-2	+1
Staff Nurse/ Staff Midwife	173	181	+8	+5%	+16	+13
Nursing/ Midwifery other	2	2	+0	+1%	+0	+1
<b>Nursing &amp; Midwifery</b>	<b>263</b>	<b>270</b>	<b>+7</b>	<b>+2.5%</b>	<b>+14</b>	<b>+13</b>
Therapy Professions	12	12	+0	+0%	+0	-1
Social Care	2	2	+0	+3%	+0	
Social Workers	19	19	-1	-3%	+1	+4
Psychologists	11	9	-2	-18%	+3	+2
Pharmacy	1	2	+1	+50%	+2	+1
Pharmacy	1	2	+1	+50%	+1	+1
<b>Health &amp; Social Care Professionals</b>	<b>45</b>	<b>43</b>	<b>-2</b>	<b>-4.6%</b>	<b>+5</b>	<b>+6</b>
Management (VIII & above)	29	27	-2	-8%	-3	+2
Administrative/ Supervisory (V to VII)	38	40	+1	+3%	+3	+7
Clerical (III & IV)	20	19	-0	-1%	+1	+0
<b>Management &amp; Administrative</b>	<b>87</b>	<b>86</b>	<b>-1</b>	<b>-1.6%</b>	<b>+1</b>	<b>+9</b>
Support	18	18	+1	+4%	+2	+3
Maintenance/ Technical	6	7	+1	+16%		+3
<b>General Support</b>	<b>24</b>	<b>25</b>	<b>+2</b>	<b>+7.3%</b>	<b>+2</b>	<b>+6</b>
Health Care Assistants	65	66	+1	+2%	+4	+11
Care, other	1	1	0			
<b>Patient &amp; Client Care</b>	<b>65</b>	<b>66</b>	<b>+1</b>	<b>+1.6%</b>	<b>+4</b>	<b>+11</b>

## Mental Health Services Employment by Grade Group: Jun 2021

Jun 2021 (Dec 2020 figure: 10,301)	WTE Apr 2021	WTE Jun 2021	WTE change since Apr 21	% change since Apr 21	WTE change since Dec 20	WTE change since Jun 20
<b>Overall</b>	<b>10,486</b>	<b>10,486</b>	<b>-0</b>	<b>-0.0%</b>	<b>+184</b>	<b>+217</b>
Consultant Medicine	1	1	0			
Consultant Psychiatry	376	381	+4	+1%	+12	+19
<b>Consultants</b>	<b>377</b>	<b>382</b>	<b>+4</b>	<b>+1%</b>	<b>+12</b>	<b>+19</b>
Registrar	199	196	-3	-2%	+28	+23
Senior Registrar	109	110	+1	+1%	-1	+20
Specialist Registrar	2	2	0			-1
<b>Registrars</b>	<b>310</b>	<b>308</b>	<b>-2</b>	<b>-1%</b>	<b>+27</b>	<b>+42</b>
Interns	5	5	+0	+4%		+1
Senior House Officer	241	243	+2	+1%	-28	+3
<b>SHO/ Interns</b>	<b>246</b>	<b>248</b>	<b>+2</b>	<b>+1%</b>	<b>-28</b>	<b>+4</b>
Other Medical	4	4	-0	-9%	-1	-1
<b>Medical/ Dental, other</b>	<b>4</b>	<b>4</b>	<b>-0</b>	<b>-9%</b>	<b>-1</b>	<b>-1</b>
<b>Medical &amp; Dental</b>	<b>938</b>	<b>942</b>	<b>+4</b>	<b>+0%</b>	<b>+10</b>	<b>+65</b>
Clinical Nurse/ Midwife Manager	1,035	1,030	-5	-0%	-11	-5
Director Nursing/Midwifery, Assistant	176	168	-9	-5%	-3	-8
Director of Nursing/Midwifery	27	28	+1	+3%	-0	-1
<b>Nurse/ Midwife Manager</b>	<b>1,238</b>	<b>1,225</b>	<b>-13</b>	<b>-1%</b>	<b>-14</b>	<b>-14</b>
Advanced Nurse/ Midwife Practitioner	41	43	+1	+3%	+3	+6
Clinical Nurse/ Midwife Specialist	485	481	-5	-1%	-9	+24
<b>Nurse/ Midwife Specialist &amp; AN/MP</b>	<b>527</b>	<b>523</b>	<b>-3</b>	<b>-1%</b>	<b>-6</b>	<b>+30</b>
Staff Midwives				-100%	-1	-1
Staff Nurse [Intellectual Disability]	2	3	+1	+36%	-1	-1
Staff Nurse [Psychiatric]	3,017	3,010	-7	-0%	+45	+119
Staff Nurses [General/ Children's]	95	122	+27	+29%	+16	+7
<b>Staff Nurse/ Staff Midwife</b>	<b>3,115</b>	<b>3,135</b>	<b>+21</b>	<b>+1%</b>	<b>+59</b>	<b>+123</b>
Pre-registration Nurse/ Midwife Intern	171	171	+0	+0%	+161	+169
Pre-registration Nurse Intern (COVID-19)	5	4	-0	-10%	-38	-227
Post-registration Nurse/ Midwife Student	1	1	0			+1
Nursing/ Midwifery awaiting registration	4	3	-1	-23%	-2	-9
<b>Nursing/ Midwifery Student</b>	<b>180</b>	<b>179</b>	<b>-1</b>	<b>-1%</b>	<b>+120</b>	<b>-66</b>
Nursing Education/Clinical	32	29	-3	-10%	-3	-3
<b>Nursing/ Midwifery other</b>	<b>32</b>	<b>29</b>	<b>-3</b>	<b>-10%</b>	<b>-3</b>	<b>-3</b>
<b>Nursing &amp; Midwifery</b>	<b>5,092</b>	<b>5,092</b>	<b>+1</b>	<b>+0%</b>	<b>+157</b>	<b>+70</b>
Dietitians	21	22	+1	+4%	+1	+2
Occupational Therapists	359	353	-5	-1%	+8	+4
Physiotherapists	2	2	0			-0
Podiatrists & Chiropodists	1	1	-0	-9%	-0	-0
Speech & Language Therapists	69	68	-1	-2%	-1	+4
<b>Therapy Professions</b>	<b>452</b>	<b>446</b>	<b>-6</b>	<b>-1%</b>	<b>+7</b>	<b>+10</b>
<b>Social Care</b>	<b>79</b>	<b>76</b>	<b>-3</b>	<b>-3%</b>	<b>-4</b>	<b>-0</b>
<b>Social Workers</b>	<b>380</b>	<b>379</b>	<b>-0</b>	<b>-0%</b>	<b>+7</b>	<b>+12</b>
<b>Psychologists</b>	<b>429</b>	<b>427</b>	<b>-2</b>	<b>-0%</b>	<b>+3</b>	<b>+24</b>
<b>Pharmacy</b>	<b>20</b>	<b>20</b>	<b>+0</b>	<b>+1%</b>	<b>-1</b>	<b>-1</b>
Counsellor Therapists	97	100	+3	+3%	-1	-4
Other Health & Social Care	5	6	+1	+12%	+0	-1
Play Therapists/ Specialists	1	1	0			
<b>H&amp;SC, Other</b>	<b>104</b>	<b>108</b>	<b>+4</b>	<b>+4%</b>	<b>-0</b>	<b>-4</b>
<b>Health &amp; Social Care Professionals</b>	<b>1,463</b>	<b>1,456</b>	<b>-7</b>	<b>-0%</b>	<b>+12</b>	<b>+40</b>
Executive Management	15	15	-1	-3%	+0	+3
Senior Management (VIII & GM)	47	43	-5	-10%	-10	-4

Jun 2021 (Dec 2020 figure: 10,301)	WTE Apr 2021	WTE Jun 2021	WTE change since Apr 21	% change since Apr 21	WTE change since Dec 20	WTE change since Jun 20
<b>Overall</b>	<b>10,486</b>	<b>10,486</b>	<b>-0</b>	<b>-0.0%</b>	<b>+184</b>	<b>+217</b>
<b>Management (VIII &amp; above)</b>	<b>63</b>	<b>57</b>	<b>-5</b>	<b>-9%</b>	<b>-10</b>	<b>-1</b>
Middle Management (V-VII)	241	244	+4	+1%	+1	+4
Other Administrative	2	2	0			
<b>Administrative/ Supervisory (V to VII)</b>	<b>242</b>	<b>246</b>	<b>+4</b>	<b>+1%</b>	<b>+1</b>	<b>+4</b>
General Administrative (III & IV)	729	723	-6	-1%	+1	+18
<b>Clerical (III &amp; IV)</b>	<b>729</b>	<b>723</b>	<b>-6</b>	<b>-1%</b>	<b>+1</b>	<b>+18</b>
<b>Management &amp; Administrative</b>	<b>1,034</b>	<b>1,026</b>	<b>-7</b>	<b>-1%</b>	<b>-8</b>	<b>+22</b>
Catering	65	66	+1	+1%	+2	+3
Household Services	435	429	-6	-1%	-12	-8
Other Support	43	43	+0	+0%	+1	+4
Portering	47	47	+0	+0%	-0	-1
<b>Support</b>	<b>590</b>	<b>585</b>	<b>-5</b>	<b>-1%</b>	<b>-9</b>	<b>-1</b>
Maintenance	137	135	-2	-1%	-2	+4
Technical Services				-100%		-2
<b>Maintenance/ Technical</b>	<b>137</b>	<b>135</b>	<b>-2</b>	<b>-1%</b>	<b>-2</b>	<b>+2</b>
<b>General Support</b>	<b>727</b>	<b>720</b>	<b>-7</b>	<b>-1%</b>	<b>-11</b>	<b>+1</b>
HCA, Nurse's Aide, etc.	1,018	1,029	+11	+1%	+16	+18
Health & Social Care Assistants	10	11	+1	+7%	+3	+3
<b>Health Care Assistants</b>	<b>1,029</b>	<b>1,040</b>	<b>+11</b>	<b>+1%</b>	<b>+18</b>	<b>+21</b>
<b>Care, other</b>	<b>204</b>	<b>209</b>	<b>+5</b>	<b>+3%</b>	<b>+6</b>	<b>-3</b>
<b>Patient &amp; Client Care</b>	<b>1,232</b>	<b>1,249</b>	<b>+17</b>	<b>+1%</b>	<b>+24</b>	<b>+18</b>



## Employment by WTE, Headcount, Gender, Full-Time /Part-Time etc.: Jun 2021

Mental Health Services Staff Group	WTE	Headcount	WTE: no.	% Male	% female	Male WTE: no.	Female WTE: no.	% Total Perm	% Male Perm	% Female Perm	% Total Full Time	% Total Part Time	% Male FT	% Female FT
<b>Overall</b>	<b>10,486</b>	<b>11,536</b>	<b>1.10</b>	<b>26.8%</b>	<b>73.2%</b>	<b>1.05</b>	<b>1.12</b>	<b>83.1%</b>	<b>79.8%</b>	<b>84.3%</b>	<b>85.0%</b>	<b>15.0%</b>	<b>93.0%</b>	<b>82.1%</b>
Consultant Medicine	1	1	1.00	100.0%		1.00		100.0%	100.0%		100.0%	0.0%	100.0%	
Consultant Psychiatry	381	408	1.07	40.4%	59.6%	1.05	1.09	67.6%	67.6%	65.8%	85.8%	14.2%	90.9%	82.3%
<b>Consultants</b>	<b>382</b>	<b>409</b>	<b>1.07</b>	<b>40.6%</b>	<b>59.4%</b>	<b>1.05</b>	<b>1.09</b>	<b>67.7%</b>	<b>70.5%</b>	<b>65.8%</b>	<b>85.8%</b>	<b>14.2%</b>	<b>91.0%</b>	<b>82.3%</b>
Registrar	196	203	1.04	45.3%	54.7%	1.01	1.06	4.9%	4.9%	3.6%	97.5%	2.5%	100.0%	95.5%
Senior Registrar	110	115	1.05	41.7%	58.3%	1.01	1.07	1.7%	1.7%	3.0%	95.7%	4.3%	100.0%	92.5%
Specialist Registrar	2	2	1.00	50.0%	50.0%	1.00	1.00	0.0%	0.0%	0.0%	100.0%	0.0%	100.0%	100.0%
<b>Registrars</b>	<b>308</b>	<b>320</b>	<b>1.04</b>	<b>44.1%</b>	<b>55.9%</b>	<b>1.01</b>	<b>1.06</b>	<b>3.8%</b>	<b>4.3%</b>	<b>3.4%</b>	<b>96.9%</b>	<b>3.1%</b>	<b>100.0%</b>	<b>94.4%</b>
Interns	5	5	1.00		100.0%		1.00	0.0%	0.0%	0.0%	100.0%	0.0%		100.0%
Senior House Officer	243	247	1.02	40.5%	59.5%	1.01	1.02	0.4%	0.4%	0.0%	98.8%	1.2%	100.0%	98.0%
<b>SHO/ Interns</b>	<b>248</b>	<b>252</b>	<b>1.02</b>	<b>39.7%</b>	<b>60.3%</b>	<b>1.01</b>	<b>1.02</b>	<b>0.4%</b>	<b>1.0%</b>	<b>0.0%</b>	<b>98.8%</b>	<b>1.2%</b>	<b>100.0%</b>	<b>98.0%</b>
Other Medical	4	8	1.98	62.5%	37.5%	2.02	1.91	50.0%	50.0%	66.7%	87.5%	12.5%	100.0%	66.7%
<b>Medical/ Dental, other</b>	<b>4</b>	<b>8</b>	<b>1.98</b>	<b>62.5%</b>	<b>37.5%</b>	<b>2.02</b>	<b>1.91</b>	<b>50.0%</b>	<b>40.0%</b>	<b>66.7%</b>	<b>87.5%</b>	<b>12.5%</b>	<b>100.0%</b>	<b>66.7%</b>
<b>Medical &amp; Dental</b>	<b>942</b>	<b>989</b>	<b>1.05</b>	<b>41.7%</b>	<b>58.3%</b>	<b>1.03</b>	<b>1.07</b>	<b>29.7%</b>	<b>30.6%</b>	<b>29.1%</b>	<b>92.7%</b>	<b>7.3%</b>	<b>96.4%</b>	<b>90.1%</b>
Clinical Nurse/ Midwife Manager	1,030	1,080	1.05	33.3%	66.7%	1.02	1.06	99.1%	99.1%	99.6%	93.4%	6.6%	98.1%	91.1%
Director Nursing/Midwifery, Assistant	168	174	1.04	44.8%	55.2%	1.04	1.04	99.4%	99.4%	100.0%	97.1%	2.9%	97.4%	96.9%
Director of Nursing/Midwifery	28	28	1.01	53.6%	46.4%	1.01	1.01	100.0%	100.0%	100.0%	96.4%	3.6%	100.0%	92.3%
<b>Nurse/ Midwife Manager</b>	<b>1,225</b>	<b>1,282</b>	<b>1.05</b>	<b>35.3%</b>	<b>64.7%</b>	<b>1.02</b>	<b>1.06</b>	<b>99.1%</b>	<b>98.2%</b>	<b>99.6%</b>	<b>94.0%</b>	<b>6.0%</b>	<b>98.0%</b>	<b>91.8%</b>
Advanced Nurse/ Midwife Practitioner	43	45	1.06	17.8%	82.2%	1.01	1.07	97.8%	97.8%	97.3%	91.1%	8.9%	100.0%	89.2%
Clinical Nurse/ Midwife Specialist	481	509	1.06	19.3%	80.7%	1.02	1.07	99.6%	99.6%	99.8%	92.1%	7.9%	98.0%	90.8%
<b>Nurse/ Midwife Specialist &amp; AN/MP</b>	<b>523</b>	<b>554</b>	<b>1.06</b>	<b>19.1%</b>	<b>80.9%</b>	<b>1.02</b>	<b>1.07</b>	<b>99.5%</b>	<b>99.1%</b>	<b>99.6%</b>	<b>92.1%</b>	<b>7.9%</b>	<b>98.1%</b>	<b>90.6%</b>
Staff Nurse [Intellectual Disability]	3	4	1.26	25.0%	75.0%	1.00	1.38	50.0%	50.0%	66.7%	75.0%	25.0%	100.0%	66.7%
Staff Nurse [Psychiatric]	3,010	3,245	1.08	25.9%	74.1%	1.05	1.09	92.5%	92.5%	93.2%	87.6%	12.4%	92.3%	86.0%
Staff Nurses [General/ Children's]	122	136	1.11	22.8%	77.2%	1.11	1.11	78.7%	78.7%	81.9%	80.9%	19.1%	83.9%	80.0%
<b>Staff Nurse/ Staff Midwife</b>	<b>3,135</b>	<b>3,385</b>	<b>1.08</b>	<b>25.8%</b>	<b>74.2%</b>	<b>1.05</b>	<b>1.09</b>	<b>91.9%</b>	<b>89.7%</b>	<b>92.7%</b>	<b>87.4%</b>	<b>12.6%</b>	<b>92.0%</b>	<b>85.7%</b>
Pre-registration Nurse/ Midwife Intern	171	343	2.00	15.5%	84.5%	2.02	2.00	0.0%	0.0%	0.0%	100.0%	0.0%	100.0%	100.0%
Pre-registration Nurse Intern (COVID-19)	4	5	1.22	20.0%	80.0%	2.00	1.11	0.0%	0.0%	0.0%	100.0%	0.0%	100.0%	100.0%
Post-registration Nurse/ Midwife Student	1	1	1.00		100.0%		1.00	0.0%	0.0%	0.0%	100.0%	0.0%		100.0%
Nursing/ Midwifery awaiting registration	3	3	1.02		100.0%		1.02	100.0%	100.0%	100.0%	100.0%	0.0%		100.0%
<b>Nursing/ Midwifery Student</b>	<b>179</b>	<b>352</b>	<b>1.96</b>	<b>15.3%</b>	<b>84.7%</b>	<b>2.02</b>	<b>1.95</b>	<b>0.9%</b>	<b>0.0%</b>	<b>1.0%</b>	<b>100.0%</b>	<b>0.0%</b>	<b>100.0%</b>	<b>100.0%</b>

Nursing Education/Clinical	29	32	1.10	18.8%	81.3%	1.00	1.13	100.0%	100.0%	100.0%	87.5%	12.5%	100.0%	84.6%
<b>Nursing/ Midwifery other</b>	<b>29</b>	<b>32</b>	<b>1.10</b>	<b>18.8%</b>	<b>81.3%</b>	<b>1.00</b>	<b>1.13</b>	<b>100.0%</b>	<b>100.0%</b>	<b>100.0%</b>	<b>87.5%</b>	<b>12.5%</b>	<b>100.0%</b>	<b>84.6%</b>
<b>Nursing &amp; Midwifery</b>	<b>5,092</b>	<b>5,605</b>	<b>1.10</b>	<b>26.6%</b>	<b>73.4%</b>	<b>1.06</b>	<b>1.12</b>	<b>88.7%</b>	<b>89.8%</b>	<b>88.3%</b>	<b>90.1%</b>	<b>9.9%</b>	<b>94.6%</b>	<b>88.5%</b>
<b>Health &amp; Social Care</b>	<b>1,456</b>	<b>1,633</b>	<b>1.12</b>	<b>16.4%</b>	<b>83.6%</b>	<b>1.04</b>	<b>1.14</b>	<b>86.5%</b>	<b>82.8%</b>	<b>87.2%</b>	<b>81.4%</b>	<b>18.6%</b>	<b>92.1%</b>	<b>79.3%</b>
Executive Management	15	15	1.00	66.7%	33.3%	1.00	1.00	100.0%	100.0%	100.0%	100.0%	0.0%	100.0%	100.0%
Senior Management (VIII & GM)	43	43	1.01	30.2%	69.8%	1.00	1.02	95.3%	95.3%	96.7%	97.7%	2.3%	100.0%	96.7%
<b>Management (VIII &amp; above)</b>	<b>57</b>	<b>58</b>	<b>1.01</b>	<b>39.7%</b>	<b>60.3%</b>	<b>1.00</b>	<b>1.01</b>	<b>96.6%</b>	<b>95.7%</b>	<b>97.1%</b>	<b>98.3%</b>	<b>1.7%</b>	<b>100.0%</b>	<b>97.1%</b>
Middle Management (V-VII)	244	256	1.05	20.7%	79.3%	1.02	1.06	89.5%	89.5%	91.1%	88.7%	11.3%	98.1%	86.2%
Other Administrative	2	2	1.27		100.0%		1.27	100.0%	100.0%	100.0%	50.0%	50.0%		50.0%
<b>Administrative/ Supervisory (V to VII)</b>	<b>246</b>	<b>258</b>	<b>1.05</b>	<b>20.5%</b>	<b>79.5%</b>	<b>1.02</b>	<b>1.06</b>	<b>89.5%</b>	<b>83.0%</b>	<b>91.2%</b>	<b>88.4%</b>	<b>11.6%</b>	<b>98.1%</b>	<b>85.9%</b>
General Administrative (III & IV)	723	815	1.13	9.1%	90.9%	1.06	1.13	84.0%	84.0%	84.5%	74.1%	25.9%	89.2%	72.6%
<b>Clerical (III &amp; IV)</b>	<b>723</b>	<b>815</b>	<b>1.13</b>	<b>9.1%</b>	<b>90.9%</b>	<b>1.06</b>	<b>1.13</b>	<b>84.0%</b>	<b>79.7%</b>	<b>84.5%</b>	<b>74.1%</b>	<b>25.9%</b>	<b>89.2%</b>	<b>72.6%</b>
<b>Management &amp; Administrative</b>	<b>1,026</b>	<b>1,131</b>	<b>1.10</b>	<b>13.3%</b>	<b>86.7%</b>	<b>1.04</b>	<b>1.11</b>	<b>85.9%</b>	<b>83.3%</b>	<b>86.3%</b>	<b>78.6%</b>	<b>21.4%</b>	<b>94.0%</b>	<b>76.2%</b>
Catering	66	71	1.08	35.2%	64.8%	1.04	1.10	95.8%	95.8%	93.5%	74.6%	25.4%	92.0%	65.2%
Household Services	429	502	1.17	20.5%	79.5%	1.10	1.19	87.3%	87.3%	90.0%	60.0%	40.0%	81.6%	54.4%
Other Support	43	49	1.14	32.7%	67.3%	1.03	1.20	89.8%	89.8%	87.9%	71.4%	28.6%	87.5%	63.6%
Portering	47	48	1.02	93.8%	6.3%	1.02	1.00	85.4%	85.4%	66.7%	89.6%	10.4%	88.9%	100.0%
<b>Support</b>	<b>585</b>	<b>670</b>	<b>1.15</b>	<b>28.2%</b>	<b>71.8%</b>	<b>1.06</b>	<b>1.18</b>	<b>88.2%</b>	<b>83.6%</b>	<b>90.0%</b>	<b>64.5%</b>	<b>35.5%</b>	<b>85.2%</b>	<b>56.3%</b>
Maintenance	135	140	1.04	99.3%	0.7%	1.04	1.00	95.7%	95.7%	100.0%	96.4%	3.6%	96.4%	100.0%
<b>Maintenance/ Technical</b>	<b>135</b>	<b>140</b>	<b>1.04</b>	<b>99.3%</b>	<b>0.7%</b>	<b>1.04</b>	<b>1.00</b>	<b>95.7%</b>	<b>95.7%</b>	<b>100.0%</b>	<b>96.4%</b>	<b>3.6%</b>	<b>96.4%</b>	<b>100.0%</b>
<b>General Support</b>	<b>720</b>	<b>810</b>	<b>1.12</b>	<b>40.5%</b>	<b>59.5%</b>	<b>1.05</b>	<b>1.18</b>	<b>89.5%</b>	<b>88.7%</b>	<b>90.0%</b>	<b>70.0%</b>	<b>30.0%</b>	<b>89.9%</b>	<b>56.4%</b>
<b>Health Care Assistants</b>	<b>1,040</b>	<b>1,126</b>	<b>1.08</b>	<b>29.5%</b>	<b>70.5%</b>	<b>1.06</b>	<b>1.09</b>	<b>89.8%</b>	<b>84.0%</b>	<b>92.2%</b>	<b>78.5%</b>	<b>21.5%</b>	<b>90.1%</b>	<b>73.7%</b>
<b>Care, other</b>	<b>209</b>	<b>242</b>	<b>1.16</b>	<b>46.3%</b>	<b>53.7%</b>	<b>1.12</b>	<b>1.19</b>	<b>81.8%</b>	<b>76.8%</b>	<b>86.2%</b>	<b>69.4%</b>	<b>30.6%</b>	<b>78.6%</b>	<b>61.5%</b>
<b>Patient &amp; Client Care</b>	<b>1,249</b>	<b>1,368</b>	<b>1.10</b>	<b>32.5%</b>	<b>67.5%</b>	<b>1.07</b>	<b>1.11</b>	<b>88.4%</b>	<b>82.2%</b>	<b>91.3%</b>	<b>76.9%</b>	<b>23.1%</b>	<b>87.2%</b>	<b>72.0%</b>

## Employment by WTE, Headcount, Gender, Full-Time /Part-Time etc.: Jun 2021

Mental Health Services CHO	WTE	Headcount	WTE: no.	% Male	% female	Male WTE: no.	Female WTE: no.	% Total Perm	% Male Perm	% Female Perm	% Total Full Time	% Total Part Time	% Male FT	% Female FT
<b>Overall</b>	<b>10,486</b>	<b>11,536</b>	<b>1.10</b>	<b>26.8%</b>	<b>73.2%</b>	<b>1.05</b>	<b>1.12</b>	<b>83.1%</b>	<b>79.8%</b>	<b>84.3%</b>	<b>85.0%</b>	<b>15.0%</b>	<b>93.0%</b>	<b>82.1%</b>
CHO 1	1,004	1,092	1.09	26.4%	73.6%	1.04	1.11	88.6%	88.6%	89.9%	87.5%	12.5%	96.9%	84.2%
CHO 2	1,366	1,484	1.09	28.0%	72.0%	1.06	1.10	84.8%	84.8%	86.9%	84.0%	16.0%	90.4%	81.5%
CHO 3	828	909	1.10	23.2%	76.8%	1.06	1.11	81.8%	81.8%	81.8%	84.9%	15.1%	91.0%	83.1%
CHO 4	1,567	1,735	1.11	25.5%	74.5%	1.07	1.12	72.6%	72.6%	75.0%	84.8%	15.2%	94.1%	81.6%
CHO 5	1,213	1,355	1.12	25.2%	74.8%	1.05	1.14	86.6%	86.6%	87.1%	79.4%	20.6%	90.9%	75.5%
CHO 6	630	700	1.11	29.0%	71.0%	1.05	1.14	82.9%	82.9%	83.3%	83.6%	16.4%	91.1%	80.5%
CHO 7	887	981	1.11	23.3%	76.7%	1.05	1.12	81.2%	81.2%	82.7%	88.0%	12.0%	95.6%	85.6%
CHO 8	1,126	1,236	1.10	24.2%	75.8%	1.02	1.12	86.0%	86.0%	86.1%	86.2%	13.8%	95.3%	83.4%
CHO 9	1,341	1,496	1.12	27.5%	72.5%	1.05	1.14	83.8%	83.8%	85.4%	84.5%	15.5%	94.2%	80.8%
other Community Services	523	548	1.05	46.4%	53.6%	1.06	1.04	88.3%	88.3%	91.2%	92.5%	7.5%	90.2%	94.6%

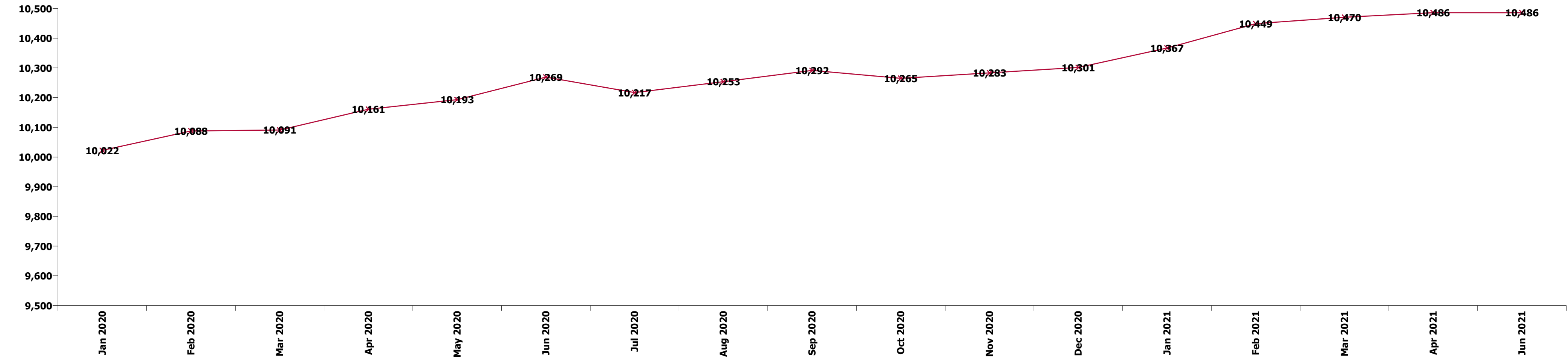
Summary Staff Movement: June 2021

Month-on-month  
Summary

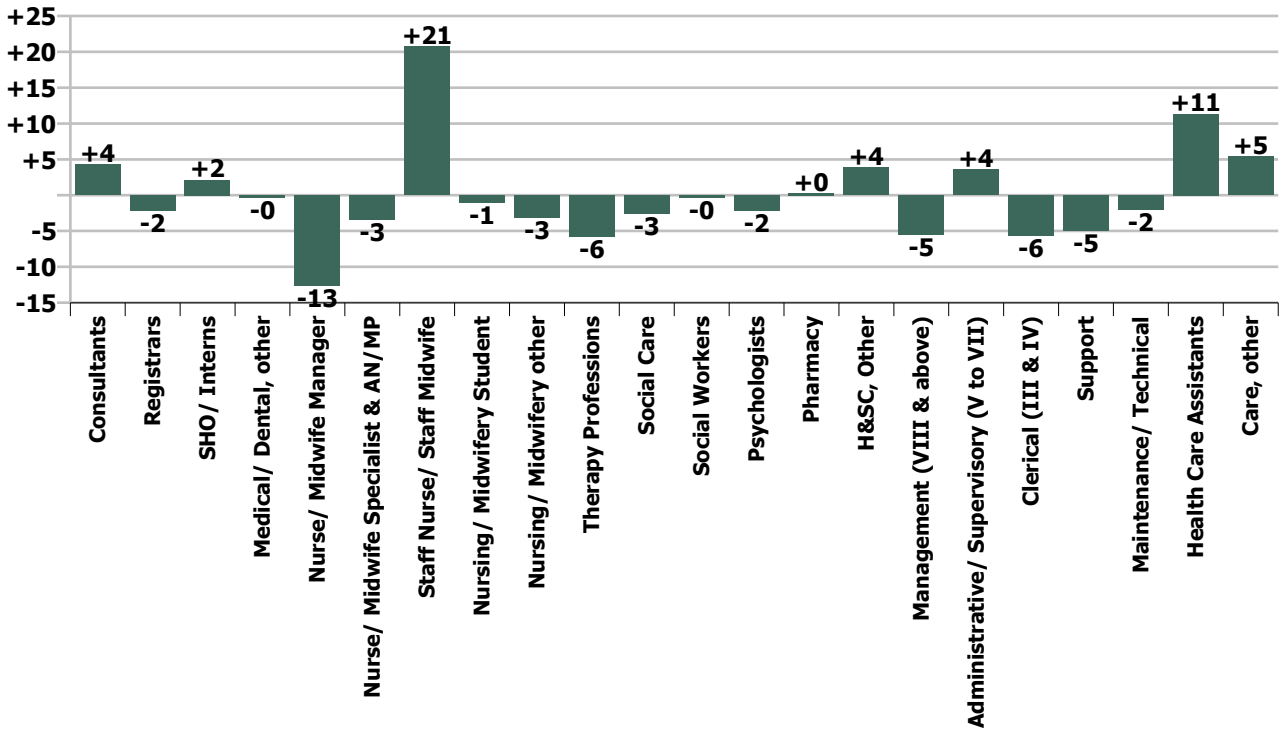
WTE change since Apr 21	% change since Apr 21	overall	Consultants	Registrars	SHO/ Interns	Medical/ Dental, other	Medical & Dental	Nurse/ Midwife Manager	Nurse/ Midwife Specialist & AN/MP	Staff Nurse/ Staff Midwife	Nursing/ Midwifery Student	Nursing/ Midwifery other	Nursing & Midwifery	Therapy Professions	Social Care	Social Workers	Psychologists	Pharmacy	H&SC, Other	Health & Social Care Professionals	Management (VIII & above)	Administrativ e/ Supervisory (V to VII)	Clerical (III & IV)	Management & Administrativ e	General Support	Health Care Assistants	Care, other	Patient & Client Care
Overall	-0.0%	-0	+4	-2	+2	-0	+4	-13	-3	+21	-1	-3	+1	-6	-3	-0	-2	+0	+4	-7	-5	+4	-6	-7	-7	+11	+5	+17
CHO 1	+0.1%	+1	+0	-1	+1		-0	-2	-0	+4	-0		+2	-1		+0	-1		-1	-3	-1	-1	+2	-1	-1	+2	+2	+4
CHO 2	-0.3%	-3	+2	+2	-0	-1	+3	-1	+1	-0	-0	-1	-2	+2	-1	-2	+1		-0	-0	-1	-0	-1	-2	-1	+0	-1	-1
CHO 3	-1.1%	-10	+0		+0		+1	-1	-5	-2	-0		-9	+0		+1	-1		-1	-1	+0	+1	-1	+0	-1	+0		+0
CHO 4	-0.1%	-2	+2	+1	+1	+0	+5	-8	+2	-5	-0		-11	-2	-1	+1	+0	+0	+0	-1	-1	+3	-2	+0	-0	+5	-0	+5
CHO 5	-0.8%	-10	+0	-1	+2		+1	-0	-4	-5	-0	-0	-10	-3	-0	+1	-0		+5	+3	-1	+2	-1	-0	-5	+1		+1
CHO 6	-0.7%	-5	+1	-2	+0		-1	+1	-0	+6	+0		+6	-1	-1	-1	+0		+1	-3		-4	-3	-6	-1	-0	+0	-0
CHO 7	+1.0%	+8	-0	-1	+1		-0	+1	-3	+11	+0	-1	+9	-1	+0	+11	+0		-1	-3	+0	-0	-2	-3	-0	+0	+5	+5
CHO 8	+0.3%	+4	-0	+0	-1		-1	-0	+2	+1	+0		+4	-0	+0	-0	+1		+0	+0	+0	+1	-2	-0	+0	+1	-0	+0
CHO 9	+0.8%	+10	-1	-0	-2		-3	+0	+2	+2	+0	-1	+3	+1	-0	+1	-0	-0	+1	+3	+0	+1	+5	+6	+0	+2	-0	+2
other Community Services	+1.2%	+6	+0	+0			+0	-2	+0	+8		+0	+7	+0	+0		-2	+1		-2	-2	+1	-0	-1	+2	+1		+1
		-0.0%	+1.1%	-0.7%	+0.9%	-9.2%	+0.4%	-1.0%	-0.7%	+0.7%	-0.6%	-9.6%	+0.0%	-1.3%	-3.3%	-0.1%	-0.5%	+1.5%	+3.7%	-0.5%	-8.7%	+1.5%	-0.8%	-0.7%	-1.0%	+1.1%	+2.7%	+1.4%

Year-on-year Summary

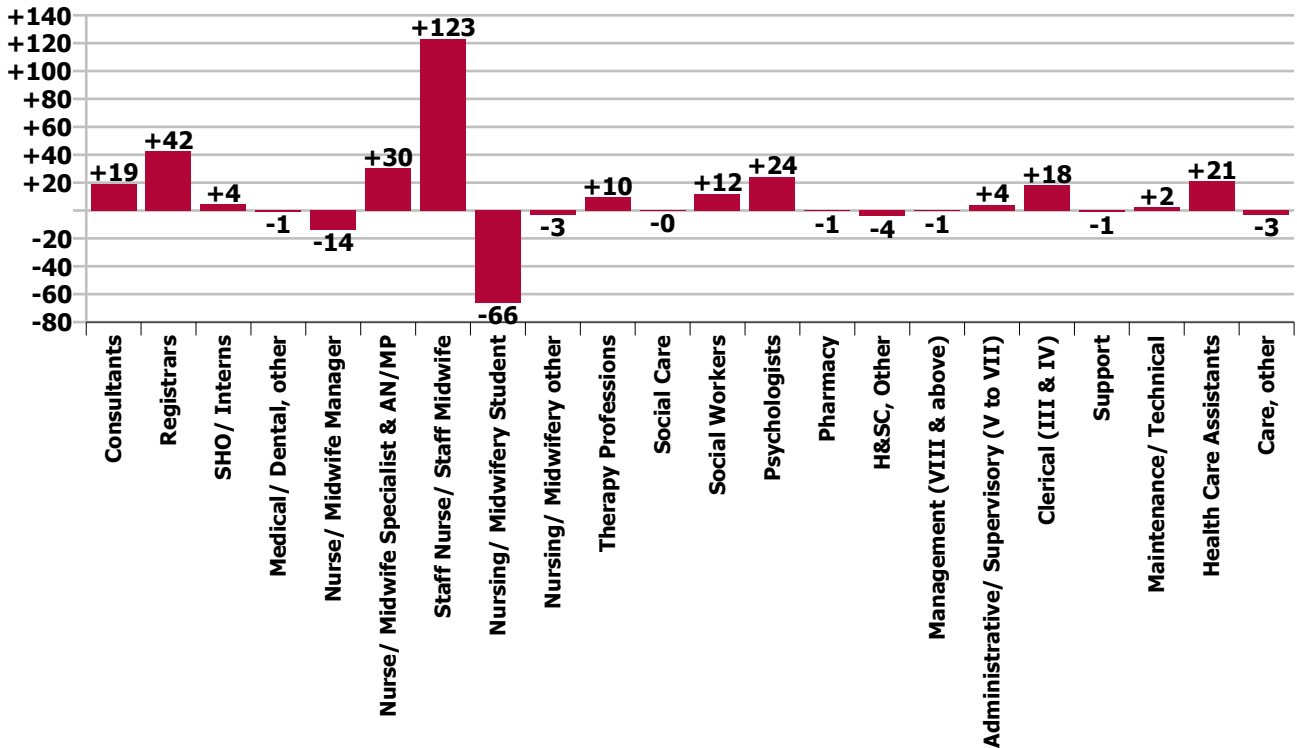
WTE change since Jun 20	% change since Jun 20	overall	Consultants	Registrars	SHO/ Interns	Medical/ Dental, other	Medical & Dental	Nurse/ Midwife Manager	Nurse/ Midwife Specialist & AN/MP	Staff Nurse/ Staff Midwife	Nursing/ Midwifery Student	Nursing/ Midwifery other	Nursing & Midwifery	Therapy Professions	Social Care	Social Workers	Psychologists	Pharmacy	H&SC, Other	Health & Social Care Professionals	Management (VIII & above)	Administrativ e/ Supervisory (V to VII)	Clerical (III & IV)	Management & Administrativ e	General Support	Health Care Assistants	Care, other	Patient & Client Care	
Overall	+2.1%	+217	+19	+42	+4	-1	+65	-14	+30	+123	-66	-3	+70	+10	-0	+12	+24	-1	-4	+40	-1	+4	+18	+22	+1	+21	-3	+18	
CHO 1	+2.7%	+26	+3	+8	-7		+5	+1	+5	+12	-10	+1	+9	+0	+0	+1	+0		+1	+4	-3	-1	+7	+4	-1	+7	-1	+6	
CHO 2	+1.9%	+25	+3	+4	+5	-1	+11	+3	+4	+26	-10	-2	+22	+6	+0		-3	+2	-1	-0	+3	-2	+1	-5	-6	+2	-4	-3	-7
CHO 3	+1.4%	+11	+2	+1	+2		+4	-4	-3	+11	-6		-2	+5			-2	+2		-2	+3	-1		+1	-0	-1	+8		+8
CHO 4	-1.1%	-17	+3	-5	+12	+0	+10	-2	-0	-5	-3		-10	-2	+0	+4	+5	-2	-4	+0	+1	-3	+3	+1	-4	-12	-2	-14	
CHO 5	+2.5%	+30	+1	-5	+12		+8	+4	+1	+15	+2	-0	+22	-6	-0	+0	-1		+5	-1		+3	+4	+7	-6	+0	+0	+0	
CHO 6	+5.7%	+34	+4	+4	+0		+8	-1	+4	+6	+5		+14	+2	+0	-2	+8		+0	+8		-2	-3	-5	+2	+6	+1	+7	
CHO 7	+2.4%	+21	+4	+15	-2		+17	-3	+3	+14	-16	-1	-2	+1	-0	+5	-0		-1	+5	+1	-1	-1	-1	+0	+0	+2	+2	
CHO 8	+0.3%	+4	+3	+11	-9		+4	-5	+2	+17	-4	-1	+9	-1	-0	+2	+2		-5	-3	-0	+2	-6	-5	+1	-2	-1	-3	
CHO 9	+2.5%	+33	-2	+4	-8		-6	-5	+12	+13	-24	-1	-5	+5	-0	+4	+3	+1	+2	+16	+1	+0	+18	+19	+1	+8	-0	+7	
other Community Services	+10.7%	+50	-0	+5			+5	-2	+1	+13		+1	+13	-1		+4	+2	+1		+6	+2	+7	+0	+9	+6	+11		+11	
		+2.1%	+5.4%	+16.0%	+1.8%	-19.0%	+7.5%	-1.1%	+6.1%	+4.1%	-27.0%	-9.2%	+1.4%	+2.2%	-0.2%	+3.2%	+6.0%	-3.5%	-3.8%	+2.9%	-1.2%	+1.7%	+2.6%	+2.2%	+0.1%	+2.1%	-1.4%	+1.5%	



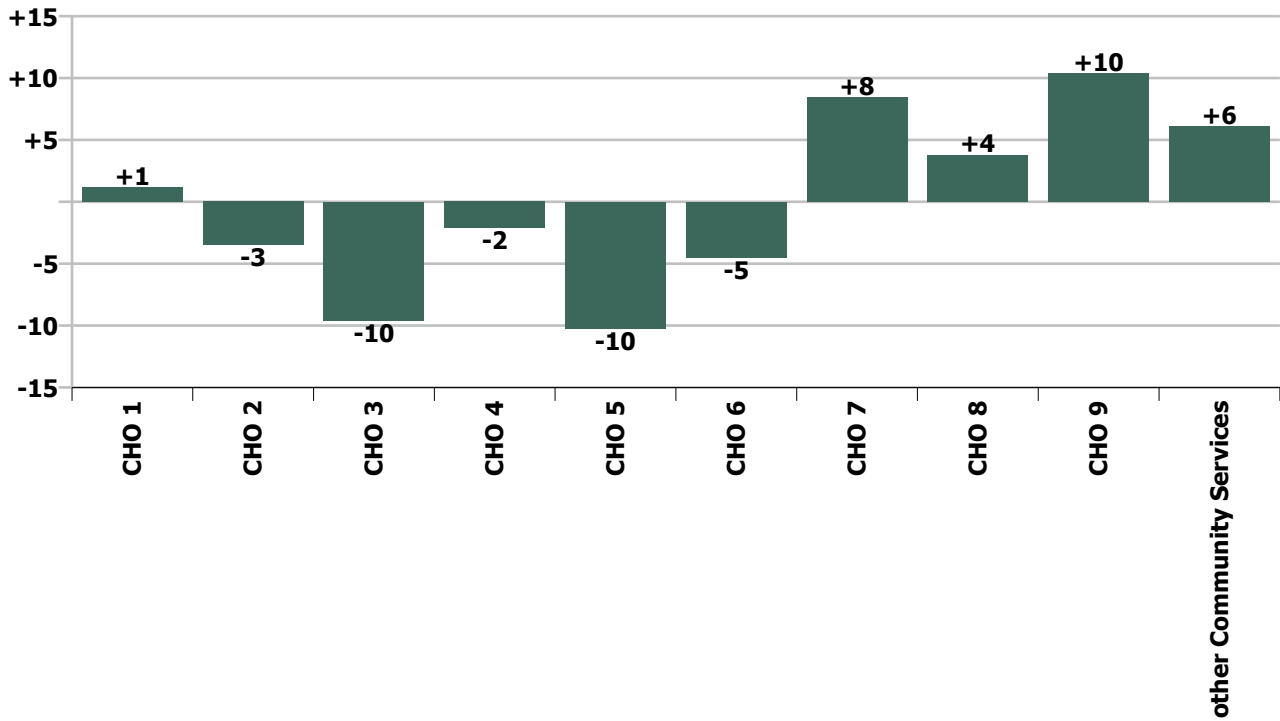
Staff Group change since: Apr 2021



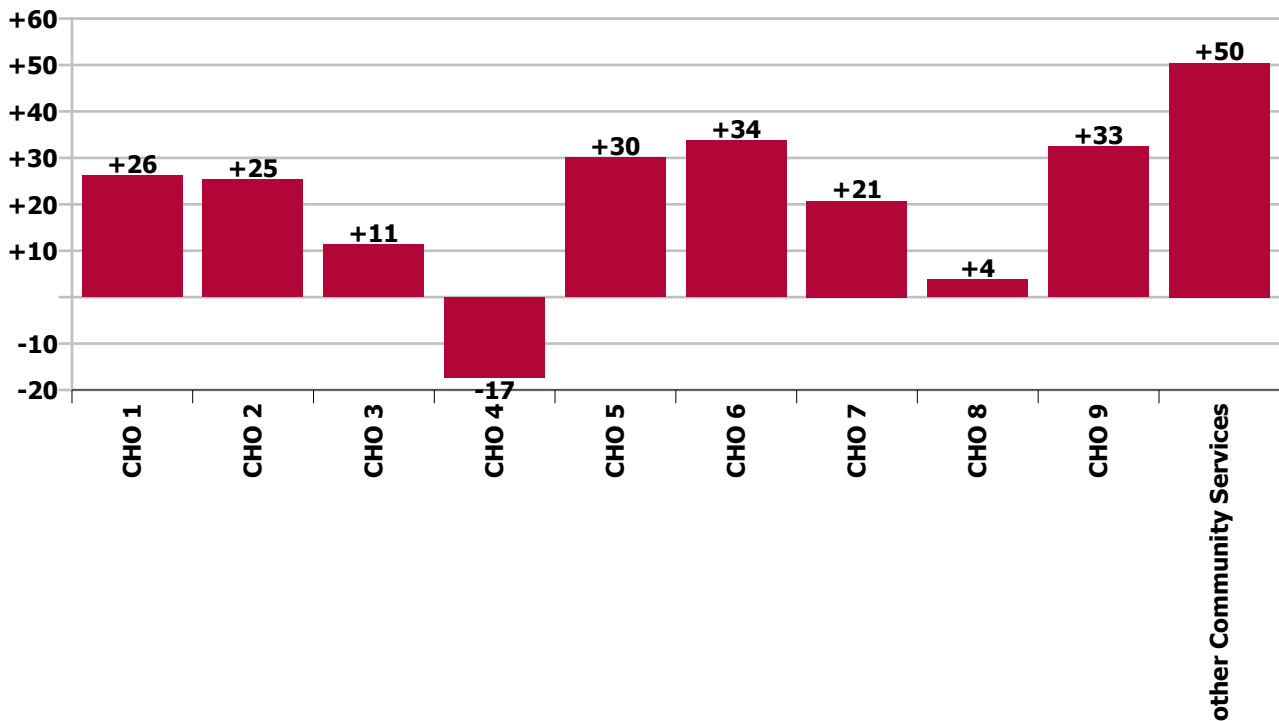
Staff Group change since: Jun 2020



CHO change since: Apr 2021



CHO change since: Jun 2020



## Longitudinal Employment Levels by Grade Group - Dec 2016 to Jun 2021

Jun 2021 (Dec 2015 figure: 9,499)	WTE Jun 2021	WTE change since Dec 16	WTE change since Dec 17	WTE change since Dec 18	WTE change since Dec 19	WTE change since Dec 20	WTE change since Apr 21	% change since Dec 16	% change since Dec 17	% change since Dec 18	% change since Dec 19	% change since Dec 20	% change since Apr 21
<b>Overall</b>	<b>10,486</b>	<b>+865</b>	<b>+696</b>	<b>+588</b>	<b>+532</b>	<b>+184</b>	<b>-0</b>	<b>+9.0%</b>	<b>+7.1%</b>	<b>+5.9%</b>	<b>+5.3%</b>	<b>+1.8%</b>	<b>-0.0%</b>
Consultant Medicine	1		-0	-0					-9.1%	-9.1%			
Consultant Psychiatry	381	+66	+68	+51	+29	+12	+4	+20.9%	+21.9%	+15.4%	+8.3%	+3.3%	+1.1%
<b>Consultants</b>	<b>382</b>	<b>+66</b>	<b>+68</b>	<b>+51</b>	<b>+29</b>	<b>+12</b>	<b>+4</b>	<b>+20.8%</b>	<b>+21.8%</b>	<b>+15.3%</b>	<b>+8.2%</b>	<b>+3.3%</b>	<b>+1.1%</b>
Registrar	196	+64	+51	+42	+27	+28	-3	+48.4%	+35.5%	+27.4%	+15.8%	+16.7%	-1.7%
Senior Registrar	110	+43	+44	+24	+13	-1	+1	+63.8%	+67.0%	+27.9%	+13.1%	-1.1%	+1.1%
Specialist Registrar	2	+1		+1	-1			+100.0%		+100.0%	-20.0%		
<b>Registrars</b>	<b>308</b>	<b>+108</b>	<b>+95</b>	<b>+67</b>	<b>+39</b>	<b>+27</b>	<b>-2</b>	<b>+53.8%</b>	<b>+44.9%</b>	<b>+27.9%</b>	<b>+14.5%</b>	<b>+9.5%</b>	<b>-0.7%</b>
<i>Intern</i>	5	-7	-5	-3	-3			-58.3%	-50.0%	-37.5%	-37.5%		
Interns	5	-7	-5	-3	-3		+0	-58.3%	-50.0%	-37.5%	-37.5%		+3.5%
Senior House Officer	243	-4	-29	-26	-10	-28	+2	-1.5%	-10.7%	-9.7%	-4.0%	-10.3%	+0.8%
<b>SHO/ Interns</b>	<b>248</b>	<b>-11</b>	<b>-34</b>	<b>-29</b>	<b>-13</b>	<b>-28</b>	<b>+2</b>	<b>-4.2%</b>	<b>-12.1%</b>	<b>-10.5%</b>	<b>-5.0%</b>	<b>-10.1%</b>	<b>+0.9%</b>
Dentists			-0	-0				-100.0%	-100.0%	-100.0%	-100.0%	-100.0%	-100.0%
Other Medical	4	-6	-7	-2	-1	-1	-0	-57.9%	-62.7%	-37.6%	-19.0%	-19.0%	-9.2%
<b>Medical/ Dental, other</b>	<b>4</b>	<b>-6</b>	<b>-7</b>	<b>-3</b>	<b>-1</b>	<b>-1</b>	<b>-0</b>	<b>-57.9%</b>	<b>-62.9%</b>	<b>-38.3%</b>	<b>-19.0%</b>	<b>-19.0%</b>	<b>-9.2%</b>
<b>Medical &amp; Dental</b>	<b>942</b>	<b>+157</b>	<b>+123</b>	<b>+86</b>	<b>+54</b>	<b>+10</b>	<b>+4</b>	<b>+20.0%</b>	<b>+15.0%</b>	<b>+10.1%</b>	<b>+6.1%</b>	<b>+1.1%</b>	<b>+0.4%</b>
Clinical Nurse/ Midwife Manager	1,030	+23	+47	+24	+31	-11	-5	+2.3%	+4.8%	+2.4%	+3.1%	-1.1%	-0.5%
Director Nursing/Midwifery, Assistant	168	+13	+6	+4	+3	-3	-9	+8.1%	+3.7%	+2.3%	+1.9%	-1.6%	-4.9%
Director of Nursing/Midwifery	28	-4	-1	+4	-1	-0	+1	-12.6%	-2.7%	+16.8%	-4.1%	-0.8%	+3.5%
<b>Nurse/ Midwife Manager</b>	<b>1,225</b>	<b>+32</b>	<b>+52</b>	<b>+32</b>	<b>+33</b>	<b>-14</b>	<b>-13</b>	<b>+2.7%</b>	<b>+4.5%</b>	<b>+2.6%</b>	<b>+2.8%</b>	<b>-1.2%</b>	<b>-1.0%</b>
Advanced Nurse/ Midwife Practitioner	43	+35	+32	+22	+12	+3	+1	+468.2%	+304.8%	+111.0%	+38.3%	+7.8%	+3.3%
Clinical Nurse/ Midwife Specialist	481	+144	+97	+85	+52	-9	-5	+42.9%	+25.4%	+21.6%	+12.2%	-1.8%	-1.0%
<b>Nurse/ Midwife Specialist &amp; AN/MP</b>	<b>523</b>	<b>+179</b>	<b>+129</b>	<b>+108</b>	<b>+64</b>	<b>-6</b>	<b>-3</b>	<b>+52.1%</b>	<b>+32.9%</b>	<b>+25.9%</b>	<b>+13.9%</b>	<b>-1.0%</b>	<b>-0.7%</b>
Graduate Nursing/ Midwifery								-100.0%	-100.0%	-100.0%	-100.0%	-100.0%	-100.0%
<i>Staff Midwife</i>								-100.0%	-100.0%	-100.0%	-100.0%	-100.0%	-100.0%
Staff Midwives						-1		-100.0%	-100.0%	-100.0%	-100.0%	-100.0%	-100.0%
Staff Nurse [Intellectual Disability]	3	-0	-0	-3	-1	-1	+1	-4.8%	-8.1%	-47.0%	-29.8%	-25.0%	+35.9%
Staff Nurse [Psychiatric]	3,010	-47	-17	+55	+116	+45	-7	-1.5%	-0.6%	+1.9%	+4.0%	+1.5%	-0.2%
Staff Nurses [General/ Children's]	122	+2	+5	+5	+18	+16	+27	+1.4%	+4.1%	+4.1%	+16.7%	+15.1%	+28.7%





Jun 2021 (Dec 2015 figure: 9,499)	WTE Jun 2021	WTE change since Dec 16	WTE change since Dec 17	WTE change since Dec 18	WTE change since Dec 19	WTE change since Dec 20	WTE change since Apr 21	% change since Dec 16	% change since Dec 17	% change since Dec 18	% change since Dec 19	% change since Dec 20	% change since Apr 21
<b>Overall</b>	<b>10,486</b>	<b>+865</b>	<b>+696</b>	<b>+588</b>	<b>+532</b>	<b>+184</b>	<b>-0</b>	<b>+9.0%</b>	<b>+7.1%</b>	<b>+5.9%</b>	<b>+5.3%</b>	<b>+1.8%</b>	<b>-0.0%</b>
<b>Staff Nurse/ Staff Midwife</b>	<b>3,135</b>	<b>-45</b>	<b>-13</b>	<b>+57</b>	<b>+133</b>	<b>+59</b>	<b>+21</b>	<b>-1.4%</b>	<b>-0.4%</b>	<b>+1.8%</b>	<b>+4.4%</b>	<b>+1.9%</b>	<b>+0.7%</b>
<b>Public Health Nurse</b>		<b>-1</b>	<b>-1</b>					<b>-100.0%</b>	<b>-100.0%</b>	<b>-100.0%</b>	<b>-100.0%</b>	<b>-100.0%</b>	<b>-100.0%</b>
<i>Student General Nursing Intern (pre-registration)</i>				-1				-100.0%	-100.0%	-100.0%	-100.0%	-100.0%	-100.0%
<i>Student Psychiatric Nursing Intern (pre-registration)</i>	171	+163	+154	+144	+144			+1878.4%	+917.4%	+534.3%	+522.3%	+1499.7%	+1499.7%
<b>Pre-registration Nurse/ Midwife Intern</b>	<b>171</b>	<b>+163</b>	<b>+154</b>	<b>+143</b>	<b>+144</b>	<b>+161</b>	<b>+0</b>	<b>+1878.4%</b>	<b>+917.4%</b>	<b>+514.7%</b>	<b>+522.3%</b>	<b>+1499.7%</b>	<b>+0.2%</b>
<i>Student Psychiatric Nursing Intern (COVID-19 HCA)</i>	4	+4	+4	+4	+4			-100.0%	-100.0%	-100.0%	-100.0%	-90.3%	-90.3%
<b>Pre-registration Nurse Intern (COVID-19)</b>	<b>4</b>	<b>+4</b>	<b>+4</b>	<b>+4</b>	<b>+4</b>	<b>-38</b>	<b>-0</b>	<b>-100.0%</b>	<b>-100.0%</b>	<b>-100.0%</b>	<b>-100.0%</b>	<b>-90.3%</b>	<b>-9.9%</b>
<i>Student Public Health Nursing (post registration)</i>	1	+1	+1	+1				-100.0%	-100.0%	-100.0%			
<b>Post-registration Nurse/ Midwife Student</b>	<b>1</b>	<b>+1</b>	<b>+1</b>	<b>+1</b>				<b>-100.0%</b>	<b>-100.0%</b>	<b>-100.0%</b>			
<b>Nursing/ Midwifery awaiting registration</b>	<b>3</b>	<b>+1</b>	<b>-6</b>	<b>-17</b>	<b>-56</b>	<b>-2</b>	<b>-1</b>	<b>+46.5%</b>	<b>-66.1%</b>	<b>-85.2%</b>	<b>-95.0%</b>	<b>-39.6%</b>	<b>-23.1%</b>
<b>Nursing/ Midwifery Student</b>	<b>179</b>	<b>+169</b>	<b>+154</b>	<b>+132</b>	<b>+92</b>	<b>+120</b>	<b>-1</b>	<b>+1582.6%</b>	<b>+603.6%</b>	<b>+275.9%</b>	<b>+105.1%</b>	<b>+204.2%</b>	<b>-0.6%</b>
<b>Nursing Education/Clinical</b>	<b>29</b>	<b>+4</b>	<b>-1</b>	<b>-2</b>	<b>-2</b>	<b>-3</b>	<b>-3</b>	<b>+18.1%</b>	<b>-4.7%</b>	<b>-6.1%</b>	<b>-7.7%</b>	<b>-8.1%</b>	<b>-9.6%</b>
<b>Nursing/ Midwifery other</b>	<b>29</b>	<b>+4</b>	<b>-1</b>	<b>-2</b>	<b>-2</b>	<b>-3</b>	<b>-3</b>	<b>+18.1%</b>	<b>-4.7%</b>	<b>-6.1%</b>	<b>-7.7%</b>	<b>-8.1%</b>	<b>-9.6%</b>
<b>Nursing &amp; Midwifery</b>	<b>5,092</b>	<b>+338</b>	<b>+321</b>	<b>+326</b>	<b>+319</b>	<b>+157</b>	<b>+1</b>	<b>+7.1%</b>	<b>+6.7%</b>	<b>+6.8%</b>	<b>+6.7%</b>	<b>+3.2%</b>	<b>+0.0%</b>
<b>Dietitians</b>	<b>22</b>	<b>+8</b>	<b>+5</b>	<b>+2</b>	<b>+3</b>	<b>+1</b>	<b>+1</b>	<b>+60.9%</b>	<b>+30.0%</b>	<b>+8.7%</b>	<b>+13.9%</b>	<b>+4.8%</b>	<b>+3.6%</b>
<b>Occupational Therapists</b>	<b>353</b>	<b>+53</b>	<b>+27</b>	<b>+14</b>	<b>+15</b>	<b>+8</b>	<b>-5</b>	<b>+17.8%</b>	<b>+8.3%</b>	<b>+4.1%</b>	<b>+4.3%</b>	<b>+2.2%</b>	<b>-1.5%</b>
<b>Physiotherapists</b>	<b>2</b>	<b>+0</b>	<b>+1</b>	<b>+1</b>	<b>+0</b>			<b>+19.9%</b>	<b>+99.2%</b>	<b>+49.7%</b>	<b>+8.1%</b>		
<b>Podiatrists &amp; Chiropodists</b>	<b>1</b>	<b>-1</b>	<b>-1</b>	<b>-1</b>	<b>-0</b>	<b>-0</b>	<b>-0</b>	<b>-61.0%</b>	<b>-51.7%</b>	<b>-41.8%</b>	<b>-2.7%</b>	<b>-11.3%</b>	<b>-9.0%</b>
<b>Speech &amp; Language Therapists</b>	<b>68</b>	<b>+9</b>	<b>+7</b>	<b>+7</b>	<b>+7</b>	<b>-1</b>	<b>-1</b>	<b>+14.7%</b>	<b>+11.1%</b>	<b>+11.0%</b>	<b>+10.7%</b>	<b>-2.0%</b>	<b>-1.8%</b>
<b>Therapy Professions</b>	<b>446</b>	<b>+70</b>	<b>+39</b>	<b>+23</b>	<b>+24</b>	<b>+7</b>	<b>-6</b>	<b>+18.5%</b>	<b>+9.7%</b>	<b>+5.4%</b>	<b>+5.7%</b>	<b>+1.6%</b>	<b>-1.3%</b>
<b>Social Care</b>	<b>76</b>	<b>-12</b>	<b>-6</b>	<b>-2</b>	<b>+3</b>	<b>-4</b>	<b>-3</b>	<b>-13.3%</b>	<b>-7.7%</b>	<b>-3.1%</b>	<b>+3.6%</b>	<b>-4.7%</b>	<b>-3.3%</b>
<b>Social Workers</b>	<b>379</b>	<b>+29</b>	<b>+22</b>	<b>+21</b>	<b>+30</b>	<b>+7</b>	<b>-0</b>	<b>+8.3%</b>	<b>+6.2%</b>	<b>+5.8%</b>	<b>+8.5%</b>	<b>+1.8%</b>	<b>-0.1%</b>
<b>Psychologists</b>	<b>427</b>	<b>+84</b>	<b>+57</b>	<b>+39</b>	<b>+33</b>	<b>+3</b>	<b>-2</b>	<b>+24.6%</b>	<b>+15.4%</b>	<b>+9.9%</b>	<b>+8.3%</b>	<b>+0.8%</b>	<b>-0.5%</b>
<b>Pharmacy</b>	<b>20</b>	<b>+0</b>	<b>+1</b>	<b>+1</b>	<b>+1</b>	<b>-1</b>	<b>+0</b>	<b>+2.2%</b>	<b>+2.7%</b>	<b>+3.2%</b>	<b>+7.2%</b>	<b>-4.0%</b>	<b>+1.5%</b>
<b>Counsellor Therapists</b>	<b>100</b>	<b>+15</b>	<b>+15</b>	<b>+15</b>	<b>+6</b>	<b>-1</b>	<b>+3</b>	<b>+18.1%</b>	<b>+17.4%</b>	<b>+18.1%</b>	<b>+5.9%</b>	<b>-0.8%</b>	<b>+3.3%</b>
<b>Other Health &amp; Social Care</b>	<b>6</b>	<b>-3</b>	<b>-3</b>	<b>-3</b>	<b>-6</b>	<b>+0</b>	<b>+1</b>	<b>-32.6%</b>	<b>-33.7%</b>	<b>-34.0%</b>	<b>-51.6%</b>	<b>+5.0%</b>	<b>+12.5%</b>
<b>Play Therapists/ Specialists</b>	<b>1</b>	<b>-1</b>	<b>-0</b>		<b>+0</b>			<b>-40.8%</b>	<b>-2.0%</b>		<b>+1.4%</b>		
<b>H&amp;SC, Other</b>	<b>108</b>	<b>+12</b>	<b>+12</b>	<b>+12</b>	<b>-0</b>	<b>-0</b>	<b>+4</b>	<b>+12.1%</b>	<b>+12.5%</b>	<b>+13.1%</b>	<b>-0.4%</b>	<b>-0.5%</b>	<b>+3.7%</b>
<b>Health &amp; Social Care Professionals</b>	<b>1,456</b>	<b>+184</b>	<b>+124</b>	<b>+93</b>	<b>+90</b>	<b>+12</b>	<b>-7</b>	<b>+14.4%</b>	<b>+9.3%</b>	<b>+6.8%</b>	<b>+6.6%</b>	<b>+0.8%</b>	<b>-0.5%</b>



Jun 2021 (Dec 2015 figure: 9,499)	WTE Jun 2021	WTE change since Dec 16	WTE change since Dec 17	WTE change since Dec 18	WTE change since Dec 19	WTE change since Dec 20	WTE change since Apr 21	% change since Dec 16	% change since Dec 17	% change since Dec 18	% change since Dec 19	% change since Dec 20	% change since Apr 21
<b>Overall</b>	<b>10,486</b>	<b>+865</b>	<b>+696</b>	<b>+588</b>	<b>+532</b>	<b>+184</b>	<b>-0</b>	<b>+9.0%</b>	<b>+7.1%</b>	<b>+5.9%</b>	<b>+5.3%</b>	<b>+1.8%</b>	<b>-0.0%</b>
Executive Management	15	+8	+7	+5	+4	+0	-1	+113.7%	+87.0%	+49.6%	+36.0%	+1.6%	-3.3%
Senior Management (VIII & GM)	43	+18	+11	+11	-4	-10	-5	+72.2%	+36.0%	+34.3%	-8.3%	-18.9%	-10.4%
<b>Management (VIII &amp; above)</b>	<b>57</b>	<b>+26</b>	<b>+18</b>	<b>+16</b>	<b>+0</b>	<b>-10</b>	<b>-5</b>	<b>+81.4%</b>	<b>+46.4%</b>	<b>+38.0%</b>	<b>+0.2%</b>	<b>-14.4%</b>	<b>-8.7%</b>
<b>Administrative/ Supervisory (V to VII)</b>	<b>246</b>	<b>+78</b>	<b>+46</b>	<b>+23</b>	<b>+9</b>	<b>+1</b>	<b>+4</b>	<b>+46.3%</b>	<b>+23.2%</b>	<b>+10.4%</b>	<b>+3.7%</b>	<b>+0.4%</b>	<b>+1.5%</b>
<b>Clerical (III &amp; IV)</b>	<b>723</b>	<b>+62</b>	<b>+41</b>	<b>+28</b>	<b>+6</b>	<b>+1</b>	<b>-6</b>	<b>+9.4%</b>	<b>+6.1%</b>	<b>+4.0%</b>	<b>+0.8%</b>	<b>+0.1%</b>	<b>-0.8%</b>
<b>Management &amp; Administrative</b>	<b>1,026</b>	<b>+165</b>	<b>+106</b>	<b>+67</b>	<b>+15</b>	<b>-8</b>	<b>-7</b>	<b>+19.2%</b>	<b>+11.5%</b>	<b>+6.9%</b>	<b>+1.4%</b>	<b>-0.7%</b>	<b>-0.7%</b>
Catering	66	+0	+0	-6	+1	+2	+1	+0.5%	+0.3%	-8.1%	+1.2%	+3.8%	+0.8%
Household Services	429	-63	-47	-17	+4	-12	-6	-12.8%	-9.9%	-3.7%	+1.1%	-2.8%	-1.3%
Other Support	43	-13	-6	-12	+0	+1	+0	-23.2%	-13.0%	-21.9%	+0.8%	+2.7%	+0.1%
Portering	47	-12	-2	-1	-1	-0	+0	-20.8%	-4.0%	-2.2%	-2.4%	-0.8%	+0.1%
<b>Support</b>	<b>585</b>	<b>-88</b>	<b>-55</b>	<b>-36</b>	<b>+4</b>	<b>-9</b>	<b>-5</b>	<b>-13.1%</b>	<b>-8.7%</b>	<b>-5.7%</b>	<b>+0.8%</b>	<b>-1.5%</b>	<b>-0.8%</b>
Maintenance	135	-8	-3	+1	+6	-2	-2	-5.4%	-2.5%	+0.7%	+4.9%	-1.6%	-1.4%
Technical Services		-2	-2	-2	-2			-100.0%	-100.0%	-100.0%	-100.0%	-100.0%	-100.0%
<b>Maintenance/ Technical</b>	<b>135</b>	<b>-10</b>	<b>-5</b>	<b>-1</b>	<b>+4</b>	<b>-2</b>	<b>-2</b>	<b>-6.7%</b>	<b>-3.9%</b>	<b>-0.8%</b>	<b>+3.3%</b>	<b>-1.6%</b>	<b>-1.4%</b>
<b>General Support</b>	<b>720</b>	<b>-98</b>	<b>-61</b>	<b>-37</b>	<b>+9</b>	<b>-11</b>	<b>-7</b>	<b>-12.0%</b>	<b>-7.8%</b>	<b>-4.8%</b>	<b>+1.2%</b>	<b>-1.5%</b>	<b>-1.0%</b>
HCA, Nurse's Aide, etc.	1,029	+100	+80	+55	+50	+16	+11	+10.8%	+8.4%	+5.6%	+5.1%	+1.5%	+1.0%
Health & Social Care Assistants	11	+6	+6	+6	+2	+3	+1	+139.4%	+139.4%	+104.2%	+24.3%	+33.2%	+6.9%
<b>Health Care Assistants</b>	<b>1,040</b>	<b>+106</b>	<b>+87</b>	<b>+60</b>	<b>+52</b>	<b>+18</b>	<b>+11</b>	<b>+11.4%</b>	<b>+9.1%</b>	<b>+6.2%</b>	<b>+5.3%</b>	<b>+1.8%</b>	<b>+1.1%</b>
Other Care Grades	209	+13	-3	-7	-7	+6	+5	+6.6%	-1.5%	-3.1%	-3.1%	+2.8%	+2.7%
<b>Care, other</b>	<b>209</b>	<b>+13</b>	<b>-3</b>	<b>-7</b>	<b>-7</b>	<b>+6</b>	<b>+5</b>	<b>+6.6%</b>	<b>-1.5%</b>	<b>-3.1%</b>	<b>-3.1%</b>	<b>+2.8%</b>	<b>+2.7%</b>
<b>Patient &amp; Client Care</b>	<b>1,249</b>	<b>+119</b>	<b>+83</b>	<b>+54</b>	<b>+45</b>	<b>+24</b>	<b>+17</b>	<b>+10.6%</b>	<b>+7.2%</b>	<b>+4.5%</b>	<b>+3.8%</b>	<b>+2.0%</b>	<b>+1.4%</b>

Source: Health Service Personnel Census

