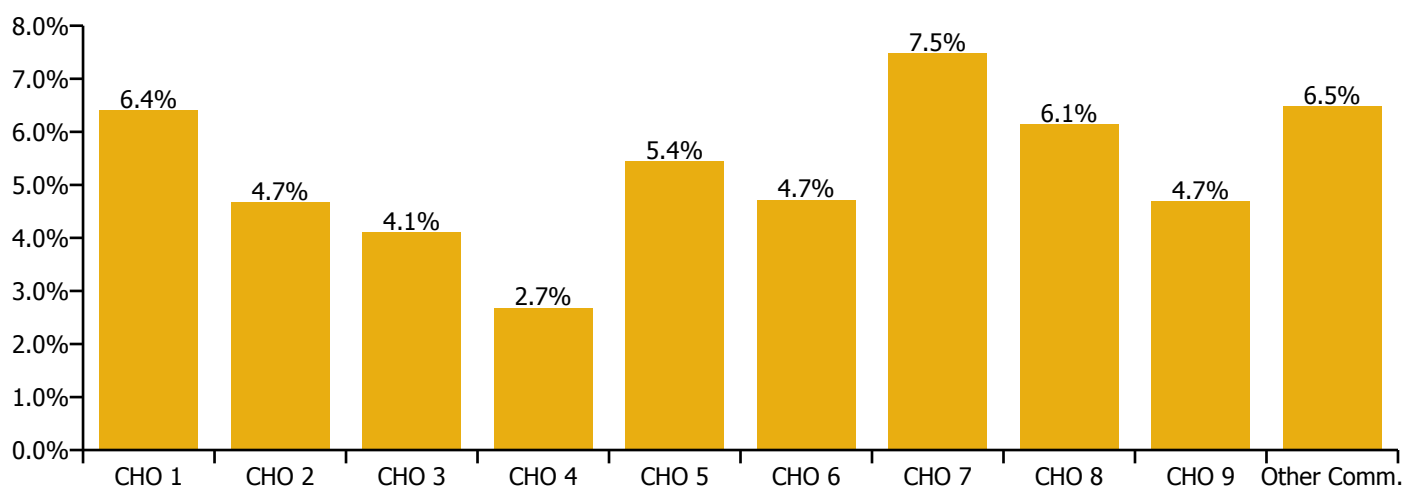


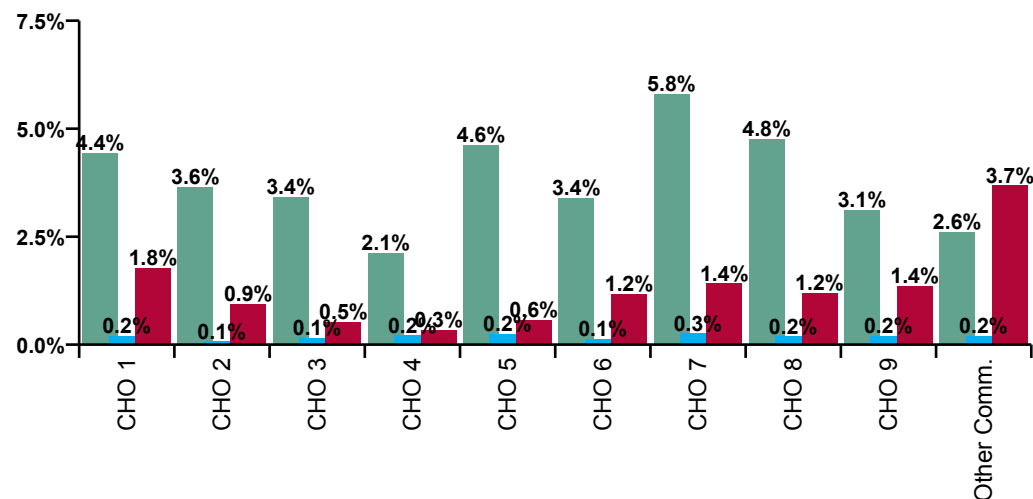
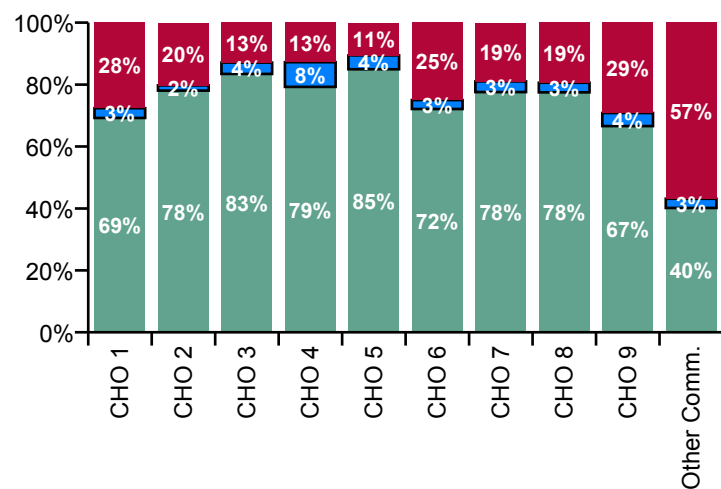
October 2020

Primary Care Absence Rate - by Staff Category: Oct 2020	Certified absence	Self-certified absence	COVID-19 absence	Total absence rate	Certified	Self-certified	COVID-19
Primary Care	4.0%	0.2%	1.1%	5.4%	75.5%	3.6%	20.9%
Medical & Dental	2.9%	0.2%	0.7%	3.8%	77.7%	4.9%	17.4%
Nursing & Midwifery	4.7%	0.2%	1.7%	6.6%	72.0%	2.8%	25.2%
Health & Social Care Professionals	3.2%	0.2%	0.6%	4.0%	81.2%	4.7%	14.0%
Management & Administrative	4.0%	0.2%	0.8%	5.0%	80.0%	3.8%	16.2%
General Support	3.3%	0.2%	1.8%	5.2%	63.0%	3.0%	34.0%
Patient & Client Care	5.5%	0.2%	1.8%	7.6%	72.5%	3.2%	24.2%

Primary Care Absence Rate - by Care Group: Oct 2020	Certified absence	Self-certified absence	COVID-19 absence	Total absence rate	Certified	Self-certified	COVID-19
Primary Care	4.0%	0.2%	1.1%	5.4%	75.5%	3.6%	20.9%
CHO 1	4.4%	0.2%	1.8%	6.4%	69.2%	3.2%	27.6%
CHO 2	3.6%	0.1%	0.9%	4.7%	78.1%	1.6%	20.3%
CHO 3	3.4%	0.1%	0.5%	4.1%	83.5%	3.6%	12.9%
Health Service Executive	2.2%	0.2%	0.3%	2.7%	81.5%	8.2%	10.3%
Section 38 Voluntary Agencies	1.0%	0.1%	0.9%	2.0%	49.7%	4.5%	45.8%
CHO 4	2.1%	0.2%	0.3%	2.7%	79.3%	8.0%	12.8%
CHO 5	4.6%	0.2%	0.6%	5.4%	85.0%	4.5%	10.6%
Health Service Executive	3.6%	0.2%	1.2%	5.0%	72.7%	3.0%	24.3%
Section 38 Voluntary Agencies	1.7%		1.0%	2.7%	63.7%	0.0%	36.3%
CHO 6	3.4%	0.1%	1.2%	4.7%	72.1%	2.9%	25.0%
Health Service Executive	6.1%	0.3%	1.8%	8.1%	75.1%	3.1%	21.8%
Section 38 Voluntary Agencies	5.0%	0.3%	0.5%	5.8%	86.5%	4.7%	8.7%
CHO 7	5.8%	0.3%	1.4%	7.5%	77.6%	3.4%	19.0%
CHO 8	4.8%	0.2%	1.2%	6.1%	77.5%	3.1%	19.4%
CHO 9	3.1%	0.2%	1.4%	4.7%	66.6%	4.2%	29.2%
Other Community Services	2.6%	0.2%	3.7%	6.5%	40.1%	3.0%	56.9%



Primary Care Overall Absence Rate - by Care Group & Staff Category: Oct 2020	Medical & Dental	Nursing & Midwifery	Health & Social Care Professionals	Management & Administrative	General Support	Patient & Client Care	Certified absence	Self-certified absence	COVID-19 absence	Total absence
Primary Care	3.8%	6.6%	4.0%	5.0%	5.2%	7.6%	4.0%	0.2%	1.1%	5.4%
CHO 1	4.9%	9.4%	4.6%	6.0%	3.6%	6.5%	4.4%	0.2%	1.8%	6.4%
CHO 2	3.2%	6.9%	3.4%	4.8%	1.2%	4.9%	3.6%	0.1%	0.9%	4.7%
CHO 3	5.1%	4.4%	4.3%	3.8%	0.7%	4.5%	3.4%	0.1%	0.5%	4.1%
Health Service Executive	4.0%	3.0%	1.6%	2.9%	0.7%	4.4%	2.2%	0.2%	0.3%	2.7%
Section 38 Voluntary Agencies	0.0%	10.5%	0.0%	1.6%	0.0%	2.8%	1.0%	0.1%	0.9%	2.0%
CHO 4	3.3%	3.2%	1.5%	2.8%	0.2%	3.9%	2.1%	0.2%	0.3%	2.7%
CHO 5	7.1%	7.0%	2.6%	4.7%	3.1%	8.6%	4.6%	0.2%	0.6%	5.4%
Health Service Executive	1.8%	7.7%	3.9%	4.4%	7.7%	1.9%	3.6%	0.2%	1.2%	5.0%
Section 38 Voluntary Agencies	4.2%	14.3%	0.0%	0.0%	3.5%	2.1%	1.7%		1.0%	2.7%
CHO 6	2.2%	7.9%	3.8%	3.8%	5.8%	2.0%	3.4%	0.1%	1.2%	4.7%
Health Service Executive	4.5%	7.8%	5.5%	11.1%	11.7%	11.8%	6.1%	0.3%	1.8%	8.1%
Section 38 Voluntary Agencies	1.5%	4.3%	6.7%	1.9%	7.7%	8.9%	5.0%	0.3%	0.5%	5.8%
CHO 7	4.0%	6.9%	5.7%	9.1%	9.0%	10.7%	5.8%	0.3%	1.4%	7.5%
CHO 8	2.2%	7.9%	5.7%	5.4%	9.8%	7.5%	4.8%	0.2%	1.2%	6.1%
CHO 9	2.9%	4.6%	3.9%	4.4%	8.4%	8.1%	3.1%	0.2%	1.4%	4.7%
Other Community Services	4.3%	3.2%	6.3%	1.6%	0.0%	30.7%	2.6%	0.2%	3.7%	6.5%



Certified absence

Self-certified absence

COVID-19 absence

Primary Care Absence Rate - by Care Group, Staff Category & Absence type: Oct 2020

CHO 1 by Staff Category Oct 2020	Certified absence	Self-certified absence	COVID-19 absence	Total absence	Certified	Self-certified	COVID-19
Primary Care	4.4%	0.2%	1.8%	6.4%	69.2%	3.2%	27.6%
Medical & Dental	3.8%	0.1%	1.0%	4.9%	77.6%	2.3%	20.1%
Nursing & Midwifery	5.6%	0.3%	3.5%	9.4%	59.3%	3.2%	37.5%
Health & Social Care Professionals	4.0%	0.1%	0.5%	4.6%	85.9%	2.8%	11.3%
Management & Administrative	4.3%	0.1%	1.6%	6.0%	70.9%	1.8%	27.3%
General Support	1.5%	0.5%	1.6%	3.6%	41.9%	13.8%	44.4%
Patient & Client Care	5.4%	0.2%	0.9%	6.5%	82.9%	3.5%	13.6%

CHO 2 by Staff Category Oct 2020	Certified absence	Self-certified absence	COVID-19 absence	Total absence	Certified	Self-certified	COVID-19
Primary Care	3.6%	0.1%	0.9%	4.7%	78.1%	1.6%	20.3%
Medical & Dental	3.0%	0.2%		3.2%	93.9%	6.1%	
Nursing & Midwifery	5.2%	0.0%	1.7%	6.9%	75.3%	0.4%	24.3%
Health & Social Care Professionals	2.5%	0.0%	0.8%	3.4%	73.4%	1.4%	25.2%
Management & Administrative	4.0%	0.1%	0.7%	4.8%	83.2%	2.5%	14.2%
General Support	0.2%		1.1%	1.2%	13.3%	0.0%	86.7%
Patient & Client Care	4.4%	0.2%	0.3%	4.9%	90.1%	3.2%	6.7%

CHO 3 by Staff Category Oct 2020	Certified absence	Self-certified absence	COVID-19 absence	Total absence	Certified	Self-certified	COVID-19
Primary Care	3.4%	0.1%	0.5%	4.1%	83.5%	3.6%	12.9%
Medical & Dental	4.5%	0.2%	0.4%	5.1%	89.3%	3.0%	7.7%
Nursing & Midwifery	3.7%	0.1%	0.7%	4.4%	82.7%	1.8%	15.5%
Health & Social Care Professionals	3.2%	0.1%	1.0%	4.3%	75.1%	1.5%	23.4%
Management & Administrative	3.4%	0.3%	0.2%	3.8%	89.1%	6.9%	4.0%
General Support	0.6%	0.1%		0.7%	81.0%	19.0%	0.0%
Patient & Client Care	3.5%	0.1%	0.8%	4.5%	78.9%	2.9%	18.2%

CHO 4 by Staff Category Oct 2020	Certified absence	Self-certified absence	COVID-19 absence	Total absence	Certified	Self-certified	COVID-19
Primary Care	2.1%	0.2%	0.3%	2.7%	79.3%	8.0%	12.8%
Medical & Dental	2.8%	0.2%	0.3%	3.3%	83.0%	7.3%	9.7%
Nursing & Midwifery	2.5%	0.2%	0.6%	3.2%	76.1%	5.0%	18.9%
Health & Social Care Professionals	1.2%	0.3%	0.1%	1.5%	77.9%	17.7%	4.4%
Management & Administrative	2.0%	0.2%	0.5%	2.8%	73.3%	7.3%	19.4%
General Support	0.2%			0.2%	100.0%	0.0%	0.0%
Patient & Client Care	3.7%	0.2%	0.1%	3.9%	93.3%	4.0%	2.7%

CHO 5 by Staff Category Oct 2020	Certified absence	Self-certified absence	COVID-19 absence	Total absence	Certified	Self-certified	COVID-19
Primary Care	4.6%	0.2%	0.6%	5.4%	85.0%	4.5%	10.6%
Medical & Dental	6.0%	0.1%	1.1%	7.1%	84.1%	1.0%	14.9%
Nursing & Midwifery	6.1%	0.2%	0.8%	7.0%	86.3%	2.4%	11.3%
Health & Social Care Professionals	2.0%	0.3%	0.2%	2.6%	77.9%	13.1%	9.0%
Management & Administrative	3.9%	0.3%	0.5%	4.7%	83.2%	5.6%	11.2%
General Support	3.1%			3.1%	100.0%	0.0%	0.0%
Patient & Client Care	7.7%	0.5%	0.4%	8.6%	89.6%	6.4%	4.1%

CHO 6 by Staff Category Oct 2020	Certified absence	Self-certified absence	COVID-19 absence	Total absence	Certified	Self-certified	COVID-19
Primary Care	3.4%	0.1%	1.2%	4.7%	72.1%	2.9%	25.0%
Medical & Dental	1.4%	0.1%	0.7%	2.2%	62.9%	5.8%	31.3%
Nursing & Midwifery	4.8%	0.2%	2.9%	7.9%	60.6%	2.6%	36.8%
Health & Social Care Professionals	3.6%	0.1%	0.1%	3.8%	95.3%	1.6%	3.2%
Management & Administrative	3.1%	0.2%	0.6%	3.8%	79.8%	4.2%	16.0%
General Support	4.4%		1.4%	5.8%	76.4%	0.0%	23.6%
Patient & Client Care	1.5%	0.1%	0.3%	2.0%	78.4%	4.3%	17.2%

CHO 7 by Staff Category Oct 2020	Certified absence	Self-certified absence	COVID-19 absence	Total absence	Certified	Self-certified	COVID-19
Primary Care	5.8%	0.3%	1.4%	7.5%	77.6%	3.4%	19.0%
Medical & Dental	3.2%	0.4%	0.4%	4.0%	80.3%	10.7%	9.0%
Nursing & Midwifery	5.2%	0.3%	1.4%	6.9%	75.5%	3.7%	20.7%
Health & Social Care Professionals	4.9%	0.2%	0.7%	5.7%	85.5%	3.1%	11.4%
Management & Administrative	7.0%	0.3%	1.8%	9.1%	76.6%	3.8%	19.6%
General Support	5.5%	0.1%	3.5%	9.0%	60.4%	1.0%	38.6%
Patient & Client Care	8.7%	0.3%	1.7%	10.7%	81.6%	2.7%	15.7%

CHO 8 by Staff Category Oct 2020	Certified absence	Self-certified absence	COVID-19 absence	Total absence	Certified	Self-certified	COVID-19
Primary Care	4.8%	0.2%	1.2%	6.1%	77.5%	3.1%	19.4%
Medical & Dental	1.5%	0.1%	0.6%	2.2%	69.0%	3.6%	27.5%
Nursing & Midwifery	5.6%	0.2%	2.1%	7.9%	71.1%	2.1%	26.9%
Health & Social Care Professionals	4.7%	0.3%	0.8%	5.7%	81.2%	4.9%	13.9%
Management & Administrative	4.6%	0.2%	0.6%	5.4%	85.6%	3.2%	11.2%
General Support	8.6%		1.3%	9.8%	87.2%	0.0%	12.8%
Patient & Client Care	5.6%	0.2%	1.6%	7.5%	75.2%	3.3%	21.4%

CHO 9 by Staff Category Oct 2020	Certified absence	Self-certified absence	COVID-19 absence	Total absence	Certified	Self-certified	COVID-19
Primary Care	3.1%	0.2%	1.4%	4.7%	66.6%	4.2%	29.2%
Medical & Dental	1.2%	0.1%	1.6%	2.9%	41.5%	3.0%	55.5%
Nursing & Midwifery	3.2%	0.2%	1.2%	4.6%	69.7%	4.2%	26.1%
Health & Social Care Professionals	2.8%	0.2%	0.8%	3.9%	73.2%	5.3%	21.5%
Management & Administrative	3.6%	0.2%	0.7%	4.4%	81.4%	3.9%	14.7%
General Support	6.0%	0.3%	2.1%	8.4%	71.8%	3.8%	24.5%
Patient & Client Care	3.4%	0.3%	4.4%	8.1%	42.2%	3.8%	54.0%

Other Community Services by Staff Category Oct 2020	Certified absence	Self-certified absence	COVID-19 absence	Total absence	Certified	Self-certified	COVID-19
Primary Care	2.6%	0.2%	3.7%	6.5%	40.1%	3.0%	56.9%
Medical & Dental	2.7%	0.6%	1.0%	4.3%	61.8%	14.7%	23.5%
Nursing & Midwifery		0.6%	2.5%	3.2%		20.2%	79.8%
Health & Social Care Professionals	6.1%	0.2%		6.3%	97.3%	2.7%	
Management & Administrative	1.6%			1.6%	100.0%	0.0%	0.0%
General Support				0.0%			
Patient & Client Care	2.5%		28.2%	30.7%	8.1%	0.0%	91.9%

Primary Care Absence Rate - by Staff Category & Care Group	CHO 1	CHO 2	CHO 3	HSE	S38	CHO 4	CHO 5	HSE	S38	CHO 6	HSE	S38	CHO 7	CHO 8	CHO 9	Other Comm.	Total absence	Certified absence	Self-certified absence	COVID-19 absence
Primary Care: 2020 overall	5.8%	4.2%	5.8%	3.2%	4.2%	3.3%	5.3%	6.2%	3.9%	5.9%	7.3%	6.9%	7.2%	6.2%	5.4%	3.8%	5.5%	4.3%	0.2%	1.0%
Medical & Dental	3.4%	2.9%	5.8%	3.0%	1.7%	2.7%	5.9%	4.6%	4.9%	4.6%	4.8%	1.5%	4.3%	2.0%	2.9%	4.9%	3.6%	2.7%	0.2%	0.7%
Nursing & Midwifery	7.1%	5.0%	6.3%	3.4%	5.5%	3.5%	5.2%	7.7%	22.0%	8.0%	7.8%	7.0%	7.5%	8.3%	6.2%	2.5%	6.4%	4.8%	0.2%	1.5%
Health & Social Care Professionals	5.6%	4.3%	4.0%	2.4%	0.2%	2.3%	5.2%	5.5%	0.0%	5.4%	5.9%	5.7%	5.9%	5.4%	3.7%	7.1%	4.7%	3.6%	0.2%	0.8%
Management & Administrative	5.9%	4.3%	7.2%	3.1%	0.6%	2.8%	5.2%	5.3%	1.3%	4.6%	6.7%	3.8%	6.2%	5.8%	5.0%	1.1%	5.2%	4.3%	0.2%	0.7%
General Support	3.9%	1.3%	2.0%	0.1%	6.7%	4.9%	3.3%	6.3%	5.8%	6.0%	11.6%	7.4%	8.9%	7.0%	7.8%	4.0%	5.3%	4.0%	0.2%	1.1%
Patient & Client Care	5.3%	4.8%	4.8%	5.6%	8.9%	6.4%	6.7%	5.3%	1.7%	3.7%	10.5%	9.2%	10.0%	7.6%	9.1%	6.2%	7.4%	4.0%	0.2%	1.1%
Total October:	6.4%	4.7%	4.1%	2.7%	2.0%	2.7%	5.4%	5.0%	2.7%	4.7%	8.1%	5.8%	7.5%	6.1%	4.7%	6.5%	5.4%	4.0%	0.2%	1.1%
Medical & Dental	4.9%	3.2%	5.1%	4.0%	0.0%	3.3%	7.1%	1.8%	4.2%	2.2%	4.5%	1.5%	4.0%	2.2%	2.9%	4.3%	3.8%	2.9%	0.2%	0.7%
Nursing & Midwifery	9.4%	6.9%	4.4%	3.0%	10.5%	3.2%	7.0%	7.7%	14.3%	7.9%	7.8%	4.3%	6.9%	7.9%	4.6%	3.2%	6.6%	4.7%	0.2%	1.7%
Health & Social Care Professionals	4.6%	3.4%	4.3%	1.6%	0.0%	1.5%	2.6%	3.9%	0.0%	3.8%	5.5%	6.7%	5.7%	5.7%	3.9%	6.3%	4.0%	3.2%	0.2%	0.6%
Management & Administrative	6.0%	4.8%	3.8%	2.9%	1.6%	2.8%	4.7%	4.4%	0.0%	3.8%	11.1%	1.9%	9.1%	5.4%	4.4%	1.6%	5.0%	4.0%	0.2%	0.8%
General Support	3.6%	1.2%	0.7%	0.7%	0.0%	0.2%	3.1%	7.7%	3.5%	5.8%	11.7%	7.7%	9.0%	9.8%	8.4%	0.0%	5.2%	3.3%	0.2%	1.8%
Patient & Client Care	6.5%	4.9%	4.5%	4.4%	2.8%	3.9%	8.6%	1.9%	2.1%	2.0%	11.8%	8.9%	10.7%	7.5%	8.1%	30.7%	7.6%	5.5%	0.2%	1.8%
Total September:	6.0%	3.5%	4.5%	2.5%	6.3%	3.0%	4.8%	4.9%	2.8%	4.7%	7.8%	7.2%	7.6%	5.7%	4.9%	3.3%	5.2%	4.2%	0.2%	0.8%
Medical & Dental	3.9%	2.6%	4.5%	1.2%	1.9%	1.4%	8.6%	2.9%	1.9%	2.8%	4.6%	0.2%	3.8%	2.3%	3.0%	3.9%	3.2%	2.7%	0.1%	0.4%
Nursing & Midwifery	7.0%	3.7%	4.2%	1.7%	15.0%	2.2%	5.1%	5.6%	16.8%	5.9%	9.3%	7.5%	8.7%	8.0%	5.8%	2.9%	6.0%	4.6%	0.2%	1.3%
Health & Social Care Professionals	5.7%	4.7%	4.8%	2.8%	0.0%	2.7%	5.2%	4.0%	0.0%	3.9%	6.6%	5.7%	6.5%	4.3%	3.1%	7.1%	4.5%	3.6%	0.2%	0.6%
Management & Administrative	5.9%	2.7%	6.0%	3.2%	1.9%	3.0%	5.1%	5.1%	0.6%	4.5%	5.4%	2.5%	5.0%	5.4%	4.7%	1.6%	4.7%	3.9%	0.2%	0.5%
General Support	2.7%	0.2%	1.0%	0.0%	9.9%	5.3%	4.2%	8.1%	4.7%	6.5%	14.1%	8.6%	10.6%	8.5%	4.5%	1.6%	5.2%	3.9%	0.2%	1.1%
Patient & Client Care	8.1%	4.4%	2.6%	6.0%	11.4%	7.9%	7.3%	5.7%	2.1%	4.6%	10.8%	10.3%	10.6%	6.4%	9.2%	1.5%	7.6%	6.5%	0.3%	0.9%
Total August:	5.1%	3.8%	5.5%	2.5%	2.8%	2.6%	5.1%	4.4%	3.2%	4.2%	7.1%	6.4%	6.9%	5.4%	4.9%	2.6%	4.9%	4.3%	0.2%	0.4%
Medical & Dental	2.6%	2.5%	4.3%	2.0%	6.6%	2.6%	8.1%	0.5%	2.1%	0.8%	4.5%	0.2%	3.7%	2.0%	3.9%	5.2%	3.2%	2.9%	0.1%	0.2%
Nursing & Midwifery	5.7%	4.2%	5.3%	2.2%	3.6%	2.2%	3.8%	4.4%	19.8%	4.9%	8.1%	7.1%	7.7%	6.9%	6.6%	3.7%	5.5%	4.6%	0.1%	0.8%
Health & Social Care Professionals	4.8%	4.1%	7.3%	2.5%	0.0%	2.5%	4.1%	4.2%	0.0%	4.2%	6.7%	3.8%	6.2%	3.8%	2.2%	5.4%	4.2%	3.7%	0.1%	0.3%
Management & Administrative	5.3%	3.2%	5.9%	2.1%	1.0%	2.0%	5.5%	4.7%	0.0%	4.0%	4.9%	4.1%	4.8%	5.8%	3.9%	0.5%	4.4%	4.1%	0.1%	0.2%
General Support	2.5%	0.0%	3.4%	0.0%	0.0%	0.0%	5.1%	2.5%	6.3%	4.4%	12.9%	8.6%	10.1%	4.5%	0.2%	0.0%	4.4%	3.7%	0.3%	0.4%
Patient & Client Care	8.1%	8.9%	4.3%	6.0%	3.6%	5.4%	9.0%	8.7%	2.7%	6.6%	9.2%	7.3%	8.4%	7.1%	11.5%	0.6%	7.8%	7.0%	0.3%	0.5%
Total July:	4.5%	3.3%	4.3%	2.5%	0.3%	2.3%	5.4%	4.9%	3.0%	4.7%	6.7%	6.0%	6.5%	4.8%	4.2%	1.8%	4.4%	3.9%	0.2%	0.3%
Medical & Dental	1.3%	2.6%	4.6%	2.0%	0.0%	1.7%	5.3%	2.4%	2.1%	2.3%	4.0%	1.2%	3.3%	1.4%	3.2%	3.2%	2.6%	2.4%	0.1%	0.1%
Nursing & Midwifery	6.3%	3.9%	4.4%	2.7%	0.0%	2.7%	4.5%	5.2%	19.8%	5.6%	7.7%	5.8%	7.1%	7.6%	4.6%	0.4%	5.3%	4.5%	0.1%	0.6%
Health & Social Care Professionals	4.1%	3.3%	3.9%	2.0%	0.0%	2.0%	5.9%	4.7%	0.0%	4.6%	6.7%	3.6%	6.2%	3.4%	3.3%	4.4%	4.1%	3.6%	0.2%	0.3%
Management & Administrative	4.0%	3.2%	5.2%	1.7%	0.0%	1.6%	5.5%	5.3%	0.9%	4.8%	3.8%	4.1%	3.9%	3.8%	3.7%	0.7%	3.7%	3.4%	0.2%	0.1%
General Support	2.6%	1.2%	2.4%	0.0%	0.0%	0.0%	4.4%	2.0%	6.3%	3.9%	9.9%	6.5%	7.7%	5.2%	5.1%	1.3%	4.1%	3.6%	0.1%	0.4%
Patient & Client Care	5.4%	4.3%	2.7%	6.0%	1.2%	4.9%	7.7%	6.9%	0.8%	5.0%	10.5%	9.5%	10.0%	5.7%	6.9%	0.9%	6.3%	5.7%	0.3%	0.3%
Total June:	4.5%	3.0%	4.1%	2.7%	2.2%	2.6%	4.3%	3.9%	3.0%	3.8%	5.8%	6.8%	6.1%	4.8%	3.7%	2.0%	4.2%	3.6%	0.1%	0.5%
Medical & Dental	1.3%	2.2%	5.5%	2.2%	0.0%	1.8%	4.8%	3.0%	2.1%	2.7%	4.1%	0.0%	3.5%	1.2%	2.5%	3.7%	2.6%	2.3%	0.1%	0.3%
Nursing & Midwifery	6.2%	3.5%	4.6%	3.1%	0.0%	3.0%	4.1%	5.4%	19.8%	5.7%	7.3%	5.8%	6.8%	7.1%	4.3%	1.9%	5.2%	4.3%	0.1%	0.8%
Health & Social Care Professionals	4.6%	2.5%	1.9%	1.7%	0.0%	1.7%	4.8%	3.2%	0.0%	3.2%	3.9%	3.8%	3.9%	3.9%	2.2%	4.0%	3.3%	2.9%	0.1%	0.2%
Management & Administrative	4.4%	3.3%	4.6%	2.5%	0.0%	2.2%	4.1%	3.2%	1.1%	2.7%	5.1%	4.8%	5.0%	4.0%	4.0%	0.2%	3.8%	3.5%	0.2%	0.2%
General Support	2.7%	3.9%	1.3%	0.0%	8.7%	7.1%	0.0%	0.4%	7.1%	3.8%	7.0%	10.7%	9.2%	2.2%	5.6%	6.1%	5.0%	4.0%	0.2%	0.8%
Patient & Client Care	2.8%	1.9%	5.3%	5.3%	4.6%	5.1%	4.7%	1.8%	0.4%	1.2%	8.3%	9.4%	8.7%	6.2%	5.6%	1.5%	5.5%	4.8%	0.2%	0.5%
Total May:	5.1%	3.5%	5.1%	3.1%	4.6%	3.3%	4.6%	6.1%	3.3%	5.6%	5.5%	7.8%	6.1%	5.5%	4.8%	1.5%	4.9%	3.7%	0.1%	1.1%
Medical & Dental	3.2%	1.7%	5.7%	1.6%	0.0%	1.3%	5.2%	0.4%	2.1%	1.3%	3.4%	0.0%	2.9%	2.0%	1.0%	3.8%	2.5%	1.8%	0.1%	0.6%
Nursing & Midwifery	6.4%	4.5%	6.8%	4.1%	0.0%	3.9%	4.3%	8.5%	20.8%	8.9%	7.0%	9.4%	7.8%	8.4%	7.0%	0.0%	6.6%	4.7%	0.1%	1.8%
Health & Social Care Professionals	4.8%	2.7%	1.4%	1.7%	0.0%	1.6%	5.1%	4.1%	0.0%	4.0%	4.1%	5.1%	4.2%	5.2%	3.3%	4.3%	3.8%	2.9%	0.1%	0.7%
Management & Administrative	5.7%	3.8%	6.4%	3.4%	0.0%	3.0%	4.7%	4.6%	1.1%	3.8%	4.8%	5.9%	5.0%	4.1%	4.6%	0.2%	4.5%	3.8%	0.2%	0.6%
General Support	4.0%	3.0%	0.0%	0.0%	8.9%	7.5%	1.3%	4.8%	8.6%	7.0%	7.9%	8.2%	8.1%	1.4%	6.1%	0.0%	4.8%	2.9%	0.1%	1.8%
Patient & Client Care	2.2%	3.0%	5.5%	6.3%	13.1%	8.5%	7.3%	1.9%	0.4%	0.8%	6.8%	8.2%	7.4%	6.2%	6.6%	0.0%	5.7%	4.5%	0.2%	1.0%
Total April:	7.7%	6.7%	8.2%	5.5%	5.8%	5.5%	7.5%	9.1%	3.9%	8.3%	9.4%	10.1%	9.6%	8.9%	8.3%	4.8%	7.9%	4.6%	0.1%	3.3%
Medical & Dental	5.2%	5.2%	9.9%	5.8%	2.5%	5.3%	8.1%	9.6%	1.6%	7.1%	5.2%	1.6%	4.7%	3.1%	2.6%	5.8%	5.2%	2.9%	0.1%	2.2%
Nursing & Midwifery	10.1%	8.4%	9.9%	8.2%	0.0%	7.9%	7.0%	14.1%	46.4%	14.9%	9.8%	12.0%	10.5%	11.3%	11.1%	3.2%	10.1%	5.5%	0.1%	4.5%
Health & Social Care Professionals	7.3%	6.2%	5.3%	3.1%	0.0%	3.1%	9.4%	5.2%	0.0%	5.2%	8.5%	10.8%	8.9%	9.7%	7.0%	8.8%	7.0%	3.8%	0.1%	3.1%
Management & Administrative	8.0%	7.3%	10.1%	4.9%	0.0%	4.3%	6.8%	4.5%	1.1%	3.7%	8.7%	3.5%	7.9%	7.0%	6.6%	2.3%	7.0%	4.6%	0.1%	2.3%
General Support	4.9%	1.4%	0.1%	0.0%	10.5%	7.5%	1.3%	12.5%	2.7%	7.3%	11.2%	7.1%	8.5%	14.8%	9.8%	0.0%	5.8%	3.3%	0.1%	2.4%
Patient & Client Care	4.8%	5.6%	5.8%	9.0%	14.8%	10.6%	6.5%	3.0%	0.4%	1.3%	13.0%	13.4%	13.2%	10.9%	12.7%	6.5%	9.7%	5.9%	0.1%	3.7%
Total March:	8.5%	6.8%	9.3%	3.3%	4.3%	3.4%	6.6%	11.8%	8.3%	11.3%	10.4%	8.7%	9.9%	8.5%	9.2%	7.5%	8.0%	5.1%	0.3%	2.7%
Medical & Dental	5.6%	3.6%	9.3%	3.6%	0.8%	3.0%	4.6%	11.4%	15.4%	12.4%	9.0%	10.8%	9.3%	4.1%	1.8%	11.7%	6.0%	3.4%	0.2%	2.5%
Nursing & Midwifery	9.7%	8.4%	10.8%	4.2%	0.0%	4.1%	6.6%	14.4%	37.0%	15.3%	9.8%	8.0%	9.2%	9.8%	8.5%	8.9%	8.9%	5.4%	0.2%	3.3%
Health & Social Care Professionals	9.7%	7.5%	6.8%	2.2%	0.0%	2.2%	7.2%	10.9%	0.0%	10.7%	9.2%	12.1%	9.6%	8.5%	4.7%	12.5%	7.6%	4.9%	0.3%	2.5%
Management & Administrative	7.7%	6.6%	10.7%	2.9%	0.0%	2.6%	6.8%	10.0%	4.7%	9.1%	10.4%	2.7%	9.1%	7.7%	2.7%	2.0%	7.2%	4.9%	0.2%	2.1%
General Support	7.9%	1.2%	2.8%	0.0%	9.9%	8.1%	4.3%	5.5%	4.3%	4.9%	23.7%	7.8%	12.3%	9.7%	10.5%	0.0%	7.7%	5.3%	0.3%	2.1%
Patient & Client Care	6.8%	6.4%	8.1%	4.9%	11.2%	6.6%	6.5%	10.6%	2.5%	6.8%	12.5%	11.4%	12.1%	11.5%	12.8%	12.1%	9.9%	6.3%	0.5%	3.1%
Total February:	4.8%	3.1%	5.7%	3.4%	6.6%	3.7%	4.8%	6.2%	3.6%	5.7%	6.1%	5.0%	5.8%	5.6%	5.1%	4.9%	4.9%	4.5%	0.4%	
Medical & Dental	3.3%	1.7%	5.2%	4.1%	2.8%	3.9%	3.9%	8.3%	6.1%	7.5%	5.0%	0.0%	4.3%	0.6%	3.0%	3.9%	3.3%	2.9%	0.4%	
Nursing & Midwifery	5.2%	2.7%	5.9%	4.0%	8.0%	4.1%	4.6%	6.3%	8.9%	6.3%	5.3%	5.0%	5.2%	6.8%	5.2%	1.0%	5.1%	4.7%	0.3%	
Health & Social Care Professionals	4.8%	3.9%	1.9%	2.5%	0.0%	2.5%	5.6%	6.7%	0.0%	6.5%	3.9%	1.3%	3.5%	4.2%	3.4%	12.7%	4.1%	3.6%	0.5%	
Management & Administrative	5.2%	3.4%	8.6%	3.0%	1.8%	2.9%	4.2%	4.2%	1.7%	3.6%	6.8%	6.0%	6.6%	7.1%	5.8%	0.6%	5.3%	4.9%	0.4%	
General Support	4.4%	0.1%	3.9%	0.0%	19.9%	13.9%	3.9%	13.3%	5.9%	9.1%	11.9%	4.8%	7.1%	2.4%	13.5%	34.3%	5.8%	5.4%	0.4%	
Patient & Client Care	4.2%	4.9%	3.6%	4.1%	9.8%	5.5%	6.6%	4.2%	2.5%	3.2%	10.0%	7								

Primary Care Absence Rate - by Staff Category & S38 Agency	Cork Dental Hospital	Dublin Dental Hospital	Our Lady's Hospice & Care Services	Total absence	Certified absence	Self-certified absence	COVID-19 absence
Primary Care: S38 2020 overall	4.2%	3.9%	6.9%	6.1%	4.6%	0.3%	1.2%
<i>Medical & Dental</i>	<i>1.7%</i>	<i>4.9%</i>	<i>1.5%</i>	<i>2.4%</i>	<i>1.6%</i>	<i>0.1%</i>	<i>0.7%</i>
<i>Nursing & Midwifery</i>	<i>5.5%</i>	<i>22.0%</i>	<i>7.0%</i>	<i>7.3%</i>	<i>5.1%</i>	<i>0.4%</i>	<i>1.8%</i>
<i>Health & Social Care Professionals</i>	<i>0.2%</i>	<i>0.0%</i>	<i>5.7%</i>	<i>5.2%</i>	<i>3.2%</i>	<i>0.2%</i>	<i>1.8%</i>
<i>Management & Administrative</i>	<i>0.6%</i>	<i>1.3%</i>	<i>3.8%</i>	<i>2.3%</i>	<i>2.0%</i>	<i>0.1%</i>	<i>0.3%</i>
<i>General Support</i>	<i>6.7%</i>	<i>5.8%</i>	<i>7.4%</i>	<i>7.1%</i>	<i>5.5%</i>	<i>0.3%</i>	<i>1.3%</i>
<i>Patient & Client Care</i>	<i>8.9%</i>	<i>1.7%</i>	<i>9.2%</i>	<i>8.0%</i>	<i>6.6%</i>	<i>0.4%</i>	<i>1.0%</i>
Total October:	2.0%	2.7%	5.8%	4.8%	3.9%	0.2%	0.6%
Medical & Dental	0.0%	4.2%	1.5%	1.3%	0.5%		0.9%
Nursing & Midwifery	10.5%	14.3%	4.3%	4.9%	3.6%	0.4%	0.8%
Health & Social Care Professionals	0.0%	0.0%	6.7%	6.0%	3.8%	0.2%	2.1%
Management & Administrative	1.6%	0.0%	1.9%	1.3%	1.1%	0.1%	0.1%
General Support	0.0%	3.5%	7.7%	6.3%	5.5%	0.1%	0.8%
Patient & Client Care	2.8%	2.1%	8.9%	6.8%	6.6%	0.2%	
Total September:	6.3%	2.8%	7.2%	6.5%	5.9%	0.2%	0.4%
Medical & Dental	1.9%	1.9%	0.2%	1.3%	0.8%	0.1%	0.4%
Nursing & Midwifery	15.0%	16.8%	7.5%	8.2%	7.2%	0.3%	0.7%
Health & Social Care Professionals	0.0%	0.0%	5.7%	5.1%	4.0%	0.1%	1.1%
Management & Administrative	1.9%	0.6%	2.5%	1.9%	1.9%		
General Support	9.9%	4.7%	8.6%	8.3%	7.8%	0.3%	0.2%
Patient & Client Care	11.4%	2.1%	10.3%	9.2%	8.7%	0.3%	0.2%
Total August:	2.8%	3.2%	6.4%	5.5%	5.0%	0.3%	0.2%
Medical & Dental	6.6%	2.1%	0.2%	2.7%	2.1%	0.1%	0.6%
Nursing & Midwifery	3.6%	19.8%	7.1%	7.3%	6.5%	0.4%	0.4%
Health & Social Care Professionals	0.0%	0.0%	3.8%	3.4%	3.1%	0.3%	
Management & Administrative	1.0%	0.0%	4.1%	2.2%	2.0%		0.2%
General Support	0.0%	6.3%	8.6%	7.4%	7.0%	0.4%	
Patient & Client Care	3.6%	2.7%	7.3%	6.0%	5.5%	0.4%	0.1%
Total July:	0.3%	3.0%	6.0%	4.8%	4.3%	0.2%	0.3%
Medical & Dental	0.0%	2.1%	1.2%	0.9%	0.5%		0.5%
Nursing & Midwifery	0.0%	19.8%	5.8%	5.9%	5.4%	0.2%	0.3%
Health & Social Care Professionals	0.0%	0.0%	3.6%	3.2%	3.0%	0.2%	
Management & Administrative	0.0%	0.9%	4.1%	2.3%	2.1%	0.0%	0.1%
General Support	0.0%	6.3%	6.5%	5.6%	5.6%	0.1%	
Patient & Client Care	1.2%	0.8%	9.5%	6.5%	5.4%	0.7%	0.5%
Total June:	2.2%	3.0%	6.8%	5.6%	4.7%	0.1%	0.8%
Medical & Dental	0.0%	2.1%	0.0%	0.5%			0.5%
Nursing & Midwifery	0.0%	19.8%	5.8%	5.9%	5.3%		0.6%
Health & Social Care Professionals	0.0%	0.0%	3.8%	3.4%	2.8%	0.3%	0.3%
Management & Administrative	0.0%	1.1%	4.8%	2.6%	2.5%	0.1%	
General Support	8.7%	7.1%	10.7%	10.0%	8.0%	0.3%	1.8%
Patient & Client Care	4.6%	0.4%	9.4%	7.0%	5.9%	0.1%	1.1%
Total May:	4.6%	3.3%	7.8%	6.7%	3.9%	0.1%	2.6%
Medical & Dental	0.0%	2.1%	0.0%	0.5%			0.5%
Nursing & Midwifery	0.0%	20.8%	9.4%	9.2%	4.8%	0.1%	4.3%
Health & Social Care Professionals	0.0%	0.0%	5.1%	4.6%	3.6%		0.9%
Management & Administrative	0.0%	1.1%	5.9%	3.1%	2.2%	0.1%	0.8%
General Support	8.9%	8.6%	8.2%	8.3%	4.0%	0.3%	4.1%
Patient & Client Care	13.1%	0.4%	8.2%	7.8%	5.4%	0.2%	2.2%
Total April:	5.8%	3.9%	10.1%	8.7%	4.2%	0.2%	4.4%
Medical & Dental	2.5%	1.6%	1.6%	2.0%	2.0%		
Nursing & Midwifery	0.0%	46.4%	12.0%	12.4%	4.9%	0.1%	7.4%
Health & Social Care Professionals	0.0%	0.0%	10.8%	9.9%	2.9%	0.3%	6.7%
Management & Administrative	0.0%	1.1%	3.5%	2.0%	1.6%	0.1%	0.3%
General Support	10.5%	2.7%	7.1%	6.9%	2.8%	0.2%	3.9%
Patient & Client Care	14.8%	0.4%	13.4%	11.6%	7.1%	0.3%	4.2%
Total March:	4.3%	8.3%	8.7%	8.0%	4.8%	0.3%	2.8%
Medical & Dental	0.8%	15.4%	10.8%	7.5%	3.4%	0.2%	4.0%
Nursing & Midwifery	0.0%	37.0%	8.0%	8.8%	4.8%	0.3%	3.6%
Health & Social Care Professionals	0.0%	0.0%	12.1%	11.0%	4.0%		7.0%
Management & Administrative	0.0%	4.7%	2.7%	2.5%	1.1%	0.2%	1.2%
General Support	9.9%	4.3%	7.8%	7.6%	5.1%	0.7%	1.8%
Patient & Client Care	11.2%	2.5%	11.4%	9.9%	7.8%	0.4%	1.7%
Total February:	6.6%	3.6%	5.0%	5.1%	4.6%	0.5%	
Medical & Dental	2.8%	6.1%	0.0%	2.7%	2.7%	0.1%	
Nursing & Midwifery	8.0%	8.9%	5.0%	5.3%	4.6%	0.7%	
Health & Social Care Professionals	0.0%	0.0%	1.3%	1.2%	0.6%	0.5%	
Management & Administrative	1.8%	1.7%	6.0%	3.8%	3.7%	0.1%	
General Support	19.9%	5.9%	4.8%	6.4%	6.0%	0.4%	
Patient & Client Care	9.8%	2.5%	7.3%	7.0%	6.4%	0.6%	
Total January:	7.1%	5.0%	4.6%	5.1%	4.4%	0.7%	
Medical & Dental	4.2%	9.7%	0.0%	4.1%	4.0%	0.1%	
Nursing & Midwifery	16.3%	8.9%	4.7%	5.4%	4.4%	1.2%	
Health & Social Care Professionals	3.0%	0.0%	4.3%	4.1%	3.7%	0.5%	
Management & Administrative	0.0%	1.6%	2.6%	1.7%	1.7%	0.0%	
General Support	0.0%	8.2%	4.4%	4.5%	3.8%	0.7%	
Patient & Client Care	15.3%	2.7%	6.7%	7.7%	7.0%	0.7%	
Primary Care: S38 2019 overall	3.8%	9.0%	4.3%	4.7%	4.2%	0.5%	
<i>Medical & Dental</i>	<i>0.3%</i>	<i>9.9%</i>	<i>0.8%</i>	<i>2.4%</i>	<i>2.1%</i>	<i>0.3%</i>	
<i>Nursing & Midwifery</i>	<i>3.8%</i>	<i>19.7%</i>	<i>3.3%</i>	<i>4.1%</i>	<i>3.5%</i>	<i>0.6%</i>	
<i>Health & Social Care Professionals</i>	<i>6.1%</i>	<i>0.2%</i>	<i>2.9%</i>	<i>3.0%</i>	<i>2.5%</i>	<i>0.5%</i>	
<i>Management & Administrative</i>	<i>2.1%</i>	<i>6.5%</i>	<i>5.3%</i>	<i>4.7%</i>	<i>4.3%</i>	<i>0.4%</i>	
<i>General Support</i>	<i>6.4%</i>	<i>17.7%</i>	<i>6.0%</i>	<i>7.3%</i>	<i>6.5%</i>	<i>0.8%</i>	
<i>Patient & Client Care</i>	<i>6.7%</i>	<i>0.7%</i>	<i>5.4%</i>	<i>5.2%</i>	<i>4.7%</i>	<i>0.5%</i>	