

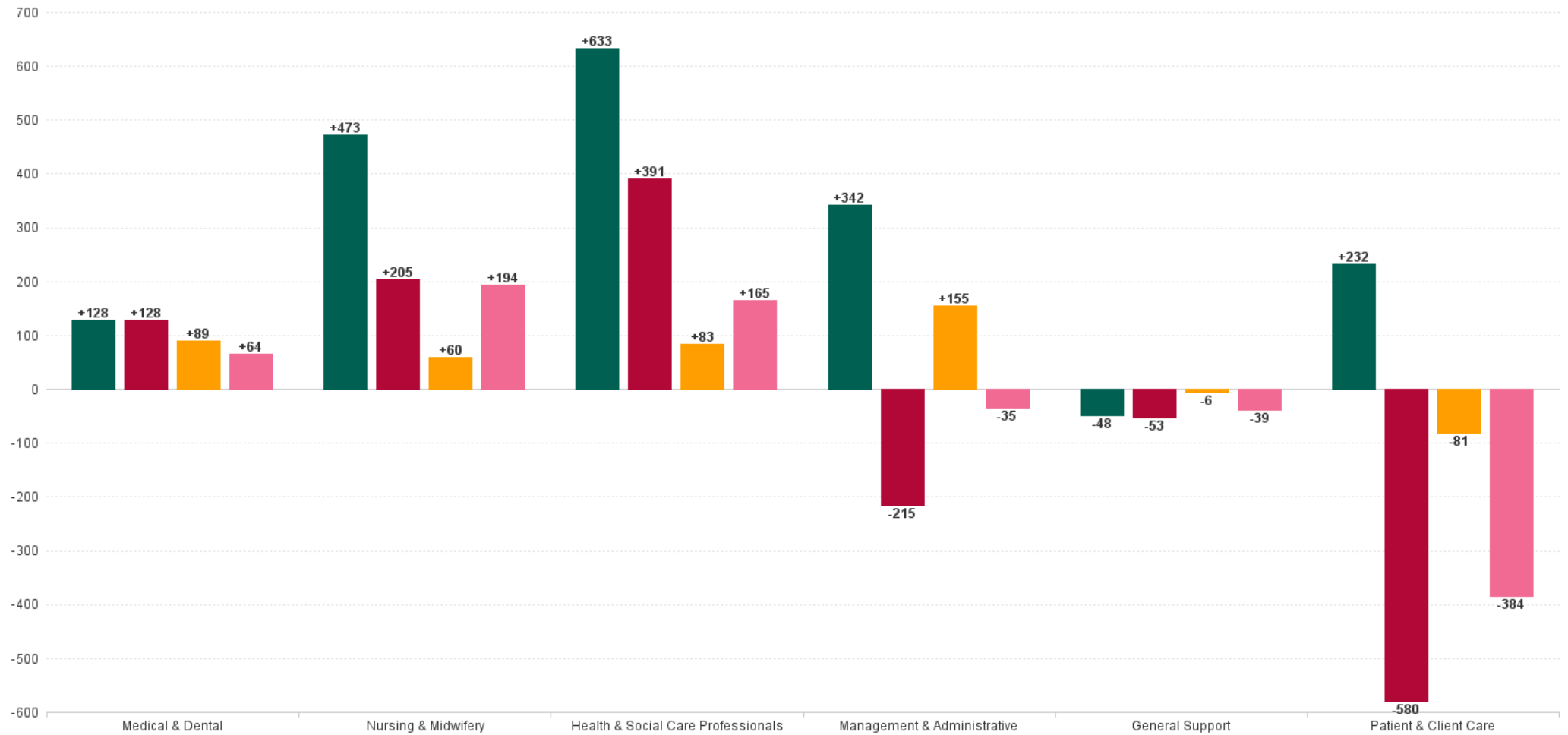
Primary Care Employment Report : JUL 2023

Primary Care Employment Report by Staff Group

JUL 2023	WTE DEC 2019	WTE DEC 2022	WTE JUN 2023	WTE JUL 2023	WTE change since DEC 2019	% WTE change since Dec 2019	WTE change since DEC 2022	% WTE change since Dec 2022	WTE change since JUN 2023	No. JUL 2023
Overall	10,606	12,064	12,305	12,364	+1,758	+16.6%	+300	+2.5%	+59	14,713
Consultants	44	50	54	54	+10	+22.3%	+3	+6.7%	-0	68
Registrars	396	433	446	531	+135	+34.2%	+98	+22.6%	+85	609
SHO/ Interns	36	39	36	41	+5	+13.4%	+2	+5.1%	+5	51
Medical/ Dental, other	520	511	508	497	-22	-4.3%	-14	-2.7%	-11	715
Medical & Dental	995	1,034	1,045	1,123	+128	+12.8%	+89	+8.7%	+78	1,443
Nurse/ Midwife Manager	358	477	486	489	+131	+36.5%	+12	+2.6%	+3	542
Nurse/ Midwife Specialist & AN/MP	143	278	341	344	+202	+141.2%	+66	+23.9%	+3	390
Staff Nurse/ Staff Midwife	862	1,057	1,142	1,142	+280	+32.5%	+85	+8.1%	+0	1,460
Public Health Nurse	1,513	1,477	1,430	1,440	-73	-4.8%	-37	-2.5%	+10	1,748
Post-registration Nurse/ Midwife Student	96	96	50	29	-67	-69.9%	-67	-69.9%	-21	29
Nursing/ Midwifery Student	96	96	50	29	-67	-69.9%	-67	-69.9%	-21	29
Nursing/ Midwifery other	4	5	5	4	+1	+17.6%	-0	-9.5%	-1	5
Nursing & Midwifery	2,976	3,389	3,454	3,449	+473	+15.9%	+60	+1.8%	-5	4,174
Therapy Professions	1,733	2,162	2,247	2,217	+483	+27.9%	+55	+2.5%	-31	2,597
Health Science/ Diagnostics	82	99	100	99	+17	+21.1%	+0	+0.1%	-1	109
Social Care	35	39	42	41	+5	+14.6%	+2	+5.5%	-1	44
Social Workers	139	195	204	205	+66	+47.1%	+10	+4.9%	+1	224
Psychologists	303	292	308	302	-1	-0.3%	+10	+3.5%	-6	337
Pharmacy	58	68	75	74	+17	+28.7%	+6	+9.2%	-1	86
H&SC, Other	209	255	255	255	+46	+21.8%	-0	0.0%	-0	301
Health & Social Care Professionals	2,559	3,109	3,230	3,192	+633	+24.7%	+83	+2.7%	-38	3,698
Management (VIII & above)	306	253	257	249	-57	-18.6%	-4	-1.7%	-8	260
Administrative/ Supervisory (V to VII)	623	762	793	798	+175	+28.0%	+36	+4.7%	+5	854
Clerical (III & IV)	1,746	1,847	1,924	1,970	+224	+12.8%	+124	+6.7%	+46	2,284
Management & Administrative	2,675	2,862	2,975	3,017	+342	+12.8%	+155	+5.4%	+42	3,398
Support	346	327	330	325	-21	-6.2%	-2	-0.7%	-6	480
Maintenance/ Technical	59	36	33	32	-27	-45.8%	-3	-9.6%	-0	36
General Support	405	362	363	357	-48	-12.0%	-6	-1.6%	-6	516
Home Help	18	15	18	19	+0	+1.1%	+4	+23.7%	+0	43
Health Care Assistants	254	466	413	410	+156	+61.4%	-56	-12.1%	-3	478
Care, other	723	827	806	798	+76	+10.4%	-29	-3.5%	-8	963
Patient & Client Care	995	1,308	1,238	1,226	+232	+23.3%	-81	-6.2%	-11	1,484

WTE Change by Staff Category

■ WTE change since DEC 2019 ■ WTE change since DEC 2021 ■ WTE change since DEC 2022 ■ WTE change since JUL 2022

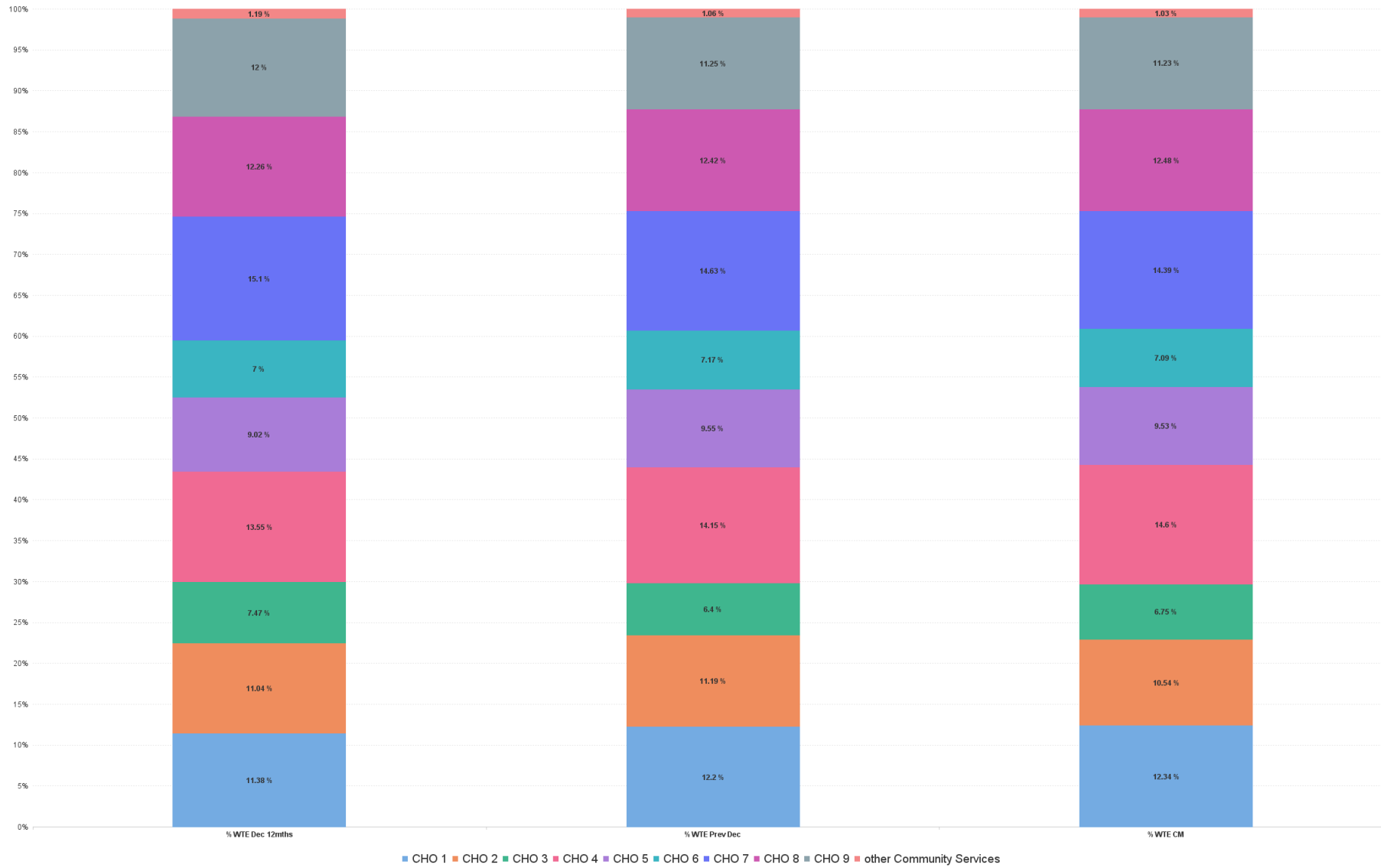


Primary Care Report by CHO: JUL 2023

JUL 2023	WTE DEC 2019	WTE DEC 2022	WTE JUN 2023	WTE JUL 2023	WTE change since DEC 2019	% WTE change since Dec 2019	WTE change since DEC 2022	% WTE change since Dec 2022	WTE change since JUN 2023	No. JUL 2023
Overall	10,606	12,064	12,305	12,364	+1,758	+16.6%	+300	+2.5%	+59	14,713
CHO 1	1,182	1,472	1,528	1,526	+344	+29.1%	+54	+3.7%	-1	1,783
CHO 2	1,134	1,351	1,316	1,303	+170	+15.0%	-47	-3.5%	-13	1,514
CHO 3	764	772	822	835	+71	+9.3%	+63	+8.2%	+13	997
CHO 4	1,346	1,707	1,783	1,806	+460	+34.2%	+99	+5.8%	+23	2,241
CHO 5	958	1,152	1,165	1,178	+220	+22.9%	+26	+2.3%	+13	1,400
CHO 6	765	864	878	877	+113	+14.7%	+13	+1.5%	-1	1,125
CHO 7	1,702	1,765	1,774	1,779	+77	+4.5%	+14	+0.8%	+6	2,076
CHO 8	1,387	1,498	1,532	1,544	+157	+11.3%	+46	+3.0%	+11	1,827
CHO 9	1,247	1,357	1,379	1,389	+142	+11.4%	+32	+2.3%	+10	1,601
other Community Services	122	127	128	127	+5	+4.0%	-0	-0.2%	-1	149



% Total by CHO



Primary Care Employment Report by HSE/S38: JUL 2023

JUL 2023	WTE DEC 2019	WTE DEC 2022	WTE JUN 2023	WTE JUL 2023	WTE change since DEC 2019	% WTE change since Dec 2019	WTE change since DEC 2022	% WTE change since Dec 2022	WTE change since JUN 2023	No. JUL 2023
Overall	10,606	12,064	12,305	12,364	+1,758	0.17	+300	0.02	+59	14,713
Health Service Executive	9,930	11,284	11,537	11,615	+1,685	0.17	+331	0.03	+78	13,717
Section 38 Voluntary Agencies	676	780	767	749	+73	0.11	-31	-0.04	-18	996



Primary Care Employment Report by HSE: JUL 2023

JUL 2023	WTE DEC 2019	WTE DEC 2022	WTE JUN 2023	WTE JUL 2023	WTE change since DEC 2019	% WTE change since Dec 2019	WTE change since DEC 2022	% WTE change since Dec 2022	WTE change since JUN 2023	No. JUL 2023
Total HSE	9,930	11,284	11,537	11,615	+1,685	+17.0%	+331	+2.9%	+78	13,717
Consultants	32	34	36	36	+3	+10.6%	+2	+6.4%	-0	45
Registrars	385	422	433	519	+134	+34.9%	+97	+23.0%	+86	595
SHO/ Interns	19	22	21	26	+7	+37.7%	+4	+17.8%	+4	29
Medical/ Dental, other	505	490	488	481	-24	-4.8%	-8	-1.7%	-6	660
Medical & Dental	941	967	978	1,062	+121	+12.8%	+95	+9.8%	+83	1,329
Nurse/ Midwife Manager	309	421	435	438	+128	+41.5%	+17	+4.0%	+3	485
Nurse/ Midwife Specialist & AN/MP	114	235	297	299	+185	+162.0%	+64	+27.3%	+2	333
Staff Nurse/ Staff Midwife	752	929	1,010	1,013	+260	+34.6%	+84	+9.0%	+2	1,306
Public Health Nurse	1,513	1,477	1,430	1,440	-73	-4.8%	-37	-2.5%	+10	1,748
Post-registration Nurse/ Midwife Student	96	96	50	29	+45	-69.9%	-20	-69.9%	-21	29
Nursing/ Midwifery Student	96	96	50	29	-67	-69.9%	-67	-69.9%	-21	29
Nursing/ Midwifery other	2	3	3	3	+1	+63.3%	+0	+0.0%	-0	3
Nursing & Midwifery	2,786	3,160	3,225	3,221	+435	+15.6%	+61	+1.9%	-4	3,904
Therapy Professions	1,696	2,124	2,213	2,183	+487	+28.7%	+59	+2.8%	-30	2,554
Health Science/ Diagnostics	78	95	96	95	+17	+22.1%	+0	+0.2%	-1	103
Social Care	35	39	42	41	+5	+14.6%	+2	+5.5%	-1	44
Social Workers	128	181	190	191	+62	+48.4%	+9	+5.0%	+1	208
Psychologists	302	291	307	301	-1	-0.4%	+10	+3.5%	-6	336
Pharmacy	48	60	67	66	+18	+37.9%	+6	+9.8%	-1	77
H&SC, Other	208	251	252	251	+44	+21.1%	-0	0.0%	-0	295
Health & Social Care Professionals	2,496	3,041	3,166	3,127	+632	+25.3%	+86	+2.8%	-38	3,617
Management (VIII & above)	297	245	247	239	-58	-19.4%	-5	-2.2%	-7	246
Administrative/ Supervisory (V to VII)	590	728	757	762	+172	+29.1%	+34	+4.7%	+5	804
Clerical (III & IV)	1,683	1,773	1,854	1,899	+217	+12.9%	+126	+7.1%	+45	2,186
Management & Administrative	2,570	2,745	2,858	2,900	+331	+12.9%	+155	+5.6%	+42	3,236
Support	251	230	233	232	-19	-7.5%	+3	+1.1%	-1	369
Maintenance/ Technical	50	25	23	23	-27	-54.4%	-2	-8.3%	-0	24
General Support	301	255	256	255	-46	-15.3%	+0	+0.2%	-1	393
Home Help	18	15	18	19	+0	+1.1%	+4	+23.7%	+0	43
Health Care Assistants	152	338	293	293	+142	+93.6%	-44	-13.1%	-0	334
Care, other	666	763	742	738	+72	+10.8%	-26	-3.4%	-5	861
Patient & Client Care	836	1,116	1,054	1,049	+214	+25.6%	-67	-6.0%	-4	1,238

Primary Care Employment Report by S38 Hospitals: JUL 2023

JUL 2023	WTE DEC 2019	WTE DEC 2022	WTE JUN 2023	WTE JUL 2023	WTE change since DEC 2019	% WTE change since Dec 2019	WTE change since DEC 2022	% WTE change since Dec 2022	WTE change since JUN 2023	No. JUL 2023
Total S38 Vols	676	780	767	749	+73	+10.8%	-31	-4.0%	-18	996
Consultants	11	17	18	18	+6	+56.0%	+1	+7.1%	-0	23
Registrars	11	11	13	12	+1	+11.3%	+1	+6.8%	-1	14
SHO/ Interns	18	17	15	16	-2	-12.1%	-2	-10.7%	+1	22
Medical/ Dental, other	14	21	21	16	+2	+11.7%	-5	-25.0%	-5	55
Medical & Dental	54	67	67	61	+7	+13.2%	-5	-7.8%	-6	114
Nurse/ Midwife Manager	49	56	51	52	+3	+5.2%	-5	-8.2%	+0	57
Nurse/ Midwife Specialist & AN/MP	29	43	44	46	+17	+58.5%	+2	+5.1%	+1	57
Staff Nurse/ Staff Midwife	110	128	131	130	+20	+17.8%	+2	+1.2%	-2	154
Nursing/ Midwifery other	2	2	2	2	-0	-23.5%	-0	-23.5%	-0	2
Nursing & Midwifery	190	229	229	228	+39	+20.3%	-1	-0.6%	-1	270
Therapy Professions	37	38	34	34	-3	-8.6%	-4	-10.6%	-0	43
Health Science/ Diagnostics	4	4	4	4	+0	+0.3%	-0	-1.8%	-0	6
Social Workers	11	14	14	14	+3	+31.4%	+0	+2.8%	+0	16
Psychologists	1	1	1	1	+0	+66.7%	+0	+0.0%	+0	1
Pharmacy	10	8	8	8	-2	-15.7%	+0	+4.4%	+0	9
H&SC, Other	2	3	3	3	+2	+117.3%	+0	+0.0%	+0	6
Health & Social Care Professionals	64	68	64	64	+1	+1.3%	-3	-5.0%	-0	81
Management (VIII & above)	9	9	11	10	+1	+11.8%	+1	+11.8%	-1	14
Administrative/ Supervisory (V to VII)	34	35	36	36	+3	+8.2%	+2	+4.5%	-0	50
Clerical (III & IV)	64	73	70	71	+7	+11.1%	-3	-3.6%	+1	98
Management & Administrative	106	117	116	117	+11	+10.3%	-0	-0.1%	+0	162
Support	95	97	97	92	-2	-2.6%	-5	-5.0%	-5	111
Maintenance/ Technical	9	11	9	9	+0	+2.6%	-1	-12.8%	-0	12
General Support	104	108	106	102	-2	-2.2%	-6	-5.8%	-5	123
Health Care Assistants	102	128	120	116	+14	+13.7%	-12	-9.4%	-3	144
Care, other	57	63	64	61	+4	+6.7%	-3	-4.5%	-3	102
Patient & Client Care	159	192	184	177	+18	+11.2%	-15	-7.8%	-7	246



Primary Care Employment Report by Staff Group: JUL 2023

CHO 1

JUL 2023	WTE DEC 2019	WTE DEC 2022	WTE JUN 2023	WTE JUL 2023	WTE change since DEC 2019	% WTE change since Dec 2019	WTE change since DEC 2022	% WTE change since Dec 2022	WTE change since JUN 2023	No. JUL 2023
Overall	1,182	1,472	1,528	1,526	+344	+29.1%	+54	+3.7%	-1	1,783
Consultants	3	5	5	5	+2	+70.3%	+0	+1.0%	-0	6
Registrars	41	42	40	45	+4	+9.7%	+3	+6.6%	+4	51
SHO/ Interns	1	1	1	1	+0	+0.0%	+0	+1.0%	+0	1
Medical/ Dental, other	47	42	43	43	-5	-9.9%	+0	+0.9%	-0	54
Medical & Dental	92	90	90	94	+1	+1.6%	+3	+3.5%	+4	112
Nurse/ Midwife Manager	36	51	56	58	+21	+58.3%	+7	+12.8%	+2	63
Nurse/ Midwife Specialist & AN/MP	21	49	62	62	+41	+197.5%	+13	+26.5%	+0	66
Staff Nurse/ Staff Midwife	85	116	143	148	+62	+72.8%	+31	+26.7%	+5	187
Public Health Nurse	156	151	145	144	-11	-7.3%	-6	-4.1%	-1	167
Post-registration Nurse/ Midwife Student	7	10	9	6	-1	-16.0%	-4	-38.8%	-3	6
Nursing/ Midwifery Student	7	10	9	6	-1	-16.0%	-4	-38.8%	-3	6
Nursing/ Midwifery other	1	1	1	1	+0	+0.0%	+0	+0.0%	+0	1
Nursing & Midwifery	306	377	416	418	+112	+36.5%	+41	+10.8%	+2	490
Therapy Professions	227	279	287	283	+56	+24.6%	+4	+1.5%	-4	328
Health Science/ Diagnostics	5	9	10	10	+5	+86.0%	+1	+5.4%	+0	11
Social Workers	13	25	29	30	+17	+135.7%	+5	+18.3%	+1	32
Psychologists	35	28	26	27	-8	-23.7%	-1	-4.1%	+0	30
Pharmacy	1	1	2	2	+1	+120.0%	+1	+111.0%	-0	2
H&SC, Other	7	20	18	16	+9	+132.4%	-4	-19.4%	-2	29
Health & Social Care Professionals	287	362	372	367	+79	+27.6%	+5	+1.4%	-5	432
Management (VIII & above)	32	30	33	32	-0	-1.5%	+2	+6.6%	-2	32
Administrative/ Supervisory (V to VII)	64	94	111	109	+46	+71.8%	+15	+16.1%	-2	115
Clerical (III & IV)	236	293	294	299	+63	+26.8%	+6	+2.1%	+5	343
Management & Administrative	331	416	438	439	+108	+32.7%	+23	+5.6%	+1	490
Support	72	84	80	77	+5	+7.6%	-7	-7.8%	-2	110
Maintenance/ Technical	6	9	8	8	+2	+26.8%	-1	-12.5%	-0	8
General Support	78	93	87	85	+7	+9.1%	-8	-8.2%	-2	118
Home Help		0	0	0	+0		+0	+29.6%	+0	1
Health Care Assistants	32	69	65	65	+33	+104.7%	-4	-5.8%	+1	73
Care, other	55	64	59	58	+3	+4.8%	-6	-10.0%	-2	67
Patient & Client Care	87	134	125	123	+36	+41.9%	-10	-7.7%	-1	141

CHO 2

JUL 2023	WTE DEC 2019	WTE DEC 2022	WTE JUN 2023	WTE JUL 2023	WTE change since DEC 2019	% WTE change since Dec 2019	WTE change since DEC 2022	% WTE change since Dec 2022	WTE change since JUN 2023	No. JUL 2023
Overall	1,134	1,351	1,316	1,303	+170	+15.0%	-47	-3.5%	-13	1,514
Consultants	1	3	4	4	+3	+210.4%	+1	+29.3%	-0	5
Registrars	40	53	50	68	+28	+70.6%	+16	+29.7%	+19	72
SHO/ Interns	1	3	5		-1	-100.0%	-3	-100.0%	-5	
Medical/ Dental, other	46	46	48	48	+2	+4.5%	+2	+4.7%	-1	59
Medical & Dental	88	104	107	120	+32	+36.3%	+16	+15.0%	+13	136
Nurse/ Midwife Manager	27	34	33	32	+5	+17.4%	-2	-4.6%	-1	35
Nurse/ Midwife Specialist & AN/MP	17	38	45	44	+26	+151.5%	+5	+14.3%	-2	49
Staff Nurse/ Staff Midwife	74	92	102	107	+33	+44.4%	+15	+15.8%	+5	131
Public Health Nurse	191	186	183	178	-13	-7.0%	-9	-4.7%	-6	213
<i>Post-registration Nurse/ Midwife Student</i>	<i>4</i>	<i>14</i>	<i>6</i>	<i>1</i>	<i>-3</i>	<i>-75.0%</i>	<i>-13</i>	<i>-93.1%</i>	<i>-5</i>	<i>1</i>
Nursing/ Midwifery Student	4	14	6	1	-3	-75.0%	-13	-93.1%	-5	1
Nursing & Midwifery	313	365	369	361	+48	+15.2%	-4	-1.0%	-8	429
Therapy Professions	226	291	281	269	+43	+19.1%	-22	-7.4%	-12	312
Health Science/ Diagnostics	6	9	10	10	+4	+69.6%	+1	+11.0%	+0	10
Social Care	8	7	6	6	-3	-33.7%	-1	-15.0%	-0	6
Social Workers	7	19	16	15	+9	+123.9%	-3	-17.8%	-1	16
Psychologists	24	32	28	27	+3	+12.8%	-5	-14.3%	-1	32
Pharmacy	1	1	1	1	+0	+0.0%	+0	+0.0%	+0	1
H&SC, Other	40	63	53	53	+12	+31.1%	-10	-16.2%	-0	60
Health & Social Care Professionals	312	421	394	381	+68	+21.9%	-40	-9.4%	-13	437
Management (VIII & above)	33	29	24	24	-9	-25.9%	-4	-15.1%	+0	25
Administrative/ Supervisory (V to VII)	62	85	83	82	+20	+33.0%	-2	-2.7%	-0	88
Clerical (III & IV)	238	219	219	220	-17	-7.3%	+1	+0.5%	+2	255
Management & Administrative	333	332	325	327	-6	-1.7%	-5	-1.6%	+2	368
Support	21	17	19	19	-2	-8.4%	+2	+10.4%	-0	39
Maintenance/ Technical	9	11	10	10	+1	+10.9%	-1	-9.2%	-0	10
General Support	30	28	29	29	-1	-2.6%	+1	+2.8%	-0	49
Health Care Assistants	14	33	30	28	+13	+93.2%	-5	-15.8%	-2	31
Care, other	43	68	61	58	+15	+34.8%	-10	-14.4%	-3	64
Patient & Client Care	57	100	91	85	+28	+49.4%	-15	-14.8%	-6	95

CHO 3

JUL 2023	WTE DEC 2019	WTE DEC 2022	WTE JUN 2023	WTE JUL 2023	WTE change since DEC 2019	% WTE change since Dec 2019	WTE change since DEC 2022	% WTE change since Dec 2022	WTE change since JUN 2023	No. JUL 2023
Overall	764	772	822	835	+71	+9.3%	+63	+8.2%	+13	997
Consultants	2	1	1	1	-1	-34.0%	+0	+0.0%	+0	2
Registrars	24	29	28	38	+14	+59.3%	+8	+28.4%	+10	41
SHO/ Interns	6				-6	-100.0%				
Medical/ Dental, other	52	45	47	46	-7	-12.5%	+0	+0.2%	-1	61
Medical & Dental	84	76	76	85	+1	+1.0%	+8	+11.1%	+9	104
Nurse/ Midwife Manager	19	23	23	24	+5	+26.5%	+1	+2.7%	+0	27
Nurse/ Midwife Specialist & AN/MP	2	7	13	13	+11	+539.5%	+6	+85.4%	-0	14
Staff Nurse/ Staff Midwife	56	75	77	80	+24	+43.1%	+5	+6.1%	+3	102
Public Health Nurse	126	125	121	121	-6	-4.7%	-4	-3.5%	-1	151
<i>Post-registration Nurse/ Midwife Student</i>		6	4	3	+3		-3	-49.5%	-1	3
Nursing/ Midwifery Student		6	4	3	+3		-3	-49.5%	-1	3
Nursing & Midwifery	203	236	239	240	+37	+18.2%	+4	+1.6%	+1	297
Therapy Professions	86	162	184	184	+98	+113.8%	+22	+13.7%	-0	213
Health Science/ Diagnostics	5	5	4	5	-0	-4.2%	+0	+0.9%	+0	5
Social Care	1				-1	-100.0%				
Social Workers	11	12	12	12	+2	+15.3%	-0	-2.6%	-0	14
Psychologists	15	14	18	18	+3	+19.4%	+4	+32.1%	+0	20
Pharmacy	1	1	2	2	+1	+100.0%	+1	+102.0%	+0	3
H&SC, Other	11	12	13	13	+2	+18.7%	+1	+6.5%	-0	15
Health & Social Care Professionals	129	205	234	233	+104	+80.5%	+28	+13.7%	-0	270
Management (VIII & above)	23	10	9	8	-16	-66.6%	-2	-19.5%	-1	8
Administrative/ Supervisory (V to VII)	54	28	28	28	-26	-48.0%	-0	-0.1%	+1	31
Clerical (III & IV)	156	127	148	152	-4	-2.8%	+25	+19.5%	+3	172
Management & Administrative	234	165	185	188	-46	-19.7%	+23	+13.8%	+3	211
Support	13	12	10	10	-3	-22.4%	-2	-16.1%	+0	25
Maintenance/ Technical	30				-30	-100.0%				
General Support	43	12	10	10	-33	-76.2%	-2	-16.1%	+0	25
Home Help	1				-1	-100.0%				
Health Care Assistants	21	26	28	29	+8	+38.8%	+3	+13.3%	+1	34
Care, other	49	51	50	50	+0	+0.8%	-1	-2.7%	-1	56
Patient & Client Care	71	77	78	79	+8	+11.0%	+2	+2.6%	+1	90

CHO 4

JUL 2023	WTE DEC 2019	WTE DEC 2022	WTE JUN 2023	WTE JUL 2023	WTE change since DEC 2019	% WTE change since Dec 2019	WTE change since DEC 2022	% WTE change since Dec 2022	WTE change since JUN 2023	No. JUL 2023
Overall	1,346	1,707	1,783	1,806	+460	+34.2%	+99	+5.8%	+23	2,241
Consultants	3	7	7	7	+4	+151.3%	-0	-3.5%	-0	10
Registrars	55	40	57	75	+20	+36.5%	+35	+88.3%	+18	78
SHO/ Interns	6	4	3	3	-3	-51.2%	-1	-25.0%	+0	3
Medical/ Dental, other	88	110	108	101	+13	+15.0%	-9	-7.8%	-6	181
Medical & Dental	152	160	174	186	+34	+22.4%	+25	+15.7%	+11	272
Nurse/ Midwife Manager	56	72	68	70	+13	+23.7%	-3	-3.6%	+1	76
Nurse/ Midwife Specialist & AN/MP	4	14	31	34	+29	+698.3%	+19	+131.7%	+2	38
Staff Nurse/ Staff Midwife	119	177	189	198	+79	+66.4%	+22	+12.4%	+10	271
Public Health Nurse	211	210	204	201	-10	-4.8%	-9	-4.4%	-3	255
<i>Post-registration Nurse/ Midwife Student</i>	17	11	13	8	-9	-53.6%	-3	-26.9%	-5	8
Nursing/ Midwifery Student	17	11	13	8	-9	-53.6%	-3	-26.9%	-5	8
Nursing & Midwifery	408	484	505	510	+102	+25.1%	+26	+5.4%	+5	648
Therapy Professions	222	327	345	341	+119	+53.5%	+14	+4.2%	-4	401
Health Science/ Diagnostics	11	13	11	11	+0	+1.5%	-2	-16.6%	-0	12
Social Care	8	7	6	6	-1	-18.7%	-0	-3.5%	-0	7
Social Workers	24	37	42	43	+18	+76.0%	+6	+16.5%	+0	46
Psychologists	20	23	30	30	+10	+47.4%	+7	+28.6%	+0	34
Pharmacy	3	2	5	5	+2	+55.7%	+3	+166.5%	+0	5
H&SC, Other	41	39	45	46	+5	+11.1%	+7	+17.3%	+0	53
Health & Social Care Professionals	329	447	484	481	+152	+46.1%	+34	+7.5%	-4	558
Management (VIII & above)	37	44	45	43	+6	+15.7%	-2	-3.5%	-2	44
Administrative/ Supervisory (V to VII)	68	114	115	118	+50	+72.9%	+4	+3.7%	+3	129
Clerical (III & IV)	205	255	268	279	+74	+36.0%	+24	+9.4%	+11	334
Management & Administrative	310	412	427	439	+129	+41.7%	+26	+6.4%	+12	507
Support	16	16	20	20	+4	+27.7%	+3	+21.1%	-0	32
Maintenance/ Technical		1	1	1	+1		+0	+0.0%	+0	1
General Support	16	17	21	21	+5	+34.1%	+3	+19.9%	-0	33
Home Help	10	8	12	12	+2	+21.4%	+4	+48.1%	+0	26
Health Care Assistants	17	47	32	34	+16	+94.1%	-13	-28.1%	+1	38
Care, other	105	130	126	123	+19	+18.0%	-7	-5.0%	-3	159
Patient & Client Care	132	185	171	169	+37	+28.2%	-16	-8.5%	-1	223

CHO 5

JUL 2023	WTE DEC 2019	WTE DEC 2022	WTE JUN 2023	WTE JUL 2023	WTE change since DEC 2019	% WTE change since Dec 2019	WTE change since DEC 2022	% WTE change since Dec 2022	WTE change since JUN 2023	No. JUL 2023
Overall	958	1,152	1,165	1,178	+220	+22.9%	+26	+2.3%	+13	1,400
Consultants	3	2	2	2	-1	-40.0%	-0	-10.0%	+0	2
Registrars	19	30	32	44	+25	+131.8%	+14	+48.9%	+12	45
SHO/ Interns	5			1	-4	-81.2%	+1		+1	1
Medical/ Dental, other	54	59	60	59	+4	+8.2%	+0	+0.0%	-2	84
Medical & Dental	81	90	94	105	+24	+29.8%	+15	+16.9%	+11	132
Nurse/ Midwife Manager	25	47	49	50	+24	+96.2%	+2	+4.9%	+1	56
Nurse/ Midwife Specialist & AN/MP	6	25	32	32	+27	+470.8%	+7	+27.8%	+0	37
Staff Nurse/ Staff Midwife	67	117	110	115	+48	+71.4%	-2	-2.1%	+4	146
Public Health Nurse	166	154	152	152	-15	-8.8%	-2	-1.5%	-0	182
<i>Post-registration Nurse/ Midwife Student</i>	5	4	4	4	-1	-20.0%	+0	+1.8%	+0	4
Nursing/ Midwifery Student	5	4	4	4	-1	-20.0%	+0	+1.8%	+0	4
Nursing/ Midwifery other	1				-1	-100.0%				
Nursing & Midwifery	270	348	347	352	+82	+30.6%	+5	+1.3%	+6	425
Therapy Professions	185	243	266	263	+78	+42.0%	+20	+8.4%	-2	299
Health Science/ Diagnostics	4	7	12	11	+7	+184.5%	+3	+44.5%	-1	12
Social Care	5	8	9	8	+3	+57.4%	-0	-2.0%	-0	9
Social Workers	8	5	5	6	-3	-31.6%	+0	+5.1%	+0	6
Psychologists	46	34	37	36	-10	-21.0%	+2	+5.6%	-1	39
Pharmacy	1		1	1	+0	+0.0%	+1		+0	1
H&SC, Other	18	19	19	18	-0	-2.5%	-2	-8.3%	-2	20
Health & Social Care Professionals	268	318	348	343	+75	+28.1%	+25	+7.9%	-5	386
Management (VIII & above)	25	18	16	13	-12	-49.2%	-5	-29.7%	-3	13
Administrative/ Supervisory (V to VII)	56	67	73	73	+17	+29.4%	+6	+9.0%	-0	74
Clerical (III & IV)	164	169	163	171	+7	+4.5%	+2	+1.4%	+8	195
Management & Administrative	245	254	252	257	+12	+4.7%	+3	+1.2%	+5	282
Support	25	21	22	22	-3	-11.5%	+1	+5.8%	+0	51
General Support	25	21	22	22	-3	-11.5%	+1	+5.8%	+0	51
Home Help	7	6	6	6	-1	-17.9%	-1	-8.4%	-0	16
Health Care Assistants	8	50	38	37	+29	+358.1%	-14	-27.0%	-1	38
Care, other	54	64	59	56	+2	+3.5%	-9	-13.6%	-3	70
Patient & Client Care	69	121	102	98	+29	+42.4%	-23	-18.9%	-4	124

CHO 6

JUL 2023	WTE DEC 2019	WTE DEC 2022	WTE JUN 2023	WTE JUL 2023	WTE change since DEC 2019	% WTE change since Dec 2019	WTE change since DEC 2022	% WTE change since Dec 2022	WTE change since JUN 2023	No. JUL 2023
Overall	765	864	878	877	+113	+14.7%	+13	+1.5%	-1	1,125
Consultants	9	10	11	11	+2	+18.4%	+1	+10.6%	+0	16
Registrars	26	32	33	34	+8	+30.0%	+2	+6.7%	+1	53
SHO/ Interns	7	7	7	10	+3	+46.2%	+2	+33.2%	+3	16
Medical/ Dental, other	46	45	44	44	-3	-5.8%	-1	-2.4%	-1	64
Medical & Dental	88	93	95	98	+10	+11.2%	+4	+4.8%	+3	149
Nurse/ Midwife Manager	22	31	32	33	+11	+49.1%	+2	+7.0%	+1	36
Nurse/ Midwife Specialist & AN/MP	6	10	14	14	+8	+137.1%	+4	+44.0%	+0	16
Staff Nurse/ Staff Midwife	52	61	66	62	+10	+19.7%	+1	+1.5%	-4	87
Public Health Nurse	117	99	95	100	-17	-14.7%	+1	+0.6%	+4	119
<i>Post-registration Nurse/ Midwife Student</i>	<i>14</i>	<i>7</i>	<i>5</i>	<i>1</i>	<i>-13</i>	<i>-92.6%</i>	<i>-6</i>	<i>-86.3%</i>	<i>-4</i>	<i>1</i>
Nursing/ Midwifery Student	14	7	5	1	-13	-92.6%	-6	-86.3%	-4	1
Nursing & Midwifery	210	208	212	210	-0	-0.2%	+2	+0.8%	-2	259
Therapy Professions	104	143	148	145	+42	+40.2%	+2	+1.7%	-3	177
Health Science/ Diagnostics	18	17	15	16	-3	-13.9%	-1	-8.3%	+0	19
Social Care	4	4	4	4	+0	+5.9%	+0	+1.8%	+0	4
Social Workers	5	10	9	9	+4	+93.2%	-1	-11.5%	+0	11
Psychologists	19	16	20	18	-1	-6.3%	+1	+8.5%	-2	22
Pharmacy	1	3	3	2	+1	+140.0%	-1	-23.5%	-1	3
H&SC, Other	4	6	8	9	+5	+133.3%	+3	+44.8%	+1	10
Health & Social Care Professionals	154	199	207	202	+49	+31.7%	+3	+1.7%	-5	246
Management (VIII & above)	30	29	24	25	-5	-15.7%	-3	-11.6%	+1	30
Administrative/ Supervisory (V to VII)	68	78	76	72	+4	+6.3%	-6	-7.1%	-4	86
Clerical (III & IV)	112	136	135	139	+27	+24.4%	+3	+2.3%	+4	163
Management & Administrative	210	242	236	237	+27	+12.8%	-6	-2.4%	+0	279
Support	24	23	25	22	-1	-6.2%	-0	-1.1%	-2	36
Maintenance/ Technical	2	2	2	2	+0	+0.0%	+0	+0.0%	+0	4
General Support	26	25	27	24	-1	-5.7%	-0	-1.0%	-2	40
Health Care Assistants	6	16	19	19	+13	+202.5%	+3	+20.5%	-0	23
Care, other	71	81	83	87	+16	+23.0%	+6	+7.4%	+5	129
Patient & Client Care	77	97	102	107	+29	+37.6%	+9	+9.5%	+5	152

JUL 2023	WTE DEC 2019	WTE DEC 2022	WTE JUN 2023	WTE JUL 2023	WTE change since DEC 2019	% WTE change since Dec 2019	WTE change since DEC 2022	% WTE change since Dec 2022	WTE change since JUN 2023	No. JUL 2023
Overall	1,702	1,765	1,774	1,779	+77	+4.5%	+14	+0.8%	+6	2,076
Consultants	11	11	12	11	-0	-1.8%	+0	+3.9%	-0	13
Registrars	46	45	47	49	+4	+8.3%	+5	+10.8%	+2	68
SHO/ Interns	6	12	11	14	+8	+133.4%	+2	+16.2%	+3	15
Medical/ Dental, other	75	61	60	62	-14	-18.4%	+0	+0.7%	+2	89
Medical & Dental	139	129	129	136	-2	-1.7%	+8	+5.9%	+7	185
Nurse/ Midwife Manager	80	100	99	100	+19	+24.0%	-1	-0.5%	+1	110
Nurse/ Midwife Specialist & AN/MP	46	65	66	67	+21	+46.0%	+2	+3.6%	+1	78
Staff Nurse/ Staff Midwife	205	198	215	200	-5	-2.3%	+3	+1.3%	-14	243
Public Health Nurse	175	164	162	170	-5	-3.0%	+6	+3.6%	+8	207
<i>Post-registration Nurse/ Midwife Student</i>	<i>21</i>	<i>25</i>	<i>8</i>	<i>5</i>	<i>-16</i>	<i>-76.3%</i>	<i>-20</i>	<i>-79.9%</i>	<i>-3</i>	<i>5</i>
Nursing/ Midwifery Student	21	25	8	5	-16	-76.3%	-20	-79.9%	-3	5
Nursing/ Midwifery other	2	2	2	2	-0	-23.5%	-0	-23.5%	-0	2
Nursing & Midwifery	530	554	550	544	+14	+2.7%	-10	-1.8%	-7	645
Therapy Professions	267	267	260	258	-8	-3.0%	-9	-3.2%	-2	301
Health Science/ Diagnostics	0	8	8	8	+8	+3,754.5%	+1	+8.4%	+0	10
Social Care	3	4	4	4	+0	+13.4%	-0	-3.9%	-0	4
Social Workers	26	30	30	33	+7	+26.9%	+3	+9.8%	+3	37
Psychologists	22	26	28	28	+7	+32.0%	+3	+10.0%	+0	31
Pharmacy	32	31	30	31	-1	-3.8%	+0	+0.0%	+0	34
H&SC, Other	24	24	22	24	+0	+0.7%	-0	-0.2%	+2	28
Health & Social Care Professionals	373	390	383	387	+14	+3.6%	-3	-0.7%	+4	445
Management (VIII & above)	33	23	28	28	-5	-16.0%	+5	+20.1%	-0	28
Administrative/ Supervisory (V to VII)	76	84	87	87	+11	+14.7%	+4	+4.3%	+0	91
Clerical (III & IV)	178	180	190	196	+18	+10.0%	+15	+8.6%	+5	220
Management & Administrative	287	287	305	311	+24	+8.3%	+24	+8.2%	+5	339
Support	116	106	103	100	-16	-13.4%	-6	-5.3%	-3	115
Maintenance/ Technical	9	10	9	9	-0	-1.6%	-1	-13.5%	-0	10
General Support	125	116	112	109	-16	-12.6%	-7	-6.0%	-3	125
Health Care Assistants	121	155	155	153	+32	+26.1%	-2	-1.4%	-2	184
Care, other	128	136	139	140	+13	+9.8%	+4	+3.2%	+1	153
Patient & Client Care	249	291	294	293	+44	+17.7%	+2	+0.8%	-1	337

JUL 2023	WTE DEC 2019	WTE DEC 2022	WTE JUN 2023	WTE JUL 2023	WTE change since DEC 2019	% WTE change since Dec 2019	WTE change since DEC 2022	% WTE change since Dec 2022	WTE change since JUN 2023	No. JUL 2023
Overall	1,387	1,498	1,532	1,544	+157	+11.3%	+46	+3.0%	+11	1,827
Consultants	6	6	7	7	+1	+11.7%	+1	+10.7%	+0	7
Registrars	78	92	92	108	+30	+37.9%	+16	+16.9%	+16	111
SHO/ Interns	2			1	-1	-56.0%	+1		+1	1
Medical/ Dental, other	61	53	49	47	-13	-21.6%	-6	-11.0%	-1	59
Medical & Dental	147	152	148	163	+16	+11.0%	+11	+7.4%	+15	178
Nurse/ Midwife Manager	51	60	61	58	+7	+13.7%	-2	-3.0%	-3	66
Nurse/ Midwife Specialist & AN/MP	35	47	52	51	+17	+47.9%	+4	+8.0%	-0	59
Staff Nurse/ Staff Midwife	98	110	109	110	+12	+12.1%	+0	+0.3%	+1	150
Public Health Nurse	196	217	205	204	+8	+4.2%	-13	-5.9%	-1	245
<i>Post-registration Nurse/ Midwife Student</i>	2				-2	-100.0%				
Nursing/ Midwifery Student	2				-2	-100.0%				
Nursing & Midwifery	382	434	426	424	+42	+10.9%	-11	-2.4%	-3	520
Therapy Professions	221	222	248	245	+24	+10.9%	+23	+10.3%	-3	297
Health Science/ Diagnostics	5	10	9	9	+4	+78.2%	-1	-9.2%	-0	10
Social Care		1	6	5	+5		+4	+449.0%	-1	6
Social Workers	16	29	29	28	+12	+77.2%	-1	-4.0%	-2	31
Psychologists	56	46	43	42	-13	-23.9%	-3	-7.3%	-1	47
Pharmacy	4	7	6	6	+2	+64.7%	-1	-8.9%	-0	7
H&SC, Other	25	36	35	35	+11	+42.1%	-1	-1.9%	+1	39
Health & Social Care Professionals	326	351	377	371	+45	+13.9%	+21	+5.9%	-6	437
Management (VIII & above)	45	36	38	36	-9	-21.0%	-1	-2.1%	-3	37
Administrative/ Supervisory (V to VII)	78	95	97	101	+24	+30.7%	+7	+6.9%	+4	107
Clerical (III & IV)	265	272	301	303	+38	+14.5%	+31	+11.5%	+2	363
Management & Administrative	387	403	436	440	+53	+13.6%	+37	+9.2%	+4	507
Support	23	19	20	21	-1	-6.0%	+2	+9.9%	+1	35
Maintenance/ Technical	3	2	2	2	-1	-29.2%	+0	+0.0%	-0	2
General Support	25	21	22	23	-2	-8.5%	+2	+9.0%	+1	37
Home Help	0				-0	-100.0%				
Health Care Assistants	21	36	21	21	+0	+1.6%	-15	-41.2%	-0	30
Care, other	98	101	102	102	+3	+3.1%	+0	+0.1%	-1	118
Patient & Client Care	120	137	124	123	+3	+2.6%	-15	-10.7%	-1	148

JUL 2023	WTE DEC 2019	WTE DEC 2022	WTE JUN 2023	WTE JUL 2023	WTE change since DEC 2019	% WTE change since Dec 2019	WTE change since DEC 2022	% WTE change since Dec 2022	WTE change since JUN 2023	No. JUL 2023
Overall	1,247	1,357	1,379	1,389	+142	+11.4%	+32	+2.3%	+10	1,601
Consultants	4	3	4	4	-0	-4.6%	+1	+21.9%	+0	5
Registrars	56	60	52	58	+3	+4.5%	-2	-3.6%	+6	67
SHO/ Interns	1	7	7	10	+9	+876.0%	+3	+40.8%	+2	10
Medical/ Dental, other	50	50	50	49	-1	-1.8%	-1	-2.5%	-2	64
Medical & Dental	111	121	114	121	+10	+9.2%	+0	+0.1%	+7	146
Nurse/ Midwife Manager	37	53	60	60	+23	+63.6%	+7	+13.1%	+1	67
Nurse/ Midwife Specialist & AN/MP	6	23	27	28	+22	+340.1%	+5	+24.4%	+1	33
Staff Nurse/ Staff Midwife	100	105	128	119	+18	+18.3%	+14	+12.9%	-9	139
Public Health Nurse	175	171	162	172	-4	-2.1%	+0	+0.3%	+9	209
<i>Post-registration Nurse/ Midwife Student</i>	26	19	1	1	-25	-96.2%	-18	-94.7%	+0	1
Nursing/ Midwifery Student	26	19	1	1	-25	-96.2%	-18	-94.7%	+0	1
Nursing/ Midwifery other		2	2	2	+2		+0	+0.0%	-0	2
Nursing & Midwifery	345	373	380	381	+37	+10.6%	+9	+2.3%	+1	451
Therapy Professions	196	229	230	229	+33	+16.6%	-1	-0.3%	-1	269
Health Science/ Diagnostics	20	13	14	14	-6	-30.8%	+1	+9.0%	+0	14
Social Care	4	6	5	5	+1	+26.5%	-1	-14.1%	+0	6
Social Workers	17	23	24	24	+7	+44.5%	+1	+2.8%	-0	25
Psychologists	65	72	76	74	+9	+13.4%	+2	+2.8%	-2	81
Pharmacy	12	13	14	14	+2	+16.7%	+1	+4.5%	+0	17
H&SC, Other	37	33	38	37	+0	+0.4%	+4	+11.5%	-1	42
Health & Social Care Professionals	351	390	401	397	+46	+13.0%	+7	+1.7%	-4	454
Management (VIII & above)	28	15	20	19	-9	-32.8%	+4	+23.9%	-1	20
Administrative/ Supervisory (V to VII)	77	93	98	103	+26	+33.2%	+10	+11.2%	+5	108
Clerical (III & IV)	182	185	195	200	+18	+9.8%	+15	+8.2%	+5	226
Management & Administrative	288	293	314	322	+34	+11.9%	+29	+10.0%	+8	354
Support	35	27	29	30	-5	-14.6%	+2	+8.1%	+0	35
General Support	35	27	29	30	-5	-14.6%	+2	+8.1%	+0	35
Health Care Assistants	13	35	26	24	+11	+86.0%	-10	-29.4%	-1	27
Care, other	105	118	114	113	+8	+8.1%	-5	-4.1%	-1	134
Patient & Client Care	118	153	140	138	+20	+16.7%	-15	-9.8%	-2	161

other Community Services

JUL 2023	WTE DEC 2019	WTE DEC 2022	WTE JUN 2023	WTE JUL 2023	WTE change since DEC 2019	% WTE change since Dec 2019	WTE change since DEC 2022	% WTE change since Dec 2022	WTE change since JUN 2023	No. JUL 2023
Overall	122	127	128	127	+5	+4.0%	-0	-0.2%	-1	149
Consultants	1	2	2	2	+1	+100.0%	+0	+0.0%	+0	2
Registrars	12	11	14	12	+0	+3.6%	+1	+13.0%	-1	23
SHO/ Interns	2	5	2	2	+0	+29.0%	-3	-60.0%	-0	4
Medical/ Dental, other	0				-0	-100.0%				
Medical & Dental	15	18	18	16	+2	+10.2%	-2	-8.7%	-2	29
Nurse/ Midwife Manager	4	5	5	5	+2	+40.5%	+0	+2.4%	+0	6
Staff Nurse/ Staff Midwife	5	5	3	3	-2	-34.8%	-2	-35.6%	+0	4
Nursing & Midwifery	9	10	9	9	-0	-2.1%	-2	-16.2%	+0	10
Health Science/ Diagnostics	8	8	6	6	-2	-25.8%	-2	-26.7%	+0	6
Social Care	2	2	2	2	+0	+12.0%	-0	-1.1%	-0	2
Social Workers	14	4	5	5	-8	-61.7%	+1	+23.6%	+0	6
Psychologists	1	1	1	1	+0	+0.0%	+0	+0.0%	+0	1
Pharmacy	3	10	11	11	+9	+320.1%	+1	+11.1%	+0	13
H&SC, Other	3	2	5	5	+2	+64.9%	+2	+92.8%	+0	5
Health & Social Care Professionals	30	28	30	30	+0	+1.4%	+2	+8.6%	-0	33
Management (VIII & above)	19	19	20	22	+3	+17.8%	+3	+13.9%	+2	23
Administrative/ Supervisory (V to VII)	20	26	25	24	+3	+17.0%	-2	-8.5%	-1	25
Clerical (III & IV)	12	12	11	12	+0	+0.2%	+0	+2.1%	+1	13
Management & Administrative	51	57	56	58	+7	+13.3%	+1	+1.3%	+1	61
Support	2	1	2	2	-0	-5.2%	+1	+217.5%	-0	2
Maintenance/ Technical	1	1	1	1	+0	+0.0%	+0	+0.0%	+0	1
General Support	3	2	3	3	-0	-3.5%	+1	+84.0%	-0	3
Care, other	15	13	12	11	-4	-23.7%	-1	-11.4%	-1	13
Patient & Client Care	15	13	12	11	-4	-23.7%	-1	-11.4%	-1	13

Primary Care Employment Report by Grade Group: JUL 2023

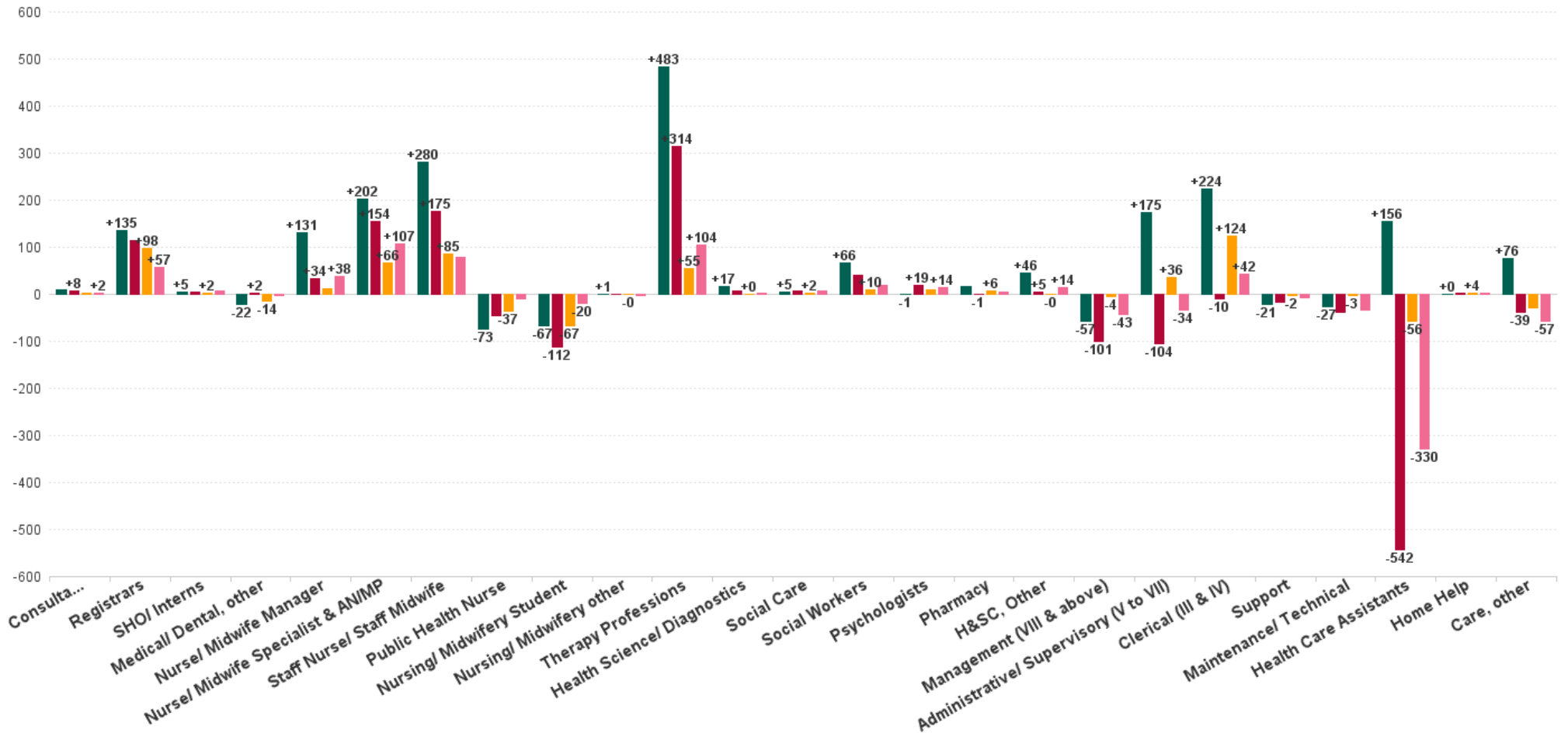
JUL 2023	WTE DEC 2019	WTE DEC 2022	WTE JUN 2023	WTE JUL 2023	WTE change since DEC 2019	% WTE change since Dec 2019	WTE change since DEC 2022	% WTE change since Dec 2022	WTE change since JUN 2023	No. JUL 2023
Overall	10,606	12,064	12,305	12,364	+1,758	+16.6%	+300	+2.5%	+59	14,713
Consultant Dentistry	11	13	15	15	+4	+34.5%	+2	+14.2%	+0	18
Consultant Medicine	18	24	26	25	+7	+38.1%	+1	+2.8%	-1	33
Consultant Paediatrics	2	2	2	2	+0	+2.0%	+0	+0.0%	+0	2
Consultant Pathology				1	+1		+1		+1	1
Consultant Psychiatry	8	8	8	8	+0	+0.6%	+0	+4.1%	+0	9
Consultant Radiology	1	1	1	1	+0	+0.0%	+0	+0.0%	+0	1
Consultant Surgery	4	3	3	3	-1	-34.8%	-0	-0.4%	-0	4
Consultants	44	50	54	54	+10	+22.3%	+3	+6.7%	-0	68
Registrar	383	422	436	522	+139	+36.3%	+100	+23.7%	+86	595
Senior Registrar	3	3	4	3	-0	-10.1%	-1	-24.7%	-2	5
Specialist Registrar	10	8	7	7	-3	-31.6%	-1	-14.0%	+0	9
Registrars	396	433	446	531	+135	+34.2%	+98	+22.6%	+85	609
Senior House Officer	36	39	36	41	+5	+13.4%	+2	+5.1%	+5	51
SHO/ Interns	36	39	36	41	+5	+13.4%	+2	+5.1%	+5	51
Dentists	301	307	308	297	-4	-1.4%	-10	-3.1%	-11	408
Other Medical	218	204	201	200	-18	-8.4%	-4	-2.1%	-1	307
Medical/ Dental, other	520	511	508	497	-22	-4.3%	-14	-2.7%	-11	715
Medical & Dental	995	1034	1045	1123	+128	+12.8%	+89	+8.7%	+78	1,443
Clinical Nurse/ Midwife Manager	168	214	216	219	+52	+30.8%	+5	+2.3%	+3	248
Director Nursing/Midwifery, Assistant	153	218	225	225	+72	+47.0%	+7	+3.1%	+0	248
Director of Nursing/Midwifery	38	44	45	45	+7	+19.3%	+1	+1.2%	-0	46
Nurse/ Midwife Manager	358	477	486	489	+131	+36.5%	+12	+2.6%	+3	542
Advanced Nurse/ Midwife Practitioner	3	38	50	51	+48	+1,894.9%	+13	+33.7%	+1	52
Clinical Nurse/ Midwife Specialist	140	240	292	294	+153	+109.4%	+54	+22.3%	+2	338
Nurse/ Midwife Specialist & AN/MP	143	278	341	344	+202	+141.2%	+66	+23.9%	+3	390
Staff Midwives	8	5	5	5	-4	-44.0%	-0	-1.3%	+0	6
Staff Nurse [Intellectual Disability]		2	2	2	+2		-1	-28.9%	-1	2
Staff Nurse [Psychiatric]	8	14	12	13	+5	+65.5%	-2	-10.6%	+0	17
Staff Nurses [General/ Children's]	846	1,036	1,123	1,123	+277	+32.7%	+88	+8.5%	+1	1,435
Staff Nurse/ Staff Midwife	862	1,057	1,142	1,142	+280	+32.5%	+85	+8.1%	+0	1,460
Public Health Nurse	1,513	1,477	1,430	1,440	-73	-4.8%	-37	-2.5%	+10	1,748
Public Health Nurse	1,513	1,477	1,430	1,440	-73	-4.8%	-37	-2.5%	+10	1,748
Post-registration Nurse/ Midwife Student	96	96	50	29	-67	-69.9%	-67	-69.9%	-21	29
Nursing/ Midwifery Student	96	96	50	29	-67	-69.9%	-67	-69.9%	-21	29
Nursing Education/Clinical	4	5	5	4	+1	+17.6%	-0	-9.5%	-1	5
Nursing/ Midwifery other	4	5	5	4	+1	+17.6%	-0	-9.5%	-1	5
Nursing & Midwifery	2976	3389	3454	3449	+473	+15.9%	+60	+1.8%	-5	4,174
Dietitians	109	195	211	212	+102	+93.4%	+17	+8.5%	+0	249
Occupational Therapists	516	638	652	639	+123	+23.9%	+1	+0.1%	-13	748
Orthoptists	13	20	18	19	+6	+46.5%	-1	-2.8%	+1	23
Physiotherapists	543	654	696	691	+149	+27.4%	+37	+5.7%	-5	825
Podiatrists & Chiropodists	25	82	91	90	+65	+265.8%	+8	+9.2%	-1	102
Speech & Language Therapists	527	572	579	565	+38	+7.2%	-7	-1.2%	-14	650
Therapy Professions	1,733	2,162	2,247	2,217	+483	+27.9%	+55	+2.5%	-31	2,597
Audiology	44	57	62	61	+17	+39.4%	+4	+7.1%	-1	66
Biochemists	8	8	6	6	-2	-25.8%	-2	-26.7%	+0	6
Cardiac Physiologists		1	1	1	+1		+0	+0.0%	+0	1
Clinical Engineering	8	9	8	8	+0	+0.0%	-1	-10.6%	+0	8
Medical Science	16	14	13	13	-3	-16.5%	-1	-9.8%	+0	15
Phlebotomists	0	0	0	0	+0	+4.5%	-0	-23.3%	-0	1
Physicists	2	2	2	2	-0	-19.0%	+0	+0.0%	-0	2
Radiographers	4	8	8	8	+4	+86.9%	+1	+6.7%	+0	10



JUL 2023	WTE DEC 2019	WTE DEC 2022	WTE JUN 2023	WTE JUL 2023	WTE change since DEC 2019	% WTE change since Dec 2019	WTE change since DEC 2022	% WTE change since Dec 2022	WTE change since JUN 2023	No. JUL 2023
Overall	10,606	12,064	12,305	12,364	+1,758	+16.6%	+300	+2.5%	+59	14,713
Health Science/ Diagnostics	82	99	100	99	+17	+21.1%	+0	+0.1%	-1	109
Social Care	35	39	42	41	+5	+14.6%	+2	+5.5%	-1	44
Social Care	35	39	42	41	+5	+14.6%	+2	+5.5%	-1	44
Social Workers	139	195	204	205	+66	+47.1%	+10	+4.9%	+1	224
Social Workers	139	195	204	205	+66	+47.1%	+10	+4.9%	+1	224
Psychologists	303	292	308	302	-1	-0.3%	+10	+3.5%	-6	337
Psychologists	303	292	308	302	-1	-0.3%	+10	+3.5%	-6	337
Pharmacists	50	58	63	62	+12	+24.4%	+4	+6.6%	-1	73
Pharmacy Technicians	8	10	12	12	+4	+55.9%	+2	+24.3%	+0	13
Pharmacy	58	68	75	74	+17	+28.7%	+6	+9.2%	-1	86
Counsellor Therapists	115	122	134	134	+19	+16.4%	+12	+9.9%	-1	148
Dental Hygienists	58	61	60	59	+2	+2.6%	-2	-3.0%	-0	75
Other Health & Social Care	34	44	46	48	+14	+41.2%	+4	+9.8%	+3	52
Play Therapists/ Specialists	2	1	2	2	-1	-33.3%	+0	+4.8%	+0	2
Vaccinators		26	14	12	+12		-15	-55.2%	-2	24
H&SC, Other	209	255	255	255	+46	+21.8%	-0	0.0%	-0	301
Health & Social Care Professionals	2559	3109	3230	3192	+633	+24.7%	+83	+2.7%	-38	3,698
Executive Management	71	37	34	32	-39	-54.6%	-5	-13.0%	-1	33
Senior Management (VIII & GM)	235	216	224	217	-18	-7.7%	+0	+0.2%	-7	227
Management (VIII & above)	306	253	257	249	-57	-18.6%	-4	-1.7%	-8	260
Middle Management (V-VII)	621	761	791	796	+175	+28.1%	+35	+4.6%	+5	852
Other Administrative	2	1	2	2	+0	+0.0%	+1	+102.0%	+0	2
Administrative/ Supervisory (V to VII)	623	762	793	798	+175	+28.0%	+36	+4.7%	+5	854
General Administrative (III & IV)	1,746	1,847	1,924	1,970	+224	+12.8%	+124	+6.7%	+46	2,284
Clerical (III & IV)	1,746	1,847	1,924	1,970	+224	+12.8%	+124	+6.7%	+46	2,284
Management & Administrative	2675	2862	2975	3017	+342	+12.8%	+155	+5.4%	+42	3,398
Catering	22	23	22	22	-0	-0.6%	-1	-5.9%	-0	25
Household Services	134	139	137	132	-2	-1.8%	-7	-5.3%	-5	163
Other Labs & Associated	3	1	6	6	+3	+88.1%	+4	+312.0%	-0	6
Other Support	112	104	104	103	-9	-8.2%	-1	-1.1%	-1	218
Portering	74	59	61	62	-12	-16.6%	+3	+5.2%	+1	68
Support	346	327	330	325	-21	-6.2%	-2	-0.7%	-6	480
Maintenance	58	34	31	30	-28	-48.3%	-3	-10.2%	-0	34
Technical Services	1	2	2	2	+1	+100.0%	+0	+0.0%	+0	2
Maintenance/ Technical	59	36	33	32	-27	-45.8%	-3	-9.6%	-0	36
General Support	405	362	363	357	-48	-12.0%	-6	-1.6%	-6	516
Home Helps	18	15	18	19	+0	+1.1%	+4	+23.7%	+0	43
Home Help	18	15	18	19	+0	+1.1%	+4	+23.7%	+0	43
Attendant/ Aide	35	61	66	64	+29	+83.6%	+3	+5.4%	-2	81
Health Care Assistant/ Care Assistant	150	308	207	206	+57	+37.8%	-102	-33.1%	-0	247
Health & Social Care Assistants	69	97	141	139	+70	+101.4%	+42	+43.6%	-1	150
Health Care Assistants	254	466	413	410	+156	+61.4%	-56	-12.1%	-3	478
Health Promotion		1					-1	-100.0%		
Home Care Services	3	3	1	1	-3	-80.0%	-2	-74.3%	-1	2
Other Care Grades	713	819	800	793	+80	+11.3%	-26	-3.2%	-7	956
Pastoral Care	4	3	3	3	-1	-28.9%	-0	-3.8%	+0	3
Workshop Services	3	1	2	2	-1	-34.5%	+1	+82.0%	+0	2
Care, other	723	827	806	798	+76	+10.4%	-29	-3.5%	-8	963
Patient & Client Care	995	1308	1238	1226	+232	+23.3%	-81	-6.2%	-11	1,484

WTE Change by Staff Category

■ WTE change since DEC 2019 ■ WTE change since DEC 2021 ■ WTE change since DEC 2022 ■ WTE change since JUL 2022



Primary Care Employment Report by WTE, Headcount, Gender, Full-Time / Part-Time etc. JUL 2023

JUL 2023	WTE JUL 2023	No. JUL 2023	WTE : No	% Male	% Female	Male WTE : No.	Female WTE : No	Perm Count %	Perm Count Male %	Perm Count Female %	Fulltime Count %	Part time Count %	FT Count Male %	FT Count Female %
Total	12,364	14,713	1:0.8	13.61%	86.39%	1:0.9	1:0.8	85.21%	10.17%	75.04%	69.05%	30.95%	84.27%	66.66%
Consultants	53.62	68	1:0.8	33.82%	66.18%	1:0.9	1:0.8	86.76%	30.88%	55.88%	69.12%	30.88%	78.26%	64.44%
Registrars	531.14	609	1:0.9	39.24%	60.76%	1:0.9	1:0.9	1.64%	0.82%	0.82%	98.85%	1.15%	99.58%	98.38%
SHO/ Interns	41.04	51	1:0.8	29.41%	70.59%	1:0.8	1:0.8	3.92%		3.92%	100.00%		100.00%	100.00%
Medical/ Dental, other	497.23	715	1:0.7	26.85%	73.15%	1:0.7	1:0.7	82.80%	20.28%	62.52%	42.66%	57.34%	46.88%	41.11%
Medical & Dental	1,123	1,443	1:0.8	32.50%	67.50%	1:0.8	1:0.8	45.95%	11.85%	34.10%	69.65%	30.35%	76.97%	66.12%
Nurse/ Midwife Manager	489.31	542	1:0.9	3.32%	96.68%	1:1	1:0.9	96.31%	3.14%	93.17%	75.83%	24.17%	83.33%	75.57%
Nurse/ Midwife Specialist & AN/MP	344.28	390	1:0.9	4.62%	95.38%	1:1	1:0.9	97.69%	4.62%	93.08%	72.82%	27.18%	100.00%	71.51%
Staff Nurse/ Staff Midwife	1,142.06	1,460	1:0.8	4.18%	95.82%	1:0.9	1:0.8	85.96%	3.77%	82.19%	48.90%	51.10%	77.05%	47.68%
Public Health Nurse	1,440.18	1,748	1:0.8	0.46%	99.54%	1:0.9	1:0.8	95.82%	0.46%	95.37%	69.28%	30.72%	100.00%	69.14%
Nursing/ Midwifery Student	28.84	29	1:1		100.00%	1:	1:1	48.28%		48.28%	100.00%			100.00%
Nursing/ Midwifery other	4.47	5	1:0.9		100.00%	1:	1:0.9	100.00%		100.00%	100.00%			100.00%
Nursing & Midwifery	3,449	4,174	1:0.8	2.52%	97.48%	1:0.9	1:0.8	92.29%	2.35%	89.94%	63.58%	36.42%	83.81%	63.06%
Therapy Professions	2,216.56	2,597	1:0.9	9.59%	90.41%	1:0.9	1:0.8	94.34%	8.70%	85.64%	72.20%	27.80%	88.76%	70.44%
Health Science/ Diagnostics	99.12	109	1:0.9	22.94%	77.06%	1:1	1:0.9	91.74%	22.02%	69.72%	85.32%	14.68%	92.00%	83.33%
Social Care	40.62	44	1:0.9	36.36%	63.64%	1:0.9	1:0.9	88.64%	31.82%	56.82%	88.64%	11.36%	93.75%	85.71%
Social Workers	204.73	224	1:0.9	16.52%	83.48%	1:1	1:0.9	90.18%	12.95%	77.23%	84.82%	15.18%	97.30%	82.35%
Psychologists	301.8	337	1:0.9	16.91%	83.09%	1:1	1:0.9	70.92%	13.65%	57.27%	76.26%	23.74%	94.74%	72.50%
Pharmacy	74.33	86	1:0.9	20.93%	79.07%	1:0.9	1:0.9	66.28%	10.47%	55.81%	60.47%	39.53%	44.44%	64.71%
H&SC, Other	254.68	301	1:0.8	25.58%	74.42%	1:0.9	1:0.8	89.04%	24.25%	64.78%	66.45%	33.55%	88.31%	58.93%
Health & Social Care Professionals	3,192	3,698	1:0.9	12.95%	87.05%	1:0.9	1:0.9	90.72%	11.38%	79.34%	73.17%	26.83%	88.73%	70.86%
Management (VIII & above)	248.94	260	1:1	23.85%	76.15%	1:0.9	1:1	98.46%	23.08%	75.38%	95.77%	4.23%	96.77%	95.45%
Administrative/ Supervisory (V to VII)	797.98	854	1:0.9	17.45%	82.55%	1:1	1:0.9	96.14%	16.28%	79.86%	89.34%	10.66%	99.33%	87.23%
Clerical (III & IV)	1,970.04	2,284	1:0.9	10.60%	89.40%	1:0.9	1:0.9	85.73%	8.23%	77.50%	69.00%	31.00%	87.60%	66.80%
Management & Administrative	3,017	3,398	1:0.9	13.33%	86.67%	1:0.9	1:0.9	89.32%	11.39%	77.93%	76.16%	23.84%	92.72%	73.62%
Support	324.51	480	1:0.7	39.79%	60.21%	1:0.9	1:0.6	71.46%	32.71%	38.75%	47.50%	52.50%	77.49%	27.68%
Maintenance/ Technical	32.16	36	1:0.9	94.44%	5.56%	1:0.9	1:0.9	100.00%	94.44%	5.56%	91.67%	8.33%	94.12%	50.00%
General Support	357	516	1:0.7	43.60%	56.40%	1:0.9	1:0.6	73.45%	37.02%	36.43%	50.58%	49.42%	80.00%	27.84%
Health Care Assistants	409.6	478	1:0.9	20.50%	79.50%	1:0.9	1:0.8	67.57%	14.64%	52.93%	69.25%	30.75%	84.69%	65.26%
Home Help	18.58	43	1:0.4	25.58%	74.42%	1:0.4	1:0.4	20.93%	4.65%	16.28%	4.65%	95.35%		6.25%
Care, other	798.16	963	1:0.8	16.93%	83.07%	1:0.9	1:0.8	95.64%	16.30%	79.34%	63.66%	36.34%	80.37%	60.25%
Patient & Client Care	1,226	1,484	1:0.8	18.33%	81.67%	1:0.9	1:0.8	84.43%	15.43%	69.00%	63.75%	36.25%	78.68%	60.40%

Primary Care Employment Report by WTE, Headcount, Gender, Full-Time / Part-Time etc. JUL 2023

JUL 2023	WTE JUL 2023	No. JUL 2023	WTE : No	% Male	% Female	Male WTE : No.	Female WTE : No	Perm Count %	Number Male %	Number Female %	Fulltime Count %	Part time Count %	FT Count Male %	FT Count Female %
Total	12,364	14,713	1:0.8	13.61%	86.39%	1:0.9	1:0.8	85.21%	10.17%	75.04%	69.05%	30.95%	84.27%	66.66%
CHO 1	1,526	1,783	1:0.9	13.68%	86.32%	1:0.9	1:0.8	87.16%	9.98%	77.17%	67.64%	32.36%	83.61%	65.11%
CHO 2	1,303	1,514	1:0.9	13.87%	86.13%	1:0.9	1:0.9	87.19%	10.24%	76.95%	74.70%	25.30%	87.14%	72.70%
CHO 3	835	997	1:0.8	8.73%	91.27%	1:0.9	1:0.8	86.36%	6.32%	80.04%	71.92%	28.08%	83.91%	70.77%
CHO 4	1,806	2,241	1:0.8	10.66%	89.34%	1:0.8	1:0.8	73.27%	6.16%	67.11%	57.61%	42.39%	71.55%	55.94%
CHO 5	1,178	1,400	1:0.8	13.07%	86.93%	1:0.9	1:0.8	88.36%	9.93%	78.43%	66.50%	33.50%	81.42%	64.26%
CHO 6	877	1,125	1:0.8	14.49%	85.51%	1:0.8	1:0.8	87.47%	11.64%	75.82%	72.36%	27.64%	90.80%	69.23%
CHO 7	1,779	2,076	1:0.9	17.39%	82.61%	1:0.9	1:0.8	88.82%	14.93%	73.89%	71.15%	28.85%	85.04%	68.22%
CHO 8	1,544	1,827	1:0.8	13.57%	86.43%	1:0.9	1:0.8	88.18%	9.69%	78.49%	68.20%	31.80%	85.48%	65.48%
CHO 9	1,389	1,601	1:0.9	13.43%	86.57%	1:0.9	1:0.9	86.01%	10.87%	75.14%	76.01%	23.99%	89.30%	73.95%
other Community Services	127	149	1:0.9	35.57%	64.43%	1:0.8	1:0.9	71.81%	21.48%	50.34%	87.25%	12.75%	92.45%	84.38%



Previous Month Summary

	% WTE change since JUN 2023	WTE change since JUN 2023	CHO 1	CHO 2	CHO 3	CHO 4	CHO 5	CHO 6	CHO 7	CHO 8	CHO 9	other Communi ty Services
Total	+0.5%	+59.4	-1.4	-12.7	+12.8	+22.9	+13.0	-1.3	+5.5	+11.2	+10.2	-0.8
Consultants	-0.7%	-0.4	-0.0	-0.2	+0.0	-0.1	+0.0	+0.2	-0.3	+0.0	+0.1	+0.0
Registrars	+19.0%	+84.8	+4.4	+18.7	+9.5	+17.5	+11.6	+1.0	+2.1	+15.6	+5.7	-1.5
SHO/ Interns	+12.9%	+4.7	+0.0	-5.0		+0.0	+0.9	+2.5	+3.0	+0.9	+2.5	-0.1
Medical/ Dental, other	-2.2%	-11.3	-0.3	-0.6	-1.0	-6.3	-1.5	-0.5	+2.0	-1.5	-1.7	
Medical & Dental	+7.4%	+77.9	+4.1	+13.0	+8.6	+11.2	+11.1	+3.1	+6.8	+15.0	+6.6	-1.6
Nurse/ Midwife Manager	+0.6%	+3.1	+1.6	-0.7	+0.4	+1.2	+0.9	+0.9	+1.1	-3.1	+0.6	+0.1
Nurse/ Midwife Specialist & AN/MP	+0.8%	+2.8	+0.1	-1.5	-0.3	+2.2	+0.1	+0.5	+1.5	-0.4	+0.6	
Staff Nurse/ Staff Midwife	+0.0%	+0.3	+4.7	+5.0	+2.9	+9.6	+4.5	-4.3	-14.1	+1.1	-9.3	+0.1
Public Health Nurse	+0.7%	+10.4	-0.8	-5.9	-0.9	-3.3	-0.0	+4.4	+8.4	-0.5	+9.0	
Nursing/ Midwifery Student	-42.3%	-21.1	-3.1	-5.0	-1.0	-5.0	+0.0	-4.0	-3.0		+0.0	
Nursing/ Midwifery other	-10.1%	-0.5	+0.0						-0.5		-0.0	
Nursing & Midwifery	-0.1%	-5.0	+2.5	-8.2	+1.1	+4.8	+5.6	-2.5	-6.6	-2.9	+0.9	+0.2
Therapy Professions	-1.4%	-30.6	-3.8	-11.5	-0.4	-4.3	-2.3	-2.8	-1.7	-3.0	-1.0	
Health Science/ Diagnostics	-0.5%	-0.5	+0.0	+0.0	+0.1	-0.1	-0.8	+0.3	+0.0	-0.0	+0.0	+0.0
Social Care	-2.4%	-1.0		-0.1		-0.0	-0.3	+0.0	-0.1	-0.5	+0.0	-0.1
Social Workers	+0.5%	+1.0	+0.6	-1.0	-0.3	+0.2	+0.2	+0.0	+3.1	-1.6	-0.3	+0.0
Psychologists	-1.9%	-5.9	+0.1	-0.8	+0.2	+0.1	-0.8	-2.2	+0.2	-1.1	-1.6	+0.0
Pharmacy	-1.4%	-1.1	-0.1	+0.0	+0.0	+0.1	+0.0	-1.2	+0.2	-0.0	+0.0	+0.1
H&SC, Other	0.0%	-0.1	-2.0	-0.1	-0.1	+0.4	-1.5	+1.3	+2.2	+0.7	-0.9	+0.0
Health & Social Care Professionals	-1.2%	-38.2	-5.3	-13.4	-0.5	-3.6	-5.3	-4.6	+3.9	-5.5	-3.8	-0.0
Management (VIII & above)	-3.3%	-8.4	-1.8	+0.4	-1.0	-2.2	-2.8	+1.0	-0.2	-2.8	-1.1	+1.9
Administrative/ Supervisory (V to VII)	+0.6%	+4.5	-2.1	-0.5	+0.6	+3.1	-0.4	-4.3	+0.1	+4.5	+4.8	-1.4



Clerical (III & IV)	+2.4%	+46.1	+4.8	+1.7	+3.4	+11.0	+8.2	+3.7	+5.5	+2.4	+4.6	+0.9
Management & Administrative	+1.4%	+42.3	+0.9	+1.7	+3.1	+11.9	+5.1	+0.5	+5.4	+4.0	+8.4	+1.4
Support	-1.7%	-5.8	-2.2	-0.1	+0.0	-0.3	+0.5	-2.3	-2.8	+1.4	+0.1	-0.2
Maintenance/ Technical	-1.1%	-0.4	-0.3	-0.0		+0.0		+0.0	-0.1	-0.0		+0.0
General Support	-1.7%	-6.2	-2.5	-0.1	+0.0	-0.3	+0.5	-2.3	-2.9	+1.4	+0.1	-0.2
Health Care Assistants	-0.8%	-3.5	+0.7	-2.4	+1.2	+1.3	-0.9	-0.1	-1.9	-0.3	-1.2	
Home Help	+0.6%	+0.1	+0.0			+0.1	-0.0					
Care, other	-1.0%	-8.0	-1.8	-3.3	-0.7	-2.5	-2.9	+4.6	+0.8	-0.6	-0.9	-0.6
Patient & Client Care	-0.9%	-11.4	-1.1	-5.6	+0.5	-1.1	-3.8	+4.5	-1.2	-0.9	-2.1	-0.6



Year on Year Summary

	% WTE change since JUL 2022	WTE change since JUL 2022	CHO 1	CHO 2	CHO 3	CHO 4	CHO 5	CHO 6	CHO 7	CHO 8	CHO 9	other Communi ty Services
Total	-0.3%	-34.9	-30.4	-27.9	-162.8	+73.2	+29.2	+15.5	+36.5	-1.3	+46.6	-13.5
Consultants	+3.8%	+2.0	+0.1	+0.9	+0.0	+0.4	-0.2	+0.1	-0.4	+0.2	+0.8	+0.0
Registrars	+12.0%	+56.8	-2.7	-3.2	+3.2	+28.7	+3.7	+7.7	+3.7	+3.4	+8.9	+3.2
SHO/ Interns	+23.0%	+7.7	+0.2	-2.9		+1.0	-0.1	+2.0	+4.7	+0.9	+2.8	-1.0
Medical/ Dental, other	-0.4%	-2.0	+1.7	+2.3	+0.5	-1.2	+1.6	+1.1	+1.0	-7.1	-1.8	
Medical & Dental	+6.1%	+64.4	-0.8	-2.8	+3.7	+28.9	+5.0	+10.9	+9.1	-2.6	+10.6	+2.3
Nurse/ Midwife Manager	+8.5%	+38.2	+4.0	+6.5	+1.4	-1.4	+1.5	+6.7	+2.8	+4.4	+12.1	+0.2
Nurse/ Midwife Specialist & AN/MP	+45.4%	+107.5	+20.1	+11.8	+5.8	+21.9	+6.1	+4.2	+15.4	+7.6	+14.7	
Staff Nurse/ Staff Midwife	+7.5%	+79.3	+30.9	+1.5	-3.4	+34.8	+8.6	-6.2	+1.0	+5.9	+10.2	-4.0
Public Health Nurse	-0.7%	-9.6	-3.9	+3.8	+1.8	-4.3	+1.5	-1.3	+5.8	-5.9	-7.0	
Nursing/ Midwifery Student	-40.6%	-19.7	-1.0	-3.0	+1.0	-8.9	-0.8	-1.0	+1.0	-4.0	-3.0	
Nursing/ Midwifery other	-24.6%	-1.5	+0.0					-1.0	-0.5		-0.0	
Nursing & Midwifery	+6.0%	+194.2	+50.0	+20.5	+6.6	+42.0	+16.9	+1.5	+25.4	+7.9	+27.1	-3.8
Therapy Professions	+4.9%	+103.6	+27.4	-7.9	+26.7	+23.5	+29.6	+4.7	-9.0	+7.3	+1.4	
Health Science/ Diagnostics	+3.3%	+3.2	+0.1	+1.1	+0.6	-2.3	+4.4	-3.3	+3.2	+0.5	+1.0	-2.0
Social Care	+17.5%	+6.1		-3.0	-1.0	-1.2	+3.9	+1.0	-0.2	+4.5	+2.0	-0.1
Social Workers	+10.9%	+20.2	-3.7	+5.6	+0.9	+12.7	+1.2	+3.4	+7.1	+5.3	-0.8	-11.5
Psychologists	+4.7%	+13.6	-1.4	-2.6	+4.7	+14.5	+2.2	-0.3	+1.0	-6.3	+1.6	+0.0
Pharmacy	+7.3%	+5.0	-1.1	-0.2	+0.0	+0.4	+0.6	+0.9	-0.9	+0.3	+1.3	+3.8
H&SC, Other	+5.6%	+13.5	-0.5	-5.1	+2.5	+6.6	-0.4	+2.8	+1.1	+1.8	+3.0	+1.8
Health & Social Care Professionals	+5.5%	+165.2	+20.8	-12.0	+34.4	+54.0	+41.6	+9.2	+2.2	+13.3	+9.6	-7.8
Management (VIII & above)	-14.8%	-43.4	-14.9	-4.5	-21.4	+0.2	-4.1	-5.4	+1.6	+6.3	+1.2	-2.4
Administrative/ Supervisory (V to VII)	-4.1%	-33.7	-5.3	+3.3	-79.4	+10.0	+10.9	+1.2	+7.3	+3.7	+16.3	-1.9
Clerical (III & IV)	+2.2%	+42.3	-28.4	-3.2	-31.9	+19.0	+15.2	+0.4	+15.6	+39.1	+16.2	+0.3



Management & Administrative	-1.1%	-34.8	-48.7	-4.3	-132.6	+29.2	+22.1	-3.7	+24.6	+49.0	+33.8	-4.1
Support	-1.9%	-6.2	-5.9	-0.2	-2.3	+4.1	-0.5	-1.6	-2.0	+1.6	+0.2	+0.5
Maintenance/ Technical	-50.8%	-33.3	-1.3	-0.0	-32.0	+0.0		+0.0	-1.0	-0.0		+1.0
General Support	-10.0%	-39.5	-7.1	-0.2	-34.3	+4.1	-0.5	-1.6	-3.0	+1.6	+0.2	+1.5
Health Care Assistants	-44.6%	-329.6	-34.1	-17.5	-29.4	-75.7	-45.4	-9.4	-18.8	-68.5	-30.8	
Home Help	+11.5%	+1.9	+0.0			+3.0	-1.1					
Care, other	-6.6%	-56.7	-10.6	-11.6	-11.1	-12.2	-9.4	+8.6	-3.0	-2.1	-3.8	-1.6
Patient & Client Care	-23.9%	-384.4	-44.7	-29.1	-40.5	-84.9	-55.9	-0.8	-21.7	-70.6	-34.6	-1.6



Year to Date Summary

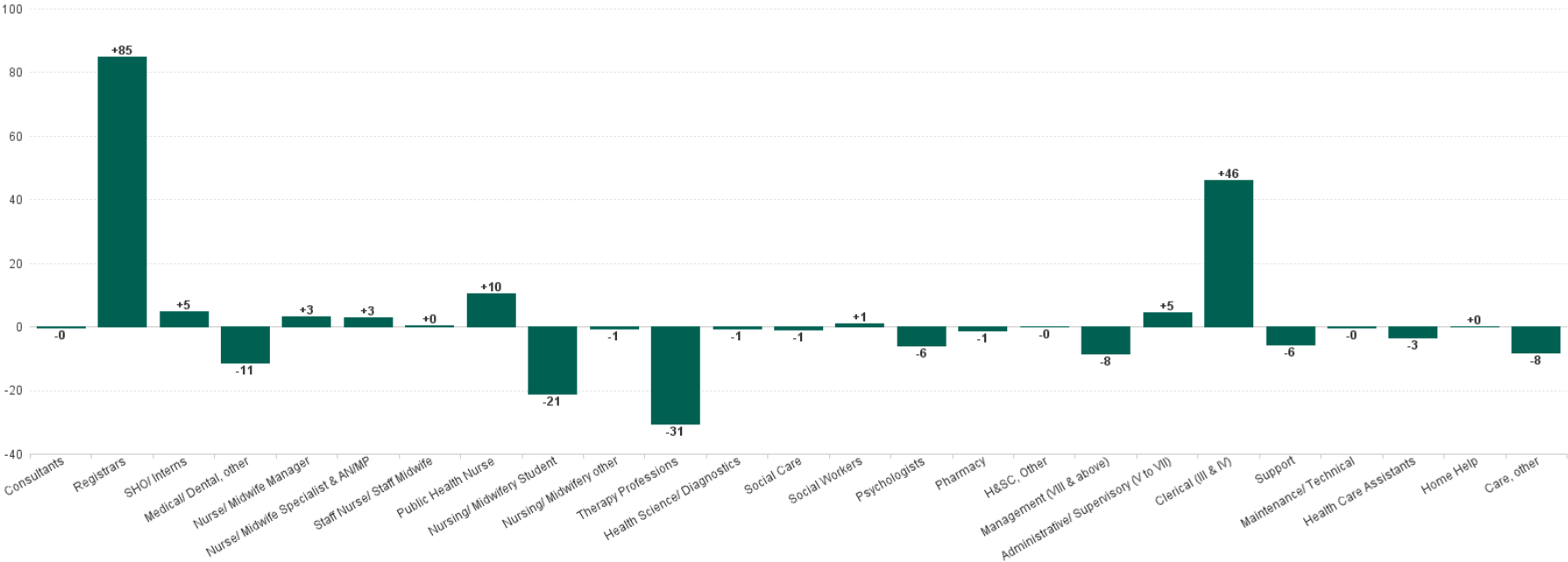
	% WTE change since DEC 2022	WTE change since DEC 2022	CHO 1	CHO 2	CHO 3	CHO 4	CHO 5	CHO 6	CHO 7	CHO 8	CHO 9	other Communi ty Services
Total	+2.5%	+299.9	+54.4	-47.1	+63.1	+99.0	+26.5	+12.8	+14.1	+45.6	+31.9	-0.3
Consultants	+6.7%	+3.4	+0.1	+0.9	+0.0	-0.2	-0.2	+1.1	+0.4	+0.6	+0.8	+0.0
Registrars	+22.6%	+97.9	+2.8	+15.6	+8.3	+35.0	+14.5	+2.1	+4.8	+15.6	-2.2	+1.4
SHO/ Interns	+5.1%	+2.0	+0.0	-3.0		-1.0	+0.9	+2.4	+2.0	+0.9	+2.8	-3.0
Medical/ Dental, other	-2.7%	-13.8	+0.4	+2.1	+0.1	-8.6	+0.0	-1.1	+0.4	-5.9	-1.3	
Medical & Dental	+8.7%	+89.5	+3.2	+15.7	+8.4	+25.1	+15.2	+4.4	+7.6	+11.2	+0.2	-1.6
Nurse/ Midwife Manager	+2.6%	+12.3	+6.5	-1.5	+0.6	-2.6	+2.3	+2.2	-0.5	-1.8	+7.0	+0.1
Nurse/ Midwife Specialist & AN/MP	+23.9%	+66.3	+12.9	+5.4	+5.9	+19.1	+7.1	+4.3	+2.4	+3.8	+5.5	
Staff Nurse/ Staff Midwife	+8.1%	+85.4	+31.2	+14.6	+4.6	+21.9	-2.4	+0.9	+2.6	+0.4	+13.6	-1.8
Public Health Nurse	-2.5%	-36.7	-6.2	-8.7	-4.4	-9.3	-2.4	+0.6	+6.0	-12.9	+0.5	
Nursing/ Midwifery Student	-69.9%	-66.9	-3.7	-13.4	-2.9	-3.0	+0.1	-6.3	-19.8		-17.8	
Nursing/ Midwifery other	-9.5%	-0.5	+0.0						-0.5		+0.0	
Nursing & Midwifery	+1.8%	+60.0	+40.7	-3.6	+3.8	+26.1	+4.7	+1.7	-9.8	-10.5	+8.7	-1.7
Therapy Professions	+2.5%	+54.6	+4.3	-21.6	+22.1	+13.6	+20.4	+2.4	-8.6	+22.8	-0.8	
Health Science/ Diagnostics	+0.1%	+0.1	+0.5	+1.0	+0.0	-2.2	+3.3	-1.4	+0.7	-0.9	+1.2	-2.1
Social Care	+5.5%	+2.1		-1.0		-0.2	-0.2	+0.1	-0.2	+4.5	-0.9	-0.0
Social Workers	+4.9%	+9.5	+4.6	-3.3	-0.3	+6.1	+0.3	-1.2	+3.0	-1.2	+0.7	+1.0
Psychologists	+3.5%	+10.1	-1.1	-4.5	+4.5	+6.7	+1.9	+1.4	+2.6	-3.3	+2.1	+0.0
Pharmacy	+9.2%	+6.3	+0.8	+0.0	+1.0	+2.9	+1.0	-0.6	+0.0	-0.6	+0.6	+1.2
H&SC, Other	0.0%	-0.0	-3.9	-10.2	+0.8	+6.7	-1.6	+2.7	-0.1	-0.7	+3.8	+2.3
Health & Social Care Professionals	+2.7%	+82.7	+5.2	-39.6	+28.1	+33.5	+25.2	+3.4	-2.6	+20.5	+6.6	+2.4
Management (VIII & above)	-1.7%	-4.3	+2.0	-4.3	-1.9	-1.5	-5.4	-3.3	+4.7	-0.8	+3.6	+2.7
Administrative/ Supervisory (V to VII)	+4.7%	+35.8	+15.1	-2.3	-0.0	+4.2	+6.0	-5.5	+3.6	+6.5	+10.4	-2.2
Clerical (III & IV)	+6.7%	+123.5	+6.1	+1.2	+24.7	+23.9	+2.4	+3.1	+15.4	+31.4	+15.2	+0.3



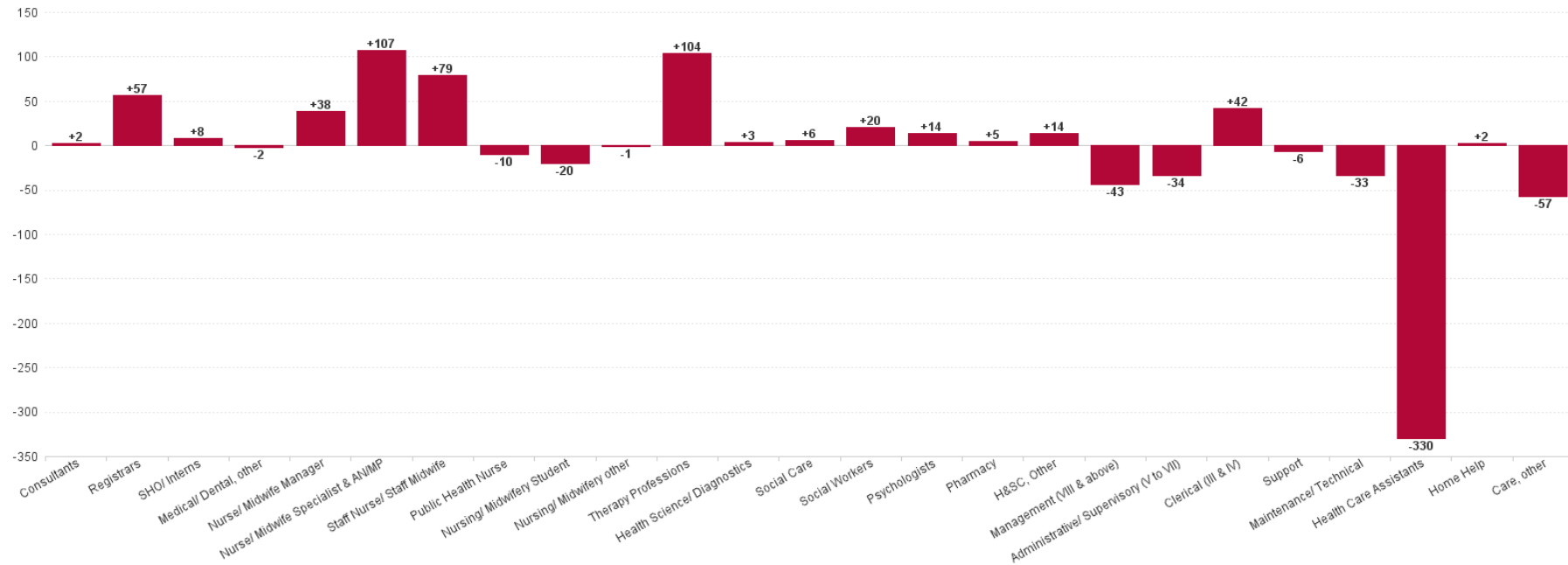
Management & Administrative	+5.4%	+154.9	+23.2	-5.4	+22.8	+26.5	+3.0	-5.8	+23.7	+37.1	+29.2	+0.7
Support	-0.7%	-2.3	-6.5	+1.8	-2.0	+3.5	+1.2	-0.2	-5.6	+1.9	+2.2	+1.4
Maintenance/ Technical	-9.6%	-3.4	-1.1	-1.0		+0.0		+0.0	-1.3	+0.0		+0.0
General Support	-1.6%	-5.8	-7.6	+0.8	-2.0	+3.5	+1.2	-0.2	-6.9	+1.9	+2.2	+1.4
Health Care Assistants	-12.1%	-56.4	-4.0	-5.2	+3.4	-13.2	-13.6	+3.2	-2.2	-14.8	-10.2	
Home Help	+23.7%	+3.6	+0.1			+4.0	-0.5					
Care, other	-3.5%	-28.6	-6.4	-9.7	-1.4	-6.5	-8.7	+6.0	+4.4	+0.1	-4.8	-1.5
Patient & Client Care	-6.2%	-81.4	-10.3	-14.9	+2.0	-15.7	-22.8	+9.2	+2.2	-14.7	-15.0	-1.5



Previous Month Summary Chart: Change since JUN 2023



Previous Year Summary Chart: Change since JUL 2022



YTD Summary Chart: Change since DEC 2022

