

# Social Care Older Persons Services Employment Report: June 2021

## Employment by Staff Group

Jun 2021 (Dec 2020 figure: 13,415)	WTE Apr 2021	WTE Jun 2021	WTE change since Apr 21	% change since Apr 21	WTE change since Dec 20	WTE change since Jun 20
<b>Overall</b>	<b>13,395</b>	<b>13,414</b>	<b>+19</b>	<b>+0.1%</b>	<b>-1</b>	<b>+65</b>
Consultants	5	4	-0	-4.3%	-0	+0
Registrars	11	11	-0	-0.5%	+2	+1
SHO/ Interns	12	14	+2	+15.7%	+0	+1
Medical/ Dental, other	86	84	-3	-3.0%	-20	-2
<b>Medical &amp; Dental</b>	<b>114</b>	<b>113</b>	<b>-1</b>	<b>-0.9%</b>	<b>-18</b>	<b>-0</b>
Nurse/ Midwife Manager	763	759	-4	-0.5%	+13	+27
Nurse/ Midwife Specialist & AN/MP	38	38	+0	+0.2%	+0	+5
Staff Nurse/ Staff Midwife	2,638	2,674	+36	+1.4%	+50	+53
Public Health Nurse	12	12	+1	+5.8%	-1	-1
Post-registration Nurse/ Midwife Student				-100.0%		-1
Nursing/ Midwifery awaiting registration	1	1.81	+0	+21.5%	+0	+0
Nursing/ Midwifery Student	1	2	+0	+21.5%	+0	-1
Nursing/ Midwifery other	4	4	+0	+5.5%	+0	+1
<b>Nursing &amp; Midwifery</b>	<b>3,456</b>	<b>3,489</b>	<b>+34</b>	<b>+1.0%</b>	<b>+62</b>	<b>+85</b>
Therapy Professions	335	343	+7	+2.2%	+47	+42
Health Science/ Diagnostics	5	5	+0	+2.7%	-0	-0
Social Care	3	3	-0	-1.8%	-0	-0
Social Workers	103	102	-1	-1.3%	+2	+5
Psychologists	2	2			+1	
Pharmacy	19	18	-0	-1.8%	+1	+2
H&SC, Other	2	2				+0
<b>Health &amp; Social Care Professionals</b>	<b>468</b>	<b>474</b>	<b>+6</b>	<b>+1.2%</b>	<b>+51</b>	<b>+49</b>
Management (VIII & above)	81	78	-2	-3.0%	-0	+6
Administrative/ Supervisory (V to VII)	192	188	-4	-1.8%	+12	+18
Clerical (III & IV)	596	594	-2	-0.4%	+7	+29
<b>Management &amp; Administrative</b>	<b>869</b>	<b>861</b>	<b>-8</b>	<b>-0.9%</b>	<b>+19</b>	<b>+52</b>
Support	800	797	-4	-0.4%	-4	-30
Maintenance/ Technical	94	95	+1	+1.5%	+0	-3
<b>General Support</b>	<b>894</b>	<b>892</b>	<b>-2</b>	<b>-0.2%</b>	<b>-4</b>	<b>-33</b>
Health Care Assistants	4,100	4,113	+13	+0.3%	-5	-302
Home Help	3,333	3,311	-22	-0.7%	-120	+202
Care, other	162	162	-0	-0.3%	+15	+12
<b>Patient &amp; Client Care</b>	<b>7,595</b>	<b>7,585</b>	<b>-9</b>	<b>-0.1%</b>	<b>-110</b>	<b>-88</b>

## Social Care Older Persons Services Employment by Administration (HSE / S38): June 2021

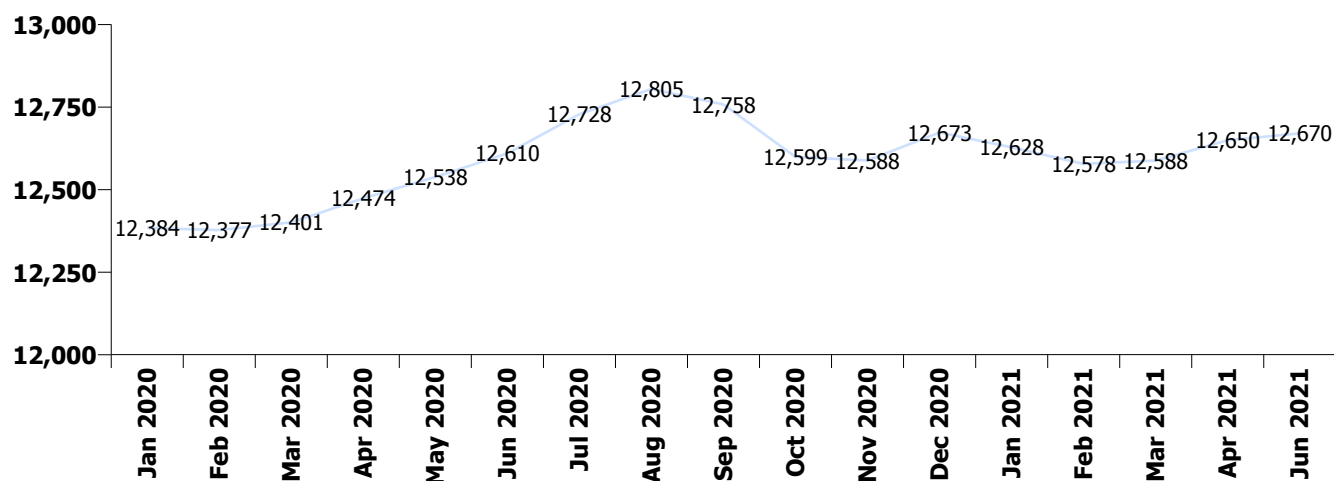
Jun 2021 (Dec 2020 figure: 13,415)	WTE Apr 2021	WTE Jun 2021	WTE change since Apr 21	% change since Apr 21	WTE change since Dec 20	WTE change since Jun 20
<b>Overall</b>	<b>13,395</b>	<b>13,414</b>	<b>+19</b>	<b>+0.1%</b>	<b>-1</b>	<b>+65</b>
<b>HSE</b>	<b>12,650</b>	<b>12,670</b>	<b>+21</b>	<b>+0.2%</b>	<b>-3</b>	<b>+61</b>
<b>Section 38</b>	<b>746</b>	<b>744</b>	<b>-2</b>	<b>-0.3%</b>	<b>+2</b>	<b>+4</b>

### HSE

Jun 2021 (Dec 2020 figure: 12,673)	WTE Apr 2021	WTE Jun 2021	WTE change since Apr 21	% change since Apr 21	WTE change since Dec 20	WTE change since Jun 20
<b>Overall</b>	<b>12,650</b>	<b>12,670</b>	<b>+21</b>	<b>+0.2%</b>	<b>-3</b>	<b>+61</b>
Consultants	3	2.80	-0	-6.7%	-0	-0
Registrars	7	6.59	-0	-0.8%	+1	-0
SHO/ Interns	8	9.71	+2	+23.7%	+0	+1
Medical/ Dental, other	85	82.89	-3	-3.0%	-19	-1
<b>Medical &amp; Dental</b>	<b>103</b>	<b>102</b>	<b>-1</b>	<b>-1.0%</b>	<b>-18</b>	<b>-1</b>
Nurse/ Midwife Manager	714	711.16	-3	-0.4%	+14	+32
Nurse/ Midwife Specialist & AN/MP	38	38.41	+0	+0.2%	+0	+5
Staff Nurse/ Staff Midwife	2,456	2,491.64	+36	+1.5%	+53	+58
Public Health Nurse	12	12.26	+1	+5.8%	-1	-1
Post-registration Nurse/ Midwife Student				-100.0%		-1
Nursing/ Midwifery awaiting registration	1	1.81	+0	+21.5%	+0	+0
Nursing/ Midwifery Student	1	1.81	+0	+21.5%	+0	-1
Nursing/ Midwifery other	4	4.00	+0	+5.5%	+0	+1
<b>Nursing &amp; Midwifery</b>	<b>3,225</b>	<b>3,259</b>	<b>+34</b>	<b>+1.1%</b>	<b>+67</b>	<b>+95</b>
Therapy Professions	260	268.55	+9	+3.3%	+45	+34
Health Science/ Diagnostics	4	3.96	+0	+3.4%	-0	-0
Social Care	3	2.74	-0	-1.8%	-0	-0
Social Workers	87	86.98	-0	-0.4%	+3	+5
Psychologists	2	1.60			+1	
Pharmacy	13	12.89	-0	-1.5%	+1	+1
H&SC, Other	2	1.54				+0
<b>Health &amp; Social Care Professionals</b>	<b>370</b>	<b>378</b>	<b>+8</b>	<b>+2.2%</b>	<b>+50</b>	<b>+39</b>
Management (VIII & above)	77	74.41	-2	-3.2%	-0	+4
Administrative/ Supervisory (V to VII)	170	167.05	-3	-1.6%	+10	+16
Clerical (III & IV)	567	564.67	-2	-0.4%	+8	+28
<b>Management &amp; Administrative</b>	<b>814</b>	<b>806</b>	<b>-8</b>	<b>-0.9%</b>	<b>+17</b>	<b>+48</b>
Support	692	687.96	-4	-0.6%	-6	-32
Maintenance/ Technical	84	85.16	+1	+1.7%	+1	-2
<b>General Support</b>	<b>776</b>	<b>773</b>	<b>-3</b>	<b>-0.3%</b>	<b>-5</b>	<b>-34</b>
Health Care Assistants	3,871	3,882.74	+11	+0.3%	-10	-303
Home Help	3,333	3,310.83	-22	-0.7%	-120	+202
Care, other	158	158.06	-0	-0.1%	+16	+13
<b>Patient &amp; Client Care</b>	<b>7,362</b>	<b>7,352</b>	<b>-11</b>	<b>-0.1%</b>	<b>-114</b>	<b>-88</b>

## Section 38

Jun 2021 (Dec 2020 figure: 742)	WTE Apr 2021	WTE Jun 2021	WTE change since Apr 21	% change since Apr 21	WTE change since Dec 20	WTE change since Jun 20
<b>Overall</b>	<b>746</b>	<b>744</b>	<b>-2</b>	<b>-0.3%</b>	<b>+2</b>	<b>+4</b>
Consultants	2	1.60				+0
Registrars	4	4.00			+1	+1
SHO/ Interns	4	4.00				
Medical/ Dental, other	1	1.00			-1	-1
<b>Medical &amp; Dental</b>	<b>11</b>	<b>11</b>				<b>+0</b>
Nurse/ Midwife Manager	49	47.86	-1	-1.5%	-2	-5
Staff Nurse/ Staff Midwife	182	182.12	-0	-0.1%	-4	-5
<b>Nursing &amp; Midwifery</b>	<b>231</b>	<b>230</b>	<b>-1</b>	<b>-0.4%</b>	<b>-5</b>	<b>-10</b>
Therapy Professions	75	74.35	-1	-1.5%	+2	+9
Health Science/ Diagnostics	1	1.00				
Social Workers	16	14.61	-1	-6.4%	-1	+0
Psychologists	1	0.50				
Pharmacy	6	5.44	-0	-2.5%	+0	+1
<b>Health &amp; Social Care Professionals</b>	<b>98</b>	<b>96</b>	<b>-2</b>	<b>-2.3%</b>	<b>+1</b>	<b>+10</b>
Management (VIII & above)	4	4.00				+2
Administrative/ Supervisory (V to VII)	22	21.33	-1	-3.3%	+3	+2
Clerical (III & IV)	29	29.54	+0	+0.7%	-1	+0
<b>Management &amp; Administrative</b>	<b>55</b>	<b>55</b>	<b>-1</b>	<b>-0.9%</b>	<b>+2</b>	<b>+4</b>
<b>General Support</b>	<b>118</b>	<b>119</b>	<b>+0</b>	<b>+0.3%</b>	<b>+1</b>	<b>+0</b>
<b>Patient &amp; Client Care</b>	<b>233</b>	<b>234</b>	<b>+1</b>	<b>+0.5%</b>	<b>+4</b>	<b>-1</b>



## Social Care Older Persons Services Employment by CHO etc. Jun 2021

### CHO 1

Jun 2021 (Dec 2020 figure: 1,918)	WTE Apr 2021	WTE Jun 2021	WTE change since Apr 21	% change since Apr 21	WTE change since Dec 20	WTE change since Jun 20
<b>Overall</b>	<b>1,887</b>	<b>1,914</b>	<b>+26</b>	<b>+1.4%</b>	<b>-4</b>	<b>+58</b>
Medical/ Dental, other	16	14	-2	-9.9%	-18	-3
<b>Medical &amp; Dental</b>	<b>16</b>	<b>14</b>	<b>-2</b>	<b>-9.9%</b>	<b>-18</b>	<b>-3</b>
Nurse/ Midwife Manager	87	90	+3	+3.1%	+2	+2
Nurse/ Midwife Specialist & AN/MP	9	9	-0	-0.8%	-0	-0
Staff Nurse/ Staff Midwife	327	334	+7	+2.0%	+19	+20
Nursing/ Midwifery other	1	1				+0
<b>Nursing &amp; Midwifery</b>	<b>424</b>	<b>434</b>	<b>+9</b>	<b>+2.2%</b>	<b>+21</b>	<b>+23</b>
Therapy Professions	16	16	-0	-0.6%	+3	+4
Health Science/ Diagnostics	1	2	+0	+9.0%	-0	+0
Social Workers	16	16	-0	-1.9%	+1	-1
<b>Health &amp; Social Care Professionals</b>	<b>33</b>	<b>33</b>	<b>-0</b>	<b>-0.8%</b>	<b>+4</b>	<b>+4</b>
Management (VIII & above)	8	8				
Administrative/ Supervisory (V to VII)	16	16	-0	-0.2%	+1	+1
Clerical (III & IV)	86	85	-1	-1.7%	-3	+4
<b>Management &amp; Administrative</b>	<b>110</b>	<b>109</b>	<b>-1</b>	<b>-1.3%</b>	<b>-2</b>	<b>+5</b>
Support	117	115	-2	-1.5%	-3	-3
Maintenance/ Technical	7	7				
<b>General Support</b>	<b>124</b>	<b>122</b>	<b>-2</b>	<b>-1.4%</b>	<b>-3</b>	<b>-3</b>
Health Care Assistants	584	582	-2	-0.3%	+2	-44
Home Help	567	594	+26	+4.6%	-11	+79
Care, other	28	26	-2	-8.5%	+3	-3
<b>Patient &amp; Client Care</b>	<b>1,179</b>	<b>1,201</b>	<b>+22</b>	<b>+1.9%</b>	<b>-5</b>	<b>+33</b>

## CHO 2

Jun 2021 (Dec 2020 figure: 1,590)	WTE Apr 2021	WTE Jun 2021	WTE change since Apr 21	% change since Apr 21	WTE change since Dec 20	WTE change since Jun 20
<b>Overall</b>	<b>1,570</b>	<b>1,536</b>	<b>-34</b>	<b>-2.1%</b>	<b>-54</b>	<b>-48</b>
Medical/ Dental, other	11	11				
<b>Medical &amp; Dental</b>	<b>11</b>	<b>11</b>				
Nurse/ Midwife Manager	70	69	-1	-1.1%	+3	+2
Nurse/ Midwife Specialist & AN/MP	2	2				+0
Staff Nurse/ Staff Midwife	304	310	+6	+1.8%	+5	+9
Public Health Nurse	1	1				
<b>Nursing &amp; Midwifery</b>	<b>377</b>	<b>382</b>	<b>+5</b>	<b>+1.3%</b>	<b>+8</b>	<b>+12</b>
Therapy Professions	30	28	-2	-6.8%	+3	+4
Health Science/ Diagnostics	1	1				
Social Workers	11	10	-0	-0.9%	+0	+1
Pharmacy	1	1				+0
H&SC, Other				-100.0%		
<b>Health &amp; Social Care Professionals</b>	<b>42</b>	<b>40</b>	<b>-2</b>	<b>-5.1%</b>	<b>+3</b>	<b>+5</b>
Management (VIII & above)	1	2	+1	+98.0%	-0	+1
Administrative/ Supervisory (V to VII)	8	9	+1	+11.5%	-0	+0
Clerical (III & IV)	62	62	+0	+0.1%	-3	-6
<b>Management &amp; Administrative</b>	<b>71</b>	<b>73</b>	<b>+2</b>	<b>+2.8%</b>	<b>-4</b>	<b>-5</b>
Support	59	59	-0	-0.8%	+3	+3
Maintenance/ Technical	19	19	-1	-5.1%	-1	-1
<b>General Support</b>	<b>79</b>	<b>77</b>	<b>-1</b>	<b>-1.9%</b>	<b>+2</b>	<b>+2</b>
Health Care Assistants	523	524	+2	+0.3%	-1	-44
Home Help	427	389	-38	-9.0%	-67	-31
Care, other	40	39	-0	-0.8%	+7	+14
<b>Patient &amp; Client Care</b>	<b>989</b>	<b>952</b>	<b>-37</b>	<b>-3.7%</b>	<b>-62</b>	<b>-62</b>

### CHO 3

Jun 2021 (Dec 2020 figure: 1,029)	WTE Apr 2021	WTE Jun 2021	WTE change since Apr 21	% change since Apr 21	WTE change since Dec 20	WTE change since Jun 20
<b>Overall</b>	<b>1,075</b>	<b>1,089</b>	<b>+14</b>	<b>+1.3%</b>	<b>+61</b>	<b>+41</b>
Consultants	1	1				
Medical/ Dental, other	6	5	-1	-16.7%	-1	
<b>Medical &amp; Dental</b>	<b>7</b>	<b>6</b>	<b>-1</b>	<b>-14.3%</b>	<b>-1</b>	
Nurse/ Midwife Manager	66	63	-3	-4.1%	-1	+1
Nurse/ Midwife Specialist & AN/MP	4	5	+1	+26.2%	+1	+3
Staff Nurse/ Staff Midwife	245	254	+9	+3.5%	+23	+25
Public Health Nurse	1	1				
<b>Nursing &amp; Midwifery</b>	<b>316</b>	<b>323</b>	<b>+7</b>	<b>+2.2%</b>	<b>+23</b>	<b>+29</b>
Therapy Professions	31	35	+3	+10.1%	+6	+7
Health Science/ Diagnostics	1	1			-0	-0
Social Workers	7	6	-1	-13.1%	-1	-1
Pharmacy	1	1				
<b>Health &amp; Social Care Professionals</b>	<b>39</b>	<b>42</b>	<b>+2</b>	<b>+5.9%</b>	<b>+5</b>	<b>+5</b>
Management (VIII & above)	6	6	-0	-0.7%		+0
Administrative/ Supervisory (V to VII)	17	16	-1	-8.7%	-1	-4
Clerical (III & IV)	57	57	-1	-1.0%	+8	+7
<b>Management &amp; Administrative</b>	<b>80</b>	<b>78</b>	<b>-2</b>	<b>-2.6%</b>	<b>+7</b>	<b>+2</b>
Support	63	63	+1	+1.1%	+0	+1
Maintenance/ Technical	21	21	+0	+1.0%	+0	+0
<b>General Support</b>	<b>84</b>	<b>85</b>	<b>+1</b>	<b>+1.1%</b>	<b>+1</b>	<b>+2</b>
Health Care Assistants	318	320	+2	+0.6%	+18	+3
Home Help	215	220	+5	+2.2%	+4	+1
Care, other	15	15	+1	+4.6%	+4	+1
<b>Patient &amp; Client Care</b>	<b>548</b>	<b>555</b>	<b>+7</b>	<b>+1.4%</b>	<b>+26</b>	<b>+4</b>

## CHO 4

Jun 2021 (Dec 2020 figure: 2,930)	WTE Apr 2021	WTE Jun 2021	WTE change since Apr 21	% change since Apr 21	WTE change since Dec 20	WTE change since Jun 20
<b>Overall</b>	<b>2,891</b>	<b>2,911</b>	<b>+19</b>	<b>+0.7%</b>	<b>-19</b>	<b>+26</b>
Consultants	1	1				
Registrars	3	3	-0	-1.6%	+0	+0
SHO/ Interns	1	1				+1
Medical/ Dental, other	23	23			-0	-0
<b>Medical &amp; Dental</b>	<b>28</b>	<b>28</b>	<b>-0</b>	<b>-0.2%</b>	<b>-0</b>	<b>+1</b>
Nurse/ Midwife Manager	126	125	-1	-0.6%	+3	+3
Nurse/ Midwife Specialist & AN/MP	4	5	+0	+6.0%	-1	-1
Staff Nurse/ Staff Midwife	520	532	+12	+2.2%	+4	+3
Public Health Nurse	5	6	+1	+16.3%	-0	+1
Post-registration Nurse/ Midwife Student				-100.0%	-1	-1
Nursing/ Midwifery awaiting registration				-100.0%	-1	
Nursing/ Midwifery Student				-100.0%		-1
<b>Nursing &amp; Midwifery</b>	<b>655</b>	<b>667</b>	<b>+12</b>	<b>+1.8%</b>	<b>+6</b>	<b>+5</b>
Therapy Professions	53	54	+1	+1.3%	+12	+5
Health Science/ Diagnostics	1	1				
Social Care	2	2				
Social Workers	11	12	+1	+5.5%	-1	+2
Pharmacy	4	4	+0	+2.0%	+0	+1
<b>Health &amp; Social Care Professionals</b>	<b>71</b>	<b>73</b>	<b>+1</b>	<b>+1.9%</b>	<b>+12</b>	<b>+8</b>
Management (VIII & above)	16	16	+0	+0.9%	+2	+3
Administrative/ Supervisory (V to VII)	21	20	-1	-3.0%	+0	+2
Clerical (III & IV)	132	131	-1	-0.7%	+0	+1
<b>Management &amp; Administrative</b>	<b>169</b>	<b>168</b>	<b>-1</b>	<b>-0.8%</b>	<b>+2</b>	<b>+6</b>
Support	113	114	+1	+0.9%	+0	-0
Maintenance/ Technical	7	7	+0	+0.1%	+1	+1
<b>General Support</b>	<b>120</b>	<b>121</b>	<b>+1</b>	<b>+0.9%</b>	<b>+1</b>	<b>+1</b>
Health Care Assistants	795	794	-1	-0.1%	+0	-41
Home Help	1,018	1,025	+7	+0.7%	-41	+45
Care, other	35	35	-0	-0.4%	+1	+1
<b>Patient &amp; Client Care</b>	<b>1,847</b>	<b>1,854</b>	<b>+7</b>	<b>+0.4%</b>	<b>-40</b>	<b>+5</b>

## CHO 5

Jun 2021 (Dec 2020 figure: 1,650)	WTE Apr 2021	WTE Jun 2021	WTE change since Apr 21	% change since Apr 21	WTE change since Dec 20	WTE change since Jun 20
<b>Overall</b>	<b>1,667</b>	<b>1,655</b>	<b>-12</b>	<b>-0.7%</b>	<b>+5</b>	<b>+46</b>
Medical/ Dental, other	15	15			+1	+6
<b>Medical &amp; Dental</b>	<b>15</b>	<b>15</b>			<b>+1</b>	<b>+6</b>
Nurse/ Midwife Manager	87	87	-0	-0.2%	-2	+2
Nurse/ Midwife Specialist & AN/MP	5	3	-1	-31.0%	-1	+1
Staff Nurse/ Staff Midwife	316	319	+2	+0.7%	+10	+0
Public Health Nurse	2	2			-1	-2
<i>Nursing/ Midwifery awaiting registration</i>		1	+1	-100.0%	+1	+1
Nursing/ Midwifery Student		1	+1	-100.0%	+1	+1
<b>Nursing &amp; Midwifery</b>	<b>410</b>	<b>411</b>	<b>+2</b>	<b>+0.4%</b>	<b>+8</b>	<b>+3</b>
Therapy Professions	32	31	-1	-2.4%	-2	-10
Social Workers	4	4	-0	-1.9%	-0	+0
Pharmacy	1	0	-1	-75.0%	-1	-1
<b>Health &amp; Social Care Professionals</b>	<b>37</b>	<b>35</b>	<b>-2</b>	<b>-4.3%</b>	<b>-2</b>	<b>-10</b>
Management (VIII & above)	5	4	-1	-16.8%	+0	+0
Administrative/ Supervisory (V to VII)	23	24	+1	+4.4%	+7	+10
Clerical (III & IV)	35	34	-1	-2.5%	+3	+3
<b>Management &amp; Administrative</b>	<b>62</b>	<b>61</b>	<b>-1</b>	<b>-1.1%</b>	<b>+9</b>	<b>+13</b>
Support	82	81	-1	-1.6%	-2	-36
Maintenance/ Technical	4	4	+0	+1.2%	+0	-4
<b>General Support</b>	<b>86</b>	<b>85</b>	<b>-1</b>	<b>-1.4%</b>	<b>-2</b>	<b>-39</b>
Health Care Assistants	429	430	+0	+0.1%	-18	-40
Home Help	620	609	-11	-1.7%	+11	+117
Care, other	8	7	-0	-0.8%	-1	-3
<b>Patient &amp; Client Care</b>	<b>1,057</b>	<b>1,047</b>	<b>-10</b>	<b>-1.0%</b>	<b>-9</b>	<b>+74</b>



## CHO 6

Jun 2021 (Dec 2020 figure: 804)	WTE Apr 2021	WTE Jun 2021	WTE change since Apr 21	% change since Apr 21	WTE change since Dec 20	WTE change since Jun 20
<b>Overall</b>	<b>804</b>	<b>804</b>	<b>+1</b>	<b>+0.1%</b>	<b>+0</b>	<b>-45</b>
Registrars	2	2			+1	+1
Medical/ Dental, other	2	2	-0	-3.3%	-1	-2
<b>Medical &amp; Dental</b>	<b>4</b>	<b>4</b>	<b>-0</b>	<b>-1.6%</b>	<b>-0</b>	<b>-1</b>
Nurse/ Midwife Manager	61	60	-1	-1.5%	-3	-7
Nurse/ Midwife Specialist & AN/MP	1	1	+0	+1.0%		
Staff Nurse/ Staff Midwife	198	198	+0	+0.0%	-7	-6
<b>Nursing &amp; Midwifery</b>	<b>260</b>	<b>259</b>	<b>-1</b>	<b>-0.3%</b>	<b>-10</b>	<b>-13</b>
Therapy Professions	49	49	-0	-0.7%	+3	+4
Social Workers	11	9	-2	-18.5%	-1	-2
Psychologists	2	2			+1	
Pharmacy	3	3	+0	+10.7%	+1	+1
<b>Health &amp; Social Care Professionals</b>	<b>66</b>	<b>63</b>	<b>-2</b>	<b>-3.1%</b>	<b>+3</b>	<b>+2</b>
Management (VIII & above)	6	5	-1	-17.9%	-0	+1
Administrative/ Supervisory (V to VII)	22	22	+0	+1.5%	+3	+2
Clerical (III & IV)	32	32	+0	+0.4%	-1	+0
<b>Management &amp; Administrative</b>	<b>59</b>	<b>59</b>	<b>-1</b>	<b>-1.0%</b>	<b>+1</b>	<b>+3</b>
Support	105	107	+2	+1.9%	+5	+1
Maintenance/ Technical	8	9	+1	+12.5%		
<b>General Support</b>	<b>113</b>	<b>116</b>	<b>+3</b>	<b>+2.6%</b>	<b>+5</b>	<b>+1</b>
Health Care Assistants	297	298	+1	+0.5%	+2	-36
Care, other	5	5	-0	-5.0%	-1	-1
<b>Patient &amp; Client Care</b>	<b>302</b>	<b>303</b>	<b>+1</b>	<b>+0.4%</b>	<b>+2</b>	<b>-37</b>

## CHO 7

Jun 2021 (Dec 2020 figure: 1,021)	WTE Apr 2021	WTE Jun 2021	WTE change since Apr 21	% change since Apr 21	WTE change since Dec 20	WTE change since Jun 20
<b>Overall</b>	<b>1,016</b>	<b>1,019</b>	<b>+3</b>	<b>+0.3%</b>	<b>-2</b>	<b>-2</b>
SHO/ Interns	2	2				
Medical/ Dental, other	2	2				-2
<b>Medical &amp; Dental</b>	<b>4</b>	<b>4</b>				<b>-2</b>
Nurse/ Midwife Manager	96	97	+1	+1.1%	+11	+22
Nurse/ Midwife Specialist & AN/MP	3	2	-0	-16.4%	-1	-1
Staff Nurse/ Staff Midwife	240	239	-0	-0.2%	-3	-5
<i>Nursing/ Midwifery awaiting registration</i>	1	1	-1	-45.6%	+1	-1
Nursing/ Midwifery Student	1	1	-1	-45.6%	-1	-1
<b>Nursing &amp; Midwifery</b>	<b>340</b>	<b>340</b>	<b>-0</b>	<b>-0.1%</b>	<b>+7</b>	<b>+15</b>
Therapy Professions	16	18	+1	+8.2%	+4	+4
Social Workers	12	11	-1	-7.7%	-1	-2
Pharmacy	2	2				-1
H&SC, Other	1	1				
<b>Health &amp; Social Care Professionals</b>	<b>32</b>	<b>32</b>	<b>+0</b>	<b>+1.2%</b>	<b>+3</b>	<b>+1</b>
Management (VIII & above)	6	6	-0	-0.5%	-1	+1
Administrative/ Supervisory (V to VII)	15	15	-0	-1.0%	+0	+0
Clerical (III & IV)	36	37	+1	+3.3%	+0	+3
<b>Management &amp; Administrative</b>	<b>58</b>	<b>59</b>	<b>+1</b>	<b>+1.8%</b>	<b>-0</b>	<b>+4</b>
Support	118	117	-1	-1.0%	-2	+11
Maintenance/ Technical	2	2				
<b>General Support</b>	<b>120</b>	<b>119</b>	<b>-1</b>	<b>-1.0%</b>	<b>-2</b>	<b>+11</b>
Health Care Assistants	347	352	+5	+1.4%	-5	-27
Home Help	111	109	-2	-1.6%	-5	-5
Care, other	5	5				+1
<b>Patient &amp; Client Care</b>	<b>463</b>	<b>467</b>	<b>+3</b>	<b>+0.7%</b>	<b>-11</b>	<b>-31</b>

## CHO 8

Jun 2021 (Dec 2020 figure: 1,484)	WTE Apr 2021	WTE Jun 2021	WTE change since Apr 21	% change since Apr 21	WTE change since Dec 20	WTE change since Jun 20
<b>Overall</b>	<b>1,482</b>	<b>1,476</b>	<b>-6</b>	<b>-0.4%</b>	<b>-8</b>	<b>-33</b>
Medical/ Dental, other	11	11	+0	+0.5%	-0	
<b>Medical &amp; Dental</b>	<b>11</b>	<b>11</b>	<b>+0</b>	<b>+0.5%</b>	<b>+0</b>	<b>+0</b>
Nurse/ Midwife Manager	90	88	-2	-2.2%	-1	+5
Nurse/ Midwife Specialist & AN/MP	5	7	+2	+39.8%	+3	+4
Staff Nurse/ Staff Midwife	255	257	+2	+0.8%	+2	+5
Public Health Nurse	3	3	-0	-4.5%	-0	+0
Nursing/ Midwifery other	2	3	+1	+50.0%	+1	+2
<b>Nursing &amp; Midwifery</b>	<b>355</b>	<b>358</b>	<b>+3</b>	<b>+0.8%</b>	<b>+5</b>	<b>+16</b>
Therapy Professions	26	28	+2	+6.6%	+4	+8
Social Workers	6	7	+1	+18.1%	+2	+2
Pharmacy	3	3			+1	+2
<b>Health &amp; Social Care Professionals</b>	<b>35</b>	<b>38</b>	<b>+3</b>	<b>+7.9%</b>	<b>+6</b>	<b>+12</b>
Management (VIII & above)	6	5	-1	-12.8%	-2	-2
Administrative/ Supervisory (V to VII)	23	22	-0	-0.3%	+1	+3
Clerical (III & IV)	68	68	+0	+0.4%	-4	-3
<b>Management &amp; Administrative</b>	<b>96</b>	<b>95</b>	<b>-1</b>	<b>-0.6%</b>	<b>-5</b>	<b>-2</b>
Support	25	24	-1	-4.6%	-1	-4
Maintenance/ Technical	23	24	+1	+4.9%	+0	+0
<b>General Support</b>	<b>48</b>	<b>48</b>	<b>-0</b>	<b>-0.1%</b>	<b>-1</b>	<b>-4</b>
Health Care Assistants	542	540	-3	-0.5%	-5	-53
Home Help	374	364	-9	-2.5%	-10	-4
Care, other	21	22	+1	+5.1%	+0	+1
<b>Patient &amp; Client Care</b>	<b>937</b>	<b>926</b>	<b>-11</b>	<b>-1.2%</b>	<b>-14</b>	<b>-55</b>

## CHO 9

Jun 2021 (Dec 2020 figure: 914)	WTE Apr 2021	WTE Jun 2021	WTE change since Apr 21	% change since Apr 21	WTE change since Dec 20	WTE change since Jun 20
<b>Overall</b>	<b>927</b>	<b>934</b>	<b>+7</b>	<b>+0.8%</b>	<b>+20</b>	<b>+13</b>
Consultants	3	2	-0	-7.7%	-0	+0
Registrars	6	6			+1	-1
SHO/ Interns	9	11	+2	+21.0%	+0	-0
Medical/ Dental, other	1	1				
<b>Medical &amp; Dental</b>	<b>18</b>	<b>20</b>	<b>+2</b>	<b>+9.2%</b>	<b>+1</b>	<b>-1</b>
Nurse/ Midwife Manager	80	80	-0	-0.1%	-1	-3
Nurse/ Midwife Specialist & AN/MP	6	5	-1	-19.5%	-1	-1
Staff Nurse/ Staff Midwife	231	231	-1	-0.3%	-3	+2
Public Health Nurse				-100.0%		
Nursing/ Midwifery other	1		-1	-100.0%	-1	-1
<b>Nursing &amp; Midwifery</b>	<b>318</b>	<b>315</b>	<b>-3</b>	<b>-0.8%</b>	<b>-7</b>	<b>-3</b>
Therapy Professions	82	85	+4	+4.5%	+14	+16
Health Science/ Diagnostics	1	1				
Social Care	1	1	-0	-4.8%		
Social Workers	25	27	+1	+5.3%	+3	+5
Pharmacy	4	4				+1
H&SC, Other	1	1				+0
<b>Health &amp; Social Care Professionals</b>	<b>113</b>	<b>118</b>	<b>+5</b>	<b>+4.4%</b>	<b>+17</b>	<b>+22</b>
Management (VIII & above)	9	9	+0	+0.8%	-0	+1
Administrative/ Supervisory (V to VII)	24	22	-2	-8.9%	+1	+6
Clerical (III & IV)	53	53	-1	-1.6%	+8	+11
<b>Management &amp; Administrative</b>	<b>86</b>	<b>83</b>	<b>-3</b>	<b>-3.4%</b>	<b>+9</b>	<b>+18</b>
Support	118	117	-1	-1.2%	-3	-4
Maintenance/ Technical	2	2				
<b>General Support</b>	<b>121</b>	<b>119</b>	<b>-1</b>	<b>-1.2%</b>	<b>-3</b>	<b>-4</b>
Health Care Assistants	265	273	+7	+2.8%	+1	-21
Care, other	6	6	+0	+0.0%	+1	+1
<b>Patient &amp; Client Care</b>	<b>272</b>	<b>279</b>	<b>+7</b>	<b>+2.7%</b>	<b>+2</b>	<b>-20</b>

## other Community Services

Jun 2021 (Dec 2020 figure: 75)	WTE Apr 2021	WTE Jun 2021	WTE change since Apr 21	% change since Apr 21	WTE change since Dec 20	WTE change since Jun 20
<b>Overall</b>	<b>77</b>	<b>76</b>	<b>-0</b>	<b>-0.5%</b>	<b>+1</b>	<b>+9</b>
Health Science/ Diagnostics				-100.0%		
<b>Health &amp; Social Care Professionals</b>				<b>-100.0%</b>		
Management (VIII & above)	18	17	-1	-5.3%	+0	+1
Administrative/ Supervisory (V to VII)	23	22	-1	-5.4%	+1	-1
Clerical (III & IV)	35	36	+1	+2.5%	-1	+8
<b>Management &amp; Administrative</b>	<b>76</b>	<b>75</b>	<b>-1</b>	<b>-1.7%</b>	<b>+0</b>	<b>+9</b>
Health Care Assistants	0	0				
Other Care Grades		1	+1	-100.0%	+1	+1
Care, other		1	+1	-100.0%	+1	+1
<b>Patient &amp; Client Care</b>	<b>0</b>	<b>1</b>	<b>+1</b>	<b>+353.8%</b>	<b>+1</b>	<b>+1</b>

## Social Care Older Persons Services Employment by CHO & Admin : Jun 2021

Jun 2021 (Dec 2020 figure: 13,415)	WTE Apr 2021	WTE Jun 2021	WTE change since Apr 21	% change since Apr 21	WTE change since Dec 20	WTE change since Jun 20
<b>Overall</b>	<b>13,395</b>	<b>13,414</b>	<b>+19</b>	<b>+0.1%</b>	<b>-1</b>	<b>+65</b>
CHO 1	1,887	1,914	+26	+1.4%	-4	+58
CHO 2	1,570	1,536	-34	-2.1%	-54	-48
CHO 3	1,075	1,089	+14	+1.3%	+61	+41
CHO 4	2,891	2,911	+19	+0.7%	-19	+26
CHO 5	1,667	1,655	-12	-0.7%	+5	+46
CHO 6	804	804	+1	+0.1%	+0	-45
CHO 7	1,016	1,019	+3	+0.3%	-2	-2
CHO 8	1,482	1,476	-6	-0.4%	-8	-33
CHO 9	927	934	+7	+0.8%	+20	+13
other Community Services	77	76	-0	-0.5%	+1	+9

## Social Care Older Persons Services Employment by CHO etc. Jun 2021

### Incorporated Orthopaedic Hospital

Jun 2021 (Dec 2020 figure: 267)	WTE Apr 2021	WTE Jun 2021	WTE change since Apr 21	% change since Apr 21	WTE change since Dec 20	WTE change since Jun 20
<b>Overall</b>	<b>271</b>	<b>271</b>			<b>+4</b>	<b>+13</b>
Consultants	2	2				+0
Registrars	2	2				
SHO/ Interns	4	4				
<b>Medical &amp; Dental</b>	<b>8</b>	<b>8</b>				<b>+0</b>
Nurse/ Midwife Manager	18	18				+1
Staff Nurse/ Staff Midwife	70	70				-1
<b>Nursing &amp; Midwifery</b>	<b>88</b>	<b>88</b>				<b>+0</b>
Therapy Professions	37	35	-2	-5.4%	+1	+5
Health Science/ Diagnostics	1	1				
Social Workers	9	9				+1
Pharmacy	4	4				+1
<b>Health &amp; Social Care Professionals</b>	<b>51</b>	<b>49</b>	<b>-2</b>	<b>-4.0%</b>	<b>+1</b>	<b>+6</b>
Management (VIII & above)	2	2				+1
Administrative/ Supervisory (V to VII)	7	7			+1	+1
Clerical (III & IV)	10	10				-1
<b>Management &amp; Administrative</b>	<b>19</b>	<b>19</b>			<b>+1</b>	<b>+1</b>
Support	40	40				
Maintenance/ Technical	2	2				
<b>General Support</b>	<b>42</b>	<b>42</b>				<b>+0</b>
Health Care Assistants	64	66	+2	+3.1%	+2	+5
Care, other	0	0				
<b>Patient &amp; Client Care</b>	<b>64</b>	<b>66</b>	<b>+2</b>	<b>+3.1%</b>	<b>+2</b>	<b>+5</b>

## Leopardstown Park Hospital

Jun 2021 (Dec 2020 figure: 207)	WTE Apr 2021	WTE Jun 2021	WTE change since Apr 21	% change since Apr 21	WTE change since Dec 20	WTE change since Jun 20
<b>Overall</b>	<b>208</b>	<b>206</b>	<b>-1</b>	<b>-0.7%</b>	<b>-0</b>	<b>+1</b>
Medical/ Dental, other				-100.0%	-1	-1
<b>Medical &amp; Dental</b>				<b>-100.0%</b>	<b>-1</b>	<b>-1</b>
Nurse/ Midwife Manager	13	13	+0	+0.5%	-1	-3
Staff Nurse/ Staff Midwife	39	40	+1	+3.5%	-2	-0
<b>Nursing &amp; Midwifery</b>	<b>52</b>	<b>53</b>	<b>+1</b>	<b>+2.7%</b>	<b>-3</b>	<b>-4</b>
Therapy Professions	10	9	-1	-13.3%	-1	+2
Social Workers	1		-1	-100.0%	-1	-1
Pharmacy	2	2	-0	-6.7%	+0	+0
<b>Health &amp; Social Care Professionals</b>	<b>13</b>	<b>11</b>	<b>-2</b>	<b>-18.9%</b>	<b>-2</b>	<b>+1</b>
Management (VIII & above)	1	1				
Administrative/ Supervisory (V to VII)	7	6	-1	-10.8%	-1	-1
Clerical (III & IV)	11	11	-0	-2.5%	-1	+1
<b>Management &amp; Administrative</b>	<b>19</b>	<b>18</b>	<b>-1</b>	<b>-5.3%</b>	<b>-2</b>	<b>-0</b>
Support	36	36	+0	+1.0%	+3	+2
Maintenance/ Technical	4	4				
<b>General Support</b>	<b>40</b>	<b>40</b>	<b>+0</b>	<b>+0.9%</b>	<b>+3</b>	<b>+2</b>
Health Care Assistants	81	81	+1	+0.6%	+4	+3
Care, other	3	3	-0	-8.3%	-0	-0
<b>Patient &amp; Client Care</b>	<b>84</b>	<b>84</b>	<b>+0</b>	<b>+0.3%</b>	<b>+4</b>	<b>+2</b>

Jun 2021 (Dec 2020 figure: 268)	WTE Apr 2021	WTE Jun 2021	WTE change since Apr 21	% change since Apr 21	WTE change since Dec 20	WTE change since Jun 20
<b>Overall</b>	<b>267</b>	<b>266</b>	<b>-1</b>	<b>-0.2%</b>	<b>-2</b>	<b>-10</b>
Registrars	2	2			+1	+1
Medical/ Dental, other	1	1				
<b>Medical &amp; Dental</b>	<b>3</b>	<b>3</b>			<b>+1</b>	<b>+1</b>
Nurse/ Midwife Manager	17	17	-1	-4.7%	-1	-3
Staff Nurse/ Staff Midwife	74	72	-2	-2.0%	-2	-4
<b>Nursing &amp; Midwifery</b>	<b>91</b>	<b>89</b>	<b>-2</b>	<b>-2.5%</b>	<b>-2</b>	<b>-7</b>
Therapy Professions	29	31	+2	+7.7%	+2	+2
Social Workers	6	6				
Psychologists	1	1				
<b>Health &amp; Social Care Professionals</b>	<b>35</b>	<b>37</b>	<b>+2</b>	<b>+6.4%</b>	<b>+2</b>	<b>+2</b>
Management (VIII & above)	1	1				+1
Administrative/ Supervisory (V to VII)	8	8			+3	+2
Clerical (III & IV)	8	9	+0	+6.0%	-1	+0
<b>Management &amp; Administrative</b>	<b>17</b>	<b>18</b>	<b>+0</b>	<b>+2.9%</b>	<b>+2</b>	<b>+3</b>
Support	33	33	-0	-0.1%	-1	-1
Maintenance/ Technical	4	4			-1	-1
<b>General Support</b>	<b>37</b>	<b>37</b>	<b>-0</b>	<b>-0.1%</b>	<b>-2</b>	<b>-2</b>
Health Care Assistants	84	83	-1	-1.2%	-2	-8
Care, other	1	1			-1	-1
<b>Patient &amp; Client Care</b>	<b>85</b>	<b>84</b>	<b>-1</b>	<b>-1.2%</b>	<b>-3</b>	<b>-8</b>



## Social Care Older Persons Services Employment by Grade Group: Jun 2021

Jun 2021 (Dec 2020 figure: 13,415)	WTE Apr 2021	WTE Jun 2021	WTE change since Apr 21	% change since Apr 21	WTE change since Dec 20	WTE change since Jun 20
<b>Overall</b>	<b>13,395</b>	<b>13,414</b>	<b>+19</b>	<b>+0.1%</b>	<b>-1</b>	<b>+65</b>
Consultant Medicine	5	4	-0	-4.3%	-0	+0
<b>Consultants</b>	<b>5</b>	<b>4</b>	<b>-0</b>	<b>-4.3%</b>	<b>-0</b>	<b>+0</b>
Registrar	7	7			+1	+1
Senior Registrar	1	1	-0	-4.4%	+0	+0
Specialist Registrar	3	3			+1	
<b>Registrars</b>	<b>11</b>	<b>11</b>	<b>-0</b>	<b>-0.5%</b>	<b>+2</b>	<b>+1</b>
<b>SHO/ Interns</b>	<b>12</b>	<b>14</b>	<b>+2</b>	<b>+15.7%</b>	<b>+0</b>	<b>+1</b>
<b>Medical/ Dental, other</b>	<b>86</b>	<b>84</b>	<b>-3</b>	<b>-3.0%</b>	<b>-20</b>	<b>-2</b>
<b>Medical &amp; Dental</b>	<b>114</b>	<b>113</b>	<b>-1</b>	<b>-0.9%</b>	<b>-18</b>	<b>-0</b>
Clinical Nurse/ Midwife Manager	550	549	-1	-0.3%	+13	+22
Director Nursing/Midwifery, Assistant	104	105	+1	+1.0%	-1	+5
Director of Nursing/Midwifery	109	106	-3	-2.9%	+1	+0
<b>Nurse/ Midwife Manager</b>	<b>763</b>	<b>759</b>	<b>-4</b>	<b>-0.5%</b>	<b>+13</b>	<b>+27</b>
Advanced Nurse/ Midwife Practitioner	18	19	+1	+6.5%	+3	+8
Clinical Nurse/ Midwife Specialist	20	19	-1	-5.5%	-3	-2
<b>Nurse/ Midwife Specialist &amp; AN/MP</b>	<b>38</b>	<b>38</b>	<b>+0</b>	<b>+0.2%</b>	<b>+0</b>	<b>+5</b>
Staff Midwives	1	1	-0	-12.2%	-0	+1
Staff Nurse [Intellectual Disability]	1	1				+1
Staff Nurse [Psychiatric]	7	7	+0	+4.4%	+2	+0
Staff Nurses [General/ Children's]	2,629	2,665	+36	+1.4%	+48	+51
<b>Staff Nurse/ Staff Midwife</b>	<b>2,638</b>	<b>2,674</b>	<b>+36</b>	<b>+1.4%</b>	<b>+50</b>	<b>+53</b>
<b>Public Health Nurse</b>	<b>12</b>	<b>12</b>	<b>+1</b>	<b>+5.8%</b>	<b>-1</b>	<b>-1</b>
Post-registration Nurse/ Midwife Student				-100.0%		-1
Nursing/ Midwifery awaiting registration	1	2	+0	+21.5%	+0	+0
<b>Nursing/ Midwifery Student</b>	<b>1</b>	<b>2</b>	<b>+0</b>	<b>+21.5%</b>	<b>+0</b>	<b>-1</b>
Nursing Education/Clinical	4	4	+0	+5.5%	+0	+1
<b>Nursing/ Midwifery other</b>	<b>4</b>	<b>4</b>	<b>+0</b>	<b>+5.5%</b>	<b>+0</b>	<b>+1</b>
<b>Nursing &amp; Midwifery</b>	<b>3,456</b>	<b>3,489</b>	<b>+34</b>	<b>+1.0%</b>	<b>+62</b>	<b>+85</b>
Dietitians	25	27	+2	+7.9%	+9	+6
Occupational Therapists	124	122	-2	-1.5%	+9	+6
Physiotherapists	147	149	+2	+1.4%	+17	+20
Podiatrists & Chiropodists	14	15	+1	+7.6%	+3	+3
Speech & Language Therapists	26	30	+4	+16.1%	+10	+8
<b>Therapy Professions</b>	<b>335</b>	<b>343</b>	<b>+7</b>	<b>+2.2%</b>	<b>+47</b>	<b>+42</b>
Clinical Measurement				-100.0%	-0	-0
Radiographers	5	5	+0	+2.7%	-0	+0
<b>Health Science/ Diagnostics</b>	<b>5</b>	<b>5</b>	<b>+0</b>	<b>+2.7%</b>	<b>-0</b>	<b>-0</b>
<b>Social Care</b>	<b>3</b>	<b>3</b>	<b>-0</b>	<b>-1.8%</b>	<b>-0</b>	<b>-0</b>
<b>Social Workers</b>	<b>103</b>	<b>102</b>	<b>-1</b>	<b>-1.3%</b>	<b>+2</b>	<b>+5</b>
<b>Psychologists</b>	<b>2</b>	<b>2</b>			<b>+1</b>	
<b>Pharmacy</b>	<b>19</b>	<b>18</b>	<b>-0</b>	<b>-1.8%</b>	<b>+1</b>	<b>+2</b>
Other Health & Social Care	1	1				+0
Play Therapists/ Specialists	1	1				
<b>H&amp;SC, Other</b>	<b>2</b>	<b>2</b>				<b>+0</b>
<b>Health &amp; Social Care Professionals</b>	<b>468</b>	<b>474</b>	<b>+6</b>	<b>+1.2%</b>	<b>+51</b>	<b>+49</b>
Executive Management	16	16	+0	+0.7%	+1	+4
Senior Management (VIII & GM)	65	63	-3	-3.9%	-1	+2

Jun 2021 (Dec 2020 figure: 13,415)	WTE Apr 2021	WTE Jun 2021	WTE change since Apr 21	% change since Apr 21	WTE change since Dec 20	WTE change since Jun 20
<b>Overall</b>	<b>13,395</b>	<b>13,414</b>	<b>+19</b>	<b>+0.1%</b>	<b>-1</b>	<b>+65</b>
<b>Management (VIII &amp; above)</b>	<b>81</b>	<b>78</b>	<b>-2</b>	<b>-3.0%</b>	<b>-0</b>	<b>+6</b>
Middle Management (V-VII)	192	188	-4	-1.8%	+12	+21
Other Administrative				-100.0%		-3
<b>Administrative/ Supervisory (V to VII)</b>	<b>192</b>	<b>188</b>	<b>-4</b>	<b>-1.8%</b>	<b>+12</b>	<b>+18</b>
<b>Clerical (III &amp; IV)</b>	<b>596</b>	<b>594</b>	<b>-2</b>	<b>-0.4%</b>	<b>+7</b>	<b>+29</b>
<b>Management &amp; Administrative</b>	<b>869</b>	<b>861</b>	<b>-8</b>	<b>-0.9%</b>	<b>+19</b>	<b>+52</b>
Catering	216	214	-2	-0.9%	-2	-10
Household Services	480	480	+0	+0.1%	+1	-11
Other Support	28	28	-0	-0.3%	-1	-5
Portering	76	74	-2	-2.4%	-2	-5
<b>Support</b>	<b>800</b>	<b>797</b>	<b>-4</b>	<b>-0.4%</b>	<b>-4</b>	<b>-30</b>
Maintenance	90	91	+1	+1.6%	-4	-7
Technical Services	4	4			+4	+4
<b>Maintenance/ Technical</b>	<b>94</b>	<b>95</b>	<b>+1</b>	<b>+1.5%</b>	<b>+0</b>	<b>-3</b>
<b>General Support</b>	<b>894</b>	<b>892</b>	<b>-2</b>	<b>-0.2%</b>	<b>-4</b>	<b>-33</b>
HCA, Nurse's Aide, etc.	4,071	4,082	+10	+0.3%	-9	-309
Health & Social Care Assistants	29	31	+2	+8.6%	+4	+7
<b>Health Care Assistants</b>	<b>4,100</b>	<b>4,113</b>	<b>+13</b>	<b>+0.3%</b>	<b>-5</b>	<b>-302</b>
<b>Home Help</b>	<b>3,333</b>	<b>3,311</b>	<b>-22</b>	<b>-0.7%</b>	<b>-120</b>	<b>+202</b>
<b>Care, other</b>	<b>162</b>	<b>162</b>	<b>-0</b>	<b>-0.3%</b>	<b>+15</b>	<b>+12</b>
<b>Patient &amp; Client Care</b>	<b>7,595</b>	<b>7,585</b>	<b>-9</b>	<b>-0.1%</b>	<b>-110</b>	<b>-88</b>

## Employment by WTE, Headcount, Gender, Full-Time /Part-Time etc.: Jun 2021

Social Care Older Persons Services Staff Group	WTE	Headcount	WTE: no.	% Male	% female	Male WTE: no.	Female WTE: no.	% Total Perm	% Male Perm	% Female Perm	% Total Full Time	% Total Part Time	% Male FT	% Female FT
<b>Overall</b>	<b>13,414</b>	<b>16,473</b>	<b>1.23</b>	<b>13.1%</b>	<b>86.9%</b>	<b>1.11</b>	<b>1.25</b>	<b>82.5%</b>	<b>79.2%</b>	<b>83.0%</b>	<b>58.4%</b>	<b>41.6%</b>	<b>82.3%</b>	<b>54.8%</b>
Consultant Medicine	4	7	1.59	14.3%	85.7%	2.00	1.54	85.7%	85.7%	83.3%	28.6%	71.4%	0.0%	33.3%
<b>Consultants</b>	<b>4</b>	<b>7</b>	<b>1.59</b>	<b>14.3%</b>	<b>85.7%</b>	<b>2.00</b>	<b>1.54</b>	<b>85.7%</b>	<b>100.0%</b>	<b>83.3%</b>	<b>28.6%</b>	<b>71.4%</b>	<b>0.0%</b>	<b>33.3%</b>
Registrar	7	7	1.08	42.9%	57.1%	1.00	1.14	57.1%	57.1%	50.0%	85.7%	14.3%	100.0%	75.0%
Senior Registrar	1	2	1.85	50.0%	50.0%	12.50	1.00	50.0%	50.0%	100.0%	50.0%	50.0%	0.0%	100.0%
Specialist Registrar	3	3	1.00	66.7%	33.3%	1.00	1.00	0.0%	0.0%	0.0%	100.0%	0.0%	100.0%	100.0%
<b>Registrars</b>	<b>11</b>	<b>12</b>	<b>1.13</b>	<b>50.0%</b>	<b>50.0%</b>	<b>1.18</b>	<b>1.09</b>	<b>41.7%</b>	<b>33.3%</b>	<b>50.0%</b>	<b>83.3%</b>	<b>16.7%</b>	<b>83.3%</b>	<b>83.3%</b>
<b>SHO/ Interns</b>	<b>14</b>	<b>14</b>	<b>1.02</b>	<b>35.7%</b>	<b>64.3%</b>	<b>1.06</b>	<b>1.00</b>	<b>14.3%</b>	<b>40.0%</b>	<b>0.0%</b>	<b>100.0%</b>	<b>0.0%</b>	<b>100.0%</b>	<b>100.0%</b>
<b>Medical/ Dental, other</b>	<b>84</b>	<b>159</b>	<b>1.90</b>	<b>64.2%</b>	<b>35.8%</b>	<b>2.08</b>	<b>1.63</b>	<b>53.5%</b>	<b>55.9%</b>	<b>49.1%</b>	<b>34.6%</b>	<b>65.4%</b>	<b>28.4%</b>	<b>45.6%</b>
<b>Medical &amp; Dental</b>	<b>113</b>	<b>192</b>	<b>1.71</b>	<b>59.4%</b>	<b>40.6%</b>	<b>1.92</b>	<b>1.46</b>	<b>51.0%</b>	<b>54.4%</b>	<b>46.2%</b>	<b>42.2%</b>	<b>57.8%</b>	<b>34.2%</b>	<b>53.8%</b>
Clinical Nurse/ Midwife Manager	549	588	1.07	7.7%	92.3%	1.03	1.08	96.8%	96.8%	97.1%	80.1%	19.9%	93.3%	79.0%
Director Nursing/Midwifery, Assistant	105	109	1.04	4.6%	95.4%	1.00	1.04	99.1%	99.1%	99.0%	92.7%	7.3%	100.0%	92.3%
Director of Nursing/Midwifery	106	107	1.01	4.7%	95.3%	1.03	1.01	99.1%	99.1%	99.0%	97.2%	2.8%	100.0%	97.1%
<b>Nurse/ Midwife Manager</b>	<b>759</b>	<b>804</b>	<b>1.06</b>	<b>6.8%</b>	<b>93.2%</b>	<b>1.02</b>	<b>1.06</b>	<b>97.4%</b>	<b>94.5%</b>	<b>97.6%</b>	<b>84.1%</b>	<b>15.9%</b>	<b>94.5%</b>	<b>83.3%</b>
Advanced Nurse/ Midwife Practitioner	19	20	1.03	10.0%	90.0%	1.02	1.03	100.0%	100.0%	100.0%	100.0%	0.0%	100.0%	100.0%
Clinical Nurse/ Midwife Specialist	19	21	1.11	9.5%	90.5%	1.00	1.12	100.0%	100.0%	100.0%	66.7%	33.3%	100.0%	63.2%
<b>Nurse/ Midwife Specialist &amp; AN/MP</b>	<b>38</b>	<b>41</b>	<b>1.07</b>	<b>9.8%</b>	<b>90.2%</b>	<b>1.01</b>	<b>1.07</b>	<b>100.0%</b>	<b>100.0%</b>	<b>100.0%</b>	<b>82.9%</b>	<b>17.1%</b>	<b>100.0%</b>	<b>81.1%</b>
Staff Midwives	1	1	1.27		100.0%		1.27	100.0%	100.0%	100.0%	0.0%	100.0%		0.0%
Staff Nurse [Intellectual Disability]	1	1	1.00		100.0%		1.00	100.0%	100.0%	100.0%	100.0%	0.0%		100.0%
Staff Nurse [Psychiatric]	7	9	1.28	22.2%	77.8%	1.00	1.39	44.4%	44.4%	28.6%	55.6%	44.4%	100.0%	42.9%
Staff Nurses [General/ Children's]	2,665	3,098	1.16	7.7%	92.3%	1.03	1.17	87.6%	87.6%	87.9%	62.5%	37.5%	93.3%	59.9%
<b>Staff Nurse/ Staff Midwife</b>	<b>2,674</b>	<b>3,109</b>	<b>1.16</b>	<b>7.7%</b>	<b>92.3%</b>	<b>1.03</b>	<b>1.18</b>	<b>87.5%</b>	<b>84.2%</b>	<b>87.7%</b>	<b>62.4%</b>	<b>37.6%</b>	<b>93.3%</b>	<b>59.8%</b>
<b>Public Health Nurse</b>	<b>12</b>	<b>15</b>	<b>1.22</b>	<b>6.7%</b>	<b>93.3%</b>	<b>1.00</b>	<b>1.24</b>	<b>100.0%</b>	<b>100.0%</b>	<b>100.0%</b>	<b>60.0%</b>	<b>40.0%</b>	<b>100.0%</b>	<b>57.1%</b>
<b>Nursing/ Midwifery Student</b>	<b>2</b>	<b>3</b>	<b>1.66</b>		<b>100.0%</b>	<b>#DIV/0</b>	<b>1.66</b>	<b>0.0%</b>		<b>0.0%</b>	<b>100.0%</b>	<b>0.0%</b>	<b>#DIV/0</b>	<b>100.0%</b>
Nursing Education/Clinical	4	4	1.00	25.0%	75.0%	1.00	1.00	100.0%	100.0%	100.0%	100.0%	0.0%	100.0%	100.0%
<b>Nursing/ Midwifery other</b>	<b>4</b>	<b>4</b>	<b>1.00</b>	<b>25.0%</b>	<b>75.0%</b>	<b>1.00</b>	<b>1.00</b>	<b>100.0%</b>	<b>100.0%</b>	<b>100.0%</b>	<b>100.0%</b>	<b>0.0%</b>	<b>100.0%</b>	<b>100.0%</b>
<b>Nursing &amp; Midwifery</b>	<b>3,489</b>	<b>3,976</b>	<b>1.14</b>	<b>7.6%</b>	<b>92.4%</b>	<b>1.03</b>	<b>1.15</b>	<b>89.6%</b>	<b>86.4%</b>	<b>89.9%</b>	<b>67.1%</b>	<b>32.9%</b>	<b>93.7%</b>	<b>64.9%</b>
Dietitians	27	34	1.27	8.8%	91.2%	1.01	1.30	88.2%	88.2%	90.3%	58.8%	41.2%	100.0%	54.8%

Occupational Therapists	122	136	1.12	9.6%	90.4%	1.01	1.13	79.4%	79.4%	77.2%	80.1%	19.9%	100.0%	78.0%
Physiotherapists	149	169	1.14	16.6%	83.4%	1.07	1.15	86.4%	86.4%	86.5%	75.1%	24.9%	85.7%	73.0%
Podiatrists & Chiropodists	15	19	1.25	21.1%	78.9%	1.00	1.34	68.4%	68.4%	60.0%	68.4%	31.6%	100.0%	60.0%
Speech & Language Therapists	30	35	1.16	2.9%	97.1%	1.00	1.16	94.3%	94.3%	94.1%	74.3%	25.7%	100.0%	73.5%
<b>Therapy Professions</b>	<b>343</b>	<b>393</b>	<b>1.15</b>	<b>12.5%</b>	<b>87.5%</b>	<b>1.04</b>	<b>1.16</b>	<b>84.0%</b>	<b>89.8%</b>	<b>83.1%</b>	<b>75.1%</b>	<b>24.9%</b>	<b>91.8%</b>	<b>72.7%</b>
Radiographers	5	9	1.81	11.1%	88.9%	2.00	1.79	88.9%	88.9%	87.5%	11.1%	88.9%	0.0%	12.5%
<b>Health Science/ Diagnostics</b>	<b>5</b>	<b>9</b>	<b>1.81</b>	<b>11.1%</b>	<b>88.9%</b>	<b>2.00</b>	<b>1.79</b>	<b>88.9%</b>	<b>100.0%</b>	<b>87.5%</b>	<b>11.1%</b>	<b>88.9%</b>	<b>0.0%</b>	<b>12.5%</b>
<b>Social Care</b>	<b>3</b>	<b>5</b>	<b>1.82</b>		<b>100.0%</b>	<b>#DIV/0</b>	<b>1.82</b>	<b>100.0%</b>		<b>100.0%</b>	<b>0.0%</b>	<b>100.0%</b>	<b>#DIV/0</b>	<b>0.0%</b>
<b>Social Workers</b>	<b>102</b>	<b>112</b>	<b>1.10</b>	<b>13.4%</b>	<b>86.6%</b>	<b>1.03</b>	<b>1.12</b>	<b>91.1%</b>	<b>86.7%</b>	<b>91.8%</b>	<b>84.8%</b>	<b>15.2%</b>	<b>93.3%</b>	<b>83.5%</b>
<b>Psychologists</b>	<b>2</b>	<b>3</b>	<b>1.43</b>		<b>100.0%</b>	<b>#DIV/0</b>	<b>1.43</b>	<b>100.0%</b>		<b>100.0%</b>	<b>33.3%</b>	<b>66.7%</b>	<b>#DIV/0</b>	<b>33.3%</b>
<b>Pharmacy</b>	<b>18</b>	<b>27</b>	<b>1.47</b>	<b>14.8%</b>	<b>85.2%</b>	<b>1.22</b>	<b>1.53</b>	<b>74.1%</b>	<b>100.0%</b>	<b>69.6%</b>	<b>51.9%</b>	<b>48.1%</b>	<b>75.0%</b>	<b>47.8%</b>
Other Health & Social Care	1	1	1.85		100.0%		1.85	100.0%	100.0%	100.0%	0.0%	100.0%		0.0%
Play Therapists/ Specialists	1	1	1.00	100.0%		1.00		100.0%	100.0%		100.0%	0.0%	100.0%	
<b>H&amp;SC, Other</b>	<b>2</b>	<b>2</b>	<b>1.30</b>	<b>50.0%</b>	<b>50.0%</b>	<b>1.00</b>	<b>1.85</b>	<b>100.0%</b>	<b>100.0%</b>	<b>100.0%</b>	<b>50.0%</b>	<b>50.0%</b>	<b>100.0%</b>	<b>0.0%</b>
<b>Health &amp; Social Care</b>	<b>474</b>	<b>551</b>	<b>1.16</b>	<b>12.7%</b>	<b>87.3%</b>	<b>1.05</b>	<b>1.18</b>	<b>85.3%</b>	<b>90.0%</b>	<b>84.6%</b>	<b>73.9%</b>	<b>26.1%</b>	<b>90.0%</b>	<b>71.5%</b>
Executive Management	16	16	1.01	50.0%	50.0%	1.00	1.03	100.0%	100.0%	100.0%	100.0%	0.0%	100.0%	100.0%
Senior Management (VIII & GM)	63	66	1.05	30.3%	69.7%	1.06	1.05	90.9%	90.9%	95.7%	97.0%	3.0%	90.0%	100.0%
<b>Management (VIII &amp; above)</b>	<b>78</b>	<b>82</b>	<b>1.05</b>	<b>34.1%</b>	<b>65.9%</b>	<b>1.04</b>	<b>1.05</b>	<b>92.7%</b>	<b>85.7%</b>	<b>96.3%</b>	<b>97.6%</b>	<b>2.4%</b>	<b>92.9%</b>	<b>100.0%</b>
<b>Administrative/ Supervisory (V to VII)</b>	<b>188</b>	<b>203</b>	<b>1.08</b>	<b>16.3%</b>	<b>83.7%</b>	<b>1.03</b>	<b>1.09</b>	<b>96.1%</b>	<b>93.9%</b>	<b>96.5%</b>	<b>78.3%</b>	<b>21.7%</b>	<b>84.8%</b>	<b>77.1%</b>
<b>Clerical (III &amp; IV)</b>	<b>594</b>	<b>688</b>	<b>1.16</b>	<b>8.4%</b>	<b>91.6%</b>	<b>1.04</b>	<b>1.17</b>	<b>84.4%</b>	<b>74.1%</b>	<b>85.4%</b>	<b>64.0%</b>	<b>36.0%</b>	<b>91.4%</b>	<b>61.4%</b>
<b>Management &amp; Administrative</b>	<b>861</b>	<b>973</b>	<b>1.13</b>	<b>12.2%</b>	<b>87.8%</b>	<b>1.04</b>	<b>1.14</b>	<b>87.6%</b>	<b>82.4%</b>	<b>88.3%</b>	<b>69.8%</b>	<b>30.2%</b>	<b>89.9%</b>	<b>67.0%</b>
Catering	214	234	1.09	33.8%	66.2%	1.04	1.12	93.6%	93.6%	95.5%	71.4%	28.6%	91.1%	61.3%
Household Services	480	544	1.13	17.6%	82.4%	1.06	1.15	83.6%	83.6%	84.2%	59.0%	41.0%	85.4%	53.3%
Other Support	28	33	1.19	54.5%	45.5%	1.10	1.31	81.8%	81.8%	80.0%	63.6%	36.4%	83.3%	40.0%
Portering	74	78	1.05	98.7%	1.3%	1.04	1.35	87.2%	87.2%	100.0%	92.3%	7.7%	92.2%	100.0%
<b>Support</b>	<b>797</b>	<b>889</b>	<b>1.12</b>	<b>30.4%</b>	<b>69.6%</b>	<b>1.05</b>	<b>1.15</b>	<b>86.5%</b>	<b>85.6%</b>	<b>86.9%</b>	<b>65.4%</b>	<b>34.6%</b>	<b>88.9%</b>	<b>55.1%</b>
<b>Maintenance/ Technical</b>	<b>95</b>	<b>98</b>	<b>1.03</b>	<b>99.0%</b>	<b>1.0%</b>	<b>1.03</b>	<b>1.00</b>	<b>92.9%</b>	<b>92.8%</b>	<b>100.0%</b>	<b>93.9%</b>	<b>6.1%</b>	<b>93.8%</b>	<b>100.0%</b>
<b>General Support</b>	<b>892</b>	<b>987</b>	<b>1.11</b>	<b>37.2%</b>	<b>62.8%</b>	<b>1.05</b>	<b>1.15</b>	<b>87.1%</b>	<b>87.5%</b>	<b>86.9%</b>	<b>68.2%</b>	<b>31.8%</b>	<b>90.2%</b>	<b>55.2%</b>
HCA, Nurse's Aide, etc.	4,082	4,634	1.14	20.2%	79.8%	1.05	1.16	87.0%	87.0%	87.2%	62.0%	38.0%	86.4%	55.9%
Health & Social Care Assistants	31	35	1.12	28.6%	71.4%	1.12	1.13	85.7%	85.7%	80.0%	85.7%	14.3%	90.0%	84.0%
<b>Health Care Assistants</b>	<b>4,113</b>	<b>4,669</b>	<b>1.14</b>	<b>20.2%</b>	<b>79.8%</b>	<b>1.05</b>	<b>1.16</b>	<b>87.0%</b>	<b>86.3%</b>	<b>87.2%</b>	<b>62.2%</b>	<b>37.8%</b>	<b>86.5%</b>	<b>56.1%</b>
<b>Home Help</b>	<b>3,311</b>	<b>4,917</b>	<b>1.49</b>	<b>3.5%</b>	<b>96.5%</b>	<b>1.39</b>	<b>1.49</b>	<b>71.9%</b>	<b>34.7%</b>	<b>73.2%</b>	<b>42.2%</b>	<b>57.8%</b>	<b>57.2%</b>	<b>41.7%</b>
<b>Care, other</b>	<b>162</b>	<b>208</b>	<b>1.29</b>	<b>35.1%</b>	<b>64.9%</b>	<b>1.60</b>	<b>1.16</b>	<b>74.5%</b>	<b>43.8%</b>	<b>91.1%</b>	<b>63.5%</b>	<b>36.5%</b>	<b>57.5%</b>	<b>66.7%</b>
<b>Patient &amp; Client Care</b>	<b>7,585</b>	<b>9,794</b>	<b>1.29</b>	<b>12.2%</b>	<b>87.8%</b>	<b>1.12</b>	<b>1.32</b>	<b>79.1%</b>	<b>76.2%</b>	<b>79.5%</b>	<b>52.2%</b>	<b>47.8%</b>	<b>80.4%</b>	<b>48.3%</b>

## Employment by WTE, Headcount, Gender, Full-Time /Part-Time etc.: Jun 2021

Social Care Older Persons Services CHO	WTE	Headcount	WTE: no.	% Male	% female	Male WTE: no.	Female WTE: no.	% Total Perm	% Male Perm	% Female Perm	% Total Full Time	% Total Part Time	% Male FT	% Female FT
<b>Overall</b>	<b>13,414</b>	<b>16,473</b>	<b>1.23</b>	<b>13.1%</b>	<b>86.9%</b>	<b>1.11</b>	<b>1.25</b>	<b>82.5%</b>	<b>79.2%</b>	<b>83.0%</b>	<b>58.4%</b>	<b>41.6%</b>	<b>82.3%</b>	<b>54.8%</b>
CHO 1	1,914	2,299	1.20	12.4%	87.6%	1.16	1.21	73.3%	73.3%	71.8%	42.9%	57.1%	67.4%	39.4%
CHO 2	1,536	1,861	1.21	12.4%	87.6%	1.05	1.24	90.5%	90.5%	91.2%	48.7%	51.3%	88.3%	43.1%
CHO 3	1,089	1,408	1.29	12.0%	88.0%	1.07	1.33	90.6%	90.6%	91.4%	52.1%	47.9%	88.2%	47.2%
CHO 4	2,911	3,841	1.32	11.0%	89.0%	1.18	1.34	64.9%	64.9%	66.8%	74.6%	25.4%	85.1%	73.3%
CHO 5	1,655	2,009	1.21	9.7%	90.3%	1.10	1.23	95.8%	95.8%	96.6%	46.1%	53.9%	77.9%	42.7%
CHO 6	804	877	1.09	25.1%	74.9%	1.05	1.10	90.2%	90.2%	88.9%	77.2%	22.8%	88.6%	73.4%
CHO 7	1,019	1,171	1.15	16.2%	83.8%	1.06	1.17	90.7%	90.7%	91.6%	67.4%	32.6%	85.3%	63.9%
CHO 8	1,476	1,875	1.27	11.7%	88.3%	1.16	1.29	89.1%	89.1%	89.6%	47.4%	52.6%	74.9%	43.7%
CHO 9	934	1,049	1.12	19.8%	80.2%	1.07	1.14	89.0%	89.0%	90.5%	74.0%	26.0%	87.5%	70.6%
other Community Services	76	83	1.09	25.3%	74.7%	1.05	1.10	86.7%	86.7%	88.7%	86.7%	13.3%	90.5%	85.5%

Summary Staff Movement: June 2021

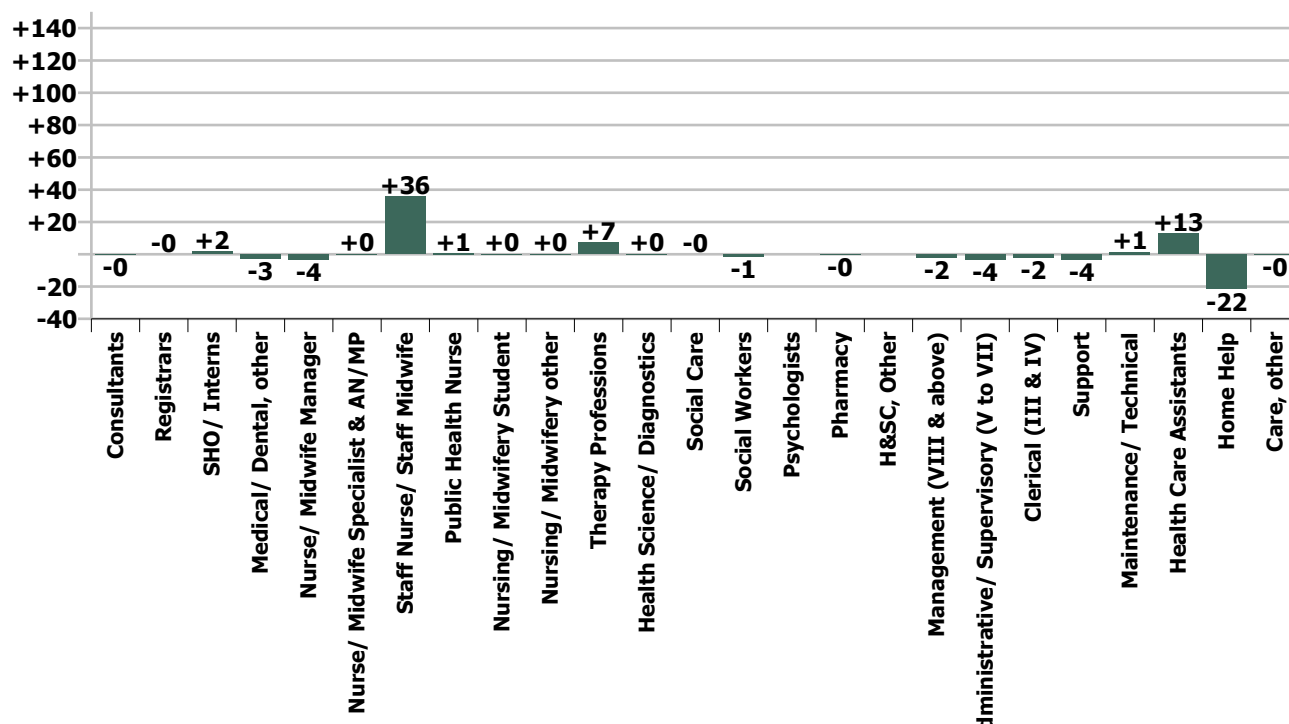
Month-on-month  
Summary

WTE change since Apr 21	% change since Apr 21	overall	Consultants	Registrars	SHO/ Interns	Medical/ Dental, other	Medical & Dental	Nurse/ Midwife Manager	Nurse/ Midwife Specialist & AN/MP	Staff Nurse/ Staff Midwife	Public Health Nurse	Nursing/ Midwifery Student	Nursing/ Midwifery other	Nursing & Midwifery	Therapy Professions	Health Science/ Diagnostics	Social Care	Social Workers	Psychologists	Pharmacy	H&SC, Other	Health & Social Care Professionals	Management (VIII & above)	Administrative Supervisory (V to VII)	Clerical (III & IV)	Management & Administrative	Support	Maintenance/ Technical	General Support	Health Care Assistants	Home Help	Care, other	Patient & Client Care	
Overall	+0.1%	+19	-0.2	-0.0	+1.9	-2.6	-1.0	-3.6	+0.1	+35.9	+0.7	+0.3	+0.2	+33.6	+7.4	+0.1	-0.1	-1.4	0.0	-0.3	0.0	+5.8	-2.5	-3.5	-2.1	-8.1	-3.6	+1.4	-2.2	+12.9	-21.7	-0.5	-9.3	
CHO 1	+1.4%	+26				-1.6	-1.6	+2.7	-0.1	+6.6				+9.2	-0.1	+0.1		-0.3				-0.3		-0.0	-1.4	-1.5	-1.7		-1.7	-1.6	+26.3	-2.4	+22.2	
CHO 2	-2.1%	-34					0.0	-0.7		+5.6				+4.9	-2.1			-0.1					-2.2	+1.0	+0.9	+0.1	+2.0	-0.5	-1.0	-1.5	+1.7	-38.3	-0.3	-36.9
CHO 3	+1.3%	+14				-1.0	-1.0	-2.7	+1.0	+8.6				+6.9	+3.2			-0.9				+2.3	-0.0	-1.5	-0.6	-2.1	+0.7	+0.2	+0.9	+1.9	+4.8	+0.7	+7.4	
CHO 4	+0.7%	+19		-0.0			-0.0	-0.7	+0.3	+11.6	+0.8			+11.9	+0.7			+0.6			+0.1	+1.4	+0.1	-0.6	-0.9	-1.4	+1.0	+0.0	+1.0	-0.6	+7.3	-0.1	+6.6	
CHO 5	-0.7%	-12					0.0	-0.1	-1.5	+2.3		+1.0		+1.7	-0.8			-0.1			-0.8	-1.6	-0.8	+1.0	-0.9	-0.7	-1.3	+0.0	+0.5	-10.5	-0.1	-10.1		
CHO 6	+0.1%	+1				-0.1	-0.1	-0.9	+0.0	+0.1				-0.8	-0.3			-2.1			+0.3	-2.1	-1.0	+0.3	+0.1	-0.6	+2.0	+1.0	+3.0	+1.4		-0.3	+1.2	
CHO 7	+0.3%	+3					0.0	+1.1	-0.5	-0.4		-0.7		-0.4	+1.3			-0.9				+0.4	-0.0	-0.2	+1.2	+1.0	-1.1		-1.1	+5.0	-1.8		+3.2	
CHO 8	-0.4%	-6				+0.0	+0.1	-2.0	+2.0	+2.1	-0.1		+1.0	+2.9	+1.7			+1.0				+2.8	-0.8	-0.1	+0.3	-0.6	-1.2	+1.1	-0.1	-2.8	-9.4	+1.1	-11.2	
CHO 9	+0.8%	+7	-0.2		+1.9		+1.7	-0.1	-1.1	-0.6			-0.8	-2.6	+3.7		-0.1	+1.3				+5.0	+0.1	-2.1	-0.9	-2.9	-1.4		-1.4	+7.4		+0.0	+7.4	
other Community Services	-0.5%	-0																				-1.0	-1.3	+0.9	-1.3							+0.9	+0.9	
		+0.1%	-4.3%	-0.5%	+15.7%	-3.0%	-0.9%	-0.5%	+0.2%	+1.4%	+5.8%	+21.5%	+5.5%	+1.0%	+2.2%	+2.7%	-1.8%	-1.3%			-1.8%	+1.2%	-3.0%	-1.8%	-0.4%	-0.9%	-0.4%	+1.5%	-0.2%	+0.3%	-0.7%	-0.3%	-0.1%	

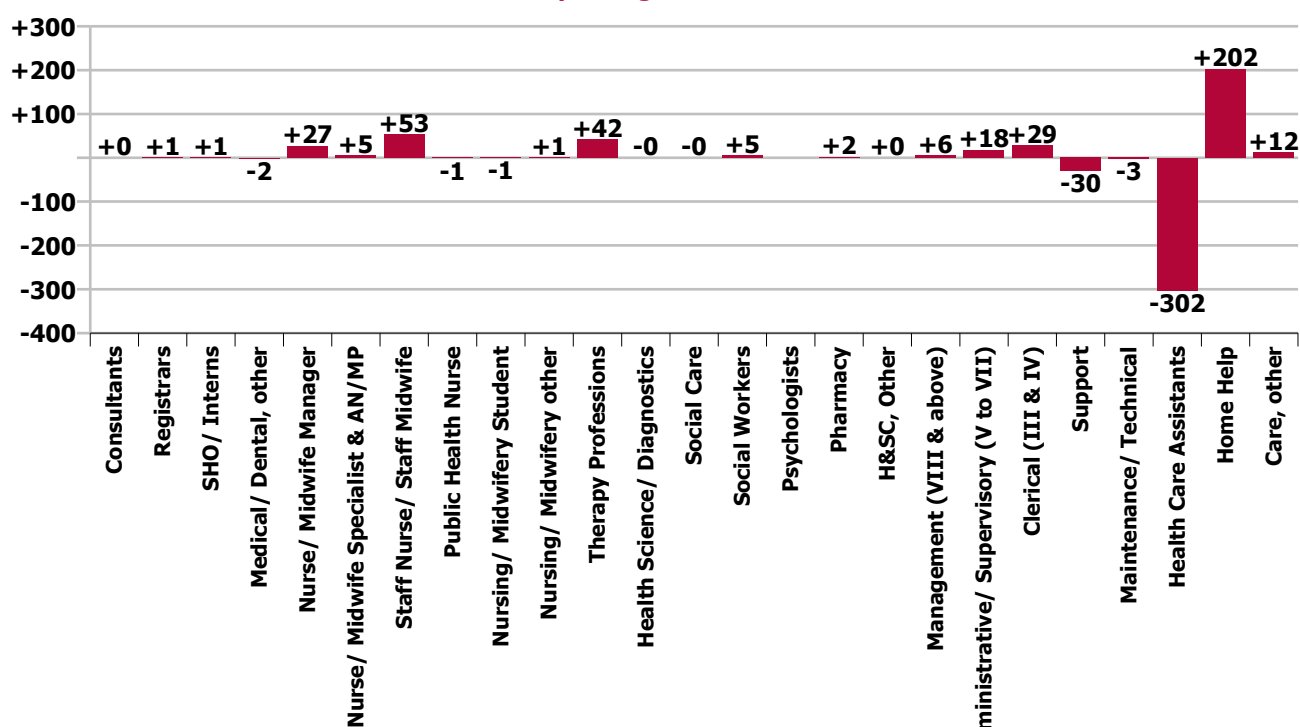
Year-on-year Summary

WTE change since Jun 20	% change since Jun 20	overall	Consultants	Registrars	SHO/ Interns	Medical/ Dental, other	Medical & Dental	Nurse/ Midwife Manager	Nurse/ Midwife Specialist & AN/MP	Staff Nurse/ Staff Midwife	Public Health Nurse	Nursing/ Midwifery Student	Nursing/ Midwifery other	Nursing & Midwifery	Therapy Professions	Health Science/ Diagnostics	Social Care	Social Workers	Psychologists	Pharmacy	H&SC, Other	Health & Social Care Professionals	Management (VIII & above)	Administrativ e/ Supervisory (V to VII)	Clerical (III & IV)	Management & Administrativ e	Support	Maintenance/ Technical	General Support	Health Care Assistants	Home Help	Care, other	Patient & Client Care	
Overall	+0.5%	+65	+0	+1	+1	-2	-0	+27	+5	+53	-1	-1	+1	+85	+42	-0	-0	+5			+2	+0	+49	+6	+18	+29	+52	-30	-3	-33	-302	+202	+12	-88
CHO 1	+3.1%	+58				-3	-3	+2	-0	+20			+0	+23	+4	+0		-1					+4	+1	+4	+5	-3		-3	-44	+79	-3	+33	
CHO 2	-3.1%	-48						+2	+0	+9				+12	+4			+1			+0		+5	+1	+0	-6	-5	+3	-1	+2	-44	-31	+14	-62
CHO 3	+3.9%	+41						+1	+3	+25				+29	+7	-0		-1				+5	+0	-4	+7	+2	+1	+0	+2	+3	+1	+1	+4	
CHO 4	+0.9%	+26		+0	+1	-0	+1	+3	-1	+3	+1	-1		+5	+5			+2			+1	+8	+3	+2	+1	+6	-0	+1	+1	-41	+45	+1	+5	
CHO 5	+2.9%	+46				+6	+6	+2	+1	+0	-2	+1		+3	-10			+0			-1	-10	+0	+10	+3	+13	-36	-4	-39	-40	+117	-3	+74	
CHO 6	-5.3%	-45		+1		-2	-1	-7		-6				-13	+4			-2			+1	+2	+2	+1	+2	+0	+3	+1		+1	-36		-1	-37
CHO 7	-0.2%	-2				-2	-2	+22	-1	-5		-1		+15	+4			-2			-1		+1	+1	+0	+3	+4	+11		+11	-27	-5	+1	-31
CHO 8	-2.2%	-33					+0	+5	+4	+5	+0		+2	+16	+8			+2			+2		+12	-2	+3	-3	-2	-4	+0	-4	-53	-4	+1	-55
CHO 9	+1.4%	+13	+0	-1	-0		-1	-3	-1	+2			-1	-3	+16			+5			+1	+0	+22	+1	+6	+11	+18	-4		-4	-21		+1	-20
other Community Services	+14.2%	+9																				+1	+1	-1	+8	+9							+1	+1
		+0.5%	+4.8%	+5.8%	+5.5%	-1.9%	-0.1%	+3.7%	+15.9%	+2.0%	-7.2%	-27.6%	+35.6%	+2.5%	+14.0%	-0.4%	-0.0%	+5.2%			+9.6%	+13.2%	+11.5%	+8.1%	+10.6%	+5.0%	+6.5%	-3.7%	-3.2%	-3.6%	-6.9%	+6.5%	+8.0%	-1.1%

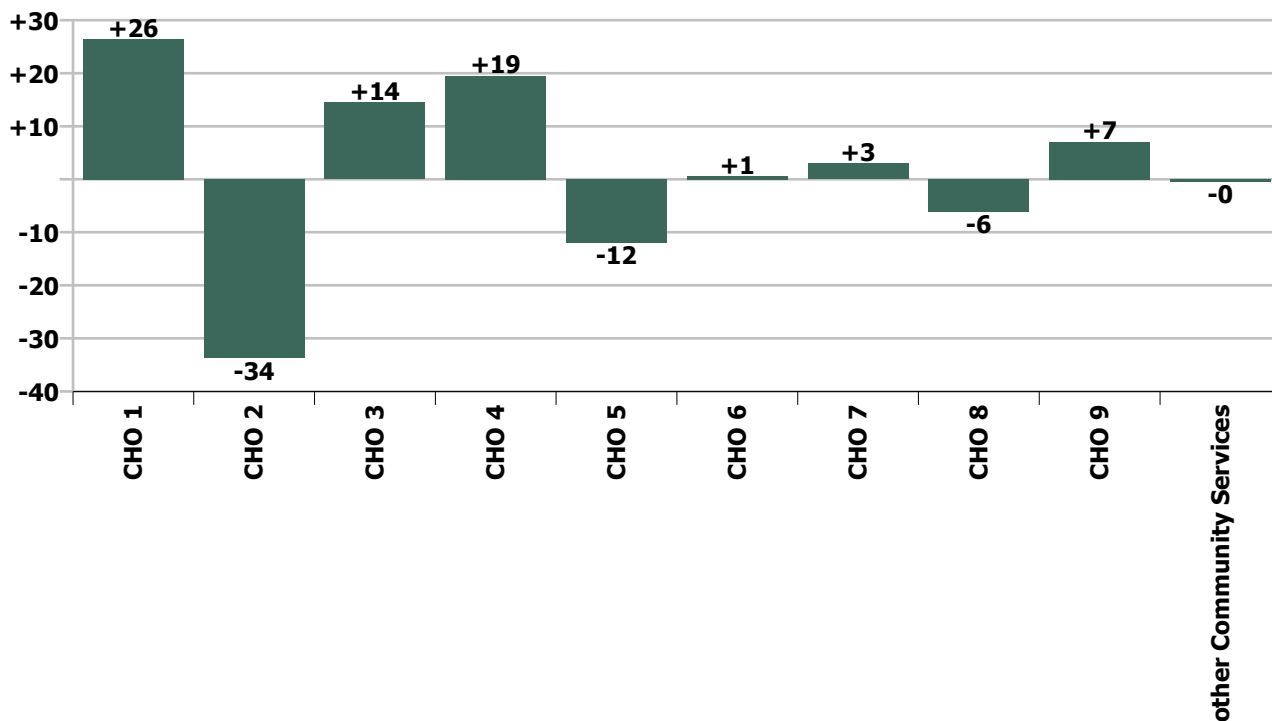
### Staff Group change since: Apr 2021



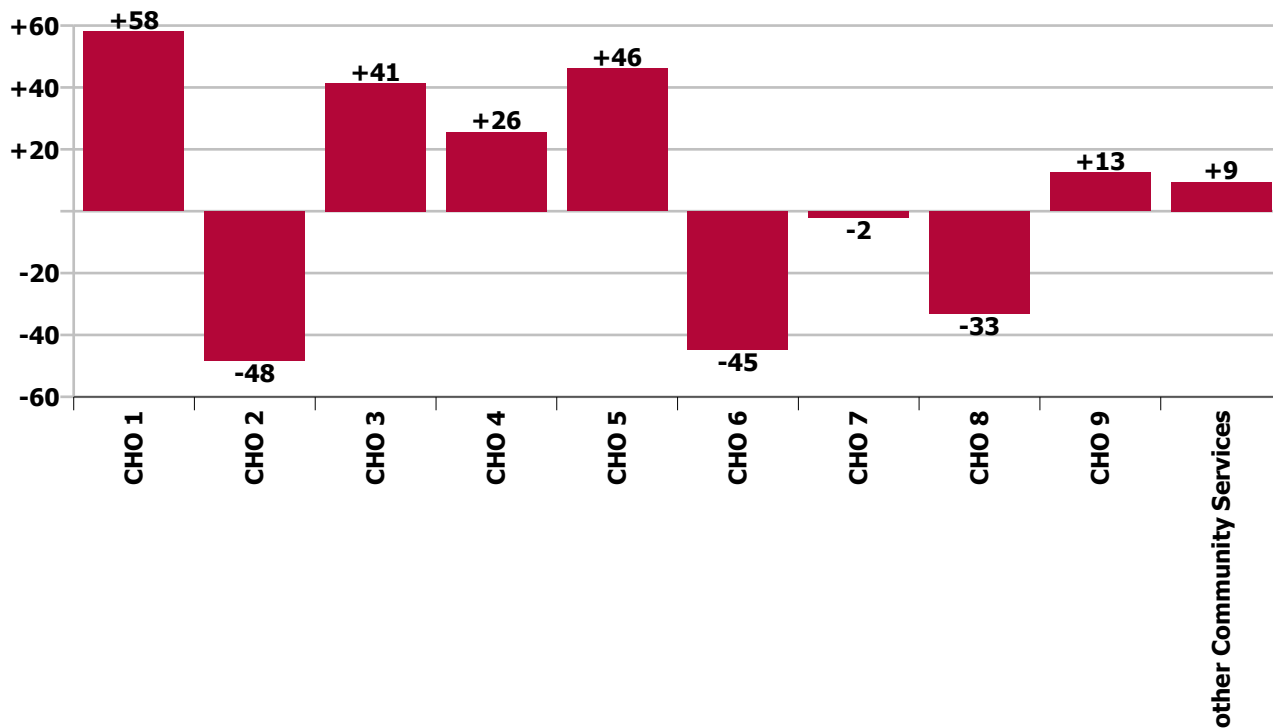
### Staff Group change since: Jun 2020



CHO change since: Apr 2021



CHO change since: Jun 2020





## Longitudinal Employment Levels by Grade Group - Dec 2016 to Jun 2021

Jun 2021 (Dec 2015 figure: 12,607)	WTE Jun 2021	WTE change since Dec 16	WTE change since Dec 17	WTE change since Dec 18	WTE change since Dec 19	WTE change since Dec 20	WTE change since Apr 21	% change since Dec 16	% change since Dec 17	% change since Dec 18	% change since Dec 19	% change since Dec 20	% change since Apr 21
<b>Overall</b>	<b>13,414</b>	<b>+932</b>	<b>+311</b>	<b>+109</b>	<b>+182</b>	<b>-1</b>	<b>+19</b>	<b>+7.5%</b>	<b>+2.4%</b>	<b>+0.8%</b>	<b>+1.4%</b>	<b>-0.0%</b>	<b>+0.1%</b>
Consultant Medicine	4	-5	-5	+1	+1	-0	-0	-53.0%	-52.2%	+22.2%	+22.2%	-0.5%	-4.3%
Consultant Psychiatry		-1	-1					-100.0%	-100.0%	-100.0%	-100.0%	-100.0%	-100.0%
Consultant Surgery		-1	-0	-0				-100.0%	-100.0%	-100.0%	-100.0%	-100.0%	-100.0%
<b>Consultants</b>	<b>4</b>	<b>-7</b>	<b>-6</b>	<b>+1</b>	<b>+1</b>	<b>-0</b>	<b>-0</b>	<b>-59.9%</b>	<b>-56.7%</b>	<b>+18.3%</b>	<b>+22.2%</b>	<b>-0.5%</b>	<b>-4.3%</b>
Registrar	7	+1	-1	-1		+1		+18.1%	-13.3%	-11.5%		+11.5%	
Senior Registrar	1	+0	+0	-1	+0	+0	-0	+8.0%	+8.0%	-46.0%	+8.0%	+8.0%	-4.4%
Specialist Registrar	3	+1	+2	+2	+1	+1		+50.0%	+200.0%	+200.0%	+50.0%	+50.0%	
<b>Registrars</b>	<b>11</b>	<b>+2</b>	<b>+1</b>	<b>+0</b>	<b>+1</b>	<b>+2</b>	<b>-0</b>	<b>+24.4%</b>	<b>+11.4%</b>	<b>+2.2%</b>	<b>+11.4%</b>	<b>+19.8%</b>	<b>-0.5%</b>
<b>SHO/ Interns</b>	<b>14</b>	<b>+4</b>	<b>+4</b>	<b>+2</b>	<b>-1</b>	<b>+0</b>	<b>+2</b>	<b>+37.8%</b>	<b>+38.3%</b>	<b>+14.9%</b>	<b>-8.6%</b>	<b>+0.3%</b>	<b>+15.7%</b>
Other Medical	84	-2	-2	-2	-13	-20	-3	-2.3%	-2.3%	-1.8%	-13.0%	-19.2%	-3.0%
<b>Medical/ Dental, other</b>	<b>84</b>	<b>-2</b>	<b>-2</b>	<b>-2</b>	<b>-13</b>	<b>-20</b>	<b>-3</b>	<b>-2.3%</b>	<b>-2.3%</b>	<b>-1.8%</b>	<b>-13.0%</b>	<b>-19.2%</b>	<b>-3.0%</b>
<b>Medical &amp; Dental</b>	<b>113</b>	<b>-3</b>	<b>-3</b>	<b>+1</b>	<b>-12</b>	<b>-18</b>	<b>-1</b>	<b>-2.4%</b>	<b>-2.5%</b>	<b>+1.0%</b>	<b>-9.6%</b>	<b>-13.9%</b>	<b>-0.9%</b>
Clinical Nurse/ Midwife Manager	549	+14	+20	+25	+40	+13	-1	+2.6%	+3.9%	+4.7%	+7.9%	+2.4%	-0.3%
Director Nursing/Midwifery, Assistant	105	+17	+13	+18	+2	-1	+1	+19.7%	+14.3%	+20.9%	+2.2%	-1.3%	+1.0%
Director of Nursing/Midwifery	106	+21	+23	+23	+7	+1	-3	+24.3%	+28.0%	+27.8%	+7.5%	+1.3%	-2.9%
<b>Nurse/ Midwife Manager</b>	<b>759</b>	<b>+52</b>	<b>+57</b>	<b>+66</b>	<b>+50</b>	<b>+13</b>	<b>-4</b>	<b>+7.3%</b>	<b>+8.1%</b>	<b>+9.5%</b>	<b>+7.0%</b>	<b>+1.7%</b>	<b>-0.5%</b>
Advanced Nurse/ Midwife Practitioner	19	+16	+16	+12	+9	+3	+1	+549.0%	+549.0%	+178.9%	+81.6%	+17.1%	+6.5%
Clinical Nurse/ Midwife Specialist	19	+6	+8	+2	+3	-3	-1	+51.2%	+68.8%	+13.0%	+20.3%	-12.2%	-5.5%
<b>Nurse/ Midwife Specialist &amp; AN/MP</b>	<b>38</b>	<b>+23</b>	<b>+24</b>	<b>+15</b>	<b>+12</b>	<b>+0</b>	<b>+0</b>	<b>+147.3%</b>	<b>+170.1%</b>	<b>+61.8%</b>	<b>+45.1%</b>	<b>+0.6%</b>	<b>+0.2%</b>
Graduate Nursing/ Midwifery								-100.0%	-100.0%	-100.0%	-100.0%	-100.0%	-100.0%
Staff Midwives	1	+0	-1	+1	+1	-0	-0	+97.5%	-56.1%	-100.0%	-100.0%	-10.2%	-12.2%
Staff Nurse [Intellectual Disability]	1		+0		+1				+29.9%		-100.0%		
Staff Nurse [Psychiatric]	7	+2	+2	+2	+2	+2	+0	+27.7%	+27.7%	+27.3%	+43.6%	+36.4%	+4.4%
Staff Nurses [General/ Children's]	2,665	+82	+104	+60	+93	+48	+36	+3.2%	+4.1%	+2.3%	+3.6%	+1.8%	+1.4%
<b>Staff Nurse/ Staff Midwife</b>	<b>2,674</b>	<b>+84</b>	<b>+105</b>	<b>+63</b>	<b>+97</b>	<b>+50</b>	<b>+36</b>	<b>+3.3%</b>	<b>+4.1%</b>	<b>+2.4%</b>	<b>+3.8%</b>	<b>+1.9%</b>	<b>+1.4%</b>
<b>Public Health Nurse</b>	<b>12</b>	<b>-2</b>	<b>-2</b>	<b>-1</b>	<b>-1</b>	<b>-1</b>	<b>+1</b>	<b>-13.8%</b>	<b>-16.9%</b>	<b>-9.5%</b>	<b>-8.5%</b>	<b>-8.8%</b>	<b>+5.8%</b>
Post-registration Nurse/ Midwife Student					-1			-100.0%	-100.0%	-100.0%	-100.0%	-100.0%	-100.0%
Nursing/ Midwifery awaiting registration	2	+2	-12	+2	+1	+0	+0	-100.0%	-87.1%	-100.0%	+81.0%	+34.1%	+21.5%
<b>Nursing/ Midwifery Student</b>	<b>2</b>	<b>+2</b>	<b>-12</b>	<b>+2</b>	<b>-0</b>	<b>+0</b>	<b>+0</b>	<b>-100.0%</b>	<b>-87.1%</b>	<b>-100.0%</b>	<b>-9.5%</b>	<b>+34.1%</b>	<b>+21.5%</b>
Nursing Education/Clinical	4	+3	+3	+3	+3	+0	+0	+300.0%	+300.0%	+300.0%	+300.0%	+0.5%	+5.5%
<b>Nursing/ Midwifery other</b>	<b>4</b>	<b>+3</b>	<b>+3</b>	<b>+3</b>	<b>+3</b>	<b>+0</b>	<b>+0</b>	<b>+300.0%</b>	<b>+300.0%</b>	<b>+300.0%</b>	<b>+300.0%</b>	<b>+0.5%</b>	<b>+5.5%</b>
<b>Nursing &amp; Midwifery</b>	<b>3,489</b>	<b>+162</b>	<b>+174</b>	<b>+147</b>	<b>+161</b>	<b>+62</b>	<b>+34</b>	<b>+4.9%</b>	<b>+5.2%</b>	<b>+4.4%</b>	<b>+4.8%</b>	<b>+1.8%</b>	<b>+1.0%</b>
Dietitians	27	+11	+9	+9	+10	+9	+2	+68.8%	+52.9%	+54.6%	+63.3%	+48.7%	+7.9%
Occupational Therapists	122	+26	+27	+18	+9	+9	-2	+27.3%	+28.8%	+17.2%	+7.7%	+8.0%	-1.5%
Physiotherapists	149	+33	+28	+21	+25	+17	+2	+28.5%	+23.0%	+16.9%	+20.4%	+12.7%	+1.4%
Podiatrists & Chiropodists	15	+0	-1	+0	+3	+3	+1	+3.3%	-5.5%	+1.5%	+26.0%	+19.9%	+7.6%
Speech & Language Therapists	30	+10	+6	+7	+7	+10	+4	+48.4%	+26.9%	+30.8%	+30.6%	+52.2%	+16.1%

Jun 2021 (Dec 2015 figure: 12,607)	WTE Jun 2021	WTE change since Dec 16	WTE change since Dec 17	WTE change since Dec 18	WTE change since Dec 19	WTE change since Dec 20	WTE change since Apr 21	% change since Dec 16	% change since Dec 17	% change since Dec 18	% change since Dec 19	% change since Dec 20	% change since Apr 21
<b>Overall</b>	<b>13,414</b>	<b>+932</b>	<b>+311</b>	<b>+109</b>	<b>+182</b>	<b>-1</b>	<b>+19</b>	<b>+7.5%</b>	<b>+2.4%</b>	<b>+0.8%</b>	<b>+1.4%</b>	<b>-0.0%</b>	<b>+0.1%</b>
<b>Therapy Professions</b>	<b>343</b>	<b>+80</b>	<b>+70</b>	<b>+56</b>	<b>+55</b>	<b>+47</b>	<b>+7</b>	<b>+30.6%</b>	<b>+25.6%</b>	<b>+19.6%</b>	<b>+18.9%</b>	<b>+16.0%</b>	<b>+2.2%</b>
Clinical Measurement				-0	-0	-0		-100.0%	-100.0%	-100.0%	-100.0%	-100.0%	-100.0%
Medical Science		-1						-100.0%	-100.0%	-100.0%	-100.0%	-100.0%	-100.0%
Phlebotomists		-1	-1					-100.0%	-100.0%	-100.0%	-100.0%	-100.0%	-100.0%
Radiographers	5	-2	-2	-1	-1	-0	+0	-30.2%	-31.2%	-11.9%	-16.4%	-0.2%	+2.7%
<b>Health Science/ Diagnostics</b>	<b>5</b>	<b>-4</b>	<b>-3</b>	<b>-1</b>	<b>-1</b>	<b>-0</b>	<b>+0</b>	<b>-45.6%</b>	<b>-39.6%</b>	<b>-13.1%</b>	<b>-19.2%</b>	<b>-3.3%</b>	<b>+2.7%</b>
<b>Social Care</b>	<b>3</b>	<b>+0</b>	<b>+0</b>	<b>-0</b>	<b>-0</b>	<b>-0</b>	<b>-0</b>	<b>+1.5%</b>	<b>+2.6%</b>	<b>-0.0%</b>	<b>-0.0%</b>	<b>-0.0%</b>	<b>-1.8%</b>
<b>Social Workers</b>	<b>102</b>	<b>+15</b>	<b>+18</b>	<b>+7</b>	<b>+3</b>	<b>+2</b>	<b>-1</b>	<b>+17.2%</b>	<b>+21.3%</b>	<b>+7.0%</b>	<b>+3.3%</b>	<b>+1.8%</b>	<b>-1.3%</b>
<b>Psychologists</b>	<b>2</b>	<b>+2</b>	<b>+2</b>	<b>+2</b>		<b>+1</b>		<b>+320.0%</b>	<b>-100.0%</b>	<b>+320.0%</b>		<b>+90.9%</b>	
<b>Pharmacy</b>	<b>18</b>	<b>+4</b>	<b>+3</b>	<b>+2</b>	<b>+3</b>	<b>+1</b>	<b>-0</b>	<b>+26.2%</b>	<b>+19.6%</b>	<b>+12.5%</b>	<b>+20.4%</b>	<b>+6.6%</b>	<b>-1.8%</b>
Other Health & Social Care	1	-1	-1	-1	+0			-60.3%	-60.3%	-60.3%	+50.0%		
Play Therapists/ Specialists	1	-1						-37.1%					
<b>H&amp;SC, Other</b>	<b>2</b>	<b>-1</b>	<b>-1</b>	<b>-1</b>	<b>+0</b>			<b>-47.8%</b>	<b>-34.7%</b>	<b>-34.7%</b>	<b>+13.2%</b>		
<b>Health &amp; Social Care Professionals</b>	<b>474</b>	<b>+95</b>	<b>+89</b>	<b>+65</b>	<b>+60</b>	<b>+51</b>	<b>+6</b>	<b>+25.1%</b>	<b>+23.0%</b>	<b>+15.9%</b>	<b>+14.5%</b>	<b>+12.1%</b>	<b>+1.2%</b>
Executive Management	16	+9	+8	+6	+4	+1	+0	+125.3%	+99.1%	+57.7%	+32.4%	+6.6%	+0.7%
Senior Management (VIII & GM)	63	+22	+26	+14	-0	-1	-3	+55.0%	+69.7%	+29.1%	-0.0%	-2.0%	-3.9%
<b>Management (VIII &amp; above)</b>	<b>78</b>	<b>+31</b>	<b>+34</b>	<b>+20</b>	<b>+4</b>	<b>-0</b>	<b>-2</b>	<b>+65.4%</b>	<b>+74.9%</b>	<b>+34.0%</b>	<b>+5.1%</b>	<b>-0.4%</b>	<b>-3.0%</b>
Middle Management (V-VII)	188	+72	+61	+47	+24	+12	-4	+61.5%	+47.6%	+32.8%	+14.9%	+7.1%	-1.8%
Other Administrative		-1	-1	-1	-1			-100.0%	-100.0%	-100.0%	-100.0%	-100.0%	-100.0%
<b>Administrative/ Supervisory (V to VII)</b>	<b>188</b>	<b>+71</b>	<b>+60</b>	<b>+46</b>	<b>+23</b>	<b>+12</b>	<b>-4</b>	<b>+60.1%</b>	<b>+46.4%</b>	<b>+31.9%</b>	<b>+14.2%</b>	<b>+7.1%</b>	<b>-1.8%</b>
<b>Clerical (III &amp; IV)</b>	<b>594</b>	<b>+111</b>	<b>+85</b>	<b>+29</b>	<b>+23</b>	<b>+7</b>	<b>-2</b>	<b>+22.9%</b>	<b>+16.7%</b>	<b>+5.2%</b>	<b>+4.0%</b>	<b>+1.2%</b>	<b>-0.4%</b>
<b>Management &amp; Administrative</b>	<b>861</b>	<b>+212</b>	<b>+178</b>	<b>+95</b>	<b>+50</b>	<b>+19</b>	<b>-8</b>	<b>+32.8%</b>	<b>+26.1%</b>	<b>+12.4%</b>	<b>+6.2%</b>	<b>+2.3%</b>	<b>-0.9%</b>
Catering	214	+1	+3	-1	-7	-2	-2	+0.6%	+1.2%	-0.5%	-3.1%	-1.0%	-0.9%
Household Services	480	-83	-65	-38	-12	+1	+0	-14.8%	-11.9%	-7.3%	-2.5%	+0.2%	+0.1%
Other Support	28	-12	-16	-10	-6	-1	-0	-30.7%	-35.9%	-26.6%	-18.3%	-4.4%	-0.3%
Portering	74	-10	-9	-5	-7	-2	-2	-12.3%	-11.1%	-6.4%	-8.5%	-2.8%	-2.4%
<b>Support</b>	<b>797</b>	<b>-105</b>	<b>-87</b>	<b>-54</b>	<b>-32</b>	<b>-4</b>	<b>-4</b>	<b>-11.6%</b>	<b>-9.8%</b>	<b>-6.4%</b>	<b>-3.9%</b>	<b>-0.6%</b>	<b>-0.4%</b>
Maintenance	91	-12	-11	-11	-7	-4	+1	-12.0%	-10.5%	-11.0%	-7.4%	-3.9%	+1.6%
Technical Services	4	+4	+4	+4	+4	+4		-100.0%	-100.0%	-100.0%	-100.0%	-100.0%	
<b>Maintenance/ Technical</b>	<b>95</b>	<b>-8</b>	<b>-7</b>	<b>-7</b>	<b>-3</b>	<b>+0</b>	<b>+1</b>	<b>-8.2%</b>	<b>-6.6%</b>	<b>-7.1%</b>	<b>-3.3%</b>	<b>+0.3%</b>	<b>+1.5%</b>
<b>General Support</b>	<b>892</b>	<b>-113</b>	<b>-94</b>	<b>-61</b>	<b>-36</b>	<b>-4</b>	<b>-2</b>	<b>-11.3%</b>	<b>-9.5%</b>	<b>-6.4%</b>	<b>-3.9%</b>	<b>-0.5%</b>	<b>-0.2%</b>
HCA, Nurse's Aide, etc.	4,082	+35	-3	-49	+60	-9	+10	+0.9%	-0.1%	-1.2%	+1.5%	-0.2%	+0.3%
Health & Social Care Assistants	31	+5	+5	+7	+10	+4	+2	+19.7%	+20.1%	+28.3%	+46.2%	+13.9%	+8.6%
<b>Health Care Assistants</b>	<b>4,113</b>	<b>+40</b>	<b>+2</b>	<b>-42</b>	<b>+70</b>	<b>-5</b>	<b>+13</b>	<b>+1.0%</b>	<b>+0.0%</b>	<b>-1.0%</b>	<b>+1.7%</b>	<b>-0.1%</b>	<b>+0.3%</b>
<b>Home Help</b>	<b>3,311</b>	<b>+516</b>	<b>-45</b>	<b>-109</b>	<b>-131</b>	<b>-120</b>	<b>-22</b>	<b>+18.5%</b>	<b>-1.3%</b>	<b>-3.2%</b>	<b>-3.8%</b>	<b>-3.5%</b>	<b>-0.7%</b>
<b>Care, other</b>	<b>162</b>	<b>+22</b>	<b>+10</b>	<b>+15</b>	<b>+20</b>	<b>+15</b>	<b>-0</b>	<b>+16.1%</b>	<b>+6.6%</b>	<b>+10.2%</b>	<b>+13.9%</b>	<b>+10.3%</b>	<b>-0.3%</b>
<b>Patient &amp; Client Care</b>	<b>7,585</b>	<b>+579</b>	<b>-33</b>	<b>-137</b>	<b>-42</b>	<b>-110</b>	<b>-9</b>	<b>+8.3%</b>	<b>-0.4%</b>	<b>-1.8%</b>	<b>-0.5%</b>	<b>-1.4%</b>	<b>-0.1%</b>

Jun 2021 (Dec 2015 figure: 12,607)	WTE Jun 2021	WTE change since Dec 16	WTE change since Dec 17	WTE change since Dec 18	WTE change since Dec 19	WTE change since Dec 20	WTE change since Apr 21	% change since Dec 16	% change since Dec 17	% change since Dec 18	% change since Dec 19	% change since Dec 20	% change since Apr 21
Overall	13,414	+932	+311	+109	+182	-1	+19	+7.5%	+2.4%	+0.8%	+1.4%	-0.0%	+0.1%

Source: Health Service Personnel Census