

September 2021

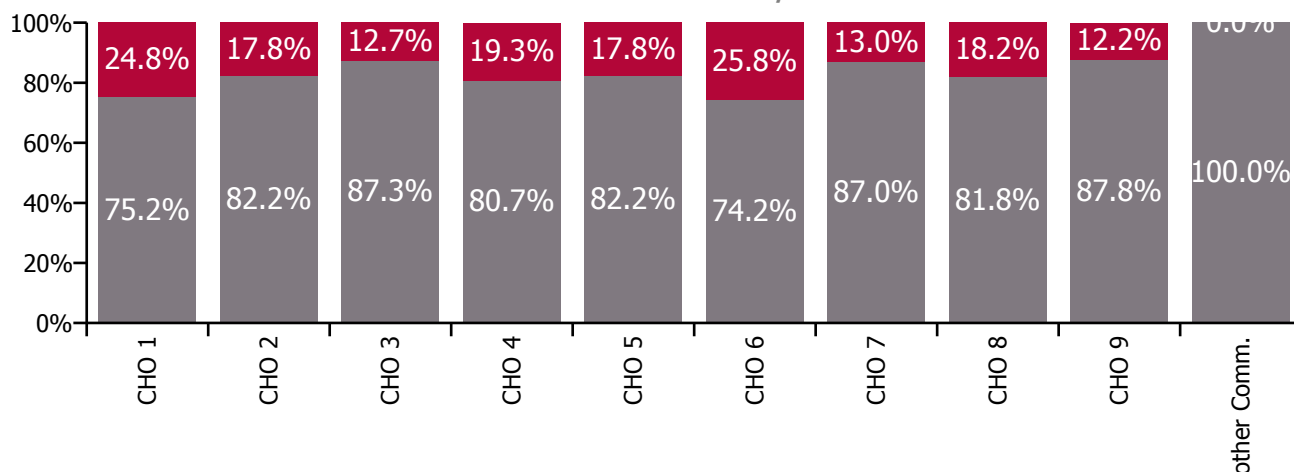
Health Service Absence Rate - by Staff Category: Sep 2021	Certified absence	Self-certified absence	Non Covid-19 absence	Covid-19 absence	Total absence rate	% Non Covid-19 absence	% Covid-19 absence
Social Care	5.0%	0.5%	5.5%	1.2%	6.7%	82.4%	17.6%
Medical & Dental	3.3%	0.1%	3.3%	0.0%	3.3%	100.0%	0.0%
Nursing & Midwifery	5.4%	0.6%	6.0%	1.4%	7.4%	81.2%	18.8%
Health & Social Care Professionals	3.6%	0.4%	4.0%	0.9%	5.0%	81.2%	18.8%
Management & Administrative	3.3%	0.2%	3.5%	0.5%	4.0%	87.4%	12.6%
General Support	5.1%	0.3%	5.5%	1.2%	6.7%	81.6%	18.4%
Patient & Client Care	5.5%	0.6%	6.1%	1.3%	7.3%	82.8%	17.2%

Health Service Absence Rate - Care Group by CHO: Sep 2021	Certified absence	Self-certified absence	Non Covid-19 absence	Covid-19 absence	Total absence rate	% Non Covid-19 absence	% Covid-19 absence
Social Care	5.0%	0.5%	5.5%	1.2%	6.7%	82.4%	17.6%
CHO 1	6.0%	0.4%	6.4%	2.1%	8.5%	75.2%	24.8%
CHO 2	3.3%	0.2%	3.5%	0.8%	4.3%	82.2%	17.8%
CHO 3	5.6%	0.4%	6.0%	0.9%	6.8%	87.3%	12.7%
CHO 4	4.6%	0.9%	5.5%	1.3%	6.8%	80.7%	19.3%
CHO 5	5.2%	0.6%	5.8%	1.3%	7.1%	82.2%	17.8%
CHO 6	4.2%	0.6%	4.8%	1.7%	6.5%	74.2%	25.8%
CHO 7	5.5%	0.7%	6.2%	0.9%	7.1%	87.0%	13.0%
CHO 8	5.9%	0.4%	6.3%	1.4%	7.8%	81.8%	18.2%
CHO 9	4.4%	0.4%	4.7%	0.7%	5.4%	87.8%	12.2%
Other Community Services	2.2%	0.1%	2.3%	0.0%	2.3%	100.0%	0.0%

Total absence rate

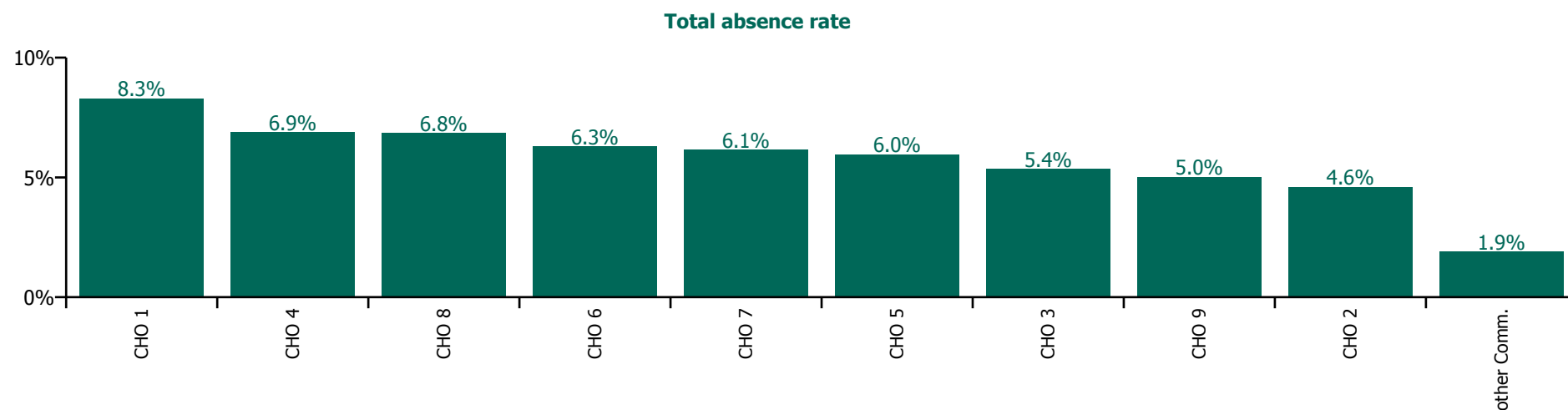


% of Absence Non Covid-19 / Covid-19

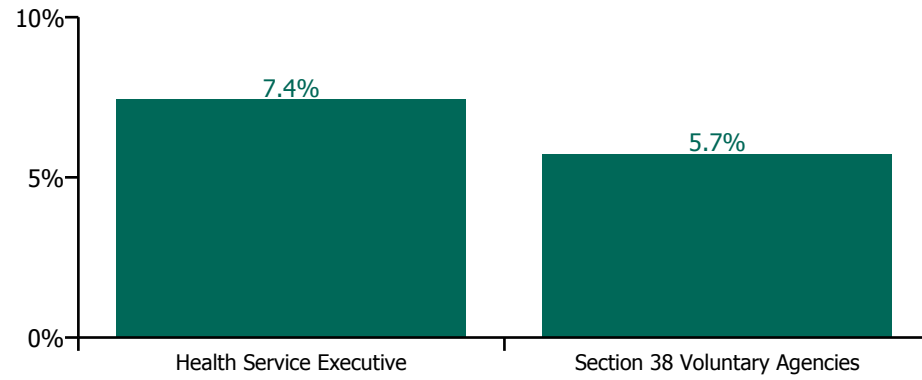


September 2021

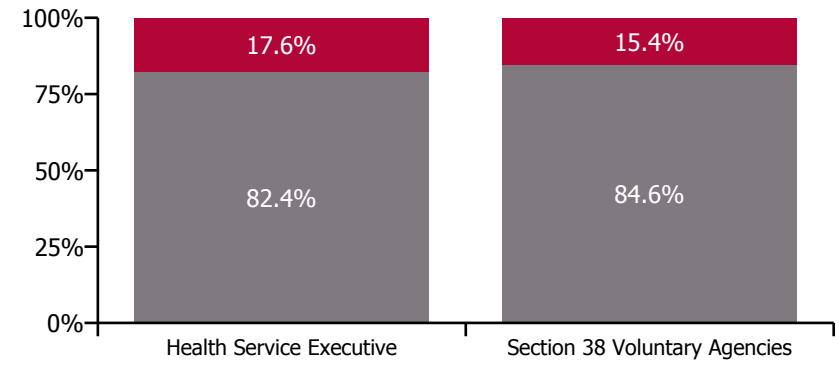
Health Service Absence Rate - by Hospital Group & Staff Category: Sep 2021	Medical & Dental	Nursing & Midwifery	Health & Social Care Professionals	Management & Administrative	General Support	Patient & Client Care	Certified absence	Self-certified absence	Non Covid-19 absence	Covid-19 absence	Total absence rate
Social Care	7.7%	6.9%	5.1%	4.2%	5.5%	6.6%	4.6%	0.5%	5.1%	1.0%	6.1%
CHO 1	0.0%	8.2%	2.1%	5.7%	8.4%	9.5%	6.1%	0.4%	6.5%	1.8%	8.3%
CHO 2	22.7%	5.2%	5.1%	2.7%	2.0%	4.5%	3.5%	0.3%	3.8%	0.8%	4.6%
CHO 3	0.0%	5.2%	3.7%	7.3%	8.9%	5.6%	4.2%	0.2%	4.4%	0.9%	5.4%
CHO 4	0.0%	8.5%	5.7%	3.7%	4.1%	7.4%	4.8%	1.2%	6.0%	0.9%	6.9%
CHO 5	0.0%	7.7%	7.0%	4.3%	2.3%	5.5%	4.2%	0.5%	4.7%	1.3%	6.0%
CHO 6	0.0%	9.9%	5.5%	3.9%	6.3%	6.4%	4.2%	0.5%	4.7%	1.5%	6.3%
CHO 7	0.0%	6.9%	5.0%	3.9%	6.3%	6.7%	4.8%	0.6%	5.4%	0.7%	6.1%
CHO 8	0.0%	7.7%	5.9%	5.8%	5.5%	7.2%	5.3%	0.4%	5.7%	1.1%	6.8%
CHO 9	13.6%	5.2%	4.7%	3.1%	4.9%	5.6%	4.2%	0.3%	4.5%	0.6%	5.0%
Other Community Services				1.9%			1.9%	0.0%	1.9%	0.0%	1.9%



Total absence rate



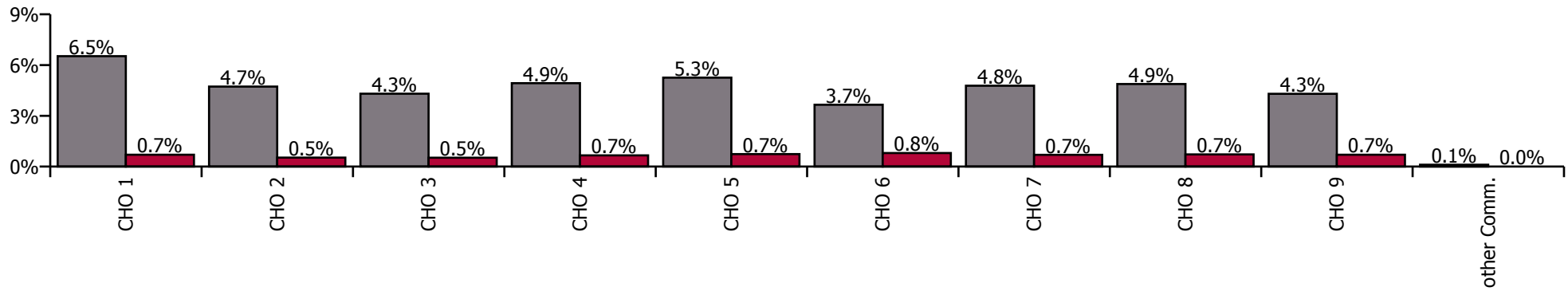
Non Covid-19 & Covid-19 Absence



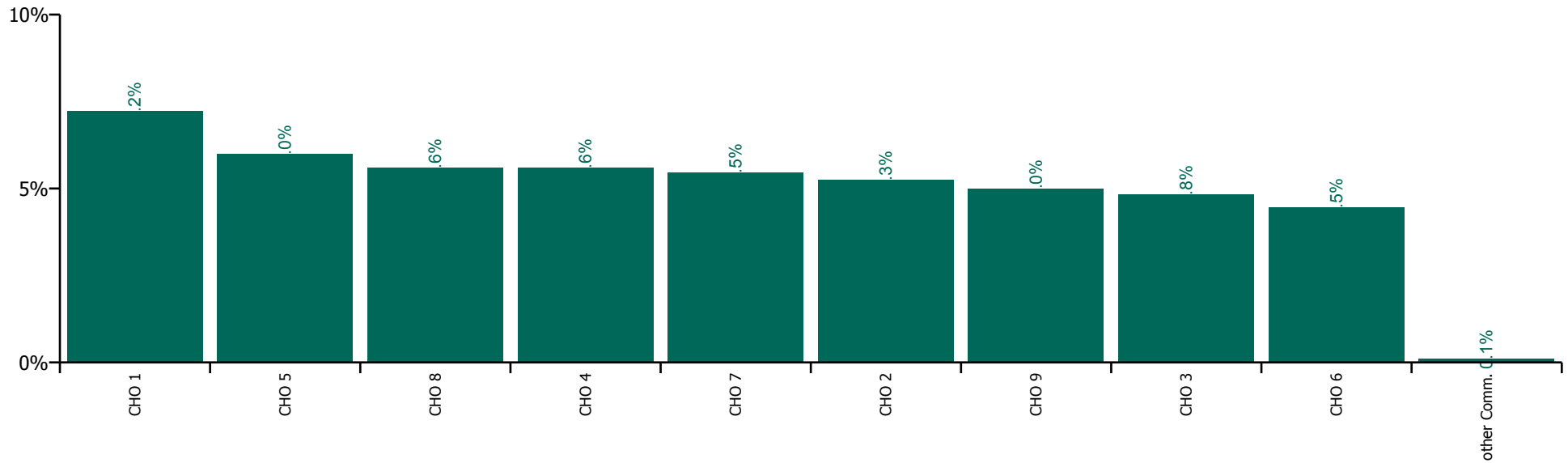
September 2021

Health Service Absence Rate by Hospital: Sep 2021	Medical & Dental	Nursing & Midwifery	Health & Social Care Professionals	Management & Administrative	General Support	Patient & Client Care	Certified absence	Self-certified absence	Non Covid-19 absence	Covid-19 absence	Total absence rate
Social Care	2.6%	6.1%	4.6%	3.2%	5.3%	5.9%	4.3%	0.4%	4.8%	0.7%	5.4%
Health Service Executive	0.2%	8.4%	3.6%	3.2%	4.6%	7.6%	6.2%	0.3%	6.5%	0.7%	7.2%
CHO 1	0.2%	8.4%	3.6%	3.2%	4.6%	7.6%	6.2%	0.3%	6.5%	0.7%	7.2%
Health Service Executive	4.7%	7.9%	3.6%	1.2%	0.8%	5.1%	4.3%	0.2%	4.6%	0.5%	5.0%
Section 38 Voluntary Agencies	5.0%	5.4%	5.0%	3.1%	4.7%	5.7%	4.4%	0.3%	4.8%	0.5%	5.3%
CHO 2	5.0%	5.9%	4.9%	2.8%	4.3%	5.6%	4.4%	0.3%	4.7%	0.5%	5.3%
Health Service Executive			3.4%	4.6%	20.2%	5.6%	4.4%	0.3%	4.7%	0.4%	5.1%
Section 38 Voluntary Agencies	1.5%	5.4%	4.6%	2.5%	4.9%	4.8%	4.0%	0.3%	4.3%	0.5%	4.8%
CHO 3	1.5%	5.4%	4.5%	3.1%	5.7%	4.8%	4.0%	0.3%	4.3%	0.5%	4.8%
Health Service Executive	7.3%	5.2%	3.8%	2.1%	4.2%	4.8%	3.3%	0.6%	3.8%	0.5%	4.3%
Section 38 Voluntary Agencies	0.0%	6.7%	4.6%	3.1%	5.1%	6.1%	4.3%	0.7%	5.0%	0.7%	5.7%
CHO 4	7.2%	6.6%	4.5%	2.9%	5.0%	6.0%	4.2%	0.7%	4.9%	0.7%	5.6%
Health Service Executive	0.0%	7.4%	5.6%	5.4%	4.7%	7.9%	5.6%	0.5%	6.1%	0.7%	6.8%
Section 38 Voluntary Agencies	9.6%	6.6%	6.2%	4.5%	6.9%	5.7%	4.5%	0.6%	5.1%	0.7%	5.8%
CHO 5	7.6%	6.8%	6.0%	4.8%	6.8%	5.9%	4.7%	0.5%	5.3%	0.7%	6.0%
Health Service Executive	1.0%	7.6%	6.2%	5.3%	1.6%	9.4%	4.6%	0.5%	5.1%	2.6%	7.7%
Section 38 Voluntary Agencies	0.0%	4.5%	4.4%	2.3%	4.7%	4.5%	3.0%	0.5%	3.5%	0.7%	4.2%
CHO 6	0.6%	4.9%	4.4%	2.5%	4.7%	5.0%	3.2%	0.5%	3.7%	0.8%	4.5%
Health Service Executive		3.1%	5.6%	4.6%		4.5%	4.4%	0.3%	4.7%	0.4%	5.2%
Section 38 Voluntary Agencies	1.3%	5.9%	4.3%	3.0%	5.5%	6.1%	4.3%	0.5%	4.8%	0.7%	5.5%
CHO 7	1.3%	5.9%	4.4%	3.1%	5.5%	6.1%	4.3%	0.4%	4.8%	0.7%	5.5%
Health Service Executive	0.2%	10.0%	6.2%	5.8%	10.6%	10.8%	7.4%	0.5%	7.9%	1.2%	9.1%
Section 38 Voluntary Agencies	0.2%	4.6%	4.8%	2.9%	5.1%	4.8%	3.8%	0.3%	4.1%	0.6%	4.7%
CHO 8	0.2%	5.9%	5.0%	4.0%	5.6%	6.0%	4.5%	0.3%	4.9%	0.7%	5.6%
Health Service Executive	0.9%	7.8%	4.0%	3.0%	8.1%	8.4%	6.0%	0.4%	6.4%	0.9%	7.3%
Section 38 Voluntary Agencies	3.2%	4.6%	4.5%	3.0%	5.5%	5.4%	3.8%	0.3%	4.1%	0.7%	4.8%
CHO 9	3.0%	5.2%	4.5%	3.0%	5.5%	5.7%	4.0%	0.3%	4.3%	0.7%	5.0%
Other Community Services				0.1%			0.1%	0.0%	0.1%	0.0%	0.1%

Non Covid-19 / Covid-19 absence rates



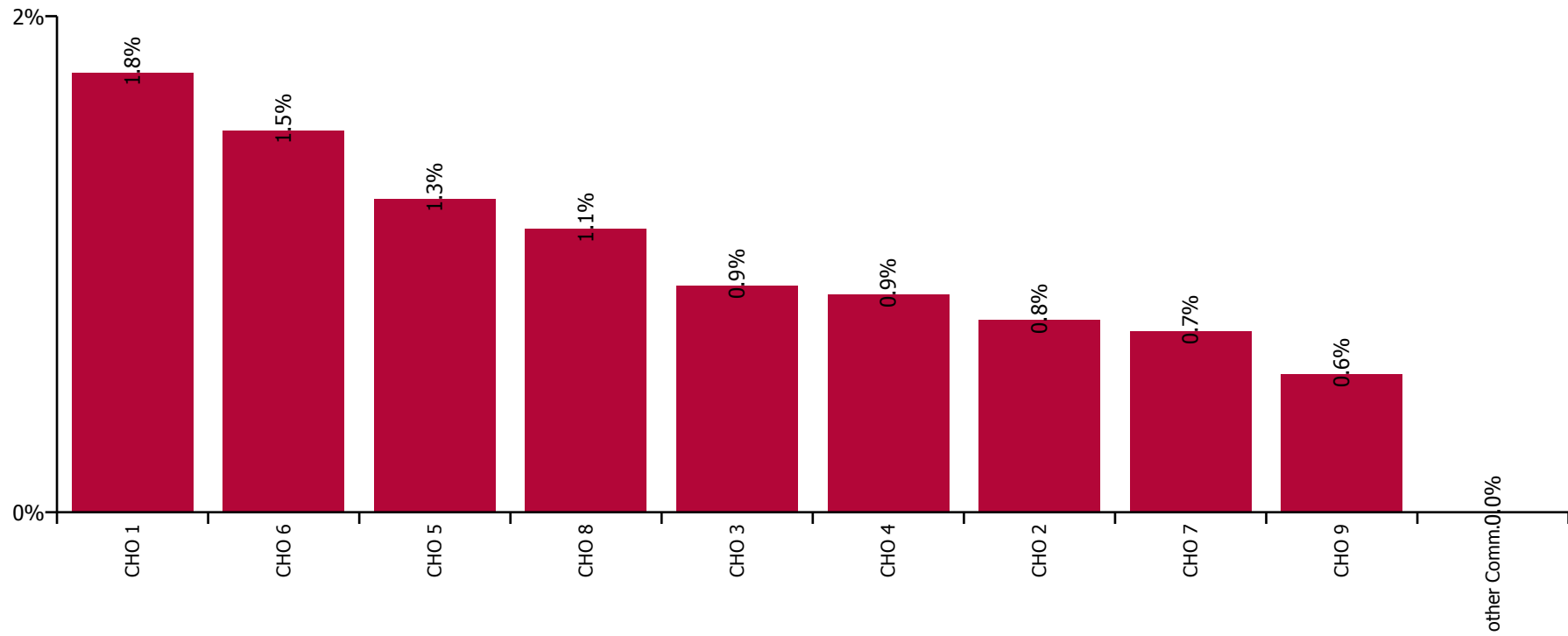
Total absence rate



September 2021

Health Service Covid-19 Absence Rate - by Staff Category & Hospital: Sep 2021	Medical & Dental	Nursing & Midwifery	Health & Social Care Professionals	Management & Administrative	General Support	Patient & Client Care	Covid-19 absence	Non Covid-19 absence	Total absence rate
Social Care	0.0%	1.0%	1.0%	4.2%	1.2%	1.0%	1.0%	5.1%	6.1%
Health Service Executive	0.0%	1.5%	0.5%	5.7%	5.1%	2.0%	1.8%	6.5%	8.3%
CHO 1	0.0%	1.5%	0.5%	5.7%	5.1%	2.0%	1.8%	6.5%	8.3%
Health Service Executive	0.0%	0.0%	0.0%	1.9%	0.0%	0.2%	0.2%	2.4%	2.6%
Section 38 Voluntary Agencies	0.0%	0.5%	1.5%	2.9%	0.4%	0.7%	0.9%	4.1%	5.0%
CHO 2	0.0%	0.3%	1.3%	2.7%	0.4%	0.6%	0.8%	3.8%	4.6%
Health Service Executive			0.1%	13.1%	0.0%	0.0%	0.1%	6.3%	6.4%
Section 38 Voluntary Agencies	0.0%	1.4%	0.6%	3.3%	1.8%	0.8%	1.0%	4.3%	5.3%
CHO 3	0.0%	1.4%	0.5%	7.3%	1.6%	0.8%	0.9%	4.4%	5.4%
Health Service Executive	0.0%	2.6%	0.0%	2.3%	0.3%	0.1%	0.4%	5.3%	5.8%
Section 38 Voluntary Agencies		1.2%	0.4%	4.1%	1.9%	1.0%	0.9%	6.1%	7.0%
CHO 4	0.0%	1.4%	0.4%	3.7%	1.7%	0.9%	0.9%	6.0%	6.9%
Health Service Executive	0.0%	1.0%	0.9%	4.6%	0.0%	1.2%	0.9%	5.3%	6.2%
Section 38 Voluntary Agencies	0.0%	0.5%	2.1%	4.1%	0.0%	1.6%	1.4%	4.5%	5.9%
CHO 5	0.0%	0.7%	1.6%	4.3%	0.0%	1.5%	1.3%	4.7%	6.0%
Health Service Executive	0.0%	5.4%	8.0%	14.7%	0.0%	2.8%	4.1%	8.0%	12.1%
Section 38 Voluntary Agencies	0.0%	0.9%	1.3%	1.5%	0.3%	1.1%	1.0%	4.0%	5.0%
CHO 6	0.0%	2.4%	1.9%	3.9%	0.3%	1.4%	1.5%	4.7%	6.3%
Health Service Executive		0.0%	0.5%	5.5%		5.1%	0.7%	6.7%	7.3%
Section 38 Voluntary Agencies	0.0%	0.9%	0.5%	3.6%	0.8%	0.8%	0.7%	5.4%	6.1%
CHO 7	0.0%	0.9%	0.5%	3.9%	0.8%	0.8%	0.7%	5.4%	6.1%
Health Service Executive	0.0%	0.5%	1.2%	7.4%	5.5%	2.2%	1.4%	7.3%	8.7%
Section 38 Voluntary Agencies	0.0%	1.3%	1.3%	3.8%	0.5%	0.9%	1.0%	5.1%	6.2%
CHO 8	0.0%	1.1%	1.3%	5.8%	1.2%	1.2%	1.1%	5.7%	6.8%
Health Service Executive	0.0%	0.0%	0.4%	3.3%	0.0%	0.6%	0.3%	5.7%	5.9%
Section 38 Voluntary Agencies	0.0%	0.7%	0.9%	3.0%	0.5%	0.3%	0.6%	4.3%	4.9%
CHO 9	0.0%	0.6%	0.9%	3.1%	0.5%	0.3%	0.6%	4.5%	5.0%
Other Community Services				1.9%			0.0%	1.9%	1.9%

Covid-19 absence rate



September 2021

Health Service Absence Rate - by Staff Category: Sep 2021	Certified absence	Self-certified absence	Non Covid-19 absence	Covid-19 absence	Total absence rate	% Non Covid-19 absence	% Covid-19 absence
HSE Social Care CHO 1	6.0%	0.4%	6.4%	2.1%	8.5%	75.2%	24.8%
Medical & Dental	0.0%	0.0%	0.0%	0.0%	0.0%		
Nursing & Midwifery	5.5%	0.5%	6.1%	1.9%	7.9%	76.2%	23.8%
Health & Social Care Professionals	3.0%	0.3%	3.2%	0.4%	3.6%	89.1%	10.9%
Management & Administrative	3.8%	0.3%	4.2%	1.4%	5.5%	75.2%	24.8%
General Support	8.2%	0.2%	8.4%	3.6%	12.0%	70.3%	29.7%
Patient & Client Care	6.7%	0.4%	7.1%	2.4%	9.5%	74.9%	25.1%

September 2021

Health Service Absence Rate - by Staff Category: Sep 2021	Certified absence	Self-certified absence	Non Covid-19 absence	Covid-19 absence	Total absence rate	% Non Covid-19 absence	% Covid-19 absence
HSE Social Care CHO 2	3.3%	0.2%	3.5%	0.8%	4.3%	82.2%	17.8%
Medical & Dental	12.9%	0.0%	12.9%	0.0%	12.9%	100.0%	0.0%
Nursing & Midwifery	4.0%	0.2%	4.2%	0.8%	5.0%	83.7%	16.3%
Health & Social Care Professionals	3.4%	0.2%	3.6%	1.1%	4.7%	75.8%	24.2%
Management & Administrative	1.7%	0.1%	1.8%	0.8%	2.6%	68.6%	31.4%
General Support	3.0%	0.0%	3.1%	0.3%	3.3%	91.5%	8.5%
Patient & Client Care	3.1%	0.3%	3.4%	0.7%	4.0%	83.0%	17.0%

September 2021

Health Service Absence Rate - by Staff Category: Sep 2021	Certified absence	Self-certified absence	Non Covid-19 absence	Covid-19 absence	Total absence rate	% Non Covid-19 absence	% Covid-19 absence
HSE Social Care CHO 3	5.6%	0.4%	6.0%	0.9%	6.8%	87.3%	12.7%
Medical & Dental	4.0%	0.0%	4.0%	0.0%	4.0%	100.0%	0.0%
Nursing & Midwifery	5.9%	0.5%	6.4%	1.1%	7.5%	85.3%	14.7%
Health & Social Care Professionals	3.1%	0.3%	3.3%	0.5%	3.8%	87.5%	12.5%
Management & Administrative	4.4%	0.2%	4.7%	0.8%	5.5%	85.4%	14.6%
General Support	8.4%	0.3%	8.6%	1.0%	9.6%	89.5%	10.5%
Patient & Client Care	6.1%	0.3%	6.5%	0.9%	7.3%	88.0%	12.0%

September 2021

Health Service Absence Rate - by Staff Category: Sep 2021	Certified absence	Self-certified absence	Non Covid-19 absence	Covid-19 absence	Total absence rate	% Non Covid-19 absence	% Covid-19 absence
HSE Social Care CHO 4	4.6%	0.9%	5.5%	1.3%	6.8%	80.7%	19.3%
Medical & Dental	0.0%	0.0%	0.0%	0.0%	0.0%		
Nursing & Midwifery	4.7%	1.0%	5.7%	1.6%	7.4%	77.9%	22.1%
Health & Social Care Professionals	3.7%	1.0%	4.7%	0.7%	5.4%	86.6%	13.4%
Management & Administrative	2.6%	0.4%	3.0%	0.1%	3.1%	97.2%	2.8%
General Support	2.4%	0.3%	2.7%	1.3%	4.1%	67.0%	33.0%
Patient & Client Care	5.4%	0.9%	6.3%	1.5%	7.8%	81.3%	18.7%

September 2021

Health Service Absence Rate - by Staff Category: Sep 2021	Certified absence	Self- certified absence	Non Covid-19 absence	Covid-19 absence	Total absence rate	% Non Covid-19 absence	% Covid-19 absence
HSE Social Care CHO 5	5.2%	0.6%	5.8%	1.3%	7.1%	82.2%	17.8%
Medical & Dental	0.0%	0.0%	0.0%	0.0%	0.0%		
Nursing & Midwifery	6.6%	0.7%	7.4%	1.0%	8.4%	88.1%	11.9%
Health & Social Care Professionals	4.7%	0.3%	5.0%	1.4%	6.5%	77.6%	22.4%
Management & Administrative	4.1%	0.4%	4.5%	0.1%	4.7%	97.4%	2.6%
General Support	2.9%	0.4%	3.4%	2.3%	5.6%	59.5%	40.5%
Patient & Client Care	5.1%	0.6%	5.7%	1.4%	7.1%	79.7%	20.3%

September 2021

Health Service Absence Rate - by Staff Category: Sep 2021	Certified absence	Self- certified absence	Non Covid-19 absence	Covid-19 absence	Total absence rate	% Non Covid-19 absence	% Covid-19 absence
HSE Social Care CHO 6	4.2%	0.6%	4.8%	1.7%	6.5%	74.2%	25.8%
Medical & Dental	0.0%	0.0%	0.0%	0.0%	0.0%		
Nursing & Midwifery	5.1%	0.6%	5.7%	2.5%	8.2%	69.4%	30.6%
Health & Social Care Professionals	3.0%	0.4%	3.5%	1.7%	5.2%	67.0%	33.0%
Management & Administrative	3.4%	0.1%	3.4%	0.1%	3.5%	97.2%	2.8%
General Support	6.5%	0.5%	7.0%	0.5%	7.5%	93.2%	6.8%
Patient & Client Care	4.2%	0.9%	5.1%	1.8%	6.9%	74.0%	26.0%

September 2021

Health Service Absence Rate - by Staff Category: Sep 2021	Certified absence	Self- certified absence	Non Covid-19 absence	Covid-19 absence	Total absence rate	% Non Covid-19 absence	% Covid-19 absence
HSE Social Care CHO 7	5.5%	0.7%	6.2%	0.9%	7.1%	87.0%	13.0%
Medical & Dental	0.0%	0.0%	0.0%	0.0%	0.0%		
Nursing & Midwifery	6.1%	0.9%	7.0%	1.4%	8.3%	83.6%	16.4%
Health & Social Care Professionals	3.8%	0.5%	4.4%	0.4%	4.8%	90.8%	9.2%
Management & Administrative	3.4%	0.3%	3.7%	0.4%	4.2%	89.3%	10.7%
General Support	5.9%	0.4%	6.3%	1.0%	7.2%	86.5%	13.5%
Patient & Client Care	6.1%	0.7%	6.8%	1.0%	7.8%	87.7%	12.3%

September 2021

Health Service Absence Rate - by Staff Category: Sep 2021	Certified absence	Self- certified absence	Non Covid-19 absence	Covid-19 absence	Total absence rate	% Non Covid-19 absence	% Covid-19 absence
HSE Social Care CHO 8	5.9%	0.4%	6.3%	1.4%	7.8%	81.8%	18.2%
Medical & Dental	0.0%	0.0%	0.0%	0.0%	0.0%		
Nursing & Midwifery	6.2%	0.5%	6.7%	1.8%	8.5%	78.8%	21.2%
Health & Social Care Professionals	4.6%	0.3%	4.8%	1.3%	6.1%	79.5%	20.5%
Management & Administrative	5.0%	0.2%	5.2%	0.6%	5.8%	90.0%	10.0%
General Support	4.1%	0.7%	4.8%	0.9%	5.7%	84.1%	15.9%
Patient & Client Care	6.5%	0.5%	7.0%	1.4%	8.4%	83.1%	16.9%

September 2021

Health Service Absence Rate - by Staff Category: Sep 2021	Certified absence	Self-certified absence	Non Covid-19 absence	Covid-19 absence	Total absence rate	% Non Covid-19 absence	% Covid-19 absence
HSE Social Care CHO 9	4.4%	0.4%	4.7%	0.7%	5.4%	87.8%	12.2%
Medical & Dental	7.9%	0.2%	8.2%	0.0%	8.2%	100.0%	0.0%
Nursing & Midwifery	4.5%	0.6%	5.1%	0.8%	5.8%	86.5%	13.5%
Health & Social Care Professionals	3.5%	0.2%	3.7%	0.8%	4.6%	81.6%	18.4%
Management & Administrative	2.4%	0.2%	2.6%	0.6%	3.2%	82.1%	17.9%
General Support	5.4%	0.4%	5.7%	0.8%	6.5%	88.3%	11.7%
Patient & Client Care	5.3%	0.4%	5.8%	0.4%	6.2%	93.6%	6.4%

September 2021

Health Service Absence Rate - by Staff Category: Sep 2021	Certified absence	Self- certified absence	Non Covid-19 absence	Covid-19 absence	Total absence rate	% Non Covid-19 absence	% Covid-19 absence
HSE Social Care Other Community Services	2.2%	0.1%	2.3%	0.0%	2.3%	100.0%	0.0%
Medical & Dental							
Nursing & Midwifery							
Health & Social Care Professionals							
Management & Administrative	2.2%	0.1%	2.3%	0.0%	2.3%	100.0%	0.0%
General Support							
Patient & Client Care	0.0%	0.0%	0.0%	0.0%	0.0%		#DIV/0

September 2021

Bros. of Charity, Clare absence by Staff Category	Certified absence	Self-certified absence	Non Covid-19 absence	Covid-19 absence	Total absence rate	% Non Covid-19 absence	% Covid-19 absence
Bros. of Charity, Clare (CHO 3)	4.4%	0.2%	4.6%	0.8%	5.4%	85.2%	14.8%
Medical & Dental	0.0%	0.0%	0.0%	0.0%	0.0%		
Nursing & Midwifery	0.0%	0.0%	0.0%	4.0%	4.0%	0.0%	100.0%
Health & Social Care Professionals	3.7%	0.2%	3.8%	0.7%	4.6%	84.2%	15.8%
Management & Administrative	1.0%	1.0%	2.1%	1.0%	3.1%	66.7%	33.3%
General Support							
Patient & Client Care	4.7%	0.2%	4.9%	0.8%	5.7%	86.3%	13.7%

September 2021

Bros. of Charity, Limerick absence by Staff Category	Certified absence	Self-certified absence	Non Covid-19 absence	Covid-19 absence	Total absence rate	% Non Covid-19 absence	% Covid-19 absence
Bros. of Charity, Limerick (CHO 3)	4.7%	0.3%	5.0%	1.0%	6.0%	83.0%	17.0%
Medical & Dental	0.0%	0.0%	0.0%	0.0%	0.0%		
Nursing & Midwifery	5.5%	0.4%	5.9%	2.2%	8.1%	73.0%	27.0%
Health & Social Care Professionals	3.1%	0.2%	3.3%	0.5%	3.8%	87.1%	12.9%
Management & Administrative	0.3%	0.0%	0.3%	1.0%	1.3%	21.3%	78.7%
General Support	3.3%	0.0%	3.3%	0.0%	3.3%	100.0%	0.0%
Patient & Client Care	5.3%	0.3%	5.6%	0.8%	6.4%	87.0%	13.0%

September 2021

Bros. of Charity, Southern absence by Staff Category	Certified absence	Self-certified absence	Non Covid-19 absence	Covid-19 absence	Total absence rate	% Non Covid-19 absence	% Covid-19 absence
Bros. of Charity, Southern (CHO 4)	5.2%	0.5%	5.6%	0.4%	6.0%	94.0%	6.0%
Medical & Dental							
Nursing & Midwifery	8.4%	0.7%	9.0%	0.2%	9.2%	98.1%	1.9%
Health & Social Care Professionals	4.4%	0.3%	4.8%	0.5%	5.3%	91.1%	8.9%
Management & Administrative	0.8%	0.0%	0.8%	0.0%	0.8%	100.0%	0.0%
General Support	0.5%	0.7%	1.2%	0.0%	1.2%	100.0%	0.0%
Patient & Client Care	5.7%	0.5%	6.2%	0.4%	6.6%	94.0%	6.0%

September 2021

Bros. of Charity, Waterford absence by Staff Category	Certified absence	Self-certified absence	Non Covid-19 absence	Covid-19 absence	Total absence rate	% Non Covid-19 absence	% Covid-19 absence
Bros. of Charity, Waterford (CHO 5)	3.1%	0.4%	3.5%	2.1%	5.6%	63.1%	36.9%
Medical & Dental	0.0%	0.0%	0.0%	0.0%	0.0%		
Nursing & Midwifery	3.9%	1.0%	4.9%	1.0%	5.8%	83.5%	16.5%
Health & Social Care Professionals	2.8%	0.2%	3.0%	2.9%	5.9%	50.6%	49.4%
Management & Administrative	3.1%	0.1%	3.2%	0.2%	3.5%	93.6%	6.4%
General Support	6.4%	0.0%	6.4%	0.0%	6.4%	100.0%	0.0%
Patient & Client Care	2.9%	0.4%	3.4%	2.3%	5.6%	59.6%	40.4%

September 2021

Bros. of Charity, West Region absence by Staff Category	Certified absence	Self-certified absence	Non Covid-19 absence	Covid-19 absence	Total absence rate	% Non Covid-19 absence	% Covid-19 absence
Bros. of Charity, West Region (CHO 2)	3.8%	0.3%	4.1%	0.9%	5.0%	82.3%	17.7%
Medical & Dental	23.5%	0.0%	23.5%	0.0%	23.5%	100.0%	0.0%
Nursing & Midwifery	4.5%	0.4%	4.9%	0.5%	5.3%	91.1%	8.9%
Health & Social Care Professionals	4.2%	0.3%	4.4%	1.5%	5.9%	75.3%	24.7%
Management & Administrative	1.4%	0.1%	1.5%	1.4%	2.9%	50.8%	49.2%
General Support	2.0%	0.0%	2.0%	0.4%	2.4%	82.4%	17.6%
Patient & Client Care	3.7%	0.4%	4.1%	0.7%	4.9%	85.3%	14.7%

September 2021

Carriglea Cairde Services absence by Staff Category	Certified absence	Self-certified absence	Non Covid-19 absence	Covid-19 absence	Total absence rate	% Non Covid-19 absence	% Covid-19 absence
Carriglea Cairde Services (CHO 5)	3.5%	0.4%	3.9%	0.5%	4.4%	88.9%	11.1%
Medical & Dental							
Nursing & Midwifery	7.3%	0.9%	8.3%	0.2%	8.4%	97.9%	2.1%
Health & Social Care Professionals	8.6%	0.6%	9.2%	1.1%	10.3%	89.5%	10.5%
Management & Administrative	0.0%	0.0%	0.0%	0.0%	0.0%		#DIV/0
General Support	0.0%	0.5%	0.5%	0.0%	0.5%	100.0%	0.0%
Patient & Client Care	1.8%	0.2%	2.0%	0.5%	2.6%	80.2%	19.8%

September 2021

Central Remedial Clinic absence by Staff Category	Certified absence	Self-certified absence	Non Covid-19 absence	Covid-19 absence	Total absence rate	% Non Covid-19 absence	% Covid-19 absence
Central Remedial Clinic (CHO 9)	2.0%	0.3%	2.3%	0.1%	2.4%	95.8%	4.2%
Medical & Dental	0.0%	0.0%	0.0%	0.0%	0.0%		
Nursing & Midwifery	0.6%	1.4%	2.0%	0.0%	2.0%	100.0%	0.0%
Health & Social Care Professionals	0.4%	0.2%	0.6%	0.0%	0.6%	100.0%	0.0%
Management & Administrative	2.4%	0.1%	2.5%	0.0%	2.5%	100.0%	0.0%
General Support	0.0%	0.2%	0.2%	0.0%	0.2%	100.0%	0.0%
Patient & Client Care	4.8%	0.3%	5.1%	0.3%	5.5%	93.8%	6.2%

September 2021

Cheeverstown House absence by Staff Category	Certified absence	Self-certified absence	Non Covid-19 absence	Covid-19 absence	Total absence rate	% Non Covid-19 absence	% Covid-19 absence
Cheeverstown House (CHO 7)	7.3%	0.9%	8.2%	0.2%	8.4%	97.6%	2.4%
Medical & Dental	0.0%	0.0%	0.0%	0.0%	0.0%		
Nursing & Midwifery	5.8%	0.8%	6.6%	0.1%	6.7%	98.4%	1.6%
Health & Social Care Professionals	4.5%	0.3%	4.7%	0.0%	4.7%	100.0%	0.0%
Management & Administrative	2.8%	1.2%	4.0%	3.3%	7.3%	54.9%	45.1%
General Support	13.1%	0.2%	13.3%	0.0%	13.3%	100.0%	0.0%
Patient & Client Care	10.0%	1.3%	11.4%	0.0%	11.4%	100.0%	0.0%

September 2021

Children's Sunshine Home absence by Staff Category	Certified absence	Self-certified absence	Non Covid-19 absence	Covid-19 absence	Total absence rate	% Non Covid-19 absence	% Covid-19 absence
Children's Sunshine Home (CHO 6)	8.4%	1.0%	9.4%	0.8%	10.2%	92.2%	7.8%
Medical & Dental							
Nursing & Midwifery	7.9%	0.8%	8.8%	1.1%	9.9%	89.1%	10.9%
Health & Social Care Professionals	0.0%	0.0%	0.0%	0.0%	0.0%		#DIV/0
Management & Administrative	0.0%	0.0%	0.0%	0.0%	0.0%		#DIV/0
General Support	0.0%	0.0%	0.0%	0.0%	0.0%		
Patient & Client Care	14.4%	1.9%	16.3%	0.8%	17.1%	95.3%	4.7%

September 2021

Cope Foundation absence by Staff Category	Certified absence	Self-certified absence	Non Covid-19 absence	Covid-19 absence	Total absence rate	% Non Covid-19 absence	% Covid-19 absence
Cope Foundation (CHO 4)	4.4%	2.1%	6.6%	1.0%	7.6%	86.5%	13.5%
Medical & Dental							
Nursing & Midwifery	4.3%	2.8%	7.1%	1.0%	8.2%	87.4%	12.6%
Health & Social Care Professionals	2.5%	2.8%	5.2%	0.5%	5.8%	90.6%	9.4%
Management & Administrative	4.3%	1.9%	6.2%	0.0%	6.2%	100.0%	0.0%
General Support	1.4%	0.9%	2.4%	1.8%	4.1%	57.1%	42.9%
Patient & Client Care	5.1%	2.0%	7.1%	1.1%	8.2%	86.8%	13.2%

September 2021

Daughters of Charity, Dublin absence by Staff Category	Certified absence	Self-certified absence	Non Covid-19 absence	Covid-19 absence	Total absence rate	% Non Covid-19 absence	% Covid-19 absence
Daughters of Charity, Dublin (CHO 9)	3.5%	0.3%	3.8%	1.1%	4.8%	78.3%	21.7%
Medical & Dental	54.9%	0.0%	54.9%	0.0%	54.9%	100.0%	0.0%
Nursing & Midwifery	3.1%	0.1%	3.3%	1.0%	4.3%	76.3%	23.7%
Health & Social Care Professionals	4.3%	0.2%	4.5%	2.5%	7.1%	64.3%	35.7%
Management & Administrative	3.4%	0.1%	3.5%	0.0%	3.5%	100.0%	0.0%
General Support	1.6%	0.4%	2.0%	0.6%	2.6%	76.5%	23.5%
Patient & Client Care	3.1%	0.4%	3.5%	0.4%	3.9%	88.9%	11.1%

September 2021

Daughters of Charity, Limerick absence by Staff Category	Certified absence	Self-certified absence	Non Covid-19 absence	Covid-19 absence	Total absence rate	% Non Covid-19 absence	% Covid-19 absence
Daughters of Charity, Limerick (CHO 3)	3.6%	0.1%	3.7%	1.4%	5.1%	73.1%	26.9%
Medical & Dental							
Nursing & Midwifery	3.1%	0.1%	3.2%	1.1%	4.3%	73.6%	26.4%
Health & Social Care Professionals	3.5%	0.4%	4.0%	0.7%	4.7%	84.7%	15.3%
Management & Administrative	1.5%	0.0%	1.5%	3.0%	4.5%	33.9%	66.1%
General Support	6.3%	0.1%	6.4%	2.5%	8.9%	72.1%	27.9%
Patient & Client Care	3.8%	0.1%	3.9%	1.4%	5.3%	73.2%	26.8%

September 2021

Daughters of Charity, Roscrea absence by Staff Category	Certified absence	Self-certified absence	Non Covid-19 absence	Covid-19 absence	Total absence rate	% Non Covid-19 absence	% Covid-19 absence
Daughters of Charity, Roscrea (CHO 3)	3.4%	0.4%	3.8%	0.4%	4.2%	90.5%	9.5%
Medical & Dental							
Nursing & Midwifery	1.8%	0.2%	2.0%	0.3%	2.3%	87.8%	12.2%
Health & Social Care Professionals	0.8%	0.4%	1.2%	0.4%	1.6%	72.1%	27.9%
Management & Administrative							
General Support	11.0%	0.0%	11.0%	0.0%	11.0%	100.0%	0.0%
Patient & Client Care	3.7%	0.4%	4.1%	0.4%	4.6%	90.7%	9.3%

September 2021

Incorporated Orthopaedic Hospital absence by Staff Category	Certified absence	Self-certified absence	Non Covid-19 absence	Covid-19 absence	Total absence rate	% Non Covid-19 absence	% Covid-19 absence
Incorporated Orthopaedic Hospital (CHO 9)	6.8%	0.5%	7.3%	0.6%	7.9%	92.7%	7.3%
Medical & Dental	3.7%	1.5%	5.2%	0.0%	5.2%	100.0%	0.0%
Nursing & Midwifery	5.9%	0.9%	6.8%	0.0%	6.8%	99.8%	0.2%
Health & Social Care Professionals	1.2%	0.4%	1.6%	0.3%	1.9%	82.7%	17.3%
Management & Administrative	0.0%	0.3%	0.3%	0.0%	0.3%	100.0%	0.0%
General Support	6.7%	0.4%	7.1%	1.7%	8.8%	81.1%	18.9%
Patient & Client Care	13.2%	0.1%	13.3%	1.1%	14.4%	92.4%	7.6%

September 2021

Kare, Newbridge, Co Kildare absence by Staff Category	Certified absence	Self-certified absence	Non Covid-19 absence	Covid-19 absence	Total absence rate	% Non Covid-19 absence	% Covid-19 absence
Kare, Newbridge, Co Kildare (CHO 7)	3.8%	0.3%	4.1%	0.8%	4.9%	83.4%	16.6%
Medical & Dental							
Nursing & Midwifery	6.2%	0.4%	6.6%	2.9%	9.5%	69.1%	30.9%
Health & Social Care Professionals	4.0%	0.2%	4.2%	0.2%	4.4%	95.5%	4.5%
Management & Administrative	2.0%	0.2%	2.1%	0.0%	2.1%	100.0%	0.0%
General Support	0.0%	0.0%	0.0%	0.0%	0.0%		
Patient & Client Care	3.7%	0.3%	4.0%	0.9%	4.8%	81.9%	18.1%

September 2021

Leopardstown Park Hospital absence by Staff Category	Certified absence	Self-certified absence	Non Covid-19 absence	Covid-19 absence	Total absence rate	% Non Covid-19 absence	% Covid-19 absence
Leopardstown Park Hospital (CHO 6)	4.5%	0.4%	5.0%	1.0%	6.0%	83.6%	16.4%
Medical & Dental							
Nursing & Midwifery	4.9%	0.2%	5.2%	0.0%	5.2%	100.0%	0.0%
Health & Social Care Professionals	0.4%	0.0%	0.4%	0.0%	0.4%	100.0%	0.0%
Management & Administrative	3.6%	0.0%	3.6%	0.8%	4.4%	82.1%	17.9%
General Support	6.6%	0.4%	7.0%	0.1%	7.1%	98.1%	1.9%
Patient & Client Care	4.1%	0.8%	4.9%	2.2%	7.1%	68.4%	31.6%

September 2021

Muiriosa Foundation, Laois/Offaly absence by Staff Category	Certified absence	Self-certified absence	Non Covid-19 absence	Covid-19 absence	Total absence rate	% Non Covid-19 absence	% Covid-19 absence
Muiriosa Foundation, Laois/Offaly (CHO 8)	3.5%	0.2%	3.7%	1.8%	5.5%	67.6%	32.4%
Medical & Dental							
Nursing & Midwifery	4.7%	0.2%	4.8%	2.7%	7.6%	64.2%	35.8%
Health & Social Care Professionals	3.3%	0.2%	3.6%	1.9%	5.4%	65.6%	34.4%
Management & Administrative	2.5%	1.4%	4.0%	0.0%	4.0%	100.0%	0.0%
General Support	0.0%	0.0%	0.0%	0.0%	0.0%		
Patient & Client Care	3.4%	0.1%	3.6%	1.5%	5.1%	70.0%	30.0%

September 2021

Muiriosa Foundation, Longford/Westmeath absence by Staff Category	Certified absence	Self-certified absence	Non Covid-19 absence	Covid-19 absence	Total absence rate	% Non Covid-19 absence	% Covid-19 absence
Muiriosa Foundation, Longford/Westmeath (CHO 8)	4.9%	0.1%	5.1%	0.2%	5.3%	96.3%	3.7%
Medical & Dental							
Nursing & Midwifery	0.0%	0.0%	0.0%	0.0%	0.0%		#DIV/0
Health & Social Care Professionals	6.1%	0.1%	6.3%	0.2%	6.4%	97.4%	2.6%
Management & Administrative	0.0%	0.0%	0.0%	0.0%	0.0%		#DIV/0
General Support	0.0%	0.0%	0.0%	0.0%	0.0%		
Patient & Client Care	4.7%	0.1%	4.9%	0.2%	5.1%	95.3%	4.7%

September 2021

Muiriosa Foundation, South Kildare absence by Staff Category	Certified absence	Self-certified absence	Non Covid-19 absence	Covid-19 absence	Total absence rate	% Non Covid-19 absence	% Covid-19 absence
Muiriosa Foundation, South Kildare (CHO 8)	4.4%	0.3%	4.7%	0.3%	5.0%	93.8%	6.2%
Medical & Dental							
Nursing & Midwifery	5.6%	0.2%	5.8%	0.0%	5.8%	100.0%	0.0%
Health & Social Care Professionals	4.8%	0.2%	4.9%	0.3%	5.2%	94.2%	5.8%
Management & Administrative	5.2%	0.5%	5.7%	0.0%	5.7%	100.0%	0.0%
General Support	0.0%	1.0%	1.0%	0.7%	1.6%	59.0%	41.0%
Patient & Client Care	4.1%	0.2%	4.4%	0.4%	4.8%	90.7%	9.3%

September 2021

Peamount Hospital (Newcastle) absence by Staff Category	Certified absence	Self-certified absence	Non Covid-19 absence	Covid-19 absence	Total absence rate	% Non Covid-19 absence	% Covid-19 absence
Peamount Hospital (Newcastle) (CHO 7)	4.0%	1.1%	5.1%	1.6%	6.6%	76.5%	23.5%
Medical & Dental	0.0%	0.0%	0.0%	0.0%	0.0%		
Nursing & Midwifery	7.0%	1.0%	8.1%	1.2%	9.3%	86.6%	13.4%
Health & Social Care Professionals	2.2%	1.0%	3.2%	1.0%	4.2%	76.7%	23.3%
Management & Administrative	0.0%	0.6%	0.6%	0.9%	1.6%	40.0%	60.0%
General Support	3.5%	0.5%	4.1%	0.6%	4.6%	87.7%	12.3%
Patient & Client Care	3.6%	1.5%	5.1%	2.2%	7.3%	69.2%	30.8%

September 2021

Royal Hospital, Donnybrook, Dublin absence by Staff Category	Certified absence	Self-certified absence	Non Covid-19 absence	Covid-19 absence	Total absence rate	% Non Covid-19 absence	% Covid-19 absence
Royal Hospital, Donnybrook, Dublin (CHO 6)	2.8%	1.0%	3.8%	2.4%	6.2%	60.7%	39.3%
Medical & Dental	0.0%	0.0%	0.0%	0.0%	0.0%		
Nursing & Midwifery	2.5%	0.5%	3.0%	4.2%	7.2%	42.1%	57.9%
Health & Social Care Professionals	3.1%	0.0%	3.1%	0.6%	3.7%	83.6%	16.4%
Management & Administrative	0.0%	0.0%	0.0%	0.3%	0.3%	0.0%	100.0%
General Support	7.4%	1.1%	8.5%	1.6%	10.1%	83.9%	16.1%
Patient & Client Care	1.6%	2.1%	3.7%	2.4%	6.1%	61.4%	38.6%

September 2021

Stewart's Hospital, (Palmerstown) absence by Staff Category	Certified absence	Self-certified absence	Non Covid-19 absence	Covid-19 absence	Total absence rate	% Non Covid-19 absence	% Covid-19 absence
Stewart's Hospital, (Palmerstown) (CHO 7)	4.6%	0.4%	5.0%	0.2%	5.3%	95.5%	4.5%
Medical & Dental	0.0%	0.0%	0.0%	0.0%	0.0%		
Nursing & Midwifery	5.1%	0.5%	5.6%	0.2%	5.8%	96.2%	3.8%
Health & Social Care Professionals	1.3%	0.3%	1.5%	0.0%	1.5%	100.0%	0.0%
Management & Administrative	2.4%	0.4%	2.8%	0.2%	2.9%	94.7%	5.3%
General Support	3.4%	0.6%	4.0%	0.0%	4.0%	100.0%	0.0%
Patient & Client Care	5.2%	0.4%	5.6%	0.3%	5.8%	95.0%	5.0%

September 2021

St. John of God, Drumcar absence by Staff Category	Certified absence	Self-certified absence	Non Covid-19 absence	Covid-19 absence	Total absence rate	% Non Covid-19 absence	% Covid-19 absence
St. John of God, Drumcar (CHO 8)	5.6%	0.6%	6.2%	1.4%	7.6%	81.4%	18.6%
Medical & Dental	0.0%	0.0%	0.0%	0.0%	0.0%		
Nursing & Midwifery	5.2%	0.6%	5.8%	1.4%	7.2%	81.2%	18.8%
Health & Social Care Professionals	5.4%	0.6%	6.0%	3.2%	9.2%	65.4%	34.6%
Management & Administrative	2.9%	0.0%	2.9%	0.0%	2.9%	100.0%	0.0%
General Support	8.8%	0.5%	9.3%	0.5%	9.7%	95.2%	4.8%
Patient & Client Care	5.8%	0.6%	6.4%	1.2%	7.6%	84.7%	15.3%

September 2021

St. John of God (IDS) absence by Staff Category	Certified absence	Self-certified absence	Non Covid-19 absence	Covid-19 absence	Total absence rate	% Non Covid-19 absence	% Covid-19 absence
St. John of God (IDS) (CHO 6)	3.2%	0.5%	3.7%	1.6%	5.2%	69.9%	30.1%
Medical & Dental	0.0%	0.0%	0.0%	0.0%	0.0%		
Nursing & Midwifery	4.2%	0.1%	4.4%	0.8%	5.2%	84.3%	15.7%
Health & Social Care Professionals	2.9%	0.8%	3.7%	2.6%	6.3%	58.2%	41.8%
Management & Administrative	1.5%	0.0%	1.5%	0.0%	1.5%	100.0%	0.0%
General Support	7.3%	0.0%	7.3%	0.6%	7.8%	92.9%	7.1%
Patient & Client Care	3.4%	0.5%	3.9%	1.5%	5.4%	72.3%	27.7%

September 2021

St. John of God, Kerry absence by Staff Category	Certified absence	Self-certified absence	Non Covid-19 absence	Covid-19 absence	Total absence rate	% Non Covid-19 absence	% Covid-19 absence
St. John of God, Kerry (CHO 4)	5.3%	0.3%	5.6%	1.9%	7.5%	75.2%	24.8%
Medical & Dental							
Nursing & Midwifery	5.8%	0.3%	6.1%	2.9%	9.0%	67.5%	32.5%
Health & Social Care Professionals	7.8%	0.5%	8.3%	0.0%	8.3%	100.0%	0.0%
Management & Administrative	6.3%	0.6%	6.9%	0.0%	6.9%	100.0%	0.0%
General Support	0.0%	-0.2%	-0.2%	2.9%	2.8%	-6.1%	106.1%
Patient & Client Care	5.2%	0.4%	5.6%	2.1%	7.7%	73.3%	26.7%

September 2021

St. John of God Liffey Services absence by Staff Category	Certified absence	Self-certified absence	Non Covid-19 absence	Covid-19 absence	Total absence rate	% Non Covid-19 absence	% Covid-19 absence
St. John of God Liffey Services (CHO 7)	4.6%	0.5%	5.2%	1.0%	6.2%	83.7%	16.3%
Medical & Dental	0.0%	0.0%	0.0%	0.0%	0.0%		
Nursing & Midwifery	2.4%	0.8%	3.1%	1.5%	4.7%	67.3%	32.7%
Health & Social Care Professionals	4.2%	0.6%	4.8%	0.6%	5.5%	88.5%	11.5%
Management & Administrative	6.6%	0.0%	6.6%	0.0%	6.6%	100.0%	0.0%
General Support	4.2%	0.0%	4.2%	3.1%	7.3%	57.7%	42.3%
Patient & Client Care	5.7%	0.5%	6.2%	1.0%	7.2%	86.0%	14.0%

September 2021

St. Michael's House, Dublin absence by Staff Category	Certified absence	Self-certified absence	Non Covid-19 absence	Covid-19 absence	Total absence rate	% Non Covid-19 absence	% Covid-19 absence
St. Michael's House, Dublin (CHO 9)	4.8%	0.2%	5.0%	0.4%	5.4%	93.5%	6.5%
Medical & Dental	0.0%	0.0%	0.0%	0.0%	0.0%		
Nursing & Midwifery	5.5%	0.3%	5.8%	0.5%	6.2%	92.3%	7.7%
Health & Social Care Professionals	4.0%	0.2%	4.3%	0.5%	4.8%	89.9%	10.1%
Management & Administrative	2.6%	0.1%	2.8%	0.1%	2.9%	96.2%	3.8%
General Support	10.0%	0.3%	10.4%	0.4%	10.7%	96.5%	3.5%
Patient & Client Care	6.1%	0.1%	6.2%	0.1%	6.3%	98.9%	1.1%

September 2021

St. Patrick's, Kilkenny absence by Staff Category	Certified absence	Self-certified absence	Non Covid-19 absence	Covid-19 absence	Total absence rate	% Non Covid-19 absence	% Covid-19 absence
St. Patrick's, Kilkenny (CHO 5)	6.8%	0.6%	7.3%	0.4%	7.7%	95.0%	5.0%
Medical & Dental							
Nursing & Midwifery	9.4%	0.1%	9.5%	0.0%	9.5%	100.0%	0.0%
Health & Social Care Professionals	4.3%	0.4%	4.7%	1.1%	5.8%	81.0%	19.0%
Management & Administrative	5.0%	2.2%	7.2%	0.0%	7.2%	100.0%	0.0%
General Support	0.0%	1.0%	1.0%	0.0%	1.0%	100.0%	0.0%
Patient & Client Care	7.0%	0.5%	7.5%	0.4%	7.9%	95.0%	5.0%

September 2021

Sunbeam House Services absence by Staff Category	Certified absence	Self-certified absence	Non Covid-19 absence	Covid-19 absence	Total absence rate	% Non Covid-19 absence	% Covid-19 absence
Sunbeam House Services (CHO 6)	3.3%	0.4%	3.7%	0.5%	4.2%	87.9%	12.1%
Medical & Dental							
Nursing & Midwifery	6.5%	0.4%	6.9%	0.8%	7.7%	89.6%	10.4%
Health & Social Care Professionals	3.4%	0.3%	3.7%	0.4%	4.1%	90.9%	9.1%
Management & Administrative	1.6%	0.2%	1.8%	0.0%	1.8%	99.8%	0.2%
General Support	5.8%	0.4%	6.2%	0.0%	6.2%	100.0%	0.0%
Patient & Client Care	2.7%	0.5%	3.3%	0.8%	4.1%	80.8%	19.2%

Social Care

Year/ month	Medical & Dental	Nursing & Midwifery	Health & Social Care Professionals	Management & Administrative	General Support	Patient & Client Care	Certified absence	Self-certified absence	Non Covid-19 absence	Covid-19 absence	Total absence rate
2021	4.0%	6.6%	5.2%	3.3%	5.8%	6.7%	4.3%	0.4%	4.7%	1.4%	6.1%
Sep 2021	7.7%	6.9%	5.1%	4.2%	5.5%	6.6%	4.6%	0.5%	5.1%	1.0%	6.1%
Aug 2021	10.8%	6.1%	4.8%	3.9%	5.0%	6.6%	4.6%	0.4%	5.0%	0.9%	5.8%
Jul 2021	5.2%	5.9%	4.7%	3.5%	6.2%	6.0%	4.5%	0.4%	4.9%	0.6%	5.5%
Jun 2021	3.2%	5.4%	4.2%	3.1%	5.2%	5.8%	4.4%	0.5%	4.9%	0.6%	5.5%
May 2021	2.5%	5.2%	4.1%	2.4%	4.5%	5.7%	3.9%	0.4%	4.3%	0.7%	5.0%
Apr 2021	2.0%	5.8%	4.5%	2.7%	5.4%	5.5%	3.9%	0.4%	4.3%	0.8%	5.1%
Mar 2021	2.2%	5.7%	4.9%	3.1%	5.3%	6.1%	4.0%	0.5%	4.5%	1.0%	5.5%
Feb 2021	1.3%	7.5%	6.1%	2.9%	6.1%	7.7%	4.4%	0.5%	4.9%	2.0%	6.9%
Jan 2021	0.9%	10.5%	8.1%	3.5%	9.5%	10.5%	4.6%	0.3%	4.9%	4.5%	9.4%
2020	3.1%	7.3%	5.0%	2.9%	6.6%	6.8%	4.5%	0.4%	4.9%	1.4%	6.2%
Dec 2020	2.6%	6.5%	4.1%	3.1%	4.9%	6.2%	4.2%	0.4%	4.6%	1.0%	5.5%
Nov 2020	3.6%	5.7%	3.8%	2.9%	5.5%	5.7%	4.0%	0.3%	4.3%	0.8%	5.1%
Oct 2020	3.8%	7.0%	5.0%	2.6%	6.8%	6.7%	4.2%	0.4%	4.6%	1.5%	6.1%
Sep 2020	3.0%	7.0%	4.7%	2.3%	6.1%	6.2%	4.3%	0.4%	4.6%	1.1%	5.8%
Aug 2020	3.7%	6.3%	4.4%	2.5%	4.8%	5.9%	4.4%	0.3%	4.7%	0.6%	5.3%
Jul 2020	1.1%	6.1%	4.0%	2.1%	5.9%	5.9%	4.4%	0.4%	4.8%	0.5%	5.3%
Jun 2020	0.9%	6.0%	3.7%	1.9%	6.1%	5.5%	4.0%	0.3%	4.3%	0.7%	5.0%
May 2020	2.1%	8.7%	5.6%	2.6%	7.6%	7.9%	4.5%	0.2%	4.7%	2.5%	7.2%
Apr 2020	2.6%	13.6%	8.3%	3.4%	12.8%	12.0%	5.2%	0.4%	5.7%	5.3%	10.9%
Mar 2020	3.1%	9.0%	7.1%	4.7%	7.9%	8.5%	5.1%	0.4%	5.5%	2.6%	8.0%
Feb 2020	4.3%	5.6%	4.4%	3.5%	5.0%	5.3%	4.6%	0.5%	5.0%		5.0%
Jan 2020	4.6%	6.0%	5.0%	3.5%	6.2%	5.9%	5.0%	0.6%	5.6%		5.6%
2019	1.3%	5.6%	4.2%	3.3%	4.8%	5.2%	4.4%	0.5%	4.9%		4.9%
Dec 2019	3.7%	6.0%	4.7%	3.5%	5.4%	4.8%	4.4%	0.5%	4.9%		4.9%
Nov 2019	1.5%	6.1%	3.8%	3.0%	5.0%	5.4%	4.5%	0.5%	5.0%		5.0%
Oct 2019	0.5%	6.0%	4.2%	2.9%	5.3%	5.7%	4.7%	0.5%	5.2%		5.2%
Sep 2019	1.3%	5.6%	4.5%	3.5%	5.3%	5.2%	4.5%	0.5%	4.9%		4.9%
Aug 2019	1.9%	5.7%	4.6%	3.4%	4.5%	5.4%	4.7%	0.4%	5.0%		5.0%
Jul 2019	1.5%	5.3%	4.1%	3.5%	4.8%	5.1%	4.5%	0.3%	4.8%		4.8%
Jun 2019	2.5%	5.4%	3.9%	2.8%	4.1%	5.3%	4.4%	0.4%	4.8%		4.8%
May 2019	3.9%	5.8%	4.3%	2.7%	4.3%	5.2%	4.4%	0.5%	4.9%		4.9%

Apr 2019	0.1%	5.5%	3.9%	3.1%	4.9%	5.2%	4.3%	0.4%	4.7%		4.7%
Mar 2019	0.3%	5.0%	3.7%	3.5%	4.7%	4.9%	4.1%	0.4%	4.5%		4.5%
Feb 2019	1.0%	5.6%	3.9%	3.9%	4.7%	4.9%	4.3%	0.5%	4.7%		4.7%
Jan 2019	0.3%	5.6%	4.5%	4.2%	5.3%	5.5%	4.6%	0.5%	5.2%		5.2%
2018	1.9%	4.6%	4.2%	3.4%	4.2%	4.8%	4.1%	0.4%	4.5%		4.5%

Social Care

Year/ month	CHO 1	CHO 2	CHO 3	CHO 4	CHO 5	CHO 6	CHO 7	CHO 8	CHO 9	other Comm.	Community Services absence rate	Certified absence	Self-certified absence	Non Covid-19 absence	Covid-19 absence	Total absence rate
2021	8.1%	5.6%	5.2%	6.3%	6.6%	5.7%	6.2%	6.4%	5.3%	0.2%	6.1%	4.3%	0.4%	4.7%	1.4%	6.1%
Sep 2021	8.3%	4.6%	5.4%	6.9%	6.0%	6.3%	6.1%	6.8%	5.0%	1.9%	6.1%	4.6%	0.5%	5.1%	1.0%	6.09%
Aug 2021	8.9%	4.6%	4.8%	6.0%	6.4%	5.7%	6.1%	6.1%	4.9%		5.8%	4.6%	0.4%	5.0%	0.9%	5.85%
Jul 2021	8.3%	4.4%	4.1%	5.4%	5.1%	6.1%	5.7%	6.3%	4.9%		5.5%	4.5%	0.4%	4.9%	0.6%	5.48%
Jun 2021	7.1%	4.8%	4.5%	5.7%	5.3%	5.0%	5.1%	5.3%	6.8%		5.5%	4.4%	0.5%	4.9%	0.6%	5.48%
May 2021	6.6%	4.6%	4.7%	5.5%	4.8%	4.3%	5.1%	5.0%	4.3%		5.0%	3.9%	0.4%	4.3%	0.7%	4.96%
Apr 2021	6.2%	4.5%	3.9%	5.1%	5.3%	5.0%	5.8%	5.6%	4.6%		5.1%	3.9%	0.4%	4.3%	0.8%	5.13%
Mar 2021	7.1%	6.2%	4.5%	5.4%	6.4%	4.5%	5.5%	5.9%	4.7%		5.5%	4.0%	0.5%	4.5%	1.0%	5.48%
Feb 2021	8.5%	7.6%	5.9%	6.7%	9.0%	6.2%	6.6%	7.7%	5.6%		6.9%	4.4%	0.5%	4.9%	2.0%	6.89%
Jan 2021	12.3%	9.0%	8.8%	10.1%	11.3%	8.9%	9.6%	8.7%	7.8%		9.4%	4.6%	0.3%	4.9%	4.5%	9.40%
2020	7.1%	5.6%	5.2%	6.2%	6.6%	4.7%	7.3%	6.7%	5.8%	0.0%	6.2%	4.5%	0.4%	4.9%	1.4%	6.2%
Dec 2020	7.6%	5.7%	4.7%	5.4%	6.9%	3.8%	6.1%	5.6%	4.5%	0.3%	5.5%	4.2%	0.4%	4.6%	1.0%	5.51%
Nov 2020	7.2%	5.2%	4.9%	5.0%	5.5%	3.5%	5.5%	5.4%	4.1%		5.1%	4.0%	0.3%	4.3%	0.8%	5.09%
Oct 2020	8.6%	5.8%	5.3%	6.5%	5.7%	3.7%	7.2%	6.5%	5.1%		6.1%	4.2%	0.4%	4.6%	1.5%	6.08%
Sep 2020	7.6%	5.3%	5.0%	5.3%	5.7%	4.1%	6.9%	6.1%	5.3%		5.8%	4.3%	0.4%	4.6%	1.1%	5.76%
Aug 2020	7.0%	4.1%	5.6%	5.3%	5.5%	4.0%	5.7%	5.7%	4.8%		5.3%	4.4%	0.3%	4.7%	0.6%	5.32%
Jul 2020	6.1%	4.1%	3.9%	4.6%	6.3%	4.4%	6.1%	6.2%	5.2%		5.3%	4.4%	0.4%	4.8%	0.5%	5.26%
Jun 2020	5.6%	4.3%	4.8%	4.9%	5.4%	3.7%	5.5%	5.4%	4.7%		5.0%	4.0%	0.3%	4.3%	0.7%	5.00%
May 2020	6.2%	6.2%	5.9%	7.7%	6.9%	5.4%	9.2%	8.4%	6.5%		7.2%	4.5%	0.2%	4.7%	2.5%	7.19%
Apr 2020	8.8%	9.0%	6.0%	11.9%	10.2%	10.9%	15.8%	12.1%	9.9%		10.9%	5.2%	0.4%	5.7%	5.3%	10.91%
Mar 2020	9.2%	6.8%	6.8%	8.1%	7.7%	6.0%	9.6%	7.2%	8.5%		8.0%	5.1%	0.4%	5.5%	2.6%	8.01%
Feb 2020	5.5%	5.3%	4.4%	4.9%	6.0%	3.7%	4.9%	5.3%	5.2%		5.0%	4.6%	0.5%	5.0%		5.04%
Jan 2020	6.2%	6.3%	5.1%	5.3%	6.9%	4.0%	5.5%	6.4%	5.2%		5.6%	5.0%	0.6%	5.6%		5.59%
2019	7.2%	4.8%	4.4%	4.9%	5.4%	4.0%	4.6%	5.0%	4.6%		4.9%	4.4%	0.5%	4.9%		4.9%
Dec 2019	7.1%	5.0%	4.0%	5.3%	7.0%	3.0%	4.9%	5.0%	5.0%		4.9%	4.4%	0.5%	4.9%		4.94%
Nov 2019	6.3%	5.5%	4.8%	5.4%	6.4%	3.4%	4.5%	4.9%	4.6%		5.0%	4.5%	0.5%	5.0%		5.01%
Oct 2019	6.3%	5.8%	4.8%	5.6%	5.5%	5.0%	5.1%	5.3%	4.6%		5.2%	4.7%	0.5%	5.2%		5.24%
Sep 2019	6.4%	4.9%	4.2%	5.2%	5.5%	4.2%	4.4%	4.9%	4.8%		4.9%	4.5%	0.5%	4.9%		4.93%
Aug 2019	8.1%	5.0%	4.4%	4.7%	5.0%	5.0%	4.3%	5.5%	4.7%		5.0%	4.7%	0.4%	5.0%		5.04%
Jul 2019	7.6%	3.9%	4.3%	4.7%	4.9%	4.2%	4.2%	5.3%	4.5%		4.8%	4.5%	0.3%	4.8%		4.78%
Jun 2019	7.1%	4.1%	4.5%	4.4%	4.7%	4.3%	5.1%	5.0%	4.4%		4.8%	4.4%	0.4%	4.8%		4.82%
May 2019	6.9%	4.4%	4.2%	4.5%	5.2%	4.3%	5.1%	5.2%	4.4%		4.9%	4.4%	0.5%	4.9%		4.89%
Apr 2019	6.7%	4.7%	4.6%	4.7%	5.5%	4.4%	4.4%	4.3%	4.0%		4.7%	4.3%	0.4%	4.7%		4.69%
Mar 2019	7.4%	4.4%	4.1%	4.2%	4.6%	3.4%	4.3%	4.9%	4.0%		4.5%	4.1%	0.4%	4.5%		4.54%
Feb 2019	7.9%	4.5%	4.4%	4.5%	4.9%	3.5%	4.2%	4.5%	4.8%		4.7%	4.3%	0.5%	4.7%		4.73%
Jan 2019	8.3%	4.8%	4.7%	5.4%	5.2%	3.8%	4.7%	5.2%	4.9%		5.2%	4.6%	0.5%	5.2%		5.18%

