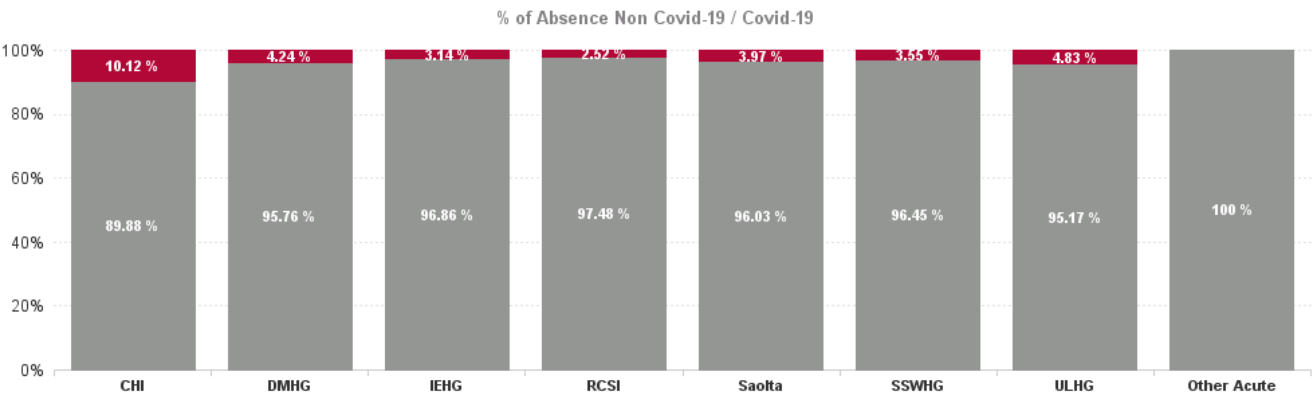
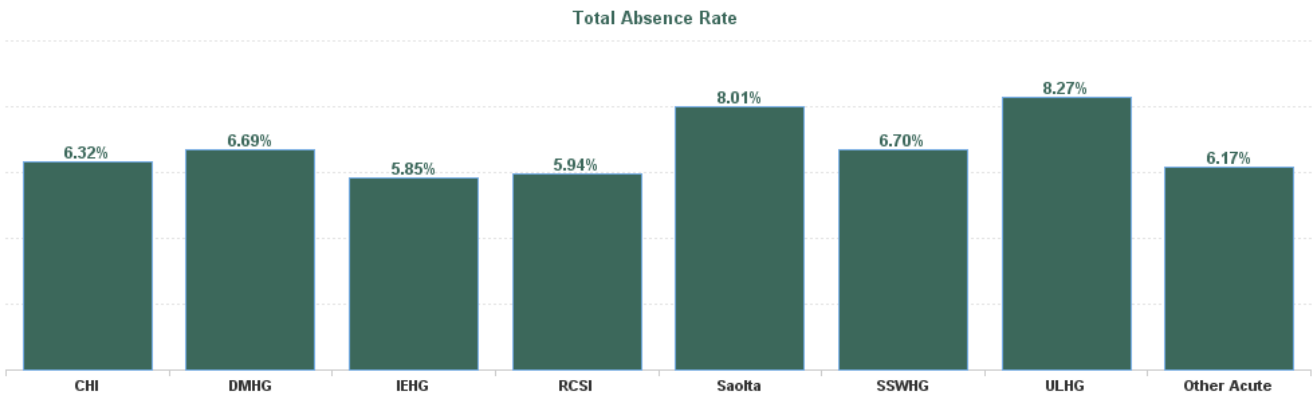


December 2024

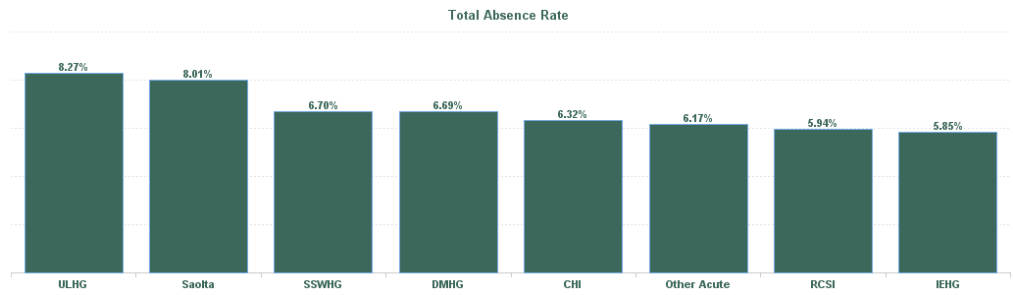
Health Service Absence Rate - by Staff Category: Dec 2024	Certified absence	Self- certified absence	Non Covid-19 absence	Covid-19 Absence	Total absence rate	% Non Covid-19 absence	% Covid-19 absence
Acute	5.51%	0.90%	6.41%	0.26%	6.67%	96.05%	3.95%
Medical & Dental	1.33%	0.34%	1.66%	0.04%	1.71%	97.47%	2.53%
Nursing & Midwifery	5.84%	1.25%	7.09%	0.29%	7.38%	96.08%	3.92%
Health & Social Care Professionals	4.75%	0.70%	5.46%	0.23%	5.69%	95.89%	4.11%
Management & Administrative	6.00%	0.65%	6.65%	0.22%	6.87%	96.79%	3.21%
General Support	8.32%	0.79%	9.11%	0.40%	9.51%	95.76%	4.24%
Patient & Client Care	8.34%	1.13%	9.47%	0.48%	9.95%	95.18%	4.82%

Health Service Absence Rate - by Hospital Group: Dec 2024	Certified absence	Self- certified absence	Non Covid-19 absence	Covid-19 Absence	Total absence rate	% Non Covid-19 absence	% Covid-19 absence
Acute	5.51%	0.90%	6.41%	0.26%	6.67%	96.05%	3.95%
Children's Health Ireland	4.88%	0.80%	5.68%	0.64%	6.32%	89.88%	10.12%
Dublin Midlands Hospital Group	5.33%	1.08%	6.41%	0.28%	6.69%	95.76%	4.24%
Ireland East Hospital Group	4.83%	0.84%	5.66%	0.18%	5.85%	96.86%	3.14%
RCSI Hospitals Group	4.97%	0.82%	5.79%	0.15%	5.94%	97.48%	2.52%
Saolta University Hospital Care Group	6.76%	0.93%	7.69%	0.32%	8.01%	96.03%	3.97%
South/South West Hospital Group	5.55%	0.91%	6.47%	0.24%	6.70%	96.45%	3.55%
University of Limerick Hospital Group	7.03%	0.83%	7.87%	0.40%	8.27%	95.17%	4.83%
Other Acute Services	5.98%	0.18%	6.17%	0.00%	6.17%	100.00%	0.00%



December 2024

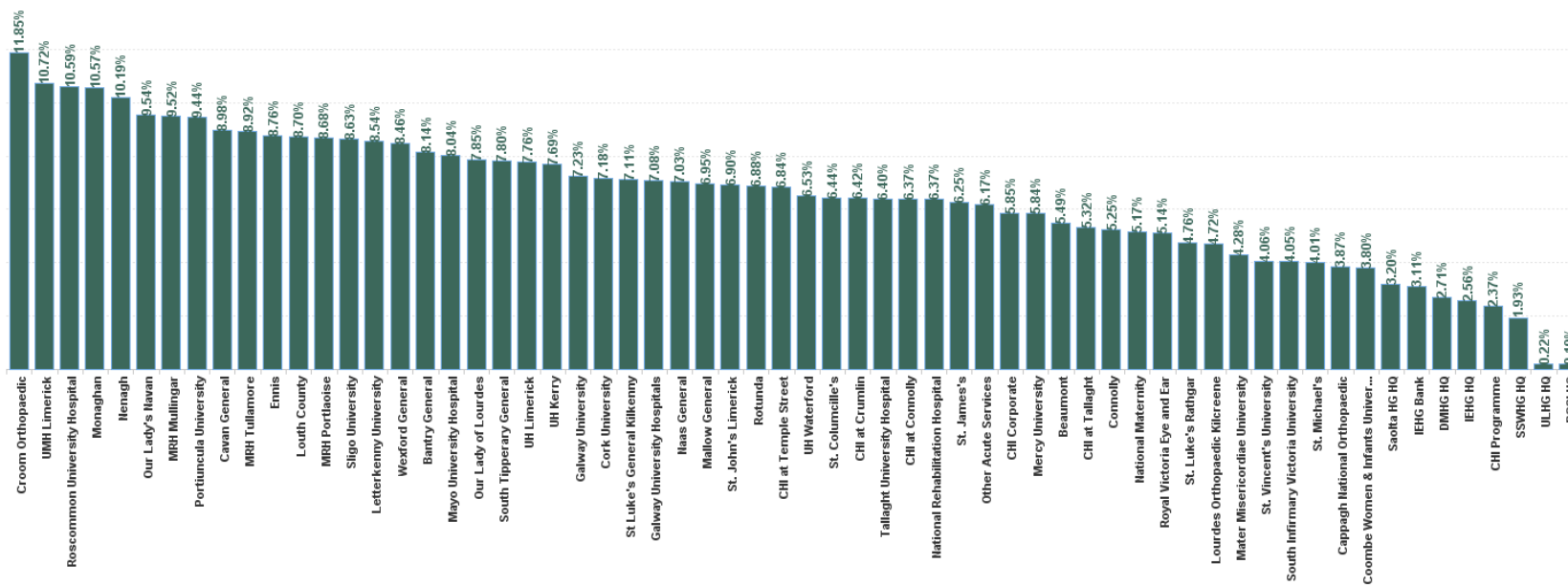
Health Service Absence Rate - by HG, CHO/Care Group & Staff Category : Dec 2024	Certified absence	Self- certified absence	Non Covid-19 absence	Covid-19 Absence	Total absence rate	Medical & Dental	Nursing & Midwifery	Health & Social Care Professionals	Management & Administrative	General Support	Patient & Client Care
Acute	5.51%	0.90%	6.41%	0.26%	6.67%	1.71%	7.38%	5.69%	6.87%	9.51%	9.95%
Children's Health Ireland	4.88%	0.80%	5.68%	0.64%	6.32%	1.82%	7.19%	7.38%	6.52%	9.32%	7.84%
Dublin Midlands Hospital Group	5.33%	1.08%	6.41%	0.28%	6.69%	1.53%	7.49%	5.48%	7.18%	8.17%	10.28%
Ireland East Hospital Group	4.83%	0.84%	5.66%	0.18%	5.85%	1.35%	6.23%	5.22%	6.39%	8.74%	8.14%
RCSI Hospitals Group	4.97%	0.82%	5.79%	0.15%	5.94%	1.48%	6.51%	4.11%	6.21%	9.40%	9.74%
Saoita University Hospital Care Group	6.76%	0.93%	7.69%	0.32%	8.01%	2.28%	9.43%	7.39%	8.48%	10.14%	10.50%
South/South West Hospital Group	5.55%	0.91%	6.47%	0.24%	6.70%	1.92%	7.62%	6.52%	5.82%	8.19%	11.03%
University of Limerick Hospital Group	7.03%	0.83%	7.87%	0.40%	8.27%	1.89%	8.01%	6.29%	8.16%	14.08%	11.19%
Other Acute Services	5.98%	0.18%	6.17%	0.00%	6.17%		14.14%	1.11%	5.66%		



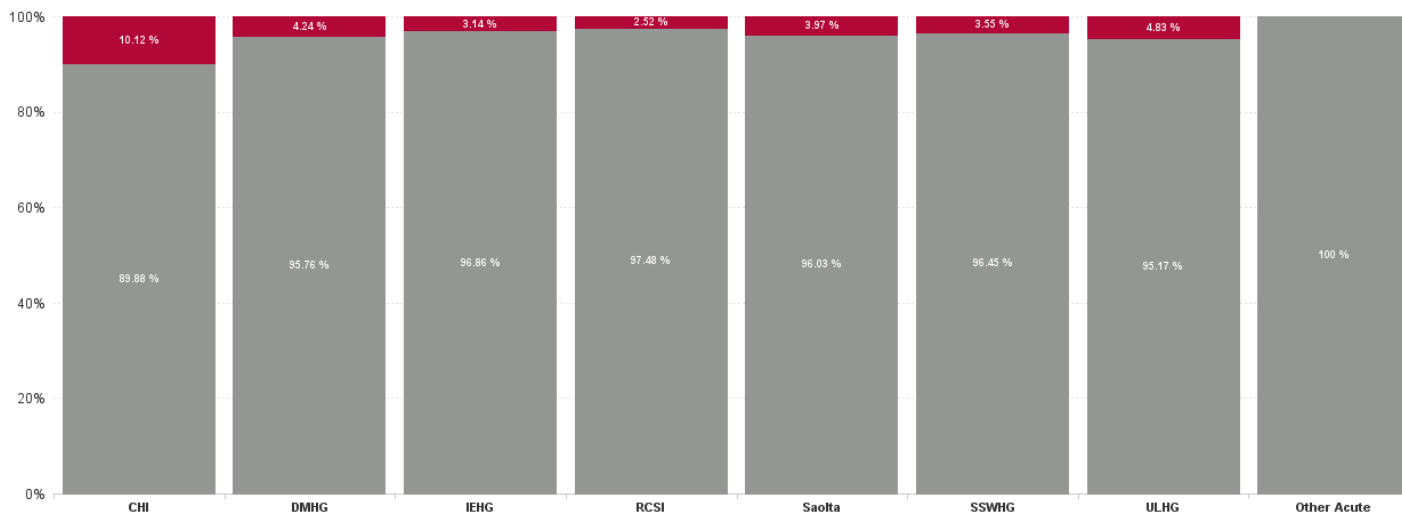
December 2024

Health Service Absence Rate - by HQ, CHO/Care Group & Staff Category: Dec 2024	Certified absence	Self-certified absence	Non Covid-19 absence	Covid-19 Absence	Total absence rate	Medical & Dental	Nursing & Midwifery	Health & Social Care Professionals	Management & Administrative	General Support	Patient & Client Care
Total	5.51%	0.96%	6.41%	0.26%	6.67%	1.71%	7.38%	5.69%	6.87%	9.51%	9.95%
CHI at Connolly	5.78%	0.40%	6.18%	0.19%	6.37%	1.61%	1.95%	8.04%	4.96%	40.24%	22.92%
CHI at Crumlin	4.85%	0.89%	5.74%	0.68%	6.42%	2.17%	6.97%	6.72%	7.70%	8.35%	7.60%
CHI at Tallaght	4.42%	0.82%	5.24%	0.08%	5.32%	1.95%	7.06%	6.54%	6.56%	15.90%	0.43%
CHI at Temple Street	5.26%	0.75%	6.01%	0.84%	6.84%	1.37%	8.32%	9.31%	6.56%	10.23%	7.32%
CHI Corporate	5.85%	0.00%	5.85%	0.00%	5.85%	0.00%	0.00%	0.00%	7.09%		
CHI Programme	1.89%	0.48%	2.37%	0.00%	2.37%	0.00%	0.00%	0.00%	2.96%	8.74%	
Children's Health Ireland	4.88%	0.80%	5.68%	0.64%	6.32%	1.82%	7.19%	7.38%	6.52%	9.32%	7.84%
Coombe Women & Infants University Hospital	2.38%	1.38%	3.76%	0.04%	3.80%	1.58%	4.88%	2.41%	3.06%	4.42%	3.88%
DMHG HQ	2.63%	0.08%	2.71%	0.00%	2.71%		0.00%	0.00%	3.03%		
MRH Mullingar	8.59%	0.84%	9.43%	0.09%	9.52%	2.46%	9.28%	2.68%	8.33%	24.84%	16.84%
MRH Portlaoise	7.25%	1.21%	8.47%	0.21%	8.68%	2.87%	8.88%	10.37%	11.87%	2.97%	10.98%
MRH Tullamore	7.02%	1.03%	8.05%	0.87%	8.92%	2.39%	9.99%	7.99%	7.21%	12.22%	12.44%
Nass General	5.94%	0.94%	6.88%	0.14%	7.03%	2.00%	7.00%	4.13%	7.51%	9.25%	10.46%
St. James's	4.87%	1.22%	6.09%	0.16%	6.25%	1.38%	7.09%	4.91%	7.26%	7.97%	9.06%
St. Luke's Rathgar	3.94%	0.48%	4.42%	0.34%	4.76%	0.00%	7.05%	2.97%	9.07%	3.07%	24.59%
Tallaght University Hospital	4.95%	1.00%	5.95%	0.44%	6.40%	1.02%	7.30%	8.13%	7.36%	8.57%	5.96%
Dublin Midlands Hospital Group	5.33%	1.08%	6.41%	0.28%	6.69%	1.53%	7.49%	5.48%	7.18%	8.17%	10.28%
IEHG Bank	1.62%	1.50%	3.11%	0.00%	3.11%		3.07%	41.18%			0.00%
IEHG HQ	2.46%	0.10%	2.56%	0.00%	2.56%		0.00%	0.00%	3.13%		
Lourdes Orthopaedic Kilsreene	3.71%	1.02%	4.72%	0.00%	4.72%	0.83%	3.18%		0.00%	13.39%	
National Maternity	4.61%	0.42%	5.03%	0.15%	5.17%	1.66%	5.82%	1.16%	4.27%	9.78%	4.30%
National Rehabilitation Hospital	5.38%	0.99%	6.37%	0.00%	6.37%	2.00%	5.95%	5.38%	7.07%	5.76%	9.16%
Royal Victoria Eye and Ear	4.23%	0.70%	4.93%	0.21%	5.14%	2.08%	8.89%	0.93%	3.77%	2.15%	13.70%
South Tipperary General	5.52%	1.05%	7.57%	0.23%	7.80%	2.56%	6.67%	10.76%	11.43%	7.71%	13.64%
St. Columcille's	6.02%	1.18%	6.20%	0.24%	6.44%	1.38%	6.75%	9.78%	7.12%	5.44%	6.13%
St Luke's General Kilkenny	6.01%	0.78%	6.79%	0.32%	7.11%	2.00%	8.26%	6.56%	7.23%	10.38%	6.82%
St. Michael's	3.03%	0.60%	3.63%	0.38%	4.01%	1.58%	8.20%	1.03%	0.47%	1.14%	0.23%
St. Vincent's University	3.22%	0.76%	3.98%	0.08%	4.06%	0.82%	4.39%	3.13%	6.32%	4.83%	6.28%
UH Waterford	5.48%	0.85%	6.33%	0.19%	6.53%	0.95%	6.40%	7.31%	6.58%	13.84%	10.90%
Wexford General	6.91%	1.16%	8.07%	0.39%	8.46%	2.09%	8.67%	7.61%	8.38%	12.46%	10.71%
Ireland East Hospital Group	4.83%	0.84%	5.66%	0.18%	5.85%	1.35%	6.23%	5.22%	6.39%	8.74%	8.14%
Beaumont	4.69%	0.64%	5.33%	0.18%	5.49%	1.35%	5.47%	3.88%	4.97%	10.73%	10.34%
Cappagh National Orthopaedic	3.18%	0.38%	3.56%	0.31%	3.87%	0.09%	5.06%	4.78%	2.11%	1.62%	6.27%
Cavan General	7.42%	1.03%	8.45%	0.53%	8.98%	5.27%	10.95%	5.38%	5.01%	6.84%	14.55%
Connolly	4.30%	0.89%	5.19%	0.05%	5.25%	0.51%	5.36%	5.36%	8.78%	5.38%	8.29%
Louth County	6.44%	0.99%	7.43%	1.27%	8.70%	0.00%	7.63%	2.17%	8.74%	8.87%	15.17%
Mater Misericordiae University	3.48%	0.76%	4.24%	0.05%	4.28%	0.74%	5.07%	2.55%	5.42%	7.59%	5.60%
Monaghan	8.97%	1.59%	10.57%	0.00%	10.57%		15.06%	3.45%	12.62%	1.53%	8.08%
Our Lady of Lourdes	6.79%	0.92%	7.71%	0.13%	7.85%	0.65%	9.21%	5.46%	10.69%	12.74%	11.58%
Our Lady's Navan	8.52%	0.98%	9.50%	0.04%	9.54%	1.87%	9.32%	10.64%	10.62%	9.82%	13.44%
RCSI HQ	0.19%	0.00%	0.19%	0.00%	0.19%	0.00%	0.00%	0.00%	0.23%		
Rolunda	5.45%	1.42%	6.87%	0.02%	6.88%	5.66%	6.05%	3.78%	6.38%	12.09%	9.89%
RCSI Hospitals Group	4.97%	0.82%	5.79%	0.15%	5.94%	1.48%	6.51%	4.11%	6.21%	9.40%	9.74%
Galway University	5.85%	0.84%	6.69%	0.54%	7.23%	1.64%	12.34%	8.74%	9.66%	4.43%	5.06%
Galway University Hospitals	5.89%	0.96%	6.84%	0.24%	7.08%	1.13%	9.09%	6.46%	9.25%	7.53%	12.14%
Letterkenny University	7.01%	1.13%	8.15%	0.39%	8.54%	3.32%	9.03%	8.53%	9.59%	11.58%	7.87%
Mayo University Hospital	6.91%	0.87%	7.78%	0.26%	8.04%	2.03%	9.95%	9.24%	6.16%	5.47%	10.60%
Portluncula University	8.35%	0.94%	9.30%	0.15%	9.44%	6.32%	10.98%	5.96%	8.75%	10.03%	11.22%
Roscommon University Hospital	8.59%	1.14%	9.73%	0.85%	10.59%	3.61%	11.42%	8.44%	8.61%	14.51%	9.23%
Saolta HG HQ	3.05%	0.14%	3.20%	0.00%	3.20%	0.00%	2.72%	0.00%	3.39%		
Sligo University	7.49%	0.76%	8.25%	0.38%	8.63%	3.26%	8.44%	7.71%	8.72%	12.60%	12.83%
Sligo University Hospital Care Group	6.76%	0.93%	7.69%	0.32%	8.01%	2.28%	9.43%	7.39%	8.48%	10.14%	10.50%
Bantry General	7.51%	0.63%	8.14%	0.00%	8.14%	0.34%	10.08%	8.03%	6.72%	3.44%	9.99%
Cork University	5.88%	0.95%	6.84%	0.34%	7.18%	1.43%	8.13%	7.89%	7.10%	9.55%	11.89%
Mallow General	5.26%	0.74%	6.00%	0.96%	6.95%	0.85%	7.68%	6.34%	6.99%	3.44%	11.97%
Mercy University	5.13%	0.68%	5.81%	0.03%	5.84%	2.64%	5.68%	5.76%	5.99%	5.91%	9.97%
South Infirmary Victoria University	3.08%	0.91%	3.99%	0.06%	4.05%	2.36%	4.90%	1.99%	3.51%	4.56%	7.45%
SSWHG HQ	1.40%	0.52%	1.93%	0.00%	1.93%		2.94%	6.25%	1.76%		
UH Kerry	6.41%	1.14%	7.56%	0.13%	7.69%	3.58%	8.93%	4.33%	7.18%	8.55%	11.77%
South/South West Hospital Group	5.55%	0.91%	6.47%	0.24%	6.70%	1.82%	7.62%	6.52%	5.82%	8.19%	11.03%
Croom Orthopaedic	11.18%	0.43%	11.61%	0.24%	11.85%	0.00%	11.03%	22.21%	7.76%	19.37%	14.84%
Ennis	7.19%	0.76%	7.95%	0.80%	8.76%	10.39%	9.36%	2.81%	10.21%	9.24%	5.69%
Nenagh	8.74%	0.87%	9.61%	0.58%	10.19%	0.00%	11.27%	12.70%	9.95%	5.90%	14.47%
St. John's Limerick	4.74%	0.51%	5.25%	1.65%	6.90%	0.44%	6.20%	1.73%	4.63%	24.41%	4.16%
UH Limerick	6.62%	0.90%	7.52%	0.24%	7.76%	1.65%	7.56%	6.23%	8.94%	12.37%	11.40%
ULHG HQ	0.00%	0.22%	0.22%	0.00%	0.22%		0.00%		0.24%		
UMH Limerick	9.68%	0.95%	10.63%	0.08%	10.72%	3.08%	8.20%	3.27%	7.33%	30.11%	11.26%
University of Limerick Hospital Group	7.03%	0.83%	7.87%	0.40%	8.27%	1.89%	8.01%	6.29%	8.16%	14.08%	11.19%
Other Acute Services	5.98%	0.18%	6.17%	0.00%	6.17%		14.14%	1.11%	5.66%		
Acute Services	5.51%	0.90%	6.41%	0.26%	6.67%	1.71%	7.38%	5.69%	6.87%	9.51%	9.95%

Total Absence Rate



% of Absence Non Covid-19 / Covid-19



December 2024

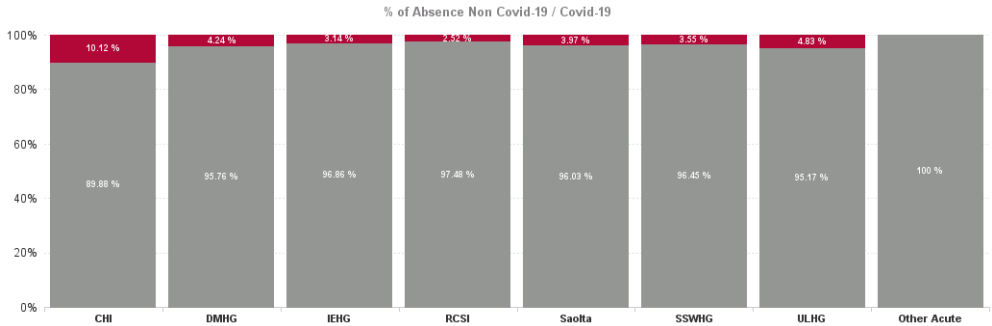
Health Service Covid 19 Absence Rate - by Hospital & Staff Category: Dec 2024	Non Covid-19 absence	Covid-19 absence	Total absence rate	Medical & Dental	Nursing & Midwifery	Health & Social Care Professionals	Management & Administrative	General Support	Patient & Client Care
Acute	6.41%	0.26%	6.67%	0.04%	0.29%	0.23%	0.22%	0.40%	0.48%
CHI at Connolly	6.18%	0.19%	6.37%	0.00%	0.00%	0.00%	0.94%	0.00%	0.00%
CHI at Crumlin	5.74%	0.68%	6.42%	0.60%	0.14%	1.20%	1.40%	1.41%	0.36%
CHI at Tallaght	5.24%	0.08%	5.32%	0.00%	0.11%	0.35%	0.00%	0.00%	0.00%
CHI at Temple Street	6.01%	0.84%	6.84%	0.00%	0.72%	2.10%	0.97%	0.00%	2.04%
CHI Corporate	5.85%	0.00%	5.85%	0.00%	0.00%	0.00%	0.00%		
CHI Programme	2.37%	0.00%	2.37%	0.00%	0.00%	0.00%	0.00%	0.00%	
Children's Health Ireland	5.68%	0.64%	6.32%	0.30%	0.31%	1.37%	0.93%	0.94%	0.78%
Coombe Women & Infants University Hospital	3.76%	0.04%	3.80%	0.00%	0.11%	0.00%	0.00%	0.00%	0.00%
DMHG HQ	2.71%	0.00%	2.71%		0.00%	0.00%	0.00%		
MRH Mullingar	9.43%	0.09%	9.52%	0.00%	0.17%	0.00%	0.00%	0.00%	0.12%
MRH Portlaoise	8.47%	0.21%	8.68%	0.00%	0.31%	0.00%	0.00%	0.00%	0.40%
MRH Tullamore	8.05%	0.87%	8.92%	0.11%	1.00%	0.37%	0.13%	2.52%	1.45%
Naas General	6.88%	0.14%	7.03%	0.00%	0.06%	0.26%	0.00%	0.52%	0.31%
St. James's	6.09%	0.16%	6.25%	0.00%	0.24%	0.21%	0.09%	0.19%	0.06%
St. Luke's Rathgar	4.42%	0.34%	4.76%	0.00%	1.97%	0.04%	0.00%	0.00%	0.00%
Tallaght University Hospital	5.95%	0.44%	6.40%	0.09%	0.53%	0.59%	0.38%	0.59%	0.44%
Dublin Midlands Hospital Group	6.41%	0.28%	6.69%	0.03%	0.40%	0.26%	0.13%	0.37%	0.37%
IEHG Bank	3.11%	0.00%	3.11%		0.00%	0.00%			0.00%
IEHG HQ	2.56%	0.00%	2.56%		0.00%	0.00%	0.00%		
Lourdes Orthopaedic Kilcreene	4.72%	0.00%	4.72%	0.00%	0.00%		0.00%	0.00%	
National Maternity	5.03%	0.15%	5.17%	0.00%	0.34%	0.00%	0.00%	0.00%	0.00%
National Rehabilitation Hospital	6.37%	0.00%	6.37%	0.00%	0.00%	0.00%	0.00%	0.00%	0.00%
Royal Victoria Eye and Ear	4.93%	0.21%	5.14%	0.00%	0.53%	0.53%	0.00%	0.00%	0.00%
South Tipperary General	7.57%	0.23%	7.80%	0.00%	0.20%	0.13%	0.14%	0.00%	1.15%
St. Columcille's	6.20%	0.24%	6.44%	0.00%	0.62%	0.00%	0.11%	0.00%	0.00%
St Luke's General Kilkenny	6.79%	0.32%	7.11%	0.00%	0.29%	0.00%	0.00%	0.89%	0.67%
St. Michael's	3.63%	0.38%	4.01%	0.00%	0.89%	0.00%	0.00%	0.00%	0.00%
St. Vincent's University	3.98%	0.08%	4.06%	0.04%	0.05%	0.05%	0.32%	0.00%	0.00%
UH Waterford	6.33%	0.19%	6.53%	0.00%	0.38%	0.06%	0.10%	0.13%	0.09%
Wexford General	8.07%	0.39%	8.46%	0.00%	0.21%	0.60%	0.34%	1.07%	0.36%
Ireland East Hospital Group	5.66%	0.18%	5.85%	0.01%	0.25%	0.07%	0.16%	0.27%	0.26%
Beaumont	5.33%	0.16%	5.49%	0.01%	0.08%	0.20%	0.25%	0.54%	0.08%
Cappagh National Orthopaedic	3.56%	0.31%	3.87%	0.00%	0.53%	0.00%	0.65%	0.00%	0.00%
Cavan General	8.45%	0.53%	8.98%	0.00%	0.34%	0.31%	0.22%	1.15%	1.88%
Connolly	5.19%	0.05%	5.25%	0.00%	0.03%	0.00%	0.23%	0.00%	0.14%
Louth County	7.43%	1.27%	8.70%	0.00%	1.67%	0.00%	0.00%	0.74%	3.32%
Mater Misericordiae University	4.24%	0.05%	4.28%	0.00%	0.01%	0.03%	0.05%	0.00%	0.41%
Monaghan	10.57%	0.00%	10.57%		0.00%	0.00%	0.00%	0.00%	0.00%
Our Lady of Lourdes	7.71%	0.13%	7.85%	0.00%	0.22%	0.13%	0.00%	0.28%	0.09%
Our Lady's Navan	9.50%	0.04%	9.54%	0.00%	0.00%	0.00%	0.31%	0.00%	0.00%

RCSI HQ	0.19%	0.00%	0.19%
Rotunda	6.87%	0.02%	6.88%
RCSI Hospitals Group	5.79%	0.15%	5.94%
Galway University	6.69%	0.54%	7.23%
Galway University Hospitals	6.84%	0.24%	7.08%
Letterkenny University	8.15%	0.39%	8.54%
Mayo University Hospital	7.78%	0.26%	8.04%
Portiuncula University	9.30%	0.15%	9.44%
Roscommon University Hospital	9.73%	0.85%	10.59%
Saolta HG HQ	3.20%	0.00%	3.20%
Sligo University	8.25%	0.38%	8.63%
Saolta University Hospital Care Group	7.69%	0.32%	8.01%
Bantry General	8.14%	0.00%	8.14%
Cork University	6.84%	0.34%	7.18%
Mallow General	6.00%	0.96%	6.95%
Mercy University	5.81%	0.03%	5.84%
South Infirmary Victoria University	3.99%	0.06%	4.05%
SSWHG HQ	1.93%	0.00%	1.93%
UH Kerry	7.56%	0.13%	7.69%
South/South West Hospital Group	6.47%	0.24%	6.70%
Croom Orthopaedic	11.61%	0.24%	11.85%
Ennis	7.95%	0.80%	8.76%
Nenagh	9.61%	0.58%	10.19%
St. John's Limerick	5.25%	1.65%	6.90%
UH Limerick	7.52%	0.24%	7.76%
ULHG HQ	0.22%	0.00%	0.22%
UMH Limerick	10.63%	0.09%	10.72%
University of Limerick Hospital Group	7.87%	0.40%	8.27%
Other Acute Services	6.17%	0.00%	6.17%
Other Acute Services	6.17%	0.00%	6.17%
Acute Services	6.41%	0.26%	6.67%

0.00%	0.00%	0.00%	0.00%		
0.00%	0.03%	0.00%	0.00%	0.04%	0.00%
0.00%	0.12%	0.10%	0.16%	0.31%	0.40%
0.00%	1.25%	0.00%	0.25%	0.55%	0.49%
0.00%	0.33%	0.10%	0.25%	0.30%	0.69%
0.42%	0.39%	0.55%	0.37%	0.26%	0.41%
0.15%	0.35%	0.20%	0.00%	0.09%	0.46%
0.00%	0.29%	0.26%	0.00%	0.00%	0.00%
0.19%	1.41%	0.00%	0.00%	1.14%	0.38%
0.00%	0.00%	0.00%	0.00%		
0.00%	0.51%	0.00%	0.06%	0.81%	0.62%
0.07%	0.44%	0.17%	0.17%	0.45%	0.50%
0.00%	0.00%	0.00%	0.00%	0.00%	0.00%
0.00%	0.38%	0.02%	0.32%	0.20%	2.14%
0.00%	0.55%	0.00%	0.00%	0.00%	4.13%
0.00%	0.00%	0.13%	0.05%	0.00%	0.00%
0.00%	0.15%	0.00%	0.00%	0.00%	0.00%
	0.00%	0.00%	0.00%		
0.00%	0.09%	0.00%	0.09%	0.07%	0.82%
0.00%	0.25%	0.03%	0.13%	0.13%	1.28%
0.00%	0.17%	0.00%	0.49%	0.40%	0.28%
1.59%	1.33%	0.00%	0.00%	0.00%	1.09%
0.00%	0.84%	2.87%	0.00%	0.13%	0.00%
0.00%	1.37%	0.00%	0.37%	8.83%	0.00%
0.00%	0.17%	0.22%	0.38%	0.58%	0.17%
	0.00%		0.00%		
0.00%	0.07%	0.00%	0.00%	0.00%	0.61%
0.06%	0.37%	0.31%	0.32%	1.04%	0.21%
	0.00%	0.00%	0.00%		
	0.00%	0.00%	0.00%		
0.04%	0.29%	0.23%	0.22%	0.40%	0.48%

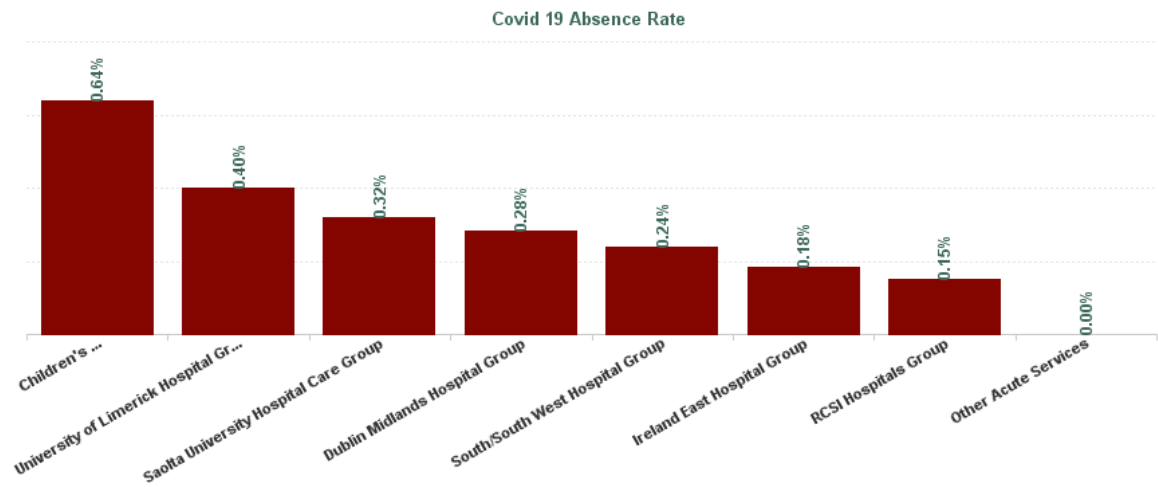
December 2024

Health Service Absence Rate - by HG, CHO/Care Group & Staff Category: Dec 2024	Certified absence	Self-certified absence	Non Covid-19 absence	Covid-19 Absence	Total absence rate	Medical & Dental	Nursing & Midwifery	Health & Social Care Professionals	Management & Administrative	General Support	Patient & Client Care
Total	5.51%	0.90%	6.41%	0.26%	6.67%	1.71%	7.38%	5.69%	6.87%	9.51%	9.95%
Section 38 Hospitals	4.88%	0.80%	5.68%	0.64%	6.32%	1.82%	7.19%	7.38%	6.52%	9.32%	7.84%
Children's Health Ireland	4.88%	0.80%	5.68%	0.64%	6.32%	1.82%	7.19%	7.38%	6.52%	9.32%	7.84%
Health Service Executive	6.73%	0.92%	7.64%	0.36%	8.00%	2.05%	8.75%	4.87%	8.19%	10.63%	13.03%
Section 38 Hospitals	4.61%	1.16%	5.77%	0.25%	6.01%	1.27%	6.90%	5.84%	6.72%	7.44%	7.70%
Dublin Midlands Hospital Group	5.33%	1.08%	6.41%	0.28%	6.69%	1.53%	7.49%	5.48%	7.18%	8.17%	10.28%
Health Service Executive	5.92%	0.94%	6.87%	0.26%	7.12%	1.59%	7.13%	7.87%	7.55%	11.51%	9.42%
Section 38 Hospitals	3.70%	0.72%	4.42%	0.11%	4.53%	1.09%	5.26%	3.26%	5.36%	5.48%	6.57%
Ireland East Hospital Group	4.83%	0.84%	5.66%	0.18%	5.85%	1.35%	6.23%	5.22%	6.39%	8.74%	8.14%
Health Service Executive	6.43%	0.95%	7.38%	0.23%	7.61%	1.55%	8.65%	5.78%	8.57%	8.89%	11.72%
Section 38 Hospitals	4.20%	0.75%	4.95%	0.11%	5.06%	1.44%	5.35%	3.35%	5.09%	9.65%	8.12%
RCSI Hospitals Group	4.97%	0.82%	5.79%	0.15%	5.94%	1.48%	6.51%	4.11%	6.21%	9.40%	9.74%
Health Service Executive	6.76%	0.93%	7.69%	0.32%	8.01%	2.28%	9.43%	7.39%	8.48%	10.14%	10.50%
Saolta University Hospital Care Group	6.76%	0.93%	7.69%	0.32%	8.01%	2.28%	9.43%	7.39%	8.48%	10.14%	10.50%
Health Service Executive	5.98%	0.96%	6.94%	0.31%	7.25%	1.76%	8.34%	7.28%	6.54%	8.87%	11.60%
Section 38 Hospitals	4.31%	0.77%	5.09%	0.04%	5.12%	2.55%	5.38%	4.49%	4.75%	5.10%	9.54%
South/South West Hospital Group	5.55%	0.91%	6.47%	0.24%	6.70%	1.92%	7.62%	6.52%	5.82%	8.19%	11.03%
Health Service Executive	7.25%	0.86%	8.11%	0.28%	8.39%	1.99%	8.18%	6.66%	8.65%	13.33%	12.05%
Section 38 Hospitals	4.74%	0.51%	5.25%	1.65%	6.90%	0.44%	6.20%	1.73%	4.63%	24.41%	4.16%
University of Limerick Hospital Group	7.03%	0.83%	7.87%	0.40%	8.27%	1.89%	8.01%	6.29%	8.16%	14.08%	11.19%
Other Acute Services	5.98%	0.18%	6.17%	0.00%	6.17%		14.14%	1.11%	5.66%		
Acute Services	5.51%	0.90%	6.41%	0.26%	6.67%	1.71%	7.38%	5.69%	6.87%	9.51%	9.95%



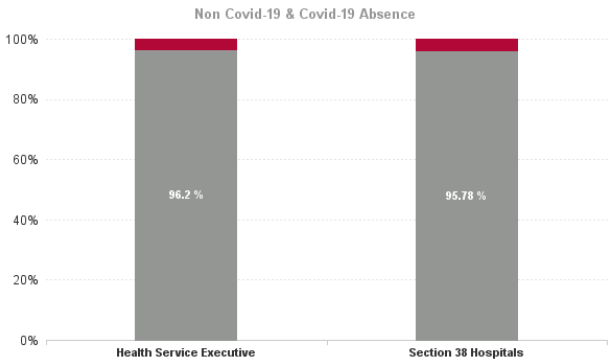
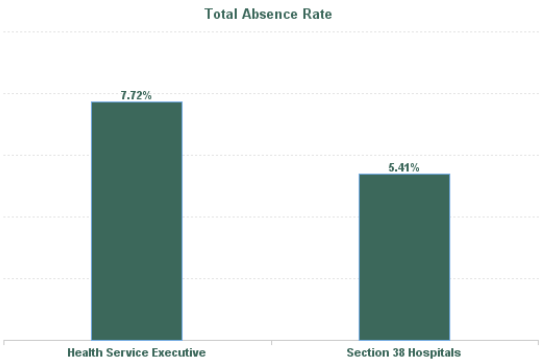
December 2024

Health Service Covid 19 Absence Rate - by Hospital & Staff Category: Dec 2024	Non Covid-19 absence	Covid-19 Absence	Total absence rate	Medical & Dental	Nursing & Midwifery	Health & Social Care Professionals	Management & Administrative	General Support	Patient & Client Care
Acute	6.41%	0.26%	6.67%	0.04%	0.29%	0.23%	0.22%	0.40%	0.48%
Section 38 Hospitals	5.68%	0.64%	6.32%	0.30%	0.31%	1.37%	0.93%	0.94%	0.78%
Children's Health Ireland	5.68%	0.64%	6.32%	0.30%	0.31%	1.37%	0.93%	0.94%	0.78%
Health Service Executive	7.64%	0.36%	8.00%	0.03%	0.53%	0.14%	0.02%	0.70%	0.59%
Section 38 Hospitals	5.77%	0.25%	6.01%	0.03%	0.33%	0.33%	0.18%	0.28%	0.17%
Dublin Midlands Hospital Group	6.41%	0.28%	6.69%	0.03%	0.40%	0.26%	0.13%	0.37%	0.37%
Health Service Executive	6.87%	0.26%	7.12%	0.00%	0.31%	0.12%	0.12%	0.51%	0.47%
Section 38 Hospitals	4.42%	0.11%	4.53%	0.03%	0.18%	0.04%	0.19%	0.00%	0.00%
Ireland East Hospital Group	5.66%	0.18%	5.85%	0.01%	0.25%	0.07%	0.16%	0.27%	0.26%
Health Service Executive	7.38%	0.23%	7.61%	0.00%	0.23%	0.10%	0.12%	0.38%	0.65%
Section 38 Hospitals	4.95%	0.11%	5.06%	0.01%	0.07%	0.11%	0.17%	0.28%	0.19%
RCSI Hospitals Group	5.79%	0.15%	5.94%	0.00%	0.12%	0.10%	0.16%	0.31%	0.40%
Health Service Executive	7.69%	0.32%	8.01%	0.07%	0.44%	0.17%	0.17%	0.45%	0.50%
Saolta University Hospital Care Group	7.69%	0.32%	8.01%	0.07%	0.44%	0.17%	0.17%	0.45%	0.50%
Health Service Executive	6.94%	0.31%	7.25%	0.00%	0.31%	0.01%	0.21%	0.16%	1.77%
Section 38 Hospitals	5.09%	0.04%	5.12%	0.00%	0.06%	0.08%	0.03%	0.00%	0.00%
South/South West Hospital Group	6.47%	0.24%	6.70%	0.00%	0.25%	0.03%	0.13%	0.13%	1.28%
Health Service Executive	8.11%	0.28%	8.39%	0.07%	0.27%	0.34%	0.31%	0.47%	0.24%
Section 38 Hospitals	5.25%	1.65%	6.90%	0.00%	1.37%	0.00%	0.37%	8.83%	0.00%
University of Limerick Hospital Group	7.87%	0.40%	8.27%	0.06%	0.37%	0.31%	0.32%	1.04%	0.21%
Health Service Executive	6.17%	0.00%	6.17%		0.00%	0.00%	0.00%		
Other Acute Services	6.17%	0.00%	6.17%		0.00%	0.00%	0.00%		
Acute Services	6.41%	0.26%	6.67%	0.04%	0.29%	0.23%	0.22%	0.40%	0.48%



December 2024

Health Service Absence Rate - by Admin : Dec 2024	Certified absence	Self-certified absence	Non Covid-19 absence	Covid-19 Absence	Total absence rate	Medical & Dental	Nursing & Midwifery	Health & Social Care Professionals	Management & Administrative	General Support	Patient & Client Care
Total	5.51%	0.90%	6.41%	0.26%	6.67%	1.71%	7.38%	5.69%	6.87%	9.51%	9.95%
Health Service Executive	6.49%	0.93%	7.42%	0.29%	7.72%	1.92%	8.51%	6.72%	8.02%	10.56%	11.35%
Section 38 Hospitals	4.31%	0.86%	5.18%	0.23%	5.41%	1.44%	6.00%	4.65%	5.73%	8.02%	7.72%



Health Service Absence Rate - by Staff Category: Dec 2024	Certified absence	Self- certified absence	Non Covid-19 absence	Covid-19 Absence	Total absence rate	% Non Covid-19 absence	% Covid-19 absence
CHI	4.88%	0.80%	5.68%	0.64%	6.32%	89.88%	10.12%
Medical & Dental	1.23%	0.29%	1.52%	0.30%	1.82%	83.68%	16.32%
Nursing & Midwifery	5.62%	1.25%	6.88%	0.31%	7.19%	95.63%	4.37%
Health & Social Care Professionals	5.43%	0.59%	6.02%	1.37%	7.38%	81.51%	18.49%
Management & Administrative	5.11%	0.49%	5.60%	0.93%	6.52%	85.80%	14.20%
General Support	7.53%	0.85%	8.38%	0.94%	9.32%	89.90%	10.10%
Patient & Client Care	6.19%	0.86%	7.05%	0.78%	7.84%	89.98%	10.02%

Health Service Absence Rate - by Staff Category: Dec 2024	Certified absence	Self- certified absence	Non Covid-19 absence	Covid-19 Absence	Total absence rate	% Non Covid-19 absence	% Covid-19 absence
DMHG	5.33%	1.08%	6.41%	0.28%	6.69%	95.76%	4.24%
Medical & Dental	1.08%	0.42%	1.50%	0.03%	1.53%	97.82%	2.18%
Nursing & Midwifery	5.58%	1.51%	7.09%	0.40%	7.49%	94.70%	5.30%
Health & Social Care Professionals	4.39%	0.82%	5.22%	0.26%	5.48%	95.32%	4.68%
Management & Administrative	6.25%	0.79%	7.04%	0.13%	7.18%	98.14%	1.86%
General Support	6.95%	0.85%	7.80%	0.37%	8.17%	95.42%	4.58%
Patient & Client Care	8.63%	1.28%	9.90%	0.37%	10.28%	96.36%	3.64%

Health Service Absence Rate - by Staff Category: Dec 2024	Certified absence	Self- certified absence	Non Covid-19 absence	Covid-19 Absence	Total absence rate	% Non Covid-19 absence	% Covid-19 absence
IEHG	4.83%	0.84%	5.66%	0.18%	5.85%	96.86%	3.14%
Medical & Dental	0.98%	0.36%	1.34%	0.01%	1.35%	99.00%	1.00%
Nursing & Midwifery	4.79%	1.19%	5.98%	0.25%	6.23%	96.04%	3.96%
Health & Social Care Professionals	4.54%	0.61%	5.14%	0.07%	5.22%	98.58%	1.42%
Management & Administrative	5.64%	0.60%	6.24%	0.16%	6.39%	97.58%	2.42%
General Support	7.84%	0.62%	8.46%	0.27%	8.74%	96.86%	3.14%
Patient & Client Care	6.88%	1.00%	7.88%	0.26%	8.14%	96.84%	3.16%

Health Service Absence Rate - by Staff Category: Dec 2024	Certified absence	Self- certified absence	Non Covid-19 absence	Covid-19 Absence	Total absence rate	% Non Covid-19 absence	% Covid-19 absence
RCSI	4.97%	0.82%	5.79%	0.15%	5.94%	97.48%	2.52%
Medical & Dental	1.17%	0.31%	1.47%	0.00%	1.48%	99.75%	0.25%
Nursing & Midwifery	5.28%	1.10%	6.39%	0.12%	6.51%	98.11%	1.89%
Health & Social Care Professionals	3.40%	0.61%	4.01%	0.10%	4.11%	97.45%	2.55%
Management & Administrative	5.48%	0.56%	6.05%	0.16%	6.21%	97.45%	2.55%
General Support	8.09%	1.00%	9.09%	0.31%	9.40%	96.68%	3.32%
Patient & Client Care	8.32%	1.02%	9.34%	0.40%	9.74%	95.94%	4.06%

Health Service Absence Rate - by Staff Category: Dec 2024	Certified absence	Self- certified absence	Non Covid-19 absence	Covid-19 Absence	Total absence rate	% Non Covid-19 absence	% Covid-19 absence
Saolta	6.76%	0.93%	7.69%	0.32%	8.01%	96.03%	3.97%
Medical & Dental	1.82%	0.39%	2.21%	0.07%	2.28%	96.96%	3.04%
Nursing & Midwifery	7.69%	1.30%	8.99%	0.44%	9.43%	95.33%	4.67%
Health & Social Care Professionals	6.39%	0.83%	7.22%	0.17%	7.39%	97.69%	2.31%
Management & Administrative	7.65%	0.67%	8.31%	0.17%	8.48%	98.05%	1.95%
General Support	8.89%	0.80%	9.69%	0.45%	10.14%	95.59%	4.41%
Patient & Client Care	8.94%	1.06%	10.00%	0.50%	10.50%	95.22%	4.78%

Health Service Absence Rate - by Staff Category: Dec 2024	Certified absence	Self- certified absence	Non Covid-19 absence	Covid-19 Absence	Total absence rate	% Non Covid-19 absence	% Covid-19 absence
SSWHG	5.55%	0.91%	6.47%	0.24%	6.70%	96.45%	3.55%
Medical & Dental	1.75%	0.17%	1.92%	0.00%	1.92%	100.00%	0.00%
Nursing & Midwifery	6.08%	1.28%	7.37%	0.25%	7.62%	96.72%	3.28%
Health & Social Care Professionals	5.80%	0.69%	6.49%	0.03%	6.52%	99.51%	0.49%
Management & Administrative	4.89%	0.80%	5.69%	0.13%	5.82%	97.71%	2.29%
General Support	7.47%	0.60%	8.06%	0.13%	8.19%	98.44%	1.56%
Patient & Client Care	8.27%	1.48%	9.75%	1.28%	11.03%	88.43%	11.57%

Health Service Absence Rate - by Staff Category: Dec 2024	Certified absence	Self- certified absence	Non Covid-19 absence	Covid-19 Absence	Total absence rate	% Non Covid-19 absence	% Covid-19 absence
ULHG	7.03%	0.83%	7.87%	0.40%	8.27%	95.17%	4.83%
Medical & Dental	1.40%	0.43%	1.83%	0.06%	1.89%	96.76%	3.24%
Nursing & Midwifery	6.62%	1.03%	7.65%	0.37%	8.01%	95.43%	4.57%
Health & Social Care Professionals	5.17%	0.80%	5.98%	0.31%	6.29%	95.05%	4.95%
Management & Administrative	7.30%	0.54%	7.84%	0.32%	8.16%	96.07%	3.93%
General Support	12.14%	0.91%	13.05%	1.04%	14.08%	92.63%	7.37%
Patient & Client Care	10.04%	0.93%	10.98%	0.21%	11.19%	98.09%	1.91%

Health Service Absence Rate - by Staff Category: Dec 2024	Certified absence	Self- certified absence	Non Covid-19 absence	Covid-19 Absence	Total absence rate	% Non Covid-19 absence	% Covid-19 absence
Other Acute	5.98%	0.18%	6.17%	0.00%	6.17%	100.00%	0.00%
Medical & Dental							
Nursing & Midwifery	14.14%	0.00%	14.14%	0.00%	14.14%	100.00%	0.00%
Health & Social Care Professionals	1.11%	0.00%	1.11%	0.00%	1.11%	100.00%	0.00%
Management & Administrative	5.37%	0.28%	5.66%	0.00%	5.66%	100.00%	0.00%
General Support							
Patient & Client Care							

Health Service Absence Rate - by Staff Category: Dec 2024	Certified absence	Self- certified absence	Non Covid-19 absence	Covid-19 Absence	Total absence rate	% Non Covid-19 absence	% Covid-19 absence
Beaumont Hospital	4.69%	0.64%	5.33%	0.16%	5.49%	97.09%	2.91%
Medical & Dental	0.91%	0.43%	1.34%	0.01%	1.35%	99.10%	0.90%
Nursing & Midwifery	4.62%	0.77%	5.39%	0.08%	5.47%	98.49%	1.51%
Health & Social Care Professionals	3.14%	0.53%	3.67%	0.20%	3.88%	94.74%	5.26%
Management & Administrative	4.33%	0.38%	4.71%	0.25%	4.97%	94.89%	5.11%
General Support	9.33%	0.87%	10.20%	0.54%	10.73%	94.99%	5.01%
Patient & Client Care	9.43%	0.83%	10.26%	0.08%	10.34%	99.27%	0.73%

Health Service Absence Rate - by Staff Category: Dec 2024	Certified absence	Self- certified absence	Non Covid-19 absence	Covid-19 Absence	Total absence rate	% Non Covid-19 absence	% Covid-19 absence
Cappagh National Orthopaedic H	3.18%	0.38%	3.56%	0.31%	3.87%	91.97%	8.03%
Medical & Dental	0.09%	0.00%	0.09%	0.00%	0.09%	100.00%	0.00%
Nursing & Midwifery	4.07%	0.46%	4.53%	0.53%	5.06%	89.57%	10.43%
Health & Social Care Professionals	4.47%	0.31%	4.78%	0.00%	4.78%	100.00%	0.00%
Management & Administrative	1.33%	0.13%	1.46%	0.65%	2.11%	69.24%	30.76%
General Support	0.97%	0.65%	1.62%	0.00%	1.62%	100.00%	0.00%
Patient & Client Care	5.54%	0.73%	6.27%	0.00%	6.27%	100.00%	0.00%

Health Service Absence Rate - by Staff Category: Dec 2024	Certified absence	Self- certified absence	Non Covid-19 absence	Covid-19 Absence	Total absence rate	% Non Covid-19 absence	% Covid-19 absence
CHI at Connolly	5.78%	0.40%	6.18%	0.19%	6.37%	96.99%	3.01%
Medical & Dental	1.29%	0.32%	1.61%	0.00%	1.61%	100.00%	0.00%
Nursing & Midwifery	1.14%	0.81%	1.95%	0.00%	1.95%	100.00%	0.00%
Health & Social Care Professionals	7.69%	0.35%	8.04%	0.00%	8.04%	100.00%	0.00%
Management & Administrative	4.02%	0.00%	4.02%	0.94%	4.96%	80.95%	19.05%
General Support	40.24%	0.00%	40.24%	0.00%	40.24%	100.00%	0.00%
Patient & Client Care	22.92%	0.00%	22.92%	0.00%	22.92%	100.00%	0.00%

Health Service Absence Rate - by Staff Category: Dec 2024	Certified absence	Self- certified absence	Non Covid-19 absence	Covid-19 Absence	Total absence rate	% Non Covid-19 absence	% Covid-19 absence
CHI at Crumlin	4.85%	0.89%	5.74%	0.68%	6.42%	89.43%	10.57%
Medical & Dental	1.28%	0.29%	1.56%	0.60%	2.17%	72.11%	27.89%
Nursing & Midwifery	5.53%	1.30%	6.84%	0.14%	6.97%	98.05%	1.95%
Health & Social Care Professionals	4.82%	0.70%	5.52%	1.20%	6.72%	82.17%	17.83%
Management & Administrative	5.80%	0.50%	6.30%	1.40%	7.70%	81.86%	18.14%
General Support	5.90%	1.04%	6.93%	1.41%	8.35%	83.07%	16.93%
Patient & Client Care	6.12%	1.12%	7.24%	0.36%	7.60%	95.31%	4.69%

Health Service Absence Rate - by Staff Category: Dec 2024	Certified absence	Self- certified absence	Non Covid-19 absence	Covid-19 Absence	Total absence rate	% Non Covid-19 absence	% Covid-19 absence
CHI at Tallaght	4.42%	0.82%	5.24%	0.08%	5.32%	98.56%	1.44%
Medical & Dental	1.28%	0.67%	1.95%	0.00%	1.95%	100.00%	0.00%
Nursing & Midwifery	6.17%	0.79%	6.95%	0.11%	7.06%	98.43%	1.57%
Health & Social Care Professionals	5.38%	0.80%	6.18%	0.35%	6.54%	94.57%	5.43%
Management & Administrative	5.14%	1.42%	6.56%	0.00%	6.56%	100.00%	0.00%
General Support	15.90%	0.00%	15.90%	0.00%	15.90%	100.00%	0.00%
Patient & Client Care	0.00%	0.43%	0.43%	0.00%	0.43%	100.00%	0.00%

Health Service Absence Rate - by Staff Category: Dec 2024	Certified absence	Self- certified absence	Non Covid-19 absence	Covid-19 Absence	Total absence rate	% Non Covid-19 absence	% Covid-19 absence
CHI at Temple Street	5.26%	0.75%	6.01%	0.84%	6.84%	87.79%	12.21%
Medical & Dental	1.19%	0.18%	1.37%	0.00%	1.37%	100.00%	0.00%
Nursing & Midwifery	6.22%	1.38%	7.60%	0.72%	8.32%	91.34%	8.66%
Health & Social Care Professionals	6.75%	0.45%	7.21%	2.10%	9.31%	77.40%	22.60%
Management & Administrative	5.21%	0.38%	5.59%	0.97%	6.56%	85.16%	14.84%
General Support	9.70%	0.53%	10.23%	0.00%	10.23%	100.00%	0.00%
Patient & Client Care	4.78%	0.50%	5.28%	2.04%	7.32%	72.15%	27.85%

Health Service Absence Rate - by Staff Category: Dec 2024	Certified absence	Self- certified absence	Non Covid-19 absence	Covid-19 Absence	Total absence rate	% Non Covid-19 absence	% Covid-19 absence
CHI Corporate	5.85%	0.00%	5.85%	0.00%	5.85%	100.00%	0.00%
Medical & Dental	0.00%	0.00%	0.00%	0.00%	0.00%		
Nursing & Midwifery	0.00%	0.00%	0.00%	0.00%	0.00%		
Health & Social Care Professionals	0.00%	0.00%	0.00%	0.00%	0.00%		
Management & Administrative	7.09%	0.00%	7.09%	0.00%	7.09%	100.00%	0.00%
General Support							
Patient & Client Care							

Health Service Absence Rate - by Staff Category: Dec 2024	Certified absence	Self- certified absence	Non Covid-19 absence	Covid-19 Absence	Total absence rate	% Non Covid-19 absence	% Covid-19 absence
CHI Programme	1.89%	0.48%	2.37%	0.00%	2.37%	100.00%	0.00%
Medical & Dental	0.00%	0.00%	0.00%	0.00%	0.00%		
Nursing & Midwifery	0.00%	0.00%	0.00%	0.00%	0.00%		
Health & Social Care Professionals	0.00%	0.00%	0.00%	0.00%	0.00%		
Management & Administrative	2.31%	0.65%	2.96%	0.00%	2.96%	100.00%	0.00%
General Support	8.74%	0.00%	8.74%	0.00%	8.74%	100.00%	0.00%
Patient & Client Care							

Health Service Absence Rate - by Staff Category: Dec 2024	Certified absence	Self- certified absence	Non Covid-19 absence	Covid-19 Absence	Total absence rate	% Non Covid-19 absence	% Covid-19 absence
Coombe Women & Infants Univer	2.38%	1.38%	3.76%	0.04%	3.80%	98.86%	1.14%
Medical & Dental	0.70%	0.88%	1.58%	0.00%	1.58%	100.00%	0.00%
Nursing & Midwifery	2.85%	1.92%	4.77%	0.11%	4.88%	97.82%	2.18%
Health & Social Care Professionals	1.95%	0.45%	2.41%	0.00%	2.41%	100.00%	0.00%
Management & Administrative	2.23%	0.83%	3.06%	0.00%	3.06%	100.00%	0.00%
General Support	2.90%	1.52%	4.42%	0.00%	4.42%	100.00%	0.00%
Patient & Client Care	2.50%	1.39%	3.88%	0.00%	3.88%	100.00%	0.00%

Health Service Absence Rate - by Staff Category: Dec 2024	Certified absence	Self- certified absence	Non Covid-19 absence	Covid-19 Absence	Total absence rate	% Non Covid-19 absence	% Covid-19 absence
Mater Misericordiae University Ho	3.48%	0.76%	4.24%	0.05%	4.28%	98.89%	1.11%
Medical & Dental	0.58%	0.16%	0.74%	0.00%	0.74%	100.00%	0.00%
Nursing & Midwifery	3.90%	1.16%	5.06%	0.01%	5.07%	99.76%	0.24%
Health & Social Care Professionals	1.93%	0.58%	2.51%	0.03%	2.55%	98.68%	1.32%
Management & Administrative	4.84%	0.52%	5.37%	0.05%	5.42%	99.08%	0.92%
General Support	6.82%	0.77%	7.59%	0.00%	7.59%	100.00%	0.00%
Patient & Client Care	4.59%	0.60%	5.20%	0.41%	5.60%	92.76%	7.24%

Health Service Absence Rate - by Staff Category: Dec 2024	Certified absence	Self- certified absence	Non Covid-19 absence	Covid-19 Absence	Total absence rate	% Non Covid-19 absence	% Covid-19 absence
Mercy University Hospital	5.13%	0.68%	5.81%	0.03%	5.84%	99.57%	0.43%
Medical & Dental	2.54%	0.10%	2.64%	0.00%	2.64%	100.00%	0.00%
Nursing & Midwifery	5.22%	0.46%	5.68%	0.00%	5.68%	100.00%	0.00%
Health & Social Care Professionals	4.99%	0.64%	5.64%	0.13%	5.76%	97.79%	2.21%
Management & Administrative	5.16%	0.77%	5.93%	0.05%	5.99%	99.13%	0.87%
General Support	5.48%	0.43%	5.91%	0.00%	5.91%	100.00%	0.00%
Patient & Client Care	7.84%	2.13%	9.97%	0.00%	9.97%	100.00%	0.00%

Health Service Absence Rate - by Staff Category: Dec 2024	Certified absence	Self- certified absence	Non Covid-19 absence	Covid-19 Absence	Total absence rate	% Non Covid-19 absence	% Covid-19 absence
National Maternity Hospital	4.61%	0.42%	5.03%	0.15%	5.17%	97.16%	2.84%
Medical & Dental	1.61%	0.05%	1.66%	0.00%	1.66%	100.00%	0.00%
Nursing & Midwifery	4.95%	0.54%	5.49%	0.34%	5.82%	94.18%	5.82%
Health & Social Care Professionals	0.86%	0.30%	1.16%	0.00%	1.16%	100.00%	0.00%
Management & Administrative	3.97%	0.30%	4.27%	0.00%	4.27%	100.00%	0.00%
General Support	9.37%	0.41%	9.78%	0.00%	9.78%	100.00%	0.00%
Patient & Client Care	3.47%	0.83%	4.30%	0.00%	4.30%	100.00%	0.00%

Health Service Absence Rate - by Staff Category: Dec 2024	Certified absence	Self- certified absence	Non Covid-19 absence	Covid-19 Absence	Total absence rate	% Non Covid-19 absence	% Covid-19 absence
National Rehabilitation Hospital	5.38%	0.99%	6.37%	0.00%	6.37%	100.00%	0.00%
Medical & Dental	1.15%	0.85%	2.00%	0.00%	2.00%	100.00%	0.00%
Nursing & Midwifery	4.48%	1.47%	5.95%	0.00%	5.95%	100.00%	0.00%
Health & Social Care Professionals	4.63%	0.76%	5.38%	0.00%	5.38%	100.00%	0.00%
Management & Administrative	6.24%	0.84%	7.07%	0.00%	7.07%	100.00%	0.00%
General Support	5.20%	0.57%	5.76%	0.00%	5.76%	100.00%	0.00%
Patient & Client Care	8.21%	0.94%	9.16%	0.00%	9.16%	100.00%	0.00%

Health Service Absence Rate - by Staff Category: Dec 2024	Certified absence	Self- certified absence	Non Covid-19 absence	Covid-19 Absence	Total absence rate	% Non Covid-19 absence	% Covid-19 absence
Rotunda Hospital	5.45%	1.42%	6.87%	0.02%	6.88%	99.75%	0.25%
Medical & Dental	4.63%	1.03%	5.66%	0.00%	5.66%	100.00%	0.00%
Nursing & Midwifery	4.55%	1.47%	6.02%	0.03%	6.05%	99.53%	0.47%
Health & Social Care Professionals	2.85%	0.93%	3.78%	0.00%	3.78%	100.00%	0.00%
Management & Administrative	5.46%	0.92%	6.38%	0.00%	6.38%	100.00%	0.00%
General Support	9.73%	2.31%	12.05%	0.04%	12.09%	99.69%	0.31%
Patient & Client Care	8.01%	1.88%	9.89%	0.00%	9.89%	100.00%	0.00%

Health Service Absence Rate - by Staff Category: Dec 2024	Certified absence	Self- certified absence	Non Covid-19 absence	Covid-19 Absence	Total absence rate	% Non Covid-19 absence	% Covid-19 absence
Royal Victoria Eye and Ear Hospi	4.23%	0.70%	4.93%	0.21%	5.14%	95.93%	4.07%
Medical & Dental	1.55%	0.54%	2.08%	0.00%	2.08%	100.00%	0.00%
Nursing & Midwifery	7.06%	1.31%	8.37%	0.53%	8.89%	94.09%	5.91%
Health & Social Care Professionals	0.13%	0.26%	0.40%	0.53%	0.93%	42.86%	57.14%
Management & Administrative	3.62%	0.15%	3.77%	0.00%	3.77%	100.00%	0.00%
General Support	1.80%	0.35%	2.15%	0.00%	2.15%	100.00%	0.00%
Patient & Client Care	12.55%	1.15%	13.70%	0.00%	13.70%	100.00%	0.00%

Health Service Absence Rate - by Staff Category: Dec 2024	Certified absence	Self- certified absence	Non Covid-19 absence	Covid-19 Absence	Total absence rate	% Non Covid-19 absence	% Covid-19 absence
South Infirmary Victoria Universit	3.08%	0.91%	3.99%	0.06%	4.05%	98.62%	1.38%
Medical & Dental	2.36%	0.00%	2.36%	0.00%	2.36%	100.00%	0.00%
Nursing & Midwifery	3.44%	1.32%	4.76%	0.15%	4.90%	97.01%	2.99%
Health & Social Care Professionals	1.47%	0.52%	1.99%	0.00%	1.99%	100.00%	0.00%
Management & Administrative	2.65%	0.85%	3.51%	0.00%	3.51%	100.00%	0.00%
General Support	4.07%	0.48%	4.56%	0.00%	4.56%	100.00%	0.00%
Patient & Client Care	5.23%	2.21%	7.45%	0.00%	7.45%	100.00%	0.00%

Health Service Absence Rate - by Staff Category: Dec 2024	Certified absence	Self- certified absence	Non Covid-19 absence	Covid-19 Absence	Total absence rate	% Non Covid-19 absence	% Covid-19 absence
St. James's Hospital	4.87%	1.22%	6.09%	0.16%	6.25%	97.52%	2.48%
Medical & Dental	1.03%	0.35%	1.38%	0.00%	1.38%	100.00%	0.00%
Nursing & Midwifery	5.13%	1.72%	6.85%	0.24%	7.09%	96.55%	3.45%
Health & Social Care Professionals	3.72%	0.98%	4.70%	0.21%	4.91%	95.71%	4.29%
Management & Administrative	6.28%	0.89%	7.17%	0.09%	7.26%	98.75%	1.25%
General Support	6.97%	0.81%	7.78%	0.19%	7.97%	97.62%	2.38%
Patient & Client Care	7.32%	1.68%	9.00%	0.06%	9.06%	99.37%	0.63%

Health Service Absence Rate - by Staff Category: Dec 2024	Certified absence	Self- certified absence	Non Covid-19 absence	Covid-19 Absence	Total absence rate	% Non Covid-19 absence	% Covid-19 absence
St. John's Hospital Limerick	4.74%	0.51%	5.25%	1.65%	6.90%	76.12%	23.88%
Medical & Dental	0.26%	0.18%	0.44%	0.00%	0.44%	100.00%	0.00%
Nursing & Midwifery	3.96%	0.88%	4.83%	1.37%	6.20%	77.96%	22.04%
Health & Social Care Professionals	1.53%	0.20%	1.73%	0.00%	1.73%	100.00%	0.00%
Management & Administrative	4.03%	0.22%	4.25%	0.37%	4.63%	91.94%	8.06%
General Support	15.30%	0.28%	15.58%	8.83%	24.41%	63.82%	36.18%
Patient & Client Care	3.67%	0.48%	4.16%	0.00%	4.16%	100.00%	0.00%

Health Service Absence Rate - by Staff Category: Dec 2024	Certified absence	Self- certified absence	Non Covid-19 absence	Covid-19 Absence	Total absence rate	% Non Covid-19 absence	% Covid-19 absence
St. Michael's Hospital	3.03%	0.60%	3.63%	0.38%	4.01%	90.48%	9.52%
Medical & Dental	1.19%	0.39%	1.58%	0.00%	1.58%	100.00%	0.00%
Nursing & Midwifery	6.29%	1.02%	7.31%	0.89%	8.20%	89.14%	10.86%
Health & Social Care Professionals	0.92%	0.11%	1.03%	0.00%	1.03%	100.00%	0.00%
Management & Administrative	0.31%	0.16%	0.47%	0.00%	0.47%	100.00%	0.00%
General Support	0.56%	0.58%	1.14%	0.00%	1.14%	100.00%	0.00%
Patient & Client Care	0.00%	0.23%	0.23%	0.00%	0.23%	100.00%	0.00%

Health Service Absence Rate - by Staff Category: Dec 2024	Certified absence	Self- certified absence	Non Covid-19 absence	Covid-19 Absence	Total absence rate	% Non Covid-19 absence	% Covid-19 absence
St. Vincent's University Hospital	3.22%	0.76%	3.98%	0.08%	4.06%	98.11%	1.89%
Medical & Dental	0.57%	0.21%	0.78%	0.04%	0.82%	95.15%	4.85%
Nursing & Midwifery	3.31%	1.03%	4.34%	0.05%	4.39%	98.91%	1.09%
Health & Social Care Professionals	2.50%	0.58%	3.08%	0.05%	3.13%	98.41%	1.59%
Management & Administrative	5.30%	0.69%	6.00%	0.32%	6.32%	94.89%	5.11%
General Support	4.26%	0.58%	4.83%	0.00%	4.83%	100.00%	0.00%
Patient & Client Care	4.91%	1.37%	6.28%	0.00%	6.28%	100.00%	0.00%

Health Service Absence Rate - by Staff Category: Dec 2024	Certified absence	Self- certified absence	Non Covid-19 absence	Covid-19 Absence	Total absence rate	% Non Covid-19 absence	% Covid-19 absence
Tallaght University Hospital	4.95%	1.00%	5.95%	0.44%	6.40%	93.09%	6.91%
Medical & Dental	0.45%	0.47%	0.93%	0.09%	1.02%	90.87%	9.13%
Nursing & Midwifery	5.43%	1.34%	6.77%	0.53%	7.30%	92.76%	7.24%
Health & Social Care Professionals	6.55%	1.00%	7.55%	0.59%	8.13%	92.77%	7.23%
Management & Administrative	6.28%	0.70%	6.99%	0.38%	7.36%	94.86%	5.14%
General Support	7.31%	0.67%	7.98%	0.59%	8.57%	93.17%	6.83%
Patient & Client Care	4.38%	1.14%	5.53%	0.44%	5.96%	92.66%	7.34%

Year / Month	Certified absence	Self-certified absence	Non Covid-19 absence	Covid-19 Absence	Total absence rate	Medical & Dental	Nursing & Midwifery	Health & Social Care Professionals	Management & Administrative	General Support	Patient & Client Care
Dec 2024	5.51%	0.90%	6.41%	0.26%	6.67%	1.71%	7.38%	5.69%	6.87%	9.51%	9.95%
Nov 2024	4.80%	0.70%	5.50%	0.26%	5.76%	1.70%	6.37%	4.64%	5.76%	8.43%	8.71%
Oct 2024	4.72%	0.65%	5.37%	0.37%	5.74%	1.63%	6.26%	4.96%	5.78%	8.30%	8.96%
Sep 2024	4.60%	0.79%	5.38%	0.51%	5.90%	1.50%	6.56%	5.29%	5.81%	8.57%	8.80%
Aug 2024	4.69%	0.57%	5.26%	0.63%	5.89%	1.47%	6.44%	5.11%	6.13%	8.37%	9.00%
Jul 2024	4.68%	0.61%	5.29%	0.94%	6.23%	1.26%	6.89%	5.37%	6.42%	8.89%	9.95%
Jun 2024	4.67%	0.69%	5.37%	0.77%	6.14%	1.68%	6.67%	5.18%	6.02%	8.53%	9.41%
May 2024	4.40%	0.66%	5.06%	0.32%	5.38%	1.47%	6.07%	4.43%	5.09%	7.73%	7.86%
Apr 2024	4.35%	0.68%	5.03%	0.22%	5.25%	1.35%	5.89%	4.46%	4.91%	7.56%	7.95%
Mar 2024	4.46%	0.71%	5.17%	0.24%	5.41%	1.55%	6.09%	4.33%	5.22%	7.75%	7.70%
Feb 2024	4.43%	0.72%	5.14%	0.32%	5.46%	1.40%	6.17%	4.40%	5.44%	7.54%	8.14%
Jan 2024	4.75%	0.83%	5.57%	0.63%	6.21%	1.24%	7.03%	5.42%	6.17%	8.64%	9.23%
2024	4.67%	0.71%	5.38%	0.46%	5.83%	1.49%	6.48%	4.94%	5.80%	8.32%	8.80%
Dec 2023	4.40%	0.87%	5.26%	0.66%	5.93%	1.24%	6.81%	5.28%	5.75%	7.60%	8.69%
Nov 2023	4.23%	0.71%	4.94%	0.47%	5.40%	1.27%	6.23%	4.46%	5.14%	7.48%	8.09%
Oct 2023	4.22%	0.79%	5.00%	0.57%	5.57%	1.28%	6.44%	4.30%	5.50%	7.94%	8.16%
Sep 2023	4.16%	0.69%	4.84%	0.72%	5.56%	1.29%	6.54%	4.38%	5.20%	7.59%	8.37%
Aug 2023	4.22%	0.68%	4.90%	0.74%	5.64%	1.23%	6.71%	4.41%	5.07%	7.61%	8.76%
Jul 2023	4.14%	0.62%	4.76%	0.36%	5.11%	1.02%	6.03%	4.04%	4.63%	7.17%	7.67%
Jun 2023	4.16%	0.58%	4.75%	0.34%	5.09%	1.23%	6.00%	3.92%	4.58%	6.86%	7.59%
May 2023	4.06%	0.63%	4.69%	0.47%	5.17%	1.19%	6.19%	4.14%	4.66%	6.69%	7.66%
Apr 2023	3.96%	0.65%	4.61%	0.49%	5.10%	1.16%	6.23%	3.58%	4.56%	6.58%	7.54%
Mar 2023	3.98%	0.74%	4.72%	0.53%	5.25%	1.36%	6.07%	4.19%	4.97%	7.18%	7.81%
Feb 2023	3.87%	0.67%	4.55%	0.43%	4.97%	1.17%	5.89%	4.08%	4.60%	6.77%	6.74%
Jan 2023	4.52%	0.75%	5.27%	0.74%	6.01%	1.26%	7.19%	4.78%	5.58%	7.99%	8.28%
2023	4.16%	0.70%	4.86%	0.55%	5.41%	1.23%	6.37%	4.30%	5.03%	7.30%	7.96%
Dec 2022	4.94%	1.01%	5.96%	1.26%	7.22%	1.79%	8.56%	6.00%	6.95%	9.13%	9.72%
Nov 2022	4.13%	0.83%	4.96%	0.73%	5.69%	1.51%	6.58%	4.37%	5.39%	7.92%	8.23%
Oct 2022	4.21%	0.73%	4.94%	0.80%	5.74%	1.57%	6.48%	4.61%	5.49%	7.99%	8.21%
Sep 2022	4.21%	0.69%	4.90%	0.68%	5.58%	1.31%	6.57%	4.18%	4.94%	7.94%	8.38%
Aug 2022	4.17%	0.61%	4.78%	0.77%	5.55%	1.47%	6.50%	4.15%	4.84%	7.92%	8.27%
Jul 2022	4.21%	0.67%	4.88%	1.84%	6.72%	1.68%	7.86%	5.16%	5.95%	9.18%	9.86%
Jun 2022	4.18%	0.70%	4.89%	2.04%	6.93%	1.84%	8.34%	5.60%	6.34%	9.30%	8.87%
May 2022	3.94%	0.72%	4.66%	1.02%	5.68%	1.50%	6.68%	4.61%	5.21%	7.41%	8.22%
Apr 2022	4.13%	0.63%	4.77%	2.50%	7.27%	2.06%	8.77%	5.81%	6.50%	9.34%	9.97%
Mar 2022	4.07%	0.64%	4.71%	5.18%	9.89%	3.23%	12.03%	9.33%	9.14%	11.38%	11.81%
Feb 2022	3.84%	0.58%	4.42%	3.63%	8.05%	2.53%	9.72%	7.30%	7.20%	9.86%	10.11%
Jan 2022	3.74%	0.48%	4.21%	5.75%	9.97%	2.87%	11.53%	8.81%	9.84%	13.05%	12.56%
2022	4.15%	0.69%	4.84%	2.18%	7.02%	1.94%	8.30%	5.85%	6.48%	9.19%	9.50%
Dec 2021	4.15%	0.60%	4.76%	3.33%	8.09%	2.37%	9.41%	7.56%	7.83%	10.12%	10.54%
Nov 2021	4.41%	0.82%	5.24%	2.48%	7.71%	2.12%	8.52%	7.33%	8.27%	10.30%	9.97%
Oct 2021	4.26%	0.71%	4.97%	1.67%	6.64%	1.91%	7.47%	5.66%	6.42%	8.87%	9.61%
Sep 2021	4.04%	0.60%	4.64%	1.13%	5.78%	1.59%	6.77%	4.31%	5.40%	7.94%	8.70%
Aug 2021	3.92%	0.58%	4.50%	1.25%	5.75%	1.60%	6.71%	4.34%	5.41%	7.45%	8.89%
Jul 2021	3.66%	0.52%	4.19%	0.78%	4.96%	1.06%	5.86%	3.86%	4.75%	6.75%	6.99%
Jun 2021	3.49%	0.50%	4.00%	0.55%	4.54%	1.02%	5.44%	3.23%	3.97%	6.12%	7.24%
May 2021	3.19%	0.44%	3.63%	0.63%	4.26%	0.99%	5.07%	2.93%	4.03%	5.83%	6.25%
Apr 2021	3.21%	0.40%	3.61%	0.82%	4.43%	1.19%	5.38%	2.95%	3.75%	6.06%	6.80%
Mar 2021	3.28%	0.40%	3.68%	1.14%	4.82%	1.14%	5.86%	3.34%	4.12%	6.47%	7.60%
Feb 2021	3.53%	0.54%	4.07%	2.25%	6.32%	1.65%	7.56%	4.03%	5.60%	8.61%	10.32%
Jan 2021	3.63%	0.45%	4.09%	5.85%	9.94%	4.55%	12.22%	6.37%	8.03%	12.28%	13.63%
2021	3.74%	0.55%	4.29%	1.82%	6.11%	1.76%	7.19%	4.68%	5.65%	8.07%	8.88%

Year / Month	Certified absence	Self-certified absence	Non Covid-19 absence	Covid-19 Absence	Total absence rate	CHI	DMHG	IEHG	RCSI	Saolta	SSWHG	ULHG	Other Acute	Acute Services
Dec 2024	5.51%	0.90%	6.41%	0.26%	6.67%	6.32%	6.69%	5.85%	5.94%	8.01%	6.70%	8.27%	6.17%	6.67%
Nov 2024	4.80%	0.70%	5.50%	0.26%	5.76%	5.83%	5.68%	5.05%	5.18%	6.67%	5.96%	7.12%	4.48%	5.76%
Oct 2024	4.72%	0.65%	5.37%	0.37%	5.74%	5.53%	5.82%	4.77%	4.84%	6.98%	6.18%	7.37%	5.10%	5.74%
Sep 2024	4.60%	0.79%	5.38%	0.51%	5.90%	5.87%	5.91%	5.02%	5.09%	7.01%	6.22%	7.55%	4.04%	5.90%
Aug 2024	4.69%	0.57%	5.26%	0.63%	5.89%	5.44%	5.75%	5.12%	5.07%	7.23%	6.15%	7.74%	4.93%	5.89%
Jul 2024	4.68%	0.61%	5.29%	0.94%	6.23%	5.44%	6.23%	5.55%	5.42%	7.53%	6.59%	7.80%	3.94%	6.23%
Jun 2024	4.67%	0.69%	5.37%	0.77%	6.14%	5.44%	6.21%	5.58%	5.73%	6.87%	6.05%	7.66%	2.14%	6.14%
May 2024	4.40%	0.66%	5.06%	0.32%	5.38%	5.26%	5.35%	5.14%	4.73%	5.70%	5.88%	6.75%	2.71%	5.38%
Apr 2024	4.35%	0.68%	5.03%	0.22%	5.25%	4.90%	5.28%	5.17%	4.71%	5.30%	5.59%	6.59%	3.95%	5.25%
Mar 2024	4.46%	0.71%	5.17%	0.24%	5.41%	5.31%	5.58%	5.26%	4.75%	5.40%	5.79%	6.80%	5.10%	5.41%
Feb 2024	4.43%	0.72%	5.14%	0.32%	5.46%	5.44%	5.82%	5.47%	4.80%	5.31%	5.61%	6.69%	3.23%	5.46%
Jan 2024	4.75%	0.83%	5.57%	0.63%	6.21%	6.47%	6.48%	5.83%	5.74%	6.43%	6.20%	7.29%	2.05%	6.21%
2024	4.67%	0.71%	5.38%	0.46%	5.83%	5.61%	5.90%	5.31%	5.16%	6.52%	6.08%	7.30%	3.86%	5.83%
Dec 2023	4.40%	0.87%	5.26%	0.66%	5.93%	6.42%	6.34%	5.62%	5.23%	6.07%	5.62%	7.70%	2.58%	5.93%
Nov 2023	4.23%	0.71%	4.94%	0.47%	5.40%	5.43%	5.73%	4.84%	4.89%	5.75%	5.43%	6.81%	1.29%	5.40%
Oct 2023	4.22%	0.79%	5.00%	0.57%	5.57%	5.05%	5.83%	4.92%	5.22%	5.74%	5.78%	7.39%	2.12%	5.57%
Sep 2023	4.16%	0.69%	4.84%	0.72%	5.56%	4.93%	5.86%	5.11%	5.09%	5.70%	5.59%	7.57%	1.30%	5.56%
Aug 2023	4.22%	0.68%	4.90%	0.74%	5.64%	4.88%	5.92%	5.44%	4.96%	6.04%	5.40%	7.88%	2.02%	5.64%
Jul 2023	4.14%	0.62%	4.76%	0.36%	5.11%	5.01%	5.16%	5.03%	4.65%	5.16%	5.12%	6.69%	2.41%	5.11%
Jun 2023	4.16%	0.58%	4.75%	0.34%	5.09%	4.52%	5.36%	4.87%	4.66%	5.29%	4.89%	6.46%	3.13%	5.09%
May 2023	4.06%	0.63%	4.69%	0.47%	5.17%	4.50%	5.41%	4.74%	4.69%	5.66%	5.02%	6.91%	2.71%	5.17%
Apr 2023	3.96%	0.65%	4.61%	0.49%	5.10%	4.70%	5.25%	4.78%	5.00%	4.96%	4.69%	7.32%	1.21%	5.10%
Mar 2023	3.98%	0.74%	4.72%	0.53%	5.25%	4.91%	5.82%	4.72%	5.28%	5.82%	3.78%	7.07%	1.69%	5.25%
Feb 2023	3.87%	0.67%	4.55%	0.43%	4.97%	4.15%	5.42%	4.38%	5.08%	5.05%	4.47%	6.49%	0.95%	4.97%
Jan 2023	4.52%	0.75%	5.27%	0.74%	6.01%	5.29%	6.26%	5.51%	5.74%	6.19%	5.91%	7.73%	2.94%	6.01%
2023	4.16%	0.70%	4.86%	0.55%	5.41%	4.99%	5.71%	5.00%	5.63%	5.14%	5.17%	7.17%	2.04%	5.41%
Dec 2022	4.94%	1.01%	5.96%	1.26%	7.22%	6.86%	8.41%	6.55%	7.00%	6.99%	6.11%	9.37%	3.38%	7.22%
Nov 2022	4.13%	0.83%	4.96%	0.73%	5.69%	5.42%	6.08%	4.72%	5.70%	5.86%	5.50%	7.20%	4.50%	5.69%
Oct 2022	4.21%	0.73%	4.94%	0.80%	5.74%	6.13%	5.89%	4.70%	6.12%	5.61%	5.44%	7.61%	4.36%	5.74%
Sep 2022	4.21%	0.69%	4.90%	0.68%	5.58%	5.94%	5.71%	4.50%	5.62%	5.79%	5.17%	7.86%	1.74%	5.58%
Aug 2022	4.17%	0.61%	4.78%	0.77%	5.55%	5.98%	5.16%	4.70%	5.46%	6.10%	5.25%	8.13%	2.72%	5.55%
Jul 2022	4.21%	0.67%	4.88%	1.84%	6.72%	6.74%	6.36%	5.75%	6.91%	7.32%	6.18%	9.33%	2.78%	6.72%
Jun 2022	4.18%	0.70%	4.89%	2.04%	6.93%	6.86%	6.30%	6.79%	6.56%	7.05%	7.62%	8.72%	2.52%	6.93%
May 2022	3.94%	0.72%	4.66%	1.02%	5.68%	5.77%	5.36%	5.69%	5.55%	5.89%	5.10%	7.61%	1.45%	5.68%
Apr 2022	4.13%	0.63%	4.77%	2.50%	7.27%	6.89%	7.07%	8.32%	6.43%	6.79%	7.25%	9.34%	4.64%	7.27%
Mar 2022	4.07%	0.64%	4.71%	5.18%	9.89%	8.99%	9.35%	11.77%	8.57%	10.01%	9.76%	11.75%	3.96%	9.89%
Feb 2022	3.84%	0.58%	4.42%	3.63%	8.05%	8.09%	7.88%	8.61%	8.19%	7.58%	6.77%	10.13%		8.05%
Jan 2022	3.74%	0.48%	4.21%	5.75%	9.97%	9.68%	8.66%	10.39%	10.14%	10.28%	9.52%	12.25%		9.97%
2022	4.15%	0.69%	4.84%	2.18%	7.02%	6.94%	6.85%	6.86%	6.85%	7.09%	6.62%	9.11%	3.21%	7.02%
Dec 2021	4.15%	0.60%	4.76%	3.33%	8.09%	7.85%	7.87%	9.99%	7.66%	7.48%	6.54%	9.43%		8.09%
Nov 2021	4.41%	0.82%	5.24%	2.48%	7.71%	8.10%	7.68%	8.63%	7.33%	7.49%	6.20%	9.76%		7.71%
Oct 2021	4.26%	0.71%	4.97%	1.67%	6.64%	6.94%	6.51%	7.34%	6.32%	6.39%	5.68%	8.54%		6.64%
Sep 2021	4.04%	0.60%	4.64%	1.13%	5.78%	5.58%	5.62%	5.68%	5.75%	5.70%	5.35%	7.66%		5.78%
Aug 2021	3.92%	0.58%	4.50%	1.25%	5.75%	5.83%	5.65%	6.32%	5.57%	5.50%	4.89%	7.49%		5.75%
Jul 2021	3.66%	0.52%	4.19%	0.78%	4.96%	5.13%	4.89%	4.94%	4.81%	5.03%	4.45%	6.43%		4.96%
Jun 2021	3.49%	0.50%	4.00%	0.55%	4.54%	4.58%	4.64%	4.29%	4.50%	4.52%	4.07%	5.93%		4.54%
May 2021	3.19%	0.44%	3.63%	0.63%	4.26%	4.20%	4.34%	4.26%	4.31%	3.96%	4.11%	4.88%		4.26%
Apr 2021	3.21%	0.40%	3.61%	0.82%	4.43%	4.30%	4.70%	4.13%	4.19%	4.39%	4.27%	5.65%		4.43%
Mar 2021	3.28%	0.40%	3.68%	1.14%	4.82%	4.12%	4.95%	4.46%	4.83%	4.63%	4.71%	6.48%		4.82%
Feb 2021	3.53%	0.54%	4.07%	2.25%	6.32%	4.51%	6.39%	5.98%	6.54%	6.49%	5.32%	9.42%		6.32%

