

Acute Service Employment Report: April 2022

Employment by Staff Group

Apr 2022	WTE Dec 2019	WTE Dec 2020	WTE Mar 2022	WTE Apr 2022	WTE change since Mar 22	WTE change since Dec 20	% change since Dec 20	WTE change since Dec 19	% change since Dec 19	No. Apr 2022
Overall	62,537	66,439	71,205	71,404	+199	+4,965	+7.5%	+8,867	+14.2%	79,962
Consultants	2,782	2,974	3,146	3,157	+12	+184	+6.2%	+375	+13.5%	3,445
Registrars	2,942	3,115	3,340	3,349	+9	+234	+7.5%	+407	+13.8%	3,448
SHO/ Interns	2,795	3,253	3,258	3,304	+47	+52	+1.6%	+509	+18.2%	3,434
Medical/ Dental, other	60	64	74	73	-1	+9	+14.1%	+13	+22.5%	105
Medical & Dental	8,578	9,405	9,817	9,884	+66	+478	+5.1%	+1,305	+15.2%	10,432
Nurse/ Midwife Manager	4,710	4,924	5,427	5,447	+20	+523	+10.6%	+736	+15.6%	6,063
Nurse/ Midwife Specialist & AN/MP	1,292	1,468	1,664	1,696	+32	+228	+15.5%	+404	+31.3%	1,915
Staff Nurse/ Staff Midwife	16,676	17,526	18,383	18,437	+54	+911	+5.2%	+1,761	+10.6%	21,104
Public Health Nurse	1	2	0	0		-1	-87.1%	-1	-85.6%	1
Pre-registration Nurse/ Midwife Intern	83	15	478	497	+19	+482	+3224.9%	+415	+502.1%	1,005
Pre-registration Nurse Intern (COVID-19)		156				-156	-100.0%		-100.0%	
Post-registration Nurse/ Midwife Student	195	151	130	129	-1	-22	-14.5%	-67	-34.0%	142
Nursing/ Midwifery awaiting registration	139	57	155	122	-33	+65	+115.7%	-17	-12.1%	131
Nursing/ Midwifery Student	417	378	763	748	-15	+370	+97.9%	+331	+79.4%	1,278
Nursing/ Midwifery other	224	226	184	182	-2	-44	-19.4%	-42	-18.6%	217
Nursing & Midwifery	23,321	24,524	26,422	26,511	+89	+1,987	+8.1%	+3,190	+13.7%	30,578
Therapy Professions	2,008	2,217	2,436	2,439	+3	+222	+10.0%	+431	+21.5%	2,749
Health Science/ Diagnostics	4,242	4,458	4,645	4,647	+3	+189	+4.2%	+405	+9.6%	5,138
Social Care	3	4	3	3	+0	-1	-19.6%	+0	+0.3%	5
Social Workers	355	384	419	423	+4	+39	+10.2%	+68	+19.1%	469
Psychologists	101	110	133	133	+1	+23	+21.1%	+33	+32.6%	162
Pharmacy	901	1,006	1,104	1,106	+2	+100	+9.9%	+206	+22.8%	1,232
H&SC, Other	151	154	258	223	-35	+69	+45.1%	+72	+47.7%	321
Health & Social Care Professionals	7,760	8,333	8,997	8,975	-23	+642	+7.7%	+1,215	+15.7%	10,076
Management (VIII & above)	518	579	676	690	+14	+110	+19.1%	+172	+33.3%	709
Administrative/ Supervisory (V to VII)	2,326	2,674	3,078	3,086	+8	+412	+15.4%	+760	+32.7%	3,290
Clerical (III & IV)	6,606	6,658	7,130	7,137	+8	+479	+7.2%	+531	+8.0%	8,108
Management & Administrative	9,450	9,912	10,884	10,913	+29	+1,001	+10.1%	+1,464	+15.5%	12,107
Support	5,630	6,152	6,434	6,474	+40	+322	+5.2%	+844	+15.0%	7,255
Maintenance/ Technical	531	539	546	545	-1	+6	+1.1%	+14	+2.7%	556
General Support	6,160	6,691	6,980	7,019	+39	+328	+4.9%	+858	+13.9%	7,811
Health Care Assistants	5,275	5,516	5,976	5,988	+12	+472	+8.6%	+713	+13.5%	6,738
Ambulance Staff	1,825	1,876	1,916	1,902	-14	+26	+1.4%	+78	+4.3%	1,965
Care, other	168	182	213	212	-1	+30	+16.4%	+44	+26.1%	255
Patient & Client Care	7,268	7,574	8,105	8,102	-3	+528	+7.0%	+835	+11.5%	8,958

Acute Services Employment by Hospital & Hospital Group: Apr 2022

Apr 2022	WTE Dec 2019	WTE Dec 2020	WTE Mar 2022	WTE Apr 2022	WTE change since Mar 22	WTE change since Dec 20	% change since Dec 20	WTE change since Dec 19	% change since Dec 19	No. Apr 2022
Overall	62,537	66,439	71,205	71,404	+199	+4,965	+7.5%	+8,867	+14.2%	79,962
National Ambulance Service	1,933	1,990	2,043	2,033	-10	+43	+2.1%	+100	+5.1%	2,101
CHI at Connolly	136	136	145	142	-4	+6	+4.0%	+6	+4.5%	164
CHI at Crumlin	1,967	2,062	2,160	2,176	+16	+114	+5.5%	+209	+10.6%	2,474
CHI at Tallaght	255	259	282	285	+3	+27	+10.3%	+30	+11.7%	320
CHI at Temple Street	1,184	1,259	1,296	1,305	+9	+46	+3.6%	+120	+10.1%	1,491
CHI Corporate	3	2	30	28	-2	+26	+1304.0%	+25	+836.0%	30
CHI Programme	57	44	100	97	-2	+53	+119.4%	+40	+71.1%	104
Children's Health Ireland	3,602	3,762	4,013	4,033	+20	+271	+7.2%	+431	+12.0%	4,583
Coombe Women & Infants University	890	925	945	944	-1	+19	+2.0%	+54	+6.1%	1,068
MRH Portlaoise	750	780	801	826	+25	+46	+5.9%	+76	+10.2%	916
MRH Tullamore	1,101	1,146	1,181	1,200	+19	+54	+4.7%	+99	+9.0%	1,324
Naas General	759	777	824	845	+21	+68	+8.8%	+86	+11.4%	943
St. James's	4,058	4,266	4,519	4,517	-1	+252	+5.9%	+460	+11.3%	5,040
St. Luke's Rathgar	544	542	542	547	+5	+5	+0.9%	+3	+0.5%	580
Tallaght University	2,683	2,812	2,992	3,000	+8	+188	+6.7%	+317	+11.8%	3,402
Hospital Group HQ	33	40	57	59	+1	+19	+47.2%	+25	+74.9%	66
Dublin Midlands Hospital Group	10,819	11,288	11,861	11,938	+77	+651	+5.8%	+1,120	+10.4%	13,339
Cappagh National Orthopaedic	426	441	455	454	-1	+12	+2.8%	+27	+6.4%	510
Mater Misericordiae University	3,159	3,429	3,695	3,700	+5	+271	+7.9%	+541	+17.1%	4,087
MRH Mullingar	914	1,004	1,068	1,068	+0	+64	+6.4%	+155	+16.9%	1,182
National Maternity	880	916	942	947	+5	+31	+3.4%	+67	+7.7%	1,066
Our Lady's Navan	516	590	602	613	+11	+23	+3.8%	+97	+18.8%	710
St. Columcille's	452	457	469	466	-3	+9	+2.0%	+14	+3.2%	513
St Luke's General Kilkenny	1,119	1,185	1,227	1,237	+10	+52	+4.4%	+118	+10.6%	1,407
St. Michael's	397	404	410	413	+3	+9	+2.3%	+17	+4.2%	483
St. Vincent's University	2,838	3,087	3,246	3,220	-26	+134	+4.3%	+382	+13.5%	3,461
Wexford General	1,024	1,055	1,129	1,134	+5	+79	+7.5%	+110	+10.7%	1,276
Royal Victoria Eye & Ear	291	313	330	334	+4	+20	+6.5%	+43	+14.7%	388
National Rehabilitation	457	555	603	610	+7	+55	+9.9%	+152	+33.3%	678
IEHG Bank		8	14	15	+0	+6	+77.9%	+15	-100.0%	21
Hospital Group HQ	30	34	82	78	-4	+44	+131.1%	+48	+160.2%	94
Ireland East Hospital Group	12,502	13,478	14,272	14,288	+16	+810	+6.0%	+1,786	+14.3%	15,876
Beaumont	3,846	4,029	4,180	4,197	+17	+168	+4.2%	+352	+9.1%	4,593
Cavan General	1,034	1,059	1,213	1,226	+13	+168	+15.8%	+193	+18.6%	1,395
Connolly	1,334	1,462	1,549	1,548	-0	+86	+5.9%	+214	+16.1%	1,696
Louth County	277	289	297	297	+0	+8	+2.7%	+20	+7.0%	338
Monaghan	101	102	147	148	+1	+46	+44.9%	+46	+45.7%	170
Our Lady of Lourdes	2,149	2,287	2,437	2,456	+20	+169	+7.4%	+307	+14.3%	2,716
Rotunda	892	929	942	948	+6	+19	+2.0%	+56	+6.3%	1,111
Hospital Group HQ	30	41	63	64	+1	+23	+56.5%	+34	+113.1%	66

Apr 2022	WTE Dec 2019	WTE Dec 2020	WTE Mar 2022	WTE Apr 2022	WTE change since Mar 22	WTE change since Dec 20	% change since Dec 20	WTE change since Dec 19	% change since Dec 19	No. Apr 2022
Overall	62,537	66,439	71,205	71,404	+199	+4,965	+7.5%	+8,867	+14.2%	79,962
RCSI Hospitals Group	9,663	10,197	10,827	10,884	+57	+687	+6.7%	+1,221	+12.6%	12,085
Galway University	3,607	3,787	4,060	4,053	-7	+266	+7.0%	+447	+12.4%	4,553
Letterkenny University	1,607	1,769	1,976	1,959	-17	+191	+10.8%	+352	+21.9%	2,252
Mayo University	1,150	1,204	1,364	1,372	+7	+168	+14.0%	+222	+19.3%	1,559
Portiuncula University	790	843	909	925	+16	+82	+9.7%	+135	+17.2%	1,033
Roscommon University	333	367	409	413	+4	+47	+12.7%	+80	+24.0%	467
Sligo University	1,688	1,766	1,976	1,956	-20	+190	+10.8%	+269	+15.9%	2,217
Hospital Group HQ	79	93	150	140	-10	+47	+49.9%	+61	+77.6%	186
Saolta University Hospital Care	9,253	9,829	10,845	10,819	-26	+990	+10.1%	+1,566	+16.9%	12,267
Bantry General	266	277	295	297	+2	+19	+6.9%	+30	+11.3%	345
Cork University	4,014	4,316	4,636	4,662	+26	+346	+8.0%	+648	+16.1%	5,326
Lourdes Orthopaedic Kilcreene	70	70	70	70	+0	-0	-0.1%	-0	-0.2%	81
Mallow General	252	246	260	263	+3	+17	+6.7%	+11	+4.3%	307
Mercy University	1,173	1,243	1,322	1,335	+13	+92	+7.4%	+163	+13.9%	1,519
South Infirmary Victoria University	787	804	848	846	-2	+42	+5.2%	+59	+7.5%	1,027
South Tipperary General	868	968	1,016	1,024	+8	+56	+5.8%	+157	+18.1%	1,184
UH Kerry	1,114	1,215	1,337	1,347	+10	+132	+10.9%	+233	+20.9%	1,536
UH Waterford	1,949	2,103	2,221	2,235	+14	+132	+6.3%	+285	+14.6%	2,490
Hospital Group HQ	35	45	71	67	-4	+22	+47.8%	+33	+94.4%	94
South/South West Hospital Group	10,527	11,288	12,076	12,146	+70	+858	+7.6%	+1,619	+15.4%	13,909
Croom Orthopaedic	156	173	285	287	+3	+114	+65.9%	+131	+84.2%	315
Ennis	235	228	244	248	+4	+20	+8.6%	+13	+5.4%	281
Nenagh	250	259	270	272	+2	+13	+5.1%	+23	+9.0%	307
St. John's Limerick	311	321	325	328	+3	+7	+2.2%	+16	+5.3%	365
UH Limerick	2,814	3,122	3,625	3,609	-16	+487	+15.6%	+796	+28.3%	3,953
UMH Limerick	375	393	400	398	-2	+5	+1.4%	+24	+6.4%	454
Hospital Group HQ	6	10	10	10	+0	+0	+3.5%	+4	+73.1%	11
University of Limerick Hospital Group	4,146	4,506	5,159	5,153	-5	+647	+14.4%	+1,007	+24.3%	5,686
Other	91	101	109	109	-0	+8	+8.2%	+18	+19.5%	116
other Acute Services	91	101	109	109	-0	+8	+8.2%	+18	+19.5%	116

Acute Services Employment by Administration (HSE / S38): April 2022

Apr 2022	WTE Dec 2019	WTE Dec 2020	WTE Mar 2022	WTE Apr 2022	WTE change since Mar 22	WTE change since Dec 20	% change since Dec 20	WTE change since Dec 19	% change since Dec 19	No. Apr 2022
Overall	62,537	66,439	71,205	71,404	+199	+4,965	+7.5%	+8,867	+14.2%	79,962
Health Service Executive	35,850	38,205	41,438	41,578	+140	+3,372	+8.8%	+5,727	+16.0%	46,581
Section 38 Hospitals	26,687	28,234	29,767	29,826	+59	+1,592	+5.6%	+3,139	+11.8%	33,381

HSE

Apr 2022	WTE Dec 2019	WTE Dec 2020	WTE Mar 2022	WTE Apr 2022	WTE change since Mar 22	WTE change since Dec 20	% change since Dec 20	WTE change since Dec 19	% change since Dec 19	No. Apr 2022
Overall	35,850	38,205	41,438	41,578	+140	+3,372	+8.8%	+5,727	+16.0%	46,581
Consultants	1,479	1,561	1,647	1,643	-3	+83	+5.3%	+164	+11.1%	1,762
Registrars	1,618	1,711	1,839	1,853	+14	+142	+8.3%	+235	+14.5%	1,914
SHO/ Interns	1,762	2,032	2,059	2,106	+46	+73	+3.6%	+344	+19.5%	2,207
Medical/ Dental, other	37	39	43	44	+0	+5	+11.6%	+7	+19.7%	59
Medical & Dental	4,895	5,343	5,589	5,646	+58	+303	+5.7%	+751	+15.3%	5,942
Nurse/ Midwife Manager	2,487	2,580	2,845	2,855	+10	+276	+10.7%	+368	+14.8%	3,158
Nurse/ Midwife Specialist & AN/MP	656	747	870	891	+21	+143	+19.2%	+235	+35.8%	990
Staff Nurse/ Staff Midwife	9,760	10,302	10,967	11,012	+45	+710	+6.9%	+1,252	+12.8%	12,912
Public Health Nurse	1	2	0	0		-1	-87.1%	-1	-85.6%	1
Pre-registration Nurse/ Midwife Intern	36	6	254	262	+7	+255	+3973.8%	+226	+633.6%	522
Pre-registration Nurse Intern (COVID-19)		65				-65	-100.0%		-100.0%	
Post-registration Nurse/ Midwife Student	77	57	35	35	+0	-22	-38.5%	-42	-54.4%	36
Nursing/ Midwifery awaiting registration	67	15	93	72	-21	+57	+378.4%	+5	+7.7%	81
Nursing/ Midwifery Student	179	143	382	368	-14	+225	+157.7%	+189	+105.7%	639
Nursing/ Midwifery other	77	87	80	79	-1	-8	-9.6%	+2	+2.9%	94
Nursing & Midwifery	13,160	13,861	15,144	15,206	+62	+1,345	+9.7%	+2,046	+15.5%	17,794
Therapy Professions	980	1,111	1,256	1,260	+5	+149	+13.4%	+281	+28.7%	1,411
Health Science/ Diagnostics	2,394	2,552	2,668	2,675	+6	+123	+4.8%	+281	+11.7%	2,965
Social Care	2	3	2	2	+0	-1	-25.8%	+0	+0.4%	3
Social Workers	98	108	126	128	+2	+20	+18.4%	+30	+31.1%	146
Psychologists	9	10	19	18	-0	+8	+82.3%	+10	+111.7%	21
Pharmacy	456	531	622	625	+3	+95	+17.8%	+169	+37.1%	717
H&SC, Other	53	46	138	109	-29	+63	+135.9%	+55	+104.3%	185
Health & Social Care Professionals	3,991	4,361	4,831	4,818	-13	+457	+10.5%	+827	+20.7%	5,448
Management (VIII & above)	259	292	337	343	+6	+51	+17.5%	+84	+32.7%	353
Administrative/ Supervisory (V to VII)	874	1,078	1,360	1,366	+6	+288	+26.7%	+491	+56.2%	1,448
Clerical (III & IV)	3,834	3,866	4,177	4,167	-10	+301	+7.8%	+333	+8.7%	4,648
Management & Administrative	4,967	5,236	5,874	5,876	+2	+640	+12.2%	+909	+18.3%	6,449
Support	3,215	3,618	3,882	3,907	+25	+289	+8.0%	+692	+21.5%	4,331
Maintenance/ Technical	292	295	300	299	-1	+4	+1.3%	+7	+2.2%	307
General Support	3,507	3,913	4,182	4,206	+24	+292	+7.5%	+698	+19.9%	4,638
Health Care Assistants	3,402	3,498	3,764	3,785	+21	+286	+8.2%	+383	+11.2%	4,178
Ambulance Staff	1,825	1,876	1,916	1,902	-14	+26	+1.4%	+78	+4.3%	1,965
Care, other	103	117	138	139	+1	+22	+19.1%	+36	+34.9%	167
Patient & Client Care	5,330	5,491	5,818	5,826	+8	+335	+6.1%	+496	+9.3%	6,310

Section 38 Hospitals

Apr 2022	WTE Dec 2019	WTE Dec 2020	WTE Mar 2022	WTE Apr 2022	WTE change since Mar 22	WTE change since Dec 20	% change since Dec 20	WTE change since Dec 19	% change since Dec 19	No. Apr 2022
Overall	26,687	28,234	29,767	29,826	+59	+1,592	+5.6%	+3,139	+11.8%	33,381
Consultants	1,303	1,413	1,499	1,514	+15	+101	+7.1%	+211	+16.2%	1,683
Registrars	1,324	1,404	1,501	1,496	-5	+92	+6.5%	+172	+13.0%	1,534
SHO/ Interns	1,033	1,220	1,198	1,198	+0	-22	-1.8%	+165	+16.0%	1,227
Medical/ Dental, other	23	25	31	29	-1	+4	+18.1%	+6	+27.0%	46
Medical & Dental	3,683	4,062	4,228	4,237	+9	+175	+4.3%	+554	+15.0%	4,490
Nurse/ Midwife Manager	2,223	2,344	2,582	2,591	+10	+247	+10.6%	+368	+16.6%	2,905
Nurse/ Midwife Specialist & AN/MP	636	721	794	806	+11	+85	+11.7%	+169	+26.6%	925
Staff Nurse/ Staff Midwife	6,916	7,224	7,417	7,425	+8	+201	+2.8%	+509	+7.4%	8,192
Pre-registration Nurse/ Midwife Intern	47	9	224	236	+11	+227	+2661.2%	+189	+402.2%	483
Pre-registration Nurse Intern (COVID-19)		91				-91	-100.0%		-100.0%	
Post-registration Nurse/ Midwife Student	119	94	95	94	-1	+0	+0.1%	-25	-20.9%	106
Nursing/ Midwifery awaiting registration	72	42	62	50	-12	+9	+20.5%	-22	-30.6%	50
Nursing/ Midwifery Student	238	235	381	380	-1	+145	+61.5%	+142	+59.6%	639
Nursing/ Midwifery other	148	139	104	104	-0	-36	-25.6%	-44	-29.8%	123
Nursing & Midwifery	10,161	10,663	11,278	11,305	+27	+642	+6.0%	+1,144	+11.3%	12,784
Therapy Professions	1,028	1,105	1,180	1,178	-2	+73	+6.6%	+150	+14.6%	1,338
Health Science/ Diagnostics	1,848	1,907	1,976	1,972	-4	+66	+3.5%	+124	+6.7%	2,173
Social Care	1	1	1	1						2
Social Workers	257	275	293	295	+2	+19	+7.0%	+37	+14.6%	323
Psychologists	92	100	114	115	+1	+15	+15.1%	+23	+25.3%	141
Pharmacy	445	476	482	481	-1	+5	+1.1%	+36	+8.1%	515
H&SC, Other	98	108	120	114	-6	+7	+6.3%	+17	+16.9%	136
Health & Social Care Professionals	3,769	3,972	4,166	4,157	-10	+185	+4.7%	+388	+10.3%	4,628
Management (VIII & above)	259	288	340	347	+7	+59	+20.6%	+88	+33.9%	356
Administrative/ Supervisory (V to VII)	1,451	1,596	1,718	1,720	+2	+124	+7.8%	+269	+18.5%	1,842
Clerical (III & IV)	2,772	2,793	2,952	2,970	+18	+178	+6.4%	+198	+7.1%	3,460
Management & Administrative	4,483	4,676	5,010	5,038	+27	+361	+7.7%	+555	+12.4%	5,658
Support	2,415	2,533	2,552	2,567	+15	+33	+1.3%	+152	+6.3%	2,924
Maintenance/ Technical	238	244	246	246	+0	+2	+0.8%	+8	+3.3%	249
General Support	2,653	2,778	2,798	2,813	+15	+35	+1.3%	+160	+6.0%	3,173
Health Care Assistants	1,873	2,018	2,212	2,204	-9	+186	+9.2%	+331	+17.7%	2,560
Health Promotion	2	3	5	4	-1	+1	+21.1%	+2	+143.8%	5
Other Care Grades	17	16	24	24	-0	+8	+52.0%	+6	+35.8%	28
Pastoral Care	45	46	44	43	-1	-3	-6.0%	-2	-3.4%	52
Workshop Services	1	1	2	2		+2	+300.0%	+1	+100.0%	3
Care, other	65	66	75	73	-1	+8	+11.5%	+8	+12.3%	88
Patient & Client Care	1,938	2,083	2,287	2,277	-10	+193	+9.3%	+339	+17.5%	2,648

Acute Services Employment by Hospital Group, CHO etc. Apr 2022

National Ambulance Service

Apr 2022	WTE Dec 2019	WTE Dec 2020	WTE Mar 2022	WTE Apr 2022	WTE change since Mar 22	WTE change since Dec 20	% change since Dec 20	WTE change since Dec 19	% change since Dec 19	No. Apr 2022
Overall	1,933	1,990	2,043	2,033	-10	+43	+2.1%	+100	+5.1%	2,101
Consultants	1	1	1	1					0.0	1
Medical & Dental	1	1	1	1					0.0	1
Nurse/ Midwife Manager	1	1	2	2		+1	+100.0%	+1	+100.0%	2
Staff Nurse/ Staff Midwife	1	1				-1	-100.0%	-1	-100.0%	
Nursing & Midwifery	2	2	2	2					0.0	2
Therapy Professions	1	1				-1	-100.0%	-1	-100.0%	
Health & Social Care Professionals	1	1				-1	-100.0%	-1	-100.0%	
Management (VIII & above)	12	14	14	15	+1	+1	+5.3%	+3	+22.9%	15
Administrative/ Supervisory (V to VII)	29	33	49	49	+0	+17	+50.5%	+21	+72.5%	50
Clerical (III & IV)	41	42	44	46	+2	+4	+9.5%	+4	+10.4%	50
Management & Administrative	82	89	107	110	+3	+21	+24.0%	+28	+33.9%	115
Support	4	4	4	4				+0	+0.3%	4
Maintenance/ Technical	2	2	1	1		-1	-50.0%	-1	-50.0%	1
General Support	6	6	5	5		-1	-18.1%	-1	-18.0%	5
Health Care Assistants	2	2	1	1	-0	-1	-57.5%	-1	-57.5%	1
Ambulance Staff	1,825	1,876	1,915	1,902	-13	+26	+1.4%	+78	+4.3%	1,965
Care, other	15	14	12	12	-0	-2	-12.6%	-3	-19.4%	12
Patient & Client Care	1,841	1,892	1,928	1,915	-13	+23	+1.2%	+74	+4.0%	1,978

Children's Health Ireland

Apr 2022	WTE Dec 2019	WTE Dec 2020	WTE Mar 2022	WTE Apr 2022	WTE change since Mar 22	WTE change since Dec 20	% change since Dec 20	WTE change since Dec 19	% change since Dec 19	No. Apr 2022
Overall	3,602	3,762	4,013	4,033	+20	+271	+7.2%	+431	+12.0%	4,583
Consultants	220	237	245	251	+6	+14	+5.9%	+31	+14.0%	272
Registrars	204	217	226	227	+1	+9	+4.3%	+23	+11.0%	237
SHO/ Interns	88	95	104	104	+0	+9	+9.1%	+16	+18.0%	106
Medical/ Dental, other	1	1	1	1		-0	-15.1%	-0	-15.1%	2
Medical & Dental	514	551	576	583	+7	+32	+5.8%	+69	+13.4%	617
Nurse/ Midwife Manager	331	334	374	370	-4	+36	+10.7%	+39	+11.7%	434
Nurse/ Midwife Specialist & AN/MP	152	172	186	189	+3	+17	+9.9%	+37	+24.5%	229
Staff Nurse/ Staff Midwife	805	850	898	901	+4	+51	+6.0%	+96	+11.9%	1,040
Pre-registration Nurse/ Midwife Intern	12		4	6	+2	+6	-100.0%	-7	-54.2%	25
Pre-registration Nurse Intern (COVID-19)		13				-13	-100.0%		-100.0%	
Post-registration Nurse/ Midwife Student	63	43	46	45	-1	+2	+5.0%	-18	-28.3%	46
Nursing/ Midwifery awaiting registration			7	8	+1	+8	-100.0%	+8	-100.0%	8
Nursing/ Midwifery Student	75	56	57	59	+2	+3	+4.9%	-16	-21.9%	79
Nursing/ Midwifery other	10	8	8	8		-1	-9.0%	-3	-28.2%	9
Nursing & Midwifery	1,374	1,421	1,522	1,527	+5	+106	+7.5%	+153	+11.1%	1,791
Therapy Professions	136	145	165	162	-3	+16	+11.3%	+26	+18.8%	192
Health Science/ Diagnostics	280	285	306	311	+5	+26	+9.2%	+31	+11.0%	336
Social Workers	57	60	64	65	+1	+5	+8.7%	+8	+14.4%	77
Psychologists	38	42	48	49	+1	+7	+16.7%	+11	+28.1%	64
Pharmacy	45	51	56	56	+0	+5	+9.2%	+11	+25.3%	63
H&SC, Other	25	26	30	29	-1	+3	+13.1%	+4	+16.3%	36
Health & Social Care Professionals	581	609	670	672	+2	+63	+10.3%	+91	+15.6%	768
Management (VIII & above)	52	54	70	71	+1	+17	+32.2%	+19	+35.7%	73
Administrative/ Supervisory (V to VII)	272	299	330	331	+1	+32	+10.8%	+59	+21.8%	354
Clerical (III & IV)	420	409	430	429	-1	+19	+4.7%	+8	+2.0%	496
Management & Administrative	744	762	830	831	+1	+69	+9.0%	+86	+11.6%	923
Support	195	210	204	210	+5	+0	+0.0%	+15	+7.5%	238
Maintenance/ Technical	15	15	16	16		+1	+6.7%	+1	+6.7%	16
General Support	210	225	220	226	+5	+1	+0.5%	+16	+7.5%	254
Health Care Assistants	165	182	183	185	+1	+3	+1.5%	+20	+11.9%	216
Care, other	14	13	12	11	-1	-3	-18.7%	-3	-21.4%	14
Patient & Client Care	179	195	195	196	+1	+0	+0.1%	+17	+9.3%	230

Dublin Midlands Hospital Group

Apr 2022	WTE Dec 2019	WTE Dec 2020	WTE Mar 2022	WTE Apr 2022	WTE change since Mar 22	WTE change since Dec 20	% change since Dec 20	WTE change since Dec 19	% change since Dec 19	No. Apr 2022
Overall	10,819	11,288	11,861	11,938	+77	+651	+5.8%	+1,120	+10.4%	13,339
Consultants	464	499	530	535	+5	+35	+7.1%	+71	+15.3%	573
Registrars	490	522	543	544	+2	+22	+4.3%	+55	+11.1%	556
SHO/ Interns	424	460	468	469	+1	+9	+2.0%	+46	+10.8%	491
Medical/ Dental, other	7	7	9	9	+0	+2	+24.8%	+2	+34.1%	11
Medical & Dental	1,384	1,489	1,550	1,558	+8	+69	+4.6%	+174	+12.5%	1,631
Nurse/ Midwife Manager	877	908	968	973	+4	+64	+7.1%	+95	+10.9%	1,073
Nurse/ Midwife Specialist & AN/MP	205	236	267	271	+4	+35	+14.7%	+66	+32.3%	310
Staff Nurse/ Staff Midwife	2,835	2,950	2,996	3,001	+6	+51	+1.7%	+166	+5.9%	3,350
Pre-registration Nurse/ Midwife Intern	8	0	80	85	+6	+85	+283500.0%	+77	+992.2%	184
Pre-registration Nurse Intern (COVID-19)		28				-28	-100.0%		-100.0%	
Post-registration Nurse/ Midwife Student	13	12	11	11		-1	-8.3%	-2	-15.4%	22
Nursing/ Midwifery awaiting registration	21	4	14	27	+13	+23	+543.5%	+6	+30.2%	28
Nursing/ Midwifery Student	42	44	104	123	+19	+79	+180.3%	+82	+195.4%	234
Nursing/ Midwifery other	36	38	42	43	+1	+5	+13.2%	+7	+19.3%	49
Nursing & Midwifery	3,994	4,177	4,377	4,411	+34	+234	+5.6%	+416	+10.4%	5,016
Therapy Professions	367	397	426	431	+5	+33	+8.4%	+64	+17.4%	486
Health Science/ Diagnostics	979	1,001	1,008	1,011	+3	+10	+1.0%	+33	+3.3%	1,099
Social Workers	79	87	94	94	+0	+7	+7.8%	+15	+18.7%	101
Psychologists	13	13	16	17	+0	+3	+24.0%	+4	+32.1%	18
Pharmacy	220	243	246	248	+2	+5	+2.0%	+28	+12.6%	269
H&SC, Other	34	46	57	55	-2	+9	+20.0%	+21	+62.7%	61
Health & Social Care Professionals	1,692	1,788	1,848	1,856	+8	+68	+3.8%	+164	+9.7%	2,034
Management (VIII & above)	117	126	140	142	+1	+15	+12.2%	+24	+20.7%	146
Administrative/ Supervisory (V to VII)	494	523	579	583	+4	+61	+11.6%	+89	+18.0%	624
Clerical (III & IV)	1,055	1,046	1,113	1,123	+10	+77	+7.4%	+68	+6.4%	1,315
Management & Administrative	1,667	1,695	1,832	1,848	+16	+153	+9.0%	+181	+10.9%	2,085
Support	764	771	793	800	+7	+29	+3.8%	+36	+4.7%	913
Maintenance/ Technical	130	130	132	129	-3	-1	-0.5%	-1	-0.9%	132
General Support	894	901	925	929	+4	+28	+3.1%	+35	+3.9%	1,045
Health Care Assistants	1,167	1,217	1,298	1,306	+8	+89	+7.3%	+140	+12.0%	1,490
Pre-Hospital Care (Ambulance)			1		-1		-100.0%		-100.0%	
Ambulance Staff			1		-1		-100.0%		-100.0%	
Care, other	21	21	31	31		+10	+44.7%	+10	+49.0%	38
Patient & Client Care	1,187	1,239	1,330	1,337	+7	+98	+7.9%	+150	+12.6%	1,528

Ireland East Hospital Group

Apr 2022	WTE Dec 2019	WTE Dec 2020	WTE Mar 2022	WTE Apr 2022	WTE change since Mar 22	WTE change since Dec 20	% change since Dec 20	WTE change since Dec 19	% change since Dec 19	No. Apr 2022
Overall	12,502	13,478	14,272	14,288	+16	+810	+6.0%	+1,786	+14.3%	15,876
Consultants	551	599	624	633	+9	+34	+5.6%	+82	+14.9%	729
Registrars	623	666	731	727	-3	+61	+9.2%	+105	+16.8%	745
SHO/ Interns	576	676	670	681	+12	+5	+0.8%	+105	+18.3%	708
Medical/ Dental, other	26	28	33	33	-1	+5	+18.5%	+7	+28.3%	48
Medical & Dental	1,775	1,968	2,058	2,074	+17	+106	+5.4%	+299	+16.9%	2,230
Nurse/ Midwife Manager	963	1,054	1,151	1,162	+11	+108	+10.3%	+199	+20.7%	1,287
Nurse/ Midwife Specialist & AN/MP	310	340	367	372	+5	+32	+9.4%	+62	+20.1%	416
Staff Nurse/ Staff Midwife	3,328	3,452	3,638	3,654	+16	+203	+5.9%	+326	+9.8%	4,056
Pre-registration Nurse/ Midwife Intern	25	10	95	96	+1	+86	+830.4%	+71	+280.6%	194
Pre-registration Nurse Intern (COVID-19)		47				-47	-100.0%		-100.0%	
Post-registration Nurse/ Midwife Student	21	17	24	24		+7	+41.2%	+3	+14.3%	24
Nursing/ Midwifery awaiting registration	11	34	37	27	-10	-7	-20.7%	+16	+150.3%	27
Nursing/ Midwifery Student	57	109	156	147	-9	+38	+35.5%	+90	+157.9%	245
Nursing/ Midwifery other	77	73	49	49	+0	-24	-32.6%	-28	-36.0%	60
Nursing & Midwifery	4,735	5,027	5,360	5,384	+24	+357	+7.1%	+649	+13.7%	6,064
Therapy Professions	514	585	597	592	-5	+6	+1.1%	+77	+15.1%	671
Health Science/ Diagnostics	738	797	843	841	-3	+43	+5.4%	+102	+13.9%	915
Social Care	1	1	1	1					0.0	2
Social Care	1	1	1	1					0.0	2
Social Workers	82	91	107	108	+1	+17	+18.8%	+26	+32.1%	116
Psychologists	33	36	44	44	+0	+8	+22.4%	+11	+35.2%	52
Pharmacy	194	201	219	214	-5	+13	+6.2%	+19	+10.0%	235
H&SC, Other	27	28	40	38	-2	+10	+35.3%	+11	+41.2%	59
Health & Social Care Professionals	1,589	1,739	1,851	1,837	-14	+97	+5.6%	+248	+15.6%	2,050
Management (VIII & above)	86	106	142	147	+5	+41	+38.6%	+60	+70.0%	151
Administrative/ Supervisory (V to VII)	544	630	698	692	-6	+61	+9.7%	+148	+27.2%	733
Clerical (III & IV)	1,252	1,269	1,320	1,327	+8	+58	+4.6%	+75	+6.0%	1,506
Management & Administrative	1,882	2,005	2,160	2,166	+6	+161	+8.0%	+284	+15.1%	2,390
Support	1,352	1,352	1,374	1,375	+1	+23	+1.7%	+22	+1.7%	1,535
Maintenance/ Technical	120	130	127	130	+2	+0	+0.3%	+10	+7.9%	132
General Support	1,473	1,481	1,502	1,505	+3	+23	+1.6%	+32	+2.2%	1,667
Health Care Assistants	1,021	1,226	1,310	1,293	-17	+67	+5.5%	+272	+26.6%	1,437
Care, other	28	31	31	30	-1	-1	-3.0%	+2	+7.6%	38
Patient & Client Care	1,049	1,257	1,341	1,323	-19	+66	+5.3%	+274	+26.1%	1,475

RCSI Hospitals Group

Apr 2022	WTE Dec 2019	WTE Dec 2020	WTE Mar 2022	WTE Apr 2022	WTE change since Mar 22	WTE change since Dec 20	% change since Dec 20	WTE change since Dec 19	% change since Dec 19	No. Apr 2022
Overall	9,663	10,197	10,827	10,884	+57	+687	+6.7%	+1,221	+12.6%	12,085
Consultants	441	470	509	505	-3	+35	+7.5%	+65	+14.7%	541
Registrars	481	508	532	536	+3	+28	+5.4%	+54	+11.3%	546
SHO/ Interns	439	510	511	515	+4	+5	+1.1%	+77	+17.5%	528
Medical/ Dental, other	5	7	6	5	-1	-2	-28.0%	-1	-11.5%	7
Medical & Dental	1,366	1,495	1,558	1,561	+3	+67	+4.5%	+195	+14.3%	1,622
Nurse/ Midwife Manager	769	820	946	946	+0	+125	+15.3%	+177	+23.0%	1,051
Nurse/ Midwife Specialist & AN/MP	185	208	239	248	+9	+39	+18.9%	+62	+33.6%	275
Staff Nurse/ Staff Midwife	2,588	2,767	2,863	2,867	+4	+100	+3.6%	+278	+10.7%	3,194
Pre-registration Nurse/ Midwife Intern	2		88	88	+1	+88	-100.0%	+86	+3495.9%	161
Pre-registration Nurse Intern (COVID-19)		13				-13	-100.0%		-100.0%	
Post-registration Nurse/ Midwife Student	42	38	22	23	+0	-15	-40.4%	-19	-46.0%	23
Nursing/ Midwifery awaiting registration	62	0	8	7	-1	+7	+2752.0%	-55	-88.5%	9
Nursing/ Midwifery Student	106	51	118	118	+0	+67	+131.6%	+12	+11.2%	193
Nursing/ Midwifery other	43	42	27	28	+0	-14	-33.1%	-15	-34.8%	31
Nursing & Midwifery	3,692	3,889	4,193	4,206	+14	+318	+8.2%	+514	+13.9%	4,744
Therapy Professions	332	362	395	397	+3	+36	+9.9%	+65	+19.6%	435
Health Science/ Diagnostics	589	609	625	630	+5	+21	+3.4%	+41	+7.0%	698
Social Workers	66	66	67	69	+2	+3	+4.5%	+3	+4.8%	76
Psychologists	12	12	12	12	-0	+0	+1.2%	+0	+1.2%	14
Pharmacy	127	146	158	155	-3	+9	+6.2%	+28	+22.5%	170
H&SC, Other	14	12	21	17	-4	+5	+43.1%	+2	+15.9%	26
Health & Social Care Professionals	1,140	1,207	1,278	1,280	+2	+74	+6.1%	+140	+12.3%	1,419
Management (VIII & above)	82	98	97	98	+2	+1	+0.9%	+16	+20.1%	100
Administrative/ Supervisory (V to VII)	349	415	479	489	+9	+74	+17.8%	+140	+40.1%	523
Clerical (III & IV)	1,031	1,026	1,040	1,046	+6	+20	+2.0%	+15	+1.4%	1,198
Management & Administrative	1,462	1,538	1,616	1,633	+17	+95	+6.2%	+171	+11.7%	1,821
Support	974	1,002	1,000	1,008	+8	+6	+0.6%	+34	+3.5%	1,131
Maintenance/ Technical	89	91	90	92	+2	+1	+1.4%	+3	+3.7%	94
General Support	1,063	1,093	1,090	1,100	+11	+7	+0.7%	+37	+3.5%	1,225
Health Care Assistants	902	942	1,060	1,070	+10	+128	+13.6%	+168	+18.6%	1,217
Care, other	37	34	32	33	+0	-2	-4.4%	-4	-11.8%	37
Patient & Client Care	939	976	1,093	1,103	+10	+127	+13.0%	+163	+17.4%	1,254

Saolta University Hospital Care

Apr 2022	WTE Dec 2019	WTE Dec 2020	WTE Mar 2022	WTE Apr 2022	WTE change since Mar 22	WTE change since Dec 20	% change since Dec 20	WTE change since Dec 19	% change since Dec 19	No. Apr 2022
Overall	9,253	9,829	10,845	10,819	-26	+990	+10.1%	+1,566	+16.9%	12,267
Consultants	463	476	497	495	-1	+19	+4.0%	+32	+7.0%	540
Registrars	445	468	501	508	+8	+40	+8.5%	+64	+14.3%	532
SHO/ Interns	535	637	647	663	+16	+26	+4.1%	+128	+24.0%	681
Medical/ Dental, other	10	12	13	14	+0	+1	+11.6%	+3	+32.4%	17
Medical & Dental	1,452	1,594	1,658	1,680	+22	+86	+5.4%	+228	+15.7%	1,770
Nurse/ Midwife Manager	567	589	655	661	+6	+72	+12.2%	+94	+16.6%	721
Nurse/ Midwife Specialist & AN/MP	218	236	273	275	+1	+39	+16.3%	+57	+25.9%	302
Staff Nurse/ Staff Midwife	2,764	2,871	3,051	3,072	+21	+201	+7.0%	+308	+11.1%	3,676
Public Health Nurse	1	1				-1	-100.0%	-1	-100.0%	
Pre-registration Nurse/ Midwife Intern	2	3	87	87	-0	+84	+2575.7%	+85	+5403.8%	175
Pre-registration Nurse Intern (COVID-19)		31				-31	-100.0%		-100.0%	
Post-registration Nurse/ Midwife Student	12	9	6	6	+0	-2	-27.6%	-6	-45.9%	7
Nursing/ Midwifery awaiting registration	36	1	80	39	-41	+38	+3975.0%	+3	+8.4%	45
Nursing/ Midwifery Student	50	44	174	133	-41	+89	+201.2%	+83	+166.8%	227
Nursing/ Midwifery other	33	39	32	30	-2	-9	-23.8%	-3	-8.7%	37
Nursing & Midwifery	3,633	3,781	4,186	4,170	-16	+389	+10.3%	+537	+14.8%	4,963
Therapy Professions	262	271	315	313	-2	+42	+15.3%	+51	+19.5%	343
Health Science/ Diagnostics	617	655	698	694	-5	+39	+5.9%	+77	+12.5%	769
Social Care	2	3	2	2	+0	-1	-25.8%	+0	+0.4%	3
Social Workers	26	31	36	35	-1	+5	+15.4%	+9	+33.6%	40
Psychologists	1	2	4	3	-0	+1	+83.3%	+3	+312.5%	4
Pharmacy	137	160	177	178	+1	+18	+11.5%	+41	+30.3%	202
H&SC, Other	19	15	60	40	-20	+25	+172.5%	+21	+106.2%	87
Health & Social Care Professionals	1,065	1,136	1,292	1,266	-26	+130	+11.4%	+201	+18.9%	1,448
Management (VIII & above)	51	54	60	60	+1	+6	+10.8%	+10	+19.0%	61
Administrative/ Supervisory (V to VII)	237	286	347	344	-3	+58	+20.1%	+107	+45.2%	359
Clerical (III & IV)	1,048	1,084	1,239	1,230	-9	+147	+13.5%	+183	+17.4%	1,374
Management & Administrative	1,335	1,424	1,646	1,634	-12	+210	+14.8%	+299	+22.4%	1,794
Support	836	908	954	955	+2	+47	+5.2%	+120	+14.3%	1,050
Maintenance/ Technical	103	94	99	99	-0	+6	+5.9%	-4	-3.8%	100
General Support	939	1,002	1,053	1,055	+1	+53	+5.3%	+116	+12.4%	1,150
Health Care Assistants	799	845	937	940	+3	+95	+11.3%	+141	+17.6%	1,056
Care, other	30	47	74	75	+1	+27	+58.0%	+44	+145.1%	86
Patient & Client Care	830	892	1,010	1,014	+4	+123	+13.7%	+185	+22.3%	1,142

South/South West Hospital Group

Apr 2022	WTE Dec 2019	WTE Dec 2020	WTE Mar 2022	WTE Apr 2022	WTE change since Mar 22	WTE change since Dec 20	% change since Dec 20	WTE change since Dec 19	% change since Dec 19	No. Apr 2022
Overall	10,527	11,288	12,076	12,146	+70	+858	+7.6%	+1,619	+15.4%	13,909
Consultants	478	508	548	547	-1	+39	+7.7%	+69	+14.4%	585
Registrars	509	530	576	577	+1	+48	+9.0%	+68	+13.4%	594
SHO/ Interns	537	615	599	609	+10	-6	-1.0%	+72	+13.4%	652
Medical/ Dental, other	9	8	11	11	-0	+3	+33.3%	+1	+14.2%	18
Medical & Dental	1,533	1,661	1,734	1,744	+10	+83	+5.0%	+210	+13.7%	1,849
Nurse/ Midwife Manager	863	856	909	919	+10	+62	+7.3%	+56	+6.4%	1,041
Nurse/ Midwife Specialist & AN/MP	146	194	235	240	+5	+46	+23.8%	+94	+64.2%	271
Staff Nurse/ Staff Midwife	3,127	3,334	3,474	3,484	+10	+149	+4.5%	+356	+11.4%	4,121
Public Health Nurse		0	0	0		+0	+16.7%	+0	-100.0%	1
Public Health Nurse		0	0	0		+0	+16.7%	+0	-100.0%	1
Pre-registration Nurse/ Midwife Intern	30	0	91	100	+9	+100	+28471.4%	+70	+233.3%	196
Pre-registration Nurse Intern (COVID-19)		23				-23	-100.0%		-100.0%	
Post-registration Nurse/ Midwife Student	29	22	15	15	-0	-7	-32.7%	-14	-49.1%	15
Nursing/ Midwifery awaiting registration	9	17	6	11	+5	-6	-33.1%	+2	+27.1%	12
Nursing/ Midwifery Student	68	62	112	126	+14	+64	+102.4%	+58	+85.6%	223
Nursing/ Midwifery other	15	15	14	14	-0	-1	-8.8%	-1	-5.3%	18
Nursing & Midwifery	4,219	4,462	4,743	4,783	+39	+320	+7.2%	+564	+13.4%	5,675
Therapy Professions	311	357	418	426	+8	+69	+19.4%	+116	+37.2%	491
Health Science/ Diagnostics	784	854	899	897	-2	+43	+5.0%	+113	+14.4%	1,036
Social Workers	33	37	38	40	+2	+3	+7.4%	+7	+21.9%	46
Psychologists	2	2	3	3		+2	+128.0%	+2	+128.0%	4
Pharmacy	129	150	185	190	+5	+40	+26.7%	+61	+47.1%	217
H&SC, Other	24	22	35	31	-5	+9	+42.4%	+7	+28.6%	37
Health & Social Care Professionals	1,282	1,421	1,578	1,587	+9	+166	+11.7%	+305	+23.8%	1,831
Management (VIII & above)	50	56	73	75	+2	+19	+34.9%	+25	+49.7%	77
Administrative/ Supervisory (V to VII)	265	322	377	380	+3	+58	+17.9%	+115	+43.3%	417
Clerical (III & IV)	1,269	1,270	1,346	1,335	-11	+65	+5.1%	+65	+5.2%	1,516
Management & Administrative	1,584	1,648	1,796	1,789	-7	+142	+8.6%	+205	+12.9%	2,010
Support	1,219	1,321	1,405	1,417	+12	+96	+7.3%	+199	+16.3%	1,619
Maintenance/ Technical	33	41	40	40	-0	-1	-2.4%	+7	+22.6%	41
General Support	1,251	1,362	1,445	1,457	+12	+95	+7.0%	+206	+16.5%	1,660
Health Care Assistants	642	719	766	772	+6	+53	+7.3%	+130	+20.3%	864
Care, other	15	15	14	14	+0	-1	-7.9%	-1	-8.9%	20
Patient & Client Care	657	735	780	786	+6	+52	+7.0%	+129	+19.6%	884

University of Limerick Hospital Group

Apr 2022	WTE Dec 2019	WTE Dec 2020	WTE Mar 2022	WTE Apr 2022	WTE change since Mar 22	WTE change since Dec 20	% change since Dec 20	WTE change since Dec 19	% change since Dec 19	No. Apr 2022
Overall	4,146	4,506	5,159	5,153	-5	+647	+14.4%	+1,007	+24.3%	5,686
Consultants	165	184	192	191	-2	+7	+3.8%	+25	+15.4%	204
Registrars	190	204	232	229	-2	+26	+12.6%	+39	+20.6%	238
SHO/ Interns	197	259	259	262	+4	+4	+1.4%	+66	+33.4%	268
Other Medical	1	1	1	1					0.0	2
Medical/ Dental, other	1	1	1	1					0.0	2
Medical & Dental	553	647	683	683	+0	+37	+5.6%	+130	+23.5%	712
Nurse/ Midwife Manager	325	346	407	400	-7	+54	+15.6%	+75	+23.2%	439
Nurse/ Midwife Specialist & AN/MP	76	81	97	102	+5	+21	+25.3%	+26	+34.5%	112
Staff Nurse/ Staff Midwife	1,226	1,300	1,464	1,458	-6	+158	+12.1%	+232	+18.9%	1,667
Pre-registration Nurse/ Midwife Intern	3	1	35	35	+0	+34	+3389.0%	+32	+1018.3%	70
Pre-registration Nurse Intern (COVID-19)		1				-1	-100.0%		-100.0%	
Post-registration Nurse/ Midwife Student	16	10	5	5		-5	-49.9%	-11	-68.4%	5
Nursing/ Midwifery awaiting registration			3	2	-1	+2	-100.0%	+2	-100.0%	2
Nursing/ Midwifery Student	19	12	42	42	-1	+30	+249.4%	+23	+121.3%	77
Nursing/ Midwifery other	11	11	12	11	-0	+0	+0.6%	+0	+4.1%	13
Nursing & Midwifery	1,657	1,751	2,024	2,014	-10	+263	+15.0%	+357	+21.5%	2,308
Therapy Professions	84	98	120	118	-2	+20	+20.7%	+34	+40.0%	131
Health Science/ Diagnostics	252	254	261	260	-1	+6	+2.3%	+8	+3.1%	281
Social Workers	11	11	13	12	-1	+1	+5.3%	+1	+5.2%	13
Psychologists	3	4	5	5		+1	+42.0%	+2	+67.9%	6
Pharmacy	45	51	57	58	+2	+7	+14.0%	+13	+29.7%	69
H&SC, Other	7	6	15	13	-2	+7	+123.6%	+6	+78.2%	15
Health & Social Care Professionals	403	423	469	466	-4	+43	+10.1%	+63	+15.7%	515
Management (VIII & above)	36	37	43	46	+3	+9	+23.8%	+10	+29.2%	47
Administrative/ Supervisory (V to VII)	103	129	182	179	-3	+50	+39.0%	+77	+74.5%	188
Clerical (III & IV)	485	508	589	594	+5	+86	+16.9%	+108	+22.3%	644
Management & Administrative	624	674	814	819	+5	+145	+21.5%	+195	+31.3%	879
Support	286	584	700	705	+4	+120	+20.6%	+418	+146.0%	765
Maintenance/ Technical	39	38	40	38	-2	+0	+0.7%	-1	-1.7%	40
General Support	325	622	741	742	+2	+121	+19.4%	+417	+128.5%	805
Health Care Assistants	577	383	421	422	+1	+39	+10.1%	-155	-26.9%	457
Care, other	8	6	7	7	-0	+1	+12.9%	-1	-11.9%	10
Patient & Client Care	585	389	427	429	+1	+39	+10.1%	-156	-26.7%	467

other Acute Services

Apr 2022	WTE Dec 2019	WTE Dec 2020	WTE Mar 2022	WTE Apr 2022	WTE change since Mar 22	WTE change since Dec 20	% change since Dec 20	WTE change since Dec 19	% change since Dec 19	No. Apr 2022
Overall	91	101	109	109	-0	+8	+8.2%	+18	+19.5%	116
Nurse/ Midwife Manager	14	14	15	15	-1	+0	+1.9%	+1	+3.9%	15
Nursing & Midwifery	14	14	15	15	-1	+0	+1.9%	+1	+3.9%	15
Health Science/ Diagnostics	3	3	4	4		+1	+33.3%	+1	+33.3%	4
Social Workers	1	1				-1	-100.0%	-1	-100.0%	
Pharmacy	4	4	7	7	+0	+3	+76.2%	+3	+74.0%	7
Health & Social Care Professionals	8	8	11	11	+0	+3	+37.9%	+3	+37.0%	11
Management (VIII & above)	31	35	38	36	-1	+1	+3.6%	+5	+14.9%	39
Administrative/ Supervisory (V to VII)	34	38	35	39	+4	+1	+3.4%	+5	+15.5%	42
Clerical (III & IV)	4	6	10	8	-2	+2	+40.8%	+4	+112.0%	9
Management & Administrative	69	79	83	84	+0	+5	+6.3%	+14	+20.7%	90

Acute Services Employment by Grade Group: Apr 2022

Apr 2022	WTE Dec 2019	WTE Dec 2020	WTE Mar 2022	WTE Apr 2022	WTE change since Mar 22	WTE change since Dec 20	% change since Dec 20	WTE change since Dec 19	% change since Dec 19	No. Apr 2022
Overall	62,537	66,439	71,205	71,404	+199	+4,965	+7.5%	+8,867	+14.2%	79,962
Consultant Anaesthesia	403	427	440	441	+1	+14	+3.2%	+38	+9.3%	470
Consultant Dentistry	6	6	6	6	+0	-0	-3.2%	-0	-2.1%	7
Consultant Emergency Medicine	108	121	137	139	+3	+18	+14.9%	+31	+29.1%	150
Consultant Intensive Care Medicine	16	18	20	20		+2	+12.3%	+4	+26.1%	22
Consultant Medicine	804	885	963	967	+4	+82	+9.2%	+163	+20.3%	1,058
Consultant Obstetrics & Gynaecology	161	170	176	176	+0	+6	+3.3%	+15	+9.3%	192
Consultant, Other	1			1	+1	+1	-100.0%	+0	+32.4%	2
Consultant Paediatrics	193	212	214	217	+3	+5	+2.5%	+24	+12.6%	239
Consultant Pathology	253	265	281	281	+0	+16	+5.9%	+29	+11.3%	305
Consultant Psychiatry	24	23	26	28	+2	+4	+18.9%	+4	+17.0%	34
Consultant Radiology	275	280	289	288	-1	+8	+2.8%	+13	+4.7%	310
Consultant Surgery	539	564	594	592	-1	+28	+5.0%	+54	+9.9%	656
Consultants	2,782	2,974	3,146	3,157	+12	+184	+6.2%	+375	+13.5%	3,445
Registrar	1,704	1,810	1,909	1,928	+19	+118	+6.5%	+224	+13.2%	1,991
Senior Registrar	108	120	127	129	+1	+8	+7.0%	+21	+19.4%	134
Specialist Registrar	1,131	1,185	1,304	1,293	-11	+108	+9.1%	+162	+14.4%	1,323
Registrars	2,942	3,115	3,340	3,349	+9	+234	+7.5%	+407	+13.8%	3,448
Interns	718	966	833	831	-2	-135	-14.0%	+113	+15.7%	885
Senior House Officer	2,077	2,286	2,424	2,473	+49	+187	+8.2%	+396	+19.1%	2,549
SHO/ Interns	2,795	3,253	3,258	3,304	+47	+52	+1.6%	+509	+18.2%	3,434
Dentists	10	11	9	10	+0	-2	-13.6%	-0	-0.8%	11
Other Medical	50	53	65	63	-1	+11	+19.8%	+13	+27.0%	94
Medical/ Dental, other	60	64	74	73	-1	+9	+14.1%	+13	+22.5%	105
Medical & Dental	8,578	9,405	9,817	9,884	66	+478	+5.1%	+1,305	+15.2%	10,432
Clinical Nurse/ Midwife Manager	4,198	4,388	4,821	4,848	+27	+460	+10.5%	+649	+15.5%	5,426
Director Nursing/Midwifery, Assistant	433	453	509	501	-8	+48	+10.6%	+68	+15.6%	538
Director of Nursing/Midwifery	79	83	97	98	+1	+15	+18.7%	+19	+24.6%	99
Nurse/ Midwife Manager	4,710	4,924	5,427	5,447	+20	+523	+10.6%	+736	+15.6%	6,063
Advanced Nurse/ Midwife Practitioner	337	440	533	546	+14	+107	+24.2%	+209	+62.1%	575
Clinical Nurse/ Midwife Specialist	955	1,028	1,132	1,150	+18	+122	+11.8%	+195	+20.4%	1,340
Nurse/ Midwife Specialist & AN/MP	1,292	1,468	1,664	1,696	+32	+228	+15.5%	+404	+31.3%	1,915
Nursing Bank	31	23	9	6	-2	-16	-71.8%	-24	-79.2%	19
Staff Midwives	1,457	1,479	1,415	1,391	-24	-88	-5.9%	-66	-4.5%	1,677
Staff Nurse [Psychiatric]	28	29	26	26	+0	-3	-9.6%	-2	-6.0%	28
Staff Nurse [Intellectual Disability]		72				-72	-100.0%		-100.0%	
Staff Nurses [General/ Children's]	15,161	15,923	16,934	17,014	+80	+1,090	+6.8%	+1,853	+12.2%	19,380
Staff Nurse/ Staff Midwife	16,676	17,526	18,383	18,437	+54	+911	+5.2%	+1,761	+10.6%	21,104
Public Health Nurse	1	2	0	0		-1	-87.1%	-1	-85.6%	1
Pre-registration Nurse/ Midwife Intern	83	15	478	497	+19	+482	+3224.9%	+415	+502.1%	1,005
Pre-registration Nurse Intern (COVID-19)		156				-156	-100.0%		-100.0%	
Post-registration Nurse/ Midwife Student	195	151	130	129	-1	-22	-14.5%	-67	-34.0%	142
Nursing/ Midwifery awaiting registration	139	57	155	122	-33	+65	+115.7%	-17	-12.1%	131
Nursing/ Midwifery Student	417	378	763	748	-15	+370	+97.9%	+331	+79.4%	1,278
Nursing Education/Clinical	191	196	177	176	-1	-20	-10.1%	-14	-7.5%	210
Other Nursing/ Midwifery	33	30	7	6	-1	-24	-80.1%	-27	-82.2%	7
Nursing/ Midwifery other	224	226	184	182	-2	-44	-19.4%	-42	-18.6%	217
Nursing & Midwifery	23,321	24,524	26,422	26,511	89	+1,987	+8.1%	+3,190	+13.7%	30,578
Dietitians	393	438	483	476	-7	+38	+8.6%	+83	+21.1%	545

Apr 2022	WTE Dec 2019	WTE Dec 2020	WTE Mar 2022	WTE Apr 2022	WTE change since Mar 22	WTE change since Dec 20	% change since Dec 20	WTE change since Dec 19	% change since Dec 19	No. Apr 2022
Overall	62,537	66,439	71,205	71,404	+199	+4,965	+7.5%	+8,867	+14.2%	79,962
Occupational Therapists	368	417	482	483	+1	+66	+15.8%	+115	+31.1%	525
Orthoptists	22	20	22	21	-0	+1	+3.9%	-1	-2.7%	29
Physiotherapists	992	1,068	1,152	1,164	+12	+97	+9.1%	+172	+17.4%	1,314
Podiatrists & Chiropodists	34	37	32	32	+1	-4	-12.0%	-2	-5.2%	39
Speech & Language Therapists	198	236	265	262	-3	+25	+10.7%	+64	+32.1%	297
Therapy Professions	2,008	2,217	2,436	2,439	+3	+222	+10.0%	+431	+21.5%	2,749
Audiology	28	30	40	40	-0	+10	+32.9%	+12	+44.3%	46
Biochemists	72	76	66	67	+2	-9	-11.4%	-4	-6.2%	71
Cardiac Physiologists	227	243	253	255	+2	+12	+4.7%	+28	+12.2%	276
Clinical Engineering	142	149	158	159	+1	+10	+6.6%	+16	+11.5%	163
Dosimetrists	13	14	15	13	-1	-1	-4.8%	+0	+2.8%	16
E.C.G. Technicians	10	11	8	8	+0	-3	-26.2%	-2	-19.5%	10
Gastrointestinal Physiologists	2	2	4	4		+2	+94.3%	+2	+94.3%	5
Medical Science	1,885	1,951	1,988	1,978	-10	+27	+1.4%	+93	+4.9%	2,170
Neuro-Physiologists	50	56	54	55	+1	-2	-3.2%	+5	+10.1%	59
Perfusionists	22	22	19	21	+2	-1	-4.0%	-1	-4.1%	23
Phlebotomists	172	183	202	197	-4	+14	+7.8%	+26	+14.9%	276
Physicists	181	172	179	183	+4	+12	+6.7%	+2	+1.3%	198
Radiation Therapists	199	212	203	207	+4	-5	-2.5%	+8	+3.9%	227
Radiographers	1,146	1,239	1,358	1,359	+1	+120	+9.7%	+213	+18.6%	1,489
Respiratory Physiologists	65	71	68	69	+1	-1	-1.8%	+4	+6.6%	73
Vascular Physiologists	29	28	32	32	+1	+5	+16.3%	+3	+11.5%	36
Health Science/ Diagnostics	4,242	4,458	4,645	4,647	+3	+189	+4.2%	+405	+9.6%	5,138
Social Care	3	4	3	3	+0	-1	-19.6%	+0	+0.3%	5
Social Workers	355	384	419	423	+4	+39	+10.2%	+68	+19.1%	469
Psychologists	101	110	133	133	+1	+23	+21.1%	+33	+32.6%	162
Pharmacists	530	590	648	648	-0	+58	+9.8%	+118	+22.2%	711
Pharmacy Technicians	370	416	456	458	+3	+42	+10.1%	+88	+23.7%	521
Pharmacy	901	1,006	1,104	1,106	+2	+100	+9.9%	+206	+22.8%	1,232
Counsellor Therapists	5	5	3	3		-1	-27.9%	-2	-36.5%	6
Dental Hygienists	1	1	1	1	+0			+0	+0.9%	2
HSCP Trainees/ Students	69	56	92	90	-2	+35	+62.9%	+21	+30.2%	101
Other Health & Social Care	50	65	65	62	-3	-3	-5.0%	+12	+24.1%	69
Play Therapists/ Specialists	25	27	31	30	-1	+3	+9.7%	+4	+17.7%	37
Vaccinators			66	36	-29	+36	-100.0%	+36	-100.0%	106
H&SC, Other	151	154	258	223	-35	+69	+45.1%	+72	+47.7%	321
Health & Social Care Professionals	7,760	8,333	8,997	8,975	-23	+642	+7.7%	+1,215	+15.7%	10,076
Executive Management	87	102	110	113	+3	+11	+11.3%	+26	+30.2%	117
Senior Management (VIII & GM)	431	478	567	577	+10	+99	+20.7%	+146	+33.9%	592
Management (VIII & above)	518	579	676	690	+14	+110	+19.1%	+172	+33.3%	709
Middle Management (V-VII)	2,311	2,661	3,063	3,070	+7	+409	+15.4%	+760	+32.9%	3,273
Other Administrative	15	13	15	16	+1	+3	+18.9%	+1	+5.9%	17
Administrative/ Supervisory (V to VII)	2,326	2,674	3,078	3,086	+8	+412	+15.4%	+760	+32.7%	3,290
Clerical (III & IV)	6,606	6,658	7,130	7,137	+8	+479	+7.2%	+531	+8.0%	8,108
Management & Administrative	9,450	9,912	10,884	10,913	29	+1,001	+10.1%	+1,464	+15.5%	12,107
Catering	470	490	486	486	-1	-4	-0.8%	+15	+3.3%	528
Household Services	2,717	3,098	3,222	3,235	+14	+137	+4.4%	+519	+19.1%	3,756
Other Labs & Associated	379	440	542	561	+19	+121	+27.5%	+182	+47.9%	613
Other Support	739	761	763	761	-2	-0	-0.0%	+23	+3.1%	850
Portering	1,325	1,362	1,420	1,431	+10	+68	+5.0%	+105	+7.9%	1,508
Support	5,630	6,152	6,434	6,474	+40	+322	+5.2%	+844	+15.0%	7,255
Maintenance	507	514	520	520	-0	+6	+1.1%	+13	+2.7%	531

Apr 2022	WTE Dec 2019	WTE Dec 2020	WTE Mar 2022	WTE Apr 2022	WTE change since Mar 22	WTE change since Dec 20	% change since Dec 20	WTE change since Dec 19	% change since Dec 19	No. Apr 2022
Overall	62,537	66,439	71,205	71,404	+199	+4,965	+7.5%	+8,867	+14.2%	79,962
Technical Services	24	25	26	25	-1	-0	-0.1%	+1	+4.2%	25
Maintenance/ Technical	531	539	546	545	-1	+6	+1.1%	+14	+2.7%	556
General Support	6,160	6,691	6,980	7,019	39	+328	+4.9%	+858	+13.9%	7,811
Attendant/ Aide	1,582	1,472	1,153	1,171	+17	-301	-20.5%	-412	-26.0%	1,283
Health & Social Care Assistants	129	156	188	185	-3	+29	+18.2%	+56	+43.5%	208
Health Care Assistant/ Care Assistant	3,564	3,838	4,634	4,633	-1	+795	+20.7%	+1,069	+30.0%	5,247
HCA (Student Nurse/Midwife COVID-19)		50	1		-1	-50	-100.0%		-100.0%	
Health Care Assistants	5,275	5,516	5,976	5,988	+12	+472	+8.6%	+713	+13.5%	6,738
Ambulance Control	179	180	158	161	+2	-20	-10.9%	-18	-10.1%	168
Ambulance Education	162	138	215	190	-25	+52	+37.6%	+28	+17.5%	191
Ambulance Officers	78	85	95	97	+2	+12	+14.3%	+19	+23.9%	99
Pre-Hospital Care (Ambulance)	1,406	1,473	1,448	1,455	+7	-18	-1.2%	+49	+3.5%	1,507
Ambulance Staff	1,825	1,876	1,916	1,902	-14	+26	+1.4%	+78	+4.3%	1,965
Health Promotion	2	3	5	4	-1	+1	+21.1%	+2	+143.8%	5
Other Care Grades	79	94	126	127	+2	+33	+35.2%	+49	+61.9%	143
Pastoral Care	87	84	80	79	-2	-6	-6.5%	-8	-9.3%	104
Workshop Services	1	1	2	2		+2	+300.0%	+1	+100.0%	3
Care, other	168	182	213	212	-1	+30	+16.4%	+44	+26.1%	255
Patient & Client Care	7,268	7,574	8,105	8,102	-3	+528	+7.0%	+835	+11.5%	8,958

Employment by WTE, Headcount, Gender, Full-Time /Part-Time etc.: Apr 2022

Acutes Services Staff Group	WTE	Headcount	WTE: no.	% Male	% female	Male WTE: no.	Female WTE: no.	% Total Perm	% Male Perm	% Female Perm	% Total Full Time	% Total Part Time	% Male FT	% Female FT
Overall	71,404	79,962	1.12	23.8%	76.2%	1.05	1.14	79.5%	70.2%	82.4%	76.0%	24.0%	92.9%	70.7%
Consultant Anaesthesia	441	470	1.07	60.9%	39.1%	1.07	1.06	80.4%	80.4%	76.6%	91.1%	8.9%	91.3%	90.8%
Consultant Dentistry	6	7	1.16	28.6%	71.4%	1.00	1.23	85.7%	85.7%	80.0%	85.7%	14.3%	100.0%	80.0%
Consultant Emergency Medicine	139	150	1.08	64.0%	36.0%	1.06	1.10	70.7%	70.7%	70.4%	84.7%	15.3%	88.5%	77.8%
Consultant Intensive Care Medicine	20	22	1.09	31.8%	68.2%	1.17	1.06	100.0%	100.0%	100.0%	86.4%	13.6%	85.7%	86.7%
Consultant Medicine	967	1,058	1.09	59.1%	40.9%	1.09	1.10	74.4%	74.4%	71.4%	85.4%	14.6%	87.4%	82.7%
Consultant Obstetrics & Gynaecology	176	192	1.09	45.8%	54.2%	1.07	1.11	82.8%	82.8%	80.8%	88.0%	12.0%	92.0%	84.6%
Consultant, Other	1	2	2.22	100.0%		2.22		100.0%	100.0%		0.0%	100.0%	0.0%	
Consultant Paediatrics	217	239	1.10	46.9%	53.1%	1.06	1.14	78.7%	78.7%	80.3%	85.4%	14.6%	92.0%	79.5%
Consultant Pathology	281	305	1.08	40.0%	60.0%	1.07	1.09	82.3%	82.3%	82.0%	85.9%	14.1%	89.3%	83.6%
Consultant Psychiatry	28	34	1.23	38.2%	61.8%	1.12	1.30	73.5%	73.5%	66.7%	73.5%	26.5%	92.3%	61.9%
Consultant Radiology	288	310	1.08	61.6%	38.4%	1.05	1.11	87.7%	87.7%	84.0%	91.0%	9.0%	93.2%	87.4%
Consultant Surgery	592	656	1.11	80.0%	20.0%	1.10	1.14	78.0%	78.0%	74.0%	83.4%	16.6%	85.3%	75.6%
Consultants	3,157	3,445	1.09	60.1%	39.9%	1.08	1.11	78.6%	79.9%	76.6%	86.3%	13.7%	88.5%	83.0%
Registrar	1,928	1,991	1.03	61.3%	38.7%	1.02	1.05	7.9%	7.9%	7.7%	96.4%	3.6%	97.8%	94.2%
Senior Registrar	129	134	1.04	65.7%	34.3%	1.03	1.07	30.6%	30.6%	32.6%	94.0%	6.0%	95.5%	91.3%
Specialist Registrar	1,293	1,323	1.02	47.0%	53.0%	1.01	1.03	8.1%	8.1%	7.8%	96.7%	3.3%	99.2%	94.6%
Registrars	3,349	3,448	1.03	56.0%	44.0%	1.02	1.04	8.8%	9.1%	8.5%	96.4%	3.6%	98.1%	94.3%
Interns	831	885	1.06	40.6%	59.4%	1.04	1.08	7.0%	7.0%	6.7%	100.0%	0.0%	100.0%	100.0%
Senior House Officer	2,473	2,549	1.03	45.4%	54.6%	1.03	1.04	5.4%	5.4%	5.8%	98.9%	1.1%	99.5%	98.4%
SHO/ Interns	3,304	3,434	1.04	44.2%	55.8%	1.03	1.05	5.8%	5.6%	6.0%	99.2%	0.8%	99.6%	98.9%
Dentists	10	11	1.16	36.4%	63.6%	1.40	1.05	81.8%	81.8%	100.0%	72.7%	27.3%	50.0%	85.7%
Other Medical	63	94	1.48	35.1%	64.9%	1.20	1.70	60.6%	60.6%	60.7%	41.5%	58.5%	69.7%	26.2%
Medical/ Dental, other	73	105	1.44	35.2%	64.8%	1.22	1.60	62.9%	59.5%	64.7%	44.8%	55.2%	67.6%	32.4%
Medical & Dental	9,884	10,432	1.06	53.2%	46.8%	1.05	1.07	31.4%	34.9%	27.5%	93.5%	6.5%	94.7%	92.0%
Clinical Nurse/ Midwife Manager	4,848	5,426	1.12	6.1%	93.9%	1.03	1.13	97.2%	97.2%	97.2%	70.3%	29.7%	91.2%	68.9%
Director Nursing/Midwifery, Assistant	501	538	1.07	11.2%	88.8%	1.02	1.08	95.4%	95.4%	95.6%	81.2%	18.8%	95.0%	79.5%
Director of Nursing/Midwifery	98	99	1.01	7.1%	92.9%	1.00	1.01	98.0%	98.0%	98.9%	97.0%	3.0%	85.7%	97.8%

Nurse/ Midwife Manager	5,447	6,063	1.11	6.5%	93.5%	1.03	1.12	97.0%	96.0%	97.1%	71.7%	28.3%	91.7%	70.3%
Advanced Nurse/ Midwife Practitioner	546	575	1.05	10.4%	89.6%	1.00	1.06	99.1%	99.1%	99.2%	88.3%	11.7%	98.3%	87.2%
Clinical Nurse/ Midwife Specialist	1,150	1,340	1.17	2.5%	97.5%	1.03	1.17	97.8%	97.8%	97.7%	61.9%	38.1%	97.1%	61.0%
Nurse/ Midwife Specialist & AN/MP	1,696	1,915	1.13	4.9%	95.1%	1.01	1.14	98.2%	98.9%	98.1%	69.9%	30.1%	97.9%	68.4%
Nursing Bank	6	19	2.97		100.0%		2.97	68.4%	68.4%	68.4%	0.0%	100.0%		0.0%
Staff Midwives	1,391	1,677	1.21	0.6%	99.4%	1.05	1.21	93.4%	93.4%	93.4%	48.5%	51.5%	90.0%	48.2%
Staff Nurse [Psychiatric]	26	28	1.07	28.6%	71.4%	1.11	1.05	100.0%	100.0%	100.0%	89.3%	10.7%	87.5%	90.0%
Staff Nurses [General/ Children's]	17,014	19,380	1.14	9.4%	90.6%	1.03	1.15	91.9%	91.9%	92.0%	68.7%	31.3%	91.9%	66.3%
Staff Nurse/ Staff Midwife	18,437	21,104	1.14	8.7%	91.3%	1.03	1.16	92.0%	91.0%	92.1%	67.0%	33.0%	91.8%	64.7%
Public Health Nurse	0	1	4.76		100.0%		4.76	0.0%		0.0%	0.0%	100.0%		0.0%
Pre-registration Nurse/ Midwife Intern	497	1,005	2.02	5.0%	95.0%	2.01	2.02	8.9%	8.9%	8.8%	82.5%	17.5%	86.0%	82.3%
Post-registration Nurse/ Midwife Student	129	142	1.10	3.5%	96.5%	1.00	1.11	10.6%	10.6%	10.9%	99.3%	0.7%	100.0%	99.3%
Nursing/ Midwifery awaiting registration	122	131	1.07	12.2%	87.8%	1.06	1.08	35.1%	35.1%	34.8%	98.5%	1.5%	100.0%	98.3%
Nursing/ Midwifery Student	748	1,278	1.71	5.6%	94.4%	1.58	1.72	11.7%	15.5%	11.5%	86.0%	14.0%	90.1%	85.7%
Nursing Education/Clinical	176	210	1.19	3.3%	96.7%	1.08	1.19	97.1%	97.1%	97.0%	61.0%	39.0%	85.7%	60.1%
Other Nursing/ Midwifery	6	7	1.17		100.0%		1.17	85.7%	85.7%	85.7%	42.9%	57.1%		42.9%
Nursing/ Midwifery other	182	217	1.19	3.2%	96.8%	1.08	1.19	96.8%	100.0%	96.7%	60.4%	39.6%	85.7%	59.5%
Nursing & Midwifery	26,511	30,578	1.15	7.9%	92.1%	1.04	1.16	90.1%	89.9%	90.1%	68.9%	31.1%	92.0%	66.9%
Dietitians	476	545	1.15	1.7%	98.3%	1.01	1.15	85.0%	85.0%	85.3%	76.5%	23.5%	100.0%	76.1%
Occupational Therapists	483	525	1.09	8.0%	92.0%	1.08	1.09	77.7%	77.7%	77.2%	86.1%	13.9%	90.5%	85.7%
Orthoptists	21	29	1.37	10.3%	89.7%	1.00	1.43	93.1%	93.1%	92.3%	51.7%	48.3%	100.0%	46.2%
Physiotherapists	1,164	1,314	1.13	19.0%	81.0%	1.05	1.15	81.1%	81.1%	81.8%	77.9%	22.1%	92.4%	74.4%
Podiatrists & Chiropodists	32	39	1.20	15.4%	84.6%	1.24	1.20	79.5%	79.5%	81.8%	61.5%	38.5%	50.0%	63.6%
Speech & Language Therapists	262	297	1.13	1.3%	98.7%	1.00	1.14	82.5%	82.5%	82.6%	75.8%	24.2%	100.0%	75.4%
Therapy Professions	2,439	2,749	1.13	11.4%	88.6%	1.05	1.14	81.5%	78.7%	81.8%	78.4%	21.6%	91.7%	76.7%
Audiology	40	46	1.15	13.0%	87.0%	1.32	1.13	89.1%	89.1%	87.5%	80.4%	19.6%	66.7%	82.5%
Biochemists	67	71	1.05	32.4%	67.6%	1.00	1.08	88.7%	88.7%	91.7%	85.9%	14.1%	100.0%	79.2%
Cardiac Physiologists	255	276	1.08	15.2%	84.8%	1.02	1.09	88.4%	88.4%	88.0%	81.5%	18.5%	92.9%	79.5%
Clinical Engineering	159	163	1.03	76.7%	23.3%	1.02	1.04	90.8%	90.8%	76.3%	96.9%	3.1%	97.6%	94.7%
Dosimetrists	13	16	1.19	12.5%	87.5%	1.43	1.16	81.3%	81.3%	85.7%	75.0%	25.0%	100.0%	71.4%
E.C.G. Technicians	8	10	1.24	30.0%	70.0%	1.00	1.38	80.0%	80.0%	85.7%	50.0%	50.0%	100.0%	28.6%
Gastrointestinal Physiologists	4	5	1.21	40.0%	60.0%	1.23	1.20	100.0%	100.0%	100.0%	60.0%	40.0%	50.0%	66.7%
Medical Science	1,978	2,170	1.10	20.1%	79.9%	1.03	1.12	93.8%	93.8%	94.2%	81.1%	18.9%	94.1%	77.8%
Neuro-Physiologists	55	59	1.08	23.7%	76.3%	1.01	1.11	88.1%	88.1%	84.4%	84.7%	15.3%	100.0%	80.0%

Perfusionists	21	23	1.10	47.8%	52.2%	1.12	1.09	87.0%	87.0%	91.7%	78.3%	21.7%	72.7%	83.3%
Phlebotomists	197	276	1.40	22.5%	77.5%	1.27	1.44	76.4%	76.4%	78.5%	44.2%	55.8%	56.5%	40.7%
Physicists	183	198	1.08	47.5%	52.5%	1.03	1.14	94.9%	94.9%	95.2%	87.9%	12.1%	100.0%	76.9%
Radiation Therapists	207	227	1.10	12.3%	87.7%	1.03	1.11	79.7%	79.7%	81.9%	79.3%	20.7%	100.0%	76.4%
Radiographers	1,359	1,489	1.10	20.6%	79.4%	1.02	1.12	92.6%	92.6%	92.1%	80.2%	19.8%	93.2%	76.8%
Respiratory Physiologists	69	73	1.05	19.2%	80.8%	1.04	1.06	95.9%	95.9%	94.9%	89.0%	11.0%	92.9%	88.1%
Vascular Physiologists	32	36	1.11	16.7%	83.3%	1.06	1.12	94.4%	94.4%	93.3%	80.6%	19.4%	100.0%	76.7%
Health Science/ Diagnostics	4,647	5,138	1.11	22.9%	77.1%	1.04	1.13	91.3%	91.2%	91.4%	79.6%	20.4%	92.6%	75.8%
Social Care	3	5	1.49	40.0%	60.0%	2.00	1.27	80.0%	100.0%	66.7%	20.0%	80.0%	0.0%	33.3%
Social Workers	423	469	1.11	13.0%	87.0%	1.05	1.12	86.1%	86.9%	86.0%	81.9%	18.1%	93.4%	80.1%
Psychologists	133	162	1.21	11.1%	88.9%	1.27	1.21	84.6%	88.9%	84.0%	55.6%	44.4%	44.4%	56.9%
Pharmacists	648	711	1.10	14.5%	85.5%	1.03	1.11	84.7%	84.7%	84.5%	84.2%	15.8%	98.1%	81.9%
Pharmacy Technicians	458	521	1.14	4.8%	95.2%	1.05	1.14	85.4%	85.4%	85.3%	75.0%	25.0%	88.0%	74.4%
Pharmacy	1,106	1,232	1.11	10.4%	89.6%	1.03	1.12	85.0%	85.9%	84.9%	80.4%	19.6%	96.1%	78.5%
Counsellor Therapists	3	6	1.84		100.0%		1.84	83.3%	83.3%	83.3%	16.7%	83.3%		16.7%
Dental Hygienists	1	2	1.83		100.0%		1.83	100.0%	100.0%	100.0%	50.0%	50.0%		50.0%
HSCP Trainees/ Students	90	101	1.12	22.8%	77.2%	1.17	1.10	2.0%	2.0%	2.6%	86.1%	13.9%	82.6%	87.2%
Other Health & Social Care	62	69	1.12	33.3%	66.7%	1.06	1.15	84.1%	84.1%	80.4%	78.3%	21.7%	87.0%	73.9%
Play Therapists/ Specialists	30	37	1.24		100.0%		1.24	91.9%	91.9%	91.9%	56.8%	43.2%		56.8%
Vaccinators	36	106	2.92	15.1%	84.9%	2.34	3.06	20.8%	20.8%	18.9%	5.7%	94.3%	6.3%	5.6%
H&SC, Other	223	321	1.44	19.3%	80.7%	1.28	1.48	38.3%	41.9%	37.5%	53.0%	47.0%	64.5%	50.2%
Health & Social Care	8,975	10,076	1.12	17.5%	82.5%	1.05	1.14	85.8%	86.7%	85.6%	78.2%	21.8%	91.1%	75.5%
Executive Management	113	117	1.03	48.7%	51.3%	1.02	1.05	92.3%	92.3%	93.3%	98.3%	1.7%	98.2%	98.3%
Senior Management (VIII & GM)	577	592	1.03	32.3%	67.7%	1.02	1.03	91.9%	91.9%	94.8%	96.5%	3.5%	97.9%	95.8%
Management (VIII & above)	690	709	1.03	35.0%	65.0%	1.02	1.03	92.0%	87.1%	94.6%	96.8%	3.2%	98.0%	96.1%
Middle Management (V-VII)	3,070	3,273	1.07	22.4%	77.6%	1.02	1.08	93.2%	93.2%	93.9%	83.9%	16.1%	98.4%	79.7%
Other Administrative	16	17	1.06	23.5%	76.5%	1.07	1.06	64.7%	64.7%	69.2%	76.5%	23.5%	100.0%	69.2%
Administrative/ Supervisory (V to VII)	3,086	3,290	1.07	22.4%	77.6%	1.02	1.08	93.1%	90.5%	93.8%	83.9%	16.1%	98.4%	79.7%
Clerical (III & IV)	7,137	8,108	1.14	13.2%	86.8%	1.03	1.15	79.7%	74.8%	80.4%	71.0%	29.0%	94.0%	67.4%
Management & Administrative	10,913	12,107	1.11	17.0%	83.0%	1.03	1.13	84.0%	81.9%	84.5%	76.0%	24.0%	96.1%	71.9%
Catering	486	528	1.09	33.9%	66.1%	1.03	1.12	92.0%	92.0%	93.7%	78.2%	21.8%	96.6%	68.8%
Household Services	3,235	3,756	1.16	24.1%	75.9%	1.08	1.19	79.6%	79.6%	83.1%	63.1%	36.9%	82.5%	56.9%
Other Labs & Associated	561	613	1.09	28.9%	71.1%	1.05	1.11	69.5%	69.5%	68.6%	87.6%	12.4%	96.6%	83.9%
Other Support	761	850	1.12	45.8%	54.2%	1.06	1.17	91.2%	91.2%	92.0%	74.0%	26.0%	92.8%	58.1%

Portering	1,431	1,508	1.05	91.9%	8.1%	1.05	1.14	81.0%	81.0%	80.3%	92.1%	7.9%	93.9%	72.1%
Support	6,474	7,255	1.12	41.8%	58.2%	1.06	1.17	81.3%	78.4%	83.4%	73.6%	26.4%	90.7%	61.3%
Maintenance	520	531	1.02	98.3%	1.7%	1.02	1.09	95.3%	95.3%	100.0%	97.4%	2.6%	97.9%	66.7%
Technical Services	25	25	1.00	100.0%		1.00		96.0%	96.0%		100.0%	0.0%	100.0%	
Maintenance/ Technical	545	556	1.02	98.4%	1.6%	1.02	1.09	95.3%	95.2%	100.0%	97.5%	2.5%	98.0%	66.7%
General Support	7,019	7,811	1.11	45.9%	54.1%	1.05	1.17	82.3%	81.0%	83.4%	75.3%	24.7%	91.8%	61.3%
Attendant/ Aide	1,171	1,283	1.10	44.5%	55.5%	1.04	1.15	92.5%	92.5%	93.8%	78.3%	21.7%	93.2%	66.4%
Health & Social Care Assistants	185	208	1.13	25.5%	74.5%	1.08	1.14	87.5%	87.5%	87.1%	71.6%	28.4%	86.8%	66.5%
Health Care Assistant/ Care Assistant	4,633	5,247	1.13	27.4%	72.6%	1.08	1.15	81.1%	81.1%	80.3%	70.8%	29.2%	83.0%	66.2%
Health Care Assistants	5,988	6,738	1.13	30.6%	69.4%	1.07	1.15	83.5%	85.4%	82.6%	72.2%	27.8%	85.9%	66.2%
Ambulance Control	161	168	1.05	51.2%	48.8%	1.05	1.04	98.8%	98.8%	98.8%	98.8%	1.2%	100.0%	97.6%
Ambulance Education	190	191	1.01	61.3%	38.7%	1.01	1.00	0.0%	0.0%	0.0%	100.0%	0.0%	100.0%	100.0%
Ambulance Officers	97	99	1.02	83.8%	16.2%	1.03	1.01	98.0%	98.0%	100.0%	99.0%	1.0%	98.8%	100.0%
Pre-Hospital Care (Ambulance)	1,455	1,507	1.04	77.3%	22.7%	1.03	1.05	94.1%	94.1%	91.8%	99.7%	0.3%	99.9%	99.1%
Ambulance Staff	1,902	1,965	1.03	73.8%	26.2%	1.03	1.04	85.5%	87.5%	80.0%	99.6%	0.4%	99.9%	99.0%
Health Promotion	4	5	1.28		100.0%		1.28	80.0%	80.0%	80.0%	40.0%	60.0%		40.0%
Other Care Grades	127	143	1.12	45.5%	54.5%	1.06	1.19	94.4%	94.4%	91.0%	73.4%	26.6%	92.3%	57.7%
Pastoral Care	79	104	1.32	69.2%	30.8%	1.40	1.17	70.2%	70.2%	96.9%	62.5%	37.5%	56.9%	75.0%
Workshop Services	2	3	1.50	66.7%	33.3%	1.33	2.00	100.0%	100.0%	100.0%	33.3%	66.7%	50.0%	0.0%
Care, other	212	255	1.20	54.5%	45.5%	1.21	1.19	84.3%	77.7%	92.2%	67.8%	32.2%	73.4%	61.2%
Patient & Client Care	8,102	8,958	1.11	40.8%	59.2%	1.06	1.14	83.9%	85.9%	82.6%	78.1%	21.9%	91.0%	69.3%

Employment by WTE, Headcount, Gender, Full-Time /Part-Time etc.: Apr 2022

Hospital Group	WTE	Headcount	WTE: no.	% Male	% female	Male WTE: no.	Female WTE: no.	% Total Perm	% Male Perm	% Female Perm	% Total Full Time	% Total Part Time	% Male FT	% Female FT
Overall	71,404	79,962	1.12	23.8%	76.2%	1.05	1.14	79.5%	70.2%	82.4%	76.0%	24.0%	92.9%	70.7%
National Ambulance Service	2,033	2,101	1.03	71.2%	28.8%	1.03	1.04	86.1%	86.1%	81.8%	99.2%	0.8%	99.8%	97.7%
CHI at Connolly	142	164	1.16	8.5%	91.5%	1.07	1.17	86.6%	86.6%	89.3%	70.1%	29.9%	92.9%	92.9%
CHI at Crumlin	2,176	2,474	1.14	15.6%	84.4%	1.03	1.16	83.0%	83.0%	84.2%	65.4%	34.6%	93.3%	93.3%
CHI at Tallaght	285	320	1.12	12.8%	87.2%	1.02	1.14	77.5%	77.5%	80.3%	74.1%	25.9%	95.1%	95.1%
CHI at Temple Street	1,305	1,491	1.14	17.8%	82.2%	1.04	1.17	77.0%	77.0%	79.5%	76.3%	23.7%	95.9%	95.9%
CHI Corporate	28	30	1.07	36.7%	63.3%	1.03	1.09	76.7%	76.7%	68.4%	100.0%	0.0%	100.0%	100.0%
CHI Programme	97	104	1.07	37.5%	62.5%	1.06	1.08	28.8%	28.8%	27.7%	97.1%	2.9%	100.0%	100.0%
Children's Health Ireland	4,033	4,583	1.14	16.5%	83.5%	1.04	1.16	79.5%	79.5%	81.6%	70.7%	29.3%	94.7%	65.9%
Coombe Women & Infants University	944	1,068	1.13	13.8%	86.2%	1.03	1.15	84.2%	84.2%	85.9%	68.8%	31.2%	91.8%	91.8%
MRH Portlaoise	826	916	1.11	19.1%	80.9%	1.03	1.13	80.2%	80.2%	83.7%	75.4%	24.6%	97.7%	97.7%
MRH Tullamore	1,200	1,324	1.10	22.1%	77.9%	1.04	1.12	84.6%	84.6%	88.9%	79.8%	20.2%	95.5%	95.5%
Naas General	845	943	1.12	19.3%	80.7%	1.05	1.13	89.4%	89.4%	90.4%	78.0%	22.0%	92.9%	92.9%
St. James's	4,517	5,040	1.12	24.3%	75.7%	1.04	1.14	84.6%	84.6%	86.4%	80.5%	19.5%	93.5%	93.5%
St. Luke's Rathgar	547	580	1.06	27.8%	72.2%	1.02	1.08	77.8%	77.8%	80.0%	85.3%	14.7%	96.9%	96.9%
Tallaght University	3,000	3,402	1.13	25.2%	74.8%	1.06	1.16	79.5%	79.5%	82.0%	77.6%	22.4%	88.8%	88.8%
Hospital Group HQ	59	66	1.13	18.2%	81.8%	1.13	1.13	78.8%	78.8%	87.0%	92.4%	7.6%	100.0%	100.0%
Dublin Midlands Hospital Group	11,938	13,339	1.12	22.9%	77.1%	1.05	1.14	83.0%	83.0%	85.3%	78.5%	21.5%	92.7%	74.3%
Cappagh National Orthopaedic	454	510	1.12	21.0%	79.0%	1.02	1.16	87.6%	87.6%	91.1%	72.5%	27.5%	95.3%	95.3%
Mater Misericordiae University	3,700	4,087	1.10	26.1%	73.9%	1.08	1.12	77.7%	77.7%	81.1%	80.6%	19.4%	86.8%	86.8%
MRH Mullingar	1,068	1,182	1.11	20.7%	79.3%	1.03	1.13	83.4%	83.4%	90.1%	77.0%	23.0%	97.6%	97.6%
National Maternity	947	1,066	1.13	17.8%	82.2%	1.07	1.14	76.3%	76.3%	78.5%	70.6%	29.4%	83.2%	83.2%
Our Lady's Navan	613	710	1.16	26.1%	73.9%	1.08	1.19	84.2%	84.2%	89.3%	67.7%	32.3%	90.3%	90.3%
St. Columcille's	466	513	1.10	24.0%	76.0%	1.02	1.13	83.2%	83.2%	84.4%	80.3%	19.7%	94.3%	94.3%
St Luke's General Kilkenny	1,237	1,407	1.14	22.6%	77.4%	1.04	1.17	75.4%	75.4%	81.5%	68.0%	32.0%	93.1%	93.1%
St. Michael's	413	483	1.17	24.8%	75.2%	1.13	1.18	92.1%	92.1%	91.5%	78.3%	21.7%	90.0%	90.0%
St. Vincent's University	3,220	3,461	1.07	29.2%	70.8%	1.03	1.09	96.4%	96.4%	96.7%	83.6%	16.4%	91.5%	91.5%
Wexford General	1,134	1,276	1.13	22.8%	77.2%	1.04	1.15	85.0%	85.0%	89.9%	74.2%	25.8%	94.2%	94.2%
Royal Victoria Eye & Ear	334	388	1.16	25.3%	74.7%	1.06	1.20	82.0%	82.0%	85.5%	64.7%	35.3%	84.7%	84.7%
National Rehabilitation	610	678	1.11	25.1%	74.9%	1.08	1.12	75.1%	75.1%	74.6%	78.3%	21.7%	90.6%	90.6%
IEHG Bank	15	21	1.43	14.3%	85.7%	1.00	1.54	100.0%	100.0%	100.0%	33.3%	66.7%	66.7%	66.7%

Hospital Group HQ	78	94	1.21	20.2%	79.8%	1.19	1.22	87.2%	87.2%	92.0%	72.3%	27.7%	78.9%	78.9%
Ireland East Hospital Group	14,288	15,876	1.11	24.9%	75.1%	1.05	1.13	83.8%	83.8%	86.6%	77.2%	22.8%	90.3%	72.8%
Beaumont	4,197	4,593	1.09	27.7%	72.3%	1.03	1.12	83.5%	83.5%	86.8%	78.2%	21.8%	91.5%	91.5%
Cavan General	1,226	1,395	1.14	19.5%	80.5%	1.04	1.16	86.5%	86.5%	91.2%	72.8%	27.2%	93.8%	93.8%
Connolly	1,548	1,696	1.10	25.1%	74.9%	1.04	1.12	82.8%	82.8%	84.3%	84.5%	15.5%	96.0%	96.0%
Louth County	297	338	1.14	19.2%	80.8%	1.06	1.16	96.2%	96.2%	96.0%	70.4%	29.6%	92.3%	92.3%
Monaghan	148	170	1.15	7.1%	92.9%	1.05	1.16	98.2%	98.2%	98.7%	60.6%	39.4%	91.7%	91.7%
Our Lady of Lourdes	2,456	2,716	1.11	22.2%	77.8%	1.04	1.13	85.8%	85.8%	89.4%	83.5%	16.5%	96.4%	96.4%
Rotunda	948	1,111	1.17	15.1%	84.9%	1.12	1.18	79.4%	79.4%	81.3%	70.3%	29.7%	88.1%	88.1%
Hospital Group HQ	64	66	1.03	19.7%	80.3%	1.06	1.03	97.0%	97.0%	98.1%	98.5%	1.5%	100.0%	100.0%
RCSI Hospitals Group	10,884	12,085	1.11	23.4%	76.6%	1.04	1.13	84.5%	84.5%	87.6%	78.6%	21.4%	93.3%	74.1%
Galway University	4,053	4,553	1.12	22.5%	77.5%	1.06	1.14	73.9%	73.9%	78.0%	74.2%	25.8%	90.9%	90.9%
Letterkenny University	1,959	2,252	1.15	22.7%	77.3%	1.05	1.18	74.4%	74.4%	78.7%	66.1%	33.9%	89.0%	89.0%
Mayo University	1,372	1,559	1.14	20.7%	79.3%	1.04	1.17	75.0%	75.0%	78.7%	71.2%	28.8%	94.4%	94.4%
Portiuncula University	925	1,033	1.12	23.0%	77.0%	1.04	1.14	74.5%	74.5%	82.5%	69.5%	30.5%	93.7%	93.7%
Roscommon University	413	467	1.13	19.1%	80.9%	1.06	1.15	73.4%	73.4%	76.7%	69.6%	30.4%	94.4%	94.4%
Sligo University	1,956	2,217	1.13	22.6%	77.4%	1.05	1.16	79.5%	79.5%	83.3%	73.1%	26.9%	93.4%	93.4%
Hospital Group HQ	140	186	1.33	15.6%	84.4%	1.11	1.38	45.2%	45.2%	43.9%	54.3%	45.7%	72.4%	72.4%
Saolta University Hospital Care	10,819	12,267	1.13	22.1%	77.9%	1.05	1.16	74.7%	74.7%	78.9%	71.2%	28.8%	91.6%	65.5%
Bantry General	297	345	1.16	14.2%	85.8%	1.14	1.17	81.2%	81.2%	83.8%	64.6%	35.4%	85.7%	85.7%
Cork University	4,662	5,326	1.14	23.0%	77.0%	1.07	1.17	62.1%	62.1%	65.9%	76.3%	23.7%	95.5%	95.5%
Lourdes Orthopaedic Kilcreene	70	81	1.15	17.3%	82.7%	1.04	1.18	91.4%	91.4%	95.5%	48.1%	51.9%	92.9%	92.9%
Mallow General	263	307	1.17	14.3%	85.7%	1.07	1.19	68.1%	68.1%	71.5%	68.7%	31.3%	95.5%	95.5%
Mercy University	1,335	1,519	1.14	22.3%	77.7%	1.03	1.17	77.9%	77.9%	81.1%	65.2%	34.8%	92.3%	92.3%
South Infirmary Victoria University	846	1,027	1.21	19.6%	80.4%	1.11	1.24	74.4%	74.4%	77.5%	49.1%	50.9%	77.1%	77.1%
South Tipperary General	1,024	1,184	1.16	19.3%	80.7%	1.04	1.19	78.0%	78.0%	82.0%	67.6%	32.4%	89.5%	89.5%
UH Kerry	1,347	1,536	1.14	20.8%	79.2%	1.04	1.17	61.2%	61.2%	64.9%	72.2%	27.8%	92.8%	92.8%
UH Waterford	2,235	2,490	1.11	23.7%	76.3%	1.03	1.14	83.3%	83.3%	87.8%	74.1%	25.9%	93.6%	93.6%
Hospital Group HQ	67	94	1.40	18.1%	81.9%	1.59	1.36	55.3%	55.3%	57.1%	62.8%	37.2%	58.8%	58.8%
South/South West Hospital Group	12,146	13,909	1.15	21.8%	78.2%	1.06	1.17	70.5%	70.5%	74.3%	70.8%	29.2%	92.4%	64.8%
Croom Orthopaedic	287	315	1.10	24.4%	75.6%	1.03	1.12	83.2%	83.2%	87.4%	77.8%	22.2%	96.1%	96.1%
Ennis	248	281	1.13	14.6%	85.4%	1.09	1.14	85.1%	85.1%	87.9%	68.3%	31.7%	85.4%	85.4%
Nenagh	272	307	1.13	15.6%	84.4%	1.07	1.14	88.6%	88.6%	90.7%	67.4%	32.6%	97.9%	97.9%
St. John's Limerick	328	365	1.11	15.3%	84.7%	1.01	1.13	91.5%	91.5%	94.5%	70.4%	29.6%	96.4%	96.4%
UH Limerick	3,609	3,953	1.10	22.6%	77.4%	1.03	1.12	75.4%	75.4%	78.2%	82.8%	17.2%	96.1%	96.1%
UMH Limerick	398	454	1.14	8.1%	91.9%	1.05	1.15	81.1%	81.1%	82.7%	74.9%	25.1%	89.2%	89.2%
Hospital Group HQ	10	11	1.06	27.3%	72.7%	1.27	1.00	90.9%	90.9%	100.0%	100.0%	0.0%	100.0%	100.0%

University of Limerick Hospital Group	5,153	5,686	1.10	20.3%	79.7%	1.03	1.12	78.5%	78.5%	81.5%	79.6%	20.4%	95.6%	75.5%
Other	109	116	1.06	25.9%	74.1%	1.07	1.06	92.2%	92.2%	96.5%	94.0%	6.0%	100.0%	100.0%
other Acute Services	109	116	1.06	25.9%	74.1%	1.07	1.06	92.2%	92.2%	96.5%	94.0%	6.0%	100.0%	91.9%

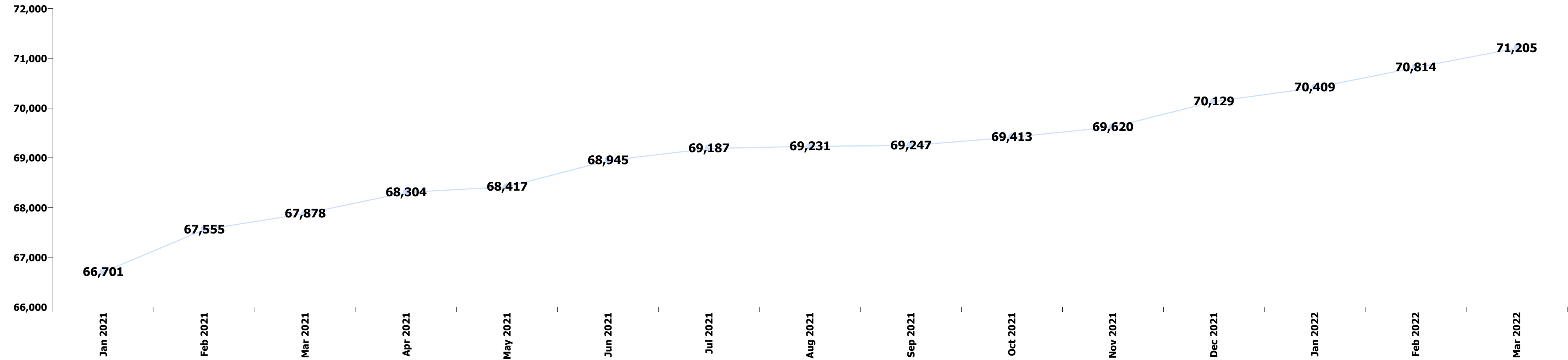
Summary Staff Movement: April 2022

Month-on-month Summary

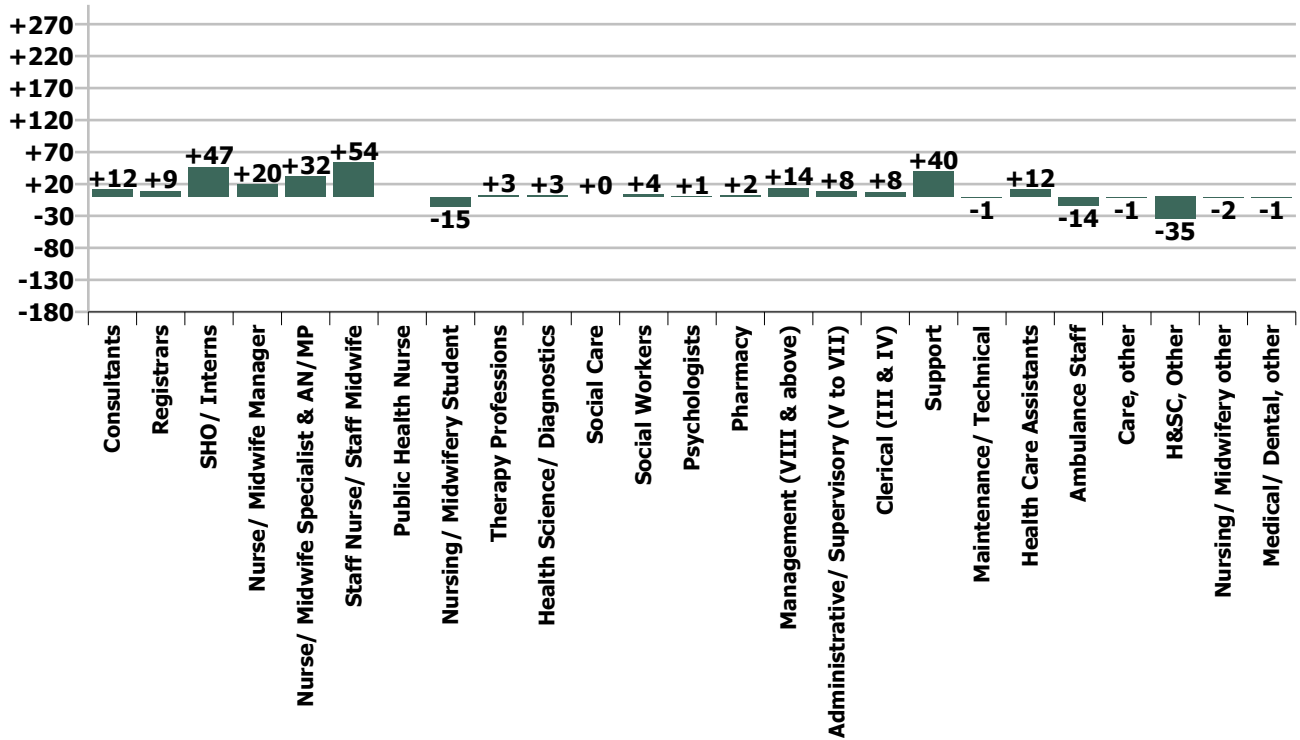
WTE change since Mar 22	% change since Mar 22	overall	Consultants	Registrars	SHO/ Interns	Medical/ Dental, other	Medical & Dental	Nurse/ Midwife Manager	Nurse/ Midwife Specialist & AN/MP	Staff Nurse/ Staff Midwife	Public Health Nurse	Nursing/ Midwifery Student	Nursing/ Midwifery other	Nursing & Midwifery	Therapy Professions	Health Science/ Diagnostics	Social Care	Social Workers	Psychologists	Pharmacy	H&SC, Other	Health & Social Care Professionals	Management (VIII & above)	Administrativ e/ Supervisory (V to VI)	Clerical (III & IV)	Management & Administrativ e	General Support	Health Care Assistants	Ambulance Staff	Care, other	Patient & Client Care	
Overall	+0.3%	+199	+12	+9	+47	-1	+66	+20	+32	+54		-15	-2	+89	+3	+3	+0	+4	+1	+2	-35	-23	+14	+8	+8	+29	+39	+12	-14	-1	-3	
National Ambulance Service	-0.5%	-10																					+1	+0	+2	+3		-0	-13	-0	-13	
Children's Health Ireland	+0.5%	+20	+6	+1	+0		+7	-4	+3	+4		+2		+5	-3	+5			+1	+1	+0	-1	+2	+1	+1	-1	+1	+5	+1	-1	+1	
Dublin Midlands Hospital Group	+0.6%	+77	+5	+2	+1	+0	+8	+4	+4	+6		+19	+1	+34	+5	+3			+0	+0	+2	-2	+8	+1	+4	+10	+16	+4	+8	-1	+7	
Ireland East Hospital Group	+0.1%	+16	+9	-3	+12	-1	+16	+11	+5	+16		-9	+0	+24	-5	-3			+1	+0	-5	-2	-14	+5	-6	+8	+6	+3	-17		-1	-19
RCSI Hospitals Group	+0.5%	+57	-3	+3	+4	-1	+3	+0	+9	+4		+0	+0	+14	+3	+5			+2	-0	-3	-4	+2	+2	+9	+6	+17	+11	+10		+0	+10
Saolta University Hospital Care	-0.2%	-26	-1	+8	+16	+0	+22	+6	+1	+21		-41	-2	-16	-2	-5	+0		-1	-0	+1	-20	-26	+1	-3	-9	-12	+1	+3		+1	+4
South/South West Hospital Group	+0.6%	+70	-1	+1	+10	-0	+10	+10	+5	+10		+14	-0	+39	+8	-2			+2	+0	+5	-5	+9	+2	+3	-11	-7	+12	+6		+0	+6
University of Limerick Hospital Group	-0.1%	-5	-2	-2	+4		+0	-7	+5	-6		-1	-0	-10	-2	-1			-1		+2	-2	-4	+3	-3	+5	+5	+2	+1		-0	+1
other Acute Services	-0.0%	-0						-1						-1						+0		+0	-1	+4	-2	+0						
Acute Services	+0.3%	+199	+12	+9	+47	-1	+66	+20	+32	+54		-15	-2	+89	+3	+3	+0	+4	+1	+2	-35	-23	+14	+8	+8	+29	+39	+12	-14	-1	-3	
			+0.4%	+0.3%	+1.4%	-1.4%	+0.7%	+0.4%	+1.9%	+0.3%		-2.0%	-0.8%	+0.3%	+0.1%	+0.1%	+0.3%	+0.9%	+0.4%	+0.2%	-13.5%	-0.3%	+2.0%	+0.3%	+0.1%	+0.3%	+0.6%	+0.2%	-0.7%	-0.4%	-0.0%	

Year-on-year Summary

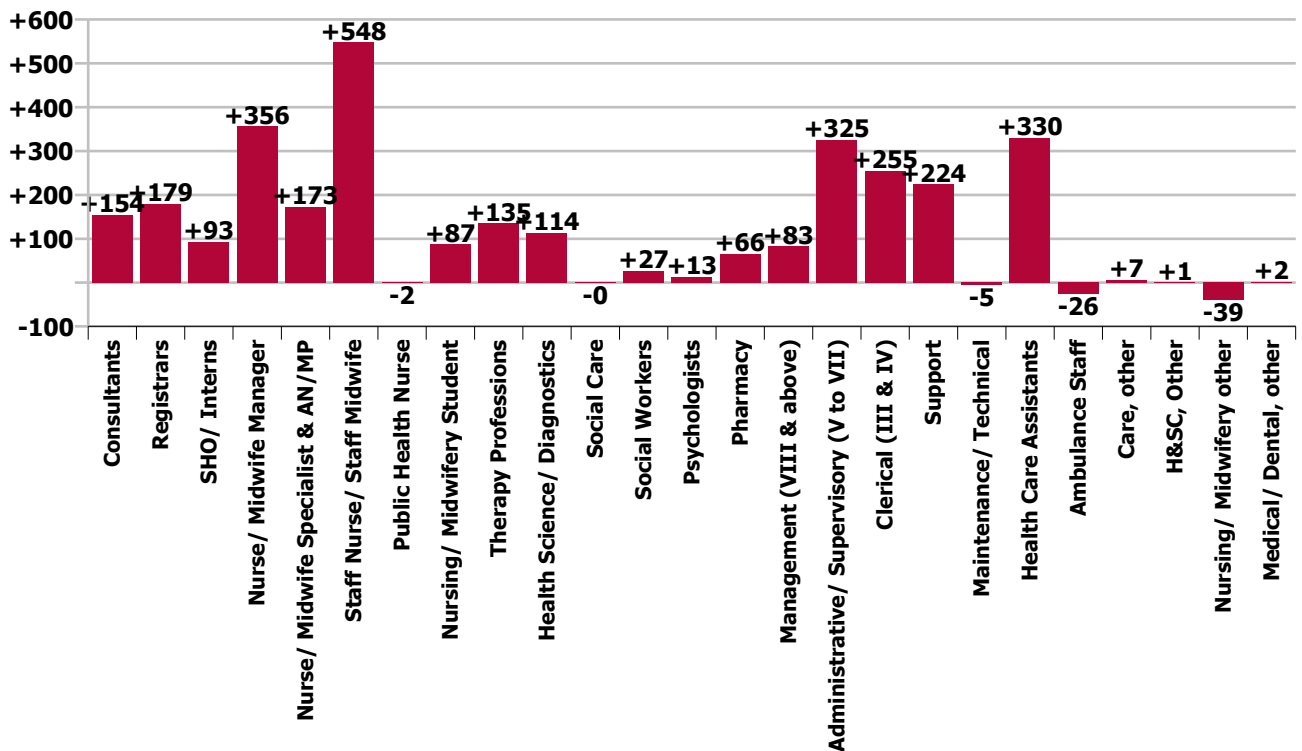
WTE change since Apr 21	% change since Apr 21	overall	Consultants	Registrars	SHO/ Interns	Medical/ Dental, other	Medical & Dental	Nurse/ Midwife Manager	Nurse/ Midwife Specialist & AN/MP	Staff Nurse/ Staff Midwife	Public Health Nurse	Nursing/ Midwifery Student	Nursing/ Midwifery other	Nursing & Midwifery	Therapy Professions	Health Science/ Diagnostics	Social Care	Social Workers	Psychologists	Pharmacy	H&SC, Other	Health & Social Care Professionals	Management (VIII & above)	Administrative/ Supervisory (V to VII)	Clerical (III & IV)	Management & Administrative	General Support	Health Care Assistants	Ambulance Staff	Care, other	Patient & Client Care	
Overall	+4.5%	+3,100	+154	+179	+93	+2	+429	+356	+173	+548	-2	+87	-39	+1,124	+135	+114	-0	+27	+13	+66	+1	+354	+83	+325	+255	+663	+219	+330	-26	+7	+312	
National Ambulance Service	-0.6%	-11		-1	-1		-2	+1		-1				+0	-1							-1	+2	+12	+4	+19	-0	-0	-26	-1	-27	
Children's Health Ireland	+5.2%	+199	+10	+12	+12		+34	+23	+13	+30		+7	+0	+73	+12	+15			+3	+4	+4	+3	+41	+9	+28	+11	+48	+0	+6		-3	+3
Dublin Midlands Hospital Group	+4.1%	+468	+34	+25	+5	+2	+65	+43	+36	+56		+10	+6	+151	+23	+18			+7	+2	-5	+2	+47	+7	+56	+46	+109	+19	+67		+9	+76
Ireland East Hospital Group	+3.5%	+485	+38	+28	+20	-1	+86	+91	+14	+92		+19	-22	+194	-2	+31			+15	+2	+5	+3	+54	+30	+39	+18	+87	+6	+61		-2	+59
RCSI Hospitals Group	+3.8%	+401	+18	+28	+11	-1	+56	+70	+32	+85		+19	-12	+194	+23	+9			-0	-1	+6	-7	+30	+3	+59	-12	+49	+10	+65		-2	+63
Saoita University Hospital Care	+6.1%	+618	+17	+25	+37	+1	+80	+52	+29	+136	-2	+27	-8	+234	+22	+20	-0		+2	+1	+19	-12	+51	+8	+54	+86	+148	+34	+65		+6	+71
South/South West Hospital Group	+4.7%	+550	+32	+37	+1	+1	+71	+38	+33	+77		+4	-0	+152	+54	+21			+3	+2	+27	+9	+115	+14	+47	+43	+104	+57	+53		-1	+52
University of Limerick Hospital Group	+8.1%	+385	+5	+25	+9		+39	+39	+16	+73		+1	-2	+126	+5	-1			-2	+2	+7	+4	+14	+9	+32	+56	+98	+93	+14		+1	+15
other Acute Services	+4.9%	+5						-1						-1		+1			-1		+3		+3	+1	-1	+2	+2					
Acute Services	+4.5%	+3,100	+154	+179	+93	+2	+429	+356	+173	+548	-2	+87	-39	+1,124	+135	+114	-0	+27	+13	+66	+1	+354	+83	+325	+255	+663	+219	+330	-26	+7	+312	
			+5.1%	+5.6%	+2.9%	+2.8%	+4.5%	+7.0%	+11.3%	+3.1%	-87.7%	+13.2%	-17.7%	+4.4%	+5.9%	+2.5%	-12.3%	+6.7%	+10.4%	+6.3%	+0.4%	+4.1%	+13.7%	+11.8%	+3.7%	+6.5%	+3.2%	+5.8%	-1.3%	+3.4%	+4.0%	



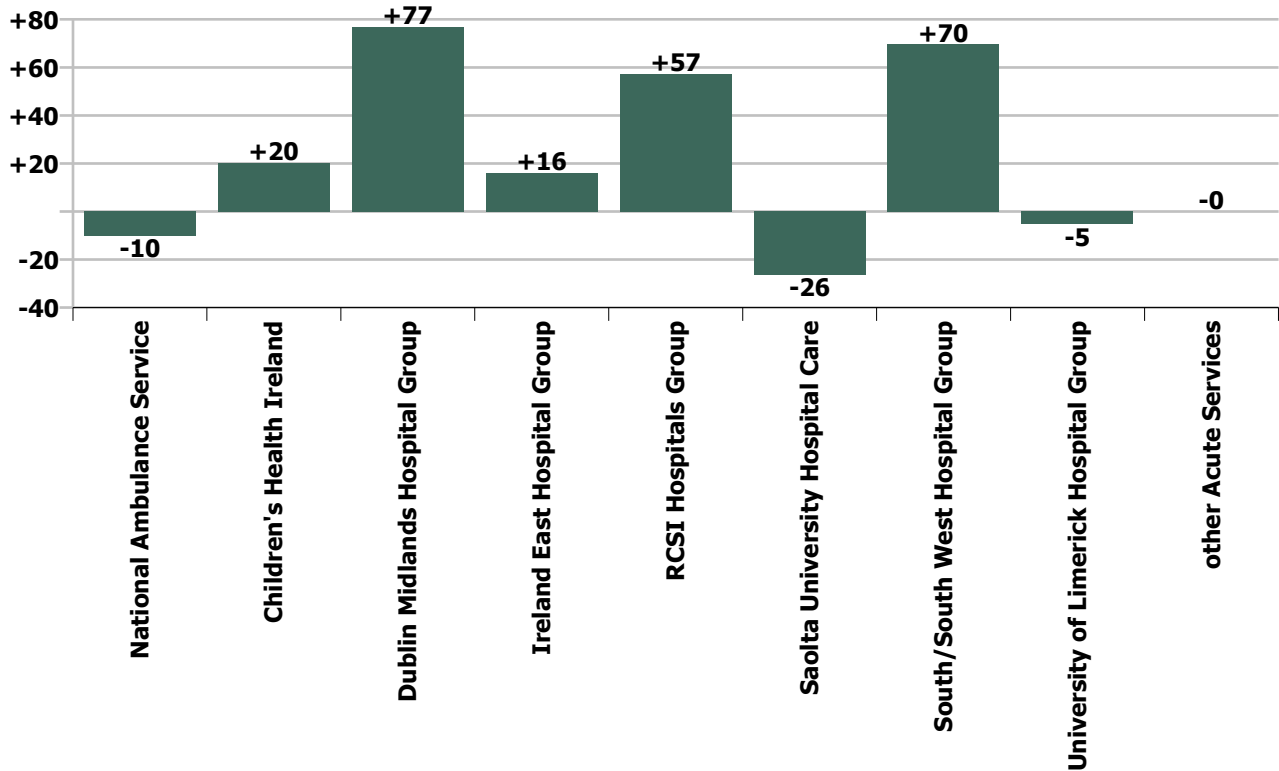
Staff Group change since: Mar 2022



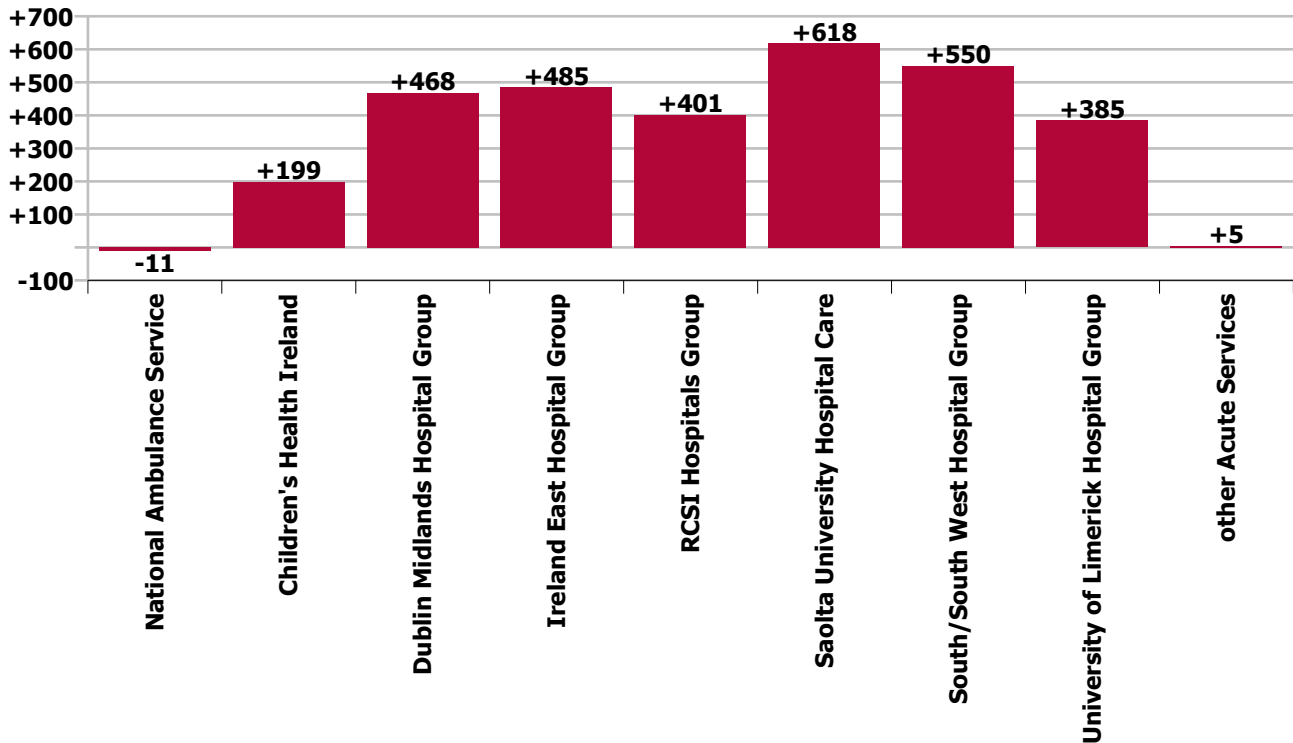
Staff Group change since: Apr 2021



Hospital Group & CHO change since: Mar 2022



Hospital Group & CHO change since: Apr 2021



Longitudinal Employment Levels by Grade Group - December 2016 to Apr 2022

Apr 2022 (Dec 2019 figure: 62,537)	WTE Apr 2022	WTE change since Dec 16	WTE change since Dec 17	WTE change since Dec 18	WTE change since Dec 19	WTE change since Dec 20	WTE change since Mar 22	% change since Dec 16	% change since Dec 17	% change since Dec 18	% change since Dec 19	% change since Dec 20	% change since Mar 22
Overall	71,404	+15,022	+12,783	+10,498	+8,867	+4,965	+199	+26.6%	+21.8%	+17.2%	+14.2%	+7.5%	+0.3%
Consultant Anaesthesia	441	+71	+55	+51	+38	+14	+1	+19.4%	+14.4%	+13.0%	+9.3%	+3.2%	+79.0%
Consultant Dentistry	6	+1	+1	-0	-0	-0	+0	+31.0%	+27.9%	-0.7%	-2.1%	-3.2%	+18.0%
Consultant Emergency Medicine	139	+47	+41	+42	+31	+18	+3	+51.5%	+42.2%	+43.2%	+29.1%	+14.9%	+295.0%
Consultant Intensive Care Medicine	20	+17	+14	+5	+4	+2		+572.3%	+236.2%	+35.7%	+26.1%	+12.3%	
Consultant Medicine	967	+276	+245	+201	+163	+82	+4	+40.0%	+33.9%	+26.3%	+20.3%	+9.2%	+398.0%
Consultant Obstetrics & Gynaecology	176	+37	+25	+19	+15	+6	+0	+26.2%	+16.9%	+12.3%	+9.3%	+3.3%	+41.0%
Consultant, Other	1	+1	+1	+1	+0	+1	+1	-100.0%	-100.0%	-100.0%	+32.4%	-100.0%	+90.0%
Consultant Paediatrics	217	+65	+51	+40	+24	+5	+3	+42.9%	+30.8%	+22.5%	+12.6%	+2.5%	+320.0%
Consultant Pathology	281	+59	+50	+39	+29	+16	+0	+26.4%	+21.8%	+16.0%	+11.3%	+5.9%	+12.0%
Consultant Psychiatry	28	+11	+9	+8	+4	+4	+2	+65.0%	+48.3%	+41.4%	+17.0%	+18.9%	+160.0%
Consultant Radiology	288	+40	+37	+22	+13	+8	-1	+15.9%	+14.8%	+8.1%	+4.7%	+2.8%	-105.0%
Consultant Surgery	592	+108	+97	+73	+54	+28	-1	+22.4%	+19.5%	+14.1%	+9.9%	+5.0%	-141.0%
Consultants	3,157	+734	+628	+502	+375	+184	+12	+30.3%	+24.8%	+18.9%	+13.5%	+6.2%	+0.4%
Registrar	1,928	+424	+355	+274	+224	+118	+19	+28.2%	+22.6%	+16.6%	+13.2%	+6.5%	+1888.0%
Senior Registrar	129	+16	+27	+21	+21	+8	+1	+14.4%	+26.5%	+19.7%	+19.4%	+7.0%	+134.0%
Specialist Registrar	1,293	+381	+291	+266	+162	+108	-11	+41.8%	+29.0%	+25.9%	+14.4%	+9.1%	-1105.0%
Registrars	3,349	+821	+673	+561	+407	+234	+9	+32.5%	+25.1%	+20.1%	+13.8%	+7.5%	+0.3%
Interns	831	+131	+122	+109	+113	-135	-2	+18.6%	+17.1%	+15.1%	+15.7%	-14.0%	-230.0%
Senior House Officer	2,473	+559	+498	+453	+396	+187	+49	+29.2%	+25.2%	+22.4%	+19.1%	+8.2%	+4887.0%
SHO/ Interns	3,304	+689	+619	+562	+509	+52	+47	+26.4%	+23.1%	+20.5%	+18.2%	+1.6%	+1.4%
Dentists	10	-4	-1	-0	-0	-2	+0	-29.2%	-8.5%	-4.6%	-0.8%	-13.6%	+15.0%
Other Medical	63	+21	+16	+12	+13	+11	-1	+47.8%	+32.5%	+24.2%	+27.0%	+19.8%	-115.0%
Medical/ Dental, other	73	+17	+15	+12	+13	+9	-1	+29.4%	+25.2%	+19.5%	+22.5%	+14.1%	-1.4%
Medical & Dental	9,884	+2,622	+1,934	+1,636	+1,305	+478	+66	+36.1%	+24.3%	+19.8%	+15.2%	+5.1%	+0.7%
Clinical Nurse/ Midwife Manager	4,848	+1,243	+1,099	+792	+649	+460	+27	+34.5%	+29.3%	+19.5%	+15.5%	+10.5%	+2660.0%
Director Nursing/Midwifery, Assistant	501	+146	+106	+78	+68	+48	-8	+41.3%	+26.8%	+18.3%	+15.6%	+10.6%	-809.0%
Director of Nursing/Midwifery	98	+35	+30	+22	+19	+15	+1	+56.3%	+44.4%	+28.2%	+24.6%	+18.7%	+126.0%
Nurse/ Midwife Manager	5,447	+1,425	+1,235	+892	+736	+523	+20	+35.4%	+29.3%	+19.6%	+15.6%	+10.6%	+0.4%
Advanced Nurse/ Midwife Practitioner	546	+397	+342	+270	+209	+107	+14	+265.8%	+167.4%	+97.9%	+62.1%	+24.2%	+1376.0%
Clinical Nurse/ Midwife Specialist	1,150	+284	+280	+233	+195	+122	+18	+32.8%	+32.2%	+25.4%	+20.4%	+11.8%	+1832.0%
Nurse/ Midwife Specialist & AN/MP	1,696	+681	+622	+503	+404	+228	+32	+67.1%	+58.0%	+42.2%	+31.3%	+15.5%	+1.9%
Graduate Nursing/ Midwifery								-100.0%	-100.0%	-100.0%	-100.0%	-100.0%	
Nursing Bank	6	-39	-41	-31	-24	-16	-2	-85.9%	-86.5%	-83.1%	-79.2%	-71.8%	-215.0%
Staff Midwives	1,391	-66	-46	-89	-66	-88	-24	-4.5%	-3.2%	-6.0%	-4.5%	-5.9%	-2407.0%
Staff Nurse [Psychiatric]	26	-7	-4	-5	-2	-3	+0	-21.0%	-13.5%	-15.9%	-6.0%	-9.6%	+30.0%
Staff Nurse [Intellectual Disability]						-72		-100.0%	-100.0%	-100.0%	-100.0%	-100.0%	
Staff Nurses [General/ Children's]	17,014	+3,114	+2,488	+2,164	+1,853	+1,090	+80	+22.4%	+17.1%	+14.6%	+12.2%	+6.8%	+7983.0%

Apr 2022 (Dec 2019 figure: 62,537)	WTE Apr 2022	WTE change since Dec 16	WTE change since Dec 17	WTE change since Dec 18	WTE change since Dec 19	WTE change since Dec 20	WTE change since Mar 22	% change since Dec 16	% change since Dec 17	% change since Dec 18	% change since Dec 19	% change since Dec 20	% change since Mar 22
Overall	71,404	+15,022	+12,783	+10,498	+8,867	+4,965	+199	+26.6%	+21.8%	+17.2%	+14.2%	+7.5%	+0.3%
Staff Nurse/ Staff Midwife	18,437	+3,002	+2,397	+2,039	+1,761	+911	+54	+19.5%	+14.9%	+12.4%	+10.6%	+5.2%	+0.3%
Public Health Nurse	0	-1	-1	-1	-1	-1		-79.0%	-79.0%	-76.1%	-85.6%	-87.1%	
Pre-registration Nurse/ Midwife Intern	497	+425	+425	+426	+415	+482	+19	+594.1%	+593.5%	+599.0%	+502.1%	+3224.9%	+1866.0%
Pre-registration Nurse Intern (COVID-19)						-156		-100.0%	-100.0%	-100.0%	-100.0%	-100.0%	
Post-registration Nurse/ Midwife Student	129	-29	-22	-44	-67	-22	-1	-18.3%	-14.7%	-25.3%	-34.0%	-14.5%	-84.0%
Nursing/ Midwifery awaiting registration	122	+81	+25	+8	-17	+65	-33	+197.7%	+26.0%	+7.3%	-12.1%	+115.7%	-3295.0%
Nursing/ Midwifery Student	748	+478	+428	+391	+331	+370	-15	+176.5%	+134.0%	+109.3%	+79.4%	+97.9%	-2.0%
Nursing Education/Clinical	176	+1	+11	+3	-14	-20	-1	+0.8%	+6.3%	+1.9%	-7.5%	-10.1%	-52.0%
Other Nursing/ Midwifery	6	-19	-21	-23	-27	-24	-1	-75.8%	-77.7%	-79.1%	-82.2%	-80.1%	-100.0%
Nursing/ Midwifery other	182	-17	-10	-19	-42	-44	-2	-8.6%	-5.3%	-9.6%	-18.6%	-19.4%	-0.8%
Nursing & Midwifery	26,511	+5,988	+4,672	+3,804	+3,190	+1,987	+89	+29.2%	+21.4%	+16.8%	+13.7%	+8.1%	+0.3%
Dietitians	476	+130	+126	+77	+83	+38	-7	+37.8%	+36.1%	+19.4%	+21.1%	+8.6%	-731.0%
Occupational Therapists	483	+151	+141	+124	+115	+66	+1	+45.5%	+41.1%	+34.4%	+31.1%	+15.8%	+131.0%
Orthoptists	21	-1	-5	-3	-1	+1	-0	-3.9%	-19.3%	-11.2%	-2.7%	+3.9%	-49.0%
Physiotherapists	1,164	+284	+227	+191	+172	+97	+12	+32.2%	+24.2%	+19.6%	+17.4%	+9.1%	+1220.0%
Podiatrists & Chiropodists	32	+1	+4	+2	-2	-4	+1	+2.9%	+12.4%	+7.4%	-5.2%	-12.0%	+78.0%
Speech & Language Therapists	262	+84	+72	+61	+64	+25	-3	+47.5%	+38.1%	+30.1%	+32.1%	+10.7%	-350.0%
Therapy Professions	2,439	+650	+564	+452	+431	+222	+3	+36.3%	+30.1%	+22.7%	+21.5%	+10.0%	+0.1%
Audiology	40	+8	+9	+11	+12	+10	-0	+26.0%	+28.7%	+38.3%	+44.3%	+32.9%	-13.0%
Biochemists	67	+8	+5	-4	-4	-9	+2	+14.4%	+7.2%	-5.6%	-6.2%	-11.4%	+169.0%
Cardiac Physiologists	255	+40	+43	+32	+28	+12	+2	+18.4%	+20.0%	+14.4%	+12.2%	+4.7%	+177.0%
Clinical Engineering	159	+35	+27	+23	+16	+10	+1	+27.9%	+20.4%	+17.2%	+11.5%	+6.6%	+73.0%
Dosimetrists	13	+3	+5	+3	+0	-1	-1	+30.0%	+52.6%	+25.5%	+2.8%	-4.8%	-110.0%
E.C.G. Technicians	8	-5	-2	-1	-2	-3	+0	-36.5%	-16.9%	-11.4%	-19.5%	-26.2%	+13.0%
Gastrointestinal Physiologists	4	+1	-1	+2	+2	+2		+44.1%	-17.3%	+94.3%	+94.3%	+94.3%	
Medical Science	1,978	+112	+97	+89	+93	+27	-10	+6.0%	+5.2%	+4.7%	+4.9%	+1.4%	-987.0%
Neuro-Physiologists	55	+14	+7	+6	+5	-2	+1	+33.7%	+15.2%	+11.6%	+10.1%	-3.2%	+100.0%
Perfusionists	21	+2	+0	+1	-1	-1	+2	+10.3%	+0.5%	+5.1%	-4.1%	-4.0%	+164.0%
Phlebotomists	197	+44	+37	+37	+26	+14	-4	+28.7%	+23.4%	+23.4%	+14.9%	+7.8%	-430.0%
Physicists	183	+31	+29	+2	+2	+12	+4	+20.4%	+18.4%	+1.0%	+1.3%	+6.7%	+438.0%
Radiation Therapists	207	+19	+21	+15	+8	-5	+4	+10.2%	+11.5%	+7.7%	+3.9%	-2.5%	+360.0%
Radiographers	1,359	+321	+282	+244	+213	+120	+1	+30.9%	+26.2%	+21.9%	+18.6%	+9.7%	+108.0%
Respiratory Physiologists	69	+16	+15	+11	+4	-1	+1	+30.9%	+26.7%	+17.9%	+6.6%	-1.8%	+111.0%
Vascular Physiologists	32	+4	+5	+6	+3	+5	+1	+12.1%	+20.0%	+24.3%	+11.5%	+16.3%	+85.0%
Health Science/ Diagnostics	4,647	+653	+579	+476	+405	+189	+3	+16.3%	+14.2%	+11.4%	+9.6%	+4.2%	+0.1%
Social Care	3	-0	+0	+0	+0	-1	+0	-10.9%	+11.3%	+15.5%	+0.3%	-19.6%	+0.3%
Social Workers	423	+104	+98	+81	+68	+39	+4	+32.5%	+30.1%	+23.9%	+19.1%	+10.2%	+0.9%
Psychologists	133	+52	+49	+44	+33	+23	+1	+63.2%	+57.8%	+49.1%	+32.6%	+21.1%	+0.4%
Pharmacists	648	+211	+188	+138	+118	+58	-0	+48.4%	+40.9%	+27.0%	+22.2%	+9.8%	-44.0%

Apr 2022 (Dec 2019 figure: 62,537)	WTE Apr 2022	WTE change since Dec 16	WTE change since Dec 17	WTE change since Dec 18	WTE change since Dec 19	WTE change since Dec 20	WTE change since Mar 22	% change since Dec 16	% change since Dec 17	% change since Dec 18	% change since Dec 19	% change since Dec 20	% change since Mar 22
Overall	71,404	+15,022	+12,783	+10,498	+8,867	+4,965	+199	+26.6%	+21.8%	+17.2%	+14.2%	+7.5%	+0.3%
Pharmacy Technicians	458	+161	+144	+127	+88	+42	+3	+54.3%	+45.8%	+38.4%	+23.7%	+10.1%	+271.0%
Pharmacy	1,106	+373	+332	+265	+206	+100	+2	+50.8%	+42.9%	+31.5%	+22.8%	+9.9%	+0.2%
H&SC, Other	223	+69	+56	+50	+72	+69	-35	+44.5%	+33.2%	+29.3%	+47.7%	+45.1%	-13.5%
Health & Social Care Professionals	8,975	+2,108	+1,678	+1,369	+1,215	+642	-23	+30.7%	+23.0%	+18.0%	+15.7%	+7.7%	-0.3%
Executive Management	113	+51	+49	+30	+26	+11	+3	+82.5%	+77.5%	+36.3%	+30.2%	+11.3%	+348.0%
Senior Management (VIII & GM)	577	+242	+201	+159	+146	+99	+10	+72.1%	+53.3%	+38.0%	+33.9%	+20.7%	+1018.0%
Management (VIII & above)	690	+293	+250	+189	+172	+110	+14	+73.7%	+56.8%	+37.7%	+33.3%	+19.1%	+2.0%
Middle Management (V-VII)	3,070	+1,273	+1,095	+922	+760	+409	+7	+70.8%	+55.5%	+42.9%	+32.9%	+15.4%	+741.0%
Other Administrative	16	+3	+4	+1	+1	+3	+1	+23.4%	+36.1%	+4.4%	+5.9%	+18.9%	+75.0%
Administrative/ Supervisory (V to VII)	3,086	+1,276	+1,100	+923	+760	+412	+8	+70.5%	+55.4%	+42.6%	+32.7%	+15.4%	+0.3%
Clerical (III & IV)	7,137	+860	+664	+530	+531	+479	+8	+13.7%	+10.3%	+8.0%	+8.0%	+7.2%	+0.1%
Management & Administrative	10,913	+2,714	+2,014	+1,641	+1,464	+1,001	+29	+33.1%	+22.6%	+17.7%	+15.5%	+10.1%	+0.3%
Catering	486	+45	+35	+42	+15	-4	-1	+10.3%	+7.7%	+9.5%	+3.3%	-0.8%	-90.0%
Household Services	3,235	+656	+601	+548	+519	+137	+14	+25.4%	+22.8%	+20.4%	+19.1%	+4.4%	+1363.0%
Other Labs & Associated	561	+237	+221	+206	+182	+121	+19	+73.4%	+65.2%	+58.1%	+47.9%	+27.5%	+1902.0%
Other Support	761	+51	+35	+27	+23	-0	-2	+7.3%	+4.8%	+3.6%	+3.1%	-0.0%	-230.0%
Portering	1,431	+105	+97	+103	+105	+68	+10	+7.9%	+7.3%	+7.7%	+7.9%	+5.0%	+1039.0%
Support	6,474	+1,095	+989	+925	+844	+322	+40	+20.4%	+18.0%	+16.7%	+15.0%	+5.2%	+0.6%
Maintenance	520	+30	+39	+32	+13	+6	-0	+6.1%	+8.1%	+6.6%	+2.7%	+1.1%	-9.0%
Technical Services	25	+6	+6	+3	+1	-0	-1	+30.1%	+30.1%	+15.1%	+4.2%	-0.1%	-79.0%
Maintenance/ Technical	545	+36	+45	+36	+14	+6	-1	+7.0%	+9.0%	+7.0%	+2.7%	+1.1%	-0.2%
General Support	7,019	+1,223	+1,034	+961	+858	+328	+39	+21.1%	+17.3%	+15.9%	+13.9%	+4.9%	+0.6%
Attendant/ Aide	1,171	-528	-575	-503	-412	-301	+17	-31.1%	-32.9%	-30.1%	-26.0%	-20.5%	+1703.0%
Health & Social Care Assistants	185	+85	+75	+60	+56	+29	-3	+85.8%	+67.9%	+47.8%	+43.5%	+18.2%	-274.0%
Health Care Assistant/ Care Assistant	4,633	+1,867	+1,729	+1,352	+1,069	+795	-1	+67.5%	+59.5%	+41.2%	+30.0%	+20.7%	-135.0%
HCA (Student Nurse/Midwife COVID-19)						-50	-1	-100.0%	-100.0%	-100.0%	-100.0%	-100.0%	-100.0%
Health Care Assistants	5,988	+1,424	+1,229	+908	+713	+472	+12	+31.2%	+25.8%	+17.9%	+13.5%	+8.6%	+0.2%
Ambulance Staff	1,902	+262	+158	+121	+78	+26	-14	+16.0%	+9.0%	+6.8%	+4.3%	+1.4%	-0.7%
Health Promotion	4	+1	+1	+1	+2	+1	-1	+59.2%	+50.0%	+50.0%	+143.8%	+21.1%	-83.0%
Other Care Grades	127	+55	+66	+67	+49	+33	+2	+77.3%	+107.8%	+111.2%	+61.9%	+35.2%	+156.0%
Pastoral Care	79	-8	-4	-12	-8	-6	-2	-9.6%	-4.7%	-13.6%	-9.3%	-6.5%	-157.0%
Workshop Services	2	+1	+1	+2	+1	+2		+100.0%	+100.0%	+300.0%	+100.0%	+300.0%	
Care, other	212	+49	+64	+57	+44	+30	-1	+30.5%	+43.6%	+37.1%	+26.1%	+16.4%	-0.4%
Patient & Client Care	8,102	+2,011	+1,451	+1,086	+835	+528	-3	+33.0%	+21.8%	+15.5%	+11.5%	+7.0%	-0.0%

Source: Health Service Personnel Census