

Acute Service Employment Report: August 2021

Employment by Staff Group

Aug 2021 (Dec 2020 figure: 66,439)	WTE Jul 2021	WTE Aug 2021	WTE change since Jul 21	% change since Jul 21	WTE change since Dec 20	WTE change since Aug 20
Overall	69,187	69,231	+44	+0.1%	+2,792	+3,051
Consultants	3,011	3,033	+22	+0.7%	+59	+107
Registrars	3,218	3,195	-23	-0.7%	+80	+97
SHO/ Interns	3,179	3,180	+1	+0.0%	-72	-97
Medical/ Dental, other	68	71	+2	+3.5%	+7	+10
Medical & Dental	9,477	9,479	+3	+0.0%	+74	+117
Nurse/ Midwife Manager	5,150	5,180	+29	+0.6%	+256	+341
Nurse/ Midwife Specialist & AN/MP	1,546	1,545	-1	-0.1%	+77	+152
Staff Nurse/ Staff Midwife	17,955	17,882	-73	-0.4%	+356	+1,013
Public Health Nurse	2	2	+0	+18.6%	+1	+1
Pre-registration Nurse/ Midwife Intern	526	513	-14	-2.6%	+430	+511
Pre-registration Nurse Intern (COVID-19)	2	2	+0	+6.0%	+2	-960
Post-registration Nurse/ Midwife Student	151	146	-6	-3.7%	-50	-30
Nursing/ Midwifery awaiting registration	31	42	+11	+37.3%	-97	+29
Nursing/ Midwifery Student	710	703	-8	-1.1%	+325	-450
Nursing/ Midwifery other	217	213	-3	-1.5%	-13	-14
Nursing & Midwifery	25,580	25,525	-55	-0.2%	+1,001	+1,042
Therapy Professions	2,324	2,321	-3	-0.1%	+105	+151
Health Science/ Diagnostics	4,556	4,590	+35	+0.8%	+132	+126
Social Care	4	4			+0	+1
Social Workers	406	406	+1	+0.2%	+23	+48
Psychologists	122	121	-1	-1.0%	+10	+13
Pharmacy	1,058	1,068	+10	+0.9%	+61	+102
H&SC, Other	327	281	-46	-14.1%	+128	+156
Health & Social Care Professionals	8,797	8,792	-5	-0.1%	+459	+596
Management (VIII & above)	618	619	+1	+0.1%	+39	+63
Administrative/ Supervisory (V to VII)	2,848	2,863	+14	+0.5%	+189	+340
Clerical (III & IV)	7,013	7,016	+3	+0.0%	+358	+364
Management & Administrative	10,480	10,498	+18	+0.2%	+586	+766
Support	6,389	6,433	+44	+0.7%	+281	+276
Maintenance/ Technical	545	543	-2	-0.3%	+4	-0
General Support	6,934	6,976	+43	+0.6%	+285	+276
Health Care Assistants	5,789	5,837	+48	+0.8%	+320	+141
Ambulance Staff	1,924	1,916	-8	-0.4%	+40	+85
Care, other	207	207	+0	+0.0%	+25	+26
Patient & Client Care	7,920	7,960	+40	+0.5%	+386	+253

Acute Services Employment by Hospital & Hospital Group: Aug 2021

Aug 2021 (Dec 2020 figure: 66,439)	WTE Jul 2021	WTE Aug 2021	WTE change since Jul 21	% change since Jul 21	WTE change since Dec 20	WTE change since Aug 20
Overall	69,187	69,231	+44	+0.1%	+2,792	+3,051
National Ambulance Service	2,037	2,030	-7	-0.4%	+40	+86
CHI at Connolly	144	144	-0	-0.1%	+7	+6
CHI at Crumlin	2,087	2,106	+19	+0.9%	+43	+108
CHI at Tallaght	253	253	+0	+0.1%	-5	-1
CHI at Temple Street	1,297	1,288	-9	-0.7%	+29	+63
CHI Corporate	26	24	-1	-5.5%	+22	+22
CHI Programme	79	82	+4	+4.7%	+38	+35
Children's Health Ireland	3,885	3,897	+12	+0.3%	+135	+233
Coombe Women & Infants University	932	946	+14	+1.5%	+21	+10
MRH Portlaoise	789	794	+5	+0.6%	+14	+11
MRH Tullamore	1,147	1,151	+5	+0.4%	+5	+9
Naas General	785	782	-3	-0.4%	+5	+5
St. James's	4,345	4,404	+59	+1.4%	+138	+142
St. Luke's Rathgar	546	536	-10	-1.8%	-6	-15
Tallaght University	2,938	2,941	+4	+0.1%	+130	+116
Hospital Group HQ	72	70	-1	-1.6%	+31	+31
Dublin Midlands Hospital Group	11,553	11,626	+72	+0.6%	+338	+310
Cappagh National Orthopaedic	457	457			+15	+18
Mater Misericordiae University	3,549	3,559	+10	+0.3%	+130	+146
MRH Mullingar	1,039	1,037	-1	-0.1%	+33	+59
National Maternity	950	945	-5	-0.5%	+29	+22
Our Lady's Navan	596	597	+2	+0.3%	+7	+13
St. Columcille's	465	467	+2	+0.5%	+10	+8
St Luke's General Kilkenny	1,186	1,178	-9	-0.7%	-7	-23
St. Michael's	415	418	+3	+0.7%	+13	-4
St. Vincent's University	3,172	3,158	-13	-0.4%	+71	+58
Wexford General	1,079	1,083	+4	+0.4%	+28	+18
Royal Victoria Eye & Ear	336	334	-3	-0.9%	+20	+36
IEHG Bank	12	11	-2	-13.0%	+2	+8
Hospital Group HQ	71	75	+4	+5.9%	+42	+47
Ireland East Hospital Group	13,326	13,319	-8	-0.1%	+396	+406
Beaumont	4,128	4,100	-28	-0.7%	+71	+73
Cavan General	1,128	1,129	+1	+0.1%	+70	+95
Connolly	1,534	1,512	-22	-1.4%	+50	+91
Louth County	294	296	+2	+0.7%	+7	+19
Monaghan	126	134	+8	+6.3%	+32	+38
Our Lady of Lourdes	2,373	2,362	-11	-0.5%	+75	+43
Rotunda	952	942	-10	-1.1%	+13	-6
Hospital Group HQ	54	54	-0	-0.3%	+13	+18
RCSI Hospitals Group	10,590	10,530	-60	-0.6%	+333	+371
Galway University	3,911	3,891	-19	-0.5%	+104	+81
Letterkenny University	1,904	1,911	+6	+0.3%	+142	+169
Mayo University	1,257	1,261	+5	+0.4%	+58	+58

Aug 2021 (Dec 2020 figure: 66,439)	WTE Jul 2021	WTE Aug 2021	WTE change since Jul 21	% change since Jul 21	WTE change since Dec 20	WTE change since Aug 20
Overall	69,187	69,231	+44	+0.1%	+2,792	+3,051
Portiuncula University	851	863	+12	+1.4%	+20	+34
Roscommon University	366	372	+5	+1.4%	+5	+16
Sligo University	1,871	1,876	+5	+0.3%	+110	+86
Hospital Group HQ	194	184	-10	-5.2%	+90	+96
Saolta University Hospital Care	10,353	10,357	+4	+0.0%	+528	+539
Bantry General	293	301	+8	+2.6%	+23	+16
Cork University	4,537	4,528	-9	-0.2%	+213	+189
Lourdes Orthopaedic Kilcreene	71	68	-3	-3.6%	-2	-5
Mallow General	250	254	+4	+1.5%	+8	-4
Mercy University	1,302	1,287	-15	-1.2%	+44	+44
South Infirmary Victoria University	852	848	-4	-0.4%	+44	+19
South Tipperary General	1,071	1,054	-17	-1.6%	+86	+102
UH Kerry	1,257	1,247	-10	-0.8%	+32	+33
UH Waterford	2,160	2,169	+10	+0.5%	+66	+73
Hospital Group HQ	105	106	+1	+1.0%	+60	+62
South/South West Hospital Group	11,897	11,862	-35	-0.3%	+574	+530
Croom Orthopaedic	215	231	+16	+7.3%	+57	+70
Ennis	227	234	+7	+3.1%	+6	+7
Nenagh	266	265	-1	-0.3%	+6	+14
St. John's Limerick	318	318	-0	-0.0%	-3	+0
UH Limerick	3,414	3,465	+51	+1.5%	+342	+407
UMH Limerick	390	387	-4	-0.9%	-6	-14
Hospital Group HQ	11	10	-1	-7.1%	-0	+3
University of Limerick Hospital Group	4,841	4,909	+68	+1.4%	+403	+488
Other	110	108	-2	-1.6%	+7	+12
National Rehabilitation	594	593	-2	-0.3%	+38	+77
other Acute Services	704	700	-3	-0.5%	+45	+89

Acute Services Employment by Administration (HSE / S38): August 2021

Aug 2021 (Dec 2020 figure: 66,439)	WTE Jul 2021	WTE Aug 2021	WTE change since Jul 21	% change since Jul 21	WTE change since Dec 20	WTE change since Aug 20
Overall	69,187	69,231	+44	+0.1%	+2,792	+3,051
Health Service Executive	40,063	40,084	+21	+0.1%	+1,879	+2,064
Section 38 Hospitals	29,125	29,147	+22	+0.1%	+913	+987

HSE

Aug 2021 (Dec 2020 figure: 38,205)	WTE Jul 2021	WTE Aug 2021	WTE change since Jul 21	% change since Jul 21	WTE change since Dec 20	WTE change since Aug 20
Overall	40,063	40,084	+21	+0.1%	+1,879	+2,064
Consultants	1,574	1,588	+14	+0.9%	+27	+57
Registrars	1,771	1,733	-38	-2.2%	+22	+59
SHO/ Interns	2,006	1,986	-21	-1.0%	-47	-67
Medical/ Dental, other	40	43	+3	+6.3%	+4	+6
Medical & Dental	5,392	5,349	-43	-0.8%	+6	+54
Nurse/ Midwife Manager	2,692	2,711	+19	+0.7%	+131	+128
Nurse/ Midwife Specialist & AN/MP	790	795	+4	+0.6%	+47	+91
Staff Nurse/ Staff Midwife	10,666	10,648	-19	-0.2%	+346	+789
Public Health Nurse	2	2	+0	+18.6%	+1	+1
Pre-registration Nurse/ Midwife Intern	264	261	-3	-1.1%	+226	+259
Post-registration Nurse/ Midwife Student	56	54	-2	-3.6%	-22	-11
Nursing/ Midwifery awaiting registration	10	8	-1	-12.7%	-58	+7
Pre-registration Nurse Intern (COVID-19)	2	2	-0	-9.9%	+2	-480
Nursing/ Midwifery Student	333	326	-6	-1.9%	+183	-224
Nursing/ Midwifery other	87	83	-4	-4.1%	-4	+3
Nursing & Midwifery	14,570	14,565	-5	-0.0%	+704	+787
Therapy Professions	1,185	1,184	-1	-0.1%	+72	+98
Health Science/ Diagnostics	2,622	2,629	+8	+0.3%	+78	+83
Social Care	3	3			+0	+1
Social Workers	118	121	+3	+2.6%	+13	+21
Psychologists	13	13	-1	-5.2%	+3	+3
Pharmacy	569	576	+8	+1.3%	+46	+78
H&SC, Other	208	181	-27	-12.9%	+135	+142
Health & Social Care Professionals	4,718	4,708	-10	-0.2%	+346	+424
Management (VIII & above)	302	301	-2	-0.6%	+9	+20
Administrative/ Supervisory (V to VII)	1,207	1,217	+10	+0.8%	+139	+219
Clerical (III & IV)	4,079	4,092	+12	+0.3%	+226	+252
Management & Administrative	5,589	5,609	+20	+0.4%	+373	+491
Support	3,792	3,833	+41	+1.1%	+215	+177
Maintenance/ Technical	294	292	-2	-0.6%	-3	-4
General Support	4,086	4,125	+39	+1.0%	+212	+174
Health Care Assistants	3,642	3,670	+29	+0.8%	+172	+22
Ambulance Staff	1,924	1,916	-8	-0.4%	+40	+85
Care, other	142	141	-1	-0.8%	+25	+27
Patient & Client Care	5,708	5,728	+20	+0.4%	+237	+134

Section 38 Hospitals

Aug 2021 (Dec 2020 figure: 28,234)	WTE Jul 2021	WTE Aug 2021	WTE change since Jul 21	% change since Jul 21	WTE change since Dec 20	WTE change since Aug 20
Overall	29,125	29,147	+22	+0.1%	+913	+987
Consultants	1,436	1,445	+9	+0.6%	+32	+51
Registrars	1,448	1,462	+15	+1.0%	+58	+38
SHO/ Interns	1,173	1,195	+22	+1.9%	-25	-30
Medical/ Dental, other	28	28	-0	-0.5%	+3	+5
Medical & Dental	4,085	4,130	+45	+1.1%	+68	+64
Nurse/ Midwife Manager	2,458	2,469	+11	+0.4%	+125	+213
Nurse/ Midwife Specialist & AN/MP	756	750	-6	-0.7%	+29	+61
Staff Nurse/ Staff Midwife	7,289	7,234	-54	-0.7%	+11	+225
Pre-registration Nurse Intern (COVID-19)		0	+0	-100.0%	+0	-481
Pre-registration Nurse/ Midwife Intern	262	251	-11	-4.1%	+204	+251
Post-registration Nurse/ Midwife Student	95	91	-4	-3.7%	-28	-19
Nursing/ Midwifery awaiting registration	21	33	+13	+60.4%	-39	+22
Nursing/ Midwifery Student	377	376	-1	-0.3%	+141	-226
Nursing/ Midwifery other	130	130	+0	+0.2%	-9	-17
Nursing & Midwifery	11,010	10,960	-50	-0.5%	+297	+255
Therapy Professions	1,140	1,138	-2	-0.1%	+32	+53
Health Science/ Diagnostics	1,934	1,961	+27	+1.4%	+55	+44
Social Care	1	1				
Social Workers	287	285	-2	-0.8%	+10	+27
Psychologists	108	108	-1	-0.5%	+7	+10
Pharmacy	489	491	+2	+0.4%	+15	+25
H&SC, Other	119	100	-19	-16.1%	-7	+14
Health & Social Care Professionals	4,079	4,084	+6	+0.1%	+113	+172
Management (VIII & above)	316	318	+3	+0.8%	+31	+43
Administrative/ Supervisory (V to VII)	1,642	1,646	+5	+0.3%	+50	+121
Clerical (III & IV)	2,934	2,925	-9	-0.3%	+132	+112
Management & Administrative	4,891	4,889	-2	-0.0%	+213	+276
Support	2,597	2,600	+3	+0.1%	+67	+98
Maintenance/ Technical	251	251	+0	+0.1%	+7	+4
General Support	2,847	2,851	+4	+0.1%	+73	+102
Health Care Assistants	2,147	2,166	+19	+0.9%	+148	+120
Care, other	65	66	+1	+1.8%	+1	-1
Patient & Client Care	2,212	2,232	+20	+0.9%	+149	+119

Acute Services Employment by Hospital Group, CHO etc. Aug 2021

National Ambulance Service

Aug 2021 (Dec 2020 figure: 1,990)	WTE Jul 2021	WTE Aug 2021	WTE change since Jul 21	% change since Jul 21	WTE change since Dec 20	WTE change since Aug 20
Overall	2,037	2,030	-7	-0.4%	+40	+86
Consultants	1	1				
Registrars	1	1			+1	+1
SHO/ Interns	1	1			+1	+1
Medical & Dental	3	3			+2	+2
Nurse/ Midwife Manager	1	1				
Staff Nurse/ Staff Midwife	1		-1	-100.0%	-1	-1
Nursing & Midwifery	2	1	-1	-50.0%	-1	-1
Therapy Professions				-100.0%	-1	-1
Health & Social Care Professionals				-100.0%	-1	-1
Management (VIII & above)	12	13	+0	+4.0%	-2	-1
Administrative/ Supervisory (V to VII)	41	42	+2	+4.0%	+10	+10
Clerical (III & IV)	37	36	-1	-2.0%	-5	-5
Management & Administrative	90	91	+1	+1.5%	+3	+4
Support	2	3	+0	+2.4%	-1	-1
Maintenance/ Technical	2	2				
General Support	4	5	+0	+1.3%	-1	-1
Health Care Assistants	1	1			-1	-1
Ambulance Staff	1,924	1,916	-8	-0.4%	+40	+85
Care, other	13	13	-0	-0.1%	-1	-1
Patient & Client Care	1,938	1,930	-8	-0.4%	+38	+83

Children's Health Ireland

Aug 2021 (Dec 2020 figure: 3,762)	WTE Jul 2021	WTE Aug 2021	WTE change since Jul 21	% change since Jul 21	WTE change since Dec 20	WTE change since Aug 20
Overall	3,885	3,897	+12	+0.3%	+135	+233
Consultants	239	238	-1	-0.3%	+1	+9
Registrars	195	213	+18	+9.4%	-4	-1
SHO/ Interns	94	103	+9	+9.4%	+8	+9
Medical/ Dental, other	1	1			-0	-0
Medical & Dental	529	555	+26	+5.0%	+4	+17
Nurse/ Midwife Manager	362	355	-7	-2.0%	+21	+24
Nurse/ Midwife Specialist & AN/MP	178	181	+2	+1.4%	+9	+16
Staff Nurse/ Staff Midwife	892	889	-3	-0.3%	+39	+85
Pre-registration Nurse/ Midwife Intern	28	19	-9	-31.2%	+7	+19
Pre-registration Nurse Intern (COVID-19)		0	+0	-100.0%	+0	-14
Post-registration Nurse/ Midwife Student	42	40	-1	-3.2%	-23	-16
Nursing/ Midwifery awaiting registration	4	3	-1	-25.0%	+3	+3
Nursing/ Midwifery Student	73	63	-11	-14.4%	+7	-8
Nursing/ Midwifery other	7	7			-1	-1
Nursing & Midwifery	1,513	1,495	-18	-1.2%	+74	+117
Therapy Professions	153	154	+1	+0.8%	+9	+8
Health Science/ Diagnostics	302	306	+4	+1.2%	+21	+20
Social Workers	65	66	+1	+1.6%	+6	+8
Psychologists	45	45			+3	+3
Pharmacy	53	54	+1	+1.3%	+3	+6
H&SC, Other	25	25	-0	-1.1%	-1	+2
Health & Social Care Professionals	644	650	+6	+1.0%	+41	+46
Management (VIII & above)	64	65	+1	+1.0%	+11	+14
Administrative/ Supervisory (V to VII)	313	311	-2	-0.6%	+12	+27
Clerical (III & IV)	410	410	+0	+0.0%	+1	+1
Management & Administrative	787	786	-1	-0.1%	+24	+42
Support	206	205	-1	-0.4%	-4	+6
Maintenance/ Technical	15	15				
General Support	221	220	-1	-0.4%	-4	+6
Health Care Assistants	179	178	-1	-0.5%	-4	+6
Care, other	12	12	+0	+1.4%	-1	-1
Patient & Client Care	191	191	-1	-0.4%	-5	+5

Dublin Midlands Hospital Group

Aug 2021 (Dec 2020 figure: 11,288)	WTE Jul 2021	WTE Aug 2021	WTE change since Jul 21	% change since Jul 21	WTE change since Dec 20	WTE change since Aug 20
Overall	11,553	11,626	+72	+0.6%	+338	+310
Consultants	504	507	+3	+0.6%	+8	+11
Registrars	526	532	+6	+1.1%	+10	+12
SHO/ Interns	453	461	+8	+1.8%	+1	+7
Dentists	1	1			+0	
Other Medical	6	6	+0	+0.5%	+0	+2
Medical/ Dental, other	7	8	+0	+0.4%	+0	+2
Medical & Dental	1,491	1,508	+17	+1.2%	+19	+31
Nurse/ Midwife Manager	937	945	+8	+0.9%	+37	+59
Nurse/ Midwife Specialist & AN/MP	243	239	-4	-1.6%	+3	+12
Staff Nurse/ Staff Midwife	2,958	2,974	+16	+0.6%	+24	+116
Pre-registration Nurse/ Midwife Intern	99	96	-3	-3.2%	+88	+96
Pre-registration Nurse Intern (COVID-19)				-100.0%		-175
Post-registration Nurse/ Midwife Student	12	12			-2	-1
Nursing/ Midwifery awaiting registration	6	13	+7	+115.5%	-8	+8
Nursing/ Midwifery Student	117	120	+4	+3.2%	+76	-71
Nursing/ Midwifery other	35	37	+2	+6.2%	-1	+1
Nursing & Midwifery	4,289	4,315	+27	+0.6%	+139	+115
Therapy Professions	405	403	-2	-0.5%	+6	+17
Health Science/ Diagnostics	986	988	+2	+0.2%	-12	-32
Social Workers	87	87	+0	+0.1%	-0	+2
Psychologists	16	16	-0	-1.7%	+3	+1
Pharmacy	252	254	+2	+0.7%	+11	+24
H&SC, Other	59	54	-4	-7.4%	+8	+25
Health & Social Care Professionals	1,806	1,803	-3	-0.2%	+15	+37
Management (VIII & above)	134	132	-1	-1.0%	+6	+10
Administrative/ Supervisory (V to VII)	540	541	+1	+0.2%	+19	+31
Clerical (III & IV)	1,089	1,092	+3	+0.3%	+46	+34
Management & Administrative	1,763	1,766	+3	+0.1%	+71	+74
Support	796	808	+13	+1.6%	+37	+32
Maintenance/ Technical	129	127	-2	-1.4%	-3	-4
General Support	924	935	+11	+1.2%	+34	+28
Health Care Assistants	1,258	1,276	+17	+1.4%	+58	+23
Care, other	23	23	+1	+3.4%	+2	+2
Patient & Client Care	1,281	1,299	+18	+1.4%	+60	+24

Ireland East Hospital Group

Aug 2021 (Dec 2020 figure: 12,923)	WTE Jul 2021	WTE Aug 2021	WTE change since Jul 21	% change since Jul 21	WTE change since Dec 20	WTE change since Aug 20
Overall	13,326	13,319	-8	-0.1%	+396	+406
Consultants	590	591	+1	+0.2%	+5	+11
Registrars	712	701	-11	-1.6%	+43	+25
SHO/ Interns	640	651	+12	+1.8%	-18	-22
Medical/ Dental, other	33	34	+0	+0.7%	+6	+8
Medical & Dental	1,975	1,977	+2	+0.1%	+35	+23
Nurse/ Midwife Manager	1,048	1,056	+8	+0.8%	+38	+93
Nurse/ Midwife Specialist & AN/MP	362	350	-12	-3.4%	+12	+36
Staff Nurse/ Staff Midwife	3,382	3,349	-32	-1.0%	+13	+90
Pre-registration Nurse/ Midwife Intern	106	105	-1	-1.0%	+80	+105
Pre-registration Nurse Intern (COVID-19)				-100.0%		-222
Post-registration Nurse/ Midwife Student	28	26	-2	-7.3%	+5	+6
Nursing/ Midwifery awaiting registration	8	8			-3	+7
Nursing/ Midwifery Student	142	139	-3	-2.2%	+30	-104
Nursing/ Midwifery other	70	69	-1	-2.0%	-4	-11
Nursing & Midwifery	5,004	4,963	-41	-0.8%	+90	+104
Therapy Professions	473	477	+5	+1.0%	-0	+8
Health Science/ Diagnostics	812	839	+27	+3.3%	+48	+56
Social Workers	77	76	-1	-1.6%	+2	+5
Psychologists	23	23	-0	-0.1%	+1	+2
Pharmacy	207	211	+4	+1.9%	+19	+19
H&SC, Other	51	44	-7	-13.6%	+17	+7
Health & Social Care Professionals	1,643	1,671	+27	+1.7%	+87	+98
Management (VIII & above)	113	114	+1	+0.9%	+13	+15
Administrative/ Supervisory (V to VII)	621	621	-0	-0.0%	+22	+66
Clerical (III & IV)	1,294	1,290	-4	-0.3%	+66	+37
Management & Administrative	2,028	2,025	-3	-0.2%	+101	+118
Support	1,339	1,339	-0	-0.0%	+26	-51
Maintenance/ Technical	121	122	+1	+0.5%	+4	+1
General Support	1,460	1,461	+1	+0.0%	+30	-50
Health Care Assistants	1,187	1,194	+7	+0.6%	+53	+113
Care, other	28	29	+0	+0.1%	-0	+1
Patient & Client Care	1,216	1,223	+7	+0.6%	+53	+113

RCSI Hospitals Group

Aug 2021 (Dec 2020 figure: 10,197)	WTE Jul 2021	WTE Aug 2021	WTE change since Jul 21	% change since Jul 21	WTE change since Dec 20	WTE change since Aug 20
Overall	10,590	10,530	-60	-0.6%	+333	+371
Consultants	489	492	+3	+0.7%	+22	+29
Registrars	521	511	-10	-1.9%	+2	+0
SHO/ Interns	512	498	-14	-2.8%	-12	-9
Medical/ Dental, other	5	5	-0	-0.8%	-1	-1
Medical & Dental	1,527	1,506	-21	-1.4%	+11	+18
Nurse/ Midwife Manager	887	895	+8	+0.9%	+74	+82
Nurse/ Midwife Specialist & AN/MP	214	228	+14	+6.5%	+20	+23
Staff Nurse/ Staff Midwife	2,776	2,743	-33	-1.2%	-24	+87
Public Health Nurse	1	0	-0	-20.0%	+0	+0
Public Health Nurse	1	0	-0	-20.0%	+0	+0
Pre-registration Nurse/ Midwife Intern	80	80	-1	-0.9%	+77	+80
Pre-registration Nurse Intern (COVID-19)				-100.0%		-157
Post-registration Nurse/ Midwife Student	25	23	-1	-4.9%	-18	-15
Nursing/ Midwifery awaiting registration				-100.0%	-62	-2
Nursing/ Midwifery Student	105	103	-2	-1.8%	+52	-94
Nursing/ Midwifery other	39	39	-1	-1.5%	-3	-2
Nursing & Midwifery	4,023	4,009	-14	-0.3%	+120	+96
Therapy Professions	379	381	+3	+0.7%	+20	+22
Health Science/ Diagnostics	618	612	-6	-1.0%	+3	+6
Social Workers	70	69	-2	-2.3%	+3	+6
Psychologists	13	12	-0	-1.4%	+0	+0
Pharmacy	151	149	-2	-1.6%	+3	+11
H&SC, Other	53	37	-15	-28.9%	+26	+32
Health & Social Care Professionals	1,283	1,261	-23	-1.8%	+54	+77
Management (VIII & above)	97	98	+1	+1.1%	+1	+11
Administrative/ Supervisory (V to VII)	434	439	+5	+1.1%	+24	+52
Clerical (III & IV)	1,064	1,065	+1	+0.1%	+39	+53
Management & Administrative	1,596	1,602	+6	+0.4%	+64	+116
Support	1,003	1,002	-2	-0.2%	-0	+20
Maintenance/ Technical	90	90	+0	+0.2%	-1	+0
General Support	1,093	1,092	-2	-0.1%	-1	+20
Health Care Assistants	1,033	1,027	-6	-0.6%	+85	+45
Care, other	34	34	-1	-2.6%	-1	-2
Patient & Client Care	1,067	1,060	-7	-0.7%	+84	+43

Saolta University Hospital Care

Aug 2021 (Dec 2020 figure: 9,829)	WTE Jul 2021	WTE Aug 2021	WTE change since Jul 21	% change since Jul 21	WTE change since Dec 20	WTE change since Aug 20
Overall	10,353	10,357	+4	+0.0%	+528	+539
Consultants	472	480	+8	+1.7%	+4	+14
Registrars	485	473	-13	-2.6%	+4	+7
SHO/ Interns	630	632	+2	+0.3%	-5	+13
Medical/ Dental, other	11	12	+0	+3.2%	-1	-1
Medical & Dental	1,598	1,596	-2	-0.1%	+2	+34
Nurse/ Midwife Manager	618	622	+4	+0.6%	+33	+40
Nurse/ Midwife Specialist & AN/MP	250	246	-4	-1.7%	+9	+17
Staff Nurse/ Staff Midwife	2,937	2,927	-10	-0.3%	+56	+152
Public Health Nurse	1	1	+0	+38.3%	+0	-0
Pre-registration Nurse/ Midwife Intern	80	81	+1	+1.4%	+79	+81
Pre-registration Nurse Intern (COVID-19)				-100.0%		-155
Post-registration Nurse/ Midwife Student	19	18	-1	-3.1%	+6	+8
Nursing/ Midwifery awaiting registration	2	2	+0	+10.6%	-34	+1
Nursing/ Midwifery Student	101	102	+1	+0.7%	+58	-64
Nursing/ Midwifery other	36	34	-2	-5.7%	-5	+0
Nursing & Midwifery	3,943	3,932	-11	-0.3%	+151	+145
Therapy Professions	297	292	-5	-1.7%	+20	+19
Health Science/ Diagnostics	676	676	-0	-0.0%	+21	+25
Social Care	3	3			+0	+1
Social Workers	36	36	-0	-1.2%	+5	+7
Psychologists	2	2	-0	-5.3%		+0
Pharmacy	162	167	+5	+3.1%	+8	+16
H&SC, Other	98	83	-15	-15.6%	+68	+62
Health & Social Care Professionals	1,275	1,259	-16	-1.3%	+122	+131
Management (VIII & above)	56	56	-0	-0.2%	+2	+3
Administrative/ Supervisory (V to VII)	319	321	+2	+0.6%	+35	+51
Clerical (III & IV)	1,179	1,198	+19	+1.6%	+115	+146
Management & Administrative	1,555	1,575	+20	+1.3%	+151	+199
Support	934	937	+3	+0.3%	+29	+32
Maintenance/ Technical	95	94	-1	-0.6%	+1	-3
General Support	1,029	1,031	+3	+0.3%	+29	+29
Health Care Assistants	880	891	+11	+1.3%	+46	-24
Care, other	74	73	-1	-0.8%	+26	+25
Patient & Client Care	954	964	+11	+1.1%	+73	+1

South/South West Hospital Group

Aug 2021 (Dec 2020 figure: 11,288)	WTE Jul 2021	WTE Aug 2021	WTE change since Jul 21	% change since Jul 21	WTE change since Dec 20	WTE change since Aug 20
Overall	11,897	11,862	-35	-0.3%	+574	+530
Consultants	518	526	+8	+1.5%	+18	+29
Registrars	550	537	-13	-2.4%	+7	+51
SHO/ Interns	601	578	-23	-3.8%	-37	-87
Medical/ Dental, other	9	11	+2	+20.2%	+3	+2
Medical & Dental	1,679	1,652	-26	-1.6%	-8	-4
Nurse/ Midwife Manager	880	883	+3	+0.3%	+27	+6
Nurse/ Midwife Specialist & AN/MP	210	212	+2	+0.8%	+18	+38
Staff Nurse/ Staff Midwife	3,469	3,438	-31	-0.9%	+103	+252
Public Health Nurse	0	0	+0	+19.0%	+0	+0
Public Health Nurse	0	0	+0	+19.0%	+0	+0
Pre-registration Nurse/ Midwife Intern	100	98	-2	-2.1%	+68	+98
Pre-registration Nurse Intern (COVID-19)	2	2	-0	-9.9%	+2	-178
Post-registration Nurse/ Midwife Student	19	19	-0	-2.5%	-10	-6
Nursing/ Midwifery awaiting registration	6	11	+5	+73.0%	+2	+7
Nursing/ Midwifery Student	128	130	+2	+1.4%	+68	-79
Nursing/ Midwifery other	15	14	-1	-8.1%	-1	-1
Nursing & Midwifery	4,703	4,677	-26	-0.5%	+215	+217
Therapy Professions	382	381	-1	-0.2%	+24	+33
Health Science/ Diagnostics	886	891	+5	+0.6%	+37	+43
Social Workers	39	40	+1	+1.6%	+7	+9
Social Workers	39	40	+1	+1.6%	+3	+9
Psychologists	2	2	+0	+1.3%	+1	+1
Psychologists	2	2	+0	+1.3%	+1	+1
Pharmacy	168	167	-1	-0.7%	+37	+23
Pharmacy	168	167	-1	-0.7%	+17	+23
H&SC, Other	29	27	-2	-8.2%	+5	+22
Health & Social Care Professionals	1,507	1,508	+1	+0.1%	+87	+131
Management (VIII & above)	62	61	-1	-2.0%	+5	+6
Administrative/ Supervisory (V to VII)	347	352	+5	+1.4%	+30	+50
Clerical (III & IV)	1,340	1,326	-14	-1.1%	+56	+53
Management & Administrative	1,749	1,739	-10	-0.6%	+91	+108
Support	1,455	1,469	+14	+1.0%	+148	+127
Maintenance/ Technical	42	41	-1	-1.7%	+0	+3
General Support	1,497	1,510	+13	+0.9%	+148	+131
Health Care Assistants	748	760	+12	+1.6%	+41	-58
Care, other	15	16	+1	+3.3%	+1	+6
Patient & Client Care	763	776	+13	+1.7%	+41	-53

University of Limerick Hospital Group

Aug 2021 (Dec 2020 figure: 4,506)	WTE Jul 2021	WTE Aug 2021	WTE change since Jul 21	% change since Jul 21	WTE change since Dec 20	WTE change since Aug 20
Overall	4,841	4,909	+68	+1.4%	+403	+488
Consultants	186	185	-1	-0.3%	+1	+4
Registrars	217	221	+4	+2.0%	+17	+4
SHO/ Interns	242	250	+8	+3.3%	-9	-10
Other Medical	1	1				
Medical/ Dental, other	1	1				
Medical & Dental	645	657	+12	+1.8%	+10	-2
Nurse/ Midwife Manager	363	367	+4	+1.0%	+20	+31
Nurse/ Midwife Specialist & AN/MP	86	87	+1	+1.4%	+6	+11
Staff Nurse/ Staff Midwife	1,417	1,436	+20	+1.4%	+136	+210
Pre-registration Nurse/ Midwife Intern	32	33	+1	+3.2%	+30	+31
Pre-registration Nurse Intern (COVID-19)				-100.0%		-60
Post-registration Nurse/ Midwife Student	8	8	+0	+1.1%	-8	-6
Nursing/ Midwifery awaiting registration	4	5	+1	+14.5%	+5	+5
Nursing/ Midwifery Student	44	46	+2	+3.9%	+34	-30
Nursing/ Midwifery other	13	13	-0	-1.6%	+2	-0
Nursing & Midwifery	1,923	1,949	+26	+1.3%	+198	+222
Therapy Professions	121	119	-1	-1.1%	+22	+29
Health Science/ Diagnostics	265	269	+4	+1.4%	+15	+7
Social Workers	10	12	+2	+23.2%	+1	+3
Psychologists	3	3	-1	-19.4%	-1	-0
Pharmacy	49	51	+2	+3.9%	+0	+3
H&SC, Other	12	10	-2	-13.4%	+5	+7
Health & Social Care Professionals	461	465	+4	+0.9%	+42	+48
Management (VIII & above)	37	39	+2	+4.2%	+1	+2
Administrative/ Supervisory (V to VII)	159	163	+4	+2.5%	+34	+50
Clerical (III & IV)	544	546	+2	+0.3%	+38	+38
Management & Administrative	741	748	+7	+1.0%	+74	+91
Support	613	629	+17	+2.7%	+45	+108
Maintenance/ Technical	39	40	+1	+2.0%	+2	+1
General Support	652	669	+17	+2.7%	+47	+109
Health Care Assistants	415	416	+2	+0.4%	+33	+22
Care, other	5	6	+0	+1.8%	-0	-2
Patient & Client Care	420	422	+2	+0.4%	+32	+20

other Acute Services

Aug 2021 (Dec 2020 figure: 655)	WTE Jul 2021	WTE Aug 2021	WTE change since Jul 21	% change since Jul 21	WTE change since Dec 20	WTE change since Aug 20
Overall	704	700	-3	-0.5%	+45	+89
Consultants	12	12				+1
Registrars	12	7	-5	-41.7%	-1	-2
SHO/ Interns	7	7			-1	-1
Medical & Dental	31	26	-5	-16.2%	-2	-2
Nurse/ Midwife Manager	54	56	+2	+3.7%	+7	+6
Nurse/ Midwife Specialist & AN/MP	2	2			-1	-1
Staff Nurse/ Staff Midwife	125	126	+1	+0.6%	+10	+22
Nursing/ Midwifery other				-100.0%		
Nursing & Midwifery	181	184	+3	+1.5%	+16	+27
Therapy Professions	115	113	-2	-1.8%	+6	+15
Health Science/ Diagnostics	9	9	-0	-2.4%	-1	+2
Social Care	1	1				
Social Workers	22	22			+3	+7
Psychologists	17	17			+3	+5
Pharmacy	14	14	-0	-0.4%	+1	+0
H&SC, Other				-100.0%	-1	-1
Health & Social Care Professionals	178	175	-2	-1.3%	+12	+29
Management (VIII & above)	43	41	-1	-3.0%	+2	+3
Administrative/ Supervisory (V to VII)	74	72	-2	-2.4%	+3	+5
Clerical (III & IV)	54	53	-2	-2.8%	+2	+7
Management & Administrative	171	167	-5	-2.7%	+6	+15
Support	41	41	+0	+0.5%	+2	+3
Maintenance/ Technical	12	12			+1	+1
General Support	53	53	+0	+0.4%	+3	+4
Health Care Assistants	88	93	+6	+6.3%	+9	+16
Care, other	3	3				-1
Patient & Client Care	90	96	+6	+6.1%	+9	+15

Acute Services Employment by Grade Group: Aug 2021

Aug 2021 (Dec 2020 figure: 66,439)	WTE Jul 2021	WTE Aug 2021	WTE change since Jul 21	% change since Jul 21	WTE change since Dec 20	WTE change since Aug 20
Overall	69,187	69,231	+44	+0.1%	+2,792	+3,051
Consultant Anaesthesia	439	440	+1	+0.2%	+13	+23
Consultant Dentistry	6	5	-1	-10.0%	-1	-1
Consultant Emergency Medicine	123	125	+2	+1.9%	+4	+8
Consultant Intensive Care Medicine	19	19	+1	+4.5%	+1	+1
Consultant Medicine	893	904	+11	+1.2%	+19	+48
Consultant Obstetrics & Gynaecology	172	171	-0	-0.3%	+1	+1
Consultant Paediatrics	212	213	+1	+0.3%	+1	+4
Consultant Pathology	271	271	-0	-0.0%	+6	+4
Consultant Psychiatry	26	25	-1	-3.5%	+2	+3
Consultant Radiology	277	281	+4	+1.3%	+0	+3
Consultant Surgery	574	578	+5	+0.8%	+14	+12
Consultants	3,011	3,033	+22	+0.7%	+59	+107
Registrar	1,864	1,761	-102	-5.5%	-48	-41
Senior Registrar	121	119	-2	-2.0%	-2	+2
Specialist Registrar	1,233	1,315	+82	+6.6%	+130	+137
Registrars	3,218	3,195	-23	-0.7%	+80	+97
Interns	944	861	-83	-8.8%	-105	-214
Senior House Officer	2,235	2,319	+84	+3.8%	+33	+117
SHO/ Interns	3,179	3,180	+1	+0.0%	-72	-97
Dentists	8	8	-0	-2.7%	-3	-2
Other Medical	60	63	+3	+4.4%	+10	+13
Medical/ Dental, other	68	71	+2	+3.5%	+7	+10
Medical & Dental	9,477	9,479	3	+0.0%	+74	+117
Clinical Nurse/ Midwife Manager	4,588	4,614	+27	+0.6%	+226	+308
Director Nursing/Midwifery, Assistant	474	478	+4	+0.7%	+25	+28
Director of Nursing/Midwifery	89	88	-1	-1.0%	+5	+5
Nurse/ Midwife Manager	5,150	5,180	+29	+0.6%	+256	+341
Advanced Nurse/ Midwife Practitioner	490	481	-9	-1.9%	+41	+88
Clinical Nurse/ Midwife Specialist	1,056	1,064	+8	+0.8%	+36	+64
Nurse/ Midwife Specialist & AN/MP	1,546	1,545	-1	-0.1%	+77	+152
Nursing Bank	14	12	-2	-15.4%	-11	-5
Staff Midwives	1,479	1,445	-35	-2.3%	-34	-0
Staff Nurse [Psychiatric]	27	25	-2	-6.0%	-4	-1
Staff Nurse [Intellectual Disability]				-100.0%	-72	-64
Staff Nurses [General/ Children's]	16,436	16,401	-35	-0.2%	+478	+1,083
Staff Nurse/ Staff Midwife	17,955	17,882	-73	-0.4%	+356	+1,013
Public Health Nurse	2	2	+0	+18.6%	+1	+1
Pre-registration Nurse/ Midwife Intern	526	513	-14	-2.6%	+498	+511
Pre-registration Nurse Intern (COVID-19)	2	2	+0	+6.0%	-153	-960
Post-registration Nurse/ Midwife Student	151	146	-6	-3.7%	-5	-30
Nursing/ Midwifery awaiting registration	31	42	+11	+37.3%	-15	+29
Nursing/ Midwifery Student	710	703	-8	-1.1%	+325	-450
Nursing Education/Clinical	184	180	-5	-2.4%	-17	-15
Other Nursing/ Midwifery	32	34	+1	+3.7%	+4	+1
Nursing/ Midwifery other	217	213	-3	-1.5%	-13	-14
Nursing & Midwifery	25,580	25,525	-55	-0.2%	+1,001	+1,042
Dietitians	458	463	+5	+1.1%	+25	+40
Occupational Therapists	454	457	+3	+0.7%	+40	+63

Aug 2021 (Dec 2020 figure: 66,439)	WTE Jul 2021	WTE Aug 2021	WTE change since Jul 21	% change since Jul 21	WTE change since Dec 20	WTE change since Aug 20
Overall	69,187	69,231	+44	+0.1%	+2,792	+3,051
Orthoptists	22	22	-0	-2.0%	+1	+1
Physiotherapists	1,100	1,092	-9	-0.8%	+24	+28
Podiatrists & Chiropodists	33	33	+0	+0.3%	-3	-2
Speech & Language Therapists	257	255	-2	-0.7%	+18	+22
Therapy Professions	2,324	2,321	-3	-0.1%	+105	+151
Audiology	36	36	-0	-0.9%	+6	+6
Biochemists	72	70	-2	-2.9%	-6	-5
Clinical Engineering	155	156	+1	+0.6%	+7	+5
Clinical Measurement	418	429	+11	+2.7%	+18	+28
Dosimetrists	16	15	-1	-6.5%	+1	+1
Medical Science	1,966	1,967	+1	+0.0%	+16	-15
Perfusionists	23	22	-1	-5.0%	+0	+1
Phlebotomists	194	197	+3	+1.8%	+14	+13
Physicists	177	178	+1	+0.8%	+7	-7
Radiation Therapists	209	204	-6	-2.7%	-9	-2
Radiographers	1,290	1,317	+27	+2.1%	+79	+101
Health Science/ Diagnostics	4,556	4,590	+35	+0.8%	+132	+126
Social Care	4	4			+0	+1
Social Workers	406	406	+1	+0.2%	+23	+48
Psychologists	122	121	-1	-1.0%	+10	+13
Pharmacy	1,058	1,068	+10	+0.9%	+61	+102
Counsellor Therapists	3	4	+0	+14.1%	-1	-1
Dental Hygienists	1	1				
HSCP Trainees/ Students	29	21	-9	-29.6%	-35	-27
Other Health & Social Care	59	59	-1	-0.8%	-6	+12
Play Therapists/ Specialists	30	29	-1	-2.2%	+2	+4
Vaccinators	204	168	-37	-18.0%	+168	+168
H&SC, Other	327	281	-46	-14.1%	+128	+156
Health & Social Care Professionals	8,797	8,792	-5	-0.1%	+459	+596
Executive Management	114	114	+0	+0.4%	+12	+22
Senior Management (VIII & GM)	505	505	+0	+0.1%	+27	+41
Management (VIII & above)	618	619	+1	+0.1%	+39	+63
Middle Management (V-VII)	2,830	2,845	+15	+0.5%	+184	+337
Other Administrative	19	18	-0	-1.1%	+5	+2
Administrative/ Supervisory (V to VII)	2,848	2,863	+14	+0.5%	+189	+340
Clerical (III & IV)	7,013	7,016	+3	+0.0%	+358	+364
Management & Administrative	10,480	10,498	18	+0.2%	+586	+766
Catering	483	479	-4	-0.8%	-10	+6
Household Services	3,197	3,215	+18	+0.6%	+117	+110
Other Labs & Associated	565	583	+18	+3.2%	+143	+157
Other Support	752	751	-1	-0.1%	-11	+7
Portering	1,392	1,404	+13	+0.9%	+42	-5
Support	6,389	6,433	+44	+0.7%	+281	+276
Maintenance	518	516	-2	-0.3%	+2	-1
Technical Services	27	27			+2	+1
Maintenance/ Technical	545	543	-2	-0.3%	+4	-0
General Support	6,934	6,976	43	+0.6%	+285	+276
HCA, Nurse's Aide, etc.	5,617	5,659	+42	+0.8%	+361	+554
HCA (Student Nurse/Midwife COVID-19)	6	6	+1	+10.6%	-44	-425
Health & Social Care Assistants	167	171	+4	+2.7%	+15	+12
Swabber (COVID-19)		1	+1	-100.0%	-11	+1

Aug 2021 (Dec 2020 figure: 66,439)	WTE Jul 2021	WTE Aug 2021	WTE change since Jul 21	% change since Jul 21	WTE change since Dec 20	WTE change since Aug 20
Overall	69,187	69,231	+44	+0.1%	+2,792	+3,051
Health Care Assistants	5,789	5,837	+48	+0.8%	+320	+141
Ambulance Control	173	173	+0	+0.2%	-7	-14
Ambulance Education	191	192	+1	+0.5%	+54	+81
Ambulance Officers	85	85	+0	+0.3%	+1	+1
Pre-Hospital Care (Ambulance)	1,475	1,466	-9	-0.6%	-7	+17
Ambulance Staff	1,924	1,916	-8	-0.4%	+40	+85
Care, other	207	207	+0	+0.0%	+25	+26
Patient & Client Care	7,920	7,960	40	+0.5%	+386	+253

Employment by WTE, Headcount, Gender, Full-Time /Part-Time etc.: Aug 2021

Acutes Services Staff Group	WTE	Headcount	WTE: no.	% Male	% female	Male WTE: no.	Female WTE: no.	% Total Perm	% Male Perm	% Female Perm	% Total Full Time	% Total Part Time	% Male FT	% Female FT
Overall	69,231	77,950	1.13	23.7%	76.3%	1.05	1.15	78.3%	68.0%	81.6%	74.8%	25.2%	92.5%	69.2%
Consultant Anaesthesia	440	478	1.09	62.1%	37.9%	1.09	1.08	76.8%	76.8%	71.8%	90.6%	9.4%	90.6%	90.6%
Consultant Dentistry	5	6	1.15	33.3%	66.7%	1.00	1.24	83.3%	83.3%	75.0%	83.3%	16.7%	100.0%	75.0%
Consultant Emergency Medicine	125	138	1.10	67.4%	32.6%	1.09	1.13	67.4%	67.4%	68.9%	81.9%	18.1%	84.9%	75.6%
Consultant Intensive Care Medicine	19	21	1.09	28.6%	71.4%	1.20	1.05	95.2%	95.2%	93.3%	81.0%	19.0%	66.7%	86.7%
Consultant Medicine	904	1,005	1.11	60.9%	39.1%	1.09	1.14	72.0%	72.0%	70.5%	85.3%	14.7%	87.4%	81.9%
Consultant Obstetrics & Gynaecology	171	187	1.09	46.5%	53.5%	1.07	1.11	83.4%	83.4%	84.0%	87.2%	12.8%	92.0%	83.0%
Consultant Paediatrics	213	236	1.11	47.0%	53.0%	1.07	1.15	78.0%	78.0%	78.4%	84.3%	15.7%	91.9%	77.6%
Consultant Pathology	271	295	1.09	39.0%	61.0%	1.07	1.10	80.3%	80.3%	80.0%	87.5%	12.5%	93.0%	83.9%
Consultant Psychiatry	25	31	1.23	35.5%	64.5%	1.11	1.31	71.0%	71.0%	60.0%	64.5%	35.5%	90.9%	50.0%
Consultant Radiology	281	301	1.07	61.5%	38.5%	1.06	1.09	87.0%	87.0%	84.5%	91.0%	9.0%	92.4%	88.8%
Consultant Surgery	578	644	1.11	79.5%	20.5%	1.09	1.20	77.3%	77.3%	73.5%	85.1%	14.9%	88.5%	72.0%
Consultants	3,033	3,342	1.10	60.8%	39.2%	1.09	1.13	76.8%	77.8%	75.4%	86.4%	13.6%	89.2%	82.0%
Registrar	1,761	1,866	1.06	62.0%	38.0%	1.05	1.07	3.4%	3.4%	3.2%	97.0%	3.0%	98.2%	95.1%
Senior Registrar	119	125	1.05	68.8%	31.2%	1.05	1.06	24.8%	24.8%	28.2%	95.2%	4.8%	96.5%	92.3%
Specialist Registrar	1,315	1,384	1.05	47.1%	52.9%	1.04	1.07	0.3%	0.3%	0.5%	96.5%	3.5%	98.3%	94.8%
Registrars	3,195	3,375	1.06	56.1%	43.9%	1.05	1.07	2.9%	3.2%	2.6%	96.7%	3.3%	98.2%	94.9%
Interns	861	886	1.03	42.4%	57.6%	1.04	1.02	0.0%	0.0%	0.0%	99.8%	0.2%	99.7%	99.8%
Senior House Officer	2,319	2,464	1.06	44.5%	55.5%	1.07	1.06	0.3%	0.3%	0.3%	99.2%	0.8%	99.5%	99.0%
SHO/ Interns	3,180	3,350	1.05	43.9%	56.1%	1.06	1.05	0.2%	0.3%	0.2%	99.3%	0.7%	99.5%	99.2%
Dentists	8	10	1.26	40.0%	60.0%	1.48	1.14	70.0%	70.0%	83.3%	60.0%	40.0%	50.0%	66.7%
Other Medical	63	91	1.45	40.7%	59.3%	1.20	1.70	60.4%	60.4%	63.0%	48.4%	51.6%	75.7%	29.6%
Medical/ Dental, other	71	101	1.43	40.6%	59.4%	1.22	1.62	61.4%	56.1%	65.0%	49.5%	50.5%	73.2%	33.3%
Medical & Dental	9,479	10,168	1.07	53.5%	46.5%	1.07	1.08	26.9%	30.7%	22.6%	93.7%	6.3%	95.0%	92.2%
Clinical Nurse/ Midwife Manager	4,614	5,171	1.12	5.8%	94.2%	1.03	1.13	97.4%	97.4%	97.4%	70.0%	30.0%	90.7%	68.8%
Director Nursing/Midwifery, Assistant	478	513	1.07	9.9%	90.1%	1.02	1.08	96.5%	96.5%	96.3%	82.1%	17.9%	92.2%	81.0%
Director of Nursing/Midwifery	88	89	1.01	7.9%	92.1%	1.00	1.01	95.5%	95.5%	96.3%	96.6%	3.4%	85.7%	97.6%
Nurse/ Midwife Manager	5,180	5,773	1.11	6.2%	93.8%	1.03	1.12	97.3%	97.2%	97.3%	71.5%	28.5%	90.8%	70.2%

Advanced Nurse/ Midwife Practitioner	481	508	1.06	10.0%	90.0%	1.03	1.06	98.8%	98.8%	98.9%	88.6%	11.4%	98.0%	87.5%
Clinical Nurse/ Midwife Specialist	1,064	1,249	1.17	2.5%	97.5%	1.03	1.18	97.8%	97.8%	97.9%	60.4%	39.6%	93.5%	59.5%
Nurse/ Midwife Specialist & AN/MP	1,545	1,757	1.14	4.7%	95.3%	1.03	1.14	98.1%	97.6%	98.1%	68.5%	31.5%	96.3%	67.2%
Nursing Bank	12	26	2.26	3.8%	96.2%	3.23	2.23	73.1%	73.1%	72.0%	7.7%	92.3%	0.0%	8.0%
Staff Midwives	1,445	1,742	1.21	0.6%	99.4%	1.02	1.21	93.3%	93.3%	93.4%	47.0%	53.0%	80.0%	46.8%
Staff Nurse [Psychiatric]	25	28	1.12	28.6%	71.4%	1.20	1.09	96.4%	96.4%	95.0%	89.3%	10.7%	87.5%	90.0%
Staff Nurses [General/ Children's]	16,401	18,708	1.14	9.2%	90.8%	1.03	1.15	92.7%	92.7%	92.9%	66.5%	33.5%	91.4%	63.9%
Staff Nurse/ Staff Midwife	17,882	20,504	1.15	8.5%	91.5%	1.03	1.16	92.7%	89.8%	93.0%	64.8%	35.2%	91.3%	62.3%
Public Health Nurse	2	4	1.84		100.0%		1.84	25.0%		25.0%	0.0%	100.0%		0.0%
Pre-registration Nurse/ Midwife Intern	513	1,010	1.97	5.0%	95.0%	2.01	1.97	7.4%	7.4%	7.4%	84.2%	15.8%	70.6%	84.9%
Pre-registration Nurse Intern (COVID-19)	2	4	1.63		100.0%		1.63	25.0%	25.0%	25.0%	100.0%	0.0%		100.0%
Post-registration Nurse/ Midwife Student	146	162	1.11	1.2%	98.8%	1.00	1.11	13.0%	13.0%	12.5%	98.1%	1.9%	100.0%	98.1%
Nursing/ Midwifery awaiting registration	42	44	1.05	13.6%	86.4%	1.00	1.06	61.4%	61.4%	60.5%	97.7%	2.3%	100.0%	97.4%
Nursing/ Midwifery Student	703	1,220	1.74	4.8%	95.2%	1.77	1.73	10.2%	15.3%	9.9%	86.6%	13.4%	74.6%	87.2%
Nursing Education/Clinical	180	214	1.19	3.3%	96.7%	1.08	1.20	97.2%	97.2%	97.1%	59.8%	40.2%	85.7%	58.9%
Other Nursing/ Midwifery	34	36	1.07	5.6%	94.4%	1.00	1.07	94.4%	94.4%	94.1%	77.8%	22.2%	100.0%	76.5%
Nursing/ Midwifery other	213	250	1.17	3.6%	96.4%	1.06	1.18	96.8%	100.0%	96.7%	62.4%	37.6%	88.9%	61.4%
Nursing & Midwifery	25,525	29,508	1.16	7.6%	92.4%	1.04	1.17	90.5%	89.3%	90.6%	67.2%	32.8%	90.9%	65.2%
Dietitians	463	538	1.16	1.9%	98.1%	1.08	1.16	82.2%	82.2%	82.8%	76.4%	23.6%	100.0%	75.9%
Occupational Therapists	457	502	1.10	8.6%	91.4%	1.07	1.10	75.3%	75.3%	75.2%	84.7%	15.3%	90.7%	84.1%
Orthoptists	22	31	1.43	9.7%	90.3%	1.24	1.46	90.3%	90.3%	89.3%	48.4%	51.6%	100.0%	42.9%
Physiotherapists	1,092	1,254	1.15	19.9%	80.1%	1.07	1.17	78.4%	78.4%	80.9%	77.3%	22.7%	91.6%	73.7%
Podiatrists & Chiropodists	33	42	1.26	16.7%	83.3%	1.41	1.23	85.7%	85.7%	91.4%	57.1%	42.9%	42.9%	60.0%
Speech & Language Therapists	255	292	1.15	1.7%	98.3%	1.17	1.15	75.0%	75.0%	75.6%	71.2%	28.8%	80.0%	71.1%
Therapy Professions	2,321	2,659	1.15	12.0%	88.0%	1.08	1.16	78.5%	68.6%	79.8%	77.2%	22.8%	90.6%	75.4%
Audiology	36	44	1.22	13.6%	86.4%	1.29	1.21	86.4%	86.4%	84.2%	70.5%	29.5%	66.7%	71.1%
Biochemists	70	74	1.06	31.1%	68.9%	1.02	1.07	90.5%	90.5%	92.2%	89.2%	10.8%	95.7%	86.3%
Clinical Engineering	156	161	1.03	77.6%	22.4%	1.02	1.09	88.2%	88.2%	72.2%	95.0%	5.0%	96.8%	88.9%
Clinical Measurement	429	468	1.09	17.7%	82.3%	1.02	1.11	88.9%	88.9%	89.1%	81.8%	18.2%	94.0%	79.2%
Dosimetrists	15	17	1.14	11.8%	88.2%	1.67	1.10	82.4%	82.4%	86.7%	76.5%	23.5%	100.0%	73.3%
Medical Science	1,967	2,154	1.10	19.5%	80.5%	1.04	1.11	92.3%	92.3%	92.6%	80.9%	19.1%	94.5%	77.6%
Perfusionists	22	26	1.19	42.3%	57.7%	1.12	1.25	84.6%	84.6%	86.7%	76.9%	23.1%	72.7%	80.0%
Phlebotomists	197	261	1.33	20.7%	79.3%	1.16	1.38	77.8%	77.8%	77.8%	46.0%	54.0%	59.3%	42.5%
Physicists	178	193	1.08	47.7%	52.3%	1.02	1.15	92.7%	92.7%	92.1%	85.5%	14.5%	98.9%	73.3%

Radiation Therapists	204	226	1.11	11.9%	88.1%	1.00	1.13	80.1%	80.1%	83.9%	79.2%	20.8%	100.0%	76.4%
Radiographers	1,317	1,451	1.10	20.7%	79.3%	1.03	1.12	92.0%	92.0%	91.7%	80.2%	19.8%	93.7%	76.7%
Health Science/ Diagnostics	4,590	5,075	1.11	22.5%	77.5%	1.04	1.13	90.4%	90.1%	90.4%	79.5%	20.5%	93.0%	75.6%
Social Care	4	6	1.43	33.3%	66.7%	2.00	1.25	83.3%	100.0%	75.0%	16.7%	83.3%	0.0%	25.0%
Social Workers	406	457	1.12	12.0%	88.0%	1.04	1.14	82.7%	85.5%	82.3%	79.2%	20.8%	92.7%	77.4%
Psychologists	121	148	1.23	10.8%	89.2%	1.19	1.23	87.2%	87.5%	87.1%	54.1%	45.9%	56.3%	53.8%
Pharmacy	1,068	1,191	1.12	11.1%	88.9%	1.04	1.13	82.4%	82.6%	82.3%	79.1%	20.9%	95.5%	77.1%
Counsellor Therapists	4	6	1.64		100.0%		1.64	83.3%	83.3%	83.3%	16.7%	83.3%		16.7%
Dental Hygienists	1	2	1.83		100.0%		1.83	100.0%	100.0%	100.0%	50.0%	50.0%		50.0%
HSCP Trainees/ Students	21	31	1.50	38.7%	61.3%	1.98	1.31	6.5%	6.5%	10.5%	58.1%	41.9%	41.7%	68.4%
Other Health & Social Care	59	66	1.12	37.9%	62.1%	1.06	1.16	89.4%	89.4%	87.8%	74.2%	25.8%	84.0%	68.3%
Play Therapists/ Specialists	29	38	1.29		100.0%		1.29	92.1%	92.1%	92.1%	52.6%	47.4%		52.6%
Vaccinators	168	398	2.38	14.6%	85.4%	1.90	2.48	14.1%	14.1%	13.5%	6.0%	94.0%	10.3%	5.3%
H&SC, Other	281	541	1.92	17.6%	82.4%	1.58	2.02	29.4%	34.7%	28.3%	20.9%	79.1%	33.7%	18.2%
Health & Social Care	8,792	10,077	1.15	17.5%	82.5%	1.07	1.16	82.6%	82.5%	82.6%	75.3%	24.7%	89.1%	72.4%
Executive Management	114	117	1.03	48.7%	51.3%	1.02	1.03	93.2%	93.2%	93.3%	97.4%	2.6%	96.5%	98.3%
Senior Management (VIII & GM)	505	519	1.03	31.0%	69.0%	1.02	1.03	92.9%	92.9%	93.9%	96.3%	3.7%	98.1%	95.5%
Management (VIII & above)	619	636	1.03	34.3%	65.7%	1.02	1.03	92.9%	91.3%	93.8%	96.5%	3.5%	97.7%	95.9%
Middle Management (V-VII)	2,845	3,057	1.07	22.1%	77.9%	1.02	1.09	93.5%	93.5%	94.1%	82.7%	17.3%	98.2%	78.3%
Other Administrative	18	19	1.04	47.4%	52.6%	1.00	1.07	52.6%	52.6%	80.0%	84.2%	15.8%	100.0%	70.0%
Administrative/ Supervisory (V to VII)	2,863	3,076	1.07	22.2%	77.8%	1.02	1.09	93.2%	90.5%	94.0%	82.7%	17.3%	98.2%	78.3%
Clerical (III & IV)	7,016	7,998	1.14	13.1%	86.9%	1.03	1.16	78.1%	71.9%	79.1%	69.9%	30.1%	92.9%	66.5%
Management & Administrative	10,498	11,710	1.12	16.6%	83.4%	1.03	1.13	82.9%	80.6%	83.4%	74.7%	25.3%	95.3%	70.6%
Catering	479	520	1.08	31.3%	68.7%	1.02	1.12	91.2%	91.2%	93.3%	78.3%	21.7%	97.5%	69.5%
Household Services	3,215	3,731	1.16	23.3%	76.7%	1.08	1.19	79.6%	79.6%	82.9%	62.4%	37.6%	81.8%	56.5%
Other Labs & Associated	583	617	1.06	30.1%	69.9%	1.03	1.07	61.3%	61.3%	61.7%	89.6%	10.4%	95.7%	87.0%
Other Support	751	828	1.10	45.0%	55.0%	1.03	1.17	91.7%	91.7%	92.5%	75.4%	24.6%	95.4%	58.9%
Portering	1,404	1,476	1.05	93.0%	7.0%	1.05	1.11	79.0%	79.0%	75.0%	90.2%	9.8%	91.6%	72.1%
Support	6,433	7,172	1.11	41.3%	58.7%	1.05	1.17	80.1%	76.8%	82.5%	73.1%	26.9%	89.8%	61.3%
Maintenance	516	524	1.02	98.1%	1.9%	1.01	1.08	94.3%	94.3%	100.0%	98.1%	1.9%	98.6%	70.0%
Technical Services	27	27	1.00	100.0%		1.00		85.2%	85.2%		100.0%	0.0%	100.0%	
Maintenance/ Technical	543	551	1.01	98.2%	1.8%	1.01	1.08	93.8%	93.7%	100.0%	98.2%	1.8%	98.7%	70.0%
General Support	6,976	7,723	1.11	45.4%	54.6%	1.04	1.16	81.1%	79.4%	82.5%	74.9%	25.1%	91.2%	61.4%

HCA, Nurse's Aide, etc.	5,659	6,344	1.12	30.6%	69.4%	1.07	1.15	82.0%	82.0%	80.8%	71.2%	28.8%	85.6%	64.9%
HCA (Student Nurse/Midwife COVID-19)	6	7	1.12	14.3%	85.7%	1.00	1.14	14.3%	14.3%	16.7%	71.4%	28.6%	100.0%	66.7%
Health & Social Care Assistants	171	194	1.13	27.3%	72.7%	1.09	1.15	84.0%	84.0%	84.4%	70.1%	29.9%	88.7%	63.1%
Swabber (COVID-19)	1	1	2.00		100.0%		2.00	100.0%	100.0%	100.0%	100.0%	0.0%		100.0%
Health Care Assistants	5,837	6,546	1.12	30.5%	69.5%	1.07	1.15	81.9%	84.4%	80.9%	71.2%	28.8%	85.7%	64.8%
Ambulance Control	173	182	1.05	50.0%	50.0%	1.03	1.07	98.9%	98.9%	98.9%	98.9%	1.1%	100.0%	97.8%
Ambulance Education	192	192	1.00	66.1%	33.9%	1.00	1.00	0.5%	0.5%	0.0%	100.0%	0.0%	100.0%	100.0%
Ambulance Officers	85	87	1.02	85.1%	14.9%	1.02	1.04	97.7%	97.7%	100.0%	98.9%	1.1%	98.6%	100.0%
Pre-Hospital Care (Ambulance)	1,466	1,509	1.03	76.8%	23.2%	1.02	1.05	99.1%	99.1%	99.4%	99.7%	0.3%	99.8%	99.1%
Ambulance Staff	1,916	1,970	1.03	73.7%	26.3%	1.02	1.05	89.4%	90.3%	86.9%	99.6%	0.4%	99.8%	99.0%
Care, other	207	248	1.20	52.0%	48.0%	1.19	1.20	81.9%	72.9%	91.6%	69.8%	30.2%	76.0%	63.0%
Patient & Client Care	7,960	8,764	1.10	40.8%	59.2%	1.05	1.14	83.6%	86.4%	81.7%	77.5%	22.5%	91.1%	68.2%

Employment by WTE, Headcount, Gender, Full-Time /Part-Time etc.: Aug 2021

Hospital Group	WTE	Headcount	WTE: no.	% Male	% female	Male WTE: no.	Female WTE: no.	% Total Perm	% Male Perm	% Female Perm	% Total Full Time	% Total Part Time	% Male FT	% Female FT
Overall	69,231	77,950	1.13	23.7%	76.3%	1.05	1.15	78.3%	68.0%	81.6%	74.8%	25.2%	92.5%	69.2%
National Ambulance Service	2,030	2,092	1.03	71.6%	28.4%	1.02	1.06	89.8%	89.8%	88.2%	99.2%	0.8%	99.7%	97.8%
CHI at Connolly	144	166	1.15	9.6%	90.4%	1.11	1.16	82.5%	82.5%	84.0%	73.5%	26.5%	93.8%	93.8%
CHI at Crumlin	2,106	2,417	1.15	15.0%	85.0%	1.02	1.17	83.4%	83.4%	84.4%	65.3%	34.7%	93.6%	93.6%
CHI at Tallaght	253	291	1.15	11.0%	89.0%	1.04	1.16	77.7%	77.7%	81.9%	72.2%	27.8%	96.9%	96.9%
CHI at Temple Street	1,288	1,482	1.15	16.7%	83.3%	1.07	1.17	78.3%	78.3%	79.7%	74.2%	25.8%	92.7%	92.7%
CHI Corporate	24	25	1.02	32.0%	68.0%	1.06	1.01	84.0%	84.0%	82.4%	100.0%	0.0%	100.0%	100.0%
CHI Programme	82	91	1.10	33.0%	67.0%	1.06	1.13	39.6%	39.6%	41.0%	92.3%	7.7%	93.3%	93.3%
Children's Health Ireland	3,897	4,472	1.15	15.6%	84.4%	1.04	1.17	80.4%	80.4%	82.0%	69.7%	30.3%	93.5%	65.4%
Coombe Women & Infants University	946	1,074	1.14	12.6%	87.4%	1.02	1.15	83.0%	83.0%	84.7%	68.3%	31.7%	88.1%	88.1%
MRH Portlaoise	794	915	1.15	20.3%	79.7%	1.10	1.17	76.2%	76.2%	81.3%	73.9%	26.1%	97.8%	97.8%
MRH Tullamore	1,151	1,342	1.17	23.3%	76.7%	1.17	1.16	78.7%	78.7%	84.2%	79.4%	20.6%	95.8%	95.8%
Naas General	782	866	1.11	19.4%	80.6%	1.04	1.12	89.7%	89.7%	92.1%	75.5%	24.5%	93.5%	93.5%
St. James's	4,404	4,933	1.12	24.4%	75.6%	1.05	1.15	84.1%	84.1%	86.2%	79.9%	20.1%	93.4%	93.4%
St. Luke's Rathgar	536	571	1.07	26.3%	73.7%	1.02	1.08	80.6%	80.6%	83.4%	84.6%	15.4%	97.3%	97.3%
Tallaght University	2,941	3,294	1.12	25.2%	74.8%	1.05	1.15	79.8%	79.8%	83.0%	76.7%	23.3%	89.3%	89.3%
Hospital Group HQ	70	95	1.35	17.9%	82.1%	1.13	1.41	43.2%	43.2%	44.9%	62.1%	37.9%	82.4%	82.4%
Dublin Midlands Hospital Group	11,626	13,090	1.13	22.9%	77.1%	1.06	1.15	81.7%	81.7%	84.7%	77.5%	22.5%	92.7%	72.9%
Cappagh National Orthopaedic	457	513	1.12	21.6%	78.4%	1.02	1.16	86.7%	86.7%	90.8%	72.7%	27.3%	95.5%	95.5%
Mater Misericordiae University	3,559	3,925	1.10	26.3%	73.7%	1.08	1.11	77.2%	77.2%	81.2%	80.4%	19.6%	85.8%	85.8%
MRH Mullingar	1,037	1,211	1.17	21.6%	78.4%	1.19	1.16	78.4%	78.4%	85.2%	78.0%	22.0%	97.7%	97.7%
National Maternity	945	1,062	1.12	16.9%	83.1%	1.09	1.13	75.2%	75.2%	77.5%	72.2%	27.8%	81.6%	81.6%
Our Lady's Navan	597	697	1.17	25.5%	74.5%	1.08	1.20	80.9%	80.9%	85.4%	66.6%	33.4%	89.9%	89.9%
St. Columcille's	467	517	1.11	24.2%	75.8%	1.04	1.13	81.2%	81.2%	82.4%	80.5%	19.5%	94.4%	94.4%
St Luke's General Kilkenny	1,178	1,351	1.15	21.6%	78.4%	1.04	1.18	75.6%	75.6%	81.8%	66.5%	33.5%	93.5%	93.5%
St. Michael's	418	473	1.13	22.8%	77.2%	1.07	1.15	83.9%	83.9%	84.9%	76.1%	23.9%	85.2%	85.2%
St. Vincent's University	3,158	3,397	1.08	29.6%	70.4%	1.03	1.09	87.4%	87.4%	91.3%	83.8%	16.2%	93.3%	93.3%
Wexford General	1,083	1,226	1.13	22.3%	77.7%	1.04	1.16	83.5%	83.5%	87.8%	71.1%	28.9%	94.1%	94.1%
Royal Victoria Eye & Ear	334	383	1.15	25.1%	74.9%	1.05	1.19	80.2%	80.2%	84.0%	66.8%	33.2%	87.5%	87.5%
IEHG Bank	11	18	1.69	11.1%	88.9%	2.04	1.65	100.0%	100.0%	100.0%	5.6%	94.4%	0.0%	0.0%
Hospital Group HQ	75	116	1.54	20.7%	79.3%	1.33	1.61	83.6%	83.6%	85.9%	45.7%	54.3%	50.0%	50.0%

Ireland East Hospital Group	13,319	14,889	1.12	24.7%	75.3%	1.06	1.14	80.9%	80.9%	84.8%	76.6%	23.4%	90.3%	72.2%
Beaumont	4,100	4,484	1.09	27.7%	72.3%	1.04	1.12	83.2%	83.2%	86.8%	77.9%	22.1%	90.8%	90.8%
Cavan General	1,129	1,284	1.14	19.1%	80.9%	1.04	1.16	87.5%	87.5%	92.5%	70.8%	29.2%	94.7%	94.7%
Connolly	1,512	1,666	1.10	25.3%	74.7%	1.04	1.12	81.9%	81.9%	84.3%	83.1%	16.9%	95.2%	95.2%
Louth County	296	336	1.13	20.2%	79.8%	1.06	1.15	96.7%	96.7%	97.0%	70.2%	29.8%	91.2%	91.2%
Monaghan	134	158	1.18	7.6%	92.4%	1.05	1.19	94.9%	94.9%	95.2%	61.4%	38.6%	83.3%	83.3%
Our Lady of Lourdes	2,362	2,619	1.11	22.2%	77.8%	1.04	1.13	83.8%	83.8%	87.4%	81.7%	18.3%	95.9%	95.9%
Rotunda	942	1,107	1.17	14.5%	85.5%	1.11	1.19	79.4%	79.4%	81.2%	72.3%	27.7%	90.7%	90.7%
Hospital Group HQ	54	57	1.06	19.3%	80.7%	1.01	1.07	93.0%	93.0%	93.5%	98.2%	1.8%	100.0%	100.0%
RCSI Hospitals Group	10,530	11,711	1.11	23.4%	76.6%	1.04	1.14	83.8%	83.8%	87.1%	77.8%	22.2%	92.9%	73.2%
Galway University	3,891	4,376	1.12	22.5%	77.5%	1.06	1.14	72.1%	72.1%	76.5%	73.1%	26.9%	90.5%	90.5%
Letterkenny University	1,911	2,208	1.16	23.2%	76.8%	1.08	1.18	74.0%	74.0%	78.6%	63.0%	37.0%	86.1%	86.1%
Mayo University	1,261	1,435	1.14	21.0%	79.0%	1.04	1.17	72.4%	72.4%	77.1%	67.7%	32.3%	93.7%	93.7%
Portiuncula University	863	977	1.13	22.7%	77.3%	1.05	1.16	72.4%	72.4%	80.4%	65.8%	34.2%	92.8%	92.8%
Roscommon University	372	420	1.13	19.5%	80.5%	1.06	1.15	74.0%	74.0%	78.7%	66.7%	33.3%	93.9%	93.9%
Sligo University	1,876	2,158	1.15	21.7%	78.3%	1.05	1.18	78.7%	78.7%	81.7%	70.4%	29.6%	91.9%	91.9%
Hospital Group HQ	184	267	1.45	16.1%	83.9%	1.19	1.52	37.5%	37.5%	38.4%	41.2%	58.8%	48.8%	48.8%
Saolta University Hospital Care	10,357	11,841	1.14	22.1%	77.9%	1.06	1.17	73.0%	73.0%	77.4%	68.5%	31.5%	89.9%	62.5%
Bantry General	301	350	1.16	15.7%	84.3%	1.16	1.17	78.3%	78.3%	82.4%	65.1%	34.9%	87.3%	87.3%
Cork University	4,528	5,131	1.13	22.7%	77.3%	1.04	1.16	65.3%	65.3%	69.4%	75.4%	24.6%	96.2%	96.2%
Lourdes Orthopaedic Kilcreene	68	81	1.18	16.0%	84.0%	1.07	1.21	92.6%	92.6%	95.6%	46.9%	53.1%	92.3%	92.3%
Mallow General	254	299	1.18	14.4%	85.6%	1.06	1.20	69.6%	69.6%	72.3%	67.6%	32.4%	95.3%	95.3%
Mercy University	1,287	1,477	1.15	22.5%	77.5%	1.03	1.19	68.5%	68.5%	72.1%	62.0%	38.0%	90.4%	90.4%
South Infirmary Victoria University	848	1,023	1.21	20.3%	79.7%	1.10	1.24	74.0%	74.0%	77.8%	47.7%	52.3%	70.7%	70.7%
South Tipperary General	1,054	1,198	1.14	19.1%	80.9%	1.04	1.16	73.5%	73.5%	78.1%	66.7%	33.3%	89.5%	89.5%
UH Kerry	1,247	1,440	1.15	20.8%	79.2%	1.05	1.19	64.9%	64.9%	69.3%	71.1%	28.9%	94.7%	94.7%
UH Waterford	2,169	2,435	1.12	23.5%	76.5%	1.04	1.15	81.5%	81.5%	85.8%	72.4%	27.6%	93.7%	93.7%
Hospital Group HQ	106	175	1.66	20.0%	80.0%	1.41	1.73	28.0%	28.0%	30.0%	38.9%	61.1%	45.7%	45.7%
South/South West Hospital Group	11,862	13,609	1.15	21.7%	78.3%	1.05	1.18	70.0%	70.0%	74.0%	69.0%	31.0%	91.8%	62.7%
Croom Orthopaedic	231	261	1.13	28.0%	72.0%	1.07	1.16	81.6%	81.6%	89.9%	75.1%	24.9%	95.9%	95.9%
Ennis	234	272	1.16	15.1%	84.9%	1.12	1.17	84.9%	84.9%	87.4%	68.0%	32.0%	85.4%	85.4%
Nenagh	265	297	1.12	13.5%	86.5%	1.00	1.14	87.5%	87.5%	89.5%	66.7%	33.3%	100.0%	100.0%
St. John's Limerick	318	360	1.13	15.6%	84.4%	1.00	1.16	89.2%	89.2%	91.8%	66.7%	33.3%	98.2%	98.2%
UH Limerick	3,465	3,828	1.10	22.2%	77.8%	1.03	1.13	75.3%	75.3%	77.9%	81.8%	18.2%	96.4%	96.4%
UMH Limerick	387	444	1.15	7.4%	92.6%	1.16	1.15	84.2%	84.2%	85.4%	73.4%	26.6%	84.8%	84.8%
Hospital Group HQ	10	10	1.00	20.0%	80.0%	1.00	1.00	90.0%	90.0%	87.5%	100.0%	0.0%	100.0%	100.0%
University of Limerick Hospital Group	4,909	5,472	1.11	20.0%	80.0%	1.04	1.14	78.4%	78.4%	81.3%	78.3%	21.7%	95.8%	73.9%

Other	108	113	1.05	26.5%	73.5%	1.05	1.05	92.9%	97.6%	93.8%	6.2%	100.0%	100.0%
National Rehabilitation	593	661	1.12	23.8%	76.2%	1.06	1.13	71.7%	70.2%	77.3%	22.7%	91.7%	91.7%
other Acute Services	700	774	1.11	24.2%	75.8%	1.06	1.12	74.8%	74.1%	79.7%	20.3%	93.0%	75.5%

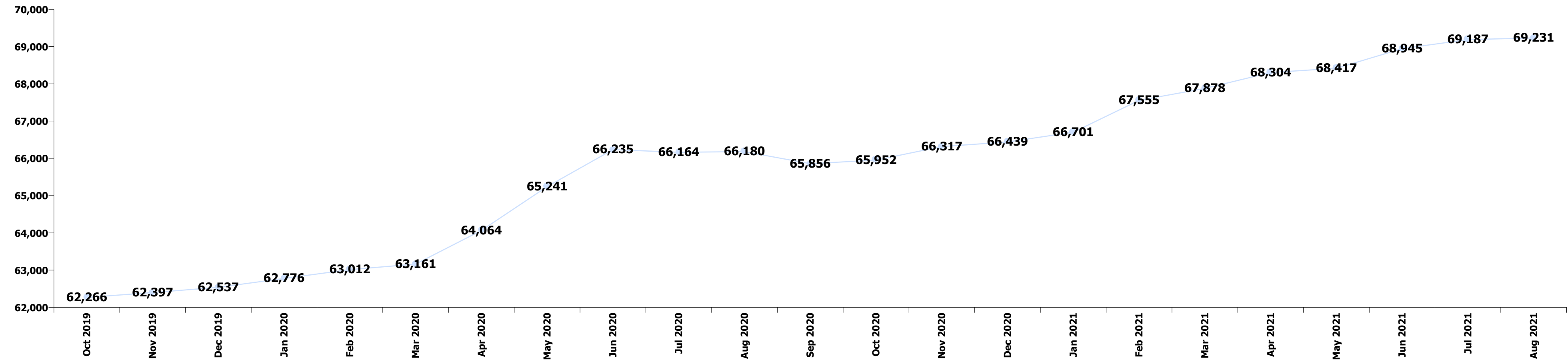
Summary Staff Movement: August 2021

Month-on-month Summary

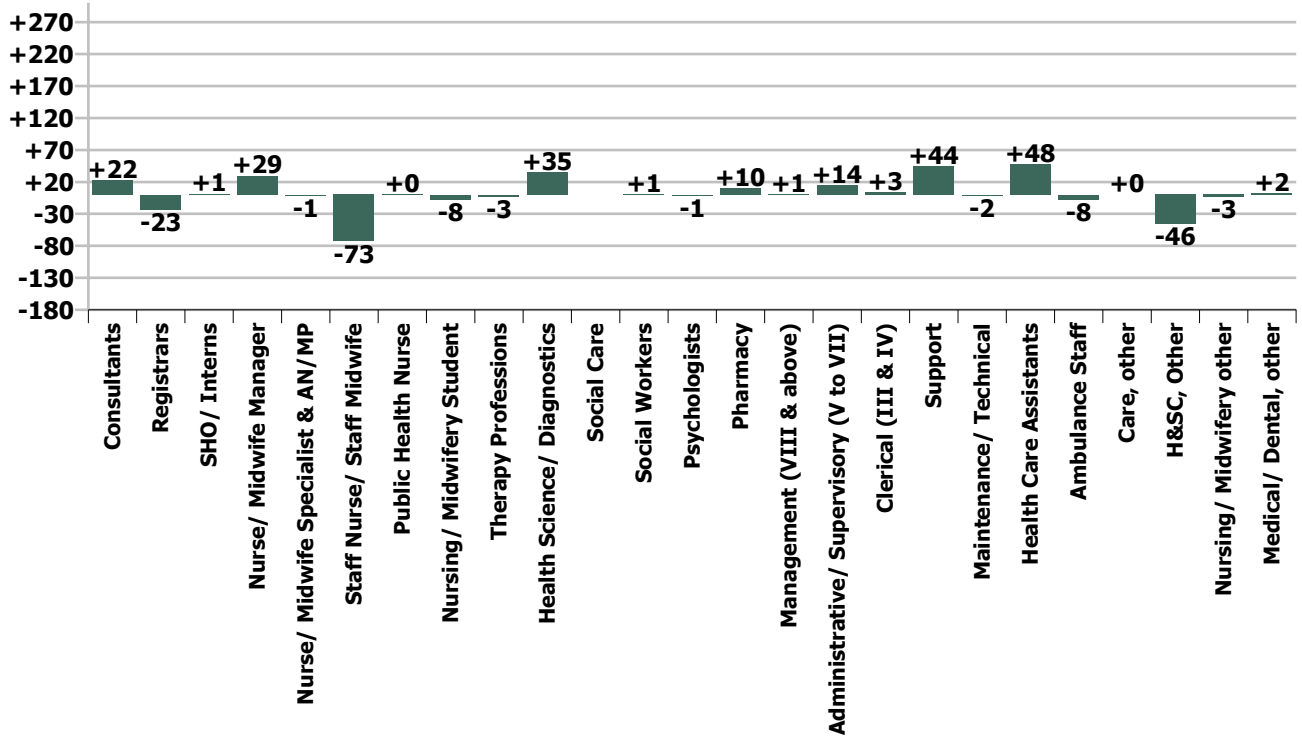
WTE change since Jul 21	% change since Jul 21	overall	Consultants	Registrars	SHO/ Interns	Medical/ Dental, other	Medical & Dental	Nurse/ Midwife Manager	Nurse/ Midwife Specialist & AN/MP	Staff Nurse/ Staff Midwife	Public Health Nurse	Nursing/ Midwifery Student	Nursing/ Midwifery other	Nursing & Midwifery	Therapy Professions	Health Science/ Diagnostics	Social Care	Social Workers	Psychologists	Pharmacy	H&SC, Other	Health & Social Care Professionals	Management (VIII & above)	Administrativ e/ Supervisory (V to VII)	Clerical (III & IV)	Management & Administrativ e	General Support	Health Care Assistants	Ambulance Staff	Care, other	Patient & Client Care
Overall	+0.1%	+44	+22	-23	+1	+2	+3	+29	-1	-73	+0	-8	-3	-55	-3	+35		+1	-1	+10	-46	-5	+1	+14	+3	+18	+43	+48	-8	+0	+40
National Ambulance Service	-0.4%	-7								-1				-1									+0	+2	-1	+1	+0			-8	
Children's Health Ireland	+0.3%	+12	-1	+18	+9		+26	-7	+2	-3		-11		-18	+1	+4		+1	-0	+1	-0	+6	+1	-2	+0	-1	-1	-1		+0	-1
Dublin Midlands Hospital Group	+0.6%	+72	+3	+6	+8	+0	+17	+8	-4	+16		+4	+2	+27	-2	+2		+0	-0	+2	-4	-3	-1	+1	+3	+3	+11	+17		+1	+18
Ireland East Hospital Group	-0.1%	-8	+1	-11	+12	+0	+2	+8	-12	-32		-3	-1	-41	+5	+27		-1	-0	+4	-7	+27	+1	-0	-4	-3	+1	+7		+0	+7
RCSI Hospitals Group	-0.6%	-60	+3	-10	-14	-0	-21	+8	+14	-33	-0	-2	-1	-14	+3	-6		-2	-0	-2	-15	-23	+1	+5	+1	+6	-2	-6		-1	-7
Saoita University Hospital Care	+0.0%	+4	+8	-13	+2	+0	-2	+4	-4	-10	+0	+1	-2	-11	-5	-0		-0	-0	+5	-15	-16	-0	+2	+19	+20	+3	+11		-1	+11
South/South West Hospital Group	-0.3%	-35	+8	-13	-23	+2	-26	+3	+2	-31	+0	+2	-1	-26	-1	+5		+1	+0	-1	-2	+1	-1	+5	-14	-10	+13	+12		+1	+13
University of Limerick Hospital Group	+1.4%	+68	-1	+4	+8		+12	+4	+1	+20		+2	-0	+26	-1	+4		+2	-1	+2	-2	+4	+2	+4	+2	+7	+17	+2		+0	+2
other Acute Services	-0.5%	-3		-5			-5	+2		+1				+3	-2	-0				-0		-2	-1	-2	-2	-5	+0	+6			+6
Acute Services	+0.1%	+44	+22	-23	+1	+2	+3	+29	-1	-73	+0	-8	-3	-55	-3	+35		+1	-1	+10	-46	-5	+1	+14	+3	+18	+43	+48	-8	+0	+40
			+0.7%	-0.7%	+0.0%	+3.5%	+0.0%	+0.6%	-0.1%	-0.4%	+18.6%	-1.1%	-1.5%	-0.2%	-0.1%	+0.8%		+0.2%	-1.0%	+0.9%	-14.1%	-0.1%	+0.1%	+0.5%	+0.0%	+0.2%	+0.6%	+0.8%	-0.4%	+0.0%	+0.5%

Year-on-year Summary

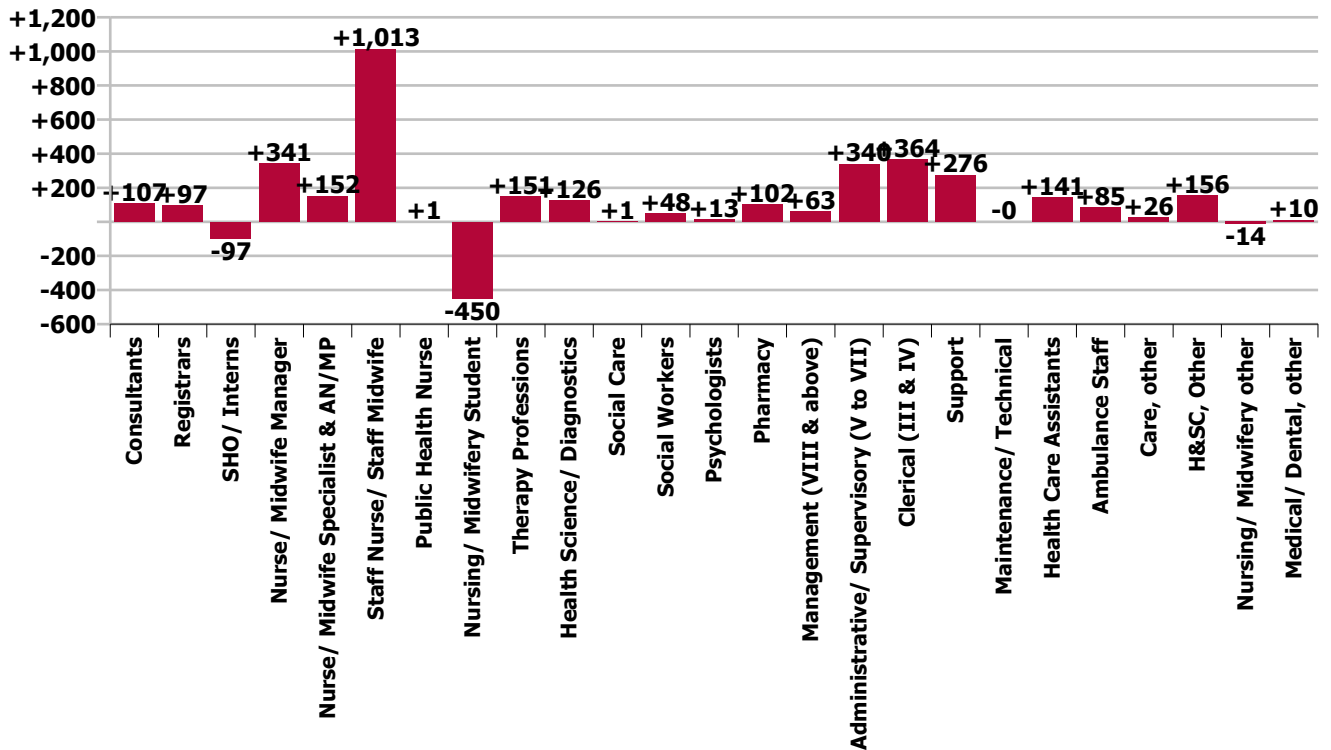
WTE change since Aug 20	% change since Aug 20	overall	Consultants	Registrars	SHO/ Interns	Medical/ Dental, other	Medical & Dental	Nurse/ Midwife Manager	Nurse/ Midwife Specialist & AN/MP	Staff Nurse/ Staff Midwife	Public Health Nurse	Nursing/ Midwifery Student	Nursing/ Midwifery other	Nursing & Midwifery	Therapy Professions	Health Science/ Diagnostics	Social Care	Social Workers	Psychologists	Pharmacy	H&SC, Other	Health & Social Care Professionals	Management (VIII & above)	Administrativ e/ Supervisory (V to VII)	Clerical (III & IV)	Management & Administrativ e	General Support	Health Care Assistants	Ambulance Staff	Care, other	Patient & Client Care
Overall	+4.6%	+3,051	+107	+97	-97	+10	+117	+341	+152	+1,013	+1	-450	-14	+1,042	+151	+126	+1	+48	+13	+102	+156	+596	+63	+340	+364	+766	+276	+141	+85	+26	+253
National Ambulance Service	+4.4%	+86		+1	+1		+2			-1				-1	-1							-1	-1	+10	-5	+4	-1	-1	+85	-1	+83
Children's Health Ireland	+6.4%	+233	+9	-1	+9	-0	+17	+24	+16	+85		-8	-1	+117	+8	+20		+8	+3	+6	+2	+46	+14	+27	+1	+42	+6	+6			+5
Dublin Midlands Hospital Group	+2.7%	+310	+11	+12	+7	+2	+31	+59	+12	+116		-71	+1	+115	+17	-32		+2	+1	+24	+25	+37	+10	+31	+34	+74	+28	+23		+2	+24
Ireland East Hospital Group	+3.1%	+406	+11	+25	-22	+8	+23	+93	+36	+90		-104	-11	+104	+8	+56		+5	+2	+19	+7	+98	+15	+66	+37	+118	-50	+113		+1	+113
RCSI Hospitals Group	+3.7%	+371	+29	+0	-9	-1	+18	+82	+23	+87	+0	-94	-2	+96	+22	+6		+6	+0	+11	+32	+77	+11	+52	+53	+116	+20	+45		-2	+43
Saoita University Hospital Care	+5.5%	+539	+14	+7	+13	-1	+34	+40	+17	+152	-0	-64	+0	+145	+19	+25	+1	+7	+0	+16	+62	+131	+3	+51	+146	+199	+29	-24		+25	+1
South/South West Hospital Group	+4.7%	+530	+29	+51	-87	+2	-4	+6	+38	+252	+0	-79	-1	+217	+33	+43		+9	+1	+23	+22	+131	+6	+50	+53	+108	+131	-58		+6	-53
University of Limerick Hospital Group	+11.0%	+488	+4	+4	-10		-2	+31	+11	+210		-30	-0	+222	+29	+7		+3	-0	+3	+7	+48	+2	+50	+38	+91	+109	+22		-2	+20
other Acute Services	+14.5%	+89	+1	-2	-1		-2	+6	-1	+22				+27	+15	+2		+7	+5	+0	-1	+29	+3	+5	+7	+15	+4	+16		-1	+15
Acute Services	+4.6%	+3,051	+107	+97	-97	+10	+117	+341	+152	+1,013	+1	-450	-14	+1,042	+151	+126	+1	+48	+13	+102	+156	+596	+63	+340	+364	+766	+276	+141	+85	+26	+253
			+3.7%	+3.1%	-3.0%	+16.9%	+1.3%	+7.1%	+10.9%	+6.0%	+40.0%	-39.1%	-6.2%	+4.3%	+6.9%	+2.8%	+24.3%	+13.3%	+11.6%	+10.6%	+124.1%	+7.3%	+11.3%	+13.5%	+5.5%	+7.9%	+4.1%	+2.5%	+4.7%	+14.4%	+3.3%



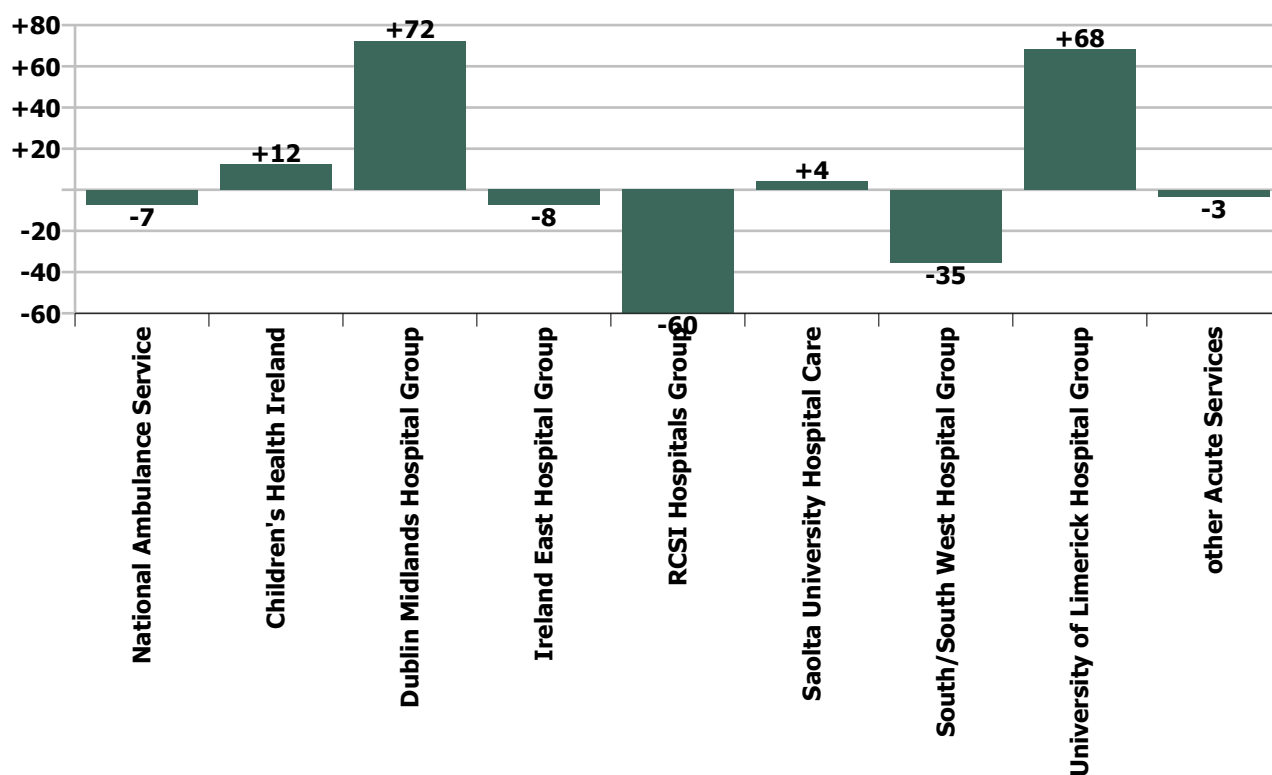
Staff Group change since: Jul 2021



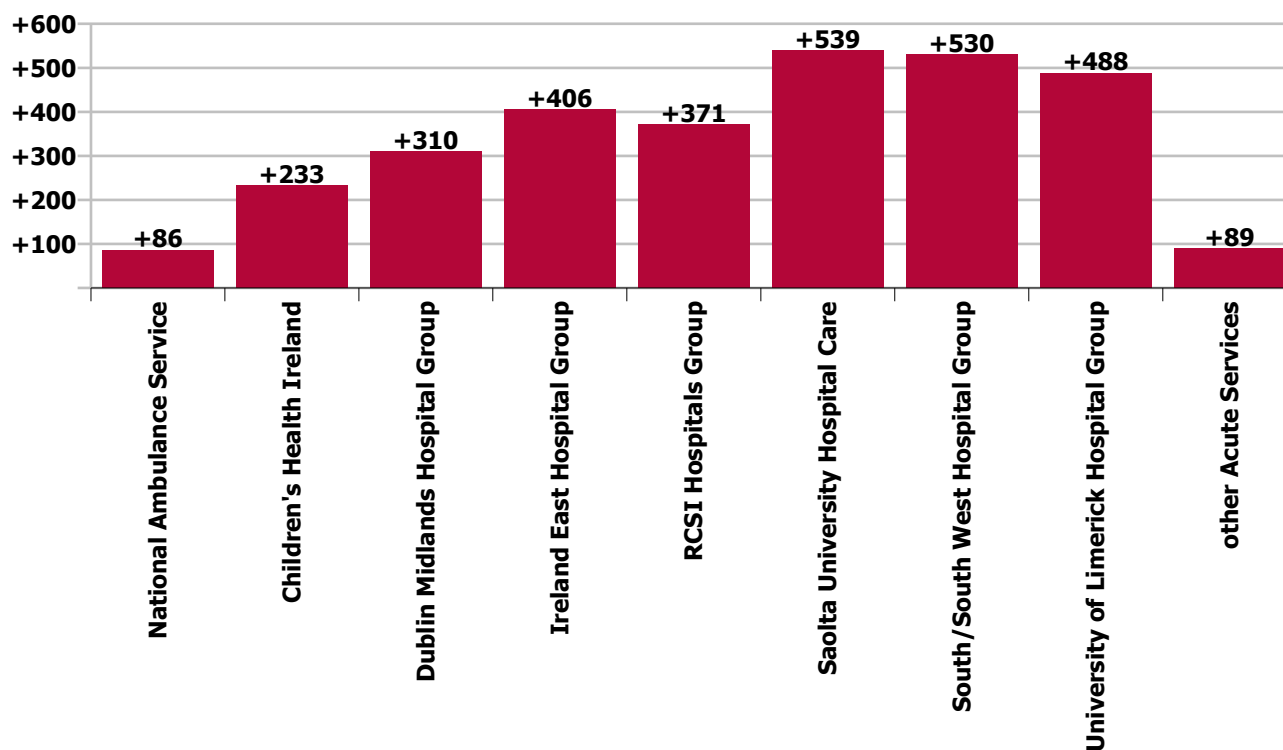
Staff Group change since: Aug 2020



Hospital Group & CHO change since: Jul 2021



Hospital Group & CHO change since: Aug 2020



Longitudinal Employment Levels by Grade Group - December 2016 to Aug 2021

Aug 2021 (Dec 2019 figure: 62,537)	WTE Aug 2021	WTE change since Dec 16	WTE change since Dec 17	WTE change since Dec 18	WTE change since Dec 19	WTE change since Dec 20	WTE change since Jul 21	% change since Dec 16	% change since Dec 17	% change since Dec 18	% change since Dec 19	% change since Dec 20	% change since Jul 21
Overall	69,231	+12,849	+10,610	+8,325	+6,694	+2,792	+44	+22.8%	+18.1%	+13.7%	+10.7%	+4.2%	+0.1%
Consultant Anaesthesia	440	+70	+54	+50	+36	+13	+1	+19.0%	+14.1%	+12.8%	+9.0%	+2.9%	+107.0%
Consultant Dentistry	5	+1	+1	-1	-1	-1	-1	+13.2%	+10.6%	-14.1%	-15.4%	-16.3%	-58.0%
Consultant Emergency Medicine	125	+33	+27	+28	+17	+4	+2	+36.1%	+27.8%	+28.7%	+16.0%	+3.3%	+234.0%
Consultant Intensive Care Medicine	19	+16	+13	+4	+3	+1	+1	+544.3%	+222.2%	+30.1%	+20.8%	+7.6%	+83.0%
Consultant Medicine	904	+213	+182	+138	+100	+19	+11	+30.9%	+25.1%	+18.1%	+12.5%	+2.1%	+1082.0%
Consultant Obstetrics & Gynaecology	171	+32	+21	+14	+10	+1	-0	+22.6%	+13.6%	+9.1%	+6.2%	+0.4%	-45.0%
Consultant, Other					-1			-100.0%	-100.0%	-100.0%	-100.0%	-100.0%	
Consultant Paediatrics	213	+61	+47	+36	+20	+1	+1	+40.2%	+28.3%	+20.1%	+10.4%	+0.6%	+63.0%
Consultant Pathology	271	+49	+40	+29	+19	+6	-0	+21.8%	+17.4%	+11.9%	+7.4%	+2.1%	-1.0%
Consultant Psychiatry	25	+8	+6	+6	+1	+2	-1	+49.7%	+34.5%	+28.3%	+6.2%	+7.9%	-90.0%
Consultant Radiology	281	+32	+29	+14	+5	+0	+4	+12.8%	+11.7%	+5.3%	+1.9%	+0.1%	+373.0%
Consultant Surgery	578	+95	+83	+60	+40	+14	+5	+19.5%	+16.7%	+11.5%	+7.4%	+2.5%	+467.0%
Consultants	3,033	+610	+503	+377	+251	+59	+22	+25.2%	+19.9%	+14.2%	+9.0%	+2.0%	+0.7%
Registrar	1,761	+258	+189	+108	+58	-48	-102	+17.1%	+12.0%	+6.5%	+3.4%	-2.7%	-10235.0%
Senior Registrar	119	+6	+17	+11	+11	-2	-2	+5.4%	+16.6%	+10.2%	+10.0%	-1.5%	-244.0%
Specialist Registrar	1,315	+403	+313	+288	+184	+130	+82	+44.2%	+31.3%	+28.0%	+16.3%	+11.0%	+8151.0%
Registrars	3,195	+667	+519	+407	+253	+80	-23	+26.4%	+19.4%	+14.6%	+8.6%	+2.6%	-0.7%
Interns	861	+161	+152	+139	+143	-105	-83	+22.9%	+21.4%	+19.3%	+19.9%	-10.9%	-8292.0%
Senior House Officer	2,319	+405	+344	+299	+243	+33	+84	+21.2%	+17.4%	+14.8%	+11.7%	+1.4%	+8421.0%
SHO/ Interns	3,180	+566	+496	+438	+386	-72	+1	+21.6%	+18.5%	+16.0%	+13.8%	-2.2%	+0.0%
Dentists	8	-5	-2	-2	-2	-3	-0	-40.8%	-23.6%	-20.3%	-17.2%	-27.9%	-22.0%
Other Medical	63	+20	+15	+12	+13	+10	+3	+46.0%	+31.0%	+22.8%	+25.5%	+18.4%	+264.0%
Medical/ Dental, other	71	+14	+12	+10	+11	+7	+2	+25.3%	+21.2%	+15.7%	+18.6%	+10.5%	+3.5%
Medical & Dental	9,479	+2,218	+1,530	+1,231	+901	+74	+3	+30.5%	+19.2%	+14.9%	+10.5%	+0.8%	+0.0%
Clinical Nurse/ Midwife Manager	4,614	+1,010	+866	+559	+416	+226	+27	+28.0%	+23.1%	+13.8%	+9.9%	+5.2%	+2663.0%
Director Nursing/Midwifery, Assistant	478	+123	+82	+54	+44	+25	+4	+34.7%	+20.8%	+12.8%	+10.2%	+5.4%	+355.0%
Director of Nursing/Midwifery	88	+25	+20	+11	+9	+5	-1	+39.7%	+29.0%	+14.5%	+11.3%	+6.1%	-90.0%
Nurse/ Midwife Manager	5,180	+1,158	+968	+624	+469	+256	+29	+28.8%	+23.0%	+13.7%	+10.0%	+5.2%	+0.6%
Advanced Nurse/ Midwife Practitioner	481	+331	+276	+205	+144	+41	-9	+221.8%	+135.3%	+74.1%	+42.6%	+9.3%	-948.0%
Clinical Nurse/ Midwife Specialist	1,064	+198	+195	+147	+109	+36	+8	+22.9%	+22.4%	+16.0%	+11.4%	+3.5%	+831.0%
Nurse/ Midwife Specialist & AN/MP	1,545	+530	+471	+352	+253	+77	-1	+52.2%	+43.9%	+29.5%	+19.6%	+5.2%	-0.1%
Graduate Nursing/ Midwifery								-100.0%	-100.0%	-100.0%	-100.0%	-100.0%	
Nursing Bank	12	-34	-36	-26	-19	-11	-2	-74.6%	-75.8%	-69.5%	-62.7%	-49.3%	-209.0%
Staff Midwives	1,445	-13	+7	-35	-12	-34	-35	-0.9%	+0.5%	-2.4%	-0.8%	-2.3%	-3450.0%
Staff Nurse [Psychiatric]	25	-8	-5	-6	-3	-4	-2	-24.4%	-17.2%	-19.5%	-10.0%	-13.5%	-159.0%
Staff Nurse [Intellectual Disability]						-72		-100.0%	-100.0%	-100.0%	-100.0%	-100.0%	
Staff Nurses [General/ Children's]	16,401	+2,502	+1,876	+1,552	+1,240	+478	-35	+18.0%	+12.9%	+10.4%	+8.2%	+3.0%	-3477.0%

Aug 2021 (Dec 2019 figure: 62,537)	WTE Aug 2021	WTE change since Dec 16	WTE change since Dec 17	WTE change since Dec 18	WTE change since Dec 19	WTE change since Dec 20	WTE change since Jul 21	% change since Dec 16	% change since Dec 17	% change since Dec 18	% change since Dec 19	% change since Dec 20	% change since Jul 21
Overall	69,231	+12,849	+10,610	+8,325	+6,694	+2,792	+44	+22.8%	+18.1%	+13.7%	+10.7%	+4.2%	+0.1%
Staff Nurse/ Staff Midwife	17,882	+2,447	+1,842	+1,484	+1,206	+356	-73	+15.9%	+11.5%	+9.1%	+7.2%	+2.0%	-0.4%
Public Health Nurse	2	+1	+1	+1	+1	+1	+0	+117.0%	+117.0%	+146.6%	+48.6%	+33.1%	+18.6%
Pre-registration Nurse/ Midwife Intern	513	+441	+441	+441	+430	+498	-14	+615.8%	+615.1%	+620.9%	+521.0%	+3328.8%	-1352.0%
Pre-registration Nurse Intern (COVID-19)	2	+2	+2	+2	+2	-153	+0	-100.0%	-100.0%	-100.0%	-100.0%	-98.4%	+14.0%
Post-registration Nurse/ Midwife Student	146	-12	-6	-27	-50	-5	-6	-7.8%	-3.7%	-15.6%	-25.5%	-3.4%	-554.0%
Nursing/ Midwifery awaiting registration	42	+1	-55	-72	-97	-15	+11	+2.2%	-56.7%	-63.1%	-69.8%	-25.9%	+1138.0%
Nursing/ Midwifery Student	703	+432	+383	+345	+286	+325	-8	+159.8%	+119.8%	+96.6%	+68.5%	+85.9%	-1.1%
Nursing Education/Clinical	180	+5	+14	+6	-11	-17	-5	+2.6%	+8.3%	+3.7%	-5.8%	-8.5%	-450.0%
Other Nursing/ Midwifery	34	+9	+7	+5	+0	+4	+1	+36.8%	+26.0%	+17.9%	+0.6%	+12.2%	+119.0%
Nursing/ Midwifery other	213	+14	+21	+12	-11	-13	-3	+6.9%	+10.7%	+5.7%	-4.8%	-5.8%	-1.5%
Nursing & Midwifery	25,525	+5,002	+3,686	+2,818	+2,204	+1,001	-55	+24.4%	+16.9%	+12.4%	+9.5%	+4.1%	-0.2%
Dietitians	463	+118	+114	+65	+70	+25	+5	+34.1%	+32.6%	+16.2%	+17.9%	+5.7%	+515.0%
Occupational Therapists	457	+125	+114	+97	+88	+40	+3	+37.5%	+33.4%	+27.1%	+24.0%	+9.5%	+297.0%
Orthoptists	22	-0	-5	-2	-0	+1	-0	-1.9%	-17.6%	-9.3%	-0.6%	+6.1%	-45.0%
Physiotherapists	1,092	+211	+154	+118	+100	+24	-9	+24.0%	+16.4%	+12.1%	+10.1%	+2.3%	-884.0%
Podiatrists & Chiropodists	33	+2	+5	+3	-1	-3	+0	+5.8%	+15.6%	+10.4%	-2.5%	-9.5%	+11.0%
Speech & Language Therapists	255	+77	+65	+54	+57	+18	-2	+43.5%	+34.4%	+26.6%	+28.6%	+7.8%	-180.0%
Therapy Professions	2,321	+532	+447	+334	+314	+105	-3	+29.8%	+23.9%	+16.8%	+15.6%	+4.7%	-0.1%
Audiology	36	+4	+5	+7	+8	+6	-0	+13.7%	+16.2%	+24.8%	+30.2%	+19.9%	-31.0%
Biochemists	70	+11	+7	-1	-2	-6	-2	+19.2%	+11.7%	-1.7%	-2.3%	-7.7%	-207.0%
Clinical Engineering	156	+32	+24	+20	+14	+7	+1	+25.6%	+18.2%	+15.1%	+9.5%	+4.6%	+99.0%
Clinical Measurement	429	+75	+73	+61	+46	+18	+11	+21.3%	+20.4%	+16.6%	+12.0%	+4.3%	+1126.0%
Dosimetrists	15	+5	+6	+4	+2	+1	-1	+44.1%	+69.2%	+39.2%	+13.9%	+5.6%	-104.0%
Medical Science	1,967	+101	+86	+78	+82	+16	+1	+5.4%	+4.6%	+4.1%	+4.3%	+0.8%	+53.0%
Perfusionists	22	+3	+1	+2	+0	+0	-1	+15.5%	+5.3%	+10.1%	+0.4%	+0.5%	-114.0%
Phlebotomists	197	+44	+37	+37	+25	+14	+3	+28.5%	+23.2%	+23.2%	+14.7%	+7.6%	+342.0%
Physicists	178	+26	+24	-3	-3	+7	+1	+17.2%	+15.3%	-1.7%	-1.4%	+3.9%	+149.0%
Radiation Therapists	204	+16	+18	+11	+4	-9	-6	+8.4%	+9.7%	+6.0%	+2.2%	-4.0%	-572.0%
Radiographers	1,317	+280	+241	+203	+171	+79	+27	+26.9%	+22.4%	+18.2%	+15.0%	+6.4%	+2745.0%
Health Science/ Diagnostics	4,590	+596	+522	+420	+348	+132	+35	+14.9%	+12.8%	+10.1%	+8.2%	+3.0%	+0.8%
Social Care	4	+0	+1	+1	+1	+0		+11.4%	+39.1%	+44.3%	+25.4%	+0.5%	
Social Workers	406	+87	+81	+65	+51	+23	+1	+27.3%	+25.1%	+19.0%	+14.5%	+5.9%	+0.2%
Psychologists	121	+39	+36	+31	+20	+10	-1	+47.4%	+42.5%	+34.6%	+19.7%	+9.4%	-1.0%
Pharmacy	1,068	+334	+294	+226	+167	+61	+10	+45.5%	+37.9%	+26.9%	+18.5%	+6.1%	+0.9%
H&SC, Other	281	+127	+114	+109	+130	+128	-46	+82.4%	+68.2%	+63.2%	+86.4%	+83.2%	-14.1%
Health & Social Care Professionals	8,792	+1,926	+1,495	+1,187	+1,032	+459	-5	+28.0%	+20.5%	+15.6%	+13.3%	+5.5%	-0.1%
Executive Management	114	+52	+50	+31	+27	+12	+0	+84.2%	+79.2%	+37.6%	+31.4%	+12.3%	+47.0%
Senior Management (VIII & GM)	505	+170	+128	+87	+74	+27	+0	+50.6%	+34.1%	+20.7%	+17.2%	+5.7%	+27.0%

Aug 2021 (Dec 2019 figure: 62,537)	WTE Aug 2021	WTE change since Dec 16	WTE change since Dec 17	WTE change since Dec 18	WTE change since Dec 19	WTE change since Dec 20	WTE change since Jul 21	% change since Dec 16	% change since Dec 17	% change since Dec 18	% change since Dec 19	% change since Dec 20	% change since Jul 21
Overall	69,231	+12,849	+10,610	+8,325	+6,694	+2,792	+44	+22.8%	+18.1%	+13.7%	+10.7%	+4.2%	+0.1%
Management (VIII & above)	619	+222	+179	+118	+101	+39	+1	+55.8%	+40.7%	+23.5%	+19.6%	+6.8%	+0.1%
Middle Management (V-VII)	2,845	+1,047	+870	+696	+534	+184	+15	+58.2%	+44.0%	+32.4%	+23.1%	+6.9%	+1458.0%
Other Administrative	18	+5	+7	+3	+3	+5	-0	+41.2%	+55.8%	+19.5%	+21.2%	+36.1%	-20.0%
Administrative/ Supervisory (V to VII)	2,863	+1,052	+876	+699	+537	+189	+14	+58.1%	+44.1%	+32.3%	+23.1%	+7.1%	+0.5%
Clerical (III & IV)	7,016	+739	+543	+409	+410	+358	+3	+11.8%	+8.4%	+6.2%	+6.2%	+5.4%	+0.0%
Management & Administrative	10,498	+2,299	+1,598	+1,226	+1,048	+586	+18	+28.0%	+18.0%	+13.2%	+11.1%	+5.9%	+0.2%
Catering	479	+39	+28	+36	+9	-10	-4	+8.8%	+6.3%	+8.1%	+1.9%	-2.1%	-403.0%
Household Services	3,215	+636	+581	+528	+499	+117	+18	+24.7%	+22.0%	+19.6%	+18.4%	+3.8%	+1810.0%
Other Labs & Associated	583	+260	+244	+228	+204	+143	+18	+80.3%	+71.8%	+64.4%	+53.8%	+32.5%	+1828.0%
Other Support	751	+41	+24	+16	+12	-11	-1	+5.8%	+3.3%	+2.2%	+1.6%	-1.4%	-80.0%
Portering	1,404	+79	+71	+76	+79	+42	+13	+6.0%	+5.4%	+5.8%	+6.0%	+3.1%	+1268.0%
Support	6,433	+1,055	+948	+885	+803	+281	+44	+19.6%	+17.3%	+15.9%	+14.3%	+4.6%	+0.7%
Maintenance	516	+26	+35	+28	+10	+2	-2	+5.3%	+7.3%	+5.8%	+1.9%	+0.4%	-160.0%
Technical Services	27	+8	+8	+5	+3	+2		+40.6%	+40.6%	+24.4%	+12.6%	+8.0%	
Maintenance/ Technical	543	+34	+43	+34	+13	+4	-2	+6.6%	+8.6%	+6.6%	+2.4%	+0.7%	-0.3%
General Support	6,976	+1,180	+991	+918	+816	+285	+43	+20.4%	+16.6%	+15.2%	+13.2%	+4.3%	+0.6%
HCA, Nurse's Aide, etc.	5,659	+1,194	+1,010	+704	+513	+361	+42	+26.7%	+21.7%	+14.2%	+10.0%	+6.8%	+4213.0%
HCA (Student Nurse/Midwife COVID-19)	6	+6	+6	+6	+6	-44	+1	-100.0%	-100.0%	-100.0%	-100.0%	-87.6%	+60.0%
Health & Social Care Assistants	171	+73	+62	+46	+43	+15	+4	+74.0%	+57.0%	+37.3%	+33.8%	+9.4%	+447.0%
Swabber (COVID-19)	1	+1	+1	+1	+1	-11	+1	-100.0%	-100.0%	-100.0%	-100.0%	-95.5%	+50.0%
Health Care Assistants	5,837	+1,273	+1,078	+757	+563	+320	+48	+27.9%	+22.7%	+14.9%	+10.7%	+5.8%	+0.8%
Ambulance Staff	1,916	+276	+171	+135	+92	+40	-8	+16.8%	+9.8%	+7.6%	+5.0%	+2.1%	-0.4%
Care, other	207	+44	+59	+53	+39	+25	+0	+26.9%	+39.7%	+33.9%	+22.8%	+14.0%	+0.0%
Patient & Client Care	7,960	+1,869	+1,309	+944	+693	+386	+40	+30.7%	+19.7%	+13.5%	+9.5%	+5.1%	+0.5%

Source: Health Service Personnel Census