

Acute Service Employment Report: January 2021

Employment by Staff Group

Jan 2021 (Dec 2019 figure: 62,537)	WTE Dec 2020	WTE Jan 2021	WTE change since Dec 20	% change since Dec 20	WTE change since Dec 19	WTE change since Jan 20
Overall	66,439	66,701	+262	+0.4%	+4,164	+3,925
Consultants	2,974	2,958	-15	-0.5%	+176	+170
Registrars	3,115	3,097	-18	-0.6%	+155	+164
SHO/ Interns	3,253	3,235	-18	-0.5%	+440	+466
Medical/ Dental, other	64	64	+0	+0.5%	+5	+5
Medical & Dental	9,405	9,354	-51	-0.5%	+776	+806
Nurse/ Midwife Manager	4,924	4,958	+34	+0.7%	+247	+262
Nurse/ Midwife Specialist & AN/MP	1,468	1,489	+21	+1.4%	+197	+171
Staff Nurse/ Staff Midwife	17,526	17,530	+4	+0.0%	+854	+873
Public Health Nurse	2	2	+0	+3.1%	+0	+0
Pre-registration Nurse/ Midwife Intern	15	242	+227	+1519.9%	+171	-137
Pre-registration Nurse Intern (COVID-19)	156	52	-103	-66.4%	+52	+52
Post-registration Nurse/ Midwife Student	151	157	+6	+4.1%	-16	-35
Nursing/ Midwifery awaiting registration	57	57	+0	+0.9%	-57	-23
Nursing/ Midwifery Student	378	509	+131	+34.6%	+92	-142
Nursing/ Midwifery other	226	227	+1	+0.3%	+3	+9
Nursing & Midwifery	24,524	24,714	+190	+0.8%	+1,393	+1,173
Therapy Professions	2,217	2,208	-9	-0.4%	+200	+202
Health Science/ Diagnostics	4,459	4,472	+13	+0.3%	+229	+202
Social Care	4	4	+0	+0.5%	+1	+1
Social Workers	384	383	-1	-0.2%	+28	+26
Psychologists	110	112	+2	+2.1%	+12	+12
Pharmacy	1,006	1,011	+4	+0.4%	+110	+105
H&SC, Other	153	178	+25	+16.7%	+28	+17
Health & Social Care Professionals	8,333	8,369	+36	+0.4%	+609	+564
Management (VIII & above)	579	576	-4	-0.6%	+58	+61
Administrative/ Supervisory (V to VII)	2,674	2,681	+6	+0.2%	+355	+338
Clerical (III & IV)	6,658	6,717	+59	+0.9%	+111	+115
Management & Administrative	9,912	9,974	+62	+0.6%	+524	+514
Support	6,152	6,166	+15	+0.2%	+536	+493
Maintenance/ Technical	539	540	+1	+0.2%	+10	+7
General Support	6,691	6,706	+15	+0.2%	+546	+500
Health Care Assistants	5,516	5,522	+6	+0.1%	+248	+292
Ambulance Staff	1,876	1,868	-8	-0.4%	+44	+51
Care, other	182	193	+11	+6.3%	+25	+25
Patient & Client Care	7,574	7,584	+10	+0.1%	+317	+368

Acute Services Employment by Hospital & Hospital Group: Jan 2021

Jan 2021 (Dec 2019 figure: 62,537)	WTE Dec 2020	WTE Jan 2021	WTE change since Dec 20	% change since Dec 20	WTE change since Dec 19	WTE change since Jan 20
Overall	66,439	66,701	+262	+0.4%	+4,164	+3,925
National Ambulance Service	1,990	1,982	-8	-0.4%	+49	+54
CHI at Connolly	136	128	-8	-5.9%	-8	-7
CHI at Crumlin	2,062	1,988	-74	-3.6%	+21	+29
CHI at Tallaght	259	253	-6	-2.3%	-3	-9
CHI at Temple Street	1,259	1,247	-12	-1.0%	+62	+62
CHI Corporate	2	14	+12	+614.0%	+11	+12
CHI Programme	44	68	+24	+54.4%	+12	+13
Children's Health Ireland	3,762	3,698	-64	-1.7%	+96	+101
Coombe Women & Infants University	925	922	-3	-0.4%	+32	+23
MRH Portlaoise	780	775	-5	-0.7%	+25	+34
MRH Tullamore	1,146	1,139	-7	-0.6%	+38	+40
Naas General	777	781	+4	+0.5%	+22	+24
St. James's	4,266	4,264	-2	-0.0%	+206	+183
St. Luke's Rathgar	542	539	-4	-0.7%	-6	-7
Tallaght University	2,812	2,812	+0	+0.0%	+129	+121
Hospital Group HQ	40	42	+2	+5.1%	+8	+7
Dublin Midlands Hospital Group	11,288	11,273	-14	-0.1%	+455	+426
Cappagh National Orthopaedic	441	443	+1	+0.3%	+16	+14
Mater Misericordiae University	3,429	3,435	+6	+0.2%	+276	+253
MRH Mullingar	1,004	1,009	+5	+0.5%	+95	+102
National Maternity	916	939	+22	+2.4%	+59	+36
Our Lady's Navan	590	584	-6	-1.0%	+68	+73
St. Columcille's	457	456	-1	-0.2%	+5	+8
St Luke's General Kilkenny	1,185	1,181	-4	-0.3%	+62	+61
St. Michael's	404	415	+11	+2.7%	+18	+10
St. Vincent's University	3,087	3,113	+26	+0.8%	+275	+237
Wexford General	1,055	1,065	+10	+0.9%	+41	+56
Royal Victoria Eye & Ear	313	317	+3	+1.1%	+26	+21
IEHG Bank	8	10	+2	+19.8%	+10	+10
Hospital Group HQ	34	34	+0	+1.3%	+4	+5
Ireland East Hospital Group	12,923	12,999	+75	+0.6%	+954	+886
Beaumont	4,029	4,077	+48	+1.2%	+231	+201
Cavan General	1,059	1,066	+7	+0.7%	+32	+45
Connolly	1,462	1,462	-0	-0.0%	+128	+123
Louth County	289	294	+5	+1.7%	+17	+15
Monaghan	102	107	+5	+4.8%	+5	+4
Our Lady of Lourdes	2,287	2,312	+25	+1.1%	+163	+135
Rotunda	929	929	+0	+0.0%	+37	+16
Hospital Group HQ	41	44	+3	+6.7%	+14	+15
RCSI Hospitals Group	10,197	10,290	+92	+0.9%	+627	+555
Galway University	3,787	3,833	+45	+1.2%	+226	+202
Letterkenny University	1,769	1,777	+8	+0.5%	+170	+173
Mayo University	1,204	1,213	+10	+0.8%	+64	+68

Jan 2021 (Dec 2019 figure: 62,537)	WTE Dec 2020	WTE Jan 2021	WTE change since Dec 20	% change since Dec 20	WTE change since Dec 19	WTE change since Jan 20
Overall	66,439	66,701	+262	+0.4%	+4,164	+3,925
Portiuncula University	843	844	+0	+0.0%	+54	+69
Roscommon University	367	369	+2	+0.6%	+35	+40
Sligo University	1,766	1,779	+13	+0.7%	+91	+87
Hospital Group HQ	93	93	-0	-0.0%	+15	+15
Saolta University Hospital Care	9,829	9,908	+79	+0.8%	+654	+654
Bantry General	277	283	+6	+2.1%	+17	+22
Cork University	4,316	4,352	+37	+0.9%	+339	+297
Lourdes Orthopaedic Kilcreene	70	70	+0	+0.2%	+0	+3
Mallow General	246	247	+0	+0.2%	-5	-1
Mercy University	1,243	1,256	+13	+1.0%	+83	+82
South Infirmary Victoria University	804	805	+1	+0.2%	+19	+15
South Tipperary General	968	974	+6	+0.6%	+107	+102
UH Kerry	1,215	1,225	+10	+0.8%	+111	+92
UH Waterford	2,103	2,102	-1	-0.0%	+153	+147
Hospital Group HQ	45	46	+0	+0.7%	+11	+11
South/South West Hospital Group	11,288	11,361	+73	+0.7%	+834	+770
Croom Orthopaedic	173	176	+3	+1.6%	+20	+20
Ennis	228	225	-3	-1.2%	-10	-11
Nenagh	259	258	-1	-0.3%	+9	+12
St. John's Limerick	321	319	-2	-0.5%	+8	+14
UH Limerick	3,122	3,140	+18	+0.6%	+327	+321
UMH Limerick	393	405	+12	+3.1%	+30	+18
Hospital Group HQ	10	9	-1	-11.9%	+3	+3
University of Limerick Hospital Group	4,506	4,533	+27	+0.6%	+387	+376
Other	101	102	+1	+0.8%	+10	+13
National Rehabilitation	555	556	+1	+0.2%	+98	+90
other Acute Services	655	657	+2	+0.3%	+109	+103

Acute Services Employment by Administration (HSE / S38): January 2021

Jan 2021 (Dec 2019 figure: 62,537)	WTE Dec 2020	WTE Jan 2021	WTE change since Dec 20	% change since Dec 20	WTE change since Dec 19	WTE change since Jan 20
Overall	66,439	66,701	+262	+0.4%	+4,164	+3,925
Health Service Executive	38,205	38,403	+198	+0.5%	+2,553	+2,504
Section 38 Hospitals	28,234	28,298	+64	+0.2%	+1,611	+1,421

HSE

Jan 2021 (Dec 2019 figure: 35,850)	WTE Dec 2020	WTE Jan 2021	WTE change since Dec 20	% change since Dec 20	WTE change since Dec 19	WTE change since Jan 20
Overall	38,205	38,403	+198	+0.5%	+2,553	+2,504
Consultants	1,561	1,560	-1	-0.1%	+81	+83
Registrars	1,711	1,719	+8	+0.5%	+101	+103
SHO/ Interns	2,032	1,991	-41	-2.0%	+230	+257
Medical/ Dental, other	39	39	+0	+0.5%	+3	+3
Medical & Dental	5,343	5,309	-34	-0.6%	+414	+446
Nurse/ Midwife Manager	2,580	2,598	+18	+0.7%	+111	+116
Nurse/ Midwife Specialist & AN/MP	747	763	+16	+2.2%	+108	+93
Staff Nurse/ Staff Midwife	10,302	10,309	+7	+0.1%	+549	+602
Public Health Nurse	2	2	+0	+3.1%	+0	+0
Pre-registration Nurse Intern (COVID-19)	65	17	-47	-73.0%	+17	+17
Post-registration Nurse/ Midwife Student	57	62	+5	+9.3%	+4	-11
Nursing/ Midwifery awaiting registration	15	12	-3	-21.2%	-78	-14
Pre-registration Nurse/ Midwife Intern	6	108	+101	+1579.4%	+85	-67
Nursing/ Midwifery Student	143	199	+56	+39.3%	+20	-74
Nursing/ Midwifery other	87	87	+0	+0.1%	+11	+12
Nursing & Midwifery	13,861	13,958	+98	+0.7%	+798	+749
Therapy Professions	1,111	1,111	-0	-0.0%	+132	+128
Health Science/ Diagnostics	2,553	2,565	+12	+0.5%	+170	+142
Social Care	3	3	+0	+0.6%	+1	+1
Social Workers	108	110	+2	+1.7%	+12	+10
Psychologists	10	11	+1	+5.9%	+2	+1
Pharmacy	531	533	+3	+0.5%	+77	+73
H&SC, Other	45	68	+23	+50.7%	+16	+5
Health & Social Care Professionals	4,361	4,401	+40	+0.9%	+410	+360
Management (VIII & above)	292	287	-5	-1.7%	+28	+35
Administrative/ Supervisory (V to VII)	1,078	1,090	+12	+1.1%	+215	+201
Clerical (III & IV)	3,866	3,909	+43	+1.1%	+75	+80
Management & Administrative	5,236	5,286	+50	+1.0%	+319	+316
Support	3,618	3,640	+22	+0.6%	+426	+388
Maintenance/ Technical	295	297	+2	+0.6%	+5	+7
General Support	3,913	3,937	+24	+0.6%	+430	+395
Health Care Assistants	3,498	3,512	+14	+0.4%	+111	+159
Ambulance Staff	1,876	1,868	-8	-0.4%	+44	+51
Care, other	117	131	+15	+12.5%	+27	+28
Patient & Client Care	5,491	5,511	+20	+0.4%	+182	+238

Section 38 Hospitals

Jan 2021 (Dec 2019 figure: 26,687)	WTE Dec 2020	WTE Jan 2021	WTE change since Dec 20	% change since Dec 20	WTE change since Dec 19	WTE change since Jan 20
Overall	28,234	28,298	+64	+0.2%	+1,611	+1,421
Consultants	1,413	1,398	-14	-1.0%	+95	+87
Registrars	1,404	1,378	-26	-1.9%	+54	+61
SHO/ Interns	1,220	1,244	+24	+1.9%	+210	+210
Medical/ Dental, other	25	25	+0	+0.4%	+2	+2
Medical & Dental	4,062	4,045	-17	-0.4%	+362	+360
Nurse/ Midwife Manager	2,344	2,359	+15	+0.7%	+136	+145
Nurse/ Midwife Specialist & AN/MP	721	726	+5	+0.7%	+90	+78
Staff Nurse/ Staff Midwife	7,224	7,221	-2	-0.0%	+305	+271
Post-registration Nurse/ Midwife Student	94	95	+1	+1.0%	-20	-24
Pre-registration Nurse Intern (COVID-19)	91	35	-56	-61.7%	+35	+35
Nursing/ Midwifery awaiting registration	42	45	+4	+8.9%	+21	-9
Pre-registration Nurse/ Midwife Intern	9	134	+126	+1475.1%	+86	-69
Nursing/ Midwifery Student	235	309	+74	+31.6%	+72	-68
Nursing/ Midwifery other	139	140	+1	+0.4%	-8	-2
Nursing & Midwifery	10,663	10,756	+93	+0.9%	+595	+424
Therapy Professions	1,105	1,097	-9	-0.8%	+69	+74
Health Science/ Diagnostics	1,907	1,908	+1	+0.1%	+59	+61
Social Care	1	1				
Social Workers	275	273	-3	-0.9%	+16	+16
Psychologists	100	102	+2	+1.7%	+10	+10
Pharmacy	476	478	+2	+0.4%	+33	+32
H&SC, Other	108	110	+3	+2.4%	+12	+12
Health & Social Care Professionals	3,972	3,968	-4	-0.1%	+199	+205
Management (VIII & above)	288	289	+1	+0.5%	+30	+26
Administrative/ Supervisory (V to VII)	1,596	1,591	-5	-0.3%	+140	+136
Clerical (III & IV)	2,793	2,808	+16	+0.6%	+36	+35
Management & Administrative	4,676	4,688	+12	+0.2%	+205	+197
Support	2,533	2,526	-8	-0.3%	+111	+105
Maintenance/ Technical	244	243	-1	-0.4%	+5	+0
General Support	2,778	2,769	-9	-0.3%	+116	+105
Health Care Assistants	2,018	2,010	-8	-0.4%	+137	+133
Care, other	66	62	-3	-4.7%	-3	-3
Patient & Client Care	2,083	2,073	-11	-0.5%	+135	+130

Acute Services Employment by Hospital Group, CHO etc. Jan 2021

National Ambulance Service

Jan 2021 (Dec 2019 figure: 1,933)	WTE Dec 2020	WTE Jan 2021	WTE change since Dec 20	% change since Dec 20	WTE change since Dec 19	WTE change since Jan 20
Overall	1,990	1,982	-8	-0.4%	+49	+54
Consultants	1	1				
Medical & Dental	1	1				
Nurse/ Midwife Manager	1	1				
Staff Nurse/ Staff Midwife	1	1				
Nursing & Midwifery	2	2				
Therapy Professions	1	1				
Health & Social Care Professionals	1	1				
Management (VIII & above)	14	13	-2	-11.9%	+0	+0
Administrative/ Supervisory (V to VII)	33	35	+2	+7.6%	+7	+5
Clerical (III & IV)	42	41	-1	-1.4%	-0	-0
Management & Administrative	89	89	+0	+0.2%	+7	+5
Support	4	4			+0	+0
Maintenance/ Technical	2	2				
General Support	6	6			+0	+0
Health Care Assistants	2	2				
Ambulance Staff	1,876	1,868	-8	-0.4%	+44	+51
Care, other	14	13	-0	-1.7%	-1	-1
Patient & Client Care	1,892	1,884	-8	-0.4%	+42	+49

Children's Health Ireland

Jan 2021 (Dec 2019 figure: 3,602)	WTE Dec 2020	WTE Jan 2021	WTE change since Dec 20	% change since Dec 20	WTE change since Dec 19	WTE change since Jan 20
Overall	3,762	3,698	-64	-1.7%	+96	+101
Consultants	237	236	-1	-0.4%	+16	+12
Registrars	217	194	-23	-10.6%	-10	-11
SHO/ Interns	95	81	-14	-15.1%	-7	-11
Medical/ Dental, other	1	1				
Medical & Dental	551	513	-38	-6.9%	-1	-9
Nurse/ Midwife Manager	334	337	+3	+1.0%	+6	+5
Nurse/ Midwife Specialist & AN/MP	172	171	-1	-0.8%	+19	+16
Staff Nurse/ Staff Midwife	850	841	-10	-1.1%	+35	+41
Pre-registration Nurse/ Midwife Intern				-100.0%	-11	-3
Pre-registration Nurse Intern (COVID-19)	13	4	-9	-67.8%	+4	+4
Post-registration Nurse/ Midwife Student	43	43	+0	+1.0%	-26	-20
Nursing/ Midwifery awaiting registration		2	+2	-100.0%	+2	+0
Nursing/ Midwifery Student	56	50	-6	-10.7%	-25	-18
Nursing/ Midwifery other	8	8			-2	-0
Nursing & Midwifery	1,421	1,407	-13	-0.9%	+33	+44
Therapy Professions	145	143	-2	-1.4%	+7	+4
Health Science/ Diagnostics	285	286	+1	+0.4%	+6	+6
Social Workers	60	61	+1	+2.3%	+4	+5
Psychologists	42	42	+0	+0.6%	+4	+4
Pharmacy	51	52	+1	+1.2%	+7	+7
H&SC, Other	26	25	-1	-2.6%	+0	-1
Health & Social Care Professionals	609	610	+1	+0.1%	+29	+25
Management (VIII & above)	54	53	-1	-1.4%	+1	+3
Administrative/ Supervisory (V to VII)	299	294	-5	-1.5%	+22	+23
Clerical (III & IV)	409	410	+1	+0.2%	-10	-14
Management & Administrative	762	757	-5	-0.6%	+13	+12
Support	210	212	+2	+1.1%	+17	+20
Maintenance/ Technical	15	15				+0
General Support	225	227	+2	+1.0%	+17	+21
Health Care Assistants	182	172	-10	-5.5%	+7	+9
Care, other	13	13	-1	-5.3%	-1	-1
Patient & Client Care	195	185	-11	-5.5%	+6	+8

Dublin Midlands Hospital Group

Jan 2021 (Dec 2019 figure: 10,819)	WTE Dec 2020	WTE Jan 2021	WTE change since Dec 20	% change since Dec 20	WTE change since Dec 19	WTE change since Jan 20
Overall	11,288	11,273	-14	-0.1%	+455	+426
Consultants	499	500	+1	+0.2%	+36	+31
Registrars	522	520	-2	-0.5%	+30	+28
SHO/ Interns	460	461	+0	+0.1%	+37	+43
Dentists	1	1			+0	+0
Other Medical	6	6	-0	-2.6%	+1	-0
Medical/ Dental, other	7	7	-0	-2.1%	+0	+0
Medical & Dental	1,489	1,487	-1	-0.1%	+103	+102
Nurse/ Midwife Manager	908	906	-2	-0.2%	+29	+33
Nurse/ Midwife Specialist & AN/MP	236	227	-9	-3.9%	+22	+20
Staff Nurse/ Staff Midwife	2,950	2,943	-8	-0.3%	+108	+110
Pre-registration Nurse/ Midwife Intern	0	31	+31	#####	+20	-10
Pre-registration Nurse Intern (COVID-19)	28	5	-23	-83.8%	+5	+5
Post-registration Nurse/ Midwife Student	12	12			+4	-1
Nursing/ Midwifery awaiting registration	4	3	-1	-29.9%	-3	-6
Nursing/ Midwifery Student	44	50	+6	+13.8%	+8	-13
Nursing/ Midwifery other	38	38	+0	+1.3%	+2	+5
Nursing & Midwifery	4,177	4,164	-12	-0.3%	+170	+155
Therapy Professions	397	393	-4	-1.1%	+26	+20
Health Science/ Diagnostics	1,001	994	-7	-0.7%	+15	+10
Social Workers	87	86	-1	-1.3%	+7	+6
Psychologists	13	13	-1	-4.2%	+0	+0
Pharmacy	243	245	+2	+0.7%	+25	+22
H&SC, Other	46	48	+2	+5.3%	+15	+12
Health & Social Care Professionals	1,788	1,779	-9	-0.5%	+87	+71
Management (VIII & above)	126	126	-0	-0.2%	+9	+10
Administrative/ Supervisory (V to VII)	523	518	-5	-1.0%	+23	+26
Clerical (III & IV)	1,046	1,055	+9	+0.9%	+0	+2
Management & Administrative	1,695	1,699	+4	+0.2%	+32	+37
Support	771	774	+3	+0.4%	+10	+10
Maintenance/ Technical	130	129	-1	-0.7%	-1	-2
General Support	901	903	+2	+0.2%	+8	+8
Health Care Assistants	1,217	1,220	+3	+0.2%	+54	+53
Care, other	21	21	-0	-2.3%	+0	-1
Patient & Client Care	1,239	1,241	+3	+0.2%	+54	+52

Ireland East Hospital Group

Jan 2021 (Dec 2019 figure: 12,045)	WTE Dec 2020	WTE Jan 2021	WTE change since Dec 20	% change since Dec 20	WTE change since Dec 19	WTE change since Jan 20
Overall	12,923	12,999	+75	+0.6%	+954	+886
Consultants	587	569	-17	-3.0%	+31	+31
Registrars	658	663	+5	+0.7%	+44	+53
SHO/ Interns	669	711	+41	+6.2%	+141	+146
Medical/ Dental, other	28	28	+0	+0.3%	+2	+2
Medical & Dental	1,941	1,970	+29	+1.5%	+218	+232
Nurse/ Midwife Manager	1,019	1,019	+1	+0.1%	+89	+92
Nurse/ Midwife Specialist & AN/MP	337	351	+13	+3.9%	+44	+41
Staff Nurse/ Staff Midwife	3,336	3,340	+4	+0.1%	+103	+82
Pre-registration Nurse/ Midwife Intern	10	65	+54	+526.6%	+42	-40
Pre-registration Nurse Intern (COVID-19)	47	24	-23	-48.7%	+24	+24
Post-registration Nurse/ Midwife Student	17	18	+1	+2.9%	-6	-4
Nursing/ Midwifery awaiting registration	34	41	+7	+20.0%	+37	+36
Nursing/ Midwifery Student	109	147	+39	+35.6%	+90	+17
Nursing/ Midwifery other	73	74	+1	+1.5%	-2	-0
Nursing & Midwifery	4,873	4,931	+58	+1.2%	+324	+232
Therapy Professions	478	475	-3	-0.6%	+53	+57
Health Science/ Diagnostics	791	793	+1	+0.2%	+59	+55
Social Workers	74	73	-1	-1.5%	+3	+5
Psychologists	22	22	+0	+1.5%	+0	+1
Pharmacy	192	193	+1	+0.5%	+5	+8
H&SC, Other	27	32	+5	+18.2%	+6	+6
Health & Social Care Professionals	1,584	1,588	+4	+0.2%	+126	+131
Management (VIII & above)	101	105	+4	+3.8%	+21	+19
Administrative/ Supervisory (V to VII)	599	606	+8	+1.3%	+90	+88
Clerical (III & IV)	1,224	1,227	+3	+0.3%	+13	+19
Management & Administrative	1,923	1,938	+15	+0.8%	+125	+126
Support	1,313	1,302	-10	-0.8%	-21	-14
Maintenance/ Technical	119	119	+0	+0.3%	+7	+4
General Support	1,431	1,421	-10	-0.7%	-14	-10
Health Care Assistants	1,142	1,126	-16	-1.4%	+177	+176
Care, other	29	25	-4	-12.5%	-1	-0
Patient & Client Care	1,170	1,151	-20	-1.7%	+176	+176

RCSI Hospitals Group

Jan 2021 (Dec 2019 figure: 9,663)	WTE Dec 2020	WTE Jan 2021	WTE change since Dec 20	% change since Dec 20	WTE change since Dec 19	WTE change since Jan 20
Overall	10,197	10,290	+92	+0.9%	+627	+555
Consultants	470	474	+4	+0.8%	+34	+35
Registrars	508	505	-3	-0.6%	+24	+25
SHO/ Interns	510	493	-17	-3.4%	+54	+50
Medical/ Dental, other	7	7	-0	-0.0%	+1	+2
Medical & Dental	1,495	1,478	-17	-1.1%	+112	+113
Nurse/ Midwife Manager	820	838	+18	+2.1%	+69	+68
Nurse/ Midwife Specialist & AN/MP	208	211	+3	+1.5%	+26	+23
Staff Nurse/ Staff Midwife	2,767	2,777	+9	+0.3%	+188	+159
Pre-registration Nurse/ Midwife Intern		45	+45	-100.0%	+41	-11
Pre-registration Nurse Intern (COVID-19)	13	3	-9	-73.6%	+3	+3
Post-registration Nurse/ Midwife Student	38	39	+1	+3.5%	+14	-1
Nursing/ Midwifery awaiting registration	0		-0	-100.0%	-21	-49
Nursing/ Midwifery Student	51	88	+37	+72.5%	-18	-58
Nursing/ Midwifery other	42	41	-1	-2.8%	-2	-1
Nursing & Midwifery	3,889	3,955	+66	+1.7%	+262	+191
Therapy Professions	362	359	-2	-0.6%	+27	+27
Health Science/ Diagnostics	609	616	+7	+1.2%	+28	+29
Social Workers	66	64	-2	-2.9%	-2	-2
Psychologists	12	12	-1	-4.1%	-1	-1
Pharmacy	146	145	-1	-0.4%	+19	+18
H&SC, Other	12	13	+1	+8.5%	-2	-2
Health & Social Care Professionals	1,207	1,210	+3	+0.2%	+69	+70
Management (VIII & above)	97	97	-1	-0.9%	+15	+12
Administrative/ Supervisory (V to VII)	415	419	+4	+1.1%	+70	+68
Clerical (III & IV)	1,026	1,042	+16	+1.5%	+10	+12
Management & Administrative	1,538	1,557	+19	+1.3%	+95	+92
Support	1,002	1,004	+2	+0.2%	+30	+29
Maintenance/ Technical	91	91	-1	-0.6%	+1	+2
General Support	1,093	1,094	+1	+0.1%	+31	+31
Health Care Assistants	942	962	+20	+2.1%	+59	+60
Care, other	34	34	-0	-1.3%	-3	-3
Patient & Client Care	976	996	+19	+2.0%	+56	+58

Saolta University Hospital Care

Jan 2021 (Dec 2019 figure: 9,253)	WTE Dec 2020	WTE Jan 2021	WTE change since Dec 20	% change since Dec 20	WTE change since Dec 19	WTE change since Jan 20
Overall	9,829	9,908	+79	+0.8%	+654	+654
Consultants	476	480	+3	+0.7%	+17	+15
Registrars	468	465	-3	-0.6%	+21	+21
SHO/ Interns	637	630	-7	-1.1%	+95	+115
Medical/ Dental, other	12	12	-0	-2.6%	+2	+2
Medical & Dental	1,594	1,587	-7	-0.5%	+134	+153
Nurse/ Midwife Manager	589	596	+7	+1.2%	+29	+36
Nurse/ Midwife Specialist & AN/MP	236	241	+4	+1.9%	+23	+19
Staff Nurse/ Staff Midwife	2,871	2,884	+13	+0.5%	+120	+126
Public Health Nurse	1	1	-0	-2.1%	-0	-0
Pre-registration Nurse/ Midwife Intern	3	48	+44	+1368.9%	+40	+14
Pre-registration Nurse Intern (COVID-19)	31	4	-27	-87.2%	+4	+4
Post-registration Nurse/ Midwife Student	9	10	+1	+11.9%	-4	-2
Nursing/ Midwifery awaiting registration	1	1			-45	-8
Nursing/ Midwifery Student	44	63	+19	+42.4%	+13	+8
Nursing/ Midwifery other	39	39	+0	+0.1%	+7	+6
Nursing & Midwifery	3,781	3,824	+43	+1.1%	+191	+195
Therapy Professions	271	276	+4	+1.7%	+14	+16
Health Science/ Diagnostics	656	659	+3	+0.4%	+41	+31
Social Care	3	3	+0	+0.6%	+1	+1
Social Workers	31	32	+1	+4.2%	+5	+4
Psychologists	2	3	+1	+42.8%	+2	+1
Pharmacy	160	158	-1	-0.8%	+22	+21
H&SC, Other	14	27	+13	+97.9%	+9	+4
Health & Social Care Professionals	1,136	1,158	+22	+1.9%	+93	+78
Management (VIII & above)	54	50	-4	-8.2%	-1	+1
Administrative/ Supervisory (V to VII)	286	283	-3	-1.0%	+47	+41
Clerical (III & IV)	1,084	1,098	+15	+1.4%	+51	+43
Management & Administrative	1,424	1,431	+7	+0.5%	+97	+86
Support	908	903	-5	-0.6%	+68	+62
Maintenance/ Technical	94	94	+0	+0.3%	-9	-8
General Support	1,002	997	-5	-0.5%	+58	+55
Health Care Assistants	845	846	+1	+0.1%	+46	+54
Care, other	47	65	+17	+37.0%	+34	+33
Patient & Client Care	892	910	+18	+2.1%	+81	+87

South/South West Hospital Group

Jan 2021 (Dec 2019 figure: 10,527)	WTE Dec 2020	WTE Jan 2021	WTE change since Dec 20	% change since Dec 20	WTE change since Dec 19	WTE change since Jan 20
Overall	11,288	11,361	+73	+0.7%	+834	+770
Consultants	508	506	-2	-0.3%	+28	+30
Registrars	530	535	+5	+1.0%	+26	+32
SHO/ Interns	615	601	-14	-2.2%	+64	+62
Medical/ Dental, other	8	9	+1	+8.7%	-1	-1
Medical & Dental	1,661	1,651	-10	-0.6%	+118	+123
Nurse/ Midwife Manager	856	861	+4	+0.5%	-2	+6
Nurse/ Midwife Specialist & AN/MP	194	202	+7	+3.8%	+55	+43
Staff Nurse/ Staff Midwife	3,334	3,339	+5	+0.2%	+212	+249
Public Health Nurse	0	0	+0	+44.4%	+0	+0
Public Health Nurse	0	0	+0	+44.4%	+0	+0
Pre-registration Nurse/ Midwife Intern	0	37	+37	10511.4%	+26	-74
Pre-registration Nurse Intern (COVID-19)	23	11	-12	-51.7%	+11	+11
Post-registration Nurse/ Midwife Student	22	22	-0	-0.2%	-1	-6
Nursing/ Midwifery awaiting registration	17	10	-7	-42.1%	-27	+4
Nursing/ Midwifery Student	62	80	+18	+28.3%	+12	-65
Nursing/ Midwifery other	15	15	+0	+2.0%	+1	+1
Nursing & Midwifery	4,462	4,497	+35	+0.8%	+278	+234
Therapy Professions	357	357	+0	+0.0%	+46	+51
Health Science/ Diagnostics	854	860	+6	+0.7%	+76	+62
Social Workers	37	38	+1	+2.5%	+5	+4
Social Workers	37	38	+1	+2.5%	+5	+4
Psychologists	2	2				
Psychologists	2	2				
Pharmacy	150	154	+4	+2.6%	+37	+21
Pharmacy	150	154	+4	+2.6%	+25	+21
H&SC, Other	22	22	+0	+1.5%	-2	-2
Health & Social Care Professionals	1,421	1,432	+11	+0.8%	+150	+136
Management (VIII & above)	56	58	+2	+3.6%	+8	+8
Administrative/ Supervisory (V to VII)	322	321	-1	-0.2%	+57	+53
Clerical (III & IV)	1,270	1,283	+13	+1.0%	+13	+16
Management & Administrative	1,648	1,662	+14	+0.9%	+77	+76
Support	1,321	1,339	+18	+1.3%	+120	+112
Maintenance/ Technical	41	42	+2	+3.7%	+10	+9
General Support	1,362	1,381	+19	+1.4%	+130	+121
Health Care Assistants	719	724	+5	+0.6%	+82	+79
Care, other	15	15	-0	-2.2%	-0	-0
Patient & Client Care	735	739	+4	+0.6%	+82	+79

University of Limerick Hospital Group

Jan 2021 (Dec 2019 figure: 4,146)	WTE Dec 2020	WTE Jan 2021	WTE change since Dec 20	% change since Dec 20	WTE change since Dec 19	WTE change since Jan 20
Overall	4,506	4,533	+27	+0.6%	+387	+376
Consultants	184	182	-1	-0.8%	+17	+17
Registrars	204	204	+0	+0.1%	+14	+10
SHO/ Interns	259	253	-6	-2.2%	+56	+60
Other Medical	1	1				
Medical/ Dental, other	1	1				
Medical & Dental	647	640	-7	-1.1%	+87	+87
Nurse/ Midwife Manager	346	347	+1	+0.3%	+22	+18
Nurse/ Midwife Specialist & AN/MP	81	85	+3	+3.7%	+9	+8
Staff Nurse/ Staff Midwife	1,300	1,291	-9	-0.7%	+65	+82
Pre-registration Nurse/ Midwife Intern	1	17	+16	+1560.0%	+14	-12
Pre-registration Nurse Intern (COVID-19)	1	1			+1	+1
Post-registration Nurse/ Midwife Student	10	13	+3	+29.2%	+3	-2
Nursing/ Midwifery Student	12	31	+19	+154.5%	+12	-13
Nursing/ Midwifery other	11	11	-0	-1.1%	+0	+0
Nursing & Midwifery	1,751	1,765	+13	+0.8%	+108	+96
Therapy Professions	98	96	-2	-1.6%	+12	+10
Health Science/ Diagnostics	254	256	+2	+0.8%	+4	+6
Social Workers	11	11	-0	-0.2%	-0	+0
Psychologists	4	4			+1	+1
Pharmacy	51	51	+0	+0.2%	+6	+6
H&SC, Other	6	10	+4	+67.9%	+3	+1
Health & Social Care Professionals	423	428	+5	+1.1%	+25	+23
Management (VIII & above)	37	35	-2	-5.4%	-0	-1
Administrative/ Supervisory (V to VII)	129	134	+5	+3.8%	+31	+27
Clerical (III & IV)	508	513	+6	+1.1%	+28	+32
Management & Administrative	674	683	+9	+1.3%	+59	+58
Support	584	590	+6	+1.0%	+303	+268
Maintenance/ Technical	38	38	+0	+0.4%	-1	+1
General Support	622	627	+6	+0.9%	+302	+268
Health Care Assistants	383	385	+1	+0.3%	-192	-155
Care, other	6	6	-0	-5.0%	-2	-2
Patient & Client Care	389	390	+1	+0.3%	-194	-157

other Acute Services

Jan 2021 (Dec 2019 figure: 548)	WTE Dec 2020	WTE Jan 2021	WTE change since Dec 20	% change since Dec 20	WTE change since Dec 19	WTE change since Jan 20
Overall	655	657	+2	+0.3%	+109	+103
Consultants	12	10	-2	-16.3%	-2	-2
Registrars	8	11	+3	+37.5%	+7	+6
SHO/ Interns	7	6	-1	-14.3%		
Medical & Dental	27	27			+5	+4
Nurse/ Midwife Manager	49	51	+2	+3.6%	+5	+4
Nurse/ Midwife Specialist & AN/MP	3	3			+0	
Staff Nurse/ Staff Midwife	115	114	-1	-1.0%	+23	+23
Nursing/ Midwifery other				-100.0%	-1	-1
Nursing & Midwifery	168	168	+1	+0.4%	+27	+26
Therapy Professions	108	108	+0	+0.0%	+15	+17
Health Science/ Diagnostics	9	9			+2	+2
Social Care	1	1				
Social Workers	18	18	-0	-0.3%	+5	+4
Psychologists	14	16	+2	+14.1%	+5	+5
Pharmacy	13	12	-1	-7.8%	+1	+2
H&SC, Other	1	0	-0	-9.8%	-0	-0
Health & Social Care Professionals	163	164	+1	+0.6%	+29	+29
Management (VIII & above)	40	40	+1	+1.3%	+6	+8
Administrative/ Supervisory (V to VII)	70	70	+0	+0.2%	+8	+8
Clerical (III & IV)	51	48	-3	-6.0%	+6	+6
Management & Administrative	161	158	-2	-1.5%	+20	+21
Support	39	39	-0	-0.0%	+10	+6
Maintenance/ Technical	11	11			+3	+1
General Support	50	50	-0	-0.0%	+13	+7
Health Care Assistants	84	86	+3	+3.0%	+16	+16
Care, other	3	3			-1	-1
Patient & Client Care	86	89	+3	+2.9%	+15	+16

Acute Services Employment by Grade Group: Jan 2021

Jan 2021 (Dec 2019 figure: 62,537)	WTE Dec 2020	WTE Jan 2021	WTE change since Dec 20	% change since Dec 20	WTE change since Dec 19	WTE change since Jan 20
Overall	66,439	66,701	+262	+0.4%	+4,164	+3,925
Consultant Anaesthesia	427	427	-0	-0.0%	+24	+27
Consultant Dentistry	6	6	+0	+1.9%	+0	+0
Consultant Emergency Medicine	121	119	-2	-1.7%	+11	+9
Consultant Intensive Care Medicine	18	18	+0	+0.7%	+2	+2
Consultant Medicine	885	880	-6	-0.6%	+76	+77
Consultant Obstetrics & Gynaecology	170	168	-2	-1.2%	+7	+6
Consultant, Other				-100.0%	-1	-1
Consultant Paediatrics	212	209	-2	-1.2%	+16	+14
Consultant Pathology	265	267	+2	+0.7%	+15	+13
Consultant Psychiatry	23	23	-0	-1.5%	-1	-0
Consultant Radiology	280	277	-3	-1.2%	+2	+3
Consultant Surgery	564	563	-2	-0.3%	+24	+20
Consultants	2,974	2,958	-15	-0.5%	+176	+170
Registrar	1,810	1,816	+6	+0.3%	+112	+110
Senior Registrar	120	122	+1	+1.2%	+14	+10
Specialist Registrar	1,185	1,159	-26	-2.2%	+29	+44
Registrars	3,115	3,097	-18	-0.6%	+155	+164
Interns	966	1,011	+44	+4.6%	+293	+297
Senior House Officer	2,286	2,224	-62	-2.7%	+147	+169
SHO/ Interns	3,253	3,235	-18	-0.5%	+440	+466
Dentists	11	10	-1	-7.4%	+1	+0
Other Medical	53	54	+1	+2.1%	+4	+5
Medical/ Dental, other	64	64	+0	+0.5%	+5	+5
Medical & Dental	9,405	9,354	-51	-0.5%	+776	+806
Clinical Nurse/ Midwife Manager	4,388	4,424	+36	+0.8%	+226	+244
Director Nursing/Midwifery, Assistant	453	451	-2	-0.4%	+18	+15
Director of Nursing/Midwifery	83	83	-0	-0.2%	+4	+2
Nurse/ Midwife Manager	4,924	4,958	+34	+0.7%	+247	+262
Advanced Nurse/ Midwife Practitioner	440	455	+15	+3.5%	+118	+103
Clinical Nurse/ Midwife Specialist	1,028	1,034	+6	+0.6%	+79	+68
Nurse/ Midwife Specialist & AN/MP	1,468	1,489	+21	+1.4%	+197	+171
Nursing Bank	23	21	-2	-8.9%	-10	-6
Staff Midwives	1,479	1,481	+2	+0.1%	+24	+39
Staff Nurse [Psychiatric]	29	27	-2	-6.8%	-1	-2
Staff Nurses [General/ Children's]	15,923	15,928	+5	+0.0%	+768	+769
Staff Nurse [Intellectual Disability]	72	73	+1	+1.4%	+73	+73
Staff Nurse/ Staff Midwife	17,526	17,530	+4	+0.0%	+854	+873
Public Health Nurse	2	2	+0	+3.1%	+0	+0
Pre-registration Nurse/ Midwife Intern	15	242	+227	+1519.9%	+160	-137
Pre-registration Nurse Intern (COVID-19)	156	52	-103	-66.4%	+52	+52
Post-registration Nurse/ Midwife Student	151	157	+6	+4.1%	-39	-35
Nursing/ Midwifery awaiting registration	57	57	+0	+0.9%	-82	-23
Nursing/ Midwifery Student	378	509	+131	+34.6%	+92	-142
Nursing Education/Clinical	196	194	-2	-1.2%	+3	+9
Other Nursing/ Midwifery	30	33	+3	+10.0%	-0	-0
Nursing/ Midwifery other	226	227	+1	+0.3%	+3	+9
Nursing & Midwifery	24,524	24,714	190	+0.8%	+1,393	+1,173
Dietitians	438	435	-3	-0.7%	+42	+41

Jan 2021 (Dec 2019 figure: 62,537)	WTE Dec 2020	WTE Jan 2021	WTE change since Dec 20	% change since Dec 20	WTE change since Dec 19	WTE change since Jan 20
Overall	66,439	66,701	+262	+0.4%	+4,164	+3,925
Occupational Therapists	417	409	-8	-2.0%	+40	+46
Orthoptists	20	20	-0	-0.3%	-1	-1
Physiotherapists	1,068	1,074	+6	+0.6%	+82	+80
Podiatrists & Chiropodists	37	37	-0	-0.7%	+2	+2
Speech & Language Therapists	236	233	-4	-1.5%	+35	+33
Therapy Professions	2,217	2,208	-9	-0.4%	+200	+202
Audiology	30	36	+6	+19.7%	+8	+7
Biochemists	76	75	-1	-1.1%	+3	+4
Clinical Engineering	149	150	+1	+0.6%	+8	+8
Clinical Measurement	411	415	+4	+1.0%	+32	+29
Dosimetrists	14	14	-0	-0.9%	+1	+1
Medical Laboratory	1,952	1,956	+4	+0.2%	+70	+56
Perfusionists	22	21	-0	-1.3%	-0	-0
Phlebotomists	183	185	+2	+1.2%	+14	+8
Physicists	172	171	-0	-0.1%	-9	-8
Radiation Therapists	212	209	-3	-1.3%	+10	+11
Radiographers	1,239	1,239	+1	+0.1%	+93	+87
Health Science/ Diagnostics	4,459	4,472	+13	+0.3%	+229	+202
Social Care	4	4	+0	+0.5%	+1	+1
Social Workers	384	383	-1	-0.2%	+28	+26
Psychologists	110	112	+2	+2.1%	+12	+12
Pharmacy	1,006	1,011	+4	+0.4%	+110	+105
Counsellor Therapists	5	5	-0	-0.0%	-1	-0
Dental Hygienists	1	1			+0	+0
HSCP Trainees/ Students	55	81	+26	+46.7%	+12	+2
Other Health & Social Care	64	65	+0	+0.6%	+16	+16
Play Therapists/ Specialists	27	26	-1	-3.3%	+1	+0
H&SC, Other	153	178	+25	+16.7%	+28	+17
Health & Social Care Professionals	8,333	8,369	36	+0.4%	+609	+564
Executive Management	102	100	-2	-1.6%	+13	+12
Senior Management (VIII & GM)	478	476	-2	-0.4%	+45	+49
Management (VIII & above)	579	576	-4	-0.6%	+58	+61
Middle Management (V-VII)	2,661	2,668	+7	+0.3%	+358	+339
Other Administrative	13	12	-1	-7.2%	-3	-1
Administrative/ Supervisory (V to VII)	2,674	2,681	+6	+0.2%	+355	+338
Clerical (III & IV)	6,658	6,717	+59	+0.9%	+111	+115
Management & Administrative	9,912	9,974	62	+0.6%	+524	+514
Catering	490	488	-2	-0.4%	+17	+23
Household Services	3,098	3,122	+24	+0.8%	+405	+367
Other Labs & Associated	440	449	+9	+2.1%	+70	+66
Other Support	761	762	+0	+0.0%	+23	+25
Portering	1,362	1,346	-17	-1.2%	+20	+13
Support	6,152	6,166	+15	+0.2%	+536	+493
Maintenance	514	515	+1	+0.2%	+9	+6
Technical Services	25	25			+1	+1
Maintenance/ Technical	539	540	+1	+0.2%	+10	+7
General Support	6,691	6,706	15	+0.2%	+546	+500
HCA, Nurse's Aide, etc.	5,360	5,370	+10	+0.2%	+224	+264
Health & Social Care Assistants	156	152	-4	-2.6%	+24	+28
Health Care Assistants	5,516	5,522	+6	+0.1%	+248	+292
Ambulance Control	180	178	-2	-1.3%	-1	+3

Jan 2021 (Dec 2019 figure: 62,537)	WTE Dec 2020	WTE Jan 2021	WTE change since Dec 20	% change since Dec 20	WTE change since Dec 19	WTE change since Jan 20
Overall	66,439	66,701	+262	+0.4%	+4,164	+3,925
Ambulance Education	138	148	+10	+7.2%	-14	-26
Ambulance Officers	85	87	+2	+2.5%	+9	+9
Pre-Hospital Care (Ambulance)	1,473	1,456	-18	-1.2%	+49	+65
Ambulance Staff	1,876	1,868	-8	-0.4%	+44	+51
Care, other	182	193	+11	+6.3%	+25	+25
Patient & Client Care	7,574	7,584	10	+0.1%	+317	+368

Employment by WTE, Headcount, Gender, Full-Time /Part-Time etc.: Jan 2021

Acutes Services Staff Group	WTE	Headcount	WTE: no.	% Male	% female	Male WTE: no.	Female WTE: no.	% Total Perm	% Male Perm	% Female Perm	% Total Full Time	% Total Part Time	% Male FT	% Female FT
Overall	66,701	75,465	1.13	23.6%	76.4%	1.06	1.16	78.7%	67.7%	82.1%	74.7%	25.3%	93.1%	69.0%
Consultant Anaesthesia	427	460	1.08	63.0%	37.0%	1.06	1.11	80.0%	80.0%	80.0%	92.4%	7.6%	93.1%	91.2%
Consultant Dentistry	6	7	1.10	28.6%	71.4%	1.02	1.13	85.7%	85.7%	80.0%	85.7%	14.3%	100.0%	80.0%
Consultant Emergency Medicine	119	132	1.11	68.2%	31.8%	1.08	1.18	69.7%	69.7%	73.8%	87.1%	12.9%	91.1%	78.6%
Consultant Intensive Care Medicine	18	19	1.05	31.6%	68.4%	1.18	1.00	89.5%	89.5%	84.6%	94.7%	5.3%	83.3%	100.0%
Consultant Medicine	880	959	1.09	60.9%	39.1%	1.07	1.12	73.7%	73.7%	69.6%	86.2%	13.8%	89.2%	81.6%
Consultant Obstetrics & Gynaecology	168	185	1.10	45.9%	54.1%	1.06	1.13	78.4%	78.4%	77.0%	86.5%	13.5%	91.8%	82.0%
Consultant Paediatrics	209	231	1.10	47.2%	52.8%	1.07	1.13	76.2%	76.2%	75.4%	85.3%	14.7%	92.7%	78.7%
Consultant Pathology	267	290	1.08	38.3%	61.7%	1.06	1.10	81.4%	81.4%	81.0%	88.6%	11.4%	92.8%	86.0%
Consultant Psychiatry	23	28	1.22	39.3%	60.7%	1.11	1.31	71.4%	71.4%	58.8%	75.0%	25.0%	100.0%	58.8%
Consultant Radiology	277	293	1.06	60.4%	39.6%	1.04	1.08	85.7%	85.7%	83.6%	92.2%	7.8%	93.8%	89.7%
Consultant Surgery	563	621	1.10	81.0%	19.0%	1.09	1.19	77.5%	77.5%	77.1%	86.5%	13.5%	89.1%	75.4%
Consultants	2,958	3,225	1.09	61.0%	39.0%	1.07	1.12	77.5%	78.5%	76.0%	87.8%	12.2%	90.8%	83.2%
Registrar	1,816	1,989	1.10	60.9%	39.1%	1.07	1.13	2.0%	2.0%	2.2%	96.7%	3.3%	97.8%	95.0%
Senior Registrar	122	128	1.05	68.8%	31.3%	1.05	1.06	17.2%	17.2%	17.5%	97.7%	2.3%	98.9%	95.0%
Specialist Registrar	1,159	1,329	1.15	45.8%	54.2%	1.13	1.16	1.5%	1.5%	1.0%	96.5%	3.5%	98.5%	94.7%
Registrars	3,097	3,446	1.11	55.4%	44.6%	1.09	1.14	2.4%	2.7%	2.0%	96.6%	3.4%	98.1%	94.9%
Interns	1,011	1,101	1.09	44.8%	55.2%	1.07	1.10	4.6%	4.6%	4.6%	100.0%	0.0%	100.0%	100.0%
Senior House Officer	2,224	2,457	1.10	44.0%	56.0%	1.08	1.13	0.9%	0.9%	0.9%	99.3%	0.7%	99.5%	99.1%
SHO/ Interns	3,235	3,558	1.10	44.2%	55.8%	1.08	1.12	2.1%	2.1%	2.0%	99.5%	0.5%	99.7%	99.3%
Dentists	10	13	1.27	38.5%	61.5%	1.35	1.23	61.5%	61.5%	75.0%	53.8%	46.2%	60.0%	50.0%
Other Medical	54	78	1.44	35.9%	64.1%	1.18	1.65	47.4%	47.4%	62.0%	47.4%	52.6%	78.6%	30.0%
Medical/ Dental, other	64	91	1.42	36.3%	63.7%	1.20	1.58	49.5%	24.2%	63.8%	48.4%	51.6%	75.8%	32.8%
Medical & Dental	9,354	10,320	1.10	53.1%	46.9%	1.08	1.13	26.2%	29.8%	22.0%	94.4%	5.6%	95.8%	92.9%
Clinical Nurse/ Midwife Manager	4,424	4,954	1.12	5.7%	94.3%	1.03	1.13	97.1%	97.1%	97.0%	68.9%	31.1%	91.4%	67.5%
Director Nursing/Midwifery, Assistant	451	483	1.07	8.5%	91.5%	1.08	1.07	97.3%	97.3%	97.1%	81.8%	18.2%	90.2%	81.0%
Director of Nursing/Midwifery	83	85	1.03	7.1%	92.9%	1.00	1.03	94.1%	94.1%	96.2%	95.3%	4.7%	83.3%	96.2%
Nurse/ Midwife Manager	4,958	5,522	1.11	5.9%	94.1%	1.04	1.12	97.0%	97.6%	97.0%	70.4%	29.6%	91.1%	69.1%

Advanced Nurse/ Midwife Practitioner	455	476	1.05	10.5%	89.5%	1.01	1.05	99.2%	99.2%	99.3%	88.9%	11.1%	98.0%	87.8%
Clinical Nurse/ Midwife Specialist	1,034	1,209	1.17	2.4%	97.6%	1.01	1.17	98.2%	98.2%	98.2%	61.0%	39.0%	93.1%	60.2%
Nurse/ Midwife Specialist & AN/MP	1,489	1,685	1.13	4.7%	95.3%	1.01	1.14	98.5%	97.5%	98.5%	68.8%	31.2%	96.2%	67.5%
Nursing Bank	21	32	1.55	6.3%	93.8%	1.92	1.53	81.3%	81.3%	80.0%	37.5%	62.5%	50.0%	36.7%
Staff Midwives	1,481	1,794	1.21	0.3%	99.7%	1.04	1.21	92.0%	92.0%	92.1%	46.5%	53.5%	80.0%	46.4%
Staff Nurse [Psychiatric]	27	29	1.07	27.6%	72.4%	1.08	1.07	100.0%	100.0%	100.0%	93.1%	6.9%	87.5%	95.2%
Staff Nurses [General/ Children's]	15,928	18,380	1.15	8.4%	91.6%	1.03	1.17	92.7%	92.7%	92.9%	65.1%	34.9%	90.9%	62.7%
Staff Nurse [Intellectual Disability]	73	74	1.01	100.0%		1.01		100.0%	100.0%		97.3%	2.7%	97.3%	
Staff Nurse/ Staff Midwife	17,530	20,309	1.16	8.1%	91.9%	1.03	1.17	92.7%	90.8%	92.8%	63.5%	36.5%	91.1%	61.1%
Public Health Nurse	2	3	1.79		100.0%		1.79	0.0%		0.0%	0.0%	100.0%		0.0%
Pre-registration Nurse/ Midwife Intern	242	742	3.06	5.1%	94.9%	2.72	3.09	1.6%	1.6%	1.7%	79.9%	20.1%	57.9%	81.1%
Pre-registration Nurse Intern (COVID-19)	52	87	1.66	3.4%	96.6%	2.24	1.65	5.7%	5.7%	6.0%	71.3%	28.7%	100.0%	70.2%
Post-registration Nurse/ Midwife Student	157	162	1.03	4.3%	95.7%	1.00	1.03	13.0%	13.0%	12.3%	98.1%	1.9%	100.0%	98.1%
Nursing/ Midwifery awaiting registration	57	62	1.09	4.8%	95.2%	1.03	1.09	72.6%	72.6%	72.9%	98.4%	1.6%	100.0%	98.3%
Nursing/ Midwifery Student	509	1,053	2.07	4.8%	95.2%	2.02	2.07	7.9%	7.8%	7.9%	83.1%	16.9%	68.6%	83.8%
Nursing Education/Clinical	194	222	1.14	4.1%	95.9%	1.01	1.15	96.8%	96.8%	97.2%	66.7%	33.3%	100.0%	65.3%
Other Nursing/ Midwifery	33	35	1.06	8.6%	91.4%	1.00	1.07	97.1%	97.1%	100.0%	77.1%	22.9%	100.0%	75.0%
Nursing/ Midwifery other	227	257	1.13	4.7%	95.3%	1.01	1.14	96.9%	83.3%	97.6%	68.1%	31.9%	100.0%	66.5%
Nursing & Midwifery	24,714	28,829	1.17	7.3%	92.7%	1.04	1.18	90.8%	90.0%	90.8%	65.9%	34.1%	90.8%	63.9%
Dietitians	435	503	1.16	1.4%	98.6%	1.24	1.15	80.1%	80.1%	80.6%	76.1%	23.9%	85.7%	76.0%
Occupational Therapists	409	449	1.10	8.5%	91.5%	1.06	1.10	74.6%	74.6%	74.2%	82.9%	17.1%	86.8%	82.5%
Orthoptists	20	28	1.38	10.7%	89.3%	1.00	1.44	89.3%	89.3%	88.0%	50.0%	50.0%	100.0%	44.0%
Physiotherapists	1,074	1,217	1.13	20.3%	79.7%	1.06	1.15	78.6%	78.6%	81.3%	76.2%	23.8%	90.3%	72.6%
Podiatrists & Chiropodists	37	45	1.23	13.3%	86.7%	1.31	1.22	82.2%	82.2%	84.6%	62.2%	37.8%	50.0%	64.1%
Speech & Language Therapists	233	274	1.18	1.1%	98.9%	1.14	1.18	75.2%	75.2%	75.6%	70.4%	29.6%	66.7%	70.5%
Therapy Professions	2,208	2,516	1.14	12.1%	87.9%	1.07	1.15	78.0%	68.8%	79.3%	76.2%	23.8%	88.8%	74.5%
Audiology	36	42	1.17	14.3%	85.7%	1.29	1.15	95.2%	95.2%	94.4%	73.8%	26.2%	66.7%	75.0%
Biochemists	75	80	1.06	32.5%	67.5%	1.03	1.08	90.0%	90.0%	94.4%	85.0%	15.0%	96.2%	79.6%
Clinical Engineering	150	155	1.03	78.7%	21.3%	1.02	1.10	91.6%	91.6%	78.8%	95.5%	4.5%	97.5%	87.9%
Clinical Measurement	415	453	1.09	17.7%	82.3%	1.04	1.10	88.1%	88.1%	88.5%	81.7%	18.3%	92.5%	79.4%
Dosimetrists	14	16	1.15	6.3%	93.8%	1.03	1.15	87.5%	87.5%	86.7%	75.0%	25.0%	100.0%	73.3%
Medical Laboratory	1,956	2,147	1.10	19.4%	80.6%	1.04	1.11	90.2%	90.2%	90.8%	81.0%	19.0%	93.8%	78.0%
Perfusionists	21	24	1.12	50.0%	50.0%	1.11	1.13	83.3%	83.3%	83.3%	70.8%	29.2%	75.0%	66.7%
Phlebotomists	185	252	1.36	21.8%	78.2%	1.25	1.40	76.6%	76.6%	77.7%	46.4%	53.6%	61.8%	42.1%

Physicists	171	182	1.06	46.2%	53.8%	1.03	1.09	94.5%	94.5%	92.9%	90.1%	9.9%	98.8%	82.7%
Radiation Therapists	209	229	1.09	12.7%	87.3%	1.03	1.10	75.1%	75.1%	78.0%	80.8%	19.2%	100.0%	78.0%
Radiographers	1,239	1,367	1.10	19.5%	80.5%	1.03	1.12	91.8%	91.8%	91.8%	79.4%	20.6%	92.9%	76.1%
Health Science/ Diagnostics	4,472	4,947	1.11	22.2%	77.8%	1.04	1.13	89.3%	88.4%	89.5%	79.6%	20.4%	92.5%	75.9%
Social Care	4	6	1.43	33.3%	66.7%	2.00	1.25	83.3%	100.0%	75.0%	16.7%	83.3%	0.0%	25.0%
Social Workers	383	424	1.11	11.1%	88.9%	1.05	1.11	84.7%	84.7%	84.4%	80.4%	19.6%	95.7%	78.5%
Social Workers	383	424	1.11	11.1%	88.9%	1.05	1.11	84.7%	87.2%	84.4%	80.4%	19.6%	95.7%	78.5%
Psychologists	112	141	1.25	11.3%	88.7%	1.27	1.25	84.4%	87.5%	84.0%	51.8%	48.2%	50.0%	52.0%
Pharmacy	1,011	1,122	1.11	11.1%	88.9%	1.03	1.12	80.3%	81.6%	80.1%	78.8%	21.2%	96.8%	76.5%
Counsellor Therapists	5	8	1.77		100.0%		1.77	87.5%	87.5%	87.5%	25.0%	75.0%		25.0%
Dental Hygienists	1	2	1.83		100.0%		1.83	100.0%	100.0%	100.0%	50.0%	50.0%		50.0%
HSCP Trainees/ Students	81	95	1.17	26.3%	73.7%	1.40	1.10	3.2%	3.2%	4.3%	81.1%	18.9%	68.0%	85.7%
Other Health & Social Care	65	71	1.10	33.8%	66.2%	1.03	1.14	80.3%	80.3%	76.6%	77.5%	22.5%	87.5%	72.3%
Play Therapists/ Specialists	26	35	1.33		100.0%		1.33	91.4%	91.4%	91.4%	51.4%	48.6%		51.4%
H&SC, Other	178	211	1.19	23.2%	76.8%	1.19	1.19	47.9%	42.9%	49.4%	72.5%	27.5%	77.6%	71.0%
Health & Social Care	8,369	9,367	1.12	17.5%	82.5%	1.05	1.13	84.0%	82.9%	84.2%	78.0%	22.0%	91.3%	75.2%
Executive Management	100	103	1.03	50.5%	49.5%	1.03	1.03	91.3%	91.3%	90.2%	97.1%	2.9%	98.1%	96.1%
Senior Management (VIII & GM)	476	491	1.03	33.4%	66.6%	1.01	1.04	94.3%	94.3%	94.8%	98.0%	2.0%	98.2%	97.9%
Management (VIII & above)	576	594	1.03	36.4%	63.6%	1.02	1.04	93.8%	93.1%	94.2%	97.8%	2.2%	98.1%	97.6%
Middle Management (V-VII)	2,668	2,866	1.07	22.3%	77.7%	1.02	1.09	93.9%	93.9%	94.6%	82.2%	17.8%	98.0%	77.6%
Other Administrative	12	14	1.12	28.6%	71.4%	1.00	1.18	78.6%	78.6%	80.0%	78.6%	21.4%	100.0%	70.0%
Administrative/ Supervisory (V to VII)	2,681	2,880	1.07	22.4%	77.6%	1.02	1.09	93.8%	91.3%	94.5%	82.2%	17.8%	98.0%	77.6%
General Administrative (III & IV)	6,717	7,668	1.14	12.4%	87.6%	1.04	1.16	81.3%	81.3%	81.9%	69.5%	30.5%	93.1%	66.1%
Clerical (III & IV)	6,717	7,668	1.14	12.4%	87.6%	1.04	1.16	81.3%	76.9%	81.9%	69.5%	30.5%	93.1%	66.1%
Management & Administrative	9,974	11,142	1.12	16.3%	83.7%	1.03	1.14	85.2%	83.9%	85.4%	74.3%	25.7%	95.4%	70.2%
Catering	488	525	1.08	30.5%	69.5%	1.02	1.10	91.0%	91.0%	93.2%	77.9%	22.1%	96.9%	69.6%
Household Services	3,122	3,645	1.17	22.0%	78.0%	1.08	1.19	80.4%	80.4%	83.7%	61.4%	38.6%	81.6%	55.7%
Other Labs & Associated	449	487	1.08	30.2%	69.8%	1.04	1.11	71.3%	71.3%	72.4%	86.4%	13.6%	95.2%	82.6%
Other Support	762	840	1.10	44.3%	55.7%	1.03	1.17	91.7%	91.7%	92.7%	75.2%	24.8%	95.7%	59.0%
Portering	1,346	1,420	1.06	93.2%	6.8%	1.05	1.12	80.2%	80.2%	80.2%	90.7%	9.3%	91.8%	75.0%
Support	6,166	6,917	1.12	40.6%	59.4%	1.05	1.17	81.9%	78.0%	84.6%	72.1%	27.9%	89.9%	60.0%
Maintenance	515	524	1.02	98.1%	1.9%	1.02	1.07	94.5%	94.5%	100.0%	97.7%	2.3%	98.2%	70.0%
Technical Services	25	25	1.00	100.0%		1.00		84.0%	84.0%		100.0%	0.0%	100.0%	
Maintenance/ Technical	540	549	1.02	98.2%	1.8%	1.02	1.07	94.0%	93.9%	100.0%	97.8%	2.2%	98.3%	70.0%

General Support	6,706	7,466	1.11	44.8%	55.2%	1.05	1.17	82.8%	80.6%	84.6%	74.0%	26.0%	91.2%	60.0%
HCA, Nurse's Aide, etc.	5,370	6,021	1.12	30.4%	69.6%	1.06	1.15	81.5%	81.5%	80.5%	72.0%	28.0%	86.6%	65.6%
Health & Social Care Assistants	152	173	1.14	24.3%	75.7%	1.05	1.17	82.1%	82.1%	83.2%	69.4%	30.6%	90.5%	62.6%
Health Care Assistants	5,522	6,194	1.12	30.3%	69.7%	1.06	1.15	81.5%	83.5%	80.6%	71.9%	28.1%	86.7%	65.5%
Ambulance Control	178	181	1.02	48.6%	51.4%	1.01	1.02	97.8%	97.8%	96.8%	98.3%	1.7%	100.0%	96.8%
Ambulance Education	148	150	1.01	65.3%	34.7%	1.01	1.03	0.0%	0.0%	0.0%	100.0%	0.0%	100.0%	100.0%
Ambulance Officers	87	88	1.01	85.2%	14.8%	1.02	1.00	98.9%	98.9%	100.0%	98.9%	1.1%	98.7%	100.0%
Pre-Hospital Care (Ambulance)	1,456	1,491	1.02	77.0%	23.0%	1.02	1.05	98.5%	98.5%	99.7%	99.7%	0.3%	99.9%	99.1%
Ambulance Staff	1,868	1,910	1.02	73.8%	26.2%	1.02	1.04	90.7%	91.3%	88.8%	99.6%	0.4%	99.9%	98.8%
Care, other	193	237	1.22	51.5%	48.5%	1.21	1.24	82.3%	72.1%	93.0%	67.5%	32.5%	76.2%	58.3%
Patient & Client Care	7,584	8,341	1.10	40.8%	59.2%	1.05	1.14	83.6%	86.3%	81.7%	78.1%	21.9%	91.7%	68.7%

Employment by WTE, Headcount, Gender, Full-Time /Part-Time etc.: Jan 2021

Hospital Group	WTE	Headcount	WTE: no.	% Male	% female	Male WTE: no.	Female WTE: no.	% Total Perm	% Male Perm	% Female Perm	% Total Full Time	% Total Part Time	% Male FT	% Female FT
Overall	66,701	75,465	1.13	23.6%	76.4%	1.06	1.16	78.7%	67.7%	82.1%	74.7%	25.3%	93.1%	69.0%
National Ambulance Service	1,982	2,033	1.03	71.5%	28.5%	1.02	1.05	90.9%	90.9%	89.6%	99.0%	1.0%	99.8%	97.1%
CHI at Connolly	128	156	1.22	10.9%	89.1%	1.20	1.22	89.7%	89.7%	92.1%	70.5%	29.5%	88.2%	88.2%
CHI at Crumlin	1,988	2,402	1.21	15.9%	84.1%	1.16	1.22	80.8%	80.8%	83.2%	65.9%	34.1%	92.7%	92.7%
CHI at Tallaght	253	304	1.20	14.5%	85.5%	1.19	1.21	70.7%	70.7%	76.9%	74.0%	26.0%	95.5%	95.5%
CHI at Temple Street	1,247	1,505	1.21	18.3%	81.7%	1.17	1.22	77.6%	77.6%	80.6%	75.9%	24.1%	96.0%	96.0%
CHI Corporate	14	17	1.19	23.5%	76.5%	1.29	1.16	94.1%	94.1%	92.3%	100.0%	0.0%	100.0%	100.0%
CHI Programme	68	86	1.26	26.7%	73.3%	1.19	1.29	38.4%	38.4%	36.5%	96.5%	3.5%	95.7%	95.7%
Children's Health Ireland	3,698	4,470	1.21	16.7%	83.3%	1.17	1.22	78.6%	78.6%	81.4%	70.7%	29.3%	94.1%	66.0%
Coombe Women & Infants University	922	1,039	1.13	13.2%	86.8%	1.04	1.14	84.3%	84.3%	86.6%	66.5%	33.5%	87.6%	87.6%
MRH Portlaoise	775	870	1.12	19.9%	80.1%	1.02	1.15	78.9%	78.9%	83.5%	71.1%	28.9%	98.8%	98.8%
MRH Tullamore	1,139	1,266	1.11	22.0%	78.0%	1.04	1.13	82.9%	82.9%	86.6%	78.0%	22.0%	96.4%	96.4%
Naas General	781	899	1.15	20.2%	79.8%	1.09	1.17	86.0%	86.0%	89.4%	75.1%	24.9%	94.0%	94.0%
St. James's	4,264	4,861	1.14	24.9%	75.1%	1.08	1.16	83.5%	83.5%	85.9%	80.7%	19.3%	93.7%	93.7%
St. Luke's Rathgar	539	571	1.06	25.7%	74.3%	1.01	1.08	79.5%	79.5%	80.9%	84.8%	15.2%	97.3%	97.3%
Tallaght University	2,812	3,227	1.15	25.8%	74.2%	1.09	1.17	79.5%	79.5%	83.5%	75.6%	24.4%	88.7%	88.7%
Hospital Group HQ	42	44	1.05	18.2%	81.8%	1.19	1.03	86.4%	86.4%	86.1%	93.2%	6.8%	87.5%	87.5%
Dublin Midlands Hospital Group	11,273	12,777	1.13	23.2%	76.8%	1.07	1.15	82.2%	82.2%	85.3%	77.2%	22.8%	92.8%	72.4%
Cappagh National Orthopaedic	443	499	1.13	20.6%	79.4%	1.02	1.16	87.6%	87.6%	90.7%	71.9%	28.1%	95.1%	95.1%
Mater Misericordiae University	3,435	3,795	1.10	26.2%	73.8%	1.08	1.11	77.6%	77.6%	81.8%	80.2%	19.8%	86.7%	86.7%
MRH Mullingar	1,009	1,106	1.10	19.7%	80.3%	1.02	1.12	81.3%	81.3%	86.0%	75.9%	24.1%	97.2%	97.2%
National Maternity	939	1,057	1.13	16.7%	83.3%	1.09	1.13	77.1%	77.1%	79.7%	70.5%	29.5%	82.5%	82.5%
Our Lady's Navan	584	672	1.15	25.4%	74.6%	1.05	1.19	80.5%	80.5%	84.6%	65.8%	34.2%	88.3%	88.3%
St. Columcille's	456	516	1.13	24.2%	75.8%	1.03	1.17	78.1%	78.1%	80.3%	79.3%	20.7%	93.6%	93.6%
St Luke's General Kilkenny	1,181	1,351	1.14	22.6%	77.4%	1.03	1.18	73.0%	73.0%	82.3%	66.4%	33.6%	93.8%	93.8%
St. Michael's	415	472	1.14	22.7%	77.3%	1.07	1.16	85.8%	85.8%	86.3%	75.0%	25.0%	84.1%	84.1%
St. Vincent's University	3,113	3,390	1.09	27.5%	72.5%	1.03	1.12	87.5%	87.5%	90.1%	90.9%	9.1%	98.0%	98.0%
Wexford General	1,065	1,198	1.12	22.8%	77.2%	1.03	1.16	78.5%	78.5%	85.7%	69.2%	30.8%	94.5%	94.5%
Royal Victoria Eye & Ear	317	365	1.15	24.9%	75.1%	1.06	1.19	82.5%	82.5%	85.8%	65.5%	34.5%	86.8%	86.8%
IEHG Bank	10	15	1.51	6.7%	93.3%	7.69	1.43	100.0%	100.0%	100.0%	6.7%	93.3%	0.0%	0.0%
Hospital Group HQ	34	35	1.03	22.9%	77.1%	1.04	1.03	85.7%	85.7%	85.2%	94.3%	5.7%	100.0%	100.0%

Ireland East Hospital Group	12,999	14,471	1.11	24.2%	75.8%	1.05	1.14	80.7%	80.7%	84.9%	77.9%	22.1%	91.9%	73.4%
Beaumont	4,077	4,458	1.09	27.1%	72.9%	1.04	1.11	84.1%	84.1%	87.6%	78.0%	22.0%	90.4%	90.4%
Cavan General	1,066	1,212	1.14	17.7%	82.3%	1.04	1.16	89.4%	89.4%	93.6%	68.8%	31.2%	96.3%	96.3%
Connolly	1,462	1,630	1.12	25.0%	75.0%	1.05	1.14	80.5%	80.5%	82.5%	83.4%	16.6%	95.8%	95.8%
Louth County	294	330	1.12	18.8%	81.2%	1.03	1.15	97.6%	97.6%	97.8%	67.6%	32.4%	91.9%	91.9%
Monaghan	107	124	1.16	11.3%	88.7%	1.04	1.18	97.6%	97.6%	99.1%	58.1%	41.9%	85.7%	85.7%
Our Lady of Lourdes	2,312	2,583	1.12	21.8%	78.2%	1.03	1.14	84.2%	84.2%	87.8%	81.5%	18.5%	96.3%	96.3%
Rotunda	929	1,084	1.17	14.5%	85.5%	1.10	1.18	80.0%	80.0%	82.5%	74.7%	25.3%	96.2%	96.2%
Hospital Group HQ	44	45	1.03	20.0%	80.0%	1.00	1.04	93.3%	93.3%	97.2%	97.8%	2.2%	100.0%	100.0%
RCSI Hospitals Group	10,290	11,466	1.11	23.0%	77.0%	1.04	1.14	84.4%	84.4%	87.6%	77.8%	22.2%	93.4%	73.2%
Galway University	3,833	4,331	1.13	21.6%	78.4%	1.06	1.15	69.7%	69.7%	73.0%	70.2%	29.8%	88.9%	88.9%
Letterkenny University	1,777	2,107	1.19	22.8%	77.2%	1.10	1.21	75.6%	75.6%	80.1%	64.2%	35.8%	88.5%	88.5%
Mayo University	1,213	1,390	1.15	20.2%	79.8%	1.04	1.17	71.6%	71.6%	75.7%	65.8%	34.2%	94.0%	94.0%
Portiuncula University	844	955	1.13	21.5%	78.5%	1.05	1.16	71.2%	71.2%	78.7%	64.6%	35.4%	91.7%	91.7%
Roscommon University	369	413	1.12	19.6%	80.4%	1.07	1.13	74.6%	74.6%	79.8%	67.1%	32.9%	95.1%	95.1%
Sligo University	1,779	2,088	1.17	22.0%	78.0%	1.08	1.20	77.6%	77.6%	81.3%	70.3%	29.7%	92.6%	92.6%
Hospital Group HQ	93	100	1.07	21.0%	79.0%	1.06	1.07	88.0%	88.0%	92.4%	90.0%	10.0%	95.2%	95.2%
Saolta University Hospital Care	9,908	11,384	1.15	21.6%	78.4%	1.07	1.17	72.9%	72.9%	77.1%	68.1%	31.9%	90.6%	62.0%
Bantry General	283	328	1.16	14.9%	85.1%	1.12	1.16	81.4%	81.4%	85.7%	62.2%	37.8%	87.8%	87.8%
Cork University	4,352	4,935	1.13	22.6%	77.4%	1.05	1.16	66.4%	66.4%	70.7%	74.2%	25.8%	96.1%	96.1%
Lourdes Orthopaedic Kilcreene	70	86	1.22	12.8%	87.2%	1.05	1.25	91.9%	91.9%	93.3%	45.3%	54.7%	100.0%	100.0%
Mallow General	247	290	1.17	14.5%	85.5%	1.04	1.20	71.7%	71.7%	75.0%	66.2%	33.8%	95.2%	95.2%
Mercy University	1,256	1,447	1.15	22.1%	77.9%	1.03	1.19	70.5%	70.5%	74.4%	61.7%	38.3%	90.9%	90.9%
South Infirmary Victoria University	805	991	1.23	20.6%	79.4%	1.09	1.27	75.3%	75.3%	80.1%	46.8%	53.2%	73.5%	73.5%
South Tipperary General	974	1,114	1.14	19.1%	80.9%	1.04	1.17	77.1%	77.1%	81.9%	66.2%	33.8%	92.5%	92.5%
UH Kerry	1,225	1,412	1.15	19.5%	80.5%	1.04	1.18	64.4%	64.4%	67.8%	70.5%	29.5%	94.2%	94.2%
UH Waterford	2,102	2,372	1.13	23.4%	76.6%	1.03	1.16	79.7%	79.7%	85.3%	71.0%	29.0%	93.9%	93.9%
Hospital Group HQ	46	56	1.22	16.1%	83.9%	1.05	1.26	64.3%	64.3%	61.7%	73.2%	26.8%	100.0%	100.0%
South/South West Hospital Group	11,361	13,031	1.15	21.5%	78.5%	1.05	1.18	71.3%	71.3%	75.7%	68.4%	31.6%	92.8%	61.7%
Croom Orthopaedic	176	206	1.17	24.3%	75.7%	1.11	1.19	87.9%	87.9%	94.2%	66.5%	33.5%	88.0%	88.0%
Ennis	225	260	1.15	14.6%	85.4%	1.08	1.17	88.1%	88.1%	89.6%	65.4%	34.6%	84.2%	84.2%
Nenagh	258	291	1.13	15.1%	84.9%	1.01	1.15	87.6%	87.6%	90.7%	66.7%	33.3%	100.0%	100.0%
St. John's Limerick	319	363	1.14	14.9%	85.1%	1.01	1.16	84.6%	84.6%	87.1%	66.1%	33.9%	98.1%	98.1%
UH Limerick	3,140	3,511	1.12	23.5%	76.5%	1.04	1.15	76.1%	76.1%	79.5%	79.8%	20.2%	95.8%	95.8%
UMH Limerick	405	467	1.15	7.1%	92.9%	1.09	1.16	82.0%	82.0%	83.4%	74.5%	25.5%	87.9%	87.9%
Hospital Group HQ	9	9	1.02	22.2%	77.8%	1.00	1.03	100.0%	100.0%	100.0%	100.0%	0.0%	100.0%	100.0%
University of Limerick Hospital Group	4,533	5,107	1.13	20.5%	79.5%	1.04	1.15	79.0%	79.0%	82.3%	76.4%	23.6%	95.0%	71.6%

Other	102	105	1.03	22.9%	77.1%	1.01	1.04	96.2%	96.2%	97.5%	96.2%	3.8%	100.0%	100.0%
National Rehabilitation	556	621	1.12	24.3%	75.7%	1.07	1.14	69.6%	69.6%	69.4%	75.4%	24.6%	88.1%	88.1%
other Acute Services	657	726	1.10	24.1%	75.9%	1.06	1.12	73.4%	73.4%	73.5%	78.4%	21.6%	89.7%	74.8%

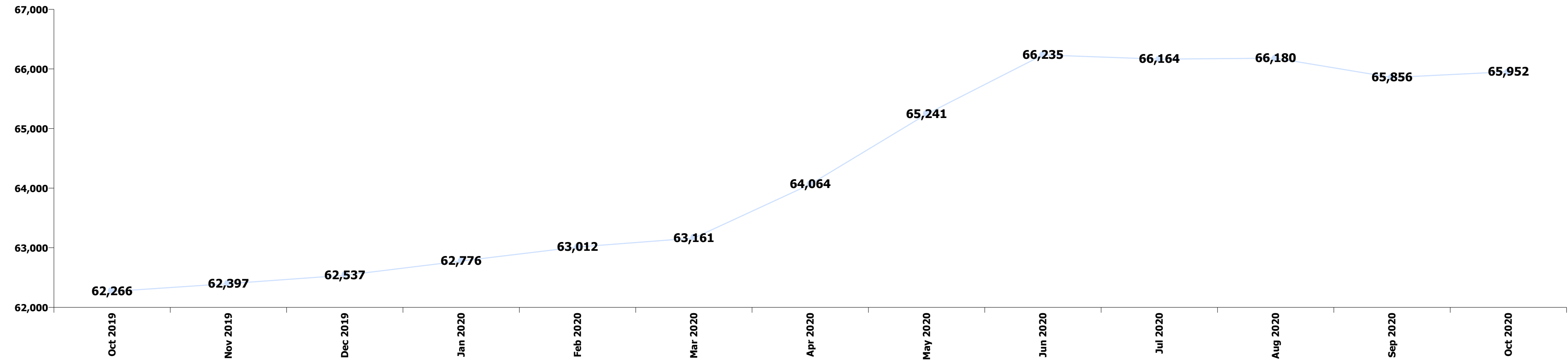
Summary Staff Movement: January 2021

Month-on-month Summary

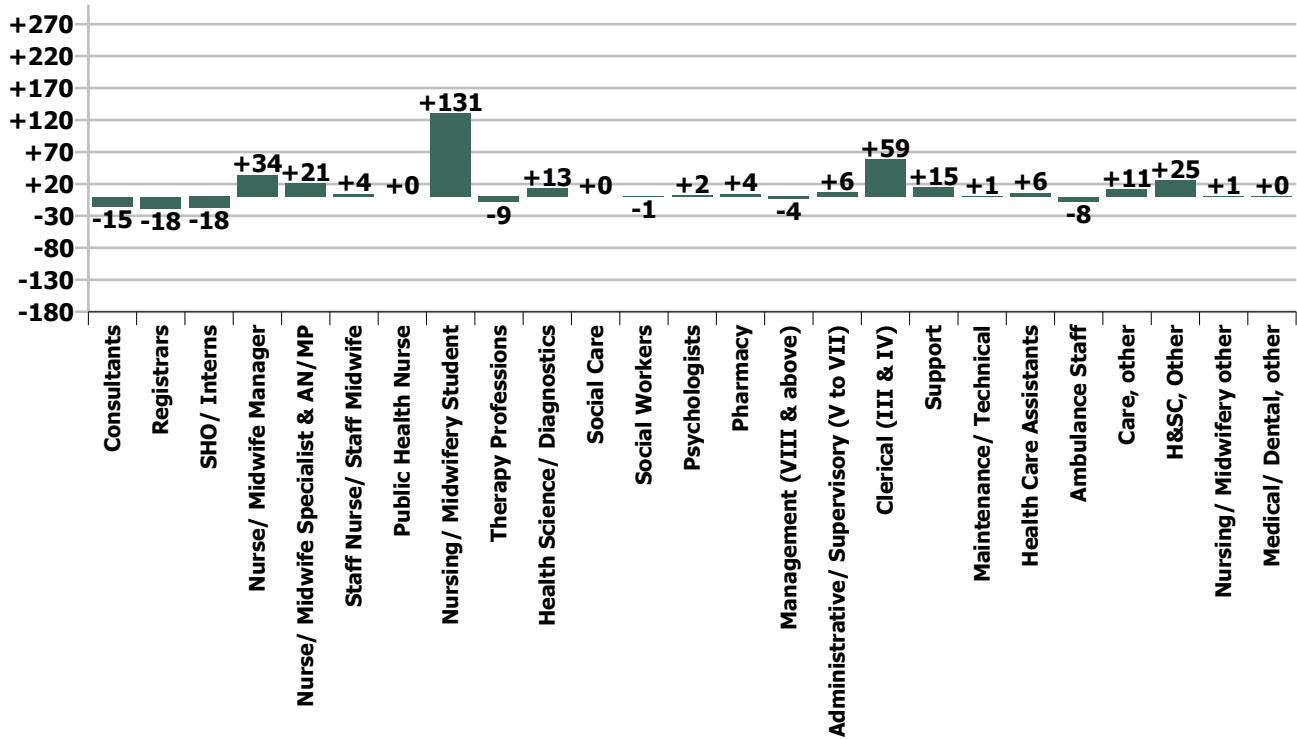
WTE change since Dec 20	% change since Dec 20	overall	Consultants	Registrars	SHO/ Interns	Medical/ Dental, other	Medical & Dental	Nurse/ Midwife Manager	Nurse/ Midwife Specialist & AN/MP	Staff Nurse/ Staff Midwife	Public Health Nurse	Nursing/ Midwifery Student	Nursing/ Midwifery other	Nursing & Midwifery	Therapy Professions	Health Science/ Diagnostics	Social Care	Social Workers	Psychologists	Pharmacy	H&SC, Other	Health & Social Care Professionals	Management (VIII & above)	Administrativ e/ Supervisory (V to VII)	Clerical (III & IV)	Management & Administrativ e	General Support	Health Care Assistants	Ambulance Staff	Care, other	Patient & Client Care
Overall	+0.4%	+262	-15	-18	-18	+0	-51	+34	+21	+4	+0	+131	+1	+190	-9	+13	+0	-1	+2	+4	+25	+36	-4	+6	+59	+62	+15	+6	-8	+11	+10
National Ambulance Service	-0.4%	-8																					-2	+2	-1	+0			-8	-0	-8
Children's Health Ireland	-1.7%	-64	-1	-23	-14		-38	+3	-1	-10		-6		-13	-2	+1		+1	+0	+1	-1	+1	-1	-5	+1	-5	+2	-10		-1	-11
Dublin Midlands Hospital Group	-0.1%	-14	+1	-2	+0	-0	-1	-2	-9	-8		+6	+0	-12	-4	-7		-1	-1	+2	+2	-9	-0	-5	+9	+4	+2	+3		-0	+3
Ireland East Hospital Group	+0.6%	+75	-17	+5	+41	+0	+29	+1	+13	+4		+39	+1	+58	-3	+1		-1	+0	+1	+5	+4	+4	+8	+3	+15	-10	-16		-4	-20
RCSI Hospitals Group	+0.9%	+92	+4	-3	-17	-0	-17	+18	+3	+9		+37	-1	+66	-2	+7		-2	-1	-1	+1	+3	-1	+4	+16	+19	+1	+20		-0	+19
Saoita University Hospital Care	+0.8%	+79	+3	-3	-7	-0	-7	+7	+4	+13	-0	+19	+0	+43	+4	+3	+0	+1	+1	-1	+13	+22	-4	-3	+15	+7	-5	+1		+17	+18
South/South West Hospital Group	+0.7%	+73	-2	+5	-14	+1	-10	+4	+7	+5	+0	+18	+0	+35	+0	+6		+1		+4	+0	+11	+2	-1	+13	+14	+19	+5		-0	+4
University of Limerick Hospital Group	+0.6%	+27	-1	+0	-6		-7	+1	+3	-9		+19	-0	+13	-2	+2		-0		+0	+4	+5	-2	+5	+6	+9	+6	+1		-0	+1
other Acute Services	+0.3%	+2	-2	+3	-1			+2		-1				+1	+0			-0	+2	-1	-0	+1	+1	+0	-3	-2	-0	+3			+3
Acute Services	+0.4%	+262	-15	-18	-18	+0	-51	+34	+21	+4	+0	+131	+1	+190	-9	+13	+0	-1	+2	+4	+25	+36	-4	+6	+59	+62	+15	+6	-8	+11	+10
			-0.5%	-0.6%	-0.5%	+0.5%	-0.5%	+0.7%	+1.4%	+0.0%	+3.1%	+34.6%	+0.3%	+0.8%	-0.4%	+0.3%	+0.5%	-0.2%	+2.1%	+0.4%	+16.7%	+0.4%	-0.6%	+0.2%	+0.9%	+0.6%	+0.2%	+0.1%	-0.4%	+6.3%	+0.1%

Year-on-year Summary

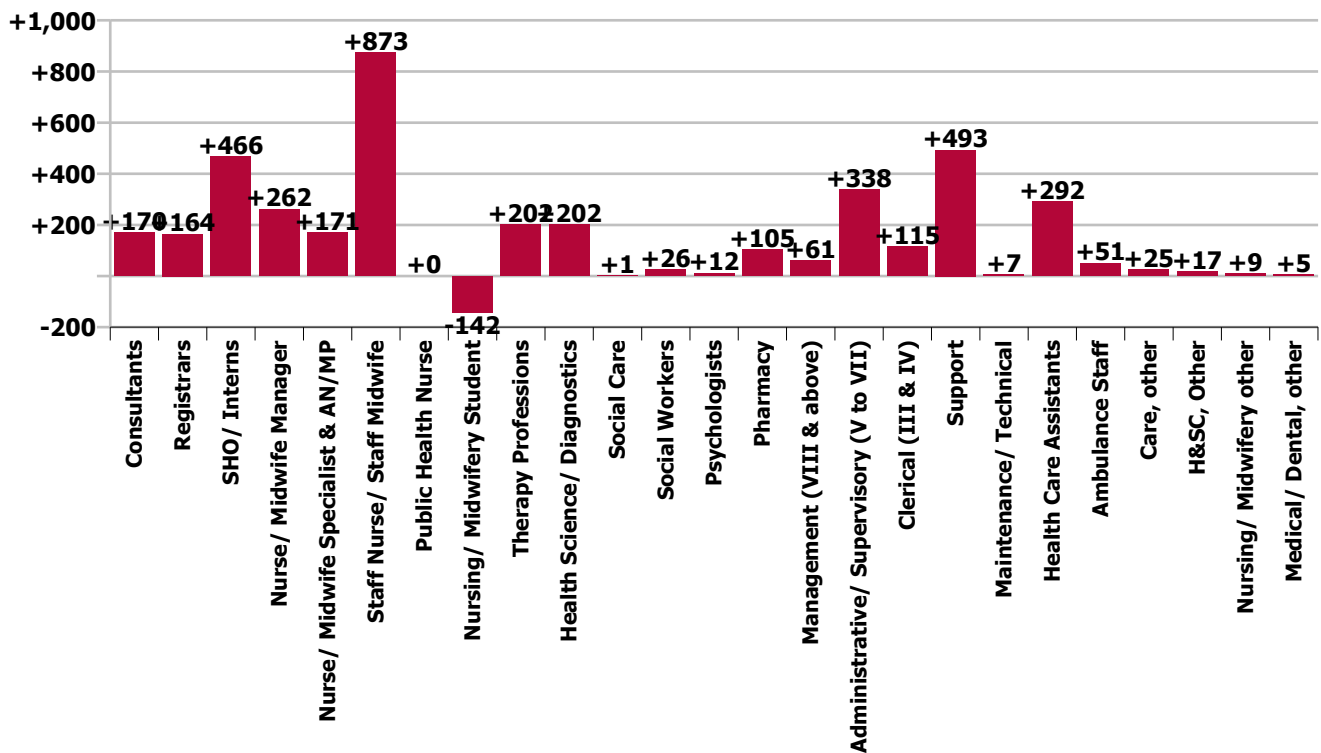
WTE change since Jan 20	% change since Jan 20	overall	Consultants	Registrars	SHO/ Interns	Medical/ Dental, other	Medical & Dental	Nurse/ Midwife Manager	Nurse/ Midwife Specialist & AN/MP	Staff Nurse/ Staff Midwife	Public Health Nurse	Nursing/ Midwifery Student	Nursing/ Midwifery other	Nursing & Midwifery	Therapy Professions	Health Science/ Diagnostics	Social Care	Social Workers	Psychologists	Pharmacy	H&SC, Other	Health & Social Care Professionals	Management (VIII & above)	Administrativ e/ Supervisory (V to VII)	Clerical (III & IV)	Management & Administrativ e	General Support	Health Care Assistants	Ambulance Staff	Care, other	Patient & Client Care
Overall	+6.3%	+3,925	+170	+164	+466	+5	+806	+262	+171	+873	+0	-142	+9	+1,173	+202	+202	+1	+26	+12	+105	+17	+564	+61	+338	+115	+514	+500	+292	+51	+25	+368
National Ambulance Service	+2.8%	+54																					+0	+5	-0	+5	+0		+51	-1	+49
Children's Health Ireland	+2.8%	+101	+12	-11	-11		-9	+5	+16	+41		-18	-0	+44	+4	+6		+5	+4	+7	-1	+25	+3	+23	-14	+12	+21	+9		-1	+8
Dublin Midlands Hospital Group	+3.9%	+426	+31	+28	+43	+0	+102	+33	+20	+110		-13	+5	+155	+20	+10		+6	+0	+22	+12	+71	+10	+26	+2	+37	+8	+53		-1	+52
Ireland East Hospital Group	+7.3%	+886	+31	+53	+146	+2	+232	+92	+41	+82		+17	-0	+232	+57	+55		+5	+1	+8	+6	+131	+19	+88	+19	+126	-10	+176		-0	+176
RCSI Hospitals Group	+5.7%	+555	+35	+25	+50	+2	+113	+68	+23	+159		-58	-1	+191	+27	+29		-2	-1	+18	-2	+70	+12	+68	+12	+92	+31	+60		-3	+58
Saoita University Hospital Care	+7.1%	+654	+15	+21	+115	+2	+153	+36	+19	+126	-0	+8	+6	+195	+16	+31	+1	+4	+1	+21	+4	+78	+1	+41	+43	+86	+55	+54		+33	+87
South/South West Hospital Group	+7.3%	+770	+30	+32	+62	-1	+123	+6	+43	+249	+0	-65	+1	+234	+51	+62		+4		+21	-2	+136	+8	+53	+16	+76	+121	+79		-0	+79
University of Limerick Hospital Group	+9.1%	+376	+17	+10	+60		+87	+18	+8	+82		-13	+0	+96	+10	+6		+0	+1	+6	+1	+23	-1	+27	+32	+58	+268	-155		-2	-157
other Acute Services	+18.5%	+103	-2	+6			+4	+4		+23			-1	+26	+17	+2		+4	+5	+2	-0	+29	+8	+8	+6	+21	+7	+16		-1	+16
Acute Services	+6.3%	+3,925	+170	+164	+466	+5	+806	+262	+171	+873	+0	-142	+9	+1,173	+202	+202	+1	+26	+12	+105	+17	+564	+61	+338	+115	+514	+500	+292	+51	+25	+368
			+6.1%	+5.6%	+16.8%	+8.4%	+9.4%	+5.6%	+13.0%	+5.2%	+14.3%	-21.8%	+4.2%	+5.0%	+10.1%	+4.7%	+25.0%	+7.3%	+11.4%	+11.6%	+10.7%	+7.2%	+11.9%	+14.4%	+1.7%	+5.4%	+8.1%	+5.6%	+2.8%	+15.2%	+5.1%



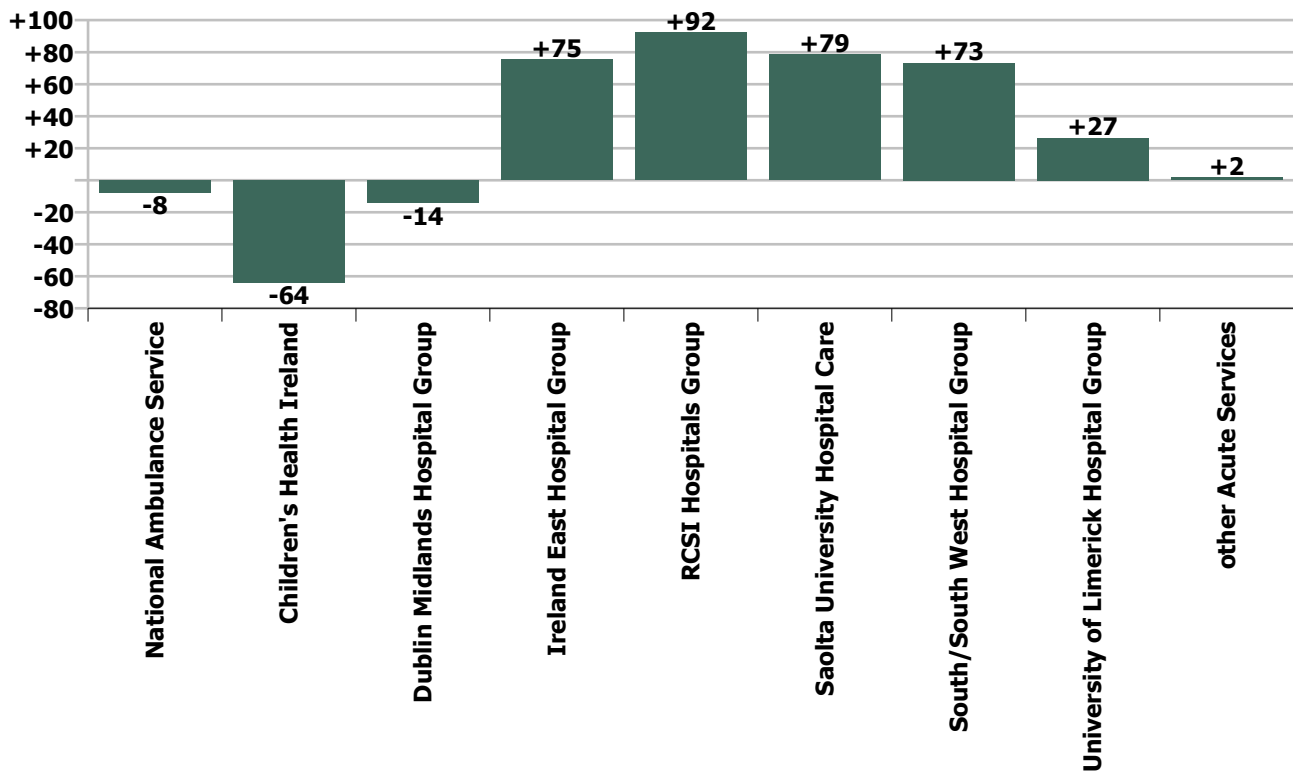
Staff Group change since: Dec 2020



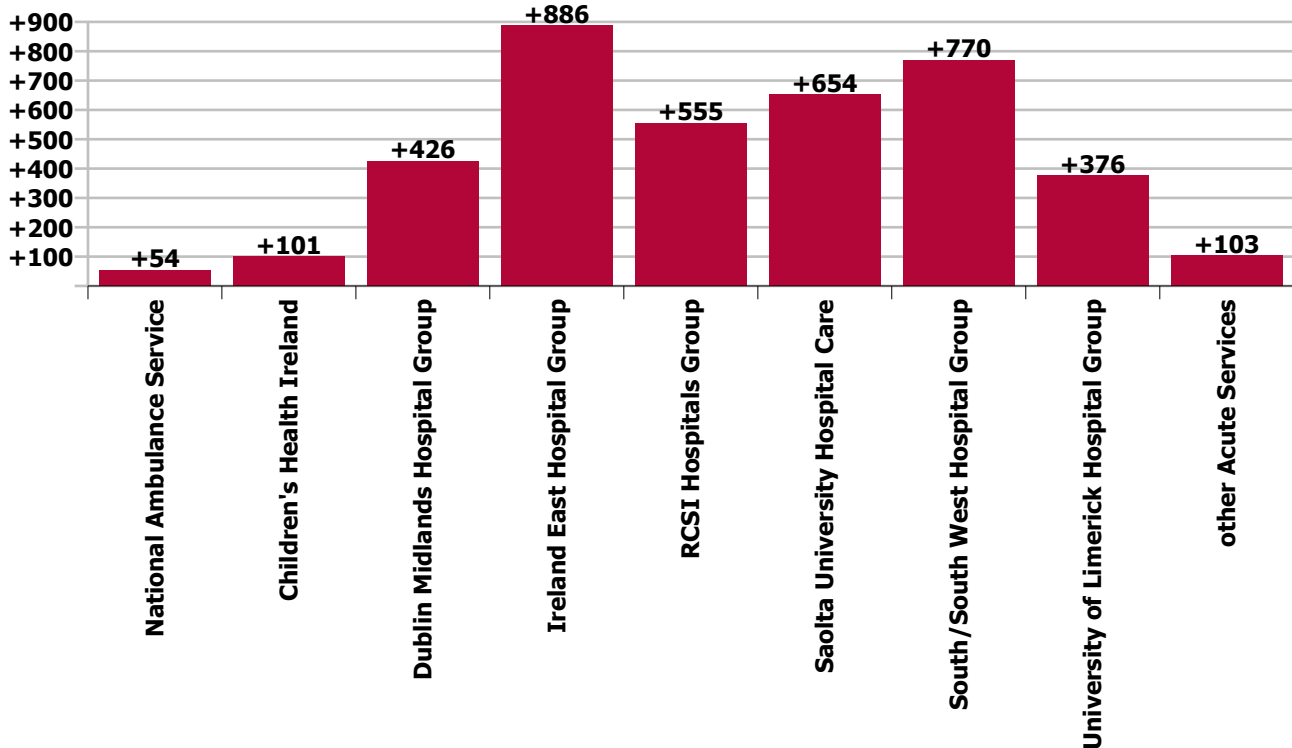
Staff Group change since: Jan 2020



Hospital Group & CHO change since: Dec 2020



Hospital Group & CHO change since: Jan 2020



Longitudinal Employment Levels by Grade Group - Oct 2013 to Jan 2021

Jan 2021 (Dec 2018 figure: 60,906)	WTE Jan 2021	WTE change since Oct 13	WTE change since Dec 16	WTE change since Dec 17	WTE change since Dec 18	WTE change since Dec 19	WTE change since Dec 20	% change since Oct 13	% change since Dec 16	% change since Dec 17	% change since Dec 18	% change since Dec 19	% change since Dec 20
Overall	66,701	+16,848	+10,319	+8,080	+5,795	+4,164	+262	+33.8%	+18.3%	+13.8%	+9.5%	+6.7%	+0.4%
Consultant Anaesthesia	427	+81	+58	+42	+37	+24	-0	+23.4%	+15.6%	+10.8%	+9.5%	+5.9%	-16.0%
Consultant Dentistry	6	+2	+2	+2	+0	+0	+0	+37.3%	+37.9%	+34.7%	+4.6%	+3.1%	+12.0%
Consultant Emergency Medicine	119	+43	+27	+21	+22	+11	-2	+57.3%	+29.6%	+21.7%	+22.5%	+10.4%	-203.0%
Consultant Intensive Care Medicine	18	+15	+15	+12	+3	+2	+0	+503.0%	+503.0%	+201.5%	+21.7%	+13.1%	+13.0%
Consultant Medicine	880	+315	+189	+157	+114	+76	-6	+55.8%	+27.4%	+21.8%	+14.9%	+9.5%	-553.0%
Consultant Obstetrics & Gynaecology	168	+47	+29	+18	+12	+7	-2	+38.2%	+20.7%	+11.9%	+7.4%	+4.5%	-202.0%
Consultant, Other						-1		-100.0%	-100.0%	-100.0%	-100.0%	-100.0%	
Consultant Paediatrics	209	+80	+57	+43	+32	+16	-2	+61.9%	+37.7%	+26.1%	+18.0%	+8.5%	-246.0%
Consultant Pathology	267	+64	+45	+36	+25	+15	+2	+31.5%	+20.1%	+15.8%	+10.3%	+5.8%	+184.0%
Consultant Psychiatry	23	+0	+6	+4	+3	-1	-0	+0.2%	+36.6%	+22.7%	+17.0%	-3.1%	-36.0%
Consultant Radiology	277	+52	+28	+26	+11	+2	-3	+23.0%	+11.4%	+10.3%	+3.9%	+0.7%	-325.0%
Consultant Surgery	563	+130	+79	+67	+44	+24	-2	+30.1%	+16.3%	+13.5%	+8.4%	+4.4%	-168.0%
Consultants	2,958	+829	+535	+429	+303	+176	-15	+38.9%	+22.1%	+16.9%	+11.4%	+6.3%	-0.5%
Registrar	1,816	+606	+312	+243	+162	+112	+6	+50.1%	+20.7%	+15.4%	+9.8%	+6.6%	+594.0%
Senior Registrar	122	+95	+9	+20	+14	+14	+1	+352.9%	+8.2%	+19.7%	+13.2%	+12.9%	+141.0%
Specialist Registrar	1,159	+406	+248	+158	+132	+29	-26	+53.9%	+27.2%	+15.7%	+12.9%	+2.6%	-2577.0%
Registrars	3,097	+1,107	+569	+420	+308	+155	-18	+55.6%	+22.5%	+15.7%	+11.1%	+5.3%	-0.6%
Interns	1,011	+400	+310	+301	+289	+293	+44	+65.5%	+44.3%	+42.5%	+40.0%	+40.7%	+4438.0%
Senior House Officer	2,224	+719	+310	+249	+204	+147	-62	+47.7%	+16.2%	+12.6%	+10.1%	+7.1%	-6201.0%
SHO/ Interns	3,235	+1,119	+620	+550	+492	+440	-18	+52.9%	+23.7%	+20.5%	+17.9%	+15.7%	-0.5%
Dentists	10	-3	-3	-0	+0	+1	-1	-25.3%	-24.1%	-2.0%	+2.2%	+6.2%	-82.0%
Other Medical	54	+26	+11	+6	+3	+4	+1	+91.8%	+25.9%	+12.9%	+5.9%	+8.2%	+112.0%
Medical/ Dental, other	64	+22	+8	+6	+3	+5	+0	+53.6%	+14.0%	+10.3%	+5.3%	+7.9%	+0.5%
Medical & Dental	9,354	+3,077	+1,732	+1,405	+1,106	+776	-51	+49.0%	+22.7%	+17.7%	+13.4%	+9.0%	-0.5%
Clinical Nurse/ Midwife Manager	4,424	+1,357	+819	+676	+369	+226	+36	+44.2%	+22.7%	+18.0%	+9.1%	+5.4%	+3593.0%
Director Nursing/Midwifery, Assistant	451	+142	+96	+56	+28	+18	-2	+45.8%	+27.2%	+14.1%	+6.5%	+4.1%	-186.0%
Director of Nursing/Midwifery	83	+37	+20	+15	+6	+4	-0	+80.3%	+31.4%	+21.4%	+7.7%	+4.7%	-19.0%
Nurse/ Midwife Manager	4,958	+1,535	+935	+746	+402	+247	+34	+44.9%	+23.3%	+17.7%	+8.8%	+5.2%	+0.7%
Advanced Nurse/ Midwife Practitioner	455	+374	+306	+251	+179	+118	+15	+463.5%	+204.7%	+122.8%	+64.8%	+35.1%	+1531.0%
Clinical Nurse/ Midwife Specialist	1,034	+319	+168	+165	+117	+79	+6	+44.5%	+19.4%	+18.9%	+12.8%	+8.3%	+575.0%
Nurse/ Midwife Specialist & AN/MP	1,489	+693	+474	+415	+296	+197	+21	+87.0%	+46.7%	+38.7%	+24.8%	+15.3%	+1.4%
Graduate Nursing/ Midwifery		-158						-100.0%	-100.0%	-100.0%	-100.0%	-100.0%	
Nursing Bank	21	-86	-25	-27	-17	-10	-2	-80.6%	-54.4%	-56.5%	-45.3%	-33.0%	-202.0%
Staff Midwives	1,481	+194	+24	+43	+1	+24	+2	+15.1%	+1.6%	+3.0%	+0.1%	+1.7%	+207.0%
Staff Nurse [Psychiatric]	27	-12	-6	-3	-4	-1	-2	-31.4%	-18.5%	-10.7%	-13.3%	-3.0%	-196.0%
Staff Nurses [General/ Children's]	15,928	+2,987	+2,029	+1,403	+1,079	+768	+5	+23.1%	+14.6%	+9.7%	+7.3%	+5.1%	+511.0%
Staff Nurse [Intellectual Disability]	73	+73	+73	+73	+73	+73	+1	-100.0%	-100.0%	-100.0%	-100.0%	-100.0%	+100.0%

Jan 2021 (Dec 2018 figure: 60,906)	WTE Jan 2021	WTE change since Oct 13	WTE change since Dec 16	WTE change since Dec 17	WTE change since Dec 18	WTE change since Dec 19	WTE change since Dec 20	% change since Oct 13	% change since Dec 16	% change since Dec 17	% change since Dec 18	% change since Dec 19	% change since Dec 20
Overall	66,701	+16,848	+10,319	+8,080	+5,795	+4,164	+262	+33.8%	+18.3%	+13.8%	+9.5%	+6.7%	+0.4%
Staff Nurse/ Staff Midwife	17,530	+2,998	+2,095	+1,490	+1,132	+854	+4	+20.6%	+13.6%	+9.3%	+6.9%	+5.1%	+0.0%
Public Health Nurse	2	-0	+1	+1	+1	+0	+0	-16.0%	+68.0%	+68.0%	+90.9%	+15.1%	+3.1%
Pre-registration Nurse/ Midwife Intern	242	+34	+171	+171	+171	+160	+227	+16.1%	+238.2%	+237.9%	+240.6%	+193.4%	+22723.0%
Pre-registration Nurse Intern (COVID-19)	52	+52	+52	+52	+52	+52	-103	-100.0%	-100.0%	-100.0%	-100.0%	-100.0%	-10337.0%
Post-registration Nurse/ Midwife Student	157	-43	-1	+6	-16	-39	+6	-21.6%	-0.6%	+3.8%	-9.0%	-19.7%	+624.0%
Nursing/ Midwifery awaiting registration	57	+57	+16	-40	-57	-82	+0	-100.0%	+39.2%	-41.1%	-49.8%	-58.9%	+50.0%
Nursing/ Midwifery Student	509	+100	+238	+189	+151	+92	+131	+24.4%	+88.0%	+59.1%	+42.3%	+22.0%	+34.6%
Nursing Education/Clinical	194	+8	+19	+28	+21	+3	-2	+4.5%	+10.8%	+16.9%	+12.0%	+1.7%	-240.0%
Other Nursing/ Midwifery	33	+4	+8	+6	+4	-0	+3	+13.2%	+34.2%	+23.6%	+15.7%	-1.3%	+301.0%
Nursing/ Midwifery other	227	+12	+27	+34	+25	+3	+1	+5.7%	+13.7%	+17.8%	+12.5%	+1.3%	+0.3%
Nursing & Midwifery	24,714	+5,338	+3,771	+2,875	+2,007	+1,393	+190	+27.6%	+18.0%	+13.2%	+8.8%	+6.0%	+0.8%
Dietitians	435	+161	+90	+86	+37	+42	-3	+58.5%	+26.0%	+24.6%	+9.2%	+10.8%	-291.0%
Occupational Therapists	409	+145	+77	+66	+49	+40	-8	+55.0%	+23.1%	+19.4%	+13.8%	+11.0%	-839.0%
Orthoptists	20	+1	-2	-6	-4	-1	-0	+5.1%	-7.8%	-22.6%	-14.8%	-6.6%	-6.0%
Physiotherapists	1,074	+325	+193	+136	+100	+82	+6	+43.4%	+22.0%	+14.6%	+10.3%	+8.3%	+646.0%
Podiatrists & Chiropodists	37	+22	+5	+8	+6	+2	-0	+157.2%	+16.1%	+26.8%	+21.1%	+7.0%	-25.0%
Speech & Language Therapists	233	+82	+55	+43	+32	+35	-4	+54.6%	+31.2%	+22.8%	+15.8%	+17.5%	-351.0%
Therapy Professions	2,208	+737	+419	+334	+221	+200	-9	+50.1%	+23.4%	+17.8%	+11.1%	+10.0%	-0.4%
Audiology	36	+5	+4	+5	+7	+8	+6	+18.1%	+13.5%	+16.0%	+24.6%	+30.0%	+591.0%
Biochemists	75	+3	+16	+12	+4	+3	-1	+4.8%	+27.7%	+19.7%	+5.4%	+4.7%	-85.0%
Clinical Engineering	150	+27	+26	+18	+14	+8	+1	+22.0%	+20.8%	+13.6%	+10.6%	+5.3%	+91.0%
Clinical Measurement	415	+119	+62	+59	+47	+32	+4	+40.2%	+17.4%	+16.6%	+12.9%	+8.4%	+393.0%
Dosimetrists	14	+6	+4	+5	+3	+1	-0	+82.4%	+35.2%	+58.7%	+30.6%	+6.9%	-13.0%
Medical Laboratory	1,956	+275	+89	+75	+67	+70	+4	+16.4%	+4.8%	+4.0%	+3.5%	+3.7%	+388.0%
Perfusionists	21	+2	+3	+1	+2	-0	-0	+11.9%	+13.3%	+3.3%	+8.1%	-1.4%	-29.0%
Phlebotomists	185	+44	+32	+25	+25	+14	+2	+31.5%	+20.9%	+15.9%	+15.9%	+7.9%	+221.0%
Physicists	171	+40	+19	+17	-10	-9	-0	+30.8%	+12.7%	+10.9%	-5.4%	-5.2%	-12.0%
Radiation Therapists	209	+86	+22	+24	+17	+10	-3	+70.2%	+11.5%	+12.8%	+9.0%	+5.1%	-281.0%
Radiographers	1,239	+307	+202	+163	+124	+93	+1	+32.9%	+19.4%	+15.1%	+11.2%	+8.1%	+74.0%
Health Science/ Diagnostics	4,472	+917	+478	+404	+302	+229	+13	+25.8%	+12.0%	+9.9%	+7.2%	+5.4%	+0.3%
Social Care	4	+1	+0	+1	+1	+1	+0	+25.0%	+11.4%	+39.1%	+44.3%	+25.4%	+0.5%
Social Workers	383	+99	+64	+58	+42	+28	-1	+35.0%	+20.0%	+17.9%	+12.2%	+7.9%	-0.2%
Psychologists	112	+35	+31	+28	+23	+12	+2	+44.6%	+37.5%	+33.0%	+25.6%	+11.7%	+2.1%
Pharmacy	1,011	+432	+277	+237	+170	+110	+4	+74.5%	+37.8%	+30.6%	+20.2%	+12.2%	+0.4%
H&SC, Other	178	+67	+24	+11	+6	+28	+25	+60.1%	+15.4%	+6.4%	+3.3%	+18.7%	+16.7%
Health & Social Care Professionals	8,369	+2,286	+1,293	+1,072	+764	+609	+36	+37.6%	+18.3%	+14.7%	+10.0%	+7.8%	+0.4%
Executive Management	100	+61	+38	+36	+17	+13	-2	+157.9%	+61.4%	+56.9%	+20.5%	+15.1%	-167.0%
Senior Management (VIII & GM)	476	+234	+141	+99	+58	+45	-2	+97.0%	+41.9%	+26.4%	+13.8%	+10.4%	-203.0%

Jan 2021 (Dec 2018 figure: 60,906)	WTE Jan 2021	WTE change since Oct 13	WTE change since Dec 16	WTE change since Dec 17	WTE change since Dec 18	WTE change since Dec 19	WTE change since Dec 20	% change since Oct 13	% change since Dec 16	% change since Dec 17	% change since Dec 18	% change since Dec 19	% change since Dec 20
Overall	66,701	+16,848	+10,319	+8,080	+5,795	+4,164	+262	+33.8%	+18.3%	+13.8%	+9.5%	+6.7%	+0.4%
Management (VIII & above)	576	+296	+179	+136	+75	+58	-4	+105.5%	+44.9%	+30.8%	+14.9%	+11.2%	-0.6%
Middle Management (V-VII)	2,668	+1,172	+871	+693	+520	+358	+7	+78.3%	+48.4%	+35.1%	+24.2%	+15.5%	+743.0%
Other Administrative	12	-1	-0	+1	-3	-3	-1	-6.0%	-3.7%	+6.2%	-18.5%	-17.4%	-97.0%
Administrative/ Supervisory (V to VII)	2,681	+1,171	+870	+694	+517	+355	+6	+77.6%	+48.1%	+34.9%	+23.9%	+15.3%	+0.2%
Clerical (III & IV)	6,717	+1,119	+439	+244	+110	+111	+59	+20.0%	+7.0%	+3.8%	+1.7%	+1.7%	+0.9%
Management & Administrative	9,974	+2,585	+1,488	+1,074	+701	+524	+62	+35.0%	+17.5%	+12.1%	+7.6%	+5.5%	+0.6%
Catering	488	+54	+47	+36	+44	+17	-2	+12.5%	+10.7%	+8.1%	+10.0%	+3.7%	-217.0%
Household Services	3,122	+632	+543	+487	+434	+405	+24	+25.4%	+21.0%	+18.5%	+16.2%	+14.9%	+2389.0%
Other Labs & Associated	449	+167	+126	+110	+94	+70	+9	+59.4%	+38.8%	+32.3%	+26.6%	+18.5%	+913.0%
Other Support	762	+90	+52	+35	+27	+23	+0	+13.4%	+7.3%	+4.8%	+3.7%	+3.1%	+28.0%
Portering	1,346	+87	+20	+13	+18	+20	-17	+6.9%	+1.5%	+1.0%	+1.3%	+1.5%	-1658.0%
Support	6,166	+1,030	+788	+681	+618	+536	+15	+20.1%	+14.7%	+12.4%	+11.1%	+9.5%	+0.2%
Maintenance	515	-4	+25	+34	+27	+9	+1	-0.7%	+5.1%	+7.1%	+5.6%	+1.7%	+83.0%
Technical Services	25	+10	+6	+6	+3	+1		+66.7%	+30.2%	+30.2%	+15.2%	+4.3%	
Maintenance/ Technical	540	+6	+31	+40	+31	+10	+1	+1.2%	+6.0%	+8.0%	+6.0%	+1.8%	+0.2%
General Support	6,706	+1,036	+819	+721	+648	+546	+15	+18.3%	+13.9%	+12.1%	+10.7%	+8.9%	+0.2%
HCA, Nurse's Aide, etc.	5,370	+2,065	+905	+721	+415	+224	+10	+62.5%	+20.3%	+15.5%	+8.4%	+4.4%	+1015.0%
Health & Social Care Assistants	152	+81	+54	+43	+28	+24	-4	+113.8%	+54.8%	+39.7%	+22.2%	+19.0%	-410.0%
Health Care Assistants	5,522	+2,146	+959	+764	+443	+248	+6	+63.6%	+21.0%	+16.1%	+8.7%	+4.7%	+0.1%
Ambulance Staff	1,868	+355	+228	+123	+87	+44	-8	+23.5%	+13.9%	+7.1%	+4.9%	+2.4%	-0.4%
Care, other	193	+24	+30	+45	+39	+25	+11	+14.0%	+18.3%	+30.2%	+24.9%	+14.6%	+6.3%
Patient & Client Care	7,584	+2,525	+1,217	+932	+568	+317	+10	+49.9%	+19.1%	+14.0%	+8.1%	+4.4%	+0.1%

Source: Health Service Personnel Census