

Acute Service Employment Report: January 2023

Employment by Staff Group

Jan 2023	WTE Dec 2020	WTE Dec 2021	WTE Dec 2022	WTE Jan 2023	WTE change since Dec 22	WTE change since Dec 21	% change since Dec 21	WTE change since Dec 20	% change since Dec 20	No. Jan 2023
Overall	66,439	70,129	74,055	74,400	+345	+4,270	+6.1%	+7,961	+12.0%	83,254
Consultants	2,974	3,102	3,329	3,331	+2	+229	+7.4%	+357	+12.0%	3,634
Registrars	3,115	3,268	3,489	3,476	-14	+208	+6.4%	+360	+11.6%	3,823
SHO/ Interns	3,253	3,282	3,333	3,299	-34	+17	+0.5%	+47	+1.4%	3,601
Medical/ Dental, other	64	67	75	73	-3	+6	+9.5%	+9	+13.9%	104
Medical & Dental	9,405	9,718	10,227	10,179	-48	+460	+4.7%	+773	+8.2%	11,162
Nurse/ Midwife Manager	4,924	5,287	5,716	5,774	+58	+487	+9.2%	+850	+17.3%	6,377
Nurse/ Midwife Specialist & AN/MP	1,468	1,621	1,897	1,938	+41	+317	+19.6%	+470	+32.0%	2,150
Staff Nurse/ Staff Midwife	17,526	18,428	19,359	19,361	+2	+932	+5.1%	+1,835	+10.5%	21,819
Public Health Nurse	2	0				-0	-100.0%	-2	-100.0%	
Pre-registration Nurse/ Midwife Intern	15	74	137	284	+147	+210	+283.4%	+269	+1799.7%	851
Pre-registration Nurse Intern (COVID-19)	156	0				-0	-100.0%	-156	-100.0%	
Post-registration Nurse/ Midwife Student	151	134	140	131	-9	-3	-2.5%	-20	-13.3%	154
Nursing/ Midwifery awaiting registration	57	96	261	207	-54	+111	+114.7%	+151	+266.4%	212
Nursing/ Midwifery Student	378	305	538	622	+84	+317	+103.9%	+244	+64.6%	1,217
Nursing/ Midwifery other	226	213	185	188	+3	-25	-11.7%	-38	-16.9%	218
Nursing & Midwifery	24,524	25,854	27,694	27,882	+188	+2,028	+7.8%	+3,359	+13.7%	31,781
Therapy Professions	2,217	2,401	2,563	2,560	-4	+158	+6.6%	+343	+15.5%	2,857
Health Science/ Diagnostics	4,458	4,642	4,793	4,821	+28	+179	+3.9%	+363	+8.1%	5,331
Social Care	4	3	3	3	-0	-0	-1.5%	-1	-21.1%	5
Social Workers	384	419	441	445	+4	+26	+6.1%	+61	+15.9%	500
Psychologists	110	132	136	142	+6	+10	+7.4%	+32	+29.0%	174
Pharmacy	1,006	1,107	1,133	1,140	+7	+33	+3.0%	+134	+13.3%	1,270
H&SC, Other	154	276	207	232	+25	-44	-16.0%	+78	+50.9%	279
Health & Social Care Professionals	8,333	8,981	9,277	9,343	+66	+362	+4.0%	+1,010	+12.1%	10,416
Management (VIII & above)	579	652	720	730	+10	+78	+12.0%	+151	+26.0%	748
Administrative/ Supervisory (V to VII)	2,674	2,982	3,390	3,433	+44	+451	+15.1%	+759	+28.4%	3,646
Clerical (III & IV)	6,658	7,032	7,264	7,274	+10	+242	+3.4%	+615	+9.2%	8,213
Management & Administrative	9,912	10,665	11,373	11,437	+63	+771	+7.2%	+1,525	+15.4%	12,607
Support	6,152	6,369	6,533	6,557	+23	+188	+2.9%	+405	+6.6%	7,370
Maintenance/ Technical	539	537	571	597	+27	+61	+11.3%	+58	+10.8%	612
General Support	6,691	6,906	7,104	7,154	+50	+249	+3.6%	+463	+6.9%	7,982
Health Care Assistants	5,516	5,863	6,218	6,189	-29	+327	+5.6%	+673	+12.2%	6,945
Ambulance Staff	1,876	1,935	1,931	1,980	+49	+45	+2.3%	+103	+5.5%	2,076
Care, other	182	208	230	236	+6	+29	+13.8%	+54	+29.7%	285
Patient & Client Care	7,574	8,005	8,379	8,405	+26	+400	+5.0%	+831	+11.0%	9,306



Acute Services Employment by Hospital & Hospital Group: Jan 2023

Jan 2023	WTE Dec 2020	WTE Dec 2021	WTE Dec 2022	WTE Jan 2023	WTE change since Dec 22	WTE change since Dec 21	% change since Dec 21	WTE change since Dec 20	% change since Dec 20	No. Jan 2023
Overall	66,439	70,129	74,055	74,400	+345	+4,270	+6.1%	+7,961	+12.0%	83,254
National Ambulance Service	1,990	2,060	2,067	2,125	+58	+65	+3.1%	+135	+6.8%	2,230
CHI at Connolly	136	147	146	146	-0	-2	-1.1%	+10	+7.0%	171
CHI at Crumlin	2,062	2,131	2,232	2,206	-26	+75	+3.5%	+144	+7.0%	2,562
CHI at Tallaght	259	264	305	305	+0	+41	+15.6%	+46	+17.9%	362
CHI at Temple Street	1,259	1,302	1,274	1,269	-5	-33	-2.6%	+10	+0.8%	1,505
CHI Corporate	2	35	40	41	+1	+6	+17.8%	+39	+1941.5%	41
CHI Programme	44	95	111	107	-4	+12	+12.9%	+63	+141.3%	112
Children's Health Ireland	3,762	3,974	4,108	4,074	-34	+100	+2.5%	+311	+8.3%	4,753
Coombe Women & Infants University	925	952	939	955	+16	+3	+0.3%	+30	+3.2%	1,074
MRH Portlaoise	780	802	847	847	-0	+45	+5.6%	+66	+8.5%	933
MRH Tullamore	1,146	1,148	1,247	1,252	+5	+103	+9.0%	+106	+9.2%	1,376
Naas General	777	796	931	941	+10	+145	+18.2%	+164	+21.1%	1,060
St. James's	4,266	4,456	4,576	4,604	+28	+149	+3.3%	+339	+7.9%	5,154
St. Luke's Rathgar	542	541	547	555	+8	+15	+2.7%	+13	+2.4%	590
Tallaght University	2,812	2,949	3,181	3,227	+46	+278	+9.4%	+415	+14.8%	3,673
Hospital Group HQ	40	63	59	60	+1	-4	-6.1%	+20	+49.8%	62
Dublin Midlands Hospital Group	11,288	11,707	12,326	12,441	+114	+733	+6.3%	+1,153	+10.2%	13,922
Cappagh National Orthopaedic	441	452	500	514	+14	+63	+13.9%	+73	+16.6%	570
Mater Misericordiae University	3,429	3,638	3,828	3,862	+34	+224	+6.1%	+433	+12.6%	4,234
MRH Mullingar	1,004	1,060	1,098	1,103	+5	+43	+4.1%	+99	+9.9%	1,210
National Maternity	916	930	955	969	+14	+39	+4.2%	+53	+5.8%	1,081
Our Lady's Navan	590	600	639	633	-6	+33	+5.4%	+43	+7.2%	719
St. Columcille's	457	469	469	482	+12	+12	+2.7%	+24	+5.3%	541
St Luke's General Kilkenny	1,185	1,211	1,290	1,300	+9	+89	+7.3%	+115	+9.7%	1,474
St. Michael's	404	407	402	417	+15	+10	+2.5%	+13	+3.2%	482
St. Vincent's University	3,087	3,234	3,452	3,322	-130	+88	+2.7%	+235	+7.6%	3,561
Wexford General	1,055	1,107	1,166	1,172	+6	+64	+5.8%	+117	+11.1%	1,306
Royal Victoria Eye & Ear	313	332	357	353	-4	+21	+6.4%	+39	+12.6%	405
National Rehabilitation	555	608	632	639	+7	+31	+5.1%	+84	+15.2%	718
IEHG Bank	8	9	23	20	-3	+11	+118.3%	+12	+139.2%	32
Hospital Group HQ	34	72	78	73	-5	+1	+1.1%	+39	+117.7%	85
Ireland East Hospital Group	13,478	14,129	14,889	14,857	-32	+728	+5.2%	+1,379	+10.2%	16,418
Beaumont	4,029	4,144	4,346	4,403	+58	+260	+6.3%	+374	+9.3%	4,778
Cavan General	1,059	1,184	1,293	1,282	-12	+98	+8.3%	+223	+21.1%	1,457
Connolly	1,462	1,506	1,586	1,596	+10	+91	+6.0%	+134	+9.2%	1,764
Louth County	289	293	309	306	-4	+13	+4.3%	+17	+5.8%	343
Monaghan	102	144	157	156	-2	+12	+8.4%	+54	+52.8%	182
Our Lady of Lourdes	2,287	2,357	2,523	2,524	+1	+167	+7.1%	+237	+10.4%	2,793
Rotunda	929	919	988	992	+4	+73	+7.9%	+63	+6.8%	1,201
Hospital Group HQ	41	60	65	67	+2	+7	+12.2%	+26	+63.7%	70

Jan 2023	WTE Dec 2020	WTE Dec 2021	WTE Dec 2022	WTE Jan 2023	WTE change since Dec 22	WTE change since Dec 21	% change since Dec 21	WTE change since Dec 20	% change since Dec 20	No. Jan 2023
Overall	66,439	70,129	74,055	74,400	+345	+4,270	+6.1%	+7,961	+12.0%	83,254
RCSI Hospitals Group	10,197	10,606	11,267	11,326	+59	+720	+6.8%	+1,129	+11.1%	12,588
Galway University	3,787	3,926	4,280	4,229	-51	+303	+7.7%	+442	+11.7%	4,761
Letterkenny University	1,769	1,943	2,089	2,096	+7	+152	+7.8%	+327	+18.5%	2,421
Mayo University	1,204	1,317	1,435	1,433	-2	+116	+8.8%	+229	+19.0%	1,611
Portiuncula University	843	907	982	979	-2	+72	+7.9%	+136	+16.1%	1,086
Roscommon University	367	387	438	430	-9	+43	+11.1%	+63	+17.2%	480
Sligo University	1,766	1,924	1,993	2,013	+20	+89	+4.6%	+247	+14.0%	2,312
Hospital Group HQ	93	162	110	107	-4	-56	-34.3%	+13	+14.2%	113
Saolta University Hospital Care	9,829	10,566	11,327	11,286	-41	+720	+6.8%	+1,457	+14.8%	12,784
Bantry General	277	294	333	330	-3	+36	+12.1%	+53	+19.0%	376
Cork University	4,316	4,553	4,782	4,808	+26	+256	+5.6%	+493	+11.4%	5,476
Lourdes Orthopaedic Kilcreene	70	72	71	74	+3	+2	+2.4%	+3	+4.6%	85
Mallow General	246	263	273	264	-10	+1	+0.2%	+17	+7.0%	305
Mercy University	1,243	1,311	1,435	1,453	+18	+142	+10.9%	+210	+16.9%	1,632
South Infirmary Victoria University	804	842	844	856	+12	+14	+1.7%	+52	+6.5%	1,017
South Tipperary General	968	1,022	1,062	1,072	+10	+50	+4.9%	+104	+10.7%	1,209
UH Kerry	1,215	1,314	1,415	1,437	+22	+123	+9.4%	+223	+18.3%	1,642
UH Waterford	2,103	2,183	2,437	2,483	+46	+300	+13.7%	+380	+18.1%	2,746
Hospital Group HQ	45	79	69	73	+4	-6	-8.2%	+27	+60.2%	80
South/South West Hospital Group	11,288	11,934	12,723	12,851	+128	+917	+7.7%	+1,563	+13.8%	14,568
Croom Orthopaedic	173	264	303	313	+10	+50	+18.8%	+140	+80.8%	344
Ennis	228	242	257	261	+4	+19	+7.6%	+33	+14.3%	295
Nenagh	259	266	294	294	-0	+28	+10.5%	+35	+13.5%	328
St. John's Limerick	321	318	332	337	+5	+19	+5.9%	+16	+5.1%	372
UH Limerick	3,122	3,560	3,641	3,698	+57	+138	+3.9%	+576	+18.4%	4,048
UMH Limerick	393	383	384	390	+7	+7	+1.9%	-3	-0.7%	449
Hospital Group HQ	10	10	12	13	+1	+3	+25.0%	+3	+25.0%	13
University of Limerick Hospital Group	4,506	5,043	5,222	5,306	+84	+263	+5.2%	+800	+17.7%	5,849
Other	101	111	127	135	+8	+24	+21.9%	+34	+34.0%	142
other Acute Services	101	111	127	135	+8	+24	+21.9%	+34	+34.0%	142

Acute Services Employment by Administration (HSE / S38): January 2023

Jan 2023	WTE Dec 2020	WTE Dec 2021	WTE Dec 2022	WTE Jan 2023	WTE change since Dec 22	WTE change since Dec 21	% change since Dec 21	WTE change since Dec 20	% change since Dec 20	No. Jan 2023
Overall	66,439	70,129	74,055	74,400	+345	+4,270	+6.1%	+7,961	+12.0%	83,254
Health Service Executive	38,205	40,665	43,181	43,423	+242	+2,758	+6.8%	+5,218	+13.7%	48,549
Section 38 Hospitals	28,234	29,464	30,874	30,977	+103	+1,513	+5.1%	+2,743	+9.7%	34,705

HSE

Jan 2023	WTE Dec 2020	WTE Dec 2021	WTE Dec 2022	WTE Jan 2023	WTE change since Dec 22	WTE change since Dec 21	% change since Dec 21	WTE change since Dec 20	% change since Dec 20	No. Jan 2023
Overall	38,205	40,665	43,181	43,423	+242	+2,758	+6.8%	+5,218	+13.7%	48,549
Consultants	1,561	1,626	1,700	1,703	+3	+77	+4.7%	+142	+9.1%	1,840
Registrars	1,711	1,804	1,892	1,910	+18	+107	+5.9%	+199	+11.6%	2,015
SHO/ Interns	2,032	2,087	2,132	2,087	-46	-0	-0.0%	+54	+2.7%	2,229
Medical/ Dental, other	39	43	46	45	-1	+2	+4.3%	+6	+15.0%	61
Medical & Dental	5,343	5,560	5,771	5,745	-26	+185	+3.3%	+402	+7.5%	6,145
Nurse/ Midwife Manager	2,580	2,789	3,062	3,084	+22	+295	+10.6%	+504	+19.5%	3,384
Nurse/ Midwife Specialist & AN/MP	747	845	1,013	1,038	+25	+193	+22.8%	+291	+38.9%	1,143
Staff Nurse/ Staff Midwife	10,302	10,933	11,658	11,665	+7	+732	+6.7%	+1,363	+13.2%	13,434
Public Health Nurse	2	0				-0	-100.0%	-2	-100.0%	
Pre-registration Nurse/ Midwife Intern	6	22	50	110	+61	+89	+411.9%	+104	+1619.9%	470
Pre-registration Nurse Intern (COVID-19)	65	0				-0	-100.0%	-65	-100.0%	
Post-registration Nurse/ Midwife Student	57	37	29	35	+6	-2	-5.1%	-22	-38.1%	50
Nursing/ Midwifery awaiting registration	15	46	151	78	-73	+32	+70.2%	+63	+417.5%	80
Nursing/ Midwifery Student	143	105	230	223	-7	+119	+113.4%	+80	+56.3%	600
Nursing/ Midwifery other	87	81	82	84	+3	+3	+4.1%	-3	-3.5%	99
Nursing & Midwifery	13,861	14,752	16,044	16,094	+50	+1,342	+9.1%	+2,233	+16.1%	18,660
Therapy Professions	1,111	1,208	1,332	1,337	+4	+129	+10.7%	+225	+20.3%	1,489
Health Science/ Diagnostics	2,552	2,672	2,756	2,790	+34	+118	+4.4%	+238	+9.3%	3,098
Social Care	3	2	2	2	-0	-0	-2.1%	-1	-27.7%	3
Social Workers	108	127	141	143	+3	+16	+12.6%	+35	+32.1%	164
Psychologists	10	19	21	24	+3	+6	+30.8%	+14	+145.1%	30
Pharmacy	531	616	649	656	+7	+40	+6.5%	+126	+23.7%	749
H&SC, Other	46	149	77	99	+21	-50	-33.8%	+53	+114.1%	124
Health & Social Care Professionals	4,361	4,793	4,979	5,051	+72	+258	+5.4%	+690	+15.8%	5,657
Management (VIII & above)	292	318	352	360	+9	+43	+13.5%	+69	+23.5%	371
Administrative/ Supervisory (V to VII)	1,078	1,293	1,549	1,582	+33	+289	+22.3%	+504	+46.7%	1,673
Clerical (III & IV)	3,866	4,103	4,249	4,263	+14	+160	+3.9%	+397	+10.3%	4,720
Management & Administrative	5,236	5,714	6,150	6,205	+55	+492	+8.6%	+970	+18.5%	6,764
Support	3,618	3,808	3,943	3,969	+26	+161	+4.2%	+351	+9.7%	4,394
Maintenance/ Technical	295	295	305	329	+24	+35	+11.7%	+34	+11.6%	341
General Support	3,913	4,103	4,248	4,298	+50	+195	+4.8%	+385	+9.8%	4,735
Health Care Assistants	3,498	3,673	3,905	3,890	-14	+218	+5.9%	+392	+11.2%	4,320
Ambulance Staff	1,876	1,935	1,931	1,980	+49	+45	+2.3%	+103	+5.5%	2,076
Care, other	117	136	154	159	+6	+23	+17.1%	+43	+36.8%	192
Patient & Client Care	5,491	5,744	5,989	6,029	+41	+286	+5.0%	+538	+9.8%	6,588

Section 38 Hospitals

Jan 2023	WTE Dec 2020	WTE Dec 2021	WTE Dec 2022	WTE Jan 2023	WTE change since Dec 22	WTE change since Dec 21	% change since Dec 21	WTE change since Dec 20	% change since Dec 20	No. Jan 2023
Overall	28,234	29,464	30,874	30,977	+103	+1,513	+5.1%	+2,743	+9.7%	34,705
Consultants	1,413	1,476	1,629	1,628	-1	+152	+10.3%	+215	+15.2%	1,794
Registrars	1,404	1,464	1,597	1,565	-32	+101	+6.9%	+161	+11.5%	1,808
SHO/ Interns	1,220	1,195	1,200	1,212	+12	+17	+1.5%	-8	-0.6%	1,372
Medical/ Dental, other	25	23	29	28	-1	+4	+19.2%	+3	+12.1%	43
Medical & Dental	4,062	4,158	4,456	4,434	-22	+275	+6.6%	+372	+9.2%	5,017
Nurse/ Midwife Manager	2,344	2,498	2,654	2,690	+36	+192	+7.7%	+346	+14.8%	2,993
Nurse/ Midwife Specialist & AN/MP	721	776	884	900	+16	+125	+16.1%	+179	+24.9%	1,007
Staff Nurse/ Staff Midwife	7,224	7,496	7,701	7,696	-5	+200	+2.7%	+472	+6.5%	8,385
Pre-registration Nurse/ Midwife Intern	9	53	87	174	+87	+121	+230.6%	+165	+1935.1%	381
Pre-registration Nurse Intern (COVID-19)	91						-100.0%	-91	-100.0%	
Post-registration Nurse/ Midwife Student	94	97	111	96	-16	-1	-1.5%	+2	+1.7%	104
Nursing/ Midwifery awaiting registration	42	51	110	129	+19	+79	+154.9%	+88	+211.6%	132
Nursing/ Midwifery Student	235	200	308	398	+91	+198	+99.0%	+164	+69.6%	617
Nursing/ Midwifery other	139	132	103	104	+1	-28	-21.3%	-35	-25.2%	119
Nursing & Midwifery	10,663	11,102	11,650	11,788	+138	+686	+6.2%	+1,126	+10.6%	13,121
Therapy Professions	1,105	1,194	1,231	1,223	-8	+29	+2.5%	+118	+10.6%	1,368
Health Science/ Diagnostics	1,907	1,970	2,037	2,031	-6	+61	+3.1%	+124	+6.5%	2,233
Social Care	1	1	1	1						2
Social Workers	275	292	300	302	+2	+9	+3.2%	+26	+9.5%	336
Psychologists	100	114	115	118	+2	+4	+3.6%	+17	+17.4%	144
Pharmacy	476	491	484	484	+0	-7	-1.4%	+8	+1.8%	521
H&SC, Other	108	127	130	133	+3	+6	+4.8%	+26	+23.8%	155
Health & Social Care Professionals	3,972	4,188	4,298	4,291	-7	+103	+2.5%	+320	+8.1%	4,759
Management (VIII & above)	288	334	368	370	+1	+36	+10.7%	+82	+28.5%	377
Administrative/ Supervisory (V to VII)	1,596	1,689	1,841	1,851	+11	+163	+9.6%	+255	+16.0%	1,973
Clerical (III & IV)	2,793	2,929	3,015	3,011	-4	+82	+2.8%	+218	+7.8%	3,493
Management & Administrative	4,676	4,952	5,224	5,232	+8	+280	+5.7%	+555	+11.9%	5,843
Support	2,533	2,561	2,590	2,588	-2	+27	+1.1%	+54	+2.2%	2,976
Maintenance/ Technical	244	242	266	268	+2	+26	+10.9%	+24	+9.8%	271
General Support	2,778	2,803	2,856	2,856	-0	+53	+1.9%	+78	+2.8%	3,247
Health Care Assistants	2,018	2,190	2,314	2,299	-15	+109	+5.0%	+281	+13.9%	2,625
Health Promotion	3	4	4	4	-0	-0	-1.5%	+1	+26.1%	6
Other Care Grades	16	22	26	26	+0	+5	+22.6%	+11	+68.8%	31
Pastoral Care	46	44	44	44	+0	+0	+1.0%	-2	-4.3%	53
Workshop Services	1	2	2	2		+0	+3.0%	+2	+312.0%	3
Care, other	66	71	76	77	+0	+5	+7.5%	+11	+17.1%	93
Patient & Client Care	2,083	2,261	2,390	2,376	-14	+114	+5.1%	+292	+14.0%	2,718

Acute Services Employment by Hospital Group, CHO etc. Jan 2023

National Ambulance Service

Jan 2023	WTE Dec 2020	WTE Dec 2021	WTE Dec 2022	WTE Jan 2023	WTE change since Dec 22	WTE change since Dec 21	% change since Dec 21	WTE change since Dec 20	% change since Dec 20	No. Jan 2023
Overall	1,990	2,060	2,067	2,125	+58	+65	+3.1%	+135	+6.8%	2,230
Consultants	1	1	1	1					0.0	1
Registrars		1				-1	-100.0%		-100.0%	
SHO/ Interns		1				-1	-100.0%		-100.0%	
Medical & Dental	1	3	1	1		-2	-66.2%		0.0	1
Nurse/ Midwife Manager	1	2	3	3	+0	+1	+58.7%	+2	+200.0%	3
Staff Nurse/ Staff Midwife	1			1	+1	+1	-100.0%	-0	-15.0%	1
Nursing & Midwifery	2	2	3	4	+1	+2	+103.7%	+2	+92.5%	4
Therapy Professions	1						-100.0%	-1	-100.0%	
Health & Social Care Professionals	1						-100.0%	-1	-100.0%	
Management (VIII & above)	14	12	21	25	+4	+13	+109.6%	+11	+76.6%	28
Administrative/ Supervisory (V to VII)	33	49	50	53	+3	+5	+9.4%	+20	+62.3%	54
Clerical (III & IV)	42	43	45	46	+1	+3	+7.0%	+4	+10.6%	50
Management & Administrative	89	104	116	124	+8	+21	+20.0%	+36	+40.3%	132
Support	4	2	3	3	+0	+1	+53.6%	-0	-2.8%	4
Maintenance/ Technical	2	1	1	1				-1	-50.0%	1
General Support	6	3	4	4	+0	+1	+37.0%	-1	-20.0%	5
Health Care Assistants	2	1	1	1	+0	+0	+3.3%	-1	-53.5%	1
Ambulance Staff	1,876	1,935	1,931	1,980	+49	+45	+2.3%	+103	+5.5%	2,076
Care, other	14	13	11	11	-0	-2	-16.0%	-3	-20.6%	11
Patient & Client Care	1,892	1,948	1,942	1,991	+49	+43	+2.2%	+100	+5.3%	2,088

Children's Health Ireland

Jan 2023	WTE Dec 2020	WTE Dec 2021	WTE Dec 2022	WTE Jan 2023	WTE change since Dec 22	WTE change since Dec 21	% change since Dec 21	WTE change since Dec 20	% change since Dec 20	No. Jan 2023
Overall	3,762	3,974	4,108	4,074	-34	+100	+2.5%	+311	+8.3%	4,753
Consultants	237	246	279	278	-1	+32	+12.9%	+41	+17.4%	294
Registrars	217	213	226	204	-22	-9	-4.3%	-14	-6.3%	329
SHO/ Interns	95	104	107	97	-9	-7	-6.4%	+2	+2.3%	155
Medical/ Dental, other	1	1	1	1		+0	+24.6%	+0	+5.8%	3
Medical & Dental	551	564	612	581	-32	+16	+2.9%	+30	+5.4%	781
Nurse/ Midwife Manager	334	359	375	378	+3	+19	+5.3%	+44	+13.1%	436
Nurse/ Midwife Specialist & AN/MP	172	187	206	206	+0	+20	+10.5%	+34	+20.0%	244
Staff Nurse/ Staff Midwife	850	906	882	874	-8	-32	-3.5%	+24	+2.8%	976
Pre-registration Nurse/ Midwife Intern		14	21	15	-6	+1	+5.4%	+15	-100.0%	39
Pre-registration Nurse Intern (COVID-19)	13						-100.0%	-13	-100.0%	
Post-registration Nurse/ Midwife Student	43	47	57	53	-4	+6	+12.4%	+10	+23.1%	55
Nursing/ Midwifery awaiting registration		2	2	2		-0	-19.0%	+2	-100.0%	2
Nursing/ Midwifery Student	56	63	79	69	-10	+6	+9.9%	+13	+23.6%	96
Nursing/ Midwifery other	8	7	9	9	+0	+2	+23.4%	+0	+4.8%	10
Nursing & Midwifery	1,421	1,522	1,551	1,537	-15	+14	+0.9%	+116	+8.1%	1,762
Therapy Professions	145	167	160	161	+1	-6	-3.6%	+16	+10.7%	189
Health Science/ Diagnostics	285	300	304	308	+4	+8	+2.6%	+23	+8.0%	331
Social Workers	60	65	64	66	+2	+1	+1.9%	+6	+10.5%	79
Psychologists	42	47	44	46	+2	-1	-2.6%	+4	+10.4%	62
Pharmacy	51	61	58	58	-0	-3	-5.4%	+6	+12.4%	64
H&SC, Other	26	27	37	36	-0	+9	+35.0%	+11	+41.5%	44
Health & Social Care Professionals	609	667	666	675	+8	+8	+1.2%	+66	+10.8%	769
Management (VIII & above)	54	68	72	73	+1	+4	+6.5%	+19	+36.0%	74
Administrative/ Supervisory (V to VII)	299	322	358	353	-6	+31	+9.6%	+54	+18.1%	377
Clerical (III & IV)	409	418	430	433	+2	+15	+3.5%	+24	+5.7%	507
Management & Administrative	762	809	861	859	-3	+50	+6.2%	+97	+12.7%	958
Support	210	205	211	217	+6	+12	+6.0%	+8	+3.7%	245
Maintenance/ Technical	15	16	14	15	+0	-1	-9.0%	-0	-2.9%	15
General Support	225	221	225	232	+6	+11	+4.9%	+7	+3.2%	260
Health Care Assistants	182	179	181	182	+1	+2	+1.4%	+0	+0.1%	211
Care, other	13	11	10	9	-1	-2	-17.6%	-4	-32.0%	12
Patient & Client Care	195	191	191	191	-0	+1	+0.3%	-4	-2.1%	223



Dublin Midlands Hospital Group

Jan 2023	WTE Dec 2020	WTE Dec 2021	WTE Dec 2022	WTE Jan 2023	WTE change since Dec 22	WTE change since Dec 21	% change since Dec 21	WTE change since Dec 20	% change since Dec 20	No. Jan 2023
Overall	11,288	11,707	12,326	12,441	+114	+733	+6.3%	+1,153	+10.2%	13,922
Consultants	499	513	564	567	+3	+54	+10.5%	+68	+13.5%	606
Registrars	522	531	583	583	-0	+51	+9.7%	+61	+11.6%	670
SHO/ Interns	460	473	473	472	-1	-1	-0.1%	+12	+2.5%	577
Medical/ Dental, other	7	7	9	8	-2	+0	+3.2%	+0	+3.0%	10
Medical & Dental	1,489	1,524	1,629	1,629	+0	+105	+6.9%	+140	+9.4%	1,863
Nurse/ Midwife Manager	908	949	992	990	-2	+41	+4.4%	+82	+9.0%	1,087
Nurse/ Midwife Specialist & AN/MP	236	257	312	324	+12	+67	+26.0%	+88	+37.2%	366
Staff Nurse/ Staff Midwife	2,950	3,011	3,141	3,172	+31	+161	+5.3%	+221	+7.5%	3,499
Pre-registration Nurse/ Midwife Intern	0	11	12	34	+22	+23	+207.0%	+34	+112566.7%	85
Pre-registration Nurse Intern (COVID-19)	28						-100.0%	-28	-100.0%	
Post-registration Nurse/ Midwife Student	12	12	6	6		-6	-52.2%	-7	-54.2%	11
Nursing/ Midwifery awaiting registration	4	21	79	62	-17	+41	+195.8%	+58	+1363.8%	65
Nursing/ Midwifery Student	44	44	96	102	+5	+58	+133.1%	+57	+130.5%	161
Nursing/ Midwifery other	38	41	36	37	+2	-3	-7.7%	-0	-0.3%	42
Nursing & Midwifery	4,177	4,301	4,576	4,625	+49	+324	+7.5%	+448	+10.7%	5,155
Therapy Professions	397	413	448	447	-1	+34	+8.3%	+50	+12.6%	495
Health Science/ Diagnostics	1,001	1,011	1,044	1,055	+11	+44	+4.3%	+54	+5.4%	1,146
Social Workers	87	90	89	89	+0	-2	-1.8%	+1	+1.4%	100
Psychologists	13	17	17	17	+0	+0	+2.2%	+4	+29.7%	20
Pharmacy	243	251	235	239	+3	-13	-5.1%	-5	-1.9%	265
H&SC, Other	46	63	52	57	+5	-7	-10.7%	+11	+23.1%	61
Health & Social Care Professionals	1,788	1,846	1,885	1,903	+18	+57	+3.1%	+115	+6.4%	2,087
Management (VIII & above)	126	139	145	146	+1	+8	+5.5%	+20	+16.0%	150
Administrative/ Supervisory (V to VII)	523	554	615	626	+10	+72	+13.0%	+103	+19.7%	663
Clerical (III & IV)	1,046	1,115	1,136	1,152	+17	+37	+3.3%	+107	+10.2%	1,333
Management & Administrative	1,695	1,808	1,896	1,924	+29	+117	+6.5%	+230	+13.6%	2,146
Support	771	803	791	798	+7	-5	-0.6%	+26	+3.4%	922
Maintenance/ Technical	130	127	127	130	+2	+3	+2.4%	-0	-0.1%	131
General Support	901	929	918	927	+9	-2	-0.2%	+26	+2.9%	1,053
Health Care Assistants	1,217	1,270	1,391	1,399	+7	+129	+10.2%	+181	+14.9%	1,576
Care, other	21	29	32	33	+1	+4	+13.1%	+12	+55.2%	42
Patient & Client Care	1,239	1,299	1,423	1,432	+9	+133	+10.2%	+193	+15.6%	1,618



Ireland East Hospital Group

Jan 2023	WTE Dec 2020	WTE Dec 2021	WTE Dec 2022	WTE Jan 2023	WTE change since Dec 22	WTE change since Dec 21	% change since Dec 21	WTE change since Dec 20	% change since Dec 20	No. Jan 2023
Overall	13,478	14,129	14,889	14,857	-32	+728	+5.2%	+1,379	+10.2%	16,418
Consultants	599	621	677	670	-7	+50	+8.0%	+71	+11.9%	765
Registrars	666	715	755	750	-5	+35	+4.9%	+84	+12.6%	773
SHO/ Interns	676	676	697	681	-17	+4	+0.7%	+4	+0.7%	697
Medical/ Dental, other	28	30	35	36	+1	+6	+20.4%	+8	+30.1%	49
Medical & Dental	1,968	2,042	2,164	2,137	-27	+95	+4.7%	+168	+8.5%	2,284
Nurse/ Midwife Manager	1,054	1,115	1,244	1,249	+5	+133	+12.0%	+195	+18.5%	1,360
Nurse/ Midwife Specialist & AN/MP	340	361	405	406	+2	+45	+12.4%	+66	+19.5%	445
Staff Nurse/ Staff Midwife	3,452	3,675	3,772	3,709	-64	+34	+0.9%	+257	+7.5%	4,090
Pre-registration Nurse/ Midwife Intern	10	23	54	107	+53	+84	+361.3%	+97	+938.4%	227
Pre-registration Nurse Intern (COVID-19)	47						-100.0%	-47	-100.0%	
Post-registration Nurse/ Midwife Student	17	25	15	15		-10	-38.8%	-2	-11.8%	15
Nursing/ Midwifery awaiting registration	34	21	59	86	+27	+65	+315.7%	+52	+152.9%	86
Nursing/ Midwifery Student	109	68	128	208	+80	+140	+204.2%	+100	+91.9%	328
Nursing/ Midwifery other	73	69	51	50	-1	-18	-26.8%	-23	-30.9%	59
Nursing & Midwifery	5,027	5,289	5,600	5,622	+23	+334	+6.3%	+596	+11.9%	6,282
Therapy Professions	585	607	611	604	-8	-4	-0.6%	+19	+3.2%	673
Health Science/ Diagnostics	797	852	868	862	-5	+11	+1.3%	+65	+8.2%	943
Social Care	1	1	1	1					0.0	2
Social Workers	91	103	110	111	+1	+8	+7.6%	+20	+22.0%	119
Psychologists	36	43	47	48	+0	+4	+9.5%	+11	+31.8%	55
Pharmacy	201	217	216	220	+3	+2	+1.0%	+19	+9.2%	238
H&SC, Other	28	40	36	38	+2	-2	-4.0%	+10	+37.6%	54
Health & Social Care Professionals	1,739	1,864	1,890	1,884	-6	+20	+1.1%	+144	+8.3%	2,084
Management (VIII & above)	106	137	160	161	+1	+24	+17.7%	+55	+52.3%	163
Administrative/ Supervisory (V to VII)	630	678	779	785	+6	+107	+15.7%	+154	+24.5%	828
Clerical (III & IV)	1,269	1,316	1,365	1,363	-2	+46	+3.5%	+94	+7.4%	1,545
Management & Administrative	2,005	2,131	2,304	2,308	+4	+177	+8.3%	+303	+15.1%	2,536
Support	1,352	1,370	1,416	1,409	-8	+38	+2.8%	+57	+4.2%	1,588
Maintenance/ Technical	130	128	138	139	+0	+11	+8.5%	+9	+7.2%	140
General Support	1,481	1,498	1,555	1,547	-7	+49	+3.3%	+66	+4.5%	1,728
Health Care Assistants	1,226	1,274	1,342	1,324	-18	+50	+3.9%	+98	+8.0%	1,462
Care, other	31	31	34	34	-0	+3	+10.9%	+3	+10.2%	42
Patient & Client Care	1,257	1,305	1,376	1,358	-18	+53	+4.1%	+102	+8.1%	1,504



RCSI Hospitals Group

Jan 2023	WTE Dec 2020	WTE Dec 2021	WTE Dec 2022	WTE Jan 2023	WTE change since Dec 22	WTE change since Dec 21	% change since Dec 21	WTE change since Dec 20	% change since Dec 20	No. Jan 2023
Overall	10,197	10,606	11,267	11,326	+59	+720	+6.8%	+1,129	+11.1%	12,588
Consultants	470	502	530	533	+3	+31	+6.1%	+63	+13.4%	564
Registrars	508	531	550	551	+1	+20	+3.8%	+43	+8.5%	597
SHO/ Interns	510	501	512	527	+15	+26	+5.1%	+17	+3.3%	568
Medical/ Dental, other	7	4	5	4	-1	-0	-5.5%	-2	-37.1%	6
Medical & Dental	1,495	1,538	1,597	1,615	+18	+77	+5.0%	+120	+8.0%	1,735
Nurse/ Midwife Manager	820	915	997	1,029	+32	+114	+12.5%	+208	+25.4%	1,158
Nurse/ Midwife Specialist & AN/MP	208	235	281	282	+0	+46	+19.6%	+73	+35.2%	312
Staff Nurse/ Staff Midwife	2,767	2,789	3,030	3,058	+28	+269	+9.6%	+291	+10.5%	3,373
Pre-registration Nurse/ Midwife Intern		4	3	23	+20	+19	+472.8%	+23	-100.0%	76
Pre-registration Nurse Intern (COVID-19)	13						-100.0%	-13	-100.0%	
Post-registration Nurse/ Midwife Student	38	22	42	29	-13	+7	+33.1%	-9	-22.7%	32
Nursing/ Midwifery awaiting registration	0	17	10	10	-0	-8	-44.1%	+9	+3716.0%	10
Nursing/ Midwifery Student	51	43	55	61	+7	+18	+42.6%	+10	+20.2%	118
Nursing/ Midwifery other	42	37	27	26	-1	-11	-29.5%	-16	-37.7%	29
Nursing & Midwifery	3,889	4,019	4,390	4,456	+65	+437	+10.9%	+567	+14.6%	4,990
Therapy Professions	362	391	415	412	-3	+20	+5.2%	+50	+13.8%	453
Health Science/ Diagnostics	609	608	660	658	-2	+50	+8.2%	+49	+8.1%	729
Social Workers	66	72	76	76	+0	+4	+6.0%	+10	+15.2%	87
Psychologists	12	14	13	13	-0	-0	-3.1%	+1	+11.2%	15
Pharmacy	146	157	155	153	-2	-4	-2.4%	+7	+4.8%	169
H&SC, Other	12	27	19	20	+1	-8	-27.9%	+8	+67.3%	25
Health & Social Care Professionals	1,207	1,269	1,337	1,332	-6	+63	+4.9%	+125	+10.4%	1,478
Management (VIII & above)	97	96	106	105	-0	+9	+9.6%	+8	+7.9%	108
Administrative/ Supervisory (V to VII)	415	466	509	509	+0	+43	+9.2%	+94	+22.8%	544
Clerical (III & IV)	1,026	1,056	1,082	1,072	-10	+15	+1.4%	+46	+4.5%	1,219
Management & Administrative	1,538	1,619	1,697	1,686	-11	+67	+4.2%	+148	+9.6%	1,871
Support	1,002	982	1,005	1,007	+2	+25	+2.6%	+5	+0.5%	1,129
Maintenance/ Technical	91	91	112	113	+1	+23	+24.9%	+22	+24.1%	117
General Support	1,093	1,073	1,117	1,120	+3	+48	+4.4%	+27	+2.5%	1,246
Health Care Assistants	942	1,056	1,096	1,085	-11	+29	+2.7%	+143	+15.2%	1,228
Care, other	34	32	32	32	+0	+0	+1.3%	-2	-6.2%	40
Patient & Client Care	976	1,088	1,128	1,117	-10	+29	+2.7%	+141	+14.4%	1,268



Saolta University Hospital Care

Jan 2023	WTE Dec 2020	WTE Dec 2021	WTE Dec 2022	WTE Jan 2023	WTE change since Dec 22	WTE change since Dec 21	% change since Dec 21	WTE change since Dec 20	% change since Dec 20	No. Jan 2023
Overall	9,829	10,566	11,327	11,286	-41	+720	+6.8%	+1,457	+14.8%	12,784
Consultants	476	491	511	513	+2	+23	+4.6%	+37	+7.8%	564
Registrars	468	493	507	515	+8	+22	+4.5%	+47	+10.0%	554
SHO/ Interns	637	665	668	654	-14	-11	-1.7%	+17	+2.6%	723
Medical/ Dental, other	12	13	12	12		-1	-6.5%	-0	-2.1%	15
Medical & Dental	1,594	1,662	1,698	1,694	-4	+33	+2.0%	+101	+6.3%	1,856
Nurse/ Midwife Manager	589	643	713	712	-1	+70	+10.8%	+123	+21.0%	775
Nurse/ Midwife Specialist & AN/MP	236	268	315	316	+2	+48	+17.9%	+80	+33.8%	343
Staff Nurse/ Staff Midwife	2,871	3,032	3,303	3,312	+9	+280	+9.2%	+441	+15.3%	3,876
Public Health Nurse	1						-100.0%	-1	-100.0%	
Pre-registration Nurse/ Midwife Intern	3	4	10	38	+28	+34	+775.1%	+35	+1076.6%	169
Pre-registration Nurse Intern (C0VID-19)	31						-100.0%	-31	-100.0%	
Post-registration Nurse/ Midwife Student	9	7	9	11	+2	+4	+57.1%	+2	+22.8%	11
Nursing/ Midwifery awaiting registration	1	18	101	39	-62	+21	+114.7%	+38	+3990.6%	40
Nursing/ Midwifery Student	44	30	120	89	-32	+59	+198.4%	+45	+101.1%	220
Nursing/ Midwifery other	39	35	34	36	+2	+1	+1.8%	-4	-9.6%	43
Nursing & Midwifery	3,781	4,007	4,485	4,464	-21	+457	+11.4%	+683	+18.1%	5,257
Therapy Professions	271	311	349	348	-1	+37	+11.8%	+76	+28.0%	381
Health Science/ Diagnostics	655	690	738	731	-7	+40	+5.9%	+76	+11.6%	807
Social Care	3	2	2	2	-0	-0	-2.1%	-1	-27.7%	3
Social Workers	31	37	43	42	-1	+5	+14.1%	+11	+37.5%	47
Psychologists	2	3	3	5	+2	+2	+71.6%	+4	+195.6%	7
Pharmacy	160	179	191	191	+0	+12	+6.9%	+32	+19.9%	214
H&SC, Other	15	69	31	40	+10	-29	-41.6%	+26	+174.7%	54
Health & Social Care Professionals	1,136	1,292	1,357	1,360	+3	+68	+5.3%	+223	+19.7%	1,513
Management (VIII & above)	54	56	62	60	-1	+5	+8.2%	+6	+10.9%	61
Administrative/ Supervisory (V to VII)	286	338	384	393	+9	+54	+16.0%	+107	+37.3%	414
Clerical (III & IV)	1,084	1,212	1,252	1,234	-18	+22	+1.8%	+151	+13.9%	1,364
Management & Administrative	1,424	1,607	1,698	1,687	-11	+81	+5.0%	+263	+18.5%	1,839
Support	908	919	919	918	-1	-0	-0.0%	+10	+1.1%	1,020
Maintenance/ Technical	94	97	103	105	+2	+8	+8.4%	+11	+12.1%	107
General Support	1,002	1,015	1,022	1,023	+1	+8	+0.8%	+21	+2.1%	1,127
Health Care Assistants	845	913	980	970	-10	+57	+6.3%	+125	+14.8%	1,094
Care, other	47	70	86	87	+1	+17	+24.3%	+40	+84.7%	98
Patient & Client Care	892	983	1,066	1,057	-9	+75	+7.6%	+165	+18.5%	1,192



South/South West Hospital Group

Jan 2023	WTE Dec 2020	WTE Dec 2021	WTE Dec 2022	WTE Jan 2023	WTE change since Dec 22	WTE change since Dec 21	% change since Dec 21	WTE change since Dec 20	% change since Dec 20	No. Jan 2023
Overall	11,288	11,934	12,723	12,851	+128	+917	+7.7%	+1,563	+13.8%	14,568
Consultants	508	537	568	564	-4	+28	+5.1%	+57	+11.1%	622
Registrars	530	564	633	635	+2	+71	+12.6%	+105	+19.8%	652
SHO/ Interns	615	596	624	611	-13	+15	+2.5%	-4	-0.6%	619
Medical/ Dental, other	8	10	12	11	-1	+1	+6.8%	+3	+35.4%	19
Medical & Dental	1,661	1,707	1,838	1,821	-17	+114	+6.7%	+160	+9.7%	1,912
Nurse/ Midwife Manager	856	903	945	954	+10	+52	+5.7%	+98	+11.4%	1,068
Nurse/ Midwife Specialist & AN/MP	194	222	257	279	+21	+56	+25.4%	+85	+43.6%	306
Staff Nurse/ Staff Midwife	3,334	3,535	3,759	3,761	+2	+225	+6.4%	+426	+12.8%	4,344
Public Health Nurse	0	0				-0	-100.0%	-0	-100.0%	
Pre-registration Nurse/ Midwife Intern	0	17	37	53	+16	+36	+213.5%	+52	+14957.1%	194
Pre-registration Nurse Intern (C0VID-19)	23	0				-0	-100.0%	-23	-100.0%	
Post-registration Nurse/ Midwife Student	22	17	10	11	+1	-6	-36.5%	-11	-50.7%	11
Nursing/ Midwifery awaiting registration	17	14	9	7	-2	-8	-54.4%	-11	-61.6%	7
Nursing/ Midwifery Student	62	49	55	70	+15	+21	+44.2%	+8	+12.4%	212
Nursing/ Midwifery other	15	14	16	17	+1	+3	+22.4%	+2	+10.1%	20
Nursing & Midwifery	4,462	4,723	5,032	5,080	+49	+358	+7.6%	+618	+13.8%	5,950
Therapy Professions	357	392	461	467	+6	+75	+19.1%	+110	+30.8%	529
Health Science/ Diagnostics	854	904	916	937	+22	+33	+3.6%	+83	+9.7%	1,077
Social Workers	37	38	47	48	+2	+10	+25.4%	+11	+30.6%	54
Psychologists	2	3	6	7	+1	+4	+104.7%	+6	+366.7%	8
Pharmacy	150	178	208	212	+4	+34	+18.9%	+62	+41.2%	242
H&SC, Other	22	35	22	26	+5	-9	-24.8%	+5	+22.1%	27
Health & Social Care Professionals	1,421	1,552	1,659	1,698	+39	+146	+9.4%	+276	+19.4%	1,937
Management (VIII & above)	56	66	75	75	+0	+10	+15.1%	+20	+35.8%	77
Administrative/ Supervisory (V to VII)	322	362	426	440	+14	+78	+21.7%	+118	+36.6%	477
Clerical (III & IV)	1,270	1,302	1,371	1,381	+10	+79	+6.0%	+111	+8.7%	1,554
Management & Administrative	1,648	1,729	1,873	1,896	+23	+167	+9.6%	+249	+15.1%	2,108
Support	1,321	1,407	1,462	1,488	+26	+81	+5.8%	+167	+12.6%	1,682
Maintenance/ Technical	41	39	37	39	+2	-0	-1.0%	-2	-5.5%	41
General Support	1,362	1,446	1,499	1,527	+28	+81	+5.6%	+165	+12.1%	1,723
Health Care Assistants	719	763	805	806	+2	+43	+5.7%	+87	+12.1%	908
Care, other	15	15	19	23	+4	+8	+52.8%	+8	+51.1%	30
Patient & Client Care	735	778	824	829	+6	+51	+6.6%	+95	+12.9%	938



University of Limerick Hospital Group

Jan 2023	WTE Dec 2020	WTE Dec 2021	WTE Dec 2022	WTE Jan 2023	WTE change since Dec 22	WTE change since Dec 21	% change since Dec 21	WTE change since Dec 20	% change since Dec 20	No. Jan 2023
Overall	4,506	5,043	5,222	5,306	+84	+263	+5.2%	+800	+17.7%	5,849
Consultants	184	191	198	204	+6	+13	+6.8%	+21	+11.2%	218
Registrars	204	219	236	238	+2	+19	+8.5%	+34	+16.9%	248
SHO/ Interns	259	266	252	258	+5	-9	-3.3%	-1	-0.4%	262
Medical/ Dental, other	1	1	1	1		+0	+4.9%	+0	+4.9%	2
Medical & Dental	647	678	687	701	+13	+23	+3.4%	+54	+8.3%	730
Nurse/ Midwife Manager	346	388	430	440	+10	+52	+13.4%	+93	+27.0%	470
Nurse/ Midwife Specialist & AN/MP	81	90	121	125	+4	+35	+39.1%	+43	+53.1%	134
Staff Nurse/ Staff Midwife	1,300	1,480	1,471	1,475	+3	-6	-0.4%	+174	+13.4%	1,660
Pre-registration Nurse/ Midwife Intern	1	1	1	15	+14	+14	+1934.2%	+14	+1385.0%	61
Pre-registration Nurse Intern (COVID-19)	1						-100.0%	-1	-100.0%	
Post-registration Nurse/ Midwife Student	10	5	2	6	+4	+1	+25.0%	-4	-37.4%	19
Nursing/ Midwifery awaiting registration		3	2	2	+0	-1	-33.3%	+2	-100.0%	2
Nursing/ Midwifery Student	12	9	4	23	+19	+14	+164.6%	+11	+92.7%	82
Nursing/ Midwifery other	11	11	13	13	+0	+2	+20.3%	+2	+18.6%	15
Nursing & Midwifery	1,751	1,978	2,040	2,076	+36	+98	+5.0%	+324	+18.5%	2,361
Therapy Professions	98	120	120	122	+2	+2	+1.5%	+24	+24.5%	137
Health Science/ Diagnostics	254	272	261	266	+5	-6	-2.3%	+12	+4.7%	294
Social Workers	11	14	13	13	+0	-1	-8.3%	+2	+16.5%	14
Psychologists	4	4	5	5	+0	+1	+30.3%	+2	+48.6%	7
Pharmacy	51	57	61	59	-2	+2	+3.3%	+8	+16.2%	69
H&SC, Other	6	14	12	14	+2	-0	-1.6%	+8	+134.3%	14
Health & Social Care Professionals	423	482	471	479	+8	-3	-0.5%	+56	+13.1%	535
Management (VIII & above)	37	42	46	48	+2	+6	+14.9%	+11	+28.5%	49
Administrative/ Supervisory (V to VII)	129	173	213	217	+4	+44	+25.6%	+88	+68.5%	228
Clerical (III & IV)	508	558	573	583	+10	+25	+4.5%	+75	+14.9%	631
Management & Administrative	674	773	832	848	+17	+76	+9.8%	+174	+25.9%	908
Support	584	682	726	717	-10	+35	+5.1%	+132	+22.7%	780
Maintenance/ Technical	38	39	37	57	+20	+18	+46.4%	+19	+51.5%	60
General Support	622	721	764	774	+10	+53	+7.3%	+152	+24.4%	840
Health Care Assistants	383	407	422	422	+0	+16	+3.9%	+39	+10.2%	465
Care, other	6	7	6	7	+0	-0	-0.5%	+1	+10.9%	10
Patient & Client Care	389	413	429	429	+0	+16	+3.8%	+40	+10.2%	475



other Acute Services

Jan 2023	WTE Dec 2020	WTE Dec 2021	WTE Dec 2022	WTE Jan 2023	WTE change since Dec 22	WTE change since Dec 21	% change since Dec 21	WTE change since Dec 20	% change since Dec 20	No. Jan 2023
Overall	101	111	127	135	+8	+24	+21.9%	+34	+34.0%	142
Nurse/ Midwife Manager	14	14	17	19	+1	+5	+33.0%	+4	+30.9%	20
Nursing & Midwifery	14	14	17	19	+1	+5	+33.0%	+4	+30.9%	20
Health Science/ Diagnostics	3	4	4	4	+0			+1	+33.3%	4
Social Workers	1						-100.0%	-1	-100.0%	
Pharmacy	4	6	8	9	+1	+3	+50.5%	+5	+127.8%	9
Health & Social Care Professionals	8	10	12	13	+1	+3	+30.3%	+5	+63.5%	13
Management (VIII & above)	35	36	34	36	+2	-1	-2.5%	+1	+2.1%	38
Administrative/ Supervisory (V to VII)	38	40	54	58	+4	+17	+43.0%	+20	+52.8%	61
Clerical (III & IV)	6	10	9	10	+1	+0	+1.5%	+4	+69.5%	10
Management & Administrative	79	87	97	103	+6	+17	+19.2%	+25	+31.6%	109



Acute Services Employment by Grade Group: Jan 2023

Jan 2023	WTE Dec 2020	WTE Dec 2021	WTE Dec 2022	WTE Jan 2023	WTE change since Dec 22	WTE change since Dec 21	% change since Dec 21	WTE change since Dec 20	% change since Dec 20	No. Jan 2023
Overall	66,439	70,129	74,055	74,400	+345	+4,270	+6.1%	+7,961	+12.0%	83,254
Consultant Anaesthesia	427	433	449	445	-3	+12	+2.8%	+18	+4.3%	478
Consultant Dentistry	6	6	6	6	-0	+0	+4.2%	-0	-3.7%	7
Consultant Emergency Medicine	121	131	156	158	+2	+26	+20.2%	+36	+29.8%	172
Consultant Intensive Care Medicine	18	21	23	23	-0	+2	+10.8%	+5	+26.4%	24
Consultant Medicine	885	944	1,039	1,036	-3	+91	+9.7%	+150	+17.0%	1,129
Consultant Obstetrics & Gynaecology	170	170	178	181	+3	+11	+6.7%	+11	+6.2%	200
Consultant, Other		1		2	+2	+1	+131.1%	+2	-100.0%	5
Consultant Paediatrics	212	218	234	234	+0	+17	+7.6%	+22	+10.5%	255
Consultant Pathology	265	278	292	294	+2	+16	+5.6%	+28	+10.6%	322
Consultant Psychiatry	23	24	29	29	+0	+4	+17.4%	+5	+23.4%	35
Consultant Radiology	280	287	300	299	-1	+12	+4.3%	+19	+6.8%	321
Consultant Surgery	564	589	624	625	+0	+36	+6.0%	+60	+10.7%	686
Consultants	2,974	3,102	3,329	3,331	+2	+229	+7.4%	+357	+12.0%	3,634
Registrar	1,810	1,830	1,965	1,984	+19	+153	+8.4%	+174	+9.6%	2,147
Senior Registrar	120	123	125	125	-1	+2	+1.4%	+4	+3.6%	130
Specialist Registrar	1,185	1,315	1,399	1,367	-32	+53	+4.0%	+182	+15.4%	1,546
Registrars	3,115	3,268	3,489	3,476	-14	+208	+6.4%	+360	+11.6%	3,823
Interns	966	860	810	806	-4	-54	-6.3%	-160	-16.6%	889
Senior House Officer	2,286	2,422	2,523	2,493	-30	+71	+2.9%	+207	+9.1%	2,712
SHO/ Interns	3,253	3,282	3,333	3,299	-34	+17	+0.5%	+47	+1.4%	3,601
Dentists	11	10	8	8	+0	-1	-12.2%	-3	-24.0%	10
Other Medical	53	57	67	64	-3	+7	+13.1%	+12	+21.7%	94
Medical/ Dental, other	64	67	75	73	-3	+6	+9.5%	+9	+13.9%	104
Medical & Dental	9,405	9,718	10,227	10,179	-48	+460	+4.7%	+773	+8.2%	11,162
Clinical Nurse/ Midwife Manager	4,388	4,704	5,100	5,121	+21	+418	+8.9%	+733	+16.7%	5,658
Director Nursing/Midwifery, Assistant	453	490	520	557	+37	+68	+13.8%	+104	+23.1%	621
Director of Nursing/Midwifery	83	94	96	95	-0	+2	+1.7%	+13	+15.4%	98
Nurse/ Midwife Manager	4,924	5,287	5,716	5,774	+58	+487	+9.2%	+850	+17.3%	6,377
Advanced Nurse/ Midwife Practitioner	440	511	681	714	+33	+202	+39.6%	+274	+62.2%	748
Clinical Nurse/ Midwife Specialist	1,028	1,109	1,216	1,224	+8	+115	+10.4%	+196	+19.1%	1,402
Nurse/ Midwife Specialist & AN/MP	1,468	1,621	1,897	1,938	+41	+317	+19.6%	+470	+32.0%	2,150
Nursing Bank	23	10	6	7	+1	-3	-27.8%	-16	-68.8%	19
Staff Midwives	1,479	1,461	1,426	1,425	-0	-36	-2.5%	-53	-3.6%	1,709
Staff Nurse [Psychiatric]	29	26	21	20	-1	-6	-22.4%	-9	-30.3%	23
Staff Nurse [Intellectual Disability]	72						-100.0%	-72	-100.0%	
Staff Nurses [General/ Children's]	15,923	16,931	17,905	17,908	+2	+977	+5.8%	+1,985	+12.5%	20,068
Staff Nurse/ Staff Midwife	17,526	18,428	19,359	19,361	+2	+932	+5.1%	+1,835	+10.5%	21,819
Public Health Nurse	2	0				-0	-100.0%	-2	-100.0%	
Pre-registration Nurse/ Midwife Intern	15	74	137	284	+147	+210	+283.4%	+269	+1799.7%	851
Pre-registration Nurse Intern (COVID-19)	156	0				-0	-100.0%	-156	-100.0%	
Post-registration Nurse/ Midwife Student	151	134	140	131	-9	-3	-2.5%	-20	-13.3%	154
Nursing/ Midwifery awaiting registration	57	96	261	207	-54	+111	+114.7%	+151	+266.4%	212
Nursing/ Midwifery Student	378	305	538	622	+84	+317	+103.9%	+244	+64.6%	1,217
Nursing Education/Clinical	196	181	179	182	+3	+1	+0.7%	-14	-7.2%	211
Other Nursing/ Midwifery	30	32	6	6		-26	-81.3%	-24	-80.0%	7

Jan 2023	WTE Dec 2020	WTE Dec 2021	WTE Dec 2022	WTE Jan 2023	WTE change since Dec 22	WTE change since Dec 21	% change since Dec 21	WTE change since Dec 20	% change since Dec 20	No. Jan 2023
Overall	66,439	70,129	74,055	74,400	+345	+4,270	+6.1%	+7,961	+12.0%	83,254
Nursing/ Midwifery other	226	213	185	188	+3	-25	-11.7%	-38	-16.9%	218
Nursing & Midwifery	24,524	25,854	27,694	27,882	188	+2,028	+7.8%	+3,359	+13.7%	31,781
Dietitians	438	480	475	470	-5	-10	-2.1%	+32	+7.2%	530
Occupational Therapists	417	484	528	530	+2	+46	+9.5%	+112	+26.9%	573
Orthoptists	20	23	20	21	+1	-2	-7.3%	+1	+3.2%	28
Physiotherapists	1,068	1,126	1,221	1,223	+2	+98	+8.7%	+156	+14.6%	1,371
Podiatrists & Chiropodists	37	31	34	32	-3	+0	+1.3%	-5	-13.7%	37
Speech & Language Therapists	236	258	285	284	-2	+26	+10.3%	+48	+20.1%	318
Therapy Professions	2,217	2,401	2,563	2,560	-4	+158	+6.6%	+343	+15.5%	2,857
Audiology	30	39	43	41	-2	+2	+6.4%	+11	+37.1%	46
Biochemists	76	70	65	69	+4	-2	-2.1%	-7	-9.3%	74
Cardiac Physiologists	243	253	251	246	-4	-7	-2.7%	+3	+1.2%	274
Clinical Engineering	149	157	161	168	+7	+12	+7.4%	+19	+12.9%	173
Dosimetrists	14	15	16	17	+1	+2	+13.2%	+2	+17.1%	18
E.C.G. Technicians	11	7	8	8	-0	+1	+14.9%	-3	-25.5%	10
Gastrointestinal Physiologists	2	4	5	5	+0	+1	+25.2%	+3	+143.4%	6
Medical Science	1,951	1,993	2,031	2,043	+12	+51	+2.5%	+93	+4.7%	2,241
Neuro-Physiologists	56	54	55	53	-1	-1	-2.1%	-3	-5.5%	59
Perfusionists	22	19	19	18	-1	-1	-4.3%	-3	-15.0%	21
Phlebotomists	183	197	229	234	+6	+37	+18.7%	+51	+28.0%	306
Physicists	172	177	192	197	+5	+21	+11.7%	+26	+15.0%	209
Radiation Therapists	212	199	205	206	+1	+6	+3.2%	-6	-3.0%	227
Radiographers	1,239	1,354	1,409	1,408	-1	+54	+4.0%	+170	+13.7%	1,550
Respiratory Physiologists	71	71	72	73	+1	+2	+2.9%	+3	+4.0%	80
Vascular Physiologists	28	32	32	33	+0	+1	+3.2%	+5	+16.9%	37
Health Science/ Diagnostics	4,458	4,642	4,793	4,821	+28	+179	+3.9%	+363	+8.1%	5,331
Social Care	4	3	3	3	-0	-0	-1.5%	-1	-21.1%	5
Social Workers	384	419	441	445	+4	+26	+6.1%	+61	+15.9%	500
Psychologists	110	132	136	142	+6	+10	+7.4%	+32	+29.0%	174
Pharmacists	590	652	646	650	+4	-3	-0.4%	+59	+10.1%	714
Pharmacy Technicians	416	455	487	491	+3	+36	+7.9%	+75	+17.9%	556
Pharmacy	1,006	1,107	1,133	1,140	+7	+33	+3.0%	+134	+13.3%	1,270
Counsellor Therapists	5	3	4	3	-1	+0	+13.1%	-1	-23.7%	6
Dental Hygienists	1	1	1	1	-0	-0	-3.7%	-0	-3.7%	2
HSCP Trainees/ Students	56	68	85	110	+26	+42	+62.2%	+55	+98.8%	124
Other Health & Social Care	65	67	73	74	+1	+7	+11.0%	+9	+14.0%	82
Play Therapists/ Specialists	27	29	33	34	+1	+5	+17.6%	+7	+24.9%	42
Vaccinators		108	10	8	-2	-99	-92.1%	+8	-100.0%	23
H&SC, Other	154	276	207	232	+25	-44	-16.0%	+78	+50.9%	279
Health & Social Care Professionals	8,333	8,981	9,277	9,343	66	+362	+4.0%	+1,010	+12.1%	10,416
Management (VIII & above)	579	652	720	730	+10	+78	+12.0%	+151	+26.0%	748
Administrative/ Supervisory (V to VII)	2,674	2,982	3,390	3,433	+44	+451	+15.1%	+759	+28.4%	3,646
Clerical (III & IV)	6,658	7,032	7,264	7,274	+10	+242	+3.4%	+615	+9.2%	8,213
Management & Administrative	9,912	10,665	11,373	11,437	63	+771	+7.2%	+1,525	+15.4%	12,607
Catering	490	481	469	449	-20	-32	-6.6%	-41	-8.3%	487
Household Services	3,098	3,188	3,250	3,280	+30	+92	+2.9%	+182	+5.9%	3,832
Other Labs & Associated	440	518	615	618	+4	+100	+19.3%	+179	+40.6%	670
Other Support	761	754	772	768	-4	+14	+1.9%	+7	+0.9%	855

Jan 2023	WTE Dec 2020	WTE Dec 2021	WTE Dec 2022	WTE Jan 2023	WTE change since Dec 22	WTE change since Dec 21	% change since Dec 21	WTE change since Dec 20	% change since Dec 20	No. Jan 2023
Overall	66,439	70,129	74,055	74,400	+345	+4,270	+6.1%	+7,961	+12.0%	83,254
Portering	1,362	1,428	1,428	1,441	+13	+14	+0.9%	+79	+5.8%	1,526
Support	6,152	6,369	6,533	6,557	+23	+188	+2.9%	+405	+6.6%	7,370
Maintenance	514	510	542	568	+27	+59	+11.5%	+54	+10.5%	583
Technical Services	25	27	29	29	+0	+2	+7.4%	+4	+16.0%	29
Maintenance/ Technical	539	537	571	597	+27	+61	+11.3%	+58	+10.8%	612
General Support	6,691	6,906	7,104	7,154	50	+249	+3.6%	+463	+6.9%	7,982
Attendant/ Aide	1,472	1,106	1,244	1,244	+1	+138	+12.5%	-227	-15.4%	1,360
Health & Social Care Assistants	156	182	223	228	+5	+46	+25.3%	+72	+46.0%	254
Health Care Assistant/ Care Assistant	3,838	4,574	4,752	4,717	-35	+142	+3.1%	+879	+22.9%	5,331
HCA (Student Nurse/Midwife COVID-19)	50	0				-0	-100.0%	-50	-100.0%	
Health Care Assistants	5,516	5,863	6,218	6,189	-29	+327	+5.6%	+673	+12.2%	6,945
Ambulance Control	180	162	164	172	+8	+11	+6.5%	-8	-4.5%	185
Ambulance Education	138	253	203	211	+8	-42	-16.7%	+73	+52.7%	233
Ambulance Officers	85	86	87	85	-2	-1	-1.2%	+1	+0.7%	86
Pre-Hospital Care (Ambulance)	1,473	1,434	1,477	1,511	+34	+78	+5.4%	+38	+2.6%	1,572
Ambulance Staff	1,876	1,935	1,931	1,980	+49	+45	+2.3%	+103	+5.5%	2,076
Health Promotion	3	4	4	4	-0	-0	-1.5%	+1	+26.1%	6
Other Care Grades	94	121	143	149	+6	+28	+22.9%	+55	+58.4%	166
Pastoral Care	84	80	80	81	+1	+1	+1.0%	-3	-3.8%	110
Workshop Services	1	2	2	2		+0	+3.0%	+2	+312.0%	3
Care, other	182	208	230	236	+6	+29	+13.8%	+54	+29.7%	285
Patient & Client Care	7,574	8,005	8,379	8,405	26	+400	+5.0%	+831	+11.0%	9,306

Employment by WTE, Headcount, Gender, Full-Time /Part-Time etc.: Jan 2023

Acutes Services Staff Group	WTE	Headcount	WTE: no.	% Male	% female	Male WTE: no.	Female WTE: no.	% Total Perm	% Male Perm	% Female Perm	% Total Full Time	% Total Part Time	% Male FT	% Female FT
Overall	74,400	83,254	1.12	24.1%	75.9%	1.06	1.14	80.0%	70.2%	83.1%	77.8%	22.2%	92.4%	73.2%
Consultant Anaesthesia	445	478	1.07	60.0%	40.0%	1.07	1.07	82.2%	82.2%	78.5%	90.2%	9.8%	92.3%	86.9%
Consultant Dentistry	6	7	1.16	28.6%	71.4%	1.00	1.24	85.7%	85.7%	80.0%	85.7%	14.3%	100.0%	80.0%
Consultant Emergency Medicine	158	172	1.09	63.4%	36.6%	1.08	1.12	65.1%	65.1%	69.8%	84.3%	15.7%	90.8%	73.0%
Consultant Intensive Care Medicine	23	24	1.06	41.7%	58.3%	1.00	1.10	91.7%	91.7%	92.9%	91.7%	8.3%	100.0%	85.7%
Consultant Medicine	1,036	1,129	1.09	57.4%	42.6%	1.08	1.11	74.3%	74.3%	72.3%	86.2%	13.8%	88.3%	83.4%
Consultant Obstetrics & Gynaecology	181	200	1.11	44.5%	55.5%	1.08	1.13	79.0%	79.0%	77.5%	85.5%	14.5%	87.6%	83.8%
Consultant, Other	2	5	2.40	100.0%		2.40		100.0%	100.0%		20.0%	80.0%	20.0%	
Consultant Paediatrics	234	255	1.09	46.7%	53.3%	1.06	1.12	76.9%	76.9%	78.7%	85.9%	14.1%	90.8%	81.6%
Consultant Pathology	294	322	1.10	40.1%	59.9%	1.08	1.11	82.9%	82.9%	82.9%	87.0%	13.0%	89.9%	85.0%
Consultant Psychiatry	29	35	1.22	34.3%	65.7%	1.10	1.29	65.7%	65.7%	60.9%	65.7%	34.3%	83.3%	56.5%
Consultant Radiology	299	321	1.07	59.8%	40.2%	1.06	1.09	85.0%	85.0%	80.6%	90.7%	9.3%	93.8%	86.0%
Consultant Surgery	625	686	1.10	79.7%	20.3%	1.09	1.12	77.8%	77.8%	77.7%	82.9%	17.1%	84.3%	77.7%
Consultants	3,331	3,634	1.09	59.1%	40.9%	1.08	1.11	77.8%	78.6%	76.6%	86.2%	13.8%	88.5%	82.8%
Registrar	1,984	2,147	1.08	59.3%	40.7%	1.07	1.10	7.8%	7.8%	7.9%	96.2%	3.8%	97.4%	94.5%
Senior Registrar	125	130	1.04	66.2%	33.8%	1.05	1.02	33.8%	33.8%	40.9%	96.2%	3.8%	95.3%	97.7%
Specialist Registrar	1,367	1,546	1.13	45.0%	55.0%	1.12	1.14	7.7%	7.7%	6.9%	96.6%	3.4%	98.3%	95.3%
Registrars	3,476	3,823	1.10	53.8%	46.2%	1.09	1.12	8.7%	9.0%	8.3%	96.4%	3.6%	97.6%	95.0%
Interns	806	889	1.10	43.1%	56.9%	1.09	1.11	7.0%	7.0%	7.7%	100.0%	0.0%	100.0%	100.0%
Senior House Officer	2,493	2,712	1.09	44.7%	55.3%	1.07	1.10	5.4%	5.4%	5.1%	99.0%	1.0%	99.3%	98.8%
SHO/ Interns	3,299	3,601	1.09	44.3%	55.7%	1.07	1.11	5.8%	5.8%	5.8%	99.3%	0.7%	99.4%	99.1%
Dentists	8	10	1.19	30.0%	70.0%	1.62	1.07	80.0%	80.0%	100.0%	50.0%	50.0%	33.3%	57.1%
Other Medical	64	94	1.46	38.3%	61.7%	1.23	1.64	55.3%	55.3%	55.2%	42.6%	57.4%	66.7%	27.6%
Medical/ Dental, other	73	104	1.43	37.5%	62.5%	1.26	1.55	57.7%	53.8%	60.0%	43.3%	56.7%	64.1%	30.8%
Medical & Dental	10,179	11,162	1.10	52.3%	47.7%	1.08	1.11	30.7%	34.1%	27.0%	93.5%	6.5%	94.5%	92.3%
Clinical Nurse/ Midwife Manager	5,121	5,658	1.10	6.7%	93.3%	1.03	1.11	97.6%	97.6%	97.7%	74.3%	25.7%	92.9%	72.9%
Director Nursing/Midwifery, Assistant	557	621	1.11	18.5%	81.5%	1.36	1.07	87.1%	87.1%	96.4%	76.3%	23.7%	47.0%	83.0%
Director of Nursing/Midwifery	95	98	1.03	10.2%	89.8%	1.00	1.03	96.9%	96.9%	97.7%	96.9%	3.1%	90.0%	97.7%

Nurse/ Midwife Manager	5,774	6,377	1.10	7.9%	92.1%	1.09	1.11	96.5%	84.4%	97.6%	74.8%	25.2%	82.4%	74.2%
Advanced Nurse/ Midwife Practitioner	714	748	1.05	9.4%	90.6%	1.02	1.05	98.1%	98.1%	98.2%	91.0%	9.0%	95.7%	90.6%
Clinical Nurse/ Midwife Specialist	1,224	1,402	1.15	2.8%	97.2%	1.04	1.15	98.1%	98.1%	98.2%	66.7%	33.3%	97.4%	65.8%
Nurse/ Midwife Specialist & AN/MP	1,938	2,150	1.11	5.1%	94.9%	1.03	1.11	98.1%	97.2%	98.2%	75.2%	24.8%	96.3%	74.0%
Nursing Bank	7	19	2.68		100.0%		2.68	100.0%	100.0%	100.0%	0.0%	100.0%		0.0%
Staff Midwives	1,425	1,709	1.20	0.6%	99.4%	1.07	1.20	95.0%	95.0%	94.9%	53.5%	46.5%	60.0%	53.4%
Staff Nurse [Psychiatric]	20	23	1.14	34.8%	65.2%	1.16	1.13	100.0%	100.0%	100.0%	91.3%	8.7%	100.0%	86.7%
Staff Nurses [General/ Children's]	17,908	20,068	1.12	9.6%	90.4%	1.03	1.13	90.7%	90.7%	90.8%	72.9%	27.1%	92.9%	70.8%
Staff Nurse/ Staff Midwife	19,361	21,819	1.13	8.9%	91.1%	1.03	1.14	91.0%	89.6%	91.2%	71.4%	28.6%	92.8%	69.3%
Pre-registration Nurse/ Midwife Intern	284	851	3.00	4.9%	95.1%	2.76	3.01	14.8%	14.8%	14.1%	85.4%	14.6%	95.2%	84.9%
Post-registration Nurse/ Midwife Student	131	154	1.18	1.3%	98.7%	1.12	1.18	7.1%	7.1%	7.2%	98.7%	1.3%	100.0%	98.7%
Nursing/ Midwifery awaiting registration	207	212	1.02	10.4%	89.6%	1.03	1.02	62.3%	62.3%	61.6%	87.3%	12.7%	90.9%	86.8%
Nursing/ Midwifery Student	622	1,217	1.96	5.4%	94.6%	1.72	1.97	22.1%	40.9%	21.0%	87.4%	12.6%	93.9%	87.1%
Nursing Education/Clinical	182	211	1.16	4.3%	95.7%	1.00	1.17	97.6%	97.6%	97.5%	68.2%	31.8%	100.0%	66.8%
Other Nursing/ Midwifery	6	7	1.17		100.0%		1.17	100.0%	100.0%	100.0%	71.4%	28.6%		71.4%
Nursing/ Midwifery other	188	218	1.16	4.1%	95.9%	1.00	1.17	97.7%	100.0%	97.6%	68.3%	31.7%	100.0%	67.0%
Nursing & Midwifery	27,882	31,781	1.14	8.3%	91.7%	1.05	1.15	90.0%	87.7%	90.2%	72.9%	27.1%	91.0%	71.3%
Dietitians	470	530	1.13	1.7%	98.3%	1.06	1.13	87.4%	87.4%	87.5%	76.8%	23.2%	77.8%	76.8%
Occupational Therapists	530	573	1.08	8.2%	91.8%	1.04	1.09	81.0%	81.0%	81.2%	86.9%	13.1%	91.5%	86.5%
Orthoptists	21	28	1.33	10.7%	89.3%	1.01	1.38	89.3%	89.3%	88.0%	46.4%	53.6%	100.0%	40.0%
Physiotherapists	1,223	1,371	1.12	21.0%	79.0%	1.05	1.14	82.9%	82.9%	83.7%	80.2%	19.8%	93.1%	76.7%
Podiatrists & Chiropodists	32	37	1.17	13.5%	86.5%	1.30	1.15	86.5%	86.5%	84.4%	67.6%	32.4%	60.0%	68.8%
Speech & Language Therapists	284	318	1.12	1.3%	98.7%	1.00	1.12	83.0%	83.0%	83.1%	77.4%	22.6%	100.0%	77.1%
Therapy Professions	2,560	2,857	1.12	12.5%	87.5%	1.05	1.13	83.4%	80.1%	83.9%	80.1%	19.9%	92.1%	78.4%
Audiology	41	46	1.12	15.2%	84.8%	1.23	1.10	93.5%	93.5%	92.3%	82.6%	17.4%	71.4%	84.6%
Biochemists	69	74	1.07	29.7%	70.3%	1.03	1.09	91.9%	91.9%	94.2%	86.5%	13.5%	100.0%	80.8%
Cardiac Physiologists	246	274	1.11	17.2%	82.8%	1.05	1.13	87.2%	87.2%	87.7%	81.8%	18.2%	93.6%	79.3%
Clinical Engineering	168	173	1.03	76.9%	23.1%	1.02	1.06	93.1%	93.1%	85.0%	94.8%	5.2%	97.0%	87.5%
Dosimetrists	17	18	1.09	11.1%	88.9%	1.43	1.06	88.9%	88.9%	93.8%	77.8%	22.2%	50.0%	81.3%
E.C.G. Technicians	8	10	1.23	20.0%	80.0%	1.04	1.28	80.0%	80.0%	75.0%	50.0%	50.0%	100.0%	37.5%
Gastrointestinal Physiologists	5	6	1.16	50.0%	50.0%	1.13	1.20	100.0%	100.0%	100.0%	66.7%	33.3%	66.7%	66.7%
Medical Science	2,043	2,241	1.10	20.2%	79.8%	1.03	1.12	93.9%	93.9%	94.3%	81.1%	18.9%	95.6%	77.5%
Neuro-Physiologists	53	59	1.11	25.4%	74.6%	1.00	1.15	86.4%	86.4%	84.1%	83.1%	16.9%	100.0%	77.3%
Perfusionists	18	21	1.14	47.6%	52.4%	1.13	1.14	90.5%	90.5%	100.0%	71.4%	28.6%	70.0%	72.7%

Phlebotomists	234	306	1.31	24.2%	75.8%	1.26	1.32	79.1%	79.1%	80.6%	50.3%	49.7%	58.1%	47.8%
Physicists	197	209	1.06	49.3%	50.7%	1.01	1.11	94.3%	94.3%	97.2%	86.1%	13.9%	98.1%	74.5%
Radiation Therapists	206	227	1.10	11.9%	88.1%	1.06	1.11	80.6%	80.6%	82.5%	76.7%	23.3%	92.6%	74.5%
Radiographers	1,408	1,550	1.10	21.3%	78.7%	1.02	1.12	93.0%	93.0%	93.3%	80.0%	20.0%	94.8%	76.0%
Respiratory Physiologists	73	80	1.09	18.8%	81.3%	1.03	1.11	97.5%	97.5%	96.9%	87.5%	12.5%	93.3%	86.2%
Vascular Physiologists	33	37	1.14	21.6%	78.4%	1.13	1.14	86.5%	86.5%	89.7%	73.0%	27.0%	87.5%	69.0%
Health Science/ Diagnostics	4,821	5,331	1.11	23.5%	76.5%	1.04	1.13	91.7%	90.5%	92.1%	79.5%	20.5%	93.0%	75.4%
Social Care	3	5	1.52	40.0%	60.0%	2.00	1.30	80.0%	100.0%	66.7%	20.0%	80.0%	0.0%	33.3%
Social Workers	445	500	1.12	13.4%	86.6%	1.07	1.13	86.8%	88.1%	86.6%	80.4%	19.6%	92.5%	78.5%
Psychologists	142	174	1.22	12.6%	87.4%	1.19	1.23	82.8%	81.8%	82.9%	55.2%	44.8%	54.5%	55.3%
Pharmacists	650	714	1.10	13.7%	86.3%	1.01	1.11	87.1%	87.1%	86.4%	83.1%	16.9%	98.0%	80.7%
Pharmacy Technicians	491	556	1.13	4.0%	96.0%	1.06	1.14	86.3%	86.3%	86.1%	74.3%	25.7%	86.4%	73.8%
Pharmacy	1,140	1,270	1.11	9.4%	90.6%	1.02	1.12	86.8%	91.7%	86.3%	79.2%	20.8%	95.8%	77.5%
Counsellor Therapists	3	6	1.74		100.0%		1.74	83.3%	83.3%	83.3%	0.0%	100.0%		0.0%
Dental Hygienists	1	2	1.90		100.0%		1.90	100.0%	100.0%	100.0%	50.0%	50.0%		50.0%
HSCP Trainees/ Students	110	124	1.12	29.0%	71.0%	1.19	1.10	1.6%	1.6%	1.1%	84.7%	15.3%	83.3%	85.2%
Other Health & Social Care	74	82	1.10	26.8%	73.2%	1.05	1.12	79.3%	79.3%	75.0%	76.8%	23.2%	90.9%	71.7%
Play Therapists/ Specialists	34	42	1.23		100.0%		1.23	83.3%	83.3%	83.3%	59.5%	40.5%		59.5%
Vaccinators	8	23	2.71	17.4%	82.6%	1.90	2.98	65.2%	65.2%	68.4%	8.7%	91.3%	0.0%	10.5%
H&SC, Other	232	279	1.20	22.2%	77.8%	1.17	1.22	44.4%	37.1%	46.5%	70.3%	29.7%	80.6%	67.3%
Health & Social Care	9,343	10,416	1.11	18.0%	82.0%	1.05	1.13	87.2%	86.6%	87.3%	79.0%	21.0%	92.0%	76.1%
Executive Management	126	130	1.03	48.5%	51.5%	1.03	1.04	92.3%	92.3%	92.5%	99.2%	0.8%	100.0%	98.5%
Senior Management (VIII & GM)	604	618	1.02	33.0%	67.0%	1.02	1.02	92.9%	92.9%	95.9%	97.2%	2.8%	98.5%	96.6%
Management (VIII & above)	730	748	1.02	35.7%	64.3%	1.02	1.03	92.8%	88.0%	95.4%	97.6%	2.4%	98.9%	96.9%
Middle Management (V-VII)	3,421	3,633	1.06	22.0%	78.0%	1.02	1.08	93.1%	93.1%	93.5%	86.2%	13.8%	98.4%	82.8%
Other Administrative	12	13	1.05	38.5%	61.5%	1.08	1.03	76.9%	76.9%	100.0%	92.3%	7.7%	100.0%	87.5%
Administrative/ Supervisory (V to VII)	3,433	3,646	1.06	22.1%	77.9%	1.02	1.08	93.0%	91.1%	93.6%	86.3%	13.7%	98.4%	82.8%
Clerical (III & IV)	7,274	8,213	1.13	13.2%	86.8%	1.04	1.14	82.1%	77.7%	82.8%	72.0%	28.0%	94.4%	68.6%
Management & Administrative	11,437	12,607	1.10	17.1%	82.9%	1.03	1.12	85.9%	84.0%	86.3%	77.6%	22.4%	96.4%	73.7%
Catering	449	487	1.08	35.5%	64.5%	1.04	1.11	91.8%	91.8%	92.0%	79.3%	20.7%	95.4%	70.4%
Household Services	3,280	3,832	1.17	25.0%	75.0%	1.09	1.20	80.1%	80.1%	83.5%	60.5%	39.5%	79.1%	54.3%
Other Labs & Associated	618	670	1.08	30.3%	69.7%	1.06	1.09	75.4%	75.4%	75.8%	86.9%	13.1%	93.6%	83.9%
Other Support	768	855	1.11	48.8%	51.2%	1.06	1.17	91.6%	91.6%	93.4%	73.7%	26.3%	92.1%	56.2%
Portering	1,441	1,526	1.06	91.4%	8.6%	1.05	1.15	81.7%	81.7%	79.4%	89.4%	10.6%	91.2%	70.2%

Support	6,557	7,370	1.12	42.7%	57.3%	1.06	1.17	82.1%	79.3%	84.2%	71.7%	28.3%	88.0%	59.5%
Maintenance	568	583	1.03	94.2%	5.8%	1.02	1.11	96.9%	96.9%	100.0%	96.1%	3.9%	97.6%	70.6%
Technical Services	29	29	1.00	100.0%		1.00		93.1%	93.1%		100.0%	0.0%	100.0%	
Maintenance/ Technical	597	612	1.02	94.4%	5.6%	1.02	1.11	96.7%	96.5%	100.0%	96.2%	3.8%	97.8%	70.6%
General Support	7,154	7,982	1.12	46.7%	53.3%	1.06	1.17	83.2%	81.9%	84.3%	73.5%	26.5%	89.5%	59.5%
Attendant/ Aide	1,244	1,360	1.09	46.8%	53.2%	1.03	1.15	92.2%	92.2%	95.0%	79.3%	20.7%	94.2%	66.3%
Health & Social Care Assistants	228	254	1.11	23.6%	76.4%	1.06	1.13	81.1%	81.1%	81.4%	75.6%	24.4%	88.3%	71.6%
Health Care Assistant/ Care Assistant	4,717	5,331	1.13	27.6%	72.4%	1.08	1.15	86.8%	86.8%	86.4%	70.7%	29.3%	82.3%	66.3%
Health Care Assistants	6,189	6,945	1.12	31.2%	68.8%	1.07	1.15	87.6%	87.9%	87.5%	72.6%	27.4%	85.9%	66.5%
Ambulance Control	172	185	1.07	57.8%	42.2%	1.09	1.05	96.8%	96.8%	94.9%	99.5%	0.5%	100.0%	98.7%
Ambulance Education	211	233	1.10	52.8%	47.2%	1.08	1.13	0.0%	0.0%	0.0%	100.0%	0.0%	100.0%	100.0%
Ambulance Officers	85	86	1.01	84.9%	15.1%	1.01	1.02	98.8%	98.8%	100.0%	98.8%	1.2%	98.6%	100.0%
Pre-Hospital Care (Ambulance)	1,511	1,572	1.04	76.1%	23.9%	1.03	1.06	89.4%	89.4%	86.4%	99.7%	0.3%	99.9%	99.2%
Ambulance Staff	1,980	2,076	1.05	72.2%	27.8%	1.04	1.07	80.4%	83.9%	71.4%	99.7%	0.3%	99.9%	99.3%
Health Promotion	4	6	1.48		100.0%		1.48	100.0%	100.0%	100.0%	33.3%	66.7%		33.3%
Other Care Grades	149	166	1.11	45.8%	54.2%	1.05	1.18	94.6%	94.6%	91.1%	75.3%	24.7%	93.4%	60.0%
Pastoral Care	81	110	1.36	70.9%	29.1%	1.45	1.17	69.1%	69.1%	96.9%	60.0%	40.0%	52.6%	78.1%
Workshop Services	2	3	1.46	66.7%	33.3%	1.31	1.89	100.0%	100.0%	100.0%	33.3%	66.7%	50.0%	0.0%
Care, other	236	285	1.21	54.7%	45.3%	1.22	1.19	84.9%	78.2%	93.0%	68.1%	31.9%	72.4%	62.8%
Patient & Client Care	8,405	9,306	1.11	41.1%	58.9%	1.06	1.14	85.9%	85.9%	85.9%	78.5%	21.5%	90.8%	69.9%

Employment by WTE, Headcount, Gender, Full-Time /Part-Time etc.: Jan 2023

Hospital Group	WTE	Headcount	WTE: no.	% Male	% female	Male WTE: no.	Female WTE: no.	% Total Perm	% Male Perm	% Female Perm	% Total Full Time	% Total Part Time	% Male FT	% Female FT
Overall	74,400	83,254	1.12	24.1%	75.9%	1.06	1.14	80.0%	70.2%	83.1%	77.8%	22.2%	92.4%	73.2%
National Ambulance Service	2,125	2,230	1.05	69.8%	30.2%	1.04	1.07	81.7%	81.7%	75.3%	99.2%	0.8%	99.8%	97.9%
CHI at Connolly	146	171	1.17	10.5%	89.5%	1.24	1.17	84.8%	84.8%	88.2%	68.4%	31.6%	94.4%	94.4%
CHI at Crumlin	2,206	2,562	1.16	16.9%	83.1%	1.11	1.17	80.0%	80.0%	82.2%	71.5%	28.5%	93.3%	93.3%
CHI at Tallaght	305	362	1.19	11.9%	88.1%	1.22	1.18	71.0%	71.0%	73.7%	76.0%	24.0%	93.0%	93.0%
CHI at Temple Street	1,269	1,505	1.19	18.6%	81.4%	1.18	1.19	72.4%	72.4%	75.1%	78.2%	21.8%	94.3%	94.3%
CHI Corporate	41	41	1.00	29.3%	70.7%	1.00	1.01	70.7%	70.7%	62.1%	97.6%	2.4%	100.0%	100.0%
CHI Programme	107	112	1.05	40.2%	59.8%	1.03	1.06	33.0%	33.0%	28.4%	95.5%	4.5%	100.0%	100.0%
Children's Health Ireland	4,074	4,753	1.17	17.5%	82.5%	1.14	1.17	75.9%	75.9%	78.5%	74.6%	25.4%	94.1%	70.5%
Coombe Women & Infants University	955	1,074	1.12	15.0%	85.0%	1.03	1.14	83.8%	83.8%	86.0%	70.7%	29.3%	90.1%	90.1%
MRH Portlaoise	847	933	1.10	19.1%	80.9%	1.02	1.12	86.1%	86.1%	89.5%	77.7%	22.3%	97.8%	97.8%
MRH Tullamore	1,252	1,376	1.10	21.4%	78.6%	1.04	1.12	85.6%	85.6%	89.0%	81.9%	18.1%	95.9%	95.9%
Naas General	941	1,060	1.13	19.6%	80.4%	1.08	1.14	87.6%	87.6%	89.0%	82.5%	17.5%	95.7%	95.7%
St. James's	4,604	5,154	1.12	25.1%	74.9%	1.07	1.14	84.5%	84.5%	87.0%	83.3%	16.7%	93.7%	93.7%
St. Luke's Rathgar	555	590	1.06	28.1%	71.9%	1.02	1.08	78.0%	78.0%	80.4%	85.1%	14.9%	96.4%	96.4%
Tallaght University	3,227	3,673	1.14	25.8%	74.2%	1.10	1.15	76.9%	76.9%	79.4%	78.6%	21.4%	89.2%	89.2%
Hospital Group HQ	60	62	1.04	12.9%	87.1%	1.00	1.05	90.3%	90.3%	94.4%	98.4%	1.6%	100.0%	100.0%
Dublin Midlands Hospital Group	12,441	13,922	1.12	23.4%	76.6%	1.07	1.13	82.6%	82.6%	85.3%	80.6%	19.4%	92.9%	76.9%
Cappagh National Orthopaedic	514	570	1.11	25.3%	74.7%	1.02	1.14	86.5%	86.5%	90.4%	74.6%	25.4%	95.1%	95.1%
Mater Misericordiae University	3,862	4,234	1.10	26.3%	73.7%	1.08	1.10	78.9%	78.9%	82.5%	81.7%	18.3%	86.7%	86.7%
MRH Mullingar	1,103	1,210	1.10	19.6%	80.4%	1.01	1.12	83.7%	83.7%	88.9%	81.7%	18.3%	97.9%	97.9%
National Maternity	969	1,081	1.12	17.1%	82.9%	1.06	1.13	77.2%	77.2%	79.2%	72.2%	27.8%	83.8%	83.8%
Our Lady's Navan	633	719	1.14	26.4%	73.6%	1.05	1.17	85.7%	85.7%	90.9%	69.8%	30.2%	91.1%	91.1%
St. Columcille's	482	541	1.12	22.6%	77.4%	1.06	1.14	85.4%	85.4%	84.7%	81.5%	18.5%	94.3%	94.3%
St Luke's General Kilkenny	1,300	1,474	1.13	22.5%	77.5%	1.02	1.17	78.6%	78.6%	83.6%	72.2%	27.8%	92.7%	92.7%
St. Michael's	417	482	1.16	25.3%	74.7%	1.13	1.16	92.1%	92.1%	92.2%	80.3%	19.7%	90.2%	90.2%
St. Vincent's University	3,322	3,561	1.07	29.9%	70.1%	1.04	1.09	96.5%	96.5%	96.8%	85.0%	15.0%	90.5%	90.5%
Wexford General	1,172	1,306	1.11	22.1%	77.9%	1.03	1.14	87.4%	87.4%	91.0%	76.4%	23.6%	96.2%	96.2%
Royal Victoria Eye & Ear	353	405	1.15	29.9%	70.1%	1.06	1.19	83.2%	83.2%	87.3%	66.4%	33.6%	85.1%	85.1%
National Rehabilitation	639	718	1.12	26.3%	73.7%	1.13	1.12	76.9%	76.9%	78.1%	76.6%	23.4%	83.1%	83.1%
IEHG Bank	20	32	1.62	6.3%	93.8%	1.47	1.63	100.0%	100.0%	100.0%	21.9%	78.1%	0.0%	0.0%
Hospital Group HQ	73	85	1.16	18.8%	81.2%	1.10	1.18	92.9%	92.9%	94.2%	80.0%	20.0%	87.5%	87.5%
Ireland East Hospital Group	14,857	16,418	1.11	25.1%	74.9%	1.05	1.12	84.9%	84.9%	87.5%	79.0%	21.0%	89.9%	75.3%
Beaumont	4,403	4,778	1.09	28.6%	71.4%	1.05	1.10	82.9%	82.9%	87.3%	79.6%	20.4%	88.2%	88.2%

Cavan General	1,282	1,457	1.14	19.8%	80.2%	1.07	1.16	84.6%	84.6%	89.1%	75.8%	24.2%	92.7%	92.7%
Connolly	1,596	1,764	1.11	26.5%	73.5%	1.06	1.12	84.5%	84.5%	87.7%	84.6%	15.4%	96.4%	96.4%
Louth County	306	343	1.12	19.5%	80.5%	1.09	1.13	98.0%	98.0%	98.6%	72.0%	28.0%	95.5%	95.5%
Monaghan	156	182	1.17	9.9%	90.1%	1.15	1.17	97.8%	97.8%	98.2%	61.0%	39.0%	83.3%	83.3%
Our Lady of Lourdes	2,524	2,793	1.11	22.0%	78.0%	1.04	1.13	86.8%	86.8%	90.5%	84.4%	15.6%	95.4%	95.4%
Rotunda	992	1,201	1.21	15.7%	84.3%	1.16	1.22	78.6%	78.6%	80.8%	73.9%	26.1%	90.5%	90.5%
Hospital Group HQ	67	70	1.05	15.7%	84.3%	1.00	1.05	97.1%	97.1%	98.3%	98.6%	1.4%	100.0%	100.0%
RCSI Hospitals Group	11,326	12,588	1.11	24.0%	76.0%	1.06	1.13	84.5%	84.5%	88.2%	80.0%	20.0%	91.7%	76.3%
Galway University	4,229	4,761	1.13	22.0%	78.0%	1.06	1.14	76.6%	76.6%	80.4%	75.2%	24.8%	90.6%	90.6%
Letterkenny University	2,096	2,421	1.16	23.2%	76.8%	1.09	1.18	74.9%	74.9%	79.4%	68.9%	31.1%	90.0%	90.0%
Mayo University	1,433	1,611	1.12	21.0%	79.0%	1.03	1.15	80.6%	80.6%	84.6%	74.2%	25.8%	96.2%	96.2%
Portiuncula University	979	1,086	1.11	22.2%	77.8%	1.04	1.13	77.2%	77.2%	83.6%	71.8%	28.2%	95.0%	95.0%
Roscommon University	430	480	1.12	19.0%	81.0%	1.05	1.13	78.8%	78.8%	81.0%	71.5%	28.5%	95.6%	95.6%
Sligo University	2,013	2,312	1.15	23.4%	76.6%	1.08	1.17	79.5%	79.5%	84.4%	75.6%	24.4%	92.2%	92.2%
Hospital Group HQ	107	113	1.06	20.4%	79.6%	1.06	1.06	83.2%	83.2%	85.6%	93.8%	6.2%	95.7%	95.7%
Saolta University Hospital Care	11,286	12,784	1.13	22.2%	77.8%	1.06	1.15	77.5%	77.5%	81.8%	73.7%	26.3%	92.1%	68.4%
Bantry General	330	376	1.14	15.7%	84.3%	1.13	1.14	77.7%	77.7%	80.8%	67.6%	32.4%	86.4%	86.4%
Cork University	4,808	5,476	1.14	23.1%	76.9%	1.07	1.16	61.8%	61.8%	66.0%	75.1%	24.9%	90.4%	90.4%
Lourdes Orthopaedic Kilcreene	74	85	1.16	21.2%	78.8%	1.05	1.19	89.4%	89.4%	97.0%	51.8%	48.2%	94.4%	94.4%
Mallow General	264	305	1.16	14.4%	85.6%	1.08	1.17	66.6%	66.6%	69.3%	65.9%	34.1%	88.6%	88.6%
Mercy University	1,453	1,632	1.12	21.4%	78.6%	1.02	1.15	77.5%	77.5%	79.4%	66.3%	33.7%	93.1%	93.1%
South Infirmary Victoria University	856	1,017	1.19	19.2%	80.8%	1.09	1.21	73.9%	73.9%	77.1%	51.5%	48.5%	72.8%	72.8%
South Tipperary General	1,072	1,209	1.13	19.8%	80.2%	1.04	1.15	75.9%	75.9%	79.4%	70.6%	29.4%	92.5%	92.5%
UH Kerry	1,437	1,642	1.14	20.0%	80.0%	1.06	1.17	63.7%	63.7%	67.1%	73.2%	26.8%	91.8%	91.8%
UH Waterford	2,483	2,746	1.11	23.7%	76.3%	1.03	1.13	83.3%	83.3%	87.8%	78.3%	21.7%	95.1%	95.1%
Hospital Group HQ	73	80	1.10	21.3%	78.8%	1.25	1.06	77.5%	77.5%	84.1%	86.3%	13.8%	76.5%	76.5%
South/South West Hospital Group	12,851	14,568	1.13	21.8%	78.2%	1.06	1.16	70.6%	70.6%	74.4%	72.0%	28.0%	90.8%	66.8%
Croom Orthopaedic	313	344	1.10	23.3%	76.7%	1.03	1.12	84.3%	84.3%	87.1%	77.9%	22.1%	95.0%	95.0%
Ennis	261	295	1.13	15.6%	84.4%	1.06	1.15	85.8%	85.8%	90.0%	69.5%	30.5%	87.0%	87.0%
Nenagh	294	328	1.12	15.9%	84.1%	1.04	1.13	89.9%	89.9%	93.5%	69.5%	30.5%	100.0%	100.0%
St. John's Limerick	337	372	1.10	15.6%	84.4%	1.01	1.12	91.9%	91.9%	95.2%	73.4%	26.6%	96.6%	96.6%
UH Limerick	3,698	4,048	1.09	23.5%	76.5%	1.04	1.11	79.1%	79.1%	82.4%	84.0%	16.0%	95.9%	95.9%
UMH Limerick	390	449	1.15	7.8%	92.2%	1.05	1.16	83.5%	83.5%	85.3%	75.1%	24.9%	88.6%	88.6%
Hospital Group HQ	13	13	1.04	38.5%	61.5%	1.00	1.07	84.6%	84.6%	100.0%	100.0%	0.0%	100.0%	100.0%
University of Limerick Hospital Group	5,306	5,849	1.10	21.0%	79.0%	1.04	1.12	81.5%	81.5%	84.9%	80.8%	19.2%	95.5%	76.9%
Other	135	142	1.05	21.1%	78.9%	1.00	1.07	93.0%	93.0%	95.5%	95.8%	4.2%	100.0%	100.0%
other Acute Services	135	142	1.05	21.1%	78.9%	1.00	1.07	93.0%	93.0%	95.5%	95.8%	4.2%	100.0%	94.6%

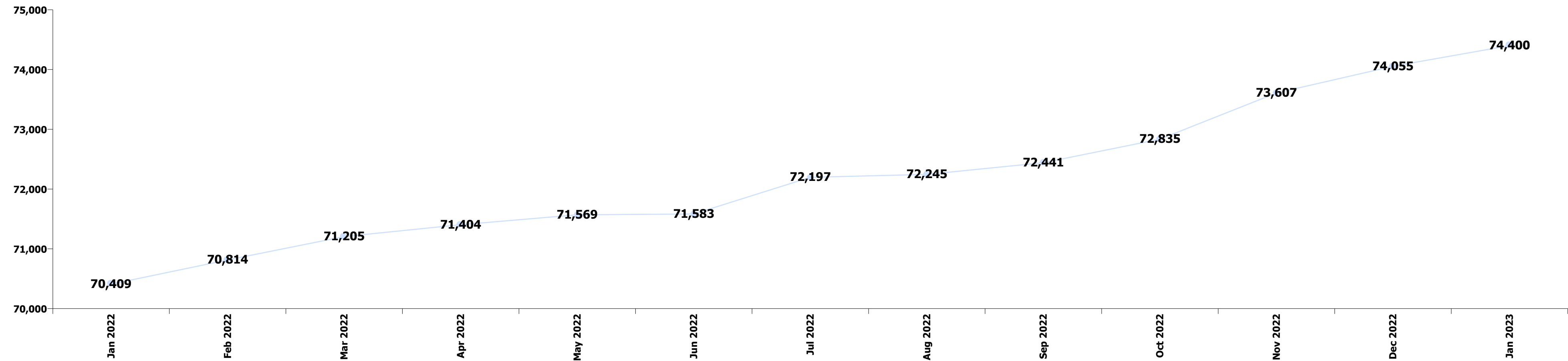
Summary Staff Movement: January 2023

Month-on-month Summary

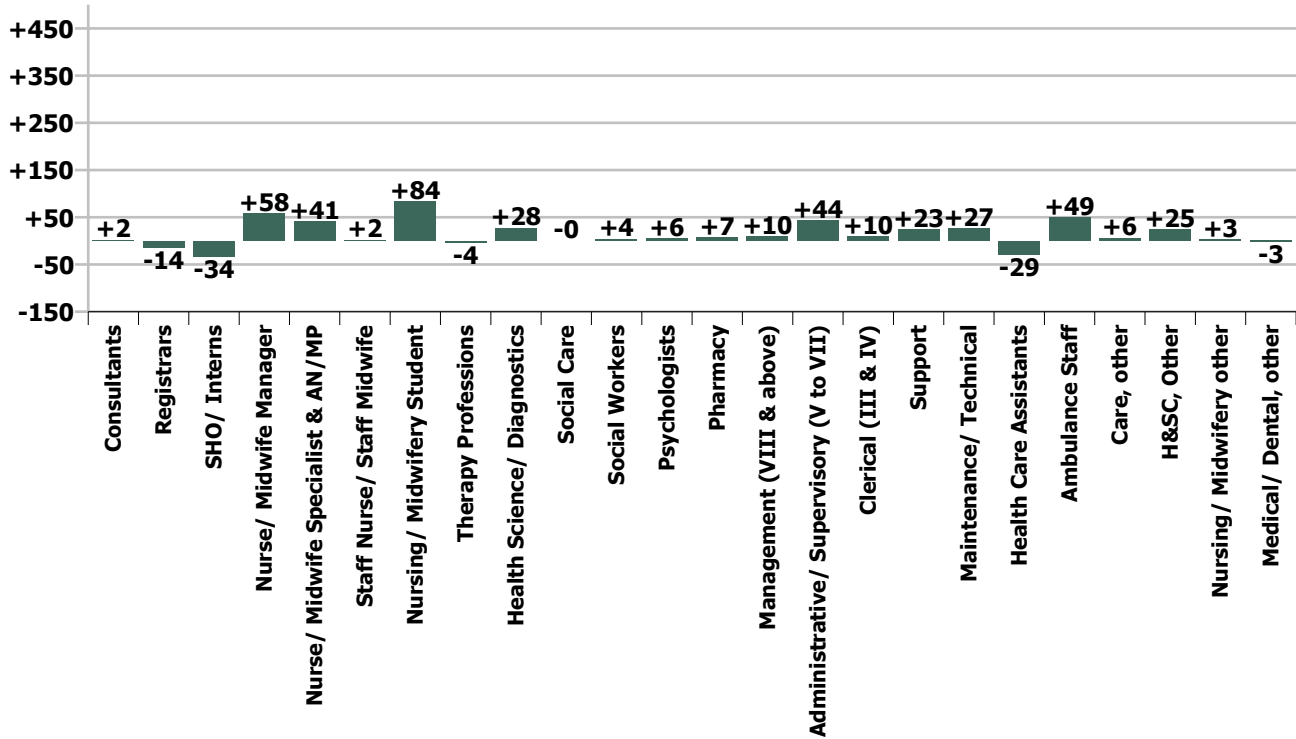
WTE change since Dec 22	% change since Dec 22	overall	Consultants	Registrars	SHO/ Interns	Medical/ Dental, other	Medical & Dental	Nurse/ Midwife Manager	Nurse/ Midwife Specialist & AN/MP	Staff Nurse/ Staff Midwife	Nursing/ Midwifery Student	Nursing/ Midwifery other	Nursing & Midwifery	Therapy Professions	Health Science/ Diagnostics	Social Care	Social Workers	Psychologists	Pharmacy	H&SC, Other	Health & Social Care Professionals	Management (VIII & above)	Administrativ e/ Supervisory (V to VII)	Clerical (III & IV)	Management & Administrativ e	General Support	Health Care Assistants	Ambulance Staff	Care, other	Patient & Client Care	
Overall	+0.5%	+345	+2	-14	-34	-3	-48	+58	+41	+2	+84	+3	+188	-4	+28	-0	+4	+6	+7	+25	+66	+10	+44	+10	+63	+50	-29	+49	+6	+26	
National Ambulance Service	+2.8%	+58						+0		+1			+1							+7	+25		+4	+3	+1	+8	+0	+0	+49	-0	+49
Children's Health Ireland	-0.8%	-34	-1	-22	-9		-32	+3	+0	-8	-10	+0	-15	+1	+4			+2	+2	-0	-0	+8	+1	-6	+2	-3	+6	+1		-1	-0
Dublin Midlands Hospital Group	+0.9%	+114	+3	-0	-1	-2	+0	-2	+12	+31	+5	+2	+49	-1	+11		+0	+0	+3	+5	+18	+1	+10	+17	+29	+9	+7		+1	+9	
Ireland East Hospital Group	-0.2%	-32	-7	-5	-17	+1	-27	+5	+2	-64	+80	-1	+23	-8	-5		+1	+0	+3	+2	-6	+1	+6	-2	+4	-7	-18		-0	-18	
RCSI Hospitals Group	+0.5%	+59	+3	+1	+15	-1	+18	+32	+0	+28	+7	-1	+65	-3	-2		+0	-0	-2	+1	-6	-0	+0	-10	-11	+3	-11		+0	-10	
Saolta University Hospital Care	-0.4%	-41	+2	+8	-14		-4	-1	+2	+9	-32	+2	-21	-1	-7	-0	-1	+2	+0	+10	+3	-1	+9	-18	-11	+1	-10		+1	-9	
South/South West Hospital Group	+1.0%	+128	-4	+2	-13	-1	-17	+10	+21	+2	+15	+1	+49	+6	+22		+2	+1	+4	+5	+39	+0	+14	+10	+23	+28	+2		+4	+6	
University of Limerick Hospital Group	+1.6%	+84	+6	+2	+5		+13	+10	+4	+3	+19	+0	+36	+2	+5		+0	+0	-2	+2	+8	+2	+4	+10	+17	+10	+0		+0	+0	
other Acute Services	+6.6%	+8						+1					+1		+0				+1		+1	+2	+4	+1	+6						
Acute Services	+0.5%	+345	+2	-14	-34	-3	-48	+58	+41	+2	+84	+3	+188	-4	+28	-0	+4	+6	+7	+25	+66	+10	+44	+10	+63	+50	-29	+49	+6	+26	
			+0.1%	-0.4%	-1.0%	-3.4%	-0.5%	+1.0%	+2.2%	+0.0%	+15.6%	+1.8%	+0.7%	-0.1%	+0.6%	-4.1%	+0.9%	+4.3%	+0.6%	+11.9%	+0.7%	+1.4%	+1.3%	+0.1%	+0.6%	+0.7%	-0.5%	+2.5%	+2.7%	+0.3%	

Year-on-year Summary

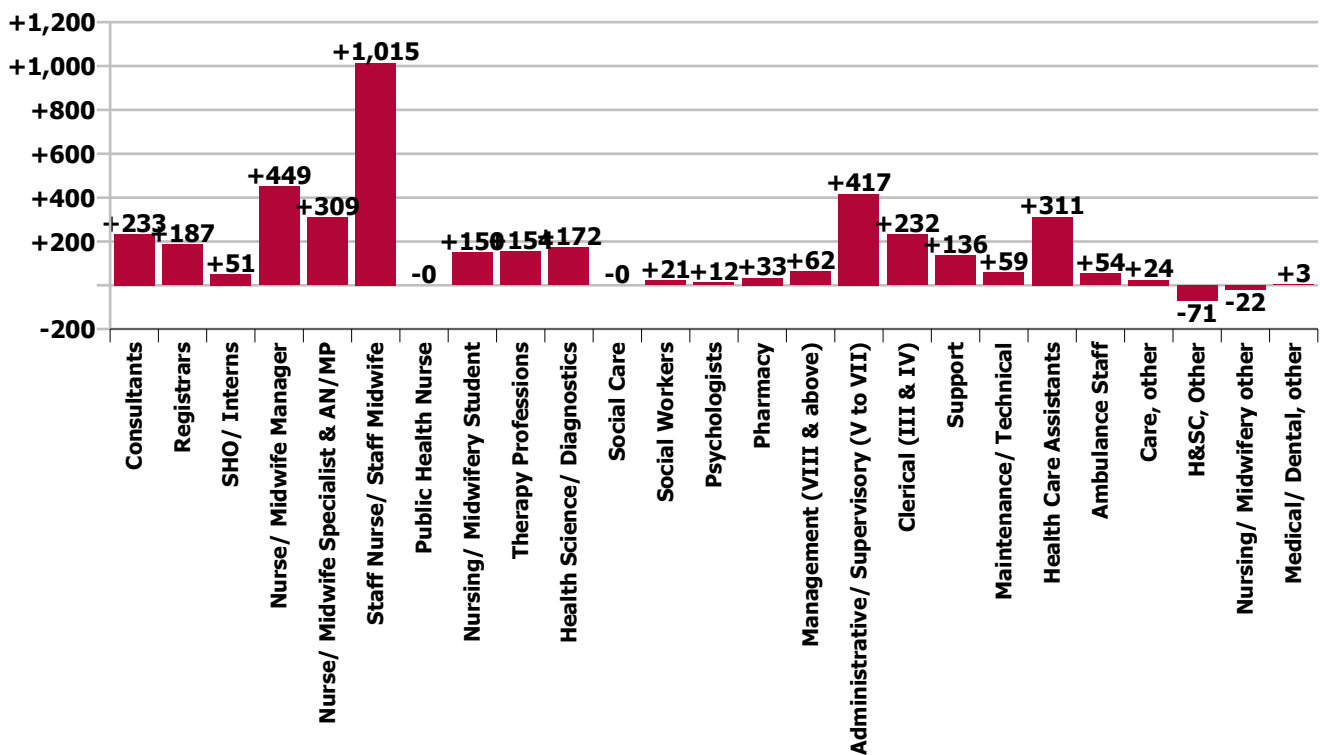
WTE change since Jan 22	% change since Jan 22	overall	Consultants	Registrars	SHO/ Interns	Medical/ Dental, other	Medical & Dental	Nurse/ Midwife Manager	Nurse/ Midwife Specialist & AN/MP	Staff Nurse/ Staff Midwife	Public Health Nurse	Nursing/ Midwifery Student	Nursing/ Midwifery other	Nursing & Midwifery	Therapy Professions	Health Science/ Diagnostics	Social Care	Social Workers	Psychologists	Pharmacy	H&SC, Other	Health & Social Care Professionals	Management (VIII & above)	Administrative/ Supervisory (V to VII)	Clerical (III & IV)	Management & Administrative	General Support	Health Care Assistants	Ambulance Staff	Care, other	Patient & Client Care	
Overall	+5.7%	+3,991	+233	+187	+51	+3	+473	+449	+309	+1,015	-0	+150	-22	+1,900	+154	+172	-0	+21	+12	+33	-71	+322	+62	+417	+232	+712	+194	+311	+54	+24	+389	
National Ambulance Service	+3.7%	+76		-0			-0	+1		+1				+2									+13	+4	+3	+20	+1		+55	-2	+53	
Children's Health Ireland	+3.1%	+124	+36	-11	-2	+0	+23	+12	+19	-14		+10	+1	+27	-5	+11		+3		-0	-1	+9	+17	+5	+30	+16	+51	+8	+2		-2	-1
Dublin Midlands Hospital Group	+6.2%	+725	+50	+53	-0	+0	+103	+41	+69	+195		+38	-3	+340	+30	+42		-3	+1	-12	-7	+51	+6	+64	+40	+110	-7	+125	-1	+3	+128	
Ireland East Hospital Group	+4.5%	+644	+48	+31	+16	+3	+98	+116	+44	+35		+96	-16	+275	+3	+13		+4	+4	+1	-5	+19	+17	+104	+34	+155	+44	+49		+4	+53	
RCSI Hospitals Group	+5.9%	+636	+33	+15	+25	-0	+72	+115	+50	+257		-37	-10	+374	+22	+41		+4	+1	-2	-7	+59	+5	+35	+19	+59	+43	+30		-1	+29	
Saolta University Hospital Care	+6.3%	+671	+26	+14	+9	-0	+49	+55	+47	+294		+40	+0	+436	+36	+37	-0	+5	+3	+12	-46	+48	+2	+54	+17	+73	+0	+51		+14	+65	
South/South West Hospital Group	+7.1%	+851	+28	+69	+10	+0	+107	+54	+50	+238	-0	-5	+4	+341	+68	+28		+9	+4	+33	-11	+131	+9	+68	+83	+160	+64	+40		+8	+49	
University of Limerick Hospital Group	+4.7%	+241	+12	+16	-7	+0	+22	+51	+31	+9		+7	+2	+101	+1	-0		-0	+0	-1	-4	-5	+6	+39	+21	+67	+42	+14		+0	+14	
other Acute Services	+21.6%	+24						+4						+4						+3		+3	-1	+19	-0	+17						
Acute Services	+5.7%	+3,991	+233	+187	+51	+3	+473	+449	+309	+1,015	-0	+150	-22	+1,900	+154	+172	-0	+21	+12	+33	-71	+322	+62	+417	+232	+712	+194	+311	+54	+24	+389	
			+7.5%	+5.7%	+1.6%	+3.8%	+4.9%	+8.4%	+19.0%	+5.5%	-100.0%	+31.7%	-10.7%	+7.3%	+6.4%	+3.7%	-1.5%	+5.0%	+9.5%	+3.0%	-23.5%	+3.6%	+9.3%	+13.8%	+3.3%	+6.6%	+2.8%	+5.3%	+2.8%	+11.4%	+4.9%	



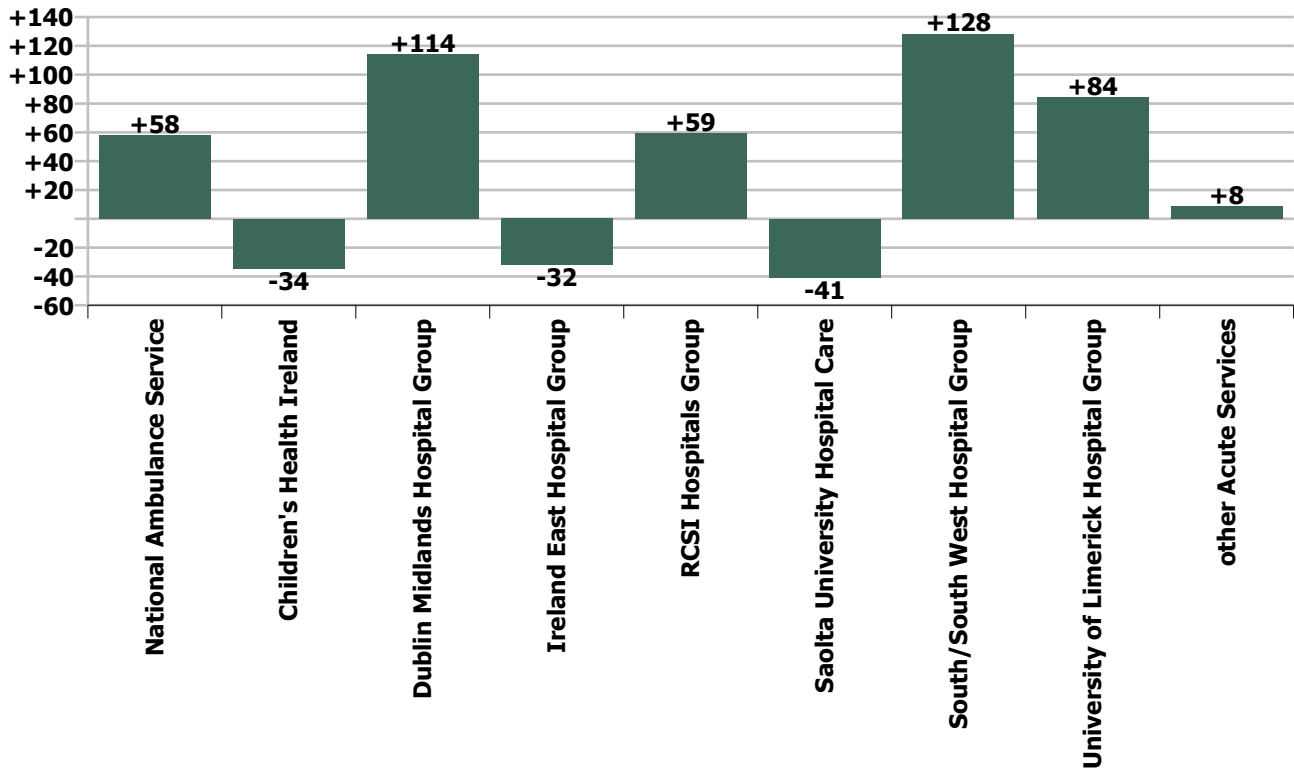
Staff Group change since: Dec 2022



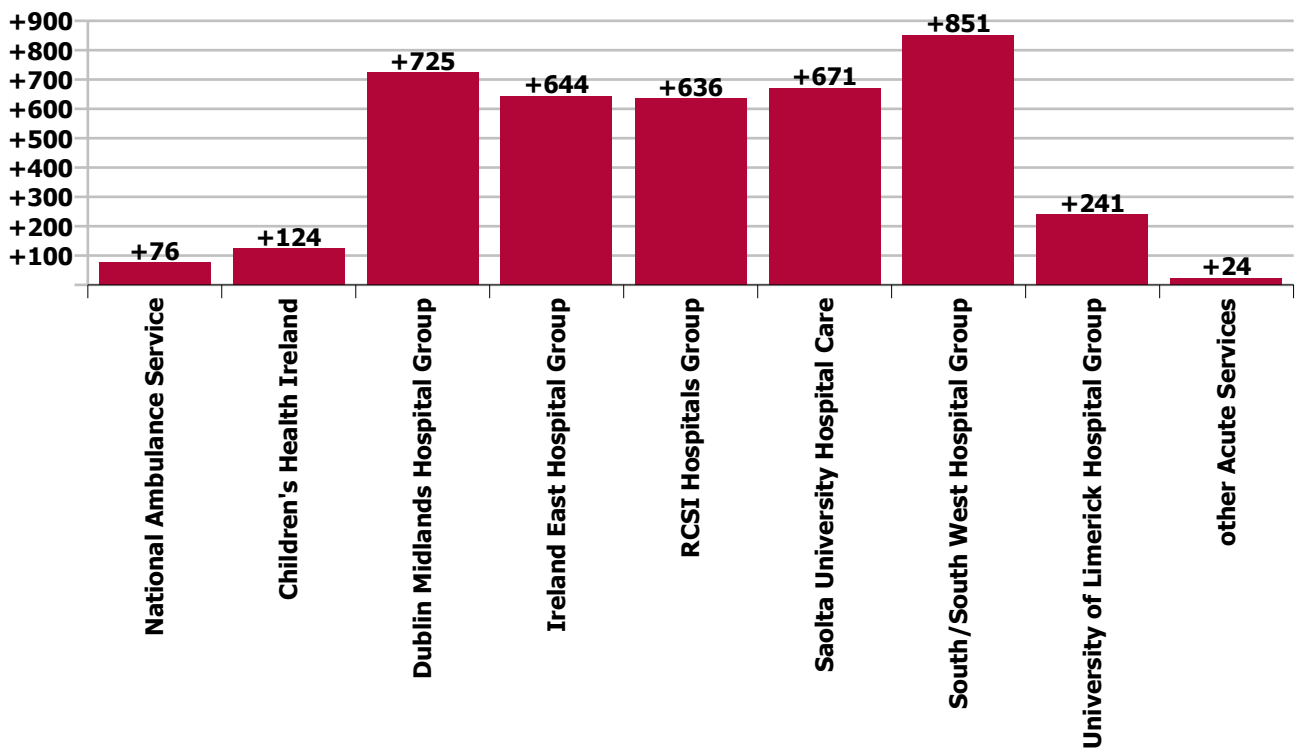
Staff Group change since: Jan 2022



Hospital Group & CHO change since: Dec 2022



Hospital Group & CHO change since: Jan 2022



Longitudinal Employment Levels by Grade Group - December 2017 to Jan 2023

Jan 2023 (Dec 2020 figure: 66,439)	WTE Jan 2023	WTE change since Dec 17	WTE change since Dec 18	WTE change since Dec 19	WTE change since Dec 20	WTE change since Dec 21	WTE change since Dec 22	% change since Dec 17	% change since Dec 18	% change since Dec 19	% change since Dec 20	% change since Dec 21	% change since Dec 22
Overall	74,400	+15,779	+13,494	+11,863	+7,961	+4,270	+345	+26.9%	+22.2%	+19.0%	+12.0%	+6.1%	+0.5%
Consultant Anaesthesia	445	+60	+55	+42	+18	+12	-3	+15.6%	+14.2%	+10.5%	+4.3%	+2.8%	-324.0%
Consultant Dentistry	6	+1	-0	-0	-0	+0	-0	+27.3%	-1.1%	-2.6%	-3.7%	+4.2%	-21.0%
Consultant Emergency Medicine	158	+59	+60	+50	+36	+26	+2	+60.7%	+61.8%	+45.8%	+29.8%	+20.2%	+168.0%
Consultant Intensive Care Medicine	23	+17	+8	+7	+5	+2	-0	+278.5%	+52.8%	+41.9%	+26.4%	+10.8%	-16.0%
Consultant Medicine	1,036	+313	+270	+232	+150	+91	-3	+43.3%	+35.2%	+28.9%	+17.0%	+9.7%	-334.0%
Consultant Obstetrics & Gynaecology	181	+30	+24	+20	+11	+11	+3	+20.2%	+15.4%	+12.3%	+6.2%	+6.7%	+296.0%
Consultant, Other	2	+2	+2	+1	+2	+1	+2	-100.0%	-100.0%	+205.9%	-100.0%	+131.1%	+208.0%
Consultant Paediatrics	234	+68	+57	+41	+22	+17	+0	+41.0%	+32.0%	+21.4%	+10.5%	+7.6%	+45.0%
Consultant Pathology	294	+63	+51	+41	+28	+16	+2	+27.2%	+21.2%	+16.3%	+10.6%	+5.6%	+210.0%
Consultant Psychiatry	29	+10	+9	+5	+5	+4	+0	+53.8%	+46.7%	+21.4%	+23.4%	+17.4%	+13.0%
Consultant Radiology	299	+48	+33	+24	+19	+12	-1	+19.2%	+12.3%	+8.8%	+6.8%	+4.3%	-93.0%
Consultant Surgery	625	+129	+106	+86	+60	+36	+0	+26.0%	+20.4%	+15.9%	+10.7%	+6.0%	+34.0%
Consultants	3,331	+801	+675	+549	+357	+229	+2	+31.7%	+25.4%	+19.7%	+12.0%	+7.4%	+0.1%
Registrar	1,984	+411	+330	+280	+174	+153	+19	+26.1%	+19.9%	+16.4%	+9.6%	+8.4%	+1893.0%
Senior Registrar	125	+23	+17	+17	+4	+2	-1	+22.6%	+16.0%	+15.7%	+3.6%	+1.4%	-65.0%
Specialist Registrar	1,367	+365	+340	+237	+182	+53	-32	+36.5%	+33.1%	+20.9%	+15.4%	+4.0%	-3215.0%
Registrars	3,476	+799	+687	+534	+360	+208	-14	+29.9%	+24.6%	+18.1%	+11.6%	+6.4%	-0.4%
Interns	806	+97	+84	+88	-160	-54	-4	+13.6%	+11.6%	+12.2%	-16.6%	-6.3%	-395.0%
Senior House Officer	2,493	+518	+473	+417	+207	+71	-30	+26.2%	+23.4%	+20.1%	+9.1%	+2.9%	-2969.0%
SHO/ Interns	3,299	+614	+557	+504	+47	+17	-34	+22.9%	+20.3%	+18.0%	+1.4%	+0.5%	-1.0%
Dentists	8	-2	-2	-1	-3	-1	+0	-19.5%	-16.0%	-12.7%	-24.0%	-12.2%	+7.0%
Other Medical	64	+17	+13	+14	+12	+7	-3	+34.6%	+26.2%	+29.0%	+21.7%	+13.1%	-260.0%
Medical/ Dental, other	73	+15	+12	+13	+9	+6	-3	+24.9%	+19.3%	+22.3%	+13.9%	+9.5%	-3.4%
Medical & Dental	10,179	+2,917	+1,931	+1,600	+773	+460	-48	+40.2%	+23.4%	+18.7%	+8.2%	+4.7%	-0.5%
Clinical Nurse/ Midwife Manager	5,121	+1,373	+1,066	+923	+733	+418	+21	+36.6%	+26.3%	+22.0%	+16.7%	+8.9%	+2100.0%
Director Nursing/Midwifery, Assistant	557	+162	+134	+124	+104	+68	+37	+41.0%	+31.6%	+28.6%	+23.1%	+13.8%	+3698.0%
Director of Nursing/Midwifery	95	+27	+19	+17	+13	+2	-0	+40.3%	+24.5%	+21.0%	+15.4%	+1.7%	-18.0%
Nurse/ Midwife Manager	5,774	+1,562	+1,219	+1,063	+850	+487	+58	+37.1%	+26.7%	+22.6%	+17.3%	+9.2%	+1.0%
Advanced Nurse/ Midwife Practitioner	714	+509	+438	+377	+274	+202	+33	+249.3%	+158.5%	+111.8%	+62.2%	+39.6%	+3300.0%
Clinical Nurse/ Midwife Specialist	1,224	+355	+307	+269	+196	+115	+8	+40.8%	+33.5%	+28.2%	+19.1%	+10.4%	+807.0%
Nurse/ Midwife Specialist & AN/MP	1,938	+864	+745	+646	+470	+317	+41	+80.5%	+62.4%	+50.0%	+32.0%	+19.6%	+2.2%
Graduate Nursing/ Midwifery								-100.0%	-100.0%	-100.0%	-100.0%	-100.0%	
Nursing Bank	7	-40	-31	-24	-16	-3	+1	-85.1%	-81.3%	-77.0%	-68.8%	-27.8%	+61.0%
Staff Midwives	1,425	-12	-54	-31	-53	-36	-0	-0.8%	-3.7%	-2.1%	-3.6%	-2.5%	-23.0%
Staff Nurse [Psychiatric]	20	-10	-11	-8	-9	-6	-1	-33.3%	-35.2%	-27.5%	-30.3%	-22.4%	-79.0%
Staff Nurse [Intellectual Disability]					-72			-100.0%	-100.0%	-100.0%	-100.0%	-100.0%	
Staff Nurses [General/ Children's]	17,908	+3,383	+3,058	+2,747	+1,985	+977	+2	+23.3%	+20.6%	+18.1%	+12.5%	+5.8%	+235.0%

Jan 2023 (Dec 2020 figure: 66,439)	WTE Jan 2023	WTE change since Dec 17	WTE change since Dec 18	WTE change since Dec 19	WTE change since Dec 20	WTE change since Dec 21	WTE change since Dec 22	% change since Dec 17	% change since Dec 18	% change since Dec 19	% change since Dec 20	% change since Dec 21	% change since Dec 22
Overall	74,400	+15,779	+13,494	+11,863	+7,961	+4,270	+345	+26.9%	+22.2%	+19.0%	+12.0%	+6.1%	+0.5%
Staff Nurse/ Staff Midwife	19,361	+3,320	+2,962	+2,684	+1,835	+932	+2	+20.7%	+18.1%	+16.1%	+10.5%	+5.1%	+0.0%
Public Health Nurse		-1	-1	-1	-2	-0		-100.0%	-100.0%	-100.0%	-100.0%	-100.0%	-100.0%
Pre-registration Nurse/ Midwife Intern	284	+212	+213	+201	+269	+210	+147	+296.2%	+299.4%	+244.0%	+1799.7%	+283.4%	+14735.0%
Pre-registration Nurse Intern (COVID-19)					-156	-0		-100.0%	-100.0%	-100.0%	-100.0%	-100.0%	
Post-registration Nurse/ Midwife Student	131	-20	-42	-65	-20	-3	-9	-13.5%	-24.2%	-33.1%	-13.3%	-2.5%	-936.0%
Nursing/ Midwifery awaiting registration	207	+110	+94	+68	+151	+111	-54	+114.0%	+82.3%	+49.2%	+266.4%	+114.7%	-5397.0%
Nursing/ Midwifery Student	622	+302	+265	+205	+244	+317	+84	+94.6%	+74.1%	+49.2%	+64.6%	+103.9%	+15.6%
Nursing Education/Clinical	182	+16	+9	-9	-14	+1	+3	+9.8%	+5.2%	-4.5%	-7.2%	+0.7%	+328.0%
Other Nursing/ Midwifery	6	-21	-23	-27	-24	-26		-77.5%	-79.0%	-82.1%	-80.0%	-81.3%	
Nursing/ Midwifery other	188	-4	-14	-36	-38	-25	+3	-2.3%	-6.7%	-16.1%	-16.9%	-11.7%	+1.8%
Nursing & Midwifery	27,882	+7,359	+5,176	+4,561	+3,359	+2,028	+188	+35.9%	+22.8%	+19.6%	+13.7%	+7.8%	+0.7%
Dietitians	470	+120	+71	+77	+32	-10	-5	+34.4%	+17.9%	+19.5%	+7.2%	-2.1%	-473.0%
Occupational Therapists	530	+187	+170	+161	+112	+46	+2	+54.7%	+47.4%	+43.8%	+26.9%	+9.5%	+204.0%
Orthoptists	21	-5	-3	-1	+1	-2	+1	-19.9%	-11.9%	-3.4%	+3.2%	-7.3%	+128.0%
Physiotherapists	1,223	+286	+250	+231	+156	+98	+2	+30.5%	+25.6%	+23.3%	+14.6%	+8.7%	+198.0%
Podiatrists & Chiropodists	32	+3	+2	-2	-5	+0	-3	+10.1%	+5.2%	-7.1%	-13.7%	+1.3%	-275.0%
Speech & Language Therapists	284	+94	+83	+86	+48	+26	-2	+49.7%	+41.1%	+43.3%	+20.1%	+10.3%	-153.0%
Therapy Professions	2,560	+685	+573	+552	+343	+158	-4	+36.6%	+28.8%	+27.5%	+15.5%	+6.6%	-0.1%
Audiology	41	+10	+12	+13	+11	+2	-2	+32.8%	+42.7%	+48.9%	+37.1%	+6.4%	-166.0%
Biochemists	69	+6	-2	-3	-7	-2	+4	+9.8%	-3.3%	-4.0%	-9.3%	-2.1%	+405.0%
Cardiac Physiologists	246	+34	+23	+19	+3	-7	-4	+16.0%	+10.5%	+8.4%	+1.2%	-2.7%	-443.0%
Clinical Engineering	168	+36	+33	+26	+19	+12	+7	+27.5%	+24.1%	+18.1%	+12.9%	+7.4%	+679.0%
Dosimetrists	17	+8	+6	+3	+2	+2	+1	+87.6%	+54.3%	+26.3%	+17.1%	+13.2%	+93.0%
E.C.G. Technicians	8	-2	-1	-2	-3	+1	-0	-16.2%	-10.6%	-18.8%	-25.5%	+14.9%	-9.0%
Gastrointestinal Physiologists	5	+0	+3	+3	+3	+1	+0	+3.6%	+143.4%	+143.4%	+143.4%	+25.2%	+4.0%
Medical Science	2,043	+162	+154	+158	+93	+51	+12	+8.6%	+8.2%	+8.4%	+4.7%	+2.5%	+1200.0%
Neuro-Physiologists	53	+6	+4	+4	-3	-1	-1	+12.5%	+9.0%	+7.5%	-5.5%	-2.1%	-150.0%
Perfusionists	18	-2	-1	-3	-3	-1	-1	-11.0%	-6.9%	-15.1%	-15.0%	-4.3%	-103.0%
Phlebotomists	234	+74	+74	+63	+51	+37	+6	+46.6%	+46.6%	+36.4%	+28.0%	+18.7%	+574.0%
Physicists	197	+43	+16	+16	+26	+21	+5	+27.6%	+8.9%	+9.1%	+15.0%	+11.7%	+482.0%
Radiation Therapists	206	+20	+14	+7	-6	+6	+1	+10.9%	+7.2%	+3.3%	-3.0%	+3.2%	+120.0%
Radiographers	1,408	+332	+293	+262	+170	+54	-1	+30.8%	+26.3%	+22.9%	+13.7%	+4.0%	-77.0%
Respiratory Physiologists	73	+19	+15	+8	+3	+2	+1	+34.1%	+24.8%	+12.8%	+4.0%	+2.9%	+121.0%
Vascular Physiologists	33	+6	+6	+4	+5	+1	+0	+20.6%	+24.9%	+12.0%	+16.9%	+3.2%	+28.0%
Health Science/ Diagnostics	4,821	+752	+650	+579	+363	+179	+28	+18.5%	+15.6%	+13.6%	+8.1%	+3.9%	+0.6%
Social Care	3	+0	+0	-0	-1	-0	-0	+9.3%	+13.4%	-1.5%	-21.1%	-1.5%	-4.1%
Social Workers	445	+120	+103	+90	+61	+26	+4	+36.9%	+30.2%	+25.3%	+15.9%	+6.1%	+0.9%
Psychologists	142	+58	+53	+41	+32	+10	+6	+68.0%	+58.7%	+41.2%	+29.0%	+7.4%	+4.3%
Pharmacists	650	+190	+140	+119	+59	-3	+4	+41.3%	+27.4%	+22.5%	+10.1%	-0.4%	+384.0%

Jan 2023 (Dec 2020 figure: 66,439)	WTE Jan 2023	WTE change since Dec 17	WTE change since Dec 18	WTE change since Dec 19	WTE change since Dec 20	WTE change since Dec 21	WTE change since Dec 22	% change since Dec 17	% change since Dec 18	% change since Dec 19	% change since Dec 20	% change since Dec 21	% change since Dec 22
Overall	74,400	+15,779	+13,494	+11,863	+7,961	+4,270	+345	+26.9%	+22.2%	+19.0%	+12.0%	+6.1%	+0.5%
Pharmacy Technicians	491	+177	+160	+120	+75	+36	+3	+56.2%	+48.2%	+32.5%	+17.9%	+7.9%	+347.0%
Pharmacy	1,140	+366	+299	+240	+134	+33	+7	+47.3%	+35.6%	+26.6%	+13.3%	+3.0%	+0.6%
H&SC, Other	232	+64	+59	+81	+78	-44	+25	+38.5%	+34.4%	+53.5%	+50.9%	-16.0%	+11.9%
Health & Social Care Professionals	9,343	+2,476	+1,737	+1,583	+1,010	+362	+66	+36.1%	+22.8%	+20.4%	+12.1%	+4.0%	+0.7%
Executive Management	126	+62	+43	+39	+24	+15	+5	+97.7%	+51.8%	+45.0%	+23.9%	+13.2%	+488.0%
Senior Management (VIII & GM)	604	+228	+186	+173	+126	+64	+5	+60.5%	+44.5%	+40.2%	+26.4%	+11.8%	+493.0%
Management (VIII & above)	730	+290	+229	+212	+151	+78	+10	+65.9%	+45.7%	+41.0%	+26.0%	+12.0%	+1.4%
Middle Management (V-VII)	3,421	+1,446	+1,273	+1,110	+760	+456	+48	+73.2%	+59.2%	+48.0%	+28.6%	+15.4%	+4800.0%
Other Administrative	12	+1	-3	-3	-1	-4	-4	+5.5%	-19.0%	-17.9%	-7.8%	-25.0%	-440.0%
Administrative/ Supervisory (V to VII)	3,433	+1,447	+1,270	+1,107	+759	+451	+44	+72.8%	+58.7%	+47.6%	+28.4%	+15.1%	+1.3%
Clerical (III & IV)	7,274	+800	+666	+668	+615	+242	+10	+12.4%	+10.1%	+10.1%	+9.2%	+3.4%	+0.1%
Management & Administrative	11,437	+3,237	+2,165	+1,987	+1,525	+771	+63	+39.5%	+23.3%	+21.0%	+15.4%	+7.2%	+0.6%
Catering	449	-2	+6	-21	-41	-32	-20	-0.4%	+1.3%	-4.5%	-8.3%	-6.6%	-1985.0%
Household Services	3,280	+645	+592	+563	+182	+92	+30	+24.5%	+22.0%	+20.7%	+5.9%	+2.9%	+2966.0%
Other Labs & Associated	618	+279	+264	+239	+179	+100	+4	+82.2%	+74.4%	+63.2%	+40.6%	+19.3%	+382.0%
Other Support	768	+42	+34	+30	+7	+14	-4	+5.7%	+4.6%	+4.0%	+0.9%	+1.9%	-351.0%
Portering	1,441	+108	+113	+116	+79	+14	+13	+8.1%	+8.5%	+8.7%	+5.8%	+0.9%	+1334.0%
Support	6,557	+1,072	+1,008	+927	+405	+188	+23	+19.5%	+18.2%	+16.5%	+6.6%	+2.9%	+0.4%
Maintenance	568	+88	+81	+62	+54	+59	+27	+18.2%	+16.5%	+12.2%	+10.5%	+11.5%	+2671.0%
Technical Services	29	+10	+7	+5	+4	+2	+0	+51.0%	+33.6%	+20.9%	+16.0%	+7.4%	+6.0%
Maintenance/ Technical	597	+97	+88	+67	+58	+61	+27	+19.5%	+17.3%	+12.6%	+10.8%	+11.3%	+4.7%
General Support	7,154	+1,358	+1,096	+994	+463	+249	+50	+23.4%	+18.1%	+16.1%	+6.9%	+3.6%	+0.7%
Attendant/ Aide	1,244	-501	-429	-338	-227	+138	+1	-28.7%	-25.7%	-21.3%	-15.4%	+12.5%	+74.0%
Health & Social Care Assistants	228	+118	+103	+99	+72	+46	+5	+107.4%	+82.5%	+77.2%	+46.0%	+25.3%	+512.0%
Health Care Assistant/ Care Assistant	4,717	+1,813	+1,436	+1,153	+879	+142	-35	+62.4%	+43.8%	+32.3%	+22.9%	+3.1%	-3484.0%
HCA (Student Nurse/Midwife COVID-19)					-50	-0		-100.0%	-100.0%	-100.0%	-100.0%	-100.0%	
Health Care Assistants	6,189	+1,430	+1,109	+914	+673	+327	-29	+30.0%	+21.8%	+17.3%	+12.2%	+5.6%	-0.5%
Ambulance Staff	1,980	+235	+198	+155	+103	+45	+49	+13.4%	+11.1%	+8.5%	+5.5%	+2.3%	+2.5%
Health Promotion	4	+1	+1	+2	+1	-0	-0	+56.2%	+56.2%	+153.7%	+26.1%	-1.5%	-8.0%
Other Care Grades	149	+88	+89	+70	+55	+28	+6	+143.5%	+147.5%	+89.7%	+58.4%	+22.9%	+559.0%
Pastoral Care	81	-2	-10	-6	-3	+1	+1	-2.0%	-11.1%	-6.6%	-3.8%	+1.0%	+63.0%
Workshop Services	2	+1	+2	+1	+2	+0		+106.0%	+312.0%	+106.0%	+312.0%	+3.0%	
Care, other	236	+89	+82	+68	+54	+29	+6	+60.2%	+52.9%	+40.6%	+29.7%	+13.8%	+2.7%
Patient & Client Care	8,405	+2,314	+1,389	+1,138	+831	+400	+26	+38.0%	+19.8%	+15.7%	+11.0%	+5.0%	+0.3%

Source: Health Service Personnel Census