

Acute Service Employment Report: October 2020

Employment by Staff Group

Oct 2020 (Dec 2019 figure: 62,537)	WTE Sep 2020	WTE Oct 2020	WTE change since Sep 20	% change since Sep 20	WTE change since Dec 19	WTE change since Oct 19
Overall	65,856	65,952	+96	+0.1%	+3,415	+3,686
Consultants	2,953	2,964	+11	+0.4%	+182	+193
Registrars	3,128	3,142	+14	+0.4%	+200	+199
SHO/ Interns	3,239	3,259	+20	+0.6%	+465	+471
Medical/ Dental, other	68	65	-2	-3.1%	+6	+8
Medical & Dental	9,387	9,430	+43	+0.5%	+852	+872
Nurse/ Midwife Manager	4,869	4,905	+37	+0.8%	+195	+182
Nurse/ Midwife Specialist & AN/MP	1,405	1,431	+26	+1.9%	+139	+134
Staff Nurse/ Staff Midwife	16,929	17,109	+180	+1.1%	+433	+787
Public Health Nurse	2	2	+0	+0.7%	+0	+0
Pre-registration Nurse/ Midwife Intern	3	1	-2	-70.8%	-70	-132
Pre-registration Nurse Intern (COVID-19)	655	427	-228	-34.8%	+427	+427
Post-registration Nurse/ Midwife Student	162	161	-1	-0.7%	-12	-39
Nursing/ Midwifery awaiting registration	79	69	-10	-12.8%	-45	-199
Nursing/ Midwifery Student	899	657	-242	-26.9%	+241	+57
Nursing/ Midwifery other	222	225	+3	+1.3%	+1	+8
Nursing & Midwifery	24,325	24,329	+4	+0.0%	+1,008	+1,168
Therapy Professions	2,177	2,185	+8	+0.4%	+178	+174
Health Science/ Diagnostics	4,447	4,458	+11	+0.2%	+215	+214
Social Care	3	3	+0	+1.5%	+0	+0
Social Workers	363	372	+9	+2.5%	+17	+28
Psychologists	108	110	+1	+1.4%	+9	+15
Pharmacy	965	981	+16	+1.6%	+80	+97
H&SC, Other	119	130	+11	+9.6%	-20	-8
Health & Social Care Professionals	8,182	8,239	+57	+0.7%	+479	+520
Management (VIII & above)	554	573	+18	+3.3%	+55	+58
Administrative/ Supervisory (V to VII)	2,578	2,605	+27	+1.0%	+279	+284
Clerical (III & IV)	6,626	6,643	+17	+0.3%	+37	+12
Management & Administrative	9,758	9,821	+62	+0.6%	+371	+353
Support	6,046	6,047	+1	+0.0%	+417	+431
Maintenance/ Technical	539	542	+2	+0.4%	+11	+17
General Support	6,585	6,589	+3	+0.1%	+428	+448
Health Care Assistants	5,603	5,498	-105	-1.9%	+224	+265
Ambulance Staff	1,832	1,867	+35	+1.9%	+42	+49
Care, other	183	180	-4	-1.9%	+11	+12
Patient & Client Care	7,618	7,544	-74	-1.0%	+276	+326

Acute Services Employment by Hospital & Hospital Group: Oct 2020

Oct 2020 (Dec 2019 figure: 62,537)	WTE Sep 2020	WTE Oct 2020	WTE change since Sep 20	% change since Sep 20	WTE change since Dec 19	WTE change since Oct 19
Overall	65,856	65,952	+96	+0.1%	+3,415	+3,686
National Ambulance Service	1,945	1,981	+37	+1.9%	+48	+56
CHI at Connolly	141	139	-3	-1.9%	+3	+28
CHI at Crumlin	2,009	2,037	+28	+1.4%	+69	+91
CHI at Tallaght	254	256	+2	+0.9%	+1	-0
CHI at Temple Street	1,225	1,242	+17	+1.4%	+57	+53
CHI Corporate	3	3				-1
CHI Programme	46	45	-1	-1.3%	-12	-16
Children's Health Ireland	3,678	3,722	+44	+1.2%	+119	+154
Coombe Women & Infants University	917	926	+9	+1.0%	+36	+40
MRH Portlaoise	776	767	-9	-1.1%	+17	+15
MRH Tullamore	1,149	1,141	-9	-0.7%	+40	+71
Naas General	775	774	-2	-0.2%	+15	+26
St. James's	4,251	4,231	-20	-0.5%	+173	+249
St. Luke's Rathgar	548	556	+8	+1.4%	+11	+14
Tallaght University	2,775	2,772	-3	-0.1%	+89	+115
Hospital Group HQ	38	38	-0	-0.0%	+5	+2
Dublin Midlands Hospital Group	11,229	11,204	-25	-0.2%	+386	+532
Cappagh National Orthopaedic	440	438	-2	-0.5%	+11	+13
Mater Misericordiae University	3,365	3,385	+20	+0.6%	+226	+229
MRH Mullingar	981	984	+3	+0.3%	+70	+74
National Maternity	909	919	+10	+1.1%	+39	+44
Our Lady's Navan	572	582	+10	+1.7%	+66	+70
St. Columcille's	456	458	+3	+0.6%	+7	+2
St Luke's General Kilkenny	1,188	1,179	-10	-0.8%	+60	+56
St. Michael's	417	399	-19	-4.5%	+2	+2
St. Vincent's University	3,043	3,101	+58	+1.9%	+263	+286
Wexford General	1,060	1,048	-12	-1.2%	+23	+15
Royal Victoria Eye & Ear	304	304			+13	+13
IEHG Bank	5	5			+5	+5
Hospital Group HQ	30	30			+0	+0
Ireland East Hospital Group	12,770	12,831	+61	+0.5%	+786	+810
Beaumont	3,975	4,029	+54	+1.4%	+183	+206
Cavan General	1,038	1,044	+6	+0.5%	+10	+15
Connolly	1,432	1,439	+7	+0.5%	+106	+115
Louth County	281	282	+0	+0.1%	+4	+0
Monaghan	95	97	+2	+2.2%	-4	-8
Our Lady of Lourdes	2,304	2,258	-47	-2.0%	+108	+119
Rotunda	932	922	-10	-1.0%	+31	+43
Hospital Group HQ	37	39	+2	+4.0%	+9	+8
RCSI Hospitals Group	10,095	10,110	+15	+0.2%	+447	+497
Galway University	3,806	3,804	-2	-0.0%	+198	+156
Letterkenny University	1,745	1,746	+1	+0.1%	+139	+143
Mayo University	1,204	1,196	-9	-0.7%	+46	+36

Oct 2020 (Dec 2019 figure: 62,537)	WTE Sep 2020	WTE Oct 2020	WTE change since Sep 20	% change since Sep 20	WTE change since Dec 19	WTE change since Oct 19
Overall	65,856	65,952	+96	+0.1%	+3,415	+3,686
Portiuncula University	845	843	-2	-0.2%	+53	+46
Roscommon University	357	359	+2	+0.4%	+25	+25
Sligo University	1,761	1,754	-7	-0.4%	+66	+62
Hospital Group HQ	88	92	+3	+3.6%	+13	+16
Saolta University Hospital Care	9,806	9,793	-14	-0.1%	+540	+486
Bantry General	286	278	-8	-2.7%	+12	+11
Cork University	4,371	4,308	-63	-1.4%	+294	+298
Lourdes Orthopaedic Kilcreene	73	72	-1	-0.9%	+2	+2
Mallow General	252	249	-3	-1.3%	-3	-2
Mercy University	1,227	1,230	+3	+0.2%	+58	+66
South Infirmary Victoria University	830	822	-9	-1.1%	+35	+43
South Tipperary General	940	948	+8	+0.9%	+80	+92
UH Kerry	1,234	1,226	-8	-0.7%	+112	+104
UH Waterford	2,071	2,088	+17	+0.8%	+139	+129
Hospital Group HQ	44	44	-0	-0.1%	+10	+10
South/South West Hospital Group	11,328	11,265	-63	-0.6%	+738	+754
Croom Orthopaedic	161	165	+4	+2.5%	+9	+12
Ennis	230	230	+0	+0.1%	-5	-2
Nenagh	252	256	+5	+1.8%	+7	+7
St. John's Limerick	316	315	-1	-0.3%	+4	+0
UH Limerick	3,024	3,046	+22	+0.7%	+232	+266
UMH Limerick	389	395	+6	+1.5%	+20	+28
Hospital Group HQ	8	8	+0	+4.1%	+2	+2
University of Limerick Hospital Group	4,379	4,415	+36	+0.8%	+269	+314
Other	95	95	+0	+0.0%	+4	-3
National Rehabilitation	531	536	+5	+0.9%	+79	+86
other Acute Services	627	631	+5	+0.7%	+83	+83

Acute Services Employment by Administration (HSE / S38): October 2020

Oct 2020 (Dec 2019 figure: 62,537)	WTE Sep 2020	WTE Oct 2020	WTE change since Sep 20	% change since Sep 20	WTE change since Dec 19	WTE change since Oct 19
Overall	65,856	65,952	+96	+0.1%	+3,415	+3,686
Health Service Executive	37,951	37,906	-45	-0.1%	+2,056	+2,095
Section 38 Hospitals	27,906	28,046	+141	+0.5%	+1,359	+1,591

HSE

Oct 2020 (Dec 2019 figure: 35,850)	WTE Sep 2020	WTE Oct 2020	WTE change since Sep 20	% change since Sep 20	WTE change since Dec 19	WTE change since Oct 19
Overall	37,951	37,906	-45	-0.1%	+2,056	+2,095
Consultants	1,557	1,556	-1	-0.1%	+77	+89
Registrars	1,708	1,711	+4	+0.2%	+93	+95
SHO/ Interns	2,017	2,024	+7	+0.3%	+263	+267
Medical/ Dental, other	43	41	-2	-5.5%	+4	+5
Medical & Dental	5,324	5,332	+7	+0.1%	+436	+457
Nurse/ Midwife Manager	2,564	2,584	+20	+0.8%	+97	+67
Nurse/ Midwife Specialist & AN/MP	711	726	+14	+2.0%	+70	+63
Staff Nurse/ Staff Midwife	9,944	10,046	+102	+1.0%	+285	+442
Public Health Nurse	2	2	+0	+0.7%	+0	+0
Pre-registration Nurse Intern (COVID-19)	402	213	-188	-46.9%	+213	+213
Post-registration Nurse/ Midwife Student	62	60	-2	-3.5%	+2	-16
Nursing/ Midwifery awaiting registration	40	39	-1	-3.4%	-51	-93
Pre-registration Nurse/ Midwife Intern	2	1	-1	-50.0%	-22	-87
Nursing/ Midwifery Student	506	313	-193	-38.1%	+134	+18
Nursing/ Midwifery other	79	82	+3	+4.2%	+6	+3
Nursing & Midwifery	13,806	13,751	-54	-0.4%	+591	+593
Therapy Professions	1,086	1,096	+9	+0.9%	+116	+110
Health Science/ Diagnostics	2,536	2,545	+9	+0.4%	+150	+142
Social Care	2	2	+0	+2.1%	+0	+0
Social Workers	99	100	+1	+1.1%	+3	+9
Psychologists	9	9	-0	-4.7%	+0	-0
Pharmacy	501	514	+13	+2.7%	+58	+67
H&SC, Other	35	47	+12	+34.8%	-5	+7
Health & Social Care Professionals	4,268	4,313	+45	+1.1%	+322	+336
Management (VIII & above)	281	290	+10	+3.5%	+32	+33
Administrative/ Supervisory (V to VII)	1,017	1,036	+19	+1.9%	+162	+168
Clerical (III & IV)	3,832	3,846	+14	+0.4%	+12	-27
Management & Administrative	5,130	5,173	+43	+0.8%	+206	+174
Support	3,546	3,546	+1	+0.0%	+332	+323
Maintenance/ Technical	294	296	+2	+0.6%	+4	+5
General Support	3,840	3,842	+2	+0.1%	+335	+328
Health Care Assistants	3,633	3,512	-120	-3.3%	+111	+147
Ambulance Staff	1,832	1,867	+35	+1.9%	+42	+49
Care, other	118	116	-3	-2.3%	+12	+12
Patient & Client Care	5,583	5,495	-88	-1.6%	+165	+208

Section 38 Hospitals

Oct 2020 (Dec 2019 figure: 26,687)	WTE Sep 2020	WTE Oct 2020	WTE change since Sep 20	% change since Sep 20	WTE change since Dec 19	WTE change since Oct 19
Overall	27,906	28,046	+141	+0.5%	+1,359	+1,591
Consultants	1,396	1,408	+12	+0.9%	+105	+104
Registrars	1,420	1,431	+10	+0.7%	+107	+104
SHO/ Interns	1,222	1,235	+13	+1.1%	+202	+204
Medical/ Dental, other	25	25	+0	+1.1%	+2	+3
Medical & Dental	4,063	4,099	+36	+0.9%	+415	+415
Nurse/ Midwife Manager	2,305	2,322	+17	+0.7%	+98	+114
Nurse/ Midwife Specialist & AN/MP	694	706	+12	+1.8%	+69	+72
Staff Nurse/ Staff Midwife	6,985	7,063	+78	+1.1%	+147	+345
Pre-registration Nurse Intern (COVID-19)	254	214	-40	-15.7%	+214	+214
Post-registration Nurse/ Midwife Student	100	101	+1	+1.1%	-14	-22
Nursing/ Midwifery awaiting registration	39	30	-9	-22.6%	+6	-106
Pre-registration Nurse/ Midwife Intern	1		-1	-100.0%	-48	-46
Nursing/ Midwifery Student	394	345	-49	-12.5%	+107	+39
Nursing/ Midwifery other	143	143	-0	-0.3%	-5	+5
Nursing & Midwifery	10,520	10,578	+58	+0.6%	+417	+575
Therapy Professions	1,090	1,089	-1	-0.1%	+62	+64
Health Science/ Diagnostics	1,911	1,913	+2	+0.1%	+64	+72
Social Care	1	1				
Social Workers	264	272	+8	+3.0%	+15	+19
Psychologists	99	101	+2	+1.9%	+9	+15
Pharmacy	465	467	+2	+0.5%	+22	+30
H&SC, Other	84	84	-1	-0.8%	-14	-15
Health & Social Care Professionals	3,914	3,926	+12	+0.3%	+157	+184
Management (VIII & above)	274	282	+9	+3.1%	+23	+24
Administrative/ Supervisory (V to VII)	1,561	1,568	+8	+0.5%	+117	+116
Clerical (III & IV)	2,794	2,797	+3	+0.1%	+25	+39
Management & Administrative	4,629	4,648	+19	+0.4%	+165	+179
Support	2,500	2,501	+0	+0.0%	+86	+107
Maintenance/ Technical	245	246	+1	+0.3%	+8	+12
General Support	2,746	2,747	+1	+0.0%	+93	+119
Health Care Assistants	1,970	1,985	+15	+0.8%	+112	+118
Care, other	65	64	-1	-1.3%	-1	+0
Patient & Client Care	2,035	2,049	+14	+0.7%	+111	+118

Acute Services Employment by Hospital Group, CHO etc. Oct 2020

National Ambulance Service

Oct 2020 (Dec 2019 figure: 1,933)	WTE Sep 2020	WTE Oct 2020	WTE change since Sep 20	% change since Sep 20	WTE change since Dec 19	WTE change since Oct 19
Overall	1,945	1,981	+37	+1.9%	+48	+56
Consultants	1	1				
Senior House Officer	0	1	+1	+566.7%	+1	+1
SHO/ Interns	0	1	+1	+566.7%	+1	+1
Medical & Dental	1	2	+1	+73.9%	+1	+1
Nurse/ Midwife Manager	1	1	-0	-1.0%	-0	-0
Staff Nurse/ Staff Midwife	1	1				-0
Nursing & Midwifery	2	2	-0	-0.5%	-0	-0
Therapy Professions	1	1				
Health & Social Care Professionals	1	1				
Management (VIII & above)	13	13	-0	-1.4%	+1	+3
Administrative/ Supervisory (V to VII)	33	33	+0	+0.3%	+4	+3
Clerical (III & IV)	42	43	+1	+2.9%	+2	+2
Management & Administrative	88	89	+1	+1.3%	+7	+8
Support	4	4				
Maintenance/ Technical	2	2				
General Support	6	6				
Health Care Assistants	2	2				
Ambulance Staff	1,832	1,867	+35	+1.9%	+42	+49
Care, other	13	13	+0	+0.4%	-1	-1
Patient & Client Care	1,847	1,882	+35	+1.9%	+41	+47

Children's Health Ireland

Oct 2020 (Dec 2019 figure: 3,602)	WTE Sep 2020	WTE Oct 2020	WTE change since Sep 20	% change since Sep 20	WTE change since Dec 19	WTE change since Oct 19
Overall	3,678	3,722	+44	+1.2%	+119	+154
Consultants	230	234	+4	+1.7%	+14	+11
Registrars	214	217	+4	+1.7%	+13	+13
SHO/ Interns	93	95	+2	+2.3%	+7	+5
Medical/ Dental, other	1	1				
Medical & Dental	538	548	+10	+1.8%	+34	+29
Nurse/ Midwife Manager	327	335	+8	+2.4%	+4	+13
Nurse/ Midwife Specialist & AN/MP	166	169	+3	+2.1%	+17	+19
Staff Nurse/ Staff Midwife	814	842	+28	+3.4%	+36	+47
Pre-registration Nurse/ Midwife Intern	1		-1	-100.0%	-11	-12
Pre-registration Nurse Intern (COVID-19)	11	11	-0	-0.6%	+11	+11
Post-registration Nurse/ Midwife Student	47	47	+0	+0.2%	-23	-17
Nursing/ Midwifery Student	59	58	-1	-2.4%	-17	-19
Nursing/ Midwifery other	9	8	-0	-4.4%	-2	-1
Nursing & Midwifery	1,375	1,412	+38	+2.7%	+38	+60
Therapy Professions	145	142	-4	-2.5%	+5	+8
Health Science/ Diagnostics	285	281	-4	-1.4%	+1	+1
Social Workers	58	59	+1	+1.9%	+2	+5
Psychologists	44	44	+0	+0.8%	+6	+8
Pharmacy	49	50	+1	+1.9%	+6	+8
H&SC, Other	25	23	-1	-5.8%	-2	-1
Health & Social Care Professionals	606	600	-7	-1.1%	+19	+28
Management (VIII & above)	55	57	+1	+2.3%	+4	+8
Administrative/ Supervisory (V to VII)	288	290	+2	+0.5%	+18	+11
Clerical (III & IV)	411	409	-2	-0.4%	-11	-9
Management & Administrative	755	756	+1	+0.1%	+11	+11
Support	200	201	+1	+0.4%	+6	+11
Maintenance/ Technical	15	15	-0	-1.7%	-0	-0
General Support	215	216	+1	+0.3%	+6	+11
Health Care Assistants	176	177	+2	+1.0%	+12	+18
Care, other	13	13	-0	-0.1%	-1	-1
Patient & Client Care	189	190	+2	+1.0%	+12	+17

Dublin Midlands Hospital Group

Oct 2020 (Dec 2019 figure: 10,819)	WTE Sep 2020	WTE Oct 2020	WTE change since Sep 20	% change since Sep 20	WTE change since Dec 19	WTE change since Oct 19
Overall	11,229	11,204	-25	-0.2%	+386	+532
Consultants	494	497	+3	+0.6%	+33	+37
Registrars	521	525	+4	+0.8%	+35	+40
SHO/ Interns	462	463	+1	+0.3%	+40	+46
Dentists	1	1			+0	+0
Other Medical	5	5	+0	+3.7%	+1	-0
Medical/ Dental, other	7	7	+0	+2.9%	+0	+0
Medical & Dental	1,484	1,492	+9	+0.6%	+108	+124
Nurse/ Midwife Manager	891	899	+9	+1.0%	+22	+28
Nurse/ Midwife Specialist & AN/MP	225	224	-1	-0.6%	+19	+22
Staff Nurse/ Staff Midwife	2,837	2,855	+17	+0.6%	+19	+95
Pre-registration Nurse/ Midwife Intern				-100.0%	-11	-12
Pre-registration Nurse Intern (COVID-19)	141	64	-77	-54.8%	+64	+64
Post-registration Nurse/ Midwife Student	12	12			+4	-3
Nursing/ Midwifery awaiting registration	8	12	+4	+59.2%	+6	-14
Nursing/ Midwifery Student	161	88	-73	-45.4%	+46	+35
Nursing/ Midwifery other	37	38	+1	+1.8%	+2	+5
Nursing & Midwifery	4,151	4,103	-48	-1.2%	+109	+185
Therapy Professions	383	391	+8	+2.0%	+24	+21
Health Science/ Diagnostics	1,010	1,015	+6	+0.6%	+37	+53
Social Workers	87	88	+1	+1.3%	+8	+9
Psychologists	14	13	-1	-3.9%	+0	+1
Pharmacy	233	238	+6	+2.5%	+18	+20
H&SC, Other	30	29	-1	-3.6%	-5	-2
Health & Social Care Professionals	1,756	1,775	+19	+1.1%	+83	+102
Management (VIII & above)	124	125	+1	+0.9%	+7	+8
Administrative/ Supervisory (V to VII)	516	518	+2	+0.4%	+24	+27
Clerical (III & IV)	1,057	1,061	+3	+0.3%	+6	+12
Management & Administrative	1,697	1,703	+7	+0.4%	+37	+48
Support	772	770	-2	-0.3%	+5	+13
Maintenance/ Technical	132	133	+1	+0.9%	+3	+5
General Support	904	903	-1	-0.1%	+9	+18
Health Care Assistants	1,216	1,208	-9	-0.7%	+41	+57
Care, other	21	20	-1	-6.0%	-1	-1
Patient & Client Care	1,238	1,228	-10	-0.8%	+40	+56

Ireland East Hospital Group

Oct 2020 (Dec 2019 figure: 12,045)	WTE Sep 2020	WTE Oct 2020	WTE change since Sep 20	% change since Sep 20	WTE change since Dec 19	WTE change since Oct 19
Overall	12,770	12,831	+61	+0.5%	+786	+810
Consultants	587	586	-1	-0.1%	+47	+48
Registrars	671	678	+7	+1.0%	+59	+59
SHO/ Interns	664	667	+3	+0.5%	+97	+97
Medical/ Dental, other	29	27	-2	-6.3%	+2	+2
Medical & Dental	1,951	1,958	+8	+0.4%	+206	+207
Nurse/ Midwife Manager	1,009	1,008	-1	-0.1%	+78	+77
Nurse/ Midwife Specialist & AN/MP	322	334	+12	+3.7%	+27	+31
Staff Nurse/ Staff Midwife	3,239	3,269	+30	+0.9%	+32	+84
Pre-registration Nurse/ Midwife Intern				-100.0%	-23	-21
Pre-registration Nurse Intern (COVID-19)	101	97	-5	-4.6%	+97	+97
Post-registration Nurse/ Midwife Student	20	20			-3	-2
Nursing/ Midwifery awaiting registration	18	31	+13	+69.2%	+27	-16
Nursing/ Midwifery Student	139	147	+8	+5.7%	+90	+57
Nursing/ Midwifery other	74	74	+0	+0.6%	-1	+1
Nursing & Midwifery	4,783	4,832	+50	+1.0%	+225	+251
Therapy Professions	472	474	+2	+0.4%	+52	+53
Health Science/ Diagnostics	782	787	+5	+0.6%	+53	+55
Social Workers	72	75	+3	+4.6%	+5	+7
Psychologists	20	22	+1	+5.9%	-0	+3
Pharmacy	188	189	+1	+0.7%	+2	+4
H&SC, Other	30	24	-6	-20.0%	-2	-2
Health & Social Care Professionals	1,565	1,571	+6	+0.4%	+109	+119
Management (VIII & above)	90	94	+4	+4.3%	+11	+8
Administrative/ Supervisory (V to VII)	590	593	+3	+0.5%	+77	+85
Clerical (III & IV)	1,224	1,219	-5	-0.4%	+5	-2
Management & Administrative	1,904	1,906	+2	+0.1%	+93	+91
Support	1,302	1,297	-5	-0.4%	-26	-30
Maintenance/ Technical	117	121	+4	+3.2%	+8	+9
General Support	1,419	1,418	-1	-0.1%	-18	-21
Health Care Assistants	1,123	1,119	-4	-0.4%	+170	+162
Care, other	26	27	+1	+2.6%	+1	+2
Patient & Client Care	1,149	1,146	-4	-0.3%	+171	+163

RCSI Hospitals Group

Oct 2020 (Dec 2019 figure: 9,663)	WTE Sep 2020	WTE Oct 2020	WTE change since Sep 20	% change since Sep 20	WTE change since Dec 19	WTE change since Oct 19
Overall	10,095	10,110	+15	+0.2%	+447	+497
Consultants	462	470	+8	+1.7%	+29	+26
Registrars	505	508	+3	+0.6%	+27	+16
SHO/ Interns	502	508	+6	+1.2%	+69	+69
Medical/ Dental, other	6	6	-0	-2.8%	+1	+2
Medical & Dental	1,476	1,492	+17	+1.1%	+126	+113
Nurse/ Midwife Manager	811	812	+1	+0.1%	+43	+31
Nurse/ Midwife Specialist & AN/MP	207	208	+1	+0.4%	+22	+25
Staff Nurse/ Staff Midwife	2,654	2,665	+10	+0.4%	+76	+157
Pre-registration Nurse/ Midwife Intern				-100.0%	-5	-6
Pre-registration Nurse Intern (COVID-19)	122	83	-39	-31.6%	+83	+83
Post-registration Nurse/ Midwife Student	36	37	+1	+1.9%	+12	-3
Nursing/ Midwifery awaiting registration	2		-2	-100.0%	-21	-79
Nursing/ Midwifery Student	160	120	-40	-24.9%	+14	-5
Nursing/ Midwifery other	41	41	+0	+0.3%	-2	+3
Nursing & Midwifery	3,873	3,845	-28	-0.7%	+153	+211
Therapy Professions	363	357	-6	-1.7%	+25	+20
Health Science/ Diagnostics	605	608	+3	+0.5%	+19	+8
Social Workers	62	65	+2	+4.0%	-1	+3
Psychologists	12	12				+1
Pharmacy	139	140	+2	+1.2%	+13	+21
H&SC, Other	6	12	+5	+85.4%	-3	-4
Health & Social Care Professionals	1,187	1,193	+6	+0.5%	+53	+50
Management (VIII & above)	89	95	+7	+7.8%	+14	+10
Administrative/ Supervisory (V to VII)	391	396	+5	+1.3%	+47	+47
Clerical (III & IV)	1,011	1,024	+13	+1.3%	-7	-10
Management & Administrative	1,491	1,516	+25	+1.7%	+54	+47
Support	985	988	+3	+0.3%	+14	+19
Maintenance/ Technical	90	89	-1	-1.6%	-0	+2
General Support	1,075	1,077	+2	+0.2%	+14	+21
Health Care Assistants	959	952	-6	-0.6%	+50	+57
Care, other	34	34	-0	-0.9%	-3	-2
Patient & Client Care	993	986	-7	-0.7%	+47	+55

Saolta University Hospital Care

Oct 2020 (Dec 2019 figure: 9,253)	WTE Sep 2020	WTE Oct 2020	WTE change since Sep 20	% change since Sep 20	WTE change since Dec 19	WTE change since Oct 19
Overall	9,806	9,793	-14	-0.1%	+540	+486
Consultants	469	473	+4	+0.8%	+10	+22
Registrars	468	468	+0	+0.1%	+23	+30
SHO/ Interns	628	636	+8	+1.3%	+102	+98
Medical/ Dental, other	12	12	-0	-1.9%	+2	+2
Medical & Dental	1,577	1,589	+12	+0.8%	+137	+151
Nurse/ Midwife Manager	575	592	+17	+2.9%	+25	+24
Nurse/ Midwife Specialist & AN/MP	232	231	-2	-0.7%	+13	+7
Staff Nurse/ Staff Midwife	2,782	2,790	+8	+0.3%	+25	+36
Public Health Nurse	2	2	+0	+0.7%	+0	+0
Pre-registration Nurse/ Midwife Intern				-100.0%	-8	-18
Pre-registration Nurse Intern (COVID-19)	123	108	-16	-12.6%	+108	+108
Post-registration Nurse/ Midwife Student	10	10			-4	-3
Nursing/ Midwifery awaiting registration	25	13	-12	-48.1%	-33	-65
Nursing/ Midwifery Student	158	131	-28	-17.4%	+81	+21
Nursing/ Midwifery other	35	38	+2	+7.1%	+5	+1
Nursing & Midwifery	3,784	3,782	-2	-0.0%	+149	+89
Therapy Professions	273	269	-4	-1.5%	+7	+8
Health Science/ Diagnostics	652	653	+1	+0.1%	+35	+22
Social Care	2	2	+0	+2.1%	+0	+0
Social Workers	28	30	+1	+4.8%	+3	+3
Psychologists	2	1	-1	-40.5%	+0	-0
Pharmacy	153	157	+4	+2.5%	+20	+25
H&SC, Other	16	13	-3	-17.4%	-6	+4
Health & Social Care Professionals	1,126	1,125	-1	-0.1%	+60	+62
Management (VIII & above)	54	54	+0	+0.7%	+4	+4
Administrative/ Supervisory (V to VII)	268	274	+6	+2.2%	+37	+45
Clerical (III & IV)	1,069	1,076	+7	+0.6%	+28	+8
Management & Administrative	1,391	1,404	+13	+0.9%	+69	+58
Support	904	904	+1	+0.1%	+69	+67
Maintenance/ Technical	97	96	-1	-1.0%	-7	-6
General Support	1,000	1,000	-0	-0.0%	+62	+61
Health Care Assistants	880	845	-35	-4.0%	+46	+47
Care, other	49	48	-0	-0.7%	+18	+18
Patient & Client Care	928	893	-35	-3.8%	+64	+65

South/South West Hospital Group

Oct 2020 (Dec 2019 figure: 10,527)	WTE Sep 2020	WTE Oct 2020	WTE change since Sep 20	% change since Sep 20	WTE change since Dec 19	WTE change since Oct 19
Overall	11,328	11,265	-63	-0.6%	+738	+754
Consultants	516	505	-11	-2.2%	+27	+22
Registrars	527	530	+3	+0.5%	+21	+17
SHO/ Interns	623	619	-4	-0.7%	+82	+86
Medical/ Dental, other	11	11	-0	-0.3%	+1	+2
Medical & Dental	1,677	1,664	-13	-0.8%	+131	+128
Nurse/ Midwife Manager	867	867	+1	+0.1%	+4	-0
Nurse/ Midwife Specialist & AN/MP	170	182	+12	+6.8%	+35	+24
Staff Nurse/ Staff Midwife	3,256	3,302	+46	+1.4%	+175	+261
Pre-registration Nurse/ Midwife Intern				-100.0%	-12	-62
Pre-registration Nurse Intern (COVID-19)	139	59	-80	-57.9%	+59	+59
Post-registration Nurse/ Midwife Student	24	22	-2	-8.2%	-1	-6
Nursing/ Midwifery awaiting registration	26	13	-13	-50.2%	-24	-23
Nursing/ Midwifery Student	189	94	-96	-50.5%	+26	-33
Nursing/ Midwifery other	15	14	-1	-6.2%	-1	-0
Nursing & Midwifery	4,497	4,458	-39	-0.9%	+239	+252
Therapy Professions	345	353	+8	+2.2%	+42	+35
Health Science/ Diagnostics	846	852	+6	+0.7%	+68	+70
Social Workers	31	31	+0	+1.2%	-2	-1
Social Workers	31	31	+0	+1.2%	-1	-1
Psychologists	2	2				
Psychologists	2	2				
Pharmacy	142	144	+2	+1.2%	+27	+13
Pharmacy	142	144	+2	+1.2%	+15	+13
H&SC, Other	9	23	+14	+159.9%	-1	-2
Health & Social Care Professionals	1,375	1,405	+30	+2.2%	+123	+116
Management (VIII & above)	53	57	+4	+7.7%	+7	+9
Administrative/ Supervisory (V to VII)	307	315	+8	+2.6%	+50	+50
Clerical (III & IV)	1,268	1,264	-4	-0.3%	-5	-6
Management & Administrative	1,628	1,636	+8	+0.5%	+52	+54
Support	1,314	1,317	+3	+0.2%	+99	+100
Maintenance/ Technical	37	38	+0	+0.7%	+5	+5
General Support	1,352	1,355	+3	+0.2%	+104	+104
Health Care Assistants	782	732	-51	-6.5%	+90	+101
Care, other	16	14	-2	-12.1%	-1	-1
Patient & Client Care	799	746	-53	-6.6%	+89	+100

University of Limerick Hospital Group

Oct 2020 (Dec 2019 figure: 4,146)	WTE Sep 2020	WTE Oct 2020	WTE change since Sep 20	% change since Sep 20	WTE change since Dec 19	WTE change since Oct 19
Overall	4,379	4,415	+36	+0.8%	+269	+314
Consultants	181	186	+4	+2.4%	+21	+25
Registrars	213	206	-7	-3.1%	+16	+18
SHO/ Interns	261	263	+2	+1.0%	+66	+69
Other Medical	1	1				
Medical/ Dental, other	1	1				
Medical & Dental	656	656	+0	+0.1%	+103	+112
Nurse/ Midwife Manager	338	341	+3	+1.0%	+16	+7
Nurse/ Midwife Specialist & AN/MP	80	82	+1	+1.8%	+6	+5
Staff Nurse/ Staff Midwife	1,240	1,279	+39	+3.1%	+53	+84
Pre-registration Nurse/ Midwife Intern	2	1	-1	-50.0%	-1	-2
Pre-registration Nurse Intern (COVID-19)	17	6	-12	-66.9%	+6	+6
Post-registration Nurse/ Midwife Student	13	13	+0	+0.7%	+3	-4
Nursing/ Midwifery Student	32	20	-12	-38.8%	+1	+0
Nursing/ Midwifery other	12	12	+0	+3.4%	+1	+0
Nursing & Midwifery	1,702	1,733	+32	+1.9%	+76	+97
Therapy Professions	91	94	+3	+2.9%	+10	+16
Health Science/ Diagnostics	259	254	-6	-2.2%	+1	+5
Social Workers	10	9	-1	-6.3%	-2	-0
Psychologists	3	4	+0	+3.9%	+1	+1
Pharmacy	48	49	+1	+1.1%	+4	+3
H&SC, Other	3	6	+3	+103.8%	-1	-1
Health & Social Care Professionals	415	415	+0	+0.0%	+12	+24
Management (VIII & above)	37	38	+1	+2.4%	+2	+3
Administrative/ Supervisory (V to VII)	117	120	+2	+2.0%	+17	+11
Clerical (III & IV)	498	501	+3	+0.5%	+16	+14
Management & Administrative	653	659	+6	+0.9%	+35	+29
Support	524	528	+4	+0.8%	+241	+241
Maintenance/ Technical	38	38	-0	-0.8%	-1	-1
General Support	561	565	+4	+0.7%	+240	+240
Health Care Assistants	386	381	-5	-1.4%	-197	-187
Care, other	7	7	-0	-5.5%	-1	-1
Patient & Client Care	393	387	-6	-1.5%	-198	-188

other Acute Services

Oct 2020 (Dec 2019 figure: 548)	WTE Sep 2020	WTE Oct 2020	WTE change since Sep 20	% change since Sep 20	WTE change since Dec 19	WTE change since Oct 19
Overall	627	631	+5	+0.7%	+83	+83
Consultants	12	12				+1
Registrars	9	9			+5	+5
SHO/ Interns	7	7			+1	+1
Medical & Dental	28	28			+6	+7
Nurse/ Midwife Manager	51	50	-1	-2.0%	+3	+2
Nurse/ Midwife Specialist & AN/MP	3	3			+0	+0
Staff Nurse/ Staff Midwife	106	108	+2	+1.9%	+17	+23
Nursing/ Midwifery awaiting registration				-100.0%		-1
Nursing/ Midwifery Student				-100.0%		-1
Nursing/ Midwifery other				-100.0%	-1	-1
Nursing & Midwifery	159	160	+1	+0.6%	+19	+23
Therapy Professions	102	104	+2	+2.3%	+12	+12
Health Science/ Diagnostics	7	7	+1	+7.3%	-0	+0
Social Care	1	1				
Social Workers	16	16			+3	+2
Psychologists	12	13	+1	+8.5%	+2	+2
Pharmacy	13	13	-0	-1.1%	+2	+2
H&SC, Other	1	1	+0	+80.0%	+0	+1
Health & Social Care Professionals	151	155	+4	+2.7%	+20	+19
Management (VIII & above)	39	39	+0	+0.0%	+5	+3
Administrative/ Supervisory (V to VII)	68	67	-1	-1.5%	+6	+5
Clerical (III & IV)	46	47	+1	+2.2%	+4	+2
Management & Administrative	153	153	+0	+0.0%	+14	+9
Support	42	38	-4	-8.6%	+9	+9
Maintenance/ Technical	11	11			+3	+4
General Support	53	49	-4	-6.8%	+12	+13
Health Care Assistants	79	83	+3	+4.0%	+12	+11
Care, other	3	3				
Patient & Client Care	82	86	+3	+3.8%	+12	+11

Acute Services Employment by Grade Group: Oct 2020

Oct 2020 (Dec 2019 figure: 62,537)	WTE Sep 2020	WTE Oct 2020	WTE change since Sep 20	% change since Sep 20	WTE change since Dec 19	WTE change since Oct 19
Overall	65,856	65,952	+96	+0.1%	+3,415	+3,686
Consultant Anaesthesia	421	423	+1	+0.3%	+19	+21
Consultant Dentistry	6	6	+0	+1.6%	+0	+0
Consultant Emergency Medicine	118	120	+2	+1.4%	+12	+9
Consultant Intensive Care Medicine	18	17	-2	-9.6%	+1	+1
Consultant Medicine	872	878	+6	+0.7%	+75	+81
Consultant Obstetrics & Gynaecology	171	171	-0	-0.0%	+10	+9
Consultant, Other				-100.0%	-1	-1
Consultant Paediatrics	211	213	+1	+0.5%	+20	+22
Consultant Pathology	267	268	+1	+0.5%	+16	+18
Consultant Psychiatry	22	24	+2	+8.0%	+0	-0
Consultant Radiology	277	277	+0	+0.1%	+2	+7
Consultant Surgery	568	567	-1	-0.2%	+28	+25
Consultants	2,953	2,964	+11	+0.4%	+182	+193
Registrar	1,806	1,811	+4	+0.2%	+107	+115
Senior Registrar	115	117	+2	+1.8%	+9	+9
Specialist Registrar	1,206	1,214	+8	+0.6%	+83	+76
Registrars	3,128	3,142	+14	+0.4%	+200	+199
Interns	987	977	-10	-1.0%	+259	+256
Senior House Officer	2,252	2,283	+30	+1.4%	+206	+216
SHO/ Interns	3,239	3,259	+20	+0.6%	+465	+471
Dentists	11	11	+0	+2.2%	+1	+1
Other Medical	57	55	-2	-4.1%	+5	+7
Medical/ Dental, other	68	65	-2	-3.1%	+6	+8
Medical & Dental	9,387	9,430	43	+0.5%	+852	+872
Clinical Nurse/ Midwife Manager	4,343	4,380	+37	+0.8%	+182	+172
Director Nursing/Midwifery, Assistant	444	445	+1	+0.2%	+11	+9
Director of Nursing/Midwifery	81	81	-1	-1.1%	+2	+1
Nurse/ Midwife Manager	4,869	4,905	+37	+0.8%	+195	+182
Advanced Nurse/ Midwife Practitioner	401	417	+16	+4.0%	+80	+74
Clinical Nurse/ Midwife Specialist	1,004	1,014	+10	+1.0%	+59	+60
Nurse/ Midwife Specialist & AN/MP	1,405	1,431	+26	+1.9%	+139	+134
Nursing Bank	14	12	-2	-15.5%	-19	-20
Staff Midwives	1,421	1,443	+22	+1.5%	-14	+39
Staff Nurse [Psychiatric]	24	24	-0	-0.0%	-4	-4
Staff Nurses [General/ Children's]	15,402	15,560	+158	+1.0%	+400	+703
Staff Nurse [Intellectual Disability]	67	69	+2	+3.0%	+69	+69
Staff Nurse/ Staff Midwife	16,929	17,109	+180	+1.1%	+433	+787
Public Health Nurse	2	2	+0	+0.7%	+0	+0
Pre-registration Nurse/ Midwife Intern	3	1	-2	-70.8%	-82	-132
Pre-registration Nurse Intern (COVID-19)	655	427	-228	-34.8%	+427	+427
Post-registration Nurse/ Midwife Student	162	161	-1	-0.7%	-35	-39
Nursing/ Midwifery awaiting registration	79	69	-10	-12.8%	-70	-199
Nursing/ Midwifery Student	899	657	-242	-26.9%	+241	+57
Nursing Education/Clinical	188	193	+5	+2.4%	+2	+3
Other Nursing/ Midwifery	34	32	-2	-5.0%	-2	+5
Nursing/ Midwifery other	222	225	+3	+1.3%	+1	+8
Nursing & Midwifery	24,325	24,329	4	+0.0%	+1,008	+1,168
Dietitians	428	430	+2	+0.5%	+37	+39

Oct 2020 (Dec 2019 figure: 62,537)	WTE Sep 2020	WTE Oct 2020	WTE change since Sep 20	% change since Sep 20	WTE change since Dec 19	WTE change since Oct 19
Overall	65,856	65,952	+96	+0.1%	+3,415	+3,686
Occupational Therapists	398	406	+8	+1.9%	+37	+44
Orthoptists	21	21	+0	+2.3%	-1	-0
Physiotherapists	1,060	1,056	-5	-0.4%	+64	+57
Podiatrists & Chiropodists	37	37	-0	-0.8%	+2	+2
Speech & Language Therapists	233	236	+3	+1.3%	+38	+32
Therapy Professions	2,177	2,185	+8	+0.4%	+178	+174
Audiology	30	30	+0	+1.4%	+2	+2
Biochemists	71	74	+3	+4.6%	+2	+2
Clinical Engineering	150	150	+1	+0.4%	+8	+8
Clinical Measurement	405	408	+3	+0.8%	+25	+24
Dosimetrists	14	14	+0	+0.1%	+1	+5
Medical Laboratory	1,966	1,955	-11	-0.6%	+69	+69
Perfusionists	20	20	+0	+0.7%	-1	-1
Phlebotomists	179	183	+4	+2.4%	+11	+13
Physicists	185	182	-3	-1.7%	+2	-1
Radiation Therapists	207	215	+8	+3.8%	+16	+15
Radiographers	1,220	1,226	+5	+0.4%	+80	+78
Health Science/ Diagnostics	4,447	4,458	+11	+0.2%	+215	+214
Social Care	3	3	+0	+1.5%	+0	+0
Social Workers	363	372	+9	+2.5%	+17	+28
Psychologists	108	110	+1	+1.4%	+9	+15
Pharmacy	965	981	+16	+1.6%	+80	+97
Counsellor Therapists	5	5	+0	+0.2%	-0	-0
Dental Hygienists	1	1			+0	
HSCP Trainees/ Students	41	46	+5	+12.5%	-23	-11
Other Health & Social Care	47	52	+5	+11.8%	+3	+2
Play Therapists/ Specialists	25	26	+1	+3.1%	+1	+1
H&SC, Other	119	130	+11	+9.6%	-20	-8
Health & Social Care Professionals	8,182	8,239	57	+0.7%	+479	+520
Executive Management	95	100	+5	+5.7%	+13	+15
Senior Management (VIII & GM)	460	473	+13	+2.8%	+42	+42
Management (VIII & above)	554	573	+18	+3.3%	+55	+58
Middle Management (V-VII)	2,562	2,589	+27	+1.0%	+278	+283
Other Administrative	15	16	+0	+1.2%	+0	+0
Administrative/ Supervisory (V to VII)	2,578	2,605	+27	+1.0%	+279	+284
Clerical (III & IV)	6,626	6,643	+17	+0.3%	+37	+12
Management & Administrative	9,758	9,821	62	+0.6%	+371	+353
Catering	481	482	+0	+0.1%	+11	+16
Household Services	3,068	3,059	-9	-0.3%	+342	+354
Other Labs & Associated	426	424	-2	-0.4%	+45	+47
Other Support	740	756	+17	+2.3%	+18	+18
Portering	1,331	1,326	-5	-0.4%	+1	-5
Support	6,046	6,047	+1	+0.0%	+417	+431
Maintenance	513	515	+1	+0.3%	+8	+13
Technical Services	26	27	+1	+3.4%	+3	+4
Maintenance/ Technical	539	542	+2	+0.4%	+11	+17
General Support	6,585	6,589	3	+0.1%	+428	+448
HCA, Nurse's Aide, etc.	5,448	5,339	-108	-2.0%	+193	+239
Health & Social Care Assistants	155	158	+3	+1.8%	+30	+26
Health Care Assistants	5,603	5,498	-105	-1.9%	+224	+265
Ambulance Control	186	183	-3	-1.4%	+4	+10

Oct 2020 (Dec 2019 figure: 62,537)	WTE Sep 2020	WTE Oct 2020	WTE change since Sep 20	% change since Sep 20	WTE change since Dec 19	WTE change since Oct 19
Overall	65,856	65,952	+96	+0.1%	+3,415	+3,686
Ambulance Education	119	154	+35	+29.2%	-7	-3
Ambulance Officers	83	86	+2	+2.6%	+8	+10
Pre-Hospital Care (Ambulance)	1,443	1,444	+0	+0.0%	+37	+33
Ambulance Staff	1,832	1,867	+35	+1.9%	+42	+49
Care, other	183	180	-4	-1.9%	+11	+12
Patient & Client Care	7,618	7,544	-74	-1.0%	+276	+326

Employment by WTE, Headcount, Gender, Full-Time /Part-Time etc.: Oct 2020

Acutes Services Staff Group	WTE	Headcount	WTE: no.	% Male	% female	Male WTE: no.	Female WTE: no.	% Total Perm	% Male Perm	% Female Perm	% Total Full Time	% Total Part Time	% Male FT	% Female FT
Overall	65,952	73,841	1.12	23.6%	76.4%	1.04	1.15	79.3%	68.0%	82.8%	74.0%	26.0%	93.1%	68.1%
Consultant Anaesthesia	423	451	1.07	63.2%	36.8%	1.05	1.10	79.8%	79.8%	80.7%	91.8%	8.2%	92.6%	90.4%
Consultant Dentistry	6	7	1.10	28.6%	71.4%	1.00	1.15	85.7%	85.7%	80.0%	85.7%	14.3%	100.0%	80.0%
Consultant Emergency Medicine	120	128	1.07	71.1%	28.9%	1.05	1.10	69.5%	69.5%	75.7%	88.3%	11.7%	91.2%	81.1%
Consultant Intensive Care Medicine	17	18	1.08	27.8%	72.2%	1.11	1.08	83.3%	83.3%	76.9%	88.9%	11.1%	80.0%	92.3%
Consultant Medicine	878	957	1.09	61.5%	38.5%	1.07	1.12	73.5%	73.5%	69.3%	86.2%	13.8%	88.8%	82.1%
Consultant Obstetrics & Gynaecology	171	186	1.09	45.7%	54.3%	1.06	1.11	77.4%	77.4%	74.3%	85.5%	14.5%	90.6%	81.2%
Consultant Paediatrics	213	233	1.10	48.1%	51.9%	1.06	1.13	74.7%	74.7%	74.4%	85.4%	14.6%	92.0%	79.3%
Consultant Pathology	268	292	1.09	39.7%	60.3%	1.07	1.10	80.1%	80.1%	80.7%	87.7%	12.3%	89.7%	86.4%
Consultant Psychiatry	24	30	1.25	43.3%	56.7%	1.15	1.34	70.0%	70.0%	64.7%	73.3%	26.7%	92.3%	58.8%
Consultant Radiology	277	293	1.06	61.1%	38.9%	1.04	1.09	85.7%	85.7%	84.2%	91.8%	8.2%	93.9%	88.6%
Consultant Surgery	567	630	1.11	81.0%	19.0%	1.09	1.20	75.9%	75.9%	73.3%	84.9%	15.1%	88.2%	70.8%
Consultants	2,964	3,225	1.09	61.6%	38.4%	1.07	1.12	76.7%	77.6%	75.4%	87.3%	12.7%	90.1%	82.7%
Registrar	1,811	1,879	1.04	61.2%	38.8%	1.03	1.06	2.0%	2.0%	2.1%	96.6%	3.4%	97.8%	94.7%
Senior Registrar	117	121	1.03	68.6%	31.4%	1.03	1.04	15.7%	15.7%	15.8%	96.7%	3.3%	97.6%	94.7%
Specialist Registrar	1,214	1,247	1.03	44.3%	55.7%	1.01	1.04	0.2%	0.2%	0.3%	96.7%	3.3%	98.9%	95.0%
Registrars	3,142	3,247	1.03	55.0%	45.0%	1.02	1.05	1.8%	2.0%	1.6%	96.6%	3.4%	98.2%	94.8%
Interns	977	1,011	1.03	44.9%	55.1%	1.03	1.04	0.0%	0.0%	0.0%	99.9%	0.1%	100.0%	99.8%
Senior House Officer	2,283	2,359	1.03	45.1%	54.9%	1.02	1.04	0.5%	0.5%	0.4%	99.1%	0.9%	99.5%	98.7%
SHO/ Interns	3,259	3,370	1.03	45.1%	54.9%	1.03	1.04	0.4%	0.5%	0.3%	99.3%	0.7%	99.7%	99.0%
Dentists	11	14	1.29	35.7%	64.3%	1.39	1.24	57.1%	57.1%	66.7%	50.0%	50.0%	60.0%	44.4%
Other Medical	55	79	1.45	31.6%	68.4%	1.15	1.64	46.8%	46.8%	57.4%	43.0%	57.0%	72.0%	29.6%
Medical/ Dental, other	65	93	1.42	32.3%	67.7%	1.19	1.57	48.4%	26.7%	58.7%	44.1%	55.9%	70.0%	31.7%
Medical & Dental	9,430	9,935	1.05	53.6%	46.4%	1.04	1.07	26.1%	29.9%	21.6%	94.0%	6.0%	95.4%	92.4%
Clinical Nurse/ Midwife Manager	4,380	4,896	1.12	5.6%	94.4%	1.03	1.12	96.9%	96.9%	96.8%	68.2%	31.8%	91.5%	66.8%
Director Nursing/Midwifery, Assistant	445	477	1.07	8.0%	92.0%	1.05	1.07	97.7%	97.7%	97.5%	81.8%	18.2%	89.5%	81.1%
Director of Nursing/Midwifery	81	83	1.03	8.4%	91.6%	1.08	1.03	94.0%	94.0%	96.1%	97.6%	2.4%	85.7%	98.7%
Nurse/ Midwife Manager	4,905	5,456	1.11	5.8%	94.2%	1.03	1.12	96.9%	97.8%	96.9%	69.8%	30.2%	91.2%	68.5%

Advanced Nurse/ Midwife Practitioner	417	438	1.05	11.0%	89.0%	1.01	1.05	98.6%	98.6%	98.7%	88.1%	11.9%	97.9%	86.9%
Clinical Nurse/ Midwife Specialist	1,014	1,204	1.19	2.4%	97.6%	1.02	1.19	98.3%	98.3%	98.3%	58.6%	41.4%	93.1%	57.8%
Nurse/ Midwife Specialist & AN/MP	1,431	1,642	1.15	4.7%	95.3%	1.01	1.15	98.4%	97.4%	98.4%	66.5%	33.5%	96.1%	65.0%
Nursing Bank	12	32	2.64		100.0%		2.64	71.9%	71.9%	71.9%	3.1%	96.9%		3.1%
Staff Midwives	1,443	1,758	1.22	0.2%	99.8%	1.03	1.22	91.7%	91.7%	91.8%	48.2%	51.8%	50.0%	48.2%
Staff Nurse [Psychiatric]	24	26	1.07	30.8%	69.2%	1.08	1.07	96.2%	96.2%	100.0%	92.3%	7.7%	87.5%	94.4%
Staff Nurses [General/ Children's]	15,560	17,957	1.15	8.4%	91.6%	1.03	1.17	93.3%	93.3%	93.4%	63.9%	36.1%	91.0%	61.4%
Staff Nurse [Intellectual Disability]	69	70	1.01	100.0%		1.01		100.0%	100.0%		97.1%	2.9%	97.1%	
Staff Nurse/ Staff Midwife	17,109	19,843	1.16	8.1%	91.9%	1.03	1.17	93.1%	91.7%	93.2%	62.5%	37.5%	91.1%	60.0%
Public Health Nurse	2	2	1.32		100.0%		1.32	0.0%		0.0%	0.0%	100.0%		0.0%
Pre-registration Nurse/ Midwife Intern	1	1	1.00		100.0%		1.00	100.0%	100.0%	100.0%	100.0%	0.0%		100.0%
Pre-registration Nurse Intern (COVID-19)	427	540	1.26	4.4%	95.6%	1.24	1.27	17.6%	17.6%	17.8%	83.1%	16.9%	79.2%	83.3%
Post-registration Nurse/ Midwife Student	161	165	1.03	3.0%	97.0%	1.00	1.03	10.9%	10.9%	11.3%	100.0%	0.0%	100.0%	100.0%
Nursing/ Midwifery awaiting registration	69	69	1.00	5.8%	94.2%	1.07	1.00	44.9%	44.9%	47.7%	98.6%	1.4%	100.0%	98.5%
Nursing/ Midwifery Student	657	775	1.18	4.3%	95.7%	1.18	1.18	18.7%	9.1%	19.1%	88.1%	11.9%	84.8%	88.3%
Nursing Education/Clinical	193	219	1.14	3.7%	96.3%	1.00	1.14	97.3%	97.3%	97.6%	67.6%	32.4%	100.0%	66.4%
Other Nursing/ Midwifery	32	35	1.10	5.7%	94.3%	1.00	1.10	100.0%	100.0%	100.0%	71.4%	28.6%	100.0%	69.7%
Nursing/ Midwifery other	225	254	1.13	3.9%	96.1%	1.00	1.14	97.6%	90.0%	98.0%	68.1%	31.9%	100.0%	66.8%
Nursing & Midwifery	24,329	27,972	1.15	7.3%	92.7%	1.03	1.16	92.1%	91.5%	92.2%	65.0%	35.0%	91.3%	62.9%
Dietitians	430	501	1.17	1.6%	98.4%	1.17	1.17	80.4%	80.4%	81.3%	73.9%	26.1%	87.5%	73.6%
Occupational Therapists	406	446	1.10	8.3%	91.7%	1.04	1.11	77.1%	77.1%	76.8%	84.1%	15.9%	89.2%	83.6%
Orthoptists	21	30	1.42	10.0%	90.0%	1.00	1.49	86.7%	86.7%	85.2%	46.7%	53.3%	100.0%	40.7%
Physiotherapists	1,056	1,208	1.14	19.6%	80.4%	1.05	1.17	78.9%	78.9%	81.9%	75.5%	24.5%	89.5%	72.1%
Podiatrists & Chiropodists	37	45	1.23	13.3%	86.7%	1.31	1.22	84.4%	84.4%	87.2%	57.8%	42.2%	33.3%	61.5%
Speech & Language Therapists	236	275	1.17	1.1%	98.9%	1.00	1.17	76.0%	76.0%	76.8%	71.3%	28.7%	100.0%	71.0%
Therapy Professions	2,185	2,505	1.15	11.7%	88.3%	1.06	1.16	78.8%	67.0%	80.3%	75.6%	24.4%	88.4%	73.9%
Audiology	30	36	1.20	16.7%	83.3%	1.24	1.19	94.4%	94.4%	93.3%	69.4%	30.6%	66.7%	70.0%
Biochemists	74	79	1.07	30.4%	69.6%	1.01	1.09	89.9%	89.9%	90.9%	86.1%	13.9%	100.0%	80.0%
Clinical Engineering	150	157	1.05	80.9%	19.1%	1.03	1.11	91.7%	91.7%	80.0%	94.9%	5.1%	97.6%	83.3%
Clinical Measurement	408	448	1.10	17.4%	82.6%	1.04	1.11	87.3%	87.3%	87.3%	81.7%	18.3%	93.6%	79.2%
Dosimetrists	14	16	1.13	6.3%	93.8%	1.00	1.14	81.3%	81.3%	80.0%	75.0%	25.0%	100.0%	73.3%
Medical Laboratory	1,955	2,150	1.10	19.5%	80.5%	1.03	1.12	88.8%	88.8%	89.5%	80.8%	19.2%	94.0%	77.6%
Perfusionists	20	23	1.12	47.8%	52.2%	1.11	1.13	82.6%	82.6%	83.3%	69.6%	30.4%	72.7%	66.7%
Phlebotomists	183	249	1.36	21.7%	78.3%	1.25	1.39	75.5%	75.5%	76.4%	44.2%	55.8%	61.1%	39.5%

Physicists	182	194	1.06	43.8%	56.2%	1.04	1.08	93.3%	93.3%	91.7%	90.7%	9.3%	98.8%	84.4%
Radiation Therapists	215	235	1.09	11.1%	88.9%	1.08	1.09	76.2%	76.2%	78.5%	83.8%	16.2%	100.0%	81.8%
Radiographers	1,226	1,358	1.11	18.9%	81.1%	1.02	1.13	91.8%	91.8%	91.6%	78.7%	21.3%	93.4%	75.3%
Health Science/ Diagnostics	4,458	4,945	1.11	22.0%	78.0%	1.04	1.13	88.5%	88.1%	88.6%	79.4%	20.6%	92.9%	75.6%
Social Care	3	5	1.45	40.0%	60.0%	2.00	1.22	100.0%	100.0%	100.0%	20.0%	80.0%	0.0%	33.3%
Social Workers	372	416	1.12	12.5%	87.5%	1.08	1.12	86.8%	86.8%	87.4%	80.0%	20.0%	92.3%	78.3%
Social Workers	372	416	1.12	12.5%	87.5%	1.08	1.12	86.8%	82.7%	87.4%	80.0%	20.0%	92.3%	78.3%
Psychologists	110	136	1.24	11.0%	89.0%	1.19	1.25	86.0%	93.3%	85.1%	51.5%	48.5%	53.3%	51.2%
Pharmacy	981	1,094	1.12	11.2%	88.8%	1.03	1.13	80.1%	82.0%	79.8%	77.9%	22.1%	96.7%	75.5%
Counsellor Therapists	5	8	1.69		100.0%		1.69	87.5%	87.5%	87.5%	25.0%	75.0%		25.0%
Dental Hygienists	1	2	1.83		100.0%		1.83	100.0%	100.0%	100.0%	50.0%	50.0%		50.0%
HSCP Trainees/ Students	46	62	1.34	29.0%	71.0%	1.44	1.30	3.2%	3.2%	4.5%	71.0%	29.0%	61.1%	75.0%
Other Health & Social Care	52	58	1.11	37.9%	62.1%	1.04	1.17	84.5%	84.5%	83.3%	70.7%	29.3%	86.4%	61.1%
Play Therapists/ Specialists	26	34	1.30		100.0%		1.30	91.2%	91.2%	91.2%	50.0%	50.0%		50.0%
H&SC, Other	130	164	1.26	24.4%	75.6%	1.19	1.28	55.5%	47.5%	58.1%	64.0%	36.0%	75.0%	60.5%
Health & Social Care	8,239	9,265	1.12	17.4%	82.6%	1.05	1.14	84.2%	82.7%	84.5%	77.5%	22.5%	91.4%	74.5%
Executive Management	100	102	1.02	49.0%	51.0%	1.02	1.02	90.2%	90.2%	90.4%	97.1%	2.9%	98.0%	96.2%
Senior Management (VIII & GM)	473	483	1.02	34.0%	66.0%	1.01	1.02	93.4%	93.4%	94.4%	97.3%	2.7%	98.2%	96.9%
Management (VIII & above)	573	585	1.02	36.6%	63.4%	1.02	1.02	92.8%	91.1%	93.8%	97.3%	2.7%	98.1%	96.8%
Middle Management (V-VII)	2,589	2,777	1.07	22.0%	78.0%	1.01	1.09	94.1%	94.1%	94.8%	81.1%	18.9%	97.5%	76.4%
Other Administrative	16	18	1.15	22.2%	77.8%	1.00	1.21	61.1%	61.1%	57.1%	83.3%	16.7%	100.0%	78.6%
Administrative/ Supervisory (V to VII)	2,605	2,795	1.07	22.0%	78.0%	1.01	1.09	93.8%	91.2%	94.6%	81.1%	18.9%	97.6%	76.4%
General Administrative (III & IV)	6,643	7,601	1.14	12.2%	87.8%	1.03	1.16	82.2%	82.2%	82.7%	68.7%	31.3%	93.7%	65.2%
Clerical (III & IV)	6,643	7,601	1.14	12.2%	87.8%	1.03	1.16	82.2%	78.4%	82.7%	68.7%	31.3%	93.7%	65.2%
Management & Administrative	9,821	10,981	1.12	16.0%	84.0%	1.02	1.14	85.7%	84.5%	86.0%	73.4%	26.6%	95.6%	69.1%
Catering	482	521	1.08	30.9%	69.1%	1.02	1.11	90.6%	90.6%	93.3%	77.5%	22.5%	96.9%	68.9%
Household Services	3,059	3,580	1.17	21.5%	78.5%	1.08	1.20	80.4%	80.4%	84.0%	60.6%	39.4%	80.9%	55.1%
Other Labs & Associated	424	465	1.10	29.5%	70.5%	1.04	1.12	72.3%	72.3%	72.0%	85.8%	14.2%	96.4%	81.4%
Other Support	756	840	1.11	44.2%	55.8%	1.03	1.18	91.7%	91.7%	93.0%	73.6%	26.4%	95.7%	56.1%
Portering	1,326	1,402	1.06	92.6%	7.4%	1.05	1.14	81.2%	81.2%	80.8%	90.4%	9.6%	92.4%	65.4%
Support	6,047	6,808	1.13	40.2%	59.8%	1.05	1.18	82.2%	78.3%	84.8%	71.4%	28.6%	90.1%	58.8%
Maintenance	515	527	1.02	98.1%	1.9%	1.02	1.08	93.5%	93.5%	100.0%	97.5%	2.5%	98.1%	70.0%
Technical Services	27	27	1.01	100.0%		1.01		88.9%	88.9%		100.0%	0.0%	100.0%	
Maintenance/ Technical	542	554	1.02	98.2%	1.8%	1.02	1.08	93.3%	93.2%	100.0%	97.7%	2.3%	98.2%	70.0%

General Support	6,589	7,362	1.12	44.6%	55.4%	1.05	1.18	83.0%	80.7%	84.8%	73.3%	26.7%	91.4%	58.8%
HCA, Nurse's Aide, etc.	5,339	6,000	1.12	30.1%	69.9%	1.06	1.15	80.7%	80.7%	79.6%	71.7%	28.3%	86.9%	65.2%
Health & Social Care Assistants	158	183	1.16	24.0%	76.0%	1.08	1.19	73.8%	73.8%	72.7%	71.0%	29.0%	90.9%	64.7%
Health Care Assistants	5,498	6,183	1.12	29.9%	70.1%	1.06	1.16	80.5%	83.0%	79.4%	71.7%	28.3%	87.0%	65.2%
Ambulance Control	183	189	1.03	49.2%	50.8%	1.03	1.03	97.9%	97.9%	96.9%	98.4%	1.6%	100.0%	96.9%
Ambulance Education	154	155	1.00	62.6%	37.4%	1.00	1.01	0.0%	0.0%	0.0%	100.0%	0.0%	100.0%	100.0%
Ambulance Officers	86	87	1.02	85.1%	14.9%	1.02	1.00	96.6%	96.6%	100.0%	97.7%	2.3%	97.3%	100.0%
Pre-Hospital Care (Ambulance)	1,444	1,491	1.03	77.3%	22.7%	1.02	1.06	98.4%	98.4%	99.7%	99.7%	0.3%	99.9%	99.1%
Ambulance Staff	1,867	1,922	1.03	73.7%	26.3%	1.02	1.05	90.3%	91.2%	87.7%	99.5%	0.5%	99.8%	98.8%
Care, other	180	221	1.23	55.7%	44.3%	1.24	1.22	76.9%	66.7%	89.8%	66.5%	33.5%	72.4%	59.2%
Patient & Client Care	7,544	8,326	1.10	40.7%	59.3%	1.05	1.14	82.6%	85.9%	80.4%	78.0%	22.0%	91.8%	68.5%

Employment by WTE, Headcount, Gender, Full-Time /Part-Time etc.: Oct 2020

Hospital Group	WTE	Headcount	WTE: no.	% Male	% female	Male WTE: no.	Female WTE: no.	% Total Perm	% Male Perm	% Female Perm	% Total Full Time	% Total Part Time	% Male FT	% Female FT
Overall	65,952	73,841	1.12	23.6%	76.4%	1.04	1.15	79.3%	68.0%	82.8%	74.0%	26.0%	93.1%	68.1%
National Ambulance Service	1,981	2,044	1.03	71.5%	28.5%	1.02	1.05	90.2%	90.2%	87.8%	99.0%	1.0%	99.7%	97.1%
CHI at Connolly	139	162	1.17	11.7%	88.3%	1.06	1.18	90.1%	90.1%	92.3%	70.4%	29.6%	89.5%	89.5%
CHI at Crumlin	2,037	2,321	1.14	14.9%	85.1%	1.03	1.16	83.4%	83.4%	85.1%	64.7%	35.3%	92.5%	92.5%
CHI at Tallaght	256	288	1.12	12.2%	87.8%	1.02	1.14	75.7%	75.7%	81.0%	72.2%	27.8%	97.1%	97.1%
CHI at Temple Street	1,242	1,418	1.14	17.1%	82.9%	1.05	1.16	80.4%	80.4%	82.0%	74.5%	25.5%	95.1%	95.1%
CHI Corporate	3	3	1.00	33.3%	66.7%	1.00	1.00	100.0%	100.0%	100.0%	100.0%	0.0%	100.0%	100.0%
CHI Programme	45	48	1.06	31.3%	68.8%	1.14	1.03	47.9%	47.9%	45.5%	97.9%	2.1%	93.3%	93.3%
Children's Health Ireland	3,722	4,240	1.14	15.5%	84.5%	1.04	1.16	81.7%	81.7%	83.7%	69.1%	30.9%	93.6%	64.6%
Coombe Women & Infants University	926	1,043	1.13	13.9%	86.1%	1.04	1.14	84.9%	84.9%	87.9%	66.1%	33.9%	86.9%	86.9%
MRH Portlaoise	767	872	1.14	19.0%	81.0%	1.02	1.17	78.2%	78.2%	82.4%	70.4%	29.6%	98.8%	98.8%
MRH Tullamore	1,141	1,280	1.12	21.4%	78.6%	1.04	1.15	82.0%	82.0%	85.2%	78.0%	22.0%	96.7%	96.7%
Naas General	774	876	1.13	19.6%	80.4%	1.04	1.16	86.1%	86.1%	89.3%	72.6%	27.4%	93.6%	93.6%
St. James's	4,231	4,696	1.11	24.5%	75.5%	1.03	1.14	85.7%	85.7%	87.6%	80.6%	19.4%	94.0%	94.0%
St. Luke's Rathgar	556	591	1.06	25.4%	74.6%	1.02	1.08	78.2%	78.2%	80.3%	84.9%	15.1%	96.7%	96.7%
Tallaght University	2,772	3,091	1.12	25.8%	74.2%	1.05	1.14	82.7%	82.7%	87.0%	75.5%	24.5%	89.5%	89.5%
Hospital Group HQ	38	40	1.05	17.5%	82.5%	1.08	1.04	92.5%	92.5%	90.9%	92.5%	7.5%	85.7%	85.7%
Dublin Midlands Hospital Group	11,204	12,489	1.11	22.9%	77.1%	1.04	1.14	83.7%	83.7%	86.7%	76.8%	23.2%	93.0%	72.0%
Cappagh National Orthopaedic	438	492	1.12	20.7%	79.3%	1.01	1.16	88.4%	88.4%	91.5%	72.0%	28.0%	96.1%	96.1%
Mater Misericordiae University	3,385	3,713	1.10	26.7%	73.3%	1.07	1.11	77.6%	77.6%	82.0%	79.5%	20.5%	87.4%	87.4%
MRH Mullingar	984	1,087	1.10	20.3%	79.7%	1.02	1.13	80.1%	80.1%	85.3%	75.1%	24.9%	96.4%	96.4%
National Maternity	919	1,018	1.11	16.6%	83.4%	1.07	1.12	77.1%	77.1%	78.7%	70.9%	29.1%	84.0%	84.0%
Our Lady's Navan	582	678	1.17	26.1%	73.9%	1.08	1.20	78.8%	78.8%	83.6%	66.1%	33.9%	88.1%	88.1%
St. Columcille's	458	505	1.10	25.1%	74.9%	1.03	1.13	78.8%	78.8%	82.3%	78.0%	22.0%	92.9%	92.9%
St Luke's General Kilkenny	1,179	1,349	1.14	23.0%	77.0%	1.03	1.19	72.9%	72.9%	82.6%	66.6%	33.4%	94.8%	94.8%
St. Michael's	399	447	1.12	23.3%	76.7%	1.06	1.14	90.4%	90.4%	91.8%	73.4%	26.6%	83.7%	83.7%
St. Vincent's University	3,101	3,333	1.07	27.8%	72.2%	1.03	1.09	86.2%	86.2%	89.3%	87.8%	12.2%	96.1%	96.1%
Wexford General	1,048	1,195	1.14	22.6%	77.4%	1.02	1.18	75.9%	75.9%	83.1%	68.6%	31.4%	94.4%	94.4%
Royal Victoria Eye & Ear	304	356	1.17	25.3%	74.7%	1.07	1.21	82.6%	82.6%	85.7%	63.5%	36.5%	85.6%	85.6%
IEHG Bank	5	7	1.38		100.0%		1.38	100.0%	100.0%	100.0%	14.3%	85.7%		
Hospital Group HQ	30	32	1.06	25.0%	75.0%	1.01	1.08	84.4%	84.4%	83.3%	93.8%	6.3%	100.0%	100.0%

Ireland East Hospital Group	12,831	14,212	1.11	24.6%	75.4%	1.04	1.13	80.2%	80.2%	84.7%	76.8%	23.2%	91.7%	72.0%
Beaumont	4,029	4,396	1.09	27.2%	72.8%	1.04	1.11	84.1%	84.1%	87.6%	78.3%	21.7%	91.0%	91.0%
Cavan General	1,044	1,202	1.15	17.1%	82.9%	1.04	1.18	86.6%	86.6%	90.9%	69.0%	31.0%	96.1%	96.1%
Connolly	1,439	1,594	1.11	24.8%	75.2%	1.04	1.13	81.5%	81.5%	83.5%	81.6%	18.4%	94.9%	94.9%
Louth County	282	327	1.16	18.3%	81.7%	1.06	1.19	97.6%	97.6%	97.8%	66.4%	33.6%	91.7%	91.7%
Monaghan	97	113	1.16	11.5%	88.5%	1.05	1.18	97.3%	97.3%	99.0%	55.8%	44.2%	84.6%	84.6%
Our Lady of Lourdes	2,258	2,520	1.12	22.4%	77.6%	1.04	1.14	84.7%	84.7%	88.9%	81.2%	18.8%	95.7%	95.7%
Rotunda	922	1,043	1.13	13.9%	86.1%	1.04	1.15	83.4%	83.4%	85.3%	73.9%	26.1%	95.2%	95.2%
Hospital Group HQ	39	40	1.03	20.0%	80.0%	1.00	1.04	95.0%	95.0%	100.0%	97.5%	2.5%	100.0%	100.0%
RCSI Hospitals Group	10,110	11,235	1.11	23.0%	77.0%	1.04	1.13	84.6%	84.6%	88.0%	77.5%	22.5%	93.3%	72.7%
Galway University	3,804	4,241	1.11	21.4%	78.6%	1.05	1.13	70.8%	70.8%	74.2%	71.3%	28.7%	89.7%	89.7%
Letterkenny University	1,746	2,002	1.15	22.8%	77.2%	1.05	1.18	77.4%	77.4%	81.7%	62.3%	37.7%	88.6%	88.6%
Mayo University	1,196	1,372	1.15	20.5%	79.5%	1.04	1.18	70.8%	70.8%	75.1%	64.1%	35.9%	94.0%	94.0%
Portiuncula University	843	953	1.13	21.5%	78.5%	1.05	1.16	72.0%	72.0%	79.5%	63.6%	36.4%	92.7%	92.7%
Roscommon University	359	406	1.13	20.0%	80.0%	1.09	1.14	76.6%	76.6%	82.8%	67.0%	33.0%	96.3%	96.3%
Sligo University	1,754	1,994	1.14	22.3%	77.7%	1.04	1.17	80.2%	80.2%	83.8%	68.7%	31.3%	92.6%	92.6%
Hospital Group HQ	92	96	1.05	18.8%	81.3%	1.01	1.06	87.5%	87.5%	89.7%	90.6%	9.4%	94.4%	94.4%
Saolta University Hospital Care	9,793	11,064	1.13	21.6%	78.4%	1.05	1.15	74.1%	74.1%	78.3%	67.6%	32.4%	91.0%	61.2%
Bantry General	278	330	1.19	13.9%	86.1%	1.13	1.20	80.3%	80.3%	84.2%	60.6%	39.4%	87.0%	87.0%
Cork University	4,308	4,896	1.14	22.5%	77.5%	1.06	1.16	67.4%	67.4%	71.5%	73.5%	26.5%	95.6%	95.6%
Lourdes Orthopaedic Kilcreene	72	86	1.19	12.8%	87.2%	1.00	1.23	93.0%	93.0%	96.0%	45.3%	54.7%	100.0%	100.0%
Mallow General	249	292	1.17	15.1%	84.9%	1.06	1.19	71.9%	71.9%	76.2%	66.8%	33.2%	95.5%	95.5%
Mercy University	1,230	1,409	1.15	22.0%	78.0%	1.03	1.18	71.7%	71.7%	75.6%	62.2%	37.8%	91.9%	91.9%
South Infirmary Victoria University	822	1,005	1.22	21.1%	78.9%	1.07	1.27	73.9%	73.9%	78.9%	46.1%	53.9%	78.8%	78.8%
South Tipperary General	948	1,091	1.15	19.2%	80.8%	1.04	1.18	75.5%	75.5%	80.7%	65.2%	34.8%	90.5%	90.5%
UH Kerry	1,226	1,400	1.14	19.4%	80.6%	1.03	1.17	65.9%	65.9%	69.9%	68.4%	31.6%	93.4%	93.4%
UH Waterford	2,088	2,342	1.12	23.4%	76.6%	1.03	1.15	80.3%	80.3%	85.9%	70.2%	29.8%	93.8%	93.8%
Hospital Group HQ	44	54	1.22	18.5%	81.5%	1.14	1.24	66.7%	66.7%	65.9%	74.1%	25.9%	90.0%	90.0%
South/South West Hospital Group	11,265	12,905	1.15	21.4%	78.6%	1.05	1.17	71.8%	71.8%	76.3%	67.6%	32.4%	92.8%	60.8%
Croom Orthopaedic	165	193	1.17	22.3%	77.7%	1.04	1.21	89.6%	89.6%	95.3%	65.3%	34.7%	90.7%	90.7%
Ennis	230	265	1.15	14.7%	85.3%	1.06	1.17	87.9%	87.9%	89.4%	64.5%	35.5%	87.2%	87.2%
Nenagh	256	291	1.14	14.8%	85.2%	1.03	1.16	88.0%	88.0%	90.7%	65.6%	34.4%	100.0%	100.0%
St. John's Limerick	315	358	1.14	16.2%	83.8%	1.01	1.17	84.1%	84.1%	87.0%	65.4%	34.6%	98.3%	98.3%
UH Limerick	3,046	3,397	1.12	23.3%	76.7%	1.04	1.14	75.8%	75.8%	80.0%	78.3%	21.7%	95.2%	95.2%
UMH Limerick	395	441	1.12	7.7%	92.3%	1.04	1.12	85.7%	85.7%	87.7%	73.0%	27.0%	88.2%	88.2%
Hospital Group HQ	8	9	1.08	11.1%	88.9%	1.00	1.09	88.9%	88.9%	87.5%	88.9%	11.1%	100.0%	100.0%
University of Limerick Hospital Group	4,415	4,954	1.12	20.4%	79.6%	1.04	1.15	79.2%	79.2%	83.1%	74.9%	25.1%	94.9%	69.8%

Other	95	100	1.05	25.0%	75.0%	1.02	1.06	93.0%	93.0%	96.0%	96.0%	4.0%	100.0%	100.0%
National Rehabilitation	536	598	1.12	23.7%	76.3%	1.07	1.13	69.6%	69.6%	71.3%	74.1%	25.9%	85.9%	85.9%
other Acute Services	631	698	1.11	23.9%	76.1%	1.06	1.12	72.9%	72.9%	74.8%	77.2%	22.8%	88.0%	73.8%

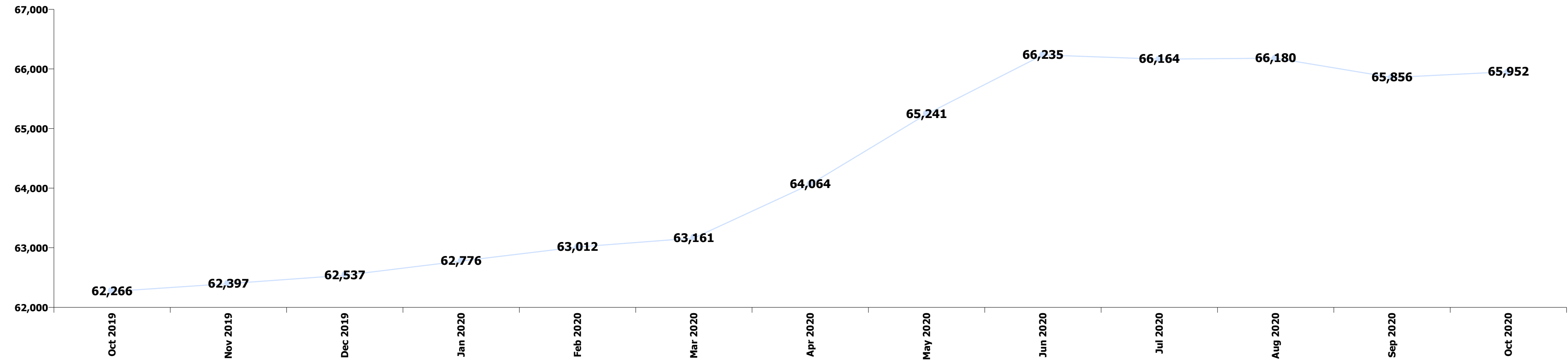
Summary Staff Movement: October 2020

Month-on-month Summary

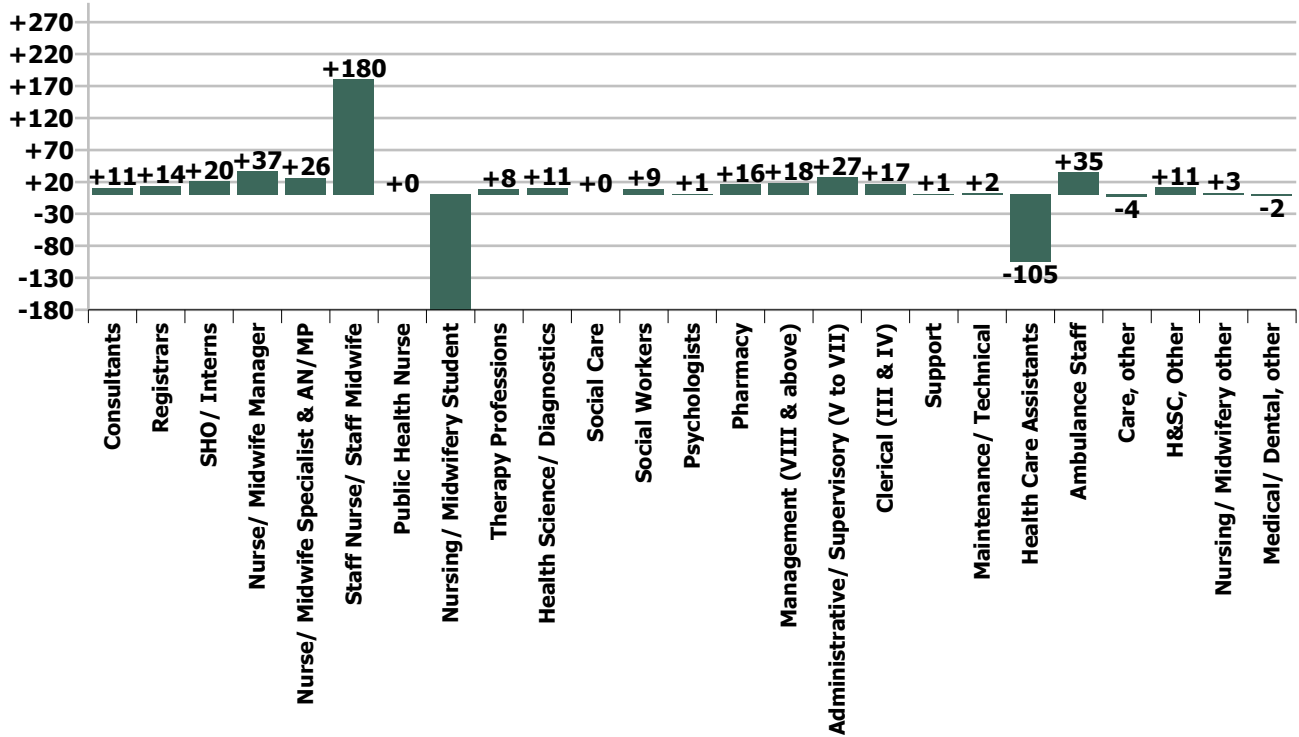
WTE change since Sep 20	% change since Sep 20	overall	Consultants	Registrars	SHO/ Interns	Medical/ Dental, other	Medical & Dental	Nurse/ Midwife Manager	Nurse/ Midwife Specialist & AN/MP	Staff Nurse/ Staff Midwife	Public Health Nurse	Nursing/ Midwifery Student	Nursing/ Midwifery other	Nursing & Midwifery	Therapy Professions	Health Science/ Diagnostics	Social Care	Social Workers	Psychologists	Pharmacy	H&SC, Other	Health & Social Care Professionals	Management (VIII & above)	Administrative/ Supervisory (V to VII)	Clerical (III & IV)	Management & Administrative	General Support	Health Care Assistants	Ambulance Staff	Care, other	Patient & Client Care		
Overall	+0.1%	+96	+11	+14	+20	-2	+43	+37	+26	+180	+0	-242	+3	+4	+8	+11	+0	+9	+1	+16	+11	+57	+18	+27	+17	+62	+3	-105	+35	-4	-74		
National Ambulance Service	+1.9%	+37			+1		+1	-0				-1	-0	+38	-4	-4		+1	+0	+1	-1	-7	+1	+2	-2	+1		+1	+2		+35	+0	+35
Children's Health Ireland	+1.2%	+44	+4	+4	+2		+10	+8	+3	+28		-73	+1	-48	+8	+6		+1	-1	+6	-1	+19	+1	+2	+3	+7	-1	-9		-1	-10		
Dublin Midlands Hospital Group	-0.2%	-25	+3	+4	+1	+0	+9	+9	-1	+17		+8	+0	+50	+2	+5		+3	+1	+1	-6	+6	+4	+3	-5	+2	-1	-4		+1	-4		
Ireland East Hospital Group	+0.5%	+61	-1	+7	+3	-2	+8	-1	+12	+30		-40	+0	-28	-6	+3		+2		+2	+5	+6	+7	+5	+13	+25	+2	-6		-0	-7		
RCSI Hospitals Group	+0.2%	+15	+8	+3	+6	-0	+17	+1	+1	+10		-28	+2	-2	-4	+1	+0	+1	-1	+4	-3	-1	+0	+6	+7	+13	-0	-35		-0	-35		
Saoita University Hospital Care	-0.1%	-14	+4	+0	+8	-0	+12	+17	-2	+8	+0	-28	+2	-2	-4	+1	+0	+1	-1	+4	-3	-1	+0	+6	+7	+13	-0	-35		-0	-35		
South/South West Hospital Group	-0.6%	-63	-11	+3	-4	-0	-13	+1	+12	+46		-96	-1	-39	+8	+6		+0		+2	+14	+30	+4	+8	-4	+8	+3	-51		-2	-53		
University of Limerick Hospital Group	+0.8%	+36	+4	-7	+2		+0	+3	+1	+39		-12	+0	+32	+3	-6		-1	+0	+1	+3	+0	+1	+2	+3	+6	+4	-5		-0	-6		
other Acute Services	+0.7%	+5						-1		+2				+1	+2	+1			+1	-0	+0	+4	+0	-1	+1	+0	-4	+3			+3		
Acute Services	+0.1%	+96	+11	+14	+20	-2	+43	+37	+26	+180	+0	-242	+3	+4	+8	+11	+0	+9	+1	+16	+11	+57	+18	+27	+17	+62	+3	-105	+35	-4	-74		
			+0.4%	+0.4%	+0.6%	-3.1%	+0.5%	+0.8%	+1.9%	+1.1%	+0.7%	-26.9%	+1.3%	+0.0%	+0.4%	+0.2%	+1.5%	+2.5%	+1.4%	+1.6%	+9.6%	+0.7%	+3.3%	+1.0%	+0.3%	+0.6%	+0.1%	-1.9%	+1.9%	-1.9%	-1.0%		

Year-on-year Summary

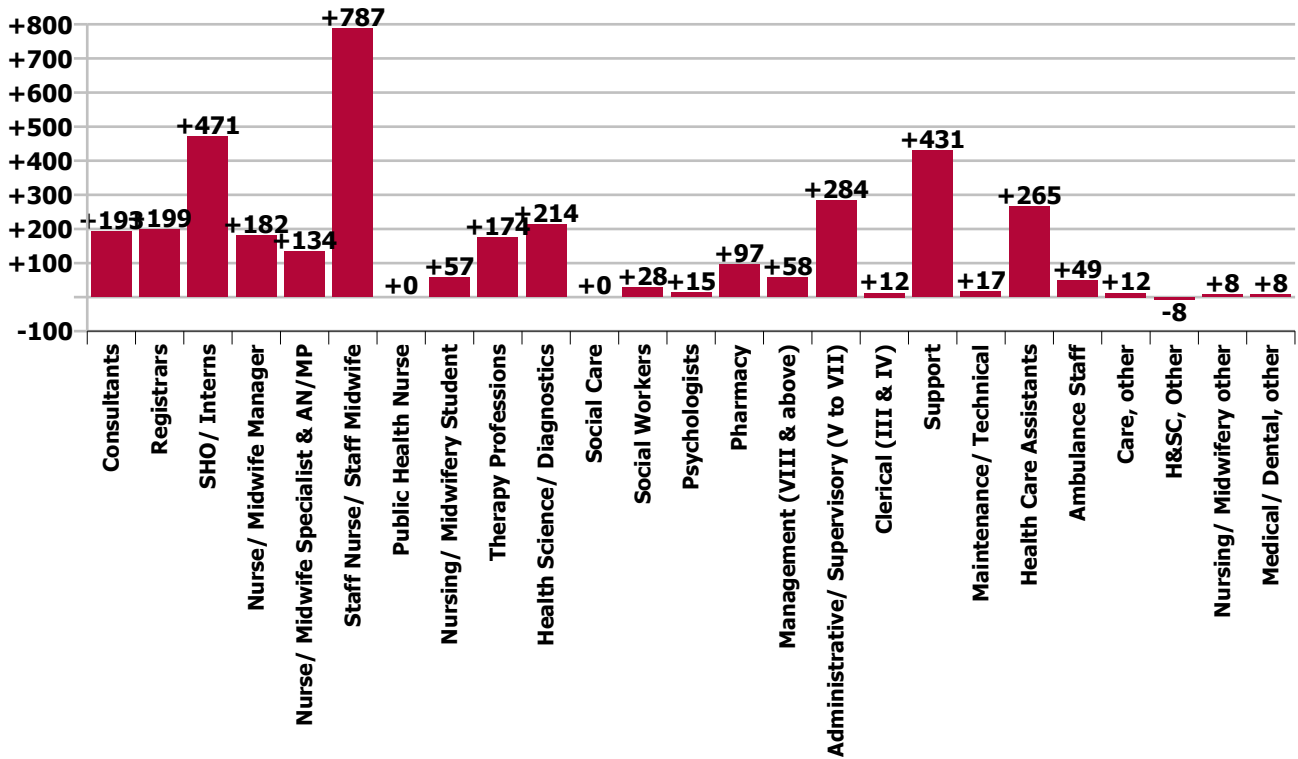
WTE change since Oct 19	% change since Oct 19	overall	Consultants	Registrars	SHO/ Interns	Medical/ Dental, other	Medical & Dental	Nurse/ Midwife Manager	Nurse/ Midwife Specialist & AN/MP	Staff Nurse/ Staff Midwife	Public Health Nurse	Nursing/ Midwifery Student	Nursing/ Midwifery other	Nursing & Midwifery	Therapy Professions	Health Science/ Diagnostics	Social Care	Social Workers	Psychologists	Pharmacy	H&SC, Other	Health & Social Care Professionals	Management (VIII & above)	Administrativ e/ Supervisory (V to VII)	Clerical (III & IV)	Management & Administrativ e	General Support	Health Care Assistants	Ambulance Staff	Care, other	Patient & Client Care
Overall	+5.9%	+3,686	+193	+199	+471	+8	+871	+182	+134	+787	+0	+57	+8	+1,168	+174	+214	+0	+28	+15	+97	-8	+520	+58	+284	+12	+353	+448	+265	+49	+12	+326
National Ambulance Service	+2.9%	+56			+1		+1	-0		-0				-0									+3	+3	+2	+8			+49	-1	+47
Children's Health Ireland	+4.3%	+154	+11	+13	+5		+29	+13	+19	+47		-19	-1	+60	+8	+1		+5	+8	+8	-1	+28	+8	+11	-9	+11	+11	+18		-1	+17
Dublin Midlands Hospital Group	+5.0%	+532	+37	+40	+46	+0	+124	+28	+22	+95		+35	+5	+185	+21	+53		+9	+1	+20	-2	+102	+8	+27	+12	+48	+18	+57		-1	+56
Ireland East Hospital Group	+6.7%	+810	+48	+59	+97	+2	+207	+77	+31	+84		+57	+1	+251	+53	+55		+7	+3	+4	-2	+119	+8	+85	-2	+91	-21	+162		+2	+163
RCSI Hospitals Group	+5.2%	+497	+26	+16	+69	+2	+113	+31	+25	+157		-5	+3	+211	+20	+8		+3	+1	+21	-4	+50	+10	+47	-10	+47	+21	+57		-2	+55
Saoita University Hospital Care	+5.2%	+486	+22	+30	+98	+2	+151	+24	+7	+36	+0	+21	+1	+89	+8	+22	+0	+3	-0	+25	+4	+62	+4	+45	+8	+58	+61	+47		+18	+65
South/South West Hospital Group	+7.2%	+754	+22	+17	+86	+2	+128	-0	+24	+261		-33	-0	+252	+35	+70		-1		+13	-2	+116	+9	+50	-6	+54	+104	+101		-1	+100
University of Limerick Hospital Group	+7.7%	+314	+25	+18	+69		+112	+7	+5	+84		+0	+0	+97	+16	+5		-0	+1	+3	-1	+24	+3	+11	+14	+29	+240	-187		-1	-188
other Acute Services	+15.1%	+83	+1	+5	+1		+7	+2	+0	+23		-1	-1	+23	+12	+0		+2	+2	+2	+1	+19	+3	+5	+2	+9	+13	+11			+11
Acute Services	+5.9%	+3,686	+193	+199	+471	+8	+871	+182	+134	+787	+0	+57	+8	+1,168	+174	+214	+0	+28	+15	+97	-8	+520	+58	+284	+12	+353	+448	+265	+49	+12	+326
			+7.0%	+6.8%	+16.9%	+13.8%	+10.2%	+3.8%	+10.3%	+4.8%	+3.4%	+9.5%	+3.7%	+5.0%	+8.7%	+5.0%	+3.0%	+8.2%	+15.7%	+10.9%	-5.8%	+6.7%	+11.2%	+12.2%	+0.2%	+3.7%	+7.3%	+5.1%	+2.7%	+7.5%	+4.5%



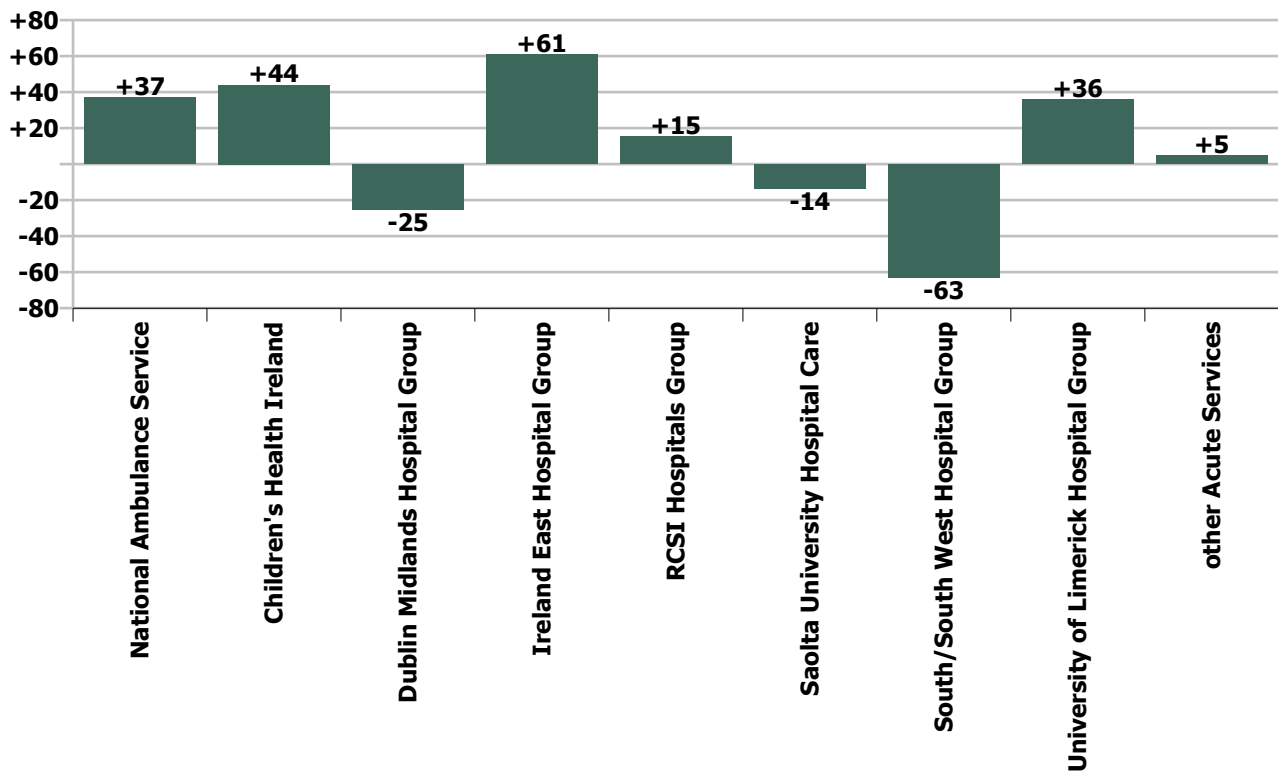
Staff Group change since: Sep 2020



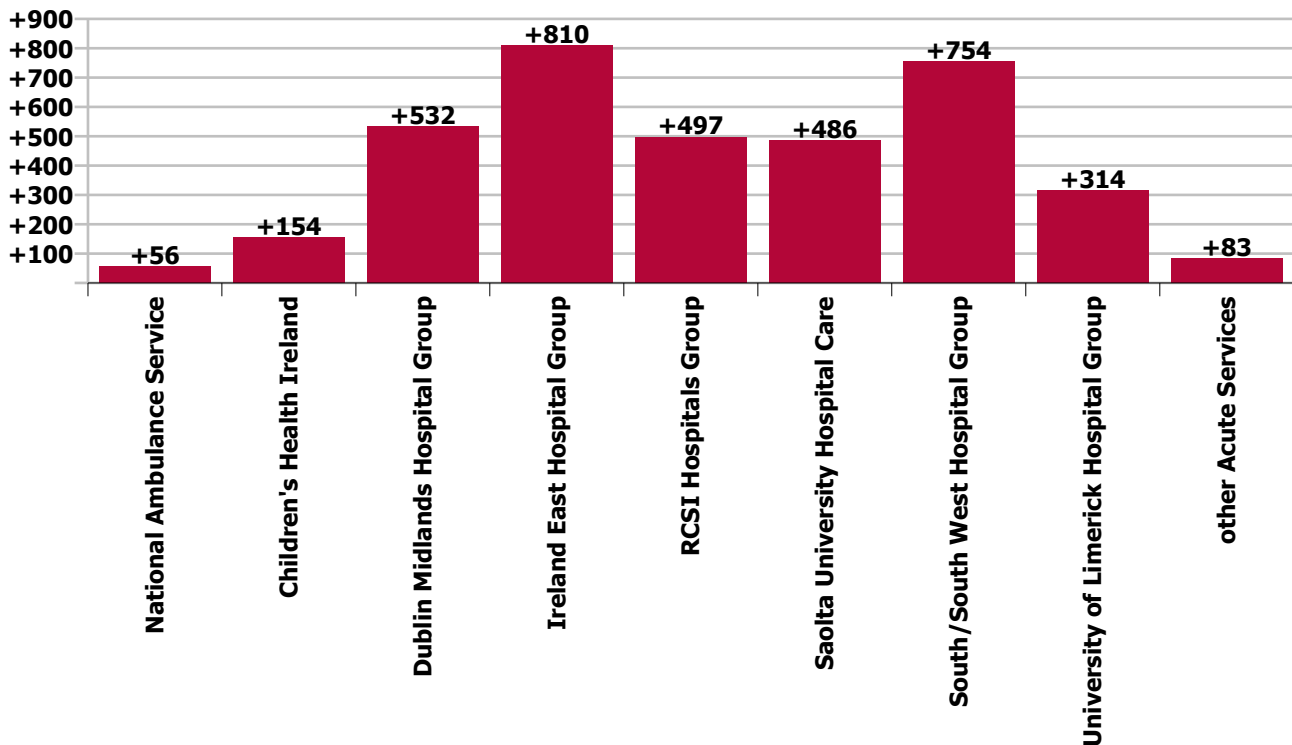
Staff Group change since: Oct 2019



Hospital Group & CHO change since: Sep 2020



Hospital Group & CHO change since: Oct 2019



Longitudinal Employment Levels by Grade Group - Oct 2013 to Oct 2020

Oct 2020 (Dec 2018 figure: 60,906)	WTE Oct 2020	WTE change since Oct 13	WTE change since Dec 16	WTE change since Dec 17	WTE change since Dec 18	WTE change since Dec 19	WTE change since Sep 20	% change since Oct 13	% change since Dec 16	% change since Dec 17	% change since Dec 18	% change since Dec 19	% change since Sep 20
Overall	65,952	+16,099	+9,570	+7,331	+5,046	+3,415	+96	+32.3%	+17.0%	+12.5%	+8.3%	+5.5%	+0.1%
Consultant Anaesthesia	423	+77	+53	+37	+33	+19	+1	+22.2%	+14.4%	+9.7%	+8.4%	+4.8%	+141.0%
Consultant Dentistry	6	+2	+2	+2	+0	+0	+0	+36.6%	+37.2%	+34.0%	+4.1%	+2.6%	+10.0%
Consultant Emergency Medicine	120	+44	+28	+22	+23	+12	+2	+58.2%	+30.3%	+22.3%	+23.2%	+11.1%	+161.0%
Consultant Intensive Care Medicine	17	+14	+14	+11	+2	+1	-2	+453.0%	+453.0%	+176.5%	+11.6%	+3.7%	-176.0%
Consultant Medicine	878	+314	+188	+156	+113	+75	+6	+55.5%	+27.2%	+21.6%	+14.7%	+9.3%	+623.0%
Consultant Obstetrics & Gynaecology	171	+49	+32	+21	+14	+10	-0	+40.4%	+22.6%	+13.7%	+9.1%	+6.2%	-3.0%
Consultant, Other						-1		-100.0%	-100.0%	-100.0%	-100.0%	-100.0%	
Consultant Paediatrics	213	+83	+61	+47	+35	+20	+1	+64.4%	+39.9%	+28.0%	+19.9%	+10.2%	+116.0%
Consultant Pathology	268	+65	+46	+37	+26	+16	+1	+31.8%	+20.5%	+16.1%	+10.6%	+6.1%	+137.0%
Consultant Psychiatry	24	+1	+7	+5	+4	+0	+2	+4.7%	+42.8%	+28.3%	+22.3%	+1.2%	+178.0%
Consultant Radiology	277	+52	+28	+26	+11	+2	+0	+23.0%	+11.4%	+10.3%	+3.9%	+0.7%	+27.0%
Consultant Surgery	567	+134	+83	+71	+48	+28	-1	+31.1%	+17.2%	+14.4%	+9.3%	+5.2%	-119.0%
Consultants	2,964	+834	+541	+434	+308	+182	+11	+39.2%	+22.3%	+17.2%	+11.6%	+6.5%	+0.4%
Registrar	1,811	+601	+307	+238	+157	+107	+4	+49.6%	+20.4%	+15.1%	+9.5%	+6.3%	+420.0%
Senior Registrar	117	+90	+5	+16	+10	+9	+2	+336.2%	+4.2%	+15.3%	+9.0%	+8.8%	+208.0%
Specialist Registrar	1,214	+461	+302	+212	+187	+83	+8	+61.2%	+33.2%	+21.2%	+18.2%	+7.4%	+767.0%
Registrars	3,142	+1,152	+614	+466	+353	+200	+14	+57.9%	+24.3%	+17.4%	+12.7%	+6.8%	+0.4%
Interns	977	+366	+276	+267	+255	+259	-10	+59.9%	+39.4%	+37.7%	+35.3%	+36.0%	-1002.0%
Senior House Officer	2,283	+777	+368	+307	+262	+206	+30	+51.6%	+19.2%	+15.6%	+13.0%	+9.9%	+3047.0%
SHO/ Interns	3,259	+1,143	+645	+575	+517	+465	+20	+54.0%	+24.7%	+21.4%	+18.8%	+16.6%	+0.6%
Dentists	11	-3	-3	+0	+1	+1	+0	-20.4%	-19.0%	+4.5%	+9.0%	+13.3%	+23.0%
Other Medical	55	+26	+12	+7	+3	+5	-2	+93.5%	+27.0%	+13.9%	+6.8%	+9.2%	-232.0%
Medical/ Dental, other	65	+24	+9	+7	+4	+6	-2	+56.3%	+16.0%	+12.2%	+7.2%	+9.8%	-3.1%
Medical & Dental	9,430	+3,153	+1,808	+1,481	+1,183	+852	+43	+50.2%	+23.7%	+18.6%	+14.3%	+9.9%	+0.5%
Clinical Nurse/ Midwife Manager	4,380	+1,313	+775	+632	+325	+182	+37	+42.8%	+21.5%	+16.9%	+8.0%	+4.3%	+3656.0%
Director Nursing/Midwifery, Assistant	445	+135	+90	+50	+21	+11	+1	+43.7%	+25.5%	+12.6%	+5.1%	+2.6%	+97.0%
Director of Nursing/Midwifery	81	+35	+18	+13	+4	+2	-1	+76.0%	+28.2%	+18.4%	+5.1%	+2.2%	-90.0%
Nurse/ Midwife Manager	4,905	+1,483	+883	+694	+350	+195	+37	+43.3%	+22.0%	+16.5%	+7.7%	+4.1%	+0.8%
Advanced Nurse/ Midwife Practitioner	417	+336	+268	+213	+141	+80	+16	+416.5%	+179.3%	+104.2%	+51.1%	+23.8%	+1616.0%
Clinical Nurse/ Midwife Specialist	1,014	+299	+148	+145	+97	+59	+10	+41.7%	+17.1%	+16.6%	+10.6%	+6.2%	+1021.0%
Nurse/ Midwife Specialist & AN/MP	1,431	+635	+416	+357	+238	+139	+26	+79.7%	+41.0%	+33.3%	+20.0%	+10.8%	+1.9%
Graduate Nursing/ Midwifery		-158						-100.0%	-100.0%	-100.0%	-100.0%	-100.0%	
Nursing Bank	12	-94	-33	-35	-26	-19	-2	-88.6%	-73.3%	-74.5%	-67.9%	-60.7%	-222.0%
Staff Midwives	1,443	+157	-14	+6	-36	-14	+22	+12.2%	-1.0%	+0.4%	-2.5%	-0.9%	+2190.0%
Staff Nurse [Psychiatric]	24	-15	-9	-6	-7	-4	-0	-38.5%	-27.0%	-20.1%	-22.3%	-13.1%	-1.0%
Staff Nurses [General/ Children's]	15,560	+2,619	+1,661	+1,035	+711	+400	+158	+20.2%	+11.9%	+7.1%	+4.8%	+2.6%	+15846.0%
Staff Nurse [Intellectual Disability]	69	+69	+69	+69	+69	+69	+2	-100.0%	-100.0%	-100.0%	-100.0%	-100.0%	+200.0%

Oct 2020 (Dec 2018 figure: 60,906)	WTE Oct 2020	WTE change since Oct 13	WTE change since Dec 16	WTE change since Dec 17	WTE change since Dec 18	WTE change since Dec 19	WTE change since Sep 20	% change since Oct 13	% change since Dec 16	% change since Dec 17	% change since Dec 18	% change since Dec 19	% change since Sep 20
Overall	65,952	+16,099	+9,570	+7,331	+5,046	+3,415	+96	+32.3%	+17.0%	+12.5%	+8.3%	+5.5%	+0.1%
Staff Nurse/ Staff Midwife	17,109	+2,577	+1,674	+1,068	+711	+433	+180	+17.7%	+10.8%	+6.7%	+4.3%	+2.6%	+1.1%
Public Health Nurse	2	-0	+1	+1	+1	+0	+0	-24.5%	+51.0%	+51.0%	+71.6%	+3.4%	+0.7%
Pre-registration Nurse/ Midwife Intern	1	-208	-71	-71	-70	-82	-2	-99.5%	-98.6%	-98.6%	-98.6%	-98.8%	-243.0%
Pre-registration Nurse Intern (COVID-19)	427	+427	+427	+427	+427	+427	-228	-100.0%	-100.0%	-100.0%	-100.0%	-100.0%	-22830.0%
Post-registration Nurse/ Midwife Student	161	-40	+3	+10	-12	-35	-1	-19.7%	+1.8%	+6.4%	-6.8%	-17.7%	-109.0%
Nursing/ Midwifery awaiting registration	69	+69	+28	-28	-45	-70	-10	-100.0%	+67.6%	-29.1%	-39.6%	-50.6%	-1012.0%
Nursing/ Midwifery Student	657	+249	+387	+338	+300	+241	-242	+60.8%	+143.0%	+105.6%	+84.0%	+57.7%	-26.9%
Nursing Education/Clinical	193	+7	+18	+27	+20	+2	+5	+4.0%	+10.2%	+16.3%	+11.4%	+1.1%	+451.0%
Other Nursing/ Midwifery	32	+3	+7	+5	+3	-2	-2	+9.4%	+29.7%	+19.4%	+11.8%	-4.6%	-169.0%
Nursing/ Midwifery other	225	+10	+25	+32	+23	+1	+3	+4.7%	+12.6%	+16.7%	+11.4%	+0.3%	+1.3%
Nursing & Midwifery	24,329	+4,953	+3,386	+2,490	+1,622	+1,008	+4	+25.6%	+16.2%	+11.4%	+7.1%	+4.3%	+0.0%
Dietitians	430	+155	+84	+80	+31	+37	+2	+56.6%	+24.5%	+23.0%	+7.8%	+9.4%	+214.0%
Occupational Therapists	406	+142	+74	+63	+46	+37	+8	+53.9%	+22.2%	+18.5%	+12.9%	+10.1%	+774.0%
Orthoptists	21	+2	-1	-5	-3	-1	+0	+9.5%	-4.0%	-19.4%	-11.3%	-2.8%	+48.0%
Physiotherapists	1,056	+307	+175	+118	+82	+64	-5	+40.9%	+19.9%	+12.6%	+8.4%	+6.4%	-456.0%
Podiatrists & Chiropodists	37	+22	+5	+8	+6	+2	-0	+157.9%	+16.4%	+27.2%	+21.5%	+7.3%	-29.0%
Speech & Language Therapists	236	+85	+59	+46	+35	+38	+3	+56.7%	+33.0%	+24.5%	+17.3%	+19.1%	+293.0%
Therapy Professions	2,185	+714	+396	+311	+198	+178	+8	+48.5%	+22.1%	+16.6%	+10.0%	+8.8%	+0.4%
Audiology	30	-0	-2	-1	+1	+2	+0	-1.0%	-4.8%	-2.7%	+4.5%	+9.0%	+42.0%
Biochemists	74	+2	+15	+11	+3	+2	+3	+3.2%	+25.8%	+17.8%	+3.7%	+3.1%	+326.0%
Clinical Engineering	150	+27	+26	+18	+15	+8	+1	+22.2%	+20.9%	+13.8%	+10.8%	+5.4%	+55.0%
Clinical Measurement	408	+112	+55	+52	+40	+25	+3	+37.9%	+15.4%	+14.6%	+11.0%	+6.6%	+341.0%
Dosimetrists	14	+6	+4	+5	+3	+1	+0	+84.2%	+36.6%	+60.3%	+31.9%	+8.0%	+1.0%
Medical Laboratory	1,955	+274	+88	+74	+66	+69	-11	+16.3%	+4.7%	+3.9%	+3.5%	+3.6%	-1125.0%
Perfusionists	20	+1	+2	-0	+1	-1	+0	+7.0%	+8.4%	-1.2%	+3.3%	-5.8%	+15.0%
Phlebotomists	183	+42	+30	+23	+23	+11	+4	+29.9%	+19.4%	+14.4%	+14.4%	+6.5%	+428.0%
Physicists	182	+51	+30	+28	+1	+2	-3	+39.2%	+19.9%	+18.0%	+0.6%	+0.9%	-311.0%
Radiation Therapists	215	+92	+27	+30	+23	+16	+8	+75.0%	+14.6%	+16.0%	+12.0%	+8.0%	+796.0%
Radiographers	1,226	+293	+188	+149	+111	+80	+5	+31.4%	+18.1%	+13.9%	+9.9%	+6.9%	+513.0%
Health Science/ Diagnostics	4,458	+902	+463	+389	+287	+215	+11	+25.4%	+11.6%	+9.6%	+6.9%	+5.1%	+0.2%
Social Care	3	+0	-0	+0	+1	+0	+0	+2.7%	-8.5%	+14.2%	+18.6%	+3.0%	+1.5%
Social Workers	372	+89	+53	+47	+31	+17	+9	+31.2%	+16.6%	+14.6%	+9.0%	+4.9%	+2.5%
Psychologists	110	+32	+28	+25	+20	+9	+1	+40.8%	+33.9%	+29.5%	+22.3%	+8.8%	+1.4%
Pharmacy	981	+402	+247	+207	+140	+80	+16	+69.3%	+33.7%	+26.7%	+16.6%	+8.9%	+1.6%
H&SC, Other	130	+19	-24	-37	-42	-20	+11	+17.3%	-15.5%	-22.0%	-24.4%	-13.0%	+9.6%
Health & Social Care Professionals	8,239	+2,157	+1,163	+943	+634	+479	+57	+35.5%	+16.4%	+12.9%	+8.3%	+6.2%	+0.7%
Executive Management	100	+61	+38	+36	+17	+13	+5	+157.7%	+61.2%	+56.8%	+20.4%	+15.0%	+536.0%
Senior Management (VIII & GM)	473	+231	+138	+97	+55	+42	+13	+95.8%	+41.0%	+25.7%	+13.1%	+9.8%	+1293.0%

Oct 2020 (Dec 2018 figure: 60,906)	WTE Oct 2020	WTE change since Oct 13	WTE change since Dec 16	WTE change since Dec 17	WTE change since Dec 18	WTE change since Dec 19	WTE change since Sep 20	% change since Oct 13	% change since Dec 16	% change since Dec 17	% change since Dec 18	% change since Dec 19	% change since Sep 20
Overall	65,952	+16,099	+9,570	+7,331	+5,046	+3,415	+96	+32.3%	+17.0%	+12.5%	+8.3%	+5.5%	+0.1%
Management (VIII & above)	573	+293	+176	+133	+72	+55	+18	+104.4%	+44.2%	+30.2%	+14.3%	+10.6%	+3.3%
Middle Management (V-VII)	2,589	+1,093	+791	+614	+441	+278	+27	+73.0%	+44.0%	+31.1%	+20.5%	+12.0%	+2677.0%
Other Administrative	16	+2	+3	+4	+0	+0	+0	+17.5%	+20.4%	+32.7%	+1.8%	+3.2%	+19.0%
Administrative/ Supervisory (V to VII)	2,605	+1,095	+794	+618	+441	+279	+27	+72.5%	+43.9%	+31.1%	+20.4%	+12.0%	+1.0%
Clerical (III & IV)	6,643	+1,045	+366	+170	+36	+37	+17	+18.7%	+5.8%	+2.6%	+0.5%	+0.6%	+0.3%
Management & Administrative	9,821	+2,432	+1,335	+921	+548	+371	+62	+32.9%	+15.7%	+10.3%	+5.9%	+3.9%	+0.6%
Catering	482	+48	+41	+31	+38	+11	+0	+11.1%	+9.4%	+6.8%	+8.6%	+2.4%	+49.0%
Household Services	3,059	+569	+480	+424	+371	+342	-9	+22.8%	+18.6%	+16.1%	+13.8%	+12.6%	-898.0%
Other Labs & Associated	424	+143	+101	+85	+70	+45	-2	+50.7%	+31.2%	+25.0%	+19.6%	+12.0%	-170.0%
Other Support	756	+85	+47	+30	+22	+18	+17	+12.6%	+6.6%	+4.1%	+3.0%	+2.4%	+1679.0%
Portering	1,326	+67	+0	-7	-2	+1	-5	+5.3%	+0.0%	-0.5%	-0.2%	+0.0%	-547.0%
Support	6,047	+911	+669	+562	+499	+417	+1	+17.7%	+12.4%	+10.3%	+9.0%	+7.4%	+0.0%
Maintenance	515	-4	+25	+34	+27	+8	+1	-0.8%	+5.0%	+7.1%	+5.6%	+1.6%	+140.0%
Technical Services	27	+12	+8	+8	+5	+3	+1	+78.7%	+39.6%	+39.6%	+23.5%	+11.8%	+88.0%
Maintenance/ Technical	542	+8	+32	+42	+32	+11	+2	+1.4%	+6.3%	+8.3%	+6.3%	+2.1%	+0.4%
General Support	6,589	+919	+701	+604	+531	+428	+3	+16.2%	+11.9%	+10.1%	+8.8%	+7.0%	+0.1%
HCA, Nurse's Aide, etc.	5,339	+2,034	+875	+690	+384	+193	-108	+61.5%	+19.6%	+14.8%	+7.8%	+3.8%	-10822.0%
Health & Social Care Assistants	158	+87	+60	+49	+34	+30	+3	+122.0%	+60.8%	+45.0%	+26.9%	+23.6%	+286.0%
Health Care Assistants	5,498	+2,121	+934	+739	+418	+224	-105	+62.8%	+20.5%	+15.5%	+8.2%	+4.2%	-1.9%
Ambulance Staff	1,867	+354	+226	+122	+85	+42	+35	+23.4%	+13.8%	+7.0%	+4.8%	+2.3%	+1.9%
Care, other	180	+10	+16	+31	+25	+11	-4	+5.9%	+9.9%	+20.9%	+16.0%	+6.4%	-1.9%
Patient & Client Care	7,544	+2,485	+1,177	+892	+528	+276	-74	+49.1%	+18.5%	+13.4%	+7.5%	+3.8%	-1.0%

Source: Health Service Personnel Census