

Acute Service Employment Report: October 2022

Employment by Staff Group

Oct 2022	WTE Dec 2019	WTE Dec 2020	WTE Sep 2022	WTE Oct 2022	WTE change since Sep 22	WTE change since Dec 20	% change since Dec 20	WTE change since Dec 19	% change since Dec 19	No. Oct 2022
Overall	62,537	66,439	72,441	72,835	+394	+6,396	+9.6%	+10,297	+16.5%	81,085
Consultants	2,782	2,974	3,264	3,294	+30	+321	+10.8%	+512	+18.4%	3,578
Registrars	2,942	3,115	3,436	3,473	+37	+358	+11.5%	+531	+18.0%	3,583
SHO/ Interns	2,795	3,253	3,287	3,317	+30	+64	+2.0%	+522	+18.7%	3,471
Medical/ Dental, other	60	64	76	75	-1	+11	+17.6%	+16	+26.2%	106
Medical & Dental	8,578	9,405	10,062	10,159	+97	+754	+8.0%	+1,581	+18.4%	10,738
Nurse/ Midwife Manager	4,710	4,924	5,586	5,636	+50	+712	+14.5%	+925	+19.6%	6,194
Nurse/ Midwife Specialist & AN/MP	1,292	1,468	1,809	1,832	+22	+364	+24.8%	+540	+41.8%	2,040
Staff Nurse/ Staff Midwife	16,676	17,526	18,588	18,757	+169	+1,231	+7.0%	+2,081	+12.5%	21,241
Public Health Nurse	1	2				-2	-100.0%	-1	-100.0%	
Pre-registration Nurse/ Midwife Intern	83	15	366	163	-203	+148	+992.9%	+81	+97.9%	444
Pre-registration Nurse Intern (COVID-19)		156				-156	-100.0%		-100.0%	
Post-registration Nurse/ Midwife Student	195	151	144	155	+11	+5	+3.1%	-40	-20.5%	171
Nursing/ Midwifery awaiting registration	139	57	212	277	+65	+221	+390.3%	+138	+99.7%	356
Nursing/ Midwifery Student	417	378	722	596	-126	+218	+57.7%	+179	+43.0%	971
Nursing/ Midwifery other	224	226	182	182	-0	-44	-19.6%	-42	-18.8%	212
Nursing & Midwifery	23,321	24,524	26,888	27,002	+114	+2,479	+10.1%	+3,681	+15.8%	30,658
Therapy Professions	2,008	2,217	2,441	2,485	+44	+268	+12.1%	+477	+23.8%	2,783
Health Science/ Diagnostics	4,242	4,458	4,708	4,753	+45	+295	+6.6%	+511	+12.0%	5,274
Social Care	3	4	3	3	-0	-1	-20.1%	-0	-0.3%	5
Social Workers	355	384	430	429	-1	+46	+11.9%	+74	+20.9%	482
Psychologists	101	110	141	142	+1	+31	+28.6%	+41	+40.7%	172
Pharmacy	901	1,006	1,118	1,127	+9	+120	+12.0%	+226	+25.1%	1,258
H&SC, Other	151	154	162	177	+15	+23	+15.3%	+26	+17.3%	240
Health & Social Care Professionals	7,760	8,333	9,003	9,116	+113	+783	+9.4%	+1,355	+17.5%	10,214
Management (VIII & above)	518	579	706	714	+8	+134	+23.1%	+196	+37.8%	730
Administrative/ Supervisory (V to VII)	2,326	2,674	3,259	3,299	+41	+625	+23.4%	+974	+41.9%	3,506
Clerical (III & IV)	6,606	6,658	7,176	7,200	+24	+542	+8.1%	+594	+9.0%	8,158
Management & Administrative	9,450	9,912	11,140	11,213	+73	+1,301	+13.1%	+1,764	+18.7%	12,394
Support	5,630	6,152	6,516	6,457	-59	+305	+5.0%	+827	+14.7%	7,293
Maintenance/ Technical	531	539	564	565	+2	+26	+4.8%	+35	+6.5%	578
General Support	6,160	6,691	7,080	7,022	-58	+331	+5.0%	+862	+14.0%	7,871
Health Care Assistants	5,275	5,516	6,141	6,141	+0	+625	+11.3%	+866	+16.4%	6,924
Ambulance Staff	1,825	1,876	1,905	1,948	+43	+72	+3.8%	+123	+6.7%	2,009
Care, other	168	182	223	233	+10	+51	+28.2%	+65	+38.9%	277
Patient & Client Care	7,268	7,574	8,268	8,322	+54	+748	+9.9%	+1,055	+14.5%	9,210



Acute Services Employment by Hospital & Hospital Group: Oct 2022

Oct 2022	WTE Dec 2019	WTE Dec 2020	WTE Sep 2022	WTE Oct 2022	WTE change since Sep 22	WTE change since Dec 20	% change since Dec 20	WTE change since Dec 19	% change since Dec 19	No. Oct 2022
Overall	62,537	66,439	72,441	72,835	+394	+6,396	+9.6%	+10,297	+16.5%	81,085
National Ambulance Service	1,933	1,990	2,033	2,079	+47	+90	+4.5%	+146	+7.6%	2,147
CHI at Connolly	136	136	146	148	+2	+11	+8.4%	+12	+8.9%	171
CHI at Crumlin	1,967	2,062	2,182	2,212	+30	+150	+7.3%	+245	+12.5%	2,504
CHI at Tallaght	255	259	286	297	+11	+39	+15.0%	+42	+16.5%	335
CHI at Temple Street	1,184	1,259	1,268	1,261	-7	+2	+0.2%	+77	+6.5%	1,442
CHI Corporate	3	2	33	35	+2	+33	+1637.5%	+32	+1058.3%	35
CHI Programme	57	44	107	109	+2	+64	+145.4%	+52	+91.3%	119
Children's Health Ireland	3,602	3,762	4,023	4,062	+39	+300	+8.0%	+459	+12.8%	4,606
Coombe Women & Infants University	890	925	931	941	+10	+16	+1.7%	+51	+5.7%	1,049
MRH Portlaoise	750	780	827	828	+1	+48	+6.2%	+78	+10.5%	926
MRH Tullamore	1,101	1,146	1,203	1,211	+8	+65	+5.7%	+110	+10.0%	1,354
Naas General	759	777	895	910	+16	+133	+17.2%	+152	+20.0%	1,002
St. James's	4,058	4,266	4,535	4,551	+17	+286	+6.7%	+494	+12.2%	5,082
St. Luke's Rathgar	544	542	542	542	-0	-0	-0.1%	-3	-0.5%	576
Tallaght University	2,683	2,812	3,100	3,094	-6	+282	+10.0%	+410	+15.3%	3,467
Hospital Group HQ	33	40	56	57	+1	+18	+44.4%	+24	+71.7%	60
Dublin Midlands Hospital Group	10,819	11,288	12,088	12,135	+46	+847	+7.5%	+1,316	+12.2%	13,516
Cappagh National Orthopaedic	426	441	490	492	+2	+51	+11.5%	+65	+15.3%	554
Mater Misericordiae University	3,159	3,429	3,752	3,764	+12	+336	+9.8%	+606	+19.2%	4,111
MRH Mullingar	914	1,004	1,073	1,074	+0	+70	+6.9%	+160	+17.5%	1,191
National Maternity	880	916	928	949	+21	+33	+3.6%	+69	+7.8%	1,054
Our Lady's Navan	516	590	630	633	+3	+43	+7.3%	+118	+22.8%	734
St. Columcille's	452	457	467	468	+1	+11	+2.4%	+17	+3.7%	516
St Luke's General Kilkenny	1,119	1,185	1,247	1,261	+14	+77	+6.5%	+143	+12.7%	1,431
St. Michael's	397	404	407	405	-2	+1	+0.2%	+8	+2.1%	467
St. Vincent's University	2,838	3,087	3,244	3,246	+2	+159	+5.2%	+408	+14.4%	3,443
Wexford General	1,024	1,055	1,161	1,169	+7	+114	+10.8%	+144	+14.1%	1,302
Royal Victoria Eye & Ear	291	313	345	346	+0	+33	+10.4%	+55	+18.8%	399
National Rehabilitation	457	555	624	635	+11	+80	+14.5%	+178	+38.8%	712
IEHG Bank		8	19	21	+2	+13	+153.2%	+21	-100.0%	28
Hospital Group HQ	30	34	70	74	+4	+40	+120.5%	+44	+148.2%	86
Ireland East Hospital Group	12,502	13,478	14,458	14,537	+79	+1,059	+7.9%	+2,035	+16.3%	16,028
Beaumont	3,846	4,029	4,199	4,264	+65	+235	+5.8%	+418	+10.9%	4,618
Cavan General	1,034	1,059	1,263	1,272	+9	+214	+20.2%	+239	+23.1%	1,445
Connolly	1,334	1,462	1,570	1,580	+10	+117	+8.0%	+246	+18.4%	1,722
Louth County	277	289	300	304	+4	+15	+5.1%	+26	+9.5%	343
Monaghan	101	102	149	154	+4	+52	+50.7%	+52	+51.6%	179
Our Lady of Lourdes	2,149	2,287	2,468	2,458	-10	+171	+7.5%	+309	+14.4%	2,712
Rotunda	892	929	980	974	-5	+46	+4.9%	+82	+9.2%	1,157
Hospital Group HQ	30	41	60	62	+2	+21	+51.1%	+32	+105.9%	66

Oct 2022	WTE Dec 2019	WTE Dec 2020	WTE Sep 2022	WTE Oct 2022	WTE change since Sep 22	WTE change since Dec 20	% change since Dec 20	WTE change since Dec 19	% change since Dec 19	No. Oct 2022
Overall	62,537	66,439	72,441	72,835	+394	+6,396	+9.6%	+10,297	+16.5%	81,085
RCSI Hospitals Group	9,663	10,197	10,990	11,067	+78	+870	+8.5%	+1,404	+14.5%	12,242
Galway University	3,607	3,787	4,118	4,144	+26	+356	+9.4%	+537	+14.9%	4,625
Letterkenny University	1,607	1,769	2,066	2,085	+19	+316	+17.9%	+478	+29.7%	2,360
Mayo University	1,150	1,204	1,428	1,417	-11	+213	+17.7%	+267	+23.2%	1,588
Portiuncula University	790	843	943	961	+18	+118	+14.0%	+171	+21.6%	1,069
Roscommon University	333	367	431	436	+5	+69	+18.9%	+102	+30.7%	489
Sligo University	1,688	1,766	1,963	1,975	+11	+209	+11.8%	+287	+17.0%	2,227
Hospital Group HQ	79	93	110	109	-1	+16	+16.7%	+30	+38.3%	115
Saolta University Hospital Care	9,253	9,829	11,059	11,126	+67	+1,297	+13.2%	+1,873	+20.2%	12,473
Bantry General	266	277	328	323	-6	+45	+16.4%	+57	+21.2%	371
Cork University	4,014	4,316	4,738	4,739	+1	+424	+9.8%	+725	+18.1%	5,401
Lourdes Orthopaedic Kilcreene	70	70	71	72	+1	+2	+2.6%	+2	+2.5%	82
Mallow General	252	246	268	268	+1	+22	+8.9%	+16	+6.5%	315
Mercy University	1,173	1,243	1,388	1,399	+11	+156	+12.5%	+226	+19.3%	1,565
South Infirmary Victoria University	787	804	834	829	-6	+25	+3.1%	+42	+5.4%	995
South Tipperary General	868	968	1,040	1,049	+9	+81	+8.3%	+181	+20.9%	1,184
UH Kerry	1,114	1,215	1,394	1,380	-14	+165	+13.6%	+266	+23.9%	1,569
UH Waterford	1,949	2,103	2,340	2,383	+43	+279	+13.3%	+433	+22.2%	2,619
Hospital Group HQ	35	45	72	70	-2	+25	+54.6%	+36	+103.4%	80
South/South West Hospital Group	10,527	11,288	12,474	12,512	+37	+1,223	+10.8%	+1,984	+18.8%	14,181
Croom Orthopaedic	156	173	304	306	+2	+133	+76.6%	+150	+96.1%	335
Ennis	235	228	253	257	+4	+29	+12.6%	+22	+9.3%	291
Nenagh	250	259	286	290	+4	+31	+12.1%	+41	+16.2%	329
St. John's Limerick	311	321	337	338	+1	+17	+5.4%	+27	+8.5%	374
UH Limerick	2,814	3,122	3,634	3,626	-8	+503	+16.1%	+812	+28.9%	3,988
UMH Limerick	375	393	373	368	-4	-25	-6.2%	-6	-1.6%	437
Hospital Group HQ	6	10	12	10	-1	+0	+4.8%	+5	+75.3%	11
University of Limerick Hospital Group	4,146	4,506	5,198	5,196	-3	+689	+15.3%	+1,049	+25.3%	5,765
Other	91	101	119	121	+3	+21	+20.5%	+30	+33.1%	127
other Acute Services	91	101	119	121	+3	+21	+20.5%	+30	+33.1%	127

Acute Services Employment by Administration (HSE / S38): October 2022

Oct 2022	WTE Dec 2019	WTE Dec 2020	WTE Sep 2022	WTE Oct 2022	WTE change since Sep 22	WTE change since Dec 20	% change since Dec 20	WTE change since Dec 19	% change since Dec 19	No. Oct 2022
Overall	62,537	66,439	72,441	72,835	+394	+6,396	+9.6%	+10,297	+16.5%	81,085
Health Service Executive	35,850	38,205	42,324	42,546	+222	+4,341	+11.4%	+6,696	+18.7%	47,432
Section 38 Hospitals	26,687	28,234	30,117	30,288	+172	+2,055	+7.3%	+3,601	+13.5%	33,653

HSE

Oct 2022	WTE Dec 2019	WTE Dec 2020	WTE Sep 2022	WTE Oct 2022	WTE change since Sep 22	WTE change since Dec 20	% change since Dec 20	WTE change since Dec 19	% change since Dec 19	No. Oct 2022
Overall	35,850	38,205	42,324	42,546	+222	+4,341	+11.4%	+6,696	+18.7%	47,432
Consultants	1,479	1,561	1,690	1,694	+4	+133	+8.6%	+215	+14.6%	1,808
Registrars	1,618	1,711	1,854	1,885	+31	+174	+10.2%	+267	+16.5%	1,950
SHO/ Interns	1,762	2,032	2,096	2,131	+35	+99	+4.9%	+369	+21.0%	2,250
Medical/ Dental, other	37	39	48	47	-0	+8	+20.2%	+11	+29.0%	63
Medical & Dental	4,895	5,343	5,687	5,758	+70	+414	+7.8%	+862	+17.6%	6,071
Nurse/ Midwife Manager	2,487	2,580	2,978	3,000	+21	+420	+16.3%	+513	+20.6%	3,281
Nurse/ Midwife Specialist & AN/MP	656	747	953	974	+21	+226	+30.3%	+318	+48.5%	1,074
Staff Nurse/ Staff Midwife	9,760	10,302	11,193	11,304	+111	+1,002	+9.7%	+1,544	+15.8%	13,061
Public Health Nurse	1	2				-2	-100.0%	-1	-100.0%	
Pre-registration Nurse/ Midwife Intern	36	6	237	93	-144	+87	+1350.9%	+57	+161.3%	273
Pre-registration Nurse Intern (COVID-19)		65				-65	-100.0%		-100.0%	
Post-registration Nurse/ Midwife Student	77	57	35	33	-2	-24	-42.1%	-44	-57.1%	36
Nursing/ Midwifery awaiting registration	67	15	121	165	+44	+150	+998.8%	+99	+147.3%	225
Nursing/ Midwifery Student	179	143	394	291	-102	+148	+103.8%	+112	+62.7%	534
Nursing/ Midwifery other	77	87	81	84	+3	-4	-4.2%	+7	+9.0%	97
Nursing & Midwifery	13,160	13,861	15,600	15,653	+53	+1,792	+12.9%	+2,492	+18.9%	18,047
Therapy Professions	980	1,111	1,267	1,290	+23	+179	+16.1%	+311	+31.7%	1,446
Health Science/ Diagnostics	2,394	2,552	2,715	2,747	+32	+195	+7.7%	+353	+14.8%	3,060
Social Care	2	3	2	2	-0	-1	-26.4%	-0	-0.4%	3
Social Workers	98	108	138	136	-1	+28	+25.7%	+38	+39.3%	157
Psychologists	9	10	22	22	+0	+12	+125.8%	+14	+162.1%	28
Pharmacy	456	531	635	640	+5	+109	+20.6%	+184	+40.3%	734
H&SC, Other	53	46	59	55	-4	+9	+20.5%	+2	+4.4%	92
Health & Social Care Professionals	3,991	4,361	4,838	4,894	+56	+532	+12.2%	+902	+22.6%	5,520
Management (VIII & above)	259	292	342	346	+4	+54	+18.5%	+88	+33.8%	354
Administrative/ Supervisory (V to VII)	874	1,078	1,482	1,510	+28	+432	+40.1%	+636	+72.7%	1,596
Clerical (III & IV)	3,834	3,866	4,202	4,195	-8	+329	+8.5%	+361	+9.4%	4,661
Management & Administrative	4,967	5,236	6,027	6,051	+25	+816	+15.6%	+1,084	+21.8%	6,611
Support	3,215	3,618	3,959	3,919	-40	+301	+8.3%	+704	+21.9%	4,375
Maintenance/ Technical	292	295	304	302	-2	+7	+2.3%	+10	+3.3%	311
General Support	3,507	3,913	4,263	4,221	-42	+308	+7.9%	+714	+20.4%	4,686
Health Care Assistants	3,402	3,498	3,857	3,865	+8	+367	+10.5%	+463	+13.6%	4,302
Ambulance Staff	1,825	1,876	1,905	1,948	+43	+72	+3.8%	+123	+6.7%	2,009
Care, other	103	117	148	157	+9	+41	+35.1%	+55	+53.1%	186
Patient & Client Care	5,330	5,491	5,910	5,970	+61	+479	+8.7%	+641	+12.0%	6,497

Section 38 Hospitals

Oct 2022	WTE Dec 2019	WTE Dec 2020	WTE Sep 2022	WTE Oct 2022	WTE change since Sep 22	WTE change since Dec 20	% change since Dec 20	WTE change since Dec 19	% change since Dec 19	No. Oct 2022
Overall	26,687	28,234	30,117	30,288	+172	+2,055	+7.3%	+3,601	+13.5%	33,653
Consultants	1,303	1,413	1,574	1,600	+26	+187	+13.2%	+297	+22.8%	1,770
Registrars	1,324	1,404	1,582	1,588	+6	+184	+13.1%	+264	+19.9%	1,633
SHO/ Interns	1,033	1,220	1,191	1,186	-5	-34	-2.8%	+153	+14.8%	1,221
Medical/ Dental, other	23	25	28	28	-0	+3	+13.3%	+5	+21.8%	43
Medical & Dental	3,683	4,062	4,375	4,402	+27	+340	+8.4%	+718	+19.5%	4,667
Nurse/ Midwife Manager	2,223	2,344	2,607	2,636	+28	+292	+12.5%	+413	+18.6%	2,913
Nurse/ Midwife Specialist & AN/MP	636	721	856	858	+2	+137	+19.0%	+222	+34.9%	966
Staff Nurse/ Staff Midwife	6,916	7,224	7,395	7,453	+58	+229	+3.2%	+537	+7.8%	8,180
Pre-registration Nurse/ Midwife Intern	47	9	129	70	-59	+62	+723.4%	+23	+49.8%	171
Pre-registration Nurse Intern (COVID-19)		91				-91	-100.0%		-100.0%	
Post-registration Nurse/ Midwife Student	119	94	109	122	+13	+28	+30.3%	+4	+3.0%	135
Nursing/ Midwifery awaiting registration	72	42	90	112	+21	+70	+169.7%	+40	+55.4%	131
Nursing/ Midwifery Student	238	235	329	305	-24	+70	+29.6%	+67	+28.1%	437
Nursing/ Midwifery other	147	139	101	98	-3	-41	-29.2%	-49	-33.2%	115
Nursing & Midwifery	10,161	10,663	11,288	11,350	+61	+687	+6.4%	+1,189	+11.7%	12,611
Therapy Professions	1,028	1,105	1,174	1,194	+20	+89	+8.0%	+166	+16.2%	1,337
Health Science/ Diagnostics	1,848	1,907	1,994	2,006	+13	+100	+5.2%	+158	+8.5%	2,214
Social Care	1	1	1	1						2
Social Workers	257	275	292	293	+1	+18	+6.4%	+36	+13.9%	325
Psychologists	92	100	119	119	+0	+19	+18.9%	+27	+29.4%	144
Pharmacy	445	476	483	487	+4	+11	+2.4%	+42	+9.5%	524
H&SC, Other	98	108	102	122	+19	+14	+13.0%	+24	+24.3%	148
Health & Social Care Professionals	3,769	3,972	4,165	4,222	+57	+250	+6.3%	+453	+12.0%	4,694
Management (VIII & above)	259	288	364	368	+4	+80	+27.8%	+108	+41.8%	376
Administrative/ Supervisory (V to VII)	1,451	1,596	1,777	1,789	+12	+193	+12.1%	+338	+23.3%	1,910
Clerical (III & IV)	2,772	2,793	2,973	3,006	+32	+213	+7.6%	+233	+8.4%	3,497
Management & Administrative	4,483	4,676	5,114	5,162	+48	+486	+10.4%	+679	+15.2%	5,783
Support	2,415	2,533	2,557	2,538	-19	+4	+0.2%	+123	+5.1%	2,918
Maintenance/ Technical	238	244	259	263	+4	+19	+7.8%	+25	+10.6%	267
General Support	2,653	2,778	2,816	2,801	-15	+23	+0.8%	+148	+5.6%	3,185
Health Care Assistants	1,873	2,018	2,284	2,276	-8	+258	+12.8%	+403	+21.5%	2,622
Health Promotion	2	3	4	4		+1	+28.6%	+3	+158.7%	6
Other Care Grades	17	16	27	27	-0	+11	+72.7%	+10	+54.4%	30
Pastoral Care	45	46	41	43	+1	-3	-7.6%	-2	-5.1%	52
Workshop Services	1	1	2	2		+2	+312.0%	+1	+106.0%	3
Care, other	65	66	75	76	+1	+10	+15.8%	+11	+16.6%	91
Patient & Client Care	1,938	2,083	2,359	2,352	-7	+268	+12.9%	+414	+21.4%	2,713

Acute Services Employment by Hospital Group, CHO etc. Oct 2022

National Ambulance Service

Oct 2022	WTE Dec 2019	WTE Dec 2020	WTE Sep 2022	WTE Oct 2022	WTE change since Sep 22	WTE change since Dec 20	% change since Dec 20	WTE change since Dec 19	% change since Dec 19	No. Oct 2022
Overall	1,933	1,990	2,033	2,079	+47	+90	+4.5%	+146	+7.6%	2,147
Consultants	1	1	1	1					0.0	1
Medical & Dental	1	1	1	1					0.0	1
Nurse/ Midwife Manager	1	1	3	3	+0	+2	+199.0%	+2	+199.0%	3
Staff Nurse/ Staff Midwife	1	1				-1	-100.0%	-1	-100.0%	
Nursing & Midwifery	2	2	3	3	+0	+1	+49.5%	+1	+49.5%	3
Therapy Professions	1	1				-1	-100.0%	-1	-100.0%	
Health & Social Care Professionals	1	1				-1	-100.0%	-1	-100.0%	
Management (VIII & above)	12	14	19	19	+0	+5	+33.4%	+7	+55.6%	19
Administrative/ Supervisory (V to VII)	29	33	48	50	+2	+17	+53.2%	+22	+75.6%	51
Clerical (III & IV)	41	42	42	43	+0	+1	+2.4%	+1	+3.2%	47
Management & Administrative	82	89	109	112	+3	+23	+26.2%	+30	+36.2%	117
Support	4	4	4	3	-0	-0	-0.6%	-0	-0.3%	4
Maintenance/ Technical	2	2	1	1		-1	-50.0%	-1	-50.0%	1
General Support	6	6	5	4	-0	-1	-18.5%	-1	-18.4%	5
Health Care Assistants	2	2	1	1		-1	-53.5%	-1	-53.5%	1
Ambulance Staff	1,825	1,876	1,904	1,948	+44	+72	+3.8%	+123	+6.7%	2,009
Care, other	15	14	11	10	-0	-3	-23.0%	-4	-29.0%	11
Patient & Client Care	1,841	1,892	1,915	1,959	+44	+67	+3.6%	+118	+6.4%	2,021

Children's Health Ireland

Oct 2022	WTE Dec 2019	WTE Dec 2020	WTE Sep 2022	WTE Oct 2022	WTE change since Sep 22	WTE change since Dec 20	% change since Dec 20	WTE change since Dec 19	% change since Dec 19	No. Oct 2022
Overall	3,602	3,762	4,023	4,062	+39	+300	+8.0%	+459	+12.8%	4,606
Consultants	220	237	264	269	+5	+32	+13.5%	+49	+22.1%	293
Registrars	204	217	224	226	+2	+8	+3.8%	+22	+10.6%	239
SHO/ Interns	88	95	104	106	+2	+11	+11.2%	+18	+20.3%	110
Medical/ Dental, other	1	1	1	1		-0	-10.8%	-0	-10.8%	2
Medical & Dental	514	551	593	602	+9	+51	+9.2%	+88	+17.1%	644
Nurse/ Midwife Manager	331	334	359	370	+12	+36	+10.9%	+39	+11.8%	430
Nurse/ Midwife Specialist & AN/MP	152	172	204	203	-1	+31	+17.9%	+51	+33.6%	242
Staff Nurse/ Staff Midwife	805	850	881	881	+0	+30	+3.5%	+75	+9.3%	1,007
Pre-registration Nurse/ Midwife Intern	12		19	18	-1	+18	-100.0%	+6	+44.5%	38
Pre-registration Nurse Intern (COVID-19)		13				-13	-100.0%		-100.0%	
Post-registration Nurse/ Midwife Student	63	43	65	69	+5	+27	+61.8%	+7	+10.5%	75
Nursing/ Midwifery awaiting registration			4	3	-1	+3	-100.0%	+3	-100.0%	3
Nursing/ Midwifery Student	75	56	87	90	+3	+34	+60.7%	+15	+19.6%	116
Nursing/ Midwifery other	10	8	8	8		-1	-7.3%	-3	-26.9%	9
Nursing & Midwifery	1,374	1,421	1,538	1,552	+13	+131	+9.2%	+177	+12.9%	1,804
Therapy Professions	136	145	155	155	-0	+10	+6.7%	+19	+13.9%	177
Health Science/ Diagnostics	280	285	291	301	+9	+16	+5.6%	+21	+7.4%	324
Social Workers	57	60	64	65	+1	+5	+8.1%	+8	+13.7%	79
Psychologists	38	42	45	45	-0	+3	+6.8%	+7	+17.3%	60
Pharmacy	45	51	59	58	-1	+6	+12.0%	+13	+28.6%	64
H&SC, Other	25	26	25	29	+4	+3	+12.9%	+4	+16.1%	39
Health & Social Care Professionals	581	609	639	652	+13	+43	+7.0%	+71	+12.2%	743
Management (VIII & above)	52	54	74	73	-0	+20	+36.5%	+21	+40.1%	75
Administrative/ Supervisory (V to VII)	272	299	332	337	+5	+38	+12.7%	+65	+23.8%	361
Clerical (III & IV)	420	409	440	440	+0	+31	+7.6%	+20	+4.8%	507
Management & Administrative	744	762	846	850	+4	+89	+11.6%	+106	+14.2%	943
Support	195	210	204	201	-3	-8	-4.0%	+6	+3.1%	229
Maintenance/ Technical	15	15	16	15	-1	-0	-0.5%	-0	-0.5%	16
General Support	210	225	220	216	-4	-9	-3.8%	+6	+2.9%	245
Health Care Assistants	165	182	176	180	+4	-2	-0.9%	+15	+9.2%	214
Care, other	14	13	10	10	+0	-3	-23.8%	-4	-26.3%	13
Patient & Client Care	179	195	186	190	+4	-5	-2.5%	+12	+6.4%	227

Dublin Midlands Hospital Group

Oct 2022	WTE Dec 2019	WTE Dec 2020	WTE Sep 2022	WTE Oct 2022	WTE change since Sep 22	WTE change since Dec 20	% change since Dec 20	WTE change since Dec 19	% change since Dec 19	No. Oct 2022
Overall	10,819	11,288	12,088	12,135	+46	+847	+7.5%	+1,316	+12.2%	13,516
Consultants	464	499	552	559	+7	+60	+12.0%	+95	+20.6%	598
Registrars	490	522	586	585	-1	+63	+12.0%	+95	+19.4%	598
SHO/ Interns	424	460	458	462	+5	+2	+0.4%	+39	+9.1%	489
Medical/ Dental, other	7	7	10	10	+1	+3	+40.6%	+3	+51.2%	13
Medical & Dental	1,384	1,489	1,605	1,616	+11	+128	+8.6%	+232	+16.8%	1,698
Nurse/ Midwife Manager	877	908	978	987	+9	+79	+8.7%	+110	+12.6%	1,087
Nurse/ Midwife Specialist & AN/MP	205	236	294	300	+6	+64	+27.2%	+96	+46.8%	336
Staff Nurse/ Staff Midwife	2,835	2,950	2,994	2,995	+1	+44	+1.5%	+159	+5.6%	3,319
Pre-registration Nurse/ Midwife Intern	8	0	74	33	-41	+33	+109266.7%	+25	+321.2%	99
Pre-registration Nurse Intern (COVID-19)		28				-28	-100.0%		-100.0%	
Post-registration Nurse/ Midwife Student	13	12	5	5		-8	-62.5%	-9	-65.4%	9
Nursing/ Midwifery awaiting registration	21	4	68	82	+14	+78	+1831.3%	+61	+290.9%	115
Nursing/ Midwifery Student	42	44	146	119	-26	+75	+171.2%	+78	+185.7%	223
Nursing/ Midwifery other	36	38	39	37	-3	-1	-2.4%	+1	+2.9%	42
Nursing & Midwifery	3,994	4,177	4,451	4,438	-13	+262	+6.3%	+444	+11.1%	5,007
Therapy Professions	367	397	421	429	+8	+32	+8.0%	+62	+16.9%	478
Health Science/ Diagnostics	979	1,001	1,018	1,028	+10	+27	+2.7%	+49	+5.0%	1,127
Social Workers	79	87	87	88	+1	+1	+1.0%	+9	+11.1%	95
Psychologists	13	13	18	17	-1	+4	+28.0%	+5	+36.3%	19
Pharmacy	220	243	240	240	+0	-3	-1.4%	+19	+8.8%	264
H&SC, Other	34	46	42	50	+8	+4	+9.3%	+16	+48.2%	58
Health & Social Care Professionals	1,692	1,788	1,825	1,852	+27	+64	+3.6%	+160	+9.5%	2,041
Management (VIII & above)	117	126	142	144	+2	+18	+14.2%	+27	+22.9%	148
Administrative/ Supervisory (V to VII)	494	523	604	608	+4	+85	+16.3%	+113	+23.0%	647
Clerical (III & IV)	1,055	1,046	1,109	1,128	+20	+82	+7.9%	+73	+6.9%	1,317
Management & Administrative	1,667	1,695	1,854	1,880	+26	+185	+10.9%	+213	+12.8%	2,112
Support	764	771	802	792	-10	+21	+2.7%	+28	+3.6%	912
Maintenance/ Technical	130	130	132	130	-3	-0	-0.1%	-1	-0.4%	132
General Support	894	901	934	922	-12	+21	+2.3%	+27	+3.1%	1,044
Health Care Assistants	1,167	1,217	1,388	1,394	+7	+177	+14.5%	+227	+19.5%	1,575
Care, other	21	21	30	32	+2	+11	+49.6%	+11	+54.1%	39
Patient & Client Care	1,187	1,239	1,418	1,426	+8	+187	+15.1%	+239	+20.1%	1,614

Ireland East Hospital Group

Oct 2022	WTE Dec 2019	WTE Dec 2020	WTE Sep 2022	WTE Oct 2022	WTE change since Sep 22	WTE change since Dec 20	% change since Dec 20	WTE change since Dec 19	% change since Dec 19	No. Oct 2022
Overall	12,502	13,478	14,458	14,537	+79	+1,059	+7.9%	+2,035	+16.3%	16,028
Consultants	551	599	660	666	+7	+68	+11.3%	+116	+21.0%	762
Registrars	623	666	737	742	+5	+76	+11.4%	+119	+19.1%	760
SHO/ Interns	576	676	701	690	-11	+14	+2.0%	+114	+19.8%	720
Medical/ Dental, other	26	28	34	33	-1	+5	+19.3%	+7	+29.1%	46
Medical & Dental	1,775	1,968	2,131	2,131	-0	+162	+8.2%	+356	+20.1%	2,288
Nurse/ Midwife Manager	963	1,054	1,209	1,213	+4	+159	+15.1%	+250	+26.0%	1,317
Nurse/ Midwife Specialist & AN/MP	310	340	391	391	-1	+51	+15.0%	+81	+26.2%	433
Staff Nurse/ Staff Midwife	3,328	3,452	3,651	3,674	+23	+222	+6.4%	+345	+10.4%	4,055
Pre-registration Nurse/ Midwife Intern	25	10	22	23	+1	+13	+126.7%	-2	-7.3%	50
Pre-registration Nurse Intern (COVID-19)		47				-47	-100.0%		-100.0%	
Post-registration Nurse/ Midwife Student	21	17	17	17				-4	-19.0%	17
Nursing/ Midwifery awaiting registration	11	34	51	48	-4	+14	+39.8%	+37	+341.4%	56
Nursing/ Midwifery Student	57	109	90	88	-2	-21	-18.9%	+31	+54.3%	123
Nursing/ Midwifery other	77	73	47	47	-0	-26	-35.1%	-29	-38.4%	56
Nursing & Midwifery	4,735	5,027	5,389	5,413	+24	+386	+7.7%	+678	+14.3%	5,984
Therapy Professions	514	585	591	600	+9	+15	+2.6%	+86	+16.8%	679
Health Science/ Diagnostics	738	797	859	862	+4	+65	+8.2%	+124	+16.8%	940
Social Care	1	1	1	1					0.0	2
Social Workers	82	91	107	106	-1	+15	+16.0%	+24	+29.0%	115
Psychologists	33	36	49	49	-0	+13	+35.7%	+16	+49.9%	56
Pharmacy	194	201	214	217	+3	+16	+7.9%	+23	+11.7%	237
H&SC, Other	27	28	40	41	+1	+13	+46.6%	+14	+53.0%	54
Health & Social Care Professionals	1,589	1,739	1,861	1,876	+15	+137	+7.9%	+287	+18.1%	2,083
Management (VIII & above)	86	106	152	157	+5	+51	+48.6%	+71	+82.4%	161
Administrative/ Supervisory (V to VII)	544	630	741	754	+14	+124	+19.6%	+210	+38.6%	797
Clerical (III & IV)	1,252	1,269	1,335	1,339	+4	+70	+5.5%	+87	+6.9%	1,517
Management & Administrative	1,882	2,005	2,227	2,250	+23	+245	+12.2%	+368	+19.5%	2,475
Support	1,352	1,352	1,371	1,378	+7	+27	+2.0%	+26	+1.9%	1,549
Maintenance/ Technical	120	130	132	135	+4	+6	+4.3%	+15	+12.3%	136
General Support	1,473	1,481	1,503	1,513	+10	+32	+2.2%	+41	+2.8%	1,685
Health Care Assistants	1,021	1,226	1,312	1,320	+8	+95	+7.7%	+299	+29.3%	1,471
Care, other	28	31	34	34	-1	+2	+7.8%	+6	+19.6%	42
Patient & Client Care	1,049	1,257	1,346	1,354	+7	+97	+7.7%	+305	+29.1%	1,513

RCSI Hospitals Group

Oct 2022	WTE Dec 2019	WTE Dec 2020	WTE Sep 2022	WTE Oct 2022	WTE change since Sep 22	WTE change since Dec 20	% change since Dec 20	WTE change since Dec 19	% change since Dec 19	No. Oct 2022
Overall	9,663	10,197	10,990	11,067	+78	+870	+8.5%	+1,404	+14.5%	12,242
Consultants	441	470	516	526	+10	+56	+11.9%	+85	+19.4%	556
Registrars	481	508	554	553	-0	+45	+8.9%	+72	+15.0%	567
SHO/ Interns	439	510	501	511	+11	+1	+0.2%	+72	+16.5%	532
Medical/ Dental, other	5	7	5	5	+0	-2	-28.0%	-1	-11.5%	7
Medical & Dental	1,366	1,495	1,575	1,595	+21	+100	+6.7%	+229	+16.8%	1,662
Nurse/ Midwife Manager	769	820	976	992	+16	+172	+20.9%	+223	+29.0%	1,095
Nurse/ Midwife Specialist & AN/MP	185	208	269	273	+3	+64	+30.9%	+87	+47.0%	302
Staff Nurse/ Staff Midwife	2,588	2,767	2,879	2,914	+35	+147	+5.3%	+325	+12.6%	3,239
Pre-registration Nurse/ Midwife Intern	2		41	4	-37	+4	-100.0%	+2	+61.8%	13
Pre-registration Nurse Intern (COVID-19)		13				-13	-100.0%		-100.0%	
Post-registration Nurse/ Midwife Student	42	38	31	39	+8	+2	+4.1%	-2	-5.7%	42
Nursing/ Midwifery awaiting registration	62	0	3	18	+15	+18	+7048.0%	-44	-71.2%	24
Nursing/ Midwifery Student	106	51	75	61	-14	+10	+20.1%	-45	-42.3%	79
Nursing/ Midwifery other	43	42	28	27	-1	-15	-35.3%	-16	-37.0%	30
Nursing & Midwifery	3,692	3,889	4,228	4,267	+39	+378	+9.7%	+575	+15.6%	4,745
Therapy Professions	332	362	404	409	+5	+48	+13.1%	+77	+23.1%	448
Health Science/ Diagnostics	589	609	641	649	+8	+40	+6.5%	+60	+10.2%	723
Social Workers	66	66	73	72	-1	+6	+8.7%	+6	+9.0%	82
Psychologists	12	12	15	16	+1	+4	+34.6%	+4	+34.6%	18
Pharmacy	127	146	153	154	+1	+8	+5.4%	+27	+21.5%	172
H&SC, Other	14	12	11	16	+5	+5	+39.6%	+2	+13.1%	23
Health & Social Care Professionals	1,140	1,207	1,297	1,316	+19	+110	+9.1%	+176	+15.4%	1,466
Management (VIII & above)	82	98	107	107	+0	+9	+9.3%	+25	+30.1%	110
Administrative/ Supervisory (V to VII)	349	415	502	503	+1	+89	+21.3%	+154	+44.3%	537
Clerical (III & IV)	1,031	1,026	1,053	1,058	+5	+32	+3.1%	+27	+2.6%	1,219
Management & Administrative	1,462	1,538	1,662	1,668	+6	+130	+8.4%	+206	+14.1%	1,866
Support	974	1,002	991	989	-2	-13	-1.2%	+15	+1.6%	1,119
Maintenance/ Technical	89	91	110	112	+3	+21	+23.2%	+23	+26.0%	116
General Support	1,063	1,093	1,101	1,102	+1	+9	+0.8%	+39	+3.6%	1,235
Health Care Assistants	902	942	1,096	1,086	-10	+144	+15.3%	+183	+20.3%	1,228
Care, other	37	34	31	34	+3	-0	-1.0%	-3	-8.7%	40
Patient & Client Care	939	976	1,127	1,120	-7	+143	+14.7%	+180	+19.2%	1,268

Saolta University Hospital Care

Oct 2022	WTE Dec 2019	WTE Dec 2020	WTE Sep 2022	WTE Oct 2022	WTE change since Sep 22	WTE change since Dec 20	% change since Dec 20	WTE change since Dec 19	% change since Dec 19	No. Oct 2022
Overall	9,253	9,829	11,059	11,126	+67	+1,297	+13.2%	+1,873	+20.2%	12,473
Consultants	463	476	510	508	-1	+32	+6.7%	+46	+9.8%	552
Registrars	445	468	497	508	+11	+40	+8.5%	+63	+14.2%	531
SHO/ Interns	535	637	663	674	+11	+37	+5.7%	+139	+26.0%	697
Medical/ Dental, other	10	12	14	13	-1	+1	+7.2%	+3	+27.1%	17
Medical & Dental	1,452	1,594	1,683	1,703	+20	+109	+6.8%	+250	+17.2%	1,797
Nurse/ Midwife Manager	567	589	675	686	+11	+97	+16.5%	+119	+21.0%	741
Nurse/ Midwife Specialist & AN/MP	218	236	294	305	+11	+69	+29.1%	+87	+39.8%	334
Staff Nurse/ Staff Midwife	2,764	2,871	3,174	3,210	+36	+339	+11.8%	+446	+16.1%	3,762
Public Health Nurse	1	1				-1	-100.0%	-1	-100.0%	
Pre-registration Nurse/ Midwife Intern	2	3	81	20	-61	+16	+504.9%	+18	+1144.3%	53
Pre-registration Nurse Intern (COVID-19)		31				-31	-100.0%		-100.0%	
Post-registration Nurse/ Midwife Student	12	9	10	11	+1	+2	+17.2%	-2	-12.5%	11
Nursing/ Midwifery awaiting registration	36	1	66	93	+27	+92	+9579.2%	+57	+157.4%	120
Nursing/ Midwifery Student	50	44	157	123	-34	+79	+179.7%	+73	+147.7%	184
Nursing/ Midwifery other	33	39	33	35	+2	-4	-10.6%	+2	+7.0%	41
Nursing & Midwifery	3,633	3,781	4,333	4,359	+26	+578	+15.3%	+726	+20.0%	5,062
Therapy Professions	262	271	317	333	+16	+61	+22.6%	+71	+27.1%	365
Health Science/ Diagnostics	617	655	720	736	+16	+81	+12.4%	+119	+19.3%	811
Social Care	2	3	2	2	-0	-1	-26.4%	-0	-0.4%	3
Social Workers	26	31	42	41	-1	+11	+35.8%	+15	+57.2%	46
Psychologists	1	2	4	3	-2	+1	+57.8%	+2	+255.0%	5
Pharmacy	137	160	187	187	+1	+28	+17.4%	+51	+37.2%	212
H&SC, Other	19	15	19	14	-5	-0	-3.1%	-5	-26.7%	29
Health & Social Care Professionals	1,065	1,136	1,291	1,317	+26	+181	+15.9%	+253	+23.7%	1,471
Management (VIII & above)	51	54	59	59	-0	+5	+8.5%	+8	+16.5%	60
Administrative/ Supervisory (V to VII)	237	286	366	377	+11	+91	+31.8%	+140	+59.3%	395
Clerical (III & IV)	1,048	1,084	1,243	1,241	-1	+158	+14.5%	+194	+18.5%	1,375
Management & Administrative	1,335	1,424	1,668	1,677	+9	+253	+17.8%	+342	+25.6%	1,830
Support	836	908	936	925	-10	+17	+1.9%	+90	+10.7%	1,022
Maintenance/ Technical	103	94	98	100	+2	+6	+6.4%	-3	-3.3%	102
General Support	939	1,002	1,034	1,025	-9	+23	+2.3%	+86	+9.2%	1,124
Health Care Assistants	799	845	969	958	-11	+113	+13.4%	+159	+19.8%	1,089
Care, other	30	47	82	87	+6	+40	+85.4%	+57	+187.5%	100
Patient & Client Care	830	892	1,051	1,045	-6	+153	+17.2%	+216	+26.0%	1,189

South/South West Hospital Group

Oct 2022	WTE Dec 2019	WTE Dec 2020	WTE Sep 2022	WTE Oct 2022	WTE change since Sep 22	WTE change since Dec 20	% change since Dec 20	WTE change since Dec 19	% change since Dec 19	No. Oct 2022
Overall	10,527	11,288	12,474	12,512	+37	+1,223	+10.8%	+1,984	+18.8%	14,181
Consultants	478	508	561	564	+3	+57	+11.2%	+86	+18.1%	601
Registrars	509	530	610	624	+14	+94	+17.7%	+114	+22.5%	644
SHO/ Interns	537	615	610	622	+13	+7	+1.2%	+86	+15.9%	662
Medical/ Dental, other	9	8	12	12	+0	+4	+49.4%	+3	+28.0%	19
Medical & Dental	1,533	1,661	1,793	1,822	+30	+162	+9.7%	+289	+18.8%	1,926
Nurse/ Midwife Manager	863	856	949	945	-5	+88	+10.3%	+82	+9.5%	1,051
Nurse/ Midwife Specialist & AN/MP	146	194	244	245	+1	+51	+26.2%	+99	+67.4%	270
Staff Nurse/ Staff Midwife	3,127	3,334	3,568	3,629	+61	+295	+8.8%	+502	+16.0%	4,196
Public Health Nurse		0				-0	-100.0%		-100.0%	
Pre-registration Nurse/ Midwife Intern	30	0	97	57	-40	+57	+16231.4%	+27	+90.5%	132
Pre-registration Nurse Intern (COVID-19)		23				-23	-100.0%		-100.0%	
Post-registration Nurse/ Midwife Student	29	22	14	11	-3	-11	-48.8%	-18	-61.3%	13
Nursing/ Midwifery awaiting registration	9	17	18	31	+13	+14	+82.9%	+22	+247.2%	35
Nursing/ Midwifery Student	68	62	129	100	-29	+37	+59.8%	+32	+46.6%	180
Nursing/ Midwifery other	15	15	15	16	+1	+1	+7.7%	+2	+11.9%	20
Nursing & Midwifery	4,219	4,462	4,905	4,935	+30	+473	+10.6%	+716	+17.0%	5,717
Therapy Professions	311	357	431	439	+7	+82	+22.9%	+128	+41.1%	502
Health Science/ Diagnostics	784	854	915	914	-1	+59	+7.0%	+129	+16.5%	1,059
Social Workers	33	37	45	45	+0	+8	+22.4%	+13	+38.9%	50
Psychologists	2	2	6	6	+0	+5	+302.7%	+5	+302.7%	7
Pharmacy	129	150	195	201	+6	+51	+34.1%	+72	+55.7%	230
H&SC, Other	24	22	18	20	+2	-2	-9.8%	-4	-18.5%	30
Health & Social Care Professionals	1,282	1,421	1,609	1,624	+15	+203	+14.3%	+342	+26.7%	1,878
Management (VIII & above)	50	56	77	78	+0	+22	+39.9%	+28	+55.3%	79
Administrative/ Supervisory (V to VII)	265	322	407	408	+1	+86	+26.5%	+143	+53.9%	442
Clerical (III & IV)	1,269	1,270	1,355	1,359	+4	+89	+7.0%	+90	+7.1%	1,524
Management & Administrative	1,584	1,648	1,839	1,844	+6	+197	+11.9%	+260	+16.4%	2,045
Support	1,219	1,321	1,485	1,445	-40	+124	+9.4%	+226	+18.6%	1,664
Maintenance/ Technical	33	41	38	35	-3	-6	-13.6%	+3	+8.6%	37
General Support	1,251	1,362	1,523	1,480	-43	+118	+8.7%	+229	+18.3%	1,701
Health Care Assistants	642	719	785	785	-0	+66	+9.2%	+144	+22.4%	888
Ambulance Staff			1		-1		-100.0%		-100.0%	
Care, other	15	15	19	20	+1	+5	+33.7%	+5	+32.4%	26
Patient & Client Care	657	735	806	806	-0	+71	+9.7%	+149	+22.6%	914

University of Limerick Hospital Group

Oct 2022	WTE Dec 2019	WTE Dec 2020	WTE Sep 2022	WTE Oct 2022	WTE change since Sep 22	WTE change since Dec 20	% change since Dec 20	WTE change since Dec 19	% change since Dec 19	No. Oct 2022
Overall	4,146	4,506	5,198	5,196	-3	+689	+15.3%	+1,049	+25.3%	5,765
Consultants	165	184	200	200	+0	+17	+9.1%	+35	+21.3%	215
Registrars	190	204	228	236	+8	+32	+15.9%	+46	+24.1%	244
SHO/ Interns	197	259	251	252	+0	-7	-2.8%	+55	+27.8%	261
Medical/ Dental, other	1	1	1	1		+0	+4.9%	+0	+4.9%	2
Medical & Dental	553	647	681	689	+8	+42	+6.5%	+136	+24.5%	722
Nurse/ Midwife Manager	325	346	422	424	+1	+77	+22.4%	+99	+30.3%	453
Nurse/ Midwife Specialist & AN/MP	76	81	113	115	+2	+34	+41.5%	+39	+51.9%	123
Staff Nurse/ Staff Midwife	1,226	1,300	1,441	1,455	+14	+155	+11.9%	+229	+18.7%	1,663
Pre-registration Nurse/ Midwife Intern	3	1	33	9	-25	+8	+751.0%	+5	+172.8%	59
Pre-registration Nurse Intern (COVID-19)		1				-1	-100.0%		-100.0%	
Post-registration Nurse/ Midwife Student	16	10	3	3	+0	-7	-68.2%	-13	-79.9%	4
Nursing/ Midwifery awaiting registration			3	3	+0	+3	-100.0%	+3	-100.0%	3
Nursing/ Midwifery Student	19	12	39	15	-25	+3	+22.5%	-4	-22.4%	66
Nursing/ Midwifery other	11	11	12	12	-0	+1	+5.0%	+1	+8.7%	14
Nursing & Midwifery	1,657	1,751	2,028	2,020	-7	+269	+15.4%	+364	+21.9%	2,319
Therapy Professions	84	98	120	119	-0	+22	+22.2%	+35	+41.8%	134
Health Science/ Diagnostics	252	254	261	260	-1	+6	+2.4%	+8	+3.2%	286
Social Workers	11	11	12	12	+0	+1	+11.0%	+1	+10.9%	15
Psychologists	3	4	4	6	+1	+2	+63.4%	+3	+93.2%	7
Pharmacy	45	51	63	62	-1	+11	+21.4%	+17	+38.0%	71
H&SC, Other	7	6	8	7	-1	+1	+14.6%	-1	-8.7%	7
Health & Social Care Professionals	403	423	468	466	-2	+43	+10.1%	+63	+15.8%	520
Management (VIII & above)	36	37	44	44	+0	+7	+17.6%	+8	+22.8%	44
Administrative/ Supervisory (V to VII)	103	129	207	209	+3	+80	+62.3%	+107	+103.7%	220
Clerical (III & IV)	485	508	592	585	-8	+77	+15.2%	+99	+20.5%	644
Management & Administrative	624	674	843	838	-5	+164	+24.3%	+214	+34.3%	908
Support	286	584	722	722	-0	+138	+23.6%	+436	+152.1%	794
Maintenance/ Technical	39	38	38	38	+0	-0	-0.1%	-1	-2.5%	38
General Support	325	622	760	760	-0	+138	+22.2%	+435	+133.8%	832
Health Care Assistants	577	383	413	417	+4	+34	+8.7%	-160	-27.8%	458
Care, other	8	6	6	5	-1	-1	-8.4%	-2	-28.5%	6
Patient & Client Care	585	389	419	422	+3	+33	+8.5%	-162	-27.8%	464

other Acute Services

Oct 2022	WTE Dec 2019	WTE Dec 2020	WTE Sep 2022	WTE Oct 2022	WTE change since Sep 22	WTE change since Dec 20	% change since Dec 20	WTE change since Dec 19	% change since Dec 19	No. Oct 2022
Overall	91	101	119	121	+3	+21	+20.5%	+30	+33.1%	127
Nurse/ Midwife Manager	14	14	14	15	+1	+1	+7.2%	+1	+9.2%	17
Nursing & Midwifery	14	14	14	15	+1	+1	+7.2%	+1	+9.2%	17
Health Science/ Diagnostics	3	3	4	4	-0	+1	+32.7%	+1	+32.7%	4
Social Workers	1	1				-1	-100.0%	-1	-100.0%	
Pharmacy	4	4	8	8	+0	+4	+101.5%	+4	+99.0%	8
Health & Social Care Professionals	8	8	12	12	+0	+4	+50.2%	+4	+49.3%	12
Management (VIII & above)	31	35	33	33	-0	-2	-5.8%	+1	+4.5%	34
Administrative/ Supervisory (V to VII)	34	38	53	54	+1	+16	+41.5%	+20	+58.1%	56
Clerical (III & IV)	4	6	7	8	+1	+2	+32.5%	+4	+99.5%	8
Management & Administrative	69	79	93	94	+1	+16	+19.9%	+25	+36.1%	98

Acute Services Employment by Grade Group: Oct 2022

Oct 2022	WTE Dec 2019	WTE Dec 2020	WTE Sep 2022	WTE Oct 2022	WTE change since Sep 22	WTE change since Dec 20	% change since Dec 20	WTE change since Dec 19	% change since Dec 19	No. Oct 2022
Overall	62,537	66,439	72,441	72,835	+394	+6,396	+9.6%	+10,297	+16.5%	81,085
Consultant Anaesthesia	403	427	451	452	+1	+25	+5.7%	+48	+12.0%	483
Consultant Dentistry	6	6	6	6	+0	+0	+1.6%	+0	+2.8%	7
Consultant Emergency Medicine	108	121	149	152	+3	+31	+25.2%	+44	+40.6%	166
Consultant Intensive Care Medicine	16	18	22	22	-0	+4	+23.0%	+6	+38.1%	25
Consultant Medicine	804	885	998	1,011	+13	+126	+14.2%	+207	+25.8%	1,100
Consultant Obstetrics & Gynaecology	161	170	178	179	+1	+8	+4.9%	+18	+11.0%	192
Consultant, Other	1			1	+1	+1	-100.0%	+0	+32.4%	2
Consultant Paediatrics	193	212	225	231	+6	+19	+9.2%	+38	+19.9%	253
Consultant Pathology	253	265	288	294	+6	+28	+10.7%	+41	+16.3%	317
Consultant Psychiatry	24	23	28	27	-1	+3	+14.8%	+3	+13.0%	32
Consultant Radiology	275	280	301	299	-2	+19	+6.7%	+24	+8.6%	319
Consultant Surgery	539	564	618	621	+3	+56	+10.0%	+82	+15.2%	682
Consultants	2,782	2,974	3,264	3,294	+30	+321	+10.8%	+512	+18.4%	3,578
Registrar	1,704	1,810	1,914	1,950	+36	+140	+7.7%	+246	+14.4%	2,026
Senior Registrar	108	120	124	127	+3	+7	+5.4%	+19	+17.7%	131
Specialist Registrar	1,131	1,185	1,398	1,396	-2	+211	+17.8%	+266	+23.5%	1,426
Registrars	2,942	3,115	3,436	3,473	+37	+358	+11.5%	+531	+18.0%	3,583
Interns	718	966	823	815	-8	-152	-15.7%	+97	+13.5%	879
Senior House Officer	2,077	2,286	2,464	2,502	+38	+216	+9.4%	+425	+20.5%	2,592
SHO/ Interns	2,795	3,253	3,287	3,317	+30	+64	+2.0%	+522	+18.7%	3,471
Dentists	10	11	9	9	-1	-2	-20.0%	-1	-8.1%	11
Other Medical	50	53	66	66	+0	+13	+25.4%	+16	+32.8%	95
Medical/ Dental, other	60	64	76	75	-1	+11	+17.6%	+16	+26.2%	106
Medical & Dental	8,578	9,405	10,062	10,159	97	+754	+8.0%	+1,581	+18.4%	10,738
Clinical Nurse/ Midwife Manager	4,198	4,388	4,974	5,022	+48	+634	+14.4%	+824	+19.6%	5,543
Director Nursing/Midwifery, Assistant	433	453	515	518	+3	+65	+14.4%	+85	+19.5%	555
Director of Nursing/Midwifery	79	83	97	96	-1	+13	+15.6%	+17	+21.3%	96
Nurse/ Midwife Manager	4,710	4,924	5,586	5,636	+50	+712	+14.5%	+925	+19.6%	6,194
Advanced Nurse/ Midwife Practitioner	337	440	610	643	+33	+203	+46.1%	+306	+90.7%	672
Clinical Nurse/ Midwife Specialist	955	1,028	1,200	1,189	-11	+161	+15.6%	+234	+24.5%	1,368
Nurse/ Midwife Specialist & AN/MP	1,292	1,468	1,809	1,832	+22	+364	+24.8%	+540	+41.8%	2,040
Nursing Bank	31	23	12	9	-3	-14	-60.4%	-22	-70.9%	21
Staff Midwives	1,457	1,479	1,326	1,354	+28	-125	-8.5%	-103	-7.1%	1,645
Staff Nurse [Psychiatric]	28	29	24	23	-0	-6	-19.1%	-4	-15.8%	26
Staff Nurse [Intellectual Disability]		72				-72	-100.0%		-100.0%	
Staff Nurses [General/ Children's]	15,161	15,923	17,226	17,371	+144	+1,447	+9.1%	+2,210	+14.6%	19,549
Staff Nurse/ Staff Midwife	16,676	17,526	18,588	18,757	+169	+1,231	+7.0%	+2,081	+12.5%	21,241
Public Health Nurse	1	2				-2	-100.0%	-1	-100.0%	
Pre-registration Nurse/ Midwife Intern	83	15	366	163	-203	+148	+992.9%	+81	+97.9%	444
Pre-registration Nurse Intern (COVID-19)		156				-156	-100.0%		-100.0%	
Post-registration Nurse/ Midwife Student	195	151	144	155	+11	+5	+3.1%	-40	-20.5%	171
Nursing/ Midwifery awaiting registration	139	57	212	277	+65	+221	+390.3%	+138	+99.7%	356
Nursing/ Midwifery Student	417	378	722	596	-126	+218	+57.7%	+179	+43.0%	971
Nursing Education/Clinical	191	196	176	176	+0	-20	-10.3%	-15	-7.7%	205
Other Nursing/ Midwifery	33	30	7	6	-1	-24	-80.0%	-27	-82.1%	7

Oct 2022	WTE Dec 2019	WTE Dec 2020	WTE Sep 2022	WTE Oct 2022	WTE change since Sep 22	WTE change since Dec 20	% change since Dec 20	WTE change since Dec 19	% change since Dec 19	No. Oct 2022
Overall	62,537	66,439	72,441	72,835	+394	+6,396	+9.6%	+10,297	+16.5%	81,085
Nursing/ Midwifery other	224	226	182	182	-0	-44	-19.6%	-42	-18.8%	212
Nursing & Midwifery	23,321	24,524	26,888	27,002	114	+2,479	+10.1%	+3,681	+15.8%	30,658
Dietitians	393	438	470	473	+2	+34	+7.8%	+79	+20.2%	534
Occupational Therapists	368	417	508	513	+5	+96	+22.9%	+144	+39.2%	556
Orthoptists	22	20	19	20	+2	-0	-0.6%	-1	-6.9%	27
Physiotherapists	992	1,068	1,148	1,174	+26	+107	+10.0%	+182	+18.4%	1,319
Podiatrists & Chiropodists	34	37	31	31	+1	-5	-14.5%	-3	-7.9%	37
Speech & Language Therapists	198	236	265	273	+8	+37	+15.7%	+75	+38.0%	310
Therapy Professions	2,008	2,217	2,441	2,485	+44	+268	+12.1%	+477	+23.8%	2,783
Audiology	28	30	42	43	+1	+13	+43.2%	+15	+55.4%	49
Biochemists	72	76	63	63	-0	-13	-17.6%	-9	-12.7%	68
Cardiac Physiologists	227	243	252	252	-0	+8	+3.4%	+24	+10.8%	275
Clinical Engineering	142	149	161	159	-1	+10	+6.8%	+17	+11.8%	162
Dosimetrists	13	14	12	13	+1	-1	-7.0%	+0	+0.3%	15
E.C.G. Technicians	10	11	10	8	-2	-3	-24.9%	-2	-18.1%	10
Gastrointestinal Physiologists	2	2	4	4	+0	+2	+96.2%	+2	+96.2%	5
Medical Science	1,885	1,951	1,987	2,006	+20	+56	+2.9%	+122	+6.4%	2,209
Neuro-Physiologists	50	56	51	52	+1	-5	-8.4%	+2	+4.3%	58
Perfusionists	22	22	21	21	+0	-1	-5.4%	-1	-5.5%	23
Phlebotomists	172	183	220	221	+0	+38	+20.5%	+49	+28.5%	300
Physicists	181	172	185	188	+4	+17	+9.6%	+7	+4.0%	204
Radiation Therapists	199	212	200	207	+6	-6	-2.6%	+7	+3.7%	229
Radiographers	1,146	1,239	1,397	1,411	+14	+172	+13.9%	+265	+23.1%	1,551
Respiratory Physiologists	65	71	71	73	+2	+3	+3.7%	+8	+12.5%	79
Vascular Physiologists	29	28	33	34	+0	+6	+21.2%	+5	+16.1%	37
Health Science/ Diagnostics	4,242	4,458	4,708	4,753	+45	+295	+6.6%	+511	+12.0%	5,274
Social Care	3	4	3	3	-0	-1	-20.1%	-0	-0.3%	5
Social Workers	355	384	430	429	-1	+46	+11.9%	+74	+20.9%	482
Psychologists	101	110	141	142	+1	+31	+28.6%	+41	+40.7%	172
Pharmacists	530	590	641	643	+2	+53	+8.9%	+113	+21.3%	711
Pharmacy Technicians	370	416	477	484	+7	+68	+16.2%	+113	+30.6%	547
Pharmacy	901	1,006	1,118	1,127	+9	+120	+12.0%	+226	+25.1%	1,258
Counsellor Therapists	5	5	3	4	+1	-1	-11.9%	-1	-22.4%	7
Dental Hygienists	1	1	1	1	+0			+0	+0.9%	2
HSCP Trainees/ Students	69	56	52	58	+5	+2	+4.3%	-12	-16.6%	86
Other Health & Social Care	50	65	64	72	+8	+6	+9.9%	+22	+43.7%	77
Play Therapists/ Specialists	25	27	29	31	+2	+4	+13.6%	+6	+21.9%	40
Vaccinators			12	11	-1	+11	-100.0%	+11	-100.0%	28
H&SC, Other	151	154	162	177	+15	+23	+15.3%	+26	+17.3%	240
Health & Social Care Professionals	7,760	8,333	9,003	9,116	113	+783	+9.4%	+1,355	+17.5%	10,214
Management (VIII & above)	518	579	706	714	+8	+134	+23.1%	+196	+37.8%	730
Administrative/ Supervisory (V to VII)	2,326	2,674	3,259	3,299	+41	+625	+23.4%	+974	+41.9%	3,506
Clerical (III & IV)	6,606	6,658	7,176	7,200	+24	+542	+8.1%	+594	+9.0%	8,158
Management & Administrative	9,450	9,912	11,140	11,213	73	+1,301	+13.1%	+1,764	+18.7%	12,394
Catering	470	490	472	472	+0	-17	-3.6%	+2	+0.4%	513
Household Services	2,717	3,098	3,255	3,237	-18	+138	+4.5%	+520	+19.1%	3,803
Other Labs & Associated	379	440	610	580	-30	+140	+31.8%	+201	+53.0%	638
Other Support	739	761	769	765	-4	+3	+0.5%	+26	+3.6%	843

Oct 2022	WTE Dec 2019	WTE Dec 2020	WTE Sep 2022	WTE Oct 2022	WTE change since Sep 22	WTE change since Dec 20	% change since Dec 20	WTE change since Dec 19	% change since Dec 19	No. Oct 2022
Overall	62,537	66,439	72,441	72,835	+394	+6,396	+9.6%	+10,297	+16.5%	81,085
Portering	1,325	1,362	1,411	1,403	-8	+41	+3.0%	+78	+5.9%	1,496
Support	5,630	6,152	6,516	6,457	-59	+305	+5.0%	+827	+14.7%	7,293
Maintenance	507	514	536	537	+2	+23	+4.5%	+31	+6.1%	550
Technical Services	24	25	28	28		+3	+12.0%	+4	+16.8%	28
Maintenance/ Technical	531	539	564	565	+2	+26	+4.8%	+35	+6.5%	578
General Support	6,160	6,691	7,080	7,022	-58	+331	+5.0%	+862	+14.0%	7,871
Attendant/ Aide	1,582	1,472	1,228	1,233	+5	-239	-16.2%	-349	-22.1%	1,351
Health & Social Care Assistants	129	156	204	213	+9	+57	+36.2%	+84	+65.3%	244
Health Care Assistant/ Care Assistant	3,564	3,838	4,709	4,695	-14	+857	+22.3%	+1,131	+31.7%	5,329
HCA (Student Nurse/Midwife COVID-19)		50				-50	-100.0%		-100.0%	
Health Care Assistants	5,275	5,516	6,141	6,141	+0	+625	+11.3%	+866	+16.4%	6,924
Ambulance Control	179	180	162	157	-5	-23	-12.7%	-21	-11.9%	162
Ambulance Education	162	138	174	229	+54	+90	+65.4%	+67	+41.2%	230
Ambulance Officers	78	85	94	92	-2	+8	+9.0%	+14	+18.2%	93
Pre-Hospital Care (Ambulance)	1,406	1,473	1,474	1,470	-5	-3	-0.2%	+63	+4.5%	1,524
Ambulance Staff	1,825	1,876	1,905	1,948	+43	+72	+3.8%	+123	+6.7%	2,009
Health Promotion	2	3	4	4		+1	+28.6%	+3	+158.7%	6
Other Care Grades	79	94	141	147	+7	+53	+56.5%	+69	+87.4%	163
Pastoral Care	87	84	76	80	+4	-4	-5.1%	-7	-7.9%	105
Workshop Services	1	1	2	2		+2	+312.0%	+1	+106.0%	3
Care, other	168	182	223	233	+10	+51	+28.2%	+65	+38.9%	277
Patient & Client Care	7,268	7,574	8,268	8,322	54	+748	+9.9%	+1,055	+14.5%	9,210

Employment by WTE, Headcount, Gender, Full-Time /Part-Time etc.: Oct 2022

Acutes Services Staff Group	WTE	Headcount	WTE: no.	% Male	% female	Male WTE: no.	Female WTE: no.	% Total Perm	% Male Perm	% Female Perm	% Total Full Time	% Total Part Time	% Male FT	% Female FT
Overall	72,835	81,085	1.11	24.0%	76.0%	1.05	1.14	80.2%	70.7%	83.2%	77.1%	22.9%	92.7%	72.2%
Consultant Anaesthesia	452	483	1.07	60.0%	40.0%	1.07	1.07	81.6%	81.6%	78.2%	90.7%	9.3%	91.7%	89.1%
Consultant Dentistry	6	7	1.10	28.6%	71.4%	1.00	1.15	85.7%	85.7%	80.0%	85.7%	14.3%	100.0%	80.0%
Consultant Emergency Medicine	152	166	1.09	63.3%	36.7%	1.06	1.14	66.9%	66.9%	68.9%	84.3%	15.7%	90.5%	73.8%
Consultant Intensive Care Medicine	22	25	1.13	40.0%	60.0%	1.11	1.15	88.0%	88.0%	86.7%	84.0%	16.0%	90.0%	80.0%
Consultant Medicine	1,011	1,100	1.09	58.1%	41.9%	1.07	1.11	74.8%	74.8%	72.2%	85.5%	14.5%	88.3%	81.8%
Consultant Obstetrics & Gynaecology	179	192	1.07	45.8%	54.2%	1.07	1.08	81.8%	81.8%	80.8%	85.9%	14.1%	87.5%	84.6%
Consultant, Other	1	2	2.22	100.0%		2.22		100.0%	100.0%		0.0%	100.0%	0.0%	
Consultant Paediatrics	231	253	1.09	46.6%	53.4%	1.06	1.12	77.9%	77.9%	79.3%	84.6%	15.4%	91.5%	78.5%
Consultant Pathology	294	317	1.08	40.7%	59.3%	1.06	1.09	83.3%	83.3%	84.0%	87.4%	12.6%	89.9%	85.6%
Consultant Psychiatry	27	32	1.20	34.4%	65.6%	1.05	1.29	75.0%	75.0%	71.4%	71.9%	28.1%	90.9%	61.9%
Consultant Radiology	299	319	1.07	59.6%	40.4%	1.05	1.10	85.0%	85.0%	79.8%	90.3%	9.7%	93.7%	85.3%
Consultant Surgery	621	682	1.10	80.2%	19.8%	1.10	1.11	77.9%	77.9%	76.3%	82.4%	17.6%	83.4%	78.5%
Consultants	3,294	3,578	1.09	59.6%	40.4%	1.07	1.10	78.3%	79.3%	76.9%	85.9%	14.1%	88.3%	82.5%
Registrar	1,950	2,026	1.04	59.5%	40.5%	1.03	1.05	7.9%	7.9%	8.4%	96.4%	3.6%	97.3%	95.2%
Senior Registrar	127	131	1.03	65.6%	34.4%	1.03	1.03	35.1%	35.1%	40.0%	96.9%	3.1%	95.3%	100.0%
Specialist Registrar	1,396	1,426	1.02	44.7%	55.3%	1.01	1.03	8.8%	8.8%	8.4%	96.7%	3.3%	98.7%	95.1%
Registrars	3,473	3,583	1.03	53.8%	46.2%	1.02	1.04	9.2%	9.2%	9.2%	96.6%	3.4%	97.7%	95.3%
Interns	815	879	1.08	43.3%	56.7%	1.07	1.08	5.9%	5.9%	6.0%	100.0%	0.0%	100.0%	100.0%
Senior House Officer	2,502	2,592	1.04	45.4%	54.6%	1.03	1.04	5.4%	5.4%	5.1%	98.8%	1.2%	99.2%	98.4%
SHO/ Interns	3,317	3,471	1.05	44.9%	55.1%	1.04	1.05	5.5%	5.8%	5.3%	99.1%	0.9%	99.4%	98.8%
Dentists	9	11	1.25	36.4%	63.6%	1.45	1.15	81.8%	81.8%	100.0%	54.5%	45.5%	50.0%	57.1%
Other Medical	66	95	1.43	37.9%	62.1%	1.18	1.64	56.8%	56.8%	57.6%	44.2%	55.8%	75.0%	25.4%
Medical/ Dental, other	75	106	1.41	37.7%	62.3%	1.21	1.57	59.4%	55.0%	62.1%	45.3%	54.7%	72.5%	28.8%
Medical & Dental	10,159	10,738	1.06	52.7%	47.3%	1.05	1.07	31.6%	35.0%	27.7%	93.3%	6.7%	94.4%	92.1%
Clinical Nurse/ Midwife Manager	5,022	5,543	1.10	6.5%	93.5%	1.03	1.11	97.6%	97.6%	97.7%	73.5%	26.5%	93.6%	72.1%
Director Nursing/Midwifery, Assistant	518	555	1.07	9.9%	90.1%	1.02	1.08	96.0%	96.0%	96.4%	84.5%	15.5%	94.5%	83.4%
Director of Nursing/Midwifery	96	96	1.00	10.4%	89.6%	1.00	1.00	99.0%	99.0%	100.0%	97.9%	2.1%	90.0%	98.8%

Nurse/ Midwife Manager	5,636	6,194	1.10	6.9%	93.1%	1.03	1.10	97.5%	95.5%	97.7%	74.9%	25.1%	93.6%	73.5%
Advanced Nurse/ Midwife Practitioner	643	672	1.05	9.8%	90.2%	1.02	1.05	98.1%	98.1%	98.2%	89.9%	10.1%	97.0%	89.1%
Clinical Nurse/ Midwife Specialist	1,189	1,368	1.15	2.6%	97.4%	1.01	1.15	98.0%	98.0%	98.0%	65.9%	34.1%	100.0%	65.0%
Nurse/ Midwife Specialist & AN/MP	1,832	2,040	1.11	5.0%	95.0%	1.01	1.12	98.0%	98.0%	98.0%	73.8%	26.2%	98.0%	72.5%
Nursing Bank	9	21	2.34		100.0%		2.34	66.7%	66.7%	66.7%	0.0%	100.0%		0.0%
Staff Midwives	1,354	1,645	1.22	0.7%	99.3%	1.13	1.22	94.5%	94.5%	94.4%	50.9%	49.1%	63.6%	50.9%
Staff Nurse [Psychiatric]	23	26	1.11	30.8%	69.2%	1.15	1.09	100.0%	100.0%	100.0%	84.6%	15.4%	87.5%	83.3%
Staff Nurses [General/ Children's]	17,371	19,549	1.13	9.6%	90.4%	1.04	1.14	90.9%	90.9%	91.0%	71.6%	28.4%	92.8%	69.3%
Staff Nurse/ Staff Midwife	18,757	21,241	1.13	8.9%	91.1%	1.04	1.14	91.2%	90.0%	91.3%	69.9%	30.1%	92.6%	67.7%
Pre-registration Nurse/ Midwife Intern	163	444	2.72	6.8%	93.2%	2.47	2.74	9.9%	9.9%	9.4%	82.9%	17.1%	86.7%	82.6%
Post-registration Nurse/ Midwife Student	155	171	1.10	2.3%	97.7%	1.30	1.10	7.6%	7.6%	7.8%	98.8%	1.2%	100.0%	98.8%
Nursing/ Midwifery awaiting registration	277	356	1.28	5.9%	94.1%	1.14	1.29	36.0%	36.0%	37.3%	85.7%	14.3%	90.5%	85.4%
Nursing/ Midwifery Student	596	971	1.63	5.7%	94.3%	1.64	1.63	19.1%	14.5%	19.3%	86.7%	13.3%	89.1%	86.6%
Nursing Education/Clinical	176	205	1.16	3.9%	96.1%	1.00	1.17	97.1%	97.1%	97.0%	65.9%	34.1%	100.0%	64.5%
Other Nursing/ Midwifery	6	7	1.17		100.0%		1.17	100.0%	100.0%	100.0%	71.4%	28.6%		71.4%
Nursing/ Midwifery other	182	212	1.16	3.8%	96.2%	1.00	1.17	97.2%	100.0%	97.1%	66.0%	34.0%	100.0%	64.7%
Nursing & Midwifery	27,002	30,658	1.14	8.1%	91.9%	1.04	1.14	90.7%	89.6%	90.8%	71.7%	28.3%	93.0%	69.8%
Dietitians	473	534	1.13	1.5%	98.5%	1.00	1.13	86.5%	86.5%	86.3%	77.5%	22.5%	100.0%	77.2%
Occupational Therapists	513	556	1.08	8.3%	91.7%	1.05	1.09	81.5%	81.5%	81.6%	86.3%	13.7%	89.1%	86.1%
Orthoptists	20	27	1.33	11.1%	88.9%	1.00	1.39	92.6%	92.6%	91.7%	48.1%	51.9%	100.0%	41.7%
Physiotherapists	1,174	1,319	1.12	20.4%	79.6%	1.05	1.14	82.8%	82.8%	83.7%	79.5%	20.5%	93.3%	76.0%
Podiatrists & Chiropodists	31	37	1.18	16.2%	83.8%	1.24	1.16	73.0%	73.0%	74.2%	67.6%	32.4%	66.7%	67.7%
Speech & Language Therapists	273	310	1.13	1.3%	98.7%	1.00	1.14	80.3%	80.3%	80.4%	77.4%	22.6%	100.0%	77.1%
Therapy Professions	2,485	2,783	1.12	12.1%	87.9%	1.05	1.13	82.9%	79.8%	83.4%	79.8%	20.2%	92.6%	78.1%
Audiology	43	49	1.14	14.3%	85.7%	1.25	1.13	89.8%	89.8%	88.1%	81.6%	18.4%	71.4%	83.3%
Biochemists	63	68	1.09	29.4%	70.6%	1.03	1.11	95.6%	95.6%	97.9%	83.8%	16.2%	100.0%	77.1%
Cardiac Physiologists	252	275	1.09	17.1%	82.9%	1.07	1.10	88.7%	88.7%	88.6%	82.9%	17.1%	91.5%	81.1%
Clinical Engineering	159	162	1.02	77.8%	22.2%	1.01	1.05	94.4%	94.4%	86.1%	95.1%	4.9%	96.8%	88.9%
Dosimetrists	13	15	1.14	13.3%	86.7%	1.43	1.11	86.7%	86.7%	92.3%	73.3%	26.7%	50.0%	76.9%
E.C.G. Technicians	8	10	1.22	20.0%	80.0%	1.00	1.28	80.0%	80.0%	75.0%	50.0%	50.0%	100.0%	37.5%
Gastrointestinal Physiologists	4	5	1.20	40.0%	60.0%	1.20	1.20	100.0%	100.0%	100.0%	60.0%	40.0%	50.0%	66.7%
Medical Science	2,006	2,209	1.10	20.2%	79.8%	1.03	1.12	93.9%	93.9%	94.0%	80.8%	19.2%	95.5%	77.0%
Neuro-Physiologists	52	58	1.12	24.1%	75.9%	1.00	1.17	86.2%	86.2%	84.1%	79.3%	20.7%	100.0%	72.7%
Perfusionists	21	23	1.12	47.8%	52.2%	1.12	1.12	87.0%	87.0%	91.7%	73.9%	26.1%	72.7%	75.0%

Phlebotomists	221	300	1.36	21.7%	78.3%	1.28	1.39	76.7%	76.7%	79.6%	44.0%	56.0%	53.8%	41.3%
Physicists	188	204	1.08	48.5%	51.5%	1.04	1.13	94.6%	94.6%	97.1%	86.3%	13.7%	97.0%	76.2%
Radiation Therapists	207	229	1.11	10.5%	89.5%	1.02	1.12	81.2%	81.2%	81.5%	75.1%	24.9%	95.8%	72.7%
Radiographers	1,411	1,551	1.10	21.0%	79.0%	1.02	1.12	93.3%	93.3%	93.1%	80.5%	19.5%	95.4%	76.5%
Respiratory Physiologists	73	79	1.08	19.0%	81.0%	1.05	1.09	94.9%	94.9%	93.8%	87.3%	12.7%	93.3%	85.9%
Vascular Physiologists	34	37	1.10	21.6%	78.4%	1.00	1.12	86.5%	86.5%	89.7%	73.0%	27.0%	87.5%	69.0%
Health Science/ Diagnostics	4,753	5,274	1.11	23.0%	77.0%	1.04	1.13	91.8%	91.6%	91.8%	79.0%	21.0%	92.9%	74.9%
Social Care	3	5	1.50	40.0%	60.0%	2.00	1.28	80.0%	100.0%	66.7%	20.0%	80.0%	0.0%	33.3%
Social Workers	429	482	1.12	13.3%	86.7%	1.05	1.13	86.1%	87.5%	85.9%	79.0%	21.0%	90.6%	77.3%
Psychologists	142	172	1.21	12.8%	87.2%	1.26	1.21	84.9%	81.8%	85.3%	55.8%	44.2%	54.5%	56.0%
Pharmacists	643	711	1.11	13.9%	86.1%	1.02	1.12	86.6%	86.6%	85.8%	83.3%	16.7%	99.0%	80.7%
Pharmacy Technicians	484	547	1.13	4.4%	95.6%	1.05	1.13	86.3%	86.3%	85.9%	74.0%	26.0%	87.5%	73.4%
Pharmacy	1,127	1,258	1.12	9.8%	90.2%	1.03	1.13	86.5%	92.7%	85.8%	79.3%	20.7%	96.7%	77.4%
Counsellor Therapists	4	7	1.76		100.0%		1.76	85.7%	85.7%	85.7%	0.0%	100.0%		0.0%
Dental Hygienists	1	2	1.83		100.0%		1.83	100.0%	100.0%	100.0%	50.0%	50.0%		50.0%
HSCP Trainees/ Students	58	86	1.49	24.4%	75.6%	1.82	1.40	1.2%	1.2%	1.5%	82.6%	17.4%	76.2%	84.6%
Other Health & Social Care	72	77	1.08	28.6%	71.4%	1.02	1.10	79.2%	79.2%	74.5%	80.5%	19.5%	90.9%	76.4%
Play Therapists/ Specialists	31	40	1.29		100.0%		1.29	87.5%	87.5%	87.5%	50.0%	50.0%		50.0%
Vaccinators	11	28	2.45	28.6%	71.4%	1.96	2.73	57.1%	57.1%	65.0%	7.1%	92.9%	0.0%	10.0%
H&SC, Other	177	240	1.36	21.3%	78.8%	1.38	1.35	50.4%	45.1%	51.9%	65.0%	35.0%	70.6%	63.5%
Health & Social Care	9,116	10,214	1.12	17.7%	82.3%	1.05	1.14	87.3%	87.9%	87.2%	78.5%	21.5%	91.8%	75.7%
Executive Management	121	124	1.02	46.8%	53.2%	1.01	1.04	91.9%	91.9%	93.9%	98.4%	1.6%	98.3%	98.5%
Senior Management (VIII & GM)	593	606	1.02	33.0%	67.0%	1.02	1.03	92.2%	92.2%	95.1%	96.7%	3.3%	98.0%	96.1%
Management (VIII & above)	714	730	1.02	35.3%	64.7%	1.02	1.03	92.2%	87.2%	94.9%	97.0%	3.0%	98.1%	96.4%
Middle Management (V-VII)	3,281	3,487	1.06	22.3%	77.7%	1.02	1.08	93.3%	93.3%	93.8%	85.3%	14.7%	98.5%	81.5%
Other Administrative	18	19	1.05	47.4%	52.6%	1.06	1.05	57.9%	57.9%	90.0%	84.2%	15.8%	100.0%	70.0%
Administrative/ Supervisory (V to VII)	3,299	3,506	1.06	22.4%	77.6%	1.02	1.08	93.1%	90.5%	93.8%	85.3%	14.7%	98.5%	81.5%
Clerical (III & IV)	7,200	8,158	1.13	13.3%	86.7%	1.04	1.15	80.9%	75.7%	81.7%	71.5%	28.5%	94.0%	68.0%
Management & Administrative	11,213	12,394	1.11	17.2%	82.8%	1.03	1.12	85.0%	82.6%	85.5%	76.9%	23.1%	96.2%	72.9%
Catering	472	513	1.09	33.9%	66.1%	1.03	1.12	91.4%	91.4%	92.0%	78.8%	21.2%	95.4%	70.2%
Household Services	3,237	3,803	1.18	24.8%	75.2%	1.10	1.20	79.9%	79.9%	83.1%	60.8%	39.2%	80.1%	54.5%
Other Labs & Associated	580	638	1.10	29.5%	70.5%	1.06	1.12	75.1%	75.1%	74.7%	86.4%	13.6%	93.6%	83.3%
Other Support	765	843	1.10	48.8%	51.2%	1.05	1.16	91.7%	91.7%	94.0%	74.6%	25.4%	92.7%	57.4%
Portering	1,403	1,496	1.07	91.2%	8.8%	1.06	1.18	81.9%	81.9%	81.7%	89.6%	10.4%	91.6%	68.7%

Support	6,457	7,293	1.13	42.3%	57.7%	1.07	1.18	82.1%	79.4%	84.0%	71.8%	28.2%	88.6%	59.6%
Maintenance	537	550	1.02	96.5%	3.5%	1.02	1.12	96.7%	96.7%	100.0%	96.9%	3.1%	98.1%	63.2%
Technical Services	28	28	1.00	100.0%		1.00		92.9%	92.9%		100.0%	0.0%	100.0%	
Maintenance/ Technical	565	578	1.02	96.7%	3.3%	1.02	1.12	96.5%	96.4%	100.0%	97.1%	2.9%	98.2%	63.2%
General Support	7,022	7,871	1.12	46.3%	53.7%	1.06	1.18	83.1%	82.0%	84.1%	73.7%	26.3%	90.1%	59.6%
Attendant/ Aide	1,233	1,351	1.10	46.6%	53.4%	1.04	1.15	90.5%	90.5%	93.9%	78.9%	21.1%	93.6%	66.1%
Health & Social Care Assistants	213	244	1.15	25.8%	74.2%	1.07	1.18	81.1%	81.1%	81.2%	74.2%	25.8%	87.3%	69.6%
Health Care Assistant/ Care Assistant	4,695	5,329	1.14	27.4%	72.6%	1.08	1.16	84.6%	84.6%	84.1%	70.1%	29.9%	82.6%	65.4%
Health Care Assistants	6,141	6,924	1.13	31.1%	68.9%	1.07	1.16	85.6%	85.9%	85.5%	72.0%	28.0%	86.0%	65.7%
Ambulance Control	157	162	1.03	51.2%	48.8%	1.01	1.05	95.7%	95.7%	94.9%	99.4%	0.6%	100.0%	98.7%
Ambulance Education	229	230	1.01	61.7%	38.3%	1.00	1.01	0.0%	0.0%	0.0%	100.0%	0.0%	100.0%	100.0%
Ambulance Officers	92	93	1.01	86.0%	14.0%	1.01	1.02	97.8%	97.8%	100.0%	98.9%	1.1%	98.8%	100.0%
Pre-Hospital Care (Ambulance)	1,470	1,524	1.04	76.5%	23.5%	1.03	1.06	94.0%	94.0%	91.1%	99.7%	0.3%	99.8%	99.2%
Ambulance Staff	1,948	2,009	1.03	73.2%	26.8%	1.03	1.05	83.5%	85.9%	77.0%	99.7%	0.3%	99.8%	99.3%
Health Promotion	4	6	1.45		100.0%		1.45	100.0%	100.0%	100.0%	33.3%	66.7%		33.3%
Other Care Grades	147	163	1.11	47.9%	52.1%	1.06	1.16	93.9%	93.9%	89.4%	77.9%	22.1%	93.6%	63.5%
Pastoral Care	80	105	1.31	70.5%	29.5%	1.37	1.20	70.5%	70.5%	93.5%	61.9%	38.1%	55.4%	77.4%
Workshop Services	2	3	1.46	66.7%	33.3%	1.31	1.89	100.0%	100.0%	100.0%	33.3%	66.7%	50.0%	0.0%
Care, other	233	277	1.19	55.6%	44.4%	1.19	1.18	85.2%	80.5%	91.1%	70.4%	29.6%	74.7%	65.0%
Patient & Client Care	8,322	9,210	1.11	41.0%	59.0%	1.06	1.14	85.1%	85.7%	84.7%	78.0%	22.0%	90.9%	69.0%

Employment by WTE, Headcount, Gender, Full-Time /Part-Time etc.: Oct 2022

Hospital Group	WTE	Headcount	WTE: no.	% Male	% female	Male WTE: no.	Female WTE: no.	% Total Perm	% Male Perm	% Female Perm	% Total Full Time	% Total Part Time	% Male FT	% Female FT
Overall	72,835	81,085	1.11	24.0%	76.0%	1.05	1.14	80.2%	70.7%	83.2%	77.1%	22.9%	92.7%	72.2%
National Ambulance Service	2,079	2,147	1.03	70.8%	29.2%	1.03	1.05	84.5%	84.5%	80.1%	99.2%	0.8%	99.7%	97.9%
CHI at Connolly	148	171	1.16	9.4%	90.6%	1.21	1.15	85.4%	85.4%	87.7%	69.0%	31.0%	93.8%	93.8%
CHI at Crumlin	2,212	2,504	1.13	16.0%	84.0%	1.04	1.15	81.9%	81.9%	83.2%	68.3%	31.7%	93.0%	93.0%
CHI at Tallaght	297	335	1.13	10.7%	89.3%	1.03	1.14	74.9%	74.9%	77.3%	73.4%	26.6%	94.4%	94.4%
CHI at Temple Street	1,261	1,442	1.14	17.1%	82.9%	1.07	1.16	76.1%	76.1%	77.8%	76.8%	23.2%	94.7%	94.7%
CHI Corporate	35	35	1.01	31.4%	68.6%	1.00	1.01	71.4%	71.4%	62.5%	100.0%	0.0%	100.0%	100.0%
CHI Programme	109	119	1.10	39.5%	60.5%	1.13	1.08	30.3%	30.3%	29.2%	94.1%	5.9%	97.9%	97.9%
Children's Health Ireland	4,062	4,606	1.13	16.5%	83.5%	1.05	1.15	78.3%	78.3%	80.1%	72.3%	27.7%	94.1%	68.0%
Coombe Women & Infants University	941	1,049	1.11	14.6%	85.4%	1.02	1.13	84.7%	84.7%	86.5%	70.5%	29.5%	94.1%	94.1%
MRH Portlaoise	828	926	1.12	19.8%	80.2%	1.03	1.14	82.6%	82.6%	86.5%	77.3%	22.7%	97.8%	97.8%
MRH Tullamore	1,211	1,354	1.12	21.7%	78.3%	1.05	1.14	84.4%	84.4%	87.5%	81.2%	18.8%	95.9%	95.9%
Naas General	910	1,002	1.10	19.9%	80.1%	1.03	1.12	89.1%	89.1%	90.4%	81.5%	18.5%	95.0%	95.0%
St. James's	4,551	5,082	1.12	24.7%	75.3%	1.05	1.14	84.7%	84.7%	86.8%	82.9%	17.1%	93.9%	93.9%
St. Luke's Rathgar	542	576	1.06	27.4%	72.6%	1.02	1.08	78.3%	78.3%	80.6%	84.5%	15.5%	96.2%	96.2%
Tallaght University	3,094	3,467	1.12	25.6%	74.4%	1.06	1.14	79.3%	79.3%	82.1%	77.2%	22.8%	88.4%	88.4%
Hospital Group HQ	57	60	1.05	13.3%	86.7%	1.00	1.05	88.3%	88.3%	92.3%	95.0%	5.0%	100.0%	100.0%
Dublin Midlands Hospital Group	12,135	13,516	1.11	23.2%	76.8%	1.05	1.14	83.2%	83.2%	85.7%	79.9%	20.1%	93.0%	76.0%
Cappagh National Orthopaedic	492	554	1.13	24.5%	75.5%	1.02	1.17	86.5%	86.5%	90.4%	73.8%	26.2%	94.1%	94.1%
Mater Misericordiae University	3,764	4,111	1.09	26.8%	73.2%	1.08	1.10	79.3%	79.3%	83.3%	81.3%	18.7%	87.6%	87.6%
MRH Mullingar	1,074	1,191	1.11	19.9%	80.1%	1.02	1.13	82.7%	82.7%	88.2%	81.1%	18.9%	97.9%	97.9%
National Maternity	949	1,054	1.11	17.9%	82.1%	1.06	1.12	76.9%	76.9%	78.8%	71.7%	28.3%	84.1%	84.1%
Our Lady's Navan	633	734	1.16	26.6%	73.4%	1.07	1.19	83.8%	83.8%	89.4%	68.9%	31.1%	91.3%	91.3%
St. Columcille's	468	516	1.10	23.8%	76.2%	1.05	1.12	86.4%	86.4%	85.8%	80.4%	19.6%	92.7%	92.7%
St Luke's General Kilkenny	1,261	1,431	1.13	22.5%	77.5%	1.03	1.17	78.3%	78.3%	84.1%	71.2%	28.8%	93.2%	93.2%
St. Michael's	405	467	1.15	25.5%	74.5%	1.15	1.15	91.6%	91.6%	92.0%	79.0%	21.0%	89.9%	89.9%
St. Vincent's University	3,246	3,443	1.06	29.9%	70.1%	1.03	1.08	96.7%	96.7%	97.0%	84.4%	15.6%	91.1%	91.1%
Wexford General	1,169	1,302	1.11	22.3%	77.7%	1.03	1.14	86.6%	86.6%	90.4%	76.7%	23.3%	96.2%	96.2%
Royal Victoria Eye & Ear	346	399	1.15	28.6%	71.4%	1.06	1.19	82.0%	82.0%	86.3%	65.2%	34.8%	85.1%	85.1%
National Rehabilitation	635	712	1.12	25.4%	74.6%	1.12	1.12	76.7%	76.7%	77.2%	77.0%	23.0%	85.1%	85.1%
IEHG Bank	21	28	1.34	7.1%	92.9%	1.01	1.37	100.0%	100.0%	100.0%	21.4%	78.6%	50.0%	50.0%
Hospital Group HQ	74	86	1.16	18.6%	81.4%	1.06	1.19	90.7%	90.7%	91.4%	80.2%	19.8%	81.3%	81.3%
Ireland East Hospital Group	14,537	16,028	1.10	25.3%	74.7%	1.05	1.12	84.7%	84.7%	87.5%	78.4%	21.6%	90.4%	74.4%
Beaumont	4,264	4,618	1.08	27.9%	72.1%	1.03	1.11	83.8%	83.8%	87.0%	79.9%	20.1%	91.8%	91.8%

Cavan General	1,272	1,445	1.14	19.2%	80.8%	1.05	1.16	85.1%	85.1%	89.5%	75.7%	24.3%	92.8%	92.8%
Connolly	1,580	1,722	1.09	26.0%	74.0%	1.03	1.11	85.5%	85.5%	88.2%	84.9%	15.1%	96.6%	96.6%
Louth County	304	343	1.13	19.8%	80.2%	1.07	1.15	98.5%	98.5%	99.3%	71.7%	28.3%	94.1%	94.1%
Monaghan	154	179	1.16	7.8%	92.2%	1.07	1.17	97.8%	97.8%	98.2%	60.9%	39.1%	92.9%	92.9%
Our Lady of Lourdes	2,458	2,712	1.10	22.4%	77.6%	1.04	1.12	87.6%	87.6%	91.9%	83.6%	16.4%	95.2%	95.2%
Rotunda	974	1,157	1.19	15.6%	84.4%	1.11	1.20	79.2%	79.2%	81.0%	72.4%	27.6%	88.9%	88.9%
Hospital Group HQ	62	66	1.07	16.7%	83.3%	1.00	1.08	98.5%	98.5%	100.0%	95.5%	4.5%	100.0%	100.0%
RCSI Hospitals Group	11,067	12,242	1.11	23.6%	76.4%	1.04	1.13	85.3%	85.3%	88.6%	79.8%	20.2%	93.3%	75.6%
Galway University	4,144	4,625	1.12	22.4%	77.6%	1.06	1.13	76.3%	76.3%	80.5%	75.6%	24.4%	90.7%	90.7%
Letterkenny University	2,085	2,360	1.13	22.9%	77.1%	1.05	1.16	74.6%	74.6%	78.7%	67.6%	32.4%	90.2%	90.2%
Mayo University	1,417	1,588	1.12	21.1%	78.9%	1.03	1.15	79.0%	79.0%	83.6%	74.1%	25.9%	95.8%	95.8%
Portiuncula University	961	1,069	1.11	21.6%	78.4%	1.04	1.13	76.1%	76.1%	82.3%	70.9%	29.1%	93.9%	93.9%
Roscommon University	436	489	1.12	19.4%	80.6%	1.06	1.14	78.3%	78.3%	81.7%	71.4%	28.6%	93.7%	93.7%
Sligo University	1,975	2,227	1.13	24.0%	76.0%	1.06	1.15	79.3%	79.3%	84.1%	74.2%	25.8%	92.5%	92.5%
Hospital Group HQ	109	115	1.05	19.1%	80.9%	1.08	1.05	76.5%	76.5%	77.4%	92.2%	7.8%	95.5%	95.5%
Saolta University Hospital Care	11,126	12,473	1.12	22.4%	77.6%	1.05	1.14	76.9%	76.9%	81.4%	73.2%	26.8%	92.0%	67.8%
Bantry General	323	371	1.15	16.7%	83.3%	1.13	1.15	75.5%	75.5%	79.0%	67.1%	32.9%	87.1%	87.1%
Cork University	4,739	5,401	1.14	23.3%	76.7%	1.08	1.16	61.0%	61.0%	65.1%	74.4%	25.6%	90.9%	90.9%
Lourdes Orthopaedic Kilcreene	72	82	1.14	19.5%	80.5%	1.01	1.17	92.7%	92.7%	98.5%	50.0%	50.0%	93.8%	93.8%
Mallow General	268	315	1.17	15.2%	84.8%	1.08	1.19	64.8%	64.8%	68.2%	67.9%	32.1%	89.6%	89.6%
Mercy University	1,399	1,565	1.12	20.7%	79.3%	1.03	1.15	79.0%	79.0%	80.2%	65.9%	34.1%	92.3%	92.3%
South Infirmary Victoria University	829	995	1.20	19.7%	80.3%	1.11	1.23	74.6%	74.6%	78.2%	49.6%	50.4%	71.9%	71.9%
South Tipperary General	1,049	1,184	1.13	20.0%	80.0%	1.05	1.15	77.0%	77.0%	80.8%	70.5%	29.5%	90.7%	90.7%
UH Kerry	1,380	1,569	1.14	20.8%	79.2%	1.05	1.16	60.8%	60.8%	64.1%	71.9%	28.1%	91.7%	91.7%
UH Waterford	2,383	2,619	1.10	24.0%	76.0%	1.03	1.12	83.7%	83.7%	88.1%	77.1%	22.9%	95.2%	95.2%
Hospital Group HQ	70	80	1.14	22.5%	77.5%	1.39	1.08	73.8%	73.8%	82.3%	85.0%	15.0%	66.7%	66.7%
South/South West Hospital Group	12,512	14,181	1.13	22.0%	78.0%	1.06	1.15	70.1%	70.1%	73.9%	71.2%	28.8%	90.6%	65.8%
Croom Orthopaedic	306	335	1.10	23.6%	76.4%	1.02	1.12	84.5%	84.5%	87.9%	77.3%	22.7%	94.9%	94.9%
Ennis	257	291	1.13	15.8%	84.2%	1.10	1.14	84.9%	84.9%	89.0%	68.4%	31.6%	87.0%	87.0%
Nenagh	290	329	1.13	15.5%	84.5%	1.03	1.15	89.4%	89.4%	91.4%	67.5%	32.5%	98.0%	98.0%
St. John's Limerick	338	374	1.11	14.4%	85.6%	1.01	1.12	91.4%	91.4%	94.1%	73.5%	26.5%	96.3%	96.3%
UH Limerick	3,626	3,988	1.10	23.4%	76.6%	1.05	1.12	78.9%	78.9%	82.4%	82.8%	17.2%	96.3%	96.3%
UMH Limerick	368	437	1.19	8.0%	92.0%	1.05	1.20	82.6%	82.6%	84.6%	69.8%	30.2%	88.6%	88.6%
Hospital Group HQ	10	11	1.05	27.3%	72.7%	1.00	1.07	90.9%	90.9%	100.0%	90.9%	9.1%	100.0%	100.0%
University of Limerick Hospital Group	5,196	5,765	1.11	20.8%	79.2%	1.05	1.13	81.2%	81.2%	84.6%	79.3%	20.7%	95.7%	75.0%
Other	121	127	1.05	23.6%	76.4%	1.00	1.06	92.9%	92.9%	95.9%	93.7%	6.3%	100.0%	100.0%
other Acute Services	121	127	1.05	23.6%	76.4%	1.00	1.06	92.9%	92.9%	95.9%	93.7%	6.3%	100.0%	91.8%

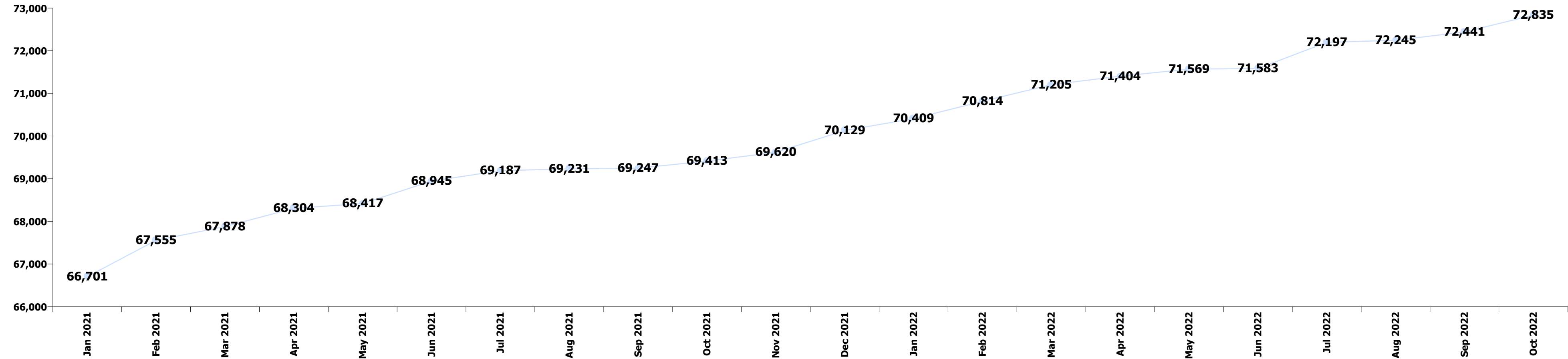
Summary Staff Movement: October 2022

Month-on-month Summary

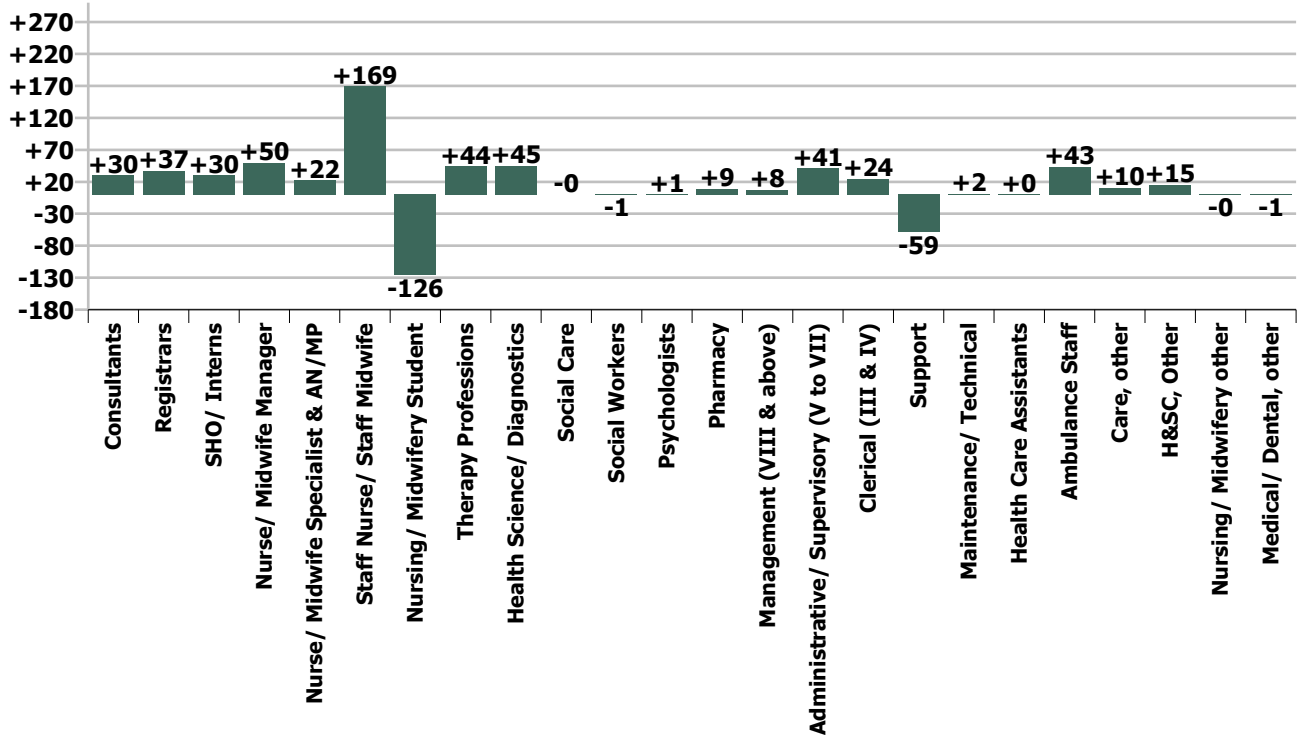
WTE change since Sep 22	% change since Sep 22	overall	Consultants	Registrars	SHO/ Interns	Medical/ Dental, other	Medical & Dental	Nurse/ Midwife Manager	Nurse/ Midwife Specialist & AN/MP	Staff Nurse/ Staff Midwife	Nursing/ Midwifery Student	Nursing/ Midwifery other	Nursing & Midwifery	Therapy Professions	Health Science/ Diagnostics	Social Care	Social Workers	Psychologists	Pharmacy	H&SC, Other	Health & Social Care Professionals	Management (VIII & above)	Administrativ e/ Supervisory (V to VII)	Clerical (III & IV)	Management & Administrativ e	General Support	Health Care Assistants	Ambulance Staff	Care, other	Patient & Client Care
Overall	+0.5%	+394	+30	+37	+30	-1	+97	+50	+22	+169	-126	-0	+114	+44	+45	-0	-1	+1	+9	+15	+113	+8	+41	+24	+73	-58	+0	+43	+10	+54
National Ambulance Service	+2.3%	+47						+0					+0									+0	+2	+0	+3	-0		+44	-0	+44
Children's Health Ireland	+1.0%	+39	+5	+2	+2		+9	+12	-1	+0	+3		+13	-0	+9		+1	-0	-1	+4	+13	-0	+5	+0	+4	-4	+4		+0	+4
Dublin Midlands Hospital Group	+0.4%	+46	+7	-1	+5	+1	+11	+9	+6	+1	-26	-3	-13	+8	+10		+1	-1	+0	+8	+27	+2	+4	+20	+26	-12	+7		+2	+8
Ireland East Hospital Group	+0.5%	+79	+7	+5	-11	-1	-0	+4	-1	+23	-2	-0	+24	+9	+4		-1	-0	+3	+1	+15	+6	+14	+4	+23	+10	+8		-1	+7
RCSI Hospitals Group	+0.7%	+78	+10	-0	+11	+0	+21	+16	+3	+35	-14	-1	+39	+5	+8		-1	+1	+1	+5	+19	+0	+1	+5	+6	+1	-10		+3	-7
Saolta University Hospital Care	+0.6%	+67	-1	+11	+11	-1	+20	+11	+11	+36	-34	+2	+27	+16	+16	-0	-1	-2	+1	-5	+26	-0	+11	-1	+9	-9	-11		+6	-6
South/South West Hospital Group	+0.3%	+37	+3	+14	+13	+0	+30	-5	+1	+61	-29	+1	+30	+7	-1		+0	+0	+6	+2	+15	+0	+1	+4	+6	-43	-0	-1	+1	-0
University of Limerick Hospital Group	-0.1%	-3	+0	+8	+0		+8	+1	+2	+14	-25	-0	-7	-0	-1		+0	+1	-1	-1	-2	+0	+3	-8	-5	-0	+4		-1	+3
other Acute Services	+2.2%	+3						+1					+1						+0		+0	-0	+1	+1	+1					
Acute Services	+0.5%	+394	+30	+37	+30	-1	+97	+50	+22	+169	-126	-0	+114	+44	+45	-0	-1	+1	+9	+15	+113	+8	+41	+24	+73	-58	+0	+43	+10	+54
			+0.9%	+1.1%	+0.9%	-0.7%	+1.0%	+0.9%	+1.2%	+0.9%	-17.5%	-0.2%	+0.4%	+1.8%	+1.0%	-1.5%	-0.1%	+0.4%	+0.8%	+9.4%	+1.3%	+1.1%	+1.2%	+0.3%	+0.7%	-0.8%	+0.0%	+2.3%	+4.7%	+0.7%

Year-on-year Summary

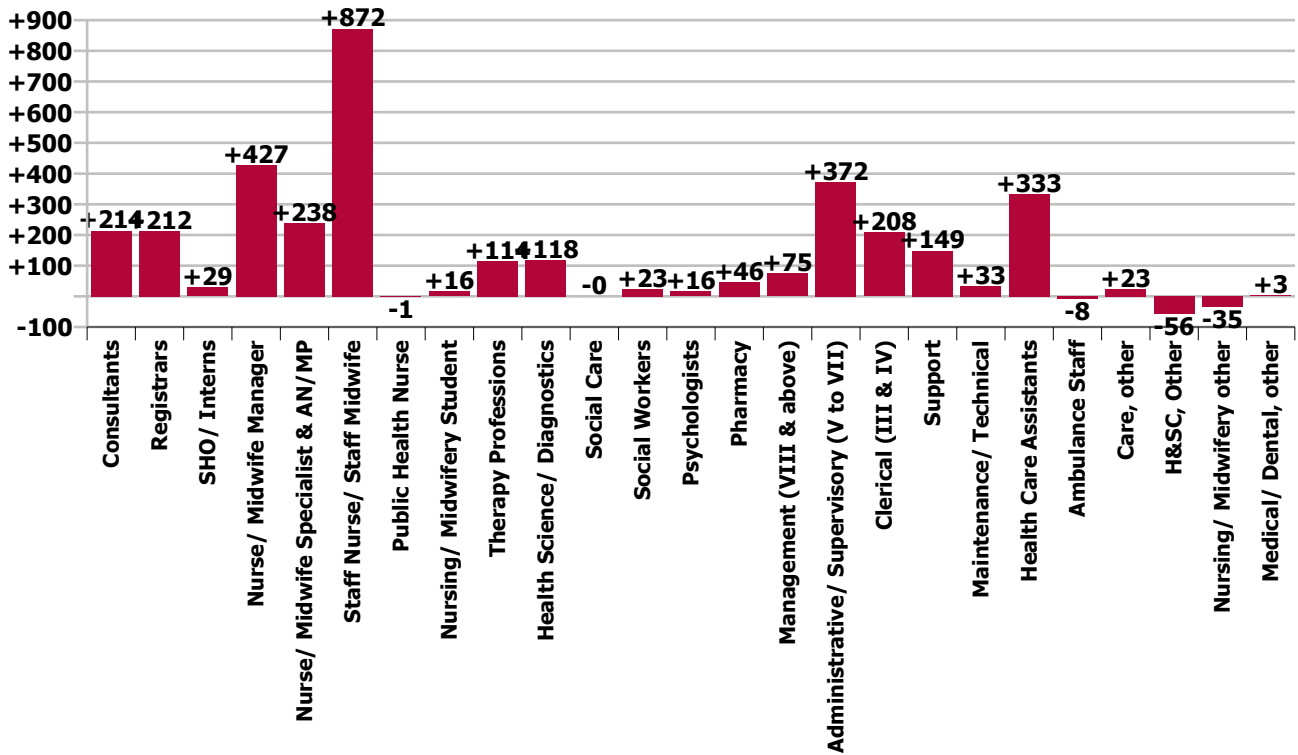
WTE change since Oct 21	% change since Oct 21	overall	Consultants	Registrars	SHO/ Interns	Medical/ Dental, other	Medical & Dental	Nurse/ Midwife Manager	Nurse/ Midwife Specialist & AN/MP	Staff Nurse/ Staff Midwife	Public Health Nurse	Nursing/ Midwifery Student	Nursing/ Midwifery other	Nursing & Midwifery	Therapy Professions	Health Science/ Diagnostics	Social Care	Social Workers	Psychologists	Pharmacy	H&SC, Other	Health & Social Care Professionals	Management (VIII & above)	Administrativ e/ Supervisory (V to VII)	Clerical (III & IV)	Management & Administrativ e	General Support	Health Care Assistants	Ambulance Staff	Care, other	Patient & Client Care	
Overall	+4.9%	+3,421	+214	+212	+29	+3	+457	+427	+238	+872	-1	+16	-35	+1,518	+114	+118	-0	+23	+16	+46	-56	+261	+75	+372	+208	+655	+182	+333	-8	+23	+349	
National Ambulance Service	+0.1%	+3		-1	-1		-2	+2						+2									+7	+3	+1	+11	+1	+0	-8	-2	-10	
Children's Health Ireland	+3.8%	+150	+29	+12	+4	+0	+45	+15	+18	-26		+24	+2	+33	-5	-2		+0	-1	+1	+4	-3	+6	+28	+29	+63	+6	+7		-1	+6	
Dublin Midlands Hospital Group	+4.9%	+561	+47	+52	-5	+2	+95	+52	+49	+57		+49	-2	+205	+19	+29		+1	+0	-12	-4	+34	+11	+65	+20	+96	-3	+132		+2	+134	
Ireland East Hospital Group	+3.7%	+518	+53	+20	+12	-0	+84	+103	+33	+151		-22	-26	+238	+0	-5		+9	+7	-2	+5	+15	+26	+80	+18	+124	+14	+40		+3	+43	
RCSI Hospitals Group	+5.4%	+571	+21	+29	-1	-0	+50	+93	+35	+189	-1	-14	-10	+292	+21	+44		+2	+2	+5	+2	+76	+8	+50	+2	+60	+27	+66		+0	+67	
Saolta University Hospital Care	+6.4%	+668	+22	+20	+9	-0	+51	+64	+48	+302			-39	-0	+375	+28	+49	-0	+5	+1	+15	-44	+55	+2	+41	+54	+98	+23	+50		+17	+66
South/South West Hospital Group	+6.0%	+706	+29	+65	+23	+1	+118	+50	+25	+203	-0	+16	+2	+296	+54	+16		+6	+4	+28	-14	+95	+15	+54	+51	+119	+45	+29		+5	+34	
University of Limerick Hospital Group	+4.7%	+234	+13	+15	-12	+0	+17	+47	+30	-3		+3	-0	+76	-3	-13		-0	+2	+7	-6	-12	+3	+38	+34	+76	+68	+10		-1	+9	
other Acute Services	+9.2%	+10						+0						+0		-0				+3		+3	-4	+12	-2	+7						
Acute Services	+4.9%	+3,421	+214	+212	+29	+3	+457	+427	+238	+872	-1	+16	-35	+1,518	+114	+118	-0	+23	+16	+46	-56	+261	+75	+372	+208	+655	+182	+333	-8	+23	+349	
			+6.9%	+6.5%	+0.9%	+3.6%	+4.7%	+8.2%	+15.0%	+4.9%	-100.0%	+2.8%	-16.1%	+6.0%	+4.8%	+2.5%	-10.7%	+5.7%	+12.4%	+4.2%	-24.0%	+2.9%	+11.7%	+12.7%	+3.0%	+6.2%	+2.7%	+5.7%	-0.4%	+11.0%	+4.4%	



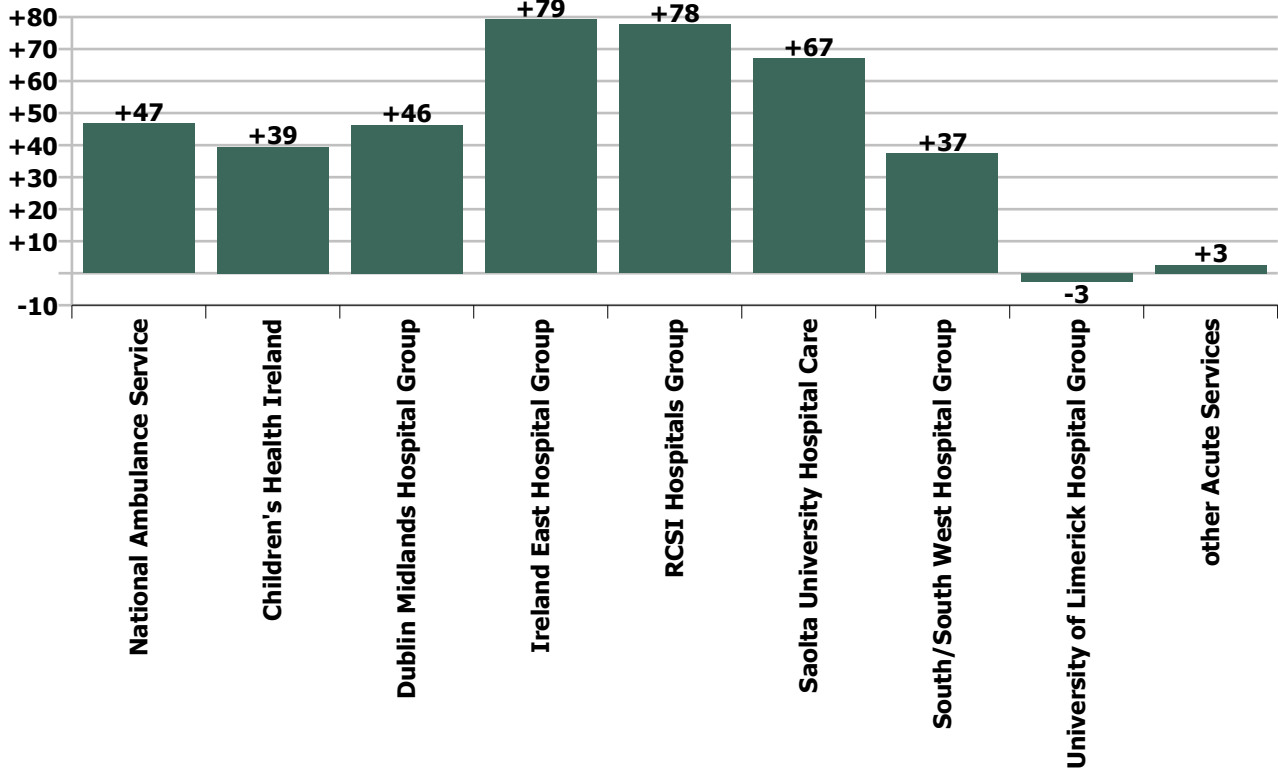
Staff Group change since: Sep 2022



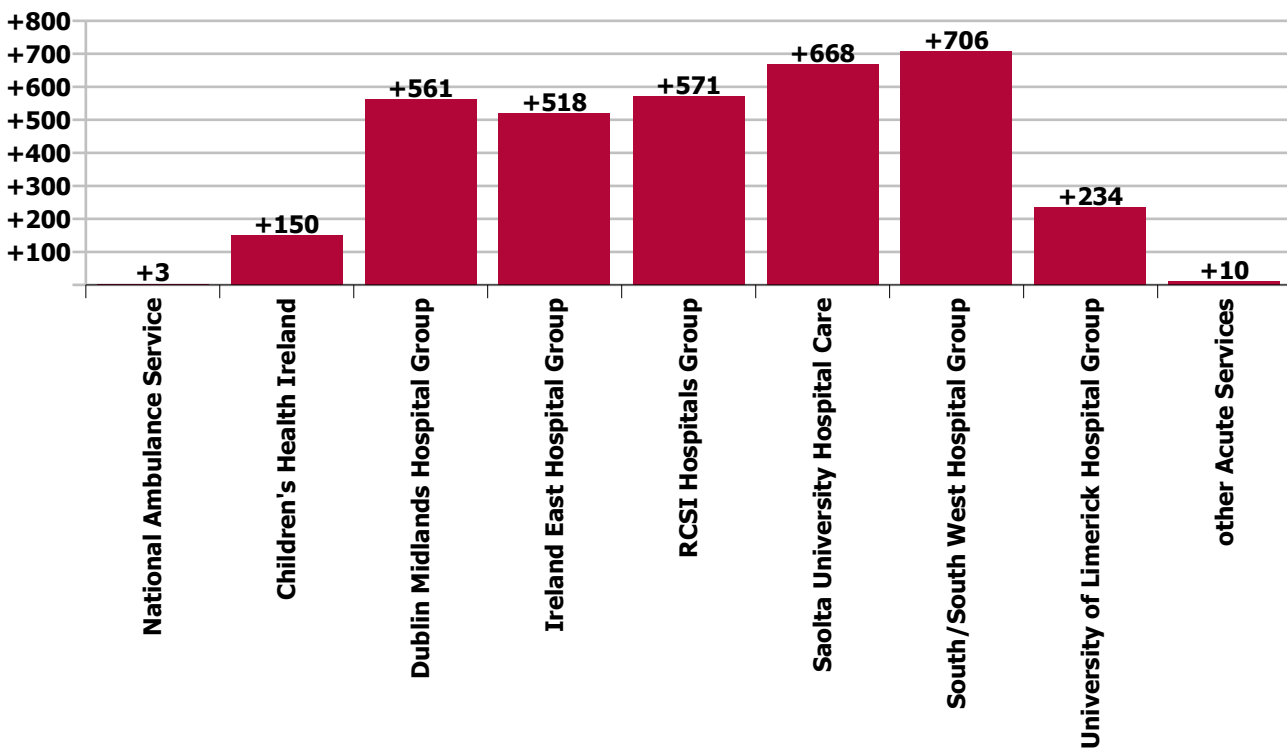
Staff Group change since: Oct 2021



Hospital Group & CHO change since: Sep 2022



Hospital Group & CHO change since: Oct 2021



Longitudinal Employment Levels by Grade Group - December 2016 to Oct 2022

Oct 2022 (Dec 2019 figure: 62,537)	WTE Oct 2022	WTE change since Dec 16	WTE change since Dec 17	WTE change since Dec 18	WTE change since Dec 19	WTE change since Dec 20	WTE change since Sep 22	% change since Dec 16	% change since Dec 17	% change since Dec 18	% change since Dec 19	% change since Dec 20	% change since Sep 22
Overall	72,835	+16,452	+14,213	+11,929	+10,297	+6,396	+394	+29.2%	+24.2%	+19.6%	+16.5%	+9.6%	+0.5%
Consultant Anaesthesia	452	+82	+66	+62	+48	+25	+1	+22.3%	+17.2%	+15.8%	+12.0%	+5.7%	+62.0%
Consultant Dentistry	6	+2	+2	+0	+0	+0	+0	+37.4%	+34.2%	+4.3%	+2.8%	+1.6%	+41.0%
Consultant Emergency Medicine	152	+60	+54	+55	+44	+31	+3	+65.0%	+54.9%	+56.0%	+40.6%	+25.2%	+296.0%
Consultant Intensive Care Medicine	22	+19	+16	+7	+6	+4	-0	+636.3%	+268.2%	+48.7%	+38.1%	+23.0%	-12.0%
Consultant Medicine	1,011	+320	+289	+245	+207	+126	+13	+46.4%	+39.9%	+32.0%	+25.8%	+14.2%	+1322.0%
Consultant Obstetrics & Gynaecology	179	+39	+28	+22	+18	+8	+1	+28.1%	+18.8%	+14.0%	+11.0%	+4.9%	+58.0%
Consultant, Other	1	+1	+1	+1	+0	+1	+1	-100.0%	-100.0%	-100.0%	+32.4%	-100.0%	+90.0%
Consultant Paediatrics	231	+79	+65	+54	+38	+19	+6	+52.1%	+39.2%	+30.4%	+19.9%	+9.2%	+574.0%
Consultant Pathology	294	+71	+63	+52	+41	+28	+6	+32.0%	+27.3%	+21.3%	+16.3%	+10.7%	+591.0%
Consultant Psychiatry	27	+10	+8	+7	+3	+3	-1	+59.4%	+43.2%	+36.5%	+13.0%	+14.8%	-75.0%
Consultant Radiology	299	+50	+48	+32	+24	+19	-2	+20.2%	+19.1%	+12.2%	+8.6%	+6.7%	-234.0%
Consultant Surgery	621	+137	+125	+102	+82	+56	+3	+28.3%	+25.2%	+19.6%	+15.2%	+10.0%	+304.0%
Consultants	3,294	+871	+765	+638	+512	+321	+30	+35.9%	+30.2%	+24.0%	+18.4%	+10.8%	+0.9%
Registrar	1,950	+446	+377	+296	+246	+140	+36	+29.7%	+24.0%	+17.9%	+14.4%	+7.7%	+3592.0%
Senior Registrar	127	+14	+25	+19	+19	+7	+3	+12.7%	+24.7%	+17.9%	+17.7%	+5.4%	+342.0%
Specialist Registrar	1,396	+485	+394	+369	+266	+211	-2	+53.2%	+39.4%	+36.0%	+23.5%	+17.8%	-192.0%
Registrars	3,473	+945	+797	+685	+531	+358	+37	+37.4%	+29.8%	+24.5%	+18.0%	+11.5%	+1.1%
Interns	815	+114	+105	+93	+97	-152	-8	+16.3%	+14.8%	+12.8%	+13.5%	-15.7%	-778.0%
Senior House Officer	2,502	+588	+527	+481	+425	+216	+38	+30.7%	+26.7%	+23.8%	+20.5%	+9.4%	+3801.0%
SHO/ Interns	3,317	+702	+632	+574	+522	+64	+30	+26.8%	+23.5%	+20.9%	+18.7%	+2.0%	+0.9%
Dentists	9	-5	-2	-1	-1	-2	-1	-34.4%	-15.3%	-11.6%	-8.1%	-20.0%	-65.0%
Other Medical	66	+23	+19	+15	+16	+13	+0	+54.6%	+38.6%	+30.0%	+32.8%	+25.4%	+14.0%
Medical/ Dental, other	75	+19	+17	+14	+16	+11	-1	+33.4%	+29.0%	+23.2%	+26.2%	+17.6%	-0.7%
Medical & Dental	10,159	+2,898	+2,210	+1,911	+1,581	+754	+97	+39.9%	+27.8%	+23.2%	+18.4%	+8.0%	+1.0%
Clinical Nurse/ Midwife Manager	5,022	+1,417	+1,274	+967	+824	+634	+48	+39.3%	+34.0%	+23.8%	+19.6%	+14.4%	+4751.0%
Director Nursing/Midwifery, Assistant	518	+163	+123	+95	+85	+65	+3	+46.1%	+31.1%	+22.3%	+19.5%	+14.4%	+328.0%
Director of Nursing/Midwifery	96	+33	+28	+19	+17	+13	-1	+52.3%	+40.6%	+24.8%	+21.3%	+15.6%	-120.0%
Nurse/ Midwife Manager	5,636	+1,613	+1,424	+1,080	+925	+712	+50	+40.1%	+33.8%	+23.7%	+19.6%	+14.5%	+0.9%
Advanced Nurse/ Midwife Practitioner	643	+493	+438	+367	+306	+203	+33	+330.2%	+214.5%	+132.7%	+90.7%	+46.1%	+3312.0%
Clinical Nurse/ Midwife Specialist	1,189	+323	+320	+272	+234	+161	-11	+37.3%	+36.7%	+29.7%	+24.5%	+15.6%	-1069.0%
Nurse/ Midwife Specialist & AN/MP	1,832	+817	+758	+639	+540	+364	+22	+80.4%	+70.6%	+53.5%	+41.8%	+24.8%	+1.2%
Graduate Nursing/ Midwifery								-100.0%	-100.0%	-100.0%	-100.0%	-100.0%	
Nursing Bank	9	-36	-39	-29	-22	-14	-3	-80.2%	-81.1%	-76.2%	-70.9%	-60.4%	-283.0%
Staff Midwives	1,354	-103	-84	-126	-103	-125	+28	-7.1%	-5.8%	-8.5%	-7.1%	-8.5%	+2778.0%
Staff Nurse [Psychiatric]	23	-10	-7	-8	-4	-6	-0	-29.3%	-22.5%	-24.7%	-15.8%	-19.1%	-35.0%
Staff Nurse [Intellectual Disability]						-72		-100.0%	-100.0%	-100.0%	-100.0%	-100.0%	
Staff Nurses [General/ Children's]	17,371	+3,471	+2,846	+2,521	+2,210	+1,447	+144	+25.0%	+19.6%	+17.0%	+14.6%	+9.1%	+14448.0%

Oct 2022 (Dec 2019 figure: 62,537)	WTE Oct 2022	WTE change since Dec 16	WTE change since Dec 17	WTE change since Dec 18	WTE change since Dec 19	WTE change since Dec 20	WTE change since Sep 22	% change since Dec 16	% change since Dec 17	% change since Dec 18	% change since Dec 19	% change since Dec 20	% change since Sep 22
Overall	72,835	+16,452	+14,213	+11,929	+10,297	+6,396	+394	+29.2%	+24.2%	+19.6%	+16.5%	+9.6%	+0.5%
Staff Nurse/ Staff Midwife	18,757	+3,322	+2,716	+2,359	+2,081	+1,231	+169	+21.5%	+16.9%	+14.4%	+12.5%	+7.0%	+0.9%
Public Health Nurse		-1	-1	-1	-1	-2		-100.0%	-100.0%	-100.0%	-100.0%	-100.0%	-100.0%
Pre-registration Nurse/ Midwife Intern	163	+92	+92	+92	+81	+148	-203	+128.2%	+127.9%	+129.8%	+97.9%	+992.9%	-20289.0%
Pre-registration Nurse Intern (COVID-19)						-156		-100.0%	-100.0%	-100.0%	-100.0%	-100.0%	
Post-registration Nurse/ Midwife Student	155	-3	+4	-17	-40	+5	+11	-1.6%	+2.8%	-10.0%	-20.5%	+3.1%	+1111.0%
Nursing/ Midwifery awaiting registration	277	+236	+180	+164	+138	+221	+65	+576.6%	+186.3%	+143.9%	+99.7%	+390.3%	+6535.0%
Nursing/ Midwifery Student	596	+326	+276	+239	+179	+218	-126	+120.3%	+86.4%	+66.8%	+43.0%	+57.7%	-17.5%
Nursing Education/Clinical	176	+1	+10	+3	-15	-20	+0	+0.6%	+6.1%	+1.6%	-7.7%	-10.3%	+16.0%
Other Nursing/ Midwifery	6	-19	-21	-23	-27	-24	-1	-75.6%	-77.5%	-79.0%	-82.1%	-80.0%	-50.0%
Nursing/ Midwifery other	182	-18	-11	-20	-42	-44	-0	-8.8%	-5.5%	-9.8%	-18.8%	-19.6%	-0.2%
Nursing & Midwifery	27,002	+6,479	+5,163	+4,296	+3,681	+2,479	+114	+31.6%	+23.6%	+18.9%	+15.8%	+10.1%	+0.4%
Dietitians	473	+127	+123	+74	+79	+34	+2	+36.8%	+35.2%	+18.5%	+20.2%	+7.8%	+218.0%
Occupational Therapists	513	+181	+170	+153	+144	+96	+5	+54.4%	+49.7%	+42.7%	+39.2%	+22.9%	+493.0%
Orthoptists	20	-2	-6	-4	-1	-0	+2	-8.1%	-22.8%	-15.1%	-6.9%	-0.6%	+157.0%
Physiotherapists	1,174	+294	+237	+200	+182	+107	+26	+33.3%	+25.2%	+20.6%	+18.4%	+10.0%	+2645.0%
Podiatrists & Chiropodists	31	-0	+3	+1	-3	-5	+1	-0.0%	+9.2%	+4.3%	-7.9%	-14.5%	+63.0%
Speech & Language Therapists	273	+96	+84	+72	+75	+37	+8	+54.1%	+44.2%	+35.9%	+38.0%	+15.7%	+811.0%
Therapy Professions	2,485	+695	+610	+498	+477	+268	+44	+38.9%	+32.6%	+25.0%	+23.8%	+12.1%	+1.8%
Audiology	43	+11	+12	+14	+15	+13	+1	+35.7%	+38.7%	+49.0%	+55.4%	+43.2%	+122.0%
Biochemists	63	+4	-0	-9	-9	-13	-0	+6.5%	-0.2%	-12.2%	-12.7%	-17.6%	-18.0%
Cardiac Physiologists	252	+36	+39	+29	+24	+8	-0	+16.9%	+18.5%	+12.9%	+10.8%	+3.4%	-22.0%
Clinical Engineering	159	+35	+27	+24	+17	+10	-1	+28.3%	+20.6%	+17.5%	+11.8%	+6.8%	-144.0%
Dosimetrists	13	+3	+4	+2	+0	-1	+1	+26.9%	+49.0%	+22.5%	+0.3%	-7.0%	+71.0%
E.C.G. Technicians	8	-5	-2	-1	-2	-3	-2	-35.4%	-15.5%	-9.9%	-18.1%	-24.9%	-208.0%
Gastrointestinal Physiologists	4	+1	-1	+2	+2	+2	+0	+45.5%	-16.5%	+96.2%	+96.2%	+96.2%	+4.0%
Medical Science	2,006	+140	+126	+118	+122	+56	+20	+7.5%	+6.7%	+6.2%	+6.4%	+2.9%	+1971.0%
Neuro-Physiologists	52	+11	+4	+3	+2	-5	+1	+26.6%	+9.1%	+5.7%	+4.3%	-8.4%	+80.0%
Perfusionists	21	+2	-0	+1	-1	-1	+0	+8.6%	-1.0%	+3.6%	-5.5%	-5.4%	+0.0%
Phlebotomists	221	+67	+61	+61	+49	+38	+0	+43.9%	+38.0%	+38.0%	+28.5%	+20.5%	+14.0%
Physicists	188	+36	+34	+7	+7	+17	+4	+23.7%	+21.7%	+3.8%	+4.0%	+9.6%	+357.0%
Radiation Therapists	207	+19	+21	+15	+7	-6	+6	+10.0%	+11.4%	+7.6%	+3.7%	-2.6%	+624.0%
Radiographers	1,411	+373	+334	+296	+265	+172	+14	+35.9%	+31.0%	+26.5%	+23.1%	+13.9%	+1388.0%
Respiratory Physiologists	73	+20	+18	+14	+8	+3	+2	+38.1%	+33.7%	+24.4%	+12.5%	+3.7%	+199.0%
Vascular Physiologists	34	+5	+7	+8	+5	+6	+0	+16.8%	+25.0%	+29.4%	+16.1%	+21.2%	+49.0%
Health Science/ Diagnostics	4,753	+759	+685	+582	+511	+295	+45	+19.0%	+16.8%	+14.0%	+12.0%	+6.6%	+1.0%
Social Care	3	-0	+0	+0	-0	-1	-0	-11.4%	+10.6%	+14.8%	-0.3%	-20.1%	-1.5%
Social Workers	429	+110	+104	+88	+74	+46	-1	+34.5%	+32.1%	+25.7%	+20.9%	+11.9%	-0.1%
Psychologists	142	+60	+57	+52	+41	+31	+1	+73.2%	+67.5%	+58.2%	+40.7%	+28.6%	+0.4%
Pharmacists	643	+206	+183	+133	+113	+53	+2	+47.3%	+39.8%	+26.1%	+21.3%	+8.9%	+246.0%

Oct 2022 (Dec 2019 figure: 62,537)	WTE Oct 2022	WTE change since Dec 16	WTE change since Dec 17	WTE change since Dec 18	WTE change since Dec 19	WTE change since Dec 20	WTE change since Sep 22	% change since Dec 16	% change since Dec 17	% change since Dec 18	% change since Dec 19	% change since Dec 20	% change since Sep 22
Overall	72,835	+16,452	+14,213	+11,929	+10,297	+6,396	+394	+29.2%	+24.2%	+19.6%	+16.5%	+9.6%	+0.5%
Pharmacy Technicians	484	+187	+169	+153	+113	+68	+7	+62.9%	+53.9%	+46.1%	+30.6%	+16.2%	+655.0%
Pharmacy	1,127	+393	+353	+286	+226	+120	+9	+53.6%	+45.6%	+33.9%	+25.1%	+12.0%	+0.8%
H&SC, Other	177	+23	+10	+5	+26	+23	+15	+14.8%	+5.8%	+2.7%	+17.3%	+15.3%	+9.4%
Health & Social Care Professionals	9,116	+2,249	+1,819	+1,510	+1,355	+783	+113	+32.8%	+24.9%	+19.9%	+17.5%	+9.4%	+1.3%
Executive Management	121	+59	+57	+38	+34	+19	+3	+95.3%	+89.9%	+45.9%	+39.3%	+19.0%	+254.0%
Senior Management (VIII & GM)	593	+257	+216	+175	+162	+115	+5	+76.8%	+57.5%	+41.7%	+37.5%	+24.0%	+513.0%
Management (VIII & above)	714	+316	+274	+213	+196	+134	+8	+79.6%	+62.2%	+42.4%	+37.8%	+23.1%	+1.1%
Middle Management (V-VII)	3,281	+1,484	+1,307	+1,133	+971	+621	+42	+82.5%	+66.2%	+52.7%	+42.0%	+23.3%	+4160.0%
Other Administrative	18	+5	+6	+3	+3	+5	-1	+39.1%	+53.4%	+17.7%	+19.3%	+34.0%	-89.0%
Administrative/ Supervisory (V to VII)	3,299	+1,489	+1,313	+1,136	+974	+625	+41	+82.2%	+66.1%	+52.5%	+41.9%	+23.4%	+1.2%
Clerical (III & IV)	7,200	+923	+727	+593	+594	+542	+24	+14.7%	+11.2%	+9.0%	+9.0%	+8.1%	+0.3%
Management & Administrative	11,213	+3,014	+2,314	+1,941	+1,764	+1,301	+73	+36.8%	+26.0%	+20.9%	+18.7%	+13.1%	+0.7%
Catering	472	+32	+21	+29	+2	-17	+0	+7.3%	+4.7%	+6.5%	+0.4%	-3.6%	+20.0%
Household Services	3,237	+657	+602	+549	+520	+138	-18	+25.5%	+22.8%	+20.4%	+19.1%	+4.5%	-1846.0%
Other Labs & Associated	580	+257	+241	+225	+201	+140	-30	+79.3%	+70.8%	+63.5%	+53.0%	+31.8%	-2969.0%
Other Support	765	+55	+38	+30	+26	+3	-4	+7.8%	+5.3%	+4.1%	+3.6%	+0.5%	-363.0%
Portering	1,403	+78	+70	+75	+78	+41	-8	+5.9%	+5.3%	+5.7%	+5.9%	+3.0%	-752.0%
Support	6,457	+1,079	+972	+908	+827	+305	-59	+20.1%	+17.7%	+16.4%	+14.7%	+5.0%	-0.9%
Maintenance	537	+47	+56	+50	+31	+23	+2	+9.6%	+11.7%	+10.2%	+6.1%	+4.5%	+157.0%
Technical Services	28	+9	+9	+6	+4	+3		+45.8%	+45.8%	+29.0%	+16.8%	+12.0%	
Maintenance/ Technical	565	+56	+65	+56	+35	+26	+2	+10.9%	+13.0%	+11.0%	+6.5%	+4.8%	+0.3%
General Support	7,022	+1,226	+1,037	+964	+862	+331	-58	+21.2%	+17.3%	+15.9%	+14.0%	+5.0%	-0.8%
Attendant/ Aide	1,233	-466	-512	-441	-349	-239	+5	-27.4%	-29.4%	-26.3%	-22.1%	-16.2%	+529.0%
Health & Social Care Assistants	213	+113	+103	+88	+84	+57	+9	+114.0%	+93.4%	+70.3%	+65.3%	+36.2%	+919.0%
Health Care Assistant/ Care Assistant	4,695	+1,929	+1,791	+1,414	+1,131	+857	-14	+69.7%	+61.7%	+43.1%	+31.7%	+22.3%	-1420.0%
HCA (Student Nurse/Midwife COVID-19)						-50		-100.0%	-100.0%	-100.0%	-100.0%	-100.0%	
Health Care Assistants	6,141	+1,577	+1,382	+1,061	+866	+625	+0	+34.5%	+29.0%	+20.9%	+16.4%	+11.3%	+0.0%
Ambulance Staff	1,948	+307	+203	+166	+123	+72	+43	+18.7%	+11.6%	+9.3%	+6.7%	+3.8%	+2.3%
Health Promotion	4	+2	+2	+2	+3	+1		+69.0%	+59.2%	+59.2%	+158.7%	+28.6%	
Other Care Grades	147	+75	+86	+87	+69	+53	+7	+105.2%	+140.6%	+144.5%	+87.4%	+56.5%	+662.0%
Pastoral Care	80	-7	-3	-11	-7	-4	+4	-8.3%	-3.3%	-12.3%	-7.9%	-5.1%	+375.0%
Workshop Services	2	+1	+1	+2	+1	+2		+106.0%	+106.0%	+312.0%	+106.0%	+312.0%	
Care, other	233	+71	+86	+79	+65	+51	+10	+43.7%	+58.2%	+51.1%	+38.9%	+28.2%	+4.7%
Patient & Client Care	8,322	+2,231	+1,670	+1,306	+1,055	+748	+54	+36.6%	+25.1%	+18.6%	+14.5%	+9.9%	+0.7%

Source: Health Service Personnel Census