

Acute Service Employment Report: September 2022

Employment by Staff Group

Sep 2022	WTE Dec 2019	WTE Dec 2020	WTE Aug 2022	WTE Sep 2022	WTE change since Aug 22	WTE change since Dec 20	% change since Dec 20	WTE change since Dec 19	% change since Dec 19	No. Sep 2022
Overall	62,537	66,439	72,245	72,441	+196	+6,002	+9.0%	+9,904	+15.8%	80,933
Consultants	2,782	2,974	3,228	3,264	+36	+290	+9.8%	+482	+17.3%	3,573
Registrars	2,942	3,115	3,367	3,436	+68	+320	+10.3%	+494	+16.8%	3,559
SHO/ Interns	2,795	3,253	3,209	3,287	+77	+34	+1.0%	+492	+17.6%	3,372
Medical/ Dental, other	60	64	75	76	+1	+12	+18.4%	+16	+27.1%	108
Medical & Dental	8,578	9,405	9,878	10,062	+184	+657	+7.0%	+1,483	+17.3%	10,612
Nurse/ Midwife Manager	4,710	4,924	5,543	5,586	+42	+662	+13.5%	+876	+18.6%	6,157
Nurse/ Midwife Specialist & AN/MP	1,292	1,468	1,761	1,809	+48	+341	+23.2%	+517	+40.1%	2,024
Staff Nurse/ Staff Midwife	16,676	17,526	18,606	18,588	-18	+1,062	+6.1%	+1,912	+11.5%	21,095
Public Health Nurse	1	2				-2	-100.0%	-1	-100.0%	
Pre-registration Nurse/ Midwife Intern	83	15	531	366	-164	+351	+2350.0%	+284	+343.7%	769
Pre-registration Nurse Intern (COVID-19)		156				-156	-100.0%		-100.0%	
Post-registration Nurse/ Midwife Student	195	151	105	144	+40	-6	-4.3%	-51	-26.2%	216
Nursing/ Midwifery awaiting registration	139	57	156	212	+56	+155	+274.8%	+73	+52.6%	237
Nursing/ Midwifery Student	417	378	791	722	-69	+345	+91.2%	+306	+73.3%	1,222
Nursing/ Midwifery other	224	226	179	182	+4	-44	-19.4%	-42	-18.6%	214
Nursing & Midwifery	23,321	24,524	26,880	26,888	+8	+2,364	+9.6%	+3,567	+15.3%	30,712
Therapy Professions	2,008	2,217	2,432	2,441	+9	+224	+10.1%	+433	+21.6%	2,775
Health Science/ Diagnostics	4,242	4,458	4,673	4,708	+36	+250	+5.6%	+466	+11.0%	5,251
Social Care	3	4	3	3	+0	-1	-18.9%	+0	+1.2%	5
Social Workers	355	384	427	430	+3	+46	+12.0%	+75	+21.1%	481
Psychologists	101	110	143	141	-2	+31	+28.1%	+40	+40.2%	172
Pharmacy	901	1,006	1,122	1,118	-4	+111	+11.1%	+217	+24.1%	1,259
H&SC, Other	151	154	147	162	+15	+8	+5.3%	+11	+7.2%	221
Health & Social Care Professionals	7,760	8,333	8,946	9,003	+57	+670	+8.0%	+1,242	+16.0%	10,164
Management (VIII & above)	518	579	710	706	-4	+126	+21.8%	+188	+36.4%	722
Administrative/ Supervisory (V to VII)	2,326	2,674	3,219	3,259	+40	+584	+21.9%	+933	+40.1%	3,475
Clerical (III & IV)	6,606	6,658	7,178	7,176	-3	+517	+7.8%	+570	+8.6%	8,124
Management & Administrative	9,450	9,912	11,107	11,140	+33	+1,228	+12.4%	+1,691	+17.9%	12,321
Support	5,630	6,152	6,633	6,516	-117	+364	+5.9%	+886	+15.7%	7,333
Maintenance/ Technical	531	539	545	564	+18	+24	+4.5%	+33	+6.2%	578
General Support	6,160	6,691	7,179	7,080	-99	+389	+5.8%	+919	+14.9%	7,911
Health Care Assistants	5,275	5,516	6,142	6,141	-1	+625	+11.3%	+866	+16.4%	6,939
Ambulance Staff	1,825	1,876	1,893	1,905	+11	+28	+1.5%	+80	+4.4%	2,008
Care, other	168	182	220	223	+3	+41	+22.5%	+55	+32.8%	266
Patient & Client Care	7,268	7,574	8,255	8,268	+13	+694	+9.2%	+1,001	+13.8%	9,213



Acute Services Employment by Hospital & Hospital Group: Sep 2022

Sep 2022	WTE Dec 2019	WTE Dec 2020	WTE Aug 2022	WTE Sep 2022	WTE change since Aug 22	WTE change since Dec 20	% change since Dec 20	WTE change since Dec 19	% change since Dec 19	No. Sep 2022
Overall	62,537	66,439	72,245	72,441	+196	+6,002	+9.0%	+9,904	+15.8%	80,933
National Ambulance Service	1,933	1,990	2,021	2,033	+11	+43	+2.1%	+100	+5.1%	2,144
CHI at Connolly	136	136	142	146	+4	+10	+7.3%	+11	+7.7%	168
CHI at Crumlin	1,967	2,062	2,186	2,182	-4	+119	+5.8%	+215	+10.9%	2,516
CHI at Tallaght	255	259	279	286	+7	+28	+10.8%	+31	+12.2%	326
CHI at Temple Street	1,184	1,259	1,277	1,268	-9	+9	+0.7%	+84	+7.1%	1,465
CHI Corporate	3	2	32	33	+1	+31	+1541.5%	+30	+994.3%	33
CHI Programme	57	44	103	107	+4	+63	+141.9%	+50	+88.6%	115
Children's Health Ireland	3,602	3,762	4,020	4,023	+3	+260	+6.9%	+420	+11.7%	4,623
Coombe Women & Infants University	890	925	965	931	-34	+6	+0.6%	+41	+4.6%	1,042
MRH Portlaoise	750	780	825	827	+2	+47	+6.0%	+77	+10.3%	921
MRH Tullamore	1,101	1,146	1,182	1,203	+21	+57	+5.0%	+102	+9.3%	1,338
Naas General	759	777	883	895	+12	+118	+15.2%	+136	+17.9%	996
St. James's	4,058	4,266	4,520	4,535	+15	+269	+6.3%	+477	+11.8%	5,047
St. Luke's Rathgar	544	542	546	542	-3	-0	-0.0%	-2	-0.4%	576
Tallaght University	2,683	2,812	3,070	3,100	+30	+288	+10.2%	+417	+15.5%	3,476
Hospital Group HQ	33	40	54	56	+2	+16	+41.1%	+23	+67.7%	59
Dublin Midlands Hospital Group	10,819	11,288	12,044	12,088	+44	+801	+7.1%	+1,270	+11.7%	13,455
Cappagh National Orthopaedic	426	441	488	490	+2	+49	+11.0%	+63	+14.9%	552
Mater Misericordiae University	3,159	3,429	3,760	3,752	-8	+323	+9.4%	+593	+18.8%	4,099
MRH Mullingar	914	1,004	1,077	1,073	-3	+69	+6.9%	+160	+17.5%	1,187
National Maternity	880	916	932	928	-4	+12	+1.3%	+48	+5.5%	1,035
Our Lady's Navan	516	590	619	630	+11	+40	+6.7%	+114	+22.2%	729
St. Columcille's	452	457	472	467	-5	+10	+2.2%	+15	+3.4%	517
St Luke's General Kilkenny	1,119	1,185	1,241	1,247	+6	+63	+5.3%	+129	+11.5%	1,422
St. Michael's	397	404	416	407	-9	+3	+0.7%	+10	+2.5%	474
St. Vincent's University	2,838	3,087	3,269	3,244	-25	+157	+5.1%	+406	+14.3%	3,433
Wexford General	1,024	1,055	1,150	1,161	+11	+106	+10.1%	+137	+13.3%	1,291
Royal Victoria Eye & Ear	291	313	348	345	-2	+32	+10.3%	+54	+18.7%	398
National Rehabilitation	457	555	613	624	+11	+69	+12.5%	+167	+36.5%	689
IEHG Bank		8	18	19	+1	+11	+127.3%	+19	-100.0%	27
Hospital Group HQ	30	34	68	70	+2	+37	+109.6%	+40	+135.9%	86
Ireland East Hospital Group	12,502	13,478	14,472	14,458	-14	+980	+7.3%	+1,956	+15.6%	15,939
Beaumont	3,846	4,029	4,208	4,199	-8	+170	+4.2%	+353	+9.2%	4,550
Cavan General	1,034	1,059	1,253	1,263	+10	+205	+19.3%	+230	+22.2%	1,437
Connolly	1,334	1,462	1,568	1,570	+2	+108	+7.4%	+236	+17.7%	1,742
Louth County	277	289	298	300	+2	+11	+3.8%	+23	+8.2%	338
Monaghan	101	102	148	149	+2	+47	+46.5%	+48	+47.4%	176
Our Lady of Lourdes	2,149	2,287	2,467	2,468	+1	+181	+7.9%	+319	+14.8%	2,738
Rotunda	892	929	983	980	-3	+51	+5.5%	+88	+9.8%	1,192
Hospital Group HQ	30	41	61	60	-1	+19	+46.3%	+30	+99.3%	63

Sep 2022	WTE Dec 2019	WTE Dec 2020	WTE Aug 2022	WTE Sep 2022	WTE change since Aug 22	WTE change since Dec 20	% change since Dec 20	WTE change since Dec 19	% change since Dec 19	No. Sep 2022
Overall	62,537	66,439	72,245	72,441	+196	+6,002	+9.0%	+9,904	+15.8%	80,933
RCSI Hospitals Group	9,663	10,197	10,985	10,990	+4	+792	+7.8%	+1,327	+13.7%	12,236
Galway University	3,607	3,787	4,111	4,118	+7	+331	+8.7%	+512	+14.2%	4,629
Letterkenny University	1,607	1,769	2,035	2,066	+31	+297	+16.8%	+459	+28.6%	2,342
Mayo University	1,150	1,204	1,395	1,428	+33	+224	+18.6%	+278	+24.2%	1,597
Portiuncula University	790	843	935	943	+9	+100	+11.9%	+153	+19.4%	1,058
Roscommon University	333	367	426	431	+5	+64	+17.5%	+97	+29.2%	486
Sligo University	1,688	1,766	1,975	1,964	-11	+198	+11.2%	+276	+16.3%	2,236
Hospital Group HQ	79	93	102	110	+7	+16	+17.5%	+31	+39.2%	115
Saolta University Hospital Care	9,253	9,829	10,979	11,059	+80	+1,230	+12.5%	+1,806	+19.5%	12,463
Bantry General	266	277	324	328	+4	+51	+18.4%	+62	+23.3%	376
Cork University	4,014	4,316	4,745	4,738	-6	+423	+9.8%	+724	+18.0%	5,404
Lourdes Orthopaedic Kilcreene	70	70	70	71	+1	+1	+1.4%	+1	+1.3%	83
Mallow General	252	246	270	268	-2	+21	+8.7%	+16	+6.3%	310
Mercy University	1,173	1,243	1,361	1,388	+28	+145	+11.7%	+215	+18.4%	1,557
South Infirmary Victoria University	787	804	849	834	-14	+30	+3.8%	+48	+6.1%	995
South Tipperary General	868	968	1,040	1,040	-0	+71	+7.4%	+172	+19.8%	1,177
UH Kerry	1,114	1,215	1,360	1,394	+35	+180	+14.8%	+280	+25.2%	1,599
UH Waterford	1,949	2,103	2,311	2,340	+29	+237	+11.3%	+391	+20.0%	2,616
Hospital Group HQ	35	45	72	72	+0	+27	+59.1%	+38	+109.3%	82
South/South West Hospital Group	10,527	11,288	12,401	12,474	+73	+1,186	+10.5%	+1,947	+18.5%	14,199
Croom Orthopaedic	156	173	305	304	-1	+131	+75.4%	+148	+94.8%	336
Ennis	235	228	254	253	-1	+24	+10.7%	+18	+7.5%	289
Nenagh	250	259	289	286	-2	+27	+10.6%	+37	+14.7%	322
St. John's Limerick	311	321	338	337	-0	+17	+5.2%	+26	+8.4%	373
UH Limerick	2,814	3,122	3,628	3,634	+5	+512	+16.4%	+820	+29.1%	3,985
UMH Limerick	375	393	382	373	-9	-20	-5.1%	-2	-0.5%	433
Hospital Group HQ	6	10	12	12	-1	+2	+15.2%	+6	+92.6%	12
University of Limerick Hospital Group	4,146	4,506	5,208	5,198	-10	+692	+15.4%	+1,052	+25.4%	5,750
Other	91	101	115	119	+4	+18	+17.9%	+28	+30.3%	124
other Acute Services	91	101	115	119	+4	+18	+17.9%	+28	+30.3%	124

Acute Services Employment by Administration (HSE / S38): September 2022

Sep 2022	WTE Dec 2019	WTE Dec 2020	WTE Aug 2022	WTE Sep 2022	WTE change since Aug 22	WTE change since Dec 20	% change since Dec 20	WTE change since Dec 19	% change since Dec 19	No. Sep 2022
Overall	62,537	66,439	72,245	72,441	+196	+6,002	+9.0%	+9,904	+15.8%	80,933
Health Service Executive	35,850	38,205	42,107	42,324	+217	+4,119	+10.8%	+6,474	+18.1%	47,398
Section 38 Hospitals	26,687	28,234	30,138	30,117	-22	+1,883	+6.7%	+3,430	+12.9%	33,535

HSE

Sep 2022	WTE Dec 2019	WTE Dec 2020	WTE Aug 2022	WTE Sep 2022	WTE change since Aug 22	WTE change since Dec 20	% change since Dec 20	WTE change since Dec 19	% change since Dec 19	No. Sep 2022
Overall	35,850	38,205	42,107	42,324	+217	+4,119	+10.8%	+6,474	+18.1%	47,398
Consultants	1,479	1,561	1,679	1,690	+11	+129	+8.3%	+211	+14.3%	1,824
Registrars	1,618	1,711	1,805	1,854	+49	+143	+8.4%	+236	+14.6%	1,933
SHO/ Interns	1,762	2,032	2,026	2,096	+69	+63	+3.1%	+334	+19.0%	2,168
Medical/ Dental, other	37	39	47	48	+1	+8	+20.9%	+11	+29.7%	64
Medical & Dental	4,895	5,343	5,557	5,687	+131	+344	+6.4%	+792	+16.2%	5,989
Nurse/ Midwife Manager	2,487	2,580	2,937	2,978	+42	+399	+15.5%	+491	+19.8%	3,270
Nurse/ Midwife Specialist & AN/MP	656	747	934	953	+19	+206	+27.6%	+298	+45.4%	1,055
Staff Nurse/ Staff Midwife	9,760	10,302	11,229	11,193	-36	+891	+8.7%	+1,433	+14.7%	12,990
Public Health Nurse	1	2				-2	-100.0%	-1	-100.0%	
Pre-registration Nurse/ Midwife Intern	36	6	268	237	-31	+231	+3594.4%	+202	+565.3%	476
Pre-registration Nurse Intern (COVID-19)		65				-65	-100.0%		-100.0%	
Post-registration Nurse/ Midwife Student	77	57	30	35	+5	-22	-38.3%	-42	-54.2%	51
Nursing/ Midwifery awaiting registration	67	15	70	121	+51	+106	+707.2%	+55	+81.7%	146
Nursing/ Midwifery Student	179	143	368	394	+25	+251	+175.4%	+215	+119.8%	673
Nursing/ Midwifery other	77	87	78	81	+3	-6	-7.2%	+4	+5.6%	96
Nursing & Midwifery	13,160	13,861	15,547	15,600	+53	+1,739	+12.5%	+2,439	+18.5%	18,084
Therapy Professions	980	1,111	1,261	1,267	+5	+156	+14.0%	+287	+29.3%	1,449
Health Science/ Diagnostics	2,394	2,552	2,703	2,715	+12	+163	+6.4%	+321	+13.4%	3,048
Social Care	2	3	2	2	+0	-1	-24.8%	+0	+1.7%	3
Social Workers	98	108	136	138	+1	+29	+26.8%	+40	+40.5%	156
Psychologists	9	10	23	22	-0	+12	+123.8%	+14	+159.9%	28
Pharmacy	456	531	638	635	-3	+104	+19.6%	+179	+39.2%	738
H&SC, Other	53	46	52	59	+7	+13	+29.0%	+6	+11.7%	98
Health & Social Care Professionals	3,991	4,361	4,815	4,838	+23	+477	+10.9%	+846	+21.2%	5,520
Management (VIII & above)	259	292	341	342	+1	+50	+17.1%	+83	+32.2%	348
Administrative/ Supervisory (V to VII)	874	1,078	1,452	1,482	+30	+404	+37.5%	+608	+69.5%	1,576
Clerical (III & IV)	3,834	3,866	4,192	4,202	+10	+337	+8.7%	+369	+9.6%	4,666
Management & Administrative	4,967	5,236	5,985	6,027	+41	+791	+15.1%	+1,060	+21.3%	6,590
Support	3,215	3,618	4,024	3,959	-65	+341	+9.4%	+744	+23.1%	4,410
Maintenance/ Technical	292	295	303	304	+1	+9	+3.2%	+12	+4.1%	315
General Support	3,507	3,913	4,327	4,263	-64	+350	+8.9%	+756	+21.6%	4,725
Health Care Assistants	3,402	3,498	3,837	3,857	+20	+358	+10.2%	+455	+13.4%	4,306
Ambulance Staff	1,825	1,876	1,893	1,905	+11	+28	+1.5%	+80	+4.4%	2,008
Care, other	103	117	146	148	+2	+32	+27.3%	+45	+44.2%	176
Patient & Client Care	5,330	5,491	5,876	5,910	+34	+419	+7.6%	+580	+10.9%	6,490

Section 38 Hospitals

Sep 2022	WTE Dec 2019	WTE Dec 2020	WTE Aug 2022	WTE Sep 2022	WTE change since Aug 22	WTE change since Dec 20	% change since Dec 20	WTE change since Dec 19	% change since Dec 19	No. Sep 2022
Overall	26,687	28,234	30,138	30,117	-22	+1,883	+6.7%	+3,430	+12.9%	33,535
Consultants	1,303	1,413	1,549	1,574	+25	+161	+11.4%	+271	+20.8%	1,749
Registrars	1,324	1,404	1,562	1,582	+19	+177	+12.6%	+258	+19.5%	1,626
SHO/ Interns	1,033	1,220	1,183	1,191	+8	-29	-2.4%	+158	+15.3%	1,204
Medical/ Dental, other	23	25	28	28	+0	+4	+14.3%	+5	+22.9%	44
Medical & Dental	3,683	4,062	4,322	4,375	+53	+313	+7.7%	+691	+18.8%	4,623
Nurse/ Midwife Manager	2,223	2,344	2,607	2,607	+1	+264	+11.2%	+384	+17.3%	2,887
Nurse/ Midwife Specialist & AN/MP	636	721	827	856	+29	+135	+18.7%	+220	+34.6%	969
Staff Nurse/ Staff Midwife	6,916	7,224	7,376	7,395	+18	+171	+2.4%	+479	+6.9%	8,105
Pre-registration Nurse/ Midwife Intern	47	9	262	129	-133	+121	+1413.5%	+82	+175.3%	293
Pre-registration Nurse Intern (COVID-19)		91				-91	-100.0%		-100.0%	
Post-registration Nurse/ Midwife Student	119	94	75	109	+34	+15	+16.2%	-10	-8.2%	165
Nursing/ Midwifery awaiting registration	72	42	86	90	+5	+49	+117.9%	+18	+25.6%	91
Nursing/ Midwifery Student	238	235	423	329	-94	+94	+39.9%	+91	+38.3%	549
Nursing/ Midwifery other	147	139	101	101	+0	-38	-27.0%	-46	-31.2%	118
Nursing & Midwifery	10,161	10,663	11,333	11,288	-45	+626	+5.9%	+1,128	+11.1%	12,628
Therapy Professions	1,028	1,105	1,171	1,174	+3	+68	+6.2%	+146	+14.2%	1,326
Health Science/ Diagnostics	1,848	1,907	1,970	1,994	+24	+87	+4.6%	+145	+7.9%	2,203
Social Care	1	1	1	1						2
Social Workers	257	275	290	292	+2	+17	+6.1%	+35	+13.6%	325
Psychologists	92	100	120	119	-1	+19	+18.6%	+27	+29.0%	144
Pharmacy	445	476	485	483	-2	+7	+1.5%	+38	+8.6%	521
H&SC, Other	98	108	94	102	+8	-5	-4.8%	+5	+4.7%	123
Health & Social Care Professionals	3,769	3,972	4,131	4,165	+34	+193	+4.9%	+396	+10.5%	4,644
Management (VIII & above)	259	288	369	364	-5	+76	+26.6%	+105	+40.5%	374
Administrative/ Supervisory (V to VII)	1,451	1,596	1,766	1,777	+10	+180	+11.3%	+325	+22.4%	1,899
Clerical (III & IV)	2,772	2,793	2,986	2,973	-13	+181	+6.5%	+201	+7.3%	3,458
Management & Administrative	4,483	4,676	5,122	5,114	-8	+437	+9.4%	+631	+14.1%	5,731
Support	2,415	2,533	2,609	2,557	-52	+24	+0.9%	+142	+5.9%	2,923
Maintenance/ Technical	238	244	242	259	+17	+15	+6.2%	+21	+8.9%	263
General Support	2,653	2,778	2,851	2,816	-35	+39	+1.4%	+163	+6.1%	3,186
Health Care Assistants	1,873	2,018	2,305	2,284	-21	+266	+13.2%	+411	+21.9%	2,633
Health Promotion	2	3	4	4	-0	+1	+28.6%	+3	+158.7%	6
Other Care Grades	17	16	27	27	+0	+12	+73.6%	+10	+55.1%	31
Pastoral Care	45	46	41	41	+0	-5	-10.5%	-4	-8.1%	50
Workshop Services	1	1	2	2		+2	+312.0%	+1	+106.0%	3
Care, other	65	66	74	75	+0	+9	+13.9%	+10	+14.7%	90
Patient & Client Care	1,938	2,083	2,379	2,359	-21	+275	+13.2%	+421	+21.7%	2,723

Acute Services Employment by Hospital Group, CHO etc. Sep 2022

National Ambulance Service

Sep 2022	WTE Dec 2019	WTE Dec 2020	WTE Aug 2022	WTE Sep 2022	WTE change since Aug 22	WTE change since Dec 20	% change since Dec 20	WTE change since Dec 19	% change since Dec 19	No. Sep 2022
Overall	1,933	1,990	2,021	2,033	+11	+43	+2.1%	+100	+5.1%	2,144
Consultants	1	1	1	1					0.0	1
Medical & Dental	1	1	1	1					0.0	1
Nurse/ Midwife Manager	1	1	2	3	+1	+2	+167.0%	+2	+167.0%	3
Staff Nurse/ Staff Midwife	1	1				-1	-100.0%	-1	-100.0%	
Nursing & Midwifery	2	2	2	3	+1	+1	+33.5%	+1	+33.5%	3
Therapy Professions	1	1				-1	-100.0%	-1	-100.0%	
Health & Social Care Professionals	1	1				-1	-100.0%	-1	-100.0%	
Management (VIII & above)	12	14	16	19	+3	+4	+31.2%	+6	+53.1%	19
Administrative/ Supervisory (V to VII)	29	33	49	48	-1	+15	+46.8%	+20	+68.3%	51
Clerical (III & IV)	41	42	46	42	-4	+1	+1.6%	+1	+2.4%	46
Management & Administrative	82	89	110	109	-1	+20	+23.1%	+27	+32.9%	116
Support	4	4	4	4				+0	+0.3%	4
Maintenance/ Technical	2	2	1	1		-1	-50.0%	-1	-50.0%	1
General Support	6	6	5	5		-1	-18.1%	-1	-18.0%	5
Health Care Assistants	2	2	1	1		-1	-53.5%	-1	-53.5%	1
Ambulance Staff	1,825	1,876	1,892	1,904	+11	+27	+1.5%	+79	+4.3%	2,007
Care, other	15	14	11	11		-3	-20.6%	-4	-26.7%	11
Patient & Client Care	1,841	1,892	1,904	1,915	+11	+24	+1.2%	+74	+4.0%	2,019

Children's Health Ireland

Sep 2022	WTE Dec 2019	WTE Dec 2020	WTE Aug 2022	WTE Sep 2022	WTE change since Aug 22	WTE change since Dec 20	% change since Dec 20	WTE change since Dec 19	% change since Dec 19	No. Sep 2022
Overall	3,602	3,762	4,020	4,023	+3	+260	+6.9%	+420	+11.7%	4,623
Consultants	220	237	259	264	+4	+27	+11.3%	+44	+19.8%	288
Registrars	204	217	220	224	+4	+6	+3.0%	+20	+9.6%	236
SHO/ Interns	88	95	104	104	+1	+9	+9.5%	+16	+18.5%	106
Medical/ Dental, other	1	1	1	1	-0	-0	-10.8%	-0	-10.8%	2
Medical & Dental	514	551	585	593	+8	+42	+7.7%	+79	+15.4%	632
Nurse/ Midwife Manager	331	334	362	359	-3	+25	+7.4%	+28	+8.4%	421
Nurse/ Midwife Specialist & AN/MP	152	172	194	204	+10	+32	+18.6%	+52	+34.4%	244
Staff Nurse/ Staff Midwife	805	850	905	881	-25	+30	+3.5%	+75	+9.3%	1,014
Pre-registration Nurse/ Midwife Intern	12		19	19	+0	+19	-100.0%	+6	+50.9%	52
Pre-registration Nurse Intern (COVID-19)		13				-13	-100.0%		-100.0%	
Post-registration Nurse/ Midwife Student	63	43	42	65	+23	+22	+50.6%	+2	+2.9%	105
Nursing/ Midwifery awaiting registration			4	4		+4	-100.0%	+4	-100.0%	4
Nursing/ Midwifery Student	75	56	64	87	+23	+31	+55.3%	+12	+15.6%	161
Nursing/ Midwifery other	10	8	8	8		-1	-7.3%	-3	-26.9%	9
Nursing & Midwifery	1,374	1,421	1,534	1,538	+4	+117	+8.3%	+164	+11.9%	1,849
Therapy Professions	136	145	155	155	+1	+10	+6.9%	+19	+14.1%	183
Health Science/ Diagnostics	280	285	295	291	-4	+7	+2.3%	+11	+4.0%	319
Social Workers	57	60	64	64	+0	+4	+6.8%	+7	+12.4%	78
Psychologists	38	42	47	45	-2	+3	+7.1%	+7	+17.7%	61
Pharmacy	45	51	60	59	-1	+7	+14.0%	+14	+30.9%	66
H&SC, Other	25	26	26	25	-1	-1	-3.5%	-0	-0.7%	32
Health & Social Care Professionals	581	609	646	639	-7	+30	+4.9%	+58	+9.9%	739
Management (VIII & above)	52	54	76	74	-2	+20	+37.3%	+21	+41.0%	74
Administrative/ Supervisory (V to VII)	272	299	332	332	-0	+33	+11.1%	+60	+22.1%	357
Clerical (III & IV)	420	409	434	440	+7	+31	+7.6%	+20	+4.7%	505
Management & Administrative	744	762	842	846	+4	+84	+11.0%	+101	+13.6%	936
Support	195	210	206	204	-2	-5	-2.5%	+9	+4.8%	232
Maintenance/ Technical	15	15	16	16		+1	+4.7%	+1	+4.7%	16
General Support	210	225	222	220	-2	-4	-2.0%	+10	+4.8%	248
Health Care Assistants	165	182	181	176	-5	-5	-3.0%	+11	+6.9%	206
Care, other	14	13	11	10	-1	-3	-26.0%	-4	-28.5%	13
Patient & Client Care	179	195	192	186	-5	-9	-4.6%	+7	+4.2%	219

Dublin Midlands Hospital Group

Sep 2022	WTE Dec 2019	WTE Dec 2020	WTE Aug 2022	WTE Sep 2022	WTE change since Aug 22	WTE change since Dec 20	% change since Dec 20	WTE change since Dec 19	% change since Dec 19	No. Sep 2022
Overall	10,819	11,288	12,044	12,088	+44	+801	+7.1%	+1,270	+11.7%	13,455
Consultants	464	499	545	552	+8	+53	+10.7%	+89	+19.1%	596
Registrars	490	522	581	586	+5	+64	+12.3%	+96	+19.6%	598
SHO/ Interns	424	460	454	458	+3	-3	-0.6%	+34	+8.0%	465
Medical/ Dental, other	7	7	9	10	+0	+2	+30.4%	+3	+40.1%	13
Medical & Dental	1,384	1,489	1,590	1,605	+16	+117	+7.8%	+221	+16.0%	1,672
Nurse/ Midwife Manager	877	908	982	978	-4	+70	+7.7%	+101	+11.5%	1,077
Nurse/ Midwife Specialist & AN/MP	205	236	281	294	+13	+58	+24.5%	+89	+43.7%	332
Staff Nurse/ Staff Midwife	2,835	2,950	2,973	2,994	+21	+44	+1.5%	+159	+5.6%	3,305
Pre-registration Nurse/ Midwife Intern	8	0	93	74	-20	+74	+245666.7%	+66	+846.5%	175
Pre-registration Nurse Intern (COVID-19)		28				-28	-100.0%		-100.0%	
Post-registration Nurse/ Midwife Student	13	12	11	5	-7	-8	-62.5%	-9	-65.4%	9
Nursing/ Midwifery awaiting registration	21	4	59	68	+9	+63	+1491.5%	+47	+222.1%	74
Nursing/ Midwifery Student	42	44	163	146	-17	+102	+231.3%	+104	+249.1%	258
Nursing/ Midwifery other	36	38	39	39	+1	+2	+4.6%	+4	+10.2%	46
Nursing & Midwifery	3,994	4,177	4,437	4,451	+14	+275	+6.6%	+457	+11.4%	5,018
Therapy Professions	367	397	429	421	-8	+24	+6.0%	+54	+14.8%	476
Health Science/ Diagnostics	979	1,001	1,009	1,018	+9	+17	+1.7%	+39	+4.0%	1,112
Social Workers	79	87	87	87	+1	-0	-0.3%	+8	+9.7%	95
Psychologists	13	13	17	18	+1	+4	+31.8%	+5	+40.4%	19
Pharmacy	220	243	240	240	+0	-4	-1.5%	+19	+8.8%	269
H&SC, Other	34	46	43	42	-1	-4	-9.1%	+8	+23.3%	47
Health & Social Care Professionals	1,692	1,788	1,823	1,825	+2	+37	+2.1%	+133	+7.9%	2,018
Management (VIII & above)	117	126	144	142	-2	+16	+12.6%	+25	+21.1%	148
Administrative/ Supervisory (V to VII)	494	523	605	604	-2	+81	+15.5%	+110	+22.2%	641
Clerical (III & IV)	1,055	1,046	1,110	1,109	-1	+63	+6.0%	+54	+5.1%	1,297
Management & Administrative	1,667	1,695	1,859	1,854	-5	+160	+9.4%	+188	+11.3%	2,086
Support	764	771	804	802	-2	+31	+4.0%	+38	+4.9%	920
Maintenance/ Technical	130	130	133	132	-0	+3	+2.1%	+2	+1.8%	135
General Support	894	901	937	934	-3	+33	+3.7%	+40	+4.5%	1,055
Health Care Assistants	1,167	1,217	1,368	1,388	+19	+170	+14.0%	+221	+18.9%	1,568
Care, other	21	21	29	30	+1	+9	+42.0%	+10	+46.2%	38
Patient & Client Care	1,187	1,239	1,398	1,418	+20	+179	+14.4%	+230	+19.4%	1,606

Ireland East Hospital Group

Sep 2022	WTE Dec 2019	WTE Dec 2020	WTE Aug 2022	WTE Sep 2022	WTE change since Aug 22	WTE change since Dec 20	% change since Dec 20	WTE change since Dec 19	% change since Dec 19	No. Sep 2022
Overall	12,502	13,478	14,472	14,458	-14	+980	+7.3%	+1,956	+15.6%	15,939
Consultants	551	599	647	660	+13	+61	+10.2%	+109	+19.8%	756
Registrars	623	666	727	737	+10	+71	+10.6%	+114	+18.3%	757
SHO/ Interns	576	676	684	701	+16	+25	+3.6%	+125	+21.7%	721
Medical/ Dental, other	26	28	34	34	-0	+6	+22.7%	+8	+32.8%	47
Medical & Dental	1,775	1,968	2,093	2,131	+38	+163	+8.3%	+356	+20.1%	2,281
Nurse/ Midwife Manager	963	1,054	1,200	1,209	+9	+155	+14.7%	+246	+25.6%	1,312
Nurse/ Midwife Specialist & AN/MP	310	340	383	391	+9	+51	+15.1%	+82	+26.4%	436
Staff Nurse/ Staff Midwife	3,328	3,452	3,659	3,651	-8	+199	+5.8%	+322	+9.7%	4,031
Pre-registration Nurse/ Midwife Intern	25	10	109	22	-87	+12	+112.5%	-3	-13.1%	52
Pre-registration Nurse Intern (COVID-19)		47				-47	-100.0%		-100.0%	
Post-registration Nurse/ Midwife Student	21	17	8	17	+9			-4	-19.0%	17
Nursing/ Midwifery awaiting registration	11	34	45	51	+6	+17	+50.3%	+40	+374.5%	57
Nursing/ Midwifery Student	57	109	162	90	-72	-18	-17.0%	+33	+57.9%	126
Nursing/ Midwifery other	77	73	48	47	-0	-25	-34.8%	-29	-38.1%	55
Nursing & Midwifery	4,735	5,027	5,452	5,389	-63	+362	+7.2%	+654	+13.8%	5,960
Therapy Professions	514	585	594	591	-3	+6	+1.1%	+77	+15.0%	669
Health Science/ Diagnostics	738	797	843	859	+16	+61	+7.7%	+120	+16.3%	940
Social Care	1	1	1	1					0.0	2
Social Workers	82	91	107	107	+0	+16	+17.2%	+25	+30.3%	115
Psychologists	33	36	48	49	+1	+13	+35.8%	+16	+50.1%	56
Pharmacy	194	201	218	214	-4	+13	+6.6%	+20	+10.4%	235
H&SC, Other	27	28	33	40	+7	+12	+43.6%	+13	+49.9%	54
Health & Social Care Professionals	1,589	1,739	1,844	1,861	+17	+122	+7.0%	+272	+17.1%	2,071
Management (VIII & above)	86	106	153	152	-1	+46	+43.4%	+66	+76.0%	155
Administrative/ Supervisory (V to VII)	544	630	727	741	+14	+110	+17.5%	+197	+36.1%	787
Clerical (III & IV)	1,252	1,269	1,337	1,335	-2	+66	+5.2%	+83	+6.6%	1,515
Management & Administrative	1,882	2,005	2,216	2,227	+11	+222	+11.1%	+345	+18.3%	2,457
Support	1,352	1,352	1,385	1,371	-14	+20	+1.5%	+19	+1.4%	1,535
Maintenance/ Technical	120	130	130	132	+2	+2	+1.6%	+11	+9.3%	134
General Support	1,473	1,481	1,515	1,503	-12	+22	+1.5%	+30	+2.1%	1,669
Health Care Assistants	1,021	1,226	1,318	1,312	-6	+87	+7.1%	+292	+28.6%	1,459
Care, other	28	31	34	34	+0	+3	+9.5%	+6	+21.4%	42
Patient & Client Care	1,049	1,257	1,352	1,346	-5	+90	+7.1%	+298	+28.4%	1,501

RCSI Hospitals Group

Sep 2022	WTE Dec 2019	WTE Dec 2020	WTE Aug 2022	WTE Sep 2022	WTE change since Aug 22	WTE change since Dec 20	% change since Dec 20	WTE change since Dec 19	% change since Dec 19	No. Sep 2022
Overall	9,663	10,197	10,985	10,990	+4	+792	+7.8%	+1,327	+13.7%	12,236
Consultants	441	470	509	516	+7	+46	+9.7%	+75	+17.1%	549
Registrars	481	508	544	554	+9	+45	+8.9%	+72	+15.0%	568
SHO/ Interns	439	510	487	501	+13	-9	-1.9%	+62	+14.1%	514
Medical/ Dental, other	5	7	5	5	-0	-2	-29.6%	-1	-13.4%	7
Medical & Dental	1,366	1,495	1,546	1,575	+29	+80	+5.3%	+209	+15.3%	1,638
Nurse/ Midwife Manager	769	820	968	976	+8	+156	+19.0%	+207	+26.9%	1,075
Nurse/ Midwife Specialist & AN/MP	185	208	262	269	+7	+61	+29.2%	+84	+45.1%	298
Staff Nurse/ Staff Midwife	2,588	2,767	2,867	2,879	+13	+112	+4.1%	+291	+11.2%	3,211
Pre-registration Nurse/ Midwife Intern	2		85	41	-44	+41	-100.0%	+38	+1558.5%	92
Pre-registration Nurse Intern (COVID-19)		13				-13	-100.0%		-100.0%	
Post-registration Nurse/ Midwife Student	42	38	22	31	+10	-6	-16.9%	-10	-24.7%	48
Nursing/ Midwifery awaiting registration	62	0	1	3	+2	+2	+968.0%	-59	-95.7%	3
Nursing/ Midwifery Student	106	51	108	75	-33	+24	+46.9%	-31	-29.5%	143
Nursing/ Midwifery other	43	42	29	28	-1	-14	-32.4%	-15	-34.0%	31
Nursing & Midwifery	3,692	3,889	4,233	4,228	-6	+339	+8.7%	+535	+14.5%	4,758
Therapy Professions	332	362	403	404	+1	+43	+11.8%	+72	+21.7%	450
Health Science/ Diagnostics	589	609	641	641	+0	+32	+5.2%	+52	+8.8%	719
Social Workers	66	66	73	73	+0	+7	+10.8%	+7	+11.1%	83
Psychologists	12	12	15	15		+3	+27.1%	+3	+27.1%	17
Pharmacy	127	146	154	153	-1	+7	+4.6%	+26	+20.7%	173
H&SC, Other	14	12	11	11	-0	-1	-6.7%	-4	-24.4%	17
Health & Social Care Professionals	1,140	1,207	1,297	1,297	-0	+91	+7.5%	+157	+13.8%	1,459
Management (VIII & above)	82	98	108	107	-1	+9	+9.3%	+25	+30.1%	110
Administrative/ Supervisory (V to VII)	349	415	496	502	+6	+88	+21.1%	+153	+44.0%	537
Clerical (III & IV)	1,031	1,026	1,056	1,053	-3	+28	+2.7%	+22	+2.1%	1,208
Management & Administrative	1,462	1,538	1,659	1,662	+3	+124	+8.1%	+200	+13.7%	1,855
Support	974	1,002	1,017	991	-25	-11	-1.1%	+17	+1.8%	1,122
Maintenance/ Technical	89	91	91	110	+18	+19	+20.4%	+21	+23.1%	115
General Support	1,063	1,093	1,108	1,101	-7	+8	+0.7%	+38	+3.6%	1,237
Health Care Assistants	902	942	1,110	1,096	-14	+154	+16.4%	+194	+21.5%	1,255
Care, other	37	34	31	31	-0	-3	-9.8%	-6	-16.8%	34
Patient & Client Care	939	976	1,141	1,127	-15	+151	+15.4%	+187	+19.9%	1,289

Saolta University Hospital Care

Sep 2022	WTE Dec 2019	WTE Dec 2020	WTE Aug 2022	WTE Sep 2022	WTE change since Aug 22	WTE change since Dec 20	% change since Dec 20	WTE change since Dec 19	% change since Dec 19	No. Sep 2022
Overall	9,253	9,829	10,979	11,059	+80	+1,230	+12.5%	+1,806	+19.5%	12,463
Consultants	463	476	515	510	-5	+33	+7.0%	+47	+10.1%	565
Registrars	445	468	482	497	+15	+29	+6.2%	+53	+11.8%	526
SHO/ Interns	535	637	641	663	+22	+25	+4.0%	+128	+23.9%	677
Medical/ Dental, other	10	12	13	14	+1	+2	+13.3%	+4	+34.4%	18
Medical & Dental	1,452	1,594	1,650	1,683	+33	+89	+5.6%	+231	+15.9%	1,786
Nurse/ Midwife Manager	567	589	668	675	+7	+86	+14.7%	+108	+19.1%	735
Nurse/ Midwife Specialist & AN/MP	218	236	288	294	+6	+58	+24.3%	+76	+34.6%	321
Staff Nurse/ Staff Midwife	2,764	2,871	3,183	3,174	-9	+303	+10.6%	+410	+14.8%	3,716
Public Health Nurse	1	1				-1	-100.0%	-1	-100.0%	
Pre-registration Nurse/ Midwife Intern	2	3	90	81	-9	+78	+2385.5%	+79	+5012.7%	157
Pre-registration Nurse Intern (COVID-19)		31				-31	-100.0%		-100.0%	
Post-registration Nurse/ Midwife Student	12	9	6	10	+4	+1	+11.4%	-2	-16.8%	13
Nursing/ Midwifery awaiting registration	36	1	39	66	+27	+65	+6767.7%	+30	+82.6%	70
Nursing/ Midwifery Student	50	44	135	157	+21	+113	+256.0%	+107	+215.4%	240
Nursing/ Midwifery other	33	39	30	33	+3	-7	-16.7%	-0	-0.2%	40
Nursing & Midwifery	3,633	3,781	4,304	4,333	+29	+552	+14.6%	+699	+19.2%	5,052
Therapy Professions	262	271	311	317	+6	+46	+16.8%	+55	+21.0%	353
Health Science/ Diagnostics	617	655	709	720	+11	+65	+9.9%	+103	+16.7%	810
Social Care	2	3	2	2	+0	-1	-24.8%	+0	+1.7%	3
Social Workers	26	31	43	42	-1	+11	+37.6%	+16	+59.4%	47
Psychologists	1	2	5	4	-1	+3	+142.2%	+4	+445.0%	7
Pharmacy	137	160	189	187	-2	+27	+16.9%	+50	+36.6%	212
H&SC, Other	19	15	19	19	+0	+4	+28.0%	-1	-3.1%	34
Health & Social Care Professionals	1,065	1,136	1,277	1,291	+14	+155	+13.6%	+227	+21.3%	1,466
Management (VIII & above)	51	54	60	59	-1	+5	+8.8%	+9	+16.8%	60
Administrative/ Supervisory (V to VII)	237	286	355	366	+11	+80	+27.9%	+129	+54.6%	387
Clerical (III & IV)	1,048	1,084	1,235	1,243	+7	+159	+14.7%	+195	+18.6%	1,379
Management & Administrative	1,335	1,424	1,651	1,668	+17	+244	+17.1%	+333	+24.9%	1,826
Support	836	908	956	936	-20	+27	+3.0%	+100	+12.0%	1,037
Maintenance/ Technical	103	94	99	98	-1	+4	+4.8%	-5	-4.8%	100
General Support	939	1,002	1,055	1,034	-21	+32	+3.2%	+95	+10.1%	1,137
Health Care Assistants	799	845	962	969	+7	+124	+14.7%	+170	+21.2%	1,103
Care, other	30	47	80	82	+2	+35	+73.4%	+51	+168.8%	93
Patient & Client Care	830	892	1,042	1,051	+8	+159	+17.8%	+221	+26.7%	1,196

South/South West Hospital Group

Sep 2022	WTE Dec 2019	WTE Dec 2020	WTE Aug 2022	WTE Sep 2022	WTE change since Aug 22	WTE change since Dec 20	% change since Dec 20	WTE change since Dec 19	% change since Dec 19	No. Sep 2022
Overall	10,527	11,288	12,401	12,474	+73	+1,186	+10.5%	+1,947	+18.5%	14,199
Consultants	478	508	554	561	+8	+54	+10.6%	+83	+17.4%	601
Registrars	509	530	576	610	+34	+80	+15.1%	+101	+19.8%	633
SHO/ Interns	537	615	588	610	+22	-5	-0.9%	+73	+13.6%	629
Medical/ Dental, other	9	8	12	12	-0	+4	+45.2%	+2	+24.4%	19
Medical & Dental	1,533	1,661	1,729	1,793	+64	+132	+7.9%	+259	+16.9%	1,882
Nurse/ Midwife Manager	863	856	934	949	+16	+93	+10.9%	+86	+10.0%	1,061
Nurse/ Midwife Specialist & AN/MP	146	194	242	244	+2	+49	+25.5%	+97	+66.4%	272
Staff Nurse/ Staff Midwife	3,127	3,334	3,562	3,568	+6	+234	+7.0%	+441	+14.1%	4,170
Public Health Nurse		0				-0	-100.0%		-100.0%	
Pre-registration Nurse/ Midwife Intern	30	0	101	97	-4	+97	+27582.9%	+67	+223.0%	172
Pre-registration Nurse Intern (COVID-19)		23				-23	-100.0%		-100.0%	
Post-registration Nurse/ Midwife Student	29	22	13	14	+1	-8	-37.4%	-15	-52.7%	19
Nursing/ Midwifery awaiting registration	9	17	6	18	+12	+1	+5.2%	+9	+99.8%	26
Nursing/ Midwifery Student	68	62	120	129	+9	+66	+106.2%	+61	+89.2%	217
Nursing/ Midwifery other	15	15	15	15	-1	-0	-1.4%	+0	+2.5%	19
Nursing & Midwifery	4,219	4,462	4,873	4,905	+32	+443	+9.9%	+686	+16.3%	5,739
Therapy Professions	311	357	426	431	+6	+74	+20.9%	+121	+38.8%	506
Health Science/ Diagnostics	784	854	911	915	+3	+61	+7.1%	+131	+16.7%	1,063
Social Workers	33	37	44	45	+1	+8	+21.2%	+12	+37.6%	50
Psychologists	2	2	6	6	-0	+4	+278.0%	+4	+278.0%	7
Pharmacy	129	150	191	195	+4	+45	+29.8%	+66	+50.7%	224
H&SC, Other	24	22	7	18	+11	-4	-18.5%	-6	-26.3%	29
Health & Social Care Professionals	1,282	1,421	1,584	1,609	+25	+188	+13.2%	+327	+25.5%	1,879
Management (VIII & above)	50	56	77	77	+0	+22	+39.1%	+27	+54.4%	78
Administrative/ Supervisory (V to VII)	265	322	401	407	+6	+84	+26.2%	+142	+53.4%	442
Clerical (III & IV)	1,269	1,270	1,356	1,355	-1	+85	+6.7%	+86	+6.7%	1,519
Management & Administrative	1,584	1,648	1,834	1,839	+4	+191	+11.6%	+254	+16.1%	2,039
Support	1,219	1,321	1,538	1,485	-52	+164	+12.4%	+267	+21.9%	1,699
Maintenance/ Technical	33	41	39	38	-1	-3	-7.4%	+5	+16.3%	39
General Support	1,251	1,362	1,576	1,523	-53	+161	+11.8%	+272	+21.7%	1,738
Health Care Assistants	642	719	785	785	+0	+66	+9.2%	+144	+22.4%	895
Ambulance Staff			1	1		+1	-100.0%	+1	-100.0%	1
Care, other	15	15	18	19	+1	+4	+26.3%	+4	+25.0%	26
Patient & Client Care	657	735	804	806	+1	+71	+9.7%	+149	+22.6%	922

University of Limerick Hospital Group

Sep 2022	WTE Dec 2019	WTE Dec 2020	WTE Aug 2022	WTE Sep 2022	WTE change since Aug 22	WTE change since Dec 20	% change since Dec 20	WTE change since Dec 19	% change since Dec 19	No. Sep 2022
Overall	4,146	4,506	5,208	5,198	-10	+692	+15.4%	+1,052	+25.4%	5,750
Consultants	165	184	197	200	+3	+17	+9.1%	+35	+21.2%	217
Registrars	190	204	236	228	-8	+25	+12.1%	+38	+20.0%	241
SHO/ Interns	197	259	250	251	+1	-8	-2.9%	+54	+27.7%	260
Medical/ Dental, other	1	1	1	1		+0	+4.9%	+0	+4.9%	2
Medical & Dental	553	647	685	681	-4	+34	+5.2%	+128	+23.1%	720
Nurse/ Midwife Manager	325	346	414	422	+8	+76	+22.0%	+97	+29.9%	459
Nurse/ Midwife Specialist & AN/MP	76	81	112	113	+2	+32	+39.1%	+37	+49.4%	121
Staff Nurse/ Staff Midwife	1,226	1,300	1,456	1,441	-16	+140	+10.8%	+215	+17.5%	1,648
Pre-registration Nurse/ Midwife Intern	3	1	34	33	-0	+32	+3248.0%	+30	+973.1%	69
Pre-registration Nurse Intern (COVID-19)		1				-1	-100.0%		-100.0%	
Post-registration Nurse/ Midwife Student	16	10	3	3	+0	-7	-71.5%	-13	-82.0%	5
Nursing/ Midwifery awaiting registration			2	3	+1	+3	-100.0%	+3	-100.0%	3
Nursing/ Midwifery Student	19	12	39	39	+1	+27	+227.9%	+20	+107.7%	77
Nursing/ Midwifery other	11	11	11	12	+1	+1	+5.2%	+1	+8.9%	14
Nursing & Midwifery	1,657	1,751	2,031	2,028	-4	+276	+15.8%	+371	+22.4%	2,319
Therapy Professions	84	98	115	120	+5	+22	+22.6%	+36	+42.3%	138
Health Science/ Diagnostics	252	254	261	261	+0	+7	+2.8%	+9	+3.6%	284
Social Workers	11	11	10	12	+2	+1	+9.4%	+1	+9.3%	13
Psychologists	3	4	5	4	-0	+1	+20.9%	+1	+42.9%	5
Pharmacy	45	51	63	63	-0	+12	+23.2%	+18	+40.0%	72
H&SC, Other	7	6	9	8	-1	+2	+30.6%	+0	+4.1%	8
Health & Social Care Professionals	403	423	462	468	+6	+45	+10.5%	+65	+16.2%	520
Management (VIII & above)	36	37	43	44	+1	+6	+17.4%	+8	+22.6%	44
Administrative/ Supervisory (V to VII)	103	129	204	207	+3	+78	+60.4%	+104	+101.2%	217
Clerical (III & IV)	485	508	599	592	-7	+85	+16.7%	+107	+22.0%	647
Management & Administrative	624	674	846	843	-3	+169	+25.1%	+219	+35.1%	908
Support	286	584	723	722	-1	+138	+23.7%	+436	+152.2%	784
Maintenance/ Technical	39	38	37	38	+0	-0	-0.2%	-1	-2.6%	38
General Support	325	622	761	760	-1	+138	+22.2%	+435	+133.9%	822
Health Care Assistants	577	383	416	413	-2	+30	+7.8%	-164	-28.4%	452
Care, other	8	6	7	6	-1	+0	+0.8%	-2	-21.3%	9
Patient & Client Care	585	389	422	419	-3	+30	+7.7%	-166	-28.3%	461

other Acute Services

Sep 2022	WTE Dec 2019	WTE Dec 2020	WTE Aug 2022	WTE Sep 2022	WTE change since Aug 22	WTE change since Dec 20	% change since Dec 20	WTE change since Dec 19	% change since Dec 19	No. Sep 2022
Overall	91	101	115	119	+4	+18	+17.9%	+28	+30.3%	124
Nurse/ Midwife Manager	14	14	13	14	+1	-0	-1.6%	+0	+0.3%	14
Nursing & Midwifery	14	14	13	14	+1	-0	-1.6%	+0	+0.3%	14
Health Science/ Diagnostics	3	3	4	4	+0	+1	+33.0%	+1	+33.0%	4
Social Workers	1	1				-1	-100.0%	-1	-100.0%	
Pharmacy	4	4	8	8	-0	+4	+100.3%	+4	+97.8%	8
Health & Social Care Professionals	8	8	12	12	+0	+4	+49.7%	+4	+48.8%	12
Management (VIII & above)	31	35	34	33	-1	-2	-5.5%	+2	+4.8%	34
Administrative/ Supervisory (V to VII)	34	38	50	53	+3	+15	+39.3%	+19	+55.6%	56
Clerical (III & IV)	4	6	6	7	+1	+1	+22.4%	+3	+84.2%	8
Management & Administrative	69	79	90	93	+3	+14	+18.2%	+24	+34.2%	98

Acute Services Employment by Grade Group: Sep 2022

Sep 2022	WTE Dec 2019	WTE Dec 2020	WTE Aug 2022	WTE Sep 2022	WTE change since Aug 22	WTE change since Dec 20	% change since Dec 20	WTE change since Dec 19	% change since Dec 19	No. Sep 2022
Overall	62,537	66,439	72,245	72,441	+196	+6,002	+9.0%	+9,904	+15.8%	80,933
Consultant Anaesthesia	403	427	445	451	+6	+24	+5.6%	+48	+11.8%	483
Consultant Dentistry	6	6	6	6	+0	-0	-5.0%	-0	-3.9%	7
Consultant Emergency Medicine	108	121	145	149	+4	+28	+22.8%	+41	+37.9%	161
Consultant Intensive Care Medicine	16	18	20	22	+2	+4	+23.7%	+6	+38.8%	24
Consultant Medicine	804	885	987	998	+11	+112	+12.7%	+194	+24.2%	1,102
Consultant Obstetrics & Gynaecology	161	170	178	178	+1	+8	+4.6%	+17	+10.6%	194
Consultant, Other	1						-100.0%	-1	-100.0%	
Consultant Paediatrics	193	212	223	225	+3	+14	+6.5%	+33	+16.9%	248
Consultant Pathology	253	265	285	288	+3	+22	+8.5%	+35	+14.0%	317
Consultant Psychiatry	24	23	27	28	+1	+4	+18.1%	+4	+16.2%	33
Consultant Radiology	275	280	302	301	-1	+21	+7.5%	+26	+9.5%	321
Consultant Surgery	539	564	610	618	+8	+53	+9.5%	+79	+14.6%	683
Consultants	2,782	2,974	3,228	3,264	+36	+290	+9.8%	+482	+17.3%	3,573
Registrar	1,704	1,810	1,846	1,914	+68	+104	+5.8%	+210	+12.3%	1,999
Senior Registrar	108	120	127	124	-3	+3	+2.6%	+16	+14.5%	127
Specialist Registrar	1,131	1,185	1,395	1,398	+3	+213	+18.0%	+268	+23.7%	1,433
Registrars	2,942	3,115	3,367	3,436	+68	+320	+10.3%	+494	+16.8%	3,559
Interns	718	966	824	823	-1	-144	-14.9%	+104	+14.5%	828
Senior House Officer	2,077	2,286	2,385	2,464	+79	+178	+7.8%	+387	+18.6%	2,544
SHO/ Interns	2,795	3,253	3,209	3,287	+77	+34	+1.0%	+492	+17.6%	3,372
Dentists	10	11	8	9	+1	-2	-14.1%	-0	-1.4%	11
Other Medical	50	53	66	66	-0	+13	+25.1%	+16	+32.6%	97
Medical/ Dental, other	60	64	75	76	+1	+12	+18.4%	+16	+27.1%	108
Medical & Dental	8,578	9,405	9,878	10,062	184	+657	+7.0%	+1,483	+17.3%	10,612
Clinical Nurse/ Midwife Manager	4,198	4,388	4,944	4,974	+30	+586	+13.4%	+776	+18.5%	5,507
Director Nursing/Midwifery, Assistant	433	453	504	515	+11	+62	+13.7%	+81	+18.8%	551
Director of Nursing/Midwifery	79	83	95	97	+2	+14	+17.1%	+18	+22.8%	99
Nurse/ Midwife Manager	4,710	4,924	5,543	5,586	+42	+662	+13.5%	+876	+18.6%	6,157
Advanced Nurse/ Midwife Practitioner	337	440	568	610	+42	+170	+38.6%	+272	+80.8%	642
Clinical Nurse/ Midwife Specialist	955	1,028	1,193	1,200	+6	+171	+16.7%	+245	+25.7%	1,382
Nurse/ Midwife Specialist & AN/MP	1,292	1,468	1,761	1,809	+48	+341	+23.2%	+517	+40.1%	2,024
Nursing Bank	31	23	9	12	+2	-11	-48.0%	-19	-61.7%	23
Staff Midwives	1,457	1,479	1,342	1,326	-16	-153	-10.3%	-131	-9.0%	1,605
Staff Nurse [Psychiatric]	28	29	24	24	+0	-5	-17.9%	-4	-14.5%	27
Staff Nurse [Intellectual Disability]		72				-72	-100.0%		-100.0%	
Staff Nurses [General/ Children's]	15,161	15,923	17,230	17,226	-4	+1,303	+8.2%	+2,065	+13.6%	19,440
Staff Nurse/ Staff Midwife	16,676	17,526	18,606	18,588	-18	+1,062	+6.1%	+1,912	+11.5%	21,095
Public Health Nurse	1	2				-2	-100.0%	-1	-100.0%	
Pre-registration Nurse/ Midwife Intern	83	15	531	366	-164	+351	+2350.0%	+284	+343.7%	769
Pre-registration Nurse Intern (COVID-19)		156				-156	-100.0%		-100.0%	
Post-registration Nurse/ Midwife Student	195	151	105	144	+40	-6	-4.3%	-51	-26.2%	216
Nursing/ Midwifery awaiting registration	139	57	156	212	+56	+155	+274.8%	+73	+52.6%	237
Nursing/ Midwifery Student	417	378	791	722	-69	+345	+91.2%	+306	+73.3%	1,222
Nursing Education/Clinical	191	196	173	176	+3	-20	-10.4%	-15	-7.8%	206
Other Nursing/ Midwifery	33	30	6	7	+1	-24	-78.3%	-27	-80.6%	8

Sep 2022	WTE Dec 2019	WTE Dec 2020	WTE Aug 2022	WTE Sep 2022	WTE change since Aug 22	WTE change since Dec 20	% change since Dec 20	WTE change since Dec 19	% change since Dec 19	No. Sep 2022
Overall	62,537	66,439	72,245	72,441	+196	+6,002	+9.0%	+9,904	+15.8%	80,933
Nursing/ Midwifery other	224	226	179	182	+4	-44	-19.4%	-42	-18.6%	214
Nursing & Midwifery	23,321	24,524	26,880	26,888	8	+2,364	+9.6%	+3,567	+15.3%	30,712
Dietitians	393	438	469	470	+2	+32	+7.3%	+77	+19.7%	543
Occupational Therapists	368	417	496	508	+12	+91	+21.7%	+139	+37.8%	553
Orthoptists	22	20	21	19	-2	-2	-8.3%	-3	-14.1%	26
Physiotherapists	992	1,068	1,149	1,148	-2	+80	+7.5%	+156	+15.7%	1,308
Podiatrists & Chiropodists	34	37	30	31	+1	-6	-16.2%	-3	-9.7%	37
Speech & Language Therapists	198	236	267	265	-2	+29	+12.2%	+67	+33.9%	308
Therapy Professions	2,008	2,217	2,432	2,441	+9	+224	+10.1%	+433	+21.6%	2,775
Audiology	28	30	42	42	-1	+12	+39.1%	+14	+51.0%	49
Biochemists	72	76	65	63	-2	-13	-17.3%	-9	-12.5%	68
Cardiac Physiologists	227	243	253	252	-1	+8	+3.5%	+25	+10.9%	278
Clinical Engineering	142	149	162	161	-1	+12	+7.8%	+18	+12.8%	165
Dosimetrists	13	14	12	12	+1	-2	-12.1%	-1	-5.1%	15
E.C.G. Technicians	10	11	9	10	+2	-1	-5.9%	+0	+2.6%	12
Gastrointestinal Physiologists	2	2	4	4	-0	+2	+94.3%	+2	+94.3%	5
Medical Science	1,885	1,951	1,969	1,987	+18	+36	+1.8%	+102	+5.4%	2,195
Neuro-Physiologists	50	56	54	51	-3	-6	-9.8%	+1	+2.7%	56
Perfusionists	22	22	20	21	+0	-1	-5.4%	-1	-5.5%	23
Phlebotomists	172	183	215	220	+5	+37	+20.4%	+49	+28.4%	300
Physicists	181	172	186	185	-1	+13	+7.6%	+4	+2.1%	201
Radiation Therapists	199	212	208	200	-7	-12	-5.5%	+1	+0.6%	225
Radiographers	1,146	1,239	1,371	1,397	+26	+158	+12.8%	+251	+21.9%	1,546
Respiratory Physiologists	65	71	71	71	-0	+1	+0.9%	+6	+9.4%	76
Vascular Physiologists	29	28	33	33	+0	+5	+19.4%	+4	+14.4%	37
Health Science/ Diagnostics	4,242	4,458	4,673	4,708	+36	+250	+5.6%	+466	+11.0%	5,251
Social Care	3	4	3	3	+0	-1	-18.9%	+0	+1.2%	5
Social Workers	355	384	427	430	+3	+46	+12.0%	+75	+21.1%	481
Psychologists	101	110	143	141	-2	+31	+28.1%	+40	+40.2%	172
Pharmacists	530	590	648	641	-7	+50	+8.5%	+110	+20.8%	717
Pharmacy Technicians	370	416	474	477	+3	+61	+14.7%	+107	+28.8%	542
Pharmacy	901	1,006	1,122	1,118	-4	+111	+11.1%	+217	+24.1%	1,259
Counsellor Therapists	5	5	3	3		-1	-25.7%	-2	-34.5%	6
Dental Hygienists	1	1	1	1	-0	-0	-1.8%	-0	-0.9%	2
HSCP Trainees/ Students	69	56	38	52	+14	-3	-5.5%	-17	-24.4%	75
Other Health & Social Care	50	65	64	64	+0	-1	-2.2%	+14	+27.8%	71
Play Therapists/ Specialists	25	27	30	29	-1	+2	+7.0%	+4	+14.8%	37
Vaccinators			11	12	+1	+12	-100.0%	+12	-100.0%	30
H&SC, Other	151	154	147	162	+15	+8	+5.3%	+11	+7.2%	221
Health & Social Care Professionals	7,760	8,333	8,946	9,003	57	+670	+8.0%	+1,242	+16.0%	10,164
Management (VIII & above)	518	579	710	706	-4	+126	+21.8%	+188	+36.4%	722
Administrative/ Supervisory (V to VII)	2,326	2,674	3,219	3,259	+40	+584	+21.9%	+933	+40.1%	3,475
Clerical (III & IV)	6,606	6,658	7,178	7,176	-3	+517	+7.8%	+570	+8.6%	8,124
Management & Administrative	9,450	9,912	11,107	11,140	33	+1,228	+12.4%	+1,691	+17.9%	12,321
Catering	470	490	488	472	-16	-18	-3.6%	+2	+0.4%	511
Household Services	2,717	3,098	3,270	3,255	-15	+157	+5.1%	+538	+19.8%	3,798
Other Labs & Associated	379	440	663	610	-53	+170	+38.6%	+231	+60.8%	670
Other Support	739	761	776	769	-7	+7	+0.9%	+30	+4.1%	851

Sep 2022	WTE Dec 2019	WTE Dec 2020	WTE Aug 2022	WTE Sep 2022	WTE change since Aug 22	WTE change since Dec 20	% change since Dec 20	WTE change since Dec 19	% change since Dec 19	No. Sep 2022
Overall	62,537	66,439	72,245	72,441	+196	+6,002	+9.0%	+9,904	+15.8%	80,933
Portering	1,325	1,362	1,437	1,411	-26	+48	+3.5%	+85	+6.4%	1,503
Support	5,630	6,152	6,633	6,516	-117	+364	+5.9%	+886	+15.7%	7,333
Maintenance	507	514	517	536	+18	+21	+4.2%	+29	+5.8%	550
Technical Services	24	25	28	28		+3	+12.0%	+4	+16.8%	28
Maintenance/ Technical	531	539	545	564	+18	+24	+4.5%	+33	+6.2%	578
General Support	6,160	6,691	7,179	7,080	-99	+389	+5.8%	+919	+14.9%	7,911
Attendant/ Aide	1,582	1,472	1,216	1,228	+12	-244	-16.6%	-354	-22.4%	1,352
Health & Social Care Assistants	129	156	191	204	+13	+47	+30.3%	+75	+58.1%	239
Health Care Assistant/ Care Assistant	3,564	3,838	4,735	4,709	-25	+872	+22.7%	+1,145	+32.1%	5,348
HCA (Student Nurse/Midwife COVID-19)		50				-50	-100.0%		-100.0%	
Health Care Assistants	5,275	5,516	6,142	6,141	-1	+625	+11.3%	+866	+16.4%	6,939
Ambulance Control	179	180	164	162	-2	-18	-10.1%	-17	-9.3%	166
Ambulance Education	162	138	189	174	-15	+36	+26.1%	+12	+7.7%	209
Ambulance Officers	78	85	93	94	+1	+9	+10.9%	+16	+20.2%	95
Pre-Hospital Care (Ambulance)	1,406	1,473	1,447	1,474	+27	+1	+0.1%	+68	+4.9%	1,538
Ambulance Staff	1,825	1,876	1,893	1,905	+11	+28	+1.5%	+80	+4.4%	2,008
Health Promotion	2	3	4	4	-0	+1	+28.6%	+3	+158.7%	6
Other Care Grades	79	94	137	141	+4	+47	+49.5%	+62	+79.0%	156
Pastoral Care	87	84	78	76	-1	-8	-9.6%	-11	-12.2%	101
Workshop Services	1	1	2	2		+2	+312.0%	+1	+106.0%	3
Care, other	168	182	220	223	+3	+41	+22.5%	+55	+32.8%	266
Patient & Client Care	7,268	7,574	8,255	8,268	13	+694	+9.2%	+1,001	+13.8%	9,213

Employment by WTE, Headcount, Gender, Full-Time /Part-Time etc.: Sep 2022

Acutes Services Staff Group	WTE	Headcount	WTE: no.	% Male	% female	Male WTE: no.	Female WTE: no.	% Total Perm	% Male Perm	% Female Perm	% Total Full Time	% Total Part Time	% Male FT	% Female FT
Overall	72,441	80,933	1.12	24.0%	76.0%	1.05	1.14	79.9%	70.5%	82.8%	76.8%	23.2%	92.6%	71.8%
Consultant Anaesthesia	451	483	1.07	60.2%	39.8%	1.07	1.08	79.9%	79.9%	76.0%	90.9%	9.1%	92.1%	89.1%
Consultant Dentistry	6	7	1.18	28.6%	71.4%	1.00	1.27	85.7%	85.7%	80.0%	85.7%	14.3%	100.0%	80.0%
Consultant Emergency Medicine	149	161	1.08	64.0%	36.0%	1.05	1.14	67.1%	67.1%	69.0%	85.1%	14.9%	90.3%	75.9%
Consultant Intensive Care Medicine	22	24	1.08	41.7%	58.3%	1.11	1.06	95.8%	95.8%	100.0%	91.7%	8.3%	90.0%	92.9%
Consultant Medicine	998	1,102	1.10	58.3%	41.7%	1.09	1.13	74.0%	74.0%	71.9%	85.2%	14.8%	88.2%	81.0%
Consultant Obstetrics & Gynaecology	178	194	1.09	46.4%	53.6%	1.09	1.09	81.4%	81.4%	80.8%	86.1%	13.9%	87.8%	84.6%
Consultant Paediatrics	225	248	1.10	47.2%	52.8%	1.05	1.14	77.0%	77.0%	79.4%	84.3%	15.7%	91.5%	77.9%
Consultant Pathology	288	317	1.10	41.6%	58.4%	1.11	1.09	82.6%	82.6%	82.7%	87.4%	12.6%	89.4%	85.9%
Consultant Psychiatry	28	33	1.20	33.3%	66.7%	1.05	1.29	66.7%	66.7%	59.1%	69.7%	30.3%	90.9%	59.1%
Consultant Radiology	301	321	1.06	59.8%	40.2%	1.05	1.09	84.7%	84.7%	78.3%	89.7%	10.3%	92.7%	85.3%
Consultant Surgery	618	683	1.11	80.2%	19.8%	1.10	1.13	77.5%	77.5%	74.1%	82.1%	17.9%	83.2%	77.8%
Consultants	3,264	3,573	1.09	59.9%	40.1%	1.08	1.12	77.6%	78.7%	75.9%	85.9%	14.1%	88.2%	82.4%
Registrar	1,914	1,999	1.04	59.1%	40.9%	1.04	1.06	7.7%	7.7%	7.9%	96.1%	3.9%	97.3%	94.5%
Senior Registrar	124	127	1.03	65.4%	34.6%	1.03	1.03	33.9%	33.9%	38.6%	95.3%	4.7%	95.2%	95.5%
Specialist Registrar	1,398	1,433	1.02	44.2%	55.8%	1.01	1.03	8.6%	8.6%	8.1%	96.4%	3.6%	98.1%	95.1%
Registrars	3,436	3,559	1.04	53.3%	46.7%	1.03	1.04	9.0%	9.1%	8.9%	96.2%	3.8%	97.5%	94.8%
Interns	823	828	1.01	43.4%	56.6%	1.01	1.01	7.1%	7.1%	8.5%	100.0%	0.0%	100.0%	100.0%
Senior House Officer	2,464	2,544	1.03	45.3%	54.7%	1.03	1.03	5.6%	5.6%	5.4%	98.8%	1.2%	99.0%	98.6%
SHO/ Interns	3,287	3,372	1.03	44.8%	55.2%	1.02	1.03	6.0%	5.8%	6.2%	99.1%	0.9%	99.3%	98.9%
Dentists	9	11	1.16	36.4%	63.6%	1.40	1.06	81.8%	81.8%	100.0%	63.6%	36.4%	50.0%	71.4%
Other Medical	66	97	1.46	38.1%	61.9%	1.21	1.68	56.7%	56.7%	56.7%	44.3%	55.7%	75.7%	25.0%
Medical/ Dental, other	76	108	1.43	38.0%	62.0%	1.22	1.59	59.3%	56.1%	61.2%	46.3%	53.7%	73.2%	29.9%
Medical & Dental	10,062	10,612	1.05	52.7%	47.3%	1.05	1.06	31.6%	35.2%	27.7%	93.1%	6.9%	94.2%	91.9%
Clinical Nurse/ Midwife Manager	4,974	5,507	1.11	6.4%	93.6%	1.03	1.11	97.7%	97.7%	97.8%	73.0%	27.0%	93.4%	71.7%
Director Nursing/Midwifery, Assistant	515	551	1.07	10.3%	89.7%	1.02	1.08	96.0%	96.0%	96.6%	83.7%	16.3%	94.7%	82.4%
Director of Nursing/Midwifery	97	99	1.02	9.1%	90.9%	1.00	1.02	99.0%	99.0%	100.0%	98.0%	2.0%	88.9%	98.9%
Nurse/ Midwife Manager	5,586	6,157	1.10	6.8%	93.2%	1.03	1.11	97.5%	95.4%	97.7%	74.4%	25.6%	93.5%	73.0%

Advanced Nurse/ Midwife Practitioner	610	642	1.05	10.0%	90.0%	1.02	1.06	98.3%	98.3%	98.3%	89.9%	10.1%	96.9%	89.1%
Clinical Nurse/ Midwife Specialist	1,200	1,382	1.15	2.7%	97.3%	1.02	1.16	97.9%	97.9%	97.8%	65.1%	34.9%	94.7%	64.3%
Nurse/ Midwife Specialist & AN/MP	1,809	2,024	1.12	5.0%	95.0%	1.02	1.12	98.0%	99.0%	98.0%	73.0%	27.0%	96.1%	71.7%
Nursing Bank	12	23	1.95		100.0%		1.95	78.3%	78.3%	78.3%	8.7%	91.3%		8.7%
Staff Midwives	1,326	1,605	1.21	0.7%	99.3%	1.09	1.21	94.0%	94.0%	93.9%	49.6%	50.4%	63.6%	49.5%
Staff Nurse [Psychiatric]	24	27	1.13	29.6%	70.4%	1.23	1.10	100.0%	100.0%	100.0%	85.2%	14.8%	87.5%	84.2%
Staff Nurses [General/ Children's]	17,226	19,440	1.13	9.5%	90.5%	1.04	1.14	91.0%	91.0%	91.2%	70.9%	29.1%	92.6%	68.6%
Staff Nurse/ Staff Midwife	18,588	21,095	1.13	8.9%	91.1%	1.04	1.15	91.3%	89.8%	91.4%	69.2%	30.8%	92.4%	67.0%
Pre-registration Nurse/ Midwife Intern	366	769	2.10	5.6%	94.4%	1.99	2.11	4.0%	4.0%	4.0%	72.0%	28.0%	74.4%	71.9%
Post-registration Nurse/ Midwife Student	144	216	1.50	3.2%	96.8%	1.87	1.49	10.6%	10.6%	11.0%	93.5%	6.5%	85.7%	93.8%
Nursing/ Midwifery awaiting registration	212	237	1.12	5.5%	94.5%	1.17	1.12	38.4%	38.4%	39.7%	98.7%	1.3%	100.0%	98.7%
Nursing/ Midwifery Student	722	1,222	1.69	5.2%	94.8%	1.73	1.69	11.9%	6.3%	12.2%	81.0%	19.0%	81.0%	81.0%
Nursing Education/Clinical	176	206	1.17	3.9%	96.1%	1.00	1.18	97.1%	97.1%	97.0%	65.5%	34.5%	100.0%	64.1%
Other Nursing/ Midwifery	7	8	1.23		100.0%		1.23	100.0%	100.0%	100.0%	62.5%	37.5%		62.5%
Nursing/ Midwifery other	182	214	1.17	3.7%	96.3%	1.00	1.18	97.2%	100.0%	97.1%	65.4%	34.6%	100.0%	64.1%
Nursing & Midwifery	26,888	30,712	1.14	8.0%	92.0%	1.04	1.15	89.8%	89.0%	89.9%	71.0%	29.0%	92.5%	69.1%
Dietitians	470	543	1.15	1.8%	98.2%	1.04	1.16	85.5%	85.5%	85.6%	77.3%	22.7%	100.0%	76.9%
Occupational Therapists	508	553	1.09	8.0%	92.0%	1.04	1.09	80.8%	80.8%	80.7%	86.6%	13.4%	90.9%	86.2%
Orthoptists	19	26	1.39	11.5%	88.5%	1.01	1.46	92.3%	92.3%	91.3%	46.2%	53.8%	100.0%	39.1%
Physiotherapists	1,148	1,308	1.14	20.1%	79.9%	1.07	1.16	82.8%	82.8%	83.4%	78.9%	21.1%	93.2%	75.3%
Podiatrists & Chiropodists	31	37	1.20	16.2%	83.8%	1.24	1.19	73.0%	73.0%	74.2%	67.6%	32.4%	66.7%	67.7%
Speech & Language Therapists	265	308	1.16	1.6%	98.4%	1.07	1.16	82.1%	82.1%	82.5%	77.9%	22.1%	100.0%	77.6%
Therapy Professions	2,441	2,775	1.14	11.9%	88.1%	1.06	1.15	82.8%	80.1%	83.2%	79.6%	20.4%	92.7%	77.8%
Audiology	42	49	1.18	14.3%	85.7%	1.37	1.15	89.8%	89.8%	88.1%	81.6%	18.4%	71.4%	83.3%
Biochemists	63	68	1.08	30.9%	69.1%	1.00	1.12	95.6%	95.6%	97.9%	82.4%	17.6%	100.0%	74.5%
Cardiac Physiologists	252	278	1.10	16.2%	83.8%	1.05	1.12	89.6%	89.6%	89.3%	83.1%	16.9%	91.1%	81.5%
Clinical Engineering	161	165	1.03	77.6%	22.4%	1.02	1.07	92.1%	92.1%	81.1%	95.2%	4.8%	96.1%	91.9%
Dosimetrists	12	15	1.21	13.3%	86.7%	1.43	1.18	86.7%	86.7%	92.3%	73.3%	26.7%	50.0%	76.9%
E.C.G. Technicians	10	12	1.16	25.0%	75.0%	1.00	1.23	66.7%	66.7%	66.7%	58.3%	41.7%	100.0%	44.4%
Gastrointestinal Physiologists	4	5	1.21	40.0%	60.0%	1.22	1.21	100.0%	100.0%	100.0%	60.0%	40.0%	50.0%	66.7%
Medical Science	1,987	2,195	1.10	20.1%	79.9%	1.03	1.13	93.7%	93.7%	93.8%	80.8%	19.2%	95.5%	77.1%
Neuro-Physiologists	51	56	1.10	25.0%	75.0%	1.00	1.14	87.5%	87.5%	85.7%	82.1%	17.9%	100.0%	76.2%
Perfusionists	21	23	1.12	47.8%	52.2%	1.12	1.12	87.0%	87.0%	91.7%	73.9%	26.1%	72.7%	75.0%
Phlebotomists	220	300	1.36	21.3%	78.7%	1.27	1.39	77.0%	77.0%	79.7%	43.3%	56.7%	56.3%	39.8%

Physicists	185	201	1.09	47.3%	52.7%	1.04	1.14	94.5%	94.5%	96.2%	85.1%	14.9%	95.8%	75.5%
Radiation Therapists	200	225	1.12	12.0%	88.0%	1.13	1.12	80.9%	80.9%	81.8%	76.9%	23.1%	96.3%	74.2%
Radiographers	1,397	1,546	1.11	21.1%	78.9%	1.03	1.13	92.9%	92.9%	92.9%	80.7%	19.3%	95.4%	76.8%
Respiratory Physiologists	71	76	1.07	18.4%	81.6%	1.04	1.08	96.1%	96.1%	95.2%	86.8%	13.2%	92.9%	85.5%
Vascular Physiologists	33	37	1.11	21.6%	78.4%	1.06	1.13	86.5%	86.5%	89.7%	73.0%	27.0%	87.5%	69.0%
Health Science/ Diagnostics	4,708	5,251	1.12	23.0%	77.0%	1.04	1.14	91.5%	91.1%	91.6%	79.1%	20.9%	92.9%	75.0%
Social Care	3	5	1.47	40.0%	60.0%	2.00	1.26	80.0%	100.0%	66.7%	20.0%	80.0%	0.0%	33.3%
Social Workers	430	481	1.12	13.5%	86.5%	1.05	1.13	85.0%	86.2%	84.9%	78.8%	21.2%	90.8%	76.9%
Psychologists	141	172	1.22	12.8%	87.2%	1.29	1.21	85.5%	81.8%	86.0%	55.2%	44.8%	50.0%	56.0%
Pharmacists	641	717	1.12	14.2%	85.8%	1.03	1.14	85.8%	85.8%	85.0%	83.4%	16.6%	98.0%	81.0%
Pharmacy Technicians	477	542	1.14	4.2%	95.8%	1.03	1.14	85.8%	85.8%	85.4%	73.6%	26.4%	87.0%	73.0%
Pharmacy	1,118	1,259	1.13	9.9%	90.1%	1.03	1.14	85.8%	91.2%	85.2%	79.2%	20.8%	96.0%	77.3%
Counsellor Therapists	3	6	1.79		100.0%		1.79	83.3%	83.3%	83.3%	0.0%	100.0%		0.0%
Dental Hygienists	1	2	1.87		100.0%		1.87	100.0%	100.0%	100.0%	50.0%	50.0%		50.0%
HSCP Trainees/ Students	52	75	1.43	33.3%	66.7%	1.36	1.47	1.3%	1.3%	2.0%	77.3%	22.7%	76.0%	78.0%
Other Health & Social Care	64	71	1.11	29.6%	70.4%	1.03	1.16	87.3%	87.3%	84.0%	77.5%	22.5%	90.5%	72.0%
Play Therapists/ Specialists	29	37	1.27		100.0%		1.27	91.9%	91.9%	91.9%	51.4%	48.6%		51.4%
Vaccinators	12	30	2.51	26.7%	73.3%	1.95	2.81	60.0%	60.0%	68.2%	3.3%	96.7%	0.0%	4.5%
H&SC, Other	162	221	1.37	24.4%	75.6%	1.26	1.41	55.2%	42.6%	59.3%	60.6%	39.4%	70.4%	57.5%
Health & Social Care	9,003	10,164	1.13	17.8%	82.2%	1.06	1.15	87.2%	87.3%	87.2%	78.4%	21.6%	91.7%	75.5%
Executive Management	118	120	1.01	50.0%	50.0%	1.01	1.02	91.7%	91.7%	93.3%	98.3%	1.7%	98.3%	98.3%
Senior Management (VIII & GM)	587	602	1.02	32.9%	67.1%	1.02	1.03	92.0%	92.0%	95.0%	96.3%	3.7%	97.5%	95.8%
Management (VIII & above)	706	722	1.02	35.7%	64.3%	1.02	1.03	92.0%	86.8%	94.8%	96.7%	3.3%	97.7%	96.1%
Middle Management (V-VII)	3,240	3,455	1.07	22.1%	77.9%	1.02	1.08	93.4%	93.4%	94.0%	84.9%	15.1%	98.2%	81.2%
Other Administrative	19	20	1.06	50.0%	50.0%	1.07	1.04	55.0%	55.0%	90.0%	85.0%	15.0%	100.0%	70.0%
Administrative/ Supervisory (V to VII)	3,259	3,475	1.07	22.3%	77.7%	1.02	1.08	93.2%	90.4%	94.0%	84.9%	15.1%	98.2%	81.2%
Clerical (III & IV)	7,176	8,124	1.13	13.4%	86.6%	1.04	1.15	80.6%	74.2%	81.5%	71.5%	28.5%	94.0%	68.1%
Management & Administrative	11,140	12,321	1.11	17.2%	82.8%	1.03	1.12	84.8%	81.6%	85.4%	76.8%	23.2%	95.9%	72.8%
Catering	472	511	1.08	34.8%	65.2%	1.04	1.11	91.4%	91.4%	92.5%	79.3%	20.7%	96.1%	70.3%
Household Services	3,255	3,798	1.17	24.7%	75.3%	1.08	1.20	79.8%	79.8%	83.4%	61.1%	38.9%	81.1%	54.5%
Other Labs & Associated	610	670	1.10	29.6%	70.4%	1.07	1.11	70.7%	70.7%	70.8%	85.7%	14.3%	91.9%	83.1%
Other Support	769	851	1.11	48.8%	51.2%	1.05	1.17	91.5%	91.5%	93.6%	74.1%	25.9%	92.0%	57.1%
Portering	1,411	1,503	1.07	91.4%	8.6%	1.06	1.15	81.3%	81.3%	82.9%	89.8%	10.2%	91.6%	69.8%
Support	6,516	7,333	1.13	42.3%	57.7%	1.06	1.18	81.4%	78.3%	83.7%	72.0%	28.0%	88.8%	59.6%

Maintenance	536	550	1.03	96.9%	3.1%	1.02	1.15	96.7%	96.7%	100.0%	96.4%	3.6%	97.6%	58.8%
Technical Services	28	28	1.00	100.0%		1.00		92.9%	92.9%		100.0%	0.0%	100.0%	
Maintenance/ Technical	564	578	1.03	97.1%	2.9%	1.02	1.15	96.5%	96.4%	100.0%	96.5%	3.5%	97.7%	58.8%
General Support	7,080	7,911	1.12	46.3%	53.7%	1.06	1.18	82.5%	81.1%	83.8%	73.8%	26.2%	90.1%	59.6%
Attendant/ Aide	1,228	1,352	1.10	46.4%	53.6%	1.04	1.16	90.6%	90.6%	94.2%	78.8%	21.2%	93.6%	65.9%
Health & Social Care Assistants	204	239	1.17	28.0%	72.0%	1.10	1.20	81.6%	81.6%	81.4%	71.5%	28.5%	88.1%	65.1%
Health Care Assistant/ Care Assistant	4,709	5,348	1.14	27.2%	72.8%	1.08	1.16	84.1%	84.1%	83.5%	70.2%	29.8%	82.7%	65.6%
Health Care Assistants	6,141	6,939	1.13	31.0%	69.0%	1.07	1.16	85.3%	85.9%	85.0%	71.9%	28.1%	86.1%	65.6%
Ambulance Control	162	166	1.02	51.8%	48.2%	1.03	1.02	94.6%	94.6%	95.0%	99.4%	0.6%	100.0%	98.8%
Ambulance Education	174	209	1.20	60.8%	39.2%	1.19	1.21	0.5%	0.5%	0.0%	100.0%	0.0%	100.0%	100.0%
Ambulance Officers	94	95	1.01	86.3%	13.7%	1.01	1.02	97.9%	97.9%	100.0%	98.9%	1.1%	98.8%	100.0%
Pre-Hospital Care (Ambulance)	1,474	1,538	1.04	76.5%	23.5%	1.04	1.07	93.8%	93.8%	91.1%	99.7%	0.3%	99.9%	99.2%
Ambulance Staff	1,905	2,008	1.05	73.3%	26.7%	1.05	1.08	84.4%	86.7%	78.0%	99.7%	0.3%	99.9%	99.3%
Health Promotion	4	6	1.45		100.0%		1.45	100.0%	100.0%	100.0%	33.3%	66.7%		33.3%
Other Care Grades	141	156	1.11	46.8%	53.2%	1.03	1.19	95.5%	95.5%	91.6%	76.9%	23.1%	93.2%	62.7%
Pastoral Care	76	101	1.33	69.3%	30.7%	1.39	1.19	72.3%	72.3%	93.5%	62.4%	37.6%	55.7%	77.4%
Workshop Services	2	3	1.46	66.7%	33.3%	1.31	1.89	100.0%	100.0%	100.0%	33.3%	66.7%	50.0%	0.0%
Care, other	223	266	1.19	54.5%	45.5%	1.18	1.20	86.8%	82.1%	92.6%	69.9%	30.1%	74.5%	64.5%
Patient & Client Care	8,268	9,213	1.11	40.9%	59.1%	1.06	1.15	85.1%	86.0%	84.5%	77.9%	22.1%	91.0%	68.9%

Employment by WTE, Headcount, Gender, Full-Time /Part-Time etc.: Sep 2022

Hospital Group	WTE	Headcount	WTE: no.	% Male	% female	Male WTE: no.	Female WTE: no.	% Total Perm	% Male Perm	% Female Perm	% Total Full Time	% Total Part Time	% Male FT	% Female FT
Overall	72,441	80,933	1.12	24.0%	76.0%	1.05	1.14	79.9%	70.5%	82.8%	76.8%	23.2%	92.6%	71.8%
National Ambulance Service	2,033	2,144	1.05	70.8%	29.2%	1.04	1.08	85.3%	85.3%	81.0%	99.3%	0.7%	99.8%	98.1%
CHI at Connolly	146	168	1.15	10.1%	89.9%	1.06	1.16	84.5%	84.5%	87.4%	68.5%	31.5%	88.2%	88.2%
CHI at Crumlin	2,182	2,516	1.15	15.8%	84.2%	1.03	1.18	80.9%	80.9%	82.0%	67.2%	32.8%	93.5%	93.5%
CHI at Tallaght	286	326	1.14	11.3%	88.7%	1.04	1.15	74.5%	74.5%	77.2%	72.7%	27.3%	91.9%	91.9%
CHI at Temple Street	1,268	1,465	1.16	16.9%	83.1%	1.07	1.18	75.6%	75.6%	77.1%	76.9%	23.1%	94.8%	94.8%
CHI Corporate	33	33	1.01	33.3%	66.7%	1.00	1.01	72.7%	72.7%	63.6%	100.0%	0.0%	100.0%	100.0%
CHI Programme	107	115	1.07	38.3%	61.7%	1.03	1.10	30.4%	30.4%	28.2%	93.9%	6.1%	97.7%	97.7%
Children's Health Ireland	4,023	4,623	1.15	16.3%	83.7%	1.04	1.17	77.6%	77.6%	79.2%	71.6%	28.4%	94.0%	67.3%
Coombe Women & Infants University	931	1,042	1.12	15.3%	84.7%	1.03	1.14	84.5%	84.5%	86.7%	69.5%	30.5%	90.6%	90.6%
MRH Portlaoise	827	921	1.11	19.5%	80.5%	1.03	1.14	82.2%	82.2%	85.8%	77.4%	22.6%	97.8%	97.8%
MRH Tullamore	1,203	1,338	1.11	22.0%	78.0%	1.04	1.13	85.4%	85.4%	88.7%	81.2%	18.8%	96.3%	96.3%
Naas General	895	996	1.11	19.9%	80.1%	1.04	1.13	89.6%	89.6%	91.0%	81.6%	18.4%	94.9%	94.9%
St. James's	4,535	5,047	1.11	24.7%	75.3%	1.05	1.13	84.1%	84.1%	86.3%	82.8%	17.2%	93.9%	93.9%
St. Luke's Rathgar	542	576	1.06	27.4%	72.6%	1.02	1.08	78.1%	78.1%	80.1%	84.7%	15.3%	96.2%	96.2%
Tallaght University	3,100	3,476	1.12	25.3%	74.7%	1.05	1.15	78.3%	78.3%	80.7%	75.7%	24.3%	87.9%	87.9%
Hospital Group HQ	56	59	1.05	13.6%	86.4%	1.01	1.06	88.1%	88.1%	92.2%	94.9%	5.1%	100.0%	100.0%
Dublin Midlands Hospital Group	12,088	13,455	1.11	23.2%	76.8%	1.05	1.13	82.8%	82.8%	85.3%	79.5%	20.5%	92.7%	75.5%
Cappagh National Orthopaedic	490	552	1.13	24.5%	75.5%	1.02	1.17	86.6%	86.6%	90.4%	73.7%	26.3%	94.1%	94.1%
Mater Misericordiae University	3,752	4,099	1.09	26.7%	73.3%	1.07	1.10	79.3%	79.3%	83.4%	81.1%	18.9%	87.4%	87.4%
MRH Mullingar	1,073	1,187	1.11	19.7%	80.3%	1.04	1.12	82.9%	82.9%	88.4%	80.9%	19.1%	97.9%	97.9%
National Maternity	928	1,035	1.12	18.3%	81.7%	1.07	1.13	76.2%	76.2%	78.5%	71.1%	28.9%	83.6%	83.6%
Our Lady's Navan	630	729	1.16	26.1%	73.9%	1.07	1.19	85.0%	85.0%	90.0%	68.4%	31.6%	91.1%	91.1%
St. Columcille's	467	517	1.11	23.4%	76.6%	1.04	1.13	86.7%	86.7%	85.9%	80.5%	19.5%	92.6%	92.6%
St Luke's General Kilkenny	1,247	1,422	1.14	22.6%	77.4%	1.05	1.17	78.5%	78.5%	84.6%	69.5%	30.5%	92.8%	92.8%
St. Michael's	407	474	1.17	24.3%	75.7%	1.13	1.18	91.8%	91.8%	92.5%	78.7%	21.3%	90.4%	90.4%
St. Vincent's University	3,244	3,433	1.06	29.2%	70.8%	1.03	1.07	96.9%	96.9%	97.1%	84.2%	15.8%	90.9%	90.9%
Wexford General	1,161	1,291	1.11	22.5%	77.5%	1.03	1.14	86.8%	86.8%	90.6%	75.7%	24.3%	95.5%	95.5%
Royal Victoria Eye & Ear	345	398	1.15	28.6%	71.4%	1.06	1.19	81.9%	81.9%	86.3%	64.6%	35.4%	85.1%	85.1%
National Rehabilitation	624	689	1.10	25.4%	74.6%	1.08	1.11	79.2%	79.2%	80.2%	78.1%	21.9%	88.0%	88.0%
IEHG Bank	19	27	1.44	11.1%	88.9%	1.22	1.47	100.0%	100.0%	100.0%	25.9%	74.1%	66.7%	66.7%
Hospital Group HQ	70	86	1.22	22.1%	77.9%	1.09	1.27	88.4%	88.4%	92.5%	74.4%	25.6%	78.9%	78.9%
Ireland East Hospital Group	14,458	15,939	1.10	25.1%	74.9%	1.05	1.12	85.0%	85.0%	87.9%	78.0%	22.0%	90.3%	73.9%
Beaumont	4,199	4,550	1.08	28.0%	72.0%	1.03	1.11	84.5%	84.5%	87.9%	79.8%	20.2%	92.1%	92.1%

Cavan General	1,263	1,437	1.14	19.1%	80.9%	1.06	1.16	85.6%	85.6%	89.9%	75.9%	24.1%	93.5%	93.5%
Connolly	1,570	1,742	1.11	25.8%	74.2%	1.04	1.14	84.9%	84.9%	87.4%	84.2%	15.8%	96.4%	96.4%
Louth County	300	338	1.13	20.1%	79.9%	1.08	1.14	98.5%	98.5%	99.3%	71.9%	28.1%	95.6%	95.6%
Monaghan	149	176	1.18	8.0%	92.0%	1.12	1.18	98.3%	98.3%	98.8%	60.8%	39.2%	92.9%	92.9%
Our Lady of Lourdes	2,468	2,738	1.11	22.1%	77.9%	1.05	1.13	86.3%	86.3%	90.0%	83.9%	16.1%	95.7%	95.7%
Rotunda	980	1,192	1.22	15.3%	84.7%	1.14	1.23	77.0%	77.0%	78.8%	72.0%	28.0%	87.4%	87.4%
Hospital Group HQ	60	63	1.05	17.5%	82.5%	1.02	1.06	98.4%	98.4%	100.0%	95.2%	4.8%	100.0%	100.0%
RCSI Hospitals Group	10,990	12,236	1.11	23.5%	76.5%	1.04	1.14	85.0%	85.0%	88.1%	79.7%	20.3%	93.5%	75.5%
Galway University	4,118	4,629	1.12	22.4%	77.6%	1.07	1.14	74.9%	74.9%	79.0%	74.8%	25.2%	90.0%	90.0%
Letterkenny University	2,066	2,342	1.13	23.0%	77.0%	1.05	1.16	73.3%	73.3%	77.2%	67.2%	32.8%	89.6%	89.6%
Mayo University	1,428	1,597	1.12	20.9%	79.1%	1.04	1.14	78.3%	78.3%	82.6%	73.5%	26.5%	94.9%	94.9%
Portiuncula University	943	1,058	1.12	22.0%	78.0%	1.04	1.15	77.0%	77.0%	84.0%	71.1%	28.9%	93.1%	93.1%
Roscommon University	431	486	1.13	19.5%	80.5%	1.07	1.14	77.4%	77.4%	81.1%	70.8%	29.2%	94.7%	94.7%
Sligo University	1,964	2,236	1.14	23.6%	76.4%	1.06	1.17	79.2%	79.2%	83.9%	74.0%	26.0%	93.0%	93.0%
Hospital Group HQ	110	115	1.05	17.4%	82.6%	1.01	1.06	77.4%	77.4%	77.9%	92.2%	7.8%	95.0%	95.0%
Saolta University Hospital Care	11,059	12,463	1.13	22.4%	77.6%	1.06	1.15	76.1%	76.1%	80.5%	72.7%	27.3%	91.5%	67.3%
Bantry General	328	376	1.14	16.2%	83.8%	1.12	1.15	75.0%	75.0%	78.4%	67.3%	32.7%	88.5%	88.5%
Cork University	4,738	5,404	1.14	23.3%	76.7%	1.07	1.16	60.6%	60.6%	64.6%	74.6%	25.4%	91.0%	91.0%
Lourdes Orthopaedic Kilcreene	71	83	1.16	19.3%	80.7%	1.06	1.19	92.8%	92.8%	98.5%	49.4%	50.6%	93.8%	93.8%
Mallow General	268	310	1.16	14.8%	85.2%	1.07	1.17	66.8%	66.8%	70.1%	67.7%	32.3%	89.1%	89.1%
Mercy University	1,388	1,557	1.12	21.4%	78.6%	1.03	1.15	75.5%	75.5%	77.5%	65.8%	34.2%	92.5%	92.5%
South Infirmary Victoria University	834	995	1.19	19.7%	80.3%	1.09	1.22	74.7%	74.7%	78.3%	49.4%	50.6%	71.9%	71.9%
South Tipperary General	1,040	1,177	1.13	19.8%	80.2%	1.05	1.15	77.7%	77.7%	81.5%	68.8%	31.2%	89.7%	89.7%
UH Kerry	1,394	1,599	1.15	20.1%	79.9%	1.06	1.17	59.7%	59.7%	62.7%	71.9%	28.1%	91.6%	91.6%
UH Waterford	2,340	2,616	1.12	23.9%	76.1%	1.04	1.14	83.4%	83.4%	87.9%	76.0%	24.0%	93.9%	93.9%
Hospital Group HQ	72	82	1.13	22.0%	78.0%	1.39	1.08	73.2%	73.2%	81.3%	85.4%	14.6%	66.7%	66.7%
South/South West Hospital Group	12,474	14,199	1.14	21.9%	78.1%	1.06	1.16	69.5%	69.5%	73.3%	70.9%	29.1%	90.3%	65.5%
Croom Orthopaedic	304	336	1.11	24.1%	75.9%	1.07	1.12	83.9%	83.9%	87.8%	77.7%	22.3%	95.1%	95.1%
Ennis	253	289	1.14	15.2%	84.8%	1.08	1.16	84.1%	84.1%	88.2%	68.5%	31.5%	88.6%	88.6%
Nenagh	286	322	1.12	15.8%	84.2%	1.04	1.14	89.4%	89.4%	91.9%	67.1%	32.9%	98.0%	98.0%
St. John's Limerick	337	373	1.11	14.2%	85.8%	1.01	1.12	91.4%	91.4%	93.8%	73.7%	26.3%	96.2%	96.2%
UH Limerick	3,634	3,985	1.10	23.2%	76.8%	1.04	1.11	78.7%	78.7%	82.2%	82.6%	17.4%	96.1%	96.1%
UMH Limerick	373	433	1.16	8.5%	91.5%	1.07	1.17	82.4%	82.4%	84.6%	69.1%	30.9%	89.2%	89.2%
Hospital Group HQ	12	12	1.04	33.3%	66.7%	1.00	1.06	91.7%	91.7%	100.0%	91.7%	8.3%	100.0%	100.0%
University of Limerick Hospital Group	5,198	5,750	1.11	20.8%	79.2%	1.04	1.12	81.0%	81.0%	84.5%	79.1%	20.9%	95.7%	74.8%
Other	119	124	1.04	24.2%	75.8%	1.00	1.06	92.7%	92.7%	95.7%	93.5%	6.5%	100.0%	100.0%
other Acute Services	119	124	1.04	24.2%	75.8%	1.00	1.06	92.7%	92.7%	95.7%	93.5%	6.5%	100.0%	91.5%

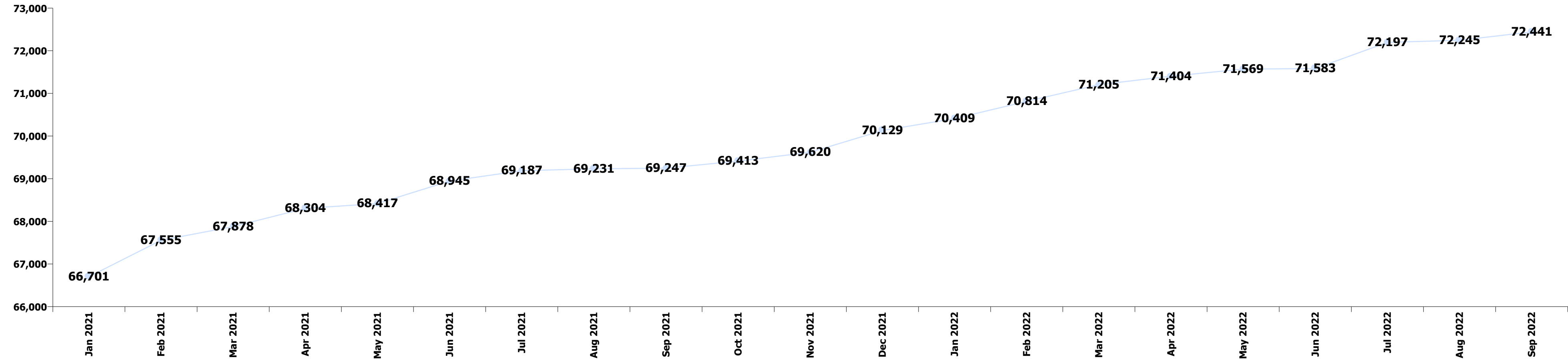
Summary Staff Movement: September 2022

Month-on-month Summary

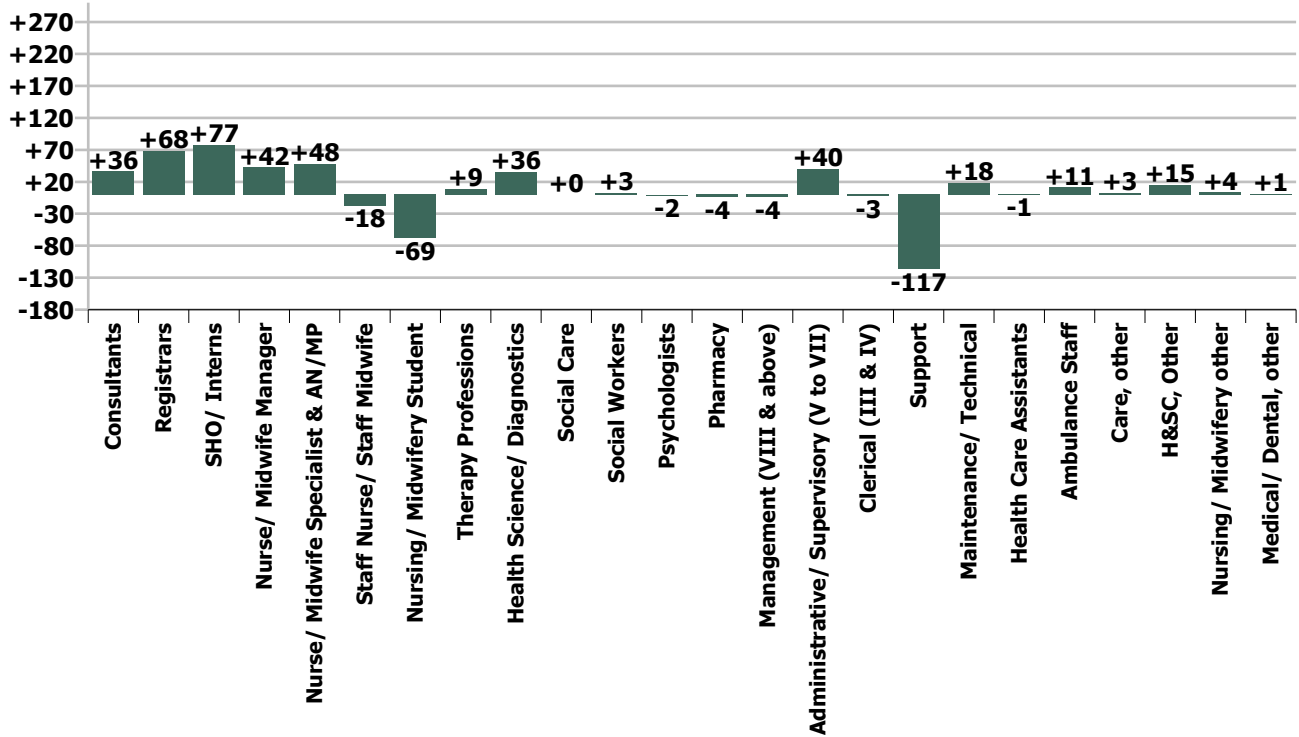
WTE change since Aug 22	% change since Aug 22	overall	Consultants	Registrars	SHO/ Interns	Medical/ Dental, other	Medical & Dental	Nurse/ Midwife Manager	Nurse/ Midwife Specialist & AN/MP	Staff Nurse/ Staff Midwife	Nursing/ Midwifery Student	Nursing/ Midwifery other	Nursing & Midwifery	Therapy Professions	Health Science/ Diagnostics	Social Care	Social Workers	Psychologists	Pharmacy	H&SC, Other	Health & Social Care Professionals	Management (VIII & above)	Administrativ e/ Supervisory (V to VII)	Clerical (III & IV)	Management & Administrativ e	General Support	Health Care Assistants	Ambulance Staff	Care, other	Patient & Client Care	
Overall	+0.3%	+196	+36	+68	+77	+1	+184	+42	+48	-18	-69	+4	+8	+9	+36	+0	+3	-2	-4	+15	+57	-4	+40	-3	+33	-99	-1	+11	+3	+13	
National Ambulance Service	+0.5%	+11						+1					+1									+3	-1	-4	-1			+11		+11	
Children's Health Ireland	+0.1%	+3	+4	+4	+1	-0	+8	-3	+10	-25	+23		+4	+1	-4		+0	-2	-1	-1		-7	-2	-0	+7	+4	-2	-5		-1	-5
Dublin Midlands Hospital Group	+0.4%	+44	+8	+5	+3	+0	+16	-4	+13	+21	-17	+1	+14	-8	+9		+1	+1	+0	-1	+2	-2	-2	-1	-5	-3	+19		+1	+20	
Ireland East Hospital Group	-0.1%	-14	+13	+10	+16	-0	+38	+9	+9	-8	-72	-0	-63	-3	+16		+0	+1	-4	+7	+17	-1	+14	-2	+11	-12	-6		+0	-5	
RCSI Hospitals Group	+0.0%	+4	+7	+9	+13	-0	+29	+8	+7	+13	-33	-1	-6	+1	+0		+0		-1	-0	-0	-1	+6	-3	+3	-7	-14		-0	-15	
Saolta University Hospital Care	+0.7%	+80	-5	+15	+22	+1	+33	+7	+6	-9	+21	+3	+29	+6	+11	+0	-1	-1	-2	+0	+14	-1	+11	+7	+17	-21	+7		+2	+8	
South/South West Hospital Group	+0.6%	+73	+8	+34	+22	-0	+64	+16	+2	+6	+9	-1	+32	+6	+3		+1	-0	+4	+11	+25	+0	+6	-1	+4	-53	+0		+1	+1	
University of Limerick Hospital Group	-0.2%	-10	+3	-8	+1		-4	+8	+2	-16	+1	+1	-4	+5	+0		+2	-0	-0	-1	+6	+1	+3	-7	-3	-1	-2		-1	-3	
other Acute Services	+3.3%	+4						+1					+1		+0				-0		+0	-1	+3	+1	+3						
Acute Services	+0.3%	+196	+36	+68	+77	+1	+184	+42	+48	-18	-69	+4	+8	+9	+36	+0	+3	-2	-4	+15	+57	-4	+40	-3	+33	-99	-1	+11	+3	+13	
			+1.1%	+2.0%	+2.4%	+1.7%	+1.9%	+0.8%	+2.7%	-0.1%	-8.7%	+2.1%	+0.0%	+0.4%	+0.8%	+0.9%	+0.7%	-1.1%	-0.4%	+10.3%	+0.6%	-0.6%	+1.2%	-0.0%	+0.3%	-1.4%	-0.0%	+0.6%	+1.2%	+0.2%	

Year-on-year Summary

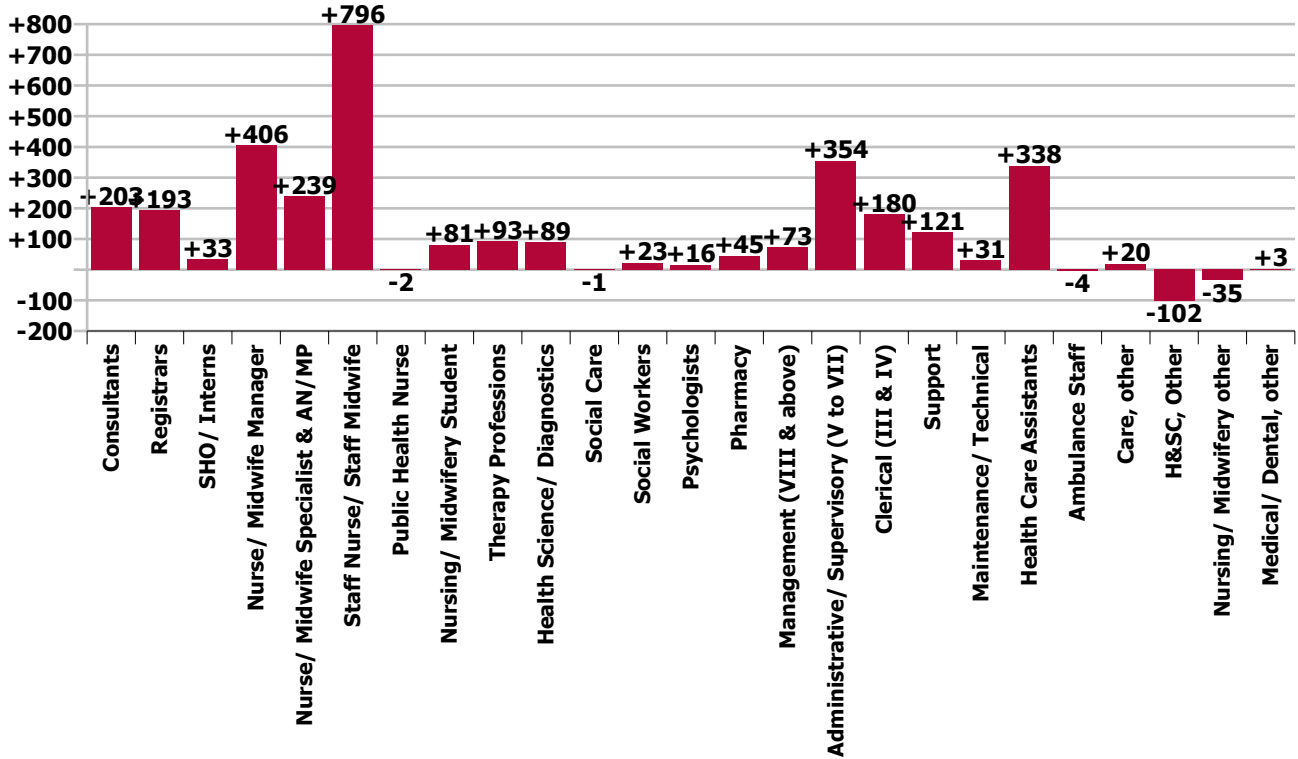
WTE change since Sep 21	% change since Sep 21	overall	Consultants	Registrars	SHO/ Interns	Medical/ Dental, other	Medical & Dental	Nurse/ Midwife Manager	Nurse/ Midwife Specialist & AN/MP	Staff Nurse/ Staff Midwife	Public Health Nurse	Nursing/ Midwifery Student	Nursing/ Midwifery other	Nursing & Midwifery	Therapy Professions	Health Science/ Diagnostics	Social Care	Social Workers	Psychologists	Pharmacy	H&SC, Other	Health & Social Care Professionals	Management (VIII & above)	Administrativ e/ Supervisory (V to VII)	Clerical (III & IV)	Management & Administrative	General Support	Health Care Assistants	Ambulance Staff	Care, other	Patient & Client Care
Overall	+4.6%	+3,194	+203	+193	+33	+3	+433	+406	+239	+796	-2	+81	-35	+1,485	+93	+89	-1	+23	+16	+45	-102	+163	+73	+354	+180	+607	+152	+338	-4	+20	+354
National Ambulance Service	+0.3%	+5		-1	-1		-2	+2						+2									+6	+2	+4	+12	+1	-0	-5	-2	-7
Children's Health Ireland	+3.5%	+138	+27	+10	+1	+0	+39	+6	+21	-2		+25	-1	+49	-2	-12		-2	-1	+4	-1	-13	+8	+21	+29	+59	+7	-1		-2	-3
Dublin Midlands Hospital Group	+4.0%	+467	+41	+50	-6	+1	+87	+45	+45	+43		+34	+0	+167	+11	+17		-1	+2	-15	-7	+7	+7	+58	+23	+88	-15	+127		+6	+133
Ireland East Hospital Group	+4.0%	+563	+52	+21	+26	+1	+100	+99	+41	+201		+10	-24	+327	-7	-3		+12	+8	-4	+2	+7	+27	+73	-2	+98	-2	+29		+5	+33
RCSI Hospitals Group	+4.7%	+490	+17	+35	-9	-1	+42	+81	+41	+135	-1	+1	-11	+245	+19	+34		+1	+1	+5	-15	+47	+9	+59	-3	+65	+15	+77		-1	+75
Saolta University Hospital Care	+6.3%	+655	+24	+9	+12	+1	+46	+60	+38	+275	-1	+13	-0	+384	+22	+40	-1	+7	+2	+17	-58	+28	+3	+40	+46	+89	+23	+76		+10	+86
South/South West Hospital Group	+5.1%	+611	+28	+61	+17	+0	+106	+60	+27	+153	-0	-4	+2	+238	+52	+22		+6	+3	+24	-20	+87	+15	+49	+35	+98	+49	+26	+1	+4	+31
University of Limerick Hospital Group	+5.2%	+256	+14	+9	-8	+0	+15	+55	+26	-8		+3	-1	+74	-2	-9		-0	+1	+10	-2	-2	+2	+39	+49	+91	+73	+4		+1	+5
other Acute Services	+9.2%	+10						-1						-1		+1		-1		+3		+3	-3	+13	-2	+8					
Acute Services	+4.6%	+3,194	+203	+193	+33	+3	+433	+406	+239	+796	-2	+81	-35	+1,485	+93	+89	-1	+23	+16	+45	-102	+163	+73	+354	+180	+607	+152	+338	-4	+20	+354
			+6.6%	+6.0%	+1.0%	+4.5%	+4.5%	+7.8%	+15.2%	+4.5%	-100.0%	+12.7%	-16.1%	+5.8%	+3.9%	+1.9%	-19.3%	+5.6%	+13.0%	+4.2%	-38.7%	+1.8%	+11.6%	+12.2%	+2.6%	+5.8%	+2.2%	+5.8%	-0.2%	+9.6%	+4.5%



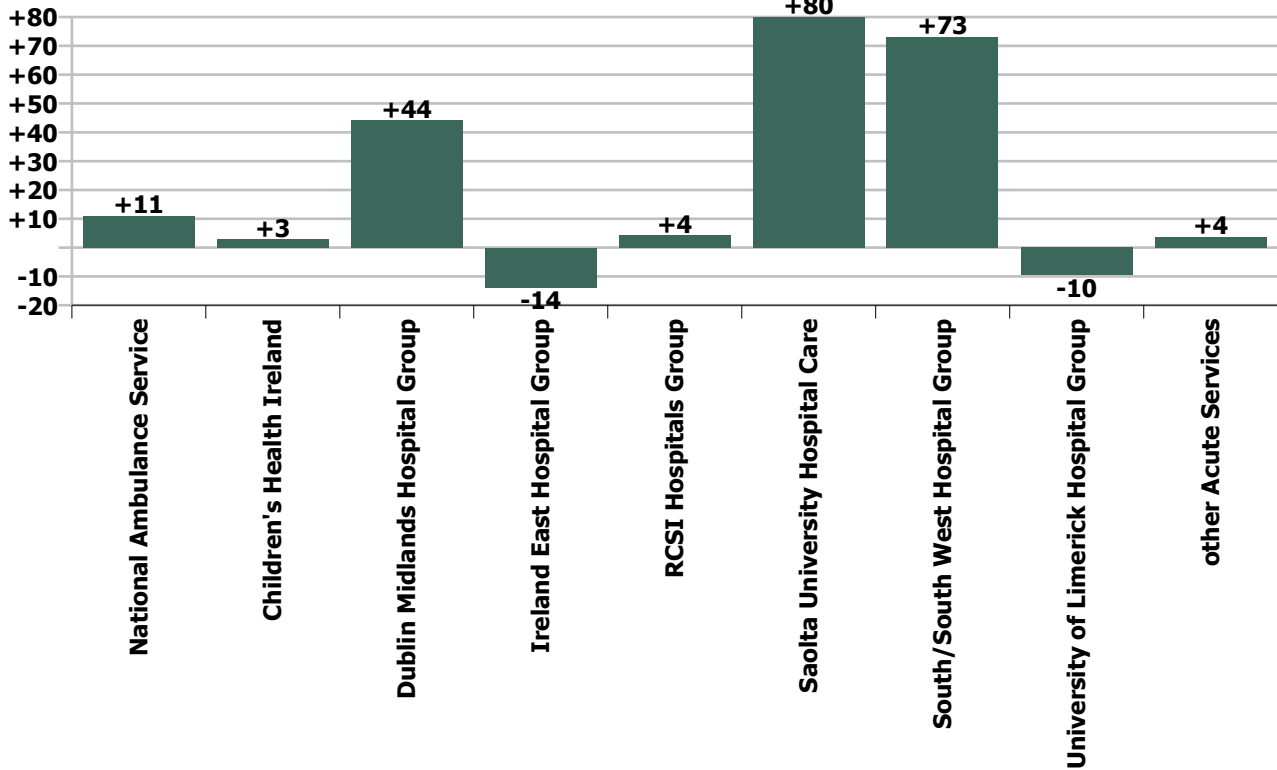
Staff Group change since: Aug 2022



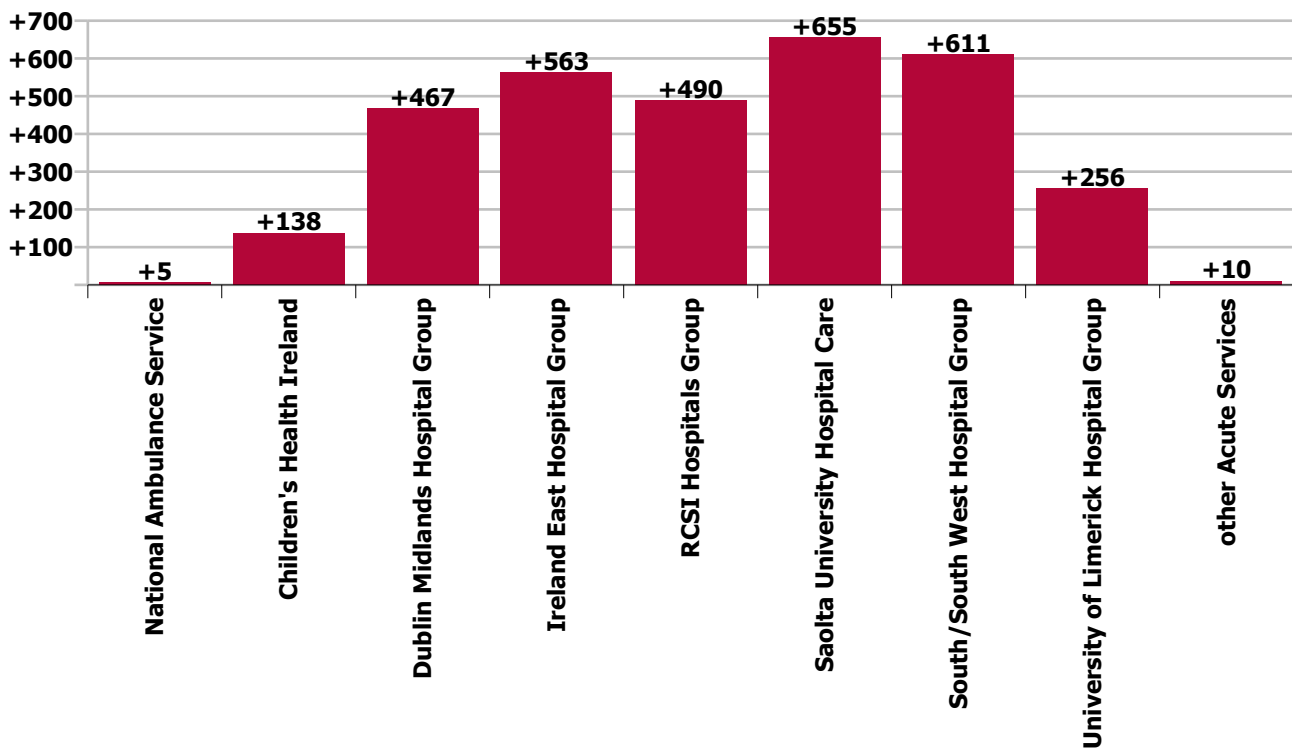
Staff Group change since: Sep 2021



Hospital Group & CHO change since: Aug 2022



Hospital Group & CHO change since: Sep 2021



Longitudinal Employment Levels by Grade Group - December 2016 to Sep 2022

Sep 2022 (Dec 2019 figure: 62,537)	WTE Sep 2022	WTE change since Dec 16	WTE change since Dec 17	WTE change since Dec 18	WTE change since Dec 19	WTE change since Dec 20	WTE change since Aug 22	% change since Dec 16	% change since Dec 17	% change since Dec 18	% change since Dec 19	% change since Dec 20	% change since Aug 22
Overall	72,441	+16,059	+13,820	+11,535	+9,904	+6,002	+196	+28.5%	+23.6%	+18.9%	+15.8%	+9.0%	+0.3%
Consultant Anaesthesia	451	+82	+66	+61	+48	+24	+6	+22.1%	+17.0%	+15.7%	+11.8%	+5.6%	+605.0%
Consultant Dentistry	6	+1	+1	-0	-0	-0	+0	+28.6%	+25.6%	-2.5%	-3.9%	-5.0%	+29.0%
Consultant Emergency Medicine	149	+57	+51	+52	+41	+28	+4	+61.8%	+51.9%	+53.0%	+37.9%	+22.8%	+357.0%
Consultant Intensive Care Medicine	22	+19	+16	+7	+6	+4	+2	+640.3%	+270.2%	+49.5%	+38.8%	+23.7%	+196.0%
Consultant Medicine	998	+307	+275	+232	+194	+112	+11	+44.5%	+38.1%	+30.3%	+24.2%	+12.7%	+1053.0%
Consultant Obstetrics & Gynaecology	178	+39	+28	+21	+17	+8	+1	+27.7%	+18.4%	+13.7%	+10.6%	+4.6%	+51.0%
Consultant, Other					-1			-100.0%	-100.0%	-100.0%	-100.0%	-100.0%	
Consultant Paediatrics	225	+74	+59	+48	+33	+14	+3	+48.4%	+35.8%	+27.1%	+16.9%	+6.5%	+267.0%
Consultant Pathology	288	+65	+57	+46	+35	+22	+3	+29.4%	+24.7%	+18.8%	+14.0%	+8.5%	+303.0%
Consultant Psychiatry	28	+11	+9	+8	+4	+4	+1	+63.8%	+47.2%	+40.4%	+16.2%	+18.1%	+68.0%
Consultant Radiology	301	+53	+50	+35	+26	+21	-1	+21.2%	+20.0%	+13.0%	+9.5%	+7.5%	-60.0%
Consultant Surgery	618	+134	+122	+99	+79	+53	+8	+27.6%	+24.6%	+19.0%	+14.6%	+9.5%	+777.0%
Consultants	3,264	+841	+734	+608	+482	+290	+36	+34.7%	+29.0%	+22.9%	+17.3%	+9.8%	+1.1%
Registrar	1,914	+410	+341	+260	+210	+104	+68	+27.3%	+21.7%	+15.7%	+12.3%	+5.8%	+6803.0%
Senior Registrar	124	+11	+22	+16	+16	+3	-3	+9.7%	+21.3%	+14.7%	+14.5%	+2.6%	-299.0%
Specialist Registrar	1,398	+487	+396	+371	+268	+213	+3	+53.4%	+39.6%	+36.1%	+23.7%	+18.0%	+341.0%
Registrars	3,436	+908	+759	+647	+494	+320	+68	+35.9%	+28.4%	+23.2%	+16.8%	+10.3%	+2.0%
Interns	823	+122	+113	+101	+104	-144	-1	+17.4%	+15.9%	+13.9%	+14.5%	-14.9%	-144.0%
Senior House Officer	2,464	+550	+489	+443	+387	+178	+79	+28.7%	+24.7%	+21.9%	+18.6%	+7.8%	+7888.0%
SHO/ Interns	3,287	+672	+602	+544	+492	+34	+77	+25.7%	+22.4%	+19.8%	+17.6%	+1.0%	+2.4%
Dentists	9	-4	-1	-1	-0	-2	+1	-29.5%	-9.0%	-5.1%	-1.4%	-14.1%	+126.0%
Other Medical	66	+23	+18	+15	+16	+13	-0	+54.2%	+38.3%	+29.7%	+32.6%	+25.1%	-1.0%
Medical/ Dental, other	76	+19	+17	+15	+16	+12	+1	+34.3%	+29.9%	+24.0%	+27.1%	+18.4%	+1.7%
Medical & Dental	10,062	+2,801	+2,113	+1,814	+1,483	+657	+184	+38.6%	+26.6%	+22.0%	+17.3%	+7.0%	+1.9%
Clinical Nurse/ Midwife Manager	4,974	+1,370	+1,226	+919	+776	+586	+30	+38.0%	+32.7%	+22.7%	+18.5%	+13.4%	+3000.0%
Director Nursing/Midwifery, Assistant	515	+160	+120	+91	+81	+62	+11	+45.2%	+30.3%	+21.6%	+18.8%	+13.7%	+1079.0%
Director of Nursing/Midwifery	97	+34	+29	+20	+18	+14	+2	+54.2%	+42.4%	+26.4%	+22.8%	+17.1%	+166.0%
Nurse/ Midwife Manager	5,586	+1,564	+1,374	+1,031	+876	+662	+42	+38.9%	+32.6%	+22.6%	+18.6%	+13.5%	+0.8%
Advanced Nurse/ Midwife Practitioner	610	+460	+405	+333	+272	+170	+42	+308.0%	+198.3%	+120.7%	+80.8%	+38.6%	+4184.0%
Clinical Nurse/ Midwife Specialist	1,200	+334	+330	+283	+245	+171	+6	+38.6%	+38.0%	+30.8%	+25.7%	+16.7%	+633.0%
Nurse/ Midwife Specialist & AN/MP	1,809	+794	+735	+616	+517	+341	+48	+78.2%	+68.5%	+51.6%	+40.1%	+23.2%	+2.7%
Graduate Nursing/ Midwifery								-100.0%	-100.0%	-100.0%	-100.0%	-100.0%	
Nursing Bank	12	-34	-36	-26	-19	-11	+2	-73.9%	-75.1%	-68.7%	-61.7%	-48.0%	+245.0%
Staff Midwives	1,326	-131	-112	-154	-131	-153	-16	-9.0%	-7.8%	-10.4%	-9.0%	-10.3%	-1648.0%
Staff Nurse [Psychiatric]	24	-9	-6	-7	-4	-5	+0	-28.2%	-21.4%	-23.6%	-14.5%	-17.9%	+5.0%
Staff Nurse [Intellectual Disability]						-72		-100.0%	-100.0%	-100.0%	-100.0%	-100.0%	
Staff Nurses [General/ Children's]	17,226	+3,327	+2,701	+2,377	+2,065	+1,303	-4	+23.9%	+18.6%	+16.0%	+13.6%	+8.2%	-386.0%

Sep 2022 (Dec 2019 figure: 62,537)	WTE Sep 2022	WTE change since Dec 16	WTE change since Dec 17	WTE change since Dec 18	WTE change since Dec 19	WTE change since Dec 20	WTE change since Aug 22	% change since Dec 16	% change since Dec 17	% change since Dec 18	% change since Dec 19	% change since Dec 20	% change since Aug 22
Overall	72,441	+16,059	+13,820	+11,535	+9,904	+6,002	+196	+28.5%	+23.6%	+18.9%	+15.8%	+9.0%	+0.3%
Staff Nurse/ Staff Midwife	18,588	+3,153	+2,547	+2,190	+1,912	+1,062	-18	+20.4%	+15.9%	+13.4%	+11.5%	+6.1%	-0.1%
Public Health Nurse		-1	-1	-1	-1	-2		-100.0%	-100.0%	-100.0%	-100.0%	-100.0%	-100.0%
Pre-registration Nurse/ Midwife Intern	366	+295	+295	+295	+284	+351	-164	+411.5%	+411.0%	+415.1%	+343.7%	+2350.0%	-16443.0%
Pre-registration Nurse Intern (COVID-19)						-156		-100.0%	-100.0%	-100.0%	-100.0%	-100.0%	
Post-registration Nurse/ Midwife Student	144	-14	-7	-28	-51	-6	+40	-8.7%	-4.6%	-16.4%	-26.2%	-4.3%	+3967.0%
Nursing/ Midwifery awaiting registration	212	+171	+115	+98	+73	+155	+56	+417.2%	+118.8%	+86.4%	+52.6%	+274.8%	+5616.0%
Nursing/ Midwifery Student	722	+452	+403	+365	+306	+345	-69	+167.1%	+126.0%	+102.2%	+73.3%	+91.2%	-8.7%
Nursing Education/Clinical	176	+1	+10	+3	-15	-20	+3	+0.5%	+6.0%	+1.6%	-7.8%	-10.4%	+275.0%
Other Nursing/ Midwifery	7	-18	-20	-22	-27	-24	+1	-73.6%	-75.7%	-77.2%	-80.6%	-78.3%	+100.0%
Nursing/ Midwifery other	182	-17	-10	-19	-42	-44	+4	-8.6%	-5.3%	-9.6%	-18.6%	-19.4%	+2.1%
Nursing & Midwifery	26,888	+6,365	+5,049	+4,181	+3,567	+2,364	+8	+31.0%	+23.1%	+18.4%	+15.3%	+9.6%	+0.0%
Dietitians	470	+125	+121	+72	+77	+32	+2	+36.2%	+34.6%	+18.0%	+19.7%	+7.3%	+171.0%
Occupational Therapists	508	+176	+165	+148	+139	+91	+12	+52.9%	+48.3%	+41.3%	+37.8%	+21.7%	+1185.0%
Orthoptists	19	-3	-8	-5	-3	-2	-2	-15.2%	-28.8%	-21.7%	-14.1%	-8.3%	-236.0%
Physiotherapists	1,148	+267	+210	+174	+156	+80	-2	+30.3%	+22.4%	+17.9%	+15.7%	+7.5%	-163.0%
Podiatrists & Chiropodists	31	-1	+2	+1	-3	-6	+1	-2.0%	+7.0%	+2.2%	-9.7%	-16.2%	+77.0%
Speech & Language Therapists	265	+88	+76	+64	+67	+29	-2	+49.5%	+39.9%	+31.9%	+33.9%	+12.2%	-172.0%
Therapy Professions	2,441	+652	+566	+454	+433	+224	+9	+36.4%	+30.2%	+22.8%	+21.6%	+10.1%	+0.4%
Audiology	42	+10	+11	+13	+14	+12	-1	+31.9%	+34.7%	+44.8%	+51.0%	+39.1%	-50.0%
Biochemists	63	+4	+0	-8	-9	-13	-2	+6.8%	+0.0%	-11.9%	-12.5%	-17.3%	-179.0%
Cardiac Physiologists	252	+37	+39	+29	+25	+8	-1	+17.0%	+18.6%	+13.0%	+10.9%	+3.5%	-79.0%
Clinical Engineering	161	+36	+29	+25	+18	+12	-1	+29.4%	+21.7%	+18.5%	+12.8%	+7.8%	-107.0%
Dosimetrists	12	+2	+4	+2	-1	-2	+1	+20.0%	+40.9%	+15.9%	-5.1%	-12.1%	+86.0%
E.C.G. Technicians	10	-2	+1	+1	+0	-1	+2	-19.1%	+5.9%	+12.9%	+2.6%	-5.9%	+151.0%
Gastrointestinal Physiologists	4	+1	-1	+2	+2	+2	-0	+44.1%	-17.3%	+94.3%	+94.3%	+94.3%	-4.0%
Medical Science	1,987	+120	+106	+98	+102	+36	+18	+6.5%	+5.6%	+5.2%	+5.4%	+1.8%	+1812.0%
Neuro-Physiologists	51	+10	+4	+2	+1	-6	-3	+24.6%	+7.4%	+4.0%	+2.7%	-9.8%	-337.0%
Perfusionists	21	+2	-0	+1	-1	-1	+0	+8.6%	-1.0%	+3.6%	-5.5%	-5.4%	+3.0%
Phlebotomists	220	+67	+61	+61	+49	+37	+5	+43.8%	+37.9%	+37.9%	+28.4%	+20.4%	+544.0%
Physicists	185	+32	+30	+3	+4	+13	-1	+21.3%	+19.4%	+1.8%	+2.1%	+7.6%	-138.0%
Radiation Therapists	200	+13	+15	+8	+1	-12	-7	+6.7%	+8.0%	+4.3%	+0.6%	-5.5%	-715.0%
Radiographers	1,397	+359	+320	+282	+251	+158	+26	+34.6%	+29.8%	+25.3%	+21.9%	+12.8%	+2597.0%
Respiratory Physiologists	71	+18	+16	+12	+6	+1	-0	+34.4%	+30.1%	+21.0%	+9.4%	+0.9%	-21.0%
Vascular Physiologists	33	+4	+6	+7	+4	+5	+0	+15.1%	+23.2%	+27.5%	+14.4%	+19.4%	+9.0%
Health Science/ Diagnostics	4,708	+714	+640	+537	+466	+250	+36	+17.9%	+15.7%	+12.9%	+11.0%	+5.6%	+0.8%
Social Care	3	-0	+0	+0	+0	-1	+0	-10.1%	+12.3%	+16.5%	+1.2%	-18.9%	+0.9%
Social Workers	430	+111	+105	+88	+75	+46	+3	+34.6%	+32.2%	+25.8%	+21.1%	+12.0%	+0.7%
Psychologists	141	+59	+57	+52	+40	+31	-2	+72.5%	+66.9%	+57.6%	+40.2%	+28.1%	-1.1%
Pharmacists	641	+204	+181	+130	+110	+50	-7	+46.7%	+39.3%	+25.6%	+20.8%	+8.5%	-711.0%

Sep 2022 (Dec 2019 figure: 62,537)	WTE Sep 2022	WTE change since Dec 16	WTE change since Dec 17	WTE change since Dec 18	WTE change since Dec 19	WTE change since Dec 20	WTE change since Aug 22	% change since Dec 16	% change since Dec 17	% change since Dec 18	% change since Dec 19	% change since Dec 20	% change since Aug 22
Overall	72,441	+16,059	+13,820	+11,535	+9,904	+6,002	+196	+28.5%	+23.6%	+18.9%	+15.8%	+9.0%	+0.3%
Pharmacy Technicians	477	+180	+163	+146	+107	+61	+3	+60.7%	+51.8%	+44.1%	+28.8%	+14.7%	+273.0%
Pharmacy	1,118	+384	+344	+277	+217	+111	-4	+52.3%	+44.4%	+32.9%	+24.1%	+11.1%	-0.4%
H&SC, Other	162	+8	-5	-11	+11	+8	+15	+4.9%	-3.3%	-6.1%	+7.2%	+5.3%	+10.3%
Health & Social Care Professionals	9,003	+2,136	+1,706	+1,397	+1,242	+670	+57	+31.1%	+23.4%	+18.4%	+16.0%	+8.0%	+0.6%
Executive Management	118	+57	+55	+36	+32	+17	+2	+91.2%	+86.0%	+42.8%	+36.4%	+16.5%	+188.0%
Senior Management (VIII & GM)	587	+252	+211	+169	+157	+110	-6	+75.2%	+56.1%	+40.5%	+36.3%	+22.9%	-618.0%
Management (VIII & above)	706	+309	+266	+205	+188	+126	-4	+77.7%	+60.4%	+40.9%	+36.4%	+21.8%	-0.6%
Middle Management (V-VII)	3,240	+1,442	+1,265	+1,092	+929	+579	+40	+80.2%	+64.1%	+50.8%	+40.2%	+21.8%	+3975.0%
Other Administrative	19	+6	+7	+4	+4	+5	+0	+46.0%	+61.0%	+23.5%	+25.2%	+40.6%	+47.0%
Administrative/ Supervisory (V to VII)	3,259	+1,448	+1,272	+1,095	+933	+584	+40	+80.0%	+64.0%	+50.6%	+40.1%	+21.9%	+1.2%
Clerical (III & IV)	7,176	+898	+703	+568	+570	+517	-3	+14.3%	+10.9%	+8.6%	+8.6%	+7.8%	-0.0%
Management & Administrative	11,140	+2,941	+2,241	+1,868	+1,691	+1,228	+33	+35.9%	+25.2%	+20.1%	+17.9%	+12.4%	+0.3%
Catering	472	+32	+21	+29	+2	-18	-16	+7.2%	+4.7%	+6.5%	+0.4%	-3.6%	-1584.0%
Household Services	3,255	+676	+620	+567	+538	+157	-15	+26.2%	+23.5%	+21.1%	+19.8%	+5.1%	-1455.0%
Other Labs & Associated	610	+286	+270	+255	+231	+170	-53	+88.5%	+79.6%	+71.9%	+60.8%	+38.6%	-5315.0%
Other Support	769	+59	+42	+34	+30	+7	-7	+8.3%	+5.8%	+4.6%	+4.1%	+0.9%	-745.0%
Portering	1,411	+85	+78	+83	+85	+48	-26	+6.4%	+5.8%	+6.2%	+6.4%	+3.5%	-2618.0%
Support	6,516	+1,138	+1,031	+968	+886	+364	-117	+21.2%	+18.8%	+17.4%	+15.7%	+5.9%	-1.8%
Maintenance	536	+45	+55	+48	+29	+21	+18	+9.3%	+11.4%	+9.8%	+5.8%	+4.2%	+1827.0%
Technical Services	28	+9	+9	+6	+4	+3		+45.8%	+45.8%	+29.0%	+16.8%	+12.0%	
Maintenance/ Technical	564	+54	+64	+54	+33	+24	+18	+10.6%	+12.7%	+10.7%	+6.2%	+4.5%	+3.3%
General Support	7,080	+1,284	+1,095	+1,022	+919	+389	-99	+22.1%	+18.3%	+16.9%	+14.9%	+5.8%	-1.4%
Attendant/ Aide	1,228	-471	-518	-446	-354	-244	+12	-27.7%	-29.7%	-26.6%	-22.4%	-16.6%	+1204.0%
Health & Social Care Assistants	204	+104	+94	+79	+75	+47	+13	+104.8%	+85.1%	+62.9%	+58.1%	+30.3%	+1258.0%
Health Care Assistant/ Care Assistant	4,709	+1,943	+1,805	+1,428	+1,145	+872	-25	+70.2%	+62.2%	+43.5%	+32.1%	+22.7%	-2546.0%
HCA (Student Nurse/Midwife COVID-19)						-50		-100.0%	-100.0%	-100.0%	-100.0%	-100.0%	
Health Care Assistants	6,141	+1,576	+1,381	+1,061	+866	+625	-1	+34.5%	+29.0%	+20.9%	+16.4%	+11.3%	-0.0%
Ambulance Staff	1,905	+264	+160	+123	+80	+28	+11	+16.1%	+9.1%	+6.9%	+4.4%	+1.5%	+0.6%
Health Promotion	4	+2	+2	+2	+3	+1	-0	+69.0%	+59.2%	+59.2%	+158.7%	+28.6%	-0.0%
Other Care Grades	141	+69	+79	+80	+62	+47	+4	+96.0%	+129.7%	+133.5%	+79.0%	+49.5%	+391.0%
Pastoral Care	76	-11	-6	-15	-11	-8	-1	-12.6%	-7.8%	-16.4%	-12.2%	-9.6%	-135.0%
Workshop Services	2	+1	+1	+2	+1	+2		+106.0%	+106.0%	+312.0%	+106.0%	+312.0%	
Care, other	223	+61	+76	+69	+55	+41	+3	+37.4%	+51.2%	+44.4%	+32.8%	+22.5%	+1.2%
Patient & Client Care	8,268	+2,177	+1,617	+1,252	+1,001	+694	+13	+35.7%	+24.3%	+17.8%	+13.8%	+9.2%	+0.2%

Source: Health Service Personnel Census