

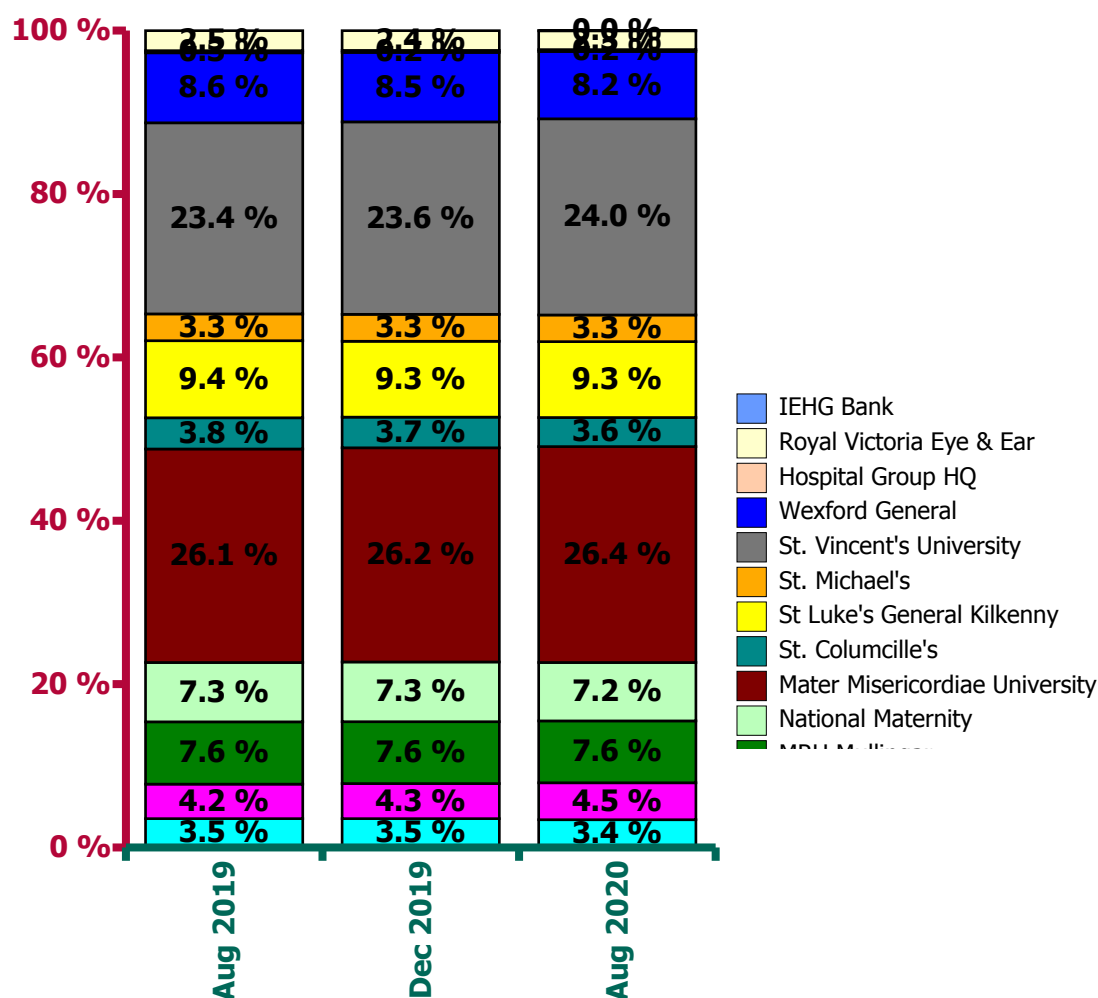
Ireland East Hospital Group Employment Report: September 2020

Employment by Staff Group

Sep 2020 (Dec 2019 figure: 12,045)	WTE Aug 2020	WTE Sep 2020	WTE change since Aug 20	% change since Aug 20	WTE change since Dec 19	WTE change since Sep 19
Overall	12,913	12,770	-143.36	-1.1%	+725	+805
Consultants	580	587	+7	+1.2%	+48	+51
Registrars	675	671	-4	-0.6%	+53	+53
SHO/ Interns	673	664	-10	-1.4%	+94	+100
Medical/ Dental, other	26	29	+4	+14.3%	+4	+4
Medical & Dental	1,954	1,951	-3	-0.2%	+198	+207
Nurse/ Midwife Manager	963	1,009	+45	+4.7%	+78	+85
Nurse/ Midwife Specialist & AN/MP	314	322	+8	+2.6%	+15	+25
Staff Nurse/ Staff Midwife	3,260	3,239	-21	-0.6%	+2	+79
<i>Pre-registration Nurse/ Midwife Intern</i>				-100.0%	-23	-30
<i>Pre-registration Nurse Intern (COVID-19)</i>	222	101	-121	-54.4%	+101	+101
<i>Post-registration Nurse/ Midwife Student</i>	20	20			-3	-3
<i>Nursing/ Midwifery awaiting registration</i>	1	18	+17	+1871.7%	+14	-10
Nursing/ Midwifery Student	243	139	-103	-42.6%	+82	+58
Nursing/ Midwifery other	80	74	-6	-7.4%	-2	+1
Nursing & Midwifery	4,860	4,783	-77	-1.6%	+176	+248
Therapy Professions	469	472	+3	+0.6%	+50	+54
Health Science/ Diagnostics	783	782	-1	-0.1%	+48	+46
Social Workers	70	72	+1	+1.9%	+2	+3
Psychologists	21	20	-0	-1.9%	-1	+3
Pharmacy	192	188	-4	-2.0%	+0	+2
H&SC, Other	37	30	-7	-18.9%	+4	+8
Health & Social Care Professionals	1,573	1,565	-8	-0.5%	+103	+116
Management (VIII & above)	99	90	-9	-8.8%	+7	+4
Administrative/ Supervisory (V to VII)	556	590	+34	+6.2%	+74	+85
Clerical (III & IV)	1,252	1,224	-28	-2.3%	+10	+1
Management & Administrative	1,906	1,904	-3	-0.1%	+91	+90
Support	1,390	1,302	-88	-6.3%	-21	-29
Maintenance/ Technical	121	117	-4	-3.5%	+5	+3
General Support	1,511	1,419	-92	-6.1%	-17	-26
Health Care Assistants	1,082	1,123	+41	+3.8%	+174	+168
Care, other	28	26	-2	-6.4%	+0	+2
Patient & Client Care	1,110	1,149	+40	+3.6%	+174	+170

Ireland East Hospital Group Employment by Hospital: Sep 2020

Sep 2020 (Dec 2019 figure: 12,045)	WTE Aug 2020	WTE Sep 2020	WTE change since Aug 20	% change since Aug 20	WTE change since Dec 19	WTE change since Sep 19
Overall	12,913	12,770	-143	-1.1%	+725	+805
Cappagh National Orthopaedic	439	440	+1	+0.2%	+13	+16
Our Lady's Navan	584	572	-12	-2.1%	+56	+68
MRH Mullingar	979	981	+2	+0.2%	+68	+62
National Maternity	924	909	-15	-1.6%	+29	+35
Mater Misericordiae University	3,412	3,365	-47	-1.4%	+206	+246
St. Columcille's	459	456	-3	-0.7%	+4	-2
St Luke's General Kilkenny	1,201	1,188	-12	-1.0%	+70	+59
St. Michael's	421	417	-4	-0.9%	+21	+23
St. Vincent's University	3,100	3,043	-57	-1.8%	+205	+250
Wexford General	1,065	1,060	-5	-0.5%	+36	+30
Hospital Group HQ	29	30	+1	+5.2%	+0	-1
Royal Victoria Eye & Ear	298	304	+6	+1.9%	+13	+13
IEHG Bank	3	5	+2	+65.9%	+5	+5



**Ireland East Hospital Group Employment by Administration (HSE / S38):
September 2020**

Sep 2020 (Dec 2019 figure: 12,045)	WTE Aug 2020	WTE Sep 2020	WTE change since Aug 20	% change since Aug 20	WTE change since Dec 19	WTE change since Sep 19
Overall	12,913	12,770	-143	-1.1%	+725	+805
HSE	4,319	4,292	-27	-0.6%	+238	+221
Section 38 Hospitals	8,594	8,477	-116	-1.4%	+487	+584

HSE

Sep 2020 (Dec 2019 figure: 4,054)	WTE Aug 2020	WTE Sep 2020	WTE change since Aug 20	% change since Aug 20	WTE change since Dec 19	WTE change since Sep 19
Overall	4,319	4,292	-27	-0.6%	+238	+221
Consultants	148	151	+3	+0.0%	+13	+9
Registrars	211	206	-5	-0.0%	+5	+6
SHO/ Interns	242	235	-7	-0.0%	+12	+18
Medical/ Dental, other	13	16	+3	+0.2%	+2	+2
Medical & Dental	614	608	-5	-0.9%	+32	+35
Nurse/ Midwife Manager	336	336	-0	-0.0%	+15	+6
Nurse/ Midwife Specialist & AN/MP	75	78	+3	+0.0%	+6	+8
Staff Nurse/ Staff Midwife	1,093	1,091	-2	-0.0%	+16	+27
<i>Pre-registration Nurse/ Midwife Intern</i>				-1.0%	-1	-11
<i>Pre-registration Nurse Intern (COVID-19)</i>	31	24	-7	-0.2%	+24	+24
<i>Nursing/ Midwifery awaiting registration</i>	1	4	+3	+3.5%	+0	-8
Nursing/ Midwifery Student	32	28	-4	-0.1%	+21	+6
Nursing/ Midwifery other	5	5	-1	-0.2%	+0	+0
Nursing & Midwifery	1,541	1,537	-4	-0.3%	+59	+47
Therapy Professions	168	169	+2	+0.0%	+34	+32
Health Science/ Diagnostics	231	228	-3	-0.0%	+16	+17
Social Workers	8	7	-1	-0.1%	+1	+2
Psychologists	2	1	-0	-0.2%	-1	-1
Pharmacy	56	55	-1	-0.0%	-1	-0
H&SC, Other	2	2		+0.0%	+2	+1
Health & Social Care Professionals	466	462	-3	-0.7%	+50	+51
Management (VIII & above)	27	23	-3	-0.1%	+4	+4
Administrative/ Supervisory (V to VII)	111	117	+7	+0.1%	+23	+30
Clerical (III & IV)	466	460	-6	-0.0%	-6	-13
Management & Administrative	603	601	-3	-0.5%	+22	+22
Support	546	459	-87	-0.2%	-54	-61
Maintenance/ Technical	41	37	-4	-0.1%	-2	-3
General Support	587	496	-92	-15.6%	-57	-63
Health Care Assistants	500	581	+80	+0.2%	+133	+131
Care, other	8	8	-0	-0.0%	-1	-1
Patient & Client Care	508	588	+80	+15.8%	+133	+130

Section 38 Hospitals

Sep 2020 (Dec 2019 figure: 7,991)	WTE Aug 2020	WTE Sep 2020	WTE change since Aug 20	% change since Aug 20	WTE change since Dec 19	WTE change since Sep 19
Overall	8,594	8,477	-116	-1.4%	+487	+584
Consultants	432	435	+4	+0.0%	+35	+42
Registrars	465	465	+0	+0.0%	+48	+46
SHO/ Interns	431	429	-3	-0.0%	+82	+82
Medical/ Dental, other	13	13	+1	+0.1%	+2	+2
Medical & Dental	1,340	1,342	+2	+0.1%	+166	+172
Nurse/ Midwife Manager	627	673	+45	+0.1%	+63	+79
Nurse/ Midwife Specialist & AN/MP	239	244	+5	+0.0%	+9	+17
Staff Nurse/ Staff Midwife	2,167	2,148	-19	-0.0%	-15	+52
<i>Pre-registration Nurse/ Midwife Intern</i>				-1.0%	-22	-20
<i>Pre-registration Nurse Intern (COVID-19)</i>	191	78	-113	-0.6%	+78	+78
<i>Post-registration Nurse/ Midwife Student</i>	20	20		+0.0%	-3	-3
<i>Nursing/ Midwifery awaiting registration</i>		14	+14	-1.0%	+14	-3
Nursing/ Midwifery Student	211	112	-99	-0.5%	+61	+52
Nursing/ Midwifery other	74	69	-5	-0.1%	-2	+1
Nursing & Midwifery	3,318	3,246	-73	-2.2%	+117	+201
Therapy Professions	302	303	+1	+0.0%	+16	+22
Health Science/ Diagnostics	552	554	+2	+0.0%	+33	+29
Social Workers	63	65	+2	+0.0%	+1	+1
Psychologists	19	19	+0	+0.0%	-1	+3
Pharmacy	136	133	-3	-0.0%	+2	+2
H&SC, Other	35	28	-7	-0.2%	+2	+7
Health & Social Care Professionals	1,107	1,102	-5	-0.4%	+53	+65
Management (VIII & above)	72	67	-5	-0.1%	+2	-1
Administrative/ Supervisory (V to VII)	445	472	+28	+0.1%	+50	+54
Clerical (III & IV)	786	764	-22	-0.0%	+16	+14
Management & Administrative	1,303	1,303	+0	+0.0%	+69	+68
Support	843	843	-1	-0.0%	+33	+32
Maintenance/ Technical	80	80		+0.0%	+7	+6
General Support	923	923	-1	-0.1%	+40	+38
<i>HCA, Nurse's Aide, etc.</i>	553	521	-32	-0.1%	+52	+36
<i>Health & Social Care Assistants</i>	29	22	-7	-0.2%	+2	+1
Health Care Assistants	581	542	-39	-0.1%	+41	+37
<i>Other Care Grades</i>	20	18	-2	-0.1%	+1	+3
Care, other	20	18	-2	-0.1%	+1	+3
Patient & Client Care	601	561	-41	-6.7%	+42	+40

Cappagh National Orthopaedic

Sep 2020 (Dec 2019 figure: 426)	WTE Aug 2020	WTE Sep 2020	WTE change since Aug 20	% change since Aug 20	WTE change since Dec 19
Overall	439	440	+1	+0.2%	+13
Consultants	15	16	+1	+0.1%	-1
Registrars	19	19	0	+0.0%	+1
SHO/ Interns	12	12	0	+0.0%	
Medical & Dental	46	47	+1	+1	+1
Nurse/ Midwife Manager	41	41	0	+0.0%	
Nurse/ Midwife Specialist & AN/MP	9	9	0	+0.0%	
Staff Nurse/ Staff Midwife	111	111	-0	-0.0%	+8
Nursing/ Midwifery other	2	2	0	+0.0%	
Nursing & Midwifery	163	163	-0	-0	+8
Therapy Professions	32	32	+0	+0.0%	-1
Health Science/ Diagnostics	26	26	0	+0.0%	+1
Social Workers	7	7	0	+0.0%	
Psychologists	1	1	0	+0.0%	
Pharmacy	5	5	0	+0.0%	
Health & Social Care Professionals	71	71			+0
Management (VIII & above)	4	4	0	+0.0%	
Administrative/ Supervisory (V to VII)	25	25	-0	-0.0%	+3
Clerical (III & IV)	41	41	0	+0.0%	+1
Management & Administrative	70	70			+4
Support	62	62	-0	-0.0%	+0
Maintenance/ Technical	1	1	0	+0.0%	
General Support	63	63			+0
Health Care Assistants	26	26	0	+0.0%	
Patient & Client Care	26	26			

Our Lady's Navan

Sep 2020 (Dec 2019 figure: 516)	WTE Aug 2020	WTE Sep 2020	WTE change since Aug 20	% change since Aug 20	WTE change since Dec 19
Overall	584	572	-12	-2.1%	+56
Consultants	15	15	+0	+0.0%	+2
Registrars	36	30	-7	-0.2%	+3
SHO/ Interns	44	42	-2	-0.0%	+8
Medical & Dental	95	87	-8	-8	+13
Nurse/ Midwife Manager	52	51	-1	-0.0%	+7
Nurse/ Midwife Specialist & AN/MP	11	13	+1	+0.1%	+2
Staff Nurse/ Staff Midwife	128	128	+1	+0.0%	+7
Nursing/ Midwifery Student				-1.0%	-4
Nursing & Midwifery	191	192	+1	+1	+12
Therapy Professions	27	27	+0	+0.0%	+8
Health Science/ Diagnostics	39	39	-0	-0.0%	+2
Pharmacy	7	7	+0	+0.0%	+1
Health & Social Care Professionals	73	73	+0	+0	+11
Management (VIII & above)	3	3	0	+0.0%	+1
Administrative/ Supervisory (V to VII)	19	19	+0	+0.0%	+7
Clerical (III & IV)	57	55	-2	-0.0%	-2
Management & Administrative	79	77	-2	-2	+6
Support	25	23	-1	-0.1%	+0
Maintenance/ Technical	5	5	+0	+0.0%	
General Support	30	28	-1	-1	+0
Health Care Assistants	115	113	-2	-0.0%	+15
Care, other	1	1	-0	-0.1%	-1
Patient & Client Care	117	114	-2	-2	+14

MRH Mullingar

Sep 2020 (Dec 2019 figure: 914)	WTE Aug 2020	WTE Sep 2020	WTE change since Aug 20	% change since Aug 20	WTE change since Dec 19
Overall	979	981	+2	+0.2%	+68
Consultants	40	41	+1	+0.0%	+7
Registrars	53	56	+3	+0.1%	+0
SHO/ Interns	61	60	-2	-0.0%	+4
Medical/ Dental, other	2	2	0	+0.0%	+0
Medical & Dental	156	158	+2	+2	+12
Nurse/ Midwife Manager	76	75	-0	-0.0%	+4
Nurse/ Midwife Specialist & AN/MP	14	14	+1	+0.0%	+1
Staff Nurse/ Staff Midwife	244	247	+2	+0.0%	+6
Nursing/ Midwifery Student	14	10	-4	-0.3%	+9
Nursing/ Midwifery other	3	3	-0	-0.0%	+1
Nursing & Midwifery	350	349	-1	-1	+21
Therapy Professions	36	37	+1	+0.0%	+12
Health Science/ Diagnostics	80	80	+0	+0.0%	+10
Pharmacy	17	15	-2	-0.1%	-1
H&SC, Other	1	1	0	+0.0%	+1
Health & Social Care Professionals	134	133	-1	-1	+21
Management (VIII & above)	5	3	-2	-0.3%	-2
Administrative/ Supervisory (V to VII)	27	27	-0	-0.0%	+4
Clerical (III & IV)	98	97	-1	-0.0%	-4
Management & Administrative	130	127	-2	-2	-1
Support	26	26	+0	+0.0%	+1
Maintenance/ Technical	13	13	-0	-0.0%	-0
General Support	39	39	+0	+0	+0
Health Care Assistants	169	174	+4	+0.0%	+14
Care, other	1	1	0	+0.0%	
Patient & Client Care	170	175	+4	+4	+14

National Maternity

Sep 2020 (Dec 2019 figure: 880)	WTE Aug 2020	WTE Sep 2020	WTE change since Aug 20	% change since Aug 20	WTE change since Dec 19
Overall	924	909	-15	-1.6%	+29
Consultant Surgery	0	0	0	+0.0%	+0
Consultant Radiology				-1.0%	-0
Consultant Pathology	3	3	0	+0.0%	+0
Consultant Paediatrics	9	9	0	+0.0%	+2
Consultant Obstetrics & Gynaecology	17	17	0	+0.0%	-1
Consultant Medicine	0	0	0	+0.0%	
Consultant Anaesthesia	8	8	0	+0.0%	+2
Consultants	37	37	0	+0.0%	+3
Specialist Registrar	17	16	-1	-0.1%	-2
Senior Registrar	2	2	0	+0.0%	+1
Registrar	20	20	0	+0.0%	+2
Registrars	39	38	-1	-0.0%	+2
Senior House Officer	22	21	-1	-0.0%	
SHO/ Interns	22	21	-1	-0.0%	
Other Medical	1	1	0	+0.0%	
Medical/ Dental, other	1	1	0	+0.0%	
Medical & Dental	99	97	-2	-2	+5
Director of Nursing/Midwifery	1	1	0	+0.0%	
Director Nursing/Midwifery, Assistant	9	8	-1	-0.1%	-0
Clinical Nurse/ Midwife Manager	117	117	-0	-0.0%	+9
Nurse/ Midwife Manager	127	126	-1	-0.0%	+6
Clinical Nurse/ Midwife Specialist	11	11	0	+0.0%	+1
Advanced Nurse/ Midwife Practitioner	5	5	0	+0.0%	
Nurse/ Midwife Specialist & AN/MP	16	16	0	+0.0%	+1
Staff Nurses [General/ Children's]	79	80	+1	+0.0%	+2
Staff Midwives	158	155	-3	-0.0%	-10
Staff Nurse/ Staff Midwife	237	235	-2	-0.0%	-10
Post-registration Nurse/ Midwife Student	20	20	0	+0.0%	-3
Pre-registration Nurse Intern (COVID-19)	18	4	-15	-0.8%	+4
Pre-registration Nurse/ Midwife Intern				-1.0%	
Nursing/ Midwifery Student	38	24	-15	-0.4%	+2
Nursing Education/Clinical	4	4	0	+0.0%	
Nursing/ Midwifery other	4	4	0	+0.0%	
Nursing & Midwifery	422	404	-18	-18	-2
Physiotherapists	7	7	0	+0.0%	+2
Dietitians	6	6	0	+0.0%	+1
Therapy Professions	13	13	0	+0.0%	+1
Radiographers	8	9	+1	+0.1%	+2
Medical Laboratory	34	34	0	+0.0%	+1
Clinical Engineering	4	4	0	+0.0%	
Health Science/ Diagnostics	45	46	+1	+0.0%	+5
Social Workers	7	7	0	+0.0%	+1
Social Workers	7	7	0	+0.0%	
Psychologists	2	2	0	+0.0%	+1
Psychologists	2	2	0	+0.0%	+0
Pharmacy	7	7	0	+0.0%	+1

Pharmacy	7	7	0	+0.0%	-0
Health & Social Care Professionals	74	75	+1	+1	+6
Senior Management (VIII & GM)	5	5	0	+0.0%	+1
Executive Management	2	2	0	+0.0%	+1
Management (VIII & above)	6	6	0	+0.0%	+1
Middle Management (V-VII)	54	55	+1	+0.0%	+7
Administrative/ Supervisory (V to VII)	54	55	+1	+0.0%	+4
General Administrative (III & IV)	76	74	-2	-0.0%	-4
Clerical (III & IV)	76	74	-2	-0.0%	-7
Management & Administrative	137	135	-1	-1	-2
Portering	28	27	-1	-0.0%	+6
Other Support	3	3	0	+0.0%	
Other Labs & Associated	7	7	0	+0.0%	+1
Household Services	85	84	-1	-0.0%	+0
Catering	15	15	-0	-0.0%	+1
Support	139	136	-2	-0.0%	+7
Technical Services	3	3	0	+0.0%	+1
Maintenance	14	14	0	+0.0%	+6
Maintenance/ Technical	17	17	0	+0.0%	+6
General Support	156	153	-2	-2	+13
Health & Social Care Assistants	1	1	0	+0.0%	+1
HCA, Nurse's Aide, etc.	36	44	+7	+0.2%	+13
Health Care Assistants	37	44	+7	+0.2%	+9
Patient & Client Care	37	44	+7	+7	+9

Mater Misericordiae University

Sep 2020 (Dec 2019 figure: 3,159)	WTE Aug 2020	WTE Sep 2020	WTE change since Aug 20	% change since Aug 20	WTE change since Dec 19
Overall	3,412	3,365	-47	-1.4%	+206
Consultant Surgery	42	42	+0	+0.0%	+9
Consultant Radiology	17	17	0	+0.0%	+0
Consultant Psychiatry	2	2	0	+0.0%	-0
Consultant Pathology	19	19	0	+0.0%	+1
Consultant Paediatrics	1	1	0	+0.0%	+1
Consultant Obstetrics & Gynaecology	3	3	0	+0.0%	
Consultant Medicine	69	70	+1	+0.0%	+13
Consultant Intensive Care Medicine	2	2	0	+0.0%	
Consultant Emergency Medicine	8	9	+1	+0.1%	+3
Consultant Anaesthesia	25	25	0	+0.0%	+3
Consultants	187	189	+1	+0.0%	+17
Specialist Registrar	97	97	+0	+0.0%	+15
Senior Registrar	5	5	0	+0.0%	
Registrar	86	86	+0	+0.0%	+15
Registrars	187	188	+1	+0.0%	+22
Senior House Officer	116	116	+1	+0.0%	+23
Interns	80	79	-1	-0.0%	+20
SHO/ Interns	196	195	-1	-0.0%	+37
Other Medical	4	5	+1	+0.2%	+2
Dentists	1	1	0	+0.0%	
Medical/ Dental, other	5	6	+1	+0.2%	+1
Medical & Dental	576	578	+3	+3	+77
Director of Nursing/Midwifery	1	1	0	+0.0%	+1
Director Nursing/Midwifery, Assistant	18	19	+0	+0.0%	+3
Clinical Nurse/ Midwife Manager	194	201	+7	+0.0%	+27
Nurse/ Midwife Manager	213	221	+8	+0.0%	+13
Clinical Nurse/ Midwife Specialist	68	66	-2	-0.0%	+4
Advanced Nurse/ Midwife Practitioner	27	28	+1	+0.0%	+4
Nurse/ Midwife Specialist & AN/MP	96	94	-2	-0.0%	+7
Staff Nurses [General/ Children's]	891	890	-1	-0.0%	+29
Staff Nurse/ Staff Midwife	891	890	-1	-0.0%	-17
Nursing/ Midwifery awaiting registration				-1.0%	
Pre-registration Nurse Intern (COVID-19)	71	27	-44	-0.6%	+27
Pre-registration Nurse/ Midwife Intern				-1.0%	-8
Nursing/ Midwifery Student	71	27	-44	-0.6%	+15
Other Nursing/ Midwifery	13	14	+1	+0.1%	+4
Nursing Education/Clinical	35	34	-0	-0.0%	+3
Nursing/ Midwifery other	48	49	+1	+0.0%	+4
Nursing & Midwifery	1,319	1,280	-39	-39	+22
Speech & Language Therapists	16	17	+1	+0.1%	+2
Podiatrists & Chiropodists	2	2	0	+0.0%	
Physiotherapists	60	61	+1	+0.0%	+7
Orthoptists	1	1	0	+0.0%	
Occupational Therapists	23	23	+0	+0.0%	+3
Dietitians	25	23	-2	-0.1%	-0
Therapy Professions	126	126	+0	+0.0%	+13
Radiographers	67	69	+2	+0.0%	+9

Physicists	8	8	0	+0.0%	+0
Phlebotomists	15	16	+0	+0.0%	+4
Perfusionists	4	4	0	+0.0%	+1
Medical Laboratory	94	93	-1	-0.0%	-1
Clinical Measurement	32	33	+1	+0.0%	+6
Clinical Engineering	7	6	-1	-0.1%	+1
Biochemists	11	11	0	+0.0%	
Audiology	2	2	0	+0.0%	+0
Health Science/ Diagnostics	238	240	+2	+0.0%	+15
Social Workers	25	25	0	+0.0%	+5
Social Workers	25	25	0	+0.0%	-2
Psychologists	6	6	0	+0.0%	+1
Psychologists	6	6	0	+0.0%	-1
Pharmacy	54	53	-1	-0.0%	+4
Pharmacy	54	53	-1	-0.0%	+3
Other Health & Social Care	13	13	0	+0.0%	-1
HSCP Trainees/ Students	16	9	-7	-0.4%	+2
Counsellor Therapists	2	2	0	+0.0%	-1
H&SC, Other	31	24	-7	-0.2%	+2
Health & Social Care Professionals	479	473	-6	-6	+30
Senior Management (VIII & GM)	28	27	-1	-0.0%	+5
Executive Management	8	7	-1	-0.1%	-1
Management (VIII & above)	36	34	-2	-0.1%	+1
Other Administrative	1	1	0	+0.0%	
Middle Management (V-VII)	162	163	+1	+0.0%	+14
Administrative/ Supervisory (V to VII)	163	164	+1	+0.0%	+6
General Administrative (III & IV)	286	290	+4	+0.0%	+39
Clerical (III & IV)	286	290	+4	+0.0%	+30
Management & Administrative	485	487	+2	+2	+37
Portering	74	76	+1	+0.0%	+6
Other Support	37	36	-1	-0.0%	+2
Other Labs & Associated	17	17	+0	+0.0%	+3
Household Services	116	117	+2	+0.0%	-2
Catering	19	19	-0	-0.0%	+4
Support	263	265	+2	+0.0%	+14
Technical Services	5	5	0	+0.0%	+1
Maintenance	21	21	0	+0.0%	+3
Maintenance/ Technical	26	26	0	+0.0%	+2
General Support	289	291	+2	+2	+16
Health & Social Care Assistants	9	10	+1	+0.1%	+1
HCA, Nurse's Aide, etc.	249	238	-11	-0.0%	+17
Health Care Assistants	258	248	-10	-0.0%	+23
Other Care Grades	8	8	-0	-0.0%	+1
Care, other	8	8	-0	-0.0%	+1
Patient & Client Care	266	256	-10	-10	+23

St. Columcille's

Sep 2020 (Dec 2019 figure: 452)	WTE Aug 2020	WTE Sep 2020	WTE change since Aug 20	% change since Aug 20	WTE change since Dec 19
Overall	459	456	-3	-0.7%	+4
Consultant Surgery	3	3	+0	+0.0%	
Consultant Radiology	2	2	0	+0.0%	
Consultant Pathology	1	1	0	+0.0%	
Consultant Medicine	10	10	-0	-0.0%	+1
Consultant Anaesthesia	2	2	0	+0.0%	-1
Consultants	18	18	+0	+0.0%	-1
Specialist Registrar	2	2	0	+0.0%	-1
Senior Registrar				-1.0%	-1
Registrar	8	8	-0	-0.1%	+2
Registrars	10	10	-0	-0.0%	+0
Senior House Officer	11	10	-1	-0.1%	+1
Interns	6	5	-1	-0.2%	
SHO/ Interns	17	15	-2	-0.1%	+1
Medical & Dental	45	43	-2	-2	+0
Director of Nursing/Midwifery	1	1	0	+0.0%	
Director Nursing/Midwifery, Assistant	6	6	-0	-0.0%	+2
Clinical Nurse/ Midwife Manager	26	28	+2	+0.1%	+1
Nurse/ Midwife Manager	33	35	+2	+0.0%	+2
Clinical Nurse/ Midwife Specialist	5	5	-0	-0.0%	-2
Advanced Nurse/ Midwife Practitioner	2	1	-1	-0.5%	-2
Nurse/ Midwife Specialist & AN/MP	7	6	-1	-0.2%	-3
Staff Nurses [General/ Children's]	114	113	-1	-0.0%	+3
Staff Nurse/ Staff Midwife	114	113	-1	-0.0%	-6
Nursing Education/Clinical	2	1	-1	-0.5%	-1
Nursing/ Midwifery other	2	1	-1	-0.5%	-1
Nursing & Midwifery	156	155	-1	-1	-7
Speech & Language Therapists	7	7	-1	-0.1%	+2
Physiotherapists	14	13	-1	-0.1%	-1
Occupational Therapists	7	7	-0	-0.0%	+2
Dietitians	6	7	+1	+0.1%	+2
Therapy Professions	35	33	-1	-0.0%	+2
Radiographers	14	14	+0	+0.0%	-0
Phlebotomists	2	2	0	+0.0%	+0
Medical Laboratory	4	4	0	+0.0%	-1
Health Science/ Diagnostics	20	20	+0	+0.0%	+2
Social Workers	7	6	-1	-0.1%	+1
Social Workers	7	6	-1	-0.1%	+1
Psychologists	2	1	-0	-0.2%	-0
Psychologists	2	1	-0	-0.2%	-1
Pharmacy	5	5	-0	-0.0%	+1
Pharmacy	5	5	-0	-0.0%	+0
Health & Social Care Professionals	68	66	-2	-2	+4
Senior Management (VIII & GM)	1	1	-0	-0.1%	-0
Executive Management		1	+1	-1.0%	+1
Management (VIII & above)	1	2	+1	+0.8%	+1
Middle Management (V-VII)	13	13	-1	-0.1%	-1

Administrative/ Supervisory (V to VII)	13	13	-1	-0.1%	-1
<i>General Administrative (III & IV)</i>	57	57	+0	+0.0%	+1
Clerical (III & IV)	57	57	+0	+0.0%	+3
Management & Administrative	71	72	+0	+0	+3
<i>Portering</i>	2	2	-0	-0.1%	+0
<i>Other Support</i>	1	1	-0	-0.0%	-0
<i>Other Labs & Associated</i>	3	3	-0	-0.1%	-0
<i>Household Services</i>	49	50	+1	+0.0%	+5
<i>Catering</i>	5	5	0	+0.0%	-1
Support	60	61	+0	+0.0%	+4
<i>Maintenance</i>	1	1	0	+0.0%	
Maintenance/ Technical	1	1	0	+0.0%	
General Support	61	62	+0	+0	+4
<i>Health & Social Care Assistants</i>	1	2	+1	+1.0%	+2
<i>HCA, Nurse's Aide, etc.</i>	55	56	+1	+0.0%	+2
Health Care Assistants	56	58	+2	+0.0%	-1
<i>Other Care Grades</i>	1	1	0	+0.0%	
Care, other	1	1	0	+0.0%	+1
Patient & Client Care	57	59	+2	+2	+0

St Luke's General Kilkenny

Sep 2020 (Dec 2019 figure: 1,119)	WTE Aug 2020	WTE Sep 2020	WTE change since Aug 20	% change since Aug 20	WTE change since Dec 19
Overall	1,201	1,188	-12	-1.0%	+70
Consultant Surgery	5	4	-1	-0.3%	-0
Consultant Radiology	6	5	-1	-0.1%	+0
Consultant Paediatrics	6	6	+0	+0.1%	+0
Consultant Obstetrics & Gynaecology	6	6	0	+0.0%	+2
Consultant Medicine	9	12	+3	+0.3%	+2
Consultant Emergency Medicine	2	2	0	+0.0%	
Consultant Anaesthesia	6	6	+0	+0.0%	+1
Consultants	40	41	+1	+0.0%	+2
Specialist Registrar	8	8	-0	-0.0%	+4
Senior Registrar	11	10	-1	-0.0%	+1
Registrar	43	43	-0	-0.0%	+6
Registrars	62	61	-1	-0.0%	+4
Senior House Officer	46	47	+1	+0.0%	-1
Interns	11	11	0	+0.0%	+1
SHO/ Interns	57	58	+1	+0.0%	-1
Other Medical	6	7	+1	+0.2%	-2
Medical/ Dental, other	6	7	+1	+0.2%	+0
Medical & Dental	165	167	+2	+2	+6
Director of Nursing/Midwifery	2	2	0	+0.0%	
Director Nursing/Midwifery, Assistant	8	9	+1	+0.1%	+1
Clinical Nurse/ Midwife Manager	76	74	-2	-0.0%	+7
Nurse/ Midwife Manager	86	85	-1	-0.0%	+1
Clinical Nurse/ Midwife Specialist	16	16	-0	-0.0%	+2
Advanced Nurse/ Midwife Practitioner	6	6	-0	-0.0%	+0
Nurse/ Midwife Specialist & AN/MP	22	22	-0	-0.0%	+2
Staff Nurses [General/ Children's]	274	273	-1	-0.0%	-11
Staff Midwives	40	36	-5	-0.1%	-3
Staff Nurse/ Staff Midwife	314	309	-5	-0.0%	+5
Nursing/ Midwifery awaiting registration	1	4	+3	+3.5%	+4
Pre-registration Nurse Intern (COVID-19)	9	7	-2	-0.3%	+7
Pre-registration Nurse/ Midwife Intern				-1.0%	-1
Nursing/ Midwifery Student	10	11	+1	+0.1%	+11
Nursing Education/Clinical	1	1	-0	-0.0%	-0
Nursing/ Midwifery other	1	1	-0	-0.0%	-0
Nursing & Midwifery	434	428	-6	-6	+18
Speech & Language Therapists	6	5	-0	-0.1%	+5
Podiatrists & Chiropodists	2	2	-0	-0.0%	+1
Physiotherapists	19	20	+1	+0.1%	+4
Occupational Therapists	4	5	+1	+0.3%	-0
Dietitians	12	11	-1	-0.1%	+2
Therapy Professions	42	43	+1	+0.0%	+8
Radiographers	28	26	-2	-0.1%	+3
Medical Laboratory	13	13	+0	+0.0%	+2
Clinical Measurement	10	10	-0	-0.0%	-1
Clinical Engineering	1	1	0	+0.0%	+1
Health Science/ Diagnostics	53	51	-2	-0.0%	+2
Pharmacy	17	16	-0	-0.0%	+1

Pharmacy	17	16	-0	-0.0%	-2
<i>HSCP Trainees/ Students</i>	1	1	0	+0.0%	+1
H&SC, Other	1	1	0	+0.0%	+1
Health & Social Care Professionals	112	111	-1	-1	+9
<i>Senior Management (VIII & GM)</i>	5	2	-3	-0.6%	-1
<i>Executive Management</i>		1	+1	-1.0%	+1
Management (VIII & above)	5	3	-2	-0.4%	
<i>Middle Management (V-VII)</i>	19	22	+4	+0.2%	+8
Administrative/ Supervisory (V to VII)	19	22	+4	+0.2%	+8
<i>General Administrative (III & IV)</i>	133	133	-1	-0.0%	-8
Clerical (III & IV)	133	133	-1	-0.0%	-4
Management & Administrative	157	158	+1	+1	+4
<i>Portering</i>	60	5	-55	-0.9%	-52
<i>Other Support</i>	4	6	+3	+0.8%	+4
<i>Other Labs & Associated</i>	1	2	+1	+1.0%	+1
<i>Household Services</i>	155	151	-4	-0.0%	+13
<i>Catering</i>	9	10	+1	+0.1%	+2
Support	229	175	-54	-0.2%	-27
<i>Maintenance</i>	15	12	-3	-0.2%	
Maintenance/ Technical	15	12	-3	-0.2%	-1
General Support	244	187	-57	-57	-28
<i>Health & Social Care Assistants</i>	1	1	-0	-0.2%	+0
<i>HCA, Nurse's Aide, etc.</i>	86	135	+48	+0.6%	+58
Health Care Assistants	87	135	+48	+0.6%	+60
<i>Other Care Grades</i>	2	2	0	+0.0%	
Care, other	2	2	0	+0.0%	
Patient & Client Care	89	138	+48	+48	+60

St. Michael's

Sep 2020 (Dec 2019 figure: 397)	WTE Aug 2020	WTE Sep 2020	WTE change since Aug 20	% change since Aug 20	WTE change since Dec 19
Overall	421	417	-4	-0.9%	+21
Consultant Surgery	2	2	0	+0.0%	
Consultant Radiology	1	1	0	+0.0%	
Consultant Medicine	7	7	+0	+0.0%	-0
Consultant Anaesthesia	1	1	0	+0.0%	
Consultants	11	11	0	+0.0%	+0
Specialist Registrar	3	3	0	+0.0%	
Registrar	9	10	+1	+0.1%	
Registrars	12	13	+1	+0.1%	
Senior House Officer	11	10	-1	-0.1%	-1
Interns	8	5	-3	-0.4%	+2
SHO/ Interns	19	15	-4	-0.2%	+1
Other Medical	0	0	0	+0.0%	
Medical/ Dental, other	0	0	0	+0.0%	
Medical & Dental	42	39	-3	-3	+2
Director of Nursing/Midwifery	1	1	0	+0.0%	
Director Nursing/Midwifery, Assistant	5	4	-1	-0.2%	-1
Clinical Nurse/ Midwife Manager	30	30	0	+0.0%	-2
Nurse/ Midwife Manager	36	35	-1	-0.0%	+1
Clinical Nurse/ Midwife Specialist	19	20	+1	+0.1%	+1
Advanced Nurse/ Midwife Practitioner	5	5	0	+0.0%	
Nurse/ Midwife Specialist & AN/MP	24	25	+1	+0.0%	-2
Staff Nurses [General/ Children's]	102	102	+0	+0.0%	-1
Staff Nurse/ Staff Midwife	102	102	+0	+0.0%	-0
Pre-registration Nurse Intern (COVID-19)	23	23	0	+0.0%	+23
Nursing/ Midwifery Student	23	23	0	+0.0%	+23
Nursing Education/Clinical	5	5	0	+0.0%	
Nursing/ Midwifery other	5	5	0	+0.0%	
Nursing & Midwifery	190	190	+0	+0	+21
Podiatrists & Chiropodists	0	0	0	+0.0%	
Physiotherapists	10	10	0	+0.0%	-1
Orthoptists	0	0	0	+0.0%	
Occupational Therapists	4	4	0	+0.0%	
Dietitians	3	3	0	+0.0%	-1
Therapy Professions	17	17	0	+0.0%	-5
Radiographers	6	7	+1	+0.1%	+1
Phlebotomists	3	3	0	+0.0%	
Medical Laboratory	6	5	-1	-0.2%	+0
Clinical Measurement	3	3	0	+0.0%	-1
Health Science/ Diagnostics	18	17	-0	-0.0%	
Social Workers	2	3	+1	+0.6%	+1
Social Workers	2	3	+1	+0.6%	+1
Pharmacy	8	7	-1	-0.2%	+2
Pharmacy	8	7	-1	-0.2%	-2
Health & Social Care Professionals	45	44	-1	-1	-6
Senior Management (VIII & GM)	1	1	0	+0.0%	
Executive Management	1	1	0	+0.0%	

Management (VIII & above)	2	2	0	+0.0%	+1
<i>Middle Management (V-VII)</i>	24	25	+1	+0.0%	+7
Administrative/ Supervisory (V to VII)	24	25	+1	+0.0%	+6
<i>General Administrative (III & IV)</i>	39	38	-1	-0.0%	-8
Clerical (III & IV)	39	38	-1	-0.0%	-5
Management & Administrative	65	65	+0	+0	+2
<i>Portering</i>	15	15	0	+0.0%	
<i>Other Support</i>	5	5	0	+0.0%	
<i>Other Labs & Associated</i>	2	2	0	+0.0%	-1
<i>Household Services</i>	17	17	0	+0.0%	-0
<i>Catering</i>	8	8	0	+0.0%	+1
Support	48	48	0	+0.0%	-0
<i>Maintenance</i>	2	2	0	+0.0%	
Maintenance/ Technical	2	2	0	+0.0%	
General Support	50	50			-0
<i>Health & Social Care Assistants</i>	0	0	0	+0.0%	
<i>HCA, Nurse's Aide, etc.</i>	28	28	0	+0.0%	+1
Health Care Assistants	28	28	0	+0.0%	+3
<i>Other Care Grades</i>	2	2	0	+0.0%	
Care, other	2	2	0	+0.0%	
Patient & Client Care	30	30			+3

St. Vincent's University

Sep 2020 (Dec 2019 figure: 2,838)	WTE Aug 2020	WTE Sep 2020	WTE change since Aug 20	% change since Aug 20	WTE change since Dec 19
Overall	3,100	3,043	-57	-1.8%	+205
Consultant Surgery	31	32	+2	+0.0%	+2
Consultant Radiology	16	15	-1	-0.0%	+0
Consultant Psychiatry	3	3	0	+0.0%	
Consultant Pathology	18	16	-2	-0.1%	+0
Consultant Medicine	64	67	+3	+0.0%	+19
Consultant Emergency Medicine	8	8	+0	+0.1%	+3
Consultant Anaesthesia	20	17	-3	-0.1%	-4
Consultants	158	158	+0	+0.0%	+14
Specialist Registrar	101	96	-5	-0.0%	+22
Senior Registrar	5	5	0	+0.0%	+1
Registrar	81	85	+4	+0.0%	+8
Registrars	187	186	-1	-0.0%	+21
Senior House Officer	98	98	-0	-0.0%	+12
Interns	70	73	+3	+0.0%	+25
SHO/ Interns	168	171	+3	+0.0%	+45
Other Medical	1	1	-0	-0.2%	-0
Medical/ Dental, other	1	1	-0	-0.2%	-0
Medical & Dental	514	516	+1	+1	+79
Director of Nursing/Midwifery	1	2	+1	+1.0%	+1
Director Nursing/Midwifery, Assistant	14	16	+2	+0.1%	+5
Clinical Nurse/ Midwife Manager	170	207	+37	+0.2%	+49
Nurse/ Midwife Manager	185	225	+40	+0.2%	+42
Clinical Nurse/ Midwife Specialist	67	69	+2	+0.0%	-2
Advanced Nurse/ Midwife Practitioner	18	22	+4	+0.2%	+9
Nurse/ Midwife Specialist & AN/MP	85	91	+6	+0.1%	+4
Staff Nurses [General/ Children's]	735	719	-16	-0.0%	+46
Staff Nurse [Psychiatric]	4	3	-1	-0.2%	-1
Nursing Bank	2	2	-0	-0.1%	-3
Staff Nurse/ Staff Midwife	741	724	-17	-0.0%	-0
Nursing/ Midwifery awaiting registration		14	+14	-1.0%	+14
Pre-registration Nurse Intern (COVID-19)	79	24	-55	-0.7%	+24
Pre-registration Nurse/ Midwife Intern				-1.0%	-14
Nursing/ Midwifery Student	79	38	-41	-0.5%	+21
Nursing Education/Clinical	14	9	-6	-0.4%	-6
Nursing/ Midwifery other	14	9	-6	-0.4%	-6
Nursing & Midwifery	1,104	1,087	-18	-18	+61
Speech & Language Therapists	10	10	0	+0.0%	
Podiatrists & Chiropodists	4	4	0	+0.0%	+2
Physiotherapists	62	61	-1	-0.0%	+4
Occupational Therapists	16	16	0	+0.0%	-1
Dietitians	20	22	+2	+0.1%	+1
Therapy Professions	111	112	+1	+0.0%	+8
Radiographers	66	66	0	+0.0%	+1
Physicists	7	7	0	+0.0%	-1
Phlebotomists	15	13	-2	-0.1%	-2
Medical Laboratory	81	82	+1	+0.0%	-2
Clinical Measurement	28	29	+1	+0.0%	+3

<i>Clinical Engineering</i>	8	8	0	+0.0%	+1
<i>Biochemists</i>	19	19	0	+0.0%	+1
<i>Audiology</i>	0	0	0	+0.0%	
Health Science/ Diagnostics	223	223	+0	+0.0%	+12
<i>Social Workers</i>	20	22	+2	+0.1%	+3
Social Workers	20	22	+2	+0.1%	+3
<i>Psychologists</i>	11	11	0	+0.0%	+4
Psychologists	11	11	0	+0.0%	+0
<i>Pharmacy</i>	59	58	-1	-0.0%	+1
Pharmacy	59	58	-1	-0.0%	-0
<i>HSCP Trainees/ Students</i>				-1.0%	-1
<i>Counsellor Therapists</i>	0	0	0	+0.0%	
H&SC, Other	0	0	0	+0.0%	
Health & Social Care Professionals	424	426	+2	+2	+23
<i>Senior Management (VIII & GM)</i>	19	16	-3	-0.2%	-3
<i>Executive Management</i>	1	1	0	+0.0%	
Management (VIII & above)	20	17	-3	-0.2%	-2
<i>Other Administrative</i>	4	4	0	+0.0%	
<i>Middle Management (V-VII)</i>	151	176	+25	+0.2%	+28
Administrative/ Supervisory (V to VII)	155	179	+25	+0.2%	+31
<i>General Administrative (III & IV)</i>	310	285	-25	-0.1%	+6
Clerical (III & IV)	310	285	-25	-0.1%	-4
Management & Administrative	485	481	-4	-4	+26
<i>Portering</i>	103	103	0	+0.0%	+11
<i>Other Support</i>	61	60	-1	-0.0%	+2
<i>Other Labs & Associated</i>	33	33	0	+0.0%	+2
<i>Household Services</i>	90	90	0	+0.0%	+3
<i>Catering</i>	19	19	0	+0.0%	
Support	305	304	-1	-0.0%	+12
<i>Technical Services</i>	2	2	0	+0.0%	-1
<i>Maintenance</i>	32	32	0	+0.0%	
Maintenance/ Technical	34	34	0	+0.0%	-1
General Support	339	338	-1	-1	+11
<i>Health & Social Care Assistants</i>	19	11	-8	-0.4%	+0
<i>HCA, Nurse's Aide, etc.</i>	203	175	-29	-0.1%	+20
Health Care Assistants	222	186	-37	-0.2%	+5
<i>Other Care Grades</i>	10	9	-2	-0.1%	+1
Care, other	10	9	-2	-0.1%	+1
Patient & Client Care	233	194	-38	-38	+5

Wexford General

Sep 2020 (Dec 2019 figure: 1,024)	WTE Aug 2020	WTE Sep 2020	WTE change since Aug 20	% change since Aug 20	WTE change since Dec 19
Overall	1,065	1,060	-5	-0.5%	+36
Consultant Surgery	5	5	0	+0.0%	
Consultant Radiology	4	5	+1	+0.2%	+1
Consultant Pathology	1	1	0	+0.0%	+1
Consultant Paediatrics	5	6	+1	+0.2%	+2
Consultant Obstetrics & Gynaecology	6	5	-1	-0.2%	-1
Consultant Medicine	8	8	-0	-0.0%	-1
Consultant Emergency Medicine	2	2	0	+0.0%	
Consultant Anaesthesia	5	5	0	+0.0%	+1
Consultants	36	37	+1	+0.0%	+3
Specialist Registrar	9	9	0	+0.0%	+2
Senior Registrar	1	4	+3	+3.0%	+3
Registrar	39	36	-3	-0.1%	-6
Registrars	49	49	+0	+0.0%	-3
Senior House Officer	50	48	-3	-0.1%	+2
Interns	12	13	+1	+0.1%	+3
SHO/ Interns	62	61	-2	-0.0%	-0
Other Medical	5	7	+2	+0.3%	+3
Medical/ Dental, other	5	7	+2	+0.3%	+2
Medical & Dental	152	154	+1	+1	+1
Director of Nursing/Midwifery	2	2	-0	-0.0%	-0
Director Nursing/Midwifery, Assistant	7	6	-1	-0.2%	+0
Clinical Nurse/ Midwife Manager	77	78	+1	+0.0%	+3
Nurse/ Midwife Manager	86	86	-0	-0.0%	+1
Clinical Nurse/ Midwife Specialist	16	19	+4	+0.2%	+3
Advanced Nurse/ Midwife Practitioner	5	5	-1	-0.1%	+1
Nurse/ Midwife Specialist & AN/MP	21	24	+3	+0.1%	+4
Staff Nurses [General/ Children's]	244	244	-0	-0.0%	-3
Staff Midwives	45	44	-1	-0.0%	-2
Staff Nurse/ Staff Midwife	289	288	-1	-0.0%	-1
Nursing/ Midwifery awaiting registration				-1.0%	
Pre-registration Nurse Intern (COVID-19)	8	7	-1	-0.1%	+7
Nursing/ Midwifery Student	8	7	-1	-0.1%	+6
Nursing & Midwifery	405	405	+1	+1	+10
Speech & Language Therapists	1	1	0	+0.0%	+1
Podiatrists & Chiropodists	1	1	-0	-0.1%	-0
Physiotherapists	17	18	+1	+0.0%	+3
Occupational Therapists	4	4	0	+0.0%	+1
Dietitians	5	5	-0	-0.0%	+1
Therapy Professions	28	29	+1	+0.0%	+4
Radiographers	20	19	-0	-0.0%	-0
Phlebotomists	2	2	0	+0.0%	
Medical Laboratory	12	11	-1	-0.1%	+2
Clinical Measurement	5	5	0	+0.0%	+1
Clinical Engineering	1	1	0	+0.0%	
Health Science/ Diagnostics	39	38	-2	-0.0%	+1
Social Workers	1	1	0	+0.0%	+1
Social Workers	1	1	0	+0.0%	

Pharmacy	10	11	+2	+0.2%	+2
Pharmacy	10	11	+2	+0.2%	+0
Health & Social Care Professionals	78	79	+1	+1	+5
Senior Management (VIII & GM)	4	3	-1	-0.3%	+0
Executive Management	1	1	0	+0.0%	+1
Management (VIII & above)	5	4	-1	-0.2%	+2
Middle Management (V-VII)	18	20	+3	+0.2%	+5
Administrative/ Supervisory (V to VII)	18	20	+3	+0.2%	+6
General Administrative (III & IV)	119	116	-3	-0.0%	-1
Clerical (III & IV)	119	116	-3	-0.0%	
Management & Administrative	142	140	-2	-2	+8
Portering	38	14	-24	-0.6%	-25
Other Support	37	31	-6	-0.2%	-6
Other Labs & Associated	1	3	+2	+1.2%	+1
Household Services	121	116	-5	-0.0%	-6
Catering	9	10	+1	+0.1%	+3
Support	206	174	-33	-0.2%	-32
Maintenance	7	6	-1	-0.2%	+1
Maintenance/ Technical	7	6	-1	-0.2%	-0
General Support	213	179	-34	-34	-33
Health & Social Care Assistants	1	1	-0	-0.1%	+1
HCA, Nurse's Aide, etc.	72	100	+28	+0.4%	+48
Health Care Assistants	73	101	+28	+0.4%	+45
Other Care Grades	2	2	0	+0.0%	-0
Care, other	2	2	0	+0.0%	-1
Patient & Client Care	75	103	+28	+28	+44

Hospital Group HQ

Sep 2020 (Dec 2019 figure: 30)	WTE Aug 2020	WTE Sep 2020	WTE change since Aug 20	% change since Aug 20	WTE change since Dec 19
Overall	29	30	+1	+5.2%	+0
<i>Director of Nursing/Midwifery</i>	1	1	0	+0.0%	
<i>Director Nursing/Midwifery, Assistant</i>	2	2	0	+0.0%	
Nurse/ Midwife Manager	3	3	0	+0.0%	
<i>Nursing Bank</i>		0	+0	-1.0%	+0
Staff Nurse/ Staff Midwife		0	+0	-1.0%	+0
Nursing & Midwifery	3	3	+0	+0	+0
<i>Clinical Engineering</i>	1	1	-0	-0.0%	-0
Health Science/ Diagnostics	1	1	-0	-0.0%	-0
Health & Social Care Professionals	1	1	-0	-0	-0
<i>Senior Management (VIII & GM)</i>	5	6	+1	+0.2%	+3
<i>Executive Management</i>	3	2	-1	-0.3%	
Management (VIII & above)	8	8	+0	+0.0%	+2
<i>Middle Management (V-VII)</i>	15	16	+1	+0.1%	-3
Administrative/ Supervisory (V to VII)	15	16	+1	+0.1%	-1
<i>General Administrative (III & IV)</i>	2	2	0	+0.0%	-2
Clerical (III & IV)	2	2	0	+0.0%	-0
Management & Administrative	25	26	+1	+1	+1
<i>Technical Services</i>				-1.0%	-1
Maintenance/ Technical				-1.0%	-1
General Support					-1

Royal Victoria Eye & Ear

Sep 2020 (Dec 2019 figure: 291)	WTE Aug 2020	WTE Sep 2020	WTE change since Aug 20	% change since Aug 20	WTE change since Dec 19
Overall	298	304	+6	+1.9%	+13
Consultant Surgery	19	20	+1	+0.1%	+0
Consultant Anaesthesia	5	5	0	+0.0%	
Consultants	24	25	+1	+0.0%	+2
Specialist Registrar	13	13	0	+0.0%	+4
Registrar	8	9	+1	+0.1%	-0
Registrars	21	22	+1	+0.0%	+2
Senior House Officer	15	15	0	+0.0%	-1
SHO/ Interns	15	15	0	+0.0%	-1
Other Medical	5	5	0	+0.0%	+0
Medical/ Dental, other	5	5	0	+0.0%	+1
Medical & Dental	64	66	+2	+2	+3
Director of Nursing/Midwifery	1	1	0	+0.0%	
Director Nursing/Midwifery, Assistant	2	2	0	+0.0%	
Clinical Nurse/ Midwife Manager	22	22	+1	+0.0%	-1
Nurse/ Midwife Manager	25	25	+1	+0.0%	+2
Clinical Nurse/ Midwife Specialist	4	4	0	+0.0%	+0
Advanced Nurse/ Midwife Practitioner	5	5	0	+0.0%	+4
Nurse/ Midwife Specialist & AN/MP	9	9	0	+0.0%	+0
Staff Nurses [General/ Children's]	86	86	+1	+0.0%	+4
Staff Nurse/ Staff Midwife	86	86	+1	+0.0%	+5
Nursing Education/Clinical	1	1	0	+0.0%	-1
Nursing/ Midwifery other	1	1	0	+0.0%	-1
Nursing & Midwifery	121	122	+1	+1	+7
Speech & Language Therapists	1	1	0	+0.0%	
Physiotherapists	0	0	0	+0.0%	
Orthoptists	1	1	0	+0.0%	-0
Dietitians	1	1	0	+0.0%	+0
Therapy Professions	3	3	+0	+0.0%	-0
Radiographers	1	1	0	+0.0%	
Medical Laboratory				-1.0%	-3
Audiology	1	1	0	+0.0%	
Health Science/ Diagnostics	2	2	0	+0.0%	
Social Workers	2	1	-1	-0.5%	
Social Workers	2	1	-1	-0.5%	-1
Pharmacy	4	4	0	+0.0%	+1
Pharmacy	4	4	0	+0.0%	+1
Other Health & Social Care	4	4	0	+0.0%	+1
H&SC, Other	4	4	0	+0.0%	
Health & Social Care Professionals	14	13	-1	-1	-0
Senior Management (VIII & GM)	4	4	0	+0.0%	+2
Management (VIII & above)	4	4	0	+0.0%	+1
Middle Management (V-VII)	24	24	0	+0.0%	-0
Administrative/ Supervisory (V to VII)	24	24	0	+0.0%	
General Administrative (III & IV)	34	37	+3	+0.1%	-0
Clerical (III & IV)	34	37	+3	+0.1%	+1

Management & Administrative	62	65	+3	+3	+2
Portering	10	10	0	+0.0%	
Other Support	2	2	0	+0.0%	+0
Other Labs & Associated		1	+1	-1.0%	+1
Household Services	10	10	0	+0.0%	-0
Catering	5	5	0	+0.0%	-1
Support	27	28	+1	+0.0%	+0
General Support	27	28	+1	+1	+0
HCA, Nurse's Aide, etc.	10	10	0	+0.0%	+1
Health Care Assistants	10	10	0	+0.0%	+1
Patient & Client Care	10	10			+1

IEHG Bank

Sep 2020 (figure:)	WTE Aug 2020	WTE Sep 2020	WTE change since Aug 20	% change since Aug 20	WTE change since Dec 19
Overall	3	5	+2	+65.9%	+5
Staff Nurses [General/ Children's]	3	5	+2	+0.7%	+5
Staff Nurse/ Staff Midwife	3	5	+2	+0.7%	+5
Nursing & Midwifery	3	5	+2	+2	+5
HCA, Nurse's Aide, etc.	0	0	+0	+0.4%	+0
Health Care Assistants	0	0	+0	+0.4%	+0
Patient & Client Care	0	0	+0	+0	+0

Ireland East Hospital Group Employment by Grade Group & Staff Category: September 2020

Sep 2020 (Dec 2019 figure: 12,045)	WTE Aug 2020	WTE Sep 2020	WTE change since Aug 20	% change since Aug 20	WTE change since Dec 19	WTE change since Sep 19
Overall	12,913	12,770	-143	-1.1%	+725	+805
Consultant Anaesthesia	90	88	-2	-1.8%	+3	+6
Consultant Emergency Medicine	23	24	+1	+4.4%	+5	+5
Consultant Intensive Care Medicine	2	2				
Consultant Medicine	187	195	+8	+4.2%	+21	+24
Consultant Obstetrics & Gynaecology	35	34	-1	-2.9%	-1	-2
Consultant Paediatrics	25	26	+1	+5.2%	+4	+5
Consultant Pathology	43	41	-2	-3.7%	+3	+1
Consultant Psychiatry	4	4				
Consultant Radiology	53	53	-0	-0.7%	+1	+2
Consultant Surgery	118	119	+1	+1.0%	+11	+11
Consultants	580	587	+7	+1.2%	+48	+51
Registrar	369	369	+0	+0.0%	+28	+25
Senior Registrar	28	31	+3	+8.8%	+3	+5
Specialist Registrar	278	271	-7	-2.5%	+22	+23
Registrars	675	671	-4	-0.6%	+53	+53
Interns	202	198	-4	-2.2%	+51	+51
Senior House Officer	471	466	-5	-1.1%	+43	+49
SHO/ Interns	673	664	-10	-1.4%	+94	+100
Dentists	1	1				
Other Medical	25	28	+4	+14.9%	+4	+4
Medical/ Dental, other	26	29	+4	+14.3%	+4	+4
Medical & Dental	1,954	1,951	-3	-0.2%	+198	+207
Clinical Nurse/ Midwife Manager	857	902	+45	+5.3%	+75	+81
Director Nursing/Midwifery, Assistant	92	91	-1	-0.7%	+2	+4
Director of Nursing/Midwifery	15	16	+1	+6.3%	+1	+0
Nurse/ Midwife Manager	963	1,009	+45	+4.7%	+78	+85
Advanced Nurse/ Midwife Practitioner	79	82	+4	+4.8%	+10	+12
Clinical Nurse/ Midwife Specialist	235	240	+4	+1.8%	+5	+14
Nurse/ Midwife Specialist & AN/MP	314	322	+8	+2.6%	+15	+25
Nursing Bank	2	2	+0	+4.5%	+0	-2
Staff Midwives	290	279	-11	-3.9%	-9	-12
Staff Nurse [Psychiatric]	4	3	-1	-19.6%	-1	-1
Staff Nurses [General/ Children's]	2,963	2,954	-9	-0.3%	+11	+94
Staff Nurse/ Staff Midwife	3,260	3,239	-21	-0.6%	+2	+79
Pre-registration Nurse/ Midwife Intern				-100.0%	-25	-30
Pre-registration Nurse Intern (COVID-19)	222	101	-121	-54.4%	+101	+101
Post-registration Nurse/ Midwife Student	20	20			-1	-3
Nursing/ Midwifery awaiting registration	1	18	+17	+1871.7%	+7	-10
Nursing/ Midwifery Student	243	139	-103	-42.6%	+82	+58
Nursing Education/Clinical	66	59	-7	-10.6%	-4	-4
Other Nursing/ Midwifery	14	15	+1	+7.0%	+3	+5

Sep 2020 (Dec 2019 figure: 12,045)	WTE Aug 2020	WTE Sep 2020	WTE change since Aug 20	% change since Aug 20	WTE change since Dec 19	WTE change since Sep 19
Overall	12,913	12,770	-143	-1.1%	+725	+805
Nursing/ Midwifery other	80	74	-6	-7.4%	-2	+1
Nursing & Midwifery	4,860	4,783	-77	-1.6%	+176	+248
Dietitians	87	88	+0	+0.4%	+10	+11
Occupational Therapists	77	80	+3	+3.9%	+12	+14
Orthoptists	2	2	+0	+18.4%	-0	-0
Physiotherapists	244	244	+0	+0.0%	+16	+18
Podiatrists & Chiropodists	11	11	-0	-1.1%	+1	+1
Speech & Language Therapists	48	47	-1	-1.3%	+13	+11
Therapy Professions	469	472	+3	+0.6%	+50	+54
Audiology	4	4			+0	+0
Biochemists	30	30			+3	+1
Clinical Engineering	23	22	-1	-4.4%	+1	+1
Clinical Measurement	86	87	+1	+1.3%	+8	+7
Medical Laboratory	323	321	-3	-0.8%	+16	+15
Perfusionists	4	4			-1	+2
Phlebotomists	40	39	-2	-4.6%	+2	-0
Physicists	15	15			-1	-1
Radiographers	259	262	+4	+1.4%	+20	+22
Health Science/ Diagnostics	783	782	-1	-0.1%	+48	+46
Social Workers	70	72	+1	+1.9%	+2	+3
Psychologists	21	20	-0	-1.9%	-1	+3
Pharmacy	192	188	-4	-2.0%	+0	+2
Counsellor Therapists	2	2	+0	+0.0%		
HSCP Trainees/ Students	18	11	-7	-38.9%	+3	+7
Other Health & Social Care	17	17			+1	+1
H&SC, Other	37	30	-7	-18.9%	+4	+8
Health & Social Care Professionals	1,573	1,565	-8	-0.5%	+103	+116
Executive Management	17	17	+0	+1.6%	+2	+4
Senior Management (VIII & GM)	82	73	-9	-11.0%	+5	-0
Management (VIII & above)	99	90	-9	-8.8%	+7	+4
Administrative/ Supervisory (V to VII)	556	590	+34	+6.2%	+74	+85
Clerical (III & IV)	1,252	1,224	-28	-2.3%	+10	+1
Management & Administrative	1,906	1,904	-3	-0.1%	+91	+90
Catering	106	107	+2	+1.5%	+5	+7
Household Services	692	685	-7	-1.1%	+23	+12
Other Labs & Associated	75	78	+2	+3.2%	+5	+6
Other Support	166	161	-6	-3.3%	+3	+6
Portering	350	271	-79	-22.6%	-58	-59
Support	1,390	1,302	-88	-6.3%	-21	-29
Maintenance/ Technical	121	117	-4	-3.5%	+5	+3
General Support	1,511	1,419	-92	-6.1%	-17	-26
HCA, Nurse's Aide, etc.	1,041	1,088	+47	+4.5%	+166	+161

Sep 2020 (Dec 2019 figure: 12,045)	WTE Aug 2020	WTE Sep 2020	WTE change since Aug 20	% change since Aug 20	WTE change since Dec 19	WTE change since Sep 19
Overall	12,913	12,770	-143	-1.1%	+725	+805
Health & Social Care Assistants	41	35	-6	-14.5%	+8	+8
Health Care Assistants	1,082	1,123	+41	+3.8%	+174	+168
Care, other	28	26	-2	-6.4%	+0	+2
Patient & Client Care	1,110	1,149	+40	+3.6%	+174	+170

Employment by WTE, Headcount, Gender, Full-Time /Part-Time etc.: Sep 2020

Ireland East Hospital Group	WTE	Headcount	WTE: no.	% Male	% female	Male WTE: no.	Female WTE: no.	% Total Perm	% Male Perm	% Female Perm	% Total Full Time	% Total Part Time	% Male FT	% Female FT
Overall	12,770	14,102	1.10	24.6%	75.4%	1.04	1.13	79.6%	66.1%	83.9%	76.8%	23.2%	91.8%	71.9%
Consultant Anaesthesia	88	98	1.11	64.3%	35.7%	1.06	1.22	84.7%	84.7%	80.0%	94.9%	5.1%	96.8%	91.4%
Consultant Emergency Medicine	24	25	1.05	96.0%	4.0%	1.05	1.00	56.0%	56.0%	0.0%	92.0%	8.0%	91.7%	100.0%
Consultant Intensive Care Medicine	2	2	1.00		100.0%		1.00	50.0%	50.0%	50.0%	100.0%	0.0%		100.0%
Consultant Medicine	195	222	1.14	68.5%	31.5%	1.09	1.24	75.7%	75.7%	72.9%	82.0%	18.0%	87.5%	70.0%
Consultant Obstetrics & Gynaecology	34	39	1.14	51.3%	48.7%	1.04	1.29	82.1%	82.1%	78.9%	79.5%	20.5%	95.0%	63.2%
Consultant Paediatrics	26	28	1.08	50.0%	50.0%	1.04	1.13	60.7%	60.7%	57.1%	82.1%	17.9%	92.9%	71.4%
Consultant Pathology	41	48	1.17	41.7%	58.3%	1.16	1.18	87.5%	87.5%	96.4%	81.3%	18.8%	80.0%	82.1%
Consultant Psychiatry	4	5	1.21	60.0%	40.0%	1.18	1.25	80.0%	80.0%	50.0%	80.0%	20.0%	100.0%	50.0%
Consultant Radiology	53	60	1.13	66.7%	33.3%	1.08	1.24	80.0%	80.0%	85.0%	86.7%	13.3%	92.5%	75.0%
Consultant Surgery	119	141	1.18	79.4%	20.6%	1.16	1.30	77.3%	77.3%	75.9%	81.6%	18.4%	85.7%	65.5%
Consultants	587	668	1.14	67.1%	32.9%	1.10	1.23	77.5%	77.7%	77.3%	84.4%	15.6%	89.3%	74.5%
Registrar	369	377	1.02	65.8%	34.2%	1.02	1.02	2.1%	2.1%	2.3%	98.7%	1.3%	98.4%	99.2%
Senior Registrar	31	31	1.00	67.7%	32.3%	1.00	1.00	0.0%	0.0%	0.0%	100.0%	0.0%	100.0%	100.0%
Specialist Registrar	271	276	1.02	48.6%	51.4%	1.00	1.03	0.4%	0.4%	0.7%	98.9%	1.1%	100.0%	97.9%
Registrars	671	684	1.02	58.9%	41.1%	1.01	1.03	1.3%	1.2%	1.4%	98.8%	1.2%	99.0%	98.6%
Interns	198	198	1.00	42.9%	57.1%	1.00	1.00	0.0%	0.0%	0.0%	100.0%	0.0%	100.0%	100.0%
Senior House Officer	466	475	1.02	49.5%	50.5%	1.02	1.02	0.4%	0.4%	0.0%	99.2%	0.8%	100.0%	98.3%
SHO/ Interns	664	673	1.01	47.5%	52.5%	1.01	1.02	0.3%	0.6%	0.0%	99.4%	0.6%	100.0%	98.9%
Dentists	1	1	1.00	100.0%		1.00		0.0%	0.0%		100.0%	0.0%	100.0%	
Other Medical	28	37	1.31	35.1%	64.9%	1.06	1.50	45.9%	45.9%	58.3%	45.9%	54.1%	84.6%	25.0%
Medical/ Dental, other	29	38	1.30	36.8%	63.2%	1.05	1.50	44.7%	21.4%	58.3%	47.4%	52.6%	85.7%	25.0%
Medical & Dental	1,951	2,063	1.06	57.4%	42.6%	1.04	1.08	26.5%	30.2%	21.4%	93.4%	6.6%	95.4%	90.7%
Clinical Nurse/ Midwife Manager	902	998	1.11	5.0%	95.0%	1.01	1.11	93.8%	93.8%	93.6%	69.4%	30.6%	96.0%	68.0%

Director Nursing/Midwifery, Assistant	91	98	1.08	6.1%	93.9%	1.00	1.08	95.9%	95.9%	95.7%	77.6%	22.4%	100.0%	76.1%
Director of Nursing/Midwifery	16	16	1.00	6.3%	93.8%	1.00	1.00	87.5%	87.5%	93.3%	93.8%	6.3%	100.0%	93.3%
Nurse/ Midwife Manager	1,009	1,112	1.10	5.1%	94.9%	1.01	1.11	93.9%	96.5%	93.7%	70.5%	29.5%	96.5%	69.1%
Advanced Nurse/ Midwife Practitioner	82	86	1.04	14.0%	86.0%	1.00	1.05	100.0%	100.0%	100.0%	90.7%	9.3%	100.0%	89.2%
Clinical Nurse/ Midwife Specialist	240	283	1.18	3.5%	96.5%	1.04	1.19	98.2%	98.2%	98.5%	64.0%	36.0%	90.0%	63.0%
Nurse/ Midwife Specialist & AN/MP	322	369	1.15	6.0%	94.0%	1.02	1.15	98.6%	95.5%	98.8%	70.2%	29.8%	95.5%	68.6%
Nursing Bank	2	4	1.72		100.0%		1.72	100.0%	100.0%	100.0%	25.0%	75.0%		25.0%
Staff Midwives	279	330	1.18	0.3%	99.7%	1.09	1.18	92.4%	92.4%	92.4%	61.8%	38.2%	0.0%	62.0%
Staff Nurse [Psychiatric]	3	3	1.00	33.3%	66.7%	1.00	1.00	100.0%	100.0%	100.0%	100.0%	0.0%	100.0%	100.0%
Staff Nurses [General/ Children's]	2,954	3,305	1.12	9.6%	90.4%	1.03	1.13	96.6%	96.6%	96.6%	72.2%	27.8%	93.4%	69.9%
Staff Nurse/ Staff Midwife	3,239	3,642	1.12	8.8%	91.2%	1.03	1.14	96.2%	96.9%	96.2%	71.2%	28.8%	93.1%	69.1%
Pre-registration Nurse Intern (COVID-19)	101	106	1.05	3.8%	96.2%	1.09	1.05	0.0%	0.0%	0.0%	77.4%	22.6%	75.0%	77.5%
Post-registration Nurse/ Midwife Student	20	20	1.00		100.0%		1.00	0.0%	0.0%	0.0%	100.0%	0.0%		100.0%
Nursing/ Midwifery awaiting registration	18	19	1.05		100.0%		1.05	73.7%	73.7%	73.7%	100.0%	0.0%		100.0%
Nursing/ Midwifery Student	139	145	1.04	2.8%	97.2%	1.09	1.04	9.7%	0.0%	9.9%	83.4%	16.6%	75.0%	83.7%
Nursing Education/Clinical	59	66	1.13	1.5%	98.5%	1.00	1.13	100.0%	100.0%	100.0%	74.2%	25.8%	100.0%	73.8%
Other Nursing/ Midwifery	15	16	1.05	12.5%	87.5%	1.00	1.05	100.0%	100.0%	100.0%	75.0%	25.0%	100.0%	71.4%
Nursing/ Midwifery other	74	82	1.11	3.7%	96.3%	1.00	1.11	100.0%	100.0%	100.0%	74.4%	25.6%	100.0%	73.4%
Nursing & Midwifery	4,783	5,350	1.12	7.6%	92.4%	1.02	1.13	93.6%	95.8%	93.4%	71.4%	28.6%	93.6%	69.6%
Dietitians	88	99	1.13	3.0%	97.0%	1.00	1.13	78.8%	78.8%	80.2%	77.8%	22.2%	100.0%	77.1%
Occupational Therapists	80	86	1.08	7.0%	93.0%	1.00	1.08	80.2%	80.2%	80.0%	84.9%	15.1%	100.0%	83.8%
Orthoptists	2	6	2.83		100.0%		2.83	83.3%	83.3%	83.3%	16.7%	83.3%		16.7%
Physiotherapists	244	275	1.13	17.5%	82.5%	1.07	1.14	82.9%	82.9%	85.9%	78.2%	21.8%	91.7%	75.3%
Podiatrists & Chiropodists	11	13	1.18	23.1%	76.9%	1.30	1.14	76.9%	76.9%	80.0%	69.2%	30.8%	33.3%	80.0%
Speech & Language Therapists	47	54	1.15	3.7%	96.3%	1.08	1.15	72.2%	72.2%	75.0%	79.6%	20.4%	100.0%	78.8%
Therapy Professions	472	533	1.13	11.6%	88.4%	1.07	1.14	80.5%	66.1%	82.4%	78.4%	21.6%	90.3%	76.9%
Audiology	4	5	1.39	20.0%	80.0%	2.63	1.25	100.0%	100.0%	100.0%	20.0%	80.0%	0.0%	25.0%
Biochemists	30	33	1.09	36.4%	63.6%	1.03	1.14	97.0%	97.0%	95.2%	81.8%	18.2%	100.0%	71.4%
Clinical Engineering	22	22	1.00	86.4%	13.6%	1.00	1.00	95.5%	95.5%	66.7%	100.0%	0.0%	100.0%	100.0%

Clinical Measurement	87	93	1.07	12.9%	87.1%	1.03	1.08	92.5%	92.5%	91.4%	78.5%	21.5%	83.3%	77.8%
Medical Laboratory	321	348	1.09	22.7%	77.3%	1.04	1.10	92.0%	92.0%	93.3%	83.3%	16.7%	92.4%	80.7%
Perfusionists	4	5	1.43	60.0%	40.0%	1.50	1.33	60.0%	60.0%	100.0%	40.0%	60.0%	33.3%	50.0%
Phlebotomists	39	53	1.38	24.5%	75.5%	1.24	1.43	81.1%	81.1%	82.5%	28.3%	71.7%	61.5%	17.5%
Physicists	15	15	1.03	33.3%	66.7%	1.00	1.04	93.3%	93.3%	90.0%	86.7%	13.3%	100.0%	80.0%
Radiographers	262	284	1.08	15.1%	84.9%	1.05	1.09	92.6%	92.6%	92.5%	85.2%	14.8%	93.0%	83.8%
Health Science/ Diagnostics	782	858	1.10	21.8%	78.2%	1.06	1.11	91.7%	90.4%	92.1%	79.8%	20.2%	89.8%	77.0%
Social Workers	72	76	1.06	11.8%	88.2%	1.14	1.05	89.5%	88.9%	89.6%	81.6%	18.4%	66.7%	83.6%
Psychologists	20	26	1.27	15.4%	84.6%	1.19	1.29	84.6%	100.0%	81.8%	53.8%	46.2%	50.0%	54.5%
Pharmacy	188	204	1.08	9.8%	90.2%	1.00	1.09	85.3%	80.0%	85.9%	82.8%	17.2%	100.0%	81.0%
Counsellor Therapists	2	4	1.72		100.0%		1.72	75.0%	75.0%	75.0%	50.0%	50.0%		50.0%
HSCP Trainees/ Students	11	11	1.00	36.4%	63.6%	1.00	1.00	0.0%	0.0%	0.0%	100.0%	0.0%	100.0%	100.0%
Other Health & Social Care	17	19	1.14	47.4%	52.6%	1.02	1.26	78.9%	78.9%	80.0%	68.4%	31.6%	88.9%	50.0%
H&SC, Other	30	34	1.13	38.2%	61.8%	1.02	1.22	52.9%	53.8%	52.4%	76.5%	23.5%	92.3%	66.7%
Health & Social Care	1,565	1,731	1.11	17.0%	83.0%	1.06	1.12	86.5%	83.1%	87.3%	79.4%	20.6%	89.5%	77.3%
Executive Management	17	18	1.05	38.9%	61.1%	1.06	1.04	83.3%	83.3%	81.8%	88.9%	11.1%	85.7%	90.9%
Senior Management (VIII & GM)	73	75	1.03	36.0%	64.0%	1.03	1.03	97.3%	97.3%	97.9%	97.3%	2.7%	96.3%	97.9%
Management (VIII & above)	90	93	1.03	36.6%	63.4%	1.03	1.04	94.6%	94.1%	94.9%	95.7%	4.3%	94.1%	96.6%
Administrative/ Supervisory (V to VII)	590	633	1.07	22.6%	77.4%	1.02	1.09	97.8%	97.2%	98.0%	81.5%	18.5%	96.5%	77.1%
Clerical (III & IV)	1,224	1,376	1.12	16.6%	83.4%	1.02	1.15	90.3%	88.6%	90.7%	72.8%	27.2%	93.0%	68.8%
Management & Administrative	1,904	2,102	1.10	19.3%	80.7%	1.02	1.13	92.8%	92.1%	92.9%	76.5%	23.5%	94.3%	72.2%
Catering	107	115	1.07	27.0%	73.0%	1.00	1.10	93.0%	93.0%	94.0%	76.5%	23.5%	100.0%	67.9%
Household Services	685	782	1.14	23.3%	76.7%	1.03	1.18	75.6%	75.6%	78.8%	63.0%	37.0%	84.6%	56.5%
Other Labs & Associated	78	82	1.05	45.1%	54.9%	1.01	1.09	86.6%	86.6%	86.7%	90.2%	9.8%	94.6%	86.7%
Other Support	161	175	1.09	54.3%	45.7%	1.01	1.19	88.6%	88.6%	93.8%	86.3%	13.7%	98.9%	71.3%
Portering	271	285	1.05	96.5%	3.5%	1.05	1.10	87.0%	87.0%	90.0%	86.0%	14.0%	86.5%	70.0%
Support	1,302	1,439	1.11	43.1%	56.9%	1.03	1.17	81.4%	80.2%	82.4%	73.0%	27.0%	89.0%	60.9%
Maintenance	106	107	1.01	99.1%	0.9%	1.01	1.00	90.7%	90.7%	100.0%	98.1%	1.9%	98.1%	100.0%
Technical Services	11	11	1.01	100.0%		1.01		100.0%	100.0%		100.0%	0.0%	100.0%	
Maintenance/ Technical	117	118	1.01	99.2%	0.8%	1.01	1.00	91.5%	91.5%	100.0%	98.3%	1.7%	98.3%	100.0%

General Support	1,419	1,557	1.10	47.3%	52.7%	1.03	1.17	82.2%	82.0%	82.4%	75.0%	25.0%	90.5%	61.0%
HCA, Nurse's Aide, etc.	1,088	1,226	1.13	33.6%	66.4%	1.07	1.15	71.7%	71.7%	70.5%	71.4%	28.6%	81.8%	66.1%
Health & Social Care Assistants	35	40	1.15	22.5%	77.5%	1.02	1.20	80.0%	80.0%	80.6%	87.5%	12.5%	88.9%	87.1%
Health Care Assistants	1,123	1,266	1.13	33.3%	66.7%	1.07	1.16	72.0%	74.1%	70.9%	71.9%	28.1%	81.9%	66.9%
Other Care Grades	26	33	1.26	66.7%	33.3%	1.29	1.22	75.8%	75.8%	90.9%	75.8%	24.2%	77.3%	72.7%
Care, other	26	33	1.26	66.7%	33.3%	1.29	1.22	75.8%	68.2%	90.9%	75.8%	24.2%	77.3%	72.7%
Patient & Client Care	1,149	1,299	1.13	34.1%	65.9%	1.08	1.16	72.1%	73.8%	71.1%	72.0%	28.0%	81.7%	66.9%

Employment by WTE, Headcount, Gender, Full-Time /Part-Time etc.: Sep 2020

Ireland East Hospital Group	WTE	Headcount	WTE: no.	% Male	% female	Male WTE: no.	Female WTE: no.	% Total Perm	% Male Perm	% Female Perm	% Total Full Time	% Total Part Time	% Male FT	% Female FT
Overall	12,770	14,102	1.10	24.6%	75.4%	1.04	1.13	79.6%	66.1%	83.9%	76.8%	23.2%	91.8%	71.9%
Cappagh National Orthopaedic	440	494	1.12	21.1%	78.9%	1.01	1.16	88.1%	88.1%	91.5%	72.1%	27.9%	96.2%	96.2%
Our Lady's Navan	572	661	1.16	26.2%	73.8%	1.06	1.20	80.0%	80.0%	85.2%	65.8%	34.2%	89.6%	89.6%
MRH Mullingar	981	1,082	1.10	20.0%	80.0%	1.01	1.13	78.7%	78.7%	84.3%	74.8%	25.2%	96.3%	96.3%
National Maternity	909	1,004	1.10	16.7%	83.3%	1.05	1.12	77.3%	77.3%	78.7%	70.4%	29.6%	84.5%	84.5%
Mater Misericordiae University	3,365	3,687	1.10	26.8%	73.2%	1.06	1.11	77.0%	77.0%	81.3%	79.2%	20.8%	86.9%	86.9%
St. Columcille's	456	502	1.10	24.9%	75.1%	1.03	1.13	78.5%	78.5%	81.7%	78.3%	21.7%	93.6%	93.6%
St Luke's General Kilkenny	1,188	1,359	1.14	22.7%	77.3%	1.03	1.18	72.3%	72.3%	81.7%	70.3%	29.7%	96.8%	96.8%
St. Michael's	417	466	1.12	22.3%	77.7%	1.06	1.13	85.8%	85.8%	86.5%	69.7%	30.3%	83.7%	83.7%
St. Vincent's University	3,043	3,247	1.07	28.1%	71.9%	1.03	1.08	86.2%	86.2%	89.3%	87.5%	12.5%	96.1%	96.1%
Wexford General	1,060	1,205	1.14	22.7%	77.3%	1.03	1.17	73.3%	73.3%	80.4%	68.8%	31.2%	94.1%	94.1%
Hospital Group HQ	30	32	1.06	25.0%	75.0%	1.01	1.08	84.4%	84.4%	83.3%	93.8%	6.3%	100.0%	100.0%
Royal Victoria Eye & Ear	304	356	1.17	25.3%	74.7%	1.07	1.21	82.6%	82.6%	85.7%	63.5%	36.5%	85.6%	85.6%
IEHG Bank	5	7	1.38		100.0%		1.38	100.0%	100.0%	100.0%	14.3%	85.7%		

Ireland East Hospital Group Employment by Grade Group & Staff Category: September 2020

Sep 2020 (Dec 2018 figure: 11,773)	WTE Dec 2015	WTE Dec 2016	WTE Dec 2017	WTE Dec 2018	WTE Dec 2019	WTE Aug 2020	WTE Sep 2020
Overall	10,662	10,971	11,382	11,773	12,045	12,913	12,770
Consultant Anaesthesia	4.9%	4.9%	4.9%	5.1%	4.8%	4.6%	4.5%
Consultant Emergency Medicine	0.9%	1.0%	1.1%	1.0%	1.1%	1.2%	1.2%
Consultant Intensive Care Medicine				0.1%	0.1%	0.1%	0.1%
Consultant Medicine	9.2%	9.1%	9.3%	9.3%	9.9%	9.6%	10.0%
Consultant Obstetrics & Gynaecology	1.9%	2.0%	2.0%	2.0%	2.0%	1.8%	1.7%
Consultant Paediatrics	1.4%	1.2%	1.3%	1.2%	1.2%	1.3%	1.3%
Consultant Pathology	2.0%	2.1%	2.1%	2.3%	2.2%	2.2%	2.1%
Consultant Psychiatry	0.3%	0.2%	0.3%	0.3%	0.2%	0.2%	0.2%
Consultant Radiology	3.2%	3.1%	2.9%	3.2%	3.0%	2.7%	2.7%
Consultant Surgery	6.5%	6.6%	6.5%	6.3%	6.2%	6.0%	6.1%
Consultants	30.5%	30.2%	30.5%	30.7%	30.7%	30.1%	30.1%
Registrar	20.6%	21.1%	19.6%	19.8%	19.5%	18.9%	18.9%
Senior Registrar	0.9%	1.7%	1.3%	1.4%	1.6%	1.5%	1.6%
Specialist Registrar	13.2%	11.9%	13.3%	13.1%	14.2%	14.2%	13.9%
Registrars	34.7%	34.7%	34.2%	34.3%	35.3%	34.4%	34.4%
Interns	9.3%	9.2%	8.7%	8.8%	8.4%	10.4%	10.2%
Senior House Officer	24.3%	24.6%	25.1%	24.5%	24.1%	24.1%	23.9%
SHO/ Interns	33.6%	33.8%	33.8%	33.4%	32.5%	34.0%	34.0%
Dentists	0.1%	0.1%	0.1%	0.1%	0.1%	0.1%	0.1%
Other Medical	1.2%	1.3%	1.5%	1.5%	1.4%	1.3%	1.4%
Medical/ Dental, other	1.2%	1.3%	1.5%	1.6%	1.5%	1.5%	1.5%
Medical & Dental	14.1%	14.3%	14.5%	14.4%	14.6%	15.3%	15.3%
Clinical Nurse/ Midwife Manager	15.9%	16.6%	16.6%	17.8%	17.9%	17.6%	18.9%
Director Nursing/Midwifery, Assistant	1.7%	1.5%	1.7%	1.8%	1.9%	1.9%	1.9%
Director of Nursing/Midwifery	0.2%	0.3%	0.3%	0.3%	0.3%	0.3%	0.3%
Nurse/ Midwife Manager	17.9%	18.4%	18.5%	19.9%	20.2%	21.1%	21.1%
Advanced Nurse/ Midwife Practitioner	0.5%	0.7%	1.3%	1.5%	1.6%	1.6%	1.7%
Clinical Nurse/ Midwife Specialist	5.0%	5.2%	4.9%	5.1%	5.1%	4.8%	5.0%
Nurse/ Midwife Specialist & AN/MP	5.5%	5.9%	6.2%	6.6%	6.7%	6.7%	6.7%
Nursing Bank	0.0%	0.1%	0.2%	0.1%	0.0%	0.0%	0.0%
Staff Midwives	7.6%	7.3%	6.5%	6.7%	6.3%	6.0%	5.8%
Staff Nurse [Psychiatric]	0.1%	0.1%	0.1%	0.1%	0.1%	0.1%	0.1%
Staff Nurses [General/ Children's]	66.0%	65.6%	65.8%	63.9%	63.9%	61.0%	61.8%
Staff Nurse/ Staff Midwife	73.8%	73.2%	72.6%	70.8%	70.3%	67.7%	67.7%
Pre-registration Nurse/ Midwife Intern	0.6%	0.3%	0.4%	0.5%	0.5%		
Pre-registration Nurse Intern (COVID-19)						4.6%	2.1%
Post-registration Nurse/ Midwife Student	0.6%	0.5%	0.5%	0.5%	0.5%	0.4%	0.4%
Nursing/ Midwifery awaiting registration		0.0%	0.1%	0.1%	0.2%	0.0%	0.4%
Nursing/ Midwifery Student	1.2%	0.9%	1.1%	1.1%	1.2%	2.9%	2.9%
Nursing Education/Clinical	1.4%	1.4%	1.4%	1.4%	1.4%	1.3%	1.2%
Other Nursing/ Midwifery	0.3%	0.3%	0.2%	0.2%	0.3%	0.3%	0.3%
Nursing/ Midwifery other	1.7%	1.7%	1.6%	1.6%	1.6%	1.5%	1.5%
Nursing & Midwifery	38.6%	38.3%	38.3%	38.0%	38.2%	37.5%	37.5%
Dietitians	4.4%	5.2%	4.9%	5.6%	5.3%	5.6%	5.6%
Occupational Therapists	5.0%	5.2%	5.2%	5.0%	4.7%	4.9%	5.1%
Orthoptists	0.2%	0.2%	0.2%	0.2%	0.2%	0.1%	0.1%
Physiotherapists	14.2%	14.2%	14.5%	15.3%	15.7%	15.5%	15.6%
Podiatrists & Chiropodists	0.4%	0.5%	0.6%	0.6%	0.7%	0.7%	0.7%
Speech & Language Therapists	2.2%	2.4%	2.7%	2.3%	2.4%	3.0%	3.0%
Therapy Professions	26.5%	27.9%	28.1%	29.0%	28.9%	30.2%	30.2%
Audiology	0.2%	0.3%	0.2%	0.2%	0.2%	0.2%	0.2%

Sep 2020 (Dec 2018 figure: 11,773)	WTE Dec 2015	WTE Dec 2016	WTE Dec 2017	WTE Dec 2018	WTE Dec 2019	WTE Aug 2020	WTE Sep 2020
Overall	10,662	10,971	11,382	11,773	12,045	12,913	12,770
Biochemists	1.7%	1.6%	2.0%	2.0%	1.8%	1.9%	1.9%
Clinical Engineering	1.2%	1.2%	1.3%	1.3%	1.4%	1.5%	1.4%
Clinical Measurement	6.0%	5.8%	5.5%	5.6%	5.4%	5.5%	5.6%
Medical Laboratory	24.2%	23.5%	22.7%	21.9%	20.9%	20.6%	20.5%
Perfusionists	0.2%	0.2%	0.3%	0.2%	0.3%	0.2%	0.2%
Phlebotomists	2.7%	2.5%	2.6%	2.6%	2.5%	2.6%	2.5%
Physicists	1.0%	0.9%	0.9%	1.1%	1.1%	0.9%	0.9%
Radiographers	18.1%	17.3%	17.2%	16.8%	16.6%	16.5%	16.8%
Health Science/ Diagnostics	55.3%	53.3%	52.7%	51.7%	50.2%	50.0%	50.0%
Social Workers	4.3%	4.4%	4.4%	4.0%	4.8%	4.6%	4.6%
Psychologists	0.9%	0.9%	1.0%	1.0%	1.5%	1.3%	1.3%
Pharmacy	11.1%	11.5%	11.7%	12.2%	12.9%	12.0%	12.0%
Counsellor Therapists	0.2%	0.2%	0.2%	0.2%	0.2%	0.1%	0.1%
HSCP Trainees/ Students	0.6%	0.6%	0.6%	0.7%	0.5%	1.1%	0.7%
Other Health & Social Care	1.2%	1.1%	1.3%	1.2%	1.1%	1.1%	1.1%
H&SC, Other	1.9%	2.0%	2.1%	2.1%	1.8%	1.9%	1.9%
Health & Social Care Professionals	12.0%	12.0%	11.9%	12.1%	12.1%	12.3%	12.3%
Executive Management	0.5%	0.6%	0.6%	0.8%	0.8%	0.9%	0.9%
Senior Management (VIII & GM)	3.2%	3.8%	3.9%	3.8%	3.8%	4.3%	3.8%
Management (VIII & above)	3.7%	4.4%	4.5%	4.5%	4.6%	4.7%	4.7%
Administrative/ Supervisory (V to VII)	26.5%	26.4%	27.6%	28.2%	28.5%	31.0%	31.0%
General Administrative (III & IV)	69.8%	69.2%	68.0%	67.3%	66.9%	65.7%	64.3%
Clerical (III & IV)	69.8%	69.2%	68.0%	67.3%	66.9%	64.3%	64.3%
Management & Administrative	15.0%	14.9%	15.1%	15.2%	15.1%	14.9%	14.9%
Catering	7.3%	7.3%	6.8%	6.9%	7.1%	7.0%	7.6%
Household Services	43.8%	45.4%	46.0%	46.9%	46.1%	45.8%	48.3%
Other Labs & Associated	4.8%	4.5%	4.6%	4.7%	5.0%	5.0%	5.5%
Other Support	11.0%	11.0%	11.3%	11.0%	11.0%	11.0%	11.3%
Portering	24.0%	23.4%	23.4%	22.9%	22.9%	23.2%	19.1%
Support	90.9%	91.6%	92.1%	92.5%	92.2%	91.8%	91.8%
Maintenance	8.3%	7.6%	7.1%	6.8%	7.0%	7.3%	7.5%
Technical Services	0.8%	0.8%	0.8%	0.8%	0.8%	0.7%	0.8%
Maintenance/ Technical	9.1%	8.4%	7.9%	7.5%	7.8%	8.2%	8.2%
General Support	12.1%	12.2%	12.3%	12.1%	11.9%	11.1%	11.1%
HCA, Nurse's Aide, etc.	94.3%	94.2%	94.5%	94.5%	94.6%	93.8%	94.7%
Health & Social Care Assistants	2.4%	2.5%	2.6%	2.8%	2.8%	3.7%	3.0%
Health Care Assistants	96.8%	96.6%	97.1%	97.3%	97.3%	97.7%	97.7%
Other Care Grades	3.2%	3.4%	2.9%	2.7%	2.7%	2.5%	2.3%
Care, other	3.2%	3.4%	2.9%	2.7%	2.7%	2.3%	2.3%
Patient & Client Care	8.3%	8.3%	8.0%	8.2%	8.1%	9.0%	9.0%
Total	100%	100%	100%	100%	100%	100%	100%

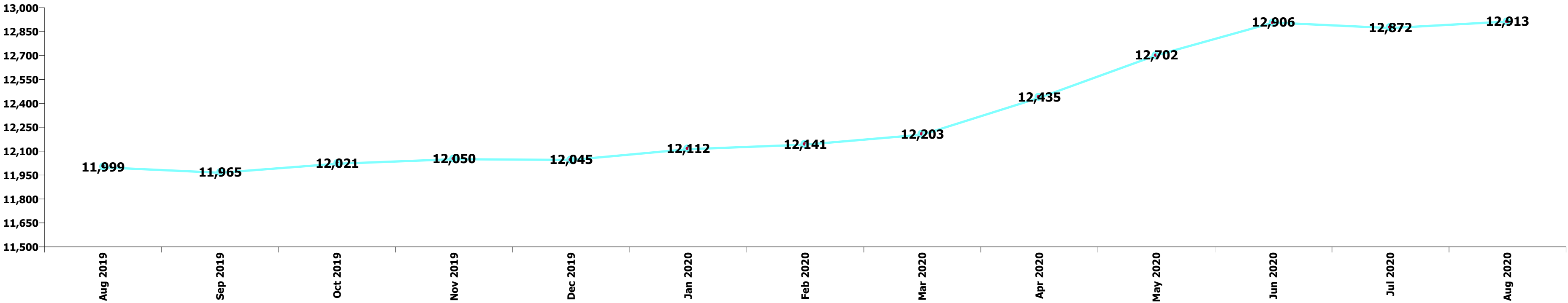
Summary Staff Movement: September 2020

Month-on-month Summary

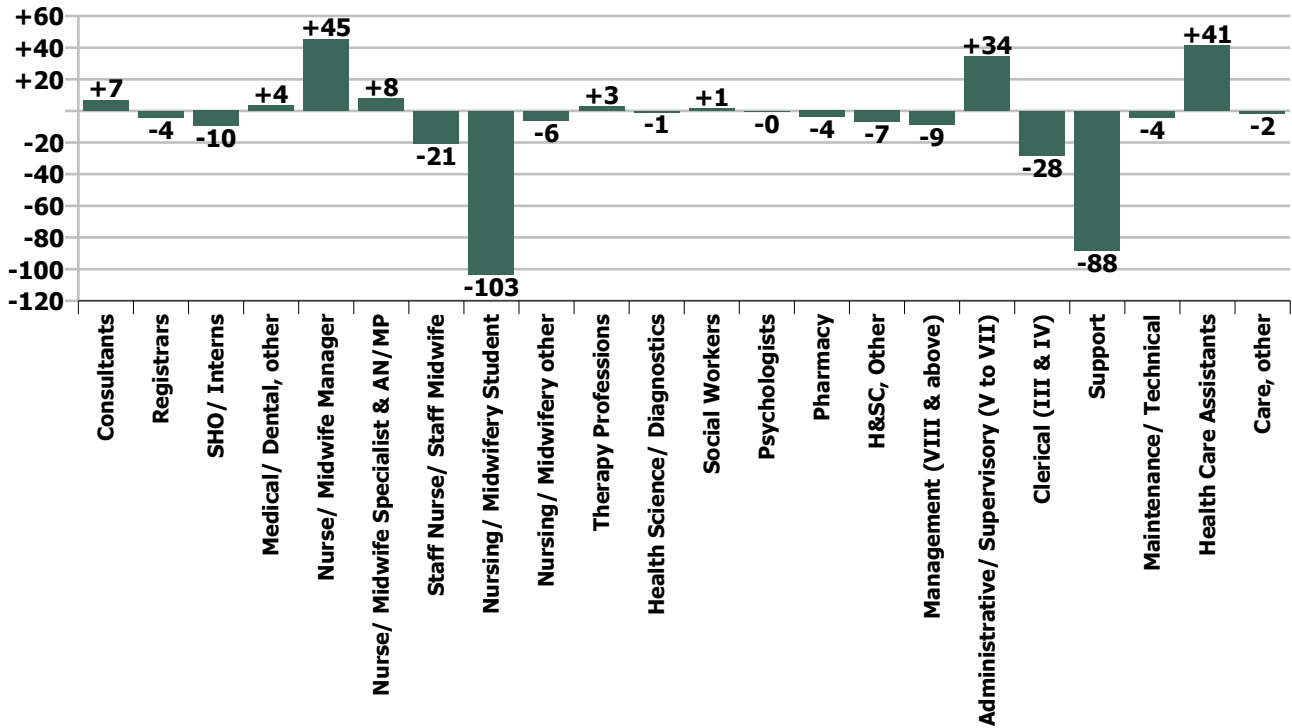
WTE change since Aug 20	% change since Aug 20	overall	Consultants	Registrars	SHO/ Interns	Medical/ Dental, other	Medical & Dental	Nurse/ Midwife Manager	Nurse/ Midwife Specialist & AN/MP	Staff Nurse/ Staff Midwife	Nursing/ Midwifery Student	Nursing/ Midwifery other	Nursing & Midwifery	Therapy Professions	Health Science/ Diagnostics	Social Workers	Psychologists	Pharmacy	H&SC, Other	Health & Social Care Professionals	Management (VII & above)	Administrativ e/ Supervisory (V to VII)	Clerical (III & IV)	Management & Administrativ e	General Support	Health Care Assistants	Care, other	Patient & Client Care
Overall	-1.1%	-143	+7	-4	-10	+4	-3	+45	+8	-21	-103	-6	-77	+3	-1	+1	-0	-4	-7	-8	-9	+34	-28	-3	-92	+41	-2	+40
Cappagh National Orthopaedic	+0.2%	+1	+1				+1			-0			-0									-0						
Our Lady's Navan	-2.1%	-12	+0	-7	-2		-8	-1	+1	+1			+1	+0	-0			+0		+0		+0	-2	-2	-1	-2	-0	-2
MRH Mullingar	+0.2%	+2	+1	+3	-2		+2	-0	+1	+2	-4	-0	-1	+1	+0	+2		-2		-1	-2	-0	-1	-2	+0	+4		+4
National Maternity	-1.6%	-15		-1	-1		-2	-1		-2	-15		-18		+1					+1		+1	-2	-1	-2	+7		+7
Mater Misericordiae University	-1.4%	-47	+1	+1	-1	+1	+3	+8	-2	-1	-44	+1	-39	+0	+2			-1	-7	-6	-2	+1	+4	+2	+2	-10	-0	-10
St. Columcille's	-0.7%	-3	+0	-0	-2		-2	+2	-1	-1		-1	-1	-1	+0	-1	-0			-2	+1	-1	+0	+0	+0	+2		+2
St Luke's General Kilkenny	-1.0%	-12	+1	-1	+1	+1	+2	-1	-0	-5	+1	-0	-6	+1	-2			-0		-1	-2	+4	-1	+1	-57	+48		+48
St. Michael's	-0.9%	-4	-0	+1	-4		-3	-1	+1	+0			+0		-1	+1		-1		-1		+1	-1	+0				
St. Vincent's University	-1.8%	-57	+0	-1	+3	-0	+1	+40	+6	-17	-41	-6	-18	+1	+0	+2		-1		+2	-3	+25	-25	-4	-1	-37	-2	-38
Wexford General	-0.5%	-5	+1	+0	-2	+2	+1	-0	+3	-1	-1		+1	+1	-2			+2		+1	-1	+3	-3	-2	-34	+28		+28
Hospital Group HQ	+5.2%	+1								+0			+0		-0					-0	+0	+1		+1				
Royal Victoria Eye & Ear	+1.9%	+6	+1	+1			+2	+1		+1			+1	+0		-1				-1			+3	+3	+1			
IEHG Bank	+65.9%	+2								+2			+2													+0		+0
			+1.0%	0.6%	1.1%	+1.1%	-0.9%	+1.7%	+0.6%	0.6%	-1.0%	-7.1%	-1.6%	+0.6%	0.1%	+1.0%	-1.0%	0.0%	-1.0%	-0.6%	0.0%	+1.6%	-0.9%	-0.1%	-6.1%	+0.0%	-6.1%	+0.6%

Year-on-year Summary

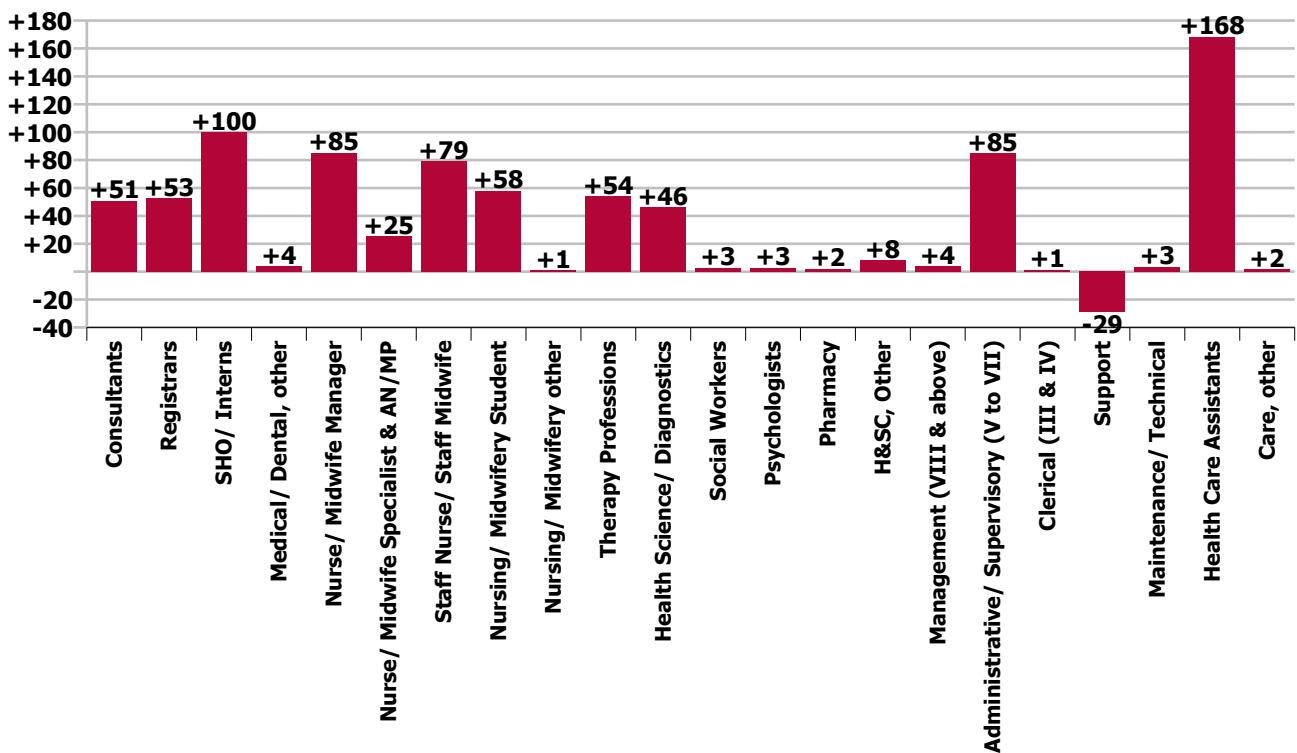
WTE change since Sep 19	% change since Sep 19	overall	Consultants	Registrars	SHO/ Interns	Medical/ Dental, other	Medical & Dental	Nurse/ Midwife Manager	Nurse/ Midwife Specialist & AN/MP	Staff Nurse/ Staff Midwife	Nursing/ Midwifery Student	Nursing/ Midwifery other	Nursing & Midwifery	Therapy Professions	Health Science/ Diagnostics	Social Workers	Psychologists	Pharmacy	H&SC, Other	Health & Social Care Professionals	Management (VIII & above)	Administrativ e/ Supervisory (V to VII)	Clerical (III & IV)	Management & Administrativ e	General Support	Health Care Assistants	Care, other	Patient & Client Care
Overall	+6.7%	+805	+51	+53	+100	+4	+207	+85	+25	+79	+58	+1	+248	+54	+46	+3	+3	+2	+8	+116	+4	+85	+1	+90	-26	+168	+2	+170
Cappagh National Orthopaedic	+3.8%	+16		+1			+1	+1		+9			+10	-1	+1					+0		+3	+1	+4	+1			
Our Lady's Navan	+13.4%	+68	+1	+2	+11		+14	+2	+2	+13	-3		+15	+9	+5			+1		+15	+1	+10	-3	+8	-1	+15	-0	+15
MRH Mullingar	+6.8%	+62	+3	+1	+9		+12	-2	+3	+19	+1	+1	+22	+8	+10			-1	+0	+17	-2	+6	-7	-3	+1	+12		+12
National Maternity	+4.0%	+35	+4	+1	-1		+4	+6	+1	-9	-2		-3	+1	+4	-0	+1	+1		+7	+1	+6	-5	+2	+15	+11		+11
Mater Misericordiae University	+7.9%	+246	+17	+23	+38	+1	+79	+13	+10	+18	+14	+7	+61	+16	+12	-2		+5	+6	+38	-0	+9	+30	+39	+11	+17	+1	+18
St. Columcille's	-0.4%	-2	-2		-0		-2	+3	-3	-3		-1	-5	+0	+1	+1	-1	+1		+2	+1	+1	+2	+3	+1	-1		-1
St Luke's General Kilkenny	+5.2%	+59	+3	+5	-3	+0	+5	+1	+2	+2	+5	+0	+11	+8	+1			-2	+1	+8		+8	-5	+3	-29	+60		+60
St. Michael's	+5.9%	+23	+2		+1		+3	-1	+1	+1	+23		+23	-4	-0	+1		-1		-4	+1	+7	-7	+2	-0	+1		+1
St. Vincent's University	+9.0%	+250	+18	+20	+45	-0	+83	+57	+5	+31	+17	-6	+104	+10	+12	+3	+2	-3		+24	-3	+30	-5	+22	+9	+7	+2	+9
Wexford General	+2.9%	+30	+4	-2	+2	+2	+5	+2	+3	-8	+2		-1	+6	+1	+1		+0		+8	+2	+7	+1	+10	-35	+44	-1	+43
Hospital Group HQ	-1.9%	-1								+0			+0		-0					-0	+2	-1	-1	+0	-1			
Royal Victoria Eye & Ear	+4.5%	+13	+2	+2	-1	+1	+3	+3	+1	+3		-1	+7	-0		-1		+1	+1	+0	+1	-1	-0	-0	+2	+1		+1
IEHG Bank	-100.0%	+5								+5			+5													+0		
			+9.5%	+8.5%	+17.7%	+14.7%	+11.9%	+9.2%	+8.5%	+2.5%	+71.1%	+1.3%	+5.5%	+12.9%	+6.3%	+3.8%	+16.2%	+1.0%	+37.6%	+8.0%	+4.4%	+16.8%	+0.1%	+5.0%	-1.8%	+17.6%	+6.5%	+17.4%



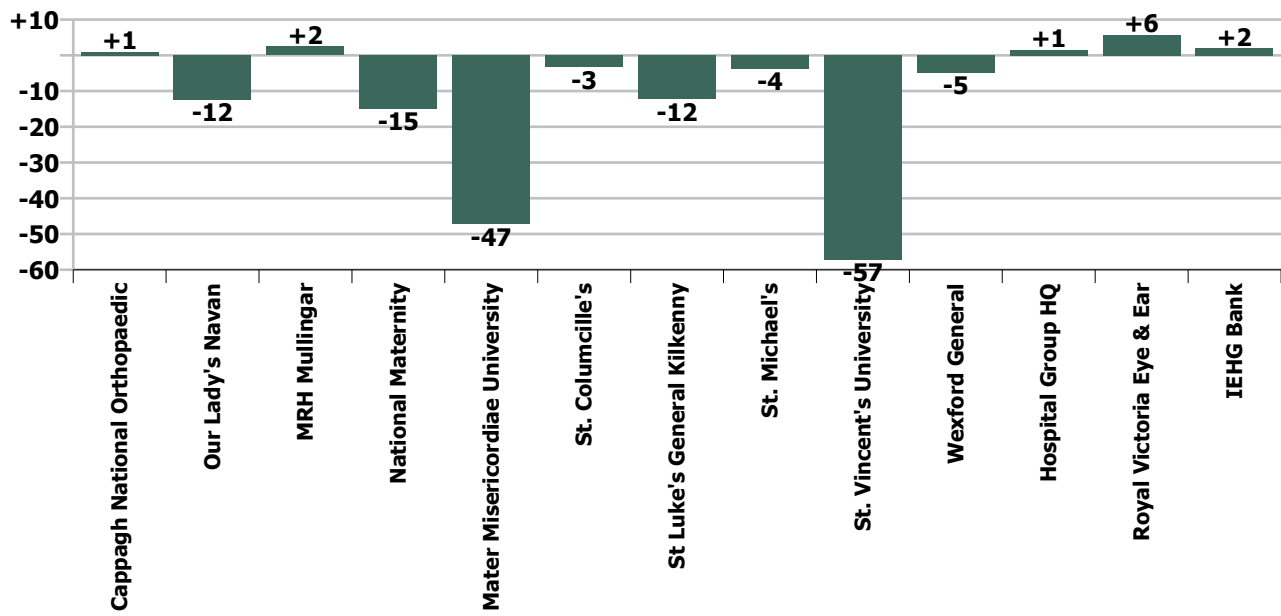
Staff Group change since: Aug 2020



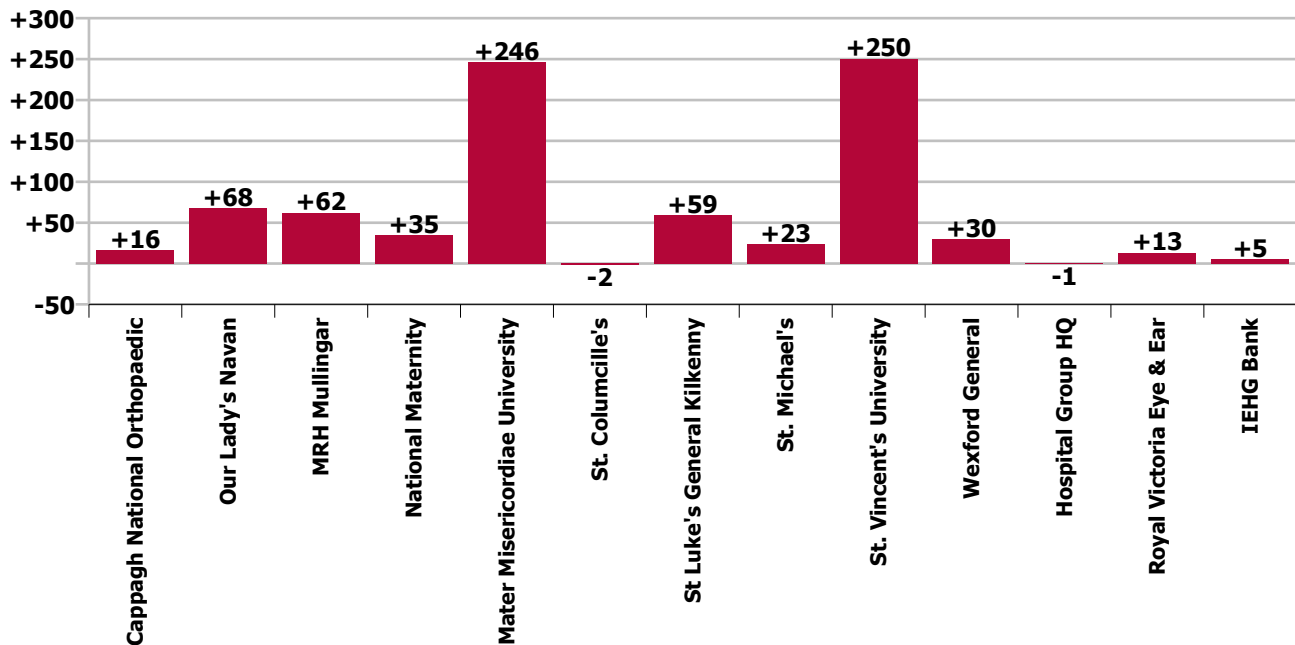
Staff Group change since: Sep 2019



Hospital change since: Aug 2020



Hospital change since: Sep 2019



Longitudinal Employment Levels by Grade Group - Dec 15 to Sep 2020

Sep 2020 (Dec 2015 figure: 10,662)	WTE Sep 2020	WTE change since Dec 15	WTE change since Dec 16	WTE change since Dec 17	WTE change since Dec 18	WTE change since Dec 19	WTE change since Aug 20	% change since Dec 15	% change since Dec 16	% change since Dec 17	% change since Dec 18	% change since Dec 19	% change since Aug 20
Overall	12,770	+2,107	+1,798	+1,388	+997	+725	-143	+19.8%	+16.4%	+12.2%	+8.5%	+6.0%	-1.1%
Consultant Anaesthesia	88	+14	+11	+7	+3	+3	-2	+19.2%	+14.3%	+8.7%	+3.0%	+4.1%	-1.8%
Consultant in Emergency Medicine	24	+10	+8	+6	+7	+5	+1	+69.2%	+46.3%	+31.8%	+39.7%	+23.7%	+4.4%
Consultant Emergency Medicine	24	+10	+8	+6	+7	+5	+1	+69.2%	+46.3%	+31.8%	+39.7%	+23.7%	+4.4%
Consultant Intensivist	2	+2	+2	+2				-100.0%	-100.0%	-100.0%			
Consultant Intensive Care Medicine	2	+2	+2	+2				-100.0%	-100.0%	-100.0%			
Consultant Cardiologist	20	+6	+4	+3	+3	+0	-1	+41.7%	+25.3%	+15.4%	+15.4%	+0.5%	-4.4%
Consultant Clinical Neurophysiologist	2	+0	+0					+25.4%	+25.4%				
Consultant Dermatologist	11	+3	+1	+1	+3	-1	-0	+36.4%	+15.5%	+8.3%	+33.2%	-10.2%	-4.4%
Consultant Gastroenterologist & General Physician	12	+2	+3	+3	+1	+2	+2	+16.0%	+28.9%	+28.9%	+5.5%	+15.2%	+16.0%
Consultant General Physician	51	+12	+13	+11	+10	+8	+6	+30.5%	+33.0%	+26.8%	+23.3%	+19.4%	+12.9%
Consultant in Clinical Genetics	0	-0	-0					-50.0%	-50.0%				
Consultant in Palliative Medicine	2	+0	-0	-0	-0			+7.0%	-15.3%	-3.8%	-13.4%		
Consultant in Rehabilitation Medicine	1	+1	+1					+222.2%	+222.2%				
Consultant Medical Oncologist	9	+2	+3	+2	+4	+1	+1	+31.8%	+38.1%	+20.0%	+67.9%	+12.2%	+12.2%
Consultant Nephrologist & General Physician	5	+3	+3	+1			-1	+127.7%	+127.7%	+23.0%			-15.7%
Consultant Neurologist	12	+4	+2	+3	+2	+2	+1	+43.2%	+20.7%	+35.4%	+25.4%	+15.2%	+8.8%
Consultant Physician in Endocrinology	12	+2	+2	+2	-0	+1	-1	+25.2%	+25.2%	+25.2%	-0.7%	+4.5%	-4.0%
Consultant Physician in Geriatric Medicine	22	+7	+6	+4	+4	+3	+1	+45.5%	+40.1%	+21.5%	+20.2%	+13.7%	+3.2%
Consultant Physician in Infectious Diseases	9	+6	+5	+5	+6	+3	+1	+284.6%	+167.0%	+167.0%	+200.0%	+52.4%	+12.9%
Consultant Respiratory & General Physician	19	+8	+7	+6	+5	+4	+1	+66.2%	+59.4%	+42.9%	+33.1%	+23.1%	+3.5%
Consultant Rheumatologist & General Physician	8	+2	+3	+2	+3	+0	-1	+30.1%	+48.0%	+29.7%	+50.6%	+3.8%	-10.2%
Consultant Medicine	195	+58	+53	+42	+38	+21	+8	+41.8%	+37.3%	+27.2%	+24.3%	+12.3%	+4.2%
Consultant Obstetrician & Gynaecologist	33	+5	+3	+1	-0	-1	-1	+17.5%	+8.4%	+2.3%	-0.5%	-1.5%	-3.0%
Master (Maternity Hospital)	1												
Consultant Obstetrics & Gynaecology	34	+5	+3	+1	-0	-1	-1	+16.9%	+8.1%	+2.3%	-0.4%	-1.5%	-2.9%
Consultant Paediatrician	26	+4	+7	+5	+6	+4	+1	+20.4%	+39.9%	+23.2%	+30.2%	+18.3%	+5.2%
Consultant Paediatrics	26	+4	+7	+5	+6	+4	+1	+20.4%	+39.9%	+23.2%	+30.2%	+18.3%	+5.2%
Consultant Clinical Biochemist	2	+1	-1	-1	-1	+1		+198.6%	-20.1%	-20.1%	-20.1%	+100.0%	
Consultant Haematologist (Clinical and Laboratory)	11	+5	+5	+5	+3		-1	+72.8%	+72.3%	+72.3%	+30.7%		-4.4%
Consultant Histopathologist	16	-0	+0	-1	-1	+0	+1	-2.2%	+0.1%	-6.6%	-3.8%	+1.3%	+3.1%
Consultant Immunologist (Clinical & Laboratory)	1												
Consultant Microbiologist	11	+5	+4	+3	+1	+2	-2	+77.1%	+52.9%	+37.6%	+11.6%	+16.6%	-12.5%
Consultant Pathology	41	+11	+8	+6	+2	+3	-2	+34.4%	+23.7%	+16.7%	+6.5%	+7.6%	-3.7%

Sep 2020 (Dec 2015 figure: 10,662)	WTE Sep 2020	WTE change since Dec 15	WTE change since Dec 16	WTE change since Dec 17	WTE change since Dec 18	WTE change since Dec 19	WTE change since Aug 20	% change since Dec 15	% change since Dec 16	% change since Dec 17	% change since Dec 18	% change since Dec 19	% change since Aug 20
Overall	12,770	+2,107	+1,798	+1,388	+997	+725	-143	+19.8%	+16.4%	+12.2%	+8.5%	+6.0%	-1.1%
Consultant Child & Adolescent Psychiatrist		-0	-0	-0	-0			-100.0%	-100.0%	-100.0%	-100.0%	-100.0%	-100.0%
Consultant General Adult Psychiatrist	4	+0	+1					+8.7%	+21.4%				
Consultant Psychiatry	4	+0	+0	-0	-0			+1.5%	+12.5%	-6.1%	-6.1%		
Consultant Radiation Oncologist	0												
Consultant Radiologist	53	+5	+5	+5	-1	+1	-0	+9.5%	+9.4%	+9.9%	-1.8%	+2.0%	-0.7%
Consultant Radiology	53	+5	+5	+5	-1	+1	-0	+9.5%	+9.4%	+9.9%	-1.8%	+2.0%	-0.7%
Consultant Cardio-thoracic Surgeon	11	+3	+3	+3	+3	+3	+0	+30.9%	+30.9%	+30.9%	+30.9%	+39.5%	+0.1%
Consultant General Surgeon	34	+2	-1	+2	+2	+1	-1	+5.0%	-3.4%	+8.0%	+6.5%	+4.0%	-2.9%
Consultant General Surgeon Breast	2	+1	+1					+100.0%	+100.0%				
Consultant General Surgeon Colo-rectal	4	+1		-1	-1			+33.3%		-20.0%	-20.0%		
Consultant General Surgeon s.i. in vascular surgery	2												
Consultant Ophthalmic Surgeon	24	+6	+4	+3	+2	+3	+1	+35.4%	+22.9%	+13.7%	+10.9%	+12.6%	+4.4%
Consultant Ophthalmic Surgeon s.i. neuro-ophthal	0	+0	+0	+0	+0	+0		-100.0%	-100.0%	-100.0%	-100.0%	-100.0%	
Consultant Oral & Maxillo Facial Surgeon				-0	-0	-0	-0	-100.0%	-100.0%	-100.0%	-100.0%	-100.0%	-100.0%
Consultant Orthopaedic Surgeon	16	+4	+2	+1	+2	+2	+1	+34.5%	+14.3%	+6.7%	+17.4%	+11.4%	+6.7%
Consultant Otolaryngologist	11	+3	+3	+3	+1	+0		+37.2%	+49.4%	+37.7%	+15.0%	+3.0%	
Consultant Plastic Surgeon	8		+1	+1	+2	+2			+9.5%	+9.5%	+27.5%	+27.5%	
Consultant Urologist	9	+3	+3	+1	+1	+1	+1	+37.2%	+37.2%	+12.2%	+12.2%	+12.2%	+7.3%
Consultant Surgery	119	+22	+15	+12	+12	+11	+1	+22.4%	+14.9%	+11.3%	+11.1%	+10.4%	+1.0%
Consultants	587	+130		+85	+67	+48	+7	+28.4%	+23.6%	+16.9%	+12.8%	+8.9%	+1.2%
Registrar	24	-69	-73	+11	+16	+17	+16	-74.1%	-75.0%	+77.6%	+180.6%	+245.6%	+210.1%
Registrar, Anaesthesia	45	+6	+9	+2	-5	-7	-6	+15.4%	+25.0%	+4.7%	-10.0%	-13.5%	-12.1%
Registrar, Emergency Medicine	43	+21	+21	+7	+2	+6	-2	+98.3%	+91.9%	+18.4%	+4.9%	+15.9%	-3.8%
Registrar, Medicine	141	+67	+39	+9	+15	+8	-0	+89.6%	+37.8%	+7.1%	+11.7%	+5.7%	-0.2%
Registrar, Obstetrics & Gynaecology	27	+13	+15	+5	+1	+5	-5	+92.7%	+124.8%	+22.6%	+5.8%	+21.1%	-14.6%
Registrar, Ophthalmology	7	+3	+2	-1	+1		+1	+85.7%	+49.1%	-15.9%	+11.9%		+18.2%
Registrar, Paediatrics	13	+7	+8	-2	-4	-7	-3	+116.7%	+160.0%	-15.6%	-22.5%	-33.3%	-19.9%
Registrar, Pathology	15	+8	+7	+8	+8	+8	+4	+112.9%	+100.5%	+112.9%	+112.9%	+112.9%	+35.5%
Registrar, Psychiatry	5	-5	-1	+1	+1	+1		-47.9%	-9.1%	+25.0%	+25.0%	+25.0%	
Registrar, Surgery	50	+10	+11	+7	-1	-3	-5	+24.4%	+27.6%	+17.3%	-1.6%	-6.1%	-9.5%
Registrar	369	+61	+38	+46	+34	+28	+0	+19.7%	+11.6%	+14.3%	+10.1%	+8.0%	+0.0%
Registrar, Senior	25	+15	+3	+8	+5	+1	+3	+150.0%	+13.6%	+42.9%	+25.8%	+4.5%	+11.2%
Senior Registrar, Psychiatry	6	+2	+2	+2	+2	+2		+50.0%	+50.0%	+50.0%	+50.0%	+50.0%	
Senior Registrar	31	+17	+5	+10	+7	+3	+3	+121.4%	+19.2%	+44.2%	+29.9%	+11.0%	+8.8%
Registrar, Specialist	18	+2	+13	+11	+6	+5	+3	+12.9%	+250.0%	+169.2%	+45.8%	+40.0%	+23.4%
Specialist Registrar, Anaesthesia	47	+13	+12	+11	+18	+6		+38.8%	+32.9%	+29.2%	+60.3%	+13.4%	

Sep 2020 (Dec 2015 figure: 10,662)	WTE Sep 2020	WTE change since Dec 15	WTE change since Dec 16	WTE change since Dec 17	WTE change since Dec 18	WTE change since Dec 19	WTE change since Aug 20	% change since Dec 15	% change since Dec 16	% change since Dec 17	% change since Dec 18	% change since Dec 19	% change since Aug 20
Overall	12,770	+2,107	+1,798	+1,388	+997	+725	-143	+19.8%	+16.4%	+12.2%	+8.5%	+6.0%	-1.1%
Specialist Registrar, Emergency Medicine	11	+5	+6	+5	+5	+1		+69.2%	+120.0%	+83.3%	+83.3%	+10.0%	
Specialist Registrar, Medicine	92	+33	+31	+20	+18	+12	-6	+56.7%	+49.9%	+28.7%	+24.2%	+14.8%	-6.5%
Specialist Registrar, Obstetrics & Gynaecology	8			-4	-7	-8	-3			-30.4%	-44.8%	-49.1%	-27.3%
Specialist Registrar, Paediatrics	5	-3	-3	-6	-4	-2	-1	-37.5%	-37.5%	-54.5%	-44.4%	-28.6%	-16.7%
Specialist Registrar, Pathology	14	+5	+8	+4	+3	-0	-1	+57.6%	+136.3%	+35.0%	+28.9%	-0.1%	-5.2%
Specialist Registrar, Radiology	27	+1	+1	+0	+0	-1	+1	+5.2%	+5.2%	+1.3%	+1.3%	-4.2%	+3.8%
Specialist Registrar, Surgery	49	+17	+16	+10	+10	+10		+50.6%	+47.0%	+26.0%	+25.6%	+23.9%	
Specialist Registrar	271	+73	+83	+52	+49	+22	-7	+36.8%	+44.1%	+23.6%	+22.1%	+8.8%	-2.5%
Registrars	671	+151		+107	+90	+53	-4	+28.9%	+23.2%	+19.0%	+15.5%	+8.5%	-0.6%
Intern	198	+59	+54	+55	+49	+51	-4	+42.4%	+37.5%	+38.5%	+32.9%	+34.6%	-2.2%
Interns	198	+59	+54	+55	+49	+51	-4	+42.4%	+37.5%	+38.5%	+32.9%	+34.6%	-2.2%
House Officer, Senior	52	-58	-40	+36	+43	+43	+22	-53.1%	-43.8%	+222.4%	+494.4%	+476.4%	+76.9%
Senior House Officer, Anaesthesia	22	+3	+3	-4	-8	-2	-0	+15.6%	+15.6%	-15.5%	-26.8%	-8.5%	-1.9%
Senior House Officer, Emergency Medicine	56	+21	+19	+9	+5	+6	-2	+58.6%	+50.0%	+18.7%	+8.8%	+12.8%	-4.3%
Senior House Officer, Medicine	172	+85	+58	+21	+16	+15	-6	+96.2%	+50.3%	+13.6%	+10.4%	+9.2%	-3.3%
Senior House Officer, Obstetrics & Gynaecology	25	+4	+5	-10	-8	-12	-6	+18.4%	+24.3%	-29.6%	-23.7%	-32.8%	-18.8%
Senior House Officer, Ophthalmology	14	+4	+1	+1	+1	+1		+35.2%	+9.4%	+8.0%	+8.0%	+8.0%	
Senior House Officer, Paediatrics	24	+6	+6	-9	-6	-8	-9	+32.4%	+35.6%	-27.3%	-18.9%	-26.2%	-27.1%
Senior House Officer, Pathology	16	+7	+4	+8	+9	+8	-2	+77.8%	+33.3%	+88.2%	+128.6%	+100.0%	-8.6%
Senior House Officer, Psychiatry	12	+9	+1	+1	-2	-1		+300.0%	+9.1%	+9.1%	-14.3%	-7.7%	
Senior House Officer, Surgery	74	+23	+22	+1	-0	-6	-3	+44.9%	+42.1%	+1.2%	-0.1%	-7.6%	-3.4%
Senior House Officer	466	+102	+78	+52	+50	+43	-5	+28.0%	+20.2%	+12.6%	+12.1%	+10.1%	-1.1%
SHO/ Interns	664	+161		+107	+99	+94	-10	+32.0%	+24.9%	+19.2%	+17.6%	+16.4%	-1.4%
Dental Surgeon, Senior	1												
Dentists	1												
Area Medical Officer	1	+1	+1	+1	+1	-0	-0	+900.0%	+900.0%	+900.0%	+376.2%	-17.4%	-17.4%
Area Medical Officer, Senior		-1						-100.0%	-100.0%	-100.0%	-100.0%	-100.0%	-100.0%
Associate Specialist	11	+10	+6	-0	-3	+0	+0	+1851.9%	+121.9%	-2.0%	-23.3%	+1.6%	+1.6%
General Practitioner	1	+1	+1	+1	+1	+1	+1	-100.0%	-100.0%	-100.0%	-100.0%	-100.0%	-100.0%
Medical & Dental Unclassified		-5	-4	-3				-100.0%	-100.0%	-100.0%	-100.0%	-100.0%	-100.0%
Medical Officer	3	+3	+3	+3	+3	+2	+3	-100.0%	-100.0%	-100.0%	-100.0%	+200.0%	-100.0%
Occupational Health Physician	1		+1	+1	+1	+0			-100.0%	-100.0%	-100.0%	+56.3%	
Ophthalmic Physician, Community	12	+2	+1	+2	+0	+0	-0	+15.0%	+7.8%	+18.0%	+1.4%	+3.0%	-2.4%
Other Medical	28	+11	+8	+4	+3	+4	+4	+61.5%	+42.0%	+17.9%	+10.7%	+14.9%	+14.9%
Medical/ Dental, other	29	+11		+4	+3	+4	+4	+58.1%	+40.0%	+17.2%	+10.3%	+14.3%	+14.3%

Sep 2020 (Dec 2015 figure: 10,662)	WTE Sep 2020	WTE change since Dec 15	WTE change since Dec 16	WTE change since Dec 17	WTE change since Dec 18	WTE change since Dec 19	WTE change since Aug 20	% change since Dec 15	% change since Dec 16	% change since Dec 17	% change since Dec 18	% change since Dec 19	% change since Aug 20
Overall	12,770	+2,107	+1,798	+1,388	+997	+725	-143	+19.8%	+16.4%	+12.2%	+8.5%	+6.0%	-1.1%
Medical & Dental	1,951	+452	+379	+303	+259	+198	-3	+30.2%	+24.1%	+18.4%	+15.3%	+11.3%	-0.2%
Clinical Midwife Manager 1	46	+16	+11	+7	+8	+5	-2	+55.0%	+33.0%	+17.0%	+22.4%	+12.1%	-3.4%
Clinical Midwife Manager 2	73	+24	+17	+13	-4	+3	+0	+47.8%	+29.3%	+22.3%	-4.6%	+4.2%	+0.4%
Clinical Midwife Manager 3	11	+4	+3	+5	+3	+3	+1	+58.7%	+42.0%	+83.4%	+37.2%	+34.8%	+9.1%
Clinical Nurse Manager 1	220	+76	+44	+46	+17	+3	+1	+53.2%	+25.3%	+26.4%	+8.2%	+1.5%	+0.6%
Clinical Nurse Manager 1 - Theatre	12	+5	+5	+6	+7	+6	+3	+77.8%	+81.8%	+86.0%	+142.4%	+96.7%	+31.9%
Clinical Nurse Manager 2	422	+97	+101	+86	+72	+52	+41	+29.7%	+31.5%	+25.5%	+20.7%	+14.1%	+10.9%
Clinical Nurse Manager 2 (Mental Health)	2	-1	-1	-1	-1	-1	-1	-40.0%	-40.0%	-40.0%	-40.0%	-40.0%	-25.0%
Clinical Nurse Manager 2 - Night	7	-1		-1	+0	+0	+0	-16.4%		-6.7%	+2.5%	+6.5%	+6.5%
Clinical Nurse Manager 2 - Theatre	41	+8	+4	+1	-3	-4	-2	+23.8%	+11.2%	+2.2%	-6.1%	-8.3%	-3.8%
Clinical Nurse Manager 3	61	+18	+18	+15	+2	+4	+1	+41.0%	+41.5%	+32.3%	+3.6%	+6.1%	+1.0%
Clinical Nurse Manager 3 - Theatre	7	+2	+1	+3	+2	+4	+1	+38.2%	+15.2%	+72.8%	+38.2%	+130.3%	+16.3%
Clinical Nurse/ Midwife Manager	902	+248	+204	+180	+104	+75	+45	+37.9%	+29.3%	+24.9%	+13.1%	+9.1%	+5.3%
Director of Nursing 1, Assistant	63	+22	+24	+21	+11	+5	+3	+55.8%	+62.3%	+49.3%	+21.9%	+8.5%	+4.3%
Director of Nursing 2, Assistant	23	-0	+2	-2	+3	-1	-1	-0.7%	+7.0%	-8.2%	+14.9%	-3.2%	-5.1%
Director of Nursing 3, Assistant	6	-2	+2	+1	-1	-1	-1	-21.4%	+37.5%	+22.2%	-15.4%	-15.4%	-15.4%
Director of Nursing (Mental Health), Assistant		-1		-1	-1	-1	-1	-100.0%	-100.0%	-100.0%	-100.0%	-100.0%	-100.0%
Director Nursing/Midwifery, Assistant	91	+20	+27	+19	+12	+2	-1	+27.8%	+42.3%	+25.8%	+15.5%	+2.4%	-0.7%
Director of Midwifery 1	1	+1	+1					-100.0%	-100.0%				
Director of Nursing 1	10	+6	+6	+6	+3	+2	+2	+148.7%	+148.7%	+148.7%	+34.5%	+25.5%	+24.4%
Director of Nursing 2	1	-1	-2	-4	-1			-50.0%	-66.7%	-79.6%	-50.0%		
Director of Nursing 2A	1	+1						-100.0%					
Director of Nursing 3	2		+0						+1.5%				
Director of Nursing & Midwifery		-1	-1	-1		-1	-1	-100.0%	-100.0%	-100.0%	-100.0%	-100.0%	-100.0%
Director of Nursing & Midwifery, Hospital Group	1	+1	+1	+1				-100.0%	-100.0%	-100.0%			
Director of Nursing/Midwifery	16	+7	+5	+2	+2	+1	+1	+77.2%	+45.4%	+14.7%	+10.8%	+6.8%	+6.3%
Nurse/ Midwife Manager	1,009	+274		+200	+118	+78	+45	+37.4%	+30.6%	+24.8%	+13.3%	+8.4%	+4.7%
Advanced Midwife Practitioner	5	+4	+3	+2	+0	+0	-0	+440.0%	+170.0%	+80.0%	+8.0%	+8.0%	-1.8%
Advanced Nurse Practitioner, Candidate (General)	26	+26	+24	+5	-0	-0	+6	-100.0%	+1186.5%	+22.8%	-0.3%	-0.3%	+29.6%
Advanced Nurse Practitioner (General)	51	+33	+28	+20	+17	+9	-2	+186.3%	+116.2%	+63.3%	+50.1%	+22.5%	-3.7%
Advanced Nurse/ Midwife Practitioner	82	+63	+55	+27	+17	+10	+4	+335.8%	+197.4%	+48.9%	+26.8%	+13.4%	+4.8%
Clinical Midwife Specialist	10	+3	+5	+2	+0	-1	-0	+53.1%	+119.7%	+32.6%	+3.2%	-8.3%	-1.2%
Clinical Nurse Specialist (General)	230	+29	+14	+24	+9	+6	+4	+14.6%	+6.6%	+11.5%	+4.3%	+2.8%	+1.9%
Clinical Nurse/ Midwife Specialist	240	+33	+20	+26	+10	+5	+4	+15.8%	+8.9%	+12.2%	+4.2%	+2.3%	+1.8%
Nurse/ Midwife Specialist & AN/MP	322	+96		+53	+27	+15	+8	+42.6%	+29.9%	+19.8%	+9.2%	+4.9%	+2.6%

Sep 2020 (Dec 2015 figure: 10,662)	WTE Sep 2020	WTE change since Dec 15	WTE change since Dec 16	WTE change since Dec 17	WTE change since Dec 18	WTE change since Dec 19	WTE change since Aug 20	% change since Dec 15	% change since Dec 16	% change since Dec 17	% change since Dec 18	% change since Dec 19	% change since Aug 20
Overall	12,770	+2,107	+1,798	+1,388	+997	+725	-143	+19.8%	+16.4%	+12.2%	+8.5%	+6.0%	-1.1%
Staff Nurse (Nursing Bank)	2	+1	-4	-5	-3	+0	+0	+30.9%	-61.9%	-68.0%	-53.2%	+4.5%	+4.5%
Nursing Bank	2	+1	-4	-5	-3	+0	+0	+30.9%	-61.9%	-68.0%	-53.2%	+4.5%	+4.5%
Enhanced Midwife	45	+45	+45	+45	+45	+45	+36	-100.0%	-100.0%	-100.0%	-100.0%	-100.0%	+410.7%
Enhanced Midwife, Senior	28	+28	+28	+28	+28	+28	+19	-100.0%	-100.0%	-100.0%	-100.0%	-100.0%	+198.1%
Staff Midwife	169	-92	-85	-55	-77	-55	-45	-35.3%	-33.5%	-24.5%	-31.3%	-24.7%	-21.1%
Staff Midwife, Senior	37	-12	-15	-21	-14	-26	-21	-24.5%	-29.2%	-36.2%	-27.5%	-41.5%	-35.6%
Staff Midwife, Senior (dual qualified)		-1	-1	-1	-1			-100.0%	-100.0%	-100.0%	-100.0%	-100.0%	-100.0%
Staff Midwives	279	-33	-29	-4	-19	-9	-11	-10.5%	-9.3%	-1.5%	-6.5%	-3.1%	-3.9%
Staff Nurse, Mental Health	3	-2	-2	-2	-1	-1	-1	-36.6%	-36.6%	-36.6%	-19.6%	-19.6%	-19.6%
Staff Nurse [Psychiatric]	3	-2	-2	-2	-1	-1	-1	-36.6%	-36.6%	-36.6%	-19.6%	-19.6%	-19.6%
Enhanced Nurse (Children's)	9	+9	+9	+9	+9	+9	+3	-100.0%	-100.0%	-100.0%	-100.0%	-100.0%	+41.1%
Enhanced Nurse (General)	772	+772	+772	+772	+772	+772	+208	-100.0%	-100.0%	-100.0%	-100.0%	-100.0%	+36.8%
Enhanced Nurse, Senior (Children's)	12	+12	+12	+12	+12	+12	+1	-100.0%	-100.0%	-100.0%	-100.0%	-100.0%	+9.8%
Enhanced Nurse, Senior (General)	591	+591	+591	+591	+591	+591	+202	-100.0%	-100.0%	-100.0%	-100.0%	-100.0%	+52.1%
Staff Nurse (Adaptation Placement), General	2	+2	+2	+2	+2	-21	-3	-100.0%	-100.0%	-100.0%	-100.0%	-91.3%	-60.0%
Staff Nurse (Children's)	4	-18	-17	-13	-10	-9	-1	-81.0%	-80.0%	-75.0%	-69.7%	-67.3%	-21.9%
Staff Nurse, Dual Qualified (General)		-13	-9	-5	-4	-3	-1	-100.0%	-100.0%	-100.0%	-100.0%	-100.0%	-100.0%
Staff Nurse - General	1,210	-890	-853	-926	-856	-800	-228	-42.4%	-41.4%	-43.3%	-41.5%	-39.8%	-15.9%
Staff Nurse, Senior (Children's)	1	-3	-4	-6	-7	-8	-1	-78.0%	-81.8%	-87.2%	-88.8%	-90.0%	-48.2%
Staff Nurse, Senior (Dual Qualified)	16	-24	-26	-19	-15	-15	-10	-60.4%	-62.5%	-54.1%	-48.4%	-48.4%	-38.3%
Staff Nurse, Senior (General)	339	-197	-277	-331	-394	-516	-179	-36.8%	-45.0%	-49.4%	-53.8%	-60.4%	-34.6%
Staff Nurses [General/ Children's]	2,954	+240	+199	+86	+99	+11	-9	+8.8%	+7.2%	+3.0%	+3.5%	+0.4%	-0.3%
Staff Nurse/ Staff Midwife	3,239	+206		+75	+77	+2	-21	+6.8%	+5.4%	+2.4%	+2.4%	+0.0%	-0.6%
Student Children's & General Nursing Intern (pre-r						-7		-100.0%	-100.0%	-100.0%	-100.0%	-100.0%	-100.0%
Student General Nursing Intern (pre-registration)		-25	-14	-19	-23	-18		-100.0%	-100.0%	-100.0%	-100.0%	-100.0%	-100.0%
Student Midwifery Intern (pre-registration)						-1		-100.0%	-100.0%	-100.0%	-100.0%	-100.0%	-100.0%
Pre-registration Nurse/ Midwife Intern		-25	-14	-19	-23	-25		-100.0%	-100.0%	-100.0%	-100.0%	-100.0%	-100.0%
Student Children's & General Nursing Intern (COVI	15	+15	+15	+15	+15	+15	+5	-100.0%	-100.0%	-100.0%	-100.0%	-100.0%	+50.0%
Student General Nursing Intern (COVID-19 HCA)	83	+83	+83	+83	+83	+83	-111	-100.0%	-100.0%	-100.0%	-100.0%	-100.0%	-57.3%
Student Midwifery Intern (COVID-19 HCA)	4	+4	+4	+4	+4	+4	-15	-100.0%	-100.0%	-100.0%	-100.0%	-100.0%	-80.6%
Pre-registration Nurse Intern (COVID-19)	101	+101	+101	+101	+101	+101	-121	-100.0%	-100.0%	-100.0%	-100.0%	-100.0%	-54.4%
Student Midwifery (post registration)	20	-3	-3	-3	-3	-1		-13.0%	-13.0%	-13.0%	-13.0%	-4.8%	
Post-registration Nurse/ Midwife Student	20	-3	-3	-3	-3	-1		-13.0%	-13.0%	-13.0%	-13.0%	-4.8%	
Staff Midwife (awaiting-registration)			-1					-100.0%	-100.0%	-100.0%	-100.0%	-100.0%	-100.0%
Staff Nurse, General (awaiting-registration)	18	+18	+18	+13	+14	+7	+17	-100.0%	-100.0%	+262.8%	+356.9%	+68.4%	+1871.7%

Sep 2020 (Dec 2015 figure: 10,662)	WTE Sep 2020	WTE change since Dec 15	WTE change since Dec 16	WTE change since Dec 17	WTE change since Dec 18	WTE change since Dec 19	WTE change since Aug 20	% change since Dec 15	% change since Dec 16	% change since Dec 17	% change since Dec 18	% change since Dec 19	% change since Aug 20
Overall	12,770	+2,107	+1,798	+1,388	+997	+725	-143	+19.8%	+16.4%	+12.2%	+8.5%	+6.0%	-1.1%
Nursing/ Midwifery awaiting registration	18	+18	+18	+13	+14	+7	+17	-100.0%	+3528.0%	+262.8%	+356.9%	+68.4%	+1871.7%
Nursing/ Midwifery Student	139	+92		+92	+90	+82	-103	+191.9%	+271.6%	+193.5%	+180.1%	+144.5%	-42.6%
Clinical Nurse Instructor/Teacher	1	-1	-1	-1	-1	-1		-50.0%	-33.3%	-33.3%	-33.3%	-33.3%	
Director, Nursing/ Midwifery Education Centre	1	-1	-1	-1	-1	-1	-1	-33.3%	-33.3%	-33.3%	-33.3%	-33.3%	-33.3%
Nurse Tutor	4	+3	-0	-0	+0	+0		+280.0%	-2.6%	-2.6%	+2.7%	+5.8%	
Nurse Tutor (Psychiatric)	5	-1	+0	+0	+0	+0	+0	-8.8%	+8.9%	+7.2%	+7.2%	+7.2%	+7.2%
Nursing/ Midwifery Clinical Placement Co-ordinator	22	-2	-2	-3	-5	-6	-5	-7.2%	-9.3%	-11.3%	-18.4%	-20.2%	-19.4%
Nursing/ Midwifery Practice Development Co-ordinator	3						-1						-25.0%
Specialist Co-ordinator, Nursing	23	+2	+3	+3	+3	+2	-0	+9.8%	+16.5%	+16.2%	+13.8%	+7.6%	-2.1%
Nursing Education/Clinical	59	+1	+0	-0	-3	-4	-7	+1.9%	+0.5%	-0.7%	-4.5%	-7.0%	-10.6%
Nursing Unclassified	15	+1	+4	+5	+4	+3	+1	+10.5%	+39.1%	+44.3%	+41.5%	+20.4%	+7.0%
Other Nursing/ Midwifery	15	+1	+4	+5	+4	+3	+1	+10.5%	+39.1%	+44.3%	+41.5%	+20.4%	+7.0%
Nursing/ Midwifery other	74	+3		+4	+2	-2	-6	+3.5%	+6.6%	+6.2%	+2.4%	-2.4%	-7.4%
Nursing & Midwifery	4,783	+671	+582	+425	+313	+176	-77	+16.3%	+13.8%	+9.8%	+7.0%	+3.8%	-1.6%
Dietitian	29	+17	+12	+9	+4	+6	-0	+154.4%	+72.2%	+44.4%	+17.9%	+25.8%	-0.6%
Dietitian, Clinical Specialist	8	+3	+3	+3	+3	+3	-0	+56.2%	+56.2%	+50.0%	+74.4%	+56.2%	-2.0%
Dietitian Manager	7	+4	+1	+1				+144.1%	+13.1%	+17.6%			
Dietitian Manager-in-charge III	2												
Dietitian, Senior	43	+7	+3	+9	+0	+1	+1	+18.1%	+7.7%	+28.7%	+0.0%	+2.9%	+1.6%
Dietitians	88	+31	+19	+22	+8	+10	+0	+53.9%	+26.9%	+33.2%	+9.5%	+12.6%	+0.4%
Occupational Therapist	35	+7	+1	-1	+1	+3	+0	+25.8%	+4.4%	-3.5%	+2.9%	+10.6%	+1.3%
Occupational Therapist, Clinical Specialist	3	+2	+2	+2	+2	+2	+1	+200.0%	+275.0%	+275.0%	+215.8%	+215.8%	+50.0%
Occupational Therapist-in-charge III	2												
Occupational Therapist Manager	1	+1	+0	+0	+0	+0	-1	-100.0%	+33.3%	+33.3%	+84.0%	+84.0%	-49.5%
Occupational Therapist, Senior	39	+5	+7	+8	+5	+6	+2	+15.3%	+21.2%	+25.2%	+14.9%	+17.2%	+6.7%
Occupational Therapists	80	+15	+11	+9	+9	+12	+3	+23.6%	+15.6%	+12.8%	+12.0%	+16.9%	+3.9%
Orthoptist, Senior	2	-1	-1	-1	-0	-0	+0	-31.4%	-31.4%	-31.4%	-7.4%	-7.4%	+18.4%
Orthoptists	2	-1	-1	-1	-0	-0	+0	-31.4%	-31.4%	-31.4%	-7.4%	-7.4%	+18.4%
Physiotherapist	108	+40	+35	+35	+18	+13	+1	+58.8%	+48.5%	+47.3%	+19.7%	+13.2%	+0.6%
Physiotherapist, Clinical Specialist	23	+10	+10	+10	+8	+4	+1	+75.0%	+76.6%	+69.3%	+55.5%	+21.4%	+2.7%
Physiotherapist-in-charge (Grade III)	7	+0	+1	+3	+3	+2	+0	+6.2%	+26.1%	+74.6%	+70.3%	+36.2%	+0.7%
Physiotherapist Manager	8	+1	-0	+0	-1		+1	+14.8%	-0.3%	+4.4%	-8.2%		+15.2%
Physiotherapist, Senior	99	+12	+11	+2	-1	-2	-1	+13.8%	+12.1%	+2.1%	-1.4%	-2.3%	-1.3%
Physiotherapy, Practice Tutor		-1	-1	-1	-1	-1	-1	-100.0%	-100.0%	-100.0%	-100.0%	-100.0%	-100.0%

Sep 2020 (Dec 2015 figure: 10,662)	WTE Sep 2020	WTE change since Dec 15	WTE change since Dec 16	WTE change since Dec 17	WTE change since Dec 18	WTE change since Dec 19	WTE change since Aug 20	% change since Dec 15	% change since Dec 16	% change since Dec 17	% change since Dec 18	% change since Dec 19	% change since Aug 20
Overall	12,770	+2,107	+1,798	+1,388	+997	+725	-143	+19.8%	+16.4%	+12.2%	+8.5%	+6.0%	-1.1%
Physiotherapists	244	+63	+57	+49	+26	+16	+0	+34.4%	+30.2%	+24.9%	+11.9%	+6.8%	+0.0%
Chiroprapist, Clinical Specialist	1												
Chiroprapist/ Podiatrist	3	+1	+1	+1	+1	-0	-0	+94.0%	+39.2%	+94.0%	+94.0%	-13.6%	-3.0%
Chiroprapist/ Podiatrist, Senior	7	+5	+3	+2	+1	+1	-0	+176.7%	+71.2%	+38.1%	+25.9%	+25.9%	-0.4%
Podiatrists & Chiroprapists	11	+6	+4	+3	+3	+1	-0	+117.5%	+52.2%	+44.1%	+35.3%	+10.1%	-1.1%
Speech & Language Therapist	16	+6	+7	+4	+8	+9	-1	+60.7%	+84.2%	+35.1%	+90.7%	+119.1%	-6.8%
Speech & Language Therapist, Clinical Specialist	6	+4	+4	+5	+5	+2	+0	+221.1%	+205.0%	+510.0%	+510.0%	+67.1%	+5.2%
Speech & Language Therapist Manager	3	+0	+0	-0	-0	-0	-0	+4.7%	+4.7%	-0.9%	-5.1%	-1.3%	-1.3%
Speech & Language Therapist, Senior	22	+8	+4	+1	+2	+1	+0	+57.1%	+22.3%	+5.6%	+7.7%	+6.4%	+1.5%
Speech & Language Therapists	47	+18	+16	+10	+14	+13	-1	+63.7%	+49.5%	+28.5%	+43.2%	+36.3%	-1.3%
Therapy Professions	472	+132		+93	+59	+50	+3	+38.8%	+28.4%	+24.4%	+14.3%	+11.9%	+0.6%
Audiologist	1												
Audiologist, Chief	1			+0	+0	+0				+8.7%	+8.7%	+3.1%	
Audiologist, Senior	1	+0	-0	+0				+40.0%	-8.9%	+16.7%			
Audiology	4	+0	-0	+0	+0	+0		+11.8%	-3.5%	+8.1%	+2.3%	+0.8%	
Biochemist	12	+5	+4	+2	+0	+1		+67.8%	+58.0%	+17.0%	+2.3%	+10.8%	
Biochemist, Principal	8	+1	+2					+16.1%	+36.9%				
Biochemist, Senior	11	+3	+3	+1	+1	+2		+33.5%	+43.0%	+12.3%	+10.0%	+22.3%	
Biochemists	30	+9	+10	+3	+1	+3		+39.3%	+46.8%	+10.6%	+4.4%	+11.6%	
Clinical Engineering Technician	3	+1	+1	+1			-1	+50.0%	+50.0%	+50.0%			-25.0%
Clinical Engineering Technician, Chief	4	+2	+2	+1	-0	-0	-0	+99.0%	+99.0%	+32.7%	-0.5%	-0.5%	-0.5%
Clinical Engineering Technician, Principal	3	-1	-1					-25.0%	-25.0%				
Clinical Engineering Technician, Senior	12	+4	+4	+3	+3	+1		+51.5%	+50.0%	+33.3%	+33.3%	+9.1%	
Clinical Engineering	22	+6	+6	+5	+3	+1	-1	+38.1%	+37.4%	+29.3%	+15.7%	+4.7%	-4.4%
Cardiac Physiologist	20	-4	-3	+3	-0	+1		-15.4%	-14.5%	+17.8%	-0.9%	+6.7%	
Cardiac Physiologist, Chief I	5	+0	-1	-1	-1	-1	-1	+2.1%	-16.1%	-15.4%	-17.7%	-17.3%	-16.7%
Cardiac Physiologist, Chief II	3	+1	+1	+1	+1	+1	+1	+49.3%	+39.3%	+44.2%	+49.3%	+42.9%	+42.9%
Cardiac Physiologist, Senior	26	+8	+9	+4	+5	+2	+1	+42.2%	+54.7%	+21.1%	+23.1%	+6.4%	+4.4%
E.C.G. Technician		-1	-1	-1				-100.0%	-100.0%	-100.0%	-100.0%	-100.0%	-100.0%
Gastrointestinal (GI) Physiologist	1	+1	+1					-100.0%	-100.0%				
Neuro-Physiologist	4	+1	+3	+3	+3	+4	+1	+33.3%	+300.0%	+300.0%	+300.0%	-100.0%	+33.3%
Neuro-Physiologist, Chief I	1					+1						-100.0%	
Neuro-Physiologist, Senior	6	+2	+2	+1	+1	+1		+50.0%	+50.0%	+20.0%	+20.0%	+20.0%	
Respiratory Physiologist	6	-2	+1		-1	-1	-1	-25.0%	+20.0%		-12.3%	-14.3%	-14.3%
Respiratory Physiologist, Chief II	2	+1	-0	+0	+1	+0	+0	+89.0%	-5.5%	+5.6%	+89.0%	+11.2%	+1.6%

Sep 2020 (Dec 2015 figure: 10,662)	WTE Sep 2020	WTE change since Dec 15	WTE change since Dec 16	WTE change since Dec 17	WTE change since Dec 18	WTE change since Dec 19	WTE change since Aug 20	% change since Dec 15	% change since Dec 16	% change since Dec 17	% change since Dec 18	% change since Dec 19	% change since Aug 20
Overall	12,770	+2,107	+1,798	+1,388	+997	+725	-143	+19.8%	+16.4%	+12.2%	+8.5%	+6.0%	-1.1%
Respiratory Physiologist, Senior	8	+4	-0	+2	-1	+0		+92.2%	-2.4%	+28.3%	-11.7%	+2.1%	
Vascular Physiologist	2	-2	-2	-1	-1			-50.0%	-50.0%	-33.3%	-33.3%		
Vascular Physiologist, Chief I	1												
Vascular Physiologist, Chief II	1	+1						-100.0%					
Vascular Physiologist, Senior	2	+1	+1	+1	+1			+100.0%	+100.0%	+100.0%	+100.0%		
Clinical Measurement	87	+10	+10	+12	+8	+8	+1	+13.6%	+12.7%	+16.6%	+9.7%	+10.3%	+1.3%
Laboratory Manager	5	+1	+1	+1				+26.6%	+25.0%	+25.0%			
Medical Scientist	169	-13	-13	-2	-6	+9	-4	-7.2%	-7.3%	-1.3%	-3.3%	+5.9%	-2.6%
Medical Scientist, Chief	35	+2	+4	+1	+0	-1	-0	+4.8%	+14.8%	+2.9%	+0.2%	-2.3%	-0.1%
Medical Scientist, Senior	98	+15	+13	+10	+7	+2	+2	+17.9%	+14.9%	+11.3%	+8.1%	+2.1%	+2.3%
Medical Scientist, Specialist	10	+1	+1	+0	+1	+1	+0	+12.9%	+11.6%	+1.7%	+18.5%	+7.2%	+1.0%
Medical Scientist, Undergraduate	4	+4	+4	+4	+4	+4	-1	-100.0%	-100.0%	-100.0%	-100.0%	-100.0%	-11.0%
Medical Laboratory	321	+10	+10	+14	+8	+16	-3	+3.2%	+3.3%	+4.7%	+2.4%	+5.1%	-0.8%
Perfusionist	3	+1	+1	-1	+1	-1		+25.0%	+25.0%	-16.7%	+25.0%	-16.7%	
Perfusionist, in charge	1												
Perfusionists	4	+1	+1	-1	+1	-1		+16.7%	+16.7%	-12.5%	+16.7%	-12.5%	
Phlebotomist	33	+3	+4	+2	+1	+1	-2	+8.7%	+13.1%	+6.6%	+4.2%	+2.5%	-5.3%
Phlebotomist, Senior	6	+1	+1	+1	+1	+1	+0	+29.9%	+28.1%	+20.8%	+12.4%	+19.2%	+0.4%
Phlebotomists	39	+4	+5	+3	+2	+2	-2	+11.3%	+15.0%	+8.4%	+5.3%	+4.6%	-4.6%
Physicist	5	+0	+1	+1	-1	-1		+2.2%	+25.0%	+25.0%	-16.7%	-16.7%	
Physicist, Chief	2	+1						+100.0%					
Physicist, Principal	4	+1	+2	+0	+0	+0		+44.0%	+140.0%	+5.9%	+5.9%	+5.3%	
Physicist, Senior	4	+0	+0	+1				+2.6%	+2.6%	+33.3%			
Physicists	15	+2	+3	+2	-1	-1		+18.8%	+28.1%	+17.7%	-5.2%	-5.3%	
Radiographer	116	+1	+7	+4	+11	+7	+3	+0.9%	+6.7%	+3.4%	+10.7%	+6.8%	+2.6%
Radiographer, Clinical Specialist	49	+14	+8	+7	+2	+2	+1	+41.2%	+20.6%	+17.6%	+5.3%	+4.5%	+1.1%
Radiographer, Senior	82	+13	+16	+19	+9	+11	+0	+19.5%	+25.0%	+29.2%	+12.6%	+14.9%	+0.3%
Radiography Service Manager, I	10	+2	+2	+1	+0	-0	-0	+17.3%	+22.0%	+9.2%	+0.7%	-0.3%	-0.8%
Radiography Service Manager, II	5				+0						+4.2%		
Radiographers	262	+30	+34	+31	+23	+20	+4	+13.0%	+14.8%	+13.2%	+9.7%	+8.3%	+1.4%
Health Science/ Diagnostics	782	+72		+70	+44	+48	-1	+10.2%	+11.1%	+9.9%	+6.0%	+6.6%	-0.1%
Social Worker, Medical	29	+2	-0	-2	-1	-5	-2	+5.8%	-0.0%	-7.3%	-3.1%	-13.6%	-5.4%
Social Worker, Principal	6	+3	+2	+1	+1			+101.4%	+49.5%	+18.9%	+20.8%		
Social Worker, Senior Medical	30	+8	+8	+10	+11	+3	-0	+38.7%	+37.9%	+48.9%	+59.1%	+10.4%	-0.1%
Social Work Practitioner, Senior	7	+3	+3	+4	+3	+3	+3	+80.5%	+80.5%	+140.7%	+80.5%	+90.0%	+71.1%

Sep 2020 (Dec 2015 figure: 10,662)	WTE Sep 2020	WTE change since Dec 15	WTE change since Dec 16	WTE change since Dec 17	WTE change since Dec 18	WTE change since Dec 19	WTE change since Aug 20	% change since Dec 15	% change since Dec 16	% change since Dec 17	% change since Dec 18	% change since Dec 19	% change since Aug 20
Overall	12,770	+2,107	+1,798	+1,388	+997	+725	-143	+19.8%	+16.4%	+12.2%	+8.5%	+6.0%	-1.1%
Social Workers	72	+16	+13	+13	+14	+2	+1	+28.7%	+22.7%	+21.3%	+24.9%	+2.3%	+1.9%
Social Workers	72	+16		+13	+14	+2	+1	+28.7%	+22.7%	+21.3%	+24.9%	+2.3%	+1.9%
Psychologist, Clinical	2	-1	-1	-1	-0			-27.5%	-18.2%	-18.2%	-8.6%		
Psychologist, Counselling	2	+1	+1	+1	+1	+0		+311.6%	+311.6%	+311.6%	+311.6%	+1.1%	
Psychologist, Educational	1												
Psychologist, Principal Clinical	2	+1	+1	+1	+1			+135.0%	+135.0%	+135.0%	+135.0%		
Psychologist, Senior Clinical	13	+6	+5	+4	+3	-1	-0	+82.7%	+67.3%	+49.9%	+25.5%	-10.4%	-3.0%
Psychologist, Trainee Clinical	1	+1	+1	+1	+1			-100.0%	-100.0%	-100.0%	-100.0%		
Psychologists	20	+9	+8	+7	+6	-1	-0	+71.7%	+67.7%	+56.5%	+41.9%	-6.6%	-1.9%
Psychologists	20	+9		+7	+6	-1	-0	+71.7%	+67.7%	+56.5%	+41.9%	-6.6%	-1.9%
Pharmaceutical Technician	43	+16	+14	+8	+8	-2	-2	+56.8%	+46.4%	+23.2%	+23.9%	-4.7%	-5.5%
Pharmaceutical Technician, Senior	25	+1	+3	+3	+3	+2	+0	+4.3%	+12.2%	+15.2%	+12.5%	+11.0%	+0.1%
Pharmacist	39	+13	+11	+7	+2	+4	+1	+51.5%	+37.9%	+22.2%	+6.2%	+10.7%	+3.9%
Pharmacist, Chief I	2			-1	-1	-1				-33.3%	-33.3%	-33.3%	
Pharmacist, Chief II	24	+2	-2	+2	+1	-0	-1	+8.0%	-7.0%	+7.3%	+4.5%	-0.1%	-2.7%
Pharmacist, Senior	56	+15	+12	+11	+1	-3	-2	+35.3%	+26.0%	+24.1%	+2.5%	-4.8%	-3.8%
Pharmacy	188	+46	+37	+30	+15	+0	-4	+32.5%	+24.2%	+18.9%	+8.4%	+0.1%	-2.0%
Pharmacy	188	+46		+30	+15	+0	-4	+32.5%	+24.2%	+18.9%	+8.4%	+0.1%	-2.0%
Counsellor Therapist (Adult Services)	1	-0	-1	-1	-1			-9.3%	-38.2%	-38.2%	-38.2%		
Counsellor / Therapist (National Services)	0	+0						-100.0%					
Director of Counselling (National Counselling Services)	1												
Counsellor Therapists	2	+0	-1	-1	-1	-0	-0	+12.1%	-20.5%	-20.5%	-20.5%	-0.0%	-0.0%
Medical Scientist, Student	1	-4	-5	-4	-4	-5	-6	-81.0%	-83.3%	-80.5%	-80.7%	-83.9%	-85.7%
Perfusionist, Student	1				-1						-50.0%		
Pharmacist, Student	1					+1						-100.0%	
Phlebotomist, Trainee	8	+8	+8	+8	+8	+7	-1	-100.0%	-100.0%	-100.0%	+2976.9%	+1303.5%	-11.1%
Respiratory Technician, Student				-1	-1			-100.0%	-100.0%	-100.0%	-100.0%	-100.0%	-100.0%
HSCP Trainees/ Students	11	+4	+3	+3	+2	+3	-7	+51.3%	+37.5%	+35.1%	+16.6%	+41.6%	-38.9%
Clinical Photographer	5			+1	+1	+1				+16.8%	+28.5%	+14.4%	
Clinical Photographer, Senior	2												
Health & Social Care Professionals Unclassified	7	+0	+0	-3	-3	-1		+1.5%	+1.5%	-30.7%	-31.3%	-16.2%	
Optometrist, Clinical	3	+2	+2	+2	+2	+2		+150.0%	+150.0%	+150.0%	+150.0%	+150.0%	
Other Health & Social Care	17	+2	+2	-1	-1	+1		+10.7%	+10.7%	-5.5%	-3.9%	+4.6%	
H&SC, Other	30	+6		+1	+0	+4	-7	+22.9%	+15.4%	+4.5%	+1.0%	+15.2%	-18.9%

Sep 2020 (Dec 2015 figure: 10,662)	WTE Sep 2020	WTE change since Dec 15	WTE change since Dec 16	WTE change since Dec 17	WTE change since Dec 18	WTE change since Dec 19	WTE change since Aug 20	% change since Dec 15	% change since Dec 16	% change since Dec 17	% change since Dec 18	% change since Dec 19	% change since Aug 20
Overall	12,770	+2,107	+1,798	+1,388	+997	+725	-143	+19.8%	+16.4%	+12.2%	+8.5%	+6.0%	-1.1%
Health & Social Care Professionals	1,565	+280	+245	+214	+139	+103	-8	+21.8%	+18.5%	+15.8%	+9.7%	+7.1%	-0.5%
CEO (Band H2 Hospital)	1					+1						-100.0%	
CEO (Band H3 Hospital)	2	+1	+1	+1	+1			+60.0%	+60.0%	+60.0%	+60.0%		
Chief Executive, Hospital Group							-1	-100.0%	-100.0%	-100.0%	-100.0%	-100.0%	-100.0%
Chief Executive Officer	3												
Chief Finance Officer (HSE)							-1	-100.0%	-100.0%	-100.0%	-100.0%	-100.0%	-100.0%
Director of Finance	1												
Director of HR	1												
Director of Information Systems	1												
Head of Function /Service, Acute Services	2	+2	+2	+2	+2	+1	+1	-100.0%	-100.0%	-100.0%	-100.0%	+100.0%	+100.0%
Head of Function /Service, Community Services	2	+2	+2	+2	+2	+1	+1	-100.0%	-100.0%	-100.0%	-100.0%	+94.0%	+94.0%
National Director, Assistant (Services)	4	+4	+4	+4		-1		-100.0%	-100.0%	-100.0%		-21.7%	
National Director, Assistant (Support)	1	+1	-1	-1	-1			-100.0%	-50.0%	-50.0%	-50.0%		
Executive Management	17	+9	+7	+7	+4	+2	+0	+114.3%	+71.4%	+71.4%	+26.0%	+12.8%	+1.6%
Chief Executive Officer, Deputy	1	+1	+1	-1				-100.0%	-100.0%	-50.0%			
Functional Officer	4	-1						-20.0%					
General Manager	6	+0	-4	-3	-2	-2	-1	+6.7%	-42.8%	-37.1%	-29.0%	-26.7%	-11.6%
Grade VIII	60	+26	+19	+13	+11	+11	-4	+76.7%	+45.5%	+28.4%	+22.8%	+21.8%	-6.6%
Service Manager	2	-5	-5	-3	-4	-4	-4	-71.4%	-71.4%	-60.0%	-66.7%	-66.7%	-66.7%
Senior Management (VIII & GM)	73	+21	+11	+6	+5	+5	-9	+41.9%	+17.2%	+9.1%	+7.2%	+7.0%	-11.0%
Management (VIII & above)	90	+31		+13	+8	+7	-9	+51.7%	+24.7%	+17.2%	+10.4%	+8.1%	-8.8%
Accountant	4	-2	-1	-1	-1	-1		-33.3%	-20.0%	-20.0%	-20.0%	-20.0%	
Grade V	309	+93	+93	+67	+60	+57	+23	+43.2%	+42.9%	+27.9%	+24.1%	+22.4%	+8.0%
Grade VI	147	+36	+43	+39	+27	+19	+12	+32.8%	+40.8%	+36.2%	+23.0%	+14.4%	+9.0%
Grade VII	111	+40	+25	+12	+0	+0	-1	+56.8%	+29.8%	+11.7%	+0.3%	+0.2%	-0.7%
Supplies Officer Grade A	1	-4	-3	-2	-2	-1	-1	-80.0%	-75.0%	-66.7%	-66.1%	-50.0%	-50.0%
Supplies Officer Grade B	13	+2	+1	+1	-1	+0	+1	+21.9%	+11.3%	+11.3%	-5.2%	+2.4%	+7.9%
Middle Management (V-VII)	585	+166	+158	+116	+84	+74	+34	+39.7%	+37.1%	+24.8%	+16.8%	+14.4%	+6.2%
Librarian	2												
Librarian, Assistant	1												
Project Manager	1												
Technical Services Manager	1												
Other Administrative	5												
Administrative/ Supervisory (V to VII)	590	+166		+116	+84	+74	+34	+39.2%	+36.7%	+24.6%	+16.7%	+14.3%	+6.2%
Clerical Officer	472	+36	+21	+22	-11	-1	-19	+8.2%	+4.7%	+4.9%	-2.2%	-0.3%	-3.9%

Sep 2020 (Dec 2015 figure: 10,662)	WTE Sep 2020	WTE change since Dec 15	WTE change since Dec 16	WTE change since Dec 17	WTE change since Dec 18	WTE change since Dec 19	WTE change since Aug 20	% change since Dec 15	% change since Dec 16	% change since Dec 17	% change since Dec 18	% change since Dec 19	% change since Aug 20
Overall	12,770	+2,107	+1,798	+1,388	+997	+725	-143	+19.8%	+16.4%	+12.2%	+8.5%	+6.0%	-1.1%
Grade IV	668	+62	+61	+24	+17	+4	-11	+10.2%	+10.0%	+3.7%	+2.6%	+0.6%	-1.6%
Supplies Officer Grade C	36	+2	+4	+8	+4	-1	+2	+7.1%	+13.9%	+28.6%	+13.2%	-1.6%	+5.9%
Supplies Officer Grade D	18	+4	+3	+1	-0	+2	-4	+26.0%	+19.3%	+8.7%	-2.1%	+9.3%	-16.8%
Telephonist	27	+4	+4	+5	+8	+9	+5	+19.0%	+18.7%	+21.8%	+41.7%	+47.6%	+25.2%
Telephonist, Night	2	-2	-2	-3	-3	-2	-2	-56.8%	-56.8%	-64.5%	-60.5%	-53.6%	-55.1%
Telephonist, Supervisor	2												
General Administrative (III & IV)	1,224	+106	+91	+57	+16	+10	-28	+9.5%	+8.0%	+4.9%	+1.3%	+0.8%	-2.3%
Clerical (III & IV)	1,224	+106		+57	+16	+10	-28	+9.5%	+8.0%	+4.9%	+1.3%	+0.8%	-2.3%
Management & Administrative	1,904	+303	+267	+187	+109	+91	-3	+18.9%	+16.3%	+10.9%	+6.0%	+5.0%	-0.1%
Catering	107	+13	+10	+13	+9	+5	+2	+14.0%	+10.7%	+13.7%	+8.8%	+4.8%	+1.5%
Household Services	685	+122	+79	+42	+15	+23	-7	+21.7%	+13.0%	+6.5%	+2.3%	+3.5%	-1.1%
Other Labs & Associated	78	+16	+18	+13	+11	+5	+2	+25.8%	+30.0%	+20.2%	+15.9%	+7.3%	+3.2%
Other Support	161	+19	+13	+2	+4	+3	-6	+13.3%	+9.1%	+1.4%	+2.4%	+1.8%	-3.3%
Portering	271	-37	-42	-56	-56	-58	-79	-12.1%	-13.4%	-17.1%	-17.1%	-17.6%	-22.6%
Support	1,302	+133		+14	-18	-21	-88	+11.4%	+6.4%	+1.1%	-1.3%	-1.6%	-6.3%
Boilerman	1												
Chargehand	3	+2	+2	+2				+200.0%	+200.0%	+200.0%			
Electrician	18	-3	-0	-0	+3	+1	-0	-14.9%	-0.6%	-0.6%	+19.5%	+5.3%	-0.6%
Gardener/ Groundsman	1	-2	-2	-2	-2	-1	-1	-66.7%	-66.7%	-66.7%	-66.7%	-50.0%	-50.0%
Gardener/ Groundsman, Head	1	+1	+1	+1	+1	+1	+1	-100.0%	-100.0%	-100.0%	-100.0%	-100.0%	-100.0%
General Operative	10	+1	-1	-1	-1	-2	-4	+13.7%	-5.1%	-9.3%	-9.3%	-15.9%	-28.4%
Labourer	2												
Maintenance Craftsman/Technician	25	+2	+4	+3	+2	+1	-1	+8.9%	+19.0%	+13.7%	+8.7%	+4.2%	-3.8%
Maintenance Foreman	11		+2	+0	+1	+2	+1		+22.2%	+0.4%	+11.1%	+17.1%	+10.0%
Maintenance Foreman, Assistant	2	+1	+1	+1				+100.0%	+100.0%	+100.0%			
Maintenance Helper	6	-2						-25.0%					
Maintenance Manager	2			+0						+16.3%			
Maintenance Officer	3	+1		+1	+2	+1		+50.0%		+50.0%	+100.0%	+50.0%	
Painter	6	-1	-2	-1	-1	-1		-14.3%	-25.0%	-14.3%	-14.3%	-14.3%	
Plasterer		-1	-1	-1	-1			-100.0%	-100.0%	-100.0%	-100.0%	-100.0%	-100.0%
Plumber	15			+3	+6	+4				+22.6%	+66.7%	+36.4%	
Maintenance	106	-1	+4	+6	+9	+6	-4	-0.8%	+4.3%	+6.0%	+9.8%	+5.5%	-3.8%
Draughtsman/Technician I	2	+1	-0	-0	-0	-0	-0	+93.0%	-3.5%	-3.5%	-3.5%	-3.5%	-3.5%
Draughtsman/Technician II			-1	-1	-1			-100.0%	-100.0%	-100.0%	-100.0%	-100.0%	-100.0%

Sep 2020 (Dec 2015 figure: 10,662)	WTE Sep 2020	WTE change since Dec 15	WTE change since Dec 16	WTE change since Dec 17	WTE change since Dec 18	WTE change since Dec 19	WTE change since Aug 20	% change since Dec 15	% change since Dec 16	% change since Dec 17	% change since Dec 18	% change since Dec 19	% change since Aug 20
Overall	12,770	+2,107	+1,798	+1,388	+997	+725	-143	+19.8%	+16.4%	+12.2%	+8.5%	+6.0%	-1.1%
Engineer/ Engineering Officer	1	-1	-1	-1	-1	-1		-50.0%	-50.0%	-50.0%	-50.0%	-50.0%	
Fire Prevention Officer	2												
Technical Services Officer	1		+1	+1	+1				+400.0%	+400.0%	+400.0%		
Technical Services Officer, Assistant		-1	-1	-1				-100.0%	-100.0%	-100.0%	-100.0%	-100.0%	-100.0%
Technical Services Officer, Chief Asst.	4	+1	+2	+1	+3	+1		+33.3%	+100.0%	+33.3%	+300.0%	+33.3%	
Technical Services Officer, Senior Asst.	1	+1	+1	+1	-2	-1		-100.0%	-100.0%	-100.0%	-60.0%	-49.5%	
Technical Services	11	+1	+1	-0	+0	-1	-0	+9.3%	+7.2%	-2.4%	+2.1%	-8.8%	-0.6%
Maintenance/ Technical	117	+0		+6	+10	+5	-4	+0.1%	+4.5%	+5.2%	+9.1%	+4.0%	-3.5%
General Support	1,419	+133	+84	+20	-8	-17	-92	+10.3%	+6.3%	+1.4%	-0.5%	-1.2%	-6.1%
HCA, Nurse's Aide, etc.	1,088	+258	+234	+229	+178	+166	+47	+31.0%	+27.5%	+26.6%	+19.6%	+18.1%	+4.5%
Occupational Therapy Assistant	6	+2	+1	+1	+2	+2	+1	+56.5%	+27.0%	+25.2%	+63.9%	+44.9%	+24.7%
Physiotherapy Assistant	8	+4	+4	+4	+4	+4	+1	+102.4%	+94.0%	+100.0%	+73.0%	+102.4%	+14.5%
Radiography Aide	20	+7	+7	+5	+1	+1	-7	+50.8%	+51.3%	+36.7%	+7.3%	+7.6%	-26.5%
Speech & Language Therapy Assistant							-1	-100.0%	-100.0%	-100.0%	-100.0%	-100.0%	-100.0%
Health & Social Care Assistants	35	+13	+12	+11	+7	+8	-6	+61.9%	+54.2%	+45.5%	+26.9%	+28.2%	-14.5%
Health Care Assistants	1,123	+271		+240	+186	+174	+41	+31.8%	+28.1%	+27.1%	+19.8%	+18.3%	+3.8%
Cardiac Aide		-1	-1	-1	-0	-1		-100.0%	-100.0%	-100.0%	-100.0%	-100.0%	-100.0%
Chaplain	21	+2	-0	+1	+1	+0	-0	+10.4%	-0.1%	+6.2%	+3.1%	+1.4%	-1.1%
Driver (Patients/Clients Public Roads)	1	-1	-1					-50.0%	-50.0%				
Education Officer		-1	-1	-1	-1	-1	-1	-100.0%	-100.0%	-100.0%	-100.0%	-100.0%	-100.0%
Head of Bed Management (Category A)	1												
Health Promotion Officer	2	-1	+1	+1	+1	+2	-1	-35.0%	+82.0%	+82.0%	+82.0%	-100.0%	-22.9%
Other Patient & Client Care Unclassified			-2					-100.0%	-100.0%	-100.0%	-100.0%	-100.0%	-100.0%
Pastoral Care Worker	1												
Other Care Grades	26	-2	-4		+0	+0	-2	-7.9%	-14.3%		+0.0%	+0.7%	-6.4%
Care, other	26	-2			+0	+0	-2	-7.9%	-14.3%		+0.0%	+0.7%	-6.4%
Patient & Client Care	1,149	+269	+242	+240	+186	+174	+40	+30.5%	+26.7%	+26.3%	+19.2%	+17.9%	+3.6%

Source: Health Service Personnel Census

Longitudinal Employment Levels by Staff Group - Oct 2013 to Sep 2020

Sep 2020 (Dec 2015 figure: 10,662)	WTE Sep 2020	WTE change since Dec 15	WTE change since Dec 16	WTE change since Dec 17	WTE change since Dec 18	WTE change since Dec 19	WTE change since Aug 20	% change since Dec 15	% change since Dec 16	% change since Dec 17	% change since Dec 18	% change since Dec 19	% change since Aug 20
Overall	12,770	+2,107	+1,798	+1,388	+997	+725	-143	+19.8%	+16.4%	+12.2%	+8.5%	+6.0%	-1.1%
Consultants	16	+1	+1	-1		-1	+1	+6.9%	+6.9%	-6.0%		-3.1%	+6.9%
Registrars	19	+2	+2	+2	+1	+1		+11.8%	+11.8%	+11.8%	+5.6%	+5.6%	
SHO/ Interns	12	+1	+1	+1	+2			+9.1%	+9.1%	+9.1%	+20.0%		
Nurse/ Midwife Manager	41	+7	+7	+9	+5			+21.7%	+20.0%	+26.4%	+15.1%		
Nurse/ Midwife Specialist & AN/MP	9	+3	+4	+4	+1			+47.5%	+100.5%	+79.9%	+16.8%		
Staff Nurse/ Staff Midwife	111	+28	+18	+16	+8	+8	-0	+33.9%	+19.4%	+16.3%	+7.5%	+8.2%	-0.0%
Nursing/ Midwifery other	2												
Therapy Professions	32	+8	+5	+1		-1		+30.1%	+16.1%	+3.2%		-3.0%	
Health Science/ Diagnostics	26	+6	+7	+4	+3	+1	-0	+27.4%	+34.0%	+16.0%	+11.0%	+4.3%	-0.0%
Social Workers	7	+3	+2	+1	+3			+75.0%	+54.2%	+15.1%	+75.0%		
Psychologists	1	+1						-100.0%					
Pharmacy	5	+2	+2	+2	+1			+74.8%	+66.7%	+66.7%	+25.0%		
Management (VIII & above)	4	+1	+1					+33.3%	+33.3%				
Administrative/ Supervisory (V to VII)	25	+4	+6	+1	+2	+3	-0	+20.8%	+34.0%	+4.2%	+8.9%	+13.9%	-0.0%
Clerical (III & IV)	41	+10	+9	+7	+4	+1		+33.5%	+29.5%	+20.9%	+10.5%	+2.2%	
Support	62	+17	+12	+1	+2	+0	-0	+38.2%	+24.4%	+2.4%	+2.9%	+0.7%	-0.0%
Maintenance/ Technical	1	-1						-50.0%					
Health Care Assistants	26	-3	-1	-3				-8.9%	-2.1%	-8.6%			
Care, other		-1	-1					-100.0%	-100.0%	-100.0%	-100.0%	-100.0%	-100.0%
Cappagh National Orthopaedic	440	+89	+76	+45	+32	+13	+1	+25.4%	+20.9%	+11.3%	+7.7%	+3.1%	+0.2%
Consultants	15	-2	-2	-0	+1	+2	+0	-11.8%	-11.8%	-0.1%	+3.5%	+15.4%	+0.3%
Registrars	30	+10	+7	+8	+2	+3	-7	+50.5%	+30.3%	+35.3%	+7.5%	+11.5%	-18.1%
SHO/ Interns	42	+17	+12	+8	+10	+8	-2	+67.0%	+39.0%	+21.9%	+31.8%	+21.6%	-4.0%
Nurse/ Midwife Manager	51	+21	+18	+14	+6	+7	-1	+69.8%	+53.7%	+35.9%	+13.6%	+16.9%	-1.1%
Nurse/ Midwife Specialist & AN/MP	13	-1	-3	+1	+2	+2	+1	-5.7%	-20.7%	+9.5%	+18.9%	+15.1%	+10.2%
Staff Nurse/ Staff Midwife	128	-6	-2	+3	+5	+7	+1	-4.7%	-1.7%	+2.3%	+3.9%	+5.9%	+0.4%
Nursing/ Midwifery Student				-2	-4	-4		-100.0%	-100.0%	-100.0%	-100.0%	-100.0%	-100.0%
Therapy Professions	27	+16	+10	+10	+11	+8	+0	+142.3%	+58.5%	+61.8%	+75.0%	+42.6%	+0.0%
Health Science/ Diagnostics	39	+8	+7	+7	+5	+2	-0	+27.5%	+21.3%	+22.6%	+14.5%	+5.4%	-0.4%
Pharmacy	7	+5	+4	+4	+2	+1	+0	+182.3%	+116.5%	+102.2%	+43.4%	+19.2%	+2.8%
Management (VIII & above)	3	+2	+2	+1	+1	+1		+200.0%	+200.0%	+50.0%	+50.0%	+50.0%	

Sep 2020 (Dec 2015 figure: 10,662)	WTE Sep 2020	WTE change since Dec 15	WTE change since Dec 16	WTE change since Dec 17	WTE change since Dec 18	WTE change since Dec 19	WTE change since Aug 20	% change since Dec 15	% change since Dec 16	% change since Dec 17	% change since Dec 18	% change since Dec 19	% change since Aug 20
Overall	12,770	+2,107	+1,798	+1,388	+997	+725	-143	+19.8%	+16.4%	+12.2%	+8.5%	+6.0%	-1.1%
Administrative/ Supervisory (V to VII)	19	+10	+11	+11	+10	+7	+0	+106.8%	+131.7%	+127.9%	+105.5%	+55.4%	+0.4%
Clerical (III & IV)	55	-2	-0	-4	-2	-2	-2	-2.9%	-0.6%	-7.3%	-3.3%	-2.7%	-2.9%
Support	23	+7	+7	+1	+0	+0	-1	+42.9%	+43.6%	+4.2%	+0.3%	+0.9%	-5.9%
Maintenance/ Technical	5			+0	-1		+0			+6.4%	-9.1%		+0.2%
Health Care Assistants	113	+11	+9	+15	+14	+15	-2	+11.0%	+8.3%	+15.7%	+14.4%	+15.1%	-1.8%
Care, other	1	-0	-1	-0	-1	-1	-0	-23.5%	-36.2%	-22.1%	-36.2%	-44.1%	-11.8%
Our Lady's Navan	572	+96	+77	+76	+63	+56	-12	+20.1%	+15.7%	+15.2%	+12.3%	+10.9%	-2.1%
Consultants	41	+7	+7	+4	+6	+7	+1	+19.6%	+19.4%	+10.7%	+16.5%	+19.4%	+2.6%
Registrars	56	+14	+17	+18	+11	+0	+3	+34.5%	+43.5%	+48.1%	+25.7%	+0.8%	+5.1%
SHO/ Interns	60	+5	+2	-0	+1	+4	-2	+8.4%	+2.7%	-0.3%	+2.0%	+8.1%	-2.9%
Medical/ Dental, other	2				+0	+0					+1.0%	+6.4%	
Nurse/ Midwife Manager	75	+18	+11	+7	+2	+4	-0	+32.5%	+17.7%	+10.8%	+2.3%	+5.4%	-0.3%
Nurse/ Midwife Specialist & AN/MP	14	+1	-1	-0	+2	+1	+1	+9.7%	-4.3%	-2.9%	+20.2%	+9.7%	+4.8%
Staff Nurse/ Staff Midwife	247	+2	+16	+12	+9	+6	+2	+0.9%	+6.7%	+4.9%	+3.7%	+2.7%	+1.0%
Nursing/ Midwifery Student	10	+10	+10	+10	+10	+9	-4	+3824.0%	-100.0%	-100.0%	-100.0%	+684.8%	-29.9%
Nursing/ Midwifery other	3	+1	+1	+1	+1	+1	-0	+52.9%	+52.9%	+57.4%	+52.9%	+55.6%	-1.5%
Therapy Professions	37	+10	+8	+9	+6	+12	+1	+37.7%	+25.6%	+31.7%	+19.3%	+46.6%	+3.8%
Health Science/ Diagnostics	80	+5	+5	+10	+11	+10	+0	+6.2%	+6.1%	+14.2%	+15.6%	+13.7%	+0.6%
Pharmacy	15	+1	+2	+1	-2	-1	-2	+9.4%	+11.6%	+4.3%	-9.5%	-9.2%	-14.3%
H&SC, Other	1	+1	+1	-0	-0	+1		+270.4%	-100.0%	-12.3%	-14.5%	+400.0%	
Management (VIII & above)	3	+0	-1	-1	-2	-2	-2	+13.3%	-15.0%	-15.0%	-32.0%	-32.0%	-31.6%
Administrative/ Supervisory (V to VII)	27	+13	+9	+9	+8	+4	-0	+95.5%	+53.6%	+46.5%	+45.9%	+20.1%	-0.4%
Clerical (III & IV)	97	-16	-17	-12	-11	-4	-1	-14.3%	-14.8%	-11.3%	-10.4%	-3.6%	-0.6%
Support	26	+4	+1	+0	+3	+1	+0	+20.3%	+5.9%	+1.3%	+12.3%	+2.9%	+1.7%
Maintenance/ Technical	13	-6	-6	-3	-0	-0	-0	-32.2%	-32.2%	-20.2%	-0.6%	-2.4%	-0.9%
Health Care Assistants	174	+43	+45	+26	+6	+14	+4	+33.2%	+35.0%	+17.9%	+3.9%	+9.0%	+2.6%
Care, other	1												
MRH Mullingar	981	+114	+109	+90	+62	+68	+2	+13.1%	+12.5%	+10.0%	+6.7%	+7.4%	+0.2%
Consultants	37	+3	+2	+2	+3	+3		+10.1%	+5.0%	+6.1%	+7.4%	+7.5%	
Registrars	38	+6	+6	+4	+2	+2	-1	+18.8%	+18.8%	+10.1%	+4.1%	+5.6%	-2.6%
SHO/ Interns	21	+1		-1			-1	+5.0%		-4.5%			-4.5%
Medical/ Dental, other	1												
Nurse/ Midwife Manager	126	+27	+16	+14	+8	+6	-1	+26.8%	+14.8%	+12.5%	+7.2%	+4.6%	-1.1%

Sep 2020 (Dec 2015 figure: 10,662)	WTE Sep 2020	WTE change since Dec 15	WTE change since Dec 16	WTE change since Dec 17	WTE change since Dec 18	WTE change since Dec 19	WTE change since Aug 20	% change since Dec 15	% change since Dec 16	% change since Dec 17	% change since Dec 18	% change since Dec 19	% change since Aug 20
Overall	12,770	+2,107	+1,798	+1,388	+997	+725	-143	+19.8%	+16.4%	+12.2%	+8.5%	+6.0%	-1.1%
Nurse/ Midwife Specialist & AN/MP	16	+3	+5	+4	+1	+1		+26.2%	+49.7%	+39.5%	+3.4%	+6.3%	
Staff Nurse/ Staff Midwife	235	+4	-5	+7	-9	-10	-2	+1.7%	-2.1%	+2.9%	-3.5%	-4.2%	-0.8%
Nursing/ Midwifery Student	24	+1		+1	+1	+2	-15	+2.2%		+2.2%	+2.2%	+9.3%	-38.2%
Nursing/ Midwifery other	4	+1	+1	+0				+22.9%	+21.8%	+1.0%			
Therapy Professions	13	+5	+4	+5	+4	+1		+71.9%	+49.9%	+70.5%	+42.0%	+11.1%	
Health Science/ Diagnostics	46	+10	+7	+8	+3	+5	+1	+27.5%	+18.4%	+21.2%	+7.4%	+12.2%	+2.2%
Social Workers	7	+1	+3	+2	+1			+13.9%	+76.1%	+36.9%	+18.3%		
Psychologists	2	+1	+1	+1	+1	+0		+144.1%	+144.1%	+144.1%	+144.1%	+0.9%	
Pharmacy	7	+1	+1	+1	+1	-0		+11.5%	+7.9%	+11.5%	+15.3%	-5.6%	
Management (VIII & above)	6	+1	+1	+1	+1	+1		+22.0%	+22.0%	+22.0%	+22.0%	+8.9%	
Administrative/ Supervisory (V to VII)	55	+12	+12	+11	+7	+4	+1	+29.2%	+28.2%	+25.3%	+15.0%	+7.7%	+2.2%
Clerical (III & IV)	74	+1	-0	-7	-4	-7	-2	+1.4%	-0.1%	-9.2%	-4.7%	-8.1%	-3.3%
Support	136	+40	+22	+13	+8	+7	-2	+40.8%	+18.8%	+10.7%	+6.6%	+5.2%	-1.6%
Maintenance/ Technical	17	+12	+10	+7	+7	+6		+240.0%	+142.9%	+70.0%	+70.0%	+54.5%	
Health Care Assistants	44	+14	+17	+16	+14	+9	+7	+48.5%	+63.4%	+56.9%	+44.1%	+27.3%	+20.1%
National Maternity	909	+144	+103	+89	+49	+29	-15	+18.8%	+12.8%	+10.8%	+5.7%	+3.3%	-1.6%
Consultants	189	+59	+45	+36	+30	+17	+1	+45.2%	+31.4%	+24.0%	+19.2%	+10.1%	+0.8%
Registrars	188	+51	+41	+25	+30	+22	+1	+37.3%	+27.5%	+15.3%	+18.8%	+13.0%	+0.3%
SHO/ Interns	195	+61	+49	+45	+43	+37	-1	+45.5%	+33.1%	+29.6%	+28.6%	+23.6%	-0.3%
Medical/ Dental, other	6	+1	+1	+2	+2	+1	+1	+21.8%	+18.8%	+61.4%	+54.7%	+27.5%	+18.8%
Nurse/ Midwife Manager	221	+47	+41	+42	+30	+13	+8	+27.1%	+22.9%	+23.3%	+15.9%	+6.5%	+3.6%
Nurse/ Midwife Specialist & AN/MP	94	+39	+34	+26	+7	+7	-2	+70.4%	+57.3%	+37.4%	+8.6%	+7.6%	-2.0%
Staff Nurse/ Staff Midwife	890	+69	+55	+32	+29	-17	-1	+8.4%	+6.6%	+3.7%	+3.4%	-1.9%	-0.1%
Nursing/ Midwifery Student	27	+18	+19	+18	+19	+15	-44	+184.2%	+217.6%	+200.0%	+237.5%	+125.0%	-62.0%
Nursing/ Midwifery other	49	+6	+8	+9	+8	+4	+1	+15.0%	+19.6%	+24.0%	+19.4%	+9.4%	+1.1%
Therapy Professions	126	+29	+29	+22	+12	+13	+0	+29.2%	+30.0%	+21.1%	+10.5%	+11.6%	+0.3%
Health Science/ Diagnostics	240	+21	+21	+21	+19	+15	+2	+9.8%	+9.7%	+9.4%	+8.5%	+6.8%	+0.7%
Social Workers	25	+4	+3	+2	+5	-2		+16.6%	+13.9%	+9.8%	+22.9%	-7.5%	
Psychologists	6	+2	+1	+1	+1	-1		+46.2%	+30.0%	+30.0%	+30.0%	-14.6%	
Pharmacy	53	+14	+10	+10	+4	+3	-1	+37.1%	+22.2%	+24.0%	+7.3%	+6.1%	-1.3%
H&SC, Other	24	+4	+2	+1	-0	+2	-7	+17.2%	+9.2%	+3.1%	-1.1%	+10.0%	-22.7%
Management (VIII & above)	34	+9	+10	+6	+4	+1	-2	+39.0%	+43.1%	+22.2%	+12.6%	+4.6%	-5.9%
Administrative/ Supervisory (V to VII)	164	+36	+41	+29	+14	+6	+1	+28.5%	+33.7%	+21.3%	+9.0%	+3.8%	+0.5%

Sep 2020 (Dec 2015 figure: 10,662)	WTE Sep 2020	WTE change since Dec 15	WTE change since Dec 16	WTE change since Dec 17	WTE change since Dec 18	WTE change since Dec 19	WTE change since Aug 20	% change since Dec 15	% change since Dec 16	% change since Dec 17	% change since Dec 18	% change since Dec 19	% change since Aug 20
Overall	12,770	+2,107	+1,798	+1,388	+997	+725	-143	+19.8%	+16.4%	+12.2%	+8.5%	+6.0%	-1.1%
Clerical (III & IV)	290	+52	+36	+43	+39	+30	+4	+22.1%	+14.4%	+17.4%	+15.7%	+11.5%	+1.3%
Support	265	+17	+16	+17	+13	+14	+2	+6.7%	+6.3%	+7.0%	+5.0%	+5.5%	+0.6%
Maintenance/ Technical	26	-3	+2	+2	+4	+2		-10.3%	+7.4%	+7.4%	+17.1%	+8.3%	
Health Care Assistants	248	+66	+49	+43	+18	+23	-10	+36.3%	+24.5%	+21.0%	+7.7%	+10.1%	-3.7%
Care, other	8	+1	-3	-0	+1	+1	-0	+7.7%	-27.4%	-1.8%	+8.8%	+7.5%	-0.9%
Mater Misericordiae University	3,365	+602	+510	+431	+331	+206	-47	+21.8%	+17.9%	+14.7%	+10.9%	+6.5%	-1.4%
Consultants	18	+4	+2	-0	-0	-1	+0	+33.0%	+13.2%	-1.6%	-0.8%	-4.7%	+0.5%
Registrars	10		+0	-1	-1	+0	-0		+0.1%	-9.1%	-4.8%	+0.7%	-4.7%
SHO/ Interns	15	-1	+1	+1	+1	+1	-2	-3.4%	+6.6%	+6.6%	+6.6%	+6.6%	-12.2%
Medical/ Dental, other		-1						-100.0%	-100.0%	-100.0%	-100.0%	-100.0%	-100.0%
Nurse/ Midwife Manager	35	+12	+11	+6	+3	+2	+2	+50.3%	+43.5%	+21.4%	+10.2%	+6.9%	+4.9%
Nurse/ Midwife Specialist & AN/MP	6	-3	-4	-3	-4	-3	-1	-38.6%	-39.5%	-35.7%	-42.4%	-35.7%	-16.4%
Staff Nurse/ Staff Midwife	113	+5	+5	+8	+3	-6	-1	+4.4%	+4.4%	+7.2%	+2.5%	-4.6%	-0.6%
Nursing/ Midwifery other	1				-1	-1	-1				-50.0%	-46.8%	-46.5%
Therapy Professions	33	+12	+10	+8	+4	+2	-1	+59.1%	+44.2%	+32.6%	+14.6%	+7.0%	-3.5%
Health Science/ Diagnostics	20	+1	+0	+2	-1	+2	+0	+3.3%	+2.5%	+9.2%	-3.4%	+8.8%	+1.5%
Social Workers	6	+2	+0	+1	+1	+1	-1	+71.1%	+7.0%	+31.9%	+12.4%	+14.1%	-10.3%
Psychologists	1	-0	+0	-0	-0	-1	-0	-17.8%	+25.0%	-18.8%	-25.1%	-30.6%	-23.8%
Pharmacy	5	+0	+2	+3	+1	+0	-0	+1.2%	+44.0%	+99.2%	+23.5%	+4.8%	-0.2%
Management (VIII & above)	2	+2	+0	+1	+1	+1	+1	+805.0%	+3.4%	+81.0%	+81.0%	+81.0%	+81.0%
Administrative/ Supervisory (V to VII)	13	+2	+2	+2	-1	-1	-1	+18.4%	+14.0%	+14.3%	-7.9%	-9.2%	-5.8%
Clerical (III & IV)	57	+4	+4	+3	+1	+3	+0	+7.0%	+7.2%	+5.7%	+2.5%	+6.2%	+0.5%
Support	61	+9	+10	+4	+4	+4	+0	+18.1%	+19.0%	+6.5%	+7.4%	+7.0%	+0.2%
Maintenance/ Technical	1												
Health Care Assistants	58	+20	+11	+12	+4	-1	+2	+53.4%	+23.4%	+25.8%	+7.1%	-1.4%	+2.9%
Care, other	1					+1						-100.0%	
St. Columcille's	456	+68	+54	+45	+15	+4	-3	+17.6%	+13.4%	+11.0%	+3.4%	+0.9%	-0.7%
Consultants	41	+7	+8	+8	+5	+2	+1	+19.2%	+22.8%	+23.1%	+14.5%	+5.7%	+3.4%
Registrars	61	+17	+13	+11	+11	+4	-1	+40.3%	+26.9%	+23.0%	+22.0%	+7.8%	-1.5%
SHO/ Interns	58	+8	+4	+0	-0	-1	+1	+15.1%	+7.8%	+0.6%	-0.7%	-1.1%	+1.0%
Medical/ Dental, other	7	+7	+5	-0	-2	+0	+1	+6900.0%	+233.3%	-1.4%	-24.0%	+2.5%	+20.1%
Nurse/ Midwife Manager	85	+40	+33	+22	+9	+1	-1	+86.8%	+63.7%	+33.9%	+11.3%	+0.7%	-0.9%
Nurse/ Midwife Specialist & AN/MP	22	+7	+7	+4	+3	+2	-0	+45.4%	+45.2%	+23.6%	+12.9%	+7.4%	-1.8%

Sep 2020 (Dec 2015 figure: 10,662)	WTE Sep 2020	WTE change since Dec 15	WTE change since Dec 16	WTE change since Dec 17	WTE change since Dec 18	WTE change since Dec 19	WTE change since Aug 20	% change since Dec 15	% change since Dec 16	% change since Dec 17	% change since Dec 18	% change since Dec 19	% change since Aug 20
Overall	12,770	+2,107	+1,798	+1,388	+997	+725	-143	+19.8%	+16.4%	+12.2%	+8.5%	+6.0%	-1.1%
Staff Nurse/ Staff Midwife	309	-10	-14	+1	-14	+5	-5	-3.0%	-4.4%	+0.3%	-4.3%	+1.6%	-1.7%
Nursing/ Midwifery Student	11	+11	+11	+8	+10	+11	+1	-100.0%	-100.0%	+260.7%	+2064.0%	-100.0%	+9.1%
Nursing/ Midwifery other	1	+1	+1	-0	-0	-0	-0	-100.0%	-100.0%	-11.0%	-11.0%	-5.3%	-3.3%
Therapy Professions	43	+19	+13	+13	+12	+8	+1	+80.9%	+42.8%	+42.2%	+40.8%	+24.0%	+2.2%
Health Science/ Diagnostics	51	+14	+8	+6	+5	+2	-2	+39.0%	+20.0%	+13.3%	+10.4%	+3.3%	-3.8%
Pharmacy	16	+1	+2	+1	+1	-2	-0	+9.8%	+12.6%	+7.8%	+9.5%	-10.4%	-1.6%
H&SC, Other	1	+1	+1	+1	+1	+1		-100.0%	-100.0%	-100.0%	-100.0%	-100.0%	
Management (VIII & above)	3						-2						-40.0%
Administrative/ Supervisory (V to VII)	22	+12	+14	+11	+8	+8	+4	+125.5%	+170.7%	+101.0%	+60.0%	+56.7%	+19.8%
Clerical (III & IV)	133	+19	+19	+7	-8	-4	-1	+16.4%	+16.6%	+5.4%	-5.4%	-2.7%	-0.5%
Support	175	-0	-2	-16	-32	-27	-54	-0.2%	-1.1%	-8.2%	-15.5%	-13.3%	-23.5%
Maintenance/ Technical	12	+2	+1	+1		-1	-3	+22.8%	+8.9%	+8.9%		-8.0%	-19.6%
Health Care Assistants	135	+91	+75	+76	+58	+60	+48	+204.7%	+126.2%	+129.2%	+74.6%	+80.0%	+55.7%
Care, other	2												
St Luke's General Kilkenny	1,188	+247	+199	+154	+67	+70	-12	+26.2%	+20.1%	+14.9%	+6.0%	+6.2%	-1.0%
Consultants	11	+2	+2	+2	-1	+0	-0	+26.3%	+17.1%	+16.0%	-4.4%	+4.8%	-0.0%
Registrars	13						+1						+8.3%
SHO/ Interns	15	+1			+1	+1	-4	+7.1%			+7.1%	+7.1%	-21.1%
Medical/ Dental, other	0												
Nurse/ Midwife Manager	35	-3	+1	+3	-3	+1	-1	-8.3%	+4.0%	+9.5%	-7.0%	+3.0%	-2.8%
Nurse/ Midwife Specialist & AN/MP	25	+10	+9	+4	+1	-2	+1	+67.9%	+51.0%	+19.1%	+2.3%	-8.2%	+4.1%
Staff Nurse/ Staff Midwife	102	+0	+1	-4	-1	-0	+0	+0.3%	+0.8%	-3.6%	-1.0%	-0.4%	+0.2%
Nursing/ Midwifery Student	23	+13	+23	+23	+23	+23		+119.0%	-100.0%	-100.0%	-100.0%	-100.0%	
Nursing/ Midwifery other	5	-1						-16.7%					
Therapy Professions	17	+2	+1	-1	-2	-5		+12.6%	+7.0%	-6.7%	-8.2%	-22.9%	
Health Science/ Diagnostics	17	-4	-3	-0	-0		-1	-19.5%	-15.5%	-0.9%	-0.5%		-2.8%
Social Workers	3	+1	+1	+1	+1	+1	+1	+40.0%	+40.0%	+40.0%	+40.0%	+40.0%	+55.6%
Pharmacy	7	+2	+3	+2	+2	-2	-1	+43.5%	+61.0%	+29.4%	+34.7%	-22.4%	-18.5%
Management (VIII & above)	2					+1						+100.0%	
Administrative/ Supervisory (V to VII)	25	+7	+5	+5	+7	+6	+1	+40.3%	+25.6%	+22.5%	+35.7%	+32.1%	+4.1%
Clerical (III & IV)	38	-5	-3	-1	-8	-5	-1	-12.1%	-6.7%	-2.7%	-17.0%	-12.4%	-2.4%
Support	48	+1	-3	-2	+0	-0		+2.2%	-6.6%	-3.5%	+0.5%	-1.0%	
Maintenance/ Technical	2	-1	-1	-1				-33.3%	-33.3%	-33.3%			

Sep 2020 (Dec 2015 figure: 10,662)	WTE Sep 2020	WTE change since Dec 15	WTE change since Dec 16	WTE change since Dec 17	WTE change since Dec 18	WTE change since Dec 19	WTE change since Aug 20	% change since Dec 15	% change since Dec 16	% change since Dec 17	% change since Dec 18	% change since Dec 19	% change since Aug 20
Overall	12,770	+2,107	+1,798	+1,388	+997	+725	-143	+19.8%	+16.4%	+12.2%	+8.5%	+6.0%	-1.1%
Health Care Assistants	28	+7	+2	+1	+1	+3		+34.0%	+7.2%	+3.2%	+3.2%	+10.5%	
Care, other	2	+1	+1	+1				+100.0%	+100.0%	+100.0%			
St. Michael's	417	+33	+37	+32	+21	+21	-4	+8.5%	+9.9%	+8.2%	+5.4%	+5.2%	-0.9%
Consultants	158	+37	+35	+28	+20	+14	+0	+30.9%	+28.6%	+21.8%	+14.5%	+9.4%	+0.2%
Registrars	186	+30	+34	+33	+30	+21	-1	+19.5%	+22.2%	+21.4%	+19.4%	+12.7%	-0.6%
SHO/ Interns	171	+53	+49	+50	+37	+45	+3	+44.9%	+40.2%	+41.3%	+27.6%	+35.4%	+1.5%
Medical/ Dental, other	1	-5	-5	-3	-0	-0	-0	-82.4%	-81.9%	-76.1%	-18.0%	-22.5%	-22.5%
Nurse/ Midwife Manager	225	+61	+58	+52	+55	+42	+40	+37.3%	+35.0%	+30.3%	+32.1%	+22.7%	+21.5%
Nurse/ Midwife Specialist & AN/MP	91	+25	+10	+7	+7	+4	+6	+37.0%	+12.9%	+8.5%	+7.9%	+4.5%	+6.6%
Staff Nurse/ Staff Midwife	724	+93	+62	-22	+43	-0	-17	+14.7%	+9.4%	-3.0%	+6.3%	-0.1%	-2.3%
Nursing/ Midwifery Student	38	+34	+33	+28	+24	+21	-41	+748.4%	+594.2%	+264.3%	+167.4%	+121.3%	-51.6%
Nursing/ Midwifery other	9	-5	-5	-6	-6	-6	-6	-38.2%	-38.3%	-38.7%	-38.7%	-38.7%	-38.7%
Therapy Professions	112	+19	+13	+15	+5	+8	+1	+20.8%	+13.3%	+15.9%	+4.7%	+7.7%	+0.9%
Health Science/ Diagnostics	223	+4	+19	+6	+1	+12		+1.9%	+9.3%	+3.0%	+0.4%	+5.4%	
Social Workers	22	+4	+2	+4	+3	+3	+2	+21.3%	+11.7%	+23.0%	+16.4%	+16.4%	+10.1%
Psychologists	11	+5	+5	+5	+4	+0		+93.7%	+101.1%	+89.2%	+55.5%	+0.9%	
Pharmacy	58	+14	+8	+3	+1	-0	-1	+32.6%	+16.4%	+5.6%	+1.9%	-0.1%	-1.7%
H&SC, Other	0	-1	-1	-1	-1			-65.0%	-74.1%	-74.1%	-74.1%		
Management (VIII & above)	17	+3	-3	+1	-3	-2	-3	+22.6%	-13.9%	+5.2%	-13.4%	-8.8%	-15.5%
Administrative/ Supervisory (V to VII)	179	+38	+30	+26	+28	+31	+25	+27.2%	+20.4%	+17.0%	+18.5%	+21.2%	+15.9%
Clerical (III & IV)	285	+37	+36	+19	+6	-4	-25	+15.1%	+14.6%	+7.3%	+2.2%	-1.2%	-8.1%
Support	304	+50	+32	+21	+17	+12	-1	+19.9%	+11.8%	+7.4%	+6.0%	+4.1%	-0.3%
Maintenance/ Technical	34	-4	-1	-1	-1	-1		-10.4%	-2.9%	-2.9%	-2.9%	-2.9%	
Health Care Assistants	186	-31	-5	+2	+20	+5	-37	-14.2%	-2.8%	+1.0%	+12.1%	+2.7%	-16.5%
Care, other	9	-1	+0	+1	+1	+1	-2	-11.4%	+5.0%	+7.0%	+7.0%	+7.0%	-15.0%
St. Vincent's University	3,043	+462	+408	+269	+290	+205	-57	+17.9%	+15.5%	+9.7%	+10.6%	+7.2%	-1.8%
Consultants	37	+7	+8	+5	+2	+3	+1	+23.6%	+29.1%	+15.0%	+7.1%	+9.0%	+1.8%
Registrars	49	+13	+1	+1	-1	-3	+0	+37.2%	+2.8%	+2.8%	-1.3%	-6.0%	+0.7%
SHO/ Interns	61	+13	+13	+5	+5	-0	-2	+26.1%	+27.4%	+8.4%	+8.9%	-0.8%	-2.5%
Medical/ Dental, other	7	+7	+5	+4	+3	+2	+2	-100.0%	+216.7%	+118.1%	+66.3%	+34.4%	+34.4%
Nurse/ Midwife Manager	86	+39	+32	+26	+3	+1	-0	+82.3%	+59.9%	+43.9%	+3.7%	+1.4%	-0.3%
Nurse/ Midwife Specialist & AN/MP	24	+8	+8	+3	+4	+4	+3	+47.4%	+54.4%	+13.2%	+18.3%	+22.1%	+14.1%
Staff Nurse/ Staff Midwife	288	-0	+9	+10	-5	-1	-1	-0.1%	+3.1%	+3.7%	-1.6%	-0.5%	-0.4%

Sep 2020 (Dec 2015 figure: 10,662)	WTE Sep 2020	WTE change since Dec 15	WTE change since Dec 16	WTE change since Dec 17	WTE change since Dec 18	WTE change since Dec 19	WTE change since Aug 20	% change since Dec 15	% change since Dec 16	% change since Dec 17	% change since Dec 18	% change since Dec 19	% change since Aug 20
Overall	12,770	+2,107	+1,798	+1,388	+997	+725	-143	+19.8%	+16.4%	+12.2%	+8.5%	+6.0%	-1.1%
Nursing/ Midwifery Student	7	+7	+7	+7	+7	+6	-1	-100.0%	-100.0%	-100.0%	-100.0%	+605.0%	-11.9%
Therapy Professions	29	+12	+12	+10	+6	+4	+1	+70.4%	+68.9%	+55.2%	+26.5%	+15.0%	+2.1%
Health Science/ Diagnostics	38	+11	+9	+8	+2	+1	-2	+38.8%	+32.1%	+26.3%	+6.8%	+2.4%	-4.1%
Social Workers	1	+1	+1	+1	+1			-100.0%	-100.0%	-100.0%	-100.0%		
Pharmacy	11	+4	+4	+3	+2	+0	+2	+48.1%	+54.0%	+39.8%	+24.6%	+4.3%	+18.9%
Management (VIII & above)	4	+2	+2	+1	+1	+2	-1	+100.0%	+100.0%	+33.3%	+37.5%	+100.0%	-20.0%
Administrative/ Supervisory (V to VII)	20	+9	+8	+5	+5	+6	+3	+72.1%	+69.4%	+35.6%	+33.7%	+40.0%	+15.5%
Clerical (III & IV)	116	-0	+0	+0	-1		-3	-0.2%	+0.2%	+0.2%	-0.7%		-2.9%
Support	174	-8	-17	-27	-33	-32	-33	-4.6%	-8.9%	-13.5%	-15.9%	-15.7%	-15.8%
Maintenance/ Technical	6	+1	+0	+1	+1	-0	-1	+18.5%	+7.3%	+18.5%	+21.0%	-1.9%	-16.3%
Health Care Assistants	101	+49	+43	+51	+49	+45	+28	+95.2%	+73.1%	+101.1%	+95.9%	+80.0%	+38.5%
Care, other	2	-1	-1	-1	-0	-1		-39.0%	-36.9%	-34.9%	-18.7%	-31.5%	
Wexford General	1,060	+171	+145	+113	+53	+36	-5	+19.2%	+15.8%	+12.0%	+5.2%	+3.5%	-0.5%
Nurse/ Midwife Manager	3	+3	+2	+2				-100.0%	+200.0%	+200.0%			
Staff Nurse/ Staff Midwife	0	+0	+0	+0	+0	+0	+0	-100.0%	-100.0%	-100.0%	-100.0%	-100.0%	-100.0%
Health Science/ Diagnostics	1	+1	+1	+1	-0	-0	-0	-100.0%	-100.0%	-100.0%	-2.0%	-2.0%	-2.0%
Management (VIII & above)	8	+8	+3	+2	+3	+2	+0	-100.0%	+59.0%	+32.5%	+59.0%	+38.3%	+4.2%
Administrative/ Supervisory (V to VII)	16	+16	+14	+6	-3	-1	+1	-100.0%	+791.6%	+62.3%	-17.9%	-4.3%	+6.3%
Clerical (III & IV)	2	+2	+2	-2	-2	-0		-100.0%	-100.0%	-43.7%	-44.4%	-19.0%	
Maintenance/ Technical					-1	-1		-100.0%	-100.0%	-100.0%	-100.0%	-100.0%	-100.0%
Hospital Group HQ	30	+30	+22	+10	-2	+0	+1	-100.0%	+286.2%	+47.8%	-7.4%	+0.9%	+5.2%
Consultants	25	+4	+5	+1	+0	+2	+1	+20.8%	+22.7%	+5.1%	+1.1%	+7.1%	+4.2%
Registrars	22	+6	+6	+7	+4	+2	+1	+40.0%	+36.8%	+43.4%	+23.2%	+10.2%	+4.8%
SHO/ Interns	15	+3	+2	-1	-1	-1		+21.0%	+17.5%	-6.4%	-6.4%	-6.4%	
Medical/ Dental, other	5	+1	+2	+1	+0	+1		+38.3%	+75.7%	+37.9%	+2.6%	+11.2%	
Nurse/ Midwife Manager	25	+3	+5	+4	-1	+2	+1	+12.7%	+26.4%	+17.5%	-2.1%	+6.8%	+2.0%
Nurse/ Midwife Specialist & AN/MP	9	+5	+4	+4	+4	+0		+115.5%	+68.2%	+62.3%	+85.1%	+2.6%	
Staff Nurse/ Staff Midwife	86	+16	+16	+9	+4	+5	+1	+22.9%	+23.1%	+11.6%	+5.2%	+6.7%	+0.9%
Nursing/ Midwifery other	1		-1	-1	-1	-1			-33.3%	-33.3%	-33.3%	-33.3%	
Therapy Professions	3	-0	+0	-0	-0	-0	+0	-2.7%	+0.0%	-9.4%	-15.5%	-11.3%	+0.0%
Health Science/ Diagnostics	2	-4	-3	-2	-3			-68.7%	-63.1%	-49.7%	-62.1%		
Social Workers	1	+0	+0	+0		-1	-1	+75.4%	+16.3%	+16.3%		-50.0%	-50.0%
Pharmacy	4	+1	+1	+1	+1	+1		+57.5%	+33.3%	+33.3%	+33.3%	+33.3%	

Sep 2020 (Dec 2015 figure: 10,662)	WTE Sep 2020	WTE change since Dec 15	WTE change since Dec 16	WTE change since Dec 17	WTE change since Dec 18	WTE change since Dec 19	WTE change since Aug 20	% change since Dec 15	% change since Dec 16	% change since Dec 17	% change since Dec 18	% change since Dec 19	% change since Aug 20
Overall	12,770	+2,107	+1,798	+1,388	+997	+725	-143	+19.8%	+16.4%	+12.2%	+8.5%	+6.0%	-1.1%
H&SC, Other	4	+1	+1	+1	+1			+35.7%	+35.7%	+23.4%	+23.4%		
Management (VIII & above)	4	+2	+2	+1	+2	+1		+100.0%	+100.0%	+33.3%	+100.0%	+33.3%	
Administrative/ Supervisory (V to VII)	24	+5	+5	+1	-0			+29.4%	+24.1%	+5.1%	-1.0%		
Clerical (III & IV)	37	+4	+4	+4	-0	+1	+3	+11.9%	+12.1%	+13.9%	-1.0%	+2.4%	+7.3%
Support	28	-4	+1	+0	+0	+0	+1	-13.0%	+4.8%	+1.4%	+0.6%	+1.8%	+3.7%
Health Care Assistants	10	+2	+2	-0	+1	+1		+23.3%	+23.4%	-3.4%	+16.1%	+9.8%	
Royal Victoria Eye & Ear	304	+46	+52	+30	+12	+13	+6	+17.9%	+20.8%	+11.1%	+4.2%	+4.4%	+1.9%
Staff Nurse/ Staff Midwife	5	+5	+5	+5	+5	+5	+2	-100.0%	-100.0%	-100.0%	-100.0%	-100.0%	+68.2%
Health Care Assistants	0	+0	+0	+0	+0	+0	+0	-100.0%	-100.0%	-100.0%	-100.0%	-100.0%	+36.4%
IEHG Bank	5	+5	+5	+5	+5	+5	+2	-100.0%	-100.0%	-100.0%	-100.0%	-100.0%	+65.9%

Source: Health Service Personnel Census