

CHO 1 Employment Report: April 2021

Employment by Staff Group

Apr 2021 (Dec 2020 figure: 5,755)	WTE Mar 2021	WTE Apr 2021	WTE change since Mar 21	% change since Mar 21	WTE change since Dec 20	WTE change since Apr 20
Overall	5,843	5,847	+4	+0.1%	+92	+313
Consultants	40	39	-0	-0.7%	+2	+5
Registrars	73	74	+2	+2.4%	+3	+13
SHO/ Interns	19	20	+1	+5.9%	-4	-6
Medical/ Dental, other	68	65	-3	-4.1%	-15	-1
Medical & Dental	199	199	-0	-0.1%	-14	+12
Nurse/ Midwife Manager	355	355	+1	+0.2%	+1	-0
Nurse/ Midwife Specialist & AN/MP	120	118	-1	-1.1%	+0	+10
Staff Nurse/ Staff Midwife	1,048	1,061	+13	+1.2%	+32	+48
Public Health Nurse	153	152	-1	-0.9%	-1	+0
Nursing/ Midwifery Student	53	53	-0	-0.7%	+30	-5
Nursing/ Midwifery other	8	8	+0	+0.5%	+1	+1
Nursing & Midwifery	1,737	1,747	+10	+0.6%	+63	+54
Therapy Professions	333	329	-5	-1.4%	+5	+8
Health Science/ Diagnostics	7	6	-0	-4.2%	-0	+1
Social Care	14	14	+0	+1.3%	-1	+2
Social Workers	94	92	-2	-1.7%	-0	+2
Psychologists	65	65	+0	+0.1%	+3	+7
Pharmacy	3	3				+1
H&SC, Other	32	30	-1	-4.4%	-1	-0
Health & Social Care Professionals	548	540	-8	-1.4%	+7	+20
Management (VIII & above)	63	63	-0	-0.0%	-0	+2
Administrative/ Supervisory (V to VII)	179	178	-1	-0.6%	+11	+19
Clerical (III & IV)	497	499	+2	+0.3%	+21	+45
Management & Administrative	739	740	+1	+0.1%	+32	+66
Support	319	315	-4	-1.3%	+5	+5
Maintenance/ Technical	35	37	+2	+6.2%	+1	+0
General Support	354	352	-2	-0.6%	+6	+5
Health Care Assistants	1,536	1,544	+9	+0.6%	+25	+116
Home Help	595	582	-13	-2.2%	-37	+32
Care, other	135	143	+8	+5.6%	+10	+8
Patient & Client Care	2,265	2,269	+3	+0.1%	-2	+156

CHO 1 Employment Report: April 2021

Community Health & Wellbeing

Apr 2021 (Dec 2020 figure: 18)	WTE Mar 2021	WTE Apr 2021	WTE change since Mar 21	% change since Mar 21	WTE change since Dec 20	WTE change since Apr 20
Total Community Health & Wellbeing	19	19	+0	+1.7%	+1	+5

Mental Health

Apr 2021 (Dec 2020 figure: 976)	WTE Mar 2021	WTE Apr 2021	WTE change since Mar 21	% change since Mar 21	WTE change since Dec 20	WTE change since Apr 20
Total Mental Health	994	1,003	+9	+0.9%	+27	+36
Consultants	36	36	-0	-0.8%	+2	+4
Registrars	32	33	+1	+2.4%	+3	+9
SHO/ Interns	18	19	+1	+6.2%	-4	-6
Medical & Dental	86	87	+2	+1.9%	+7	+8
Nurse/ Midwife Manager	123	123	+0	+0.0%	+3	+4
Nurse/ Midwife Specialist & AN/MP	73	71	-1	-1.8%	-2	+4
Staff Nurse/ Staff Midwife	294	300	+6	+2.0%	+12	+7
Nursing/ Midwifery Student	16	16	-0	-2.0%	+13	+1
Nursing/ Midwifery other	2	2			+1	+1
Nursing & Midwifery	507	511	+4	+0.8%	+29	+16
Therapy Professions	39	38	-1	-2.1%	+2	+1
Social Care	4	4	+0	+5.6%	+0	+0
Social Workers	42	41	-0	-0.7%	-2	+1
Psychologists	24	24	+0	+0.0%	+0	+3
Pharmacy	1	1				
H&SC, Other	15	14	-0	-1.7%	+0	+0
Health & Social Care Professionals	123	122	-1	-0.9%	+9	+5
Management (VIII & above)	6	5	-1	-15.0%	-3	-2
Administrative/ Supervisory (V to VII)	30	31	+0	+1.3%	+0	+1
Clerical (III & IV)	87	89	+2	+2.5%	+4	+5
Management & Administrative	123	125	+2	+1.4%	+4	+4
Support	63	63	+0	+0.5%	-2	+2
Maintenance/ Technical	16	16	+0	+2.8%		-0
General Support	79	80	+1	+1.0%	+1	+2
Health Care Assistants	68	69	+1	+1.8%	+2	+4
Care, other	8	9	+0	+3.9%	-2	-2
Patient & Client Care	77	78	+2	+2.0%	+1	+2

Primary Care

Apr 2021 (Dec 2020 figure: 1,296)	WTE Mar 2021	WTE Apr 2021	WTE change since Mar 21	% change since Mar 21	WTE change since Dec 20	WTE change since Apr 20
Total Primary Care	1,369	1,346	-23	-1.7%	+49	+147
Consultants	4	4			+0	+1
Registrars	41	42	+1	+2.4%	-0	+4
SHO/ Interns	1	1				+0
Medical/ Dental, other	49	46	-3	-6.1%	+1	-0
Medical & Dental	94	92	-2	-2.1%	-0	+5
Nurse/ Midwife Manager	38	39	+1	+3.6%	+0	-4
Nurse/ Midwife Specialist & AN/MP	28	27	-1	-3.6%	+1	+3
Staff Nurse/ Staff Midwife	98	94	-4	-4.2%	-2	+6
Public Health Nurse	153	151	-2	-1.5%	-2	-1
<i>Post-registration Nurse/ Midwife Student</i>	3	3				
Nursing/ Midwifery Student	3	3				-4
Nursing/ Midwifery other	1	1	+0	+4.2%	+0	
Nursing & Midwifery	322	316	-6	-1.9%	+9	-0
Therapy Professions	238	231	-7	-2.8%	+1	+6
Health Science/ Diagnostics	5	5	-0	-0.2%	-0	+1
Social Workers	18	18	-0	-1.1%	+2	+5
Psychologists	31	30	-1	-2.7%	-2	-3
Pharmacy	2	2				+1
H&SC, Other	7	7			-0	-0
Health & Social Care Professionals	300	292	-8	-2.6%	+5	+9
Management (VIII & above)	32	33	+1	+2.7%	+3	+1
Administrative/ Supervisory (V to VII)	85	84	-1	-1.6%	+8	+13
Clerical (III & IV)	268	266	-2	-0.9%	+16	+31
Management & Administrative	385	382	-3	-0.7%	+51	+45
Support	88	86	-2	-2.4%	+9	+11
Maintenance/ Technical	7	8	+1	+10.4%	+1	+1
General Support	95	94	-1	-1.5%	+16	+12
Health Care Assistants	108	104	-4	-3.4%	+9	+70
Home Help	1	0	-0	-22.6%	-0	+0
Care, other	64	65	+1	+1.7%	+7	+7
Patient & Client Care	173	170	-3	-1.6%	+83	+77

Social Care

Apr 2021 (Dec 2020 figure: 3,464)	WTE Mar 2021	WTE Apr 2021	WTE change since Mar 21	% change since Mar 21	WTE change since Dec 20	WTE change since Apr 20
Total Social Care	3,461	3,479	+18	+0.5%	+14	+125
Medical/ Dental, other	19	19	+0	+0.7%	-17	-2
Medical & Dental	19	19	+0	+0.7%	-14	-2
Nurse/ Midwife Manager	193	192	-1	-0.4%	-2	-1
Nurse/ Midwife Specialist & AN/MP	19	19			+1	+3
Staff Nurse/ Staff Midwife	655	666	+12	+1.8%	+23	+35
Public Health Nurse		1	+1	-100.0%	+1	+1
Pre-registration Nurse/ Midwife Intern	24	23	-0	-0.1%	+23	-0
Pre-registration Nurse Intern (COVID-19)				-100.0%	-6	
Nursing/ Midwifery awaiting registration	11	11				
Nursing/ Midwifery Student	35	34	-0	-0.1%	+17	-2
Nursing/ Midwifery other	5	5				+0
Nursing & Midwifery	906	918	+12	+1.3%	+58	+36
Therapy Professions	56	59	+3	+5.2%	+3	+0
Health Science/ Diagnostics	2	1	-0	-15.8%	-0	+0
Social Care	11	11	-0	-0.2%	-1	+2
Social Workers	34	33	-1	-3.3%	-0	-4
Psychologists	11	12	+1	+7.9%	+5	+7
H&SC, Other	10	9	-1	-11.6%	-1	-0
Health & Social Care Professionals	124	125	+1	+1.0%	+13	+6
Management (VIII & above)	25	25				+3
Administrative/ Supervisory (V to VII)	53	53	-0	-0.7%	+4	+5
Clerical (III & IV)	138	140	+2	+1.3%	-0	+7
Management & Administrative	216	218	+1	+0.7%	+19	+15
Support	168	166	-2	-1.4%	-2	-8
Maintenance/ Technical	12	13	+1	+8.3%		
General Support	180	179	-1	-0.7%	-6	-8
Health Care Assistants	1,359	1,370	+11	+0.8%	+15	+42
Home Help	594	581	-13	-2.1%	-37	+32
Care, other	63	69	+6	+10.0%	+6	+4
Patient & Client Care	2,016	2,020	+5	+0.2%	+75	+78

CHO 1 Employment Report: April 2021

Disabilities

Apr 2021 (Dec 2020 figure: 1,547)	WTE Mar 2021	WTE Apr 2021	WTE change since Mar 21	% change since Mar 21	WTE change since Dec 20	WTE change since Apr 20
Total Disabilities	1,575	1,591	+17	+1.1%	+45	+66
Medical/ Dental, other	3	3				-0
Medical & Dental	3	3				-0
Nurse/ Midwife Manager	106	105	-1	-1.0%	-1	-0
Nurse/ Midwife Specialist & AN/MP	10	10			+1	+2
Staff Nurse/ Staff Midwife	335	339	+5	+1.4%	+11	+21
Public Health Nurse		1	+1	-100.0%	+1	+1
Public Health Nurse		1	+1	-100.0%	+1	+1
Nursing/ Midwifery Student	35	34	-0	-0.1%	+17	-2
Nursing/ Midwifery other	4	4				-1
Nursing & Midwifery	489	494	+5	+0.9%	+29	+21
Therapy Professions	41	43	+2	+6.1%	-1	-5
Social Care	11	11	-0	-0.2%	-1	+2
Social Workers	18	17	-1	-3.0%	-1	-2
Psychologists	11	12	+1	+7.9%	+5	+7
H&SC, Other	10	9	-1	-11.6%	-1	-0
Health & Social Care Professionals	90	92	+2	+1.9%	+1	+2
Management (VIII & above)	17	17				+3
Administrative/ Supervisory (V to VII)	36	37	+1	+1.7%	+3	+3
Clerical (III & IV)	52	54	+2	+3.2%	+1	+5
Management & Administrative	105	107	+2	+2.2%	+4	+11
Support	49	49	-1	-1.2%	-0	-2
Maintenance/ Technical	6	6				
General Support	55	55	-1	-1.0%	-0	-2
Health Care Assistants	777	786	+9	+1.1%	+11	+29
Home Help	15	14	-1	-4.3%	+0	+0
Care, other	40	41	+1	+2.0%	+0	+4
Patient & Client Care	832	841	+9	+1.1%	+11	+33

Older People

Apr 2021 (Dec 2020 figure: 1,918)	WTE Mar 2021	WTE Apr 2021	WTE change since Mar 21	% change since Mar 21	WTE change since Dec 20	WTE change since Apr 20
Total Older People	1,886	1,887	+1	+0.1%	-30	+59
Medical/ Dental, other	16	16	+0	+0.9%	-17	-2
Medical & Dental	16	16	+0	+0.9%	-17	-2
Nurse/ Midwife Manager	87	87	+0	+0.2%	-1	-1
Nurse/ Midwife Specialist & AN/MP	9	9			+0	+1
Staff Nurse/ Staff Midwife	320	327	+7	+2.3%	+13	+14
Nursing/ Midwifery other	1	1				+1
Nursing & Midwifery	417	424	+7	+1.8%	+12	+15
Health & Social Care Professionals	34	33	-0	-1.4%	+4	+4
Management (VIII & above)	8	8				
Administrative/ Supervisory (V to VII)	17	16	-1	-5.7%	+1	+1
Clerical (III & IV)	86	86	+0	+0.2%	-2	+3
Management & Administrative	111	110	-1	-0.8%	-1	+4
Support	119	117	-2	-1.5%	-2	-7
Maintenance/ Technical	6	7	+1	+16.7%		
General Support	125	124	-1	-0.6%	-2	-7
Health Care Assistants	582	584	+2	+0.4%	+4	+14
Home Help	579	567	-12	-2.1%	-37	+31
Care, other	22	28	+5	+24.2%	+6	-0
Patient & Client Care	1,184	1,179	-4	-0.4%	-28	+45

CHO 1 Employment by Administration (HSE / S38): April 2021

Apr 2021 (Dec 2020 figure: 5,755)	WTE Mar 2021	WTE Apr 2021	WTE change since Mar 21	% change since Mar 21	WTE change since Dec 20	WTE change since Apr 20
Overall	5,843	5,847	+4	+0.1%	+92	+313
HSE	5,843	5,847	+4	+0.1%	+92	+313

HSE

Apr 2021 (Dec 2020 figure: 5,755)	WTE Mar 2021	WTE Apr 2021	WTE change since Mar 21	% change since Mar 21	WTE change since Dec 20	WTE change since Apr 20
Overall	5,843	5,847	+4	+0.1%	+92	+313
Consultants	40	39	-0	-0.0%	+2	+5
Registrars	73	74	+2	+0.0%	+3	+13
SHO/ Interns	19	20	+1	+0.1%	-4	-6
Medical/ Dental, other	68	65	-3	-0.0%	-15	-1
Medical & Dental	199	199	-0	-0.1%	-14	+12
Nurse/ Midwife Manager	355	355	+1	+0.0%	+1	-0
Nurse/ Midwife Specialist & AN/MP	120	118	-1	-0.0%	+0	+10
Staff Nurse/ Staff Midwife	1,048	1,061	+13	+0.0%	+32	+48
Public Health Nurse	153	152	-1	-0.0%	-1	+0
Nursing/ Midwifery Student	53	53	-0	-0.0%	+30	-5
Nursing/ Midwifery other	8	8	+0	+0.0%	+1	+1
Nursing & Midwifery	1,737	1,747	+10	+0.6%	+63	+54
Therapy Professions	333	329	-5	-0.0%	+5	+8
Health Science/ Diagnostics	7	6	-0	-0.0%	-0	+1
Social Care	14	14	+0	+0.0%	-1	+2
Social Workers	94	92	-2	-0.0%	-0	+2
Psychologists	65	65	+0	+0.0%	+3	+7
Pharmacy	3	3		+0.0%		+1
H&SC, Other	32	30	-1	-0.0%	-1	-0
Health & Social Care Professionals	548	540	-8	-1.4%	+7	+20
Management (VIII & above)	63	63	-0	-0.0%	-0	+2
Administrative/ Supervisory (V to VII)	179	178	-1	-0.0%	+11	+19
Clerical (III & IV)	497	499	+2	+0.0%	+21	+45
Management & Administrative	739	740	+1	+0.1%	+32	+66
Support	319	315	-4	-0.0%	+5	+5
Maintenance/ Technical	35	37	+2	+0.1%	+1	+0
General Support	354	352	-2	-0.6%	+6	+5
Health Care Assistants	1,536	1,544	+9	+0.0%	+25	+116
Home Help	595	582	-13	-0.0%	-37	+32
Care, other	135	143	+8	+0.1%	+10	+8
Patient & Client Care	2,265	2,269	+3	+0.1%	-2	+156

CHO 1 Employment by Grade Group & Staff Category: April 2021

Apr 2021 (Dec 2020 figure: 5,755)	WTE Mar 2021	WTE Apr 2021	WTE change since Mar 21	% change since Mar 21	WTE change since Dec 20	WTE change since Apr 20
Overall	5,843	5,847	+4	+0.1%	+92	+313
Consultant Medicine	4	4			+0	+1
Consultant Psychiatry	36	36	-0	-0.8%	+2	+4
Consultants	40	39	-0	-0.7%	+2	+5
Registrar	64	66	+2	+2.7%	+3	+14
Senior Registrar	9	9				+1
Specialist Registrar				-100.0%		-1
Registrars	73	74	+2	+2.4%	+3	+13
Senior House Officer	19	20	+1	+5.9%	-4	-6
SHO/ Interns	19	20	+1	+5.9%	-4	-6
Dentists	29	28	-0	-1.3%	+0	-1
Other Medical	40	37	-2	-6.1%	-15	-0
Medical/ Dental, other	68	65	-3	-4.1%	-15	-1
Medical & Dental	199	199	-0	-0.1%	-6	+12
Clinical Nurse/ Midwife Manager	277	275	-2	-0.6%	+2	+6
Director Nursing/Midwifery, Assistant	54	56	+1	+2.6%	-0	-1
Director of Nursing/Midwifery	24	25	+1	+3.6%	-1	-5
Nurse/ Midwife Manager	355	355	+1	+0.2%	+1	-0
Advanced Nurse/ Midwife Practitioner	15	15			+1	+4
Clinical Nurse/ Midwife Specialist	105	103	-1	-1.3%	-1	+6
Nurse/ Midwife Specialist & AN/MP	120	118	-1	-1.1%	+0	+10
Staff Nurse [Intellectual Disability]	252	260	+8	+3.2%	+23	+58
Staff Nurse [Psychiatric]	295	299	+5	+1.6%	+10	+6
Staff Nurses [General/ Children's]	502	501	-0	-0.0%	-0	-16
Staff Nurse/ Staff Midwife	1,048	1,061	+13	+1.2%	+32	+48
Public Health Nurse	153	152	-1	-0.9%	-1	+0
Pre-registration Nurse/ Midwife Intern	39	39	-0	-0.9%	+39	-1
Pre-registration Nurse Intern (COVID-19)				-100.0%	-9	
Post-registration Nurse/ Midwife Student	3	3				-4
Nursing/ Midwifery awaiting registration	11	11				
Nursing/ Midwifery Student	53	53	-0	-0.7%	+30	-5
Nursing Education/Clinical	8	8	+0	+0.5%	+1	+1
Nursing/ Midwifery other	8	8	+0	+0.5%	+1	+1
Nursing & Midwifery	1,737	1,747	+10	+0.6%	+99	+54
Dietitians	15	15	+0	+0.3%	-0	-1
Occupational Therapists	135	134	-1	-0.9%	+6	+5
Orthoptists	3	3	+0	+13.1%	+0	+1
Physiotherapists	96	94	-1	-1.5%	-1	+2
Podiatrists & Chiropodists	10	10	-1	-8.2%	+0	-1
Speech & Language Therapists	74	73	-1	-2.0%	+0	+1
Therapy Professions	333	329	-5	-1.4%	+5	+8
Audiology	5	5	-0	-0.2%	-0	+1
Radiographers	2	1	-0	-15.8%	-0	+0
Health Science/ Diagnostics	7	6	-0	-4.2%	-0	+1
Social Care	14	14	+0	+1.3%	-1	+2
Social Workers	94	92	-2	-1.7%	-0	+2
Psychologists	65	65	+0	+0.1%	+3	+7
Pharmacy	3	3				+1

Apr 2021 (Dec 2020 figure: 5,755)	WTE Mar 2021	WTE Apr 2021	WTE change since Mar 21	% change since Mar 21	WTE change since Dec 20	WTE change since Apr 20
Overall	5,843	5,847	+4	+0.1%	+92	+313
Counsellor Therapists	23	23	-0	-1.7%	+0	+2
Dental Hygienists	5	5			-0	-0
Other Health & Social Care	3	2	-1	-30.8%	-1	-2
H&SC, Other	32	30	-1	-4.4%	-1	-0
Health & Social Care Professionals	548	540	-8	-1.4%	+27	+20
Executive Management	8	8				+1
Senior Management (VIII & GM)	55	55	-0	-0.0%	-0	+1
Management (VIII & above)	63	63	-0	-0.0%	-0	+2
Middle Management (V-VII)	178	177	-1	-0.6%	+11	+19
Other Administrative	1	1				
Administrative/ Supervisory (V to VII)	179	178	-1	-0.6%	+11	+19
General Administrative (III & IV)	497	499	+2	+0.3%	+21	+45
Clerical (III & IV)	497	499	+2	+0.3%	+21	+45
Management & Administrative	739	740	+1	+0.1%	+89	+66
Catering	64	63	-1	-1.5%	-2	-1
Household Services	216	214	-3	-1.2%	+7	+6
Other Support	32	31	-1	-2.2%	+1	+1
Portering	7	7			-1	-1
Support	319	315	-4	-1.3%	+5	+5
Maintenance	35	37	+2	+6.2%	+1	+0
Maintenance/ Technical	35	37	+2	+6.2%	+1	+0
General Support	354	352	-2	-0.6%	+10	+5
HCA, Nurse's Aide, etc.	1,448	1,458	+10	+0.7%	+17	+49
Health & Social Care Assistants	30	29	-0	-1.4%	-0	+11
Swabber (COVID-19)	58	57	-1	-1.3%	+8	+57
Health Care Assistants	1,536	1,544	+9	+0.6%	+25	+116
Home Help	595	582	-13	-2.2%	-37	+32
Other Care Grades	135	143	+8	+5.6%	+10	+8
Care, other	135	143	+8	+5.6%	+10	+8
Patient & Client Care	2,265	2,269	+3	+0.1%	+159	+156

Employment by WTE, Headcount, Gender, Full-Time /Part-Time etc.: Apr 2021

CHO 1	WTE	Headcount	WTE: no.	% Male	% female	Male WTE: no.	Female WTE: no.	% Total Perm	% Male Perm	% Female Perm	% Total Full Time	% Total Part Time	% Male FT	% Female FT
Overall	5,847	6,762	1.16	17.3%	82.7%	1.08	1.17	82.1%	82.8%	81.9%	65.5%	34.5%	85.1%	61.4%
Consultant Medicine	4	4	1.10	25.0%	75.0%	1.00	1.15	75.0%	75.0%	66.7%	75.0%	25.0%	100.0%	66.7%
Consultant Psychiatry	36	37	1.03	40.5%	59.5%	1.00	1.06	75.7%	75.7%	81.8%	97.3%	2.7%	100.0%	95.5%
Consultants	39	41	1.04	39.0%	61.0%	1.00	1.07	75.6%	68.8%	80.0%	95.1%	4.9%	100.0%	92.0%
Registrars	74	77	1.03	44.2%	55.8%	1.03	1.04	10.4%	14.7%	7.0%	96.1%	3.9%	97.1%	95.3%
SHO/ Interns	20	20	1.00	50.0%	50.0%	1.00	1.01	0.0%	0.0%	0.0%	100.0%	0.0%	100.0%	100.0%
Medical/ Dental, other	65	104	1.59	49.0%	51.0%	1.63	1.56	84.6%	86.3%	83.0%	44.2%	55.8%	43.1%	45.3%
Medical & Dental	199	242	1.22	45.9%	54.1%	1.23	1.21	52.5%	54.1%	51.1%	74.0%	26.0%	73.0%	74.8%
Nurse/ Midwife Manager	355	376	1.06	18.1%	81.9%	1.01	1.07	99.5%	98.5%	99.7%	87.8%	12.2%	98.5%	85.4%
Nurse/ Midwife Specialist & AN/MP	118	125	1.06	18.4%	81.6%	1.01	1.07	97.6%	100.0%	97.1%	88.0%	12.0%	100.0%	85.3%
Staff Nurse/ Staff Midwife	1,061	1,218	1.15	13.1%	86.9%	1.04	1.17	91.7%	95.0%	91.2%	72.8%	27.2%	93.1%	69.8%
Public Health Nurse	152	178	1.17		100.0%		1.17	94.4%		94.4%	73.6%	26.4%		73.6%
Nursing/ Midwifery Student	53	93	1.75	12.9%	87.1%	2.00	1.72	2.2%	0.0%	2.5%	100.0%	0.0%	100.0%	100.0%
Nursing/ Midwifery other	8	8	1.03		100.0%		1.03	100.0%		100.0%	100.0%	0.0%		100.0%
Nursing & Midwifery	1,747	1,998	1.14	13.1%	86.9%	1.05	1.16	89.6%	92.0%	89.3%	78.0%	22.0%	95.4%	75.4%
Therapy Professions	329	376	1.14	8.0%	92.0%	1.05	1.15	94.4%	90.0%	94.8%	70.5%	29.5%	90.0%	68.8%
Health Science/ Diagnostics	6	9	1.40		100.0%		1.40	100.0%		100.0%	44.4%	55.6%		44.4%
Social Care	14	18	1.25	5.6%	94.4%	1.00	1.27	100.0%	100.0%	100.0%	44.4%	55.6%	100.0%	41.2%
Social Workers	92	99	1.07	15.2%	84.8%	1.01	1.08	94.9%	100.0%	94.0%	86.9%	13.1%	100.0%	84.5%
Psychologists	65	71	1.09	26.8%	73.2%	1.01	1.11	97.2%	100.0%	96.2%	80.3%	19.7%	94.7%	75.0%
Pharmacy	3	3	1.20	33.3%	66.7%	1.43	1.11	100.0%	100.0%	100.0%	66.7%	33.3%	0.0%	100.0%
H&SC, Other	30	35	1.15	20.0%	80.0%	1.13	1.16	100.0%	100.0%	100.0%	62.9%	37.1%	71.4%	60.7%
Health & Social Care	540	611	1.13	11.9%	88.1%	1.04	1.14	95.4%	95.9%	95.4%	72.7%	27.3%	90.4%	70.3%
Management (VIII & above)	63	65	1.03	24.6%	75.4%	1.02	1.03	95.4%	100.0%	93.9%	92.3%	7.7%	93.8%	91.8%
Administrative/ Supervisory (V to VII)	178	189	1.06	13.8%	86.2%	1.02	1.07	93.7%	84.6%	95.1%	82.0%	18.0%	96.2%	79.8%
Clerical (III & IV)	499	570	1.14	8.9%	91.1%	1.07	1.15	88.4%	80.4%	89.2%	70.2%	29.8%	90.2%	68.2%
Management & Administrative	740	824	1.11	11.3%	88.7%	1.05	1.12	90.2%	84.9%	90.8%	74.6%	25.4%	92.5%	72.4%

Support	315	378	1.20	25.1%	74.9%	1.08	1.25	92.3%	84.2%	95.1%	58.5%	41.5%	81.1%	50.9%
Maintenance/ Technical	37	38	1.03	100.0%		1.03		100.0%	100.0%	#DIV/0	100.0%	0.0%	100.0%	
General Support	352	416	1.18	32.0%	68.0%	1.06	1.25	93.0%	88.7%	95.1%	62.3%	37.7%	86.5%	50.9%
Health Care Assistants	1,544	1,729	1.12	23.7%	76.3%	1.07	1.14	89.4%	85.8%	90.5%	71.4%	28.6%	87.8%	66.3%
Home Help	582	774	1.33	4.9%	95.1%	1.21	1.34	29.5%	26.3%	29.6%	2.6%	97.4%	5.3%	2.4%
Care, other	143	168	1.18	31.5%	68.5%	1.22	1.16	86.9%	77.4%	91.3%	71.4%	28.6%	71.7%	71.3%
Patient & Client Care	2,269	2,671	1.18	18.7%	81.3%	1.09	1.20	71.8%	80.4%	69.9%	51.4%	48.6%	79.8%	44.9%

Employment by WTE, Headcount, Gender, Full-Time /Part-Time etc.: Apr 2021

CHO 1	WTE	Headcount	WTE: no.	% Male	% female	Male WTE: no.	Female WTE: no.	% Total Perm	% Male Perm	% Female Perm	% Total Full Time	% Total Part Time	% Male FT	% Female FT
Overall	5,847	6,762	1.16	17.3%	82.7%	1.08	1.17	82.1%	82.8%	81.9%	65.5%	34.5%	85.1%	61.4%
Community Health & Wellbeing	19	21	1.09	4.8%	95.2%	1.00	1.09	90.5%	90.5%	90.0%	76.2%	23.8%	100.0%	100.0%
Mental Health	1,003	1,086	1.08	26.6%	73.4%	1.04	1.10	88.4%	88.4%	89.6%	87.9%	12.1%	97.2%	97.2%
Primary Care	1,346	1,568	1.17	14.7%	85.3%	1.08	1.18	83.7%	83.7%	86.0%	67.5%	32.5%	84.4%	84.4%
Social Care	3,479	4,087	1.17	15.9%	84.1%	1.11	1.19	79.7%	79.7%	78.5%	58.7%	41.3%	79.9%	79.9%

CHO 1 Skills Mix by Staff Grouping: April 2021

Apr 2021 (Dec 2019 figure: 5,468)	WTE Dec 2016	WTE Dec 2017	WTE Dec 2018	WTE Dec 2019	WTE Dec 2020	WTE Mar 2021	WTE Apr 2021
Overall	5,280	5,368	5,436	5,468	5,755	5,843	5,847
Consultant Medicine	1.8%	1.7%	1.6%	1.5%	1.7%	1.8%	1.8%
Consultant Psychiatry	16.1%	15.8%	16.2%	15.0%	16.0%	18.1%	18.0%
Consultants	17.8%	17.5%	17.8%	16.4%	17.6%	19.9%	19.8%
Registrar	23.7%	26.6%	27.9%	27.4%	29.4%	32.2%	33.1%
Senior Registrar	3.0%	2.3%	5.8%	3.9%	4.0%	4.3%	4.3%
Specialist Registrar		0.6%	0.5%	0.5%			
Registrars	26.6%	29.5%	34.3%	31.8%	33.4%	36.4%	37.4%
Senior House Officer	17.5%	15.6%	13.8%	12.8%	11.2%	9.4%	10.0%
SHO/ Interns	17.5%	15.6%	13.8%	12.8%	11.2%	9.4%	10.0%
Dentists	16.6%	15.9%	15.3%	13.5%	13.2%	14.3%	14.2%
Other Medical	21.5%	21.5%	18.8%	25.4%	24.5%	19.9%	18.7%
Medical/ Dental, other	38.1%	37.4%	34.1%	39.0%	37.7%	34.2%	32.8%
Medical & Dental	3.2%	3.2%	3.4%	3.8%	3.7%	100.0%	3.4%
Clinical Nurse/ Midwife Manager	16.4%	15.8%	16.1%	16.3%	16.2%	15.9%	15.7%
Director Nursing/Midwifery, Assistant	3.2%	3.0%	3.1%	3.1%	3.3%	3.1%	3.2%
Director of Nursing/Midwifery	1.6%	1.6%	1.4%	1.8%	1.5%	1.4%	1.4%
Nurse/ Midwife Manager	21.2%	20.3%	20.6%	21.2%	21.0%	20.4%	20.3%
Advanced Nurse/ Midwife Practitioner	0.2%	0.1%	0.4%	0.5%	0.8%	0.9%	0.9%
Clinical Nurse/ Midwife Specialist	5.2%	5.5%	5.4%	5.7%	6.2%	6.0%	5.9%
Nurse/ Midwife Specialist & AN/MP	5.4%	5.6%	5.8%	6.2%	7.0%	6.9%	6.8%
Staff Nurse [Intellectual Disability]	12.2%	12.2%	12.6%	12.4%	14.1%	14.5%	14.9%
Staff Nurse [Psychiatric]	20.1%	19.5%	18.4%	18.1%	17.2%	17.0%	17.1%
Staff Nurses [General/ Children's]	31.4%	32.1%	31.8%	31.0%	29.8%	28.9%	28.7%
Staff Nurse/ Staff Midwife	63.7%	63.7%	62.8%	61.5%	61.1%	60.4%	60.7%
Public Health Nurse	8.9%	9.3%	9.4%	9.5%	9.1%	8.8%	8.7%
Pre-registration Nurse/ Midwife Intern	0.1%	0.2%	0.7%	0.2%		2.3%	2.2%
Pre-registration Nurse Intern (COVID-19)					0.6%		
Post-registration Nurse/ Midwife Student	0.4%	0.4%	0.4%	0.4%	0.2%	0.2%	0.2%
Nursing/ Midwifery awaiting registration			0.1%	0.7%	0.7%	0.6%	0.6%
Nursing/ Midwifery Student	0.5%	0.7%	1.1%	1.3%	1.4%	3.1%	3.0%
Nursing/ Midwifery other	0.3%	0.3%	0.3%	0.3%	0.4%	0.4%	0.4%
Nursing & Midwifery	31.0%	30.4%	30.5%	30.1%	29.3%	100.0%	29.9%
Dietitians	3.0%	3.2%	3.5%	3.4%	2.9%	2.7%	2.8%
Occupational Therapists	24.4%	22.9%	24.3%	25.0%	23.9%	24.6%	24.8%
Orthoptists	0.4%	0.5%	0.5%	0.5%	0.6%	0.6%	0.6%
Physiotherapists	18.6%	18.3%	18.4%	17.6%	17.9%	17.5%	17.5%
Podiatrists & Chiropractors	2.0%	1.7%	1.8%	1.7%	1.7%	1.9%	1.8%
Speech & Language Therapists	13.1%	14.6%	13.8%	13.5%	13.6%	13.6%	13.5%
Therapy Professions	61.6%	61.3%	62.4%	61.7%	60.7%	60.9%	60.9%
Audiology	1.1%	1.1%	1.1%	1.0%	0.9%	0.9%	0.9%
Radiographers	0.3%	0.3%	0.3%	0.2%	0.3%	0.3%	0.3%
Health Science/ Diagnostics	1.4%	1.4%	1.4%	1.3%	1.2%	1.2%	1.2%
Social Care	2.7%	2.4%	2.3%	2.2%	2.8%	2.6%	2.7%
Social Workers	16.5%	16.0%	15.3%	16.6%	17.3%	17.1%	17.1%
Social Workers	16.5%	16.0%	15.3%	16.6%	17.3%	17.1%	17.1%
Psychologists	11.2%	11.6%	12.1%	11.7%	11.7%	11.9%	12.1%
Pharmacy	0.3%	0.3%	0.3%	0.3%	0.5%	0.5%	0.5%
Counsellor Therapists	3.7%	4.1%	3.8%	3.8%	4.2%	4.2%	4.2%
Dental Hygienists	1.1%	1.1%	1.0%	1.0%	1.0%	1.0%	1.0%
Other Health & Social Care	1.6%	1.8%	1.4%	1.5%	0.6%	0.6%	0.4%

Apr 2021 (Dec 2019 figure: 5,468)	WTE Dec 2016	WTE Dec 2017	WTE Dec 2018	WTE Dec 2019	WTE Dec 2020	WTE Mar 2021	WTE Apr 2021
Overall	5,280	5,368	5,436	5,468	5,755	5,843	5,847
H&SC, Other	6.4%	7.0%	6.3%	6.3%	5.8%	5.8%	5.6%
Health & Social Care Professionals	9.3%	9.3%	9.4%	9.4%	9.3%	100.0%	9.2%
Executive Management	1.2%	1.3%	1.3%	1.0%	1.1%	1.1%	1.1%
Senior Management (VIII & GM)	6.8%	6.8%	7.9%	8.1%	7.8%	7.5%	7.5%
Management (VIII & above)	8.0%	8.2%	9.2%	9.2%	9.0%	8.5%	8.5%
Middle Management (V-VII)	16.4%	17.9%	18.3%	20.7%	23.3%	24.0%	23.9%
Other Administrative	0.2%	0.2%	0.2%	0.2%	0.1%	0.1%	0.1%
Administrative/ Supervisory (V to VII)	16.6%	18.1%	18.4%	20.8%	23.5%	24.2%	24.0%
Clerical (III & IV)	75.5%	73.8%	72.4%	70.0%	67.6%	67.3%	67.4%
Management & Administrative	11.1%	11.1%	11.4%	11.9%	12.3%	100.0%	12.7%
Catering	15.6%	16.7%	16.8%	17.8%	18.8%	18.2%	18.0%
Household Services	65.1%	62.1%	61.6%	59.8%	59.8%	61.1%	60.8%
Other Support	6.2%	8.2%	9.8%	9.7%	8.6%	8.9%	8.8%
Portering	2.4%	2.2%	2.2%	2.3%	2.2%	1.9%	1.9%
Support	89.4%	89.3%	90.3%	89.5%	89.5%	90.1%	89.5%
Maintenance/ Technical	10.6%	10.7%	9.7%	10.5%	10.5%	9.9%	10.5%
General Support	6.8%	6.5%	6.4%	6.2%	6.0%	100.0%	6.0%
HCA, Nurse's Aide, etc.	66.1%	66.3%	67.1%	66.5%	63.5%	63.9%	64.3%
Health & Social Care Assistants	0.7%	0.8%	1.3%	0.9%	1.3%	1.3%	1.3%
Swabber (COVID-19)					2.1%	2.5%	2.5%
Health Care Assistants	66.8%	67.1%	68.3%	67.4%	66.9%	67.8%	68.1%
Home Help	26.7%	26.5%	25.4%	26.4%	27.3%	26.2%	25.6%
Other Care Grades	6.4%	6.4%	6.2%	6.2%	5.8%	6.0%	6.3%
Care, other	6.4%	6.4%	6.2%	6.2%	5.8%	6.0%	6.3%
Patient & Client Care	38.7%	39.5%	38.9%	38.6%	39.5%	100.0%	38.8%
Total	100 %	100 %	100 %	100 %	100%	100 %	100 %

CHO 1 Skills Mix by Care Group: April 2021

Apr 2021 (Dec 2019 figure: 953)	WTE Dec 2016	WTE Dec 2017	WTE Dec 2018	WTE Dec 2019	WTE Dec 2020	WTE Mar 2021	WTE Apr 2021
Mental Health	948	942	941	953	976	994	1,003
Consultants	36.2%	36.8%	37.2%	38.2%	39.6%	42.1%	41.0%
Registrar	17.4%	22.7%	18.6%	20.5%	24.0%	27.2%	27.6%
Senior Registrar	5.5%	4.2%	12.6%	9.9%	9.9%	9.9%	9.7%
Registrars	23.0%	26.9%	31.2%	30.4%	33.9%	37.2%	37.4%
Senior House Officer	40.8%	36.3%	31.6%	31.4%	26.6%	20.8%	21.7%
SHO/ Interns	40.8%	36.3%	31.6%	31.4%	26.6%	20.8%	21.7%
Medical & Dental	7.6%	7.6%	8.2%	8.5%	8.3%	8.7%	8.7%
Clinical Nurse/ Midwife Manager	19.8%	20.0%	19.9%	19.9%	20.1%	20.0%	19.7%
Director Nursing/Midwifery, Assistant	3.2%	3.2%	3.7%	3.7%	3.9%	3.5%	3.7%
Director of Nursing/Midwifery	0.6%	0.6%	0.4%	0.6%	0.6%	0.6%	0.6%
Nurse/ Midwife Manager	23.6%	23.8%	24.0%	24.3%	24.6%	24.2%	24.0%
Advanced Nurse/ Midwife Practitioner	0.2%	0.2%	0.4%	0.4%	0.6%	0.6%	0.6%
Clinical Nurse/ Midwife Specialist	11.4%	12.1%	12.9%	13.6%	14.6%	13.7%	13.4%
Nurse/ Midwife Specialist & AN/MP	11.6%	12.3%	13.3%	14.0%	15.2%	14.3%	13.9%
Staff Nurse [Intellectual Disability]	0.2%	0.2%	0.2%				
Staff Nurse [Psychiatric]	64.0%	63.2%	61.7%	61.1%	59.0%	57.4%	58.1%
Staff Nurses [General/ Children's]	0.6%	0.4%	0.6%	0.6%	0.4%	0.6%	0.6%
Staff Nurse/ Staff Midwife	64.8%	63.9%	62.5%	61.7%	59.4%	58.0%	58.7%
Pre-registration Nurse/ Midwife Intern						3.1%	3.1%
Pre-registration Nurse Intern (COVID-19)					0.6%		
Nursing/ Midwifery awaiting registration			0.2%				
Nursing/ Midwifery Student			0.2%		0.6%	3.1%	3.1%
Nursing Education/Clinical					0.2%	0.4%	0.4%
Nursing/ Midwifery other					0.2%	0.4%	0.4%
Nursing & Midwifery	52.9%	52.5%	51.6%	50.6%	49.4%	51.0%	51.0%
Occupational Therapists	26.7%	25.7%	26.9%	28.7%	26.5%	28.1%	27.7%
Podiatrists & Chiropractors	0.7%	0.7%	0.7%	0.6%	0.6%	0.6%	0.6%
Speech & Language Therapists	2.6%	3.5%	3.0%	2.2%	2.7%	2.8%	2.9%
Therapy Professions	30.0%	29.9%	30.6%	31.6%	29.8%	31.5%	31.2%
Social Care	3.5%	3.6%	3.2%	3.3%	3.1%	2.9%	3.1%
Social Workers	35.5%	34.4%	34.0%	34.6%	35.6%	33.9%	34.0%
Psychologists	19.9%	19.9%	20.5%	18.2%	19.3%	19.1%	19.3%
Pharmacy	0.7%	0.8%	0.8%	0.7%	0.7%	0.7%	0.7%
Counsellor Therapists	10.0%	11.5%	10.8%	11.6%	11.5%	11.9%	11.8%
Other Health & Social Care	0.4%						
H&SC, Other	10.4%	11.5%	10.8%	11.6%	11.5%	11.9%	11.8%
Health & Social Care Professionals	11.3%	11.2%	11.8%	11.9%	11.6%	12.1%	12.1%
Management (VIII & above)	3.3%	4.1%	3.8%	4.7%	6.2%	4.7%	4.0%
Administrative/ Supervisory (V to VII)	14.5%	16.6%	18.7%	24.9%	24.8%	24.8%	24.7%
Clerical (III & IV)	82.2%	79.3%	77.4%	70.5%	69.0%	70.5%	71.3%
Management & Administrative	9.7%	10.5%	11.1%	12.7%	12.4%	12.4%	12.4%
Support	80.6%	80.3%	80.8%	78.7%	79.9%	79.8%	79.4%
Maintenance	19.4%	19.7%	19.2%	21.3%	20.1%	20.2%	20.6%
Maintenance/ Technical	19.4%	19.7%	19.2%	21.3%	20.1%	20.2%	20.6%
General Support	9.8%	9.1%	8.8%	8.3%	8.1%	7.9%	7.9%
HCA, Nurse's Aide, etc.	87.9%	86.5%	82.1%	83.9%	83.9%	86.9%	86.8%
Health & Social Care Assistants		1.2%	2.0%	2.1%	2.1%	2.1%	2.1%

Apr 2021 (Dec 2019 figure: 953)	WTE Dec 2016	WTE Dec 2017	WTE Dec 2018	WTE Dec 2019	WTE Dec 2020	WTE Mar 2021	WTE Apr 2021
Mental Health	948	942	941	953	976	994	1,003
Health Care Assistants	87.9%	87.6%	84.1%	86.0%	85.9%	89.0%	88.8%
Care, other	12.1%	12.4%	15.9%	14.0%	14.1%	11.0%	11.2%
Patient & Client Care	8.7%	9.1%	8.5%	8.1%	7.9%	7.8%	7.8%
Total	100 %	100 %	100 %	100 %	100 %	100 %	100%

Apr 2021 (Dec 2019 figure: 1,182)	WTE Dec 2016	WTE Dec 2017	WTE Dec 2018	WTE Dec 2019	WTE Dec 2020	WTE Mar 2021	WTE Apr 2021
Primary Care	1,257	1,188	1,233	1,182	1,296	1,369	1,346
Consultant Medicine	3.8%	3.6%	3.3%	3.3%	3.8%	3.9%	3.9%
Consultants	3.8%	3.6%	3.3%	3.3%	3.8%	3.9%	3.9%
Registrars	35.7%	37.8%	43.8%	44.3%	45.9%	43.4%	45.4%
SHO/ Interns		1.2%	1.1%	1.1%	1.1%	1.1%	1.1%
Dentists	35.4%	32.8%	31.5%	30.2%	30.7%	30.4%	30.7%
Other Medical	25.1%	24.7%	20.4%	21.2%	18.4%	21.2%	18.9%
Medical/ Dental, other	60.5%	57.5%	51.9%	51.3%	49.2%	51.7%	49.6%
Medical & Dental	6.3%	7.1%	7.3%	7.8%	7.1%	6.8%	6.8%
Clinical Nurse/ Midwife Manager	4.9%	4.7%	5.4%	5.6%	6.2%	5.5%	6.0%
Director Nursing/Midwifery, Assistant	5.9%	5.4%	5.0%	5.0%	5.1%	5.4%	5.5%
Director of Nursing/Midwifery	1.7%	1.3%	1.6%	1.3%	0.8%	0.9%	1.0%
Nurse/ Midwife Manager	12.5%	11.4%	12.0%	11.9%	12.2%	11.8%	12.4%
Nurse/ Midwife Specialist & AN/MP	6.7%	7.7%	6.6%	6.8%	8.2%	8.7%	8.6%
Staff Nurse [Psychiatric]	0.1%	0.1%	0.5%	0.1%	0.1%	0.1%	0.1%
Staff Nurses [General/ Children's]	29.0%	28.4%	27.7%	27.8%	30.2%	30.5%	29.8%
Staff Nurse/ Staff Midwife	29.1%	28.6%	28.2%	27.9%	30.3%	30.6%	29.9%
Public Health Nurse	49.3%	50.1%	50.9%	50.9%	48.0%	47.7%	47.8%
Post-registration Nurse/ Midwife Student	2.4%	2.3%	2.3%	2.3%	0.9%	0.9%	1.0%
Nursing/ Midwifery Student	2.4%	2.3%	2.3%	2.3%	0.9%	0.9%	1.0%
Nursing Education/Clinical				0.3%	0.3%	0.3%	0.3%
Nursing/ Midwifery other				0.3%	0.3%	0.3%	0.3%
Nursing & Midwifery	23.6%	25.7%	24.7%	25.9%	23.6%	23.4%	23.4%
Dietitians	4.8%	5.2%	5.6%	6.0%	5.3%	5.0%	5.1%
Occupational Therapists	25.2%	23.2%	24.2%	25.3%	25.5%	26.3%	26.7%
Orthoptists	0.7%	0.8%	0.8%	0.9%	1.0%	1.0%	1.2%
Physiotherapists	27.4%	27.1%	27.3%	28.1%	28.2%	27.5%	27.5%
Podiatrists & Chiropodists	3.1%	2.6%	2.7%	2.8%	2.9%	3.2%	3.0%
Speech & Language Therapists	17.8%	19.4%	17.8%	15.9%	16.0%	16.2%	15.5%
Therapy Professions	79.0%	78.4%	78.5%	79.0%	79.0%	79.2%	79.0%
Audiology	1.8%	1.7%	1.7%	1.8%	1.7%	1.7%	1.7%
Health Science/ Diagnostics	1.8%	1.7%	1.7%	1.8%	1.7%	1.7%	1.7%
Social Workers	6.6%	6.9%	6.4%	4.4%	5.4%	5.9%	6.0%
Psychologists	10.3%	10.3%	10.9%	12.1%	10.8%	10.2%	10.2%
Pharmacy	0.2%	0.2%	0.2%	0.2%	0.6%	0.6%	0.6%
Counsellor Therapists		0.3%	0.3%	0.3%	0.3%	0.3%	0.3%
Dental Hygienists	1.7%	1.9%	1.6%	1.7%	1.8%	1.8%	1.8%
Other Health & Social Care	0.3%	0.3%	0.3%	0.3%	0.3%	0.3%	0.3%
H&SC, Other	2.1%	2.5%	2.2%	2.4%	2.5%	2.4%	2.5%
Health & Social Care Professionals	23.8%	25.9%	25.6%	24.3%	22.2%	21.7%	21.7%
Executive Management	1.8%	2.1%	2.0%	1.5%	1.4%	1.3%	1.3%
Senior Management (VIII & GM)	6.9%	6.9%	8.7%	8.2%	7.1%	7.0%	7.3%
Management (VIII & above)	8.8%	9.0%	10.7%	9.7%	8.5%	8.3%	8.6%
Administrative/ Supervisory (V to VII)	17.1%	19.7%	19.1%	19.2%	21.4%	22.0%	21.9%

Apr 2021 (Dec 2019 figure: 1,182)	WTE Dec 2016	WTE Dec 2017	WTE Dec 2018	WTE Dec 2019	WTE Dec 2020	WTE Mar 2021	WTE Apr 2021
Primary Care	1,257	1,188	1,233	1,182	1,296	1,369	1,346
Clerical (III & IV)	74.2%	71.3%	70.2%	71.1%	70.1%	69.7%	69.6%
Management & Administrative	25.9%	27.7%	28.3%	28.0%	25.5%	28.4%	28.4%
Support	91.3%	92.2%	94.7%	92.3%	91.7%	92.7%	91.8%
Maintenance/ Technical	8.7%	7.8%	5.3%	7.7%	8.3%	7.3%	8.2%
General Support	5.7%	6.3%	6.4%	6.6%	6.0%	7.0%	7.0%
HCA, Nurse's Aide, etc.	10.8%	22.4%	20.1%	21.8%	16.3%	16.4%	15.7%
Health & Social Care Assistants	5.8%	12.3%	21.7%	14.9%	14.1%	12.8%	12.3%
Swabber (COVID-19)					31.4%	33.3%	33.4%
Health Care Assistants	16.6%	34.7%	41.8%	36.7%	61.9%	62.5%	61.4%
Home Help	51.6%				0.5%	0.4%	0.3%
Other Care Grades	31.8%	65.3%	58.2%	63.3%	37.7%	37.1%	38.3%
Care, other	31.8%	65.3%	58.2%	63.3%	37.7%	37.1%	38.3%
Patient & Client Care	14.6%	7.4%	7.7%	7.4%	6.7%	12.6%	12.6%
Total	100 %	100 %	100 %	100 %	100 %	100 %	100%

Apr 2021 (Dec 2019 figure: 1,498)	WTE Dec 2016	WTE Dec 2017	WTE Dec 2018	WTE Dec 2019	WTE Dec 2020	WTE Mar 2021	WTE Apr 2021
Disabilities	1,430	1,457	1,479	1,498	1,547	1,575	1,591
Consultant Psychiatry	33.3%	33.3%	33.3%				
Consultants	33.3%	33.3%	33.3%				
Medical/ Dental, other	66.7%	66.7%	66.7%	100.0%	100.0%	100.0%	100.0%
Medical & Dental	0.2%	0.2%	0.2%	0.2%	0.2%	0.2%	0.2%
Clinical Nurse/ Midwife Manager	19.5%	20.0%	19.1%	20.1%	20.8%	20.0%	19.3%
Director Nursing/Midwifery, Assistant	1.7%	1.3%	1.7%	1.3%	1.3%	1.1%	1.2%
Director of Nursing/Midwifery	1.1%	1.3%	1.1%	1.8%	0.8%	0.6%	0.8%
Nurse/ Midwife Manager	22.3%	22.6%	21.8%	23.1%	22.9%	21.7%	21.3%
Clinical Nurse/ Midwife Specialist	2.1%	1.8%	1.5%	1.5%	1.9%	2.0%	2.0%
Nurse/ Midwife Specialist & AN/MP	2.1%	1.8%	1.5%	1.5%	1.9%	2.0%	2.0%
Staff Nurse [Intellectual Disability]	44.2%	44.4%	45.3%	45.1%	51.0%	51.5%	52.6%
Staff Nurse [Psychiatric]	1.3%	0.9%	0.7%	0.4%	0.4%	0.4%	0.4%
Staff Nurses [General/ Children's]	28.6%	28.3%	27.2%	25.6%	19.2%	16.5%	15.7%
Staff Nurse/ Staff Midwife	74.2%	73.7%	73.2%	71.2%	70.6%	68.4%	68.7%
Public Health Nurse							0.2%
Public Health Nurse							0.2%
Pre-registration Nurse/ Midwife Intern	0.3%	0.8%	2.4%	0.7%		4.8%	4.8%
Pre-registration Nurse Intern (COVID-19)					1.4%		
Nursing/ Midwifery awaiting registration				2.4%	2.4%	2.2%	2.2%
Nursing/ Midwifery Student	0.3%	0.8%	2.4%	3.1%	3.8%	7.1%	7.0%
Nursing/ Midwifery other	1.0%	1.1%	1.1%	1.0%	0.8%	0.8%	0.8%
Nursing & Midwifery	31.4%	30.7%	30.8%	30.3%	29.4%	31.0%	31.0%
Occupational Therapists	11.9%	12.0%	9.5%	15.4%	11.5%	10.2%	9.8%
Physiotherapists	14.2%	11.4%	12.3%	10.8%	11.7%	10.3%	11.0%
Speech & Language Therapists	11.3%	12.7%	17.5%	25.2%	24.9%	24.5%	26.1%
Therapy Professions	37.4%	36.0%	39.3%	51.4%	48.1%	45.0%	46.9%
Social Care	15.2%	12.3%	13.2%	9.2%	12.4%	11.8%	11.6%
Social Workers	21.0%	21.0%	19.8%	18.9%	20.5%	19.8%	18.9%
Psychologists	4.3%	7.5%	6.6%	5.6%	8.2%	12.5%	13.2%
Counsellor Therapists	11.8%	11.3%	10.7%	6.8%	8.3%	8.4%	8.1%
Other Health & Social Care	10.4%	11.9%	10.4%	8.2%	2.5%	2.5%	1.4%
H&SC, Other	22.2%	23.2%	21.1%	15.0%	10.8%	10.9%	9.5%

Apr 2021 (Dec 2019 figure: 1,498)	WTE Dec 2016	WTE Dec 2017	WTE Dec 2018	WTE Dec 2019	WTE Dec 2020	WTE Mar 2021	WTE Apr 2021
Disabilities	1,430	1,457	1,479	1,498	1,547	1,575	1,591
Health & Social Care Professionals	4.3%	4.5%	4.1%	5.5%	5.3%	5.8%	5.8%
Executive Management					1.0%	1.0%	0.9%
Senior Management (VIII & GM)	12.7%	14.7%	15.6%	15.3%	15.0%	14.8%	14.5%
Management (VIII & above)	12.7%	14.7%	15.6%	15.3%	16.0%	15.7%	15.4%
Administrative/ Supervisory (V to VII)	26.0%	24.4%	25.1%	30.2%	33.1%	34.3%	34.2%
Clerical (III & IV)	61.3%	60.9%	59.3%	54.5%	51.0%	49.9%	50.4%
Management & Administrative	6.0%	5.6%	5.6%	6.1%	5.9%	6.7%	6.7%
Support	88.7%	88.1%	89.5%	89.1%	89.1%	89.1%	89.0%
Maintenance/ Technical	11.3%	11.9%	10.5%	10.9%	10.9%	10.9%	11.0%
General Support	4.2%	4.0%	3.9%	3.7%	3.6%	3.4%	3.4%
HCA, Nurse's Aide, etc.	93.4%	93.6%	94.3%	93.8%	93.4%	93.4%	93.5%
Health Care Assistants	93.4%	93.6%	94.3%	93.8%	93.4%	93.4%	93.5%
Home Help	2.3%	1.8%	1.6%	1.6%	1.7%	1.7%	1.7%
Care, other	4.3%	4.6%	4.1%	4.6%	4.9%	4.8%	4.9%
Patient & Client Care	53.8%	55.0%	55.4%	54.2%	52.5%	52.9%	52.9%
Total	100 %	100 %	100 %	100 %	100 %	100 %	100%

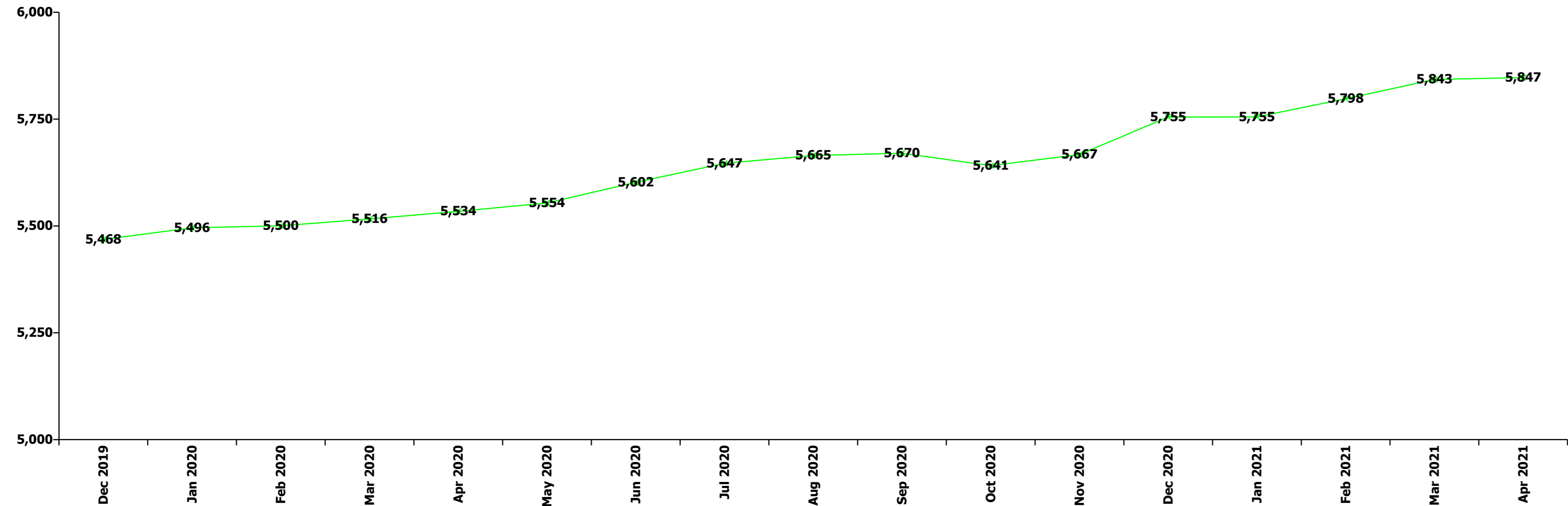
Apr 2021 (Dec 2019 figure: 1,836)	WTE Dec 2016	WTE Dec 2017	WTE Dec 2018	WTE Dec 2019	WTE Dec 2020	WTE Mar 2021	WTE Apr 2021
Older People	1,645	1,780	1,782	1,836	1,918	1,886	1,887
Medical/ Dental, other	100.0%	100.0%	100.0%	100.0%	100.0%	100.0%	100.0%
Medical & Dental	0.9%	0.8%	0.8%	1.6%	1.6%	0.8%	0.8%
Clinical Nurse/ Midwife Manager	17.2%	14.3%	16.4%	15.9%	14.4%	14.3%	14.1%
Director Nursing/Midwifery, Assistant	2.7%	2.7%	2.4%	3.0%	3.1%	3.1%	3.0%
Director of Nursing/Midwifery	3.3%	3.2%	2.8%	3.5%	3.8%	3.5%	3.5%
Nurse/ Midwife Manager	23.3%	20.2%	21.6%	22.5%	21.3%	20.8%	20.5%
Advanced Nurse/ Midwife Practitioner	0.3%		1.0%	1.4%	1.7%	1.7%	1.6%
Clinical Nurse/ Midwife Specialist				0.2%	0.5%	0.5%	0.5%
Nurse/ Midwife Specialist & AN/MP	0.3%		1.0%	1.7%	2.2%	2.2%	2.1%
Staff Nurse [Intellectual Disability]			0.2%				
Staff Nurse [Psychiatric]	0.2%	0.2%	0.4%	0.2%			
Staff Nurses [General/ Children's]	76.2%	79.6%	76.8%	75.6%	76.3%	76.8%	77.1%
Staff Nurse/ Staff Midwife	76.5%	79.8%	77.4%	75.9%	76.3%	76.8%	77.1%
Nursing Education/Clinical					0.2%	0.2%	0.2%
Nursing/ Midwifery other					0.2%	0.2%	0.2%
Nursing & Midwifery	23.7%	21.8%	23.0%	22.1%	21.1%	22.5%	22.5%
Occupational Therapists	40.9%	40.5%	55.3%	35.0%	36.2%	36.8%	38.9%
Physiotherapists				2.2%	6.6%	8.9%	8.7%
Speech & Language Therapists	4.0%	4.2%					
Therapy Professions	44.9%	44.7%	55.3%	37.2%	42.8%	45.7%	47.6%
Radiographers	7.0%	8.1%	7.0%	4.2%	5.4%	5.1%	4.3%
Health Science/ Diagnostics	7.0%	8.1%	7.0%	4.2%	5.4%	5.1%	4.3%
Social Workers	48.1%	47.2%	37.7%	58.6%	51.7%	49.2%	48.0%
Health & Social Care Professionals	1.2%	1.0%	1.2%	1.6%	1.6%	1.8%	1.8%
Executive Management				0.9%	0.9%	0.9%	0.9%
Senior Management (VIII & GM)	5.0%	3.5%	3.5%	6.5%	6.3%	6.3%	6.3%
Management (VIII & above)	5.0%	3.5%	3.5%	7.4%	7.2%	7.2%	7.2%
Administrative/ Supervisory (V to VII)	6.8%	7.5%	8.8%	13.3%	13.8%	15.6%	14.8%
Clerical (III & IV)	88.2%	89.0%	87.7%	79.3%	79.1%	77.3%	78.0%

Apr 2021 (Dec 2019 figure: 1,836)	WTE Dec 2016	WTE Dec 2017	WTE Dec 2018	WTE Dec 2019	WTE Dec 2020	WTE Mar 2021	WTE Apr 2021
Older People	1,645	1,780	1,782	1,836	1,918	1,886	1,887
Management & Administrative	4.9%	4.8%	4.8%	5.8%	5.6%	5.9%	5.9%
Support	94.8%	93.9%	93.9%	94.6%	94.4%	95.2%	94.4%
Maintenance/ Technical	5.2%	6.1%	6.1%	5.4%	5.6%	4.8%	5.6%
General Support	8.1%	7.4%	7.4%	7.1%	6.8%	6.6%	6.6%
HCA, Nurse's Aide, etc.	53.6%	49.1%	50.0%	49.2%	47.6%	48.7%	49.0%
Health & Social Care Assistants	0.4%	0.4%	0.4%	0.4%	0.5%	0.5%	0.6%
Health Care Assistants	54.0%	49.5%	50.4%	49.7%	48.1%	49.1%	49.5%
Home Help	43.1%	47.9%	46.8%	47.9%	50.1%	49.0%	48.1%
Care, other	2.9%	2.6%	2.7%	2.5%	1.9%	1.9%	2.4%
Patient & Client Care	61.2%	64.2%	62.8%	61.8%	59.1%	62.5%	62.5%
Total	100 %	100 %	100 %	100 %	100 %	100 %	100%

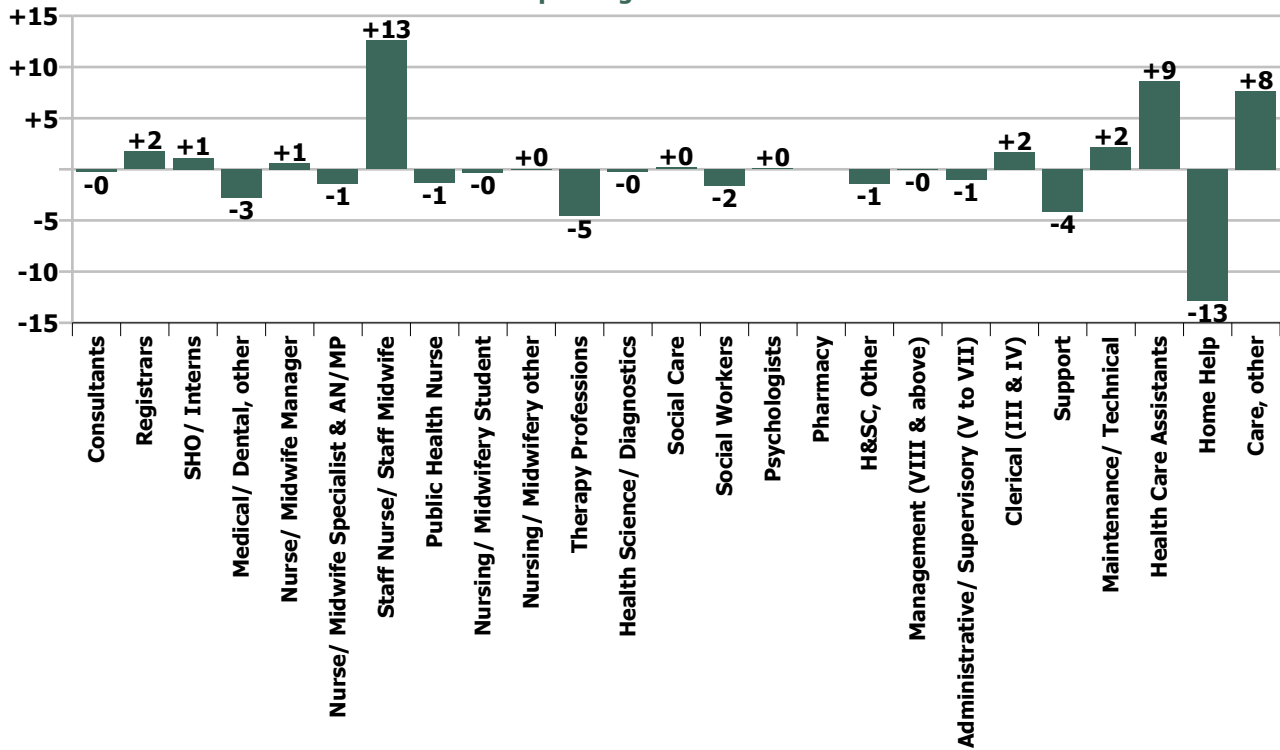
Summary Staff Movement: April 2021

Month-on-month Summary																												
WTE change since Mar 21	% change since Mar 21	overall	Consultants	Registrars	SHO/ Interns	Medical/ Dental, other	Medical & Dental	Nurse/ Midwife Manager	Nurse/ Midwife Specialist & AN/MP	Staff Nurse/ Staff Midwife	Public Health Nurse	Nursing/ Midwifery Student	Nursing/ Midwifery other	Nursing & Midwifery	Therapy Professions	Health Science/ Diagnostics	Social Care	Social Workers	Psychologists	Pharmacy	H&SC, Other	Health & Social Care Professionals	Management (VIII & above)	Administrative/ Supervisory (V to VII)	Clerical (III & IV)	Management & Administrative	General Support	Patient & Client Care
Overall	+0.1%	+4	-0.3	+1.7	+1.1	-2.8	-0.2	+0.6	-1.4	+12.6	-1.3	-0.4	+0.0	+10.2	-4.6	-0.3	+0.2	-1.6	+0.1	0.0	-1.4	-7.6	-0.0	-1.0	+1.7	+0.6	-2.0	+3.4
Community Health & Wellbeing	+1.7%	+0				0.0	0.0	0.0	+1.0	-1.0				-0.0	0.0							0.0	0.0	+0.3	+0.1	+0.4		
Mental Health	+0.9%	+9	-0.3	+0.8	+1.1		+1.6	+0.0	-1.3	+5.9		-0.3	0.0	+4.3	-0.8		+0.2	-0.3	+0.0	0.0	-0.3	-1.1	-0.9	+0.4	+2.2	+1.7	+0.8	+1.6
Primary Care	-1.7%	-23	0.0	+1.0	0.0	-2.9	-2.0	+1.4	-1.0	-4.1	-2.3	0.0	+0.0	-6.0	-6.7	-0.0		-0.2	-0.8	0.0	0.0	-7.7	+0.8	-1.3	-2.4	-2.9	-1.4	-2.7
Disabilities	+1.1%	+17				0.0	0.0	-1.0	0.0	+4.6	+1.0	-0.0	0.0	+4.5	+2.5		-0.0	-0.5	+0.9		-1.1	+1.7	0.0	+0.6	+1.7	+2.3	-0.6	+9.0
Older People	+0.1%	+1				+0.1	+0.1	+0.2	0.0	+7.2			0.0	+7.4	+0.4	-0.3		-0.6				-0.5	0.0	-1.0	+0.1	-0.8	-0.8	-4.5
Social Care	+0.5%	+18				+0.1	+0.1	-0.8	+0.0	+11.8	+1.0	-0.0	0.0	+12.0	+2.9	-0.3	-0.0	-1.1	+0.9		-1.1	+1.2	0.0	-0.4	+1.8	+1.4	-1.3	+4.5
Change	+4.4	+0.1%	-0.7%	+2.4%	+5.9%	-4.1%	-0.1%	+0.2%	-1.1%	+1.2%	-0.9%	-0.7%	+0.5%	+0.6%	-1.4%	-4.2%	+1.3%	-1.7%	+0.1%		-4.4%	-1.4%	-0.0%	-0.6%	+0.3%	+0.1%	-0.6%	+0.1%

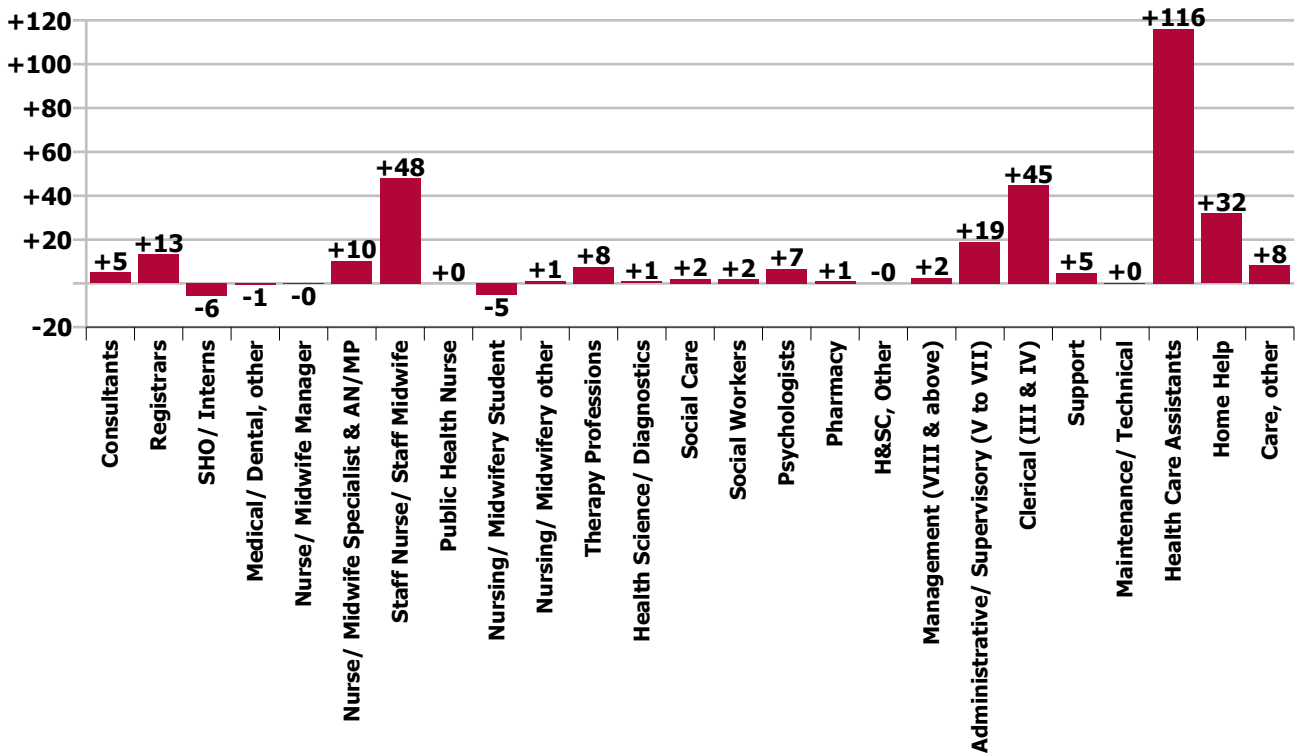
Year-on-year Summary																												
WTE change since Apr 20	% change since Apr 20	overall	Consultants	Registrars	SHO/ Interns	Medical/ Dental, other	Medical & Dental	Nurse/ Midwife Manager	Nurse/ Midwife Specialist & AN/MP	Staff Nurse/ Staff Midwife	Public Health Nurse	Nursing/ Midwifery Student	Nursing/ Midwifery other	Nursing & Midwifery	Therapy Professions	Health Science/ Diagnostics	Social Care	Social Workers	Psychologists	Pharmacy	H&SC, Other	Health & Social Care Professionals	Management (VIII & above)	Administrative/ Supervisory (V to VII)	Clerical (III & IV)	Management & Administrative	General Support	Patient & Client Care
Overall	+5.7%	+313	+5.0	+13.2	-5.7	-0.7	+11.7	-0.2	+10.3	+48.0	+0.0	-5.2	+1.2	+54.0	+7.6	+0.9	+2.1	+1.9	+6.6	+1.0	-0.0	+20.1	+2.5	+19.0	+44.7	+66.2	+5.0	+156.1
Community Health & Wellbeing	+1.7%	+0				+1.0	+1.0	+1.0	+1.0					+2.0	+1.0							+1.0	0.0	+1.1	+0.9	+2.0		-0.7
Mental Health	+0.9%	+9	+4.4	+9.2	-5.8		+7.8	+3.8	+3.5	+7.1		+0.6	+1.0	+16.0	+0.8		+0.0	+1.1	+2.6	0.0	+0.2	+4.7	-1.7	+0.5	+5.3	+4.2	+1.5	+1.7
Primary Care	-1.7%	-23	+0.6	+4.0	+0.0	-0.1	+4.5	-3.9	+2.8	+5.8	-1.0	-4.0	0.0	-0.2	+5.7	+0.6		+4.6	-3.3	+1.0	-0.1	+8.6	+1.5	+12.7	+31.1	+45.2	+11.7	+77.1
Disabilities	+4.3%	+65.6				-0.1	-0.1	-0.2	+2.0	+21.1	+1.0	-1.8	-0.8	+21.3	-4.9		+2.1	-2.3	+7.3		-0.1	+2.1	+2.7	+3.4	+4.6	+10.7	-1.6	+33.4
Older People	+3.3%	+59.4				-1.5	-1.5	-0.9	+1.0	+13.9			+1.0	+15.0	+5.0	+0.3		-1.6				+3.7	0.0	+1.3	+2.8	+4.1	-6.5	+44.7
Social Care	+0.5%	+18				-1.6	-1.6	-1.2	+3.0	+35.0	+1.0	-1.8	+0.2	+36.2	+0.1	+0.3	+2.1	-3.8	+7.3		-0.1	+5.8	+2.7	+4.7	+7.4	+14.7	-8.2	+78.1
Change	+313.1	+5.7%	+14.6%	+21.5%	-22.3%	-1.1%	+6.2%	-0.1%	+9.5%	+4.7%	+0.0%	-9.0%	+18.1%	+3.2%	+2.4%	+16.4%	+17.4%	+2.1%	+11.2%	+66.7%	-0.1%	+3.9%	+4.1%	+11.9%	+9.8%	+9.8%	+1.4%	+7.4%



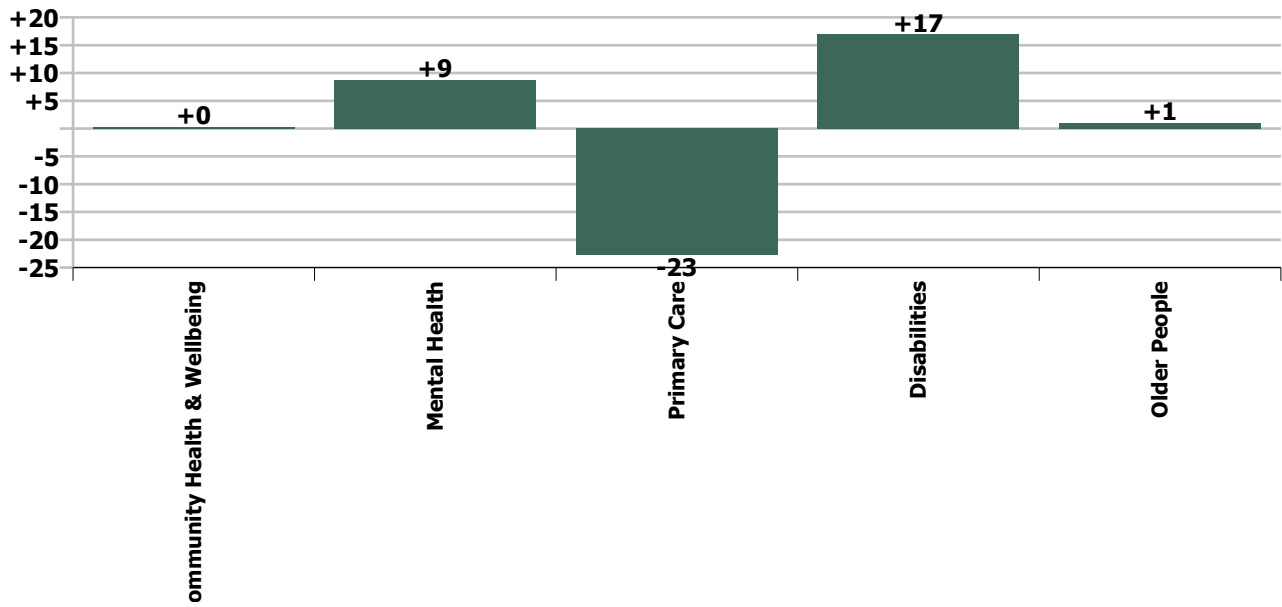
Staff Group change since: Mar 2021



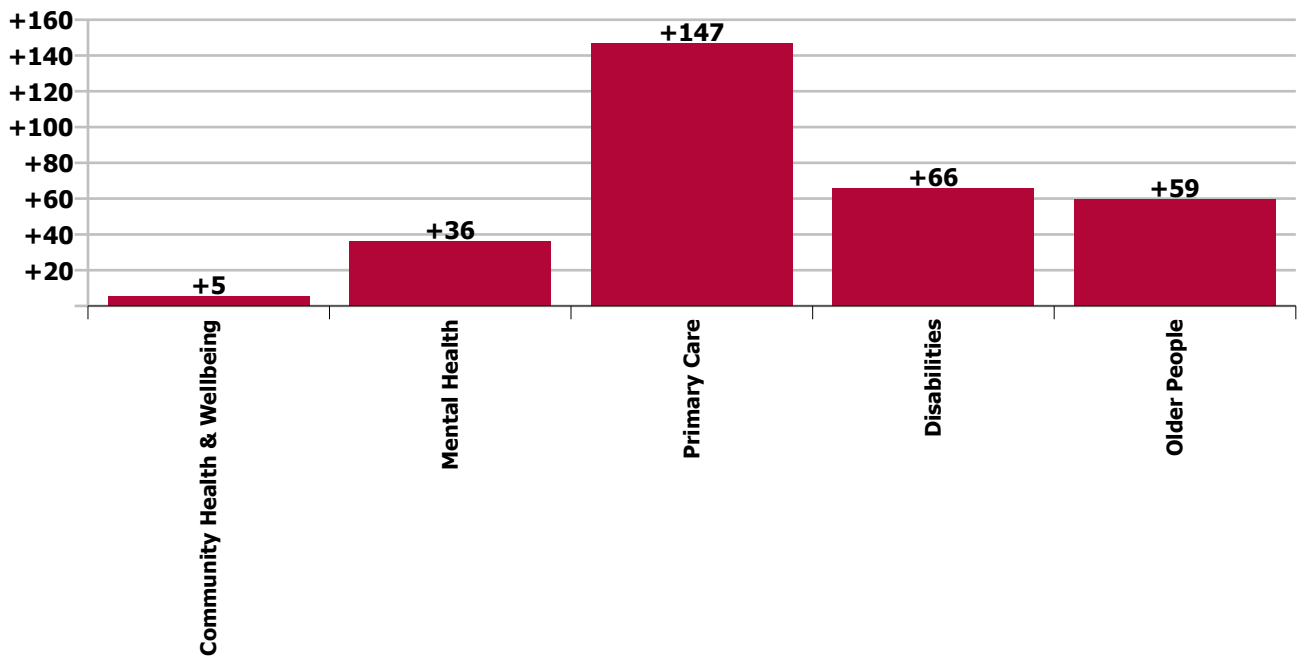
Staff Group change since: Apr 2020



Care Group change since: Mar 2021



Care Group change since: Apr 2020



Longitudinal Employment Levels by Grade Group - Dec 2015 to Apr 2021

Apr 2021 (Dec 2016 figure: 5,280)	WTE Apr 2021	WTE change since Dec 16	WTE change since Dec 17	WTE change since Dec 18	WTE change since Dec 19	WTE change since Dec 19	WTE change since Mar 21	% change since Dec 16	% change since Dec 17	% change since Dec 18	% change since Dec 19	% change since Dec 19	% change since Mar 21
Overall	5,847	+567	+479	+411	+379	+379	+4	+10.7%	+8.9%	+7.6%	+6.9%	+6.9%	+0.1%
Consultant Medicine	4	+1	+1	+1	+1	+1		+20.7%	+20.7%	+24.4%	+20.7%	+20.7%	
Consultant Psychiatry	36	+9	+8	+6	+5	+5	-0	+31.8%	+30.2%	+19.8%	+16.2%	+16.2%	-0.8%
Consultants	39	+9	+9	+7	+6	+6	-0	+30.7%	+29.3%	+20.2%	+16.6%	+16.6%	-0.7%
Registrar	66	+26	+20	+14	+10	+10	+2	+64.6%	+42.6%	+27.8%	+17.0%	+17.0%	+2.7%
Senior Registrar	9	+4	+5	-2	+1	+1		+70.2%	+112.8%	-20.9%	+6.4%	+6.4%	
Specialist Registrar			-1	-1	-1	-1		-100.0%	-100.0%	-100.0%	-100.0%	-100.0%	-100.0%
Registrars	74	+29	+23	+11	+9	+9	+2	+65.3%	+45.3%	+17.5%	+13.9%	+13.9%	+2.4%
Senior House Officer	20	-10	-7	-6	-6	-6	+1	-32.5%	-26.5%	-21.8%	-24.2%	-24.2%	+5.9%
SHO/ Interns	20	-10	-7	-6	-6	-6	+1	-32.5%	-26.5%	-21.8%	-24.2%	-24.2%	+5.9%
Dentists	28	+0	+1	+0	+0	+0	-0	+0.2%	+2.0%	+0.1%	+1.5%	+1.5%	-1.3%
Other Medical	37	+1	-0	+2	-15	-15	-2	+2.4%	-0.2%	+7.1%	-28.8%	-28.8%	-6.1%
Medical/ Dental, other	65	+1	+0	+2	-15	-15	-3	+1.5%	+0.7%	+4.0%	-18.3%	-18.3%	-4.1%
Medical & Dental	199	+30	+25	+15	-6	-6	-0	+17.7%	+14.6%	+7.9%	-3.1%	-3.1%	-0.1%
Clinical Nurse/ Midwife Manager	275	+6	+17	+8	+6	+6	-2	+2.3%	+6.6%	+3.0%	+2.1%	+2.1%	-0.6%
Director Nursing/Midwifery, Assistant	56	+4	+7	+5	+5	+5	+1	+7.6%	+14.4%	+9.1%	+9.1%	+9.1%	+2.6%
Director of Nursing/Midwifery	25	-1	-1	+1	-5	-5	+1	-4.6%	-4.0%	+4.2%	-16.4%	-16.4%	+3.6%
Nurse/ Midwife Manager	355	+9	+23	+14	+6	+6	+1	+2.6%	+6.9%	+4.0%	+1.6%	+1.6%	+0.2%
Advanced Nurse/ Midwife Practitioner	15	+12	+13	+8	+6	+6		+400.0%	+650.0%	+114.9%	+73.4%	+73.4%	
Clinical Nurse/ Midwife Specialist	103	+18	+13	+14	+10	+10	-1	+20.6%	+14.4%	+16.3%	+10.7%	+10.7%	-1.3%
Nurse/ Midwife Specialist & AN/MP	118	+30	+26	+22	+16	+16	-1	+33.5%	+28.2%	+23.5%	+16.0%	+16.0%	-1.1%
Staff Nurse [Intellectual Disability]	260	+60	+60	+51	+55	+55	+8	+30.1%	+30.0%	+24.7%	+26.7%	+26.7%	+3.2%
Staff Nurse [Psychiatric]	299	-29	-18	-6	+2	+2	+5	-8.8%	-5.8%	-1.9%	+0.6%	+0.6%	+1.6%
Staff Nurses [General/ Children's]	501	-13	-23	-26	-10	-10	-0	-2.5%	-4.3%	-4.9%	-1.9%	-1.9%	-0.0%
Staff Nurse/ Staff Midwife	1,061	+18	+19	+20	+47	+47	+13	+1.7%	+1.8%	+1.9%	+4.6%	+4.6%	+1.2%
Public Health Nurse	152	+6	-1	-3	-4	-4	-1	+3.8%	-0.6%	-2.2%	-2.6%	-2.6%	-0.9%
Public Health Nurse	152	+6	-1	-3	-4	-4	-1	+3.8%	-0.6%	-2.2%	-2.6%	-2.6%	-0.9%
Pre-registration Nurse/ Midwife Intern	39	+38	+35	+28	+36	+36	-0	+2508.0%	+932.2%	+261.6%	+1204.0%	+1204.0%	-0.9%
Post-registration Nurse/ Midwife Student	3	-4	-4	-4	-4	-4		-57.1%	-57.1%	-57.1%	-57.0%	-57.0%	
Nursing/ Midwifery awaiting registration	11	+11	+11	+10				-100.0%	-100.0%	+1000.0%			
Nursing/ Midwifery Student	53	+45	+42	+34	+32	+32	-0	+524.9%	+392.3%	+182.3%	+153.2%	+153.2%	-0.7%
Nursing/ Midwifery other	8	+3	+3	+3	+2	+2	+0	+65.2%	+61.5%	+61.5%	+35.5%	+35.5%	+0.5%
Nursing & Midwifery	1,747	+110	+112	+90	+99	+99	+10	+6.7%	+6.9%	+5.4%	+6.0%	+6.0%	+0.6%
Dietitians	15	+0	-1	-3	-2	-2	+0	+2.8%	-7.2%	-15.8%	-13.3%	-13.3%	+0.3%

Apr 2021 (Dec 2016 figure: 5,280)	WTE Apr 2021	WTE change since Dec 16	WTE change since Dec 17	WTE change since Dec 18	WTE change since Dec 19	WTE change since Dec 19	WTE change since Mar 21	% change since Dec 16	% change since Dec 17	% change since Dec 18	% change since Dec 19	% change since Dec 19	% change since Mar 21
Overall	5,847	+567	+479	+411	+379	+379	+4	+10.7%	+8.9%	+7.6%	+6.9%	+6.9%	+0.1%
Occupational Therapists	134	+14	+20	+10	+5	+5	-1	+12.0%	+17.6%	+8.3%	+4.2%	+4.2%	-0.9%
Orthoptists	3	+1	+1	+1	+1	+1	+0	+72.5%	+32.2%	+30.7%	+29.7%	+29.7%	+13.1%
Physiotherapists	94	+3	+4	+0	+4	+4	-1	+3.8%	+3.9%	+0.5%	+4.7%	+4.7%	-1.5%
Podiatrists & Chiropodists	10	-0	+1	+0	+1	+1	-1	-4.4%	+9.6%	+2.4%	+8.8%	+8.8%	-8.2%
Speech & Language Therapists	73	+9	+0	+2	+4	+4	-1	+13.6%	+0.4%	+3.5%	+5.4%	+5.4%	-2.0%
Therapy Professions	329	+28	+24	+11	+13	+13	-5	+9.3%	+8.0%	+3.6%	+4.0%	+4.0%	-1.4%
Audiology	5	-0	-0	-0	-0	-0	-0	-7.6%	-6.5%	-8.9%	-5.3%	-5.3%	-0.2%
Radiographers	1	+0	-0	+0	+0	+0	-0	+3.6%	-0.7%	+0.0%	+16.1%	+16.1%	-15.8%
Health Science/ Diagnostics	6	-0	-0	-0	-0	-0	-0	-5.3%	-5.3%	-7.1%	-1.2%	-1.2%	-4.2%
Social Care	14	+1	+3	+3	+3	+3	+0	+9.6%	+22.1%	+24.3%	+28.0%	+28.0%	+1.3%
Social Workers	92	+12	+13	+14	+7	+7	-2	+14.8%	+16.0%	+18.3%	+8.8%	+8.8%	-1.7%
Psychologists	65	+11	+8	+4	+5	+5	+0	+19.5%	+13.5%	+6.6%	+9.1%	+9.1%	+0.1%
Pharmacy	3	+1	+1	+1	+1	+1		+66.7%	+66.7%	+56.3%	+66.7%	+66.7%	
Counsellor Therapists	23	+5	+2	+3	+3	+3	-0	+26.0%	+10.8%	+16.5%	+15.4%	+15.4%	-1.7%
Dental Hygienists	5	+0	-0	+0	+0	+0		+3.3%	-6.0%	+4.3%	+8.0%	+8.0%	
Other Health & Social Care	2	-6	-6	-5	-6	-6	-1	-71.3%	-74.2%	-69.1%	-71.1%	-71.1%	-30.8%
H&SC, Other	30	-1	-5	-2	-2	-2	-1	-2.3%	-13.2%	-5.0%	-6.4%	-6.4%	-4.4%
Health & Social Care Professionals	540	+52	+44	+31	+27	+27	-8	+10.6%	+8.8%	+6.2%	+5.4%	+5.4%	-1.4%
Executive Management	8	+1		+0	+1	+1		+14.3%		+1.8%	+17.1%	+17.1%	
Senior Management (VIII & GM)	55	+16	+15	+6	+2	+2	-0	+39.8%	+36.3%	+12.2%	+4.5%	+4.5%	-0.0%
Management (VIII & above)	63	+17	+15	+6	+4	+4	-0	+36.0%	+30.3%	+10.7%	+6.0%	+6.0%	-0.0%
Middle Management (V-VII)	177	+81	+70	+63	+42	+42	-1	+84.8%	+66.2%	+55.5%	+31.4%	+31.4%	-0.6%
Other Administrative	1												
Administrative/ Supervisory (V to VII)	178	+81	+70	+63	+42	+42	-1	+83.9%	+65.6%	+55.0%	+31.2%	+31.2%	-0.6%
General Administrative (III & IV)	499	+59	+61	+49	+44	+44	+2	+13.3%	+14.0%	+10.9%	+9.6%	+9.6%	+0.3%
Clerical (III & IV)	499	+59	+61	+49	+44	+44	+2	+13.3%	+14.0%	+10.9%	+9.6%	+9.6%	+0.3%
Management & Administrative	740	+156	+146	+118	+89	+89	+1	+26.8%	+24.7%	+19.0%	+13.7%	+13.7%	+0.1%
Catering	63	+8	+5	+5	+3	+3	-1	+13.6%	+8.5%	+7.9%	+4.6%	+4.6%	-1.5%
Household Services	214	-19	-3	-2	+10	+10	-3	-8.3%	-1.5%	-0.8%	+4.8%	+4.8%	-1.2%
Other Support	31	+9	+2	-4	-2	-2	-1	+38.5%	+7.0%	-10.3%	-7.2%	-7.2%	-2.2%
Portering	7	-2	-1	-1	-1	-1		-22.9%	-12.4%	-11.8%	-12.9%	-12.9%	
Support	315	-5	+3	-2	+9	+9	-4	-1.6%	+0.9%	-0.5%	+3.0%	+3.0%	-1.3%
Maintenance	37	-1	-0	+3	+1	+1	+2	-2.4%	-1.3%	+9.0%	+3.5%	+3.5%	+6.2%
Maintenance/ Technical	37	-1	-0	+3	+1	+1	+2	-2.4%	-1.3%	+9.0%	+3.5%	+3.5%	+6.2%
General Support	352	-6	+2	+1	+10	+10	-2	-1.7%	+0.7%	+0.4%	+3.1%	+3.1%	-0.6%

Apr 2021 (Dec 2016 figure: 5,280)	WTE Apr 2021	WTE change since Dec 16	WTE change since Dec 17	WTE change since Dec 18	WTE change since Dec 19	WTE change since Dec 19	WTE change since Mar 21	% change since Dec 16	% change since Dec 17	% change since Dec 18	% change since Dec 19	% change since Dec 19	% change since Mar 21
Overall	5,847	+567	+479	+411	+379	+379	+4	+10.7%	+8.9%	+7.6%	+6.9%	+6.9%	+0.1%
HCA, Nurse's Aide, etc.	1,458	+107	+52	+41	+55	+55	+10	+7.9%	+3.7%	+2.9%	+3.9%	+3.9%	+0.7%
Health & Social Care Assistants	29	+14	+12	+2	+10	+10	-0	+98.2%	+73.6%	+7.5%	+49.2%	+49.2%	-1.4%
Swabber (COVID-19)	57	+57	+57	+57	+57	+57	-1	-100.0%	-100.0%	-100.0%	-100.0%	-100.0%	-1.3%
Health Care Assistants	1,544	+178	+121	+100	+121	+121	+9	+13.0%	+8.5%	+6.9%	+8.5%	+8.5%	+0.6%
Home Help	582	+35	+20	+45	+26	+26	-13	+6.4%	+3.6%	+8.3%	+4.6%	+4.6%	-2.2%
Care, other	143	+11	+8	+11	+12	+12	+8	+8.7%	+5.8%	+8.3%	+9.3%	+9.3%	+5.6%
Patient & Client Care	2,269	+225	+149	+156	+159	+159	+3	+11.0%	+7.0%	+7.4%	+7.5%	+7.5%	+0.1%

Source: Health Service Personnel Census

Longitudinal Employment Levels by Care Group - Dec 2015 to Apr 2021

Community Health & Wellbeing

Apr 2021 (figure:)	WTE Apr 2021	WTE change since	WTE change since	WTE change since	WTE change since	WTE change since	WTE change since Mar 21	% change since	% change since	% change since	% change since	% change since	% change since Mar 21
Overall	19	+19	+19	+19	+19	+19	+0	-100.0%	-100.0%	-100.0%	-100.0%	-100.0%	+1.7%
Medical & Dental	1	+1	+1	+1	+1	+1		-1.0%	-1.0%	-1.0%	-1.0%	-1.0%	+0.0%
Medical/ Dental, other	1	+1	+1	+1	+1	+1		-1.0%	-1.0%	-1.0%	-1.0%	-1.0%	+0.0%
Nursing & Midwifery	2	+2	+2	+2	+2	+2	-0	-1.0%	-1.0%	-1.0%	-1.0%	-1.0%	-0.0%
Nurse/ Midwife Manager	1	+1	+1	+1	+1	+1		-1.0%	-1.0%	-1.0%	-1.0%	-1.0%	+0.0%
Nurse/ Midwife Specialist & AN/MP	1	+1	+1	+1	+1	+1	+1	-1.0%	-1.0%	-1.0%	-1.0%	-1.0%	-1.0%
Staff Nurse/ Staff Midwife							-1	-1.0%	-1.0%	-1.0%	-1.0%	-1.0%	-1.0%
Health & Social Care Professionals	1	+1	+1	+1	+1	+1		-1.0%	-1.0%	-1.0%	-1.0%	-1.0%	+0.0%
Therapy Professions	1	+1	+1	+1	+1	+1		-1.0%	-1.0%	-1.0%	-1.0%	-1.0%	+0.0%
Management & Administrative	15	+15	+15	+15	+15	+15	+0	-1.0%	-1.0%	-1.0%	-1.0%	-1.0%	+0.0%
Management (VIII & above)	1	+1	+1	+1	+1	+1		-1.0%	-1.0%	-1.0%	-1.0%	-1.0%	+0.0%
Administrative/ Supervisory (V to VII)	10	+10	+10	+10	+10	+10	+0	-1.0%	-1.0%	-1.0%	-1.0%	-1.0%	+0.0%
Clerical (III & IV)	4	+4	+4	+4	+4	+4	+0	-1.0%	-1.0%	-1.0%	-1.0%	-1.0%	+0.0%

Source: Health Service Personnel Census

Mental Health

Apr 2021 (Dec 2016 figure: 948)	WTE Apr 2021	WTE change since Dec 16	WTE change since Dec 17	WTE change since Dec 18	WTE change since Dec 19	WTE change since Dec 19	WTE change since Mar 21	% change since Dec 16	% change since Dec 17	% change since Dec 18	% change since Dec 19	% change since Dec 19	% change since Mar 21
Overall	1,003	+55	+61	+62	+51	+51	+9	+5.8%	+6.5%	+6.6%	+5.3%	+5.3%	+0.9%
Medical & Dental	87	+15	+15	+10	+7	+7	+2	+0.2%	+0.2%	+0.1%	+0.1%	+0.1%	+0.0%
Consultants	36	+10	+9	+7	+5	+5	-0	+0.4%	+0.4%	+0.2%	+0.2%	+0.2%	-0.0%
Registrars	33	+16	+13	+8	+8	+8	+1	+1.0%	+0.7%	+0.4%	+0.3%	+0.3%	+0.0%
SHO/ Interns	19	-11	-7	-6	-6	-6	+1	-0.4%	-0.3%	-0.2%	-0.3%	-0.3%	+0.1%
Nursing & Midwifery	511	+10	+17	+26	+29	+29	+4	+0.0%	+0.0%	+0.1%	+0.1%	+0.1%	+0.0%
Nurse/ Midwife Manager	123	+4	+5	+6	+6	+6	+0	+0.0%	+0.0%	+0.1%	+0.0%	+0.0%	+0.0%
Nurse/ Midwife Specialist & AN/MP	71	+13	+10	+7	+4	+4	-1	+0.2%	+0.2%	+0.1%	+0.1%	+0.1%	-0.0%
Staff Nurse/ Staff Midwife	300	-25	-16	-3	+3	+3	+6	-0.1%	-0.0%	-0.0%	+0.0%	+0.0%	+0.0%
Nursing/ Midwifery Student	16	+16	+16	+15	+16	+16	-0	-1.0%	-1.0%	+14.7%	-1.0%	-1.0%	-0.0%
Nursing/ Midwifery other	2	+2	+2	+2	+2	+2		-1.0%	-1.0%	-1.0%	-1.0%	-1.0%	+0.0%
Health & Social Care Professionals	122	+15	+16	+10	+9	+9	-1	+0.1%	+0.2%	+0.1%	+0.1%	+0.1%	-0.0%
Therapy Professions	38	+6	+6	+4	+2	+2	-1	+0.2%	+0.2%	+0.1%	+0.1%	+0.1%	-0.0%
Social Care	4	+0	-0	+0	+0	+0	+0	+0.0%	-0.0%	+0.0%	+0.0%	+0.0%	+0.1%
Social Workers	41	+3	+5	+4	+2	+2	-0	+0.1%	+0.1%	+0.1%	+0.1%	+0.1%	-0.0%
Psychologists	24	+2	+3	+1	+3	+3	+0	+0.1%	+0.1%	+0.0%	+0.1%	+0.1%	+0.0%
Pharmacy	1			-0				+0.0%	+0.0%	-0.1%	+0.0%	+0.0%	+0.0%
H&SC, Other	14	+3	+2	+2	+1	+1	-0	+0.3%	+0.2%	+0.2%	+0.1%	+0.1%	-0.0%
Management & Administrative	125	+33	+26	+20	+4	+4	+2	+0.4%	+0.3%	+0.2%	+0.0%	+0.0%	+0.0%
Management (VIII & above)	5	+2	+1	+1	-1	-1	-1	+0.6%	+0.2%	+0.2%	-0.1%	-0.1%	-0.1%
Administrative/ Supervisory (V to VII)	31	+18	+14	+11	+1	+1	+0	+1.3%	+0.9%	+0.6%	+0.0%	+0.0%	+0.0%
Clerical (III & IV)	89	+14	+11	+8	+4	+4	+2	+0.2%	+0.1%	+0.1%	+0.0%	+0.0%	+0.0%
General Support	80	-13	-6	-3	+1	+1	+1	-0.1%	-0.1%	-0.0%	+0.0%	+0.0%	+0.0%
Support	63	-11	-5	-3	+1	+1	+0	-0.2%	-0.1%	-0.1%	+0.0%	+0.0%	+0.0%
Maintenance/ Technical	16	-2	-0	+1	-0	-0	+0	-0.1%	-0.0%	+0.0%	-0.0%	-0.0%	+0.0%
Patient & Client Care	78	-5	-8	-2	+1	+1	+2	-0.1%	-0.1%	-0.0%	+0.0%	+0.0%	+0.0%
Health Care Assistants	69	-3	-6	+2	+3	+3	+1	-0.0%	-0.0%	+0.0%	+0.0%	+0.0%	+0.0%
Care, other	9	-1	-2	-4	-2	-2	+0	-0.1%	-0.2%	-0.3%	-0.2%	-0.2%	+0.0%

Source: Health Service Personnel Census

Primary Care

Apr 2021 (Dec 2016 figure: 1,257)	WTE Apr 2021	WTE change since Dec 16	WTE change since Dec 17	WTE change since Dec 18	WTE change since Dec 19	WTE change since Dec 19	WTE change since Mar 21	% change since Dec 16	% change since Dec 17	% change since Dec 18	% change since Dec 19	% change since Dec 19	% change since Mar 21
Overall	1,346	+89	+158	+113	+164	+164	-23	+7.1%	+13.3%	+9.2%	+13.9%	+13.9%	-1.7%
Medical & Dental	92	+12	+8	+2	-0	-0	-2	+0.2%	+0.1%	+0.0%	-0.0%	-0.0%	-0.0%
Consultants	4	+1	+1	+1	+1	+1		+0.2%	+0.2%	+0.2%	+0.2%	+0.2%	+0.0%
Registrars	42	+13	+10	+3	+1	+1	+1	+0.5%	+0.3%	+0.1%	+0.0%	+0.0%	+0.0%
SHO/ Interns	1	+1						-1.0%	+0.0%	+0.0%	+0.0%	+0.0%	+0.0%
Medical/ Dental, other	46	-2	-3	-1	-2	-2	-3	-0.1%	-0.1%	-0.0%	-0.0%	-0.0%	-0.1%
Nursing & Midwifery	316	+19	+10	+11	+9	+9	-6	+0.1%	+0.0%	+0.0%	+0.0%	+0.0%	-0.0%
Nurse/ Midwife Manager	39	+2	+4	+3	+3	+3	+1	+0.1%	+0.1%	+0.1%	+0.1%	+0.1%	+0.0%
Nurse/ Midwife Specialist & AN/MP	27	+7	+4	+7	+6	+6	-1	+0.4%	+0.2%	+0.4%	+0.3%	+0.3%	-0.0%
Staff Nurse/ Staff Midwife	94	+8	+7	+8	+9	+9	-4	+0.1%	+0.1%	+0.1%	+0.1%	+0.1%	-0.0%
Public Health Nurse	151	+5	-2	-4	-5	-5	-2	+0.0%	-0.0%	-0.0%	-0.0%	-0.0%	-0.0%
Nursing/ Midwifery Student	3	-4	-4	-4	-4	-4		-0.6%	-0.6%	-0.6%	-0.6%	-0.6%	+0.0%
Nursing/ Midwifery other	1	+1	+1	+1			+0	-1.0%	-1.0%	-1.0%	+0.0%	+0.0%	+0.0%
Health & Social Care Professionals	292	-7	-15	-24	+5	+5	-8	-0.0%	-0.1%	-0.1%	+0.0%	+0.0%	-0.0%
Therapy Professions	231	-6	-10	-17	+4	+4	-7	-0.0%	-0.0%	-0.1%	+0.0%	+0.0%	-0.0%
Health Science/ Diagnostics	5	-0	-0	-0	-0	-0	-0	-0.1%	-0.1%	-0.1%	-0.1%	-0.1%	-0.0%
Social Workers	18	-2	-3	-3	+5	+5	-0	-0.1%	-0.2%	-0.1%	+0.4%	+0.4%	-0.0%
Psychologists	30	-1	-2	-5	-5	-5	-1	-0.0%	-0.1%	-0.1%	-0.1%	-0.1%	-0.0%
Pharmacy	2	+1	+1	+1	+1	+1		+1.4%	+1.4%	+1.4%	+1.4%	+1.4%	+0.0%
H&SC, Other	7	+1	-0	+0	+0	+0		+0.2%	-0.1%	+0.0%	+0.1%	+0.1%	+0.0%
Management & Administrative	382	+56	+54	+34	+51	+51	-3	+0.2%	+0.2%	+0.1%	+0.2%	+0.2%	-0.0%
Management (VIII & above)	33	+4	+3	-4	+1	+1	+1	+0.1%	+0.1%	-0.1%	+0.0%	+0.0%	+0.0%
Administrative/ Supervisory (V to VII)	84	+28	+19	+17	+20	+20	-1	+0.5%	+0.3%	+0.3%	+0.3%	+0.3%	-0.0%
Clerical (III & IV)	266	+24	+32	+21	+30	+30	-2	+0.1%	+0.1%	+0.1%	+0.1%	+0.1%	-0.0%
General Support	94	+22	+19	+14	+16	+16	-1	+0.3%	+0.3%	+0.2%	+0.2%	+0.2%	-0.0%
Support	86	+21	+17	+11	+14	+14	-2	+0.3%	+0.3%	+0.1%	+0.2%	+0.2%	-0.0%
Maintenance/ Technical	8	+1	+2	+3	+2	+2	+1	+0.2%	+0.3%	+0.8%	+0.3%	+0.3%	+0.1%
Patient & Client Care	170	-14	+82	+76	+83	+83	-3	-0.1%	+0.9%	+0.8%	+1.0%	+1.0%	-0.0%
Health Care Assistants	104	+74	+74	+65	+73	+73	-4	+2.4%	+2.4%	+1.6%	+2.3%	+2.3%	-0.0%
Home Help	0	-94	+0	+0	+0	+0	-0	-1.0%	-1.0%	-1.0%	-1.0%	-1.0%	-0.2%
Care, other	65	+7	+8	+10	+10	+10	+1	+0.1%	+0.1%	+0.2%	+0.2%	+0.2%	+0.0%

Source: Health Service Personnel Census

Disabilities

Apr 2021 (Dec 2016 figure: 1,430)	WTE Apr 2021	WTE change since Dec 16	WTE change since Dec 17	WTE change since Dec 18	WTE change since Dec 19	WTE change since Dec 19	WTE change since Mar 21	% change since Dec 16	% change since Dec 17	% change since Dec 18	% change since Dec 19	% change since Dec 19	% change since Mar 21
Overall	1,591	+161	+134	+112	+93	+93	+17	+11.3%	+9.2%	+7.6%	+6.2%	+6.2%	+1.1%
Medical & Dental	3	-0	-0	-0	-0	-0		-0.0%	-0.0%	-0.0%	-0.0%	-0.0%	+0.0%
Consultants		-1	-1	-1				-1.0%	-1.0%	-1.0%	-1.0%	-1.0%	-1.0%
Medical/ Dental, other	3	+1	+1	+1	-0	-0		+0.4%	+0.4%	+0.4%	-0.0%	-0.0%	+0.0%
Nursing & Midwifery	494	+44	+46	+38	+39	+39	+5	+0.1%	+0.1%	+0.1%	+0.1%	+0.1%	+0.0%
Nurse/ Midwife Manager	105	+5	+4	+6	+0	+0	-1	+0.1%	+0.0%	+0.1%	+0.0%	+0.0%	-0.0%
Nurse/ Midwife Specialist & AN/MP	10	+0	+2	+3	+3	+3		+0.0%	+0.2%	+0.4%	+0.4%	+0.4%	+0.0%
Staff Nurse/ Staff Midwife	339	+6	+9	+6	+15	+15	+5	+0.0%	+0.0%	+0.0%	+0.0%	+0.0%	+0.0%
Public Health Nurse	1	+1	+1	+1	+1	+1	+1	-1.0%	-1.0%	-1.0%	-1.0%	-1.0%	-1.0%
Nursing/ Midwifery Student	34	+33	+31	+24	+20	+20	-0	+22.0%	+8.1%	+2.2%	+1.5%	+1.5%	-0.0%
Nursing/ Midwifery other	4	-1	-1	-1	-1	-1		-0.2%	-0.2%	-0.2%	-0.2%	-0.2%	+0.0%
Health & Social Care Professionals	92	+30	+27	+31	+9	+9	+2	+0.5%	+0.4%	+0.5%	+0.1%	+0.1%	+0.0%
Therapy Professions	43	+20	+20	+19	+1	+1	+2	+0.9%	+0.8%	+0.8%	+0.0%	+0.0%	+0.1%
Social Care	11	+1	+3	+3	+3	+3	-0	+0.1%	+0.3%	+0.3%	+0.4%	+0.4%	-0.0%
Social Workers	17	+4	+4	+5	+2	+2	-1	+0.3%	+0.3%	+0.4%	+0.1%	+0.1%	-0.0%
Psychologists	12	+9	+7	+8	+8	+8	+1	+3.6%	+1.5%	+2.0%	+1.6%	+1.6%	+0.1%
H&SC, Other	9	-5	-6	-4	-4	-4	-1	-0.4%	-0.4%	-0.3%	-0.3%	-0.3%	-0.1%
Management & Administrative	107	+22	+26	+24	+16	+16	+2	+0.3%	+0.3%	+0.3%	+0.2%	+0.2%	+0.0%
Management (VIII & above)	17	+6	+5	+4	+3	+3		+0.5%	+0.4%	+0.3%	+0.2%	+0.2%	+0.0%
Administrative/ Supervisory (V to VII)	37	+14	+17	+16	+9	+9	+1	+0.6%	+0.8%	+0.8%	+0.3%	+0.3%	+0.0%
Clerical (III & IV)	54	+2	+5	+5	+4	+4	+2	+0.0%	+0.1%	+0.1%	+0.1%	+0.1%	+0.0%
General Support	55	-5	-4	-3	-0	-0	-1	-0.1%	-0.1%	-0.0%	-0.0%	-0.0%	-0.0%
Support	49	-5	-3	-3	-0	-0	-1	-0.1%	-0.1%	-0.1%	-0.0%	-0.0%	-0.0%
Maintenance/ Technical	6	-1	-1					-0.1%	-0.1%	+0.0%	+0.0%	+0.0%	+0.0%
Patient & Client Care	841	+71	+39	+21	+29	+29	+9	+0.1%	+0.0%	+0.0%	+0.0%	+0.0%	+0.0%
Health Care Assistants	786	+67	+36	+14	+25	+25	+9	+0.1%	+0.0%	+0.0%	+0.0%	+0.0%	+0.0%
Home Help	14	-4	-0	+1	+1	+1	-1	-0.2%	-0.0%	+0.1%	+0.0%	+0.0%	-0.0%
Care, other	41	+8	+4	+7	+4	+4	+1	+0.2%	+0.1%	+0.2%	+0.1%	+0.1%	+0.0%

Source: Health Service Personnel Census

Older People

Apr 2021 (Dec 2016 figure: 1,645)	WTE Apr 2021	WTE change since Dec 16	WTE change since Dec 17	WTE change since Dec 18	WTE change since Dec 19	WTE change since Dec 19	WTE change since Mar 21	% change since Dec 16	% change since Dec 17	% change since Dec 18	% change since Dec 19	% change since Dec 19	% change since Mar 21
Overall	1,887	+242	+107	+105	+52	+52	+1	+14.7%	+6.0%	+5.9%	+2.8%	+2.8%	+0.1%
Medical & Dental	16	+2	+1	+1	-14	-14	+0	+0.1%	+0.1%	+0.1%	-0.5%	-0.5%	+0.0%
Medical/ Dental, other	16	+2	+1	+1	-14	-14	+0	+0.1%	+0.1%	+0.1%	-0.5%	-0.5%	+0.0%
Nursing & Midwifery	424	+35	+37	+14	+19	+19	+7	+0.1%	+0.1%	+0.0%	+0.0%	+0.0%	+0.0%
Nurse/ Midwife Manager	87	-4	+9	-2	-4	-4	+0	-0.0%	+0.1%	-0.0%	-0.0%	-0.0%	+0.0%
Nurse/ Midwife Specialist & AN/MP	9	+8	+9	+5	+2	+2		+8.0%	-1.0%	+1.3%	+0.3%	+0.3%	+0.0%
Staff Nurse/ Staff Midwife	327	+30	+18	+9	+20	+20	+7	+0.1%	+0.1%	+0.0%	+0.1%	+0.1%	+0.0%
Nursing/ Midwifery other	1	+1	+1	+1	+1	+1		-1.0%	-1.0%	-1.0%	-1.0%	-1.0%	+0.0%
Health & Social Care Professionals	33	+13	+15	+12	+3	+3	-0	+0.7%	+0.9%	+0.6%	+0.1%	+0.1%	-0.0%
Therapy Professions	16	+7	+8	+4	+5	+5	+0	+0.8%	+1.0%	+0.4%	+0.4%	+0.4%	+0.0%
Health Science/ Diagnostics	1	+0	-0	+0	+0	+0	-0	+0.0%	-0.0%	+0.0%	+0.2%	+0.2%	-0.2%
Social Workers	16	+6	+7	+8	-2	-2	-1	+0.7%	+0.9%	+1.0%	-0.1%	-0.1%	-0.0%
Management & Administrative	110	+30	+25	+25	+3	+3	-1	+0.4%	+0.3%	+0.3%	+0.0%	+0.0%	-0.0%
Management (VIII & above)	8	+4	+5	+5	+0	+0		+1.0%	+1.7%	+1.7%	+0.0%	+0.0%	+0.0%
Administrative/ Supervisory (V to VII)	16	+11	+10	+9	+2	+2	-1	+2.0%	+1.6%	+1.2%	+0.1%	+0.1%	-0.1%
Clerical (III & IV)	86	+15	+10	+11	+1	+1	+0	+0.2%	+0.1%	+0.1%	+0.0%	+0.0%	+0.0%
General Support	124	-10	-8	-7	-6	-6	-1	-0.1%	-0.1%	-0.1%	-0.0%	-0.0%	-0.0%
Support	117	-10	-7	-6	-6	-6	-2	-0.1%	-0.1%	-0.1%	-0.0%	-0.0%	-0.0%
Maintenance/ Technical	7		-1	-1			+1	+0.0%	-0.1%	-0.1%	+0.0%	+0.0%	+0.2%
Patient & Client Care	1,179	+172	+36	+60	+45	+45	-4	+0.2%	+0.0%	+0.1%	+0.0%	+0.0%	-0.0%
Health Care Assistants	584	+40	+17	+19	+21	+21	+2	+0.1%	+0.0%	+0.0%	+0.0%	+0.0%	+0.0%
Home Help	567	+133	+20	+43	+25	+25	-12	+0.3%	+0.0%	+0.1%	+0.0%	+0.0%	-0.0%
Care, other	28	-2	-2	-2	+0	+0	+5	-0.1%	-0.1%	-0.1%	+0.0%	+0.0%	+0.2%

Source: Health Service Personnel Census