

## CHO 1 Employment Report: August 2020

### Employment by Staff Group

Aug 2020 (Dec 2019 figure: 5,468)	WTE Jul 2020	WTE Aug 2020	WTE change since Jul 20	% change since Jul 20	WTE change since Dec 19	WTE change since Aug 19
<b>Overall</b>	<b>5,647</b>	<b>5665</b>	<b>+18</b>	<b>+0.3%</b>	<b>+197</b>	<b>+200</b>
Consultants	36	37	+0	+0.7%	+3	+5
Registrars	79	66	-12	-15.5%	+1	-3
SHO/ Interns	24	26	+2	+8.3%	-0	+2
Medical/ Dental, other	66	65	-1	-1.7%	-15	-1
<b>Medical &amp; Dental</b>	<b>205</b>	<b>194</b>	<b>-11</b>	<b>-5.4%</b>	<b>-11</b>	<b>+2</b>
Nurse/ Midwife Manager	363	359	-4	-1.0%	+10	+8
Nurse/ Midwife Specialist & AN/MP	108	109	+1	+1.4%	+7	+7
Staff Nurse/ Staff Midwife	1,021	1,025	+4	+0.4%	+11	-2
Public Health Nurse	151	150	-0	-0.3%	-6	-4
<i>Pre-registration Nurse/ Midwife Intern</i>	5		-5	-100.0%	-3	-5
<i>Pre-registration Nurse Intern (COVID-19)</i>	40	54	+14	+35.8%	+54	+14
<i>Post-registration Nurse/ Midwife Student</i>	1	1			-6	
<i>Nursing/ Midwifery awaiting registration</i>	11	11				
Nursing/ Midwifery Student	57	66	+9	+16.0%	+45	+47
Nursing/ Midwifery other	8	8	-0	-0.1%	+2	+2
<b>Nursing &amp; Midwifery</b>	<b>1,707</b>	<b>1,717</b>	<b>+10</b>	<b>+0.6%</b>	<b>+69</b>	<b>+59</b>
Therapy Professions	320	325	+5	+1.5%	+9	+7
Health Science/ Diagnostics	6	7	+0	+2.0%	+0	+0
Social Care	12	11	-1	-4.3%	+0	-1
Social Workers	89	88	-2	-1.7%	+3	+6
Psychologists	61	61	-0	-0.4%	+1	+3
Pharmacy	2	2	+0	+1.3%	+0	+0
H&SC, Other	29	30	+1	+4.2%	-2	-1
<b>Health &amp; Social Care Professionals</b>	<b>520</b>	<b>524</b>	<b>+4</b>	<b>+0.8%</b>	<b>+11</b>	<b>+15</b>
Management (VIII & above)	63	64	+1	+1.7%	+4	+5
Administrative/ Supervisory (V to VII)	161	159	-1	-0.7%	+24	+36
Clerical (III & IV)	455	462	+7	+1.4%	+6	+14
<b>Management &amp; Administrative</b>	<b>679</b>	<b>685</b>	<b>+6</b>	<b>+0.9%</b>	<b>+34</b>	<b>+54</b>
Support	313	313	+0	+0.1%	+7	+4
Maintenance/ Technical	37	37	+0	+0.2%	+1	+0
<b>General Support</b>	<b>350</b>	<b>350</b>	<b>+0</b>	<b>+0.1%</b>	<b>+8</b>	<b>+4</b>
Health Care Assistants	1,517	1,519	+2	+0.1%	+96	+86
Care, other	135	134	-1	-1.1%	+3	+3
Home Help	534	542	+8	+1.4%	-14	-23
<b>Patient &amp; Client Care</b>	<b>2,187</b>	<b>2,195</b>	<b>+8</b>	<b>+0.4%</b>	<b>+85</b>	<b>+66</b>

## CHO 1 Employment Report: August 2020

### Community Health & Wellbeing

Aug 2020 ( figure: )	WTE Jul 2020	WTE Aug 2020	WTE change since Jul 20	% change since Jul 20	WTE change since	WTE change since
<b>Total Community Health &amp; Wellbeing</b>	<b>14</b>	<b>14</b>	<b>-0</b>	<b>-1.8%</b>	<b>+14</b>	<b>+14</b>
Management (VIII & above)	1	1			+1	+1
Administrative/ Supervisory (V to VII)	9	9	-0	-2.7%	+9	+9
Clerical (III & IV)	3	3	-0	-0.3%	+3	+3
<b>Management &amp; Administrative</b>	<b>13</b>	<b>13</b>	<b>-0</b>	<b>-1.9%</b>	<b>+13</b>	<b>+13</b>
<b>Patient &amp; Client Care</b>	<b>1</b>	<b>1</b>			<b>+1</b>	<b>+1</b>

### Mental Health

Aug 2020 (Dec 2019 figure: 953)	WTE Jul 2020	WTE Aug 2020	WTE change since Jul 20	% change since Jul 20	WTE change since Dec 19	WTE change since Aug 19
<b>Total Mental Health</b>	<b>970</b>	<b>979</b>	<b>+9</b>	<b>+0.9%</b>	<b>+26</b>	<b>+26</b>
Consultants	33	33	+0	+1.3%	+2	+4
Registrars	24	22	-2	-7.0%	-2	-4
SHO/ Interns	23	25	+2	+8.7%	-0	+2
<b>Medical &amp; Dental</b>	<b>80</b>	<b>81</b>	<b>+1</b>	<b>+1.0%</b>	<b>-0</b>	<b>+2</b>
Nurse/ Midwife Manager	122	124	+2	+1.6%	+7	+4
Nurse/ Midwife Specialist & AN/MP	65	66	+1	+2.2%	-1	-2
Staff Nurse/ Staff Midwife	290	286	-4	-1.4%	-11	-12
Pre-registration Nurse/ Midwife Intern	5		-5	-100.0%		-5
Pre-registration Nurse Intern (COVID-19)	13	26	+14	+106.2%	+26	+14
Nursing/ Midwifery Student	18	26	+8	+46.6%	+26	+18
Nursing/ Midwifery other	1	1	-0	-7.4%	+1	+1
<b>Nursing &amp; Midwifery</b>	<b>496</b>	<b>503</b>	<b>+8</b>	<b>+1.5%</b>	<b>+21</b>	<b>+10</b>
Therapy Professions	36	36	-0	-1.2%	+0	+1
Social Care	3	3	-0	-13.4%	-1	-1
Social Workers	39	38	-1	-2.7%	-1	-1
Psychologists	22	23	+1	+3.6%	+2	+3
Pharmacy	1	1	+0	+2.4%	+0	+0
H&SC, Other	12	13	+1	+4.9%	-0	+1
<b>Health &amp; Social Care Professionals</b>	<b>114</b>	<b>113</b>	<b>-0</b>	<b>-0.4%</b>	<b>+0</b>	<b>+3</b>
Management (VIII & above)	7	8	+0	+5.4%	+2	+2
Administrative/ Supervisory (V to VII)	31	31	-0	-0.8%	+0	+5
Clerical (III & IV)	84	85	+2	+2.2%	+0	+4
<b>Management &amp; Administrative</b>	<b>122</b>	<b>124</b>	<b>+2</b>	<b>+1.6%</b>	<b>+3</b>	<b>+11</b>
Support	64	64	+0	+0.1%	+1	+1
Maintenance/ Technical	17	17	+0	+0.4%	+0	+0
<b>General Support</b>	<b>80</b>	<b>81</b>	<b>+0</b>	<b>+0.2%</b>	<b>+2</b>	<b>+2</b>
Health Care Assistants	68	67	-0	-0.1%	+1	-0
Care, other	11	10	-1	-8.0%	-1	-1
<b>Patient &amp; Client Care</b>	<b>79</b>	<b>78</b>	<b>-1</b>	<b>-1.3%</b>	<b>+1</b>	<b>-1</b>

## Primary Care

Aug 2020 (Dec 2019 figure: 1,182)	WTE Jul 2020	WTE Aug 2020	WTE change since Jul 20	% change since Jul 20	WTE change since Dec 19	WTE change since Aug 19
<b>Total Primary Care</b>	<b>1,241</b>	<b>1,239</b>	<b>-3</b>	<b>-0.2%</b>	<b>+57</b>	<b>+62</b>
Consultants	4	3	-0	-5.4%	+0	+1
Registrars	55	44	-10	-19.2%	+3	+1
SHO/ Interns	1	1	-0	-2.1%	-0	-0
Medical/ Dental, other	46	45	-1	-2.5%	-3	-2
<b>Medical &amp; Dental</b>	<b>105</b>	<b>93</b>	<b>-12</b>	<b>-11.3%</b>	<b>+1</b>	<b>-1</b>
Nurse/ Midwife Manager	42	40	-1	-3.3%	+4	+5
Nurse/ Midwife Specialist & AN/MP	25	25	+0	+0.5%	+4	+4
Staff Nurse/ Staff Midwife	99	100	+1	+1.2%	+15	+17
Public Health Nurse	151	150	-0	-0.3%	-6	-4
<i>Post-registration Nurse/ Midwife Student</i>	1	1			-6	
Nursing/ Midwifery Student	1	1			-6	+0
Nursing/ Midwifery other	1	1				
<b>Nursing &amp; Midwifery</b>	<b>318</b>	<b>318</b>	<b>-0</b>	<b>-0.2%</b>	<b>+11</b>	<b>+23</b>
Therapy Professions	228	236	+8	+3.6%	+9	+3
Health Science/ Diagnostics	5	5	+0	+1.5%	+0	-0
Social Workers	14	14	+0	+1.2%	+1	+2
Psychologists	34	32	-1	-3.1%	-2	-1
Pharmacy	1	1				
H&SC, Other	7	7	-0	-0.4%	+0	-0
<b>Health &amp; Social Care Professionals</b>	<b>289</b>	<b>296</b>	<b>+7</b>	<b>+2.5%</b>	<b>+9</b>	<b>+4</b>
Management (VIII & above)	31	32	+1	+2.2%	+0	+0
Administrative/ Supervisory (V to VII)	73	71	-1	-1.8%	+8	+13
Clerical (III & IV)	237	240	+4	+1.6%	+5	+5
<b>Management &amp; Administrative</b>	<b>341</b>	<b>344</b>	<b>+3</b>	<b>+0.9%</b>	<b>+13</b>	<b>+18</b>
Support	80	80	-0	-0.1%	+8	+8
Maintenance/ Technical	7	7	+0	+0.1%	+1	+1
<b>General Support</b>	<b>87</b>	<b>87</b>	<b>-0</b>	<b>-0.1%</b>	<b>+9</b>	<b>+9</b>
Health Care Assistants	45	45	-0	-0.1%	+13	+7
Care, other	57	56	-1	-1.3%	+1	+2
Home Help	0	1	+0	+85.7%	+1	+1
<b>Patient &amp; Client Care</b>	<b>102</b>	<b>102</b>	<b>-1</b>	<b>-0.5%</b>	<b>+15</b>	<b>+10</b>

## Social Care

Aug 2020 (Dec 2019 figure: 3,334)	WTE Jul 2020	WTE Aug 2020	WTE change since Jul 20	% change since Jul 20	WTE change since Dec 19	WTE change since Aug 19
<b>Total Social Care</b>	<b>3,421</b>	<b>3,433</b>	<b>+12</b>	<b>+0.4%</b>	<b>+99</b>	<b>+99</b>
Medical/ Dental, other	20	20	+0	+0.0%	-12	+1
<b>Medical &amp; Dental</b>	<b>20</b>	<b>20</b>			<b>-12</b>	<b>+1</b>
Nurse/ Midwife Manager	199	195	-4	-2.1%	-1	-1
Nurse/ Midwife Specialist & AN/MP	18	18	-0	-0.3%	+4	+5
Staff Nurse/ Staff Midwife	632	639	+7	+1.1%	+7	-7
Pre-registration Nurse/ Midwife Intern				-100.0%	-3	
Pre-registration Nurse Intern (COVID-19)	27	28	+1	+2.7%	+28	+1
Nursing/ Midwifery awaiting registration	11	11				
Nursing/ Midwifery Student	38	39	+1	+1.9%	+25	+28
Nursing/ Midwifery other	6	6	+0	+1.1%	+1	+1
<b>Nursing &amp; Midwifery</b>	<b>893</b>	<b>896</b>	<b>+3</b>	<b>+0.4%</b>	<b>+37</b>	<b>+26</b>
Therapy Professions	56	53	-3	-4.9%	-0	+3
Health Science/ Diagnostics	1	1	+0	+4.1%	+0	+0
Social Care	9	9	-0	-0.8%	+1	+0
Social Workers	36	35	-1	-1.7%	+2	+5
Psychologists	6	6	-0	-0.2%	+1	+1
H&SC, Other	10	10	+1	+7.0%	-2	-2
<b>Health &amp; Social Care Professionals</b>	<b>117</b>	<b>115</b>	<b>-3</b>	<b>-2.3%</b>	<b>+2</b>	<b>+8</b>
Management (VIII & above)	23	23			+1	+2
Administrative/ Supervisory (V to VII)	48	48	+1	+1.3%	+7	+9
Clerical (III & IV)	132	133	+1	+0.7%	-2	+2
<b>Management &amp; Administrative</b>	<b>203</b>	<b>205</b>	<b>+2</b>	<b>+0.8%</b>	<b>+6</b>	<b>+13</b>
Support	169	169	+0	+0.1%	-2	-5
Maintenance/ Technical	13	13				-1
<b>General Support</b>	<b>182</b>	<b>182</b>	<b>+0</b>	<b>+0.1%</b>	<b>-2</b>	<b>-6</b>
Health Care Assistants	1,405	1,407	+2	+0.2%	+83	+79
Care, other	66	67	+0	+0.3%	+2	+2
Home Help	534	541	+7	+1.4%	-15	-24
<b>Patient &amp; Client Care</b>	<b>2,005</b>	<b>2,015</b>	<b>+10</b>	<b>+0.5%</b>	<b>+69</b>	<b>+57</b>

## CHO 1 Employment Report: August 2020

### Disabilities

Aug 2020 (Dec 2019 figure: 1,498)	WTE Jul 2020	WTE Aug 2020	WTE change since Jul 20	% change since Jul 20	WTE change since Dec 19	WTE change since Aug 19
<b>Total Disabilities</b>	<b>1,536</b>	<b>1,542</b>	<b>+7</b>	<b>+0.4%</b>	<b>+44</b>	<b>+59</b>
Medical/ Dental, other	3	3			+0	+0
<b>Medical &amp; Dental</b>	<b>3</b>	<b>3</b>			<b>+0</b>	<b>+0</b>
Nurse/ Midwife Manager	109	107	-1	-1.2%	+2	+6
Nurse/ Midwife Specialist & AN/MP	10	10	-0	-0.4%	+3	+3
Staff Nurse/ Staff Midwife	319	323	+4	+1.1%	-1	-9
<i>Pre-registration Nurse/ Midwife Intern</i>				-100.0%	-3	
<i>Pre-registration Nurse Intern (COVID-19)</i>	27	28	+1	+2.7%	+28	+1
<i>Nursing/ Midwifery awaiting registration</i>	11	11				
Nursing/ Midwifery Student	38	39	+1	+1.9%	+25	+28
Nursing/ Midwifery other	5	5	+0	+1.3%	+0	+0
<b>Nursing &amp; Midwifery</b>	<b>480</b>	<b>483</b>	<b>+3</b>	<b>+0.6%</b>	<b>+29</b>	<b>+28</b>
Therapy Professions	44	42	-3	-6.3%	-1	+3
Social Care	9	9	-0	-0.8%	+1	+0
Social Workers	20	19	-0	-2.1%	+4	+6
Psychologists	6	6	-0	-0.2%	+1	+1
H&SC, Other	10	10	+1	+7.0%	-2	-2
<b>Health &amp; Social Care Professionals</b>	<b>88</b>	<b>85</b>	<b>-3</b>	<b>-3.0%</b>	<b>+3</b>	<b>+8</b>
Management (VIII & above)	15	15			+1	+2
Administrative/ Supervisory (V to VII)	32	33	+1	+2.2%	+6	+8
Clerical (III & IV)	50	50	+0	+0.6%	+0	+5
<b>Management &amp; Administrative</b>	<b>97</b>	<b>98</b>	<b>+1</b>	<b>+1.0%</b>	<b>+7</b>	<b>+15</b>
Support	50	50	-0	-0.1%	+1	+1
Maintenance/ Technical	6	6				-0
<b>General Support</b>	<b>56</b>	<b>56</b>	<b>-0</b>	<b>-0.1%</b>	<b>+1</b>	<b>+1</b>
Health Care Assistants	759	763	+4	+0.5%	+2	+3
Care, other	38	38	+0	+1.1%	+1	+3
Home Help	14	14	+1	+5.8%	+1	+1
<b>Patient &amp; Client Care</b>	<b>811</b>	<b>816</b>	<b>+5</b>	<b>+0.6%</b>	<b>+4</b>	<b>+7</b>

## Older People

Aug 2020 (Dec 2019 figure: 1,836)	WTE Jul 2020	WTE Aug 2020	WTE change since Jul 20	% change since Jul 20	WTE change since Dec 19	WTE change since Aug 19
<b>Total Older People</b>	<b>1,885</b>	<b>1,891</b>	<b>+6</b>	<b>+0.3%</b>	<b>+55</b>	<b>+40</b>
Medical/ Dental, other	17	17	+0	+0.0%	-12	+1
<b>Medical &amp; Dental</b>	<b>17</b>	<b>17</b>			<b>-12</b>	<b>+1</b>
Nurse/ Midwife Manager	91	88	-3	-3.1%	-3	-7
Nurse/ Midwife Specialist & AN/MP	8	8	-0	-0.1%	+1	+2
Staff Nurse/ Staff Midwife	313	316	+3	+1.1%	+9	+2
Nursing/ Midwifery other	1	1			+1	+1
<b>Nursing &amp; Midwifery</b>	<b>412</b>	<b>413</b>	<b>+0</b>	<b>+0.1%</b>	<b>+8</b>	<b>-2</b>
<b>Health &amp; Social Care Professionals</b>	<b>29</b>	<b>29</b>	<b>-0</b>	<b>-0.3%</b>	<b>-1</b>	<b>-1</b>
Management (VIII & above)	8	8			+0	+0
Administrative/ Supervisory (V to VII)	15	15	-0	-0.7%	+1	+1
Clerical (III & IV)	82	83	+1	+0.8%	-2	-3
<b>Management &amp; Administrative</b>	<b>106</b>	<b>106</b>	<b>+1</b>	<b>+0.6%</b>	<b>-1</b>	<b>-2</b>
Support	119	119	+0	+0.3%	-3	-6
Maintenance/ Technical	7	7				-1
<b>General Support</b>	<b>126</b>	<b>126</b>	<b>+0</b>	<b>+0.2%</b>	<b>-3</b>	<b>-7</b>
Health Care Assistants	646	644	-2	-0.3%	+81	+76
Care, other	28	28	-0	-0.8%	+0	-1
Home Help	520	527	+6	+1.2%	-16	-24
<b>Patient &amp; Client Care</b>	<b>1,195</b>	<b>1,199</b>	<b>+5</b>	<b>+0.4%</b>	<b>+65</b>	<b>+51</b>

## CHO 1 Employment by Administration (HSE / S38): August 2020

Aug 2020 (Dec 2019 figure: 5,468)	WTE Jul 2020	WTE Aug 2020	WTE change since Jul 20	% change since Jul 20	WTE change since Dec 19	WTE change since Aug 19
<b>Overall</b>	<b>5,647</b>	<b>5,665</b>	<b>+18</b>	<b>+0.3%</b>	<b>+197</b>	<b>+200</b>
<b>HSE</b>	<b>5,647</b>	<b>5,665</b>	<b>+18</b>	<b>+0.3%</b>	<b>+197</b>	<b>+200</b>

### HSE

Aug 2020 (Dec 2019 figure: 5,468)	WTE Jul 2020	WTE Aug 2020	WTE change since Jul 20	% change since Jul 20	WTE change since Dec 19	WTE change since Aug 19
<b>Overall</b>	<b>5,647</b>	<b>5,665</b>	<b>+18</b>	<b>+0.3%</b>	<b>+197</b>	<b>+200</b>
Consultants	36	37	+0	+0.0%	+3	+5
Registrars	79	66	-12	-0.2%	+1	-3
SHO/ Interns	24	26	+2	+0.1%	-0	+2
Medical/ Dental, other	66	65	-1	-0.0%	-15	-1
<b>Medical &amp; Dental</b>	<b>205</b>	<b>194</b>	<b>-11</b>	<b>-5.4%</b>	<b>-11</b>	<b>+2</b>
Nurse/ Midwife Manager	363	359	-4	-0.0%	+10	+8
Nurse/ Midwife Specialist & AN/MP	108	109	+1	+0.0%	+7	+7
Staff Nurse/ Staff Midwife	1,021	1,025	+4	+0.0%	+11	-2
Public Health Nurse	151	150	-0	-0.0%	-6	-4
<i>Pre-registration Nurse/ Midwife Intern</i>	5		-5	-1.0%	-11	-19
<i>Pre-registration Nurse Intern (COVID-19)</i>	40	54	+14	+0.4%	+54	+54
<i>Post-registration Nurse/ Midwife Student</i>	1	1		+0.0%	-6	+0
<i>Nursing/ Midwifery awaiting registration</i>	11	11		+0.0%	+10	+11
Nursing/ Midwifery Student	57	66	+9	+0.2%	+45	+47
Nursing/ Midwifery other	8	8	-0	-0.0%	+2	+2
<b>Nursing &amp; Midwifery</b>	<b>1,707</b>	<b>1,717</b>	<b>+10</b>	<b>+0.6%</b>	<b>+69</b>	<b>+59</b>
Therapy Professions	320	325	+5	+0.0%	+9	+7
Health Science/ Diagnostics	6	7	+0	+0.0%	+0	+0
Social Care	12	11	-1	-0.0%	+0	-1
Social Workers	89	88	-2	-0.0%	+3	+6
Psychologists	61	61	-0	-0.0%	+1	+3
Pharmacy	2	2	+0	+0.0%	+0	+0
H&SC, Other	29	30	+1	+0.0%	-2	-1
<b>Health &amp; Social Care Professionals</b>	<b>520</b>	<b>524</b>	<b>+4</b>	<b>+0.8%</b>	<b>+11</b>	<b>+15</b>
Management (VIII & above)	63	64	+1	+0.0%	+4	+5
Administrative/ Supervisory (V to VII)	161	159	-1	-0.0%	+24	+36
Clerical (III & IV)	455	462	+7	+0.0%	+6	+14
<b>Management &amp; Administrative</b>	<b>679</b>	<b>685</b>	<b>+6</b>	<b>+0.9%</b>	<b>+34</b>	<b>+54</b>
Support	313	313	+0	+0.0%	+7	+4
Maintenance/ Technical	37	37	+0	+0.0%	+1	+0
<b>General Support</b>	<b>350</b>	<b>350</b>	<b>+0</b>	<b>+0.1%</b>	<b>+8</b>	<b>+4</b>
Health Care Assistants	1,517	1,519	+2	+0.0%	+97	+86
Care, other	135	134	-1	-0.0%	+3	+3
Home Help	534	542	+8	+0.0%	-14	-23
<b>Patient &amp; Client Care</b>	<b>2,187</b>	<b>2,195</b>	<b>+8</b>	<b>+0.4%</b>	<b>+85</b>	<b>+66</b>

**CHO 1 Employment by Grade Group & Staff Category: August 2020**

Aug 2020 (Dec 2019 figure: 5,468)	WTE Jul 2020	WTE Aug 2020	WTE change since Jul 20	% change since Jul 20	WTE change since Dec 19	WTE change since Aug 19
<b>Overall</b>	<b>5,647</b>	<b>5,665</b>	<b>+18</b>	<b>+0.3%</b>	<b>+197</b>	<b>+200</b>
Consultant Medicine	4	3	-0	-5.4%	+0	+1
Consultant Psychiatry	33	33	+0	+1.3%	+2	+4
<b>Consultants</b>	<b>36</b>	<b>37</b>	<b>+0</b>	<b>+0.7%</b>	<b>+3</b>	<b>+5</b>
Registrar	68	59	-9	-13.9%	+3	+1
Senior Registrar	9	7	-2	-20.0%	-1	-2
Specialist Registrar	1		-1	-100.0%	-1	-2
<b>Registrars</b>	<b>79</b>	<b>66</b>	<b>-12</b>	<b>-15.5%</b>	<b>+1</b>	<b>-3</b>
Senior House Officer	24	26	+2	+8.3%	-0	+2
<b>SHO/ Interns</b>	<b>24</b>	<b>26</b>	<b>+2</b>	<b>+8.3%</b>	<b>-0</b>	<b>+2</b>
Dentists	30	29	-1	-3.1%	+1	+1
Other Medical	36	36	-0	-0.6%	-16	-1
<b>Medical/ Dental, other</b>	<b>66</b>	<b>65</b>	<b>-1</b>	<b>-1.7%</b>	<b>-15</b>	<b>-1</b>
<b>Medical &amp; Dental</b>	<b>205</b>	<b>194</b>	<b>-11</b>	<b>-5.4%</b>	<b>+10</b>	<b>+2</b>
Clinical Nurse/ Midwife Manager	279	278	-1	-0.3%	+9	+10
Director Nursing/Midwifery, Assistant	56	55	-2	-2.8%	+3	-0
Director of Nursing/Midwifery	28	27	-1	-4.0%	-3	-1
<b>Nurse/ Midwife Manager</b>	<b>363</b>	<b>359</b>	<b>-4</b>	<b>-1.0%</b>	<b>+10</b>	<b>+8</b>
Advanced Nurse/ Midwife Practitioner	10	11	+0	+1.6%	+2	+3
Clinical Nurse/ Midwife Specialist	97	98	+1	+1.3%	+5	+5
<b>Nurse/ Midwife Specialist &amp; AN/MP</b>	<b>108</b>	<b>109</b>	<b>+1</b>	<b>+1.4%</b>	<b>+7</b>	<b>+7</b>
Staff Nurse [Intellectual Disability]	218	220	+2	+0.8%	+14	+10
Staff Nurse [Psychiatric]	291	287	-4	-1.3%	-11	-12
Staff Nurses [General/ Children's]	512	518	+6	+1.1%	+7	+1
<b>Staff Nurse/ Staff Midwife</b>	<b>1,021</b>	<b>1,025</b>	<b>+4</b>	<b>+0.4%</b>	<b>+11</b>	<b>-2</b>
<b>Public Health Nurse</b>	<b>151</b>	<b>150</b>	<b>-0</b>	<b>-0.3%</b>	<b>-6</b>	<b>-4</b>
Pre-registration Nurse/ Midwife Intern	5		-5	-100.0%	-3	-19
Pre-registration Nurse Intern (COVID-19)	40	54	+14	+35.8%	+54	+54
Post-registration Nurse/ Midwife Student	1	1			-6	+0
Nursing/ Midwifery awaiting registration	11	11				+11
<b>Nursing/ Midwifery Student</b>	<b>57</b>	<b>66</b>	<b>+9</b>	<b>+16.0%</b>	<b>+45</b>	<b>+47</b>
Nursing Education/Clinical	8	8	-0	-0.1%	+2	+2
<b>Nursing/ Midwifery other</b>	<b>8</b>	<b>8</b>	<b>-0</b>	<b>-0.1%</b>	<b>+2</b>	<b>+2</b>
<b>Nursing &amp; Midwifery</b>	<b>1,707</b>	<b>1,717</b>	<b>+10</b>	<b>+0.6%</b>	<b>+60</b>	<b>+59</b>
Dietitians	15	15	+0	+0.3%	-2	-2
Occupational Therapists	129	129	+0	+0.0%	+1	+4
Orthoptists	3	3			+0	+0
Physiotherapists	93	94	+1	+0.8%	+4	+1
Podiatrists & Chiropodists	10	11	+1	+12.7%	+2	+1
Speech & Language Therapists	70	73	+3	+4.1%	+4	+3
<b>Therapy Professions</b>	<b>320</b>	<b>325</b>	<b>+5</b>	<b>+1.5%</b>	<b>+9</b>	<b>+7</b>
Audiology	5	5	+0	+1.5%	+0	-0
Radiographers	1	1	+0	+4.1%	+0	+0
<b>Health Science/ Diagnostics</b>	<b>6</b>	<b>7</b>	<b>+0</b>	<b>+2.0%</b>	<b>+0</b>	<b>+0</b>
<b>Social Care</b>	<b>12</b>	<b>11</b>	<b>-1</b>	<b>-4.3%</b>	<b>+0</b>	<b>-1</b>
<b>Social Workers</b>	<b>89</b>	<b>88</b>	<b>-2</b>	<b>-1.7%</b>	<b>+3</b>	<b>+6</b>
<b>Psychologists</b>	<b>61</b>	<b>61</b>	<b>-0</b>	<b>-0.4%</b>	<b>+1</b>	<b>+3</b>
<b>Pharmacy</b>	<b>2</b>	<b>2</b>	<b>+0</b>	<b>+1.3%</b>	<b>+0</b>	<b>+0</b>



Aug 2020 (Dec 2019 figure: 5,468)	WTE Jul 2020	WTE Aug 2020	WTE change since Jul 20	% change since Jul 20	WTE change since Dec 19	WTE change since Aug 19
<b>Overall</b>	<b>5,647</b>	<b>5,665</b>	<b>+18</b>	<b>+0.3%</b>	<b>+197</b>	<b>+200</b>
Counsellor Therapists	20	21	+1	+6.5%	+1	+3
Dental Hygienists	5	5	-0	-0.6%	+0	-0
Other Health & Social Care	4	4			-4	-4
<b>H&amp;SC, Other</b>	<b>29</b>	<b>30</b>	<b>+1</b>	<b>+4.2%</b>	<b>-2</b>	<b>-1</b>
<b>Health &amp; Social Care Professionals</b>	<b>520</b>	<b>524</b>	<b>+4</b>	<b>+0.8%</b>	<b>+15</b>	<b>+15</b>
Executive Management	7	7			+0	+0
Senior Management (VIII & GM)	56	57	+1	+1.9%	+4	+5
<b>Management (VIII &amp; above)</b>	<b>63</b>	<b>64</b>	<b>+1</b>	<b>+1.7%</b>	<b>+4</b>	<b>+5</b>
Middle Management (V-VII)	160	158	-1	-0.8%	+24	+36
Other Administrative	1	1				
<b>Administrative/ Supervisory (V to VII)</b>	<b>161</b>	<b>159</b>	<b>-1</b>	<b>-0.7%</b>	<b>+24</b>	<b>+36</b>
General Administrative (III & IV)	455	462	+6	+1.4%	+6	+14
<b>Clerical (III &amp; IV)</b>	<b>455</b>	<b>462</b>	<b>+6</b>	<b>+1.4%</b>	<b>+6</b>	<b>+14</b>
<b>Management &amp; Administrative</b>	<b>679</b>	<b>685</b>	<b>+6</b>	<b>+0.9%</b>	<b>+63</b>	<b>+54</b>
Catering	66	66	+1	+1.3%	+6	+6
Household Services	210	210	+0	+0.0%	+6	+4
Other Support	29	29	-1	-2.4%	-5	-5
Portering	8	8				
<b>Support</b>	<b>313</b>	<b>313</b>	<b>+0</b>	<b>+0.1%</b>	<b>+7</b>	<b>+4</b>
Maintenance	37	37	+0	+0.2%	+1	+0
<b>Maintenance/ Technical</b>	<b>37</b>	<b>37</b>	<b>+0</b>	<b>+0.2%</b>	<b>+1</b>	<b>+0</b>
<b>General Support</b>	<b>350</b>	<b>350</b>	<b>+0</b>	<b>+0.1%</b>	<b>-1</b>	<b>+4</b>
HCA, Nurse's Aide, etc.	1,489	1,492	+3	+0.2%	+89	+84
Health & Social Care Assistants	28	27	-1	-3.7%	+7	+3
<b>Health Care Assistants</b>	<b>1,517</b>	<b>1,519</b>	<b>+2</b>	<b>+0.1%</b>	<b>+97</b>	<b>+86</b>
Community Welfare Officers	1		-1	-100.0%	-1	-1
Other Care Grades	135	134	-1	-0.6%	+4	+4
<b>Care, other</b>	<b>135</b>	<b>134</b>	<b>-1</b>	<b>-1.1%</b>	<b>+3</b>	<b>+3</b>
<b>Home Help</b>	<b>534</b>	<b>542</b>	<b>+8</b>	<b>+1.4%</b>	<b>-14</b>	<b>-23</b>
<b>Patient &amp; Client Care</b>	<b>2,187</b>	<b>2,195</b>	<b>+8</b>	<b>+0.4%</b>	<b>+82</b>	<b>+66</b>

## Employment by WTE, Headcount, Gender, Full-Time /Part-Time etc.: Aug 2020

CHO 1	WTE	Headcount	WTE: no.	% Male	% female	Male WTE: no.	Female WTE: no.	% Total Perm	% Male Perm	% Female Perm	% Total Full Time	% Total Part Time	% Male FT	% Female FT
<b>Overall</b>	<b>5,665</b>	<b>6,570</b>	<b>1.16</b>	<b>17.2%</b>	<b>82.8%</b>	<b>1.07</b>	<b>1.18</b>	<b>82.1%</b>	<b>83.4%</b>	<b>81.9%</b>	<b>64.3%</b>	<b>35.7%</b>	<b>85.7%</b>	<b>59.9%</b>
Consultant Medicine	3	4	1.20	25.0%	75.0%	1.00	1.28	75.0%	75.0%	66.7%	75.0%	25.0%	100.0%	66.7%
Consultant Psychiatry	33	34	1.02	41.2%	58.8%	1.00	1.04	76.5%	76.5%	80.0%	97.1%	2.9%	100.0%	95.0%
<b>Consultants</b>	<b>37</b>	<b>38</b>	<b>1.04</b>	<b>39.5%</b>	<b>60.5%</b>	<b>1.00</b>	<b>1.07</b>	<b>76.3%</b>	<b>73.3%</b>	<b>78.3%</b>	<b>94.7%</b>	<b>5.3%</b>	<b>100.0%</b>	<b>91.3%</b>
Registrar	59	60	1.02	43.3%	56.7%	1.00	1.03	10.0%	10.0%	5.9%	96.7%	3.3%	96.2%	97.1%
Senior Registrar	7	8	1.08	37.5%	62.5%	1.03	1.11	12.5%	12.5%	20.0%	87.5%	12.5%	100.0%	80.0%
<b>Registrars</b>	<b>66</b>	<b>68</b>	<b>1.02</b>	<b>42.6%</b>	<b>57.4%</b>	<b>1.00</b>	<b>1.04</b>	<b>10.3%</b>	<b>13.8%</b>	<b>7.7%</b>	<b>95.6%</b>	<b>4.4%</b>	<b>96.6%</b>	<b>94.9%</b>
Senior House Officer	26	28	1.07	46.4%	53.6%	1.11	1.04	0.0%	0.0%	0.0%	96.4%	3.6%	100.0%	93.3%
<b>SHO/ Interns</b>	<b>26</b>	<b>28</b>	<b>1.07</b>	<b>46.4%</b>	<b>53.6%</b>	<b>1.11</b>	<b>1.04</b>	<b>0.0%</b>	<b>0.0%</b>	<b>0.0%</b>	<b>96.4%</b>	<b>3.6%</b>	<b>100.0%</b>	<b>93.3%</b>
Dentists	29	31	1.07	38.7%	61.3%	1.06	1.08	96.8%	96.8%	94.7%	87.1%	12.9%	83.3%	89.5%
Other Medical	36	70	1.93	51.4%	48.6%	1.89	1.98	77.1%	77.1%	70.6%	18.6%	81.4%	25.0%	11.8%
<b>Medical/ Dental, other</b>	<b>65</b>	<b>101</b>	<b>1.55</b>	<b>47.5%</b>	<b>52.5%</b>	<b>1.58</b>	<b>1.52</b>	<b>83.2%</b>	<b>87.5%</b>	<b>79.2%</b>	<b>39.6%</b>	<b>60.4%</b>	<b>39.6%</b>	<b>39.6%</b>
<b>Medical &amp; Dental</b>	<b>194</b>	<b>235</b>	<b>1.21</b>	<b>44.7%</b>	<b>55.3%</b>	<b>1.22</b>	<b>1.20</b>	<b>51.1%</b>	<b>54.3%</b>	<b>48.5%</b>	<b>71.5%</b>	<b>28.5%</b>	<b>71.4%</b>	<b>71.5%</b>
Clinical Nurse/ Midwife Manager	278	295	1.06	18.3%	81.7%	1.01	1.07	98.6%	98.6%	98.8%	85.4%	14.6%	98.1%	82.6%
Director Nursing/Midwifery, Assistant	55	57	1.05	19.3%	80.7%	1.00	1.06	100.0%	100.0%	100.0%	93.0%	7.0%	100.0%	91.3%
Director of Nursing/Midwifery	27	27	1.02	18.5%	81.5%	1.00	1.02	100.0%	100.0%	100.0%	92.6%	7.4%	100.0%	90.9%
<b>Nurse/ Midwife Manager</b>	<b>359</b>	<b>379</b>	<b>1.06</b>	<b>18.5%</b>	<b>81.5%</b>	<b>1.01</b>	<b>1.07</b>	<b>98.9%</b>	<b>98.6%</b>	<b>99.0%</b>	<b>87.1%</b>	<b>12.9%</b>	<b>98.6%</b>	<b>84.5%</b>
Advanced Nurse/ Midwife Practitioner	11	11	1.03	9.1%	90.9%	1.00	1.04	100.0%	100.0%	100.0%	100.0%	0.0%	100.0%	100.0%
Clinical Nurse/ Midwife Specialist	98	106	1.08	20.8%	79.2%	1.01	1.10	97.2%	97.2%	96.4%	85.8%	14.2%	100.0%	82.1%
<b>Nurse/ Midwife Specialist &amp; AN/MP</b>	<b>109</b>	<b>117</b>	<b>1.07</b>	<b>19.7%</b>	<b>80.3%</b>	<b>1.01</b>	<b>1.09</b>	<b>97.4%</b>	<b>100.0%</b>	<b>96.8%</b>	<b>87.2%</b>	<b>12.8%</b>	<b>100.0%</b>	<b>84.0%</b>
Staff Nurse [Intellectual Disability]	220	245	1.12	11.4%	88.6%	1.04	1.13	92.2%	92.2%	92.2%	78.8%	21.2%	89.3%	77.4%
Staff Nurse [Psychiatric]	287	307	1.07	26.7%	73.3%	1.01	1.09	99.0%	99.0%	98.7%	91.5%	8.5%	100.0%	88.4%
Staff Nurses [General/ Children's]	518	628	1.21	7.0%	93.0%	1.10	1.22	91.9%	91.9%	92.0%	59.1%	40.9%	84.1%	57.2%
<b>Staff Nurse/ Staff Midwife</b>	<b>1,025</b>	<b>1,180</b>	<b>1.15</b>	<b>13.1%</b>	<b>86.9%</b>	<b>1.04</b>	<b>1.17</b>	<b>93.8%</b>	<b>96.1%</b>	<b>93.5%</b>	<b>71.6%</b>	<b>28.4%</b>	<b>93.5%</b>	<b>68.3%</b>
<b>Public Health Nurse</b>	<b>150</b>	<b>175</b>	<b>1.16</b>		<b>100.0%</b>		<b>1.16</b>	<b>96.0%</b>		<b>96.0%</b>	<b>77.1%</b>	<b>22.9%</b>		<b>77.1%</b>
Pre-registration Nurse Intern (COVID-19)	54	65	1.19	18.5%	81.5%	1.10	1.22	0.0%	0.0%	0.0%	100.0%	0.0%	100.0%	100.0%
Post-registration Nurse/ Midwife Student	1	1	1.00		100.0%		1.00	100.0%	100.0%	100.0%	100.0%	0.0%		100.0%
Nursing/ Midwifery awaiting registration	11	11	1.00		100.0%		1.00	0.0%	0.0%	0.0%	100.0%	0.0%		100.0%
<b>Nursing/ Midwifery Student</b>	<b>66</b>	<b>77</b>	<b>1.16</b>	<b>15.6%</b>	<b>84.4%</b>	<b>1.10</b>	<b>1.17</b>	<b>1.3%</b>	<b>0.0%</b>	<b>1.5%</b>	<b>100.0%</b>	<b>0.0%</b>	<b>100.0%</b>	<b>100.0%</b>

<b>Nursing/ Midwifery other</b>	<b>8</b>	<b>8</b>	<b>1.05</b>		<b>100.0%</b>		<b>1.05</b>	<b>100.0%</b>		<b>100.0%</b>	<b>100.0%</b>	<b>0.0%</b>		<b>100.0%</b>
<b>Nursing &amp; Midwifery</b>	<b>1,717</b>	<b>1,936</b>	<b>1.13</b>	<b>13.4%</b>	<b>86.6%</b>	<b>1.03</b>	<b>1.14</b>	<b>91.6%</b>	<b>92.7%</b>	<b>91.4%</b>	<b>77.3%</b>	<b>22.7%</b>	<b>95.8%</b>	<b>74.5%</b>
Dietitians	15	17	1.12		100.0%		1.12	100.0%	100.0%	100.0%	82.4%	17.6%		82.4%
Occupational Therapists	129	148	1.14	5.4%	94.6%	1.12	1.15	93.2%	93.2%	94.3%	71.6%	28.4%	87.5%	70.7%
Orthoptists	3	3	1.07	33.3%	66.7%	1.00	1.10	100.0%	100.0%	100.0%	66.7%	33.3%	100.0%	50.0%
Physiotherapists	94	109	1.16	17.4%	82.6%	1.03	1.19	96.3%	96.3%	95.6%	62.4%	37.6%	89.5%	56.7%
Podiatrists & Chiropodists	11	14	1.29	14.3%	85.7%	1.00	1.36	92.9%	92.9%	91.7%	50.0%	50.0%	100.0%	41.7%
Speech & Language Therapists	73	84	1.15	3.6%	96.4%	2.07	1.13	92.9%	92.9%	96.3%	71.4%	28.6%	100.0%	70.4%
<b>Therapy Professions</b>	<b>325</b>	<b>375</b>	<b>1.15</b>	<b>8.8%</b>	<b>91.2%</b>	<b>1.10</b>	<b>1.16</b>	<b>94.4%</b>	<b>84.8%</b>	<b>95.3%</b>	<b>68.5%</b>	<b>31.5%</b>	<b>90.9%</b>	<b>66.4%</b>
Audiology	5	6	1.13		100.0%		1.13	100.0%	100.0%	100.0%	83.3%	16.7%		83.3%
Radiographers	1	3	2.34		100.0%		2.34	66.7%	66.7%	66.7%	0.0%	100.0%		0.0%
<b>Health Science/ Diagnostics</b>	<b>7</b>	<b>9</b>	<b>1.37</b>		<b>100.0%</b>		<b>1.37</b>	<b>88.9%</b>		<b>88.9%</b>	<b>55.6%</b>	<b>44.4%</b>		<b>55.6%</b>
<b>Social Care</b>	<b>11</b>	<b>16</b>	<b>1.41</b>		<b>100.0%</b>		<b>1.41</b>	<b>100.0%</b>		<b>100.0%</b>	<b>37.5%</b>	<b>62.5%</b>		<b>37.5%</b>
<b>Social Workers</b>	<b>88</b>	<b>96</b>	<b>1.10</b>	<b>17.7%</b>	<b>82.3%</b>	<b>1.01</b>	<b>1.12</b>	<b>94.8%</b>	<b>100.0%</b>	<b>93.7%</b>	<b>83.3%</b>	<b>16.7%</b>	<b>94.1%</b>	<b>81.0%</b>
<b>Psychologists</b>	<b>61</b>	<b>69</b>	<b>1.13</b>	<b>29.0%</b>	<b>71.0%</b>	<b>1.06</b>	<b>1.17</b>	<b>95.7%</b>	<b>90.0%</b>	<b>98.0%</b>	<b>79.7%</b>	<b>20.3%</b>	<b>95.0%</b>	<b>73.5%</b>
<b>Pharmacy</b>	<b>2</b>	<b>2</b>	<b>1.29</b>	<b>50.0%</b>	<b>50.0%</b>	<b>1.43</b>	<b>1.18</b>	<b>100.0%</b>	<b>100.0%</b>	<b>100.0%</b>	<b>50.0%</b>	<b>50.0%</b>	<b>0.0%</b>	<b>100.0%</b>
Counsellor Therapists	21	24	1.15	20.8%	79.2%	1.04	1.19	100.0%	100.0%	100.0%	62.5%	37.5%	80.0%	57.9%
Dental Hygienists	5	6	1.13		100.0%		1.13	100.0%	100.0%	100.0%	66.7%	33.3%		66.7%
Other Health & Social Care	4	5	1.18	60.0%	40.0%	1.28	1.05	80.0%	80.0%	50.0%	80.0%	20.0%	66.7%	100.0%
<b>H&amp;SC, Other</b>	<b>30</b>	<b>35</b>	<b>1.15</b>	<b>22.9%</b>	<b>77.1%</b>	<b>1.12</b>	<b>1.16</b>	<b>97.1%</b>	<b>100.0%</b>	<b>96.3%</b>	<b>65.7%</b>	<b>34.3%</b>	<b>75.0%</b>	<b>63.0%</b>
<b>Health &amp; Social Care</b>	<b>524</b>	<b>602</b>	<b>1.15</b>	<b>13.1%</b>	<b>86.9%</b>	<b>1.07</b>	<b>1.16</b>	<b>94.9%</b>	<b>91.1%</b>	<b>95.4%</b>	<b>70.9%</b>	<b>29.1%</b>	<b>89.9%</b>	<b>68.1%</b>
Executive Management	7	7	1.00	85.7%	14.3%	1.00	1.00	100.0%	100.0%	100.0%	100.0%	0.0%	100.0%	100.0%
Senior Management (VIII & GM)	57	59	1.04	13.6%	86.4%	1.05	1.04	93.2%	93.2%	92.2%	93.2%	6.8%	87.5%	94.1%
<b>Management (VIII &amp; above)</b>	<b>64</b>	<b>66</b>	<b>1.04</b>	<b>21.2%</b>	<b>78.8%</b>	<b>1.03</b>	<b>1.04</b>	<b>93.9%</b>	<b>100.0%</b>	<b>92.3%</b>	<b>93.9%</b>	<b>6.1%</b>	<b>92.9%</b>	<b>94.2%</b>
<b>Administrative/ Supervisory (V to VII)</b>	<b>159</b>	<b>170</b>	<b>1.07</b>	<b>16.5%</b>	<b>83.5%</b>	<b>1.05</b>	<b>1.07</b>	<b>91.8%</b>	<b>82.1%</b>	<b>93.7%</b>	<b>81.2%</b>	<b>18.8%</b>	<b>92.9%</b>	<b>78.9%</b>
<b>Clerical (III &amp; IV)</b>	<b>462</b>	<b>531</b>	<b>1.15</b>	<b>8.1%</b>	<b>91.9%</b>	<b>1.05</b>	<b>1.16</b>	<b>94.4%</b>	<b>90.7%</b>	<b>94.7%</b>	<b>67.6%</b>	<b>32.4%</b>	<b>93.0%</b>	<b>65.4%</b>
<b>Management &amp; Administrative</b>	<b>685</b>	<b>767</b>	<b>1.12</b>	<b>11.1%</b>	<b>88.9%</b>	<b>1.04</b>	<b>1.13</b>	<b>93.7%</b>	<b>89.4%</b>	<b>94.3%</b>	<b>72.9%</b>	<b>27.1%</b>	<b>92.9%</b>	<b>70.4%</b>
Catering	66	76	1.14	27.6%	72.4%	1.13	1.15	100.0%	100.0%	100.0%	61.8%	38.2%	90.5%	50.9%
Household Services	210	239	1.14	20.9%	79.1%	1.04	1.17	92.9%	92.9%	96.3%	62.8%	37.2%	82.0%	57.7%
Other Support	29	56	1.96	30.4%	69.6%	1.29	2.52	91.1%	91.1%	89.7%	23.2%	76.8%	64.7%	5.1%
Portering	8	8	1.03	100.0%		1.03		87.5%	87.5%		75.0%	25.0%	75.0%	
<b>Support</b>	<b>313</b>	<b>379</b>	<b>1.21</b>	<b>25.3%</b>	<b>74.7%</b>	<b>1.09</b>	<b>1.26</b>	<b>93.9%</b>	<b>87.5%</b>	<b>96.1%</b>	<b>57.0%</b>	<b>43.0%</b>	<b>80.2%</b>	<b>49.1%</b>
<b>Maintenance/ Technical</b>	<b>37</b>	<b>37</b>	<b>1.00</b>	<b>100.0%</b>		<b>1.00</b>		<b>100.0%</b>	<b>100.0%</b>	<b>#DIV/0</b>	<b>100.0%</b>	<b>0.0%</b>	<b>100.0%</b>	
<b>General Support</b>	<b>350</b>	<b>416</b>	<b>1.19</b>	<b>32.0%</b>	<b>68.0%</b>	<b>1.07</b>	<b>1.26</b>	<b>94.5%</b>	<b>91.0%</b>	<b>96.1%</b>	<b>60.8%</b>	<b>39.2%</b>	<b>85.7%</b>	<b>49.1%</b>
HCA, Nurse's Aide, etc.	1,492	1,668	1.12	22.9%	77.1%	1.05	1.14	87.9%	87.9%	88.5%	70.2%	29.8%	88.0%	64.9%

Health & Social Care Assistants	27	28	1.04	25.0%	75.0%	1.08	1.03	71.4%	71.4%	61.9%	89.3%	10.7%	85.7%	90.5%
<b>Health Care Assistants</b>	<b>1,519</b>	<b>1,696</b>	<b>1.12</b>	<b>22.9%</b>	<b>77.1%</b>	<b>1.05</b>	<b>1.14</b>	<b>87.7%</b>	<b>86.4%</b>	<b>88.1%</b>	<b>70.5%</b>	<b>29.5%</b>	<b>87.9%</b>	<b>65.3%</b>
<b>Care, other</b>	<b>134</b>	<b>149</b>	<b>1.11</b>	<b>32.9%</b>	<b>67.1%</b>	<b>1.08</b>	<b>1.13</b>	<b>89.3%</b>	<b>75.5%</b>	<b>96.0%</b>	<b>71.8%</b>	<b>28.2%</b>	<b>75.5%</b>	<b>70.0%</b>
<b>Home Help</b>	<b>542</b>	<b>769</b>	<b>1.42</b>	<b>3.9%</b>	<b>96.1%</b>	<b>1.33</b>	<b>1.42</b>	<b>26.1%</b>	<b>10.0%</b>	<b>26.8%</b>	<b>2.6%</b>	<b>97.4%</b>	<b>3.3%</b>	<b>2.6%</b>
<b>Patient &amp; Client Care</b>	<b>2,195</b>	<b>2,614</b>	<b>1.19</b>	<b>17.9%</b>	<b>82.1%</b>	<b>1.07</b>	<b>1.22</b>	<b>69.7%</b>	<b>80.3%</b>	<b>67.3%</b>	<b>50.6%</b>	<b>49.4%</b>	<b>81.2%</b>	<b>43.9%</b>

## Employment by WTE, Headcount, Gender, Full-Time /Part-Time etc.: Aug 2020

CHO 1	WTE	Headcount	WTE: no.	% Male	% female	Male WTE: no.	Female WTE: no.	% Total Perm	% Male Perm	% Female Perm	% Total Full Time	% Total Part Time	% Male FT	% Female FT
<b>Overall</b>	<b>5,665</b>	<b>6,570</b>	<b>1.16</b>	<b>17.2%</b>	<b>82.8%</b>	<b>1.07</b>	<b>1.18</b>	<b>82.1%</b>	<b>83.4%</b>	<b>81.9%</b>	<b>64.3%</b>	<b>35.7%</b>	<b>85.7%</b>	<b>59.9%</b>
Community Health & Wellbeing	14	16	1.15	6.3%	93.8%	1.00	1.16	93.8%	93.8%	93.3%	68.8%	31.3%	100.0%	100.0%
Mental Health	979	1,051	1.07	27.0%	73.0%	1.02	1.09	89.0%	89.0%	90.4%	87.3%	12.7%	97.2%	97.2%
Primary Care	1,239	1,463	1.18	13.9%	86.1%	1.09	1.20	89.5%	89.5%	91.1%	65.5%	34.5%	84.3%	84.3%
Social Care	3,433	4,040	1.18	15.8%	84.2%	1.09	1.19	77.7%	77.7%	76.5%	57.9%	42.1%	80.9%	80.9%

## CHO 1 Skills Mix by Staff Grouping: August 2020

Aug 2020 (Dec 2018 figure: 5,436)	WTE Dec 2015	WTE Dec 2016	WTE Dec 2017	WTE Dec 2018	WTE Dec 2019	WTE Jul 2020	WTE Aug 2020
<b>Overall</b>	<b>5,177</b>	<b>5,280</b>	<b>5,368</b>	<b>5,436</b>	<b>5,468</b>	<b>5,647</b>	<b>5,665</b>
Consultant Medicine	1.8%	1.8%	1.7%	1.6%	1.5%	1.7%	1.7%
Consultant Psychiatry	15.1%	16.1%	15.8%	16.2%	15.0%	16.0%	17.1%
<b>Consultants</b>	<b>16.9%</b>	<b>17.8%</b>	<b>17.5%</b>	<b>17.8%</b>	<b>16.4%</b>	<b>17.7%</b>	<b>18.8%</b>
Registrar	27.2%	23.7%	26.6%	27.9%	27.4%	33.3%	30.4%
Senior Registrar	2.3%	3.0%	2.3%	5.8%	3.9%	4.5%	3.8%
Specialist Registrar			0.6%	0.5%	0.5%	0.4%	
<b>Registrars</b>	<b>29.6%</b>	<b>26.6%</b>	<b>29.5%</b>	<b>34.3%</b>	<b>31.8%</b>	<b>38.3%</b>	<b>34.2%</b>
Senior House Officer	15.1%	17.5%	15.6%	13.8%	12.8%	11.7%	13.4%
<b>SHO/ Interns</b>	<b>15.1%</b>	<b>17.5%</b>	<b>15.6%</b>	<b>13.8%</b>	<b>12.8%</b>	<b>11.7%</b>	<b>13.4%</b>
Dentists	16.8%	16.6%	15.9%	15.3%	13.5%	14.5%	14.9%
Other Medical	21.7%	21.5%	21.5%	18.8%	25.4%	17.8%	18.7%
<b>Medical/ Dental, other</b>	<b>38.5%</b>	<b>38.1%</b>	<b>37.4%</b>	<b>34.1%</b>	<b>39.0%</b>	<b>32.3%</b>	<b>33.6%</b>
<b>Medical &amp; Dental</b>	<b>3.3%</b>	<b>3.2%</b>	<b>3.2%</b>	<b>3.4%</b>	<b>3.8%</b>	<b>100.0%</b>	<b>3.4%</b>
Clinical Nurse/ Midwife Manager	16.7%	16.4%	15.8%	16.1%	16.3%	16.3%	16.2%
Director Nursing/Midwifery, Assistant	3.1%	3.2%	3.0%	3.1%	3.1%	3.3%	3.2%
Director of Nursing/Midwifery	1.6%	1.6%	1.6%	1.4%	1.8%	1.6%	1.5%
<b>Nurse/ Midwife Manager</b>	<b>21.4%</b>	<b>21.2%</b>	<b>20.3%</b>	<b>20.6%</b>	<b>21.2%</b>	<b>21.3%</b>	<b>20.9%</b>
Advanced Nurse/ Midwife Practitioner	0.1%	0.2%	0.1%	0.4%	0.5%	0.6%	0.6%
Clinical Nurse/ Midwife Specialist	5.1%	5.2%	5.5%	5.4%	5.7%	5.7%	5.7%
<b>Nurse/ Midwife Specialist &amp; AN/MP</b>	<b>5.2%</b>	<b>5.4%</b>	<b>5.6%</b>	<b>5.8%</b>	<b>6.2%</b>	<b>6.3%</b>	<b>6.3%</b>
Graduate Nursing/ Midwifery	0.7%						
Staff Nurse [Intellectual Disability]	11.0%	12.2%	12.2%	12.6%	12.4%	12.8%	12.8%
Staff Nurse [Psychiatric]	19.9%	20.1%	19.5%	18.4%	18.1%	17.1%	16.7%
Staff Nurses [General/ Children's]	31.0%	31.4%	32.1%	31.8%	31.0%	30.0%	30.2%
<b>Staff Nurse/ Staff Midwife</b>	<b>62.5%</b>	<b>63.7%</b>	<b>63.7%</b>	<b>62.8%</b>	<b>61.5%</b>	<b>59.8%</b>	<b>59.7%</b>
<b>Public Health Nurse</b>	<b>9.6%</b>	<b>8.9%</b>	<b>9.3%</b>	<b>9.4%</b>	<b>9.5%</b>	<b>8.8%</b>	<b>8.7%</b>
Pre-registration Nurse/ Midwife Intern	0.5%	0.1%	0.2%	0.7%	0.2%	0.3%	
Pre-registration Nurse Intern (COVID-19)						2.3%	3.2%
Post-registration Nurse/ Midwife Student	0.4%	0.4%	0.4%	0.4%	0.4%	0.1%	0.1%
Nursing/ Midwifery awaiting registration				0.1%	0.7%	0.6%	0.6%
<b>Nursing/ Midwifery Student</b>	<b>1.0%</b>	<b>0.5%</b>	<b>0.7%</b>	<b>1.1%</b>	<b>1.3%</b>	<b>3.4%</b>	<b>3.9%</b>
<b>Nursing/ Midwifery other</b>	<b>0.3%</b>	<b>0.3%</b>	<b>0.3%</b>	<b>0.3%</b>	<b>0.3%</b>	<b>0.4%</b>	<b>0.4%</b>
<b>Nursing &amp; Midwifery</b>	<b>30.9%</b>	<b>31.0%</b>	<b>30.4%</b>	<b>30.5%</b>	<b>30.1%</b>	<b>100.0%</b>	<b>30.3%</b>
Dietitians	3.3%	3.0%	3.2%	3.5%	3.4%	2.9%	2.9%
Occupational Therapists	24.0%	24.4%	22.9%	24.3%	25.0%	24.9%	24.7%
Orthoptists	0.6%	0.4%	0.5%	0.5%	0.5%	0.5%	0.5%
Physiotherapists	17.0%	18.6%	18.3%	18.4%	17.6%	17.9%	17.9%
Podiatrists & Chiropodists	1.7%	2.0%	1.7%	1.8%	1.7%	1.8%	2.1%
Speech & Language Therapists	13.6%	13.1%	14.6%	13.8%	13.5%	13.6%	14.0%
<b>Therapy Professions</b>	<b>60.2%</b>	<b>61.6%</b>	<b>61.3%</b>	<b>62.4%</b>	<b>61.7%</b>	<b>61.7%</b>	<b>62.1%</b>
Audiology	1.2%	1.1%	1.1%	1.1%	1.0%	1.0%	1.0%
Radiographers	0.3%	0.3%	0.3%	0.3%	0.2%	0.2%	0.2%
<b>Health Science/ Diagnostics</b>	<b>1.5%</b>	<b>1.4%</b>	<b>1.4%</b>	<b>1.4%</b>	<b>1.3%</b>	<b>1.2%</b>	<b>1.3%</b>
<b>Social Care</b>	<b>3.5%</b>	<b>2.7%</b>	<b>2.4%</b>	<b>2.3%</b>	<b>2.2%</b>	<b>2.3%</b>	<b>2.2%</b>
Social Workers	16.2%	16.5%	16.0%	15.3%	16.6%	17.1%	16.7%
<b>Social Workers</b>	<b>16.2%</b>	<b>16.5%</b>	<b>16.0%</b>	<b>15.3%</b>	<b>16.6%</b>	<b>17.1%</b>	<b>16.7%</b>
<b>Psychologists</b>	<b>11.2%</b>	<b>11.2%</b>	<b>11.6%</b>	<b>12.1%</b>	<b>11.7%</b>	<b>11.8%</b>	<b>11.6%</b>
<b>Pharmacy</b>	<b>0.3%</b>	<b>0.3%</b>	<b>0.3%</b>	<b>0.3%</b>	<b>0.3%</b>	<b>0.3%</b>	<b>0.3%</b>
Counsellor Therapists	4.2%	3.7%	4.1%	3.8%	3.8%	3.8%	4.0%
Dental Hygienists	1.1%	1.1%	1.1%	1.0%	1.0%	1.0%	1.0%

Aug 2020 (Dec 2018 figure: 5,436)	WTE Dec 2015	WTE Dec 2016	WTE Dec 2017	WTE Dec 2018	WTE Dec 2019	WTE Jul 2020	WTE Aug 2020
<b>Overall</b>	<b>5,177</b>	<b>5,280</b>	<b>5,368</b>	<b>5,436</b>	<b>5,468</b>	<b>5,647</b>	<b>5,665</b>
Other Health & Social Care	1.8%	1.6%	1.8%	1.4%	1.5%	0.8%	0.8%
<b>H&amp;SC, Other</b>	<b>7.1%</b>	<b>6.4%</b>	<b>7.0%</b>	<b>6.3%</b>	<b>6.3%</b>	<b>5.6%</b>	<b>5.8%</b>
<b>Health &amp; Social Care Professionals</b>	<b>9.1%</b>	<b>9.3%</b>	<b>9.3%</b>	<b>9.4%</b>	<b>9.4%</b>	<b>100.0%</b>	<b>9.2%</b>
Executive Management	0.5%	1.2%	1.3%	1.3%	1.0%	1.0%	1.0%
Senior Management (VIII & GM)	7.1%	6.8%	6.8%	7.9%	8.1%	8.2%	8.3%
<b>Management (VIII &amp; above)</b>	<b>7.6%</b>	<b>8.0%</b>	<b>8.2%</b>	<b>9.2%</b>	<b>9.2%</b>	<b>9.2%</b>	<b>9.3%</b>
Middle Management (V-VII)	16.5%	16.4%	17.9%	18.3%	20.7%	23.5%	23.1%
Other Administrative	0.2%	0.2%	0.2%	0.2%	0.2%	0.1%	0.1%
<b>Administrative/ Supervisory (V to VII)</b>	<b>16.7%</b>	<b>16.6%</b>	<b>18.1%</b>	<b>18.4%</b>	<b>20.8%</b>	<b>23.7%</b>	<b>23.3%</b>
<b>Clerical (III &amp; IV)</b>	<b>75.7%</b>	<b>75.5%</b>	<b>73.8%</b>	<b>72.4%</b>	<b>70.0%</b>	<b>67.1%</b>	<b>67.4%</b>
<b>Management &amp; Administrative</b>	<b>11.0%</b>	<b>11.1%</b>	<b>11.1%</b>	<b>11.4%</b>	<b>11.9%</b>	<b>100.0%</b>	<b>12.1%</b>
Catering	14.5%	15.6%	16.7%	16.8%	17.8%	18.8%	19.0%
Household Services	66.5%	65.1%	62.1%	61.6%	59.8%	60.1%	60.0%
Other Support	5.7%	6.2%	8.2%	9.8%	9.7%	8.4%	8.2%
Portering	2.4%	2.4%	2.2%	2.2%	2.3%	2.2%	2.2%
<b>Support</b>	<b>89.0%</b>	<b>89.4%</b>	<b>89.3%</b>	<b>90.3%</b>	<b>89.5%</b>	<b>89.4%</b>	<b>89.4%</b>
<b>Maintenance/ Technical</b>	<b>11.0%</b>	<b>10.6%</b>	<b>10.7%</b>	<b>9.7%</b>	<b>10.5%</b>	<b>10.6%</b>	<b>10.6%</b>
<b>General Support</b>	<b>7.2%</b>	<b>6.8%</b>	<b>6.5%</b>	<b>6.4%</b>	<b>6.2%</b>	<b>100.0%</b>	<b>6.2%</b>
HCA, Nurse's Aide, etc.	64.3%	66.1%	66.3%	67.1%	66.5%	68.1%	68.0%
Health & Social Care Assistants	0.8%	0.7%	0.8%	1.3%	0.9%	1.3%	1.2%
<b>Health Care Assistants</b>	<b>65.1%</b>	<b>66.8%</b>	<b>67.1%</b>	<b>68.3%</b>	<b>67.4%</b>	<b>69.4%</b>	<b>69.2%</b>
Community Welfare Officers	0.1%	0.0%	0.0%	0.0%	0.0%	0.0%	
Other Care Grades	6.5%	6.4%	6.3%	6.2%	6.2%	6.2%	6.1%
<b>Care, other</b>	<b>6.5%</b>	<b>6.4%</b>	<b>6.4%</b>	<b>6.2%</b>	<b>6.2%</b>	<b>6.2%</b>	<b>6.1%</b>
<b>Home Help</b>	<b>28.4%</b>	<b>26.7%</b>	<b>26.5%</b>	<b>25.4%</b>	<b>26.4%</b>	<b>24.4%</b>	<b>24.7%</b>
<b>Patient &amp; Client Care</b>	<b>38.6%</b>	<b>38.7%</b>	<b>39.5%</b>	<b>38.9%</b>	<b>38.6%</b>	<b>100.0%</b>	<b>38.7%</b>
<b>Total</b>	<b>100 %</b>	<b>100 %</b>	<b>100 %</b>	<b>100 %</b>	<b>100%</b>	<b>100 %</b>	<b>100 %</b>



# CHO 1 Skills Mix by Care Group: August 2020

Aug 2020 (Dec 2018 figure: 941)	WTE Dec 2015	WTE Dec 2016	WTE Dec 2017	WTE Dec 2018	WTE Dec 2019	WTE Jul 2020	WTE Aug 2020
<b>Mental Health</b>	<b>931</b>	<b>948</b>	<b>942</b>	<b>941</b>	<b>953</b>	<b>970</b>	<b>979</b>
<b>Consultants</b>	<b>37.0%</b>	<b>36.2%</b>	<b>36.8%</b>	<b>37.2%</b>	<b>38.2%</b>	<b>41.1%</b>	<b>41.2%</b>
Registrar	22.4%	17.4%	22.7%	18.6%	20.5%	18.3%	18.4%
Senior Registrar	4.5%	5.5%	4.2%	12.6%	9.9%	11.6%	9.2%
<b>Registrars</b>	<b>26.8%</b>	<b>23.0%</b>	<b>26.9%</b>	<b>31.2%</b>	<b>30.4%</b>	<b>29.9%</b>	<b>27.6%</b>
Senior House Officer	36.2%	40.8%	36.3%	31.6%	31.4%	29.0%	31.2%
<b>SHO/ Interns</b>	<b>36.2%</b>	<b>40.8%</b>	<b>36.3%</b>	<b>31.6%</b>	<b>31.4%</b>	<b>29.0%</b>	<b>31.2%</b>
<b>Medical &amp; Dental</b>	<b>7.2%</b>	<b>7.6%</b>	<b>7.6%</b>	<b>8.2%</b>	<b>8.1%</b>	<b>8.2%</b>	<b>8.2%</b>
Clinical Nurse/ Midwife Manager	19.4%	19.8%	20.0%	19.9%	19.9%	20.1%	20.2%
Director Nursing/Midwifery, Assistant	3.5%	3.2%	3.2%	3.7%	3.7%	3.8%	3.8%
Director of Nursing/Midwifery	0.8%	0.6%	0.6%	0.4%	0.6%	0.6%	0.6%
<b>Nurse/ Midwife Manager</b>	<b>23.7%</b>	<b>23.6%</b>	<b>23.8%</b>	<b>24.0%</b>	<b>24.3%</b>	<b>24.5%</b>	<b>24.6%</b>
Advanced Nurse/ Midwife Practitioner	0.2%	0.2%	0.2%	0.4%	0.4%	0.4%	0.4%
Clinical Nurse/ Midwife Specialist	10.7%	11.4%	12.1%	12.9%	13.6%	12.7%	12.8%
<b>Nurse/ Midwife Specialist &amp; AN/MP</b>	<b>10.9%</b>	<b>11.6%</b>	<b>12.3%</b>	<b>13.3%</b>	<b>14.0%</b>	<b>13.1%</b>	<b>13.2%</b>
Graduate Nursing/ Midwifery	0.2%						
Staff Nurse [Intellectual Disability]		0.2%	0.2%	0.2%			
Staff Nurse [Psychiatric]	63.4%	64.0%	63.2%	61.7%	61.1%	58.1%	56.4%
Staff Nurses [General/ Children's]	0.6%	0.6%	0.4%	0.6%	0.6%	0.4%	0.4%
<b>Staff Nurse/ Staff Midwife</b>	<b>64.2%</b>	<b>64.8%</b>	<b>63.9%</b>	<b>62.5%</b>	<b>61.7%</b>	<b>58.5%</b>	<b>56.8%</b>
Pre-registration Nurse/ Midwife Intern	1.1%					1.1%	
Pre-registration Nurse Intern (COVID-19)						2.6%	5.3%
Nursing/ Midwifery awaiting registration				0.2%			
<b>Nursing/ Midwifery Student</b>	<b>1.1%</b>			<b>0.2%</b>		<b>3.6%</b>	<b>5.3%</b>
Nursing Education/Clinical						0.2%	0.2%
<b>Nursing/ Midwifery other</b>						<b>0.2%</b>	<b>0.2%</b>
<b>Nursing &amp; Midwifery</b>	<b>52.3%</b>	<b>52.9%</b>	<b>52.5%</b>	<b>51.6%</b>	<b>51.0%</b>	<b>51.4%</b>	<b>51.4%</b>
Occupational Therapists	26.2%	26.7%	25.7%	26.9%	28.7%	29.5%	29.9%
Podiatrists & Chiropractors	0.7%	0.7%	0.7%	0.7%	0.6%	0.7%	0.7%
Speech & Language Therapists	1.9%	2.6%	3.5%	3.0%	2.2%	1.8%	1.1%
<b>Therapy Professions</b>	<b>28.8%</b>	<b>30.0%</b>	<b>29.9%</b>	<b>30.6%</b>	<b>31.6%</b>	<b>31.9%</b>	<b>31.7%</b>
<b>Social Care</b>	<b>4.7%</b>	<b>3.5%</b>	<b>3.6%</b>	<b>3.2%</b>	<b>3.3%</b>	<b>2.9%</b>	<b>2.5%</b>
<b>Social Workers</b>	<b>35.7%</b>	<b>35.5%</b>	<b>34.4%</b>	<b>34.0%</b>	<b>34.6%</b>	<b>34.4%</b>	<b>33.7%</b>
<b>Psychologists</b>	<b>18.2%</b>	<b>19.9%</b>	<b>19.9%</b>	<b>20.5%</b>	<b>18.2%</b>	<b>19.3%</b>	<b>20.1%</b>
<b>Pharmacy</b>	<b>0.8%</b>	<b>0.7%</b>	<b>0.8%</b>	<b>0.8%</b>	<b>0.7%</b>	<b>0.7%</b>	<b>0.7%</b>
Counsellor Therapists	11.6%	10.0%	11.5%	10.8%	11.6%	10.7%	11.2%
Other Health & Social Care	0.4%	0.4%					
<b>H&amp;SC, Other</b>	<b>11.9%</b>	<b>10.4%</b>	<b>11.5%</b>	<b>10.8%</b>	<b>11.6%</b>	<b>10.7%</b>	<b>11.2%</b>
<b>Health &amp; Social Care Professionals</b>	<b>11.4%</b>	<b>11.3%</b>	<b>11.2%</b>	<b>11.8%</b>	<b>11.7%</b>	<b>11.6%</b>	<b>11.6%</b>
<b>Management (VIII &amp; above)</b>	<b>4.2%</b>	<b>3.3%</b>	<b>4.1%</b>	<b>3.8%</b>	<b>4.7%</b>	<b>6.0%</b>	<b>6.2%</b>
<b>Administrative/ Supervisory (V to VII)</b>	<b>14.4%</b>	<b>14.5%</b>	<b>16.6%</b>	<b>18.7%</b>	<b>24.9%</b>	<b>25.3%</b>	<b>24.7%</b>
<b>Clerical (III &amp; IV)</b>	<b>81.4%</b>	<b>82.2%</b>	<b>79.3%</b>	<b>77.4%</b>	<b>70.5%</b>	<b>68.7%</b>	<b>69.1%</b>
<b>Management &amp; Administrative</b>	<b>10.3%</b>	<b>9.7%</b>	<b>10.5%</b>	<b>11.1%</b>	<b>11.0%</b>	<b>12.6%</b>	<b>12.6%</b>
<b>Support</b>	<b>80.7%</b>	<b>80.6%</b>	<b>80.3%</b>	<b>80.8%</b>	<b>78.7%</b>	<b>79.0%</b>	<b>78.9%</b>
Maintenance	19.3%	19.4%	19.7%	19.2%	21.3%	21.0%	21.1%
<b>Maintenance/ Technical</b>	<b>19.3%</b>	<b>19.4%</b>	<b>19.7%</b>	<b>19.2%</b>	<b>21.3%</b>	<b>21.0%</b>	<b>21.1%</b>
<b>General Support</b>	<b>10.4%</b>	<b>9.8%</b>	<b>9.1%</b>	<b>8.8%</b>	<b>8.7%</b>	<b>8.2%</b>	<b>8.2%</b>
HCA, Nurse's Aide, etc.	86.8%	87.9%	86.5%	82.1%	83.9%	83.2%	84.1%
Health & Social Care Assistants			1.2%	2.0%	2.1%	2.7%	2.7%



Aug 2020 (Dec 2018 figure: 941)	WTE Dec 2015	WTE Dec 2016	WTE Dec 2017	WTE Dec 2018	WTE Dec 2019	WTE Jul 2020	WTE Aug 2020
<b>Mental Health</b>	<b>931</b>	<b>948</b>	<b>942</b>	<b>941</b>	<b>953</b>	<b>970</b>	<b>979</b>
Health Care Assistants	86.8%	87.9%	87.6%	84.1%	86.0%	85.9%	86.9%
Care, other	13.2%	12.1%	12.4%	15.9%	14.0%	14.1%	13.1%
<b>Patient &amp; Client Care</b>	<b>8.3%</b>	<b>8.7%</b>	<b>9.1%</b>	<b>8.5%</b>	<b>8.4%</b>	<b>7.9%</b>	<b>7.9%</b>
<b>Total</b>	<b>100 %</b>	<b>100 %</b>	<b>100 %</b>	<b>100 %</b>	<b>100 %</b>	<b>100 %</b>	<b>100%</b>

Aug 2020 (Dec 2018 figure: 1,233)	WTE Dec 2015	WTE Dec 2016	WTE Dec 2017	WTE Dec 2018	WTE Dec 2019	WTE Jul 2020	WTE Aug 2020
<b>Primary Care</b>	<b>1,222</b>	<b>1,257</b>	<b>1,188</b>	<b>1,233</b>	<b>1,182</b>	<b>1,241</b>	<b>1,239</b>
Consultant Medicine	3.5%	3.8%	3.6%	3.3%	3.3%	3.4%	3.6%
<b>Consultants</b>	<b>3.5%</b>	<b>3.8%</b>	<b>3.6%</b>	<b>3.3%</b>	<b>3.3%</b>	<b>3.4%</b>	<b>3.6%</b>
<b>Registrars</b>	<b>37.9%</b>	<b>35.7%</b>	<b>37.8%</b>	<b>43.8%</b>	<b>44.3%</b>	<b>52.0%</b>	<b>47.4%</b>
<b>SHO/ Interns</b>	<b>1.5%</b>		<b>1.2%</b>	<b>1.1%</b>	<b>1.1%</b>	<b>0.9%</b>	<b>1.0%</b>
Dentists	33.7%	35.4%	32.8%	31.5%	30.2%	28.4%	31.0%
Other Medical	23.4%	25.1%	24.7%	20.4%	21.2%	15.2%	17.0%
<b>Medical/ Dental, other</b>	<b>57.1%</b>	<b>60.5%</b>	<b>57.5%</b>	<b>51.9%</b>	<b>51.3%</b>	<b>43.7%</b>	<b>48.0%</b>
<b>Medical &amp; Dental</b>	<b>6.9%</b>	<b>6.3%</b>	<b>7.1%</b>	<b>7.3%</b>	<b>7.6%</b>	<b>7.5%</b>	<b>7.5%</b>
Clinical Nurse/ Midwife Manager	5.1%	4.9%	4.7%	5.4%	5.6%	6.4%	6.3%
Director Nursing/Midwifery, Assistant	5.9%	5.9%	5.4%	5.0%	5.0%	5.7%	5.4%
Director of Nursing/Midwifery	1.5%	1.7%	1.3%	1.6%	1.3%	0.9%	0.9%
<b>Nurse/ Midwife Manager</b>	<b>12.6%</b>	<b>12.5%</b>	<b>11.4%</b>	<b>12.0%</b>	<b>11.9%</b>	<b>13.1%</b>	<b>12.7%</b>
<b>Nurse/ Midwife Specialist &amp; AN/MP</b>	<b>7.2%</b>	<b>6.7%</b>	<b>7.7%</b>	<b>6.6%</b>	<b>6.8%</b>	<b>7.8%</b>	<b>7.9%</b>
Staff Nurse [Psychiatric]	0.1%	0.1%	0.1%	0.5%	0.1%	0.1%	0.1%
Staff Nurses [General/ Children's]	25.1%	29.0%	28.4%	27.7%	27.8%	31.0%	31.4%
<b>Staff Nurse/ Staff Midwife</b>	<b>25.2%</b>	<b>29.1%</b>	<b>28.6%</b>	<b>28.2%</b>	<b>27.9%</b>	<b>31.1%</b>	<b>31.5%</b>
<b>Public Health Nurse</b>	<b>52.5%</b>	<b>49.3%</b>	<b>50.1%</b>	<b>50.9%</b>	<b>50.9%</b>	<b>47.4%</b>	<b>47.3%</b>
Post-registration Nurse/ Midwife Student	2.4%	2.4%	2.3%	2.3%	2.3%	0.3%	0.3%
<b>Nursing/ Midwifery Student</b>	<b>2.4%</b>	<b>2.4%</b>	<b>2.3%</b>	<b>2.3%</b>	<b>2.3%</b>	<b>0.3%</b>	<b>0.3%</b>
Nursing Education/Clinical					0.3%	0.3%	0.3%
<b>Nursing/ Midwifery other</b>					<b>0.3%</b>	<b>0.3%</b>	<b>0.3%</b>
<b>Nursing &amp; Midwifery</b>	<b>23.8%</b>	<b>23.6%</b>	<b>25.7%</b>	<b>24.7%</b>	<b>25.8%</b>	<b>25.6%</b>	<b>25.6%</b>
Dietitians	5.6%	4.8%	5.2%	5.6%	6.0%	5.2%	5.1%
Occupational Therapists	24.3%	25.2%	23.2%	24.2%	25.3%	25.3%	25.2%
Orthoptists	1.0%	0.7%	0.8%	0.8%	0.9%	1.0%	0.9%
Physiotherapists	25.4%	27.4%	27.1%	27.3%	28.1%	28.3%	28.0%
Podiatrists & Chiropodists	2.6%	3.1%	2.6%	2.7%	2.8%	3.1%	3.4%
Speech & Language Therapists	19.2%	17.8%	19.4%	17.8%	15.9%	16.2%	17.1%
<b>Therapy Professions</b>	<b>78.2%</b>	<b>79.0%</b>	<b>78.4%</b>	<b>78.5%</b>	<b>79.0%</b>	<b>79.0%</b>	<b>79.8%</b>
Audiology	1.9%	1.8%	1.7%	1.7%	1.8%	1.8%	1.8%
<b>Health Science/ Diagnostics</b>	<b>1.9%</b>	<b>1.8%</b>	<b>1.7%</b>	<b>1.7%</b>	<b>1.8%</b>	<b>1.8%</b>	<b>1.8%</b>
<b>Social Workers</b>	<b>6.1%</b>	<b>6.6%</b>	<b>6.9%</b>	<b>6.4%</b>	<b>4.4%</b>	<b>4.8%</b>	<b>4.7%</b>
<b>Psychologists</b>	<b>11.3%</b>	<b>10.3%</b>	<b>10.3%</b>	<b>10.9%</b>	<b>12.1%</b>	<b>11.6%</b>	<b>11.0%</b>
<b>Pharmacy</b>	<b>0.2%</b>	<b>0.2%</b>	<b>0.2%</b>	<b>0.2%</b>	<b>0.2%</b>	<b>0.2%</b>	<b>0.2%</b>
Counsellor Therapists			0.3%	0.3%	0.3%	0.3%	0.3%
Dental Hygienists	1.9%	1.7%	1.9%	1.6%	1.7%	1.9%	1.8%
Other Health & Social Care	0.4%	0.3%	0.3%	0.3%	0.3%	0.3%	0.3%
<b>H&amp;SC, Other</b>	<b>2.2%</b>	<b>2.1%</b>	<b>2.5%</b>	<b>2.2%</b>	<b>2.4%</b>	<b>2.6%</b>	<b>2.5%</b>
<b>Health &amp; Social Care Professionals</b>	<b>22.9%</b>	<b>23.8%</b>	<b>25.9%</b>	<b>25.6%</b>	<b>26.8%</b>	<b>23.9%</b>	<b>23.9%</b>
Executive Management	0.6%	1.8%	2.1%	2.0%	1.5%	1.5%	1.5%
Senior Management (VIII & GM)	7.2%	6.9%	6.9%	8.7%	8.2%	7.8%	7.9%
<b>Management (VIII &amp; above)</b>	<b>7.8%</b>	<b>8.8%</b>	<b>9.0%</b>	<b>10.7%</b>	<b>9.7%</b>	<b>9.2%</b>	<b>9.3%</b>
<b>Administrative/ Supervisory (V to VII)</b>	<b>17.8%</b>	<b>17.1%</b>	<b>19.7%</b>	<b>19.1%</b>	<b>19.2%</b>	<b>21.3%</b>	<b>20.8%</b>

Aug 2020 (Dec 2018 figure: 1,233)	WTE Dec 2015	WTE Dec 2016	WTE Dec 2017	WTE Dec 2018	WTE Dec 2019	WTE Jul 2020	WTE Aug 2020
<b>Primary Care</b>	<b>1,222</b>	<b>1,257</b>	<b>1,188</b>	<b>1,233</b>	<b>1,182</b>	<b>1,241</b>	<b>1,239</b>
Clerical (III & IV)	74.4%	74.2%	71.3%	70.2%	71.1%	69.4%	69.9%
<b>Management &amp; Administrative</b>	<b>25.5%</b>	<b>25.9%</b>	<b>27.7%</b>	<b>28.3%</b>	<b>29.5%</b>	<b>27.7%</b>	<b>27.7%</b>
Support	91.0%	91.3%	92.2%	94.7%	92.3%	92.0%	92.0%
Maintenance/ Technical	9.0%	8.7%	7.8%	5.3%	7.7%	8.0%	8.0%
<b>General Support</b>	<b>5.5%</b>	<b>5.7%</b>	<b>6.3%</b>	<b>6.4%</b>	<b>6.7%</b>	<b>7.0%</b>	<b>7.0%</b>
HCA, Nurse's Aide, etc.	9.6%	10.8%	22.4%	20.1%	21.8%	23.1%	24.2%
Health & Social Care Assistants	5.6%	5.8%	12.3%	21.7%	14.9%	20.5%	19.6%
<b>Health Care Assistants</b>	<b>15.2%</b>	<b>16.6%</b>	<b>34.7%</b>	<b>41.8%</b>	<b>36.7%</b>	<b>43.6%</b>	<b>43.8%</b>
Community Welfare Officers	0.5%	0.5%	1.1%	1.1%	0.9%	0.7%	
Other Care Grades	31.7%	31.2%	64.2%	57.1%	62.4%	55.4%	55.6%
<b>Care, other</b>	<b>32.2%</b>	<b>31.8%</b>	<b>65.3%</b>	<b>58.2%</b>	<b>63.3%</b>	<b>56.0%</b>	<b>55.6%</b>
Home Help	52.6%	51.6%				0.3%	0.6%
<b>Patient &amp; Client Care</b>	<b>15.3%</b>	<b>14.6%</b>	<b>7.4%</b>	<b>7.7%</b>	<b>8.0%</b>	<b>8.2%</b>	<b>8.2%</b>
<b>Total</b>	<b>100 %</b>	<b>100 %</b>	<b>100 %</b>	<b>100 %</b>	<b>100 %</b>	<b>100 %</b>	<b>100%</b>

Aug 2020 (Dec 2018 figure: 1,479)	WTE Dec 2015	WTE Dec 2016	WTE Dec 2017	WTE Dec 2018	WTE Dec 2019	WTE Jul 2020	WTE Aug 2020
<b>Disabilities</b>	<b>1,374</b>	<b>1,430</b>	<b>1,457</b>	<b>1,479</b>	<b>1,498</b>	<b>1,536</b>	<b>1,542</b>
Consultant Psychiatry	29.1%	33.3%	33.3%	33.3%			
<b>Consultants</b>	<b>29.1%</b>	<b>33.3%</b>	<b>33.3%</b>	<b>33.3%</b>			
Medical/ Dental, other	70.9%	66.7%	66.7%	66.7%	100.0%	100.0%	100.0%
<b>Medical &amp; Dental</b>	<b>0.2%</b>	<b>0.2%</b>	<b>0.2%</b>	<b>0.2%</b>	<b>0.2%</b>	<b>0.2%</b>	<b>0.2%</b>
Clinical Nurse/ Midwife Manager	19.9%	19.5%	20.0%	19.1%	20.1%	19.7%	19.6%
Director Nursing/Midwifery, Assistant	1.4%	1.7%	1.3%	1.7%	1.3%	1.4%	1.3%
Director of Nursing/Midwifery	1.4%	1.1%	1.3%	1.1%	1.8%	1.5%	1.2%
<b>Nurse/ Midwife Manager</b>	<b>22.7%</b>	<b>22.3%</b>	<b>22.6%</b>	<b>21.8%</b>	<b>23.1%</b>	<b>22.6%</b>	<b>22.2%</b>
Clinical Nurse/ Midwife Specialist	2.2%	2.1%	1.8%	1.5%	1.5%	2.1%	2.0%
<b>Nurse/ Midwife Specialist &amp; AN/MP</b>	<b>2.2%</b>	<b>2.1%</b>	<b>1.8%</b>	<b>1.5%</b>	<b>1.5%</b>	<b>2.1%</b>	<b>2.0%</b>
Graduate Nursing/ Midwifery	2.3%						
Staff Nurse [Intellectual Disability]	41.2%	44.2%	44.4%	45.3%	45.1%	45.3%	45.4%
Staff Nurse [Psychiatric]	1.6%	1.3%	0.9%	0.7%	0.4%	0.3%	0.4%
Staff Nurses [General/ Children's]	28.3%	28.6%	28.3%	27.2%	25.6%	20.8%	20.9%
<b>Staff Nurse/ Staff Midwife</b>	<b>73.3%</b>	<b>74.2%</b>	<b>73.7%</b>	<b>73.2%</b>	<b>71.2%</b>	<b>66.4%</b>	<b>66.7%</b>
Pre-registration Nurse/ Midwife Intern	0.7%	0.3%	0.8%	2.4%	0.7%		
Pre-registration Nurse Intern (COVID-19)						5.7%	5.8%
Nursing/ Midwifery awaiting registration					2.4%	2.3%	2.3%
<b>Nursing/ Midwifery Student</b>	<b>0.7%</b>	<b>0.3%</b>	<b>0.8%</b>	<b>2.4%</b>	<b>3.1%</b>	<b>8.0%</b>	<b>8.1%</b>
<b>Nursing/ Midwifery other</b>	<b>1.1%</b>	<b>1.0%</b>	<b>1.1%</b>	<b>1.1%</b>	<b>1.0%</b>	<b>1.0%</b>	<b>1.0%</b>
<b>Nursing &amp; Midwifery</b>	<b>31.1%</b>	<b>31.4%</b>	<b>30.7%</b>	<b>30.8%</b>	<b>30.4%</b>	<b>31.3%</b>	<b>31.3%</b>
Occupational Therapists	14.3%	11.9%	12.0%	9.5%	15.4%	14.8%	12.8%
Physiotherapists	13.7%	14.2%	11.4%	12.3%	10.8%	11.0%	10.9%
Speech & Language Therapists	11.3%	11.3%	12.7%	17.5%	25.2%	24.7%	25.0%
<b>Therapy Professions</b>	<b>39.3%</b>	<b>37.4%</b>	<b>36.0%</b>	<b>39.3%</b>	<b>51.4%</b>	<b>50.5%</b>	<b>48.8%</b>
<b>Social Care</b>	<b>17.4%</b>	<b>15.2%</b>	<b>12.3%</b>	<b>13.2%</b>	<b>9.2%</b>	<b>9.7%</b>	<b>9.9%</b>
<b>Social Workers</b>	<b>18.3%</b>	<b>21.0%</b>	<b>21.0%</b>	<b>19.8%</b>	<b>18.9%</b>	<b>22.4%</b>	<b>22.6%</b>
<b>Psychologists</b>	<b>3.0%</b>	<b>4.3%</b>	<b>7.5%</b>	<b>6.6%</b>	<b>5.6%</b>	<b>6.4%</b>	<b>6.6%</b>
Counsellor Therapists	11.5%	11.8%	11.3%	10.7%	6.8%	7.3%	8.3%
Other Health & Social Care	10.4%	10.4%	11.9%	10.4%	8.2%	3.7%	3.8%
<b>H&amp;SC, Other</b>	<b>22.0%</b>	<b>22.2%</b>	<b>23.2%</b>	<b>21.1%</b>	<b>15.0%</b>	<b>10.9%</b>	<b>12.1%</b>
<b>Health &amp; Social Care Professionals</b>	<b>4.9%</b>	<b>4.3%</b>	<b>4.5%</b>	<b>4.1%</b>	<b>4.0%</b>	<b>5.5%</b>	<b>5.5%</b>

Aug 2020 (Dec 2018 figure: 1,479)	WTE Dec 2015	WTE Dec 2016	WTE Dec 2017	WTE Dec 2018	WTE Dec 2019	WTE Jul 2020	WTE Aug 2020
<b>Disabilities</b>	<b>1,374</b>	<b>1,430</b>	<b>1,457</b>	<b>1,479</b>	<b>1,498</b>	<b>1,536</b>	<b>1,542</b>
Senior Management (VIII & GM)	13.4%	12.7%	14.7%	15.6%	15.3%	15.4%	15.2%
<b>Management (VIII &amp; above)</b>	<b>13.4%</b>	<b>12.7%</b>	<b>14.7%</b>	<b>15.6%</b>	<b>15.3%</b>	<b>15.4%</b>	<b>15.2%</b>
<b>Administrative/ Supervisory (V to VII)</b>	<b>25.1%</b>	<b>26.0%</b>	<b>24.4%</b>	<b>25.1%</b>	<b>30.2%</b>	<b>33.4%</b>	<b>33.8%</b>
<b>Clerical (III &amp; IV)</b>	<b>61.5%</b>	<b>61.3%</b>	<b>60.9%</b>	<b>59.3%</b>	<b>54.5%</b>	<b>51.3%</b>	<b>51.0%</b>
<b>Management &amp; Administrative</b>	<b>5.9%</b>	<b>6.0%</b>	<b>5.6%</b>	<b>5.6%</b>	<b>5.5%</b>	<b>6.4%</b>	<b>6.4%</b>
<b>Support</b>	<b>87.7%</b>	<b>88.7%</b>	<b>88.1%</b>	<b>89.5%</b>	<b>89.1%</b>	<b>89.3%</b>	<b>89.3%</b>
<b>Maintenance/ Technical</b>	<b>12.3%</b>	<b>11.3%</b>	<b>11.9%</b>	<b>10.5%</b>	<b>10.9%</b>	<b>10.7%</b>	<b>10.7%</b>
<b>General Support</b>	<b>5.3%</b>	<b>4.2%</b>	<b>4.0%</b>	<b>3.9%</b>	<b>3.8%</b>	<b>3.6%</b>	<b>3.6%</b>
HCA, Nurse's Aide, etc.	93.1%	93.4%	93.6%	94.3%	93.8%	93.6%	93.5%
<b>Health Care Assistants</b>	<b>93.1%</b>	<b>93.4%</b>	<b>93.6%</b>	<b>94.3%</b>	<b>93.8%</b>	<b>93.6%</b>	<b>93.5%</b>
<b>Care, other</b>	<b>4.5%</b>	<b>4.3%</b>	<b>4.6%</b>	<b>4.1%</b>	<b>4.6%</b>	<b>4.7%</b>	<b>4.7%</b>
<b>Home Help</b>	<b>2.4%</b>	<b>2.3%</b>	<b>1.8%</b>	<b>1.6%</b>	<b>1.6%</b>	<b>1.7%</b>	<b>1.8%</b>
<b>Patient &amp; Client Care</b>	<b>52.7%</b>	<b>53.8%</b>	<b>55.0%</b>	<b>55.4%</b>	<b>54.7%</b>	<b>52.9%</b>	<b>52.9%</b>
<b>Total</b>	<b>100 %</b>	<b>100 %</b>	<b>100 %</b>	<b>100 %</b>	<b>100 %</b>	<b>100 %</b>	<b>100%</b>

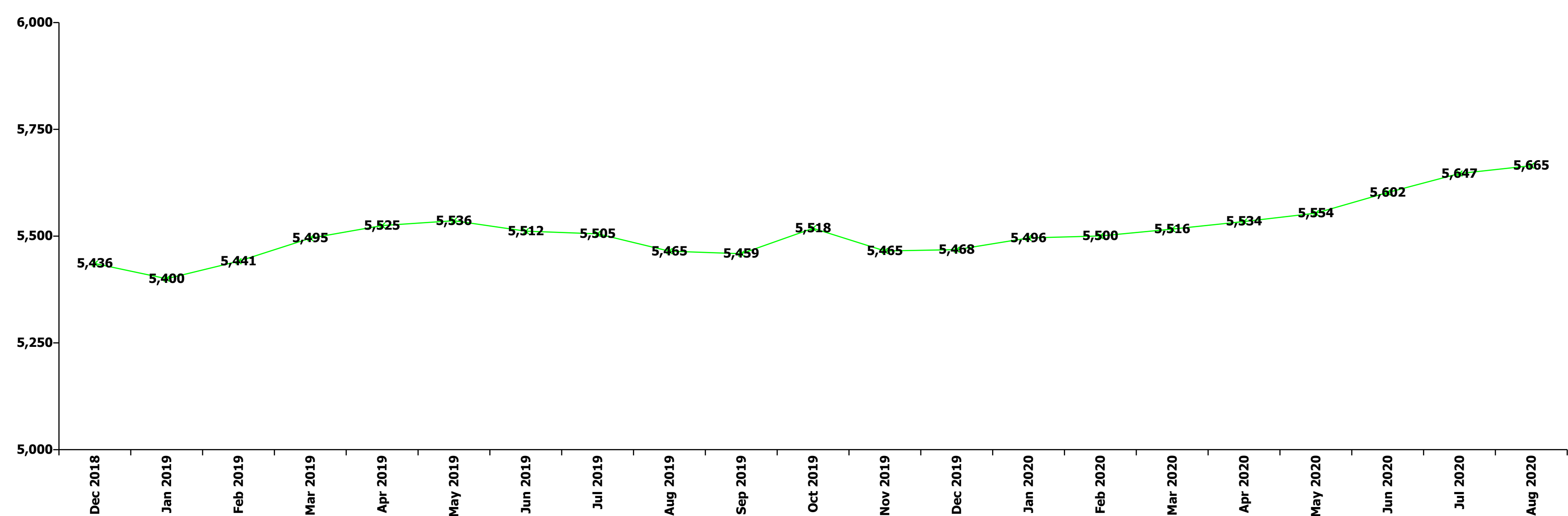
Aug 2020 (Dec 2018 figure: 1,782)	WTE Dec 2015	WTE Dec 2016	WTE Dec 2017	WTE Dec 2018	WTE Dec 2019	WTE Jul 2020	WTE Aug 2020
<b>Older People</b>	<b>1,650</b>	<b>1,645</b>	<b>1,780</b>	<b>1,782</b>	<b>1,836</b>	<b>1,885</b>	<b>1,891</b>
<b>Medical/ Dental, other</b>	<b>100.0%</b>	<b>100.0%</b>	<b>100.0%</b>	<b>100.0%</b>	<b>100.0%</b>	<b>100.0%</b>	<b>100.0%</b>
<b>Medical &amp; Dental</b>	<b>0.9%</b>	<b>0.9%</b>	<b>0.8%</b>	<b>0.8%</b>	<b>0.8%</b>	<b>0.9%</b>	<b>0.9%</b>
Clinical Nurse/ Midwife Manager	18.4%	17.2%	14.3%	16.4%	15.9%	15.6%	14.9%
Director Nursing/Midwifery, Assistant	2.5%	2.7%	2.7%	2.4%	3.0%	2.9%	2.9%
Director of Nursing/Midwifery	2.7%	3.3%	3.2%	2.8%	3.5%	3.6%	3.5%
<b>Nurse/ Midwife Manager</b>	<b>23.6%</b>	<b>23.3%</b>	<b>20.2%</b>	<b>21.6%</b>	<b>22.5%</b>	<b>22.0%</b>	<b>21.3%</b>
Advanced Nurse/ Midwife Practitioner		0.3%		1.0%	1.4%	1.7%	1.7%
Clinical Nurse/ Midwife Specialist					0.2%	0.2%	0.2%
<b>Nurse/ Midwife Specialist &amp; AN/MP</b>		<b>0.3%</b>		<b>1.0%</b>	<b>1.7%</b>	<b>1.9%</b>	<b>1.9%</b>
Staff Nurse [Intellectual Disability]				0.2%			
Staff Nurse [Psychiatric]	0.4%	0.2%	0.2%	0.4%	0.2%	0.2%	0.2%
Staff Nurses [General/ Children's]	76.0%	76.2%	79.6%	76.8%	75.6%	75.6%	76.3%
<b>Staff Nurse/ Staff Midwife</b>	<b>76.4%</b>	<b>76.5%</b>	<b>79.8%</b>	<b>77.4%</b>	<b>75.9%</b>	<b>75.8%</b>	<b>76.5%</b>
Nursing Education/Clinical						0.2%	0.2%
<b>Nursing/ Midwifery other</b>						<b>0.2%</b>	<b>0.2%</b>
<b>Nursing &amp; Midwifery</b>	<b>23.8%</b>	<b>23.7%</b>	<b>21.8%</b>	<b>23.0%</b>	<b>22.4%</b>	<b>21.8%</b>	<b>21.8%</b>
Occupational Therapists	41.2%	40.9%	40.5%	55.3%	35.0%	33.5%	33.9%
Physiotherapists					2.2%	6.5%	6.3%
Speech & Language Therapists	3.8%	4.0%	4.2%				
<b>Therapy Professions</b>	<b>45.0%</b>	<b>44.9%</b>	<b>44.7%</b>	<b>55.3%</b>	<b>37.2%</b>	<b>39.9%</b>	<b>40.3%</b>
Radiographers	7.3%	7.0%	8.1%	7.0%	4.2%	4.2%	4.4%
<b>Health Science/ Diagnostics</b>	<b>7.3%</b>	<b>7.0%</b>	<b>8.1%</b>	<b>7.0%</b>	<b>4.2%</b>	<b>4.2%</b>	<b>4.4%</b>
<b>Social Workers</b>	<b>47.7%</b>	<b>48.1%</b>	<b>47.2%</b>	<b>37.7%</b>	<b>58.6%</b>	<b>55.9%</b>	<b>55.3%</b>
<b>Health &amp; Social Care Professionals</b>	<b>1.2%</b>	<b>1.2%</b>	<b>1.0%</b>	<b>1.2%</b>	<b>1.1%</b>	<b>1.5%</b>	<b>1.5%</b>
Executive Management					0.9%	0.9%	0.9%
Senior Management (VIII & GM)	4.9%	5.0%	3.5%	3.5%	6.5%	6.6%	6.6%
<b>Management (VIII &amp; above)</b>	<b>4.9%</b>	<b>5.0%</b>	<b>3.5%</b>	<b>3.5%</b>	<b>7.4%</b>	<b>7.6%</b>	<b>7.5%</b>
<b>Administrative/ Supervisory (V to VII)</b>	<b>6.9%</b>	<b>6.8%</b>	<b>7.5%</b>	<b>8.8%</b>	<b>13.3%</b>	<b>14.5%</b>	<b>14.3%</b>
<b>Clerical (III &amp; IV)</b>	<b>88.2%</b>	<b>88.2%</b>	<b>89.0%</b>	<b>87.7%</b>	<b>79.3%</b>	<b>78.0%</b>	<b>78.2%</b>
<b>Management &amp; Administrative</b>	<b>4.8%</b>	<b>4.9%</b>	<b>4.8%</b>	<b>4.8%</b>	<b>4.7%</b>	<b>5.6%</b>	<b>5.6%</b>
<b>Support</b>	<b>94.8%</b>	<b>94.8%</b>	<b>93.9%</b>	<b>93.9%</b>	<b>94.6%</b>	<b>94.4%</b>	<b>94.5%</b>

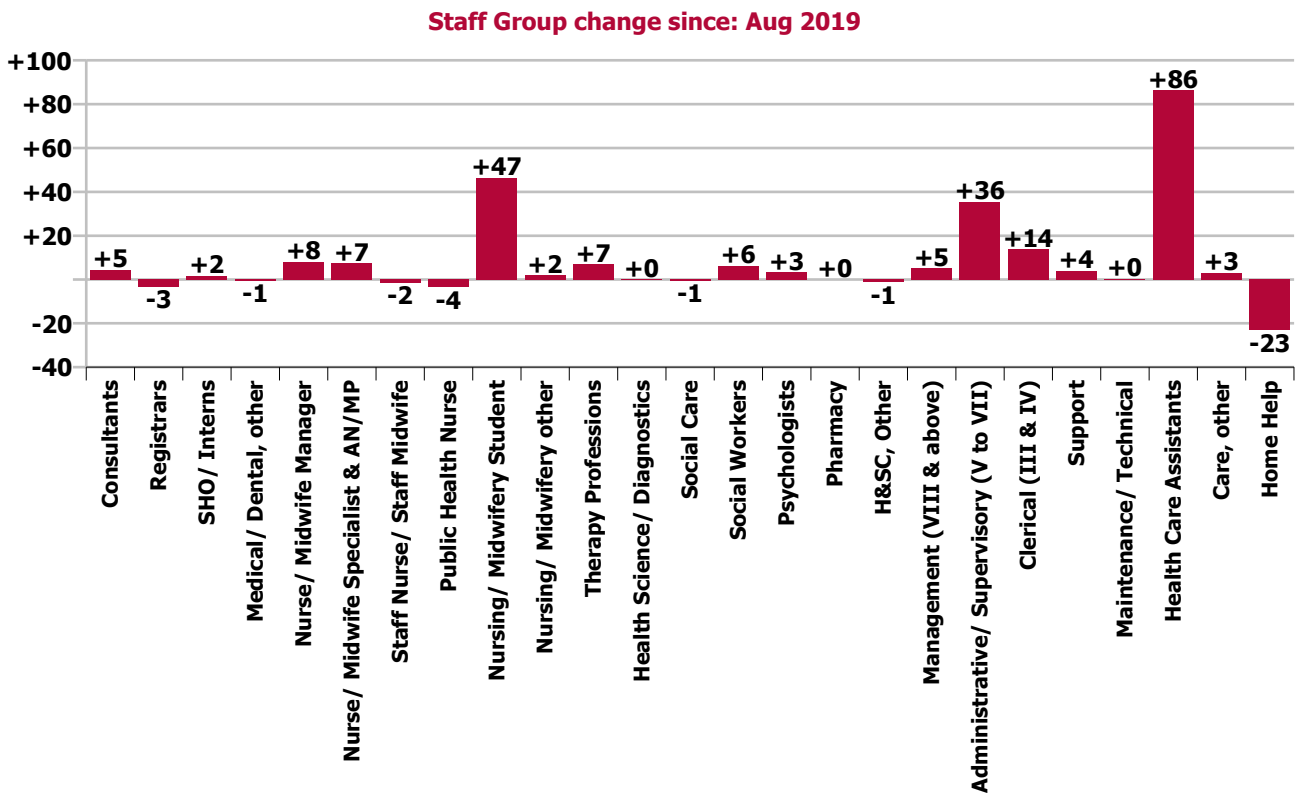
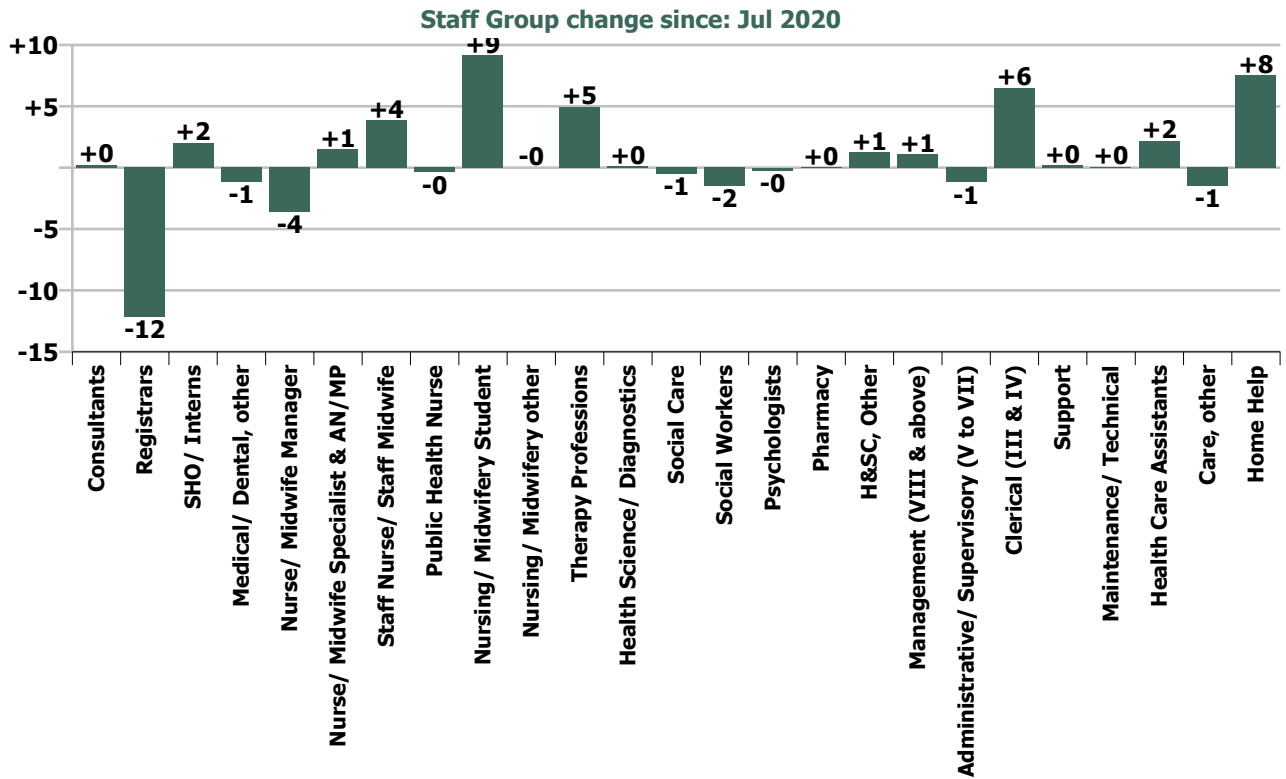
Aug 2020 (Dec 2018 figure: 1,782)	WTE Dec 2015	WTE Dec 2016	WTE Dec 2017	WTE Dec 2018	WTE Dec 2019	WTE Jul 2020	WTE Aug 2020
<b>Older People</b>	<b>1,650</b>	<b>1,645</b>	<b>1,780</b>	<b>1,782</b>	<b>1,836</b>	<b>1,885</b>	<b>1,891</b>
<b>Maintenance/ Technical</b>	<b>5.2%</b>	<b>5.2%</b>	<b>6.1%</b>	<b>6.1%</b>	<b>5.4%</b>	<b>5.6%</b>	<b>5.5%</b>
<b>General Support</b>	<b>8.1%</b>	<b>8.1%</b>	<b>7.4%</b>	<b>7.4%</b>	<b>7.2%</b>	<b>6.7%</b>	<b>6.7%</b>
HCA, Nurse's Aide, etc.	52.1%	53.6%	49.1%	50.0%	49.2%	53.7%	53.3%
Health & Social Care Assistants	0.5%	0.4%	0.4%	0.4%	0.4%	0.4%	0.4%
<b>Health Care Assistants</b>	<b>52.6%</b>	<b>54.0%</b>	<b>49.5%</b>	<b>50.4%</b>	<b>49.7%</b>	<b>54.1%</b>	<b>53.7%</b>
<b>Care, other</b>	<b>2.6%</b>	<b>2.9%</b>	<b>2.6%</b>	<b>2.7%</b>	<b>2.5%</b>	<b>2.4%</b>	<b>2.3%</b>
<b>Home Help</b>	<b>44.7%</b>	<b>43.1%</b>	<b>47.9%</b>	<b>46.8%</b>	<b>47.9%</b>	<b>43.6%</b>	<b>43.9%</b>
<b>Patient &amp; Client Care</b>	<b>61.1%</b>	<b>61.2%</b>	<b>64.2%</b>	<b>62.8%</b>	<b>61.0%</b>	<b>63.4%</b>	<b>63.4%</b>
<b>Total</b>	<b>100 %</b>	<b>100 %</b>	<b>100 %</b>	<b>100 %</b>	<b>100 %</b>	<b>100 %</b>	<b>100%</b>

Summary Staff Movement: August 2020

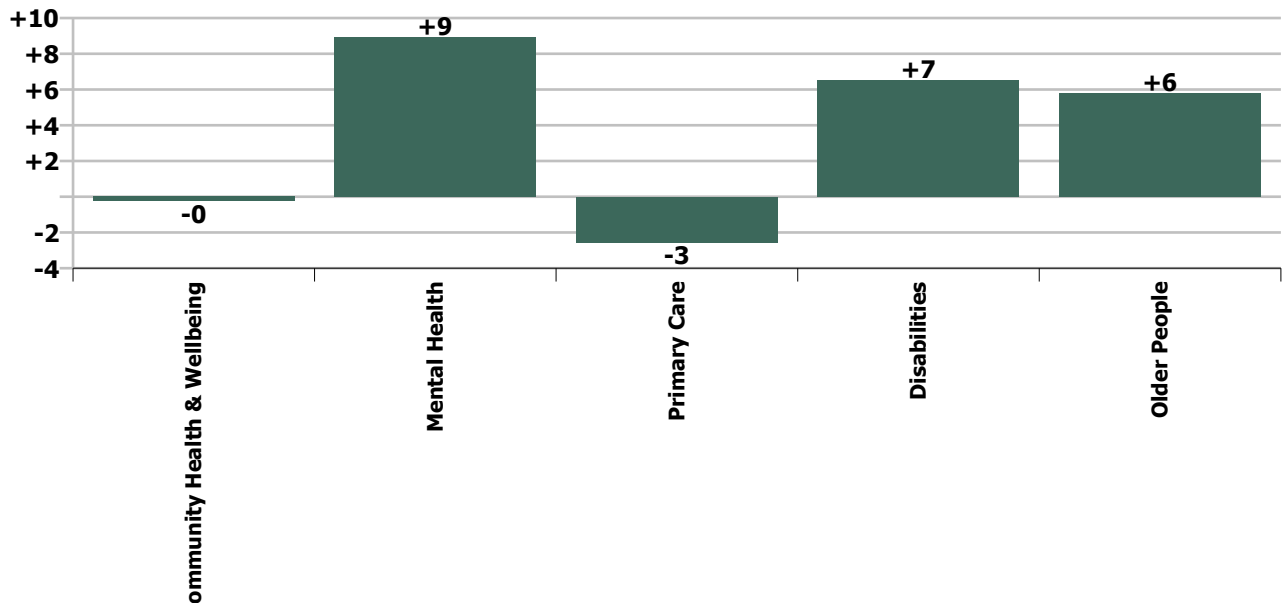
Month-on-month Summary																												
WTE change since Jul 20	% change since Jul 20	overall	Consultants	Registrars	SHO/ Interns	Medical/ Dental, other	Medical & Dental	Nurse/ Midwife Manager	Nurse/ Midwife Specialist & AN/MP	Staff Nurse/ Staff Midwife	Public Health Nurse	Nursing/ Midwifery Student	Nursing/ Midwifery other	Nursing & Midwifery	Therapy Professions	Health Science/ Diagnostics	Social Care	Social Workers	Psychologists	Pharmacy	H&SC, Other	Health & Social Care Professionals	Management (VIII & above)	Administrative/ Supervisory (V to VII)	Clerical (III & IV)	Management & Administrative	General Support	Patient & Client Care
Overall	+0.3%	+18	+0.2	-12.2	+2.0	-1.1	-11.1	-3.6	+1.5	+3.9	-0.4	+9.1	-0.0	+10.5	+4.9	+0.1	-0.5	-1.5	-0.2	+0.0	+1.2	+4.1	+1.1	-1.2	+6.5	+6.4	+0.3	+8.2
Community Health & Wellbeing	-1.8%	-0																					0.0	-0.2	-0.0	-0.3		0.0
Mental Health	+0.9%	+9	+0.4	-1.7	+2.0		+0.8	+1.9	+1.4	-4.2		+8.4	-0.1	+7.5	-0.4		-0.4	-1.0	+0.8	+0.0	+0.6	-0.5	+0.4	-0.3	+1.8	+2.0	+0.2	-1.0
Primary Care	-0.2%	-3	-0.2	-10.5	-0.0	-1.1	-11.8	-1.4	+0.1	+1.2	-0.4	0.0	0.0	-0.5	+8.1	+0.1		+0.2	-1.0	0.0	-0.0	+7.3	+0.7	-1.3	+3.7	+3.1	-0.1	-0.5
Disabilities	+0.4%	+7				0.0	0.0	-1.3	-0.0	+3.5		+0.7	+0.1	+3.0	-2.8		-0.1	-0.4	-0.0		+0.7	-2.6	0.0	+0.7	+0.3	+1.0	-0.1	+5.2
Older People	+0.3%	+6				0.0	0.0	-2.9	-0.0	+3.3			0.0	+0.4	+0.1	+0.1		-0.2				-0.1	0.0	-0.1	+0.7	+0.6	+0.3	+4.5
Social Care	+0.4%	+12				0.0	0.0	-4.2	-0.0	+6.9		+0.7	+0.1	+3.5	-2.7	+0.1	-0.1	-0.6	-0.0		+0.7	-2.7	0.0	+0.6	+1.0	+1.6	+0.2	+9.7
Change	+18.4	+0.3%	+0.7%	-15.5%	+8.3%	-1.7%	-5.4%	-1.0%	+1.4%	+0.4%	-0.3%	+16.0%	-0.1%	+0.6%	+1.5%	+2.0%	-4.3%	-1.7%	-0.4%	+1.3%	+4.2%	+0.8%	+1.7%	-0.7%	+1.4%	+0.9%	+0.1%	+0.4%

Year-on-year Summary																												
WTE change since Aug 19	% change since Aug 19	overall	Consultants	Registrars	SHO/ Interns	Medical/ Dental, other	Medical & Dental	Nurse/ Midwife Manager	Nurse/ Midwife Specialist & AN/MP	Staff Nurse/ Staff Midwife	Public Health Nurse	Nursing/ Midwifery Student	Nursing/ Midwifery other	Nursing & Midwifery	Therapy Professions	Health Science/ Diagnostics	Social Care	Social Workers	Psychologists	Pharmacy	H&SC, Other	Health & Social Care Professionals	Management (VIII & above)	Administrativ e/ Supervisory (V to VII)	Clerical (III & IV)	Management & Administrative	General Support	Patient & Client Care
Overall	+3.7%	+200	+4.5	-3.4	+1.7	-0.8	+2.0	+8.1	+7.5	-1.5	-3.6	+46.5	+1.9	+58.9	+7.0	+0.1	-0.6	+6.2	+3.4	+0.1	-1.4	+14.7	+5.1	+35.5	+13.7	+54.3	+4.1	+66.2
Community Health & Wellbeing	-1.8%	-0																					+1.0	+9.1	+3.1	+13.2		+0.7
Mental Health	+0.9%	+9	+4.0	-4.0	+1.7		+1.7	+4.1	-1.6	-11.7		+18.2	+0.9	+9.9	+0.7		-0.9	-0.9	+3.3	+0.0	+1.1	+3.3	+2.1	+4.6	+3.8	+10.5	+1.7	-1.4
Primary Care	-0.2%	-3	+0.5	+0.6	-0.0	-1.9	-0.8	+4.9	+4.3	+17.1	-3.6	+0.3	0.0	+23.0	+3.1	-0.0		+1.9	-0.9	0.0	-0.3	+3.8	+0.1	+13.1	+4.6	+17.8	+8.6	+9.6
Disabilities	+4.0%	+58.8				+0.0	+0.0	+6.4	+2.9	-9.4		+28.0	+0.1	+28.0	+2.9		+0.3	+6.4	+1.0		-2.1	+8.4	+1.8	+8.3	+5.1	+15.2	+0.6	+6.5
Older People	+2.2%	+39.9				+1.1	+1.1	-7.2	+1.9	+2.4			+1.0	-1.9	+0.2	+0.1		-1.1				-0.8	+0.0	+0.5	-2.9	-2.3	-6.8	+50.7
Social Care	+0.4%	+12				+1.1	+1.1	-0.8	+4.8	-7.0		+28.0	+1.1	+26.1	+3.1	+0.1	+0.3	+5.2	+1.0		-2.1	+7.6	+1.8	+8.8	+2.2	+12.8	-6.2	+57.3
Change	+200.3	+3.7%	+14.1%	-4.9%	+6.7%	-1.2%	+1.0%	+2.3%	+7.4%	-0.1%	-2.3%	+233.2%	+34.3%	+3.6%	+2.2%	+1.1%	-4.9%	+7.6%	+5.8%	+3.3%	-4.3%	+2.9%	+8.7%	+28.7%	+3.1%	+8.6%	+1.2%	+3.1%

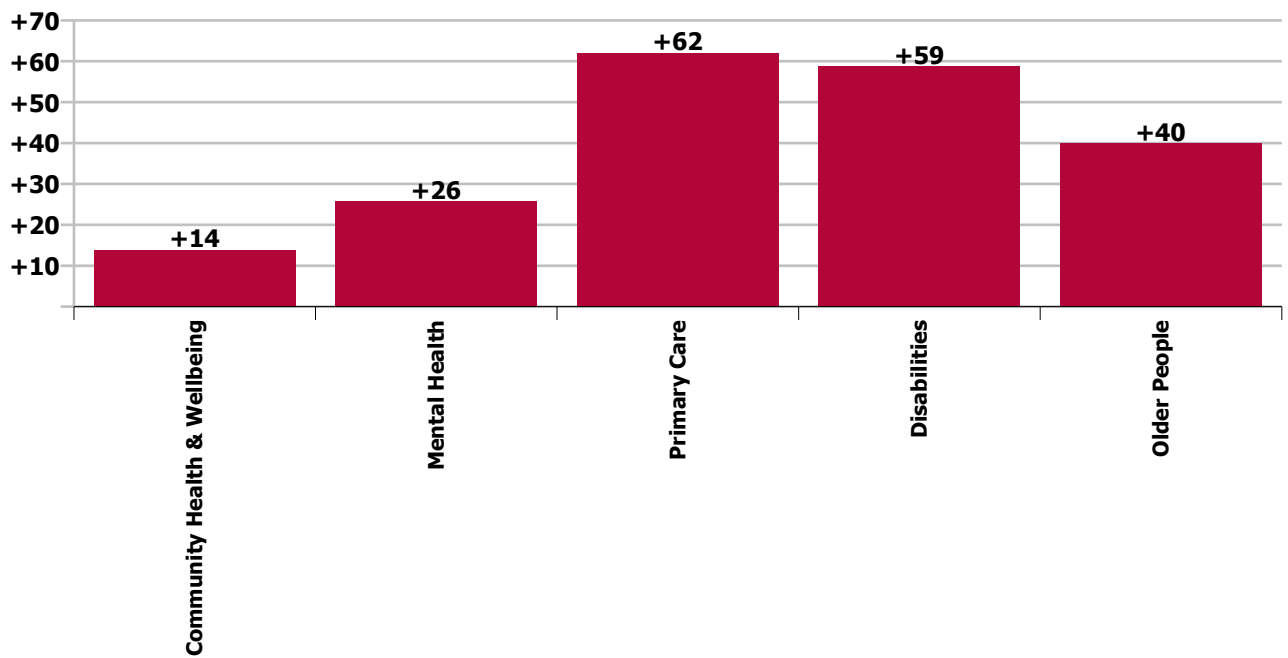




Care Group change since: Jul 2020



Care Group change since: Aug 2019





## Longitudinal Employment Levels by Grade Group - Oct 2013 to Aug 2020

Aug 2020 (Dec 2015 figure: 5,177)	WTE Aug 2020	WTE change since Dec 15	WTE change since Dec 16	WTE change since Dec 17	WTE change since Dec 18	WTE change since Dec 18	WTE change since Jul 20	% change since Dec 15	% change since Dec 16	% change since Dec 17	% change since Dec 18	% change since Dec 18	% change since Jul 20
<b>Overall</b>	<b>5,665</b>	<b>+488</b>	<b>+385</b>	<b>+297</b>	<b>+229</b>	<b>+229</b>	<b>+18</b>	<b>+9.4%</b>	<b>+7.3%</b>	<b>+5.5%</b>	<b>+4.2%</b>	<b>+4.2%</b>	<b>+0.3%</b>
Consultant Medicine	3	+0	+0	+0	+0	+0	-0	+11.3%	+11.3%	+11.3%	+14.8%	+14.8%	-5.4%
Consultant Psychiatry	33	+8	+6	+6	+3	+3	+0	+29.6%	+22.2%	+20.8%	+11.1%	+11.1%	+1.3%
<b>Consultants</b>	<b>37</b>	<b>+8</b>	<b>+6</b>	<b>+6</b>	<b>+4</b>	<b>+4</b>	<b>+0</b>	<b>+27.7%</b>	<b>+21.2%</b>	<b>+19.8%</b>	<b>+11.4%</b>	<b>+11.4%</b>	<b>+0.7%</b>
Registrar	59	+13	+19	+13	+7	+7	-9	+27.7%	+47.3%	+27.6%	+14.3%	+14.3%	-13.9%
Senior Registrar	7	+3	+2	+3	-3	-3	-2	+86.9%	+48.4%	+85.5%	-31.0%	-31.0%	-20.0%
Specialist Registrar				-1	-1	-1	-1	-100.0%	-100.0%	-100.0%	-100.0%	-100.0%	-100.0%
<b>Registrars</b>	<b>66</b>	<b>+16</b>	<b>+21</b>	<b>+15</b>	<b>+3</b>	<b>+3</b>	<b>-12</b>	<b>+32.4%</b>	<b>+47.4%</b>	<b>+29.6%</b>	<b>+4.8%</b>	<b>+4.8%</b>	<b>-15.5%</b>
Senior House Officer	26	+1	-3	-1	+1	+1	+2	+2.2%	-11.6%	-3.7%	+2.4%	+2.4%	+8.3%
<b>SHO/ Interns</b>	<b>26</b>	<b>+1</b>	<b>-3</b>	<b>-1</b>	<b>+1</b>	<b>+1</b>	<b>+2</b>	<b>+2.2%</b>	<b>-11.6%</b>	<b>-3.7%</b>	<b>+2.4%</b>	<b>+2.4%</b>	<b>+8.3%</b>
Dentists	29	+0	+1	+1	+1	+1	-1	+1.2%	+2.8%	+4.6%	+2.7%	+2.7%	-3.1%
Other Medical	36	-0	-0	-1	+2	+2	-0	-1.3%	-0.2%	-2.8%	+4.3%	+4.3%	-0.6%
<b>Medical/ Dental, other</b>	<b>65</b>	<b>-0</b>	<b>+1</b>	<b>+0</b>	<b>+2</b>	<b>+2</b>	<b>-1</b>	<b>-0.2%</b>	<b>+1.1%</b>	<b>+0.3%</b>	<b>+3.6%</b>	<b>+3.6%</b>	<b>-1.7%</b>
<b>Medical &amp; Dental</b>	<b>194</b>	<b>+25</b>	<b>+25</b>	<b>+20</b>	<b>+10</b>	<b>+10</b>	<b>-11</b>	<b>+14.5%</b>	<b>+14.8%</b>	<b>+11.8%</b>	<b>+5.2%</b>	<b>+5.2%</b>	<b>-5.4%</b>
Clinical Nurse/ Midwife Manager	278	+12	+9	+20	+11	+11	-1	+4.4%	+3.4%	+7.8%	+4.2%	+4.2%	-0.3%
Director Nursing/Midwifery, Assistant	55	+5	+3	+6	+3	+3	-2	+9.4%	+5.3%	+12.0%	+6.8%	+6.8%	-2.8%
Director of Nursing/Midwifery	27	+1	+1	+1	+3	+3	-1	+5.9%	+3.4%	+4.1%	+13.0%	+13.0%	-4.0%
<b>Nurse/ Midwife Manager</b>	<b>359</b>	<b>+18</b>	<b>+13</b>	<b>+27</b>	<b>+18</b>	<b>+18</b>	<b>-4</b>	<b>+5.2%</b>	<b>+3.7%</b>	<b>+8.1%</b>	<b>+5.2%</b>	<b>+5.2%</b>	<b>-1.0%</b>
Advanced Nurse/ Midwife Practitioner	11	+9	+8	+9	+4	+4	+0	+432.5%	+255.0%	+432.5%	+52.6%	+52.6%	+1.6%
Clinical Nurse/ Midwife Specialist	98	+17	+13	+8	+10	+10	+1	+20.4%	+14.9%	+9.0%	+10.8%	+10.8%	+1.3%
<b>Nurse/ Midwife Specialist &amp; AN/MP</b>	<b>109</b>	<b>+25</b>	<b>+20</b>	<b>+17</b>	<b>+13</b>	<b>+13</b>	<b>+1</b>	<b>+30.2%</b>	<b>+23.1%</b>	<b>+18.2%</b>	<b>+13.8%</b>	<b>+13.8%</b>	<b>+1.4%</b>
Graduate Nursing/ Midwifery		-11						-100.0%	-100.0%	-100.0%	-100.0%	-100.0%	-100.0%
Staff Nurse [Intellectual Disability]	220	+44	+20	+20	+11	+11	+2	+25.0%	+9.9%	+9.8%	+5.3%	+5.3%	+0.8%
Staff Nurse [Psychiatric]	287	-30	-41	-31	-18	-18	-4	-9.4%	-12.5%	-9.6%	-5.9%	-5.9%	-1.3%
Staff Nurses [General/ Children's]	518	+22	+3	-6	-9	-9	+6	+4.5%	+0.6%	-1.2%	-1.7%	-1.7%	+1.1%
<b>Staff Nurse/ Staff Midwife</b>	<b>1,025</b>	<b>+26</b>	<b>-18</b>	<b>-17</b>	<b>-16</b>	<b>-16</b>	<b>+4</b>	<b>+2.6%</b>	<b>-1.7%</b>	<b>-1.6%</b>	<b>-1.5%</b>	<b>-1.5%</b>	<b>+0.4%</b>
Public Health Nursing	150	-3	+4	-3	-5	-5	-0	-1.8%	+2.7%	-1.7%	-3.2%	-3.2%	-0.3%
<b>Public Health Nurse</b>	<b>150</b>	<b>-3</b>	<b>+4</b>	<b>-3</b>	<b>-5</b>	<b>-5</b>	<b>-0</b>	<b>-1.8%</b>	<b>+2.7%</b>	<b>-1.7%</b>	<b>-3.2%</b>	<b>-3.2%</b>	<b>-0.3%</b>
Pre-registration Nurse/ Midwife Intern		-9	-2	-4	-11	-11	-5	-100.0%	-100.0%	-100.0%	-100.0%	-100.0%	-100.0%
Pre-registration Nurse Intern (COVID-19)	54	+54	+54	+54	+54	+54	+14	-100.0%	-100.0%	-100.0%	-100.0%	-100.0%	+35.8%
Post-registration Nurse/ Midwife Student	1	-6	-6	-6	-6	-6		-85.7%	-85.7%	-85.7%	-85.7%	-85.7%	
Nursing/ Midwifery awaiting registration	11	+11	+11	+11	+10	+10		-100.0%	-100.0%	-100.0%	+1000.0%	+1000.0%	
<b>Nursing/ Midwifery Student</b>	<b>66</b>	<b>+51</b>	<b>+58</b>	<b>+56</b>	<b>+48</b>	<b>+48</b>	<b>+9</b>	<b>+326.6%</b>	<b>+682.0%</b>	<b>+516.0%</b>	<b>+253.2%</b>	<b>+253.2%</b>	<b>+16.0%</b>
<b>Nursing/ Midwifery other</b>	<b>8</b>	<b>+3</b>	<b>+3</b>	<b>+3</b>	<b>+3</b>	<b>+3</b>	<b>-0</b>	<b>+55.1%</b>	<b>+62.0%</b>	<b>+58.3%</b>	<b>+58.3%</b>	<b>+58.3%</b>	<b>-0.1%</b>



Aug 2020 (Dec 2015 figure: 5,177)	WTE Aug 2020	WTE change since Dec 15	WTE change since Dec 16	WTE change since Dec 17	WTE change since Dec 18	WTE change since Dec 18	WTE change since Jul 20	% change since Dec 15	% change since Dec 16	% change since Dec 17	% change since Dec 18	% change since Dec 18	% change since Jul 20
<b>Overall</b>	<b>5,665</b>	<b>+488</b>	<b>+385</b>	<b>+297</b>	<b>+229</b>	<b>+229</b>	<b>+18</b>	<b>+9.4%</b>	<b>+7.3%</b>	<b>+5.5%</b>	<b>+4.2%</b>	<b>+4.2%</b>	<b>+0.3%</b>
<b>Nursing &amp; Midwifery</b>	<b>1,717</b>	<b>+120</b>	<b>+80</b>	<b>+83</b>	<b>+60</b>	<b>+60</b>	<b>+10</b>	<b>+7.5%</b>	<b>+4.9%</b>	<b>+5.1%</b>	<b>+3.6%</b>	<b>+3.6%</b>	<b>+0.6%</b>
Dietitians	15	-1	+1	-1	-3	-3	+0	-3.9%	+4.6%	-5.7%	-14.4%	-14.4%	+0.3%
Occupational Therapists	129	+16	+10	+16	+6	+6	+0	+13.7%	+8.3%	+13.7%	+4.6%	+4.6%	+0.0%
Orthoptists	3	-0	+1	+0	+0	+0		-3.1%	+40.5%	+7.7%	+6.4%	+6.4%	
Physiotherapists	94	+14	+3	+3	+0	+0	+1	+17.0%	+3.3%	+3.5%	+0.0%	+0.0%	+0.8%
Podiatrists & Chiropodists	11	+3	+1	+2	+2	+2	+1	+35.4%	+8.6%	+24.5%	+16.3%	+16.3%	+12.7%
Speech & Language Therapists	73	+9	+9	+1	+3	+3	+3	+14.4%	+14.5%	+1.2%	+4.3%	+4.3%	+4.1%
<b>Therapy Professions</b>	<b>325</b>	<b>+41</b>	<b>+25</b>	<b>+21</b>	<b>+8</b>	<b>+8</b>	<b>+5</b>	<b>+14.2%</b>	<b>+8.1%</b>	<b>+6.9%</b>	<b>+2.5%</b>	<b>+2.5%</b>	<b>+1.5%</b>
Audiology	5	-0	-0	-0	-0	-0	+0	-2.7%	-2.0%	-0.9%	-3.5%	-3.5%	+1.5%
Radiographers	1	-0	-0	-0	-0	-0	+0	-11.1%	-7.9%	-11.7%	-11.1%	-11.1%	+4.1%
<b>Health Science/ Diagnostics</b>	<b>7</b>	<b>-0</b>	<b>-0</b>	<b>-0</b>	<b>-0</b>	<b>-0</b>	<b>+0</b>	<b>-4.5%</b>	<b>-3.2%</b>	<b>-3.2%</b>	<b>-5.0%</b>	<b>-5.0%</b>	<b>+2.0%</b>
<b>Social Care</b>	<b>11</b>	<b>-5</b>	<b>-2</b>	<b>-0</b>	<b>-0</b>	<b>-0</b>	<b>-1</b>	<b>-31.6%</b>	<b>-13.6%</b>	<b>-3.7%</b>	<b>-2.0%</b>	<b>-2.0%</b>	<b>-4.3%</b>
<b>Social Workers</b>	<b>88</b>	<b>+11</b>	<b>+7</b>	<b>+8</b>	<b>+9</b>	<b>+9</b>	<b>-2</b>	<b>+14.0%</b>	<b>+8.8%</b>	<b>+10.0%</b>	<b>+12.2%</b>	<b>+12.2%</b>	<b>-1.7%</b>
<b>Psychologists</b>	<b>61</b>	<b>+8</b>	<b>+6</b>	<b>+3</b>	<b>-0</b>	<b>-0</b>	<b>-0</b>	<b>+15.2%</b>	<b>+11.3%</b>	<b>+5.8%</b>	<b>-0.6%</b>	<b>-0.6%</b>	<b>-0.4%</b>
<b>Pharmacy</b>	<b>2</b>	<b>+0</b>	<b>+0</b>	<b>+0</b>	<b>-0</b>	<b>-0</b>	<b>+0</b>	<b>+3.3%</b>	<b>+3.3%</b>	<b>+3.3%</b>	<b>-3.1%</b>	<b>-3.1%</b>	<b>+1.3%</b>
Counsellor Therapists	21	+1	+3	+0	+1	+1	+1	+3.9%	+15.3%	+1.4%	+6.6%	+6.6%	+6.5%
Dental Hygienists	5	+0	+0	-0	+0	+0	-0	+0.9%	+2.5%	-6.7%	+3.5%	+3.5%	-0.6%
Other Health & Social Care	4	-4	-4	-4	-3	-3		-49.0%	-45.7%	-51.3%	-41.7%	-41.7%	
<b>H&amp;SC, Other</b>	<b>30</b>	<b>-3</b>	<b>-1</b>	<b>-5</b>	<b>-2</b>	<b>-2</b>	<b>+1</b>	<b>-9.6%</b>	<b>-2.2%</b>	<b>-13.1%</b>	<b>-4.9%</b>	<b>-4.9%</b>	<b>+4.2%</b>
<b>Health &amp; Social Care Professionals</b>	<b>524</b>	<b>+51</b>	<b>+35</b>	<b>+27</b>	<b>+15</b>	<b>+15</b>	<b>+4</b>	<b>+10.7%</b>	<b>+7.2%</b>	<b>+5.5%</b>	<b>+2.9%</b>	<b>+2.9%</b>	<b>+0.8%</b>
Executive Management	7	+4		-1	-1	-1		+133.3%		-12.5%	-10.9%	-10.9%	
Senior Management (VIII & GM)	57	+16	+17	+16	+7	+7	+1	+41.0%	+43.6%	+40.0%	+15.2%	+15.2%	+1.9%
<b>Management (VIII &amp; above)</b>	<b>64</b>	<b>+20</b>	<b>+17</b>	<b>+15</b>	<b>+7</b>	<b>+7</b>	<b>+1</b>	<b>+47.4%</b>	<b>+37.0%</b>	<b>+31.4%</b>	<b>+11.6%</b>	<b>+11.6%</b>	<b>+1.7%</b>
Middle Management (V-VII)	158	+64	+63	+52	+45	+45	-1	+68.2%	+65.6%	+48.9%	+39.3%	+39.3%	-0.8%
Other Administrative	1												
<b>Administrative/ Supervisory (V to VII)</b>	<b>159</b>	<b>+64</b>	<b>+63</b>	<b>+52</b>	<b>+45</b>	<b>+45</b>	<b>-1</b>	<b>+67.5%</b>	<b>+64.9%</b>	<b>+48.5%</b>	<b>+39.0%</b>	<b>+39.0%</b>	<b>-0.7%</b>
General Administrative (III & IV)	462	+31	+21	+24	+12	+12	+7	+7.2%	+4.9%	+5.5%	+2.6%	+2.6%	+1.4%
<b>Clerical (III &amp; IV)</b>	<b>462</b>	<b>+31</b>	<b>+21</b>	<b>+24</b>	<b>+12</b>	<b>+12</b>	<b>+7</b>	<b>+7.2%</b>	<b>+4.9%</b>	<b>+5.5%</b>	<b>+2.6%</b>	<b>+2.6%</b>	<b>+1.4%</b>
<b>Management &amp; Administrative</b>	<b>685</b>	<b>+116</b>	<b>+101</b>	<b>+91</b>	<b>+63</b>	<b>+63</b>	<b>+6</b>	<b>+20.4%</b>	<b>+17.4%</b>	<b>+15.4%</b>	<b>+10.1%</b>	<b>+10.1%</b>	<b>+0.9%</b>
Catering	66	+13	+11	+8	+8	+8	+1	+24.1%	+19.0%	+13.6%	+13.0%	+13.0%	+1.3%
Household Services	210	-36	-23	-7	-6	-6	+0	-14.6%	-9.9%	-3.2%	-2.6%	-2.6%	+0.0%
Other Support	29	+8	+6	-0	-6	-6	-1	+35.6%	+28.7%	-0.6%	-16.6%	-16.6%	-2.4%
Portering	8	-1	-1	+0	+0	+0		-11.4%	-11.4%	+0.7%	+1.3%	+1.3%	
<b>Support</b>	<b>313</b>	<b>-17</b>	<b>-7</b>	<b>+1</b>	<b>-4</b>	<b>-4</b>	<b>+0</b>	<b>-5.0%</b>	<b>-2.2%</b>	<b>+0.3%</b>	<b>-1.2%</b>	<b>-1.2%</b>	<b>+0.1%</b>
Maintenance	37	-4	-1	-1	+3	+3	+0	-9.1%	-2.6%	-1.5%	+8.8%	+8.8%	+0.2%

Aug 2020 (Dec 2015 figure: 5,177)	WTE Aug 2020	WTE change since Dec 15	WTE change since Dec 16	WTE change since Dec 17	WTE change since Dec 18	WTE change since Dec 18	WTE change since Jul 20	% change since Dec 15	% change since Dec 16	% change since Dec 17	% change since Dec 18	% change since Dec 18	% change since Jul 20
<b>Overall</b>	<b>5,665</b>	<b>+488</b>	<b>+385</b>	<b>+297</b>	<b>+229</b>	<b>+229</b>	<b>+18</b>	<b>+9.4%</b>	<b>+7.3%</b>	<b>+5.5%</b>	<b>+4.2%</b>	<b>+4.2%</b>	<b>+0.3%</b>
<b>Maintenance/ Technical</b>	<b>37</b>	<b>-4</b>	<b>-1</b>	<b>-1</b>	<b>+3</b>	<b>+3</b>	<b>+0</b>	<b>-9.1%</b>	<b>-2.6%</b>	<b>-1.5%</b>	<b>+8.8%</b>	<b>+8.8%</b>	<b>+0.2%</b>
<b>General Support</b>	<b>350</b>	<b>-20</b>	<b>-8</b>	<b>+0</b>	<b>-1</b>	<b>-1</b>	<b>+0</b>	<b>-5.5%</b>	<b>-2.3%</b>	<b>+0.1%</b>	<b>-0.2%</b>	<b>-0.2%</b>	<b>+0.1%</b>
HCA, Nurse's Aide, etc.	1,492	+207	+141	+86	+76	+76	+3	+16.1%	+10.4%	+6.1%	+5.3%	+5.3%	+0.2%
Health & Social Care Assistants	27	+11	+12	+10	-0	-0	-1	+73.1%	+82.8%	+60.2%	-0.9%	-0.9%	-3.7%
<b>Health Care Assistants</b>	<b>1,519</b>	<b>+219</b>	<b>+153</b>	<b>+96</b>	<b>+76</b>	<b>+76</b>	<b>+2</b>	<b>+16.8%</b>	<b>+11.2%</b>	<b>+6.8%</b>	<b>+5.2%</b>	<b>+5.2%</b>	<b>+0.1%</b>
<b>Care, other</b>	<b>134</b>	<b>+4</b>	<b>+3</b>	<b>-1</b>	<b>+2</b>	<b>+2</b>	<b>-1</b>	<b>+3.2%</b>	<b>+1.9%</b>	<b>-0.8%</b>	<b>+1.5%</b>	<b>+1.5%</b>	<b>-1.1%</b>
<b>Home Help</b>	<b>542</b>	<b>-25</b>	<b>-5</b>	<b>-20</b>	<b>+5</b>	<b>+5</b>	<b>+8</b>	<b>-4.4%</b>	<b>-0.9%</b>	<b>-3.5%</b>	<b>+0.9%</b>	<b>+0.9%</b>	<b>+1.4%</b>
<b>Patient &amp; Client Care</b>	<b>2,195</b>	<b>+198</b>	<b>+151</b>	<b>+75</b>	<b>+82</b>	<b>+82</b>	<b>+8</b>	<b>+9.9%</b>	<b>+7.4%</b>	<b>+3.5%</b>	<b>+3.9%</b>	<b>+3.9%</b>	<b>+0.4%</b>

Source: Health Service Personnel Census

Longitudinal Employment Levels by Care Group - Oct 2013 to Aug 2020

Community Health & Wellbeing

Aug 2020 ( figure: )	WTE Aug 2020	WTE change since	WTE change since	WTE change since	WTE change since	WTE change since	WTE change since Jul 20	% change since	% change since	% change since	% change since	% change since	% change since Jul 20
Overall	14	+14	+14	+14	+14	+14	-0	-100.0%	-100.0%	-100.0%	-100.0%	-100.0%	-1.8%
Management & Administrative	13	+13	+13	+13	+13	+13	-0	-1.0%	-1.0%	-1.0%	-1.0%	-1.0%	-0.0%
Management (VIII & above)	1	+1	+1	+1	+1	+1		-1.0%	-1.0%	-1.0%	-1.0%	-1.0%	+0.0%
Administrative/ Supervisory (V to VII)	9	+9	+9	+9	+9	+9	-0	-1.0%	-1.0%	-1.0%	-1.0%	-1.0%	-0.0%
Clerical (III & IV)	3	+3	+3	+3	+3	+3	-0	-1.0%	-1.0%	-1.0%	-1.0%	-1.0%	-0.0%
Patient & Client Care	1	+1	+1	+1	+1	+1		-1.0%	-1.0%	-1.0%	-1.0%	-1.0%	+0.0%
Care, other	1	+1	+1	+1	+1	+1		-1.0%	-1.0%	-1.0%	-1.0%	-1.0%	+0.0%

Source: Health Service Personnel Census

Mental Health

Aug 2020 (Dec 2015 figure: 931)	WTE Aug 2020	WTE change since Dec 15	WTE change since Dec 16	WTE change since Dec 17	WTE change since Dec 18	WTE change since Dec 18	WTE change since Jul 20	% change since Dec 15	% change since Dec 16	% change since Dec 17	% change since Dec 18	% change since Dec 18	% change since Jul 20
Overall	979	+48	+31	+37	+38	+38	+9	+5.2%	+3.3%	+3.9%	+4.0%	+4.0%	+0.9%
Medical & Dental	81	+13	+8	+9	+3	+3	+1	+0.2%	+0.1%	+0.1%	+0.0%	+0.0%	+0.0%
Consultants	33	+8	+7	+7	+4	+4	+0	+0.3%	+0.3%	+0.3%	+0.1%	+0.1%	+0.0%
Registrars	22	+4	+6	+3	-2	-2	-2	+0.2%	+0.3%	+0.1%	-0.1%	-0.1%	-0.1%
SHO/ Interns	25	+1	-4	-1	+1	+1	+2	+0.0%	-0.1%	-0.0%	+0.0%	+0.0%	+0.1%
Nursing & Midwifery	503	+17	+2	+9	+18	+18	+8	+0.0%	+0.0%	+0.0%	+0.0%	+0.0%	+0.0%
Nurse/ Midwife Manager	124	+8	+5	+6	+7	+7	+2	+0.1%	+0.0%	+0.0%	+0.1%	+0.1%	+0.0%
Nurse/ Midwife Specialist & AN/MP	66	+13	+8	+5	+2	+2	+1	+0.2%	+0.1%	+0.1%	+0.1%	+0.1%	+0.0%
Staff Nurse/ Staff Midwife	286	-26	-39	-30	-17	-17	-4	-0.1%	-0.1%	-0.1%	-0.1%	-0.1%	-0.0%
Nursing/ Midwifery Student	26	+21	+26	+26	+25	+25	+8	+3.7%	-1.0%	-1.0%	+25.5%	+25.5%	+0.5%
Nursing/ Midwifery other	1	+1	+1	+1	+1	+1	-0	-1.0%	-1.0%	-1.0%	-1.0%	-1.0%	-0.1%
Health & Social Care Professionals	113	+7	+6	+8	+2	+2	-0	+0.1%	+0.1%	+0.1%	+0.0%	+0.0%	-0.0%
Therapy Professions	36	+5	+4	+4	+2	+2	-0	+0.2%	+0.1%	+0.1%	+0.1%	+0.1%	-0.0%
Social Care	3	-2	-1	-1	-1	-1	-0	-0.4%	-0.2%	-0.2%	-0.2%	-0.2%	-0.1%
Social Workers	38	+0	+0	+2	+0	+0	-1	+0.0%	+0.0%	+0.0%	+0.0%	+0.0%	-0.0%
Psychologists	23	+3	+1	+2	-0	-0	+1	+0.2%	+0.1%	+0.1%	-0.0%	-0.0%	+0.0%
Pharmacy	1	+0	+0	+0	-0	-0	+0	+0.1%	+0.1%	+0.1%	-0.1%	-0.1%	+0.0%
H&SC, Other	13	+0	+2	+1	+1	+1	+1	+0.0%	+0.1%	+0.0%	+0.1%	+0.1%	+0.0%
Management & Administrative	124	+28	+32	+25	+19	+19	+2	+0.3%	+0.3%	+0.3%	+0.2%	+0.2%	+0.0%
Management (VIII & above)	8	+4	+5	+4	+4	+4	+0	+0.9%	+1.6%	+0.9%	+0.9%	+0.9%	+0.1%
Administrative/ Supervisory (V to VII)	31	+17	+17	+14	+11	+11	-0	+1.2%	+1.3%	+0.9%	+0.6%	+0.6%	-0.0%
Clerical (III & IV)	85	+8	+10	+7	+4	+4	+2	+0.1%	+0.1%	+0.1%	+0.1%	+0.1%	+0.0%
General Support	81	-17	-12	-5	-2	-2	+0	-0.2%	-0.1%	-0.1%	-0.0%	-0.0%	+0.0%
Support	64	-15	-11	-5	-3	-3	+0	-0.2%	-0.1%	-0.1%	-0.0%	-0.0%	+0.0%
Maintenance/ Technical	17	-2	-1	+0	+1	+1	+0	-0.1%	-0.1%	+0.0%	+0.1%	+0.1%	+0.0%
Patient & Client Care	78	-0	-5	-8	-2	-2	-1	-0.0%	-0.1%	-0.1%	-0.0%	-0.0%	-0.0%
Health Care Assistants	67	+0	-5	-8	+0	+0	-0	+0.0%	-0.1%	-0.1%	+0.0%	+0.0%	-0.0%
Care, other	10	-0	+0	-0	-2	-2	-1	-0.0%	+0.0%	-0.0%	-0.2%	-0.2%	-0.1%

Source: Health Service Personnel Census

Primary Care

Aug 2020 (Dec 2015 figure: 1,222)	WTE Aug 2020	WTE change since Dec 15	WTE change since Dec 16	WTE change since Dec 17	WTE change since Dec 18	WTE change since Dec 18	WTE change since Jul 20	% change since Dec 15	% change since Dec 16	% change since Dec 17	% change since Dec 18	% change since Dec 18	% change since Jul 20
Overall	1,239	+16	-18	+51	+6	+6	-3	+1.3%	-1.4%	+4.3%	+0.5%	+0.5%	-0.2%
Medical & Dental	93	+8	+14	+9	+4	+4	-12	+0.1%	+0.2%	+0.1%	+0.0%	+0.0%	-0.1%
Consultants	3	+0	+0	+0	+0	+0	-0	+0.1%	+0.1%	+0.1%	+0.1%	+0.1%	-0.1%
Registrars	44	+12	+16	+12	+5	+5	-10	+0.4%	+0.6%	+0.4%	+0.1%	+0.1%	-0.2%
SHO/ Interns	1	-0	+1	-0	-0	-0	-0	-0.2%	-1.0%	-0.0%	-0.0%	-0.0%	-0.0%
Medical/ Dental, other	45	-4	-3	-4	-2	-2	-1	-0.1%	-0.1%	-0.1%	-0.0%	-0.0%	-0.0%
Nursing & Midwifery	318	+26	+21	+12	+13	+13	-0	+0.1%	+0.1%	+0.0%	+0.0%	+0.0%	-0.0%
Nurse/ Midwife Manager	40	+4	+3	+5	+4	+4	-1	+0.1%	+0.1%	+0.2%	+0.1%	+0.1%	-0.0%
Nurse/ Midwife Specialist & AN/MP	25	+4	+5	+2	+5	+5	+0	+0.2%	+0.3%	+0.1%	+0.2%	+0.2%	+0.0%
Staff Nurse/ Staff Midwife	100	+27	+14	+13	+14	+14	+1	+0.4%	+0.2%	+0.1%	+0.2%	+0.2%	+0.0%
Public Health Nurse	150	-3	+4	-3	-5	-5	-0	-0.0%	+0.0%	-0.0%	-0.0%	-0.0%	-0.0%
Nursing/ Midwifery Student	1	-6	-6	-6	-6	-6		-0.9%	-0.9%	-0.9%	-0.9%	-0.9%	+0.0%
Nursing/ Midwifery other	1	+1	+1	+1	+1	+1		-1.0%	-1.0%	-1.0%	-1.0%	-1.0%	+0.0%
Health & Social Care Professionals	296	+16	-4	-12	-20	-20	+7	+0.1%	-0.0%	-0.0%	-0.1%	-0.1%	+0.0%
Therapy Professions	236	+17	-1	-5	-12	-12	+8	+0.1%	-0.0%	-0.0%	-0.0%	-0.0%	+0.0%
Health Science/ Diagnostics	5	-0	-0	-0	-0	-0	+0	-0.0%	-0.0%	-0.0%	-0.0%	-0.0%	+0.0%
Social Workers	14	-3	-6	-7	-6	-6	+0	-0.2%	-0.3%	-0.3%	-0.3%	-0.3%	+0.0%
Psychologists	32	+1	+2	+1	-2	-2	-1	+0.0%	+0.1%	+0.0%	-0.1%	-0.1%	-0.0%
Pharmacy	1							+0.0%	+0.0%	+0.0%	+0.0%	+0.0%	+0.0%
H&SC, Other	7	+1	+1	-0	+0	+0	-0	+0.2%	+0.2%	-0.0%	+0.0%	+0.0%	-0.0%
Management & Administrative	344	+32	+18	+15	-5	-5	+3	+0.1%	+0.1%	+0.0%	-0.0%	-0.0%	+0.0%
Management (VIII & above)	32	+8	+4	+3	-5	-5	+1	+0.3%	+0.1%	+0.1%	-0.1%	-0.1%	+0.0%
Administrative/ Supervisory (V to VII)	71	+16	+16	+7	+5	+5	-1	+0.3%	+0.3%	+0.1%	+0.1%	+0.1%	-0.0%
Clerical (III & IV)	240	+8	-1	+6	-5	-5	+4	+0.0%	-0.0%	+0.0%	-0.0%	-0.0%	+0.0%
General Support	87	+20	+15	+13	+8	+8	-0	+0.3%	+0.2%	+0.2%	+0.1%	+0.1%	-0.0%
Support	80	+19	+15	+11	+5	+5	-0	+0.3%	+0.2%	+0.2%	+0.1%	+0.1%	-0.0%
Maintenance/ Technical	7	+1	+1	+1	+3	+3	+0	+0.2%	+0.1%	+0.2%	+0.7%	+0.7%	+0.0%
Patient & Client Care	102	-86	-82	+14	+7	+7	-0	-0.5%	-0.4%	+0.2%	+0.1%	+0.1%	-0.0%
Health Care Assistants	45	+16	+14	+14	+5	+5	-0	+0.6%	+0.5%	+0.5%	+0.1%	+0.1%	-0.0%
Care, other	56	-4	-2	-1	+2	+2	-1	-0.1%	-0.0%	-0.0%	+0.0%	+0.0%	-0.0%
Home Help	1	-98	-94	+1	+1	+1	+0	-1.0%	-1.0%	-1.0%	-1.0%	-1.0%	+0.9%

Source: Health Service Personnel Census

Disabilities

Aug 2020 (Dec 2015 figure: 1,374)	WTE Aug 2020	WTE change since Dec 15	WTE change since Dec 16	WTE change since Dec 17	WTE change since Dec 18	WTE change since Dec 18	WTE change since Jul 20	% change since Dec 15	% change since Dec 16	% change since Dec 17	% change since Dec 18	% change since Dec 18	% change since Jul 20
Overall	1,542	+168	+112	+85	+63	+63	+7	+12.2%	+7.8%	+5.8%	+4.3%	+4.3%	+0.4%
Medical & Dental	3	+0						+0.1%	+0.0%	+0.0%	+0.0%	+0.0%	+0.0%
Consultants		-1	-1	-1	-1	-1		-1.0%	-1.0%	-1.0%	-1.0%	-1.0%	-1.0%
Medical/ Dental, other	3	+1	+1	+1	+1	+1		+0.5%	+0.5%	+0.5%	+0.5%	+0.5%	+0.0%
Nursing & Midwifery	483	+57	+34	+36	+28	+28	+3	+0.1%	+0.1%	+0.1%	+0.1%	+0.1%	+0.0%
Nurse/ Midwife Manager	107	+11	+7	+6	+8	+8	-1	+0.1%	+0.1%	+0.1%	+0.1%	+0.1%	-0.0%
Nurse/ Midwife Specialist & AN/MP	10	+1	+0	+2	+3	+3	-0	+0.1%	+0.0%	+0.2%	+0.4%	+0.4%	-0.0%
Staff Nurse/ Staff Midwife	323	+10	-11	-7	-11	-11	+4	+0.0%	-0.0%	-0.0%	-0.0%	-0.0%	+0.0%
Nursing/ Midwifery Student	39	+36	+38	+35	+28	+28	+1	+12.0%	+25.0%	+9.3%	+2.6%	+2.6%	+0.0%
Nursing/ Midwifery other	5	-0	+0	-0	-0	-0	+0	-0.0%	+0.0%	-0.0%	-0.0%	-0.0%	+0.0%
Health & Social Care Professionals	85	+19	+24	+20	+25	+25	-3	+0.3%	+0.4%	+0.3%	+0.4%	+0.4%	-0.0%
Therapy Professions	42	+15	+18	+18	+18	+18	-3	+0.6%	+0.8%	+0.8%	+0.8%	+0.8%	-0.1%
Social Care	9	-3	-1	+0	+1	+1	-0	-0.3%	-0.1%	+0.1%	+0.1%	+0.1%	-0.0%
Social Workers	19	+7	+6	+6	+7	+7	-0	+0.6%	+0.5%	+0.4%	+0.6%	+0.6%	-0.0%
Psychologists	6	+4	+3	+1	+2	+2	-0	+1.8%	+1.1%	+0.2%	+0.4%	+0.4%	-0.0%
H&SC, Other	10	-4	-3	-5	-2	-2	+1	-0.3%	-0.2%	-0.3%	-0.2%	-0.2%	+0.1%
Management & Administrative	98	+17	+12	+17	+15	+15	+1	+0.2%	+0.1%	+0.2%	+0.2%	+0.2%	+0.0%
Management (VIII & above)	15	+4	+4	+3	+2	+2		+0.4%	+0.4%	+0.3%	+0.2%	+0.2%	+0.0%
Administrative/ Supervisory (V to VII)	33	+13	+11	+13	+12	+12	+1	+0.6%	+0.5%	+0.7%	+0.6%	+0.6%	+0.0%
Clerical (III & IV)	50	+0	-2	+1	+1	+1	+0	+0.0%	-0.0%	+0.0%	+0.0%	+0.0%	+0.0%
General Support	56	-16	-4	-2	-1	-1	-0	-0.2%	-0.1%	-0.0%	-0.0%	-0.0%	-0.0%
Support	50	-13	-3	-1	-1	-1	-0	-0.2%	-0.1%	-0.0%	-0.0%	-0.0%	-0.0%
Maintenance/ Technical	6	-3	-1	-1				-0.3%	-0.1%	-0.1%	+0.0%	+0.0%	+0.0%
Patient & Client Care	816	+92	+46	+14	-4	-4	+5	+0.1%	+0.1%	+0.0%	-0.0%	-0.0%	+0.0%
Health Care Assistants	763	+89	+44	+12	-10	-10	+4	+0.1%	+0.1%	+0.0%	-0.0%	-0.0%	+0.0%
Care, other	38	+6	+5	+1	+4	+4	+0	+0.2%	+0.2%	+0.0%	+0.1%	+0.1%	+0.0%
Home Help	14	-3	-3	-0	+1	+1	+1	-0.2%	-0.2%	-0.0%	+0.1%	+0.1%	+0.1%

Source: Health Service Personnel Census

Older People

Aug 2020 (Dec 2015 figure: 1,650)	WTE Aug 2020	WTE change since Dec 15	WTE change since Dec 16	WTE change since Dec 17	WTE change since Dec 18	WTE change since Dec 18	WTE change since Jul 20	% change since Dec 15	% change since Dec 16	% change since Dec 17	% change since Dec 18	% change since Dec 18	% change since Jul 20
Overall	1,891	+241	+246	+111	+109	+109	+6	+14.6%	+14.9%	+6.2%	+6.1%	+6.1%	+0.3%
Medical & Dental	17	+3	+3	+3	+3	+3		+0.2%	+0.2%	+0.2%	+0.2%	+0.2%	+0.0%
Medical/ Dental, other	17	+3	+3	+3	+3	+3		+0.2%	+0.2%	+0.2%	+0.2%	+0.2%	+0.0%
Nursing & Midwifery	413	+20	+23	+25	+2	+2	+0	+0.1%	+0.1%	+0.1%	+0.0%	+0.0%	+0.0%
Nurse/ Midwife Manager	88	-5	-3	+10	-1	-1	-3	-0.0%	-0.0%	+0.1%	-0.0%	-0.0%	-0.0%
Nurse/ Midwife Specialist & AN/MP	8	+8	+7	+8	+4	+4	-0	-1.0%	+6.9%	-1.0%	+1.0%	+1.0%	-0.0%
Staff Nurse/ Staff Midwife	316	+16	+18	+7	-2	-2	+3	+0.1%	+0.1%	+0.0%	-0.0%	-0.0%	+0.0%
Nursing/ Midwifery other	1	+1	+1	+1	+1	+1		-1.0%	-1.0%	-1.0%	-1.0%	-1.0%	+0.0%
Health & Social Care Professionals	29	+9	+9	+11	+8	+8	-0	+0.5%	+0.5%	+0.6%	+0.4%	+0.4%	-0.0%
Therapy Professions	12	+3	+3	+4	+0	+0	+0	+0.3%	+0.3%	+0.5%	+0.0%	+0.0%	+0.0%
Health Science/ Diagnostics	1	-0	-0	-0	-0	-0	+0	-0.1%	-0.1%	-0.1%	-0.1%	-0.1%	+0.0%
Social Workers	16	+7	+6	+8	+8	+8	-0	+0.7%	+0.7%	+0.9%	+1.1%	+1.1%	-0.0%
Management & Administrative	106	+26	+26	+21	+20	+20	+1	+0.3%	+0.3%	+0.2%	+0.2%	+0.2%	+0.0%
Management (VIII & above)	8	+4	+4	+5	+5	+5		+1.0%	+1.0%	+1.7%	+1.7%	+1.7%	+0.0%
Administrative/ Supervisory (V to VII)	15	+10	+10	+9	+8	+8	-0	+1.8%	+1.8%	+1.4%	+1.0%	+1.0%	-0.0%
Clerical (III & IV)	83	+12	+12	+7	+8	+8	+1	+0.2%	+0.2%	+0.1%	+0.1%	+0.1%	+0.0%
General Support	126	-7	-8	-5	-5	-5	+0	-0.1%	-0.1%	-0.0%	-0.0%	-0.0%	+0.0%
Support	119	-7	-8	-4	-4	-4	+0	-0.1%	-0.1%	-0.0%	-0.0%	-0.0%	+0.0%
Maintenance/ Technical	7			-1	-1	-1		+0.0%	+0.0%	-0.1%	-0.1%	-0.1%	+0.0%
Patient & Client Care	1,199	+191	+192	+56	+80	+80	+5	+0.2%	+0.2%	+0.0%	+0.1%	+0.1%	+0.0%
Health Care Assistants	644	+114	+101	+78	+80	+80	-2	+0.2%	+0.2%	+0.1%	+0.1%	+0.1%	-0.0%
Care, other	28	+1	-1	-2	-2	-2	-0	+0.1%	-0.0%	-0.1%	-0.1%	-0.1%	-0.0%
Home Help	527	+76	+93	-20	+3	+3	+6	+0.2%	+0.2%	-0.0%	+0.0%	+0.0%	+0.0%

Source: Health Service Personnel Census