

CHO 1 Employment Report: July 2020

Employment by Staff Group

Jul 2020 (Dec 2019 figure: 5,468)	WTE Jun 2020	WTE Jul 2020	WTE change since Jun 20	% change since Jun 20	WTE change since Dec 19	WTE change since Jul 19
Overall	5,602	5647	+45	+0.8%	+178	+141
Consultants	36	36	+0	+0.4%	+3	+4
Registrars	62	79	+16	+26.1%	+13	-0
SHO/ Interns	27	24	-3	-12.0%	-2	+4
Medical/ Dental, other	66	66	+0	+0.1%	-14	+2
Medical & Dental	192	205	+13	+6.9%	-0	+10
Nurse/ Midwife Manager	359	363	+4	+1.1%	+13	+6
Nurse/ Midwife Specialist & AN/MP	110	108	-2	-2.2%	+6	+7
Staff Nurse/ Staff Midwife	1,021	1,021	-0	-0.0%	+7	-7
Public Health Nurse	153	151	-2	-1.4%	-5	-3
<i>Pre-registration Nurse/ Midwife Intern</i>	7	5	-2	-25.4%	+2	-2
<i>Pre-registration Nurse Intern (COVID-19)</i>	46	40	-6	-13.4%	+40	-6
<i>Post-registration Nurse/ Midwife Student</i>	2	1	-1	-50.0%	-6	-1
<i>Nursing/ Midwifery awaiting registration</i>	11	11				
Nursing/ Midwifery Student	66	57	-9	-13.6%	+36	+35
Nursing/ Midwifery other	8	8	-0	-0.1%	+2	+2
Nursing & Midwifery	1,716	1,707	-10	-0.6%	+59	+40
Therapy Professions	320	320	+1	+0.2%	+4	-1
Health Science/ Diagnostics	6	6	+0	+0.5%	-0	-0
Social Care	12	12	-0	-3.0%	+1	-0
Social Workers	91	89	-2	-1.8%	+4	+9
Psychologists	61	61	-0	-0.2%	+1	+2
Pharmacy	2	2	+0	+2.0%	+0	+0
H&SC, Other	28	29	+1	+3.2%	-3	-1
Health & Social Care Professionals	520	520	-1	-0.1%	+7	+9
Management (VIII & above)	62	63	+1	+1.2%	+3	+2
Administrative/ Supervisory (V to VII)	161	161	-0	-0.0%	+25	+34
Clerical (III & IV)	450	455	+5	+1.2%	-0	+4
Management & Administrative	673	679	+6	+0.9%	+28	+41
Support	315	313	-2	-0.6%	+7	+1
Maintenance/ Technical	37	37	-0	-0.1%	+1	
General Support	352	350	-2	-0.6%	+8	+1
Health Care Assistants	1,488	1,517	+30	+2.0%	+94	+76
Care, other	134	135	+2	+1.4%	+5	+3
Home Help	528	534	+6	+1.2%	-22	-38
Patient & Client Care	2,149	2,187	+38	+1.7%	+77	+41

CHO 1 Employment Report: July 2020

Community Health & Wellbeing

Jul 2020 (figure:)	WTE Jun 2020	WTE Jul 2020	WTE change since Jun 20	% change since Jun 20	WTE change since	WTE change since
Total Community Health & Wellbeing	14	14	+0	+0.2%	+14	+14
Management (VIII & above)	1	1			+1	+1
Administrative/ Supervisory (V to VII)	9	9	-0	-0.2%	+9	+9
Clerical (III & IV)	3	3	+0	+1.6%	+3	+3
Management & Administrative	13	13	+0	+0.2%	+13	+13
Patient & Client Care	1	1			+1	+1

Mental Health

Jul 2020 (Dec 2019 figure: 953)	WTE Jun 2020	WTE Jul 2020	WTE change since Jun 20	% change since Jun 20	WTE change since Dec 19	WTE change since Jul 19
Total Mental Health	978	970	-8	-0.8%	+18	+16
Consultants	33	33	-0	-0.1%	+2	+3
Registrars	23	24	+1	+2.5%	-1	-3
SHO/ Interns	26	23	-3	-12.3%	-2	+5
Medical & Dental	83	80	-3	-3.3%	-1	+5
Nurse/ Midwife Manager	120	122	+1	+1.2%	+5	+2
Nurse/ Midwife Specialist & AN/MP	66	65	-1	-1.8%	-3	-3
Staff Nurse/ Staff Midwife	292	290	-2	-0.6%	-7	-12
Pre-registration Nurse/ Midwife Intern		5	+5	-100.0%	+5	+5
Pre-registration Nurse Intern (COVID-19)	25	13	-12	-49.3%	+13	-12
Nursing/ Midwifery Student	25	18	-7	-28.6%	+18	+10
Nursing/ Midwifery other	1	1	-0	-6.0%	+1	+1
Nursing & Midwifery	505	496	-9	-1.7%	+14	-2
Therapy Professions	36	36	+0	+0.4%	+1	+2
Social Care	4	3	-0	-11.8%	-0	-0
Social Workers	40	39	-1	-2.3%	+0	+1
Psychologists	22	22	+0	+0.3%	+1	+2
Pharmacy	1	1	+0	+3.8%	+0	+0
H&SC, Other	12	12	+0	+1.1%	-1	+2
Health & Social Care Professionals	115	114	-1	-0.9%	+1	+7
Management (VIII & above)	7	7	+1	+9.2%	+2	+1
Administrative/ Supervisory (V to VII)	30	31	+0	+1.3%	+1	+4
Clerical (III & IV)	84	84	+0	+0.0%	-2	+2
Management & Administrative	121	122	+1	+0.9%	+1	+7
Support	63	64	+0	+0.5%	+1	+1
Maintenance/ Technical	17	17	-0	-0.2%	+0	+0
General Support	80	80	+0	+0.4%	+1	+2
Health Care Assistants	64	68	+3	+4.9%	+1	-2
Care, other	11	11	-0	-0.9%	+0	-1
Patient & Client Care	76	79	+3	+4.0%	+2	-3

Primary Care

Jul 2020 (Dec 2019 figure: 1,182)	WTE Jun 2020	WTE Jul 2020	WTE change since Jun 20	% change since Jun 20	WTE change since Dec 19	WTE change since Jul 19
Total Primary Care	1,229	1,241	+13	+1.0%	+60	+40
Consultants	3	4	+0	+5.7%	+1	+1
Registrars	39	55	+16	+40.3%	+14	+3
SHO/ Interns	1	1	-0	-3.0%	-0	-1
Medical/ Dental, other	46	46	+0	+0.1%	-1	+1
Medical & Dental	89	105	+16	+17.9%	+13	+4
Nurse/ Midwife Manager	43	42	-1	-3.1%	+5	+6
Nurse/ Midwife Specialist & AN/MP	25	25	-0	-0.5%	+4	+5
Staff Nurse/ Staff Midwife	98	99	+1	+1.3%	+14	+14
Public Health Nurse	153	151	-2	-1.4%	-5	-3
<i>Post-registration Nurse/ Midwife Student</i>	2	1	-1	-50.0%	-6	-1
Nursing/ Midwifery Student	2	1	-1	-50.0%	-6	-2
Nursing/ Midwifery other	1	1				+0
Nursing & Midwifery	321	318	-3	-1.0%	+12	+19
Therapy Professions	227	228	+1	+0.3%	+1	-9
Health Science/ Diagnostics	5	5	-0	-0.8%	-0	-0
Social Workers	14	14	-1	-3.5%	+1	+1
Psychologists	34	34	-0	-0.8%	-1	-1
Pharmacy	1	1				
H&SC, Other	7	7	-0	-0.5%	+0	+0
Health & Social Care Professionals	289	289	-0	-0.1%	+1	-8
Management (VIII & above)	31	31	+0	+0.4%	-1	-1
Administrative/ Supervisory (V to VII)	72	73	+1	+0.9%	+9	+13
Clerical (III & IV)	236	237	+1	+0.4%	+1	-3
Management & Administrative	339	341	+2	+0.5%	+9	+9
Support	83	80	-3	-3.5%	+8	+7
Maintenance/ Technical	7	7	-0	-0.1%	+1	+1
General Support	90	87	-3	-3.2%	+9	+8
Health Care Assistants	44	45	+1	+2.0%	+13	+6
Care, other	57	57	+0	+0.7%	+2	+2
Home Help		0	+0	-100.0%	+0	+0
Patient & Client Care	101	102	+2	+1.6%	+15	+8

Social Care

Jul 2020 (Dec 2019 figure: 3,334)	WTE Jun 2020	WTE Jul 2020	WTE change since Jun 20	% change since Jun 20	WTE change since Dec 19	WTE change since Jul 19
Total Social Care	3,381	3,421	+40	+1.2%	+87	+71
Medical/ Dental, other	20	20			-12	+1
Medical & Dental	20	20			-12	+1
Nurse/ Midwife Manager	195	199	+4	+2.0%	+3	-2
Nurse/ Midwife Specialist & AN/MP	19	18	-1	-5.5%	+4	+5
Staff Nurse/ Staff Midwife	632	632	+0	+0.0%	+1	-8
Pre-registration Nurse/ Midwife Intern	7		-7	-100.0%	-3	-7
Pre-registration Nurse Intern (COVID-19)	21	27	+6	+29.8%	+27	+6
Nursing/ Midwifery awaiting registration	11	11				
Nursing/ Midwifery Student	39	38	-1	-1.9%	+24	+27
Nursing/ Midwifery other	6	6	+0	+0.9%	+1	+1
Nursing & Midwifery	891	893	+2	+0.3%	+33	+23
Therapy Professions	56	56	-0	-0.4%	+3	+6
Health Science/ Diagnostics	1	1	+0	+6.0%	-0	-0
Social Care	9	9	+0	+0.8%	+1	+0
Social Workers	36	36	-0	-0.4%	+3	+6
Psychologists	6	6	+0	+1.2%	+1	+1
H&SC, Other	9	10	+1	+9.2%	-3	-3
Health & Social Care Professionals	117	117	+1	+0.5%	+5	+10
Management (VIII & above)	23	23			+1	+1
Administrative/ Supervisory (V to VII)	49	48	-1	-2.2%	+6	+8
Clerical (III & IV)	128	132	+4	+3.5%	-3	+2
Management & Administrative	200	203	+3	+1.7%	+4	+11
Support	169	169	+1	+0.3%	-3	-7
Maintenance/ Technical	13	13				-1
General Support	182	182	+1	+0.3%	-3	-8
Health Care Assistants	1,380	1,405	+26	+1.8%	+80	+72
Care, other	65	66	+2	+2.4%	+2	+1
Home Help	528	534	+6	+1.1%	-22	-38
Patient & Client Care	1,972	2,005	+33	+1.7%	+60	+35

CHO 1 Employment Report: July 2020

Disabilities

Jul 2020 (Dec 2019 figure: 1,498)	WTE Jun 2020	WTE Jul 2020	WTE change since Jun 20	% change since Jun 20	WTE change since Dec 19	WTE change since Jul 19
Total Disabilities	1,526	1,536	+10	+0.7%	+37	+39
Medical/ Dental, other	3	3			+0	+0
Medical & Dental	3	3			+0	+0
Nurse/ Midwife Manager	108	109	+1	+0.7%	+3	+3
Nurse/ Midwife Specialist & AN/MP	10	10			+3	+3
Staff Nurse/ Staff Midwife	318	319	+1	+0.3%	-5	-10
<i>Pre-registration Nurse/ Midwife Intern</i>	7		-7	-100.0%	-3	-7
<i>Pre-registration Nurse Intern (COVID-19)</i>	21	27	+6	+29.8%	+27	+6
<i>Nursing/ Midwifery awaiting registration</i>	11	11				
Nursing/ Midwifery Student	39	38	-1	-1.9%	+24	+27
Nursing/ Midwifery other	5	5			-0	-0
Nursing & Midwifery	479	480	+1	+0.2%	+26	+23
Therapy Professions	45	44	-0	-0.8%	+2	+5
Social Care	9	9	+0	+0.8%	+1	+0
Social Workers	20	20	-0	-0.5%	+4	+6
Psychologists	6	6	+0	+1.2%	+1	+1
H&SC, Other	9	10	+1	+9.2%	-3	-3
Health & Social Care Professionals	88	88	+1	+0.6%	+6	+10
Management (VIII & above)	15	15			+1	+1
Administrative/ Supervisory (V to VII)	33	32	-1	-3.0%	+5	+7
Clerical (III & IV)	47	50	+3	+5.7%	+0	+4
Management & Administrative	96	97	+2	+1.7%	+6	+13
Support	50	50	+0	+0.2%	+1	-0
Maintenance/ Technical	6	6				-0
General Support	56	56	+0	+0.2%	+1	-0
Health Care Assistants	754	759	+5	+0.7%	-2	-6
Care, other	37	38	+1	+3.8%	+1	+1
Home Help	14	14	+0	+0.1%	+0	-1
Patient & Client Care	804	811	+7	+0.8%	-1	-6

Older People

Jul 2020 (Dec 2019 figure: 1,836)	WTE Jun 2020	WTE Jul 2020	WTE change since Jun 20	% change since Jun 20	WTE change since Dec 19	WTE change since Jul 19
Total Older People	1,856	1,885	+30	+1.6%	+50	+33
Medical/ Dental, other	17	17			-12	+1
Medical & Dental	17	17			-12	+1
Nurse/ Midwife Manager	88	91	+3	+3.6%	-0	-5
Nurse/ Midwife Specialist & AN/MP	9	8	-1	-11.6%	+1	+2
Staff Nurse/ Staff Midwife	313	313	-1	-0.3%	+5	+2
Nursing/ Midwifery other	1	1	+0	+5.3%	+1	+1
Nursing & Midwifery	411	412	+1	+0.3%	+7	+0
Health & Social Care Professionals	29	29	+0	+0.4%	-1	+0
Management (VIII & above)	8	8			+0	+0
Administrative/ Supervisory (V to VII)	15	15	-0	-0.4%	+1	+0
Clerical (III & IV)	81	82	+2	+2.2%	-3	-2
Management & Administrative	104	106	+2	+1.7%	-2	-2
Support	118	119	+0	+0.4%	-4	-6
Maintenance/ Technical	7	7				-1
General Support	125	126	+0	+0.4%	-4	-7
Health Care Assistants	626	646	+20	+3.2%	+83	+78
Care, other	28	28	+0	+0.5%	+1	-1
Home Help	515	520	+6	+1.1%	-22	-37
Patient & Client Care	1,169	1,195	+26	+2.2%	+61	+40

CHO 1 Employment by Administration (HSE / S38): July 2020

Jul 2020 (Dec 2019 figure: 5,468)	WTE Jun 2020	WTE Jul 2020	WTE change since Jun 20	% change since Jun 20	WTE change since Dec 19	WTE change since Jul 19
Overall	5,602	5,647	+45	+0.8%	+178	+141
HSE	5,602	5,647	+45	+0.8%	+178	+141

HSE

Jul 2020 (Dec 2019 figure: 5,468)	WTE Jun 2020	WTE Jul 2020	WTE change since Jun 20	% change since Jun 20	WTE change since Dec 19	WTE change since Jul 19
Overall	5,602	5,647	+45	+0.8%	+178	+141
Consultants	36	36	+0	+0.0%	+3	+4
Registrars	62	79	+16	+0.3%	+13	-0
SHO/ Interns	27	24	-3	-0.1%	-2	+4
Medical/ Dental, other	66	66	+0	+0.0%	-14	+2
Medical & Dental	192	205	+13	+6.9%	-0	+10
Nurse/ Midwife Manager	359	363	+4	+0.0%	+13	+6
Nurse/ Midwife Specialist & AN/MP	110	108	-2	-0.0%	+6	+7
Staff Nurse/ Staff Midwife	1,021	1,021	-0	-0.0%	+7	-7
Public Health Nurse	153	151	-2	-0.0%	-5	-3
Pre-registration Nurse/ Midwife Intern	7	5	-2	-0.3%	-6	-14
Pre-registration Nurse Intern (COVID-19)	46	40	-6	-0.1%	+40	+40
Post-registration Nurse/ Midwife Student	2	1	-1	-0.5%	-6	-2
Nursing/ Midwifery awaiting registration	11	11		+0.0%	+10	+11
Nursing/ Midwifery Student	66	57	-9	-0.1%	+36	+35
Nursing/ Midwifery other	8	8	-0	-0.0%	+2	+2
Nursing & Midwifery	1,716	1,707	-10	-0.6%	+59	+40
Therapy Professions	320	320	+1	+0.0%	+4	-1
Health Science/ Diagnostics	6	6	+0	+0.0%	-0	-0
Social Care	12	12	-0	-0.0%	+1	-0
Social Workers	91	89	-2	-0.0%	+4	+9
Psychologists	61	61	-0	-0.0%	+1	+2
Pharmacy	2	2	+0	+0.0%	+0	+0
H&SC, Other	28	29	+1	+0.0%	-3	-1
Health & Social Care Professionals	520	520	-1	-0.1%	+7	+9
Management (VIII & above)	62	63	+1	+0.0%	+3	+2
Administrative/ Supervisory (V to VII)	161	161	-0	-0.0%	+25	+34
Clerical (III & IV)	450	455	+5	+0.0%	-0	+4
Management & Administrative	673	679	+6	+0.9%	+28	+41
Support	315	313	-2	-0.0%	+7	+1
Maintenance/ Technical	37	37	-0	-0.0%	+1	
General Support	352	350	-2	-0.6%	+8	+1
Health Care Assistants	1,488	1,517	+30	+0.0%	+94	+76
Care, other	134	135	+2	+0.0%	+5	+3
Home Help	528	534	+6	+0.0%	-22	-38
Patient & Client Care	2,149	2,187	+38	+1.7%	+77	+41

CHO 1 Employment by Grade Group & Staff Category: July 2020

Jul 2020 (Dec 2019 figure: 5,468)	WTE Jun 2020	WTE Jul 2020	WTE change since Jun 20	% change since Jun 20	WTE change since Dec 19	WTE change since Jul 19
Overall	5,602	5,647	+45	+0.8%	+178	+141
Consultant Medicine	3	4	+0	+5.7%	+1	+1
Consultant Psychiatry	33	33	-0	-0.1%	+2	+3
Consultants	36	36	+0	+0.4%	+3	+4
Registrar	53	68	+15	+28.5%	+12	+0
Senior Registrar	8	9	+1	+16.0%	+1	-0
Specialist Registrar	1	1	-0	-17.0%	-0	-0
Registrars	62	79	+16	+26.1%	+13	-0
Senior House Officer	27	24	-3	-12.0%	-2	+4
SHO/ Interns	27	24	-3	-12.0%	-2	+4
Dentists	29	30	+1	+3.3%	+2	+2
Other Medical	37	36	-1	-2.4%	-16	+0
Medical/ Dental, other	66	66	+0	+0.1%	-14	+2
Medical & Dental	192	205	+13	+6.9%	+21	+10
Clinical Nurse/ Midwife Manager	274	279	+5	+1.9%	+10	-1
Director Nursing/Midwifery, Assistant	57	56	-0	-0.8%	+5	+5
Director of Nursing/Midwifery	28	28	-1	-2.6%	-2	+2
Nurse/ Midwife Manager	359	363	+4	+1.1%	+13	+6
Advanced Nurse/ Midwife Practitioner	11	10	-0	-3.9%	+2	+3
Clinical Nurse/ Midwife Specialist	99	97	-2	-2.0%	+4	+5
Nurse/ Midwife Specialist & AN/MP	110	108	-2	-2.2%	+6	+7
Staff Nurse [Intellectual Disability]	208	218	+10	+4.7%	+13	+9
Staff Nurse [Psychiatric]	292	291	-1	-0.3%	-7	-12
Staff Nurses [General/ Children's]	521	512	-9	-1.8%	+1	-3
Staff Nurse/ Staff Midwife	1,021	1,021	-0	-0.0%	+7	-7
Public Health Nurse	153	151	-2	-1.4%	-5	-3
Pre-registration Nurse/ Midwife Intern	7	5	-2	-25.4%	+2	-14
Pre-registration Nurse Intern (COVID-19)	46	40	-6	-13.4%	+40	+40
Post-registration Nurse/ Midwife Student	2	1	-1	-50.0%	-6	-2
Nursing/ Midwifery awaiting registration	11	11				+11
Nursing/ Midwifery Student	66	57	-9	-13.6%	+36	+35
Nursing Education/Clinical	8	8	-0	-0.1%	+2	+2
Nursing/ Midwifery other	8	8	-0	-0.1%	+2	+2
Nursing & Midwifery	1,716	1,707	-10	-0.6%	+50	+40
Dietitians	16	15	-1	-4.2%	-2	-1
Occupational Therapists	129	129	+1	+0.5%	+1	+4
Orthoptists	3	3	+0	+5.2%	+0	+0
Physiotherapists	93	93	+0	+0.5%	+3	-1
Podiatrists & Chiropodists	10	10	-1	-6.3%	+1	-1
Speech & Language Therapists	70	70	+1	+0.9%	+1	-2
Therapy Professions	320	320	+1	+0.2%	+4	-1
Audiology	5	5	-0	-0.8%	-0	-0
Radiographers	1	1	+0	+6.0%	-0	-0
Health Science/ Diagnostics	6	6	+0	+0.5%	-0	-0
Social Care	12	12	-0	-3.0%	+1	-0
Social Workers	91	89	-2	-1.8%	+4	+9
Psychologists	61	61	-0	-0.2%	+1	+2
Pharmacy	2	2	+0	+2.0%	+0	+0

Jul 2020 (Dec 2019 figure: 5,468)	WTE Jun 2020	WTE Jul 2020	WTE change since Jun 20	% change since Jun 20	WTE change since Dec 19	WTE change since Jul 19
Overall	5,602	5,647	+45	+0.8%	+178	+141
Counsellor Therapists	19	20	+1	+5.1%	-0	+3
Dental Hygienists	5	5	-0	-0.7%	+0	+0
Other Health & Social Care	4	4			-4	-4
H&SC, Other	28	29	+1	+3.2%	-3	-1
Health & Social Care Professionals	520	520	-1	-0.1%	+11	+9
Executive Management	7	7	+0	+1.3%	+0	+0
Senior Management (VIII & GM)	55	56	+1	+1.1%	+3	+2
Management (VIII & above)	62	63	+1	+1.2%	+3	+2
Middle Management (V-VII)	160	160	-0	-0.0%	+25	+34
Other Administrative	1	1				
Administrative/ Supervisory (V to VII)	161	161	-0	-0.0%	+25	+34
General Administrative (III & IV)	450	455	+5	+1.2%	-0	+4
Clerical (III & IV)	450	455	+5	+1.2%	-0	+4
Management & Administrative	673	679	+6	+0.9%	+57	+41
Catering	65	66	+0	+0.3%	+5	+5
Household Services	212	210	-2	-1.0%	+6	+2
Other Support	29	29	-0	-0.3%	-4	-5
Portering	8	8				
Support	315	313	-2	-0.6%	+7	+1
Maintenance	37	37	-0	-0.1%	+1	-0
Maintenance/ Technical	37	37	-0	-0.1%	+1	-0
General Support	352	350	-2	-0.6%	-1	+1
HCA, Nurse's Aide, etc.	1,460	1,489	+29	+2.0%	+86	+74
Health & Social Care Assistants	28	28	+0	+0.4%	+8	+3
Health Care Assistants	1,488	1,517	+30	+2.0%	+94	+76
Community Welfare Officers	1	1	-0	-33.0%	-0	-0
Other Care Grades	133	135	+2	+1.6%	+5	+3
Care, other	134	135	+2	+1.4%	+5	+3
Home Help	528	534	+6	+1.2%	-22	-38
Patient & Client Care	2,149	2,187	+38	+1.7%	+74	+41

Employment by WTE, Headcount, Gender, Full-Time /Part-Time etc.: Jul 2020

CHO 1	WTE	Headcount	WTE: no.	% Male	% female	Male WTE: no.	Female WTE: no.	% Total Perm	% Male Perm	% Female Perm	% Total Full Time	% Total Part Time	% Male FT	% Female FT
Overall	5,647	6,588	1.17	17.2%	82.8%	1.07	1.19	82.0%	83.1%	81.7%	64.3%	35.7%	85.4%	59.9%
Consultant Medicine	4	4	1.13	25.0%	75.0%	1.00	1.19	75.0%	75.0%	66.7%	75.0%	25.0%	100.0%	66.7%
Consultant Psychiatry	33	35	1.07	40.0%	60.0%	1.00	1.12	71.4%	71.4%	71.4%	94.3%	5.7%	100.0%	90.5%
Consultants	36	39	1.07	38.5%	61.5%	1.00	1.13	71.8%	73.3%	70.8%	92.3%	7.7%	100.0%	87.5%
Registrar	68	73	1.07	43.8%	56.2%	1.06	1.08	8.2%	8.2%	4.9%	97.3%	2.7%	96.9%	97.6%
Senior Registrar	9	12	1.29	41.7%	58.3%	1.08	1.51	8.3%	8.3%	14.3%	91.7%	8.3%	100.0%	85.7%
Specialist Registrar	1	1	1.20		100.0%		1.20	0.0%	0.0%	0.0%	100.0%	0.0%		100.0%
Registrars	79	86	1.09	43.0%	57.0%	1.06	1.12	8.1%	10.8%	6.1%	96.5%	3.5%	97.3%	95.9%
Senior House Officer	24	27	1.12	40.7%	59.3%	1.09	1.14	0.0%	0.0%	0.0%	96.3%	3.7%	100.0%	93.8%
SHO/ Interns	24	27	1.12	40.7%	59.3%	1.09	1.14	0.0%	0.0%	0.0%	96.3%	3.7%	100.0%	93.8%
Dentists	30	32	1.07	37.5%	62.5%	1.06	1.08	96.9%	96.9%	95.0%	84.4%	15.6%	83.3%	85.0%
Other Medical	36	71	1.95	50.7%	49.3%	1.90	2.00	77.5%	77.5%	71.4%	18.3%	81.7%	25.0%	11.4%
Medical/ Dental, other	66	103	1.55	46.6%	53.4%	1.58	1.53	83.5%	87.5%	80.0%	38.8%	61.2%	39.6%	38.2%
Medical & Dental	205	255	1.24	43.5%	56.5%	1.23	1.25	47.5%	51.4%	44.4%	72.5%	27.5%	73.0%	72.2%
Clinical Nurse/ Midwife Manager	279	298	1.07	17.8%	82.2%	1.01	1.08	99.0%	99.0%	99.2%	84.6%	15.4%	98.1%	81.6%
Director Nursing/Midwifery, Assistant	56	58	1.03	19.0%	81.0%	1.00	1.04	100.0%	100.0%	100.0%	91.4%	8.6%	100.0%	89.4%
Director of Nursing/Midwifery	28	28	1.01	21.4%	78.6%	1.00	1.01	96.4%	96.4%	95.5%	96.4%	3.6%	100.0%	95.5%
Nurse/ Midwife Manager	363	384	1.06	18.2%	81.8%	1.01	1.07	99.0%	98.6%	99.0%	86.5%	13.5%	98.6%	83.8%
Advanced Nurse/ Midwife Practitioner	10	11	1.05	9.1%	90.9%	1.00	1.05	100.0%	100.0%	100.0%	100.0%	0.0%	100.0%	100.0%
Clinical Nurse/ Midwife Specialist	97	105	1.08	21.9%	78.1%	1.03	1.10	97.1%	97.1%	96.3%	85.7%	14.3%	100.0%	81.7%
Nurse/ Midwife Specialist & AN/MP	108	116	1.08	20.7%	79.3%	1.03	1.09	97.4%	100.0%	96.7%	87.1%	12.9%	100.0%	83.7%
Staff Nurse [Intellectual Disability]	218	245	1.12	11.4%	88.6%	1.06	1.13	92.2%	92.2%	92.2%	78.8%	21.2%	89.3%	77.4%
Staff Nurse [Psychiatric]	291	309	1.06	26.2%	73.8%	1.00	1.08	99.0%	99.0%	98.7%	91.3%	8.7%	100.0%	88.2%
Staff Nurses [General/ Children's]	512	628	1.23	6.8%	93.2%	1.09	1.24	92.0%	92.0%	92.1%	58.4%	41.6%	83.7%	56.6%
Staff Nurse/ Staff Midwife	1,021	1,182	1.16	12.9%	87.1%	1.04	1.18	93.9%	96.1%	93.6%	71.2%	28.8%	93.4%	68.0%
Public Health Nurse	151	175	1.16		100.0%		1.16	96.6%		96.6%	76.6%	23.4%		76.6%
Pre-registration Nurse/ Midwife Intern	5	9	1.72	33.3%	66.7%	1.72	1.72	0.0%	0.0%	0.0%	100.0%	0.0%	100.0%	100.0%
Pre-registration Nurse Intern (COVID-19)	40	49	1.22	14.3%	85.7%	1.09	1.25	0.0%	0.0%	0.0%	100.0%	0.0%	100.0%	100.0%
Post-registration Nurse/ Midwife Student	1	1	1.00		100.0%		1.00	100.0%	100.0%	100.0%	100.0%	0.0%		100.0%

Nursing/ Midwifery awaiting registration	11	11	1.00		100.0%		1.00	0.0%	0.0%	0.0%	100.0%	0.0%		100.0%
Nursing/ Midwifery Student	57	70	1.22	14.3%	85.7%	1.22	1.22	1.4%	0.0%	1.7%	100.0%	0.0%	100.0%	100.0%
Nursing/ Midwifery other	8	8	1.05		100.0%		1.05	100.0%		100.0%	100.0%	0.0%		100.0%
Nursing & Midwifery	1,707	1,935	1.13	13.2%	86.8%	1.03	1.15	92.0%	93.4%	91.8%	76.8%	23.2%	95.7%	74.0%
Dietitians	15	17	1.12		100.0%		1.12	100.0%	100.0%	100.0%	82.4%	17.6%		82.4%
Occupational Therapists	129	150	1.16	5.3%	94.7%	1.11	1.16	93.3%	93.3%	94.4%	73.3%	26.7%	87.5%	72.5%
Orthoptists	3	3	1.07	33.3%	66.7%	1.00	1.10	100.0%	100.0%	100.0%	66.7%	33.3%	100.0%	50.0%
Physiotherapists	93	107	1.15	17.8%	82.2%	1.02	1.18	96.3%	96.3%	95.5%	62.6%	37.4%	89.5%	56.8%
Podiatrists & Chiropodists	10	14	1.46	14.3%	85.7%	1.00	1.58	92.9%	92.9%	91.7%	50.0%	50.0%	100.0%	41.7%
Speech & Language Therapists	70	83	1.18	1.2%	98.8%	2.00	1.17	95.2%	95.2%	96.3%	71.1%	28.9%	100.0%	70.7%
Therapy Professions	320	374	1.17	8.3%	91.7%	1.06	1.18	94.9%	90.3%	95.3%	69.3%	30.7%	90.3%	67.3%
Audiology	5	6	1.15		100.0%		1.15	100.0%	100.0%	100.0%	83.3%	16.7%		83.3%
Radiographers	1	3	2.44		100.0%		2.44	66.7%	66.7%	66.7%	0.0%	100.0%		0.0%
Health Science/ Diagnostics	6	9	1.39		100.0%		1.39	88.9%		88.9%	55.6%	44.4%		55.6%
Social Care	12	17	1.43		100.0%		1.43	100.0%		100.0%	35.3%	64.7%		35.3%
Social Workers	89	96	1.08	17.7%	82.3%	1.00	1.10	94.8%	100.0%	93.7%	83.3%	16.7%	94.1%	81.0%
Psychologists	61	67	1.09	28.4%	71.6%	1.01	1.13	95.5%	89.5%	97.9%	79.1%	20.9%	94.7%	72.9%
Pharmacy	2	2	1.31	50.0%	50.0%	1.43	1.20	100.0%	100.0%	100.0%	50.0%	50.0%	0.0%	100.0%
Counsellor Therapists	20	23	1.18	21.7%	78.3%	1.03	1.23	100.0%	100.0%	100.0%	60.9%	39.1%	80.0%	55.6%
Dental Hygienists	5	6	1.12		100.0%		1.12	100.0%	100.0%	100.0%	66.7%	33.3%		66.7%
Other Health & Social Care	4	5	1.18	60.0%	40.0%	1.28	1.05	80.0%	80.0%	50.0%	80.0%	20.0%	66.7%	100.0%
H&SC, Other	29	34	1.17	23.5%	76.5%	1.11	1.19	97.1%	100.0%	96.2%	64.7%	35.3%	75.0%	61.5%
Health & Social Care	520	599	1.15	12.7%	87.3%	1.04	1.17	95.2%	93.4%	95.4%	71.1%	28.9%	89.5%	68.5%
Executive Management	7	7	1.00	85.7%	14.3%	1.00	1.00	100.0%	100.0%	100.0%	100.0%	0.0%	100.0%	100.0%
Senior Management (VIII & GM)	56	57	1.02	14.0%	86.0%	1.05	1.02	93.0%	93.0%	91.8%	93.0%	7.0%	87.5%	93.9%
Management (VIII & above)	63	64	1.02	21.9%	78.1%	1.03	1.02	93.8%	100.0%	92.0%	93.8%	6.3%	92.9%	94.0%
Administrative/ Supervisory (V to VII)	161	170	1.06	16.5%	83.5%	1.05	1.06	91.8%	82.1%	93.7%	82.4%	17.6%	92.9%	80.3%
Clerical (III & IV)	455	528	1.16	8.0%	92.0%	1.05	1.17	94.3%	90.5%	94.7%	67.6%	32.4%	92.9%	65.4%
Management & Administrative	679	762	1.12	11.0%	89.0%	1.04	1.13	93.7%	89.3%	94.2%	73.1%	26.9%	92.9%	70.6%
Catering	66	75	1.14	28.0%	72.0%	1.13	1.15	100.0%	100.0%	100.0%	61.3%	38.7%	90.5%	50.0%
Household Services	210	240	1.14	20.4%	79.6%	1.05	1.17	92.5%	92.5%	95.8%	62.1%	37.9%	81.6%	57.1%
Other Support	29	57	1.94	31.6%	68.4%	1.30	2.52	89.5%	89.5%	89.7%	22.8%	77.2%	61.1%	5.1%
Portering	8	8	1.03	100.0%		1.03		87.5%	87.5%		75.0%	25.0%	75.0%	
Support	313	380	1.22	25.3%	74.7%	1.10	1.26	93.4%	86.5%	95.8%	56.3%	43.7%	79.2%	48.6%
Maintenance/ Technical	37	37	1.00	100.0%		1.00		100.0%	100.0%	#DIV/0	100.0%	0.0%	100.0%	

General Support	350	417	1.19	31.9%	68.1%	1.07	1.26	94.0%	90.2%	95.8%	60.2%	39.8%	85.0%	48.6%
HCA, Nurse's Aide, etc.	1,489	1,672	1.12	22.9%	77.1%	1.06	1.14	87.7%	87.7%	88.2%	70.1%	29.9%	87.7%	64.9%
Health & Social Care Assistants	28	30	1.08	23.3%	76.7%	1.08	1.08	66.7%	66.7%	56.5%	93.3%	6.7%	85.7%	95.7%
Health Care Assistants	1,517	1,702	1.12	22.9%	77.1%	1.06	1.14	87.4%	86.4%	87.7%	70.5%	29.5%	87.7%	65.4%
Care, other	135	152	1.12	33.6%	66.4%	1.08	1.14	89.5%	76.5%	96.0%	72.4%	27.6%	76.5%	70.3%
Home Help	534	766	1.43	4.0%	96.0%	1.35	1.44	26.0%	9.7%	26.7%	2.6%	97.4%	3.2%	2.6%
Patient & Client Care	2,187	2,620	1.20	18.0%	82.0%	1.08	1.23	69.5%	80.3%	67.2%	50.8%	49.2%	80.9%	44.1%

Employment by WTE, Headcount, Gender, Full-Time /Part-Time etc.: Jul 2020

CHO 1	WTE	Headcount	WTE: no.	% Male	% female	Male WTE: no.	Female WTE: no.	% Total Perm	% Male Perm	% Female Perm	% Total Full Time	% Total Part Time	% Male FT	% Female FT
Overall	5,647	6,588	1.17	17.2%	82.8%	1.07	1.19	82.0%	83.1%	81.7%	64.3%	35.7%	85.4%	59.9%
Community Health & Wellbeing	14	16	1.13	6.3%	93.8%	1.00	1.14	93.8%	93.8%	93.3%	68.8%	31.3%	100.0%	100.0%
Mental Health	970	1,048	1.08	26.9%	73.1%	1.02	1.10	89.1%	89.1%	90.2%	87.0%	13.0%	97.2%	97.2%
Primary Care	1,241	1,476	1.19	14.0%	86.0%	1.08	1.21	88.8%	88.8%	90.6%	66.0%	34.0%	84.5%	84.5%
Social Care	3,421	4,048	1.18	15.9%	84.1%	1.10	1.20	77.6%	77.6%	76.5%	57.8%	42.2%	80.5%	80.5%

CHO 1 Skills Mix by Staff Grouping: July 2020

Jul 2020 (Dec 2018 figure: 5,436)	WTE Dec 2015	WTE Dec 2016	WTE Dec 2017	WTE Dec 2018	WTE Dec 2019	WTE Jun 2020	WTE Jul 2020
Overall	5,177	5,280	5,368	5,436	5,468	5,602	5,647
Consultant Medicine	1.8%	1.8%	1.7%	1.6%	1.5%	1.7%	1.7%
Consultant Psychiatry	15.1%	16.1%	15.8%	16.2%	15.0%	17.1%	16.0%
Consultants	16.9%	17.8%	17.5%	17.8%	16.4%	18.8%	17.7%
Registrar	27.2%	23.7%	26.6%	27.9%	27.4%	27.7%	33.3%
Senior Registrar	2.3%	3.0%	2.3%	5.8%	3.9%	4.2%	4.5%
Specialist Registrar			0.6%	0.5%	0.5%	0.5%	0.4%
Registrars	29.6%	26.6%	29.5%	34.3%	31.8%	32.4%	38.3%
Senior House Officer	15.1%	17.5%	15.6%	13.8%	12.8%	14.3%	11.7%
SHO/ Interns	15.1%	17.5%	15.6%	13.8%	12.8%	14.3%	11.7%
Dentists	16.8%	16.6%	15.9%	15.3%	13.5%	15.0%	14.5%
Other Medical	21.7%	21.5%	21.5%	18.8%	25.4%	19.5%	17.8%
Medical/ Dental, other	38.5%	38.1%	37.4%	34.1%	39.0%	34.5%	32.3%
Medical & Dental	3.3%	3.2%	3.2%	3.4%	3.8%	100.0%	3.6%
Clinical Nurse/ Midwife Manager	16.7%	16.4%	15.8%	16.1%	16.3%	15.9%	16.3%
Director Nursing/Midwifery, Assistant	3.1%	3.2%	3.0%	3.1%	3.1%	3.3%	3.3%
Director of Nursing/Midwifery	1.6%	1.6%	1.6%	1.4%	1.8%	1.7%	1.6%
Nurse/ Midwife Manager	21.4%	21.2%	20.3%	20.6%	21.2%	20.9%	21.3%
Advanced Nurse/ Midwife Practitioner	0.1%	0.2%	0.1%	0.4%	0.5%	0.6%	0.6%
Clinical Nurse/ Midwife Specialist	5.1%	5.2%	5.5%	5.4%	5.7%	5.8%	5.7%
Nurse/ Midwife Specialist & AN/MP	5.2%	5.4%	5.6%	5.8%	6.2%	6.4%	6.3%
Graduate Nursing/ Midwifery	0.7%						
Staff Nurse [Intellectual Disability]	11.0%	12.2%	12.2%	12.6%	12.4%	12.1%	12.8%
Staff Nurse [Psychiatric]	19.9%	20.1%	19.5%	18.4%	18.1%	17.0%	17.1%
Staff Nurses [General/ Children's]	31.0%	31.4%	32.1%	31.8%	31.0%	30.4%	30.0%
Staff Nurse/ Staff Midwife	62.5%	63.7%	63.7%	62.8%	61.5%	59.5%	59.8%
Public Health Nurse	9.6%	8.9%	9.3%	9.4%	9.5%	8.9%	8.8%
Pre-registration Nurse/ Midwife Intern	0.5%	0.1%	0.2%	0.7%	0.2%	0.4%	0.3%
Pre-registration Nurse Intern (COVID-19)						2.7%	2.3%
Post-registration Nurse/ Midwife Student	0.4%	0.4%	0.4%	0.4%	0.4%	0.1%	0.1%
Nursing/ Midwifery awaiting registration				0.1%	0.7%	0.6%	0.6%
Nursing/ Midwifery Student	1.0%	0.5%	0.7%	1.1%	1.3%	3.9%	3.4%
Nursing/ Midwifery other	0.3%	0.3%	0.3%	0.3%	0.3%	0.4%	0.4%
Nursing & Midwifery	30.9%	31.0%	30.4%	30.5%	30.1%	100.0%	30.2%
Dietitians	3.3%	3.0%	3.2%	3.5%	3.4%	3.0%	2.9%
Occupational Therapists	24.0%	24.4%	22.9%	24.3%	25.0%	24.7%	24.9%
Orthoptists	0.6%	0.4%	0.5%	0.5%	0.5%	0.5%	0.5%
Physiotherapists	17.0%	18.6%	18.3%	18.4%	17.6%	17.8%	17.9%
Podiatrists & Chiropodists	1.7%	2.0%	1.7%	1.8%	1.7%	2.0%	1.8%
Speech & Language Therapists	13.6%	13.1%	14.6%	13.8%	13.5%	13.4%	13.6%
Therapy Professions	60.2%	61.6%	61.3%	62.4%	61.7%	61.5%	61.7%
Audiology	1.2%	1.1%	1.1%	1.1%	1.0%	1.0%	1.0%
Radiographers	0.3%	0.3%	0.3%	0.3%	0.2%	0.2%	0.2%
Health Science/ Diagnostics	1.5%	1.4%	1.4%	1.4%	1.3%	1.2%	1.2%
Social Care	3.5%	2.7%	2.4%	2.3%	2.2%	2.4%	2.3%
Social Workers	16.2%	16.5%	16.0%	15.3%	16.6%	17.4%	17.1%
Social Workers	16.2%	16.5%	16.0%	15.3%	16.6%	17.4%	17.1%
Psychologists	11.2%	11.2%	11.6%	12.1%	11.7%	11.8%	11.8%
Pharmacy	0.3%	0.3%	0.3%	0.3%	0.3%	0.3%	0.3%
Counsellor Therapists	4.2%	3.7%	4.1%	3.8%	3.8%	3.6%	3.8%
Dental Hygienists	1.1%	1.1%	1.1%	1.0%	1.0%	1.0%	1.0%

Jul 2020 (Dec 2018 figure: 5,436)	WTE Dec 2015	WTE Dec 2016	WTE Dec 2017	WTE Dec 2018	WTE Dec 2019	WTE Jun 2020	WTE Jul 2020
Overall	5,177	5,280	5,368	5,436	5,468	5,602	5,647
Other Health & Social Care	1.8%	1.6%	1.8%	1.4%	1.5%	0.8%	0.8%
H&SC, Other	7.1%	6.4%	7.0%	6.3%	6.3%	5.4%	5.6%
Health & Social Care Professionals	9.1%	9.3%	9.3%	9.4%	9.4%	100.0%	9.2%
Executive Management	0.5%	1.2%	1.3%	1.3%	1.0%	1.0%	1.0%
Senior Management (VIII & GM)	7.1%	6.8%	6.8%	7.9%	8.1%	8.2%	8.2%
Management (VIII & above)	7.6%	8.0%	8.2%	9.2%	9.2%	9.2%	9.2%
Middle Management (V-VII)	16.5%	16.4%	17.9%	18.3%	20.7%	23.7%	23.5%
Other Administrative	0.2%	0.2%	0.2%	0.2%	0.2%	0.1%	0.1%
Administrative/ Supervisory (V to VII)	16.7%	16.6%	18.1%	18.4%	20.8%	23.9%	23.7%
Clerical (III & IV)	75.7%	75.5%	73.8%	72.4%	70.0%	66.9%	67.1%
Management & Administrative	11.0%	11.1%	11.1%	11.4%	11.9%	100.0%	12.0%
Catering	14.5%	15.6%	16.7%	16.8%	17.8%	18.6%	18.8%
Household Services	66.5%	65.1%	62.1%	61.6%	59.8%	60.3%	60.1%
Other Support	5.7%	6.2%	8.2%	9.8%	9.7%	8.4%	8.4%
Portering	2.4%	2.4%	2.2%	2.2%	2.3%	2.2%	2.2%
Support	89.0%	89.4%	89.3%	90.3%	89.5%	89.5%	89.4%
Maintenance/ Technical	11.0%	10.6%	10.7%	9.7%	10.5%	10.5%	10.6%
General Support	7.2%	6.8%	6.5%	6.4%	6.2%	100.0%	6.2%
HCA, Nurse's Aide, etc.	64.3%	66.1%	66.3%	67.1%	66.5%	67.9%	68.1%
Health & Social Care Assistants	0.8%	0.7%	0.8%	1.3%	0.9%	1.3%	1.3%
Health Care Assistants	65.1%	66.8%	67.1%	68.3%	67.4%	69.2%	69.4%
Community Welfare Officers	0.1%	0.0%	0.0%	0.0%	0.0%	0.0%	0.0%
Other Care Grades	6.5%	6.4%	6.3%	6.2%	6.2%	6.2%	6.2%
Care, other	6.5%	6.4%	6.4%	6.2%	6.2%	6.2%	6.2%
Home Help	28.4%	26.7%	26.5%	25.4%	26.4%	24.6%	24.4%
Patient & Client Care	38.6%	38.7%	39.5%	38.9%	38.6%	100.0%	38.7%
Total	100 %	100 %	100 %	100 %	100%	100 %	100 %

CHO 1 Skills Mix by Care Group: July 2020

Jul 2020 (Dec 2018 figure: 941)	WTE Dec 2015	WTE Dec 2016	WTE Dec 2017	WTE Dec 2018	WTE Dec 2019	WTE Jun 2020	WTE Jul 2020
Mental Health	931	948	942	941	953	978	970
Consultants	37.0%	36.2%	36.8%	37.2%	38.2%	39.8%	41.1%
Registrar	22.4%	17.4%	22.7%	18.6%	20.5%	18.6%	18.3%
Senior Registrar	4.5%	5.5%	4.2%	12.6%	9.9%	9.7%	11.6%
Registrars	26.8%	23.0%	26.9%	31.2%	30.4%	28.3%	29.9%
Senior House Officer	36.2%	40.8%	36.3%	31.6%	31.4%	32.0%	29.0%
SHO/ Interns	36.2%	40.8%	36.3%	31.6%	31.4%	32.0%	29.0%
Medical & Dental	7.2%	7.6%	7.6%	8.2%	8.1%	8.2%	8.2%
Clinical Nurse/ Midwife Manager	19.4%	19.8%	20.0%	19.9%	19.9%	19.5%	20.1%
Director Nursing/Midwifery, Assistant	3.5%	3.2%	3.2%	3.7%	3.7%	3.8%	3.8%
Director of Nursing/Midwifery	0.8%	0.6%	0.6%	0.4%	0.6%	0.6%	0.6%
Nurse/ Midwife Manager	23.7%	23.6%	23.8%	24.0%	24.3%	23.8%	24.5%
Advanced Nurse/ Midwife Practitioner	0.2%	0.2%	0.2%	0.4%	0.4%	0.4%	0.4%
Clinical Nurse/ Midwife Specialist	10.7%	11.4%	12.1%	12.9%	13.6%	12.7%	12.7%
Nurse/ Midwife Specialist & AN/MP	10.9%	11.6%	12.3%	13.3%	14.0%	13.1%	13.1%
Graduate Nursing/ Midwifery	0.2%						
Staff Nurse [Intellectual Disability]		0.2%	0.2%	0.2%			
Staff Nurse [Psychiatric]	63.4%	64.0%	63.2%	61.7%	61.1%	57.3%	58.1%
Staff Nurses [General/ Children's]	0.6%	0.6%	0.4%	0.6%	0.6%	0.6%	0.4%
Staff Nurse/ Staff Midwife	64.2%	64.8%	63.9%	62.5%	61.7%	57.8%	58.5%
Pre-registration Nurse/ Midwife Intern	1.1%						1.1%
Pre-registration Nurse Intern (COVID-19)						5.0%	2.6%
Nursing/ Midwifery awaiting registration				0.2%			
Nursing/ Midwifery Student	1.1%			0.2%		5.0%	3.6%
Nursing Education/Clinical						0.2%	0.2%
Nursing/ Midwifery other						0.2%	0.2%
Nursing & Midwifery	52.3%	52.9%	52.5%	51.6%	51.0%	51.1%	51.1%
Occupational Therapists	26.2%	26.7%	25.7%	26.9%	28.7%	29.2%	29.5%
Podiatrists & Chiropractors	0.7%	0.7%	0.7%	0.7%	0.6%	0.6%	0.7%
Speech & Language Therapists	1.9%	2.6%	3.5%	3.0%	2.2%	1.7%	1.8%
Therapy Professions	28.8%	30.0%	29.9%	30.6%	31.6%	31.5%	31.9%
Social Care	4.7%	3.5%	3.6%	3.2%	3.3%	3.2%	2.9%
Social Workers	35.7%	35.5%	34.4%	34.0%	34.6%	35.0%	34.4%
Psychologists	18.2%	19.9%	19.9%	20.5%	18.2%	19.1%	19.3%
Pharmacy	0.8%	0.7%	0.8%	0.8%	0.7%	0.7%	0.7%
Counsellor Therapists	11.6%	10.0%	11.5%	10.8%	11.6%	10.4%	10.7%
Other Health & Social Care	0.4%	0.4%					
H&SC, Other	11.9%	10.4%	11.5%	10.8%	11.6%	10.4%	10.7%
Health & Social Care Professionals	11.4%	11.3%	11.2%	11.8%	11.7%	11.7%	11.7%
Management (VIII & above)	4.2%	3.3%	4.1%	3.8%	4.7%	5.5%	6.0%
Administrative/ Supervisory (V to VII)	14.4%	14.5%	16.6%	18.7%	24.9%	25.2%	25.3%
Clerical (III & IV)	81.4%	82.2%	79.3%	77.4%	70.5%	69.3%	68.7%
Management & Administrative	10.3%	9.7%	10.5%	11.1%	11.0%	12.5%	12.5%
Support	80.7%	80.6%	80.3%	80.8%	78.7%	78.8%	79.0%
Maintenance	19.3%	19.4%	19.7%	19.2%	21.3%	21.2%	21.0%
Maintenance/ Technical	19.3%	19.4%	19.7%	19.2%	21.3%	21.2%	21.0%
General Support	10.4%	9.8%	9.1%	8.8%	8.7%	8.3%	8.3%
HCA, Nurse's Aide, etc.	86.8%	87.9%	86.5%	82.1%	83.9%	83.0%	83.2%
Health & Social Care Assistants			1.2%	2.0%	2.1%	2.2%	2.7%

Jul 2020 (Dec 2018 figure: 941)	WTE Dec 2015	WTE Dec 2016	WTE Dec 2017	WTE Dec 2018	WTE Dec 2019	WTE Jun 2020	WTE Jul 2020
Mental Health	931	948	942	941	953	978	970
Health Care Assistants	86.8%	87.9%	87.6%	84.1%	86.0%	85.2%	85.9%
Care, other	13.2%	12.1%	12.4%	15.9%	14.0%	14.8%	14.1%
Patient & Client Care	8.3%	8.7%	9.1%	8.5%	8.4%	8.1%	8.1%
Total	100 %	100 %	100 %	100 %	100 %	100 %	100%

Jul 2020 (Dec 2018 figure: 1,233)	WTE Dec 2015	WTE Dec 2016	WTE Dec 2017	WTE Dec 2018	WTE Dec 2019	WTE Jun 2020	WTE Jul 2020
Primary Care	1,222	1,257	1,188	1,233	1,182	1,229	1,241
Consultant Medicine	3.5%	3.8%	3.6%	3.3%	3.3%	3.7%	3.4%
Consultants	3.5%	3.8%	3.6%	3.3%	3.3%	3.7%	3.4%
Registrars	37.9%	35.7%	37.8%	43.8%	44.3%	43.7%	52.0%
SHO/ Interns	1.5%		1.2%	1.1%	1.1%	1.1%	0.9%
Dentists	33.7%	35.4%	32.8%	31.5%	30.2%	32.4%	28.4%
Other Medical	23.4%	25.1%	24.7%	20.4%	21.2%	19.0%	15.2%
Medical/ Dental, other	57.1%	60.5%	57.5%	51.9%	51.3%	51.4%	43.7%
Medical & Dental	6.9%	6.3%	7.1%	7.3%	7.6%	8.5%	8.5%
Clinical Nurse/ Midwife Manager	5.1%	4.9%	4.7%	5.4%	5.6%	6.6%	6.4%
Director Nursing/Midwifery, Assistant	5.9%	5.9%	5.4%	5.0%	5.0%	5.8%	5.7%
Director of Nursing/Midwifery	1.5%	1.7%	1.3%	1.6%	1.3%	0.9%	0.9%
Nurse/ Midwife Manager	12.6%	12.5%	11.4%	12.0%	11.9%	13.4%	13.1%
Nurse/ Midwife Specialist & AN/MP	7.2%	6.7%	7.7%	6.6%	6.8%	7.8%	7.8%
Staff Nurse [Psychiatric]	0.1%	0.1%	0.1%	0.5%	0.1%	0.1%	0.1%
Staff Nurses [General/ Children's]	25.1%	29.0%	28.4%	27.7%	27.8%	30.3%	31.0%
Staff Nurse/ Staff Midwife	25.2%	29.1%	28.6%	28.2%	27.9%	30.4%	31.1%
Public Health Nurse	52.5%	49.3%	50.1%	50.9%	50.9%	47.5%	47.4%
Post-registration Nurse/ Midwife Student	2.4%	2.4%	2.3%	2.3%	2.3%	0.6%	0.3%
Nursing/ Midwifery Student	2.4%	2.4%	2.3%	2.3%	2.3%	0.6%	0.3%
Nursing Education/Clinical					0.3%	0.3%	0.3%
Nursing/ Midwifery other					0.3%	0.3%	0.3%
Nursing & Midwifery	23.8%	23.6%	25.7%	24.7%	25.8%	25.6%	25.6%
Dietitians	5.6%	4.8%	5.2%	5.6%	6.0%	5.5%	5.2%
Occupational Therapists	24.3%	25.2%	23.2%	24.2%	25.3%	25.0%	25.3%
Orthoptists	1.0%	0.7%	0.8%	0.8%	0.9%	0.9%	1.0%
Physiotherapists	25.4%	27.4%	27.1%	27.3%	28.1%	28.1%	28.3%
Podiatrists & Chiropodists	2.6%	3.1%	2.6%	2.7%	2.8%	3.3%	3.1%
Speech & Language Therapists	19.2%	17.8%	19.4%	17.8%	15.9%	15.9%	16.2%
Therapy Professions	78.2%	79.0%	78.4%	78.5%	79.0%	78.7%	79.0%
Audiology	1.9%	1.8%	1.7%	1.7%	1.8%	1.8%	1.8%
Health Science/ Diagnostics	1.9%	1.8%	1.7%	1.7%	1.8%	1.8%	1.8%
Social Workers	6.1%	6.6%	6.9%	6.4%	4.4%	5.0%	4.8%
Psychologists	11.3%	10.3%	10.3%	10.9%	12.1%	11.7%	11.6%
Pharmacy	0.2%	0.2%	0.2%	0.2%	0.2%	0.2%	0.2%
Counsellor Therapists			0.3%	0.3%	0.3%	0.3%	0.3%
Dental Hygienists	1.9%	1.7%	1.9%	1.6%	1.7%	1.9%	1.9%
Other Health & Social Care	0.4%	0.3%	0.3%	0.3%	0.3%	0.3%	0.3%
H&SC, Other	2.2%	2.1%	2.5%	2.2%	2.4%	2.6%	2.6%
Health & Social Care Professionals	22.9%	23.8%	25.9%	25.6%	26.8%	23.2%	23.2%
Executive Management	0.6%	1.8%	2.1%	2.0%	1.5%	1.4%	1.5%
Senior Management (VIII & GM)	7.2%	6.9%	6.9%	8.7%	8.2%	7.8%	7.8%
Management (VIII & above)	7.8%	8.8%	9.0%	10.7%	9.7%	9.2%	9.2%
Administrative/ Supervisory (V to VII)	17.8%	17.1%	19.7%	19.1%	19.2%	21.3%	21.3%

Jul 2020 (Dec 2018 figure: 1,233)	WTE Dec 2015	WTE Dec 2016	WTE Dec 2017	WTE Dec 2018	WTE Dec 2019	WTE Jun 2020	WTE Jul 2020
Primary Care	1,222	1,257	1,188	1,233	1,182	1,229	1,241
Clerical (III & IV)	74.4%	74.2%	71.3%	70.2%	71.1%	69.5%	69.4%
Management & Administrative	25.5%	25.9%	27.7%	28.3%	29.5%	27.4%	27.4%
Support	91.0%	91.3%	92.2%	94.7%	92.3%	92.2%	92.0%
Maintenance/ Technical	9.0%	8.7%	7.8%	5.3%	7.7%	7.8%	8.0%
General Support	5.5%	5.7%	6.3%	6.4%	6.7%	7.0%	7.0%
HCA, Nurse's Aide, etc.	9.6%	10.8%	22.4%	20.1%	21.8%	22.4%	23.1%
Health & Social Care Assistants	5.6%	5.8%	12.3%	21.7%	14.9%	21.1%	20.5%
Health Care Assistants	15.2%	16.6%	34.7%	41.8%	36.7%	43.5%	43.6%
Community Welfare Officers	0.5%	0.5%	1.1%	1.1%	0.9%	1.0%	0.7%
Other Care Grades	31.7%	31.2%	64.2%	57.1%	62.4%	55.5%	55.4%
Care, other	32.2%	31.8%	65.3%	58.2%	63.3%	56.5%	56.0%
Home Help	52.6%	51.6%					0.3%
Patient & Client Care	15.3%	14.6%	7.4%	7.7%	8.0%	8.2%	8.2%
Total	100 %	100 %	100 %	100 %	100 %	100 %	100%

Jul 2020 (Dec 2018 figure: 1,479)	WTE Dec 2015	WTE Dec 2016	WTE Dec 2017	WTE Dec 2018	WTE Dec 2019	WTE Jun 2020	WTE Jul 2020
Disabilities	1,374	1,430	1,457	1,479	1,498	1,526	1,536
Consultant Psychiatry	29.1%	33.3%	33.3%	33.3%			
Consultants	29.1%	33.3%	33.3%	33.3%			
Medical/ Dental, other	70.9%	66.7%	66.7%	66.7%	100.0%	100.0%	100.0%
Medical & Dental	0.2%	0.2%	0.2%	0.2%	0.2%	0.2%	0.2%
Clinical Nurse/ Midwife Manager	19.9%	19.5%	20.0%	19.1%	20.1%	19.6%	19.7%
Director Nursing/Midwifery, Assistant	1.4%	1.7%	1.3%	1.7%	1.3%	1.4%	1.4%
Director of Nursing/Midwifery	1.4%	1.1%	1.3%	1.1%	1.8%	1.5%	1.5%
Nurse/ Midwife Manager	22.7%	22.3%	22.6%	21.8%	23.1%	22.5%	22.6%
Clinical Nurse/ Midwife Specialist	2.2%	2.1%	1.8%	1.5%	1.5%	2.1%	2.1%
Nurse/ Midwife Specialist & AN/MP	2.2%	2.1%	1.8%	1.5%	1.5%	2.1%	2.1%
Graduate Nursing/ Midwifery	2.3%						
Staff Nurse [Intellectual Disability]	41.2%	44.2%	44.4%	45.3%	45.1%	43.4%	45.3%
Staff Nurse [Psychiatric]	1.6%	1.3%	0.9%	0.7%	0.4%	0.3%	0.3%
Staff Nurses [General/ Children's]	28.3%	28.6%	28.3%	27.2%	25.6%	22.6%	20.8%
Staff Nurse/ Staff Midwife	73.3%	74.2%	73.7%	73.2%	71.2%	66.3%	66.4%
Pre-registration Nurse/ Midwife Intern	0.7%	0.3%	0.8%	2.4%	0.7%	1.5%	
Pre-registration Nurse Intern (COVID-19)						4.4%	5.7%
Nursing/ Midwifery awaiting registration					2.4%	2.3%	2.3%
Nursing/ Midwifery Student	0.7%	0.3%	0.8%	2.4%	3.1%	8.1%	8.0%
Nursing/ Midwifery other	1.1%	1.0%	1.1%	1.1%	1.0%	1.0%	1.0%
Nursing & Midwifery	31.1%	31.4%	30.7%	30.8%	30.4%	31.3%	31.3%
Occupational Therapists	14.3%	11.9%	12.0%	9.5%	15.4%	14.9%	14.8%
Physiotherapists	13.7%	14.2%	11.4%	12.3%	10.8%	11.3%	11.0%
Speech & Language Therapists	11.3%	11.3%	12.7%	17.5%	25.2%	25.0%	24.7%
Therapy Professions	39.3%	37.4%	36.0%	39.3%	51.4%	51.2%	50.5%
Social Care	17.4%	15.2%	12.3%	13.2%	9.2%	9.7%	9.7%
Social Workers	18.3%	21.0%	21.0%	19.8%	18.9%	22.6%	22.4%
Psychologists	3.0%	4.3%	7.5%	6.6%	5.6%	6.4%	6.4%
Counsellor Therapists	11.5%	11.8%	11.3%	10.7%	6.8%	6.4%	7.3%
Other Health & Social Care	10.4%	10.4%	11.9%	10.4%	8.2%	3.7%	3.7%
H&SC, Other	22.0%	22.2%	23.2%	21.1%	15.0%	10.1%	10.9%
Health & Social Care Professionals	4.9%	4.3%	4.5%	4.1%	4.0%	5.7%	5.7%

Jul 2020 (Dec 2018 figure: 1,479)	WTE Dec 2015	WTE Dec 2016	WTE Dec 2017	WTE Dec 2018	WTE Dec 2019	WTE Jun 2020	WTE Jul 2020
Disabilities	1,374	1,430	1,457	1,479	1,498	1,526	1,536
Senior Management (VIII & GM)	13.4%	12.7%	14.7%	15.6%	15.3%	15.6%	15.4%
Management (VIII & above)	13.4%	12.7%	14.7%	15.6%	15.3%	15.6%	15.4%
Administrative/ Supervisory (V to VII)	25.1%	26.0%	24.4%	25.1%	30.2%	35.0%	33.4%
Clerical (III & IV)	61.5%	61.3%	60.9%	59.3%	54.5%	49.3%	51.3%
Management & Administrative	5.9%	6.0%	5.6%	5.6%	5.5%	6.3%	6.3%
Support	87.7%	88.7%	88.1%	89.5%	89.1%	89.3%	89.3%
Maintenance/ Technical	12.3%	11.3%	11.9%	10.5%	10.9%	10.7%	10.7%
General Support	5.3%	4.2%	4.0%	3.9%	3.8%	3.7%	3.7%
HCA, Nurse's Aide, etc.	93.1%	93.4%	93.6%	94.3%	93.8%	93.8%	93.6%
Health Care Assistants	93.1%	93.4%	93.6%	94.3%	93.8%	93.8%	93.6%
Care, other	4.5%	4.3%	4.6%	4.1%	4.6%	4.6%	4.7%
Home Help	2.4%	2.3%	1.8%	1.6%	1.6%	1.7%	1.7%
Patient & Client Care	52.7%	53.8%	55.0%	55.4%	54.7%	52.8%	52.8%
Total	100 %	100 %	100 %	100 %	100 %	100 %	100%

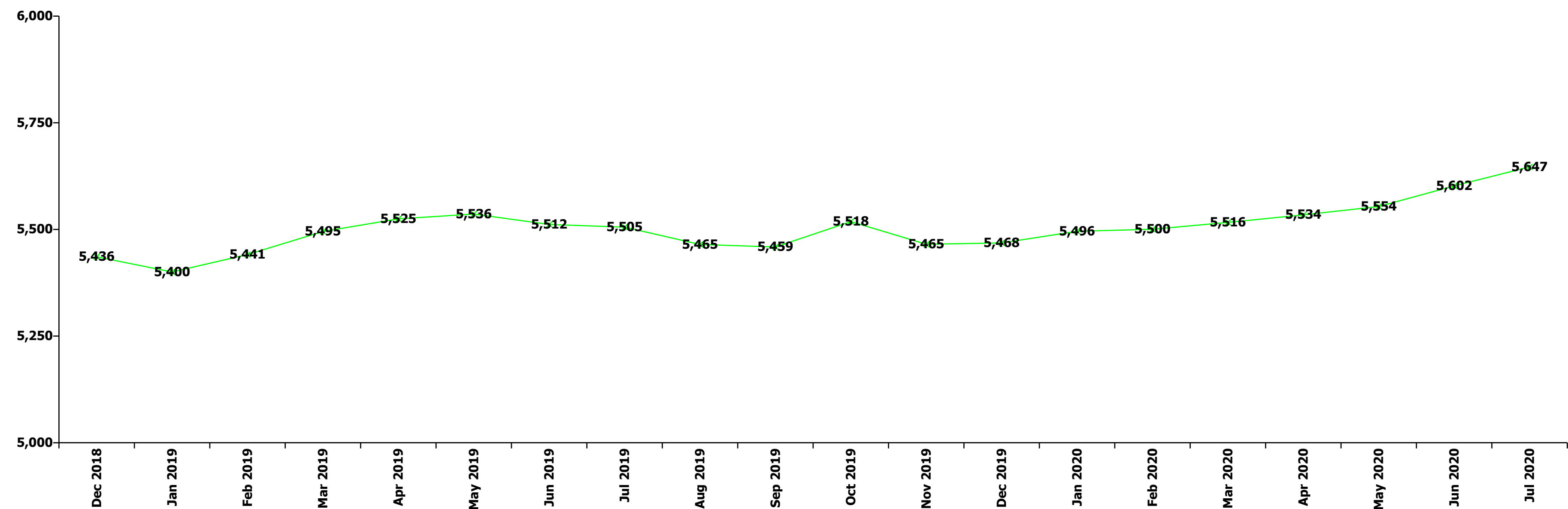
Jul 2020 (Dec 2018 figure: 1,782)	WTE Dec 2015	WTE Dec 2016	WTE Dec 2017	WTE Dec 2018	WTE Dec 2019	WTE Jun 2020	WTE Jul 2020
Older People	1,650	1,645	1,780	1,782	1,836	1,856	1,885
Medical/ Dental, other	100.0%	100.0%	100.0%	100.0%	100.0%	100.0%	100.0%
Medical & Dental	0.9%	0.9%	0.8%	0.8%	0.8%	0.9%	0.9%
Clinical Nurse/ Midwife Manager	18.4%	17.2%	14.3%	16.4%	15.9%	14.7%	15.6%
Director Nursing/Midwifery, Assistant	2.5%	2.7%	2.7%	2.4%	3.0%	2.9%	2.9%
Director of Nursing/Midwifery	2.7%	3.3%	3.2%	2.8%	3.5%	3.8%	3.6%
Nurse/ Midwife Manager	23.6%	23.3%	20.2%	21.6%	22.5%	21.3%	22.0%
Advanced Nurse/ Midwife Practitioner		0.3%		1.0%	1.4%	1.7%	1.7%
Clinical Nurse/ Midwife Specialist					0.2%	0.5%	0.2%
Nurse/ Midwife Specialist & AN/MP		0.3%		1.0%	1.7%	2.2%	1.9%
Staff Nurse [Intellectual Disability]				0.2%			
Staff Nurse [Psychiatric]	0.4%	0.2%	0.2%	0.4%	0.2%	0.2%	0.2%
Staff Nurses [General/ Children's]	76.0%	76.2%	79.6%	76.8%	75.6%	76.0%	75.6%
Staff Nurse/ Staff Midwife	76.4%	76.5%	79.8%	77.4%	75.9%	76.3%	75.8%
Nursing Education/Clinical						0.2%	0.2%
Nursing/ Midwifery other						0.2%	0.2%
Nursing & Midwifery	23.8%	23.7%	21.8%	23.0%	22.4%	21.9%	21.9%
Occupational Therapists	41.2%	40.9%	40.5%	55.3%	35.0%	33.8%	33.5%
Physiotherapists					2.2%	5.9%	6.5%
Speech & Language Therapists	3.8%	4.0%	4.2%				
Therapy Professions	45.0%	44.9%	44.7%	55.3%	37.2%	39.7%	39.9%
Radiographers	7.3%	7.0%	8.1%	7.0%	4.2%	4.0%	4.2%
Health Science/ Diagnostics	7.3%	7.0%	8.1%	7.0%	4.2%	4.0%	4.2%
Social Workers	47.7%	48.1%	47.2%	37.7%	58.6%	56.3%	55.9%
Health & Social Care Professionals	1.2%	1.2%	1.0%	1.2%	1.1%	1.5%	1.5%
Executive Management					0.9%	1.0%	0.9%
Senior Management (VIII & GM)	4.9%	5.0%	3.5%	3.5%	6.5%	6.7%	6.6%
Management (VIII & above)	4.9%	5.0%	3.5%	3.5%	7.4%	7.7%	7.6%
Administrative/ Supervisory (V to VII)	6.9%	6.8%	7.5%	8.8%	13.3%	14.8%	14.5%
Clerical (III & IV)	88.2%	88.2%	89.0%	87.7%	79.3%	77.5%	78.0%
Management & Administrative	4.8%	4.9%	4.8%	4.8%	4.7%	5.6%	5.6%
Support	94.8%	94.8%	93.9%	93.9%	94.6%	94.4%	94.4%

Jul 2020 (Dec 2018 figure: 1,782)	WTE Dec 2015	WTE Dec 2016	WTE Dec 2017	WTE Dec 2018	WTE Dec 2019	WTE Jun 2020	WTE Jul 2020
Older People	1,650	1,645	1,780	1,782	1,836	1,856	1,885
Maintenance/ Technical	5.2%	5.2%	6.1%	6.1%	5.4%	5.6%	5.6%
General Support	8.1%	8.1%	7.4%	7.4%	7.2%	6.7%	6.7%
HCA, Nurse's Aide, etc.	52.1%	53.6%	49.1%	50.0%	49.2%	53.1%	53.7%
Health & Social Care Assistants	0.5%	0.4%	0.4%	0.4%	0.4%	0.4%	0.4%
Health Care Assistants	52.6%	54.0%	49.5%	50.4%	49.7%	53.6%	54.1%
Care, other	2.6%	2.9%	2.6%	2.7%	2.5%	2.4%	2.4%
Home Help	44.7%	43.1%	47.9%	46.8%	47.9%	44.0%	43.6%
Patient & Client Care	61.1%	61.2%	64.2%	62.8%	61.0%	63.4%	63.4%
Total	100 %	100 %	100 %	100 %	100 %	100 %	100%

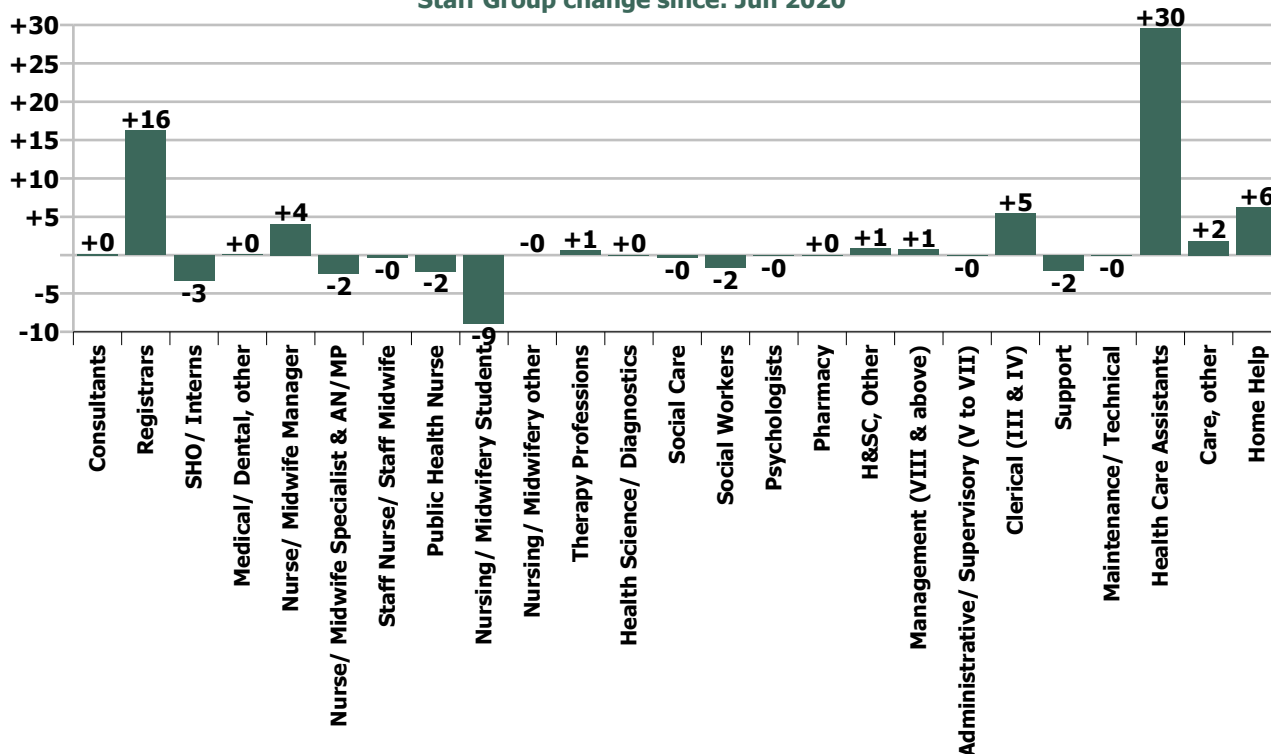
Summary Staff Movement: July 2020

Month-on-month Summary																												
WTE change since Jun 20	% change since Jun 20	overall	Consultants	Registrars	SHO/ Interns	Medical/ Dental, other	Medical & Dental	Nurse/ Midwife Manager	Nurse/ Midwife Specialist & AN/MP	Staff Nurse/ Staff Midwife	Public Health Nurse	Nursing/ Midwifery Student	Nursing/ Midwifery other	Nursing & Midwifery	Therapy Professions	Health Science/ Diagnostics	Social Care	Social Workers	Psychologists	Pharmacy	H&SC, Other	Health & Social Care Professionals	Management (VIII & above)	Administrative/ Supervisory (V to VII)	Clerical (III & IV)	Management & Administrative	General Support	Patient & Client Care
Overall	+0.8%	+45	+0.2	+16.3	-3.3	+0.0	+13.2	+4.1	-2.4	-0.3	-2.1	-9.0	-0.0	-9.7	+0.6	+0.0	-0.4	-1.6	-0.1	+0.0	+0.9	-0.6	+0.7	-0.1	+5.4	+6.1	-2.0	+37.5
Community Health & Wellbeing	+0.2%	+0																					0.0	-0.0	+0.0	+0.0		0.0
Mental Health	-0.8%	-8	-0.0	+0.6	-3.3		-2.7	+1.5	-1.2	-1.7		-7.3	-0.1	-8.7	+0.1		-0.4	-0.9	+0.1	+0.0	+0.1	-1.0	+0.6	+0.4	+0.0	+1.0	+0.3	+3.0
Primary Care	+1.0%	+13	+0.2	+15.7	-0.0	+0.0	+15.9	-1.3	-0.1	+1.3	-2.1	-1.0	0.0	-3.3	+0.7	-0.0		-0.5	-0.3	0.0	-0.0	-0.2	+0.1	+0.6	+0.9	+1.6	-2.9	+1.6
Disabilities	+0.7%	+10				0.0	0.0	+0.7	0.0	+1.0		-0.7		+1.0	-0.3		+0.1	-0.1	+0.1		+0.8	+0.5	0.0	-1.0	+2.7	+1.7	+0.1	+6.8
Older People	+1.6%	+30				0.0	0.0	+3.2	-1.0	-0.9			+0.0	+1.3	+0.1	+0.1		-0.1				+0.1	0.0	-0.1	+1.8	+1.7	+0.5	+26.1
Social Care	+1.2%	+40				0.0	0.0	+3.9	-1.0	+0.1		-0.7	+0.0	+2.3	-0.2	+0.1	+0.1	-0.1	+0.1		+0.8	+0.6	0.0	-1.1	+4.5	+3.4	+0.6	+32.9
Change	+44.5	+0.8%	+0.4%	+26.1%	-12.0%	+0.1%	+6.9%	+1.1%	-2.2%	-0.0%	-1.4%	-13.6%	-0.1%	-0.6%	+0.2%	+0.5%	-3.0%	-1.8%	-0.2%	+2.0%	+3.2%	-0.1%	+1.2%	-0.0%	+1.2%	+0.9%	-0.6%	+1.7%

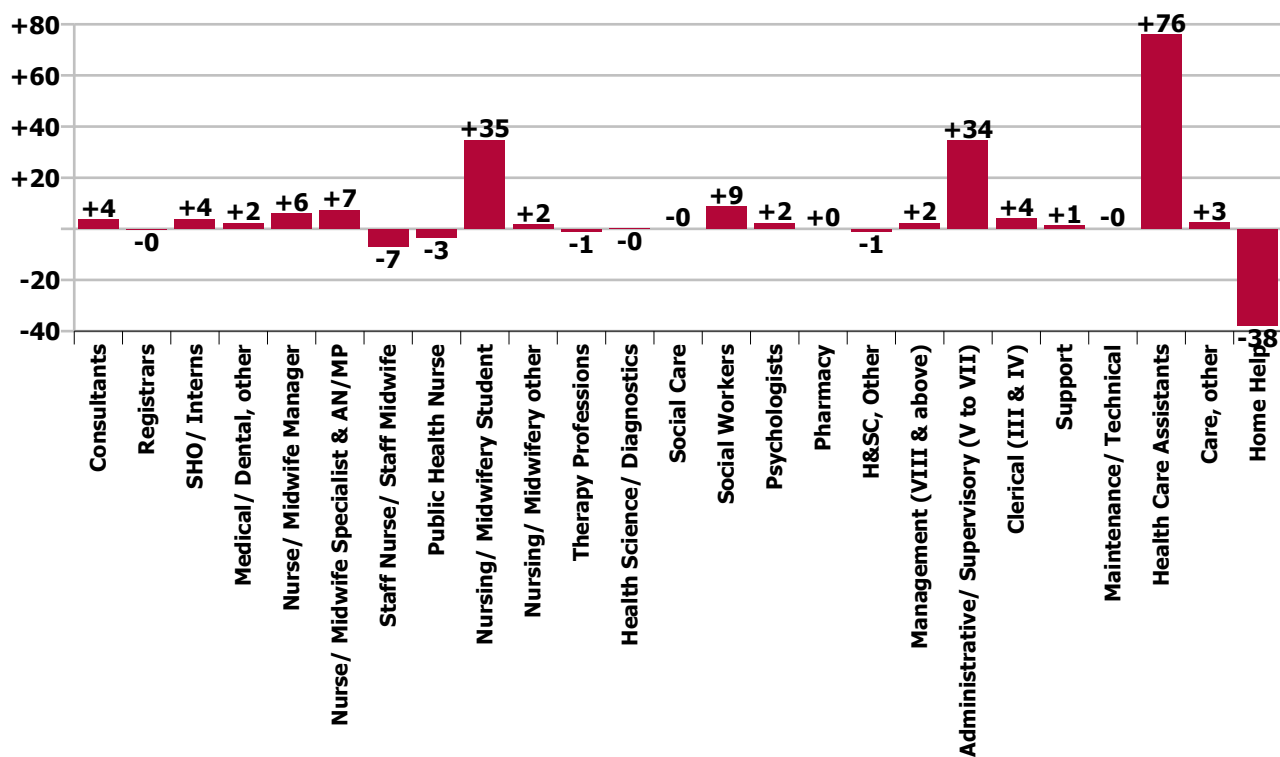
Year-on-year Summary																												
WTE change since Jul 19	% change since Jul 19	overall	Consultants	Registrars	SHO/ Interns	Medical/ Dental, other	Medical & Dental	Nurse/ Midwife Manager	Nurse/ Midwife Specialist & AN/MP	Staff Nurse/ Staff Midwife	Public Health Nurse	Nursing/ Midwifery Student	Nursing/ Midwifery other	Nursing & Midwifery	Therapy Professions	Health Science/ Diagnostics	Social Care	Social Workers	Psychologists	Pharmacy	H&SC, Other	Health & Social Care Professionals	Management (VIII & above)	Administrative/ Supervisory (V to VII)	Clerical (III & IV)	Management & Administrative	General Support	Patient & Client Care
Overall	+2.6%	+141	+3.8	-0.4	+3.9	+2.3	+9.5	+6.0	+7.4	-6.8	-3.3	+34.8	+1.8	+39.9	-1.1	-0.1	-0.0	+8.7	+2.3	+0.0	-1.1	+8.8	+2.3	+34.5	+4.2	+40.9	+1.4	+40.7
Community Health & Wellbeing	+0.2%	+0																					+1.0	+9.3	+3.1	+13.4		+0.7
Mental Health	-0.8%	-8	+3.0	-2.9	+4.9		+5.1	+1.8	-2.6	-11.9		+9.6	+0.9	-2.2	+1.9		-0.4	+1.4	+2.4	+0.0	+1.7	+7.0	+1.3	+4.1	+1.8	+7.1	+1.5	-2.6
Primary Care	+1.0%	+13	+0.7	+2.5	-1.0	+1.3	+3.5	+5.9	+5.2	+13.6	-3.3	-2.0	+0.0	+19.5	-8.7	-0.0		+1.5	-1.1	0.0	+0.1	-8.3	-1.0	+13.2	-2.9	+9.3	+7.7	+8.0
Disabilities	+2.6%	+38.9				+0.0	+0.0	+3.0	+2.9	-10.5		+27.3	-0.2	+22.5	+5.3		+0.4	+6.1	+1.0		-2.9	+9.9	+1.0	+7.5	+4.1	+12.6	-0.3	-5.7
Older People	+1.8%	+32.6				+0.9	+1.0	-4.8	+1.9	+2.0			+1.0	+0.1	+0.4	-0.0		-0.2				+0.2	+0.0	+0.3	-1.9	-1.5	-7.5	+40.3
Social Care	+1.2%	+40				+1.0	+1.0	-1.8	+4.8	-8.5		+27.3	+0.8	+22.6	+5.7	-0.0	+0.4	+5.9	+1.0		-2.9	+10.1	+1.0	+7.8	+2.2	+11.1	-7.8	+34.6
Change	+141.3	+2.6%	+11.6%	-0.5%	+19.2%	+3.5%	+4.9%	+1.7%	+7.4%	-0.7%	-2.2%	+154.8%	+30.5%	+2.4%	-0.3%	-1.1%	-0.1%	+10.9%	+3.9%	+2.0%	-3.6%	+1.7%	+3.8%	+27.3%	+0.9%	+6.4%	+0.4%	+1.9%



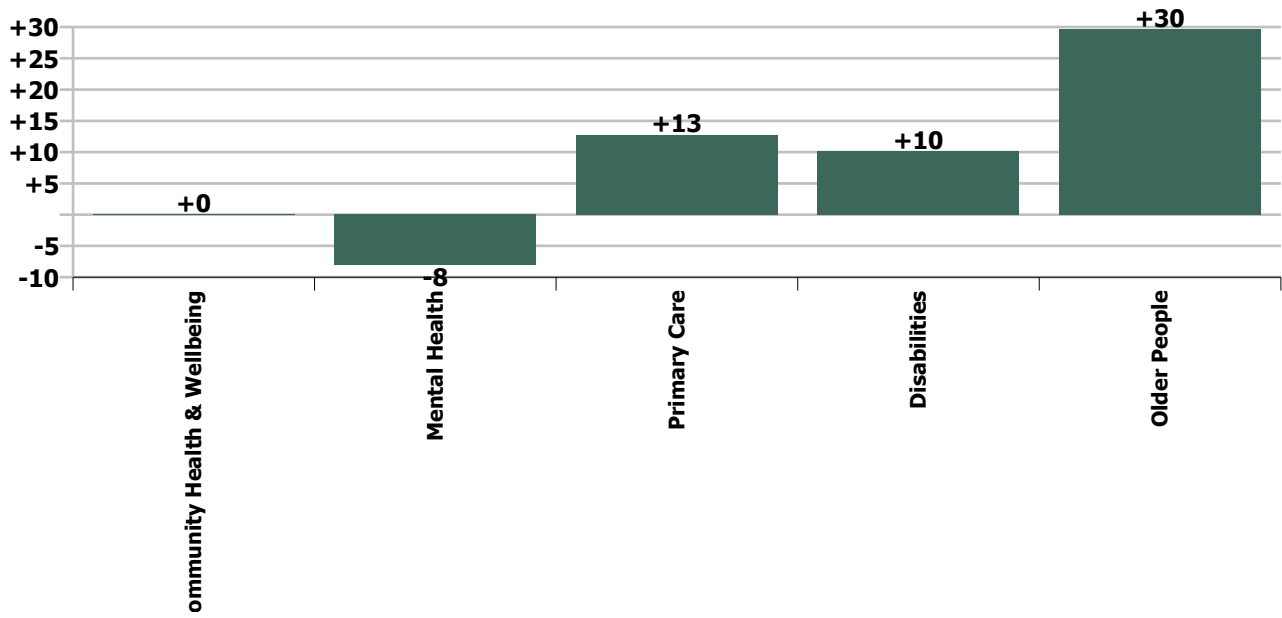
Staff Group change since: Jun 2020



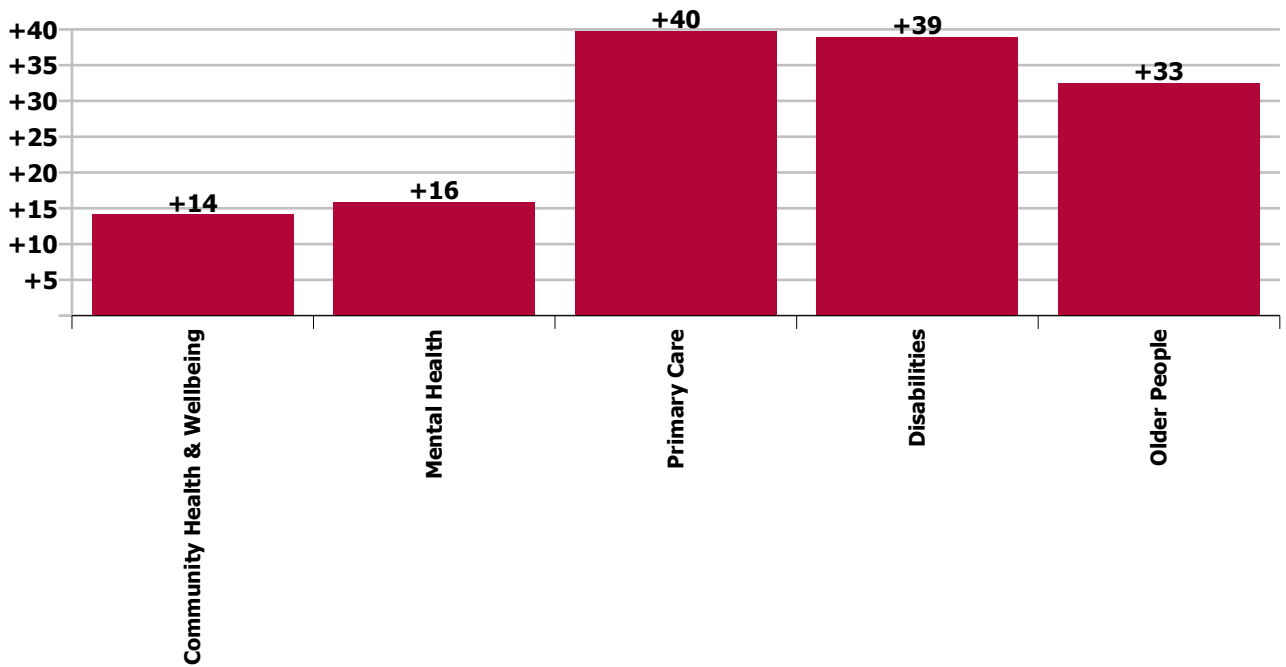
Staff Group change since: Jul 2019



Care Group change since: Jun 2020



Care Group change since: Jul 2019



Longitudinal Employment Levels by Grade Group - Oct 2013 to Jul 2020

Jul 2020 (Dec 2015 figure: 5,177)	WTE Jul 2020	WTE change since Dec 15	WTE change since Dec 16	WTE change since Dec 17	WTE change since Dec 18	WTE change since Dec 18	WTE change since Jun 20	% change since Dec 15	% change since Dec 16	% change since Dec 17	% change since Dec 18	% change since Dec 18	% change since Jun 20
Overall	5,647	+470	+366	+279	+211	+211	+45	+9.1%	+6.9%	+5.2%	+3.9%	+3.9%	+0.8%
Consultant Medicine	4	+1	+1	+1	+1	+1	+0	+17.7%	+17.7%	+17.7%	+21.3%	+21.3%	+5.7%
Consultant Psychiatry	33	+7	+6	+5	+3	+3	-0	+28.0%	+20.7%	+19.2%	+9.7%	+9.7%	-0.1%
Consultants	36	+8	+6	+6	+4	+4	+0	+26.9%	+20.4%	+19.1%	+10.7%	+10.7%	+0.4%
Registrar	68	+22	+28	+22	+17	+17	+15	+48.2%	+71.0%	+48.1%	+32.7%	+32.7%	+28.5%
Senior Registrar	9	+5	+4	+5	-1	-1	+1	+133.8%	+85.6%	+132.0%	-13.8%	-13.8%	+16.0%
Specialist Registrar	1	+1	+1	-0	-0	-0	-0	-100.0%	-100.0%	-17.0%	-17.0%	-17.0%	-17.0%
Registrars	79	+28	+34	+27	+15	+15	+16	+56.6%	+74.5%	+53.4%	+24.0%	+24.0%	+26.1%
Senior House Officer	24	-1	-5	-3	-1	-1	-3	-5.6%	-18.4%	-11.1%	-5.5%	-5.5%	-12.0%
SHO/ Interns	24	-1	-5	-3	-1	-1	-3	-5.6%	-18.4%	-11.1%	-5.5%	-5.5%	-12.0%
Dentists	30	+1	+2	+2	+2	+2	+1	+4.5%	+6.2%	+8.0%	+6.0%	+6.0%	+3.3%
Other Medical	36	-0	+0	-1	+2	+2	-1	-0.8%	+0.4%	-2.3%	+4.9%	+4.9%	-2.4%
Medical/ Dental, other	66	+1	+2	+1	+3	+3	+0	+1.5%	+2.9%	+2.1%	+5.4%	+5.4%	+0.1%
Medical & Dental	205	+36	+36	+32	+21	+21	+13	+21.0%	+21.3%	+18.1%	+11.2%	+11.2%	+6.9%
Clinical Nurse/ Midwife Manager	279	+13	+10	+21	+12	+12	+5	+4.7%	+3.8%	+8.2%	+4.5%	+4.5%	+1.9%
Director Nursing/Midwifery, Assistant	56	+6	+4	+7	+5	+5	-0	+12.6%	+8.3%	+15.2%	+9.9%	+9.9%	-0.8%
Director of Nursing/Midwifery	28	+3	+2	+2	+4	+4	-1	+10.3%	+7.7%	+8.4%	+17.7%	+17.7%	-2.6%
Nurse/ Midwife Manager	363	+21	+16	+31	+21	+21	+4	+6.3%	+4.8%	+9.2%	+6.2%	+6.2%	+1.1%
Advanced Nurse/ Midwife Practitioner	10	+8	+7	+8	+4	+4	-0	+424.0%	+249.3%	+424.0%	+50.1%	+50.1%	-3.9%
Clinical Nurse/ Midwife Specialist	97	+15	+11	+7	+8	+8	-2	+18.8%	+13.4%	+7.6%	+9.3%	+9.3%	-2.0%
Nurse/ Midwife Specialist & AN/MP	108	+24	+19	+15	+12	+12	-2	+28.5%	+21.4%	+16.6%	+12.3%	+12.3%	-2.2%
Graduate Nursing/ Midwifery		-11						-100.0%	-100.0%	-100.0%	-100.0%	-100.0%	-100.0%
Staff Nurse [Intellectual Disability]	218	+42	+18	+18	+9	+9	+10	+24.0%	+9.0%	+8.9%	+4.5%	+4.5%	+4.7%
Staff Nurse [Psychiatric]	291	-26	-37	-27	-14	-14	-1	-8.2%	-11.4%	-8.5%	-4.7%	-4.7%	-0.3%
Staff Nurses [General/ Children's]	512	+17	-3	-12	-15	-15	-9	+3.4%	-0.5%	-2.3%	-2.9%	-2.9%	-1.8%
Staff Nurse/ Staff Midwife	1,021	+22	-22	-21	-20	-20	-0	+2.2%	-2.1%	-2.0%	-1.9%	-1.9%	-0.0%
Public Health Nursing	151	-2	+4	-2	-5	-5	-2	-1.5%	+3.0%	-1.4%	-3.0%	-3.0%	-1.4%
Public Health Nurse	151	-2	+4	-2	-5	-5	-2	-1.5%	+3.0%	-1.4%	-3.0%	-3.0%	-1.4%
Pre-registration Nurse/ Midwife Intern	5	-3	+4	+1	-6	-6	-2	-39.2%	+248.0%	+37.7%	-51.8%	-51.8%	-25.4%
Pre-registration Nurse Intern (COVID-19)	40	+40	+40	+40	+40	+40	-6	-100.0%	-100.0%	-100.0%	-100.0%	-100.0%	-13.4%
Post-registration Nurse/ Midwife Student	1	-6	-6	-6	-6	-6	-1	-85.7%	-85.7%	-85.7%	-85.7%	-85.7%	-50.0%
Nursing/ Midwifery awaiting registration	11	+11	+11	+11	+10	+10		-100.0%	-100.0%	-100.0%	+1000.0%	+1000.0%	
Nursing/ Midwifery Student	57	+42	+49	+47	+39	+39	-9	+267.9%	+574.4%	+431.2%	+204.6%	+204.6%	-13.6%
Nursing/ Midwifery other	8	+3	+3	+3	+3	+3	-0	+55.3%	+62.3%	+58.5%	+58.5%	+58.5%	-0.1%

Jul 2020 (Dec 2015 figure: 5,177)	WTE Jul 2020	WTE change since Dec 15	WTE change since Dec 16	WTE change since Dec 17	WTE change since Dec 18	WTE change since Dec 18	WTE change since Jun 20	% change since Dec 15	% change since Dec 16	% change since Dec 17	% change since Dec 18	% change since Dec 18	% change since Jun 20
Overall	5,647	+470	+366	+279	+211	+211	+45	+9.1%	+6.9%	+5.2%	+3.9%	+3.9%	+0.8%
Nursing & Midwifery	1,707	+109	+70	+72	+50	+50	-10	+6.8%	+4.3%	+4.4%	+3.0%	+3.0%	-0.6%
Dietitians	15	-1	+1	-1	-3	-3	-1	-4.2%	+4.3%	-5.9%	-14.6%	-14.6%	-4.2%
Occupational Therapists	129	+16	+10	+16	+6	+6	+1	+13.7%	+8.2%	+13.7%	+4.6%	+4.6%	+0.5%
Orthoptists	3	-0	+1	+0	+0	+0	+0	-3.1%	+40.5%	+7.7%	+6.4%	+6.4%	+5.2%
Physiotherapists	93	+13	+2	+2	-1	-1	+0	+16.1%	+2.5%	+2.6%	-0.8%	-0.8%	+0.5%
Podiatrists & Chiropodists	10	+2	-0	+1	+0	+0	-1	+20.2%	-3.6%	+10.5%	+3.2%	+3.2%	-6.3%
Speech & Language Therapists	70	+6	+6	-2	+0	+0	+1	+9.8%	+9.9%	-2.8%	+0.1%	+0.1%	+0.9%
Therapy Professions	320	+36	+20	+16	+3	+3	+1	+12.5%	+6.5%	+5.3%	+0.9%	+0.9%	+0.2%
Audiology	5	-0	-0	-0	-0	-0	-0	-4.2%	-3.5%	-2.4%	-4.9%	-4.9%	-0.8%
Radiographers	1	-0	-0	-0	-0	-0	+0	-14.6%	-11.5%	-15.2%	-14.6%	-14.6%	+6.0%
Health Science/ Diagnostics	6	-0	-0	-0	-0	-0	+0	-6.4%	-5.1%	-5.1%	-6.9%	-6.9%	+0.5%
Social Care	12	-5	-1	+0	+0	+0	-0	-28.6%	-9.7%	+0.6%	+2.4%	+2.4%	-3.0%
Social Workers	89	+12	+9	+9	+11	+11	-2	+15.9%	+10.7%	+11.9%	+14.1%	+14.1%	-1.8%
Psychologists	61	+8	+6	+4	-0	-0	-0	+15.6%	+11.8%	+6.2%	-0.2%	-0.2%	-0.2%
Pharmacy	2	+0	+0	+0	-0	-0	+0	+2.0%	+2.0%	+2.0%	-4.4%	-4.4%	+2.0%
Counsellor Therapists	20	-0	+2	-1	+0	+0	+1	-2.3%	+8.3%	-4.7%	+0.2%	+0.2%	+5.1%
Dental Hygienists	5	+0	+0	-0	+0	+0	-0	+1.5%	+3.1%	-6.1%	+4.1%	+4.1%	-0.7%
Other Health & Social Care	4	-4	-4	-4	-3	-3		-49.0%	-45.7%	-51.3%	-41.7%	-41.7%	
H&SC, Other	29	-4	-2	-6	-3	-3	+1	-13.3%	-6.2%	-16.6%	-8.8%	-8.8%	+3.2%
Health & Social Care Professionals	520	+47	+31	+23	+11	+11	-1	+9.8%	+6.4%	+4.6%	+2.1%	+2.1%	-0.1%
Executive Management	7	+4		-1	-1	-1	+0	+133.3%		-12.5%	-10.9%	-10.9%	+1.3%
Senior Management (VIII & GM)	56	+15	+16	+15	+6	+6	+1	+38.3%	+40.9%	+37.4%	+13.0%	+13.0%	+1.1%
Management (VIII & above)	63	+19	+16	+14	+6	+6	+1	+44.9%	+34.7%	+29.1%	+9.7%	+9.7%	+1.2%
Middle Management (V-VII)	160	+65	+64	+53	+46	+46	-0	+69.5%	+66.8%	+50.1%	+40.4%	+40.4%	-0.0%
Other Administrative	1												
Administrative/ Supervisory (V to VII)	161	+65	+64	+53	+46	+46	-0	+68.8%	+66.2%	+49.6%	+40.1%	+40.1%	-0.0%
General Administrative (III & IV)	455	+25	+15	+18	+5	+5	+5	+5.7%	+3.4%	+4.0%	+1.1%	+1.1%	+1.2%
Clerical (III & IV)	455	+25	+15	+18	+5	+5	+5	+5.7%	+3.4%	+4.0%	+1.1%	+1.1%	+1.2%
Management & Administrative	679	+109	+95	+85	+57	+57	+6	+19.2%	+16.3%	+14.3%	+9.1%	+9.1%	+0.9%
Catering	66	+12	+10	+7	+7	+7	+0	+22.6%	+17.4%	+12.1%	+11.6%	+11.6%	+0.3%
Household Services	210	-36	-23	-7	-6	-6	-2	-14.7%	-10.0%	-3.3%	-2.7%	-2.7%	-1.0%
Other Support	29	+8	+7	+1	-5	-5	-0	+38.9%	+31.9%	+1.9%	-14.6%	-14.6%	-0.3%
Portering	8	-1	-1	+0	+0	+0		-11.4%	-11.4%	+0.7%	+1.3%	+1.3%	
Support	313	-17	-7	+1	-4	-4	-2	-5.1%	-2.3%	+0.2%	-1.2%	-1.2%	-0.6%
Maintenance	37	-4	-1	-1	+3	+3	-0	-9.3%	-2.8%	-1.7%	+8.6%	+8.6%	-0.1%

Jul 2020 (Dec 2015 figure: 5,177)	WTE Jul 2020	WTE change since Dec 15	WTE change since Dec 16	WTE change since Dec 17	WTE change since Dec 18	WTE change since Dec 18	WTE change since Jun 20	% change since Dec 15	% change since Dec 16	% change since Dec 17	% change since Dec 18	% change since Dec 18	% change since Jun 20
Overall	5,647	+470	+366	+279	+211	+211	+45	+9.1%	+6.9%	+5.2%	+3.9%	+3.9%	+0.8%
Maintenance/ Technical	37	-4	-1	-1	+3	+3	-0	-9.3%	-2.8%	-1.7%	+8.6%	+8.6%	-0.1%
General Support	350	-21	-8	-0	-1	-1	-2	-5.6%	-2.4%	-0.0%	-0.3%	-0.3%	-0.6%
HCA, Nurse's Aide, etc.	1,489	+204	+138	+83	+73	+73	+29	+15.9%	+10.2%	+5.9%	+5.1%	+5.1%	+2.0%
Health & Social Care Assistants	28	+12	+13	+11	+1	+1	+0	+79.6%	+89.8%	+66.2%	+2.9%	+2.9%	+0.4%
Health Care Assistants	1,517	+217	+151	+94	+73	+73	+29	+16.6%	+11.1%	+6.6%	+5.1%	+5.1%	+2.0%
Care, other	135	+6	+4	+0	+4	+4	+2	+4.3%	+3.1%	+0.3%	+2.7%	+2.7%	+1.4%
Home Help	534	-33	-12	-27	-3	-3	+6	-5.8%	-2.3%	-4.9%	-0.5%	-0.5%	+1.2%
Patient & Client Care	2,187	+189	+143	+67	+74	+74	+38	+9.5%	+7.0%	+3.2%	+3.5%	+3.5%	+1.7%

Source: Health Service Personnel Census

Longitudinal Employment Levels by Care Group - Oct 2013 to Jul 2020

Community Health & Wellbeing

Jul 2020 (figure:)	WTE Jul 2020	WTE change since	WTE change since	WTE change since	WTE change since	WTE change since	WTE change since Jun 20	% change since	% change since	% change since	% change since	% change since	% change since Jun 20
Overall	14	+14	+14	+14	+14	+14	+0	-100.0%	-100.0%	-100.0%	-100.0%	-100.0%	+0.2%
Management & Administrative	13	+13	+13	+13	+13	+13	+0	-1.0%	-1.0%	-1.0%	-1.0%	-1.0%	+0.0%
Management (VIII & above)	1	+1	+1	+1	+1	+1		-1.0%	-1.0%	-1.0%	-1.0%	-1.0%	+0.0%
Administrative/ Supervisory (V to VII)	9	+9	+9	+9	+9	+9	-0	-1.0%	-1.0%	-1.0%	-1.0%	-1.0%	-0.0%
Clerical (III & IV)	3	+3	+3	+3	+3	+3	+0	-1.0%	-1.0%	-1.0%	-1.0%	-1.0%	+0.0%
Patient & Client Care	1	+1	+1	+1	+1	+1		-1.0%	-1.0%	-1.0%	-1.0%	-1.0%	+0.0%
Care, other	1	+1	+1	+1	+1	+1		-1.0%	-1.0%	-1.0%	-1.0%	-1.0%	+0.0%

Source: Health Service Personnel Census

Mental Health

Jul 2020 (Dec 2015 figure: 931)	WTE Jul 2020	WTE change since Dec 15	WTE change since Dec 16	WTE change since Dec 17	WTE change since Dec 18	WTE change since Dec 18	WTE change since Jun 20	% change since Dec 15	% change since Dec 16	% change since Dec 17	% change since Dec 18	% change since Dec 18	% change since Jun 20
Overall	970	+40	+22	+28	+29	+29	-8	+4.3%	+2.3%	+3.0%	+3.1%	+3.1%	-0.8%
Medical & Dental	80	+13	+7	+8	+2	+2	-3	+0.2%	+0.1%	+0.1%	+0.0%	+0.0%	-0.0%
Consultants	33	+8	+7	+6	+4	+4	-0	+0.3%	+0.3%	+0.2%	+0.1%	+0.1%	-0.0%
Registrars	24	+6	+7	+5	-0	-0	+1	+0.3%	+0.4%	+0.2%	-0.0%	-0.0%	+0.0%
SHO/ Interns	23	-1	-6	-3	-1	-1	-3	-0.0%	-0.2%	-0.1%	-0.1%	-0.1%	-0.1%
Nursing & Midwifery	496	+9	-6	+1	+10	+10	-9	+0.0%	-0.0%	+0.0%	+0.0%	+0.0%	-0.0%
Nurse/ Midwife Manager	122	+6	+3	+4	+5	+5	+1	+0.1%	+0.0%	+0.0%	+0.0%	+0.0%	+0.0%
Nurse/ Midwife Specialist & AN/MP	65	+12	+7	+4	+0	+0	-1	+0.2%	+0.1%	+0.1%	+0.1%	+0.1%	-0.0%
Staff Nurse/ Staff Midwife	290	-22	-35	-26	-13	-13	-2	-0.1%	-0.1%	-0.1%	-0.0%	-0.0%	-0.0%
Nursing/ Midwifery Student	18	+12	+18	+18	+17	+17	-7	+2.2%	-1.0%	-1.0%	+17.1%	+17.1%	-0.3%
Nursing/ Midwifery other	1	+1	+1	+1	+1	+1	-0	-1.0%	-1.0%	-1.0%	-1.0%	-1.0%	-0.1%
Health & Social Care Professionals	114	+7	+7	+8	+2	+2	-1	+0.1%	+0.1%	+0.1%	+0.0%	+0.0%	-0.0%
Therapy Professions	36	+6	+4	+5	+2	+2	+0	+0.2%	+0.1%	+0.1%	+0.1%	+0.1%	+0.0%
Social Care	3	-2	-0	-0	-0	-0	-0	-0.3%	-0.1%	-0.1%	-0.1%	-0.1%	-0.1%
Social Workers	39	+1	+1	+3	+1	+1	-1	+0.0%	+0.0%	+0.1%	+0.0%	+0.0%	-0.0%
Psychologists	22	+3	+1	+1	-1	-1	+0	+0.1%	+0.0%	+0.0%	-0.0%	-0.0%	+0.0%
Pharmacy	1	+0	+0	+0	-0	-0	+0	+0.0%	+0.0%	+0.0%	-0.1%	-0.1%	+0.0%
H&SC, Other	12	-1	+1	-0	+0	+0	+0	-0.0%	+0.1%	-0.0%	+0.0%	+0.0%	+0.0%
Management & Administrative	122	+26	+30	+23	+17	+17	+1	+0.3%	+0.3%	+0.2%	+0.2%	+0.2%	+0.0%
Management (VIII & above)	7	+3	+4	+3	+3	+3	+1	+0.8%	+1.4%	+0.8%	+0.8%	+0.8%	+0.1%
Administrative/ Supervisory (V to VII)	31	+17	+18	+14	+11	+11	+0	+1.2%	+1.3%	+0.9%	+0.6%	+0.6%	+0.0%
Clerical (III & IV)	84	+6	+8	+5	+3	+3	+0	+0.1%	+0.1%	+0.1%	+0.0%	+0.0%	+0.0%
General Support	80	-17	-12	-5	-2	-2	+0	-0.2%	-0.1%	-0.1%	-0.0%	-0.0%	+0.0%
Support	64	-15	-11	-5	-3	-3	+0	-0.2%	-0.1%	-0.1%	-0.0%	-0.0%	+0.0%
Maintenance/ Technical	17	-2	-1	+0	+1	+1	-0	-0.1%	-0.1%	+0.0%	+0.1%	+0.1%	-0.0%
Patient & Client Care	79	+1	-4	-7	-1	-1	+3	+0.0%	-0.1%	-0.1%	-0.0%	-0.0%	+0.0%
Health Care Assistants	68	+0	-5	-8	+0	+0	+3	+0.0%	-0.1%	-0.1%	+0.0%	+0.0%	+0.0%
Care, other	11	+1	+1	+0	-2	-2	-0	+0.1%	+0.1%	+0.0%	-0.1%	-0.1%	-0.0%

Source: Health Service Personnel Census

Primary Care

Jul 2020 (Dec 2015 figure: 1,222)	WTE Jul 2020	WTE change since Dec 15	WTE change since Dec 16	WTE change since Dec 17	WTE change since Dec 18	WTE change since Dec 18	WTE change since Jun 20	% change since Dec 15	% change since Dec 16	% change since Dec 17	% change since Dec 18	% change since Dec 18	% change since Jun 20
Overall	1,241	+19	-16	+53	+9	+9	+13	+1.6%	-1.2%	+4.5%	+0.7%	+0.7%	+1.0%
Medical & Dental	105	+20	+26	+21	+16	+16	+16	+0.2%	+0.3%	+0.2%	+0.2%	+0.2%	+0.2%
Consultants	4	+1	+1	+1	+1	+1	+0	+0.2%	+0.2%	+0.2%	+0.2%	+0.2%	+0.1%
Registrars	55	+23	+26	+23	+15	+15	+16	+0.7%	+0.9%	+0.7%	+0.4%	+0.4%	+0.4%
SHO/ Interns	1	-0	+1	-0	-0	-0	-0	-0.2%	-1.0%	-0.0%	-0.0%	-0.0%	-0.0%
Medical/ Dental, other	46	-3	-2	-3	-1	-1	+0	-0.1%	-0.0%	-0.1%	-0.0%	-0.0%	+0.0%
Nursing & Midwifery	318	+27	+21	+13	+13	+13	-3	+0.1%	+0.1%	+0.0%	+0.0%	+0.0%	-0.0%
Nurse/ Midwife Manager	42	+5	+5	+7	+5	+5	-1	+0.1%	+0.1%	+0.2%	+0.1%	+0.1%	-0.0%
Nurse/ Midwife Specialist & AN/MP	25	+4	+5	+1	+5	+5	-0	+0.2%	+0.2%	+0.1%	+0.2%	+0.2%	-0.0%
Staff Nurse/ Staff Midwife	99	+26	+13	+12	+13	+13	+1	+0.3%	+0.1%	+0.1%	+0.2%	+0.2%	+0.0%
Public Health Nurse	151	-2	+4	-2	-5	-5	-2	-0.0%	+0.0%	-0.0%	-0.0%	-0.0%	-0.0%
Nursing/ Midwifery Student	1	-6	-6	-6	-6	-6	-1	-0.9%	-0.9%	-0.9%	-0.9%	-0.9%	-0.5%
Nursing/ Midwifery other	1	+1	+1	+1	+1	+1		-1.0%	-1.0%	-1.0%	-1.0%	-1.0%	+0.0%
Health & Social Care Professionals	289	+8	-11	-19	-28	-28	-0	+0.0%	-0.0%	-0.1%	-0.1%	-0.1%	-0.0%
Therapy Professions	228	+9	-9	-13	-20	-20	+1	+0.0%	-0.0%	-0.1%	-0.1%	-0.1%	+0.0%
Health Science/ Diagnostics	5	-0	-0	-0	-0	-0	-0	-0.0%	-0.0%	-0.0%	-0.0%	-0.0%	-0.0%
Social Workers	14	-3	-6	-7	-7	-7	-1	-0.2%	-0.3%	-0.3%	-0.3%	-0.3%	-0.0%
Psychologists	34	+2	+3	+2	-1	-1	-0	+0.1%	+0.1%	+0.1%	-0.0%	-0.0%	-0.0%
Pharmacy	1							+0.0%	+0.0%	+0.0%	+0.0%	+0.0%	+0.0%
H&SC, Other	7	+1	+1	-0	+0	+0	-0	+0.2%	+0.2%	-0.0%	+0.0%	+0.0%	-0.0%
Management & Administrative	341	+28	+15	+12	-8	-8	+2	+0.1%	+0.0%	+0.0%	-0.0%	-0.0%	+0.0%
Management (VIII & above)	31	+7	+3	+2	-6	-6	+0	+0.3%	+0.1%	+0.1%	-0.2%	-0.2%	+0.0%
Administrative/ Supervisory (V to VII)	73	+17	+17	+8	+6	+6	+1	+0.3%	+0.3%	+0.1%	+0.1%	+0.1%	+0.0%
Clerical (III & IV)	237	+4	-5	+2	-8	-8	+1	+0.0%	-0.0%	+0.0%	-0.0%	-0.0%	+0.0%
General Support	87	+20	+16	+13	+8	+8	-3	+0.3%	+0.2%	+0.2%	+0.1%	+0.1%	-0.0%
Support	80	+19	+15	+12	+5	+5	-3	+0.3%	+0.2%	+0.2%	+0.1%	+0.1%	-0.0%
Maintenance/ Technical	7	+1	+1	+1	+3	+3	-0	+0.2%	+0.1%	+0.2%	+0.7%	+0.7%	-0.0%
Patient & Client Care	102	-85	-82	+14	+8	+8	+2	-0.5%	-0.4%	+0.2%	+0.1%	+0.1%	+0.0%
Health Care Assistants	45	+16	+14	+14	+5	+5	+1	+0.6%	+0.5%	+0.5%	+0.1%	+0.1%	+0.0%
Care, other	57	-3	-1	-0	+2	+2	+0	-0.1%	-0.0%	-0.0%	+0.0%	+0.0%	+0.0%
Home Help	0	-98	-95	+0	+0	+0	+0	-1.0%	-1.0%	-1.0%	-1.0%	-1.0%	-1.0%

Source: Health Service Personnel Census

Disabilities

Jul 2020 (Dec 2015 figure: 1,374)	WTE Jul 2020	WTE change since Dec 15	WTE change since Dec 16	WTE change since Dec 17	WTE change since Dec 18	WTE change since Dec 18	WTE change since Jun 20	% change since Dec 15	% change since Dec 16	% change since Dec 17	% change since Dec 18	% change since Dec 18	% change since Jun 20
Overall	1,536	+162	+105	+78	+57	+57	+10	+11.8%	+7.4%	+5.4%	+3.8%	+3.8%	+0.7%
Medical & Dental	3	+0						+0.1%	+0.0%	+0.0%	+0.0%	+0.0%	+0.0%
Consultants		-1	-1	-1	-1	-1		-1.0%	-1.0%	-1.0%	-1.0%	-1.0%	-1.0%
Medical/ Dental, other	3	+1	+1	+1	+1	+1		+0.5%	+0.5%	+0.5%	+0.5%	+0.5%	+0.0%
Nursing & Midwifery	480	+54	+31	+33	+25	+25	+1	+0.1%	+0.1%	+0.1%	+0.1%	+0.1%	+0.0%
Nurse/ Midwife Manager	109	+12	+8	+7	+9	+9	+1	+0.1%	+0.1%	+0.1%	+0.1%	+0.1%	+0.0%
Nurse/ Midwife Specialist & AN/MP	10	+1	+0	+2	+3	+3		+0.1%	+0.0%	+0.2%	+0.4%	+0.4%	+0.0%
Staff Nurse/ Staff Midwife	319	+6	-14	-11	-14	-14	+1	+0.0%	-0.0%	-0.0%	-0.0%	-0.0%	+0.0%
Nursing/ Midwifery Student	38	+35	+37	+34	+27	+27	-1	+11.8%	+24.5%	+9.1%	+2.5%	+2.5%	-0.0%
Nursing/ Midwifery other	5	-0	-0	-0	-0	-0		-0.0%	-0.0%	-0.0%	-0.0%	-0.0%	+0.0%
Health & Social Care Professionals	88	+21	+26	+23	+28	+28	+1	+0.3%	+0.4%	+0.4%	+0.5%	+0.5%	+0.0%
Therapy Professions	44	+18	+21	+21	+21	+21	-0	+0.7%	+0.9%	+0.9%	+0.9%	+0.9%	-0.0%
Social Care	9	-3	-1	+1	+1	+1	+0	-0.3%	-0.1%	+0.1%	+0.1%	+0.1%	+0.0%
Social Workers	20	+8	+7	+6	+8	+8	-0	+0.6%	+0.5%	+0.4%	+0.6%	+0.6%	-0.0%
Psychologists	6	+4	+3	+1	+2	+2	+0	+1.8%	+1.1%	+0.2%	+0.4%	+0.4%	+0.0%
H&SC, Other	10	-5	-4	-5	-3	-3	+1	-0.3%	-0.3%	-0.4%	-0.2%	-0.2%	+0.1%
Management & Administrative	97	+16	+11	+16	+14	+14	+2	+0.2%	+0.1%	+0.2%	+0.2%	+0.2%	+0.0%
Management (VIII & above)	15	+4	+4	+3	+2	+2		+0.4%	+0.4%	+0.3%	+0.2%	+0.2%	+0.0%
Administrative/ Supervisory (V to VII)	32	+12	+10	+13	+12	+12	-1	+0.6%	+0.5%	+0.6%	+0.6%	+0.6%	-0.0%
Clerical (III & IV)	50	-0	-3	+0	+1	+1	+3	-0.0%	-0.1%	+0.0%	+0.0%	+0.0%	+0.1%
General Support	56	-16	-4	-2	-1	-1	+0	-0.2%	-0.1%	-0.0%	-0.0%	-0.0%	+0.0%
Support	50	-13	-3	-1	-1	-1	+0	-0.2%	-0.1%	-0.0%	-0.0%	-0.0%	+0.0%
Maintenance/ Technical	6	-3	-1	-1				-0.3%	-0.1%	-0.1%	+0.0%	+0.0%	+0.0%
Patient & Client Care	811	+87	+41	+8	-9	-9	+7	+0.1%	+0.1%	+0.0%	-0.0%	-0.0%	+0.0%
Health Care Assistants	759	+85	+40	+8	-14	-14	+5	+0.1%	+0.1%	+0.0%	-0.0%	-0.0%	+0.0%
Care, other	38	+5	+5	+1	+4	+4	+1	+0.2%	+0.1%	+0.0%	+0.1%	+0.1%	+0.0%
Home Help	14	-4	-4	-1	+1	+1	+0	-0.2%	-0.2%	-0.1%	+0.0%	+0.0%	+0.0%

Source: Health Service Personnel Census

Older People

Jul 2020 (Dec 2015 figure: 1,650)	WTE Jul 2020	WTE change since Dec 15	WTE change since Dec 16	WTE change since Dec 17	WTE change since Dec 18	WTE change since Dec 18	WTE change since Jun 20	% change since Dec 15	% change since Dec 16	% change since Dec 17	% change since Dec 18	% change since Dec 18	% change since Jun 20
Overall	1,885	+235	+240	+105	+103	+103	+30	+14.3%	+14.6%	+5.9%	+5.8%	+5.8%	+1.6%
Medical & Dental	17	+3	+3	+3	+3	+3		+0.2%	+0.2%	+0.2%	+0.2%	+0.2%	+0.0%
Medical/ Dental, other	17	+3	+3	+3	+3	+3		+0.2%	+0.2%	+0.2%	+0.2%	+0.2%	+0.0%
Nursing & Midwifery	412	+19	+23	+25	+2	+2	+1	+0.0%	+0.1%	+0.1%	+0.0%	+0.0%	+0.0%
Nurse/ Midwife Manager	91	-2	+0	+13	+2	+2	+3	-0.0%	+0.0%	+0.2%	+0.0%	+0.0%	+0.0%
Nurse/ Midwife Specialist & AN/MP	8	+8	+7	+8	+4	+4	-1	-1.0%	+6.9%	-1.0%	+1.0%	+1.0%	-0.1%
Staff Nurse/ Staff Midwife	313	+12	+15	+3	-5	-5	-1	+0.0%	+0.0%	+0.0%	-0.0%	-0.0%	-0.0%
Nursing/ Midwifery other	1	+1	+1	+1	+1	+1	+0	-1.0%	-1.0%	-1.0%	-1.0%	-1.0%	+0.1%
Health & Social Care Professionals	29	+9	+9	+11	+8	+8	+0	+0.5%	+0.5%	+0.6%	+0.4%	+0.4%	+0.0%
Therapy Professions	12	+3	+3	+4	+0	+0	+0	+0.3%	+0.3%	+0.5%	+0.0%	+0.0%	+0.0%
Health Science/ Diagnostics	1	-0	-0	-0	-0	-0	+0	-0.1%	-0.1%	-0.2%	-0.1%	-0.1%	+0.1%
Social Workers	16	+7	+7	+8	+8	+8	-0	+0.7%	+0.7%	+0.9%	+1.1%	+1.1%	-0.0%
Management & Administrative	106	+26	+25	+21	+20	+20	+2	+0.3%	+0.3%	+0.2%	+0.2%	+0.2%	+0.0%
Management (VIII & above)	8	+4	+4	+5	+5	+5		+1.0%	+1.0%	+1.7%	+1.7%	+1.7%	+0.0%
Administrative/ Supervisory (V to VII)	15	+10	+10	+9	+8	+8	-0	+1.8%	+1.8%	+1.4%	+1.0%	+1.0%	-0.0%
Clerical (III & IV)	82	+12	+11	+7	+7	+7	+2	+0.2%	+0.2%	+0.1%	+0.1%	+0.1%	+0.0%
General Support	126	-8	-8	-6	-6	-6	+0	-0.1%	-0.1%	-0.0%	-0.0%	-0.0%	+0.0%
Support	119	-8	-8	-5	-5	-5	+0	-0.1%	-0.1%	-0.0%	-0.0%	-0.0%	+0.0%
Maintenance/ Technical	7			-1	-1	-1		+0.0%	+0.0%	-0.1%	-0.1%	-0.1%	+0.0%
Patient & Client Care	1,195	+186	+188	+51	+76	+76	+26	+0.2%	+0.2%	+0.0%	+0.1%	+0.1%	+0.0%
Health Care Assistants	646	+115	+102	+79	+81	+81	+20	+0.2%	+0.2%	+0.1%	+0.1%	+0.1%	+0.0%
Care, other	28	+2	-1	-2	-2	-2	+0	+0.1%	-0.0%	-0.1%	-0.1%	-0.1%	+0.0%
Home Help	520	+69	+86	-27	-4	-4	+6	+0.2%	+0.2%	-0.0%	-0.0%	-0.0%	+0.0%

Source: Health Service Personnel Census