

## CHO 1 Employment Report: June 2021

### Employment by Staff Group

Jun 2021 (Dec 2020 figure: 5,755)	WTE Apr 2021	WTE Jun 2021	WTE change since Apr 21	% change since Apr 21	WTE change since Dec 20	WTE change since Jun 20
<b>Overall</b>	<b>5,847</b>	<b>5,922</b>	<b>+75</b>	<b>+1.3%</b>	<b>+167</b>	<b>+320</b>
Consultants	39	39	+0	+0.1%	+2	+3
Registrars	74	75	+0	+0.2%	+3	+12
SHO/ Interns	20	21	+1	+4.7%	-3	-7
Medical/ Dental, other	65	62	-3	-4.6%	-18	-4
<b>Medical &amp; Dental</b>	<b>199</b>	<b>197</b>	<b>-2</b>	<b>-0.9%</b>	<b>-16</b>	<b>+5</b>
Nurse/ Midwife Manager	355	362	+7	+2.0%	+8	+4
Nurse/ Midwife Specialist & AN/MP	118	118	-1	-0.5%	-0	+8
Staff Nurse/ Staff Midwife	1,061	1,079	+18	+1.7%	+50	+58
Public Health Nurse	152	147	-5	-3.2%	-6	-6
Nursing/ Midwifery Student	53	42	-11	-20.5%	+19	-24
Nursing/ Midwifery other	8	8			+1	+0
<b>Nursing &amp; Midwifery</b>	<b>1,747</b>	<b>1,756</b>	<b>+9</b>	<b>+0.5%</b>	<b>+72</b>	<b>+39</b>
Therapy Professions	329	329	+1	+0.2%	+6	+10
Health Science/ Diagnostics	6	7	+0	+1.6%	-0	+0
Social Care	14	15	+1	+5.5%	+0	+3
Social Workers	92	92	-1	-0.6%	-1	+1
Psychologists	65	66	+0	+0.2%	+3	+4
Pharmacy	3	5	+2	+98.8%	+2	+3
H&SC, Other	30	37	+7	+23.3%	+6	+9
<b>Health &amp; Social Care Professionals</b>	<b>540</b>	<b>551</b>	<b>+11</b>	<b>+2.0%</b>	<b>+18</b>	<b>+31</b>
Management (VIII & above)	63	63	+0	+0.0%	-0	+1
Administrative/ Supervisory (V to VII)	178	185	+7	+4.0%	+19	+24
Clerical (III & IV)	499	520	+20	+4.1%	+41	+70
<b>Management &amp; Administrative</b>	<b>740</b>	<b>768</b>	<b>+28</b>	<b>+3.7%</b>	<b>+60</b>	<b>+95</b>
Support	315	309	-6	-1.8%	-1	-5
Maintenance/ Technical	37	37	+0	+0.7%	+1	+0
<b>General Support</b>	<b>352</b>	<b>347</b>	<b>-5</b>	<b>-1.6%</b>	<b>+0</b>	<b>-5</b>
Health Care Assistants	1,544	1,548	+4	+0.3%	+29	+60
Home Help	582	608	+26	+4.5%	-11	+80
Care, other	143	148	+5	+3.7%	+16	+15
<b>Patient &amp; Client Care</b>	<b>2,269</b>	<b>2,304</b>	<b>+35</b>	<b>+1.6%</b>	<b>+34</b>	<b>+155</b>

## CHO 1 Employment Report: June 2021

### Community Health & Wellbeing

Jun 2021 (Dec 2020 figure: 18)	WTE Apr 2021	WTE Jun 2021	WTE change since Apr 21	% change since Apr 21	WTE change since Dec 20	WTE change since Jun 20
<b>Total Community Health &amp; Wellbeing</b>	<b>19</b>	<b>18</b>	<b>-1</b>	<b>-6.1%</b>	<b>-0</b>	<b>+4</b>

### Mental Health

Jun 2021 (Dec 2020 figure: 976)	WTE Apr 2021	WTE Jun 2021	WTE change since Apr 21	% change since Apr 21	WTE change since Dec 20	WTE change since Jun 20
<b>Total Mental Health</b>	<b>1,003</b>	<b>1,004</b>	<b>+1</b>	<b>+0.1%</b>	<b>+29</b>	<b>+26</b>
Consultants	36	36	+0	+0.1%	+2	+3
Registrars	33	32	-1	-3.1%	+2	+8
SHO/ Interns	19	20	+1	+4.9%	-3	-7
<b>Medical &amp; Dental</b>	<b>87</b>	<b>87</b>	<b>-0</b>	<b>-0.0%</b>	<b>+7</b>	<b>+5</b>
Nurse/ Midwife Manager	123	121	-2	-1.5%	+1	+1
Nurse/ Midwife Specialist & AN/MP	71	71	-0	-0.2%	-3	+5
Staff Nurse/ Staff Midwife	300	304	+4	+1.4%	+16	+12
Nursing/ Midwifery Student	16	16	-0	-0.8%	+13	-10
Nursing/ Midwifery other	2	2			+1	+1
<b>Nursing &amp; Midwifery</b>	<b>511</b>	<b>513</b>	<b>+2</b>	<b>+0.4%</b>	<b>+31</b>	<b>+9</b>
Therapy Professions	38	37	-1	-3.2%	+1	+0
Social Care	4	4	-0	-0.0%	+0	+0
Social Workers	41	41	+0	+0.1%	-2	+1
Psychologists	24	22	-1	-5.1%	-1	+0
Pharmacy	1	1				
H&SC, Other	14	13	-1	-5.9%	-0	+1
<b>Health &amp; Social Care Professionals</b>	<b>122</b>	<b>119</b>	<b>-3</b>	<b>-2.7%</b>	<b>+5</b>	<b>+4</b>
Management (VIII & above)	5	4	-1	-19.0%	-4	-3
Administrative/ Supervisory (V to VII)	31	30	-1	-4.3%	-1	-1
Clerical (III & IV)	89	91	+2	+1.9%	+5	+7
<b>Management &amp; Administrative</b>	<b>125</b>	<b>124</b>	<b>-1</b>	<b>-0.5%</b>	<b>+3</b>	<b>+4</b>
Support	63	63	-1	-1.2%	-2	-1
Maintenance/ Technical	16	16	-0	-0.2%	-0	-1
<b>General Support</b>	<b>80</b>	<b>79</b>	<b>-1</b>	<b>-1.0%</b>	<b>+0</b>	<b>-1</b>
Health Care Assistants	69	71	+2	+2.9%	+4	+7
Care, other	9	11	+2	+21.0%	-1	-1
<b>Patient &amp; Client Care</b>	<b>78</b>	<b>82</b>	<b>+4</b>	<b>+4.9%</b>	<b>+5</b>	<b>+6</b>

## Primary Care

Jun 2021 (Dec 2020 figure: 1,296)	WTE Apr 2021	WTE Jun 2021	WTE change since Apr 21	% change since Apr 21	WTE change since Dec 20	WTE change since Jun 20
<b>Total Primary Care</b>	<b>1,346</b>	<b>1,387</b>	<b>+41</b>	<b>+3.1%</b>	<b>+91</b>	<b>+159</b>
Consultants	4	4			+0	+0
Registrars	42	43	+1	+2.7%	+1	+4
SHO/ Interns	1	1				
Medical/ Dental, other	46	45	-1	-2.1%	-0	-1
<b>Medical &amp; Dental</b>	<b>92</b>	<b>92</b>	<b>+0</b>	<b>+0.2%</b>	<b>-0</b>	<b>+3</b>
Nurse/ Midwife Manager	39	41	+2	+5.1%	+2	-2
Nurse/ Midwife Specialist & AN/MP	27	27	+0	+0.4%	+1	+2
Staff Nurse/ Staff Midwife	94	95	+1	+1.2%	-1	-2
Public Health Nurse	151	146	-5	-3.2%	-7	-7
<i>Post-registration Nurse/ Midwife Student</i>	3	3				
Nursing/ Midwifery Student	3	3				+1
Nursing/ Midwifery other	1	1			+0	
<b>Nursing &amp; Midwifery</b>	<b>316</b>	<b>314</b>	<b>-2</b>	<b>-0.5%</b>	<b>+7</b>	<b>-7</b>
Therapy Professions	231	232	+1	+0.6%	+2	+5
Health Science/ Diagnostics	5	5	-0	-0.6%	-0	-0
Social Workers	18	17	-1	-4.6%	+1	+2
Psychologists	30	31	+1	+2.5%	-1	-3
Pharmacy	2	4	+2	+145.3%	+2	+3
H&SC, Other	7	16	+9	+119.4%	+9	+9
<b>Health &amp; Social Care Professionals</b>	<b>292</b>	<b>305</b>	<b>+12</b>	<b>+4.3%</b>	<b>+18</b>	<b>+16</b>
Management (VIII & above)	33	34	+1	+3.5%	+4	+3
Administrative/ Supervisory (V to VII)	84	92	+8	+9.6%	+16	+20
Clerical (III & IV)	266	287	+21	+7.9%	+38	+52
<b>Management &amp; Administrative</b>	<b>382</b>	<b>413</b>	<b>+30</b>	<b>+7.9%</b>	<b>+81</b>	<b>+74</b>
Support	86	83	-3	-3.1%	+6	+0
Maintenance/ Technical	8	8	+0	+4.8%	+1	+1
<b>General Support</b>	<b>94</b>	<b>91</b>	<b>-2</b>	<b>-2.4%</b>	<b>+13</b>	<b>+1</b>
Health Care Assistants	104	105	+0	+0.3%	+9	+61
Home Help	0	1	+0	+6.3%	-0	+1
Care, other	65	67	+2	+3.1%	+9	+10
<b>Patient &amp; Client Care</b>	<b>170</b>	<b>173</b>	<b>+2</b>	<b>+1.4%</b>	<b>+86</b>	<b>+72</b>

## Social Care

Jun 2021 (Dec 2020 figure: 3,464)	WTE Apr 2021	WTE Jun 2021	WTE change since Apr 21	% change since Apr 21	WTE change since Dec 20	WTE change since Jun 20
<b>Total Social Care</b>	<b>3,479</b>	<b>3,512</b>	<b>+34</b>	<b>+1.0%</b>	<b>+48</b>	<b>+131</b>
Medical/ Dental, other	19	17	-2	-8.4%	-18	-3
<b>Medical &amp; Dental</b>	<b>19</b>	<b>17</b>	<b>-2</b>	<b>-8.4%</b>	<b>-16</b>	<b>-3</b>
Nurse/ Midwife Manager	192	199	+7	+3.7%	+5	+4
Nurse/ Midwife Specialist & AN/MP	19	19	-0	-0.4%	+1	-0
Staff Nurse/ Staff Midwife	666	679	+13	+1.9%	+36	+48
Public Health Nurse	1	1			+1	+1
Pre-registration Nurse/ Midwife Intern	23	19	-4	-18.2%	+19	-4
Pre-registration Nurse Intern (COVID-19)		5	+5	-100.0%	-2	+5
Nursing/ Midwifery awaiting registration	11		-11	-100.0%	-11	-11
Nursing/ Midwifery Student	34	24	-11	-31.3%	+6	-15
Nursing/ Midwifery other	5	5				-1
<b>Nursing &amp; Midwifery</b>	<b>918</b>	<b>927</b>	<b>+9</b>	<b>+1.0%</b>	<b>+67</b>	<b>+36</b>
Therapy Professions	59	59	+0	+0.8%	+3	+3
Health Science/ Diagnostics	1	2	+0	+9.0%	-0	+0
Social Care	11	11	+1	+7.4%	+0	+3
Social Workers	33	33	+0	+0.6%	-0	-3
Psychologists	12	13	+1	+5.3%	+5	+7
H&SC, Other	9	8	-1	-9.6%	-2	-1
<b>Health &amp; Social Care Professionals</b>	<b>125</b>	<b>126</b>	<b>+1</b>	<b>+1.1%</b>	<b>+14</b>	<b>+10</b>
Management (VIII & above)	25	24	-0	-0.7%	-0	+1
Administrative/ Supervisory (V to VII)	53	54	+1	+1.3%	+4	+5
Clerical (III & IV)	140	138	-2	-1.7%	-3	+10
<b>Management &amp; Administrative</b>	<b>218</b>	<b>216</b>	<b>-2</b>	<b>-0.8%</b>	<b>+17</b>	<b>+16</b>
Support	166	163	-2	-1.4%	-4	-5
Maintenance/ Technical	13	13	-0	-0.5%	-0	-0
<b>General Support</b>	<b>179</b>	<b>176</b>	<b>-2</b>	<b>-1.4%</b>	<b>-9</b>	<b>-5</b>
Health Care Assistants	1,370	1,372	+2	+0.1%	+17	-8
Home Help	581	607	+26	+4.5%	-11	+79
Care, other	69	70	+1	+2.1%	+7	+5
<b>Patient &amp; Client Care</b>	<b>2,020</b>	<b>2,050</b>	<b>+29</b>	<b>+1.4%</b>	<b>+104</b>	<b>+77</b>

## CHO 1 Employment Report: June 2021

### Disabilities

Jun 2021 (Dec 2020 figure: 1,547)	WTE Apr 2021	WTE Jun 2021	WTE change since Apr 21	% change since Apr 21	WTE change since Dec 20	WTE change since Jun 20
<b>Total Disabilities</b>	<b>1,591</b>	<b>1,599</b>	<b>+7</b>	<b>+0.5%</b>	<b>+52</b>	<b>+73</b>
Medical/ Dental, other	3	3				-0
<b>Medical &amp; Dental</b>	<b>3</b>	<b>3</b>				<b>-0</b>
Nurse/ Midwife Manager	105	110	+4	+4.2%	+3	+2
Nurse/ Midwife Specialist & AN/MP	10	10			+1	
Staff Nurse/ Staff Midwife	339	345	+6	+1.8%	+17	+27
Public Health Nurse	1	1			+1	
Public Health Nurse	1	1			+1	+1
Nursing/ Midwifery Student	34	24	-11	-31.3%	+6	-15
Nursing/ Midwifery other	4	4				-1
<b>Nursing &amp; Midwifery</b>	<b>494</b>	<b>493</b>	<b>-0</b>	<b>-0.1%</b>	<b>+28</b>	<b>+14</b>
Therapy Professions	43	44	+1	+1.3%	+0	-1
Social Care	11	11	+1	+7.4%	+0	+3
Social Workers	17	18	+1	+2.9%	-1	-2
Psychologists	12	13	+1	+5.3%	+5	+7
H&SC, Other	9	8	-1	-9.6%	-2	-1
<b>Health &amp; Social Care Professionals</b>	<b>92</b>	<b>93</b>	<b>+2</b>	<b>+1.8%</b>	<b>+3</b>	<b>+6</b>
Management (VIII & above)	17	16	-0	-1.0%	-0	+1
Administrative/ Supervisory (V to VII)	37	37	+1	+2.0%	+3	+4
Clerical (III & IV)	54	53	-1	-1.7%	+0	+6
<b>Management &amp; Administrative</b>	<b>107</b>	<b>107</b>	<b>-0</b>	<b>-0.3%</b>	<b>+4</b>	<b>+11</b>
Support	49	48	-1	-1.4%	-1	-2
Maintenance/ Technical	6	6	-0	-1.2%	-0	-0
<b>General Support</b>	<b>55</b>	<b>54</b>	<b>-1</b>	<b>-1.3%</b>	<b>-1</b>	<b>-2</b>
Health Care Assistants	786	790	+3	+0.4%	+14	+36
Home Help	14	14	-0	-0.2%	+0	+0
Care, other	41	45	+4	+9.3%	+4	+8
<b>Patient &amp; Client Care</b>	<b>841</b>	<b>848</b>	<b>+7</b>	<b>+0.8%</b>	<b>+18</b>	<b>+44</b>

## Older People

Jun 2021 (Dec 2020 figure: 1,918)	WTE Apr 2021	WTE Jun 2021	WTE change since Apr 21	% change since Apr 21	WTE change since Dec 20	WTE change since Jun 20
<b>Total Older People</b>	<b>1,887</b>	<b>1,914</b>	<b>+26</b>	<b>+1.4%</b>	<b>-4</b>	<b>+58</b>
Medical/ Dental, other	16	14	-2	-9.9%	-18	-3
<b>Medical &amp; Dental</b>	<b>16</b>	<b>14</b>	<b>-2</b>	<b>-9.9%</b>	<b>-18</b>	<b>-3</b>
Nurse/ Midwife Manager	87	90	+3	+3.1%	+2	+2
Nurse/ Midwife Specialist & AN/MP	9	9	-0	-0.8%	-0	-0
Staff Nurse/ Staff Midwife	327	334	+7	+2.0%	+19	+20
Nursing/ Midwifery other	1	1				+0
<b>Nursing &amp; Midwifery</b>	<b>424</b>	<b>434</b>	<b>+9</b>	<b>+2.2%</b>	<b>+21</b>	<b>+23</b>
<b>Health &amp; Social Care Professionals</b>	<b>33</b>	<b>33</b>	<b>-0</b>	<b>-0.8%</b>	<b>+4</b>	<b>+4</b>
Management (VIII & above)	8	8				
Administrative/ Supervisory (V to VII)	16	16	-0	-0.2%	+1	+1
Clerical (III & IV)	86	85	-1	-1.7%	-3	+4
<b>Management &amp; Administrative</b>	<b>110</b>	<b>109</b>	<b>-1</b>	<b>-1.3%</b>	<b>-2</b>	<b>+5</b>
Support	117	115	-2	-1.5%	-3	-3
Maintenance/ Technical	7	7				
<b>General Support</b>	<b>124</b>	<b>122</b>	<b>-2</b>	<b>-1.4%</b>	<b>-3</b>	<b>-3</b>
Health Care Assistants	584	582	-2	-0.3%	+2	-44
Home Help	567	594	+26	+4.6%	-11	+79
Care, other	28	26	-2	-8.5%	+3	-3
<b>Patient &amp; Client Care</b>	<b>1,179</b>	<b>1,201</b>	<b>+22</b>	<b>+1.9%</b>	<b>-5</b>	<b>+33</b>

## CHO 1 Employment by Administration (HSE / S38): June 2021

Jun 2021 (Dec 2020 figure: 5,755)	WTE Apr 2021	WTE Jun 2021	WTE change since Apr 21	% change since Apr 21	WTE change since Dec 20	WTE change since Jun 20
<b>Overall</b>	<b>5,847</b>	<b>5,922</b>	<b>+75</b>	<b>+1.3%</b>	<b>+167</b>	<b>+320</b>
<b>HSE</b>	<b>5,847</b>	<b>5,922</b>	<b>+75</b>	<b>+1.3%</b>	<b>+167</b>	<b>+320</b>

### HSE

Jun 2021 (Dec 2020 figure: 5,755)	WTE Apr 2021	WTE Jun 2021	WTE change since Apr 21	% change since Apr 21	WTE change since Dec 20	WTE change since Jun 20
<b>Overall</b>	<b>5,847</b>	<b>5,922</b>	<b>+75</b>	<b>+1.3%</b>	<b>+167</b>	<b>+320</b>
Consultants	39	39	+0	+0.0%	+2	+3
Registrars	74	75	+0	+0.0%	+3	+12
SHO/ Interns	20	21	+1	+0.0%	-3	-7
Medical/ Dental, other	65	62	-3	-0.0%	-18	-4
<b>Medical &amp; Dental</b>	<b>199</b>	<b>197</b>	<b>-2</b>	<b>-0.9%</b>	<b>-16</b>	<b>+5</b>
Nurse/ Midwife Manager	355	362	+7	+0.0%	+8	+4
Nurse/ Midwife Specialist & AN/MP	118	118	-1	-0.0%	-0	+8
Staff Nurse/ Staff Midwife	1,061	1,079	+18	+0.0%	+50	+58
Public Health Nurse	152	147	-5	-0.0%	-6	-6
Nursing/ Midwifery Student	53	42	-11	-0.2%	+19	-24
Nursing/ Midwifery other	8	8		+0.0%	+1	+0
<b>Nursing &amp; Midwifery</b>	<b>1,747</b>	<b>1,756</b>	<b>+9</b>	<b>+0.5%</b>	<b>+72</b>	<b>+39</b>
Therapy Professions	329	329	+1	+0.0%	+6	+10
Health Science/ Diagnostics	6	7	+0	+0.0%	-0	+0
Social Care	14	15	+1	+0.1%	+0	+3
Social Workers	92	92	-1	-0.0%	-1	+1
Psychologists	65	66	+0	+0.0%	+3	+4
Pharmacy	3	5	+2	+1.0%	+2	+3
H&SC, Other	30	37	+7	+0.2%	+6	+9
<b>Health &amp; Social Care Professionals</b>	<b>540</b>	<b>551</b>	<b>+11</b>	<b>+2.0%</b>	<b>+18</b>	<b>+31</b>
Management (VIII & above)	63	63	+0	+0.0%	-0	+1
Administrative/ Supervisory (V to VII)	178	185	+7	+0.0%	+19	+24
Clerical (III & IV)	499	520	+20	+0.0%	+41	+70
<b>Management &amp; Administrative</b>	<b>740</b>	<b>768</b>	<b>+28</b>	<b>+3.7%</b>	<b>+60</b>	<b>+95</b>
Support	315	309	-6	-0.0%	-1	-5
Maintenance/ Technical	37	37	+0	+0.0%	+1	+0
<b>General Support</b>	<b>352</b>	<b>347</b>	<b>-5</b>	<b>-1.6%</b>	<b>+0</b>	<b>-5</b>
Health Care Assistants	1,544	1,548	+4	+0.0%	+29	+60
Home Help	582	608	+26	+0.0%	-11	+80
Care, other	143	148	+5	+0.0%	+16	+15
<b>Patient &amp; Client Care</b>	<b>2,269</b>	<b>2,304</b>	<b>+35</b>	<b>+1.6%</b>	<b>+34</b>	<b>+155</b>

**CHO 1 Employment by Grade Group & Staff Category: June 2021**

Jun 2021 (Dec 2020 figure: 5,755)	WTE Apr 2021	WTE Jun 2021	WTE change since Apr 21	% change since Apr 21	WTE change since Dec 20	WTE change since Jun 20
<b>Overall</b>	<b>5,847</b>	<b>5,922</b>	<b>+75</b>	<b>+1.3%</b>	<b>+167</b>	<b>+320</b>
Consultant Medicine	4	4			+0	+0
Consultant Psychiatry	36	36	+0	+0.1%	+2	+3
<b>Consultants</b>	<b>39</b>	<b>39</b>	<b>+0</b>	<b>+0.1%</b>	<b>+2</b>	<b>+3</b>
Registrar	66	66	-0	-0.5%	+3	+12
Senior Registrar	9	9	+1	+5.9%	+1	+1
Specialist Registrar				-100.0%		-1
<b>Registrars</b>	<b>74</b>	<b>75</b>	<b>+0</b>	<b>+0.2%</b>	<b>+3</b>	<b>+12</b>
Senior House Officer	20	21	+1	+4.7%	-3	-7
<b>SHO/ Interns</b>	<b>20</b>	<b>21</b>	<b>+1</b>	<b>+4.7%</b>	<b>-3</b>	<b>-7</b>
Dentists	28	28	+0	+0.7%	+0	-1
Other Medical	37	34	-3	-8.5%	-18	-3
<b>Medical/ Dental, other</b>	<b>65</b>	<b>62</b>	<b>-3</b>	<b>-4.6%</b>	<b>-18</b>	<b>-4</b>
<b>Medical &amp; Dental</b>	<b>199</b>	<b>197</b>	<b>-2</b>	<b>-0.9%</b>	<b>-8</b>	<b>+5</b>
Clinical Nurse/ Midwife Manager	275	276	+1	+0.4%	+3	+2
Director Nursing/Midwifery, Assistant	56	61	+5	+9.4%	+5	+4
Director of Nursing/Midwifery	25	25	+1	+3.9%	+0	-3
<b>Nurse/ Midwife Manager</b>	<b>355</b>	<b>362</b>	<b>+7</b>	<b>+2.0%</b>	<b>+8</b>	<b>+4</b>
Advanced Nurse/ Midwife Practitioner	15	15	-0	-0.5%	+1	+4
Clinical Nurse/ Midwife Specialist	103	103	-1	-0.5%	-1	+4
<b>Nurse/ Midwife Specialist &amp; AN/MP</b>	<b>118</b>	<b>118</b>	<b>-1</b>	<b>-0.5%</b>	<b>-0</b>	<b>+8</b>
Staff Nurse [Intellectual Disability]	260	267	+7	+2.6%	+29	+58
Staff Nurse [Psychiatric]	299	303	+3	+1.0%	+13	+11
Staff Nurses [General/ Children's]	501	510	+8	+1.6%	+8	-12
<b>Staff Nurse/ Staff Midwife</b>	<b>1,061</b>	<b>1,079</b>	<b>+18</b>	<b>+1.7%</b>	<b>+50</b>	<b>+58</b>
<b>Public Health Nurse</b>	<b>152</b>	<b>147</b>	<b>-5</b>	<b>-3.2%</b>	<b>-6</b>	<b>-6</b>
Pre-registration Nurse/ Midwife Intern	39	35	-4	-11.2%	+35	+28
Pre-registration Nurse Intern (COVID-19)		5	+5	-100.0%	-5	-42
Post-registration Nurse/ Midwife Student	3	3				+1
Nursing/ Midwifery awaiting registration	11		-11	-100.0%	-11	-11
<b>Nursing/ Midwifery Student</b>	<b>53</b>	<b>42</b>	<b>-11</b>	<b>-20.5%</b>	<b>+19</b>	<b>-24</b>
Nursing Education/Clinical	8	8			+1	+0
<b>Nursing/ Midwifery other</b>	<b>8</b>	<b>8</b>			<b>+1</b>	<b>+0</b>
<b>Nursing &amp; Midwifery</b>	<b>1,747</b>	<b>1,756</b>	<b>+9</b>	<b>+0.5%</b>	<b>+108</b>	<b>+39</b>
Dietitians	15	18	+3	+17.6%	+2	+2
Occupational Therapists	134	131	-3	-2.1%	+3	+2
Orthoptists	3	3	-0	-13.0%	-0	+0
Physiotherapists	94	95	+1	+0.8%	-1	+2
Podiatrists & Chiropodists	10	12	+2	+24.4%	+3	+2
Speech & Language Therapists	73	71	-2	-2.5%	-2	+1
<b>Therapy Professions</b>	<b>329</b>	<b>329</b>	<b>+1</b>	<b>+0.2%</b>	<b>+6</b>	<b>+10</b>
Audiology	5	5	-0	-0.6%	-0	-0
Radiographers	1	2	+0	+9.0%	-0	+0
<b>Health Science/ Diagnostics</b>	<b>6</b>	<b>7</b>	<b>+0</b>	<b>+1.6%</b>	<b>-0</b>	<b>+0</b>
<b>Social Care</b>	<b>14</b>	<b>15</b>	<b>+1</b>	<b>+5.5%</b>	<b>+0</b>	<b>+3</b>
<b>Social Workers</b>	<b>92</b>	<b>92</b>	<b>-1</b>	<b>-0.6%</b>	<b>-1</b>	<b>+1</b>
<b>Psychologists</b>	<b>65</b>	<b>66</b>	<b>+0</b>	<b>+0.2%</b>	<b>+3</b>	<b>+4</b>
<b>Pharmacy</b>	<b>3</b>	<b>5</b>	<b>+2</b>	<b>+98.8%</b>	<b>+2</b>	<b>+3</b>



Jun 2021 (Dec 2020 figure: 5,755)	WTE Apr 2021	WTE Jun 2021	WTE change since Apr 21	% change since Apr 21	WTE change since Dec 20	WTE change since Jun 20
<b>Overall</b>	<b>5,847</b>	<b>5,922</b>	<b>+75</b>	<b>+1.3%</b>	<b>+167</b>	<b>+320</b>
Counsellor Therapists	23	21	-2	-7.4%	-1	+2
Dental Hygienists	5	5			-0	-0
Other Health & Social Care	2	2			-1	-2
Vaccinators		9	+9	-100.0%	+9	+9
<b>H&amp;SC, Other</b>	<b>30</b>	<b>37</b>	<b>+7</b>	<b>+23.3%</b>	<b>+6</b>	<b>+9</b>
<b>Health &amp; Social Care Professionals</b>	<b>540</b>	<b>551</b>	<b>+11</b>	<b>+2.0%</b>	<b>+38</b>	<b>+31</b>
Executive Management	8	9	+1	+12.5%	+1	+2
Senior Management (VIII & GM)	55	54	-1	-1.8%	-1	-1
<b>Management (VIII &amp; above)</b>	<b>63</b>	<b>63</b>	<b>+0</b>	<b>+0.0%</b>	<b>-0</b>	<b>+1</b>
Middle Management (V-VII)	177	184	+7	+4.0%	+19	+24
Other Administrative	1	1				
<b>Administrative/ Supervisory (V to VII)</b>	<b>178</b>	<b>185</b>	<b>+7</b>	<b>+4.0%</b>	<b>+19</b>	<b>+24</b>
General Administrative (III & IV)	499	520	+20	+4.1%	+41	+70
<b>Clerical (III &amp; IV)</b>	<b>499</b>	<b>520</b>	<b>+20</b>	<b>+4.1%</b>	<b>+41</b>	<b>+70</b>
<b>Management &amp; Administrative</b>	<b>740</b>	<b>768</b>	<b>+28</b>	<b>+3.7%</b>	<b>+117</b>	<b>+95</b>
Catering	63	61	-2	-3.7%	-4	-4
Household Services	214	211	-2	-1.2%	+4	-1
Other Support	31	30	-1	-2.9%	+0	+0
Portering	7	7			-1	-1
<b>Support</b>	<b>315</b>	<b>309</b>	<b>-6</b>	<b>-1.8%</b>	<b>-1</b>	<b>-5</b>
Maintenance	37	37	+0	+0.7%	+1	+0
<b>Maintenance/ Technical</b>	<b>37</b>	<b>37</b>	<b>+0</b>	<b>+0.7%</b>	<b>+1</b>	<b>+0</b>
<b>General Support</b>	<b>352</b>	<b>347</b>	<b>-5</b>	<b>-1.6%</b>	<b>+5</b>	<b>-5</b>
HCA, Nurse's Aide, etc.	1,458	1,466	+8	+0.5%	+25	+6
Health & Social Care Assistants	29	28	-1	-4.1%	-1	+0
Swabber (COVID-19)	57	54	-3	-5.0%	+5	+54
<b>Health Care Assistants</b>	<b>1,544</b>	<b>1,548</b>	<b>+4</b>	<b>+0.3%</b>	<b>+29</b>	<b>+60</b>
<b>Home Help</b>	<b>582</b>	<b>608</b>	<b>+26</b>	<b>+4.5%</b>	<b>-11</b>	<b>+80</b>
Other Care Grades	143	148	+5	+3.7%	+16	+15
<b>Care, other</b>	<b>143</b>	<b>148</b>	<b>+5</b>	<b>+3.7%</b>	<b>+16</b>	<b>+15</b>
<b>Patient &amp; Client Care</b>	<b>2,269</b>	<b>2,304</b>	<b>+35</b>	<b>+1.6%</b>	<b>+194</b>	<b>+155</b>

## Employment by WTE, Headcount, Gender, Full-Time /Part-Time etc.: Jun 2021

CHO 1	WTE	Headcount	WTE: no.	% Male	% female	Male WTE: no.	Female WTE: no.	% Total Perm	% Male Perm	% Female Perm	% Total Full Time	% Total Part Time	% Male FT	% Female FT
<b>Overall</b>	<b>5,922</b>	<b>6,837</b>	<b>1.15</b>	<b>17.3%</b>	<b>82.7%</b>	<b>1.09</b>	<b>1.17</b>	<b>81.5%</b>	<b>82.1%</b>	<b>81.3%</b>	<b>65.4%</b>	<b>34.6%</b>	<b>85.0%</b>	<b>61.3%</b>
Consultant Medicine	4	4	1.10	25.0%	75.0%	1.00	1.15	75.0%	75.0%	66.7%	75.0%	25.0%	100.0%	66.7%
Consultant Psychiatry	36	38	1.06	42.1%	57.9%	1.07	1.06	73.7%	73.7%	81.8%	94.7%	5.3%	93.8%	95.5%
<b>Consultants</b>	<b>39</b>	<b>42</b>	<b>1.06</b>	<b>40.5%</b>	<b>59.5%</b>	<b>1.06</b>	<b>1.07</b>	<b>73.8%</b>	<b>64.7%</b>	<b>80.0%</b>	<b>92.9%</b>	<b>7.1%</b>	<b>94.1%</b>	<b>92.0%</b>
<b>Registrars</b>	<b>75</b>	<b>78</b>	<b>1.05</b>	<b>43.6%</b>	<b>56.4%</b>	<b>1.02</b>	<b>1.07</b>	<b>10.3%</b>	<b>14.7%</b>	<b>6.8%</b>	<b>96.2%</b>	<b>3.8%</b>	<b>97.1%</b>	<b>95.5%</b>
<b>SHO/ Interns</b>	<b>21</b>	<b>22</b>	<b>1.05</b>	<b>45.5%</b>	<b>54.5%</b>	<b>1.03</b>	<b>1.08</b>	<b>0.0%</b>	<b>0.0%</b>	<b>0.0%</b>	<b>100.0%</b>	<b>0.0%</b>	<b>100.0%</b>	<b>100.0%</b>
<b>Medical/ Dental, other</b>	<b>62</b>	<b>100</b>	<b>1.60</b>	<b>49.0%</b>	<b>51.0%</b>	<b>1.64</b>	<b>1.57</b>	<b>87.0%</b>	<b>87.8%</b>	<b>86.3%</b>	<b>43.0%</b>	<b>57.0%</b>	<b>42.9%</b>	<b>43.1%</b>
<b>Medical &amp; Dental</b>	<b>197</b>	<b>242</b>	<b>1.23</b>	<b>45.5%</b>	<b>54.5%</b>	<b>1.24</b>	<b>1.22</b>	<b>52.1%</b>	<b>53.6%</b>	<b>50.8%</b>	<b>74.0%</b>	<b>26.0%</b>	<b>72.7%</b>	<b>75.0%</b>
<b>Nurse/ Midwife Manager</b>	<b>362</b>	<b>381</b>	<b>1.05</b>	<b>18.4%</b>	<b>81.6%</b>	<b>1.01</b>	<b>1.06</b>	<b>99.0%</b>	<b>97.1%</b>	<b>99.4%</b>	<b>87.7%</b>	<b>12.3%</b>	<b>98.6%</b>	<b>85.2%</b>
<b>Nurse/ Midwife Specialist &amp; AN/MP</b>	<b>118</b>	<b>125</b>	<b>1.06</b>	<b>18.4%</b>	<b>81.6%</b>	<b>1.01</b>	<b>1.07</b>	<b>97.6%</b>	<b>100.0%</b>	<b>97.1%</b>	<b>88.0%</b>	<b>12.0%</b>	<b>100.0%</b>	<b>85.3%</b>
<b>Staff Nurse/ Staff Midwife</b>	<b>1,079</b>	<b>1,226</b>	<b>1.14</b>	<b>12.7%</b>	<b>87.3%</b>	<b>1.04</b>	<b>1.15</b>	<b>90.4%</b>	<b>94.9%</b>	<b>89.7%</b>	<b>73.3%</b>	<b>26.7%</b>	<b>92.3%</b>	<b>70.6%</b>
<b>Public Health Nurse</b>	<b>147</b>	<b>174</b>	<b>1.18</b>		<b>100.0%</b>		<b>1.18</b>	<b>94.8%</b>		<b>94.8%</b>	<b>73.6%</b>	<b>26.4%</b>		<b>73.6%</b>
<b>Nursing/ Midwifery Student</b>	<b>42</b>	<b>83</b>	<b>1.97</b>	<b>14.5%</b>	<b>85.5%</b>	<b>2.00</b>	<b>1.96</b>	<b>2.4%</b>	<b>0.0%</b>	<b>2.8%</b>	<b>100.0%</b>	<b>0.0%</b>	<b>100.0%</b>	<b>100.0%</b>
<b>Nursing/ Midwifery other</b>	<b>8</b>	<b>8</b>	<b>1.03</b>		<b>100.0%</b>		<b>1.03</b>	<b>100.0%</b>		<b>100.0%</b>	<b>100.0%</b>	<b>0.0%</b>		<b>100.0%</b>
<b>Nursing &amp; Midwifery</b>	<b>1,756</b>	<b>1,997</b>	<b>1.14</b>	<b>13.1%</b>	<b>86.9%</b>	<b>1.05</b>	<b>1.15</b>	<b>89.2%</b>	<b>91.6%</b>	<b>88.9%</b>	<b>78.2%</b>	<b>21.8%</b>	<b>95.0%</b>	<b>75.7%</b>
<b>Therapy Professions</b>	<b>329</b>	<b>379</b>	<b>1.15</b>	<b>7.1%</b>	<b>92.9%</b>	<b>1.07</b>	<b>1.16</b>	<b>94.7%</b>	<b>96.3%</b>	<b>94.6%</b>	<b>70.4%</b>	<b>29.6%</b>	<b>88.9%</b>	<b>69.0%</b>
<b>Health Science/ Diagnostics</b>	<b>7</b>	<b>9</b>	<b>1.37</b>		<b>100.0%</b>		<b>1.37</b>	<b>100.0%</b>		<b>100.0%</b>	<b>44.4%</b>	<b>55.6%</b>		<b>44.4%</b>
<b>Social Care</b>	<b>15</b>	<b>19</b>	<b>1.25</b>	<b>5.3%</b>	<b>94.7%</b>	<b>1.00</b>	<b>1.27</b>	<b>100.0%</b>	<b>100.0%</b>	<b>100.0%</b>	<b>47.4%</b>	<b>52.6%</b>	<b>100.0%</b>	<b>44.4%</b>
<b>Social Workers</b>	<b>92</b>	<b>100</b>	<b>1.09</b>	<b>15.0%</b>	<b>85.0%</b>	<b>1.01</b>	<b>1.10</b>	<b>95.0%</b>	<b>100.0%</b>	<b>94.1%</b>	<b>86.0%</b>	<b>14.0%</b>	<b>100.0%</b>	<b>83.5%</b>
<b>Psychologists</b>	<b>66</b>	<b>72</b>	<b>1.10</b>	<b>26.4%</b>	<b>73.6%</b>	<b>1.01</b>	<b>1.13</b>	<b>94.4%</b>	<b>100.0%</b>	<b>92.5%</b>	<b>80.6%</b>	<b>19.4%</b>	<b>94.7%</b>	<b>75.5%</b>
<b>Pharmacy</b>	<b>5</b>	<b>7</b>	<b>1.41</b>	<b>14.3%</b>	<b>85.7%</b>	<b>1.43</b>	<b>1.41</b>	<b>42.9%</b>	<b>100.0%</b>	<b>33.3%</b>	<b>42.9%</b>	<b>57.1%</b>	<b>0.0%</b>	<b>50.0%</b>
<b>H&amp;SC, Other</b>	<b>37</b>	<b>53</b>	<b>1.42</b>	<b>22.6%</b>	<b>77.4%</b>	<b>1.34</b>	<b>1.44</b>	<b>66.0%</b>	<b>66.7%</b>	<b>65.9%</b>	<b>45.3%</b>	<b>54.7%</b>	<b>66.7%</b>	<b>39.0%</b>
<b>Health &amp; Social Care</b>	<b>551</b>	<b>639</b>	<b>1.16</b>	<b>11.7%</b>	<b>88.3%</b>	<b>1.08</b>	<b>1.17</b>	<b>92.0%</b>	<b>93.3%</b>	<b>91.8%</b>	<b>70.6%</b>	<b>29.4%</b>	<b>88.0%</b>	<b>68.3%</b>
<b>Management (VIII &amp; above)</b>	<b>63</b>	<b>65</b>	<b>1.03</b>	<b>23.1%</b>	<b>76.9%</b>	<b>1.02</b>	<b>1.03</b>	<b>96.9%</b>	<b>100.0%</b>	<b>96.0%</b>	<b>92.3%</b>	<b>7.7%</b>	<b>93.3%</b>	<b>92.0%</b>
<b>Administrative/ Supervisory (V to VII)</b>	<b>185</b>	<b>196</b>	<b>1.06</b>	<b>14.8%</b>	<b>85.2%</b>	<b>1.02</b>	<b>1.07</b>	<b>94.9%</b>	<b>89.7%</b>	<b>95.8%</b>	<b>84.2%</b>	<b>15.8%</b>	<b>96.6%</b>	<b>82.0%</b>
<b>Clerical (III &amp; IV)</b>	<b>520</b>	<b>594</b>	<b>1.14</b>	<b>9.6%</b>	<b>90.4%</b>	<b>1.07</b>	<b>1.15</b>	<b>83.0%</b>	<b>70.2%</b>	<b>84.4%</b>	<b>72.2%</b>	<b>27.8%</b>	<b>91.2%</b>	<b>70.2%</b>
<b>Management &amp; Administrative</b>	<b>768</b>	<b>855</b>	<b>1.11</b>	<b>11.8%</b>	<b>88.2%</b>	<b>1.05</b>	<b>1.12</b>	<b>86.8%</b>	<b>80.2%</b>	<b>87.7%</b>	<b>76.5%</b>	<b>23.5%</b>	<b>93.1%</b>	<b>74.3%</b>

<b>Support</b>	<b>309</b>	<b>373</b>	<b>1.21</b>	<b>25.2%</b>	<b>74.8%</b>	<b>1.08</b>	<b>1.25</b>	<b>92.5%</b>	<b>85.1%</b>	<b>95.0%</b>	<b>57.9%</b>	<b>42.1%</b>	<b>81.9%</b>	<b>49.8%</b>
<b>Maintenance/ Technical</b>	<b>37</b>	<b>39</b>	<b>1.05</b>	<b>100.0%</b>		<b>1.05</b>		<b>100.0%</b>	<b>100.0%</b>	<b>#DIV/0</b>	<b>100.0%</b>	<b>0.0%</b>	<b>100.0%</b>	
<b>General Support</b>	<b>347</b>	<b>412</b>	<b>1.19</b>	<b>32.3%</b>	<b>67.7%</b>	<b>1.07</b>	<b>1.25</b>	<b>93.2%</b>	<b>89.5%</b>	<b>95.0%</b>	<b>61.9%</b>	<b>38.1%</b>	<b>87.2%</b>	<b>49.8%</b>
<b>Health Care Assistants</b>	<b>1,548</b>	<b>1,727</b>	<b>1.12</b>	<b>23.7%</b>	<b>76.3%</b>	<b>1.06</b>	<b>1.13</b>	<b>89.5%</b>	<b>85.3%</b>	<b>90.7%</b>	<b>71.2%</b>	<b>28.8%</b>	<b>87.8%</b>	<b>66.0%</b>
<b>Home Help</b>	<b>608</b>	<b>794</b>	<b>1.31</b>	<b>4.9%</b>	<b>95.1%</b>	<b>1.23</b>	<b>1.31</b>	<b>31.7%</b>	<b>30.8%</b>	<b>31.8%</b>	<b>2.4%</b>	<b>97.6%</b>	<b>5.1%</b>	<b>2.3%</b>
<b>Care, other</b>	<b>148</b>	<b>171</b>	<b>1.15</b>	<b>31.6%</b>	<b>68.4%</b>	<b>1.17</b>	<b>1.15</b>	<b>87.7%</b>	<b>77.8%</b>	<b>92.3%</b>	<b>71.3%</b>	<b>28.7%</b>	<b>74.1%</b>	<b>70.1%</b>
<b>Patient &amp; Client Care</b>	<b>2,304</b>	<b>2,692</b>	<b>1.17</b>	<b>18.6%</b>	<b>81.4%</b>	<b>1.09</b>	<b>1.19</b>	<b>72.3%</b>	<b>80.3%</b>	<b>70.5%</b>	<b>50.9%</b>	<b>49.1%</b>	<b>79.9%</b>	<b>44.2%</b>

## Employment by WTE, Headcount, Gender, Full-Time /Part-Time etc.: Jun 2021

CHO 1	WTE	Headcount	WTE: no.	% Male	% female	Male WTE: no.	Female WTE: no.	% Total Perm	% Male Perm	% Female Perm	% Total Full Time	% Total Part Time	% Male FT	% Female FT
<b>Overall</b>	<b>5,922</b>	<b>6,837</b>	<b>1.15</b>	<b>17.3%</b>	<b>82.7%</b>	<b>1.09</b>	<b>1.17</b>	<b>81.5%</b>	<b>82.1%</b>	<b>81.3%</b>	<b>65.4%</b>	<b>34.6%</b>	<b>85.0%</b>	<b>61.3%</b>
Community Health & Wellbeing	18	21	1.16	9.5%	90.5%	1.27	1.15	90.5%	90.5%	94.7%	71.4%	28.6%	50.0%	50.0%
Mental Health	1,004	1,092	1.09	26.4%	73.6%	1.04	1.11	88.6%	88.6%	89.9%	87.5%	12.5%	96.9%	96.9%
Primary Care	1,387	1,631	1.18	14.7%	85.3%	1.09	1.19	80.7%	80.7%	82.8%	68.2%	31.8%	85.8%	85.8%
Social Care	3,512	4,093	1.17	15.9%	84.1%	1.10	1.18	79.8%	79.8%	78.6%	58.3%	41.7%	79.6%	79.6%

## CHO 1 Skills Mix by Staff Grouping: June 2021

Jun 2021 (Dec 2019 figure: 5,468)	WTE Dec 2016	WTE Dec 2017	WTE Dec 2018	WTE Dec 2019	WTE Dec 2020	WTE Apr 2021	WTE Jun 2021
<b>Overall</b>	<b>5,280</b>	<b>5,368</b>	<b>5,436</b>	<b>5,468</b>	<b>5,755</b>	<b>5,847</b>	<b>5,922</b>
Consultant Medicine	1.8%	1.7%	1.6%	1.5%	1.7%	1.8%	1.8%
Consultant Psychiatry	16.1%	15.8%	16.2%	15.0%	16.0%	18.0%	18.2%
<b>Consultants</b>	<b>17.8%</b>	<b>17.5%</b>	<b>17.8%</b>	<b>16.4%</b>	<b>17.6%</b>	<b>19.8%</b>	<b>20.0%</b>
Registrar	23.7%	26.6%	27.9%	27.4%	29.4%	33.1%	33.2%
Senior Registrar	3.0%	2.3%	5.8%	3.9%	4.0%	4.3%	4.6%
Specialist Registrar		0.6%	0.5%	0.5%			
<b>Registrars</b>	<b>26.6%</b>	<b>29.5%</b>	<b>34.3%</b>	<b>31.8%</b>	<b>33.4%</b>	<b>37.4%</b>	<b>37.8%</b>
Senior House Officer	17.5%	15.6%	13.8%	12.8%	11.2%	10.0%	10.6%
<b>SHO/ Interns</b>	<b>17.5%</b>	<b>15.6%</b>	<b>13.8%</b>	<b>12.8%</b>	<b>11.2%</b>	<b>10.0%</b>	<b>10.6%</b>
Dentists	16.6%	15.9%	15.3%	13.5%	13.2%	14.2%	14.4%
Other Medical	21.5%	21.5%	18.8%	25.4%	24.5%	18.7%	17.3%
<b>Medical/ Dental, other</b>	<b>38.1%</b>	<b>37.4%</b>	<b>34.1%</b>	<b>39.0%</b>	<b>37.7%</b>	<b>32.8%</b>	<b>31.6%</b>
<b>Medical &amp; Dental</b>	<b>3.2%</b>	<b>3.2%</b>	<b>3.4%</b>	<b>3.8%</b>	<b>3.7%</b>	<b>100.0%</b>	<b>3.3%</b>
Clinical Nurse/ Midwife Manager	16.4%	15.8%	16.1%	16.3%	16.2%	15.7%	15.7%
Director Nursing/Midwifery, Assistant	3.2%	3.0%	3.1%	3.1%	3.3%	3.2%	3.5%
Director of Nursing/Midwifery	1.6%	1.6%	1.4%	1.8%	1.5%	1.4%	1.5%
<b>Nurse/ Midwife Manager</b>	<b>21.2%</b>	<b>20.3%</b>	<b>20.6%</b>	<b>21.2%</b>	<b>21.0%</b>	<b>20.3%</b>	<b>20.6%</b>
Advanced Nurse/ Midwife Practitioner	0.2%	0.1%	0.4%	0.5%	0.8%	0.9%	0.9%
Clinical Nurse/ Midwife Specialist	5.2%	5.5%	5.4%	5.7%	6.2%	5.9%	5.9%
<b>Nurse/ Midwife Specialist &amp; AN/MP</b>	<b>5.4%</b>	<b>5.6%</b>	<b>5.8%</b>	<b>6.2%</b>	<b>7.0%</b>	<b>6.8%</b>	<b>6.7%</b>
Staff Nurse [Intellectual Disability]	12.2%	12.2%	12.6%	12.4%	14.1%	14.9%	15.2%
Staff Nurse [Psychiatric]	20.1%	19.5%	18.4%	18.1%	17.2%	17.1%	17.2%
Staff Nurses [General/ Children's]	31.4%	32.1%	31.8%	31.0%	29.8%	28.7%	29.0%
<b>Staff Nurse/ Staff Midwife</b>	<b>63.7%</b>	<b>63.7%</b>	<b>62.8%</b>	<b>61.5%</b>	<b>61.1%</b>	<b>60.7%</b>	<b>61.4%</b>
<b>Public Health Nurse</b>	<b>8.9%</b>	<b>9.3%</b>	<b>9.4%</b>	<b>9.5%</b>	<b>9.1%</b>	<b>8.7%</b>	<b>8.4%</b>
Pre-registration Nurse/ Midwife Intern	0.1%	0.2%	0.7%	0.2%		2.2%	2.0%
Pre-registration Nurse Intern (COVID-19)					0.6%		0.3%
Post-registration Nurse/ Midwife Student	0.4%	0.4%	0.4%	0.4%	0.2%	0.2%	0.2%
Nursing/ Midwifery awaiting registration			0.1%	0.7%	0.7%	0.6%	
<b>Nursing/ Midwifery Student</b>	<b>0.5%</b>	<b>0.7%</b>	<b>1.1%</b>	<b>1.3%</b>	<b>1.4%</b>	<b>3.0%</b>	<b>2.4%</b>
<b>Nursing/ Midwifery other</b>	<b>0.3%</b>	<b>0.3%</b>	<b>0.3%</b>	<b>0.3%</b>	<b>0.4%</b>	<b>0.4%</b>	<b>0.4%</b>
<b>Nursing &amp; Midwifery</b>	<b>31.0%</b>	<b>30.4%</b>	<b>30.5%</b>	<b>30.1%</b>	<b>29.3%</b>	<b>100.0%</b>	<b>29.6%</b>
Dietitians	3.0%	3.2%	3.5%	3.4%	2.9%	2.8%	3.2%
Occupational Therapists	24.4%	22.9%	24.3%	25.0%	23.9%	24.8%	23.8%
Orthoptists	0.4%	0.5%	0.5%	0.5%	0.6%	0.6%	0.5%
Physiotherapists	18.6%	18.3%	18.4%	17.6%	17.9%	17.5%	17.3%
Podiatrists & Chiropractors	2.0%	1.7%	1.8%	1.7%	1.7%	1.8%	2.1%
Speech & Language Therapists	13.1%	14.6%	13.8%	13.5%	13.6%	13.5%	12.9%
<b>Therapy Professions</b>	<b>61.6%</b>	<b>61.3%</b>	<b>62.4%</b>	<b>61.7%</b>	<b>60.7%</b>	<b>60.9%</b>	<b>59.8%</b>
Audiology	1.1%	1.1%	1.1%	1.0%	0.9%	0.9%	0.9%
Radiographers	0.3%	0.3%	0.3%	0.2%	0.3%	0.3%	0.3%
<b>Health Science/ Diagnostics</b>	<b>1.4%</b>	<b>1.4%</b>	<b>1.4%</b>	<b>1.3%</b>	<b>1.2%</b>	<b>1.2%</b>	<b>1.2%</b>
<b>Social Care</b>	<b>2.7%</b>	<b>2.4%</b>	<b>2.3%</b>	<b>2.2%</b>	<b>2.8%</b>	<b>2.7%</b>	<b>2.8%</b>
Social Workers	16.5%	16.0%	15.3%	16.6%	17.3%	17.1%	16.7%
<b>Social Workers</b>	<b>16.5%</b>	<b>16.0%</b>	<b>15.3%</b>	<b>16.6%</b>	<b>17.3%</b>	<b>17.1%</b>	<b>16.7%</b>
<b>Psychologists</b>	<b>11.2%</b>	<b>11.6%</b>	<b>12.1%</b>	<b>11.7%</b>	<b>11.7%</b>	<b>12.1%</b>	<b>11.9%</b>
<b>Pharmacy</b>	<b>0.3%</b>	<b>0.3%</b>	<b>0.3%</b>	<b>0.3%</b>	<b>0.5%</b>	<b>0.5%</b>	<b>0.9%</b>
Counsellor Therapists	3.7%	4.1%	3.8%	3.8%	4.2%	4.2%	3.8%
Dental Hygienists	1.1%	1.1%	1.0%	1.0%	1.0%	1.0%	1.0%
Other Health & Social Care	1.6%	1.8%	1.4%	1.5%	0.6%	0.4%	0.4%
Vaccinators							1.6%

Jun 2021 (Dec 2019 figure: 5,468)	WTE Dec 2016	WTE Dec 2017	WTE Dec 2018	WTE Dec 2019	WTE Dec 2020	WTE Apr 2021	WTE Jun 2021
<b>Overall</b>	<b>5,280</b>	<b>5,368</b>	<b>5,436</b>	<b>5,468</b>	<b>5,755</b>	<b>5,847</b>	<b>5,922</b>
<b>H&amp;SC, Other</b>	<b>6.4%</b>	<b>7.0%</b>	<b>6.3%</b>	<b>6.3%</b>	<b>5.8%</b>	<b>5.6%</b>	<b>6.8%</b>
<b>Health &amp; Social Care Professionals</b>	<b>9.3%</b>	<b>9.3%</b>	<b>9.4%</b>	<b>9.4%</b>	<b>9.3%</b>	<b>100.0%</b>	<b>9.3%</b>
Executive Management	1.2%	1.3%	1.3%	1.0%	1.1%	1.1%	1.2%
Senior Management (VIII & GM)	6.8%	6.8%	7.9%	8.1%	7.8%	7.5%	7.1%
<b>Management (VIII &amp; above)</b>	<b>8.0%</b>	<b>8.2%</b>	<b>9.2%</b>	<b>9.2%</b>	<b>9.0%</b>	<b>8.5%</b>	<b>8.2%</b>
Middle Management (V-VII)	16.4%	17.9%	18.3%	20.7%	23.3%	23.9%	24.0%
Other Administrative	0.2%	0.2%	0.2%	0.2%	0.1%	0.1%	0.1%
<b>Administrative/ Supervisory (V to VII)</b>	<b>16.6%</b>	<b>18.1%</b>	<b>18.4%</b>	<b>20.8%</b>	<b>23.5%</b>	<b>24.0%</b>	<b>24.1%</b>
<b>Clerical (III &amp; IV)</b>	<b>75.5%</b>	<b>73.8%</b>	<b>72.4%</b>	<b>70.0%</b>	<b>67.6%</b>	<b>67.4%</b>	<b>67.7%</b>
<b>Management &amp; Administrative</b>	<b>11.1%</b>	<b>11.1%</b>	<b>11.4%</b>	<b>11.9%</b>	<b>12.3%</b>	<b>100.0%</b>	<b>13.0%</b>
Catering	15.6%	16.7%	16.8%	17.8%	18.8%	18.0%	17.6%
Household Services	65.1%	62.1%	61.6%	59.8%	59.8%	60.8%	61.0%
Other Support	6.2%	8.2%	9.8%	9.7%	8.6%	8.8%	8.6%
Portering	2.4%	2.2%	2.2%	2.3%	2.2%	1.9%	1.9%
<b>Support</b>	<b>89.4%</b>	<b>89.3%</b>	<b>90.3%</b>	<b>89.5%</b>	<b>89.5%</b>	<b>89.5%</b>	<b>89.2%</b>
<b>Maintenance/ Technical</b>	<b>10.6%</b>	<b>10.7%</b>	<b>9.7%</b>	<b>10.5%</b>	<b>10.5%</b>	<b>10.5%</b>	<b>10.8%</b>
<b>General Support</b>	<b>6.8%</b>	<b>6.5%</b>	<b>6.4%</b>	<b>6.2%</b>	<b>6.0%</b>	<b>100.0%</b>	<b>5.9%</b>
HCA, Nurse's Aide, etc.	66.1%	66.3%	67.1%	66.5%	63.5%	64.3%	63.6%
Health & Social Care Assistants	0.7%	0.8%	1.3%	0.9%	1.3%	1.3%	1.2%
Swabber (COVID-19)					2.1%	2.5%	2.3%
<b>Health Care Assistants</b>	<b>66.8%</b>	<b>67.1%</b>	<b>68.3%</b>	<b>67.4%</b>	<b>66.9%</b>	<b>68.1%</b>	<b>67.2%</b>
<b>Home Help</b>	<b>26.7%</b>	<b>26.5%</b>	<b>25.4%</b>	<b>26.4%</b>	<b>27.3%</b>	<b>25.6%</b>	<b>26.4%</b>
Other Care Grades	6.4%	6.4%	6.2%	6.2%	5.8%	6.3%	6.4%
<b>Care, other</b>	<b>6.4%</b>	<b>6.4%</b>	<b>6.2%</b>	<b>6.2%</b>	<b>5.8%</b>	<b>6.3%</b>	<b>6.4%</b>
<b>Patient &amp; Client Care</b>	<b>38.7%</b>	<b>39.5%</b>	<b>38.9%</b>	<b>38.6%</b>	<b>39.5%</b>	<b>100.0%</b>	<b>38.9%</b>
<b>Total</b>	<b>100 %</b>	<b>100 %</b>	<b>100 %</b>	<b>100 %</b>	<b>100%</b>	<b>100 %</b>	<b>100 %</b>

# CHO 1 Skills Mix by Care Group: June 2021

Jun 2021 (Dec 2019 figure: 953)	WTE Dec 2016	WTE Dec 2017	WTE Dec 2018	WTE Dec 2019	WTE Dec 2020	WTE Apr 2021	WTE Jun 2021
<b>Mental Health</b>	<b>948</b>	<b>942</b>	<b>941</b>	<b>953</b>	<b>976</b>	<b>1,003</b>	<b>1,004</b>
<b>Consultants</b>	<b>36.2%</b>	<b>36.8%</b>	<b>37.2%</b>	<b>38.2%</b>	<b>39.6%</b>	<b>41.0%</b>	<b>41.0%</b>
Registrar	17.4%	22.7%	18.6%	20.5%	24.0%	27.6%	25.9%
Senior Registrar	5.5%	4.2%	12.6%	9.9%	9.9%	9.7%	10.3%
<b>Registrars</b>	<b>23.0%</b>	<b>26.9%</b>	<b>31.2%</b>	<b>30.4%</b>	<b>33.9%</b>	<b>37.4%</b>	<b>36.2%</b>
Senior House Officer	40.8%	36.3%	31.6%	31.4%	26.6%	21.7%	22.7%
<b>SHO/ Interns</b>	<b>40.8%</b>	<b>36.3%</b>	<b>31.6%</b>	<b>31.4%</b>	<b>26.6%</b>	<b>21.7%</b>	<b>22.7%</b>
<b>Medical &amp; Dental</b>	<b>7.6%</b>	<b>7.6%</b>	<b>8.2%</b>	<b>8.5%</b>	<b>8.3%</b>	<b>8.7%</b>	<b>8.7%</b>
Clinical Nurse/ Midwife Manager	19.8%	20.0%	19.9%	19.9%	20.1%	19.7%	19.1%
Director Nursing/Midwifery, Assistant	3.2%	3.2%	3.7%	3.7%	3.9%	3.7%	3.9%
Director of Nursing/Midwifery	0.6%	0.6%	0.4%	0.6%	0.6%	0.6%	0.5%
<b>Nurse/ Midwife Manager</b>	<b>23.6%</b>	<b>23.8%</b>	<b>24.0%</b>	<b>24.3%</b>	<b>24.6%</b>	<b>24.0%</b>	<b>23.5%</b>
Advanced Nurse/ Midwife Practitioner	0.2%	0.2%	0.4%	0.4%	0.6%	0.6%	0.6%
Clinical Nurse/ Midwife Specialist	11.4%	12.1%	12.9%	13.6%	14.6%	13.4%	13.3%
<b>Nurse/ Midwife Specialist &amp; AN/MP</b>	<b>11.6%</b>	<b>12.3%</b>	<b>13.3%</b>	<b>14.0%</b>	<b>15.2%</b>	<b>13.9%</b>	<b>13.9%</b>
Staff Nurse [Intellectual Disability]	0.2%	0.2%	0.2%				
Staff Nurse [Psychiatric]	64.0%	63.2%	61.7%	61.1%	59.0%	58.1%	58.5%
Staff Nurses [General/ Children's]	0.6%	0.4%	0.6%	0.6%	0.4%	0.6%	0.8%
<b>Staff Nurse/ Staff Midwife</b>	<b>64.8%</b>	<b>63.9%</b>	<b>62.5%</b>	<b>61.7%</b>	<b>59.4%</b>	<b>58.7%</b>	<b>59.2%</b>
Pre-registration Nurse/ Midwife Intern						3.1%	3.0%
Pre-registration Nurse Intern (COVID-19)					0.6%		
Nursing/ Midwifery awaiting registration			0.2%				
<b>Nursing/ Midwifery Student</b>			<b>0.2%</b>		<b>0.6%</b>	<b>3.1%</b>	<b>3.0%</b>
Nursing Education/Clinical					0.2%	0.4%	0.4%
<b>Nursing/ Midwifery other</b>					<b>0.2%</b>	<b>0.4%</b>	<b>0.4%</b>
<b>Nursing &amp; Midwifery</b>	<b>52.9%</b>	<b>52.5%</b>	<b>51.6%</b>	<b>50.6%</b>	<b>49.4%</b>	<b>51.1%</b>	<b>51.1%</b>
Occupational Therapists	26.7%	25.7%	26.9%	28.7%	26.5%	27.7%	28.1%
Podiatrists & Chiropractors	0.7%	0.7%	0.7%	0.6%	0.6%	0.6%	0.5%
Speech & Language Therapists	2.6%	3.5%	3.0%	2.2%	2.7%	2.9%	2.3%
<b>Therapy Professions</b>	<b>30.0%</b>	<b>29.9%</b>	<b>30.6%</b>	<b>31.6%</b>	<b>29.8%</b>	<b>31.2%</b>	<b>31.0%</b>
<b>Social Care</b>	<b>3.5%</b>	<b>3.6%</b>	<b>3.2%</b>	<b>3.3%</b>	<b>3.1%</b>	<b>3.1%</b>	<b>3.2%</b>
<b>Social Workers</b>	<b>35.5%</b>	<b>34.4%</b>	<b>34.0%</b>	<b>34.6%</b>	<b>35.6%</b>	<b>34.0%</b>	<b>35.0%</b>
<b>Psychologists</b>	<b>19.9%</b>	<b>19.9%</b>	<b>20.5%</b>	<b>18.2%</b>	<b>19.3%</b>	<b>19.3%</b>	<b>18.8%</b>
<b>Pharmacy</b>	<b>0.7%</b>	<b>0.8%</b>	<b>0.8%</b>	<b>0.7%</b>	<b>0.7%</b>	<b>0.7%</b>	<b>0.7%</b>
Counsellor Therapists	10.0%	11.5%	10.8%	11.6%	11.5%	11.8%	11.4%
Other Health & Social Care	0.4%						
<b>H&amp;SC, Other</b>	<b>10.4%</b>	<b>11.5%</b>	<b>10.8%</b>	<b>11.6%</b>	<b>11.5%</b>	<b>11.8%</b>	<b>11.4%</b>
<b>Health &amp; Social Care Professionals</b>	<b>11.3%</b>	<b>11.2%</b>	<b>11.8%</b>	<b>11.9%</b>	<b>11.6%</b>	<b>11.8%</b>	<b>11.8%</b>
<b>Management (VIII &amp; above)</b>	<b>3.3%</b>	<b>4.1%</b>	<b>3.8%</b>	<b>4.7%</b>	<b>6.2%</b>	<b>4.0%</b>	<b>3.2%</b>
<b>Administrative/ Supervisory (V to VII)</b>	<b>14.5%</b>	<b>16.6%</b>	<b>18.7%</b>	<b>24.9%</b>	<b>24.8%</b>	<b>24.7%</b>	<b>23.8%</b>
<b>Clerical (III &amp; IV)</b>	<b>82.2%</b>	<b>79.3%</b>	<b>77.4%</b>	<b>70.5%</b>	<b>69.0%</b>	<b>71.3%</b>	<b>73.0%</b>
<b>Management &amp; Administrative</b>	<b>9.7%</b>	<b>10.5%</b>	<b>11.1%</b>	<b>12.7%</b>	<b>12.4%</b>	<b>12.4%</b>	<b>12.4%</b>
<b>Support</b>	<b>80.6%</b>	<b>80.3%</b>	<b>80.8%</b>	<b>78.7%</b>	<b>79.9%</b>	<b>79.4%</b>	<b>79.3%</b>
Maintenance	19.4%	19.7%	19.2%	21.3%	20.1%	20.6%	20.7%
<b>Maintenance/ Technical</b>	<b>19.4%</b>	<b>19.7%</b>	<b>19.2%</b>	<b>21.3%</b>	<b>20.1%</b>	<b>20.6%</b>	<b>20.7%</b>
<b>General Support</b>	<b>9.8%</b>	<b>9.1%</b>	<b>8.8%</b>	<b>8.3%</b>	<b>8.1%</b>	<b>7.9%</b>	<b>7.9%</b>

Jun 2021 (Dec 2019 figure: 953)	WTE Dec 2016	WTE Dec 2017	WTE Dec 2018	WTE Dec 2019	WTE Dec 2020	WTE Apr 2021	WTE Jun 2021
<b>Mental Health</b>	<b>948</b>	<b>942</b>	<b>941</b>	<b>953</b>	<b>976</b>	<b>1,003</b>	<b>1,004</b>
HCA, Nurse's Aide, etc.	87.9%	86.5%	82.1%	83.9%	83.9%	86.8%	85.1%
Health & Social Care Assistants		1.2%	2.0%	2.1%	2.1%	2.1%	2.0%
<b>Health Care Assistants</b>	<b>87.9%</b>	<b>87.6%</b>	<b>84.1%</b>	<b>86.0%</b>	<b>85.9%</b>	<b>88.8%</b>	<b>87.1%</b>
<b>Care, other</b>	<b>12.1%</b>	<b>12.4%</b>	<b>15.9%</b>	<b>14.0%</b>	<b>14.1%</b>	<b>11.2%</b>	<b>12.9%</b>
<b>Patient &amp; Client Care</b>	<b>8.7%</b>	<b>9.1%</b>	<b>8.5%</b>	<b>8.1%</b>	<b>7.9%</b>	<b>8.2%</b>	<b>8.2%</b>
<b>Total</b>	<b>100 %</b>	<b>100 %</b>	<b>100 %</b>	<b>100 %</b>	<b>100 %</b>	<b>100 %</b>	<b>100%</b>

Jun 2021 (Dec 2019 figure: 1,182)	WTE Dec 2016	WTE Dec 2017	WTE Dec 2018	WTE Dec 2019	WTE Dec 2020	WTE Apr 2021	WTE Jun 2021
<b>Primary Care</b>	<b>1,257</b>	<b>1,188</b>	<b>1,233</b>	<b>1,182</b>	<b>1,296</b>	<b>1,346</b>	<b>1,387</b>
Consultant Medicine	3.8%	3.6%	3.3%	3.3%	3.8%	3.9%	3.9%
<b>Consultants</b>	<b>3.8%</b>	<b>3.6%</b>	<b>3.3%</b>	<b>3.3%</b>	<b>3.8%</b>	<b>3.9%</b>	<b>3.9%</b>
<b>Registrars</b>	<b>35.7%</b>	<b>37.8%</b>	<b>43.8%</b>	<b>44.3%</b>	<b>45.9%</b>	<b>45.4%</b>	<b>46.6%</b>
<b>SHO/ Interns</b>		<b>1.2%</b>	<b>1.1%</b>	<b>1.1%</b>	<b>1.1%</b>	<b>1.1%</b>	<b>1.1%</b>
Dentists	35.4%	32.8%	31.5%	30.2%	30.7%	30.7%	30.8%
Other Medical	25.1%	24.7%	20.4%	21.2%	18.4%	18.9%	17.6%
<b>Medical/ Dental, other</b>	<b>60.5%</b>	<b>57.5%</b>	<b>51.9%</b>	<b>51.3%</b>	<b>49.2%</b>	<b>49.6%</b>	<b>48.4%</b>
<b>Medical &amp; Dental</b>	<b>6.3%</b>	<b>7.1%</b>	<b>7.3%</b>	<b>7.8%</b>	<b>7.1%</b>	<b>6.6%</b>	<b>6.6%</b>
Clinical Nurse/ Midwife Manager	4.9%	4.7%	5.4%	5.6%	6.2%	6.0%	6.0%
Director Nursing/Midwifery, Assistant	5.9%	5.4%	5.0%	5.0%	5.1%	5.5%	6.5%
Director of Nursing/Midwifery	1.7%	1.3%	1.6%	1.3%	0.8%	1.0%	0.6%
<b>Nurse/ Midwife Manager</b>	<b>12.5%</b>	<b>11.4%</b>	<b>12.0%</b>	<b>11.9%</b>	<b>12.2%</b>	<b>12.4%</b>	<b>13.1%</b>
<b>Nurse/ Midwife Specialist &amp; AN/MP</b>	<b>6.7%</b>	<b>7.7%</b>	<b>6.6%</b>	<b>6.8%</b>	<b>8.2%</b>	<b>8.6%</b>	<b>8.7%</b>
Staff Nurse [Psychiatric]	0.1%	0.1%	0.5%	0.1%	0.1%	0.1%	0.1%
Staff Nurses [General/ Children's]	29.0%	28.4%	27.7%	27.8%	30.2%	29.8%	30.3%
<b>Staff Nurse/ Staff Midwife</b>	<b>29.1%</b>	<b>28.6%</b>	<b>28.2%</b>	<b>27.9%</b>	<b>30.3%</b>	<b>29.9%</b>	<b>30.4%</b>
<b>Public Health Nurse</b>	<b>49.3%</b>	<b>50.1%</b>	<b>50.9%</b>	<b>50.9%</b>	<b>48.0%</b>	<b>47.8%</b>	<b>46.5%</b>
Post-registration Nurse/ Midwife Student	2.4%	2.3%	2.3%	2.3%	0.9%	1.0%	1.0%
<b>Nursing/ Midwifery Student</b>	<b>2.4%</b>	<b>2.3%</b>	<b>2.3%</b>	<b>2.3%</b>	<b>0.9%</b>	<b>1.0%</b>	<b>1.0%</b>
Nursing Education/Clinical				0.3%	0.3%	0.3%	0.3%
<b>Nursing/ Midwifery other</b>				<b>0.3%</b>	<b>0.3%</b>	<b>0.3%</b>	<b>0.3%</b>
<b>Nursing &amp; Midwifery</b>	<b>23.6%</b>	<b>25.7%</b>	<b>24.7%</b>	<b>25.9%</b>	<b>23.6%</b>	<b>22.6%</b>	<b>22.6%</b>
Dietitians	4.8%	5.2%	5.6%	6.0%	5.3%	5.1%	5.8%
Occupational Therapists	25.2%	23.2%	24.2%	25.3%	25.5%	26.7%	24.3%
Orthoptists	0.7%	0.8%	0.8%	0.9%	1.0%	1.2%	1.0%
Physiotherapists	27.4%	27.1%	27.3%	28.1%	28.2%	27.5%	26.6%
Podiatrists & Chiropodists	3.1%	2.6%	2.7%	2.8%	2.9%	3.0%	3.7%
Speech & Language Therapists	17.8%	19.4%	17.8%	15.9%	16.0%	15.5%	14.9%
<b>Therapy Professions</b>	<b>79.0%</b>	<b>78.4%</b>	<b>78.5%</b>	<b>79.0%</b>	<b>79.0%</b>	<b>79.0%</b>	<b>76.2%</b>
Audiology	1.8%	1.7%	1.7%	1.8%	1.7%	1.7%	1.6%
<b>Health Science/ Diagnostics</b>	<b>1.8%</b>	<b>1.7%</b>	<b>1.7%</b>	<b>1.8%</b>	<b>1.7%</b>	<b>1.7%</b>	<b>1.6%</b>
<b>Social Workers</b>	<b>6.6%</b>	<b>6.9%</b>	<b>6.4%</b>	<b>4.4%</b>	<b>5.4%</b>	<b>6.0%</b>	<b>5.5%</b>
<b>Psychologists</b>	<b>10.3%</b>	<b>10.3%</b>	<b>10.9%</b>	<b>12.1%</b>	<b>10.8%</b>	<b>10.2%</b>	<b>10.0%</b>
<b>Pharmacy</b>	<b>0.2%</b>	<b>0.2%</b>	<b>0.2%</b>	<b>0.2%</b>	<b>0.6%</b>	<b>0.6%</b>	<b>1.4%</b>
Counsellor Therapists		0.3%	0.3%	0.3%	0.3%	0.3%	0.3%
Dental Hygienists	1.7%	1.9%	1.6%	1.7%	1.8%	1.8%	1.8%
Other Health & Social Care	0.3%	0.3%	0.3%	0.3%	0.3%	0.3%	0.3%
Vaccinators							2.9%
<b>H&amp;SC, Other</b>	<b>2.1%</b>	<b>2.5%</b>	<b>2.2%</b>	<b>2.4%</b>	<b>2.5%</b>	<b>2.5%</b>	<b>5.3%</b>



Jun 2021 (Dec 2019 figure: 1,182)	WTE Dec 2016	WTE Dec 2017	WTE Dec 2018	WTE Dec 2019	WTE Dec 2020	WTE Apr 2021	WTE Jun 2021
<b>Primary Care</b>	<b>1,257</b>	<b>1,188</b>	<b>1,233</b>	<b>1,182</b>	<b>1,296</b>	<b>1,346</b>	<b>1,387</b>
<b>Health &amp; Social Care Professionals</b>	<b>23.8%</b>	<b>25.9%</b>	<b>25.6%</b>	<b>24.3%</b>	<b>22.2%</b>	<b>22.0%</b>	<b>22.0%</b>
Executive Management	1.8%	2.1%	2.0%	1.5%	1.4%	1.3%	1.5%
Senior Management (VIII & GM)	6.9%	6.9%	8.7%	8.2%	7.1%	7.3%	6.7%
<b>Management (VIII &amp; above)</b>	<b>8.8%</b>	<b>9.0%</b>	<b>10.7%</b>	<b>9.7%</b>	<b>8.5%</b>	<b>8.6%</b>	<b>8.2%</b>
<b>Administrative/ Supervisory (V to VII)</b>	<b>17.1%</b>	<b>19.7%</b>	<b>19.1%</b>	<b>19.2%</b>	<b>21.4%</b>	<b>21.9%</b>	<b>22.2%</b>
<b>Clerical (III &amp; IV)</b>	<b>74.2%</b>	<b>71.3%</b>	<b>70.2%</b>	<b>71.1%</b>	<b>70.1%</b>	<b>69.6%</b>	<b>69.6%</b>
<b>Management &amp; Administrative</b>	<b>25.9%</b>	<b>27.7%</b>	<b>28.3%</b>	<b>28.0%</b>	<b>25.5%</b>	<b>29.7%</b>	<b>29.7%</b>
<b>Support</b>	<b>91.3%</b>	<b>92.2%</b>	<b>94.7%</b>	<b>92.3%</b>	<b>91.7%</b>	<b>91.8%</b>	<b>91.2%</b>
<b>Maintenance/ Technical</b>	<b>8.7%</b>	<b>7.8%</b>	<b>5.3%</b>	<b>7.7%</b>	<b>8.3%</b>	<b>8.2%</b>	<b>8.8%</b>
<b>General Support</b>	<b>5.7%</b>	<b>6.3%</b>	<b>6.4%</b>	<b>6.6%</b>	<b>6.0%</b>	<b>6.6%</b>	<b>6.6%</b>
HCA, Nurse's Aide, etc.	10.8%	22.4%	20.1%	21.8%	16.3%	15.7%	17.9%
Health & Social Care Assistants	5.8%	12.3%	21.7%	14.9%	14.1%	12.3%	11.5%
Swabber (COVID-19)					31.4%	33.4%	31.3%
<b>Health Care Assistants</b>	<b>16.6%</b>	<b>34.7%</b>	<b>41.8%</b>	<b>36.7%</b>	<b>61.9%</b>	<b>61.4%</b>	<b>60.7%</b>
<b>Home Help</b>	<b>51.6%</b>				<b>0.5%</b>	<b>0.3%</b>	<b>0.3%</b>
Other Care Grades	31.8%	65.3%	58.2%	63.3%	37.7%	38.3%	39.0%
<b>Care, other</b>	<b>31.8%</b>	<b>65.3%</b>	<b>58.2%</b>	<b>63.3%</b>	<b>37.7%</b>	<b>38.3%</b>	<b>39.0%</b>
<b>Patient &amp; Client Care</b>	<b>14.6%</b>	<b>7.4%</b>	<b>7.7%</b>	<b>7.4%</b>	<b>6.7%</b>	<b>12.4%</b>	<b>12.4%</b>
<b>Total</b>	<b>100 %</b>	<b>100 %</b>	<b>100 %</b>	<b>100 %</b>	<b>100 %</b>	<b>100 %</b>	<b>100%</b>

Jun 2021 (Dec 2019 figure: 1,498)	WTE Dec 2016	WTE Dec 2017	WTE Dec 2018	WTE Dec 2019	WTE Dec 2020	WTE Apr 2021	WTE Jun 2021
<b>Disabilities</b>	<b>1,430</b>	<b>1,457</b>	<b>1,479</b>	<b>1,498</b>	<b>1,547</b>	<b>1,591</b>	<b>1,599</b>
Consultant Psychiatry	33.3%	33.3%	33.3%				
<b>Consultants</b>	<b>33.3%</b>	<b>33.3%</b>	<b>33.3%</b>				
<b>Medical/ Dental, other</b>	<b>66.7%</b>	<b>66.7%</b>	<b>66.7%</b>	<b>100.0%</b>	<b>100.0%</b>	<b>100.0%</b>	<b>100.0%</b>
<b>Medical &amp; Dental</b>	<b>0.2%</b>	<b>0.2%</b>	<b>0.2%</b>	<b>0.2%</b>	<b>0.2%</b>	<b>0.2%</b>	<b>0.2%</b>
Clinical Nurse/ Midwife Manager	19.5%	20.0%	19.1%	20.1%	20.8%	19.3%	20.0%
Director Nursing/Midwifery, Assistant	1.7%	1.3%	1.7%	1.3%	1.3%	1.2%	1.2%
Director of Nursing/Midwifery	1.1%	1.3%	1.1%	1.8%	0.8%	0.8%	1.0%
<b>Nurse/ Midwife Manager</b>	<b>22.3%</b>	<b>22.6%</b>	<b>21.8%</b>	<b>23.1%</b>	<b>22.9%</b>	<b>21.3%</b>	<b>22.2%</b>
Clinical Nurse/ Midwife Specialist	2.1%	1.8%	1.5%	1.5%	1.9%	2.0%	2.0%
<b>Nurse/ Midwife Specialist &amp; AN/MP</b>	<b>2.1%</b>	<b>1.8%</b>	<b>1.5%</b>	<b>1.5%</b>	<b>1.9%</b>	<b>2.0%</b>	<b>2.0%</b>
Staff Nurse [Intellectual Disability]	44.2%	44.4%	45.3%	45.1%	51.0%	52.6%	54.0%
Staff Nurse [Psychiatric]	1.3%	0.9%	0.7%	0.4%	0.4%	0.4%	0.4%
Staff Nurses [General/ Children's]	28.6%	28.3%	27.2%	25.6%	19.2%	15.7%	15.6%
<b>Staff Nurse/ Staff Midwife</b>	<b>74.2%</b>	<b>73.7%</b>	<b>73.2%</b>	<b>71.2%</b>	<b>70.6%</b>	<b>68.7%</b>	<b>70.0%</b>
Public Health Nurse						0.2%	0.2%
<b>Public Health Nurse</b>						<b>0.2%</b>	<b>0.2%</b>
Pre-registration Nurse/ Midwife Intern	0.3%	0.8%	2.4%	0.7%		4.8%	3.9%
Pre-registration Nurse Intern (COVID-19)					1.4%		0.9%
Nursing/ Midwifery awaiting registration				2.4%	2.4%	2.2%	
<b>Nursing/ Midwifery Student</b>	<b>0.3%</b>	<b>0.8%</b>	<b>2.4%</b>	<b>3.1%</b>	<b>3.8%</b>	<b>7.0%</b>	<b>4.8%</b>
<b>Nursing/ Midwifery other</b>	<b>1.0%</b>	<b>1.1%</b>	<b>1.1%</b>	<b>1.0%</b>	<b>0.8%</b>	<b>0.8%</b>	<b>0.8%</b>
<b>Nursing &amp; Midwifery</b>	<b>31.4%</b>	<b>30.7%</b>	<b>30.8%</b>	<b>30.3%</b>	<b>29.4%</b>	<b>30.9%</b>	<b>30.9%</b>
Occupational Therapists	11.9%	12.0%	9.5%	15.4%	11.5%	9.8%	11.5%
Physiotherapists	14.2%	11.4%	12.3%	10.8%	11.7%	11.0%	10.8%
Speech & Language Therapists	11.3%	12.7%	17.5%	25.2%	24.9%	26.1%	24.3%

Jun 2021 (Dec 2019 figure: 1,498)	WTE Dec 2016	WTE Dec 2017	WTE Dec 2018	WTE Dec 2019	WTE Dec 2020	WTE Apr 2021	WTE Jun 2021
<b>Disabilities</b>	<b>1,430</b>	<b>1,457</b>	<b>1,479</b>	<b>1,498</b>	<b>1,547</b>	<b>1,591</b>	<b>1,599</b>
Therapy Professions	37.4%	36.0%	39.3%	51.4%	48.1%	46.9%	46.7%
Social Care	15.2%	12.3%	13.2%	9.2%	12.4%	11.6%	12.2%
Social Workers	21.0%	21.0%	19.8%	18.9%	20.5%	18.9%	19.1%
Psychologists	4.3%	7.5%	6.6%	5.6%	8.2%	13.2%	13.6%
Counsellor Therapists	11.8%	11.3%	10.7%	6.8%	8.3%	8.1%	7.1%
Other Health & Social Care	10.4%	11.9%	10.4%	8.2%	2.5%	1.4%	1.3%
H&SC, Other	22.2%	23.2%	21.1%	15.0%	10.8%	9.5%	8.4%
<b>Health &amp; Social Care Professionals</b>	<b>4.3%</b>	<b>4.5%</b>	<b>4.1%</b>	<b>5.5%</b>	<b>5.3%</b>	<b>5.8%</b>	<b>5.8%</b>
Executive Management					1.0%	0.9%	0.9%
Senior Management (VIII & GM)	12.7%	14.7%	15.6%	15.3%	15.0%	14.5%	14.4%
<b>Management (VIII &amp; above)</b>	<b>12.7%</b>	<b>14.7%</b>	<b>15.6%</b>	<b>15.3%</b>	<b>16.0%</b>	<b>15.4%</b>	<b>15.3%</b>
<b>Administrative/ Supervisory (V to VII)</b>	<b>26.0%</b>	<b>24.4%</b>	<b>25.1%</b>	<b>30.2%</b>	<b>33.1%</b>	<b>34.2%</b>	<b>35.0%</b>
<b>Clerical (III &amp; IV)</b>	<b>61.3%</b>	<b>60.9%</b>	<b>59.3%</b>	<b>54.5%</b>	<b>51.0%</b>	<b>50.4%</b>	<b>49.7%</b>
<b>Management &amp; Administrative</b>	<b>6.0%</b>	<b>5.6%</b>	<b>5.6%</b>	<b>6.1%</b>	<b>5.9%</b>	<b>6.7%</b>	<b>6.7%</b>
Support	88.7%	88.1%	89.5%	89.1%	89.1%	89.0%	89.0%
Maintenance/ Technical	11.3%	11.9%	10.5%	10.9%	10.9%	11.0%	11.0%
<b>General Support</b>	<b>4.2%</b>	<b>4.0%</b>	<b>3.9%</b>	<b>3.7%</b>	<b>3.6%</b>	<b>3.4%</b>	<b>3.4%</b>
HCA, Nurse's Aide, etc.	93.4%	93.6%	94.3%	93.8%	93.4%	93.5%	93.1%
<b>Health Care Assistants</b>	<b>93.4%</b>	<b>93.6%</b>	<b>94.3%</b>	<b>93.8%</b>	<b>93.4%</b>	<b>93.5%</b>	<b>93.1%</b>
Home Help	2.3%	1.8%	1.6%	1.6%	1.7%	1.7%	1.6%
Care, other	4.3%	4.6%	4.1%	4.6%	4.9%	4.9%	5.3%
<b>Patient &amp; Client Care</b>	<b>53.8%</b>	<b>55.0%</b>	<b>55.4%</b>	<b>54.2%</b>	<b>52.5%</b>	<b>53.1%</b>	<b>53.1%</b>
<b>Total</b>	<b>100 %</b>	<b>100 %</b>	<b>100 %</b>	<b>100 %</b>	<b>100 %</b>	<b>100 %</b>	<b>100%</b>

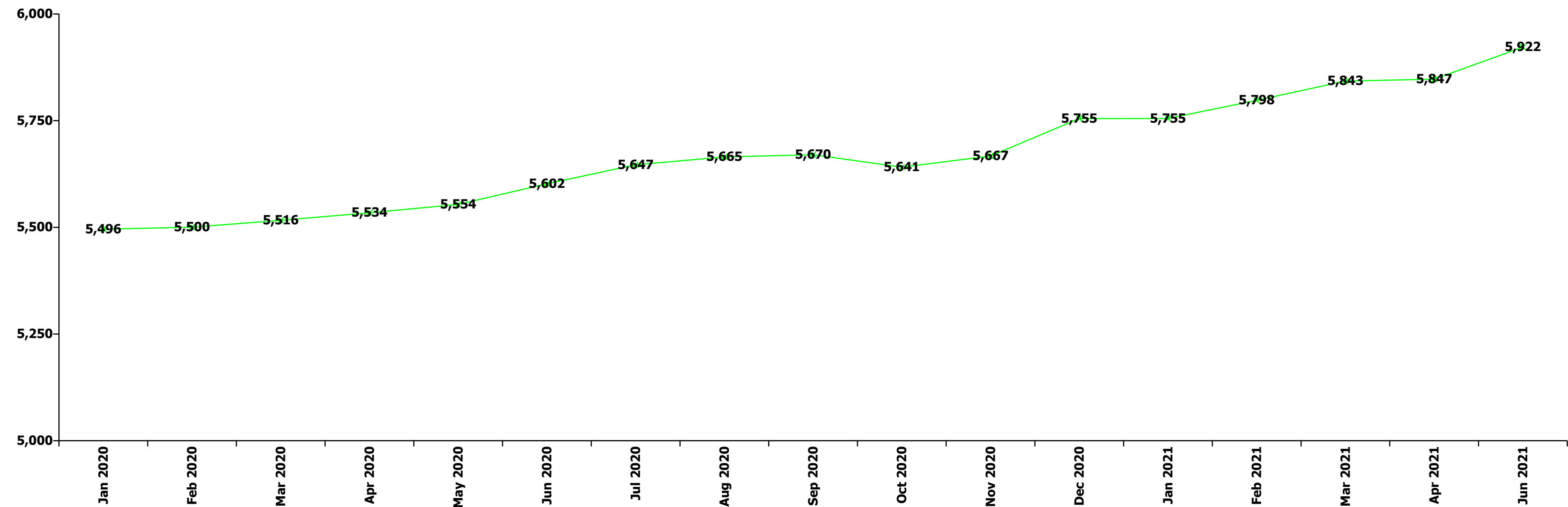
Jun 2021 (Dec 2019 figure: 1,836)	WTE Dec 2016	WTE Dec 2017	WTE Dec 2018	WTE Dec 2019	WTE Dec 2020	WTE Apr 2021	WTE Jun 2021
<b>Older People</b>	<b>1,645</b>	<b>1,780</b>	<b>1,782</b>	<b>1,836</b>	<b>1,918</b>	<b>1,887</b>	<b>1,914</b>
Medical/ Dental, other	100.0%	100.0%	100.0%	100.0%	100.0%	100.0%	100.0%
<b>Medical &amp; Dental</b>	<b>0.9%</b>	<b>0.8%</b>	<b>0.8%</b>	<b>1.6%</b>	<b>1.6%</b>	<b>0.7%</b>	<b>0.7%</b>
Clinical Nurse/ Midwife Manager	17.2%	14.3%	16.4%	15.9%	14.4%	14.1%	13.9%
Director Nursing/Midwifery, Assistant	2.7%	2.7%	2.4%	3.0%	3.1%	3.0%	3.2%
Director of Nursing/Midwifery	3.3%	3.2%	2.8%	3.5%	3.8%	3.5%	3.6%
<b>Nurse/ Midwife Manager</b>	<b>23.3%</b>	<b>20.2%</b>	<b>21.6%</b>	<b>22.5%</b>	<b>21.3%</b>	<b>20.5%</b>	<b>20.7%</b>
Advanced Nurse/ Midwife Practitioner	0.3%		1.0%	1.4%	1.7%	1.6%	1.6%
Clinical Nurse/ Midwife Specialist				0.2%	0.5%	0.5%	0.5%
<b>Nurse/ Midwife Specialist &amp; AN/MP</b>	<b>0.3%</b>		<b>1.0%</b>	<b>1.7%</b>	<b>2.2%</b>	<b>2.1%</b>	<b>2.1%</b>
Staff Nurse [Intellectual Disability]			0.2%				
Staff Nurse [Psychiatric]	0.2%	0.2%	0.4%	0.2%			
Staff Nurses [General/ Children's]	76.2%	79.6%	76.8%	75.6%	76.3%	77.1%	77.0%
<b>Staff Nurse/ Staff Midwife</b>	<b>76.5%</b>	<b>79.8%</b>	<b>77.4%</b>	<b>75.9%</b>	<b>76.3%</b>	<b>77.1%</b>	<b>77.0%</b>
Nursing Education/Clinical					0.2%	0.2%	0.2%
<b>Nursing/ Midwifery other</b>					<b>0.2%</b>	<b>0.2%</b>	<b>0.2%</b>
<b>Nursing &amp; Midwifery</b>	<b>23.7%</b>	<b>21.8%</b>	<b>23.0%</b>	<b>22.1%</b>	<b>21.1%</b>	<b>22.7%</b>	<b>22.7%</b>
Occupational Therapists	40.9%	40.5%	55.3%	35.0%	36.2%	38.9%	38.9%
Physiotherapists				2.2%	6.6%	8.7%	8.8%
Speech & Language Therapists	4.0%	4.2%					
<b>Therapy Professions</b>	<b>44.9%</b>	<b>44.7%</b>	<b>55.3%</b>	<b>37.2%</b>	<b>42.8%</b>	<b>47.6%</b>	<b>47.7%</b>
Radiographers	7.0%	8.1%	7.0%	4.2%	5.4%	4.3%	4.8%

Jun 2021 (Dec 2019 figure: 1,836)	WTE Dec 2016	WTE Dec 2017	WTE Dec 2018	WTE Dec 2019	WTE Dec 2020	WTE Apr 2021	WTE Jun 2021
<b>Older People</b>	<b>1,645</b>	<b>1,780</b>	<b>1,782</b>	<b>1,836</b>	<b>1,918</b>	<b>1,887</b>	<b>1,914</b>
Health Science/ Diagnostics	7.0%	8.1%	7.0%	4.2%	5.4%	4.3%	4.8%
Social Workers	48.1%	47.2%	37.7%	58.6%	51.7%	48.0%	47.5%
<b>Health &amp; Social Care Professionals</b>	<b>1.2%</b>	<b>1.0%</b>	<b>1.2%</b>	<b>1.6%</b>	<b>1.6%</b>	<b>1.7%</b>	<b>1.7%</b>
Executive Management				0.9%	0.9%	0.9%	0.9%
Senior Management (VIII & GM)	5.0%	3.5%	3.5%	6.5%	6.3%	6.3%	6.4%
<b>Management (VIII &amp; above)</b>	<b>5.0%</b>	<b>3.5%</b>	<b>3.5%</b>	<b>7.4%</b>	<b>7.2%</b>	<b>7.2%</b>	<b>7.3%</b>
<b>Administrative/ Supervisory (V to VII)</b>	<b>6.8%</b>	<b>7.5%</b>	<b>8.8%</b>	<b>13.3%</b>	<b>13.8%</b>	<b>14.8%</b>	<b>14.9%</b>
Clerical (III & IV)	88.2%	89.0%	87.7%	79.3%	79.1%	78.0%	77.7%
<b>Management &amp; Administrative</b>	<b>4.9%</b>	<b>4.8%</b>	<b>4.8%</b>	<b>5.8%</b>	<b>5.6%</b>	<b>5.7%</b>	<b>5.7%</b>
Support	94.8%	93.9%	93.9%	94.6%	94.4%	94.4%	94.3%
Maintenance/ Technical	5.2%	6.1%	6.1%	5.4%	5.6%	5.6%	5.7%
<b>General Support</b>	<b>8.1%</b>	<b>7.4%</b>	<b>7.4%</b>	<b>7.1%</b>	<b>6.8%</b>	<b>6.4%</b>	<b>6.4%</b>
HCA, Nurse's Aide, etc.	53.6%	49.1%	50.0%	49.2%	47.6%	49.0%	47.9%
Health & Social Care Assistants	0.4%	0.4%	0.4%	0.4%	0.5%	0.6%	0.5%
<b>Health Care Assistants</b>	<b>54.0%</b>	<b>49.5%</b>	<b>50.4%</b>	<b>49.7%</b>	<b>48.1%</b>	<b>49.5%</b>	<b>48.5%</b>
Home Help	43.1%	47.9%	46.8%	47.9%	50.1%	48.1%	49.4%
Care, other	2.9%	2.6%	2.7%	2.5%	1.9%	2.4%	2.1%
<b>Patient &amp; Client Care</b>	<b>61.2%</b>	<b>64.2%</b>	<b>62.8%</b>	<b>61.8%</b>	<b>59.1%</b>	<b>62.8%</b>	<b>62.8%</b>
<b>Total</b>	<b>100 %</b>	<b>100 %</b>	<b>100 %</b>	<b>100 %</b>	<b>100 %</b>	<b>100 %</b>	<b>100%</b>

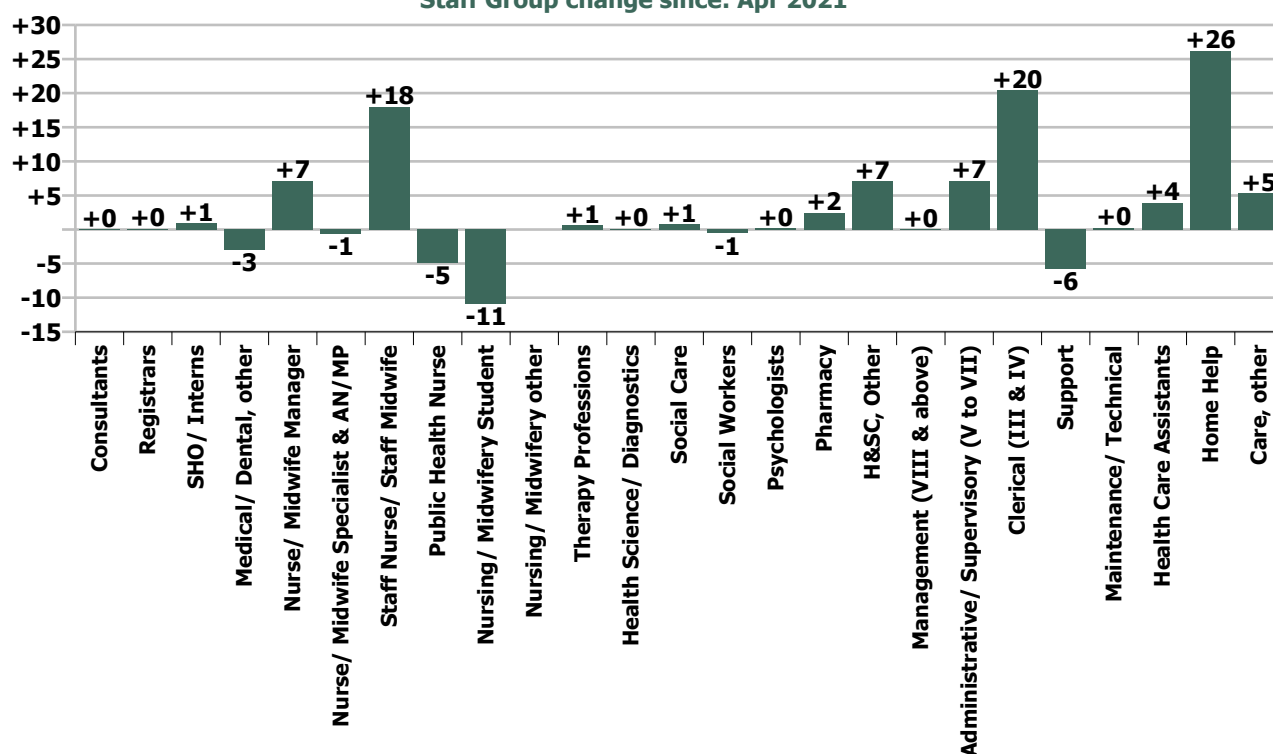
Summary Staff Movement: June 2021

Month-on-month Summary																												
WTE change since Apr 21	% change since Apr 21	overall	Consultants	Registrars	SHO/ Interns	Medical/ Dental, other	Medical & Dental	Nurse/ Midwife Manager	Nurse/ Midwife Specialist & AN/MP	Staff Nurse/ Staff Midwife	Public Health Nurse	Nursing/ Midwifery Student	Nursing/ Midwifery other	Nursing & Midwifery	Therapy Professions	Health Science/ Diagnostics	Social Care	Social Workers	Psychologists	Pharmacy	H&SC, Other	Health & Social Care Professionals	Management (VIII & above)	Administrativ e/ Supervisory (V to VII)	Clerical (III & IV)	Management & Administrativ e	General Support	Patient & Client Care
Overall	+1.3%	+75	+0.0	+0.1	+0.9	-3.0	-1.9	+7.2	-0.6	+18.0	-4.9	-10.9	0.0	+8.8	+0.6	+0.1	+0.8	-0.6	+0.2	+2.5	+7.1	+10.6	+0.0	+7.1	+20.4	+27.6	-5.5	+35.5
Community Health & Wellbeing	-6.1%	-1				-0.4	-0.4	0.0	-0.5					-0.5	0.0							0.0	0.0	-0.3	0.0	-0.3		
Mental Health	+0.1%	+1	+0.0	-1.0	+0.9		-0.0	-1.9	-0.2	+4.1		-0.1	0.0	+1.9	-1.2		0.0	+0.0	-1.2	0.0	-0.8	-3.2	-0.9	-1.3	+1.7	-0.6	-0.8	+3.8
Primary Care	+3.1%	+41	0.0	+1.1	0.0	-1.0	+0.2	+2.0	+0.1	+1.1	-4.9	0.0	0.0	-1.7	+1.4	-0.0		-0.8	+0.7	+2.5	+8.7	+12.5	+1.1	+8.0	+21.1	+30.3	-2.3	+2.4
Disabilities	+0.5%	+7				0.0	0.0	+4.4	0.0	+6.2	0.0	-10.8	0.0	-0.3	+0.6		+0.8	+0.5	+0.6		-0.8	+1.7	-0.2	+0.7	-0.9	-0.4	-0.7	+7.0
Older People	+1.4%	+26				-1.6	-1.6	+2.7	-0.1	+6.6			0.0	+9.2	-0.1	+0.1		-0.3				-0.3	0.0	-0.0	-1.4	-1.5	-1.7	+22.2
Social Care	+1.0%	+34				-1.6	-1.6	+7.0	-0.1	+12.8	0.0	-10.8	0.0	+8.9	+0.5	+0.1	+0.8	+0.2	+0.6		-0.8	+1.4	-0.2	+0.7	-2.4	-1.8	-2.4	+29.2
Change	+75.1	+1.3%	+0.1%	+0.2%	+4.7%	-4.6%	-0.9%	+2.0%	-0.5%	+1.7%	-3.2%	-20.5%		+0.5%	+0.2%	+1.6%	+5.5%	-0.6%	+0.2%	+98.8%	+23.3%	+2.0%	+0.0%	+4.0%	+4.1%	+3.7%	-1.6%	+1.6%

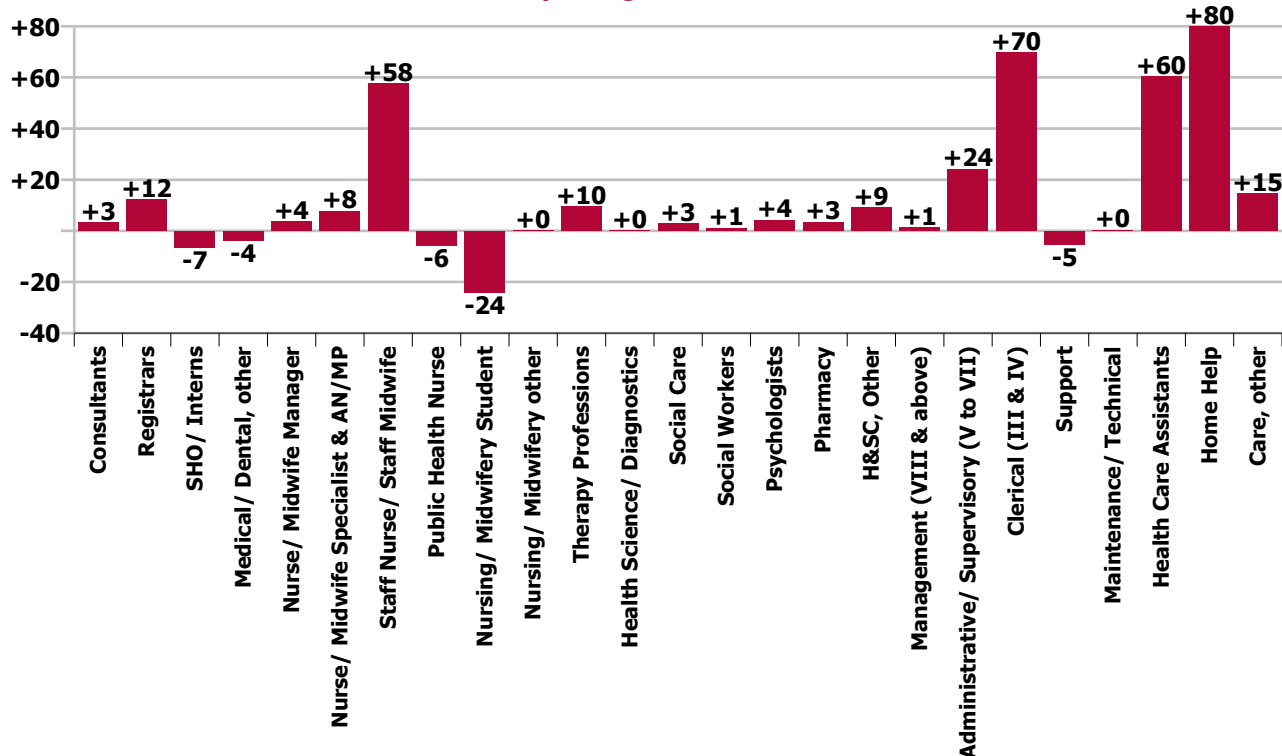
Year-on-year Summary																												
WTE change since Jun 20	% change since Jun 20	overall	Consultants	Registrars	SHO/ Interns	Medical/ Dental, other	Medical & Dental	Nurse/ Midwife Manager	Nurse/ Midwife Specialist & AN/MP	Staff Nurse/ Staff Midwife	Public Health Nurse	Nursing/ Midwifery Student	Nursing/ Midwifery other	Nursing & Midwifery	Therapy Professions	Health Science/ Diagnostics	Social Care	Social Workers	Psychologists	Pharmacy	H&SC, Other	Health & Social Care Professionals	Management (VIII & above)	Administrativ e/ Supervisory (V to VII)	Clerical (III & IV)	Management & Administrative	General Support	Patient & Client Care
Overall	+5.7%	+320	+3.3	+12.3	-6.5	-3.9	+5.2	+3.7	+7.7	+57.6	-5.7	-24.1	+0.1	+39.4	+9.6	+0.1	+2.9	+1.1	+4.3	+3.5	+9.2	+30.6	+1.3	+24.2	+69.6	+95.2	-5.1	+154.9
Community Health & Wellbeing	-6.1%	-1				+0.6	+0.6	+1.0	+0.5					+1.5	+1.0							+1.0	0.0	+0.7	+0.9	+1.7		-0.7
Mental Health	+0.1%	+1	+3.0	+8.3	-6.5		+4.8	+0.5	+5.0	+12.2		-9.8	+0.9	+8.8	+0.5		+0.0	+1.3	+0.4	0.0	+1.5	+3.7	-2.7	-0.8	+7.1	+3.5	-1.1	+6.4
Primary Care	+3.1%	+41	+0.3	+3.9	0.0	-1.2	+3.0	-1.7	+2.2	-2.3	-6.7	+1.0	0.0	-7.4	+5.1	-0.3		+2.5	-3.3	+3.5	+8.7	+16.1	+2.5	+19.5	+51.5	+73.6	+1.3	+72.0
Disabilities	+4.8%	+73.3				-0.1	-0.1	+1.8	0.0	+27.2	+1.0	-15.3	-0.8	+13.9	-1.2		+2.9	-2.0	+7.2		-1.0	+5.9	+1.4	+3.9	+6.0	+11.4	-2.1	+44.3
Older People	+3.1%	+58.1				-3.1	-3.1	+2.1	-0.0	+20.5			+0.0	+22.6	+4.2	+0.4			-0.7			+3.9	0.0	+0.9	+4.1	+5.0	-3.2	+32.8
Social Care	+1.0%	+34				-3.2	-3.2	+3.9	-0.0	+47.7	+1.0	-15.3	-0.7	+36.5	+3.0	+0.4	+2.9	-2.7	+7.2		-1.0	+9.8	+1.4	+4.8	+10.1	+16.4	-5.3	+77.2
Change	+320.2	+5.7%	+9.2%	+19.7%	-23.9%	-5.8%	+2.7%	+1.0%	+7.0%	+5.6%	-3.7%	-36.3%	+1.7%	+2.3%	+3.0%	+1.9%	+24.1%	+1.2%	+6.9%	+231.3%	+32.4%	+5.9%	+2.1%	+15.1%	+15.5%	+14.2%	-1.5%	+7.2%



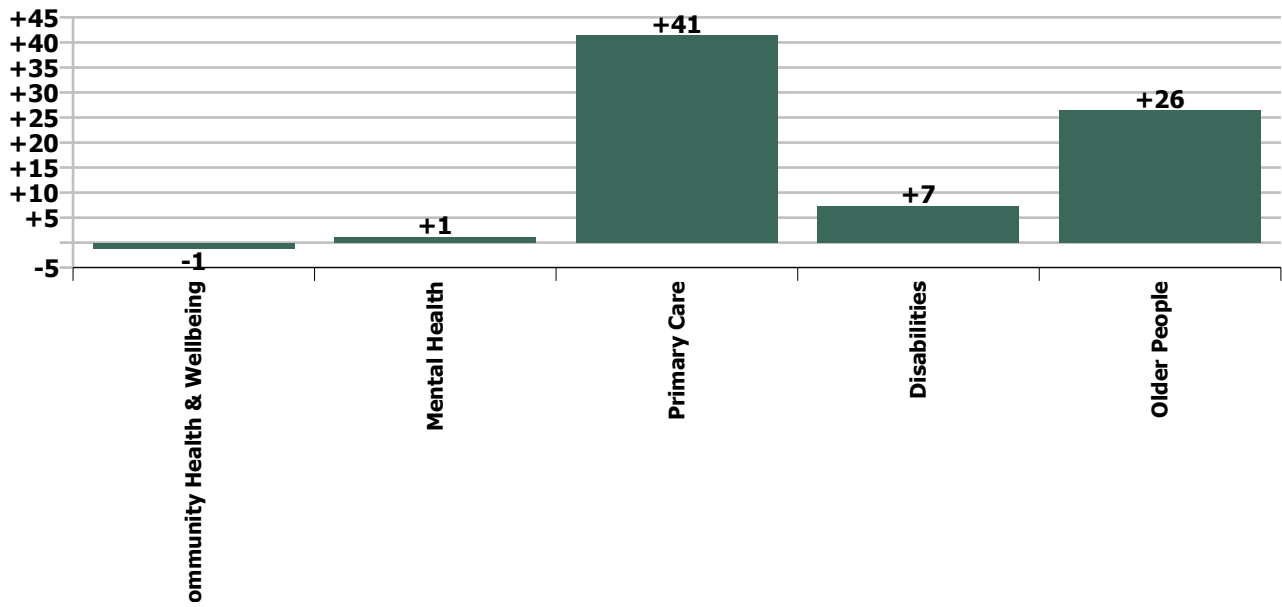
Staff Group change since: Apr 2021



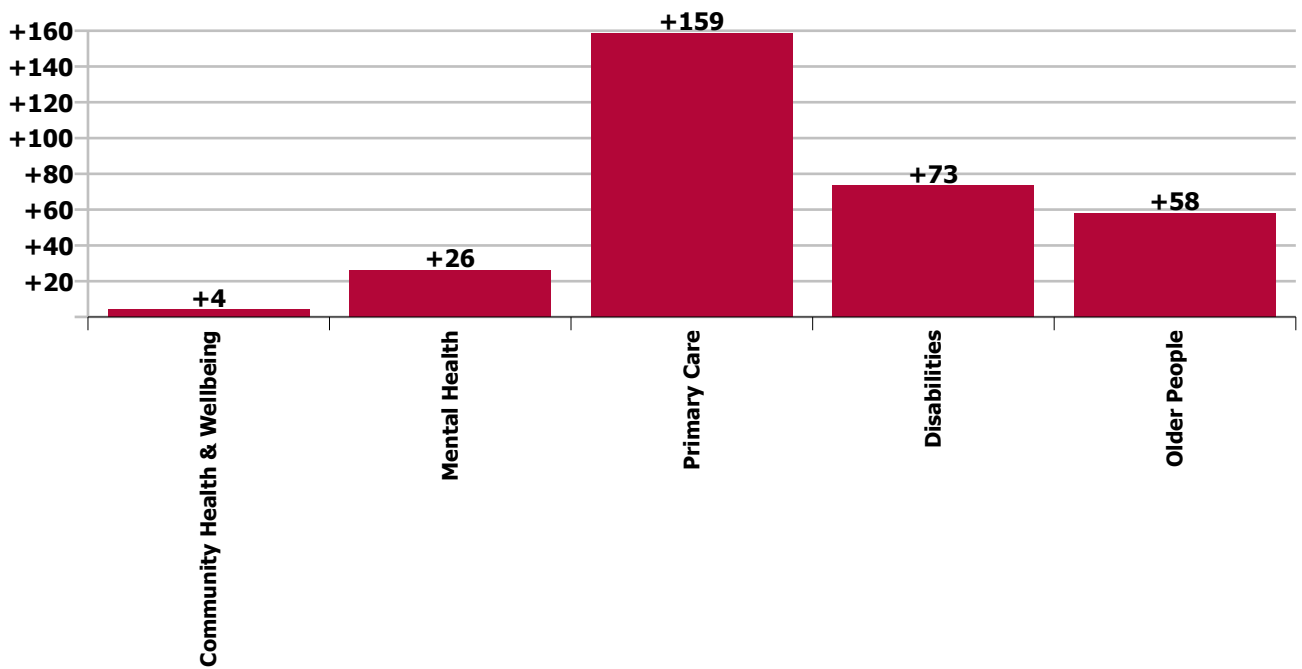
Staff Group change since: Jun 2020



Care Group change since: Apr 2021



Care Group change since: Jun 2020



## Longitudinal Employment Levels by Grade Group - Dec 2016 to Jun 2021

Jun 2021 (Dec 2016 figure: 5,280)	WTE Jun 2021	WTE change since Dec 16	WTE change since Dec 17	WTE change since Dec 18	WTE change since Dec 19	WTE change since Dec 20	WTE change since Apr 21	% change since Dec 16	% change since Dec 17	% change since Dec 18	% change since Dec 19	% change since Dec 20	% change since Apr 21
<b>Overall</b>	<b>5,922</b>	<b>+642</b>	<b>+554</b>	<b>+486</b>	<b>+454</b>	<b>+167</b>	<b>+75</b>	<b>+12.2%</b>	<b>+10.3%</b>	<b>+8.9%</b>	<b>+8.3%</b>	<b>+2.9%</b>	<b>+1.3%</b>
Consultant Medicine	4	+1	+1	+1	+1	+0		+20.7%	+20.7%	+24.4%	+20.7%	+2.8%	
Consultant Psychiatry	36	+9	+8	+6	+5	+2	+0	+31.9%	+30.3%	+19.9%	+16.3%	+5.2%	+0.1%
<b>Consultants</b>	<b>39</b>	<b>+9</b>	<b>+9</b>	<b>+7</b>	<b>+6</b>	<b>+6</b>	<b>+0</b>	<b>+30.8%</b>	<b>+29.4%</b>	<b>+20.3%</b>	<b>+16.7%</b>	<b>+4.9%</b>	<b>+0.1%</b>
Registrar	66	+26	+19	+14	+9	+3	-0	+63.7%	+41.8%	+27.1%	+16.3%	+4.6%	-0.5%
Senior Registrar	9	+4	+5	-2	+1	+1	+1	+80.2%	+125.3%	-16.3%	+12.6%	+5.9%	+5.9%
Specialist Registrar			-1	-1	-1			-100.0%	-100.0%	-100.0%	-100.0%	-100.0%	-100.0%
<b>Registrars</b>	<b>75</b>	<b>+30</b>	<b>+23</b>	<b>+11</b>	<b>+9</b>	<b>+9</b>	<b>+0</b>	<b>+65.6%</b>	<b>+45.6%</b>	<b>+17.7%</b>	<b>+14.1%</b>	<b>+4.7%</b>	<b>+0.2%</b>
Senior House Officer	21	-9	-6	-5	-5	-3	+1	-29.4%	-23.1%	-18.2%	-20.7%	-12.7%	+4.7%
<b>SHO/ Interns</b>	<b>21</b>	<b>-9</b>	<b>-6</b>	<b>-5</b>	<b>-5</b>	<b>-5</b>	<b>+1</b>	<b>-29.4%</b>	<b>-23.1%</b>	<b>-18.2%</b>	<b>-20.7%</b>	<b>-12.7%</b>	<b>+4.7%</b>
Dentists	28	+0	+1	+0	+1	+0	+0	+0.9%	+2.6%	+0.8%	+2.2%	+0.9%	+0.7%
Other Medical	34	-2	-3	-1	-18	-18	-3	-6.3%	-8.8%	-2.1%	-34.9%	-34.8%	-8.5%
<b>Medical/ Dental, other</b>	<b>62</b>	<b>-2</b>	<b>-3</b>	<b>-1</b>	<b>-18</b>	<b>-18</b>	<b>-3</b>	<b>-3.2%</b>	<b>-3.9%</b>	<b>-0.8%</b>	<b>-22.0%</b>	<b>-22.3%</b>	<b>-4.6%</b>
<b>Medical &amp; Dental</b>	<b>197</b>	<b>+28</b>	<b>+24</b>	<b>+13</b>	<b>-8</b>	<b>-8</b>	<b>-2</b>	<b>+16.6%</b>	<b>+13.5%</b>	<b>+6.9%</b>	<b>-4.0%</b>	<b>-4.0%</b>	<b>-0.9%</b>
Clinical Nurse/ Midwife Manager	276	+7	+18	+9	+7	+3	+1	+2.6%	+7.0%	+3.4%	+2.5%	+1.0%	+0.4%
Director Nursing/Midwifery, Assistant	61	+9	+12	+10	+10	+5	+5	+17.8%	+25.2%	+19.5%	+19.4%	+9.1%	+9.4%
Director of Nursing/Midwifery	25	-0	-0	+2	-4	+0	+1	-0.9%	-0.3%	+8.2%	-13.2%	+1.1%	+3.9%
<b>Nurse/ Midwife Manager</b>	<b>362</b>	<b>+16</b>	<b>+30</b>	<b>+21</b>	<b>+13</b>	<b>+13</b>	<b>+7</b>	<b>+4.6%</b>	<b>+9.1%</b>	<b>+6.1%</b>	<b>+3.7%</b>	<b>+2.3%</b>	<b>+2.0%</b>
Advanced Nurse/ Midwife Practitioner	15	+12	+13	+8	+6	+1	-0	+397.7%	+646.5%	+113.9%	+72.6%	+7.5%	-0.5%
Clinical Nurse/ Midwife Specialist	103	+17	+13	+14	+9	-1	-1	+20.0%	+13.9%	+15.7%	+10.1%	-1.2%	-0.5%
<b>Nurse/ Midwife Specialist &amp; AN/MP</b>	<b>118</b>	<b>+29</b>	<b>+25</b>	<b>+22</b>	<b>+16</b>	<b>+16</b>	<b>-1</b>	<b>+32.8%</b>	<b>+27.6%</b>	<b>+22.9%</b>	<b>+15.4%</b>	<b>-0.2%</b>	<b>-0.5%</b>
Staff Nurse [Intellectual Disability]	267	+67	+67	+58	+61	+29	+7	+33.4%	+33.3%	+27.9%	+29.9%	+12.4%	+2.6%
Staff Nurse [Psychiatric]	303	-26	-15	-3	+5	+13	+3	-7.9%	-4.8%	-0.9%	+1.6%	+4.4%	+1.0%
Staff Nurses [General/ Children's]	510	-5	-14	-17	-1	+8	+8	-1.0%	-2.7%	-3.3%	-0.3%	+1.6%	+1.6%
<b>Staff Nurse/ Staff Midwife</b>	<b>1,079</b>	<b>+36</b>	<b>+37</b>	<b>+38</b>	<b>+65</b>	<b>+65</b>	<b>+18</b>	<b>+3.5%</b>	<b>+3.5%</b>	<b>+3.6%</b>	<b>+6.4%</b>	<b>+4.9%</b>	<b>+1.7%</b>
Public Health Nurse	147	+1	-6	-8	-9	-6	-5	+0.5%	-3.8%	-5.3%	-5.7%	-3.7%	-3.2%
<b>Public Health Nurse</b>	<b>147</b>	<b>+1</b>	<b>-6</b>	<b>-8</b>	<b>-9</b>	<b>-9</b>	<b>-5</b>	<b>+0.5%</b>	<b>-3.8%</b>	<b>-5.3%</b>	<b>-5.7%</b>	<b>-3.7%</b>	<b>-3.2%</b>
Pre-registration Nurse/ Midwife Intern	35	+33	+31	+24	+32	+35	-4	+2214.7%	+816.1%	+220.9%	+1057.3%	-100.0%	-11.2%
Pre-registration Nurse Intern (COVID-19)	5	+5	+5	+5	+5	-5	+5	-100.0%	-100.0%	-100.0%	-100.0%	-52.6%	-100.0%
Post-registration Nurse/ Midwife Student	3	-4	-4	-4	-4			-57.1%	-57.1%	-57.1%	-57.0%		
Nursing/ Midwifery awaiting registration				-1	-11	-11	-11	-100.0%	-100.0%	-100.0%	-100.0%	-100.0%	-100.0%
<b>Nursing/ Midwifery Student</b>	<b>42</b>	<b>+34</b>	<b>+31</b>	<b>+23</b>	<b>+21</b>	<b>+21</b>	<b>-11</b>	<b>+396.7%</b>	<b>+291.3%</b>	<b>+124.3%</b>	<b>+101.2%</b>	<b>+79.7%</b>	<b>-20.5%</b>
<b>Nursing/ Midwifery other</b>	<b>8</b>	<b>+3</b>	<b>+3</b>	<b>+3</b>	<b>+2</b>	<b>+2</b>		<b>+65.2%</b>	<b>+61.5%</b>	<b>+61.5%</b>	<b>+35.5%</b>	<b>+14.0%</b>	
<b>Nursing &amp; Midwifery</b>	<b>1,756</b>	<b>+119</b>	<b>+121</b>	<b>+99</b>	<b>+108</b>	<b>+108</b>	<b>+9</b>	<b>+7.2%</b>	<b>+7.4%</b>	<b>+6.0%</b>	<b>+6.5%</b>	<b>+6.5%</b>	<b>+0.5%</b>



Jun 2021 (Dec 2016 figure: 5,280)	WTE Jun 2021	WTE change since Dec 16	WTE change since Dec 17	WTE change since Dec 18	WTE change since Dec 19	WTE change since Dec 20	WTE change since Apr 21	% change since Dec 16	% change since Dec 17	% change since Dec 18	% change since Dec 19	% change since Dec 20	% change since Apr 21
<b>Overall</b>	<b>5,922</b>	<b>+642</b>	<b>+554</b>	<b>+486</b>	<b>+454</b>	<b>+167</b>	<b>+75</b>	<b>+12.2%</b>	<b>+10.3%</b>	<b>+8.9%</b>	<b>+8.3%</b>	<b>+2.9%</b>	<b>+1.3%</b>
Dietitians	18	+3	+1	-0	+0	+2	+3	+20.9%	+9.1%	-1.0%	+1.9%	+14.2%	+17.6%
Occupational Therapists	131	+11	+17	+7	+3	+3	-3	+9.6%	+15.1%	+6.0%	+2.0%	+2.7%	-2.1%
Orthoptists	3	+1	+0	+0	+0	-0	-0	+50.0%	+14.9%	+13.6%	+12.8%	-1.6%	-13.0%
Physiotherapists	95	+4	+4	+1	+5	-1	+1	+4.7%	+4.8%	+1.3%	+5.5%	-0.6%	+0.8%
Podiatrists & Chiropodists	12	+2	+3	+3	+3	+3	+2	+18.9%	+36.2%	+27.3%	+35.3%	+27.6%	+24.4%
Speech & Language Therapists	71	+7	-1	+1	+2	-2	-2	+10.8%	-2.1%	+0.9%	+2.8%	-2.2%	-2.5%
<b>Therapy Professions</b>	<b>329</b>	<b>+29</b>	<b>+25</b>	<b>+12</b>	<b>+13</b>	<b>+13</b>	<b>+1</b>	<b>+9.5%</b>	<b>+8.2%</b>	<b>+3.8%</b>	<b>+4.2%</b>	<b>+1.9%</b>	<b>+0.2%</b>
Audiology	5	-0	-0	-1	-0	-0	-0	-8.1%	-7.1%	-9.5%	-5.9%	-1.6%	-0.6%
Radiographers	2	+0	+0	+0	+0	-0	+0	+12.9%	+8.3%	+9.0%	+26.6%	-0.6%	+9.0%
<b>Health Science/ Diagnostics</b>	<b>7</b>	<b>-0</b>	<b>-0</b>	<b>-0</b>	<b>+0</b>	<b>+0</b>	<b>+0</b>	<b>-3.8%</b>	<b>-3.8%</b>	<b>-5.6%</b>	<b>+0.3%</b>	<b>-1.4%</b>	<b>+1.6%</b>
<b>Social Care</b>	<b>15</b>	<b>+2</b>	<b>+3</b>	<b>+4</b>	<b>+4</b>	<b>+4</b>	<b>+1</b>	<b>+15.6%</b>	<b>+28.8%</b>	<b>+31.1%</b>	<b>+35.1%</b>	<b>+1.3%</b>	<b>+5.5%</b>
<b>Social Workers</b>	<b>92</b>	<b>+11</b>	<b>+12</b>	<b>+14</b>	<b>+7</b>	<b>+7</b>	<b>-1</b>	<b>+14.0%</b>	<b>+15.3%</b>	<b>+17.6%</b>	<b>+8.1%</b>	<b>-0.8%</b>	<b>-0.6%</b>
<b>Psychologists</b>	<b>66</b>	<b>+11</b>	<b>+8</b>	<b>+4</b>	<b>+6</b>	<b>+6</b>	<b>+0</b>	<b>+19.8%</b>	<b>+13.8%</b>	<b>+6.9%</b>	<b>+9.3%</b>	<b>+5.4%</b>	<b>+0.2%</b>
<b>Pharmacy</b>	<b>5</b>	<b>+3</b>	<b>+3</b>	<b>+3</b>	<b>+3</b>	<b>+3</b>	<b>+2</b>	<b>+231.3%</b>	<b>+231.3%</b>	<b>+210.6%</b>	<b>+231.3%</b>	<b>+98.8%</b>	<b>+98.8%</b>
Counsellor Therapists	21	+3	+1	+2	+1	-1	-2	+16.7%	+2.6%	+7.9%	+6.9%	-5.7%	-7.4%
Dental Hygienists	5	+0	-0	+0	+0	-0		+3.3%	-6.0%	+4.3%	+8.0%	-0.2%	
Other Health & Social Care	2	-6	-6	-5	-6	-1		-71.3%	-74.2%	-69.1%	-71.1%	-30.8%	
Vaccinators	9	+9	+9	+9	+9	+9	+9	-100.0%	-100.0%	-100.0%	-100.0%	-100.0%	-100.0%
<b>H&amp;SC, Other</b>	<b>37</b>	<b>+6</b>	<b>+2</b>	<b>+5</b>	<b>+5</b>	<b>+5</b>	<b>+7</b>	<b>+20.4%</b>	<b>+7.0%</b>	<b>+17.1%</b>	<b>+15.3%</b>	<b>+20.9%</b>	<b>+23.3%</b>
<b>Health &amp; Social Care Professionals</b>	<b>551</b>	<b>+62</b>	<b>+54</b>	<b>+42</b>	<b>+38</b>	<b>+38</b>	<b>+11</b>	<b>+12.7%</b>	<b>+10.9%</b>	<b>+8.2%</b>	<b>+7.4%</b>	<b>+7.4%</b>	<b>+2.0%</b>
Executive Management	9	+2	+1	+1	+2	+1	+1	+28.6%	+12.5%	+14.5%	+31.8%	+12.5%	+12.5%
Senior Management (VIII & GM)	54	+15	+14	+5	+1	-1	-1	+37.3%	+33.9%	+10.2%	+2.7%	-2.1%	-1.8%
<b>Management (VIII &amp; above)</b>	<b>63</b>	<b>+17</b>	<b>+15</b>	<b>+6</b>	<b>+4</b>	<b>+4</b>	<b>+0</b>	<b>+36.0%</b>	<b>+30.4%</b>	<b>+10.8%</b>	<b>+6.0%</b>	<b>-0.3%</b>	<b>+0.0%</b>
Middle Management (V-VII)	184	+88	+78	+70	+49	+19	+7	+92.2%	+72.9%	+61.8%	+36.7%	+11.2%	+4.0%
Other Administrative	1												
<b>Administrative/ Supervisory (V to VII)</b>	<b>185</b>	<b>+88</b>	<b>+78</b>	<b>+70</b>	<b>+49</b>	<b>+49</b>	<b>+7</b>	<b>+91.3%</b>	<b>+72.2%</b>	<b>+61.2%</b>	<b>+36.5%</b>	<b>+11.2%</b>	<b>+4.0%</b>
General Administrative (III & IV)	520	+79	+82	+69	+64	+41	+20	+18.0%	+18.7%	+15.4%	+14.1%	+8.6%	+4.1%
<b>Clerical (III &amp; IV)</b>	<b>520</b>	<b>+79</b>	<b>+82</b>	<b>+69</b>	<b>+64</b>	<b>+64</b>	<b>+20</b>	<b>+18.0%</b>	<b>+18.7%</b>	<b>+15.4%</b>	<b>+14.1%</b>	<b>+8.6%</b>	<b>+4.1%</b>
<b>Management &amp; Administrative</b>	<b>768</b>	<b>+184</b>	<b>+174</b>	<b>+146</b>	<b>+117</b>	<b>+117</b>	<b>+28</b>	<b>+31.5%</b>	<b>+29.3%</b>	<b>+23.4%</b>	<b>+18.0%</b>	<b>+18.0%</b>	<b>+3.7%</b>
Catering	61	+5	+3	+2	+0	-4	-2	+9.4%	+4.4%	+3.9%	+0.7%	-6.2%	-3.7%
Household Services	211	-22	-6	-4	+7	+4	-2	-9.3%	-2.6%	-2.0%	+3.6%	+2.0%	-1.2%
Other Support	30	+8	+1	-4	-3	+0	-1	+34.5%	+3.9%	-12.9%	-9.9%	+0.0%	-2.9%
Portering	7	-2	-1	-1	-1	-1		-22.9%	-12.4%	-11.8%	-12.9%	-12.9%	
<b>Support</b>	<b>309</b>	<b>-11</b>	<b>-3</b>	<b>-7</b>	<b>+3</b>	<b>+3</b>	<b>-6</b>	<b>-3.4%</b>	<b>-0.9%</b>	<b>-2.3%</b>	<b>+1.1%</b>	<b>-0.3%</b>	<b>-1.8%</b>
Maintenance	37	-1	-0	+3	+2	+1	+0	-1.7%	-0.6%	+9.8%	+4.3%	+2.6%	+0.7%



Jun 2021 (Dec 2016 figure: 5,280)	WTE Jun 2021	WTE change since Dec 16	WTE change since Dec 17	WTE change since Dec 18	WTE change since Dec 19	WTE change since Dec 20	WTE change since Apr 21	% change since Dec 16	% change since Dec 17	% change since Dec 18	% change since Dec 19	% change since Dec 20	% change since Apr 21
<b>Overall</b>	<b>5,922</b>	<b>+642</b>	<b>+554</b>	<b>+486</b>	<b>+454</b>	<b>+167</b>	<b>+75</b>	<b>+12.2%</b>	<b>+10.3%</b>	<b>+8.9%</b>	<b>+8.3%</b>	<b>+2.9%</b>	<b>+1.3%</b>
<b>Maintenance/ Technical</b>	<b>37</b>	<b>-1</b>	<b>-0</b>	<b>+3</b>	<b>+2</b>	<b>+2</b>	<b>+0</b>	<b>-1.7%</b>	<b>-0.6%</b>	<b>+9.8%</b>	<b>+4.3%</b>	<b>+2.6%</b>	<b>+0.7%</b>
<b>General Support</b>	<b>347</b>	<b>-12</b>	<b>-3</b>	<b>-4</b>	<b>+5</b>	<b>+5</b>	<b>-5</b>	<b>-3.2%</b>	<b>-0.9%</b>	<b>-1.1%</b>	<b>+1.5%</b>	<b>+1.5%</b>	<b>-1.6%</b>
HCA, Nurse's Aide, etc.	1,466	+115	+60	+49	+63	+25	+8	+8.5%	+4.2%	+3.5%	+4.5%	+1.8%	+0.5%
Health & Social Care Assistants	28	+13	+11	+1	+8	-1	-1	+90.1%	+66.5%	+3.1%	+43.1%	-4.9%	-4.1%
Swabber (COVID-19)	54	+54	+54	+54	+54	+5	-3	-100.0%	-100.0%	-100.0%	-100.0%	+11.0%	-5.0%
<b>Health Care Assistants</b>	<b>1,548</b>	<b>+182</b>	<b>+125</b>	<b>+104</b>	<b>+125</b>	<b>+125</b>	<b>+4</b>	<b>+13.3%</b>	<b>+8.8%</b>	<b>+7.2%</b>	<b>+8.8%</b>	<b>+1.9%</b>	<b>+0.3%</b>
<b>Home Help</b>	<b>608</b>	<b>+61</b>	<b>+46</b>	<b>+71</b>	<b>+52</b>	<b>+52</b>	<b>+26</b>	<b>+11.2%</b>	<b>+8.3%</b>	<b>+13.2%</b>	<b>+9.3%</b>	<b>-1.8%</b>	<b>+4.5%</b>
<b>Care, other</b>	<b>148</b>	<b>+17</b>	<b>+13</b>	<b>+16</b>	<b>+17</b>	<b>+17</b>	<b>+5</b>	<b>+12.7%</b>	<b>+9.7%</b>	<b>+12.3%</b>	<b>+13.3%</b>	<b>+11.7%</b>	<b>+3.7%</b>
<b>Patient &amp; Client Care</b>	<b>2,304</b>	<b>+260</b>	<b>+184</b>	<b>+191</b>	<b>+194</b>	<b>+194</b>	<b>+35</b>	<b>+12.7%</b>	<b>+8.7%</b>	<b>+9.1%</b>	<b>+9.2%</b>	<b>+9.2%</b>	<b>+1.6%</b>

Source: Health Service Personnel Census

Longitudinal Employment Levels by Care Group - Dec 2016 to Jun 2021

Community Health & Wellbeing

Jun 2021 ( figure: )	WTE Jun 2021	WTE change since	WTE change since	WTE change since	WTE change since	WTE change since Dec 20	WTE change since Apr 21	% change since	% change since	% change since	% change since	% change since Dec 20	% change since Apr 21
Overall	18	+18	+18	+18	+18	-0	-1	-100.0%	-100.0%	-100.0%	-100.0%	-0.8%	-6.1%
Medical & Dental	1	+1	+1	+1	+1	+1	-0	-1.0%	-1.0%	-1.0%	-1.0%	-1.0%	-0.4%
Medical/ Dental, other	1	+1	+1	+1	+1	+1	-0	-1.0%	-1.0%	-1.0%	-1.0%	-1.0%	-0.4%
Nursing & Midwifery	2	+2	+2	+2	+2	-2	-0	-1.0%	-1.0%	-1.0%	-1.0%	-0.5%	-0.2%
Nurse/ Midwife Manager	1	+1	+1	+1	+1	-1		-1.0%	-1.0%	-1.0%	-1.0%	-0.5%	+0.0%
Nurse/ Midwife Specialist & AN/MP	1	+1	+1	+1	+1	+1	-0	-1.0%	-1.0%	-1.0%	-1.0%	-1.0%	-0.5%
Staff Nurse/ Staff Midwife						-1		-1.0%	-1.0%	-1.0%	-1.0%	-1.0%	-1.0%
Health & Social Care Professionals	1	+1	+1	+1	+1			-1.0%	-1.0%	-1.0%	-1.0%	+0.0%	+0.0%
Therapy Professions	1	+1	+1	+1	+1			-1.0%	-1.0%	-1.0%	-1.0%	+0.0%	+0.0%
Management & Administrative	15	+15	+15	+15	+15	+1	-0	-1.0%	-1.0%	-1.0%	-1.0%	+0.1%	-0.0%
Management (VIII & above)	1	+1	+1	+1	+1			-1.0%	-1.0%	-1.0%	-1.0%	+0.0%	+0.0%
Administrative/ Supervisory (V to VII)	10	+10	+10	+10	+10	-0	-0	-1.0%	-1.0%	-1.0%	-1.0%	-0.0%	-0.0%
Clerical (III & IV)	4	+4	+4	+4	+4	+1		-1.0%	-1.0%	-1.0%	-1.0%	+0.3%	+0.0%

Source: Health Service Personnel Census

Mental Health

Jun 2021 (Dec 2016 figure: 948)	WTE Jun 2021	WTE change since Dec 16	WTE change since Dec 17	WTE change since Dec 18	WTE change since Dec 19	WTE change since Dec 20	WTE change since Apr 21	% change since Dec 16	% change since Dec 17	% change since Dec 18	% change since Dec 19	% change since Dec 20	% change since Apr 21
Overall	1,004	+56	+62	+63	+52	+29	+1	+5.9%	+6.6%	+6.7%	+5.4%	+2.9%	+0.1%
Medical & Dental	87	+15	+15	+10	+7	+1	-0	+0.2%	+0.2%	+0.1%	+0.1%	+0.0%	-0.0%
Consultants	36	+10	+9	+7	+5	+2	+0	+0.4%	+0.4%	+0.2%	+0.2%	+0.1%	+0.0%
Registrars	32	+15	+12	+7	+7	+2	-1	+0.9%	+0.6%	+0.3%	+0.3%	+0.1%	-0.0%
SHO/ Interns	20	-10	-6	-5	-5	-3	+1	-0.3%	-0.2%	-0.2%	-0.2%	-0.1%	+0.0%
Nursing & Midwifery	513	+12	+19	+28	+31	+28	+2	+0.0%	+0.0%	+0.1%	+0.1%	+0.1%	+0.0%
Nurse/ Midwife Manager	121	+2	+3	+4	+4	+1	-2	+0.0%	+0.0%	+0.0%	+0.0%	+0.0%	-0.0%
Nurse/ Midwife Specialist & AN/MP	71	+13	+10	+6	+4	-3	-0	+0.2%	+0.2%	+0.1%	+0.1%	-0.0%	-0.0%
Staff Nurse/ Staff Midwife	304	-21	-12	+1	+7	+16	+4	-0.1%	-0.0%	+0.0%	+0.0%	+0.1%	+0.0%
Nursing/ Midwifery Student	16	+16	+16	+15	+16	+13	-0	-1.0%	-1.0%	+14.5%	-1.0%	+4.2%	-0.0%
Nursing/ Midwifery other	2	+2	+2	+2	+2	+1		-1.0%	-1.0%	-1.0%	-1.0%	+1.0%	+0.0%
Health & Social Care Professionals	119	+11	+13	+7	+5	-2	-3	+0.1%	+0.1%	+0.1%	+0.0%	-0.0%	-0.0%
Therapy Professions	37	+5	+5	+3	+1	+1	-1	+0.1%	+0.2%	+0.1%	+0.0%	+0.0%	-0.0%
Social Care	4	+0	-0	+0	+0	+0		+0.0%	-0.0%	+0.0%	+0.0%	+0.0%	+0.0%
Social Workers	41	+3	+5	+4	+2	-2	+0	+0.1%	+0.1%	+0.1%	+0.1%	-0.0%	+0.0%
Psychologists	22	+1	+1	-1	+2	-1	-1	+0.0%	+0.1%	-0.0%	+0.1%	-0.0%	-0.1%
Pharmacy	1			-0				+0.0%	+0.0%	-0.1%	+0.0%	+0.0%	+0.0%
H&SC, Other	13	+2	+1	+1	+0	-0	-1	+0.2%	+0.1%	+0.1%	+0.0%	-0.0%	-0.1%
Management & Administrative	124	+33	+26	+20	+3	+1	-1	+0.4%	+0.3%	+0.2%	+0.0%	+0.0%	-0.0%
Management (VIII & above)	4	+1			-2	-4	-1	+0.3%	+0.0%	+0.0%	-0.3%	-0.5%	-0.2%
Administrative/ Supervisory (V to VII)	30	+16	+13	+10	-1	-1	-1	+1.2%	+0.8%	+0.5%	-0.0%	-0.0%	-0.0%
Clerical (III & IV)	91	+15	+12	+10	+5	+5	+2	+0.2%	+0.2%	+0.1%	+0.1%	+0.1%	+0.0%
General Support	79	-14	-6	-4	+0	-2	-1	-0.1%	-0.1%	-0.0%	+0.0%	-0.0%	-0.0%
Support	63	-12	-6	-4	+0	-2	-1	-0.2%	-0.1%	-0.1%	+0.0%	-0.0%	-0.0%
Maintenance/ Technical	16	-2	-0	+1	-0	-0	-0	-0.1%	-0.0%	+0.0%	-0.0%	-0.0%	-0.0%
Patient & Client Care	82	-1	-4	+2	+5	+3	+4	-0.0%	-0.0%	+0.0%	+0.1%	+0.0%	+0.0%
Health Care Assistants	71	-1	-4	+4	+5	+4	+2	-0.0%	-0.0%	+0.1%	+0.1%	+0.1%	+0.0%
Care, other	11	+1	-0	-2	-0	-1	+2	+0.1%	-0.0%	-0.2%	-0.0%	-0.0%	+0.2%

Source: Health Service Personnel Census

Primary Care

Jun 2021 (Dec 2016 figure: 1,257)	WTE Jun 2021	WTE change since Dec 16	WTE change since Dec 17	WTE change since Dec 18	WTE change since Dec 19	WTE change since Dec 20	WTE change since Apr 21	% change since Dec 16	% change since Dec 17	% change since Dec 18	% change since Dec 19	% change since Dec 20	% change since Apr 21
Overall	1,387	+130	+199	+154	+205	+91	+41	+10.4%	+16.7%	+12.5%	+17.4%	+7.0%	+3.1%
Medical & Dental	92	+13	+8	+3	-0	+1	+0	+0.2%	+0.1%	+0.0%	-0.0%	+0.0%	+0.0%
Consultants	4	+1	+1	+1	+1	+0		+0.2%	+0.2%	+0.2%	+0.2%	+0.0%	+0.0%
Registrars	43	+14	+11	+4	+2	+1	+1	+0.5%	+0.3%	+0.1%	+0.0%	+0.0%	+0.0%
SHO/ Interns	1	+1						-1.0%	+0.0%	+0.0%	+0.0%	+0.0%	+0.0%
Medical/ Dental, other	45	-3	-4	-2	-3	-0	-1	-0.1%	-0.1%	-0.0%	-0.1%	-0.0%	-0.0%
Nursing & Midwifery	314	+17	+9	+9	+7	-4	-2	+0.1%	+0.0%	+0.0%	+0.0%	-0.0%	-0.0%
Nurse/ Midwife Manager	41	+4	+6	+5	+5	+2	+2	+0.1%	+0.2%	+0.1%	+0.1%	+0.1%	+0.1%
Nurse/ Midwife Specialist & AN/MP	27	+7	+4	+7	+6	+1	+0	+0.4%	+0.2%	+0.4%	+0.3%	+0.0%	+0.0%
Staff Nurse/ Staff Midwife	95	+9	+8	+10	+10	-1	+1	+0.1%	+0.1%	+0.1%	+0.1%	-0.0%	+0.0%
Public Health Nurse	146	-0	-7	-9	-10	-7	-5	-0.0%	-0.0%	-0.1%	-0.1%	-0.0%	-0.0%
Nursing/ Midwifery Student	3	-4	-4	-4	-4			-0.6%	-0.6%	-0.6%	-0.6%	+0.0%	+0.0%
Nursing/ Midwifery other	1	+1	+1	+1		+0		-1.0%	-1.0%	-1.0%	+0.0%	+0.0%	+0.0%
Health & Social Care Professionals	305	+5	-3	-11	+18	+13	+12	+0.0%	-0.0%	-0.0%	+0.1%	+0.0%	+0.0%
Therapy Professions	232	-4	-9	-16	+5	+2	+1	-0.0%	-0.0%	-0.1%	+0.0%	+0.0%	+0.0%
Health Science/ Diagnostics	5	-0	-0	-1	-0	-0	-0	-0.1%	-0.1%	-0.1%	-0.1%	-0.0%	-0.0%
Social Workers	17	-3	-4	-4	+4	+1	-1	-0.2%	-0.2%	-0.2%	+0.3%	+0.1%	-0.0%
Psychologists	31	-0	-1	-4	-4	-1	+1	-0.0%	-0.0%	-0.1%	-0.1%	-0.0%	+0.0%
Pharmacy	4	+3	+3	+3	+3	+2	+2	+5.0%	+5.0%	+5.0%	+5.0%	+1.5%	+1.5%
H&SC, Other	16	+10	+8	+9	+9	+9	+9	+1.6%	+1.1%	+1.3%	+1.3%	+1.2%	+1.2%
Management & Administrative	413	+87	+84	+64	+81	+57	+30	+0.3%	+0.3%	+0.2%	+0.2%	+0.2%	+0.1%
Management (VIII & above)	34	+5	+4	-3	+2	+4	+1	+0.2%	+0.1%	-0.1%	+0.1%	+0.1%	+0.0%
Administrative/ Supervisory (V to VII)	92	+36	+27	+25	+28	+16	+8	+0.6%	+0.4%	+0.4%	+0.4%	+0.2%	+0.1%
Clerical (III & IV)	287	+45	+53	+42	+52	+38	+21	+0.2%	+0.2%	+0.2%	+0.2%	+0.2%	+0.1%
General Support	91	+20	+17	+12	+13	+7	-2	+0.3%	+0.2%	+0.2%	+0.2%	+0.1%	-0.0%
Support	83	+18	+15	+8	+11	+6	-3	+0.3%	+0.2%	+0.1%	+0.2%	+0.1%	-0.0%
Maintenance/ Technical	8	+2	+2	+4	+2	+1	+0	+0.3%	+0.4%	+0.9%	+0.3%	+0.2%	+0.0%
Patient & Client Care	173	-11	+85	+78	+86	+18	+2	-0.1%	+1.0%	+0.8%	+1.0%	+0.1%	+0.0%
Health Care Assistants	105	+74	+74	+65	+73	+9	+0	+2.4%	+2.4%	+1.7%	+2.3%	+0.1%	+0.0%
Home Help	1	-94	+1	+1	+1	-0	+0	-1.0%	-1.0%	-1.0%	-1.0%	-0.3%	+0.1%
Care, other	67	+9	+10	+12	+12	+9	+2	+0.2%	+0.2%	+0.2%	+0.2%	+0.2%	+0.0%

Source: Health Service Personnel Census

Disabilities

Jun 2021 (Dec 2016 figure: 1,430)	WTE Jun 2021	WTE change since Dec 16	WTE change since Dec 17	WTE change since Dec 18	WTE change since Dec 19	WTE change since Dec 20	WTE change since Apr 21	% change since Dec 16	% change since Dec 17	% change since Dec 18	% change since Dec 19	% change since Dec 20	% change since Apr 21
Overall	1,599	+168	+141	+120	+101	+52	+7	+11.8%	+9.7%	+8.1%	+6.7%	+3.4%	+0.5%
Medical & Dental	3	-0	-0	-0	-0			-0.0%	-0.0%	-0.0%	-0.0%	+0.0%	+0.0%
Consultants		-1	-1	-1				-1.0%	-1.0%	-1.0%	-1.0%	-1.0%	-1.0%
Medical/ Dental, other	3	+1	+1	+1	-0			+0.4%	+0.4%	+0.4%	-0.0%	+0.0%	+0.0%
Nursing & Midwifery	493	+44	+46	+38	+39	+28	-0	+0.1%	+0.1%	+0.1%	+0.1%	+0.1%	-0.0%
Nurse/ Midwife Manager	110	+9	+8	+10	+4	+3	+4	+0.1%	+0.1%	+0.1%	+0.0%	+0.0%	+0.0%
Nurse/ Midwife Specialist & AN/MP	10	+0	+2	+3	+3	+1		+0.0%	+0.2%	+0.4%	+0.4%	+0.1%	+0.0%
Staff Nurse/ Staff Midwife	345	+12	+16	+12	+21	+17	+6	+0.0%	+0.0%	+0.0%	+0.1%	+0.1%	+0.0%
Public Health Nurse	1	+1	+1	+1	+1	+1		-1.0%	-1.0%	-1.0%	-1.0%	-1.0%	+0.0%
Nursing/ Midwifery Student	24	+22	+20	+13	+10	+6	-11	+14.8%	+5.3%	+1.2%	+0.7%	+0.4%	-0.3%
Nursing/ Midwifery other	4	-1	-1	-1	-1			-0.2%	-0.2%	-0.2%	-0.2%	+0.0%	+0.0%
Health & Social Care Professionals	93	+32	+28	+33	+11	+3	+2	+0.5%	+0.4%	+0.5%	+0.1%	+0.0%	+0.0%
Therapy Professions	44	+20	+20	+20	+1	+0	+1	+0.9%	+0.9%	+0.8%	+0.0%	+0.0%	+0.0%
Social Care	11	+2	+3	+3	+4	+0	+1	+0.2%	+0.4%	+0.4%	+0.5%	+0.0%	+0.1%
Social Workers	18	+5	+4	+6	+2	-1	+1	+0.4%	+0.3%	+0.5%	+0.1%	-0.0%	+0.0%
Psychologists	13	+10	+8	+9	+8	+5	+1	+3.8%	+1.6%	+2.2%	+1.8%	+0.7%	+0.1%
H&SC, Other	8	-6	-7	-5	-5	-2	-1	-0.4%	-0.5%	-0.4%	-0.4%	-0.2%	-0.1%
Management & Administrative	107	+21	+26	+24	+16	+4	-0	+0.2%	+0.3%	+0.3%	+0.2%	+0.0%	-0.0%
Management (VIII & above)	16	+6	+4	+3	+2	-0	-0	+0.5%	+0.4%	+0.3%	+0.2%	-0.0%	-0.0%
Administrative/ Supervisory (V to VII)	37	+15	+18	+17	+10	+3	+1	+0.7%	+0.9%	+0.8%	+0.4%	+0.1%	+0.0%
Clerical (III & IV)	53	+1	+4	+4	+3	+0	-1	+0.0%	+0.1%	+0.1%	+0.1%	+0.0%	-0.0%
General Support	54	-6	-4	-3	-1	-1	-1	-0.1%	-0.1%	-0.1%	-0.0%	-0.0%	-0.0%
Support	48	-5	-3	-3	-1	-1	-1	-0.1%	-0.1%	-0.1%	-0.0%	-0.0%	-0.0%
Maintenance/ Technical	6	-1	-1	-0	-0	-0	-0	-0.1%	-0.1%	-0.0%	-0.0%	-0.0%	-0.0%
Patient & Client Care	848	+78	+46	+28	+36	+18	+7	+0.1%	+0.1%	+0.0%	+0.0%	+0.0%	+0.0%
Health Care Assistants	790	+71	+39	+17	+28	+14	+3	+0.1%	+0.1%	+0.0%	+0.0%	+0.0%	+0.0%
Home Help	14	-4	-1	+1	+1	+0	-0	-0.2%	-0.0%	+0.1%	+0.0%	+0.0%	-0.0%
Care, other	45	+11	+8	+11	+8	+4	+4	+0.3%	+0.2%	+0.3%	+0.2%	+0.1%	+0.1%

Source: Health Service Personnel Census

Older People

Jun 2021 (Dec 2016 figure: 1,645)	WTE Jun 2021	WTE change since Dec 16	WTE change since Dec 17	WTE change since Dec 18	WTE change since Dec 19	WTE change since Dec 20	WTE change since Apr 21	% change since Dec 16	% change since Dec 17	% change since Dec 18	% change since Dec 19	% change since Dec 20	% change since Apr 21
Overall	1,914	+269	+134	+131	+78	-4	+26	+16.3%	+7.5%	+7.4%	+4.3%	-0.2%	+1.4%
Medical & Dental	14	-0	-0	-0	-15	-18	-2	-0.0%	-0.0%	-0.0%	-0.5%	-0.6%	-0.1%
Medical/ Dental, other	14	-0	-0	-0	-15	-18	-2	-0.0%	-0.0%	-0.0%	-0.5%	-0.6%	-0.1%
Nursing & Midwifery	434	+44	+46	+23	+29	+21	+9	+0.1%	+0.1%	+0.1%	+0.1%	+0.1%	+0.0%
Nurse/ Midwife Manager	90	-1	+12	+1	-1	+2	+3	-0.0%	+0.1%	+0.0%	-0.0%	+0.0%	+0.0%
Nurse/ Midwife Specialist & AN/MP	9	+8	+9	+5	+2	-0	-0	+7.9%	-1.0%	+1.2%	+0.3%	-0.0%	-0.0%
Staff Nurse/ Staff Midwife	334	+36	+25	+16	+27	+19	+7	+0.1%	+0.1%	+0.1%	+0.1%	+0.1%	+0.0%
Nursing/ Midwifery other	1	+1	+1	+1	+1			-1.0%	-1.0%	-1.0%	-1.0%	+0.0%	+0.0%
Health & Social Care Professionals	33	+13	+15	+12	+3	+4	-0	+0.7%	+0.8%	+0.6%	+0.1%	+0.1%	-0.0%
Therapy Professions	16	+7	+8	+4	+5	+3	-0	+0.8%	+1.0%	+0.4%	+0.4%	+0.3%	-0.0%
Health Science/ Diagnostics	2	+0	+0	+0	+0	-0	+0	+0.1%	+0.1%	+0.1%	+0.3%	-0.0%	+0.1%
Social Workers	16	+6	+7	+8	-2	+1	-0	+0.6%	+0.8%	+1.0%	-0.1%	+0.0%	-0.0%
Management & Administrative	109	+29	+24	+23	+2	-2	-1	+0.4%	+0.3%	+0.3%	+0.0%	-0.0%	-0.0%
Management (VIII & above)	8	+4	+5	+5	+0			+1.0%	+1.7%	+1.7%	+0.0%	+0.0%	+0.0%
Administrative/ Supervisory (V to VII)	16	+11	+10	+9	+2	+1	-0	+2.0%	+1.5%	+1.2%	+0.1%	+0.1%	-0.0%
Clerical (III & IV)	85	+14	+9	+9	-0	-3	-1	+0.2%	+0.1%	+0.1%	-0.0%	-0.0%	-0.0%
General Support	122	-11	-9	-9	-7	-3	-2	-0.1%	-0.1%	-0.1%	-0.1%	-0.0%	-0.0%
Support	115	-11	-8	-8	-7	-3	-2	-0.1%	-0.1%	-0.1%	-0.1%	-0.0%	-0.0%
Maintenance/ Technical	7		-1	-1				+0.0%	-0.1%	-0.1%	+0.0%	+0.0%	+0.0%
Patient & Client Care	1,201	+194	+58	+82	+67	-5	+22	+0.2%	+0.1%	+0.1%	+0.1%	-0.0%	+0.0%
Health Care Assistants	582	+39	+16	+18	+19	+2	-2	+0.1%	+0.0%	+0.0%	+0.0%	+0.0%	-0.0%
Home Help	594	+160	+46	+69	+51	-11	+26	+0.4%	+0.1%	+0.1%	+0.1%	-0.0%	+0.0%
Care, other	26	-4	-4	-5	-2	+3	-2	-0.1%	-0.1%	-0.2%	-0.1%	+0.1%	-0.1%

Source: Health Service Personnel Census