

## CHO 1 Employment Report: March 2021

### Employment by Staff Group

Mar 2021 (Dec 2020 figure: 5,755)	WTE Feb 2021	WTE Mar 2021	WTE change since Feb 21	% change since Feb 21	WTE change since Dec 20	WTE change since Mar 20
<b>Overall</b>	<b>5,798</b>	<b>5,843</b>	<b>+45</b>	<b>+0.8%</b>	<b>+88</b>	<b>+326</b>
Consultants	40	40	-0	-0.8%	+2	+5
Registrars	74	73	-1	-1.7%	+1	+11
SHO/ Interns	19	19	-0	-0.8%	-5	-7
Medical/ Dental, other	67	68	+1	+1.7%	-12	-1
<b>Medical &amp; Dental</b>	<b>200</b>	<b>199</b>	<b>-1</b>	<b>-0.3%</b>	<b>-14</b>	<b>+8</b>
Nurse/ Midwife Manager	356	355	-2	-0.5%	+0	+3
Nurse/ Midwife Specialist & AN/MP	119	120	+0	+0.2%	+2	+14
Staff Nurse/ Staff Midwife	1,043	1,048	+5	+0.5%	+20	+30
Public Health Nurse	151	153	+2	+1.6%	+1	+1
Nursing/ Midwifery Student	54	53	-0	-0.3%	+30	+6
Nursing/ Midwifery other	7	8	+1	+14.6%	+1	+2
<b>Nursing &amp; Midwifery</b>	<b>1,730</b>	<b>1,737</b>	<b>+7</b>	<b>+0.4%</b>	<b>+53</b>	<b>+56</b>
Therapy Professions	331	333	+2	+0.7%	+10	+14
Health Science/ Diagnostics	7	7	+0	+0.9%	+0	+1
Social Care	15	14	-1	-4.1%	-1	+2
Social Workers	93	94	+1	+0.7%	+1	+6
Psychologists	65	65	-0	-0.1%	+3	+6
Pharmacy	3	3				+1
H&SC, Other	31	32	+1	+2.3%	+1	-2
<b>Health &amp; Social Care Professionals</b>	<b>545</b>	<b>548</b>	<b>+3</b>	<b>+0.6%</b>	<b>+15</b>	<b>+28</b>
Management (VIII & above)	64	63	-0	-0.5%	-0	+2
Administrative/ Supervisory (V to VII)	175	179	+3	+1.9%	+12	+28
Clerical (III & IV)	495	497	+2	+0.4%	+19	+43
<b>Management &amp; Administrative</b>	<b>734</b>	<b>739</b>	<b>+5</b>	<b>+0.7%</b>	<b>+31</b>	<b>+74</b>
Support	316	319	+3	+1.1%	+9	+11
Maintenance/ Technical	36	35	-1	-2.3%	-1	-1
<b>General Support</b>	<b>351</b>	<b>354</b>	<b>+3</b>	<b>+0.7%</b>	<b>+8</b>	<b>+10</b>
Health Care Assistants	1,534	1,536	+2	+0.1%	+17	+107
Home Help	575	595	+20	+3.4%	-24	+38
Care, other	129	135	+6	+5.0%	+3	+5
<b>Patient &amp; Client Care</b>	<b>2,237</b>	<b>2,265</b>	<b>+28</b>	<b>+1.3%</b>	<b>-5</b>	<b>+150</b>

## CHO 1 Employment Report: March 2021

### Community Health & Wellbeing

Mar 2021 (Dec 2020 figure: 18)	WTE Feb 2021	WTE Mar 2021	WTE change since Feb 21	% change since Feb 21	WTE change since Dec 20	WTE change since Mar 20
<b>Total Community Health &amp; Wellbeing</b>	<b>19</b>	<b>19</b>	<b>-0</b>	<b>-0.8%</b>	<b>+1</b>	<b>+5</b>

### Mental Health

Mar 2021 (Dec 2020 figure: 976)	WTE Feb 2021	WTE Mar 2021	WTE change since Feb 21	% change since Feb 21	WTE change since Dec 20	WTE change since Mar 20
<b>Total Mental Health</b>	<b>997</b>	<b>994</b>	<b>-3</b>	<b>-0.3%</b>	<b>+19</b>	<b>+35</b>
Consultants	36	36	-0	-0.9%	+2	+5
Registrars	31	32	+0	+1.2%	+3	+8
SHO/ Interns	18	18	-0	-1.0%	-5	-7
<b>Medical &amp; Dental</b>	<b>86</b>	<b>86</b>	<b>-0</b>	<b>-0.1%</b>	<b>+5</b>	<b>+6</b>
Nurse/ Midwife Manager	124	123	-2	-1.3%	+3	+5
Nurse/ Midwife Specialist & AN/MP	73	73	-1	-0.7%	-1	+5
Staff Nurse/ Staff Midwife	296	294	-2	-0.6%	+6	-0
Nursing/ Midwifery Student	16	16	+0	+2.2%	+13	+5
Nursing/ Midwifery other	1	2	+1	+114.9%	+1	+2
<b>Nursing &amp; Midwifery</b>	<b>510</b>	<b>507</b>	<b>-3</b>	<b>-0.5%</b>	<b>+25</b>	<b>+17</b>
Therapy Professions	37	39	+1	+3.6%	+3	+4
Social Care	4	4	-0	-0.3%	-0	-0
Social Workers	42	42	-0	-0.3%	-1	+3
Psychologists	24	24	-0	-0.1%	+0	+2
Pharmacy	1	1				
H&SC, Other	14	15	+1	+5.5%	+1	+0
<b>Health &amp; Social Care Professionals</b>	<b>121</b>	<b>123</b>	<b>+2</b>	<b>+1.6%</b>	<b>+10</b>	<b>+9</b>
Management (VIII & above)	6	6	-0	-2.7%	-2	-1
Administrative/ Supervisory (V to VII)	31	30	-1	-3.3%	-0	+1
Clerical (III & IV)	87	87	+0	+0.2%	+2	+3
<b>Management &amp; Administrative</b>	<b>124</b>	<b>123</b>	<b>-1</b>	<b>-0.9%</b>	<b>+2</b>	<b>+3</b>
Support	63	63			-2	+2
Maintenance/ Technical	16	16	-0	-2.1%	-0	-1
<b>General Support</b>	<b>79</b>	<b>79</b>	<b>-0</b>	<b>-0.4%</b>	<b>+0</b>	<b>+1</b>
Health Care Assistants	69	68	-1	-0.8%	+0	+1
Care, other	8	8	+0	+0.2%	-3	-2
<b>Patient &amp; Client Care</b>	<b>77</b>	<b>77</b>	<b>-1</b>	<b>-0.7%</b>	<b>-0</b>	<b>-0</b>

## Primary Care

Mar 2021 (Dec 2020 figure: 1,296)	WTE Feb 2021	WTE Mar 2021	WTE change since Feb 21	% change since Feb 21	WTE change since Dec 20	WTE change since Mar 20
<b>Total Primary Care</b>	<b>1,342</b>	<b>1,369</b>	<b>+26</b>	<b>+2.0%</b>	<b>+72</b>	<b>+181</b>
Consultants	4	4			+0	-0
Registrars	42	41	-2	-3.8%	-1	+3
SHO/ Interns	1	1	+0	+2.0%		
Medical/ Dental, other	47	49	+1	+2.8%	+4	+3
<b>Medical &amp; Dental</b>	<b>94</b>	<b>94</b>	<b>-0</b>	<b>-0.3%</b>	<b>+2</b>	<b>+6</b>
Nurse/ Midwife Manager	37	38	+0	+1.1%	-1	-3
Nurse/ Midwife Specialist & AN/MP	27	28	+1	+2.6%	+2	+6
Staff Nurse/ Staff Midwife	97	98	+2	+1.8%	+2	+12
Public Health Nurse	151	153	+2	+1.6%	+1	+1
<i>Post-registration Nurse/ Midwife Student</i>	3	3				
Nursing/ Midwifery Student	3	3				-4
Nursing/ Midwifery other	1	1	-0	-2.0%	-0	-0
<b>Nursing &amp; Midwifery</b>	<b>316</b>	<b>322</b>	<b>+5</b>	<b>+1.6%</b>	<b>+15</b>	<b>+11</b>
Therapy Professions	235	238	+3	+1.2%	+7	+9
Health Science/ Diagnostics	5	5	-0	-0.6%	-0	+1
Social Workers	16	18	+1	+8.7%	+2	+5
Psychologists	31	31	+0	+0.2%	-1	-2
Pharmacy	2	2				+1
H&SC, Other	7	7	+0	+1.9%	-0	+0
<b>Health &amp; Social Care Professionals</b>	<b>296</b>	<b>300</b>	<b>+5</b>	<b>+1.5%</b>	<b>+13</b>	<b>+14</b>
Management (VIII & above)	32	32	-0	-0.4%	+2	+1
Administrative/ Supervisory (V to VII)	81	85	+4	+5.3%	+9	+17
Clerical (III & IV)	267	268	+1	+0.6%	+19	+35
<b>Management &amp; Administrative</b>	<b>380</b>	<b>385</b>	<b>+6</b>	<b>+1.5%</b>	<b>+54</b>	<b>+53</b>
Support	85	88	+3	+3.6%	+11	+14
Maintenance/ Technical	7	7	-0	-0.3%	-0	+1
<b>General Support</b>	<b>92</b>	<b>95</b>	<b>+3</b>	<b>+3.3%</b>	<b>+17</b>	<b>+15</b>
Health Care Assistants	104	108	+4	+3.9%	+12	+75
Home Help	0	1	+0	+34.8%	-0	+0
Care, other	60	64	+4	+6.5%	+6	+7
<b>Patient &amp; Client Care</b>	<b>165</b>	<b>173</b>	<b>+8</b>	<b>+4.9%</b>	<b>+86</b>	<b>+82</b>

## Social Care

Mar 2021 (Dec 2020 figure: 3,464)	WTE Feb 2021	WTE Mar 2021	WTE change since Feb 21	% change since Feb 21	WTE change since Dec 20	WTE change since Mar 20
<b>Total Social Care</b>	<b>3,439</b>	<b>3,461</b>	<b>+22</b>	<b>+0.6%</b>	<b>-4</b>	<b>+106</b>
Medical/ Dental, other	19	19	-0	-0.9%	-17	-5
<b>Medical &amp; Dental</b>	<b>19</b>	<b>19</b>	<b>-0</b>	<b>-0.9%</b>	<b>-14</b>	<b>-5</b>
Nurse/ Midwife Manager	193	193	+0	+0.3%	-1	+1
Nurse/ Midwife Specialist & AN/MP	19	19	+0	+0.2%	+1	+3
Staff Nurse/ Staff Midwife	649	655	+5	+0.8%	+12	+17
Pre-registration Nurse/ Midwife Intern	19	24	+5	+27.0%	+24	+5
Pre-registration Nurse Intern (COVID-19)	6		-6	-100.0%	-6	-6
Nursing/ Midwifery awaiting registration	11	11				
Nursing/ Midwifery Student	35	35	-1	-1.4%	+17	+5
Nursing/ Midwifery other	5	5				
<b>Nursing &amp; Midwifery</b>	<b>901</b>	<b>906</b>	<b>+5</b>	<b>+0.6%</b>	<b>+46</b>	<b>+26</b>
Therapy Professions	58	56	-2	-3.4%	-0	+0
Health Science/ Diagnostics	2	2	+0	+5.6%	+0	+0
Social Care	11	11	-1	-5.2%	-1	+2
Social Workers	35	34	-1	-1.9%	+1	-1
Psychologists	11	11	-0	-0.7%	+4	+6
H&SC, Other	10	10	-0	-2.0%	+0	-3
<b>Health &amp; Social Care Professionals</b>	<b>127</b>	<b>124</b>	<b>-3</b>	<b>-2.7%</b>	<b>+11</b>	<b>+5</b>
Management (VIII & above)	25	25				+3
Administrative/ Supervisory (V to VII)	53	53	+0	+0.2%	+4	+10
Clerical (III & IV)	139	138	-0	-0.2%	-2	+4
<b>Management &amp; Administrative</b>	<b>216</b>	<b>216</b>	<b>-0</b>	<b>-0.1%</b>	<b>+18</b>	<b>+17</b>
Support	168	168	+0	+0.2%	+0	-6
Maintenance/ Technical	12	12	-0	-3.6%	-1	-1
<b>General Support</b>	<b>180</b>	<b>180</b>	<b>-0</b>	<b>-0.1%</b>	<b>-5</b>	<b>-7</b>
Health Care Assistants	1,361	1,359	-2	-0.1%	+4	+31
Home Help	575	594	+19	+3.4%	-24	+38
Care, other	60	63	+2	+4.1%	-0	-0
<b>Patient &amp; Client Care</b>	<b>1,995</b>	<b>2,016</b>	<b>+20</b>	<b>+1.0%</b>	<b>+70</b>	<b>+69</b>

## CHO 1 Employment Report: March 2021

### Disabilities

Mar 2021 (Dec 2020 figure: 1,547)	WTE Feb 2021	WTE Mar 2021	WTE change since Feb 21	% change since Feb 21	WTE change since Dec 20	WTE change since Mar 20
<b>Total Disabilities</b>	<b>1,575</b>	<b>1,575</b>	<b>-0</b>	<b>-0.0%</b>	<b>+28</b>	<b>+51</b>
Medical/ Dental, other	3	3				-0
<b>Medical &amp; Dental</b>	<b>3</b>	<b>3</b>				<b>-0</b>
Nurse/ Midwife Manager	106	106	-0	-0.1%	-0	+1
Nurse/ Midwife Specialist & AN/MP	10	10	+0	+0.4%	+1	+2
Staff Nurse/ Staff Midwife	332	335	+2	+0.7%	+6	+10
Nursing/ Midwifery Student	35	35	-1	-1.4%	+17	+5
Nursing/ Midwifery other	4	4				-1
<b>Nursing &amp; Midwifery</b>	<b>487</b>	<b>489</b>	<b>+2</b>	<b>+0.3%</b>	<b>+24</b>	<b>+17</b>
Therapy Professions	43	41	-3	-6.6%	-3	-6
Social Care	11	11	-1	-5.2%	-1	+2
Social Workers	19	18	-1	-3.7%	-1	-0
Psychologists	11	11	-0	-0.7%	+4	+6
H&SC, Other	10	10	-0	-2.0%	+0	-3
<b>Health &amp; Social Care Professionals</b>	<b>95</b>	<b>90</b>	<b>-4</b>	<b>-4.7%</b>	<b>-0</b>	<b>-0</b>
Management (VIII & above)	17	17				+3
Administrative/ Supervisory (V to VII)	36	36	+0	+0.1%	+2	+7
Clerical (III & IV)	52	52	-0	-0.1%	-0	+3
<b>Management &amp; Administrative</b>	<b>105</b>	<b>105</b>	<b>+0</b>	<b>+0.0%</b>	<b>+2</b>	<b>+13</b>
Support	50	49	-0	-0.5%	+0	+1
Maintenance/ Technical	6	6	-0	-7.0%		
<b>General Support</b>	<b>56</b>	<b>55</b>	<b>-1</b>	<b>-1.3%</b>	<b>+0</b>	<b>+1</b>
Health Care Assistants	776	777	+2	+0.2%	+2	+16
Home Help	15	15	-0	-1.0%	+1	+1
Care, other	39	40	+2	+3.9%	-1	+4
<b>Patient &amp; Client Care</b>	<b>829</b>	<b>832</b>	<b>+3</b>	<b>+0.4%</b>	<b>+2</b>	<b>+21</b>

## Older People

Mar 2021 (Dec 2020 figure: 1,918)	WTE Feb 2021	WTE Mar 2021	WTE change since Feb 21	% change since Feb 21	WTE change since Dec 20	WTE change since Mar 20
<b>Total Older People</b>	<b>1,864</b>	<b>1,886</b>	<b>+22</b>	<b>+1.2%</b>	<b>-31</b>	<b>+55</b>
Medical/ Dental, other	16	16	-0	-1.1%	-17	-5
<b>Medical &amp; Dental</b>	<b>16</b>	<b>16</b>	<b>-0</b>	<b>-1.1%</b>	<b>-17</b>	<b>-5</b>
Nurse/ Midwife Manager	86	87	+1	+0.7%	-1	-0
Nurse/ Midwife Specialist & AN/MP	9	9			+0	+1
Staff Nurse/ Staff Midwife	317	320	+3	+1.0%	+5	+7
Nursing/ Midwifery other	1	1				+1
<b>Nursing &amp; Midwifery</b>	<b>413</b>	<b>417</b>	<b>+4</b>	<b>+0.9%</b>	<b>+5</b>	<b>+9</b>
<b>Health &amp; Social Care Professionals</b>	<b>33</b>	<b>34</b>	<b>+1</b>	<b>+3.1%</b>	<b>+5</b>	<b>+5</b>
Management (VIII & above)	8	8				
Administrative/ Supervisory (V to VII)	17	17	+0	+0.2%	+2	+3
Clerical (III & IV)	86	86	-0	-0.2%	-2	+1
<b>Management &amp; Administrative</b>	<b>111</b>	<b>111</b>	<b>-0</b>	<b>-0.1%</b>	<b>+0</b>	<b>+4</b>
Support	118	119	+1	+0.5%	+0	-7
Maintenance/ Technical	6	6			-1	-1
<b>General Support</b>	<b>124</b>	<b>125</b>	<b>+1</b>	<b>+0.4%</b>	<b>-1</b>	<b>-8</b>
Health Care Assistants	585	582	-3	-0.6%	+2	+15
Home Help	560	579	+20	+3.5%	-25	+37
Care, other	22	22	+1	+4.6%	+0	-4
<b>Patient &amp; Client Care</b>	<b>1,166</b>	<b>1,184</b>	<b>+17</b>	<b>+1.5%</b>	<b>-23</b>	<b>+48</b>

## CHO 1 Employment by Administration (HSE / S38): March 2021

Mar 2021 (Dec 2020 figure: 5,755)	WTE Feb 2021	WTE Mar 2021	WTE change since Feb 21	% change since Feb 21	WTE change since Dec 20	WTE change since Mar 20
<b>Overall</b>	<b>5,798</b>	<b>5,843</b>	<b>+45</b>	<b>+0.8%</b>	<b>+88</b>	<b>+326</b>
<b>HSE</b>	<b>5,798</b>	<b>5,843</b>	<b>+45</b>	<b>+0.8%</b>	<b>+88</b>	<b>+326</b>

### HSE

Mar 2021 (Dec 2020 figure: 5,755)	WTE Feb 2021	WTE Mar 2021	WTE change since Feb 21	% change since Feb 21	WTE change since Dec 20	WTE change since Mar 20
<b>Overall</b>	<b>5,798</b>	<b>5,843</b>	<b>+45</b>	<b>+0.8%</b>	<b>+88</b>	<b>+326</b>
Consultants	40	40	-0	-0.0%	+2	+5
Registrars	74	73	-1	-0.0%	+1	+11
SHO/ Interns	19	19	-0	-0.0%	-5	-7
Medical/ Dental, other	67	68	+1	+0.0%	-12	-1
<b>Medical &amp; Dental</b>	<b>200</b>	<b>199</b>	<b>-1</b>	<b>-0.3%</b>	<b>-14</b>	<b>+8</b>
Nurse/ Midwife Manager	356	355	-2	-0.0%	+0	+3
Nurse/ Midwife Specialist & AN/MP	119	120	+0	+0.0%	+2	+14
Staff Nurse/ Staff Midwife	1,043	1,048	+5	+0.0%	+20	+30
Public Health Nurse	151	153	+2	+0.0%	+1	+1
Nursing/ Midwifery Student	54	53	-0	-0.0%	+30	+6
Nursing/ Midwifery other	7	8	+1	+0.1%	+1	+2
<b>Nursing &amp; Midwifery</b>	<b>1,730</b>	<b>1,737</b>	<b>+7</b>	<b>+0.4%</b>	<b>+53</b>	<b>+56</b>
Therapy Professions	331	333	+2	+0.0%	+10	+14
Health Science/ Diagnostics	7	7	+0	+0.0%	+0	+1
Social Care	15	14	-1	-0.0%	-1	+2
Social Workers	93	94	+1	+0.0%	+1	+6
Psychologists	65	65	-0	-0.0%	+3	+6
Pharmacy	3	3		+0.0%		+1
H&SC, Other	31	32	+1	+0.0%	+1	-2
<b>Health &amp; Social Care Professionals</b>	<b>545</b>	<b>548</b>	<b>+3</b>	<b>+0.6%</b>	<b>+15</b>	<b>+28</b>
Management (VIII & above)	64	63	-0	-0.0%	-0	+2
Administrative/ Supervisory (V to VII)	175	179	+3	+0.0%	+12	+28
Clerical (III & IV)	495	497	+2	+0.0%	+19	+43
<b>Management &amp; Administrative</b>	<b>734</b>	<b>739</b>	<b>+5</b>	<b>+0.7%</b>	<b>+31</b>	<b>+74</b>
Support	316	319	+3	+0.0%	+9	+11
Maintenance/ Technical	36	35	-1	-0.0%	-1	-1
<b>General Support</b>	<b>351</b>	<b>354</b>	<b>+3</b>	<b>+0.7%</b>	<b>+8</b>	<b>+10</b>
Health Care Assistants	1,534	1,536	+2	+0.0%	+17	+107
Home Help	575	595	+20	+0.0%	-24	+38
Care, other	129	135	+6	+0.0%	+3	+5
<b>Patient &amp; Client Care</b>	<b>2,237</b>	<b>2,265</b>	<b>+28</b>	<b>+1.3%</b>	<b>-5</b>	<b>+150</b>

**CHO 1 Employment by Grade Group & Staff Category: March 2021**

Mar 2021 (Dec 2020 figure: 5,755)	WTE Feb 2021	WTE Mar 2021	WTE change since Feb 21	% change since Feb 21	WTE change since Dec 20	WTE change since Mar 20
<b>Overall</b>	<b>5,798</b>	<b>5,843</b>	<b>+45</b>	<b>+0.8%</b>	<b>+88</b>	<b>+326</b>
Consultant Medicine	4	4			+0	-0
Consultant Psychiatry	36	36	-0	-0.9%	+2	+5
<b>Consultants</b>	<b>40</b>	<b>40</b>	<b>-0</b>	<b>-0.8%</b>	<b>+2</b>	<b>+5</b>
Registrar	65	64	-1	-1.9%	+1	+11
Senior Registrar	9	9				+1
Specialist Registrar				-100.0%		-1
<b>Registrars</b>	<b>74</b>	<b>73</b>	<b>-1</b>	<b>-1.7%</b>	<b>+1</b>	<b>+11</b>
Senior House Officer	19	19	-0	-0.8%	-5	-7
<b>SHO/ Interns</b>	<b>19</b>	<b>19</b>	<b>-0</b>	<b>-0.8%</b>	<b>-5</b>	<b>-7</b>
Dentists	28	29	+0	+0.3%	+0	+0
Other Medical	39	40	+1	+2.7%	-13	-1
<b>Medical/ Dental, other</b>	<b>67</b>	<b>68</b>	<b>+1</b>	<b>+1.7%</b>	<b>-12</b>	<b>-1</b>
<b>Medical &amp; Dental</b>	<b>200</b>	<b>199</b>	<b>-1</b>	<b>-0.3%</b>	<b>-6</b>	<b>+8</b>
Clinical Nurse/ Midwife Manager	276	277	+1	+0.2%	+3	+10
Director Nursing/Midwifery, Assistant	56	54	-2	-3.3%	-2	-1
Director of Nursing/Midwifery	24	24	-1	-2.2%	-2	-6
<b>Nurse/ Midwife Manager</b>	<b>356</b>	<b>355</b>	<b>-2</b>	<b>-0.5%</b>	<b>+0</b>	<b>+3</b>
Advanced Nurse/ Midwife Practitioner	15	15	+0	+0.8%	+1	+5
Clinical Nurse/ Midwife Specialist	105	105	+0	+0.1%	+1	+9
<b>Nurse/ Midwife Specialist &amp; AN/MP</b>	<b>119</b>	<b>120</b>	<b>+0</b>	<b>+0.2%</b>	<b>+2</b>	<b>+14</b>
Staff Nurse [Intellectual Disability]	247	252	+5	+1.9%	+15	+48
Staff Nurse [Psychiatric]	296	295	-2	-0.6%	+5	+0
Staff Nurses [General/ Children's]	499	502	+2	+0.5%	-0	-18
<b>Staff Nurse/ Staff Midwife</b>	<b>1,043</b>	<b>1,048</b>	<b>+5</b>	<b>+0.5%</b>	<b>+20</b>	<b>+30</b>
<b>Public Health Nurse</b>	<b>151</b>	<b>153</b>	<b>+2</b>	<b>+1.6%</b>	<b>+1</b>	<b>+1</b>
Pre-registration Nurse/ Midwife Intern	34	39	+5	+15.7%	+39	+10
Pre-registration Nurse Intern (COVID-19)	6		-6	-100.0%	-9	
Post-registration Nurse/ Midwife Student	3	3				-4
Nursing/ Midwifery awaiting registration	11	11				
<b>Nursing/ Midwifery Student</b>	<b>54</b>	<b>53</b>	<b>-0</b>	<b>-0.3%</b>	<b>+30</b>	<b>+6</b>
Nursing Education/Clinical	7	8	+1	+14.6%	+1	+2
<b>Nursing/ Midwifery other</b>	<b>7</b>	<b>8</b>	<b>+1</b>	<b>+14.6%</b>	<b>+1</b>	<b>+2</b>
<b>Nursing &amp; Midwifery</b>	<b>1,730</b>	<b>1,737</b>	<b>+7</b>	<b>+0.4%</b>	<b>+89</b>	<b>+56</b>
Dietitians	14	15	+1	+6.4%	-0	-2
Occupational Therapists	133	135	+2	+1.7%	+8	+9
Orthoptists	3	3	+0	+10.9%		+0
Physiotherapists	97	96	-1	-1.2%	+0	+4
Podiatrists & Chiropodists	11	10	-0	-1.4%	+1	-0
Speech & Language Therapists	74	74	+0	+0.2%	+2	+3
<b>Therapy Professions</b>	<b>331</b>	<b>333</b>	<b>+2</b>	<b>+0.7%</b>	<b>+10</b>	<b>+14</b>
Audiology	5	5	-0	-0.6%	-0	+1
Radiographers	2	2	+0	+5.6%	+0	+0
<b>Health Science/ Diagnostics</b>	<b>7</b>	<b>7</b>	<b>+0</b>	<b>+0.9%</b>	<b>+0</b>	<b>+1</b>
<b>Social Care</b>	<b>15</b>	<b>14</b>	<b>-1</b>	<b>-4.1%</b>	<b>-1</b>	<b>+2</b>
<b>Social Workers</b>	<b>93</b>	<b>94</b>	<b>+1</b>	<b>+0.7%</b>	<b>+1</b>	<b>+6</b>
<b>Psychologists</b>	<b>65</b>	<b>65</b>	<b>-0</b>	<b>-0.1%</b>	<b>+3</b>	<b>+6</b>
<b>Pharmacy</b>	<b>3</b>	<b>3</b>				<b>+1</b>



Mar 2021 (Dec 2020 figure: 5,755)	WTE Feb 2021	WTE Mar 2021	WTE change since Feb 21	% change since Feb 21	WTE change since Dec 20	WTE change since Mar 20
<b>Overall</b>	<b>5,798</b>	<b>5,843</b>	<b>+45</b>	<b>+0.8%</b>	<b>+88</b>	<b>+326</b>
Counsellor Therapists	22	23	+1	+3.1%	+1	+2
Dental Hygienists	5	5			-0	+0
Other Health & Social Care	3	3				-5
<b>H&amp;SC, Other</b>	<b>31</b>	<b>32</b>	<b>+1</b>	<b>+2.3%</b>	<b>+1</b>	<b>-2</b>
<b>Health &amp; Social Care Professionals</b>	<b>545</b>	<b>548</b>	<b>+3</b>	<b>+0.6%</b>	<b>+35</b>	<b>+28</b>
Executive Management	8	8				+1
Senior Management (VIII & GM)	56	55	-0	-0.5%	-0	+1
<b>Management (VIII &amp; above)</b>	<b>64</b>	<b>63</b>	<b>-0</b>	<b>-0.5%</b>	<b>-0</b>	<b>+2</b>
Middle Management (V-VII)	174	178	+3	+1.9%	+12	+28
Other Administrative	1	1				
<b>Administrative/ Supervisory (V to VII)</b>	<b>175</b>	<b>179</b>	<b>+3</b>	<b>+1.9%</b>	<b>+12</b>	<b>+28</b>
General Administrative (III & IV)	495	497	+2	+0.4%	+19	+43
<b>Clerical (III &amp; IV)</b>	<b>495</b>	<b>497</b>	<b>+2</b>	<b>+0.4%</b>	<b>+19</b>	<b>+43</b>
<b>Management &amp; Administrative</b>	<b>734</b>	<b>739</b>	<b>+5</b>	<b>+0.7%</b>	<b>+89</b>	<b>+74</b>
Catering	65	64	-1	-1.0%	-1	-0
Household Services	213	216	+3	+1.6%	+9	+13
Other Support	31	32	+1	+1.9%	+2	-1
Portering	7	7			-1	-1
<b>Support</b>	<b>316</b>	<b>319</b>	<b>+3</b>	<b>+1.1%</b>	<b>+9</b>	<b>+11</b>
Maintenance	36	35	-1	-2.3%	-1	-1
<b>Maintenance/ Technical</b>	<b>36</b>	<b>35</b>	<b>-1</b>	<b>-2.3%</b>	<b>-1</b>	<b>-1</b>
<b>General Support</b>	<b>351</b>	<b>354</b>	<b>+3</b>	<b>+0.7%</b>	<b>+12</b>	<b>+10</b>
HCA, Nurse's Aide, etc.	1,449	1,447	-2	-0.1%	+9	+38
HCA (Student Nurse/Midwife COVID-19)	2	1	-1	-29.7%	-2	+1
Health & Social Care Assistants	29	30	+1	+3.4%	+0	+10
Swabber (COVID-19)	54	58	+4	+6.7%	+9	+58
<b>Health Care Assistants</b>	<b>1,534</b>	<b>1,536</b>	<b>+2</b>	<b>+0.1%</b>	<b>+17</b>	<b>+107</b>
<b>Home Help</b>	<b>575</b>	<b>595</b>	<b>+20</b>	<b>+3.4%</b>	<b>-24</b>	<b>+38</b>
Other Care Grades	129	135	+6	+5.0%	+3	+5
<b>Care, other</b>	<b>129</b>	<b>135</b>	<b>+6</b>	<b>+5.0%</b>	<b>+3</b>	<b>+5</b>
<b>Patient &amp; Client Care</b>	<b>2,237</b>	<b>2,265</b>	<b>+28</b>	<b>+1.3%</b>	<b>+156</b>	<b>+150</b>

## Employment by WTE, Headcount, Gender, Full-Time /Part-Time etc.: Mar 2021

CHO 1	WTE	Headcount	WTE: no.	% Male	% female	Male WTE: no.	Female WTE: no.	% Total Perm	% Male Perm	% Female Perm	% Total Full Time	% Total Part Time	% Male FT	% Female FT
<b>Overall</b>	<b>5,843</b>	<b>6,728</b>	<b>1.15</b>	<b>17.4%</b>	<b>82.6%</b>	<b>1.08</b>	<b>1.17</b>	<b>82.0%</b>	<b>82.8%</b>	<b>81.8%</b>	<b>65.1%</b>	<b>34.9%</b>	<b>84.9%</b>	<b>61.0%</b>
Consultant Medicine	4	4	1.10	25.0%	75.0%	1.00	1.15	75.0%	75.0%	66.7%	75.0%	25.0%	100.0%	66.7%
Consultant Psychiatry	36	39	1.08	43.6%	56.4%	1.12	1.06	71.8%	71.8%	81.8%	92.3%	7.7%	88.2%	95.5%
<b>Consultants</b>	<b>40</b>	<b>43</b>	<b>1.08</b>	<b>41.9%</b>	<b>58.1%</b>	<b>1.11</b>	<b>1.07</b>	<b>72.1%</b>	<b>61.1%</b>	<b>80.0%</b>	<b>90.7%</b>	<b>9.3%</b>	<b>88.9%</b>	<b>92.0%</b>
<b>Registrars</b>	<b>73</b>	<b>75</b>	<b>1.03</b>	<b>44.0%</b>	<b>56.0%</b>	<b>1.01</b>	<b>1.05</b>	<b>9.3%</b>	<b>12.1%</b>	<b>7.1%</b>	<b>96.0%</b>	<b>4.0%</b>	<b>97.0%</b>	<b>95.2%</b>
<b>SHO/ Interns</b>	<b>19</b>	<b>19</b>	<b>1.01</b>	<b>52.6%</b>	<b>47.4%</b>	<b>1.00</b>	<b>1.02</b>	<b>0.0%</b>	<b>0.0%</b>	<b>0.0%</b>	<b>100.0%</b>	<b>0.0%</b>	<b>100.0%</b>	<b>100.0%</b>
<b>Medical/ Dental, other</b>	<b>68</b>	<b>107</b>	<b>1.57</b>	<b>48.6%</b>	<b>51.4%</b>	<b>1.62</b>	<b>1.52</b>	<b>83.2%</b>	<b>84.6%</b>	<b>81.8%</b>	<b>43.0%</b>	<b>57.0%</b>	<b>42.3%</b>	<b>43.6%</b>
<b>Medical &amp; Dental</b>	<b>199</b>	<b>244</b>	<b>1.22</b>	<b>46.3%</b>	<b>53.7%</b>	<b>1.24</b>	<b>1.21</b>	<b>52.0%</b>	<b>52.2%</b>	<b>51.9%</b>	<b>72.1%</b>	<b>27.9%</b>	<b>70.8%</b>	<b>73.3%</b>
<b>Nurse/ Midwife Manager</b>	<b>355</b>	<b>374</b>	<b>1.05</b>	<b>18.7%</b>	<b>81.3%</b>	<b>1.01</b>	<b>1.06</b>	<b>99.5%</b>	<b>98.6%</b>	<b>99.7%</b>	<b>87.7%</b>	<b>12.3%</b>	<b>98.6%</b>	<b>85.2%</b>
<b>Nurse/ Midwife Specialist &amp; AN/MP</b>	<b>120</b>	<b>127</b>	<b>1.06</b>	<b>18.1%</b>	<b>81.9%</b>	<b>1.00</b>	<b>1.08</b>	<b>97.6%</b>	<b>100.0%</b>	<b>97.1%</b>	<b>89.0%</b>	<b>11.0%</b>	<b>100.0%</b>	<b>86.5%</b>
<b>Staff Nurse/ Staff Midwife</b>	<b>1,048</b>	<b>1,199</b>	<b>1.14</b>	<b>13.1%</b>	<b>86.9%</b>	<b>1.04</b>	<b>1.16</b>	<b>93.0%</b>	<b>95.5%</b>	<b>92.6%</b>	<b>72.1%</b>	<b>27.9%</b>	<b>93.0%</b>	<b>68.9%</b>
<b>Public Health Nurse</b>	<b>153</b>	<b>177</b>	<b>1.16</b>		<b>100.0%</b>		<b>1.16</b>	<b>94.9%</b>		<b>94.9%</b>	<b>74.0%</b>	<b>26.0%</b>		<b>74.0%</b>
<b>Nursing/ Midwifery Student</b>	<b>53</b>	<b>93</b>	<b>1.74</b>	<b>12.9%</b>	<b>87.1%</b>	<b>2.00</b>	<b>1.71</b>	<b>2.2%</b>	<b>0.0%</b>	<b>2.5%</b>	<b>100.0%</b>	<b>0.0%</b>	<b>100.0%</b>	<b>100.0%</b>
<b>Nursing/ Midwifery other</b>	<b>8</b>	<b>8</b>	<b>1.04</b>		<b>100.0%</b>		<b>1.04</b>	<b>100.0%</b>		<b>100.0%</b>	<b>100.0%</b>	<b>0.0%</b>		<b>100.0%</b>
<b>Nursing &amp; Midwifery</b>	<b>1,737</b>	<b>1,978</b>	<b>1.14</b>	<b>13.2%</b>	<b>86.8%</b>	<b>1.05</b>	<b>1.15</b>	<b>90.4%</b>	<b>92.4%</b>	<b>90.2%</b>	<b>77.7%</b>	<b>22.3%</b>	<b>95.4%</b>	<b>75.0%</b>
<b>Therapy Professions</b>	<b>333</b>	<b>383</b>	<b>1.15</b>	<b>7.8%</b>	<b>92.2%</b>	<b>1.05</b>	<b>1.16</b>	<b>94.0%</b>	<b>90.0%</b>	<b>94.3%</b>	<b>71.0%</b>	<b>29.0%</b>	<b>90.0%</b>	<b>69.4%</b>
<b>Health Science/ Diagnostics</b>	<b>7</b>	<b>9</b>	<b>1.34</b>		<b>100.0%</b>		<b>1.34</b>	<b>100.0%</b>		<b>100.0%</b>	<b>44.4%</b>	<b>55.6%</b>		<b>44.4%</b>
<b>Social Care</b>	<b>14</b>	<b>19</b>	<b>1.34</b>	<b>5.3%</b>	<b>94.7%</b>	<b>1.00</b>	<b>1.36</b>	<b>100.0%</b>	<b>100.0%</b>	<b>100.0%</b>	<b>47.4%</b>	<b>52.6%</b>	<b>100.0%</b>	<b>44.4%</b>
<b>Social Workers</b>	<b>94</b>	<b>102</b>	<b>1.09</b>	<b>16.7%</b>	<b>83.3%</b>	<b>1.03</b>	<b>1.10</b>	<b>93.1%</b>	<b>100.0%</b>	<b>91.8%</b>	<b>85.3%</b>	<b>14.7%</b>	<b>94.1%</b>	<b>83.5%</b>
<b>Psychologists</b>	<b>65</b>	<b>71</b>	<b>1.09</b>	<b>26.8%</b>	<b>73.2%</b>	<b>1.02</b>	<b>1.11</b>	<b>97.2%</b>	<b>100.0%</b>	<b>96.2%</b>	<b>80.3%</b>	<b>19.7%</b>	<b>94.7%</b>	<b>75.0%</b>
<b>Pharmacy</b>	<b>3</b>	<b>3</b>	<b>1.20</b>	<b>33.3%</b>	<b>66.7%</b>	<b>1.43</b>	<b>1.11</b>	<b>100.0%</b>	<b>100.0%</b>	<b>100.0%</b>	<b>66.7%</b>	<b>33.3%</b>	<b>0.0%</b>	<b>100.0%</b>
<b>H&amp;SC, Other</b>	<b>32</b>	<b>36</b>	<b>1.13</b>	<b>22.2%</b>	<b>77.8%</b>	<b>1.11</b>	<b>1.14</b>	<b>100.0%</b>	<b>100.0%</b>	<b>100.0%</b>	<b>63.9%</b>	<b>36.1%</b>	<b>75.0%</b>	<b>60.7%</b>
<b>Health &amp; Social Care</b>	<b>548</b>	<b>623</b>	<b>1.14</b>	<b>12.2%</b>	<b>87.8%</b>	<b>1.04</b>	<b>1.15</b>	<b>94.9%</b>	<b>96.1%</b>	<b>94.7%</b>	<b>72.9%</b>	<b>27.1%</b>	<b>89.5%</b>	<b>70.6%</b>
<b>Management (VIII &amp; above)</b>	<b>63</b>	<b>65</b>	<b>1.03</b>	<b>24.6%</b>	<b>75.4%</b>	<b>1.02</b>	<b>1.03</b>	<b>95.4%</b>	<b>100.0%</b>	<b>93.9%</b>	<b>92.3%</b>	<b>7.7%</b>	<b>93.8%</b>	<b>91.8%</b>
<b>Administrative/ Supervisory (V to VII)</b>	<b>179</b>	<b>190</b>	<b>1.06</b>	<b>13.7%</b>	<b>86.3%</b>	<b>1.02</b>	<b>1.07</b>	<b>93.7%</b>	<b>84.6%</b>	<b>95.1%</b>	<b>81.1%</b>	<b>18.9%</b>	<b>96.2%</b>	<b>78.7%</b>
<b>Clerical (III &amp; IV)</b>	<b>497</b>	<b>569</b>	<b>1.14</b>	<b>8.6%</b>	<b>91.4%</b>	<b>1.08</b>	<b>1.15</b>	<b>88.6%</b>	<b>83.7%</b>	<b>89.0%</b>	<b>69.4%</b>	<b>30.6%</b>	<b>89.8%</b>	<b>67.5%</b>
<b>Management &amp; Administrative</b>	<b>739</b>	<b>824</b>	<b>1.11</b>	<b>11.0%</b>	<b>89.0%</b>	<b>1.05</b>	<b>1.12</b>	<b>90.3%</b>	<b>86.8%</b>	<b>90.7%</b>	<b>73.9%</b>	<b>26.1%</b>	<b>92.3%</b>	<b>71.6%</b>

<b>Support</b>	<b>319</b>	<b>379</b>	<b>1.19</b>	<b>25.1%</b>	<b>74.9%</b>	<b>1.07</b>	<b>1.23</b>	<b>92.1%</b>	<b>84.2%</b>	<b>94.7%</b>	<b>58.6%</b>	<b>41.4%</b>	<b>80.0%</b>	<b>51.4%</b>
<b>Maintenance/ Technical</b>	<b>35</b>	<b>36</b>	<b>1.03</b>	<b>100.0%</b>		<b>1.03</b>		<b>100.0%</b>	<b>100.0%</b>	<b>#DIV/0</b>	<b>100.0%</b>	<b>0.0%</b>	<b>100.0%</b>	
<b>General Support</b>	<b>354</b>	<b>415</b>	<b>1.17</b>	<b>31.6%</b>	<b>68.4%</b>	<b>1.06</b>	<b>1.23</b>	<b>92.8%</b>	<b>88.5%</b>	<b>94.7%</b>	<b>62.2%</b>	<b>37.8%</b>	<b>85.5%</b>	<b>51.4%</b>
<b>Health Care Assistants</b>	<b>1,536</b>	<b>1,713</b>	<b>1.12</b>	<b>23.9%</b>	<b>76.1%</b>	<b>1.06</b>	<b>1.13</b>	<b>88.8%</b>	<b>85.6%</b>	<b>89.8%</b>	<b>71.0%</b>	<b>29.0%</b>	<b>87.6%</b>	<b>65.8%</b>
<b>Home Help</b>	<b>595</b>	<b>771</b>	<b>1.30</b>	<b>4.4%</b>	<b>95.6%</b>	<b>1.21</b>	<b>1.30</b>	<b>28.5%</b>	<b>26.5%</b>	<b>28.6%</b>	<b>2.6%</b>	<b>97.4%</b>	<b>5.9%</b>	<b>2.4%</b>
<b>Care, other</b>	<b>135</b>	<b>160</b>	<b>1.18</b>	<b>32.5%</b>	<b>67.5%</b>	<b>1.20</b>	<b>1.18</b>	<b>87.5%</b>	<b>75.0%</b>	<b>93.5%</b>	<b>70.6%</b>	<b>29.4%</b>	<b>73.1%</b>	<b>69.4%</b>
<b>Patient &amp; Client Care</b>	<b>2,265</b>	<b>2,644</b>	<b>1.17</b>	<b>18.8%</b>	<b>81.2%</b>	<b>1.09</b>	<b>1.19</b>	<b>71.1%</b>	<b>80.4%</b>	<b>69.0%</b>	<b>51.0%</b>	<b>49.0%</b>	<b>80.4%</b>	<b>44.2%</b>

## Employment by WTE, Headcount, Gender, Full-Time /Part-Time etc.: Mar 2021

CHO 1	WTE	Headcount	WTE: no.	% Male	% female	Male WTE: no.	Female WTE: no.	% Total Perm	% Male Perm	% Female Perm	% Total Full Time	% Total Part Time	% Male FT	% Female FT
<b>Overall</b>	<b>5,843</b>	<b>6,728</b>	<b>1.15</b>	<b>17.4%</b>	<b>82.6%</b>	<b>1.08</b>	<b>1.17</b>	<b>82.0%</b>	<b>82.8%</b>	<b>81.8%</b>	<b>65.1%</b>	<b>34.9%</b>	<b>84.9%</b>	<b>61.0%</b>
Community Health & Wellbeing	19	21	1.11	4.8%	95.2%	1.00	1.11	90.5%	90.5%	90.0%	71.4%	28.6%	100.0%	100.0%
Mental Health	994	1,085	1.09	26.7%	73.3%	1.04	1.11	88.6%	88.6%	89.9%	87.6%	12.4%	96.6%	96.6%
Primary Care	1,369	1,591	1.16	14.5%	85.5%	1.07	1.18	83.3%	83.3%	85.5%	67.2%	32.8%	84.0%	84.0%
Social Care	3,461	4,031	1.16	16.1%	83.9%	1.10	1.18	79.7%	79.7%	78.4%	58.2%	41.8%	80.1%	80.1%

## CHO 1 Skills Mix by Staff Grouping: March 2021

Mar 2021 (Dec 2019 figure: 5,468)	WTE Dec 2016	WTE Dec 2017	WTE Dec 2018	WTE Dec 2019	WTE Dec 2020	WTE Feb 2021	WTE Mar 2021
<b>Overall</b>	<b>5,280</b>	<b>5,368</b>	<b>5,436</b>	<b>5,468</b>	<b>5,755</b>	<b>5,798</b>	<b>5,843</b>
Consultant Medicine	1.8%	1.7%	1.6%	1.5%	1.7%	1.8%	1.8%
Consultant Psychiatry	16.1%	15.8%	16.2%	15.0%	16.0%	18.2%	18.1%
<b>Consultants</b>	<b>17.8%</b>	<b>17.5%</b>	<b>17.8%</b>	<b>16.4%</b>	<b>17.6%</b>	<b>20.0%</b>	<b>19.9%</b>
Registrar	23.7%	26.6%	27.9%	27.4%	29.4%	32.7%	32.2%
Senior Registrar	3.0%	2.3%	5.8%	3.9%	4.0%	4.3%	4.3%
Specialist Registrar		0.6%	0.5%	0.5%			
<b>Registrars</b>	<b>26.6%</b>	<b>29.5%</b>	<b>34.3%</b>	<b>31.8%</b>	<b>33.4%</b>	<b>37.0%</b>	<b>36.4%</b>
Senior House Officer	17.5%	15.6%	13.8%	12.8%	11.2%	9.5%	9.4%
<b>SHO/ Interns</b>	<b>17.5%</b>	<b>15.6%</b>	<b>13.8%</b>	<b>12.8%</b>	<b>11.2%</b>	<b>9.5%</b>	<b>9.4%</b>
Dentists	16.6%	15.9%	15.3%	13.5%	13.2%	14.2%	14.3%
Other Medical	21.5%	21.5%	18.8%	25.4%	24.5%	19.3%	19.9%
<b>Medical/ Dental, other</b>	<b>38.1%</b>	<b>37.4%</b>	<b>34.1%</b>	<b>39.0%</b>	<b>37.7%</b>	<b>33.5%</b>	<b>34.2%</b>
<b>Medical &amp; Dental</b>	<b>3.2%</b>	<b>3.2%</b>	<b>3.4%</b>	<b>3.8%</b>	<b>3.7%</b>	<b>100.0%</b>	<b>3.4%</b>
Clinical Nurse/ Midwife Manager	16.4%	15.8%	16.1%	16.3%	16.2%	16.0%	15.9%
Director Nursing/Midwifery, Assistant	3.2%	3.0%	3.1%	3.1%	3.3%	3.2%	3.1%
Director of Nursing/Midwifery	1.6%	1.6%	1.4%	1.8%	1.5%	1.4%	1.4%
<b>Nurse/ Midwife Manager</b>	<b>21.2%</b>	<b>20.3%</b>	<b>20.6%</b>	<b>21.2%</b>	<b>21.0%</b>	<b>20.6%</b>	<b>20.4%</b>
Advanced Nurse/ Midwife Practitioner	0.2%	0.1%	0.4%	0.5%	0.8%	0.9%	0.9%
Clinical Nurse/ Midwife Specialist	5.2%	5.5%	5.4%	5.7%	6.2%	6.0%	6.0%
<b>Nurse/ Midwife Specialist &amp; AN/MP</b>	<b>5.4%</b>	<b>5.6%</b>	<b>5.8%</b>	<b>6.2%</b>	<b>7.0%</b>	<b>6.9%</b>	<b>6.9%</b>
Staff Nurse [Intellectual Disability]	12.2%	12.2%	12.6%	12.4%	14.1%	14.3%	14.5%
Staff Nurse [Psychiatric]	20.1%	19.5%	18.4%	18.1%	17.2%	17.1%	17.0%
Staff Nurses [General/ Children's]	31.4%	32.1%	31.8%	31.0%	29.8%	28.9%	28.9%
<b>Staff Nurse/ Staff Midwife</b>	<b>63.7%</b>	<b>63.7%</b>	<b>62.8%</b>	<b>61.5%</b>	<b>61.1%</b>	<b>60.3%</b>	<b>60.4%</b>
<b>Public Health Nurse</b>	<b>8.9%</b>	<b>9.3%</b>	<b>9.4%</b>	<b>9.5%</b>	<b>9.1%</b>	<b>8.7%</b>	<b>8.8%</b>
Pre-registration Nurse/ Midwife Intern	0.1%	0.2%	0.7%	0.2%		2.0%	2.3%
Pre-registration Nurse Intern (COVID-19)					0.6%	0.3%	
Post-registration Nurse/ Midwife Student	0.4%	0.4%	0.4%	0.4%	0.2%	0.2%	0.2%
Nursing/ Midwifery awaiting registration			0.1%	0.7%	0.7%	0.6%	0.6%
<b>Nursing/ Midwifery Student</b>	<b>0.5%</b>	<b>0.7%</b>	<b>1.1%</b>	<b>1.3%</b>	<b>1.4%</b>	<b>3.1%</b>	<b>3.1%</b>
<b>Nursing/ Midwifery other</b>	<b>0.3%</b>	<b>0.3%</b>	<b>0.3%</b>	<b>0.3%</b>	<b>0.4%</b>	<b>0.4%</b>	<b>0.4%</b>
<b>Nursing &amp; Midwifery</b>	<b>31.0%</b>	<b>30.4%</b>	<b>30.5%</b>	<b>30.1%</b>	<b>29.3%</b>	<b>100.0%</b>	<b>29.7%</b>
Dietitians	3.0%	3.2%	3.5%	3.4%	2.9%	2.6%	2.7%
Occupational Therapists	24.4%	22.9%	24.3%	25.0%	23.9%	24.4%	24.6%
Orthoptists	0.4%	0.5%	0.5%	0.5%	0.6%	0.5%	0.6%
Physiotherapists	18.6%	18.3%	18.4%	17.6%	17.9%	17.8%	17.5%
Podiatrists & Chiropractors	2.0%	1.7%	1.8%	1.7%	1.7%	1.9%	1.9%
Speech & Language Therapists	13.1%	14.6%	13.8%	13.5%	13.6%	13.6%	13.6%
<b>Therapy Professions</b>	<b>61.6%</b>	<b>61.3%</b>	<b>62.4%</b>	<b>61.7%</b>	<b>60.7%</b>	<b>60.8%</b>	<b>60.9%</b>
Audiology	1.1%	1.1%	1.1%	1.0%	0.9%	0.9%	0.9%
Radiographers	0.3%	0.3%	0.3%	0.2%	0.3%	0.3%	0.3%
<b>Health Science/ Diagnostics</b>	<b>1.4%</b>	<b>1.4%</b>	<b>1.4%</b>	<b>1.3%</b>	<b>1.2%</b>	<b>1.2%</b>	<b>1.2%</b>
<b>Social Care</b>	<b>2.7%</b>	<b>2.4%</b>	<b>2.3%</b>	<b>2.2%</b>	<b>2.8%</b>	<b>2.7%</b>	<b>2.6%</b>
Social Workers	16.5%	16.0%	15.3%	16.6%	17.3%	17.1%	17.1%
<b>Social Workers</b>	<b>16.5%</b>	<b>16.0%</b>	<b>15.3%</b>	<b>16.6%</b>	<b>17.3%</b>	<b>17.1%</b>	<b>17.1%</b>
<b>Psychologists</b>	<b>11.2%</b>	<b>11.6%</b>	<b>12.1%</b>	<b>11.7%</b>	<b>11.7%</b>	<b>12.0%</b>	<b>11.9%</b>
<b>Pharmacy</b>	<b>0.3%</b>	<b>0.3%</b>	<b>0.3%</b>	<b>0.3%</b>	<b>0.5%</b>	<b>0.5%</b>	<b>0.5%</b>
Counsellor Therapists	3.7%	4.1%	3.8%	3.8%	4.2%	4.1%	4.2%
Dental Hygienists	1.1%	1.1%	1.0%	1.0%	1.0%	1.0%	1.0%
Other Health & Social Care	1.6%	1.8%	1.4%	1.5%	0.6%	0.6%	0.6%

Mar 2021 (Dec 2019 figure: 5,468)	WTE Dec 2016	WTE Dec 2017	WTE Dec 2018	WTE Dec 2019	WTE Dec 2020	WTE Feb 2021	WTE Mar 2021
<b>Overall</b>	<b>5,280</b>	<b>5,368</b>	<b>5,436</b>	<b>5,468</b>	<b>5,755</b>	<b>5,798</b>	<b>5,843</b>
<b>H&amp;SC, Other</b>	<b>6.4%</b>	<b>7.0%</b>	<b>6.3%</b>	<b>6.3%</b>	<b>5.8%</b>	<b>5.7%</b>	<b>5.8%</b>
<b>Health &amp; Social Care Professionals</b>	<b>9.3%</b>	<b>9.3%</b>	<b>9.4%</b>	<b>9.4%</b>	<b>9.3%</b>	<b>100.0%</b>	<b>9.4%</b>
Executive Management	1.2%	1.3%	1.3%	1.0%	1.1%	1.1%	1.1%
Senior Management (VIII & GM)	6.8%	6.8%	7.9%	8.1%	7.8%	7.6%	7.5%
<b>Management (VIII &amp; above)</b>	<b>8.0%</b>	<b>8.2%</b>	<b>9.2%</b>	<b>9.2%</b>	<b>9.0%</b>	<b>8.6%</b>	<b>8.5%</b>
Middle Management (V-VII)	16.4%	17.9%	18.3%	20.7%	23.3%	23.8%	24.0%
Other Administrative	0.2%	0.2%	0.2%	0.2%	0.1%	0.1%	0.1%
<b>Administrative/ Supervisory (V to VII)</b>	<b>16.6%</b>	<b>18.1%</b>	<b>18.4%</b>	<b>20.8%</b>	<b>23.5%</b>	<b>23.9%</b>	<b>24.2%</b>
<b>Clerical (III &amp; IV)</b>	<b>75.5%</b>	<b>73.8%</b>	<b>72.4%</b>	<b>70.0%</b>	<b>67.6%</b>	<b>67.5%</b>	<b>67.3%</b>
<b>Management &amp; Administrative</b>	<b>11.1%</b>	<b>11.1%</b>	<b>11.4%</b>	<b>11.9%</b>	<b>12.3%</b>	<b>100.0%</b>	<b>12.7%</b>
Catering	15.6%	16.7%	16.8%	17.8%	18.8%	18.5%	18.2%
Household Services	65.1%	62.1%	61.6%	59.8%	59.8%	60.6%	61.1%
Other Support	6.2%	8.2%	9.8%	9.7%	8.6%	8.8%	8.9%
Portering	2.4%	2.2%	2.2%	2.3%	2.2%	1.9%	1.9%
<b>Support</b>	<b>89.4%</b>	<b>89.3%</b>	<b>90.3%</b>	<b>89.5%</b>	<b>89.5%</b>	<b>89.8%</b>	<b>90.1%</b>
<b>Maintenance/ Technical</b>	<b>10.6%</b>	<b>10.7%</b>	<b>9.7%</b>	<b>10.5%</b>	<b>10.5%</b>	<b>10.2%</b>	<b>9.9%</b>
<b>General Support</b>	<b>6.8%</b>	<b>6.5%</b>	<b>6.4%</b>	<b>6.2%</b>	<b>6.0%</b>	<b>100.0%</b>	<b>6.1%</b>
HCA, Nurse's Aide, etc.	66.1%	66.3%	67.1%	66.5%	63.3%	64.8%	63.9%
HCA (Student Nurse/Midwife COVID-19)					0.1%	0.1%	0.1%
Health & Social Care Assistants	0.7%	0.8%	1.3%	0.9%	1.3%	1.3%	1.3%
Swabber (COVID-19)					2.1%	2.4%	2.5%
<b>Health Care Assistants</b>	<b>66.8%</b>	<b>67.1%</b>	<b>68.3%</b>	<b>67.4%</b>	<b>66.9%</b>	<b>68.5%</b>	<b>67.8%</b>
<b>Home Help</b>	<b>26.7%</b>	<b>26.5%</b>	<b>25.4%</b>	<b>26.4%</b>	<b>27.3%</b>	<b>25.7%</b>	<b>26.2%</b>
Other Care Grades	6.4%	6.4%	6.2%	6.2%	5.8%	5.8%	6.0%
<b>Care, other</b>	<b>6.4%</b>	<b>6.4%</b>	<b>6.2%</b>	<b>6.2%</b>	<b>5.8%</b>	<b>5.8%</b>	<b>6.0%</b>
<b>Patient &amp; Client Care</b>	<b>38.7%</b>	<b>39.5%</b>	<b>38.9%</b>	<b>38.6%</b>	<b>39.5%</b>	<b>100.0%</b>	<b>38.8%</b>
<b>Total</b>	<b>100 %</b>	<b>100 %</b>	<b>100 %</b>	<b>100 %</b>	<b>100%</b>	<b>100 %</b>	<b>100 %</b>

## CHO 1 Skills Mix by Care Group: March 2021

Mar 2021 (Dec 2019 figure: 953)	WTE Dec 2016	WTE Dec 2017	WTE Dec 2018	WTE Dec 2019	WTE Dec 2020	WTE Feb 2021	WTE Mar 2021
<b>Mental Health</b>	<b>948</b>	<b>942</b>	<b>941</b>	<b>953</b>	<b>976</b>	<b>997</b>	<b>994</b>
<b>Consultants</b>	<b>36.2%</b>	<b>36.8%</b>	<b>37.2%</b>	<b>38.2%</b>	<b>39.6%</b>	<b>42.4%</b>	<b>42.1%</b>
Registrar	17.4%	22.7%	18.6%	20.5%	24.0%	26.8%	27.2%
Senior Registrar	5.5%	4.2%	12.6%	9.9%	9.9%	9.9%	9.9%
<b>Registrars</b>	<b>23.0%</b>	<b>26.9%</b>	<b>31.2%</b>	<b>30.4%</b>	<b>33.9%</b>	<b>36.7%</b>	<b>37.2%</b>
Senior House Officer	40.8%	36.3%	31.6%	31.4%	26.6%	21.0%	20.8%
<b>SHO/ Interns</b>	<b>40.8%</b>	<b>36.3%</b>	<b>31.6%</b>	<b>31.4%</b>	<b>26.6%</b>	<b>21.0%</b>	<b>20.8%</b>
<b>Medical &amp; Dental</b>	<b>7.6%</b>	<b>7.6%</b>	<b>8.2%</b>	<b>8.5%</b>	<b>8.3%</b>	<b>8.6%</b>	<b>8.6%</b>
Clinical Nurse/ Midwife Manager	19.8%	20.0%	19.9%	19.9%	20.1%	20.1%	20.0%
Director Nursing/Midwifery, Assistant	3.2%	3.2%	3.7%	3.7%	3.9%	3.7%	3.5%
Director of Nursing/Midwifery	0.6%	0.6%	0.4%	0.6%	0.6%	0.6%	0.6%
<b>Nurse/ Midwife Manager</b>	<b>23.6%</b>	<b>23.8%</b>	<b>24.0%</b>	<b>24.3%</b>	<b>24.6%</b>	<b>24.4%</b>	<b>24.2%</b>
Advanced Nurse/ Midwife Practitioner	0.2%	0.2%	0.4%	0.4%	0.6%	0.6%	0.6%
Clinical Nurse/ Midwife Specialist	11.4%	12.1%	12.9%	13.6%	14.6%	13.8%	13.7%
<b>Nurse/ Midwife Specialist &amp; AN/MP</b>	<b>11.6%</b>	<b>12.3%</b>	<b>13.3%</b>	<b>14.0%</b>	<b>15.2%</b>	<b>14.3%</b>	<b>14.3%</b>
Staff Nurse [Intellectual Disability]	0.2%	0.2%	0.2%				
Staff Nurse [Psychiatric]	64.0%	63.2%	61.7%	61.1%	59.0%	57.5%	57.4%
Staff Nurses [General/ Children's]	0.6%	0.4%	0.6%	0.6%	0.4%	0.6%	0.6%
<b>Staff Nurse/ Staff Midwife</b>	<b>64.8%</b>	<b>63.9%</b>	<b>62.5%</b>	<b>61.7%</b>	<b>59.4%</b>	<b>58.0%</b>	<b>58.0%</b>
Pre-registration Nurse/ Midwife Intern						3.1%	3.1%
Pre-registration Nurse Intern (COVID-19)					0.6%		
Nursing/ Midwifery awaiting registration			0.2%				
<b>Nursing/ Midwifery Student</b>			<b>0.2%</b>		<b>0.6%</b>	<b>3.1%</b>	<b>3.1%</b>
Nursing Education/Clinical					0.2%	0.2%	0.4%
<b>Nursing/ Midwifery other</b>					<b>0.2%</b>	<b>0.2%</b>	<b>0.4%</b>
<b>Nursing &amp; Midwifery</b>	<b>52.9%</b>	<b>52.5%</b>	<b>51.6%</b>	<b>50.6%</b>	<b>49.4%</b>	<b>51.0%</b>	<b>51.0%</b>
Occupational Therapists	26.7%	25.7%	26.9%	28.7%	26.5%	27.4%	28.1%
Podiatrists & Chiropractors	0.7%	0.7%	0.7%	0.6%	0.6%	0.6%	0.6%
Speech & Language Therapists	2.6%	3.5%	3.0%	2.2%	2.7%	2.9%	2.8%
<b>Therapy Professions</b>	<b>30.0%</b>	<b>29.9%</b>	<b>30.6%</b>	<b>31.6%</b>	<b>29.8%</b>	<b>30.9%</b>	<b>31.5%</b>
<b>Social Care</b>	<b>3.5%</b>	<b>3.6%</b>	<b>3.2%</b>	<b>3.3%</b>	<b>3.1%</b>	<b>2.9%</b>	<b>2.9%</b>
<b>Social Workers</b>	<b>35.5%</b>	<b>34.4%</b>	<b>34.0%</b>	<b>34.6%</b>	<b>35.6%</b>	<b>34.6%</b>	<b>33.9%</b>
<b>Psychologists</b>	<b>19.9%</b>	<b>19.9%</b>	<b>20.5%</b>	<b>18.2%</b>	<b>19.3%</b>	<b>19.5%</b>	<b>19.1%</b>
<b>Pharmacy</b>	<b>0.7%</b>	<b>0.8%</b>	<b>0.8%</b>	<b>0.7%</b>	<b>0.7%</b>	<b>0.7%</b>	<b>0.7%</b>
Counsellor Therapists	10.0%	11.5%	10.8%	11.6%	11.5%	11.4%	11.9%
Other Health & Social Care	0.4%						
<b>H&amp;SC, Other</b>	<b>10.4%</b>	<b>11.5%</b>	<b>10.8%</b>	<b>11.6%</b>	<b>11.5%</b>	<b>11.4%</b>	<b>11.9%</b>
<b>Health &amp; Social Care Professionals</b>	<b>11.3%</b>	<b>11.2%</b>	<b>11.8%</b>	<b>11.9%</b>	<b>11.6%</b>	<b>12.4%</b>	<b>12.4%</b>
<b>Management (VIII &amp; above)</b>	<b>3.3%</b>	<b>4.1%</b>	<b>3.8%</b>	<b>4.7%</b>	<b>6.2%</b>	<b>4.8%</b>	<b>4.7%</b>
<b>Administrative/ Supervisory (V to VII)</b>	<b>14.5%</b>	<b>16.6%</b>	<b>18.7%</b>	<b>24.9%</b>	<b>24.8%</b>	<b>25.4%</b>	<b>24.8%</b>
<b>Clerical (III &amp; IV)</b>	<b>82.2%</b>	<b>79.3%</b>	<b>77.4%</b>	<b>70.5%</b>	<b>69.0%</b>	<b>69.8%</b>	<b>70.5%</b>
<b>Management &amp; Administrative</b>	<b>9.7%</b>	<b>10.5%</b>	<b>11.1%</b>	<b>12.7%</b>	<b>12.4%</b>	<b>12.4%</b>	<b>12.4%</b>
<b>Support</b>	<b>80.6%</b>	<b>80.3%</b>	<b>80.8%</b>	<b>78.7%</b>	<b>79.9%</b>	<b>79.5%</b>	<b>79.8%</b>
Maintenance	19.4%	19.7%	19.2%	21.3%	20.1%	20.5%	20.2%
<b>Maintenance/ Technical</b>	<b>19.4%</b>	<b>19.7%</b>	<b>19.2%</b>	<b>21.3%</b>	<b>20.1%</b>	<b>20.5%</b>	<b>20.2%</b>
<b>General Support</b>	<b>9.8%</b>	<b>9.1%</b>	<b>8.8%</b>	<b>8.3%</b>	<b>8.1%</b>	<b>7.9%</b>	<b>7.9%</b>
HCA, Nurse's Aide, etc.	87.9%	86.5%	82.1%	83.9%	83.9%	87.0%	86.9%
Health & Social Care Assistants		1.2%	2.0%	2.1%	2.1%	2.1%	2.1%



Mar 2021 (Dec 2019 figure: 953)	WTE Dec 2016	WTE Dec 2017	WTE Dec 2018	WTE Dec 2019	WTE Dec 2020	WTE Feb 2021	WTE Mar 2021
<b>Mental Health</b>	<b>948</b>	<b>942</b>	<b>941</b>	<b>953</b>	<b>976</b>	<b>997</b>	<b>994</b>
Health Care Assistants	87.9%	87.6%	84.1%	86.0%	85.9%	89.1%	89.0%
Care, other	12.1%	12.4%	15.9%	14.0%	14.1%	10.9%	11.0%
<b>Patient &amp; Client Care</b>	<b>8.7%</b>	<b>9.1%</b>	<b>8.5%</b>	<b>8.1%</b>	<b>7.9%</b>	<b>7.7%</b>	<b>7.7%</b>
<b>Total</b>	<b>100 %</b>	<b>100 %</b>	<b>100 %</b>	<b>100 %</b>	<b>100 %</b>	<b>100 %</b>	<b>100%</b>

Mar 2021 (Dec 2019 figure: 1,182)	WTE Dec 2016	WTE Dec 2017	WTE Dec 2018	WTE Dec 2019	WTE Dec 2020	WTE Feb 2021	WTE Mar 2021
<b>Primary Care</b>	<b>1,257</b>	<b>1,188</b>	<b>1,233</b>	<b>1,182</b>	<b>1,296</b>	<b>1,342</b>	<b>1,369</b>
Consultant Medicine	3.8%	3.6%	3.3%	3.3%	3.8%	3.8%	3.9%
<b>Consultants</b>	<b>3.8%</b>	<b>3.6%</b>	<b>3.3%</b>	<b>3.3%</b>	<b>3.8%</b>	<b>3.8%</b>	<b>3.9%</b>
<b>Registrars</b>	<b>35.7%</b>	<b>37.8%</b>	<b>43.8%</b>	<b>44.3%</b>	<b>45.9%</b>	<b>45.0%</b>	<b>43.4%</b>
<b>SHO/ Interns</b>		<b>1.2%</b>	<b>1.1%</b>	<b>1.1%</b>	<b>1.1%</b>	<b>1.0%</b>	<b>1.1%</b>
Dentists	35.4%	32.8%	31.5%	30.2%	30.7%	30.2%	30.4%
Other Medical	25.1%	24.7%	20.4%	21.2%	18.4%	19.9%	21.2%
<b>Medical/ Dental, other</b>	<b>60.5%</b>	<b>57.5%</b>	<b>51.9%</b>	<b>51.3%</b>	<b>49.2%</b>	<b>50.1%</b>	<b>51.7%</b>
<b>Medical &amp; Dental</b>	<b>6.3%</b>	<b>7.1%</b>	<b>7.3%</b>	<b>7.8%</b>	<b>7.1%</b>	<b>6.9%</b>	<b>6.9%</b>
Clinical Nurse/ Midwife Manager	4.9%	4.7%	5.4%	5.6%	6.2%	5.8%	5.5%
Director Nursing/Midwifery, Assistant	5.9%	5.4%	5.0%	5.0%	5.1%	5.2%	5.4%
Director of Nursing/Midwifery	1.7%	1.3%	1.6%	1.3%	0.8%	0.8%	0.9%
<b>Nurse/ Midwife Manager</b>	<b>12.5%</b>	<b>11.4%</b>	<b>12.0%</b>	<b>11.9%</b>	<b>12.2%</b>	<b>11.8%</b>	<b>11.8%</b>
<b>Nurse/ Midwife Specialist &amp; AN/MP</b>	<b>6.7%</b>	<b>7.7%</b>	<b>6.6%</b>	<b>6.8%</b>	<b>8.2%</b>	<b>8.7%</b>	<b>8.7%</b>
Staff Nurse [Psychiatric]	0.1%	0.1%	0.5%	0.1%	0.1%	0.1%	0.1%
Staff Nurses [General/ Children's]	29.0%	28.4%	27.7%	27.8%	30.2%	30.4%	30.5%
<b>Staff Nurse/ Staff Midwife</b>	<b>29.1%</b>	<b>28.6%</b>	<b>28.2%</b>	<b>27.9%</b>	<b>30.3%</b>	<b>30.6%</b>	<b>30.6%</b>
<b>Public Health Nurse</b>	<b>49.3%</b>	<b>50.1%</b>	<b>50.9%</b>	<b>50.9%</b>	<b>48.0%</b>	<b>47.7%</b>	<b>47.7%</b>
Post-registration Nurse/ Midwife Student	2.4%	2.3%	2.3%	2.3%	0.9%	0.9%	0.9%
<b>Nursing/ Midwifery Student</b>	<b>2.4%</b>	<b>2.3%</b>	<b>2.3%</b>	<b>2.3%</b>	<b>0.9%</b>	<b>0.9%</b>	<b>0.9%</b>
Nursing Education/Clinical				0.3%	0.3%	0.3%	0.3%
<b>Nursing/ Midwifery other</b>				<b>0.3%</b>	<b>0.3%</b>	<b>0.3%</b>	<b>0.3%</b>
<b>Nursing &amp; Midwifery</b>	<b>23.6%</b>	<b>25.7%</b>	<b>24.7%</b>	<b>25.9%</b>	<b>23.6%</b>	<b>23.5%</b>	<b>23.5%</b>
Dietitians	4.8%	5.2%	5.6%	6.0%	5.3%	4.7%	5.0%
Occupational Therapists	25.2%	23.2%	24.2%	25.3%	25.5%	26.0%	26.3%
Orthoptists	0.7%	0.8%	0.8%	0.9%	1.0%	0.9%	1.0%
Physiotherapists	27.4%	27.1%	27.3%	28.1%	28.2%	28.0%	27.5%
Podiatrists & Chiropodists	3.1%	2.6%	2.7%	2.8%	2.9%	3.3%	3.2%
Speech & Language Therapists	17.8%	19.4%	17.8%	15.9%	16.0%	16.5%	16.2%
<b>Therapy Professions</b>	<b>79.0%</b>	<b>78.4%</b>	<b>78.5%</b>	<b>79.0%</b>	<b>79.0%</b>	<b>79.4%</b>	<b>79.2%</b>
Audiology	1.8%	1.7%	1.7%	1.8%	1.7%	1.7%	1.7%
<b>Health Science/ Diagnostics</b>	<b>1.8%</b>	<b>1.7%</b>	<b>1.7%</b>	<b>1.8%</b>	<b>1.7%</b>	<b>1.7%</b>	<b>1.7%</b>
<b>Social Workers</b>	<b>6.6%</b>	<b>6.9%</b>	<b>6.4%</b>	<b>4.4%</b>	<b>5.4%</b>	<b>5.5%</b>	<b>5.9%</b>
<b>Psychologists</b>	<b>10.3%</b>	<b>10.3%</b>	<b>10.9%</b>	<b>12.1%</b>	<b>10.8%</b>	<b>10.3%</b>	<b>10.2%</b>
<b>Pharmacy</b>	<b>0.2%</b>	<b>0.2%</b>	<b>0.2%</b>	<b>0.2%</b>	<b>0.6%</b>	<b>0.6%</b>	<b>0.6%</b>
Counsellor Therapists		0.3%	0.3%	0.3%	0.3%	0.3%	0.3%
Dental Hygienists	1.7%	1.9%	1.6%	1.7%	1.8%	1.8%	1.8%
Other Health & Social Care	0.3%	0.3%	0.3%	0.3%	0.3%	0.3%	0.3%
<b>H&amp;SC, Other</b>	<b>2.1%</b>	<b>2.5%</b>	<b>2.2%</b>	<b>2.4%</b>	<b>2.5%</b>	<b>2.4%</b>	<b>2.4%</b>
<b>Health &amp; Social Care Professionals</b>	<b>23.8%</b>	<b>25.9%</b>	<b>25.6%</b>	<b>24.3%</b>	<b>22.2%</b>	<b>21.9%</b>	<b>21.9%</b>
Executive Management	1.8%	2.1%	2.0%	1.5%	1.4%	1.3%	1.3%
Senior Management (VIII & GM)	6.9%	6.9%	8.7%	8.2%	7.1%	7.1%	7.0%
<b>Management (VIII &amp; above)</b>	<b>8.8%</b>	<b>9.0%</b>	<b>10.7%</b>	<b>9.7%</b>	<b>8.5%</b>	<b>8.4%</b>	<b>8.3%</b>
<b>Administrative/ Supervisory (V to VII)</b>	<b>17.1%</b>	<b>19.7%</b>	<b>19.1%</b>	<b>19.2%</b>	<b>21.4%</b>	<b>21.2%</b>	<b>22.0%</b>



Mar 2021 (Dec 2019 figure: 1,182)	WTE Dec 2016	WTE Dec 2017	WTE Dec 2018	WTE Dec 2019	WTE Dec 2020	WTE Feb 2021	WTE Mar 2021
<b>Primary Care</b>	<b>1,257</b>	<b>1,188</b>	<b>1,233</b>	<b>1,182</b>	<b>1,296</b>	<b>1,342</b>	<b>1,369</b>
Clerical (III & IV)	74.2%	71.3%	70.2%	71.1%	70.1%	70.3%	69.7%
<b>Management &amp; Administrative</b>	<b>25.9%</b>	<b>27.7%</b>	<b>28.3%</b>	<b>28.0%</b>	<b>25.5%</b>	<b>28.1%</b>	<b>28.1%</b>
Support	91.3%	92.2%	94.7%	92.3%	91.7%	92.4%	92.7%
Maintenance/ Technical	8.7%	7.8%	5.3%	7.7%	8.3%	7.6%	7.3%
<b>General Support</b>	<b>5.7%</b>	<b>6.3%</b>	<b>6.4%</b>	<b>6.6%</b>	<b>6.0%</b>	<b>6.9%</b>	<b>6.9%</b>
HCA, Nurse's Aide, etc.	10.8%	22.4%	20.1%	21.8%	16.3%	17.5%	16.4%
Health & Social Care Assistants	5.8%	12.3%	21.7%	14.9%	14.1%	12.8%	12.8%
Swabber (COVID-19)					31.4%	32.8%	33.3%
<b>Health Care Assistants</b>	<b>16.6%</b>	<b>34.7%</b>	<b>41.8%</b>	<b>36.7%</b>	<b>61.9%</b>	<b>63.1%</b>	<b>62.5%</b>
<b>Home Help</b>	<b>51.6%</b>				<b>0.5%</b>	<b>0.3%</b>	<b>0.4%</b>
Other Care Grades	31.8%	65.3%	58.2%	63.3%	37.7%	36.6%	37.1%
<b>Care, other</b>	<b>31.8%</b>	<b>65.3%</b>	<b>58.2%</b>	<b>63.3%</b>	<b>37.7%</b>	<b>36.6%</b>	<b>37.1%</b>
<b>Patient &amp; Client Care</b>	<b>14.6%</b>	<b>7.4%</b>	<b>7.7%</b>	<b>7.4%</b>	<b>6.7%</b>	<b>12.6%</b>	<b>12.6%</b>
<b>Total</b>	<b>100 %</b>	<b>100 %</b>	<b>100 %</b>	<b>100 %</b>	<b>100 %</b>	<b>100 %</b>	<b>100%</b>

Mar 2021 (Dec 2019 figure: 1,498)	WTE Dec 2016	WTE Dec 2017	WTE Dec 2018	WTE Dec 2019	WTE Dec 2020	WTE Feb 2021	WTE Mar 2021
<b>Disabilities</b>	<b>1,430</b>	<b>1,457</b>	<b>1,479</b>	<b>1,498</b>	<b>1,547</b>	<b>1,575</b>	<b>1,575</b>
Consultant Psychiatry	33.3%	33.3%	33.3%				
<b>Consultants</b>	<b>33.3%</b>	<b>33.3%</b>	<b>33.3%</b>				
<b>Medical/ Dental, other</b>	<b>66.7%</b>	<b>66.7%</b>	<b>66.7%</b>	<b>100.0%</b>	<b>100.0%</b>	<b>100.0%</b>	<b>100.0%</b>
<b>Medical &amp; Dental</b>	<b>0.2%</b>	<b>0.2%</b>	<b>0.2%</b>	<b>0.2%</b>	<b>0.2%</b>	<b>0.2%</b>	<b>0.2%</b>
Clinical Nurse/ Midwife Manager	19.5%	20.0%	19.1%	20.1%	20.8%	20.0%	20.0%
Director Nursing/Midwifery, Assistant	1.7%	1.3%	1.7%	1.3%	1.3%	1.0%	1.1%
Director of Nursing/Midwifery	1.1%	1.3%	1.1%	1.8%	0.8%	0.8%	0.6%
<b>Nurse/ Midwife Manager</b>	<b>22.3%</b>	<b>22.6%</b>	<b>21.8%</b>	<b>23.1%</b>	<b>22.9%</b>	<b>21.8%</b>	<b>21.7%</b>
Clinical Nurse/ Midwife Specialist	2.1%	1.8%	1.5%	1.5%	1.9%	2.0%	2.0%
<b>Nurse/ Midwife Specialist &amp; AN/MP</b>	<b>2.1%</b>	<b>1.8%</b>	<b>1.5%</b>	<b>1.5%</b>	<b>1.9%</b>	<b>2.0%</b>	<b>2.0%</b>
Staff Nurse [Intellectual Disability]	44.2%	44.4%	45.3%	45.1%	51.0%	50.7%	51.5%
Staff Nurse [Psychiatric]	1.3%	0.9%	0.7%	0.4%	0.4%	0.4%	0.4%
Staff Nurses [General/ Children's]	28.6%	28.3%	27.2%	25.6%	19.2%	17.0%	16.5%
<b>Staff Nurse/ Staff Midwife</b>	<b>74.2%</b>	<b>73.7%</b>	<b>73.2%</b>	<b>71.2%</b>	<b>70.6%</b>	<b>68.2%</b>	<b>68.4%</b>
Pre-registration Nurse/ Midwife Intern	0.3%	0.8%	2.4%	0.7%		3.8%	4.8%
Pre-registration Nurse Intern (COVID-19)					1.4%	1.1%	
Nursing/ Midwifery awaiting registration				2.4%	2.4%	2.3%	2.2%
<b>Nursing/ Midwifery Student</b>	<b>0.3%</b>	<b>0.8%</b>	<b>2.4%</b>	<b>3.1%</b>	<b>3.8%</b>	<b>7.2%</b>	<b>7.1%</b>
<b>Nursing/ Midwifery other</b>	<b>1.0%</b>	<b>1.1%</b>	<b>1.1%</b>	<b>1.0%</b>	<b>0.8%</b>	<b>0.8%</b>	<b>0.8%</b>
<b>Nursing &amp; Midwifery</b>	<b>31.4%</b>	<b>30.7%</b>	<b>30.8%</b>	<b>30.3%</b>	<b>29.4%</b>	<b>31.1%</b>	<b>31.1%</b>
Occupational Therapists	11.9%	12.0%	9.5%	15.4%	11.5%	10.8%	10.2%
Physiotherapists	14.2%	11.4%	12.3%	10.8%	11.7%	11.9%	10.3%
Speech & Language Therapists	11.3%	12.7%	17.5%	25.2%	24.9%	23.3%	24.5%
<b>Therapy Professions</b>	<b>37.4%</b>	<b>36.0%</b>	<b>39.3%</b>	<b>51.4%</b>	<b>48.1%</b>	<b>45.9%</b>	<b>45.0%</b>
<b>Social Care</b>	<b>15.2%</b>	<b>12.3%</b>	<b>13.2%</b>	<b>9.2%</b>	<b>12.4%</b>	<b>11.9%</b>	<b>11.8%</b>
<b>Social Workers</b>	<b>21.0%</b>	<b>21.0%</b>	<b>19.8%</b>	<b>18.9%</b>	<b>20.5%</b>	<b>19.6%</b>	<b>19.8%</b>
<b>Psychologists</b>	<b>4.3%</b>	<b>7.5%</b>	<b>6.6%</b>	<b>5.6%</b>	<b>8.2%</b>	<b>12.0%</b>	<b>12.5%</b>
Counsellor Therapists	11.8%	11.3%	10.7%	6.8%	8.3%	8.2%	8.4%
Other Health & Social Care	10.4%	11.9%	10.4%	8.2%	2.5%	2.4%	2.5%
<b>H&amp;SC, Other</b>	<b>22.2%</b>	<b>23.2%</b>	<b>21.1%</b>	<b>15.0%</b>	<b>10.8%</b>	<b>10.6%</b>	<b>10.9%</b>
<b>Health &amp; Social Care Professionals</b>	<b>4.3%</b>	<b>4.5%</b>	<b>4.1%</b>	<b>5.5%</b>	<b>5.3%</b>	<b>5.7%</b>	<b>5.7%</b>
Executive Management					1.0%	1.0%	1.0%

Mar 2021 (Dec 2019 figure: 1,498)	WTE Dec 2016	WTE Dec 2017	WTE Dec 2018	WTE Dec 2019	WTE Dec 2020	WTE Feb 2021	WTE Mar 2021
<b>Disabilities</b>	<b>1,430</b>	<b>1,457</b>	<b>1,479</b>	<b>1,498</b>	<b>1,547</b>	<b>1,575</b>	<b>1,575</b>
Senior Management (VIII & GM)	12.7%	14.7%	15.6%	15.3%	15.0%	14.8%	14.8%
<b>Management (VIII &amp; above)</b>	<b>12.7%</b>	<b>14.7%</b>	<b>15.6%</b>	<b>15.3%</b>	<b>16.0%</b>	<b>15.7%</b>	<b>15.7%</b>
<b>Administrative/ Supervisory (V to VII)</b>	<b>26.0%</b>	<b>24.4%</b>	<b>25.1%</b>	<b>30.2%</b>	<b>33.1%</b>	<b>34.3%</b>	<b>34.3%</b>
<b>Clerical (III &amp; IV)</b>	<b>61.3%</b>	<b>60.9%</b>	<b>59.3%</b>	<b>54.5%</b>	<b>51.0%</b>	<b>50.0%</b>	<b>49.9%</b>
<b>Management &amp; Administrative</b>	<b>6.0%</b>	<b>5.6%</b>	<b>5.6%</b>	<b>6.1%</b>	<b>5.9%</b>	<b>6.7%</b>	<b>6.7%</b>
<b>Support</b>	<b>88.7%</b>	<b>88.1%</b>	<b>89.5%</b>	<b>89.1%</b>	<b>89.1%</b>	<b>88.5%</b>	<b>89.1%</b>
<b>Maintenance/ Technical</b>	<b>11.3%</b>	<b>11.9%</b>	<b>10.5%</b>	<b>10.9%</b>	<b>10.9%</b>	<b>11.5%</b>	<b>10.9%</b>
<b>General Support</b>	<b>4.2%</b>	<b>4.0%</b>	<b>3.9%</b>	<b>3.7%</b>	<b>3.6%</b>	<b>3.5%</b>	<b>3.5%</b>
HCA, Nurse's Aide, etc.	93.4%	93.6%	94.3%	93.8%	93.4%	93.6%	93.4%
<b>Health Care Assistants</b>	<b>93.4%</b>	<b>93.6%</b>	<b>94.3%</b>	<b>93.8%</b>	<b>93.4%</b>	<b>93.6%</b>	<b>93.4%</b>
<b>Home Help</b>	<b>2.3%</b>	<b>1.8%</b>	<b>1.6%</b>	<b>1.6%</b>	<b>1.7%</b>	<b>1.8%</b>	<b>1.7%</b>
<b>Care, other</b>	<b>4.3%</b>	<b>4.6%</b>	<b>4.1%</b>	<b>4.6%</b>	<b>4.9%</b>	<b>4.7%</b>	<b>4.8%</b>
<b>Patient &amp; Client Care</b>	<b>53.8%</b>	<b>55.0%</b>	<b>55.4%</b>	<b>54.2%</b>	<b>52.5%</b>	<b>52.9%</b>	<b>52.9%</b>
<b>Total</b>	<b>100 %</b>	<b>100 %</b>	<b>100 %</b>	<b>100 %</b>	<b>100 %</b>	<b>100 %</b>	<b>100%</b>

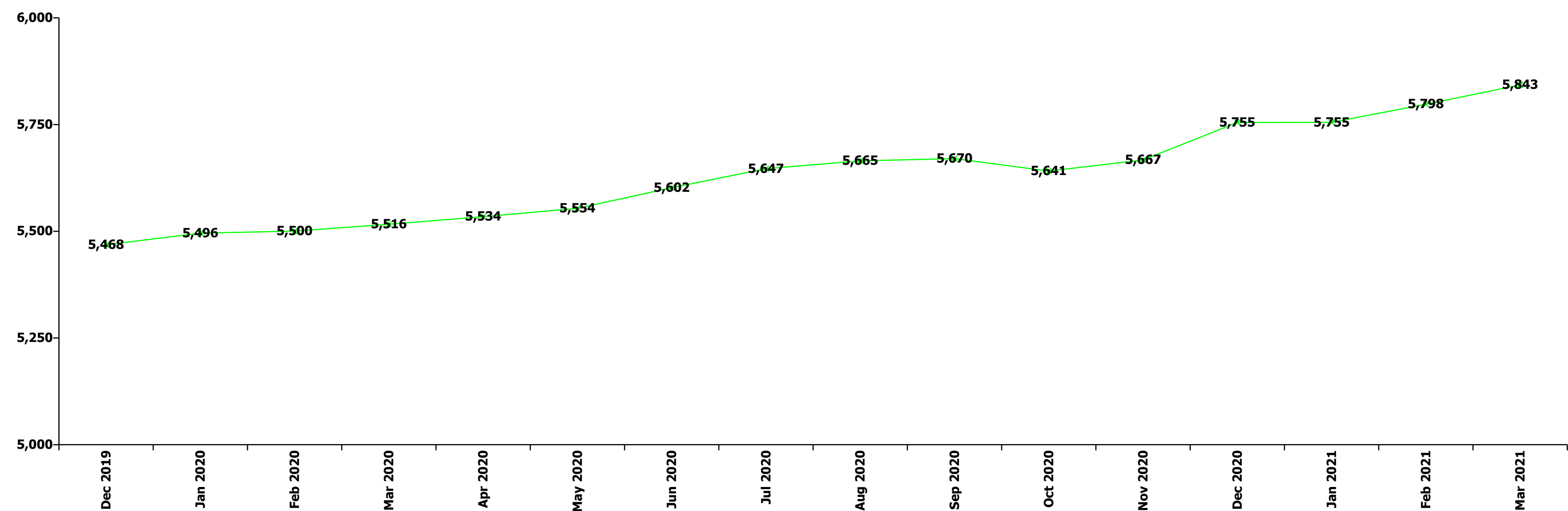
Mar 2021 (Dec 2019 figure: 1,836)	WTE Dec 2016	WTE Dec 2017	WTE Dec 2018	WTE Dec 2019	WTE Dec 2020	WTE Feb 2021	WTE Mar 2021
<b>Older People</b>	<b>1,645</b>	<b>1,780</b>	<b>1,782</b>	<b>1,836</b>	<b>1,918</b>	<b>1,864</b>	<b>1,886</b>
<b>Medical/ Dental, other</b>	<b>100.0%</b>	<b>100.0%</b>	<b>100.0%</b>	<b>100.0%</b>	<b>100.0%</b>	<b>100.0%</b>	<b>100.0%</b>
<b>Medical &amp; Dental</b>	<b>0.9%</b>	<b>0.8%</b>	<b>0.8%</b>	<b>1.6%</b>	<b>1.6%</b>	<b>0.8%</b>	<b>0.8%</b>
Clinical Nurse/ Midwife Manager	17.2%	14.3%	16.4%	15.9%	14.4%	14.0%	14.3%
Director Nursing/Midwifery, Assistant	2.7%	2.7%	2.4%	3.0%	3.1%	3.3%	3.1%
Director of Nursing/Midwifery	3.3%	3.2%	2.8%	3.5%	3.8%	3.5%	3.5%
<b>Nurse/ Midwife Manager</b>	<b>23.3%</b>	<b>20.2%</b>	<b>21.6%</b>	<b>22.5%</b>	<b>21.3%</b>	<b>20.9%</b>	<b>20.8%</b>
Advanced Nurse/ Midwife Practitioner	0.3%		1.0%	1.4%	1.7%	1.7%	1.7%
Clinical Nurse/ Midwife Specialist				0.2%	0.5%	0.5%	0.5%
<b>Nurse/ Midwife Specialist &amp; AN/MP</b>	<b>0.3%</b>		<b>1.0%</b>	<b>1.7%</b>	<b>2.2%</b>	<b>2.2%</b>	<b>2.2%</b>
Staff Nurse [Intellectual Disability]			0.2%				
Staff Nurse [Psychiatric]	0.2%	0.2%	0.4%	0.2%			
Staff Nurses [General/ Children's]	76.2%	79.6%	76.8%	75.6%	76.3%	76.7%	76.8%
<b>Staff Nurse/ Staff Midwife</b>	<b>76.5%</b>	<b>79.8%</b>	<b>77.4%</b>	<b>75.9%</b>	<b>76.3%</b>	<b>76.7%</b>	<b>76.8%</b>
Nursing Education/Clinical					0.2%	0.2%	0.2%
<b>Nursing/ Midwifery other</b>					<b>0.2%</b>	<b>0.2%</b>	<b>0.2%</b>
<b>Nursing &amp; Midwifery</b>	<b>23.7%</b>	<b>21.8%</b>	<b>23.0%</b>	<b>22.1%</b>	<b>21.1%</b>	<b>22.1%</b>	<b>22.1%</b>
Occupational Therapists	40.9%	40.5%	55.3%	35.0%	36.2%	38.3%	36.8%
Physiotherapists				2.2%	6.6%	6.1%	8.9%
Speech & Language Therapists	4.0%	4.2%					
<b>Therapy Professions</b>	<b>44.9%</b>	<b>44.7%</b>	<b>55.3%</b>	<b>37.2%</b>	<b>42.8%</b>	<b>44.4%</b>	<b>45.7%</b>
Radiographers	7.0%	8.1%	7.0%	4.2%	5.4%	5.0%	5.1%
<b>Health Science/ Diagnostics</b>	<b>7.0%</b>	<b>8.1%</b>	<b>7.0%</b>	<b>4.2%</b>	<b>5.4%</b>	<b>5.0%</b>	<b>5.1%</b>
<b>Social Workers</b>	<b>48.1%</b>	<b>47.2%</b>	<b>37.7%</b>	<b>58.6%</b>	<b>51.7%</b>	<b>50.6%</b>	<b>49.2%</b>
<b>Health &amp; Social Care Professionals</b>	<b>1.2%</b>	<b>1.0%</b>	<b>1.2%</b>	<b>1.6%</b>	<b>1.6%</b>	<b>1.8%</b>	<b>1.8%</b>
Executive Management				0.9%	0.9%	0.9%	0.9%
Senior Management (VIII & GM)	5.0%	3.5%	3.5%	6.5%	6.3%	6.3%	6.3%
<b>Management (VIII &amp; above)</b>	<b>5.0%</b>	<b>3.5%</b>	<b>3.5%</b>	<b>7.4%</b>	<b>7.2%</b>	<b>7.2%</b>	<b>7.2%</b>
<b>Administrative/ Supervisory (V to VII)</b>	<b>6.8%</b>	<b>7.5%</b>	<b>8.8%</b>	<b>13.3%</b>	<b>13.8%</b>	<b>15.5%</b>	<b>15.6%</b>
<b>Clerical (III &amp; IV)</b>	<b>88.2%</b>	<b>89.0%</b>	<b>87.7%</b>	<b>79.3%</b>	<b>79.1%</b>	<b>77.3%</b>	<b>77.3%</b>
<b>Management &amp; Administrative</b>	<b>4.9%</b>	<b>4.8%</b>	<b>4.8%</b>	<b>5.8%</b>	<b>5.6%</b>	<b>5.9%</b>	<b>5.9%</b>
<b>Support</b>	<b>94.8%</b>	<b>93.9%</b>	<b>93.9%</b>	<b>94.6%</b>	<b>94.4%</b>	<b>95.2%</b>	<b>95.2%</b>

Mar 2021 (Dec 2019 figure: 1,836)	WTE Dec 2016	WTE Dec 2017	WTE Dec 2018	WTE Dec 2019	WTE Dec 2020	WTE Feb 2021	WTE Mar 2021
<b>Older People</b>	<b>1,645</b>	<b>1,780</b>	<b>1,782</b>	<b>1,836</b>	<b>1,918</b>	<b>1,864</b>	<b>1,886</b>
<b>Maintenance/ Technical</b>	<b>5.2%</b>	<b>6.1%</b>	<b>6.1%</b>	<b>5.4%</b>	<b>5.6%</b>	<b>4.8%</b>	<b>4.8%</b>
<b>General Support</b>	<b>8.1%</b>	<b>7.4%</b>	<b>7.4%</b>	<b>7.1%</b>	<b>6.8%</b>	<b>6.6%</b>	<b>6.6%</b>
HCA, Nurse's Aide, etc.	53.6%	49.1%	50.0%	49.2%	47.3%	49.5%	48.5%
HCA (Student Nurse/Midwife COVID-19)					0.2%	0.2%	0.1%
Health & Social Care Assistants	0.4%	0.4%	0.4%	0.4%	0.5%	0.5%	0.5%
<b>Health Care Assistants</b>	<b>54.0%</b>	<b>49.5%</b>	<b>50.4%</b>	<b>49.7%</b>	<b>48.1%</b>	<b>50.2%</b>	<b>49.1%</b>
<b>Home Help</b>	<b>43.1%</b>	<b>47.9%</b>	<b>46.8%</b>	<b>47.9%</b>	<b>50.1%</b>	<b>48.0%</b>	<b>49.0%</b>
<b>Care, other</b>	<b>2.9%</b>	<b>2.6%</b>	<b>2.7%</b>	<b>2.5%</b>	<b>1.9%</b>	<b>1.8%</b>	<b>1.9%</b>
<b>Patient &amp; Client Care</b>	<b>61.2%</b>	<b>64.2%</b>	<b>62.8%</b>	<b>61.8%</b>	<b>59.1%</b>	<b>62.8%</b>	<b>62.8%</b>
<b>Total</b>	<b>100 %</b>	<b>100 %</b>	<b>100 %</b>	<b>100 %</b>	<b>100 %</b>	<b>100 %</b>	<b>100%</b>

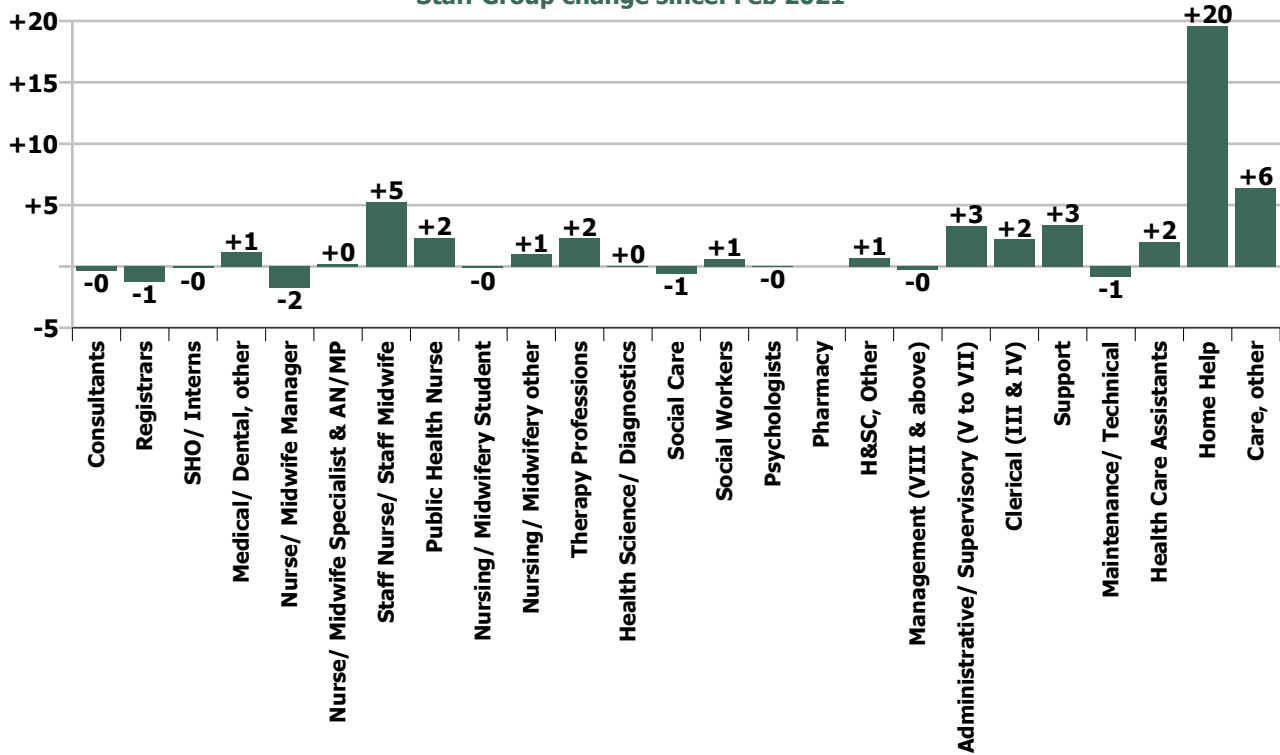
Summary Staff Movement: March 2021

Month-on-month Summary																												
WTE change since Feb 21	% change since Feb 21	overall	Consultants	Registrars	SHO/ Interns	Medical/ Dental, other	Medical & Dental	Nurse/ Midwife Manager	Nurse/ Midwife Specialist & AN/MP	Staff Nurse/ Staff Midwife	Public Health Nurse	Nursing/ Midwifery Student	Nursing/ Midwifery other	Nursing & Midwifery	Therapy Professions	Health Science/ Diagnostics	Social Care	Social Workers	Psychologists	Pharmacy	H&SC, Other	Health & Social Care Professionals	Management (VIII & above)	Administrative/ Supervisory (V to VII)	Clerical (III & IV)	Management & Administrative	General Support	Patient & Client Care
Overall	+0.8%	+45	-0.3	-1.2	-0.2	+1.2	-0.6	-1.8	+0.2	+5.3	+2.3	-0.2	+1.0	+6.9	+2.3	+0.1	-0.6	+0.6	-0.0	0.0	+0.7	+3.0	-0.3	+3.3	+2.2	+5.3	+2.5	+28.0
Community Health & Wellbeing	-0.8%	-0				0.0	0.0	-1.0		0.0				-1.0	0.0							0.0	0.0	0.0	+0.8	+0.8		
Mental Health	-0.3%	-3	-0.3	+0.4	-0.2		-0.1	-1.7	-0.5	-1.8		+0.3	+1.0	-2.6	+1.3		-0.0	-0.1	-0.0	0.0	+0.8	+1.9	-0.2	-1.0	+0.1	-1.1	-0.3	-0.5
Primary Care	+2.0%	+26	0.0	-1.6	+0.0	+1.3	-0.3	+0.4	+0.7	+1.8	+2.3	0.0	-0.0	+5.2	+2.9	-0.0		+1.4	+0.1	0.0	+0.1	+4.5	-0.1	+4.3	+1.5	+5.6	+3.1	+8.1
Disabilities	-0.0%	-0				0.0	0.0	-0.2	+0.0	+2.2		-0.5	0.0	+1.6	-2.9		-0.6	-0.7	-0.1		-0.2	-4.4	0.0	+0.0	-0.0	+0.0	-0.7	+3.1
Older People	+1.2%	+22				-0.2	-0.2	+0.6	0.0	+3.0			0.0	+3.7	+0.9	+0.1		+0.0				+1.0	0.0	+0.0	-0.2	-0.2	+0.5	+17.2
Social Care	+0.6%	+22				-0.2	-0.2	+0.5	+0.0	+5.2		-0.5	0.0	+5.3	-2.0	+0.1	-0.6	-0.7	-0.1		-0.2	-3.4	0.0	+0.1	-0.2	-0.1	-0.2	+20.4
Change	+45.2	+0.8%	-0.8%	-1.7%	-0.8%	+1.7%	-0.3%	-0.5%	+0.2%	+0.5%	+1.6%	-0.3%	+14.6%	+0.4%	+0.7%	+0.9%	-4.1%	+0.7%	-0.1%		+2.3%	+0.6%	-0.5%	+1.9%	+0.4%	+0.7%	+0.7%	+1.3%

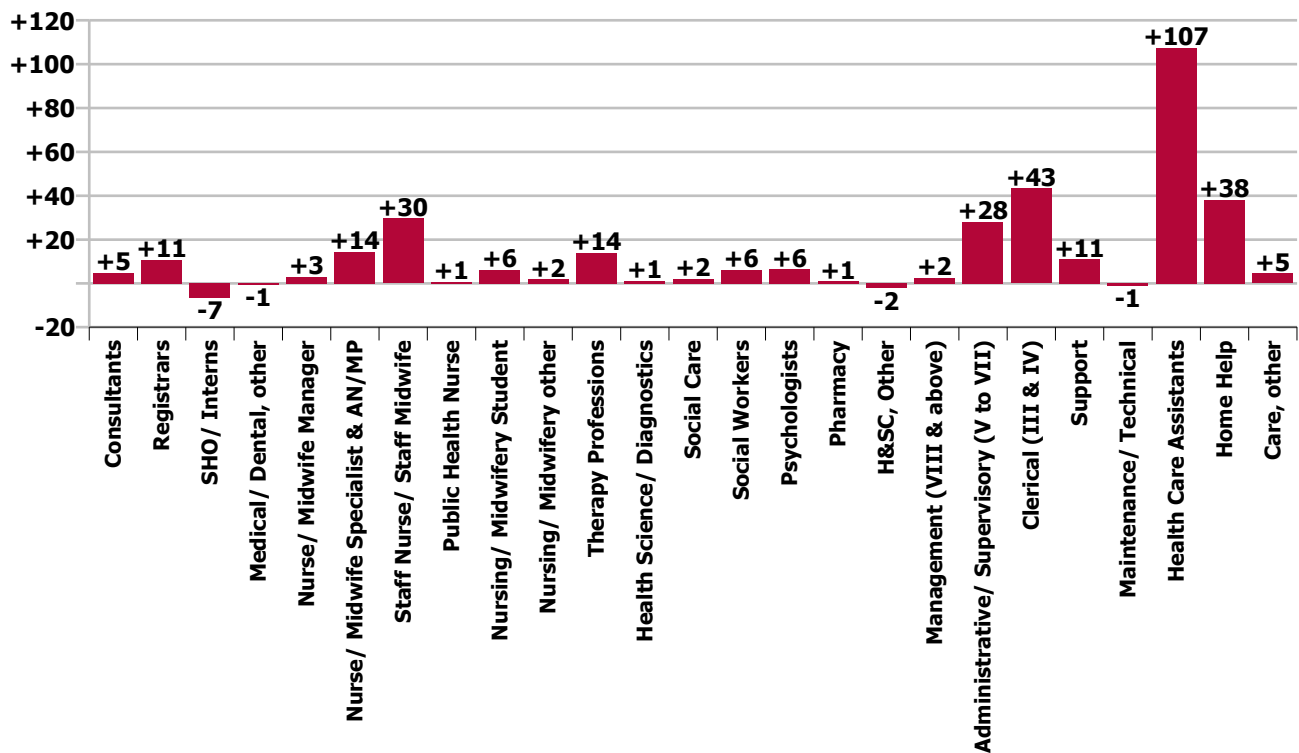
Year-on-year Summary																												
WTE change since Mar 20	% change since Mar 20	overall	Consultants	Registrars	SHO/ Interns	Medical/ Dental, other	Medical & Dental	Nurse/ Midwife Manager	Nurse/ Midwife Specialist & AN/MP	Staff Nurse/ Staff Midwife	Public Health Nurse	Nursing/ Midwifery Student	Nursing/ Midwifery other	Nursing & Midwifery	Therapy Professions	Health Science/ Diagnostics	Social Care	Social Workers	Psychologists	Pharmacy	H&SC, Other	Health & Social Care Professionals	Management (VIII & above)	Administrative/ Supervisory (V to VII)	Clerical (III & IV)	Management & Administrative	General Support	Patient & Client Care
Overall	+5.9%	+326	+4.8	+10.9	-6.6	-0.6	+8.5	+2.9	+14.4	+29.6	+0.7	+6.1	+1.8	+55.6	+14.0	+1.1	+2.0	+6.2	+6.4	+1.0	-2.2	+28.4	+2.4	+28.0	+43.3	+73.7	+10.0	+150.2
Community Health & Wellbeing	-0.8%	-0				+1.0	+1.0	+1.0		+1.0				+2.0	+1.0							+1.0	0.0	+0.7	+1.0	+1.7		-0.7
Mental Health	-0.3%	-3	+5.0	+8.1	-6.6		+6.5	+4.5	+5.3	-0.2		+5.1	+1.9	+16.6	+3.6		-0.1	+2.7	+2.0	0.0	+0.5	+8.7	-0.8	+0.5	+2.9	+2.6	+1.1	-0.5
Primary Care	+2.0%	+26	-0.2	+2.8	0.0	+3.1	+5.8	-3.5	+6.2	+11.8	+0.7	-4.0	-0.0	+11.2	+9.2	+0.7		+4.9	-2.0	+1.0	+0.0	+13.8	+0.7	+17.1	+34.9	+52.7	+15.5	+82.0
Disabilities	+3.4%	+51.1				-0.1	-0.1	+1.0	+2.0	+10.1		+5.0	-1.0	+17.1	-5.8		+2.1	-0.5	+6.4		-2.7	-0.5	+2.6	+6.6	+3.4	+12.5	+1.0	+20.9
Older People	+3.0%	+54.5				-4.6	-4.6	-0.2	+1.0	+7.0			+1.0	+8.8	+5.9	+0.4		-0.9				+5.4	0.0	+3.1	+1.1	+4.2	-7.6	+48.4
Social Care	+0.6%	+22				-4.7	-4.7	+0.8	+3.0	+17.0		+5.0	0.0	+25.9	+0.1	+0.4	+2.1	-1.4	+6.4		-2.7	+4.9	+2.6	+9.7	+4.5	+16.8	-6.6	+69.4
Change	+326.4	+5.9%	+13.8%	+17.6%	-25.9%	-0.9%	+4.4%	+0.8%	+13.7%	+2.9%	+0.5%	+12.9%	+31.1%	+3.3%	+4.4%	+19.1%	+16.3%	+7.1%	+10.9%	+66.7%	-6.6%	+5.5%	+4.0%	+18.6%	+9.5%	+11.1%	+2.9%	+7.1%



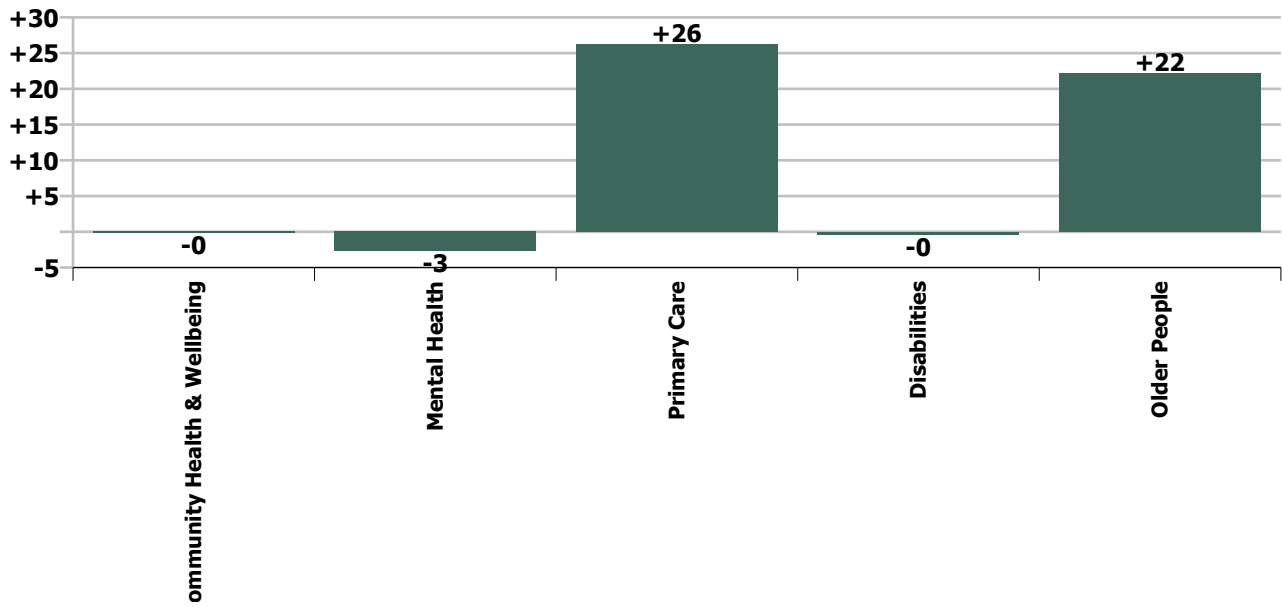
Staff Group change since: Feb 2021



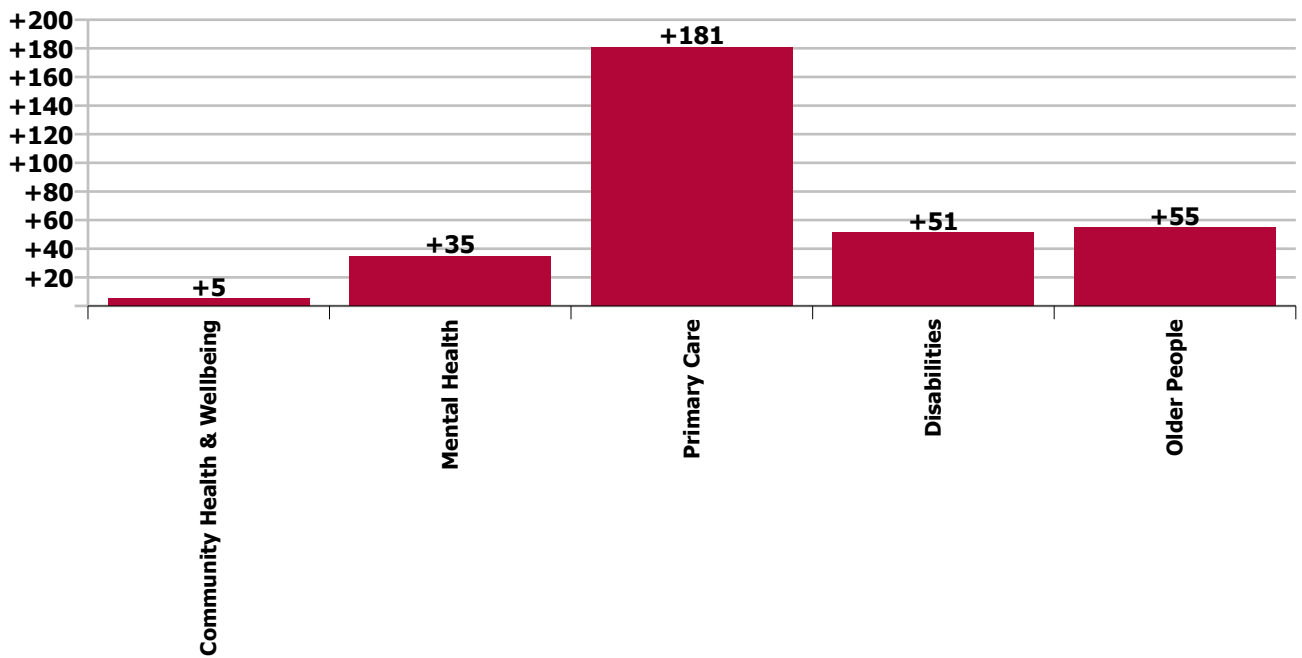
Staff Group change since: Mar 2020



Care Group change since: Feb 2021



Care Group change since: Mar 2020



## Longitudinal Employment Levels by Grade Group - Dec 2015 to Mar 2021

Mar 2021 (Dec 2016 figure: 5,280)	WTE Mar 2021	WTE change since Dec 16	WTE change since Dec 17	WTE change since Dec 18	WTE change since Dec 19	WTE change since Dec 19	WTE change since Feb 21	% change since Dec 16	% change since Dec 17	% change since Dec 18	% change since Dec 19	% change since Dec 19	% change since Feb 21
<b>Overall</b>	<b>5,843</b>	<b>+562</b>	<b>+475</b>	<b>+407</b>	<b>+374</b>	<b>+374</b>	<b>+45</b>	<b>+10.6%</b>	<b>+8.8%</b>	<b>+7.5%</b>	<b>+6.8%</b>	<b>+6.8%</b>	<b>+0.8%</b>
Consultant Medicine	4	+1	+1	+1	+1	+1		+20.7%	+20.7%	+24.4%	+20.7%	+20.7%	
Consultant Psychiatry	36	+9	+9	+6	+5	+5	-0	+32.8%	+31.2%	+20.7%	+17.1%	+17.1%	-0.9%
<b>Consultants</b>	<b>40</b>	<b>+10</b>	<b>+9</b>	<b>+7</b>	<b>+6</b>	<b>+6</b>	<b>-0</b>	<b>+31.6%</b>	<b>+30.2%</b>	<b>+21.1%</b>	<b>+17.5%</b>	<b>+17.5%</b>	<b>-0.8%</b>
Registrar	64	+24	+18	+13	+8	+8	-1	+60.3%	+38.9%	+24.4%	+13.9%	+13.9%	-1.9%
Senior Registrar	9	+4	+5	-2	+1	+1		+70.2%	+112.8%	-20.9%	+6.4%	+6.4%	
Specialist Registrar			-1	-1	-1	-1		-100.0%	-100.0%	-100.0%	-100.0%	-100.0%	-100.0%
<b>Registrars</b>	<b>73</b>	<b>+28</b>	<b>+21</b>	<b>+9</b>	<b>+7</b>	<b>+7</b>	<b>-1</b>	<b>+61.4%</b>	<b>+41.9%</b>	<b>+14.7%</b>	<b>+11.2%</b>	<b>+11.2%</b>	<b>-1.7%</b>
Senior House Officer	19	-11	-8	-7	-7	-7	-0	-36.3%	-30.6%	-26.2%	-28.4%	-28.4%	-0.8%
<b>SHO/ Interns</b>	<b>19</b>	<b>-11</b>	<b>-8</b>	<b>-7</b>	<b>-7</b>	<b>-7</b>	<b>-0</b>	<b>-36.3%</b>	<b>-30.6%</b>	<b>-26.2%</b>	<b>-28.4%</b>	<b>-28.4%</b>	<b>-0.8%</b>
Dentists	29	+0	+1	+0	+1	+1	+0	+1.6%	+3.3%	+1.5%	+2.8%	+2.8%	+0.3%
Other Medical	40	+3	+2	+5	-13	-13	+1	+9.1%	+6.2%	+14.0%	-24.1%	-24.1%	+2.7%
<b>Medical/ Dental, other</b>	<b>68</b>	<b>+4</b>	<b>+3</b>	<b>+5</b>	<b>-12</b>	<b>-12</b>	<b>+1</b>	<b>+5.8%</b>	<b>+5.0%</b>	<b>+8.4%</b>	<b>-14.8%</b>	<b>-14.8%</b>	<b>+1.7%</b>
<b>Medical &amp; Dental</b>	<b>199</b>	<b>+30</b>	<b>+26</b>	<b>+15</b>	<b>-6</b>	<b>-6</b>	<b>-1</b>	<b>+17.9%</b>	<b>+14.7%</b>	<b>+8.0%</b>	<b>-3.0%</b>	<b>-3.0%</b>	<b>-0.3%</b>
Clinical Nurse/ Midwife Manager	277	+8	+19	+10	+7	+7	+1	+2.9%	+7.2%	+3.6%	+2.8%	+2.8%	+0.2%
Director Nursing/Midwifery, Assistant	54	+3	+6	+3	+3	+3	-2	+4.9%	+11.6%	+6.4%	+6.4%	+6.4%	-3.3%
Director of Nursing/Midwifery	24	-2	-2	+0	-6	-6	-1	-8.0%	-7.4%	+0.6%	-19.4%	-19.4%	-2.2%
<b>Nurse/ Midwife Manager</b>	<b>355</b>	<b>+8</b>	<b>+22</b>	<b>+13</b>	<b>+5</b>	<b>+5</b>	<b>-2</b>	<b>+2.4%</b>	<b>+6.8%</b>	<b>+3.8%</b>	<b>+1.4%</b>	<b>+1.4%</b>	<b>-0.5%</b>
Advanced Nurse/ Midwife Practitioner	15	+12	+13	+8	+6	+6	+0	+400.0%	+650.0%	+114.9%	+73.4%	+73.4%	+0.8%
Clinical Nurse/ Midwife Specialist	105	+19	+14	+16	+11	+11	+0	+22.2%	+16.0%	+17.8%	+12.1%	+12.1%	+0.1%
<b>Nurse/ Midwife Specialist &amp; AN/MP</b>	<b>120</b>	<b>+31</b>	<b>+27</b>	<b>+24</b>	<b>+18</b>	<b>+18</b>	<b>+0</b>	<b>+35.0%</b>	<b>+29.7%</b>	<b>+24.9%</b>	<b>+17.3%</b>	<b>+17.3%</b>	<b>+0.2%</b>
Staff Nurse [Intellectual Disability]	252	+52	+52	+43	+47	+47	+5	+26.1%	+26.0%	+20.8%	+22.8%	+22.8%	+1.9%
Staff Nurse [Psychiatric]	295	-34	-23	-11	-3	-3	-2	-10.3%	-7.3%	-3.5%	-1.1%	-1.1%	-0.6%
Staff Nurses [General/ Children's]	502	-13	-22	-25	-9	-9	+2	-2.5%	-4.3%	-4.8%	-1.8%	-1.8%	+0.5%
<b>Staff Nurse/ Staff Midwife</b>	<b>1,048</b>	<b>+5</b>	<b>+6</b>	<b>+7</b>	<b>+34</b>	<b>+34</b>	<b>+5</b>	<b>+0.5%</b>	<b>+0.6%</b>	<b>+0.7%</b>	<b>+3.4%</b>	<b>+3.4%</b>	<b>+0.5%</b>
Public Health Nurse	153	+7	+0	-2	-3	-3	+2	+4.7%	+0.3%	-1.3%	-1.7%	-1.7%	+1.6%
<b>Public Health Nurse</b>	<b>153</b>	<b>+7</b>	<b>+0</b>	<b>-2</b>	<b>-3</b>	<b>-3</b>	<b>+2</b>	<b>+4.7%</b>	<b>+0.3%</b>	<b>-1.3%</b>	<b>-1.7%</b>	<b>-1.7%</b>	<b>+1.6%</b>
Pre-registration Nurse/ Midwife Intern	39	+38	+36	+29	+36	+36	+5	+2531.3%	+941.4%	+264.8%	+1215.7%	+1215.7%	+15.7%
Pre-registration Nurse Intern (COVID-19)							-6	-100.0%	-100.0%	-100.0%	-100.0%	-100.0%	-100.0%
Post-registration Nurse/ Midwife Student	3	-4	-4	-4	-4	-4		-57.1%	-57.1%	-57.1%	-57.0%	-57.0%	
Nursing/ Midwifery awaiting registration	11	+11	+11	+10				-100.0%	-100.0%	+1000.0%			
<b>Nursing/ Midwifery Student</b>	<b>53</b>	<b>+45</b>	<b>+43</b>	<b>+35</b>	<b>+32</b>	<b>+32</b>	<b>-0</b>	<b>+529.1%</b>	<b>+395.6%</b>	<b>+184.1%</b>	<b>+154.9%</b>	<b>+154.9%</b>	<b>-0.3%</b>
<b>Nursing/ Midwifery other</b>	<b>8</b>	<b>+3</b>	<b>+3</b>	<b>+3</b>	<b>+2</b>	<b>+2</b>	<b>+1</b>	<b>+64.4%</b>	<b>+60.6%</b>	<b>+60.6%</b>	<b>+34.8%</b>	<b>+34.8%</b>	<b>+14.6%</b>
<b>Nursing &amp; Midwifery</b>	<b>1,737</b>	<b>+100</b>	<b>+102</b>	<b>+80</b>	<b>+89</b>	<b>+89</b>	<b>+7</b>	<b>+6.1%</b>	<b>+6.3%</b>	<b>+4.8%</b>	<b>+5.4%</b>	<b>+5.4%</b>	<b>+0.4%</b>



Mar 2021 (Dec 2016 figure: 5,280)	WTE Mar 2021	WTE change since Dec 16	WTE change since Dec 17	WTE change since Dec 18	WTE change since Dec 19	WTE change since Dec 19	WTE change since Feb 21	% change since Dec 16	% change since Dec 17	% change since Dec 18	% change since Dec 19	% change since Dec 19	% change since Feb 21
<b>Overall</b>	<b>5,843</b>	<b>+562</b>	<b>+475</b>	<b>+407</b>	<b>+374</b>	<b>+374</b>	<b>+45</b>	<b>+10.6%</b>	<b>+8.8%</b>	<b>+7.5%</b>	<b>+6.8%</b>	<b>+6.8%</b>	<b>+0.8%</b>
Dietitians	15	+0	-1	-3	-2	-2	+1	+2.6%	-7.5%	-16.0%	-13.5%	-13.5%	+6.4%
Occupational Therapists	135	+16	+21	+11	+7	+7	+2	+13.0%	+18.7%	+9.3%	+5.2%	+5.2%	+1.7%
Orthoptists	3	+1	+0	+0	+0	+0	+0	+52.5%	+16.9%	+15.5%	+14.7%	+14.7%	+10.9%
Physiotherapists	96	+5	+5	+2	+6	+6	-1	+5.4%	+5.6%	+2.1%	+6.3%	+6.3%	-1.2%
Podiatrists & Chiropodists	10	+0	+2	+1	+2	+2	-0	+4.1%	+19.3%	+11.5%	+18.5%	+18.5%	-1.4%
Speech & Language Therapists	74	+10	+2	+4	+5	+5	+0	+15.9%	+2.5%	+5.6%	+7.5%	+7.5%	+0.2%
<b>Therapy Professions</b>	<b>333</b>	<b>+33</b>	<b>+29</b>	<b>+16</b>	<b>+17</b>	<b>+17</b>	<b>+2</b>	<b>+10.8%</b>	<b>+9.5%</b>	<b>+5.0%</b>	<b>+5.4%</b>	<b>+5.4%</b>	<b>+0.7%</b>
Audiology	5	-0	-0	-0	-0	-0	-0	-7.4%	-6.3%	-8.7%	-5.1%	-5.1%	-0.6%
Radiographers	2	+0	+0	+0	+0	+0	+0	+23.0%	+17.9%	+18.8%	+37.9%	+37.9%	+5.6%
<b>Health Science/ Diagnostics</b>	<b>7</b>	<b>-0</b>	<b>-0</b>	<b>-0</b>	<b>+0</b>	<b>+0</b>	<b>+0</b>	<b>-1.2%</b>	<b>-1.2%</b>	<b>-3.0%</b>	<b>+3.1%</b>	<b>+3.1%</b>	<b>+0.9%</b>
<b>Social Care</b>	<b>14</b>	<b>+1</b>	<b>+2</b>	<b>+3</b>	<b>+3</b>	<b>+3</b>	<b>-1</b>	<b>+8.2%</b>	<b>+20.5%</b>	<b>+22.7%</b>	<b>+26.4%</b>	<b>+26.4%</b>	<b>-4.1%</b>
<b>Social Workers</b>	<b>94</b>	<b>+13</b>	<b>+14</b>	<b>+16</b>	<b>+9</b>	<b>+9</b>	<b>+1</b>	<b>+16.8%</b>	<b>+18.0%</b>	<b>+20.4%</b>	<b>+10.7%</b>	<b>+10.7%</b>	<b>+0.7%</b>
<b>Psychologists</b>	<b>65</b>	<b>+11</b>	<b>+8</b>	<b>+4</b>	<b>+5</b>	<b>+5</b>	<b>-0</b>	<b>+19.3%</b>	<b>+13.4%</b>	<b>+6.5%</b>	<b>+8.9%</b>	<b>+8.9%</b>	<b>-0.1%</b>
<b>Pharmacy</b>	<b>3</b>	<b>+1</b>	<b>+1</b>	<b>+1</b>	<b>+1</b>	<b>+1</b>		<b>+66.7%</b>	<b>+66.7%</b>	<b>+56.3%</b>	<b>+66.7%</b>	<b>+66.7%</b>	
Counsellor Therapists	23	+5	+3	+4	+3	+3	+1	+28.2%	+12.7%	+18.5%	+17.4%	+17.4%	+3.1%
Dental Hygienists	5	+0	-0	+0	+0	+0		+3.3%	-6.0%	+4.3%	+8.0%	+8.0%	
Other Health & Social Care	3	-5	-5	-4	-5	-5		-58.5%	-62.8%	-55.4%	-58.2%	-58.2%	
<b>H&amp;SC, Other</b>	<b>32</b>	<b>+1</b>	<b>-3</b>	<b>-0</b>	<b>-1</b>	<b>-1</b>	<b>+1</b>	<b>+2.2%</b>	<b>-9.2%</b>	<b>-0.7%</b>	<b>-2.2%</b>	<b>-2.2%</b>	<b>+2.3%</b>
<b>Health &amp; Social Care Professionals</b>	<b>548</b>	<b>+59</b>	<b>+51</b>	<b>+39</b>	<b>+35</b>	<b>+35</b>	<b>+3</b>	<b>+12.1%</b>	<b>+10.3%</b>	<b>+7.6%</b>	<b>+6.8%</b>	<b>+6.8%</b>	<b>+0.6%</b>
Executive Management	8	+1		+0	+1	+1		+14.3%		+1.8%	+17.1%	+17.1%	
Senior Management (VIII & GM)	55	+16	+15	+6	+2	+2	-0	+39.8%	+36.4%	+12.2%	+4.6%	+4.6%	-0.5%
<b>Management (VIII &amp; above)</b>	<b>63</b>	<b>+17</b>	<b>+15</b>	<b>+6</b>	<b>+4</b>	<b>+4</b>	<b>-0</b>	<b>+36.0%</b>	<b>+30.4%</b>	<b>+10.8%</b>	<b>+6.0%</b>	<b>+6.0%</b>	<b>-0.5%</b>
Middle Management (V-VII)	178	+82	+71	+64	+43	+43	+3	+85.9%	+67.2%	+56.4%	+32.2%	+32.2%	+1.9%
Other Administrative	1												
<b>Administrative/ Supervisory (V to VII)</b>	<b>179</b>	<b>+82</b>	<b>+71</b>	<b>+64</b>	<b>+43</b>	<b>+43</b>	<b>+3</b>	<b>+85.0%</b>	<b>+66.6%</b>	<b>+55.9%</b>	<b>+32.0%</b>	<b>+32.0%</b>	<b>+1.9%</b>
General Administrative (III & IV)	497	+57	+60	+47	+42	+42	+2	+12.9%	+13.6%	+10.5%	+9.2%	+9.2%	+0.4%
<b>Clerical (III &amp; IV)</b>	<b>497</b>	<b>+57</b>	<b>+60</b>	<b>+47</b>	<b>+42</b>	<b>+42</b>	<b>+2</b>	<b>+12.9%</b>	<b>+13.6%</b>	<b>+10.5%</b>	<b>+9.2%</b>	<b>+9.2%</b>	<b>+0.4%</b>
<b>Management &amp; Administrative</b>	<b>739</b>	<b>+156</b>	<b>+146</b>	<b>+118</b>	<b>+89</b>	<b>+89</b>	<b>+5</b>	<b>+26.7%</b>	<b>+24.6%</b>	<b>+18.9%</b>	<b>+13.6%</b>	<b>+13.6%</b>	<b>+0.7%</b>
Catering	64	+9	+6	+6	+4	+4	-1	+15.3%	+10.1%	+9.5%	+6.2%	+6.2%	-1.0%
Household Services	216	-17	-1	+1	+12	+12	+3	-7.2%	-0.3%	+0.3%	+6.0%	+6.0%	+1.6%
Other Support	32	+9	+3	-3	-2	-2	+1	+41.7%	+9.4%	-8.2%	-5.1%	-5.1%	+1.9%
Portering	7	-2	-1	-1	-1	-1		-22.9%	-12.4%	-11.8%	-12.9%	-12.9%	
<b>Support</b>	<b>319</b>	<b>-1</b>	<b>+7</b>	<b>+3</b>	<b>+13</b>	<b>+13</b>	<b>+3</b>	<b>-0.3%</b>	<b>+2.2%</b>	<b>+0.8%</b>	<b>+4.4%</b>	<b>+4.4%</b>	<b>+1.1%</b>
Maintenance	35	-3	-3	+1	-1	-1	-1	-8.1%	-7.1%	+2.7%	-2.5%	-2.5%	-2.3%
<b>Maintenance/ Technical</b>	<b>35</b>	<b>-3</b>	<b>-3</b>	<b>+1</b>	<b>-1</b>	<b>-1</b>	<b>-1</b>	<b>-8.1%</b>	<b>-7.1%</b>	<b>+2.7%</b>	<b>-2.5%</b>	<b>-2.5%</b>	<b>-2.3%</b>



Mar 2021 (Dec 2016 figure: 5,280)	WTE Mar 2021	WTE change since Dec 16	WTE change since Dec 17	WTE change since Dec 18	WTE change since Dec 19	WTE change since Dec 19	WTE change since Feb 21	% change since Dec 16	% change since Dec 17	% change since Dec 18	% change since Dec 19	% change since Dec 19	% change since Feb 21
<b>Overall</b>	<b>5,843</b>	<b>+562</b>	<b>+475</b>	<b>+407</b>	<b>+374</b>	<b>+374</b>	<b>+45</b>	<b>+10.6%</b>	<b>+8.8%</b>	<b>+7.5%</b>	<b>+6.8%</b>	<b>+6.8%</b>	<b>+0.8%</b>
<b>General Support</b>	<b>354</b>	<b>-4</b>	<b>+4</b>	<b>+3</b>	<b>+12</b>	<b>+12</b>	<b>+3</b>	<b>-1.1%</b>	<b>+1.2%</b>	<b>+1.0%</b>	<b>+3.6%</b>	<b>+3.6%</b>	<b>+0.7%</b>
HCA, Nurse's Aide, etc.	1,447	+96	+41	+30	+44	+44	-2	+7.1%	+2.9%	+2.1%	+3.1%	+3.1%	-0.1%
HCA (Student Nurse/Midwife COVID-19)	1	+1	+1	+1	+1	+1	-1	-100.0%	-100.0%	-100.0%	-100.0%	-100.0%	-29.7%
Health & Social Care Assistants	30	+15	+13	+2	+10	+10	+1	+101.0%	+76.0%	+8.9%	+51.2%	+51.2%	+3.4%
Swabber (COVID-19)	58	+58	+58	+58	+58	+58	+4	-100.0%	-100.0%	-100.0%	-100.0%	-100.0%	+6.7%
<b>Health Care Assistants</b>	<b>1,536</b>	<b>+170</b>	<b>+112</b>	<b>+92</b>	<b>+113</b>	<b>+113</b>	<b>+2</b>	<b>+12.4%</b>	<b>+7.9%</b>	<b>+6.4%</b>	<b>+7.9%</b>	<b>+7.9%</b>	<b>+0.1%</b>
<b>Home Help</b>	<b>595</b>	<b>+48</b>	<b>+33</b>	<b>+57</b>	<b>+38</b>	<b>+38</b>	<b>+20</b>	<b>+8.8%</b>	<b>+5.9%</b>	<b>+10.7%</b>	<b>+6.9%</b>	<b>+6.9%</b>	<b>+3.4%</b>
<b>Care, other</b>	<b>135</b>	<b>+4</b>	<b>+0</b>	<b>+3</b>	<b>+5</b>	<b>+5</b>	<b>+6</b>	<b>+2.9%</b>	<b>+0.1%</b>	<b>+2.5%</b>	<b>+3.5%</b>	<b>+3.5%</b>	<b>+5.0%</b>
<b>Patient &amp; Client Care</b>	<b>2,265</b>	<b>+221</b>	<b>+146</b>	<b>+152</b>	<b>+156</b>	<b>+156</b>	<b>+28</b>	<b>+10.8%</b>	<b>+6.9%</b>	<b>+7.2%</b>	<b>+7.4%</b>	<b>+7.4%</b>	<b>+1.3%</b>

Source: Health Service Personnel Census

Longitudinal Employment Levels by Care Group - Dec 2015 to Mar 2021

Community Health & Wellbeing

Mar 2021 ( figure: )	WTE Mar 2021	WTE change since	WTE change since	WTE change since	WTE change since	WTE change since	WTE change since Feb 21	% change since	% change since	% change since	% change since	% change since	% change since Feb 21
Overall	19	+19	+19	+19	+19	+19	-0	-100.0%	-100.0%	-100.0%	-100.0%	-100.0%	-0.8%
Medical & Dental	1	+1	+1	+1	+1	+1		-1.0%	-1.0%	-1.0%	-1.0%	-1.0%	+0.0%
Medical/ Dental, other	1	+1	+1	+1	+1	+1		-1.0%	-1.0%	-1.0%	-1.0%	-1.0%	+0.0%
Nursing & Midwifery	2	+2	+2	+2	+2	+2	-1	-1.0%	-1.0%	-1.0%	-1.0%	-1.0%	-0.3%
Nurse/ Midwife Manager	1	+1	+1	+1	+1	+1	+1	-1.0%	-1.0%	-1.0%	-1.0%	-1.0%	-0.5%
Staff Nurse/ Staff Midwife	1	+1	+1	+1	+1	+1	+1	-1.0%	-1.0%	-1.0%	-1.0%	-1.0%	+0.0%
Health & Social Care Professionals	1	+1	+1	+1	+1	+1		-1.0%	-1.0%	-1.0%	-1.0%	-1.0%	+0.0%
Therapy Professions	1	+1	+1	+1	+1	+1		-1.0%	-1.0%	-1.0%	-1.0%	-1.0%	+0.0%
Management & Administrative	15	+15	+15	+15	+15	+15	+1	-1.0%	-1.0%	-1.0%	-1.0%	-1.0%	+0.1%
Management (VIII & above)	1	+1	+1	+1	+1	+1		-1.0%	-1.0%	-1.0%	-1.0%	-1.0%	+0.0%
Administrative/ Supervisory (V to VII)	10	+10	+10	+10	+10	+10	+10	-1.0%	-1.0%	-1.0%	-1.0%	-1.0%	+0.0%
Clerical (III & IV)	4	+4	+4	+4	+4	+4	+4	-1.0%	-1.0%	-1.0%	-1.0%	-1.0%	+0.3%

Source: Health Service Personnel Census

Mental Health

Mar 2021 (Dec 2016 figure: 948)	WTE Mar 2021	WTE change since Dec 16	WTE change since Dec 17	WTE change since Dec 18	WTE change since Dec 19	WTE change since Dec 19	WTE change since Feb 21	% change since Dec 16	% change since Dec 17	% change since Dec 18	% change since Dec 19	% change since Dec 19	% change since Feb 21
Overall	994	+46	+52	+53	+42	+42	-3	+4.9%	+5.6%	+5.6%	+4.4%	+4.4%	-0.3%
Medical & Dental	86	+13	+14	+8	+5	+5	-0	+0.2%	+0.2%	+0.1%	+0.1%	+0.1%	-0.0%
Consultants	36	+10	+10	+7	+5	+5	-0	+0.4%	+0.4%	+0.2%	+0.2%	+0.2%	-0.0%
Registrars	32	+15	+13	+8	+7	+7	+0	+0.9%	+0.6%	+0.3%	+0.3%	+0.3%	+0.0%
SHO/ Interns	18	-12	-8	-7	-7	-7	-0	-0.4%	-0.3%	-0.3%	-0.3%	-0.3%	-0.0%
Nursing & Midwifery	507	+6	+13	+22	+25	+25	-3	+0.0%	+0.0%	+0.0%	+0.1%	+0.1%	-0.0%
Nurse/ Midwife Manager	123	+4	+5	+6	+5	+5	-2	+0.0%	+0.0%	+0.1%	+0.0%	+0.0%	-0.0%
Nurse/ Midwife Specialist & AN/MP	73	+15	+12	+8	+5	+5	-1	+0.3%	+0.2%	+0.1%	+0.1%	+0.1%	-0.0%
Staff Nurse/ Staff Midwife	294	-31	-22	-9	-3	-3	-2	-0.1%	-0.1%	-0.0%	-0.0%	-0.0%	-0.0%
Nursing/ Midwifery Student	16	+16	+16	+15	+16	+16	+0	-1.0%	-1.0%	+15.0%	-1.0%	-1.0%	+0.0%
Nursing/ Midwifery other	2	+2	+2	+2	+2	+2	+1	-1.0%	-1.0%	-1.0%	-1.0%	-1.0%	+1.1%
Health & Social Care Professionals	123	+16	+17	+12	+10	+10	+2	+0.1%	+0.2%	+0.1%	+0.1%	+0.1%	+0.0%
Therapy Professions	39	+7	+7	+5	+3	+3	+1	+0.2%	+0.2%	+0.1%	+0.1%	+0.1%	+0.0%
Social Care	4	-0	-0	-0	-0	-0	-0	-0.0%	-0.1%	-0.0%	-0.0%	-0.0%	-0.0%
Social Workers	42	+4	+5	+4	+3	+3	-0	+0.1%	+0.1%	+0.1%	+0.1%	+0.1%	-0.0%
Psychologists	24	+2	+3	+1	+3	+3	-0	+0.1%	+0.1%	+0.0%	+0.1%	+0.1%	-0.0%
Pharmacy	1			-0				+0.0%	+0.0%	-0.1%	+0.0%	+0.0%	+0.0%
H&SC, Other	15	+3	+2	+3	+1	+1	+1	+0.3%	+0.2%	+0.2%	+0.1%	+0.1%	+0.1%
Management & Administrative	123	+31	+24	+18	+2	+2	-1	+0.3%	+0.2%	+0.2%	+0.0%	+0.0%	-0.0%
Management (VIII & above)	6	+3	+2	+2	+0	+0	-0	+0.9%	+0.5%	+0.5%	+0.0%	+0.0%	-0.0%
Administrative/ Supervisory (V to VII)	30	+17	+14	+11	+0	+0	-1	+1.3%	+0.9%	+0.6%	+0.0%	+0.0%	-0.0%
Clerical (III & IV)	87	+11	+8	+6	+1	+1	+0	+0.2%	+0.1%	+0.1%	+0.0%	+0.0%	+0.0%
General Support	79	-14	-6	-4	+0	+0	-0	-0.1%	-0.1%	-0.0%	+0.0%	+0.0%	-0.0%
Support	63	-12	-6	-4	+1	+1	-0	-0.2%	-0.1%	-0.1%	+0.0%	+0.0%	-0.0%
Maintenance/ Technical	16	-2	-1	+0	-1	-1	-0	-0.1%	-0.1%	+0.0%	-0.1%	-0.1%	-0.0%
Patient & Client Care	77	-6	-9	-3	-0	-0	-1	-0.1%	-0.1%	-0.0%	-0.0%	-0.0%	-0.0%
Health Care Assistants	68	-5	-7	+1	+2	+2	-1	-0.1%	-0.1%	+0.0%	+0.0%	+0.0%	-0.0%
Care, other	8	-2	-2	-4	-2	-2	+0	-0.2%	-0.2%	-0.3%	-0.2%	-0.2%	+0.0%

Source: Health Service Personnel Census

Primary Care

Mar 2021 (Dec 2016 figure: 1,257)	WTE Mar 2021	WTE change since Dec 16	WTE change since Dec 17	WTE change since Dec 18	WTE change since Dec 19	WTE change since Dec 19	WTE change since Feb 21	% change since Dec 16	% change since Dec 17	% change since Dec 18	% change since Dec 19	% change since Dec 19	% change since Feb 21
Overall	1,369	+112	+180	+136	+187	+187	+26	+8.9%	+15.2%	+11.0%	+15.8%	+15.8%	+2.0%
Medical & Dental	94	+14	+10	+4	+2	+2	-0	+0.2%	+0.1%	+0.0%	+0.0%	+0.0%	-0.0%
Consultants	4	+1	+1	+1	+1	+1		+0.2%	+0.2%	+0.2%	+0.2%	+0.2%	+0.0%
Registrars	41	+12	+9	+2	-0	-0	-2	+0.4%	+0.3%	+0.0%	-0.0%	-0.0%	-0.0%
SHO/ Interns	1	+1					+0	-1.0%	+0.0%	+0.0%	+0.0%	+0.0%	+0.0%
Medical/ Dental, other	49	+0	+0	+2	+1	+1	+1	+0.0%	+0.0%	+0.0%	+0.0%	+0.0%	+0.0%
Nursing & Midwifery	322	+25	+16	+17	+15	+15	+5	+0.1%	+0.1%	+0.1%	+0.0%	+0.0%	+0.0%
Nurse/ Midwife Manager	38	+1	+3	+1	+2	+2	+0	+0.0%	+0.1%	+0.0%	+0.0%	+0.0%	+0.0%
Nurse/ Midwife Specialist & AN/MP	28	+8	+5	+8	+7	+7	+1	+0.4%	+0.2%	+0.4%	+0.4%	+0.4%	+0.0%
Staff Nurse/ Staff Midwife	98	+12	+11	+13	+13	+13	+2	+0.1%	+0.1%	+0.1%	+0.2%	+0.2%	+0.0%
Public Health Nurse	153	+7	+0	-2	-3	-3	+2	+0.0%	+0.0%	-0.0%	-0.0%	-0.0%	+0.0%
Nursing/ Midwifery Student	3	-4	-4	-4	-4	-4		-0.6%	-0.6%	-0.6%	-0.6%	-0.6%	+0.0%
Nursing/ Midwifery other	1	+1	+1	+1	-0	-0	-0	-1.0%	-1.0%	-1.0%	-0.0%	-0.0%	-0.0%
Health & Social Care Professionals	300	+1	-8	-16	+13	+13	+5	+0.0%	-0.0%	-0.1%	+0.0%	+0.0%	+0.0%
Therapy Professions	238	+1	-4	-10	+11	+11	+3	+0.0%	-0.0%	-0.0%	+0.0%	+0.0%	+0.0%
Health Science/ Diagnostics	5	-0	-0	-0	-0	-0	-0	-0.1%	-0.1%	-0.1%	-0.1%	-0.1%	-0.0%
Social Workers	18	-2	-3	-3	+5	+5	+1	-0.1%	-0.2%	-0.1%	+0.4%	+0.4%	+0.1%
Psychologists	31	-0	-1	-4	-4	-4	+0	-0.0%	-0.0%	-0.1%	-0.1%	-0.1%	+0.0%
Pharmacy	2	+1	+1	+1	+1	+1		+1.4%	+1.4%	+1.4%	+1.4%	+1.4%	+0.0%
H&SC, Other	7	+1	-0	+0	+0	+0	+0	+0.2%	-0.1%	+0.0%	+0.1%	+0.1%	+0.0%
Management & Administrative	385	+59	+56	+37	+54	+54	+6	+0.2%	+0.2%	+0.1%	+0.2%	+0.2%	+0.0%
Management (VIII & above)	32	+3	+2	-5	-0	-0	-0	+0.1%	+0.1%	-0.1%	-0.0%	-0.0%	-0.0%
Administrative/ Supervisory (V to VII)	85	+29	+20	+18	+21	+21	+4	+0.5%	+0.3%	+0.3%	+0.3%	+0.3%	+0.1%
Clerical (III & IV)	268	+27	+34	+24	+33	+33	+1	+0.1%	+0.1%	+0.1%	+0.1%	+0.1%	+0.0%
General Support	95	+23	+21	+16	+17	+17	+3	+0.3%	+0.3%	+0.2%	+0.2%	+0.2%	+0.0%
Support	88	+23	+19	+13	+16	+16	+3	+0.3%	+0.3%	+0.2%	+0.2%	+0.2%	+0.0%
Maintenance/ Technical	7	+1	+1	+3	+1	+1	-0	+0.1%	+0.2%	+0.7%	+0.2%	+0.2%	-0.0%
Patient & Client Care	173	-11	+85	+79	+86	+86	+8	-0.1%	+1.0%	+0.8%	+1.0%	+1.0%	+0.0%
Health Care Assistants	108	+77	+78	+69	+76	+76	+4	+2.5%	+2.5%	+1.7%	+2.4%	+2.4%	+0.0%
Home Help	1	-94	+1	+1	+1	+1	+0	-1.0%	-1.0%	-1.0%	-1.0%	-1.0%	+0.3%
Care, other	64	+6	+7	+9	+9	+9	+4	+0.1%	+0.1%	+0.2%	+0.2%	+0.2%	+0.1%

Source: Health Service Personnel Census

Disabilities

Mar 2021 (Dec 2016 figure: 1,430)	WTE Mar 2021	WTE change since Dec 16	WTE change since Dec 17	WTE change since Dec 18	WTE change since Dec 19	WTE change since Dec 19	WTE change since Feb 21	% change since Dec 16	% change since Dec 17	% change since Dec 18	% change since Dec 19	% change since Dec 19	% change since Feb 21
Overall	1,575	+144	+117	+95	+76	+76	-0	+10.1%	+8.0%	+6.5%	+5.1%	+5.1%	-0.0%
Medical & Dental	3	-0	-0	-0	-0	-0		-0.0%	-0.0%	-0.0%	-0.0%	-0.0%	+0.0%
Consultants		-1	-1	-1				-1.0%	-1.0%	-1.0%	-1.0%	-1.0%	-1.0%
Medical/ Dental, other	3	+1	+1	+1	-0	-0		+0.4%	+0.4%	+0.4%	-0.0%	-0.0%	+0.0%
Nursing & Midwifery	489	+40	+41	+33	+34	+34	+2	+0.1%	+0.1%	+0.1%	+0.1%	+0.1%	+0.0%
Nurse/ Midwife Manager	106	+6	+5	+7	+1	+1	-0	+0.1%	+0.0%	+0.1%	+0.0%	+0.0%	-0.0%
Nurse/ Midwife Specialist & AN/MP	10	+0	+2	+3	+3	+3	+0	+0.0%	+0.2%	+0.4%	+0.4%	+0.4%	+0.0%
Staff Nurse/ Staff Midwife	335	+1	+5	+1	+11	+11	+2	+0.0%	+0.0%	+0.0%	+0.0%	+0.0%	+0.0%
Nursing/ Midwifery Student	35	+33	+31	+24	+21	+21	-1	+22.0%	+8.1%	+2.2%	+1.5%	+1.5%	-0.0%
Nursing/ Midwifery other	4	-1	-1	-1	-1	-1		-0.2%	-0.2%	-0.2%	-0.2%	-0.2%	+0.0%
Health & Social Care Professionals	90	+28	+25	+30	+8	+8	-4	+0.5%	+0.4%	+0.5%	+0.1%	+0.1%	-0.0%
Therapy Professions	41	+17	+17	+17	-2	-2	-3	+0.8%	+0.7%	+0.7%	-0.0%	-0.0%	-0.1%
Social Care	11	+1	+3	+3	+3	+3	-1	+0.1%	+0.3%	+0.3%	+0.4%	+0.4%	-0.1%
Social Workers	18	+5	+4	+6	+2	+2	-1	+0.4%	+0.3%	+0.5%	+0.1%	+0.1%	-0.0%
Psychologists	11	+9	+6	+7	+7	+7	-0	+3.2%	+1.3%	+1.8%	+1.4%	+1.4%	-0.0%
H&SC, Other	10	-4	-5	-3	-3	-3	-0	-0.3%	-0.3%	-0.2%	-0.2%	-0.2%	-0.0%
Management & Administrative	105	+19	+24	+22	+14	+14	+0	+0.2%	+0.3%	+0.3%	+0.2%	+0.2%	+0.0%
Management (VIII & above)	17	+6	+5	+4	+3	+3		+0.5%	+0.4%	+0.3%	+0.2%	+0.2%	+0.0%
Administrative/ Supervisory (V to VII)	36	+14	+16	+15	+8	+8	+0	+0.6%	+0.8%	+0.7%	+0.3%	+0.3%	+0.0%
Clerical (III & IV)	52	-0	+3	+3	+3	+3	-0	-0.0%	+0.1%	+0.1%	+0.1%	+0.1%	-0.0%
General Support	55	-5	-3	-2	+0	+0	-1	-0.1%	-0.1%	-0.0%	+0.0%	+0.0%	-0.0%
Support	49	-4	-2	-2	+0	+0	-0	-0.1%	-0.0%	-0.0%	+0.0%	+0.0%	-0.0%
Maintenance/ Technical	6	-1	-1				-0	-0.1%	-0.1%	+0.0%	+0.0%	+0.0%	-0.1%
Patient & Client Care	832	+62	+30	+12	+20	+20	+3	+0.1%	+0.0%	+0.0%	+0.0%	+0.0%	+0.0%
Health Care Assistants	777	+59	+27	+5	+16	+16	+2	+0.1%	+0.0%	+0.0%	+0.0%	+0.0%	+0.0%
Home Help	15	-3	+0	+2	+1	+1	-0	-0.2%	+0.0%	+0.1%	+0.1%	+0.1%	-0.0%
Care, other	40	+7	+3	+6	+3	+3	+2	+0.2%	+0.1%	+0.2%	+0.1%	+0.1%	+0.0%

Source: Health Service Personnel Census

Older People

Mar 2021 (Dec 2016 figure: 1,645)	WTE Mar 2021	WTE change since Dec 16	WTE change since Dec 17	WTE change since Dec 18	WTE change since Dec 19	WTE change since Dec 19	WTE change since Feb 21	% change since Dec 16	% change since Dec 17	% change since Dec 18	% change since Dec 19	% change since Dec 19	% change since Feb 21
Overall	1,886	+241	+106	+104	+51	+51	+22	+14.7%	+6.0%	+5.8%	+2.8%	+2.8%	+1.2%
Medical & Dental	16	+1	+1	+1	-14	-14	-0	+0.1%	+0.1%	+0.1%	-0.5%	-0.5%	-0.0%
Medical/ Dental, other	16	+1	+1	+1	-14	-14	-0	+0.1%	+0.1%	+0.1%	-0.5%	-0.5%	-0.0%
Nursing & Midwifery	417	+28	+30	+6	+12	+12	+4	+0.1%	+0.1%	+0.0%	+0.0%	+0.0%	+0.0%
Nurse/ Midwife Manager	87	-4	+9	-2	-4	-4	+1	-0.0%	+0.1%	-0.0%	-0.0%	-0.0%	+0.0%
Nurse/ Midwife Specialist & AN/MP	9	+8	+9	+5	+2	+2		+8.0%	-1.0%	+1.3%	+0.3%	+0.3%	+0.0%
Staff Nurse/ Staff Midwife	320	+22	+11	+2	+13	+13	+3	+0.1%	+0.0%	+0.0%	+0.0%	+0.0%	+0.0%
Nursing/ Midwifery other	1	+1	+1	+1	+1	+1		-1.0%	-1.0%	-1.0%	-1.0%	-1.0%	+0.0%
Health & Social Care Professionals	34	+14	+16	+13	+4	+4	+1	+0.7%	+0.9%	+0.6%	+0.1%	+0.1%	+0.0%
Therapy Professions	15	+6	+7	+4	+4	+4	+1	+0.7%	+0.9%	+0.3%	+0.4%	+0.4%	+0.1%
Health Science/ Diagnostics	2	+0	+0	+0	+0	+0	+0	+0.2%	+0.2%	+0.2%	+0.4%	+0.4%	+0.1%
Social Workers	17	+7	+8	+9	-1	-1	+0	+0.7%	+1.0%	+1.1%	-0.1%	-0.1%	+0.0%
Management & Administrative	111	+31	+26	+25	+4	+4	-0	+0.4%	+0.3%	+0.3%	+0.0%	+0.0%	-0.0%
Management (VIII & above)	8	+4	+5	+5	+0	+0		+1.0%	+1.7%	+1.7%	+0.0%	+0.0%	+0.0%
Administrative/ Supervisory (V to VII)	17	+12	+11	+10	+3	+3	+0	+2.2%	+1.7%	+1.3%	+0.2%	+0.2%	+0.0%
Clerical (III & IV)	86	+15	+10	+11	+1	+1	-0	+0.2%	+0.1%	+0.1%	+0.0%	+0.0%	-0.0%
General Support	125	-9	-7	-7	-5	-5	+1	-0.1%	-0.1%	-0.1%	-0.0%	-0.0%	+0.0%
Support	119	-8	-5	-5	-4	-4	+1	-0.1%	-0.0%	-0.0%	-0.0%	-0.0%	+0.0%
Maintenance/ Technical	6	-1	-2	-2	-1	-1		-0.1%	-0.3%	-0.3%	-0.1%	-0.1%	+0.0%
Patient & Client Care	1,184	+177	+40	+65	+50	+50	+17	+0.2%	+0.0%	+0.1%	+0.0%	+0.0%	+0.0%
Health Care Assistants	582	+38	+15	+17	+18	+18	-3	+0.1%	+0.0%	+0.0%	+0.0%	+0.0%	-0.0%
Home Help	579	+145	+32	+55	+37	+37	+20	+0.3%	+0.1%	+0.1%	+0.1%	+0.1%	+0.0%
Care, other	22	-7	-7	-8	-5	-5	+1	-0.2%	-0.2%	-0.3%	-0.2%	-0.2%	+0.0%

Source: Health Service Personnel Census