

CHO 1 Employment Report: May 2020

Employment by Staff Group

May 2020 (Dec 2019 figure: 5,468)	WTE Apr 2020	WTE May 2020	WTE change since Apr 20	% change since Apr 20	WTE change since Dec 19	WTE change since May 19
Overall	5,534	5,554	+20	+0.4%	+85	+18
Consultants	34	35	+1	+3.0%	+2	+2
Registrars	61	60	-1	-2.1%	-5	-1
SHO/ Interns	26	24	-2	-7.4%	-3	-3
Medical/ Dental, other	66	66	+0	+0.1%	-14	+2
Medical & Dental	187	185	-2	-1.1%	-20	-0
Nurse/ Midwife Manager	355	357	+2	+0.5%	+8	+3
Nurse/ Midwife Specialist & AN/MP	108	108	+0	+0.4%	+6	+11
Staff Nurse/ Staff Midwife	1,013	1,009	-3	-0.3%	-5	-23
Public Health Nurse	152	152	+0	+0.3%	-4	-1
Pre-registration Nurse/ Midwife Intern	40	7	-33	-82.7%	+4	-33
Post-registration Nurse/ Midwife Student	7	7				
Nursing/ Midwifery awaiting registration	11	11				
Pre-registration Nurse Intern (COVID-19)		37	+37	-100.0%	+37	+37
Nursing/ Midwifery Student	58	62	+4	+6.4%	+41	+36
Nursing/ Midwifery other	7	7	+0	+1.7%	+1	+1
Nursing & Midwifery	1,693	1,696	+3	+0.2%	+48	+27
Therapy Professions	321	322	+1	+0.3%	+6	-5
Health Science/ Diagnostics	6	6	+1	+16.1%	-0	-0
Social Care	12	12	-0	-1.5%	+1	+0
Social Workers	90	91	+1	+0.8%	+6	+10
Psychologists	59	60	+1	+1.7%	-0	-1
Pharmacy	2	2	+0	+3.3%	+0	+0
H&SC, Other	30	29	-1	-3.4%	-3	-4
Health & Social Care Professionals	520	523	+2	+0.5%	+10	+1
Management (VIII & above)	61	61	+0	+0.2%	+1	+2
Administrative/ Supervisory (V to VII)	159	163	+4	+2.5%	+27	+34
Clerical (III & IV)	454	450	-4	-0.9%	-5	-4
Management & Administrative	674	674	+0	+0.0%	+23	+33
Support	310	313	+3	+1.0%	+7	+3
Maintenance/ Technical	37	37	-0	-0.2%	+1	+2
General Support	347	350	+3	+0.9%	+8	+5
Health Care Assistants	1,428	1,453	+25	+1.7%	+30	-6
Care, other	135	134	-1	-0.7%	+3	-3
Home Help	550	539	-11	-2.0%	-17	-38
Patient & Client Care	2,113	2,125	+13	+0.6%	+16	-47

CHO 1 Employment Report: May 2020

Community Health & Wellbeing

May 2020 (figure:)	WTE Apr 2020	WTE May 2020	WTE change since Apr 20	% change since Apr 20	WTE change since	WTE change since
Total Community Health & Wellbeing	14	14	+0	+0.4%	+14	+14
Management (VIII & above)	1	1			+1	+1
Administrative/ Supervisory (V to VII)	9	9	+0	+0.9%	+9	+9
Clerical (III & IV)	3	3	-0	-0.7%	+3	+3
Management & Administrative	13	13	+0	+0.5%	+13	+13
Patient & Client Care	1	1			+1	+1

Mental Health

May 2020 (Dec 2019 figure: 953)	WTE Apr 2020	WTE May 2020	WTE change since Apr 20	% change since Apr 20	WTE change since Dec 19	WTE change since May 19
Total Mental Health	967	965	-3	-0.3%	+12	+6
Consultants	31	32	+1	+3.4%	+2	+3
Registrars	23	23	-0	-0.6%	-1	+1
SHO/ Interns	25	23	-2	-7.4%	-2	-3
Medical & Dental	80	79	-1	-1.2%	-2	+1
Nurse/ Midwife Manager	119	121	+2	+1.7%	+4	+3
Nurse/ Midwife Specialist & AN/MP	68	68	+1	+0.8%	+1	+3
Staff Nurse/ Staff Midwife	293	290	-3	-1.1%	-8	-19
Pre-registration Nurse/ Midwife Intern	15		-15	-100.0%		-15
Pre-registration Nurse Intern (COVID-19)		16	+16	-100.0%	+16	+16
Nursing/ Midwifery Student	15	16	+1	+8.6%	+16	+8
Nursing/ Midwifery other	1	1	+0	+5.6%	+1	+1
Nursing & Midwifery	495	496	+1	+0.2%	+14	-3
Therapy Professions	37	36	-1	-3.7%	+0	+2
Social Care	4	4	-0	-1.6%	-0	-0
Social Workers	40	41	+0	+1.0%	+2	+3
Psychologists	21	22	+1	+2.7%	+1	-0
Pharmacy	1	1	+0	+6.3%	+0	+0
H&SC, Other	14	13	-1	-8.7%	-0	-0
Health & Social Care Professionals	117	115	-2	-1.4%	+2	+4
Management (VIII & above)	7	7	+0	+1.1%	+1	+3
Administrative/ Supervisory (V to VII)	30	30	+0	+0.4%	+0	+7
Clerical (III & IV)	84	83	-0	-0.1%	-2	+3
Management & Administrative	120	121	+0	+0.1%	-0	+13
Support	61	62	+1	+1.5%	+0	-1
Maintenance/ Technical	17	17	-0	-0.0%	+0	+1
General Support	78	79	+1	+1.2%	+0	-0
Health Care Assistants	66	63	-2	-3.7%	-3	-7
Care, other	11	11	+0	+3.3%	+1	-1
Patient & Client Care	77	74	-2	-2.7%	-3	-9

Primary Care

May 2020 (Dec 2019 figure: 1,182)	WTE Apr 2020	WTE May 2020	WTE change since Apr 20	% change since Apr 20	WTE change since Dec 19	WTE change since May 19
Total Primary Care	1,199	1,217	+18	+1.5%	+35	+7
Consultants	3	3	-0	-1.0%	-0	+0
Registrars	38	37	-1	-2.9%	-4	-2
SHO/ Interns	1	1	-0	-5.3%	-0	-0
Medical/ Dental, other	46	46	+0	+0.2%	-2	-1
Medical & Dental	87	86	-1	-1.3%	-6	-3
Nurse/ Midwife Manager	43	43	-1	-1.3%	+6	+7
Nurse/ Midwife Specialist & AN/MP	24	24	-0	-0.7%	+3	+4
Staff Nurse/ Staff Midwife	88	92	+3	+3.5%	+6	+8
Public Health Nurse	152	152	+0	+0.3%	-4	-1
<i>Post-registration Nurse/ Midwife Student</i>	7	7				
Nursing/ Midwifery Student	7	7				+0
<i>Nursing Education/Clinical</i>	1	1				
Nursing/ Midwifery other	1	1				
Nursing & Midwifery	316	318	+3	+0.9%	+12	+19
Therapy Professions	225	228	+3	+1.3%	+1	-16
Health Science/ Diagnostics	4	5	+1	+20.3%	-0	-0
Social Workers	13	13	+0	+3.3%	+1	+1
Psychologists	33	33	+0	+0.8%	-1	-3
Pharmacy	1	1				
H&SC, Other	7	7			+0	+0
Health & Social Care Professionals	284	288	+5	+1.6%	+1	-17
Management (VIII & above)	31	30	-1	-3.0%	-2	-3
Administrative/ Supervisory (V to VII)	71	73	+2	+3.1%	+10	+9
Clerical (III & IV)	235	233	-2	-0.7%	-2	-10
Management & Administrative	337	337	-0	-0.1%	+5	-4
Support	75	82	+7	+9.3%	+10	+9
Maintenance/ Technical	7	7	-0	-0.9%	+1	+1
General Support	82	89	+7	+8.5%	+11	+10
Health Care Assistants	35	41	+6	+16.5%	+9	+1
Care, other	58	57	-1	-1.2%	+2	+1
Home Help	0	1	+0	+25.6%	+1	+1
Patient & Client Care	93	98	+5	+5.5%	+11	+2

Social Care

May 2020 (Dec 2019 figure: 3,334)	WTE Apr 2020	WTE May 2020	WTE change since Apr 20	% change since Apr 20	WTE change since Dec 19	WTE change since May 19
Total Social Care	3,354	3,358	+4	+0.1%	+24	-9
Consultants				-100.0%		-1
Medical/ Dental, other	20	20			-12	+3
Medical & Dental	20	20			-12	+2
Nurse/ Midwife Manager	193	194	+0	+0.2%	-2	-7
Nurse/ Midwife Specialist & AN/MP	16	16			+2	+4
Staff Nurse/ Staff Midwife	631	628	-3	-0.5%	-3	-13
Pre-registration Nurse/ Midwife Intern	25	7	-18	-72.3%	+4	-18
Nursing/ Midwifery awaiting registration	11	11				
Pre-registration Nurse Intern (COVID-19)		21	+21	-100.0%	+21	+21
Nursing/ Midwifery Student	36	39	+2	+6.8%	+25	+28
Nursing Education/Clinical	5	5	+0	+1.3%	+0	+0
Nursing/ Midwifery other	5	5	+0	+1.3%	+0	+0
Nursing & Midwifery	882	882	-0	-0.0%	+22	+12
Therapy Professions	59	58	-1	-1.2%	+5	+9
Health Science/ Diagnostics	1	1			-0	-0
Social Care	9	8	-0	-1.5%	+1	+0
Social Workers	37	37	-0	-0.4%	+4	+6
Psychologists	5	5	+0	+3.5%	+0	+2
H&SC, Other	9	9	+0	+2.0%	-3	-4
Health & Social Care Professionals	119	119	-1	-0.5%	+6	+14
Management (VIII & above)	22	23	+1	+4.6%	+1	+1
Administrative/ Supervisory (V to VII)	48	50	+2	+3.3%	+8	+9
Clerical (III & IV)	133	131	-2	-1.7%	-4	+0
Management & Administrative	203	203	+0	+0.1%	+5	+11
Support	174	169	-5	-2.8%	-3	-5
Maintenance/ Technical	13	13				
General Support	187	182	-5	-2.6%	-3	-5
Health Care Assistants	1,328	1,349	+21	+1.6%	+24	+0
Care, other	65	64	-1	-1.0%	-0	-4
Home Help	549	539	-11	-2.0%	-18	-38
Patient & Client Care	1,942	1,952	+10	+0.5%	+6	-42

CHO 1 Employment Report: May 2020

Disabilities

May 2020 (Dec 2019 figure: 1,498)	WTE Apr 2020	WTE May 2020	WTE change since Apr 20	% change since Apr 20	WTE change since Dec 19	WTE change since May 19
Total Disabilities	1,526	1,522	-3	-0.2%	+24	+23
Consultants				-100.0%		-1
Medical/ Dental, other	3	3			+0	+0
Medical & Dental	3	3			+0	-1
Nurse/ Midwife Manager	105	105			+0	+0
Nurse/ Midwife Specialist & AN/MP	8	8			+1	+1
Staff Nurse/ Staff Midwife	318	317	-1	-0.4%	-7	-12
Pre-registration Nurse/ Midwife Intern	25	7	-18	-72.3%	+4	-18
Nursing/ Midwifery awaiting registration	11	11				
Pre-registration Nurse Intern (COVID-19)		21	+21	-100.0%	+21	+21
Nursing/ Midwifery Student	36	39	+2	+6.8%	+25	+28
Nursing/ Midwifery other	5	5	+0	+1.3%	+0	+0
Nursing & Midwifery	472	473	+1	+0.2%	+19	+17
Therapy Professions	48	47	-1	-1.5%	+5	+11
Social Care	9	8	-0	-1.5%	+1	+0
Social Workers	20	20	+0	+0.4%	+4	+5
Psychologists	5	5	+0	+3.5%	+0	+2
H&SC, Other	9	9	+0	+2.0%	-3	-4
Health & Social Care Professionals	90	89	-0	-0.5%	+7	+15
Management (VIII & above)	14	15	+1	+7.2%	+1	+1
Administrative/ Supervisory (V to VII)	33	35	+1	+3.8%	+7	+9
Clerical (III & IV)	50	48	-1	-2.7%	-2	+1
Management & Administrative	97	98	+1	+0.9%	+6	+11
Support	50	50	-1	-1.1%	+1	+0
Maintenance/ Technical	6	6				
General Support	56	56	-1	-1.0%	+1	+0
Health Care Assistants	758	754	-4	-0.5%	-8	-17
Care, other	37	36	-0	-1.2%	-1	-1
Home Help	13	14	+0	+0.3%	+0	-1
Patient & Client Care	808	803	-4	-0.6%	-8	-19

Older People

May 2020 (Dec 2019 figure: 1,836)	WTE Apr 2020	WTE May 2020	WTE change since Apr 20	% change since Apr 20	WTE change since Dec 19	WTE change since May 19
Total Older People	1,828	1,836	+8	+0.4%	-0	-32
Medical/ Dental, other	17	17	+0	+0.0%	-12	+3
Medical & Dental	17	17			-12	+3
Nurse/ Midwife Manager	88	89	+0	+0.5%	-2	-7

Nurse/ Midwife Specialist & AN/MP	8	8			+1	+3
Staff Nurse/ Staff Midwife	313	312	-2	-0.6%	+4	-1
Nursing & Midwifery	409	408	-1	-0.3%	+3	-5
Health & Social Care Professionals	29	29	-0	-0.7%	-1	-1
Management (VIII & above)	8	8			+0	
Administrative/ Supervisory (V to VII)	15	15	+0	+2.3%	+1	+0
Clerical (III & IV)	83	82	-1	-1.1%	-3	-1
Management & Administrative	106	106	-1	-0.6%	-1	-0
Support	124	119	-4	-3.5%	-3	-6
<i>Maintenance</i>	7	7				
Maintenance/ Technical	7	7				
General Support	131	126	-4	-3.3%	-3	-6
Health Care Assistants	570	596	+25	+4.5%	+32	+17
Care, other	28	28	-0	-0.7%	+0	-2
Home Help	536	525	-11	-2.0%	-18	-38
Patient & Client Care	1,134	1,149	+14	+1.3%	+15	-23

CHO 1 Employment by Administration (HSE / S38): May 2020

May 2020 (Dec 2019 figure: 5,468)	WTE Apr 2020	WTE May 2020	WTE change since Apr 20	% change since Apr 20	WTE change since Dec 19	WTE change since May 19
Overall	5,534	5,554	+20	+0.4%	+85	+18
HSE	5,534	5,554	+20	+0.4%	+85	+18

HSE

May 2020 (Dec 2019 figure: 5,468)	WTE Apr 2020	WTE May 2020	WTE change since Apr 20	% change since Apr 20	WTE change since Dec 19	WTE change since May 19
Overall	5,534	5,554	+20	+0.4%	+85	+18
Consultants	34	35	+1	+0.0%	+2	+2
Registrars	61	60	-1	-0.0%	-5	-1
SHO/ Interns	26	24	-2	-0.1%	-3	-3
Medical/ Dental, other	66	66	+0	+0.0%	-14	+2
Medical & Dental	187	185	-2	-1.1%	-20	-0
Nurse/ Midwife Manager	355	357	+2	+0.0%	+8	+3
Nurse/ Midwife Specialist & AN/MP	108	108	+0	+0.0%	+6	+11
Staff Nurse/ Staff Midwife	1,013	1,009	-3	-0.0%	-5	-23
Public Health Nurse	152	152	+0	+0.0%	-4	-1
Pre-registration Nurse/ Midwife Intern	40	7	-33	-0.8%	-4	-13
Post-registration Nurse/ Midwife Student	7	7		+0.0%	-0	+0
Nursing/ Midwifery awaiting registration	11	11		+0.0%	+10	+11
Pre-registration Nurse Intern (COVID-19)		37	+37	-1.0%	+37	+37
Nursing/ Midwifery Student	58	62	+4	+0.1%	+41	+36
Nursing/ Midwifery other	7	7	+0	+0.0%	+1	+1
Nursing & Midwifery	1,693	1,696	+3	+0.2%	+48	+27
Therapy Professions	321	322	+1	+0.0%	+6	-5
Health Science/ Diagnostics	6	6	+1	+0.2%	-0	-0
Social Care	12	12	-0	-0.0%	+1	+0
Social Workers	90	91	+1	+0.0%	+6	+10
Psychologists	59	60	+1	+0.0%	-0	-1
Pharmacy	2	2	+0	+0.0%	+0	+0
H&SC, Other	30	29	-1	-0.0%	-3	-4
Health & Social Care Professionals	520	523	+2	+0.5%	+10	+1
Management (VIII & above)	61	61	+0	+0.0%	+1	+2
Administrative/ Supervisory (V to VII)	159	163	+4	+0.0%	+27	+34
Clerical (III & IV)	454	450	-4	-0.0%	-5	-4
Management & Administrative	674	674	+0	+0.0%	+23	+33
Support	310	313	+3	+0.0%	+7	+3
Maintenance/ Technical	37	37	-0	-0.0%	+1	+2
General Support	347	350	+3	+0.9%	+8	+5
Health Care Assistants	1,428	1,453	+25	+0.0%	+30	-6
Care, other	135	134	-1	-0.0%	+3	-3
Home Help	550	539	-11	-0.0%	-17	-38
Patient & Client Care	2,113	2,125	+13	+0.6%	+16	-47

CHO 1 Employment by Grade Group & Staff Category: May 2020

May 2020 (Dec 2019 figure: 5,468)	WTE Apr 2020	WTE May 2020	WTE change since Apr 20	% change since Apr 20	WTE change since Dec 19	WTE change since May 19
Overall	5,534	5,554	+20	+0.4%	+85	+18
Consultant Medicine	3	3	-0	-1.0%	-0	+0
Consultant Psychiatry	31	32	+1	+3.4%	+2	+2
Consultants	34	35	+1	+3.0%	+2	+2
Registrar	52	51	-1	-2.4%	-5	+1
Senior Registrar	8	8	+0	+0.3%		-2
Specialist Registrar	1	1	-0	-5.0%	-0	-0
Registrars	61	60	-1	-2.1%	-5	-1
Senior House Officer	26	24	-2	-7.4%	-3	-3
SHO/ Interns	26	24	-2	-7.4%	-3	-3
Dentists	29	29	-0	-0.1%	+1	-0
Other Medical	37	38	+0	+0.3%	-15	+2
Medical/ Dental, other	66	66	+0	+0.1%	-14	+2
Medical & Dental	187	185	-2	-1.1%	+1	-0
Clinical Nurse/ Midwife Manager	269	273	+4	+1.4%	+4	-4
Director Nursing/Midwifery, Assistant	57	55	-2	-2.9%	+4	+6
Director of Nursing/Midwifery	29	29	-0	-0.7%	-0	+1
Nurse/ Midwife Manager	355	357	+2	+0.5%	+8	+3
Advanced Nurse/ Midwife Practitioner	11	11	-0	-0.3%	+2	+4
Clinical Nurse/ Midwife Specialist	97	97	+0	+0.4%	+4	+7
Nurse/ Midwife Specialist & AN/MP	108	108	+0	+0.4%	+6	+11
Staff Nurse [Intellectual Disability]	202	202	+0	+0.1%	-3	-7
Staff Nurse [Psychiatric]	293	290	-3	-1.1%	-8	-20
Staff Nurses [General/ Children's]	517	517	-0	-0.1%	+6	+3
Staff Nurse/ Staff Midwife	1,013	1,009	-3	-0.3%	-5	-23
Public Health Nurse	152	152	+0	+0.3%	-4	-1
Pre-registration Nurse/ Midwife Intern	40	7	-33	-82.7%	+4	-13
Post-registration Nurse/ Midwife Student	7	7				+0
Nursing/ Midwifery awaiting registration	11	11				+11
Pre-registration Nurse Intern (COVID-19)		37	+37	-100.0%	+37	+37
Nursing/ Midwifery Student	58	62	+4	+6.4%	+41	+36
Nursing Education/Clinical	7	7	+0	+1.7%	+1	+1
Nursing/ Midwifery other	7	7	+0	+1.7%	+1	+1
Nursing & Midwifery	1,693	1,696	+3	+0.2%	+39	+27
Dietitians	16	16	+0	+1.0%	-1	-1
Occupational Therapists	128	128	-1	-0.4%	-0	+1
Orthoptists	3	2	-0	-10.6%	-0	-0
Physiotherapists	93	94	+2	+1.9%	+4	-0
Podiatrists & Chiropodists	10	10	-0	-1.6%	+1	-0
Speech & Language Therapists	72	72	+0	+0.1%	+3	-5
Therapy Professions	321	322	+1	+0.3%	+6	-5
Audiology	4	5	+1	+20.3%	-0	-0
Radiographers	1	1			-0	-0
Health Science/ Diagnostics	6	6	+1	+16.1%	-0	-0
Social Care	12	12	-0	-1.5%	+1	+0
Social Workers	90	91	+1	+0.8%	+6	+10
Psychologists	59	60	+1	+1.7%	-0	-1
Pharmacy	2	2	+0	+3.3%	+0	+0

May 2020 (Dec 2019 figure: 5,468)	WTE Apr 2020	WTE May 2020	WTE change since Apr 20	% change since Apr 20	WTE change since Dec 19	WTE change since May 19
Overall	5,534	5,554	+20	+0.4%	+85	+18
Counsellor Therapists	21	20	-1	-5.0%	-0	+0
Dental Hygienists	5	5			+0	+0
Other Health & Social Care	4	4			-4	-4
H&SC, Other	30	29	-1	-3.4%	-3	-4
Health & Social Care Professionals	520	523	+2	+0.5%	+14	+1
Executive Management	7	7	+0	+2.8%	+0	+0
Senior Management (VIII & GM)	54	54	-0	-0.1%	+1	+2
Management (VIII & above)	61	61	+0	+0.2%	+1	+2
Middle Management (V-VII)	158	162	+4	+2.5%	+27	+34
Other Administrative	1	1				
Administrative/ Supervisory (V to VII)	159	163	+4	+2.5%	+27	+34
General Administrative (III & IV)	454	450	-4	-0.9%	-5	-4
Clerical (III & IV)	454	450	-4	-0.9%	-5	-4
Management & Administrative	674	674	+0	+0.0%	+52	+33
Catering	65	64	-1	-1.4%	+3	+4
Household Services	207	213	+5	+2.5%	+9	+2
Other Support	30	29	-1	-4.5%	-4	-3
Portering	8	8				
Support	310	313	+3	+1.0%	+7	+3
Maintenance	37	37	-0	-0.2%	+1	+2
Maintenance/ Technical	37	37	-0	-0.2%	+1	+2
General Support	347	350	+3	+0.9%	-1	+5
HCA, Nurse's Aide, etc.	1,410	1,428	+18	+1.3%	+24	-7
Health & Social Care Assistants	19	25	+7	+35.2%	+6	+0
Health Care Assistants	1,428	1,453	+25	+1.7%	+30	-6
Community Welfare Officers	1	1			+0	+0
Other Care Grades	134	133	-1	-0.7%	+3	-3
Care, other	135	134	-1	-0.7%	+3	-3
Home Help	550	539	-11	-2.0%	-17	-38
Patient & Client Care	2,113	2,125	+13	+0.6%	+13	-47

Employment by WTE, Headcount, Gender, Full-Time /Part-Time etc.: May 2020

CHO 1	WTE	Headcount	WTE: no.	% Male	% female	Male WTE: no.	Female WTE: no.	% Total Perm	% Male Perm	% Female Perm	% Total Full Time	% Total Part Time	% Male FT	% Female FT
Overall	5,554	6,459	1.16	17.2%	82.8%	1.08	1.18	82.8%	83.9%	82.5%	63.7%	36.3%	85.0%	59.3%
Consultant Medicine	3	3	1.00	33.3%	66.7%	1.00	1.01	100.0%	100.0%	100.0%	100.0%	0.0%	100.0%	100.0%
Consultant Psychiatry	32	36	1.11	41.7%	58.3%	1.05	1.15	69.4%	69.4%	71.4%	88.9%	11.1%	93.3%	85.7%
Consultants	35	39	1.10	41.0%	59.0%	1.05	1.14	71.8%	68.8%	73.9%	89.7%	10.3%	93.8%	87.0%
Registrar	51	54	1.06	44.4%	55.6%	1.00	1.11	9.3%	9.3%	3.3%	94.4%	5.6%	95.8%	93.3%
Senior Registrar	8	8	1.00	50.0%	50.0%	1.00	1.00	12.5%	12.5%	25.0%	100.0%	0.0%	100.0%	100.0%
Specialist Registrar	1	1	1.05		100.0%		1.05	0.0%	0.0%	0.0%	100.0%	0.0%		100.0%
Registrars	60	63	1.05	44.4%	55.6%	1.00	1.09	9.5%	14.3%	5.7%	95.2%	4.8%	96.4%	94.3%
Senior House Officer	24	26	1.09	46.2%	53.8%	1.16	1.04	0.0%	0.0%	0.0%	96.2%	3.8%	100.0%	92.9%
SHO/ Interns	24	26	1.09	46.2%	53.8%	1.16	1.04	0.0%	0.0%	0.0%	96.2%	3.8%	100.0%	92.9%
Dentists	29	31	1.08	38.7%	61.3%	1.06	1.09	96.8%	96.8%	94.7%	87.1%	12.9%	83.3%	89.5%
Other Medical	38	72	1.92	50.0%	50.0%	1.89	1.95	76.4%	76.4%	69.4%	19.4%	80.6%	25.0%	13.9%
Medical/ Dental, other	66	103	1.55	46.6%	53.4%	1.58	1.53	82.5%	87.5%	78.2%	39.8%	60.2%	39.6%	40.0%
Medical & Dental	185	231	1.25	45.0%	55.0%	1.24	1.25	51.5%	54.8%	48.8%	69.7%	30.3%	70.2%	69.3%
Clinical Nurse/ Midwife Manager	273	291	1.07	17.9%	82.1%	1.02	1.08	99.0%	99.0%	99.2%	85.2%	14.8%	100.0%	82.0%
Director Nursing/Midwifery, Assistant	55	57	1.03	19.3%	80.7%	1.00	1.04	100.0%	100.0%	100.0%	91.2%	8.8%	100.0%	89.1%
Director of Nursing/Midwifery	29	30	1.02	23.3%	76.7%	1.02	1.03	96.7%	96.7%	95.7%	93.3%	6.7%	100.0%	91.3%
Nurse/ Midwife Manager	357	378	1.06	18.5%	81.5%	1.01	1.07	98.9%	98.6%	99.0%	86.8%	13.2%	100.0%	83.8%
Advanced Nurse/ Midwife Practitioner	11	11	1.01	9.1%	90.9%	1.00	1.01	100.0%	100.0%	100.0%	100.0%	0.0%	100.0%	100.0%
Clinical Nurse/ Midwife Specialist	97	105	1.08	21.9%	78.1%	1.01	1.10	98.1%	98.1%	97.6%	84.8%	15.2%	100.0%	80.5%
Nurse/ Midwife Specialist & AN/MP	108	116	1.07	20.7%	79.3%	1.01	1.09	98.3%	100.0%	97.8%	86.2%	13.8%	100.0%	82.6%
Staff Nurse [Intellectual Disability]	202	226	1.12	10.6%	89.4%	1.03	1.13	92.5%	92.5%	92.1%	79.6%	20.4%	91.7%	78.2%
Staff Nurse [Psychiatric]	290	309	1.07	26.5%	73.5%	1.02	1.08	99.4%	99.4%	99.1%	90.9%	9.1%	98.8%	88.1%
Staff Nurses [General/ Children's]	517	625	1.21	7.5%	92.5%	1.07	1.22	92.5%	92.5%	92.6%	59.5%	40.5%	85.1%	57.4%
Staff Nurse/ Staff Midwife	1,009	1,160	1.15	13.2%	86.8%	1.03	1.17	94.3%	96.7%	93.9%	71.8%	28.2%	93.5%	68.5%
Public Health Nurse	152	172	1.13		100.0%		1.13	97.7%		97.7%	76.7%	23.3%		76.7%
Pre-registration Nurse/ Midwife Intern	7	14	2.00		100.0%		2.00	0.0%	0.0%	0.0%	100.0%	0.0%		100.0%
Post-registration Nurse/ Midwife Student	7	7	1.00		100.0%		1.00	85.7%	85.7%	85.7%	100.0%	0.0%		100.0%
Nursing/ Midwifery awaiting registration	11	11	1.00		100.0%		1.00	0.0%	0.0%	0.0%	100.0%	0.0%		100.0%

Pre-registration Nurse Intern (COVID-19)	37	43	1.16	23.3%	76.7%	1.26	1.13	0.0%	0.0%	0.0%	100.0%	0.0%	100.0%	100.0%
Nursing/ Midwifery Student	62	75	1.21	13.3%	86.7%	1.26	1.20	8.0%	0.0%	9.2%	100.0%	0.0%	100.0%	100.0%
Nursing Education/Clinical	7	7	1.05		100.0%		1.05	100.0%	100.0%	100.0%	100.0%	0.0%		100.0%
Nursing/ Midwifery other	7	7	1.05		100.0%		1.05	100.0%		100.0%	100.0%	0.0%		100.0%
Nursing & Midwifery	1,696	1,908	1.12	13.5%	86.5%	1.03	1.14	92.4%	93.8%	92.2%	77.3%	22.7%	96.1%	74.4%
Dietitians	16	18	1.14		100.0%		1.14	100.0%	100.0%	100.0%	83.3%	16.7%		83.3%
Occupational Therapists	128	145	1.13	5.5%	94.5%	1.12	1.13	93.8%	93.8%	94.9%	72.4%	27.6%	87.5%	71.5%
Orthoptists	2	3	1.27	33.3%	66.7%	1.00	1.47	100.0%	100.0%	100.0%	66.7%	33.3%	100.0%	50.0%
Physiotherapists	94	109	1.15	17.4%	82.6%	1.04	1.18	96.3%	96.3%	95.6%	62.4%	37.6%	89.5%	56.7%
Podiatrists & Chiropodists	10	13	1.29	15.4%	84.6%	1.00	1.36	92.3%	92.3%	90.9%	46.2%	53.8%	100.0%	36.4%
Speech & Language Therapists	72	81	1.13		100.0%		1.13	92.6%	92.6%	92.6%	70.4%	29.6%		70.4%
Therapy Professions	322	369	1.15	8.1%	91.9%	1.05	1.15	94.6%	93.3%	94.7%	68.6%	31.4%	90.0%	66.7%
Audiology	5	6	1.14		100.0%		1.14	100.0%	100.0%	100.0%	83.3%	16.7%		83.3%
Radiographers	1	3	2.61		100.0%		2.61	66.7%	66.7%	66.7%	0.0%	100.0%		0.0%
Health Science/ Diagnostics	6	9	1.40		100.0%		1.40	88.9%		88.9%	55.6%	44.4%		55.6%
Social Care	12	17	1.41		100.0%		1.41	100.0%		100.0%	35.3%	64.7%		35.3%
Social Workers	91	98	1.08	17.3%	82.7%	1.00	1.09	93.9%	94.1%	93.8%	84.7%	15.3%	94.1%	82.7%
Psychologists	60	67	1.12	28.4%	71.6%	1.02	1.17	94.0%	89.5%	95.8%	77.6%	22.4%	94.7%	70.8%
Pharmacy	2	2	1.29	50.0%	50.0%	1.43	1.18	100.0%	100.0%	100.0%	50.0%	50.0%	0.0%	100.0%
Counsellor Therapists	20	22	1.12	22.7%	77.3%	1.05	1.14	100.0%	100.0%	100.0%	59.1%	40.9%	80.0%	52.9%
Dental Hygienists	5	6	1.10		100.0%		1.10	100.0%	100.0%	100.0%	66.7%	33.3%		66.7%
Other Health & Social Care	4	5	1.18	60.0%	40.0%	1.28	1.05	80.0%	80.0%	50.0%	80.0%	20.0%	66.7%	100.0%
H&SC, Other	29	33	1.13	24.2%	75.8%	1.12	1.13	97.0%	100.0%	96.0%	63.6%	36.4%	75.0%	60.0%
Health & Social Care	523	595	1.14	12.6%	87.4%	1.04	1.15	94.6%	93.3%	94.8%	70.8%	29.2%	89.3%	68.1%
Executive Management	7	7	1.00	85.7%	14.3%	1.00	1.00	100.0%	100.0%	100.0%	100.0%	0.0%	100.0%	100.0%
Senior Management (VIII & GM)	54	55	1.02	14.5%	85.5%	1.04	1.02	96.4%	96.4%	95.7%	92.7%	7.3%	87.5%	93.6%
Management (VIII & above)	61	62	1.02	22.6%	77.4%	1.02	1.02	96.8%	100.0%	95.8%	93.5%	6.5%	92.9%	93.8%
Administrative/ Supervisory (V to VII)	163	172	1.06	16.3%	83.7%	1.06	1.06	91.3%	82.1%	93.1%	82.6%	17.4%	92.9%	80.6%
Clerical (III & IV)	450	520	1.15	7.9%	92.1%	1.06	1.16	95.4%	90.2%	95.8%	67.3%	32.7%	92.7%	65.1%
Management & Administrative	674	754	1.12	11.0%	89.0%	1.05	1.13	94.6%	89.2%	95.2%	72.9%	27.1%	92.8%	70.5%
Catering	64	75	1.17	28.0%	72.0%	1.13	1.19	100.0%	100.0%	100.0%	61.3%	38.7%	90.5%	50.0%
Household Services	213	242	1.14	20.7%	79.3%	1.07	1.16	92.1%	92.1%	95.3%	62.0%	38.0%	78.0%	57.8%
Other Support	29	58	2.02	31.0%	69.0%	1.36	2.59	89.7%	89.7%	90.0%	20.7%	79.3%	55.6%	5.0%
Portering	8	8	1.03	100.0%		1.03		87.5%	87.5%		75.0%	25.0%	75.0%	
Support	313	383	1.22	25.3%	74.7%	1.13	1.26	93.2%	86.6%	95.5%	55.9%	44.1%	76.3%	49.0%

Maintenance/ Technical	37	37	1.00	100.0%		1.00		100.0%	100.0%	#DIV/0	100.0%	0.0%	100.0%	
General Support	350	420	1.20	31.9%	68.1%	1.09	1.26	93.8%	90.3%	95.5%	59.8%	40.2%	82.8%	49.0%
HCA, Nurse's Aide, etc.	1,428	1,606	1.12	23.3%	76.7%	1.05	1.15	89.8%	89.8%	90.7%	68.7%	31.3%	87.7%	63.0%
Health & Social Care Assistants	25	27	1.08	22.2%	77.8%	1.09	1.07	66.7%	66.7%	57.1%	92.6%	7.4%	83.3%	95.2%
Health Care Assistants	1,453	1,633	1.12	23.3%	76.7%	1.05	1.15	89.4%	87.1%	90.1%	69.1%	30.9%	87.6%	63.5%
Care, other	134	150	1.12	33.3%	66.7%	1.08	1.14	89.3%	76.0%	96.0%	72.0%	28.0%	76.0%	70.0%
Home Help	539	768	1.42	4.0%	96.0%	1.38	1.43	25.9%	9.7%	26.6%	2.6%	97.4%	3.2%	2.6%
Patient & Client Care	2,125	2,551	1.20	18.1%	81.9%	1.07	1.23	70.3%	80.7%	68.0%	49.3%	50.7%	80.7%	42.3%

Employment by WTE, Headcount, Gender, Full-Time /Part-Time etc.: May 2020

CHO 1	WTE	Headcount	WTE: no.	% Male	% female	Male WTE: no.	Female WTE: no.	% Total Perm	% Male Perm	% Female Perm	% Total Full Time	% Total Part Time	% Male FT	% Female FT
Overall	5,554	6,459	1.16	17.2%	82.8%	1.08	1.18	82.8%	83.9%	82.5%	63.7%	36.3%	85.0%	59.3%
Community Health & Wellbeing	14	16	1.14	6.3%	93.8%	1.00	1.15	93.8%	93.8%	93.3%	68.8%	31.3%	100.0%	100.0%
Mental Health	965	1,040	1.08	27.1%	72.9%	1.03	1.10	89.8%	89.8%	91.2%	86.3%	13.8%	96.5%	96.5%
Primary Care	1,217	1,431	1.18	13.9%	86.1%	1.09	1.19	90.1%	90.1%	91.7%	65.6%	34.4%	83.4%	83.4%
Social Care	3,358	3,972	1.18	15.9%	84.1%	1.09	1.20	78.2%	78.2%	77.1%	57.1%	42.9%	80.4%	80.4%

CHO 1 Skills Mix by Staff Grouping: May 2020

May 2020 (Dec 2018 figure: 5,436)	WTE Dec 2015	WTE Dec 2016	WTE Dec 2017	WTE Dec 2018	WTE Dec 2019	WTE Apr 2020	WTE May 2020
Overall	5,177	5,280	5,368	5,436	5,468	5,534	5,554
Consultant Medicine	1.8%	1.8%	1.7%	1.6%	1.5%	1.6%	1.6%
Consultant Psychiatry	15.1%	16.1%	15.8%	16.2%	15.0%	16.7%	17.5%
Consultants	16.9%	17.8%	17.5%	17.8%	16.4%	18.4%	19.1%
Registrar	27.2%	23.7%	26.6%	27.9%	27.4%	27.9%	27.5%
Senior Registrar	2.3%	3.0%	2.3%	5.8%	3.9%	4.3%	4.3%
Specialist Registrar			0.6%	0.5%	0.5%	0.5%	0.5%
Registrars	29.6%	26.6%	29.5%	34.3%	31.8%	32.7%	32.3%
Senior House Officer	15.1%	17.5%	15.6%	13.8%	12.8%	13.7%	12.8%
SHO/ Interns	15.1%	17.5%	15.6%	13.8%	12.8%	13.7%	12.8%
Dentists	16.8%	16.6%	15.9%	15.3%	13.5%	15.3%	15.5%
Other Medical	21.7%	21.5%	21.5%	18.8%	25.4%	20.0%	20.3%
Medical/ Dental, other	38.5%	38.1%	37.4%	34.1%	39.0%	35.3%	35.7%
Medical & Dental	3.3%	3.2%	3.2%	3.4%	3.8%	100.0%	3.3%
Clinical Nurse/ Midwife Manager	16.7%	16.4%	15.8%	16.1%	16.3%	15.9%	16.1%
Director Nursing/Midwifery, Assistant	3.1%	3.2%	3.0%	3.1%	3.1%	3.3%	3.2%
Director of Nursing/Midwifery	1.6%	1.6%	1.6%	1.4%	1.8%	1.7%	1.7%
Nurse/ Midwife Manager	21.4%	21.2%	20.3%	20.6%	21.2%	21.0%	21.1%
Advanced Nurse/ Midwife Practitioner	0.1%	0.2%	0.1%	0.4%	0.5%	0.6%	0.6%
Clinical Nurse/ Midwife Specialist	5.1%	5.2%	5.5%	5.4%	5.7%	5.7%	5.7%
Nurse/ Midwife Specialist & AN/MP	5.2%	5.4%	5.6%	5.8%	6.2%	6.4%	6.4%
Graduate Nursing/ Midwifery	0.7%						
Staff Nurse [Intellectual Disability]	11.0%	12.2%	12.2%	12.6%	12.4%	11.9%	11.9%
Staff Nurse [Psychiatric]	19.9%	20.1%	19.5%	18.4%	18.1%	17.3%	17.1%
Staff Nurses [General/ Children's]	31.0%	31.4%	32.1%	31.8%	31.0%	30.6%	30.5%
Staff Nurse/ Staff Midwife	62.5%	63.7%	63.7%	62.8%	61.5%	59.8%	59.5%
Public Health Nurse	9.6%	8.9%	9.3%	9.4%	9.5%	9.0%	9.0%
Pre-registration Nurse/ Midwife Intern	0.5%	0.1%	0.2%	0.7%	0.2%	2.4%	0.4%
Post-registration Nurse/ Midwife Student	0.4%	0.4%	0.4%	0.4%	0.4%	0.4%	0.4%
Nursing/ Midwifery awaiting registration				0.1%	0.7%	0.6%	0.6%
Pre-registration Nurse Intern (COVID-19)							2.2%
Nursing/ Midwifery Student	1.0%	0.5%	0.7%	1.1%	1.3%	3.4%	3.7%
Nursing/ Midwifery other	0.3%	0.3%	0.3%	0.3%	0.3%	0.4%	0.4%
Nursing & Midwifery	30.9%	31.0%	30.4%	30.5%	30.1%	100.0%	30.5%
Dietitians	3.3%	3.0%	3.2%	3.5%	3.4%	3.0%	3.0%
Occupational Therapists	24.0%	24.4%	22.9%	24.3%	25.0%	24.7%	24.5%
Orthoptists	0.6%	0.4%	0.5%	0.5%	0.5%	0.5%	0.5%
Physiotherapists	17.0%	18.6%	18.3%	18.4%	17.6%	17.8%	18.1%
Podiatrists & Chiropodists	1.7%	2.0%	1.7%	1.8%	1.7%	2.0%	1.9%
Speech & Language Therapists	13.6%	13.1%	14.6%	13.8%	13.5%	13.8%	13.7%
Therapy Professions	60.2%	61.6%	61.3%	62.4%	61.7%	61.8%	61.7%
Audiology	1.2%	1.1%	1.1%	1.1%	1.0%	0.8%	1.0%
Radiographers	0.3%	0.3%	0.3%	0.3%	0.2%	0.2%	0.2%
Health Science/ Diagnostics	1.5%	1.4%	1.4%	1.4%	1.3%	1.1%	1.2%
Social Care	3.5%	2.7%	2.4%	2.3%	2.2%	2.4%	2.3%
Social Workers	16.2%	16.5%	16.0%	15.3%	16.6%	17.4%	17.4%
Social Workers	16.2%	16.5%	16.0%	15.3%	16.6%	17.4%	17.4%
Psychologists	11.2%	11.2%	11.6%	12.1%	11.7%	11.3%	11.5%
Pharmacy	0.3%	0.3%	0.3%	0.3%	0.3%	0.3%	0.3%
Counsellor Therapists	4.2%	3.7%	4.1%	3.8%	3.8%	4.0%	3.8%
Dental Hygienists	1.1%	1.1%	1.1%	1.0%	1.0%	1.0%	1.0%
Other Health & Social Care	1.8%	1.6%	1.8%	1.4%	1.5%	0.8%	0.8%

May 2020 (Dec 2018 figure: 5,436)	WTE Dec 2015	WTE Dec 2016	WTE Dec 2017	WTE Dec 2018	WTE Dec 2019	WTE Apr 2020	WTE May 2020
Overall	5,177	5,280	5,368	5,436	5,468	5,534	5,554
H&SC, Other	7.1%	6.4%	7.0%	6.3%	6.3%	5.8%	5.6%
Health & Social Care Professionals	9.1%	9.3%	9.3%	9.4%	9.4%	100.0%	9.4%
Executive Management	0.5%	1.2%	1.3%	1.3%	1.0%	1.0%	1.0%
Senior Management (VIII & GM)	7.1%	6.8%	6.8%	7.9%	8.1%	8.0%	8.0%
Management (VIII & above)	7.6%	8.0%	8.2%	9.2%	9.2%	9.0%	9.0%
Middle Management (V-VII)	16.5%	16.4%	17.9%	18.3%	20.7%	23.4%	24.0%
Other Administrative	0.2%	0.2%	0.2%	0.2%	0.2%	0.1%	0.1%
Administrative/ Supervisory (V to VII)	16.7%	16.6%	18.1%	18.4%	20.8%	23.6%	24.1%
Clerical (III & IV)	75.7%	75.5%	73.8%	72.4%	70.0%	67.4%	66.8%
Management & Administrative	11.0%	11.1%	11.1%	11.4%	11.9%	100.0%	12.1%
Catering	14.5%	15.6%	16.7%	16.8%	17.8%	18.7%	18.3%
Household Services	66.5%	65.1%	62.1%	61.6%	59.8%	59.8%	60.8%
Other Support	5.7%	6.2%	8.2%	9.8%	9.7%	8.7%	8.2%
Portering	2.4%	2.4%	2.2%	2.2%	2.3%	2.2%	2.2%
Support	89.0%	89.4%	89.3%	90.3%	89.5%	89.4%	89.5%
Maintenance/ Technical	11.0%	10.6%	10.7%	9.7%	10.5%	10.6%	10.5%
General Support	7.2%	6.8%	6.5%	6.4%	6.2%	100.0%	6.3%
HCA, Nurse's Aide, etc.	64.3%	66.1%	66.3%	67.1%	66.5%	66.7%	67.2%
Health & Social Care Assistants	0.8%	0.7%	0.8%	1.3%	0.9%	0.9%	1.2%
Health Care Assistants	65.1%	66.8%	67.1%	68.3%	67.4%	67.6%	68.4%
Community Welfare Officers	0.1%	0.0%	0.0%	0.0%	0.0%	0.0%	0.0%
Other Care Grades	6.5%	6.4%	6.3%	6.2%	6.2%	6.3%	6.2%
Care, other	6.5%	6.4%	6.4%	6.2%	6.2%	6.4%	6.3%
Home Help	28.4%	26.7%	26.5%	25.4%	26.4%	26.0%	25.4%
Patient & Client Care	38.6%	38.7%	39.5%	38.9%	38.6%	100.0%	38.3%
Total	100 %	100 %	100 %	100 %	100%	100 %	100 %

CHO 1 Skills Mix by Care Group: May 2020

May 2020 (Dec 2018 figure: 941)	WTE Dec 2015	WTE Dec 2016	WTE Dec 2017	WTE Dec 2018	WTE Dec 2019	WTE Apr 2020	WTE May 2020
Mental Health	931	948	942	941	952.63	967.35	964.57
Consultants	37.0%	36.2%	36.8%	37.2%	38.2%	39.4%	41.3%
Registrar	22.4%	17.4%	22.7%	18.6%	20.5%	19.5%	19.5%
Senior Registrar	4.5%	5.5%	4.2%	12.6%	9.9%	10.0%	10.2%
Registrars	26.8%	23.0%	26.9%	31.2%	30.4%	29.5%	29.6%
Senior House Officer	36.2%	40.8%	36.3%	31.6%	31.4%	31.1%	29.1%
SHO/ Interns	36.2%	40.8%	36.3%	31.6%	31.4%	31.1%	29.1%
Medical & Dental	7.2%	7.6%	7.6%	8.2%	8.1%	8.2%	8.2%
Clinical Nurse/ Midwife Manager	19.4%	19.8%	20.0%	19.9%	19.9%	19.5%	19.9%
Director Nursing/Midwifery, Assistant	3.5%	3.2%	3.2%	3.7%	3.7%	3.8%	3.8%
Director of Nursing/Midwifery	0.8%	0.6%	0.6%	0.4%	0.6%	0.6%	0.6%
Nurse/ Midwife Manager	23.7%	23.6%	23.8%	24.0%	24.3%	24.0%	24.4%
Advanced Nurse/ Midwife Practitioner	0.2%	0.2%	0.2%	0.4%	0.4%	0.4%	0.4%
Clinical Nurse/ Midwife Specialist	10.7%	11.4%	12.1%	12.9%	13.6%	13.3%	13.4%
Nurse/ Midwife Specialist & AN/MP	10.9%	11.6%	12.3%	13.3%	14.0%	13.7%	13.8%
Graduate Nursing/ Midwifery	0.2%						
Staff Nurse [Intellectual Disability]		0.2%	0.2%	0.2%			
Staff Nurse [Psychiatric]	63.4%	64.0%	63.2%	61.7%	61.1%	58.5%	57.8%
Staff Nurses [General/ Children's]	0.6%	0.6%	0.4%	0.6%	0.6%	0.6%	0.6%
Staff Nurse/ Staff Midwife	64.2%	64.8%	63.9%	62.5%	61.7%	59.1%	58.4%
Pre-registration Nurse/ Midwife Intern	1.1%					3.0%	
Nursing/ Midwifery awaiting registration				0.2%			
Pre-registration Nurse Intern (COVID-19)							3.3%
Nursing/ Midwifery Student	1.1%			0.2%		3.0%	3.3%
Nursing Education/Clinical						0.2%	0.2%
Nursing/ Midwifery other						0.2%	0.2%
Nursing & Midwifery	52.3%	52.9%	52.5%	51.6%	51.0%	51.4%	51.4%
Occupational Therapists	26.2%	26.7%	25.7%	26.9%	28.7%	29.8%	29.1%
Podiatrists & Chiropractors	0.7%	0.7%	0.7%	0.7%	0.6%	0.6%	0.6%
Speech & Language Therapists	1.9%	2.6%	3.5%	3.0%	2.2%	1.3%	1.3%
Therapy Professions	28.8%	30.0%	29.9%	30.6%	31.6%	31.7%	31.0%
Social Care	4.7%	3.5%	3.6%	3.2%	3.3%	3.2%	3.2%
Social Workers	35.7%	35.5%	34.4%	34.0%	34.6%	34.4%	35.3%
Psychologists	18.2%	19.9%	19.9%	20.5%	18.2%	17.9%	18.7%
Pharmacy	0.8%	0.7%	0.8%	0.8%	0.7%	0.7%	0.7%
Counsellor Therapists	11.6%	10.0%	11.5%	10.8%	11.6%	12.0%	11.2%
Other Health & Social Care	0.4%	0.4%					
H&SC, Other	11.9%	10.4%	11.5%	10.8%	11.6%	12.0%	11.2%
Health & Social Care Professionals	11.4%	11.3%	11.2%	11.8%	11.7%	12.0%	12.0%
Management (VIII & above)	4.2%	3.3%	4.1%	3.8%	4.7%	5.5%	5.5%
Administrative/ Supervisory (V to VII)	14.4%	14.5%	16.6%	18.7%	24.9%	25.2%	25.2%
Clerical (III & IV)	81.4%	82.2%	79.3%	77.4%	70.5%	69.3%	69.2%
Management & Administrative	10.3%	9.7%	10.5%	11.1%	11.0%	12.5%	12.5%
Support	80.7%	80.6%	80.3%	80.8%	78.7%	78.4%	78.7%
Maintenance	19.3%	19.4%	19.7%	19.2%	21.3%	21.6%	21.3%
Maintenance/ Technical	19.3%	19.4%	19.7%	19.2%	21.3%	21.6%	21.3%
General Support	10.4%	9.8%	9.1%	8.8%	8.7%	8.2%	8.2%
HCA, Nurse's Aide, etc.	86.8%	87.9%	86.5%	82.1%	83.9%	83.9%	82.2%
Health & Social Care Assistants			1.2%	2.0%	2.1%	1.8%	2.6%

May 2020 (Dec 2018 figure: 941)	WTE Dec 2015	WTE Dec 2016	WTE Dec 2017	WTE Dec 2018	WTE Dec 2019	WTE Apr 2020	WTE May 2020
Mental Health	931	948	942	941	952.63	967.35	964.57
Health Care Assistants	86.8%	87.9%	87.6%	84.1%	86.0%	85.8%	84.9%
Care, other	13.2%	12.1%	12.4%	15.9%	14.0%	14.2%	15.1%
Patient & Client Care	8.3%	8.7%	9.1%	8.5%	8.4%	7.7%	7.7%
Total	100 %	100 %	100 %	100 %	100 %	100 %	100%

May 2020 (Dec 2018 figure: 1,233)	WTE Dec 2015	WTE Dec 2016	WTE Dec 2017	WTE Dec 2018	WTE Dec 2019	WTE Apr 2020	WTE May 2020
Primary Care	1,222	1,257	1,188	1,233	1,181.82	1,199.02	1,216.96
Consultant Medicine	3.5%	3.8%	3.6%	3.3%	3.3%	3.5%	3.5%
Consultants	3.5%	3.8%	3.6%	3.3%	3.3%	3.5%	3.5%
Registrars	37.9%	35.7%	37.8%	43.8%	44.3%	43.2%	42.5%
SHO/ Interns	1.5%		1.2%	1.1%	1.1%	1.1%	1.0%
Dentists	33.7%	35.4%	32.8%	31.5%	30.2%	32.9%	33.2%
Other Medical	23.4%	25.1%	24.7%	20.4%	21.2%	19.4%	19.8%
Medical/ Dental, other	57.1%	60.5%	57.5%	51.9%	51.3%	52.3%	53.0%
Medical & Dental	6.9%	6.3%	7.1%	7.3%	7.6%	7.1%	7.1%
Clinical Nurse/ Midwife Manager	5.1%	4.9%	4.7%	5.4%	5.6%	6.7%	6.7%
Director Nursing/Midwifery, Assistant	5.9%	5.9%	5.4%	5.0%	5.0%	5.6%	5.4%
Director of Nursing/Midwifery	1.5%	1.7%	1.3%	1.6%	1.3%	1.3%	1.3%
Nurse/ Midwife Manager	12.6%	12.5%	11.4%	12.0%	11.9%	13.6%	13.4%
Nurse/ Midwife Specialist & AN/MP	7.2%	6.7%	7.7%	6.6%	6.8%	7.7%	7.6%
Staff Nurse/ Staff Midwife	25.2%	29.1%	28.6%	28.2%	27.9%	28.0%	28.7%
Public Health Nurse	52.5%	49.3%	50.1%	50.9%	50.9%	48.1%	47.8%
Nursing/ Midwifery Student	2.4%	2.4%	2.3%	2.3%	2.3%	2.2%	2.2%
Nursing Education/Clinical					0.3%	0.3%	0.3%
Nursing/ Midwifery other					0.3%	0.3%	0.3%
Nursing & Midwifery	23.8%	23.6%	25.7%	24.7%	25.8%	26.2%	26.2%
Dietitians	5.6%	4.8%	5.2%	5.6%	6.0%	5.5%	5.5%
Occupational Therapists	24.3%	25.2%	23.2%	24.2%	25.3%	24.7%	24.6%
Orthoptists	1.0%	0.7%	0.8%	0.8%	0.9%	0.9%	0.8%
Physiotherapists	25.4%	27.4%	27.1%	27.3%	28.1%	28.5%	28.9%
Podiatrists & Chiropractors	2.6%	3.1%	2.6%	2.7%	2.8%	3.3%	3.2%
Speech & Language Therapists	19.2%	17.8%	19.4%	17.8%	15.9%	16.4%	16.2%
Therapy Professions	78.2%	79.0%	78.4%	78.5%	79.0%	79.4%	79.2%
Audiology	1.9%	1.8%	1.7%	1.7%	1.8%	1.5%	1.8%
Health Science/ Diagnostics	1.9%	1.8%	1.7%	1.7%	1.8%	1.5%	1.8%
Social Workers	6.1%	6.6%	6.9%	6.4%	4.4%	4.6%	4.6%
Psychologists	11.3%	10.3%	10.3%	10.9%	12.1%	11.6%	11.5%
Pharmacy	0.2%	0.2%	0.2%	0.2%	0.2%	0.2%	0.2%
Counsellor Therapists			0.3%	0.3%	0.3%	0.4%	0.3%
Dental Hygienists	1.9%	1.7%	1.9%	1.6%	1.7%	1.9%	1.9%
Other Health & Social Care	0.4%	0.3%	0.3%	0.3%	0.3%	0.4%	0.3%
H&SC, Other	2.2%	2.1%	2.5%	2.2%	2.4%	2.6%	2.6%
Health & Social Care Professionals	22.9%	23.8%	25.9%	25.6%	26.8%	23.7%	23.7%
Executive Management	0.6%	1.8%	2.1%	2.0%	1.5%	1.4%	1.5%
Senior Management (VIII & GM)	7.2%	6.9%	6.9%	8.7%	8.2%	7.8%	7.5%
Management (VIII & above)	7.8%	8.8%	9.0%	10.7%	9.7%	9.3%	9.0%
Administrative/ Supervisory (V to VII)	17.8%	17.1%	19.7%	19.1%	19.2%	21.0%	21.7%
Clerical (III & IV)	74.4%	74.2%	71.3%	70.2%	71.1%	69.7%	69.3%
Management & Administrative	25.5%	25.9%	27.7%	28.3%	29.5%	27.7%	27.7%

May 2020 (Dec 2018 figure: 1,233)	WTE Dec 2015	WTE Dec 2016	WTE Dec 2017	WTE Dec 2018	WTE Dec 2019	WTE Apr 2020	WTE May 2020
Primary Care	1,222	1,257	1,188	1,233	1,181.82	1,199.02	1,216.96
Support	91.0%	91.3%	92.2%	94.7%	92.3%	91.5%	92.2%
Maintenance/ Technical	9.0%	8.7%	7.8%	5.3%	7.7%	8.5%	7.8%
General Support	5.5%	5.7%	6.3%	6.4%	6.7%	7.3%	7.3%
HCA, Nurse's Aide, etc.	9.6%	10.8%	22.4%	20.1%	21.8%	24.2%	22.8%
Health & Social Care Assistants	5.6%	5.8%	12.3%	21.7%	14.9%	13.1%	18.4%
Health Care Assistants	15.2%	16.6%	34.7%	41.8%	36.7%	37.3%	41.2%
Community Welfare Officers	0.5%	0.5%	1.1%	1.1%	0.9%	1.1%	1.0%
Other Care Grades	31.7%	31.2%	64.2%	57.1%	62.4%	61.1%	57.2%
Care, other	32.2%	31.8%	65.3%	58.2%	63.3%	62.2%	58.2%
Home Help	52.6%	51.6%				0.5%	0.5%
Patient & Client Care	15.3%	14.6%	7.4%	7.7%	8.0%	8.1%	8.1%
Total	100 %	100 %	100 %	100 %	100 %	100 %	100%

May 2020 (Dec 2018 figure: 1,479)	WTE Dec 2015	WTE Dec 2016	WTE Dec 2017	WTE Dec 2018	WTE Dec 2019	WTE Apr 2020	WTE May 2020
Disabilities	1,374	1,430	1,457	1,479	1,498.23	1,525.86	1,522.48
Consultant Psychiatry	29.1%	33.3%	33.3%	33.3%			
Consultants	29.1%	33.3%	33.3%	33.3%			
Medical/ Dental, other	70.9%	66.7%	66.7%	66.7%	100.0%	100.0%	100.0%
Medical & Dental	0.2%	0.2%	0.2%	0.2%	0.2%	0.2%	0.2%
Clinical Nurse/ Midwife Manager	19.9%	19.5%	20.0%	19.1%	20.1%	19.4%	19.4%
Director Nursing/Midwifery, Assistant	1.4%	1.7%	1.3%	1.7%	1.3%	1.5%	1.5%
Director of Nursing/Midwifery	1.4%	1.1%	1.3%	1.1%	1.8%	1.5%	1.5%
Nurse/ Midwife Manager	22.7%	22.3%	22.6%	21.8%	23.1%	22.3%	22.3%
Clinical Nurse/ Midwife Specialist	2.2%	2.1%	1.8%	1.5%	1.5%	1.7%	1.7%
Nurse/ Midwife Specialist & AN/MP	2.2%	2.1%	1.8%	1.5%	1.5%	1.7%	1.7%
Graduate Nursing/ Midwifery	2.3%						
Staff Nurse [Intellectual Disability]	41.2%	44.2%	44.4%	45.3%	45.1%	42.8%	42.8%
Staff Nurse [Psychiatric]	1.6%	1.3%	0.9%	0.7%	0.4%	0.4%	0.4%
Staff Nurses [General/ Children's]	28.3%	28.6%	28.3%	27.2%	25.6%	24.1%	23.7%
Staff Nurse/ Staff Midwife	73.3%	74.2%	73.7%	73.2%	71.2%	67.3%	66.9%
Pre-registration Nurse/ Midwife Intern	0.7%	0.3%	0.8%	2.4%	0.7%	5.4%	1.5%
Nursing/ Midwifery awaiting registration					2.4%	2.3%	2.3%
Pre-registration Nurse Intern (COVID-19)							4.4%
Nursing/ Midwifery Student	0.7%	0.3%	0.8%	2.4%	3.1%	7.7%	8.2%
Nursing/ Midwifery other	1.1%	1.0%	1.1%	1.1%	1.0%	1.0%	1.0%
Nursing & Midwifery	31.1%	31.4%	30.7%	30.8%	30.4%	31.1%	31.1%
Occupational Therapists	14.3%	11.9%	12.0%	9.5%	15.4%	15.1%	15.2%
Physiotherapists	13.7%	14.2%	11.4%	12.3%	10.8%	12.1%	11.4%
Speech & Language Therapists	11.3%	11.3%	12.7%	17.5%	25.2%	26.3%	26.3%
Therapy Professions	39.3%	37.4%	36.0%	39.3%	51.4%	53.5%	52.9%
Social Care	17.4%	15.2%	12.3%	13.2%	9.2%	9.5%	9.4%
Social Workers	18.3%	21.0%	21.0%	19.8%	18.9%	21.8%	22.0%
Psychologists	3.0%	4.3%	7.5%	6.6%	5.6%	5.4%	5.6%
Counsellor Therapists	11.5%	11.8%	11.3%	10.7%	6.8%	6.2%	6.4%
Other Health & Social Care	10.4%	10.4%	11.9%	10.4%	8.2%	3.6%	3.6%
H&SC, Other	22.0%	22.2%	23.2%	21.1%	15.0%	9.8%	10.1%
Health & Social Care Professionals	4.9%	4.3%	4.5%	4.1%	4.0%	5.9%	5.9%
Senior Management (VIII & GM)	13.4%	12.7%	14.7%	15.6%	15.3%	14.3%	15.2%
Management (VIII & above)	13.4%	12.7%	14.7%	15.6%	15.3%	14.3%	15.2%

May 2020 (Dec 2018 figure: 1,479)	WTE Dec 2015	WTE Dec 2016	WTE Dec 2017	WTE Dec 2018	WTE Dec 2019	WTE Apr 2020	WTE May 2020
Disabilities	1,374	1,430	1,457	1,479	1,498.23	1,525.86	1,522.48
Administrative/ Supervisory (V to VII)	25.1%	26.0%	24.4%	25.1%	30.2%	34.4%	35.4%
Clerical (III & IV)	61.5%	61.3%	60.9%	59.3%	54.5%	51.2%	49.4%
Management & Administrative	5.9%	6.0%	5.6%	5.6%	5.5%	6.4%	6.4%
Support	87.7%	88.7%	88.1%	89.5%	89.1%	89.4%	89.2%
Maintenance/ Technical	12.3%	11.3%	11.9%	10.5%	10.9%	10.6%	10.8%
General Support	5.3%	4.2%	4.0%	3.9%	3.8%	3.7%	3.7%
HCA, Nurse's Aide, etc.	93.1%	93.4%	93.6%	94.3%	93.8%	93.8%	93.8%
Health Care Assistants	93.1%	93.4%	93.6%	94.3%	93.8%	93.8%	93.8%
Care, other	4.5%	4.3%	4.6%	4.1%	4.6%	4.6%	4.5%
Home Help	2.4%	2.3%	1.8%	1.6%	1.6%	1.7%	1.7%
Patient & Client Care	52.7%	53.8%	55.0%	55.4%	54.7%	52.8%	52.8%
Total	100 %	100 %	100 %	100 %	100 %	100 %	100%

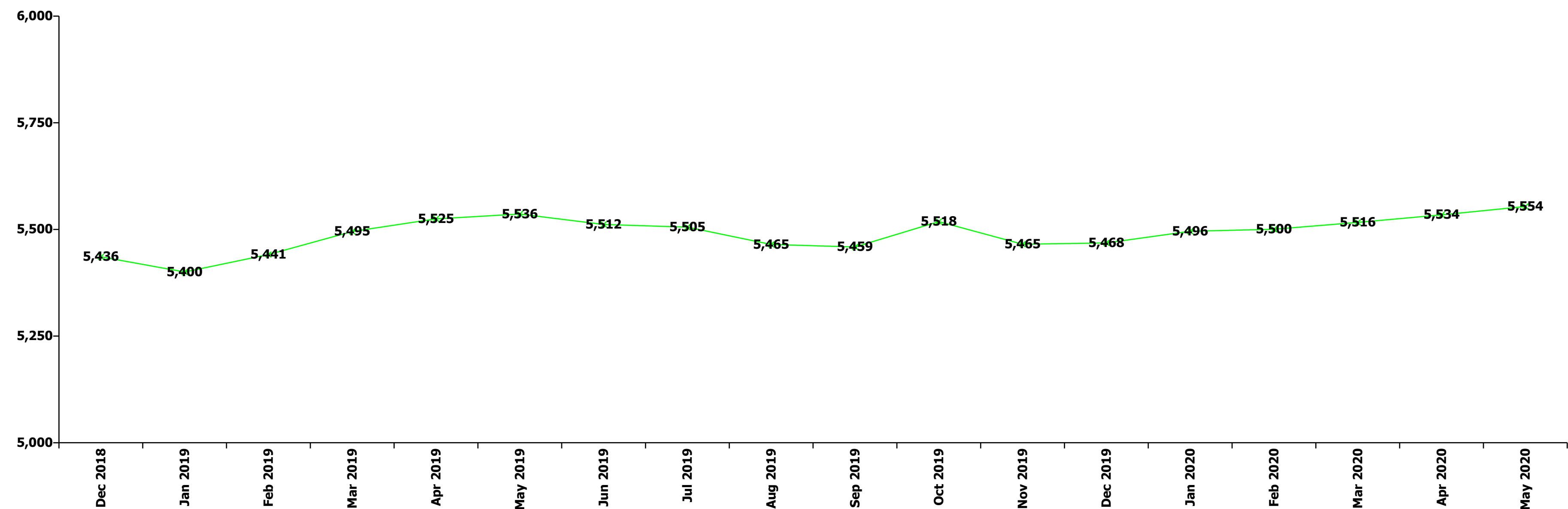
May 2020 (Dec 2018 figure: 1,782)	WTE Dec 2015	WTE Dec 2016	WTE Dec 2017	WTE Dec 2018	WTE Dec 2019	WTE Apr 2020	WTE May 2020
Older People	1,650	1,645	1,780	1,782	1,835.61	1,827.78	1,835.54
Medical/ Dental, other	100.0%	100.0%	100.0%	100.0%	100.0%	100.0%	100.0%
Medical & Dental	0.9%	0.9%	0.8%	0.8%	0.8%	1.0%	1.0%
Clinical Nurse/ Midwife Manager	18.4%	17.2%	14.3%	16.4%	15.9%	14.5%	15.0%
Director Nursing/Midwifery, Assistant	2.5%	2.7%	2.7%	2.4%	3.0%	3.2%	2.9%
Director of Nursing/Midwifery	2.7%	3.3%	3.2%	2.8%	3.5%	3.8%	3.8%
Nurse/ Midwife Manager	23.6%	23.3%	20.2%	21.6%	22.5%	21.5%	21.7%
Advanced Nurse/ Midwife Practitioner		0.3%		1.0%	1.4%	1.7%	1.7%
Clinical Nurse/ Midwife Specialist					0.2%	0.2%	0.2%
Nurse/ Midwife Specialist & AN/MP		0.3%		1.0%	1.7%	2.0%	2.0%
Staff Nurse [Intellectual Disability]				0.2%			
Staff Nurse [Psychiatric]	0.4%	0.2%	0.2%	0.4%	0.2%	0.2%	0.2%
Staff Nurses [General/ Children's]	76.0%	76.2%	79.6%	76.8%	75.6%	76.3%	76.1%
Staff Nurse/ Staff Midwife	76.4%	76.5%	79.8%	77.4%	75.9%	76.5%	76.3%
Nursing & Midwifery	23.8%	23.7%	21.8%	23.0%	22.4%	22.2%	22.2%
Occupational Therapists	41.2%	40.9%	40.5%	55.3%	35.0%	33.7%	33.7%
Physiotherapists					2.2%	2.9%	3.2%
Speech & Language Therapists	3.8%	4.0%	4.2%				
Therapy Professions	45.0%	44.9%	44.7%	55.3%	37.2%	36.6%	36.9%
Radiographers	7.3%	7.0%	8.1%	7.0%	4.2%	3.9%	3.9%
Health Science/ Diagnostics	7.3%	7.0%	8.1%	7.0%	4.2%	3.9%	3.9%
Social Workers	47.7%	48.1%	47.2%	37.7%	58.6%	59.5%	59.2%
Health & Social Care Professionals	1.2%	1.2%	1.0%	1.2%	1.1%	1.6%	1.6%
Executive Management					0.9%	0.9%	0.9%
Senior Management (VIII & GM)	4.9%	5.0%	3.5%	3.5%	6.5%	6.6%	6.6%
Management (VIII & above)	4.9%	5.0%	3.5%	3.5%	7.4%	7.5%	7.6%
Administrative/ Supervisory (V to VII)	6.9%	6.8%	7.5%	8.8%	13.3%	14.1%	14.5%
Clerical (III & IV)	88.2%	88.2%	89.0%	87.7%	79.3%	78.3%	77.9%
Management & Administrative	4.8%	4.9%	4.8%	4.8%	4.7%	5.8%	5.8%
Support	94.8%	94.8%	93.9%	93.9%	94.6%	94.6%	94.5%
Maintenance/ Technical	5.2%	5.2%	6.1%	6.1%	5.4%	5.4%	5.5%
General Support	8.1%	8.1%	7.4%	7.4%	7.2%	6.9%	6.9%
HCA, Nurse's Aide, etc.	52.1%	53.6%	49.1%	50.0%	49.2%	49.8%	51.4%
Health & Social Care Assistants	0.5%	0.4%	0.4%	0.4%	0.4%	0.4%	0.4%

May 2020 (Dec 2018 figure: 1,782)	WTE Dec 2015	WTE Dec 2016	WTE Dec 2017	WTE Dec 2018	WTE Dec 2019	WTE Apr 2020	WTE May 2020
Older People	1,650	1,645	1,780	1,782	1,835.61	1,827.78	1,835.54
Health Care Assistants	52.6%	54.0%	49.5%	50.4%	49.7%	50.3%	51.9%
Care, other	2.6%	2.9%	2.6%	2.7%	2.5%	2.5%	2.4%
Home Help	44.7%	43.1%	47.9%	46.8%	47.9%	47.2%	45.7%
Patient & Client Care	61.1%	61.2%	64.2%	62.8%	61.0%	62.6%	62.6%
Total	100 %	100 %	100 %	100 %	100 %	100 %	100%

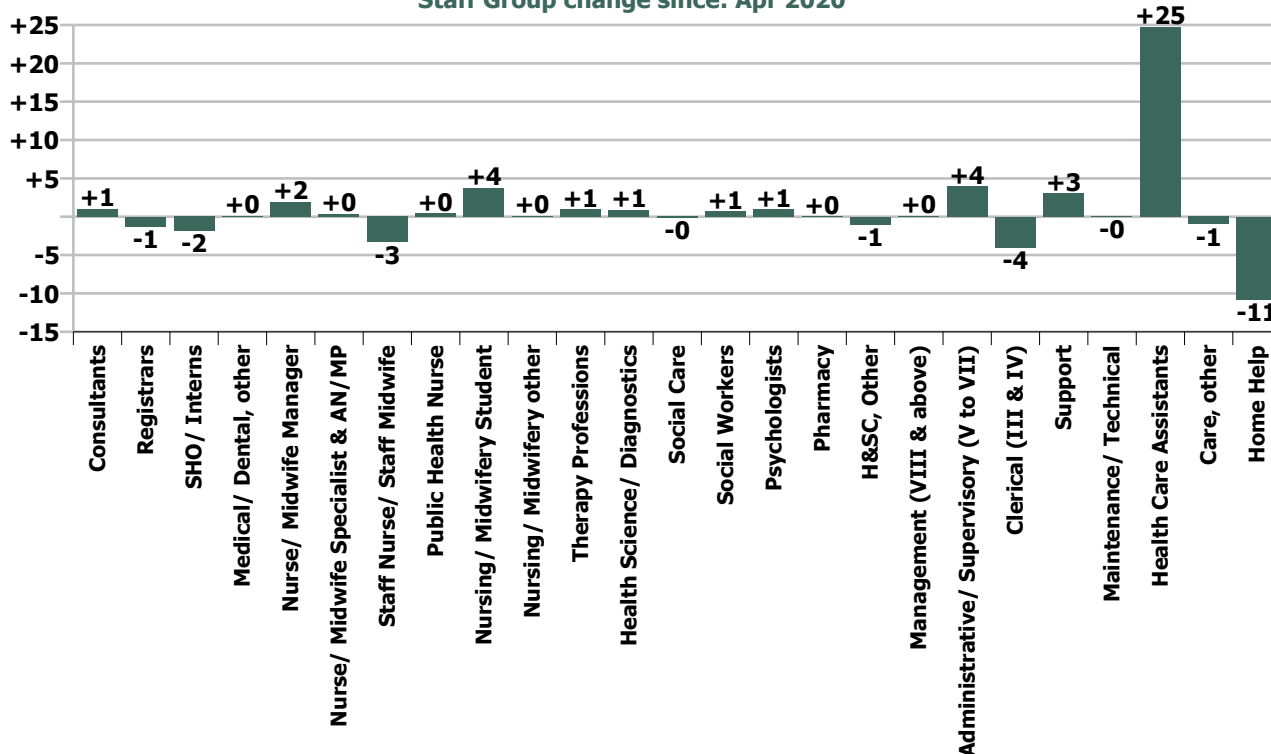
Summary Staff Movement: May 2020

Month-on-month Summary																												
WTE change since Apr 20	% change since Apr 20	overall	Consultants	Registrars	SHO/ Interns	Medical/ Dental, other	Medical & Dental	Nurse/ Midwife Manager	Nurse/ Midwife Specialist & AN/MP	Staff Nurse/ Staff Midwife	Public Health Nurse	Nursing/ Midwifery Student	Nursing/ Midwifery other	Nursing & Midwifery	Therapy Professions	Health Science/ Diagnostics	Social Care	Social Workers	Psychologists	Pharmacy	H&SC, Other	Health & Social Care Professionals	Management (VIII & above)	Administrative/ Supervisory (V to VII)	Clerical (III & IV)	Management & Administrative	General Support	Patient & Client Care
Overall	+0.4%	+20	+1.0	-1.3	-1.9	+0.1	-2.0	+1.9	+0.4	-3.3	+0.4	+3.7	+0.1	+3.3	+1.0	+0.9	-0.2	+0.7	+1.0	+0.1	-1.0	+2.4	+0.1	+4.0	-4.0	+0.1	+3.0	+12.9
Community Health & Wellbeing	+0.4%	+0																					0.0	+0.1	-0.0	+0.1		0.0
Mental Health	-0.3%	-3	+1.1	-0.1	-1.8		-0.9	+2.0	+0.6	-3.1		+1.3	+0.1	+0.8	-1.4		-0.1	+0.4	+0.6	+0.0	-1.2	-1.6	+0.1	+0.1	-0.0	+0.2	+0.9	-2.1
Primary Care	+1.5%	+18	-0.0	-1.1	-0.1	+0.1	-1.1	-0.5	-0.2	+3.1	+0.4	0.0	0.0	+2.8	+3.0	+0.9		+0.4	+0.3	0.0	0.0	+4.6	-0.9	+2.2	-1.6	-0.4	+6.9	+5.1
Disabilities	-0.2%	-3				0.0	0.0	+0.0	0.0	-1.4		+2.5	+0.1	+1.2	-0.7		-0.1	+0.1	+0.2		+0.2	-0.4	+1.0	+1.2	-1.3	+0.9	-0.6	-4.4
Older People	+0.4%	+8				0.0	0.0	+0.5	0.0	-1.9				-1.4	+0.0	0.0		-0.2				-0.2	0.0	+0.3	-0.9	-0.6	-4.3	+14.3
Social Care	+0.1%	+4				0.0	0.0	+0.5	+0.0	-3.3		+2.5	+0.1	-0.3	-0.7	0.0	-0.1	-0.1	+0.2		+0.2	-0.6	+1.0	+1.6	-2.3	+0.3	-4.9	+9.9
Change	+19.6	+0.4%	+3.0%	-2.1%	-7.4%	+0.1%	-1.1%	+0.5%	+0.4%	-0.3%	+0.3%	+6.4%	+1.7%	+0.2%	+0.3%	+16.1%	-1.5%	+0.8%	+1.7%	+3.3%	-3.4%	+0.5%	+0.2%	+2.5%	-0.9%	+0.0%	+0.9%	+0.6%

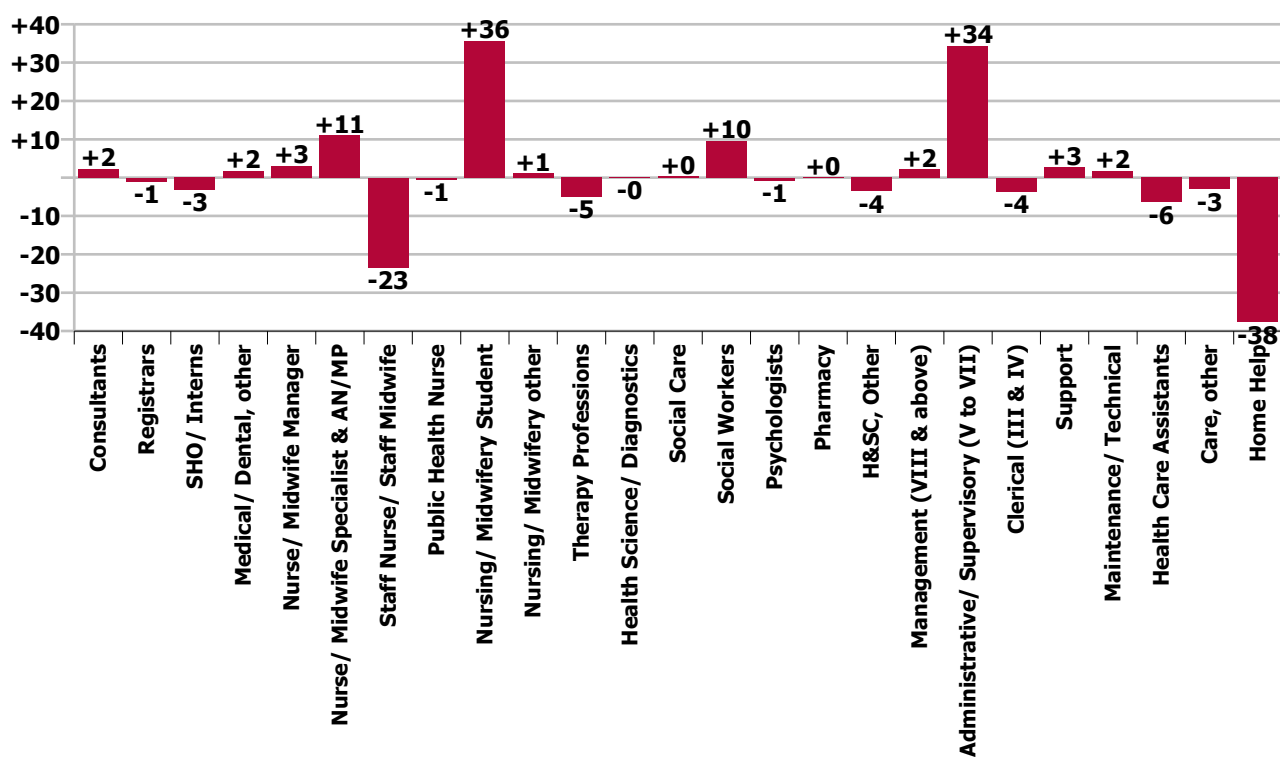
Year-on-year Summary																												
WTE change since May 19	% change since May 19	overall	Consultants	Registrars	SHO/ Interns	Medical/ Dental, other	Medical & Dental	Nurse/ Midwife Manager	Nurse/ Midwife Specialist & AN/MP	Staff Nurse/ Staff Midwife	Public Health Nurse	Nursing/ Midwifery Student	Nursing/ Midwifery other	Nursing & Midwifery	Therapy Professions	Health Science/ Diagnostics	Social Care	Social Workers	Psychologists	Pharmacy	H&SC, Other	Health & Social Care Professionals	Management (VIII & above)	Administrative/ Supervisory (V to VII)	Clerical (III & IV)	Management & Administrative	General Support	Patient & Client Care
Overall	+0.3%	+18	+2.3	-1.0	-3.3	+1.7	-0.3	+3.1	+11.1	-23.4	-0.5	+35.7	+1.0	+26.9	-5.0	-0.0	+0.4	+9.6	-0.8	+0.1	-3.6	+0.7	+2.1	+34.4	-3.6	+32.9	+4.6	-47.2
Community Health & Wellbeing	+0.4%	+0																					+1.0	+9.4	+3.0	+13.4		+0.7
Mental Health	-0.3%	-3	+3.1	+1.4	-3.2		+1.2	+3.4	+3.2	-18.9		+7.9	+0.9	-3.4	+1.7		-0.0	+2.7	-0.2	+0.0	-0.1	+4.1	+2.7	+7.0	+2.9	+12.6	-0.2	-8.6
Primary Care	+1.5%	+18	+0.2	-2.4	-0.1	-1.3	-3.5	+6.8	+3.9	+8.4	-0.5	+0.1	0.0	+18.6	-16.0	-0.0		+1.1	-2.6	0.0	+0.3	-17.3	-3.0	+9.1	-9.8	-3.7	+10.2	+2.4
Disabilities	+1.6%	+23.4	-1.0			+0.1	-0.9	+0.2	+0.9	-12.0		+27.7	+0.1	+17.0	+10.9		+0.4	+5.0	+2.1		-3.7	+14.6	+1.4	+8.8	+0.8	+11.0	+0.5	-18.8
Older People	-1.7%	-32.4				+2.9	+2.9	-7.2	+3.0	-1.0				-5.2	-1.6	-0.0		+0.9				-0.8	0.0	+0.1	-0.6	-0.4	-5.9	-22.9
Social Care	+0.1%	+4	-1.0			+3.0	+2.0	-7.1	+4.0	-13.0		+27.7	+0.1	+11.8	+9.3	-0.0	+0.4	+5.9	+2.1		-3.7	+13.8	+1.4	+8.9	+0.2	+10.5	-5.4	-41.7
Change	+17.6	+0.3%	+6.8%	-1.7%	-12.1%	+2.7%	-0.2%	+0.9%	+11.4%	-2.3%	-0.3%	+135.2%	+18.7%	+1.6%	-1.5%	-0.8%	+3.2%	+11.8%	-1.3%	+3.3%	-10.8%	+0.1%	+3.6%	+26.8%	-0.8%	+5.1%	+1.3%	-2.2%



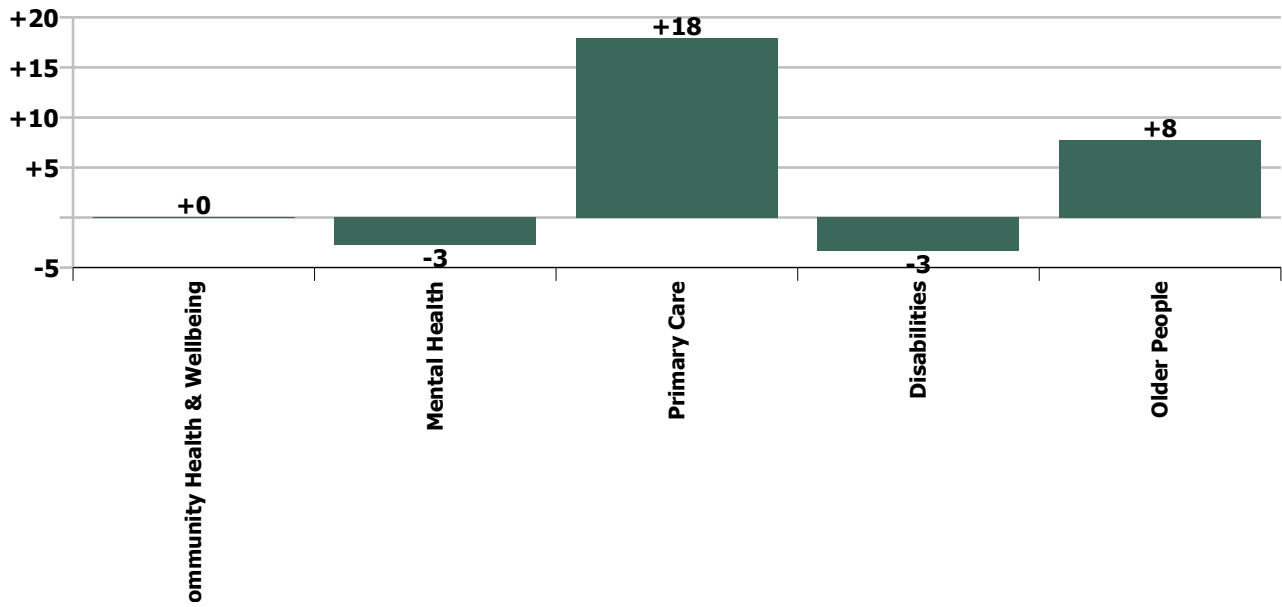
Staff Group change since: Apr 2020



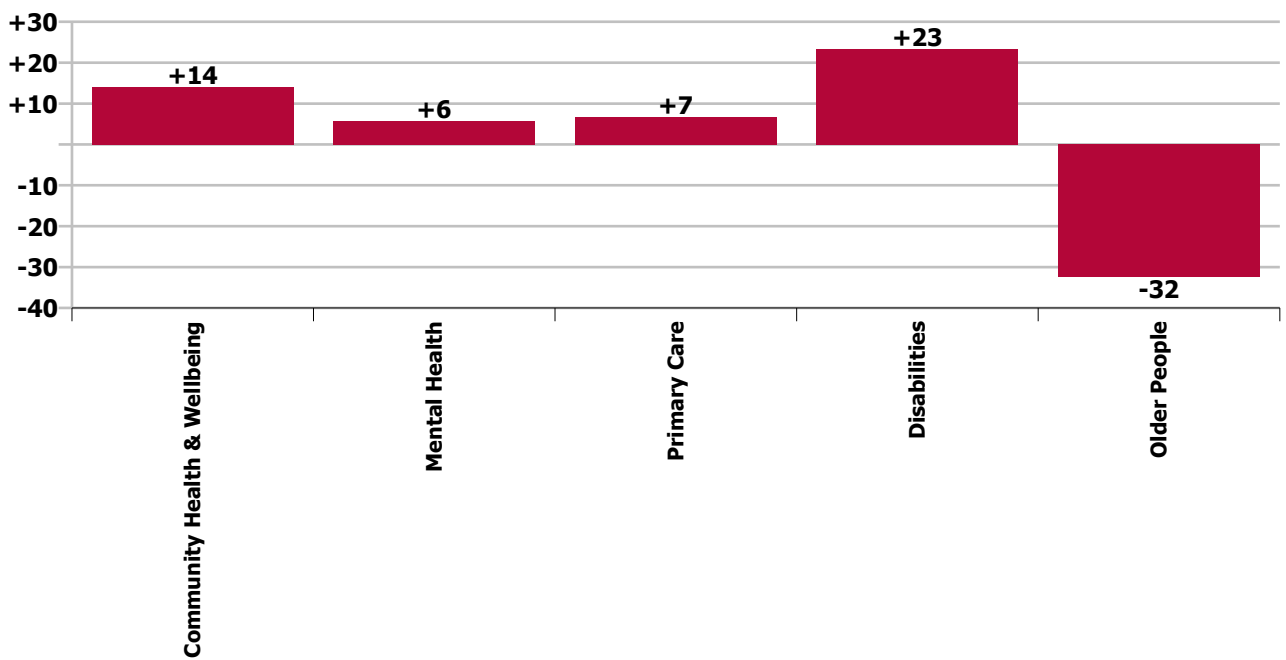
Staff Group change since: May 2019



Care Group change since: Apr 2020



Care Group change since: May 2019



Longitudinal Employment Levels by Grade Group - Oct 2013 to May 2020

May 2020 (Dec 2015 figure: 5,177)	WTE May 2020	WTE change since Dec 15	WTE change since Dec 16	WTE change since Dec 17	WTE change since Dec 18	WTE change since Dec 18	WTE change since Apr 20	% change since Dec 15	% change since Dec 16	% change since Dec 17	% change since Dec 18	% change since Dec 18	% change since Apr 20
Overall	5,554	+377	+273	+186	+118	+118	+20	+7.3%	+5.2%	+3.5%	+2.2%	+2.2%	+0.4%
Consultant Medicine	3	-0	-0	-0	+0	+0	-0	-0.3%	-0.3%	-0.3%	+2.7%	+2.7%	-1.0%
Consultant Psychiatry	32	+7	+5	+5	+3	+3	+1	+26.7%	+19.5%	+18.0%	+8.6%	+8.6%	+3.4%
Consultants	35	+7	+5	+5	+3	+3	+1	+23.9%	+17.5%	+16.2%	+8.1%	+8.1%	+3.0%
Registrar	51	+5	+11	+5	-1	-1	-1	+10.5%	+27.5%	+10.4%	-1.1%	-1.1%	-2.4%
Senior Registrar	8	+4	+3	+4	-3	-3	+0	+101.5%	+60.0%	+100.0%	-25.7%	-25.7%	+0.3%
Specialist Registrar	1	+1	+1	-0	-0	-0	-0	-100.0%	-100.0%	-5.0%	-5.0%	-5.0%	-5.0%
Registrars	60	+10	+15	+9	-3	-3	-1	+19.6%	+33.2%	+17.1%	-5.3%	-5.3%	-2.1%
Senior House Officer	24	-2	-6	-3	-2	-2	-2	-7.0%	-19.5%	-12.4%	-6.8%	-6.8%	-7.4%
SHO/ Interns	24	-2	-6	-3	-2	-2	-2	-7.0%	-19.5%	-12.4%	-6.8%	-6.8%	-7.4%
Dentists	29	+0	+1	+1	+1	+1	-0	+0.5%	+2.0%	+3.8%	+1.9%	+1.9%	-0.1%
Other Medical	38	+1	+1	+0	+3	+3	+0	+2.2%	+3.3%	+0.6%	+8.0%	+8.0%	+0.3%
Medical/ Dental, other	66	+1	+2	+1	+3	+3	+0	+1.4%	+2.8%	+2.0%	+5.3%	+5.3%	+0.1%
Medical & Dental	185	+16	+16	+12	+1	+1	-2	+9.3%	+9.6%	+6.7%	+0.5%	+0.5%	-1.1%
Clinical Nurse/ Midwife Manager	273	+7	+4	+15	+6	+6	+4	+2.5%	+1.6%	+5.8%	+2.3%	+2.3%	+1.4%
Director Nursing/Midwifery, Assistant	55	+5	+3	+6	+4	+4	-2	+10.6%	+6.4%	+13.1%	+7.9%	+7.9%	-2.9%
Director of Nursing/Midwifery	29	+4	+4	+4	+6	+6	-0	+16.7%	+13.9%	+14.6%	+24.4%	+24.4%	-0.7%
Nurse/ Midwife Manager	357	+16	+11	+25	+16	+16	+2	+4.7%	+3.2%	+7.6%	+4.6%	+4.6%	+0.5%
Advanced Nurse/ Midwife Practitioner	11	+9	+8	+9	+4	+4	-0	+446.0%	+264.0%	+446.0%	+56.4%	+56.4%	-0.3%
Clinical Nurse/ Midwife Specialist	97	+16	+12	+7	+9	+9	+0	+19.3%	+13.8%	+8.0%	+9.7%	+9.7%	+0.4%
Nurse/ Midwife Specialist & AN/MP	108	+25	+20	+16	+13	+13	+0	+29.4%	+22.3%	+17.5%	+13.1%	+13.1%	+0.4%
Graduate Nursing/ Midwifery		-11						-100.0%	-100.0%	-100.0%	-100.0%	-100.0%	-100.0%
Staff Nurse [Intellectual Disability]	202	+27	+3	+2	-6	-6	+0	+15.2%	+1.3%	+1.2%	-2.9%	-2.9%	+0.1%
Staff Nurse [Psychiatric]	290	-27	-38	-28	-15	-15	-3	-8.6%	-11.7%	-8.8%	-5.0%	-5.0%	-1.1%
Staff Nurses [General/ Children's]	517	+22	+3	-7	-10	-10	-0	+4.4%	+0.5%	-1.3%	-1.9%	-1.9%	-0.1%
Staff Nurse/ Staff Midwife	1,009	+11	-33	-32	-31	-31	-3	+1.1%	-3.2%	-3.1%	-3.0%	-3.0%	-0.3%
Public Health Nursing	152	-1	+6	-0	-3	-3	+0	-0.4%	+4.1%	-0.3%	-1.9%	-1.9%	+0.3%
Public Health Nurse	152	-1	+6	-0	-3	-3	+0	-0.4%	+4.1%	-0.3%	-1.9%	-1.9%	+0.3%
Pre-registration Nurse/ Midwife Intern	7	-2	+6	+3	-4	-4	-33	-18.4%	+366.7%	+84.7%	-35.3%	-35.3%	-82.7%
Post-registration Nurse/ Midwife Student	7	-0	-0	-0	-0	-0		-0.3%	-0.3%	-0.3%	-0.3%	-0.3%	
Nursing/ Midwifery awaiting registration	11	+11	+11	+11	+10	+10		-100.0%	-100.0%	-100.0%	+1000.0%	+1000.0%	
Pre-registration Nurse Intern (COVID-19)	37	+37	+37	+37	+37	+37	+37	-100.0%	-100.0%	-100.0%	-100.0%	-100.0%	-100.0%
Nursing/ Midwifery Student	62	+47	+54	+51	+43	+43	+4	+298.6%	+630.6%	+475.5%	+230.0%	+230.0%	+6.4%
Nursing Education/Clinical	7	+2	+2	+2	+2	+2	+0	+36.1%	+42.2%	+39.0%	+39.0%	+39.0%	+1.7%
Nursing/ Midwifery other	7	+2	+2	+2	+2	+2	+0	+36.1%	+42.2%	+39.0%	+39.0%	+39.0%	+1.7%

May 2020 (Dec 2015 figure: 5,177)	WTE May 2020	WTE change since Dec 15	WTE change since Dec 16	WTE change since Dec 17	WTE change since Dec 18	WTE change since Dec 18	WTE change since Apr 20	% change since Dec 15	% change since Dec 16	% change since Dec 17	% change since Dec 18	% change since Dec 18	% change since Apr 20
Overall	5,554	+377	+273	+186	+118	+118	+20	+7.3%	+5.2%	+3.5%	+2.2%	+2.2%	+0.4%
Nursing & Midwifery	1,696	+99	+59	+62	+39	+39	+3	+6.2%	+3.6%	+3.8%	+2.4%	+2.4%	+0.2%
Dietitians	16	-0	+1	-0	-2	-2	+0	-0.1%	+8.8%	-1.9%	-10.9%	-10.9%	+1.0%
Occupational Therapists	128	+14	+8	+14	+4	+4	-1	+12.5%	+7.1%	+12.5%	+3.5%	+3.5%	-0.4%
Orthoptists	2	-1	+0	-0	-0	-0	-0	-18.6%	+18.0%	-9.6%	-10.6%	-10.6%	-10.6%
Physiotherapists	94	+14	+4	+4	+1	+1	+2	+17.7%	+3.9%	+4.1%	+0.6%	+0.6%	+1.9%
Podiatrists & Chiropodists	10	+2	+0	+1	+1	+1	-0	+26.0%	+1.1%	+15.9%	+8.3%	+8.3%	-1.6%
Speech & Language Therapists	72	+7	+8	-1	+1	+1	+0	+11.6%	+11.7%	-1.2%	+1.7%	+1.7%	+0.1%
Therapy Professions	322	+37	+21	+18	+5	+5	+1	+13.1%	+7.1%	+5.9%	+1.5%	+1.5%	+0.3%
Audiology	5	-0	-0	-0	-0	-0	+1	-3.3%	-2.6%	-1.5%	-4.0%	-4.0%	+20.3%
Radiographers	1	-0	-0	-0	-0	-0		-20.1%	-17.3%	-20.7%	-20.1%	-20.1%	
Health Science/ Diagnostics	6	-0	-0	-0	-1	-1	+1	-6.8%	-5.6%	-5.6%	-7.3%	-7.3%	+16.1%
Social Care	12	-5	-1	+0	+0	+0	-0	-27.3%	-8.1%	+2.4%	+4.2%	+4.2%	-1.5%
Social Care	12	-5	-1	+0	+0	+0	-0	-27.3%	-8.1%	+2.4%	+4.2%	+4.2%	-1.5%
Social Workers	91	+14	+11	+12	+13	+13	+1	+18.6%	+13.3%	+14.5%	+16.8%	+16.8%	+0.8%
Social Workers	91	+14	+11	+12	+13	+13	+1	+18.6%	+13.3%	+14.5%	+16.8%	+16.8%	+0.8%
Psychologists	60	+7	+5	+2	-2	-2	+1	+13.0%	+9.2%	+3.8%	-2.5%	-2.5%	+1.7%
Psychologists	60	+7	+5	+2	-2	-2	+1	+13.0%	+9.2%	+3.8%	-2.5%	-2.5%	+1.7%
Pharmacy	2	+0	+0	+0	-0	-0	+0	+3.3%	+3.3%	+3.3%	-3.1%	-3.1%	+3.3%
Pharmacy	2	+0	+0	+0	-0	-0	+0	+3.3%	+3.3%	+3.3%	-3.1%	-3.1%	+3.3%
Counsellor Therapists	20	-0	+2	-1	+0	+0	-1	-1.8%	+8.9%	-4.2%	+0.7%	+0.7%	-5.0%
Dental Hygienists	5	+0	+0	-0	+0	+0		+2.8%	+4.4%	-4.9%	+5.4%	+5.4%	
Other Health & Social Care	4	-4	-4	-4	-3	-3		-49.0%	-45.7%	-51.3%	-41.7%	-41.7%	
H&SC, Other	29	-4	-2	-6	-3	-3	-1	-12.8%	-5.6%	-16.1%	-8.2%	-8.2%	-3.4%
Health & Social Care Professionals	523	+49	+34	+26	+14	+14	+2	+10.4%	+6.9%	+5.2%	+2.7%	+2.7%	+0.5%
Executive Management	7	+4		-1	-1	-1	+0	+133.3%		-12.5%	-10.9%	-10.9%	+2.8%
Senior Management (VIII & GM)	54	+14	+14	+13	+5	+5	-0	+33.9%	+36.4%	+33.0%	+9.4%	+9.4%	-0.1%
Management (VIII & above)	61	+18	+14	+12	+4	+4	+0	+40.8%	+30.9%	+25.5%	+6.6%	+6.6%	+0.2%
Middle Management (V-VII)	162	+68	+66	+55	+48	+48	+4	+71.8%	+69.1%	+52.1%	+42.3%	+42.3%	+2.5%
Other Administrative	1												
Administrative/ Supervisory (V to VII)	163	+68	+66	+55	+48	+48	+4	+71.1%	+68.4%	+51.6%	+41.9%	+41.9%	+2.5%
General Administrative (III & IV)	450	+20	+10	+13	+0	+0	-4	+4.6%	+2.3%	+2.9%	+0.0%	+0.0%	-0.9%
Clerical (III & IV)	450	+20	+10	+13	+0	+0	-4	+4.6%	+2.3%	+2.9%	+0.0%	+0.0%	-0.9%
Management & Administrative	674	+105	+90	+80	+52	+52	+0	+18.4%	+15.5%	+13.5%	+8.4%	+8.4%	+0.0%
Catering	64	+10	+8	+5	+5	+5	-1	+19.4%	+14.5%	+9.3%	+8.7%	+8.7%	-1.4%
Household Services	213	-33	-21	-4	-3	-3	+5	-13.6%	-8.8%	-2.0%	-1.4%	-1.4%	+2.5%

May 2020 (Dec 2015 figure: 5,177)	WTE May 2020	WTE change since Dec 15	WTE change since Dec 16	WTE change since Dec 17	WTE change since Dec 18	WTE change since Dec 18	WTE change since Apr 20	% change since Dec 15	% change since Dec 16	% change since Dec 17	% change since Dec 18	% change since Dec 18	% change since Apr 20
Overall	5,554	+377	+273	+186	+118	+118	+20	+7.3%	+5.2%	+3.5%	+2.2%	+2.2%	+0.4%
Other Support	29	+8	+6	-0	-6	-6	-1	+36.0%	+29.1%	-0.2%	-16.4%	-16.4%	-4.5%
Portering	8	-1	-1	+0	+0	+0		-11.4%	-11.4%	+0.7%	+1.3%	+1.3%	
Support	313	-16	-7	+1	-3	-3	+3	-5.0%	-2.2%	+0.3%	-1.1%	-1.1%	+1.0%
Maintenance	37	-4	-1	-1	+3	+3	-0	-9.5%	-3.0%	-1.9%	+8.4%	+8.4%	-0.2%
Maintenance/ Technical	37	-4	-1	-1	+3	+3	-0	-9.5%	-3.0%	-1.9%	+8.4%	+8.4%	-0.2%
General Support	350	-20	-8	+0	-1	-1	+3	-5.5%	-2.3%	+0.1%	-0.2%	-0.2%	+0.9%
HCA, Nurse's Aide, etc.	1,428	+143	+77	+21	+11	+11	+18	+11.1%	+5.7%	+1.5%	+0.8%	+0.8%	+1.3%
Health & Social Care Assistants	25	+10	+10	+8	-2	-2	+7	+61.3%	+70.4%	+49.3%	-7.6%	-7.6%	+35.2%
Health Care Assistants	1,453	+152	+87	+30	+9	+9	+25	+11.7%	+6.4%	+2.1%	+0.6%	+0.6%	+1.7%
Care, other	134	+4	+2	-1	+2	+2	-1	+2.9%	+1.7%	-1.1%	+1.3%	+1.3%	-0.7%
Home Help	539	-28	-7	-23	+2	+2	-11	-4.9%	-1.4%	-4.0%	+0.4%	+0.4%	-2.0%
Patient & Client Care	2,125	+128	+82	+6	+13	+13	+13	+6.4%	+4.0%	+0.3%	+0.6%	+0.6%	+0.6%

Source: Health Service Personnel Census

Longitudinal Employment Levels by Care Group - Oct 2013 to May 2020

Community Health & Wellbeing

May 2020 (figure:)	WTE May 2020	WTE change since	WTE change since	WTE change since	WTE change since	WTE change since	WTE change since Apr 20	% change since	% change since	% change since	% change since	% change since	% change since Apr 20
Overall	14	+14	+14	+14	+14	+14	+0	-100.0%	-100.0%	-100.0%	-100.0%	-100.0%	+0.4%
Management & Administrative	13	+13	+13	+13	+13	+13	+0	-1.0%	-1.0%	-1.0%	-1.0%	-1.0%	+0.0%
Management (VIII & above)	1	+1	+1	+1	+1	+1		-1.0%	-1.0%	-1.0%	-1.0%	-1.0%	+0.0%
Administrative/ Supervisory (V to VII)	9	+9	+9	+9	+9	+9	+0	-1.0%	-1.0%	-1.0%	-1.0%	-1.0%	+0.0%
Clerical (III & IV)	3	+3	+3	+3	+3	+3	-0	-1.0%	-1.0%	-1.0%	-1.0%	-1.0%	-0.0%
Patient & Client Care	1	+1	+1	+1	+1	+1		-1.0%	-1.0%	-1.0%	-1.0%	-1.0%	+0.0%
Care, other	1	+1	+1	+1	+1	+1		-1.0%	-1.0%	-1.0%	-1.0%	-1.0%	+0.0%

Source: Health Service Personnel Census

Mental Health

May 2020 (Dec 2015 figure: 931)	WTE May 2020	WTE change since Dec 15	WTE change since Dec 16	WTE change since Dec 17	WTE change since Dec 18	WTE change since Dec 18	WTE change since Apr 20	% change since Dec 15	% change since Dec 16	% change since Dec 17	% change since Dec 18	% change since Dec 18	% change since Apr 20
Overall	965	+34	+17	+22	+23	+23	-3	+3.7%	+1.8%	+2.4%	+2.5%	+2.5%	-0.3%
Medical & Dental	79	+12	+6	+7	+1	+1	-1	+0.2%	+0.1%	+0.1%	+0.0%	+0.0%	-0.0%
Consultants	32	+8	+6	+6	+4	+4	+1	+0.3%	+0.2%	+0.2%	+0.1%	+0.1%	+0.0%
Registrars	23	+5	+7	+4	-1	-1	-0	+0.3%	+0.4%	+0.2%	-0.0%	-0.0%	-0.0%
SHO/ Interns	23	-1	-7	-3	-2	-2	-2	-0.1%	-0.2%	-0.1%	-0.1%	-0.1%	-0.1%
Nursing & Midwifery	496	+10	-5	+2	+11	+11	+1	+0.0%	-0.0%	+0.0%	+0.0%	+0.0%	+0.0%
Nurse/ Midwife Manager	121	+6	+2	+3	+4	+4	+2	+0.0%	+0.0%	+0.0%	+0.0%	+0.0%	+0.0%
Nurse/ Midwife Specialist & AN/MP	68	+15	+10	+7	+4	+4	+1	+0.3%	+0.2%	+0.1%	+0.1%	+0.1%	+0.0%
Staff Nurse/ Staff Midwife	290	-23	-35	-26	-14	-14	-3	-0.1%	-0.1%	-0.1%	-0.0%	-0.0%	-0.0%
Nursing/ Midwifery Student	16	+11	+16	+16	+15	+15	+1	+1.9%	-1.0%	-1.0%	+15.4%	+15.4%	+0.1%
Nursing/ Midwifery other	1	+1	+1	+1	+1	+1	+0	-1.0%	-1.0%	-1.0%	-1.0%	-1.0%	+0.1%
Health & Social Care Professionals	115	+9	+8	+10	+4	+4	-2	+0.1%	+0.1%	+0.1%	+0.0%	+0.0%	-0.0%
Therapy Professions	36	+5	+4	+4	+2	+2	-1	+0.2%	+0.1%	+0.1%	+0.1%	+0.1%	-0.0%
Social Care	4	-1	-0	-0	+0	+0	-0	-0.3%	-0.0%	-0.0%	+0.0%	+0.0%	-0.0%
Social Workers	41	+3	+3	+4	+3	+3	+0	+0.1%	+0.1%	+0.1%	+0.1%	+0.1%	+0.0%
Psychologists	22	+2	+0	+1	-1	-1	+1	+0.1%	+0.0%	+0.0%	-0.1%	-0.1%	+0.0%
Pharmacy	1	+0	+0	+0	-0	-0	+0	+0.1%	+0.1%	+0.1%	-0.1%	-0.1%	+0.1%
H&SC, Other	13	+0	+2	+1	+1	+1	-1	+0.0%	+0.2%	+0.1%	+0.1%	+0.1%	-0.1%
Management & Administrative	121	+25	+29	+22	+16	+16	+0	+0.3%	+0.3%	+0.2%	+0.2%	+0.2%	+0.0%
Management (VIII & above)	7	+3	+4	+3	+3	+3	+0	+0.7%	+1.2%	+0.7%	+0.7%	+0.7%	+0.0%
Administrative/ Supervisory (V to VII)	30	+17	+17	+14	+11	+11	+0	+1.2%	+1.3%	+0.9%	+0.6%	+0.6%	+0.0%
Clerical (III & IV)	83	+6	+8	+5	+3	+3	-0	+0.1%	+0.1%	+0.1%	+0.0%	+0.0%	-0.0%
General Support	79	-18	-13	-6	-3	-3	+1	-0.2%	-0.1%	-0.1%	-0.0%	-0.0%	+0.0%
Support	62	-16	-12	-6	-4	-4	+1	-0.2%	-0.2%	-0.1%	-0.1%	-0.1%	+0.0%
Maintenance/ Technical	17	-2	-1	+0	+1	+1	-0	-0.1%	-0.1%	+0.0%	+0.1%	+0.1%	-0.0%
Patient & Client Care	74	-3	-8	-12	-5	-5	-2	-0.0%	-0.1%	-0.1%	-0.1%	-0.1%	-0.0%
Health Care Assistants	63	-4	-10	-12	-4	-4	-2	-0.1%	-0.1%	-0.2%	-0.1%	-0.1%	-0.0%
Care, other	11	+1	+1	+1	-1	-1	+0	+0.1%	+0.1%	+0.1%	-0.1%	-0.1%	+0.0%

Source: Health Service Personnel Census

Primary Care

May 2020 (Dec 2015 figure: 1,222)	WTE May 2020	WTE change since Dec 15	WTE change since Dec 16	WTE change since Dec 17	WTE change since Dec 18	WTE change since Dec 18	WTE change since Apr 20	% change since Dec 15	% change since Dec 16	% change since Dec 17	% change since Dec 18	% change since Dec 18	% change since Apr 20
Overall	1,217	-5	-40	+29	-16	-16	+18	-0.4%	-3.2%	+2.4%	-1.3%	-1.3%	+1.5%
Medical & Dental	86	+1	+7	+2	-3	-3	-1	+0.0%	+0.1%	+0.0%	-0.0%	-0.0%	-0.0%
Consultants	3	-0	-0	-0	+0	+0	-0	-0.0%	-0.0%	-0.0%	+0.0%	+0.0%	-0.0%
Registrars	37	+5	+8	+5	-3	-3	-1	+0.1%	+0.3%	+0.2%	-0.1%	-0.1%	-0.0%
SHO/ Interns	1	-0	+1	-0	-0	-0	-0	-0.3%	-1.0%	-0.1%	-0.1%	-0.1%	-0.1%
Medical/ Dental, other	46	-3	-2	-3	-1	-1	+0	-0.1%	-0.0%	-0.1%	-0.0%	-0.0%	+0.0%
Nursing & Midwifery	318	+27	+22	+13	+14	+14	+3	+0.1%	+0.1%	+0.0%	+0.0%	+0.0%	+0.0%
Nurse/ Midwife Manager	43	+6	+6	+8	+6	+6	-1	+0.2%	+0.1%	+0.2%	+0.2%	+0.2%	-0.0%
Nurse/ Midwife Specialist & AN/MP	24	+3	+4	+1	+4	+4	-0	+0.1%	+0.2%	+0.0%	+0.2%	+0.2%	-0.0%
Staff Nurse/ Staff Midwife	92	+18	+5	+4	+6	+6	+3	+0.2%	+0.1%	+0.1%	+0.1%	+0.1%	+0.0%
Public Health Nurse	152	-1	+6	-0	-3	-3	+0	-0.0%	+0.0%	-0.0%	-0.0%	-0.0%	+0.0%
Nursing/ Midwifery Student	7	-0	-0	-0	-0	-0		-0.0%	-0.0%	-0.0%	-0.0%	-0.0%	+0.0%
Nursing/ Midwifery other	1	+1	+1	+1	+1	+1		-1.0%	-1.0%	-1.0%	-1.0%	-1.0%	+0.0%
Health & Social Care Professionals	288	+8	-11	-19	-28	-28	+5	+0.0%	-0.0%	-0.1%	-0.1%	-0.1%	+0.0%
Therapy Professions	228	+9	-8	-13	-20	-20	+3	+0.0%	-0.0%	-0.1%	-0.1%	-0.1%	+0.0%
Health Science/ Diagnostics	5	-0	-0	-0	-0	-0	+1	-0.0%	-0.0%	-0.0%	-0.0%	-0.0%	+0.2%
Social Workers	13	-4	-6	-8	-7	-7	+0	-0.2%	-0.3%	-0.4%	-0.3%	-0.3%	+0.0%
Psychologists	33	+2	+2	+1	-1	-1	+0	+0.1%	+0.1%	+0.0%	-0.0%	-0.0%	+0.0%
Pharmacy	1							+0.0%	+0.0%	+0.0%	+0.0%	+0.0%	+0.0%
H&SC, Other	7	+1	+1	-0	+0	+0		+0.2%	+0.2%	-0.0%	+0.0%	+0.0%	+0.0%
Management & Administrative	337	+25	+11	+8	-12	-12	-0	+0.1%	+0.0%	+0.0%	-0.0%	-0.0%	-0.0%
Management (VIII & above)	30	+6	+2	+1	-7	-7	-1	+0.2%	+0.1%	+0.0%	-0.2%	-0.2%	-0.0%
Administrative/ Supervisory (V to VII)	73	+18	+17	+8	+6	+6	+2	+0.3%	+0.3%	+0.1%	+0.1%	+0.1%	+0.0%
Clerical (III & IV)	233	+1	-8	-1	-12	-12	-2	+0.0%	-0.0%	-0.0%	-0.0%	-0.0%	-0.0%
General Support	89	+22	+17	+14	+10	+10	+7	+0.3%	+0.2%	+0.2%	+0.1%	+0.1%	+0.1%
Support	82	+21	+17	+13	+7	+7	+7	+0.3%	+0.3%	+0.2%	+0.1%	+0.1%	+0.1%
Maintenance/ Technical	7	+1	+1	+1	+3	+3	-0	+0.2%	+0.1%	+0.2%	+0.7%	+0.7%	-0.0%
Patient & Client Care	98	-89	-86	+10	+4	+4	+5	-0.5%	-0.5%	+0.1%	+0.0%	+0.0%	+0.1%
Health Care Assistants	41	+12	+10	+10	+1	+1	+6	+0.4%	+0.3%	+0.3%	+0.0%	+0.0%	+0.2%
Care, other	57	-3	-1	-0	+2	+2	-1	-0.1%	-0.0%	-0.0%	+0.0%	+0.0%	-0.0%
Home Help	1	-98	-94	+1	+1	+1	+0	-1.0%	-1.0%	-1.0%	-1.0%	-1.0%	+0.3%

Source: Health Service Personnel Census

Disabilities

May 2020 (Dec 2015 figure: 1,374)	WTE May 2020	WTE change since Dec 15	WTE change since Dec 16	WTE change since Dec 17	WTE change since Dec 18	WTE change since Dec 18	WTE change since Apr 20	% change since Dec 15	% change since Dec 16	% change since Dec 17	% change since Dec 18	% change since Dec 18	% change since Apr 20
Overall	1,522	+149	+92	+65	+43	+43	-3	+10.8%	+6.4%	+4.5%	+2.9%	+2.9%	-0.2%
Medical & Dental	3	+0						+0.1%	+0.0%	+0.0%	+0.0%	+0.0%	+0.0%
Consultants		-1	-1	-1	-1	-1		-1.0%	-1.0%	-1.0%	-1.0%	-1.0%	-1.0%
Medical/ Dental, other	3	+1	+1	+1	+1	+1		+0.5%	+0.5%	+0.5%	+0.5%	+0.5%	+0.0%
Nursing & Midwifery	473	+47	+24	+26	+18	+18	+1	+0.1%	+0.1%	+0.1%	+0.0%	+0.0%	+0.0%
Nurse/ Midwife Manager	105	+9	+5	+4	+6	+6		+0.1%	+0.1%	+0.0%	+0.1%	+0.1%	+0.0%
Nurse/ Midwife Specialist & AN/MP	8	-1	-2	-0	+1	+1		-0.2%	-0.2%	-0.0%	+0.1%	+0.1%	+0.0%
Staff Nurse/ Staff Midwife	317	+4	-17	-13	-17	-17	-1	+0.0%	-0.1%	-0.0%	-0.1%	-0.1%	-0.0%
Nursing/ Midwifery Student	39	+36	+37	+35	+28	+28	+2	+11.9%	+24.8%	+9.2%	+2.6%	+2.6%	+0.1%
Nursing/ Midwifery other	5	-0	+0	-0	-0	-0	+0	-0.0%	+0.0%	-0.0%	-0.0%	-0.0%	+0.0%
Health & Social Care Professionals	89	+23	+27	+24	+29	+29	-0	+0.3%	+0.4%	+0.4%	+0.5%	+0.5%	-0.0%
Therapy Professions	47	+21	+24	+24	+23	+23	-1	+0.8%	+1.0%	+1.0%	+1.0%	+1.0%	-0.0%
Social Care	8	-3	-1	+0	+0	+0	-0	-0.3%	-0.1%	+0.0%	+0.1%	+0.1%	-0.0%
Social Workers	20	+7	+7	+6	+8	+8	+0	+0.6%	+0.5%	+0.4%	+0.6%	+0.6%	+0.0%
Psychologists	5	+3	+2	+0	+1	+1	+0	+1.5%	+0.9%	+0.0%	+0.3%	+0.3%	+0.0%
H&SC, Other	9	-6	-5	-6	-4	-4	+0	-0.4%	-0.3%	-0.4%	-0.3%	-0.3%	+0.0%
Management & Administrative	98	+16	+12	+16	+15	+15	+1	+0.2%	+0.1%	+0.2%	+0.2%	+0.2%	+0.0%
Management (VIII & above)	15	+4	+4	+3	+2	+2	+1	+0.4%	+0.4%	+0.2%	+0.1%	+0.1%	+0.1%
Administrative/ Supervisory (V to VII)	35	+14	+12	+15	+14	+14	+1	+0.7%	+0.5%	+0.7%	+0.7%	+0.7%	+0.0%
Clerical (III & IV)	48	-2	-4	-1	-1	-1	-1	-0.0%	-0.1%	-0.0%	-0.0%	-0.0%	-0.0%
General Support	56	-17	-4	-2	-2	-2	-1	-0.2%	-0.1%	-0.0%	-0.0%	-0.0%	-0.0%
Support	50	-14	-4	-2	-2	-2	-1	-0.2%	-0.1%	-0.0%	-0.0%	-0.0%	-0.0%
Maintenance/ Technical	6	-3	-1	-1				-0.3%	-0.1%	-0.1%	+0.0%	+0.0%	+0.0%
Patient & Client Care	803	+80	+33	+1	-16	-16	-4	+0.1%	+0.0%	+0.0%	-0.0%	-0.0%	-0.0%
Health Care Assistants	754	+79	+35	+3	-19	-19	-4	+0.1%	+0.0%	+0.0%	-0.0%	-0.0%	-0.0%
Care, other	36	+4	+3	-1	+2	+2	-0	+0.1%	+0.0%	-0.0%	+0.1%	+0.1%	-0.0%
Home Help	14	-4	-4	-1	+1	+1	+0	-0.2%	-0.2%	-0.1%	+0.0%	+0.0%	+0.0%

Source: Health Service Personnel Census

Older People

May 2020 (Dec 2015 figure: 1,650)	WTE May 2020	WTE change since Dec 15	WTE change since Dec 16	WTE change since Dec 17	WTE change since Dec 18	WTE change since Dec 18	WTE change since Apr 20	% change since Dec 15	% change since Dec 16	% change since Dec 17	% change since Dec 18	% change since Dec 18	% change since Apr 20
Overall	1,836	+186	+191	+55	+53	+53	+8	+11.3%	+11.6%	+3.1%	+3.0%	+3.0%	+0.4%
Medical & Dental	17	+3	+3	+3	+3	+3		+0.2%	+0.2%	+0.2%	+0.2%	+0.2%	+0.0%
Medical/ Dental, other	17	+3	+3	+3	+3	+3	-0	+0.2%	+0.2%	+0.2%	+0.2%	+0.2%	-0.0%
Nursing & Midwifery	408	+15	+19	+21	-3	-3	-1	+0.0%	+0.0%	+0.1%	-0.0%	-0.0%	-0.0%
Nurse/ Midwife Manager	89	-4	-2	+10	-0	-0	+0	-0.0%	-0.0%	+0.1%	-0.0%	-0.0%	+0.0%
Nurse/ Midwife Specialist & AN/MP	8	+8	+7	+8	+4	+4		-1.0%	+7.0%	-1.0%	+1.0%	+1.0%	+0.0%
Staff Nurse/ Staff Midwife	312	+11	+14	+2	-6	-6	-2	+0.0%	+0.0%	+0.0%	-0.0%	-0.0%	-0.0%
Health & Social Care Professionals	29	+9	+9	+11	+9	+9	-0	+0.5%	+0.5%	+0.6%	+0.4%	+0.4%	-0.0%
Therapy Professions	11	+2	+2	+3	-1	-1	+0	+0.2%	+0.2%	+0.3%	-0.1%	-0.1%	+0.0%
Health Science/ Diagnostics	1	-0	-0	-0	-0	-0	+0	-0.2%	-0.2%	-0.2%	-0.2%	-0.2%	+0.0%
Social Workers	17	+8	+8	+9	+10	+10	-0	+0.8%	+0.8%	+1.0%	+1.2%	+1.2%	-0.0%
Management & Administrative	106	+26	+25	+21	+20	+20	-1	+0.3%	+0.3%	+0.2%	+0.2%	+0.2%	-0.0%
Management (VIII & above)	8	+4	+4	+5	+5	+5		+1.0%	+1.0%	+1.7%	+1.7%	+1.7%	+0.0%
Administrative/ Supervisory (V to VII)	15	+10	+10	+9	+8	+8	+0	+1.8%	+1.8%	+1.4%	+1.0%	+1.0%	+0.0%
Clerical (III & IV)	82	+12	+12	+7	+7	+7	-1	+0.2%	+0.2%	+0.1%	+0.1%	+0.1%	-0.0%
General Support	126	-8	-8	-5	-5	-5	-4	-0.1%	-0.1%	-0.0%	-0.0%	-0.0%	-0.0%
Support	119	-8	-8	-4	-4	-4	-4	-0.1%	-0.1%	-0.0%	-0.0%	-0.0%	-0.0%
Maintenance/ Technical	7			-1	-1	-1		+0.0%	+0.0%	-0.1%	-0.1%	-0.1%	+0.0%
Patient & Client Care	1,149	+140	+142	+5	+30	+30	+14	+0.1%	+0.1%	+0.0%	+0.0%	+0.0%	+0.0%
Health Care Assistants	596	+65	+52	+29	+31	+31	+25	+0.1%	+0.1%	+0.1%	+0.1%	+0.1%	+0.0%
Care, other	28	+1	-1	-2	-2	-2	-0	+0.1%	-0.0%	-0.1%	-0.1%	-0.1%	-0.0%
Home Help	525	+74	+91	-22	+1	+1	-11	+0.2%	+0.2%	-0.0%	+0.0%	+0.0%	-0.0%

Source: Health Service Personnel Census