

CHO 1 Employment Report: October 2020

Employment by Staff Group

Oct 2020 (Dec 2019 figure: 5,468)	WTE Sep 2020	WTE Oct 2020	WTE change since Sep 20	% change since Sep 20	WTE change since Dec 19	WTE change since Oct 19
Overall	5,670	5,641	-29	-0.5%	+173	+123
Consultants	37	38	+0	+0.9%	+4	+5
Registrars	71	73	+2	+2.3%	+8	+4
SHO/ Interns	23	24	+1	+3.9%	-2	+1
Medical/ Dental, other	66	66	+1	+0.8%	-14	-2
Medical & Dental	197	201	+3	+1.7%	-5	+8
Nurse/ Midwife Manager	360	361	+1	+0.1%	+11	+13
Nurse/ Midwife Specialist & AN/MP	112	115	+3	+3.0%	+13	+15
Staff Nurse/ Staff Midwife	1,023	1,019	-4	-0.4%	+5	-8
Public Health Nurse	153	151	-2	-1.4%	-5	-2
<i>Pre-registration Nurse/ Midwife Intern</i>	5	1	-5	-90.6%	-3	-5
<i>Pre-registration Nurse Intern (COVID-19)</i>	46	32	-15	-31.8%	+32	-15
<i>Post-registration Nurse/ Midwife Student</i>	1	3	+2	+240.0%	-4	+2
<i>Nursing/ Midwifery awaiting registration</i>	11	11				
Nursing/ Midwifery Student	64	47	-17	-27.0%	+26	+26
Nursing/ Midwifery other	8	8	-0	-1.9%	+2	+2
Nursing & Midwifery	1,720	1,700	-20	-1.2%	+52	+46
Therapy Professions	326	329	+3	+1.1%	+13	+8
Health Science/ Diagnostics	7	7	+0	+2.4%	+0	+0
Social Care	12	12	+1	+6.4%	+1	+1
Social Workers	87	90	+3	+2.9%	+5	+6
Psychologists	62	62	-1	-1.5%	+2	+3
Pharmacy	3	3	-0	-1.9%	+1	+1
H&SC, Other	30	31	+1	+2.6%	-2	-3
Health & Social Care Professionals	526	533	+7	+1.3%	+20	+15
Management (VIII & above)	63	63	-1	-0.9%	+3	+3
Administrative/ Supervisory (V to VII)	158	161	+4	+2.5%	+26	+30
Clerical (III & IV)	459	470	+11	+2.4%	+15	+19
Management & Administrative	680	695	+14	+2.1%	+44	+52
Support	307	308	+1	+0.3%	+2	+1
Maintenance/ Technical	36	36	+0	+0.4%	+1	-1
General Support	343	344	+1	+0.3%	+2	-0
Health Care Assistants	1,509	1,472	-36	-2.4%	+50	+37
Care, other	136	136	-0	-0.3%	+5	+7
Home Help	559	561	+2	+0.4%	+4	-42
Patient & Client Care	2,204	2,169	-35	-1.6%	+59	+2

CHO 1 Employment Report: October 2020

Community Health & Wellbeing

Oct 2020 (figure:)	WTE Sep 2020	WTE Oct 2020	WTE change since Sep 20	% change since Sep 20	WTE change since	WTE change since
Total Community Health & Wellbeing	13	13	+0	+0.3%	+13	+13
Management (VIII & above)	1	1			+1	+1
Administrative/ Supervisory (V to VII)	8	9	+1	+8.4%	+9	+9
Clerical (III & IV)	3	3	+0	+1.3%	+3	+3
Management & Administrative	12	13	+1	+6.0%	+13	+13
Patient & Client Care	1		-1	-100.0%		

Mental Health

Oct 2020 (Dec 2019 figure: 953)	WTE Sep 2020	WTE Oct 2020	WTE change since Sep 20	% change since Sep 20	WTE change since Dec 19	WTE change since Oct 19
Total Mental Health	984	977	-8	-0.8%	+24	+25
Consultants	34	35	+1	+1.7%	+4	+5
Registrars	27	29	+2	+5.8%	+4	+2
SHO/ Interns	22	23	+1	+4.0%	-2	+1
Medical & Dental	83	87	+3	+3.7%	+6	+8
Nurse/ Midwife Manager	124	124	-0	-0.1%	+7	+5
Nurse/ Midwife Specialist & AN/MP	68	70	+1	+2.0%	+2	+4
Staff Nurse/ Staff Midwife	289	288	-2	-0.6%	-10	-11
Pre-registration Nurse/ Midwife Intern	5	1	-5	-90.6%	+1	-5
Pre-registration Nurse Intern (COVID-19)	21	12	-9	-44.5%	+12	-9
Nursing/ Midwifery Student	26	12	-14	-53.9%	+12	+12
Nursing/ Midwifery other	1	1			+1	+1
Nursing & Midwifery	508	494	-15	-2.9%	+12	+10
Therapy Professions	34	34			-1	+0
Social Care	3	4	+1	+30.2%	-0	-0
Social Workers	38	41	+3	+7.1%	+2	+1
Psychologists	23	23	+0	+0.1%	+2	+3
Pharmacy	1	1	-0	-5.7%	+0	-0
H&SC, Other	14	14	+0	+1.9%	+1	-0
Health & Social Care Professionals	113	117	+4	+3.4%	+3	+4
Management (VIII & above)	8	7	-1	-13.1%	+1	+2
Administrative/ Supervisory (V to VII)	30	31	+0	+0.6%	+0	+2
Clerical (III & IV)	84	85	+1	+0.7%	-1	-0
Management & Administrative	122	122	-0	-0.2%	+1	+3
Support	64	64	+0	+0.3%	+2	+1
Maintenance/ Technical	17	17	-0	-1.5%	-0	-0
General Support	81	81	-0	-0.1%	+2	+1
Health Care Assistants	66	66	+0	+0.4%	+0	-0
Care, other	11	11	+0	+1.1%	+0	-1
Patient & Client Care	77	77	+0	+0.5%	+0	-1

Primary Care

Oct 2020 (Dec 2019 figure: 1,182)	WTE Sep 2020	WTE Oct 2020	WTE change since Sep 20	% change since Sep 20	WTE change since Dec 19	WTE change since Oct 19
Total Primary Care	1,237	1,244	+8	+0.6%	+63	+55
Consultants	3	3	-0	-7.6%	+0	+0
Registrars	44	44	+0	+0.1%	+3	+2
SHO/ Interns	1	1				
Medical/ Dental, other	45	46	+1	+1.2%	-2	-3
Medical & Dental	94	94	+0	+0.4%	+2	-1
Nurse/ Midwife Manager	38	37	-1	-1.8%	+1	-0
Nurse/ Midwife Specialist & AN/MP	25	27	+2	+6.7%	+6	+6
Staff Nurse/ Staff Midwife	98	95	-3	-3.5%	+9	+9
Public Health Nurse	153	151	-2	-1.4%	-5	-2
<i>Post-registration Nurse/ Midwife Student</i>	1	3	+2	+240.0%	-4	+2
Nursing/ Midwifery Student	1	3	+2	+240.0%	-4	-3
Nursing/ Midwifery other	1	1				
Nursing & Midwifery	316	314	-2	-0.7%	+7	+10
Therapy Professions	239	237	-2	-0.8%	+10	+2
Health Science/ Diagnostics	5	5	+0	+1.3%	+0	-0
Social Workers	15	16	+1	+6.0%	+3	+4
Psychologists	30	28	-2	-7.0%	-7	-6
Pharmacy	2	2			+1	+1
H&SC, Other	7	7	+1	+9.7%	+0	+0
Health & Social Care Professionals	298	295	-2	-0.8%	+8	+1
Management (VIII & above)	32	31	-1	-3.4%	-1	-0
Administrative/ Supervisory (V to VII)	71	73	+3	+3.8%	+10	+11
Clerical (III & IV)	238	245	+7	+3.0%	+10	+12
Management & Administrative	341	350	+9	+2.6%	+18	+23
Support	77	77	+0	+0.6%	+5	+4
Maintenance/ Technical	7	7	-0	-1.9%	+1	+1
General Support	84	84	+0	+0.4%	+6	+4
Health Care Assistants	47	51	+4	+8.5%	+19	+16
Care, other	57	56	-1	-1.4%	+1	+1
Home Help	1	1	-0	-3.0%	+1	+1
Patient & Client Care	105	108	+3	+3.0%	+21	+18

Social Care

Oct 2020 (Dec 2019 figure: 3,334)	WTE Sep 2020	WTE Oct 2020	WTE change since Sep 20	% change since Sep 20	WTE change since Dec 19	WTE change since Oct 19
Total Social Care	3,436	3,407	-29	-0.9%	+73	+30
Medical/ Dental, other	20	20			-12	+1
Medical & Dental	20	20	-0	-0.0%	-12	+1
Nurse/ Midwife Manager	199	200	+1	+0.7%	+4	+9
Nurse/ Midwife Specialist & AN/MP	18	19	+0	+2.0%	+5	+6
Staff Nurse/ Staff Midwife	636	637	+1	+0.1%	+6	-6
Pre-registration Nurse/ Midwife Intern				-100.0%	-3	
Pre-registration Nurse Intern (COVID-19)	26	20	-6	-21.5%	+20	-6
Nursing/ Midwifery awaiting registration	11	11				
Nursing/ Midwifery Student	37	31	-6	-15.0%	+17	+17
Nursing/ Midwifery other	6	6	-0	-2.6%	+1	+1
Nursing & Midwifery	895	892	-3	-0.3%	+33	+27
Therapy Professions	52	58	+5	+10.5%	+4	+5
Health Science/ Diagnostics	1	2	+0	+6.1%	+0	+0
Social Care	9	9	-0	-1.0%	+1	+1
Social Workers	34	33	-1	-3.2%	-0	+1
Psychologists	10	11	+1	+12.0%	+6	+6
H&SC, Other	9	9	-0	-1.6%	-3	-3
Health & Social Care Professionals	116	121	+5	+4.7%	+9	+10
Management (VIII & above)	22	24	+2	+6.8%	+2	+1
Administrative/ Supervisory (V to VII)	48	49	+0	+0.7%	+7	+7
Clerical (III & IV)	134	137	+3	+2.4%	+3	+4
Management & Administrative	205	210	+5	+2.4%	+11	+13
Support	166	166	+0	+0.1%	-5	-4
Maintenance/ Technical	12	13	+1	+4.3%	-0	-2
General Support	179	179	+1	+0.4%	-5	-6
Health Care Assistants	1,395	1,355	-40	-2.9%	+30	+22
Care, other	68	69	+1	+1.4%	+4	+7
Home Help	558	560	+2	+0.4%	+4	-43
Patient & Client Care	2,021	1,984	-37	-1.9%	+38	-14

CHO 1 Employment Report: October 2020

Disabilities

Oct 2020 (Dec 2019 figure: 1,498)	WTE Sep 2020	WTE Oct 2020	WTE change since Sep 20	% change since Sep 20	WTE change since Dec 19	WTE change since Oct 19
Total Disabilities	1,546	1,553	+7	+0.5%	+55	+58
Medical/ Dental, other	3	3			+0	
Medical & Dental	3	3			+0	
Nurse/ Midwife Manager	110	109	-0	-0.3%	+4	+12
Nurse/ Midwife Specialist & AN/MP	9	10	+0	+4.5%	+3	+3
Staff Nurse/ Staff Midwife	321	322	+1	+0.3%	-2	-9
<i>Pre-registration Nurse/ Midwife Intern</i>				-100.0%	-3	
<i>Pre-registration Nurse Intern (COVID-19)</i>	26	20	-6	-21.5%	+20	-6
<i>Nursing/ Midwifery awaiting registration</i>	11	11				
Nursing/ Midwifery Student	37	31	-6	-15.0%	+17	+17
Nursing/ Midwifery other	5	5	-0	-3.1%	+0	+0
Nursing & Midwifery	482	477	-5	-1.0%	+22	+23
Therapy Professions	40	44	+4	+9.8%	+2	+2
Social Care	9	9	-0	-1.0%	+1	+1
Social Workers	18	18	+0	+2.3%	+2	+3
Psychologists	10	11	+1	+12.0%	+6	+6
H&SC, Other	9	9	-0	-1.6%	-3	-3
Health & Social Care Professionals	86	91	+5	+6.2%	+9	+9
Management (VIII & above)	14	16	+2	+10.6%	+2	-0
Administrative/ Supervisory (V to VII)	33	33	+0	+1.0%	+6	+7
Clerical (III & IV)	50	51	+0	+0.9%	+1	+4
Management & Administrative	97	100	+2	+2.4%	+9	+11
Support	49	49	+0	+0.4%	+0	+1
Maintenance/ Technical	6	6				-1
General Support	55	55	+0	+0.4%	+0	+1
Health Care Assistants	768	771	+4	+0.5%	+10	+6
Care, other	40	41	+1	+3.1%	+4	+7
Home Help	15	15	-1	-4.3%	+1	+1
Patient & Client Care	823	827	+4	+0.5%	+15	+14

Older People

Oct 2020 (Dec 2019 figure: 1,836)	WTE Sep 2020	WTE Oct 2020	WTE change since Sep 20	% change since Sep 20	WTE change since Dec 19	WTE change since Oct 19
Total Older People	1,890	1,854	-37	-1.9%	+18	-28
Medical/ Dental, other	17	17			-12	+1
Medical & Dental	17	17			-12	+1
Nurse/ Midwife Manager	89	91	+2	+1.9%	-0	-3
Nurse/ Midwife Specialist & AN/MP	9	9	-0	-0.7%	+2	+3
Staff Nurse/ Staff Midwife	315	315	-0	-0.0%	+8	+3
Nursing/ Midwifery other	1	1			+1	+1
Nursing & Midwifery	414	415	+2	+0.4%	+10	+4
Health & Social Care Professionals	30	30	+0	+0.4%	+0	+1
Management (VIII & above)	8	8			+0	+1
Administrative/ Supervisory (V to VII)	15	15	-0	-0.1%	+1	-0
Clerical (III & IV)	84	87	+3	+3.2%	+2	+1
Management & Administrative	107	110	+3	+2.5%	+3	+1
Support	117	117	+0	+0.0%	-5	-6
Maintenance/ Technical	6	7	+1	+8.3%	-0	-1
General Support	124	124	+1	+0.5%	-6	-7
Health Care Assistants	628	584	-44	-7.0%	+20	+16
Care, other	28	28	-0	-1.0%	-0	-0
Home Help	543	545	+3	+0.5%	+2	-44
Patient & Client Care	1,198	1,157	-42	-3.5%	+23	-29

CHO 1 Employment by Administration (HSE / S38): October 2020

Oct 2020 (Dec 2019 figure: 5,468)	WTE Sep 2020	WTE Oct 2020	WTE change since Sep 20	% change since Sep 20	WTE change since Dec 19	WTE change since Oct 19
Overall	5,670	5,641	-29	-0.5%	+173	+123
HSE	5,670	5,641	-29	-0.5%	+173	+123

HSE

Oct 2020 (Dec 2019 figure: 5,468)	WTE Sep 2020	WTE Oct 2020	WTE change since Sep 20	% change since Sep 20	WTE change since Dec 19	WTE change since Oct 19
Overall	5,670	5,641	-29	-0.5%	+173	+123
Consultants	37	38	+0	+0.0%	+4	+5
Registrars	71	73	+2	+0.0%	+8	+4
SHO/ Interns	23	24	+1	+0.0%	-2	+1
Medical/ Dental, other	66	66	+1	+0.0%	-14	-2
Medical & Dental	197	201	+3	+1.7%	-5	+8
Nurse/ Midwife Manager	360	361	+1	+0.0%	+11	+13
Nurse/ Midwife Specialist & AN/MP	112	115	+3	+0.0%	+13	+15
Staff Nurse/ Staff Midwife	1,023	1,019	-4	-0.0%	+5	-8
Public Health Nurse	153	151	-2	-0.0%	-5	-2
<i>Pre-registration Nurse/ Midwife Intern</i>	5	1	-5	-0.9%	-10	-14
<i>Pre-registration Nurse Intern (COVID-19)</i>	46	32	-15	-0.3%	+32	+32
<i>Post-registration Nurse/ Midwife Student</i>	1	3	+2	+2.4%	-4	-3
<i>Nursing/ Midwifery awaiting registration</i>	11	11		+0.0%	+10	+11
Nursing/ Midwifery Student	64	47	-17	-0.3%	+26	+26
Nursing/ Midwifery other	8	8	-0	-0.0%	+2	+2
Nursing & Midwifery	1,720	1,700	-20	-1.2%	+52	+46
Therapy Professions	326	329	+3	+0.0%	+13	+8
Health Science/ Diagnostics	7	7	+0	+0.0%	+0	+0
Social Care	12	12	+1	+0.1%	+1	+1
Social Workers	87	90	+3	+0.0%	+5	+6
Psychologists	62	62	-1	-0.0%	+2	+3
Pharmacy	3	3	-0	-0.0%	+1	+1
H&SC, Other	30	31	+1	+0.0%	-2	-3
Health & Social Care Professionals	526	533	+7	+1.3%	+20	+15
Management (VIII & above)	63	63	-1	-0.0%	+3	+3
Administrative/ Supervisory (V to VII)	158	161	+4	+0.0%	+26	+30
Clerical (III & IV)	459	470	+11	+0.0%	+15	+19
Management & Administrative	680	695	+14	+2.1%	+44	+52
Support	307	308	+1	+0.0%	+2	+1
Maintenance/ Technical	36	36	+0	+0.0%	+1	-1
General Support	343	344	+1	+0.3%	+2	-0
Health Care Assistants	1,509	1,472	-36	-0.0%	+50	+37
Care, other	136	136	-0	-0.0%	+5	+7
Home Help	559	561	+2	+0.0%	+4	-42
Patient & Client Care	2,204	2,169	-35	-1.6%	+59	+2

CHO 1 Employment by Grade Group & Staff Category: October 2020

Oct 2020 (Dec 2019 figure: 5,468)	WTE Sep 2020	WTE Oct 2020	WTE change since Sep 20	% change since Sep 20	WTE change since Dec 19	WTE change since Oct 19
Overall	5,670	5,641	-29	-0.5%	+173	+123
Consultant Medicine	3	3	-0	-7.6%	+0	+0
Consultant Psychiatry	34	35	+1	+1.7%	+4	+5
Consultants	37	38	+0	+0.9%	+4	+5
Registrar	64	66	+2	+2.6%	+9	+7
Senior Registrar	8	8	-0	-0.4%	-0	-1
Specialist Registrar				-100.0%	-1	-1
Registrars	71	73	+2	+2.3%	+8	+4
Senior House Officer	23	24	+1	+3.9%	-2	+1
SHO/ Interns	23	24	+1	+3.9%	-2	+1
Dentists	28	28	-1	-1.8%	+0	-1
Other Medical	37	38	+1	+2.8%	-14	-1
Medical/ Dental, other	66	66	+1	+0.8%	-14	-2
Medical & Dental	197	201	+3	+1.7%	+16	+8
Clinical Nurse/ Midwife Manager	280	280	-0	-0.0%	+11	+15
Director Nursing/Midwifery, Assistant	55	53	-1	-2.4%	+2	-3
Director of Nursing/Midwifery	26	28	+2	+7.5%	-2	+0
Nurse/ Midwife Manager	360	361	+1	+0.1%	+11	+13
Advanced Nurse/ Midwife Practitioner	11	13	+2	+16.5%	+4	+5
Clinical Nurse/ Midwife Specialist	101	103	+2	+1.6%	+9	+11
Nurse/ Midwife Specialist & AN/MP	112	115	+3	+3.0%	+13	+15
Staff Nurse [Intellectual Disability]	219	223	+4	+1.7%	+18	+16
Staff Nurse [Psychiatric]	290	289	-2	-0.5%	-9	-11
Staff Nurses [General/ Children's]	514	507	-6	-1.3%	-4	-13
Staff Nurse/ Staff Midwife	1,023	1,019	-4	-0.4%	+5	-8
Public Health Nurse	153	151	-2	-1.4%	-5	-2
Pre-registration Nurse/ Midwife Intern	5	1	-5	-90.6%	-3	-14
Pre-registration Nurse Intern (COVID-19)	46	32	-15	-31.8%	+32	+32
Post-registration Nurse/ Midwife Student	1	3	+2	+240.0%	-4	-3
Nursing/ Midwifery awaiting registration	11	11				+11
Nursing/ Midwifery Student	64	47	-17	-27.0%	+26	+26
Nursing Education/Clinical	8	8	-0	-1.9%	+2	+2
Nursing/ Midwifery other	8	8	-0	-1.9%	+2	+2
Nursing & Midwifery	1,720	1,700	-20	-1.2%	+43	+46
Dietitians	15	15	-0	-1.5%	-2	-2
Occupational Therapists	128	128	+1	+0.4%	-0	+2
Orthoptists	3	3			+0	+0
Physiotherapists	95	99	+4	+4.7%	+9	+5
Podiatrists & Chiropodists	11	11	-0	-0.7%	+2	+2
Speech & Language Therapists	75	73	-1	-1.6%	+4	+1
Therapy Professions	326	329	+3	+1.1%	+13	+8
Audiology	5	5	+0	+1.3%	+0	-0
Radiographers	1	2	+0	+6.1%	+0	+0
Health Science/ Diagnostics	7	7	+0	+2.4%	+0	+0
Social Care	12	12	+1	+6.4%	+1	+1
Social Workers	87	90	+3	+2.9%	+5	+6
Psychologists	62	62	-1	-1.5%	+2	+3
Pharmacy	3	3	-0	-1.9%	+1	+1

Oct 2020 (Dec 2019 figure: 5,468)	WTE Sep 2020	WTE Oct 2020	WTE change since Sep 20	% change since Sep 20	WTE change since Dec 19	WTE change since Oct 19
Overall	5,670	5,641	-29	-0.5%	+173	+123
Counsellor Therapists	21	22	+1	+2.9%	+2	+1
Dental Hygienists	5	5	+0	+3.0%	+0	+0
Other Health & Social Care	3	3			-5	-5
H&SC, Other	30	31	+1	+2.6%	-2	-3
Health & Social Care Professionals	526	533	+7	+1.3%	+24	+15
Executive Management	7	8	+1	+15.9%	+1	+1
Senior Management (VIII & GM)	56	55	-2	-3.0%	+2	+2
Management (VIII & above)	63	63	-1	-0.9%	+3	+3
Middle Management (V-VII)	157	160	+4	+2.5%	+26	+30
Other Administrative	1	1				
Administrative/ Supervisory (V to VII)	158	161	+4	+2.5%	+26	+30
General Administrative (III & IV)	459	470	+11	+2.4%	+15	+19
Clerical (III & IV)	459	470	+11	+2.4%	+15	+19
Management & Administrative	680	695	+14	+2.1%	+73	+52
Catering	66	65	-1	-0.9%	+4	+6
Household Services	204	206	+2	+0.9%	+1	+0
Other Support	29	29	-0	-0.6%	-4	-5
Portering	8	8	-0	-1.8%	-0	-0
Support	307	308	+1	+0.3%	+2	+1
Maintenance	36	36	+0	+0.4%	+1	-1
Maintenance/ Technical	36	36	+0	+0.4%	+1	-1
General Support	343	344	+1	+0.3%	-7	-0
HCA, Nurse's Aide, etc.	1,480	1,443	-37	-2.5%	+40	+31
Health & Social Care Assistants	28	29	+1	+3.3%	+10	+6
Health Care Assistants	1,509	1,472	-36	-2.4%	+50	+37
Community Welfare Officers				-100.0%	-1	-1
Other Care Grades	136	136	-0	-0.3%	+6	+8
Care, other	136	136	-0	-0.3%	+5	+7
Home Help	559	561	+2	+0.4%	+4	-42
Patient & Client Care	2,204	2,169	-35	-1.6%	+56	+2

Employment by WTE, Headcount, Gender, Full-Time /Part-Time etc.: Oct 2020

CHO 1	WTE	Headcount	WTE: no.	% Male	% female	Male WTE: no.	Female WTE: no.	% Total Perm	% Male Perm	% Female Perm	% Total Full Time	% Total Part Time	% Male FT	% Female FT
Overall	5,641	6,542	1.16	17.2%	82.8%	1.07	1.18	83.4%	84.3%	83.3%	64.1%	35.9%	85.4%	59.6%
Consultant Medicine	3	4	1.31	25.0%	75.0%	1.00	1.46	75.0%	75.0%	66.7%	75.0%	25.0%	100.0%	66.7%
Consultant Psychiatry	35	38	1.10	42.1%	57.9%	1.11	1.09	68.4%	68.4%	72.7%	92.1%	7.9%	93.8%	90.9%
Consultants	38	42	1.11	40.5%	59.5%	1.10	1.12	69.0%	64.7%	72.0%	90.5%	9.5%	94.1%	88.0%
Registrar	66	67	1.02	43.3%	56.7%	1.01	1.03	9.0%	9.0%	5.3%	97.0%	3.0%	96.6%	97.4%
Senior Registrar	8	8	1.07	37.5%	62.5%	1.00	1.11	12.5%	12.5%	20.0%	87.5%	12.5%	100.0%	80.0%
Registrars	73	75	1.03	42.7%	57.3%	1.00	1.04	9.3%	12.5%	7.0%	96.0%	4.0%	96.9%	95.3%
Senior House Officer	24	24	1.01	54.2%	45.8%	1.01	1.00	0.0%	0.0%	0.0%	100.0%	0.0%	100.0%	100.0%
SHO/ Interns	24	24	1.01	54.2%	45.8%	1.01	1.00	0.0%	0.0%	0.0%	100.0%	0.0%	100.0%	100.0%
Dentists	28	31	1.11	38.7%	61.3%	1.08	1.13	96.8%	96.8%	94.7%	87.1%	12.9%	83.3%	89.5%
Other Medical	38	73	1.91	50.7%	49.3%	1.86	1.97	76.7%	76.7%	72.2%	19.2%	80.8%	27.0%	11.1%
Medical/ Dental, other	66	104	1.57	47.1%	52.9%	1.58	1.57	82.7%	85.7%	80.0%	39.4%	60.6%	40.8%	38.2%
Medical & Dental	201	245	1.22	45.3%	54.7%	1.22	1.22	49.8%	51.4%	48.5%	71.4%	28.6%	72.1%	70.9%
Clinical Nurse/ Midwife Manager	280	297	1.06	17.5%	82.5%	1.01	1.07	99.3%	99.3%	99.6%	85.2%	14.8%	98.1%	82.4%
Director Nursing/Midwifery, Assistant	53	56	1.05	19.6%	80.4%	1.00	1.06	100.0%	100.0%	100.0%	89.3%	10.7%	100.0%	86.7%
Director of Nursing/Midwifery	28	28	1.01	17.9%	82.1%	1.01	1.01	100.0%	100.0%	100.0%	96.4%	3.6%	100.0%	95.7%
Nurse/ Midwife Manager	361	381	1.06	17.8%	82.2%	1.01	1.07	99.5%	98.5%	99.7%	86.6%	13.4%	98.5%	84.0%
Advanced Nurse/ Midwife Practitioner	13	13	1.02	7.7%	92.3%	1.00	1.03	100.0%	100.0%	100.0%	100.0%	0.0%	100.0%	100.0%
Clinical Nurse/ Midwife Specialist	103	111	1.08	19.8%	80.2%	1.02	1.10	97.3%	97.3%	96.6%	86.5%	13.5%	100.0%	83.1%
Nurse/ Midwife Specialist & AN/MP	115	124	1.08	18.5%	81.5%	1.02	1.09	97.6%	100.0%	97.0%	87.9%	12.1%	100.0%	85.1%
Staff Nurse [Intellectual Disability]	223	249	1.12	11.2%	88.8%	1.03	1.13	91.6%	91.6%	91.4%	77.5%	22.5%	89.3%	76.0%
Staff Nurse [Psychiatric]	289	307	1.06	27.4%	72.6%	1.01	1.08	99.0%	99.0%	98.7%	91.9%	8.1%	98.8%	89.2%
Staff Nurses [General/ Children's]	507	615	1.21	7.2%	92.8%	1.05	1.23	92.7%	92.7%	92.8%	58.2%	41.8%	84.1%	56.2%
Staff Nurse/ Staff Midwife	1,019	1,171	1.15	13.3%	86.7%	1.03	1.17	94.1%	96.2%	93.8%	71.1%	28.9%	92.9%	67.8%
Public Health Nurse	151	176	1.17		100.0%		1.17	95.5%		95.5%	75.0%	25.0%		75.0%
Pre-registration Nurse/ Midwife Intern	1	1	2.00		100.0%		2.00	0.0%	0.0%	0.0%	100.0%	0.0%		100.0%
Pre-registration Nurse Intern (COVID-19)	32	42	1.33	11.9%	88.1%	1.09	1.36	0.0%	0.0%	0.0%	100.0%	0.0%	100.0%	100.0%
Post-registration Nurse/ Midwife Student	3	4	1.18		100.0%		1.18	75.0%	75.0%	75.0%	100.0%	0.0%		100.0%
Nursing/ Midwifery awaiting registration	11	11	1.00		100.0%		1.00	0.0%	0.0%	0.0%	100.0%	0.0%		100.0%

Nursing/ Midwifery Student	47	58	1.24	8.6%	91.4%	1.09	1.26	5.2%	0.0%	5.7%	100.0%	0.0%	100.0%	100.0%
Nursing/ Midwifery other	8	8	1.05		100.0%		1.05	100.0%		100.0%	100.0%	0.0%		100.0%
Nursing & Midwifery	1,700	1,918	1.13	13.1%	86.9%	1.02	1.15	92.9%	95.2%	92.5%	76.6%	23.4%	95.2%	73.8%
Dietitians	15	17	1.14		100.0%		1.14	100.0%	100.0%	100.0%	82.4%	17.6%		82.4%
Occupational Therapists	128	150	1.17	5.3%	94.7%	1.11	1.17	94.0%	94.0%	94.4%	72.0%	28.0%	87.5%	71.1%
Orthoptists	3	3	1.07	33.3%	66.7%	1.00	1.10	100.0%	100.0%	100.0%	66.7%	33.3%	100.0%	50.0%
Physiotherapists	99	114	1.15	15.8%	84.2%	1.04	1.17	93.9%	93.9%	92.7%	64.0%	36.0%	88.9%	59.4%
Podiatrists & Chiropodists	11	13	1.22	15.4%	84.6%	1.00	1.27	92.3%	92.3%	90.9%	53.8%	46.2%	100.0%	45.5%
Speech & Language Therapists	73	84	1.14	3.6%	96.4%	1.00	1.15	92.9%	92.9%	96.3%	70.2%	29.8%	100.0%	69.1%
Therapy Professions	329	381	1.16	8.4%	91.6%	1.05	1.17	94.0%	87.5%	94.6%	69.0%	31.0%	90.6%	67.0%
Audiology	5	6	1.13		100.0%		1.13	100.0%	100.0%	100.0%	66.7%	33.3%		66.7%
Radiographers	2	3	1.91		100.0%		1.91	100.0%	100.0%	100.0%	0.0%	100.0%		0.0%
Health Science/ Diagnostics	7	9	1.30		100.0%		1.30	100.0%		100.0%	44.4%	55.6%		44.4%
Social Care	12	16	1.30		100.0%		1.30	100.0%		100.0%	37.5%	62.5%		37.5%
Social Workers	90	100	1.12	17.0%	83.0%	1.01	1.14	94.0%	100.0%	92.8%	82.0%	18.0%	94.1%	79.5%
Psychologists	62	68	1.11	27.9%	72.1%	1.02	1.14	95.6%	94.7%	95.9%	79.4%	20.6%	94.7%	73.5%
Pharmacy	3	3	1.19	33.3%	66.7%	1.43	1.09	100.0%	100.0%	100.0%	66.7%	33.3%	0.0%	100.0%
Counsellor Therapists	22	25	1.14	20.0%	80.0%	1.03	1.17	100.0%	100.0%	100.0%	64.0%	36.0%	80.0%	60.0%
Dental Hygienists	5	6	1.10		100.0%		1.10	100.0%	100.0%	100.0%	66.7%	33.3%		66.7%
Other Health & Social Care	3	4	1.23	75.0%	25.0%	1.28	1.11	100.0%	100.0%	100.0%	75.0%	25.0%	66.7%	100.0%
H&SC, Other	31	35	1.14	22.9%	77.1%	1.11	1.15	100.0%	100.0%	100.0%	65.7%	34.3%	75.0%	63.0%
Health & Social Care	533	612	1.15	12.6%	87.4%	1.04	1.17	94.8%	93.5%	95.0%	70.9%	29.1%	89.6%	68.2%
Executive Management	8	8	1.01	75.0%	25.0%	1.00	1.03	100.0%	100.0%	100.0%	100.0%	0.0%	100.0%	100.0%
Senior Management (VIII & GM)	55	56	1.02	14.3%	85.7%	1.05	1.02	94.6%	94.6%	93.8%	91.1%	8.9%	87.5%	91.7%
Management (VIII & above)	63	64	1.02	21.9%	78.1%	1.03	1.02	95.3%	100.0%	94.0%	92.2%	7.8%	92.9%	92.0%
Administrative/ Supervisory (V to VII)	161	171	1.06	15.8%	84.2%	1.02	1.07	93.0%	85.2%	94.4%	81.3%	18.7%	96.3%	78.5%
Clerical (III & IV)	470	544	1.16	8.1%	91.9%	1.05	1.17	92.8%	88.6%	93.2%	68.4%	31.6%	93.2%	66.2%
Management & Administrative	694	779	1.12	10.9%	89.1%	1.04	1.13	93.1%	89.4%	93.5%	73.2%	26.8%	94.1%	70.6%
Catering	65	75	1.15	28.0%	72.0%	1.14	1.16	100.0%	100.0%	100.0%	58.7%	41.3%	85.7%	48.1%
Household Services	206	235	1.14	20.9%	79.1%	1.05	1.17	93.2%	93.2%	96.8%	62.1%	37.9%	81.6%	57.0%
Other Support	29	54	1.85	29.6%	70.4%	1.23	2.34	92.6%	92.6%	92.1%	24.1%	75.9%	68.8%	5.3%
Portering	8	8	1.05	100.0%		1.05		87.5%	87.5%		75.0%	25.0%	75.0%	
Support	308	372	1.21	25.3%	74.7%	1.09	1.25	94.4%	87.2%	96.8%	56.2%	43.8%	79.8%	48.2%
Maintenance/ Technical	36	38	1.04	100.0%		1.04		100.0%	100.0%	#DIV/0	97.4%	2.6%	97.4%	

General Support	344	410	1.19	32.2%	67.8%	1.08	1.25	94.9%	90.9%	96.8%	60.0%	40.0%	84.8%	48.2%
HCA, Nurse's Aide, etc.	1,443	1,631	1.13	23.3%	76.7%	1.07	1.15	91.7%	91.7%	92.7%	69.9%	30.1%	88.2%	64.3%
Health & Social Care Assistants	29	31	1.07	25.8%	74.2%	1.07	1.07	64.5%	64.5%	56.5%	87.1%	12.9%	87.5%	87.0%
Health Care Assistants	1,472	1,662	1.13	23.3%	76.7%	1.07	1.15	91.2%	88.4%	92.1%	70.2%	29.8%	88.1%	64.8%
Care, other	136	155	1.14	32.9%	67.1%	1.08	1.17	89.7%	76.5%	96.2%	71.6%	28.4%	74.5%	70.2%
Home Help	561	761	1.36	4.1%	95.9%	1.31	1.36	27.1%	9.7%	27.8%	2.5%	97.5%	3.2%	2.5%
Patient & Client Care	2,169	2,578	1.19	18.2%	81.8%	1.08	1.21	72.2%	81.9%	70.0%	50.3%	49.7%	81.1%	43.5%

Employment by WTE, Headcount, Gender, Full-Time /Part-Time etc.: Oct 2020

CHO 1	WTE	Headcount	WTE: no.	% Male	% female	Male WTE: no.	Female WTE: no.	% Total Perm	% Male Perm	% Female Perm	% Total Full Time	% Total Part Time	% Male FT	% Female FT
Overall	5,641	6,542	1.16	17.2%	82.8%	1.07	1.18	83.4%	84.3%	83.3%	64.1%	35.9%	85.4%	59.6%
Community Health & Wellbeing	13	15	1.14	6.7%	93.3%	1.00	1.15	100.0%	100.0%	100.0%	66.7%	33.3%	100.0%	100.0%
Mental Health	977	1,050	1.08	27.1%	72.9%	1.02	1.10	90.1%	90.1%	91.6%	87.0%	13.0%	96.5%	96.5%
Primary Care	1,244	1,479	1.19	13.7%	86.3%	1.07	1.21	88.0%	88.0%	89.4%	65.3%	34.7%	85.1%	85.1%
Social Care	3,407	3,998	1.17	16.0%	84.0%	1.10	1.19	79.9%	79.9%	78.9%	57.6%	42.4%	80.4%	80.4%

CHO 1 Skills Mix by Staff Grouping: October 2020

Oct 2020 (Dec 2018 figure: 5,436)	WTE Dec 2015	WTE Dec 2016	WTE Dec 2017	WTE Dec 2018	WTE Dec 2019	WTE Sep 2020	WTE Oct 2020
Overall	5,177	5,280	5,368	5,436	5,468	5,670	5,641
Consultant Medicine	1.8%	1.8%	1.7%	1.6%	1.5%	1.7%	1.5%
Consultant Psychiatry	15.1%	16.1%	15.8%	16.2%	15.0%	17.3%	17.3%
Consultants	16.9%	17.8%	17.5%	17.8%	16.4%	18.9%	18.8%
Registrar	27.2%	23.7%	26.6%	27.9%	27.4%	32.4%	32.7%
Senior Registrar	2.3%	3.0%	2.3%	5.8%	3.9%	3.8%	3.7%
Specialist Registrar			0.6%	0.5%	0.5%		
Registrars	29.6%	26.6%	29.5%	34.3%	31.8%	36.2%	36.4%
Senior House Officer	15.1%	17.5%	15.6%	13.8%	12.8%	11.6%	11.9%
SHO/ Interns	15.1%	17.5%	15.6%	13.8%	12.8%	11.6%	11.9%
Dentists	16.8%	16.6%	15.9%	15.3%	13.5%	14.4%	13.9%
Other Medical	21.7%	21.5%	21.5%	18.8%	25.4%	18.8%	19.0%
Medical/ Dental, other	38.5%	38.1%	37.4%	34.1%	39.0%	33.2%	32.9%
Medical & Dental	3.3%	3.2%	3.2%	3.4%	3.8%	100.0%	3.6%
Clinical Nurse/ Midwife Manager	16.7%	16.4%	15.8%	16.1%	16.3%	16.3%	16.5%
Director Nursing/Midwifery, Assistant	3.1%	3.2%	3.0%	3.1%	3.1%	3.2%	3.1%
Director of Nursing/Midwifery	1.6%	1.6%	1.6%	1.4%	1.8%	1.5%	1.6%
Nurse/ Midwife Manager	21.4%	21.2%	20.3%	20.6%	21.2%	21.0%	21.2%
Advanced Nurse/ Midwife Practitioner	0.1%	0.2%	0.1%	0.4%	0.5%	0.6%	0.7%
Clinical Nurse/ Midwife Specialist	5.1%	5.2%	5.5%	5.4%	5.7%	5.9%	6.0%
Nurse/ Midwife Specialist & AN/MP	5.2%	5.4%	5.6%	5.8%	6.2%	6.5%	6.8%
Graduate Nursing/ Midwifery	0.7%						
Staff Nurse [Intellectual Disability]	11.0%	12.2%	12.2%	12.6%	12.4%	12.7%	13.1%
Staff Nurse [Psychiatric]	19.9%	20.1%	19.5%	18.4%	18.1%	16.9%	17.0%
Staff Nurses [General/ Children's]	31.0%	31.4%	32.1%	31.8%	31.0%	29.9%	29.8%
Staff Nurse/ Staff Midwife	62.5%	63.7%	63.7%	62.8%	61.5%	59.5%	59.9%
Public Health Nurse	9.6%	8.9%	9.3%	9.4%	9.5%	8.9%	8.9%
Pre-registration Nurse/ Midwife Intern	0.5%	0.1%	0.2%	0.7%	0.2%	0.3%	0.0%
Pre-registration Nurse Intern (COVID-19)						2.7%	1.9%
Post-registration Nurse/ Midwife Student	0.4%	0.4%	0.4%	0.4%	0.4%	0.1%	0.2%
Nursing/ Midwifery awaiting registration				0.1%	0.7%	0.6%	0.6%
Nursing/ Midwifery Student	1.0%	0.5%	0.7%	1.1%	1.3%	3.7%	2.7%
Nursing/ Midwifery other	0.3%	0.3%	0.3%	0.3%	0.3%	0.5%	0.4%
Nursing & Midwifery	30.9%	31.0%	30.4%	30.5%	30.1%	100.0%	30.1%
Dietitians	3.3%	3.0%	3.2%	3.5%	3.4%	2.9%	2.8%
Occupational Therapists	24.0%	24.4%	22.9%	24.3%	25.0%	24.3%	24.1%
Orthoptists	0.6%	0.4%	0.5%	0.5%	0.5%	0.5%	0.5%
Physiotherapists	17.0%	18.6%	18.3%	18.4%	17.6%	18.0%	18.6%
Podiatrists & Chiropodists	1.7%	2.0%	1.7%	1.8%	1.7%	2.0%	2.0%
Speech & Language Therapists	13.6%	13.1%	14.6%	13.8%	13.5%	14.2%	13.8%
Therapy Professions	60.2%	61.6%	61.3%	62.4%	61.7%	61.9%	61.8%
Audiology	1.2%	1.1%	1.1%	1.1%	1.0%	1.0%	1.0%
Radiographers	0.3%	0.3%	0.3%	0.3%	0.2%	0.3%	0.3%
Health Science/ Diagnostics	1.5%	1.4%	1.4%	1.4%	1.3%	1.3%	1.3%
Social Care	3.5%	2.7%	2.4%	2.3%	2.2%	2.2%	2.3%
Social Workers	16.2%	16.5%	16.0%	15.3%	16.6%	16.6%	16.8%
Social Workers	16.2%	16.5%	16.0%	15.3%	16.6%	16.6%	16.8%
Psychologists	11.2%	11.2%	11.6%	12.1%	11.7%	11.9%	11.5%
Pharmacy	0.3%	0.3%	0.3%	0.3%	0.3%	0.5%	0.5%
Counsellor Therapists	4.2%	3.7%	4.1%	3.8%	3.8%	4.1%	4.1%
Dental Hygienists	1.1%	1.1%	1.1%	1.0%	1.0%	1.0%	1.0%
Other Health & Social Care	1.8%	1.6%	1.8%	1.4%	1.5%	0.6%	0.6%

Oct 2020 (Dec 2018 figure: 5,436)	WTE Dec 2015	WTE Dec 2016	WTE Dec 2017	WTE Dec 2018	WTE Dec 2019	WTE Sep 2020	WTE Oct 2020
Overall	5,177	5,280	5,368	5,436	5,468	5,670	5,641
H&SC, Other	7.1%	6.4%	7.0%	6.3%	6.3%	5.7%	5.8%
Health & Social Care Professionals	9.1%	9.3%	9.3%	9.4%	9.4%	100.0%	9.4%
Executive Management	0.5%	1.2%	1.3%	1.3%	1.0%	1.0%	1.1%
Senior Management (VIII & GM)	7.1%	6.8%	6.8%	7.9%	8.1%	8.3%	7.9%
Management (VIII & above)	7.6%	8.0%	8.2%	9.2%	9.2%	9.3%	9.0%
Middle Management (V-VII)	16.5%	16.4%	17.9%	18.3%	20.7%	23.0%	23.1%
Other Administrative	0.2%	0.2%	0.2%	0.2%	0.2%	0.1%	0.1%
Administrative/ Supervisory (V to VII)	16.7%	16.6%	18.1%	18.4%	20.8%	23.2%	23.2%
Clerical (III & IV)	75.7%	75.5%	73.8%	72.4%	70.0%	67.5%	67.7%
Management & Administrative	11.0%	11.1%	11.1%	11.4%	11.9%	100.0%	12.3%
Catering	14.5%	15.6%	16.7%	16.8%	17.8%	19.1%	18.9%
Household Services	66.5%	65.1%	62.1%	61.6%	59.8%	59.4%	59.8%
Other Support	5.7%	6.2%	8.2%	9.8%	9.7%	8.6%	8.5%
Portering	2.4%	2.4%	2.2%	2.2%	2.3%	2.3%	2.2%
Support	89.0%	89.4%	89.3%	90.3%	89.5%	89.4%	89.4%
Maintenance/ Technical	11.0%	10.6%	10.7%	9.7%	10.5%	10.6%	10.6%
General Support	7.2%	6.8%	6.5%	6.4%	6.2%	100.0%	6.1%
HCA, Nurse's Aide, etc.	64.3%	66.1%	66.3%	67.1%	66.5%	67.2%	66.5%
Health & Social Care Assistants	0.8%	0.7%	0.8%	1.3%	0.9%	1.3%	1.3%
Health Care Assistants	65.1%	66.8%	67.1%	68.3%	67.4%	68.5%	67.9%
Community Welfare Officers	0.1%	0.0%	0.0%	0.0%	0.0%		
Other Care Grades	6.5%	6.4%	6.3%	6.2%	6.2%	6.2%	6.3%
Care, other	6.5%	6.4%	6.4%	6.2%	6.2%	6.2%	6.3%
Home Help	28.4%	26.7%	26.5%	25.4%	26.4%	25.3%	25.8%
Patient & Client Care	38.6%	38.7%	39.5%	38.9%	38.6%	100.0%	38.4%
Total	100 %	100 %	100 %	100 %	100%	100 %	100 %

CHO 1 Skills Mix by Care Group: October 2020

Oct 2020 (Dec 2018 figure: 941)	WTE Dec 2015	WTE Dec 2016	WTE Dec 2017	WTE Dec 2018	WTE Dec 2019	WTE Sep 2020	WTE Oct 2020
Mental Health	931	948	942	941	953	984	977
Consultants	37.0%	36.2%	36.8%	37.2%	38.2%	40.9%	40.1%
Registrar	22.4%	17.4%	22.7%	18.6%	20.5%	23.8%	24.8%
Senior Registrar	4.5%	5.5%	4.2%	12.6%	9.9%	9.0%	8.7%
Registrars	26.8%	23.0%	26.9%	31.2%	30.4%	32.8%	33.5%
Senior House Officer	36.2%	40.8%	36.3%	31.6%	31.4%	26.4%	26.5%
SHO/ Interns	36.2%	40.8%	36.3%	31.6%	31.4%	26.4%	26.5%
Medical & Dental	7.2%	7.6%	7.6%	8.2%	8.1%	8.9%	8.9%
Clinical Nurse/ Midwife Manager	19.4%	19.8%	20.0%	19.9%	19.9%	19.8%	20.6%
Director Nursing/Midwifery, Assistant	3.5%	3.2%	3.2%	3.7%	3.7%	3.9%	3.8%
Director of Nursing/Midwifery	0.8%	0.6%	0.6%	0.4%	0.6%	0.6%	0.6%
Nurse/ Midwife Manager	23.7%	23.6%	23.8%	24.0%	24.3%	24.4%	25.1%
Advanced Nurse/ Midwife Practitioner	0.2%	0.2%	0.2%	0.4%	0.4%	0.4%	0.6%
Clinical Nurse/ Midwife Specialist	10.7%	11.4%	12.1%	12.9%	13.6%	13.1%	13.5%
Nurse/ Midwife Specialist & AN/MP	10.9%	11.6%	12.3%	13.3%	14.0%	13.4%	14.1%
Graduate Nursing/ Midwifery	0.2%						
Staff Nurse [Intellectual Disability]		0.2%	0.2%	0.2%			
Staff Nurse [Psychiatric]	63.4%	64.0%	63.2%	61.7%	61.1%	56.5%	57.8%
Staff Nurses [General/ Children's]	0.6%	0.6%	0.4%	0.6%	0.6%	0.4%	0.4%
Staff Nurse/ Staff Midwife	64.2%	64.8%	63.9%	62.5%	61.7%	56.9%	58.2%
Pre-registration Nurse/ Midwife Intern	1.1%					1.0%	0.1%
Pre-registration Nurse Intern (COVID-19)						4.1%	2.3%
Nursing/ Midwifery awaiting registration				0.2%			
Nursing/ Midwifery Student	1.1%			0.2%		5.1%	2.4%
Nursing Education/Clinical						0.2%	0.2%
Nursing/ Midwifery other						0.2%	0.2%
Nursing & Midwifery	52.3%	52.9%	52.5%	51.6%	51.0%	50.6%	50.6%
Occupational Therapists	26.2%	26.7%	25.7%	26.9%	28.7%	28.5%	27.5%
Podiatrists & Chiropodists	0.7%	0.7%	0.7%	0.7%	0.6%	0.6%	0.6%
Speech & Language Therapists	1.9%	2.6%	3.5%	3.0%	2.2%	1.3%	1.3%
Therapy Professions	28.8%	30.0%	29.9%	30.6%	31.6%	30.5%	29.5%
Social Care	4.7%	3.5%	3.6%	3.2%	3.3%	2.4%	3.1%
Social Workers	35.7%	35.5%	34.4%	34.0%	34.6%	34.0%	35.2%
Psychologists	18.2%	19.9%	19.9%	20.5%	18.2%	20.3%	19.6%
Pharmacy	0.8%	0.7%	0.8%	0.8%	0.7%	0.8%	0.7%
Counsellor Therapists	11.6%	10.0%	11.5%	10.8%	11.6%	12.1%	11.9%
Other Health & Social Care	0.4%	0.4%					
H&SC, Other	11.9%	10.4%	11.5%	10.8%	11.6%	12.1%	11.9%
Health & Social Care Professionals	11.4%	11.3%	11.2%	11.8%	11.7%	11.9%	11.9%
Management (VIII & above)	4.2%	3.3%	4.1%	3.8%	4.7%	6.3%	5.5%
Administrative/ Supervisory (V to VII)	14.4%	14.5%	16.6%	18.7%	24.9%	24.9%	25.1%
Clerical (III & IV)	81.4%	82.2%	79.3%	77.4%	70.5%	68.8%	69.5%
Management & Administrative	10.3%	9.7%	10.5%	11.1%	11.0%	12.5%	12.5%
Support	80.7%	80.6%	80.3%	80.8%	78.7%	79.0%	79.3%
Maintenance	19.3%	19.4%	19.7%	19.2%	21.3%	21.0%	20.7%
Maintenance/ Technical	19.3%	19.4%	19.7%	19.2%	21.3%	21.0%	20.7%
General Support	10.4%	9.8%	9.1%	8.8%	8.7%	8.3%	8.3%
HCA, Nurse's Aide, etc.	86.8%	87.9%	86.5%	82.1%	83.9%	83.4%	83.7%
Health & Social Care Assistants			1.2%	2.0%	2.1%	2.4%	2.1%

Oct 2020 (Dec 2018 figure: 941)	WTE Dec 2015	WTE Dec 2016	WTE Dec 2017	WTE Dec 2018	WTE Dec 2019	WTE Sep 2020	WTE Oct 2020
Mental Health	931	948	942	941	953	984	977
Health Care Assistants	86.8%	87.9%	87.6%	84.1%	86.0%	85.8%	85.8%
Care, other	13.2%	12.1%	12.4%	15.9%	14.0%	14.2%	14.2%
Patient & Client Care	8.3%	8.7%	9.1%	8.5%	8.4%	7.9%	7.9%
Total	100 %	100 %	100 %	100 %	100 %	100 %	100%

Oct 2020 (Dec 2018 figure: 1,233)	WTE Dec 2015	WTE Dec 2016	WTE Dec 2017	WTE Dec 2018	WTE Dec 2019	WTE Sep 2020	WTE Oct 2020
Primary Care	1,222	1,257	1,188	1,233	1,182	1,237	1,244
Consultant Medicine	3.5%	3.8%	3.6%	3.3%	3.3%	3.5%	3.3%
Consultants	3.5%	3.8%	3.6%	3.3%	3.3%	3.5%	3.3%
Registrars	37.9%	35.7%	37.8%	43.8%	44.3%	47.2%	47.0%
SHO/ Interns	1.5%		1.2%	1.1%	1.1%	1.1%	1.1%
Dentists	33.7%	35.4%	32.8%	31.5%	30.2%	30.4%	29.7%
Other Medical	23.4%	25.1%	24.7%	20.4%	21.2%	17.9%	18.9%
Medical/ Dental, other	57.1%	60.5%	57.5%	51.9%	51.3%	48.2%	48.6%
Medical & Dental	6.9%	6.3%	7.1%	7.3%	7.6%	7.5%	7.5%
Clinical Nurse/ Midwife Manager	5.1%	4.9%	4.7%	5.4%	5.6%	6.3%	6.0%
Director Nursing/Midwifery, Assistant	5.9%	5.9%	5.4%	5.0%	5.0%	4.8%	4.9%
Director of Nursing/Midwifery	1.5%	1.7%	1.3%	1.6%	1.3%	0.9%	1.0%
Nurse/ Midwife Manager	12.6%	12.5%	11.4%	12.0%	11.9%	12.0%	11.9%
Nurse/ Midwife Specialist & AN/MP	7.2%	6.7%	7.7%	6.6%	6.8%	8.0%	8.6%
Staff Nurse [Psychiatric]	0.1%	0.1%	0.1%	0.5%	0.1%	0.1%	0.1%
Staff Nurses [General/ Children's]	25.1%	29.0%	28.4%	27.7%	27.8%	30.9%	30.0%
Staff Nurse/ Staff Midwife	25.2%	29.1%	28.6%	28.2%	27.9%	31.0%	30.1%
Public Health Nurse	52.5%	49.3%	50.1%	50.9%	50.9%	48.4%	48.0%
Post-registration Nurse/ Midwife Student	2.4%	2.4%	2.3%	2.3%	2.3%	0.3%	1.1%
Nursing/ Midwifery Student	2.4%	2.4%	2.3%	2.3%	2.3%	0.3%	1.1%
Nursing Education/Clinical					0.3%	0.3%	0.3%
Nursing/ Midwifery other					0.3%	0.3%	0.3%
Nursing & Midwifery	23.8%	23.6%	25.7%	24.7%	25.8%	25.2%	25.2%
Dietitians	5.6%	4.8%	5.2%	5.6%	6.0%	5.1%	5.1%
Occupational Therapists	24.3%	25.2%	23.2%	24.2%	25.3%	25.4%	25.6%
Orthoptists	1.0%	0.7%	0.8%	0.8%	0.9%	0.9%	1.0%
Physiotherapists	25.4%	27.4%	27.1%	27.3%	28.1%	28.1%	28.3%
Podiatrists & Chiropodists	2.6%	3.1%	2.6%	2.7%	2.8%	3.4%	3.3%
Speech & Language Therapists	19.2%	17.8%	19.4%	17.8%	15.9%	17.4%	17.0%
Therapy Professions	78.2%	79.0%	78.4%	78.5%	79.0%	80.3%	80.3%
Audiology	1.9%	1.8%	1.7%	1.7%	1.8%	1.8%	1.8%
Health Science/ Diagnostics	1.9%	1.8%	1.7%	1.7%	1.8%	1.8%	1.8%
Social Workers	6.1%	6.6%	6.9%	6.4%	4.4%	5.0%	5.4%
Psychologists	11.3%	10.3%	10.3%	10.9%	12.1%	10.1%	9.5%
Pharmacy	0.2%	0.2%	0.2%	0.2%	0.2%	0.6%	0.6%
Counsellor Therapists			0.3%	0.3%	0.3%	0.2%	0.3%
Dental Hygienists	1.9%	1.7%	1.9%	1.6%	1.7%	1.8%	1.8%
Other Health & Social Care	0.4%	0.3%	0.3%	0.3%	0.3%	0.3%	0.3%
H&SC, Other	2.2%	2.1%	2.5%	2.2%	2.4%	2.3%	2.5%
Health & Social Care Professionals	22.9%	23.8%	25.9%	25.6%	26.8%	23.7%	23.7%
Executive Management	0.6%	1.8%	2.1%	2.0%	1.5%	1.4%	1.4%
Senior Management (VIII & GM)	7.2%	6.9%	6.9%	8.7%	8.2%	8.1%	7.5%
Management (VIII & above)	7.8%	8.8%	9.0%	10.7%	9.7%	9.5%	8.9%
Administrative/ Supervisory (V to VII)	17.8%	17.1%	19.7%	19.1%	19.2%	20.7%	21.0%

Oct 2020 (Dec 2018 figure: 1,233)	WTE Dec 2015	WTE Dec 2016	WTE Dec 2017	WTE Dec 2018	WTE Dec 2019	WTE Sep 2020	WTE Oct 2020
Primary Care	1,222	1,257	1,188	1,233	1,182	1,237	1,244
Clerical (III & IV)	74.4%	74.2%	71.3%	70.2%	71.1%	69.8%	70.1%
Management & Administrative	25.5%	25.9%	27.7%	28.3%	29.5%	28.1%	28.1%
Support	91.0%	91.3%	92.2%	94.7%	92.3%	91.6%	91.8%
Maintenance/ Technical	9.0%	8.7%	7.8%	5.3%	7.7%	8.4%	8.2%
General Support	5.5%	5.7%	6.3%	6.4%	6.7%	6.8%	6.8%
HCA, Nurse's Aide, etc.	9.6%	10.8%	22.4%	20.1%	21.8%	24.5%	27.0%
Health & Social Care Assistants	5.6%	5.8%	12.3%	21.7%	14.9%	20.4%	20.3%
Health Care Assistants	15.2%	16.6%	34.7%	41.8%	36.7%	44.9%	47.3%
Community Welfare Officers	0.5%	0.5%	1.1%	1.1%	0.9%		
Other Care Grades	31.7%	31.2%	64.2%	57.1%	62.4%	54.4%	52.1%
Care, other	32.2%	31.8%	65.3%	58.2%	63.3%	54.4%	52.1%
Home Help	52.6%	51.6%				0.6%	0.6%
Patient & Client Care	15.3%	14.6%	7.4%	7.7%	8.0%	8.7%	8.7%
Total	100 %	100 %	100 %	100 %	100 %	100 %	100%

Oct 2020 (Dec 2018 figure: 1,479)	WTE Dec 2015	WTE Dec 2016	WTE Dec 2017	WTE Dec 2018	WTE Dec 2019	WTE Sep 2020	WTE Oct 2020
Disabilities	1,374	1,430	1,457	1,479	1,498	1,546	1,553
Consultant Psychiatry	29.1%	33.3%	33.3%	33.3%			
Consultants	29.1%	33.3%	33.3%	33.3%			
Medical/ Dental, other	70.9%	66.7%	66.7%	66.7%	100.0%	100.0%	100.0%
Medical & Dental	0.2%	0.2%	0.2%	0.2%	0.2%	0.2%	0.2%
Clinical Nurse/ Midwife Manager	19.9%	19.5%	20.0%	19.1%	20.1%	20.3%	20.3%
Director Nursing/Midwifery, Assistant	1.4%	1.7%	1.3%	1.7%	1.3%	1.4%	1.4%
Director of Nursing/Midwifery	1.4%	1.1%	1.3%	1.1%	1.8%	1.0%	1.3%
Nurse/ Midwife Manager	22.7%	22.3%	22.6%	21.8%	23.1%	22.8%	22.9%
Clinical Nurse/ Midwife Specialist	2.2%	2.1%	1.8%	1.5%	1.5%	2.0%	2.1%
Nurse/ Midwife Specialist & AN/MP	2.2%	2.1%	1.8%	1.5%	1.5%	2.0%	2.1%
Graduate Nursing/ Midwifery	2.3%						
Staff Nurse [Intellectual Disability]	41.2%	44.2%	44.4%	45.3%	45.1%	45.5%	46.7%
Staff Nurse [Psychiatric]	1.6%	1.3%	0.9%	0.7%	0.4%	0.4%	0.4%
Staff Nurses [General/ Children's]	28.3%	28.6%	28.3%	27.2%	25.6%	20.7%	20.3%
Staff Nurse/ Staff Midwife	73.3%	74.2%	73.7%	73.2%	71.2%	66.6%	67.5%
Pre-registration Nurse/ Midwife Intern	0.7%	0.3%	0.8%	2.4%	0.7%		
Pre-registration Nurse Intern (COVID-19)						5.3%	4.2%
Nursing/ Midwifery awaiting registration					2.4%	2.3%	2.3%
Nursing/ Midwifery Student	0.7%	0.3%	0.8%	2.4%	3.1%	7.6%	6.5%
Nursing/ Midwifery other	1.1%	1.0%	1.1%	1.1%	1.0%	1.0%	1.0%
Nursing & Midwifery	31.1%	31.4%	30.7%	30.8%	30.4%	30.7%	30.7%
Occupational Therapists	14.3%	11.9%	12.0%	9.5%	15.4%	11.6%	10.8%
Physiotherapists	13.7%	14.2%	11.4%	12.3%	10.8%	10.6%	14.1%
Speech & Language Therapists	11.3%	11.3%	12.7%	17.5%	25.2%	25.0%	23.9%
Therapy Professions	39.3%	37.4%	36.0%	39.3%	51.4%	47.2%	48.8%
Social Care	17.4%	15.2%	12.3%	13.2%	9.2%	10.3%	9.6%
Social Workers	18.3%	21.0%	21.0%	19.8%	18.9%	20.4%	19.7%
Psychologists	3.0%	4.3%	7.5%	6.6%	5.6%	11.1%	11.7%
Counsellor Therapists	11.5%	11.8%	11.3%	10.7%	6.8%	8.4%	7.8%
Other Health & Social Care	10.4%	10.4%	11.9%	10.4%	8.2%	2.6%	2.5%
H&SC, Other	22.0%	22.2%	23.2%	21.1%	15.0%	11.0%	10.2%
Health & Social Care Professionals	4.9%	4.3%	4.5%	4.1%	4.0%	5.9%	5.9%

Oct 2020 (Dec 2018 figure: 1,479)	WTE Dec 2015	WTE Dec 2016	WTE Dec 2017	WTE Dec 2018	WTE Dec 2019	WTE Sep 2020	WTE Oct 2020
Disabilities	1,374	1,430	1,457	1,479	1,498	1,546	1,553
Executive Management							1.0%
Senior Management (VIII & GM)	13.4%	12.7%	14.7%	15.6%	15.3%	14.7%	14.9%
Management (VIII & above)	13.4%	12.7%	14.7%	15.6%	15.3%	14.7%	15.9%
Administrative/ Supervisory (V to VII)	25.1%	26.0%	24.4%	25.1%	30.2%	33.8%	33.4%
Clerical (III & IV)	61.5%	61.3%	60.9%	59.3%	54.5%	51.5%	50.7%
Management & Administrative	5.9%	6.0%	5.6%	5.6%	5.5%	6.4%	6.4%
Support	87.7%	88.7%	88.1%	89.5%	89.1%	89.1%	89.1%
Maintenance/ Technical	12.3%	11.3%	11.9%	10.5%	10.9%	10.9%	10.9%
General Support	5.3%	4.2%	4.0%	3.9%	3.8%	3.6%	3.6%
HCA, Nurse's Aide, etc.	93.1%	93.4%	93.6%	94.3%	93.8%	93.3%	93.3%
Health Care Assistants	93.1%	93.4%	93.6%	94.3%	93.8%	93.3%	93.3%
Care, other	4.5%	4.3%	4.6%	4.1%	4.6%	4.8%	5.0%
Home Help	2.4%	2.3%	1.8%	1.6%	1.6%	1.9%	1.8%
Patient & Client Care	52.7%	53.8%	55.0%	55.4%	54.7%	53.3%	53.3%
Total	100 %	100 %	100 %	100 %	100 %	100 %	100%

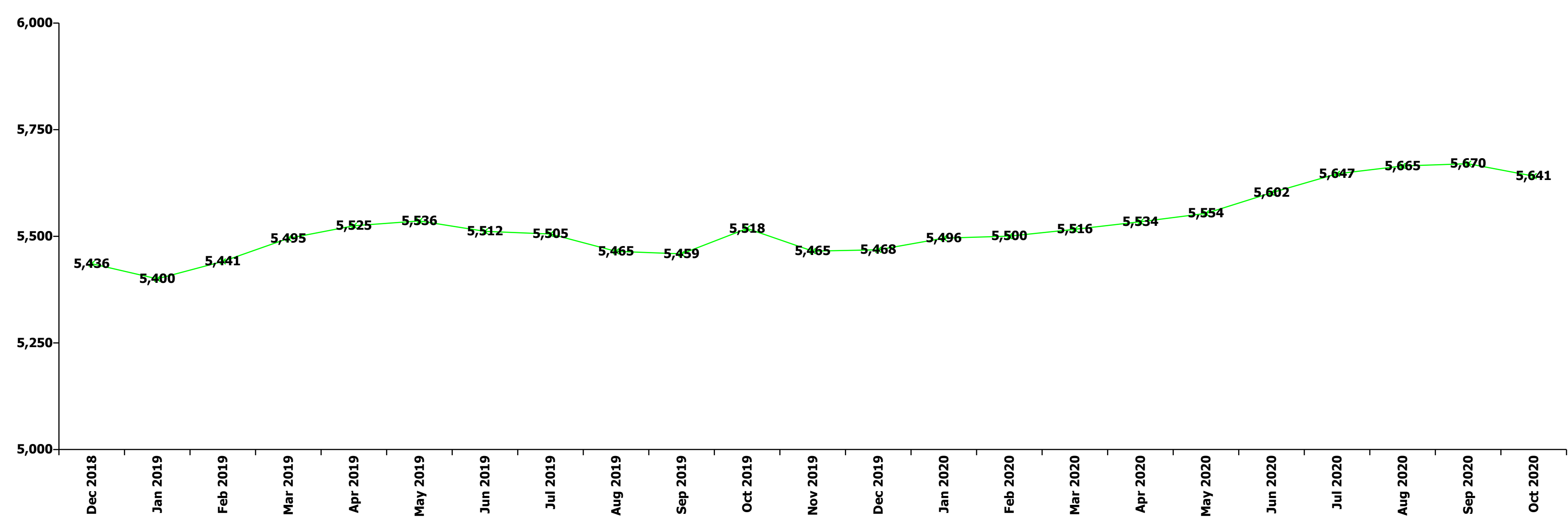
Oct 2020 (Dec 2018 figure: 1,782)	WTE Dec 2015	WTE Dec 2016	WTE Dec 2017	WTE Dec 2018	WTE Dec 2019	WTE Sep 2020	WTE Oct 2020
Older People	1,650	1,645	1,780	1,782	1,836	1,890	1,854
Medical/ Dental, other	100.0%	100.0%	100.0%	100.0%	100.0%	100.0%	100.0%
Medical & Dental	0.9%	0.9%	0.8%	0.8%	0.8%	0.9%	0.9%
Clinical Nurse/ Midwife Manager	18.4%	17.2%	14.3%	16.4%	15.9%	14.8%	15.1%
Director Nursing/Midwifery, Assistant	2.5%	2.7%	2.7%	2.4%	3.0%	3.1%	2.9%
Director of Nursing/Midwifery	2.7%	3.3%	3.2%	2.8%	3.5%	3.6%	3.8%
Nurse/ Midwife Manager	23.6%	23.3%	20.2%	21.6%	22.5%	21.5%	21.8%
Advanced Nurse/ Midwife Practitioner		0.3%		1.0%	1.4%	1.7%	1.7%
Clinical Nurse/ Midwife Specialist					0.2%	0.5%	0.5%
Nurse/ Midwife Specialist & AN/MP		0.3%		1.0%	1.7%	2.2%	2.1%
Staff Nurse [Intellectual Disability]				0.2%			
Staff Nurse [Psychiatric]	0.4%	0.2%	0.2%	0.4%	0.2%	0.2%	0.2%
Staff Nurses [General/ Children's]	76.0%	76.2%	79.6%	76.8%	75.6%	75.9%	75.6%
Staff Nurse/ Staff Midwife	76.4%	76.5%	79.8%	77.4%	75.9%	76.1%	75.8%
Nursing Education/Clinical						0.2%	0.2%
Nursing/ Midwifery other						0.2%	0.2%
Nursing & Midwifery	23.8%	23.7%	21.8%	23.0%	22.4%	22.4%	22.4%
Occupational Therapists	41.2%	40.9%	40.5%	55.3%	35.0%	33.7%	35.4%
Physiotherapists					2.2%	6.2%	9.4%
Speech & Language Therapists	3.8%	4.0%	4.2%				
Therapy Professions	45.0%	44.9%	44.7%	55.3%	37.2%	39.9%	44.8%
Radiographers	7.3%	7.0%	8.1%	7.0%	4.2%	5.0%	5.3%
Health Science/ Diagnostics	7.3%	7.0%	8.1%	7.0%	4.2%	5.0%	5.3%
Social Workers	47.7%	48.1%	47.2%	37.7%	58.6%	55.1%	49.9%
Health & Social Care Professionals	1.2%	1.2%	1.0%	1.2%	1.1%	1.6%	1.6%
Executive Management					0.9%	0.9%	0.9%
Senior Management (VIII & GM)	4.9%	5.0%	3.5%	3.5%	6.5%	6.5%	6.4%
Management (VIII & above)	4.9%	5.0%	3.5%	3.5%	7.4%	7.4%	7.3%
Administrative/ Supervisory (V to VII)	6.9%	6.8%	7.5%	8.8%	13.3%	14.3%	13.9%
Clerical (III & IV)	88.2%	88.2%	89.0%	87.7%	79.3%	78.3%	78.8%
Management & Administrative	4.8%	4.9%	4.8%	4.8%	4.7%	5.9%	5.9%

Oct 2020 (Dec 2018 figure: 1,782)	WTE Dec 2015	WTE Dec 2016	WTE Dec 2017	WTE Dec 2018	WTE Dec 2019	WTE Sep 2020	WTE Oct 2020
Older People	1,650	1,645	1,780	1,782	1,836	1,890	1,854
Support	94.8%	94.8%	93.9%	93.9%	94.6%	94.9%	94.5%
Maintenance/ Technical	5.2%	5.2%	6.1%	6.1%	5.4%	5.1%	5.5%
General Support	8.1%	8.1%	7.4%	7.4%	7.2%	6.7%	6.7%
HCA, Nurse's Aide, etc.	52.1%	53.6%	49.1%	50.0%	49.2%	52.0%	50.0%
Health & Social Care Assistants	0.5%	0.4%	0.4%	0.4%	0.4%	0.4%	0.5%
Health Care Assistants	52.6%	54.0%	49.5%	50.4%	49.7%	52.4%	50.5%
Care, other	2.6%	2.9%	2.6%	2.7%	2.5%	2.3%	2.4%
Home Help	44.7%	43.1%	47.9%	46.8%	47.9%	45.3%	47.1%
Patient & Client Care	61.1%	61.2%	64.2%	62.8%	61.0%	62.4%	62.4%
Total	100 %	100 %	100 %	100 %	100 %	100 %	100%

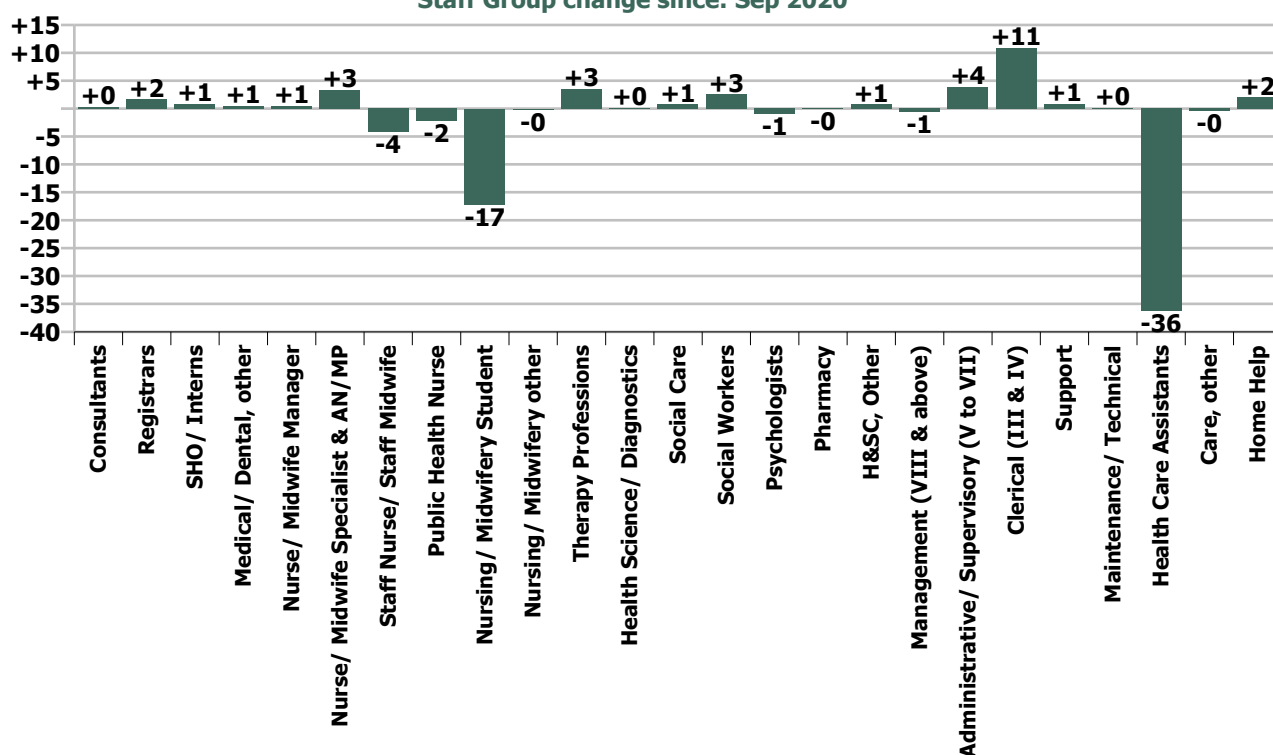
Summary Staff Movement: October 2020

Month-on-month Summary																												
WTE change since Sep 20	% change since Sep 20	overall	Consultants	Registrars	SHO/ Interns	Medical/ Dental, other	Medical & Dental	Nurse/ Midwife Manager	Nurse/ Midwife Specialist & AN/MP	Staff Nurse/ Staff Midwife	Public Health Nurse	Nursing/ Midwifery Student	Nursing/ Midwifery other	Nursing & Midwifery	Therapy Professions	Health Science/ Diagnostics	Social Care	Social Workers	Psychologists	Pharmacy	H&SC, Other	Health & Social Care Professionals	Management (VIII & above)	Administrativ e/ Supervisory (V to VII)	Clerical (III & IV)	Management & Administrativ e	General Support	Patient & Client Care
Overall	-0.5%	-29	+0.3	+1.6	+0.9	+0.5	+3.4	+0.5	+3.4	-4.2	-2.2	-17.2	-0.2	-19.8	+3.5	+0.2	+0.7	+2.5	-0.9	-0.0	+0.8	+6.7	-0.6	+3.9	+10.9	+14.3	+1.0	-34.6
Community Health & Wellbeing	+0.3%	+0																				0.0	+0.7	+0.0	+0.7			-0.7
Mental Health	-0.8%	-8	+0.6	+1.6	+0.9		+3.1	-0.1	+1.4	-1.7		-14.1	0.0	-14.6	0.0		+0.8	+2.7	+0.0	-0.0	+0.3	+3.8	-1.0	+0.2	+0.6	-0.3	-0.1	+0.4
Primary Care	+0.6%	+8	-0.3	+0.0	0.0	+0.5	+0.3	-0.7	+1.7	-3.4	-2.2	+2.4	0.0	-2.2	-2.0	+0.1		+0.9	-2.1	0.0	+0.7	-2.5	-1.1	+2.7	+7.2	+8.8	+0.3	+3.2
Disabilities	+0.5%	+7				0.0	0.0	-0.3	+0.4	+0.9		-5.5	-0.1	-4.7	+4.0		-0.1	+0.4	+1.1		-0.2	+5.3	+1.5	+0.3	+0.5	+2.3	+0.2	+4.1
Older People	-1.9%	-37				0.0	0.0	+1.7	-0.1	-0.0			0.0	+1.6	+1.5	+0.1		-1.5			+0.1	0.0	-0.0	+2.7	+2.7	+0.6	-41.6	
Social Care	-0.9%	-29				+0.0	0.0	+1.3	+0.4	+0.8		-5.5	-0.1	-3.1	+5.5	+0.1	-0.1	-1.1	+1.1		-0.2	+5.4	+1.5	+0.3	+3.2	+5.0	+0.8	-37.5
Change	-29.1	-0.5%	+0.9%	+2.3%	+3.9%	+0.8%	+1.7%	+0.1%	+3.0%	-0.4%	-1.4%	-27.0%	-1.9%	-1.2%	+1.1%	+2.4%	+6.4%	+2.9%	-1.5%	-1.9%	+2.6%	+1.3%	-0.9%	+2.5%	+2.4%	+2.1%	+0.3%	-1.6%

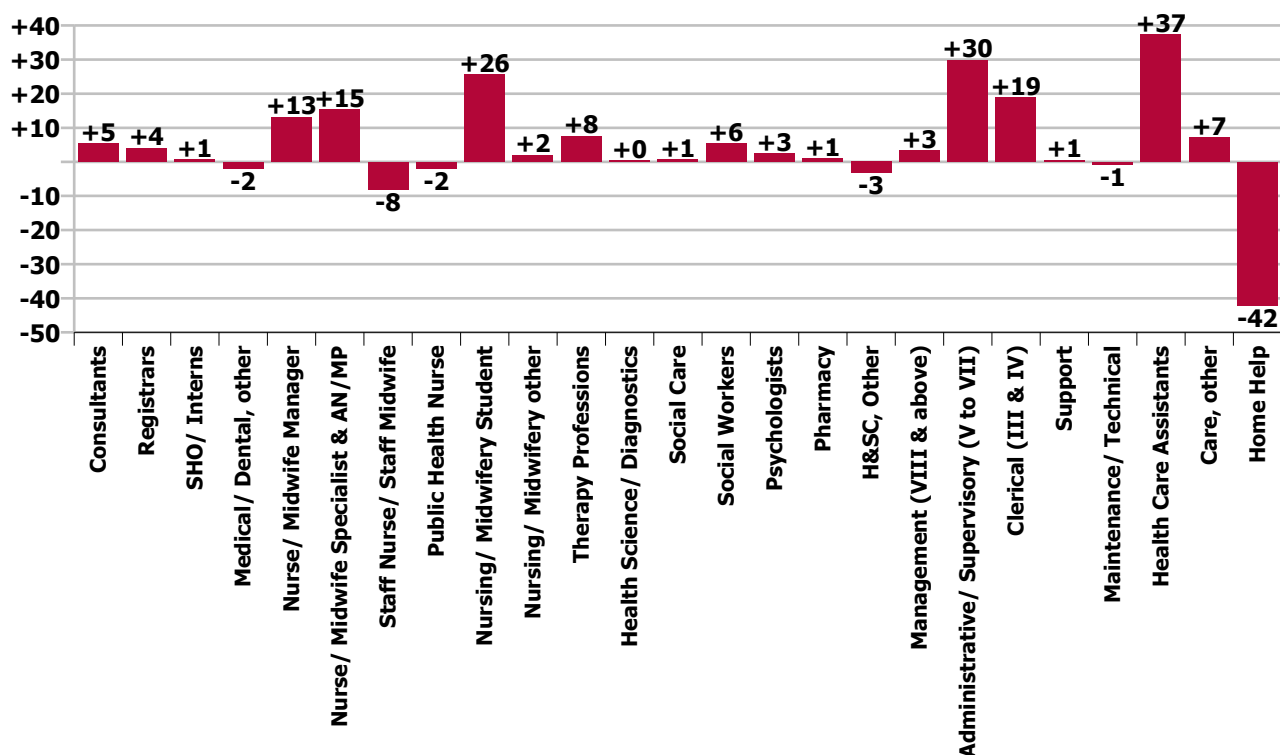
Year-on-year Summary																												
WTE change since Oct 19	% change since Oct 19	overall	Consultants	Registrars	SHO/ Interns	Medical/ Dental, other	Medical & Dental	Nurse/ Midwife Manager	Nurse/ Midwife Specialist & AN/MP	Staff Nurse/ Staff Midwife	Public Health Nurse	Nursing/ Midwifery Student	Nursing/ Midwifery other	Nursing & Midwifery	Therapy Professions	Health Science/ Diagnostics	Social Care	Social Workers	Psychologists	Pharmacy	H&SC, Other	Health & Social Care Professionals	Management (VIII & above)	Administrativ e/ Supervisory (V to VII)	Clerical (III & IV)	Management & Administrative	General Support	Patient & Client Care
Overall	+2.2%	+123	+5.3	+4.1	+0.7	-2.0	+8.0	+13.2	+15.3	-8.1	-2.0	+25.7	+2.0	+46.1	+7.6	+0.4	+0.8	+5.5	+2.5	+1.0	-3.3	+14.5	+3.3	+29.9	+18.8	+52.0	-0.3	+2.3
Community Health & Wellbeing	+0.3%	+0																					+1.0	+9.1	+3.1	+13.2		
Mental Health	-0.8%	-8	+5.2	+2.4	+0.7		+8.2	+4.8	+3.7	-11.1		+11.6	+0.9	+9.9	+0.5		-0.0	+0.9	+2.6	-0.0	-0.2	+3.7	+1.7	+2.0	-0.5	+3.3	+1.0	-1.2
Primary Care	+0.6%	+8	+0.1	+1.7	0.0	-3.1	-1.3	-0.2	+5.9	+9.3	-2.0	-3.4	0.0	+9.6	+2.4	-0.0		+3.9	-6.0	+1.0	+0.0	+1.3	-0.4	+11.4	+11.8	+22.9	+4.4	+17.9
Disabilities	+3.9%	+58.2				0.0	0.0	+11.6	+2.8	-9.3		+17.5	+0.2	+22.8	+2.2		+0.8	+3.1	+6.0		-3.2	+9.0	-0.1	+7.4	+3.8	+11.2	+0.9	+14.3
Older People	-1.5%	-28.5				+1.1	+1.1	-3.1	+2.9	+3.0			+1.0	+3.8	+2.5	+0.4		-2.4			+0.5	+1.0	-0.0	+0.5	+1.5	-6.7	-28.7	
Social Care	-0.9%	-29				+1.1	+1.1	+8.6	+5.7	-6.3		+17.5	+1.2	+26.6	+4.7	+0.4	+0.8	+0.7	+6.0		-3.2	+9.5	+0.9	+7.4	+4.4	+12.7	-5.7	-14.4
Change	+122.7	+2.2%	+16.3%	+5.9%	+2.8%	-3.0%	+4.2%	+3.8%	+15.3%	-0.8%	-1.3%	+122.8%	+36.2%	+2.8%	+2.4%	+6.0%	+7.1%	+6.5%	+4.3%	+63.2%	-9.7%	+2.8%	+5.6%	+22.7%	+4.2%	+8.1%	-0.1%	+0.1%



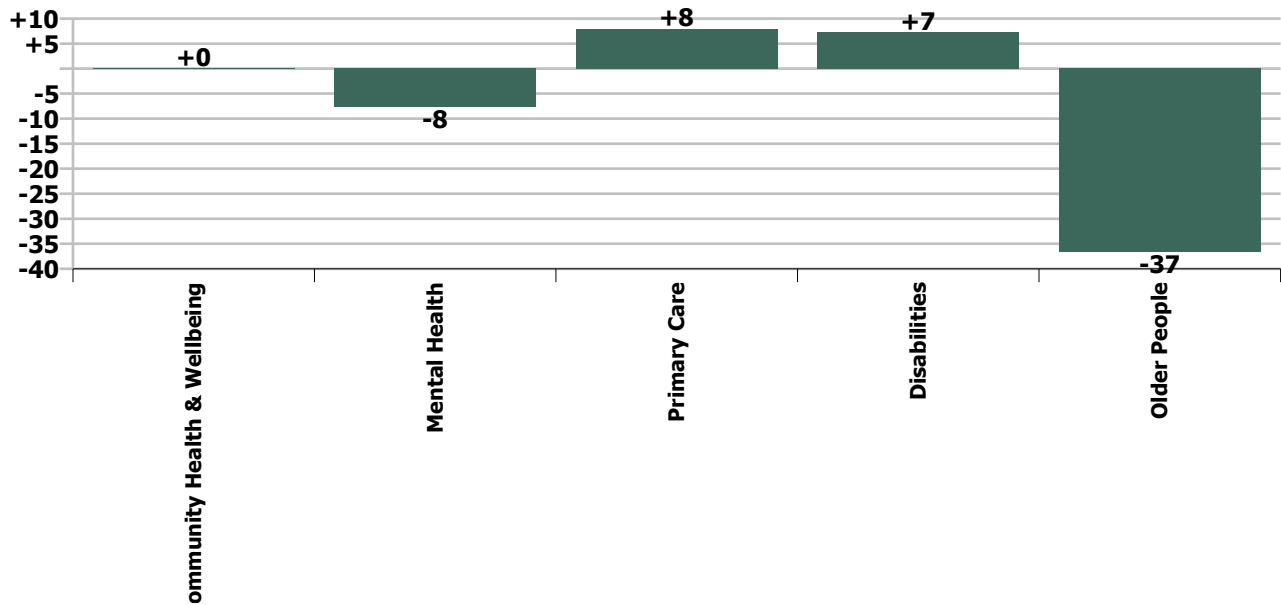
Staff Group change since: Sep 2020



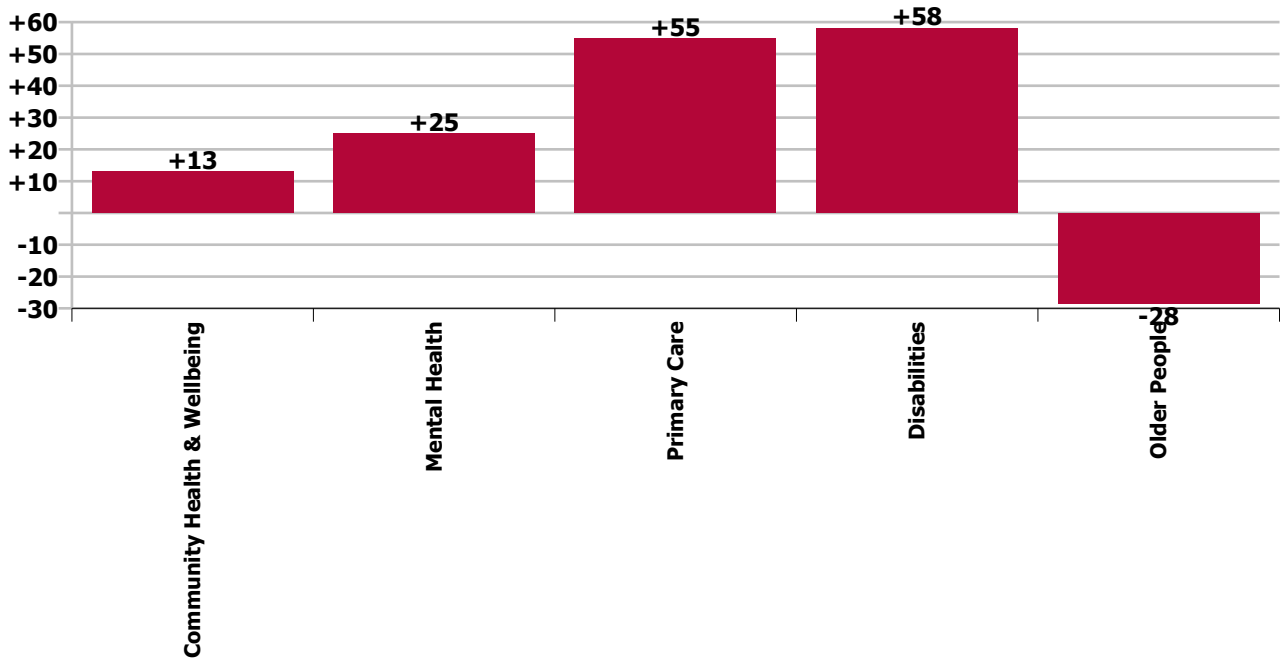
Staff Group change since: Oct 2019



Care Group change since: Sep 2020



Care Group change since: Oct 2019



Longitudinal Employment Levels by Grade Group - Oct 2013 to Oct 2020

Oct 2020 (Dec 2015 figure: 5,177)	WTE Oct 2020	WTE change since Dec 15	WTE change since Dec 16	WTE change since Dec 17	WTE change since Dec 18	WTE change since Dec 18	WTE change since Sep 20	% change since Dec 15	% change since Dec 16	% change since Dec 17	% change since Dec 18	% change since Dec 18	% change since Sep 20
Overall	5,641	+464	+361	+273	+205	+205	-29	+9.0%	+6.8%	+5.1%	+3.8%	+3.8%	-0.5%
Consultant Medicine	3	+0	+0	+0	+0	+0	-0	+2.0%	+2.0%	+2.0%	+5.2%	+5.2%	-7.6%
Consultant Psychiatry	35	+9	+8	+7	+5	+5	+1	+35.3%	+27.6%	+26.1%	+16.0%	+16.0%	+1.7%
Consultants	38	+9	+8	+7	+5	+5	+0	+31.8%	+25.1%	+23.7%	+15.0%	+15.0%	+0.9%
Registrar	66	+19	+26	+19	+14	+14	+2	+42.1%	+63.9%	+42.0%	+27.2%	+27.2%	+2.6%
Senior Registrar	8	+4	+3	+4	-3	-3	-0	+89.2%	+50.2%	+87.8%	-30.2%	-30.2%	-0.4%
Specialist Registrar				-1	-1	-1		-100.0%	-100.0%	-100.0%	-100.0%	-100.0%	-100.0%
Registrars	73	+23	+28	+22	+10	+10	+2	+45.8%	+62.4%	+42.8%	+15.4%	+15.4%	+2.3%
Senior House Officer	24	-2	-6	-3	-2	-2	+1	-6.5%	-19.1%	-11.9%	-6.4%	-6.4%	+3.9%
SHO/ Interns	24	-2	-6	-3	-2	-2	+1	-6.5%	-19.1%	-11.9%	-6.4%	-6.4%	+3.9%
Dentists	28	-1	-0	+0	-0	-0	-1	-2.4%	-0.9%	+0.8%	-1.0%	-1.0%	-1.8%
Other Medical	38	+1	+2	+1	+3	+3	+1	+4.0%	+5.2%	+2.4%	+10.0%	+10.0%	+2.8%
Medical/ Dental, other	66	+1	+2	+1	+3	+3	+1	+1.2%	+2.5%	+1.8%	+5.1%	+5.1%	+0.8%
Medical & Dental	201	+31	+32	+27	+16	+16	+3	+18.4%	+18.7%	+15.6%	+8.8%	+8.8%	+1.7%
Clinical Nurse/ Midwife Manager	280	+14	+11	+22	+13	+13	-0	+5.1%	+4.1%	+8.5%	+4.9%	+4.9%	-0.0%
Director Nursing/Midwifery, Assistant	53	+4	+2	+5	+2	+2	-1	+7.1%	+3.1%	+9.6%	+4.5%	+4.5%	-2.4%
Director of Nursing/Midwifery	28	+3	+2	+2	+4	+4	+2	+10.3%	+7.7%	+8.4%	+17.7%	+17.7%	+7.5%
Nurse/ Midwife Manager	361	+20	+15	+29	+20	+20	+1	+5.8%	+4.2%	+8.7%	+5.7%	+5.7%	+0.1%
Advanced Nurse/ Midwife Practitioner	13	+11	+10	+11	+6	+6	+2	+535.0%	+323.3%	+535.0%	+81.9%	+81.9%	+16.5%
Clinical Nurse/ Midwife Specialist	103	+21	+17	+12	+14	+14	+2	+25.5%	+19.8%	+13.7%	+15.5%	+15.5%	+1.6%
Nurse/ Midwife Specialist & AN/MP	115	+32	+27	+23	+19	+19	+3	+37.7%	+30.1%	+25.0%	+20.4%	+20.4%	+3.0%
Graduate Nursing/ Midwifery		-11						-100.0%	-100.0%	-100.0%	-100.0%	-100.0%	-100.0%
Staff Nurse [Intellectual Disability]	223	+47	+23	+23	+14	+14	+4	+26.8%	+11.5%	+11.4%	+6.8%	+6.8%	+1.7%
Staff Nurse [Psychiatric]	289	-28	-40	-29	-16	-16	-2	-8.9%	-12.0%	-9.1%	-5.4%	-5.4%	-0.5%
Staff Nurses [General/ Children's]	507	+12	-7	-17	-20	-20	-6	+2.4%	-1.4%	-3.2%	-3.8%	-3.8%	-1.3%
Staff Nurse/ Staff Midwife	1,019	+20	-24	-23	-22	-22	-4	+2.0%	-2.3%	-2.2%	-2.1%	-2.1%	-0.4%
Public Health Nurse	151	-2	+4	-2	-5	-5	-2	-1.4%	+3.0%	-1.3%	-2.9%	-2.9%	-1.4%
Public Health Nurse	151	-2	+4	-2	-5	-5	-2	-1.4%	+3.0%	-1.3%	-2.9%	-2.9%	-1.4%
Pre-registration Nurse/ Midwife Intern	1	-8	-1	-3	-10	-10	-5	-94.2%	-66.7%	-86.8%	-95.4%	-95.4%	-90.6%
Pre-registration Nurse Intern (COVID-19)	32	+32	+32	+32	+32	+32	-15	-100.0%	-100.0%	-100.0%	-100.0%	-100.0%	-31.8%
Post-registration Nurse/ Midwife Student	3	-4	-4	-4	-4	-4	+2	-51.4%	-51.4%	-51.4%	-51.4%	-51.4%	+240.0%
Nursing/ Midwifery awaiting registration	11	+11	+11	+11	+10	+10		-100.0%	-100.0%	-100.0%	+1000.0%	+1000.0%	
Nursing/ Midwifery Student	47	+31	+38	+36	+28	+28	-17	+199.0%	+448.1%	+331.8%	+147.6%	+147.6%	-27.0%
Nursing/ Midwifery other	8	+3	+3	+3	+3	+3	-0	+55.1%	+62.0%	+58.3%	+58.3%	+58.3%	-1.9%

Oct 2020 (Dec 2015 figure: 5,177)	WTE Oct 2020	WTE change since Dec 15	WTE change since Dec 16	WTE change since Dec 17	WTE change since Dec 18	WTE change since Dec 18	WTE change since Sep 20	% change since Dec 15	% change since Dec 16	% change since Dec 17	% change since Dec 18	% change since Dec 18	% change since Sep 20
Overall	5,641	+464	+361	+273	+205	+205	-29	+9.0%	+6.8%	+5.1%	+3.8%	+3.8%	-0.5%
Nursing & Midwifery	1,700	+103	+63	+65	+43	+43	-20	+6.4%	+3.8%	+4.0%	+2.6%	+2.6%	-1.2%
Dietitians	15	-1	+0	-1	-3	-3	-0	-5.4%	+3.0%	-7.1%	-15.6%	-15.6%	-1.5%
Occupational Therapists	128	+15	+9	+15	+5	+5	+1	+12.8%	+7.4%	+12.8%	+3.8%	+3.8%	+0.4%
Orthoptists	3	-0	+1	+0	+0	+0		-3.1%	+40.5%	+7.7%	+6.4%	+6.4%	
Physiotherapists	99	+19	+8	+8	+5	+5	+4	+23.4%	+9.0%	+9.1%	+5.5%	+5.5%	+4.7%
Podiatrists & Chiropodists	11	+3	+1	+2	+1	+1	-0	+33.0%	+6.7%	+22.3%	+14.3%	+14.3%	-0.7%
Speech & Language Therapists	73	+9	+9	+1	+3	+3	-1	+14.6%	+14.7%	+1.4%	+4.5%	+4.5%	-1.6%
Therapy Professions	329	+44	+28	+25	+12	+12	+3	+15.6%	+9.4%	+8.2%	+3.7%	+3.7%	+1.1%
Audiology	5	-0	-0	-0	-0	-0	+0	-2.4%	-1.7%	-0.6%	-3.1%	-3.1%	+1.3%
Radiographers	2	+0	+0	+0	+0	+0	+0	+9.0%	+12.9%	+8.3%	+9.0%	+9.0%	+6.1%
Health Science/ Diagnostics	7		+0	+0	-0	-0	+0		+1.3%	+1.3%	-0.6%	-0.6%	+2.4%
Social Care	12	-4	-1	+1	+1	+1	+1	-25.8%	-6.2%	+4.5%	+6.4%	+6.4%	+6.4%
Social Workers	90	+13	+9	+10	+12	+12	+3	+16.8%	+11.5%	+12.7%	+14.9%	+14.9%	+2.9%
Psychologists	62	+9	+7	+4	+0	+0	-1	+16.2%	+12.3%	+6.7%	+0.3%	+0.3%	-1.5%
Pharmacy	3	+1	+1	+1	+1	+1	-0	+68.7%	+68.7%	+68.7%	+58.1%	+58.1%	-1.9%
Counsellor Therapists	22	+2	+4	+1	+2	+2	+1	+9.9%	+22.0%	+7.3%	+12.8%	+12.8%	+2.9%
Dental Hygienists	5	+0	+0	-0	+0	+0	+0	+3.4%	+5.0%	-4.4%	+6.0%	+6.0%	+3.0%
Other Health & Social Care	3	-5	-5	-5	-4	-4		-61.0%	-58.5%	-62.8%	-55.4%	-55.4%	
H&SC, Other	31	-3	-0	-4	-1	-1	+1	-8.7%	-1.2%	-12.1%	-3.9%	-3.9%	+2.6%
Health & Social Care Professionals	533	+60	+44	+36	+24	+24	+7	+12.6%	+9.1%	+7.3%	+4.7%	+4.7%	+1.3%
Executive Management	8	+5	+1	-0	+0	+0	+1	+165.0%	+13.6%	-0.6%	+1.1%	+1.1%	+15.9%
Senior Management (VIII & GM)	55	+15	+15	+14	+6	+6	-2	+36.3%	+38.8%	+35.3%	+11.4%	+11.4%	-3.0%
Management (VIII & above)	63	+20	+16	+14	+6	+6	-1	+45.2%	+35.0%	+29.4%	+10.0%	+10.0%	-0.9%
Middle Management (V-VII)	160	+66	+65	+54	+47	+47	+4	+70.4%	+67.8%	+50.9%	+41.2%	+41.2%	+2.5%
Other Administrative	1												
Administrative/ Supervisory (V to VII)	161	+66	+65	+54	+47	+47	+4	+69.7%	+67.1%	+50.4%	+40.8%	+40.8%	+2.5%
General Administrative (III & IV)	470	+40	+30	+33	+20	+20	+11	+9.2%	+6.8%	+7.4%	+4.5%	+4.5%	+2.4%
Clerical (III & IV)	470	+40	+30	+33	+20	+20	+11	+9.2%	+6.8%	+7.4%	+4.5%	+4.5%	+2.4%
Management & Administrative	695	+125	+111	+101	+73	+73	+14	+22.0%	+19.0%	+17.0%	+11.7%	+11.7%	+2.1%
Catering	65	+11	+9	+7	+6	+6	-1	+21.5%	+16.4%	+11.1%	+10.6%	+10.6%	-0.9%
Household Services	206	-40	-28	-11	-10	-10	+2	-16.4%	-11.8%	-5.3%	-4.7%	-4.7%	+0.9%
Other Support	29	+8	+7	+0	-5	-5	-0	+38.4%	+31.4%	+1.5%	-14.9%	-14.9%	-0.6%
Portering	8	-1	-1	-0	-0	-0	-0	-13.0%	-13.0%	-1.2%	-0.5%	-0.5%	-1.8%
Support	308	-22	-13	-5	-9	-9	+1	-6.7%	-3.9%	-1.5%	-2.9%	-2.9%	+0.3%
Maintenance	36	-4	-2	-1	+2	+2	+0	-10.5%	-4.1%	-3.1%	+7.1%	+7.1%	+0.4%

Oct 2020 (Dec 2015 figure: 5,177)	WTE Oct 2020	WTE change since Dec 15	WTE change since Dec 16	WTE change since Dec 17	WTE change since Dec 18	WTE change since Dec 18	WTE change since Sep 20	% change since Dec 15	% change since Dec 16	% change since Dec 17	% change since Dec 18	% change since Dec 18	% change since Sep 20
Overall	5,641	+464	+361	+273	+205	+205	-29	+9.0%	+6.8%	+5.1%	+3.8%	+3.8%	-0.5%
Maintenance/ Technical	36	-4	-2	-1	+2	+2	+0	-10.5%	-4.1%	-3.1%	+7.1%	+7.1%	+0.4%
General Support	344	-26	-14	-6	-7	-7	+1	-7.1%	-4.0%	-1.7%	-1.9%	-1.9%	+0.3%
HCA, Nurse's Aide, etc.	1,443	+158	+92	+37	+27	+27	-37	+12.3%	+6.8%	+2.6%	+1.9%	+1.9%	-2.5%
Health & Social Care Assistants	29	+14	+14	+12	+2	+2	+1	+87.2%	+97.8%	+73.2%	+7.2%	+7.2%	+3.3%
Health Care Assistants	1,472	+172	+106	+49	+29	+29	-36	+13.2%	+7.8%	+3.5%	+2.0%	+2.0%	-2.4%
Care, other	136	+6	+5	+1	+4	+4	-0	+4.7%	+3.5%	+0.7%	+3.1%	+3.1%	-0.3%
Home Help	561	-6	+14	-1	+23	+23	+2	-1.1%	+2.6%	-0.2%	+4.4%	+4.4%	+0.4%
Patient & Client Care	2,169	+172	+125	+49	+56	+56	-35	+8.6%	+6.1%	+2.3%	+2.7%	+2.7%	-1.6%

Source: Health Service Personnel Census

Longitudinal Employment Levels by Care Group - Oct 2013 to Oct 2020

Community Health & Wellbeing

Oct 2020 (figure:)	WTE Oct 2020	WTE change since	WTE change since	WTE change since	WTE change since	WTE change since	WTE change since Sep 20	% change since	% change since	% change since	% change since	% change since	% change since Sep 20
Overall	13	+13	+13	+13	+13	+13	+0	-100.0%	-100.0%	-100.0%	-100.0%	-100.0%	+0.3%
Management & Administrative	13	+13	+13	+13	+13	+13	+1	-1.0%	-1.0%	-1.0%	-1.0%	-1.0%	+0.1%
Management (VIII & above)	1	+1	+1	+1	+1	+1		-1.0%	-1.0%	-1.0%	-1.0%	-1.0%	+0.0%
Administrative/ Supervisory (V to VII)	9	+9	+9	+9	+9	+9	+1	-1.0%	-1.0%	-1.0%	-1.0%	-1.0%	+0.1%
Clerical (III & IV)	3	+3	+3	+3	+3	+3	+0	-1.0%	-1.0%	-1.0%	-1.0%	-1.0%	+0.0%
Patient & Client Care							-1	-1.0%	-1.0%	-1.0%	-1.0%	-1.0%	-1.0%
Care, other							-1	-1.0%	-1.0%	-1.0%	-1.0%	-1.0%	-1.0%

Source: Health Service Personnel Census

Mental Health

Oct 2020 (Dec 2015 figure: 931)	WTE Oct 2020	WTE change since Dec 15	WTE change since Dec 16	WTE change since Dec 17	WTE change since Dec 18	WTE change since Dec 18	WTE change since Sep 20	% change since Dec 15	% change since Dec 16	% change since Dec 17	% change since Dec 18	% change since Dec 18	% change since Sep 20
Overall	977	+46	+29	+35	+35	+35	-8	+5.0%	+3.0%	+3.7%	+3.8%	+3.8%	-0.8%
Medical & Dental	87	+19	+14	+15	+9	+9	+3	+0.3%	+0.2%	+0.2%	+0.1%	+0.1%	+0.0%
Consultants	35	+10	+9	+8	+6	+6	+1	+0.4%	+0.3%	+0.3%	+0.2%	+0.2%	+0.0%
Registrars	29	+11	+12	+10	+5	+5	+2	+0.6%	+0.7%	+0.5%	+0.2%	+0.2%	+0.1%
SHO/ Interns	23	-1	-7	-3	-2	-2	+1	-0.1%	-0.2%	-0.1%	-0.1%	-0.1%	+0.0%
Nursing & Midwifery	494	+7	-8	-1	+8	+8	-15	+0.0%	-0.0%	-0.0%	+0.0%	+0.0%	-0.0%
Nurse/ Midwife Manager	124	+8	+5	+6	+7	+7	-0	+0.1%	+0.0%	+0.1%	+0.1%	+0.1%	-0.0%
Nurse/ Midwife Specialist & AN/MP	70	+16	+12	+9	+5	+5	+1	+0.3%	+0.2%	+0.1%	+0.1%	+0.1%	+0.0%
Staff Nurse/ Staff Midwife	288	-25	-38	-28	-16	-16	-2	-0.1%	-0.1%	-0.1%	-0.1%	-0.1%	-0.0%
Nursing/ Midwifery Student	12	+6	+12	+12	+11	+11	-14	+1.2%	-1.0%	-1.0%	+11.1%	+11.1%	-0.5%
Nursing/ Midwifery other	1	+1	+1	+1	+1	+1		-1.0%	-1.0%	-1.0%	-1.0%	-1.0%	+0.0%
Health & Social Care Professionals	117	+10	+9	+11	+5	+5	+4	+0.1%	+0.1%	+0.1%	+0.0%	+0.0%	+0.0%
Therapy Professions	34	+4	+2	+3	+0	+0		+0.1%	+0.1%	+0.1%	+0.0%	+0.0%	+0.0%
Social Care	4	-1	-0	-0	-0	-0	+1	-0.3%	-0.0%	-0.0%	-0.0%	-0.0%	+0.3%
Social Workers	41	+3	+3	+5	+3	+3	+3	+0.1%	+0.1%	+0.1%	+0.1%	+0.1%	+0.1%
Psychologists	23	+3	+2	+2	+0	+0	+0	+0.2%	+0.1%	+0.1%	+0.0%	+0.0%	+0.0%
Pharmacy	1	+0	+0	+0	-0	-0	-0	+0.0%	+0.0%	+0.0%	-0.1%	-0.1%	-0.1%
H&SC, Other	14	+1	+3	+2	+2	+2	+0	+0.1%	+0.3%	+0.1%	+0.2%	+0.2%	+0.0%
Management & Administrative	122	+26	+30	+23	+17	+17	-0	+0.3%	+0.3%	+0.2%	+0.2%	+0.2%	-0.0%
Management (VIII & above)	7	+3	+4	+3	+3	+3	-1	+0.7%	+1.2%	+0.7%	+0.7%	+0.7%	-0.1%
Administrative/ Supervisory (V to VII)	31	+17	+17	+14	+11	+11	+0	+1.2%	+1.3%	+0.9%	+0.6%	+0.6%	+0.0%
Clerical (III & IV)	85	+7	+9	+6	+4	+4	+1	+0.1%	+0.1%	+0.1%	+0.0%	+0.0%	+0.0%
General Support	81	-17	-12	-5	-2	-2	-0	-0.2%	-0.1%	-0.1%	-0.0%	-0.0%	-0.0%
Support	64	-14	-11	-5	-3	-3	+0	-0.2%	-0.1%	-0.1%	-0.0%	-0.0%	+0.0%
Maintenance/ Technical	17	-2	-1	-0	+1	+1	-0	-0.1%	-0.1%	-0.0%	+0.1%	+0.1%	-0.0%
Patient & Client Care	77	-0	-5	-9	-2	-2	+0	-0.0%	-0.1%	-0.1%	-0.0%	-0.0%	+0.0%
Health Care Assistants	66	-1	-6	-9	-1	-1	+0	-0.0%	-0.1%	-0.1%	-0.0%	-0.0%	+0.0%
Care, other	11	+1	+1	+0	-2	-2	+0	+0.1%	+0.1%	+0.0%	-0.1%	-0.1%	+0.0%

Source: Health Service Personnel Census

Primary Care

Oct 2020 (Dec 2015 figure: 1,222)	WTE Oct 2020	WTE change since Dec 15	WTE change since Dec 16	WTE change since Dec 17	WTE change since Dec 18	WTE change since Dec 18	WTE change since Sep 20	% change since Dec 15	% change since Dec 16	% change since Dec 17	% change since Dec 18	% change since Dec 18	% change since Sep 20
Overall	1,244	+22	-13	+56	+12	+12	+8	+1.8%	-1.0%	+4.7%	+0.9%	+0.9%	+0.6%
Medical & Dental	94	+9	+14	+10	+4	+4	+0	+0.1%	+0.2%	+0.1%	+0.0%	+0.0%	+0.0%
Consultants	3	+0	+0	+0	+0	+0	-0	+0.0%	+0.0%	+0.0%	+0.1%	+0.1%	-0.1%
Registrars	44	+12	+16	+12	+5	+5	+0	+0.4%	+0.6%	+0.4%	+0.1%	+0.1%	+0.0%
SHO/ Interns	1	-0	+1					-0.2%	-1.0%	+0.0%	+0.0%	+0.0%	+0.0%
Medical/ Dental, other	46	-3	-2	-3	-1	-1	+1	-0.1%	-0.1%	-0.1%	-0.0%	-0.0%	+0.0%
Nursing & Midwifery	314	+23	+17	+9	+9	+9	-2	+0.1%	+0.1%	+0.0%	+0.0%	+0.0%	-0.0%
Nurse/ Midwife Manager	37	+1	+0	+3	+1	+1	-1	+0.0%	+0.0%	+0.1%	+0.0%	+0.0%	-0.0%
Nurse/ Midwife Specialist & AN/MP	27	+6	+7	+4	+7	+7	+2	+0.3%	+0.3%	+0.2%	+0.3%	+0.3%	+0.1%
Staff Nurse/ Staff Midwife	95	+21	+8	+7	+9	+9	-3	+0.3%	+0.1%	+0.1%	+0.1%	+0.1%	-0.0%
Public Health Nurse	151	-2	+4	-2	-5	-5	-2	-0.0%	+0.0%	-0.0%	-0.0%	-0.0%	-0.0%
Nursing/ Midwifery Student	3	-4	-4	-4	-4	-4	+2	-0.5%	-0.5%	-0.5%	-0.5%	-0.5%	+2.4%
Nursing/ Midwifery other	1	+1	+1	+1	+1	+1		-1.0%	-1.0%	-1.0%	-1.0%	-1.0%	+0.0%
Health & Social Care Professionals	295	+15	-4	-13	-21	-21	-2	+0.1%	-0.0%	-0.0%	-0.1%	-0.1%	-0.0%
Therapy Professions	237	+18	+0	-4	-11	-11	-2	+0.1%	+0.0%	-0.0%	-0.0%	-0.0%	-0.0%
Health Science/ Diagnostics	5	-0	-0	-0	-0	-0	+0	-0.0%	-0.0%	-0.0%	-0.0%	-0.0%	+0.0%
Social Workers	16	-1	-4	-5	-4	-4	+1	-0.1%	-0.2%	-0.2%	-0.2%	-0.2%	+0.1%
Psychologists	28	-4	-3	-4	-7	-7	-2	-0.1%	-0.1%	-0.1%	-0.2%	-0.2%	-0.1%
Pharmacy	2	+1	+1	+1	+1	+1		+1.4%	+1.4%	+1.4%	+1.4%	+1.4%	+0.0%
H&SC, Other	7	+1	+1	-0	+0	+0	+1	+0.2%	+0.2%	-0.0%	+0.1%	+0.1%	+0.1%
Management & Administrative	350	+37	+24	+21	+1	+1	+9	+0.1%	+0.1%	+0.1%	+0.0%	+0.0%	+0.0%
Management (VIII & above)	31	+7	+3	+2	-6	-6	-1	+0.3%	+0.1%	+0.1%	-0.2%	-0.2%	-0.0%
Administrative/ Supervisory (V to VII)	73	+18	+18	+9	+7	+7	+3	+0.3%	+0.3%	+0.1%	+0.1%	+0.1%	+0.0%
Clerical (III & IV)	245	+13	+3	+11	+0	+0	+7	+0.1%	+0.0%	+0.0%	+0.0%	+0.0%	+0.0%
General Support	84	+17	+12	+10	+5	+5	+0	+0.3%	+0.2%	+0.1%	+0.1%	+0.1%	+0.0%
Support	77	+16	+12	+9	+2	+2	+0	+0.3%	+0.2%	+0.1%	+0.0%	+0.0%	+0.0%
Maintenance/ Technical	7	+1	+1	+1	+3	+3	-0	+0.1%	+0.1%	+0.2%	+0.6%	+0.6%	-0.0%
Patient & Client Care	108	-80	-76	+20	+13	+13	+3	-0.4%	-0.4%	+0.2%	+0.1%	+0.1%	+0.0%
Health Care Assistants	51	+23	+20	+21	+12	+12	+4	+0.8%	+0.7%	+0.7%	+0.3%	+0.3%	+0.1%
Care, other	56	-4	-2	-1	+1	+1	-1	-0.1%	-0.0%	-0.0%	+0.0%	+0.0%	-0.0%
Home Help	1	-98	-94	+1	+1	+1	-0	-1.0%	-1.0%	-1.0%	-1.0%	-1.0%	-0.0%

Source: Health Service Personnel Census

Disabilities

Oct 2020 (Dec 2015 figure: 1,374)	WTE Oct 2020	WTE change since Dec 15	WTE change since Dec 16	WTE change since Dec 17	WTE change since Dec 18	WTE change since Dec 18	WTE change since Sep 20	% change since Dec 15	% change since Dec 16	% change since Dec 17	% change since Dec 18	% change since Dec 18	% change since Sep 20
Overall	1,553	+179	+123	+96	+74	+74	+7	+13.0%	+8.6%	+6.6%	+5.0%	+5.0%	+0.5%
Medical & Dental	3	+0						+0.1%	+0.0%	+0.0%	+0.0%	+0.0%	+0.0%
Consultants		-1	-1	-1	-1	-1		-1.0%	-1.0%	-1.0%	-1.0%	-1.0%	-1.0%
Medical/ Dental, other	3	+1	+1	+1	+1	+1		+0.5%	+0.5%	+0.5%	+0.5%	+0.5%	+0.0%
Nursing & Midwifery	477	+50	+27	+29	+21	+21	-5	+0.1%	+0.1%	+0.1%	+0.0%	+0.0%	-0.0%
Nurse/ Midwife Manager	109	+13	+9	+8	+10	+10	-0	+0.1%	+0.1%	+0.1%	+0.1%	+0.1%	-0.0%
Nurse/ Midwife Specialist & AN/MP	10	+0	+0	+2	+3	+3	+0	+0.1%	+0.0%	+0.2%	+0.4%	+0.4%	+0.0%
Staff Nurse/ Staff Midwife	322	+9	-12	-8	-12	-12	+1	+0.0%	-0.0%	-0.0%	-0.0%	-0.0%	+0.0%
Nursing/ Midwifery Student	31	+28	+30	+27	+20	+20	-6	+9.4%	+19.7%	+7.2%	+1.9%	+1.9%	-0.2%
Nursing/ Midwifery other	5	-0	+0	-0	-0	-0	-0	-0.0%	+0.0%	-0.0%	-0.0%	-0.0%	-0.0%
Health & Social Care Professionals	91	+24	+29	+26	+31	+31	+5	+0.4%	+0.5%	+0.4%	+0.5%	+0.5%	+0.1%
Therapy Professions	44	+18	+21	+21	+21	+21	+4	+0.7%	+0.9%	+0.9%	+0.9%	+0.9%	+0.1%
Social Care	9	-3	-1	+1	+1	+1	-0	-0.2%	-0.1%	+0.1%	+0.1%	+0.1%	-0.0%
Social Workers	18	+6	+5	+4	+6	+6	+0	+0.5%	+0.4%	+0.3%	+0.5%	+0.5%	+0.0%
Psychologists	11	+9	+8	+6	+7	+7	+1	+4.3%	+3.0%	+1.2%	+1.7%	+1.7%	+0.1%
H&SC, Other	9	-5	-4	-6	-3	-3	-0	-0.4%	-0.3%	-0.4%	-0.3%	-0.3%	-0.0%
Management & Administrative	100	+19	+14	+19	+17	+17	+2	+0.2%	+0.2%	+0.2%	+0.2%	+0.2%	+0.0%
Management (VIII & above)	16	+5	+5	+4	+3	+3	+2	+0.5%	+0.5%	+0.3%	+0.2%	+0.2%	+0.1%
Administrative/ Supervisory (V to VII)	33	+13	+11	+13	+12	+12	+0	+0.6%	+0.5%	+0.7%	+0.6%	+0.6%	+0.0%
Clerical (III & IV)	51	+1	-2	+1	+2	+2	+0	+0.0%	-0.0%	+0.0%	+0.0%	+0.0%	+0.0%
General Support	55	-17	-5	-3	-2	-2	+0	-0.2%	-0.1%	-0.1%	-0.0%	-0.0%	+0.0%
Support	49	-14	-4	-2	-2	-2	+0	-0.2%	-0.1%	-0.0%	-0.0%	-0.0%	+0.0%
Maintenance/ Technical	6	-3	-1	-1				-0.3%	-0.1%	-0.1%	+0.0%	+0.0%	+0.0%
Patient & Client Care	827	+103	+57	+25	+8	+8	+4	+0.1%	+0.1%	+0.0%	+0.0%	+0.0%	+0.0%
Health Care Assistants	771	+97	+53	+21	-1	-1	+4	+0.1%	+0.1%	+0.0%	-0.0%	-0.0%	+0.0%
Care, other	41	+9	+8	+4	+7	+7	+1	+0.3%	+0.2%	+0.1%	+0.2%	+0.2%	+0.0%
Home Help	15	-3	-3	+0	+2	+2	-1	-0.1%	-0.2%	+0.0%	+0.1%	+0.1%	-0.0%

Source: Health Service Personnel Census

Older People

Oct 2020 (Dec 2015 figure: 1,650)	WTE Oct 2020	WTE change since Dec 15	WTE change since Dec 16	WTE change since Dec 17	WTE change since Dec 18	WTE change since Dec 18	WTE change since Sep 20	% change since Dec 15	% change since Dec 16	% change since Dec 17	% change since Dec 18	% change since Dec 18	% change since Sep 20
Overall	1,854	+204	+209	+73	+71	+71	-37	+12.4%	+12.7%	+4.1%	+4.0%	+4.0%	-1.9%
Medical & Dental	17	+3	+3	+3	+3	+3		+0.2%	+0.2%	+0.2%	+0.2%	+0.2%	+0.0%
Medical/ Dental, other	17	+3	+3	+3	+3	+3	+0	+0.2%	+0.2%	+0.2%	+0.2%	+0.2%	+0.0%
Nursing & Midwifery	415	+23	+26	+28	+5	+5	+2	+0.1%	+0.1%	+0.1%	+0.0%	+0.0%	+0.0%
Nurse/ Midwife Manager	91	-2	-0	+12	+2	+2	+2	-0.0%	-0.0%	+0.2%	+0.0%	+0.0%	+0.0%
Nurse/ Midwife Specialist & AN/MP	9	+9	+8	+9	+5	+5	-0	-1.0%	+7.9%	-1.0%	+1.2%	+1.2%	-0.0%
Staff Nurse/ Staff Midwife	315	+15	+17	+6	-3	-3	-0	+0.0%	+0.1%	+0.0%	-0.0%	-0.0%	-0.0%
Nursing/ Midwifery other	1	+1	+1	+1	+1	+1		-1.0%	-1.0%	-1.0%	-1.0%	-1.0%	+0.0%
Health & Social Care Professionals	30	+10	+10	+12	+9	+9	+0	+0.5%	+0.5%	+0.7%	+0.4%	+0.4%	+0.0%
Therapy Professions	13	+4	+4	+5	+2	+2	+2	+0.5%	+0.5%	+0.7%	+0.2%	+0.2%	+0.1%
Health Science/ Diagnostics	2	+0	+0	+0	+0	+0	+0	+0.1%	+0.1%	+0.1%	+0.1%	+0.1%	+0.1%
Social Workers	15	+5	+5	+6	+7	+7	-1	+0.6%	+0.6%	+0.8%	+0.9%	+0.9%	-0.1%
Management & Administrative	110	+30	+30	+25	+24	+24	+3	+0.4%	+0.4%	+0.3%	+0.3%	+0.3%	+0.0%
Management (VIII & above)	8	+4	+4	+5	+5	+5		+1.0%	+1.0%	+1.7%	+1.7%	+1.7%	+0.0%
Administrative/ Supervisory (V to VII)	15	+10	+10	+9	+8	+8	-0	+1.8%	+1.8%	+1.4%	+1.0%	+1.0%	-0.0%
Clerical (III & IV)	87	+16	+16	+11	+12	+12	+3	+0.2%	+0.2%	+0.1%	+0.2%	+0.2%	+0.0%
General Support	124	-10	-10	-7	-7	-7	+1	-0.1%	-0.1%	-0.1%	-0.1%	-0.1%	+0.0%
Support	117	-9	-10	-6	-6	-6	+0	-0.1%	-0.1%	-0.1%	-0.1%	-0.1%	+0.0%
Maintenance/ Technical	7	-0	-0	-1	-1	-1	+1	-0.0%	-0.0%	-0.1%	-0.1%	-0.1%	+0.1%
Patient & Client Care	1,157	+148	+149	+13	+38	+38	-42	+0.1%	+0.1%	+0.0%	+0.0%	+0.0%	-0.0%
Health Care Assistants	584	+53	+40	+17	+19	+19	-44	+0.1%	+0.1%	+0.0%	+0.0%	+0.0%	-0.1%
Care, other	28	+1	-2	-2	-3	-3	-0	+0.0%	-0.1%	-0.1%	-0.1%	-0.1%	-0.0%
Home Help	545	+94	+111	-2	+21	+21	+3	+0.2%	+0.3%	-0.0%	+0.0%	+0.0%	+0.0%

Source: Health Service Personnel Census