

CHO 1 Employment Report: September 2020

Employment by Staff Group

Sep 2020 (Dec 2019 figure: 5,468)	WTE Aug 2020	WTE Sep 2020	WTE change since Aug 20	% change since Aug 20	WTE change since Dec 19	WTE change since Sep 19
Overall	5,665	5,670	+5	+0.1%	+202	+211
Consultants	37	37	+1	+2.4%	+4	+5
Registrars	66	71	+5	+7.7%	+6	+1
SHO/ Interns	26	23	-3	-11.9%	-3	-1
Medical/ Dental, other	65	66	+0	+0.6%	-14	-1
Medical & Dental	194	197	+3	+1.7%	-8	+4
Nurse/ Midwife Manager	359	360	+1	+0.4%	+11	+10
Nurse/ Midwife Specialist & AN/MP	109	112	+3	+2.6%	+10	+11
Staff Nurse/ Staff Midwife	1,025	1,023	-2	-0.2%	+9	-0
Public Health Nurse	150	153	+3	+1.8%	-3	-0
Pre-registration Nurse/ Midwife Intern		5	+5	-100.0%	+2	+5
Pre-registration Nurse Intern (COVID-19)	54	46	-8	-14.7%	+46	-8
Post-registration Nurse/ Midwife Student	1	1			-6	
Nursing/ Midwifery awaiting registration	11	11				
Nursing/ Midwifery Student	66	64	-3	-4.0%	+43	+43
Nursing/ Midwifery other	8	8	+0	+2.0%	+2	+2
Nursing & Midwifery	1,717	1,720	+3	+0.2%	+72	+66
Therapy Professions	325	326	+0	+0.1%	+10	+13
Health Science/ Diagnostics	7	7	+0	+2.3%	+0	+0
Social Care	11	12	+0	+2.0%	+0	+0
Social Workers	88	87	-0	-0.5%	+2	+4
Psychologists	61	62	+1	+2.4%	+2	+5
Pharmacy	2	3	+1	+66.5%	+1	+1
H&SC, Other	30	30	-0	-1.4%	-2	-2
Health & Social Care Professionals	524	526	+2	+0.5%	+13	+21
Management (VIII & above)	64	63	-0	-0.6%	+4	+2
Administrative/ Supervisory (V to VII)	159	158	-2	-1.1%	+22	+30
Clerical (III & IV)	462	459	-3	-0.5%	+4	+12
Management & Administrative	685	680	-5	-0.7%	+30	+45
Support	313	307	-6	-2.0%	+1	-2
Maintenance/ Technical	37	36	-1	-1.9%	+0	-1
General Support	350	343	-7	-2.0%	+1	-3
Health Care Assistants	1,519	1,509	-11	-0.7%	+86	+81
Care, other	134	136	+2	+1.8%	+6	+5
Home Help	542	559	+17	+3.1%	+2	-8
Patient & Client Care	2,195	2,204	+9	+0.4%	+94	+78

CHO 1 Employment Report: September 2020

Community Health & Wellbeing

Sep 2020 (figure:)	WTE Aug 2020	WTE Sep 2020	WTE change since Aug 20	% change since Aug 20	WTE change since	WTE change since
Total Community Health & Wellbeing	14	13	-1	-5.5%	+13	+13
Management (VIII & above)	1	1			+1	+1
Administrative/ Supervisory (V to VII)	9	8	-1	-8.0%	+8	+8
Clerical (III & IV)	3	3	-0	-1.0%	+3	+3
Management & Administrative	13	12	-1	-5.8%	+12	+12
Patient & Client Care	1	1			+1	+1

Mental Health

Sep 2020 (Dec 2019 figure: 953)	WTE Aug 2020	WTE Sep 2020	WTE change since Aug 20	% change since Aug 20	WTE change since Dec 19	WTE change since Sep 19
Total Mental Health	979	984	+5	+0.5%	+32	+37
Consultants	33	34	+1	+2.7%	+3	+4
Registrars	22	27	+5	+23.2%	+3	+1
SHO/ Interns	25	22	-3	-12.6%	-3	-1
Medical & Dental	81	83	+3	+3.6%	+3	+4
Nurse/ Midwife Manager	124	124	+0	+0.2%	+7	+4
Nurse/ Midwife Specialist & AN/MP	66	68	+2	+3.0%	+1	+2
Staff Nurse/ Staff Midwife	286	289	+3	+1.1%	-8	-5
Pre-registration Nurse/ Midwife Intern		5	+5	-100.0%	+5	+5
Pre-registration Nurse Intern (COVID-19)	26	21	-6	-21.3%	+21	-6
Nursing/ Midwifery Student	26	26	-0	-1.2%	+26	+18
Nursing/ Midwifery other	1	1			+1	+1
Nursing & Midwifery	503	508	+5	+1.0%	+26	+20
Therapy Professions	36	34	-2	-4.5%	-1	+3
Social Care	3	3	-0	-3.5%	-1	-1
Social Workers	38	38	+0	+0.3%	-1	-1
Psychologists	23	23	+0	+0.1%	+2	+3
Pharmacy	1	1	+0	+3.5%	+0	+0
H&SC, Other	13	14	+1	+7.2%	+1	+1
Health & Social Care Professionals	113	113	-1	-0.5%	-0	+5
Management (VIII & above)	8	8			+2	+2
Administrative/ Supervisory (V to VII)	31	30	-0	-0.5%	+0	+3
Clerical (III & IV)	85	84	-1	-1.6%	-1	+2
Management & Administrative	124	122	-1	-1.2%	+1	+7
Support	64	64	+0	+0.3%	+2	+1
Maintenance/ Technical	17	17	-0	-0.4%	+0	+0
General Support	81	81	+0	+0.1%	+2	+1
Health Care Assistants	67	66	-1	-2.1%	-0	-1
Care, other	10	11	+1	+6.7%	+0	-1
Patient & Client Care	78	77	-1	-0.9%	-0	-1

Primary Care

Sep 2020 (Dec 2019 figure: 1,182)	WTE Aug 2020	WTE Sep 2020	WTE change since Aug 20	% change since Aug 20	WTE change since Dec 19	WTE change since Sep 19
Total Primary Care	1,239	1,237	-2	-0.2%	+55	+57
Consultants	3	3	-0	-0.9%	+0	+1
Registrars	44	44	-0	-0.1%	+3	+0
SHO/ Interns	1	1	+0	+5.3%		
Medical/ Dental, other	45	45	+0	+0.9%	-2	-2
Medical & Dental	93	94	+0	+0.4%	+1	-2
Nurse/ Midwife Manager	40	38	-2	-5.6%	+2	+1
Nurse/ Midwife Specialist & AN/MP	25	25	+0	+0.9%	+4	+5
Staff Nurse/ Staff Midwife	100	98	-2	-2.2%	+12	+12
Public Health Nurse	150	153	+3	+1.8%	-3	-0
<i>Post-registration Nurse/ Midwife Student</i>	1	1			-6	
Nursing/ Midwifery Student	1	1			-6	-2
Nursing/ Midwifery other	1	1				
Nursing & Midwifery	318	316	-2	-0.5%	+10	+15
Therapy Professions	236	239	+3	+1.3%	+12	+8
Health Science/ Diagnostics	5	5	-0	-0.9%	-0	-0
Social Workers	14	15	+1	+6.9%	+2	+2
Psychologists	32	30	-2	-7.4%	-5	-3
Pharmacy	1	2	+1	+142.9%	+1	+1
H&SC, Other	7	7	-1	-7.2%	-0	+0
Health & Social Care Professionals	296	298	+2	+0.7%	+11	+9
Management (VIII & above)	32	32	+0	+0.6%	+0	-0
Administrative/ Supervisory (V to VII)	71	71	-1	-1.2%	+7	+11
Clerical (III & IV)	240	238	-2	-0.9%	+2	+3
Management & Administrative	344	341	-3	-0.8%	+10	+15
Support	80	77	-3	-4.1%	+5	+5
Maintenance/ Technical	7	7			+1	+1
General Support	87	84	-3	-3.8%	+6	+6
Health Care Assistants	45	47	+2	+5.6%	+15	+12
Care, other	56	57	+0	+0.8%	+2	+1
Home Help	1	1	+0	+3.1%	+1	+1
Patient & Client Care	102	105	+3	+2.9%	+18	+13

Social Care

Sep 2020 (Dec 2019 figure: 3,334)	WTE Aug 2020	WTE Sep 2020	WTE change since Aug 20	% change since Aug 20	WTE change since Dec 19	WTE change since Sep 19
Total Social Care	3,433	3,436	+3	+0.1%	+102	+105
Medical/ Dental, other	20	20			-12	+1
Medical & Dental	20	20			-12	+1
Nurse/ Midwife Manager	195	199	+3	+1.7%	+2	+6
Nurse/ Midwife Specialist & AN/MP	18	18	+1	+3.3%	+5	+5
Staff Nurse/ Staff Midwife	639	636	-3	-0.4%	+5	-7
Pre-registration Nurse/ Midwife Intern				-100.0%	-3	
Pre-registration Nurse Intern (COVID-19)	28	26	-2	-8.5%	+26	-2
Nursing/ Midwifery awaiting registration	11	11				
Nursing/ Midwifery Student	39	37	-2	-6.1%	+23	+26
Nursing/ Midwifery other	6	6	+0	+2.6%	+1	+1
Nursing & Midwifery	896	895	-1	-0.1%	+36	+31
Therapy Professions	53	52	-1	-1.9%	-1	+1
Health Science/ Diagnostics	1	1	+0	+15.6%	+0	+0
Social Care	9	9	+0	+3.9%	+1	+1
Social Workers	35	34	-2	-4.3%	+1	+3
Psychologists	6	10	+4	+68.2%	+5	+5
H&SC, Other	10	9	-1	-8.1%	-3	-3
Health & Social Care Professionals	115	116	+1	+0.9%	+3	+7
Management (VIII & above)	23	22	-1	-2.5%	+0	-0
Administrative/ Supervisory (V to VII)	48	48	-0	-0.2%	+6	+8
Clerical (III & IV)	133	134	+1	+0.8%	-1	+3
Management & Administrative	205	205	+0	+0.2%	+6	+11
Support	169	166	-3	-1.9%	-6	-8
Maintenance/ Technical	13	12	-1	-5.0%	-1	-2
General Support	182	179	-4	-2.1%	-6	-10
Health Care Assistants	1,407	1,395	-12	-0.8%	+71	+70
Care, other	67	68	+1	+2.0%	+3	+4
Home Help	541	558	+17	+3.1%	+2	-8
Patient & Client Care	2,015	2,021	+6	+0.3%	+76	+65

CHO 1 Employment Report: September 2020

Disabilities

Sep 2020 (Dec 2019 figure: 1,498)	WTE Aug 2020	WTE Sep 2020	WTE change since Aug 20	% change since Aug 20	WTE change since Dec 19	WTE change since Sep 19
Total Disabilities	1,542	1,546	+4	+0.2%	+48	+59
Medical/ Dental, other	3	3			+0	+0
Medical & Dental	3	3			+0	+0
Nurse/ Midwife Manager	107	110	+3	+2.4%	+5	+11
Nurse/ Midwife Specialist & AN/MP	10	9	-0	-4.7%	+2	+2
Staff Nurse/ Staff Midwife	323	321	-2	-0.6%	-3	-12
<i>Pre-registration Nurse/ Midwife Intern</i>				-100.0%	-3	
<i>Pre-registration Nurse Intern (COVID-19)</i>	28	26	-2	-8.5%	+26	-2
<i>Nursing/ Midwifery awaiting registration</i>	11	11				
Nursing/ Midwifery Student	39	37	-2	-6.1%	+23	+26
Nursing/ Midwifery other	5	5	+0	+3.2%	+0	+0
Nursing & Midwifery	483	482	-2	-0.4%	+27	+28
Therapy Professions	42	40	-1	-2.9%	-2	+1
Social Care	9	9	+0	+3.9%	+1	+1
Social Workers	19	18	-2	-9.4%	+2	+4
Psychologists	6	10	+4	+68.2%	+5	+5
H&SC, Other	10	9	-1	-8.1%	-3	-3
Health & Social Care Professionals	85	86	+0	+0.4%	+3	+8
Management (VIII & above)	15	14	-1	-3.8%	+0	-1
Administrative/ Supervisory (V to VII)	33	33	-0	-0.7%	+5	+7
Clerical (III & IV)	50	50	+0	+0.1%	+0	+5
Management & Administrative	98	97	-1	-0.8%	+6	+11
Support	50	49	-1	-2.3%	-0	+0
Maintenance/ Technical	6	6				-1
General Support	56	55	-1	-2.1%	-0	-0
Health Care Assistants	763	768	+5	+0.6%	+7	+6
Care, other	38	40	+1	+3.7%	+3	+5
Home Help	14	15	+1	+7.2%	+2	+2
Patient & Client Care	816	823	+7	+0.9%	+11	+12

Older People

Sep 2020 (Dec 2019 figure: 1,836)	WTE Aug 2020	WTE Sep 2020	WTE change since Aug 20	% change since Aug 20	WTE change since Dec 19	WTE change since Sep 19
Total Older People	1,891	1,890	-1	-0.0%	+55	+46
Medical/ Dental, other	17	17			-12	+1
Medical & Dental	17	17			-12	+1
Nurse/ Midwife Manager	88	89	+1	+0.9%	-2	-6
Nurse/ Midwife Specialist & AN/MP	8	9	+1	+13.3%	+2	+3
Staff Nurse/ Staff Midwife	316	315	-1	-0.3%	+8	+5
Nursing/ Midwifery other	1	1			+1	+1
Nursing & Midwifery	413	414	+1	+0.2%	+9	+3
Health & Social Care Professionals	29	30	+1	+2.4%	-0	-1
Management (VIII & above)	8	8			+0	+1
Administrative/ Supervisory (V to VII)	15	15	+0	+0.7%	+1	+0
Clerical (III & IV)	83	84	+1	+1.3%	-1	-1
Management & Administrative	106	107	+1	+1.1%	+0	-0
Support	119	117	-2	-1.7%	-5	-8
Maintenance/ Technical	7	6	-1	-9.3%	-1	-2
General Support	126	124	-3	-2.1%	-6	-10
Health Care Assistants	644	628	-17	-2.6%	+64	+64
Care, other	28	28	-0	-0.3%	+0	-1
Home Help	527	543	+16	+3.0%	-0	-10
Patient & Client Care	1,199	1,198	-1	-0.1%	+64	+53

CHO 1 Employment by Administration (HSE / S38): September 2020

Sep 2020 (Dec 2019 figure: 5,468)	WTE Aug 2020	WTE Sep 2020	WTE change since Aug 20	% change since Aug 20	WTE change since Dec 19	WTE change since Sep 19
Overall	5,665	5,670	+5	+0.1%	+202	+211
HSE	5,665	5,670	+5	+0.1%	+202	+211

HSE

Sep 2020 (Dec 2019 figure: 5,468)	WTE Aug 2020	WTE Sep 2020	WTE change since Aug 20	% change since Aug 20	WTE change since Dec 19	WTE change since Sep 19
Overall	5,665	5,670	+5	+0.1%	+202	+211
Consultants	37	37	+1	+0.0%	+4	+5
Registrars	66	71	+5	+0.1%	+6	+1
SHO/ Interns	26	23	-3	-0.1%	-3	-1
Medical/ Dental, other	65	66	+0	+0.0%	-14	-1
Medical & Dental	194	197	+3	+1.7%	-8	+4
Nurse/ Midwife Manager	359	360	+1	+0.0%	+11	+10
Nurse/ Midwife Specialist & AN/MP	109	112	+3	+0.0%	+10	+11
Staff Nurse/ Staff Midwife	1,025	1,023	-2	-0.0%	+9	-0
Public Health Nurse	150	153	+3	+0.0%	-3	-0
<i>Pre-registration Nurse/ Midwife Intern</i>		5	+5	-1.0%	-6	-13
<i>Pre-registration Nurse Intern (COVID-19)</i>	54	46	-8	-0.1%	+46	+46
<i>Post-registration Nurse/ Midwife Student</i>	1	1		+0.0%	-6	-2
<i>Nursing/ Midwifery awaiting registration</i>	11	11		+0.0%	+10	+11
Nursing/ Midwifery Student	66	64	-3	-0.0%	+43	+43
Nursing/ Midwifery other	8	8	+0	+0.0%	+2	+2
Nursing & Midwifery	1,717	1,720	+3	+0.2%	+72	+66
Therapy Professions	325	326	+0	+0.0%	+10	+13
Health Science/ Diagnostics	7	7	+0	+0.0%	+0	+0
Social Care	11	12	+0	+0.0%	+0	+0
Social Workers	88	87	-0	-0.0%	+2	+4
Psychologists	61	62	+1	+0.0%	+2	+5
Pharmacy	2	3	+1	+0.7%	+1	+1
H&SC, Other	30	30	-0	-0.0%	-2	-2
Health & Social Care Professionals	524	526	+2	+0.5%	+13	+21
Management (VIII & above)	64	63	-0	-0.0%	+4	+2
Administrative/ Supervisory (V to VII)	159	158	-2	-0.0%	+22	+30
Clerical (III & IV)	462	459	-3	-0.0%	+4	+12
Management & Administrative	685	680	-5	-0.7%	+30	+45
Support	313	307	-6	-0.0%	+1	-2
Maintenance/ Technical	37	36	-1	-0.0%	+0	-1
General Support	350	343	-7	-2.0%	+1	-3
Health Care Assistants	1,519	1,509	-11	-0.0%	+86	+81
Care, other	134	136	+2	+0.0%	+6	+5
Home Help	542	559	+17	+0.0%	+2	-8
Patient & Client Care	2,195	2,204	+9	+0.4%	+94	+78

CHO 1 Employment by Grade Group & Staff Category: September 2020

Sep 2020 (Dec 2019 figure: 5,468)	WTE Aug 2020	WTE Sep 2020	WTE change since Aug 20	% change since Aug 20	WTE change since Dec 19	WTE change since Sep 19
Overall	5,665	5,670	+5	+0.1%	+202	+211
Consultant Medicine	3	3	-0	-0.9%	+0	+1
Consultant Psychiatry	33	34	+1	+2.7%	+3	+4
Consultants	37	37	+1	+2.4%	+4	+5
Registrar	59	64	+5	+8.4%	+8	+5
Senior Registrar	7	8	+0	+1.6%	-0	-2
Specialist Registrar				-100.0%	-1	-2
Registrars	66	71	+5	+7.7%	+6	+1
Senior House Officer	26	23	-3	-11.9%	-3	-1
SHO/ Interns	26	23	-3	-11.9%	-3	-1
Dentists	29	28	-1	-1.8%	+1	+1
Other Medical	36	37	+1	+2.5%	-15	-2
Medical/ Dental, other	65	66	+0	+0.6%	-14	-1
Medical & Dental	194	197	+3	+1.7%	+13	+4
Clinical Nurse/ Midwife Manager	278	280	+2	+0.7%	+11	+13
Director Nursing/Midwifery, Assistant	55	55	+0	+0.3%	+4	-0
Director of Nursing/Midwifery	27	26	-1	-3.1%	-4	-2
Nurse/ Midwife Manager	359	360	+1	+0.4%	+11	+10
Advanced Nurse/ Midwife Practitioner	11	11	+0	+2.3%	+2	+3
Clinical Nurse/ Midwife Specialist	98	101	+3	+2.6%	+8	+8
Nurse/ Midwife Specialist & AN/MP	109	112	+3	+2.6%	+10	+11
Staff Nurse [Intellectual Disability]	220	219	-1	-0.3%	+14	+10
Staff Nurse [Psychiatric]	287	290	+3	+1.1%	-7	-5
Staff Nurses [General/ Children's]	518	514	-4	-0.8%	+3	-5
Staff Nurse/ Staff Midwife	1,025	1,023	-2	-0.2%	+9	-0
Public Health Nurse	150	153	+3	+1.8%	-3	-0
Pre-registration Nurse/ Midwife Intern		5	+5	-100.0%	+2	-13
Pre-registration Nurse Intern (COVID-19)	54	46	-8	-14.7%	+46	+46
Post-registration Nurse/ Midwife Student	1	1			-6	-2
Nursing/ Midwifery awaiting registration	11	11				+11
Nursing/ Midwifery Student	66	64	-3	-4.0%	+43	+43
Nursing Education/Clinical	8	8	+0	+2.0%	+2	+2
Nursing/ Midwifery other	8	8	+0	+2.0%	+2	+2
Nursing & Midwifery	1,717	1,720	+3	+0.2%	+63	+66
Dietitians	15	15	-0	-0.1%	-2	-2
Occupational Therapists	129	128	-2	-1.2%	-1	+5
Orthoptists	3	3			+0	+0
Physiotherapists	94	95	+1	+0.7%	+4	+3
Podiatrists & Chiropodists	11	11	-0	-1.0%	+2	+2
Speech & Language Therapists	73	75	+1	+1.8%	+6	+4
Therapy Professions	325	326	+0	+0.1%	+10	+13
Audiology	5	5	-0	-0.9%	-0	-0
Radiographers	1	1	+0	+15.6%	+0	+0
Health Science/ Diagnostics	7	7	+0	+2.3%	+0	+0
Social Care	11	12	+0	+2.0%	+0	+0
Social Workers	88	87	-0	-0.5%	+2	+4
Psychologists	61	62	+1	+2.4%	+2	+5
Pharmacy	2	3	+1	+66.5%	+1	+1

Sep 2020 (Dec 2019 figure: 5,468)	WTE Aug 2020	WTE Sep 2020	WTE change since Aug 20	% change since Aug 20	WTE change since Dec 19	WTE change since Sep 19
Overall	5,665	5,670	+5	+0.1%	+202	+211
Counsellor Therapists	21	21	+1	+2.8%	+2	+3
Dental Hygienists	5	5	-0	-0.6%	+0	-0
Other Health & Social Care	4	3	-1	-23.5%	-5	-5
H&SC, Other	30	30	-0	-1.4%	-3	-2
Health & Social Care Professionals	524	526	+2	+0.5%	+17	+21
Executive Management	7	7	-0	-2.0%	+0	-0
Senior Management (VIII & GM)	57	56	-0	-0.4%	+4	+2
Management (VIII & above)	64	63	-0	-0.6%	+4	+2
Middle Management (V-VII)	158	157	-2	-1.1%	+22	+30
Other Administrative	1	1				
Administrative/ Supervisory (V to VII)	159	158	-2	-1.1%	+22	+30
General Administrative (III & IV)	462	459	-3	-0.5%	+4	+12
Clerical (III & IV)	462	459	-3	-0.5%	+4	+12
Management & Administrative	685	680	-5	-0.7%	+58	+45
Catering	66	66	-1	-1.2%	+5	+5
Household Services	210	204	-6	-3.0%	-0	-2
Other Support	29	29	+1	+2.7%	-4	-5
Portering	8	8				
Support	313	307	-6	-2.0%	+1	-2
Maintenance	37	36	-1	-1.9%	+0	-1
Maintenance/ Technical	37	36	-1	-1.9%	+0	-1
General Support	350	343	-7	-2.0%	-8	-3
HCA, Nurse's Aide, etc.	1,492	1,480	-12	-0.8%	+77	+76
Health & Social Care Assistants	27	28	+1	+4.7%	+9	+5
Health Care Assistants	1,519	1,509	-11	-0.7%	+86	+81
Community Welfare Officers				-100.0%	-1	-1
Other Care Grades	134	136	+2	+1.8%	+6	+6
Care, other	134	136	+2	+1.8%	+6	+5
Home Help	542	559	+17	+3.1%	+2	-8
Patient & Client Care	2,195	2,204	+9	+0.4%	+91	+78

Employment by WTE, Headcount, Gender, Full-Time /Part-Time etc.: Sep 2020

CHO 1	WTE	Headcount	WTE: no.	% Male	% female	Male WTE: no.	Female WTE: no.	% Total Perm	% Male Perm	% Female Perm	% Total Full Time	% Total Part Time	% Male FT	% Female FT
Overall	5,670	6,577	1.16	17.2%	82.8%	1.07	1.18	82.3%	83.1%	82.2%	64.2%	35.8%	85.3%	59.8%
Consultant Medicine	3	4	1.21	25.0%	75.0%	1.00	1.30	75.0%	75.0%	66.7%	75.0%	25.0%	100.0%	66.7%
Consultant Psychiatry	34	36	1.06	41.7%	58.3%	1.06	1.05	72.2%	72.2%	76.2%	94.4%	5.6%	93.3%	95.2%
Consultants	37	40	1.07	40.0%	60.0%	1.06	1.08	72.5%	68.8%	75.0%	92.5%	7.5%	93.8%	91.7%
Registrar	64	66	1.03	42.4%	57.6%	1.02	1.04	9.1%	9.1%	5.3%	97.0%	3.0%	96.4%	97.4%
Senior Registrar	8	8	1.06	37.5%	62.5%	1.00	1.10	12.5%	12.5%	20.0%	87.5%	12.5%	100.0%	80.0%
Registrars	71	74	1.04	41.9%	58.1%	1.02	1.05	9.5%	12.9%	7.0%	95.9%	4.1%	96.8%	95.3%
Senior House Officer	23	23	1.00	52.2%	47.8%	1.00	1.00	0.0%	0.0%	0.0%	100.0%	0.0%	100.0%	100.0%
SHO/ Interns	23	23	1.00	52.2%	47.8%	1.00	1.00	0.0%	0.0%	0.0%	100.0%	0.0%	100.0%	100.0%
Dentists	28	31	1.09	38.7%	61.3%	1.06	1.11	96.8%	96.8%	94.7%	87.1%	12.9%	83.3%	89.5%
Other Medical	37	71	1.91	52.1%	47.9%	1.86	1.97	77.5%	77.5%	73.5%	19.7%	80.3%	27.0%	11.8%
Medical/ Dental, other	66	102	1.56	48.0%	52.0%	1.57	1.54	83.3%	85.7%	81.1%	40.2%	59.8%	40.8%	39.6%
Medical & Dental	197	239	1.21	45.2%	54.8%	1.22	1.21	50.6%	52.8%	48.9%	72.0%	28.0%	71.3%	72.5%
Clinical Nurse/ Midwife Manager	280	297	1.06	17.8%	82.2%	1.02	1.07	98.7%	98.7%	98.8%	85.2%	14.8%	98.1%	82.4%
Director Nursing/Midwifery, Assistant	55	58	1.06	19.0%	81.0%	1.00	1.08	100.0%	100.0%	100.0%	89.7%	10.3%	100.0%	87.2%
Director of Nursing/Midwifery	26	26	1.01	19.2%	80.8%	1.00	1.01	100.0%	100.0%	100.0%	96.2%	3.8%	100.0%	95.2%
Nurse/ Midwife Manager	360	381	1.06	18.1%	81.9%	1.02	1.07	99.0%	98.6%	99.0%	86.6%	13.4%	98.6%	84.0%
Advanced Nurse/ Midwife Practitioner	11	11	1.01	9.1%	90.9%	1.00	1.01	100.0%	100.0%	100.0%	100.0%	0.0%	100.0%	100.0%
Clinical Nurse/ Midwife Specialist	101	110	1.09	20.0%	80.0%	1.02	1.11	97.3%	97.3%	96.6%	86.4%	13.6%	100.0%	83.0%
Nurse/ Midwife Specialist & AN/MP	112	121	1.08	19.0%	81.0%	1.02	1.10	97.5%	100.0%	96.9%	87.6%	12.4%	100.0%	84.7%
Staff Nurse [Intellectual Disability]	219	245	1.12	11.4%	88.6%	1.02	1.13	92.2%	92.2%	92.2%	78.0%	22.0%	89.3%	76.5%
Staff Nurse [Psychiatric]	290	307	1.06	27.4%	72.6%	1.02	1.07	99.0%	99.0%	98.7%	91.5%	8.5%	98.8%	88.8%
Staff Nurses [General/ Children's]	514	622	1.21	7.1%	92.9%	1.07	1.22	92.4%	92.4%	92.4%	59.0%	41.0%	86.4%	56.9%
Staff Nurse/ Staff Midwife	1,023	1,174	1.15	13.3%	86.7%	1.03	1.17	94.1%	96.8%	93.7%	71.5%	28.5%	93.6%	68.1%
Public Health Nurse	153	179	1.17		100.0%		1.17	94.4%		94.4%	77.7%	22.3%		77.7%
Pre-registration Nurse/ Midwife Intern	5	9	1.69	33.3%	66.7%	1.64	1.72	0.0%	0.0%	0.0%	100.0%	0.0%	100.0%	100.0%
Pre-registration Nurse Intern (COVID-19)	46	59	1.27	15.3%	84.7%	1.22	1.28	0.0%	0.0%	0.0%	89.8%	10.2%	100.0%	88.0%
Post-registration Nurse/ Midwife Student	1	1	1.00		100.0%		1.00	100.0%	100.0%	100.0%	100.0%	0.0%		100.0%
Nursing/ Midwifery awaiting registration	11	11	1.00		100.0%		1.00	0.0%	0.0%	0.0%	100.0%	0.0%		100.0%

Nursing/ Midwifery Student	64	80	1.25	15.0%	85.0%	1.30	1.25	1.3%	0.0%	1.5%	92.5%	7.5%	100.0%	91.2%
Nursing/ Midwifery other	8	8	1.03		100.0%		1.03	100.0%		100.0%	100.0%	0.0%		100.0%
Nursing & Midwifery	1,720	1,943	1.13	13.4%	86.6%	1.04	1.15	91.5%	93.1%	91.3%	77.0%	23.0%	95.8%	74.1%
Dietitians	15	17	1.12		100.0%		1.12	100.0%	100.0%	100.0%	82.4%	17.6%		82.4%
Occupational Therapists	128	149	1.17	5.4%	94.6%	1.10	1.17	94.6%	94.6%	95.0%	71.8%	28.2%	87.5%	70.9%
Orthoptists	3	3	1.07	33.3%	66.7%	1.00	1.10	100.0%	100.0%	100.0%	66.7%	33.3%	100.0%	50.0%
Physiotherapists	95	111	1.17	16.2%	83.8%	1.02	1.21	96.4%	96.4%	95.7%	63.1%	36.9%	88.9%	58.1%
Podiatrists & Chiropodists	11	13	1.21	15.4%	84.6%	1.00	1.26	92.3%	92.3%	90.9%	53.8%	46.2%	100.0%	45.5%
Speech & Language Therapists	75	85	1.14	3.5%	96.5%	1.00	1.14	92.9%	92.9%	96.3%	70.6%	29.4%	100.0%	69.5%
Therapy Professions	326	378	1.16	8.5%	91.5%	1.04	1.17	95.0%	87.5%	95.7%	68.8%	31.2%	90.6%	66.8%
Audiology	5	6	1.14		100.0%		1.14	100.0%	100.0%	100.0%	66.7%	33.3%		66.7%
Radiographers	1	4	2.70		100.0%		2.70	75.0%	75.0%	75.0%	0.0%	100.0%		0.0%
Health Science/ Diagnostics	7	10	1.48		100.0%		1.48	90.0%		90.0%	40.0%	60.0%		40.0%
Social Care	12	16	1.38		100.0%		1.38	100.0%		100.0%	37.5%	62.5%		37.5%
Social Workers	87	96	1.10	17.7%	82.3%	1.00	1.13	95.8%	100.0%	94.9%	82.3%	17.7%	94.1%	79.7%
Psychologists	62	69	1.10	29.0%	71.0%	1.03	1.14	94.2%	90.0%	95.9%	79.7%	20.3%	95.0%	73.5%
Pharmacy	3	3	1.16	33.3%	66.7%	1.43	1.06	100.0%	100.0%	100.0%	66.7%	33.3%	0.0%	100.0%
Counsellor Therapists	21	25	1.17	20.0%	80.0%	1.03	1.21	100.0%	100.0%	100.0%	64.0%	36.0%	80.0%	60.0%
Dental Hygienists	5	6	1.13		100.0%		1.13	100.0%	100.0%	100.0%	66.7%	33.3%		66.7%
Other Health & Social Care	3	4	1.23	75.0%	25.0%	1.28	1.11	100.0%	100.0%	100.0%	75.0%	25.0%	66.7%	100.0%
H&SC, Other	30	35	1.17	22.9%	77.1%	1.11	1.19	100.0%	100.0%	100.0%	65.7%	34.3%	75.0%	63.0%
Health & Social Care	526	607	1.15	12.9%	87.1%	1.04	1.17	95.4%	92.3%	95.8%	70.7%	29.3%	89.7%	67.9%
Executive Management	7	7	1.02	85.7%	14.3%	1.00	1.16	100.0%	100.0%	100.0%	100.0%	0.0%	100.0%	100.0%
Senior Management (VIII & GM)	56	58	1.03	13.8%	86.2%	1.05	1.02	94.8%	94.8%	94.0%	91.4%	8.6%	87.5%	92.0%
Management (VIII & above)	63	65	1.03	21.5%	78.5%	1.03	1.03	95.4%	100.0%	94.1%	92.3%	7.7%	92.9%	92.2%
Administrative/ Supervisory (V to VII)	158	169	1.07	16.6%	83.4%	1.06	1.08	92.3%	82.1%	94.3%	81.1%	18.9%	92.9%	78.7%
Clerical (III & IV)	459	534	1.16	8.1%	91.9%	1.06	1.17	94.0%	90.7%	94.3%	67.6%	32.4%	93.0%	65.4%
Management & Administrative	680	768	1.13	11.1%	88.9%	1.05	1.14	93.8%	89.4%	94.3%	72.7%	27.3%	92.9%	70.1%
Catering	66	75	1.14	28.0%	72.0%	1.13	1.15	100.0%	100.0%	100.0%	58.7%	41.3%	85.7%	48.1%
Household Services	204	233	1.14	20.6%	79.4%	1.04	1.17	93.1%	93.1%	96.8%	62.2%	37.8%	81.3%	57.3%
Other Support	29	57	1.94	31.6%	68.4%	1.33	2.46	89.5%	89.5%	89.7%	24.6%	75.4%	66.7%	5.1%
Portering	8	8	1.03	100.0%		1.03		87.5%	87.5%		75.0%	25.0%	75.0%	
Support	307	373	1.22	25.5%	74.5%	1.10	1.26	93.8%	86.3%	96.4%	56.0%	44.0%	78.9%	48.2%
Maintenance/ Technical	36	37	1.02	100.0%		1.02		100.0%	100.0%	#DIV/0	100.0%	0.0%	100.0%	

General Support	343	410	1.20	32.2%	67.8%	1.08	1.26	94.4%	90.2%	96.4%	60.0%	40.0%	84.8%	48.2%
HCA, Nurse's Aide, etc.	1,480	1,665	1.12	22.9%	77.1%	1.05	1.15	88.5%	88.5%	89.2%	70.0%	30.0%	87.9%	64.7%
Health & Social Care Assistants	28	30	1.07	26.7%	73.3%	1.07	1.07	66.7%	66.7%	59.1%	86.7%	13.3%	87.5%	86.4%
Health Care Assistants	1,509	1,695	1.12	22.9%	77.1%	1.05	1.15	88.1%	86.1%	88.7%	70.3%	29.7%	87.9%	65.1%
Care, other	136	152	1.11	32.9%	67.1%	1.06	1.14	89.5%	76.0%	96.1%	71.7%	28.3%	74.0%	70.6%
Home Help	559	763	1.37	4.1%	95.9%	1.36	1.37	26.5%	9.7%	27.2%	2.5%	97.5%	3.2%	2.5%
Patient & Client Care	2,204	2,610	1.18	18.0%	82.0%	1.07	1.21	70.2%	80.0%	68.0%	50.6%	49.4%	80.9%	43.9%

Employment by WTE, Headcount, Gender, Full-Time /Part-Time etc.: Sep 2020

CHO 1	WTE	Headcount	WTE: no.	% Male	% female	Male WTE: no.	Female WTE: no.	% Total Perm	% Male Perm	% Female Perm	% Total Full Time	% Total Part Time	% Male FT	% Female FT
Overall	5,670	6,577	1.16	17.2%	82.8%	1.07	1.18	82.3%	83.1%	82.2%	64.2%	35.8%	85.3%	59.8%
Community Health & Wellbeing	13	15	1.14	6.7%	93.3%	1.00	1.16	100.0%	100.0%	100.0%	66.7%	33.3%	100.0%	100.0%
Mental Health	984	1,060	1.08	27.2%	72.8%	1.03	1.10	88.7%	88.7%	90.0%	87.3%	12.7%	96.5%	96.5%
Primary Care	1,237	1,463	1.18	13.8%	86.2%	1.07	1.20	89.1%	89.1%	90.8%	65.5%	34.5%	85.1%	85.1%
Social Care	3,436	4,039	1.18	15.9%	84.1%	1.09	1.19	78.2%	78.2%	77.1%	57.6%	42.4%	80.4%	80.4%

CHO 1 Skills Mix by Staff Grouping: September 2020

Sep 2020 (Dec 2018 figure: 5,436)	WTE Dec 2015	WTE Dec 2016	WTE Dec 2017	WTE Dec 2018	WTE Dec 2019	WTE Aug 2020	WTE Sep 2020
Overall	5,177	5,280	5,368	5,436	5,468	5,665	5,670
Consultant Medicine	1.8%	1.8%	1.7%	1.6%	1.5%	1.7%	1.7%
Consultant Psychiatry	15.1%	16.1%	15.8%	16.2%	15.0%	17.1%	17.3%
Consultants	16.9%	17.8%	17.5%	17.8%	16.4%	18.8%	18.9%
Registrar	27.2%	23.7%	26.6%	27.9%	27.4%	30.4%	32.4%
Senior Registrar	2.3%	3.0%	2.3%	5.8%	3.9%	3.8%	3.8%
Specialist Registrar			0.6%	0.5%	0.5%		
Registrars	29.6%	26.6%	29.5%	34.3%	31.8%	34.2%	36.2%
Senior House Officer	15.1%	17.5%	15.6%	13.8%	12.8%	13.4%	11.6%
SHO/ Interns	15.1%	17.5%	15.6%	13.8%	12.8%	13.4%	11.6%
Dentists	16.8%	16.6%	15.9%	15.3%	13.5%	14.9%	14.4%
Other Medical	21.7%	21.5%	21.5%	18.8%	25.4%	18.7%	18.8%
Medical/ Dental, other	38.5%	38.1%	37.4%	34.1%	39.0%	33.6%	33.2%
Medical & Dental	3.3%	3.2%	3.2%	3.4%	3.8%	100.0%	3.5%
Clinical Nurse/ Midwife Manager	16.7%	16.4%	15.8%	16.1%	16.3%	16.2%	16.3%
Director Nursing/Midwifery, Assistant	3.1%	3.2%	3.0%	3.1%	3.1%	3.2%	3.2%
Director of Nursing/Midwifery	1.6%	1.6%	1.6%	1.4%	1.8%	1.5%	1.5%
Nurse/ Midwife Manager	21.4%	21.2%	20.3%	20.6%	21.2%	20.9%	21.0%
Advanced Nurse/ Midwife Practitioner	0.1%	0.2%	0.1%	0.4%	0.5%	0.6%	0.6%
Clinical Nurse/ Midwife Specialist	5.1%	5.2%	5.5%	5.4%	5.7%	5.7%	5.9%
Nurse/ Midwife Specialist & AN/MP	5.2%	5.4%	5.6%	5.8%	6.2%	6.3%	6.5%
Graduate Nursing/ Midwifery	0.7%						
Staff Nurse [Intellectual Disability]	11.0%	12.2%	12.2%	12.6%	12.4%	12.8%	12.7%
Staff Nurse [Psychiatric]	19.9%	20.1%	19.5%	18.4%	18.1%	16.7%	16.9%
Staff Nurses [General/ Children's]	31.0%	31.4%	32.1%	31.8%	31.0%	30.2%	29.9%
Staff Nurse/ Staff Midwife	62.5%	63.7%	63.7%	62.8%	61.5%	59.7%	59.5%
Public Health Nurse	9.6%	8.9%	9.3%	9.4%	9.5%	8.7%	8.9%
Pre-registration Nurse/ Midwife Intern	0.5%	0.1%	0.2%	0.7%	0.2%		0.3%
Pre-registration Nurse Intern (COVID-19)						3.2%	2.7%
Post-registration Nurse/ Midwife Student	0.4%	0.4%	0.4%	0.4%	0.4%	0.1%	0.1%
Nursing/ Midwifery awaiting registration				0.1%	0.7%	0.6%	0.6%
Nursing/ Midwifery Student	1.0%	0.5%	0.7%	1.1%	1.3%	3.9%	3.7%
Nursing/ Midwifery other	0.3%	0.3%	0.3%	0.3%	0.3%	0.4%	0.5%
Nursing & Midwifery	30.9%	31.0%	30.4%	30.5%	30.1%	100.0%	30.3%
Dietitians	3.3%	3.0%	3.2%	3.5%	3.4%	2.9%	2.9%
Occupational Therapists	24.0%	24.4%	22.9%	24.3%	25.0%	24.7%	24.3%
Orthoptists	0.6%	0.4%	0.5%	0.5%	0.5%	0.5%	0.5%
Physiotherapists	17.0%	18.6%	18.3%	18.4%	17.6%	17.9%	18.0%
Podiatrists & Chiropodists	1.7%	2.0%	1.7%	1.8%	1.7%	2.1%	2.0%
Speech & Language Therapists	13.6%	13.1%	14.6%	13.8%	13.5%	14.0%	14.2%
Therapy Professions	60.2%	61.6%	61.3%	62.4%	61.7%	62.1%	61.9%
Audiology	1.2%	1.1%	1.1%	1.1%	1.0%	1.0%	1.0%
Radiographers	0.3%	0.3%	0.3%	0.3%	0.2%	0.2%	0.3%
Health Science/ Diagnostics	1.5%	1.4%	1.4%	1.4%	1.3%	1.3%	1.3%
Social Care	3.5%	2.7%	2.4%	2.3%	2.2%	2.2%	2.2%
Social Workers	16.2%	16.5%	16.0%	15.3%	16.6%	16.7%	16.6%
Social Workers	16.2%	16.5%	16.0%	15.3%	16.6%	16.7%	16.6%
Psychologists	11.2%	11.2%	11.6%	12.1%	11.7%	11.6%	11.9%
Pharmacy	0.3%	0.3%	0.3%	0.3%	0.3%	0.3%	0.5%
Counsellor Therapists	4.2%	3.7%	4.1%	3.8%	3.8%	4.0%	4.1%
Dental Hygienists	1.1%	1.1%	1.1%	1.0%	1.0%	1.0%	1.0%
Other Health & Social Care	1.8%	1.6%	1.8%	1.4%	1.5%	0.8%	0.6%

Sep 2020 (Dec 2018 figure: 5,436)	WTE Dec 2015	WTE Dec 2016	WTE Dec 2017	WTE Dec 2018	WTE Dec 2019	WTE Aug 2020	WTE Sep 2020
Overall	5,177	5,280	5,368	5,436	5,468	5,665	5,670
H&SC, Other	7.1%	6.4%	7.0%	6.3%	6.3%	5.8%	5.7%
Health & Social Care Professionals	9.1%	9.3%	9.3%	9.4%	9.4%	100.0%	9.3%
Executive Management	0.5%	1.2%	1.3%	1.3%	1.0%	1.0%	1.0%
Senior Management (VIII & GM)	7.1%	6.8%	6.8%	7.9%	8.1%	8.3%	8.3%
Management (VIII & above)	7.6%	8.0%	8.2%	9.2%	9.2%	9.3%	9.3%
Middle Management (V-VII)	16.5%	16.4%	17.9%	18.3%	20.7%	23.1%	23.0%
Other Administrative	0.2%	0.2%	0.2%	0.2%	0.2%	0.1%	0.1%
Administrative/ Supervisory (V to VII)	16.7%	16.6%	18.1%	18.4%	20.8%	23.3%	23.2%
Clerical (III & IV)	75.7%	75.5%	73.8%	72.4%	70.0%	67.4%	67.5%
Management & Administrative	11.0%	11.1%	11.1%	11.4%	11.9%	100.0%	12.0%
Catering	14.5%	15.6%	16.7%	16.8%	17.8%	19.0%	19.1%
Household Services	66.5%	65.1%	62.1%	61.6%	59.8%	60.0%	59.4%
Other Support	5.7%	6.2%	8.2%	9.8%	9.7%	8.2%	8.6%
Portering	2.4%	2.4%	2.2%	2.2%	2.3%	2.2%	2.3%
Support	89.0%	89.4%	89.3%	90.3%	89.5%	89.4%	89.4%
Maintenance/ Technical	11.0%	10.6%	10.7%	9.7%	10.5%	10.6%	10.6%
General Support	7.2%	6.8%	6.5%	6.4%	6.2%	100.0%	6.0%
HCA, Nurse's Aide, etc.	64.3%	66.1%	66.3%	67.1%	66.5%	68.0%	67.2%
Health & Social Care Assistants	0.8%	0.7%	0.8%	1.3%	0.9%	1.2%	1.3%
Health Care Assistants	65.1%	66.8%	67.1%	68.3%	67.4%	69.2%	68.5%
Community Welfare Officers	0.1%	0.0%	0.0%	0.0%	0.0%		
Other Care Grades	6.5%	6.4%	6.3%	6.2%	6.2%	6.1%	6.2%
Care, other	6.5%	6.4%	6.4%	6.2%	6.2%	6.1%	6.2%
Home Help	28.4%	26.7%	26.5%	25.4%	26.4%	24.7%	25.3%
Patient & Client Care	38.6%	38.7%	39.5%	38.9%	38.6%	100.0%	38.9%
Total	100 %	100 %	100 %	100 %	100%	100 %	100 %

CHO 1 Skills Mix by Care Group: September 2020

Sep 2020 (Dec 2018 figure: 941)	WTE Dec 2015	WTE Dec 2016	WTE Dec 2017	WTE Dec 2018	WTE Dec 2019	WTE Aug 2020	WTE Sep 2020
Mental Health	931	948	942	941	953	979	984
Consultants	37.0%	36.2%	36.8%	37.2%	38.2%	41.2%	40.9%
Registrar	22.4%	17.4%	22.7%	18.6%	20.5%	18.4%	23.8%
Senior Registrar	4.5%	5.5%	4.2%	12.6%	9.9%	9.2%	9.0%
Registrars	26.8%	23.0%	26.9%	31.2%	30.4%	27.6%	32.8%
Senior House Officer	36.2%	40.8%	36.3%	31.6%	31.4%	31.2%	26.4%
SHO/ Interns	36.2%	40.8%	36.3%	31.6%	31.4%	31.2%	26.4%
Medical & Dental	7.2%	7.6%	7.6%	8.2%	8.1%	8.5%	8.5%
Clinical Nurse/ Midwife Manager	19.4%	19.8%	20.0%	19.9%	19.9%	20.2%	19.8%
Director Nursing/Midwifery, Assistant	3.5%	3.2%	3.2%	3.7%	3.7%	3.8%	3.9%
Director of Nursing/Midwifery	0.8%	0.6%	0.6%	0.4%	0.6%	0.6%	0.6%
Nurse/ Midwife Manager	23.7%	23.6%	23.8%	24.0%	24.3%	24.6%	24.4%
Advanced Nurse/ Midwife Practitioner	0.2%	0.2%	0.2%	0.4%	0.4%	0.4%	0.4%
Clinical Nurse/ Midwife Specialist	10.7%	11.4%	12.1%	12.9%	13.6%	12.8%	13.1%
Nurse/ Midwife Specialist & AN/MP	10.9%	11.6%	12.3%	13.3%	14.0%	13.2%	13.4%
Graduate Nursing/ Midwifery	0.2%						
Staff Nurse [Intellectual Disability]		0.2%	0.2%	0.2%			
Staff Nurse [Psychiatric]	63.4%	64.0%	63.2%	61.7%	61.1%	56.4%	56.5%
Staff Nurses [General/ Children's]	0.6%	0.6%	0.4%	0.6%	0.6%	0.4%	0.4%
Staff Nurse/ Staff Midwife	64.2%	64.8%	63.9%	62.5%	61.7%	56.8%	56.9%
Pre-registration Nurse/ Midwife Intern	1.1%						1.0%
Pre-registration Nurse Intern (COVID-19)						5.3%	4.1%
Nursing/ Midwifery awaiting registration				0.2%			
Nursing/ Midwifery Student	1.1%			0.2%		5.3%	5.1%
Nursing Education/Clinical						0.2%	0.2%
Nursing/ Midwifery other						0.2%	0.2%
Nursing & Midwifery	52.3%	52.9%	52.5%	51.6%	51.0%	51.7%	51.7%
Occupational Therapists	26.2%	26.7%	25.7%	26.9%	28.7%	29.9%	28.5%
Podiatrists & Chiropodists	0.7%	0.7%	0.7%	0.7%	0.6%	0.7%	0.6%
Speech & Language Therapists	1.9%	2.6%	3.5%	3.0%	2.2%	1.1%	1.3%
Therapy Professions	28.8%	30.0%	29.9%	30.6%	31.6%	31.7%	30.5%
Social Care	4.7%	3.5%	3.6%	3.2%	3.3%	2.5%	2.4%
Social Workers	35.7%	35.5%	34.4%	34.0%	34.6%	33.7%	34.0%
Psychologists	18.2%	19.9%	19.9%	20.5%	18.2%	20.1%	20.3%
Pharmacy	0.8%	0.7%	0.8%	0.8%	0.7%	0.7%	0.8%
Counsellor Therapists	11.6%	10.0%	11.5%	10.8%	11.6%	11.2%	12.1%
Other Health & Social Care	0.4%	0.4%					
H&SC, Other	11.9%	10.4%	11.5%	10.8%	11.6%	11.2%	12.1%
Health & Social Care Professionals	11.4%	11.3%	11.2%	11.8%	11.7%	11.5%	11.5%
Management (VIII & above)	4.2%	3.3%	4.1%	3.8%	4.7%	6.2%	6.3%
Administrative/ Supervisory (V to VII)	14.4%	14.5%	16.6%	18.7%	24.9%	24.7%	24.9%
Clerical (III & IV)	81.4%	82.2%	79.3%	77.4%	70.5%	69.1%	68.8%
Management & Administrative	10.3%	9.7%	10.5%	11.1%	11.0%	12.4%	12.4%
Support	80.7%	80.6%	80.3%	80.8%	78.7%	78.9%	79.0%
Maintenance	19.3%	19.4%	19.7%	19.2%	21.3%	21.1%	21.0%
Maintenance/ Technical	19.3%	19.4%	19.7%	19.2%	21.3%	21.1%	21.0%
General Support	10.4%	9.8%	9.1%	8.8%	8.7%	8.2%	8.2%
HCA, Nurse's Aide, etc.	86.8%	87.9%	86.5%	82.1%	83.9%	84.1%	83.4%
Health & Social Care Assistants			1.2%	2.0%	2.1%	2.7%	2.4%

Sep 2020 (Dec 2018 figure: 941)	WTE Dec 2015	WTE Dec 2016	WTE Dec 2017	WTE Dec 2018	WTE Dec 2019	WTE Aug 2020	WTE Sep 2020
Mental Health	931	948	942	941	953	979	984
Health Care Assistants	86.8%	87.9%	87.6%	84.1%	86.0%	86.9%	85.8%
Care, other	13.2%	12.1%	12.4%	15.9%	14.0%	13.1%	14.2%
Patient & Client Care	8.3%	8.7%	9.1%	8.5%	8.4%	7.8%	7.8%
Total	100 %	100 %	100 %	100 %	100 %	100 %	100%

Sep 2020 (Dec 2018 figure: 1,233)	WTE Dec 2015	WTE Dec 2016	WTE Dec 2017	WTE Dec 2018	WTE Dec 2019	WTE Aug 2020	WTE Sep 2020
Primary Care	1,222	1,257	1,188	1,233	1,182	1,239	1,237
Consultant Medicine	3.5%	3.8%	3.6%	3.3%	3.3%	3.6%	3.5%
Consultants	3.5%	3.8%	3.6%	3.3%	3.3%	3.6%	3.5%
Registrars	37.9%	35.7%	37.8%	43.8%	44.3%	47.4%	47.2%
SHO/ Interns	1.5%		1.2%	1.1%	1.1%	1.0%	1.1%
Dentists	33.7%	35.4%	32.8%	31.5%	30.2%	31.0%	30.4%
Other Medical	23.4%	25.1%	24.7%	20.4%	21.2%	17.0%	17.9%
Medical/ Dental, other	57.1%	60.5%	57.5%	51.9%	51.3%	48.0%	48.2%
Medical & Dental	6.9%	6.3%	7.1%	7.3%	7.6%	7.6%	7.6%
Clinical Nurse/ Midwife Manager	5.1%	4.9%	4.7%	5.4%	5.6%	6.3%	6.3%
Director Nursing/Midwifery, Assistant	5.9%	5.9%	5.4%	5.0%	5.0%	5.4%	4.8%
Director of Nursing/Midwifery	1.5%	1.7%	1.3%	1.6%	1.3%	0.9%	0.9%
Nurse/ Midwife Manager	12.6%	12.5%	11.4%	12.0%	11.9%	12.7%	12.0%
Nurse/ Midwife Specialist & AN/MP	7.2%	6.7%	7.7%	6.6%	6.8%	7.9%	8.0%
Staff Nurse [Psychiatric]	0.1%	0.1%	0.1%	0.5%	0.1%	0.1%	0.1%
Staff Nurses [General/ Children's]	25.1%	29.0%	28.4%	27.7%	27.8%	31.4%	30.9%
Staff Nurse/ Staff Midwife	25.2%	29.1%	28.6%	28.2%	27.9%	31.5%	31.0%
Public Health Nurse	52.5%	49.3%	50.1%	50.9%	50.9%	47.3%	48.4%
Post-registration Nurse/ Midwife Student	2.4%	2.4%	2.3%	2.3%	2.3%	0.3%	0.3%
Nursing/ Midwifery Student	2.4%	2.4%	2.3%	2.3%	2.3%	0.3%	0.3%
Nursing Education/Clinical					0.3%	0.3%	0.3%
Nursing/ Midwifery other					0.3%	0.3%	0.3%
Nursing & Midwifery	23.8%	23.6%	25.7%	24.7%	25.8%	25.6%	25.6%
Dietitians	5.6%	4.8%	5.2%	5.6%	6.0%	5.1%	5.1%
Occupational Therapists	24.3%	25.2%	23.2%	24.2%	25.3%	25.2%	25.4%
Orthoptists	1.0%	0.7%	0.8%	0.8%	0.9%	0.9%	0.9%
Physiotherapists	25.4%	27.4%	27.1%	27.3%	28.1%	28.0%	28.1%
Podiatrists & Chiropractors	2.6%	3.1%	2.6%	2.7%	2.8%	3.4%	3.4%
Speech & Language Therapists	19.2%	17.8%	19.4%	17.8%	15.9%	17.1%	17.4%
Therapy Professions	78.2%	79.0%	78.4%	78.5%	79.0%	79.8%	80.3%
Audiology	1.9%	1.8%	1.7%	1.7%	1.8%	1.8%	1.8%
Health Science/ Diagnostics	1.9%	1.8%	1.7%	1.7%	1.8%	1.8%	1.8%
Social Workers	6.1%	6.6%	6.9%	6.4%	4.4%	4.7%	5.0%
Psychologists	11.3%	10.3%	10.3%	10.9%	12.1%	11.0%	10.1%
Pharmacy	0.2%	0.2%	0.2%	0.2%	0.2%	0.2%	0.6%
Counsellor Therapists			0.3%	0.3%	0.3%	0.3%	0.2%
Dental Hygienists	1.9%	1.7%	1.9%	1.6%	1.7%	1.8%	1.8%
Other Health & Social Care	0.4%	0.3%	0.3%	0.3%	0.3%	0.3%	0.3%
H&SC, Other	2.2%	2.1%	2.5%	2.2%	2.4%	2.5%	2.3%
Health & Social Care Professionals	22.9%	23.8%	25.9%	25.6%	26.8%	24.1%	24.1%
Executive Management	0.6%	1.8%	2.1%	2.0%	1.5%	1.5%	1.4%
Senior Management (VIII & GM)	7.2%	6.9%	6.9%	8.7%	8.2%	7.9%	8.1%
Management (VIII & above)	7.8%	8.8%	9.0%	10.7%	9.7%	9.3%	9.5%
Administrative/ Supervisory (V to VII)	17.8%	17.1%	19.7%	19.1%	19.2%	20.8%	20.7%

Sep 2020 (Dec 2018 figure: 1,233)	WTE Dec 2015	WTE Dec 2016	WTE Dec 2017	WTE Dec 2018	WTE Dec 2019	WTE Aug 2020	WTE Sep 2020
Primary Care	1,222	1,257	1,188	1,233	1,182	1,239	1,237
Clerical (III & IV)	74.4%	74.2%	71.3%	70.2%	71.1%	69.9%	69.8%
Management & Administrative	25.5%	25.9%	27.7%	28.3%	29.5%	27.6%	27.6%
Support	91.0%	91.3%	92.2%	94.7%	92.3%	92.0%	91.6%
Maintenance/ Technical	9.0%	8.7%	7.8%	5.3%	7.7%	8.0%	8.4%
General Support	5.5%	5.7%	6.3%	6.4%	6.7%	6.8%	6.8%
HCA, Nurse's Aide, etc.	9.6%	10.8%	22.4%	20.1%	21.8%	24.2%	24.5%
Health & Social Care Assistants	5.6%	5.8%	12.3%	21.7%	14.9%	19.6%	20.4%
Health Care Assistants	15.2%	16.6%	34.7%	41.8%	36.7%	43.8%	44.9%
Community Welfare Officers	0.5%	0.5%	1.1%	1.1%	0.9%		
Other Care Grades	31.7%	31.2%	64.2%	57.1%	62.4%	55.6%	54.4%
Care, other	32.2%	31.8%	65.3%	58.2%	63.3%	55.6%	54.4%
Home Help	52.6%	51.6%				0.6%	0.6%
Patient & Client Care	15.3%	14.6%	7.4%	7.7%	8.0%	8.5%	8.5%
Total	100 %	100 %	100 %	100 %	100 %	100 %	100%

Sep 2020 (Dec 2018 figure: 1,479)	WTE Dec 2015	WTE Dec 2016	WTE Dec 2017	WTE Dec 2018	WTE Dec 2019	WTE Aug 2020	WTE Sep 2020
Disabilities	1,374	1,430	1,457	1,479	1,498	1,542	1,546
Consultant Psychiatry	29.1%	33.3%	33.3%	33.3%			
Consultants	29.1%	33.3%	33.3%	33.3%			
Medical/ Dental, other	70.9%	66.7%	66.7%	66.7%	100.0%	100.0%	100.0%
Medical & Dental	0.2%	0.2%	0.2%	0.2%	0.2%	0.2%	0.2%
Clinical Nurse/ Midwife Manager	19.9%	19.5%	20.0%	19.1%	20.1%	19.6%	20.3%
Director Nursing/Midwifery, Assistant	1.4%	1.7%	1.3%	1.7%	1.3%	1.3%	1.4%
Director of Nursing/Midwifery	1.4%	1.1%	1.3%	1.1%	1.8%	1.2%	1.0%
Nurse/ Midwife Manager	22.7%	22.3%	22.6%	21.8%	23.1%	22.2%	22.8%
Clinical Nurse/ Midwife Specialist	2.2%	2.1%	1.8%	1.5%	1.5%	2.0%	2.0%
Nurse/ Midwife Specialist & AN/MP	2.2%	2.1%	1.8%	1.5%	1.5%	2.0%	2.0%
Graduate Nursing/ Midwifery	2.3%						
Staff Nurse [Intellectual Disability]	41.2%	44.2%	44.4%	45.3%	45.1%	45.4%	45.5%
Staff Nurse [Psychiatric]	1.6%	1.3%	0.9%	0.7%	0.4%	0.4%	0.4%
Staff Nurses [General/ Children's]	28.3%	28.6%	28.3%	27.2%	25.6%	20.9%	20.7%
Staff Nurse/ Staff Midwife	73.3%	74.2%	73.7%	73.2%	71.2%	66.7%	66.6%
Pre-registration Nurse/ Midwife Intern	0.7%	0.3%	0.8%	2.4%	0.7%		
Pre-registration Nurse Intern (COVID-19)						5.8%	5.3%
Nursing/ Midwifery awaiting registration					2.4%	2.3%	2.3%
Nursing/ Midwifery Student	0.7%	0.3%	0.8%	2.4%	3.1%	8.1%	7.6%
Nursing/ Midwifery other	1.1%	1.0%	1.1%	1.1%	1.0%	1.0%	1.0%
Nursing & Midwifery	31.1%	31.4%	30.7%	30.8%	30.4%	31.1%	31.1%
Occupational Therapists	14.3%	11.9%	12.0%	9.5%	15.4%	12.8%	11.6%
Physiotherapists	13.7%	14.2%	11.4%	12.3%	10.8%	10.9%	10.6%
Speech & Language Therapists	11.3%	11.3%	12.7%	17.5%	25.2%	25.0%	25.0%
Therapy Professions	39.3%	37.4%	36.0%	39.3%	51.4%	48.8%	47.2%
Social Care	17.4%	15.2%	12.3%	13.2%	9.2%	9.9%	10.3%
Social Workers	18.3%	21.0%	21.0%	19.8%	18.9%	22.6%	20.4%
Psychologists	3.0%	4.3%	7.5%	6.6%	5.6%	6.6%	11.1%
Counsellor Therapists	11.5%	11.8%	11.3%	10.7%	6.8%	8.3%	8.4%
Other Health & Social Care	10.4%	10.4%	11.9%	10.4%	8.2%	3.8%	2.6%
H&SC, Other	22.0%	22.2%	23.2%	21.1%	15.0%	12.1%	11.0%
Health & Social Care Professionals	4.9%	4.3%	4.5%	4.1%	4.0%	5.6%	5.6%

Sep 2020 (Dec 2018 figure: 1,479)	WTE Dec 2015	WTE Dec 2016	WTE Dec 2017	WTE Dec 2018	WTE Dec 2019	WTE Aug 2020	WTE Sep 2020
Disabilities	1,374	1,430	1,457	1,479	1,498	1,542	1,546
Senior Management (VIII & GM)	13.4%	12.7%	14.7%	15.6%	15.3%	15.2%	14.7%
Management (VIII & above)	13.4%	12.7%	14.7%	15.6%	15.3%	15.2%	14.7%
Administrative/ Supervisory (V to VII)	25.1%	26.0%	24.4%	25.1%	30.2%	33.8%	33.8%
Clerical (III & IV)	61.5%	61.3%	60.9%	59.3%	54.5%	51.0%	51.5%
Management & Administrative	5.9%	6.0%	5.6%	5.6%	5.5%	6.3%	6.3%
Support	87.7%	88.7%	88.1%	89.5%	89.1%	89.3%	89.1%
Maintenance/ Technical	12.3%	11.3%	11.9%	10.5%	10.9%	10.7%	10.9%
General Support	5.3%	4.2%	4.0%	3.9%	3.8%	3.6%	3.6%
HCA, Nurse's Aide, etc.	93.1%	93.4%	93.6%	94.3%	93.8%	93.5%	93.3%
Health Care Assistants	93.1%	93.4%	93.6%	94.3%	93.8%	93.5%	93.3%
Care, other	4.5%	4.3%	4.6%	4.1%	4.6%	4.7%	4.8%
Home Help	2.4%	2.3%	1.8%	1.6%	1.6%	1.8%	1.9%
Patient & Client Care	52.7%	53.8%	55.0%	55.4%	54.7%	53.2%	53.2%
Total	100 %	100 %	100 %	100 %	100 %	100 %	100%

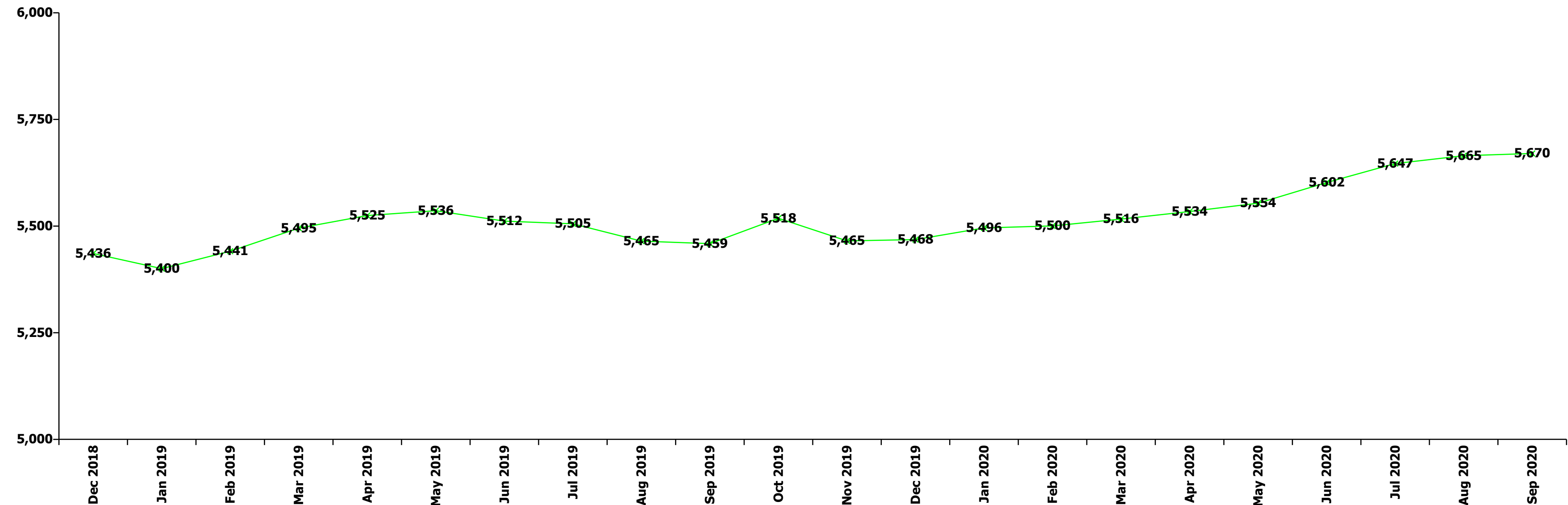
Sep 2020 (Dec 2018 figure: 1,782)	WTE Dec 2015	WTE Dec 2016	WTE Dec 2017	WTE Dec 2018	WTE Dec 2019	WTE Aug 2020	WTE Sep 2020
Older People	1,650	1,645	1,780	1,782	1,836	1,891	1,890
Medical/ Dental, other	100.0%	100.0%	100.0%	100.0%	100.0%	100.0%	100.0%
Medical & Dental	0.9%	0.9%	0.8%	0.8%	0.8%	0.9%	0.9%
Clinical Nurse/ Midwife Manager	18.4%	17.2%	14.3%	16.4%	15.9%	14.9%	14.8%
Director Nursing/Midwifery, Assistant	2.5%	2.7%	2.7%	2.4%	3.0%	2.9%	3.1%
Director of Nursing/Midwifery	2.7%	3.3%	3.2%	2.8%	3.5%	3.5%	3.6%
Nurse/ Midwife Manager	23.6%	23.3%	20.2%	21.6%	22.5%	21.3%	21.5%
Advanced Nurse/ Midwife Practitioner		0.3%		1.0%	1.4%	1.7%	1.7%
Clinical Nurse/ Midwife Specialist					0.2%	0.2%	0.5%
Nurse/ Midwife Specialist & AN/MP		0.3%		1.0%	1.7%	1.9%	2.2%
Staff Nurse [Intellectual Disability]				0.2%			
Staff Nurse [Psychiatric]	0.4%	0.2%	0.2%	0.4%	0.2%	0.2%	0.2%
Staff Nurses [General/ Children's]	76.0%	76.2%	79.6%	76.8%	75.6%	76.3%	75.9%
Staff Nurse/ Staff Midwife	76.4%	76.5%	79.8%	77.4%	75.9%	76.5%	76.1%
Nursing Education/Clinical						0.2%	0.2%
Nursing/ Midwifery other						0.2%	0.2%
Nursing & Midwifery	23.8%	23.7%	21.8%	23.0%	22.4%	21.9%	21.9%
Occupational Therapists	41.2%	40.9%	40.5%	55.3%	35.0%	33.9%	33.7%
Physiotherapists					2.2%	6.3%	6.2%
Speech & Language Therapists	3.8%	4.0%	4.2%				
Therapy Professions	45.0%	44.9%	44.7%	55.3%	37.2%	40.3%	39.9%
Radiographers	7.3%	7.0%	8.1%	7.0%	4.2%	4.4%	5.0%
Health Science/ Diagnostics	7.3%	7.0%	8.1%	7.0%	4.2%	4.4%	5.0%
Social Workers	47.7%	48.1%	47.2%	37.7%	58.6%	55.3%	55.1%
Health & Social Care Professionals	1.2%	1.2%	1.0%	1.2%	1.1%	1.6%	1.6%
Executive Management					0.9%	0.9%	0.9%
Senior Management (VIII & GM)	4.9%	5.0%	3.5%	3.5%	6.5%	6.6%	6.5%
Management (VIII & above)	4.9%	5.0%	3.5%	3.5%	7.4%	7.5%	7.4%
Administrative/ Supervisory (V to VII)	6.9%	6.8%	7.5%	8.8%	13.3%	14.3%	14.3%
Clerical (III & IV)	88.2%	88.2%	89.0%	87.7%	79.3%	78.2%	78.3%
Management & Administrative	4.8%	4.9%	4.8%	4.8%	4.7%	5.7%	5.7%
Support	94.8%	94.8%	93.9%	93.9%	94.6%	94.5%	94.9%

Sep 2020 (Dec 2018 figure: 1,782)	WTE Dec 2015	WTE Dec 2016	WTE Dec 2017	WTE Dec 2018	WTE Dec 2019	WTE Aug 2020	WTE Sep 2020
Older People	1,650	1,645	1,780	1,782	1,836	1,891	1,890
Maintenance/ Technical	5.2%	5.2%	6.1%	6.1%	5.4%	5.5%	5.1%
General Support	8.1%	8.1%	7.4%	7.4%	7.2%	6.5%	6.5%
HCA, Nurse's Aide, etc.	52.1%	53.6%	49.1%	50.0%	49.2%	53.3%	52.0%
Health & Social Care Assistants	0.5%	0.4%	0.4%	0.4%	0.4%	0.4%	0.4%
Health Care Assistants	52.6%	54.0%	49.5%	50.4%	49.7%	53.7%	52.4%
Care, other	2.6%	2.9%	2.6%	2.7%	2.5%	2.3%	2.3%
Home Help	44.7%	43.1%	47.9%	46.8%	47.9%	43.9%	45.3%
Patient & Client Care	61.1%	61.2%	64.2%	62.8%	61.0%	63.4%	63.4%
Total	100 %	100 %	100 %	100 %	100 %	100 %	100%

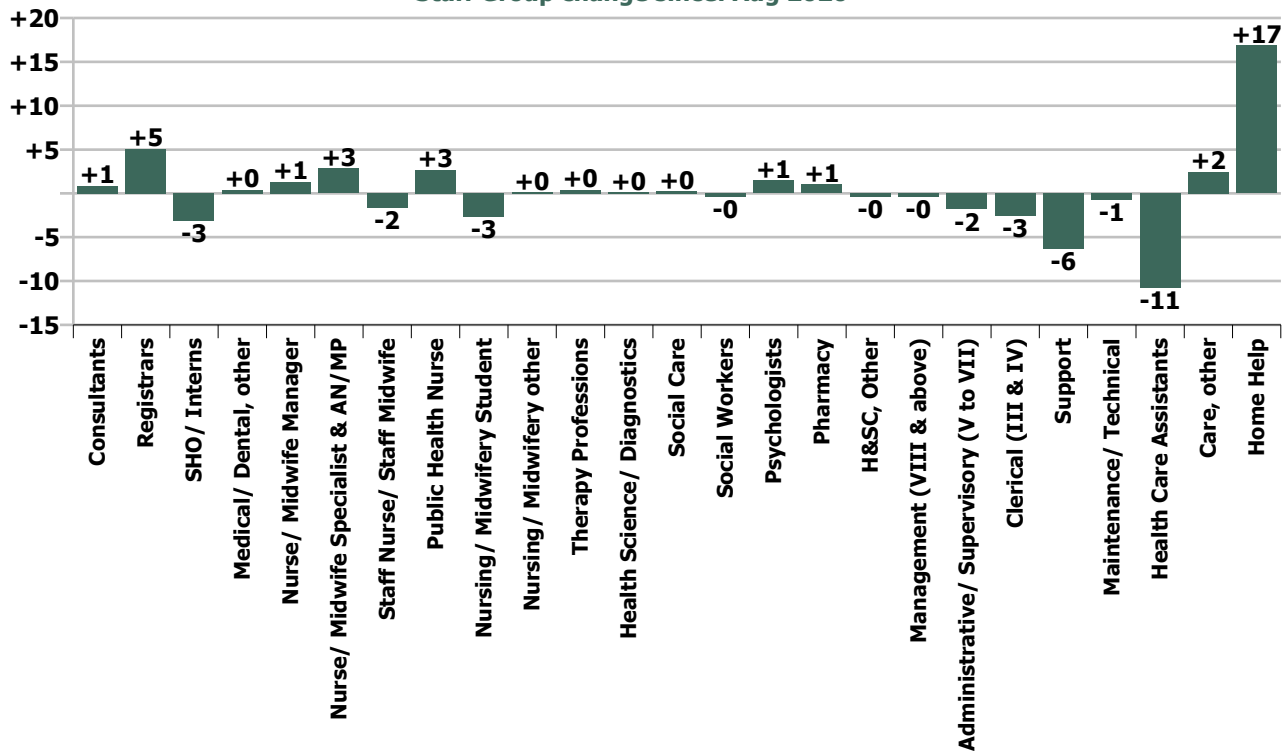
Summary Staff Movement: September 2020

Month-on-month Summary																												
WTE change since Aug 20	% change since Aug 20	overall	Consultants	Registrars	SHO/ Interns	Medical/ Dental, other	Medical & Dental	Nurse/ Midwife Manager	Nurse/ Midwife & Specialist & AN/MP	Staff Nurse/ Staff Midwife	Public Health Nurse	Nursing/ Midwifery Student	Nursing/ Midwifery other	Nursing & Midwifery	Therapy Professions	Health Science/ Diagnostics	Social Care	Social Workers	Psychologists	Pharmacy	H&SC, Other	Health & Social Care Professionals	Management (VIII & above)	Administrativ e/ Supervisory (V to VII)	Clerical (III & IV)	Management & Administrativ e	General Support	Patient & Client Care
Overall	+0.1%	+5	+0.9	+5.1	-3.1	+0.4	+3.2	+1.3	+2.8	-1.7	+2.7	-2.7	+0.2	+2.6	+0.4	+0.1	+0.2	-0.4	+1.5	+1.0	-0.4	+2.4	-0.4	-1.8	-2.5	-4.7	-7.0	+8.5
Community Health & Wellbeing	-5.5%	-1																					0.0	-0.7	-0.0	-0.8		0.0
Mental Health	+0.5%	+5	+0.9	+5.1	-3.2		+2.9	+0.2	+2.0	+3.2		-0.3	0.0	+5.1	-1.6		-0.1	+0.1	+0.0	+0.0	+0.9	-0.6	0.0	-0.1	-1.3	-1.5	+0.1	-0.7
Primary Care	-0.2%	-2	-0.0	-0.0	+0.0	+0.4	+0.4	-2.2	+0.2	-2.2	+2.7	0.0	0.0	-1.5	+3.0	-0.1		+1.0	-2.4	+1.0	-0.5	+2.0	+0.2	-0.8	-2.2	-2.8	-3.3	+2.9
Disabilities	+0.2%	+4				0.0	0.0	+2.5	-0.5	-1.8		-2.4	+0.1	-1.9	-1.2		+0.3	-1.8	+3.9		-0.8	+0.3	-0.6	-0.2	+0.0	-0.8	-1.2	+7.3
Older People	-0.0%	-1				0.0	0.0	+0.8	+1.0	-0.9			0.0	+1.0	+0.2	+0.2		+0.3				+0.7	0.0	+0.1	+1.0	+1.2	-2.6	-1.0
Social Care	+0.1%	+3				0.0	0.0	+3.3	+0.6	-2.6		-2.4	+0.1	-1.0	-1.0	+0.2	+0.3	-1.5	+3.9		-0.8	+1.0	-0.6	-0.1	+1.1	+0.4	-3.8	+6.3
Change	+5.1	+0.1%	+2.4%	+7.7%	-11.9%	+0.6%	+1.7%	+0.4%	+2.6%	-0.2%	+1.8%	-4.0%	+2.0%	+0.2%	+0.1%	+2.3%	+2.0%	-0.5%	+2.4%	+66.5%	-1.4%	+0.5%	-0.6%	-1.1%	-0.5%	-0.7%	-2.0%	+0.4%

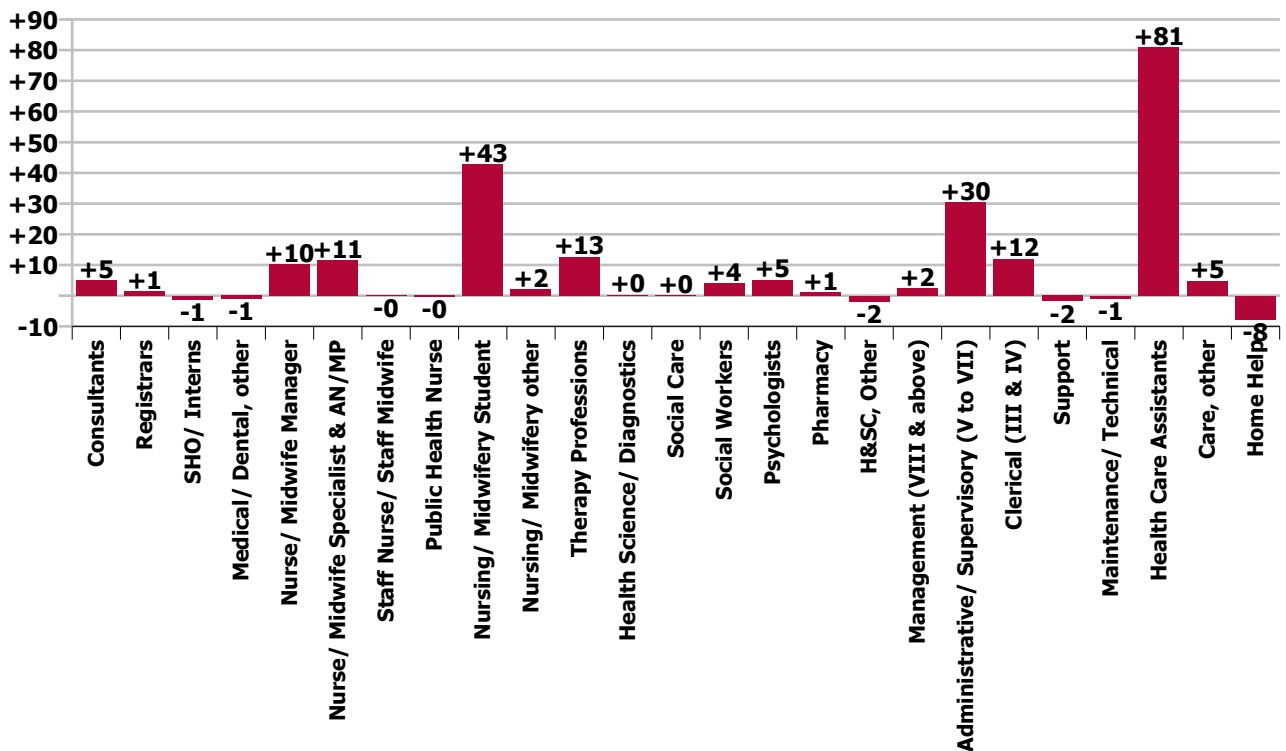
Year-on-year Summary																												
WTE change since Sep 19	% change since Sep 19	overall	Consultants	Registrars	SHO/ Interns	Medical/ Dental, other	Medical & Dental	Nurse/ Midwife Manager	Nurse/ Midwife Specialist & AN/MP	Staff Nurse/ Staff Midwife	Public Health Nurse	Nursing/ Midwifery Student	Nursing/ Midwifery other	Nursing & Midwifery	Therapy Professions	Health Science/ Diagnostics	Social Care	Social Workers	Psychologists	Pharmacy	H&SC, Other	Health & Social Care Professionals	Management (VIII & above)	Administrative/ Supervisory (V to VII)	Clerical (III & IV)	Management & Administrative	General Support	Patient & Client Care
Overall	+3.9%	+211	+5.1	+1.3	-1.3	-1.1	+4.0	+10.2	+11.4	-0.1	-0.4	+42.8	+2.1	+66.0	+12.6	+0.2	+0.1	+4.0	+5.2	+1.1	-1.9	+21.4	+2.4	+30.4	+11.9	+44.7	-2.8	+78.0
Community Health & Wellbeing	-5.5%	-1																					+1.0	+8.4	+3.1	+12.4		+0.7
Mental Health	+0.5%	+5	+4.4	+1.2	-1.3		+4.3	+3.7	+1.5	-4.6		+18.3	+0.9	+19.9	+3.0		-0.6	-1.2	+3.3	+0.1	+0.8	+5.4	+1.7	+3.2	+2.2	+7.0	+1.3	-1.1
Primary Care	-0.2%	-2	+0.7	+0.1	0.0	-2.4	-1.5	+0.8	+4.5	+11.9	-0.4	-1.6	0.0	+15.2	+8.5	-0.0		+2.5	-2.9	+1.0	+0.1	+9.1	-0.1	+11.3	+3.3	+14.5	+6.1	+13.2
Disabilities	+3.9%	+58.7				+0.0	+0.0	+11.3	+2.4	-12.0		+26.0	+0.2	+28.0	+1.4		+0.7	+3.6	+4.8		-2.9	+7.6	-1.3	+7.2	+4.9	+10.8	-0.2	+12.5
Older People	+2.5%	+46.0				+1.2	+1.2	-5.6	+2.9	+4.6			+1.0	+2.9	-0.2	+0.3		-0.8				-0.7	+1.0	+0.5	-1.5	-0.0	-10.0	+52.6
Social Care	+0.1%	+3				+1.2	+1.2	+5.7	+5.4	-7.4		+26.0	+1.2	+30.9	+1.1	+0.3	+0.7	+2.8	+4.8		-2.9	+6.9	-0.3	+7.7	+3.4	+10.8	-10.2	+65.1
Change	+211.2	+3.9%	+15.6%	+1.9%	-5.3%	-1.7%	+2.1%	+2.9%	+11.4%	-0.0%	-0.2%	+203.4%	+36.7%	+4.0%	+4.0%	+3.9%	+1.2%	+4.9%	+9.1%	+72.0%	-6.1%	+4.2%	+3.9%	+23.9%	+2.7%	+7.0%	-0.8%	+3.7%



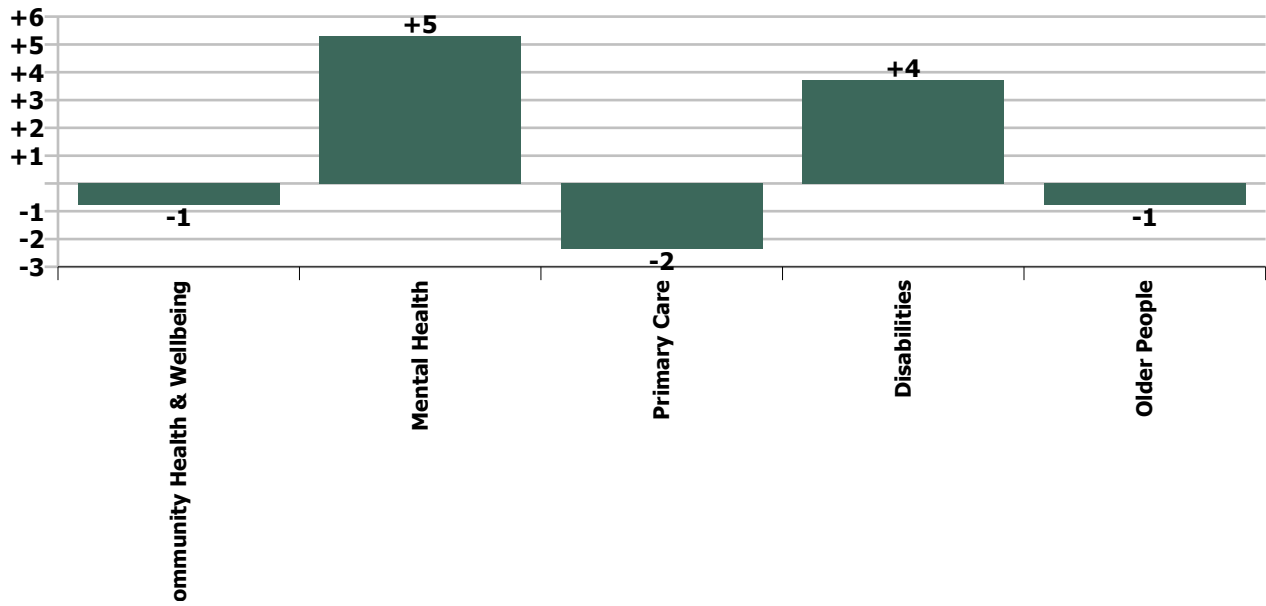
Staff Group change since: Aug 2020



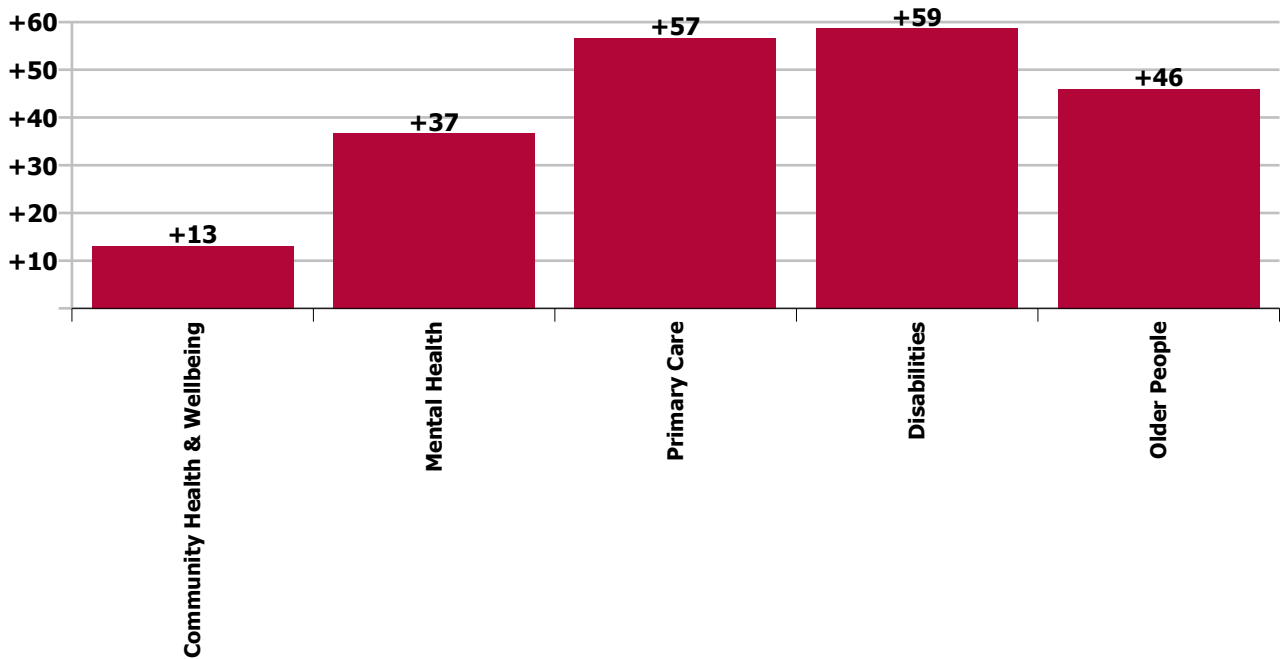
Staff Group change since: Sep 2019



Care Group change since: Aug 2020



Care Group change since: Sep 2019



Longitudinal Employment Levels by Grade Group - Oct 2013 to Sep 2020

Sep 2020 (Dec 2015 figure: 5,177)	WTE Sep 2020	WTE change since Dec 15	WTE change since Dec 16	WTE change since Dec 17	WTE change since Dec 18	WTE change since Dec 18	WTE change since Aug 20	% change since Dec 15	% change since Dec 16	% change since Dec 17	% change since Dec 18	% change since Dec 18	% change since Aug 20
Overall	5,670	+493	+390	+302	+234	+234	+5	+9.5%	+7.4%	+5.6%	+4.3%	+4.3%	+0.1%
Consultant Medicine	3	+0	+0	+0	+0	+0	-0	+10.3%	+10.3%	+10.3%	+13.7%	+13.7%	-0.9%
Consultant Psychiatry	34	+8	+7	+7	+4	+4	+1	+33.1%	+25.5%	+24.0%	+14.1%	+14.1%	+2.7%
Consultants	37	+9	+7	+7	+5	+5	+1	+30.7%	+24.0%	+22.7%	+14.1%	+14.1%	+2.4%
Registrar	64	+18	+24	+18	+12	+12	+5	+38.5%	+59.7%	+38.4%	+24.0%	+24.0%	+8.4%
Senior Registrar	8	+4	+3	+4	-3	-3	+0	+89.9%	+50.8%	+88.5%	-29.9%	-29.9%	+1.6%
Specialist Registrar				-1	-1	-1		-100.0%	-100.0%	-100.0%	-100.0%	-100.0%	-100.0%
Registrars	71	+21	+26	+20	+8	+8	+5	+42.5%	+58.8%	+39.6%	+12.9%	+12.9%	+7.7%
Senior House Officer	23	-3	-7	-4	-3	-3	-3	-10.0%	-22.1%	-15.2%	-9.8%	-9.8%	-11.9%
SHO/ Interns	23	-3	-7	-4	-3	-3	-3	-10.0%	-22.1%	-15.2%	-9.8%	-9.8%	-11.9%
Dentists	28	-0	+0	+1	+0	+0	-1	-0.6%	+1.0%	+2.7%	+0.8%	+0.8%	-1.8%
Other Medical	37	+0	+1	-0	+2	+2	+1	+1.1%	+2.3%	-0.4%	+6.9%	+6.9%	+2.5%
Medical/ Dental, other	66	+0	+1	+1	+3	+3	+0	+0.4%	+1.7%	+0.9%	+4.2%	+4.2%	+0.6%
Medical & Dental	197	+28	+28	+24	+13	+13	+3	+16.4%	+16.7%	+13.6%	+7.0%	+7.0%	+1.7%
Clinical Nurse/ Midwife Manager	280	+14	+11	+22	+13	+13	+2	+5.1%	+4.2%	+8.6%	+4.9%	+4.9%	+0.7%
Director Nursing/Midwifery, Assistant	55	+5	+3	+6	+4	+4	+0	+9.8%	+5.6%	+12.3%	+7.1%	+7.1%	+0.3%
Director of Nursing/Midwifery	26	+1	+0	+0	+2	+2	-1	+2.6%	+0.2%	+0.9%	+9.5%	+9.5%	-3.1%
Nurse/ Midwife Manager	360	+19	+14	+28	+19	+19	+1	+5.6%	+4.1%	+8.5%	+5.6%	+5.6%	+0.4%
Advanced Nurse/ Midwife Practitioner	11	+9	+8	+9	+4	+4	+0	+445.0%	+263.3%	+445.0%	+56.2%	+56.2%	+2.3%
Clinical Nurse/ Midwife Specialist	101	+19	+15	+11	+12	+12	+3	+23.6%	+18.0%	+11.9%	+13.7%	+13.7%	+2.6%
Nurse/ Midwife Specialist & AN/MP	112	+28	+23	+20	+16	+16	+3	+33.6%	+26.3%	+21.3%	+16.8%	+16.8%	+2.6%
Graduate Nursing/ Midwifery		-11						-100.0%	-100.0%	-100.0%	-100.0%	-100.0%	-100.0%
Staff Nurse [Intellectual Disability]	219	+43	+19	+19	+11	+11	-1	+24.7%	+9.6%	+9.5%	+5.1%	+5.1%	-0.3%
Staff Nurse [Psychiatric]	290	-27	-38	-28	-15	-15	+3	-8.4%	-11.6%	-8.7%	-4.9%	-4.9%	+1.1%
Staff Nurses [General/ Children's]	514	+18	-1	-10	-13	-13	-4	+3.7%	-0.2%	-2.0%	-2.5%	-2.5%	-0.8%
Staff Nurse/ Staff Midwife	1,023	+24	-20	-19	-18	-18	-2	+2.4%	-1.9%	-1.8%	-1.7%	-1.7%	-0.2%
Public Health Nurse	153		+7	+0	-2	-2	+3		+4.5%	+0.1%	-1.5%	-1.5%	+1.8%
Public Health Nurse	153		+7	+0	-2	-2	+3		+4.5%	+0.1%	-1.5%	-1.5%	+1.8%
Pre-registration Nurse/ Midwife Intern	5	-3	+4	+2	-6	-6	+5	-38.0%	+254.7%	+40.4%	-50.8%	-50.8%	-100.0%
Pre-registration Nurse Intern (COVID-19)	46	+46	+46	+46	+46	+46	-8	-100.0%	-100.0%	-100.0%	-100.0%	-100.0%	-14.7%
Post-registration Nurse/ Midwife Student	1	-6	-6	-6	-6	-6		-85.7%	-85.7%	-85.7%	-85.7%	-85.7%	
Nursing/ Midwifery awaiting registration	11	+11	+11	+11	+10	+10		-100.0%	-100.0%	-100.0%	+1000.0%	+1000.0%	
Nursing/ Midwifery Student	64	+48	+55	+53	+45	+45	-3	+309.4%	+650.4%	+491.1%	+238.9%	+238.9%	-4.0%
Nursing/ Midwifery other	8	+3	+3	+3	+3	+3	+0	+58.2%	+65.2%	+61.5%	+61.5%	+61.5%	+2.0%

Sep 2020 (Dec 2015 figure: 5,177)	WTE Sep 2020	WTE change since Dec 15	WTE change since Dec 16	WTE change since Dec 17	WTE change since Dec 18	WTE change since Dec 18	WTE change since Aug 20	% change since Dec 15	% change since Dec 16	% change since Dec 17	% change since Dec 18	% change since Dec 18	% change since Aug 20
Overall	5,670	+493	+390	+302	+234	+234	+5	+9.5%	+7.4%	+5.6%	+4.3%	+4.3%	+0.1%
Nursing & Midwifery	1,720	+122	+83	+85	+63	+63	+3	+7.7%	+5.1%	+5.2%	+3.8%	+3.8%	+0.2%
Dietitians	15	-1	+1	-1	-3	-3	-0	-4.0%	+4.5%	-5.7%	-14.4%	-14.4%	-0.1%
Occupational Therapists	128	+14	+8	+14	+4	+4	-2	+12.4%	+7.0%	+12.4%	+3.4%	+3.4%	-1.2%
Orthoptists	3	-0	+1	+0	+0	+0		-3.1%	+40.5%	+7.7%	+6.4%	+6.4%	
Physiotherapists	95	+14	+4	+4	+1	+1	+1	+17.9%	+4.1%	+4.2%	+0.8%	+0.8%	+0.7%
Podiatrists & Chiropodists	11	+3	+1	+2	+1	+1	-0	+34.0%	+7.5%	+23.2%	+15.2%	+15.2%	-1.0%
Speech & Language Therapists	75	+11	+11	+2	+4	+4	+1	+16.5%	+16.6%	+3.0%	+6.2%	+6.2%	+1.8%
Therapy Professions	326	+41	+25	+21	+8	+8	+0	+14.4%	+8.3%	+7.0%	+2.6%	+2.6%	+0.1%
Audiology	5	-0	-0	-0	-0	-0	-0	-3.7%	-3.0%	-1.9%	-4.4%	-4.4%	-0.9%
Radiographers	1	+0	+0	+0	+0	+0	+0	+2.8%	+6.5%	+2.1%	+2.8%	+2.8%	+15.6%
Health Science/ Diagnostics	7	-0	-0	-0	-0	-0	+0	-2.3%	-1.0%	-1.0%	-2.9%	-2.9%	+2.3%
Social Care	12	-5	-2	-0	+0	+0	+0	-30.2%	-11.8%	-1.8%	+0.0%	+0.0%	+2.0%
Social Workers	87	+10	+7	+8	+9	+9	-0	+13.4%	+8.3%	+9.5%	+11.6%	+11.6%	-0.5%
Psychologists	62	+10	+8	+5	+1	+1	+1	+18.0%	+14.0%	+8.3%	+1.8%	+1.8%	+2.4%
Pharmacy	3	+1	+1	+1	+1	+1	+1	+72.0%	+72.0%	+72.0%	+61.3%	+61.3%	+66.5%
Counsellor Therapists	21	+1	+3	+1	+2	+2	+1	+6.9%	+18.6%	+4.3%	+9.6%	+9.6%	+2.8%
Dental Hygienists	5	+0	+0	-0	+0	+0	-0	+0.4%	+1.9%	-7.2%	+2.9%	+2.9%	-0.6%
Other Health & Social Care	3	-5	-5	-5	-4	-4	-1	-61.0%	-58.5%	-62.8%	-55.4%	-55.4%	-23.5%
H&SC, Other	30	-4	-1	-5	-2	-2	-0	-10.9%	-3.6%	-14.3%	-6.3%	-6.3%	-1.4%
Health & Social Care Professionals	526	+53	+38	+30	+17	+17	+2	+11.2%	+7.7%	+6.0%	+3.4%	+3.4%	+0.5%
Executive Management	7	+4	-0	-1	-1	-1	-0	+128.7%	-2.0%	-14.3%	-12.7%	-12.7%	-2.0%
Senior Management (VIII & GM)	56	+16	+17	+16	+7	+7	-0	+40.4%	+43.0%	+39.5%	+14.8%	+14.8%	-0.4%
Management (VIII & above)	63	+20	+17	+15	+6	+6	-0	+46.5%	+36.3%	+30.6%	+11.0%	+11.0%	-0.6%
Middle Management (V-VII)	157	+62	+61	+50	+43	+43	-2	+66.3%	+63.7%	+47.2%	+37.7%	+37.7%	-1.1%
Other Administrative	1												
Administrative/ Supervisory (V to VII)	158	+62	+61	+50	+43	+43	-2	+65.6%	+63.0%	+46.8%	+37.4%	+37.4%	-1.1%
General Administrative (III & IV)	459	+29	+19	+22	+9	+9	-3	+6.7%	+4.3%	+4.9%	+2.0%	+2.0%	-0.5%
Clerical (III & IV)	459	+29	+19	+22	+9	+9	-3	+6.7%	+4.3%	+4.9%	+2.0%	+2.0%	-0.5%
Management & Administrative	680	+111	+97	+87	+58	+58	-5	+19.5%	+16.6%	+14.6%	+9.4%	+9.4%	-0.7%
Catering	66	+12	+10	+7	+7	+7	-1	+22.6%	+17.5%	+12.2%	+11.6%	+11.6%	-1.2%
Household Services	204	-42	-29	-13	-12	-12	-6	-17.2%	-12.6%	-6.1%	-5.5%	-5.5%	-3.0%
Other Support	29	+8	+7	+1	-5	-5	+1	+39.3%	+32.2%	+2.2%	-14.4%	-14.4%	+2.7%
Portering	8	-1	-1	+0	+0	+0		-11.4%	-11.4%	+0.7%	+1.3%	+1.3%	
Support	307	-23	-13	-5	-10	-10	-6	-6.9%	-4.2%	-1.8%	-3.1%	-3.1%	-2.0%
Maintenance	36	-4	-2	-1	+2	+2	-1	-10.9%	-4.5%	-3.4%	+6.7%	+6.7%	-1.9%

Sep 2020 (Dec 2015 figure: 5,177)	WTE Sep 2020	WTE change since Dec 15	WTE change since Dec 16	WTE change since Dec 17	WTE change since Dec 18	WTE change since Dec 18	WTE change since Aug 20	% change since Dec 15	% change since Dec 16	% change since Dec 17	% change since Dec 18	% change since Dec 18	% change since Aug 20
Overall	5,670	+493	+390	+302	+234	+234	+5	+9.5%	+7.4%	+5.6%	+4.3%	+4.3%	+0.1%
Maintenance/ Technical	36	-4	-2	-1	+2	+2	-1	-10.9%	-4.5%	-3.4%	+6.7%	+6.7%	-1.9%
General Support	343	-27	-15	-7	-8	-8	-7	-7.4%	-4.2%	-1.9%	-2.2%	-2.2%	-2.0%
HCA, Nurse's Aide, etc.	1,480	+195	+129	+74	+64	+64	-12	+15.2%	+9.6%	+5.3%	+4.5%	+4.5%	-0.8%
Health & Social Care Assistants	28	+13	+13	+11	+1	+1	+1	+81.3%	+91.5%	+67.7%	+3.8%	+3.8%	+4.7%
Health Care Assistants	1,509	+208	+143	+85	+65	+65	-11	+16.0%	+10.4%	+6.0%	+4.5%	+4.5%	-0.7%
Care, other	136	+7	+5	+1	+5	+5	+2	+5.0%	+3.8%	+1.0%	+3.4%	+3.4%	+1.8%
Home Help	559	-8	+12	-3	+21	+21	+17	-1.5%	+2.2%	-0.5%	+4.0%	+4.0%	+3.1%
Patient & Client Care	2,204	+206	+160	+84	+91	+91	+9	+10.3%	+7.8%	+4.0%	+4.3%	+4.3%	+0.4%

Source: Health Service Personnel Census

Longitudinal Employment Levels by Care Group - Oct 2013 to Sep 2020

Community Health & Wellbeing

Sep 2020 (figure:)	WTE Sep 2020	WTE change since	WTE change since	WTE change since	WTE change since	WTE change since	WTE change since Aug 20	% change since	% change since	% change since	% change since	% change since	% change since Aug 20
Overall	13	+13	+13	+13	+13	+13	-1	-100.0%	-100.0%	-100.0%	-100.0%	-100.0%	-5.5%
Management & Administrative	12	+12	+12	+12	+12	+12	-1	-1.0%	-1.0%	-1.0%	-1.0%	-1.0%	-0.1%
Management (VIII & above)	1	+1	+1	+1	+1	+1		-1.0%	-1.0%	-1.0%	-1.0%	-1.0%	+0.0%
Administrative/ Supervisory (V to VII)	8	+8	+8	+8	+8	+8	-1	-1.0%	-1.0%	-1.0%	-1.0%	-1.0%	-0.1%
Clerical (III & IV)	3	+3	+3	+3	+3	+3	-0	-1.0%	-1.0%	-1.0%	-1.0%	-1.0%	-0.0%
Patient & Client Care	1	+1	+1	+1	+1	+1		-1.0%	-1.0%	-1.0%	-1.0%	-1.0%	+0.0%
Care, other	1	+1	+1	+1	+1	+1		-1.0%	-1.0%	-1.0%	-1.0%	-1.0%	+0.0%

Source: Health Service Personnel Census

Mental Health

Sep 2020 (Dec 2015 figure: 931)	WTE Sep 2020	WTE change since Dec 15	WTE change since Dec 16	WTE change since Dec 17	WTE change since Dec 18	WTE change since Dec 18	WTE change since Aug 20	% change since Dec 15	% change since Dec 16	% change since Dec 17	% change since Dec 18	% change since Dec 18	% change since Aug 20
Overall	984	+54	+36	+42	+43	+43	+5	+5.8%	+3.8%	+4.5%	+4.6%	+4.6%	+0.5%
Medical & Dental	83	+16	+11	+11	+6	+6	+3	+0.2%	+0.2%	+0.2%	+0.1%	+0.1%	+0.0%
Consultants	34	+9	+8	+8	+5	+5	+1	+0.4%	+0.3%	+0.3%	+0.2%	+0.2%	+0.0%
Registrars	27	+9	+11	+8	+3	+3	+5	+0.5%	+0.6%	+0.4%	+0.1%	+0.1%	+0.2%
SHO/ Interns	22	-2	-8	-4	-3	-3	-3	-0.1%	-0.3%	-0.2%	-0.1%	-0.1%	-0.1%
Nursing & Midwifery	508	+22	+7	+14	+23	+23	+5	+0.0%	+0.0%	+0.0%	+0.0%	+0.0%	+0.0%
Nurse/ Midwife Manager	124	+9	+6	+6	+7	+7	+0	+0.1%	+0.0%	+0.1%	+0.1%	+0.1%	+0.0%
Nurse/ Midwife Specialist & AN/MP	68	+15	+10	+7	+4	+4	+2	+0.3%	+0.2%	+0.1%	+0.1%	+0.1%	+0.0%
Staff Nurse/ Staff Midwife	289	-23	-36	-27	-14	-14	+3	-0.1%	-0.1%	-0.1%	-0.0%	-0.0%	+0.0%
Nursing/ Midwifery Student	26	+21	+26	+26	+25	+25	-0	+3.7%	-1.0%	-1.0%	+25.2%	+25.2%	-0.0%
Nursing/ Midwifery other	1	+1	+1	+1	+1	+1		-1.0%	-1.0%	-1.0%	-1.0%	-1.0%	+0.0%
Health & Social Care Professionals	113	+6	+6	+7	+1	+1	-1	+0.1%	+0.1%	+0.1%	+0.0%	+0.0%	-0.0%
Therapy Professions	34	+4	+2	+3	+0	+0	-2	+0.1%	+0.1%	+0.1%	+0.0%	+0.0%	-0.0%
Social Care	3	-2	-1	-1	-1	-1	-0	-0.4%	-0.3%	-0.3%	-0.2%	-0.2%	-0.0%
Social Workers	38	+0	+0	+2	+0	+0	+0	+0.0%	+0.0%	+0.1%	+0.0%	+0.0%	+0.0%
Psychologists	23	+3	+2	+2	-0	-0	+0	+0.2%	+0.1%	+0.1%	-0.0%	-0.0%	+0.0%
Pharmacy	1	+0	+0	+0	-0	-0	+0	+0.1%	+0.1%	+0.1%	-0.0%	-0.0%	+0.0%
H&SC, Other	14	+1	+3	+2	+2	+2	+1	+0.1%	+0.2%	+0.1%	+0.1%	+0.1%	+0.1%
Management & Administrative	122	+26	+30	+23	+17	+17	-1	+0.3%	+0.3%	+0.2%	+0.2%	+0.2%	-0.0%
Management (VIII & above)	8	+4	+5	+4	+4	+4		+0.9%	+1.6%	+0.9%	+0.9%	+0.9%	+0.0%
Administrative/ Supervisory (V to VII)	30	+17	+17	+14	+11	+11	-0	+1.2%	+1.3%	+0.9%	+0.5%	+0.5%	-0.0%
Clerical (III & IV)	84	+6	+9	+6	+3	+3	-1	+0.1%	+0.1%	+0.1%	+0.0%	+0.0%	-0.0%
General Support	81	-17	-12	-5	-2	-2	+0	-0.2%	-0.1%	-0.1%	-0.0%	-0.0%	+0.0%
Support	64	-15	-11	-5	-3	-3	+0	-0.2%	-0.1%	-0.1%	-0.0%	-0.0%	+0.0%
Maintenance/ Technical	17	-2	-1	+0	+1	+1	-0	-0.1%	-0.1%	+0.0%	+0.1%	+0.1%	-0.0%
Patient & Client Care	77	-1	-6	-9	-3	-3	-1	-0.0%	-0.1%	-0.1%	-0.0%	-0.0%	-0.0%
Health Care Assistants	66	-1	-7	-9	-1	-1	-1	-0.0%	-0.1%	-0.1%	-0.0%	-0.0%	-0.0%
Care, other	11	+1	+1	+0	-2	-2	+1	+0.1%	+0.1%	+0.0%	-0.1%	-0.1%	+0.1%

Source: Health Service Personnel Census

Primary Care

Sep 2020 (Dec 2015 figure: 1,222)	WTE Sep 2020	WTE change since Dec 15	WTE change since Dec 16	WTE change since Dec 17	WTE change since Dec 18	WTE change since Dec 18	WTE change since Aug 20	% change since Dec 15	% change since Dec 16	% change since Dec 17	% change since Dec 18	% change since Dec 18	% change since Aug 20
Overall	1,237	+14	-20	+48	+4	+4	-2	+1.2%	-1.6%	+4.1%	+0.3%	+0.3%	-0.2%
Medical & Dental	94	+9	+14	+9	+4	+4	+0	+0.1%	+0.2%	+0.1%	+0.0%	+0.0%	+0.0%
Consultants	3	+0	+0	+0	+0	+0	-0	+0.1%	+0.1%	+0.1%	+0.1%	+0.1%	-0.0%
Registrars	44	+12	+16	+12	+5	+5	-0	+0.4%	+0.6%	+0.4%	+0.1%	+0.1%	-0.0%
SHO/ Interns	1	-0	+1				+0	-0.2%	-1.0%	+0.0%	+0.0%	+0.0%	+0.1%
Medical/ Dental, other	45	-3	-3	-3	-1	-1	+0	-0.1%	-0.1%	-0.1%	-0.0%	-0.0%	+0.0%
Nursing & Midwifery	316	+25	+19	+11	+11	+11	-2	+0.1%	+0.1%	+0.0%	+0.0%	+0.0%	-0.0%
Nurse/ Midwife Manager	38	+1	+1	+3	+1	+1	-2	+0.0%	+0.0%	+0.1%	+0.0%	+0.0%	-0.1%
Nurse/ Midwife Specialist & AN/MP	25	+4	+5	+2	+5	+5	+0	+0.2%	+0.3%	+0.1%	+0.3%	+0.3%	+0.0%
Staff Nurse/ Staff Midwife	98	+25	+12	+11	+12	+12	-2	+0.3%	+0.1%	+0.1%	+0.1%	+0.1%	-0.0%
Public Health Nurse	153		+7	+0	-2	-2	+3	+0.0%	+0.0%	+0.0%	-0.0%	-0.0%	+0.0%
Nursing/ Midwifery Student	1	-6	-6	-6	-6	-6		-0.9%	-0.9%	-0.9%	-0.9%	-0.9%	+0.0%
Nursing/ Midwifery other	1	+1	+1	+1	+1	+1		-1.0%	-1.0%	-1.0%	-1.0%	-1.0%	+0.0%
Health & Social Care Professionals	298	+18	-2	-10	-18	-18	+2	+0.1%	-0.0%	-0.0%	-0.1%	-0.1%	+0.0%
Therapy Professions	239	+20	+2	-2	-9	-9	+3	+0.1%	+0.0%	-0.0%	-0.0%	-0.0%	+0.0%
Health Science/ Diagnostics	5	-0	-0	-0	-0	-0	-0	-0.0%	-0.0%	-0.0%	-0.0%	-0.0%	-0.0%
Social Workers	15	-2	-5	-6	-5	-5	+1	-0.1%	-0.2%	-0.3%	-0.3%	-0.3%	+0.1%
Psychologists	30	-1	-1	-2	-4	-4	-2	-0.0%	-0.0%	-0.1%	-0.1%	-0.1%	-0.1%
Pharmacy	2	+1	+1	+1	+1	+1	+1	+1.4%	+1.4%	+1.4%	+1.4%	+1.4%	+1.4%
H&SC, Other	7	+1	+1	-1	-0	-0	-1	+0.1%	+0.1%	-0.1%	-0.0%	-0.0%	-0.1%
Management & Administrative	341	+29	+15	+12	-8	-8	-3	+0.1%	+0.0%	+0.0%	-0.0%	-0.0%	-0.0%
Management (VIII & above)	32	+8	+4	+3	-5	-5	+0	+0.3%	+0.1%	+0.1%	-0.1%	-0.1%	+0.0%
Administrative/ Supervisory (V to VII)	71	+15	+15	+6	+4	+4	-1	+0.3%	+0.3%	+0.1%	+0.1%	+0.1%	-0.0%
Clerical (III & IV)	238	+6	-4	+4	-7	-7	-2	+0.0%	-0.0%	+0.0%	-0.0%	-0.0%	-0.0%
General Support	84	+17	+12	+9	+4	+4	-3	+0.3%	+0.2%	+0.1%	+0.1%	+0.1%	-0.0%
Support	77	+16	+11	+8	+2	+2	-3	+0.3%	+0.2%	+0.1%	+0.0%	+0.0%	-0.0%
Maintenance/ Technical	7	+1	+1	+1	+3	+3		+0.2%	+0.1%	+0.2%	+0.7%	+0.7%	+0.0%
Patient & Client Care	105	-83	-79	+17	+10	+10	+3	-0.4%	-0.4%	+0.2%	+0.1%	+0.1%	+0.0%
Health Care Assistants	47	+19	+16	+17	+8	+8	+2	+0.7%	+0.5%	+0.5%	+0.2%	+0.2%	+0.1%
Care, other	57	-3	-2	-1	+2	+2	+0	-0.1%	-0.0%	-0.0%	+0.0%	+0.0%	+0.0%
Home Help	1	-98	-94	+1	+1	+1	+0	-1.0%	-1.0%	-1.0%	-1.0%	-1.0%	+0.0%

Source: Health Service Personnel Census

Disabilities

Sep 2020 (Dec 2015 figure: 1,374)	WTE Sep 2020	WTE change since Dec 15	WTE change since Dec 16	WTE change since Dec 17	WTE change since Dec 18	WTE change since Dec 18	WTE change since Aug 20	% change since Dec 15	% change since Dec 16	% change since Dec 17	% change since Dec 18	% change since Dec 18	% change since Aug 20
Overall	1,546	+172	+116	+88	+67	+67	+4	+12.5%	+8.1%	+6.1%	+4.5%	+4.5%	+0.2%
Medical & Dental	3	+0						+0.1%	+0.0%	+0.0%	+0.0%	+0.0%	+0.0%
Consultants		-1	-1	-1	-1	-1		-1.0%	-1.0%	-1.0%	-1.0%	-1.0%	-1.0%
Medical/ Dental, other	3	+1	+1	+1	+1	+1		+0.5%	+0.5%	+0.5%	+0.5%	+0.5%	+0.0%
Nursing & Midwifery	482	+55	+32	+34	+26	+26	-2	+0.1%	+0.1%	+0.1%	+0.1%	+0.1%	-0.0%
Nurse/ Midwife Manager	110	+13	+10	+8	+10	+10	+3	+0.1%	+0.1%	+0.1%	+0.1%	+0.1%	+0.0%
Nurse/ Midwife Specialist & AN/MP	9	+0	-0	+1	+2	+2	-0	+0.0%	-0.0%	+0.2%	+0.3%	+0.3%	-0.0%
Staff Nurse/ Staff Midwife	321	+8	-13	-9	-13	-13	-2	+0.0%	-0.0%	-0.0%	-0.0%	-0.0%	-0.0%
Nursing/ Midwifery Student	37	+34	+35	+33	+26	+26	-2	+11.2%	+23.4%	+8.7%	+2.4%	+2.4%	-0.1%
Nursing/ Midwifery other	5	-0	+0	+0	+0	+0	+0	-0.0%	+0.0%	+0.0%	+0.0%	+0.0%	+0.0%
Health & Social Care Professionals	86	+19	+24	+21	+25	+25	+0	+0.3%	+0.4%	+0.3%	+0.4%	+0.4%	+0.0%
Therapy Professions	40	+14	+17	+17	+17	+17	-1	+0.5%	+0.7%	+0.7%	+0.7%	+0.7%	-0.0%
Social Care	9	-3	-1	+1	+1	+1	+0	-0.2%	-0.1%	+0.1%	+0.1%	+0.1%	+0.0%
Social Workers	18	+5	+5	+4	+6	+6	-2	+0.4%	+0.3%	+0.3%	+0.5%	+0.5%	-0.1%
Psychologists	10	+8	+7	+5	+6	+6	+4	+3.8%	+2.6%	+1.0%	+1.4%	+1.4%	+0.7%
H&SC, Other	9	-5	-4	-6	-3	-3	-1	-0.4%	-0.3%	-0.4%	-0.3%	-0.3%	-0.1%
Management & Administrative	97	+16	+12	+16	+15	+15	-1	+0.2%	+0.1%	+0.2%	+0.2%	+0.2%	-0.0%
Management (VIII & above)	14	+3	+4	+2	+1	+1	-1	+0.3%	+0.3%	+0.2%	+0.1%	+0.1%	-0.0%
Administrative/ Supervisory (V to VII)	33	+13	+11	+13	+12	+12	-0	+0.6%	+0.5%	+0.7%	+0.6%	+0.6%	-0.0%
Clerical (III & IV)	50	+0	-2	+1	+1	+1	+0	+0.0%	-0.0%	+0.0%	+0.0%	+0.0%	+0.0%
General Support	55	-18	-5	-3	-2	-2	-1	-0.2%	-0.1%	-0.1%	-0.0%	-0.0%	-0.0%
Support	49	-15	-4	-2	-2	-2	-1	-0.2%	-0.1%	-0.0%	-0.0%	-0.0%	-0.0%
Maintenance/ Technical	6	-3	-1	-1				-0.3%	-0.1%	-0.1%	+0.0%	+0.0%	+0.0%
Patient & Client Care	823	+99	+53	+21	+3	+3	+7	+0.1%	+0.1%	+0.0%	+0.0%	+0.0%	+0.0%
Health Care Assistants	768	+94	+49	+17	-5	-5	+5	+0.1%	+0.1%	+0.0%	-0.0%	-0.0%	+0.0%
Care, other	40	+7	+6	+3	+6	+6	+1	+0.2%	+0.2%	+0.1%	+0.2%	+0.2%	+0.0%
Home Help	15	-2	-2	+1	+2	+2	+1	-0.1%	-0.1%	+0.1%	+0.2%	+0.2%	+0.1%

Source: Health Service Personnel Census

Older People

Sep 2020 (Dec 2015 figure: 1,650)	WTE Sep 2020	WTE change since Dec 15	WTE change since Dec 16	WTE change since Dec 17	WTE change since Dec 18	WTE change since Dec 18	WTE change since Aug 20	% change since Dec 15	% change since Dec 16	% change since Dec 17	% change since Dec 18	% change since Dec 18	% change since Aug 20
Overall	1,890	+240	+245	+110	+108	+108	-1	+14.6%	+14.9%	+6.2%	+6.0%	+6.0%	-0.0%
Medical & Dental	17	+3	+3	+3	+3	+3		+0.2%	+0.2%	+0.2%	+0.2%	+0.2%	+0.0%
Medical/ Dental, other	17	+3	+3	+3	+3	+3	-0	+0.2%	+0.2%	+0.2%	+0.2%	+0.2%	-0.0%
Nursing & Midwifery	414	+21	+24	+26	+3	+3	+1	+0.1%	+0.1%	+0.1%	+0.0%	+0.0%	+0.0%
Nurse/ Midwife Manager	89	-4	-2	+11			+1	-0.0%	-0.0%	+0.1%	+0.0%	+0.0%	+0.0%
Nurse/ Midwife Specialist & AN/MP	9	+9	+8	+9	+5	+5	+1	-1.0%	+7.9%	-1.0%	+1.2%	+1.2%	+0.1%
Staff Nurse/ Staff Midwife	315	+15	+17	+6	-3	-3	-1	+0.0%	+0.1%	+0.0%	-0.0%	-0.0%	-0.0%
Nursing/ Midwifery other	1	+1	+1	+1	+1	+1		-1.0%	-1.0%	-1.0%	-1.0%	-1.0%	+0.0%
Health & Social Care Professionals	30	+10	+10	+12	+9	+9	+1	+0.5%	+0.5%	+0.7%	+0.4%	+0.4%	+0.0%
Therapy Professions	12	+3	+3	+4	+0	+0	+0	+0.3%	+0.3%	+0.5%	+0.0%	+0.0%	+0.0%
Health Science/ Diagnostics	1	+0	+0	+0	+0	+0	+0	+0.0%	+0.1%	+0.0%	+0.0%	+0.0%	+0.2%
Social Workers	16	+7	+7	+8	+9	+9	+0	+0.7%	+0.7%	+0.9%	+1.1%	+1.1%	+0.0%
Management & Administrative	107	+27	+27	+22	+22	+22	+1	+0.3%	+0.3%	+0.3%	+0.3%	+0.3%	+0.0%
Management (VIII & above)	8	+4	+4	+5	+5	+5		+1.0%	+1.0%	+1.7%	+1.7%	+1.7%	+0.0%
Administrative/ Supervisory (V to VII)	15	+10	+10	+9	+8	+8	+0	+1.8%	+1.8%	+1.4%	+1.0%	+1.0%	+0.0%
Clerical (III & IV)	84	+14	+13	+8	+9	+9	+1	+0.2%	+0.2%	+0.1%	+0.1%	+0.1%	+0.0%
General Support	124	-10	-10	-8	-8	-8	-3	-0.1%	-0.1%	-0.1%	-0.1%	-0.1%	-0.0%
Support	117	-9	-10	-6	-6	-6	-2	-0.1%	-0.1%	-0.1%	-0.1%	-0.1%	-0.0%
Maintenance/ Technical	6	-1	-1	-2	-2	-2	-1	-0.1%	-0.1%	-0.2%	-0.2%	-0.2%	-0.1%
Patient & Client Care	1,198	+190	+191	+55	+79	+79	-1	+0.2%	+0.2%	+0.0%	+0.1%	+0.1%	-0.0%
Health Care Assistants	628	+97	+84	+61	+63	+63	-17	+0.2%	+0.2%	+0.1%	+0.1%	+0.1%	-0.0%
Care, other	28	+1	-1	-2	-2	-2	-0	+0.1%	-0.1%	-0.1%	-0.1%	-0.1%	-0.0%
Home Help	543	+91	+109	-5	+18	+18	+16	+0.2%	+0.3%	-0.0%	+0.0%	+0.0%	+0.0%

Source: Health Service Personnel Census