

CHO 2 Employment Report: April 2021

Employment by Staff Group

Apr 2021 (Dec 2019 figure: 5,545)	WTE Mar 2021	WTE Apr 2021	WTE change since Mar 21	% change since Mar 21	WTE change since Dec 20	WTE change since Apr 20
Overall	5,708	5,747	+38	+0.7%	+57	+274
Consultants	44	45	+1	+3.4%	+3	+2
Registrars	88	88	-0	-0.4%	+2	+10
SHO/ Interns	36	40	+4	+11.8%	-3	+6
Medical/ Dental, other	60	57	-3	-4.8%	-5	-3
Medical & Dental	228	230	+2	+1.1%	-2	+15
Nurse/ Midwife Manager	331	331	+0	+0.1%	+8	+21
Nurse/ Midwife Specialist & AN/MP	109	110	+1	+1.0%	+2	+11
Staff Nurse/ Staff Midwife	931	936	+5	+0.5%	+28	+36
Public Health Nurse	194	191	-3	-1.3%	-7	-4
<i>Pre-registration Nurse/ Midwife Intern</i>	13	21	+8	+57.7%	+20	+8
<i>Pre-registration Nurse Intern (COVID-19)</i>	9	1	-8	-88.2%	+1	-8
<i>Post-registration Nurse/ Midwife Student</i>				-100.0%	-4	
<i>Nursing/ Midwifery awaiting registration</i>				-100.0%	-5	
Nursing/ Midwifery Student	22	22			+11	-6
Nursing/ Midwifery other	2	2	+0	+24.2%	+0	-0
Nursing & Midwifery	1,588	1,592	+4	+0.2%	+42	+57
Therapy Professions	374	380	+6	+1.7%	+18	+33
Health Science/ Diagnostics	8	8	+0	+6.1%	+1	+2
Social Care	271	275	+3	+1.3%	+7	+19
Social Workers	85	84	-1	-1.1%	+0	-0
Psychologists	82	83	+1	+0.7%	+5	+8
Pharmacy	5	4	-0	-6.9%	+1	+1
H&SC, Other	55	59	+4	+6.6%	+3	+2
Health & Social Care Professionals	880	894	+13	+1.5%	+34	+66
Management (VIII & above)	57	59	+1	+2.3%	+1	+3
Administrative/ Supervisory (V to VII)	165	161	-4	-2.3%	+1	+18
Clerical (III & IV)	446	445	-0	-0.1%	-2	-16
Management & Administrative	668	665	-3	-0.4%	-1	+5
Support	150	152	+1	+0.9%	-1	+1
Maintenance/ Technical	76	76	+0	+0.2%	+3	+8
General Support	226	228	+2	+0.7%	+2	+9
Health Care Assistants	1,425	1,422	-3	-0.2%	+3	+90
Home Help	408	427	+19	+4.8%	-29	+3
Care, other	286	290	+4	+1.3%	+8	+28
Patient & Client Care	2,118	2,138	+20	+0.9%	-18	+121

CHO 2 Employment Report: April 2021

Community Health & Wellbeing

Apr 2021 (figure:)	WTE Mar 2021	WTE Apr 2021	WTE change since Mar 21	% change since Mar 21	WTE change since Dec 20	WTE change since Apr 20
Total Community Health & Wellbeing	10	10	+0	+1.1%	-0	+1
Management (VIII & above)	1	1				
Administrative/ Supervisory (V to VII)	7	7	+0	+1.6%	-0	+1
Clerical (III & IV)	1	1				
Management & Administrative	9	9	+0	+1.2%	-0	+1
Care, other	1	1				
Patient & Client Care	1	1				

Mental Health

Apr 2021 (Dec 2019 figure: 1,308)	WTE Mar 2021	WTE Apr 2021	WTE change since Mar 21	% change since Mar 21	WTE change since Dec 20	WTE change since Apr 20
Total Mental Health	1,368	1,370	+2	+0.1%	+30	+40
Consultants	39	40	+1	+2.4%	+3	+2
Registrars	39	38	-1	-3.0%	+2	+3
SHO/ Interns	33	38	+5	+15.9%	-2	+6
Medical/ Dental, other	1	1	-0	-40.0%	-0	-0
Medical & Dental	112	117	+5	+4.1%	+2	+10
Nurse/ Midwife Manager	149	148	-1	-0.6%	-3	+3
Nurse/ Midwife Specialist & AN/MP	77	76	-0	-0.3%	-3	+5
Staff Nurse/ Staff Midwife	375	378	+3	+0.9%	+23	+27
Pre-registration Nurse/ Midwife Intern	13	21	+8	+57.7%	+20	+8
Pre-registration Nurse Intern (COVID-19)	9	1	-8	-88.2%	+1	-8
Nursing/ Midwifery awaiting registration				-100.0%	-5	
Nursing/ Midwifery Student	22	22			+11	-2
Nursing/ Midwifery other	2	2	+0	+24.2%	+0	-0
Nursing & Midwifery	624	626	+2	+0.4%	+30	+32
Therapy Professions	57	56	-0	-0.7%	+1	+8
Social Care	16	16	-0	-1.9%	-0	-0
Social Workers	42	41	-1	-1.6%	-0	+0
Psychologists	37	38	+0	+0.4%	+1	+2
Pharmacy	2	2				-1
H&SC, Other	3	3	-0	-0.7%	-0	-0
Health & Social Care Professionals	157	156	-1	-0.8%	+1	+10
Management (VIII & above)	3	3	-0	-13.0%	-1	-2
Administrative/ Supervisory (V to VII)	25	25	+0	+0.2%	-2	+2
Clerical (III & IV)	104	103	-1	-0.5%	+1	-6
Management & Administrative	131	130	-1	-0.7%	-2	-6
Support	31	30	-1	-3.3%	-1	-4
Maintenance/ Technical	35	35	+0	+0.4%	+2	+7
General Support	66	65	-1	-1.4%	+1	+3
Health Care Assistants	211	208	-3	-1.3%	-3	-7
Care, other	67	68	+1	+0.8%	+1	-1
Patient & Client Care	278	276	-2	-0.8%	-2	-8

Primary Care

Apr 2021 (Dec 2019 figure: 1,134)	WTE Mar 2021	WTE Apr 2021	WTE change since Mar 21	% change since Mar 21	WTE change since Dec 20	WTE change since Apr 20
Total Primary Care	1,271	1,281	+10	+0.8%	+47	+130
Consultants	1	2	+1	+38.5%	+1	+1
Registrars	47	48	+1	+1.9%	+0	+7
SHO/ Interns	3	2	-1	-33.3%	-1	
Medical/ Dental, other	47	45	-2	-5.2%	-4	-3
Medical & Dental	99	97	-2	-2.1%	-4	+5
Nurse/ Midwife Manager	31	33	+1	+3.6%	+5	+7
Nurse/ Midwife Specialist & AN/MP	23	24	+1	+5.2%	+3	+5
Staff Nurse/ Staff Midwife	82	90	+8	+9.7%	+11	+14
Public Health Nurse	193	190	-3	-1.3%	-7	-4
<i>Post-registration Nurse/ Midwife Student</i>				-100.0%	-4	
Nursing/ Midwifery Student				-100.0%		-4
Nursing & Midwifery	330	338	+8	+2.3%	+12	+17
Therapy Professions	254	260	+6	+2.2%	+12	+23
Health Science/ Diagnostics	7	8	+0	+6.6%	+1	+2
Social Care	9	9	-0	-1.5%	-0	-0
Social Workers	6	5	-1	-14.3%	-1	-2
Psychologists	29	30	+0	+1.4%	+3	+6
Pharmacy	2	2	-0	-16.5%	+1	+2
H&SC, Other	42	45	+3	+6.8%	+3	+5
Health & Social Care Professionals	349	357	+8	+2.3%	+19	+36
Management (VIII & above)	37	38	+2	+4.7%	+3	+5
Administrative/ Supervisory (V to VII)	81	77	-4	-5.1%	+4	+13
Clerical (III & IV)	229	230	+1	+0.3%	+1	-3
Management & Administrative	347	345	-2	-0.5%	+8	+16
Support	22	20	-2	-7.7%	-2	-1
Maintenance/ Technical	9	9			+1	
General Support	31	29	-2	-5.5%	-1	-1
Health Care Assistants	68	65	-2	-3.5%	+9	+52
Care, other	48	50	+2	+3.6%	+4	+5
Patient & Client Care	116	115	-1	-0.6%	+12	+57

Social Care

Apr 2021 (Dec 2019 figure: 3,103)	WTE Mar 2021	WTE Apr 2021	WTE change since Mar 21	% change since Mar 21	WTE change since Dec 20	WTE change since Apr 20
Total Social Care	3,059	3,086	+27	+0.9%	-19	+103
Consultants	3	3				-0
Registrars	2	2	-0	-2.5%	-0	-0
Medical/ Dental, other	12	12				
Medical & Dental	17	17	-0	-0.3%	-0	-0
Nurse/ Midwife Manager	150	151	+0	+0.1%	+6	+11
Nurse/ Midwife Specialist & AN/MP	9	9	+0	+0.7%	+1	+1
Staff Nurse/ Staff Midwife	474	467	-7	-1.4%	-7	-4
Public Health Nurse	1	1				
<i>Pre-registration Nurse Intern (COVID-19)</i>				-100.0%		
Nursing/ Midwifery Student				-100.0%	-1	
Nursing & Midwifery	634	628	-6	-1.0%	-0	+8
Therapy Professions	63	64	+1	+1.8%	+5	+2
Health Science/ Diagnostics	1	1				
Social Care	246	250	+4	+1.6%	+7	+20
Social Workers	37	38	+1	+1.6%	+2	+1
Psychologists	15	15	-0	-0.1%	+1	-0
Pharmacy	1	1				+0
H&SC, Other	10	11	+1	+7.8%	-0	-3
Health & Social Care Professionals	374	381	+6	+1.7%	+14	+20
Management (VIII & above)	17	17	-0	-0.1%	-1	-0
Administrative/ Supervisory (V to VII)	52	52	+0	+0.3%	-2	+2
Clerical (III & IV)	113	112	-1	-0.5%	-4	-7
Management & Administrative	181	181	-0	-0.2%	-7	-5
Support	97	101	+4	+4.3%	+2	+7
Maintenance/ Technical	32	32	-0	-0.0%		+1
General Support	129	134	+4	+3.2%	+2	+8
Health Care Assistants	1,146	1,148	+2	+0.2%	-2	+45
Home Help	408	427	+19	+4.8%	-29	+3
Care, other	170	171	+1	+0.9%	+3	+23
Patient & Client Care	1,724	1,746	+23	+1.3%	-29	+72

CHO 2 Employment Report: April 2021

Disabilities

Apr 2021 (Dec 2019 figure: 1,497)	WTE Mar 2021	WTE Apr 2021	WTE change since Mar 21	% change since Mar 21	WTE change since Dec 20	WTE change since Apr 20
Total Disabilities	1,510	1,516	+6	+0.4%	+1	+77
Consultants	3	3				-0
Registrars	2	2	-0	-2.5%	-0	-0
Medical/ Dental, other	1	1				
Medical & Dental	6	6	-0	-0.8%	-0	-0
Nurse/ Midwife Manager	79	81	+1	+1.7%	+3	+5
Nurse/ Midwife Specialist & AN/MP	7	7	+0	+0.9%	+1	+1
Staff Nurse/ Staff Midwife	168	163	-5	-2.8%	-6	-3
<i>Pre-registration Nurse Intern (COVID-19)</i>				-100.0%		
Nursing/ Midwifery Student				-100.0%	-1	
Nursing & Midwifery	254	251	-3	-1.3%	-3	+4
Therapy Professions	34	34	-0	-0.8%	+0	-3
Social Care	246	250	+4	+1.6%	+7	+20
Social Workers	27	27	+1	+1.9%	+1	+1
Psychologists	15	15	-0	-0.1%	+1	-0
H&SC, Other	10	11	+1	+7.8%	-0	-3
Health & Social Care Professionals	333	338	+5	+1.5%	+9	+15
Management (VIII & above)	16	16	-0	-0.1%	+0	+1
Administrative/ Supervisory (V to VII)	43	44	+1	+2.7%	-1	+3
Clerical (III & IV)	51	50	-1	-1.9%	-0	+2
Management & Administrative	109	109	+0	+0.2%	-1	+6
Support	41	42	+1	+2.3%	-1	+3
Maintenance/ Technical	13	13				-0
General Support	54	55	+1	+1.8%	-1	+3
Health Care Assistants	620	626	+5	+0.9%	+1	+42
Care, other	133	131	-2	-1.4%	-4	+8
Patient & Client Care	753	757	+4	+0.5%	-4	+50

Older People

Apr 2021 (Dec 2019 figure: 1,606)	WTE Mar 2021	WTE Apr 2021	WTE change since Mar 21	% change since Mar 21	WTE change since Dec 20	WTE change since Apr 20
Total Older People	1,549	1,570	+20	+1.3%	-20	+26
Medical/ Dental, other	11	11				
Medical & Dental	11	11				
Nurse/ Midwife Manager	71	70	-1	-1.8%	+4	+6
Nurse/ Midwife Specialist & AN/MP	2	2				
Staff Nurse/ Staff Midwife	306	304	-2	-0.6%	-1	-2
Public Health Nurse	1	1				
Nursing & Midwifery	380	377	-3	-0.8%	+3	+5
Health & Social Care Professionals	41	42	+2	+3.8%	+5	+5
Management (VIII & above)	1	1			-1	-1
Administrative/ Supervisory (V to VII)	9	8	-1	-11.2%	-1	-1
Clerical (III & IV)	62	62	+0	+0.7%	-3	-9
Management & Administrative	72	71	-1	-0.8%	-6	-11
Support	56	59	+3	+5.7%	+3	+4
Maintenance/ Technical	20	19	-0	-0.1%		+1
General Support	76	79	+3	+4.2%	+3	+5
Health Care Assistants	526	523	-4	-0.7%	-3	+4
Home Help	408	427	+19	+4.8%	-29	+3
Care, other	36	40	+3	+9.3%	+7	+15
Patient & Client Care	970	989	+19	+2.0%	-25	+22

CHO 2 Employment by Administration (HSE / S38): April 2021

Apr 2021 (Dec 2019 figure: 5,545)	WTE Mar 2021	WTE Apr 2021	WTE change since Mar 21	% change since Mar 21	WTE change since Dec 20	WTE change since Apr 20
Overall	5,708	5,747	+38	+0.7%	+57	+274
HSE	4,417	4,449	+33	+0.7%	+57	+210
Section 38 Voluntary Agencies	1,292	1,297	+6	+0.4%	-0	+64

HSE

Apr 2021 (Dec 2019 figure: 4,256)	WTE Mar 2021	WTE Apr 2021	WTE change since Mar 21	% change since Mar 21	WTE change since Dec 20	WTE change since Apr 20
Overall	4,417	4,449	+33	+0.7%	+57	+210
Consultants	41	43	+1	+0.0%	+3	+3
Registrars	86	86	-0	-0.0%	+2	+10
SHO/ Interns	36	40	+4	+0.1%	-3	+6
Medical/ Dental, other	60	57	-3	-0.0%	-5	-3
Medical & Dental	223	226	+2	+1.1%	-2	+15
Nurse/ Midwife Manager	261	262	+0	+0.0%	+7	+18
Nurse/ Midwife Specialist & AN/MP	104	105	+1	+0.0%	+2	+11
Staff Nurse/ Staff Midwife	809	816	+8	+0.0%	+32	+37
Public Health Nurse	194	191	-3	-0.0%	-7	-4
Pre-registration Nurse/ Midwife Intern	13	21	+8	+0.6%	+20	+21
Pre-registration Nurse Intern (COVID-19)	9	1	-8	-0.9%	+1	-23
Post-registration Nurse/ Midwife Student				-1.0%	-4	-4
Nursing/ Midwifery awaiting registration				-1.0%	-5	
Nursing/ Midwifery Student	22	22		+0.0%	+11	-6
Nursing/ Midwifery other	2	2	+0	+0.2%	+0	-0
Nursing & Midwifery	1,391	1,397	+6	+0.5%	+45	+55
Therapy Professions	344	351	+7	+0.0%	+18	+35
Health Science/ Diagnostics	8	8	+0	+0.1%	+1	+2
Social Care	56	55	-1	-0.0%	-2	+3
Social Workers	58	57	-1	-0.0%	-1	-1
Psychologists	69	69	+1	+0.0%	+4	+8
Pharmacy	5	4	-0	-0.1%	+1	+1
H&SC, Other	45	48	+3	+0.1%	+3	+5
Health & Social Care Professionals	585	593	+8	+1.4%	+23	+54
Management (VIII & above)	45	46	+1	+0.0%	+1	+3
Administrative/ Supervisory (V to VII)	129	125	-4	-0.0%	+1	+17
Clerical (III & IV)	409	409	+1	+0.0%	-1	-17
Management & Administrative	582	580	-2	-0.3%	+1	+3
Support	109	110	+0	+0.0%	+0	-2
Maintenance/ Technical	71	71	+0	+0.0%	+3	+8
General Support	180	181	+1	+0.3%	+3	+6
Health Care Assistants	882	873	-9	-0.0%	+3	+48
Home Help	408	427	+19	+0.0%	-29	+3
Care, other	166	172	+6	+0.0%	+13	+26
Patient & Client Care	1,455	1,472	+17	+1.2%	-13	+77

Section 38 Voluntary Agencies

Apr 2021 (Dec 2019 figure: 1,288)	WTE Mar 2021	WTE Apr 2021	WTE change since Mar 21	% change since Mar 21	WTE change since Dec 20	WTE change since Apr 20
Overall	1,292	1,297	+6	+0.4%	-0	+64
Consultants	2	2		+0.0%		-0
Registrars	2	2	-0	-0.0%	-0	-0
Medical & Dental	4	4	-0	-1.1%	-0	-0
Nurse/ Midwife Manager	70	70	+0	+0.0%	+2	+3
Nurse/ Midwife Specialist & AN/MP	5	5	+0	+0.0%	+0	+0
Staff Nurse/ Staff Midwife	123	119	-3	-0.0%	-4	-1
<i>Pre-registration Nurse Intern (COVID-19)</i>				-1.0%		
Nursing/ Midwifery Student				-1.0%	-1	
Nursing & Midwifery	197	194	-3	-1.4%	-3	+2
Therapy Professions	30	29	-0	-0.0%	+0	-2
Social Care	215	220	+5	+0.0%	+9	+16
Social Workers	27	27	+0	+0.0%	+1	+1
Psychologists	13	13	-0	-0.0%	+1	-1
H&SC, Other	10	11	+1	+0.1%	-0	-3
Health & Social Care Professionals	295	301	+5	+1.8%	+11	+12
Management (VIII & above)	13	13		+0.0%		-0
Administrative/ Supervisory (V to VII)	36	36	+0	+0.0%	-0	+1
Clerical (III & IV)	37	36	-1	-0.0%	-1	+1
Management & Administrative	86	85	-1	-0.8%	-2	+2
Support	41	42	+1	+0.0%	-1	+3
Maintenance/ Technical	5	5		+0.0%		
General Support	46	47	+1	+2.1%	-1	+3
Health Care Assistants	543	548	+6	+0.0%	+0	+43
Care, other	120	118	-3	-0.0%	-5	+2
Patient & Client Care	663	666	+3	+0.4%	-5	+45

CHO 2 Employment by S38 Agency: April 2021

Bros. of Charity, West Region

Apr 2021 (Dec 2019 figure: 1,288)	WTE Mar 2021	WTE Apr 2021	WTE change since Mar 21	% change since Mar 21	WTE change since Dec 20	WTE change since Apr 20
Overall	1,292	1,297	+6	+0.4%	-0	+64
Consultants	2	2		+0.0%		-0
Registrars	2	2	-0	-0.0%	-0	-0
Medical & Dental	4	4	-0	-1.1%	-0	-0
Nurse/ Midwife Manager	70	70	+0	+0.0%	+2	+3
Nurse/ Midwife Specialist & AN/MP	5	5	+0	+0.0%	+0	+0
Staff Nurse/ Staff Midwife	123	119	-3	-0.0%	-4	-1
Pre-registration Nurse Intern (COVID-19)				-1.0%		
Nursing/ Midwifery Student				-1.0%	-1	
Nursing & Midwifery	197	194	-3	-1.4%	-3	+2
Therapy Professions	30	29	-0	-0.0%	+0	-2
Social Care	215	220	+5	+0.0%	+9	+16
Social Workers	27	27	+0	+0.0%	+1	+1
Psychologists	13	13	-0	-0.0%	+1	-1
H&SC, Other	10	11	+1	+0.1%	-0	-3
Health & Social Care Professionals	295	301	+5	+1.8%	+11	+12
Management (VIII & above)	13	13		+0.0%		
Administrative/ Supervisory (V to VII)	36	36	+0	+0.0%	-0	+1
Clerical (III & IV)	37	36	-1	-0.0%	-1	+1
Management & Administrative	86	85	-1	-0.8%	-2	+2
Support	41	42	+1	+0.0%	-1	+3
Maintenance/ Technical	5	5		+0.0%		
General Support	46	47	+1	+2.1%	-1	+3
Health Care Assistants	543	548	+6	+0.0%	+0	+43
Care, other	120	118	-3	-0.0%	-5	+2
Patient & Client Care	663	666	+3	+0.4%	-5	+45

CHO 2 Employment by Grade Group & Staff Category: April 2021

Apr 2021 (Dec 2019 figure: 5,545)	WTE Mar 2021	WTE Apr 2021	WTE change since Mar 21	% change since Mar 21	WTE change since Dec 20	WTE change since Apr 20
Overall	5,708	5,747	+38	+0.7%	+57	+274
Consultant Medicine	1	2	+1	+67.0%	+1	+1
Consultant Paediatrics	1	1				
Consultant Psychiatry	41	42	+1	+2.2%	+3	+2
Consultant Surgery	0	0	-0	-27.9%	+0	+0
Consultants	44	45	+1	+3.4%	+3	+2
Registrar	68	68	+1	+1.0%	+4	+8
Senior Registrar	21	19	-1	-5.1%	-2	+2
Registrars	88	88	-0	-0.4%	+2	+10
Senior House Officer	36	40	+4	+11.8%	-3	+6
SHO/ Interns	36	40	+4	+11.8%	-3	+6
Dentists	21	22	+1	+6.4%	+1	+1
Other Medical	39	35	-4	-10.8%	-6	-4
Medical/ Dental, other	60	57	-3	-4.8%	-5	-3
Medical & Dental	228	230	+2	+1.1%	+18	+15
Clinical Nurse/ Midwife Manager	262	262	-0	-0.1%	+5	+16
Director Nursing/Midwifery, Assistant	45	46	+2	+3.4%	+3	+3
Director of Nursing/Midwifery	25	24	-1	-4.4%	-0	+2
Nurse/ Midwife Manager	331	331	+0	+0.1%	+8	+21
Advanced Nurse/ Midwife Practitioner	11	11	-0	-0.5%	+0	+2
Clinical Nurse/ Midwife Specialist	98	99	+1	+1.1%	+2	+9
Nurse/ Midwife Specialist & AN/MP	109	110	+1	+1.0%	+2	+11
Staff Nurse [Intellectual Disability]	121	117	-4	-3.6%	-4	+17
Staff Nurse [Psychiatric]	383	387	+4	+1.0%	+22	+22
Staff Nurses [General/ Children's]	427	432	+5	+1.2%	+10	-3
Staff Nurse/ Staff Midwife	931	936	+5	+0.5%	+28	+36
Public Health Nurse	194	191	-3	-1.3%	-7	-4
Pre-registration Nurse/ Midwife Intern	13	21	+8	+57.7%	+21	+21
Pre-registration Nurse Intern (COVID-19)	9	1	-8	-88.2%	-10	-23
Post-registration Nurse/ Midwife Student				-100.0%		-4
Nursing/ Midwifery awaiting registration				-100.0%		
Nursing/ Midwifery Student	22	22			+11	-6
Nursing/ Midwifery other	2	2	+0	+24.2%	+0	-0
Nursing & Midwifery	1,588	1,592	+4	+0.2%	+90	+57
Dietitians	24	25	+1	+4.1%	-0	+3
Occupational Therapists	130	131	+1	+0.8%	+3	+10
Orthoptists	1	1			-1	-1
Physiotherapists	102	104	+3	+2.6%	+10	+14
Podiatrists & Chiropodists	9	9	-0	-0.3%	+1	+1
Speech & Language Therapists	108	109	+2	+1.7%	+4	+6
Therapy Professions	374	380	+6	+1.7%	+18	+33
Audiology	6	7	+0	+6.9%	+1	+2
Clinical Engineering	1	1	+0	+4.2%		
Radiographers	1	1				
Health Science/ Diagnostics	8	8	+0	+6.1%	+1	+2
Social Care	271	275	+3	+1.3%	+7	+19
Social Workers	85	84	-1	-1.1%	+0	-0
Psychologists	82	83	+1	+0.7%	+5	+8

Apr 2021 (Dec 2019 figure: 5,545)	WTE Mar 2021	WTE Apr 2021	WTE change since Mar 21	% change since Mar 21	WTE change since Dec 20	WTE change since Apr 20
Overall	5,708	5,747	+38	+0.7%	+57	+274
Pharmacy	5	4	-0	-6.9%	+1	+1
Counsellor Therapists	14	17	+3	+21.3%	+4	+5
Dental Hygienists	5	5	-0	-0.4%	+0	+0
Other Health & Social Care	35	36	+1	+1.8%	-1	-4
Play Therapists/ Specialists	1	1				
H&SC, Other	55	59	+4	+6.6%	+3	+2
Health & Social Care Professionals	880	894	+13	+1.5%	+83	+66
Executive Management	11	11	+1	+6.9%	-0	+0
Senior Management (VIII & GM)	47	47	+1	+1.3%	+1	+3
Management (VIII & above)	57	59	+1	+2.3%	+1	+3
Middle Management (V-VII)	165	161	-4	-2.3%	+1	+18
Other Administrative				-100.0%		
Administrative/ Supervisory (V to VII)	165	161	-4	-2.3%	+1	+18
Clerical (III & IV)	446	445	-0	-0.1%	-2	-16
Management & Administrative	668	665	-3	-0.4%	+8	+5
Catering	40	41	+1	+2.6%	+3	+4
Household Services	60	61	+1	+2.0%	-1	-2
Other Support	36	36	-0	-0.3%	-2	+2
Portering	14	13	-1	-5.5%	-1	-3
Support	150	152	+1	+0.9%	-1	+1
Maintenance/ Technical	76	76	+0	+0.2%	+3	+8
General Support	226	228	+2	+0.7%	+2	+9
HCA, Nurse's Aide, etc.	1,357	1,357	-1	-0.1%	-6	+38
Health & Social Care Assistants	14	14			+6	+1
Swabber (COVID-19)	54	51	-2	-4.4%	+3	+51
Health Care Assistants	1,425	1,422	-3	-0.2%	+3	+90
Home Help	408	427	+19	+4.8%	-29	+3
Other Care Grades	286	290	+4	+1.3%	+8	+28
Care, other	286	290	+4	+1.3%	+8	+28
Patient & Client Care	2,118	2,138	+20	+0.9%	+1	+121

CHO 2 HSE Employment by Grade Group & Staff Category: April 2021

Apr 2021 (Dec 2019 figure: 4,256)	WTE Mar 2021	WTE Apr 2021	WTE change since Mar 21	% change since Mar 21	WTE change since Dec 20	WTE change since Apr 20
Overall	4,417	4,449	+33	+0.7%	+57	+210
Consultant Medicine	1	2	+1	+67.0%	+1	+1
Consultant Psychiatry	40	41	+1	+2.3%	+3	+2
Consultant Surgery	0	0	-0	-27.9%	+0	+0
Consultants	41	43	+1	+3.6%	+3	+3
Registrar	67	68	+1	+1.1%	+3	+8
Senior Registrar	20	18	-1	-5.4%	-1	+2
Registrars	86	86	-0	-0.4%	+2	+10
SHO/ Interns	36	40	+4	+11.8%	-3	+6
Dentists	21	22	+1	+6.4%	+1	+1
Other Medical	39	35	-4	-10.8%	-6	-4
Medical/ Dental, other	60	57	-3	-4.8%	-5	-3
Medical & Dental	223	226	+2	+1.1%	-2	+15
Clinical Nurse/ Midwife Manager	193	192	-0	-0.2%	+4	+12
Director Nursing/Midwifery, Assistant	45	46	+2	+3.4%	+3	+3
Director of Nursing/Midwifery	24	23	-1	-4.6%	-0	+2
Nurse/ Midwife Manager	261	262	+0	+0.0%	+7	+18
Advanced Nurse/ Midwife Practitioner	10	10	-0	-0.5%	+0	+2
Clinical Nurse/ Midwife Specialist	94	95	+1	+1.1%	+2	+9
Nurse/ Midwife Specialist & AN/MP	104	105	+1	+0.9%	+2	+11
Staff Nurse [Intellectual Disability]	14	13	-1	-6.9%	-1	+1
Staff Nurse [Psychiatric]	374	377	+4	+1.0%	+20	+25
Staff Nurses [General/ Children's]	421	426	+5	+1.1%	+14	+11
Staff Nurse/ Staff Midwife	809	816	+8	+0.9%	+32	+37
Public Health Nurse	194	191	-3	-1.3%	-7	-4
Pre-registration Nurse/ Midwife Intern	13	21	+8	+57.7%	+21	+21
Pre-registration Nurse Intern (COVID-19)	9	1	-8	-88.2%	-9	-23
Post-registration Nurse/ Midwife Student				-100.0%		-4
Nursing/ Midwifery awaiting registration				-100.0%		
Nursing/ Midwifery Student	22	22			+11	-6
Nursing/ Midwifery other	2	2	+0	+24.2%	+0	-0
Nursing & Midwifery	1,391	1,397	+6	+0.5%	+45	+55
Dietitians	24	25	+1	+4.1%	-0	+3
Occupational Therapists	122	123	+1	+0.7%	+3	+10
Orthoptists	1	1			-1	-1
Physiotherapists	91	93	+3	+3.2%	+10	+14
Podiatrists & Chiropodists	9	9	-0	-0.3%	+1	+1
Speech & Language Therapists	97	99	+2	+2.0%	+5	+9
Therapy Professions	344	351	+7	+2.0%	+18	+35
Audiology	6	7	+0	+6.9%	+1	+2
Clinical Engineering	1	1	+0	+4.2%		
Radiographers	1	1				
Health Science/ Diagnostics	8	8	+0	+6.1%	+1	+2
Social Care	56	55	-1	-2.0%	-2	+3
Social Workers	58	57	-1	-1.7%	-1	-1
Psychologists	69	69	+1	+0.8%	+4	+8
Pharmacy	5	4	-0	-6.9%	+1	+1
Counsellor Therapists	10	13	+3	+30.2%	+4	+5
Dental Hygienists	5	5	-0	-0.4%	+0	+0
Other Health & Social Care	29	29	-0	-0.6%	-1	-0

Apr 2021 (Dec 2019 figure: 4,256)	WTE Mar 2021	WTE Apr 2021	WTE change since Mar 21	% change since Mar 21	WTE change since Dec 20	WTE change since Apr 20
Overall	4,417	4,449	+33	+0.7%	+57	+210
Play Therapists/ Specialists	1	1				
H&SC, Other	45	48	+3	+6.3%	+3	+5
Health & Social Care Professionals	585	593	+8	+1.4%	+23	+54
Executive Management	9	9	+1	+8.5%	-0	+0
Senior Management (VIII & GM)	36	37	+1	+1.6%	+1	+3
Management (VIII & above)	45	46	+1	+3.0%	+1	+3
Administrative/ Supervisory (V to VII)	129	125	-4	-3.1%	+1	+17
Clerical (III & IV)	409	409	+1	+0.2%	-1	-17
Management & Administrative	582	580	-2	-0.3%	+1	+3
Catering	40	41	+1	+2.7%	+3	+4
Household Services	42	42	+0	+0.9%	-2	-2
Other Support	14	14	-0	-1.8%	+0	-1
Portering	14	13	-1	-5.5%	-1	-3
Support	109	110	+0	+0.4%	+0	-2
Maintenance/ Technical	71	71	+0	+0.2%	+3	+8
General Support	180	181	+1	+0.3%	+3	+6
HCA, Nurse's Aide, etc.	815	808	-6	-0.8%	-6	-5
Health & Social Care Assistants	14	14			+6	+1
Swabber (COVID-19)	54	51	-2	-4.4%	+3	+51
Health Care Assistants	882	873	-9	-1.0%	+3	+48
Home Help	408	427	+19	+4.8%	-29	+3
Care, other	166	172	+6	+3.9%	+13	+26
Patient & Client Care	1,455	1,472	+17	+1.2%	-13	+77

Employment by WTE, Headcount, Gender, Full-Time /Part-Time etc.: Apr 2021

CHO 2	WTE	Headcount	WTE: no.	% Male	% female	Male WTE: no.	Female WTE: no.	% Total Perm	% Male Perm	% Female Perm	% Total Full Time	% Total Part Time	% Male FT	% Female FT
Overall	5,747	6,710	1.17	19.0%	81.0%	1.11	1.18	85.0%	80.8%	86.0%	59.9%	40.1%	74.7%	56.4%
Consultant Medicine	2	3	1.80		100.0%		1.80	33.3%	33.3%	33.3%	100.0%	0.0%		100.0%
Consultant Paediatrics	1	1	1.00		100.0%		1.00	100.0%	100.0%	100.0%	100.0%	0.0%		100.0%
Consultant Psychiatry	42	47	1.11	38.3%	61.7%	1.11	1.11	63.8%	63.8%	62.1%	85.1%	14.9%	88.9%	82.8%
Consultant Surgery	0	1	3.23		100.0%		3.23	0.0%	0.0%	0.0%	0.0%	100.0%		0.0%
Consultants	45	52	1.15	34.6%	65.4%	1.11	1.17	61.5%	66.7%	58.8%	84.6%	15.4%	88.9%	82.4%
Registrar	68	69	1.01	34.8%	65.2%	1.01	1.01	1.4%	1.4%	2.2%	100.0%	0.0%	100.0%	100.0%
Senior Registrar	19	20	1.03	40.0%	60.0%	1.00	1.05	0.0%	0.0%	0.0%	100.0%	0.0%	100.0%	100.0%
Registrars	88	89	1.01	36.0%	64.0%	1.01	1.01	1.1%	0.0%	1.8%	100.0%	0.0%	100.0%	100.0%
Senior House Officer	40	41	1.02	31.7%	68.3%	1.00	1.03	0.0%	0.0%	0.0%	100.0%	0.0%	100.0%	100.0%
SHO/ Interns	40	41	1.02	31.7%	68.3%	1.00	1.03	0.0%	0.0%	0.0%	100.0%	0.0%	100.0%	100.0%
Dentists	22	26	1.17	26.9%	73.1%	1.08	1.20	96.2%	96.2%	94.7%	61.5%	38.5%	71.4%	57.9%
Other Medical	35	41	1.18	31.7%	68.3%	1.23	1.15	65.9%	65.9%	75.0%	58.5%	41.5%	61.5%	57.1%
Medical/ Dental, other	57	67	1.17	29.9%	70.1%	1.18	1.17	77.6%	65.0%	83.0%	59.7%	40.3%	65.0%	57.4%
Medical & Dental	230	249	1.08	33.3%	66.7%	1.07	1.09	34.1%	30.1%	36.1%	85.9%	14.1%	89.2%	84.3%
Clinical Nurse/ Midwife Manager	262	281	1.07	26.0%	74.0%	1.00	1.10	96.4%	96.4%	96.6%	85.8%	14.2%	98.6%	81.3%
Director Nursing/Midwifery, Assistant	46	48	1.04	20.8%	79.2%	1.00	1.05	97.9%	97.9%	97.4%	93.8%	6.3%	100.0%	92.1%
Director of Nursing/Midwifery	24	24	1.02	12.5%	87.5%	1.00	1.02	100.0%	100.0%	100.0%	100.0%	0.0%	100.0%	100.0%
Nurse/ Midwife Manager	331	353	1.07	24.4%	75.6%	1.00	1.09	96.9%	96.5%	97.0%	87.8%	12.2%	98.8%	84.3%
Advanced Nurse/ Midwife Practitioner	11	11	1.01	27.3%	72.7%	1.00	1.01	100.0%	100.0%	100.0%	100.0%	0.0%	100.0%	100.0%
Clinical Nurse/ Midwife Specialist	99	104	1.05	13.5%	86.5%	1.00	1.06	99.0%	99.0%	98.9%	89.4%	10.6%	100.0%	87.8%
Nurse/ Midwife Specialist & AN/MP	110	115	1.05	14.8%	85.2%	1.00	1.06	99.1%	100.0%	99.0%	90.4%	9.6%	100.0%	88.8%
Staff Nurse [Intellectual Disability]	117	145	1.24	6.9%	93.1%	1.11	1.25	93.8%	93.8%	93.3%	50.3%	49.7%	70.0%	48.9%
Staff Nurse [Psychiatric]	387	419	1.08	24.3%	75.7%	1.08	1.08	94.0%	94.0%	96.5%	85.4%	14.6%	84.3%	85.8%
Staff Nurses [General/ Children's]	432	513	1.19	4.9%	95.1%	1.06	1.19	92.8%	92.8%	92.6%	53.4%	46.6%	80.0%	52.0%
Staff Nurse/ Staff Midwife	936	1,077	1.15	12.7%	87.3%	1.08	1.16	93.4%	89.1%	94.0%	65.5%	34.5%	82.5%	63.0%
Public Health Nurse	191	218	1.14		100.0%		1.14	96.8%		96.8%	73.9%	26.1%		73.9%
Pre-registration Nurse/ Midwife Intern	21	40	1.95	22.5%	77.5%	2.00	1.94	0.0%	0.0%	0.0%	100.0%	0.0%	100.0%	100.0%
Pre-registration Nurse Intern (COVID-19)	1	2	2.00	50.0%	50.0%	2.00	2.00	0.0%	0.0%	0.0%	100.0%	0.0%	100.0%	100.0%

Nursing/ Midwifery Student	22	42	1.95	23.8%	76.2%	2.00	1.94	0.0%	0.0%	0.0%	100.0%	0.0%	100.0%	100.0%
Nursing/ Midwifery other	2	2	1.00		100.0%		1.00	100.0%		100.0%	100.0%	0.0%		100.0%
Nursing & Midwifery	1,592	1,807	1.14	13.8%	86.2%	1.07	1.15	92.7%	88.8%	93.3%	73.3%	26.7%	90.0%	70.6%
Dietitians	25	29	1.15		100.0%		1.15	89.7%	89.7%	89.7%	65.5%	34.5%		65.5%
Occupational Therapists	131	148	1.13	7.4%	92.6%	1.02	1.14	89.9%	89.9%	89.1%	73.0%	27.0%	90.9%	71.5%
Orthoptists	1	1	1.00		100.0%		1.00	100.0%	100.0%	100.0%	100.0%	0.0%		100.0%
Physiotherapists	104	123	1.18	14.6%	85.4%	1.03	1.21	87.8%	87.8%	88.6%	62.6%	37.4%	88.9%	58.1%
Podiatrists & Chiropodists	9	12	1.35	8.3%	91.7%	1.00	1.40	83.3%	83.3%	81.8%	50.0%	50.0%	100.0%	45.5%
Speech & Language Therapists	109	124	1.13	1.6%	98.4%	1.00	1.14	82.3%	82.3%	82.0%	79.8%	20.2%	100.0%	79.5%
Therapy Professions	380	437	1.15	7.3%	92.7%	1.02	1.16	87.0%	90.6%	86.7%	70.9%	29.1%	90.6%	69.4%
Audiology	7	7	1.03		100.0%		1.03	100.0%	100.0%	100.0%	85.7%	14.3%		85.7%
Clinical Engineering	1	1	1.00	100.0%		1.00		100.0%	100.0%		100.0%	0.0%	100.0%	
Radiographers	1	1	1.67		100.0%		1.67	100.0%	100.0%	100.0%	0.0%	100.0%		0.0%
Health Science/ Diagnostics	8	9	1.07	11.1%	88.9%	1.00	1.08	100.0%	100.0%	100.0%	77.8%	22.2%	100.0%	75.0%
Social Care	275	334	1.22	18.6%	81.4%	1.27	1.20	83.2%	90.3%	81.6%	51.8%	48.2%	54.8%	51.1%
Social Workers	84	97	1.15	18.6%	81.4%	1.09	1.17	91.8%	88.9%	92.4%	67.0%	33.0%	77.8%	64.6%
Psychologists	83	96	1.16	15.6%	84.4%	1.02	1.19	93.8%	93.3%	93.8%	70.8%	29.2%	93.3%	66.7%
Pharmacy	4	6	1.35	16.7%	83.3%	1.00	1.45	83.3%	100.0%	80.0%	50.0%	50.0%	100.0%	40.0%
Counsellor Therapists	17	21	1.22	23.8%	76.2%	1.20	1.22	90.5%	90.5%	93.8%	52.4%	47.6%	40.0%	56.3%
Dental Hygienists	5	6	1.21		100.0%		1.21	83.3%	83.3%	83.3%	50.0%	50.0%		50.0%
Other Health & Social Care	36	43	1.20	16.3%	83.7%	1.07	1.23	93.0%	93.0%	94.4%	60.5%	39.5%	71.4%	58.3%
Play Therapists/ Specialists	1	1	1.00		100.0%		1.00	100.0%	100.0%	100.0%	100.0%	0.0%		100.0%
H&SC, Other	59	71	1.20	16.9%	83.1%	1.12	1.22	91.5%	83.3%	93.2%	57.7%	42.3%	58.3%	57.6%
Health & Social Care	894	1,050	1.17	13.4%	86.6%	1.14	1.18	87.2%	90.1%	86.8%	63.5%	36.5%	70.9%	62.4%
Executive Management	11	12	1.06	66.7%	33.3%	1.08	1.03	91.7%	91.7%	100.0%	83.3%	16.7%	87.5%	75.0%
Senior Management (VIII & GM)	47	48	1.01	41.7%	58.3%	1.00	1.02	91.7%	91.7%	92.9%	97.9%	2.1%	100.0%	96.4%
Management (VIII & above)	59	60	1.02	46.7%	53.3%	1.02	1.02	91.7%	89.3%	93.8%	95.0%	5.0%	96.4%	93.8%
Administrative/ Supervisory (V to VII)	161	169	1.05	17.2%	82.8%	1.07	1.05	97.6%	100.0%	97.1%	81.7%	18.3%	82.8%	81.4%
Clerical (III & IV)	445	510	1.14	5.5%	94.5%	1.10	1.15	88.8%	78.6%	89.4%	66.5%	33.5%	75.0%	66.0%
Management & Administrative	665	739	1.11	11.5%	88.5%	1.06	1.12	91.1%	89.4%	91.3%	72.3%	27.7%	84.7%	70.6%
Catering	41	45	1.09	28.9%	71.1%	1.02	1.12	100.0%	100.0%	100.0%	64.4%	35.6%	84.6%	56.3%
Household Services	61	90	1.48	15.6%	84.4%	1.48	1.48	90.0%	90.0%	92.1%	32.2%	67.8%	42.9%	30.3%
Other Support	36	70	1.92	70.0%	30.0%	1.53	4.78	57.1%	57.1%	14.3%	17.1%	82.9%	20.4%	9.5%
Portering	13	13	1.00	92.3%	7.7%	1.00	1.01	100.0%	100.0%	100.0%	100.0%	0.0%	100.0%	100.0%
Support	152	218	1.44	40.4%	59.6%	1.33	1.52	82.1%	83.0%	81.5%	38.1%	61.9%	44.3%	33.8%

Maintenance/ Technical	76	79	1.04	98.7%	1.3%	1.04	1.00	97.5%	97.4%	100.0%	93.7%	6.3%	93.6%	100.0%
General Support	228	297	1.30	55.9%	44.1%	1.17	1.52	86.2%	89.8%	81.7%	52.9%	47.1%	67.5%	34.4%
HCA, Nurse's Aide, etc.	1,357	1,570	1.16	25.7%	74.3%	1.11	1.18	80.2%	80.2%	80.2%	53.2%	46.8%	68.3%	48.0%
Health & Social Care Assistants	14	14	1.02	28.6%	71.4%	1.00	1.03	28.6%	28.6%	20.0%	92.9%	7.1%	100.0%	90.0%
Swabber (COVID-19)	51	54	1.05	27.8%	72.2%	1.10	1.04	1.9%	1.9%	2.6%	85.2%	14.8%	73.3%	89.7%
Health Care Assistants	1,422	1,638	1.15	25.8%	74.2%	1.11	1.17	77.2%	77.1%	77.2%	54.6%	45.4%	68.8%	49.7%
Home Help	427	585	1.37	0.7%	99.3%	1.56	1.37	91.6%	50.0%	91.9%	5.0%	95.0%	0.0%	5.0%
Care, other	290	345	1.19	35.1%	64.9%	1.17	1.21	87.0%	83.5%	88.8%	56.8%	43.2%	63.6%	53.1%
Patient & Client Care	2,138	2,568	1.20	21.3%	78.7%	1.12	1.22	81.8%	78.3%	82.7%	43.6%	56.4%	67.2%	37.2%

Employment by WTE, Headcount, Gender, Full-Time /Part-Time etc.: Apr 2021

CHO 2	WTE	Headcount	WTE: no.	% Male	% female	Male WTE: no.	Female WTE: no.	% Total Perm	% Male Perm	% Female Perm	% Total Full Time	% Total Part Time	% Male FT	% Female FT
Overall	5,747	6,710	1.17	19.0%	81.0%	1.11	1.18	85.0%	80.8%	86.0%	59.9%	40.1%	74.7%	56.4%
Community Health & Wellbeing	10	11	1.11	9.1%	90.9%	1.00	1.12	100.0%	100.0%	100.0%	54.5%	45.5%	100.0%	100.0%
Mental Health	1,370	1,493	1.09	27.9%	72.1%	1.06	1.10	84.9%	84.9%	86.8%	83.9%	16.1%	90.4%	90.4%
Primary Care	1,281	1,461	1.14	12.1%	87.9%	1.08	1.15	81.7%	81.7%	83.0%	70.8%	29.2%	83.6%	83.6%
HSE	1,788	2,109	1.18	13.9%	86.1%	1.05	1.20	90.1%	90.1%	90.8%	51.0%	49.0%	89.1%	89.1%
Section 38 Voluntary Agencies	1,297	1,636	1.26	23.6%	76.4%	1.25	1.27	81.5%	81.5%	81.4%	39.7%	60.3%	42.7%	42.7%
Social Care	3,086	3,745	1.21	18.1%	81.9%	1.15	1.23	86.3%	86.3%	87.0%	46.0%	54.0%	62.7%	62.7%

CHO 2 Skills Mix by Staff Grouping: April 2021

Apr 2021 (Dec 2019 figure: 5,545)	WTE Dec 2016	WTE Dec 2017	WTE Dec 2018	WTE Dec 2019	WTE Dec 2019	WTE Mar 2021	WTE Apr 2021
Overall	5,236	5,377	5,559	5,545	5,690	5,708	5,747
Consultant Medicine	0.5%	0.5%	0.5%	0.5%	0.5%	0.4%	0.7%
Consultant Paediatrics	0.5%	0.5%	0.5%	0.5%	0.5%	0.4%	0.4%
Consultant Psychiatry	16.7%	16.6%	16.4%	18.9%	18.9%	18.1%	18.3%
Consultant Surgery	0.7%	0.6%	0.1%	0.1%	0.1%	0.2%	0.1%
Consultants	18.4%	18.3%	17.5%	19.9%	19.9%	19.2%	19.6%
Registrar	27.0%	29.4%	27.8%	27.4%	27.4%	29.8%	29.7%
Senior Registrar	4.2%	4.2%	5.5%	8.0%	8.0%	9.0%	8.4%
Registrars	31.1%	33.6%	33.2%	35.4%	35.4%	38.8%	38.2%
Senior House Officer	19.3%	18.6%	20.0%	16.9%	16.9%	15.7%	17.4%
SHO/ Interns	19.3%	18.6%	20.0%	16.9%	16.9%	15.7%	17.4%
Dentists	11.2%	10.8%	11.0%	10.0%	10.0%	9.2%	9.7%
Other Medical	19.9%	18.8%	18.3%	17.7%	17.7%	17.1%	15.1%
Medical/ Dental, other	31.2%	29.6%	29.3%	27.7%	27.7%	26.4%	24.8%
Medical & Dental	3.7%	3.8%	3.8%	3.8%	3.8%	100.0%	4.0%
Clinical Nurse/ Midwife Manager	15.7%	15.7%	16.5%	16.0%	16.0%	16.5%	16.4%
Director Nursing/Midwifery, Assistant	2.5%	2.7%	2.6%	3.0%	3.0%	2.8%	2.9%
Director of Nursing/Midwifery	1.4%	1.4%	1.4%	1.5%	1.5%	1.6%	1.5%
Nurse/ Midwife Manager	19.5%	19.7%	20.5%	20.6%	20.6%	20.9%	20.8%
Advanced Nurse/ Midwife Practitioner	0.2%	0.3%	0.4%	0.6%	0.6%	0.7%	0.7%
Clinical Nurse/ Midwife Specialist	4.3%	5.1%	5.1%	5.6%	5.6%	6.1%	6.2%
Nurse/ Midwife Specialist & AN/MP	4.5%	5.3%	5.5%	6.2%	6.2%	6.8%	6.9%
Staff Midwives	0.0%	0.1%					
Staff Nurse [Intellectual Disability]	8.5%	6.5%	6.4%	6.0%	6.0%	7.6%	7.3%
Staff Nurse [Psychiatric]	25.4%	24.3%	24.1%	24.7%	24.7%	24.1%	24.3%
Staff Nurses [General/ Children's]	29.7%	30.5%	29.6%	29.1%	29.1%	26.9%	27.2%
Staff Nurse/ Staff Midwife	63.6%	61.4%	60.1%	59.8%	59.8%	58.6%	58.8%
Public Health Nurse	11.7%	11.4%	12.2%	12.8%	12.8%	12.2%	12.0%
Pre-registration Nurse/ Midwife Intern		0.9%		0.0%	0.0%	0.8%	1.3%
Pre-registration Nurse Intern (COVID-19)						0.5%	0.1%
Post-registration Nurse/ Midwife Student	0.7%	1.1%	0.8%	0.3%	0.3%		
Nursing/ Midwifery awaiting registration			0.7%	0.3%	0.3%		
Nursing/ Midwifery Student	0.7%	1.9%	1.6%	0.6%	0.6%	1.4%	1.4%
Nursing/ Midwifery other		0.1%	0.2%	0.1%	0.1%	0.1%	0.1%
Nursing & Midwifery	28.8%	28.3%	27.6%	27.1%	27.1%	100.0%	27.7%
Dietitians	2.4%	2.6%	2.5%	2.4%	2.4%	2.8%	2.8%
Occupational Therapists	15.1%	14.7%	14.6%	14.4%	14.4%	14.8%	14.7%
Orthoptists	0.2%	0.2%	0.2%	0.2%	0.2%	0.1%	0.1%
Physiotherapists	10.7%	11.7%	11.0%	10.9%	10.9%	11.5%	11.7%
Podiatrists & Chiropodists	1.2%	1.0%	0.9%	0.9%	0.9%	1.0%	1.0%
Speech & Language Therapists	12.3%	12.4%	12.8%	12.9%	12.9%	12.2%	12.2%
Therapy Professions	41.8%	42.6%	41.9%	41.7%	41.7%	42.5%	42.5%
Audiology	0.6%	0.8%	0.7%	0.6%	0.6%	0.7%	0.8%
Clinical Engineering	0.1%			0.1%	0.1%	0.1%	0.1%
Physicists	0.1%						
Radiographers	0.1%	0.1%	0.1%	0.1%	0.1%	0.1%	0.1%
Health Science/ Diagnostics	1.0%	0.8%	0.8%	0.8%	0.8%	0.9%	0.9%
Social Care	26.3%	27.2%	28.6%	30.2%	30.2%	30.8%	30.7%
Social Workers	10.3%	10.1%	10.1%	10.3%	10.3%	9.7%	9.4%
Psychologists	11.4%	10.7%	10.3%	9.1%	9.1%	9.4%	9.3%
Pharmacy	0.7%	0.6%	0.5%	0.6%	0.6%	0.5%	0.5%
Counsellor Therapists	1.4%	1.4%	1.5%	1.4%	1.4%	1.6%	1.9%

Apr 2021 (Dec 2019 figure: 5,545)	WTE Dec 2016	WTE Dec 2017	WTE Dec 2018	WTE Dec 2019	WTE Dec 2019	WTE Mar 2021	WTE Apr 2021
Overall	5,236	5,377	5,559	5,545	5,690	5,708	5,747
Dental Hygienists	0.5%	0.3%	0.5%	0.6%	0.6%	0.6%	0.6%
HSCP Trainees/ Students	0.3%	0.1%					
Other Health & Social Care	5.8%	5.6%	5.2%	4.9%	4.9%	4.0%	4.0%
Play Therapists/ Specialists	0.5%	0.5%	0.4%	0.4%	0.4%	0.1%	0.1%
H&SC, Other	8.5%	7.9%	7.7%	7.3%	7.3%	6.3%	6.6%
Health & Social Care Professionals	14.0%	14.0%	14.6%	14.6%	14.6%	100.0%	15.6%
Executive Management	1.7%	1.8%	1.7%	1.6%	1.6%	1.6%	1.7%
Senior Management (VIII & GM)	6.5%	6.6%	7.0%	6.9%	6.9%	7.0%	7.1%
Management (VIII & above)	8.2%	8.5%	8.7%	8.5%	8.5%	8.6%	8.8%
Middle Management (V-VII)	17.2%	18.3%	18.5%	20.2%	20.2%	24.6%	24.2%
Other Administrative				0.2%	0.2%		
Administrative/ Supervisory (V to VII)	17.2%	18.3%	18.5%	20.3%	20.3%	24.6%	24.2%
Clerical (III & IV)	74.6%	73.2%	72.8%	71.2%	71.2%	66.8%	67.0%
Management & Administrative	11.3%	11.9%	12.0%	11.9%	11.9%	100.0%	11.6%
Catering	15.6%	14.8%	16.9%	17.6%	17.6%	17.8%	18.2%
Household Services	31.9%	30.7%	28.8%	27.9%	27.9%	26.4%	26.7%
Other Support	17.2%	17.6%	17.4%	17.4%	17.4%	16.1%	16.0%
Portering	6.4%	7.2%	7.1%	6.9%	6.9%	6.1%	5.7%
Support	71.0%	70.3%	70.2%	69.9%	69.9%	66.4%	66.5%
Maintenance/ Technical	29.0%	29.7%	29.8%	30.1%	30.1%	33.6%	33.5%
General Support	4.9%	4.5%	4.4%	4.1%	4.1%	100.0%	4.0%
HCA, Nurse's Aide, etc.	63.7%	64.2%	63.5%	63.3%	63.3%	64.1%	63.4%
Health & Social Care Assistants	0.3%	0.5%	0.9%	0.6%	0.6%	0.6%	0.6%
Swabber (COVID-19)						2.5%	2.4%
Health Care Assistants	64.0%	64.7%	64.5%	64.0%	64.0%	67.3%	66.5%
Home Help	23.0%	22.3%	23.0%	23.4%	23.4%	19.3%	20.0%
Care, other	13.0%	13.0%	12.5%	12.7%	12.7%	13.5%	13.5%
Patient & Client Care	37.4%	37.4%	37.7%	38.5%	38.5%	100.0%	37.2%
Total	100 %	100 %	100 %	100 %	100%	100 %	100 %

CHO 2 Skills Mix by Care Group: April 2021

Apr 2021 (Dec 2019 figure: 1,308)	WTE Dec 2016	WTE Dec 2017	WTE Dec 2018	WTE Dec 2019	WTE Dec 2019	WTE Mar 2021	WTE Apr 2021
Mental Health	1,283	1,307	1,338	1,308	1,340	1,368	1,370
Consultants	33.8%	31.8%	30.6%	35.3%	35.3%	34.7%	34.1%
Registrar	18.0%	19.5%	17.9%	16.0%	16.0%	17.8%	17.0%
Senior Registrar	9.0%	8.5%	10.9%	15.0%	15.0%	17.4%	15.8%
Registrars	27.0%	28.0%	28.7%	31.1%	31.1%	35.2%	32.8%
Senior House Officer	36.4%	37.7%	39.7%	32.7%	32.7%	29.2%	32.6%
SHO/ Interns	36.4%	37.7%	39.7%	32.7%	32.7%	29.2%	32.6%
Medical/ Dental, other	2.8%	2.5%	0.9%	0.9%	0.9%	0.9%	0.5%
Medical & Dental	6.9%	7.6%	7.9%	8.1%	8.1%	8.5%	8.5%
Clinical Nurse/ Midwife Manager	22.1%	20.7%	23.0%	21.5%	21.5%	20.6%	20.3%
Director Nursing/Midwifery, Assistant	2.8%	3.3%	3.1%	3.3%	3.3%	2.9%	2.9%
Director of Nursing/Midwifery	0.5%	0.5%	0.3%	0.5%	0.5%	0.5%	0.5%
Nurse/ Midwife Manager	25.5%	24.6%	26.4%	25.3%	25.3%	23.9%	23.7%
Advanced Nurse/ Midwife Practitioner	0.5%	0.5%	0.9%	1.0%	1.0%	1.1%	1.1%
Clinical Nurse/ Midwife Specialist	7.4%	9.9%	9.4%	10.6%	10.6%	11.1%	11.1%
Nurse/ Midwife Specialist & AN/MP	7.9%	10.4%	10.2%	11.7%	11.7%	12.3%	12.2%
Staff Nurse [Psychiatric]	64.6%	61.0%	60.0%	61.0%	61.0%	58.8%	59.2%
Staff Nurses [General/ Children's]	2.0%	1.3%	0.9%	0.9%	0.9%	1.3%	1.1%
Staff Nurse/ Staff Midwife	66.6%	62.3%	61.0%	61.9%	61.9%	60.1%	60.4%
Pre-registration Nurse/ Midwife Intern		2.3%		0.0%	0.0%	2.1%	3.3%
Pre-registration Nurse Intern (COVID-19)						1.4%	0.2%
Nursing/ Midwifery awaiting registration			1.9%	0.8%	0.8%		
Nursing/ Midwifery Student		2.3%	1.9%	0.8%	0.8%	3.4%	3.4%
Nursing/ Midwifery other		0.4%	0.5%	0.3%	0.3%	0.3%	0.3%
Nursing & Midwifery	44.0%	43.5%	43.8%	44.1%	44.1%	45.7%	45.7%
Dietitians	2.9%	3.6%	2.4%	2.1%	2.1%	3.3%	3.3%
Occupational Therapists	24.4%	26.3%	26.4%	26.0%	26.0%	25.4%	26.0%
Speech & Language Therapists	5.3%	5.5%	5.2%	4.3%	4.3%	7.3%	6.7%
Therapy Professions	32.6%	35.4%	33.9%	32.4%	32.4%	36.0%	36.0%
Social Care	12.2%	9.7%	9.9%	10.5%	10.5%	10.4%	10.3%
Social Workers	26.9%	26.2%	27.7%	29.1%	29.1%	26.7%	26.5%
Psychologists	25.0%	25.3%	24.6%	24.0%	24.0%	23.8%	24.1%
Pharmacy	2.6%	1.9%	1.8%	1.8%	1.8%	1.1%	1.1%
Counsellor Therapists			1.4%	1.4%	1.4%	1.3%	1.3%
Other Health & Social Care		0.7%					
Play Therapists/ Specialists	0.7%	0.7%	0.7%	0.7%	0.7%	0.6%	0.6%
H&SC, Other	0.7%	1.4%	2.1%	2.1%	2.1%	1.9%	1.9%
Health & Social Care Professionals	10.7%	10.6%	10.9%	10.7%	10.7%	11.4%	11.4%
Management (VIII & above)	3.1%	2.2%	2.8%	3.6%	3.6%	2.3%	2.0%
Administrative/ Supervisory (V to VII)	15.9%	17.6%	16.5%	17.1%	17.1%	18.9%	19.0%
Clerical (III & IV)	81.0%	80.2%	80.7%	79.2%	79.2%	78.8%	79.0%
Management & Administrative	10.2%	10.4%	10.5%	10.5%	10.5%	9.5%	9.5%
Support	56.6%	53.4%	52.7%	57.3%	57.3%	47.3%	46.4%
Maintenance/ Technical	43.4%	46.6%	47.3%	42.7%	42.7%	52.7%	53.6%
General Support	6.3%	5.6%	5.2%	4.8%	4.8%	4.7%	4.7%
Health Care Assistants	76.3%	74.5%	75.0%	75.6%	75.6%	75.8%	75.4%
Care, other	23.7%	25.5%	25.0%	24.4%	24.4%	24.2%	24.6%
Patient & Client Care	21.9%	22.3%	21.7%	21.7%	21.7%	20.1%	20.1%

Apr 2021 (Dec 2019 figure: 1,308)	WTE Dec 2016	WTE Dec 2017	WTE Dec 2018	WTE Dec 2019	WTE Dec 2019	WTE Mar 2021	WTE Apr 2021
Mental Health	1,283	1,307	1,338	1,308	1,340	1,368	1,370
Total	100 %	100 %	100 %	100 %	100 %	100 %	100 %

Apr 2021 (Dec 2019 figure: 1,134)	WTE Dec 2016	WTE Dec 2017	WTE Dec 2018	WTE Dec 2019	WTE Dec 2019	WTE Mar 2021	WTE Apr 2021
Primary Care	1,238	1,090	1,160	1,134	1,235	1,271	1,281
Consultant Medicine	1.2%	1.2%	1.1%	1.1%	1.1%	1.0%	1.7%
Consultant Surgery	1.5%	1.5%	0.3%	0.3%	0.3%	0.4%	0.3%
Consultants	2.7%	2.7%	1.5%	1.4%	1.4%	1.4%	2.0%
Registrars	39.1%	44.7%	43.2%	45.6%	45.6%	47.5%	49.4%
SHO/ Interns	5.4%			1.1%	1.1%	3.0%	2.1%
Dentists	25.0%	25.7%	26.7%	24.1%	24.1%	21.3%	23.1%
Other Medical	27.8%	26.9%	28.6%	27.8%	27.8%	26.8%	23.4%
Medical/ Dental, other	52.8%	52.6%	55.3%	51.9%	51.9%	48.0%	46.5%
Medical & Dental	7.0%	7.8%	7.5%	7.8%	7.8%	7.5%	7.5%
Clinical Nurse/ Midwife Manager	1.7%	2.3%	2.0%	1.7%	1.7%	1.7%	1.7%
Director Nursing/Midwifery, Assistant	5.3%	4.9%	5.1%	6.4%	6.4%	6.6%	6.7%
Director of Nursing/Midwifery	0.7%	1.0%	0.9%	0.6%	0.6%	1.2%	1.2%
Nurse/ Midwife Manager	7.7%	8.2%	8.0%	8.7%	8.7%	9.5%	9.6%
Nurse/ Midwife Specialist & AN/MP	5.2%	4.9%	5.7%	5.5%	5.5%	7.1%	7.2%
Staff Nurse/ Staff Midwife	24.0%	23.9%	24.4%	23.6%	23.6%	25.0%	26.8%
Public Health Nurse	59.4%	57.7%	57.8%	60.9%	60.9%	58.5%	56.4%
Nursing/ Midwifery Student	3.7%	5.3%	4.0%	1.3%	1.3%		
Nursing & Midwifery	23.9%	27.6%	27.7%	27.7%	27.7%	26.4%	26.4%
Dietitians	3.3%	4.0%	5.2%	4.9%	4.9%	4.7%	4.9%
Occupational Therapists	19.1%	18.6%	18.8%	19.0%	19.0%	20.2%	19.5%
Orthoptists	0.5%	0.5%	0.5%	0.5%	0.5%	0.3%	0.3%
Physiotherapists	18.1%	21.1%	20.0%	20.0%	20.0%	21.2%	21.4%
Podiatrists & Chiropodists	2.8%	2.5%	2.2%	2.2%	2.2%	2.5%	2.5%
Speech & Language Therapists	22.6%	22.9%	24.4%	25.7%	25.7%	23.8%	24.1%
Therapy Professions	66.4%	69.7%	71.1%	72.4%	72.4%	72.8%	72.7%
Audiology	1.5%	1.9%	1.8%	1.6%	1.6%	1.8%	1.9%
Clinical Engineering	0.3%			0.3%	0.3%	0.3%	0.3%
Physicists	0.3%						
Health Science/ Diagnostics	2.2%	1.9%	1.8%	1.9%	1.9%	2.1%	2.2%
Social Care	3.7%	3.5%	3.0%	2.7%	2.7%	2.5%	2.4%
Social Workers	3.0%	2.3%	2.1%	2.2%	2.2%	1.7%	1.4%
Psychologists	10.0%	8.8%	8.6%	7.7%	7.7%	8.4%	8.3%
Pharmacy	0.3%	0.3%	0.3%	0.3%	0.3%	0.6%	0.5%
Counsellor Therapists	3.0%	2.9%	2.4%	1.9%	1.9%	2.3%	3.1%
Dental Hygienists	1.1%	0.8%	1.4%	1.4%	1.4%	1.4%	1.4%
Other Health & Social Care	10.2%	9.8%	9.2%	9.5%	9.5%	8.3%	8.0%
H&SC, Other	14.3%	13.5%	13.0%	12.8%	12.8%	12.0%	12.5%
Health & Social Care Professionals	24.2%	27.8%	27.8%	27.6%	27.6%	27.9%	27.9%
Executive Management	2.7%	3.1%	2.8%	2.5%	2.5%	2.5%	2.7%
Senior Management (VIII & GM)	7.0%	8.4%	8.4%	7.4%	7.4%	8.1%	8.4%
Management (VIII & above)	9.7%	11.5%	11.2%	9.9%	9.9%	10.5%	11.1%
Administrative/ Supervisory (V to VII)	13.6%	14.3%	16.1%	18.6%	18.6%	23.4%	22.3%
Clerical (III & IV)	76.7%	74.2%	72.7%	71.5%	71.5%	66.0%	66.6%
Management & Administrative	23.6%	28.8%	28.5%	29.3%	29.3%	26.9%	26.9%
Support	70.6%	70.8%	74.0%	69.9%	69.9%	71.0%	69.4%

Apr 2021 (Dec 2019 figure: 1,134)	WTE Dec 2016	WTE Dec 2017	WTE Dec 2018	WTE Dec 2019	WTE Dec 2019	WTE Mar 2021	WTE Apr 2021
Primary Care	1,238	1,090	1,160	1,134	1,235	1,271	1,281
Maintenance/ Technical	29.4%	29.2%	26.0%	30.1%	30.1%	29.0%	30.6%
General Support	2.5%	2.8%	3.0%	2.6%	2.6%	2.3%	2.3%
HCA, Nurse's Aide, etc.	2.4%	8.1%	6.9%	7.7%	7.7%	3.7%	3.7%
Health & Social Care Assistants	0.4%	7.1%	23.2%	17.2%	17.2%	8.6%	8.7%
Swabber (COVID-19)						46.2%	44.4%
Health Care Assistants	2.9%	15.2%	30.0%	25.0%	25.0%	58.5%	56.8%
Home Help	72.5%						
Care, other	24.7%	84.8%	70.0%	75.0%	75.0%	41.5%	43.2%
Patient & Client Care	18.8%	5.2%	5.6%	5.0%	5.0%	9.0%	9.0%
Total	100 %	100 %	100 %	100 %	100 %	100 %	100 %

Apr 2021 (Dec 2019 figure: 1,497)	WTE Dec 2016	WTE Dec 2017	WTE Dec 2018	WTE Dec 2019	WTE Dec 2019	WTE Mar 2021	WTE Apr 2021
Disabilities	1,338	1,395	1,420	1,497	1,516	1,510	1,516
Consultant Paediatrics	16.7%	16.7%	16.4%	15.6%	15.6%	15.6%	15.7%
Consultant Psychiatry	33.3%	33.3%	34.3%	37.5%	37.5%	37.5%	37.8%
Consultants	50.0%	50.0%	50.7%	53.1%	53.1%	53.1%	53.5%
Registrars	33.3%	33.3%	32.8%	31.3%	31.3%	31.3%	30.7%
Medical/ Dental, other	16.7%	16.7%	16.4%	15.6%	15.6%	15.6%	15.7%
Medical & Dental	0.4%	0.4%	0.4%	0.4%	0.4%	0.4%	0.4%
Clinical Nurse/ Midwife Manager	24.3%	26.1%	27.5%	30.0%	30.0%	30.1%	31.1%
Director Nursing/Midwifery, Assistant	0.7%	0.4%					
Director of Nursing/Midwifery	1.1%	0.7%	0.7%	1.1%	1.1%	1.1%	1.1%
Nurse/ Midwife Manager	26.0%	27.1%	28.2%	31.1%	31.1%	31.3%	32.2%
Advanced Nurse/ Midwife Practitioner		0.4%	0.4%	0.4%	0.4%	0.4%	0.4%
Clinical Nurse/ Midwife Specialist	2.6%	2.3%	2.0%	2.0%	2.0%	2.3%	2.3%
Nurse/ Midwife Specialist & AN/MP	2.6%	2.7%	2.3%	2.4%	2.4%	2.7%	2.7%
Staff Nurse [Intellectual Disability]	46.3%	36.3%	38.9%	36.1%	36.1%	47.7%	46.6%
Staff Nurse [Psychiatric]	6.2%	8.6%	7.0%	7.7%	7.7%	6.3%	6.3%
Staff Nurses [General/ Children's]	19.0%	25.3%	23.5%	22.7%	22.7%	12.1%	12.2%
Staff Nurse/ Staff Midwife	71.4%	70.2%	69.4%	66.5%	66.5%	66.1%	65.1%
Pre-registration Nurse Intern (COVID-19)							
Nursing/ Midwifery Student							
Nursing & Midwifery	20.6%	19.5%	17.8%	16.6%	16.6%	16.5%	16.5%
Dietitians	0.6%			0.2%	0.2%	0.3%	0.3%
Occupational Therapists	3.8%	3.7%	3.1%	3.6%	3.6%	3.1%	3.1%
Physiotherapists	3.8%	4.0%	3.6%	4.0%	4.0%	3.6%	3.5%
Speech & Language Therapists	5.3%	5.4%	5.0%	5.1%	5.1%	3.3%	3.2%
Therapy Professions	13.6%	13.1%	11.7%	12.9%	12.9%	10.3%	10.1%
Social Care	63.8%	65.0%	67.9%	69.1%	69.1%	73.9%	74.0%
Social Workers	8.5%	8.8%	8.0%	8.1%	8.1%	8.0%	8.0%
Psychologists	7.3%	7.0%	6.5%	4.9%	4.9%	4.6%	4.6%
Counsellor Therapists	0.4%	0.7%	0.8%	1.0%	1.0%	1.3%	1.2%
HSCP Trainees/ Students	0.9%	0.2%					
Other Health & Social Care	4.7%	4.3%	4.2%	3.2%	3.2%	1.9%	2.1%
Play Therapists/ Specialists	0.8%	0.9%	0.8%	0.8%	0.8%		
H&SC, Other	6.7%	6.1%	5.8%	4.9%	4.9%	3.1%	3.3%
Health & Social Care Professionals	19.3%	20.1%	21.6%	21.4%	21.4%	22.3%	22.3%
Executive Management	2.0%	1.9%	1.9%	1.9%	1.9%	1.8%	1.8%
Senior Management (VIII & GM)	11.7%	11.1%	12.5%	13.1%	13.1%	12.7%	12.7%
Management (VIII & above)	13.7%	13.0%	14.4%	15.0%	15.0%	14.5%	14.5%

Apr 2021 (Dec 2019 figure: 1,497)	WTE Dec 2016	WTE Dec 2017	WTE Dec 2018	WTE Dec 2019	WTE Dec 2019	WTE Mar 2021	WTE Apr 2021
Disabilities	1,338	1,395	1,420	1,497	1,516	1,510	1,516
Administrative/ Supervisory (V to VII)	34.7%	38.6%	36.6%	38.2%	38.2%	39.1%	40.1%
Clerical (III & IV)	51.7%	48.4%	49.1%	46.8%	46.8%	46.4%	45.4%
Management & Administrative	7.6%	7.7%	7.4%	7.1%	7.1%	7.2%	7.2%
Support	77.5%	78.2%	79.1%	77.5%	77.5%	76.1%	76.5%
Maintenance/ Technical	22.5%	21.8%	20.9%	22.5%	22.5%	23.9%	23.5%
General Support	4.3%	4.3%	4.0%	3.9%	3.9%	3.6%	3.6%
Health Care Assistants	81.9%	82.7%	82.5%	82.3%	82.3%	82.3%	82.6%
Care, other	18.1%	17.3%	17.5%	17.7%	17.7%	17.7%	17.4%
Patient & Client Care	47.8%	48.0%	48.8%	50.6%	50.6%	49.9%	49.9%
Total	100 %	100 %	100 %	100 %	100 %	100 %	100 %

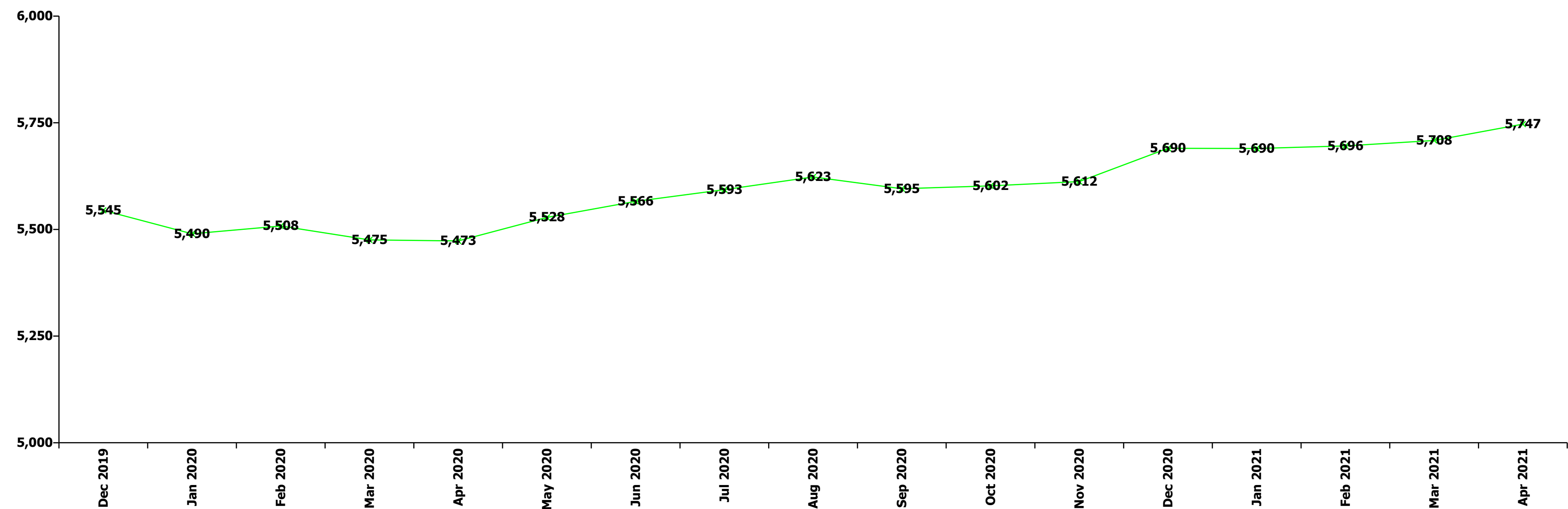
Apr 2021 (Dec 2019 figure: 1,606)	WTE Dec 2016	WTE Dec 2017	WTE Dec 2018	WTE Dec 2019	WTE Dec 2019	WTE Mar 2021	WTE Apr 2021
Older People	1,376	1,586	1,641	1,606	1,590	1,549	1,570
Medical/ Dental, other	100.0%	100.0%	100.0%	100.0%	100.0%	100.0%	100.0%
Medical & Dental	0.8%	0.7%	0.7%	0.7%	0.7%	0.7%	0.7%
Clinical Nurse/ Midwife Manager	10.7%	11.4%	11.4%	10.2%	10.2%	13.5%	13.4%
Director Nursing/Midwifery, Assistant	1.0%	1.5%	1.3%	1.6%	1.6%	1.3%	1.5%
Director of Nursing/Midwifery	3.5%	3.4%	3.8%	4.3%	4.3%	3.9%	3.6%
Nurse/ Midwife Manager	15.2%	16.3%	16.5%	16.1%	16.1%	18.7%	18.5%
Nurse/ Midwife Specialist & AN/MP				0.6%	0.6%	0.5%	0.5%
Staff Midwives	0.1%	0.2%					
Staff Nurse [Intellectual Disability]		0.2%					
Staff Nurses [General/ Children's]	84.5%	83.0%	83.2%	83.2%	83.2%	80.5%	80.7%
Staff Nurse/ Staff Midwife	84.6%	83.4%	83.2%	83.2%	83.2%	80.5%	80.7%
Public Health Nurse	0.2%	0.2%	0.3%	0.2%	0.2%	0.3%	0.3%
Nursing & Midwifery	27.0%	24.1%	22.8%	22.6%	22.6%	24.0%	24.0%
Dietitians	6.6%	6.1%		1.3%	1.3%	3.9%	3.5%
Occupational Therapists	26.3%	21.9%	26.6%	25.5%	25.5%	23.9%	25.1%
Physiotherapists	38.2%	38.5%	38.4%	36.1%	36.1%	37.7%	37.8%
Speech & Language Therapists	2.8%	5.7%	5.5%	5.3%	5.3%	4.9%	4.7%
Therapy Professions	74.0%	72.2%	70.4%	68.2%	68.2%	70.4%	71.2%
Radiographers	1.7%	1.7%	1.7%	1.6%	1.6%	1.5%	1.4%
Health Science/ Diagnostics	1.7%	1.7%	1.7%	1.6%	1.6%	1.5%	1.4%
Social Workers	21.3%	24.6%	26.5%	27.5%	27.5%	25.6%	25.0%
Pharmacy	1.4%	1.5%	1.4%	2.7%	2.7%	2.5%	2.4%
Play Therapists/ Specialists	1.6%	0.0%	0.0%	0.0%	0.0%		
H&SC, Other	1.6%		0.0%	0.0%	0.0%		
Health & Social Care Professionals	2.6%	2.2%	2.2%	2.3%	2.3%	2.7%	2.7%
Management (VIII & above)	2.9%	1.2%	2.2%	2.5%	2.5%	1.4%	1.4%
Administrative/ Supervisory (V to VII)	9.0%	8.3%	9.4%	9.4%	9.4%	12.4%	11.1%
Clerical (III & IV)	88.0%	90.5%	88.4%	88.1%	88.1%	86.2%	87.5%
Management & Administrative	5.0%	5.2%	5.6%	5.1%	5.1%	4.5%	4.5%
Support	80.3%	79.5%	77.3%	74.7%	74.7%	74.2%	75.2%
Maintenance/ Technical	19.7%	20.5%	22.7%	25.3%	25.3%	25.8%	24.8%
General Support	6.3%	5.1%	5.0%	4.7%	4.7%	5.0%	5.0%
HCA, Nurse's Aide, etc.	62.8%	52.2%	51.4%	49.3%	49.3%	53.9%	52.5%
Health & Social Care Assistants	0.5%	0.4%	0.4%	0.3%	0.3%	0.3%	0.3%

Apr 2021 (Dec 2019 figure: 1,606)	WTE Dec 2016	WTE Dec 2017	WTE Dec 2018	WTE Dec 2019	WTE Dec 2019	WTE Mar 2021	WTE Apr 2021
Older People	1,376	1,586	1,641	1,606	1,590	1,549	1,570
Health Care Assistants	63.3%	52.6%	51.8%	49.6%	49.6%	54.2%	52.8%
Home Help	34.9%	45.0%	46.0%	48.1%	48.1%	42.0%	43.2%
Care, other	1.8%	2.4%	2.3%	2.4%	2.4%	3.7%	4.0%
Patient & Client Care	58.4%	62.8%	63.7%	64.7%	64.7%	63.0%	63.0%
Total	100 %	100 %	100 %	100 %	100 %	100 %	100 %

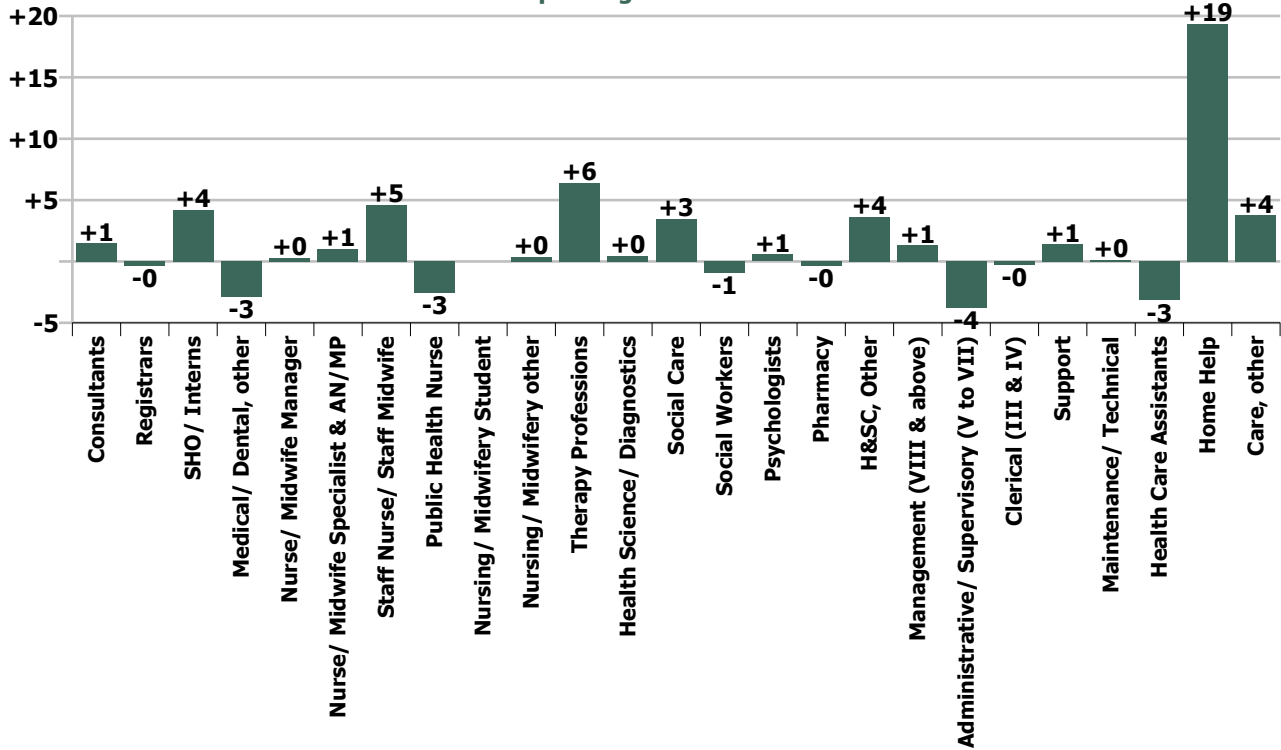
Summary Staff Movement: April 2021

Month-on-month Summary																												
WTE change since Mar 21	% change since Mar 21	overall	Consultants	Registrars	SHO/ Interns	Medical/ Dental, other	Medical & Dental	Nurse/ Midwife Manager	Nurse/ Midwife Specialist & AN/MP	Staff Nurse/ Staff Midwife	Public Health Nurse	Nursing/ Midwifery Student	Nursing/ Midwifery other	Nursing & Midwifery	Therapy Professions	Health Science/ Diagnostics	Social Care	Social Workers	Psychologists	Pharmacy	H&SC, Other	Health & Social Care Professionals	Management (VIII & above)	Administrative/ Supervisory (V to VII)	Clerical (III & IV)	Management & Administrative	General Support	Patient & Client Care
Overall	+0.7%	+38	+1.5	-0.4	+4.2	-2.9	+2.5	+0.3	+1.0	+4.6	-2.6	0.0	+0.4	+3.8	+6.4	+0.5	+3.5	-0.9	+0.6	-0.3	+3.6	+13.3	+1.3	-3.8	-0.3	-2.7	+1.5	+20.0
Community Health & Wellbeing	+1.1%	+0																					0.0	+0.1	0.0	+0.1		0.0
Mental Health	+0.1%	+2	+0.9	-1.2	+5.2	-0.4	+4.5	-0.9	-0.2	+3.2		0.0	+0.4	+2.5	-0.4		-0.3	-0.7	+0.2	0.0	-0.0	-1.3	-0.4	+0.0	-0.5	-0.9	-0.9	-2.2
Primary Care	+0.8%	+10	+0.6	+0.9	-1.0	-2.5	-2.0	+1.1	+1.2	+8.0	-2.6			+7.8	+5.6	+0.5	-0.1	-0.8	+0.4	-0.3	+2.9	+8.1	+1.7	-4.1	+0.8	-1.6	-1.7	-0.7
Disabilities	+0.4%	+6	0.0	-0.0		0.0	-0.0	+1.3	+0.1	-4.7				-3.3	-0.3		+3.9	+0.5	-0.0		+0.8	+4.9	-0.0	+1.2	-0.9	+0.2	+1.0	+3.6
Older People	+1.3%	+20				0.0	0.0	-1.3	0.0	-1.9	0.0			-3.2	+1.4	0.0		+0.1			0.0	+1.5	0.0	-1.0	+0.4	-0.6	+3.2	+19.2
Social Care	+0.9%	+27	0.0	-0.0		0.0	-0.0	+0.1	+0.1	-6.6	0.0			-6.5	+1.2	0.0	+3.9	+0.6	-0.0	0.0	+0.8	+6.5	-0.0	+0.2	-0.5	-0.4	+4.1	+22.8
Change	+38.3	+0.7%	+3.4%	-0.4%	+11.8%	-4.8%	+1.1%	+0.1%	+1.0%	+0.5%	-1.3%		+24.2%	+0.2%	+1.7%	+6.1%	+1.3%	-1.1%	+0.7%	-6.9%	+6.6%	+1.5%	+2.3%	-2.3%	-0.1%	-0.4%	+0.7%	+0.9%

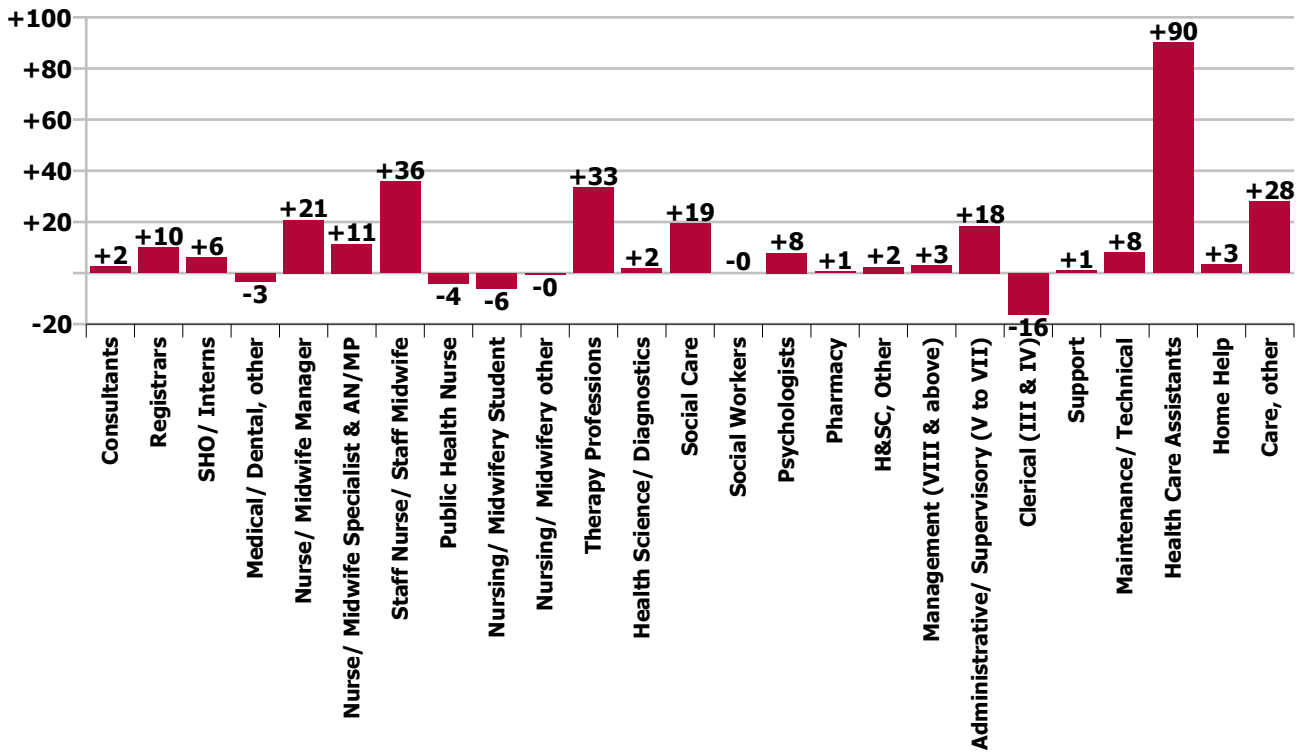
Year-on-year Summary																												
WTE change since Apr 20	% change since Apr 20	overall	Consultants	Registrars	SHO/ Interns	Medical/ Dental, other	Medical & Dental	Nurse/ Midwife Manager	Nurse/ Midwife Specialist & AN/MP	Staff Nurse/ Staff Midwife	Public Health Nurse	Nursing/ Midwifery Student	Nursing/ Midwifery other	Nursing & Midwifery	Therapy Professions	Health Science/ Diagnostics	Social Care	Social Workers	Psychologists	Pharmacy	H&SC, Other	Health & Social Care Professionals	Management (VIII & above)	Administrative/ Supervisory (V to VII)	Clerical (III & IV)	Management & Administrative	General Support	Patient & Client Care
Overall	+5.0%	+274	+2.5	+10.0	+6.0	-3.3	+15.2	+20.8	+11.4	+35.9	-4.2	-6.1	-0.5	+57.3	+33.3	+1.9	+19.4	-0.0	+7.9	+0.8	+2.4	+65.6	+3.1	+18.4	-16.3	+5.2	+9.0	+121.4
Community Health & Wellbeing	+1.1%	+0																					0.0	+0.8	0.0	+0.8		0.0
Mental Health	+0.1%	+2	+1.9	+2.9	+6.0	-0.4	+10.4	+2.8	+4.8	+26.5		-2.1	-0.5	+31.5	+8.4		-0.0	+0.3	+1.9	-0.9	-0.0	+9.7	-2.4	+1.8	-5.9	-6.4	+2.7	-7.8
Primary Care	+0.8%	+10	+0.8	+7.1	0.0	-2.9	+5.0	+6.8	+5.2	+13.7	-4.2	-4.0		+17.5	+23.0	+1.9	-0.1	-1.8	+6.3	+1.7	+5.4	+36.2	+5.5	+13.4	-3.2	+15.6	-1.4	+57.1
Disabilities	+5.3%	+76.9	-0.2	-0.0		0.0	-0.2	+4.8	+1.4	-2.5				+3.7	-3.0		+19.5	+1.3	-0.4		-2.9	+14.6	+1.0	+3.3	+1.8	+6.2	+2.8	+49.9
Older People	+1.7%	+25.9				0.0	0.0	+6.5	0.0	-1.8	0.0			+4.7	+4.9	0.0		+0.2		+0.0	0.0	+5.1	-1.0	-0.9	-9.1	-10.9	+4.9	+22.2
Social Care	+0.9%	+27	-0.2	-0.0		0.0	-0.3	+11.2	+1.4	-4.3	0.0			+8.3	+2.0	0.0	+19.5	+1.4	-0.4	+0.0	-2.9	+19.7	-0.0	+2.5	-7.3	-4.8	+7.7	+72.1
Change	+273.7	+5.0%	+5.8%	+12.9%	+17.5%	-5.4%	+7.1%	+6.7%	+11.6%	+4.0%	-2.2%	-22.0%	-19.4%	+3.7%	+9.6%	+28.7%	+7.6%	-0.0%	+10.5%	+21.3%	+4.2%	+7.9%	+5.6%	+12.9%	-3.5%	+0.8%	+4.1%	+6.0%



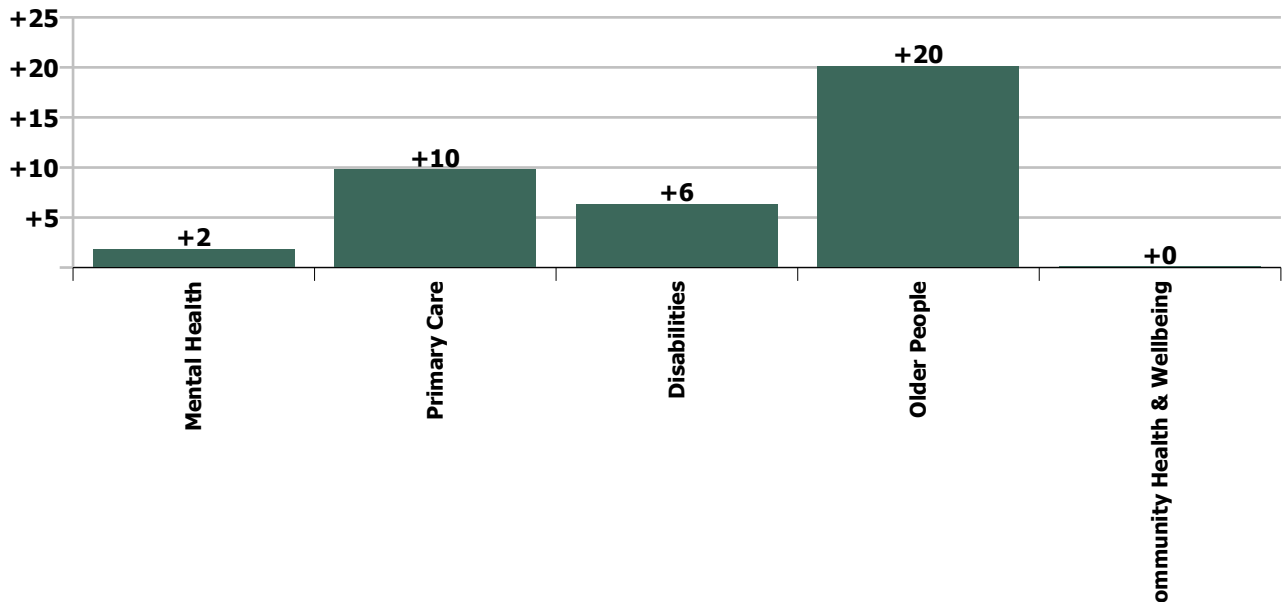
Staff Group change since: Mar 2021



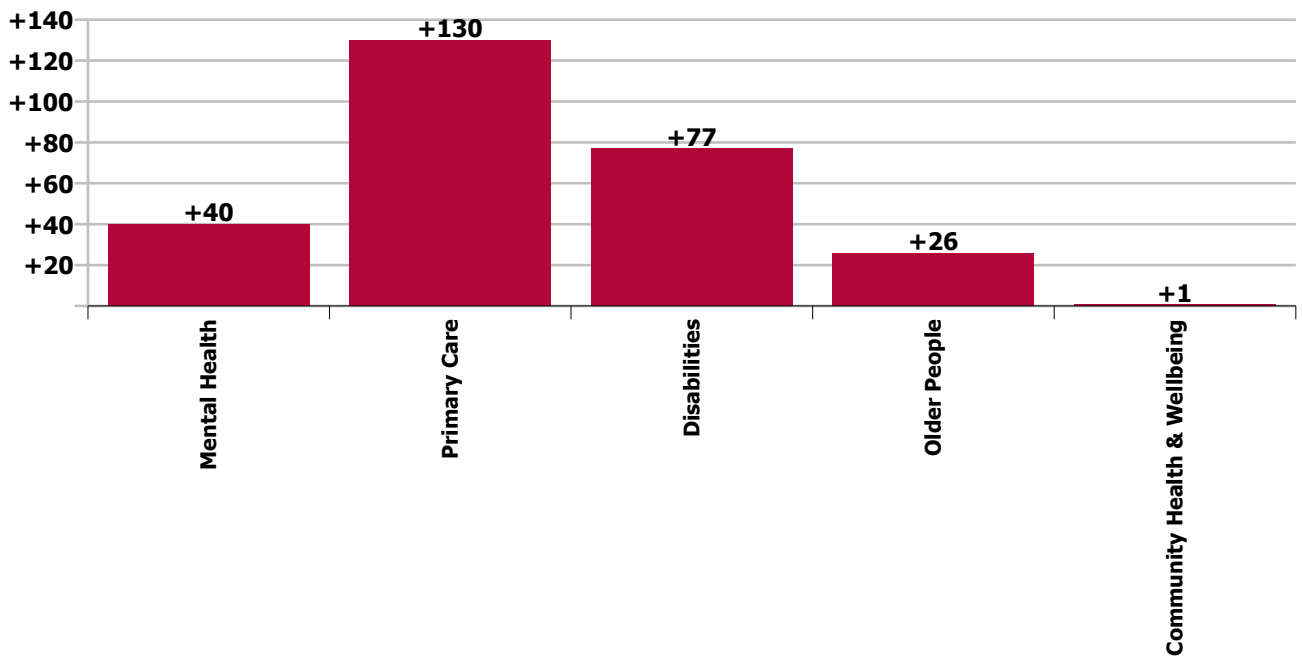
Staff Group change since: Apr 2020



Care Group change since: Mar 2021



Care Group change since: Apr 2020



Longitudinal Employment Levels by Grade Group - Dec 2015 to Apr 2021

Apr 2021 (Dec 2016 figure: 5,236)	WTE Apr 2021	WTE change since Dec 16	WTE change since Dec 17	WTE change since Dec 18	WTE change since Dec 19	WTE change since Dec 19	WTE change since Mar 21	% change since Dec 16	% change since Dec 17	% change since Dec 18	% change since Dec 19	% change since Dec 19	% change since Mar 21
Overall	5,747	+511	+370	+188	+202	+202	+38	+9.8%	+6.9%	+3.4%	+3.6%	+3.6%	+0.7%
Consultant Medicine	2	+1	+1	+1	+1	+1	+1	+67.0%	+67.0%	+67.0%	+67.0%	+67.0%	+67.0%
Consultant Paediatrics	1												
Consultant Psychiatry	42	+10	+8	+8	+2	+2	+1	+32.1%	+25.1%	+22.4%	+5.6%	+5.6%	+2.2%
Consultant Surgery	0	-1	-1	+0	+0	+0	-0	-76.0%	-76.0%	+3.3%	+24.0%	+24.0%	-27.9%
Consultants	45	+10	+8	+8	+3	+3	+1	+28.2%	+22.1%	+22.9%	+7.0%	+7.0%	+3.4%
Registrar	68	+17	+9	+10	+10	+10	+1	+32.7%	+15.1%	+17.0%	+17.7%	+17.7%	+1.0%
Senior Registrar	19	+11	+11	+8	+2	+2	-1	+143.1%	+128.8%	+69.1%	+14.4%	+14.4%	-5.1%
Registrars	88	+28	+20	+18	+13	+13	-0	+47.5%	+29.3%	+25.6%	+17.0%	+17.0%	-0.4%
Senior House Officer	40	+3	+2	-2	+4	+4	+4	+8.5%	+6.1%	-4.8%	+11.4%	+11.4%	+11.8%
SHO/ Interns	40	+3	+2	-2	+4	+4	+4	+8.5%	+6.1%	-4.8%	+11.4%	+11.4%	+11.8%
Dentists	22	+1	+0	-1	+1	+1	+1	+3.7%	+2.1%	-3.9%	+5.4%	+5.4%	+6.4%
Other Medical	35	-3	-3	-4	-3	-3	-4	-8.6%	-8.4%	-9.6%	-7.3%	-7.3%	-10.8%
Medical/ Dental, other	57	-2	-3	-5	-2	-2	-3	-4.2%	-4.6%	-7.4%	-2.7%	-2.7%	-4.8%
Medical & Dental	230	+39	+28	+20	+18	+18	+2	+20.3%	+13.7%	+9.4%	+8.6%	+8.6%	+1.1%
Clinical Nurse/ Midwife Manager	262	+25	+22	+8	+21	+21	-0	+10.7%	+9.4%	+3.2%	+8.6%	+8.6%	-0.1%
Director Nursing/Midwifery, Assistant	46	+9	+6	+7	+2	+2	+2	+23.9%	+14.1%	+17.8%	+3.6%	+3.6%	+3.4%
Director of Nursing/Midwifery	24	+3	+3	+2	+0	+0	-1	+13.0%	+13.5%	+11.1%	+1.5%	+1.5%	-4.4%
Nurse/ Midwife Manager	331	+37	+31	+17	+23	+23	+0	+12.5%	+10.3%	+5.5%	+7.4%	+7.4%	+0.1%
Advanced Nurse/ Midwife Practitioner	11	+8	+7	+5	+2	+2	-0	+263.7%	+172.8%	+81.8%	+21.2%	+21.2%	-0.5%
Clinical Nurse/ Midwife Specialist	99	+35	+22	+20	+15	+15	+1	+53.9%	+27.9%	+26.0%	+18.0%	+18.0%	+1.1%
Nurse/ Midwife Specialist & AN/MP	110	+42	+28	+25	+17	+17	+1	+63.2%	+35.1%	+30.0%	+18.3%	+18.3%	+1.0%
Staff Midwives		-0	-1					-100.0%	-100.0%	-100.0%	-100.0%	-100.0%	-100.0%
Staff Nurse [Intellectual Disability]	117	-11	+18	+19	+27	+27	-4	-8.4%	+17.8%	+18.9%	+30.2%	+30.2%	-3.6%
Staff Nurse [Psychiatric]	387	+5	+16	+17	+15	+15	+4	+1.2%	+4.3%	+4.6%	+4.1%	+4.1%	+1.0%
Staff Nurses [General/ Children's]	432	-16	-32	-23	-4	-4	+5	-3.5%	-7.0%	-5.0%	-1.0%	-1.0%	+1.2%
Staff Nurse/ Staff Midwife	936	-22	+1	+13	+38	+38	+5	-2.3%	+0.1%	+1.4%	+4.2%	+4.2%	+0.5%
Public Health Nurse	191	+15	+17	+4	-0	-0	-3	+8.5%	+9.9%	+2.3%	-0.1%	-0.1%	-1.3%
Pre-registration Nurse/ Midwife Intern	21	+21	+7	+21	+20	+20	+8	-100.0%	+56.0%	-100.0%	+16983.3%	+16983.3%	+57.7%
Pre-registration Nurse Intern (COVID-19)	1	+1	+1	+1	+1	+1	-8	-100.0%	-100.0%	-100.0%	-100.0%	-100.0%	-88.2%
Post-registration Nurse/ Midwife Student		-11	-16	-13	-4	-4		-100.0%	-100.0%	-100.0%	-100.0%	-100.0%	-100.0%
Nursing/ Midwifery awaiting registration				-11	-5	-5		-100.0%	-100.0%	-100.0%	-100.0%	-100.0%	-100.0%
Nursing/ Midwifery Student	22	+11	-8	-3	+13	+13		+95.5%	-26.2%	-10.4%	+142.4%	+142.4%	
Nursing/ Midwifery other	2	+2		-1			+0	-100.0%		-33.3%			+24.2%
Nursing & Midwifery	1,592	+85	+70	+56	+90	+90	+4	+5.6%	+4.6%	+3.7%	+6.0%	+6.0%	+0.2%
Dietitians	25	+7	+6	+5	+6	+6	+1	+42.0%	+30.8%	+24.4%	+28.5%	+28.5%	+4.1%

Apr 2021 (Dec 2016 figure: 5,236)	WTE Apr 2021	WTE change since Dec 16	WTE change since Dec 17	WTE change since Dec 18	WTE change since Dec 19	WTE change since Dec 19	WTE change since Mar 21	% change since Dec 16	% change since Dec 17	% change since Dec 18	% change since Dec 19	% change since Dec 19	% change since Mar 21
Overall	5,747	+511	+370	+188	+202	+202	+38	+9.8%	+6.9%	+3.4%	+3.6%	+3.6%	+0.7%
Occupational Therapists	131	+21	+21	+13	+15	+15	+1	+19.3%	+18.7%	+11.0%	+12.5%	+12.5%	+0.8%
Orthoptists	1	-1	-1	-1	-1	-1		-37.5%	-37.5%	-37.5%	-37.5%	-37.5%	
Physiotherapists	104	+26	+16	+15	+15	+15	+3	+33.5%	+18.0%	+17.1%	+17.4%	+17.4%	+2.6%
Podiatrists & Chiropodists	9	+0	+1	+2	+2	+2	-0	+4.6%	+15.5%	+27.3%	+26.6%	+26.6%	-0.3%
Speech & Language Therapists	109	+20	+16	+6	+5	+5	+2	+22.0%	+16.5%	+5.8%	+4.7%	+4.7%	+1.7%
Therapy Professions	380	+74	+59	+40	+42	+42	+6	+24.3%	+18.3%	+11.9%	+12.4%	+12.4%	+1.7%
Audiology	7	+2	+1	+1	+2	+2	+0	+46.1%	+17.9%	+17.3%	+38.9%	+38.9%	+6.9%
Clinical Engineering	1		+1	+1			+0		-100.0%	-100.0%			+4.2%
Physicists		-1						-100.0%	-100.0%	-100.0%	-100.0%	-100.0%	-100.0%
Radiographers	1												
Health Science/ Diagnostics	8	+1	+2	+2	+2	+2	+0	+15.7%	+32.0%	+31.3%	+29.3%	+29.3%	+6.1%
Social Care	275	+82	+69	+43	+30	+30	+3	+42.8%	+33.5%	+18.4%	+12.1%	+12.1%	+1.3%
Social Workers	84	+9	+8	+2	+0	+0	-1	+11.5%	+10.1%	+3.0%	+0.2%	+0.2%	-1.1%
Psychologists	83	-0	+2	-1	+9	+9	+1	-0.3%	+2.2%	-1.1%	+12.9%	+12.9%	+0.7%
Pharmacy	4	-1	+0	+0	-0	-0	-0	-13.3%	+6.0%	+6.2%	-2.0%	-2.0%	-6.9%
Counsellor Therapists	17	+7	+6	+5	+6	+6	+3	+72.1%	+59.1%	+41.2%	+54.9%	+54.9%	+21.3%
Dental Hygienists	5	+2	+3	+1	+0	+0	-0	+44.9%	+105.8%	+13.6%	+10.8%	+10.8%	-0.4%
HSCP Trainees/ Students		-2	-1					-100.0%	-100.0%	-100.0%	-100.0%	-100.0%	-100.0%
Other Health & Social Care	36	-7	-7	-7	-4	-4	+1	-15.9%	-16.0%	-15.7%	-10.0%	-10.0%	+1.8%
Play Therapists/ Specialists	1	-3	-3	-3	-3	-3		-72.1%	-72.3%	-72.1%	-72.1%	-72.1%	
H&SC, Other	59	-3	-1	-4	+0	+0	+4	-4.8%	-1.7%	-5.8%	+0.1%	+0.1%	+6.6%
Health & Social Care Professionals	894	+163	+138	+83	+83	+83	+13	+22.3%	+18.3%	+10.3%	+10.2%	+10.2%	+1.5%
Executive Management	11	+1	-0	-0	+1	+1	+1	+14.5%	-4.0%	-0.6%	+10.6%	+10.6%	+6.9%
Senior Management (VIII & GM)	47	+9	+5	+1	+2	+2	+1	+23.1%	+11.9%	+1.8%	+3.9%	+3.9%	+1.3%
Management (VIII & above)	59	+10	+5	+1	+3	+3	+1	+21.3%	+8.5%	+1.4%	+5.1%	+5.1%	+2.3%
Middle Management (V-VII)	161	+59	+44	+38	+28	+28	-4	+57.3%	+37.2%	+30.5%	+21.3%	+21.3%	-2.3%
Other Administrative					-1	-1		-100.0%	-100.0%	-100.0%	-100.0%	-100.0%	-100.0%
Administrative/ Supervisory (V to VII)	161	+59	+44	+38	+27	+27	-4	+57.3%	+37.2%	+30.5%	+20.4%	+20.4%	-2.3%
Clerical (III & IV)	445	+2	-23	-40	-22	-22	-0	+0.5%	-5.0%	-8.3%	-4.8%	-4.8%	-0.1%
Management & Administrative	665	+71	+25	-2	+8	+8	-3	+12.0%	+3.9%	-0.3%	+1.2%	+1.2%	-0.4%
Catering	41	+2	+5	+0	+2	+2	+1	+4.2%	+14.6%	+1.0%	+4.0%	+4.0%	+2.6%
Household Services	61	-21	-14	-9	-2	-2	+1	-25.2%	-18.6%	-12.8%	-3.2%	-3.2%	+2.0%
Other Support	36	-8	-6	-6	-3	-3	-0	-17.4%	-14.9%	-13.7%	-7.6%	-7.6%	-0.3%
Portering	13	-3	-5	-4	-3	-3	-1	-20.1%	-25.8%	-24.7%	-17.2%	-17.2%	-5.5%
Support	152	-30	-20	-19	-6	-6	+1	-16.4%	-11.4%	-10.9%	-3.9%	-3.9%	+0.9%
Maintenance/ Technical	76	+2	+4	+4	+8	+8	+0	+3.0%	+5.3%	+5.7%	+12.1%	+12.1%	+0.2%
General Support	228	-28	-16	-14	+2	+2	+2	-10.8%	-6.4%	-6.0%	+0.9%	+0.9%	+0.7%

Apr 2021 (Dec 2016 figure: 5,236)	WTE Apr 2021	WTE change since Dec 16	WTE change since Dec 17	WTE change since Dec 18	WTE change since Dec 19	WTE change since Dec 19	WTE change since Mar 21	% change since Dec 16	% change since Dec 17	% change since Dec 18	% change since Dec 19	% change since Dec 19	% change since Mar 21
Overall	5,747	+511	+370	+188	+202	+202	+38	+9.8%	+6.9%	+3.4%	+3.6%	+3.6%	+0.7%
HCA, Nurse's Aide, etc.	1,357	+110	+63	+26	+3	+3	-1	+8.8%	+4.9%	+2.0%	+0.2%	+0.2%	-0.1%
Health & Social Care Assistants	14	+7	+4	-6	+0	+0		+109.8%	+43.1%	-30.4%	+0.3%	+0.3%	
Swabber (COVID-19)	51	+51	+51	+51	+51	+51	-2	-100.0%	-100.0%	-100.0%	-100.0%	-100.0%	-4.4%
Health Care Assistants	1,422	+168	+119	+71	+54	+54	-3	+13.4%	+9.1%	+5.3%	+4.0%	+4.0%	-0.2%
Home Help	427	-22	-21	-54	-72	-72	+19	-4.9%	-4.7%	-11.2%	-14.5%	-14.5%	+4.8%
Care, other	290	+35	+28	+27	+19	+19	+4	+13.8%	+10.6%	+10.2%	+7.0%	+7.0%	+1.3%
Patient & Client Care	2,138	+181	+125	+45	+1	+1	+20	+9.3%	+6.2%	+2.1%	+0.0%	+0.0%	+0.9%

Source: Health Service Personnel Census

Longitudinal Employment Levels by Care Group - Dec 2015 to Apr 2021

Community Health & Wellbeing

Apr 2021 (figure:)	WTE Apr 2021	WTE change since	WTE change since	WTE change since	WTE change since	WTE change since	WTE change since Mar 21	% change since	% change since	% change since	% change since	% change since	% change since Mar 21
Overall	10	+10	+10	+10	+10	+10	+0	-100.0%	-100.0%	-100.0%	-100.0%	-100.0%	+1.1%
Management & Administrative	9	+9	+9	+9	+9	+9	+0	-1.0%	-1.0%	-1.0%	-1.0%	-1.0%	+0.0%
Management (VIII & above)	1	+1	+1	+1	+1	+1		-1.0%	-1.0%	-1.0%	-1.0%	-1.0%	+0.0%
Administrative/ Supervisory (V to VII)	7	+7	+7	+7	+7	+7	+0	-1.0%	-1.0%	-1.0%	-1.0%	-1.0%	+0.0%
Clerical (III & IV)	1	+1	+1	+1	+1	+1		-1.0%	-1.0%	-1.0%	-1.0%	-1.0%	+0.0%
Patient & Client Care	1	+1	+1	+1	+1	+1		-1.0%	-1.0%	-1.0%	-1.0%	-1.0%	+0.0%
Care, other	1	+1	+1	+1	+1	+1		-1.0%	-1.0%	-1.0%	-1.0%	-1.0%	+0.0%

Source: Health Service Personnel Census

Mental Health

Apr 2021 (Dec 2016 figure: 1,283)	WTE Apr 2021	WTE change since Dec 16	WTE change since Dec 17	WTE change since Dec 18	WTE change since Dec 19	WTE change since Dec 19	WTE change since Mar 21	% change since Dec 16	% change since Dec 17	% change since Dec 18	% change since Dec 19	% change since Dec 19	% change since Mar 21
Overall	1,370	+87	+63	+31	+61	+61	+2	+6.8%	+4.8%	+2.4%	+4.7%	+4.7%	+0.1%
Medical & Dental	117	+28	+17	+11	+10	+10	+5	+0.3%	+0.2%	+0.1%	+0.1%	+0.1%	+0.0%
Consultants	40	+10	+8	+7	+2	+2	+1	+0.3%	+0.3%	+0.2%	+0.1%	+0.1%	+0.0%
Registrars	38	+14	+10	+8	+5	+5	-1	+0.6%	+0.4%	+0.3%	+0.2%	+0.2%	-0.0%
SHO/ Interns	38	+6	+0	-4	+3	+3	+5	+0.2%	+0.0%	-0.1%	+0.1%	+0.1%	+0.2%
Medical/ Dental, other	1	-2	-2	-0	-0	-0	-0	-0.8%	-0.8%	-0.4%	-0.4%	-0.4%	-0.4%
Nursing & Midwifery	626	+61	+58	+40	+49	+49	+2	+0.1%	+0.1%	+0.1%	+0.1%	+0.1%	+0.0%
Nurse/ Midwife Manager	148	+4	+8	-7	+3	+3	-1	+0.0%	+0.1%	-0.0%	+0.0%	+0.0%	-0.0%
Nurse/ Midwife Specialist & AN/MP	76	+32	+17	+16	+9	+9	-0	+0.7%	+0.3%	+0.3%	+0.1%	+0.1%	-0.0%
Staff Nurse/ Staff Midwife	378	+2	+24	+21	+21	+21	+3	+0.0%	+0.1%	+0.1%	+0.1%	+0.1%	+0.0%
Nursing/ Midwifery Student	22	+22	+8	+11	+17	+17		-1.0%	+0.6%	+1.0%	+3.4%	+3.4%	+0.0%
Nursing/ Midwifery other	2	+2		-1			+0	-1.0%	+0.0%	-0.3%	+0.0%	+0.0%	+0.2%
Health & Social Care Professionals	156	+19	+17	+10	+16	+16	-1	+0.1%	+0.1%	+0.1%	+0.1%	+0.1%	-0.0%
Therapy Professions	56	+11	+7	+7	+11	+11	-0	+0.3%	+0.1%	+0.1%	+0.2%	+0.2%	-0.0%
Social Care	16	-1	+3	+2	+1	+1	-0	-0.0%	+0.2%	+0.1%	+0.1%	+0.1%	-0.0%
Social Workers	41	+4	+5	+1	+1	+1	-1	+0.1%	+0.1%	+0.0%	+0.0%	+0.0%	-0.0%
Psychologists	38	+3	+3	+2	+4	+4	+0	+0.1%	+0.1%	+0.0%	+0.1%	+0.1%	+0.0%
Pharmacy	2	-2	-1	-1	-1	-1		-0.5%	-0.4%	-0.3%	-0.3%	-0.3%	+0.0%
H&SC, Other	3	+2	+1	-0	-0	-0	-0	+2.0%	+0.5%	-0.0%	-0.0%	-0.0%	-0.0%
Management & Administrative	130	+0	-6	-10	-7	-7	-1	+0.0%	-0.0%	-0.1%	-0.1%	-0.1%	-0.0%
Management (VIII & above)	3	-1	-0	-1	-2	-2	-0	-0.3%	-0.1%	-0.3%	-0.5%	-0.5%	-0.1%
Administrative/ Supervisory (V to VII)	25	+4	+1	+2	+1	+1	+0	+0.2%	+0.0%	+0.1%	+0.1%	+0.1%	+0.0%
Clerical (III & IV)	103	-3	-6	-11	-6	-6	-1	-0.0%	-0.1%	-0.1%	-0.1%	-0.1%	-0.0%
General Support	65	-16	-8	-4	+2	+2	-1	-0.2%	-0.1%	-0.1%	+0.0%	+0.0%	-0.0%
Support	30	-15	-9	-6	-6	-6	-1	-0.3%	-0.2%	-0.2%	-0.2%	-0.2%	-0.0%
Maintenance/ Technical	35	-0	+1	+2	+8	+8	+0	-0.0%	+0.0%	+0.1%	+0.3%	+0.3%	+0.0%
Patient & Client Care	276	-5	-15	-14	-8	-8	-2	-0.0%	-0.1%	-0.0%	-0.0%	-0.0%	-0.0%
Health Care Assistants	208	-7	-9	-9	-7	-7	-3	-0.0%	-0.0%	-0.0%	-0.0%	-0.0%	-0.0%
Care, other	68	+1	-6	-5	-2	-2	+1	+0.0%	-0.1%	-0.1%	-0.0%	-0.0%	+0.0%

Source: Health Service Personnel Census

Primary Care

Apr 2021 (Dec 2016 figure: 1,238)	WTE Apr 2021	WTE change since Dec 16	WTE change since Dec 17	WTE change since Dec 18	WTE change since Dec 19	WTE change since Dec 19	WTE change since Mar 21	% change since Dec 16	% change since Dec 17	% change since Dec 18	% change since Dec 19	% change since Dec 19	% change since Mar 21
Overall	1,281	+43	+191	+121	+148	+148	+10	+3.5%	+17.6%	+10.5%	+13.0%	+13.0%	+0.8%
Medical & Dental	97	+10	+12	+10	+9	+9	-2	+0.1%	+0.1%	+0.1%	+0.1%	+0.1%	-0.0%
Consultants	2	-0	-0	+1	+1	+1	+1	-0.1%	-0.1%	+0.5%	+0.6%	+0.6%	+0.4%
Registrars	48	+14	+10	+10	+8	+8	+1	+0.4%	+0.3%	+0.3%	+0.2%	+0.2%	+0.0%
SHO/ Interns	2	-3	+2	+2	+1	+1	-1	-0.6%	-1.0%	-1.0%	+1.0%	+1.0%	-0.3%
Medical/ Dental, other	45	-1	+0	-3	-1	-1	-2	-0.0%	+0.0%	-0.1%	-0.0%	-0.0%	-0.1%
Nursing & Midwifery	338	+42	+37	+16	+24	+24	+8	+0.1%	+0.1%	+0.1%	+0.1%	+0.1%	+0.0%
Nurse/ Midwife Manager	33	+10	+8	+7	+5	+5	+1	+0.4%	+0.3%	+0.3%	+0.2%	+0.2%	+0.0%
Nurse/ Midwife Specialist & AN/MP	24	+9	+10	+6	+7	+7	+1	+0.6%	+0.7%	+0.3%	+0.4%	+0.4%	+0.1%
Staff Nurse/ Staff Midwife	90	+20	+19	+12	+16	+16	+8	+0.3%	+0.3%	+0.2%	+0.2%	+0.2%	+0.1%
Public Health Nurse	190	+15	+17	+4	-0	-0	-3	+0.1%	+0.1%	+0.0%	-0.0%	-0.0%	-0.0%
Nursing/ Midwifery Student		-11	-16	-13	-4	-4		-1.0%	-1.0%	-1.0%	-1.0%	-1.0%	-1.0%
Health & Social Care Professionals	357	+57	+55	+35	+45	+45	+8	+0.2%	+0.2%	+0.1%	+0.1%	+0.1%	+0.0%
Therapy Professions	260	+60	+49	+31	+34	+34	+6	+0.3%	+0.2%	+0.1%	+0.1%	+0.1%	+0.0%
Health Science/ Diagnostics	8	+1	+2	+2	+2	+2	+0	+0.2%	+0.4%	+0.3%	+0.3%	+0.3%	+0.1%
Social Care	9	-3	-2	-1	+0	+0	-0	-0.2%	-0.2%	-0.1%	+0.0%	+0.0%	-0.0%
Social Workers	5	-4	-2	-2	-2	-2	-1	-0.4%	-0.3%	-0.3%	-0.3%	-0.3%	-0.1%
Psychologists	30	-0	+3	+2	+6	+6	+0	-0.0%	+0.1%	+0.1%	+0.2%	+0.2%	+0.0%
Pharmacy	2	+1	+1	+1	+1	+1	-0	+0.7%	+0.7%	+0.7%	+0.7%	+0.7%	-0.2%
H&SC, Other	45	+2	+4	+3	+5	+5	+3	+0.0%	+0.1%	+0.1%	+0.1%	+0.1%	+0.1%
Management & Administrative	345	+52	+31	+15	+12	+12	-2	+0.2%	+0.1%	+0.0%	+0.0%	+0.0%	-0.0%
Management (VIII & above)	38	+10	+2	+1	+5	+5	+2	+0.3%	+0.1%	+0.0%	+0.2%	+0.2%	+0.0%
Administrative/ Supervisory (V to VII)	77	+37	+32	+24	+15	+15	-4	+0.9%	+0.7%	+0.5%	+0.2%	+0.2%	-0.1%
Clerical (III & IV)	230	+5	-4	-10	-8	-8	+1	+0.0%	-0.0%	-0.0%	-0.0%	-0.0%	+0.0%
General Support	29	-1	-1	-5	-1	-1	-2	-0.0%	-0.0%	-0.2%	-0.0%	-0.0%	-0.1%
Support	20	-1	-1	-5	-1	-1	-2	-0.1%	-0.1%	-0.2%	-0.0%	-0.0%	-0.1%
Maintenance/ Technical	9			+0				+0.0%	+0.0%	+0.0%	+0.0%	+0.0%	+0.0%
Patient & Client Care	115	-118	+59	+51	+58	+58	-1	-0.5%	+1.0%	+0.8%	+1.0%	+1.0%	-0.0%
Health Care Assistants	65	+59	+57	+46	+51	+51	-2	+8.8%	+6.6%	+2.4%	+3.6%	+3.6%	-0.0%
Home Help		-169						-1.0%	-1.0%	-1.0%	-1.0%	-1.0%	-1.0%
Care, other	50	-8	+2	+5	+7	+7	+2	-0.1%	+0.0%	+0.1%	+0.2%	+0.2%	+0.0%

Source: Health Service Personnel Census

Disabilities

Apr 2021 (Dec 2016 figure: 1,338)	WTE Apr 2021	WTE change since Dec 16	WTE change since Dec 17	WTE change since Dec 18	WTE change since Dec 19	WTE change since Dec 19	WTE change since Mar 21	% change since Dec 16	% change since Dec 17	% change since Dec 18	% change since Dec 19	% change since Dec 19	% change since Mar 21
Overall	1,516	+178	+122	+96	+19	+19	+6	+13.3%	+8.7%	+6.8%	+1.3%	+1.3%	+0.4%
Medical & Dental	6	+0	+0	+0	-0	-0	-0	+0.1%	+0.1%	+0.0%	-0.0%	-0.0%	-0.0%
Consultants	3	+0	+0	+0				+0.1%	+0.1%	+0.1%	+0.0%	+0.0%	+0.0%
Registrars	2	-0	-0	-0	-0	-0	-0	-0.0%	-0.0%	-0.0%	-0.0%	-0.0%	-0.0%
Medical/ Dental, other	1							+0.0%	+0.0%	+0.0%	+0.0%	+0.0%	+0.0%
Nursing & Midwifery	251	-25	-21	-2	+2	+2	-3	-0.1%	-0.1%	-0.0%	+0.0%	+0.0%	-0.0%
Nurse/ Midwife Manager	81	+9	+7	+9	+3	+3	+1	+0.1%	+0.1%	+0.1%	+0.0%	+0.0%	+0.0%
Nurse/ Midwife Specialist & AN/MP	7	-0	-0	+1	+1	+1	+0	-0.0%	-0.1%	+0.2%	+0.2%	+0.2%	+0.0%
Staff Nurse/ Staff Midwife	163	-33	-27	-12	-2	-2	-5	-0.2%	-0.1%	-0.1%	-0.0%	-0.0%	-0.0%
Health & Social Care Professionals	338	+80	+58	+32	+17	+17	+5	+0.3%	+0.2%	+0.1%	+0.1%	+0.1%	+0.0%
Therapy Professions	34	-1	-3	-2	-7	-7	-0	-0.0%	-0.1%	-0.1%	-0.2%	-0.2%	-0.0%
Social Care	250	+86	+68	+42	+28	+28	+4	+0.5%	+0.4%	+0.2%	+0.1%	+0.1%	+0.0%
Social Workers	27	+5	+2	+3	+1	+1	+1	+0.2%	+0.1%	+0.1%	+0.0%	+0.0%	+0.0%
Psychologists	15	-3	-4	-5	-0	-0	-0	-0.2%	-0.2%	-0.2%	-0.0%	-0.0%	-0.0%
H&SC, Other	11	-6	-6	-6	-5	-5	+1	-0.4%	-0.3%	-0.4%	-0.3%	-0.3%	+0.1%
Management & Administrative	109	+7	+1	+5	+3	+3	+0	+0.1%	+0.0%	+0.0%	+0.0%	+0.0%	+0.0%
Management (VIII & above)	16	+2	+2	+1	-0	-0	-0	+0.1%	+0.1%	+0.1%	-0.0%	-0.0%	-0.0%
Administrative/ Supervisory (V to VII)	44	+8	+2	+6	+3	+3	+1	+0.2%	+0.1%	+0.1%	+0.1%	+0.1%	+0.0%
Clerical (III & IV)	50	-3	-3	-2	+0	+0	-1	-0.1%	-0.0%	-0.0%	+0.0%	+0.0%	-0.0%
General Support	55	-3	-5	-3	-3	-3	+1	-0.1%	-0.1%	-0.0%	-0.1%	-0.1%	+0.0%
Support	42	-3	-5	-3	-3	-3	+1	-0.1%	-0.1%	-0.1%	-0.1%	-0.1%	+0.0%
Maintenance/ Technical	13	-0	-0	+1	-0	-0		-0.0%	-0.0%	+0.1%	-0.0%	-0.0%	+0.0%
Patient & Client Care	757	+118	+87	+64	-0	-0	+4	+0.2%	+0.1%	+0.1%	-0.0%	-0.0%	+0.0%
Health Care Assistants	626	+102	+72	+53	+2	+2	+5	+0.2%	+0.1%	+0.1%	+0.0%	+0.0%	+0.0%
Care, other	131	+16	+15	+10	-3	-3	-2	+0.1%	+0.1%	+0.1%	-0.0%	-0.0%	-0.0%

Source: Health Service Personnel Census

Older People

Apr 2021 (Dec 2016 figure: 1,376)	WTE Apr 2021	WTE change since Dec 16	WTE change since Dec 17	WTE change since Dec 18	WTE change since Dec 19	WTE change since Dec 19	WTE change since Mar 21	% change since Dec 16	% change since Dec 17	% change since Dec 18	% change since Dec 19	% change since Dec 19	% change since Mar 21
Overall	1,570	+193	-17	-72	-36	-36	+20	+14.1%	-1.1%	-4.4%	-2.3%	-2.3%	+1.3%
Medical & Dental	11	-0	-1	-1	-1	-1		-0.0%	-0.1%	-0.1%	-0.0%	-0.0%	+0.0%
Medical/ Dental, other	11	-0	-1	-1	-1	-1		-0.0%	-0.1%	-0.1%	-0.0%	-0.0%	+0.0%
Nursing & Midwifery	377	+6	-4	+2	+15	+15	-3	+0.0%	-0.0%	+0.0%	+0.0%	+0.0%	-0.0%
Nurse/ Midwife Manager	70	+13	+7	+8	+12	+12	-1	+0.2%	+0.1%	+0.1%	+0.2%	+0.2%	-0.0%
Nurse/ Midwife Specialist & AN/MP	2	+2	+2	+2				-1.0%	-1.0%	-1.0%	+0.0%	+0.0%	+0.0%
Staff Nurse/ Staff Midwife	304	-10	-14	-8	+3	+3	-2	-0.0%	-0.0%	-0.0%	+0.0%	+0.0%	-0.0%
Public Health Nurse	1	+0	+0		+0	+0		+0.3%	+0.1%	+0.0%	+0.3%	+0.3%	+0.0%
Health & Social Care Professionals	42	+7	+8	+7	+5	+5	+2	+0.2%	+0.2%	+0.2%	+0.1%	+0.1%	+0.0%
Therapy Professions	30	+4	+5	+5	+5	+5	+1	+0.1%	+0.2%	+0.2%	+0.2%	+0.2%	+0.1%
Health Science/ Diagnostics	1							+0.0%	+0.0%	+0.0%	+0.0%	+0.0%	+0.0%
Social Workers	11	+3	+2	+1	+0	+0	+0	+0.4%	+0.3%	+0.1%	+0.0%	+0.0%	+0.0%
Pharmacy	1	+1	+1	+1	+0	+0		+1.0%	+1.0%	+1.0%	+0.0%	+0.0%	+0.0%
H&SC, Other		-1						-1.0%		-1.0%			-1.0%
Management & Administrative	71	+3	-11	-21	-10	-10	-1	+0.0%	-0.1%	-0.2%	-0.1%	-0.1%	-0.0%
Management (VIII & above)	1	-1		-1	-1	-1		-0.5%	+0.0%	-0.5%	-0.5%	-0.5%	+0.0%
Administrative/ Supervisory (V to VII)	8	+2	+1	-1	+0	+0	-1	+0.3%	+0.2%	-0.1%	+0.0%	+0.0%	-0.1%
Clerical (III & IV)	62	+2	-12	-19	-9	-9	+0	+0.0%	-0.2%	-0.2%	-0.1%	-0.1%	+0.0%
General Support	79	-8	-2	-3	+4	+4	+3	-0.1%	-0.0%	-0.0%	+0.0%	+0.0%	+0.0%
Support	59	-10	-5	-4	+3	+3	+3	-0.1%	-0.1%	-0.1%	+0.1%	+0.1%	+0.1%
Maintenance/ Technical	19	+2	+3	+1	+1	+1	-0	+0.1%	+0.2%	+0.1%	+0.0%	+0.0%	-0.0%
Patient & Client Care	989	+186	-7	-56	-49	-49	+19	+0.2%	-0.0%	-0.1%	-0.0%	-0.0%	+0.0%
Health Care Assistants	523	+14	-2	-18	+8	+8	-4	+0.0%	-0.0%	-0.0%	+0.0%	+0.0%	-0.0%
Home Help	427	+147	-21	-54	-72	-72	+19	+0.5%	-0.0%	-0.1%	-0.1%	-0.1%	+0.0%
Care, other	40	+25	+16	+16	+15	+15	+3	+1.7%	+0.7%	+0.7%	+0.6%	+0.6%	+0.1%

Source: Health Service Personnel Census