

CHO 2 Employment Report: August 2020

Employment by Staff Group

Aug 2020 (Dec 2019 figure: 5,545)	WTE Jul 2020	WTE Aug 2020	WTE change since Jul 20	% change since Jul 20	WTE change since Dec 19	WTE change since Aug 19
Overall	5,593	5,623	+30	+0.5%	+78	+95
Consultants	43	45	+2	+4.2%	+3	+8
Registrars	99	90	-8	-8.5%	+15	+18
SHO/ Interns	34	42	+8	+24.5%	+6	+9
Medical/ Dental, other	60	60	-0	-0.1%	+1	+3
Medical & Dental	235	237	+2	+0.7%	+25	+37
Nurse/ Midwife Manager	317	318	+0	+0.1%	+9	+10
Nurse/ Midwife Specialist & AN/MP	98	99	+1	+0.8%	+6	+7
Staff Nurse/ Staff Midwife	891	899	+9	+1.0%	+2	-0
Public Health Nurse	195	191	-4	-2.0%	-0	+0
<i>Pre-registration Nurse/ Midwife Intern</i>				-100.0%	-0	
<i>Pre-registration Nurse Intern (COVID-19)</i>	32	32	+0	+0.1%	+32	+0
<i>Post-registration Nurse/ Midwife Student</i>				-100.0%	-4	
<i>Nursing/ Midwifery awaiting registration</i>				-100.0%	-5	
Nursing/ Midwifery Student	32	32	+0	+0.1%	+23	+20
Nursing/ Midwifery other	3	3			+1	+1
Nursing & Midwifery	1,535	1,541	+6	+0.4%	+40	+36
Therapy Professions	349	350	+1	+0.2%	+11	+7
Health Science/ Diagnostics	34	34	-1	-1.6%	+1	+1
Social Care	262	263	+1	+0.3%	+18	+17
Social Workers	84	82	-2	-1.9%	-1	+1
Psychologists	76	81	+5	+6.3%	+7	+0
Pharmacy	4	4	-0	-0.3%	-1	-1
H&SC, Other	28	26	-2	-7.2%	-6	-5
Health & Social Care Professionals	837	839	+2	+0.3%	+28	+21
Management (VIII & above)	56	56	+0	+0.1%	-0	-2
Administrative/ Supervisory (V to VII)	145	142	-2	-1.6%	+9	+12
Clerical (III & IV)	450	447	-4	-0.9%	-21	-24
Management & Administrative	651	645	-6	-0.9%	-13	-14
Support	146	149	+3	+2.0%	-9	-6
Maintenance/ Technical	70	70	-0	-0.6%	+2	-2
General Support	216	219	+3	+1.2%	-7	-8
Health Care Assistants	1,430	1,437	+8	+0.5%	+70	+51
Care, other	271	266	-5	-1.9%	-5	-3
Home Help	418	439	+21	+5.0%	-61	-26
Patient & Client Care	2,119	2,142	+23	+1.1%	+5	+23

CHO 2 Employment Report: August 2020

Community Health & Wellbeing

Aug 2020 (figure:)	WTE Jul 2020	WTE Aug 2020	WTE change since Jul 20	% change since Jul 20	WTE change since	WTE change since
Total Community Health & Wellbeing	10	8	-2	-15.9%	+8	+8
Management (VIII & above)	1	1			+1	+1
Administrative/ Supervisory (V to VII)	7	6	-2	-22.1%	+6	+6
Clerical (III & IV)	1	1			+1	+1
Management & Administrative	9	7	-2	-17.7%	+7	+7
Care, other	1	1			+1	+1
Patient & Client Care	1	1			+1	+1

Mental Health

Aug 2020 (Dec 2019 figure: 1,308)	WTE Jul 2020	WTE Aug 2020	WTE change since Jul 20	% change since Jul 20	WTE change since Dec 19	WTE change since Aug 19
Total Mental Health	1,334	1,349	+14	+1.1%	+40	+28
Consultants	39	41	+2	+4.6%	+3	+7
Registrars	37	36	-0	-1.1%	+3	+6
SHO/ Interns	32	39	+7	+22.9%	+4	+6
Medical/ Dental, other	1	1				
Medical & Dental	108	117	+9	+8.0%	+10	+19
Nurse/ Midwife Manager	146	147	+1	+0.9%	+1	-1
Nurse/ Midwife Specialist & AN/MP	74	75	+1	+1.2%	+7	+7
Staff Nurse/ Staff Midwife	349	348	-1	-0.2%	-9	-6
Pre-registration Nurse/ Midwife Intern				-100.0%	-0	
Pre-registration Nurse Intern (COVID-19)	31	31			+31	
Nursing/ Midwifery awaiting registration				-100.0%	-5	
Nursing/ Midwifery Student	31	31			+26	+19
Nursing/ Midwifery other	3	3			+1	+1
Nursing & Midwifery	601	603	+1	+0.2%	+26	+20
Therapy Professions	54	55	+1	+2.1%	+10	+8
Social Care	14	15	+1	+7.0%	+0	+2
Social Workers	42	44	+1	+2.8%	+3	+2
Psychologists	36	40	+4	+10.1%	+6	+2
Pharmacy	2	2	-0	-0.6%	-1	-1
H&SC, Other	3	3	-1	-16.7%	-1	-1
Health & Social Care Professionals	151	158	+7	+4.3%	+18	+14
Management (VIII & above)	4	4			-1	-3
Administrative/ Supervisory (V to VII)	25	26	+1	+2.2%	+2	+3
Clerical (III & IV)	103	103	-0	-0.3%	-6	-8
Management & Administrative	132	132	+0	+0.2%	-5	-8
Support	33	33	+0	+0.3%	-3	-3
Maintenance/ Technical	29	28	-0	-1.3%	+1	-2
General Support	62	62	-0	-0.5%	-1	-5
Health Care Assistants	210	210	-0	-0.2%	-5	-7
Care, other	69	67	-2	-2.8%	-2	-5
Patient & Client Care	279	277	-2	-0.8%	-7	-12

Primary Care

Aug 2020 (Dec 2019 figure: 1,134)	WTE Jul 2020	WTE Aug 2020	WTE change since Jul 20	% change since Jul 20	WTE change since Dec 19	WTE change since Aug 19
Total Primary Care	1,172	1,157	-15	-1.3%	+24	+18
Consultants	1	1	+0	+1.5%	+0	+0
Registrars	60	52	-8	-12.9%	+12	+12
SHO/ Interns	2	3	+1	+50.0%	+2	+3
Medical/ Dental, other	47	48	+1	+1.1%	+2	+5
Medical & Dental	110	104	-6	-5.6%	+16	+19
Nurse/ Midwife Manager	30	29	-1	-3.4%	+2	+2
Nurse/ Midwife Specialist & AN/MP	17	17	-0	-0.5%	-1	-1
Staff Nurse/ Staff Midwife	80	81	+1	+0.9%	+7	-1
Public Health Nurse	194	190	-4	-2.0%	-1	+0
<i>Post-registration Nurse/ Midwife Student</i>				-100.0%	-4	
Nursing/ Midwifery Student				-100.0%	-4	
Nursing & Midwifery	321	317	-4	-1.4%	+3	+1
Therapy Professions	235	236	+1	+0.4%	+10	+6
Health Science/ Diagnostics	34	33	-1	-1.6%	+1	+1
Social Care	9	9			+0	-0
Social Workers	6	6			-1	-0
Psychologists	25	25	-0	-1.3%	+1	-1
Pharmacy	1	1				
H&SC, Other	12	11	-0	-3.3%	-2	-3
Health & Social Care Professionals	321	320	-0	-0.1%	+8	+3
Management (VIII & above)	34	33	-1	-3.0%	-0	+0
Administrative/ Supervisory (V to VII)	63	62	-1	-2.3%	-0	+1
Clerical (III & IV)	233	231	-2	-0.8%	-7	-7
Management & Administrative	330	326	-4	-1.3%	-7	-5
Support	21	21	+0	+0.2%	+0	+0
Maintenance/ Technical	9	9	+0	+0.1%		+0
General Support	30	30	+0	+0.2%	+0	+0
Health Care Assistants	15	14	-1	-8.2%	-0	-2
Care, other	45	46	+2	+3.7%	+3	+0
Patient & Client Care	60	60	+0	+0.7%	+3	-2

Social Care

Aug 2020 (Dec 2019 figure: 3,103)	WTE Jul 2020	WTE Aug 2020	WTE change since Jul 20	% change since Jul 20	WTE change since Dec 19	WTE change since Aug 19
Total Social Care	3,077	3,108	+32	+1.0%	+6	+41
Consultants	3	3				
Registrars	2	2	-0	-9.1%		
Medical/ Dental, other	11	11	-1	-5.1%	-2	-2
Medical & Dental	17	16	-1	-4.6%	-2	-2
Nurse/ Midwife Manager	142	142	+0	+0.1%	+6	+8
Nurse/ Midwife Specialist & AN/MP	7	7	+0	+0.1%	-1	+0
Staff Nurse/ Staff Midwife	462	471	+9	+1.9%	+4	+6
Public Health Nurse	1	1			+0	
<i>Pre-registration Nurse Intern (COVID-19)</i>	1	1	+0	+4.2%	+1	+0
Nursing/ Midwifery Student	1	1	+0	+4.2%	+1	+1
Nursing & Midwifery	613	622	+9	+1.4%	+11	+15
Therapy Professions	60	58	-1	-2.2%	-9	-7
Health Science/ Diagnostics	1	1				
Social Care	239	239	-0	-0.0%	+17	+15
Social Workers	36	33	-3	-7.7%	-3	-1
Psychologists	14	16	+1	+10.1%	-0	-1
Pharmacy	1	1				
H&SC, Other	13	12	-1	-8.4%	-4	-2
Health & Social Care Professionals	364	360	-4	-1.1%	+2	+4
Management (VIII & above)	17	18	+1	+6.4%	-0	-0
Administrative/ Supervisory (V to VII)	49	49	+0	+0.4%	+1	+2
Clerical (III & IV)	114	112	-2	-1.6%	-9	-11
Management & Administrative	180	179	-1	-0.3%	-8	-9
Support	91	94	+3	+3.1%	-6	-3
Maintenance/ Technical	33	33	-0	-0.1%	+1	+0
General Support	124	127	+3	+2.2%	-6	-3
Health Care Assistants	1,204	1,214	+9	+0.8%	+76	+61
Care, other	157	152	-5	-3.2%	-7	+1
Home Help	418	439	+21	+5.0%	-61	-26
Patient & Client Care	1,779	1,804	+25	+1.4%	+8	+36

CHO 2 Employment Report: August 2020

Disabilities

Aug 2020 (Dec 2019 figure: 1,497)	WTE Jul 2020	WTE Aug 2020	WTE change since Jul 20	% change since Jul 20	WTE change since Dec 19	WTE change since Aug 19
Total Disabilities	1,479	1,482	+3	+0.2%	-15	+6
Consultants	3	3				
Registrars	2	2	-0	-9.1%		
Medical/ Dental, other	1	1				
Medical & Dental	7	6	-0	-3.0%		
Nurse/ Midwife Manager	77	77	+0	+0.1%	-0	+4
Nurse/ Midwife Specialist & AN/MP	5	5	+0	+0.2%	-1	-1
Staff Nurse/ Staff Midwife	162	163	+1	+0.9%	-2	-3
<i>Pre-registration Nurse Intern (COVID-19)</i>	1	1	+0	+4.2%	+1	+0
Nursing/ Midwifery Student	1	1	+0	+4.2%	+1	+1
Nursing & Midwifery	245	247	+2	+0.6%	-2	+1
Therapy Professions	34	31	-3	-8.8%	-10	-8
Social Care	239	239	-0	-0.0%	+17	+15
Social Workers	26	23	-3	-10.8%	-3	-2
Psychologists	14	16	+1	+10.1%	-0	-1
H&SC, Other	13	12	-1	-8.4%	-4	-2
Health & Social Care Professionals	327	321	-6	-1.7%	+0	+2
Management (VIII & above)	16	17	+1	+6.9%	+1	+1
Administrative/ Supervisory (V to VII)	40	40	+1	+1.5%	-0	+1
Clerical (III & IV)	48	48	+0	+0.6%	-2	-3
Management & Administrative	103	105	+2	+1.9%	-1	-1
Support	35	35	+0	+0.2%	-9	-3
Maintenance/ Technical	13	13			+0	+0
General Support	48	48	+0	+0.1%	-9	-3
Health Care Assistants	620	628	+8	+1.3%	+5	+7
Care, other	129	126	-2	-1.9%	-8	-0
Patient & Client Care	749	754	+6	+0.7%	-3	+7

Older People

Aug 2020 (Dec 2019 figure: 1,606)	WTE Jul 2020	WTE Aug 2020	WTE change since Jul 20	% change since Jul 20	WTE change since Dec 19	WTE change since Aug 19
Total Older People	1,598	1,626	+28	+1.8%	+21	+35
Medical/ Dental, other	10	10	-1	-5.6%	-2	-2
Medical & Dental	10	10	-1	-5.6%	-2	-2
Nurse/ Midwife Manager	65	65	-0	-0.0%	+7	+4
Nurse/ Midwife Specialist & AN/MP	2	2				+1
Staff Nurse/ Staff Midwife	300	307	+7	+2.4%	+6	+9
Public Health Nurse	1	1			+0	
Nursing & Midwifery	368	375	+7	+2.0%	+13	+14
Health & Social Care Professionals	38	39	+2	+4.4%	+2	+2
Management (VIII & above)	1	1			-1	-1
Administrative/ Supervisory (V to VII)	9	9	-0	-4.2%	+1	+0
Clerical (III & IV)	66	64	-2	-3.2%	-7	-8
Management & Administrative	77	74	-3	-3.3%	-7	-8
Support	56	59	+3	+4.9%	+3	-0
Maintenance/ Technical	20	19	-0	-0.1%	+1	-0
General Support	76	78	+3	+3.6%	+3	-0
Health Care Assistants	584	585	+1	+0.2%	+71	+54
Care, other	28	26	-2	-8.8%	+1	+1
Home Help	418	439	+21	+5.0%	-61	-26
Patient & Client Care	1,030	1,050	+20	+1.9%	+11	+30

CHO 2 Employment by Administration (HSE / S38): August 2020

Aug 2020 (Dec 2019 figure: 5,545)	WTE Jul 2020	WTE Aug 2020	WTE change since Jul 20	% change since Jul 20	WTE change since Dec 19	WTE change since Aug 19
Overall	5,593	5,623	+30	+0.5%	+78	+95
HSE	4,328	4,355	+28	+0.6%	+99	+90
Section 38 Voluntary Agencies	1,265	1,268	+2	+0.2%	-21	+4

HSE

Aug 2020 (Dec 2019 figure: 4,256)	WTE Jul 2020	WTE Aug 2020	WTE change since Jul 20	% change since Jul 20	WTE change since Dec 19	WTE change since Aug 19
Overall	4,328	4,355	+28	+0.6%	+99	+90
Consultants	41	43	+2	+0.0%	+3	+8
Registrars	96	88	-8	-0.1%	+15	+18
SHO/ Interns	34	42	+8	+0.2%	+6	+9
Medical/ Dental, other	60	60	-0	-0.0%	+1	+3
Medical & Dental	231	233	+2	+0.8%	+25	+37
Nurse/ Midwife Manager	250	251	+0	+0.0%	+9	+8
Nurse/ Midwife Specialist & AN/MP	93	94	+1	+0.0%	+7	+7
Staff Nurse/ Staff Midwife	774	781	+7	+0.0%	+3	+1
Public Health Nurse	195	191	-4	-0.0%	-0	+0
<i>Pre-registration Nurse/ Midwife Intern</i>				-1.0%		-13
<i>Pre-registration Nurse Intern (COVID-19)</i>	31	31		+0.0%	+31	+31
<i>Post-registration Nurse/ Midwife Student</i>				-1.0%	-13	
<i>Nursing/ Midwifery awaiting registration</i>				-1.0%	-11	
Nursing/ Midwifery Student	31	31		+0.0%	+22	+19
Nursing/ Midwifery other	3	3		+0.0%	+1	+1
Nursing & Midwifery	1,347	1,351	+4	+0.3%	+41	+36
Therapy Professions	322	325	+4	+0.0%	+21	+15
Health Science/ Diagnostics	34	34	-1	-0.0%	+1	+1
Social Care	54	55	+1	+0.0%	+6	+5
Social Workers	58	60	+1	+0.0%	+1	+3
Psychologists	63	67	+3	+0.1%	+7	+2
Pharmacy	4	4	-0	-0.0%	-1	-1
H&SC, Other	15	14	-1	-0.1%	-3	-3
Health & Social Care Professionals	550	558	+8	+1.4%	+32	+21
Management (VIII & above)	43	42	-1	-0.0%	-1	-3
Administrative/ Supervisory (V to VII)	110	108	-2	-0.0%	+9	+10
Clerical (III & IV)	415	411	-4	-0.0%	-20	-22
Management & Administrative	568	561	-7	-1.3%	-12	-14
Support	111	114	+3	+0.0%	+0	-3
Maintenance/ Technical	65	65	-0	-0.0%	+2	-2
General Support	176	178	+2	+1.4%	+2	-5
Health Care Assistants	888	888	-1	-0.0%	+66	+44
Care, other	151	149	-2	-0.0%	+4	-2
Home Help	418	439	+21	+0.0%	-61	-26
Patient & Client Care	1,457	1,475	+18	+1.3%	+10	+16

Section 38 Voluntary Agencies

Aug 2020 (Dec 2019 figure: 1,288)	WTE Jul 2020	WTE Aug 2020	WTE change since Jul 20	% change since Jul 20	WTE change since Dec 19	WTE change since Aug 19
Overall	1,265	1,268	+2	+0.2%	-21	+4
Consultants	2	2		+0.0%		
Registrars	2	2	-0	-0.1%		
Medical & Dental	5	4	-0	-4.3%		
Nurse/ Midwife Manager	67	67	+0	+0.0%	-0	+2
Nurse/ Midwife Specialist & AN/MP	4	4	+0	+0.0%	-1	-1
Staff Nurse/ Staff Midwife	116	118	+2	+0.0%	-2	-2
<i>Pre-registration Nurse Intern (COVID-19)</i>	1	1	+0	+0.0%	+1	+1
Nursing/ Midwifery Student	1	1	+0	+0.0%	+1	+1
Nursing & Midwifery	189	190	+2	+0.9%	-2	+0
Therapy Professions	27	24	-3	-0.1%	-10	-8
Social Care	208	208	-0	-0.0%	+12	+13
Social Workers	26	23	-3	-0.1%	-3	-2
Psychologists	12	14	+1	+0.1%	-0	-2
H&SC, Other	13	12	-1	-0.1%	-4	-2
Health & Social Care Professionals	287	281	-6	-2.0%	-4	-0
Management (VIII & above)	13	14	+1	+0.1%	+1	+1
Administrative/ Supervisory (V to VII)	35	35	-0	-0.0%	-0	+2
Clerical (III & IV)	35	36	+0	+0.0%	-2	-3
Management & Administrative	83	84	+1	+1.3%	-1	+0
Support	35	35	+0	+0.0%	-9	-3
Maintenance/ Technical	5	5		+0.0%	+0	+0
General Support	40	40	+0	+0.2%	-9	-3
Health Care Assistants	542	550	+8	+0.0%	+4	+8
Care, other	121	118	-3	-0.0%	-9	-1
Patient & Client Care	662	667	+5	+0.8%	-5	+7

CHO 2 Employment by S38 Agency: August 2020

Bros. of Charity, West Region

Aug 2020 (Dec 2019 figure: 1,288)	WTE Jul 2020	WTE Aug 2020	WTE change since Jul 20	% change since Jul 20	WTE change since Dec 19	WTE change since Aug 19
Overall	1,265	1,268	+2	+0.2%	-21	+4
Consultants	2	2		+0.0%		
Registrars	2	2	-0	-0.1%		
Medical & Dental	5	4	-0	-4.3%		
Nurse/ Midwife Manager	67	67	+0	+0.0%	-0	+2
Nurse/ Midwife Specialist & AN/MP	4	4	+0	+0.0%	-1	-1
Staff Nurse/ Staff Midwife	116	118	+2	+0.0%	-2	-2
Pre-registration Nurse Intern (COVID-19)	1	1	+0	+0.0%	+1	+1
Nursing/ Midwifery Student	1	1	+0	+0.0%	+1	+1
Nursing & Midwifery	189	190	+2	+0.9%	-2	+0
Therapy Professions	27	24	-3	-0.1%	-10	-8
Social Care	208	208	-0	-0.0%	+12	+13
Social Workers	26	23	-3	-0.1%	-3	-2
Psychologists	12	14	+1	+0.1%	-0	-2
H&SC, Other	13	12	-1	-0.1%	-4	-2
Health & Social Care Professionals	287	281	-6	-2.0%	-4	-0
Management (VIII & above)	13	14	+1	+0.1%	+1	+1
Administrative/ Supervisory (V to VII)	35	35	-0	-0.0%	-0	+2
Clerical (III & IV)	35	36	+0	+0.0%	-2	-3
Management & Administrative	83	84	+1	+1.3%	-1	+0
Support	35	35	+0	+0.0%	-9	-3
Maintenance/ Technical	5	5		+0.0%	+0	+0
General Support	40	40	+0	+0.2%	-9	-3
Health Care Assistants	542	550	+8	+0.0%	+4	+8
Care, other	121	118	-3	-0.0%	-9	-1
Patient & Client Care	662	667	+5	+0.8%	-5	+7

CHO 2 Employment by Grade Group & Staff Category: August 2020

Aug 2020 (Dec 2019 figure: 5,545)	WTE Jul 2020	WTE Aug 2020	WTE change since Jul 20	% change since Jul 20	WTE change since Dec 19	WTE change since Aug 19
Overall	5,593	5,623	+30	+0.5%	+78	+95
Consultant Medicine	1	1				
Consultant Paediatrics	1	1				
Consultant Psychiatry	41	43	+2	+4.4%	+3	+7
Consultant Surgery	0	0	+0	+6.7%	+0	+0
Consultants	43	45	+2	+4.2%	+3	+8
Registrar	80	69	-11	-13.7%	+11	+12
Senior Registrar	19	21	+3	+13.9%	+4	+6
Registrars	99	90	-8	-8.5%	+15	+18
Senior House Officer	34	42	+8	+24.5%	+6	+9
SHO/ Interns	34	42	+8	+24.5%	+6	+9
Dentists	21	21	+0	+1.5%	-0	+0
Other Medical	39	39	-0	-1.0%	+1	+2
Medical/ Dental, other	60	60	-0	-0.1%	+1	+3
Medical & Dental	235	237	+2	+0.7%	+26	+37
Clinical Nurse/ Midwife Manager	249	249	+0	+0.1%	+8	+6
Director Nursing/Midwifery, Assistant	45	46	+1	+1.8%	+1	+3
Director of Nursing/Midwifery	24	23	-1	-3.0%	-0	+1
Nurse/ Midwife Manager	317	318	+0	+0.1%	+9	+10
Advanced Nurse/ Midwife Practitioner	10	10	+0	+0.1%	+1	+2
Clinical Nurse/ Midwife Specialist	88	89	+1	+0.9%	+5	+5
Nurse/ Midwife Specialist & AN/MP	98	99	+1	+0.8%	+6	+7
Staff Nurse [Intellectual Disability]	99	101	+1	+1.4%	+11	+10
Staff Nurse [Psychiatric]	362	361	-1	-0.3%	-10	-4
Staff Nurses [General/ Children's]	429	438	+8	+2.0%	+1	-6
Staff Nurse/ Staff Midwife	891	899	+9	+1.0%	+2	-0
Public Health Nurse	195	191	-4	-2.0%	-0	+0
Pre-registration Nurse/ Midwife Intern				-100.0%	-0	-13
Pre-registration Nurse Intern (COVID-19)	32	32	+0	+0.1%	+32	+32
Post-registration Nurse/ Midwife Student				-100.0%	-4	
Nursing/ Midwifery awaiting registration				-100.0%	-5	
Nursing/ Midwifery Student	32	32	+0	+0.1%	+23	+20
Nursing/ Midwifery other	3	3			+1	+1
Nursing & Midwifery	1,535	1,541	+6	+0.4%	+6	+36
Dietitians	22	23	+1	+3.7%	+4	+3
Occupational Therapists	126	125	-1	-0.8%	+8	+6
Orthoptists	1	1	+0	+44.0%	-0	-0
Physiotherapists	89	90	+1	+0.7%	+1	+0
Podiatrists & Chiropodists	10	10	-1	-5.4%	+3	+2
Speech & Language Therapists	100	100	+0	+0.4%	-5	-5
Therapy Professions	349	350	+1	+0.2%	+11	+7
Audiology	5	5	-0	-0.6%		-1
Clinical Engineering	1	1				
Medical Laboratory	28	27	-1	-1.9%	+1	+2
Radiographers	1	1				
Health Science/ Diagnostics	34	34	-1	-1.6%	+1	+1
Social Care	262	263	+1	+0.3%	+18	+17
Social Workers	84	82	-2	-1.9%	-1	+1

Aug 2020 (Dec 2019 figure: 5,545)	WTE Jul 2020	WTE Aug 2020	WTE change since Jul 20	% change since Jul 20	WTE change since Dec 19	WTE change since Aug 19
Overall	5,593	5,623	+30	+0.5%	+78	+95
Psychologists	76	81	+5	+6.3%	+7	+0
Pharmacy	4	4	-0	-0.3%	-1	-1
Counsellor Therapists	12	10	-2	-15.7%	-1	-1
Dental Hygienists	5	5	+0	+0.4%	+0	+0
Other Health & Social Care	11	10	-0	-1.7%	-3	-2
Play Therapists/ Specialists	1	1			-3	-3
H&SC, Other	28	26	-2	-7.2%	-6	-5
Health & Social Care Professionals	837	839	+2	+0.3%	+29	+21
Executive Management	10	9	-1	-11.0%	-1	-2
Senior Management (VIII & GM)	46	47	+1	+2.6%	+1	+0
Management (VIII & above)	56	56	+0	+0.1%	-0	-2
Middle Management (V-VII)	145	142	-2	-1.6%	+10	+12
Other Administrative				-100.0%	-1	
Administrative/ Supervisory (V to VII)	145	142	-2	-1.6%	+9	+12
Clerical (III & IV)	450	447	-4	-0.9%	-21	-24
Management & Administrative	651	645	-6	-0.9%	-22	-14
Catering	39	40	+1	+3.5%	+0	+0
Household Services	62	63	+1	+1.1%	-0	-1
Other Support	30	31	+1	+3.0%	-8	-3
Portering	15	15			-1	-2
Support	146	149	+3	+2.0%	-9	-6
Maintenance/ Technical	70	70	-0	-0.6%	+2	-2
General Support	216	219	+3	+1.2%	-24	-8
HCA, Nurse's Aide, etc.	1,415	1,424	+9	+0.7%	+71	+53
Health & Social Care Assistants	15	13	-2	-11.0%	-0	-2
Health Care Assistants	1,430	1,437	+8	+0.5%	+70	+51
Other Care Grades	271	266	-5	-1.9%	-5	-3
Care, other	271	266	-5	-1.9%	-5	-3
Home Help	418	439	+21	+5.0%	-61	-26
Patient & Client Care	2,119	2,142	+23	+1.1%	+49	+23

CHO 2 HSE Employment by Grade Group & Staff Category: August 2020

Aug 2020 (Dec 2019 figure: 4,256)	WTE Jul 2020	WTE Aug 2020	WTE change since Jul 20	% change since Jul 20	WTE change since Dec 19	WTE change since Aug 19
Overall	4,328	4,355	+28	+0.6%	+99	+90
Consultant Medicine	1	1				
Consultant Psychiatry	40	42	+2	+4.5%	+3	+7
Consultant Surgery	0	0	+0	+6.7%	+0	+0
Consultants	41	43	+2	+4.4%	+3	+8
Registrar	80	69	-11	-13.5%	+12	+13
Senior Registrar	17	19	+3	+15.5%	+3	+5
Registrars	96	88	-8	-8.4%	+15	+18
SHO/ Interns	34	42	+8	+24.5%	+6	+9
Dentists	21	21	+0	+1.5%	-0	+0
Other Medical	39	39	-0	-1.0%	+1	+2
Medical/ Dental, other	60	60	-0	-0.1%	+1	+3
Medical & Dental	231	233	+2	+0.8%	+26	+37
Clinical Nurse/ Midwife Manager	183	183	+0	+0.1%	+9	+4
Director Nursing/Midwifery, Assistant	45	46	+1	+1.8%	+1	+3
Director of Nursing/Midwifery	23	22	-1	-3.2%	-0	+1
Nurse/ Midwife Manager	250	251	+0	+0.1%	+9	+8
Advanced Nurse/ Midwife Practitioner	9	9	+0	+0.1%	+1	+2
Clinical Nurse/ Midwife Specialist	84	85	+1	+1.0%	+6	+5
Nurse/ Midwife Specialist & AN/MP	93	94	+1	+0.9%	+7	+7
Staff Nurse [Intellectual Disability]	13	13	-0	-1.4%	-0	-1
Staff Nurse [Psychiatric]	350	350	-1	-0.2%	-10	-5
Staff Nurses [General/ Children's]	411	419	+8	+2.0%	+13	+8
Staff Nurse/ Staff Midwife	774	781	+7	+0.9%	+3	+1
Public Health Nurse	195	191	-4	-2.0%	-0	+0
Pre-registration Nurse/ Midwife Intern				-100.0%	-0	-13
Pre-registration Nurse Intern (COVID-19)	31	31			+31	+31
Post-registration Nurse/ Midwife Student				-100.0%	-4	
Nursing/ Midwifery awaiting registration				-100.0%	-5	
Nursing/ Midwifery Student	31	31			+22	+19
Nursing/ Midwifery other	3	3			+1	+1
Nursing & Midwifery	1,347	1,351	+4	+0.3%	+12	+36
Dietitians	22	23	+1	+3.7%	+4	+3
Occupational Therapists	118	118	+1	+0.5%	+11	+8
Orthoptists	1	1	+0	+44.0%	-0	-0
Physiotherapists	80	82	+2	+2.3%	+4	+2
Podiatrists & Chiropodists	10	10	-1	-5.4%	+3	+2
Speech & Language Therapists	91	91	+1	+0.6%	+1	-0
Therapy Professions	322	325	+4	+1.2%	+21	+15
Audiology	5	5	-0	-0.6%		-1
Clinical Engineering	1	1				
Medical Laboratory	28	27	-1	-1.9%	+1	+2
Radiographers	1	1				
Health Science/ Diagnostics	34	34	-1	-1.6%	+1	+1
Social Care	54	55	+1	+2.0%	+6	+5
Social Workers	58	60	+1	+2.1%	+1	+3
Psychologists	63	67	+3	+5.2%	+7	+2
Pharmacy	4	4	-0	-0.3%	-1	-1
Counsellor Therapists	7	6	-1	-12.9%	-2	-2
Dental Hygienists	5	5	+0	+0.4%	+0	+0

Aug 2020 (Dec 2019 figure: 4,256)	WTE Jul 2020	WTE Aug 2020	WTE change since Jul 20	% change since Jul 20	WTE change since Dec 19	WTE change since Aug 19
Overall	4,328	4,355	+28	+0.6%	+99	+90
Other Health & Social Care	2	2			-1	-1
Play Therapists/ Specialists	1	1				
H&SC, Other	15	14	-1	-6.1%	-3	-3
Health & Social Care Professionals	550	558	+8	+1.4%	+16	+21
Executive Management	8	7	-1	-13.7%	-1	-2
Senior Management (VIII & GM)	35	35	+0	+0.5%	+0	-0
Management (VIII & above)	43	42	-1	-2.2%	-1	-3
Administrative/ Supervisory (V to VII)	110	108	-2	-1.9%	+9	+10
Clerical (III & IV)	415	411	-4	-1.0%	-20	-22
Management & Administrative	568	561	-7	-1.3%	-26	-14
Catering	38	40	+1	+3.5%	+0	+0
Household Services	43	44	+1	+3.4%	+0	-1
Other Support	15	15	+0	+0.5%	+0	+0
Portering	15	15			-1	-2
Support	111	114	+3	+2.6%	+0	-3
Maintenance/ Technical	65	65	-0	-0.6%	+2	-2
General Support	176	178	+2	+1.4%	-15	-5
HCA, Nurse's Aide, etc.	873	874	+1	+0.1%	+67	+46
Health & Social Care Assistants	15	13	-2	-11.0%	-0	-2
Health Care Assistants	888	888	-1	-0.1%	+66	+44
Care, other	151	149	-2	-1.4%	+4	-2
Home Help	418	439	+21	+5.0%	-61	-26
Patient & Client Care	1,457	1,475	+18	+1.3%	-11	+16

Employment by WTE, Headcount, Gender, Full-Time /Part-Time etc.: Aug 2020

CHO 2	WTE	Headcount	WTE: no.	% Male	% female	Male WTE: no.	Female WTE: no.	% Total Perm	% Male Perm	% Female Perm	% Total Full Time	% Total Part Time	% Male FT	% Female FT
Overall	5,623	6,495	1.16	18.7%	81.3%	1.07	1.18	85.1%	81.8%	85.9%	59.2%	40.8%	76.7%	55.1%
Consultant Medicine	1	1	1.00		100.0%		1.00	100.0%	100.0%	100.0%	100.0%	0.0%		100.0%
Consultant Paediatrics	1	1	1.00		100.0%		1.00	100.0%	100.0%	100.0%	100.0%	0.0%		100.0%
Consultant Psychiatry	43	47	1.09	38.3%	61.7%	1.06	1.11	70.2%	70.2%	69.0%	80.9%	19.1%	88.9%	75.9%
Consultant Surgery	0	1	3.13		100.0%		3.13	0.0%	0.0%	0.0%	0.0%	100.0%		0.0%
Consultants	45	50	1.10	36.0%	64.0%	1.06	1.13	70.0%	72.2%	68.8%	80.0%	20.0%	88.9%	75.0%
Registrar	69	70	1.02	31.4%	68.6%	1.00	1.02	1.4%	1.4%	2.1%	100.0%	0.0%	100.0%	100.0%
Senior Registrar	21	22	1.02	36.4%	63.6%	1.00	1.04	0.0%	0.0%	0.0%	100.0%	0.0%	100.0%	100.0%
Registrars	90	92	1.02	32.6%	67.4%	1.00	1.03	1.1%	0.0%	1.6%	100.0%	0.0%	100.0%	100.0%
Senior House Officer	42	42	1.00	45.2%	54.8%	1.00	1.00	0.0%	0.0%	0.0%	100.0%	0.0%	100.0%	100.0%
SHO/ Interns	42	42	1.00	45.2%	54.8%	1.00	1.00	0.0%	0.0%	0.0%	100.0%	0.0%	100.0%	100.0%
Dentists	21	25	1.19	24.0%	76.0%	1.03	1.25	96.0%	96.0%	94.7%	56.0%	44.0%	83.3%	47.4%
Other Medical	39	43	1.12	27.9%	72.1%	1.18	1.10	69.8%	69.8%	77.4%	58.1%	41.9%	58.3%	58.1%
Medical/ Dental, other	60	68	1.14	26.5%	73.5%	1.12	1.15	79.4%	66.7%	84.0%	57.4%	42.6%	66.7%	54.0%
Medical & Dental	237	252	1.06	33.7%	66.3%	1.04	1.08	35.7%	29.4%	38.9%	84.5%	15.5%	90.6%	81.4%
Clinical Nurse/ Midwife Manager	249	266	1.07	26.7%	73.3%	1.01	1.09	95.9%	95.9%	94.9%	86.1%	13.9%	98.6%	81.5%
Director Nursing/Midwifery, Assistant	46	48	1.05	22.9%	77.1%	1.00	1.06	97.9%	97.9%	97.3%	91.7%	8.3%	100.0%	89.2%
Director of Nursing/Midwifery	23	23	1.00	13.0%	87.0%	1.00	1.00	100.0%	100.0%	100.0%	100.0%	0.0%	100.0%	100.0%
Nurse/ Midwife Manager	318	337	1.06	25.2%	74.8%	1.00	1.08	96.4%	98.8%	95.6%	87.8%	12.2%	98.8%	84.1%
Advanced Nurse/ Midwife Practitioner	10	10	1.00	30.0%	70.0%	1.00	1.00	100.0%	100.0%	100.0%	100.0%	0.0%	100.0%	100.0%
Clinical Nurse/ Midwife Specialist	89	94	1.06	13.8%	86.2%	1.00	1.07	100.0%	100.0%	100.0%	93.6%	6.4%	100.0%	92.6%
Nurse/ Midwife Specialist & AN/MP	99	104	1.06	15.4%	84.6%	1.00	1.07	100.0%	100.0%	100.0%	94.2%	5.8%	100.0%	93.2%
Staff Nurse [Intellectual Disability]	101	124	1.23	8.1%	91.9%	1.28	1.23	91.1%	91.1%	91.2%	47.6%	52.4%	70.0%	45.6%
Staff Nurse [Psychiatric]	361	395	1.09	25.6%	74.4%	1.08	1.10	93.7%	93.7%	96.3%	85.6%	14.4%	85.1%	85.7%
Staff Nurses [General/ Children's]	438	528	1.21	4.9%	95.1%	1.09	1.21	92.6%	92.6%	92.4%	52.8%	47.2%	76.9%	51.6%
Staff Nurse/ Staff Midwife	899	1,047	1.16	13.1%	86.9%	1.09	1.18	92.8%	88.3%	93.5%	64.6%	35.4%	82.5%	61.9%
Public Health Nurse	191	220	1.15		100.0%		1.15	96.8%		96.8%	74.5%	25.5%		74.5%
Pre-registration Nurse Intern (COVID-19)	32	32	1.00	18.8%	81.3%	1.00	1.00	0.0%	0.0%	0.0%	96.9%	3.1%	100.0%	96.2%
Nursing/ Midwifery Student	32	32	1.00	18.8%	81.3%	1.00	1.00	0.0%	0.0%	0.0%	96.9%	3.1%	100.0%	96.2%

Nursing/ Midwifery other	3	3	1.20		100.0%		1.20	100.0%		100.0%	66.7%	33.3%		66.7%
Nursing & Midwifery	1,541	1,743	1.13	14.0%	86.0%	1.05	1.14	92.8%	90.6%	93.1%	72.7%	27.3%	89.8%	69.9%
Dietitians	23	26	1.12		100.0%		1.12	88.5%	88.5%	88.5%	65.4%	34.6%		65.4%
Occupational Therapists	125	142	1.13	7.0%	93.0%	1.01	1.14	93.0%	93.0%	92.4%	69.0%	31.0%	90.0%	67.4%
Orthoptists	1	2	1.39		100.0%		1.39	100.0%	100.0%	100.0%	50.0%	50.0%		50.0%
Physiotherapists	90	107	1.19	15.9%	84.1%	1.02	1.22	96.3%	96.3%	97.8%	67.3%	32.7%	88.2%	63.3%
Podiatrists & Chiropodists	10	13	1.37	7.7%	92.3%	1.00	1.41	84.6%	84.6%	83.3%	53.8%	46.2%	100.0%	50.0%
Speech & Language Therapists	100	112	1.12	1.8%	98.2%	1.00	1.12	91.1%	91.1%	90.9%	77.7%	22.3%	100.0%	77.3%
Therapy Professions	350	402	1.15	7.5%	92.5%	1.02	1.16	92.8%	93.3%	92.7%	70.1%	29.9%	90.0%	68.5%
Audiology	5	5	1.02		100.0%		1.02	100.0%	100.0%	100.0%	80.0%	20.0%		80.0%
Clinical Engineering	1	1	1.00	100.0%		1.00		100.0%	100.0%		100.0%	0.0%	100.0%	
Medical Laboratory	27	29	1.07	17.2%	82.8%	1.00	1.09	96.6%	96.6%	95.8%	86.2%	13.8%	100.0%	83.3%
Radiographers	1	1	1.67		100.0%		1.67	100.0%	100.0%	100.0%	0.0%	100.0%		0.0%
Health Science/ Diagnostics	34	36	1.07	16.7%	83.3%	1.00	1.09	97.2%	100.0%	96.7%	83.3%	16.7%	100.0%	80.0%
Social Care	263	301	1.14	16.6%	83.4%	1.12	1.15	86.7%	92.0%	85.7%	53.2%	46.8%	56.0%	52.6%
Social Workers	82	94	1.14	17.0%	83.0%	1.08	1.15	91.5%	93.8%	91.0%	70.2%	29.8%	81.3%	67.9%
Psychologists	81	93	1.15	15.1%	84.9%	1.04	1.18	94.6%	100.0%	93.7%	71.0%	29.0%	92.9%	67.1%
Pharmacy	4	5	1.35	20.0%	80.0%	1.00	1.48	80.0%	100.0%	75.0%	40.0%	60.0%	100.0%	25.0%
Counsellor Therapists	10	13	1.31	30.8%	69.2%	1.42	1.26	92.3%	92.3%	100.0%	69.2%	30.8%	50.0%	77.8%
Dental Hygienists	5	6	1.30		100.0%		1.30	83.3%	83.3%	83.3%	50.0%	50.0%		50.0%
Other Health & Social Care	10	14	1.34	21.4%	78.6%	1.17	1.40	85.7%	85.7%	90.9%	21.4%	78.6%	33.3%	18.2%
Play Therapists/ Specialists	1	1	1.00		100.0%		1.00	100.0%	100.0%	100.0%	100.0%	0.0%		100.0%
H&SC, Other	26	34	1.31	20.6%	79.4%	1.30	1.31	88.2%	71.4%	92.6%	47.1%	52.9%	42.9%	48.1%
Health & Social Care	839	965	1.15	12.8%	87.2%	1.08	1.16	90.9%	92.7%	90.6%	64.5%	35.5%	73.4%	63.1%
Executive Management	9	10	1.12	80.0%	20.0%	1.11	1.14	90.0%	90.0%	100.0%	90.0%	10.0%	87.5%	100.0%
Senior Management (VIII & GM)	47	47	1.01	42.6%	57.4%	1.00	1.01	91.5%	91.5%	92.6%	95.7%	4.3%	100.0%	92.6%
Management (VIII & above)	56	57	1.02	49.1%	50.9%	1.03	1.02	91.2%	89.3%	93.1%	94.7%	5.3%	96.4%	93.1%
Administrative/ Supervisory (V to VII)	142	155	1.09	19.4%	80.6%	1.05	1.10	96.8%	93.3%	97.6%	80.6%	19.4%	83.3%	80.0%
Clerical (III & IV)	447	513	1.15	7.2%	92.8%	1.12	1.15	90.1%	81.1%	90.8%	67.1%	32.9%	75.7%	66.4%
Management & Administrative	645	725	1.12	13.1%	86.9%	1.07	1.13	91.6%	87.4%	92.2%	72.1%	27.9%	84.2%	70.3%
Catering	40	44	1.09	29.5%	70.5%	1.02	1.13	100.0%	100.0%	100.0%	65.9%	34.1%	84.6%	58.1%
Household Services	63	90	1.44	14.4%	85.6%	1.43	1.44	92.2%	92.2%	93.5%	32.2%	67.8%	38.5%	31.2%
Other Support	31	62	1.99	64.5%	35.5%	1.45	6.32	58.1%	58.1%	9.1%	21.0%	79.0%	30.0%	4.5%
Portering	15	15	1.00	93.3%	6.7%	1.00	1.00	100.0%	100.0%	100.0%	100.0%	0.0%	100.0%	100.0%
Support	149	211	1.42	37.9%	62.1%	1.26	1.53	84.4%	90.0%	80.9%	40.8%	59.2%	52.5%	33.6%

Maintenance/ Technical	70	72	1.03	98.6%	1.4%	1.03	1.00	97.2%	97.2%	100.0%	94.4%	5.6%	94.4%	100.0%
General Support	219	283	1.29	53.4%	46.6%	1.14	1.53	87.6%	93.4%	81.1%	54.4%	45.6%	72.2%	34.1%
HCA, Nurse's Aide, etc.	1,424	1,600	1.12	24.8%	75.3%	1.06	1.15	75.4%	75.4%	74.3%	52.9%	47.1%	69.2%	47.6%
Health & Social Care Assistants	13	14	1.05	35.7%	64.3%	1.00	1.08	28.6%	28.6%	22.2%	92.9%	7.1%	100.0%	88.9%
Health Care Assistants	1,437	1,614	1.12	24.8%	75.2%	1.06	1.15	75.0%	78.6%	73.9%	53.3%	46.7%	69.6%	47.9%
Care, other	266	306	1.15	35.3%	64.7%	1.09	1.19	85.9%	82.4%	87.9%	56.5%	43.5%	68.5%	50.0%
Home Help	439	607	1.38	0.7%	99.3%	1.48	1.38	91.8%	50.0%	92.0%	4.9%	95.1%	0.0%	5.0%
Patient & Client Care	2,142	2,527	1.18	20.3%	79.7%	1.07	1.21	80.4%	79.1%	80.7%	42.1%	57.9%	68.8%	35.3%

Employment by WTE, Headcount, Gender, Full-Time /Part-Time etc.: Aug 2020

CHO 2	WTE	Headcount	WTE: no.	% Male	% female	Male WTE: no.	Female WTE: no.	% Total Perm	% Male Perm	% Female Perm	% Total Full Time	% Total Part Time	% Male FT	% Female FT
Overall	5,623	6,495	1.16	18.7%	81.3%	1.07	1.18	85.1%	81.8%	85.9%	59.2%	40.8%	76.7%	55.1%
Community Health & Wellbeing	8	11	1.30	9.1%	90.9%	1.00	1.34	100.0%	100.0%	100.0%	54.5%	45.5%	100.0%	100.0%
Mental Health	1,349	1,457	1.08	28.4%	71.6%	1.04	1.10	85.7%	85.7%	87.8%	83.3%	16.7%	89.9%	89.9%
Primary Care	1,157	1,339	1.16	12.5%	87.5%	1.07	1.17	85.8%	85.8%	86.9%	70.1%	29.9%	86.2%	86.2%
HSE	1,841	2,174	1.18	13.5%	86.5%	1.04	1.21	87.4%	87.4%	87.8%	50.2%	49.8%	88.8%	88.8%
Section 38 Voluntary Agencies	1,268	1,514	1.19	22.2%	77.8%	1.15	1.21	80.4%	80.4%	79.8%	39.1%	60.9%	44.9%	44.9%
Social Care	3,108	3,688	1.19	17.1%	82.9%	1.09	1.21	84.5%	84.5%	84.7%	45.7%	54.3%	65.4%	65.4%

CHO 2 Skills Mix by Staff Grouping: August 2020

Aug 2020 (Dec 2018 figure: 5,559)	WTE Dec 2015	WTE Dec 2016	WTE Dec 2017	WTE Dec 2018	WTE Dec 2019	WTE Jul 2020	WTE Aug 2020
Overall	5,111	5,236	5,377	5,559	5,545	5,593	5,623
Consultant Medicine	0.5%	0.5%	0.5%	0.5%	0.5%	0.4%	0.4%
Consultant Paediatrics	0.5%	0.5%	0.5%	0.5%	0.5%	0.4%	0.4%
Consultant Psychiatry	18.0%	16.7%	16.6%	16.4%	18.9%	17.5%	18.1%
Consultant Surgery	0.7%	0.7%	0.6%	0.1%	0.1%	0.1%	0.1%
Consultants	19.7%	18.4%	18.3%	17.5%	19.9%	18.5%	19.1%
Registrar	26.4%	27.0%	29.4%	27.8%	27.4%	33.9%	29.0%
Senior Registrar	3.5%	4.2%	4.2%	5.5%	8.0%	8.0%	9.1%
Registrars	29.9%	31.1%	33.6%	33.2%	35.4%	41.9%	38.1%
Interns	0.5%						
Senior House Officer	19.2%	19.3%	18.6%	20.0%	16.9%	14.3%	17.7%
SHO/ Interns	19.8%	19.3%	18.6%	20.0%	16.9%	14.3%	17.7%
Dentists	11.8%	11.2%	10.8%	11.0%	10.0%	8.8%	8.9%
Other Medical	18.9%	19.9%	18.8%	18.3%	17.7%	16.5%	16.2%
Medical/ Dental, other	30.6%	31.2%	29.6%	29.3%	27.7%	25.3%	25.1%
Medical & Dental	3.7%	3.7%	3.8%	3.8%	3.8%	100.0%	4.2%
Clinical Nurse/ Midwife Manager	14.7%	15.7%	15.7%	16.5%	16.0%	16.2%	16.2%
Director Nursing/Midwifery, Assistant	2.4%	2.5%	2.7%	2.6%	3.0%	2.9%	3.0%
Director of Nursing/Midwifery	1.4%	1.4%	1.4%	1.4%	1.5%	1.5%	1.5%
Nurse/ Midwife Manager	18.5%	19.5%	19.7%	20.5%	20.6%	20.7%	20.6%
Advanced Nurse/ Midwife Practitioner	0.2%	0.2%	0.3%	0.4%	0.6%	0.7%	0.6%
Clinical Nurse/ Midwife Specialist	4.3%	4.3%	5.1%	5.1%	5.6%	5.7%	5.7%
Nurse/ Midwife Specialist & AN/MP	4.5%	4.5%	5.3%	5.5%	6.2%	6.4%	6.4%
Staff Midwives	0.1%	0.0%	0.1%				
Staff Nurse [Intellectual Disability]	8.0%	8.5%	6.5%	6.4%	6.0%	6.5%	6.5%
Staff Nurse [Psychiatric]	26.0%	25.4%	24.3%	24.1%	24.7%	23.6%	23.4%
Staff Nurses [General/ Children's]	30.3%	29.7%	30.5%	29.6%	29.1%	28.0%	28.4%
Staff Nurse/ Staff Midwife	64.4%	63.6%	61.4%	60.1%	59.8%	58.0%	58.3%
Public Health Nurse	11.9%	11.7%	11.4%	12.2%	12.8%	12.7%	12.4%
Pre-registration Nurse/ Midwife Intern	0.2%		0.9%		0.0%		
Pre-registration Nurse Intern (COVID-19)						2.1%	2.1%
Post-registration Nurse/ Midwife Student	0.5%	0.7%	1.1%	0.8%	0.3%		
Nursing/ Midwifery awaiting registration				0.7%	0.3%		
Nursing/ Midwifery Student	0.6%	0.7%	1.9%	1.6%	0.6%	2.1%	2.1%
Nursing/ Midwifery other			0.1%	0.2%	0.1%	0.2%	0.2%
Nursing & Midwifery	29.3%	28.8%	28.3%	27.6%	27.7%	100.0%	27.4%
Dietitians	2.2%	2.4%	2.6%	2.5%	2.4%	2.7%	2.8%
Occupational Therapists	13.8%	15.1%	14.7%	14.6%	14.4%	15.1%	14.9%
Orthoptists	0.2%	0.2%	0.2%	0.2%	0.2%	0.1%	0.2%
Physiotherapists	12.3%	10.7%	11.7%	11.0%	10.9%	10.7%	10.7%
Podiatrists & Chiropodists	0.9%	1.2%	1.0%	0.9%	0.9%	1.2%	1.1%
Speech & Language Therapists	11.9%	12.3%	12.4%	12.8%	12.9%	11.9%	11.9%
Therapy Professions	41.2%	41.8%	42.6%	41.9%	41.7%	41.7%	41.7%
Audiology	0.7%	0.6%	0.8%	0.7%	0.6%	0.6%	0.6%
Clinical Engineering	0.1%	0.1%			0.1%	0.1%	0.1%
Medical Laboratory	3.8%	3.8%	3.5%	3.3%	3.3%	3.3%	3.2%
Physicists	0.1%	0.1%					
Radiographers	0.0%	0.1%	0.1%	0.1%	0.1%	0.1%	0.1%
Health Science/ Diagnostics	4.8%	4.8%	4.4%	4.1%	4.1%	4.1%	4.0%
Social Care	24.8%	26.3%	27.2%	28.6%	30.2%	31.3%	31.4%
Social Workers	11.1%	10.3%	10.1%	10.1%	10.3%	10.0%	9.8%
Psychologists	12.2%	11.4%	10.7%	10.3%	9.1%	9.1%	9.6%

Aug 2020 (Dec 2018 figure: 5,559)	WTE Dec 2015	WTE Dec 2016	WTE Dec 2017	WTE Dec 2018	WTE Dec 2019	WTE Jul 2020	WTE Aug 2020
Overall	5,111	5,236	5,377	5,559	5,545	5,593	5,623
Pharmacy	0.8%	0.7%	0.6%	0.5%	0.6%	0.4%	0.4%
Counsellor Therapists	1.2%	1.4%	1.4%	1.5%	1.4%	1.4%	1.2%
Dental Hygienists	0.4%	0.5%	0.3%	0.5%	0.6%	0.5%	0.5%
HSCP Trainees/ Students	0.5%	0.3%	0.1%				
Other Health & Social Care	2.5%	2.1%	2.1%	1.9%	1.6%	1.3%	1.2%
Play Therapists/ Specialists	0.6%	0.5%	0.5%	0.4%	0.4%	0.1%	0.1%
H&SC, Other	5.2%	4.7%	4.4%	4.4%	4.0%	3.3%	3.1%
Health & Social Care Professionals	13.7%	14.0%	14.0%	14.6%	14.6%	100.0%	14.9%
Executive Management	1.4%	1.7%	1.8%	1.7%	1.6%	1.5%	1.4%
Senior Management (VIII & GM)	6.4%	6.5%	6.6%	7.0%	6.9%	7.0%	7.2%
Management (VIII & above)	7.8%	8.2%	8.5%	8.7%	8.5%	8.5%	8.6%
Middle Management (V-VII)	15.0%	17.2%	18.3%	18.5%	20.2%	22.2%	22.1%
Other Administrative					0.2%		
Administrative/ Supervisory (V to VII)	15.0%	17.2%	18.3%	18.5%	20.3%	22.2%	22.1%
Clerical (III & IV)	77.2%	74.6%	73.2%	72.8%	71.2%	69.2%	69.3%
Management & Administrative	11.0%	11.3%	11.9%	12.0%	12.0%	100.0%	11.5%
Catering	14.7%	15.6%	14.8%	16.9%	17.6%	18.0%	18.4%
Household Services	34.7%	31.9%	30.7%	28.8%	27.9%	28.6%	28.6%
Other Support	16.8%	17.2%	17.6%	17.4%	17.4%	14.0%	14.2%
Portering	4.9%	6.4%	7.2%	7.1%	6.9%	6.9%	6.9%
Support	71.1%	71.0%	70.3%	70.2%	69.9%	67.5%	68.1%
Maintenance/ Technical	28.9%	29.0%	29.7%	29.8%	30.1%	32.5%	31.9%
General Support	5.3%	4.9%	4.5%	4.4%	4.4%	100.0%	3.9%
HCA, Nurse's Aide, etc.	61.2%	63.7%	64.2%	63.5%	63.3%	66.8%	66.5%
Health & Social Care Assistants	0.3%	0.3%	0.5%	0.9%	0.6%	0.7%	0.6%
Health Care Assistants	61.5%	64.0%	64.7%	64.5%	64.0%	67.5%	67.1%
Care, other	13.9%	13.0%	13.0%	12.5%	12.7%	12.8%	12.4%
Home Help	24.6%	23.0%	22.3%	23.0%	23.4%	19.7%	20.5%
Patient & Client Care	37.1%	37.4%	37.4%	37.7%	37.8%	100.0%	38.1%
Total	100 %	100 %	100 %	100 %	100%	100 %	100 %

CHO 2 Skills Mix by Care Group: August 2020

Aug 2020 (Dec 2018 figure: 1,338)	WTE Dec 2015	WTE Dec 2016	WTE Dec 2017	WTE Dec 2018	WTE Dec 2019	WTE Jul 2020	WTE Aug 2020
Mental Health	1,258	1,283	1,307	1,338	1,308	1,334	1,349
Consultants	38.0%	33.8%	31.8%	30.6%	35.3%	35.8%	34.7%
Registrar	17.5%	18.0%	19.5%	17.9%	16.0%	18.5%	14.5%
Senior Registrar	7.8%	9.0%	8.5%	10.9%	15.0%	15.6%	16.7%
Registrars	25.3%	27.0%	28.0%	28.7%	31.1%	34.0%	31.2%
Interns	1.2%						
Senior House Officer	32.6%	36.4%	37.7%	39.7%	32.7%	29.2%	33.2%
SHO/ Interns	33.8%	36.4%	37.7%	39.7%	32.7%	29.2%	33.2%
Medical/ Dental, other	3.0%	2.8%	2.5%	0.9%	0.9%	0.9%	0.9%
Medical & Dental	6.6%	6.9%	7.6%	7.9%	8.1%	8.7%	8.7%
Clinical Nurse/ Midwife Manager	20.5%	22.1%	20.7%	23.0%	21.5%	20.4%	20.5%
Director Nursing/Midwifery, Assistant	2.9%	2.8%	3.3%	3.1%	3.3%	3.3%	3.3%
Director of Nursing/Midwifery	0.4%	0.5%	0.5%	0.3%	0.5%	0.5%	0.5%
Nurse/ Midwife Manager	23.7%	25.5%	24.6%	26.4%	25.3%	24.2%	24.4%
Advanced Nurse/ Midwife Practitioner	0.5%	0.5%	0.5%	0.9%	1.0%	1.2%	1.2%
Clinical Nurse/ Midwife Specialist	7.5%	7.4%	9.9%	9.4%	10.6%	11.1%	11.2%
Nurse/ Midwife Specialist & AN/MP	8.1%	7.9%	10.4%	10.2%	11.7%	12.3%	12.4%
Staff Nurse [Psychiatric]	65.7%	64.6%	61.0%	60.0%	61.0%	57.1%	56.9%
Staff Nurses [General/ Children's]	2.0%	2.0%	1.3%	0.9%	0.9%	0.8%	0.8%
Staff Nurse/ Staff Midwife	67.8%	66.6%	62.3%	61.0%	61.9%	58.0%	57.7%
Pre-registration Nurse/ Midwife Intern	0.4%		2.3%		0.0%		
Pre-registration Nurse Intern (COVID-19)						5.2%	5.1%
Nursing/ Midwifery awaiting registration				1.9%	0.8%		
Nursing/ Midwifery Student	0.4%		2.3%	1.9%	0.8%	5.2%	5.1%
Nursing/ Midwifery other			0.4%	0.5%	0.3%	0.4%	0.4%
Nursing & Midwifery	44.5%	44.0%	43.5%	43.8%	44.8%	44.7%	44.7%
Dietitians	1.6%	2.9%	3.6%	2.4%	2.1%	2.9%	2.8%
Occupational Therapists	20.6%	24.4%	26.3%	26.4%	26.0%	27.0%	25.9%
Speech & Language Therapists	4.7%	5.3%	5.5%	5.2%	4.3%	5.8%	6.2%
Therapy Professions	26.9%	32.6%	35.4%	33.9%	32.4%	35.7%	35.0%
Social Care	13.5%	12.2%	9.7%	9.9%	10.5%	9.4%	9.6%
Social Workers	30.3%	26.9%	26.2%	27.7%	29.1%	27.9%	27.5%
Psychologists	25.4%	25.0%	25.3%	24.6%	24.0%	23.9%	25.2%
Pharmacy	3.2%	2.6%	1.9%	1.8%	1.8%	1.1%	1.1%
Counsellor Therapists				1.4%	1.4%	1.3%	0.9%
Other Health & Social Care			0.7%				
Play Therapists/ Specialists	0.8%	0.7%	0.7%	0.7%	0.7%	0.7%	0.6%
H&SC, Other	0.8%	0.7%	1.4%	2.1%	2.1%	2.0%	1.6%
Health & Social Care Professionals	10.1%	10.7%	10.6%	10.9%	11.2%	11.7%	11.7%
Management (VIII & above)	4.0%	3.1%	2.2%	2.8%	3.6%	3.0%	3.0%
Administrative/ Supervisory (V to VII)	13.5%	15.9%	17.6%	16.5%	17.1%	19.2%	19.6%
Clerical (III & IV)	82.5%	81.0%	80.2%	80.7%	79.2%	77.8%	77.4%
Management & Administrative	9.9%	10.2%	10.4%	10.5%	10.8%	9.8%	9.8%
Support	61.0%	56.6%	53.4%	52.7%	57.3%	53.7%	54.1%
Maintenance/ Technical	39.0%	43.4%	46.6%	47.3%	42.7%	46.3%	45.9%
General Support	6.7%	6.3%	5.6%	5.2%	5.3%	4.6%	4.6%
Health Care Assistants	75.6%	76.3%	74.5%	75.0%	75.6%	75.3%	75.7%
Care, other	24.4%	23.7%	25.5%	25.0%	24.4%	24.7%	24.3%

Aug 2020 (Dec 2018 figure: 1,338)	WTE Dec 2015	WTE Dec 2016	WTE Dec 2017	WTE Dec 2018	WTE Dec 2019	WTE Jul 2020	WTE Aug 2020
Mental Health	1,258	1,283	1,307	1,338	1,308	1,334	1,349
Patient & Client Care	22.1%	21.9%	22.3%	21.7%	22.2%	20.5%	20.5%
Total	100 %	100 %	100 %	100 %	100 %	100 %	100 %

Aug 2020 (Dec 2018 figure: 1,160)	WTE Dec 2015	WTE Dec 2016	WTE Dec 2017	WTE Dec 2018	WTE Dec 2019	WTE Jul 2020	WTE Aug 2020
Primary Care	1,261	1,238	1,090	1,160	1,134	1,172	1,157
Consultant Medicine	1.1%	1.2%	1.2%	1.1%	1.1%	0.9%	1.0%
Consultant Psychiatry	1.1%						
Consultant Surgery	1.4%	1.5%	1.5%	0.3%	0.3%	0.3%	0.3%
Consultants	3.6%	2.7%	2.7%	1.5%	1.4%	1.2%	1.3%
Registrars	36.5%	39.1%	44.7%	43.2%	45.6%	54.0%	49.8%
SHO/ Interns	9.8%	5.4%			1.1%	1.8%	2.9%
Dentists	24.5%	25.0%	25.7%	26.7%	24.1%	18.8%	20.2%
Other Medical	25.6%	27.8%	26.9%	28.6%	27.8%	24.2%	25.8%
Medical/ Dental, other	50.0%	52.8%	52.6%	55.3%	51.9%	43.0%	46.0%
Medical & Dental	7.1%	7.0%	7.8%	7.5%	7.7%	9.0%	9.0%
Clinical Nurse/ Midwife Manager	2.0%	1.7%	2.3%	2.0%	1.7%	1.8%	1.9%
Director Nursing/Midwifery, Assistant	4.7%	5.3%	4.9%	5.1%	6.4%	6.3%	6.4%
Director of Nursing/Midwifery	0.9%	0.7%	1.0%	0.9%	0.6%	1.2%	0.9%
Nurse/ Midwife Manager	7.6%	7.7%	8.2%	8.0%	8.7%	9.4%	9.2%
Nurse/ Midwife Specialist & AN/MP	5.7%	5.2%	4.9%	5.7%	5.5%	5.2%	5.2%
Staff Nurse/ Staff Midwife	24.1%	24.0%	23.9%	24.4%	23.6%	24.9%	25.5%
Public Health Nurse	60.3%	59.4%	57.7%	57.8%	60.9%	60.5%	60.0%
Nursing/ Midwifery Student	2.4%	3.7%	5.3%	4.0%	1.3%		
Nursing & Midwifery	23.4%	23.9%	27.6%	27.7%	28.4%	27.4%	27.4%
Dietitians	4.0%	3.3%	4.0%	5.2%	4.9%	5.2%	5.4%
Occupational Therapists	17.7%	19.1%	18.6%	18.8%	19.0%	20.3%	20.2%
Orthoptists	0.5%	0.5%	0.5%	0.5%	0.5%	0.3%	0.4%
Physiotherapists	19.4%	18.1%	21.1%	20.0%	20.0%	19.9%	20.3%
Podiatrists & Chiropodists	2.0%	2.8%	2.5%	2.2%	2.2%	3.1%	3.0%
Speech & Language Therapists	20.8%	22.6%	22.9%	24.4%	25.7%	24.4%	24.2%
Therapy Professions	64.5%	66.4%	69.7%	71.1%	72.4%	73.2%	73.6%
Audiology	1.6%	1.5%	1.9%	1.8%	1.6%	1.5%	1.5%
Clinical Engineering	0.3%	0.3%			0.3%	0.3%	0.3%
Medical Laboratory	8.8%	9.2%	8.8%	8.3%	8.5%	8.6%	8.5%
Physicists	0.3%	0.3%					
Health Science/ Diagnostics	11.0%	11.4%	10.7%	10.1%	10.4%	10.4%	10.3%
Social Care	4.0%	3.7%	3.5%	3.0%	2.7%	2.7%	2.7%
Social Workers	3.2%	3.0%	2.3%	2.1%	2.2%	1.8%	1.8%
Psychologists	12.2%	10.0%	8.8%	8.6%	7.7%	7.9%	7.8%
Pharmacy	0.3%	0.3%	0.3%	0.3%	0.3%	0.3%	0.3%
Counsellor Therapists	2.8%	3.0%	2.9%	2.4%	1.9%	1.5%	1.4%
Dental Hygienists	1.0%	1.1%	0.8%	1.4%	1.4%	1.4%	1.4%
Other Health & Social Care	1.0%	1.0%	1.0%	0.9%	1.0%	0.6%	0.6%
H&SC, Other	4.8%	5.1%	4.7%	4.7%	4.3%	3.6%	3.5%
Health & Social Care Professionals	24.2%	24.2%	27.8%	27.8%	28.4%	27.7%	27.7%
Executive Management	2.1%	2.7%	3.1%	2.8%	2.5%	2.4%	2.1%
Senior Management (VIII & GM)	7.3%	7.0%	8.4%	8.4%	7.4%	7.8%	7.9%
Management (VIII & above)	9.4%	9.7%	11.5%	11.2%	9.9%	10.2%	10.1%
Administrative/ Supervisory (V to VII)	12.7%	13.6%	14.3%	16.1%	18.6%	19.2%	19.0%
Clerical (III & IV)	77.9%	76.7%	74.2%	72.7%	71.5%	70.6%	70.9%

Aug 2020 (Dec 2018 figure: 1,160)	WTE Dec 2015	WTE Dec 2016	WTE Dec 2017	WTE Dec 2018	WTE Dec 2019	WTE Jul 2020	WTE Aug 2020
Primary Care	1,261	1,238	1,090	1,160	1,134	1,172	1,157
Management & Administrative	22.6%	23.6%	28.8%	28.5%	29.1%	28.1%	28.1%
Support	59.1%	70.6%	70.8%	74.0%	69.9%	70.2%	70.2%
Maintenance/ Technical	40.9%	29.4%	29.2%	26.0%	30.1%	29.8%	29.8%
General Support	2.9%	2.5%	2.8%	3.0%	3.1%	2.6%	2.6%
HCA, Nurse's Aide, etc.	2.7%	2.4%	8.1%	6.9%	7.7%	6.8%	7.4%
Health & Social Care Assistants		0.4%	7.1%	23.2%	17.2%	18.7%	15.8%
Health Care Assistants	2.7%	2.9%	15.2%	30.0%	25.0%	25.4%	23.2%
Care, other	24.7%	24.7%	84.8%	70.0%	75.0%	74.6%	76.8%
Home Help	72.5%	72.5%					
Patient & Client Care	19.8%	18.8%	5.2%	5.6%	5.7%	5.2%	5.2%
Total	100 %	100 %	100 %	100 %	100 %	100 %	100 %

Aug 2020 (Dec 2018 figure: 1,420)	WTE Dec 2015	WTE Dec 2016	WTE Dec 2017	WTE Dec 2018	WTE Dec 2019	WTE Jul 2020	WTE Aug 2020
Disabilities	1,221	1,338	1,395	1,420	1,497	1,479	1,482
Consultant Paediatrics	20.0%	16.7%	16.7%	16.4%	15.6%	15.2%	15.6%
Consultant Psychiatry	20.0%	33.3%	33.3%	34.3%	37.5%	36.4%	37.5%
Consultants	40.0%	50.0%	50.0%	50.7%	53.1%	51.5%	53.1%
Registrars	40.0%	33.3%	33.3%	32.8%	31.3%	33.3%	31.3%
Medical/ Dental, other	20.0%	16.7%	16.7%	16.4%	15.6%	15.2%	15.6%
Medical & Dental	0.4%	0.4%	0.4%	0.4%	0.4%	0.4%	0.4%
Clinical Nurse/ Midwife Manager	23.8%	24.3%	26.1%	27.5%	30.0%	30.2%	30.1%
Director Nursing/Midwifery, Assistant	0.4%	0.7%	0.4%				
Director of Nursing/Midwifery	0.7%	1.1%	0.7%	0.7%	1.1%	1.2%	1.2%
Nurse/ Midwife Manager	24.8%	26.0%	27.1%	28.2%	31.1%	31.4%	31.3%
Advanced Nurse/ Midwife Practitioner			0.4%	0.4%	0.4%	0.4%	0.4%
Clinical Nurse/ Midwife Specialist	2.2%	2.6%	2.3%	2.0%	2.0%	1.7%	1.7%
Nurse/ Midwife Specialist & AN/MP	2.2%	2.6%	2.7%	2.3%	2.4%	2.1%	2.1%
Staff Nurse [Intellectual Disability]	43.6%	46.3%	36.3%	38.9%	36.1%	40.5%	40.8%
Staff Nurse [Psychiatric]	7.7%	6.2%	8.6%	7.0%	7.7%	7.5%	7.3%
Staff Nurses [General/ Children's]	21.6%	19.0%	25.3%	23.5%	22.7%	18.1%	18.1%
Staff Nurse/ Staff Midwife	73.0%	71.4%	70.2%	69.4%	66.5%	66.1%	66.2%
Pre-registration Nurse Intern (COVID-19)						0.4%	0.4%
Nursing/ Midwifery Student						0.4%	0.4%
Nursing & Midwifery	22.6%	20.6%	19.5%	17.8%	16.9%	16.6%	16.6%
Dietitians	0.3%	0.6%			0.2%	0.3%	0.3%
Occupational Therapists	3.4%	3.8%	3.7%	3.1%	3.6%	3.2%	2.8%
Physiotherapists	4.8%	3.8%	4.0%	3.6%	4.0%	3.6%	3.3%
Speech & Language Therapists	5.3%	5.3%	5.4%	5.0%	5.1%	3.3%	3.3%
Therapy Professions	13.8%	13.6%	13.1%	11.7%	12.9%	10.4%	9.7%
Social Care	61.5%	63.8%	65.0%	67.9%	69.1%	73.2%	74.5%
Social Workers	9.3%	8.5%	8.8%	8.0%	8.1%	7.8%	7.1%
Psychologists	6.7%	7.3%	7.0%	6.5%	4.9%	4.4%	4.9%
Counsellor Therapists		0.4%	0.7%	0.8%	1.0%	1.5%	1.2%
HSCP Trainees/ Students	1.3%	0.9%	0.2%				
Other Health & Social Care	6.1%	4.7%	4.3%	4.2%	3.2%	2.6%	2.6%
Play Therapists/ Specialists	1.3%	0.8%	0.9%	0.8%	0.8%		
H&SC, Other	8.7%	6.7%	6.1%	5.8%	4.9%	4.1%	3.8%
Health & Social Care Professionals	19.2%	19.3%	20.1%	21.6%	20.5%	21.7%	21.7%
Executive Management	2.4%	2.0%	1.9%	1.9%	1.9%	1.9%	1.9%

Aug 2020 (Dec 2018 figure: 1,420)	WTE Dec 2015	WTE Dec 2016	WTE Dec 2017	WTE Dec 2018	WTE Dec 2019	WTE Jul 2020	WTE Aug 2020
Disabilities	1,221	1,338	1,395	1,420	1,497	1,479	1,482
Senior Management (VIII & GM)	9.4%	11.7%	11.1%	12.5%	13.1%	13.4%	14.1%
Management (VIII & above)	11.8%	13.7%	13.0%	14.4%	15.0%	15.3%	16.0%
Administrative/ Supervisory (V to VII)	32.6%	34.7%	38.6%	36.6%	38.2%	38.4%	38.2%
Clerical (III & IV)	55.6%	51.7%	48.4%	49.1%	46.8%	46.3%	45.7%
Management & Administrative	6.9%	7.6%	7.7%	7.4%	7.0%	7.1%	7.1%
Support	78.4%	77.5%	78.2%	79.1%	77.5%	73.0%	73.0%
Maintenance/ Technical	21.6%	22.5%	21.8%	20.9%	22.5%	27.0%	27.0%
General Support	4.7%	4.3%	4.3%	4.0%	3.8%	3.3%	3.3%
Health Care Assistants	78.9%	81.9%	82.7%	82.5%	82.3%	82.8%	83.3%
Care, other	21.1%	18.1%	17.3%	17.5%	17.7%	17.2%	16.7%
Patient & Client Care	46.2%	47.8%	48.0%	48.8%	46.3%	50.9%	50.9%
Total	100 %	100 %	100 %	100 %	100 %	100 %	100 %

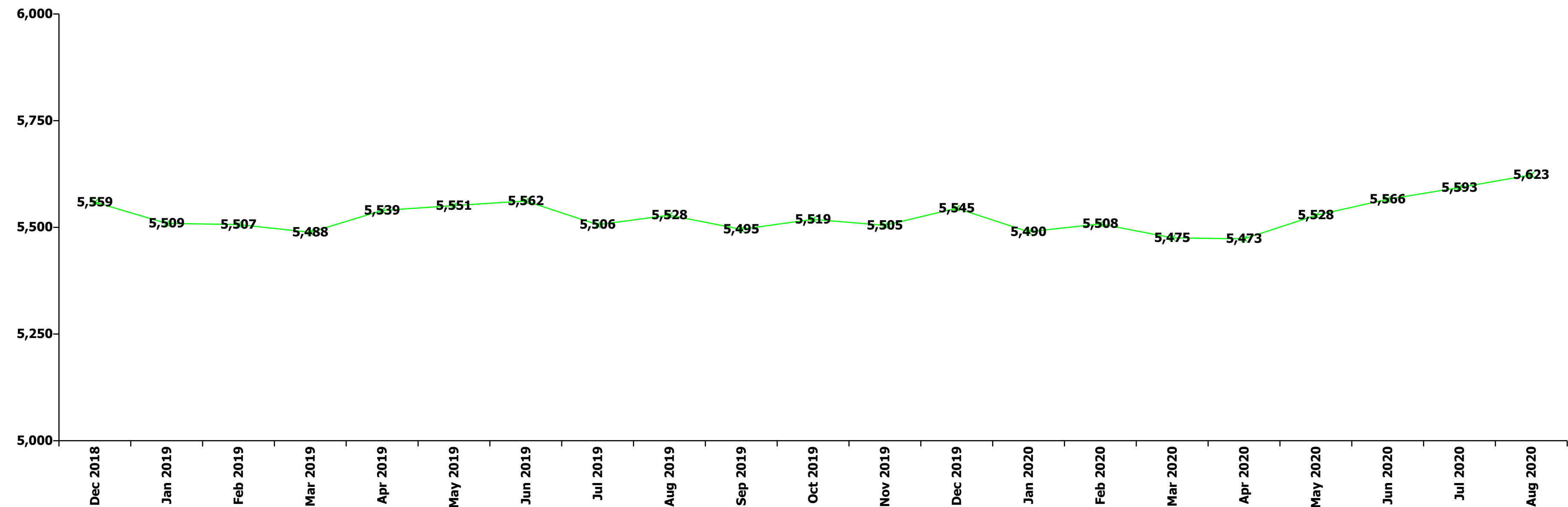
Aug 2020 (Dec 2018 figure: 1,641)	WTE Dec 2015	WTE Dec 2016	WTE Dec 2017	WTE Dec 2018	WTE Dec 2019	WTE Jul 2020	WTE Aug 2020
Older People	1,371	1,376	1,586	1,641	1,606	1,598	1,626
Medical/ Dental, other	100.0%	100.0%	100.0%	100.0%	100.0%	100.0%	100.0%
Medical & Dental	0.6%	0.8%	0.7%	0.7%	0.7%	0.6%	0.6%
Clinical Nurse/ Midwife Manager	9.4%	10.7%	11.4%	11.4%	10.2%	12.6%	12.0%
Director Nursing/Midwifery, Assistant	1.5%	1.0%	1.5%	1.3%	1.6%	1.3%	1.5%
Director of Nursing/Midwifery	3.8%	3.5%	3.4%	3.8%	4.3%	3.7%	3.7%
Nurse/ Midwife Manager	14.6%	15.2%	16.3%	16.5%	16.1%	17.6%	17.3%
Nurse/ Midwife Specialist & AN/MP					0.6%	0.5%	0.5%
Staff Midwives	0.2%	0.1%	0.2%				
Staff Nurse [Intellectual Disability]			0.2%				
Staff Nurses [General/ Children's]	85.0%	84.5%	83.0%	83.2%	83.2%	81.6%	81.9%
Staff Nurse/ Staff Midwife	85.2%	84.6%	83.4%	83.2%	83.2%	81.6%	81.9%
Public Health Nurse	0.2%	0.2%	0.2%	0.3%	0.2%	0.3%	0.3%
Nursing & Midwifery	26.7%	27.0%	24.1%	22.8%	23.3%	23.1%	23.1%
Dietitians	1.2%	6.6%	6.1%		1.3%	0.7%	1.3%
Occupational Therapists	24.4%	26.3%	21.9%	26.6%	25.5%	25.7%	26.8%
Physiotherapists	46.2%	38.2%	38.5%	38.4%	36.1%	36.7%	36.6%
Speech & Language Therapists	3.0%	2.8%	5.7%	5.5%	5.3%	5.3%	5.1%
Therapy Professions	74.8%	74.0%	72.2%	70.4%	68.2%	68.4%	69.8%
Radiographers	0.0%	1.7%	1.7%	1.7%	1.6%	1.6%	1.5%
Health Science/ Diagnostics	0.0%	1.7%	1.7%	1.7%	1.6%	1.6%	1.5%
Social Workers	22.4%	21.3%	24.6%	26.5%	27.5%	27.3%	26.1%
Pharmacy	1.5%	1.4%	1.5%	1.4%	2.7%	2.7%	2.6%
Play Therapists/ Specialists	1.3%	1.6%	0.0%	0.0%	0.0%		
H&SC, Other	1.3%	1.6%	0.0%	0.0%	0.0%		
Health & Social Care Professionals	2.4%	2.6%	2.2%	2.2%	2.2%	2.4%	2.4%
Management (VIII & above)	2.9%	2.9%	1.2%	2.2%	2.5%	1.3%	1.4%
Administrative/ Supervisory (V to VII)	5.6%	9.0%	8.3%	9.4%	9.4%	12.0%	11.9%
Clerical (III & IV)	91.4%	88.0%	90.5%	88.4%	88.1%	86.7%	86.8%
Management & Administrative	4.9%	5.0%	5.2%	5.6%	5.7%	4.6%	4.6%
Support	80.6%	80.3%	79.5%	77.3%	74.7%	74.2%	75.1%
Maintenance/ Technical	19.4%	19.7%	20.5%	22.7%	25.3%	25.8%	24.9%
General Support	6.6%	6.3%	5.1%	5.0%	5.1%	4.8%	4.8%

Aug 2020 (Dec 2018 figure: 1,641)	WTE Dec 2015	WTE Dec 2016	WTE Dec 2017	WTE Dec 2018	WTE Dec 2019	WTE Jul 2020	WTE Aug 2020
Older People	1,371	1,376	1,586	1,641	1,606	1,598	1,626
HCA, Nurse's Aide, etc.	62.1%	62.8%	52.2%	51.4%	49.3%	56.4%	55.5%
Health & Social Care Assistants	0.5%	0.5%	0.4%	0.4%	0.3%	0.3%	0.3%
Health Care Assistants	62.6%	63.3%	52.6%	51.8%	49.6%	56.7%	55.8%
Care, other	1.9%	1.8%	2.4%	2.3%	2.4%	2.7%	2.5%
Home Help	35.5%	34.9%	45.0%	46.0%	48.1%	40.6%	41.8%
Patient & Client Care	58.7%	58.4%	62.8%	63.7%	65.1%	64.6%	64.6%
Total	100 %	100 %	100 %	100 %	100 %	100 %	100 %

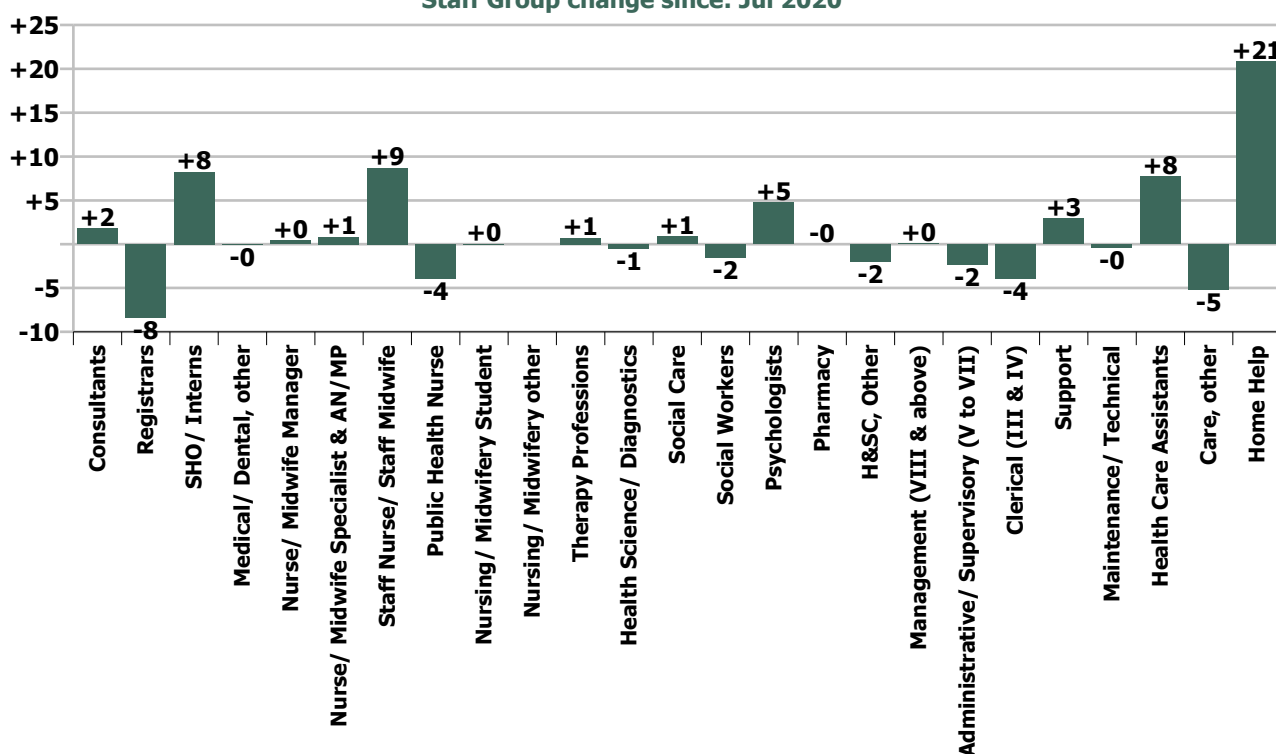
Summary Staff Movement: August 2020

Month-on-month Summary																												
WTE change since Jul 20	% change since Jul 20	overall	Consultants	Registrars	SHO/ Interns	Medical/ Dental, other	Medical & Dental	Nurse/ Midwife Manager	Nurse/ Midwife Specialist & AN/MP	Staff Nurse/ Staff Midwife	Public Health Nurse	Nursing/ Midwifery Student	Nursing/ Midwifery other	Nursing & Midwifery	Therapy Professions	Health Science/ Diagnostics	Social Care	Social Workers	Psychologists	Pharmacy	H&SC, Other	Health & Social Care Professionals	Management (VIII & above)	Administrative/ Supervisory (V to VII)	Clerical (III & IV)	Management & Administrative	General Support	Patient & Client Care
Overall	+0.5%	+30	+1.8	-8.3	+8.2	-0.1	+1.7	+0.4	+0.8	+8.7	-3.9	+0.0	0.0	+6.0	+0.7	-0.5	+0.9	-1.6	+4.8	-0.0	-2.0	+2.3	+0.1	-2.3	-3.9	-6.1	+2.6	+23.3
Community Health & Wellbeing	-15.9%	-2																					0.0	-1.6	0.0	-1.6		0.0
Mental Health	+1.1%	+14	+1.8	-0.4	+7.2	0.0	+8.6	+1.3	+0.9	-0.8		0.0	0.0	+1.5	+1.2		+1.0	+1.2	+3.7	-0.0	-0.5	+6.5	0.0	+0.6	-0.3	+0.3	-0.3	-2.3
Primary Care	-1.3%	-15	+0.0	-7.7	+1.0	+0.5	-6.2	-1.0	-0.1	+0.7	-3.9			-4.3	+0.9	-0.5	0.0	0.0	-0.3	0.0	-0.4	-0.4	-1.0	-1.5	-1.8	-4.2	+0.1	+0.4
Disabilities	+0.2%	+3	0.0	-0.2		0.0	-0.2	+0.1	+0.0	+1.4		+0.0		+1.6	-3.0		-0.1	-2.8	+1.4		-1.1	-5.5	+1.1	+0.6	+0.3	+2.0	+0.1	+5.5
Older People	+1.8%	+28					-0.6	-0.6	-0.0	+7.3	0.0			+7.3	+1.7	0.0		+0.0			0.0	+1.7	0.0	-0.4	-2.2	-2.5	+2.7	+19.7
Social Care	+1.0%	+32	0.0	-0.2		-0.6	-0.8	+0.1	+0.0	+8.7	0.0	+0.0		+8.9	-1.3	0.0	-0.1	-2.8	+1.4	0.0	-1.1	-3.9	+1.1	+0.2	-1.9	-0.6	+2.8	+25.3
Change	+29.7	+0.5%	+4.2%	-8.5%	+24.5%	-0.1%	+0.7%	+0.1%	+0.8%	+1.0%	-2.0%	+0.1%		+0.4%	+0.2%	-1.6%	+0.3%	-1.9%	+6.3%	-0.3%	-7.2%	+0.3%	+0.1%	-1.6%	-0.9%	-0.9%	+1.2%	+1.1%

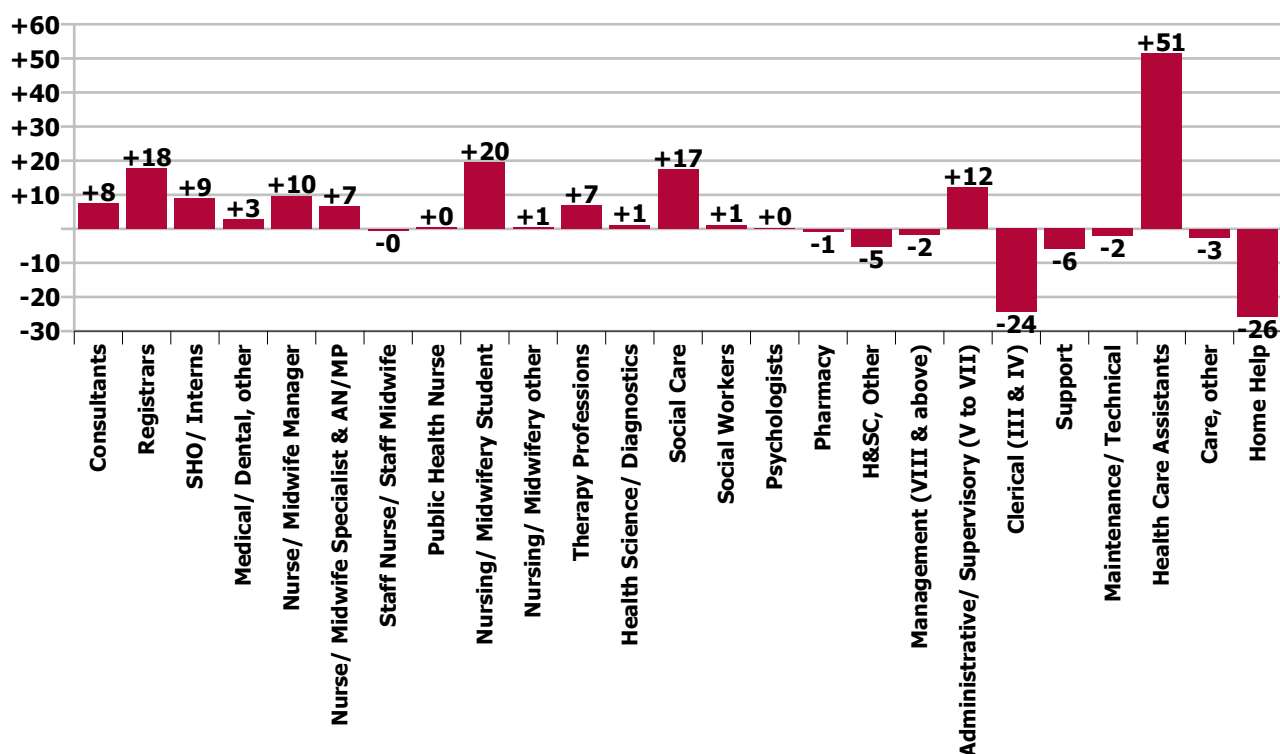
Year-on-year Summary																												
WTE change since Aug 19	% change since Aug 19	overall	Consultants	Registrars	SHO/ Interns	Medical/ Dental, other	Medical & Dental	Nurse/ Midwife Manager	Nurse/ Midwife Specialist & AN/MP	Staff Nurse/ Staff Midwife	Public Health Nurse	Nursing/ Midwifery Student	Nursing/ Midwifery other	Nursing & Midwifery	Therapy Professions	Health Science/ Diagnostics	Social Care	Social Workers	Psychologists	Pharmacy	H&SC, Other	Health & Social Care Professionals	Management (VIII & above)	Administrative/ Supervisory (V to VII)	Clerical (III & IV)	Management & Administrative	General Support	Patient & Client Care
Overall	+1.7%	+95	+7.5	+17.7	+9.0	+2.7	+36.8	+9.7	+6.6	-0.4	+0.3	+19.5	+0.5	+36.2	+6.8	+1.1	+17.4	+1.1	+0.2	-0.8	-5.2	+20.5	-1.7	+12.1	-24.4	-14.0	-8.1	+23.1
Community Health & Wellbeing	-15.9%	-2																					+1.0	+5.7	+0.8	+7.5		+1.0
Mental Health	+1.1%	+14	+7.3	+6.1	+6.0	0.0	+19.4	-0.8	+7.1	-5.7		+18.5	+0.5	+19.7	+7.9		+2.3	+2.3	+2.4	-0.8	-0.5	+13.6	-2.9	+3.5	-8.2	-7.6	-5.2	-12.2
Primary Care	-1.3%	-15	+0.2	+11.6	+3.0	+4.7	+19.4	+2.4	-0.7	-0.6	+0.3			+1.3	+6.0	+1.1	-0.2	-0.1	-0.8	0.0	-2.6	+3.3	+0.3	+1.4	-6.5	-4.8	+0.4	-1.8
Disabilities	+0.4%	+5.9	0.0	0.0		0.0	0.0	+4.2	-0.8	-3.2		+1.0		+1.3	-7.9		+15.2	-2.1	-1.4		-2.1	+1.7	+0.9	+1.3	-2.8	-0.6	-3.1	+6.6
Older People	+2.2%	+34.7				-2.0	-2.0	+3.9	+1.0	+9.0	0.0			+13.9	+0.8	0.0		+1.0		0.0	0.0	+1.9	-1.0	+0.3	-7.7	-8.5	-0.2	+29.5
Social Care	+1.0%	+32	0.0	0.0		-2.0	-2.0	+8.1	+0.3	+5.9	0.0	+1.0		+15.2	-7.1	0.0	+15.2	-1.1	-1.4	0.0	-2.1	+3.5	-0.1	+1.6	-10.5	-9.1	-3.3	+36.2
Change	+94.6	+1.7%	+19.9%	+24.4%	+27.2%	+4.7%	+18.4%	+3.1%	+7.2%	-0.0%	+0.2%	+156.0%	+25.0%	+2.4%	+2.0%	+3.4%	+7.1%	+1.4%	+0.3%	-18.3%	-16.8%	+2.5%	-2.9%	+9.3%	-5.2%	-2.1%	-3.6%	+1.1%



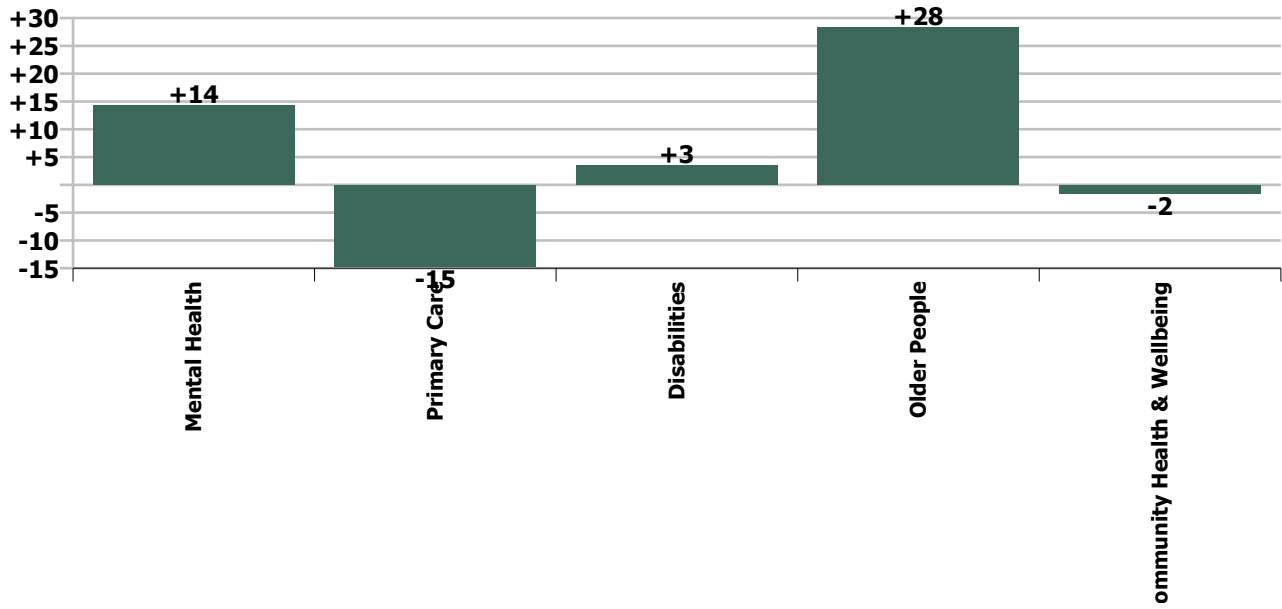
Staff Group change since: Jul 2020



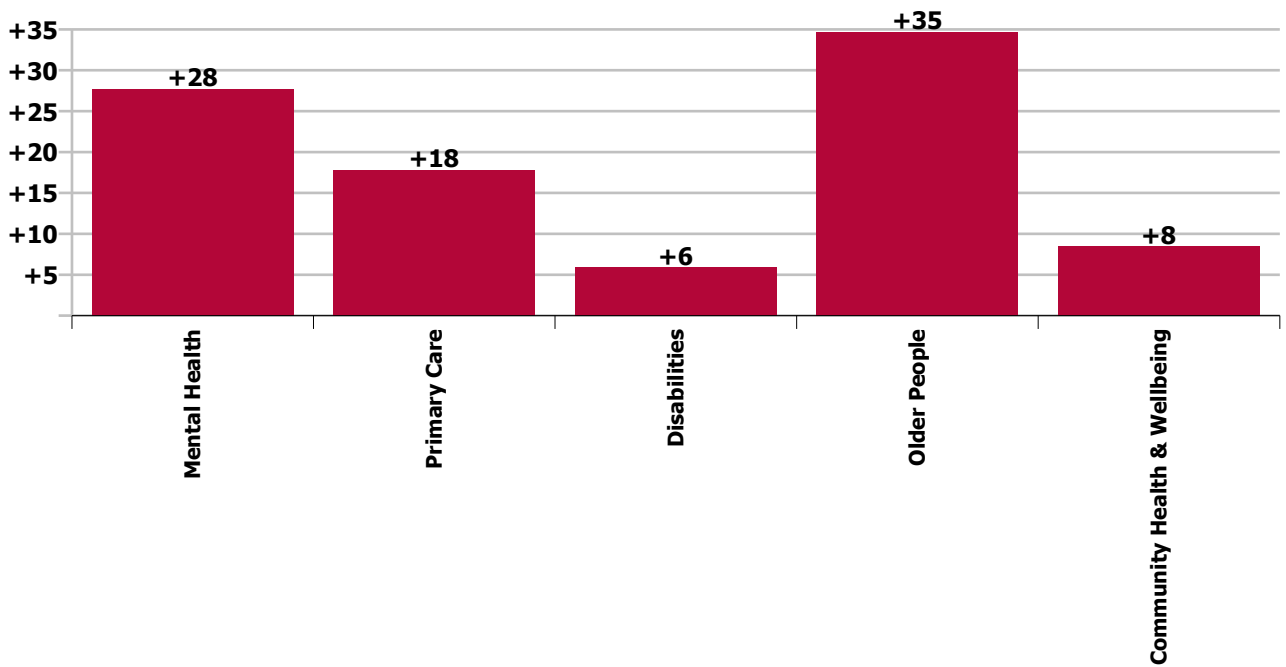
Staff Group change since: Aug 2019



Care Group change since: Jul 2020



Care Group change since: Aug 2019



Longitudinal Employment Levels by Grade Group - Oct 2013 to Aug 2020

Aug 2020 (Dec 2015 figure: 5,111)	WTE Aug 2020	WTE change since Dec 15	WTE change since Dec 16	WTE change since Dec 17	WTE change since Dec 18	WTE change since Dec 19	WTE change since Jul 20	% change since Dec 15	% change since Dec 16	% change since Dec 17	% change since Dec 18	% change since Dec 19	% change since Jul 20
Overall	5,623	+512	+387	+246	+64	+78	+30	+10.0%	+7.4%	+4.6%	+1.1%	+1.4%	+0.5%
Consultant Medicine	1												
Consultant Paediatrics	1												
Consultant Psychiatry	43	+9	+11	+9	+9	+3	+2	+27.8%	+34.6%	+27.5%	+24.7%	+7.6%	+4.4%
Consultant Surgery	0	-1	-1	-1	+0	+0	+0	-74.8%	-75.2%	-75.2%	+6.7%	+28.0%	+6.7%
Consultants	45	+8	+10	+8	+9	+3	+2	+22.8%	+28.6%	+22.5%	+23.3%	+7.3%	+4.2%
Registrar	69	+19	+17	+9	+10	+11	-11	+39.5%	+33.5%	+15.8%	+17.7%	+18.4%	-13.7%
Senior Registrar	21	+15	+13	+13	+10	+4	+3	+230.5%	+168.5%	+152.7%	+86.8%	+26.4%	+13.9%
Registrars	90	+34	+31	+22	+20	+15	-8	+61.7%	+51.6%	+32.9%	+29.0%	+20.2%	-8.5%
Interns		-1						-100.0%	-100.0%	-100.0%	-100.0%	-100.0%	-100.0%
Senior House Officer	42	+6	+5	+4	-0	+6	+8	+16.4%	+13.4%	+11.0%	-0.5%	+16.5%	+24.5%
SHO/ Interns	42	+5	+5	+4	-0	+6	+8	+13.3%	+13.4%	+11.0%	-0.5%	+16.5%	+24.5%
Dentists	21	-1	-0	-1	-2	-0	+0	-4.2%	-2.2%	-3.8%	-9.3%	-0.6%	+1.5%
Other Medical	39	+3	+0	+0	-0	+1	-0	+9.1%	+1.0%	+1.2%	-0.1%	+2.4%	-1.0%
Medical/ Dental, other	60	+2	-0	-0	-2	+1	-0	+4.0%	-0.2%	-0.6%	-3.6%	+1.3%	-0.1%
Medical & Dental	237	+50	+46	+34	+26	+25	+2	+26.8%	+23.9%	+17.0%	+12.6%	+11.8%	+0.7%
Clinical Nurse/ Midwife Manager	249	+28	+13	+10	-4	+8	+0	+12.9%	+5.4%	+4.1%	-1.8%	+3.4%	+0.1%
Director Nursing/Midwifery, Assistant	46	+10	+9	+5	+7	+1	+1	+27.3%	+22.9%	+13.1%	+16.8%	+2.8%	+1.8%
Director of Nursing/Midwifery	23	+2	+2	+2	+2	-0	-1	+11.5%	+9.9%	+10.5%	+8.1%	-1.2%	-3.0%
Nurse/ Midwife Manager	318	+41	+23	+17	+4	+9	+0	+14.6%	+7.9%	+5.8%	+1.2%	+3.0%	+0.1%
Advanced Nurse/ Midwife Practitioner	10	+7	+7	+6	+4	+1	+0	+233.0%	+233.0%	+149.8%	+66.5%	+11.0%	+0.1%
Clinical Nurse/ Midwife Specialist	89	+24	+24	+11	+10	+5	+1	+36.4%	+38.0%	+14.8%	+13.1%	+5.8%	+0.9%
Nurse/ Midwife Specialist & AN/MP	99	+31	+31	+17	+14	+6	+1	+45.1%	+46.8%	+21.4%	+16.9%	+6.3%	+0.8%
Staff Midwives		-1	-0	-1				-100.0%	-100.0%	-100.0%	-100.0%	-100.0%	-100.0%
Staff Nurse [Intellectual Disability]	101	-20	-27	+2	+2	+11	+1	-16.4%	-21.0%	+1.5%	+2.5%	+12.2%	+1.4%
Staff Nurse [Psychiatric]	361	-28	-21	-10	-9	-10	-1	-7.3%	-5.6%	-2.6%	-2.4%	-2.8%	-0.3%
Staff Nurses [General/ Children's]	438	-15	-10	-27	-17	+1	+8	-3.4%	-2.3%	-5.8%	-3.8%	+0.2%	+2.0%
Staff Nurse/ Staff Midwife	899	-64	-59	-36	-24	+2	+9	-6.7%	-6.1%	-3.8%	-2.6%	+0.2%	+1.0%
Public Health Nurse	191	+13	+15	+17	+4	-0	-4	+7.2%	+8.4%	+9.7%	+2.2%	-0.2%	-2.0%
Pre-registration Nurse/ Midwife Intern		-2		-13		-0		-100.0%	-100.0%	-100.0%	-100.0%	-100.0%	-100.0%
Pre-registration Nurse Intern (COVID-19)	32	+32	+32	+32	+32	+32	+0	-100.0%	-100.0%	-100.0%	-100.0%	-100.0%	+0.1%
Post-registration Nurse/ Midwife Student		-7	-11	-16	-13	-4		-100.0%	-100.0%	-100.0%	-100.0%	-100.0%	-100.0%
Nursing/ Midwifery awaiting registration					-11	-5		-100.0%	-100.0%	-100.0%	-100.0%	-100.0%	-100.0%
Nursing/ Midwifery Student	32	+23	+21	+3	+8	+23	+0	+243.7%	+190.9%	+9.8%	+33.3%	+260.8%	+0.1%
Nursing/ Midwifery other	3	+3	+3	+1	-1	+1		-100.0%	-100.0%	+25.0%	-16.7%	+25.0%	
Nursing & Midwifery	1,541	+45	+34	+19	+6	+40	+6	+3.0%	+2.3%	+1.3%	+0.4%	+2.6%	+0.4%

Aug 2020 (Dec 2015 figure: 5,111)	WTE Aug 2020	WTE change since Dec 15	WTE change since Dec 16	WTE change since Dec 17	WTE change since Dec 18	WTE change since Dec 19	WTE change since Jul 20	% change since Dec 15	% change since Dec 16	% change since Dec 17	% change since Dec 18	% change since Dec 19	% change since Jul 20
Overall	5,623	+512	+387	+246	+64	+78	+30	+10.0%	+7.4%	+4.6%	+1.1%	+1.4%	+0.5%
Dietitians	23	+8	+5	+4	+3	+4	+1	+54.6%	+30.7%	+20.4%	+14.6%	+18.3%	+3.7%
Occupational Therapists	125	+29	+15	+14	+7	+8	-1	+29.7%	+13.6%	+13.1%	+5.7%	+7.1%	-0.8%
Orthoptists	1	-0	-0	-0	-0	-0	+0	-10.0%	-10.0%	-10.0%	-10.0%	-10.0%	+44.0%
Physiotherapists	90	+4	+12	+2	+1	+1	+1	+4.7%	+15.5%	+2.1%	+1.3%	+1.6%	+0.7%
Podiatrists & Chiropodists	10	+3	+1	+2	+3	+3	-1	+51.8%	+12.2%	+23.9%	+36.5%	+35.7%	-5.4%
Speech & Language Therapists	100	+17	+10	+6	-3	-5	+0	+20.5%	+11.4%	+6.5%	-3.3%	-4.3%	+0.4%
Therapy Professions	350	+61	+44	+28	+10	+11	+1	+21.1%	+14.3%	+8.7%	+2.9%	+3.3%	+0.2%
Audiology	5	+0	+0	-1	-1		-0	+3.0%	+5.2%	-15.1%	-15.6%		-0.6%
Clinical Engineering	1			+1	+1					-100.0%	-100.0%		
Medical Laboratory	27	+0	-0	+0	+0	+1	-1	+1.0%	-1.6%	+1.8%	+1.4%	+2.0%	-1.9%
Physicists		-1	-1					-100.0%	-100.0%	-100.0%	-100.0%	-100.0%	-100.0%
Radiographers	1	+1						#DIV/0					
Health Science/ Diagnostics	34	+0	-1	+1	+0	+1	-1	+0.0%	-3.5%	+1.9%	+1.4%	+1.6%	-1.6%
Social Care	263	+90	+71	+57	+31	+18	+1	+51.6%	+36.8%	+27.8%	+13.4%	+7.3%	+0.3%
Social Workers	82	+5	+7	+6	+1	-1	-2	+6.2%	+9.3%	+7.9%	+1.0%	-1.7%	-1.9%
Psychologists	81	-5	-3	-1	-3	+7	+5	-5.5%	-3.1%	-0.7%	-3.8%	+9.8%	+6.3%
Pharmacy	4	-2	-1	-0	-0	-1	-0	-33.1%	-27.7%	-11.7%	-11.5%	-18.3%	-0.3%
Counsellor Therapists	10	+1	-0	-1	-2	-1	-2	+15.3%	-0.7%	-8.2%	-18.5%	-10.6%	-15.7%
Dental Hygienists	5	+2	+1	+2	+0	+0	+0	+54.4%	+34.9%	+91.7%	+5.7%	+3.1%	+0.4%
HSCP Trainees/ Students		-3	-2	-1				-100.0%	-100.0%	-100.0%	-100.0%	-100.0%	-100.0%
Other Health & Social Care	10	-7	-5	-6	-5	-3	-0	-39.5%	-30.4%	-34.6%	-33.5%	-20.7%	-1.7%
Play Therapists/ Specialists	1	-3	-3	-3	-3	-3		-77.4%	-72.1%	-72.3%	-72.1%	-72.1%	
H&SC, Other	26	-10	-8	-7	-10	-6	-2	-28.7%	-24.4%	-22.1%	-27.5%	-19.7%	-7.2%
Health & Social Care Professionals	839	+138	+108	+84	+29	+28	+2	+19.8%	+14.8%	+11.1%	+3.5%	+3.5%	+0.3%
Executive Management	9	+1	-1	-3	-2	-1	-1	+13.5%	-9.5%	-24.1%	-21.4%	-12.6%	-11.0%
Senior Management (VIII & GM)	47	+11	+8	+4	+0	+1	+1	+30.4%	+21.2%	+10.2%	+0.3%	+2.3%	+2.6%
Management (VIII & above)	56	+12	+7	+1	-2	-0	+0	+27.4%	+14.9%	+2.7%	-4.0%	-0.4%	+0.1%
Middle Management (V-VII)	142	+58	+40	+25	+19	+10	-2	+68.8%	+39.3%	+21.4%	+15.6%	+7.4%	-1.6%
Other Administrative						-1		-100.0%	-100.0%	-100.0%	-100.0%	-100.0%	-100.0%
Administrative/ Supervisory (V to VII)	142	+58	+40	+25	+19	+9	-2	+68.8%	+39.3%	+21.4%	+15.6%	+6.6%	-1.6%
Clerical (III & IV)	447	+13	+3	-22	-39	-21	-4	+3.0%	+0.8%	-4.7%	-8.1%	-4.6%	-0.9%
Management & Administrative	645	+83	+51	+4	-22	-13	-6	+14.8%	+8.6%	+0.7%	-3.3%	-1.9%	-0.9%
Catering	40	+1	+0	+4	-1	+0	+1	+1.7%	+1.2%	+11.2%	-2.0%	+0.9%	+3.5%
Household Services	63	-31	-19	-12	-7	-0	+1	-33.1%	-23.2%	-16.4%	-10.4%	-0.6%	+1.1%
Other Support	31	-14	-13	-12	-11	-8	+1	-31.1%	-29.4%	-27.2%	-26.2%	-21.0%	+3.0%
Portering	15	+2	-1	-3	-2	-1		+13.1%	-7.7%	-14.3%	-13.0%	-4.3%	
Support	149	-43	-33	-22	-21	-9	+3	-22.2%	-18.0%	-13.1%	-12.5%	-5.7%	+2.0%
Maintenance/ Technical	70	-8	-4	-2	-2	+2	-0	-10.4%	-5.6%	-3.4%	-3.1%	+2.8%	-0.6%

Aug 2020 (Dec 2015 figure: 5,111)	WTE Aug 2020	WTE change since Dec 15	WTE change since Dec 16	WTE change since Dec 17	WTE change since Dec 18	WTE change since Dec 19	WTE change since Jul 20	% change since Dec 15	% change since Dec 16	% change since Dec 17	% change since Dec 18	% change since Dec 19	% change since Jul 20
Overall	5,623	+512	+387	+246	+64	+78	+30	+10.0%	+7.4%	+4.6%	+1.1%	+1.4%	+0.5%
General Support	219	-51	-37	-25	-24	-7	+3	-18.8%	-14.4%	-10.2%	-9.7%	-3.1%	+1.2%
HCA, Nurse's Aide, etc.	1,424	+264	+177	+131	+94	+71	+9	+22.7%	+14.2%	+10.1%	+7.0%	+5.2%	+0.7%
Health & Social Care Assistants	13	+8	+7	+4	-6	-0	-2	+142.6%	+103.7%	+38.9%	-32.5%	-2.6%	-11.0%
Health Care Assistants	1,437	+271	+184	+134	+87	+70	+8	+23.3%	+14.7%	+10.3%	+6.5%	+5.1%	+0.5%
Care, other	266	+3	+12	+4	+3	-5	-5	+1.1%	+4.6%	+1.7%	+1.3%	-1.7%	-1.9%
Home Help	439	-28	-11	-10	-42	-61	+21	-6.0%	-2.4%	-2.1%	-8.7%	-12.1%	+5.0%
Patient & Client Care	2,142	+246	+185	+129	+49	+5	+23	+13.0%	+9.5%	+6.4%	+2.3%	+0.2%	+1.1%

Source: Health Service Personnel Census

Longitudinal Employment Levels by Care Group - Oct 2013 to Aug 2020

Community Health & Wellbeing

Aug 2020 (figure:)	WTE Aug 2020	WTE change since	WTE change since	WTE change since	WTE change since	WTE change since	WTE change since Jul 20	% change since	% change since	% change since	% change since	% change since	% change since Jul 20
Overall	8	+8	+8	+8	+8	+8	-2	-100.0%	-100.0%	-100.0%	-100.0%	-100.0%	-15.9%
Management & Administrative	7	+7	+7	+7	+7	+7	-2	-1.0%	-1.0%	-1.0%	-1.0%	-1.0%	-0.2%
Management (VIII & above)	1	+1	+1	+1	+1	+1		-1.0%	-1.0%	-1.0%	-1.0%	-1.0%	+0.0%
Administrative/ Supervisory (V to VII)	6	+6	+6	+6	+6	+6	-2	-1.0%	-1.0%	-1.0%	-1.0%	-1.0%	-0.2%
Clerical (III & IV)	1	+1	+1	+1	+1	+1		-1.0%	-1.0%	-1.0%	-1.0%	-1.0%	+0.0%
Patient & Client Care	1	+1	+1	+1	+1	+1		-1.0%	-1.0%	-1.0%	-1.0%	-1.0%	+0.0%
Care, other	1	+1	+1	+1	+1	+1		-1.0%	-1.0%	-1.0%	-1.0%	-1.0%	+0.0%

Source: Health Service Personnel Census

Mental Health

Aug 2020 (Dec 2015 figure: 1,258)	WTE Aug 2020	WTE change since Dec 15	WTE change since Dec 16	WTE change since Dec 17	WTE change since Dec 18	WTE change since Dec 19	WTE change since Jul 20	% change since Dec 15	% change since Dec 16	% change since Dec 17	% change since Dec 18	% change since Dec 19	% change since Jul 20
Overall	1,349	+91	+66	+42	+10	+40	+14	+7.2%	+5.1%	+3.2%	+0.8%	+3.1%	+1.1%
Medical & Dental	117	+34	+28	+17	+11	+10	+9	+0.4%	+0.3%	+0.2%	+0.1%	+0.1%	+0.1%
Consultants	41	+9	+11	+9	+8	+3	+2	+0.3%	+0.4%	+0.3%	+0.3%	+0.1%	+0.0%
Registrars	36	+15	+13	+8	+6	+3	-0	+0.7%	+0.5%	+0.3%	+0.2%	+0.1%	-0.0%
SHO/ Interns	39	+11	+7	+1	-3	+4	+7	+0.4%	+0.2%	+0.0%	-0.1%	+0.1%	+0.2%
Medical/ Dental, other	1	-2	-2	-2				-0.6%	-0.6%	-0.6%	+0.0%	+0.0%	+0.0%
Nursing & Midwifery	603	+43	+38	+34	+16	+26	+1	+0.1%	+0.1%	+0.1%	+0.0%	+0.0%	+0.0%
Nurse/ Midwife Manager	147	+14	+3	+7	-8	+1	+1	+0.1%	+0.0%	+0.0%	-0.1%	+0.0%	+0.0%
Nurse/ Midwife Specialist & AN/MP	75	+30	+30	+16	+15	+7	+1	+0.7%	+0.0%	+0.3%	+0.2%	+0.1%	+0.0%
Staff Nurse/ Staff Midwife	348	-32	-29	-7	-10	-9	-1	-0.1%	-0.1%	-0.0%	-0.0%	-0.0%	-0.0%
Nursing/ Midwifery Student	31	+29	+31	+18	+20	+26		+12.4%	-1.0%	+1.4%	+1.8%	+5.4%	+0.0%
Nursing/ Midwifery other	3	+3	+3	+1	-1	+1		-1.0%	-1.0%	+0.3%	-0.2%	+0.3%	+0.0%
Health & Social Care Professionals	158	+31	+21	+20	+12	+18	+6	+0.2%	+0.2%	+0.1%	+0.1%	+0.1%	+0.0%
Therapy Professions	55	+21	+11	+6	+6	+10	+1	+0.6%	+0.2%	+0.1%	+0.1%	+0.2%	+0.0%
Social Care	15	-2	-2	+2	+1	+0	+1	-0.1%	-0.1%	+0.1%	+0.1%	+0.0%	+0.1%
Social Workers	44	+5	+7	+7	+3	+3	+1	+0.1%	+0.2%	+0.2%	+0.1%	+0.1%	+0.0%
Psychologists	40	+7	+6	+5	+4	+6	+4	+0.2%	+0.2%	+0.1%	+0.1%	+0.2%	+0.1%
Pharmacy	2	-2	-2	-1	-1	-1	-0	-0.6%	-0.5%	-0.4%	-0.4%	-0.3%	-0.0%
H&SC, Other	3	+2	+2	+1	-1	-1	-1	+1.5%	+1.5%	+0.3%	-0.2%	-0.2%	-0.2%
Management & Administrative	132	+8	+2	-4	-8	-5	+0	+0.1%	+0.0%	-0.0%	-0.1%	-0.0%	+0.0%
Management (VIII & above)	4	-1		+1	+0	-1		-0.2%	+0.0%	+0.3%	+0.0%	-0.2%	+0.0%
Administrative/ Supervisory (V to VII)	26	+9	+5	+2	+3	+2	+1	+0.5%	+0.3%	+0.1%	+0.1%	+0.1%	+0.0%
Clerical (III & IV)	103	-0	-3	-7	-11	-6	-0	-0.0%	-0.0%	-0.1%	-0.1%	-0.1%	-0.0%
General Support	62	-23	-19	-11	-7	-1	-0	-0.3%	-0.2%	-0.2%	-0.1%	-0.0%	-0.0%
Support	33	-18	-12	-5	-3	-3	+0	-0.4%	-0.3%	-0.1%	-0.1%	-0.1%	+0.0%
Maintenance/ Technical	28	-5	-7	-6	-4	+1	-0	-0.1%	-0.2%	-0.2%	-0.1%	+0.0%	-0.0%
Patient & Client Care	277	-1	-4	-14	-13	-7	-2	-0.0%	-0.0%	-0.0%	-0.0%	-0.0%	-0.0%
Health Care Assistants	210	-1	-5	-7	-8	-5	-0	-0.0%	-0.0%	-0.0%	-0.0%	-0.0%	-0.0%
Care, other	67	-1	+1	-7	-5	-2	-2	-0.0%	+0.0%	-0.1%	-0.1%	-0.0%	-0.0%

Source: Health Service Personnel Census

Primary Care

Aug 2020 (Dec 2015 figure: 1,261)	WTE Aug 2020	WTE change since Dec 15	WTE change since Dec 16	WTE change since Dec 17	WTE change since Dec 18	WTE change since Dec 19	WTE change since Jul 20	% change since Dec 15	% change since Dec 16	% change since Dec 17	% change since Dec 18	% change since Dec 19	% change since Jul 20
Overall	1,157	-104	-81	+68	-2	+24	-15	-8.2%	-6.6%	+6.2%	-0.2%	+2.1%	-1.3%
Medical & Dental	104	+14	+18	+19	+17	+16	-6	+0.2%	+0.2%	+0.2%	+0.2%	+0.2%	-0.1%
Consultants	1	-2	-1	-1	+0	+0	+0	-0.6%	-0.4%	-0.4%	+0.0%	+0.1%	+0.0%
Registrars	52	+19	+18	+14	+14	+12	-8	+0.6%	+0.5%	+0.4%	+0.4%	+0.3%	-0.1%
SHO/ Interns	3	-6	-2	+3	+3	+2	+1	-0.7%	-0.4%	-1.0%	-1.0%	+2.0%	+0.5%
Medical/ Dental, other	48	+3	+2	+3	-0	+2	+1	+0.1%	+0.1%	+0.1%	-0.0%	+0.1%	+0.0%
Nursing & Midwifery	317	+22	+21	+16	-5	+3	-4	+0.1%	+0.1%	+0.1%	-0.0%	+0.0%	-0.0%
Nurse/ Midwife Manager	29	+7	+7	+5	+3	+2	-1	+0.3%	+0.3%	+0.2%	+0.1%	+0.1%	-0.0%
Nurse/ Midwife Specialist & AN/MP	17	-0	+1	+2	-2	-1	-0	-0.0%	+0.1%	+0.1%	-0.1%	-0.0%	-0.0%
Staff Nurse/ Staff Midwife	81	+10	+10	+9	+2	+7	+1	+0.1%	+0.1%	+0.1%	+0.0%	+0.1%	+0.0%
Public Health Nurse	190	+13	+15	+17	+4	-1	-4	+0.1%	+0.1%	+0.1%	+0.0%	-0.0%	-0.0%
Nursing/ Midwifery Student		-7	-11	-16	-13	-4		-1.0%	-1.0%	-1.0%	-1.0%	-1.0%	-1.0%
Health & Social Care Professionals	320	+15	+20	+18	-1	+8	-0	+0.0%	+0.1%	+0.1%	-0.0%	+0.0%	-0.0%
Therapy Professions	236	+39	+36	+25	+7	+10	+1	+0.2%	+0.2%	+0.1%	+0.0%	+0.0%	+0.0%
Health Science/ Diagnostics	33	-1	-1	+1	+0	+1	-1	-0.0%	-0.0%	+0.0%	+0.0%	+0.0%	-0.0%
Social Care	9	-4	-3	-2	-1	+0		-0.3%	-0.2%	-0.2%	-0.1%	+0.0%	+0.0%
Social Workers	6	-4	-3	-1	-1	-1		-0.4%	-0.3%	-0.2%	-0.2%	-0.2%	+0.0%
Psychologists	25	-12	-5	-2	-3	+1	-0	-0.3%	-0.2%	-0.1%	-0.1%	+0.0%	-0.0%
Pharmacy	1							+0.0%	+0.0%	+0.0%	+0.0%	+0.0%	+0.0%
H&SC, Other	11	-3	-4	-3	-4	-2	-0	-0.2%	-0.3%	-0.2%	-0.3%	-0.2%	-0.0%
Management & Administrative	326	+41	+33	+12	-4	-7	-4	+0.1%	+0.1%	+0.0%	-0.0%	-0.0%	-0.0%
Management (VIII & above)	33	+6	+4	-3	-4	-0	-1	+0.2%	+0.2%	-0.1%	-0.1%	-0.0%	-0.0%
Administrative/ Supervisory (V to VII)	62	+26	+22	+17	+9	-0	-1	+0.7%	+0.6%	+0.4%	+0.2%	-0.0%	-0.0%
Clerical (III & IV)	231	+9	+6	-2	-9	-7	-2	+0.0%	+0.0%	-0.0%	-0.0%	-0.0%	-0.0%
General Support	30	-6	-0	-1	-4	+0	+0	-0.2%	-0.0%	-0.0%	-0.1%	+0.0%	+0.0%
Support	21	-0	-0	-1	-4	+0	+0	-0.0%	-0.0%	-0.0%	-0.2%	+0.0%	+0.0%
Maintenance/ Technical	9	-6			+0		+0	-0.4%	+0.0%	+0.0%	+0.0%	+0.0%	+0.0%
Patient & Client Care	60	-189	-173	+3	-5	+3	+0	-0.8%	-0.7%	+0.1%	-0.1%	+0.1%	+0.0%
Health Care Assistants	14	+7	+7	+5	-6	-0	-1	+1.0%	+1.1%	+0.6%	-0.3%	-0.0%	-0.1%
Care, other	46	-15	-11	-2	+1	+3	+2	-0.3%	-0.2%	-0.0%	+0.0%	+0.1%	+0.0%
Home Help		-181	-169					-1.0%	-1.0%	-1.0%	-1.0%	-1.0%	-1.0%

Source: Health Service Personnel Census

Disabilities

Aug 2020 (Dec 2015 figure: 1,221)	WTE Aug 2020	WTE change since Dec 15	WTE change since Dec 16	WTE change since Dec 17	WTE change since Dec 18	WTE change since Dec 19	WTE change since Jul 20	% change since Dec 15	% change since Dec 16	% change since Dec 17	% change since Dec 18	% change since Dec 19	% change since Jul 20
Overall	1,482	+261	+144	+88	+62	-15	+3	+21.4%	+10.8%	+6.3%	+4.4%	-1.0%	+0.2%
Medical & Dental	6	+1	+0	+0	+0		-0	+0.3%	+0.1%	+0.1%	+0.1%	+0.0%	-0.0%
Consultants	3	+1	+0	+0	+0			+0.7%	+0.1%	+0.1%	+0.1%	+0.0%	+0.0%
Registrars	2						-0	+0.0%	+0.0%	+0.0%	+0.0%	+0.0%	-0.1%
Medical/ Dental, other	1							+0.0%	+0.0%	+0.0%	+0.0%	+0.0%	+0.0%
Nursing & Midwifery	247	-29	-29	-25	-6	-2	+2	-0.1%	-0.1%	-0.1%	-0.0%	-0.0%	+0.0%
Nurse/ Midwife Manager	77	+9	+6	+4	+6	-0	+0	+0.1%	+0.1%	+0.0%	+0.1%	-0.0%	+0.0%
Nurse/ Midwife Specialist & AN/MP	5	-1	-2	-2	-1	-1	+0	-0.1%	-0.3%	-0.3%	-0.1%	-0.1%	+0.0%
Staff Nurse/ Staff Midwife	163	-38	-33	-27	-12	-2	+1	-0.2%	-0.2%	-0.1%	-0.1%	-0.0%	+0.0%
Nursing/ Midwifery Student	1	+1	+1	+1	+1	+1	+0	-1.0%	-1.0%	-1.0%	-1.0%	-1.0%	+0.0%
Health & Social Care Professionals	321	+87	+63	+41	+15	+0	-6	+0.4%	+0.2%	+0.1%	+0.0%	+0.0%	-0.0%
Therapy Professions	31	-1	-4	-6	-5	-10	-3	-0.0%	-0.1%	-0.2%	-0.1%	-0.2%	-0.1%
Social Care	239	+95	+75	+57	+31	+17	-0	+0.7%	+0.5%	+0.3%	+0.2%	+0.1%	-0.0%
Social Workers	23	+1	+1	-2	-2	-3	-3	+0.0%	+0.0%	-0.1%	-0.1%	-0.1%	-0.1%
Psychologists	16	+0	-3	-4	-4		+1	+0.0%	-0.2%	-0.2%	-0.2%	+0.0%	+0.1%
H&SC, Other	12	-8	-5	-5	-5	-4	-1	-0.4%	-0.3%	-0.3%	-0.3%	-0.2%	-0.1%
Management & Administrative	105	+20	+3	-3	+1	-1	+2	+0.2%	+0.0%	-0.0%	+0.0%	-0.0%	+0.0%
Management (VIII & above)	17	+7	+3	+3	+2	+1	+1	+0.7%	+0.2%	+0.2%	+0.1%	+0.1%	+0.1%
Administrative/ Supervisory (V to VII)	40	+12	+5	-2	+2	-0	+1	+0.5%	+0.1%	-0.0%	+0.1%	-0.0%	+0.0%
Clerical (III & IV)	48	+1	-5	-4	-3	-2	+0	+0.0%	-0.1%	-0.1%	-0.1%	-0.0%	+0.0%
General Support	48	-9	-9	-11	-9	-9	+0	-0.2%	-0.2%	-0.2%	-0.2%	-0.2%	+0.0%
Support	35	-10	-9	-11	-10	-9	+0	-0.2%	-0.2%	-0.2%	-0.2%	-0.2%	+0.0%
Maintenance/ Technical	13	+1	+0	+0	+1	+0		+0.1%	+0.0%	+0.0%	+0.1%	+0.0%	+0.0%
Patient & Client Care	754	+191	+115	+85	+61	-3	+6	+0.3%	+0.2%	+0.1%	+0.1%	-0.0%	+0.0%
Health Care Assistants	628	+183	+105	+75	+56	+5	+8	+0.4%	+0.2%	+0.1%	+0.1%	+0.0%	+0.0%
Care, other	126	+7	+11	+10	+5	-8	-2	+0.1%	+0.1%	+0.1%	+0.0%	-0.1%	-0.0%

Source: Health Service Personnel Census

Older People

Aug 2020 (Dec 2015 figure: 1,371)	WTE Aug 2020	WTE change since Dec 15	WTE change since Dec 16	WTE change since Dec 17	WTE change since Dec 18	WTE change since Dec 19	WTE change since Jul 20	% change since Dec 15	% change since Dec 16	% change since Dec 17	% change since Dec 18	% change since Dec 19	% change since Jul 20
Overall	1,626	+255	+250	+40	-15	+21	+28	+18.6%	+18.2%	+2.5%	-0.9%	+1.3%	+1.8%
Medical & Dental	10	+1	-1	-2	-2	-2	-1	+0.1%	-0.1%	-0.2%	-0.2%	-0.1%	-0.1%
Medical/ Dental, other	10	+1	-1	-2	-2	-2	-1	+0.1%	-0.1%	-0.2%	-0.2%	-0.1%	-0.1%
Nursing & Midwifery	375	+9	+4	-7	+0	+13	+7	+0.0%	+0.0%	-0.0%	+0.0%	+0.0%	+0.0%
Nurse/ Midwife Manager	65	+11	+8	+2	+3	+7	-0	+0.2%	+0.1%	+0.0%	+0.0%	+0.1%	-0.0%
Nurse/ Midwife Specialist & AN/MP	2	+2	+2	+2	+2			-1.0%	-1.0%	-1.0%	-1.0%	+0.0%	+0.0%
Staff Nurse/ Staff Midwife	307	-5	-7	-11	-4	+6	+7	-0.0%	-0.0%	-0.0%	-0.0%	+0.0%	+0.0%
Public Health Nurse	1	+0	+0	+0		+0		+0.3%	+0.3%	+0.1%	+0.0%	+0.3%	+0.0%
Health & Social Care Professionals	39	+6	+3	+5	+3	+2	+2	+0.2%	+0.1%	+0.1%	+0.1%	+0.0%	+0.0%
Therapy Professions	27	+2	+1	+3	+2	+2	+2	+0.1%	+0.0%	+0.1%	+0.1%	+0.1%	+0.1%
Health Science/ Diagnostics	1	+1						#DIV/0	+0.0%	+0.0%	+0.0%	+0.0%	+0.0%
Social Workers	10	+3	+3	+2	+1	-0		+0.4%	+0.3%	+0.2%	+0.1%	-0.0%	+0.0%
Pharmacy	1	+1	+1	+1	+1			+1.0%	+1.0%	+1.0%	+1.0%	+0.0%	+0.0%
H&SC, Other		-0	-1					-1.0%	-1.0%	-1.0%			-1.0%
Management & Administrative	74	+6	+6	-8	-18	-7	-3	+0.1%	+0.1%	-0.1%	-0.2%	-0.1%	-0.0%
Management (VIII & above)	1	-1	-1		-1	-1		-0.5%	-0.5%	+0.0%	-0.5%	-0.5%	+0.0%
Administrative/ Supervisory (V to VII)	9	+5	+3	+2	+0	+1	-0	+1.3%	+0.4%	+0.3%	+0.0%	+0.2%	-0.0%
Clerical (III & IV)	64	+2	+4	-10	-17	-7	-2	+0.0%	+0.1%	-0.1%	-0.2%	-0.1%	-0.0%
General Support	78	-12	-8	-2	-3	+3	+3	-0.1%	-0.1%	-0.0%	-0.0%	+0.0%	+0.0%
Support	59	-14	-11	-5	-4	+3	+3	-0.2%	-0.2%	-0.1%	-0.1%	+0.1%	+0.0%
Maintenance/ Technical	19	+2	+2	+3	+1	+1	-0	+0.1%	+0.1%	+0.2%	+0.1%	+0.0%	-0.0%
Patient & Client Care	1,050	+245	+247	+54	+4	+11	+20	+0.3%	+0.3%	+0.1%	+0.0%	+0.0%	+0.0%
Health Care Assistants	585	+82	+77	+61	+44	+71	+1	+0.2%	+0.2%	+0.1%	+0.1%	+0.1%	+0.0%
Care, other	26	+11	+11	+2	+2	+1	-2	+0.7%	+0.7%	+0.1%	+0.1%	+0.1%	-0.1%
Home Help	439	+153	+159	-10	-42	-61	+21	+0.5%	+0.6%	-0.0%	-0.1%	-0.1%	+0.0%

Source: Health Service Personnel Census