

CHO 2 Employment Report: August 2021

Employment by Staff Group

| Aug 2021 (Dec 2019 figure: 5,545) | WTE Jul 2021 | WTE Aug 2021 | WTE change since Jul 21 | % change since Jul 21 | WTE change since Dec 20 | WTE change since Aug 20 |
|---|--------------|--------------|-------------------------|-----------------------|-------------------------|-------------------------|
| Overall | 5,738 | 5,726 | -12 | -0.2% | +36 | +103 |
| Consultants | 48 | 49 | +1 | +2.0% | +7 | +4 |
| Registrars | 99 | 88 | -10 | -10.6% | +2 | -2 |
| SHO/ Interns | 34 | 40 | +6 | +18.4% | -2 | -1 |
| Medical/ Dental, other | 54 | 54 | +1 | +1.6% | -7 | -5 |
| Medical & Dental | 235 | 232 | -2 | -1.0% | -0 | -5 |
| Nurse/ Midwife Manager | 326 | 318 | -8 | -2.5% | -6 | -0 |
| Nurse/ Midwife Specialist & AN/MP | 108 | 110 | +2 | +1.8% | +2 | +11 |
| Staff Nurse/ Staff Midwife | 924 | 923 | -2 | -0.2% | +15 | +24 |
| Public Health Nurse | 187 | 187 | -0 | -0.1% | -12 | -5 |
| Pre-registration Nurse/ Midwife Intern | 20 | 20 | +0 | +2.2% | +20 | +0 |
| Pre-registration Nurse Intern (COVID-19) | 1 | 1 | | | +1 | |
| Post-registration Nurse/ Midwife Student | | | | -100.0% | -4 | |
| Nursing/ Midwifery awaiting registration | | | | -100.0% | -5 | |
| Nursing/ Midwifery Student | 20 | 21 | +0 | +2.1% | +10 | -12 |
| Nursing/ Midwifery other | 2 | 2 | +0 | +1.5% | +0 | -1 |
| Nursing & Midwifery | 1,567 | 1,559 | -8 | -0.5% | +9 | +18 |
| Therapy Professions | 365 | 358 | -7 | -1.9% | -4 | +9 |
| Health Science/ Diagnostics | 7 | 8 | +0 | +2.6% | | +1 |
| Social Care | 286 | 287 | +0 | +0.1% | +18 | +24 |
| Social Workers | 80 | 81 | +1 | +1.5% | -3 | -1 |
| Psychologists | 84 | 83 | -1 | -0.7% | +5 | +3 |
| Pharmacy | 5 | 4 | -0 | -9.8% | +0 | +1 |
| H&SC, Other | 60 | 59 | -1 | -1.7% | +2 | +6 |
| Health & Social Care Professionals | 887 | 879 | -7 | -0.8% | +20 | +41 |
| Management (VIII & above) | 60 | 58 | -2 | -3.3% | +0 | +3 |
| Administrative/ Supervisory (V to VII) | 171 | 173 | +2 | +1.3% | +13 | +31 |
| Clerical (III & IV) | 428 | 431 | +3 | +0.6% | -17 | -16 |
| Management & Administrative | 659 | 662 | +3 | +0.5% | -4 | +18 |
| Support | 151 | 145 | -6 | -4.0% | -8 | -4 |
| Maintenance/ Technical | 74 | 73 | -1 | -0.8% | -0 | +4 |
| General Support | 225 | 218 | -7 | -2.9% | -8 | -1 |
| Health Care Assistants | 1,456 | 1,460 | +4 | +0.3% | +42 | +23 |
| Home Help | 416 | 421 | +6 | +1.4% | -35 | -17 |
| Care, other | 294 | 293 | -1 | -0.3% | +12 | +27 |
| Patient & Client Care | 2,166 | 2,175 | +9 | +0.4% | +18 | +32 |

CHO 2 Employment Report: August 2021

Community Health & Wellbeing

| Aug 2021 (figure:) | WTE Jul 2021 | WTE Aug 2021 | WTE change since Jul 21 | % change since Jul 21 | WTE change since Dec 20 | WTE change since Aug 20 |
|---|--------------|--------------|-------------------------|-----------------------|-------------------------|-------------------------|
| Total Community Health & Wellbeing | 9 | 9 | -1 | -6.9% | -1 | +0 |
| Management (VIII & above) | 1 | 1 | | | | |
| Administrative/ Supervisory (V to VII) | 6 | 6 | -1 | -10.0% | -1 | +0 |
| Clerical (III & IV) | 1 | 1 | | | | |
| Management & Administrative | 8 | 8 | -1 | -7.8% | -1 | +0 |
| Care, other | 1 | 1 | | | | |
| Patient & Client Care | 1 | 1 | | | | |

Mental Health

| Aug 2021 (Dec 2019 figure: 1,308) | WTE Jul 2021 | WTE Aug 2021 | WTE change since Jul 21 | % change since Jul 21 | WTE change since Dec 20 | WTE change since Aug 20 |
|---|--------------|--------------|-------------------------|-----------------------|-------------------------|-------------------------|
| Total Mental Health | 1,344 | 1,333 | -11 | -0.8% | -7 | -15 |
| Consultants | 42 | 42 | +1 | +1.3% | +5 | +2 |
| Registrars | 38 | 34 | -4 | -11.3% | -3 | -3 |
| SHO/ Interns | 33 | 38 | +5 | +14.5% | -2 | -1 |
| Medical/ Dental, other | | | | -100.0% | -1 | -1 |
| Medical & Dental | 113 | 114 | +1 | +0.9% | -1 | -3 |
| Nurse/ Midwife Manager | 148 | 146 | -1 | -0.9% | -5 | -0 |
| Nurse/ Midwife Specialist & AN/MP | 76 | 77 | +1 | +1.4% | -3 | +2 |
| Staff Nurse/ Staff Midwife | 371 | 366 | -6 | -1.5% | +11 | +18 |
| Pre-registration Nurse/ Midwife Intern | 20 | 20 | +0 | +2.2% | +20 | +0 |
| Pre-registration Nurse Intern (COVID-19) | 1 | 1 | | | +1 | |
| Nursing/ Midwifery awaiting registration | | | | -100.0% | -5 | |
| Nursing/ Midwifery Student | 20 | 21 | +0 | +2.1% | +10 | -11 |
| Nursing/ Midwifery other | 2 | 2 | +0 | +1.5% | +0 | -1 |
| Nursing & Midwifery | 617 | 611 | -5 | -0.9% | +15 | +9 |
| Therapy Professions | 55 | 52 | -3 | -5.9% | -3 | -3 |
| Social Care | 14 | 15 | +0 | +0.8% | -2 | -1 |
| Social Workers | 39 | 39 | +1 | +1.5% | -2 | -4 |
| Psychologists | 39 | 40 | +1 | +2.2% | +3 | +0 |
| Pharmacy | 2 | 2 | | | | +0 |
| H&SC, Other | 3 | 3 | | | -0 | +0 |
| Health & Social Care Professionals | 152 | 151 | -2 | -1.1% | -4 | -7 |
| Management (VIII & above) | 2 | 3 | +1 | +44.0% | -1 | -1 |
| Administrative/ Supervisory (V to VII) | 26 | 26 | -0 | -1.5% | -1 | -0 |
| Clerical (III & IV) | 96 | 94 | -2 | -2.3% | -8 | -8 |
| Management & Administrative | 125 | 123 | -2 | -1.4% | -10 | -10 |
| Support | 31 | 30 | -0 | -0.2% | -1 | -3 |
| Maintenance/ Technical | 34 | 33 | -1 | -1.8% | -0 | +5 |
| General Support | 64 | 64 | -1 | -1.0% | -1 | +2 |
| Health Care Assistants | 207 | 206 | -1 | -0.5% | -5 | -3 |
| Care, other | 66 | 65 | -1 | -1.6% | -2 | -3 |
| Patient & Client Care | 273 | 271 | -2 | -0.8% | -7 | -6 |

Primary Care

| Aug 2021 (Dec 2019 figure: 1,134) | WTE Jul 2021 | WTE Aug 2021 | WTE change since Jul 21 | % change since Jul 21 | WTE change since Dec 20 | WTE change since Aug 20 |
|---|--------------|--------------|-------------------------|-----------------------|-------------------------|-------------------------|
| Total Primary Care | 1,271 | 1,263 | -7 | -0.6% | +29 | +106 |
| Consultants | 3 | 3 | -0 | -2.4% | +2 | +2 |
| Registrars | 59 | 52 | -6 | -10.4% | +5 | +1 |
| SHO/ Interns | 1 | 3 | +2 | +106.3% | -0 | -0 |
| Medical/ Dental, other | 42 | 43 | +1 | +2.0% | -6 | -5 |
| Medical & Dental | 105 | 101 | -4 | -3.7% | +0 | -3 |
| Nurse/ Midwife Manager | 29 | 27 | -2 | -6.7% | -1 | -3 |
| Nurse/ Midwife Specialist & AN/MP | 24 | 25 | +1 | +4.0% | +4 | +9 |
| Staff Nurse/ Staff Midwife | 87 | 84 | -3 | -3.7% | +5 | +3 |
| Public Health Nurse | 186 | 186 | -0 | -0.1% | -12 | -5 |
| <i>Post-registration Nurse/ Midwife Student</i> | | | | -100.0% | -4 | |
| Nursing/ Midwifery Student | | | | -100.0% | | |
| Nursing & Midwifery | 326 | 321 | -4 | -1.4% | -4 | +5 |
| Therapy Professions | 252 | 249 | -3 | -1.1% | +1 | +13 |
| Health Science/ Diagnostics | 7 | 7 | +0 | +2.8% | | +1 |
| Social Care | 8 | 7 | -0 | -3.0% | -1 | -1 |
| Social Workers | 5 | 5 | +0 | +0.2% | -1 | -1 |
| Psychologists | 29 | 28 | -1 | -3.6% | +1 | +3 |
| Pharmacy | 2 | 2 | | | +1 | +1 |
| H&SC, Other | 47 | 46 | -1 | -2.8% | +4 | +7 |
| Health & Social Care Professionals | 349 | 344 | -5 | -1.5% | +5 | +23 |
| Management (VIII & above) | 39 | 36 | -3 | -7.7% | +0 | +3 |
| Administrative/ Supervisory (V to VII) | 80 | 81 | +1 | +0.9% | +8 | +19 |
| Clerical (III & IV) | 225 | 230 | +4 | +2.0% | +1 | -1 |
| Management & Administrative | 344 | 346 | +2 | +0.6% | +10 | +21 |
| Support | 21 | 20 | -1 | -4.7% | -2 | -2 |
| Maintenance/ Technical | 10 | 10 | +0 | +0.6% | +2 | +1 |
| General Support | 31 | 30 | -1 | -3.0% | -0 | -1 |
| Health Care Assistants | 62 | 66 | +4 | +5.8% | +9 | +52 |
| Care, other | 54 | 55 | +1 | +2.5% | +9 | +9 |
| Patient & Client Care | 116 | 121 | +5 | +4.3% | +18 | +61 |

Social Care

| Aug 2021 (Dec 2019 figure: 3,103) | WTE Jul 2021 | WTE Aug 2021 | WTE change since Jul 21 | % change since Jul 21 | WTE change since Dec 20 | WTE change since Aug 20 |
|---|--------------|--------------|-------------------------|-----------------------|-------------------------|-------------------------|
| Total Social Care | 3,114 | 3,121 | +7 | +0.2% | +16 | +12 |
| Consultants | 3 | 3 | +1 | +17.2% | | |
| Registrars | 2 | 2 | | | | |
| Medical/ Dental, other | 12 | 12 | | | | +1 |
| Medical & Dental | 17 | 17 | +1 | +3.0% | | +1 |
| Nurse/ Midwife Manager | 150 | 145 | -5 | -3.3% | +0 | +3 |
| Nurse/ Midwife Specialist & AN/MP | 8 | 8 | -0 | -0.6% | +1 | +1 |
| Staff Nurse/ Staff Midwife | 466 | 473 | +7 | +1.5% | -1 | +2 |
| Public Health Nurse | 1 | 1 | | | | |
| <i>Pre-registration Nurse Intern (COVID-19)</i> | | | | -100.0% | | |
| Nursing/ Midwifery Student | | | | -100.0% | -1 | -1 |
| Nursing & Midwifery | 625 | 627 | +2 | +0.4% | -1 | +5 |
| Therapy Professions | 58 | 57 | -1 | -1.4% | -2 | -1 |
| Health Science/ Diagnostics | 1 | 1 | | | | |
| Social Care | 264 | 265 | +0 | +0.2% | +21 | +26 |
| Social Workers | 37 | 37 | +1 | +1.7% | +1 | +4 |
| Psychologists | 15 | 15 | -0 | -2.6% | +1 | -1 |
| Pharmacy | 1 | 1 | -0 | -47.9% | -1 | -1 |
| H&SC, Other | 10 | 10 | +0 | +3.0% | -1 | -2 |
| Health & Social Care Professionals | 386 | 385 | -0 | -0.1% | +19 | +25 |
| Management (VIII & above) | 19 | 19 | +0 | +0.4% | +1 | +1 |
| Administrative/ Supervisory (V to VII) | 58 | 60 | +3 | +4.4% | +7 | +12 |
| Clerical (III & IV) | 105 | 106 | +1 | +0.5% | -10 | -6 |
| Management & Administrative | 182 | 185 | +3 | +1.7% | -2 | +6 |
| Support | 99 | 94 | -5 | -5.0% | -5 | +0 |
| Maintenance/ Technical | 30 | 30 | -0 | -0.1% | -2 | -2 |
| General Support | 130 | 125 | -5 | -3.8% | -7 | -2 |
| Health Care Assistants | 1,187 | 1,188 | +2 | +0.1% | +38 | -26 |
| Home Help | 416 | 421 | +6 | +1.4% | -35 | -17 |
| Care, other | 173 | 172 | -1 | -0.8% | +4 | +20 |
| Patient & Client Care | 1,775 | 1,782 | +6 | +0.4% | +7 | -23 |

CHO 2 Employment Report: August 2021

Disabilities

| Aug 2021 (Dec 2019 figure: 1,497) | WTE Jul 2021 | WTE Aug 2021 | WTE change since Jul 21 | % change since Jul 21 | WTE change since Dec 20 | WTE change since Aug 20 |
|---|--------------|--------------|-------------------------|-----------------------|-------------------------|-------------------------|
| Total Disabilities | 1,555 | 1,556 | +1 | +0.0% | +40 | +73 |
| Consultants | 3 | 3 | +1 | +17.2% | | |
| Registrars | 2 | 2 | | | | |
| Medical/ Dental, other | 1 | 1 | | | | |
| Medical & Dental | 6 | 6 | +1 | +8.5% | | |
| Nurse/ Midwife Manager | 80 | 74 | -5 | -6.6% | -4 | -3 |
| Nurse/ Midwife Specialist & AN/MP | 6 | 6 | -0 | -0.9% | +1 | +1 |
| Staff Nurse/ Staff Midwife | 159 | 161 | +2 | +1.3% | -8 | -3 |
| <i>Pre-registration Nurse Intern (COVID-19)</i> | | | | -100.0% | | |
| Nursing/ Midwifery Student | | | | -100.0% | -1 | -1 |
| Nursing & Midwifery | 245 | 241 | -3 | -1.3% | -12 | -5 |
| Therapy Professions | 33 | 34 | +1 | +3.3% | -0 | +3 |
| Social Care | 264 | 265 | +0 | +0.2% | +21 | +26 |
| Social Workers | 26 | 27 | +1 | +2.4% | +1 | +4 |
| Psychologists | 15 | 15 | -0 | -2.6% | +1 | -1 |
| H&SC, Other | 10 | 10 | +0 | +3.0% | -1 | -2 |
| Health & Social Care Professionals | 349 | 351 | +2 | +0.6% | +22 | +29 |
| Management (VIII & above) | 17 | 17 | +0 | +0.5% | +1 | +0 |
| Administrative/ Supervisory (V to VII) | 47 | 47 | -0 | -0.1% | +3 | +7 |
| Clerical (III & IV) | 46 | 48 | +2 | +3.8% | -2 | +0 |
| Management & Administrative | 111 | 112 | +2 | +1.6% | +2 | +7 |
| Support | 42 | 37 | -5 | -12.7% | -6 | +2 |
| Maintenance/ Technical | 13 | 13 | | | | -0 |
| General Support | 55 | 50 | -5 | -9.7% | -6 | +2 |
| Health Care Assistants | 659 | 665 | +6 | +0.9% | +40 | +37 |
| Care, other | 131 | 130 | -1 | -0.9% | -6 | +4 |
| Patient & Client Care | 790 | 795 | +5 | +0.6% | +34 | +40 |

Older People

| Aug 2021 (Dec 2019 figure: 1,606) | WTE Jul 2021 | WTE Aug 2021 | WTE change since Jul 21 | % change since Jul 21 | WTE change since Dec 20 | WTE change since Aug 20 |
|---|--------------|--------------|-------------------------|-----------------------|-------------------------|-------------------------|
| Total Older People | 1,559 | 1,565 | +6 | +0.4% | -24 | -61 |
| Medical/ Dental, other | 11 | 11 | | | | +1 |
| Medical & Dental | 11 | 11 | | | | +1 |
| Nurse/ Midwife Manager | 70 | 70 | +0 | +0.5% | +4 | +6 |
| Nurse/ Midwife Specialist & AN/MP | 2 | 2 | +0 | +0.5% | | |
| Staff Nurse/ Staff Midwife | 307 | 312 | +5 | +1.7% | +7 | +5 |
| Public Health Nurse | 1 | 1 | | | | |
| Nursing & Midwifery | 380 | 385 | +6 | +1.5% | +11 | +10 |
| Health & Social Care Professionals | 37 | 35 | -2 | -6.3% | -3 | -4 |
| Management (VIII & above) | 2 | 2 | | | -0 | +1 |
| Administrative/ Supervisory (V to VII) | 11 | 13 | +3 | +24.5% | +4 | +4 |
| Clerical (III & IV) | 59 | 58 | -1 | -2.1% | -8 | -6 |
| Management & Administrative | 72 | 73 | +1 | +1.9% | -4 | -1 |
| Support | 57 | 57 | +0 | +0.8% | +1 | -2 |
| Maintenance/ Technical | 18 | 17 | -0 | -0.1% | -2 | -2 |
| General Support | 74 | 75 | +0 | +0.6% | -1 | -4 |
| Health Care Assistants | 527 | 523 | -4 | -0.8% | -3 | -62 |
| Home Help | 416 | 421 | +6 | +1.4% | -35 | -17 |
| Care, other | 42 | 42 | -0 | -0.4% | +10 | +16 |
| Patient & Client Care | 985 | 987 | +1 | +0.1% | -28 | -63 |

CHO 2 Employment by Administration (HSE / S38): August 2021

| Aug 2021 (Dec 2019 figure: 5,545) | WTE Jul 2021 | WTE Aug 2021 | WTE change since Jul 21 | % change since Jul 21 | WTE change since Dec 20 | WTE change since Aug 20 |
|--------------------------------------|--------------|--------------|-------------------------|-----------------------|-------------------------|-------------------------|
| Overall | 5,738 | 5,726 | -12 | -0.2% | +36 | +103 |
| HSE | 4,406 | 4,392 | -14 | -0.3% | -0 | +37 |
| Section 38 Voluntary Agencies | 1,332 | 1,334 | +2 | +0.2% | +36 | +66 |

HSE

| Aug 2021 (Dec 2019 figure: 4,256) | WTE Jul 2021 | WTE Aug 2021 | WTE change since Jul 21 | % change since Jul 21 | WTE change since Dec 20 | WTE change since Aug 20 |
|---|--------------|--------------|-------------------------|-----------------------|-------------------------|-------------------------|
| Overall | 4,406 | 4,392 | -14 | -0.3% | -0 | +37 |
| Consultants | 46 | 47 | +0 | +0.0% | +7 | +4 |
| Registrars | 97 | 86 | -10 | -0.1% | +2 | -2 |
| SHO/ Interns | 34 | 40 | +6 | +0.2% | -2 | -1 |
| Medical/ Dental, other | 54 | 54 | +1 | +0.0% | -7 | -5 |
| Medical & Dental | 231 | 228 | -3 | -1.2% | -0 | -5 |
| Nurse/ Midwife Manager | 256 | 253 | -4 | -0.0% | -2 | +2 |
| Nurse/ Midwife Specialist & AN/MP | 104 | 106 | +2 | +0.0% | +2 | +11 |
| Staff Nurse/ Staff Midwife | 809 | 805 | -4 | -0.0% | +21 | +24 |
| Public Health Nurse | 187 | 187 | -0 | -0.0% | -12 | -5 |
| Pre-registration Nurse/ Midwife Intern | 20 | 20 | +0 | +0.0% | +20 | +20 |
| Pre-registration Nurse Intern (COVID-19) | 1 | 1 | | +0.0% | +1 | -31 |
| Post-registration Nurse/ Midwife Student | | | | -1.0% | -4 | |
| Nursing/ Midwifery awaiting registration | | | | -1.0% | -5 | |
| Nursing/ Midwifery Student | 20 | 21 | +0 | +0.0% | +10 | -11 |
| Nursing/ Midwifery other | 2 | 2 | +0 | +0.0% | +0 | -1 |
| Nursing & Midwifery | 1,378 | 1,372 | -6 | -0.4% | +19 | +21 |
| Therapy Professions | 338 | 330 | -8 | -0.0% | -3 | +5 |
| Health Science/ Diagnostics | 7 | 8 | +0 | +0.0% | | +1 |
| Social Care | 54 | 54 | -0 | -0.0% | -3 | -1 |
| Social Workers | 54 | 55 | +1 | +0.0% | -3 | -5 |
| Psychologists | 70 | 70 | -0 | -0.0% | +5 | +4 |
| Pharmacy | 5 | 4 | -0 | -0.1% | +0 | +1 |
| H&SC, Other | 50 | 48 | -1 | -0.0% | +4 | +8 |
| Health & Social Care Professionals | 578 | 569 | -9 | -1.5% | -0 | +11 |
| Management (VIII & above) | 48 | 46 | -2 | -0.0% | +0 | +4 |
| Administrative/ Supervisory (V to VII) | 132 | 134 | +2 | +0.0% | +10 | +26 |
| Clerical (III & IV) | 392 | 393 | +1 | +0.0% | -17 | -18 |
| Management & Administrative | 572 | 572 | +1 | +0.1% | -7 | +12 |
| Support | 108 | 107 | -1 | -0.0% | -2 | -6 |
| Maintenance/ Technical | 69 | 68 | -1 | -0.0% | -0 | +4 |
| General Support | 177 | 176 | -1 | -0.6% | -2 | -3 |
| Health Care Assistants | 876 | 874 | -2 | -0.0% | +4 | -13 |
| Home Help | 416 | 421 | +6 | +0.0% | -35 | -17 |
| Care, other | 179 | 179 | +0 | +0.0% | +21 | +31 |
| Patient & Client Care | 1,471 | 1,475 | +4 | +0.3% | -10 | -0 |

Section 38 Voluntary Agencies

| Aug 2021 (Dec 2019 figure: 1,288) | WTE Jul 2021 | WTE Aug 2021 | WTE change since Jul 21 | % change since Jul 21 | WTE change since Dec 20 | WTE change since Aug 20 |
|---|--------------|--------------|-------------------------|-----------------------|-------------------------|-------------------------|
| Overall | 1,332 | 1,334 | +2 | +0.2% | +36 | +66 |
| Consultants | 2 | 2 | +1 | +0.3% | | |
| Registrars | 2 | 2 | | +0.0% | | |
| Medical & Dental | 4 | 4 | +1 | +12.8% | | |
| Nurse/ Midwife Manager | 70 | 65 | -4 | -0.1% | -3 | -2 |
| Nurse/ Midwife Specialist & AN/MP | 4 | 4 | -0 | -0.0% | -0 | +0 |
| Staff Nurse/ Staff Midwife | 115 | 118 | +3 | +0.0% | -6 | -0 |
| <i>Pre-registration Nurse Intern (COVID-19)</i> | | | | -1.0% | | -1 |
| Nursing/ Midwifery Student | | | | -1.0% | -1 | -1 |
| Nursing & Midwifery | 189 | 187 | -2 | -0.9% | -10 | -3 |
| Therapy Professions | 27 | 28 | +1 | +0.0% | -1 | +3 |
| Social Care | 232 | 233 | +0 | +0.0% | +22 | +25 |
| Social Workers | 26 | 26 | +1 | +0.0% | +1 | +4 |
| Psychologists | 13 | 13 | -0 | -0.0% | +1 | -1 |
| H&SC, Other | 10 | 10 | +0 | +0.0% | -1 | -2 |
| Health & Social Care Professionals | 309 | 310 | +2 | +0.5% | +20 | +29 |
| Management (VIII & above) | 13 | 13 | +0 | +0.0% | +0 | -1 |
| Administrative/ Supervisory (V to VII) | 39 | 39 | +0 | +0.0% | +3 | +5 |
| Clerical (III & IV) | 36 | 38 | +2 | +0.0% | +0 | +2 |
| Management & Administrative | 88 | 90 | +2 | +2.5% | +3 | +6 |
| Support | 42 | 37 | -5 | -0.1% | -6 | +2 |
| Maintenance/ Technical | 5 | 5 | | +0.0% | | |
| General Support | 48 | 42 | -5 | -11.3% | -6 | +2 |
| Health Care Assistants | 580 | 586 | +6 | +0.0% | +38 | +36 |
| Care, other | 115 | 114 | -1 | -0.0% | -9 | -4 |
| Patient & Client Care | 695 | 700 | +5 | +0.7% | +29 | +32 |

CHO 2 Employment by S38 Agency: August 2021

Bros. of Charity, West Region

| Aug 2021 (Dec 2019 figure: 1,288) | WTE Jul 2021 | WTE Aug 2021 | WTE change since Jul 21 | % change since Jul 21 | WTE change since Dec 20 | WTE change since Aug 20 |
|---|--------------|--------------|-------------------------|-----------------------|-------------------------|-------------------------|
| Overall | 1,332 | 1,334 | +2 | +0.2% | +36 | +66 |
| Consultants | 2 | 2 | +1 | +0.3% | | |
| Registrars | 2 | 2 | | +0.0% | | |
| Medical & Dental | 4 | 4 | +1 | +12.8% | | |
| Nurse/ Midwife Manager | 70 | 65 | -4 | -0.1% | -3 | -2 |
| Nurse/ Midwife Specialist & AN/MP | 4 | 4 | -0 | -0.0% | -0 | +0 |
| Staff Nurse/ Staff Midwife | 115 | 118 | +3 | +0.0% | -6 | -0 |
| Pre-registration Nurse Intern (COVID-19) | | | | -1.0% | | -1 |
| Nursing/ Midwifery Student | | | | -1.0% | -1 | -1 |
| Nursing & Midwifery | 189 | 187 | -2 | -0.9% | -10 | -3 |
| Therapy Professions | 27 | 28 | +1 | +0.0% | -1 | +3 |
| Social Care | 232 | 233 | +0 | +0.0% | +22 | +25 |
| Social Workers | 26 | 26 | +1 | +0.0% | +1 | +4 |
| Psychologists | 13 | 13 | -0 | -0.0% | +1 | -1 |
| H&SC, Other | 10 | 10 | +0 | +0.0% | -1 | -2 |
| Health & Social Care Professionals | 309 | 310 | +2 | +0.5% | +20 | +29 |
| Management (VIII & above) | 13 | 13 | | +0.0% | | -1 |
| Administrative/ Supervisory (V to VII) | 39 | 39 | +0 | +0.0% | +3 | +5 |
| Clerical (III & IV) | 36 | 38 | +2 | +0.0% | +0 | +2 |
| Management & Administrative | 88 | 90 | +2 | +2.5% | +3 | +6 |
| Support | 42 | 37 | -5 | -0.1% | -6 | +2 |
| Maintenance/ Technical | 5 | 5 | | +0.0% | | |
| General Support | 48 | 42 | -5 | -11.3% | -6 | +2 |
| Health Care Assistants | 580 | 586 | +6 | +0.0% | +38 | +36 |
| Care, other | 115 | 114 | -1 | -0.0% | -9 | -4 |
| Patient & Client Care | 695 | 700 | +5 | +0.7% | +29 | +32 |

CHO 2 Employment by Grade Group & Staff Category: August 2021

| Aug 2021 (Dec 2019 figure: 5,545) | WTE Jul 2021 | WTE Aug 2021 | WTE change since Jul 21 | % change since Jul 21 | WTE change since Dec 20 | WTE change since Aug 20 |
|--|--------------|--------------|-------------------------|-----------------------|-------------------------|-------------------------|
| Overall | 5,738 | 5,726 | -12 | -0.2% | +36 | +103 |
| Consultant Medicine | 3 | 3 | -0 | -0.7% | +2 | +2 |
| Consultant Paediatrics | 1 | 1 | +1 | +100.0% | | |
| Consultant Psychiatry | 44 | 45 | +1 | +1.2% | +5 | +2 |
| Consultant Surgery | 0 | 0 | -0 | -19.4% | -0 | -0 |
| Consultants | 48 | 49 | +1 | +2.0% | +7 | +4 |
| Registrar | 81 | 71 | -9 | -11.4% | +7 | +3 |
| Senior Registrar | 18 | 17 | -1 | -6.8% | -5 | -5 |
| Registrars | 99 | 88 | -10 | -10.6% | +2 | -2 |
| Senior House Officer | 34 | 40 | +6 | +18.4% | -2 | -1 |
| SHO/ Interns | 34 | 40 | +6 | +18.4% | -2 | -1 |
| Dentists | 21 | 22 | +1 | +4.2% | +1 | +1 |
| Other Medical | 33 | 32 | -0 | -0.1% | -8 | -6 |
| Medical/ Dental, other | 54 | 54 | +1 | +1.6% | -7 | -5 |
| Medical & Dental | 235 | 232 | -2 | -1.0% | +20 | -5 |
| Clinical Nurse/ Midwife Manager | 261 | 252 | -9 | -3.3% | -4 | +3 |
| Director Nursing/Midwifery, Assistant | 42 | 41 | -1 | -2.1% | -2 | -5 |
| Director of Nursing/Midwifery | 23 | 24 | +1 | +6.4% | +0 | +1 |
| Nurse/ Midwife Manager | 326 | 318 | -8 | -2.5% | -6 | -0 |
| Advanced Nurse/ Midwife Practitioner | 12 | 12 | +0 | +2.3% | +1 | +2 |
| Clinical Nurse/ Midwife Specialist | 96 | 98 | +2 | +1.7% | +1 | +10 |
| Nurse/ Midwife Specialist & AN/MP | 108 | 110 | +2 | +1.8% | +2 | +11 |
| Staff Nurse [Intellectual Disability] | 111 | 114 | +3 | +3.1% | -6 | +14 |
| Staff Nurse [Psychiatric] | 381 | 375 | -7 | -1.7% | +10 | +14 |
| Staff Nurses [General/ Children's] | 432 | 434 | +1 | +0.3% | +11 | -4 |
| Staff Nurse/ Staff Midwife | 924 | 923 | -2 | -0.2% | +15 | +24 |
| Public Health Nurse | 187 | 187 | -0 | -0.1% | -12 | -5 |
| Pre-registration Nurse/ Midwife Intern | 20 | 20 | +0 | +2.2% | +20 | +20 |
| Pre-registration Nurse Intern (COVID-19) | 1 | 1 | | | -10 | -32 |
| Post-registration Nurse/ Midwife Student | | | | -100.0% | | |
| Nursing/ Midwifery awaiting registration | | | | -100.0% | | |
| Nursing/ Midwifery Student | 20 | 21 | +0 | +2.1% | +10 | -12 |
| Nursing/ Midwifery other | 2 | 2 | +0 | +1.5% | +0 | -1 |
| Nursing & Midwifery | 1,567 | 1,559 | -8 | -0.5% | +58 | +18 |
| Dietitians | 26 | 25 | -1 | -3.4% | -0 | +2 |
| Occupational Therapists | 127 | 125 | -2 | -2.0% | -4 | -0 |
| Orthoptists | 1 | 1 | +0 | +1.0% | -1 | -0 |
| Physiotherapists | 98 | 97 | -1 | -1.2% | +3 | +6 |
| Podiatrists & Chiropodists | 10 | 11 | +0 | +2.3% | +3 | +1 |
| Speech & Language Therapists | 102 | 100 | -3 | -2.5% | -6 | -0 |
| Therapy Professions | 365 | 358 | -7 | -1.9% | -4 | +9 |
| Audiology | 6 | 6 | +0 | +3.3% | | +1 |
| Clinical Engineering | 1 | 1 | | | | |
| Radiographers | 1 | 1 | | | | |
| Health Science/ Diagnostics | 7 | 8 | +0 | +2.6% | | +1 |
| Social Care | 286 | 287 | +0 | +0.1% | +18 | +24 |
| Social Workers | 80 | 81 | +1 | +1.5% | -3 | -1 |
| Psychologists | 84 | 83 | -1 | -0.7% | +5 | +3 |

| Aug 2021 (Dec 2019 figure: 5,545) | WTE Jul 2021 | WTE Aug 2021 | WTE change since Jul 21 | % change since Jul 21 | WTE change since Dec 20 | WTE change since Aug 20 |
|---|--------------|--------------|-------------------------|-----------------------|-------------------------|-------------------------|
| Overall | 5,738 | 5,726 | -12 | -0.2% | +36 | +103 |
| Pharmacy | 5 | 4 | -0 | -9.8% | +0 | +1 |
| Counsellor Therapists | 21 | 20 | -0 | -2.2% | +7 | +10 |
| Dental Hygienists | 5 | 5 | +0 | +2.0% | +0 | +1 |
| Other Health & Social Care | 33 | 32 | -1 | -2.0% | -5 | -5 |
| Play Therapists/ Specialists | 1 | 1 | | | | |
| H&SC, Other | 60 | 59 | -1 | -1.7% | +2 | +6 |
| Health & Social Care Professionals | 887 | 879 | -7 | -0.8% | +69 | +41 |
| Executive Management | 13 | 13 | -1 | -6.3% | +1 | +4 |
| Senior Management (VIII & GM) | 47 | 46 | -1 | -2.5% | -1 | -1 |
| Management (VIII & above) | 60 | 58 | -2 | -3.3% | +0 | +3 |
| Middle Management (V-VII) | 171 | 173 | +2 | +1.3% | +13 | +31 |
| Other Administrative | | | | -100.0% | | |
| Administrative/ Supervisory (V to VII) | 171 | 173 | +2 | +1.3% | +13 | +31 |
| Clerical (III & IV) | 428 | 431 | +3 | +0.6% | -17 | -16 |
| Management & Administrative | 659 | 662 | +3 | +0.5% | +5 | +18 |
| Catering | 41 | 40 | -1 | -2.7% | +1 | -0 |
| Household Services | 59 | 60 | +2 | +2.6% | -1 | -2 |
| Other Support | 38 | 32 | -6 | -15.5% | -6 | +1 |
| Portering | 13 | 13 | -1 | -3.8% | -2 | -3 |
| Support | 151 | 145 | -6 | -4.0% | -8 | -4 |
| Maintenance/ Technical | 74 | 73 | -1 | -0.8% | -0 | +4 |
| General Support | 225 | 218 | -7 | -2.9% | -8 | -1 |
| HCA, Nurse's Aide, etc. | 1,394 | 1,394 | +0 | +0.0% | +32 | +24 |
| HCA (Student Nurse/Midwife COVID-19) | | | | -100.0% | | -54 |
| Health & Social Care Assistants | 15 | 15 | -0 | -0.1% | +7 | +1 |
| Swabber (COVID-19) | 48 | 52 | +4 | +8.4% | +3 | +52 |
| Health Care Assistants | 1,456 | 1,460 | +4 | +0.3% | +42 | +23 |
| Home Help | 416 | 421 | +6 | +1.4% | -35 | -17 |
| Other Care Grades | 294 | 293 | -1 | -0.3% | +12 | +27 |
| Care, other | 294 | 293 | -1 | -0.3% | +12 | +27 |
| Patient & Client Care | 2,166 | 2,175 | +9 | +0.4% | +37 | +32 |

CHO 2 HSE Employment by Grade Group & Staff Category: August 2021

| Aug 2021 (Dec 2019 figure: 4,256) | WTE Jul 2021 | WTE Aug 2021 | WTE change since Jul 21 | % change since Jul 21 | WTE change since Dec 20 | WTE change since Aug 20 |
|--|--------------|--------------|-------------------------|-----------------------|-------------------------|-------------------------|
| Overall | 4,406 | 4,392 | -14 | -0.3% | -0 | +37 |
| Consultant Medicine | 3 | 3 | -0 | -0.7% | +2 | +2 |
| Consultant Psychiatry | 43 | 43 | +1 | +1.3% | +5 | +2 |
| Consultant Surgery | 0 | 0 | -0 | -19.4% | -0 | -0 |
| Consultants | 46 | 47 | +0 | +1.0% | +7 | +4 |
| Registrar | 79 | 69 | -9 | -11.7% | +5 | +1 |
| Senior Registrar | 18 | 17 | -1 | -6.8% | -3 | -3 |
| Registrars | 97 | 86 | -10 | -10.8% | +2 | -2 |
| SHO/ Interns | 34 | 40 | +6 | +18.4% | -2 | -1 |
| Dentists | 21 | 22 | +1 | +4.2% | +1 | +1 |
| Other Medical | 33 | 32 | -0 | -0.1% | -8 | -6 |
| Medical/ Dental, other | 54 | 54 | +1 | +1.6% | -7 | -5 |
| Medical & Dental | 231 | 228 | -3 | -1.2% | -0 | -5 |
| Clinical Nurse/ Midwife Manager | 192 | 188 | -4 | -2.2% | -1 | +5 |
| Director Nursing/Midwifery, Assistant | 42 | 41 | -1 | -2.1% | -2 | -5 |
| Director of Nursing/Midwifery | 22 | 23 | +1 | +6.7% | +0 | +1 |
| Nurse/ Midwife Manager | 256 | 253 | -4 | -1.5% | -2 | +2 |
| Advanced Nurse/ Midwife Practitioner | 11 | 11 | +0 | +2.5% | +1 | +2 |
| Clinical Nurse/ Midwife Specialist | 93 | 95 | +2 | +1.9% | +2 | +10 |
| Nurse/ Midwife Specialist & AN/MP | 104 | 106 | +2 | +1.9% | +2 | +11 |
| Staff Nurse [Intellectual Disability] | 13 | 12 | -1 | -7.9% | -2 | -1 |
| Staff Nurse [Psychiatric] | 371 | 365 | -6 | -1.6% | +8 | +16 |
| Staff Nurses [General/ Children's] | 425 | 427 | +2 | +0.6% | +15 | +8 |
| Staff Nurse/ Staff Midwife | 809 | 805 | -4 | -0.5% | +21 | +24 |
| Public Health Nurse | 187 | 187 | -0 | -0.1% | -12 | -5 |
| Pre-registration Nurse/ Midwife Intern | 20 | 20 | +0 | +2.2% | +20 | +20 |
| Pre-registration Nurse Intern (COVID-19) | 1 | 1 | | | -10 | -31 |
| Post-registration Nurse/ Midwife Student | | | | -100.0% | | |
| Nursing/ Midwifery awaiting registration | | | | -100.0% | | |
| Nursing/ Midwifery Student | 20 | 21 | +0 | +2.1% | +10 | -11 |
| Nursing/ Midwifery other | 2 | 2 | +0 | +1.5% | +0 | -1 |
| Nursing & Midwifery | 1,378 | 1,372 | -6 | -0.4% | +19 | +21 |
| Dietitians | 26 | 25 | -1 | -3.4% | -0 | +2 |
| Occupational Therapists | 119 | 117 | -2 | -1.4% | -3 | -1 |
| Orthoptists | 1 | 1 | +0 | +1.0% | -1 | -0 |
| Physiotherapists | 88 | 87 | -1 | -1.6% | +3 | +5 |
| Podiatrists & Chiropodists | 10 | 11 | +0 | +2.3% | +3 | +1 |
| Speech & Language Therapists | 94 | 90 | -4 | -4.0% | -5 | -1 |
| Therapy Professions | 338 | 330 | -8 | -2.2% | -3 | +5 |
| Audiology | 6 | 6 | +0 | +3.3% | | +1 |
| Clinical Engineering | 1 | 1 | | | | |
| Radiographers | 1 | 1 | | | | |
| Health Science/ Diagnostics | 7 | 8 | +0 | +2.6% | | +1 |
| Social Care | 54 | 54 | -0 | -0.2% | -3 | -2 |
| Social Workers | 54 | 55 | +1 | +1.1% | -3 | -5 |
| Psychologists | 70 | 70 | -0 | -0.3% | +5 | +4 |
| Pharmacy | 5 | 4 | -0 | -9.8% | +0 | +1 |
| Counsellor Therapists | 16 | 15 | -1 | -7.4% | +5 | +9 |
| Dental Hygienists | 5 | 5 | +0 | +2.0% | +0 | +1 |
| Other Health & Social Care | 28 | 27 | -0 | -0.9% | -2 | -2 |

| Aug 2021 (Dec 2019 figure: 4,256) | WTE Jul 2021 | WTE Aug 2021 | WTE change since Jul 21 | % change since Jul 21 | WTE change since Dec 20 | WTE change since Aug 20 |
|---|--------------|--------------|-------------------------|-----------------------|-------------------------|-------------------------|
| Overall | 4,406 | 4,392 | -14 | -0.3% | -0 | +37 |
| Play Therapists/ Specialists | 1 | 1 | | | | |
| H&SC, Other | 50 | 48 | -1 | -2.6% | +4 | +8 |
| Health & Social Care Professionals | 578 | 569 | -9 | -1.5% | -0 | +11 |
| Executive Management | 11 | 11 | -1 | -7.4% | +1 | +4 |
| Senior Management (VIII & GM) | 36 | 35 | -1 | -3.2% | -1 | +0 |
| Management (VIII & above) | 48 | 46 | -2 | -4.2% | +0 | +4 |
| Administrative/ Supervisory (V to VII) | 132 | 134 | +2 | +1.4% | +10 | +26 |
| Clerical (III & IV) | 392 | 393 | +1 | +0.3% | -17 | -18 |
| Management & Administrative | 572 | 572 | +1 | +0.1% | -7 | +12 |
| Catering | 40 | 39 | -1 | -2.8% | +1 | -1 |
| Household Services | 41 | 42 | +2 | +3.7% | -2 | -2 |
| Other Support | 14 | 13 | -0 | -3.4% | +0 | -1 |
| Portering | 13 | 13 | -1 | -3.8% | -2 | -3 |
| Support | 108 | 107 | -1 | -0.5% | -2 | -6 |
| Maintenance/ Technical | 69 | 68 | -1 | -0.8% | -0 | +4 |
| General Support | 177 | 176 | -1 | -0.6% | -2 | -3 |
| HCA, Nurse's Aide, etc. | 814 | 808 | -6 | -0.7% | -6 | -12 |
| HCA (Student Nurse/Midwife COVID-19) | | | | -100.0% | | -54 |
| Health & Social Care Assistants | 15 | 15 | -0 | -0.1% | +7 | +1 |
| Swabber (COVID-19) | 48 | 52 | +4 | +8.4% | +3 | +52 |
| Health Care Assistants | 876 | 874 | -2 | -0.2% | +4 | -13 |
| Home Help | 416 | 421 | +6 | +1.4% | -35 | -17 |
| Care, other | 179 | 179 | +0 | +0.1% | +21 | +31 |
| Patient & Client Care | 1,471 | 1,475 | +4 | +0.3% | -10 | -0 |

Employment by WTE, Headcount, Gender, Full-Time /Part-Time etc.: Aug 2021

| CHO 2 | WTE | Headcount | WTE: no. | % Male | % female | Male WTE: no. | Female WTE: no. | % Total Perm | % Male Perm | % Female Perm | % Total Full Time | % Total Part Time | % Male FT | % Female FT |
|--|--------------|--------------|-------------|--------------|---------------|---------------|-----------------|--------------|---------------|---------------|-------------------|-------------------|---------------|---------------|
| Overall | 5,726 | 6,711 | 1.17 | 19.1% | 80.9% | 1.11 | 1.19 | 84.8% | 79.9% | 85.9% | 60.0% | 40.0% | 74.5% | 56.6% |
| Consultant Medicine | 3 | 3 | 1.01 | | 100.0% | | 1.01 | 33.3% | 33.3% | 33.3% | 100.0% | 0.0% | | 100.0% |
| Consultant Paediatrics | 1 | 1 | 1.00 | | 100.0% | | 1.00 | 100.0% | 100.0% | 100.0% | 100.0% | 0.0% | | 100.0% |
| Consultant Psychiatry | 45 | 48 | 1.07 | 39.6% | 60.4% | 1.06 | 1.08 | 62.5% | 62.5% | 62.1% | 85.4% | 14.6% | 89.5% | 82.8% |
| Consultant Surgery | 0 | 1 | 4.00 | | 100.0% | | 4.00 | 0.0% | 0.0% | 0.0% | 0.0% | 100.0% | | 0.0% |
| Consultants | 49 | 53 | 1.08 | 35.8% | 64.2% | 1.06 | 1.09 | 60.4% | 63.2% | 58.8% | 84.9% | 15.1% | 89.5% | 82.4% |
| Registrar | 71 | 74 | 1.04 | 36.5% | 63.5% | 1.01 | 1.06 | 1.4% | 1.4% | 2.1% | 98.6% | 1.4% | 100.0% | 97.9% |
| Senior Registrar | 17 | 17 | 1.00 | 35.3% | 64.7% | 1.01 | 1.00 | 0.0% | 0.0% | 0.0% | 100.0% | 0.0% | 100.0% | 100.0% |
| Registrars | 88 | 91 | 1.03 | 36.3% | 63.7% | 1.01 | 1.04 | 1.1% | 0.0% | 1.7% | 98.9% | 1.1% | 100.0% | 98.3% |
| Senior House Officer | 40 | 43 | 1.06 | 32.6% | 67.4% | 1.04 | 1.07 | 0.0% | 0.0% | 0.0% | 100.0% | 0.0% | 100.0% | 100.0% |
| SHO/ Interns | 40 | 43 | 1.06 | 32.6% | 67.4% | 1.04 | 1.07 | 0.0% | 0.0% | 0.0% | 100.0% | 0.0% | 100.0% | 100.0% |
| Dentists | 22 | 26 | 1.19 | 30.8% | 69.2% | 1.07 | 1.25 | 96.2% | 96.2% | 94.4% | 65.4% | 34.6% | 75.0% | 61.1% |
| Other Medical | 32 | 40 | 1.23 | 27.5% | 72.5% | 1.20 | 1.24 | 67.5% | 67.5% | 75.9% | 62.5% | 37.5% | 63.6% | 62.1% |
| Medical/ Dental, other | 54 | 66 | 1.21 | 28.8% | 71.2% | 1.15 | 1.24 | 78.8% | 68.4% | 83.0% | 63.6% | 36.4% | 68.4% | 61.7% |
| Medical & Dental | 232 | 253 | 1.09 | 33.6% | 66.4% | 1.05 | 1.11 | 33.6% | 29.4% | 35.7% | 87.0% | 13.0% | 90.6% | 85.1% |
| Clinical Nurse/ Midwife Manager | 252 | 273 | 1.08 | 27.8% | 72.2% | 1.00 | 1.11 | 96.7% | 96.7% | 96.4% | 86.1% | 13.9% | 98.7% | 81.2% |
| Director Nursing/Midwifery, Assistant | 41 | 43 | 1.05 | 20.9% | 79.1% | 1.00 | 1.06 | 95.3% | 95.3% | 94.1% | 90.7% | 9.3% | 100.0% | 88.2% |
| Director of Nursing/Midwifery | 24 | 25 | 1.04 | 12.0% | 88.0% | 1.00 | 1.04 | 100.0% | 100.0% | 100.0% | 96.0% | 4.0% | 100.0% | 95.5% |
| Nurse/ Midwife Manager | 318 | 341 | 1.07 | 25.8% | 74.2% | 1.00 | 1.10 | 96.8% | 97.7% | 96.4% | 87.4% | 12.6% | 98.9% | 83.4% |
| Advanced Nurse/ Midwife Practitioner | 12 | 12 | 1.02 | 25.0% | 75.0% | 1.00 | 1.02 | 100.0% | 100.0% | 100.0% | 100.0% | 0.0% | 100.0% | 100.0% |
| Clinical Nurse/ Midwife Specialist | 98 | 108 | 1.10 | 13.0% | 87.0% | 1.00 | 1.12 | 98.1% | 98.1% | 97.9% | 89.8% | 10.2% | 100.0% | 88.3% |
| Nurse/ Midwife Specialist & AN/MP | 110 | 120 | 1.09 | 14.2% | 85.8% | 1.00 | 1.11 | 98.3% | 100.0% | 98.1% | 90.8% | 9.2% | 100.0% | 89.3% |
| Staff Nurse [Intellectual Disability] | 114 | 143 | 1.25 | 8.4% | 91.6% | 1.12 | 1.27 | 96.5% | 96.5% | 96.9% | 47.6% | 52.4% | 58.3% | 46.6% |
| Staff Nurse [Psychiatric] | 375 | 410 | 1.09 | 23.7% | 76.3% | 1.09 | 1.09 | 93.7% | 93.7% | 96.2% | 84.1% | 15.9% | 83.5% | 84.3% |
| Staff Nurses [General/ Children's] | 434 | 517 | 1.19 | 5.0% | 95.0% | 1.06 | 1.20 | 91.5% | 91.5% | 91.4% | 54.7% | 45.3% | 84.6% | 53.2% |
| Staff Nurse/ Staff Midwife | 923 | 1,070 | 1.16 | 12.6% | 87.4% | 1.09 | 1.17 | 93.0% | 87.4% | 93.8% | 65.0% | 35.0% | 81.5% | 62.7% |
| Public Health Nurse | 187 | 218 | 1.17 | | 100.0% | | 1.17 | 96.8% | | 96.8% | 73.4% | 26.6% | | 73.4% |
| Pre-registration Nurse/ Midwife Intern | 20 | 40 | 2.00 | 22.5% | 77.5% | 2.00 | 2.00 | 0.0% | 0.0% | 0.0% | 100.0% | 0.0% | 100.0% | 100.0% |
| Pre-registration Nurse Intern (COVID-19) | 1 | 1 | 2.00 | 100.0% | | 2.00 | | 0.0% | 0.0% | | 100.0% | 0.0% | 100.0% | |

| | | | | | | | | | | | | | | |
|---|--------------|--------------|-------------|--------------|---------------|-------------|-------------|---------------|---------------|---------------|---------------|--------------|---------------|---------------|
| Nursing/ Midwifery Student | 21 | 41 | 2.00 | 24.4% | 75.6% | 2.00 | 2.00 | 0.0% | 0.0% | 0.0% | 100.0% | 0.0% | 100.0% | 100.0% |
| Nursing/ Midwifery other | 2 | 2 | 1.00 | | 100.0% | | 1.00 | 100.0% | | 100.0% | 100.0% | 0.0% | | 100.0% |
| Nursing & Midwifery | 1,559 | 1,792 | 1.15 | 14.0% | 86.0% | 1.07 | 1.16 | 92.4% | 88.4% | 93.1% | 72.9% | 27.1% | 89.6% | 70.2% |
| Dietitians | 25 | 28 | 1.11 | | 100.0% | | 1.11 | 89.3% | 89.3% | 89.3% | 71.4% | 28.6% | | 71.4% |
| Occupational Therapists | 125 | 143 | 1.15 | 7.0% | 93.0% | 1.02 | 1.16 | 90.9% | 90.9% | 90.2% | 74.1% | 25.9% | 90.0% | 72.9% |
| Orthoptists | 1 | 1 | 1.01 | | 100.0% | | 1.01 | 100.0% | 100.0% | 100.0% | 100.0% | 0.0% | | 100.0% |
| Physiotherapists | 97 | 118 | 1.22 | 15.3% | 84.7% | 1.04 | 1.26 | 93.2% | 93.2% | 94.0% | 61.9% | 38.1% | 88.9% | 57.0% |
| Podiatrists & Chiropodists | 11 | 14 | 1.32 | 7.1% | 92.9% | 1.00 | 1.35 | 92.9% | 92.9% | 92.3% | 64.3% | 35.7% | 100.0% | 61.5% |
| Speech & Language Therapists | 100 | 115 | 1.15 | 0.9% | 99.1% | 1.00 | 1.15 | 87.0% | 87.0% | 86.8% | 80.0% | 20.0% | 100.0% | 79.8% |
| Therapy Professions | 358 | 419 | 1.17 | 7.2% | 92.8% | 1.03 | 1.18 | 90.5% | 93.3% | 90.2% | 71.8% | 28.2% | 90.0% | 70.4% |
| Audiology | 6 | 6 | 1.02 | | 100.0% | | 1.02 | 100.0% | 100.0% | 100.0% | 83.3% | 16.7% | | 83.3% |
| Clinical Engineering | 1 | 1 | 1.00 | 100.0% | | 1.00 | | 100.0% | 100.0% | | 100.0% | 0.0% | 100.0% | |
| Radiographers | 1 | 1 | 1.67 | | 100.0% | | 1.67 | 100.0% | 100.0% | 100.0% | 0.0% | 100.0% | | 0.0% |
| Health Science/ Diagnostics | 8 | 8 | 1.07 | 12.5% | 87.5% | 1.00 | 1.08 | 100.0% | 100.0% | 100.0% | 75.0% | 25.0% | 100.0% | 71.4% |
| Social Care | 287 | 345 | 1.20 | 16.2% | 83.8% | 1.14 | 1.22 | 82.3% | 89.3% | 81.0% | 49.9% | 50.1% | 50.0% | 49.8% |
| Social Workers | 81 | 94 | 1.16 | 19.1% | 80.9% | 1.07 | 1.18 | 92.6% | 88.9% | 93.4% | 69.1% | 30.9% | 77.8% | 67.1% |
| Psychologists | 83 | 97 | 1.17 | 15.5% | 84.5% | 1.03 | 1.20 | 94.8% | 93.3% | 95.1% | 68.0% | 32.0% | 86.7% | 64.6% |
| Pharmacy | 4 | 5 | 1.18 | 20.0% | 80.0% | 1.00 | 1.23 | 100.0% | 100.0% | 100.0% | 60.0% | 40.0% | 100.0% | 50.0% |
| Counsellor Therapists | 20 | 25 | 1.24 | 28.0% | 72.0% | 1.25 | 1.23 | 92.0% | 92.0% | 94.4% | 56.0% | 44.0% | 57.1% | 55.6% |
| Dental Hygienists | 5 | 6 | 1.15 | | 100.0% | | 1.15 | 83.3% | 83.3% | 83.3% | 66.7% | 33.3% | | 66.7% |
| Other Health & Social Care | 32 | 38 | 1.18 | 15.8% | 84.2% | 1.08 | 1.20 | 94.7% | 94.7% | 96.9% | 65.8% | 34.2% | 66.7% | 65.6% |
| Play Therapists/ Specialists | 1 | 1 | 1.00 | | 100.0% | | 1.00 | 100.0% | 100.0% | 100.0% | 100.0% | 0.0% | | 100.0% |
| H&SC, Other | 59 | 70 | 1.19 | 18.6% | 81.4% | 1.16 | 1.20 | 92.9% | 84.6% | 94.7% | 62.9% | 37.1% | 61.5% | 63.2% |
| Health & Social Care | 879 | 1,038 | 1.18 | 12.9% | 87.1% | 1.09 | 1.19 | 88.6% | 90.3% | 88.4% | 63.3% | 36.7% | 68.7% | 62.5% |
| Executive Management | 13 | 13 | 1.04 | 69.2% | 30.8% | 1.06 | 1.00 | 92.3% | 92.3% | 100.0% | 92.3% | 7.7% | 88.9% | 100.0% |
| Senior Management (VIII & GM) | 46 | 47 | 1.02 | 42.6% | 57.4% | 1.01 | 1.04 | 93.6% | 93.6% | 96.3% | 97.9% | 2.1% | 100.0% | 96.3% |
| Management (VIII & above) | 58 | 60 | 1.03 | 48.3% | 51.7% | 1.02 | 1.03 | 93.3% | 89.7% | 96.8% | 96.7% | 3.3% | 96.6% | 96.8% |
| Administrative/ Supervisory (V to VII) | 173 | 186 | 1.08 | 18.3% | 81.7% | 1.03 | 1.09 | 97.8% | 100.0% | 97.4% | 83.3% | 16.7% | 85.3% | 82.9% |
| Clerical (III & IV) | 431 | 501 | 1.16 | 5.8% | 94.2% | 1.14 | 1.16 | 88.2% | 86.2% | 88.3% | 66.3% | 33.7% | 72.4% | 65.9% |
| Management & Administrative | 662 | 747 | 1.13 | 12.3% | 87.7% | 1.06 | 1.14 | 91.0% | 92.4% | 90.8% | 73.0% | 27.0% | 84.8% | 71.3% |
| Catering | 40 | 44 | 1.11 | 29.5% | 70.5% | 1.02 | 1.15 | 100.0% | 100.0% | 100.0% | 65.9% | 34.1% | 84.6% | 58.1% |
| Household Services | 60 | 88 | 1.46 | 14.8% | 85.2% | 1.47 | 1.46 | 92.0% | 92.0% | 93.3% | 30.7% | 69.3% | 38.5% | 29.3% |
| Other Support | 32 | 62 | 1.94 | 69.4% | 30.6% | 1.50 | 5.81 | 59.7% | 59.7% | 10.5% | 19.4% | 80.6% | 25.6% | 5.3% |
| Portering | 13 | 13 | 1.04 | 92.3% | 7.7% | 1.04 | 1.00 | 100.0% | 100.0% | 100.0% | 100.0% | 0.0% | 100.0% | 100.0% |
| Support | 145 | 207 | 1.43 | 39.1% | 60.9% | 1.31 | 1.52 | 84.5% | 87.7% | 82.5% | 39.1% | 60.9% | 48.1% | 33.3% |

| | | | | | | | | | | | | | | |
|----------------------------------|--------------|--------------|-------------|--------------|--------------|-------------|-------------|--------------|--------------|---------------|--------------|--------------|--------------|---------------|
| Maintenance/ Technical | 73 | 76 | 1.04 | 98.7% | 1.3% | 1.04 | 1.00 | 97.4% | 97.3% | 100.0% | 93.4% | 6.6% | 93.3% | 100.0% |
| General Support | 218 | 283 | 1.30 | 55.1% | 44.9% | 1.16 | 1.52 | 88.0% | 92.3% | 82.7% | 53.7% | 46.3% | 69.9% | 33.9% |
| HCA, Nurse's Aide, etc. | 1,394 | 1,601 | 1.15 | 26.1% | 73.9% | 1.11 | 1.16 | 78.9% | 78.9% | 79.3% | 53.2% | 46.8% | 66.5% | 48.4% |
| Health & Social Care Assistants | 15 | 15 | 1.02 | 26.7% | 73.3% | 1.00 | 1.02 | 26.7% | 26.7% | 18.2% | 93.3% | 6.7% | 100.0% | 90.9% |
| Swabber (COVID-19) | 52 | 57 | 1.10 | 31.6% | 68.4% | 1.17 | 1.07 | 1.8% | 1.8% | 2.6% | 82.5% | 17.5% | 83.3% | 82.1% |
| Health Care Assistants | 1,460 | 1,673 | 1.15 | 26.3% | 73.7% | 1.11 | 1.16 | 75.8% | 74.3% | 76.3% | 54.5% | 45.5% | 67.5% | 49.9% |
| Home Help | 421 | 570 | 1.35 | 0.7% | 99.3% | 1.53 | 1.35 | 91.8% | 50.0% | 92.0% | 4.7% | 95.3% | 0.0% | 4.8% |
| Care, other | 293 | 355 | 1.21 | 34.6% | 65.4% | 1.20 | 1.22 | 86.8% | 82.1% | 89.2% | 58.3% | 41.7% | 64.2% | 55.2% |
| Patient & Client Care | 2,175 | 2,598 | 1.19 | 21.8% | 78.2% | 1.13 | 1.21 | 80.8% | 75.8% | 82.2% | 44.1% | 55.9% | 66.3% | 37.9% |

Employment by WTE, Headcount, Gender, Full-Time /Part-Time etc.: Aug 2021

| CHO 2 | WTE | Headcount | WTE: no. | % Male | % female | Male WTE: no. | Female WTE: no. | % Total Perm | % Male Perm | % Female Perm | % Total Full Time | % Total Part Time | % Male FT | % Female FT |
|-------------------------------|--------------|--------------|-------------|--------------|--------------|---------------|-----------------|--------------|--------------|---------------|-------------------|-------------------|--------------|--------------|
| Overall | 5,726 | 6,711 | 1.17 | 19.1% | 80.9% | 1.11 | 1.19 | 84.8% | 79.9% | 85.9% | 60.0% | 40.0% | 74.5% | 56.6% |
| Community Health & Wellbeing | 9 | 11 | 1.28 | 9.1% | 90.9% | 1.00 | 1.32 | 100.0% | 100.0% | 100.0% | 54.5% | 45.5% | 100.0% | 100.0% |
| Mental Health | 1,333 | 1,468 | 1.10 | 28.1% | 71.9% | 1.06 | 1.12 | 85.1% | 85.1% | 87.2% | 84.0% | 16.0% | 90.0% | 90.0% |
| Primary Care | 1,263 | 1,462 | 1.16 | 12.6% | 87.4% | 1.08 | 1.17 | 81.5% | 81.5% | 82.9% | 71.5% | 28.5% | 84.8% | 84.8% |
| HSE | 1,787 | 2,097 | 1.17 | 13.9% | 86.1% | 1.04 | 1.20 | 90.1% | 90.1% | 90.8% | 51.8% | 48.2% | 89.0% | 89.0% |
| Section 38 Voluntary Agencies | 1,334 | 1,673 | 1.25 | 23.6% | 76.4% | 1.24 | 1.26 | 80.6% | 80.6% | 80.8% | 39.1% | 60.9% | 42.5% | 42.5% |
| Social Care | 3,121 | 3,770 | 1.21 | 18.2% | 81.8% | 1.15 | 1.22 | 85.9% | 85.9% | 86.7% | 46.2% | 53.8% | 62.3% | 62.3% |

CHO 2 Skills Mix by Staff Grouping: August 2021

| Aug 2021 (Dec 2019 figure: 5,545) | WTE Dec 2016 | WTE Dec 2017 | WTE Dec 2018 | WTE Dec 2019 | WTE Dec 2019 | WTE Jul 2021 | WTE Aug 2021 |
|--|--------------|--------------|--------------|--------------|--------------|---------------|--------------|
| Overall | 5,236 | 5,377 | 5,559 | 5,545 | 5,690 | 5,738 | 5,726 |
| Consultant Medicine | 0.5% | 0.5% | 0.5% | 0.5% | 0.5% | 1.3% | 1.3% |
| Consultant Paediatrics | 0.5% | 0.5% | 0.5% | 0.5% | 0.5% | 0.2% | 0.4% |
| Consultant Psychiatry | 16.7% | 16.6% | 16.4% | 18.9% | 18.9% | 18.9% | 19.3% |
| Consultant Surgery | 0.7% | 0.6% | 0.1% | 0.1% | 0.1% | 0.1% | 0.1% |
| Consultants | 18.4% | 18.3% | 17.5% | 19.9% | 19.9% | 20.5% | 21.1% |
| Registrar | 27.0% | 29.4% | 27.8% | 27.4% | 27.4% | 34.3% | 30.7% |
| Senior Registrar | 4.2% | 4.2% | 5.5% | 8.0% | 8.0% | 7.8% | 7.3% |
| Registrars | 31.1% | 33.6% | 33.2% | 35.4% | 35.4% | 42.1% | 38.0% |
| Senior House Officer | 19.3% | 18.6% | 20.0% | 16.9% | 16.9% | 14.6% | 17.4% |
| SHO/ Interns | 19.3% | 18.6% | 20.0% | 16.9% | 16.9% | 14.6% | 17.4% |
| Dentists | 11.2% | 10.8% | 11.0% | 10.0% | 10.0% | 9.0% | 9.4% |
| Other Medical | 19.9% | 18.8% | 18.3% | 17.7% | 17.7% | 13.9% | 14.0% |
| Medical/ Dental, other | 31.2% | 29.6% | 29.3% | 27.7% | 27.7% | 22.8% | 23.4% |
| Medical & Dental | 3.7% | 3.8% | 3.8% | 3.8% | 3.8% | 100.0% | 4.1% |
| Clinical Nurse/ Midwife Manager | 15.7% | 15.7% | 16.5% | 16.0% | 16.0% | 16.7% | 16.2% |
| Director Nursing/Midwifery, Assistant | 2.5% | 2.7% | 2.6% | 3.0% | 3.0% | 2.7% | 2.6% |
| Director of Nursing/Midwifery | 1.4% | 1.4% | 1.4% | 1.5% | 1.5% | 1.4% | 1.5% |
| Nurse/ Midwife Manager | 19.5% | 19.7% | 20.5% | 20.6% | 20.6% | 20.8% | 20.4% |
| Advanced Nurse/ Midwife Practitioner | 0.2% | 0.3% | 0.4% | 0.6% | 0.6% | 0.7% | 0.8% |
| Clinical Nurse/ Midwife Specialist | 4.3% | 5.1% | 5.1% | 5.6% | 5.6% | 6.2% | 6.3% |
| Nurse/ Midwife Specialist & AN/MP | 4.5% | 5.3% | 5.5% | 6.2% | 6.2% | 6.9% | 7.1% |
| Staff Midwives | 0.0% | 0.1% | | | | | |
| Staff Nurse [Intellectual Disability] | 8.5% | 6.5% | 6.4% | 6.0% | 6.0% | 7.1% | 7.3% |
| Staff Nurse [Psychiatric] | 25.4% | 24.3% | 24.1% | 24.7% | 24.7% | 24.3% | 24.0% |
| Staff Nurses [General/ Children's] | 29.7% | 30.5% | 29.6% | 29.1% | 29.1% | 27.6% | 27.8% |
| Staff Nurse/ Staff Midwife | 63.6% | 61.4% | 60.1% | 59.8% | 59.8% | 59.0% | 59.2% |
| Public Health Nurse | 11.7% | 11.4% | 12.2% | 12.8% | 12.8% | 11.9% | 12.0% |
| Pre-registration Nurse/ Midwife Intern | | 0.9% | | 0.0% | 0.0% | 1.2% | 1.3% |
| Pre-registration Nurse Intern (COVID-19) | | | | | | 0.0% | 0.0% |
| Post-registration Nurse/ Midwife Student | 0.7% | 1.1% | 0.8% | 0.3% | 0.3% | | |
| Nursing/ Midwifery awaiting registration | | | 0.7% | 0.3% | 0.3% | | |
| Nursing/ Midwifery Student | 0.7% | 1.9% | 1.6% | 0.6% | 0.6% | 1.3% | 1.3% |
| Nursing/ Midwifery other | | 0.1% | 0.2% | 0.1% | 0.1% | 0.1% | 0.1% |
| Nursing & Midwifery | 28.8% | 28.3% | 27.6% | 27.1% | 27.1% | 100.0% | 27.2% |
| Dietitians | 2.4% | 2.6% | 2.5% | 2.4% | 2.4% | 2.9% | 2.9% |
| Occupational Therapists | 15.1% | 14.7% | 14.6% | 14.4% | 14.4% | 14.4% | 14.2% |
| Orthoptists | 0.2% | 0.2% | 0.2% | 0.2% | 0.2% | 0.1% | 0.1% |
| Physiotherapists | 10.7% | 11.7% | 11.0% | 10.9% | 10.9% | 11.0% | 11.0% |
| Podiatrists & Chiropodists | 1.2% | 1.0% | 0.9% | 0.9% | 0.9% | 1.2% | 1.2% |
| Speech & Language Therapists | 12.3% | 12.4% | 12.8% | 12.9% | 12.9% | 11.5% | 11.3% |
| Therapy Professions | 41.8% | 42.6% | 41.9% | 41.7% | 41.7% | 41.2% | 40.7% |
| Audiology | 0.6% | 0.8% | 0.7% | 0.6% | 0.6% | 0.6% | 0.7% |
| Clinical Engineering | 0.1% | | | 0.1% | 0.1% | 0.1% | 0.1% |
| Physicists | 0.1% | | | | | | |
| Radiographers | 0.1% | 0.1% | 0.1% | 0.1% | 0.1% | 0.1% | 0.1% |
| Health Science/ Diagnostics | 1.0% | 0.8% | 0.8% | 0.8% | 0.8% | 0.8% | 0.9% |
| Social Care | 26.3% | 27.2% | 28.6% | 30.2% | 30.2% | 32.3% | 32.6% |
| Social Workers | 10.3% | 10.1% | 10.1% | 10.3% | 10.3% | 9.0% | 9.2% |
| Psychologists | 11.4% | 10.7% | 10.3% | 9.1% | 9.1% | 9.4% | 9.4% |
| Pharmacy | 0.7% | 0.6% | 0.5% | 0.6% | 0.6% | 0.5% | 0.5% |
| Counsellor Therapists | 1.4% | 1.4% | 1.5% | 1.4% | 1.4% | 2.3% | 2.3% |

| Aug 2021 (Dec 2019 figure: 5,545) | WTE Dec 2016 | WTE Dec 2017 | WTE Dec 2018 | WTE Dec 2019 | WTE Dec 2019 | WTE Jul 2021 | WTE Aug 2021 |
|---|--------------|--------------|--------------|--------------|--------------|---------------|--------------|
| Overall | 5,236 | 5,377 | 5,559 | 5,545 | 5,690 | 5,738 | 5,726 |
| Dental Hygienists | 0.5% | 0.3% | 0.5% | 0.6% | 0.6% | 0.6% | 0.6% |
| HSCP Trainees/ Students | 0.3% | 0.1% | | | | | |
| Other Health & Social Care | 5.8% | 5.6% | 5.2% | 4.9% | 4.9% | 3.7% | 3.7% |
| Play Therapists/ Specialists | 0.5% | 0.5% | 0.4% | 0.4% | 0.4% | 0.1% | 0.1% |
| H&SC, Other | 8.5% | 7.9% | 7.7% | 7.3% | 7.3% | 6.7% | 6.7% |
| Health & Social Care Professionals | 14.0% | 14.0% | 14.6% | 14.6% | 14.6% | 100.0% | 15.4% |
| Executive Management | 1.7% | 1.8% | 1.7% | 1.6% | 1.6% | 2.0% | 1.9% |
| Senior Management (VIII & GM) | 6.5% | 6.6% | 7.0% | 6.9% | 6.9% | 7.1% | 6.9% |
| Management (VIII & above) | 8.2% | 8.5% | 8.7% | 8.5% | 8.5% | 9.2% | 8.8% |
| Middle Management (V-VII) | 17.2% | 18.3% | 18.5% | 20.2% | 20.2% | 25.9% | 26.1% |
| Other Administrative | | | | 0.2% | 0.2% | | |
| Administrative/ Supervisory (V to VII) | 17.2% | 18.3% | 18.5% | 20.3% | 20.3% | 25.9% | 26.1% |
| Clerical (III & IV) | 74.6% | 73.2% | 72.8% | 71.2% | 71.2% | 64.9% | 65.1% |
| Management & Administrative | 11.3% | 11.9% | 12.0% | 11.9% | 11.9% | 100.0% | 11.6% |
| Catering | 15.6% | 14.8% | 16.9% | 17.6% | 17.6% | 18.2% | 18.2% |
| Household Services | 31.9% | 30.7% | 28.8% | 27.9% | 27.9% | 26.2% | 27.7% |
| Other Support | 17.2% | 17.6% | 17.4% | 17.4% | 17.4% | 16.9% | 14.7% |
| Portering | 6.4% | 7.2% | 7.1% | 6.9% | 6.9% | 5.8% | 5.7% |
| Support | 71.0% | 70.3% | 70.2% | 69.9% | 69.9% | 67.0% | 66.3% |
| Maintenance/ Technical | 29.0% | 29.7% | 29.8% | 30.1% | 30.1% | 33.0% | 33.7% |
| General Support | 4.9% | 4.5% | 4.4% | 4.1% | 4.1% | 100.0% | 3.8% |
| HCA, Nurse's Aide, etc. | 63.7% | 64.2% | 63.5% | 63.3% | 63.3% | 64.4% | 64.1% |
| Health & Social Care Assistants | 0.3% | 0.5% | 0.9% | 0.6% | 0.6% | 0.7% | 0.7% |
| Swabber (COVID-19) | | | | | | 2.2% | 2.4% |
| Health Care Assistants | 64.0% | 64.7% | 64.5% | 64.0% | 64.0% | 67.2% | 67.2% |
| Home Help | 23.0% | 22.3% | 23.0% | 23.4% | 23.4% | 19.2% | 19.4% |
| Care, other | 13.0% | 13.0% | 12.5% | 12.7% | 12.7% | 13.6% | 13.5% |
| Patient & Client Care | 37.4% | 37.4% | 37.7% | 38.5% | 38.5% | 100.0% | 38.0% |
| Total | 100 % | 100 % | 100 % | 100 % | 100% | 100 % | 100 % |

CHO 2 Skills Mix by Care Group: August 2021

| Aug 2021 (Dec 2019 figure: 1,308) | WTE Dec 2016 | WTE Dec 2017 | WTE Dec 2018 | WTE Dec 2019 | WTE Dec 2019 | WTE Jul 2021 | WTE Aug 2021 |
|---|--------------|--------------|--------------|--------------|--------------|--------------|--------------|
| Mental Health | 1,283 | 1,307 | 1,338 | 1,308 | 1,340 | 1,344 | 1,333 |
| Consultants | 33.8% | 31.8% | 30.6% | 35.3% | 35.3% | 37.1% | 37.3% |
| Registrar | 18.0% | 19.5% | 17.9% | 16.0% | 16.0% | 17.7% | 14.9% |
| Senior Registrar | 9.0% | 8.5% | 10.9% | 15.0% | 15.0% | 16.1% | 14.9% |
| Registrars | 27.0% | 28.0% | 28.7% | 31.1% | 31.1% | 33.8% | 29.8% |
| Senior House Officer | 36.4% | 37.7% | 39.7% | 32.7% | 32.7% | 29.0% | 33.0% |
| SHO/ Interns | 36.4% | 37.7% | 39.7% | 32.7% | 32.7% | 29.0% | 33.0% |
| Medical/ Dental, other | 2.8% | 2.5% | 0.9% | 0.9% | 0.9% | | |
| Medical & Dental | 6.9% | 7.6% | 7.9% | 8.1% | 8.1% | 8.5% | 8.5% |
| Clinical Nurse/ Midwife Manager | 22.1% | 20.7% | 23.0% | 21.5% | 21.5% | 20.9% | 20.8% |
| Director Nursing/Midwifery, Assistant | 2.8% | 3.3% | 3.1% | 3.3% | 3.3% | 2.6% | 2.6% |
| Director of Nursing/Midwifery | 0.5% | 0.5% | 0.3% | 0.5% | 0.5% | 0.5% | 0.5% |
| Nurse/ Midwife Manager | 25.5% | 24.6% | 26.4% | 25.3% | 25.3% | 24.0% | 23.9% |
| Advanced Nurse/ Midwife Practitioner | 0.5% | 0.5% | 0.9% | 1.0% | 1.0% | 1.2% | 1.3% |
| Clinical Nurse/ Midwife Specialist | 7.4% | 9.9% | 9.4% | 10.6% | 10.6% | 11.0% | 11.2% |
| Nurse/ Midwife Specialist & AN/MP | 7.9% | 10.4% | 10.2% | 11.7% | 11.7% | 12.2% | 12.5% |
| Staff Nurse [Psychiatric] | 64.6% | 61.0% | 60.0% | 61.0% | 61.0% | 59.3% | 58.8% |
| Staff Nurses [General/ Children's] | 2.0% | 1.3% | 0.9% | 0.9% | 0.9% | 1.0% | 1.0% |
| Staff Nurse/ Staff Midwife | 66.6% | 62.3% | 61.0% | 61.9% | 61.9% | 60.2% | 59.9% |
| Pre-registration Nurse/ Midwife Intern | | 2.3% | | 0.0% | 0.0% | 3.2% | 3.3% |
| Pre-registration Nurse Intern (COVID-19) | | | | | | 0.1% | 0.1% |
| Nursing/ Midwifery awaiting registration | | | 1.9% | 0.8% | 0.8% | | |
| Nursing/ Midwifery Student | | 2.3% | 1.9% | 0.8% | 0.8% | 3.3% | 3.4% |
| Nursing/ Midwifery other | | 0.4% | 0.5% | 0.3% | 0.3% | 0.3% | 0.3% |
| Nursing & Midwifery | 44.0% | 43.5% | 43.8% | 44.1% | 44.1% | 45.9% | 45.9% |
| Dietitians | 2.9% | 3.6% | 2.4% | 2.1% | 2.1% | 4.7% | 4.2% |
| Occupational Therapists | 24.4% | 26.3% | 26.4% | 26.0% | 26.0% | 25.6% | 25.6% |
| Speech & Language Therapists | 5.3% | 5.5% | 5.2% | 4.3% | 4.3% | 6.0% | 4.8% |
| Therapy Professions | 32.6% | 35.4% | 33.9% | 32.4% | 32.4% | 36.3% | 34.5% |
| Social Care | 12.2% | 9.7% | 9.9% | 10.5% | 10.5% | 9.5% | 9.6% |
| Social Workers | 26.9% | 26.2% | 27.7% | 29.1% | 29.1% | 25.4% | 26.1% |
| Psychologists | 25.0% | 25.3% | 24.6% | 24.0% | 24.0% | 25.9% | 26.7% |
| Pharmacy | 2.6% | 1.9% | 1.8% | 1.8% | 1.8% | 1.1% | 1.2% |
| Counsellor Therapists | | | 1.4% | 1.4% | 1.4% | 1.2% | 1.2% |
| Other Health & Social Care | | 0.7% | | | | | |
| Play Therapists/ Specialists | 0.7% | 0.7% | 0.7% | 0.7% | 0.7% | 0.7% | 0.7% |
| H&SC, Other | 0.7% | 1.4% | 2.1% | 2.1% | 2.1% | 1.8% | 1.9% |
| Health & Social Care Professionals | 10.7% | 10.6% | 10.9% | 10.7% | 10.7% | 11.3% | 11.3% |
| Management (VIII & above) | 3.1% | 2.2% | 2.8% | 3.6% | 3.6% | 1.6% | 2.3% |
| Administrative/ Supervisory (V to VII) | 15.9% | 17.6% | 16.5% | 17.1% | 17.1% | 21.1% | 21.0% |
| Clerical (III & IV) | 81.0% | 80.2% | 80.7% | 79.2% | 79.2% | 77.3% | 76.6% |
| Management & Administrative | 10.2% | 10.4% | 10.5% | 10.5% | 10.5% | 9.2% | 9.2% |
| Support | 56.6% | 53.4% | 52.7% | 57.3% | 57.3% | 47.5% | 47.9% |
| Maintenance/ Technical | 43.4% | 46.6% | 47.3% | 42.7% | 42.7% | 52.5% | 52.1% |
| General Support | 6.3% | 5.6% | 5.2% | 4.8% | 4.8% | 4.8% | 4.8% |
| Health Care Assistants | 76.3% | 74.5% | 75.0% | 75.6% | 75.6% | 76.0% | 76.2% |
| Care, other | 23.7% | 25.5% | 25.0% | 24.4% | 24.4% | 24.0% | 23.8% |
| Patient & Client Care | 21.9% | 22.3% | 21.7% | 21.7% | 21.7% | 20.3% | 20.3% |

| Aug 2021 (Dec 2019 figure: 1,308) | WTE Dec 2016 | WTE Dec 2017 | WTE Dec 2018 | WTE Dec 2019 | WTE Dec 2019 | WTE Jul 2021 | WTE Aug 2021 |
|-----------------------------------|--------------|--------------|--------------|--------------|--------------|--------------|--------------|
| Mental Health | 1,283 | 1,307 | 1,338 | 1,308 | 1,340 | 1,344 | 1,333 |
| Total | 100 % | 100 % | 100 % | 100 % | 100 % | 100 % | 100 % |

| Aug 2021 (Dec 2019 figure: 1,134) | WTE Dec 2016 | WTE Dec 2017 | WTE Dec 2018 | WTE Dec 2019 | WTE Dec 2019 | WTE Jul 2021 | WTE Aug 2021 |
|---|--------------|--------------|--------------|--------------|--------------|--------------|--------------|
| Primary Care | 1,238 | 1,090 | 1,160 | 1,134 | 1,235 | 1,271 | 1,263 |
| Consultant Medicine | 1.2% | 1.2% | 1.1% | 1.1% | 1.1% | 2.9% | 2.9% |
| Consultant Surgery | 1.5% | 1.5% | 0.3% | 0.3% | 0.3% | 0.3% | 0.2% |
| Consultants | 2.7% | 2.7% | 1.5% | 1.4% | 1.4% | 3.1% | 3.2% |
| Registrars | 39.1% | 44.7% | 43.2% | 45.6% | 45.6% | 55.7% | 51.8% |
| SHO/ Interns | 5.4% | | | 1.1% | 1.1% | 1.3% | 2.9% |
| Dentists | 25.0% | 25.7% | 26.7% | 24.1% | 24.1% | 20.0% | 21.6% |
| Other Medical | 27.8% | 26.9% | 28.6% | 27.8% | 27.8% | 19.9% | 20.6% |
| Medical/ Dental, other | 52.8% | 52.6% | 55.3% | 51.9% | 51.9% | 39.8% | 42.2% |
| Medical & Dental | 7.0% | 7.8% | 7.5% | 7.8% | 7.8% | 8.0% | 8.0% |
| Clinical Nurse/ Midwife Manager | 1.7% | 2.3% | 2.0% | 1.7% | 1.7% | 2.2% | 2.0% |
| Director Nursing/Midwifery, Assistant | 5.3% | 4.9% | 5.1% | 6.4% | 6.4% | 5.7% | 5.3% |
| Director of Nursing/Midwifery | 0.7% | 1.0% | 0.9% | 0.6% | 0.6% | 0.9% | 0.9% |
| Nurse/ Midwife Manager | 7.7% | 8.2% | 8.0% | 8.7% | 8.7% | 8.8% | 8.3% |
| Nurse/ Midwife Specialist & AN/MP | 5.2% | 4.9% | 5.7% | 5.5% | 5.5% | 7.4% | 7.8% |
| Staff Nurse/ Staff Midwife | 24.0% | 23.9% | 24.4% | 23.6% | 23.6% | 26.8% | 26.2% |
| Public Health Nurse | 59.4% | 57.7% | 57.8% | 60.9% | 60.9% | 57.0% | 57.7% |
| Nursing/ Midwifery Student | 3.7% | 5.3% | 4.0% | 1.3% | 1.3% | | |
| Nursing & Midwifery | 23.9% | 27.6% | 27.7% | 27.7% | 27.7% | 25.4% | 25.4% |
| Dietitians | 3.3% | 4.0% | 5.2% | 4.9% | 4.9% | 4.8% | 4.9% |
| Occupational Therapists | 19.1% | 18.6% | 18.8% | 19.0% | 19.0% | 19.5% | 19.3% |
| Orthoptists | 0.5% | 0.5% | 0.5% | 0.5% | 0.5% | 0.3% | 0.3% |
| Physiotherapists | 18.1% | 21.1% | 20.0% | 20.0% | 20.0% | 20.9% | 21.3% |
| Podiatrists & Chiropodists | 2.8% | 2.5% | 2.2% | 2.2% | 2.2% | 3.0% | 3.1% |
| Speech & Language Therapists | 22.6% | 22.9% | 24.4% | 25.7% | 25.7% | 23.7% | 23.5% |
| Therapy Professions | 66.4% | 69.7% | 71.1% | 72.4% | 72.4% | 72.2% | 72.5% |
| Audiology | 1.5% | 1.9% | 1.8% | 1.6% | 1.6% | 1.6% | 1.7% |
| Clinical Engineering | 0.3% | | | 0.3% | 0.3% | 0.3% | 0.3% |
| Physicists | 0.3% | | | | | | |
| Health Science/ Diagnostics | 2.2% | 1.9% | 1.8% | 1.9% | 1.9% | 1.9% | 2.0% |
| Social Care | 3.7% | 3.5% | 3.0% | 2.7% | 2.7% | 2.2% | 2.2% |
| Social Workers | 3.0% | 2.3% | 2.1% | 2.2% | 2.2% | 1.3% | 1.3% |
| Psychologists | 10.0% | 8.8% | 8.6% | 7.7% | 7.7% | 8.3% | 8.2% |
| Pharmacy | 0.3% | 0.3% | 0.3% | 0.3% | 0.3% | 0.6% | 0.6% |
| Counsellor Therapists | 3.0% | 2.9% | 2.4% | 1.9% | 1.9% | 4.0% | 3.7% |
| Dental Hygienists | 1.1% | 0.8% | 1.4% | 1.4% | 1.4% | 1.5% | 1.5% |
| Other Health & Social Care | 10.2% | 9.8% | 9.2% | 9.5% | 9.5% | 7.9% | 8.0% |
| H&SC, Other | 14.3% | 13.5% | 13.0% | 12.8% | 12.8% | 13.4% | 13.2% |
| Health & Social Care Professionals | 24.2% | 27.8% | 27.8% | 27.6% | 27.6% | 27.2% | 27.2% |
| Executive Management | 2.7% | 3.1% | 2.8% | 2.5% | 2.5% | 3.3% | 3.0% |
| Senior Management (VIII & GM) | 7.0% | 8.4% | 8.4% | 7.4% | 7.4% | 7.9% | 7.3% |
| Management (VIII & above) | 9.7% | 11.5% | 11.2% | 9.9% | 9.9% | 11.2% | 10.3% |
| Administrative/ Supervisory (V to VII) | 13.6% | 14.3% | 16.1% | 18.6% | 18.6% | 23.3% | 23.4% |
| Clerical (III & IV) | 76.7% | 74.2% | 72.7% | 71.5% | 71.5% | 65.5% | 66.3% |
| Management & Administrative | 23.6% | 28.8% | 28.5% | 29.3% | 29.3% | 27.4% | 27.4% |
| Support | 70.6% | 70.8% | 74.0% | 69.9% | 69.9% | 67.6% | 66.4% |

| Aug 2021 (Dec 2019 figure: 1,134) | WTE Dec 2016 | WTE Dec 2017 | WTE Dec 2018 | WTE Dec 2019 | WTE Dec 2019 | WTE Jul 2021 | WTE Aug 2021 |
|-----------------------------------|--------------|--------------|--------------|--------------|--------------|--------------|--------------|
| Primary Care | 1,238 | 1,090 | 1,160 | 1,134 | 1,235 | 1,271 | 1,263 |
| Maintenance/ Technical | 29.4% | 29.2% | 26.0% | 30.1% | 30.1% | 32.4% | 33.6% |
| General Support | 2.5% | 2.8% | 3.0% | 2.6% | 2.6% | 2.4% | 2.4% |
| HCA, Nurse's Aide, etc. | 2.4% | 8.1% | 6.9% | 7.7% | 7.7% | 2.9% | 2.5% |
| Health & Social Care Assistants | 0.4% | 7.1% | 23.2% | 17.2% | 17.2% | 9.5% | 9.1% |
| Swabber (COVID-19) | | | | | | 41.1% | 42.7% |
| Health Care Assistants | 2.9% | 15.2% | 30.0% | 25.0% | 25.0% | 53.5% | 54.3% |
| Home Help | 72.5% | | | | | | |
| Care, other | 24.7% | 84.8% | 70.0% | 75.0% | 75.0% | 46.5% | 45.7% |
| Patient & Client Care | 18.8% | 5.2% | 5.6% | 5.0% | 5.0% | 9.6% | 9.6% |
| Total | 100 % | 100 % | 100 % | 100 % | 100 % | 100 % | 100 % |

| Aug 2021 (Dec 2019 figure: 1,497) | WTE Dec 2016 | WTE Dec 2017 | WTE Dec 2018 | WTE Dec 2019 | WTE Dec 2019 | WTE Jul 2021 | WTE Aug 2021 |
|---|--------------|--------------|--------------|--------------|--------------|--------------|--------------|
| Disabilities | 1,338 | 1,395 | 1,420 | 1,497 | 1,516 | 1,555 | 1,556 |
| Consultant Paediatrics | 16.7% | 16.7% | 16.4% | 15.6% | 15.6% | 8.5% | 15.6% |
| Consultant Psychiatry | 33.3% | 33.3% | 34.3% | 37.5% | 37.5% | 40.7% | 37.5% |
| Consultants | 50.0% | 50.0% | 50.7% | 53.1% | 53.1% | 49.2% | 53.1% |
| Registrars | 33.3% | 33.3% | 32.8% | 31.3% | 31.3% | 33.9% | 31.3% |
| Medical/ Dental, other | 16.7% | 16.7% | 16.4% | 15.6% | 15.6% | 16.9% | 15.6% |
| Medical & Dental | 0.4% | 0.4% | 0.4% | 0.4% | 0.4% | 0.4% | 0.4% |
| Clinical Nurse/ Midwife Manager | 24.3% | 26.1% | 27.5% | 30.0% | 30.0% | 31.4% | 29.6% |
| Director Nursing/Midwifery, Assistant | 0.7% | 0.4% | | | | | |
| Director of Nursing/Midwifery | 1.1% | 0.7% | 0.7% | 1.1% | 1.1% | 1.1% | 1.2% |
| Nurse/ Midwife Manager | 26.0% | 27.1% | 28.2% | 31.1% | 31.1% | 32.5% | 30.8% |
| Advanced Nurse/ Midwife Practitioner | | 0.4% | 0.4% | 0.4% | 0.4% | 0.4% | 0.4% |
| Clinical Nurse/ Midwife Specialist | 2.6% | 2.3% | 2.0% | 2.0% | 2.0% | 2.2% | 2.2% |
| Nurse/ Midwife Specialist & AN/MP | 2.6% | 2.7% | 2.3% | 2.4% | 2.4% | 2.6% | 2.6% |
| Staff Nurse [Intellectual Disability] | 46.3% | 36.3% | 38.9% | 36.1% | 36.1% | 45.3% | 47.3% |
| Staff Nurse [Psychiatric] | 6.2% | 8.6% | 7.0% | 7.7% | 7.7% | 6.4% | 6.2% |
| Staff Nurses [General/ Children's] | 19.0% | 25.3% | 23.5% | 22.7% | 22.7% | 13.2% | 13.0% |
| Staff Nurse/ Staff Midwife | 71.4% | 70.2% | 69.4% | 66.5% | 66.5% | 64.9% | 66.6% |
| Pre-registration Nurse Intern (COVID-19) | | | | | | | |
| Nursing/ Midwifery Student | | | | | | | |
| Nursing & Midwifery | 20.6% | 19.5% | 17.8% | 16.6% | 16.6% | 15.5% | 15.5% |
| Dietitians | 0.6% | | | 0.2% | 0.2% | 0.6% | 0.6% |
| Occupational Therapists | 3.8% | 3.7% | 3.1% | 3.6% | 3.6% | 3.0% | 2.9% |
| Physiotherapists | 3.8% | 4.0% | 3.6% | 4.0% | 4.0% | 3.1% | 3.2% |
| Speech & Language Therapists | 5.3% | 5.4% | 5.0% | 5.1% | 5.1% | 2.7% | 3.1% |
| Therapy Professions | 13.6% | 13.1% | 11.7% | 12.9% | 12.9% | 9.4% | 9.7% |
| Social Care | 63.8% | 65.0% | 67.9% | 69.1% | 69.1% | 75.8% | 75.5% |
| Social Workers | 8.5% | 8.8% | 8.0% | 8.1% | 8.1% | 7.5% | 7.6% |
| Psychologists | 7.3% | 7.0% | 6.5% | 4.9% | 4.9% | 4.4% | 4.2% |
| Counsellor Therapists | 0.4% | 0.7% | 0.8% | 1.0% | 1.0% | 1.4% | 1.6% |
| HSCP Trainees/ Students | 0.9% | 0.2% | | | | | |
| Other Health & Social Care | 4.7% | 4.3% | 4.2% | 3.2% | 3.2% | 1.5% | 1.4% |
| Play Therapists/ Specialists | 0.8% | 0.9% | 0.8% | 0.8% | 0.8% | | |
| H&SC, Other | 6.7% | 6.1% | 5.8% | 4.9% | 4.9% | 2.9% | 3.0% |
| Health & Social Care Professionals | 19.3% | 20.1% | 21.6% | 21.4% | 21.4% | 22.5% | 22.5% |
| Executive Management | 2.0% | 1.9% | 1.9% | 1.9% | 1.9% | 1.8% | 1.8% |
| Senior Management (VIII & GM) | 11.7% | 11.1% | 12.5% | 13.1% | 13.1% | 13.4% | 13.2% |
| Management (VIII & above) | 13.7% | 13.0% | 14.4% | 15.0% | 15.0% | 15.2% | 15.0% |

| Aug 2021 (Dec 2019 figure: 1,497) | WTE Dec 2016 | WTE Dec 2017 | WTE Dec 2018 | WTE Dec 2019 | WTE Dec 2019 | WTE Jul 2021 | WTE Aug 2021 |
|--|--------------|--------------|--------------|--------------|--------------|--------------|--------------|
| Disabilities | 1,338 | 1,395 | 1,420 | 1,497 | 1,516 | 1,555 | 1,556 |
| Administrative/ Supervisory (V to VII) | 34.7% | 38.6% | 36.6% | 38.2% | 38.2% | 42.8% | 42.1% |
| Clerical (III & IV) | 51.7% | 48.4% | 49.1% | 46.8% | 46.8% | 42.0% | 42.9% |
| Management & Administrative | 7.6% | 7.7% | 7.4% | 7.1% | 7.1% | 7.2% | 7.2% |
| Support | 77.5% | 78.2% | 79.1% | 77.5% | 77.5% | 76.7% | 74.2% |
| Maintenance/ Technical | 22.5% | 21.8% | 20.9% | 22.5% | 22.5% | 23.3% | 25.8% |
| General Support | 4.3% | 4.3% | 4.0% | 3.9% | 3.9% | 3.2% | 3.2% |
| Health Care Assistants | 81.9% | 82.7% | 82.5% | 82.3% | 82.3% | 83.4% | 83.7% |
| Care, other | 18.1% | 17.3% | 17.5% | 17.7% | 17.7% | 16.6% | 16.3% |
| Patient & Client Care | 47.8% | 48.0% | 48.8% | 50.6% | 50.6% | 51.1% | 51.1% |
| Total | 100 % | 100 % | 100 % | 100 % | 100 % | 100 % | 100 % |

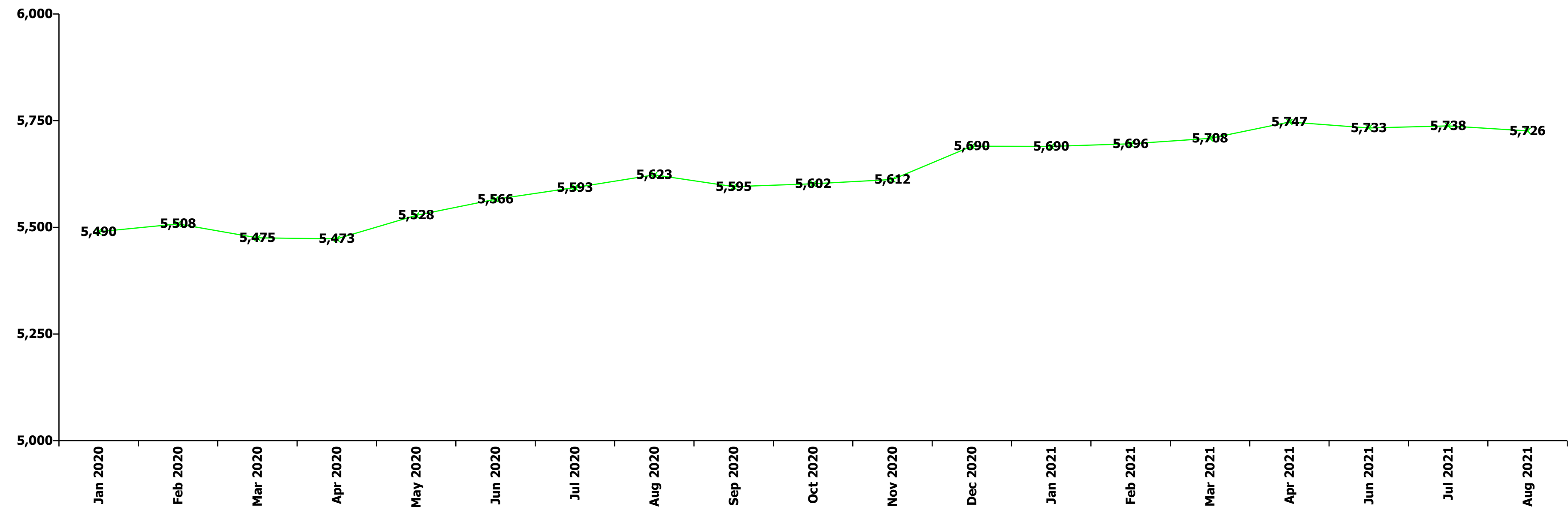
| Aug 2021 (Dec 2019 figure: 1,606) | WTE Dec 2016 | WTE Dec 2017 | WTE Dec 2018 | WTE Dec 2019 | WTE Dec 2019 | WTE Jul 2021 | WTE Aug 2021 |
|---|--------------|--------------|--------------|--------------|--------------|--------------|--------------|
| Older People | 1,376 | 1,586 | 1,641 | 1,606 | 1,590 | 1,559 | 1,565 |
| Medical/ Dental, other | 100.0% | 100.0% | 100.0% | 100.0% | 100.0% | 100.0% | 100.0% |
| Medical & Dental | 0.8% | 0.7% | 0.7% | 0.7% | 0.7% | 0.7% | 0.7% |
| Clinical Nurse/ Midwife Manager | 10.7% | 11.4% | 11.4% | 10.2% | 10.2% | 12.7% | 12.2% |
| Director Nursing/Midwifery, Assistant | 1.0% | 1.5% | 1.3% | 1.6% | 1.6% | 2.0% | 2.0% |
| Director of Nursing/Midwifery | 3.5% | 3.4% | 3.8% | 4.3% | 4.3% | 3.6% | 4.0% |
| Nurse/ Midwife Manager | 15.2% | 16.3% | 16.5% | 16.1% | 16.1% | 18.4% | 18.2% |
| Nurse/ Midwife Specialist & AN/MP | | | | 0.6% | 0.6% | 0.5% | 0.5% |
| Staff Midwives | 0.1% | 0.2% | | | | | |
| Staff Nurse [Intellectual Disability] | | 0.2% | | | | | |
| Staff Nurses [General/ Children's] | 84.5% | 83.0% | 83.2% | 83.2% | 83.2% | 80.8% | 81.0% |
| Staff Nurse/ Staff Midwife | 84.6% | 83.4% | 83.2% | 83.2% | 83.2% | 80.8% | 81.0% |
| Public Health Nurse | 0.2% | 0.2% | 0.3% | 0.2% | 0.2% | 0.3% | 0.3% |
| Nursing & Midwifery | 27.0% | 24.1% | 22.8% | 22.6% | 22.6% | 24.6% | 24.6% |
| Dietitians | 6.6% | 6.1% | | 1.3% | 1.3% | 0.7% | |
| Occupational Therapists | 26.3% | 21.9% | 26.6% | 25.5% | 25.5% | 26.7% | 28.8% |
| Physiotherapists | 38.2% | 38.5% | 38.4% | 36.1% | 36.1% | 37.5% | 35.0% |
| Speech & Language Therapists | 2.8% | 5.7% | 5.5% | 5.3% | 5.3% | 2.7% | 2.9% |
| Therapy Professions | 74.0% | 72.2% | 70.4% | 68.2% | 68.2% | 67.5% | 66.7% |
| Radiographers | 1.7% | 1.7% | 1.7% | 1.6% | 1.6% | 1.6% | 1.7% |
| Health Science/ Diagnostics | 1.7% | 1.7% | 1.7% | 1.6% | 1.6% | 1.6% | 1.7% |
| Social Workers | 21.3% | 24.6% | 26.5% | 27.5% | 27.5% | 28.3% | 30.2% |
| Pharmacy | 1.4% | 1.5% | 1.4% | 2.7% | 2.7% | 2.6% | 1.4% |
| Play Therapists/ Specialists | 1.6% | 0.0% | 0.0% | 0.0% | 0.0% | | |
| H&SC, Other | 1.6% | | 0.0% | 0.0% | 0.0% | | |
| Health & Social Care Professionals | 2.6% | 2.2% | 2.2% | 2.3% | 2.3% | 2.2% | 2.2% |
| Management (VIII & above) | 2.9% | 1.2% | 2.2% | 2.5% | 2.5% | 2.8% | 2.7% |
| Administrative/ Supervisory (V to VII) | 9.0% | 8.3% | 9.4% | 9.4% | 9.4% | 14.8% | 18.1% |
| Clerical (III & IV) | 88.0% | 90.5% | 88.4% | 88.1% | 88.1% | 82.4% | 79.2% |
| Management & Administrative | 5.0% | 5.2% | 5.6% | 5.1% | 5.1% | 4.7% | 4.7% |
| Support | 80.3% | 79.5% | 77.3% | 74.7% | 74.7% | 76.5% | 76.6% |
| Maintenance/ Technical | 19.7% | 20.5% | 22.7% | 25.3% | 25.3% | 23.5% | 23.4% |
| General Support | 6.3% | 5.1% | 5.0% | 4.7% | 4.7% | 4.8% | 4.8% |
| HCA, Nurse's Aide, etc. | 62.8% | 52.2% | 51.4% | 49.3% | 49.3% | 53.2% | 52.7% |
| Health & Social Care Assistants | 0.5% | 0.4% | 0.4% | 0.3% | 0.3% | 0.3% | 0.3% |

| Aug 2021 (Dec 2019 figure: 1,606) | WTE Dec 2016 | WTE Dec 2017 | WTE Dec 2018 | WTE Dec 2019 | WTE Dec 2019 | WTE Jul 2021 | WTE Aug 2021 |
|-----------------------------------|--------------|--------------|--------------|--------------|--------------|--------------|--------------|
| Older People | 1,376 | 1,586 | 1,641 | 1,606 | 1,590 | 1,559 | 1,565 |
| Health Care Assistants | 63.3% | 52.6% | 51.8% | 49.6% | 49.6% | 53.5% | 53.0% |
| Home Help | 34.9% | 45.0% | 46.0% | 48.1% | 48.1% | 42.2% | 42.7% |
| Care, other | 1.8% | 2.4% | 2.3% | 2.4% | 2.4% | 4.3% | 4.3% |
| Patient & Client Care | 58.4% | 62.8% | 63.7% | 64.7% | 64.7% | 63.0% | 63.0% |
| Total | 100 % | 100 % | 100 % | 100 % | 100 % | 100 % | 100 % |

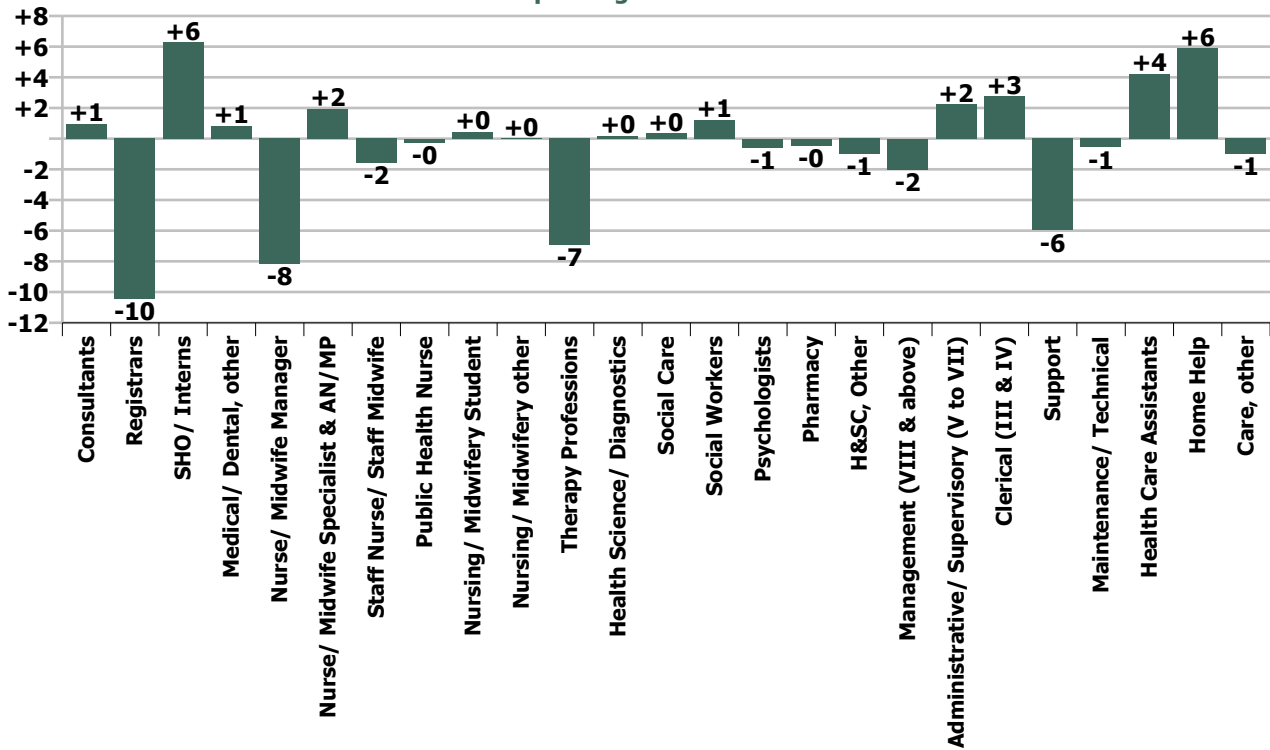
Summary Staff Movement: August 2021

| Month-on-month Summary | | | | | | | | | | | | | | | | | | | | | | | | | | | | |
|------------------------------|-----------------------|---------|-------------|------------|--------------|------------------------|------------------|------------------------|-----------------------------------|----------------------------|---------------------|----------------------------|--------------------------|---------------------|---------------------|-----------------------------|-------------|----------------|---------------|----------|-------------|------------------------------------|---------------------------|--|---------------------|-----------------------------|-----------------|-----------------------|
| WTE change since Jul 21 | % change since Jul 21 | overall | Consultants | Registrars | SHO/ Interns | Medical/ Dental, other | Medical & Dental | Nurse/ Midwife Manager | Nurse/ Midwife Specialist & AN/MP | Staff Nurse/ Staff Midwife | Public Health Nurse | Nursing/ Midwifery Student | Nursing/ Midwifery other | Nursing & Midwifery | Therapy Professions | Health Science/ Diagnostics | Social Care | Social Workers | Psychologists | Pharmacy | H&SC, Other | Health & Social Care Professionals | Management (VIII & above) | Administrative/ Supervisory (V to VII) | Clerical (III & IV) | Management & Administrative | General Support | Patient & Client Care |
| Overall | -0.2% | -12 | +1.0 | -10.4 | +6.3 | +0.8 | -2.3 | -8.2 | +1.9 | -1.6 | -0.3 | +0.4 | +0.0 | -7.6 | -6.9 | +0.2 | +0.3 | +1.2 | -0.6 | -0.5 | -1.0 | -7.2 | -2.0 | +2.2 | +2.8 | +3.0 | -6.5 | +9.1 |
| Community Health & Wellbeing | -6.9% | -1 | | | | | | | | | | | | | | | | | | | | | 0.0 | -0.6 | 0.0 | -0.6 | | 0.0 |
| Mental Health | -0.8% | -11 | +0.5 | -4.3 | +4.8 | | +1.0 | -1.4 | +1.0 | -5.5 | | +0.4 | +0.0 | -5.4 | -3.3 | | +0.1 | +0.6 | +0.9 | 0.0 | 0.0 | -1.7 | +0.9 | -0.4 | -2.2 | -1.7 | -0.7 | -2.1 |
| Primary Care | -0.6% | -7 | -0.1 | -6.1 | +1.5 | +0.8 | -3.8 | -1.9 | +1.0 | -3.2 | -0.3 | | | -4.4 | -2.8 | +0.2 | -0.2 | +0.0 | -1.0 | 0.0 | -1.3 | -5.2 | -3.0 | +0.7 | +4.5 | +2.2 | -0.9 | +5.0 |
| Disabilities | +0.0% | +1 | +0.5 | 0.0 | | 0.0 | +0.5 | -5.2 | -0.1 | +2.0 | | | | -3.3 | +1.1 | | +0.5 | +0.6 | -0.4 | | +0.3 | +2.1 | +0.1 | -0.0 | +1.8 | +1.8 | -5.4 | +4.9 |
| Older People | +0.4% | +6 | | | | 0.0 | 0.0 | +0.3 | +0.0 | +5.2 | 0.0 | | | +5.5 | -1.9 | 0.0 | | 0.0 | | -0.5 | | -2.3 | 0.0 | +2.6 | -1.2 | +1.4 | +0.4 | +1.4 |
| Social Care | +0.2% | +7 | +0.5 | 0.0 | | 0.0 | +0.5 | -4.9 | -0.1 | +7.2 | 0.0 | | | +2.2 | -0.8 | 0.0 | +0.5 | +0.6 | -0.4 | -0.5 | +0.3 | -0.3 | +0.1 | +2.6 | +0.5 | +3.2 | -5.0 | +6.3 |
| Change | -11.6 | -0.2% | +2.0% | -10.6% | +18.4% | +1.6% | -1.0% | -2.5% | +1.8% | -0.2% | -0.1% | +2.1% | +1.5% | -0.5% | -1.9% | +2.6% | +0.1% | +1.5% | -0.7% | -9.8% | -1.7% | -0.8% | -3.3% | +1.3% | +0.6% | +0.5% | -2.9% | +0.4% |

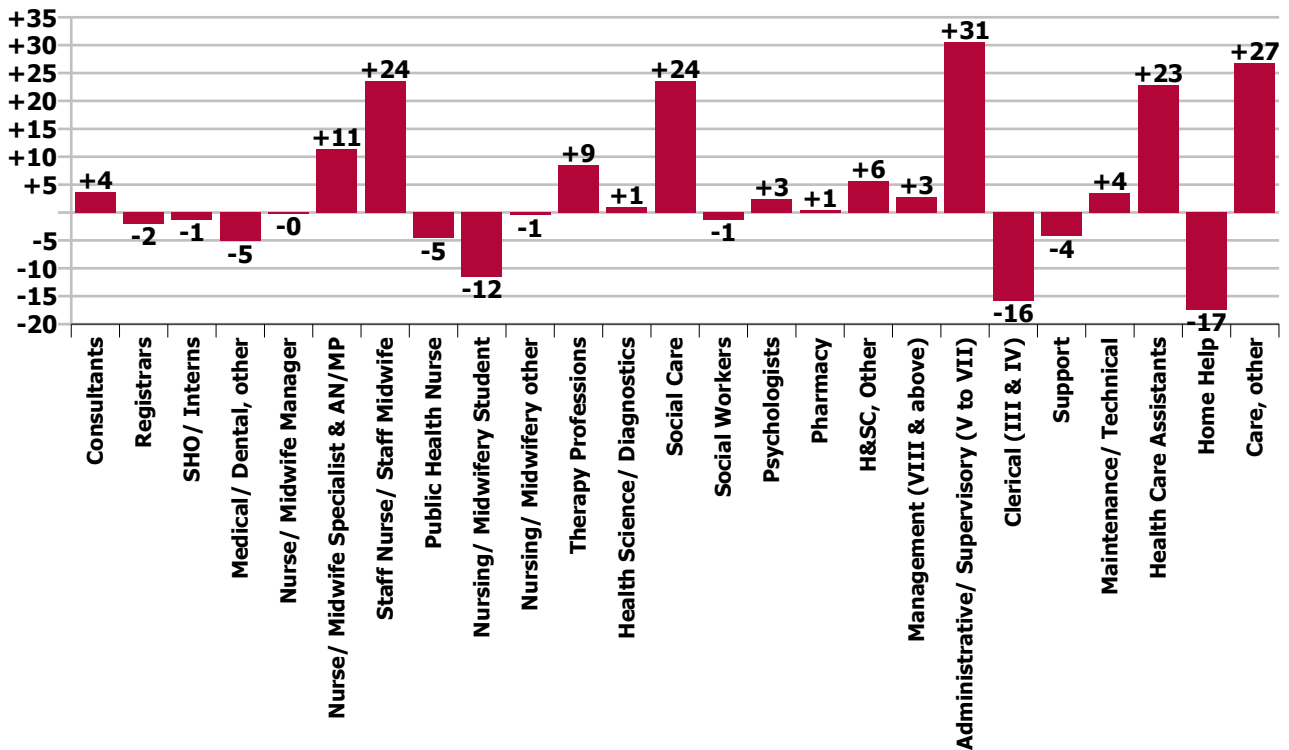
| Year-on-year Summary | | | | | | | | | | | | | | | | | | | | | | | | | | | | |
|------------------------------|-----------------------|---------|-------------|------------|--------------|------------------------|------------------|------------------------|-----------------------------------|----------------------------|---------------------|----------------------------|--------------------------|---------------------|---------------------|-----------------------------|-------------|----------------|---------------|----------|-------------|------------------------------------|---------------------------|--|---------------------|-----------------------------|-----------------|-----------------------|
| WTE change since Aug 20 | % change since Aug 20 | overall | Consultants | Registrars | SHO/ Interns | Medical/ Dental, other | Medical & Dental | Nurse/ Midwife Manager | Nurse/ Midwife Specialist & AN/MP | Staff Nurse/ Staff Midwife | Public Health Nurse | Nursing/ Midwifery Student | Nursing/ Midwifery other | Nursing & Midwifery | Therapy Professions | Health Science/ Diagnostics | Social Care | Social Workers | Psychologists | Pharmacy | H&SC, Other | Health & Social Care Professionals | Management (VIII & above) | Administrative/ Supervisory (V to VII) | Clerical (III & IV) | Management & Administrative | General Support | Patient & Client Care |
| Overall | +1.8% | +103 | +3.7 | -2.0 | -1.4 | -5.2 | -4.8 | -0.3 | +11.4 | +23.6 | -4.6 | -11.5 | -0.5 | +18.1 | +8.5 | +1.0 | +23.6 | -1.3 | +2.5 | +0.5 | +5.7 | +40.5 | +2.8 | +30.6 | -15.8 | +17.6 | -0.8 | +32.3 |
| Community Health & Wellbeing | -6.9% | -1 | | | | | | | | | | | | | | | | | | | | | 0.0 | +0.1 | 0.0 | +0.1 | | 0.0 |
| Mental Health | -0.8% | -11 | +1.8 | -2.5 | -1.3 | -1.0 | -3.0 | -0.5 | +1.8 | +18.2 | | -10.5 | -0.5 | +8.6 | -3.3 | | -0.7 | -4.3 | +0.4 | +0.1 | +0.3 | -7.4 | -1.1 | -0.0 | -8.4 | -9.5 | +1.8 | -5.9 |
| Primary Care | -0.6% | -7 | +1.9 | +0.6 | -0.1 | -5.2 | -2.8 | -2.6 | +8.5 | +3.2 | -4.6 | | | +4.5 | +13.2 | +1.0 | -1.2 | -1.2 | +3.1 | +1.0 | +7.2 | +23.1 | +2.9 | +19.1 | -1.2 | +20.7 | -0.5 | +60.9 |
| Disabilities | +5.0% | +73.5 | 0.0 | 0.0 | | 0.0 | 0.0 | -2.8 | +1.1 | -2.6 | | -1.0 | | -5.3 | +2.8 | | +25.5 | +3.9 | -1.0 | | -1.9 | +29.4 | +0.0 | +7.1 | +0.2 | +7.4 | +1.6 | +40.5 |
| Older People | -3.8% | -61.1 | | | | +1.0 | +1.0 | +5.5 | 0.0 | +4.8 | 0.0 | | | +10.4 | -4.2 | 0.0 | | +0.2 | | -0.5 | | -4.5 | +1.0 | +4.4 | -6.4 | -1.0 | -3.6 | -63.3 |
| Social Care | +0.2% | +7 | 0.0 | 0.0 | | +1.0 | +1.0 | +2.8 | +1.1 | +2.2 | 0.0 | -1.0 | | +5.1 | -1.4 | 0.0 | +25.5 | +4.2 | -1.0 | -0.5 | -1.9 | +24.9 | +1.0 | +11.5 | -6.2 | +6.3 | -2.1 | -22.8 |
| Change | +103.0 | +1.8% | +8.3% | -2.2% | -3.2% | -8.7% | -2.0% | -0.1% | +11.6% | +2.6% | -2.4% | -35.9% | -20.0% | +1.2% | +2.4% | +15.9% | +9.0% | -1.6% | +3.1% | +14.6% | +10.7% | +4.8% | +5.0% | +21.5% | -3.5% | +2.7% | -0.3% | +1.5% |



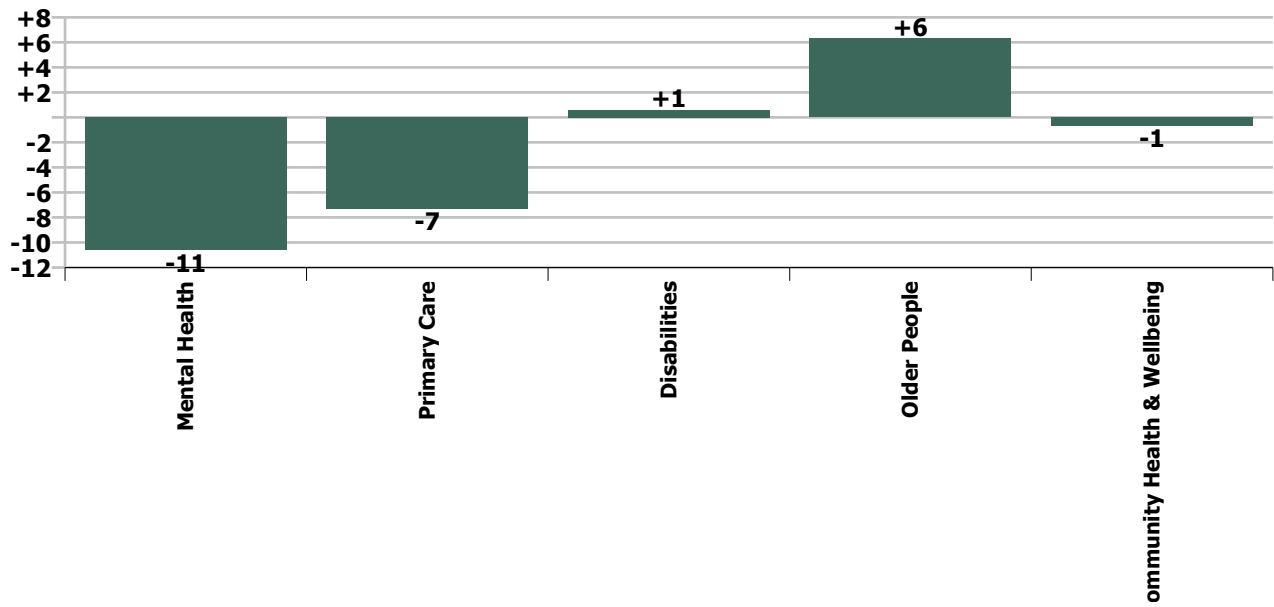
Staff Group change since: Jul 2021



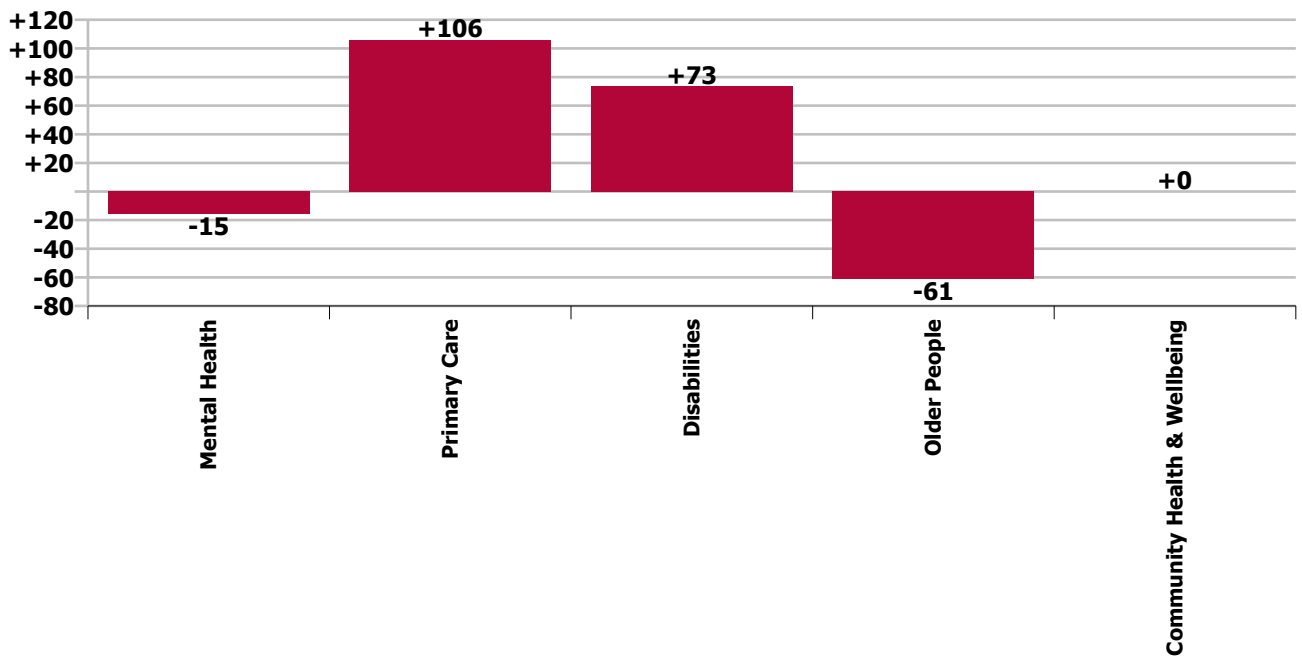
Staff Group change since: Aug 2020



Care Group change since: Jul 2021



Care Group change since: Aug 2020



Longitudinal Employment Levels by Grade Group - Dec 2016 to Aug 2021

| Aug 2021 (Dec 2016 figure: 5,236) | WTE Aug 2021 | WTE change since Dec 16 | WTE change since Dec 17 | WTE change since Dec 18 | WTE change since Dec 19 | WTE change since Dec 20 | WTE change since Jul 21 | % change since Dec 16 | % change since Dec 17 | % change since Dec 18 | % change since Dec 19 | % change since Dec 20 | % change since Jul 21 |
|--|--------------|-------------------------|-------------------------|-------------------------|-------------------------|-------------------------|-------------------------|-----------------------|-----------------------|-----------------------|-----------------------|-----------------------|-----------------------|
| Overall | 5,726 | +490 | +349 | +167 | +181 | +36 | -12 | +9.4% | +6.5% | +3.0% | +3.3% | +0.6% | -0.2% |
| Consultant Medicine | 3 | +2 | +2 | +2 | +2 | +2 | -0 | +198.0% | +198.0% | +198.0% | +198.0% | +198.0% | -0.7% |
| Consultant Paediatrics | 1 | | | | | | +1 | | | | | | +100.0% |
| Consultant Psychiatry | 45 | +13 | +11 | +10 | +5 | +5 | +1 | +40.3% | +33.0% | +30.1% | +12.2% | +13.7% | +1.2% |
| Consultant Surgery | 0 | -1 | -1 | -0 | | -0 | -0 | -80.6% | -80.6% | -16.7% | | -16.7% | -19.4% |
| Consultants | 49 | +14 | +12 | +12 | +7 | +7 | +1 | +39.2% | +32.6% | +33.5% | +16.2% | +17.6% | +2.0% |
| Registrar | 71 | +20 | +12 | +13 | +13 | +7 | -9 | +38.3% | +20.0% | +22.0% | +22.7% | +10.9% | -11.4% |
| Senior Registrar | 17 | +9 | +8 | +5 | -0 | -5 | -1 | +112.1% | +99.6% | +47.6% | -0.2% | -21.1% | -6.8% |
| Registrars | 88 | +29 | +20 | +18 | +13 | +2 | -10 | +48.2% | +30.0% | +26.2% | +17.5% | +2.9% | -10.6% |
| Senior House Officer | 40 | +4 | +3 | -2 | +5 | -2 | +6 | +9.8% | +7.4% | -3.7% | +12.8% | -5.6% | +18.4% |
| SHO/ Interns | 40 | +4 | +3 | -2 | +5 | -2 | +6 | +9.8% | +7.4% | -3.7% | +12.8% | -5.6% | +18.4% |
| Dentists | 22 | +0 | +0 | -1 | +1 | +1 | +1 | +1.7% | +0.1% | -5.7% | +3.4% | +2.9% | +4.2% |
| Other Medical | 32 | -6 | -6 | -6 | -5 | -8 | -0 | -14.8% | -14.6% | -15.7% | -13.6% | -19.9% | -0.1% |
| Medical/ Dental, other | 54 | -5 | -6 | -7 | -4 | -7 | +1 | -8.8% | -9.2% | -11.9% | -7.4% | -12.1% | +1.6% |
| Medical & Dental | 232 | +41 | +30 | +22 | +20 | -0 | -2 | +21.4% | +14.7% | +10.3% | +9.6% | -0.0% | -1.0% |
| Clinical Nurse/ Midwife Manager | 252 | +16 | +13 | -1 | +12 | -4 | -9 | +6.8% | +5.6% | -0.4% | +4.8% | -1.4% | -3.3% |
| Director Nursing/Midwifery, Assistant | 41 | +4 | +0 | +2 | -4 | -2 | -1 | +9.8% | +1.1% | +4.4% | -8.2% | -5.2% | -2.1% |
| Director of Nursing/Midwifery | 24 | +3 | +3 | +3 | +1 | +0 | +1 | +15.6% | +16.2% | +13.7% | +3.9% | +1.0% | +6.4% |
| Nurse/ Midwife Manager | 318 | +23 | +17 | +4 | +9 | -6 | -8 | +7.8% | +5.7% | +1.1% | +2.9% | -1.7% | -2.5% |
| Advanced Nurse/ Midwife Practitioner | 12 | +9 | +8 | +6 | +3 | +1 | +0 | +293.0% | +194.8% | +96.5% | +31.0% | +8.2% | +2.3% |
| Clinical Nurse/ Midwife Specialist | 98 | +34 | +21 | +20 | +15 | +1 | +2 | +53.1% | +27.3% | +25.4% | +17.4% | +1.2% | +1.7% |
| Nurse/ Midwife Specialist & AN/MP | 110 | +43 | +29 | +26 | +17 | +2 | +2 | +63.8% | +35.5% | +30.4% | +18.7% | +1.9% | +1.8% |
| Staff Midwives | | -0 | -1 | | | | | -100.0% | -100.0% | -100.0% | -100.0% | -100.0% | -100.0% |
| Staff Nurse [Intellectual Disability] | 114 | -13 | +15 | +16 | +25 | -6 | +3 | -10.3% | +15.2% | +16.3% | +27.4% | -5.1% | +3.1% |
| Staff Nurse [Psychiatric] | 375 | -7 | +4 | +5 | +3 | +10 | -7 | -1.9% | +1.1% | +1.3% | +0.9% | +2.8% | -1.7% |
| Staff Nurses [General/ Children's] | 434 | -14 | -31 | -21 | -3 | +11 | +1 | -3.2% | -6.6% | -4.6% | -0.7% | +2.6% | +0.3% |
| Staff Nurse/ Staff Midwife | 923 | -35 | -12 | -0 | +25 | +15 | -2 | -3.7% | -1.3% | -0.0% | +2.8% | +1.7% | -0.2% |
| Public Health Nurse | 187 | +10 | +12 | -1 | -5 | -12 | -0 | +5.8% | +7.1% | -0.3% | -2.7% | -6.1% | -0.1% |
| Pre-registration Nurse/ Midwife Intern | 20 | +20 | +7 | +20 | +20 | +20 | +0 | -100.0% | +52.2% | -100.0% | +16566.7% | -100.0% | +2.2% |
| Pre-registration Nurse Intern (COVID-19) | 1 | +1 | +1 | +1 | +1 | -10 | | -100.0% | -100.0% | -100.0% | -100.0% | -95.4% | |
| Post-registration Nurse/ Midwife Student | | -11 | -16 | -13 | -4 | | | -100.0% | -100.0% | -100.0% | -100.0% | -100.0% | -100.0% |
| Nursing/ Midwifery awaiting registration | | | | -11 | -5 | | | -100.0% | -100.0% | -100.0% | -100.0% | -100.0% | -100.0% |
| Nursing/ Midwifery Student | 21 | +10 | -9 | -4 | +12 | +10 | +0 | +86.4% | -29.6% | -14.6% | +131.1% | +88.9% | +2.1% |
| Nursing/ Midwifery other | 2 | +2 | | -1 | | +0 | +0 | -100.0% | | -33.3% | | +25.0% | +1.5% |
| Nursing & Midwifery | 1,559 | +52 | +37 | +24 | +58 | +9 | -8 | +3.5% | +2.5% | +1.6% | +3.9% | +0.6% | -0.5% |
| Dietitians | 25 | +7 | +6 | +5 | +6 | -0 | -1 | +41.6% | +30.4% | +24.1% | +28.2% | -0.5% | -3.4% |

| Aug 2021 (Dec 2016 figure: 5,236) | WTE Aug 2021 | WTE change since Dec 16 | WTE change since Dec 17 | WTE change since Dec 18 | WTE change since Dec 19 | WTE change since Dec 20 | WTE change since Jul 21 | % change since Dec 16 | % change since Dec 17 | % change since Dec 18 | % change since Dec 19 | % change since Dec 20 | % change since Jul 21 |
|---|--------------|-------------------------|-------------------------|-------------------------|-------------------------|-------------------------|-------------------------|-----------------------|-----------------------|-----------------------|-----------------------|-----------------------|-----------------------|
| Overall | 5,726 | +490 | +349 | +167 | +181 | +36 | -12 | +9.4% | +6.5% | +3.0% | +3.3% | +0.6% | -0.2% |
| Occupational Therapists | 125 | +15 | +14 | +6 | +8 | -4 | -2 | +13.4% | +12.8% | +5.5% | +6.9% | -2.8% | -2.0% |
| Orthoptists | 1 | -1 | -1 | -1 | -1 | -1 | +0 | -38.1% | -38.1% | -38.1% | -38.1% | -41.1% | +1.0% |
| Physiotherapists | 97 | +19 | +8 | +8 | +8 | +3 | -1 | +23.8% | +9.4% | +8.5% | +8.9% | +3.0% | -1.2% |
| Podiatrists & Chiropodists | 11 | +2 | +3 | +4 | +4 | +3 | +0 | +25.3% | +38.3% | +52.4% | +51.6% | +42.0% | +2.3% |
| Speech & Language Therapists | 100 | +10 | +6 | -4 | -5 | -6 | -3 | +11.2% | +6.3% | -3.5% | -4.6% | -5.3% | -2.5% |
| Therapy Professions | 358 | +52 | +37 | +18 | +20 | -4 | -7 | +17.1% | +11.4% | +5.4% | +5.8% | -1.1% | -1.9% |
| Audiology | 6 | +1 | +0 | +0 | +1 | | +0 | +27.4% | +2.8% | +2.2% | +21.1% | | +3.3% |
| Clinical Engineering | 1 | | +1 | +1 | | | | | -100.0% | -100.0% | | | |
| Physicists | | -1 | | | | | | -100.0% | -100.0% | -100.0% | -100.0% | -100.0% | -100.0% |
| Radiographers | 1 | | | | | | | | | | | | |
| Health Science/ Diagnostics | 8 | +0 | +1 | +1 | +1 | | +0 | +3.7% | +18.3% | +17.7% | +15.9% | | +2.6% |
| Social Care | 287 | +94 | +81 | +55 | +42 | +18 | +0 | +49.0% | +39.3% | +23.5% | +16.9% | +6.9% | +0.1% |
| Social Workers | 81 | +6 | +5 | -1 | -3 | -3 | +1 | +7.6% | +6.2% | -0.6% | -3.3% | -3.0% | +1.5% |
| Psychologists | 83 | -0 | +2 | -1 | +10 | +5 | -1 | -0.1% | +2.4% | -0.9% | +13.2% | +6.7% | -0.7% |
| Pharmacy | 4 | -1 | +0 | +0 | -0 | +0 | -0 | -17.2% | +1.2% | +1.4% | -6.4% | +12.5% | -9.8% |
| Counsellor Therapists | 20 | +10 | +9 | +8 | +9 | +7 | -0 | +101.8% | +86.5% | +65.6% | +81.7% | +51.7% | -2.2% |
| Dental Hygienists | 5 | +2 | +3 | +1 | +1 | +0 | +0 | +53.1% | +117.5% | +20.0% | +17.0% | +6.1% | +2.0% |
| HSCP Trainees/ Students | | -2 | -1 | | | | | -100.0% | -100.0% | -100.0% | -100.0% | -100.0% | -100.0% |
| Other Health & Social Care | 32 | -10 | -10 | -10 | -7 | -5 | -1 | -24.1% | -24.1% | -23.9% | -18.7% | -12.9% | -2.0% |
| Play Therapists/ Specialists | 1 | -3 | -3 | -3 | -3 | | | -72.1% | -72.3% | -72.1% | -72.1% | | |
| H&SC, Other | 59 | -3 | -1 | -4 | -0 | +2 | -1 | -5.1% | -2.1% | -6.1% | -0.3% | +4.3% | -1.7% |
| Health & Social Care Professionals | 879 | +148 | +124 | +69 | +69 | +20 | -7 | +20.3% | +16.4% | +8.5% | +8.5% | +2.3% | -0.8% |
| Executive Management | 13 | +3 | +1 | +1 | +2 | +1 | -1 | +26.5% | +6.1% | +9.8% | +22.2% | +9.0% | -6.3% |
| Senior Management (VIII & GM) | 46 | +7 | +4 | -1 | +0 | -1 | -1 | +19.2% | +8.4% | -1.4% | +0.6% | -1.5% | -2.5% |
| Management (VIII & above) | 58 | +10 | +4 | +0 | +3 | +0 | -2 | +20.7% | +7.9% | +0.8% | +4.6% | +0.6% | -3.3% |
| Middle Management (V-VII) | 173 | +71 | +56 | +50 | +40 | +13 | +2 | +69.2% | +47.6% | +40.4% | +30.5% | +8.0% | +1.3% |
| Other Administrative | | | | | -1 | | | -100.0% | -100.0% | -100.0% | -100.0% | -100.0% | -100.0% |
| Administrative/ Supervisory (V to VII) | 173 | +71 | +56 | +50 | +39 | +13 | +2 | +69.2% | +47.6% | +40.4% | +29.5% | +8.0% | +1.3% |
| Clerical (III & IV) | 431 | -12 | -38 | -55 | -37 | -17 | +3 | -2.8% | -8.1% | -11.3% | -7.9% | -3.8% | +0.6% |
| Management & Administrative | 662 | +68 | +22 | -5 | +5 | -4 | +3 | +11.5% | +3.4% | -0.7% | +0.7% | -0.6% | +0.5% |
| Catering | 40 | -0 | +4 | -1 | -0 | +1 | -1 | -0.1% | +9.9% | -3.2% | -0.3% | +3.0% | -2.7% |
| Household Services | 60 | -21 | -14 | -9 | -3 | -1 | +2 | -25.9% | -19.3% | -13.5% | -4.0% | -2.1% | +2.6% |
| Other Support | 32 | -12 | -11 | -10 | -7 | -6 | -6 | -27.4% | -25.2% | -24.1% | -18.7% | -16.3% | -15.5% |
| Portering | 13 | -4 | -5 | -5 | -3 | -2 | -1 | -23.1% | -28.6% | -27.5% | -20.3% | -10.7% | -3.8% |
| Support | 145 | -37 | -27 | -26 | -13 | -8 | -6 | -20.3% | -15.6% | -15.0% | -8.4% | -5.2% | -4.0% |
| Maintenance/ Technical | 73 | -1 | +1 | +1 | +5 | -0 | -1 | -0.8% | +1.5% | +1.8% | +8.0% | -0.1% | -0.8% |
| General Support | 218 | -38 | -26 | -24 | -8 | -8 | -7 | -14.7% | -10.5% | -10.0% | -3.4% | -3.5% | -2.9% |

| Aug 2021 (Dec 2016 figure: 5,236) | WTE Aug 2021 | WTE change since Dec 16 | WTE change since Dec 17 | WTE change since Dec 18 | WTE change since Dec 19 | WTE change since Dec 20 | WTE change since Jul 21 | % change since Dec 16 | % change since Dec 17 | % change since Dec 18 | % change since Dec 19 | % change since Dec 20 | % change since Jul 21 |
|-----------------------------------|--------------|-------------------------|-------------------------|-------------------------|-------------------------|-------------------------|-------------------------|-----------------------|-----------------------|-----------------------|-----------------------|-----------------------|-----------------------|
| Overall | 5,726 | +490 | +349 | +167 | +181 | +36 | -12 | +9.4% | +6.5% | +3.0% | +3.3% | +0.6% | -0.2% |
| HCA, Nurse's Aide, etc. | 1,394 | +147 | +100 | +63 | +40 | +32 | +0 | +11.8% | +7.8% | +4.8% | +3.0% | +2.3% | +0.0% |
| Health & Social Care Assistants | 15 | +8 | +5 | -5 | +1 | +7 | -0 | +125.4% | +53.7% | -25.3% | +7.7% | +89.7% | -0.1% |
| Swabber (COVID-19) | 52 | +52 | +52 | +52 | +52 | +3 | +4 | -100.0% | -100.0% | -100.0% | -100.0% | +6.5% | +8.4% |
| Health Care Assistants | 1,460 | +207 | +157 | +110 | +93 | +42 | +4 | +16.5% | +12.1% | +8.2% | +6.8% | +2.9% | +0.3% |
| Home Help | 421 | -28 | -27 | -59 | -78 | -35 | +6 | -6.2% | -6.0% | -12.4% | -15.6% | -7.6% | +1.4% |
| Care, other | 293 | +39 | +31 | +30 | +22 | +12 | -1 | +15.1% | +11.9% | +11.5% | +8.2% | +4.1% | -0.3% |
| Patient & Client Care | 2,175 | +218 | +161 | +81 | +37 | +18 | +9 | +11.1% | +8.0% | +3.9% | +1.7% | +0.8% | +0.4% |

Source: Health Service Personnel Census

Longitudinal Employment Levels by Care Group - Dec 2016 to Aug 2021

Community Health & Wellbeing

| Aug 2021 (figure:) | WTE Aug 2021 | WTE change since | WTE change since | WTE change since | WTE change since | WTE change since Dec 20 | WTE change since Jul 21 | % change since | % change since | % change since | % change since | % change since Dec 20 | % change since Jul 21 |
|--|--------------|------------------|------------------|------------------|------------------|-------------------------|-------------------------|----------------|----------------|----------------|----------------|-----------------------|-----------------------|
| Overall | 9 | +9 | +9 | +9 | +9 | -1 | -1 | -100.0% | -100.0% | -100.0% | -100.0% | -14.1% | -6.9% |
| Management & Administrative | 8 | +8 | +8 | +8 | +8 | -1 | -1 | -1.0% | -1.0% | -1.0% | -1.0% | -0.2% | -0.1% |
| Management (VIII & above) | 1 | +1 | +1 | +1 | +1 | | | -1.0% | -1.0% | -1.0% | -1.0% | +0.0% | +0.0% |
| Administrative/ Supervisory (V to VII) | 6 | +6 | +6 | +6 | +6 | -1 | -1 | -1.0% | -1.0% | -1.0% | -1.0% | -0.2% | -0.1% |
| Clerical (III & IV) | 1 | +1 | +1 | +1 | +1 | | | -1.0% | -1.0% | -1.0% | -1.0% | +0.0% | +0.0% |
| Patient & Client Care | 1 | +1 | +1 | +1 | +1 | | | -1.0% | -1.0% | -1.0% | -1.0% | +0.0% | +0.0% |
| Care, other | 1 | +1 | +1 | +1 | +1 | | | -1.0% | -1.0% | -1.0% | -1.0% | +0.0% | +0.0% |

Source: Health Service Personnel Census

Mental Health

| Aug 2021 (Dec 2016 figure: 1,283) | WTE Aug 2021 | WTE change since Dec 16 | WTE change since Dec 17 | WTE change since Dec 18 | WTE change since Dec 19 | WTE change since Dec 20 | WTE change since Jul 21 | % change since Dec 16 | % change since Dec 17 | % change since Dec 18 | % change since Dec 19 | % change since Dec 20 | % change since Jul 21 |
|--|--------------|-------------------------|-------------------------|-------------------------|-------------------------|-------------------------|-------------------------|-----------------------|-----------------------|-----------------------|-----------------------|-----------------------|-----------------------|
| Overall | 1,333 | +50 | +27 | -5 | +25 | -7 | -11 | +3.9% | +2.0% | -0.4% | +1.9% | -0.5% | -0.8% |
| Medical & Dental | 114 | +25 | +14 | +8 | +7 | -1 | +1 | +0.3% | +0.1% | +0.1% | +0.1% | -0.0% | +0.0% |
| Consultants | 42 | +12 | +11 | +10 | +5 | +5 | +1 | +0.4% | +0.3% | +0.3% | +0.1% | +0.1% | +0.0% |
| Registrars | 34 | +10 | +6 | +3 | +1 | -3 | -4 | +0.4% | +0.2% | +0.1% | +0.0% | -0.1% | -0.1% |
| SHO/ Interns | 38 | +5 | -0 | -4 | +3 | -2 | +5 | +0.2% | -0.0% | -0.1% | +0.1% | -0.1% | +0.1% |
| Medical/ Dental, other | | -3 | -3 | -1 | -1 | -1 | | -1.0% | -1.0% | -1.0% | -1.0% | -1.0% | -1.0% |
| Nursing & Midwifery | 611 | +46 | +43 | +25 | +34 | +15 | -5 | +0.1% | +0.1% | +0.0% | +0.1% | +0.0% | -0.0% |
| Nurse/ Midwife Manager | 146 | +2 | +7 | -9 | +1 | -5 | -1 | +0.0% | +0.0% | -0.1% | +0.0% | -0.0% | -0.0% |
| Nurse/ Midwife Specialist & AN/MP | 77 | +32 | +17 | +17 | +9 | -3 | +1 | +0.7% | +0.3% | +0.3% | +0.1% | -0.0% | +0.0% |
| Staff Nurse/ Staff Midwife | 366 | -10 | +11 | +9 | +9 | +11 | -6 | -0.0% | +0.0% | +0.0% | +0.0% | +0.0% | -0.0% |
| Nursing/ Midwifery Student | 21 | +21 | +7 | +10 | +16 | +10 | +0 | -1.0% | +0.6% | +0.9% | +3.2% | +1.0% | +0.0% |
| Nursing/ Midwifery other | 2 | +2 | | -1 | | +0 | +0 | -1.0% | +0.0% | -0.3% | +0.0% | +0.3% | +0.0% |
| Health & Social Care Professionals | 151 | +13 | +12 | +4 | +11 | -4 | -2 | +0.1% | +0.1% | +0.0% | +0.1% | -0.0% | -0.0% |
| Therapy Professions | 52 | +7 | +3 | +2 | +7 | -3 | -3 | +0.2% | +0.1% | +0.0% | +0.1% | -0.1% | -0.1% |
| Social Care | 15 | -2 | +1 | +0 | -0 | -2 | +0 | -0.1% | +0.1% | +0.0% | -0.0% | -0.1% | +0.0% |
| Social Workers | 39 | +2 | +3 | -1 | -1 | -2 | +1 | +0.1% | +0.1% | -0.0% | -0.0% | -0.1% | +0.0% |
| Psychologists | 40 | +6 | +5 | +4 | +7 | +3 | +1 | +0.2% | +0.1% | +0.1% | +0.2% | +0.1% | +0.0% |
| Pharmacy | 2 | -2 | -1 | -1 | -1 | | | -0.5% | -0.4% | -0.3% | -0.3% | +0.0% | +0.0% |
| H&SC, Other | 3 | +2 | +1 | -0 | -0 | -0 | | +1.8% | +0.4% | -0.1% | -0.1% | -0.1% | +0.0% |
| Management & Administrative | 123 | -7 | -13 | -18 | -15 | -10 | -2 | -0.1% | -0.1% | -0.1% | -0.1% | -0.1% | -0.0% |
| Management (VIII & above) | 3 | -1 | -0 | -1 | -2 | -1 | +1 | -0.3% | -0.0% | -0.3% | -0.4% | -0.3% | +0.4% |
| Administrative/ Supervisory (V to VII) | 26 | +5 | +2 | +3 | +2 | -1 | -0 | +0.2% | +0.1% | +0.1% | +0.1% | -0.0% | -0.0% |
| Clerical (III & IV) | 94 | -11 | -15 | -19 | -15 | -8 | -2 | -0.1% | -0.1% | -0.2% | -0.1% | -0.1% | -0.0% |
| General Support | 64 | -17 | -9 | -5 | +0 | -1 | -1 | -0.2% | -0.1% | -0.1% | +0.0% | -0.0% | -0.0% |
| Support | 30 | -15 | -8 | -6 | -6 | -1 | -0 | -0.3% | -0.2% | -0.2% | -0.2% | -0.0% | -0.0% |
| Maintenance/ Technical | 33 | -2 | -1 | +0 | +6 | -0 | -1 | -0.1% | -0.0% | +0.0% | +0.2% | -0.0% | -0.0% |
| Patient & Client Care | 271 | -10 | -20 | -19 | -13 | -7 | -2 | -0.0% | -0.1% | -0.1% | -0.0% | -0.0% | -0.0% |
| Health Care Assistants | 206 | -8 | -10 | -11 | -8 | -5 | -1 | -0.0% | -0.0% | -0.1% | -0.0% | -0.0% | -0.0% |
| Care, other | 65 | -2 | -10 | -8 | -5 | -2 | -1 | -0.0% | -0.1% | -0.1% | -0.1% | -0.0% | -0.0% |

Source: Health Service Personnel Census

Primary Care

| Aug 2021 (Dec 2016 figure: 1,238) | WTE Aug 2021 | WTE change since Dec 16 | WTE change since Dec 17 | WTE change since Dec 18 | WTE change since Dec 19 | WTE change since Dec 20 | WTE change since Jul 21 | % change since Dec 16 | % change since Dec 17 | % change since Dec 18 | % change since Dec 19 | % change since Dec 20 | % change since Jul 21 |
|--|--------------|-------------------------|-------------------------|-------------------------|-------------------------|-------------------------|-------------------------|-----------------------|-----------------------|-----------------------|-----------------------|-----------------------|-----------------------|
| Overall | 1,263 | +25 | +174 | +103 | +130 | +29 | -7 | +2.0% | +15.9% | +8.9% | +11.4% | +2.3% | -0.6% |
| Medical & Dental | 101 | +15 | +16 | +14 | +13 | +0 | -4 | +0.2% | +0.2% | +0.2% | +0.2% | +0.0% | -0.0% |
| Consultants | 3 | +1 | +1 | +2 | +2 | +2 | -0 | +0.4% | +0.4% | +1.5% | +1.6% | +1.5% | -0.0% |
| Registrars | 52 | +19 | +14 | +15 | +12 | +5 | -6 | +0.6% | +0.4% | +0.4% | +0.3% | +0.1% | -0.1% |
| SHO/ Interns | 3 | -2 | +3 | +3 | +2 | -0 | +2 | -0.4% | -1.0% | -1.0% | +1.9% | -0.0% | +1.1% |
| Medical/ Dental, other | 43 | -3 | -2 | -5 | -3 | -6 | +1 | -0.1% | -0.0% | -0.1% | -0.1% | -0.1% | +0.0% |
| Nursing & Midwifery | 321 | +26 | +21 | -0 | +8 | -4 | -4 | +0.1% | +0.1% | -0.0% | +0.0% | -0.0% | -0.0% |
| Nurse/ Midwife Manager | 27 | +4 | +2 | +1 | -1 | -1 | -2 | +0.2% | +0.1% | +0.0% | -0.0% | -0.0% | -0.1% |
| Nurse/ Midwife Specialist & AN/MP | 25 | +10 | +10 | +7 | +8 | +4 | +1 | +0.6% | +0.7% | +0.4% | +0.5% | +0.2% | +0.0% |
| Staff Nurse/ Staff Midwife | 84 | +13 | +12 | +6 | +10 | +5 | -3 | +0.2% | +0.2% | +0.1% | +0.1% | +0.1% | -0.0% |
| Public Health Nurse | 186 | +10 | +12 | -1 | -5 | -12 | -0 | +0.1% | +0.1% | -0.0% | -0.0% | -0.1% | -0.0% |
| Nursing/ Midwifery Student | | -11 | -16 | -13 | -4 | | | -1.0% | -1.0% | -1.0% | -1.0% | -1.0% | -1.0% |
| Health & Social Care Professionals | 344 | +43 | +41 | +22 | +31 | +5 | -5 | +0.1% | +0.1% | +0.1% | +0.1% | +0.0% | -0.0% |
| Therapy Professions | 249 | +50 | +38 | +20 | +23 | +1 | -3 | +0.2% | +0.2% | +0.1% | +0.1% | +0.0% | -0.0% |
| Health Science/ Diagnostics | 7 | +0 | +1 | +1 | +1 | | +0 | +0.0% | +0.2% | +0.2% | +0.2% | +0.0% | +0.0% |
| Social Care | 7 | -4 | -3 | -2 | -1 | -1 | -0 | -0.3% | -0.3% | -0.2% | -0.1% | -0.1% | -0.0% |
| Social Workers | 5 | -4 | -2 | -2 | -2 | -1 | +0 | -0.5% | -0.3% | -0.3% | -0.3% | -0.2% | +0.0% |
| Psychologists | 28 | -2 | +1 | +0 | +4 | +1 | -1 | -0.1% | +0.1% | +0.0% | +0.2% | +0.1% | -0.0% |
| Pharmacy | 2 | +1 | +1 | +1 | +1 | +1 | | +1.0% | +1.0% | +1.0% | +1.0% | +1.0% | +0.0% |
| H&SC, Other | 46 | +3 | +5 | +4 | +5 | +4 | -1 | +0.1% | +0.1% | +0.1% | +0.1% | +0.1% | -0.0% |
| Management & Administrative | 346 | +54 | +32 | +16 | +14 | +10 | +2 | +0.2% | +0.1% | +0.0% | +0.0% | +0.0% | +0.0% |
| Management (VIII & above) | 36 | +7 | -0 | -1 | +3 | +0 | -3 | +0.3% | -0.0% | -0.0% | +0.1% | +0.0% | -0.1% |
| Administrative/ Supervisory (V to VII) | 81 | +41 | +36 | +28 | +19 | +8 | +1 | +1.0% | +0.8% | +0.5% | +0.3% | +0.1% | +0.0% |
| Clerical (III & IV) | 230 | +5 | -3 | -10 | -8 | +1 | +4 | +0.0% | -0.0% | -0.0% | -0.0% | +0.0% | +0.0% |
| General Support | 30 | -1 | -1 | -5 | -0 | -0 | -1 | -0.0% | -0.0% | -0.1% | -0.0% | -0.0% | -0.0% |
| Support | 20 | -2 | -2 | -6 | -1 | -2 | -1 | -0.1% | -0.1% | -0.2% | -0.1% | -0.1% | -0.0% |
| Maintenance/ Technical | 10 | +1 | +1 | +1 | +1 | +2 | +0 | +0.1% | +0.1% | +0.1% | +0.1% | +0.3% | +0.0% |
| Patient & Client Care | 121 | -112 | +64 | +56 | +64 | +18 | +5 | -0.5% | +1.1% | +0.9% | +1.1% | +0.2% | +0.0% |
| Health Care Assistants | 66 | +59 | +57 | +46 | +51 | +9 | +4 | +8.9% | +6.6% | +2.4% | +3.6% | +0.2% | +0.1% |
| Home Help | | -169 | | | | | | -1.0% | -1.0% | -1.0% | -1.0% | -1.0% | -1.0% |
| Care, other | 55 | -2 | +7 | +10 | +12 | +9 | +1 | -0.0% | +0.2% | +0.2% | +0.3% | +0.2% | +0.0% |

Source: Health Service Personnel Census

Disabilities

| Aug 2021 (Dec 2016 figure: 1,338) | WTE Aug 2021 | WTE change since Dec 16 | WTE change since Dec 17 | WTE change since Dec 18 | WTE change since Dec 19 | WTE change since Dec 20 | WTE change since Jul 21 | % change since Dec 16 | % change since Dec 17 | % change since Dec 18 | % change since Dec 19 | % change since Dec 20 | % change since Jul 21 |
|--|--------------|-------------------------|-------------------------|-------------------------|-------------------------|-------------------------|-------------------------|-----------------------|-----------------------|-----------------------|-----------------------|-----------------------|-----------------------|
| Overall | 1,556 | +217 | +161 | +136 | +59 | +40 | +1 | +16.2% | +11.5% | +9.6% | +3.9% | +2.6% | +0.0% |
| Medical & Dental | 6 | +0 | +0 | +0 | | | +1 | +0.1% | +0.1% | +0.1% | +0.0% | +0.0% | +0.1% |
| Consultants | 3 | +0 | +0 | +0 | | | +1 | +0.1% | +0.1% | +0.1% | +0.0% | +0.0% | +0.2% |
| Registrars | 2 | | | | | | | +0.0% | +0.0% | +0.0% | +0.0% | +0.0% | +0.0% |
| Medical/ Dental, other | 1 | | | | | | | +0.0% | +0.0% | +0.0% | +0.0% | +0.0% | +0.0% |
| Nursing & Midwifery | 241 | -34 | -30 | -11 | -7 | -12 | -3 | -0.1% | -0.1% | -0.0% | -0.0% | -0.0% | -0.0% |
| Nurse/ Midwife Manager | 74 | +3 | +1 | +3 | -3 | -4 | -5 | +0.0% | +0.0% | +0.0% | -0.0% | -0.0% | -0.1% |
| Nurse/ Midwife Specialist & AN/MP | 6 | -1 | -1 | +0 | +0 | +1 | -0 | -0.1% | -0.1% | +0.1% | +0.1% | +0.1% | -0.0% |
| Staff Nurse/ Staff Midwife | 161 | -36 | -30 | -14 | -5 | -8 | +2 | -0.2% | -0.2% | -0.1% | -0.0% | -0.0% | +0.0% |
| Nursing/ Midwifery Student | | | | | | -1 | | -1.0% | -1.0% | -1.0% | -1.0% | -1.0% | -1.0% |
| Health & Social Care Professionals | 351 | +93 | +71 | +44 | +30 | +22 | +2 | +0.4% | +0.3% | +0.1% | +0.1% | +0.1% | +0.0% |
| Therapy Professions | 34 | -1 | -3 | -2 | -7 | -0 | +1 | -0.0% | -0.1% | -0.1% | -0.2% | -0.0% | +0.0% |
| Social Care | 265 | +100 | +83 | +57 | +43 | +21 | +0 | +0.6% | +0.5% | +0.3% | +0.2% | +0.1% | +0.0% |
| Social Workers | 27 | +5 | +2 | +2 | +1 | +1 | +1 | +0.2% | +0.1% | +0.1% | +0.0% | +0.0% | +0.0% |
| Psychologists | 15 | -4 | -5 | -5 | -1 | +1 | -0 | -0.2% | -0.2% | -0.3% | -0.1% | +0.0% | -0.0% |
| H&SC, Other | 10 | -7 | -7 | -7 | -5 | -1 | +0 | -0.4% | -0.4% | -0.4% | -0.3% | -0.1% | +0.0% |
| Management & Administrative | 112 | +10 | +4 | +8 | +6 | +2 | +2 | +0.1% | +0.0% | +0.1% | +0.1% | +0.0% | +0.0% |
| Management (VIII & above) | 17 | +3 | +3 | +2 | +1 | +1 | +0 | +0.2% | +0.2% | +0.1% | +0.1% | +0.1% | +0.0% |
| Administrative/ Supervisory (V to VII) | 47 | +12 | +5 | +9 | +7 | +3 | -0 | +0.3% | +0.1% | +0.2% | +0.2% | +0.1% | -0.0% |
| Clerical (III & IV) | 48 | -5 | -4 | -3 | -1 | -2 | +2 | -0.1% | -0.1% | -0.1% | -0.0% | -0.0% | +0.0% |
| General Support | 50 | -8 | -10 | -7 | -8 | -6 | -5 | -0.1% | -0.2% | -0.1% | -0.1% | -0.1% | -0.1% |
| Support | 37 | -8 | -10 | -8 | -8 | -6 | -5 | -0.2% | -0.2% | -0.2% | -0.2% | -0.1% | -0.1% |
| Maintenance/ Technical | 13 | -0 | -0 | +1 | -0 | | | -0.0% | -0.0% | +0.1% | -0.0% | +0.0% | +0.0% |
| Patient & Client Care | 795 | +156 | +125 | +101 | +38 | +34 | +5 | +0.2% | +0.2% | +0.1% | +0.0% | +0.0% | +0.0% |
| Health Care Assistants | 665 | +141 | +112 | +93 | +42 | +40 | +6 | +0.3% | +0.2% | +0.2% | +0.1% | +0.1% | +0.0% |
| Care, other | 130 | +14 | +14 | +9 | -4 | -6 | -1 | +0.1% | +0.1% | +0.1% | -0.0% | -0.0% | -0.0% |

Source: Health Service Personnel Census

Older People

| Aug 2021 (Dec 2016 figure: 1,376) | WTE Aug 2021 | WTE change since Dec 16 | WTE change since Dec 17 | WTE change since Dec 18 | WTE change since Dec 19 | WTE change since Dec 20 | WTE change since Jul 21 | % change since Dec 16 | % change since Dec 17 | % change since Dec 18 | % change since Dec 19 | % change since Dec 20 | % change since Jul 21 |
|--|--------------|-------------------------|-------------------------|-------------------------|-------------------------|-------------------------|-------------------------|-----------------------|-----------------------|-----------------------|-----------------------|-----------------------|-----------------------|
| Overall | 1,565 | +189 | -21 | -76 | -40 | -24 | +6 | +13.8% | -1.3% | -4.6% | -2.5% | -1.5% | +0.4% |
| Medical & Dental | 11 | -0 | -1 | -1 | -1 | | | -0.0% | -0.1% | -0.1% | -0.0% | +0.0% | +0.0% |
| Medical/ Dental, other | 11 | -0 | -1 | -1 | -1 | | | -0.0% | -0.1% | -0.1% | -0.0% | +0.0% | +0.0% |
| Nursing & Midwifery | 385 | +14 | +4 | +11 | +23 | +11 | +6 | +0.0% | +0.0% | +0.0% | +0.1% | +0.0% | +0.0% |
| Nurse/ Midwife Manager | 70 | +14 | +8 | +8 | +12 | +4 | +0 | +0.2% | +0.1% | +0.1% | +0.2% | +0.1% | +0.0% |
| Nurse/ Midwife Specialist & AN/MP | 2 | +2 | +2 | +2 | | | +0 | -1.0% | -1.0% | -1.0% | +0.0% | +0.0% | +0.0% |
| Staff Nurse/ Staff Midwife | 312 | -2 | -6 | +0 | +11 | +7 | +5 | -0.0% | -0.0% | +0.0% | +0.0% | +0.0% | +0.0% |
| Public Health Nurse | 1 | +0 | +0 | | +0 | | | +0.3% | +0.1% | +0.0% | +0.3% | +0.0% | +0.0% |
| Health & Social Care Professionals | 35 | -1 | +0 | -1 | -3 | -3 | -2 | -0.0% | +0.0% | -0.0% | -0.1% | -0.1% | -0.1% |
| Therapy Professions | 23 | -3 | -2 | -2 | -2 | -2 | -2 | -0.1% | -0.1% | -0.1% | -0.1% | -0.1% | -0.1% |
| Health Science/ Diagnostics | 1 | | | | | | | +0.0% | +0.0% | +0.0% | +0.0% | +0.0% | +0.0% |
| Social Workers | 10 | +3 | +2 | +1 | +0 | | | +0.4% | +0.2% | +0.1% | +0.0% | +0.0% | +0.0% |
| Pharmacy | 1 | -0 | -0 | -0 | -1 | -1 | -0 | -0.0% | -0.0% | -0.0% | -0.5% | -0.5% | -0.5% |
| H&SC, Other | | -1 | | | | | | -1.0% | | -1.0% | | | -1.0% |
| Management & Administrative | 73 | +5 | -9 | -19 | -8 | -4 | +1 | +0.1% | -0.1% | -0.2% | -0.1% | -0.1% | +0.0% |
| Management (VIII & above) | 2 | -0 | +1 | -0 | -0 | -0 | | -0.0% | +1.0% | -0.0% | -0.0% | -0.0% | +0.0% |
| Administrative/ Supervisory (V to VII) | 13 | +7 | +6 | +5 | +6 | +4 | +3 | +1.1% | +0.9% | +0.5% | +0.7% | +0.4% | +0.2% |
| Clerical (III & IV) | 58 | -2 | -17 | -23 | -14 | -8 | -1 | -0.0% | -0.2% | -0.3% | -0.2% | -0.1% | -0.0% |
| General Support | 75 | -12 | -6 | -7 | -0 | -1 | +0 | -0.1% | -0.1% | -0.1% | -0.0% | -0.0% | +0.0% |
| Support | 57 | -12 | -7 | -6 | +1 | +1 | +0 | -0.2% | -0.1% | -0.1% | +0.0% | +0.0% | +0.0% |
| Maintenance/ Technical | 17 | +0 | +1 | -1 | -1 | -2 | -0 | +0.0% | +0.1% | -0.1% | -0.1% | -0.1% | -0.0% |
| Patient & Client Care | 987 | +183 | -9 | -59 | -52 | -28 | +1 | +0.2% | -0.0% | -0.1% | -0.1% | -0.0% | +0.0% |
| Health Care Assistants | 523 | +15 | -1 | -18 | +8 | -3 | -4 | +0.0% | -0.0% | -0.0% | +0.0% | -0.0% | -0.0% |
| Home Help | 421 | +141 | -27 | -59 | -78 | -35 | +6 | +0.5% | -0.1% | -0.1% | -0.2% | -0.1% | +0.0% |
| Care, other | 42 | +27 | +19 | +19 | +18 | +10 | -0 | +1.9% | +0.8% | +0.8% | +0.7% | +0.3% | -0.0% |

Source: Health Service Personnel Census