

CHO 2 Employment Report: December 2020

Employment by Staff Group

Dec 2020 (Dec 2019 figure: 5,545)	WTE Nov 2020	WTE Dec 2020	WTE change since Nov 20	% change since Nov 20	WTE change since Dec 19	WTE change since Dec 19
Overall	5,612	5,690	+78	+1.4%	+145	+145
Consultants	42	42	-0	-0.5%	-0	-0
Registrars	89	86	-3	-3.0%	+11	+11
SHO/ Interns	43	43	+0	+0.3%	+7	+7
Medical/ Dental, other	63	62	-1	-1.1%	+3	+3
Medical & Dental	236	232	-3	-1.4%	+20	+20
Nurse/ Midwife Manager	322	323	+1	+0.4%	+15	+15
Nurse/ Midwife Specialist & AN/MP	107	108	+1	+1.2%	+15	+15
Staff Nurse/ Staff Midwife	902	908	+6	+0.7%	+10	+10
Public Health Nurse	199	199	-0	-0.2%	+7	+7
<i>Pre-registration Nurse/ Midwife Intern</i>				-100.0%	-0	
<i>Pre-registration Nurse Intern (COVID-19)</i>	16	11	-5	-31.8%	+11	-5
<i>Post-registration Nurse/ Midwife Student</i>				-100.0%	-4	
<i>Nursing/ Midwifery awaiting registration</i>				-100.0%	-5	
Nursing/ Midwifery Student	16	11	-5	-31.8%	+2	+2
Nursing/ Midwifery other	3	2	-1	-40.5%	-0	-0
Nursing & Midwifery	1,548	1,550	+2	+0.1%	+48	+48
Therapy Professions	360	362	+2	+0.6%	+24	+24
Health Science/ Diagnostics	34	35	+1	+1.8%	+2	+2
Social Care	265	268	+3	+1.0%	+23	+23
Social Workers	84	84	-0	-0.4%	-0	-0
Psychologists	78	78	-0	-0.4%	+4	+4
Pharmacy	4	4	-0	-1.0%	-1	-1
H&SC, Other	31	29	-2	-6.0%	-3	-3
Health & Social Care Professionals	857	859	+3	+0.3%	+49	+49
Management (VIII & above)	58	58	-0	-0.1%	+2	+2
Administrative/ Supervisory (V to VII)	157	160	+3	+2.2%	+27	+27
Clerical (III & IV)	445	448	+3	+0.7%	-20	-20
Management & Administrative	660	666	+6	+1.0%	+9	+9
Support	154	152	-2	-1.1%	-5	-5
Maintenance/ Technical	73	74	+1	+0.7%	+6	+6
General Support	227	226	-1	-0.5%	+0	+0
Health Care Assistants	1,378	1,419	+41	+3.0%	+51	+51
Care, other	280	281	+2	+0.7%	+11	+11
Home Help	428	456	+28	+6.6%	-43	-43
Patient & Client Care	2,085	2,156	+71	+3.4%	+19	+19

CHO 2 Employment Report: December 2020

Community Health & Wellbeing

Dec 2020 (figure:)	WTE Nov 2020	WTE Dec 2020	WTE change since Nov 20	% change since Nov 20	WTE change since	WTE change since
Total Community Health & Wellbeing	10	10	+0	+1.5%	+10	+10
Management (VIII & above)	1	1			+1	+1
Administrative/ Supervisory (V to VII)	7	7	+0	+2.1%	+7	+7
Clerical (III & IV)	1	1			+1	+1
Management & Administrative	9	9	+0	+1.7%	+9	+9
Care, other	1	1			+1	+1
Patient & Client Care	1	1			+1	+1

Mental Health

Dec 2020 (Dec 2019 figure: 1,308)	WTE Nov 2020	WTE Dec 2020	WTE change since Nov 20	% change since Nov 20	WTE change since Dec 19	WTE change since Dec 19
Total Mental Health	1,345	1,340	-5	-0.4%	+32	+32
Consultants	37	37	-0	-0.6%	-1	-1
Registrars	37	37			+3	+3
SHO/ Interns	40	40	+0	+0.2%	+5	+5
Medical/ Dental, other	2	1	-1	-42.9%		
Medical & Dental	115	114	-1	-0.8%	+8	+8
Nurse/ Midwife Manager	151	151	-0	-0.1%	+5	+5
Nurse/ Midwife Specialist & AN/MP	79	79	+1	+0.7%	+12	+12
Staff Nurse/ Staff Midwife	355	355	-0	-0.1%	-3	-3
Pre-registration Nurse/ Midwife Intern				-100.0%	-0	
Pre-registration Nurse Intern (COVID-19)	15	10	-5	-33.8%	+10	-5
Nursing/ Midwifery awaiting registration				-100.0%	-5	
Nursing/ Midwifery Student	15	10	-5	-33.8%	+5	+5
Nursing/ Midwifery other	3	2	-1	-40.5%	-0	-0
Nursing & Midwifery	603	597	-6	-1.0%	+19	+19
Therapy Professions	53	55	+3	+5.0%	+10	+10
Social Care	16	16	+0	+1.8%	+1	+1
Social Workers	42	42	-1	-1.3%	+1	+1
Psychologists	37	37	-0	-1.0%	+3	+3
Pharmacy	2	2	-0	-2.2%	-1	-1
H&SC, Other	3	3				
Health & Social Care Professionals	153	155	+2	+1.3%	+15	+15
Management (VIII & above)	4	4			-1	-1
Administrative/ Supervisory (V to VII)	27	26	-1	-3.2%	+3	+3
Clerical (III & IV)	101	102	+2	+1.7%	-7	-7
Management & Administrative	132	133	+1	+0.6%	-5	-5
Support	32	31	-1	-2.3%	-5	-5
Maintenance/ Technical	33	33	+0	+1.5%	+6	+6
General Support	65	64	-0	-0.4%	+1	+1
Health Care Assistants	211	211	+0	+0.2%	-4	-4
Care, other	67	66	-1	-0.9%	-3	-3
Patient & Client Care	278	278	-0	-0.1%	-7	-7

Primary Care

Dec 2020 (Dec 2019 figure: 1,134)	WTE Nov 2020	WTE Dec 2020	WTE change since Nov 20	% change since Nov 20	WTE change since Dec 19	WTE change since Dec 19
Total Primary Care	1,191	1,235	+43	+3.6%	+101	+101
Consultants	1	1	+0	+1.6%	+0	+0
Registrars	50	47	-3	-5.3%	+7	+7
SHO/ Interns	3	3	+0	+1.7%	+2	+2
Medical/ Dental, other	49	49	+0	+0.0%	+4	+4
Medical & Dental	103	101	-3	-2.5%	+13	+13
Nurse/ Midwife Manager	28	28	+0	+0.4%	+1	+1
Nurse/ Midwife Specialist & AN/MP	20	21	+1	+3.8%	+4	+4
Staff Nurse/ Staff Midwife	77	79	+2	+2.4%	+5	+5
Public Health Nurse	198	198	-0	-0.2%	+7	+7
<i>Post-registration Nurse/ Midwife Student</i>				-100.0%	-4	
Nursing/ Midwifery Student				-100.0%	-4	-4
Nursing & Midwifery	323	326	+2	+0.7%	+12	+12
Therapy Professions	246	248	+2	+0.7%	+22	+22
Health Science/ Diagnostics	34	34	+1	+1.9%	+2	+2
Social Care	9	9			+0	+0
Social Workers	6	6			-1	-1
Psychologists	26	27	+1	+2.4%	+3	+3
Pharmacy	1	1				
H&SC, Other	12	14	+2	+19.4%	+1	+1
Health & Social Care Professionals	333	339	+5	+1.6%	+26	+26
Management (VIII & above)	34	35	+1	+3.0%	+2	+2
Administrative/ Supervisory (V to VII)	69	73	+3	+5.0%	+11	+11
Clerical (III & IV)	229	229	-0	-0.2%	-9	-9
Management & Administrative	333	337	+4	+1.2%	+4	+4
Support	22	22	-0	-1.6%	+1	+1
Maintenance/ Technical	8	8	-0	-0.1%	-1	-1
General Support	30	30	-0	-1.2%	+0	+0
Health Care Assistants	22	57	+35	+154.9%	+43	+43
Care, other	46	46	+0	+0.2%	+3	+3
Patient & Client Care	68	103	+35	+50.9%	+46	+46

Social Care

Dec 2020 (Dec 2019 figure: 3,103)	WTE Nov 2020	WTE Dec 2020	WTE change since Nov 20	% change since Nov 20	WTE change since Dec 19	WTE change since Dec 19
Total Social Care	3,066	3,105	+39	+1.3%	+3	+3
Consultants	3	3				
Registrars	2	2				
Medical/ Dental, other	12	12	+0	+0.3%	-1	-1
Medical & Dental	17	17	+0	+0.2%	-1	-1
Nurse/ Midwife Manager	143	144	+1	+1.0%	+9	+9
Nurse/ Midwife Specialist & AN/MP	8	8	+0	+0.1%	-0	-0
Staff Nurse/ Staff Midwife	470	474	+5	+1.0%	+8	+8
Public Health Nurse	1	1			+0	+0
<i>Pre-registration Nurse Intern (COVID-19)</i>	1	1	+0	+21.8%	+1	+0
Nursing/ Midwifery Student	1	1	+0	+21.8%	+1	+1
Nursing & Midwifery	622	628	+6	+1.0%	+17	+17
Therapy Professions	62	59	-2	-3.8%	-8	-8
Health Science/ Diagnostics	1	1				
Social Care	241	243	+2	+1.0%	+22	+22
Social Workers	36	36	+0	+0.6%	-0	-0
Psychologists	15	14	-1	-3.9%	-2	-2
Pharmacy	1	1			+0	+0
H&SC, Other	16	12	-4	-26.3%	-4	-4
Health & Social Care Professionals	371	366	-4	-1.2%	+8	+8
Management (VIII & above)	19	18	-1	-5.6%	-0	-0
Administrative/ Supervisory (V to VII)	53	54	+1	+1.2%	+6	+6
Clerical (III & IV)	114	116	+2	+1.5%	-5	-5
Management & Administrative	186	187	+1	+0.7%	+0	+0
Support	100	99	-1	-0.6%	-2	-2
Maintenance/ Technical	32	32	+0	+0.1%	+0	+0
General Support	132	132	-1	-0.4%	-1	-1
Health Care Assistants	1,145	1,151	+6	+0.5%	+13	+13
Care, other	166	168	+2	+1.4%	+10	+10
Home Help	428	456	+28	+6.6%	-43	-43
Patient & Client Care	1,738	1,775	+37	+2.1%	-21	-21

CHO 2 Employment Report: December 2020

Disabilities

Dec 2020 (Dec 2019 figure: 1,497)	WTE Nov 2020	WTE Dec 2020	WTE change since Nov 20	% change since Nov 20	WTE change since Dec 19	WTE change since Dec 19
Total Disabilities	1,505	1,516	+11	+0.7%	+19	+19
Consultants	3	3				
Registrars	2	2				
Medical/ Dental, other	1	1				
Medical & Dental	6	6				
Nurse/ Midwife Manager	77	78	+1	+1.0%	+0	+0
Nurse/ Midwife Specialist & AN/MP	6	6			-0	-0
Staff Nurse/ Staff Midwife	162	169	+7	+4.5%	+4	+4
<i>Pre-registration Nurse Intern (COVID-19)</i>	1	1	+0	+21.8%	+1	+0
Nursing/ Midwifery Student	1	1	+0	+21.8%	+1	+1
Nursing & Midwifery	245	253	+8	+3.3%	+5	+5
Therapy Professions	35	34	-1	-2.6%	-7	-7
Social Care	241	243	+2	+1.0%	+22	+22
Social Workers	25	26	+1	+2.1%	-0	-0
Psychologists	15	14	-1	-3.9%	-2	-2
H&SC, Other	16	12	-4	-26.3%	-4	-4
Health & Social Care Professionals	332	329	-3	-0.8%	+8	+8
Management (VIII & above)	17	16	-1	-6.3%	-0	-0
Administrative/ Supervisory (V to VII)	43	44	+1	+2.8%	+4	+4
Clerical (III & IV)	50	50	+0	+0.6%	+0	+0
Management & Administrative	110	110	+0	+0.4%	+4	+4
Support	43	43	+0	+0.3%	-2	-2
Maintenance/ Technical	13	13			-0	-0
General Support	56	56	+0	+0.2%	-2	-2
Health Care Assistants	620	625	+5	+0.8%	+2	+2
Care, other	135	136	+0	+0.1%	+2	+2
Patient & Client Care	756	761	+5	+0.7%	+3	+3

Older People

Dec 2020 (Dec 2019 figure: 1,606)	WTE Nov 2020	WTE Dec 2020	WTE change since Nov 20	% change since Nov 20	WTE change since Dec 19	WTE change since Dec 19
Total Older People	1,561	1,590	+28	+1.8%	-16	-16
Medical/ Dental, other	11	11	+0	+0.4%	-1	-1
Medical & Dental	11	11	+0	+0.4%	-1	-1
Nurse/ Midwife Manager	66	66	+1	+1.1%	+8	+8
Nurse/ Midwife Specialist & AN/MP	2	2	+0	+0.5%		
Staff Nurse/ Staff Midwife	308	305	-3	-0.9%	+4	+4
Public Health Nurse	1	1			+0	+0
Nursing & Midwifery	376	374	-2	-0.5%	+12	+12
Health & Social Care Professionals	39	37	-2	-4.3%	-0	-0
Management (VIII & above)	2	2				
Administrative/ Supervisory (V to VII)	10	9	-1	-5.7%	+2	+2
Clerical (III & IV)	64	66	+1	+2.2%	-6	-6
Management & Administrative	76	77	+1	+1.1%	-4	-4
Support	57	56	-1	-1.3%	+0	+0
Maintenance/ Technical	19	19	+0	+0.2%	+1	+1
General Support	76	76	-1	-0.9%	+1	+1
Health Care Assistants	525	526	+1	+0.2%	+11	+11
Care, other	30	33	+2	+7.1%	+8	+8
Home Help	428	456	+28	+6.6%	-43	-43
Patient & Client Care	983	1,015	+32	+3.2%	-24	-24

CHO 2 Employment by Administration (HSE / S38): December 2020

Dec 2020 (Dec 2019 figure: 5,545)	WTE Nov 2020	WTE Dec 2020	WTE change since Nov 20	% change since Nov 20	WTE change since Dec 19	WTE change since Dec 19
Overall	5,612	5,690	+78	+1.4%	+145	+145
HSE	4,323	4,393	+70	+1.6%	+136	+136
Section 38 Voluntary Agencies	1,289	1,298	+8	+0.6%	+9	+9

HSE

Dec 2020 (Dec 2019 figure: 4,256)	WTE Nov 2020	WTE Dec 2020	WTE change since Nov 20	% change since Nov 20	WTE change since Dec 19	WTE change since Dec 19
Overall	4,323	4,393	+70	+1.6%	+136	+136
Consultants	40	39	-0	-0.0%	-0	-0
Registrars	87	84	-3	-0.0%	+11	+11
SHO/ Interns	43	43	+0	+0.0%	+7	+7
Medical/ Dental, other	63	62	-1	-0.0%	+3	+3
Medical & Dental	231	228	-3	-1.5%	+20	+20
Nurse/ Midwife Manager	254	255	+0	+0.0%	+14	+14
Nurse/ Midwife Specialist & AN/MP	102	103	+1	+0.0%	+15	+15
Staff Nurse/ Staff Midwife	783	784	+1	+0.0%	+6	+6
Public Health Nurse	199	199	-0	-0.0%	+7	+7
<i>Pre-registration Nurse/ Midwife Intern</i>				-1.0%		-0
<i>Pre-registration Nurse Intern (COVID-19)</i>	15	10	-5	-0.3%	+10	+10
<i>Post-registration Nurse/ Midwife Student</i>				-1.0%	-13	-4
<i>Nursing/ Midwifery awaiting registration</i>				-1.0%	-11	-5
Nursing/ Midwifery Student	15	10	-5	-0.3%	+1	+1
Nursing/ Midwifery other	3	2	-1	-0.4%	-0	-0
Nursing & Midwifery	1,357	1,353	-4	-0.3%	+43	+43
Therapy Professions	330	333	+3	+0.0%	+29	+29
Health Science/ Diagnostics	34	35	+1	+0.0%	+2	+2
Social Care	56	57	+1	+0.0%	+8	+8
Social Workers	59	58	-1	-0.0%	-1	-1
Psychologists	65	66	+0	+0.0%	+6	+6
Pharmacy	4	4	-0	-0.0%	-1	-1
H&SC, Other	15	17	+2	+0.2%	+1	+1
Health & Social Care Professionals	564	570	+6	+1.1%	+44	+44
Management (VIII & above)	45	45	-0	-0.0%	+2	+2
Administrative/ Supervisory (V to VII)	120	124	+4	+0.0%	+25	+25
Clerical (III & IV)	407	410	+3	+0.0%	-21	-21
Management & Administrative	573	579	+6	+1.1%	+6	+6
Support	111	109	-2	-0.0%	-4	-4
Maintenance/ Technical	68	68	+1	+0.0%	+6	+6
General Support	179	178	-1	-0.7%	+2	+2
Health Care Assistants	834	870	+36	+0.0%	+49	+49
Care, other	157	159	+2	+0.0%	+14	+14
Home Help	428	456	+28	+0.1%	-43	-43
Patient & Client Care	1,419	1,485	+66	+4.6%	+20	+20

Section 38 Voluntary Agencies

Dec 2020 (Dec 2019 figure: 1,288)	WTE Nov 2020	WTE Dec 2020	WTE change since Nov 20	% change since Nov 20	WTE change since Dec 19	WTE change since Dec 19
Overall	1,289	1,298	+8	+0.6%	+9	+9
Consultants	2	2		+0.0%		
Registrars	2	2		+0.0%		
Medical & Dental	4	4				
Nurse/ Midwife Manager	67	68	+1	+0.0%	+1	+1
Nurse/ Midwife Specialist & AN/MP	5	5		+0.0%	-0	-0
Staff Nurse/ Staff Midwife	119	124	+5	+0.0%	+4	+4
<i>Pre-registration Nurse Intern (COVID-19)</i>	1	1	+0	+0.2%	+1	+1
Nursing/ Midwifery Student	1	1	+0	+0.2%	+1	+1
Nursing & Midwifery	191	197	+6	+3.2%	+5	+5
Therapy Professions	30	29	-1	-0.0%	-5	-5
Social Care	209	211	+2	+0.0%	+16	+16
Social Workers	25	26	+1	+0.0%	+0	+0
Psychologists	13	12	-1	-0.0%	-2	-2
H&SC, Other	16	12	-4	-0.3%	-4	-4
Health & Social Care Professionals	293	290	-3	-1.1%	+5	+5
Management (VIII & above)	13	13		+0.0%	-0	-0
Administrative/ Supervisory (V to VII)	37	36	-0	-0.0%	+2	+2
Clerical (III & IV)	37	38	+0	+0.0%	+0	+0
Management & Administrative	87	87	-0	-0.0%	+2	+2
Support	43	43	+0	+0.0%	-2	-2
Maintenance/ Technical	5	5		+0.0%	+0	+0
General Support	48	48	+0	+0.3%	-2	-2
Health Care Assistants	543	548	+5	+0.0%	+2	+2
Care, other	123	123	+0	+0.0%	-4	-4
Patient & Client Care	666	671	+5	+0.8%	-1	-1

CHO 2 Employment by S38 Agency: December 2020

Bros. of Charity, West Region

Dec 2020 (Dec 2019 figure: 1,288)	WTE Nov 2020	WTE Dec 2020	WTE change since Nov 20	% change since Nov 20	WTE change since Dec 19	WTE change since Dec 19
Overall	1,289	1,298	+8	+0.6%	+9	+9
Consultants	2	2		+0.0%		
Registrars	2	2		+0.0%		
Medical & Dental	4	4				
Nurse/ Midwife Manager	67	68	+1	+0.0%	+1	+1
Nurse/ Midwife Specialist & AN/MP	5	5		+0.0%	-0	-0
Staff Nurse/ Staff Midwife	119	124	+5	+0.0%	+4	+4
Pre-registration Nurse Intern (COVID-19)	1	1	+0	+0.2%	+1	+1
Nursing/ Midwifery Student	1	1	+0	+0.2%	+1	+1
Nursing & Midwifery	191	197	+6	+3.2%	+5	+5
Therapy Professions	30	29	-1	-0.0%	-5	-5
Social Care	209	211	+2	+0.0%	+16	+16
Social Workers	25	26	+1	+0.0%	+0	+0
Psychologists	13	12	-1	-0.0%	-2	-2
H&SC, Other	16	12	-4	-0.3%	-4	-4
Health & Social Care Professionals	293	290	-3	-1.1%	+5	+5
Management (VIII & above)	13	13		+0.0%	-0	-0
Administrative/ Supervisory (V to VII)	37	36	-0	-0.0%	+2	+2
Clerical (III & IV)	37	38	+0	+0.0%	+0	+0
Management & Administrative	87	87	-0	-0.0%	+2	+2
Support	43	43	+0	+0.0%	-2	-2
Maintenance/ Technical	5	5		+0.0%	+0	+0
General Support	48	48	+0	+0.3%	-2	-2
Health Care Assistants	543	548	+5	+0.0%	+2	+2
Care, other	123	123	+0	+0.0%	-4	-4
Patient & Client Care	666	671	+5	+0.8%	-1	-1

CHO 2 Employment by Grade Group & Staff Category: December 2020

Dec 2020 (Dec 2019 figure: 5,545)	WTE Nov 2020	WTE Dec 2020	WTE change since Nov 20	% change since Nov 20	WTE change since Dec 19	WTE change since Dec 19
Overall	5,612	5,690	+78	+1.4%	+145	+145
Consultant Medicine	1	1				
Consultant Paediatrics	1	1				
Consultant Psychiatry	40	39	-0	-0.6%	-1	-1
Consultant Surgery	0	0	+0	+7.1%	+0	+0
Consultants	42	42	-0	-0.5%	-0	-0
Registrar	67	64	-3	-3.9%	+6	+6
Senior Registrar	22	22			+5	+5
Registrars	89	86	-3	-3.0%	+11	+11
Senior House Officer	43	43	+0	+0.3%	+7	+7
SHO/ Interns	43	43	+0	+0.3%	+7	+7
Dentists	21	21	+0	+2.2%	+0	+0
Other Medical	42	41	-1	-2.7%	+3	+3
Medical/ Dental, other	63	62	-1	-1.1%	+3	+3
Medical & Dental	236	232	-3	-1.4%	+22	+20
Clinical Nurse/ Midwife Manager	257	256	-1	-0.2%	+15	+15
Director Nursing/Midwifery, Assistant	43	43	+1	+1.5%	-1	-1
Director of Nursing/Midwifery	22	24	+1	+6.3%	+1	+1
Nurse/ Midwife Manager	322	323	+1	+0.4%	+15	+15
Advanced Nurse/ Midwife Practitioner	10	11	+1	+10.5%	+2	+2
Clinical Nurse/ Midwife Specialist	97	97	+0	+0.3%	+13	+13
Nurse/ Midwife Specialist & AN/MP	107	108	+1	+1.2%	+15	+15
Staff Nurse [Intellectual Disability]	102	120	+18	+17.9%	+31	+31
Staff Nurse [Psychiatric]	366	365	-2	-0.4%	-7	-7
Staff Nurses [General/ Children's]	433	423	-11	-2.4%	-14	-14
Staff Nurse/ Staff Midwife	902	908	+6	+0.7%	+10	+10
Public Health Nurse	199	199	-0	-0.2%	+7	+7
Pre-registration Nurse/ Midwife Intern				-100.0%	-0	-0
Pre-registration Nurse Intern (COVID-19)	16	11	-5	-31.8%	+11	+11
Post-registration Nurse/ Midwife Student				-100.0%	-4	-4
Nursing/ Midwifery awaiting registration				-100.0%	-5	-5
Nursing/ Midwifery Student	16	11	-5	-31.8%	+2	+2
Nursing/ Midwifery other	3	2	-1	-40.5%	-0	-0
Nursing & Midwifery	1,548	1,550	+2	+0.1%	+15	+48
Dietitians	24	25	+1	+4.1%	+6	+6
Occupational Therapists	129	129	-1	-0.6%	+12	+12
Orthoptists	2	2	-0	-16.0%	+0	+0
Physiotherapists	92	94	+2	+2.0%	+5	+5
Podiatrists & Chiropodists	7	7	+0	+0.1%	+0	+0
Speech & Language Therapists	105	105	+0	+0.2%	+1	+1
Therapy Professions	360	362	+2	+0.6%	+24	+24
Audiology	5	6	+1	+10.7%	+1	+1
Clinical Engineering	1	1				
Medical Laboratory	27	27	+0	+0.2%	+1	+1
Radiographers	1	1				
Health Science/ Diagnostics	34	35	+1	+1.8%	+2	+2
Social Care	265	268	+3	+1.0%	+23	+23
Social Workers	84	84	-0	-0.4%	-0	-0

Dec 2020 (Dec 2019 figure: 5,545)	WTE Nov 2020	WTE Dec 2020	WTE change since Nov 20	% change since Nov 20	WTE change since Dec 19	WTE change since Dec 19
Overall	5,612	5,690	+78	+1.4%	+145	+145
Psychologists	78	78	-0	-0.4%	+4	+4
Pharmacy	4	4	-0	-1.0%	-1	-1
Counsellor Therapists	11	13	+2	+21.8%	+2	+2
Dental Hygienists	5	5	-0	-1.4%	+0	+0
Other Health & Social Care	14	10	-4	-30.2%	-4	-4
Play Therapists/ Specialists	1	1			-3	-3
H&SC, Other	31	29	-2	-6.0%	-3	-3
Health & Social Care Professionals	857	859	+3	+0.3%	+49	+49
Executive Management	11	11			+1	+1
Senior Management (VIII & GM)	47	47	-0	-0.1%	+1	+1
Management (VIII & above)	58	58	-0	-0.1%	+2	+2
Middle Management (V-VII)	157	160	+3	+2.2%	+28	+28
Other Administrative				-100.0%	-1	-1
Administrative/ Supervisory (V to VII)	157	160	+3	+2.2%	+27	+27
Clerical (III & IV)	445	448	+3	+0.7%	-20	-20
Management & Administrative	660	666	+6	+1.0%	-1	+9
Catering	39	39	-1	-1.4%	-1	-1
Household Services	63	62	-1	-1.8%	-1	-1
Other Support	38	38	+0	+0.0%	-1	-1
Portering	14	14			-2	-2
Support	154	152	-2	-1.1%	-5	-5
Maintenance/ Technical	73	74	+1	+0.7%	+6	+6
General Support	227	226	-1	-0.5%	-16	+0
HCA, Nurse's Aide, etc.	1,369	1,411	+42	+3.1%	+57	+57
Health & Social Care Assistants	9	8	-1	-16.2%	-6	-6
Health Care Assistants	1,378	1,419	+41	+3.0%	+51	+51
Other Care Grades	280	281	+2	+0.7%	+11	+11
Care, other	280	281	+2	+0.7%	+11	+11
Home Help	428	456	+28	+6.6%	-43	-43
Patient & Client Care	2,085	2,156	+71	+3.4%	+63	+19

CHO 2 HSE Employment by Grade Group & Staff Category: December 2020

Dec 2020 (Dec 2019 figure: 4,256)	WTE Nov 2020	WTE Dec 2020	WTE change since Nov 20	% change since Nov 20	WTE change since Dec 19	WTE change since Dec 19
Overall	4,323	4,393	+70	+1.6%	+136	+136
Consultant Medicine	1	1				
Consultant Psychiatry	38	38	-0	-0.6%	-1	-1
Consultant Surgery	0	0	+0	+7.1%	+0	+0
Consultants	40	39	-0	-0.5%	-0	-0
Registrar	67	64	-3	-3.9%	+7	+7
Senior Registrar	20	20			+4	+4
Registrars	87	84	-3	-3.0%	+11	+11
SHO/ Interns	43	43	+0	+0.3%	+7	+7
Dentists	21	21	+0	+2.2%	+0	+0
Other Medical	42	41	-1	-2.7%	+3	+3
Medical/ Dental, other	63	62	-1	-1.1%	+3	+3
Medical & Dental	231	228	-3	-1.5%	+21	+20
Clinical Nurse/ Midwife Manager	190	189	-2	-0.8%	+14	+14
Director Nursing/Midwifery, Assistant	43	43	+1	+1.5%	-1	-1
Director of Nursing/Midwifery	21	23	+1	+6.6%	+0	+0
Nurse/ Midwife Manager	254	255	+0	+0.2%	+14	+14
Advanced Nurse/ Midwife Practitioner	9	10	+1	+11.7%	+2	+2
Clinical Nurse/ Midwife Specialist	93	93	+0	+0.3%	+14	+14
Nurse/ Midwife Specialist & AN/MP	102	103	+1	+1.3%	+15	+15
Staff Nurse [Intellectual Disability]	13	14	+1	+8.9%	+1	+1
Staff Nurse [Psychiatric]	356	358	+1	+0.4%	-2	-2
Staff Nurses [General/ Children's]	414	413	-1	-0.3%	+7	+7
Staff Nurse/ Staff Midwife	783	784	+1	+0.1%	+6	+6
Public Health Nurse	199	199	-0	-0.2%	+7	+7
Pre-registration Nurse/ Midwife Intern				-100.0%	-0	-0
Pre-registration Nurse Intern (COVID-19)	15	10	-5	-33.8%	+10	+10
Post-registration Nurse/ Midwife Student				-100.0%	-4	-4
Nursing/ Midwifery awaiting registration				-100.0%	-5	-5
Nursing/ Midwifery Student	15	10	-5	-33.8%	+1	+1
Nursing/ Midwifery other	3	2	-1	-40.5%	-0	-0
Nursing & Midwifery	1,357	1,353	-4	-0.3%	+14	+43
Dietitians	24	25	+1	+4.1%	+6	+6
Occupational Therapists	121	120	-1	-0.7%	+13	+13
Orthoptists	2	2	-0	-16.0%	+0	+0
Physiotherapists	82	84	+2	+2.2%	+6	+6
Podiatrists & Chiropodists	7	7	+0	+0.1%	+0	+0
Speech & Language Therapists	94	95	+1	+1.3%	+5	+5
Therapy Professions	330	333	+3	+0.9%	+29	+29
Audiology	5	6	+1	+10.7%	+1	+1
Clinical Engineering	1	1				
Medical Laboratory	27	27	+0	+0.2%	+1	+1
Radiographers	1	1				
Health Science/ Diagnostics	34	35	+1	+1.8%	+2	+2
Social Care	56	57	+1	+1.3%	+8	+8
Social Workers	59	58	-1	-1.4%	-1	-1
Psychologists	65	66	+0	+0.4%	+6	+6
Pharmacy	4	4	-0	-1.0%	-1	-1
Counsellor Therapists	7	9	+2	+34.4%	+1	+1
Dental Hygienists	5	5	-0	-1.4%	+0	+0

Dec 2020 (Dec 2019 figure: 4,256)	WTE Nov 2020	WTE Dec 2020	WTE change since Nov 20	% change since Nov 20	WTE change since Dec 19	WTE change since Dec 19
Overall	4,323	4,393	+70	+1.6%	+136	+136
Other Health & Social Care	2	2			-1	-1
Play Therapists/ Specialists	1	1				
H&SC, Other	15	17	+2	+15.5%	+1	+1
Health & Social Care Professionals	564	570	+6	+1.1%	+28	+44
Executive Management	9	9			+1	+1
Senior Management (VIII & GM)	36	36	-0	-0.1%	+1	+1
Management (VIII & above)	45	45	-0	-0.1%	+2	+2
Administrative/ Supervisory (V to VII)	120	124	+4	+3.2%	+25	+25
Clerical (III & IV)	407	410	+3	+0.7%	-21	-21
Management & Administrative	573	579	+6	+1.1%	-8	+6
Catering	39	38	-1	-1.5%	-1	-1
Household Services	45	44	-1	-1.8%	+0	+0
Other Support	14	13	-0	-3.2%	-1	-1
Portering	14	14			-2	-2
Support	111	109	-2	-1.6%	-4	-4
Maintenance/ Technical	68	68	+1	+0.7%	+6	+6
General Support	179	178	-1	-0.7%	-15	+2
HCA, Nurse's Aide, etc.	825	863	+37	+4.5%	+55	+55
Health & Social Care Assistants	9	8	-1	-16.2%	-6	-6
Health Care Assistants	834	870	+36	+4.3%	+49	+49
Care, other	157	159	+2	+1.0%	+14	+14
Home Help	428	456	+28	+6.6%	-43	-43
Patient & Client Care	1,419	1,485	+66	+4.6%	-1	+20

Employment by WTE, Headcount, Gender, Full-Time /Part-Time etc.: Dec 2020

CHO 2	WTE	Headcount	WTE: no.	% Male	% female	Male WTE: no.	Female WTE: no.	% Total Perm	% Male Perm	% Female Perm	% Total Full Time	% Total Part Time	% Male FT	% Female FT
Overall	5,690	6,644	1.17	18.7%	81.3%	1.10	1.18	85.4%	81.5%	86.3%	58.8%	41.2%	74.6%	55.2%
Consultant Medicine	1	1	1.00		100.0%		1.00	100.0%	100.0%	100.0%	100.0%	0.0%		100.0%
Consultant Paediatrics	1	1	1.00		100.0%		1.00	100.0%	100.0%	100.0%	100.0%	0.0%		100.0%
Consultant Psychiatry	39	43	1.09	39.5%	60.5%	1.08	1.10	67.4%	67.4%	65.4%	81.4%	18.6%	88.2%	76.9%
Consultant Surgery	0	1	3.33		100.0%		3.33	0.0%	0.0%	0.0%	0.0%	100.0%		0.0%
Consultants	42	46	1.10	37.0%	63.0%	1.08	1.12	67.4%	70.6%	65.5%	80.4%	19.6%	88.2%	75.9%
Registrar	64	66	1.03	33.3%	66.7%	1.00	1.04	1.5%	1.5%	2.3%	100.0%	0.0%	100.0%	100.0%
Senior Registrar	22	22	1.02	36.4%	63.6%	1.00	1.04	0.0%	0.0%	0.0%	100.0%	0.0%	100.0%	100.0%
Registrars	86	88	1.02	34.1%	65.9%	1.00	1.04	1.1%	0.0%	1.7%	100.0%	0.0%	100.0%	100.0%
Senior House Officer	43	43	1.00	37.2%	62.8%	1.00	1.00	0.0%	0.0%	0.0%	100.0%	0.0%	100.0%	100.0%
SHO/ Interns	43	43	1.00	37.2%	62.8%	1.00	1.00	0.0%	0.0%	0.0%	100.0%	0.0%	100.0%	100.0%
Dentists	21	26	1.22	23.1%	76.9%	1.03	1.29	96.2%	96.2%	95.0%	57.7%	42.3%	83.3%	50.0%
Other Medical	41	47	1.16	29.8%	70.2%	1.20	1.14	61.7%	61.7%	69.7%	55.3%	44.7%	57.1%	54.5%
Medical/ Dental, other	62	73	1.18	27.4%	72.6%	1.14	1.20	74.0%	60.0%	79.2%	56.2%	43.8%	65.0%	52.8%
Medical & Dental	232	250	1.08	33.2%	66.8%	1.05	1.09	34.4%	28.9%	37.1%	83.6%	16.4%	89.2%	80.8%
Clinical Nurse/ Midwife Manager	256	275	1.07	26.5%	73.5%	1.01	1.10	96.4%	96.4%	96.0%	85.1%	14.9%	98.6%	80.2%
Director Nursing/Midwifery, Assistant	43	46	1.06	21.7%	78.3%	1.00	1.08	97.8%	97.8%	97.2%	91.3%	8.7%	100.0%	88.9%
Director of Nursing/Midwifery	24	24	1.01	12.5%	87.5%	1.00	1.01	100.0%	100.0%	100.0%	100.0%	0.0%	100.0%	100.0%
Nurse/ Midwife Manager	323	345	1.07	24.9%	75.1%	1.01	1.09	96.8%	97.7%	96.5%	87.0%	13.0%	98.8%	83.0%
Advanced Nurse/ Midwife Practitioner	11	11	1.01	27.3%	72.7%	1.00	1.01	100.0%	100.0%	100.0%	100.0%	0.0%	100.0%	100.0%
Clinical Nurse/ Midwife Specialist	97	104	1.07	12.5%	87.5%	1.01	1.08	100.0%	100.0%	100.0%	94.2%	5.8%	100.0%	93.4%
Nurse/ Midwife Specialist & AN/MP	108	115	1.07	13.9%	86.1%	1.01	1.08	100.0%	100.0%	100.0%	94.8%	5.2%	100.0%	93.9%
Staff Nurse [Intellectual Disability]	120	147	1.22	7.5%	92.5%	1.08	1.23	93.9%	93.9%	93.4%	49.7%	50.3%	72.7%	47.8%
Staff Nurse [Psychiatric]	365	401	1.10	25.2%	74.8%	1.10	1.10	92.8%	92.8%	95.3%	85.3%	14.7%	85.1%	85.3%
Staff Nurses [General/ Children's]	423	507	1.20	4.9%	95.1%	1.09	1.21	93.5%	93.5%	93.4%	53.6%	46.4%	76.0%	52.5%
Staff Nurse/ Staff Midwife	908	1,055	1.16	13.0%	87.0%	1.10	1.17	93.3%	88.3%	94.0%	65.1%	34.9%	82.5%	62.5%
Public Health Nurse	199	228	1.15		100.0%		1.15	97.4%		97.4%	73.7%	26.3%		73.7%
Pre-registration Nurse Intern (COVID-19)	11	12	1.11	8.3%	91.7%	1.00	1.12	0.0%	0.0%	0.0%	91.7%	8.3%	100.0%	90.9%
Nursing/ Midwifery Student	11	12	1.11	8.3%	91.7%	1.00	1.12	0.0%	0.0%	0.0%	91.7%	8.3%	100.0%	90.9%

Nursing/ Midwifery other	2	3	1.88		100.0%		1.88	100.0%		100.0%	66.7%	33.3%		66.7%
Nursing & Midwifery	1,550	1,758	1.13	13.7%	86.3%	1.06	1.15	94.3%	92.1%	94.7%	72.6%	27.4%	89.6%	70.0%
Dietitians	25	29	1.14		100.0%		1.14	89.7%	89.7%	89.7%	72.4%	27.6%		72.4%
Occupational Therapists	129	144	1.12	7.6%	92.4%	1.02	1.13	91.7%	91.7%	91.0%	70.8%	29.2%	90.9%	69.2%
Orthoptists	2	2	1.19		100.0%		1.19	100.0%	100.0%	100.0%	100.0%	0.0%		100.0%
Physiotherapists	94	111	1.18	15.3%	84.7%	1.03	1.22	91.0%	91.0%	91.5%	64.9%	35.1%	88.2%	60.6%
Podiatrists & Chiropodists	7	10	1.34	10.0%	90.0%	1.00	1.39	80.0%	80.0%	77.8%	50.0%	50.0%	100.0%	44.4%
Speech & Language Therapists	105	120	1.14	1.7%	98.3%	1.00	1.14	84.2%	84.2%	83.9%	78.3%	21.7%	100.0%	78.0%
Therapy Professions	362	416	1.15	7.5%	92.5%	1.03	1.16	88.9%	93.5%	88.6%	71.2%	28.8%	90.3%	69.6%
Audiology	6	6	1.02		100.0%		1.02	100.0%	100.0%	100.0%	83.3%	16.7%		83.3%
Clinical Engineering	1	1	1.00	100.0%		1.00		100.0%	100.0%		100.0%	0.0%	100.0%	
Medical Laboratory	27	29	1.06	17.2%	82.8%	1.05	1.06	100.0%	100.0%	100.0%	86.2%	13.8%	100.0%	83.3%
Radiographers	1	1	1.67		100.0%		1.67	100.0%	100.0%	100.0%	0.0%	100.0%		0.0%
Health Science/ Diagnostics	35	37	1.06	16.2%	83.8%	1.04	1.06	100.0%	100.0%	100.0%	83.8%	16.2%	100.0%	80.6%
Social Care	268	329	1.23	17.0%	83.0%	1.21	1.23	86.3%	92.9%	85.0%	51.1%	48.9%	51.8%	50.9%
Social Workers	84	95	1.14	17.9%	82.1%	1.04	1.16	94.7%	94.1%	94.9%	69.5%	30.5%	82.4%	66.7%
Psychologists	78	92	1.18	15.2%	84.8%	1.10	1.20	95.7%	100.0%	94.9%	68.5%	31.5%	92.9%	64.1%
Pharmacy	4	5	1.33	20.0%	80.0%	1.00	1.44	80.0%	100.0%	75.0%	40.0%	60.0%	100.0%	25.0%
Counsellor Therapists	13	15	1.12	26.7%	73.3%	1.17	1.11	93.3%	93.3%	100.0%	73.3%	26.7%	50.0%	81.8%
Dental Hygienists	5	6	1.22		100.0%		1.22	83.3%	83.3%	83.3%	50.0%	50.0%		50.0%
Other Health & Social Care	10	16	1.66	18.8%	81.3%	1.17	1.84	81.3%	81.3%	84.6%	12.5%	87.5%	33.3%	7.7%
Play Therapists/ Specialists	1	1	1.00		100.0%		1.00	100.0%	100.0%	100.0%	100.0%	0.0%		100.0%
H&SC, Other	29	38	1.32	18.4%	81.6%	1.17	1.35	86.8%	71.4%	90.3%	44.7%	55.3%	42.9%	45.2%
Health & Social Care	859	1,012	1.18	13.0%	87.0%	1.12	1.19	89.5%	93.2%	89.0%	63.5%	36.5%	71.2%	62.4%
Executive Management	11	13	1.13	69.2%	30.8%	1.19	1.03	84.6%	84.6%	100.0%	76.9%	23.1%	77.8%	75.0%
Senior Management (VIII & GM)	47	47	1.01	44.7%	55.3%	1.00	1.01	91.5%	91.5%	92.3%	95.7%	4.3%	100.0%	92.3%
Management (VIII & above)	58	60	1.03	50.0%	50.0%	1.05	1.02	90.0%	86.7%	93.3%	91.7%	8.3%	93.3%	90.0%
Administrative/ Supervisory (V to VII)	160	172	1.07	18.6%	81.4%	1.06	1.08	96.5%	93.8%	97.1%	80.2%	19.8%	84.4%	79.3%
Clerical (III & IV)	448	513	1.15	5.8%	94.2%	1.13	1.15	88.1%	76.7%	88.8%	66.7%	33.3%	73.3%	66.3%
Management & Administrative	666	745	1.12	12.3%	87.7%	1.08	1.12	90.2%	85.9%	90.8%	71.8%	28.2%	83.7%	70.1%
Catering	39	43	1.12	30.2%	69.8%	1.02	1.16	100.0%	100.0%	100.0%	62.8%	37.2%	84.6%	53.3%
Household Services	62	90	1.46	15.6%	84.4%	1.67	1.43	88.9%	88.9%	89.5%	32.2%	67.8%	35.7%	31.6%
Other Support	38	71	1.86	69.0%	31.0%	1.45	5.07	56.3%	56.3%	13.6%	16.9%	83.1%	20.4%	9.1%
Portering	14	14	1.00	92.9%	7.1%	1.00	1.00	100.0%	100.0%	100.0%	100.0%	0.0%	100.0%	100.0%
Support	152	218	1.43	40.8%	59.2%	1.31	1.53	81.2%	84.3%	79.1%	37.6%	62.4%	43.8%	33.3%

Maintenance/ Technical	74	76	1.03	98.7%	1.3%	1.03	1.00	97.4%	97.3%	100.0%	93.4%	6.6%	93.3%	100.0%
General Support	226	294	1.30	55.8%	44.2%	1.17	1.52	85.4%	90.2%	79.2%	52.0%	48.0%	66.5%	33.8%
HCA, Nurse's Aide, etc.	1,411	1,629	1.15	25.2%	74.8%	1.10	1.18	76.5%	76.5%	76.0%	53.6%	46.4%	69.0%	48.4%
Health & Social Care Assistants	8	9	1.16	44.4%	55.6%	1.00	1.33	44.4%	44.4%	40.0%	88.9%	11.1%	100.0%	80.0%
Health Care Assistants	1,419	1,638	1.15	25.3%	74.7%	1.10	1.18	76.3%	77.8%	75.8%	53.8%	46.2%	69.3%	48.5%
Care, other	281	342	1.22	33.9%	66.1%	1.15	1.25	86.0%	82.8%	87.6%	53.2%	46.8%	62.9%	48.2%
Home Help	456	605	1.33	0.7%	99.3%	1.14	1.33	91.7%	50.0%	92.0%	4.8%	95.2%	0.0%	4.8%
Patient & Client Care	2,156	2,585	1.20	20.7%	79.3%	1.11	1.22	81.2%	78.7%	81.9%	42.2%	57.8%	67.4%	35.7%

Employment by WTE, Headcount, Gender, Full-Time /Part-Time etc.: Dec 2020

CHO 2	WTE	Headcount	WTE: no.	% Male	% female	Male WTE: no.	Female WTE: no.	% Total Perm	% Male Perm	% Female Perm	% Total Full Time	% Total Part Time	% Male FT	% Female FT
Overall	5,690	6,644	1.17	18.7%	81.3%	1.10	1.18	85.4%	81.5%	86.3%	58.8%	41.2%	74.6%	55.2%
Community Health & Wellbeing	10	11	1.10	9.1%	90.9%	1.00	1.11	100.0%	100.0%	100.0%	54.5%	45.5%	100.0%	100.0%
Mental Health	1,340	1,447	1.08	28.0%	72.0%	1.05	1.09	86.2%	86.2%	88.0%	83.3%	16.7%	89.9%	89.9%
Primary Care	1,235	1,431	1.16	12.5%	87.5%	1.09	1.17	82.2%	82.2%	83.9%	70.2%	29.8%	82.7%	82.7%
HSE	1,808	2,118	1.17	13.6%	86.4%	1.05	1.19	90.1%	90.1%	90.7%	50.5%	49.5%	89.2%	89.2%
Section 38 Voluntary Agencies	1,298	1,637	1.26	22.7%	77.3%	1.22	1.27	81.1%	81.1%	80.6%	38.2%	61.8%	42.7%	42.7%
Social Care	3,105	3,755	1.21	17.6%	82.4%	1.14	1.23	86.2%	86.2%	86.6%	45.1%	54.9%	63.0%	63.0%

CHO 2 Skills Mix by Staff Grouping: December 2020

Dec 2020 (Dec 2018 figure: 5,559)	WTE Dec 2015	WTE Dec 2016	WTE Dec 2017	WTE Dec 2018	WTE Dec 2019	WTE Nov 2020	WTE Dec 2020
Overall	5,111	5,236	5,377	5,559	5,545	5,612	5,690
Consultant Medicine	0.5%	0.5%	0.5%	0.5%	0.5%	0.4%	0.4%
Consultant Paediatrics	0.5%	0.5%	0.5%	0.5%	0.5%	0.4%	0.4%
Consultant Psychiatry	18.0%	16.7%	16.6%	16.4%	18.9%	16.8%	17.0%
Consultant Surgery	0.7%	0.7%	0.6%	0.1%	0.1%	0.1%	0.1%
Consultants	19.7%	18.4%	18.3%	17.5%	19.9%	17.8%	18.0%
Registrar	26.4%	27.0%	29.4%	27.8%	27.4%	28.4%	27.7%
Senior Registrar	3.5%	4.2%	4.2%	5.5%	8.0%	9.1%	9.3%
Registrars	29.9%	31.1%	33.6%	33.2%	35.4%	37.5%	37.0%
Interns	0.5%						
Senior House Officer	19.2%	19.3%	18.6%	20.0%	16.9%	18.1%	18.5%
SHO/ Interns	19.8%	19.3%	18.6%	20.0%	16.9%	18.1%	18.5%
Dentists	11.8%	11.2%	10.8%	11.0%	10.0%	8.8%	9.2%
Other Medical	18.9%	19.9%	18.8%	18.3%	17.7%	17.7%	17.5%
Medical/ Dental, other	30.6%	31.2%	29.6%	29.3%	27.7%	26.5%	26.6%
Medical & Dental	3.7%	3.7%	3.8%	3.8%	3.8%	100.0%	4.1%
Clinical Nurse/ Midwife Manager	14.7%	15.7%	15.7%	16.5%	16.0%	16.6%	16.5%
Director Nursing/Midwifery, Assistant	2.4%	2.5%	2.7%	2.6%	3.0%	2.8%	2.8%
Director of Nursing/Midwifery	1.4%	1.4%	1.4%	1.4%	1.5%	1.4%	1.5%
Nurse/ Midwife Manager	18.5%	19.5%	19.7%	20.5%	20.6%	20.8%	20.9%
Advanced Nurse/ Midwife Practitioner	0.2%	0.2%	0.3%	0.4%	0.6%	0.6%	0.7%
Clinical Nurse/ Midwife Specialist	4.3%	4.3%	5.1%	5.1%	5.6%	6.2%	6.3%
Nurse/ Midwife Specialist & AN/MP	4.5%	4.5%	5.3%	5.5%	6.2%	6.9%	7.0%
Staff Midwives	0.1%	0.0%	0.1%				
Staff Nurse [Intellectual Disability]	8.0%	8.5%	6.5%	6.4%	6.0%	6.6%	7.8%
Staff Nurse [Psychiatric]	26.0%	25.4%	24.3%	24.1%	24.7%	23.7%	23.5%
Staff Nurses [General/ Children's]	30.3%	29.7%	30.5%	29.6%	29.1%	28.0%	27.3%
Staff Nurse/ Staff Midwife	64.4%	63.6%	61.4%	60.1%	59.8%	58.3%	58.6%
Public Health Nurse	11.9%	11.7%	11.4%	12.2%	12.8%	12.9%	12.8%
Pre-registration Nurse/ Midwife Intern	0.2%		0.9%		0.0%		
Pre-registration Nurse Intern (COVID-19)						1.0%	0.7%
Post-registration Nurse/ Midwife Student	0.5%	0.7%	1.1%	0.8%	0.3%		
Nursing/ Midwifery awaiting registration				0.7%	0.3%		
Nursing/ Midwifery Student	0.6%	0.7%	1.9%	1.6%	0.6%	1.0%	0.7%
Nursing/ Midwifery other			0.1%	0.2%	0.1%	0.2%	0.1%
Nursing & Midwifery	29.3%	28.8%	28.3%	27.6%	27.7%	100.0%	27.2%
Dietitians	2.2%	2.4%	2.6%	2.5%	2.4%	2.8%	3.0%
Occupational Therapists	13.8%	15.1%	14.7%	14.6%	14.4%	15.1%	15.0%
Orthoptists	0.2%	0.2%	0.2%	0.2%	0.2%	0.2%	0.2%
Physiotherapists	12.3%	10.7%	11.7%	11.0%	10.9%	10.7%	10.9%
Podiatrists & Chiropodists	0.9%	1.2%	1.0%	0.9%	0.9%	0.9%	0.9%
Speech & Language Therapists	11.9%	12.3%	12.4%	12.8%	12.9%	12.3%	12.3%
Therapy Professions	41.2%	41.8%	42.6%	41.9%	41.7%	42.0%	42.1%
Audiology	0.7%	0.6%	0.8%	0.7%	0.6%	0.6%	0.7%
Clinical Engineering	0.1%	0.1%			0.1%	0.1%	0.1%
Medical Laboratory	3.8%	3.8%	3.5%	3.3%	3.3%	3.2%	3.2%
Physicists	0.1%	0.1%					
Radiographers	0.0%	0.1%	0.1%	0.1%	0.1%	0.1%	0.1%
Health Science/ Diagnostics	4.8%	4.8%	4.4%	4.1%	4.1%	4.0%	4.1%
Social Care	24.8%	26.3%	27.2%	28.6%	30.2%	31.0%	31.2%
Social Workers	11.1%	10.3%	10.1%	10.1%	10.3%	9.8%	9.7%
Psychologists	12.2%	11.4%	10.7%	10.3%	9.1%	9.1%	9.1%

Dec 2020 (Dec 2018 figure: 5,559)	WTE Dec 2015	WTE Dec 2016	WTE Dec 2017	WTE Dec 2018	WTE Dec 2019	WTE Nov 2020	WTE Dec 2020
Overall	5,111	5,236	5,377	5,559	5,545	5,612	5,690
Pharmacy	0.8%	0.7%	0.6%	0.5%	0.6%	0.4%	0.4%
Counsellor Therapists	1.2%	1.4%	1.4%	1.5%	1.4%	1.3%	1.6%
Dental Hygienists	0.4%	0.5%	0.3%	0.5%	0.6%	0.6%	0.6%
HSCP Trainees/ Students	0.5%	0.3%	0.1%				
Other Health & Social Care	2.5%	2.1%	2.1%	1.9%	1.6%	1.6%	1.1%
Play Therapists/ Specialists	0.6%	0.5%	0.5%	0.4%	0.4%	0.1%	0.1%
H&SC, Other	5.2%	4.7%	4.4%	4.4%	4.0%	3.6%	3.4%
Health & Social Care Professionals	13.7%	14.0%	14.0%	14.6%	14.6%	100.0%	15.1%
Executive Management	1.4%	1.7%	1.8%	1.7%	1.6%	1.7%	1.7%
Senior Management (VIII & GM)	6.4%	6.5%	6.6%	7.0%	6.9%	7.1%	7.0%
Management (VIII & above)	7.8%	8.2%	8.5%	8.7%	8.5%	8.8%	8.7%
Middle Management (V-VII)	15.0%	17.2%	18.3%	18.5%	20.2%	23.8%	24.1%
Other Administrative					0.2%		
Administrative/ Supervisory (V to VII)	15.0%	17.2%	18.3%	18.5%	20.3%	23.8%	24.1%
Clerical (III & IV)	77.2%	74.6%	73.2%	72.8%	71.2%	67.4%	67.2%
Management & Administrative	11.0%	11.3%	11.9%	12.0%	12.0%	100.0%	11.7%
Catering	14.7%	15.6%	14.8%	16.9%	17.6%	17.2%	17.0%
Household Services	34.7%	31.9%	30.7%	28.8%	27.9%	27.6%	27.3%
Other Support	16.8%	17.2%	17.6%	17.4%	17.4%	16.8%	16.9%
Portering	4.9%	6.4%	7.2%	7.1%	6.9%	6.2%	6.2%
Support	71.1%	71.0%	70.3%	70.2%	69.9%	67.9%	67.5%
Maintenance/ Technical	28.9%	29.0%	29.7%	29.8%	30.1%	32.1%	32.5%
General Support	5.3%	4.9%	4.5%	4.4%	4.4%	100.0%	4.0%
HCA, Nurse's Aide, etc.	61.2%	63.7%	64.2%	63.5%	63.3%	65.6%	65.4%
Health & Social Care Assistants	0.3%	0.3%	0.5%	0.9%	0.6%	0.4%	0.4%
Health Care Assistants	61.5%	64.0%	64.7%	64.5%	64.0%	66.1%	65.8%
Care, other	13.9%	13.0%	13.0%	12.5%	12.7%	13.4%	13.0%
Home Help	24.6%	23.0%	22.3%	23.0%	23.4%	20.5%	21.2%
Patient & Client Care	37.1%	37.4%	37.4%	37.7%	37.8%	100.0%	37.9%
Total	100 %	100 %	100 %	100 %	100%	100 %	100 %

CHO 2 Skills Mix by Care Group: December 2020

Dec 2020 (Dec 2018 figure: 1,338)	WTE Dec 2015	WTE Dec 2016	WTE Dec 2017	WTE Dec 2018	WTE Dec 2019	WTE Nov 2020	WTE Dec 2020
Mental Health	1,258	1,283	1,307	1,338	1,308	1,345	1,340
Consultants	38.0%	33.8%	31.8%	30.6%	35.3%	32.3%	32.4%
Registrar	17.5%	18.0%	19.5%	17.9%	16.0%	14.7%	14.9%
Senior Registrar	7.8%	9.0%	8.5%	10.9%	15.0%	16.9%	17.0%
Registrars	25.3%	27.0%	28.0%	28.7%	31.1%	31.7%	31.9%
Interns	1.2%						
Senior House Officer	32.6%	36.4%	37.7%	39.7%	32.7%	34.5%	34.9%
SHO/ Interns	33.8%	36.4%	37.7%	39.7%	32.7%	34.5%	34.9%
Medical/ Dental, other	3.0%	2.8%	2.5%	0.9%	0.9%	1.5%	0.9%
Medical & Dental	6.6%	6.9%	7.6%	7.9%	8.1%	8.5%	8.5%
Clinical Nurse/ Midwife Manager	20.5%	22.1%	20.7%	23.0%	21.5%	21.6%	21.8%
Director Nursing/Midwifery, Assistant	2.9%	2.8%	3.3%	3.1%	3.3%	3.0%	3.0%
Director of Nursing/Midwifery	0.4%	0.5%	0.5%	0.3%	0.5%	0.5%	0.5%
Nurse/ Midwife Manager	23.7%	25.5%	24.6%	26.4%	25.3%	25.1%	25.3%
Advanced Nurse/ Midwife Practitioner	0.5%	0.5%	0.5%	0.9%	1.0%	1.1%	1.2%
Clinical Nurse/ Midwife Specialist	7.5%	7.4%	9.9%	9.4%	10.6%	11.9%	12.1%
Nurse/ Midwife Specialist & AN/MP	8.1%	7.9%	10.4%	10.2%	11.7%	13.0%	13.3%
Staff Nurse [Psychiatric]	65.7%	64.6%	61.0%	60.0%	61.0%	58.1%	58.7%
Staff Nurses [General/ Children's]	2.0%	2.0%	1.3%	0.9%	0.9%	0.7%	0.8%
Staff Nurse/ Staff Midwife	67.8%	66.6%	62.3%	61.0%	61.9%	58.9%	59.4%
Pre-registration Nurse/ Midwife Intern	0.4%		2.3%		0.0%		
Pre-registration Nurse Intern (COVID-19)						2.5%	1.7%
Nursing/ Midwifery awaiting registration				1.9%	0.8%		
Nursing/ Midwifery Student	0.4%		2.3%	1.9%	0.8%	2.5%	1.7%
Nursing/ Midwifery other			0.4%	0.5%	0.3%	0.4%	0.3%
Nursing & Midwifery	44.5%	44.0%	43.5%	43.8%	44.8%	44.5%	44.5%
Dietitians	1.6%	2.9%	3.6%	2.4%	2.1%	2.7%	3.7%
Occupational Therapists	20.6%	24.4%	26.3%	26.4%	26.0%	26.0%	25.9%
Speech & Language Therapists	4.7%	5.3%	5.5%	5.2%	4.3%	5.7%	6.1%
Therapy Professions	26.9%	32.6%	35.4%	33.9%	32.4%	34.4%	35.7%
Social Care	13.5%	12.2%	9.7%	9.9%	10.5%	10.3%	10.4%
Social Workers	30.3%	26.9%	26.2%	27.7%	29.1%	27.6%	26.9%
Psychologists	25.4%	25.0%	25.3%	24.6%	24.0%	24.5%	23.9%
Pharmacy	3.2%	2.6%	1.9%	1.8%	1.8%	1.2%	1.1%
Counsellor Therapists				1.4%	1.4%	1.3%	1.3%
Other Health & Social Care			0.7%				
Play Therapists/ Specialists	0.8%	0.7%	0.7%	0.7%	0.7%	0.7%	0.6%
H&SC, Other	0.8%	0.7%	1.4%	2.1%	2.1%	2.0%	1.9%
Health & Social Care Professionals	10.1%	10.7%	10.6%	10.9%	11.2%	11.5%	11.5%
Management (VIII & above)	4.0%	3.1%	2.2%	2.8%	3.6%	3.0%	3.0%
Administrative/ Supervisory (V to VII)	13.5%	15.9%	17.6%	16.5%	17.1%	20.7%	19.9%
Clerical (III & IV)	82.5%	81.0%	80.2%	80.7%	79.2%	76.3%	77.1%
Management & Administrative	9.9%	10.2%	10.4%	10.5%	10.8%	9.9%	9.9%
Support	61.0%	56.6%	53.4%	52.7%	57.3%	49.4%	48.5%
Maintenance/ Technical	39.0%	43.4%	46.6%	47.3%	42.7%	50.6%	51.5%
General Support	6.7%	6.3%	5.6%	5.2%	5.3%	4.8%	4.8%
Health Care Assistants	75.6%	76.3%	74.5%	75.0%	75.6%	75.9%	76.1%
Care, other	24.4%	23.7%	25.5%	25.0%	24.4%	24.1%	23.9%

Dec 2020 (Dec 2018 figure: 1,338)	WTE Dec 2015	WTE Dec 2016	WTE Dec 2017	WTE Dec 2018	WTE Dec 2019	WTE Nov 2020	WTE Dec 2020
Mental Health	1,258	1,283	1,307	1,338	1,308	1,345	1,340
Patient & Client Care	22.1%	21.9%	22.3%	21.7%	22.2%	20.7%	20.7%
Total	100 %	100 %	100 %	100 %	100 %	100 %	100 %

Dec 2020 (Dec 2018 figure: 1,160)	WTE Dec 2015	WTE Dec 2016	WTE Dec 2017	WTE Dec 2018	WTE Dec 2019	WTE Nov 2020	WTE Dec 2020
Primary Care	1,261	1,238	1,090	1,160	1,134	1,191	1,235
Consultant Medicine	1.1%	1.2%	1.2%	1.1%	1.1%	1.0%	1.0%
Consultant Psychiatry	1.1%						
Consultant Surgery	1.4%	1.5%	1.5%	0.3%	0.3%	0.3%	0.3%
Consultants	3.6%	2.7%	2.7%	1.5%	1.4%	1.2%	1.3%
Registrars	36.5%	39.1%	44.7%	43.2%	45.6%	48.3%	47.0%
SHO/ Interns	9.8%	5.4%			1.1%	2.9%	3.0%
Dentists	24.5%	25.0%	25.7%	26.7%	24.1%	20.1%	21.1%
Other Medical	25.6%	27.8%	26.9%	28.6%	27.8%	27.4%	27.7%
Medical/ Dental, other	50.0%	52.8%	52.6%	55.3%	51.9%	47.6%	48.8%
Medical & Dental	7.1%	7.0%	7.8%	7.5%	7.7%	8.2%	8.2%
Clinical Nurse/ Midwife Manager	2.0%	1.7%	2.3%	2.0%	1.7%	1.8%	1.8%
Director Nursing/Midwifery, Assistant	4.7%	5.3%	4.9%	5.1%	6.4%	5.8%	5.8%
Director of Nursing/Midwifery	0.9%	0.7%	1.0%	0.9%	0.6%	0.9%	0.9%
Nurse/ Midwife Manager	7.6%	7.7%	8.2%	8.0%	8.7%	8.6%	8.6%
Nurse/ Midwife Specialist & AN/MP	5.7%	5.2%	4.9%	5.7%	5.5%	6.3%	6.5%
Staff Nurse/ Staff Midwife	24.1%	24.0%	23.9%	24.4%	23.6%	23.9%	24.3%
Public Health Nurse	60.3%	59.4%	57.7%	57.8%	60.9%	61.3%	60.7%
Nursing/ Midwifery Student	2.4%	3.7%	5.3%	4.0%	1.3%		
Nursing & Midwifery	23.4%	23.9%	27.6%	27.7%	28.4%	26.4%	26.4%
Dietitians	4.0%	3.3%	4.0%	5.2%	4.9%	5.6%	5.5%
Occupational Therapists	17.7%	19.1%	18.6%	18.8%	19.0%	20.9%	20.5%
Orthoptists	0.5%	0.5%	0.5%	0.5%	0.5%	0.6%	0.5%
Physiotherapists	19.4%	18.1%	21.1%	20.0%	20.0%	20.2%	20.4%
Podiatrists & Chiropodists	2.0%	2.8%	2.5%	2.2%	2.2%	2.2%	2.2%
Speech & Language Therapists	20.8%	22.6%	22.9%	24.4%	25.7%	24.3%	24.1%
Therapy Professions	64.5%	66.4%	69.7%	71.1%	72.4%	73.8%	73.2%
Audiology	1.6%	1.5%	1.9%	1.8%	1.6%	1.6%	1.7%
Clinical Engineering	0.3%	0.3%			0.3%	0.3%	0.3%
Medical Laboratory	8.8%	9.2%	8.8%	8.3%	8.5%	8.2%	8.1%
Physicists	0.3%	0.3%					
Health Science/ Diagnostics	11.0%	11.4%	10.7%	10.1%	10.4%	10.1%	10.2%
Social Care	4.0%	3.7%	3.5%	3.0%	2.7%	2.6%	2.6%
Social Workers	3.2%	3.0%	2.3%	2.1%	2.2%	1.7%	1.7%
Psychologists	12.2%	10.0%	8.8%	8.6%	7.7%	7.8%	7.9%
Pharmacy	0.3%	0.3%	0.3%	0.3%	0.3%	0.3%	0.3%
Counsellor Therapists	2.8%	3.0%	2.9%	2.4%	1.9%	1.5%	2.2%
Dental Hygienists	1.0%	1.1%	0.8%	1.4%	1.4%	1.5%	1.5%
Other Health & Social Care	1.0%	1.0%	1.0%	0.9%	1.0%	0.6%	0.6%
H&SC, Other	4.8%	5.1%	4.7%	4.7%	4.3%	3.6%	4.2%
Health & Social Care Professionals	24.2%	24.2%	27.8%	27.8%	28.4%	27.4%	27.4%
Executive Management	2.1%	2.7%	3.1%	2.8%	2.5%	2.8%	2.8%
Senior Management (VIII & GM)	7.3%	7.0%	8.4%	8.4%	7.4%	7.5%	7.7%
Management (VIII & above)	9.4%	9.7%	11.5%	11.2%	9.9%	10.3%	10.5%
Administrative/ Supervisory (V to VII)	12.7%	13.6%	14.3%	16.1%	18.6%	20.9%	21.7%
Clerical (III & IV)	77.9%	76.7%	74.2%	72.7%	71.5%	68.8%	67.9%

Dec 2020 (Dec 2018 figure: 1,160)	WTE Dec 2015	WTE Dec 2016	WTE Dec 2017	WTE Dec 2018	WTE Dec 2019	WTE Nov 2020	WTE Dec 2020
Primary Care	1,261	1,238	1,090	1,160	1,134	1,191	1,235
Management & Administrative	22.6%	23.6%	28.8%	28.5%	29.1%	27.3%	27.3%
Support	59.1%	70.6%	70.8%	74.0%	69.9%	73.7%	73.5%
Maintenance/ Technical	40.9%	29.4%	29.2%	26.0%	30.1%	26.3%	26.5%
General Support	2.9%	2.5%	2.8%	3.0%	3.1%	2.4%	2.4%
HCA, Nurse's Aide, etc.	2.7%	2.4%	8.1%	6.9%	7.7%	24.6%	51.4%
Health & Social Care Assistants		0.4%	7.1%	23.2%	17.2%	8.1%	3.9%
Health Care Assistants	2.7%	2.9%	15.2%	30.0%	25.0%	32.8%	55.4%
Care, other	24.7%	24.7%	84.8%	70.0%	75.0%	67.2%	44.6%
Home Help	72.5%	72.5%					
Patient & Client Care	19.8%	18.8%	5.2%	5.6%	5.7%	8.3%	8.3%
Total	100 %	100 %	100 %	100 %	100 %	100 %	100 %

Dec 2020 (Dec 2018 figure: 1,420)	WTE Dec 2015	WTE Dec 2016	WTE Dec 2017	WTE Dec 2018	WTE Dec 2019	WTE Nov 2020	WTE Dec 2020
Disabilities	1,221	1,338	1,395	1,420	1,497	1,505	1,516
Consultant Paediatrics	20.0%	16.7%	16.7%	16.4%	15.6%	15.6%	15.6%
Consultant Psychiatry	20.0%	33.3%	33.3%	34.3%	37.5%	37.5%	37.5%
Consultants	40.0%	50.0%	50.0%	50.7%	53.1%	53.1%	53.1%
Registrars	40.0%	33.3%	33.3%	32.8%	31.3%	31.3%	31.3%
Medical/ Dental, other	20.0%	16.7%	16.7%	16.4%	15.6%	15.6%	15.6%
Medical & Dental	0.4%	0.4%	0.4%	0.4%	0.4%	0.4%	0.4%
Clinical Nurse/ Midwife Manager	23.8%	24.3%	26.1%	27.5%	30.0%	30.3%	29.6%
Director Nursing/Midwifery, Assistant	0.4%	0.7%	0.4%				
Director of Nursing/Midwifery	0.7%	1.1%	0.7%	0.7%	1.1%	1.2%	1.2%
Nurse/ Midwife Manager	24.8%	26.0%	27.1%	28.2%	31.1%	31.5%	30.8%
Advanced Nurse/ Midwife Practitioner			0.4%	0.4%	0.4%	0.4%	0.4%
Clinical Nurse/ Midwife Specialist	2.2%	2.6%	2.3%	2.0%	2.0%	1.9%	1.9%
Nurse/ Midwife Specialist & AN/MP	2.2%	2.6%	2.7%	2.3%	2.4%	2.3%	2.3%
Staff Nurse [Intellectual Disability]	43.6%	46.3%	36.3%	38.9%	36.1%	41.6%	47.5%
Staff Nurse [Psychiatric]	7.7%	6.2%	8.6%	7.0%	7.7%	6.5%	5.7%
Staff Nurses [General/ Children's]	21.6%	19.0%	25.3%	23.5%	22.7%	17.9%	13.5%
Staff Nurse/ Staff Midwife	73.0%	71.4%	70.2%	69.4%	66.5%	66.0%	66.7%
Pre-registration Nurse Intern (COVID-19)						0.2%	0.3%
Nursing/ Midwifery Student						0.2%	0.3%
Nursing & Midwifery	22.6%	20.6%	19.5%	17.8%	16.9%	16.7%	16.7%
Dietitians	0.3%	0.6%			0.2%	0.3%	0.3%
Occupational Therapists	3.4%	3.8%	3.7%	3.1%	3.6%	2.9%	2.9%
Physiotherapists	4.8%	3.8%	4.0%	3.6%	4.0%	3.3%	3.4%
Speech & Language Therapists	5.3%	5.3%	5.4%	5.0%	5.1%	4.0%	3.8%
Therapy Professions	13.8%	13.6%	13.1%	11.7%	12.9%	10.5%	10.3%
Social Care	61.5%	63.8%	65.0%	67.9%	69.1%	72.6%	74.0%
Social Workers	9.3%	8.5%	8.8%	8.0%	8.1%	7.6%	7.8%
Psychologists	6.7%	7.3%	7.0%	6.5%	4.9%	4.5%	4.3%
Counsellor Therapists		0.4%	0.7%	0.8%	1.0%	1.2%	1.2%
HSCP Trainees/ Students	1.3%	0.9%	0.2%				
Other Health & Social Care	6.1%	4.7%	4.3%	4.2%	3.2%	3.6%	2.3%
Play Therapists/ Specialists	1.3%	0.8%	0.9%	0.8%	0.8%		
H&SC, Other	8.7%	6.7%	6.1%	5.8%	4.9%	4.8%	3.5%
Health & Social Care Professionals	19.2%	19.3%	20.1%	21.6%	20.5%	21.7%	21.7%
Executive Management	2.4%	2.0%	1.9%	1.9%	1.9%	1.8%	1.8%

Dec 2020 (Dec 2018 figure: 1,420)	WTE Dec 2015	WTE Dec 2016	WTE Dec 2017	WTE Dec 2018	WTE Dec 2019	WTE Nov 2020	WTE Dec 2020
Disabilities	1,221	1,338	1,395	1,420	1,497	1,505	1,516
Senior Management (VIII & GM)	9.4%	11.7%	11.1%	12.5%	13.1%	13.5%	12.5%
Management (VIII & above)	11.8%	13.7%	13.0%	14.4%	15.0%	15.3%	14.3%
Administrative/ Supervisory (V to VII)	32.6%	34.7%	38.6%	36.6%	38.2%	39.4%	40.3%
Clerical (III & IV)	55.6%	51.7%	48.4%	49.1%	46.8%	45.3%	45.4%
Management & Administrative	6.9%	7.6%	7.7%	7.4%	7.0%	7.3%	7.3%
Support	78.4%	77.5%	78.2%	79.1%	77.5%	76.9%	77.0%
Maintenance/ Technical	21.6%	22.5%	21.8%	20.9%	22.5%	23.1%	23.0%
General Support	4.7%	4.3%	4.3%	4.0%	3.8%	3.7%	3.7%
Health Care Assistants	78.9%	81.9%	82.7%	82.5%	82.3%	82.1%	82.2%
Care, other	21.1%	18.1%	17.3%	17.5%	17.7%	17.9%	17.8%
Patient & Client Care	46.2%	47.8%	48.0%	48.8%	46.3%	50.2%	50.2%
Total	100 %	100 %	100 %	100 %	100 %	100 %	100 %

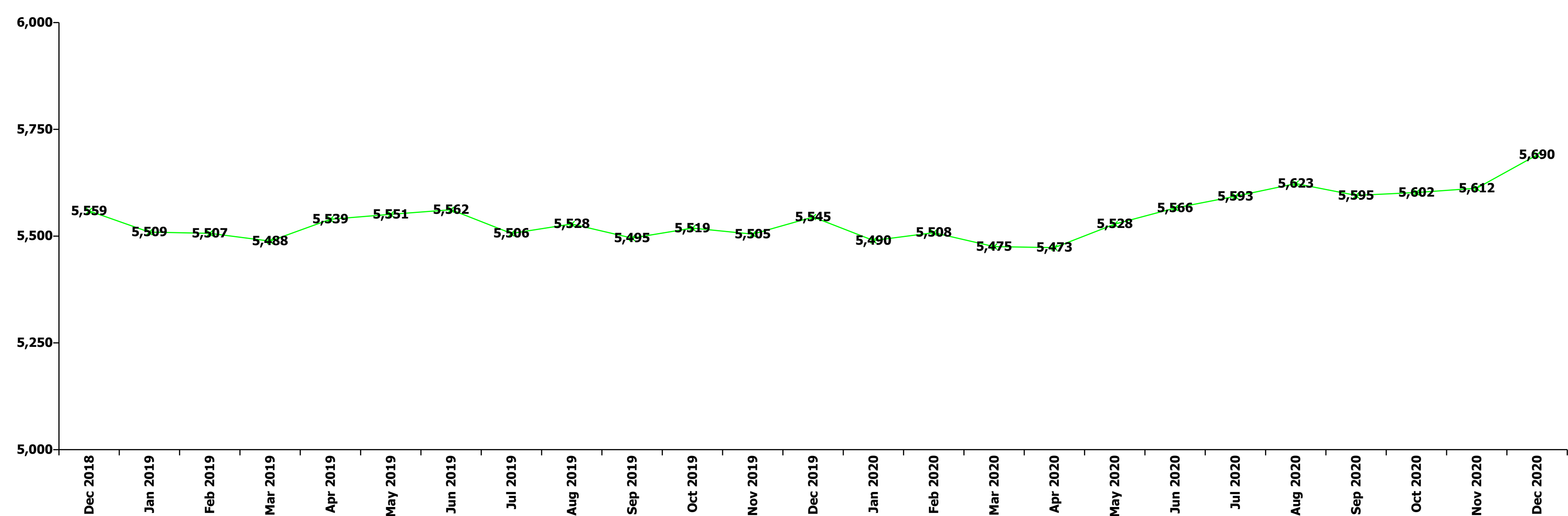
Dec 2020 (Dec 2018 figure: 1,641)	WTE Dec 2015	WTE Dec 2016	WTE Dec 2017	WTE Dec 2018	WTE Dec 2019	WTE Nov 2020	WTE Dec 2020
Older People	1,371	1,376	1,586	1,641	1,606	1,561	1,590
Medical/ Dental, other	100.0%	100.0%	100.0%	100.0%	100.0%	100.0%	100.0%
Medical & Dental	0.6%	0.8%	0.7%	0.7%	0.7%	0.7%	0.7%
Clinical Nurse/ Midwife Manager	9.4%	10.7%	11.4%	11.4%	10.2%	12.3%	12.0%
Director Nursing/Midwifery, Assistant	1.5%	1.0%	1.5%	1.3%	1.6%	1.6%	1.7%
Director of Nursing/Midwifery	3.8%	3.5%	3.4%	3.8%	4.3%	3.6%	4.0%
Nurse/ Midwife Manager	14.6%	15.2%	16.3%	16.5%	16.1%	17.4%	17.7%
Nurse/ Midwife Specialist & AN/MP					0.6%	0.5%	0.5%
Staff Midwives	0.2%	0.1%	0.2%				
Staff Nurse [Intellectual Disability]			0.2%				
Staff Nurses [General/ Children's]	85.0%	84.5%	83.0%	83.2%	83.2%	81.8%	81.5%
Staff Nurse/ Staff Midwife	85.2%	84.6%	83.4%	83.2%	83.2%	81.8%	81.5%
Public Health Nurse	0.2%	0.2%	0.2%	0.3%	0.2%	0.3%	0.3%
Nursing & Midwifery	26.7%	27.0%	24.1%	22.8%	23.3%	23.5%	23.5%
Dietitians	1.2%	6.6%	6.1%		1.3%	1.3%	
Occupational Therapists	24.4%	26.3%	21.9%	26.6%	25.5%	27.2%	25.7%
Physiotherapists	46.2%	38.2%	38.5%	38.4%	36.1%	34.6%	36.5%
Speech & Language Therapists	3.0%	2.8%	5.7%	5.5%	5.3%	5.1%	5.4%
Therapy Professions	74.8%	74.0%	72.2%	70.4%	68.2%	68.2%	67.6%
Radiographers	0.0%	1.7%	1.7%	1.7%	1.6%	1.5%	1.6%
Health Science/ Diagnostics	0.0%	1.7%	1.7%	1.7%	1.6%	1.5%	1.6%
Social Workers	22.4%	21.3%	24.6%	26.5%	27.5%	27.6%	28.1%
Pharmacy	1.5%	1.4%	1.5%	1.4%	2.7%	2.6%	2.8%
Play Therapists/ Specialists	1.3%	1.6%	0.0%	0.0%	0.0%		
H&SC, Other	1.3%	1.6%	0.0%	0.0%	0.0%		
Health & Social Care Professionals	2.4%	2.6%	2.2%	2.2%	2.2%	2.4%	2.4%
Management (VIII & above)	2.9%	2.9%	1.2%	2.2%	2.5%	2.6%	2.6%
Administrative/ Supervisory (V to VII)	5.6%	9.0%	8.3%	9.4%	9.4%	12.7%	11.9%
Clerical (III & IV)	91.4%	88.0%	90.5%	88.4%	88.1%	84.6%	85.5%
Management & Administrative	4.9%	5.0%	5.2%	5.6%	5.7%	4.8%	4.8%
Support	80.6%	80.3%	79.5%	77.3%	74.7%	74.5%	74.2%
Maintenance/ Technical	19.4%	19.7%	20.5%	22.7%	25.3%	25.5%	25.8%
General Support	6.6%	6.3%	5.1%	5.0%	5.1%	4.8%	4.8%

Dec 2020 (Dec 2018 figure: 1,641)	WTE Dec 2015	WTE Dec 2016	WTE Dec 2017	WTE Dec 2018	WTE Dec 2019	WTE Nov 2020	WTE Dec 2020
Older People	1,371	1,376	1,586	1,641	1,606	1,561	1,590
HCA, Nurse's Aide, etc.	62.1%	62.8%	52.2%	51.4%	49.3%	53.1%	51.5%
Health & Social Care Assistants	0.5%	0.5%	0.4%	0.4%	0.3%	0.3%	0.3%
Health Care Assistants	62.6%	63.3%	52.6%	51.8%	49.6%	53.4%	51.8%
Care, other	1.9%	1.8%	2.4%	2.3%	2.4%	3.1%	3.2%
Home Help	35.5%	34.9%	45.0%	46.0%	48.1%	43.5%	45.0%
Patient & Client Care	58.7%	58.4%	62.8%	63.7%	65.1%	63.8%	63.8%
Total	100 %	100 %	100 %	100 %	100 %	100 %	100 %

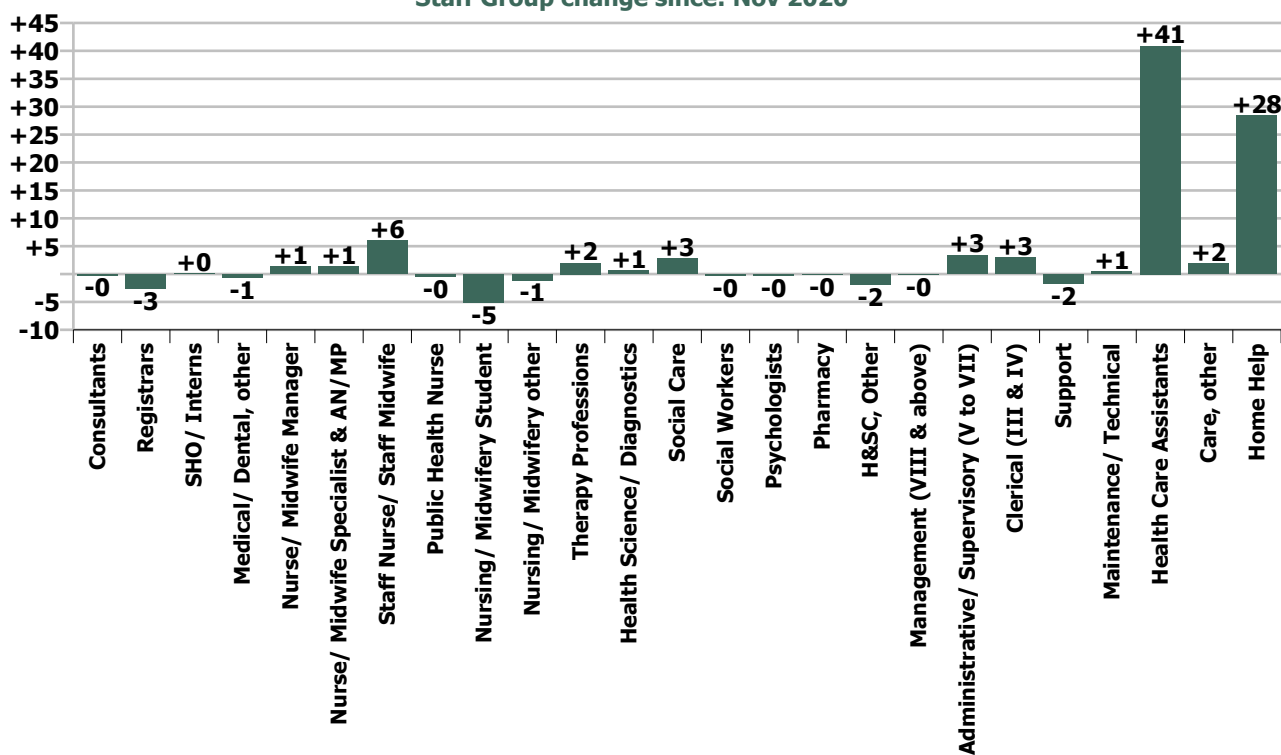
Summary Staff Movement: December 2020

Month-on-month Summary																												
WTE change since Nov 20	% change since Nov 20	overall	Consultants	Registrars	SHO/ Interns	Medical/ Dental, other	Medical & Dental	Nurse/ Midwife Manager	Nurse/ Midwife Specialist & AN/MP	Staff Nurse/ Staff Midwife	Public Health Nurse	Nursing/ Midwifery Student	Nursing/ Midwifery other	Nursing & Midwifery	Therapy Professions	Health Science/ Diagnostics	Social Care	Social Workers	Psychologists	Pharmacy	H&SC, Other	Health & Social Care Professionals	Management (VIII & above)	Administrative/ Supervisory (V to VII)	Clerical (III & IV)	Management & Administrative	General Support	Patient & Client Care
Overall	+1.4%	+78	-0.2	-2.6	+0.1	-0.7	-3.4	+1.4	+1.3	+6.1	-0.5	-5.1	-1.1	+2.2	+2.0	+0.6	+2.8	-0.3	-0.4	-0.0	-1.8	+2.8	-0.0	+3.4	+3.0	+6.4	-1.2	+71.1
Community Health & Wellbeing	+1.5%	+0																				0.0	+0.2	0.0	+0.2		0.0	
Mental Health	-0.4%	-5	-0.2	0.0	+0.1	-0.8	-0.9	-0.1	+0.5	-0.3		-5.2	-1.1	-6.2	+2.6		+0.3	-0.6	-0.4	-0.0	0.0	+1.9	0.0	-0.9	+1.7	+0.8	-0.3	-0.3
Primary Care	+3.6%	+43	+0.0	-2.6	+0.0	+0.0	-2.5	+0.1	+0.8	+1.9	-0.5			+2.3	+1.7	+0.6	0.0	0.0	+0.6	0.0	+2.3	+5.2	+1.0	+3.5	-0.4	+4.1	-0.4	+34.7
Disabilities	+0.7%	+11	0.0	0.0		0.0	0.0	+0.7	0.0	+7.3		+0.1		+8.2	-0.9		+2.5	+0.5	-0.6		-4.2	-2.7	-1.1	+1.2	+0.3	+0.5	+0.1	+4.9
Older People	+1.8%	+28				+0.0	+0.0	+0.7	+0.0	-2.7	0.0			-2.0	-1.4	0.0		-0.3		0.0		-1.7	0.0	-0.6	+1.4	+0.8	-0.7	+31.8
Social Care	+1.3%	+39	0.0	0.0		+0.0	+0.0	+1.5	+0.0	+4.6	0.0	+0.1		+6.1	-2.3	0.0	+2.5	+0.2	-0.6	0.0	-4.2	-4.4	-1.1	+0.7	+1.7	+1.3	-0.6	+36.7
Change	+78.0	+1.4%	-0.5%	-3.0%	+0.3%	-1.1%	-1.4%	+0.4%	+1.2%	+0.7%	-0.2%	-31.8%	-40.5%	+0.1%	+0.6%	+1.8%	+1.0%	-0.4%	-0.4%	-1.0%	-6.0%	+0.3%	-0.1%	+2.2%	+0.7%	+1.0%	-0.5%	+3.4%

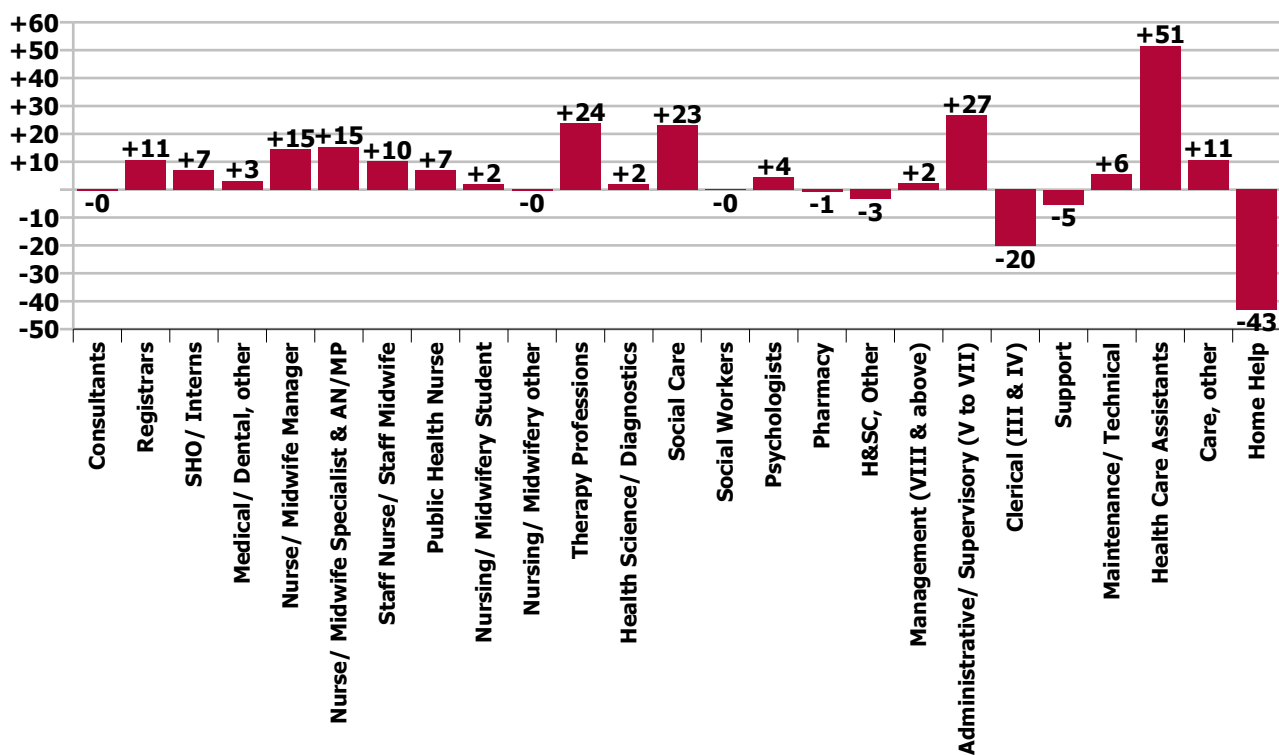
Year-on-year Summary																												
WTE change since Dec 19	% change since Dec 19	overall	Consultants	Registrars	SHO/ Interns	Medical/ Dental, other	Medical & Dental	Nurse/ Midwife Manager	Nurse/ Midwife Specialist & AN/MP	Staff Nurse/ Staff Midwife	Public Health Nurse	Nursing/ Midwifery Student	Nursing/ Midwifery other	Nursing & Midwifery	Therapy Professions	Health Science/ Diagnostics	Social Care	Social Workers	Psychologists	Pharmacy	H&SC, Other	Health & Social Care Professionals	Management (VIII & above)	Administrative/ Supervisory (V to VII)	Clerical (III & IV)	Management & Administrative	General Support	Patient & Client Care
Overall	+2.6%	+145	-0.5	+10.7	+7.0	+3.1	+20.3	+14.5	+15.3	+10.1	+7.0	+2.0	-0.4	+48.4	+23.8	+1.9	+23.1	-0.2	+4.5	-0.8	-3.5	+48.8	+2.2	+26.6	-20.3	+8.6	+0.2	+19.0
Community Health & Wellbeing	+1.5%	+0																					+1.0	+7.2	+0.8	+9.0		+1.0
Mental Health	-0.4%	-5	-0.5	+3.4	+5.0	0.0	+7.9	+5.3	+11.7	-2.6		+5.3	-0.4	+19.3	+9.8		+1.3	+0.9	+3.4	-0.8	0.0	+14.7	-1.0	+2.9	-6.7	-4.8	+1.2	-6.5
Primary Care	+3.6%	+43	+0.1	+7.3	+2.0	+3.6	+13.0	+0.6	+3.8	+5.0	+6.8	-4.0		+12.1	+21.7	+1.9	+0.2	-1.1	+2.6	0.0	+0.8	+26.1	+2.3	+11.0	-9.2	+4.2	+0.2	+45.5
Disabilities	+1.2%	+18.6	0.0	0.0		0.0	0.0	+0.5	-0.2	+3.8		+0.7		+4.8	-7.4		+21.5	-0.2	-1.6		-4.2	+8.2	-0.1	+4.0	+0.4	+4.4	-1.8	+3.2
Older People	-1.0%	-16.1				-0.5	-0.5	+8.1	0.0	+3.9	+0.2			+12.2	-0.3	0.0		+0.2		+0.0	0.0	-0.1	0.0	+1.5	-5.7	-4.1	+0.6	-24.2
Social Care	+1.3%	+39	0.0	0.0		-0.5	-0.5	+8.6	-0.2	+7.7	+0.2	+0.7		+17.0	-7.7	0.0	+21.5	-0.0	-1.6	+0.0	-4.2	+8.0	-0.1	+5.6	-5.3	+0.2	-1.2	-21.0
Change	+145.4	+2.6%	-1.1%	+14.2%	+19.5%	+5.3%	+9.6%	+4.7%	+16.5%	+1.1%	+3.7%	+22.3%	-20.0%	+3.2%	+7.0%	+5.8%	+9.4%	-0.3%	+6.1%	-16.8%	-10.7%	+6.0%	+4.0%	+20.0%	-4.3%	+1.3%	+0.1%	+0.9%



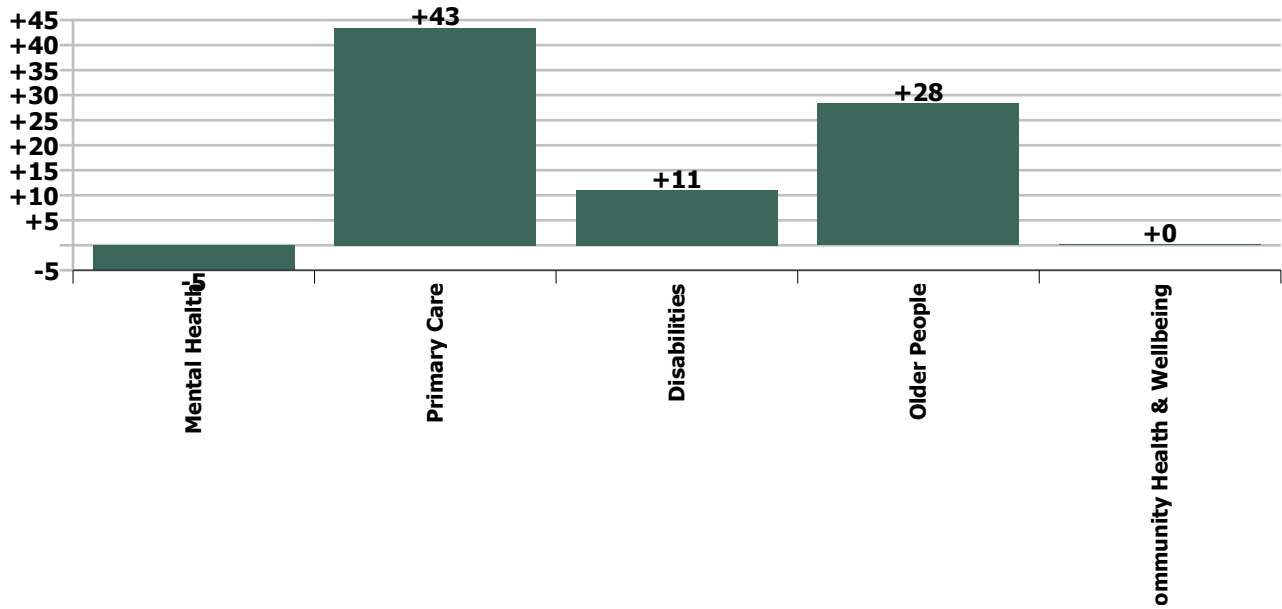
Staff Group change since: Nov 2020



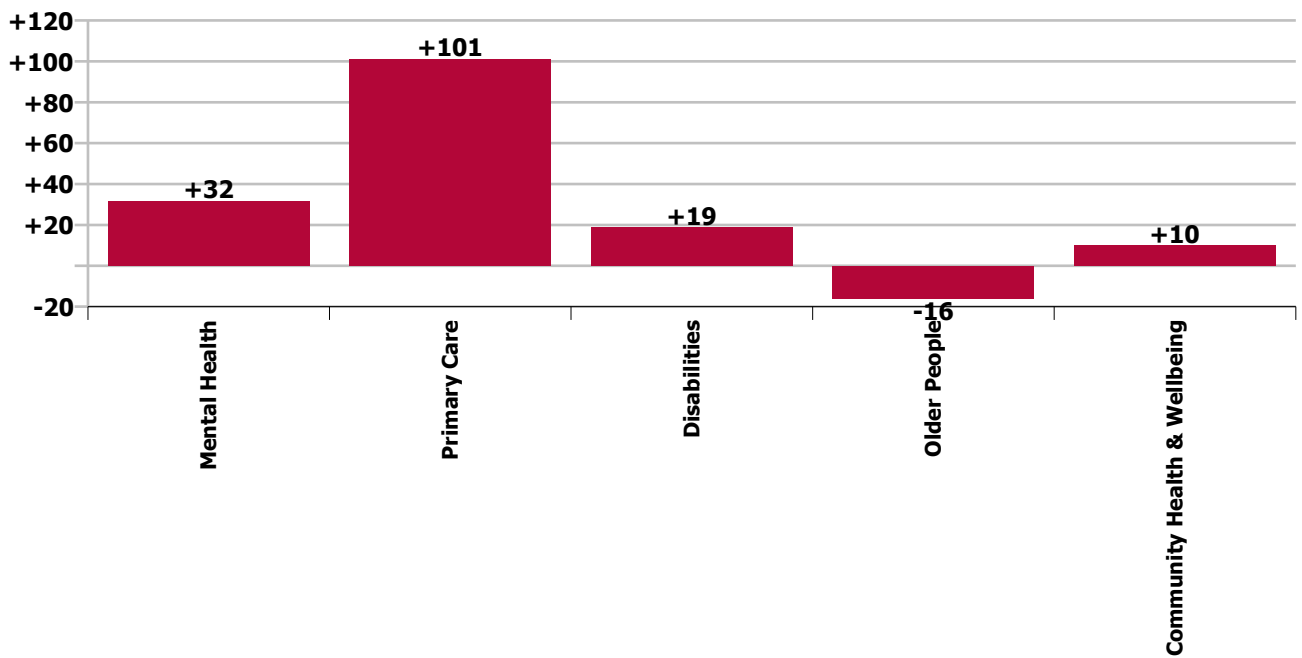
Staff Group change since: Dec 2019



Care Group change since: Nov 2020



Care Group change since: Dec 2019



Longitudinal Employment Levels by Grade Group - Oct 2013 to Dec 2020

Dec 2020 (Dec 2015 figure: 5,111)	WTE Dec 2020	WTE change since Dec 15	WTE change since Dec 16	WTE change since Dec 17	WTE change since Dec 18	WTE change since Dec 19	WTE change since Nov 20	% change since Dec 15	% change since Dec 16	% change since Dec 17	% change since Dec 18	% change since Dec 19	% change since Nov 20
Overall	5,690	+579	+455	+313	+131	+145	+78	+11.3%	+8.7%	+5.8%	+2.4%	+2.6%	+1.4%
Consultant Medicine	1												
Consultant Paediatrics	1												
Consultant Psychiatry	39	+6	+7	+6	+5	-1	-0	+17.2%	+23.4%	+17.0%	+14.4%	-1.3%	-0.6%
Consultant Surgery	0	-1	-1	-1		+0	+0	-76.4%	-76.7%	-76.7%		+20.0%	+7.1%
Consultants	42	+5	+6	+5	+5	-0	-0	+13.1%	+18.4%	+12.8%	+13.5%	-1.1%	-0.5%
Registrar	64	+15	+13	+5	+6	+6	-3	+30.4%	+24.8%	+8.2%	+10.0%	+10.7%	-3.9%
Senior Registrar	22	+15	+14	+13	+10	+5		+230.8%	+168.8%	+152.9%	+87.0%	+26.5%	
Registrars	86	+30	+26	+18	+16	+11	-3	+53.7%	+44.1%	+26.3%	+22.7%	+14.2%	-3.0%
Interns		-1						-100.0%	-100.0%	-100.0%	-100.0%	-100.0%	-100.0%
Senior House Officer	43	+7	+6	+5	+1	+7	+0	+19.4%	+16.3%	+13.8%	+2.0%	+19.5%	+0.3%
SHO/ Interns	43	+6	+6	+5	+1	+7	+0	+16.2%	+16.3%	+13.8%	+2.0%	+19.5%	+0.3%
Dentists	21	-1	-0	-1	-2	+0	+0	-3.1%	-1.1%	-2.7%	-8.3%	+0.6%	+2.2%
Other Medical	41	+5	+2	+3	+2	+3	-1	+15.0%	+6.4%	+6.7%	+5.2%	+7.9%	-2.7%
Medical/ Dental, other	62	+5	+2	+2	+0	+3	-1	+8.0%	+3.7%	+3.3%	+0.1%	+5.3%	-1.1%
Medical & Dental	232	+45	+41	+30	+22	+20	-3	+24.3%	+21.4%	+14.7%	+10.3%	+9.6%	-1.4%
Clinical Nurse/ Midwife Manager	256	+35	+20	+17	+3	+15	-1	+16.1%	+8.3%	+7.1%	+1.0%	+6.3%	-0.2%
Director Nursing/Midwifery, Assistant	43	+7	+6	+3	+4	-1	+1	+20.0%	+15.8%	+6.6%	+10.1%	-3.1%	+1.5%
Director of Nursing/Midwifery	24	+3	+3	+3	+3	+1	+1	+16.1%	+14.4%	+15.0%	+12.6%	+2.8%	+6.3%
Nurse/ Midwife Manager	323	+46	+29	+23	+9	+15	+1	+16.6%	+9.7%	+7.6%	+2.9%	+4.7%	+0.4%
Advanced Nurse/ Midwife Practitioner	11	+8	+8	+7	+5	+2	+1	+263.3%	+263.3%	+172.5%	+81.7%	+21.1%	+10.5%
Clinical Nurse/ Midwife Specialist	97	+32	+33	+20	+19	+13	+0	+49.5%	+51.3%	+25.8%	+23.9%	+16.0%	+0.3%
Nurse/ Midwife Specialist & AN/MP	108	+40	+41	+27	+24	+15	+1	+59.0%	+60.8%	+33.0%	+28.0%	+16.5%	+1.2%
Staff Midwives		-1	-0	-1				-100.0%	-100.0%	-100.0%	-100.0%	-100.0%	-100.0%
Staff Nurse [Intellectual Disability]	120	-0	-7	+21	+22	+31	+18	-0.0%	-5.6%	+21.4%	+22.5%	+34.2%	+17.9%
Staff Nurse [Psychiatric]	365	-25	-17	-6	-5	-7	-2	-6.3%	-4.6%	-1.6%	-1.4%	-1.8%	-0.4%
Staff Nurses [General/ Children's]	423	-30	-25	-42	-32	-14	-11	-6.7%	-5.6%	-9.0%	-7.1%	-3.2%	-2.4%
Staff Nurse/ Staff Midwife	908	-56	-50	-27	-15	+10	+6	-5.8%	-5.2%	-2.9%	-1.6%	+1.1%	+0.7%
Public Health Nurse	199	+20	+22	+24	+12	+7	-0	+11.4%	+12.6%	+14.0%	+6.2%	+3.7%	-0.2%
Pre-registration Nurse/ Midwife Intern		-2		-13		-0		-100.0%	-100.0%	-100.0%	-100.0%	-100.0%	-100.0%
Pre-registration Nurse Intern (COVID-19)	11	+11	+11	+11	+11	+11	-5	-100.0%	-100.0%	-100.0%	-100.0%	-100.0%	-31.8%
Post-registration Nurse/ Midwife Student		-7	-11	-16	-13	-4		-100.0%	-100.0%	-100.0%	-100.0%	-100.0%	-100.0%
Nursing/ Midwifery awaiting registration					-11	-5		-100.0%	-100.0%	-100.0%	-100.0%	-100.0%	-100.0%
Nursing/ Midwifery Student	11	+2	-0	-18	-13	+2	-5	+16.5%	-1.4%	-62.8%	-54.8%	+22.3%	-31.8%
Nursing/ Midwifery other	2	+2	+2	-0	-1	-0	-1	-100.0%	-100.0%	-20.0%	-46.7%	-20.0%	-40.5%
Nursing & Midwifery	1,550	+54	+43	+28	+15	+48	+2	+3.6%	+2.9%	+1.8%	+1.0%	+3.2%	+0.1%

Dec 2020 (Dec 2015 figure: 5,111)	WTE Dec 2020	WTE change since Dec 15	WTE change since Dec 16	WTE change since Dec 17	WTE change since Dec 18	WTE change since Dec 19	WTE change since Nov 20	% change since Dec 15	% change since Dec 16	% change since Dec 17	% change since Dec 18	% change since Dec 19	% change since Nov 20
Overall	5,690	+579	+455	+313	+131	+145	+78	+11.3%	+8.7%	+5.8%	+2.4%	+2.6%	+1.4%
Dietitians	25	+10	+8	+6	+5	+6	+1	+68.3%	+42.2%	+31.1%	+24.7%	+28.8%	+4.1%
Occupational Therapists	129	+32	+18	+18	+10	+12	-1	+33.2%	+16.7%	+16.1%	+8.6%	+10.0%	-0.6%
Orthoptists	2	+0	+0	+0	+0	+0	-0	+5.0%	+5.0%	+5.0%	+5.0%	+5.0%	-16.0%
Physiotherapists	94	+8	+16	+5	+5	+5	+2	+8.9%	+20.2%	+6.2%	+5.4%	+5.7%	+2.0%
Podiatrists & Chiropodists	7	+1	-1	-0	+1	+0	+0	+19.3%	-11.8%	-2.6%	+7.3%	+6.7%	+0.1%
Speech & Language Therapists	105	+22	+16	+11	+2	+1	+0	+26.9%	+17.4%	+12.2%	+1.9%	+0.8%	+0.2%
Therapy Professions	362	+74	+56	+41	+22	+24	+2	+25.5%	+18.4%	+12.7%	+6.6%	+7.0%	+0.6%
Audiology	6	+1	+1	+0	+0	+1	+1	+24.7%	+27.4%	+2.8%	+2.2%	+21.1%	+10.7%
Clinical Engineering	1			+1	+1					-100.0%	-100.0%		
Medical Laboratory	27	+1	-0	+1	+1	+1	+0	+2.4%	-0.3%	+3.2%	+2.8%	+3.3%	+0.2%
Physicists		-1	-1					-100.0%	-100.0%	-100.0%	-100.0%	-100.0%	-100.0%
Radiographers	1	+1						#DIV/0					
Health Science/ Diagnostics	35	+1	+0	+2	+2	+2	+1	+4.2%	+0.6%	+6.1%	+5.6%	+5.8%	+1.8%
Social Care	268	+95	+76	+62	+36	+23	+3	+54.6%	+39.4%	+30.3%	+15.6%	+9.4%	+1.0%
Social Workers	84	+6	+8	+7	+2	-0	-0	+7.8%	+10.9%	+9.5%	+2.5%	-0.3%	-0.4%
Psychologists	78	-7	-5	-3	-6	+4	-0	-8.7%	-6.3%	-4.0%	-7.1%	+6.1%	-0.4%
Pharmacy	4	-2	-1	-0	-0	-1	-0	-31.8%	-26.4%	-10.0%	-9.8%	-16.8%	-1.0%
Counsellor Therapists	13	+5	+3	+2	+1	+2	+2	+54.4%	+33.0%	+22.9%	+9.2%	+19.7%	+21.8%
Dental Hygienists	5	+2	+2	+3	+1	+0	-0	+65.1%	+44.3%	+105.0%	+13.1%	+10.3%	-1.4%
HSCP Trainees/ Students		-3	-2	-1				-100.0%	-100.0%	-100.0%	-100.0%	-100.0%	-100.0%
Other Health & Social Care	10	-8	-5	-6	-6	-4	-4	-44.2%	-35.8%	-39.7%	-38.7%	-26.9%	-30.2%
Play Therapists/ Specialists	1	-3	-3	-3	-3	-3		-77.4%	-72.1%	-72.3%	-72.1%	-72.1%	
H&SC, Other	29	-8	-6	-4	-7	-3	-2	-20.8%	-16.0%	-13.5%	-19.5%	-10.7%	-6.0%
Health & Social Care Professionals	859	+159	+129	+104	+49	+49	+3	+22.7%	+17.6%	+13.8%	+6.1%	+6.0%	+0.3%
Executive Management	11	+4	+2	-0	+0	+1		+45.6%	+16.1%	-2.6%	+0.8%	+12.1%	
Senior Management (VIII & GM)	47	+11	+8	+4	+0	+1	-0	+30.3%	+21.1%	+10.1%	+0.2%	+2.2%	-0.1%
Management (VIII & above)	58	+14	+10	+4	+0	+2	-0	+33.0%	+20.0%	+7.3%	+0.3%	+4.0%	-0.1%
Middle Management (V-VII)	160	+76	+58	+43	+37	+28	+3	+90.0%	+56.7%	+36.7%	+30.1%	+20.9%	+2.2%
Other Administrative						-1		-100.0%	-100.0%	-100.0%	-100.0%	-100.0%	-100.0%
Administrative/ Supervisory (V to VII)	160	+76	+58	+43	+37	+27	+3	+90.0%	+56.7%	+36.7%	+30.1%	+20.0%	+2.2%
Clerical (III & IV)	448	+14	+4	-21	-38	-20	+3	+3.3%	+1.0%	-4.5%	-7.8%	-4.3%	+0.7%
Management & Administrative	666	+104	+72	+26	-1	+9	+6	+18.6%	+12.2%	+4.0%	-0.1%	+1.3%	+1.0%
Catering	39	-1	-1	+2	-2	-1	-1	-2.5%	-3.0%	+6.6%	-6.0%	-3.3%	-1.4%
Household Services	62	-32	-20	-13	-8	-1	-1	-34.0%	-24.2%	-17.5%	-11.6%	-1.9%	-1.8%
Other Support	38	-7	-6	-5	-4	-1		-15.3%	-13.2%	-10.6%	-9.3%	-2.9%	
Portering	14	+1	-2	-4	-3	-2		+5.6%	-13.8%	-20.0%	-18.8%	-10.7%	
Support	152	-39	-29	-19	-18	-5	-2	-20.4%	-16.0%	-11.0%	-10.4%	-3.4%	-1.1%
Maintenance/ Technical	74	-4	-0	+1	+1	+6	+1	-5.7%	-0.7%	+1.6%	+1.9%	+8.2%	+0.7%

Dec 2020 (Dec 2015 figure: 5,111)	WTE Dec 2020	WTE change since Dec 15	WTE change since Dec 16	WTE change since Dec 17	WTE change since Dec 18	WTE change since Dec 19	WTE change since Nov 20	% change since Dec 15	% change since Dec 16	% change since Dec 17	% change since Dec 18	% change since Dec 19	% change since Nov 20
Overall	5,690	+579	+455	+313	+131	+145	+78	+11.3%	+8.7%	+5.8%	+2.4%	+2.6%	+1.4%
General Support	226	-43	-30	-18	-16	+0	-1	-16.1%	-11.5%	-7.2%	-6.7%	+0.1%	-0.5%
HCA, Nurse's Aide, etc.	1,411	+250	+164	+117	+80	+57	+42	+21.6%	+13.2%	+9.1%	+6.0%	+4.2%	+3.1%
Health & Social Care Assistants	8	+2	+1	-2	-12	-6	-1	+41.5%	+18.8%	-19.0%	-60.6%	-43.2%	-16.2%
Health Care Assistants	1,419	+253	+166	+116	+68	+51	+41	+21.7%	+13.2%	+8.9%	+5.1%	+3.8%	+3.0%
Care, other	281	+18	+27	+20	+19	+11	+2	+6.9%	+10.6%	+7.5%	+7.1%	+3.9%	+0.7%
Home Help	456	-11	+7	+8	-24	-43	+28	-2.3%	+1.5%	+1.8%	-5.1%	-8.6%	+6.6%
Patient & Client Care	2,156	+260	+199	+143	+63	+19	+71	+13.7%	+10.2%	+7.1%	+3.0%	+0.9%	+3.4%

Source: Health Service Personnel Census

Longitudinal Employment Levels by Care Group - Oct 2013 to Dec 2020

Community Health & Wellbeing

Dec 2020 (figure:)	WTE Dec 2020	WTE change since	WTE change since	WTE change since	WTE change since	WTE change since	WTE change since Nov 20	% change since	% change since	% change since	% change since	% change since	% change since Nov 20
Overall	10	+10	+10	+10	+10	+10	+0	-100.0%	-100.0%	-100.0%	-100.0%	-100.0%	+1.5%
Management & Administrative	9	+9	+9	+9	+9	+9	+0	-1.0%	-1.0%	-1.0%	-1.0%	-1.0%	+0.0%
Management (VIII & above)	1	+1	+1	+1	+1	+1		-1.0%	-1.0%	-1.0%	-1.0%	-1.0%	+0.0%
Administrative/ Supervisory (V to VII)	7	+7	+7	+7	+7	+7	+0	-1.0%	-1.0%	-1.0%	-1.0%	-1.0%	+0.0%
Clerical (III & IV)	1	+1	+1	+1	+1	+1		-1.0%	-1.0%	-1.0%	-1.0%	-1.0%	+0.0%
Patient & Client Care	1	+1	+1	+1	+1	+1		-1.0%	-1.0%	-1.0%	-1.0%	-1.0%	+0.0%
Care, other	1	+1	+1	+1	+1	+1		-1.0%	-1.0%	-1.0%	-1.0%	-1.0%	+0.0%

Source: Health Service Personnel Census

Mental Health

Dec 2020 (Dec 2015 figure: 1,258)	WTE Dec 2020	WTE change since Dec 15	WTE change since Dec 16	WTE change since Dec 17	WTE change since Dec 18	WTE change since Dec 19	WTE change since Nov 20	% change since Dec 15	% change since Dec 16	% change since Dec 17	% change since Dec 18	% change since Dec 19	% change since Nov 20
Overall	1,340	+82	+57	+34	+2	+32	-5	+6.5%	+4.5%	+2.6%	+0.1%	+2.4%	-0.4%
Medical & Dental	114	+31	+26	+15	+9	+8	-1	+0.4%	+0.3%	+0.1%	+0.1%	+0.1%	-0.0%
Consultants	37	+5	+7	+5	+5	-1	-0	+0.2%	+0.2%	+0.2%	+0.1%	-0.0%	-0.0%
Registrars	37	+15	+13	+9	+6	+3		+0.7%	+0.5%	+0.3%	+0.2%	+0.1%	+0.0%
SHO/ Interns	40	+12	+8	+2	-2	+5	+0	+0.4%	+0.2%	+0.1%	-0.1%	+0.1%	+0.0%
Medical/ Dental, other	1	-2	-2	-2			-1	-0.6%	-0.6%	-0.6%	+0.0%	+0.0%	-0.4%
Nursing & Midwifery	597	+37	+32	+28	+10	+19	-6	+0.1%	+0.1%	+0.0%	+0.0%	+0.0%	-0.0%
Nurse/ Midwife Manager	151	+18	+7	+11	-4	+5	-0	+0.1%	+0.1%	+0.1%	-0.0%	+0.0%	-0.0%
Nurse/ Midwife Specialist & AN/MP	79	+34	+34	+20	+19	+12	+1	+0.8%	+0.8%	+0.3%	+0.3%	+0.2%	+0.0%
Staff Nurse/ Staff Midwife	355	-25	-22	+0	-3	-3	-0	-0.1%	-0.1%	+0.0%	-0.0%	-0.0%	-0.0%
Nursing/ Midwifery Student	10	+8	+10	-3	-1	+5	-5	+3.4%	-1.0%	-0.2%	-0.1%	+1.1%	-0.3%
Nursing/ Midwifery other	2	+2	+2	-0	-1	-0	-1	-1.0%	-1.0%	-0.2%	-0.5%	-0.2%	-0.4%
Health & Social Care Professionals	155	+27	+17	+16	+8	+15	+2	+0.2%	+0.1%	+0.1%	+0.1%	+0.1%	+0.0%
Therapy Professions	55	+21	+10	+6	+6	+10	+3	+0.6%	+0.2%	+0.1%	+0.1%	+0.2%	+0.1%
Social Care	16	-1	-1	+3	+2	+1	+0	-0.1%	-0.0%	+0.2%	+0.1%	+0.1%	+0.0%
Social Workers	42	+3	+5	+5	+1	+1	-1	+0.1%	+0.1%	+0.1%	+0.0%	+0.0%	-0.0%
Psychologists	37	+5	+3	+2	+1	+3	-0	+0.1%	+0.1%	+0.1%	+0.0%	+0.1%	-0.0%
Pharmacy	2	-2	-2	-1	-1	-1	-0	-0.6%	-0.5%	-0.4%	-0.3%	-0.3%	-0.0%
H&SC, Other	3	+2	+2	+1				+2.0%	+2.0%	+0.5%	+0.0%	+0.0%	+0.0%
Management & Administrative	133	+8	+2	-3	-8	-5	+1	+0.1%	+0.0%	-0.0%	-0.1%	-0.0%	+0.0%
Management (VIII & above)	4	-1		+1	+0	-1		-0.2%	+0.0%	+0.3%	+0.0%	-0.2%	+0.0%
Administrative/ Supervisory (V to VII)	26	+10	+6	+3	+3	+3	-1	+0.6%	+0.3%	+0.1%	+0.1%	+0.1%	-0.0%
Clerical (III & IV)	102	-0	-3	-7	-11	-7	+2	-0.0%	-0.0%	-0.1%	-0.1%	-0.1%	+0.0%
General Support	64	-20	-16	-8	-5	+1	-0	-0.2%	-0.2%	-0.1%	-0.1%	+0.0%	-0.0%
Support	31	-21	-14	-8	-5	-5	-1	-0.4%	-0.3%	-0.2%	-0.1%	-0.1%	-0.0%
Maintenance/ Technical	33	+0	-2	-1	+1	+6	+0	+0.0%	-0.1%	-0.0%	+0.0%	+0.2%	+0.0%
Patient & Client Care	278	-1	-4	-13	-13	-7	-0	-0.0%	-0.0%	-0.0%	-0.0%	-0.0%	-0.0%
Health Care Assistants	211	+1	-3	-6	-6	-4	+0	+0.0%	-0.0%	-0.0%	-0.0%	-0.0%	+0.0%
Care, other	66	-1	-0	-8	-6	-3	-1	-0.0%	-0.0%	-0.1%	-0.1%	-0.0%	-0.0%

Source: Health Service Personnel Census

Primary Care

Dec 2020 (Dec 2015 figure: 1,261)	WTE Dec 2020	WTE change since Dec 15	WTE change since Dec 16	WTE change since Dec 17	WTE change since Dec 18	WTE change since Dec 19	WTE change since Nov 20	% change since Dec 15	% change since Dec 16	% change since Dec 17	% change since Dec 18	% change since Dec 19	% change since Nov 20
Overall	1,235	-26	-4	+145	+75	+101	+43	-2.1%	-0.3%	+13.3%	+6.5%	+8.9%	+3.6%
Medical & Dental	101	+11	+15	+16	+14	+13	-3	+0.1%	+0.2%	+0.2%	+0.2%	+0.1%	-0.0%
Consultants	1	-2	-1	-1		+0	+0	-0.6%	-0.4%	-0.4%	+0.0%	+0.0%	+0.0%
Registrars	47	+15	+14	+9	+10	+7	-3	+0.4%	+0.4%	+0.2%	+0.3%	+0.2%	-0.1%
SHO/ Interns	3	-6	-2	+3	+3	+2	+0	-0.7%	-0.4%	-1.0%	-1.0%	+2.0%	+0.0%
Medical/ Dental, other	49	+4	+4	+4	+1	+4	+0	+0.1%	+0.1%	+0.1%	+0.0%	+0.1%	+0.0%
Nursing & Midwifery	326	+31	+30	+25	+4	+12	+2	+0.1%	+0.1%	+0.1%	+0.0%	+0.0%	+0.0%
Nurse/ Midwife Manager	28	+6	+5	+3	+2	+1	+0	+0.2%	+0.2%	+0.1%	+0.1%	+0.0%	+0.0%
Nurse/ Midwife Specialist & AN/MP	21	+4	+6	+6	+3	+4	+1	+0.3%	+0.4%	+0.4%	+0.1%	+0.2%	+0.0%
Staff Nurse/ Staff Midwife	79	+8	+8	+7	+1	+5	+2	+0.1%	+0.1%	+0.1%	+0.0%	+0.1%	+0.0%
Public Health Nurse	198	+20	+22	+24	+12	+7	-0	+0.1%	+0.1%	+0.1%	+0.1%	+0.0%	-0.0%
Nursing/ Midwifery Student		-7	-11	-16	-13	-4		-1.0%	-1.0%	-1.0%	-1.0%	-1.0%	-1.0%
Health & Social Care Professionals	339	+33	+38	+36	+17	+26	+5	+0.1%	+0.1%	+0.1%	+0.1%	+0.1%	+0.0%
Therapy Professions	248	+51	+48	+37	+19	+22	+2	+0.3%	+0.2%	+0.2%	+0.1%	+0.1%	+0.0%
Health Science/ Diagnostics	34	+1	+0	+2	+2	+2	+1	+0.0%	+0.0%	+0.1%	+0.1%	+0.1%	+0.0%
Social Care	9	-4	-3	-2	-1	+0		-0.3%	-0.2%	-0.2%	-0.1%	+0.0%	+0.0%
Social Workers	6	-4	-3	-1	-1	-1		-0.4%	-0.3%	-0.2%	-0.2%	-0.2%	+0.0%
Psychologists	27	-11	-3	+0	-1	+3	+1	-0.3%	-0.1%	+0.0%	-0.0%	+0.1%	+0.0%
Pharmacy	1							+0.0%	+0.0%	+0.0%	+0.0%	+0.0%	+0.0%
H&SC, Other	14	-0	-1	+0	-1	+1	+2	-0.0%	-0.1%	+0.0%	-0.1%	+0.1%	+0.2%
Management & Administrative	337	+52	+44	+23	+7	+4	+4	+0.2%	+0.2%	+0.1%	+0.0%	+0.0%	+0.0%
Management (VIII & above)	35	+9	+7	-1	-2	+2	+1	+0.3%	+0.2%	-0.0%	-0.0%	+0.1%	+0.0%
Administrative/ Supervisory (V to VII)	73	+37	+33	+28	+20	+11	+3	+1.0%	+0.8%	+0.6%	+0.4%	+0.2%	+0.0%
Clerical (III & IV)	229	+7	+4	-4	-11	-9	-0	+0.0%	+0.0%	-0.0%	-0.0%	-0.0%	-0.0%
General Support	30	-7	-1	-1	-5	+0	-0	-0.2%	-0.0%	-0.0%	-0.1%	+0.0%	-0.0%
Support	22	+0	+0	+0	-4	+1	-0	+0.0%	+0.0%	+0.0%	-0.1%	+0.1%	-0.0%
Maintenance/ Technical	8	-7	-1	-1	-1	-1	-0	-0.5%	-0.1%	-0.1%	-0.1%	-0.1%	-0.0%
Patient & Client Care	103	-147	-131	+46	+38	+46	+35	-0.6%	-0.6%	+0.8%	+0.6%	+0.8%	+0.5%
Health Care Assistants	57	+50	+50	+48	+37	+43	+35	+7.3%	+7.6%	+5.6%	+1.9%	+3.0%	+1.5%
Care, other	46	-16	-12	-2	+1	+3	+0	-0.3%	-0.2%	-0.0%	+0.0%	+0.1%	+0.0%
Home Help		-181	-169					-1.0%	-1.0%	-1.0%	-1.0%	-1.0%	-1.0%

Source: Health Service Personnel Census

Disabilities

Dec 2020 (Dec 2015 figure: 1,221)	WTE Dec 2020	WTE change since Dec 15	WTE change since Dec 16	WTE change since Dec 17	WTE change since Dec 18	WTE change since Dec 19	WTE change since Nov 20	% change since Dec 15	% change since Dec 16	% change since Dec 17	% change since Dec 18	% change since Dec 19	% change since Nov 20
Overall	1,516	+295	+177	+121	+96	+19	+11	+24.1%	+13.3%	+8.7%	+6.7%	+1.2%	+0.7%
Medical & Dental	6	+1	+0	+0	+0			+0.3%	+0.1%	+0.1%	+0.1%	+0.0%	+0.0%
Consultants	3	+1	+0	+0	+0			+0.7%	+0.1%	+0.1%	+0.1%	+0.0%	+0.0%
Registrars	2							+0.0%	+0.0%	+0.0%	+0.0%	+0.0%	+0.0%
Medical/ Dental, other	1							+0.0%	+0.0%	+0.0%	+0.0%	+0.0%	+0.0%
Nursing & Midwifery	253	-23	-22	-18	+1	+5	+8	-0.1%	-0.1%	-0.1%	+0.0%	+0.0%	+0.0%
Nurse/ Midwife Manager	78	+9	+6	+4	+7	+0	+1	+0.1%	+0.1%	+0.1%	+0.1%	+0.0%	+0.0%
Nurse/ Midwife Specialist & AN/MP	6	-0	-1	-2	-0	-0		-0.1%	-0.2%	-0.2%	-0.0%	-0.0%	+0.0%
Staff Nurse/ Staff Midwife	169	-32	-27	-21	-6	+4	+7	-0.2%	-0.1%	-0.1%	-0.0%	+0.0%	+0.0%
Nursing/ Midwifery Student	1	+1	+1	+1	+1	+1	+0	-1.0%	-1.0%	-1.0%	-1.0%	-1.0%	+0.2%
Health & Social Care Professionals	329	+95	+71	+49	+23	+8	-3	+0.4%	+0.3%	+0.2%	+0.1%	+0.0%	-0.0%
Therapy Professions	34	+2	-1	-3	-2	-7	-1	+0.1%	-0.0%	-0.1%	-0.1%	-0.2%	-0.0%
Social Care	243	+99	+79	+62	+35	+22	+2	+0.7%	+0.5%	+0.3%	+0.2%	+0.1%	+0.0%
Social Workers	26	+4	+4	+1	+1	-0	+1	+0.2%	+0.2%	+0.0%	+0.0%	-0.0%	+0.0%
Psychologists	14	-1	-5	-5	-6	-2	-1	-0.1%	-0.2%	-0.3%	-0.3%	-0.1%	-0.0%
H&SC, Other	12	-9	-6	-6	-6	-4	-4	-0.4%	-0.3%	-0.3%	-0.3%	-0.3%	-0.3%
Management & Administrative	110	+26	+8	+2	+6	+4	+0	+0.3%	+0.1%	+0.0%	+0.1%	+0.0%	+0.0%
Management (VIII & above)	16	+6	+2	+2	+1	-0	-1	+0.6%	+0.1%	+0.1%	+0.1%	-0.0%	-0.1%
Administrative/ Supervisory (V to VII)	44	+17	+9	+3	+6	+4	+1	+0.6%	+0.3%	+0.1%	+0.2%	+0.1%	+0.0%
Clerical (III & IV)	50	+3	-3	-2	-1	+0	+0	+0.1%	-0.1%	-0.0%	-0.0%	+0.0%	+0.0%
General Support	56	-2	-2	-4	-1	-2	+0	-0.0%	-0.1%	-0.1%	-0.0%	-0.0%	+0.0%
Support	43	-2	-2	-4	-2	-2	+0	-0.0%	-0.0%	-0.1%	-0.1%	-0.0%	+0.0%
Maintenance/ Technical	13	+0	-0	-0	+1	-0		+0.0%	-0.0%	-0.0%	+0.1%	-0.0%	+0.0%
Patient & Client Care	761	+197	+121	+91	+67	+3	+5	+0.3%	+0.2%	+0.1%	+0.1%	+0.0%	+0.0%
Health Care Assistants	625	+180	+101	+71	+53	+2	+5	+0.4%	+0.2%	+0.1%	+0.1%	+0.0%	+0.0%
Care, other	136	+17	+20	+19	+14	+2	+0	+0.1%	+0.2%	+0.2%	+0.1%	+0.0%	+0.0%

Source: Health Service Personnel Census

Older People

Dec 2020 (Dec 2015 figure: 1,371)	WTE Dec 2020	WTE change since Dec 15	WTE change since Dec 16	WTE change since Dec 17	WTE change since Dec 18	WTE change since Dec 19	WTE change since Nov 20	% change since Dec 15	% change since Dec 16	% change since Dec 17	% change since Dec 18	% change since Dec 19	% change since Nov 20
Overall	1,590	+218	+214	+3	-52	-16	+28	+15.9%	+15.5%	+0.2%	-3.1%	-1.0%	+1.8%
Medical & Dental	11	+2	-0	-1	-1	-1	+0	+0.2%	-0.0%	-0.1%	-0.1%	-0.0%	+0.0%
Medical/ Dental, other	11	+2	-0	-1	-1	-1	+0	+0.2%	-0.0%	-0.1%	-0.1%	-0.0%	+0.0%
Nursing & Midwifery	374	+8	+3	-7	-0	+12	-2	+0.0%	+0.0%	-0.0%	-0.0%	+0.0%	-0.0%
Nurse/ Midwife Manager	66	+13	+10	+4	+4	+8	+1	+0.2%	+0.2%	+0.1%	+0.1%	+0.1%	+0.0%
Nurse/ Midwife Specialist & AN/MP	2	+2	+2	+2	+2		+0	-1.0%	-1.0%	-1.0%	-1.0%	+0.0%	+0.0%
Staff Nurse/ Staff Midwife	305	-7	-9	-13	-7	+4	-3	-0.0%	-0.0%	-0.0%	-0.0%	+0.0%	-0.0%
Public Health Nurse	1	+0	+0	+0		+0		+0.3%	+0.3%	+0.1%	+0.0%	+0.3%	+0.0%
Health & Social Care Professionals	37	+4	+2	+3	+1	-0	-2	+0.1%	+0.0%	+0.1%	+0.0%	-0.0%	-0.0%
Therapy Professions	25	+0	-1	+0	-0	-0	-1	+0.0%	-0.0%	+0.0%	-0.0%	-0.0%	-0.1%
Health Science/ Diagnostics	1	+1						#DIV/0	+0.0%	+0.0%	+0.0%	+0.0%	+0.0%
Social Workers	10	+3	+3	+2	+1	+0	-0	+0.4%	+0.4%	+0.2%	+0.1%	+0.0%	-0.0%
Pharmacy	1	+1	+1	+1	+1	+0		+1.0%	+1.0%	+1.0%	+1.0%	+0.0%	+0.0%
H&SC, Other		-0	-1					-1.0%	-1.0%	-1.0%			-1.0%
Management & Administrative	77	+9	+9	-5	-15	-4	+1	+0.1%	+0.1%	-0.1%	-0.2%	-0.1%	+0.0%
Management (VIII & above)	2	+0		+1				+0.0%	+0.0%	+1.0%	+0.0%	+0.0%	+0.0%
Administrative/ Supervisory (V to VII)	9	+5	+3	+2	+1	+2	-1	+1.4%	+0.5%	+0.3%	+0.1%	+0.2%	-0.1%
Clerical (III & IV)	66	+4	+6	-8	-15	-6	+1	+0.1%	+0.1%	-0.1%	-0.2%	-0.1%	+0.0%
General Support	76	-15	-11	-5	-6	+1	-1	-0.2%	-0.1%	-0.1%	-0.1%	+0.0%	-0.0%
Support	56	-17	-13	-8	-7	+0	-1	-0.2%	-0.2%	-0.1%	-0.1%	+0.0%	-0.0%
Maintenance/ Technical	19	+2	+2	+3	+1	+1	+0	+0.1%	+0.1%	+0.2%	+0.1%	+0.0%	+0.0%
Patient & Client Care	1,015	+210	+211	+18	-31	-24	+32	+0.3%	+0.3%	+0.0%	-0.0%	-0.0%	+0.0%
Health Care Assistants	526	+22	+17	+2	-15	+11	+1	+0.0%	+0.0%	+0.0%	-0.0%	+0.0%	+0.0%
Care, other	33	+18	+18	+9	+9	+8	+2	+1.2%	+1.2%	+0.4%	+0.4%	+0.3%	+0.1%
Home Help	456	+170	+176	+8	-25	-43	+28	+0.6%	+0.6%	+0.0%	-0.1%	-0.1%	+0.1%

Source: Health Service Personnel Census