

CHO 2 Employment Report: January 2021

Employment by Staff Group

Jan 2021 (Dec 2019 figure: 5,545)	WTE Dec 2020	WTE Jan 2021	WTE change since Dec 20	% change since Dec 20	WTE change since Dec 19	WTE change since Jan 20
Overall	5,690	5,690	-0	-0.0%	+145	+200
Consultants	42	42	+1	+1.2%	+0	+0
Registrars	86	88	+2	+2.6%	+13	+10
SHO/ Interns	43	39	-4	-10.0%	+3	+3
Medical/ Dental, other	62	59	-3	-4.8%	+0	+1
Medical & Dental	232	228	-5	-1.9%	+16	+13
Nurse/ Midwife Manager	323	325	+2	+0.6%	+17	+12
Nurse/ Midwife Specialist & AN/MP	108	108	-0	-0.2%	+15	+14
Staff Nurse/ Staff Midwife	908	918	+10	+1.1%	+20	+14
Public Health Nurse	199	194	-4	-2.1%	+3	+1
<i>Pre-registration Nurse/ Midwife Intern</i>		4	+4	-100.0%	+4	+4
<i>Pre-registration Nurse Intern (COVID-19)</i>	11	10	-1	-6.2%	+10	-1
<i>Post-registration Nurse/ Midwife Student</i>				-100.0%	-4	
<i>Nursing/ Midwifery awaiting registration</i>				-100.0%	-5	
Nursing/ Midwifery Student	11	15	+4	+33.7%	+6	+3
Nursing/ Midwifery other	2	1	-0	-21.9%	-1	-1
Nursing & Midwifery	1,550	1,561	+11	+0.7%	+60	+43
Therapy Professions	362	366	+4	+1.0%	+28	+19
Health Science/ Diagnostics	35	35	-0	-1.2%	+2	+1
Social Care	268	272	+4	+1.6%	+27	+27
Social Workers	84	84	+0	+0.3%	+0	-0
Psychologists	78	80	+2	+3.2%	+7	+7
Pharmacy	4	4	+0	+13.0%	-0	+1
H&SC, Other	29	27	-2	-7.2%	-6	-6
Health & Social Care Professionals	859	868	+9	+1.0%	+58	+48
Management (VIII & above)	58	61	+3	+5.1%	+5	+5
Administrative/ Supervisory (V to VII)	160	161	+1	+0.6%	+28	+22
Clerical (III & IV)	448	449	+1	+0.3%	-19	-14
Management & Administrative	666	671	+5	+0.8%	+14	+14
Support	152	149	-4	-2.3%	-9	-10
Maintenance/ Technical	74	75	+1	+2.0%	+7	+7
General Support	226	224	-2	-0.9%	-2	-3
Health Care Assistants	1,419	1,414	-4	-0.3%	+47	+70
Care, other	281	278	-3	-1.1%	+8	+6
Home Help	456	445	-12	-2.5%	-55	+9
Patient & Client Care	2,156	2,137	-19	-0.9%	-0	+85

CHO 2 Employment Report: January 2021

Community Health & Wellbeing

Jan 2021 (figure:)	WTE Dec 2020	WTE Jan 2021	WTE change since Dec 20	% change since Dec 20	WTE change since	WTE change since Jan 20
Total Community Health & Wellbeing	10	10	-0	-1.4%	+10	+2
Management (VIII & above)	1	1			+1	
Administrative/ Supervisory (V to VII)	7	7	-0	-2.0%	+7	+2
Clerical (III & IV)	1	1			+1	
Management & Administrative	9	9	-0	-1.6%	+9	+2
Care, other	1	1			+1	
Patient & Client Care	1	1			+1	

Mental Health

Jan 2021 (Dec 2019 figure: 1,308)	WTE Dec 2020	WTE Jan 2021	WTE change since Dec 20	% change since Dec 20	WTE change since Dec 19	WTE change since Jan 20
Total Mental Health	1,340	1,354	+14	+1.0%	+45	+37
Consultants	37	38	+1	+1.6%	+0	+0
Registrars	37	36	-0	-0.7%	+3	+2
SHO/ Interns	40	37	-3	-8.3%	+2	+2
Medical/ Dental, other	1	1				
Medical & Dental	114	111	-3	-2.6%	+5	+4
Nurse/ Midwife Manager	151	150	-1	-0.7%	+4	+4
Nurse/ Midwife Specialist & AN/MP	79	78	-1	-1.0%	+11	+9
Staff Nurse/ Staff Midwife	355	366	+12	+3.3%	+9	+9
Pre-registration Nurse/ Midwife Intern		4	+4	-100.0%	+4	+4
Pre-registration Nurse Intern (COVID-19)	10	10	-1	-6.1%	+10	-1
Nursing/ Midwifery awaiting registration				-100.0%	-5	
Nursing/ Midwifery Student	10	14	+4	+36.4%	+9	+7
Nursing/ Midwifery other	2	1	-0	-21.9%	-1	-1
Nursing & Midwifery	597	610	+13	+2.2%	+33	+28
Therapy Professions	55	55			+10	+8
Social Care	16	16	+0	+1.2%	+2	+0
Social Workers	42	43	+1	+2.7%	+2	+1
Psychologists	37	38	+2	+4.1%	+5	+4
Pharmacy	2	2			-1	-1
H&SC, Other	3	3				
Health & Social Care Professionals	155	157	+3	+1.8%	+17	+13
Management (VIII & above)	4	4			-1	-1
Administrative/ Supervisory (V to VII)	26	24	-3	-10.2%	+0	+1
Clerical (III & IV)	102	104	+2	+1.9%	-5	-3
Management & Administrative	133	132	-1	-0.5%	-6	-3
Support	31	31	-0	-0.2%	-5	-4
Maintenance/ Technical	33	34	+1	+1.7%	+7	+7
General Support	64	65	+0	+0.7%	+2	+3
Health Care Assistants	211	211	+0	+0.1%	-3	-4
Care, other	66	67	+0	+0.6%	-2	-3
Patient & Client Care	278	278	+1	+0.2%	-6	-7

Primary Care

Jan 2021 (Dec 2019 figure: 1,134)	WTE Dec 2020	WTE Jan 2021	WTE change since Dec 20	% change since Dec 20	WTE change since Dec 19	WTE change since Jan 20
Total Primary Care	1,235	1,250	+15	+1.2%	+116	+107
Consultants	1	1	-0	-6.2%	-0	
Registrars	47	50	+2	+5.2%	+10	+9
SHO/ Interns	3	2	-1	-33.3%	+1	+1
Medical/ Dental, other	49	46	-3	-6.1%	+1	+1
Medical & Dental	101	99	-2	-1.6%	+11	+10
Nurse/ Midwife Manager	28	31	+3	+11.0%	+4	+3
Nurse/ Midwife Specialist & AN/MP	21	21	+0	+2.0%	+4	+4
Staff Nurse/ Staff Midwife	79	82	+3	+4.1%	+8	+5
Public Health Nurse	198	193	-4	-2.1%	+3	+1
<i>Post-registration Nurse/ Midwife Student</i>				-100.0%	-4	
Nursing/ Midwifery Student				-100.0%	-4	-4
Nursing & Midwifery	326	328	+3	+0.8%	+15	+9
Therapy Professions	248	248	+1	+0.2%	+22	+16
Health Science/ Diagnostics	34	34	-0	-1.2%	+2	+1
Social Care	9	9	-0	-0.5%	+0	
Social Workers	6	5	-0	-6.0%	-1	-1
Psychologists	27	26	-0	-0.9%	+2	+4
Pharmacy	1	1	+0	+49.0%	+0	+1
H&SC, Other	14	14	+0	+1.3%	+1	+0
Health & Social Care Professionals	339	339	+0	+0.1%	+26	+21
Management (VIII & above)	35	38	+3	+8.2%	+5	+5
Administrative/ Supervisory (V to VII)	73	76	+3	+4.6%	+14	+15
Clerical (III & IV)	229	229	+0	+0.2%	-9	-5
Management & Administrative	337	344	+7	+2.0%	+11	+16
Support	22	22	+0	+1.5%	+2	+0
Maintenance/ Technical	8	9	+1	+12.2%	-0	-0
General Support	30	31	+1	+4.3%	+1	+0
Health Care Assistants	57	64	+7	+13.1%	+50	+51
Care, other	46	44	-2	-3.9%	+1	-0
Patient & Client Care	103	108	+6	+5.5%	+51	+51

Social Care

Jan 2021 (Dec 2019 figure: 3,103)	WTE Dec 2020	WTE Jan 2021	WTE change since Dec 20	% change since Dec 20	WTE change since Dec 19	WTE change since Jan 20
Total Social Care	3,105	3,076	-29	-0.9%	-26	+54
Consultants	3	3				
Registrars	2	2				-1
Medical/ Dental, other	12	12			-1	
Medical & Dental	17	17			-1	-1
Nurse/ Midwife Manager	144	144	-0	-0.0%	+9	+5
Nurse/ Midwife Specialist & AN/MP	8	8	+0	+1.8%	-0	+0
Staff Nurse/ Staff Midwife	474	469	-5	-1.0%	+3	-0
Public Health Nurse	1	1			+0	+0
<i>Pre-registration Nurse Intern (COVID-19)</i>	1	1	-0	-7.5%	+1	-0
Nursing/ Midwifery Student	1	1	-0	-7.5%	+1	+1
Nursing & Midwifery	628	623	-5	-0.7%	+12	+6
Therapy Professions	59	62	+3	+5.4%	-4	-5
Health Science/ Diagnostics	1	1				
Social Care	243	247	+4	+1.7%	+26	+26
Social Workers	36	36	-1	-1.4%	-1	-0
Psychologists	14	15	+1	+8.4%	-0	-0
Pharmacy	1	1			+0	+0
H&SC, Other	12	9	-2	-19.3%	-6	-6
Health & Social Care Professionals	366	372	+6	+1.6%	+14	+15
Management (VIII & above)	18	18	+0	+0.3%	-0	+1
Administrative/ Supervisory (V to VII)	54	54	+0	+0.8%	+6	+5
Clerical (III & IV)	116	115	-1	-1.1%	-7	-6
Management & Administrative	187	187	-1	-0.4%	-1	-0
Support	99	95	-4	-3.8%	-5	-6
Maintenance/ Technical	32	32	-0	-0.2%	+0	-0
General Support	132	128	-4	-2.9%	-5	-6
Health Care Assistants	1,151	1,139	-12	-1.1%	+0	+23
Care, other	168	167	-2	-1.0%	+8	+9
Home Help	456	445	-12	-2.5%	-55	+9
Patient & Client Care	1,775	1,750	-25	-1.4%	-46	+41

CHO 2 Employment Report: January 2021

Disabilities

Jan 2021 (Dec 2019 figure: 1,497)	WTE Dec 2020	WTE Jan 2021	WTE change since Dec 20	% change since Dec 20	WTE change since Dec 19	WTE change since Jan 20
Total Disabilities	1,516	1,500	-15	-1.0%	+3	+18
Consultants	3	3				
Registrars	2	2				-1
Medical/ Dental, other	1	1				
Medical & Dental	6	6				-1
Nurse/ Midwife Manager	78	77	-1	-1.2%	-0	-3
Nurse/ Midwife Specialist & AN/MP	6	6	+0	+2.5%	-0	+0
Staff Nurse/ Staff Midwife	169	164	-5	-3.1%	-2	-3
<i>Pre-registration Nurse Intern (COVID-19)</i>	1	1	-0	-7.5%	+1	-0
Nursing/ Midwifery Student	1	1	-0	-7.5%	+1	+1
Nursing & Midwifery	253	247	-6	-2.4%	-1	-5
Therapy Professions	34	35	+1	+4.2%	-6	-6
Social Care	243	247	+4	+1.7%	+26	+26
Social Workers	26	25	-1	-2.0%	-1	-1
Psychologists	14	15	+1	+8.4%	-0	-0
H&SC, Other	12	9	-2	-19.3%	-6	-6
Health & Social Care Professionals	329	333	+4	+1.2%	+12	+13
Management (VIII & above)	16	16	+0	+0.4%	-0	
Administrative/ Supervisory (V to VII)	44	46	+2	+4.1%	+6	+6
Clerical (III & IV)	50	49	-1	-1.6%	-0	-1
Management & Administrative	110	111	+1	+1.0%	+5	+5
Support	43	39	-4	-9.6%	-6	-8
Maintenance/ Technical	13	13			-0	-0
General Support	56	52	-4	-7.4%	-6	-8
Health Care Assistants	625	616	-9	-1.4%	-7	+13
Care, other	136	134	-1	-1.1%	+0	+2
Patient & Client Care	761	750	-10	-1.3%	-7	+14

Older People

Jan 2021 (Dec 2019 figure: 1,606)	WTE Dec 2020	WTE Jan 2021	WTE change since Dec 20	% change since Dec 20	WTE change since Dec 19	WTE change since Jan 20
Total Older People	1,590	1,576	-14	-0.8%	-30	+36
Medical/ Dental, other	11	11			-1	
Medical & Dental	11	11			-1	
Nurse/ Midwife Manager	66	67	+1	+1.4%	+9	+8
Nurse/ Midwife Specialist & AN/MP	2	2				
Staff Nurse/ Staff Midwife	305	306	+1	+0.2%	+5	+3
Public Health Nurse	1	1			+0	+0
Nursing & Midwifery	374	376	+2	+0.4%	+14	+11
Health & Social Care Professionals	37	39	+2	+4.8%	+2	+2
Management (VIII & above)	2	2				+1
Administrative/ Supervisory (V to VII)	9	8	-1	-15.3%	+0	-1
Clerical (III & IV)	66	65	-1	-0.8%	-6	-5
Management & Administrative	77	75	-2	-2.5%	-6	-5
Support	56	56	+0	+0.6%	+0	+2
Maintenance/ Technical	19	19	-0	-0.3%	+0	-0
General Support	76	76	+0	+0.4%	+1	+2
Health Care Assistants	526	522	-3	-0.6%	+7	+11
Care, other	33	32	-0	-0.6%	+8	+7
Home Help	456	445	-12	-2.5%	-55	+9
Patient & Client Care	1,015	999	-15	-1.5%	-39	+27

CHO 2 Employment by Administration (HSE / S38): January 2021

Jan 2021 (Dec 2019 figure: 5,545)	WTE Dec 2020	WTE Jan 2021	WTE change since Dec 20	% change since Dec 20	WTE change since Dec 19	WTE change since Jan 20
Overall	5,690	5,690	-0	-0.0%	+145	+200
HSE	4,393	4,409	+16	+0.4%	+152	+193
Section 38 Voluntary Agencies	1,298	1,281	-17	-1.3%	-7	+7

HSE

Jan 2021 (Dec 2019 figure: 4,256)	WTE Dec 2020	WTE Jan 2021	WTE change since Dec 20	% change since Dec 20	WTE change since Dec 19	WTE change since Jan 20
Overall	4,393	4,409	+16	+0.4%	+152	+193
Consultants	39	40	+1	+0.0%	+0	+0
Registrars	84	86	+2	+0.0%	+13	+11
SHO/ Interns	43	39	-4	-0.1%	+3	+3
Medical/ Dental, other	62	59	-3	-0.0%	+0	+1
Medical & Dental	228	223	-5	-2.0%	+16	+14
Nurse/ Midwife Manager	255	257	+3	+0.0%	+16	+14
Nurse/ Midwife Specialist & AN/MP	103	103	-0	-0.0%	+15	+14
Staff Nurse/ Staff Midwife	784	798	+14	+0.0%	+20	+15
Public Health Nurse	199	194	-4	-0.0%	+3	+1
Pre-registration Nurse/ Midwife Intern		4	+4	-1.0%	+4	-1
Pre-registration Nurse Intern (COVID-19)	10	10	-1	-0.1%	+10	+10
Post-registration Nurse/ Midwife Student				-1.0%	-13	-4
Nursing/ Midwifery awaiting registration				-1.0%	-11	-2
Nursing/ Midwifery Student	10	14	+4	+0.4%	+5	+3
Nursing/ Midwifery other	2	1	-0	-0.2%	-1	-1
Nursing & Midwifery	1,353	1,368	+15	+1.1%	+58	+46
Therapy Professions	333	336	+3	+0.0%	+32	+23
Health Science/ Diagnostics	35	35	-0	-0.0%	+2	+1
Social Care	57	59	+2	+0.0%	+9	+7
Social Workers	58	59	+1	+0.0%	+0	+0
Psychologists	66	67	+1	+0.0%	+7	+8
Pharmacy	4	4	+0	+0.1%	-0	+1
H&SC, Other	17	17	+0	+0.0%	+1	+0
Health & Social Care Professionals	570	576	+7	+1.2%	+51	+40
Management (VIII & above)	45	48	+3	+0.1%	+5	+5
Administrative/ Supervisory (V to VII)	124	124	-0	-0.0%	+25	+20
Clerical (III & IV)	410	412	+2	+0.0%	-19	-13
Management & Administrative	579	584	+5	+0.8%	+11	+12
Support	109	110	+1	+0.0%	-3	-2
Maintenance/ Technical	68	70	+1	+0.0%	+7	+7
General Support	178	180	+2	+1.2%	+4	+4
Health Care Assistants	870	876	+5	+0.0%	+54	+58
Care, other	159	157	-2	-0.0%	+13	+10
Home Help	456	445	-12	-0.0%	-55	+9
Patient & Client Care	1,485	1,477	-8	-0.5%	+12	+77

Section 38 Voluntary Agencies

Jan 2021 (Dec 2019 figure: 1,288)	WTE Dec 2020	WTE Jan 2021	WTE change since Dec 20	% change since Dec 20	WTE change since Dec 19	WTE change since Jan 20
Overall	1,298	1,281	-17	-1.3%	-7	+7
Consultants	2	2		+0.0%		
Registrars	2	2		+0.0%		-1
Medical & Dental	4	4				-1
Nurse/ Midwife Manager	68	68	-1	-0.0%	+0	-2
Nurse/ Midwife Specialist & AN/MP	5	5	+0	+0.0%	-0	+0
Staff Nurse/ Staff Midwife	124	120	-3	-0.0%	+0	-2
<i>Pre-registration Nurse Intern (COVID-19)</i>	1	1	-0	-0.1%	+1	+1
Nursing/ Midwifery Student	1	1	-0	-0.1%	+1	+1
Nursing & Midwifery	197	193	-4	-1.9%	+1	-3
Therapy Professions	29	30	+1	+0.0%	-4	-4
Social Care	211	214	+3	+0.0%	+18	+20
Social Workers	26	25	-1	-0.0%	-0	-0
Psychologists	12	13	+1	+0.1%	-1	-1
H&SC, Other	12	9	-2	-0.2%	-6	-6
Health & Social Care Professionals	290	292	+2	+0.7%	+7	+8
Management (VIII & above)	13	13		+0.0%	-0	
Administrative/ Supervisory (V to VII)	36	38	+1	+0.0%	+3	+3
Clerical (III & IV)	38	37	-1	-0.0%	-0	-1
Management & Administrative	87	87	+0	+0.4%	+3	+2
Support	43	39	-4	-0.1%	-6	-8
Maintenance/ Technical	5	5		+0.0%	+0	+0
General Support	48	44	-4	-8.6%	-6	-8
Health Care Assistants	548	539	-10	-0.0%	-7	+12
Care, other	123	121	-2	-0.0%	-5	-4
Patient & Client Care	671	660	-11	-1.6%	-12	+8

CHO 2 Employment by S38 Agency: January 2021

Bros. of Charity, West Region

Jan 2021 (Dec 2019 figure: 1,288)	WTE Dec 2020	WTE Jan 2021	WTE change since Dec 20	% change since Dec 20	WTE change since Dec 19	WTE change since Jan 20
Overall	1,298	1,281	-17	-1.3%	-7	+7
Consultants	2	2		+0.0%		
Registrars	2	2		+0.0%		-1
Medical & Dental	4	4				-1
Nurse/ Midwife Manager	68	68	-1	-0.0%	+0	-2
Nurse/ Midwife Specialist & AN/MP	5	5	+0	+0.0%	-0	+0
Staff Nurse/ Staff Midwife	124	120	-3	-0.0%	+0	-2
Pre-registration Nurse Intern (COVID-19)	1	1	-0	-0.1%	+1	+1
Nursing/ Midwifery Student	1	1	-0	-0.1%	+1	+1
Nursing & Midwifery	197	193	-4	-1.9%	+1	-3
Therapy Professions	29	30	+1	+0.0%	-4	-4
Social Care	211	214	+3	+0.0%	+18	+20
Social Workers	26	25	-1	-0.0%	-0	-0
Psychologists	12	13	+1	+0.1%	-1	-1
H&SC, Other	12	9	-2	-0.2%	-6	-6
Health & Social Care Professionals	290	292	+2	+0.7%	+7	+8
Management (VIII & above)	13	13		+0.0%	-0	
Administrative/ Supervisory (V to VII)	36	38	+1	+0.0%	+3	+3
Clerical (III & IV)	38	37	-1	-0.0%	-0	-1
Management & Administrative	87	87	+0	+0.4%	+3	+2
Support	43	39	-4	-0.1%	-6	-8
Maintenance/ Technical	5	5		+0.0%	+0	+0
General Support	48	44	-4	-8.6%	-6	-8
Health Care Assistants	548	539	-10	-0.0%	-7	+12
Care, other	123	121	-2	-0.0%	-5	-4
Patient & Client Care	671	660	-11	-1.6%	-12	+8

CHO 2 Employment by Grade Group & Staff Category: January 2021

Jan 2021 (Dec 2019 figure: 5,545)	WTE Dec 2020	WTE Jan 2021	WTE change since Dec 20	% change since Dec 20	WTE change since Dec 19	WTE change since Jan 20
Overall	5,690	5,690	-0	-0.0%	+145	+200
Consultant Medicine	1	1				
Consultant Paediatrics	1	1				
Consultant Psychiatry	39	40	+1	+1.5%	+0	+0
Consultant Surgery	0	0	-0	-26.7%	-0	
Consultants	42	42	+1	+1.2%	+0	+0
Registrar	64	68	+3	+5.0%	+9	+7
Senior Registrar	22	21	-1	-4.7%	+4	+4
Registrars	86	88	+2	+2.6%	+13	+10
Senior House Officer	43	39	-4	-10.0%	+3	+3
SHO/ Interns	43	39	-4	-10.0%	+3	+3
Dentists	21	21	-1	-3.0%	-1	-0
Other Medical	41	38	-2	-5.8%	+1	+1
Medical/ Dental, other	62	59	-3	-4.8%	+0	+1
Medical & Dental	232	228	-5	-1.9%	+17	+13
Clinical Nurse/ Midwife Manager	256	255	-1	-0.5%	+14	+12
Director Nursing/Midwifery, Assistant	43	47	+3	+8.0%	+2	+1
Director of Nursing/Midwifery	24	24	-0	-0.5%	+1	-1
Nurse/ Midwife Manager	323	325	+2	+0.6%	+17	+12
Advanced Nurse/ Midwife Practitioner	11	11	+0	+0.1%	+2	+2
Clinical Nurse/ Midwife Specialist	97	97	-0	-0.2%	+13	+12
Nurse/ Midwife Specialist & AN/MP	108	108	-0	-0.2%	+15	+14
Staff Nurse [Intellectual Disability]	120	118	-3	-2.1%	+28	+24
Staff Nurse [Psychiatric]	365	375	+11	+2.9%	+4	+5
Staff Nurses [General/ Children's]	423	425	+2	+0.6%	-12	-15
Staff Nurse/ Staff Midwife	908	918	+10	+1.1%	+20	+14
Public Health Nurse	199	194	-4	-2.1%	+3	+1
Pre-registration Nurse/ Midwife Intern		4	+4	-100.0%	+4	-1
Pre-registration Nurse Intern (COVID-19)	11	10	-1	-6.2%	+10	+10
Post-registration Nurse/ Midwife Student				-100.0%	-4	-4
Nursing/ Midwifery awaiting registration				-100.0%	-5	-2
Nursing/ Midwifery Student	11	15	+4	+33.7%	+6	+3
Nursing/ Midwifery other	2	1	-0	-21.9%	-1	-1
Nursing & Midwifery	1,550	1,561	+11	+0.7%	+26	+43
Dietitians	25	22	-3	-12.9%	+2	+0
Occupational Therapists	129	131	+3	+2.0%	+14	+10
Orthoptists	2	1	-1	-40.5%	-1	-1
Physiotherapists	94	94	+0	+0.3%	+5	+5
Podiatrists & Chiropodists	7	7	-0	-0.3%	+0	+0
Speech & Language Therapists	105	110	+5	+4.7%	+6	+4
Therapy Professions	362	366	+4	+1.0%	+28	+19
Audiology	6	6	-0	-2.7%	+1	+1
Clinical Engineering	1	1				
Medical Laboratory	27	27	-0	-0.9%	+1	+0
Radiographers	1	1				
Health Science/ Diagnostics	35	35	-0	-1.2%	+2	+1
Social Care	268	272	+4	+1.6%	+27	+27
Social Workers	84	84	+0	+0.3%	+0	-0

Jan 2021 (Dec 2019 figure: 5,545)	WTE Dec 2020	WTE Jan 2021	WTE change since Dec 20	% change since Dec 20	WTE change since Dec 19	WTE change since Jan 20
Overall	5,690	5,690	-0	-0.0%	+145	+200
Psychologists	78	80	+2	+3.2%	+7	+7
Pharmacy	4	4	+0	+13.0%	-0	+1
Counsellor Therapists	13	12	-1	-7.4%	+1	+1
Dental Hygienists	5	5	-0	-2.2%	+0	+0
Other Health & Social Care	10	9	-1	-10.1%	-5	-4
Play Therapists/ Specialists	1	1			-3	-3
H&SC, Other	29	27	-2	-7.2%	-6	-6
Health & Social Care Professionals	859	868	+9	+1.0%	+58	+48
Executive Management	11	12	+0	+1.1%	+1	+1
Senior Management (VIII & GM)	47	49	+3	+6.0%	+4	+4
Management (VIII & above)	58	61	+3	+5.1%	+5	+5
Middle Management (V-VII)	160	161	+1	+0.6%	+29	+23
Other Administrative				-100.0%	-1	-0
Administrative/ Supervisory (V to VII)	160	161	+1	+0.6%	+28	+22
Clerical (III & IV)	448	449	+1	+0.3%	-19	-14
Management & Administrative	666	671	+5	+0.8%	+4	+14
Catering	39	38	-0	-0.5%	-2	+0
Household Services	62	60	-1	-2.3%	-3	-3
Other Support	38	36	-2	-5.5%	-3	-6
Portering	14	14	+0	+1.4%	-1	-1
Support	152	149	-4	-2.3%	-9	-10
Maintenance/ Technical	74	75	+1	+2.0%	+7	+7
General Support	226	224	-2	-0.9%	-18	-3
HCA, Nurse's Aide, etc.	1,411	1,404	-7	-0.5%	+51	+73
Health & Social Care Assistants	8	10	+2	+27.3%	-4	-3
Health Care Assistants	1,419	1,414	-4	-0.3%	+47	+70
Other Care Grades	281	278	-3	-1.1%	+8	+6
Care, other	281	278	-3	-1.1%	+8	+6
Home Help	456	445	-12	-2.5%	-55	+9
Patient & Client Care	2,156	2,137	-19	-0.9%	+44	+85

CHO 2 HSE Employment by Grade Group & Staff Category: January 2021

Jan 2021 (Dec 2019 figure: 4,256)	WTE Dec 2020	WTE Jan 2021	WTE change since Dec 20	% change since Dec 20	WTE change since Dec 19	WTE change since Jan 20
Overall	4,393	4,409	+16	+0.4%	+152	+193
Consultant Medicine	1	1				
Consultant Psychiatry	38	39	+1	+1.6%	+0	+0
Consultant Surgery	0	0	-0	-26.7%	-0	
Consultants	39	40	+1	+1.3%	+0	+0
Registrar	64	67	+2	+3.5%	+9	+7
Senior Registrar	20	20			+4	+4
Registrars	84	86	+2	+2.7%	+13	+11
SHO/ Interns	43	39	-4	-10.0%	+3	+3
Dentists	21	21	-1	-3.0%	-1	-0
Other Medical	41	38	-2	-5.8%	+1	+1
Medical/ Dental, other	62	59	-3	-4.8%	+0	+1
Medical & Dental	228	223	-5	-2.0%	+17	+14
Clinical Nurse/ Midwife Manager	189	188	-1	-0.5%	+14	+14
Director Nursing/Midwifery, Assistant	43	47	+3	+8.0%	+2	+1
Director of Nursing/Midwifery	23	23	+0	+0.1%	+1	-1
Nurse/ Midwife Manager	255	257	+3	+1.0%	+16	+14
Advanced Nurse/ Midwife Practitioner	10	10	+0	+0.1%	+2	+2
Clinical Nurse/ Midwife Specialist	93	93	-0	-0.4%	+13	+12
Nurse/ Midwife Specialist & AN/MP	103	103	-0	-0.3%	+15	+14
Staff Nurse [Intellectual Disability]	14	14	-0	-0.9%	+1	+1
Staff Nurse [Psychiatric]	358	368	+11	+2.9%	+9	+9
Staff Nurses [General/ Children's]	413	416	+3	+0.8%	+10	+5
Staff Nurse/ Staff Midwife	784	798	+14	+1.8%	+20	+15
Public Health Nurse	199	194	-4	-2.1%	+3	+1
Pre-registration Nurse/ Midwife Intern		4	+4	-100.0%	+4	-1
Pre-registration Nurse Intern (COVID-19)	10	10	-1	-6.1%	+10	+10
Post-registration Nurse/ Midwife Student				-100.0%	-4	-4
Nursing/ Midwifery awaiting registration				-100.0%	-5	-2
Nursing/ Midwifery Student	10	14	+4	+36.4%	+5	+3
Nursing/ Midwifery other	2	1	-0	-21.9%	-1	-1
Nursing & Midwifery	1,353	1,368	+15	+1.1%	+29	+46
Dietitians	25	22	-3	-12.9%	+2	+0
Occupational Therapists	120	123	+3	+2.2%	+15	+11
Orthoptists	2	1	-1	-40.5%	-1	-1
Physiotherapists	84	84	-0	-0.0%	+6	+5
Podiatrists & Chiropodists	7	7	-0	-0.3%	+0	+0
Speech & Language Therapists	95	99	+4	+4.4%	+9	+7
Therapy Professions	333	336	+3	+0.8%	+32	+23
Audiology	6	6	-0	-2.7%	+1	+1
Clinical Engineering	1	1				
Medical Laboratory	27	27	-0	-0.9%	+1	+0
Radiographers	1	1				
Health Science/ Diagnostics	35	35	-0	-1.2%	+2	+1
Social Care	57	59	+2	+2.8%	+9	+7
Social Workers	58	59	+1	+1.3%	+0	+0
Psychologists	66	67	+1	+1.9%	+7	+8
Pharmacy	4	4	+0	+13.0%	-0	+1
Counsellor Therapists	9	10	+0	+3.2%	+2	+1
Dental Hygienists	5	5	-0	-2.2%	+0	+0

Jan 2021 (Dec 2019 figure: 4,256)	WTE Dec 2020	WTE Jan 2021	WTE change since Dec 20	% change since Dec 20	WTE change since Dec 19	WTE change since Jan 20
Overall	4,393	4,409	+16	+0.4%	+152	+193
Other Health & Social Care	2	2	-0	-0.5%	-1	-1
Play Therapists/ Specialists	1	1				
H&SC, Other	17	17	+0	+1.0%	+1	+0
Health & Social Care Professionals	570	576	+7	+1.2%	+35	+40
Executive Management	9	10	+0	+1.4%	+1	+1
Senior Management (VIII & GM)	36	39	+3	+7.9%	+4	+4
Management (VIII & above)	45	48	+3	+6.5%	+5	+5
Administrative/ Supervisory (V to VII)	124	124	-0	-0.1%	+25	+20
Clerical (III & IV)	410	412	+2	+0.5%	-19	-13
Management & Administrative	579	584	+5	+0.8%	-3	+12
Catering	38	38	-0	-0.5%	-1	+0
Household Services	44	45	+1	+1.5%	+1	+1
Other Support	13	13	-0	-0.2%	-1	-2
Portering	14	14	+0	+1.4%	-1	-1
Support	109	110	+1	+0.5%	-3	-2
Maintenance/ Technical	68	70	+1	+2.1%	+7	+7
General Support	178	180	+2	+1.2%	-13	+4
HCA, Nurse's Aide, etc.	863	866	+3	+0.4%	+58	+61
Health & Social Care Assistants	8	10	+2	+27.3%	-4	-3
Health Care Assistants	870	876	+5	+0.6%	+54	+58
Care, other	159	157	-2	-1.0%	+13	+10
Home Help	456	445	-12	-2.5%	-55	+9
Patient & Client Care	1,485	1,477	-8	-0.5%	-9	+77

Employment by WTE, Headcount, Gender, Full-Time /Part-Time etc.: Jan 2021

CHO 2	WTE	Headcount	WTE: no.	% Male	% female	Male WTE: no.	Female WTE: no.	% Total Perm	% Male Perm	% Female Perm	% Total Full Time	% Total Part Time	% Male FT	% Female FT
Overall	5,690	6,651	1.17	18.8%	81.2%	1.11	1.18	85.5%	81.3%	86.4%	59.4%	40.6%	74.9%	55.8%
Consultant Medicine	1	1	1.00		100.0%		1.00	100.0%	100.0%	100.0%	100.0%	0.0%		100.0%
Consultant Paediatrics	1	1	1.00		100.0%		1.00	100.0%	100.0%	100.0%	100.0%	0.0%		100.0%
Consultant Psychiatry	40	43	1.07	39.5%	60.5%	1.04	1.10	67.4%	67.4%	65.4%	81.4%	18.6%	88.2%	76.9%
Consultant Surgery	0	1	4.55		100.0%		4.55	0.0%	0.0%	0.0%	0.0%	100.0%		0.0%
Consultants	42	46	1.09	37.0%	63.0%	1.04	1.12	67.4%	70.6%	65.5%	80.4%	19.6%	88.2%	75.9%
Registrar	68	69	1.02	33.3%	66.7%	1.00	1.03	1.4%	1.4%	2.2%	100.0%	0.0%	100.0%	100.0%
Senior Registrar	21	21	1.02	38.1%	61.9%	1.00	1.04	0.0%	0.0%	0.0%	100.0%	0.0%	100.0%	100.0%
Registrars	88	90	1.02	34.4%	65.6%	1.00	1.03	1.1%	0.0%	1.7%	100.0%	0.0%	100.0%	100.0%
Senior House Officer	39	40	1.04	35.0%	65.0%	1.06	1.02	0.0%	0.0%	0.0%	100.0%	0.0%	100.0%	100.0%
SHO/ Interns	39	40	1.04	35.0%	65.0%	1.06	1.02	0.0%	0.0%	0.0%	100.0%	0.0%	100.0%	100.0%
Dentists	21	25	1.21	24.0%	76.0%	1.03	1.28	100.0%	100.0%	100.0%	60.0%	40.0%	83.3%	52.6%
Other Medical	38	46	1.20	30.4%	69.6%	1.26	1.18	60.9%	60.9%	68.8%	54.3%	45.7%	57.1%	53.1%
Medical/ Dental, other	59	71	1.21	28.2%	71.8%	1.18	1.21	74.6%	60.0%	80.4%	56.3%	43.7%	65.0%	52.9%
Medical & Dental	228	247	1.08	33.2%	66.8%	1.06	1.10	34.4%	29.3%	37.0%	83.8%	16.2%	89.0%	81.2%
Clinical Nurse/ Midwife Manager	255	273	1.07	26.7%	73.3%	1.01	1.10	96.7%	96.7%	96.5%	85.7%	14.3%	98.6%	81.0%
Director Nursing/Midwifery, Assistant	47	49	1.05	20.4%	79.6%	1.00	1.06	98.0%	98.0%	97.4%	91.8%	8.2%	100.0%	89.7%
Director of Nursing/Midwifery	24	24	1.01	12.5%	87.5%	1.00	1.01	100.0%	100.0%	100.0%	100.0%	0.0%	100.0%	100.0%
Nurse/ Midwife Manager	325	346	1.06	24.9%	75.1%	1.01	1.08	97.1%	97.7%	96.9%	87.6%	12.4%	98.8%	83.8%
Advanced Nurse/ Midwife Practitioner	11	11	1.01	27.3%	72.7%	1.00	1.01	100.0%	100.0%	100.0%	100.0%	0.0%	100.0%	100.0%
Clinical Nurse/ Midwife Specialist	97	103	1.06	12.6%	87.4%	1.00	1.07	100.0%	100.0%	100.0%	94.2%	5.8%	100.0%	93.3%
Nurse/ Midwife Specialist & AN/MP	108	114	1.06	14.0%	86.0%	1.00	1.07	100.0%	100.0%	100.0%	94.7%	5.3%	100.0%	93.9%
Staff Nurse [Intellectual Disability]	118	145	1.23	7.6%	92.4%	1.15	1.24	93.1%	93.1%	92.5%	50.3%	49.7%	72.7%	48.5%
Staff Nurse [Psychiatric]	375	410	1.09	24.6%	75.4%	1.10	1.09	93.7%	93.7%	96.4%	85.6%	14.4%	84.2%	86.1%
Staff Nurses [General/ Children's]	425	507	1.19	5.1%	94.9%	1.09	1.20	93.5%	93.5%	93.3%	53.5%	46.5%	76.9%	52.2%
Staff Nurse/ Staff Midwife	918	1,062	1.16	13.0%	87.0%	1.10	1.17	93.5%	88.4%	94.3%	65.4%	34.6%	81.9%	63.0%
Public Health Nurse	194	222	1.14		100.0%		1.14	97.3%		97.3%	73.9%	26.1%		73.9%
Pre-registration Nurse/ Midwife Intern	4	10	2.31	30.0%	70.0%	1.72	2.70	0.0%	0.0%	0.0%	100.0%	0.0%	100.0%	100.0%
Pre-registration Nurse Intern (COVID-19)	10	20	1.96	25.0%	75.0%	2.67	1.81	0.0%	0.0%	0.0%	95.0%	5.0%	100.0%	93.3%

Nursing/ Midwifery Student	15	30	2.07	26.7%	73.3%	2.22	2.02	0.0%	0.0%	0.0%	96.7%	3.3%	100.0%	95.5%
Nursing/ Midwifery other	1	2	1.60		100.0%		1.60	100.0%		100.0%	50.0%	50.0%		50.0%
Nursing & Midwifery	1,561	1,776	1.14	14.0%	86.0%	1.08	1.15	93.5%	89.5%	94.2%	73.2%	26.8%	89.5%	70.5%
Dietitians	22	27	1.22		100.0%		1.22	88.9%	88.9%	88.9%	74.1%	25.9%		74.1%
Occupational Therapists	131	147	1.12	7.5%	92.5%	1.02	1.13	89.8%	89.8%	89.0%	72.1%	27.9%	90.9%	70.6%
Orthoptists	1	1	1.00		100.0%		1.00	100.0%	100.0%	100.0%	100.0%	0.0%		100.0%
Physiotherapists	94	113	1.20	15.0%	85.0%	1.03	1.24	91.2%	91.2%	91.7%	63.7%	36.3%	88.2%	59.4%
Podiatrists & Chiropodists	7	10	1.34	10.0%	90.0%	1.02	1.39	80.0%	80.0%	77.8%	50.0%	50.0%	100.0%	44.4%
Speech & Language Therapists	110	124	1.12	1.6%	98.4%	1.00	1.13	83.9%	83.9%	83.6%	79.0%	21.0%	100.0%	78.7%
Therapy Professions	366	422	1.15	7.3%	92.7%	1.03	1.16	88.2%	93.5%	87.7%	71.6%	28.4%	90.3%	70.1%
Audiology	6	6	1.04		100.0%		1.04	100.0%	100.0%	100.0%	83.3%	16.7%		83.3%
Clinical Engineering	1	1	1.00	100.0%		1.00		100.0%	100.0%		100.0%	0.0%	100.0%	
Medical Laboratory	27	29	1.07	17.2%	82.8%	1.11	1.06	100.0%	100.0%	100.0%	86.2%	13.8%	100.0%	83.3%
Radiographers	1	1	1.67		100.0%		1.67	100.0%	100.0%	100.0%	0.0%	100.0%		0.0%
Health Science/ Diagnostics	35	37	1.07	16.2%	83.8%	1.09	1.07	100.0%	100.0%	100.0%	83.8%	16.2%	100.0%	80.6%
Social Care	272	331	1.22	17.2%	82.8%	1.21	1.22	86.7%	93.0%	85.4%	52.3%	47.7%	52.6%	52.2%
Social Workers	84	98	1.17	17.3%	82.7%	1.06	1.19	92.9%	94.1%	92.6%	70.4%	29.6%	82.4%	67.9%
Psychologists	80	93	1.16	15.1%	84.9%	1.02	1.19	95.7%	100.0%	94.9%	68.8%	31.2%	92.9%	64.6%
Pharmacy	4	6	1.41	16.7%	83.3%	1.00	1.53	83.3%	100.0%	80.0%	50.0%	50.0%	100.0%	40.0%
Counsellor Therapists	12	15	1.21	26.7%	73.3%	1.09	1.27	93.3%	93.3%	100.0%	73.3%	26.7%	50.0%	81.8%
Dental Hygienists	5	6	1.25		100.0%		1.25	83.3%	83.3%	83.3%	50.0%	50.0%		50.0%
Other Health & Social Care	9	15	1.73	20.0%	80.0%	1.17	1.97	80.0%	80.0%	83.3%	13.3%	86.7%	33.3%	8.3%
Play Therapists/ Specialists	1	1	1.00		100.0%		1.00	100.0%	100.0%	100.0%	100.0%	0.0%		100.0%
H&SC, Other	27	37	1.38	18.9%	81.1%	1.13	1.46	86.5%	71.4%	90.0%	45.9%	54.1%	42.9%	46.7%
Health & Social Care	868	1,024	1.18	13.0%	87.0%	1.11	1.19	89.2%	93.2%	88.6%	64.4%	35.6%	71.4%	63.3%
Executive Management	12	13	1.12	69.2%	30.8%	1.16	1.04	84.6%	84.6%	100.0%	76.9%	23.1%	77.8%	75.0%
Senior Management (VIII & GM)	49	50	1.01	42.0%	58.0%	1.00	1.02	92.0%	92.0%	93.1%	98.0%	2.0%	100.0%	96.6%
Management (VIII & above)	61	63	1.03	47.6%	52.4%	1.04	1.02	90.5%	86.7%	93.9%	93.7%	6.3%	93.3%	93.9%
Administrative/ Supervisory (V to VII)	161	170	1.05	18.2%	81.8%	1.07	1.05	97.1%	96.8%	97.1%	79.4%	20.6%	83.9%	78.4%
Clerical (III & IV)	449	510	1.14	6.1%	93.9%	1.15	1.14	88.2%	74.2%	89.1%	66.3%	33.7%	74.2%	65.8%
Management & Administrative	671	743	1.11	12.4%	87.6%	1.09	1.11	90.4%	85.9%	91.1%	71.6%	28.4%	83.7%	69.9%
Catering	38	43	1.12	30.2%	69.8%	1.02	1.17	100.0%	100.0%	100.0%	62.8%	37.2%	84.6%	53.3%
Household Services	60	89	1.48	13.5%	86.5%	1.45	1.48	91.0%	91.0%	90.9%	33.7%	66.3%	41.7%	32.5%
Other Support	36	71	1.97	67.6%	32.4%	1.50	5.64	54.9%	54.9%	13.0%	16.9%	83.1%	20.8%	8.7%
Portering	14	15	1.06	86.7%	13.3%	1.01	1.46	93.3%	93.3%	50.0%	100.0%	0.0%	100.0%	100.0%

Support	149	218	1.46	39.4%	60.6%	1.31	1.59	81.2%	84.9%	78.8%	38.5%	61.5%	45.3%	34.1%
Maintenance/ Technical	75	77	1.03	98.7%	1.3%	1.03	1.00	97.4%	97.4%	100.0%	93.5%	6.5%	93.4%	100.0%
General Support	224	295	1.32	54.9%	45.1%	1.16	1.58	85.4%	90.7%	78.9%	52.9%	47.1%	67.9%	34.6%
HCA, Nurse's Aide, etc.	1,404	1,618	1.15	25.4%	74.6%	1.11	1.17	77.3%	77.3%	77.1%	54.2%	45.8%	69.1%	49.1%
Health & Social Care Assistants	10	11	1.11	36.4%	63.6%	1.00	1.19	36.4%	36.4%	28.6%	90.9%	9.1%	100.0%	85.7%
Health Care Assistants	1,414	1,629	1.15	25.5%	74.5%	1.11	1.17	77.0%	77.8%	76.8%	54.5%	45.5%	69.4%	49.3%
Care, other	278	337	1.21	34.4%	65.6%	1.17	1.24	87.5%	83.6%	89.6%	54.0%	46.0%	62.9%	49.3%
Home Help	445	600	1.35	0.7%	99.3%	1.42	1.35	91.8%	50.0%	92.1%	4.8%	95.2%	0.0%	4.9%
Patient & Client Care	2,137	2,566	1.20	20.8%	79.2%	1.12	1.22	81.9%	78.9%	82.7%	42.8%	57.2%	67.5%	36.3%

Employment by WTE, Headcount, Gender, Full-Time /Part-Time etc.: Jan 2021

CHO 2	WTE	Headcount	WTE: no.	% Male	% female	Male WTE: no.	Female WTE: no.	% Total Perm	% Male Perm	% Female Perm	% Total Full Time	% Total Part Time	% Male FT	% Female FT
Overall	5,690	6,651	1.17	18.8%	81.2%	1.11	1.18	85.5%	81.3%	86.4%	59.4%	40.6%	74.9%	55.8%
Community Health & Wellbeing	10	11	1.12	9.1%	90.9%	1.00	1.13	100.0%	100.0%	100.0%	54.5%	45.5%	100.0%	100.0%
Mental Health	1,354	1,475	1.09	28.0%	72.0%	1.06	1.10	85.4%	85.4%	87.3%	83.6%	16.4%	89.6%	89.6%
Primary Care	1,250	1,433	1.15	12.4%	87.6%	1.08	1.16	82.3%	82.3%	83.8%	70.6%	29.4%	83.1%	83.1%
HSE	1,795	2,107	1.17	13.5%	86.5%	1.04	1.20	90.0%	90.0%	90.7%	50.6%	49.4%	89.5%	89.5%
Section 38 Voluntary Agencies	1,281	1,625	1.27	23.1%	76.9%	1.25	1.28	82.3%	82.3%	82.0%	39.1%	60.9%	43.7%	43.7%
Social Care	3,076	3,732	1.21	17.7%	82.3%	1.15	1.23	86.7%	86.7%	87.1%	45.6%	54.4%	63.5%	63.5%

CHO 2 Skills Mix by Staff Grouping: January 2021

Jan 2021 (Dec 2018 figure: 5,559)	WTE Dec 2015	WTE Dec 2016	WTE Dec 2017	WTE Dec 2018	WTE Dec 2019	WTE Dec 2020	WTE Jan 2021
Overall	5,111	5,236	5,377	5,559	5,545	5,690	5,690
Consultant Medicine	0.5%	0.5%	0.5%	0.5%	0.5%	0.4%	0.4%
Consultant Paediatrics	0.5%	0.5%	0.5%	0.5%	0.5%	0.4%	0.4%
Consultant Psychiatry	18.0%	16.7%	16.6%	16.4%	18.9%	17.0%	17.6%
Consultant Surgery	0.7%	0.7%	0.6%	0.1%	0.1%	0.1%	0.1%
Consultants	19.7%	18.4%	18.3%	17.5%	19.9%	18.0%	18.5%
Registrar	26.4%	27.0%	29.4%	27.8%	27.4%	27.7%	29.7%
Senior Registrar	3.5%	4.2%	4.2%	5.5%	8.0%	9.3%	9.0%
Registrars	29.9%	31.1%	33.6%	33.2%	35.4%	37.0%	38.7%
Interns	0.5%						
Senior House Officer	19.2%	19.3%	18.6%	20.0%	16.9%	18.5%	16.9%
SHO/ Interns	19.8%	19.3%	18.6%	20.0%	16.9%	18.5%	16.9%
Dentists	11.8%	11.2%	10.8%	11.0%	10.0%	9.2%	9.1%
Other Medical	18.9%	19.9%	18.8%	18.3%	17.7%	17.5%	16.8%
Medical/ Dental, other	30.6%	31.2%	29.6%	29.3%	27.7%	26.6%	25.8%
Medical & Dental	3.7%	3.7%	3.8%	3.8%	3.8%	100.0%	4.0%
Clinical Nurse/ Midwife Manager	14.7%	15.7%	15.7%	16.5%	16.0%	16.5%	16.3%
Director Nursing/Midwifery, Assistant	2.4%	2.5%	2.7%	2.6%	3.0%	2.8%	3.0%
Director of Nursing/Midwifery	1.4%	1.4%	1.4%	1.4%	1.5%	1.5%	1.5%
Nurse/ Midwife Manager	18.5%	19.5%	19.7%	20.5%	20.6%	20.9%	20.8%
Advanced Nurse/ Midwife Practitioner	0.2%	0.2%	0.3%	0.4%	0.6%	0.7%	0.7%
Clinical Nurse/ Midwife Specialist	4.3%	4.3%	5.1%	5.1%	5.6%	6.3%	6.2%
Nurse/ Midwife Specialist & AN/MP	4.5%	4.5%	5.3%	5.5%	6.2%	7.0%	6.9%
Staff Midwives	0.1%	0.0%	0.1%				
Staff Nurse [Intellectual Disability]	8.0%	8.5%	6.5%	6.4%	6.0%	7.8%	7.5%
Staff Nurse [Psychiatric]	26.0%	25.4%	24.3%	24.1%	24.7%	23.5%	24.0%
Staff Nurses [General/ Children's]	30.3%	29.7%	30.5%	29.6%	29.1%	27.3%	27.2%
Staff Nurse/ Staff Midwife	64.4%	63.6%	61.4%	60.1%	59.8%	58.6%	58.8%
Public Health Nurse	11.9%	11.7%	11.4%	12.2%	12.8%	12.8%	12.5%
Pre-registration Nurse/ Midwife Intern	0.2%		0.9%		0.0%		0.3%
Pre-registration Nurse Intern (COVID-19)						0.7%	0.7%
Post-registration Nurse/ Midwife Student	0.5%	0.7%	1.1%	0.8%	0.3%		
Nursing/ Midwifery awaiting registration				0.7%	0.3%		
Nursing/ Midwifery Student	0.6%	0.7%	1.9%	1.6%	0.6%	0.7%	0.9%
Nursing/ Midwifery other			0.1%	0.2%	0.1%	0.1%	0.1%
Nursing & Midwifery	29.3%	28.8%	28.3%	27.6%	27.7%	100.0%	27.4%
Dietitians	2.2%	2.4%	2.6%	2.5%	2.4%	3.0%	2.5%
Occupational Therapists	13.8%	15.1%	14.7%	14.6%	14.4%	15.0%	15.1%
Orthoptists	0.2%	0.2%	0.2%	0.2%	0.2%	0.2%	0.1%
Physiotherapists	12.3%	10.7%	11.7%	11.0%	10.9%	10.9%	10.8%
Podiatrists & Chiropodists	0.9%	1.2%	1.0%	0.9%	0.9%	0.9%	0.9%
Speech & Language Therapists	11.9%	12.3%	12.4%	12.8%	12.9%	12.3%	12.7%
Therapy Professions	41.2%	41.8%	42.6%	41.9%	41.7%	42.1%	42.2%
Audiology	0.7%	0.6%	0.8%	0.7%	0.6%	0.7%	0.7%
Clinical Engineering	0.1%	0.1%			0.1%	0.1%	0.1%
Medical Laboratory	3.8%	3.8%	3.5%	3.3%	3.3%	3.2%	3.1%
Physicists	0.1%	0.1%					
Radiographers	0.0%	0.1%	0.1%	0.1%	0.1%	0.1%	0.1%
Health Science/ Diagnostics	4.8%	4.8%	4.4%	4.1%	4.1%	4.1%	4.0%
Social Care	24.8%	26.3%	27.2%	28.6%	30.2%	31.2%	31.4%
Social Workers	11.1%	10.3%	10.1%	10.1%	10.3%	9.7%	9.7%
Psychologists	12.2%	11.4%	10.7%	10.3%	9.1%	9.1%	9.3%

Jan 2021 (Dec 2018 figure: 5,559)	WTE Dec 2015	WTE Dec 2016	WTE Dec 2017	WTE Dec 2018	WTE Dec 2019	WTE Dec 2020	WTE Jan 2021
Overall	5,111	5,236	5,377	5,559	5,545	5,690	5,690
Pharmacy	0.8%	0.7%	0.6%	0.5%	0.6%	0.4%	0.5%
Counsellor Therapists	1.2%	1.4%	1.4%	1.5%	1.4%	1.6%	1.4%
Dental Hygienists	0.4%	0.5%	0.3%	0.5%	0.6%	0.6%	0.6%
HSCP Trainees/ Students	0.5%	0.3%	0.1%				
Other Health & Social Care	2.5%	2.1%	2.1%	1.9%	1.6%	1.1%	1.0%
Play Therapists/ Specialists	0.6%	0.5%	0.5%	0.4%	0.4%	0.1%	0.1%
H&SC, Other	5.2%	4.7%	4.4%	4.4%	4.0%	3.4%	3.1%
Health & Social Care Professionals	13.7%	14.0%	14.0%	14.6%	14.6%	100.0%	15.3%
Executive Management	1.4%	1.7%	1.8%	1.7%	1.6%	1.7%	1.7%
Senior Management (VIII & GM)	6.4%	6.5%	6.6%	7.0%	6.9%	7.0%	7.4%
Management (VIII & above)	7.8%	8.2%	8.5%	8.7%	8.5%	8.7%	9.1%
Middle Management (V-VII)	15.0%	17.2%	18.3%	18.5%	20.2%	24.1%	24.0%
Other Administrative					0.2%		
Administrative/ Supervisory (V to VII)	15.0%	17.2%	18.3%	18.5%	20.3%	24.1%	24.0%
Clerical (III & IV)	77.2%	74.6%	73.2%	72.8%	71.2%	67.2%	66.9%
Management & Administrative	11.0%	11.3%	11.9%	12.0%	12.0%	100.0%	11.8%
Catering	14.7%	15.6%	14.8%	16.9%	17.6%	17.0%	17.1%
Household Services	34.7%	31.9%	30.7%	28.8%	27.9%	27.3%	26.9%
Other Support	16.8%	17.2%	17.6%	17.4%	17.4%	16.9%	16.1%
Portering	4.9%	6.4%	7.2%	7.1%	6.9%	6.2%	6.3%
Support	71.1%	71.0%	70.3%	70.2%	69.9%	67.5%	66.5%
Maintenance/ Technical	28.9%	29.0%	29.7%	29.8%	30.1%	32.5%	33.5%
General Support	5.3%	4.9%	4.5%	4.4%	4.4%	100.0%	3.9%
HCA, Nurse's Aide, etc.	61.2%	63.7%	64.2%	63.5%	63.3%	65.4%	65.7%
Health & Social Care Assistants	0.3%	0.3%	0.5%	0.9%	0.6%	0.4%	0.5%
Health Care Assistants	61.5%	64.0%	64.7%	64.5%	64.0%	65.8%	66.2%
Care, other	13.9%	13.0%	13.0%	12.5%	12.7%	13.0%	13.0%
Home Help	24.6%	23.0%	22.3%	23.0%	23.4%	21.2%	20.8%
Patient & Client Care	37.1%	37.4%	37.4%	37.7%	37.8%	100.0%	37.6%
Total	100 %	100 %	100 %	100 %	100%	100 %	100 %

CHO 2 Skills Mix by Care Group: January 2021

Jan 2021 (Dec 2018 figure: 1,338)	WTE Dec 2015	WTE Dec 2016	WTE Dec 2017	WTE Dec 2018	WTE Dec 2019	WTE Dec 2020	WTE Jan 2021
Mental Health	1,258	1,283	1,307	1,338	1,308	1,340	1,354
Consultants	38.0%	33.8%	31.8%	30.6%	35.3%	32.4%	33.8%
Registrar	17.5%	18.0%	19.5%	17.9%	16.0%	14.9%	15.0%
Senior Registrar	7.8%	9.0%	8.5%	10.9%	15.0%	17.0%	17.5%
Registrars	25.3%	27.0%	28.0%	28.7%	31.1%	31.9%	32.5%
Interns	1.2%						
Senior House Officer	32.6%	36.4%	37.7%	39.7%	32.7%	34.9%	32.8%
SHO/ Interns	33.8%	36.4%	37.7%	39.7%	32.7%	34.9%	32.8%
Medical/ Dental, other	3.0%	2.8%	2.5%	0.9%	0.9%	0.9%	0.9%
Medical & Dental	6.6%	6.9%	7.6%	7.9%	8.1%	8.2%	8.2%
Clinical Nurse/ Midwife Manager	20.5%	22.1%	20.7%	23.0%	21.5%	21.8%	21.2%
Director Nursing/Midwifery, Assistant	2.9%	2.8%	3.3%	3.1%	3.3%	3.0%	2.9%
Director of Nursing/Midwifery	0.4%	0.5%	0.5%	0.3%	0.5%	0.5%	0.5%
Nurse/ Midwife Manager	23.7%	25.5%	24.6%	26.4%	25.3%	25.3%	24.6%
Advanced Nurse/ Midwife Practitioner	0.5%	0.5%	0.5%	0.9%	1.0%	1.2%	1.1%
Clinical Nurse/ Midwife Specialist	7.5%	7.4%	9.9%	9.4%	10.6%	12.1%	11.7%
Nurse/ Midwife Specialist & AN/MP	8.1%	7.9%	10.4%	10.2%	11.7%	13.3%	12.8%
Staff Nurse [Psychiatric]	65.7%	64.6%	61.0%	60.0%	61.0%	58.7%	59.3%
Staff Nurses [General/ Children's]	2.0%	2.0%	1.3%	0.9%	0.9%	0.8%	0.8%
Staff Nurse/ Staff Midwife	67.8%	66.6%	62.3%	61.0%	61.9%	59.4%	60.1%
Pre-registration Nurse/ Midwife Intern	0.4%		2.3%		0.0%		0.7%
Pre-registration Nurse Intern (COVID-19)						1.7%	1.6%
Nursing/ Midwifery awaiting registration				1.9%	0.8%		
Nursing/ Midwifery Student	0.4%		2.3%	1.9%	0.8%	1.7%	2.3%
Nursing/ Midwifery other			0.4%	0.5%	0.3%	0.3%	0.2%
Nursing & Midwifery	44.5%	44.0%	43.5%	43.8%	44.8%	45.1%	45.1%
Dietitians	1.6%	2.9%	3.6%	2.4%	2.1%	3.7%	3.2%
Occupational Therapists	20.6%	24.4%	26.3%	26.4%	26.0%	25.9%	25.7%
Speech & Language Therapists	4.7%	5.3%	5.5%	5.2%	4.3%	6.1%	6.2%
Therapy Professions	26.9%	32.6%	35.4%	33.9%	32.4%	35.7%	35.1%
Social Care	13.5%	12.2%	9.7%	9.9%	10.5%	10.4%	10.3%
Social Workers	30.3%	26.9%	26.2%	27.7%	29.1%	26.9%	27.1%
Psychologists	25.4%	25.0%	25.3%	24.6%	24.0%	23.9%	24.5%
Pharmacy	3.2%	2.6%	1.9%	1.8%	1.8%	1.1%	1.1%
Counsellor Therapists				1.4%	1.4%	1.3%	1.3%
Other Health & Social Care			0.7%				
Play Therapists/ Specialists	0.8%	0.7%	0.7%	0.7%	0.7%	0.6%	0.6%
H&SC, Other	0.8%	0.7%	1.4%	2.1%	2.1%	1.9%	1.9%
Health & Social Care Professionals	10.1%	10.7%	10.6%	10.9%	11.2%	11.6%	11.6%
Management (VIII & above)	4.0%	3.1%	2.2%	2.8%	3.6%	3.0%	3.0%
Administrative/ Supervisory (V to VII)	13.5%	15.9%	17.6%	16.5%	17.1%	19.9%	18.0%
Clerical (III & IV)	82.5%	81.0%	80.2%	80.7%	79.2%	77.1%	79.0%
Management & Administrative	9.9%	10.2%	10.4%	10.5%	10.8%	9.8%	9.8%
Support	61.0%	56.6%	53.4%	52.7%	57.3%	48.5%	48.0%
Maintenance/ Technical	39.0%	43.4%	46.6%	47.3%	42.7%	51.5%	52.0%
General Support	6.7%	6.3%	5.6%	5.2%	5.3%	4.8%	4.8%
Health Care Assistants	75.6%	76.3%	74.5%	75.0%	75.6%	76.1%	76.0%
Care, other	24.4%	23.7%	25.5%	25.0%	24.4%	23.9%	24.0%

Jan 2021 (Dec 2018 figure: 1,338)	WTE Dec 2015	WTE Dec 2016	WTE Dec 2017	WTE Dec 2018	WTE Dec 2019	WTE Dec 2020	WTE Jan 2021
Mental Health	1,258	1,283	1,307	1,338	1,308	1,340	1,354
Patient & Client Care	22.1%	21.9%	22.3%	21.7%	22.2%	20.5%	20.5%
Total	100 %	100 %	100 %	100 %	100 %	100 %	100 %

Jan 2021 (Dec 2018 figure: 1,160)	WTE Dec 2015	WTE Dec 2016	WTE Dec 2017	WTE Dec 2018	WTE Dec 2019	WTE Dec 2020	WTE Jan 2021
Primary Care	1,261	1,238	1,090	1,160	1,134	1,235	1,250
Consultant Medicine	1.1%	1.2%	1.2%	1.1%	1.1%	1.0%	1.0%
Consultant Psychiatry	1.1%						
Consultant Surgery	1.4%	1.5%	1.5%	0.3%	0.3%	0.3%	0.2%
Consultants	3.6%	2.7%	2.7%	1.5%	1.4%	1.3%	1.2%
Registrars	36.5%	39.1%	44.7%	43.2%	45.6%	47.0%	50.2%
SHO/ Interns	9.8%	5.4%			1.1%	3.0%	2.0%
Dentists	24.5%	25.0%	25.7%	26.7%	24.1%	21.1%	20.8%
Other Medical	25.6%	27.8%	26.9%	28.6%	27.8%	27.7%	25.8%
Medical/ Dental, other	50.0%	52.8%	52.6%	55.3%	51.9%	48.8%	46.6%
Medical & Dental	7.1%	7.0%	7.8%	7.5%	7.7%	7.9%	7.9%
Clinical Nurse/ Midwife Manager	2.0%	1.7%	2.3%	2.0%	1.7%	1.8%	1.8%
Director Nursing/Midwifery, Assistant	4.7%	5.3%	4.9%	5.1%	6.4%	5.8%	6.7%
Director of Nursing/Midwifery	0.9%	0.7%	1.0%	0.9%	0.6%	0.9%	0.9%
Nurse/ Midwife Manager	7.6%	7.7%	8.2%	8.0%	8.7%	8.6%	9.4%
Nurse/ Midwife Specialist & AN/MP	5.7%	5.2%	4.9%	5.7%	5.5%	6.5%	6.5%
Staff Nurse/ Staff Midwife	24.1%	24.0%	23.9%	24.4%	23.6%	24.3%	25.1%
Public Health Nurse	60.3%	59.4%	57.7%	57.8%	60.9%	60.7%	58.9%
Nursing/ Midwifery Student	2.4%	3.7%	5.3%	4.0%	1.3%		
Nursing & Midwifery	23.4%	23.9%	27.6%	27.7%	28.4%	26.3%	26.3%
Dietitians	4.0%	3.3%	4.0%	5.2%	4.9%	5.5%	4.6%
Occupational Therapists	17.7%	19.1%	18.6%	18.8%	19.0%	20.5%	20.9%
Orthoptists	0.5%	0.5%	0.5%	0.5%	0.5%	0.5%	0.3%
Physiotherapists	19.4%	18.1%	21.1%	20.0%	20.0%	20.4%	20.2%
Podiatrists & Chiropodists	2.0%	2.8%	2.5%	2.2%	2.2%	2.2%	2.2%
Speech & Language Therapists	20.8%	22.6%	22.9%	24.4%	25.7%	24.1%	25.2%
Therapy Professions	64.5%	66.4%	69.7%	71.1%	72.4%	73.2%	73.3%
Audiology	1.6%	1.5%	1.9%	1.8%	1.6%	1.7%	1.7%
Clinical Engineering	0.3%	0.3%			0.3%	0.3%	0.3%
Medical Laboratory	8.8%	9.2%	8.8%	8.3%	8.5%	8.1%	8.0%
Physicists	0.3%	0.3%					
Health Science/ Diagnostics	11.0%	11.4%	10.7%	10.1%	10.4%	10.2%	10.0%
Social Care	4.0%	3.7%	3.5%	3.0%	2.7%	2.6%	2.6%
Social Workers	3.2%	3.0%	2.3%	2.1%	2.2%	1.7%	1.6%
Psychologists	12.2%	10.0%	8.8%	8.6%	7.7%	7.9%	7.8%
Pharmacy	0.3%	0.3%	0.3%	0.3%	0.3%	0.3%	0.4%
Counsellor Therapists	2.8%	3.0%	2.9%	2.4%	1.9%	2.2%	2.3%
Dental Hygienists	1.0%	1.1%	0.8%	1.4%	1.4%	1.5%	1.4%
Other Health & Social Care	1.0%	1.0%	1.0%	0.9%	1.0%	0.6%	0.6%
H&SC, Other	4.8%	5.1%	4.7%	4.7%	4.3%	4.2%	4.3%
Health & Social Care Professionals	24.2%	24.2%	27.8%	27.8%	28.4%	27.1%	27.1%
Executive Management	2.1%	2.7%	3.1%	2.8%	2.5%	2.8%	2.8%
Senior Management (VIII & GM)	7.3%	7.0%	8.4%	8.4%	7.4%	7.7%	8.3%
Management (VIII & above)	9.4%	9.7%	11.5%	11.2%	9.9%	10.5%	11.1%
Administrative/ Supervisory (V to VII)	12.7%	13.6%	14.3%	16.1%	18.6%	21.7%	22.2%
Clerical (III & IV)	77.9%	76.7%	74.2%	72.7%	71.5%	67.9%	66.7%

Jan 2021 (Dec 2018 figure: 1,160)	WTE Dec 2015	WTE Dec 2016	WTE Dec 2017	WTE Dec 2018	WTE Dec 2019	WTE Dec 2020	WTE Jan 2021
Primary Care	1,261	1,238	1,090	1,160	1,134	1,235	1,250
Management & Administrative	22.6%	23.6%	28.8%	28.5%	29.1%	27.5%	27.5%
Support	59.1%	70.6%	70.8%	74.0%	69.9%	73.5%	71.5%
Maintenance/ Technical	40.9%	29.4%	29.2%	26.0%	30.1%	26.5%	28.5%
General Support	2.9%	2.5%	2.8%	3.0%	3.1%	2.5%	2.5%
HCA, Nurse's Aide, etc.	2.7%	2.4%	8.1%	6.9%	7.7%	51.4%	53.7%
Health & Social Care Assistants		0.4%	7.1%	23.2%	17.2%	3.9%	5.7%
Health Care Assistants	2.7%	2.9%	15.2%	30.0%	25.0%	55.4%	59.4%
Care, other	24.7%	24.7%	84.8%	70.0%	75.0%	44.6%	40.6%
Home Help	72.5%	72.5%					
Patient & Client Care	19.8%	18.8%	5.2%	5.6%	5.7%	8.7%	8.7%
Total	100 %	100 %	100 %	100 %	100 %	100 %	100 %

Jan 2021 (Dec 2018 figure: 1,420)	WTE Dec 2015	WTE Dec 2016	WTE Dec 2017	WTE Dec 2018	WTE Dec 2019	WTE Dec 2020	WTE Jan 2021
Disabilities	1,221	1,338	1,395	1,420	1,497	1,516	1,500
Consultant Paediatrics	20.0%	16.7%	16.7%	16.4%	15.6%	15.6%	15.6%
Consultant Psychiatry	20.0%	33.3%	33.3%	34.3%	37.5%	37.5%	37.5%
Consultants	40.0%	50.0%	50.0%	50.7%	53.1%	53.1%	53.1%
Registrars	40.0%	33.3%	33.3%	32.8%	31.3%	31.3%	31.3%
Medical/ Dental, other	20.0%	16.7%	16.7%	16.4%	15.6%	15.6%	15.6%
Medical & Dental	0.4%	0.4%	0.4%	0.4%	0.4%	0.4%	0.4%
Clinical Nurse/ Midwife Manager	23.8%	24.3%	26.1%	27.5%	30.0%	29.6%	30.0%
Director Nursing/Midwifery, Assistant	0.4%	0.7%	0.4%				
Director of Nursing/Midwifery	0.7%	1.1%	0.7%	0.7%	1.1%	1.2%	1.1%
Nurse/ Midwife Manager	24.8%	26.0%	27.1%	28.2%	31.1%	30.8%	31.2%
Advanced Nurse/ Midwife Practitioner			0.4%	0.4%	0.4%	0.4%	0.4%
Clinical Nurse/ Midwife Specialist	2.2%	2.6%	2.3%	2.0%	2.0%	1.9%	2.0%
Nurse/ Midwife Specialist & AN/MP	2.2%	2.6%	2.7%	2.3%	2.4%	2.3%	2.4%
Staff Nurse [Intellectual Disability]	43.6%	46.3%	36.3%	38.9%	36.1%	47.5%	47.6%
Staff Nurse [Psychiatric]	7.7%	6.2%	8.6%	7.0%	7.7%	5.7%	5.6%
Staff Nurses [General/ Children's]	21.6%	19.0%	25.3%	23.5%	22.7%	13.5%	13.0%
Staff Nurse/ Staff Midwife	73.0%	71.4%	70.2%	69.4%	66.5%	66.7%	66.2%
Pre-registration Nurse Intern (COVID-19)						0.3%	0.3%
Nursing/ Midwifery Student						0.3%	0.3%
Nursing & Midwifery	22.6%	20.6%	19.5%	17.8%	16.9%	16.5%	16.5%
Dietitians	0.3%	0.6%			0.2%	0.3%	0.2%
Occupational Therapists	3.4%	3.8%	3.7%	3.1%	3.6%	2.9%	3.0%
Physiotherapists	4.8%	3.8%	4.0%	3.6%	4.0%	3.4%	3.4%
Speech & Language Therapists	5.3%	5.3%	5.4%	5.0%	5.1%	3.8%	4.0%
Therapy Professions	13.8%	13.6%	13.1%	11.7%	12.9%	10.3%	10.6%
Social Care	61.5%	63.8%	65.0%	67.9%	69.1%	74.0%	74.3%
Social Workers	9.3%	8.5%	8.8%	8.0%	8.1%	7.8%	7.6%
Psychologists	6.7%	7.3%	7.0%	6.5%	4.9%	4.3%	4.6%
Counsellor Therapists		0.4%	0.7%	0.8%	1.0%	1.2%	0.8%
HSCP Trainees/ Students	1.3%	0.9%	0.2%				
Other Health & Social Care	6.1%	4.7%	4.3%	4.2%	3.2%	2.3%	2.0%
Play Therapists/ Specialists	1.3%	0.8%	0.9%	0.8%	0.8%		
H&SC, Other	8.7%	6.7%	6.1%	5.8%	4.9%	3.5%	2.8%
Health & Social Care Professionals	19.2%	19.3%	20.1%	21.6%	20.5%	22.2%	22.2%
Executive Management	2.4%	2.0%	1.9%	1.9%	1.9%	1.8%	1.8%

Jan 2021 (Dec 2018 figure: 1,420)	WTE Dec 2015	WTE Dec 2016	WTE Dec 2017	WTE Dec 2018	WTE Dec 2019	WTE Dec 2020	WTE Jan 2021
Disabilities	1,221	1,338	1,395	1,420	1,497	1,516	1,500
Senior Management (VIII & GM)	9.4%	11.7%	11.1%	12.5%	13.1%	12.5%	12.4%
Management (VIII & above)	11.8%	13.7%	13.0%	14.4%	15.0%	14.3%	14.2%
Administrative/ Supervisory (V to VII)	32.6%	34.7%	38.6%	36.6%	38.2%	40.3%	41.6%
Clerical (III & IV)	55.6%	51.7%	48.4%	49.1%	46.8%	45.4%	44.2%
Management & Administrative	6.9%	7.6%	7.7%	7.4%	7.0%	7.4%	7.4%
Support	78.4%	77.5%	78.2%	79.1%	77.5%	77.0%	75.1%
Maintenance/ Technical	21.6%	22.5%	21.8%	20.9%	22.5%	23.0%	24.9%
General Support	4.7%	4.3%	4.3%	4.0%	3.8%	3.5%	3.5%
Health Care Assistants	78.9%	81.9%	82.7%	82.5%	82.3%	82.2%	82.1%
Care, other	21.1%	18.1%	17.3%	17.5%	17.7%	17.8%	17.9%
Patient & Client Care	46.2%	47.8%	48.0%	48.8%	46.3%	50.0%	50.0%
Total	100 %	100 %	100 %	100 %	100 %	100 %	100 %

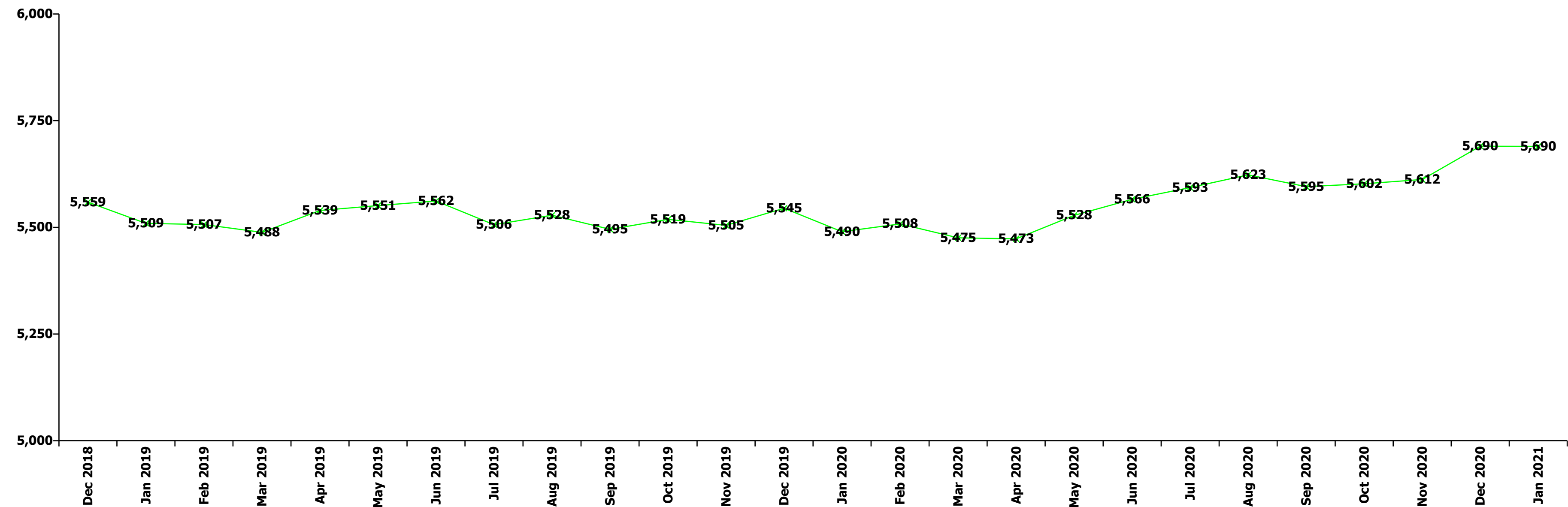
Jan 2021 (Dec 2018 figure: 1,641)	WTE Dec 2015	WTE Dec 2016	WTE Dec 2017	WTE Dec 2018	WTE Dec 2019	WTE Dec 2020	WTE Jan 2021
Older People	1,371	1,376	1,586	1,641	1,606	1,590	1,576
Medical/ Dental, other	100.0%	100.0%	100.0%	100.0%	100.0%	100.0%	100.0%
Medical & Dental	0.6%	0.8%	0.7%	0.7%	0.7%	0.7%	0.7%
Clinical Nurse/ Midwife Manager	9.4%	10.7%	11.4%	11.4%	10.2%	12.0%	12.1%
Director Nursing/Midwifery, Assistant	1.5%	1.0%	1.5%	1.3%	1.6%	1.7%	1.8%
Director of Nursing/Midwifery	3.8%	3.5%	3.4%	3.8%	4.3%	4.0%	4.0%
Nurse/ Midwife Manager	14.6%	15.2%	16.3%	16.5%	16.1%	17.7%	17.9%
Nurse/ Midwife Specialist & AN/MP					0.6%	0.5%	0.5%
Staff Midwives	0.2%	0.1%	0.2%				
Staff Nurse [Intellectual Disability]			0.2%				
Staff Nurses [General/ Children's]	85.0%	84.5%	83.0%	83.2%	83.2%	81.5%	81.3%
Staff Nurse/ Staff Midwife	85.2%	84.6%	83.4%	83.2%	83.2%	81.5%	81.3%
Public Health Nurse	0.2%	0.2%	0.2%	0.3%	0.2%	0.3%	0.3%
Nursing & Midwifery	26.7%	27.0%	24.1%	22.8%	23.3%	23.8%	23.8%
Dietitians	1.2%	6.6%	6.1%		1.3%		2.6%
Occupational Therapists	24.4%	26.3%	21.9%	26.6%	25.5%	25.7%	24.6%
Physiotherapists	46.2%	38.2%	38.5%	38.4%	36.1%	36.5%	36.8%
Speech & Language Therapists	3.0%	2.8%	5.7%	5.5%	5.3%	5.4%	5.1%
Therapy Professions	74.8%	74.0%	72.2%	70.4%	68.2%	67.6%	69.1%
Radiographers	0.0%	1.7%	1.7%	1.7%	1.6%	1.6%	1.5%
Health Science/ Diagnostics	0.0%	1.7%	1.7%	1.7%	1.6%	1.6%	1.5%
Social Workers	22.4%	21.3%	24.6%	26.5%	27.5%	28.1%	26.8%
Pharmacy	1.5%	1.4%	1.5%	1.4%	2.7%	2.8%	2.6%
Play Therapists/ Specialists	1.3%	1.6%	0.0%	0.0%	0.0%		
H&SC, Other	1.3%	1.6%	0.0%	0.0%	0.0%		
Health & Social Care Professionals	2.4%	2.6%	2.2%	2.2%	2.2%	2.5%	2.5%
Management (VIII & above)	2.9%	2.9%	1.2%	2.2%	2.5%	2.6%	2.7%
Administrative/ Supervisory (V to VII)	5.6%	9.0%	8.3%	9.4%	9.4%	11.9%	10.3%
Clerical (III & IV)	91.4%	88.0%	90.5%	88.4%	88.1%	85.5%	87.0%
Management & Administrative	4.9%	5.0%	5.2%	5.6%	5.7%	4.8%	4.8%
Support	80.6%	80.3%	79.5%	77.3%	74.7%	74.2%	74.4%
Maintenance/ Technical	19.4%	19.7%	20.5%	22.7%	25.3%	25.8%	25.6%
General Support	6.6%	6.3%	5.1%	5.0%	5.1%	4.8%	4.8%

Jan 2021 (Dec 2018 figure: 1,641)	WTE Dec 2015	WTE Dec 2016	WTE Dec 2017	WTE Dec 2018	WTE Dec 2019	WTE Dec 2020	WTE Jan 2021
Older People	1,371	1,376	1,586	1,641	1,606	1,590	1,576
HCA, Nurse's Aide, etc.	62.1%	62.8%	52.2%	51.4%	49.3%	51.5%	52.0%
Health & Social Care Assistants	0.5%	0.5%	0.4%	0.4%	0.3%	0.3%	0.3%
Health Care Assistants	62.6%	63.3%	52.6%	51.8%	49.6%	51.8%	52.3%
Care, other	1.9%	1.8%	2.4%	2.3%	2.4%	3.2%	3.2%
Home Help	35.5%	34.9%	45.0%	46.0%	48.1%	45.0%	44.5%
Patient & Client Care	58.7%	58.4%	62.8%	63.7%	65.1%	63.4%	63.4%
Total	100 %	100 %	100 %	100 %	100 %	100 %	100 %

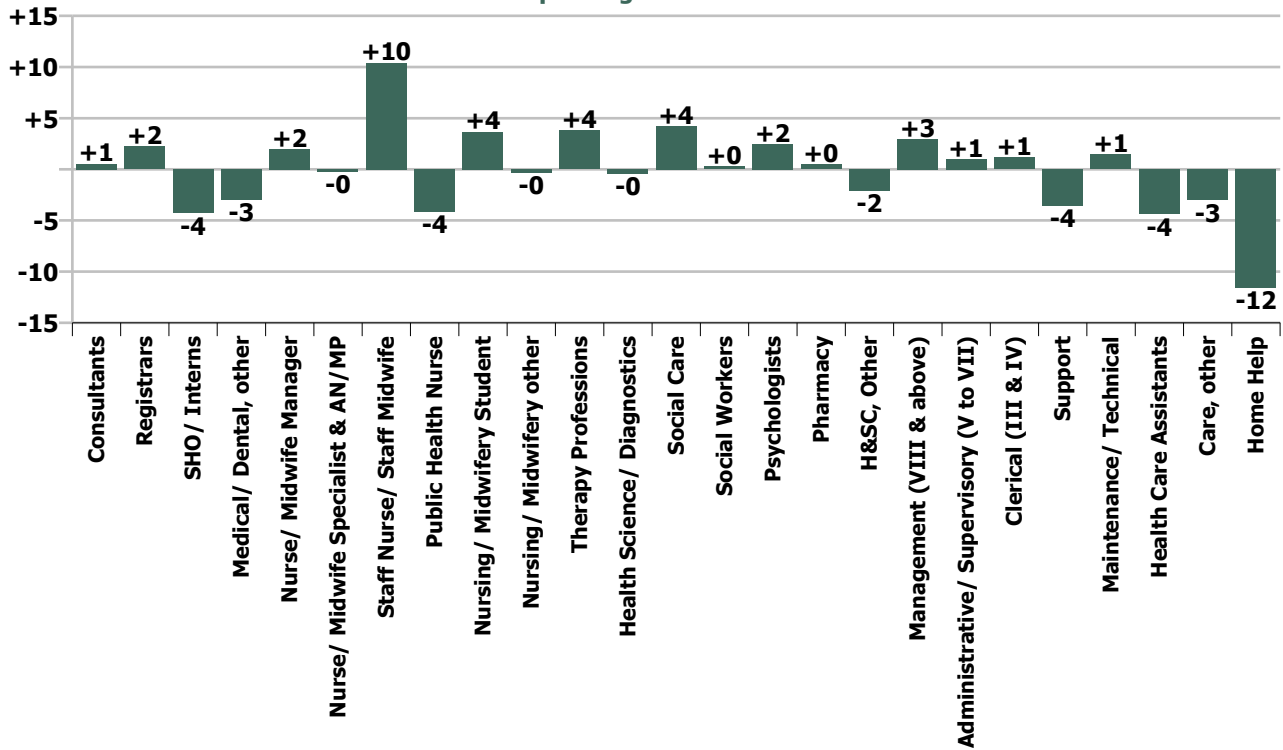
Summary Staff Movement: January 2021

Month-on-month Summary																												
WTE change since Dec 20	% change since Dec 20	overall	Consultants	Registrars	SHO/ Interns	Medical/ Dental, other	Medical & Dental	Nurse/ Midwife Manager	Nurse/ Midwife Specialist & AN/MP	Staff Nurse/ Staff Midwife	Public Health Nurse	Nursing/ Midwifery Student	Nursing/ Midwifery other	Nursing & Midwifery	Therapy Professions	Health Science/ Diagnostics	Social Care	Social Workers	Psychologists	Pharmacy	H&SC, Other	Health & Social Care Professionals	Management (VIII & above)	Administrative/ Supervisory (V to VII)	Clerical (III & IV)	Management & Administrative	General Support	Patient & Client Care
Overall	-0.0%	-0	+0.5	+2.2	-4.3	-3.0	-4.5	+2.0	-0.2	+10.4	-4.1	+3.7	-0.4	+11.4	+3.8	-0.4	+4.2	+0.3	+2.5	+0.5	-2.1	+8.7	+2.9	+1.0	+1.2	+5.1	-2.1	-19.0
Community Health & Wellbeing	-1.4%	-0																					0.0	-0.1	0.0	-0.1		0.0
Mental Health	+1.0%	+14	+0.6	-0.3	-3.3	0.0	-3.0	-1.1	-0.8	+11.9		+3.7	-0.4	+13.4	0.0		+0.2	+1.1	+1.5	0.0	0.0	+2.8	0.0	-2.7	+2.0	-0.7	+0.5	+0.7
Primary Care	+1.2%	+15	-0.1	+2.5	-1.0	-3.0	-1.6	+3.1	+0.4	+3.2	-4.1			+2.6	+0.6	-0.4	-0.0	-0.4	-0.2	+0.5	+0.2	+0.2	+2.9	+3.4	+0.5	+6.8	+1.3	+5.6
Disabilities	-1.0%	-15	0.0	0.0		0.0	0.0	-0.9	+0.1	-5.3		-0.1		-6.1	+1.4		+4.1	-0.5	+1.2		-2.3	+3.9	+0.1	+1.8	-0.8	+1.1	-4.1	-10.1
Older People	-0.8%	-14				0.0	0.0	+0.9	0.0	+0.6	0.0			+1.5	+1.8	0.0		0.0		0.0		+1.8	0.0	-1.4	-0.5	-1.9	+0.3	-15.2
Social Care	-0.9%	-29	0.0	0.0		0.0	0.0	-0.0	+0.1	-4.7	0.0	-0.1		-4.6	+3.2	0.0	+4.1	-0.5	+1.2	0.0	-2.3	+5.7	+0.1	+0.4	-1.3	-0.8	-3.8	-25.3
Change	-0.4	-0.0%	+1.2%	+2.6%	-10.0%	-4.8%	-1.9%	+0.6%	-0.2%	+1.1%	-2.1%	+33.7%	-21.9%	+0.7%	+1.0%	-1.2%	+1.6%	+0.3%	+3.2%	+13.0%	-7.2%	+1.0%	+5.1%	+0.6%	+0.3%	+0.8%	-0.9%	-0.9%

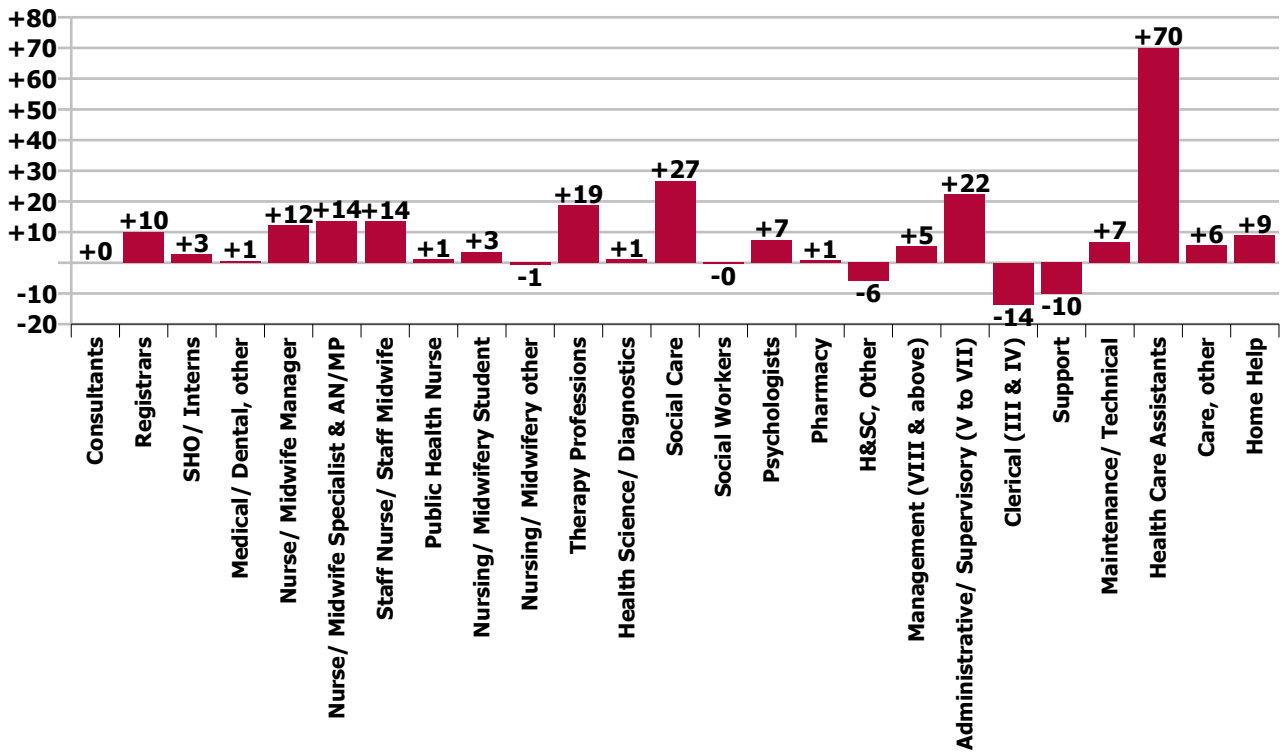
Year-on-year Summary																												
WTE change since Jan 20	% change since Jan 20	overall	Consultants	Registrars	SHO/ Interns	Medical/ Dental, other	Medical & Dental	Nurse/ Midwife Manager	Nurse/ Midwife Specialist & AN/MP	Staff Nurse/ Staff Midwife	Public Health Nurse	Nursing/ Midwifery Student	Nursing/ Midwifery other	Nursing & Midwifery	Therapy Professions	Health Science/ Diagnostics	Social Care	Social Workers	Psychologists	Pharmacy	H&SC, Other	Health & Social Care Professionals	Management (VIII & above)	Administrative/ Supervisory (V to VII)	Clerical (III & IV)	Management & Administrative	General Support	Patient & Client Care
Overall	+3.6%	+200	+0.0	+10.0	+2.7	+0.6	+13.4	+12.2	+13.6	+13.6	+1.0	+3.5	-0.8	+43.1	+18.7	+1.2	+26.7	-0.4	+7.4	+0.7	-6.0	+48.3	+5.3	+22.3	-13.6	+14.0	-3.4	+84.7
Community Health & Wellbeing	-1.4%	-0																					0.0	+1.8	0.0	+1.8		0.0
Mental Health	+1.0%	+14	+0.0	+2.0	+1.7	0.0	+3.7	+3.5	+9.4	+9.5		+6.9	-0.8	+28.5	+8.2		+0.2	+1.0	+4.0	-0.8	0.0	+12.5	-1.0	+0.7	-3.0	-3.3	+2.9	-7.1
Primary Care	+1.2%	+15	0.0	+8.5	+1.0	+0.6	+10.1	+3.2	+4.2	+4.6	+0.8	-4.0		+8.8	+15.8	+1.2	0.0	-1.3	+3.8	+1.5	+0.3	+21.2	+5.3	+15.2	-4.7	+15.7	+0.0	+50.6
Disabilities	+1.2%	+18.2	0.0	-0.5		0.0	-0.5	-2.5	+0.1	-3.2		+0.6		-5.1	-5.9		+26.5	-1.4	-0.4		-6.3	+12.5	0.0	+5.6	-0.6	+4.9	-8.0	+14.3
Older People	+2.4%	+36.2				0.0	0.0	+8.0	0.0	+2.7	+0.2			+10.9	+0.6	0.0		+1.4		+0.0	0.0	+2.0	+1.0	-0.9	-5.2	-5.2	+1.6	+26.8
Social Care	-0.9%	-29	0.0	-0.5		0.0	-0.5	+5.4	+0.1	-0.4	+0.2	+0.6		+5.8	-5.3	0.0	+26.5	-0.0	-0.4	+0.0	-6.3	+14.5	+1.0	+4.7	-5.9	-0.2	-6.3	+41.1
Change	+200.0	+3.6%	+0.0%	+12.9%	+7.5%	+1.0%	+6.2%	+3.9%	+14.5%	+1.5%	+0.5%	+31.6%	-37.5%	+2.8%	+5.4%	+3.5%	+10.9%	-0.5%	+10.1%	+18.3%	-18.2%	+5.9%	+9.4%	+16.1%	-2.9%	+2.1%	-1.5%	+4.1%



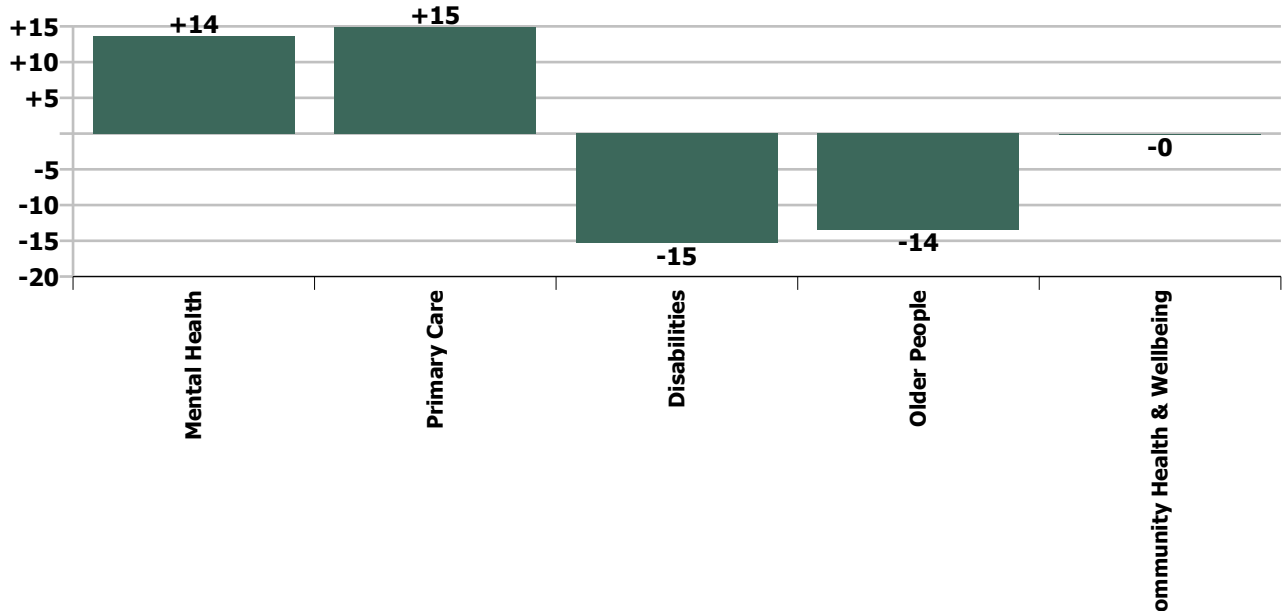
Staff Group change since: Dec 2020



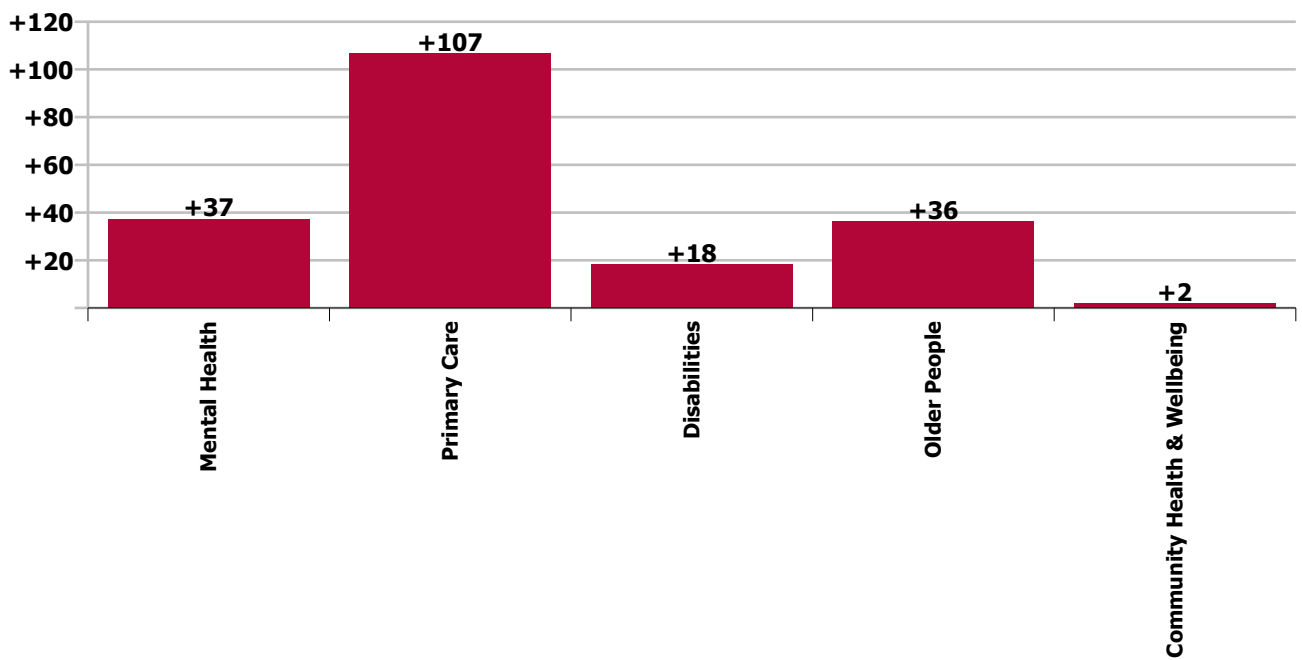
Staff Group change since: Jan 2020



Care Group change since: Dec 2020



Care Group change since: Jan 2020



Longitudinal Employment Levels by Grade Group - Oct 2013 to Jan 2021

Jan 2021 (Dec 2015 figure: 5,111)	WTE Jan 2021	WTE change since Dec 15	WTE change since Dec 16	WTE change since Dec 17	WTE change since Dec 18	WTE change since Dec 19	WTE change since Dec 20	% change since Dec 15	% change since Dec 16	% change since Dec 17	% change since Dec 18	% change since Dec 19	% change since Dec 20
Overall	5,690	+579	+454	+313	+131	+145	-0	+11.3%	+8.7%	+5.8%	+2.4%	+2.6%	-0.0%
Consultant Medicine	1												
Consultant Paediatrics	1												
Consultant Psychiatry	40	+6	+8	+6	+6	+0	+1	+19.0%	+25.3%	+18.7%	+16.2%	+0.2%	+1.5%
Consultant Surgery	0	-1	-1	-1	-0	-0	-0	-82.7%	-82.9%	-82.9%	-26.7%	-12.0%	-26.7%
Consultants	42	+5	+7	+5	+5	+0	+1	+14.5%	+19.9%	+14.2%	+14.9%	+0.1%	+1.2%
Registrar	68	+18	+16	+8	+9	+9	+3	+36.9%	+31.0%	+13.7%	+15.6%	+16.2%	+5.0%
Senior Registrar	21	+14	+13	+12	+9	+4	-1	+215.4%	+156.3%	+141.2%	+78.3%	+20.6%	-4.7%
Registrars	88	+32	+29	+20	+18	+13	+2	+57.7%	+47.8%	+29.6%	+25.9%	+17.2%	+2.6%
Interns		-1						-100.0%	-100.0%	-100.0%	-100.0%	-100.0%	-100.0%
Senior House Officer	39	+3	+2	+1	-3	+3	-4	+7.4%	+4.7%	+2.4%	-8.2%	+7.5%	-10.0%
SHO/ Interns	39	+2	+2	+1	-3	+3	-4	+4.5%	+4.7%	+2.4%	-8.2%	+7.5%	-10.0%
Dentists	21	-1	-1	-1	-3	-1	-1	-6.1%	-4.1%	-5.6%	-11.1%	-2.5%	-3.0%
Other Medical	38	+3	+0	+0	-0	+1	-2	+8.4%	+0.3%	+0.5%	-0.8%	+1.7%	-5.8%
Medical/ Dental, other	59	+2	-1	-1	-3	+0	-3	+2.8%	-1.3%	-1.7%	-4.7%	+0.2%	-4.8%
Medical & Dental	228	+41	+36	+25	+17	+16	-5	+21.9%	+19.1%	+12.5%	+8.2%	+7.5%	-1.9%
Clinical Nurse/ Midwife Manager	255	+34	+18	+16	+1	+14	-1	+15.4%	+7.8%	+6.5%	+0.5%	+5.8%	-0.5%
Director Nursing/Midwifery, Assistant	47	+11	+9	+6	+7	+2	+3	+29.7%	+25.2%	+15.2%	+18.9%	+4.7%	+8.0%
Director of Nursing/Midwifery	24	+3	+3	+3	+3	+1	-0	+15.5%	+13.8%	+14.4%	+11.9%	+2.2%	-0.5%
Nurse/ Midwife Manager	325	+48	+31	+25	+11	+17	+2	+17.3%	+10.4%	+8.2%	+3.6%	+5.3%	+0.6%
Advanced Nurse/ Midwife Practitioner	11	+8	+8	+7	+5	+2	+0	+263.7%	+263.7%	+172.8%	+81.8%	+21.2%	+0.1%
Clinical Nurse/ Midwife Specialist	97	+32	+33	+20	+18	+13	-0	+49.2%	+50.9%	+25.5%	+23.6%	+15.7%	-0.2%
Nurse/ Midwife Specialist & AN/MP	108	+40	+41	+27	+23	+15	-0	+58.7%	+60.4%	+32.8%	+27.7%	+16.2%	-0.2%
Staff Midwives		-1	-0	-1				-100.0%	-100.0%	-100.0%	-100.0%	-100.0%	-100.0%
Staff Nurse [Intellectual Disability]	118	-3	-10	+19	+20	+28	-3	-2.1%	-7.6%	+18.8%	+19.9%	+31.3%	-2.1%
Staff Nurse [Psychiatric]	375	-14	-7	+5	+5	+4	+11	-3.6%	-1.8%	+1.3%	+1.5%	+1.1%	+2.9%
Staff Nurses [General/ Children's]	425	-28	-23	-39	-30	-12	+2	-6.2%	-5.1%	-8.5%	-6.5%	-2.7%	+0.6%
Staff Nurse/ Staff Midwife	918	-45	-40	-17	-5	+20	+10	-4.7%	-4.1%	-1.8%	-0.5%	+2.3%	+1.1%
Public Health Nurse	194	+16	+18	+20	+7	+3	-4	+9.1%	+10.3%	+11.6%	+4.0%	+1.5%	-2.1%
Pre-registration Nurse/ Midwife Intern	4	+2	+4	-9	+4	+4	+4	+87.4%	-100.0%	-67.0%	-100.0%	+3508.3%	-100.0%
Pre-registration Nurse Intern (COVID-19)	10	+10	+10	+10	+10	+10	-1	-100.0%	-100.0%	-100.0%	-100.0%	-100.0%	-6.2%
Post-registration Nurse/ Midwife Student		-7	-11	-16	-13	-4		-100.0%	-100.0%	-100.0%	-100.0%	-100.0%	-100.0%
Nursing/ Midwifery awaiting registration					-11	-5		-100.0%	-100.0%	-100.0%	-100.0%	-100.0%	-100.0%
Nursing/ Midwifery Student	15	+5	+4	-15	-9	+6	+4	+55.9%	+31.9%	-50.2%	-39.5%	+63.6%	+33.7%
Nursing/ Midwifery other	1	+1	+1	-1	-2	-1	-0	-100.0%	-100.0%	-37.5%	-58.3%	-37.5%	-21.9%
Nursing & Midwifery	1,561	+65	+54	+39	+26	+60	+11	+4.3%	+3.6%	+2.6%	+1.7%	+4.0%	+0.7%

Jan 2021 (Dec 2015 figure: 5,111)	WTE Jan 2021	WTE change since Dec 15	WTE change since Dec 16	WTE change since Dec 17	WTE change since Dec 18	WTE change since Dec 19	WTE change since Dec 20	% change since Dec 15	% change since Dec 16	% change since Dec 17	% change since Dec 18	% change since Dec 19	% change since Dec 20
Overall	5,690	+579	+454	+313	+131	+145	-0	+11.3%	+8.7%	+5.8%	+2.4%	+2.6%	-0.0%
Dietitians	22	+7	+4	+3	+2	+2	-3	+46.5%	+23.8%	+14.1%	+8.6%	+12.1%	-12.9%
Occupational Therapists	131	+35	+21	+20	+13	+14	+3	+35.8%	+19.0%	+18.4%	+10.7%	+12.2%	+2.0%
Orthoptists	1	-1	-1	-1	-1	-1	-1	-37.5%	-37.5%	-37.5%	-37.5%	-37.5%	-40.5%
Physiotherapists	94	+8	+16	+6	+5	+5	+0	+9.2%	+20.5%	+6.5%	+5.7%	+6.0%	+0.3%
Podiatrists & Chiropodists	7	+1	-1	-0	+0	+0	-0	+19.0%	-12.0%	-2.9%	+7.0%	+6.4%	-0.3%
Speech & Language Therapists	110	+27	+21	+16	+7	+6	+5	+32.9%	+22.9%	+17.5%	+6.7%	+5.5%	+4.7%
Therapy Professions	366	+77	+60	+44	+26	+28	+4	+26.8%	+19.7%	+13.8%	+7.7%	+8.2%	+1.0%
Audiology	6	+1	+1		-0	+1	-0	+21.3%	+23.9%		-0.5%	+17.8%	-2.7%
Clinical Engineering	1			+1	+1					-100.0%	-100.0%		
Medical Laboratory	27	+0	-0	+1	+0	+1	-0	+1.5%	-1.2%	+2.3%	+1.8%	+2.4%	-0.9%
Physicists		-1	-1					-100.0%	-100.0%	-100.0%	-100.0%	-100.0%	-100.0%
Radiographers	1	+1						#DIV/0					
Health Science/ Diagnostics	35	+1	-0	+2	+1	+2	-0	+3.0%	-0.6%	+4.9%	+4.4%	+4.6%	-1.2%
Social Care	272	+99	+80	+67	+40	+27	+4	+57.0%	+41.6%	+32.3%	+17.4%	+11.1%	+1.6%
Social Workers	84	+6	+9	+8	+2	+0	+0	+8.1%	+11.3%	+9.9%	+2.8%	+0.0%	+0.3%
Psychologists	80	-5	-3	-1	-3	+7	+2	-5.8%	-3.4%	-1.0%	-4.1%	+9.4%	+3.2%
Pharmacy	4	-1	-1	+0	+0	-0	+0	-23.0%	-16.8%	+1.7%	+1.9%	-6.0%	+13.0%
Counsellor Therapists	12	+4	+2	+2	+0	+1	-1	+42.9%	+23.1%	+13.8%	+1.1%	+10.9%	-7.4%
Dental Hygienists	5	+2	+1	+2	+0	+0	-0	+61.4%	+41.1%	+100.4%	+10.6%	+7.8%	-2.2%
HSCP Trainees/ Students		-3	-2	-1				-100.0%	-100.0%	-100.0%	-100.0%	-100.0%	-100.0%
Other Health & Social Care	9	-9	-6	-7	-7	-5	-1	-49.8%	-42.3%	-45.7%	-44.9%	-34.2%	-10.1%
Play Therapists/ Specialists	1	-3	-3	-3	-3	-3		-77.4%	-72.1%	-72.3%	-72.1%	-72.1%	
H&SC, Other	27	-10	-8	-7	-9	-6	-2	-26.4%	-22.0%	-19.7%	-25.2%	-17.1%	-7.2%
Health & Social Care Professionals	868	+168	+137	+113	+58	+58	+9	+23.9%	+18.8%	+14.9%	+7.1%	+7.1%	+1.0%
Executive Management	12	+4	+2	-0	+0	+1	+0	+47.2%	+17.4%	-1.5%	+1.9%	+13.4%	+1.1%
Senior Management (VIII & GM)	49	+14	+11	+7	+3	+4	+3	+38.1%	+28.4%	+16.7%	+6.2%	+8.4%	+6.0%
Management (VIII & above)	61	+17	+13	+7	+3	+5	+3	+39.8%	+26.1%	+12.7%	+5.4%	+9.3%	+5.1%
Middle Management (V-VII)	161	+77	+59	+44	+38	+29	+1	+91.1%	+57.7%	+37.5%	+30.9%	+21.6%	+0.6%
Other Administrative						-1		-100.0%	-100.0%	-100.0%	-100.0%	-100.0%	-100.0%
Administrative/ Supervisory (V to VII)	161	+77	+59	+44	+38	+28	+1	+91.1%	+57.7%	+37.5%	+30.9%	+20.7%	+0.6%
Clerical (III & IV)	449	+15	+6	-20	-37	-19	+1	+3.5%	+1.3%	-4.3%	-7.6%	-4.1%	+0.3%
Management & Administrative	671	+110	+77	+31	+4	+14	+5	+19.5%	+13.0%	+4.8%	+0.6%	+2.1%	+0.8%
Catering	38	-1	-1	+2	-3	-2	-0	-3.0%	-3.5%	+6.1%	-6.5%	-3.8%	-0.5%
Household Services	60	-33	-21	-15	-9	-3	-1	-35.5%	-25.9%	-19.4%	-13.6%	-4.1%	-2.3%
Other Support	36	-9	-8	-7	-6	-3	-2	-20.0%	-18.0%	-15.5%	-14.3%	-8.3%	-5.5%
Portering	14	+1	-2	-3	-3	-1	+0	+7.0%	-12.7%	-18.9%	-17.7%	-9.5%	+1.4%
Support	149	-43	-33	-22	-21	-9	-4	-22.2%	-17.9%	-13.0%	-12.5%	-5.6%	-2.3%
Maintenance/ Technical	75	-3	+1	+3	+3	+7	+1	-3.8%	+1.3%	+3.6%	+3.9%	+10.3%	+2.0%

Jan 2021 (Dec 2015 figure: 5,111)	WTE Jan 2021	WTE change since Dec 15	WTE change since Dec 16	WTE change since Dec 17	WTE change since Dec 18	WTE change since Dec 19	WTE change since Dec 20	% change since Dec 15	% change since Dec 16	% change since Dec 17	% change since Dec 18	% change since Dec 19	% change since Dec 20
Overall	5,690	+579	+454	+313	+131	+145	-0	+11.3%	+8.7%	+5.8%	+2.4%	+2.6%	-0.0%
General Support	224	-45	-32	-20	-18	-2	-2	-16.9%	-12.4%	-8.1%	-7.6%	-0.8%	-0.9%
HCA, Nurse's Aide, etc.	1,404	+244	+158	+111	+74	+51	-7	+21.0%	+12.7%	+8.6%	+5.6%	+3.8%	-0.5%
Health & Social Care Assistants	10	+4	+3	+0	-10	-4	+2	+80.1%	+51.2%	+3.1%	-49.8%	-27.7%	+27.3%
Health Care Assistants	1,414	+248	+161	+111	+64	+47	-4	+21.3%	+12.9%	+8.5%	+4.7%	+3.4%	-0.3%
Care, other	278	+15	+24	+17	+16	+8	-3	+5.8%	+9.4%	+6.3%	+5.9%	+2.8%	-1.1%
Home Help	445	-22	-5	-4	-36	-55	-12	-4.8%	-1.1%	-0.8%	-7.5%	-11.0%	-2.5%
Patient & Client Care	2,137	+241	+180	+124	+44	-0	-19	+12.7%	+9.2%	+6.2%	+2.1%	-0.0%	-0.9%

Source: Health Service Personnel Census

Longitudinal Employment Levels by Care Group - Oct 2013 to Jan 2021

Community Health & Wellbeing

Jan 2021 (figure:)	WTE Jan 2021	WTE change since	WTE change since	WTE change since	WTE change since	WTE change since	WTE change since Dec 20	% change since	% change since	% change since	% change since	% change since	% change since Dec 20
Overall	10	+10	+10	+10	+10	+10	-0	-100.0%	-100.0%	-100.0%	-100.0%	-100.0%	-1.4%
Management & Administrative	9	+9	+9	+9	+9	+9	-0	-1.0%	-1.0%	-1.0%	-1.0%	-1.0%	-0.0%
Management (VIII & above)	1	+1	+1	+1	+1	+1		-1.0%	-1.0%	-1.0%	-1.0%	-1.0%	+0.0%
Administrative/ Supervisory (V to VII)	7	+7	+7	+7	+7	+7	-0	-1.0%	-1.0%	-1.0%	-1.0%	-1.0%	-0.0%
Clerical (III & IV)	1	+1	+1	+1	+1	+1		-1.0%	-1.0%	-1.0%	-1.0%	-1.0%	+0.0%
Patient & Client Care	1	+1	+1	+1	+1	+1		-1.0%	-1.0%	-1.0%	-1.0%	-1.0%	+0.0%
Care, other	1	+1	+1	+1	+1	+1		-1.0%	-1.0%	-1.0%	-1.0%	-1.0%	+0.0%

Source: Health Service Personnel Census

Mental Health

Jan 2021 (Dec 2015 figure: 1,258)	WTE Jan 2021	WTE change since Dec 15	WTE change since Dec 16	WTE change since Dec 17	WTE change since Dec 18	WTE change since Dec 19	WTE change since Dec 20	% change since Dec 15	% change since Dec 16	% change since Dec 17	% change since Dec 18	% change since Dec 19	% change since Dec 20
Overall	1,354	+96	+71	+47	+16	+45	+14	+7.6%	+5.5%	+3.6%	+1.2%	+3.5%	+1.0%
Medical & Dental	111	+28	+23	+12	+6	+5	-3	+0.3%	+0.3%	+0.1%	+0.1%	+0.0%	-0.0%
Consultants	38	+6	+8	+6	+5	+0	+1	+0.2%	+0.3%	+0.2%	+0.2%	+0.0%	+0.0%
Registrars	36	+15	+12	+8	+6	+3	-0	+0.7%	+0.5%	+0.3%	+0.2%	+0.1%	-0.0%
SHO/ Interns	37	+8	+4	-1	-5	+2	-3	+0.3%	+0.1%	-0.0%	-0.1%	+0.0%	-0.1%
Medical/ Dental, other	1	-2	-2	-2				-0.6%	-0.6%	-0.6%	+0.0%	+0.0%	+0.0%
Nursing & Midwifery	610	+50	+45	+41	+24	+33	+13	+0.1%	+0.1%	+0.1%	+0.0%	+0.1%	+0.0%
Nurse/ Midwife Manager	150	+17	+6	+10	-5	+4	-1	+0.1%	+0.0%	+0.1%	-0.0%	+0.0%	-0.0%
Nurse/ Midwife Specialist & AN/MP	78	+33	+34	+19	+18	+11	-1	+0.7%	+0.8%	+0.3%	+0.3%	+0.2%	-0.0%
Staff Nurse/ Staff Midwife	366	-13	-10	+12	+9	+9	+12	-0.0%	-0.0%	+0.0%	+0.0%	+0.0%	+0.0%
Nursing/ Midwifery Student	14	+12	+14	+1	+3	+9	+4	+5.0%	-1.0%	+0.1%	+0.3%	+1.9%	+0.4%
Nursing/ Midwifery other	1	+1	+1	-1	-2	-1	-0	-1.0%	-1.0%	-0.4%	-0.6%	-0.4%	-0.2%
Health & Social Care Professionals	157	+30	+20	+19	+11	+18	+3	+0.2%	+0.1%	+0.1%	+0.1%	+0.1%	+0.0%
Therapy Professions	55	+21	+10	+6	+6	+10	+0	+0.6%	+0.2%	+0.1%	+0.1%	+0.2%	+0.0%
Social Care	16	-1	-1	+3	+2	+2	+0	-0.1%	-0.0%	+0.2%	+0.1%	+0.1%	+0.0%
Social Workers	43	+4	+6	+6	+2	+2	+1	+0.1%	+0.2%	+0.2%	+0.1%	+0.0%	+0.0%
Psychologists	38	+6	+4	+3	+3	+5	+2	+0.2%	+0.1%	+0.1%	+0.1%	+0.1%	+0.0%
Pharmacy	2	-2	-2	-1	-1	-1		-0.6%	-0.5%	-0.4%	-0.3%	-0.3%	+0.0%
H&SC, Other	3	+2	+2	+1				+2.0%	+2.0%	+0.5%	+0.0%	+0.0%	+0.0%
Management & Administrative	132	+8	+2	-4	-9	-6	-1	+0.1%	+0.0%	-0.0%	-0.1%	-0.0%	-0.0%
Management (VIII & above)	4	-1		+1	+0	-1		-0.2%	+0.0%	+0.3%	+0.0%	-0.2%	+0.0%
Administrative/ Supervisory (V to VII)	24	+7	+3	-0	+0	+0	-3	+0.4%	+0.1%	-0.0%	+0.0%	+0.0%	-0.1%
Clerical (III & IV)	104	+2	-1	-5	-9	-5	+2	+0.0%	-0.0%	-0.0%	-0.1%	-0.0%	+0.0%
General Support	65	-20	-16	-8	-4	+2	+0	-0.2%	-0.2%	-0.1%	-0.1%	+0.0%	+0.0%
Support	31	-21	-14	-8	-5	-5	-0	-0.4%	-0.3%	-0.2%	-0.1%	-0.1%	-0.0%
Maintenance/ Technical	34	+1	-1	-0	+1	+7	+1	+0.0%	-0.0%	-0.0%	+0.0%	+0.2%	+0.0%
Patient & Client Care	278	-0	-3	-13	-12	-6	+1	-0.0%	-0.0%	-0.0%	-0.0%	-0.0%	+0.0%
Health Care Assistants	211	+1	-3	-5	-6	-3	+0	+0.0%	-0.0%	-0.0%	-0.0%	-0.0%	+0.0%
Care, other	67	-1	+0	-7	-6	-2	+0	-0.0%	+0.0%	-0.1%	-0.1%	-0.0%	+0.0%

Source: Health Service Personnel Census

Primary Care

Jan 2021 (Dec 2015 figure: 1,261)	WTE Jan 2021	WTE change since Dec 15	WTE change since Dec 16	WTE change since Dec 17	WTE change since Dec 18	WTE change since Dec 19	WTE change since Dec 20	% change since Dec 15	% change since Dec 16	% change since Dec 17	% change since Dec 18	% change since Dec 19	% change since Dec 20
Overall	1,250	-11	+11	+160	+90	+116	+15	-0.9%	+0.9%	+14.7%	+7.7%	+10.2%	+1.2%
Medical & Dental	99	+9	+13	+14	+12	+11	-2	+0.1%	+0.2%	+0.2%	+0.1%	+0.1%	-0.0%
Consultants	1	-2	-1	-1	-0	-0	-0	-0.6%	-0.5%	-0.5%	-0.1%	-0.0%	-0.1%
Registrars	50	+17	+16	+12	+12	+10	+2	+0.5%	+0.5%	+0.3%	+0.3%	+0.2%	+0.1%
SHO/ Interns	2	-7	-3	+2	+2	+1	-1	-0.8%	-0.6%	-1.0%	-1.0%	+1.0%	-0.3%
Medical/ Dental, other	46	+1	+1	+1	-2	+1	-3	+0.0%	+0.0%	+0.0%	-0.0%	+0.0%	-0.1%
Nursing & Midwifery	328	+34	+33	+28	+7	+15	+3	+0.1%	+0.1%	+0.1%	+0.0%	+0.0%	+0.0%
Nurse/ Midwife Manager	31	+9	+8	+6	+5	+4	+3	+0.4%	+0.4%	+0.3%	+0.2%	+0.1%	+0.1%
Nurse/ Midwife Specialist & AN/MP	21	+5	+6	+7	+3	+4	+0	+0.3%	+0.4%	+0.5%	+0.2%	+0.2%	+0.0%
Staff Nurse/ Staff Midwife	82	+11	+11	+10	+4	+8	+3	+0.2%	+0.2%	+0.1%	+0.0%	+0.1%	+0.0%
Public Health Nurse	193	+16	+18	+20	+7	+3	-4	+0.1%	+0.1%	+0.1%	+0.0%	+0.0%	-0.0%
Nursing/ Midwifery Student		-7	-11	-16	-13	-4		-1.0%	-1.0%	-1.0%	-1.0%	-1.0%	-1.0%
Health & Social Care Professionals	339	+33	+39	+36	+17	+26	+0	+0.1%	+0.1%	+0.1%	+0.1%	+0.1%	+0.0%
Therapy Professions	248	+51	+49	+37	+19	+22	+1	+0.3%	+0.2%	+0.2%	+0.1%	+0.1%	+0.0%
Health Science/ Diagnostics	34	+0	-0	+2	+1	+2	-0	+0.0%	-0.0%	+0.0%	+0.0%	+0.0%	-0.0%
Social Care	9	-4	-3	-2	-1	+0	-0	-0.3%	-0.2%	-0.2%	-0.1%	+0.0%	-0.0%
Social Workers	5	-4	-3	-2	-1	-1	-0	-0.4%	-0.4%	-0.2%	-0.2%	-0.2%	-0.1%
Psychologists	26	-11	-4	-0	-1	+2	-0	-0.3%	-0.1%	-0.0%	-0.1%	+0.1%	-0.0%
Pharmacy	1	+0	+0	+0	+0	+0	+0	+0.5%	+0.5%	+0.5%	+0.5%	+0.5%	+0.5%
H&SC, Other	14	-0	-1	+0	-1	+1	+0	-0.0%	-0.1%	+0.0%	-0.0%	+0.1%	+0.0%
Management & Administrative	344	+59	+51	+30	+14	+11	+7	+0.2%	+0.2%	+0.1%	+0.0%	+0.0%	+0.0%
Management (VIII & above)	38	+11	+10	+2	+1	+5	+3	+0.4%	+0.3%	+0.1%	+0.0%	+0.2%	+0.1%
Administrative/ Supervisory (V to VII)	76	+40	+36	+32	+23	+14	+3	+1.1%	+0.9%	+0.7%	+0.4%	+0.2%	+0.0%
Clerical (III & IV)	229	+7	+5	-4	-11	-9	+1	+0.0%	+0.0%	-0.0%	-0.0%	-0.0%	+0.0%
General Support	31	-5	+1	+1	-3	+1	+1	-0.1%	+0.0%	+0.0%	-0.1%	+0.0%	+0.0%
Support	22	+1	+1	+1	-3	+2	+0	+0.0%	+0.0%	+0.0%	-0.1%	+0.1%	+0.0%
Maintenance/ Technical	9	-6	-0	-0	-0	-0	+1	-0.4%	-0.0%	-0.0%	-0.0%	-0.0%	+0.1%
Patient & Client Care	108	-141	-125	+52	+44	+51	+6	-0.6%	-0.5%	+0.9%	+0.7%	+0.9%	+0.1%
Health Care Assistants	64	+57	+58	+56	+45	+50	+7	+8.4%	+8.7%	+6.5%	+2.3%	+3.5%	+0.1%
Care, other	44	-18	-13	-4	-1	+1	-2	-0.3%	-0.2%	-0.1%	-0.0%	+0.0%	-0.0%
Home Help		-181	-169					-1.0%	-1.0%	-1.0%	-1.0%	-1.0%	-1.0%

Source: Health Service Personnel Census

Disabilities

Jan 2021 (Dec 2015 figure: 1,221)	WTE Jan 2021	WTE change since Dec 15	WTE change since Dec 16	WTE change since Dec 17	WTE change since Dec 18	WTE change since Dec 19	WTE change since Dec 20	% change since Dec 15	% change since Dec 16	% change since Dec 17	% change since Dec 18	% change since Dec 19	% change since Dec 20
Overall	1,500	+279	+162	+106	+80	+3	-15	+22.9%	+12.1%	+7.6%	+5.7%	+0.2%	-1.0%
Medical & Dental	6	+1	+0	+0	+0			+0.3%	+0.1%	+0.1%	+0.1%	+0.0%	+0.0%
Consultants	3	+1	+0	+0	+0			+0.7%	+0.1%	+0.1%	+0.1%	+0.0%	+0.0%
Registrars	2							+0.0%	+0.0%	+0.0%	+0.0%	+0.0%	+0.0%
Medical/ Dental, other	1							+0.0%	+0.0%	+0.0%	+0.0%	+0.0%	+0.0%
Nursing & Midwifery	247	-29	-28	-24	-5	-1	-6	-0.1%	-0.1%	-0.1%	-0.0%	-0.0%	-0.0%
Nurse/ Midwife Manager	77	+8	+5	+3	+6	-0	-1	+0.1%	+0.1%	+0.0%	+0.1%	-0.0%	-0.0%
Nurse/ Midwife Specialist & AN/MP	6	-0	-1	-1	-0	-0	+0	-0.0%	-0.2%	-0.2%	-0.0%	-0.0%	+0.0%
Staff Nurse/ Staff Midwife	164	-38	-33	-27	-11	-2	-5	-0.2%	-0.2%	-0.1%	-0.1%	-0.0%	-0.0%
Nursing/ Midwifery Student	1	+1	+1	+1	+1	+1	-0	-1.0%	-1.0%	-1.0%	-1.0%	-1.0%	-0.1%
Health & Social Care Professionals	333	+99	+75	+53	+27	+12	+4	+0.4%	+0.3%	+0.2%	+0.1%	+0.0%	+0.0%
Therapy Professions	35	+3	+0	-1	-0	-6	+1	+0.1%	+0.0%	-0.0%	-0.0%	-0.1%	+0.0%
Social Care	247	+103	+83	+66	+39	+26	+4	+0.7%	+0.5%	+0.4%	+0.2%	+0.1%	+0.0%
Social Workers	25	+4	+3	+1	+1	-1	-1	+0.2%	+0.1%	+0.0%	+0.0%	-0.0%	-0.0%
Psychologists	15	-0	-3	-4	-5	-0	+1	-0.0%	-0.2%	-0.2%	-0.2%	-0.0%	+0.1%
H&SC, Other	9	-11	-8	-8	-8	-6	-2	-0.5%	-0.2%	-0.5%	-0.5%	-0.4%	-0.2%
Management & Administrative	111	+27	+9	+3	+7	+5	+1	+0.3%	+0.1%	+0.0%	+0.1%	+0.1%	+0.0%
Management (VIII & above)	16	+6	+2	+2	+1	-0	+0	+0.6%	+0.1%	+0.1%	+0.1%	-0.0%	+0.0%
Administrative/ Supervisory (V to VII)	46	+19	+11	+5	+8	+6	+2	+0.7%	+0.3%	+0.1%	+0.2%	+0.1%	+0.0%
Clerical (III & IV)	49	+2	-4	-3	-2	-0	-1	+0.0%	-0.1%	-0.1%	-0.0%	-0.0%	-0.0%
General Support	52	-6	-6	-8	-6	-6	-4	-0.1%	-0.1%	-0.1%	-0.1%	-0.1%	-0.1%
Support	39	-6	-6	-8	-6	-6	-4	-0.1%	-0.1%	-0.2%	-0.1%	-0.1%	-0.1%
Maintenance/ Technical	13	+0	-0	-0	+1	-0		+0.0%	-0.0%	-0.0%	+0.1%	-0.0%	+0.0%
Patient & Client Care	750	+187	+111	+81	+57	-7	-10	+0.3%	+0.2%	+0.1%	+0.1%	-0.0%	-0.0%
Health Care Assistants	616	+171	+93	+63	+44	-7	-9	+0.4%	+0.2%	+0.1%	+0.1%	-0.0%	-0.0%
Care, other	134	+15	+19	+18	+13	+0	-1	+0.1%	+0.2%	+0.2%	+0.1%	+0.0%	-0.0%

Source: Health Service Personnel Census

Older People

Jan 2021 (Dec 2015 figure: 1,371)	WTE Jan 2021	WTE change since Dec 15	WTE change since Dec 16	WTE change since Dec 17	WTE change since Dec 18	WTE change since Dec 19	WTE change since Dec 20	% change since Dec 15	% change since Dec 16	% change since Dec 17	% change since Dec 18	% change since Dec 19	% change since Dec 20
Overall	1,576	+205	+200	-10	-65	-30	-14	+14.9%	+14.5%	-0.6%	-4.0%	-1.8%	-0.8%
Medical & Dental	11	+2	-0	-1	-1	-1		+0.2%	-0.0%	-0.1%	-0.1%	-0.0%	+0.0%
Medical/ Dental, other	11	+2	-0	-1	-1	-1		+0.2%	-0.0%	-0.1%	-0.1%	-0.0%	+0.0%
Nursing & Midwifery	376	+10	+5	-6	+1	+14	+2	+0.0%	+0.0%	-0.0%	+0.0%	+0.0%	+0.0%
Nurse/ Midwife Manager	67	+14	+11	+5	+5	+9	+1	+0.3%	+0.2%	+0.1%	+0.1%	+0.2%	+0.0%
Nurse/ Midwife Specialist & AN/MP	2	+2	+2	+2	+2			-1.0%	-1.0%	-1.0%	-1.0%	+0.0%	+0.0%
Staff Nurse/ Staff Midwife	306	-6	-8	-13	-6	+5	+1	-0.0%	-0.0%	-0.0%	-0.0%	+0.0%	+0.0%
Public Health Nurse	1	+0	+0	+0		+0		+0.3%	+0.3%	+0.1%	+0.0%	+0.3%	+0.0%
Health & Social Care Professionals	39	+6	+3	+5	+3	+2	+2	+0.2%	+0.1%	+0.1%	+0.1%	+0.0%	+0.0%
Therapy Professions	27	+2	+1	+2	+2	+1	+2	+0.1%	+0.0%	+0.1%	+0.1%	+0.1%	+0.1%
Health Science/ Diagnostics	1	+1						#DIV/0	+0.0%	+0.0%	+0.0%	+0.0%	+0.0%
Social Workers	10	+3	+3	+2	+1	+0	+0	+0.4%	+0.4%	+0.2%	+0.1%	+0.0%	+0.0%
Pharmacy	1	+1	+1	+1	+1	+0		+1.0%	+1.0%	+1.0%	+1.0%	+0.0%	+0.0%
H&SC, Other		-0	-1					-1.0%	-1.0%	-1.0%			-1.0%
Management & Administrative	75	+8	+7	-7	-17	-6	-2	+0.1%	+0.1%	-0.1%	-0.2%	-0.1%	-0.0%
Management (VIII & above)	2	+0		+1				+0.0%	+0.0%	+1.0%	+0.0%	+0.0%	+0.0%
Administrative/ Supervisory (V to VII)	8	+4	+2	+1	-1	+0	-1	+1.0%	+0.3%	+0.1%	-0.1%	+0.0%	-0.2%
Clerical (III & IV)	65	+4	+5	-9	-16	-6	-1	+0.1%	+0.1%	-0.1%	-0.2%	-0.1%	-0.0%
General Support	76	-14	-11	-5	-6	+1	+0	-0.2%	-0.1%	-0.1%	-0.1%	+0.0%	+0.0%
Support	56	-16	-13	-7	-6	+0	+0	-0.2%	-0.2%	-0.1%	-0.1%	+0.0%	+0.0%
Maintenance/ Technical	19	+2	+2	+3	+1	+0	-0	+0.1%	+0.1%	+0.2%	+0.1%	+0.0%	-0.0%
Patient & Client Care	999	+195	+196	+3	-46	-39	-15	+0.2%	+0.2%	+0.0%	-0.0%	-0.0%	-0.0%
Health Care Assistants	522	+19	+14	-2	-19	+7	-3	+0.0%	+0.0%	-0.0%	-0.0%	+0.0%	-0.0%
Care, other	32	+17	+18	+9	+9	+8	-0	+1.2%	+1.2%	+0.4%	+0.4%	+0.3%	-0.0%
Home Help	445	+159	+164	-4	-36	-55	-12	+0.6%	+0.6%	-0.0%	-0.1%	-0.1%	-0.0%

Source: Health Service Personnel Census