

CHO 2 Employment Report: June 2021

Employment by Staff Group

Jun 2021 (Dec 2019 figure: 5,545)	WTE Apr 2021	WTE Jun 2021	WTE change since Apr 21	% change since Apr 21	WTE change since Dec 20	WTE change since Jun 20
Overall	5,747	5,733	-14	-0.2%	+43	+167
Consultants	45	49	+3	+7.4%	+7	+5
Registrars	88	89	+1	+1.4%	+3	+12
SHO/ Interns	40	40	-0	-1.0%	-3	+5
Medical/ Dental, other	57	54	-3	-5.5%	-8	-7
Medical & Dental	230	231	+1	+0.4%	-1	+15
Nurse/ Midwife Manager	331	326	-5	-1.7%	+3	+9
Nurse/ Midwife Specialist & AN/MP	110	111	+2	+1.6%	+3	+13
Staff Nurse/ Staff Midwife	936	938	+2	+0.2%	+30	+46
Public Health Nurse	191	190	-1	-0.5%	-8	-5
Pre-registration Nurse/ Midwife Intern	21	21	+0	+1.2%	+21	+0
Pre-registration Nurse Intern (COVID-19)	1	1	-1	-50.0%	+1	-1
Post-registration Nurse/ Midwife Student				-100.0%	-4	
Nursing/ Midwifery awaiting registration				-100.0%	-5	
Nursing/ Midwifery Student	22	21	-0	-1.2%	+10	-13
Nursing/ Midwifery other	2	1	-1	-50.0%	-1	-2
Nursing & Midwifery	1,592	1,588	-4	-0.3%	+38	+49
Therapy Professions	380	378	-2	-0.5%	+16	+28
Health Science/ Diagnostics	8	8	-0	-1.0%	+1	+2
Social Care	275	284	+9	+3.4%	+16	+21
Social Workers	84	82	-2	-2.2%	-1	-2
Psychologists	83	83	+0	+0.6%	+5	+6
Pharmacy	4	5	+0	+7.4%	+1	+0
H&SC, Other	59	60	+1	+2.5%	+4	+3
Health & Social Care Professionals	894	901	+8	+0.9%	+42	+57
Management (VIII & above)	59	62	+3	+5.5%	+4	+7
Administrative/ Supervisory (V to VII)	161	161	-0	-0.1%	+0	+17
Clerical (III & IV)	445	441	-5	-1.1%	-7	-17
Management & Administrative	665	663	-2	-0.2%	-3	+7
Support	152	153	+1	+0.8%	+0	+3
Maintenance/ Technical	76	73	-3	-3.9%	-0	+4
General Support	228	226	-2	-0.8%	+0	+7
Health Care Assistants	1,422	1,443	+22	+1.5%	+25	+37
Home Help	427	389	-38	-9.0%	-67	-31
Care, other	290	291	+1	+0.5%	+10	+26
Patient & Client Care	2,138	2,123	-15	-0.7%	-33	+32

CHO 2 Employment Report: June 2021

Community Health & Wellbeing

Jun 2021 (figure:)	WTE Apr 2021	WTE Jun 2021	WTE change since Apr 21	% change since Apr 21	WTE change since Dec 20	WTE change since Jun 20
Total Community Health & Wellbeing	10	10	-0	-2.8%	-0	-0
Management (VIII & above)	1	1				
Administrative/ Supervisory (V to VII)	7	7	-0	-3.9%	-0	-0
Clerical (III & IV)	1	1				
Management & Administrative	9	9	-0	-3.1%	-0	-0
Care, other	1	1				
Patient & Client Care	1	1				

Mental Health

Jun 2021 (Dec 2019 figure: 1,308)	WTE Apr 2021	WTE Jun 2021	WTE change since Apr 21	% change since Apr 21	WTE change since Dec 20	WTE change since Jun 20
Total Mental Health	1,370	1,366	-3	-0.3%	+26	+25
Consultants	40	42	+2	+5.1%	+5	+3
Registrars	38	40	+2	+4.0%	+3	+4
SHO/ Interns	38	38	-0	-0.9%	-2	+5
Medical/ Dental, other	1		-1	-100.0%	-1	-1
Medical & Dental	117	119	+3	+2.2%	+5	+11
Nurse/ Midwife Manager	148	147	-1	-1.0%	-4	+3
Nurse/ Midwife Specialist & AN/MP	76	78	+1	+1.7%	-2	+4
Staff Nurse/ Staff Midwife	378	378	-0	-0.0%	+23	+26
Pre-registration Nurse/ Midwife Intern	21	21	+0	+1.2%	+21	+0
Pre-registration Nurse Intern (COVID-19)	1	1	-1	-50.0%	+1	-1
Nursing/ Midwifery awaiting registration				-100.0%	-5	
Nursing/ Midwifery Student	22	21	-0	-1.2%	+11	-10
Nursing/ Midwifery other	2	1	-1	-50.0%	-1	-2
Nursing & Midwifery	626	625	-2	-0.2%	+28	+22
Therapy Professions	56	58	+2	+3.1%	+3	+6
Social Care	16	15	-1	-3.9%	-1	+0
Social Workers	41	40	-2	-4.0%	-2	-3
Psychologists	38	38	+1	+1.6%	+1	+2
Pharmacy	2	2				-1
H&SC, Other	3	3	-0	-4.7%	-0	-0
Health & Social Care Professionals	156	156	-0	-0.1%	+1	+3
Management (VIII & above)	3	2	-1	-23.4%	-2	-2
Administrative/ Supervisory (V to VII)	25	25	-0	-1.0%	-2	+1
Clerical (III & IV)	103	102	-1	-1.4%	-1	-5
Management & Administrative	130	128	-2	-1.8%	-5	-6
Support	30	31	+1	+2.1%	-0	-3
Maintenance/ Technical	35	33	-2	-5.8%	-0	+5
General Support	65	64	-1	-2.2%	-1	+2
Health Care Assistants	208	208	+0	+0.1%	-3	-4
Care, other	68	67	-1	-1.4%	+0	-3
Patient & Client Care	276	275	-1	-0.3%	-3	-7

Primary Care

Jun 2021 (Dec 2019 figure: 1,134)	WTE Apr 2021	WTE Jun 2021	WTE change since Apr 21	% change since Apr 21	WTE change since Dec 20	WTE change since Jun 20
Total Primary Care	1,281	1,271	-10	-0.8%	+37	+115
Consultants	2	3	+1	+65.7%	+2	+2
Registrars	48	47	-0	-0.8%	-0	+8
SHO/ Interns	2	2	-0	-1.5%	-1	-0
Medical/ Dental, other	45	42	-3	-5.7%	-7	-6
Medical & Dental	97	95	-2	-1.7%	-6	+4
Nurse/ Midwife Manager	33	29	-3	-9.9%	+1	-1
Nurse/ Midwife Specialist & AN/MP	24	25	+0	+1.8%	+4	+8
Staff Nurse/ Staff Midwife	90	90	-1	-0.9%	+10	+14
Public Health Nurse	190	189	-1	-0.5%	-8	-5
<i>Post-registration Nurse/ Midwife Student</i>				-100.0%	-4	
Nursing/ Midwifery Student				-100.0%		-3
Nursing & Midwifery	338	333	-5	-1.3%	+8	+14
Therapy Professions	260	258	-2	-0.7%	+10	+20
Health Science/ Diagnostics	8	8	-0	-1.0%	+1	+2
Social Care	9	9	+0	+0.4%	-0	-0
Social Workers	5	5	-0	-3.4%	-1	-1
Psychologists	30	30	+0	+0.7%	+3	+4
Pharmacy	2	2	+0	+19.8%	+1	+1
H&SC, Other	45	45	+1	+1.3%	+4	+5
Health & Social Care Professionals	357	356	-1	-0.2%	+18	+30
Management (VIII & above)	38	39	+1	+2.9%	+4	+5
Administrative/ Supervisory (V to VII)	77	75	-2	-2.6%	+2	+11
Clerical (III & IV)	230	229	-1	-0.4%	+0	-4
Management & Administrative	345	343	-2	-0.5%	+6	+12
Support	20	19	-1	-5.9%	-3	-2
Maintenance/ Technical	9	9			+1	+0
General Support	29	28	-1	-4.1%	-2	-2
Health Care Assistants	65	66	+1	+0.8%	+9	+51
Care, other	50	49	-0	-0.6%	+4	+6
Patient & Client Care	115	115	+0	+0.2%	+13	+56

Social Care

Jun 2021 (Dec 2019 figure: 3,103)	WTE Apr 2021	WTE Jun 2021	WTE change since Apr 21	% change since Apr 21	WTE change since Dec 20	WTE change since Jun 20
Total Social Care	3,086	3,086	-0	-0.0%	-20	+27
Consultants	3	3				-0
Registrars	2	2	+0	+2.6%		
Medical/ Dental, other	12	12				
Medical & Dental	17	17	+0	+0.3%		-0
Nurse/ Midwife Manager	151	150	-1	-0.6%	+5	+7
Nurse/ Midwife Specialist & AN/MP	9	9	+0	+0.1%	+1	+1
Staff Nurse/ Staff Midwife	467	470	+3	+0.6%	-4	+6
Public Health Nurse	1	1				
<i>Pre-registration Nurse Intern (COVID-19)</i>				-100.0%		
Nursing/ Midwifery Student				-100.0%	-1	
Nursing & Midwifery	628	630	+2	+0.3%	+2	+13
Therapy Professions	64	62	-2	-3.0%	+3	+3
Health Science/ Diagnostics	1	1				
Social Care	250	260	+10	+4.0%	+17	+20
Social Workers	38	38	-0	-0.2%	+1	+2
Psychologists	15	15	-0	-1.9%	+1	-0
Pharmacy	1	1				+0
H&SC, Other	11	12	+1	+9.1%	+1	-2
Health & Social Care Professionals	381	389	+9	+2.3%	+23	+23
Management (VIII & above)	17	20	+3	+16.1%	+2	+4
Administrative/ Supervisory (V to VII)	52	54	+2	+4.7%	+1	+6
Clerical (III & IV)	112	110	-2	-2.1%	-6	-8
Management & Administrative	181	183	+3	+1.6%	-4	+2
Support	101	103	+2	+1.7%	+4	+7
Maintenance/ Technical	32	31	-1	-3.1%	-1	-1
General Support	134	134	+1	+0.6%	+3	+6
Health Care Assistants	1,148	1,169	+21	+1.8%	+19	-9
Home Help	427	389	-38	-9.0%	-67	-31
Care, other	171	174	+3	+1.5%	+6	+23
Patient & Client Care	1,746	1,732	-15	-0.8%	-43	-17

CHO 2 Employment Report: June 2021

Disabilities

Jun 2021 (Dec 2019 figure: 1,497)	WTE Apr 2021	WTE Jun 2021	WTE change since Apr 21	% change since Apr 21	WTE change since Dec 20	WTE change since Jun 20
Total Disabilities	1,516	1,550	+34	+2.2%	+34	+75
Consultants	3	3				-0
Registrars	2	2	+0	+2.6%		
Medical/ Dental, other	1	1				
Medical & Dental	6	6	+0	+0.8%		-0
Nurse/ Midwife Manager	81	81	-0	-0.1%	+3	+4
Nurse/ Midwife Specialist & AN/MP	7	7	+0	+0.1%	+1	+1
Staff Nurse/ Staff Midwife	163	160	-3	-1.7%	-9	-3
<i>Pre-registration Nurse Intern (COVID-19)</i>				-100.0%		
Nursing/ Midwifery Student				-100.0%	-1	
Nursing & Midwifery	251	248	-3	-1.1%	-6	+2
Therapy Professions	34	34	+0	+0.5%	+0	-1
Social Care	250	260	+10	+4.0%	+17	+20
Social Workers	27	27	+0	+0.1%	+1	+1
Psychologists	15	15	-0	-1.9%	+1	-0
H&SC, Other	11	12	+1	+9.1%	+1	-2
Health & Social Care Professionals	338	349	+11	+3.2%	+20	+18
Management (VIII & above)	16	18	+2	+10.9%	+2	+3
Administrative/ Supervisory (V to VII)	44	45	+2	+3.5%	+1	+6
Clerical (III & IV)	50	47	-2	-4.8%	-3	-1
Management & Administrative	109	110	+1	+0.8%	-0	+7
Support	42	44	+2	+5.3%	+1	+4
Maintenance/ Technical	13	13				-0
General Support	55	57	+2	+4.1%	+1	+4
Health Care Assistants	626	645	+19	+3.1%	+20	+35
Care, other	131	134	+3	+2.2%	-1	+9
Patient & Client Care	757	779	+22	+3.0%	+19	+44

Older People

Jun 2021 (Dec 2019 figure: 1,606)	WTE Apr 2021	WTE Jun 2021	WTE change since Apr 21	% change since Apr 21	WTE change since Dec 20	WTE change since Jun 20
Total Older People	1,570	1,536	-34	-2.1%	-54	-48
Medical/ Dental, other	11	11				
Medical & Dental	11	11				
Nurse/ Midwife Manager	70	69	-1	-1.1%	+3	+2
Nurse/ Midwife Specialist & AN/MP	2	2				+0
Staff Nurse/ Staff Midwife	304	310	+6	+1.8%	+5	+9
Public Health Nurse	1	1				
Nursing & Midwifery	377	382	+5	+1.3%	+8	+12
Health & Social Care Professionals	42	40	-2	-5.1%	+3	+5
Management (VIII & above)	1	2	+1	+98.0%	-0	+1
Administrative/ Supervisory (V to VII)	8	9	+1	+11.5%	-0	+0
Clerical (III & IV)	62	62	+0	+0.1%	-3	-6
Management & Administrative	71	73	+2	+2.8%	-4	-5
Support	59	59	-0	-0.8%	+3	+3
Maintenance/ Technical	19	19	-1	-5.1%	-1	-1
General Support	79	77	-1	-1.9%	+2	+2
Health Care Assistants	523	524	+2	+0.3%	-1	-44
Home Help	427	389	-38	-9.0%	-67	-31
Care, other	40	39	-0	-0.8%	+7	+14
Patient & Client Care	989	952	-37	-3.7%	-62	-62

CHO 2 Employment by Administration (HSE / S38): June 2021

Jun 2021 (Dec 2019 figure: 5,545)	WTE Apr 2021	WTE Jun 2021	WTE change since Apr 21	% change since Apr 21	WTE change since Dec 20	WTE change since Jun 20
Overall	5,747	5,733	-14	-0.2%	+43	+167
HSE	4,449	4,407	-42	-0.9%	+15	+105
Section 38 Voluntary Agencies	1,297	1,326	+28	+2.2%	+28	+62

HSE

Jun 2021 (Dec 2019 figure: 4,256)	WTE Apr 2021	WTE Jun 2021	WTE change since Apr 21	% change since Apr 21	WTE change since Dec 20	WTE change since Jun 20
Overall	4,449	4,407	-42	-0.9%	+15	+105
Consultants	43	46	+3	+0.1%	+7	+5
Registrars	86	87	+1	+0.0%	+3	+12
SHO/ Interns	40	40	-0	-0.0%	-3	+5
Medical/ Dental, other	57	54	-3	-0.1%	-8	-7
Medical & Dental	226	227	+1	+0.4%	-1	+15
Nurse/ Midwife Manager	262	256	-5	-0.0%	+2	+6
Nurse/ Midwife Specialist & AN/MP	105	107	+2	+0.0%	+3	+13
Staff Nurse/ Staff Midwife	816	822	+6	+0.0%	+38	+48
Public Health Nurse	191	190	-1	-0.0%	-8	-5
Pre-registration Nurse/ Midwife Intern	21	21	+0	+0.0%	+21	+21
Pre-registration Nurse Intern (COVID-19)	1	1	-1	-0.5%	+1	-31
Post-registration Nurse/ Midwife Student				-1.0%	-4	-3
Nursing/ Midwifery awaiting registration				-1.0%	-5	
Nursing/ Midwifery Student	22	21	-0	-0.0%	+11	-13
Nursing/ Midwifery other	2	1	-1	-0.5%	-1	-2
Nursing & Midwifery	1,397	1,397	+0	+0.0%	+45	+48
Therapy Professions	351	349	-2	-0.0%	+16	+27
Health Science/ Diagnostics	8	8	-0	-0.0%	+1	+2
Social Care	55	56	+0	+0.0%	-2	+1
Social Workers	57	55	-2	-0.0%	-2	-3
Psychologists	69	70	+1	+0.0%	+5	+6
Pharmacy	4	5	+0	+0.1%	+1	+0
H&SC, Other	48	48	+0	+0.0%	+3	+5
Health & Social Care Professionals	593	591	-2	-0.4%	+21	+38
Management (VIII & above)	46	48	+2	+0.1%	+3	+6
Administrative/ Supervisory (V to VII)	125	124	-1	-0.0%	+0	+15
Clerical (III & IV)	409	404	-5	-0.0%	-6	-18
Management & Administrative	580	576	-4	-0.6%	-3	+4
Support	110	109	-1	-0.0%	-1	-1
Maintenance/ Technical	71	68	-3	-0.0%	-0	+4
General Support	181	177	-4	-2.3%	-1	+3
Health Care Assistants	873	878	+5	+0.0%	+8	+4
Home Help	427	389	-38	-0.1%	-67	-31
Care, other	172	172	-0	-0.0%	+13	+24
Patient & Client Care	1,472	1,439	-33	-2.3%	-46	-3

Section 38 Voluntary Agencies

Jun 2021 (Dec 2019 figure: 1,288)	WTE Apr 2021	WTE Jun 2021	WTE change since Apr 21	% change since Apr 21	WTE change since Dec 20	WTE change since Jun 20
Overall	1,297	1,326	+28	+2.2%	+28	+62
Consultants	2	2		+0.0%		-0
Registrars	2	2	+0	+0.0%		
Medical & Dental	4	4	+0	+1.1%		-0
Nurse/ Midwife Manager	70	70	-0	-0.0%	+1	+3
Nurse/ Midwife Specialist & AN/MP	5	5	+0	+0.0%	+0	-0
Staff Nurse/ Staff Midwife	119	116	-4	-0.0%	-8	-2
<i>Pre-registration Nurse Intern (COVID-19)</i>				-1.0%		
Nursing/ Midwifery Student				-1.0%	-1	
Nursing & Midwifery	194	190	-4	-2.1%	-7	+1
Therapy Professions	29	30	+0	+0.0%	+0	+0
Social Care	220	228	+9	+0.0%	+17	+20
Social Workers	27	27	+0	+0.0%	+1	+1
Psychologists	13	13	-0	-0.0%	+1	-0
H&SC, Other	11	12	+1	+0.1%	+1	-2
Health & Social Care Professionals	301	310	+10	+3.3%	+21	+19
Management (VIII & above)	13	14	+1	+0.1%	+1	+1
Administrative/ Supervisory (V to VII)	36	37	+1	+0.0%	+0	+2
Clerical (III & IV)	36	37	+1	+0.0%	-1	+1
Management & Administrative	85	87	+2	+2.3%	+0	+3
Support	42	44	+2	+0.1%	+1	+4
Maintenance/ Technical	5	5		+0.0%		
General Support	47	49	+2	+4.8%	+1	+4
Health Care Assistants	548	565	+17	+0.0%	+17	+33
Care, other	118	119	+2	+0.0%	-4	+2
Patient & Client Care	666	684	+18	+2.7%	+13	+35

CHO 2 Employment by S38 Agency: June 2021

Bros. of Charity, West Region

Jun 2021 (Dec 2019 figure: 1,288)	WTE Apr 2021	WTE Jun 2021	WTE change since Apr 21	% change since Apr 21	WTE change since Dec 20	WTE change since Jun 20
Overall	1,297	1,326	+28	+2.2%	+28	+62
Consultants	2	2		+0.0%		-0
Registrars	2	2	+0	+0.0%		
Medical & Dental	4	4	+0	+1.1%		-0
Nurse/ Midwife Manager	70	70	-0	-0.0%	+1	+3
Nurse/ Midwife Specialist & AN/MP	5	5	+0	+0.0%	+0	-0
Staff Nurse/ Staff Midwife	119	116	-4	-0.0%	-8	-2
Pre-registration Nurse Intern (COVID-19)				-1.0%		
Nursing/ Midwifery Student				-1.0%	-1	
Nursing & Midwifery	194	190	-4	-2.1%	-7	+1
Therapy Professions	29	30	+0	+0.0%	+0	+0
Social Care	220	228	+9	+0.0%	+17	+20
Social Workers	27	27	+0	+0.0%	+1	+1
Psychologists	13	13	-0	-0.0%	+1	-0
H&SC, Other	11	12	+1	+0.1%	+1	-2
Health & Social Care Professionals	301	310	+10	+3.3%	+21	+19
Management (VIII & above)	13	14	+1	+0.1%	+1	+1
Administrative/ Supervisory (V to VII)	36	37	+1	+0.0%	+0	+2
Clerical (III & IV)	36	37	+1	+0.0%	-1	+1
Management & Administrative	85	87	+2	+2.3%	+0	+3
Support	42	44	+2	+0.1%	+1	+4
Maintenance/ Technical	5	5		+0.0%		
General Support	47	49	+2	+4.8%	+1	+4
Health Care Assistants	548	565	+17	+0.0%	+17	+33
Care, other	118	119	+2	+0.0%	-4	+2
Patient & Client Care	666	684	+18	+2.7%	+13	+35

CHO 2 Employment by Grade Group & Staff Category: June 2021

Jun 2021 (Dec 2019 figure: 5,545)	WTE Apr 2021	WTE Jun 2021	WTE change since Apr 21	% change since Apr 21	WTE change since Dec 20	WTE change since Jun 20
Overall	5,747	5,733	-14	-0.2%	+43	+167
Consultant Medicine	2	3	+1	+79.6%	+2	+2
Consultant Paediatrics	1	1				
Consultant Psychiatry	42	44	+2	+4.8%	+5	+3
Consultant Surgery	0	0	-0	-9.7%	-0	-0
Consultants	45	49	+3	+7.4%	+7	+5
Registrar	68	69	+0	+0.7%	+5	+9
Senior Registrar	19	20	+1	+3.8%	-1	+3
Registrars	88	89	+1	+1.4%	+3	+12
Senior House Officer	40	40	-0	-1.0%	-3	+5
SHO/ Interns	40	40	-0	-1.0%	-3	+5
Dentists	22	21	-2	-7.1%	-1	-0
Other Medical	35	33	-2	-4.5%	-7	-7
Medical/ Dental, other	57	54	-3	-5.5%	-8	-7
Medical & Dental	230	231	+1	+0.4%	+19	+15
Clinical Nurse/ Midwife Manager	262	261	-1	-0.3%	+5	+14
Director Nursing/Midwifery, Assistant	46	44	-3	-5.8%	+0	-2
Director of Nursing/Midwifery	24	22	-2	-8.5%	-2	-2
Nurse/ Midwife Manager	331	326	-5	-1.7%	+3	+9
Advanced Nurse/ Midwife Practitioner	11	11	-0	-0.3%	-0	+1
Clinical Nurse/ Midwife Specialist	99	100	+2	+1.8%	+3	+12
Nurse/ Midwife Specialist & AN/MP	110	111	+2	+1.6%	+3	+13
Staff Nurse [Intellectual Disability]	117	114	-3	-2.6%	-7	+15
Staff Nurse [Psychiatric]	387	385	-2	-0.5%	+20	+19
Staff Nurses [General/ Children's]	432	439	+7	+1.6%	+16	+12
Staff Nurse/ Staff Midwife	936	938	+2	+0.2%	+30	+46
Public Health Nurse	191	190	-1	-0.5%	-8	-5
Pre-registration Nurse/ Midwife Intern	21	21	+0	+1.2%	+21	+21
Pre-registration Nurse Intern (COVID-19)	1	1	-1	-50.0%	-10	-31
Post-registration Nurse/ Midwife Student				-100.0%		-3
Nursing/ Midwifery awaiting registration				-100.0%		
Nursing/ Midwifery Student	22	21	-0	-1.2%	+10	-13
Nursing/ Midwifery other	2	1	-1	-50.0%	-1	-2
Nursing & Midwifery	1,592	1,588	-4	-0.3%	+86	+49
Dietitians	25	28	+2	+9.9%	+2	+6
Occupational Therapists	131	130	-2	-1.2%	+1	+6
Orthoptists	1	1			-1	-0
Physiotherapists	104	100	-4	-3.8%	+6	+8
Podiatrists & Chiropodists	9	11	+2	+24.9%	+4	+1
Speech & Language Therapists	109	108	-1	-1.0%	+3	+7
Therapy Professions	380	378	-2	-0.5%	+16	+28
Audiology	7	7	-0	-1.2%	+1	+2
Clinical Engineering	1	1				
Radiographers	1	1				
Health Science/ Diagnostics	8	8	-0	-1.0%	+1	+2
Social Care	275	284	+9	+3.4%	+16	+21
Social Workers	84	82	-2	-2.2%	-1	-2
Psychologists	83	83	+0	+0.6%	+5	+6

Jun 2021 (Dec 2019 figure: 5,545)	WTE Apr 2021	WTE Jun 2021	WTE change since Apr 21	% change since Apr 21	WTE change since Dec 20	WTE change since Jun 20
Overall	5,747	5,733	-14	-0.2%	+43	+167
Pharmacy	4	5	+0	+7.4%	+1	+0
Counsellor Therapists	17	20	+2	+13.6%	+6	+8
Dental Hygienists	5	5	+0	+2.0%	+0	+0
Other Health & Social Care	36	35	-1	-2.7%	-2	-5
Play Therapists/ Specialists	1	1				
H&SC, Other	59	60	+1	+2.5%	+4	+3
Health & Social Care Professionals	894	901	+8	+0.9%	+91	+57
Executive Management	11	12	+1	+9.5%	+1	+1
Senior Management (VIII & GM)	47	50	+2	+4.5%	+3	+5
Management (VIII & above)	59	62	+3	+5.5%	+4	+7
Middle Management (V-VII)	161	161	-0	-0.1%	+0	+17
Other Administrative				-100.0%		
Administrative/ Supervisory (V to VII)	161	161	-0	-0.1%	+0	+17
Clerical (III & IV)	445	441	-5	-1.1%	-7	-17
Management & Administrative	665	663	-2	-0.2%	+6	+7
Catering	41	41	-0	-0.7%	+3	+3
Household Services	61	62	+1	+2.3%	+1	+1
Other Support	36	36	+0	+0.2%	-2	+2
Portering	13	13	+0	+0.1%	-1	-2
Support	152	153	+1	+0.8%	+0	+3
Maintenance/ Technical	76	73	-3	-3.9%	-0	+4
General Support	228	226	-2	-0.8%	+0	+7
HCA, Nurse's Aide, etc.	1,357	1,378	+21	+1.6%	+16	-14
Health & Social Care Assistants	14	15	+1	+7.3%	+7	+0
Swabber (COVID-19)	51	51	-0	-0.6%	+2	+51
Health Care Assistants	1,422	1,443	+22	+1.5%	+25	+37
Home Help	427	389	-38	-9.0%	-67	-31
Other Care Grades	290	291	+1	+0.5%	+10	+26
Care, other	290	291	+1	+0.5%	+10	+26
Patient & Client Care	2,138	2,123	-15	-0.7%	-14	+32

CHO 2 HSE Employment by Grade Group & Staff Category: June 2021

Jun 2021 (Dec 2019 figure: 4,256)	WTE Apr 2021	WTE Jun 2021	WTE change since Apr 21	% change since Apr 21	WTE change since Dec 20	WTE change since Jun 20
Overall	4,449	4,407	-42	-0.9%	+15	+105
Consultant Medicine	2	3	+1	+79.6%	+2	+2
Consultant Psychiatry	41	43	+2	+5.0%	+5	+3
Consultant Surgery	0	0	-0	-9.7%	-0	-0
Consultants	43	46	+3	+7.8%	+7	+5
Registrar	68	68	+0	+0.6%	+4	+9
Senior Registrar	18	19	+1	+4.0%	-0	+3
Registrars	86	87	+1	+1.3%	+3	+12
SHO/ Interns	40	40	-0	-1.0%	-3	+5
Dentists	22	21	-2	-7.1%	-1	-0
Other Medical	35	33	-2	-4.5%	-7	-7
Medical/ Dental, other	57	54	-3	-5.5%	-8	-7
Medical & Dental	226	227	+1	+0.4%	-1	+15
Clinical Nurse/ Midwife Manager	192	192	-0	-0.2%	+3	+10
Director Nursing/Midwifery, Assistant	46	44	-3	-5.8%	+0	-2
Director of Nursing/Midwifery	23	21	-2	-8.8%	-2	-2
Nurse/ Midwife Manager	262	256	-5	-1.9%	+2	+6
Advanced Nurse/ Midwife Practitioner	10	10	-0	-0.3%	-0	+1
Clinical Nurse/ Midwife Specialist	95	97	+2	+1.9%	+3	+12
Nurse/ Midwife Specialist & AN/MP	105	107	+2	+1.7%	+3	+13
Staff Nurse [Intellectual Disability]	13	13	+1	+5.5%	-1	+1
Staff Nurse [Psychiatric]	377	376	-2	-0.5%	+18	+21
Staff Nurses [General/ Children's]	426	433	+7	+1.6%	+20	+26
Staff Nurse/ Staff Midwife	816	822	+6	+0.7%	+38	+48
Public Health Nurse	191	190	-1	-0.5%	-8	-5
Pre-registration Nurse/ Midwife Intern	21	21	+0	+1.2%	+21	+21
Pre-registration Nurse Intern (COVID-19)	1	1	-1	-50.0%	-10	-31
Post-registration Nurse/ Midwife Student				-100.0%		-3
Nursing/ Midwifery awaiting registration				-100.0%		
Nursing/ Midwifery Student	22	21	-0	-1.2%	+11	-13
Nursing/ Midwifery other	2	1	-1	-50.0%	-1	-2
Nursing & Midwifery	1,397	1,397	+0	+0.0%	+45	+48
Dietitians	25	28	+2	+9.9%	+2	+6
Occupational Therapists	123	121	-2	-1.2%	+1	+5
Orthoptists	1	1			-1	-0
Physiotherapists	93	90	-3	-3.6%	+6	+9
Podiatrists & Chiropodists	9	11	+2	+24.9%	+4	+1
Speech & Language Therapists	99	97	-2	-2.0%	+3	+7
Therapy Professions	351	349	-2	-0.6%	+16	+27
Audiology	7	7	-0	-1.2%	+1	+2
Clinical Engineering	1	1				
Radiographers	1	1				
Health Science/ Diagnostics	8	8	-0	-1.0%	+1	+2
Social Care	55	56	+0	+0.8%	-2	+1
Social Workers	57	55	-2	-3.3%	-2	-3
Psychologists	69	70	+1	+1.1%	+5	+6
Pharmacy	4	5	+0	+7.4%	+1	+0
Counsellor Therapists	13	14	+1	+10.3%	+5	+7
Dental Hygienists	5	5	+0	+2.0%	+0	+0
Other Health & Social Care	29	28	-1	-3.4%	-2	-2

Jun 2021 (Dec 2019 figure: 4,256)	WTE Apr 2021	WTE Jun 2021	WTE change since Apr 21	% change since Apr 21	WTE change since Dec 20	WTE change since Jun 20
Overall	4,449	4,407	-42	-0.9%	+15	+105
Play Therapists/ Specialists	1	1				
H&SC, Other	48	48	+0	+1.0%	+3	+5
Health & Social Care Professionals	593	591	-2	-0.4%	+21	+38
Executive Management	9	10	+1	+11.5%	+1	+1
Senior Management (VIII & GM)	37	38	+1	+3.5%	+2	+4
Management (VIII & above)	46	48	+2	+5.1%	+3	+6
Administrative/ Supervisory (V to VII)	125	124	-1	-0.5%	+0	+15
Clerical (III & IV)	409	404	-5	-1.3%	-6	-18
Management & Administrative	580	576	-4	-0.6%	-3	+4
Catering	41	41	-0	-0.8%	+3	+3
Household Services	42	43	+0	+1.0%	-1	+0
Other Support	14	12	-1	-8.9%	-1	-2
Portering	13	13	+0	+0.1%	-1	-2
Support	110	109	-1	-1.0%	-1	-1
Maintenance/ Technical	71	68	-3	-4.2%	-0	+4
General Support	181	177	-4	-2.3%	-1	+3
HCA, Nurse's Aide, etc.	808	813	+5	+0.6%	-1	-47
Health & Social Care Assistants	14	15	+1	+7.3%	+7	+0
Swabber (COVID-19)	51	51	-0	-0.6%	+2	+51
Health Care Assistants	873	878	+5	+0.6%	+8	+4
Home Help	427	389	-38	-9.0%	-67	-31
Care, other	172	172	-0	-0.1%	+13	+24
Patient & Client Care	1,472	1,439	-33	-2.3%	-46	-3

Employment by WTE, Headcount, Gender, Full-Time /Part-Time etc.: Jun 2021

CHO 2	WTE	Headcount	WTE: no.	% Male	% female	Male WTE: no.	Female WTE: no.	% Total Perm	% Male Perm	% Female Perm	% Total Full Time	% Total Part Time	% Male FT	% Female FT
Overall	5,733	6,728	1.17	19.0%	81.0%	1.11	1.19	84.7%	80.3%	85.7%	59.7%	40.3%	74.3%	56.3%
Consultant Medicine	3	3	1.00		100.0%		1.00	33.3%	33.3%	33.3%	100.0%	0.0%		100.0%
Consultant Paediatrics	1	1	1.00		100.0%		1.00	100.0%	100.0%	100.0%	100.0%	0.0%		100.0%
Consultant Psychiatry	44	48	1.09	37.5%	62.5%	1.06	1.10	62.5%	62.5%	60.0%	83.3%	16.7%	88.9%	80.0%
Consultant Surgery	0	1	3.57		100.0%		3.57	0.0%	0.0%	0.0%	0.0%	100.0%		0.0%
Consultants	49	53	1.09	34.0%	66.0%	1.06	1.11	60.4%	66.7%	57.1%	83.0%	17.0%	88.9%	80.0%
Registrar	69	70	1.02	34.3%	65.7%	1.00	1.02	1.4%	1.4%	2.2%	100.0%	0.0%	100.0%	100.0%
Senior Registrar	20	21	1.04	38.1%	61.9%	1.00	1.07	0.0%	0.0%	0.0%	100.0%	0.0%	100.0%	100.0%
Registrars	89	91	1.02	35.2%	64.8%	1.00	1.03	1.1%	0.0%	1.7%	100.0%	0.0%	100.0%	100.0%
Senior House Officer	40	40	1.01	32.5%	67.5%	1.01	1.01	0.0%	0.0%	0.0%	100.0%	0.0%	100.0%	100.0%
SHO/ Interns	40	40	1.01	32.5%	67.5%	1.01	1.01	0.0%	0.0%	0.0%	100.0%	0.0%	100.0%	100.0%
Dentists	21	25	1.21	28.0%	72.0%	1.08	1.26	96.0%	96.0%	94.4%	64.0%	36.0%	71.4%	61.1%
Other Medical	33	39	1.17	30.8%	69.2%	1.15	1.18	69.2%	69.2%	77.8%	59.0%	41.0%	66.7%	55.6%
Medical/ Dental, other	54	64	1.19	29.7%	70.3%	1.12	1.21	79.7%	68.4%	84.4%	60.9%	39.1%	68.4%	57.8%
Medical & Dental	231	248	1.07	33.1%	66.9%	1.04	1.09	33.9%	30.5%	35.5%	86.3%	13.7%	90.2%	84.3%
Clinical Nurse/ Midwife Manager	261	283	1.09	25.4%	74.6%	1.01	1.11	96.5%	96.5%	96.7%	85.9%	14.1%	98.6%	81.5%
Director Nursing/Midwifery, Assistant	44	45	1.03	20.0%	80.0%	1.00	1.04	97.8%	97.8%	97.2%	93.3%	6.7%	100.0%	91.7%
Director of Nursing/Midwifery	22	22	1.02	13.6%	86.4%	1.00	1.02	100.0%	100.0%	100.0%	100.0%	0.0%	100.0%	100.0%
Nurse/ Midwife Manager	326	350	1.07	24.0%	76.0%	1.01	1.10	96.9%	96.4%	97.0%	87.7%	12.3%	98.8%	84.2%
Advanced Nurse/ Midwife Practitioner	11	11	1.01	27.3%	72.7%	1.00	1.02	100.0%	100.0%	100.0%	100.0%	0.0%	100.0%	100.0%
Clinical Nurse/ Midwife Specialist	100	106	1.06	13.2%	86.8%	1.00	1.06	98.1%	98.1%	97.8%	89.6%	10.4%	100.0%	88.0%
Nurse/ Midwife Specialist & AN/MP	111	117	1.05	14.5%	85.5%	1.00	1.06	98.3%	100.0%	98.0%	90.6%	9.4%	100.0%	89.0%
Staff Nurse [Intellectual Disability]	114	139	1.22	7.2%	92.8%	1.11	1.23	95.7%	95.7%	95.3%	49.6%	50.4%	70.0%	48.1%
Staff Nurse [Psychiatric]	385	416	1.08	24.3%	75.7%	1.09	1.08	94.0%	94.0%	96.5%	84.9%	15.1%	84.2%	85.1%
Staff Nurses [General/ Children's]	439	522	1.19	5.0%	95.0%	1.06	1.20	92.3%	92.3%	92.1%	54.8%	45.2%	80.8%	53.4%
Staff Nurse/ Staff Midwife	938	1,077	1.15	12.7%	87.3%	1.08	1.16	93.4%	89.1%	94.0%	65.7%	34.3%	82.5%	63.3%
Public Health Nurse	190	219	1.15		100.0%		1.15	96.3%		96.3%	73.1%	26.9%		73.1%
Pre-registration Nurse/ Midwife Intern	21	41	1.98	22.0%	78.0%	2.12	1.94	0.0%	0.0%	0.0%	100.0%	0.0%	100.0%	100.0%
Pre-registration Nurse Intern (COVID-19)	1	1	2.00	100.0%		2.00		0.0%	0.0%		100.0%	0.0%	100.0%	

Nursing/ Midwifery Student	21	42	1.98	23.8%	76.2%	2.11	1.94	0.0%	0.0%	0.0%	100.0%	0.0%	100.0%	100.0%
Nursing/ Midwifery other	1	1	1.00		100.0%		1.00	100.0%		100.0%	100.0%	0.0%		100.0%
Nursing & Midwifery	1,588	1,806	1.14	13.7%	86.3%	1.07	1.15	92.6%	88.7%	93.2%	73.3%	26.7%	89.9%	70.7%
Dietitians	28	31	1.11		100.0%		1.11	87.1%	87.1%	87.1%	67.7%	32.3%		67.7%
Occupational Therapists	130	145	1.12	6.9%	93.1%	1.03	1.12	91.0%	91.0%	90.4%	73.1%	26.9%	90.0%	71.9%
Orthoptists	1	1	1.00		100.0%		1.00	100.0%	100.0%	100.0%	100.0%	0.0%		100.0%
Physiotherapists	100	120	1.20	15.0%	85.0%	1.03	1.23	90.8%	90.8%	92.2%	62.5%	37.5%	88.9%	57.8%
Podiatrists & Chiropodists	11	14	1.26	7.1%	92.9%	1.00	1.29	85.7%	85.7%	84.6%	57.1%	42.9%	100.0%	53.8%
Speech & Language Therapists	108	122	1.13	0.8%	99.2%	1.00	1.13	83.6%	83.6%	83.5%	78.7%	21.3%	100.0%	78.5%
Therapy Professions	378	433	1.14	6.9%	93.1%	1.03	1.15	88.5%	90.0%	88.3%	70.9%	29.1%	90.0%	69.5%
Audiology	7	7	1.04		100.0%		1.04	100.0%	100.0%	100.0%	85.7%	14.3%		85.7%
Clinical Engineering	1	1	1.00	100.0%		1.00		100.0%	100.0%		100.0%	0.0%	100.0%	
Radiographers	1	1	1.67		100.0%		1.67	100.0%	100.0%	100.0%	0.0%	100.0%		0.0%
Health Science/ Diagnostics	8	9	1.08	11.1%	88.9%	1.00	1.10	100.0%	100.0%	100.0%	77.8%	22.2%	100.0%	75.0%
Social Care	284	343	1.21	17.2%	82.8%	1.18	1.21	82.8%	93.2%	80.6%	50.1%	49.9%	54.2%	49.3%
Social Workers	82	94	1.14	19.1%	80.9%	1.08	1.16	91.5%	88.9%	92.1%	69.1%	30.9%	77.8%	67.1%
Psychologists	83	96	1.15	15.6%	84.4%	1.07	1.17	93.8%	93.3%	93.8%	67.7%	32.3%	93.3%	63.0%
Pharmacy	5	6	1.26	16.7%	83.3%	1.00	1.33	83.3%	100.0%	80.0%	50.0%	50.0%	100.0%	40.0%
Counsellor Therapists	20	24	1.22	25.0%	75.0%	1.30	1.20	91.7%	91.7%	94.4%	58.3%	41.7%	50.0%	61.1%
Dental Hygienists	5	6	1.19		100.0%		1.19	83.3%	83.3%	83.3%	66.7%	33.3%		66.7%
Other Health & Social Care	35	42	1.21	14.3%	85.7%	1.08	1.23	92.9%	92.9%	94.4%	59.5%	40.5%	66.7%	58.3%
Play Therapists/ Specialists	1	1	1.00		100.0%		1.00	100.0%	100.0%	100.0%	100.0%	0.0%		100.0%
H&SC, Other	60	73	1.21	16.4%	83.6%	1.18	1.21	91.8%	83.3%	93.4%	60.3%	39.7%	58.3%	60.7%
Health & Social Care	901	1,054	1.17	12.9%	87.1%	1.11	1.18	87.7%	91.2%	87.1%	62.9%	37.1%	70.6%	61.8%
Executive Management	12	13	1.05	61.5%	38.5%	1.07	1.02	92.3%	92.3%	100.0%	84.6%	15.4%	87.5%	80.0%
Senior Management (VIII & GM)	50	50	1.01	42.0%	58.0%	1.01	1.01	92.0%	92.0%	93.1%	98.0%	2.0%	100.0%	96.6%
Management (VIII & above)	62	63	1.02	46.0%	54.0%	1.02	1.01	92.1%	89.7%	94.1%	95.2%	4.8%	96.6%	94.1%
Administrative/ Supervisory (V to VII)	161	169	1.05	18.3%	81.7%	1.05	1.05	97.6%	100.0%	97.1%	82.8%	17.2%	87.1%	81.9%
Clerical (III & IV)	441	504	1.14	5.6%	94.4%	1.14	1.14	88.9%	82.1%	89.3%	66.1%	33.9%	71.4%	65.8%
Management & Administrative	663	736	1.11	12.0%	88.0%	1.07	1.12	91.2%	90.9%	91.2%	72.4%	27.6%	85.2%	70.7%
Catering	41	44	1.07	29.5%	70.5%	1.02	1.09	100.0%	100.0%	100.0%	65.9%	34.1%	84.6%	58.1%
Household Services	62	91	1.46	15.4%	84.6%	1.57	1.44	90.1%	90.1%	92.2%	31.9%	68.1%	42.9%	29.9%
Other Support	36	67	1.84	73.1%	26.9%	1.47	5.64	61.2%	61.2%	16.7%	19.4%	80.6%	22.4%	11.1%
Portering	13	13	1.00	92.3%	7.7%	1.00	1.00	100.0%	100.0%	100.0%	100.0%	0.0%	100.0%	100.0%
Support	153	215	1.41	40.9%	59.1%	1.32	1.48	83.7%	84.1%	83.5%	39.1%	60.9%	45.5%	34.6%

Maintenance/ Technical	73	76	1.04	98.7%	1.3%	1.04	1.00	97.4%	97.3%	100.0%	93.4%	6.6%	93.3%	100.0%
General Support	226	291	1.29	56.0%	44.0%	1.17	1.47	87.3%	90.2%	83.6%	53.3%	46.7%	67.5%	35.2%
HCA, Nurse's Aide, etc.	1,378	1,604	1.16	26.2%	73.8%	1.12	1.18	78.6%	78.6%	78.8%	52.7%	47.3%	66.4%	47.8%
Health & Social Care Assistants	15	15	1.02	26.7%	73.3%	1.00	1.03	26.7%	26.7%	18.2%	93.3%	6.7%	100.0%	90.9%
Swabber (COVID-19)	51	53	1.04	26.4%	73.6%	1.10	1.02	1.9%	1.9%	2.6%	84.9%	15.1%	78.6%	87.2%
Health Care Assistants	1,443	1,672	1.16	26.2%	73.8%	1.12	1.17	75.7%	75.1%	75.9%	54.1%	45.9%	67.1%	49.4%
Home Help	389	573	1.47	0.7%	99.3%	1.51	1.47	91.6%	50.0%	91.9%	5.1%	94.9%	0.0%	5.1%
Care, other	291	348	1.20	34.5%	65.5%	1.15	1.22	86.8%	83.3%	88.6%	56.3%	43.7%	65.0%	51.8%
Patient & Client Care	2,123	2,593	1.22	21.7%	78.3%	1.13	1.25	80.7%	76.7%	81.8%	43.5%	56.5%	66.2%	37.3%

Employment by WTE, Headcount, Gender, Full-Time /Part-Time etc.: Jun 2021

CHO 2	WTE	Headcount	WTE: no.	% Male	% female	Male WTE: no.	Female WTE: no.	% Total Perm	% Male Perm	% Female Perm	% Total Full Time	% Total Part Time	% Male FT	% Female FT
Overall	5,733	6,728	1.17	19.0%	81.0%	1.11	1.19	84.7%	80.3%	85.7%	59.7%	40.3%	74.3%	56.3%
Community Health & Wellbeing	10	11	1.14	9.1%	90.9%	1.00	1.15	100.0%	100.0%	100.0%	54.5%	45.5%	100.0%	100.0%
Mental Health	1,366	1,484	1.09	28.0%	72.0%	1.06	1.10	84.8%	84.8%	86.9%	84.0%	16.0%	90.4%	90.4%
Primary Care	1,271	1,448	1.14	11.9%	88.1%	1.07	1.15	82.1%	82.1%	83.3%	71.0%	29.0%	84.9%	84.9%
HSE	1,760	2,108	1.20	13.9%	86.1%	1.05	1.23	89.8%	89.8%	90.5%	51.7%	48.3%	89.1%	89.1%
Section 38 Voluntary Agencies	1,326	1,677	1.27	23.7%	76.3%	1.25	1.27	80.3%	80.3%	80.2%	38.6%	61.4%	41.8%	41.8%
Social Care	3,086	3,785	1.23	18.3%	81.7%	1.16	1.24	85.6%	85.6%	86.2%	45.9%	54.1%	61.9%	61.9%

CHO 2 Skills Mix by Staff Grouping: June 2021

Jun 2021 (Dec 2019 figure: 5,545)	WTE Dec 2016	WTE Dec 2017	WTE Dec 2018	WTE Dec 2019	WTE Dec 2019	WTE Apr 2021	WTE Jun 2021
Overall	5,236	5,377	5,559	5,545	5,690	5,747	5,733
Consultant Medicine	0.5%	0.5%	0.5%	0.5%	0.5%	0.7%	1.3%
Consultant Paediatrics	0.5%	0.5%	0.5%	0.5%	0.5%	0.4%	0.4%
Consultant Psychiatry	16.7%	16.6%	16.4%	18.9%	18.9%	18.3%	19.1%
Consultant Surgery	0.7%	0.6%	0.1%	0.1%	0.1%	0.1%	0.1%
Consultants	18.4%	18.3%	17.5%	19.9%	19.9%	19.6%	21.0%
Registrar	27.0%	29.4%	27.8%	27.4%	27.4%	29.7%	29.8%
Senior Registrar	4.2%	4.2%	5.5%	8.0%	8.0%	8.4%	8.7%
Registrars	31.1%	33.6%	33.2%	35.4%	35.4%	38.2%	38.5%
Senior House Officer	19.3%	18.6%	20.0%	16.9%	16.9%	17.4%	17.1%
SHO/ Interns	19.3%	18.6%	20.0%	16.9%	16.9%	17.4%	17.1%
Dentists	11.2%	10.8%	11.0%	10.0%	10.0%	9.7%	9.0%
Other Medical	19.9%	18.8%	18.3%	17.7%	17.7%	15.1%	14.4%
Medical/ Dental, other	31.2%	29.6%	29.3%	27.7%	27.7%	24.8%	23.4%
Medical & Dental	3.7%	3.8%	3.8%	3.8%	3.8%	100.0%	4.0%
Clinical Nurse/ Midwife Manager	15.7%	15.7%	16.5%	16.0%	16.0%	16.4%	16.4%
Director Nursing/Midwifery, Assistant	2.5%	2.7%	2.6%	3.0%	3.0%	2.9%	2.7%
Director of Nursing/Midwifery	1.4%	1.4%	1.4%	1.5%	1.5%	1.5%	1.4%
Nurse/ Midwife Manager	19.5%	19.7%	20.5%	20.6%	20.6%	20.8%	20.5%
Advanced Nurse/ Midwife Practitioner	0.2%	0.3%	0.4%	0.6%	0.6%	0.7%	0.7%
Clinical Nurse/ Midwife Specialist	4.3%	5.1%	5.1%	5.6%	5.6%	6.2%	6.3%
Nurse/ Midwife Specialist & AN/MP	4.5%	5.3%	5.5%	6.2%	6.2%	6.9%	7.0%
Staff Midwives	0.0%	0.1%					
Staff Nurse [Intellectual Disability]	8.5%	6.5%	6.4%	6.0%	6.0%	7.3%	7.2%
Staff Nurse [Psychiatric]	25.4%	24.3%	24.1%	24.7%	24.7%	24.3%	24.2%
Staff Nurses [General/ Children's]	29.7%	30.5%	29.6%	29.1%	29.1%	27.2%	27.7%
Staff Nurse/ Staff Midwife	63.6%	61.4%	60.1%	59.8%	59.8%	58.8%	59.1%
Public Health Nurse	11.7%	11.4%	12.2%	12.8%	12.8%	12.0%	12.0%
Pre-registration Nurse/ Midwife Intern		0.9%		0.0%	0.0%	1.3%	1.3%
Pre-registration Nurse Intern (COVID-19)						0.1%	0.0%
Post-registration Nurse/ Midwife Student	0.7%	1.1%	0.8%	0.3%	0.3%		
Nursing/ Midwifery awaiting registration			0.7%	0.3%	0.3%		
Nursing/ Midwifery Student	0.7%	1.9%	1.6%	0.6%	0.6%	1.4%	1.3%
Nursing/ Midwifery other		0.1%	0.2%	0.1%	0.1%	0.1%	0.1%
Nursing & Midwifery	28.8%	28.3%	27.6%	27.1%	27.1%	100.0%	27.7%
Dietitians	2.4%	2.6%	2.5%	2.4%	2.4%	2.8%	3.1%
Occupational Therapists	15.1%	14.7%	14.6%	14.4%	14.4%	14.7%	14.4%
Orthoptists	0.2%	0.2%	0.2%	0.2%	0.2%	0.1%	0.1%
Physiotherapists	10.7%	11.7%	11.0%	10.9%	10.9%	11.7%	11.1%
Podiatrists & Chiropodists	1.2%	1.0%	0.9%	0.9%	0.9%	1.0%	1.2%
Speech & Language Therapists	12.3%	12.4%	12.8%	12.9%	12.9%	12.2%	12.0%
Therapy Professions	41.8%	42.6%	41.9%	41.7%	41.7%	42.5%	42.0%
Audiology	0.6%	0.8%	0.7%	0.6%	0.6%	0.8%	0.7%
Clinical Engineering	0.1%			0.1%	0.1%	0.1%	0.1%
Physicists	0.1%						
Radiographers	0.1%	0.1%	0.1%	0.1%	0.1%	0.1%	0.1%
Health Science/ Diagnostics	1.0%	0.8%	0.8%	0.8%	0.8%	0.9%	0.9%
Social Care	26.3%	27.2%	28.6%	30.2%	30.2%	30.7%	31.5%
Social Workers	10.3%	10.1%	10.1%	10.3%	10.3%	9.4%	9.1%
Psychologists	11.4%	10.7%	10.3%	9.1%	9.1%	9.3%	9.2%
Pharmacy	0.7%	0.6%	0.5%	0.6%	0.6%	0.5%	0.5%
Counsellor Therapists	1.4%	1.4%	1.5%	1.4%	1.4%	1.9%	2.2%

Jun 2021 (Dec 2019 figure: 5,545)	WTE Dec 2016	WTE Dec 2017	WTE Dec 2018	WTE Dec 2019	WTE Dec 2019	WTE Apr 2021	WTE Jun 2021
Overall	5,236	5,377	5,559	5,545	5,690	5,747	5,733
Dental Hygienists	0.5%	0.3%	0.5%	0.6%	0.6%	0.6%	0.6%
HSCP Trainees/ Students	0.3%	0.1%					
Other Health & Social Care	5.8%	5.6%	5.2%	4.9%	4.9%	4.0%	3.9%
Play Therapists/ Specialists	0.5%	0.5%	0.4%	0.4%	0.4%	0.1%	0.1%
H&SC, Other	8.5%	7.9%	7.7%	7.3%	7.3%	6.6%	6.7%
Health & Social Care Professionals	14.0%	14.0%	14.6%	14.6%	14.6%	100.0%	15.7%
Executive Management	1.7%	1.8%	1.7%	1.6%	1.6%	1.7%	1.9%
Senior Management (VIII & GM)	6.5%	6.6%	7.0%	6.9%	6.9%	7.1%	7.5%
Management (VIII & above)	8.2%	8.5%	8.7%	8.5%	8.5%	8.8%	9.3%
Middle Management (V-VII)	17.2%	18.3%	18.5%	20.2%	20.2%	24.2%	24.2%
Other Administrative				0.2%	0.2%		
Administrative/ Supervisory (V to VII)	17.2%	18.3%	18.5%	20.3%	20.3%	24.2%	24.2%
Clerical (III & IV)	74.6%	73.2%	72.8%	71.2%	71.2%	67.0%	66.4%
Management & Administrative	11.3%	11.9%	12.0%	11.9%	11.9%	100.0%	11.6%
Catering	15.6%	14.8%	16.9%	17.6%	17.6%	18.2%	18.2%
Household Services	31.9%	30.7%	28.8%	27.9%	27.9%	26.7%	27.5%
Other Support	17.2%	17.6%	17.4%	17.4%	17.4%	16.0%	16.1%
Portering	6.4%	7.2%	7.1%	6.9%	6.9%	5.7%	5.7%
Support	71.0%	70.3%	70.2%	69.9%	69.9%	66.5%	67.6%
Maintenance/ Technical	29.0%	29.7%	29.8%	30.1%	30.1%	33.5%	32.4%
General Support	4.9%	4.5%	4.4%	4.1%	4.1%	100.0%	3.9%
HCA, Nurse's Aide, etc.	63.7%	64.2%	63.5%	63.3%	63.3%	63.4%	64.9%
Health & Social Care Assistants	0.3%	0.5%	0.9%	0.6%	0.6%	0.6%	0.7%
Swabber (COVID-19)						2.4%	2.4%
Health Care Assistants	64.0%	64.7%	64.5%	64.0%	64.0%	66.5%	68.0%
Home Help	23.0%	22.3%	23.0%	23.4%	23.4%	20.0%	18.3%
Care, other	13.0%	13.0%	12.5%	12.7%	12.7%	13.5%	13.7%
Patient & Client Care	37.4%	37.4%	37.7%	38.5%	38.5%	100.0%	37.0%
Total	100 %	100 %	100 %	100 %	100%	100 %	100 %

CHO 2 Skills Mix by Care Group: June 2021

Jun 2021 (Dec 2019 figure: 1,308)	WTE Dec 2016	WTE Dec 2017	WTE Dec 2018	WTE Dec 2019	WTE Dec 2019	WTE Apr 2021	WTE Jun 2021
Mental Health	1,283	1,307	1,338	1,308	1,340	1,370	1,366
Consultants	33.8%	31.8%	30.6%	35.3%	35.3%	34.1%	35.1%
Registrar	18.0%	19.5%	17.9%	16.0%	16.0%	17.0%	17.3%
Senior Registrar	9.0%	8.5%	10.9%	15.0%	15.0%	15.8%	16.1%
Registrars	27.0%	28.0%	28.7%	31.1%	31.1%	32.8%	33.4%
Senior House Officer	36.4%	37.7%	39.7%	32.7%	32.7%	32.6%	31.6%
SHO/ Interns	36.4%	37.7%	39.7%	32.7%	32.7%	32.6%	31.6%
Medical/ Dental, other	2.8%	2.5%	0.9%	0.9%	0.9%	0.5%	
Medical & Dental	6.9%	7.6%	7.9%	8.1%	8.1%	8.7%	8.7%
Clinical Nurse/ Midwife Manager	22.1%	20.7%	23.0%	21.5%	21.5%	20.3%	20.3%
Director Nursing/Midwifery, Assistant	2.8%	3.3%	3.1%	3.3%	3.3%	2.9%	2.7%
Director of Nursing/Midwifery	0.5%	0.5%	0.3%	0.5%	0.5%	0.5%	0.5%
Nurse/ Midwife Manager	25.5%	24.6%	26.4%	25.3%	25.3%	23.7%	23.5%
Advanced Nurse/ Midwife Practitioner	0.5%	0.5%	0.9%	1.0%	1.0%	1.1%	1.1%
Clinical Nurse/ Midwife Specialist	7.4%	9.9%	9.4%	10.6%	10.6%	11.1%	11.3%
Nurse/ Midwife Specialist & AN/MP	7.9%	10.4%	10.2%	11.7%	11.7%	12.2%	12.4%
Staff Nurse [Psychiatric]	64.6%	61.0%	60.0%	61.0%	61.0%	59.2%	59.1%
Staff Nurses [General/ Children's]	2.0%	1.3%	0.9%	0.9%	0.9%	1.1%	1.4%
Staff Nurse/ Staff Midwife	66.6%	62.3%	61.0%	61.9%	61.9%	60.4%	60.5%
Pre-registration Nurse/ Midwife Intern		2.3%		0.0%	0.0%	3.3%	3.3%
Pre-registration Nurse Intern (COVID-19)						0.2%	0.1%
Nursing/ Midwifery awaiting registration			1.9%	0.8%	0.8%		
Nursing/ Midwifery Student		2.3%	1.9%	0.8%	0.8%	3.4%	3.4%
Nursing/ Midwifery other		0.4%	0.5%	0.3%	0.3%	0.3%	0.2%
Nursing & Midwifery	44.0%	43.5%	43.8%	44.1%	44.1%	45.7%	45.7%
Dietitians	2.9%	3.6%	2.4%	2.1%	2.1%	3.3%	4.6%
Occupational Therapists	24.4%	26.3%	26.4%	26.0%	26.0%	26.0%	26.4%
Speech & Language Therapists	5.3%	5.5%	5.2%	4.3%	4.3%	6.7%	6.1%
Therapy Professions	32.6%	35.4%	33.9%	32.4%	32.4%	36.0%	37.2%
Social Care	12.2%	9.7%	9.9%	10.5%	10.5%	10.3%	9.9%
Social Workers	26.9%	26.2%	27.7%	29.1%	29.1%	26.5%	25.5%
Psychologists	25.0%	25.3%	24.6%	24.0%	24.0%	24.1%	24.5%
Pharmacy	2.6%	1.9%	1.8%	1.8%	1.8%	1.1%	1.1%
Counsellor Therapists			1.4%	1.4%	1.4%	1.3%	1.2%
Other Health & Social Care		0.7%					
Play Therapists/ Specialists	0.7%	0.7%	0.7%	0.7%	0.7%	0.6%	0.6%
H&SC, Other	0.7%	1.4%	2.1%	2.1%	2.1%	1.9%	1.8%
Health & Social Care Professionals	10.7%	10.6%	10.9%	10.7%	10.7%	11.4%	11.4%
Management (VIII & above)	3.1%	2.2%	2.8%	3.6%	3.6%	2.0%	1.6%
Administrative/ Supervisory (V to VII)	15.9%	17.6%	16.5%	17.1%	17.1%	19.0%	19.2%
Clerical (III & IV)	81.0%	80.2%	80.7%	79.2%	79.2%	79.0%	79.3%
Management & Administrative	10.2%	10.4%	10.5%	10.5%	10.5%	9.4%	9.4%
Support	56.6%	53.4%	52.7%	57.3%	57.3%	46.4%	48.3%
Maintenance/ Technical	43.4%	46.6%	47.3%	42.7%	42.7%	53.6%	51.7%
General Support	6.3%	5.6%	5.2%	4.8%	4.8%	4.7%	4.7%
Health Care Assistants	76.3%	74.5%	75.0%	75.6%	75.6%	75.4%	75.7%
Care, other	23.7%	25.5%	25.0%	24.4%	24.4%	24.6%	24.3%
Patient & Client Care	21.9%	22.3%	21.7%	21.7%	21.7%	20.1%	20.1%

Jun 2021 (Dec 2019 figure: 1,308)	WTE Dec 2016	WTE Dec 2017	WTE Dec 2018	WTE Dec 2019	WTE Dec 2019	WTE Apr 2021	WTE Jun 2021
Mental Health	1,283	1,307	1,338	1,308	1,340	1,370	1,366
Total	100 %	100 %	100 %	100 %	100 %	100 %	100 %

Jun 2021 (Dec 2019 figure: 1,134)	WTE Dec 2016	WTE Dec 2017	WTE Dec 2018	WTE Dec 2019	WTE Dec 2019	WTE Apr 2021	WTE Jun 2021
Primary Care	1,238	1,090	1,160	1,134	1,235	1,281	1,271
Consultant Medicine	1.2%	1.2%	1.1%	1.1%	1.1%	1.7%	3.2%
Consultant Surgery	1.5%	1.5%	0.3%	0.3%	0.3%	0.3%	0.3%
Consultants	2.7%	2.7%	1.5%	1.4%	1.4%	2.0%	3.5%
Registrars	39.1%	44.7%	43.2%	45.6%	45.6%	49.4%	49.8%
SHO/ Interns	5.4%			1.1%	1.1%	2.1%	2.1%
Dentists	25.0%	25.7%	26.7%	24.1%	24.1%	23.1%	21.8%
Other Medical	27.8%	26.9%	28.6%	27.8%	27.8%	23.4%	22.8%
Medical/ Dental, other	52.8%	52.6%	55.3%	51.9%	51.9%	46.5%	44.6%
Medical & Dental	7.0%	7.8%	7.5%	7.8%	7.8%	7.5%	7.5%
Clinical Nurse/ Midwife Manager	1.7%	2.3%	2.0%	1.7%	1.7%	1.7%	2.0%
Director Nursing/Midwifery, Assistant	5.3%	4.9%	5.1%	6.4%	6.4%	6.7%	5.9%
Director of Nursing/Midwifery	0.7%	1.0%	0.9%	0.6%	0.6%	1.2%	0.9%
Nurse/ Midwife Manager	7.7%	8.2%	8.0%	8.7%	8.7%	9.6%	8.8%
Nurse/ Midwife Specialist & AN/MP	5.2%	4.9%	5.7%	5.5%	5.5%	7.2%	7.5%
Staff Nurse/ Staff Midwife	24.0%	23.9%	24.4%	23.6%	23.6%	26.8%	26.9%
Public Health Nurse	59.4%	57.7%	57.8%	60.9%	60.9%	56.4%	56.8%
Nursing/ Midwifery Student	3.7%	5.3%	4.0%	1.3%	1.3%		
Nursing & Midwifery	23.9%	27.6%	27.7%	27.7%	27.7%	26.2%	26.2%
Dietitians	3.3%	4.0%	5.2%	4.9%	4.9%	4.9%	5.1%
Occupational Therapists	19.1%	18.6%	18.8%	19.0%	19.0%	19.5%	19.2%
Orthoptists	0.5%	0.5%	0.5%	0.5%	0.5%	0.3%	0.3%
Physiotherapists	18.1%	21.1%	20.0%	20.0%	20.0%	21.4%	20.9%
Podiatrists & Chiropodists	2.8%	2.5%	2.2%	2.2%	2.2%	2.5%	3.1%
Speech & Language Therapists	22.6%	22.9%	24.4%	25.7%	25.7%	24.1%	23.8%
Therapy Professions	66.4%	69.7%	71.1%	72.4%	72.4%	72.7%	72.4%
Audiology	1.5%	1.9%	1.8%	1.6%	1.6%	1.9%	1.9%
Clinical Engineering	0.3%			0.3%	0.3%	0.3%	0.3%
Physicists	0.3%						
Health Science/ Diagnostics	2.2%	1.9%	1.8%	1.9%	1.9%	2.2%	2.2%
Social Care	3.7%	3.5%	3.0%	2.7%	2.7%	2.4%	2.4%
Social Workers	3.0%	2.3%	2.1%	2.2%	2.2%	1.4%	1.3%
Psychologists	10.0%	8.8%	8.6%	7.7%	7.7%	8.3%	8.4%
Pharmacy	0.3%	0.3%	0.3%	0.3%	0.3%	0.5%	0.6%
Counsellor Therapists	3.0%	2.9%	2.4%	1.9%	1.9%	3.1%	3.5%
Dental Hygienists	1.1%	0.8%	1.4%	1.4%	1.4%	1.4%	1.4%
Other Health & Social Care	10.2%	9.8%	9.2%	9.5%	9.5%	8.0%	7.8%
H&SC, Other	14.3%	13.5%	13.0%	12.8%	12.8%	12.5%	12.7%
Health & Social Care Professionals	24.2%	27.8%	27.8%	27.6%	27.6%	28.0%	28.0%
Executive Management	2.7%	3.1%	2.8%	2.5%	2.5%	2.7%	3.0%
Senior Management (VIII & GM)	7.0%	8.4%	8.4%	7.4%	7.4%	8.4%	8.5%
Management (VIII & above)	9.7%	11.5%	11.2%	9.9%	9.9%	11.1%	11.5%
Administrative/ Supervisory (V to VII)	13.6%	14.3%	16.1%	18.6%	18.6%	22.3%	21.9%
Clerical (III & IV)	76.7%	74.2%	72.7%	71.5%	71.5%	66.6%	66.6%
Management & Administrative	23.6%	28.8%	28.5%	29.3%	29.3%	27.0%	27.0%
Support	70.6%	70.8%	74.0%	69.9%	69.9%	69.4%	68.1%

Jun 2021 (Dec 2019 figure: 1,134)	WTE Dec 2016	WTE Dec 2017	WTE Dec 2018	WTE Dec 2019	WTE Dec 2019	WTE Apr 2021	WTE Jun 2021
Primary Care	1,238	1,090	1,160	1,134	1,235	1,281	1,271
Maintenance/ Technical	29.4%	29.2%	26.0%	30.1%	30.1%	30.6%	31.9%
General Support	2.5%	2.8%	3.0%	2.6%	2.6%	2.2%	2.2%
HCA, Nurse's Aide, etc.	2.4%	8.1%	6.9%	7.7%	7.7%	3.7%	3.5%
Health & Social Care Assistants	0.4%	7.1%	23.2%	17.2%	17.2%	8.7%	9.5%
Swabber (COVID-19)						44.4%	44.1%
Health Care Assistants	2.9%	15.2%	30.0%	25.0%	25.0%	56.8%	57.1%
Home Help	72.5%						
Care, other	24.7%	84.8%	70.0%	75.0%	75.0%	43.2%	42.9%
Patient & Client Care	18.8%	5.2%	5.6%	5.0%	5.0%	9.1%	9.1%
Total	100 %	100 %	100 %	100 %	100 %	100 %	100 %

Jun 2021 (Dec 2019 figure: 1,497)	WTE Dec 2016	WTE Dec 2017	WTE Dec 2018	WTE Dec 2019	WTE Dec 2019	WTE Apr 2021	WTE Jun 2021
Disabilities	1,338	1,395	1,420	1,497	1,516	1,516	1,550
Consultant Paediatrics	16.7%	16.7%	16.4%	15.6%	15.6%	15.7%	15.6%
Consultant Psychiatry	33.3%	33.3%	34.3%	37.5%	37.5%	37.8%	37.5%
Consultants	50.0%	50.0%	50.7%	53.1%	53.1%	53.5%	53.1%
Registrars	33.3%	33.3%	32.8%	31.3%	31.3%	30.7%	31.3%
Medical/ Dental, other	16.7%	16.7%	16.4%	15.6%	15.6%	15.7%	15.6%
Medical & Dental	0.4%	0.4%	0.4%	0.4%	0.4%	0.4%	0.4%
Clinical Nurse/ Midwife Manager	24.3%	26.1%	27.5%	30.0%	30.0%	31.1%	31.4%
Director Nursing/Midwifery, Assistant	0.7%	0.4%					
Director of Nursing/Midwifery	1.1%	0.7%	0.7%	1.1%	1.1%	1.1%	1.1%
Nurse/ Midwife Manager	26.0%	27.1%	28.2%	31.1%	31.1%	32.2%	32.5%
Advanced Nurse/ Midwife Practitioner		0.4%	0.4%	0.4%	0.4%	0.4%	0.4%
Clinical Nurse/ Midwife Specialist	2.6%	2.3%	2.0%	2.0%	2.0%	2.3%	2.4%
Nurse/ Midwife Specialist & AN/MP	2.6%	2.7%	2.3%	2.4%	2.4%	2.7%	2.8%
Staff Nurse [Intellectual Disability]	46.3%	36.3%	38.9%	36.1%	36.1%	46.6%	45.9%
Staff Nurse [Psychiatric]	6.2%	8.6%	7.0%	7.7%	7.7%	6.3%	6.1%
Staff Nurses [General/ Children's]	19.0%	25.3%	23.5%	22.7%	22.7%	12.2%	12.7%
Staff Nurse/ Staff Midwife	71.4%	70.2%	69.4%	66.5%	66.5%	65.1%	64.7%
Pre-registration Nurse Intern (COVID-19)							
Nursing/ Midwifery Student							
Nursing & Midwifery	20.6%	19.5%	17.8%	16.6%	16.6%	16.0%	16.0%
Dietitians	0.6%			0.2%	0.2%	0.3%	0.3%
Occupational Therapists	3.8%	3.7%	3.1%	3.6%	3.6%	3.1%	3.0%
Physiotherapists	3.8%	4.0%	3.6%	4.0%	4.0%	3.5%	3.2%
Speech & Language Therapists	5.3%	5.4%	5.0%	5.1%	5.1%	3.2%	3.4%
Therapy Professions	13.6%	13.1%	11.7%	12.9%	12.9%	10.1%	9.8%
Social Care	63.8%	65.0%	67.9%	69.1%	69.1%	74.0%	74.5%
Social Workers	8.5%	8.8%	8.0%	8.1%	8.1%	8.0%	7.8%
Psychologists	7.3%	7.0%	6.5%	4.9%	4.9%	4.6%	4.3%
Counsellor Therapists	0.4%	0.7%	0.8%	1.0%	1.0%	1.2%	1.5%
HSCP Trainees/ Students	0.9%	0.2%					
Other Health & Social Care	4.7%	4.3%	4.2%	3.2%	3.2%	2.1%	2.0%
Play Therapists/ Specialists	0.8%	0.9%	0.8%	0.8%	0.8%		
H&SC, Other	6.7%	6.1%	5.8%	4.9%	4.9%	3.3%	3.5%
Health & Social Care Professionals	19.3%	20.1%	21.6%	21.4%	21.4%	22.5%	22.5%
Executive Management	2.0%	1.9%	1.9%	1.9%	1.9%	1.8%	1.8%
Senior Management (VIII & GM)	11.7%	11.1%	12.5%	13.1%	13.1%	12.7%	14.1%
Management (VIII & above)	13.7%	13.0%	14.4%	15.0%	15.0%	14.5%	15.9%

Jun 2021 (Dec 2019 figure: 1,497)	WTE Dec 2016	WTE Dec 2017	WTE Dec 2018	WTE Dec 2019	WTE Dec 2019	WTE Apr 2021	WTE Jun 2021
Disabilities	1,338	1,395	1,420	1,497	1,516	1,516	1,550
Administrative/ Supervisory (V to VII)	34.7%	38.6%	36.6%	38.2%	38.2%	40.1%	41.2%
Clerical (III & IV)	51.7%	48.4%	49.1%	46.8%	46.8%	45.4%	42.9%
Management & Administrative	7.6%	7.7%	7.4%	7.1%	7.1%	7.1%	7.1%
Support	77.5%	78.2%	79.1%	77.5%	77.5%	76.5%	77.4%
Maintenance/ Technical	22.5%	21.8%	20.9%	22.5%	22.5%	23.5%	22.6%
General Support	4.3%	4.3%	4.0%	3.9%	3.9%	3.7%	3.7%
Health Care Assistants	81.9%	82.7%	82.5%	82.3%	82.3%	82.6%	82.8%
Care, other	18.1%	17.3%	17.5%	17.7%	17.7%	17.4%	17.2%
Patient & Client Care	47.8%	48.0%	48.8%	50.6%	50.6%	50.3%	50.3%
Total	100 %	100 %	100 %	100 %	100 %	100 %	100 %

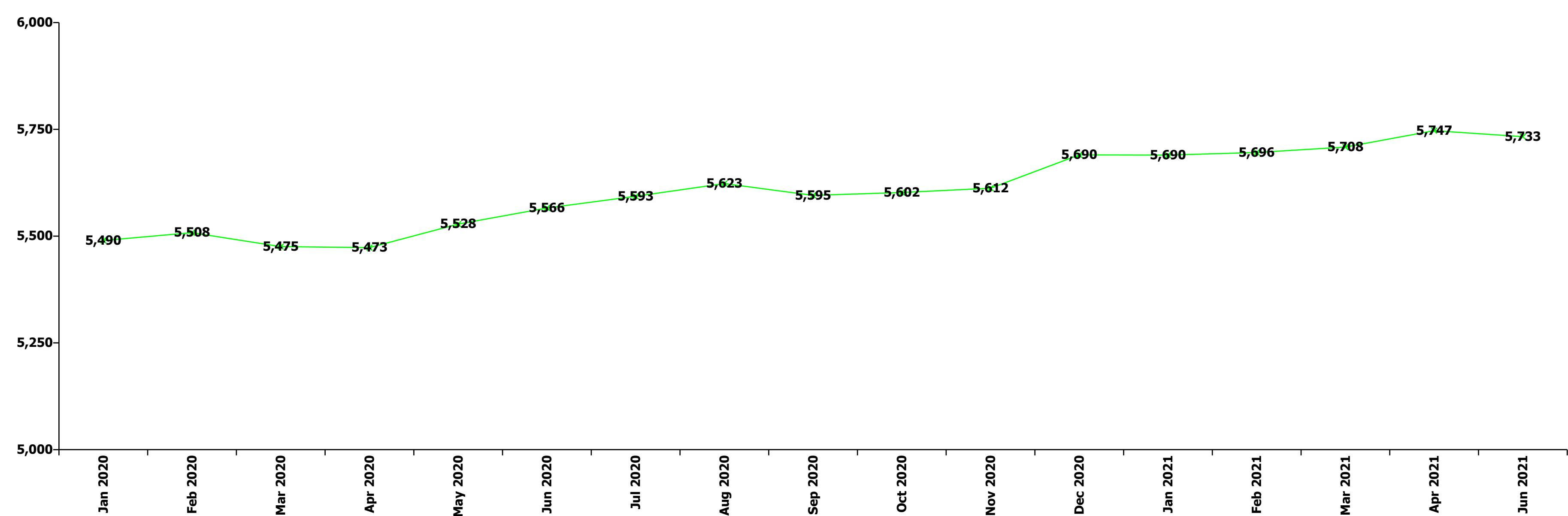
Jun 2021 (Dec 2019 figure: 1,606)	WTE Dec 2016	WTE Dec 2017	WTE Dec 2018	WTE Dec 2019	WTE Dec 2019	WTE Apr 2021	WTE Jun 2021
Older People	1,376	1,586	1,641	1,606	1,590	1,570	1,536
Medical/ Dental, other	100.0%	100.0%	100.0%	100.0%	100.0%	100.0%	100.0%
Medical & Dental	0.8%	0.7%	0.7%	0.7%	0.7%	0.7%	0.7%
Clinical Nurse/ Midwife Manager	10.7%	11.4%	11.4%	10.2%	10.2%	13.4%	12.9%
Director Nursing/Midwifery, Assistant	1.0%	1.5%	1.3%	1.6%	1.6%	1.5%	1.8%
Director of Nursing/Midwifery	3.5%	3.4%	3.8%	4.3%	4.3%	3.6%	3.3%
Nurse/ Midwife Manager	15.2%	16.3%	16.5%	16.1%	16.1%	18.5%	18.1%
Nurse/ Midwife Specialist & AN/MP				0.6%	0.6%	0.5%	0.5%
Staff Midwives	0.1%	0.2%					
Staff Nurse [Intellectual Disability]		0.2%					
Staff Nurses [General/ Children's]	84.5%	83.0%	83.2%	83.2%	83.2%	80.7%	81.1%
Staff Nurse/ Staff Midwife	84.6%	83.4%	83.2%	83.2%	83.2%	80.7%	81.1%
Public Health Nurse	0.2%	0.2%	0.3%	0.2%	0.2%	0.3%	0.3%
Nursing & Midwifery	27.0%	24.1%	22.8%	22.6%	22.6%	24.9%	24.9%
Dietitians	6.6%	6.1%		1.3%	1.3%	3.5%	3.6%
Occupational Therapists	26.3%	21.9%	26.6%	25.5%	25.5%	25.1%	24.9%
Physiotherapists	38.2%	38.5%	38.4%	36.1%	36.1%	37.8%	36.5%
Speech & Language Therapists	2.8%	5.7%	5.5%	5.3%	5.3%	4.7%	5.0%
Therapy Professions	74.0%	72.2%	70.4%	68.2%	68.2%	71.2%	69.9%
Radiographers	1.7%	1.7%	1.7%	1.6%	1.6%	1.4%	1.5%
Health Science/ Diagnostics	1.7%	1.7%	1.7%	1.6%	1.6%	1.4%	1.5%
Social Workers	21.3%	24.6%	26.5%	27.5%	27.5%	25.0%	26.0%
Pharmacy	1.4%	1.5%	1.4%	2.7%	2.7%	2.4%	2.6%
Play Therapists/ Specialists	1.6%	0.0%	0.0%	0.0%	0.0%		
H&SC, Other	1.6%		0.0%	0.0%	0.0%		
Health & Social Care Professionals	2.6%	2.2%	2.2%	2.3%	2.3%	2.6%	2.6%
Management (VIII & above)	2.9%	1.2%	2.2%	2.5%	2.5%	1.4%	2.7%
Administrative/ Supervisory (V to VII)	9.0%	8.3%	9.4%	9.4%	9.4%	11.1%	12.0%
Clerical (III & IV)	88.0%	90.5%	88.4%	88.1%	88.1%	87.5%	85.3%
Management & Administrative	5.0%	5.2%	5.6%	5.1%	5.1%	4.8%	4.8%
Support	80.3%	79.5%	77.3%	74.7%	74.7%	75.2%	76.1%
Maintenance/ Technical	19.7%	20.5%	22.7%	25.3%	25.3%	24.8%	23.9%
General Support	6.3%	5.1%	5.0%	4.7%	4.7%	5.0%	5.0%
HCA, Nurse's Aide, etc.	62.8%	52.2%	51.4%	49.3%	49.3%	52.5%	54.7%
Health & Social Care Assistants	0.5%	0.4%	0.4%	0.3%	0.3%	0.3%	0.3%

Jun 2021 (Dec 2019 figure: 1,606)	WTE Dec 2016	WTE Dec 2017	WTE Dec 2018	WTE Dec 2019	WTE Dec 2019	WTE Apr 2021	WTE Jun 2021
Older People	1,376	1,586	1,641	1,606	1,590	1,570	1,536
Health Care Assistants	63.3%	52.6%	51.8%	49.6%	49.6%	52.8%	55.1%
Home Help	34.9%	45.0%	46.0%	48.1%	48.1%	43.2%	40.8%
Care, other	1.8%	2.4%	2.3%	2.4%	2.4%	4.0%	4.1%
Patient & Client Care	58.4%	62.8%	63.7%	64.7%	64.7%	62.0%	62.0%
Total	100 %	100 %	100 %	100 %	100 %	100 %	100 %

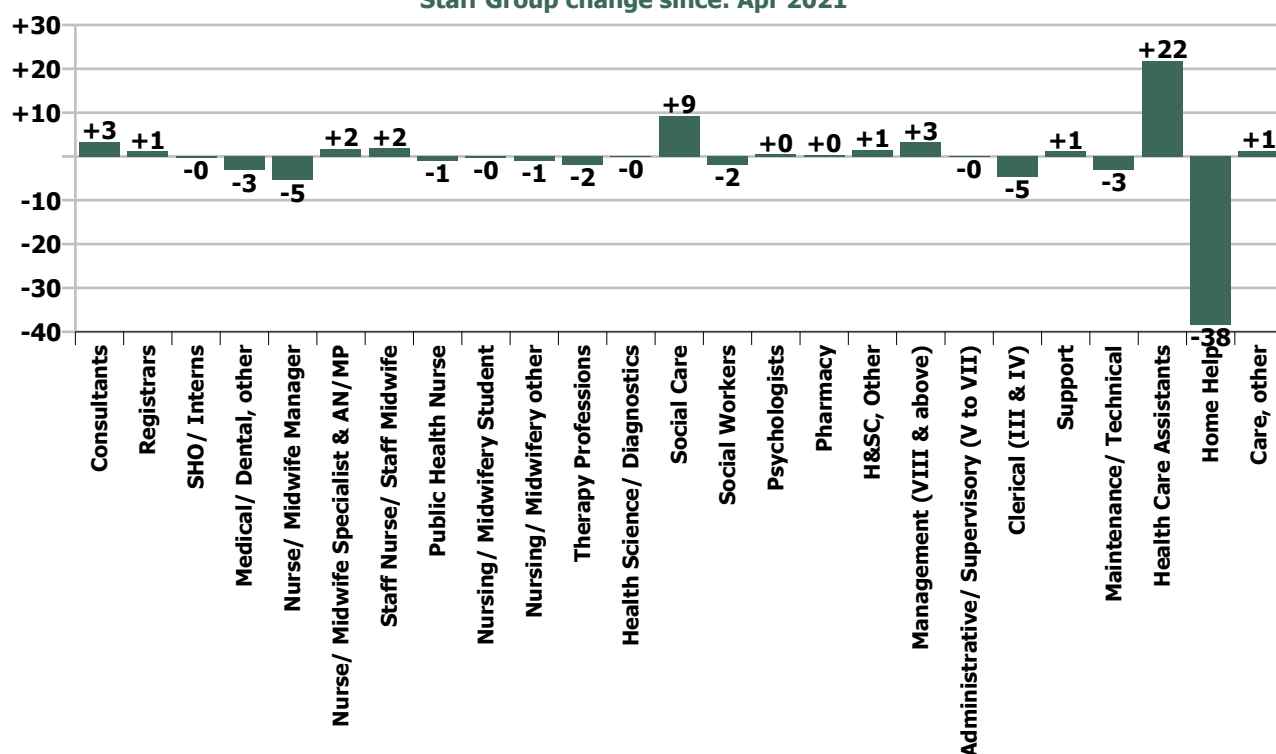
Summary Staff Movement: June 2021

Month-on-month Summary																												
WTE change since Apr 21	% change since Apr 21	overall	Consultants	Registrars	SHO/ Interns	Medical/ Dental, other	Medical & Dental	Nurse/ Midwife Manager	Nurse/ Midwife Specialist & AN/MP	Staff Nurse/ Staff Midwife	Public Health Nurse	Nursing/ Midwifery Student	Nursing/ Midwifery other	Nursing & Midwifery	Therapy Professions	Health Science/ Diagnostics	Social Care	Social Workers	Psychologists	Pharmacy	H&SC, Other	Health & Social Care Professionals	Management (VIII & above)	Administrative/ Supervisory (V to VII)	Clerical (III & IV)	Management & Administrative	General Support	Patient & Client Care
Overall	-0.2%	-14	+3.3	+1.2	-0.4	-3.2	+1.0	-5.5	+1.8	+1.8	-0.9	-0.3	-1.0	-4.0	-1.9	-0.1	+9.3	-1.9	+0.5	+0.3	+1.5	+7.7	+3.2	-0.1	-4.7	-1.6	-1.8	-15.1
Community Health & Wellbeing	-2.8%	-0																				0.0	-0.3	0.0	-0.3		0.0	
Mental Health	-0.3%	-3	+2.0	+1.5	-0.4	-0.6	+2.6	-1.4	+1.3	-0.2		-0.3	-1.0	-1.5	+1.7		-0.6	-1.6	+0.6	0.0	-0.1	-0.1	-0.6	-0.3	-1.4	-2.3	-1.4	-0.8
Primary Care	-0.8%	-10	+1.3	-0.4	-0.0	-2.6	-1.7	-3.2	+0.5	-0.8	-0.9			-4.6	-1.7	-0.1	+0.0	-0.2	+0.2	+0.3	+0.6	-0.8	+1.1	-2.0	-0.9	-1.8	-1.2	+0.2
Disabilities	+2.2%	+34	0.0	+0.0		0.0	+0.0	-0.1	+0.0	-2.8				-2.8	+0.2		+9.9	+0.0	-0.3		+1.0	+10.8	+1.7	+1.5	-2.4	+0.9	+2.2	+22.4
Older People	-2.1%	-34				0.0	0.0	-0.7	0.0	+5.6	0.0			+4.9	-2.1	0.0		-0.1		0.0		-2.2	+1.0	+0.9	+0.1	+2.0	-1.5	-37.0
Social Care	-0.0%	-0	0.0	+0.0		0.0	+0.0	-0.8	+0.0	+2.9	0.0			+2.0	-1.9	0.0	+9.9	-0.1	-0.3	0.0	+1.0	+8.7	+2.7	+2.4	-2.3	+2.8	+0.8	-14.6
Change	-13.9	-0.2%	+7.4%	+1.4%	-1.0%	-5.5%	+0.4%	-1.7%	+1.6%	+0.2%	-0.5%	-1.2%	-50.0%	-0.3%	-0.5%	-1.0%	+3.4%	-2.2%	+0.6%	+7.4%	+2.5%	+0.9%	+5.5%	-0.1%	-1.1%	-0.2%	-0.8%	-0.7%

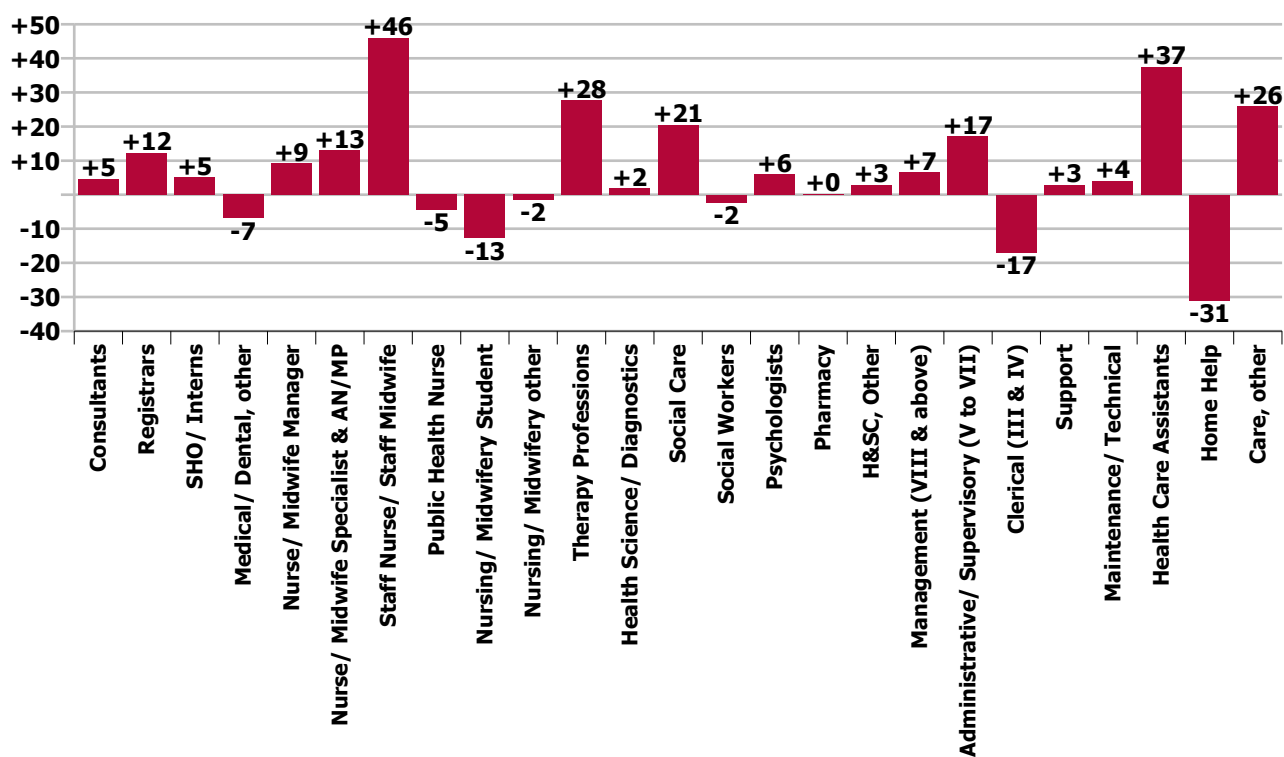
Year-on-year Summary																												
WTE change since Jun 20	% change since Jun 20	overall	Consultants	Registrars	SHO/ Interns	Medical/ Dental, other	Medical & Dental	Nurse/ Midwife Manager	Nurse/ Midwife Specialist & AN/MP	Staff Nurse/ Staff Midwife	Public Health Nurse	Nursing/ Midwifery Student	Nursing/ Midwifery other	Nursing & Midwifery	Therapy Professions	Health Science/ Diagnostics	Social Care	Social Workers	Psychologists	Pharmacy	H&SC, Other	Health & Social Care Professionals	Management (VIII & above)	Administrative/ Supervisory (V to VII)	Clerical (III & IV)	Management & Administrative	General Support	Patient & Client Care
Overall	+3.0%	+167	+4.6	+12.3	+5.1	-6.9	+15.0	+9.1	+12.9	+46.0	-4.5	-12.8	-1.5	+49.3	+27.7	+1.8	+20.5	-2.2	+5.9	+0.2	+2.9	+56.8	+6.6	+17.1	-17.0	+6.8	+7.0	+32.3
Community Health & Wellbeing	-2.8%	-0																					0.0	-0.2	0.0	-0.2		0.0
Mental Health	-0.3%	-3	+2.7	+4.4	+5.1	-1.0	+11.2	+3.2	+4.1	+25.7		-9.8	-1.5	+21.7	+5.6		+0.3	-3.4	+2.1	-1.0	-0.2	+3.4	-2.0	+0.5	-4.9	-6.4	+2.3	-6.9
Primary Care	-0.8%	-10	+2.0	+7.8	-0.0	-5.9	+3.9	-0.8	+8.3	+14.2	-4.5	-3.0		+14.2	+19.6	+1.8	-0.2	-1.0	+4.0	+1.2	+5.0	+30.4	+4.8	+11.0	-4.1	+11.7	-1.7	+56.3
Disabilities	+5.1%	+75.4	-0.1	0.0		0.0	-0.1	+4.3	+0.5	-3.1				+1.8	-1.1		+20.4	+1.1	-0.3		-1.9	+18.2	+2.8	+5.8	-1.5	+7.2	+4.1	+44.3
Older People	-3.1%	-48.4				0.0	0.0	+2.4	+0.0	+9.2	0.0			+11.6	+3.7	0.0		+1.1		+0.0		+4.8	+1.0	+0.0	-6.5	-5.5	+2.2	-61.5
Social Care	-0.0%	-0	-0.1	0.0		0.0	-0.1	+6.7	+0.6	+6.0	0.0			+13.3	+2.5	0.0	+20.4	+2.2	-0.3	+0.0	-1.9	+23.0	+3.8	+5.8	-7.9	+1.7	+6.3	-17.2
Change	+167.1	+3.0%	+10.5%	+16.0%	+14.6%	-11.3%	+6.9%	+2.9%	+13.1%	+5.2%	-2.3%	-37.5%	-60.0%	+3.2%	+7.9%	+27.9%	+7.8%	-2.7%	+7.6%	+4.8%	+5.0%	+6.7%	+12.0%	+11.9%	-3.7%	+1.0%	+3.2%	+1.5%



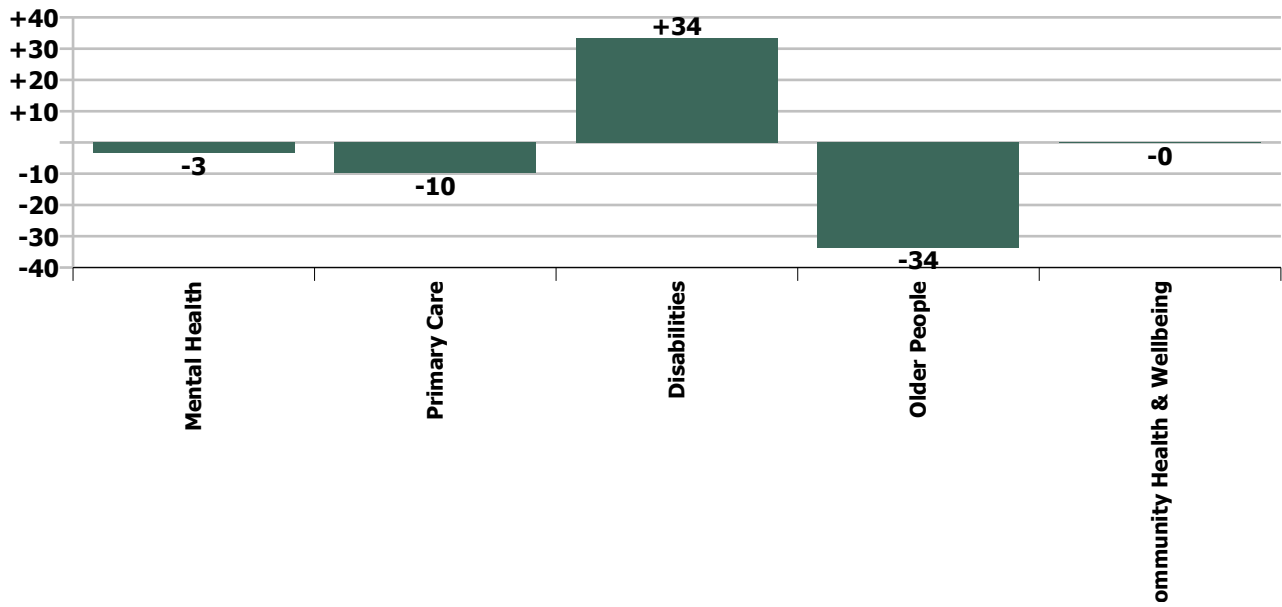
Staff Group change since: Apr 2021



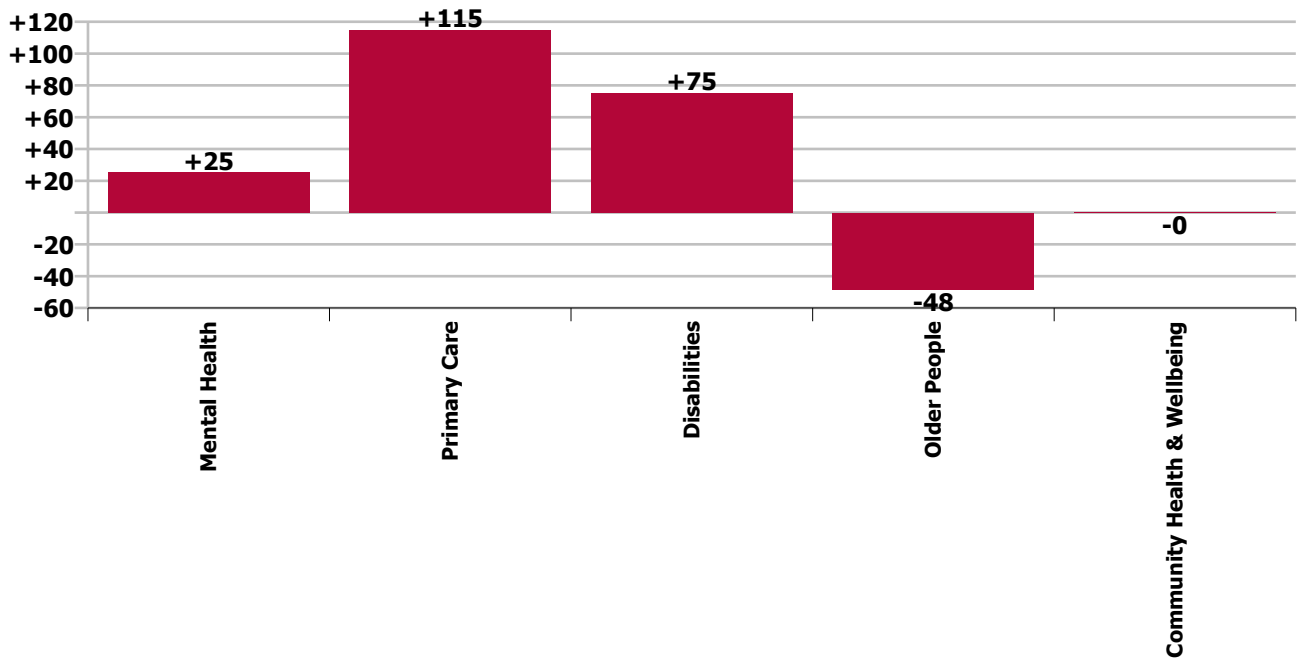
Staff Group change since: Jun 2020



Care Group change since: Apr 2021



Care Group change since: Jun 2020



Longitudinal Employment Levels by Grade Group - Dec 2016 to Jun 2021

Jun 2021 (Dec 2016 figure: 5,236)	WTE Jun 2021	WTE change since Dec 16	WTE change since Dec 17	WTE change since Dec 18	WTE change since Dec 19	WTE change since Dec 20	WTE change since Apr 21	% change since Dec 16	% change since Dec 17	% change since Dec 18	% change since Dec 19	% change since Dec 20	% change since Apr 21
Overall	5,733	+497	+356	+174	+188	+43	-14	+9.5%	+6.6%	+3.1%	+3.4%	+0.8%	-0.2%
Consultant Medicine	3	+2	+2	+2	+2	+2	+1	+200.0%	+200.0%	+200.0%	+200.0%	+200.0%	+79.6%
Consultant Paediatrics	1												
Consultant Psychiatry	44	+12	+11	+10	+4	+5	+2	+38.4%	+31.2%	+28.3%	+10.7%	+12.1%	+4.8%
Consultant Surgery	0	-1	-1	-0	+0	-0	-0	-78.3%	-78.3%	-6.7%	+12.0%	-6.7%	-9.7%
Consultants	49	+13	+12	+12	+6	+7	+3	+37.7%	+31.1%	+31.9%	+14.9%	+16.2%	+7.4%
Registrar	69	+17	+9	+10	+11	+5	+0	+33.6%	+15.9%	+17.8%	+18.5%	+7.1%	+0.7%
Senior Registrar	20	+12	+12	+9	+3	-1	+1	+152.3%	+137.4%	+75.5%	+18.7%	-6.1%	+3.8%
Registrars	89	+30	+21	+19	+14	+3	+1	+49.5%	+31.1%	+27.3%	+18.5%	+3.8%	+1.4%
Senior House Officer	40	+3	+2	-2	+4	-3	-0	+7.4%	+5.1%	-5.8%	+10.4%	-7.6%	-1.0%
SHO/ Interns	40	+3	+2	-2	+4	-3	-0	+7.4%	+5.1%	-5.8%	+10.4%	-7.6%	-1.0%
Dentists	21	-1	-1	-2	-0	-1	-2	-3.7%	-5.2%	-10.7%	-2.0%	-2.6%	-7.1%
Other Medical	33	-5	-5	-5	-4	-7	-2	-12.7%	-12.5%	-13.7%	-11.5%	-18.0%	-4.5%
Medical/ Dental, other	54	-6	-6	-8	-5	-8	-3	-9.5%	-9.8%	-12.6%	-8.1%	-12.7%	-5.5%
Medical & Dental	231	+40	+29	+21	+19	-1	+1	+20.8%	+14.1%	+9.8%	+9.1%	-0.5%	+0.4%
Clinical Nurse/ Midwife Manager	261	+24	+22	+7	+20	+5	-1	+10.3%	+9.0%	+2.9%	+8.3%	+1.8%	-0.3%
Director Nursing/Midwifery, Assistant	44	+6	+3	+4	-1	+0	-3	+16.8%	+7.5%	+11.0%	-2.3%	+0.8%	-5.8%
Director of Nursing/Midwifery	22	+1	+1	+0	-2	-2	-2	+3.4%	+3.9%	+1.7%	-7.1%	-9.6%	-8.5%
Nurse/ Midwife Manager	326	+31	+25	+12	+17	+3	-5	+10.6%	+8.5%	+3.8%	+5.6%	+0.8%	-1.7%
Advanced Nurse/ Midwife Practitioner	11	+8	+7	+5	+2	-0	-0	+262.7%	+172.0%	+81.3%	+20.9%	-0.2%	-0.3%
Clinical Nurse/ Midwife Specialist	100	+36	+23	+22	+17	+3	+2	+56.7%	+30.3%	+28.3%	+20.1%	+3.6%	+1.8%
Nurse/ Midwife Specialist & AN/MP	111	+44	+30	+27	+19	+3	+2	+65.9%	+37.3%	+32.1%	+20.2%	+3.2%	+1.6%
Staff Midwives		-0	-1					-100.0%	-100.0%	-100.0%	-100.0%	-100.0%	-100.0%
Staff Nurse [Intellectual Disability]	114	-14	+15	+16	+24	-7	-3	-10.7%	+14.8%	+15.8%	+26.8%	-5.5%	-2.6%
Staff Nurse [Psychiatric]	385	+3	+14	+15	+13	+20	-2	+0.7%	+3.8%	+4.0%	+3.6%	+5.5%	-0.5%
Staff Nurses [General/ Children's]	439	-9	-25	-16	+2	+16	+7	-2.0%	-5.5%	-3.4%	+0.6%	+3.9%	+1.6%
Staff Nurse/ Staff Midwife	938	-20	+2	+15	+40	+30	+2	-2.1%	+0.3%	+1.6%	+4.4%	+3.3%	+0.2%
Public Health Nurse	190	+14	+16	+3	-1	-8	-1	+8.0%	+9.3%	+1.8%	-0.6%	-4.1%	-0.5%
Pre-registration Nurse/ Midwife Intern	21	+21	+8	+21	+21	+21	+0	-100.0%	+57.9%	-100.0%	+17191.7%	-100.0%	+1.2%
Pre-registration Nurse Intern (COVID-19)	1	+1	+1	+1	+1	-10	-1	-100.0%	-100.0%	-100.0%	-100.0%	-95.4%	-50.0%
Post-registration Nurse/ Midwife Student		-11	-16	-13	-4			-100.0%	-100.0%	-100.0%	-100.0%	-100.0%	-100.0%
Nursing/ Midwifery awaiting registration				-11	-5			-100.0%	-100.0%	-100.0%	-100.0%	-100.0%	-100.0%
Nursing/ Midwifery Student	21	+10	-8	-3	+12	+10	-0	+93.2%	-27.1%	-11.5%	+139.6%	+95.9%	-1.2%
Nursing/ Midwifery other	1	+1	-1	-2	-1	-1	-1	-100.0%	-50.0%	-66.7%	-50.0%	-37.5%	-50.0%
Nursing & Midwifery	1,588	+81	+65	+52	+86	+38	-4	+5.3%	+4.3%	+3.4%	+5.7%	+2.4%	-0.3%
Dietitians	28	+10	+8	+7	+8	+2	+2	+56.0%	+43.7%	+36.7%	+41.2%	+9.7%	+9.9%

Jun 2021 (Dec 2016 figure: 5,236)	WTE Jun 2021	WTE change since Dec 16	WTE change since Dec 17	WTE change since Dec 18	WTE change since Dec 19	WTE change since Dec 20	WTE change since Apr 21	% change since Dec 16	% change since Dec 17	% change since Dec 18	% change since Dec 19	% change since Dec 20	% change since Apr 21
Overall	5,733	+497	+356	+174	+188	+43	-14	+9.5%	+6.6%	+3.1%	+3.4%	+0.8%	-0.2%
Occupational Therapists	130	+20	+19	+11	+13	+1	-2	+17.9%	+17.3%	+9.7%	+11.2%	+1.0%	-1.2%
Orthoptists	1	-1	-1	-1	-1	-1		-37.5%	-37.5%	-37.5%	-37.5%	-40.5%	
Physiotherapists	100	+22	+12	+11	+12	+6	-4	+28.5%	+13.5%	+12.6%	+13.0%	+6.9%	-3.8%
Podiatrists & Chiropodists	11	+3	+3	+4	+4	+4	+2	+30.7%	+44.3%	+59.1%	+58.1%	+48.2%	+24.9%
Speech & Language Therapists	108	+19	+14	+5	+4	+3	-1	+20.7%	+15.3%	+4.7%	+3.6%	+2.8%	-1.0%
Therapy Professions	378	+72	+57	+39	+40	+16	-2	+23.7%	+17.7%	+11.3%	+11.8%	+4.4%	-0.5%
Audiology	7	+2	+1	+1	+2	+1	-0	+44.4%	+16.5%	+15.9%	+37.3%	+13.4%	-1.2%
Clinical Engineering	1		+1	+1					-100.0%	-100.0%			
Physicists		-1						-100.0%	-100.0%	-100.0%	-100.0%	-100.0%	-100.0%
Radiographers	1												
Health Science/ Diagnostics	8	+1	+2	+2	+2	+1	-0	+14.6%	+30.7%	+30.1%	+28.1%	+10.5%	-1.0%
Social Care	284	+92	+78	+52	+39	+16	+9	+47.7%	+38.0%	+22.4%	+15.9%	+5.9%	+3.4%
Social Workers	82	+7	+6	+1	-2	-1	-2	+9.0%	+7.6%	+0.7%	-2.0%	-1.7%	-2.2%
Psychologists	83	+0	+2	-0	+10	+5	+0	+0.3%	+2.8%	-0.5%	+13.6%	+7.0%	+0.6%
Pharmacy	5	-0	+1	+1	+0	+1	+0	-6.8%	+13.8%	+14.1%	+5.3%	+26.5%	+7.4%
Counsellor Therapists	20	+10	+9	+7	+8	+6	+2	+95.4%	+80.6%	+60.4%	+75.9%	+46.9%	+13.6%
Dental Hygienists	5	+2	+3	+1	+1	+0	+0	+47.8%	+110.0%	+15.9%	+13.0%	+2.4%	+2.0%
HSCP Trainees/ Students		-2	-1					-100.0%	-100.0%	-100.0%	-100.0%	-100.0%	-100.0%
Other Health & Social Care	35	-8	-8	-8	-5	-2	-1	-18.1%	-18.2%	-17.9%	-12.4%	-6.1%	-2.7%
Play Therapists/ Specialists	1	-3	-3	-3	-3			-72.1%	-72.3%	-72.1%	-72.1%		
H&SC, Other	60	-1	+0	-2	+2	+4	+1	-2.4%	+0.8%	-3.4%	+2.6%	+7.3%	+2.5%
Health & Social Care Professionals	901	+170	+146	+91	+91	+42	+8	+23.3%	+19.3%	+11.2%	+11.2%	+4.9%	+0.9%
Executive Management	12	+3	+1	+1	+2	+1	+1	+25.3%	+5.1%	+8.8%	+21.0%	+7.9%	+9.5%
Senior Management (VIII & GM)	50	+11	+7	+3	+4	+3	+2	+28.7%	+17.0%	+6.5%	+8.6%	+6.3%	+4.5%
Management (VIII & above)	62	+14	+8	+4	+6	+4	+3	+28.0%	+14.4%	+6.9%	+10.9%	+6.6%	+5.5%
Middle Management (V-VII)	161	+58	+43	+37	+28	+0	-0	+57.2%	+37.1%	+30.4%	+21.2%	+0.3%	-0.1%
Other Administrative					-1			-100.0%	-100.0%	-100.0%	-100.0%	-100.0%	-100.0%
Administrative/ Supervisory (V to VII)	161	+58	+43	+37	+27	+0	-0	+57.2%	+37.1%	+30.4%	+20.3%	+0.3%	-0.1%
Clerical (III & IV)	441	-2	-28	-45	-27	-7	-5	-0.5%	-6.0%	-9.3%	-5.8%	-1.5%	-1.1%
Management & Administrative	663	+70	+23	-3	+6	-3	-2	+11.7%	+3.6%	-0.5%	+0.9%	-0.4%	-0.2%
Catering	41	+1	+5	+0	+1	+3	-0	+3.4%	+13.8%	+0.2%	+3.2%	+6.7%	-0.7%
Household Services	62	-19	-13	-8	-1	+1	+1	-23.5%	-16.8%	-10.8%	-1.0%	+0.9%	+2.3%
Other Support	36	-8	-6	-6	-3	-2	+0	-17.2%	-14.7%	-13.5%	-7.4%	-4.7%	+0.2%
Portering	13	-3	-5	-4	-3	-1	+0	-20.1%	-25.8%	-24.7%	-17.2%	-7.2%	+0.1%
Support	153	-29	-18	-17	-5	+0	+1	-15.8%	-10.7%	-10.2%	-3.1%	+0.2%	+0.8%
Maintenance/ Technical	73	-1	+1	+1	+5	-0	-3	-1.1%	+1.2%	+1.5%	+7.7%	-0.4%	-3.9%
General Support	226	-29	-18	-16	+0	+0	-2	-11.5%	-7.2%	-6.7%	+0.1%	+0.0%	-0.8%

Jun 2021 (Dec 2016 figure: 5,236)	WTE Jun 2021	WTE change since Dec 16	WTE change since Dec 17	WTE change since Dec 18	WTE change since Dec 19	WTE change since Dec 20	WTE change since Apr 21	% change since Dec 16	% change since Dec 17	% change since Dec 18	% change since Dec 19	% change since Dec 20	% change since Apr 21
Overall	5,733	+497	+356	+174	+188	+43	-14	+9.5%	+6.6%	+3.1%	+3.4%	+0.8%	-0.2%
HCA, Nurse's Aide, etc.	1,378	+131	+84	+47	+24	+16	+21	+10.5%	+6.5%	+3.6%	+1.8%	+1.1%	+1.6%
Health & Social Care Assistants	15	+8	+5	-5	+1	+7	+1	+125.1%	+53.5%	-25.4%	+7.6%	+89.4%	+7.3%
Swabber (COVID-19)	51	+51	+51	+51	+51	+2	-0	-100.0%	-100.0%	-100.0%	-100.0%	+4.7%	-0.6%
Health Care Assistants	1,443	+190	+140	+93	+76	+25	+22	+15.2%	+10.8%	+6.9%	+5.6%	+1.7%	+1.5%
Home Help	389	-61	-60	-92	-111	-67	-38	-13.5%	-13.3%	-19.1%	-22.1%	-14.8%	-9.0%
Care, other	291	+37	+29	+28	+20	+10	+1	+14.3%	+11.1%	+10.7%	+7.5%	+3.4%	+0.5%
Patient & Client Care	2,123	+166	+110	+30	-14	-33	-15	+8.5%	+5.5%	+1.4%	-0.7%	-1.5%	-0.7%

Source: Health Service Personnel Census

Longitudinal Employment Levels by Care Group - Dec 2016 to Jun 2021

Community Health & Wellbeing

Jun 2021 (figure:)	WTE Jun 2021	WTE change since	WTE change since	WTE change since	WTE change since	WTE change since Dec 20	WTE change since Apr 21	% change since	% change since	% change since	% change since	% change since Dec 20	% change since Apr 21
Overall	10	+10	+10	+10	+10	-0	-0	-100.0%	-100.0%	-100.0%	-100.0%	-3.3%	-2.8%
Management & Administrative	9	+9	+9	+9	+9	-0	-0	-1.0%	-1.0%	-1.0%	-1.0%	-0.0%	-0.0%
Management (VIII & above)	1	+1	+1	+1	+1			-1.0%	-1.0%	-1.0%	-1.0%	+0.0%	+0.0%
Administrative/ Supervisory (V to VII)	7	+7	+7	+7	+7	-0	-0	-1.0%	-1.0%	-1.0%	-1.0%	-0.0%	-0.0%
Clerical (III & IV)	1	+1	+1	+1	+1			-1.0%	-1.0%	-1.0%	-1.0%	+0.0%	+0.0%
Patient & Client Care	1	+1	+1	+1	+1			-1.0%	-1.0%	-1.0%	-1.0%	+0.0%	+0.0%
Care, other	1	+1	+1	+1	+1			-1.0%	-1.0%	-1.0%	-1.0%	+0.0%	+0.0%

Source: Health Service Personnel Census

Mental Health

Jun 2021 (Dec 2016 figure: 1,283)	WTE Jun 2021	WTE change since Dec 16	WTE change since Dec 17	WTE change since Dec 18	WTE change since Dec 19	WTE change since Dec 20	WTE change since Apr 21	% change since Dec 16	% change since Dec 17	% change since Dec 18	% change since Dec 19	% change since Dec 20	% change since Apr 21
Overall	1,366	+84	+60	+28	+58	+26	-3	+6.5%	+4.6%	+2.1%	+4.4%	+1.9%	-0.3%
Medical & Dental	119	+31	+19	+13	+13	+5	+3	+0.3%	+0.2%	+0.1%	+0.1%	+0.0%	+0.0%
Consultants	42	+12	+10	+9	+4	+5	+2	+0.4%	+0.3%	+0.3%	+0.1%	+0.1%	+0.1%
Registrars	40	+16	+12	+9	+7	+3	+2	+0.7%	+0.4%	+0.3%	+0.2%	+0.1%	+0.0%
SHO/ Interns	38	+5	-0	-4	+3	-2	-0	+0.2%	-0.0%	-0.1%	+0.1%	-0.1%	-0.0%
Medical/ Dental, other		-3	-3	-1	-1	-1	-1	-1.0%	-1.0%	-1.0%	-1.0%	-1.0%	-1.0%
Nursing & Midwifery	625	+60	+56	+38	+47	+28	-2	+0.1%	+0.1%	+0.1%	+0.1%	+0.0%	-0.0%
Nurse/ Midwife Manager	147	+3	+7	-8	+1	-4	-1	+0.0%	+0.1%	-0.1%	+0.0%	-0.0%	-0.0%
Nurse/ Midwife Specialist & AN/MP	78	+33	+18	+18	+10	-2	+1	+0.7%	+0.3%	+0.3%	+0.2%	-0.0%	+0.0%
Staff Nurse/ Staff Midwife	378	+2	+23	+20	+21	+23	-0	+0.0%	+0.1%	+0.1%	+0.1%	+0.1%	-0.0%
Nursing/ Midwifery Student	21	+21	+8	+10	+16	+11	-0	-1.0%	+0.6%	+0.9%	+3.4%	+1.1%	-0.0%
Nursing/ Midwifery other	1	+1	-1	-2	-1	-1	-1	-1.0%	-0.5%	-0.7%	-0.5%	-0.4%	-0.5%
Health & Social Care Professionals	156	+18	+17	+9	+16	+1	-0	+0.1%	+0.1%	+0.1%	+0.1%	+0.0%	-0.0%
Therapy Professions	58	+13	+9	+8	+12	+3	+2	+0.3%	+0.2%	+0.2%	+0.3%	+0.0%	+0.0%
Social Care	15	-1	+2	+1	+1	-1	-1	-0.1%	+0.1%	+0.1%	+0.0%	-0.0%	-0.0%
Social Workers	40	+3	+3	-1	-1	-2	-2	+0.1%	+0.1%	-0.0%	-0.0%	-0.0%	-0.0%
Psychologists	38	+4	+3	+2	+5	+1	+1	+0.1%	+0.1%	+0.1%	+0.1%	+0.0%	+0.0%
Pharmacy	2	-2	-1	-1	-1			-0.5%	-0.4%	-0.3%	-0.3%	+0.0%	+0.0%
H&SC, Other	3	+2	+1	-0	-0	-0	-0	+1.8%	+0.4%	-0.1%	-0.1%	-0.1%	-0.0%
Management & Administrative	128	-2	-8	-13	-9	-5	-2	-0.0%	-0.1%	-0.1%	-0.1%	-0.0%	-0.0%
Management (VIII & above)	2	-2	-1	-2	-3	-2	-1	-0.5%	-0.3%	-0.5%	-0.6%	-0.5%	-0.2%
Administrative/ Supervisory (V to VII)	25	+4	+1	+1	+1	-2	-0	+0.2%	+0.0%	+0.1%	+0.0%	-0.1%	-0.0%
Clerical (III & IV)	102	-4	-8	-12	-7	-1	-1	-0.0%	-0.1%	-0.1%	-0.1%	-0.0%	-0.0%
General Support	64	-17	-9	-5	+0	-1	-1	-0.2%	-0.1%	-0.1%	+0.0%	-0.0%	-0.0%
Support	31	-15	-8	-6	-5	-0	+1	-0.3%	-0.2%	-0.2%	-0.2%	-0.0%	+0.0%
Maintenance/ Technical	33	-2	-1	+0	+6	-0	-2	-0.1%	-0.0%	+0.0%	+0.2%	-0.0%	-0.1%
Patient & Client Care	275	-6	-16	-15	-9	-3	-1	-0.0%	-0.1%	-0.1%	-0.0%	-0.0%	-0.0%
Health Care Assistants	208	-6	-9	-9	-7	-3	+0	-0.0%	-0.0%	-0.0%	-0.0%	-0.0%	+0.0%
Care, other	67	+0	-7	-6	-2	+0	-1	+0.0%	-0.1%	-0.1%	-0.0%	+0.0%	-0.0%

Source: Health Service Personnel Census

Primary Care

Jun 2021 (Dec 2016 figure: 1,238)	WTE Jun 2021	WTE change since Dec 16	WTE change since Dec 17	WTE change since Dec 18	WTE change since Dec 19	WTE change since Dec 20	WTE change since Apr 21	% change since Dec 16	% change since Dec 17	% change since Dec 18	% change since Dec 19	% change since Dec 20	% change since Apr 21
Overall	1,271	+33	+182	+112	+138	+37	-10	+2.7%	+16.7%	+9.6%	+12.1%	+3.0%	-0.8%
Medical & Dental	95	+9	+10	+8	+7	-6	-2	+0.1%	+0.1%	+0.1%	+0.1%	-0.1%	-0.0%
Consultants	3	+1	+1	+2	+2	+2	+1	+0.4%	+0.4%	+1.5%	+1.6%	+1.5%	+0.7%
Registrars	47	+14	+9	+10	+7	-0	-0	+0.4%	+0.2%	+0.3%	+0.2%	-0.0%	-0.0%
SHO/ Interns	2	-3	+2	+2	+1	-1	-0	-0.6%	-1.0%	-1.0%	+1.0%	-0.3%	-0.0%
Medical/ Dental, other	42	-3	-2	-6	-3	-7	-3	-0.1%	-0.1%	-0.1%	-0.1%	-0.1%	-0.1%
Nursing & Midwifery	333	+38	+33	+12	+20	+8	-5	+0.1%	+0.1%	+0.0%	+0.1%	+0.0%	-0.0%
Nurse/ Midwife Manager	29	+7	+5	+4	+2	+1	-3	+0.3%	+0.2%	+0.1%	+0.1%	+0.1%	-0.1%
Nurse/ Midwife Specialist & AN/MP	25	+10	+10	+7	+8	+4	+0	+0.6%	+0.7%	+0.4%	+0.4%	+0.2%	+0.0%
Staff Nurse/ Staff Midwife	90	+19	+18	+11	+15	+10	-1	+0.3%	+0.2%	+0.1%	+0.2%	+0.1%	-0.0%
Public Health Nurse	189	+14	+16	+3	-1	-8	-1	+0.1%	+0.1%	+0.0%	-0.0%	-0.0%	-0.0%
Nursing/ Midwifery Student		-11	-16	-13	-4			-1.0%	-1.0%	-1.0%	-1.0%	-1.0%	-1.0%
Health & Social Care Professionals	356	+56	+54	+35	+44	+18	-1	+0.2%	+0.2%	+0.1%	+0.1%	+0.1%	-0.0%
Therapy Professions	258	+59	+47	+29	+32	+10	-2	+0.3%	+0.2%	+0.1%	+0.1%	+0.0%	-0.0%
Health Science/ Diagnostics	8	+1	+2	+2	+2	+1	-0	+0.2%	+0.3%	+0.3%	+0.3%	+0.1%	-0.0%
Social Care	9	-3	-2	-1	+0	-0	+0	-0.2%	-0.2%	-0.1%	+0.0%	-0.0%	+0.0%
Social Workers	5	-4	-2	-2	-2	-1	-0	-0.5%	-0.3%	-0.3%	-0.3%	-0.2%	-0.0%
Psychologists	30	+0	+3	+2	+6	+3	+0	+0.0%	+0.1%	+0.1%	+0.2%	+0.1%	+0.0%
Pharmacy	2	+1	+1	+1	+1	+1	+0	+1.0%	+1.0%	+1.0%	+1.0%	+1.0%	+0.2%
H&SC, Other	45	+2	+4	+3	+5	+4	+1	+0.1%	+0.1%	+0.1%	+0.1%	+0.1%	+0.0%
Management & Administrative	343	+50	+29	+13	+10	+6	-2	+0.2%	+0.1%	+0.0%	+0.0%	+0.0%	-0.0%
Management (VIII & above)	39	+11	+3	+2	+6	+4	+1	+0.4%	+0.1%	+0.1%	+0.2%	+0.1%	+0.0%
Administrative/ Supervisory (V to VII)	75	+35	+30	+22	+13	+2	-2	+0.9%	+0.7%	+0.4%	+0.2%	+0.0%	-0.0%
Clerical (III & IV)	229	+4	-4	-11	-9	+0	-1	+0.0%	-0.0%	-0.0%	-0.0%	+0.0%	-0.0%
General Support	28	-2	-3	-6	-2	-2	-1	-0.1%	-0.1%	-0.2%	-0.1%	-0.1%	-0.0%
Support	19	-2	-3	-6	-2	-3	-1	-0.1%	-0.1%	-0.3%	-0.1%	-0.1%	-0.1%
Maintenance/ Technical	9			+0		+1		+0.0%	+0.0%	+0.0%	+0.0%	+0.1%	+0.0%
Patient & Client Care	115	-118	+59	+51	+58	+13	+0	-0.5%	+1.0%	+0.8%	+1.0%	+0.1%	+0.0%
Health Care Assistants	66	+59	+57	+47	+52	+9	+1	+8.9%	+6.7%	+2.4%	+3.6%	+0.2%	+0.0%
Home Help		-169						-1.0%	-1.0%	-1.0%	-1.0%	-1.0%	-1.0%
Care, other	49	-8	+1	+4	+7	+4	-0	-0.1%	+0.0%	+0.1%	+0.2%	+0.1%	-0.0%

Source: Health Service Personnel Census

Disabilities

Jun 2021 (Dec 2016 figure: 1,338)	WTE Jun 2021	WTE change since Dec 16	WTE change since Dec 17	WTE change since Dec 18	WTE change since Dec 19	WTE change since Dec 20	WTE change since Apr 21	% change since Dec 16	% change since Dec 17	% change since Dec 18	% change since Dec 19	% change since Dec 20	% change since Apr 21
Overall	1,550	+212	+155	+130	+53	+34	+34	+15.8%	+11.1%	+9.1%	+3.5%	+2.3%	+2.2%
Medical & Dental	6	+0	+0	+0			+0	+0.1%	+0.1%	+0.1%	+0.0%	+0.0%	+0.0%
Consultants	3	+0	+0	+0				+0.1%	+0.1%	+0.1%	+0.0%	+0.0%	+0.0%
Registrars	2						+0	+0.0%	+0.0%	+0.0%	+0.0%	+0.0%	+0.0%
Medical/ Dental, other	1							+0.0%	+0.0%	+0.0%	+0.0%	+0.0%	+0.0%
Nursing & Midwifery	248	-27	-24	-5	-1	-6	-3	-0.1%	-0.1%	-0.0%	-0.0%	-0.0%	-0.0%
Nurse/ Midwife Manager	81	+9	+7	+9	+3	+3	-0	+0.1%	+0.1%	+0.1%	+0.0%	+0.0%	-0.0%
Nurse/ Midwife Specialist & AN/MP	7	-0	-0	+1	+1	+1	+0	-0.0%	-0.1%	+0.2%	+0.2%	+0.2%	+0.0%
Staff Nurse/ Staff Midwife	160	-36	-30	-15	-5	-9	-3	-0.2%	-0.2%	-0.1%	-0.0%	-0.1%	-0.0%
Nursing/ Midwifery Student						-1		-1.0%	-1.0%	-1.0%	-1.0%	-1.0%	-1.0%
Health & Social Care Professionals	349	+91	+69	+43	+28	+20	+11	+0.4%	+0.2%	+0.1%	+0.1%	+0.1%	+0.0%
Therapy Professions	34	-1	-2	-2	-7	+0	+0	-0.0%	-0.1%	-0.0%	-0.2%	+0.0%	+0.0%
Social Care	260	+96	+78	+52	+38	+17	+10	+0.6%	+0.4%	+0.3%	+0.2%	+0.1%	+0.0%
Social Workers	27	+5	+2	+3	+1	+1	+0	+0.2%	+0.1%	+0.1%	+0.0%	+0.1%	+0.0%
Psychologists	15	-4	-4	-5	-1	+1	-0	-0.2%	-0.2%	-0.2%	-0.0%	+0.1%	-0.0%
H&SC, Other	12	-5	-5	-5	-4	+1	+1	-0.3%	-0.3%	-0.3%	-0.2%	+0.1%	+0.1%
Management & Administrative	110	+8	+2	+6	+4	-0	+1	+0.1%	+0.0%	+0.1%	+0.0%	-0.0%	+0.0%
Management (VIII & above)	18	+4	+4	+3	+2	+2	+2	+0.3%	+0.3%	+0.2%	+0.1%	+0.1%	+0.1%
Administrative/ Supervisory (V to VII)	45	+10	+4	+7	+5	+1	+2	+0.3%	+0.1%	+0.2%	+0.1%	+0.0%	+0.0%
Clerical (III & IV)	47	-6	-5	-4	-2	-3	-2	-0.1%	-0.1%	-0.1%	-0.0%	-0.1%	-0.0%
General Support	57	-1	-3	-0	-1	+1	+2	-0.0%	-0.0%	-0.0%	-0.0%	+0.0%	+0.0%
Support	44	-1	-3	-1	-1	+1	+2	-0.0%	-0.1%	-0.0%	-0.0%	+0.0%	+0.1%
Maintenance/ Technical	13	-0	-0	+1	-0			-0.0%	-0.0%	+0.1%	-0.0%	+0.0%	+0.0%
Patient & Client Care	779	+140	+110	+86	+22	+19	+22	+0.2%	+0.2%	+0.1%	+0.0%	+0.0%	+0.0%
Health Care Assistants	645	+121	+92	+73	+22	+20	+19	+0.2%	+0.2%	+0.1%	+0.0%	+0.0%	+0.0%
Care, other	134	+19	+18	+13	+0	-1	+3	+0.2%	+0.2%	+0.1%	+0.0%	-0.0%	+0.0%

Source: Health Service Personnel Census

Older People

Jun 2021 (Dec 2016 figure: 1,376)	WTE Jun 2021	WTE change since Dec 16	WTE change since Dec 17	WTE change since Dec 18	WTE change since Dec 19	WTE change since Dec 20	WTE change since Apr 21	% change since Dec 16	% change since Dec 17	% change since Dec 18	% change since Dec 19	% change since Dec 20	% change since Apr 21
Overall	1,536	+160	-50	-105	-70	-54	-34	+11.6%	-3.2%	-6.4%	-4.4%	-3.4%	-2.1%
Medical & Dental	11	-0	-1	-1	-1			-0.0%	-0.1%	-0.1%	-0.0%	+0.0%	+0.0%
Medical/ Dental, other	11	-0	-1	-1	-1			-0.0%	-0.1%	-0.1%	-0.0%	+0.0%	+0.0%
Nursing & Midwifery	382	+11	+0	+7	+20	+8	+5	+0.0%	+0.0%	+0.0%	+0.1%	+0.0%	+0.0%
Nurse/ Midwife Manager	69	+13	+7	+7	+11	+3	-1	+0.2%	+0.1%	+0.1%	+0.2%	+0.0%	-0.0%
Nurse/ Midwife Specialist & AN/MP	2	+2	+2	+2				-1.0%	-1.0%	-1.0%	+0.0%	+0.0%	+0.0%
Staff Nurse/ Staff Midwife	310	-4	-8	-2	+9	+5	+6	-0.0%	-0.0%	-0.0%	+0.0%	+0.0%	+0.0%
Public Health Nurse	1	+0	+0		+0			+0.3%	+0.1%	+0.0%	+0.3%	+0.0%	+0.0%
Health & Social Care Professionals	40	+4	+6	+4	+3	+3	-2	+0.1%	+0.2%	+0.1%	+0.1%	+0.1%	-0.1%
Therapy Professions	28	+2	+3	+3	+3	+3	-2	+0.1%	+0.1%	+0.1%	+0.1%	+0.1%	-0.1%
Health Science/ Diagnostics	1							+0.0%	+0.0%	+0.0%	+0.0%	+0.0%	+0.0%
Social Workers	10	+3	+2	+1	+0		-0	+0.4%	+0.2%	+0.1%	+0.0%	+0.0%	-0.0%
Pharmacy	1	+1	+1	+1	+0			+1.0%	+1.0%	+1.0%	+0.0%	+0.0%	+0.0%
H&SC, Other		-1						-1.0%		-1.0%			-1.0%
Management & Administrative	73	+5	-9	-19	-8	-4	+2	+0.1%	-0.1%	-0.2%	-0.1%	-0.0%	+0.0%
Management (VIII & above)	2	-0	+1	-0	-0	-0	+1	-0.0%	+1.0%	-0.0%	-0.0%	-0.0%	+1.0%
Administrative/ Supervisory (V to VII)	9	+3	+2	+0	+1	-0	+1	+0.4%	+0.3%	+0.0%	+0.2%	-0.0%	+0.1%
Clerical (III & IV)	62	+2	-12	-19	-9	-3	+0	+0.0%	-0.2%	-0.2%	-0.1%	-0.1%	+0.0%
General Support	77	-9	-3	-4	+2	+2	-1	-0.1%	-0.0%	-0.1%	+0.0%	+0.0%	-0.0%
Support	59	-11	-5	-4	+3	+3	-0	-0.2%	-0.1%	-0.1%	+0.0%	+0.0%	-0.0%
Maintenance/ Technical	19	+1	+2		-0	-1	-1	+0.1%	+0.1%	+0.0%	-0.0%	-0.1%	-0.1%
Patient & Client Care	952	+149	-44	-93	-86	-62	-37	+0.2%	-0.0%	-0.1%	-0.1%	-0.1%	-0.0%
Health Care Assistants	524	+16	+0	-17	+9	-1	+2	+0.0%	+0.0%	-0.0%	+0.0%	-0.0%	+0.0%
Home Help	389	+109	-60	-92	-111	-67	-38	+0.4%	-0.1%	-0.2%	-0.2%	-0.1%	-0.1%
Care, other	39	+25	+16	+16	+15	+7	-0	+1.7%	+0.7%	+0.7%	+0.6%	+0.2%	-0.0%

Source: Health Service Personnel Census