

## CHO 2 Employment Report: November 2020

### Employment by Staff Group

Nov 2020 (Dec 2019 figure: 5,545)	WTE Oct 2020	WTE Nov 2020	WTE change since Oct 20	% change since Oct 20	WTE change since Dec 19	WTE change since Nov 19
<b>Overall</b>	<b>5,602</b>	<b>5,612</b>	<b>+10</b>	<b>+0.2%</b>	<b>+67</b>	<b>+108</b>
Consultants	44	42	-2	-4.8%	-0	+1
Registrars	89	89	-0	-0.3%	+13	+13
SHO/ Interns	42	43	+0	+0.9%	+7	+8
Medical/ Dental, other	61	63	+2	+3.4%	+4	+4
<b>Medical &amp; Dental</b>	<b>236</b>	<b>236</b>	<b>+0</b>	<b>+0.0%</b>	<b>+24</b>	<b>+25</b>
Nurse/ Midwife Manager	326	322	-5	-1.4%	+13	+16
Nurse/ Midwife Specialist & AN/MP	106	107	+1	+0.9%	+14	+13
Staff Nurse/ Staff Midwife	890	902	+11	+1.3%	+4	+2
Public Health Nurse	198	199	+1	+0.6%	+7	+7
<i>Pre-registration Nurse/ Midwife Intern</i>				-100.0%	-0	
<i>Pre-registration Nurse Intern (COVID-19)</i>	26	16	-10	-39.3%	+16	-10
<i>Post-registration Nurse/ Midwife Student</i>				-100.0%	-4	
<i>Nursing/ Midwifery awaiting registration</i>				-100.0%	-5	
Nursing/ Midwifery Student	26	16	-10	-39.3%	+7	+0
Nursing/ Midwifery other	3	3	-0	-5.6%	+1	+1
<b>Nursing &amp; Midwifery</b>	<b>1,550</b>	<b>1,548</b>	<b>-2</b>	<b>-0.1%</b>	<b>+46</b>	<b>+39</b>
Therapy Professions	360	360	+0	+0.1%	+22	+25
Health Science/ Diagnostics	34	34	+0	+0.8%	+1	+2
Social Care	261	265	+4	+1.6%	+20	+18
Social Workers	84	84	-0	-0.0%	+0	+0
Psychologists	81	78	-3	-3.2%	+5	+5
Pharmacy	4	4	+0	+2.4%	-1	-1
H&SC, Other	29	31	+2	+5.4%	-2	-1
<b>Health &amp; Social Care Professionals</b>	<b>853</b>	<b>857</b>	<b>+4</b>	<b>+0.5%</b>	<b>+46</b>	<b>+48</b>
Management (VIII & above)	59	58	-1	-1.8%	+2	+1
Administrative/ Supervisory (V to VII)	151	157	+6	+4.0%	+23	+22
Clerical (III & IV)	448	445	-3	-0.7%	-23	-22
<b>Management &amp; Administrative</b>	<b>658</b>	<b>660</b>	<b>+2</b>	<b>+0.3%</b>	<b>+2</b>	<b>+2</b>
Support	154	154	+0	+0.1%	-4	-7
Maintenance/ Technical	71	73	+2	+2.6%	+5	+3
<b>General Support</b>	<b>225</b>	<b>227</b>	<b>+2</b>	<b>+0.9%</b>	<b>+1</b>	<b>-4</b>
Health Care Assistants	1,383	1,378	-5	-0.4%	+11	+15
Care, other	272	280	+7	+2.6%	+9	+9
Home Help	426	428	+2	+0.4%	-72	-25
<b>Patient &amp; Client Care</b>	<b>2,081</b>	<b>2,085</b>	<b>+4</b>	<b>+0.2%</b>	<b>-52</b>	<b>-1</b>

## CHO 2 Employment Report: November 2020

### Community Health & Wellbeing

Nov 2020 ( figure: )	WTE Oct 2020	WTE Nov 2020	WTE change since Oct 20	% change since Oct 20	WTE change since	WTE change since
<b>Total Community Health &amp; Wellbeing</b>	<b>10</b>	<b>10</b>	<b>+0</b>	<b>+0.7%</b>	<b>+10</b>	<b>+10</b>
Management (VIII & above)	1	1			+1	+1
Administrative/ Supervisory (V to VII)	7	7	+0	+1.0%	+7	+7
Clerical (III & IV)	1	1			+1	+1
<b>Management &amp; Administrative</b>	<b>9</b>	<b>9</b>	<b>+0</b>	<b>+0.8%</b>	<b>+9</b>	<b>+9</b>
Care, other	1	1			+1	+1
<b>Patient &amp; Client Care</b>	<b>1</b>	<b>1</b>			<b>+1</b>	<b>+1</b>

### Mental Health

Nov 2020 (Dec 2019 figure: 1,308)	WTE Oct 2020	WTE Nov 2020	WTE change since Oct 20	% change since Oct 20	WTE change since Dec 19	WTE change since Nov 19
<b>Total Mental Health</b>	<b>1,353</b>	<b>1,345</b>	<b>-7</b>	<b>-0.5%</b>	<b>+37</b>	<b>+30</b>
Consultants	39	37	-2	-5.5%	-0	+1
Registrars	36	37	+0	+0.2%	+3	+3
SHO/ Interns	39	40	+0	+1.1%	+5	+5
Medical/ Dental, other	1	2	+1	+75.0%	+1	+1
<b>Medical &amp; Dental</b>	<b>116</b>	<b>115</b>	<b>-1</b>	<b>-0.8%</b>	<b>+9</b>	<b>+10</b>
Nurse/ Midwife Manager	154	151	-2	-1.5%	+5	+7
Nurse/ Midwife Specialist & AN/MP	78	79	+1	+1.2%	+11	+11
Staff Nurse/ Staff Midwife	346	355	+9	+2.5%	-2	-3
Pre-registration Nurse/ Midwife Intern				-100.0%	-0	
Pre-registration Nurse Intern (COVID-19)	26	15	-11	-40.9%	+15	-11
Nursing/ Midwifery awaiting registration				-100.0%	-5	
Nursing/ Midwifery Student	26	15	-11	-40.9%	+11	+4
Nursing/ Midwifery other	3	3	-0	-5.6%	+1	+1
<b>Nursing &amp; Midwifery</b>	<b>606</b>	<b>603</b>	<b>-4</b>	<b>-0.6%</b>	<b>+26</b>	<b>+19</b>
Therapy Professions	54	53	-1	-2.7%	+7	+7
Social Care	15	16	+0	+3.1%	+1	+2
Social Workers	42	42	+0	+0.6%	+1	+1
Psychologists	40	37	-3	-6.6%	+4	+3
Pharmacy	2	2	+0	+4.7%	-1	-1
H&SC, Other	3	3				+0
<b>Health &amp; Social Care Professionals</b>	<b>156</b>	<b>153</b>	<b>-3</b>	<b>-2.1%</b>	<b>+13</b>	<b>+13</b>
Management (VIII & above)	4	4			-1	-2
Administrative/ Supervisory (V to VII)	28	27	-1	-3.3%	+4	+4
Clerical (III & IV)	101	101	-0	-0.3%	-8	-8
<b>Management &amp; Administrative</b>	<b>133</b>	<b>132</b>	<b>-1</b>	<b>-0.9%</b>	<b>-6</b>	<b>-7</b>
Support	32	32	-0	-1.1%	-4	-3
Maintenance/ Technical	30	33	+3	+10.1%	+6	+4
<b>General Support</b>	<b>62</b>	<b>65</b>	<b>+3</b>	<b>+4.3%</b>	<b>+1</b>	<b>+1</b>
Health Care Assistants	211	211	-0	-0.2%	-4	-3
Care, other	68	67	-1	-1.0%	-2	-3
<b>Patient &amp; Client Care</b>	<b>279</b>	<b>278</b>	<b>-1</b>	<b>-0.4%</b>	<b>-6</b>	<b>-6</b>

## Primary Care

Nov 2020 (Dec 2019 figure: 1,134)	WTE Oct 2020	WTE Nov 2020	WTE change since Oct 20	% change since Oct 20	WTE change since Dec 19	WTE change since Nov 19
<b>Total Primary Care</b>	<b>1,171</b>	<b>1,191</b>	<b>+21</b>	<b>+1.8%</b>	<b>+58</b>	<b>+55</b>
Consultants	1	1	+0	+4.1%	+0	-0
Registrars	50	50	-0	-0.7%	+10	+9
SHO/ Interns	3	3	-0	-1.7%	+2	+3
Medical/ Dental, other	48	49	+1	+2.8%	+4	+3
<b>Medical &amp; Dental</b>	<b>102</b>	<b>103</b>	<b>+1</b>	<b>+1.0%</b>	<b>+16</b>	<b>+15</b>
Nurse/ Midwife Manager	29	28	-1	-2.7%	+0	+1
Nurse/ Midwife Specialist & AN/MP	20	20	-0	-0.3%	+3	+3
Staff Nurse/ Staff Midwife	74	77	+4	+4.8%	+3	+1
Public Health Nurse	197	198	+1	+0.6%	+7	+6
<i>Post-registration Nurse/ Midwife Student</i>				-100.0%	-4	
Nursing/ Midwifery Student				-100.0%	-4	-4
<b>Nursing &amp; Midwifery</b>	<b>319</b>	<b>323</b>	<b>+4</b>	<b>+1.2%</b>	<b>+10</b>	<b>+7</b>
Therapy Professions	245	246	+1	+0.6%	+20	+22
Health Science/ Diagnostics	33	34	+0	+0.8%	+1	+2
Social Care	9	9	-0	-1.0%	+0	+0
Social Workers	6	6	-0	-0.2%	-1	-1
Psychologists	26	26	-0	-1.5%	+2	+3
Pharmacy	1	1				
H&SC, Other	12	12	+0	+0.7%	-2	-1
<b>Health &amp; Social Care Professionals</b>	<b>332</b>	<b>333</b>	<b>+1</b>	<b>+0.4%</b>	<b>+21</b>	<b>+25</b>
Management (VIII & above)	34	34	-0	-0.2%	+1	+1
Administrative/ Supervisory (V to VII)	63	69	+7	+10.8%	+8	+7
Clerical (III & IV)	230	229	-1	-0.3%	-9	-9
<b>Management &amp; Administrative</b>	<b>327</b>	<b>333</b>	<b>+6</b>	<b>+1.9%</b>	<b>+0</b>	<b>-0</b>
Support	22	22	+0	+0.5%	+2	+1
Maintenance/ Technical	9	8	-1	-11.2%	-1	-1
<b>General Support</b>	<b>31</b>	<b>30</b>	<b>-1</b>	<b>-2.9%</b>	<b>+1</b>	<b>-0</b>
Health Care Assistants	13	22	+9	+66.3%	+8	+8
Care, other	45	46	+1	+1.3%	+3	+0
<b>Patient &amp; Client Care</b>	<b>59</b>	<b>68</b>	<b>+9</b>	<b>+16.2%</b>	<b>+11</b>	<b>+8</b>

## Social Care

Nov 2020 (Dec 2019 figure: 3,103)	WTE Oct 2020	WTE Nov 2020	WTE change since Oct 20	% change since Oct 20	WTE change since Dec 19	WTE change since Nov 19
<b>Total Social Care</b>	<b>3,069</b>	<b>3,066</b>	<b>-3</b>	<b>-0.1%</b>	<b>-37</b>	<b>+13</b>
Consultants	3	3				
Registrars	2	2				
Medical/ Dental, other	12	12	-0	-0.3%	-1	-0
<b>Medical &amp; Dental</b>	<b>17</b>	<b>17</b>	<b>-0</b>	<b>-0.2%</b>	<b>-1</b>	<b>-0</b>
Nurse/ Midwife Manager	144	143	-2	-1.1%	+7	+8
Nurse/ Midwife Specialist & AN/MP	8	8	+0	+1.2%	-0	-0
Staff Nurse/ Staff Midwife	470	470	-1	-0.2%	+3	+4
Public Health Nurse	1	1			+0	+0
<i>Pre-registration Nurse Intern (COVID-19)</i>	0	1	+0	+139.1%	+1	+0
Nursing/ Midwifery Student	0	1	+0	+139.1%	+1	+1
<b>Nursing &amp; Midwifery</b>	<b>624</b>	<b>622</b>	<b>-2</b>	<b>-0.3%</b>	<b>+11</b>	<b>+13</b>
Therapy Professions	61	62	+0	+0.6%	-5	-5
Health Science/ Diagnostics	1	1				
Social Care	237	241	+4	+1.6%	+19	+16
Social Workers	36	36	-0	-0.7%	-0	-0
Psychologists	14	15	+0	+3.1%	-1	-1
Pharmacy	1	1	+0	+1.0%	+0	+0
H&SC, Other	14	16	+1	+10.4%	-0	+0
<b>Health &amp; Social Care Professionals</b>	<b>365</b>	<b>371</b>	<b>+6</b>	<b>+1.6%</b>	<b>+12</b>	<b>+10</b>
Management (VIII & above)	20	19	-1	-5.0%	+1	+1
Administrative/ Supervisory (V to VII)	53	53	+0	+0.1%	+5	+4
Clerical (III & IV)	116	114	-2	-1.9%	-7	-6
<b>Management &amp; Administrative</b>	<b>189</b>	<b>186</b>	<b>-3</b>	<b>-1.7%</b>	<b>-1</b>	<b>-1</b>
Support	99	100	+0	+0.5%	-1	-5
Maintenance/ Technical	33	32	-0	-0.5%	+0	-0
<b>General Support</b>	<b>132</b>	<b>132</b>	<b>+0</b>	<b>+0.2%</b>	<b>-1</b>	<b>-5</b>
Health Care Assistants	1,158	1,145	-13	-1.2%	+7	+10
Care, other	159	166	+7	+4.6%	+7	+11
Home Help	426	428	+2	+0.4%	-72	-25
<b>Patient &amp; Client Care</b>	<b>1,743</b>	<b>1,738</b>	<b>-4</b>	<b>-0.3%</b>	<b>-58</b>	<b>-5</b>

## CHO 2 Employment Report: November 2020

### Disabilities

Nov 2020 (Dec 2019 figure: 1,497)	WTE Oct 2020	WTE Nov 2020	WTE change since Oct 20	% change since Oct 20	WTE change since Dec 19	WTE change since Nov 19
<b>Total Disabilities</b>	<b>1,491</b>	<b>1,505</b>	<b>+13</b>	<b>+0.9%</b>	<b>+8</b>	<b>+14</b>
Consultants	3	3				
Registrars	2	2				
Medical/ Dental, other	1	1				
<b>Medical &amp; Dental</b>	<b>6</b>	<b>6</b>				
Nurse/ Midwife Manager	77	77	-0	-0.1%	-0	+2
Nurse/ Midwife Specialist & AN/MP	6	6	+0	+1.8%	-0	-0
Staff Nurse/ Staff Midwife	160	162	+2	+1.4%	-4	-5
<i>Pre-registration Nurse Intern (COVID-19)</i>	0	1	+0	+139.1%	+1	+0
Nursing/ Midwifery Student	0	1	+0	+139.1%	+1	+1
<b>Nursing &amp; Midwifery</b>	<b>243</b>	<b>245</b>	<b>+3</b>	<b>+1.1%</b>	<b>-3</b>	<b>-2</b>
Therapy Professions	34	35	+1	+2.8%	-6	-6
Social Care	237	241	+4	+1.6%	+19	+16
Social Workers	26	25	-0	-1.6%	-1	-1
Psychologists	14	15	+0	+3.1%	-1	-1
H&SC, Other	14	16	+1	+10.4%	-0	+0
<b>Health &amp; Social Care Professionals</b>	<b>325</b>	<b>332</b>	<b>+6</b>	<b>+1.9%</b>	<b>+11</b>	<b>+8</b>
Management (VIII & above)	18	17	-1	-5.6%	+1	+1
Administrative/ Supervisory (V to VII)	42	43	+1	+2.1%	+3	+2
Clerical (III & IV)	50	50	+0	+0.1%	+0	+1
<b>Management &amp; Administrative</b>	<b>110</b>	<b>110</b>	<b>-0</b>	<b>-0.0%</b>	<b>+4</b>	<b>+4</b>
Support	42	43	+1	+3.0%	-2	-4
Maintenance/ Technical	12	13	+1	+5.6%	-0	-0
<b>General Support</b>	<b>54</b>	<b>56</b>	<b>+2</b>	<b>+3.6%</b>	<b>-2</b>	<b>-4</b>
Health Care Assistants	622	620	-2	-0.3%	-3	+3
Care, other	131	135	+5	+3.5%	+1	+5
<b>Patient &amp; Client Care</b>	<b>753</b>	<b>756</b>	<b>+3</b>	<b>+0.3%</b>	<b>-2</b>	<b>+9</b>

## Older People

Nov 2020 (Dec 2019 figure: 1,606)	WTE Oct 2020	WTE Nov 2020	WTE change since Oct 20	% change since Oct 20	WTE change since Dec 19	WTE change since Nov 19
<b>Total Older People</b>	<b>1,578</b>	<b>1,561</b>	<b>-17</b>	<b>-1.1%</b>	<b>-44</b>	<b>-2</b>
Medical/ Dental, other	11	11	-0	-0.4%	-1	-0
<b>Medical &amp; Dental</b>	<b>11</b>	<b>11</b>	<b>-0</b>	<b>-0.4%</b>	<b>-1</b>	<b>-0</b>
Nurse/ Midwife Manager	67	66	-2	-2.3%	+7	+6
Nurse/ Midwife Specialist & AN/MP	2	2	-0	-0.5%	-0	-0
Staff Nurse/ Staff Midwife	311	308	-3	-1.0%	+7	+9
Public Health Nurse	1	1			+0	+0
<b>Nursing &amp; Midwifery</b>	<b>381</b>	<b>376</b>	<b>-5</b>	<b>-1.2%</b>	<b>+14</b>	<b>+15</b>
<b>Health &amp; Social Care Professionals</b>	<b>39</b>	<b>39</b>	<b>-0</b>	<b>-1.0%</b>	<b>+2</b>	<b>+2</b>
Management (VIII & above)	2	2				+0
Administrative/ Supervisory (V to VII)	11	10	-1	-7.9%	+2	+2
Clerical (III & IV)	67	64	-2	-3.4%	-7	-6
<b>Management &amp; Administrative</b>	<b>79</b>	<b>76</b>	<b>-3</b>	<b>-3.9%</b>	<b>-5</b>	<b>-4</b>
Support	58	57	-1	-1.4%	+1	-1
Maintenance/ Technical	20	19	-1	-4.2%	+0	-0
<b>General Support</b>	<b>78</b>	<b>76</b>	<b>-2</b>	<b>-2.1%</b>	<b>+1</b>	<b>-1</b>
Health Care Assistants	536	525	-12	-2.1%	+10	+6
Care, other	28	30	+3	+9.8%	+6	+6
Home Help	426	428	+2	+0.4%	-72	-25
<b>Patient &amp; Client Care</b>	<b>990</b>	<b>983</b>	<b>-7</b>	<b>-0.7%</b>	<b>-56</b>	<b>-13</b>

## CHO 2 Employment by Administration (HSE / S38): November 2020

Nov 2020 (Dec 2019 figure: 5,545)	WTE Oct 2020	WTE Nov 2020	WTE change since Oct 20	% change since Oct 20	WTE change since Dec 19	WTE change since Nov 19
<b>Overall</b>	<b>5,602</b>	<b>5,612</b>	<b>+10</b>	<b>+0.2%</b>	<b>+67</b>	<b>+108</b>
<b>HSE</b>	<b>4,328</b>	<b>4,323</b>	<b>-5</b>	<b>-0.1%</b>	<b>+66</b>	<b>+99</b>
<b>Section 38 Voluntary Agencies</b>	<b>1,274</b>	<b>1,289</b>	<b>+15</b>	<b>+1.2%</b>	<b>+1</b>	<b>+8</b>

## HSE

Nov 2020 (Dec 2019 figure: 4,256)	WTE Oct 2020	WTE Nov 2020	WTE change since Oct 20	% change since Oct 20	WTE change since Dec 19	WTE change since Nov 19
<b>Overall</b>	<b>4,328</b>	<b>4,323</b>	<b>-5</b>	<b>-0.1%</b>	<b>+66</b>	<b>+99</b>
Consultants	42	40	-2	-0.1%	-0	+1
Registrars	87	87	-0	-0.0%	+13	+13
SHO/ Interns	42	43	+0	+0.0%	+7	+8
Medical/ Dental, other	61	63	+2	+0.0%	+4	+4
<b>Medical &amp; Dental</b>	<b>231</b>	<b>231</b>	<b>+0</b>	<b>+0.0%</b>	<b>+24</b>	<b>+25</b>
Nurse/ Midwife Manager	259	254	-5	-0.0%	+13	+16
Nurse/ Midwife Specialist & AN/MP	101	102	+1	+0.0%	+14	+13
Staff Nurse/ Staff Midwife	775	783	+8	+0.0%	+5	+2
Public Health Nurse	198	199	+1	+0.0%	+7	+7
Pre-registration Nurse/ Midwife Intern				-1.0%		-1
Pre-registration Nurse Intern (COVID-19)	26	15	-11	-0.4%	+15	+15
Post-registration Nurse/ Midwife Student				-1.0%	-13	-4
Nursing/ Midwifery awaiting registration				-1.0%	-11	-11
Nursing/ Midwifery Student	26	15	-11	-0.4%	+7	-0
Nursing/ Midwifery other	3	3	-0	-0.1%	+1	+1
<b>Nursing &amp; Midwifery</b>	<b>1,362</b>	<b>1,357</b>	<b>-5</b>	<b>-0.4%</b>	<b>+47</b>	<b>+37</b>
Therapy Professions	332	330	-2	-0.0%	+26	+29
Health Science/ Diagnostics	34	34	+0	+0.0%	+1	+2
Social Care	56	56	+1	+0.0%	+7	+9
Social Workers	58	59	+0	+0.0%	+0	+1
Psychologists	68	65	-3	-0.0%	+6	+6
Pharmacy	4	4	+0	+0.0%	-1	-1
H&SC, Other	15	15	+0	+0.0%	-2	-1
<b>Health &amp; Social Care Professionals</b>	<b>567</b>	<b>564</b>	<b>-3</b>	<b>-0.5%</b>	<b>+38</b>	<b>+44</b>
Management (VIII & above)	45	45	-0	-0.0%	+2	+1
Administrative/ Supervisory (V to VII)	115	120	+5	+0.0%	+21	+20
Clerical (III & IV)	411	407	-3	-0.0%	-23	-23
<b>Management &amp; Administrative</b>	<b>570</b>	<b>573</b>	<b>+2</b>	<b>+0.4%</b>	<b>+0</b>	<b>-1</b>
Support	112	111	-1	-0.0%	-2	-4
Maintenance/ Technical	67	68	+1	+0.0%	+5	+3
<b>General Support</b>	<b>179</b>	<b>179</b>	<b>+0</b>	<b>+0.1%</b>	<b>+3</b>	<b>-1</b>
Health Care Assistants	839	834	-4	-0.0%	+13	+11
Care, other	153	157	+4	+0.0%	+13	+9
Home Help	426	428	+2	+0.0%	-72	-25
<b>Patient &amp; Client Care</b>	<b>1,418</b>	<b>1,419</b>	<b>+1</b>	<b>+0.1%</b>	<b>-46</b>	<b>-5</b>

## Section 38 Voluntary Agencies

Nov 2020 (Dec 2019 figure: 1,288)	WTE Oct 2020	WTE Nov 2020	WTE change since Oct 20	% change since Oct 20	WTE change since Dec 19	WTE change since Nov 19
<b>Overall</b>	<b>1,274</b>	<b>1,289</b>	<b>+15</b>	<b>+1.2%</b>	<b>+1</b>	<b>+8</b>
Consultants	2	2		+0.0%		
Registrars	2	2		+0.0%		
<b>Medical &amp; Dental</b>	<b>4</b>	<b>4</b>				
Nurse/ Midwife Manager	67	67	-0	-0.0%	+0	+0
Nurse/ Midwife Specialist & AN/MP	5	5	+0	+0.0%	-0	-0
Staff Nurse/ Staff Midwife	115	119	+3	+0.0%	-1	+1
<i>Pre-registration Nurse Intern (COVID-19)</i>	0	1	+0	+1.4%	+1	+1
Nursing/ Midwifery Student	0	1	+0	+1.4%	+1	+1
<b>Nursing &amp; Midwifery</b>	<b>188</b>	<b>191</b>	<b>+4</b>	<b>+1.9%</b>	<b>-1</b>	<b>+1</b>
Therapy Professions	28	30	+2	+0.1%	-4	-4
Social Care	206	209	+3	+0.0%	+14	+9
Social Workers	26	25	-0	-0.0%	-0	-0
Psychologists	12	13	+0	+0.0%	-1	-1
H&SC, Other	14	16	+1	+0.1%	-0	+0
<b>Health &amp; Social Care Professionals</b>	<b>286</b>	<b>293</b>	<b>+7</b>	<b>+2.4%</b>	<b>+8</b>	<b>+3</b>
Management (VIII & above)	14	13	-1	-0.1%	-0	-0
Administrative/ Supervisory (V to VII)	36	37	+1	+0.0%	+2	+2
Clerical (III & IV)	37	37	+0	+0.0%	+0	+1
<b>Management &amp; Administrative</b>	<b>87</b>	<b>87</b>	<b>-0</b>	<b>-0.4%</b>	<b>+2</b>	<b>+3</b>
Support	42	43	+1	+0.0%	-2	-4
Maintenance/ Technical	4	5	+1	+0.2%	+0	+0
<b>General Support</b>	<b>46</b>	<b>48</b>	<b>+2</b>	<b>+4.2%</b>	<b>-2</b>	<b>-4</b>
Health Care Assistants	544	543	-0	-0.0%	-2	+4
Care, other	119	123	+3	+0.0%	-4	+0
<b>Patient &amp; Client Care</b>	<b>663</b>	<b>666</b>	<b>+3</b>	<b>+0.5%</b>	<b>-6</b>	<b>+4</b>



## CHO 2 Employment by S38 Agency: November 2020

### Bros. of Charity, West Region

Nov 2020 (Dec 2019 figure: 1,288)	WTE Oct 2020	WTE Nov 2020	WTE change since Oct 20	% change since Oct 20	WTE change since Dec 19	WTE change since Nov 19
<b>Overall</b>	<b>1,274</b>	<b>1,289</b>	<b>+15</b>	<b>+1.2%</b>	<b>+1</b>	<b>+8</b>
Consultants	2	2		+0.0%		
Registrars	2	2		+0.0%		
<b>Medical &amp; Dental</b>	<b>4</b>	<b>4</b>				
Nurse/ Midwife Manager	67	67	-0	-0.0%	+0	+0
Nurse/ Midwife Specialist & AN/MP	5	5	+0	+0.0%	-0	-0
Staff Nurse/ Staff Midwife	115	119	+3	+0.0%	-1	+1
Pre-registration Nurse Intern (COVID-19)	0	1	+0	+1.4%	+1	+1
Nursing/ Midwifery Student	0	1	+0	+1.4%	+1	+1
<b>Nursing &amp; Midwifery</b>	<b>188</b>	<b>191</b>	<b>+4</b>	<b>+1.9%</b>	<b>-1</b>	<b>+1</b>
Therapy Professions	28	30	+2	+0.1%	-4	-4
Social Care	206	209	+3	+0.0%	+14	+9
Social Workers	26	25	-0	-0.0%	-0	-0
Psychologists	12	13	+0	+0.0%	-1	-1
H&SC, Other	14	16	+1	+0.1%	-0	+0
<b>Health &amp; Social Care Professionals</b>	<b>286</b>	<b>293</b>	<b>+7</b>	<b>+2.4%</b>	<b>+8</b>	<b>+3</b>
Management (VIII & above)	14	13	-1	-0.1%	-0	-0
Administrative/ Supervisory (V to VII)	36	37	+1	+0.0%	+2	+2
Clerical (III & IV)	37	37	+0	+0.0%	+0	+1
<b>Management &amp; Administrative</b>	<b>87</b>	<b>87</b>	<b>-0</b>	<b>-0.4%</b>	<b>+2</b>	<b>+3</b>
Support	42	43	+1	+0.0%	-2	-4
Maintenance/ Technical	4	5	+1	+0.2%	+0	+0
<b>General Support</b>	<b>46</b>	<b>48</b>	<b>+2</b>	<b>+4.2%</b>	<b>-2</b>	<b>-4</b>
Health Care Assistants	544	543	-0	-0.0%	-2	+4
Care, other	119	123	+3	+0.0%	-4	+0
<b>Patient &amp; Client Care</b>	<b>663</b>	<b>666</b>	<b>+3</b>	<b>+0.5%</b>	<b>-6</b>	<b>+4</b>

**CHO 2 Employment by Grade Group & Staff Category: November 2020**

Nov 2020 (Dec 2019 figure: 5,545)	WTE Oct 2020	WTE Nov 2020	WTE change since Oct 20	% change since Oct 20	WTE change since Dec 19	WTE change since Nov 19
<b>Overall</b>	<b>5,602</b>	<b>5,612</b>	<b>+10</b>	<b>+0.2%</b>	<b>+67</b>	<b>+108</b>
Consultant Medicine	1	1				
Consultant Paediatrics	1	1				
Consultant Psychiatry	42	40	-2	-5.2%	-0	+1
Consultant Surgery	0	0	+0	+21.7%	+0	-0
<b>Consultants</b>	<b>44</b>	<b>42</b>	<b>-2</b>	<b>-4.8%</b>	<b>-0</b>	<b>+1</b>
Registrar	67	67	-0	-0.4%	+9	+8
Senior Registrar	22	22			+5	+5
<b>Registrars</b>	<b>89</b>	<b>89</b>	<b>-0</b>	<b>-0.3%</b>	<b>+13</b>	<b>+13</b>
Senior House Officer	42	43	+0	+0.9%	+7	+8
<b>SHO/ Interns</b>	<b>42</b>	<b>43</b>	<b>+0</b>	<b>+0.9%</b>	<b>+7</b>	<b>+8</b>
Dentists	21	21	+0	+1.4%	-0	+1
Other Medical	40	42	+2	+4.4%	+4	+3
<b>Medical/ Dental, other</b>	<b>61</b>	<b>63</b>	<b>+2</b>	<b>+3.4%</b>	<b>+4</b>	<b>+4</b>
<b>Medical &amp; Dental</b>	<b>236</b>	<b>236</b>	<b>+0</b>	<b>+0.0%</b>	<b>+25</b>	<b>+25</b>
Clinical Nurse/ Midwife Manager	258	257	-1	-0.5%	+16	+19
Director Nursing/Midwifery, Assistant	44	43	-2	-4.0%	-2	-2
Director of Nursing/Midwifery	24	22	-2	-6.3%	-1	-1
<b>Nurse/ Midwife Manager</b>	<b>326</b>	<b>322</b>	<b>-5</b>	<b>-1.4%</b>	<b>+13</b>	<b>+16</b>
Advanced Nurse/ Midwife Practitioner	10	10	-0	-1.0%	+1	+1
Clinical Nurse/ Midwife Specialist	96	97	+1	+1.1%	+13	+12
<b>Nurse/ Midwife Specialist &amp; AN/MP</b>	<b>106</b>	<b>107</b>	<b>+1</b>	<b>+0.9%</b>	<b>+14</b>	<b>+13</b>
Staff Nurse [Intellectual Disability]	98	102	+4	+4.3%	+12	+10
Staff Nurse [Psychiatric]	360	366	+6	+1.8%	-5	-5
Staff Nurses [General/ Children's]	433	433	+1	+0.1%	-3	-2
<b>Staff Nurse/ Staff Midwife</b>	<b>890</b>	<b>902</b>	<b>+11</b>	<b>+1.3%</b>	<b>+4</b>	<b>+2</b>
<b>Public Health Nurse</b>	<b>198</b>	<b>199</b>	<b>+1</b>	<b>+0.6%</b>	<b>+7</b>	<b>+7</b>
Pre-registration Nurse/ Midwife Intern				-100.0%	-0	-1
Pre-registration Nurse Intern (COVID-19)	26	16	-10	-39.3%	+16	+16
Post-registration Nurse/ Midwife Student				-100.0%	-4	-4
Nursing/ Midwifery awaiting registration				-100.0%	-5	-11
<b>Nursing/ Midwifery Student</b>	<b>26</b>	<b>16</b>	<b>-10</b>	<b>-39.3%</b>	<b>+7</b>	<b>+0</b>
<b>Nursing/ Midwifery other</b>	<b>3</b>	<b>3</b>	<b>-0</b>	<b>-5.6%</b>	<b>+1</b>	<b>+1</b>
<b>Nursing &amp; Midwifery</b>	<b>1,550</b>	<b>1,548</b>	<b>-2</b>	<b>-0.1%</b>	<b>+13</b>	<b>+39</b>
Dietitians	24	24	+1	+3.2%	+5	+5
Occupational Therapists	129	129	+0	+0.1%	+13	+15
Orthoptists	2	2	-0	-7.8%	+0	+0
Physiotherapists	93	92	-1	-1.4%	+3	+3
Podiatrists & Chiropodists	8	7	-1	-7.1%	+0	+1
Speech & Language Therapists	104	105	+2	+1.5%	+1	+1
<b>Therapy Professions</b>	<b>360</b>	<b>360</b>	<b>+0</b>	<b>+0.1%</b>	<b>+22</b>	<b>+25</b>
Audiology	5	5	+0	+8.5%	+0	+0
Clinical Engineering	1	1				
Medical Laboratory	28	27	-0	-0.5%	+1	+1
Radiographers	1	1				
<b>Health Science/ Diagnostics</b>	<b>34</b>	<b>34</b>	<b>+0</b>	<b>+0.8%</b>	<b>+1</b>	<b>+2</b>
<b>Social Care</b>	<b>261</b>	<b>265</b>	<b>+4</b>	<b>+1.6%</b>	<b>+20</b>	<b>+18</b>
<b>Social Workers</b>	<b>84</b>	<b>84</b>	<b>-0</b>	<b>-0.0%</b>	<b>+0</b>	<b>+0</b>

Nov 2020 (Dec 2019 figure: 5,545)	WTE Oct 2020	WTE Nov 2020	WTE change since Oct 20	% change since Oct 20	WTE change since Dec 19	WTE change since Nov 19
<b>Overall</b>	<b>5,602</b>	<b>5,612</b>	<b>+10</b>	<b>+0.2%</b>	<b>+67</b>	<b>+108</b>
<b>Psychologists</b>	<b>81</b>	<b>78</b>	<b>-3</b>	<b>-3.2%</b>	<b>+5</b>	<b>+5</b>
<b>Pharmacy</b>	<b>4</b>	<b>4</b>	<b>+0</b>	<b>+2.4%</b>	<b>-1</b>	<b>-1</b>
Counsellor Therapists	11	11	-0	-1.3%	-0	+0
Dental Hygienists	5	5	+0	+4.6%	+1	+0
Other Health & Social Care	12	14	+1	+12.1%	+1	+1
Play Therapists/ Specialists	1	1			-3	-3
<b>H&amp;SC, Other</b>	<b>29</b>	<b>31</b>	<b>+2</b>	<b>+5.4%</b>	<b>-2</b>	<b>-1</b>
<b>Health &amp; Social Care Professionals</b>	<b>853</b>	<b>857</b>	<b>+4</b>	<b>+0.5%</b>	<b>+46</b>	<b>+48</b>
Executive Management	11	11			+1	+1
Senior Management (VIII & GM)	48	47	-1	-2.2%	+1	+0
<b>Management (VIII &amp; above)</b>	<b>59</b>	<b>58</b>	<b>-1</b>	<b>-1.8%</b>	<b>+2</b>	<b>+1</b>
Middle Management (V-VII)	151	157	+6	+4.0%	+24	+23
Other Administrative				-100.0%	-1	-1
<b>Administrative/ Supervisory (V to VII)</b>	<b>151</b>	<b>157</b>	<b>+6</b>	<b>+4.0%</b>	<b>+23</b>	<b>+22</b>
<b>Clerical (III &amp; IV)</b>	<b>448</b>	<b>445</b>	<b>-3</b>	<b>-0.7%</b>	<b>-23</b>	<b>-22</b>
<b>Management &amp; Administrative</b>	<b>658</b>	<b>660</b>	<b>+2</b>	<b>+0.3%</b>	<b>-7</b>	<b>+2</b>
Catering	39	39	-0	-0.9%	-1	-1
Household Services	64	63	-1	-1.8%	-0	-1
Other Support	37	38	+2	+4.6%	-1	-3
Portering	14	14	+0	+0.3%	-2	-2
<b>Support</b>	<b>154</b>	<b>154</b>	<b>+0</b>	<b>+0.1%</b>	<b>-4</b>	<b>-7</b>
<b>Maintenance/ Technical</b>	<b>71</b>	<b>73</b>	<b>+2</b>	<b>+2.6%</b>	<b>+5</b>	<b>+3</b>
<b>General Support</b>	<b>225</b>	<b>227</b>	<b>+2</b>	<b>+0.9%</b>	<b>-15</b>	<b>-4</b>
HCA, Nurse's Aide, etc.	1,372	1,369	-4	-0.3%	+15	+19
Health & Social Care Assistants	10	9	-1	-9.6%	-4	-4
<b>Health Care Assistants</b>	<b>1,383</b>	<b>1,378</b>	<b>-5</b>	<b>-0.4%</b>	<b>+11</b>	<b>+15</b>
Other Care Grades	272	280	+7	+2.6%	+9	+9
<b>Care, other</b>	<b>272</b>	<b>280</b>	<b>+7</b>	<b>+2.6%</b>	<b>+9</b>	<b>+9</b>
<b>Home Help</b>	<b>426</b>	<b>428</b>	<b>+2</b>	<b>+0.4%</b>	<b>-72</b>	<b>-25</b>
<b>Patient &amp; Client Care</b>	<b>2,081</b>	<b>2,085</b>	<b>+4</b>	<b>+0.2%</b>	<b>-8</b>	<b>-1</b>

## CHO 2 HSE Employment by Grade Group & Staff Category: November 2020

Nov 2020 (Dec 2019 figure: 4,256)	WTE Oct 2020	WTE Nov 2020	WTE change since Oct 20	% change since Oct 20	WTE change since Dec 19	WTE change since Nov 19
<b>Overall</b>	<b>4,328</b>	<b>4,323</b>	<b>-5</b>	<b>-0.1%</b>	<b>+66</b>	<b>+99</b>
Consultant Medicine	1	1				
Consultant Psychiatry	40	38	-2	-5.4%	-0	+1
Consultant Surgery	0	0	+0	+21.7%	+0	-0
<b>Consultants</b>	<b>42</b>	<b>40</b>	<b>-2</b>	<b>-5.1%</b>	<b>-0</b>	<b>+1</b>
Registrar	67	67	-0	-0.4%	+10	+9
Senior Registrar	20	20			+4	+4
<b>Registrars</b>	<b>87</b>	<b>87</b>	<b>-0</b>	<b>-0.3%</b>	<b>+13</b>	<b>+13</b>
<b>SHO/ Interns</b>	<b>42</b>	<b>43</b>	<b>+0</b>	<b>+0.9%</b>	<b>+7</b>	<b>+8</b>
Dentists	21	21	+0	+1.4%	-0	+1
Other Medical	40	42	+2	+4.4%	+4	+3
<b>Medical/ Dental, other</b>	<b>61</b>	<b>63</b>	<b>+2</b>	<b>+3.4%</b>	<b>+4</b>	<b>+4</b>
<b>Medical &amp; Dental</b>	<b>231</b>	<b>231</b>	<b>+0</b>	<b>+0.0%</b>	<b>+25</b>	<b>+25</b>
Clinical Nurse/ Midwife Manager	192	190	-1	-0.6%	+16	+19
Director Nursing/Midwifery, Assistant	44	43	-2	-4.0%	-2	-2
Director of Nursing/Midwifery	23	21	-2	-6.6%	-1	-1
<b>Nurse/ Midwife Manager</b>	<b>259</b>	<b>254</b>	<b>-5</b>	<b>-1.8%</b>	<b>+13</b>	<b>+16</b>
Advanced Nurse/ Midwife Practitioner	9	9	-0	-1.1%	+1	+1
Clinical Nurse/ Midwife Specialist	92	93	+1	+1.0%	+13	+12
<b>Nurse/ Midwife Specialist &amp; AN/MP</b>	<b>101</b>	<b>102</b>	<b>+1</b>	<b>+0.8%</b>	<b>+14</b>	<b>+13</b>
Staff Nurse [Intellectual Disability]	13	13	+0	+0.1%	-0	-1
Staff Nurse [Psychiatric]	348	356	+8	+2.3%	-3	-3
Staff Nurses [General/ Children's]	414	414	-0	-0.0%	+8	+6
<b>Staff Nurse/ Staff Midwife</b>	<b>775</b>	<b>783</b>	<b>+8</b>	<b>+1.0%</b>	<b>+5</b>	<b>+2</b>
<b>Public Health Nurse</b>	<b>198</b>	<b>199</b>	<b>+1</b>	<b>+0.6%</b>	<b>+7</b>	<b>+7</b>
Pre-registration Nurse/ Midwife Intern				-100.0%	-0	-1
Pre-registration Nurse Intern (COVID-19)	26	15	-11	-40.9%	+15	+15
Post-registration Nurse/ Midwife Student				-100.0%	-4	-4
Nursing/ Midwifery awaiting registration				-100.0%	-5	-11
<b>Nursing/ Midwifery Student</b>	<b>26</b>	<b>15</b>	<b>-11</b>	<b>-40.9%</b>	<b>+7</b>	<b>-0</b>
<b>Nursing/ Midwifery other</b>	<b>3</b>	<b>3</b>	<b>-0</b>	<b>-5.6%</b>	<b>+1</b>	<b>+1</b>
<b>Nursing &amp; Midwifery</b>	<b>1,362</b>	<b>1,357</b>	<b>-5</b>	<b>-0.4%</b>	<b>+18</b>	<b>+37</b>
Dietitians	24	24	+1	+3.2%	+5	+5
Occupational Therapists	121	121	+0	+0.1%	+13	+16
Orthoptists	2	2	-0	-7.8%	+0	+0
Physiotherapists	84	82	-2	-2.0%	+4	+4
Podiatrists & Chiropodists	8	7	-1	-7.1%	+0	+1
Speech & Language Therapists	94	94	-0	-0.0%	+3	+3
<b>Therapy Professions</b>	<b>332</b>	<b>330</b>	<b>-2</b>	<b>-0.5%</b>	<b>+26</b>	<b>+29</b>
Audiology	5	5	+0	+8.5%	+0	+0
Clinical Engineering	1	1				
Medical Laboratory	28	27	-0	-0.5%	+1	+1
Radiographers	1	1				
<b>Health Science/ Diagnostics</b>	<b>34</b>	<b>34</b>	<b>+0</b>	<b>+0.8%</b>	<b>+1</b>	<b>+2</b>
<b>Social Care</b>	<b>56</b>	<b>56</b>	<b>+1</b>	<b>+1.6%</b>	<b>+7</b>	<b>+9</b>
<b>Social Workers</b>	<b>58</b>	<b>59</b>	<b>+0</b>	<b>+0.7%</b>	<b>+0</b>	<b>+1</b>
<b>Psychologists</b>	<b>68</b>	<b>65</b>	<b>-3</b>	<b>-4.5%</b>	<b>+6</b>	<b>+6</b>
<b>Pharmacy</b>	<b>4</b>	<b>4</b>	<b>+0</b>	<b>+2.4%</b>	<b>-1</b>	<b>-1</b>
Counsellor Therapists	7	7	-0	-2.0%	-1	-1
Dental Hygienists	5	5	+0	+4.6%	+1	+0

Nov 2020 (Dec 2019 figure: 4,256)	WTE Oct 2020	WTE Nov 2020	WTE change since Oct 20	% change since Oct 20	WTE change since Dec 19	WTE change since Nov 19
<b>Overall</b>	<b>4,328</b>	<b>4,323</b>	<b>-5</b>	<b>-0.1%</b>	<b>+66</b>	<b>+99</b>
Other Health & Social Care	2	2			-1	-1
Play Therapists/ Specialists	1	1				+0
<b>H&amp;SC, Other</b>	<b>15</b>	<b>15</b>	<b>+0</b>	<b>+0.5%</b>	<b>-2</b>	<b>-1</b>
<b>Health &amp; Social Care Professionals</b>	<b>567</b>	<b>564</b>	<b>-3</b>	<b>-0.5%</b>	<b>+22</b>	<b>+44</b>
Executive Management	9	9			+1	+1
Senior Management (VIII & GM)	36	36	-0	-0.2%	+1	+0
<b>Management (VIII &amp; above)</b>	<b>45</b>	<b>45</b>	<b>-0</b>	<b>-0.2%</b>	<b>+2</b>	<b>+1</b>
<b>Administrative/ Supervisory (V to VII)</b>	<b>115</b>	<b>120</b>	<b>+5</b>	<b>+4.7%</b>	<b>+21</b>	<b>+20</b>
<b>Clerical (III &amp; IV)</b>	<b>411</b>	<b>407</b>	<b>-3</b>	<b>-0.8%</b>	<b>-23</b>	<b>-23</b>
<b>Management &amp; Administrative</b>	<b>570</b>	<b>573</b>	<b>+2</b>	<b>+0.4%</b>	<b>-14</b>	<b>-1</b>
Catering	39	39	-0	-0.9%	-1	-1
Household Services	46	45	-1	-1.6%	+1	+0
Other Support	14	14	+0	+0.1%	-1	-1
Portering	14	14	+0	+0.3%	-2	-2
<b>Support</b>	<b>112</b>	<b>111</b>	<b>-1</b>	<b>-0.9%</b>	<b>-2</b>	<b>-4</b>
<b>Maintenance/ Technical</b>	<b>67</b>	<b>68</b>	<b>+1</b>	<b>+1.7%</b>	<b>+5</b>	<b>+3</b>
<b>General Support</b>	<b>179</b>	<b>179</b>	<b>+0</b>	<b>+0.1%</b>	<b>-14</b>	<b>-1</b>
HCA, Nurse's Aide, etc.	829	825	-4	-0.4%	+17	+15
Health & Social Care Assistants	10	9	-1	-9.6%	-4	-4
<b>Health Care Assistants</b>	<b>839</b>	<b>834</b>	<b>-4</b>	<b>-0.5%</b>	<b>+13</b>	<b>+11</b>
<b>Care, other</b>	<b>153</b>	<b>157</b>	<b>+4</b>	<b>+2.5%</b>	<b>+13</b>	<b>+9</b>
<b>Home Help</b>	<b>426</b>	<b>428</b>	<b>+2</b>	<b>+0.4%</b>	<b>-72</b>	<b>-25</b>
<b>Patient &amp; Client Care</b>	<b>1,418</b>	<b>1,419</b>	<b>+1</b>	<b>+0.1%</b>	<b>-67</b>	<b>-5</b>

## Employment by WTE, Headcount, Gender, Full-Time /Part-Time etc.: Nov 2020

CHO 2	WTE	Headcount	WTE: no.	% Male	% female	Male WTE: no.	Female WTE: no.	% Total Perm	% Male Perm	% Female Perm	% Total Full Time	% Total Part Time	% Male FT	% Female FT
<b>Overall</b>	<b>5,612</b>	<b>6,587</b>	<b>1.17</b>	<b>18.8%</b>	<b>81.2%</b>	<b>1.11</b>	<b>1.19</b>	<b>85.7%</b>	<b>82.1%</b>	<b>86.5%</b>	<b>58.4%</b>	<b>41.6%</b>	<b>74.2%</b>	<b>54.8%</b>
Consultant Medicine	1	1	1.00		100.0%		1.00	100.0%	100.0%	100.0%	100.0%	0.0%		100.0%
Consultant Paediatrics	1	1	1.00		100.0%		1.00	100.0%	100.0%	100.0%	100.0%	0.0%		100.0%
Consultant Psychiatry	40	44	1.11	38.6%	61.4%	1.08	1.13	68.2%	68.2%	66.7%	79.5%	20.5%	88.2%	74.1%
Consultant Surgery	0	1	3.57		100.0%		3.57	0.0%	0.0%	0.0%	0.0%	100.0%		0.0%
<b>Consultants</b>	<b>42</b>	<b>47</b>	<b>1.12</b>	<b>36.2%</b>	<b>63.8%</b>	<b>1.08</b>	<b>1.15</b>	<b>68.1%</b>	<b>70.6%</b>	<b>66.7%</b>	<b>78.7%</b>	<b>21.3%</b>	<b>88.2%</b>	<b>73.3%</b>
Registrar	67	67	1.00	32.8%	67.2%	1.00	1.00	1.5%	1.5%	2.2%	100.0%	0.0%	100.0%	100.0%
Senior Registrar	22	22	1.02	36.4%	63.6%	1.00	1.04	0.0%	0.0%	0.0%	100.0%	0.0%	100.0%	100.0%
<b>Registrars</b>	<b>89</b>	<b>89</b>	<b>1.01</b>	<b>33.7%</b>	<b>66.3%</b>	<b>1.00</b>	<b>1.01</b>	<b>1.1%</b>	<b>0.0%</b>	<b>1.7%</b>	<b>100.0%</b>	<b>0.0%</b>	<b>100.0%</b>	<b>100.0%</b>
Senior House Officer	43	43	1.01	37.2%	62.8%	1.01	1.00	0.0%	0.0%	0.0%	100.0%	0.0%	100.0%	100.0%
<b>SHO/ Interns</b>	<b>43</b>	<b>43</b>	<b>1.01</b>	<b>37.2%</b>	<b>62.8%</b>	<b>1.01</b>	<b>1.00</b>	<b>0.0%</b>	<b>0.0%</b>	<b>0.0%</b>	<b>100.0%</b>	<b>0.0%</b>	<b>100.0%</b>	<b>100.0%</b>
Dentists	21	25	1.20	24.0%	76.0%	1.04	1.26	100.0%	100.0%	100.0%	56.0%	44.0%	83.3%	47.4%
Other Medical	42	48	1.15	29.2%	70.8%	1.26	1.11	62.5%	62.5%	70.6%	56.3%	43.8%	57.1%	55.9%
<b>Medical/ Dental, other</b>	<b>63</b>	<b>73</b>	<b>1.17</b>	<b>27.4%</b>	<b>72.6%</b>	<b>1.19</b>	<b>1.16</b>	<b>75.3%</b>	<b>60.0%</b>	<b>81.1%</b>	<b>56.2%</b>	<b>43.8%</b>	<b>65.0%</b>	<b>52.8%</b>
<b>Medical &amp; Dental</b>	<b>236</b>	<b>252</b>	<b>1.07</b>	<b>32.9%</b>	<b>67.1%</b>	<b>1.06</b>	<b>1.07</b>	<b>34.9%</b>	<b>28.9%</b>	<b>37.9%</b>	<b>83.3%</b>	<b>16.7%</b>	<b>89.2%</b>	<b>80.5%</b>
Clinical Nurse/ Midwife Manager	257	273	1.06	26.7%	73.3%	1.00	1.09	96.7%	96.7%	96.5%	85.0%	15.0%	98.6%	80.0%
Director Nursing/Midwifery, Assistant	43	46	1.08	21.7%	78.3%	1.08	1.08	97.8%	97.8%	97.2%	91.3%	8.7%	100.0%	88.9%
Director of Nursing/Midwifery	22	23	1.02	13.0%	87.0%	1.00	1.03	100.0%	100.0%	100.0%	100.0%	0.0%	100.0%	100.0%
<b>Nurse/ Midwife Manager</b>	<b>322</b>	<b>342</b>	<b>1.06</b>	<b>25.1%</b>	<b>74.9%</b>	<b>1.01</b>	<b>1.08</b>	<b>97.1%</b>	<b>97.7%</b>	<b>96.9%</b>	<b>86.8%</b>	<b>13.2%</b>	<b>98.8%</b>	<b>82.8%</b>
Advanced Nurse/ Midwife Practitioner	10	10	1.01	30.0%	70.0%	1.00	1.02	100.0%	100.0%	100.0%	100.0%	0.0%	100.0%	100.0%
Clinical Nurse/ Midwife Specialist	97	102	1.05	11.8%	88.2%	1.00	1.06	99.0%	99.0%	98.9%	94.1%	5.9%	100.0%	93.3%
<b>Nurse/ Midwife Specialist &amp; AN/MP</b>	<b>107</b>	<b>112</b>	<b>1.05</b>	<b>13.4%</b>	<b>86.6%</b>	<b>1.00</b>	<b>1.06</b>	<b>99.1%</b>	<b>100.0%</b>	<b>99.0%</b>	<b>94.6%</b>	<b>5.4%</b>	<b>100.0%</b>	<b>93.8%</b>
Staff Nurse [Intellectual Disability]	102	127	1.24	6.3%	93.7%	1.19	1.25	91.3%	91.3%	90.8%	47.2%	52.8%	75.0%	45.4%
Staff Nurse [Psychiatric]	366	399	1.09	25.8%	74.2%	1.08	1.09	93.2%	93.2%	95.9%	85.2%	14.8%	85.4%	85.1%
Staff Nurses [General/ Children's]	433	517	1.19	5.0%	95.0%	1.12	1.20	94.0%	94.0%	93.7%	54.0%	46.0%	73.1%	53.0%
<b>Staff Nurse/ Staff Midwife</b>	<b>902</b>	<b>1,043</b>	<b>1.16</b>	<b>13.1%</b>	<b>86.9%</b>	<b>1.09</b>	<b>1.17</b>	<b>93.4%</b>	<b>89.1%</b>	<b>94.0%</b>	<b>65.1%</b>	<b>34.9%</b>	<b>82.5%</b>	<b>62.5%</b>
<b>Public Health Nurse</b>	<b>199</b>	<b>226</b>	<b>1.14</b>		<b>100.0%</b>		<b>1.14</b>	<b>97.3%</b>		<b>97.3%</b>	<b>73.5%</b>	<b>26.5%</b>		<b>73.5%</b>
Pre-registration Nurse Intern (COVID-19)	16	17	1.07	5.9%	94.1%	1.00	1.07	0.0%	0.0%	0.0%	94.1%	5.9%	100.0%	93.8%
<b>Nursing/ Midwifery Student</b>	<b>16</b>	<b>17</b>	<b>1.07</b>	<b>5.9%</b>	<b>94.1%</b>	<b>1.00</b>	<b>1.07</b>	<b>0.0%</b>	<b>0.0%</b>	<b>0.0%</b>	<b>94.1%</b>	<b>5.9%</b>	<b>100.0%</b>	<b>93.8%</b>

<b>Nursing/ Midwifery other</b>	<b>3</b>	<b>3</b>	<b>1.12</b>		<b>100.0%</b>		<b>1.12</b>	<b>100.0%</b>		<b>100.0%</b>	<b>66.7%</b>	<b>33.3%</b>		<b>66.7%</b>
<b>Nursing &amp; Midwifery</b>	<b>1,548</b>	<b>1,743</b>	<b>1.13</b>	<b>13.7%</b>	<b>86.3%</b>	<b>1.06</b>	<b>1.14</b>	<b>94.1%</b>	<b>92.5%</b>	<b>94.3%</b>	<b>72.6%</b>	<b>27.4%</b>	<b>89.5%</b>	<b>69.9%</b>
Dietitians	24	28	1.15		100.0%		1.15	<b>85.7%</b>	85.7%	85.7%	<b>67.9%</b>	32.1%		67.9%
Occupational Therapists	129	145	1.12	7.6%	92.4%	1.02	1.13	<b>91.0%</b>	91.0%	90.3%	<b>71.0%</b>	29.0%	90.9%	69.4%
Orthoptists	2	2	1.00		100.0%		1.00	<b>100.0%</b>	100.0%	100.0%	<b>100.0%</b>	0.0%		100.0%
Physiotherapists	92	110	1.20	15.5%	84.5%	1.03	1.23	<b>91.8%</b>	91.8%	92.5%	<b>64.5%</b>	35.5%	88.2%	60.2%
Podiatrists & Chiropodists	7	10	1.34	10.0%	90.0%	1.00	1.39	<b>80.0%</b>	80.0%	77.8%	<b>50.0%</b>	50.0%	100.0%	44.4%
Speech & Language Therapists	105	120	1.14	1.7%	98.3%	1.00	1.14	<b>86.7%</b>	86.7%	86.4%	<b>78.3%</b>	21.7%	100.0%	78.0%
<b>Therapy Professions</b>	<b>360</b>	<b>415</b>	<b>1.15</b>	<b>7.5%</b>	<b>92.5%</b>	<b>1.02</b>	<b>1.16</b>	<b>89.4%</b>	<b>93.5%</b>	<b>89.1%</b>	<b>70.8%</b>	<b>29.2%</b>	<b>90.3%</b>	<b>69.3%</b>
Audiology	5	6	1.12		100.0%		1.12	<b>100.0%</b>	100.0%	100.0%	<b>83.3%</b>	16.7%		83.3%
Clinical Engineering	1	1	1.00	100.0%		1.00		<b>100.0%</b>	100.0%		<b>100.0%</b>	0.0%	100.0%	
Medical Laboratory	27	29	1.06	17.2%	82.8%	1.00	1.07	<b>100.0%</b>	100.0%	100.0%	<b>86.2%</b>	13.8%	100.0%	83.3%
Radiographers	1	1	1.67		100.0%		1.67	<b>100.0%</b>	100.0%	100.0%	<b>0.0%</b>	100.0%		0.0%
<b>Health Science/ Diagnostics</b>	<b>34</b>	<b>37</b>	<b>1.08</b>	<b>16.2%</b>	<b>83.8%</b>	<b>1.00</b>	<b>1.09</b>	<b>100.0%</b>	<b>100.0%</b>	<b>100.0%</b>	<b>83.8%</b>	<b>16.2%</b>	<b>100.0%</b>	<b>80.6%</b>
<b>Social Care</b>	<b>265</b>	<b>329</b>	<b>1.24</b>	<b>17.3%</b>	<b>82.7%</b>	<b>1.24</b>	<b>1.24</b>	<b>86.3%</b>	<b>93.0%</b>	<b>84.9%</b>	<b>50.8%</b>	<b>49.2%</b>	<b>50.9%</b>	<b>50.7%</b>
<b>Social Workers</b>	<b>84</b>	<b>96</b>	<b>1.14</b>	<b>17.7%</b>	<b>82.3%</b>	<b>1.04</b>	<b>1.17</b>	<b>92.7%</b>	<b>94.1%</b>	<b>92.4%</b>	<b>69.8%</b>	<b>30.2%</b>	<b>82.4%</b>	<b>67.1%</b>
<b>Psychologists</b>	<b>78</b>	<b>94</b>	<b>1.20</b>	<b>16.0%</b>	<b>84.0%</b>	<b>1.16</b>	<b>1.21</b>	<b>94.7%</b>	<b>100.0%</b>	<b>93.7%</b>	<b>68.1%</b>	<b>31.9%</b>	<b>93.3%</b>	<b>63.3%</b>
<b>Pharmacy</b>	<b>4</b>	<b>5</b>	<b>1.31</b>	<b>20.0%</b>	<b>80.0%</b>	<b>1.00</b>	<b>1.42</b>	<b>80.0%</b>	<b>100.0%</b>	<b>75.0%</b>	<b>40.0%</b>	<b>60.0%</b>	<b>100.0%</b>	<b>25.0%</b>
Counsellor Therapists	11	13	1.19	30.8%	69.2%	1.17	1.19	<b>92.3%</b>	92.3%	100.0%	<b>69.2%</b>	30.8%	50.0%	77.8%
Dental Hygienists	5	6	1.20		100.0%		1.20	<b>83.3%</b>	83.3%	83.3%	<b>50.0%</b>	50.0%		50.0%
Other Health & Social Care	14	20	1.45	15.0%	85.0%	1.17	1.52	<b>90.0%</b>	90.0%	94.1%	<b>15.0%</b>	85.0%	33.3%	11.8%
Play Therapists/ Specialists	1	1	1.00		100.0%		1.00	<b>100.0%</b>	100.0%	100.0%	<b>100.0%</b>	0.0%		100.0%
<b>H&amp;SC, Other</b>	<b>31</b>	<b>40</b>	<b>1.30</b>	<b>17.5%</b>	<b>82.5%</b>	<b>1.17</b>	<b>1.33</b>	<b>90.0%</b>	<b>71.4%</b>	<b>93.9%</b>	<b>40.0%</b>	<b>60.0%</b>	<b>42.9%</b>	<b>39.4%</b>
<b>Health &amp; Social Care</b>	<b>857</b>	<b>1,016</b>	<b>1.19</b>	<b>13.2%</b>	<b>86.8%</b>	<b>1.13</b>	<b>1.19</b>	<b>89.6%</b>	<b>93.3%</b>	<b>89.0%</b>	<b>63.1%</b>	<b>36.9%</b>	<b>70.9%</b>	<b>61.9%</b>
Executive Management	11	13	1.13	69.2%	30.8%	1.19	1.03	<b>84.6%</b>	84.6%	100.0%	<b>76.9%</b>	23.1%	77.8%	75.0%
Senior Management (VIII & GM)	47	47	1.01	44.7%	55.3%	1.00	1.01	<b>91.5%</b>	91.5%	92.3%	<b>95.7%</b>	4.3%	100.0%	92.3%
<b>Management (VIII &amp; above)</b>	<b>58</b>	<b>60</b>	<b>1.03</b>	<b>50.0%</b>	<b>50.0%</b>	<b>1.05</b>	<b>1.02</b>	<b>90.0%</b>	<b>86.7%</b>	<b>93.3%</b>	<b>91.7%</b>	<b>8.3%</b>	<b>93.3%</b>	<b>90.0%</b>
<b>Administrative/ Supervisory (V to VII)</b>	<b>157</b>	<b>166</b>	<b>1.06</b>	<b>19.3%</b>	<b>80.7%</b>	<b>1.05</b>	<b>1.06</b>	<b>96.4%</b>	<b>93.8%</b>	<b>97.0%</b>	<b>79.5%</b>	<b>20.5%</b>	<b>84.4%</b>	<b>78.4%</b>
<b>Clerical (III &amp; IV)</b>	<b>445</b>	<b>508</b>	<b>1.14</b>	<b>5.7%</b>	<b>94.3%</b>	<b>1.13</b>	<b>1.14</b>	<b>89.4%</b>	<b>79.3%</b>	<b>90.0%</b>	<b>66.1%</b>	<b>33.9%</b>	<b>72.4%</b>	<b>65.8%</b>
<b>Management &amp; Administrative</b>	<b>660</b>	<b>734</b>	<b>1.11</b>	<b>12.4%</b>	<b>87.6%</b>	<b>1.07</b>	<b>1.12</b>	<b>91.0%</b>	<b>86.8%</b>	<b>91.6%</b>	<b>71.3%</b>	<b>28.7%</b>	<b>83.5%</b>	<b>69.5%</b>
Catering	39	43	1.10	30.2%	69.8%	1.02	1.14	<b>100.0%</b>	100.0%	100.0%	<b>62.8%</b>	37.2%	84.6%	53.3%
Household Services	63	90	1.43	14.4%	85.6%	1.43	1.43	<b>91.1%</b>	91.1%	90.9%	<b>32.2%</b>	67.8%	38.5%	31.2%
Other Support	38	70	1.83	68.6%	31.4%	1.43	4.78	<b>55.7%</b>	55.7%	13.6%	<b>17.1%</b>	82.9%	20.8%	9.1%
Portering	14	14	1.00	92.9%	7.1%	1.00	1.00	<b>100.0%</b>	100.0%	100.0%	<b>100.0%</b>	0.0%	100.0%	100.0%
<b>Support</b>	<b>154</b>	<b>217</b>	<b>1.41</b>	<b>40.1%</b>	<b>59.9%</b>	<b>1.27</b>	<b>1.52</b>	<b>82.0%</b>	<b>85.1%</b>	<b>80.0%</b>	<b>37.8%</b>	<b>62.2%</b>	<b>44.8%</b>	<b>33.1%</b>

<b>Maintenance/ Technical</b>	<b>73</b>	<b>75</b>	<b>1.03</b>	<b>98.7%</b>	<b>1.3%</b>	<b>1.03</b>	<b>1.01</b>	<b>97.3%</b>	<b>97.3%</b>	<b>100.0%</b>	<b>93.3%</b>	<b>6.7%</b>	<b>93.2%</b>	<b>100.0%</b>
<b>General Support</b>	<b>227</b>	<b>292</b>	<b>1.29</b>	<b>55.1%</b>	<b>44.9%</b>	<b>1.15</b>	<b>1.51</b>	<b>86.0%</b>	<b>90.7%</b>	<b>80.2%</b>	<b>52.1%</b>	<b>47.9%</b>	<b>67.1%</b>	<b>33.6%</b>
HCA, Nurse's Aide, etc.	1,369	1,602	1.17	25.3%	74.7%	1.13	1.19	77.3%	77.3%	76.8%	52.1%	47.9%	67.4%	47.0%
Health & Social Care Assistants	9	11	1.19	45.5%	54.5%	1.13	1.24	36.4%	36.4%	33.3%	90.9%	9.1%	100.0%	83.3%
<b>Health Care Assistants</b>	<b>1,378</b>	<b>1,613</b>	<b>1.17</b>	<b>25.4%</b>	<b>74.6%</b>	<b>1.13</b>	<b>1.19</b>	<b>77.1%</b>	<b>78.5%</b>	<b>76.6%</b>	<b>52.4%</b>	<b>47.6%</b>	<b>67.8%</b>	<b>47.1%</b>
<b>Care, other</b>	<b>280</b>	<b>336</b>	<b>1.20</b>	<b>34.5%</b>	<b>65.5%</b>	<b>1.14</b>	<b>1.24</b>	<b>87.2%</b>	<b>83.6%</b>	<b>89.1%</b>	<b>53.9%</b>	<b>46.1%</b>	<b>63.8%</b>	<b>48.6%</b>
<b>Home Help</b>	<b>428</b>	<b>601</b>	<b>1.40</b>	<b>0.7%</b>	<b>99.3%</b>	<b>1.63</b>	<b>1.40</b>	<b>91.7%</b>	<b>50.0%</b>	<b>92.0%</b>	<b>5.0%</b>	<b>95.0%</b>	<b>0.0%</b>	<b>5.0%</b>
<b>Patient &amp; Client Care</b>	<b>2,085</b>	<b>2,550</b>	<b>1.22</b>	<b>20.8%</b>	<b>79.2%</b>	<b>1.13</b>	<b>1.25</b>	<b>81.8%</b>	<b>79.4%</b>	<b>82.5%</b>	<b>41.4%</b>	<b>58.6%</b>	<b>66.4%</b>	<b>34.9%</b>



## Employment by WTE, Headcount, Gender, Full-Time /Part-Time etc.: Nov 2020

CHO 2	WTE	Headcount	WTE: no.	% Male	% female	Male WTE: no.	Female WTE: no.	% Total Perm	% Male Perm	% Female Perm	% Total Full Time	% Total Part Time	% Male FT	% Female FT
<b>Overall</b>	<b>5,612</b>	<b>6,587</b>	<b>1.17</b>	<b>18.8%</b>	<b>81.2%</b>	<b>1.11</b>	<b>1.19</b>	<b>85.7%</b>	<b>82.1%</b>	<b>86.5%</b>	<b>58.4%</b>	<b>41.6%</b>	<b>74.2%</b>	<b>54.8%</b>
Community Health & Wellbeing	10	11	1.12	9.1%	90.9%	1.00	1.13	100.0%	100.0%	100.0%	54.5%	45.5%	100.0%	100.0%
Mental Health	1,345	1,444	1.07	28.1%	71.9%	1.04	1.09	86.1%	86.1%	87.9%	83.0%	17.0%	89.9%	89.9%
Primary Care	1,191	1,379	1.16	12.2%	87.8%	1.08	1.17	84.4%	84.4%	85.7%	69.5%	30.5%	83.3%	83.3%
HSE	1,776	2,116	1.19	13.5%	86.5%	1.05	1.22	90.2%	90.2%	90.7%	50.5%	49.5%	89.1%	89.1%
Section 38 Voluntary Agencies	1,289	1,637	1.27	23.1%	76.9%	1.26	1.27	80.5%	80.5%	80.1%	37.6%	62.4%	42.1%	42.1%
Social Care	3,066	3,753	1.22	17.7%	82.3%	1.16	1.24	86.0%	86.0%	86.3%	44.9%	55.1%	62.3%	62.3%

## CHO 2 Skills Mix by Staff Grouping: November 2020

Nov 2020 (Dec 2018 figure: 5,559)	WTE Dec 2015	WTE Dec 2016	WTE Dec 2017	WTE Dec 2018	WTE Dec 2019	WTE Oct 2020	WTE Nov 2020
<b>Overall</b>	<b>5,111</b>	<b>5,236</b>	<b>5,377</b>	<b>5,559</b>	<b>5,545</b>	<b>5,602</b>	<b>5,612</b>
Consultant Medicine	0.5%	0.5%	0.5%	0.5%	0.5%	0.4%	0.4%
Consultant Paediatrics	0.5%	0.5%	0.5%	0.5%	0.5%	0.4%	0.4%
Consultant Psychiatry	18.0%	16.7%	16.6%	16.4%	18.9%	17.8%	16.8%
Consultant Surgery	0.7%	0.7%	0.6%	0.1%	0.1%	0.1%	0.1%
<b>Consultants</b>	<b>19.7%</b>	<b>18.4%</b>	<b>18.3%</b>	<b>17.5%</b>	<b>19.9%</b>	<b>18.7%</b>	<b>17.8%</b>
Registrar	26.4%	27.0%	29.4%	27.8%	27.4%	28.5%	28.4%
Senior Registrar	3.5%	4.2%	4.2%	5.5%	8.0%	9.1%	9.1%
<b>Registrars</b>	<b>29.9%</b>	<b>31.1%</b>	<b>33.6%</b>	<b>33.2%</b>	<b>35.4%</b>	<b>37.7%</b>	<b>37.5%</b>
Interns	0.5%						
Senior House Officer	19.2%	19.3%	18.6%	20.0%	16.9%	18.0%	18.1%
<b>SHO/ Interns</b>	<b>19.8%</b>	<b>19.3%</b>	<b>18.6%</b>	<b>20.0%</b>	<b>16.9%</b>	<b>18.0%</b>	<b>18.1%</b>
Dentists	11.8%	11.2%	10.8%	11.0%	10.0%	8.7%	8.8%
Other Medical	18.9%	19.9%	18.8%	18.3%	17.7%	17.0%	17.7%
<b>Medical/ Dental, other</b>	<b>30.6%</b>	<b>31.2%</b>	<b>29.6%</b>	<b>29.3%</b>	<b>27.7%</b>	<b>25.7%</b>	<b>26.5%</b>
<b>Medical &amp; Dental</b>	<b>3.7%</b>	<b>3.7%</b>	<b>3.8%</b>	<b>3.8%</b>	<b>3.8%</b>	<b>100.0%</b>	<b>4.2%</b>
Clinical Nurse/ Midwife Manager	14.7%	15.7%	15.7%	16.5%	16.0%	16.7%	16.6%
Director Nursing/Midwifery, Assistant	2.4%	2.5%	2.7%	2.6%	3.0%	2.9%	2.8%
Director of Nursing/Midwifery	1.4%	1.4%	1.4%	1.4%	1.5%	1.5%	1.4%
<b>Nurse/ Midwife Manager</b>	<b>18.5%</b>	<b>19.5%</b>	<b>19.7%</b>	<b>20.5%</b>	<b>20.6%</b>	<b>21.1%</b>	<b>20.8%</b>
Advanced Nurse/ Midwife Practitioner	0.2%	0.2%	0.3%	0.4%	0.6%	0.6%	0.6%
Clinical Nurse/ Midwife Specialist	4.3%	4.3%	5.1%	5.1%	5.6%	6.2%	6.2%
<b>Nurse/ Midwife Specialist &amp; AN/MP</b>	<b>4.5%</b>	<b>4.5%</b>	<b>5.3%</b>	<b>5.5%</b>	<b>6.2%</b>	<b>6.8%</b>	<b>6.9%</b>
Staff Midwives	0.1%	0.0%	0.1%				
Staff Nurse [Intellectual Disability]	8.0%	8.5%	6.5%	6.4%	6.0%	6.3%	6.6%
Staff Nurse [Psychiatric]	26.0%	25.4%	24.3%	24.1%	24.7%	23.2%	23.7%
Staff Nurses [General/ Children's]	30.3%	29.7%	30.5%	29.6%	29.1%	27.9%	28.0%
<b>Staff Nurse/ Staff Midwife</b>	<b>64.4%</b>	<b>63.6%</b>	<b>61.4%</b>	<b>60.1%</b>	<b>59.8%</b>	<b>57.5%</b>	<b>58.3%</b>
<b>Public Health Nurse</b>	<b>11.9%</b>	<b>11.7%</b>	<b>11.4%</b>	<b>12.2%</b>	<b>12.8%</b>	<b>12.8%</b>	<b>12.9%</b>
Pre-registration Nurse/ Midwife Intern	0.2%		0.9%		0.0%		
Pre-registration Nurse Intern (COVID-19)						1.7%	1.0%
Post-registration Nurse/ Midwife Student	0.5%	0.7%	1.1%	0.8%	0.3%		
Nursing/ Midwifery awaiting registration				0.7%	0.3%		
<b>Nursing/ Midwifery Student</b>	<b>0.6%</b>	<b>0.7%</b>	<b>1.9%</b>	<b>1.6%</b>	<b>0.6%</b>	<b>1.7%</b>	<b>1.0%</b>
<b>Nursing/ Midwifery other</b>			<b>0.1%</b>	<b>0.2%</b>	<b>0.1%</b>	<b>0.2%</b>	<b>0.2%</b>
<b>Nursing &amp; Midwifery</b>	<b>29.3%</b>	<b>28.8%</b>	<b>28.3%</b>	<b>27.6%</b>	<b>27.7%</b>	<b>100.0%</b>	<b>27.6%</b>
Dietitians	2.2%	2.4%	2.6%	2.5%	2.4%	2.8%	2.8%
Occupational Therapists	13.8%	15.1%	14.7%	14.6%	14.4%	15.1%	15.1%
Orthoptists	0.2%	0.2%	0.2%	0.2%	0.2%	0.3%	0.2%
Physiotherapists	12.3%	10.7%	11.7%	11.0%	10.9%	10.9%	10.7%
Podiatrists & Chiropodists	0.9%	1.2%	1.0%	0.9%	0.9%	0.9%	0.9%
Speech & Language Therapists	11.9%	12.3%	12.4%	12.8%	12.9%	12.1%	12.3%
<b>Therapy Professions</b>	<b>41.2%</b>	<b>41.8%</b>	<b>42.6%</b>	<b>41.9%</b>	<b>41.7%</b>	<b>42.2%</b>	<b>42.0%</b>
Audiology	0.7%	0.6%	0.8%	0.7%	0.6%	0.6%	0.6%
Clinical Engineering	0.1%	0.1%			0.1%	0.1%	0.1%
Medical Laboratory	3.8%	3.8%	3.5%	3.3%	3.3%	3.2%	3.2%
Physicists	0.1%	0.1%					
Radiographers	0.0%	0.1%	0.1%	0.1%	0.1%	0.1%	0.1%
<b>Health Science/ Diagnostics</b>	<b>4.8%</b>	<b>4.8%</b>	<b>4.4%</b>	<b>4.1%</b>	<b>4.1%</b>	<b>4.0%</b>	<b>4.0%</b>
<b>Social Care</b>	<b>24.8%</b>	<b>26.3%</b>	<b>27.2%</b>	<b>28.6%</b>	<b>30.2%</b>	<b>30.6%</b>	<b>31.0%</b>
<b>Social Workers</b>	<b>11.1%</b>	<b>10.3%</b>	<b>10.1%</b>	<b>10.1%</b>	<b>10.3%</b>	<b>9.8%</b>	<b>9.8%</b>
<b>Psychologists</b>	<b>12.2%</b>	<b>11.4%</b>	<b>10.7%</b>	<b>10.3%</b>	<b>9.1%</b>	<b>9.5%</b>	<b>9.1%</b>

Nov 2020 (Dec 2018 figure: 5,559)	WTE Dec 2015	WTE Dec 2016	WTE Dec 2017	WTE Dec 2018	WTE Dec 2019	WTE Oct 2020	WTE Nov 2020
<b>Overall</b>	<b>5,111</b>	<b>5,236</b>	<b>5,377</b>	<b>5,559</b>	<b>5,545</b>	<b>5,602</b>	<b>5,612</b>
<b>Pharmacy</b>	<b>0.8%</b>	<b>0.7%</b>	<b>0.6%</b>	<b>0.5%</b>	<b>0.6%</b>	<b>0.4%</b>	<b>0.4%</b>
Counsellor Therapists	1.2%	1.4%	1.4%	1.5%	1.4%	1.3%	1.3%
Dental Hygienists	0.4%	0.5%	0.3%	0.5%	0.6%	0.6%	0.6%
HSCP Trainees/ Students	0.5%	0.3%	0.1%				
Other Health & Social Care	2.5%	2.1%	2.1%	1.9%	1.6%	1.4%	1.6%
Play Therapists/ Specialists	0.6%	0.5%	0.5%	0.4%	0.4%	0.1%	0.1%
<b>H&amp;SC, Other</b>	<b>5.2%</b>	<b>4.7%</b>	<b>4.4%</b>	<b>4.4%</b>	<b>4.0%</b>	<b>3.4%</b>	<b>3.6%</b>
<b>Health &amp; Social Care Professionals</b>	<b>13.7%</b>	<b>14.0%</b>	<b>14.0%</b>	<b>14.6%</b>	<b>14.6%</b>	<b>100.0%</b>	<b>15.3%</b>
Executive Management	1.4%	1.7%	1.8%	1.7%	1.6%	1.7%	1.7%
Senior Management (VIII & GM)	6.4%	6.5%	6.6%	7.0%	6.9%	7.3%	7.1%
<b>Management (VIII &amp; above)</b>	<b>7.8%</b>	<b>8.2%</b>	<b>8.5%</b>	<b>8.7%</b>	<b>8.5%</b>	<b>9.0%</b>	<b>8.8%</b>
Middle Management (V-VII)	15.0%	17.2%	18.3%	18.5%	20.2%	22.9%	23.8%
Other Administrative					0.2%		
<b>Administrative/ Supervisory (V to VII)</b>	<b>15.0%</b>	<b>17.2%</b>	<b>18.3%</b>	<b>18.5%</b>	<b>20.3%</b>	<b>22.9%</b>	<b>23.8%</b>
<b>Clerical (III &amp; IV)</b>	<b>77.2%</b>	<b>74.6%</b>	<b>73.2%</b>	<b>72.8%</b>	<b>71.2%</b>	<b>68.1%</b>	<b>67.4%</b>
<b>Management &amp; Administrative</b>	<b>11.0%</b>	<b>11.3%</b>	<b>11.9%</b>	<b>12.0%</b>	<b>12.0%</b>	<b>100.0%</b>	<b>11.8%</b>
Catering	14.7%	15.6%	14.8%	16.9%	17.6%	17.5%	17.2%
Household Services	34.7%	31.9%	30.7%	28.8%	27.9%	28.4%	27.6%
Other Support	16.8%	17.2%	17.6%	17.4%	17.4%	16.2%	16.8%
Portering	4.9%	6.4%	7.2%	7.1%	6.9%	6.2%	6.2%
<b>Support</b>	<b>71.1%</b>	<b>71.0%</b>	<b>70.3%</b>	<b>70.2%</b>	<b>69.9%</b>	<b>68.4%</b>	<b>67.9%</b>
<b>Maintenance/ Technical</b>	<b>28.9%</b>	<b>29.0%</b>	<b>29.7%</b>	<b>29.8%</b>	<b>30.1%</b>	<b>31.6%</b>	<b>32.1%</b>
<b>General Support</b>	<b>5.3%</b>	<b>4.9%</b>	<b>4.5%</b>	<b>4.4%</b>	<b>4.4%</b>	<b>100.0%</b>	<b>4.0%</b>
HCA, Nurse's Aide, etc.	61.2%	63.7%	64.2%	63.5%	63.3%	65.9%	65.6%
Health & Social Care Assistants	0.3%	0.3%	0.5%	0.9%	0.6%	0.5%	0.4%
<b>Health Care Assistants</b>	<b>61.5%</b>	<b>64.0%</b>	<b>64.7%</b>	<b>64.5%</b>	<b>64.0%</b>	<b>66.4%</b>	<b>66.1%</b>
<b>Care, other</b>	<b>13.9%</b>	<b>13.0%</b>	<b>13.0%</b>	<b>12.5%</b>	<b>12.7%</b>	<b>13.1%</b>	<b>13.4%</b>
<b>Home Help</b>	<b>24.6%</b>	<b>23.0%</b>	<b>22.3%</b>	<b>23.0%</b>	<b>23.4%</b>	<b>20.5%</b>	<b>20.5%</b>
<b>Patient &amp; Client Care</b>	<b>37.1%</b>	<b>37.4%</b>	<b>37.4%</b>	<b>37.7%</b>	<b>37.8%</b>	<b>100.0%</b>	<b>37.2%</b>
<b>Total</b>	<b>100 %</b>	<b>100 %</b>	<b>100 %</b>	<b>100 %</b>	<b>100%</b>	<b>100 %</b>	<b>100 %</b>

## CHO 2 Skills Mix by Care Group: November 2020

Nov 2020 (Dec 2018 figure: 1,338)	WTE Dec 2015	WTE Dec 2016	WTE Dec 2017	WTE Dec 2018	WTE Dec 2019	WTE Oct 2020	WTE Nov 2020
<b>Mental Health</b>	<b>1,258</b>	<b>1,283</b>	<b>1,307</b>	<b>1,338</b>	<b>1,308</b>	<b>1,353</b>	<b>1,345</b>
<b>Consultants</b>	<b>38.0%</b>	<b>33.8%</b>	<b>31.8%</b>	<b>30.6%</b>	<b>35.3%</b>	<b>33.9%</b>	<b>32.3%</b>
Registrar	17.5%	18.0%	19.5%	17.9%	16.0%	14.6%	14.7%
Senior Registrar	7.8%	9.0%	8.5%	10.9%	15.0%	16.8%	16.9%
<b>Registrars</b>	<b>25.3%</b>	<b>27.0%</b>	<b>28.0%</b>	<b>28.7%</b>	<b>31.1%</b>	<b>31.3%</b>	<b>31.7%</b>
Interns	1.2%						
Senior House Officer	32.6%	36.4%	37.7%	39.7%	32.7%	33.9%	34.5%
<b>SHO/ Interns</b>	<b>33.8%</b>	<b>36.4%</b>	<b>37.7%</b>	<b>39.7%</b>	<b>32.7%</b>	<b>33.9%</b>	<b>34.5%</b>
<b>Medical/ Dental, other</b>	<b>3.0%</b>	<b>2.8%</b>	<b>2.5%</b>	<b>0.9%</b>	<b>0.9%</b>	<b>0.9%</b>	<b>1.5%</b>
<b>Medical &amp; Dental</b>	<b>6.6%</b>	<b>6.9%</b>	<b>7.6%</b>	<b>7.9%</b>	<b>8.1%</b>	<b>8.6%</b>	<b>8.6%</b>
Clinical Nurse/ Midwife Manager	20.5%	22.1%	20.7%	23.0%	21.5%	21.7%	21.6%
Director Nursing/Midwifery, Assistant	2.9%	2.8%	3.3%	3.1%	3.3%	3.1%	3.0%
Director of Nursing/Midwifery	0.4%	0.5%	0.5%	0.3%	0.5%	0.5%	0.5%
<b>Nurse/ Midwife Manager</b>	<b>23.7%</b>	<b>25.5%</b>	<b>24.6%</b>	<b>26.4%</b>	<b>25.3%</b>	<b>25.3%</b>	<b>25.1%</b>
Advanced Nurse/ Midwife Practitioner	0.5%	0.5%	0.5%	0.9%	1.0%	1.1%	1.1%
Clinical Nurse/ Midwife Specialist	7.5%	7.4%	9.9%	9.4%	10.6%	11.7%	11.9%
<b>Nurse/ Midwife Specialist &amp; AN/MP</b>	<b>8.1%</b>	<b>7.9%</b>	<b>10.4%</b>	<b>10.2%</b>	<b>11.7%</b>	<b>12.8%</b>	<b>13.0%</b>
Staff Nurse [Psychiatric]	65.7%	64.6%	61.0%	60.0%	61.0%	56.4%	58.1%
Staff Nurses [General/ Children's]	2.0%	2.0%	1.3%	0.9%	0.9%	0.7%	0.7%
<b>Staff Nurse/ Staff Midwife</b>	<b>67.8%</b>	<b>66.6%</b>	<b>62.3%</b>	<b>61.0%</b>	<b>61.9%</b>	<b>57.1%</b>	<b>58.9%</b>
Pre-registration Nurse/ Midwife Intern	0.4%		2.3%		0.0%		
Pre-registration Nurse Intern (COVID-19)						4.3%	2.5%
Nursing/ Midwifery awaiting registration				1.9%	0.8%		
<b>Nursing/ Midwifery Student</b>	<b>0.4%</b>		<b>2.3%</b>	<b>1.9%</b>	<b>0.8%</b>	<b>4.3%</b>	<b>2.5%</b>
<b>Nursing/ Midwifery other</b>			<b>0.4%</b>	<b>0.5%</b>	<b>0.3%</b>	<b>0.5%</b>	<b>0.4%</b>
<b>Nursing &amp; Midwifery</b>	<b>44.5%</b>	<b>44.0%</b>	<b>43.5%</b>	<b>43.8%</b>	<b>44.8%</b>	<b>44.8%</b>	<b>44.8%</b>
Dietitians	1.6%	2.9%	3.6%	2.4%	2.1%	2.2%	2.7%
Occupational Therapists	20.6%	24.4%	26.3%	26.4%	26.0%	26.3%	26.0%
Speech & Language Therapists	4.7%	5.3%	5.5%	5.2%	4.3%	6.2%	5.7%
<b>Therapy Professions</b>	<b>26.9%</b>	<b>32.6%</b>	<b>35.4%</b>	<b>33.9%</b>	<b>32.4%</b>	<b>34.7%</b>	<b>34.4%</b>
<b>Social Care</b>	<b>13.5%</b>	<b>12.2%</b>	<b>9.7%</b>	<b>9.9%</b>	<b>10.5%</b>	<b>9.8%</b>	<b>10.3%</b>
<b>Social Workers</b>	<b>30.3%</b>	<b>26.9%</b>	<b>26.2%</b>	<b>27.7%</b>	<b>29.1%</b>	<b>26.8%</b>	<b>27.6%</b>
<b>Psychologists</b>	<b>25.4%</b>	<b>25.0%</b>	<b>25.3%</b>	<b>24.6%</b>	<b>24.0%</b>	<b>25.7%</b>	<b>24.5%</b>
<b>Pharmacy</b>	<b>3.2%</b>	<b>2.6%</b>	<b>1.9%</b>	<b>1.8%</b>	<b>1.8%</b>	<b>1.1%</b>	<b>1.2%</b>
Counsellor Therapists				1.4%	1.4%	1.3%	1.3%
Other Health & Social Care			0.7%				
Play Therapists/ Specialists	0.8%	0.7%	0.7%	0.7%	0.7%	0.6%	0.7%
<b>H&amp;SC, Other</b>	<b>0.8%</b>	<b>0.7%</b>	<b>1.4%</b>	<b>2.1%</b>	<b>2.1%</b>	<b>1.9%</b>	<b>2.0%</b>
<b>Health &amp; Social Care Professionals</b>	<b>10.1%</b>	<b>10.7%</b>	<b>10.6%</b>	<b>10.9%</b>	<b>11.2%</b>	<b>11.3%</b>	<b>11.3%</b>
<b>Management (VIII &amp; above)</b>	<b>4.0%</b>	<b>3.1%</b>	<b>2.2%</b>	<b>2.8%</b>	<b>3.6%</b>	<b>3.0%</b>	<b>3.0%</b>
<b>Administrative/ Supervisory (V to VII)</b>	<b>13.5%</b>	<b>15.9%</b>	<b>17.6%</b>	<b>16.5%</b>	<b>17.1%</b>	<b>21.2%</b>	<b>20.7%</b>
<b>Clerical (III &amp; IV)</b>	<b>82.5%</b>	<b>81.0%</b>	<b>80.2%</b>	<b>80.7%</b>	<b>79.2%</b>	<b>75.8%</b>	<b>76.3%</b>
<b>Management &amp; Administrative</b>	<b>9.9%</b>	<b>10.2%</b>	<b>10.4%</b>	<b>10.5%</b>	<b>10.8%</b>	<b>9.8%</b>	<b>9.8%</b>
<b>Support</b>	<b>61.0%</b>	<b>56.6%</b>	<b>53.4%</b>	<b>52.7%</b>	<b>57.3%</b>	<b>52.1%</b>	<b>49.4%</b>
<b>Maintenance/ Technical</b>	<b>39.0%</b>	<b>43.4%</b>	<b>46.6%</b>	<b>47.3%</b>	<b>42.7%</b>	<b>47.9%</b>	<b>50.6%</b>
<b>General Support</b>	<b>6.7%</b>	<b>6.3%</b>	<b>5.6%</b>	<b>5.2%</b>	<b>5.3%</b>	<b>4.8%</b>	<b>4.8%</b>
<b>Health Care Assistants</b>	<b>75.6%</b>	<b>76.3%</b>	<b>74.5%</b>	<b>75.0%</b>	<b>75.6%</b>	<b>75.7%</b>	<b>75.9%</b>
<b>Care, other</b>	<b>24.4%</b>	<b>23.7%</b>	<b>25.5%</b>	<b>25.0%</b>	<b>24.4%</b>	<b>24.3%</b>	<b>24.1%</b>

Nov 2020 (Dec 2018 figure: 1,338)	WTE Dec 2015	WTE Dec 2016	WTE Dec 2017	WTE Dec 2018	WTE Dec 2019	WTE Oct 2020	WTE Nov 2020
<b>Mental Health</b>	<b>1,258</b>	<b>1,283</b>	<b>1,307</b>	<b>1,338</b>	<b>1,308</b>	<b>1,353</b>	<b>1,345</b>
<b>Patient &amp; Client Care</b>	<b>22.1%</b>	<b>21.9%</b>	<b>22.3%</b>	<b>21.7%</b>	<b>22.2%</b>	<b>20.7%</b>	<b>20.7%</b>
<b>Total</b>	<b>100 %</b>	<b>100 %</b>	<b>100 %</b>	<b>100 %</b>	<b>100 %</b>	<b>100 %</b>	<b>100 %</b>

Nov 2020 (Dec 2018 figure: 1,160)	WTE Dec 2015	WTE Dec 2016	WTE Dec 2017	WTE Dec 2018	WTE Dec 2019	WTE Oct 2020	WTE Nov 2020
<b>Primary Care</b>	<b>1,261</b>	<b>1,238</b>	<b>1,090</b>	<b>1,160</b>	<b>1,134</b>	<b>1,170</b>	<b>1,191</b>
Consultant Medicine	1.1%	1.2%	1.2%	1.1%	1.1%	1.0%	1.0%
Consultant Psychiatry	1.1%						
Consultant Surgery	1.4%	1.5%	1.5%	0.3%	0.3%	0.2%	0.3%
<b>Consultants</b>	<b>3.6%</b>	<b>2.7%</b>	<b>2.7%</b>	<b>1.5%</b>	<b>1.4%</b>	<b>1.2%</b>	<b>1.2%</b>
<b>Registrars</b>	<b>36.5%</b>	<b>39.1%</b>	<b>44.7%</b>	<b>43.2%</b>	<b>45.6%</b>	<b>49.1%</b>	<b>48.3%</b>
<b>SHO/ Interns</b>	<b>9.8%</b>	<b>5.4%</b>			<b>1.1%</b>	<b>2.9%</b>	<b>2.9%</b>
Dentists	24.5%	25.0%	25.7%	26.7%	24.1%	20.1%	20.1%
Other Medical	25.6%	27.8%	26.9%	28.6%	27.8%	26.7%	27.4%
<b>Medical/ Dental, other</b>	<b>50.0%</b>	<b>52.8%</b>	<b>52.6%</b>	<b>55.3%</b>	<b>51.9%</b>	<b>46.7%</b>	<b>47.6%</b>
<b>Medical &amp; Dental</b>	<b>7.1%</b>	<b>7.0%</b>	<b>7.8%</b>	<b>7.5%</b>	<b>7.7%</b>	<b>8.7%</b>	<b>8.7%</b>
Clinical Nurse/ Midwife Manager	2.0%	1.7%	2.3%	2.0%	1.7%	1.8%	1.8%
Director Nursing/Midwifery, Assistant	4.7%	5.3%	4.9%	5.1%	6.4%	6.2%	5.8%
Director of Nursing/Midwifery	0.9%	0.7%	1.0%	0.9%	0.6%	0.9%	0.9%
<b>Nurse/ Midwife Manager</b>	<b>7.6%</b>	<b>7.7%</b>	<b>8.2%</b>	<b>8.0%</b>	<b>8.7%</b>	<b>8.9%</b>	<b>8.6%</b>
<b>Nurse/ Midwife Specialist &amp; AN/MP</b>	<b>5.7%</b>	<b>5.2%</b>	<b>4.9%</b>	<b>5.7%</b>	<b>5.5%</b>	<b>6.4%</b>	<b>6.3%</b>
<b>Staff Nurse/ Staff Midwife</b>	<b>24.1%</b>	<b>24.0%</b>	<b>23.9%</b>	<b>24.4%</b>	<b>23.6%</b>	<b>23.1%</b>	<b>23.9%</b>
<b>Public Health Nurse</b>	<b>60.3%</b>	<b>59.4%</b>	<b>57.7%</b>	<b>57.8%</b>	<b>60.9%</b>	<b>61.6%</b>	<b>61.3%</b>
<b>Nursing/ Midwifery Student</b>	<b>2.4%</b>	<b>3.7%</b>	<b>5.3%</b>	<b>4.0%</b>	<b>1.3%</b>		
<b>Nursing &amp; Midwifery</b>	<b>23.4%</b>	<b>23.9%</b>	<b>27.6%</b>	<b>27.7%</b>	<b>28.4%</b>	<b>27.1%</b>	<b>27.1%</b>
Dietitians	4.0%	3.3%	4.0%	5.2%	4.9%	5.6%	5.6%
Occupational Therapists	17.7%	19.1%	18.6%	18.8%	19.0%	20.2%	20.9%
Orthoptists	0.5%	0.5%	0.5%	0.5%	0.5%	0.7%	0.6%
Physiotherapists	19.4%	18.1%	21.1%	20.0%	20.0%	20.7%	20.2%
Podiatrists & Chiropodists	2.0%	2.8%	2.5%	2.2%	2.2%	2.4%	2.2%
Speech & Language Therapists	20.8%	22.6%	22.9%	24.4%	25.7%	24.1%	24.3%
<b>Therapy Professions</b>	<b>64.5%</b>	<b>66.4%</b>	<b>69.7%</b>	<b>71.1%</b>	<b>72.4%</b>	<b>73.7%</b>	<b>73.8%</b>
Audiology	1.6%	1.5%	1.9%	1.8%	1.6%	1.5%	1.6%
Clinical Engineering	0.3%	0.3%			0.3%	0.3%	0.3%
Medical Laboratory	8.8%	9.2%	8.8%	8.3%	8.5%	8.3%	8.2%
Physicists	0.3%	0.3%					
<b>Health Science/ Diagnostics</b>	<b>11.0%</b>	<b>11.4%</b>	<b>10.7%</b>	<b>10.1%</b>	<b>10.4%</b>	<b>10.1%</b>	<b>10.1%</b>
<b>Social Care</b>	<b>4.0%</b>	<b>3.7%</b>	<b>3.5%</b>	<b>3.0%</b>	<b>2.7%</b>	<b>2.6%</b>	<b>2.6%</b>
<b>Social Workers</b>	<b>3.2%</b>	<b>3.0%</b>	<b>2.3%</b>	<b>2.1%</b>	<b>2.2%</b>	<b>1.8%</b>	<b>1.7%</b>
<b>Psychologists</b>	<b>12.2%</b>	<b>10.0%</b>	<b>8.8%</b>	<b>8.6%</b>	<b>7.7%</b>	<b>8.0%</b>	<b>7.8%</b>
<b>Pharmacy</b>	<b>0.3%</b>	<b>0.3%</b>	<b>0.3%</b>	<b>0.3%</b>	<b>0.3%</b>	<b>0.3%</b>	<b>0.3%</b>
Counsellor Therapists	2.8%	3.0%	2.9%	2.4%	1.9%	1.5%	1.5%
Dental Hygienists	1.0%	1.1%	0.8%	1.4%	1.4%	1.4%	1.5%
Other Health & Social Care	1.0%	1.0%	1.0%	0.9%	1.0%	0.6%	0.6%
<b>H&amp;SC, Other</b>	<b>4.8%</b>	<b>5.1%</b>	<b>4.7%</b>	<b>4.7%</b>	<b>4.3%</b>	<b>3.6%</b>	<b>3.6%</b>
<b>Health &amp; Social Care Professionals</b>	<b>24.2%</b>	<b>24.2%</b>	<b>27.8%</b>	<b>27.8%</b>	<b>28.4%</b>	<b>28.0%</b>	<b>28.0%</b>
Executive Management	2.1%	2.7%	3.1%	2.8%	2.5%	2.9%	2.8%
Senior Management (VIII & GM)	7.3%	7.0%	8.4%	8.4%	7.4%	7.6%	7.5%
<b>Management (VIII &amp; above)</b>	<b>9.4%</b>	<b>9.7%</b>	<b>11.5%</b>	<b>11.2%</b>	<b>9.9%</b>	<b>10.5%</b>	<b>10.3%</b>
<b>Administrative/ Supervisory (V to VII)</b>	<b>12.7%</b>	<b>13.6%</b>	<b>14.3%</b>	<b>16.1%</b>	<b>18.6%</b>	<b>19.2%</b>	<b>20.9%</b>
<b>Clerical (III &amp; IV)</b>	<b>77.9%</b>	<b>76.7%</b>	<b>74.2%</b>	<b>72.7%</b>	<b>71.5%</b>	<b>70.3%</b>	<b>68.8%</b>

Nov 2020 (Dec 2018 figure: 1,160)	WTE Dec 2015	WTE Dec 2016	WTE Dec 2017	WTE Dec 2018	WTE Dec 2019	WTE Oct 2020	WTE Nov 2020
<b>Primary Care</b>	<b>1,261</b>	<b>1,238</b>	<b>1,090</b>	<b>1,160</b>	<b>1,134</b>	<b>1,170</b>	<b>1,191</b>
<b>Management &amp; Administrative</b>	<b>22.6%</b>	<b>23.6%</b>	<b>28.8%</b>	<b>28.5%</b>	<b>29.1%</b>	<b>27.9%</b>	<b>27.9%</b>
<b>Support</b>	<b>59.1%</b>	<b>70.6%</b>	<b>70.8%</b>	<b>74.0%</b>	<b>69.9%</b>	<b>71.3%</b>	<b>73.7%</b>
<b>Maintenance/ Technical</b>	<b>40.9%</b>	<b>29.4%</b>	<b>29.2%</b>	<b>26.0%</b>	<b>30.1%</b>	<b>28.7%</b>	<b>26.3%</b>
<b>General Support</b>	<b>2.9%</b>	<b>2.5%</b>	<b>2.8%</b>	<b>3.0%</b>	<b>3.1%</b>	<b>2.6%</b>	<b>2.6%</b>
HCA, Nurse's Aide, etc.	2.7%	2.4%	8.1%	6.9%	7.7%	11.0%	24.6%
Health & Social Care Assistants		0.4%	7.1%	23.2%	17.2%	11.9%	8.1%
<b>Health Care Assistants</b>	<b>2.7%</b>	<b>2.9%</b>	<b>15.2%</b>	<b>30.0%</b>	<b>25.0%</b>	<b>22.9%</b>	<b>32.8%</b>
<b>Care, other</b>	<b>24.7%</b>	<b>24.7%</b>	<b>84.8%</b>	<b>70.0%</b>	<b>75.0%</b>	<b>77.1%</b>	<b>67.2%</b>
<b>Home Help</b>	<b>72.5%</b>	<b>72.5%</b>					
<b>Patient &amp; Client Care</b>	<b>19.8%</b>	<b>18.8%</b>	<b>5.2%</b>	<b>5.6%</b>	<b>5.7%</b>	<b>5.7%</b>	<b>5.7%</b>
<b>Total</b>	<b>100 %</b>	<b>100 %</b>	<b>100 %</b>	<b>100 %</b>	<b>100 %</b>	<b>100 %</b>	<b>100 %</b>

Nov 2020 (Dec 2018 figure: 1,420)	WTE Dec 2015	WTE Dec 2016	WTE Dec 2017	WTE Dec 2018	WTE Dec 2019	WTE Oct 2020	WTE Nov 2020
<b>Disabilities</b>	<b>1,221</b>	<b>1,338</b>	<b>1,395</b>	<b>1,420</b>	<b>1,497</b>	<b>1,491</b>	<b>1,505</b>
Consultant Paediatrics	20.0%	16.7%	16.7%	16.4%	15.6%	15.6%	15.6%
Consultant Psychiatry	20.0%	33.3%	33.3%	34.3%	37.5%	37.5%	37.5%
<b>Consultants</b>	<b>40.0%</b>	<b>50.0%</b>	<b>50.0%</b>	<b>50.7%</b>	<b>53.1%</b>	<b>53.1%</b>	<b>53.1%</b>
<b>Registrars</b>	<b>40.0%</b>	<b>33.3%</b>	<b>33.3%</b>	<b>32.8%</b>	<b>31.3%</b>	<b>31.3%</b>	<b>31.3%</b>
<b>Medical/ Dental, other</b>	<b>20.0%</b>	<b>16.7%</b>	<b>16.7%</b>	<b>16.4%</b>	<b>15.6%</b>	<b>15.6%</b>	<b>15.6%</b>
<b>Medical &amp; Dental</b>	<b>0.4%</b>	<b>0.4%</b>	<b>0.4%</b>	<b>0.4%</b>	<b>0.4%</b>	<b>0.4%</b>	<b>0.4%</b>
Clinical Nurse/ Midwife Manager	23.8%	24.3%	26.1%	27.5%	30.0%	30.6%	30.3%
Director Nursing/Midwifery, Assistant	0.4%	0.7%	0.4%				
Director of Nursing/Midwifery	0.7%	1.1%	0.7%	0.7%	1.1%	1.2%	1.2%
<b>Nurse/ Midwife Manager</b>	<b>24.8%</b>	<b>26.0%</b>	<b>27.1%</b>	<b>28.2%</b>	<b>31.1%</b>	<b>31.8%</b>	<b>31.5%</b>
Advanced Nurse/ Midwife Practitioner			0.4%	0.4%	0.4%	0.4%	0.4%
Clinical Nurse/ Midwife Specialist	2.2%	2.6%	2.3%	2.0%	2.0%	1.9%	1.9%
<b>Nurse/ Midwife Specialist &amp; AN/MP</b>	<b>2.2%</b>	<b>2.6%</b>	<b>2.7%</b>	<b>2.3%</b>	<b>2.4%</b>	<b>2.3%</b>	<b>2.3%</b>
Staff Nurse [Intellectual Disability]	43.6%	46.3%	36.3%	38.9%	36.1%	40.3%	41.6%
Staff Nurse [Psychiatric]	7.7%	6.2%	8.6%	7.0%	7.7%	7.4%	6.5%
Staff Nurses [General/ Children's]	21.6%	19.0%	25.3%	23.5%	22.7%	18.0%	17.9%
<b>Staff Nurse/ Staff Midwife</b>	<b>73.0%</b>	<b>71.4%</b>	<b>70.2%</b>	<b>69.4%</b>	<b>66.5%</b>	<b>65.7%</b>	<b>66.0%</b>
Pre-registration Nurse Intern (COVID-19)						0.1%	0.2%
<b>Nursing/ Midwifery Student</b>						<b>0.1%</b>	<b>0.2%</b>
<b>Nursing &amp; Midwifery</b>	<b>22.6%</b>	<b>20.6%</b>	<b>19.5%</b>	<b>17.8%</b>	<b>16.9%</b>	<b>16.3%</b>	<b>16.3%</b>
Dietitians	0.3%	0.6%			0.2%	0.3%	0.3%
Occupational Therapists	3.4%	3.8%	3.7%	3.1%	3.6%	3.2%	2.9%
Physiotherapists	4.8%	3.8%	4.0%	3.6%	4.0%	3.3%	3.3%
Speech & Language Therapists	5.3%	5.3%	5.4%	5.0%	5.1%	3.6%	4.0%
<b>Therapy Professions</b>	<b>13.8%</b>	<b>13.6%</b>	<b>13.1%</b>	<b>11.7%</b>	<b>12.9%</b>	<b>10.4%</b>	<b>10.5%</b>
<b>Social Care</b>	<b>61.5%</b>	<b>63.8%</b>	<b>65.0%</b>	<b>67.9%</b>	<b>69.1%</b>	<b>72.9%</b>	<b>72.6%</b>
<b>Social Workers</b>	<b>9.3%</b>	<b>8.5%</b>	<b>8.8%</b>	<b>8.0%</b>	<b>8.1%</b>	<b>7.9%</b>	<b>7.6%</b>
<b>Psychologists</b>	<b>6.7%</b>	<b>7.3%</b>	<b>7.0%</b>	<b>6.5%</b>	<b>4.9%</b>	<b>4.4%</b>	<b>4.5%</b>
Counsellor Therapists		0.4%	0.7%	0.8%	1.0%	1.2%	1.2%
HSCP Trainees/ Students	1.3%	0.9%	0.2%				
Other Health & Social Care	6.1%	4.7%	4.3%	4.2%	3.2%	3.2%	3.6%
Play Therapists/ Specialists	1.3%	0.8%	0.9%	0.8%	0.8%		
<b>H&amp;SC, Other</b>	<b>8.7%</b>	<b>6.7%</b>	<b>6.1%</b>	<b>5.8%</b>	<b>4.9%</b>	<b>4.4%</b>	<b>4.8%</b>
<b>Health &amp; Social Care Professionals</b>	<b>19.2%</b>	<b>19.3%</b>	<b>20.1%</b>	<b>21.6%</b>	<b>20.5%</b>	<b>22.0%</b>	<b>22.0%</b>
Executive Management	2.4%	2.0%	1.9%	1.9%	1.9%	1.8%	1.8%



Nov 2020 (Dec 2018 figure: 1,420)	WTE Dec 2015	WTE Dec 2016	WTE Dec 2017	WTE Dec 2018	WTE Dec 2019	WTE Oct 2020	WTE Nov 2020
<b>Disabilities</b>	<b>1,221</b>	<b>1,338</b>	<b>1,395</b>	<b>1,420</b>	<b>1,497</b>	<b>1,491</b>	<b>1,505</b>
Senior Management (VIII & GM)	9.4%	11.7%	11.1%	12.5%	13.1%	14.4%	13.5%
<b>Management (VIII &amp; above)</b>	<b>11.8%</b>	<b>13.7%</b>	<b>13.0%</b>	<b>14.4%</b>	<b>15.0%</b>	<b>16.2%</b>	<b>15.3%</b>
<b>Administrative/ Supervisory (V to VII)</b>	<b>32.6%</b>	<b>34.7%</b>	<b>38.6%</b>	<b>36.6%</b>	<b>38.2%</b>	<b>38.5%</b>	<b>39.4%</b>
<b>Clerical (III &amp; IV)</b>	<b>55.6%</b>	<b>51.7%</b>	<b>48.4%</b>	<b>49.1%</b>	<b>46.8%</b>	<b>45.2%</b>	<b>45.3%</b>
<b>Management &amp; Administrative</b>	<b>6.9%</b>	<b>7.6%</b>	<b>7.7%</b>	<b>7.4%</b>	<b>7.0%</b>	<b>7.3%</b>	<b>7.3%</b>
<b>Support</b>	<b>78.4%</b>	<b>77.5%</b>	<b>78.2%</b>	<b>79.1%</b>	<b>77.5%</b>	<b>77.4%</b>	<b>76.9%</b>
<b>Maintenance/ Technical</b>	<b>21.6%</b>	<b>22.5%</b>	<b>21.8%</b>	<b>20.9%</b>	<b>22.5%</b>	<b>22.6%</b>	<b>23.1%</b>
<b>General Support</b>	<b>4.7%</b>	<b>4.3%</b>	<b>4.3%</b>	<b>4.0%</b>	<b>3.8%</b>	<b>3.7%</b>	<b>3.7%</b>
<b>Health Care Assistants</b>	<b>78.9%</b>	<b>81.9%</b>	<b>82.7%</b>	<b>82.5%</b>	<b>82.3%</b>	<b>82.6%</b>	<b>82.1%</b>
<b>Care, other</b>	<b>21.1%</b>	<b>18.1%</b>	<b>17.3%</b>	<b>17.5%</b>	<b>17.7%</b>	<b>17.4%</b>	<b>17.9%</b>
<b>Patient &amp; Client Care</b>	<b>46.2%</b>	<b>47.8%</b>	<b>48.0%</b>	<b>48.8%</b>	<b>46.3%</b>	<b>50.2%</b>	<b>50.2%</b>
<b>Total</b>	<b>100 %</b>	<b>100 %</b>	<b>100 %</b>	<b>100 %</b>	<b>100 %</b>	<b>100 %</b>	<b>100 %</b>

Nov 2020 (Dec 2018 figure: 1,641)	WTE Dec 2015	WTE Dec 2016	WTE Dec 2017	WTE Dec 2018	WTE Dec 2019	WTE Oct 2020	WTE Nov 2020
<b>Older People</b>	<b>1,371</b>	<b>1,376</b>	<b>1,586</b>	<b>1,641</b>	<b>1,606</b>	<b>1,578</b>	<b>1,561</b>
<b>Medical/ Dental, other</b>	<b>100.0%</b>	<b>100.0%</b>	<b>100.0%</b>	<b>100.0%</b>	<b>100.0%</b>	<b>100.0%</b>	<b>100.0%</b>
<b>Medical &amp; Dental</b>	<b>0.6%</b>	<b>0.8%</b>	<b>0.7%</b>	<b>0.7%</b>	<b>0.7%</b>	<b>0.7%</b>	<b>0.7%</b>
Clinical Nurse/ Midwife Manager	9.4%	10.7%	11.4%	11.4%	10.2%	12.1%	12.3%
Director Nursing/Midwifery, Assistant	1.5%	1.0%	1.5%	1.3%	1.6%	1.5%	1.6%
Director of Nursing/Midwifery	3.8%	3.5%	3.4%	3.8%	4.3%	3.9%	3.6%
<b>Nurse/ Midwife Manager</b>	<b>14.6%</b>	<b>15.2%</b>	<b>16.3%</b>	<b>16.5%</b>	<b>16.1%</b>	<b>17.6%</b>	<b>17.4%</b>
<b>Nurse/ Midwife Specialist &amp; AN/MP</b>					<b>0.6%</b>	<b>0.5%</b>	<b>0.5%</b>
Staff Midwives	0.2%	0.1%	0.2%				
Staff Nurse [Intellectual Disability]			0.2%				
Staff Nurses [General/ Children's]	85.0%	84.5%	83.0%	83.2%	83.2%	81.6%	81.8%
<b>Staff Nurse/ Staff Midwife</b>	<b>85.2%</b>	<b>84.6%</b>	<b>83.4%</b>	<b>83.2%</b>	<b>83.2%</b>	<b>81.6%</b>	<b>81.8%</b>
<b>Public Health Nurse</b>	<b>0.2%</b>	<b>0.2%</b>	<b>0.2%</b>	<b>0.3%</b>	<b>0.2%</b>	<b>0.3%</b>	<b>0.3%</b>
<b>Nursing &amp; Midwifery</b>	<b>26.7%</b>	<b>27.0%</b>	<b>24.1%</b>	<b>22.8%</b>	<b>23.3%</b>	<b>24.1%</b>	<b>24.1%</b>
Dietitians	1.2%	6.6%	6.1%		1.3%	1.3%	1.3%
Occupational Therapists	24.4%	26.3%	21.9%	26.6%	25.5%	27.1%	27.2%
Physiotherapists	46.2%	38.2%	38.5%	38.4%	36.1%	35.6%	34.6%
Speech & Language Therapists	3.0%	2.8%	5.7%	5.5%	5.3%	5.1%	5.1%
<b>Therapy Professions</b>	<b>74.8%</b>	<b>74.0%</b>	<b>72.2%</b>	<b>70.4%</b>	<b>68.2%</b>	<b>69.0%</b>	<b>68.2%</b>
Radiographers	0.0%	1.7%	1.7%	1.7%	1.6%	1.5%	1.5%
<b>Health Science/ Diagnostics</b>	<b>0.0%</b>	<b>1.7%</b>	<b>1.7%</b>	<b>1.7%</b>	<b>1.6%</b>	<b>1.5%</b>	<b>1.5%</b>
<b>Social Workers</b>	<b>22.4%</b>	<b>21.3%</b>	<b>24.6%</b>	<b>26.5%</b>	<b>27.5%</b>	<b>26.9%</b>	<b>27.6%</b>
<b>Pharmacy</b>	<b>1.5%</b>	<b>1.4%</b>	<b>1.5%</b>	<b>1.4%</b>	<b>2.7%</b>	<b>2.6%</b>	<b>2.6%</b>
Play Therapists/ Specialists	1.3%	1.6%	0.0%	0.0%	0.0%		
<b>H&amp;SC, Other</b>	<b>1.3%</b>	<b>1.6%</b>	<b>0.0%</b>	<b>0.0%</b>	<b>0.0%</b>		
<b>Health &amp; Social Care Professionals</b>	<b>2.4%</b>	<b>2.6%</b>	<b>2.2%</b>	<b>2.2%</b>	<b>2.2%</b>	<b>2.5%</b>	<b>2.5%</b>
<b>Management (VIII &amp; above)</b>	<b>2.9%</b>	<b>2.9%</b>	<b>1.2%</b>	<b>2.2%</b>	<b>2.5%</b>	<b>2.5%</b>	<b>2.6%</b>
<b>Administrative/ Supervisory (V to VII)</b>	<b>5.6%</b>	<b>9.0%</b>	<b>8.3%</b>	<b>9.4%</b>	<b>9.4%</b>	<b>13.3%</b>	<b>12.7%</b>
<b>Clerical (III &amp; IV)</b>	<b>91.4%</b>	<b>88.0%</b>	<b>90.5%</b>	<b>88.4%</b>	<b>88.1%</b>	<b>84.2%</b>	<b>84.6%</b>
<b>Management &amp; Administrative</b>	<b>4.9%</b>	<b>5.0%</b>	<b>5.2%</b>	<b>5.6%</b>	<b>5.7%</b>	<b>4.9%</b>	<b>4.9%</b>
<b>Support</b>	<b>80.6%</b>	<b>80.3%</b>	<b>79.5%</b>	<b>77.3%</b>	<b>74.7%</b>	<b>73.9%</b>	<b>74.5%</b>
<b>Maintenance/ Technical</b>	<b>19.4%</b>	<b>19.7%</b>	<b>20.5%</b>	<b>22.7%</b>	<b>25.3%</b>	<b>26.1%</b>	<b>25.5%</b>
<b>General Support</b>	<b>6.6%</b>	<b>6.3%</b>	<b>5.1%</b>	<b>5.0%</b>	<b>5.1%</b>	<b>4.9%</b>	<b>4.9%</b>

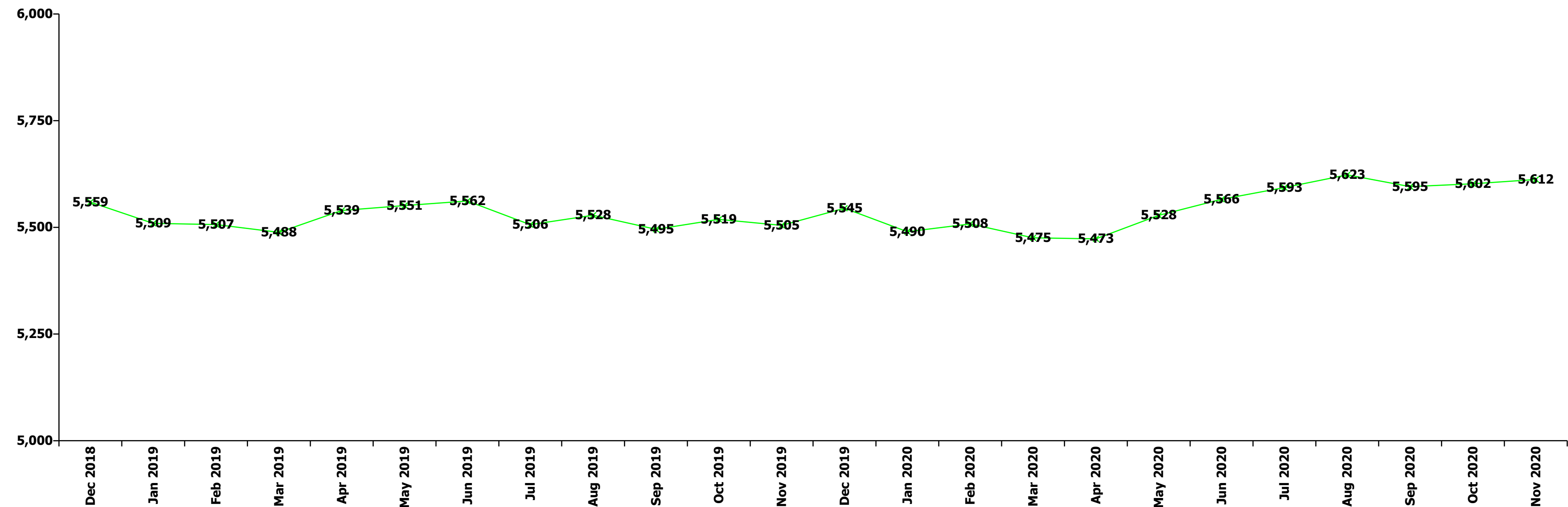
Nov 2020 (Dec 2018 figure: 1,641)	WTE Dec 2015	WTE Dec 2016	WTE Dec 2017	WTE Dec 2018	WTE Dec 2019	WTE Oct 2020	WTE Nov 2020
<b>Older People</b>	<b>1,371</b>	<b>1,376</b>	<b>1,586</b>	<b>1,641</b>	<b>1,606</b>	<b>1,578</b>	<b>1,561</b>
HCA, Nurse's Aide, etc.	62.1%	62.8%	52.2%	51.4%	49.3%	53.9%	53.1%
Health & Social Care Assistants	0.5%	0.5%	0.4%	0.4%	0.3%	0.2%	0.3%
<b>Health Care Assistants</b>	<b>62.6%</b>	<b>63.3%</b>	<b>52.6%</b>	<b>51.8%</b>	<b>49.6%</b>	<b>54.2%</b>	<b>53.4%</b>
<b>Care, other</b>	<b>1.9%</b>	<b>1.8%</b>	<b>2.4%</b>	<b>2.3%</b>	<b>2.4%</b>	<b>2.8%</b>	<b>3.1%</b>
<b>Home Help</b>	<b>35.5%</b>	<b>34.9%</b>	<b>45.0%</b>	<b>46.0%</b>	<b>48.1%</b>	<b>43.0%</b>	<b>43.5%</b>
<b>Patient &amp; Client Care</b>	<b>58.7%</b>	<b>58.4%</b>	<b>62.8%</b>	<b>63.7%</b>	<b>65.1%</b>	<b>62.9%</b>	<b>62.9%</b>
<b>Total</b>	<b>100 %</b>	<b>100 %</b>	<b>100 %</b>	<b>100 %</b>	<b>100 %</b>	<b>100 %</b>	<b>100 %</b>



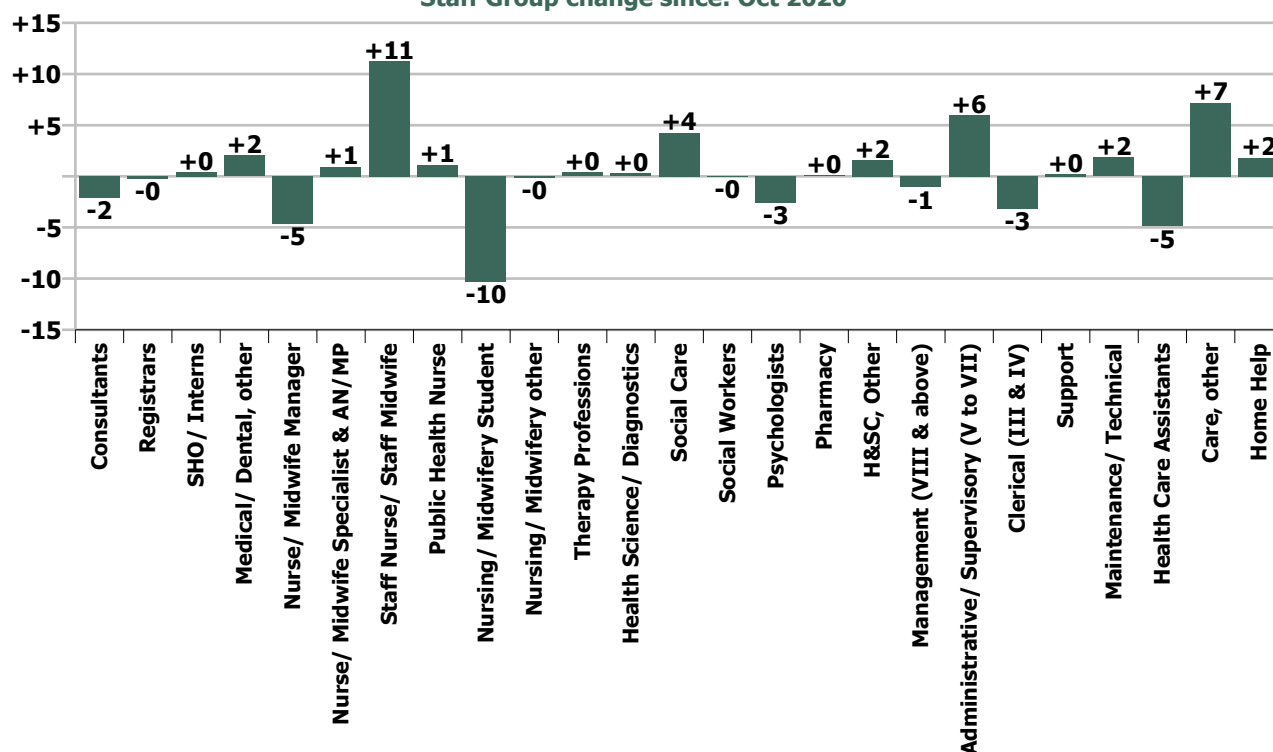
Summary Staff Movement: November 2020

Month-on-month Summary																												
WTE change since Oct 20	% change since Oct 20	overall	Consultants	Registrars	SHO/ Interns	Medical/ Dental, other	Medical & Dental	Nurse/ Midwife Manager	Nurse/ Midwife Specialist & AN/MP	Staff Nurse/ Staff Midwife	Public Health Nurse	Nursing/ Midwifery Student	Nursing/ Midwifery other	Nursing & Midwifery	Therapy Professions	Health Science/ Diagnostics	Social Care	Social Workers	Psychologists	Pharmacy	H&SC, Other	Health & Social Care Professionals	Management (VIII & above)	Administrative/ Supervisory (V to VII)	Clerical (III & IV)	Management & Administrative	General Support	Patient & Client Care
Overall	+0.2%	+10	-2.1	-0.3	+0.4	+2.0	+0.0	-4.6	+0.9	+11.2	+1.1	-10.3	-0.2	-1.8	+0.4	+0.3	+4.2	-0.0	-2.6	+0.1	+1.6	+3.9	-1.1	+6.0	-3.1	+1.8	+2.0	+4.1
Community Health & Wellbeing	+0.7%	+0																					0.0	+0.1	0.0	+0.1		0.0
Mental Health	-0.5%	-7	-2.2	+0.1	+0.5	+0.8	-0.9	-2.3	+0.9	+8.6		-10.6	-0.2	-3.5	-1.5		+0.5	+0.2	-2.7	+0.1	0.0	-3.3	0.0	-0.9	-0.3	-1.2	+2.6	-1.0
Primary Care	+1.8%	+21	+0.1	-0.3	-0.0	+1.3	+1.0	-0.8	-0.1	+3.5	+1.1			+3.8	+1.4	+0.3	-0.1	-0.0	-0.4	0.0	+0.1	+1.3	-0.1	+6.7	-0.6	+6.1	-0.9	+9.5
Disabilities	+0.9%	+13	0.0	0.0		0.0	0.0	-0.1	+0.1	+2.3		+0.3		+2.6	+0.9		+3.8	-0.4	+0.4		+1.5	+6.3	-1.0	+0.9	+0.1	-0.0	+1.9	+2.6
Older People	-1.1%	-17				-0.0	-0.0	-1.5	-0.0	-3.2	0.0			-4.7	-0.6	0.0		+0.2		+0.0		-0.4	0.0	-0.8	-2.3	-3.1	-1.6	-7.0
Social Care	-0.1%	-3	0.0	0.0		-0.0	-0.0	-1.6	+0.1	-0.9	0.0	+0.3		-2.1	+0.4	0.0	+3.8	-0.2	+0.4	+0.0	+1.5	+5.9	-1.0	+0.1	-2.2	-3.2	+0.3	-4.4
Change	+10.1	+0.2%	-4.8%	-0.3%	+0.9%	+3.4%	+0.0%	-1.4%	+0.9%	+1.3%	+0.6%	-39.3%	-5.6%	-0.1%	+0.1%	+0.8%	+1.6%	-0.0%	-3.2%	+2.4%	+5.4%	+0.5%	-1.8%	+4.0%	-0.7%	+0.3%	+0.9%	+0.2%

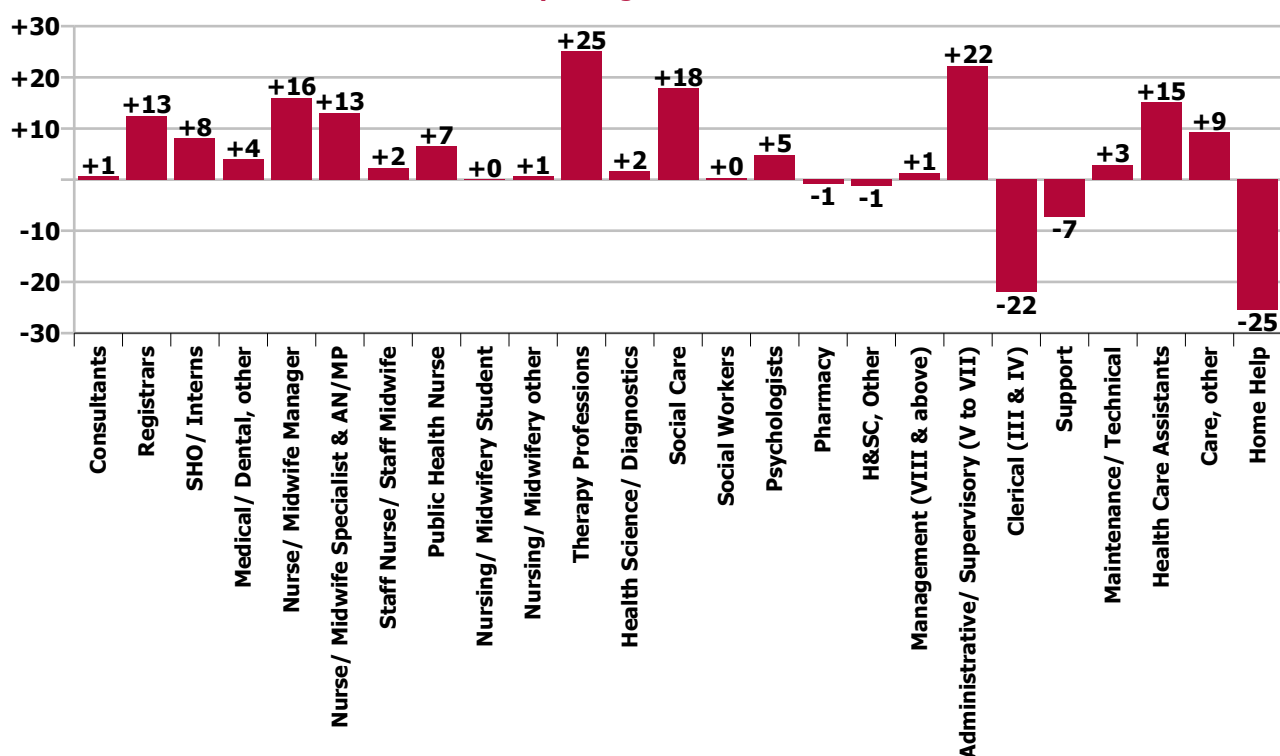
Year-on-year Summary																												
WTE change since Nov 19	% change since Nov 19	overall	Consultants	Registrars	SHO/ Interns	Medical/ Dental, other	Medical & Dental	Nurse/ Midwife Manager	Nurse/ Midwife Specialist & AN/MP	Staff Nurse/ Staff Midwife	Public Health Nurse	Nursing/ Midwifery Student	Nursing/ Midwifery other	Nursing & Midwifery	Therapy Professions	Health Science/ Diagnostics	Social Care	Social Workers	Psychologists	Pharmacy	H&SC, Other	Health & Social Care Professionals	Management (VIII & above)	Administrative/ Supervisory (V to VII)	Clerical (III & IV)	Management & Administrative	General Support	Patient & Client Care
Overall	+2.0%	+108	+0.7	+12.5	+8.1	+4.0	+25.2	+16.0	+13.1	+2.3	+6.5	+0.1	+0.7	+38.6	+25.0	+1.6	+17.9	+0.4	+4.8	-0.8	-1.3	+47.7	+1.3	+22.2	-22.0	+1.5	-4.3	-1.1
Community Health & Wellbeing	+0.7%	+0																					+1.0	+7.0	+0.8	+8.8		+1.0
Mental Health	-0.5%	-7	+0.7	+3.3	+5.1	+0.8	+9.8	+6.8	+10.7	-2.6		+3.6	+0.7	+19.1	+7.5		+1.7	+1.4	+3.2	-0.8	+0.0	+12.9	-1.9	+3.8	-8.5	-6.5	+0.8	-5.8
Primary Care	+1.8%	+21	-0.0	+9.2	+3.0	+3.3	+15.4	+0.8	+2.5	+0.9	+6.3	-4.0		+6.5	+22.4	+1.6	+0.3	-0.8	+2.7	0.0	-1.3	+24.9	+1.3	+7.1	-8.6	-0.2	-0.3	+8.4
Disabilities	+1.0%	+14.3	0.0	0.0		0.0	0.0	+2.3	-0.1	-4.7		+0.6		-1.9	-6.3		+15.8	-1.1	-1.0		+0.1	+7.5	+1.0	+2.1	+0.7	+3.8	-3.8	+8.7
Older People	-0.1%	-1.7				-0.0	-0.0	+6.0	-0.0	+8.7	+0.2			+14.9	+1.4	0.0		+0.9		+0.0	0.0	+2.3	+0.0	+2.1	-6.4	-4.4	-1.1	-13.5
Social Care	-0.1%	-3	0.0	0.0		-0.0	-0.0	+8.4	-0.1	+4.1	+0.2	+0.6		+13.0	-4.9	0.0	+15.8	-0.2	-1.0	+0.0	+0.1	+9.8	+1.0	+4.2	-5.8	-0.6	-4.8	-4.8
Change	+107.6	+2.0%	+1.6%	+16.4%	+23.2%	+6.8%	+12.0%	+5.2%	+14.0%	+0.3%	+3.4%	+0.6%	+34.5%	+2.6%	+7.5%	+4.9%	+7.2%	+0.5%	+6.6%	-17.2%	-4.0%	+5.9%	+2.3%	+16.5%	-4.7%	+0.2%	-1.9%	-0.1%



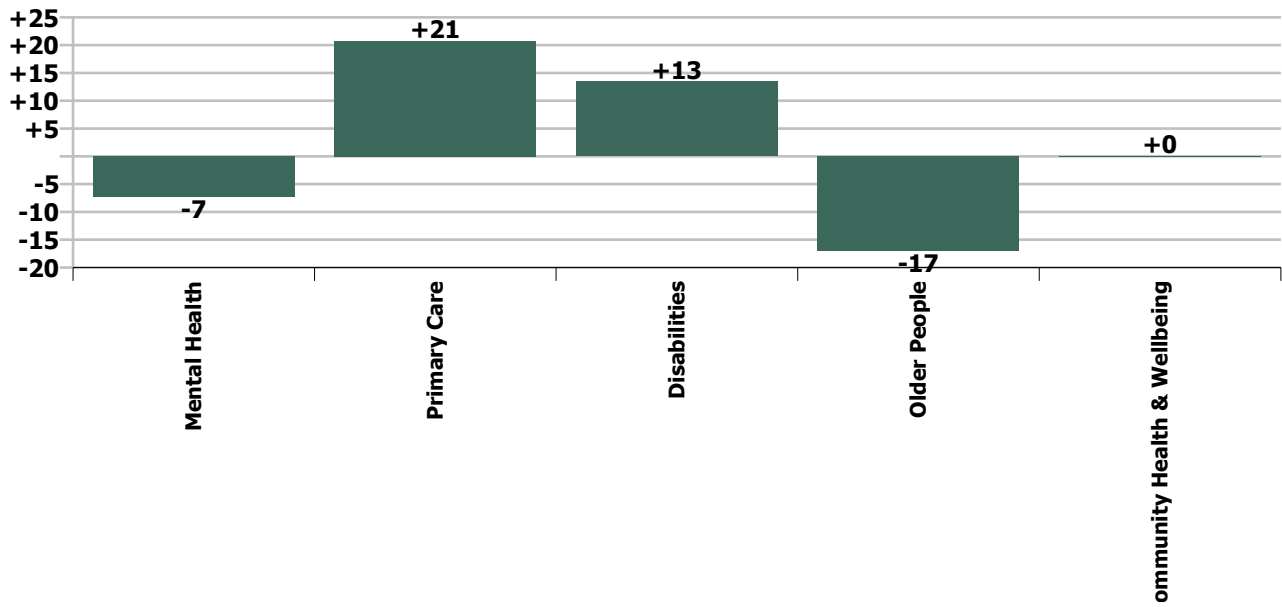
Staff Group change since: Oct 2020



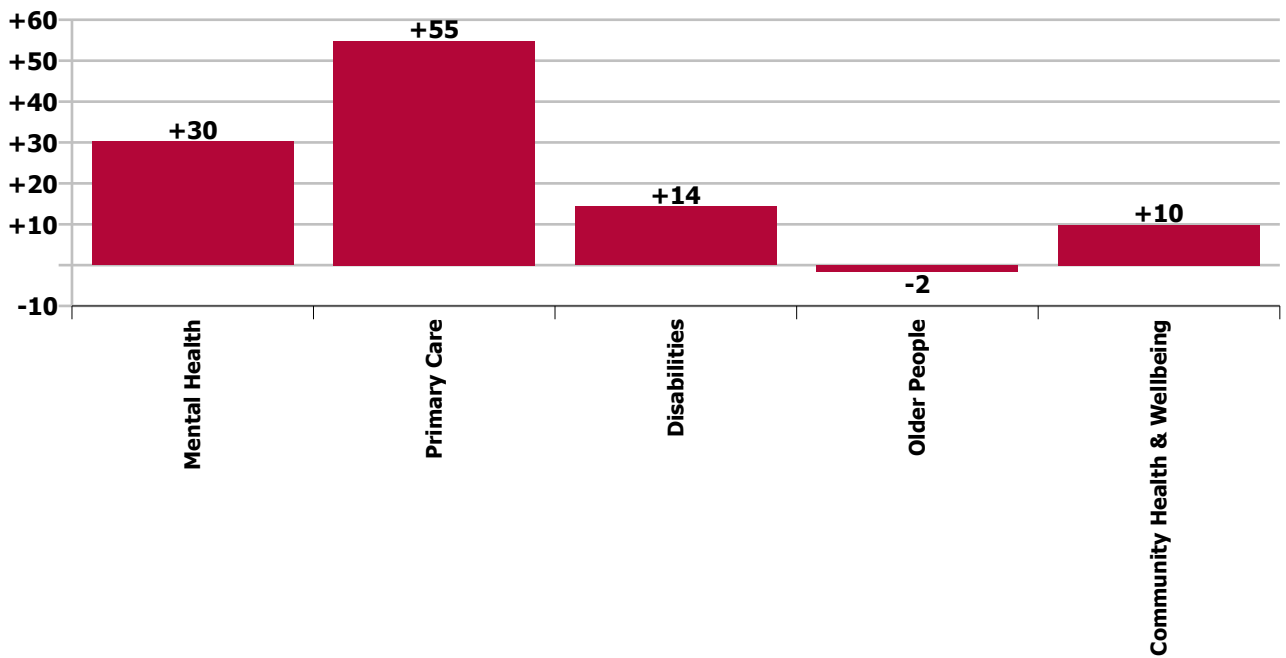
Staff Group change since: Nov 2019



Care Group change since: Oct 2020



Care Group change since: Nov 2019



## Longitudinal Employment Levels by Grade Group - Oct 2013 to Nov 2020

Nov 2020 (Dec 2015 figure: 5,111)	WTE Nov 2020	WTE change since Dec 15	WTE change since Dec 16	WTE change since Dec 17	WTE change since Dec 18	WTE change since Dec 19	WTE change since Oct 20	% change since Dec 15	% change since Dec 16	% change since Dec 17	% change since Dec 18	% change since Dec 19	% change since Oct 20
<b>Overall</b>	<b>5,612</b>	<b>+501</b>	<b>+377</b>	<b>+235</b>	<b>+53</b>	<b>+67</b>	<b>+10</b>	<b>+9.8%</b>	<b>+7.2%</b>	<b>+4.4%</b>	<b>+1.0%</b>	<b>+1.2%</b>	<b>+0.2%</b>
Consultant Medicine	1												
Consultant Paediatrics	1												
Consultant Psychiatry	40	+6	+8	+6	+5	-0	-2	+17.9%	+24.1%	+17.6%	+15.1%	-0.8%	-5.2%
Consultant Surgery	0	-1	-1	-1	-0	+0	+0	-78.0%	-78.3%	-78.3%	-6.7%	+12.0%	+21.7%
<b>Consultants</b>	<b>42</b>	<b>+5</b>	<b>+7</b>	<b>+5</b>	<b>+5</b>	<b>-0</b>	<b>-2</b>	<b>+13.6%</b>	<b>+19.0%</b>	<b>+13.3%</b>	<b>+14.1%</b>	<b>-0.7%</b>	<b>-4.8%</b>
Registrar	67	+18	+15	+8	+9	+9	-0	+35.7%	+29.9%	+12.7%	+14.5%	+15.2%	-0.4%
Senior Registrar	22	+15	+14	+13	+10	+5		+230.8%	+168.8%	+152.9%	+87.0%	+26.5%	
<b>Registrars</b>	<b>89</b>	<b>+33</b>	<b>+29</b>	<b>+21</b>	<b>+19</b>	<b>+13</b>	<b>-0</b>	<b>+58.4%</b>	<b>+48.5%</b>	<b>+30.2%</b>	<b>+26.4%</b>	<b>+17.7%</b>	<b>-0.3%</b>
Interns		-1						-100.0%	-100.0%	-100.0%	-100.0%	-100.0%	-100.0%
Senior House Officer	43	+7	+6	+5	+1	+7	+0	+19.0%	+15.9%	+13.4%	+1.7%	+19.1%	+0.9%
<b>SHO/ Interns</b>	<b>43</b>	<b>+6</b>	<b>+6</b>	<b>+5</b>	<b>+1</b>	<b>+7</b>	<b>+0</b>	<b>+15.8%</b>	<b>+15.9%</b>	<b>+13.4%</b>	<b>+1.7%</b>	<b>+19.1%</b>	<b>+0.9%</b>
Dentists	21	-1	-1	-1	-2	-0	+0	-5.2%	-3.2%	-4.7%	-10.3%	-1.6%	+1.4%
Other Medical	42	+6	+4	+4	+3	+4	+2	+18.2%	+9.4%	+9.6%	+8.2%	+11.0%	+4.4%
<b>Medical/ Dental, other</b>	<b>63</b>	<b>+5</b>	<b>+3</b>	<b>+3</b>	<b>+1</b>	<b>+4</b>	<b>+2</b>	<b>+9.2%</b>	<b>+4.9%</b>	<b>+4.4%</b>	<b>+1.3%</b>	<b>+6.5%</b>	<b>+3.4%</b>
<b>Medical &amp; Dental</b>	<b>236</b>	<b>+49</b>	<b>+44</b>	<b>+33</b>	<b>+25</b>	<b>+24</b>	<b>+0</b>	<b>+26.1%</b>	<b>+23.2%</b>	<b>+16.4%</b>	<b>+12.0%</b>	<b>+11.2%</b>	<b>+0.0%</b>
Clinical Nurse/ Midwife Manager	257	+36	+20	+18	+3	+16	-1	+16.3%	+8.6%	+7.3%	+1.3%	+6.6%	-0.5%
Director Nursing/Midwifery, Assistant	43	+7	+5	+2	+3	-2	-2	+18.3%	+14.2%	+5.1%	+8.5%	-4.5%	-4.0%
Director of Nursing/Midwifery	22	+2	+2	+2	+1	-1	-2	+9.3%	+7.7%	+8.2%	+5.9%	-3.3%	-6.3%
<b>Nurse/ Midwife Manager</b>	<b>322</b>	<b>+45</b>	<b>+27</b>	<b>+21</b>	<b>+8</b>	<b>+13</b>	<b>-5</b>	<b>+16.1%</b>	<b>+9.2%</b>	<b>+7.1%</b>	<b>+2.5%</b>	<b>+4.2%</b>	<b>-1.4%</b>
Advanced Nurse/ Midwife Practitioner	10	+7	+7	+6	+4	+1	-0	+228.7%	+228.7%	+146.5%	+64.3%	+9.6%	-1.0%
Clinical Nurse/ Midwife Specialist	97	+32	+33	+20	+18	+13	+1	+49.1%	+50.8%	+25.4%	+23.5%	+15.7%	+1.1%
<b>Nurse/ Midwife Specialist &amp; AN/MP</b>	<b>107</b>	<b>+39</b>	<b>+39</b>	<b>+25</b>	<b>+22</b>	<b>+14</b>	<b>+1</b>	<b>+57.0%</b>	<b>+58.8%</b>	<b>+31.4%</b>	<b>+26.4%</b>	<b>+15.1%</b>	<b>+0.9%</b>
Staff Midwives		-1	-0	-1				-100.0%	-100.0%	-100.0%	-100.0%	-100.0%	-100.0%
Staff Nurse [Intellectual Disability]	102	-18	-25	+3	+4	+12	+4	-15.2%	-19.9%	+2.9%	+3.9%	+13.8%	+4.3%
Staff Nurse [Psychiatric]	366	-23	-16	-4	-3	-5	+6	-5.9%	-4.1%	-1.1%	-0.9%	-1.3%	+1.8%
Staff Nurses [General/ Children's]	433	-20	-15	-31	-22	-3	+1	-4.4%	-3.3%	-6.7%	-4.7%	-0.8%	+0.1%
<b>Staff Nurse/ Staff Midwife</b>	<b>902</b>	<b>-62</b>	<b>-56</b>	<b>-33</b>	<b>-21</b>	<b>+4</b>	<b>+11</b>	<b>-6.4%</b>	<b>-5.9%</b>	<b>-3.6%</b>	<b>-2.3%</b>	<b>+0.4%</b>	<b>+1.3%</b>
<b>Public Health Nurse</b>	<b>199</b>	<b>+21</b>	<b>+23</b>	<b>+25</b>	<b>+12</b>	<b>+7</b>	<b>+1</b>	<b>+11.6%</b>	<b>+12.9%</b>	<b>+14.3%</b>	<b>+6.4%</b>	<b>+3.9%</b>	<b>+0.6%</b>
Pre-registration Nurse/ Midwife Intern		-2		-13		-0		-100.0%	-100.0%	-100.0%	-100.0%	-100.0%	-100.0%
Pre-registration Nurse Intern (COVID-19)	16	+16	+16	+16	+16	+16	-10	-100.0%	-100.0%	-100.0%	-100.0%	-100.0%	-39.3%
Post-registration Nurse/ Midwife Student		-7	-11	-16	-13	-4		-100.0%	-100.0%	-100.0%	-100.0%	-100.0%	-100.0%
Nursing/ Midwifery awaiting registration					-11	-5		-100.0%	-100.0%	-100.0%	-100.0%	-100.0%	-100.0%
<b>Nursing/ Midwifery Student</b>	<b>16</b>	<b>+7</b>	<b>+5</b>	<b>-13</b>	<b>-8</b>	<b>+7</b>	<b>-10</b>	<b>+71.0%</b>	<b>+44.7%</b>	<b>-45.4%</b>	<b>-33.7%</b>	<b>+79.5%</b>	<b>-39.3%</b>
<b>Nursing/ Midwifery other</b>	<b>3</b>	<b>+3</b>	<b>+3</b>	<b>+1</b>	<b>-0</b>	<b>+1</b>	<b>-0</b>	<b>-100.0%</b>	<b>-100.0%</b>	<b>+34.5%</b>	<b>-10.3%</b>	<b>+34.5%</b>	<b>-5.6%</b>
<b>Nursing &amp; Midwifery</b>	<b>1,548</b>	<b>+51</b>	<b>+41</b>	<b>+26</b>	<b>+13</b>	<b>+46</b>	<b>-2</b>	<b>+3.4%</b>	<b>+2.7%</b>	<b>+1.7%</b>	<b>+0.8%</b>	<b>+3.1%</b>	<b>-0.1%</b>

Nov 2020 (Dec 2015 figure: 5,111)	WTE Nov 2020	WTE change since Dec 15	WTE change since Dec 16	WTE change since Dec 17	WTE change since Dec 18	WTE change since Dec 19	WTE change since Oct 20	% change since Dec 15	% change since Dec 16	% change since Dec 17	% change since Dec 18	% change since Dec 19	% change since Oct 20
<b>Overall</b>	<b>5,612</b>	<b>+501</b>	<b>+377</b>	<b>+235</b>	<b>+53</b>	<b>+67</b>	<b>+10</b>	<b>+9.8%</b>	<b>+7.2%</b>	<b>+4.4%</b>	<b>+1.0%</b>	<b>+1.2%</b>	<b>+0.2%</b>
Dietitians	24	+9	+7	+5	+4	+5	+1	+61.7%	+36.7%	+25.9%	+19.8%	+23.8%	+3.2%
Occupational Therapists	129	+33	+19	+19	+11	+13	+0	+34.0%	+17.4%	+16.9%	+9.2%	+10.7%	+0.1%
Orthoptists	2	+0	+0	+0	+0	+0	-0	+25.0%	+25.0%	+25.0%	+25.0%	+25.0%	-7.8%
Physiotherapists	92	+6	+14	+4	+3	+3	-1	+6.8%	+17.8%	+4.1%	+3.3%	+3.6%	-1.4%
Podiatrists & Chiropodists	7	+1	-1	-0	+0	+0	-1	+19.2%	-11.9%	-2.7%	+7.2%	+6.6%	-7.1%
Speech & Language Therapists	105	+22	+15	+11	+2	+1	+2	+26.6%	+17.1%	+11.9%	+1.6%	+0.5%	+1.5%
<b>Therapy Professions</b>	<b>360</b>	<b>+72</b>	<b>+54</b>	<b>+39</b>	<b>+20</b>	<b>+22</b>	<b>+0</b>	<b>+24.8%</b>	<b>+17.8%</b>	<b>+12.0%</b>	<b>+6.0%</b>	<b>+6.4%</b>	<b>+0.1%</b>
Audiology	5	+1	+1	-0	-0	+0	+0	+12.7%	+15.1%	-7.1%	-7.6%	+9.4%	+8.5%
Clinical Engineering	1			+1	+1					-100.0%	-100.0%		
Medical Laboratory	27	+1	-0	+1	+1	+1	-0	+2.2%	-0.5%	+3.0%	+2.5%	+3.1%	-0.5%
Physicists		-1	-1					-100.0%	-100.0%	-100.0%	-100.0%	-100.0%	-100.0%
Radiographers	1	+1						#DIV/0					
<b>Health Science/ Diagnostics</b>	<b>34</b>	<b>+1</b>	<b>-0</b>	<b>+1</b>	<b>+1</b>	<b>+1</b>	<b>+0</b>	<b>+2.3%</b>	<b>-1.2%</b>	<b>+4.2%</b>	<b>+3.7%</b>	<b>+3.9%</b>	<b>+0.8%</b>
<b>Social Care</b>	<b>265</b>	<b>+92</b>	<b>+73</b>	<b>+60</b>	<b>+33</b>	<b>+20</b>	<b>+4</b>	<b>+53.0%</b>	<b>+38.0%</b>	<b>+28.9%</b>	<b>+14.4%</b>	<b>+8.3%</b>	<b>+1.6%</b>
<b>Social Workers</b>	<b>84</b>	<b>+6</b>	<b>+9</b>	<b>+8</b>	<b>+2</b>	<b>+0</b>	<b>-0</b>	<b>+8.2%</b>	<b>+11.4%</b>	<b>+10.0%</b>	<b>+2.9%</b>	<b>+0.1%</b>	<b>-0.0%</b>
<b>Psychologists</b>	<b>78</b>	<b>-7</b>	<b>-5</b>	<b>-3</b>	<b>-6</b>	<b>+5</b>	<b>-3</b>	<b>-8.3%</b>	<b>-5.9%</b>	<b>-3.6%</b>	<b>-6.7%</b>	<b>+6.6%</b>	<b>-3.2%</b>
<b>Pharmacy</b>	<b>4</b>	<b>-2</b>	<b>-1</b>	<b>-0</b>	<b>-0</b>	<b>-1</b>	<b>+0</b>	<b>-31.1%</b>	<b>-25.6%</b>	<b>-9.1%</b>	<b>-8.9%</b>	<b>-15.9%</b>	<b>+2.4%</b>
Counsellor Therapists	11	+2	+1	+0	-1	-0	-0	+26.7%	+9.2%	+0.9%	-10.4%	-1.7%	-1.3%
Dental Hygienists	5	+2	+2	+3	+1	+1	+0	+67.4%	+46.3%	+107.9%	+14.7%	+11.9%	+4.6%
HSCP Trainees/ Students		-3	-2	-1				-100.0%	-100.0%	-100.0%	-100.0%	-100.0%	-100.0%
Other Health & Social Care	14	-3	-1	-2	-2	+1	+1	-20.1%	-8.1%	-13.6%	-12.2%	+4.7%	+12.1%
Play Therapists/ Specialists	1	-3	-3	-3	-3	-3		-77.4%	-72.1%	-72.3%	-72.1%	-72.1%	
<b>H&amp;SC, Other</b>	<b>31</b>	<b>-6</b>	<b>-4</b>	<b>-3</b>	<b>-5</b>	<b>-2</b>	<b>+2</b>	<b>-15.7%</b>	<b>-10.7%</b>	<b>-7.9%</b>	<b>-14.3%</b>	<b>-5.0%</b>	<b>+5.4%</b>
<b>Health &amp; Social Care Professionals</b>	<b>857</b>	<b>+156</b>	<b>+126</b>	<b>+101</b>	<b>+46</b>	<b>+46</b>	<b>+4</b>	<b>+22.3%</b>	<b>+17.2%</b>	<b>+13.4%</b>	<b>+5.7%</b>	<b>+5.7%</b>	<b>+0.5%</b>
Executive Management	11	+4	+2	-0	+0	+1		+45.6%	+16.1%	-2.6%	+0.8%	+12.1%	
Senior Management (VIII & GM)	47	+11	+8	+4	+0	+1	-1	+30.3%	+21.1%	+10.1%	+0.2%	+2.3%	-2.2%
<b>Management (VIII &amp; above)</b>	<b>58</b>	<b>+14</b>	<b>+10</b>	<b>+4</b>	<b>+0</b>	<b>+2</b>	<b>-1</b>	<b>+33.1%</b>	<b>+20.1%</b>	<b>+7.4%</b>	<b>+0.3%</b>	<b>+4.1%</b>	<b>-1.8%</b>
Middle Management (V-VII)	157	+72	+55	+40	+34	+24	+6	+85.9%	+53.4%	+33.8%	+27.3%	+18.3%	+4.0%
Other Administrative						-1		-100.0%	-100.0%	-100.0%	-100.0%	-100.0%	-100.0%
<b>Administrative/ Supervisory (V to VII)</b>	<b>157</b>	<b>+72</b>	<b>+55</b>	<b>+40</b>	<b>+34</b>	<b>+23</b>	<b>+6</b>	<b>+85.9%</b>	<b>+53.4%</b>	<b>+33.8%</b>	<b>+27.3%</b>	<b>+17.4%</b>	<b>+4.0%</b>
<b>Clerical (III &amp; IV)</b>	<b>445</b>	<b>+11</b>	<b>+1</b>	<b>-24</b>	<b>-41</b>	<b>-23</b>	<b>-3</b>	<b>+2.6%</b>	<b>+0.3%</b>	<b>-5.2%</b>	<b>-8.5%</b>	<b>-5.0%</b>	<b>-0.7%</b>
<b>Management &amp; Administrative</b>	<b>660</b>	<b>+98</b>	<b>+66</b>	<b>+19</b>	<b>-7</b>	<b>+2</b>	<b>+2</b>	<b>+17.5%</b>	<b>+11.1%</b>	<b>+3.0%</b>	<b>-1.1%</b>	<b>+0.3%</b>	<b>+0.3%</b>
Catering	39	-0	-1	+3	-2	-1	-0	-1.1%	-1.6%	+8.2%	-4.7%	-1.9%	-0.9%
Household Services	63	-31	-19	-12	-7	-0	-1	-32.8%	-22.9%	-16.0%	-10.0%	-0.2%	-1.8%
Other Support	38	-7	-6	-5	-4	-1	+2	-15.3%	-13.2%	-10.6%	-9.3%	-2.9%	+4.6%
Portering	14	+1	-2	-4	-3	-2	+0	+5.6%	-13.8%	-20.0%	-18.8%	-10.7%	+0.3%
<b>Support</b>	<b>154</b>	<b>-37</b>	<b>-27</b>	<b>-17</b>	<b>-16</b>	<b>-4</b>	<b>+0</b>	<b>-19.5%</b>	<b>-15.1%</b>	<b>-10.0%</b>	<b>-9.4%</b>	<b>-2.3%</b>	<b>+0.1%</b>
<b>Maintenance/ Technical</b>	<b>73</b>	<b>-5</b>	<b>-1</b>	<b>+1</b>	<b>+1</b>	<b>+5</b>	<b>+2</b>	<b>-6.3%</b>	<b>-1.3%</b>	<b>+0.9%</b>	<b>+1.2%</b>	<b>+7.4%</b>	<b>+2.6%</b>

Nov 2020 (Dec 2015 figure: 5,111)	WTE Nov 2020	WTE change since Dec 15	WTE change since Dec 16	WTE change since Dec 17	WTE change since Dec 18	WTE change since Dec 19	WTE change since Oct 20	% change since Dec 15	% change since Dec 16	% change since Dec 17	% change since Dec 18	% change since Dec 19	% change since Oct 20
<b>Overall</b>	<b>5,612</b>	<b>+501</b>	<b>+377</b>	<b>+235</b>	<b>+53</b>	<b>+67</b>	<b>+10</b>	<b>+9.8%</b>	<b>+7.2%</b>	<b>+4.4%</b>	<b>+1.0%</b>	<b>+1.2%</b>	<b>+0.2%</b>
<b>General Support</b>	<b>227</b>	<b>-42</b>	<b>-28</b>	<b>-16</b>	<b>-15</b>	<b>+1</b>	<b>+2</b>	<b>-15.7%</b>	<b>-11.1%</b>	<b>-6.7%</b>	<b>-6.3%</b>	<b>+0.6%</b>	<b>+0.9%</b>
HCA, Nurse's Aide, etc.	1,369	+208	+122	+75	+38	+15	-4	+17.9%	+9.8%	+5.8%	+2.9%	+1.1%	-0.3%
Health & Social Care Assistants	9	+4	+3	-0	-10	-4	-1	+68.9%	+41.7%	-3.3%	-53.0%	-32.2%	-9.6%
<b>Health Care Assistants</b>	<b>1,378</b>	<b>+212</b>	<b>+125</b>	<b>+75</b>	<b>+28</b>	<b>+11</b>	<b>-5</b>	<b>+18.2%</b>	<b>+9.9%</b>	<b>+5.7%</b>	<b>+2.0%</b>	<b>+0.8%</b>	<b>-0.4%</b>
<b>Care, other</b>	<b>280</b>	<b>+16</b>	<b>+25</b>	<b>+18</b>	<b>+17</b>	<b>+9</b>	<b>+7</b>	<b>+6.2%</b>	<b>+9.9%</b>	<b>+6.8%</b>	<b>+6.4%</b>	<b>+3.3%</b>	<b>+2.6%</b>
<b>Home Help</b>	<b>428</b>	<b>-39</b>	<b>-22</b>	<b>-21</b>	<b>-53</b>	<b>-72</b>	<b>+2</b>	<b>-8.4%</b>	<b>-4.8%</b>	<b>-4.6%</b>	<b>-11.0%</b>	<b>-14.3%</b>	<b>+0.4%</b>
<b>Patient &amp; Client Care</b>	<b>2,085</b>	<b>+189</b>	<b>+128</b>	<b>+72</b>	<b>-8</b>	<b>-52</b>	<b>+4</b>	<b>+10.0%</b>	<b>+6.6%</b>	<b>+3.6%</b>	<b>-0.4%</b>	<b>-2.4%</b>	<b>+0.2%</b>

Source: Health Service Personnel Census

Longitudinal Employment Levels by Care Group - Oct 2013 to Nov 2020

Community Health & Wellbeing

Nov 2020 ( figure: )	WTE Nov 2020	WTE change since	WTE change since	WTE change since	WTE change since	WTE change since	WTE change since Oct 20	% change since	% change since	% change since	% change since	% change since	% change since Oct 20
Overall	10	+10	+10	+10	+10	+10	+0	-100.0%	-100.0%	-100.0%	-100.0%	-100.0%	+0.7%
Management & Administrative	9	+9	+9	+9	+9	+9	+0	-1.0%	-1.0%	-1.0%	-1.0%	-1.0%	+0.0%
Management (VIII & above)	1	+1	+1	+1	+1	+1		-1.0%	-1.0%	-1.0%	-1.0%	-1.0%	+0.0%
Administrative/ Supervisory (V to VII)	7	+7	+7	+7	+7	+7	+0	-1.0%	-1.0%	-1.0%	-1.0%	-1.0%	+0.0%
Clerical (III & IV)	1	+1	+1	+1	+1	+1		-1.0%	-1.0%	-1.0%	-1.0%	-1.0%	+0.0%
Patient & Client Care	1	+1	+1	+1	+1	+1		-1.0%	-1.0%	-1.0%	-1.0%	-1.0%	+0.0%
Care, other	1	+1	+1	+1	+1	+1		-1.0%	-1.0%	-1.0%	-1.0%	-1.0%	+0.0%

Source: Health Service Personnel Census

Mental Health

Nov 2020 (Dec 2015 figure: 1,258)	WTE Nov 2020	WTE change since Dec 15	WTE change since Dec 16	WTE change since Dec 17	WTE change since Dec 18	WTE change since Dec 19	WTE change since Oct 20	% change since Dec 15	% change since Dec 16	% change since Dec 17	% change since Dec 18	% change since Dec 19	% change since Oct 20
Overall	1,345	+87	+62	+39	+7	+37	-7	+6.9%	+4.9%	+3.0%	+0.5%	+2.8%	-0.5%
Medical & Dental	115	+32	+27	+15	+10	+9	-1	+0.4%	+0.3%	+0.2%	+0.1%	+0.1%	-0.0%
Consultants	37	+6	+7	+6	+5	-0	-2	+0.2%	+0.2%	+0.2%	+0.2%	-0.0%	-0.1%
Registrars	37	+15	+13	+9	+6	+3	+0	+0.7%	+0.5%	+0.3%	+0.2%	+0.1%	+0.0%
SHO/ Interns	40	+12	+8	+2	-2	+5	+0	+0.4%	+0.2%	+0.1%	-0.1%	+0.1%	+0.0%
Medical/ Dental, other	2	-1	-1	-1	+1	+1	+1	-0.3%	-0.3%	-0.3%	+0.8%	+0.8%	+0.8%
Nursing & Midwifery	603	+43	+38	+34	+16	+26	-4	+0.1%	+0.1%	+0.1%	+0.0%	+0.0%	-0.0%
Nurse/ Midwife Manager	151	+18	+7	+11	-4	+5	-2	+0.1%	+0.1%	+0.1%	-0.0%	+0.0%	-0.0%
Nurse/ Midwife Specialist & AN/MP	79	+33	+34	+19	+19	+11	+1	+0.7%	+0.8%	+0.3%	+0.3%	+0.2%	+0.0%
Staff Nurse/ Staff Midwife	355	-24	-21	+0	-2	-2	+9	-0.1%	-0.1%	+0.0%	-0.0%	-0.0%	+0.0%
Nursing/ Midwifery Student	15	+13	+15	+2	+4	+11	-11	+5.7%	-1.0%	+0.2%	+0.4%	+2.2%	-0.4%
Nursing/ Midwifery other	3	+3	+3	+1	-0	+1	-0	-1.0%	-1.0%	+0.3%	-0.1%	+0.3%	-0.1%
Health & Social Care Professionals	153	+25	+15	+14	+6	+13	-3	+0.2%	+0.1%	+0.1%	+0.0%	+0.1%	-0.0%
Therapy Professions	53	+18	+8	+4	+3	+7	-1	+0.5%	+0.2%	+0.1%	+0.1%	+0.2%	-0.0%
Social Care	16	-1	-1	+2	+1	+1	+0	-0.1%	-0.1%	+0.2%	+0.1%	+0.1%	+0.0%
Social Workers	42	+4	+5	+6	+2	+1	+0	+0.1%	+0.1%	+0.2%	+0.0%	+0.0%	+0.0%
Psychologists	37	+5	+3	+2	+1	+4	-3	+0.2%	+0.1%	+0.1%	+0.0%	+0.1%	-0.1%
Pharmacy	2	-2	-2	-1	-1	-1	+0	-0.6%	-0.5%	-0.3%	-0.3%	-0.3%	+0.0%
H&SC, Other	3	+2	+2	+1				+2.0%	+2.0%	+0.5%	+0.0%	+0.0%	+0.0%
Management & Administrative	132	+7	+2	-4	-9	-6	-1	+0.1%	+0.0%	-0.0%	-0.1%	-0.0%	-0.0%
Management (VIII & above)	4	-1		+1	+0	-1		-0.2%	+0.0%	+0.3%	+0.0%	-0.2%	+0.0%
Administrative/ Supervisory (V to VII)	27	+11	+7	+3	+4	+4	-1	+0.6%	+0.3%	+0.1%	+0.2%	+0.2%	-0.0%
Clerical (III & IV)	101	-2	-5	-9	-13	-8	-0	-0.0%	-0.0%	-0.1%	-0.1%	-0.1%	-0.0%
General Support	65	-20	-16	-8	-4	+1	+3	-0.2%	-0.2%	-0.1%	-0.1%	+0.0%	+0.0%
Support	32	-20	-14	-7	-4	-4	-0	-0.4%	-0.3%	-0.2%	-0.1%	-0.1%	-0.0%
Maintenance/ Technical	33	-0	-2	-1	+0	+6	+3	-0.0%	-0.1%	-0.0%	+0.0%	+0.2%	+0.1%
Patient & Client Care	278	-0	-3	-13	-12	-6	-1	-0.0%	-0.0%	-0.0%	-0.0%	-0.0%	-0.0%
Health Care Assistants	211	+0	-4	-6	-7	-4	-0	+0.0%	-0.0%	-0.0%	-0.0%	-0.0%	-0.0%
Care, other	67	-1	+0	-7	-6	-2	-1	-0.0%	+0.0%	-0.1%	-0.1%	-0.0%	-0.0%

Source: Health Service Personnel Census



Primary Care

Nov 2020 (Dec 2015 figure: 1,261)	WTE Nov 2020	WTE change since Dec 15	WTE change since Dec 16	WTE change since Dec 17	WTE change since Dec 18	WTE change since Dec 19	WTE change since Oct 20	% change since Dec 15	% change since Dec 16	% change since Dec 17	% change since Dec 18	% change since Dec 19	% change since Oct 20
Overall	1,191	-70	-47	+102	+32	+58	+21	-5.5%	-3.8%	+9.3%	+2.7%	+5.1%	+1.8%
Medical & Dental	103	+14	+17	+18	+16	+16	+1	+0.2%	+0.2%	+0.2%	+0.2%	+0.2%	+0.0%
Consultants	1	-2	-1	-1	-0	+0	+0	-0.6%	-0.4%	-0.4%	-0.0%	+0.0%	+0.0%
Registrars	50	+17	+16	+12	+12	+10	-0	+0.5%	+0.5%	+0.3%	+0.3%	+0.2%	-0.0%
SHO/ Interns	3	-6	-2	+3	+3	+2	-0	-0.7%	-0.4%	-1.0%	-1.0%	+2.0%	-0.0%
Medical/ Dental, other	49	+4	+4	+4	+1	+4	+1	+0.1%	+0.1%	+0.1%	+0.0%	+0.1%	+0.0%
Nursing & Midwifery	323	+29	+28	+23	+2	+10	+4	+0.1%	+0.1%	+0.1%	+0.0%	+0.0%	+0.0%
Nurse/ Midwife Manager	28	+5	+5	+3	+2	+0	-1	+0.2%	+0.2%	+0.1%	+0.1%	+0.0%	-0.0%
Nurse/ Midwife Specialist & AN/MP	20	+4	+5	+6	+2	+3	-0	+0.2%	+0.3%	+0.4%	+0.1%	+0.2%	-0.0%
Staff Nurse/ Staff Midwife	77	+6	+6	+5	-1	+3	+4	+0.1%	+0.1%	+0.1%	-0.0%	+0.0%	+0.0%
Public Health Nurse	198	+21	+23	+25	+12	+7	+1	+0.1%	+0.1%	+0.1%	+0.1%	+0.0%	+0.0%
Nursing/ Midwifery Student		-7	-11	-16	-13	-4		-1.0%	-1.0%	-1.0%	-1.0%	-1.0%	-1.0%
Health & Social Care Professionals	333	+28	+33	+31	+11	+21	+1	+0.1%	+0.1%	+0.1%	+0.0%	+0.1%	+0.0%
Therapy Professions	246	+49	+47	+35	+17	+20	+1	+0.2%	+0.2%	+0.2%	+0.1%	+0.1%	+0.0%
Health Science/ Diagnostics	34	+0	-0	+1	+1	+1	+0	+0.0%	-0.0%	+0.0%	+0.0%	+0.0%	+0.0%
Social Care	9	-4	-3	-2	-1	+0	-0	-0.3%	-0.2%	-0.2%	-0.1%	+0.0%	-0.0%
Social Workers	6	-4	-3	-1	-1	-1	-0	-0.4%	-0.3%	-0.2%	-0.2%	-0.2%	-0.0%
Psychologists	26	-11	-4	-1	-2	+2	-0	-0.3%	-0.1%	-0.0%	-0.1%	+0.1%	-0.0%
Pharmacy	1							+0.0%	+0.0%	+0.0%	+0.0%	+0.0%	+0.0%
H&SC, Other	12	-3	-4	-2	-3	-2	+0	-0.2%	-0.2%	-0.2%	-0.2%	-0.1%	+0.0%
Management & Administrative	333	+48	+40	+19	+3	+0	+6	+0.2%	+0.1%	+0.1%	+0.0%	+0.0%	+0.0%
Management (VIII & above)	34	+8	+6	-2	-3	+1	-0	+0.3%	+0.2%	-0.1%	-0.1%	+0.0%	-0.0%
Administrative/ Supervisory (V to VII)	69	+33	+30	+25	+16	+8	+7	+0.9%	+0.7%	+0.6%	+0.3%	+0.1%	+0.1%
Clerical (III & IV)	229	+7	+4	-4	-11	-9	-1	+0.0%	+0.0%	-0.0%	-0.0%	-0.0%	-0.0%
General Support	30	-6	-0	-0	-4	+1	-1	-0.2%	-0.0%	-0.0%	-0.1%	+0.0%	-0.0%
Support	22	+1	+1	+1	-3	+2	+0	+0.0%	+0.0%	+0.0%	-0.1%	+0.1%	+0.0%
Maintenance/ Technical	8	-7	-1	-1	-1	-1	-1	-0.5%	-0.1%	-0.1%	-0.1%	-0.1%	-0.1%
Patient & Client Care	68	-181	-165	+11	+3	+11	+9	-0.7%	-0.7%	+0.2%	+0.1%	+0.2%	+0.2%
Health Care Assistants	22	+15	+16	+14	+3	+8	+9	+2.3%	+2.4%	+1.6%	+0.1%	+0.6%	+0.7%
Care, other	46	-16	-12	-2	+1	+3	+1	-0.3%	-0.2%	-0.0%	+0.0%	+0.1%	+0.0%
Home Help		-181	-169					-1.0%	-1.0%	-1.0%	-1.0%	-1.0%	-1.0%

Source: Health Service Personnel Census



Disabilities

Nov 2020 (Dec 2015 figure: 1,221)	WTE Nov 2020	WTE change since Dec 15	WTE change since Dec 16	WTE change since Dec 17	WTE change since Dec 18	WTE change since Dec 19	WTE change since Oct 20	% change since Dec 15	% change since Dec 16	% change since Dec 17	% change since Dec 18	% change since Dec 19	% change since Oct 20
Overall	1,505	+283	+166	+110	+85	+8	+13	+23.2%	+12.4%	+7.9%	+6.0%	+0.5%	+0.9%
Medical & Dental	6	+1	+0	+0	+0			+0.3%	+0.1%	+0.1%	+0.1%	+0.0%	+0.0%
Consultants	3	+1	+0	+0	+0			+0.7%	+0.1%	+0.1%	+0.1%	+0.0%	+0.0%
Registrars	2							+0.0%	+0.0%	+0.0%	+0.0%	+0.0%	+0.0%
Medical/ Dental, other	1							+0.0%	+0.0%	+0.0%	+0.0%	+0.0%	+0.0%
Nursing & Midwifery	245	-31	-30	-26	-7	-3	+3	-0.1%	-0.1%	-0.1%	-0.0%	-0.0%	+0.0%
Nurse/ Midwife Manager	77	+9	+6	+4	+6	-0	-0	+0.1%	+0.1%	+0.0%	+0.1%	-0.0%	-0.0%
Nurse/ Midwife Specialist & AN/MP	6	-0	-1	-2	-0	-0	+0	-0.1%	-0.2%	-0.2%	-0.0%	-0.0%	+0.0%
Staff Nurse/ Staff Midwife	162	-40	-35	-29	-13	-4	+2	-0.2%	-0.2%	-0.2%	-0.1%	-0.0%	+0.0%
Nursing/ Midwifery Student	1	+1	+1	+1	+1	+1	+0	-1.0%	-1.0%	-1.0%	-1.0%	-1.0%	+1.4%
Health & Social Care Professionals	332	+97	+74	+52	+25	+11	+6	+0.4%	+0.3%	+0.2%	+0.1%	+0.0%	+0.0%
Therapy Professions	35	+3	-0	-2	-1	-6	+1	+0.1%	-0.0%	-0.0%	-0.0%	-0.2%	+0.0%
Social Care	241	+97	+77	+59	+33	+19	+4	+0.7%	+0.5%	+0.3%	+0.2%	+0.1%	+0.0%
Social Workers	25	+3	+3	+1	+1	-1	-0	+0.2%	+0.1%	+0.0%	+0.0%	-0.0%	-0.0%
Psychologists	15	-1	-4	-5	-5	-1	+0	-0.1%	-0.2%	-0.2%	-0.3%	-0.1%	+0.0%
H&SC, Other	16	-5	-2	-1	-2	-0	+1	-0.2%	-0.1%	-0.1%	-0.1%	-0.0%	+0.1%
Management & Administrative	110	+25	+8	+2	+6	+4	-0	+0.3%	+0.1%	+0.0%	+0.1%	+0.0%	-0.0%
Management (VIII & above)	17	+7	+3	+3	+2	+1	-1	+0.7%	+0.2%	+0.2%	+0.1%	+0.1%	-0.1%
Administrative/ Supervisory (V to VII)	43	+16	+8	+2	+5	+3	+1	+0.6%	+0.2%	+0.0%	+0.1%	+0.1%	+0.0%
Clerical (III & IV)	50	+3	-3	-3	-1	+0	+0	+0.1%	-0.1%	-0.0%	-0.0%	+0.0%	+0.0%
General Support	56	-2	-2	-4	-2	-2	+2	-0.0%	-0.1%	-0.1%	-0.0%	-0.0%	+0.0%
Support	43	-2	-2	-4	-2	-2	+1	-0.0%	-0.0%	-0.1%	-0.1%	-0.0%	+0.0%
Maintenance/ Technical	13	+0	-0	-0	+1	-0	+1	+0.0%	-0.0%	-0.0%	+0.1%	-0.0%	+0.1%
Patient & Client Care	756	+192	+116	+86	+62	-2	+3	+0.3%	+0.2%	+0.1%	+0.1%	-0.0%	+0.0%
Health Care Assistants	620	+175	+96	+67	+48	-3	-2	+0.4%	+0.2%	+0.1%	+0.1%	-0.0%	-0.0%
Care, other	135	+17	+20	+19	+14	+1	+5	+0.1%	+0.2%	+0.2%	+0.1%	+0.0%	+0.0%

Source: Health Service Personnel Census

Older People

Nov 2020 (Dec 2015 figure: 1,371)	WTE Nov 2020	WTE change since Dec 15	WTE change since Dec 16	WTE change since Dec 17	WTE change since Dec 18	WTE change since Dec 19	WTE change since Oct 20	% change since Dec 15	% change since Dec 16	% change since Dec 17	% change since Dec 18	% change since Dec 19	% change since Oct 20
Overall	1,561	+190	+185	-25	-80	-44	-17	+13.9%	+13.5%	-1.6%	-4.9%	-2.8%	-1.1%
Medical & Dental	11	+2	-0	-1	-1	-1	-0	+0.2%	-0.0%	-0.1%	-0.1%	-0.0%	-0.0%
Medical/ Dental, other	11	+2	-0	-1	-1	-1	-0	+0.2%	-0.0%	-0.1%	-0.1%	-0.0%	-0.0%
Nursing & Midwifery	376	+10	+5	-5	+2	+14	-5	+0.0%	+0.0%	-0.0%	+0.0%	+0.0%	-0.0%
Nurse/ Midwife Manager	66	+12	+9	+3	+4	+7	-2	+0.2%	+0.2%	+0.1%	+0.1%	+0.1%	-0.0%
Nurse/ Midwife Specialist & AN/MP	2	+2	+2	+2	+2	-0	-0	-1.0%	-1.0%	-1.0%	-1.0%	-0.0%	-0.0%
Staff Nurse/ Staff Midwife	308	-4	-6	-10	-4	+7	-3	-0.0%	-0.0%	-0.0%	-0.0%	+0.0%	-0.0%
Public Health Nurse	1	+0	+0	+0		+0		+0.3%	+0.3%	+0.1%	+0.0%	+0.3%	+0.0%
Health & Social Care Professionals	39	+6	+3	+5	+3	+2	-0	+0.2%	+0.1%	+0.1%	+0.1%	+0.0%	-0.0%
Therapy Professions	27	+2	+0	+2	+1	+1	-1	+0.1%	+0.0%	+0.1%	+0.1%	+0.0%	-0.0%
Health Science/ Diagnostics	1	+1						#DIV/0	+0.0%	+0.0%	+0.0%	+0.0%	+0.0%
Social Workers	11	+3	+3	+2	+1	+0	+0	+0.4%	+0.4%	+0.3%	+0.1%	+0.0%	+0.0%
Pharmacy	1	+1	+1	+1	+1	+0	+0	+1.0%	+1.0%	+1.0%	+1.0%	+0.0%	+0.0%
H&SC, Other		-0	-1					-1.0%	-1.0%	-1.0%			-1.0%
Management & Administrative	76	+9	+8	-6	-16	-5	-3	+0.1%	+0.1%	-0.1%	-0.2%	-0.1%	-0.0%
Management (VIII & above)	2	+0		+1				+0.0%	+0.0%	+1.0%	+0.0%	+0.0%	+0.0%
Administrative/ Supervisory (V to VII)	10	+6	+4	+3	+1	+2	-1	+1.5%	+0.6%	+0.4%	+0.1%	+0.3%	-0.1%
Clerical (III & IV)	64	+3	+4	-10	-17	-7	-2	+0.0%	+0.1%	-0.1%	-0.2%	-0.1%	-0.0%
General Support	76	-14	-10	-4	-5	+1	-2	-0.2%	-0.1%	-0.1%	-0.1%	+0.0%	-0.0%
Support	57	-16	-13	-7	-6	+1	-1	-0.2%	-0.2%	-0.1%	-0.1%	+0.0%	-0.0%
Maintenance/ Technical	19	+2	+2	+3	+1	+0	-1	+0.1%	+0.1%	+0.2%	+0.1%	+0.0%	-0.0%
Patient & Client Care	983	+178	+179	-13	-63	-56	-7	+0.2%	+0.2%	-0.0%	-0.1%	-0.1%	-0.0%
Health Care Assistants	525	+21	+16	+0	-17	+10	-12	+0.0%	+0.0%	+0.0%	-0.0%	+0.0%	-0.0%
Care, other	30	+15	+16	+7	+7	+6	+3	+1.0%	+1.1%	+0.3%	+0.3%	+0.2%	+0.1%
Home Help	428	+142	+148	-21	-53	-72	+2	+0.5%	+0.5%	-0.0%	-0.1%	-0.1%	+0.0%

Source: Health Service Personnel Census