

CHO 2 Employment Report: October 2020

Employment by Staff Group

Oct 2020 (Dec 2019 figure: 5,545)	WTE Sep 2020	WTE Oct 2020	WTE change since Sep 20	% change since Sep 20	WTE change since Dec 19	WTE change since Oct 19
Overall	5,595	5,602	+7	+0.1%	+57	+83
Consultants	44	44	-0	-0.4%	+2	+4
Registrars	90	89	-2	-1.8%	+14	+13
SHO/ Interns	40	42	+2	+4.7%	+6	+6
Medical/ Dental, other	59	61	+1	+2.1%	+2	+2
Medical & Dental	234	236	+1	+0.6%	+24	+25
Nurse/ Midwife Manager	327	326	-1	-0.2%	+18	+20
Nurse/ Midwife Specialist & AN/MP	102	106	+4	+3.4%	+13	+12
Staff Nurse/ Staff Midwife	899	890	-9	-1.0%	-7	-8
Public Health Nurse	194	198	+4	+1.9%	+6	+4
<i>Pre-registration Nurse/ Midwife Intern</i>				-100.0%	-0	
<i>Pre-registration Nurse Intern (COVID-19)</i>	32	26	-5	-17.0%	+26	-5
<i>Post-registration Nurse/ Midwife Student</i>				-100.0%	-4	
<i>Nursing/ Midwifery awaiting registration</i>				-100.0%	-5	
Nursing/ Midwifery Student	32	26	-5	-17.0%	+17	+2
Nursing/ Midwifery other	3	3	+0	+14.0%	+1	+1
Nursing & Midwifery	1,557	1,550	-7	-0.5%	+48	+30
Therapy Professions	353	360	+7	+1.9%	+21	+22
Health Science/ Diagnostics	34	34	+0	+1.3%	+1	+0
Social Care	264	261	-3	-1.2%	+16	+12
Social Workers	83	84	+1	+0.6%	+0	+2
Psychologists	81	81	+0	+0.0%	+7	+5
Pharmacy	4	4	-0	-0.3%	-1	-1
H&SC, Other	29	29	+1	+1.8%	-3	-2
Health & Social Care Professionals	848	853	+5	+0.6%	+42	+37
Management (VIII & above)	58	59	+1	+1.9%	+3	+2
Administrative/ Supervisory (V to VII)	144	151	+7	+4.7%	+17	+16
Clerical (III & IV)	440	448	+8	+1.8%	-20	-23
Management & Administrative	642	658	+16	+2.5%	+0	-4
Support	153	154	+1	+0.4%	-4	-9
Maintenance/ Technical	69	71	+2	+2.9%	+3	+0
General Support	222	225	+3	+1.2%	-1	-8
Health Care Assistants	1,404	1,383	-22	-1.5%	+15	+15
Care, other	269	272	+4	+1.3%	+2	+4
Home Help	418	426	+8	+1.8%	-73	-15
Patient & Client Care	2,092	2,081	-11	-0.5%	-56	+4

CHO 2 Employment Report: October 2020

Community Health & Wellbeing

Oct 2020 (figure:)	WTE Sep 2020	WTE Oct 2020	WTE change since Sep 20	% change since Sep 20	WTE change since	WTE change since
Total Community Health & Wellbeing	9	10	+1	+9.3%	+10	+10
Management (VIII & above)	1	1			+1	+1
Administrative/ Supervisory (V to VII)	6	7	+1	+13.6%	+7	+7
Clerical (III & IV)	1	1			+1	+1
Management & Administrative	8	9	+1	+10.5%	+9	+9
Care, other	1	1			+1	+1
Patient & Client Care	1	1			+1	+1

Mental Health

Oct 2020 (Dec 2019 figure: 1,308)	WTE Sep 2020	WTE Oct 2020	WTE change since Sep 20	% change since Sep 20	WTE change since Dec 19	WTE change since Oct 19
Total Mental Health	1,343	1,352	+10	+0.7%	+44	+26
Consultants	40	39	-0	-0.4%	+2	+4
Registrars	37	36	-0	-1.2%	+3	+4
SHO/ Interns	38	39	+2	+4.9%	+4	+3
Medical/ Dental, other	1	1				
Medical & Dental	115	116	+1	+1.1%	+10	+11
Nurse/ Midwife Manager	154	154	-1	-0.6%	+8	+8
Nurse/ Midwife Specialist & AN/MP	75	78	+3	+3.4%	+10	+10
Staff Nurse/ Staff Midwife	345	346	+1	+0.4%	-11	-6
Pre-registration Nurse/ Midwife Intern				-100.0%	-0	
Pre-registration Nurse Intern (COVID-19)	31	26	-5	-15.4%	+26	-5
Nursing/ Midwifery awaiting registration				-100.0%	-5	
Nursing/ Midwifery Student	31	26	-5	-15.4%	+21	+5
Nursing/ Midwifery other	3	3	+0	+14.0%	+1	+1
Nursing & Midwifery	608	606	-1	-0.2%	+29	+17
Therapy Professions	54	54	+0	+0.2%	+9	+8
Social Care	14	15	+1	+9.0%	+1	+2
Social Workers	43	42	-1	-2.9%	+1	+1
Psychologists	40	40	+0	+0.7%	+6	+5
Pharmacy	2	2	-0	-1.2%	-1	-1
H&SC, Other	3	3	+1	+20.0%		
Health & Social Care Professionals	155	156	+1	+0.5%	+16	+15
Management (VIII & above)	4	4			-1	-2
Administrative/ Supervisory (V to VII)	26	28	+2	+9.1%	+5	+4
Clerical (III & IV)	98	101	+3	+2.9%	-8	-9
Management & Administrative	128	133	+5	+4.1%	-4	-6
Support	32	32	+0	+0.4%	-4	-3
Maintenance/ Technical	28	30	+2	+7.0%	+3	+0
General Support	60	62	+2	+3.4%	-1	-3
Health Care Assistants	209	211	+2	+1.0%	-4	-5
Care, other	68	68	-0	-0.2%	-2	-3
Patient & Client Care	277	279	+2	+0.7%	-5	-8

Primary Care

Oct 2020 (Dec 2019 figure: 1,134)	WTE Sep 2020	WTE Oct 2020	WTE change since Sep 20	% change since Sep 20	WTE change since Dec 19	WTE change since Oct 19
Total Primary Care	1,156	1,170	+14	+1.2%	+37	+23
Consultants	1	1	+0	+0.8%	-0	+0
Registrars	52	50	-1	-2.4%	+10	+9
SHO/ Interns	3	3	+0	+2.4%	+2	+3
Medical/ Dental, other	47	48	+1	+2.7%	+2	+2
Medical & Dental	102	102	+0	+0.1%	+15	+14
Nurse/ Midwife Manager	28	29	+1	+3.1%	+1	+1
Nurse/ Midwife Specialist & AN/MP	19	20	+1	+5.7%	+3	+3
Staff Nurse/ Staff Midwife	81	74	-7	-9.2%	-0	-5
Public Health Nurse	193	197	+4	+1.9%	+6	+4
<i>Post-registration Nurse/ Midwife Student</i>				-100.0%	-4	
Nursing/ Midwifery Student				-100.0%	-4	-3
Nursing & Midwifery	321	319	-2	-0.6%	+6	-0
Therapy Professions	237	245	+8	+3.4%	+19	+19
Health Science/ Diagnostics	33	33	+0	+1.3%	+1	+0
Social Care	9	9	+0	+1.5%	+0	+0
Social Workers	5	6	+1	+12.1%	-1	+0
Psychologists	26	26	+0	+1.5%	+2	+2
Pharmacy	1	1				
H&SC, Other	12	12	+0	+0.1%	-2	-2
Health & Social Care Professionals	322	332	+10	+3.0%	+20	+19
Management (VIII & above)	34	34	+0	+0.1%	+1	+1
Administrative/ Supervisory (V to VII)	61	63	+2	+3.4%	+1	+1
Clerical (III & IV)	227	230	+3	+1.2%	-8	-10
Management & Administrative	322	327	+5	+1.5%	-6	-8
Support	22	22	+0	+0.8%	+1	-0
Maintenance/ Technical	9	9				
General Support	31	31	+0	+0.5%	+1	-0
Health Care Assistants	12	13	+1	+8.4%	-1	-2
Care, other	45	45	+0	+0.8%	+2	-0
Patient & Client Care	57	59	+1	+2.4%	+1	-2

Social Care

Oct 2020 (Dec 2019 figure: 3,103)	WTE Sep 2020	WTE Oct 2020	WTE change since Sep 20	% change since Sep 20	WTE change since Dec 19	WTE change since Oct 19
Total Social Care	3,088	3,069	-18	-0.6%	-33	+25
Consultants	3	3				
Registrars	2	2				
Medical/ Dental, other	12	12			-1	-0
Medical & Dental	17	17			-1	-0
Nurse/ Midwife Manager	145	144	-1	-0.4%	+9	+10
Nurse/ Midwife Specialist & AN/MP	8	8	-0	-1.3%	-0	-0
Staff Nurse/ Staff Midwife	474	470	-3	-0.6%	+4	+2
Public Health Nurse	1	1			+0	+0
<i>Pre-registration Nurse Intern (COVID-19)</i>	1	0	-1	-72.9%	+0	-1
Nursing/ Midwifery Student	1	0	-1	-72.9%	+0	+0
Nursing & Midwifery	628	624	-4	-0.7%	+13	+13
Therapy Professions	63	61	-2	-2.6%	-6	-5
Health Science/ Diagnostics	1	1				-0
Social Care	242	237	-5	-1.9%	+15	+9
Social Workers	35	36	+1	+3.2%		+1
Psychologists	15	14	-1	-4.5%	-1	-2
Pharmacy	1	1	+0	+1.0%	+0	
H&SC, Other	14	14			-2	-1
Health & Social Care Professionals	371	365	-6	-1.5%	+6	+3
Management (VIII & above)	19	20	+1	+5.6%	+2	+2
Administrative/ Supervisory (V to VII)	51	53	+2	+3.1%	+5	+4
Clerical (III & IV)	114	116	+2	+2.0%	-5	-5
Management & Administrative	184	189	+5	+2.7%	+2	+1
Support	99	99	+0	+0.4%	-1	-5
Maintenance/ Technical	32	33	+0	+0.3%	+1	+0
General Support	131	132	+0	+0.4%	-1	-5
Health Care Assistants	1,183	1,158	-25	-2.1%	+20	+22
Care, other	155	159	+3	+2.2%	+0	+7
Home Help	418	426	+8	+1.8%	-73	-15
Patient & Client Care	1,757	1,743	-14	-0.8%	-53	+13

CHO 2 Employment Report: October 2020

Disabilities

Oct 2020 (Dec 2019 figure: 1,497)	WTE Sep 2020	WTE Oct 2020	WTE change since Sep 20	% change since Sep 20	WTE change since Dec 19	WTE change since Oct 19
Total Disabilities	1,498	1,491	-7	-0.5%	-6	+10
Consultants	3	3				
Registrars	2	2				
Medical/ Dental, other	1	1				
Medical & Dental	6	6				
Nurse/ Midwife Manager	78	77	-1	-0.7%	-0	+1
Nurse/ Midwife Specialist & AN/MP	6	6	-0	-1.8%	-0	-0
Staff Nurse/ Staff Midwife	163	160	-4	-2.4%	-6	-6
<i>Pre-registration Nurse Intern (COVID-19)</i>	1	0	-1	-72.9%	+0	-1
Nursing/ Midwifery Student	1	0	-1	-72.9%	+0	+0
Nursing & Midwifery	248	243	-5	-2.1%	-6	-5
Therapy Professions	35	34	-2	-4.2%	-7	-6
Social Care	242	237	-5	-1.9%	+15	+9
Social Workers	25	26	+1	+4.0%	-0	-1
Psychologists	15	14	-1	-4.5%	-1	-2
H&SC, Other	14	14			-2	-1
Health & Social Care Professionals	331	325	-6	-1.7%	+5	-0
Management (VIII & above)	17	18	+1	+6.2%	+2	+2
Administrative/ Supervisory (V to VII)	41	42	+1	+2.4%	+2	+1
Clerical (III & IV)	49	50	+1	+1.9%	+0	+0
Management & Administrative	107	110	+3	+2.8%	+4	+4
Support	42	42	-0	-0.7%	-3	-3
Maintenance/ Technical	13	12	-1	-5.9%	-1	-1
General Support	55	54	-1	-1.9%	-4	-4
Health Care Assistants	624	622	-1	-0.2%	-1	+12
Care, other	127	131	+4	+2.8%	-3	+3
Patient & Client Care	751	753	+2	+0.3%	-4	+15

Older People

Oct 2020 (Dec 2019 figure: 1,606)	WTE Sep 2020	WTE Oct 2020	WTE change since Sep 20	% change since Sep 20	WTE change since Dec 19	WTE change since Oct 19
Total Older People	1,590	1,578	-12	-0.7%	-28	+15
Medical/ Dental, other	11	11			-1	-0
Medical & Dental	11	11			-1	-0
Nurse/ Midwife Manager	67	67	+0	+0.1%	+9	+9
Nurse/ Midwife Specialist & AN/MP	2	2				
Staff Nurse/ Staff Midwife	310	311	+1	+0.3%	+10	+9
Public Health Nurse	1	1			+0	+0
Nursing & Midwifery	380	381	+1	+0.2%	+19	+18
Health & Social Care Professionals	39	39	-0	-0.0%	+2	+3
Management (VIII & above)	2	2				
Administrative/ Supervisory (V to VII)	10	11	+1	+5.8%	+3	+3
Clerical (III & IV)	65	67	+1	+2.0%	-5	-5
Management & Administrative	77	79	+2	+2.5%	-2	-2
Support	57	58	+1	+1.2%	+2	-3
Maintenance/ Technical	19	20	+1	+4.5%	+1	+1
General Support	76	78	+2	+2.0%	+3	-2
Health Care Assistants	559	536	-23	-4.2%	+21	+10
Care, other	28	28	-0	-0.9%	+3	+4
Home Help	418	426	+8	+1.8%	-73	-15
Patient & Client Care	1,006	990	-16	-1.6%	-49	-2

CHO 2 Employment by Administration (HSE / S38): October 2020

Oct 2020 (Dec 2019 figure: 5,545)	WTE Sep 2020	WTE Oct 2020	WTE change since Sep 20	% change since Sep 20	WTE change since Dec 19	WTE change since Oct 19
Overall	5,595	5,602	+7	+0.1%	+57	+83
HSE	4,311	4,328	+16	+0.4%	+71	+78
Section 38 Voluntary Agencies	1,284	1,274	-10	-0.7%	-14	+5

HSE

Oct 2020 (Dec 2019 figure: 4,256)	WTE Sep 2020	WTE Oct 2020	WTE change since Sep 20	% change since Sep 20	WTE change since Dec 19	WTE change since Oct 19
Overall	4,311	4,328	+16	+0.4%	+71	+78
Consultants	42	42	-0	-0.0%	+2	+4
Registrars	88	87	-2	-0.0%	+14	+13
SHO/ Interns	40	42	+2	+0.0%	+6	+6
Medical/ Dental, other	59	61	+1	+0.0%	+2	+2
Medical & Dental	230	231	+1	+0.6%	+24	+25
Nurse/ Midwife Manager	259	259	-0	-0.0%	+18	+18
Nurse/ Midwife Specialist & AN/MP	97	101	+4	+0.0%	+13	+12
Staff Nurse/ Staff Midwife	782	775	-7	-0.0%	-3	-3
Public Health Nurse	194	198	+4	+0.0%	+6	+4
<i>Pre-registration Nurse/ Midwife Intern</i>				-1.0%		-1
<i>Pre-registration Nurse Intern (COVID-19)</i>	31	26	-5	-0.2%	+26	+26
<i>Post-registration Nurse/ Midwife Student</i>				-1.0%	-13	-3
<i>Nursing/ Midwifery awaiting registration</i>				-1.0%	-11	-21
Nursing/ Midwifery Student	31	26	-5	-0.2%	+17	+2
Nursing/ Midwifery other	3	3	+0	+0.1%	+1	+1
Nursing & Midwifery	1,366	1,362	-4	-0.3%	+52	+33
Therapy Professions	324	332	+8	+0.0%	+28	+27
Health Science/ Diagnostics	34	34	+0	+0.0%	+1	+0
Social Care	54	56	+1	+0.0%	+6	+7
Social Workers	59	58	-0	-0.0%	-0	+2
Psychologists	68	68	+1	+0.0%	+9	+6
Pharmacy	4	4	-0	-0.0%	-1	-1
H&SC, Other	14	15	+1	+0.0%	-2	-2
Health & Social Care Professionals	556	567	+10	+1.9%	+41	+41
Management (VIII & above)	44	45	+1	+0.0%	+2	+1
Administrative/ Supervisory (V to VII)	108	115	+6	+0.1%	+16	+14
Clerical (III & IV)	404	411	+7	+0.0%	-20	-23
Management & Administrative	556	570	+14	+2.6%	-2	-8
Support	111	112	+1	+0.0%	-1	-6
Maintenance/ Technical	64	67	+3	+0.0%	+4	+1
General Support	175	179	+4	+2.1%	+3	-5
Health Care Assistants	858	839	-19	-0.0%	+18	+2
Care, other	152	153	+2	+0.0%	+9	+5
Home Help	418	426	+8	+0.0%	-73	-15
Patient & Client Care	1,428	1,418	-9	-0.7%	-47	-8

Section 38 Voluntary Agencies

Oct 2020 (Dec 2019 figure: 1,288)	WTE Sep 2020	WTE Oct 2020	WTE change since Sep 20	% change since Sep 20	WTE change since Dec 19	WTE change since Oct 19
Overall	1,284	1,274	-10	-0.7%	-14	+5
Consultants	2	2		+0.0%		
Registrars	2	2		+0.0%		
Medical & Dental	4	4				
Nurse/ Midwife Manager	68	67	-0	-0.0%	+0	+2
Nurse/ Midwife Specialist & AN/MP	5	5	-0	-0.0%	-0	-0
Staff Nurse/ Staff Midwife	118	115	-2	-0.0%	-4	-5
<i>Pre-registration Nurse Intern (COVID-19)</i>	1	0	-1	-0.7%	+0	+0
Nursing/ Midwifery Student	1	0	-1	-0.7%	+0	+0
Nursing & Midwifery	191	188	-4	-1.9%	-4	-3
Therapy Professions	29	28	-1	-0.0%	-6	-5
Social Care	210	206	-4	-0.0%	+10	+4
Social Workers	25	26	+1	+0.0%	+0	+0
Psychologists	13	12	-1	-0.1%	-2	-2
H&SC, Other	14	14		+0.0%	-2	-1
Health & Social Care Professionals	292	286	-5	-1.9%	+1	-4
Management (VIII & above)	14	14	+0	+0.0%	+1	+1
Administrative/ Supervisory (V to VII)	36	36	+1	+0.0%	+2	+2
Clerical (III & IV)	36	37	+1	+0.0%	+0	+1
Management & Administrative	86	87	+2	+1.8%	+3	+3
Support	42	42	-0	-0.0%	-3	-3
Maintenance/ Technical	5	4	-1	-0.1%	-1	-1
General Support	47	46	-1	-2.1%	-4	-3
Health Care Assistants	547	544	-3	-0.0%	-2	+13
Care, other	117	119	+2	+0.0%	-7	-1
Patient & Client Care	664	663	-1	-0.2%	-9	+12

CHO 2 Employment by S38 Agency: October 2020

Bros. of Charity, West Region

Oct 2020 (Dec 2019 figure: 1,288)	WTE Sep 2020	WTE Oct 2020	WTE change since Sep 20	% change since Sep 20	WTE change since Dec 19	WTE change since Oct 19
Overall	1,284	1,274	-10	-0.7%	-14	+5
Consultants	2	2		+0.0%		
Registrars	2	2		+0.0%		
Medical & Dental	4	4				
Nurse/ Midwife Manager	68	67	-0	-0.0%	+0	+2
Nurse/ Midwife Specialist & AN/MP	5	5	-0	-0.0%	-0	-0
Staff Nurse/ Staff Midwife	118	115	-2	-0.0%	-4	-5
Pre-registration Nurse Intern (COVID-19)	1	0	-1	-0.7%	+0	+0
Nursing/ Midwifery Student	1	0	-1	-0.7%	+0	+0
Nursing & Midwifery	191	188	-4	-1.9%	-4	-3
Therapy Professions	29	28	-1	-0.0%	-6	-5
Social Care	210	206	-4	-0.0%	+10	+4
Social Workers	25	26	+1	+0.0%	+0	+0
Psychologists	13	12	-1	-0.1%	-2	-2
H&SC, Other	14	14		+0.0%	-2	-1
Health & Social Care Professionals	292	286	-5	-1.9%	+1	-4
Management (VIII & above)	14	14		+0.0%	+1	+1
Administrative/ Supervisory (V to VII)	36	36	+1	+0.0%	+2	+2
Clerical (III & IV)	36	37	+1	+0.0%	+0	+1
Management & Administrative	86	87	+2	+1.8%	+3	+3
Support	42	42	-0	-0.0%	-3	-3
Maintenance/ Technical	5	4	-1	-0.1%	-1	-1
General Support	47	46	-1	-2.1%	-4	-3
Health Care Assistants	547	544	-3	-0.0%	-2	+13
Care, other	117	119	+2	+0.0%	-7	-1
Patient & Client Care	664	663	-1	-0.2%	-9	+12

CHO 2 Employment by Grade Group & Staff Category: October 2020

Oct 2020 (Dec 2019 figure: 5,545)	WTE Sep 2020	WTE Oct 2020	WTE change since Sep 20	% change since Sep 20	WTE change since Dec 19	WTE change since Oct 19
Overall	5,595	5,602	+7	+0.1%	+57	+83
Consultant Medicine	1	1				
Consultant Paediatrics	1	1				
Consultant Psychiatry	42	42	-0	-0.4%	+2	+4
Consultant Surgery	0	0	+0	+4.5%	-0	+0
Consultants	44	44	-0	-0.4%	+2	+4
Registrar	69	67	-2	-2.4%	+9	+8
Senior Registrar	22	22			+5	+5
Registrars	90	89	-2	-1.8%	+14	+13
Senior House Officer	40	42	+2	+4.7%	+6	+6
SHO/ Interns	40	42	+2	+4.7%	+6	+6
Dentists	20	21	+0	+0.6%	-1	+0
Other Medical	39	40	+1	+3.0%	+2	+2
Medical/ Dental, other	59	61	+1	+2.1%	+2	+2
Medical & Dental	234	236	+1	+0.6%	+25	+25
Clinical Nurse/ Midwife Manager	261	258	-3	-1.0%	+17	+17
Director Nursing/Midwifery, Assistant	44	44	+0	+1.1%	-0	-1
Director of Nursing/Midwifery	23	24	+1	+6.4%	+1	+3
Nurse/ Midwife Manager	327	326	-1	-0.2%	+18	+20
Advanced Nurse/ Midwife Practitioner	10	10			+1	+2
Clinical Nurse/ Midwife Specialist	92	96	+4	+3.8%	+12	+10
Nurse/ Midwife Specialist & AN/MP	102	106	+4	+3.4%	+13	+12
Staff Nurse [Intellectual Disability]	100	98	-2	-2.4%	+8	+6
Staff Nurse [Psychiatric]	359	360	+1	+0.3%	-11	-7
Staff Nurses [General/ Children's]	441	433	-8	-1.8%	-4	-8
Staff Nurse/ Staff Midwife	899	890	-9	-1.0%	-7	-8
Public Health Nurse	194	198	+4	+1.9%	+6	+4
Pre-registration Nurse/ Midwife Intern				-100.0%	-0	-1
Pre-registration Nurse Intern (COVID-19)	32	26	-5	-17.0%	+26	+26
Post-registration Nurse/ Midwife Student				-100.0%	-4	-3
Nursing/ Midwifery awaiting registration				-100.0%	-5	-21
Nursing/ Midwifery Student	32	26	-5	-17.0%	+17	+2
Nursing/ Midwifery other	3	3	+0	+14.0%	+1	+1
Nursing & Midwifery	1,557	1,550	-7	-0.5%	+14	+30
Dietitians	23	24	+1	+2.3%	+4	+4
Occupational Therapists	127	129	+2	+1.4%	+12	+15
Orthoptists	2	2	+1	+35.6%	+1	+1
Physiotherapists	93	93	+0	+0.4%	+5	+2
Podiatrists & Chiropodists	8	8	-0	-0.5%	+1	+1
Speech & Language Therapists	100	104	+3	+3.4%	-1	-1
Therapy Professions	353	360	+7	+1.9%	+21	+22
Audiology	5	5	+0	+0.2%	+0	-1
Clinical Engineering	1	1				
Medical Laboratory	27	28	+0	+1.5%	+1	+1
Radiographers	1	1				-0
Health Science/ Diagnostics	34	34	+0	+1.3%	+1	+0
Social Care	264	261	-3	-1.2%	+16	+12
Social Workers	83	84	+1	+0.6%	+0	+2

Oct 2020 (Dec 2019 figure: 5,545)	WTE Sep 2020	WTE Oct 2020	WTE change since Sep 20	% change since Sep 20	WTE change since Dec 19	WTE change since Oct 19
Overall	5,595	5,602	+7	+0.1%	+57	+83
Psychologists	81	81	+0	+0.0%	+7	+5
Pharmacy	4	4	-0	-0.3%	-1	-1
Counsellor Therapists	11	11	+0	+3.6%	-0	+1
Dental Hygienists	5	5	+0	+1.5%	+0	+0
Other Health & Social Care	12	12	+0	+0.4%	-1	-1
Play Therapists/ Specialists	1	1			-3	-3
H&SC, Other	29	29	+1	+1.8%	-3	-2
Health & Social Care Professionals	848	853	+5	+0.6%	+42	+37
Executive Management	8	11	+3	+35.4%	+1	+2
Senior Management (VIII & GM)	50	48	-2	-3.8%	+2	+0
Management (VIII & above)	58	59	+1	+1.9%	+3	+2
Middle Management (V-VII)	144	151	+7	+4.7%	+18	+16
Other Administrative				-100.0%	-1	
Administrative/ Supervisory (V to VII)	144	151	+7	+4.7%	+17	+16
Clerical (III & IV)	440	448	+8	+1.8%	-20	-23
Management & Administrative	642	658	+16	+2.5%	-9	-4
Catering	40	39	-0	-0.5%	-0	-2
Household Services	63	64	+1	+1.1%	+1	-0
Other Support	36	37	+0	+0.5%	-3	-4
Portering	14	14	-0	-0.3%	-2	-3
Support	153	154	+1	+0.4%	-4	-9
Maintenance/ Technical	69	71	+2	+2.9%	+3	+0
General Support	222	225	+3	+1.2%	-17	-8
HCA, Nurse's Aide, etc.	1,393	1,372	-20	-1.5%	+19	+20
Health & Social Care Assistants	12	10	-1	-11.0%	-3	-5
Health Care Assistants	1,404	1,383	-22	-1.5%	+15	+15
Other Care Grades	269	272	+4	+1.3%	+2	+4
Care, other	269	272	+4	+1.3%	+2	+4
Home Help	418	426	+8	+1.8%	-73	-15
Patient & Client Care	2,092	2,081	-11	-0.5%	-13	+4

CHO 2 HSE Employment by Grade Group & Staff Category: October 2020

Oct 2020 (Dec 2019 figure: 4,256)	WTE Sep 2020	WTE Oct 2020	WTE change since Sep 20	% change since Sep 20	WTE change since Dec 19	WTE change since Oct 19
Overall	4,311	4,328	+16	+0.4%	+71	+78
Consultant Medicine	1	1				
Consultant Psychiatry	41	40	-0	-0.4%	+2	+4
Consultant Surgery	0	0	+0	+4.5%	-0	+0
Consultants	42	42	-0	-0.4%	+2	+4
Registrar	69	67	-2	-2.4%	+10	+9
Senior Registrar	20	20			+4	+4
Registrars	88	87	-2	-1.9%	+14	+13
SHO/ Interns	40	42	+2	+4.7%	+6	+6
Dentists	20	21	+0	+0.6%	-1	+0
Other Medical	39	40	+1	+3.0%	+2	+2
Medical/ Dental, other	59	61	+1	+2.1%	+2	+2
Medical & Dental	230	231	+1	+0.6%	+25	+25
Clinical Nurse/ Midwife Manager	194	192	-2	-1.1%	+17	+16
Director Nursing/Midwifery, Assistant	44	44	+0	+1.1%	-0	-1
Director of Nursing/Midwifery	22	23	+1	+6.7%	+1	+3
Nurse/ Midwife Manager	259	259	-0	-0.1%	+18	+18
Advanced Nurse/ Midwife Practitioner	9	9			+1	+2
Clinical Nurse/ Midwife Specialist	88	92	+4	+4.1%	+12	+10
Nurse/ Midwife Specialist & AN/MP	97	101	+4	+3.7%	+13	+12
Staff Nurse [Intellectual Disability]	13	13	-0	-1.0%	-0	-0
Staff Nurse [Psychiatric]	347	348	+1	+0.3%	-11	-6
Staff Nurses [General/ Children's]	421	414	-7	-1.7%	+8	+3
Staff Nurse/ Staff Midwife	782	775	-7	-0.8%	-3	-3
Public Health Nurse	194	198	+4	+1.9%	+6	+4
Pre-registration Nurse/ Midwife Intern				-100.0%	-0	-1
Pre-registration Nurse Intern (COVID-19)	31	26	-5	-15.4%	+26	+26
Post-registration Nurse/ Midwife Student				-100.0%	-4	-3
Nursing/ Midwifery awaiting registration				-100.0%	-5	-21
Nursing/ Midwifery Student	31	26	-5	-15.4%	+17	+2
Nursing/ Midwifery other	3	3	+0	+14.0%	+1	+1
Nursing & Midwifery	1,366	1,362	-4	-0.3%	+23	+33
Dietitians	23	24	+1	+2.3%	+4	+4
Occupational Therapists	119	121	+2	+1.5%	+13	+15
Orthoptists	2	2	+1	+35.6%	+1	+1
Physiotherapists	82	84	+2	+2.0%	+6	+3
Podiatrists & Chiropodists	8	8	-0	-0.5%	+1	+1
Speech & Language Therapists	90	94	+3	+3.8%	+3	+4
Therapy Professions	324	332	+8	+2.4%	+28	+27
Audiology	5	5	+0	+0.2%	+0	-1
Clinical Engineering	1	1				
Medical Laboratory	27	28	+0	+1.5%	+1	+1
Radiographers	1	1				-0
Health Science/ Diagnostics	34	34	+0	+1.3%	+1	+0
Social Care	54	56	+1	+2.4%	+6	+7
Social Workers	59	58	-0	-0.9%	-0	+2
Psychologists	68	68	+1	+1.0%	+9	+6
Pharmacy	4	4	-0	-0.3%	-1	-1
Counsellor Therapists	7	7	+0	+5.8%	-1	-1
Dental Hygienists	5	5	+0	+1.5%	+0	+0

Oct 2020 (Dec 2019 figure: 4,256)	WTE Sep 2020	WTE Oct 2020	WTE change since Sep 20	% change since Sep 20	WTE change since Dec 19	WTE change since Oct 19
Overall	4,311	4,328	+16	+0.4%	+71	+78
Other Health & Social Care	2	2	+0	+2.6%	-1	-1
Play Therapists/ Specialists	1	1				
H&SC, Other	14	15	+1	+3.6%	-2	-2
Health & Social Care Professionals	556	567	+10	+1.9%	+25	+41
Executive Management	6	9	+3	+46.4%	+1	+1
Senior Management (VIII & GM)	38	36	-2	-5.1%	+1	+0
Management (VIII & above)	44	45	+1	+2.5%	+2	+1
Administrative/ Supervisory (V to VII)	108	115	+6	+5.7%	+16	+14
Clerical (III & IV)	404	411	+7	+1.7%	-20	-23
Management & Administrative	556	570	+14	+2.6%	-16	-8
Catering	39	39	-0	-0.5%	-0	-2
Household Services	44	46	+1	+2.4%	+2	-0
Other Support	14	14	+0	+0.9%	-1	-1
Portering	14	14	-0	-0.3%	-2	-3
Support	111	112	+1	+0.9%	-1	-6
Maintenance/ Technical	64	67	+3	+4.3%	+4	+1
General Support	175	179	+4	+2.1%	-14	-5
HCA, Nurse's Aide, etc.	846	829	-17	-2.1%	+21	+7
Health & Social Care Assistants	12	10	-1	-11.0%	-3	-5
Health Care Assistants	858	839	-19	-2.2%	+18	+2
Care, other	152	153	+2	+1.1%	+9	+5
Home Help	418	426	+8	+1.8%	-73	-15
Patient & Client Care	1,428	1,418	-9	-0.7%	-68	-8

Employment by WTE, Headcount, Gender, Full-Time /Part-Time etc.: Oct 2020

CHO 2	WTE	Headcount	WTE: no.	% Male	% female	Male WTE: no.	Female WTE: no.	% Total Perm	% Male Perm	% Female Perm	% Total Full Time	% Total Part Time	% Male FT	% Female FT
Overall	5,602	6,588	1.18	18.8%	81.2%	1.10	1.19	85.7%	81.7%	86.6%	58.3%	41.7%	74.7%	54.5%
Consultant Medicine	1	1	1.00		100.0%		1.00	100.0%	100.0%	100.0%	100.0%	0.0%		100.0%
Consultant Paediatrics	1	1	1.00		100.0%		1.00	100.0%	100.0%	100.0%	100.0%	0.0%		100.0%
Consultant Psychiatry	42	46	1.10	37.0%	63.0%	1.03	1.14	69.6%	69.6%	69.0%	80.4%	19.6%	88.2%	75.9%
Consultant Surgery	0	1	4.35		100.0%		4.35	0.0%	0.0%	0.0%	0.0%	100.0%		0.0%
Consultants	44	49	1.11	34.7%	65.3%	1.03	1.16	69.4%	70.6%	68.8%	79.6%	20.4%	88.2%	75.0%
Registrar	67	68	1.01	32.4%	67.6%	1.00	1.02	1.5%	1.5%	2.2%	100.0%	0.0%	100.0%	100.0%
Senior Registrar	22	22	1.02	36.4%	63.6%	1.00	1.04	0.0%	0.0%	0.0%	100.0%	0.0%	100.0%	100.0%
Registrars	89	90	1.01	33.3%	66.7%	1.00	1.02	1.1%	0.0%	1.7%	100.0%	0.0%	100.0%	100.0%
Senior House Officer	42	43	1.02	44.2%	55.8%	1.02	1.01	0.0%	0.0%	0.0%	100.0%	0.0%	100.0%	100.0%
SHO/ Interns	42	43	1.02	44.2%	55.8%	1.02	1.01	0.0%	0.0%	0.0%	100.0%	0.0%	100.0%	100.0%
Dentists	21	24	1.17	25.0%	75.0%	1.04	1.22	100.0%	100.0%	100.0%	58.3%	41.7%	83.3%	50.0%
Other Medical	40	47	1.18	29.8%	70.2%	1.26	1.14	61.7%	61.7%	69.7%	57.4%	42.6%	57.1%	57.6%
Medical/ Dental, other	61	71	1.17	28.2%	71.8%	1.19	1.17	74.6%	60.0%	80.4%	57.7%	42.3%	65.0%	54.9%
Medical & Dental	236	253	1.07	34.0%	66.0%	1.05	1.09	34.8%	27.9%	38.3%	84.2%	15.8%	89.5%	81.4%
Clinical Nurse/ Midwife Manager	258	275	1.07	26.5%	73.5%	1.00	1.09	96.0%	96.0%	95.0%	85.5%	14.5%	98.6%	80.7%
Director Nursing/Midwifery, Assistant	44	47	1.06	23.4%	76.6%	1.06	1.06	97.9%	97.9%	97.2%	91.5%	8.5%	100.0%	88.9%
Director of Nursing/Midwifery	24	24	1.00	12.5%	87.5%	1.00	1.00	100.0%	100.0%	100.0%	100.0%	0.0%	100.0%	100.0%
Nurse/ Midwife Manager	326	346	1.06	25.1%	74.9%	1.01	1.08	96.5%	98.9%	95.8%	87.3%	12.7%	98.9%	83.4%
Advanced Nurse/ Midwife Practitioner	10	10	1.00	30.0%	70.0%	1.00	1.01	100.0%	100.0%	100.0%	100.0%	0.0%	100.0%	100.0%
Clinical Nurse/ Midwife Specialist	96	102	1.07	11.8%	88.2%	1.00	1.08	99.0%	99.0%	98.9%	94.1%	5.9%	100.0%	93.3%
Nurse/ Midwife Specialist & AN/MP	106	112	1.06	13.4%	86.6%	1.00	1.07	99.1%	100.0%	99.0%	94.6%	5.4%	100.0%	93.8%
Staff Nurse [Intellectual Disability]	98	127	1.30	7.1%	92.9%	1.33	1.30	90.6%	90.6%	90.7%	45.7%	54.3%	66.7%	44.1%
Staff Nurse [Psychiatric]	360	392	1.09	26.0%	74.0%	1.09	1.09	93.4%	93.4%	96.2%	84.2%	15.8%	84.3%	84.1%
Staff Nurses [General/ Children's]	433	522	1.21	5.0%	95.0%	1.10	1.21	93.7%	93.7%	93.3%	53.3%	46.7%	73.1%	52.2%
Staff Nurse/ Staff Midwife	890	1,041	1.17	13.2%	86.8%	1.10	1.18	93.2%	88.3%	93.9%	64.0%	36.0%	81.0%	61.4%
Public Health Nurse	198	228	1.15		100.0%		1.15	97.4%		97.4%	75.4%	24.6%		75.4%
Pre-registration Nurse Intern (COVID-19)	26	30	1.14	16.7%	83.3%	1.00	1.18	0.0%	0.0%	0.0%	96.7%	3.3%	100.0%	96.0%
Nursing/ Midwifery Student	26	30	1.14	16.7%	83.3%	1.00	1.18	0.0%	0.0%	0.0%	96.7%	3.3%	100.0%	96.0%

Nursing/ Midwifery other	3	3	1.05		100.0%		1.05	100.0%		100.0%	66.7%	33.3%		66.7%
Nursing & Midwifery	1,550	1,760	1.14	13.9%	86.1%	1.06	1.15	93.2%	91.0%	93.5%	72.6%	27.4%	88.9%	69.9%
Dietitians	24	27	1.14		100.0%		1.14	88.9%	88.9%	88.9%	66.7%	33.3%		66.7%
Occupational Therapists	129	146	1.13	7.5%	92.5%	1.08	1.13	92.5%	92.5%	91.9%	69.9%	30.1%	90.9%	68.1%
Orthoptists	2	3	1.38		100.0%		1.38	100.0%	100.0%	100.0%	66.7%	33.3%		66.7%
Physiotherapists	93	112	1.20	15.2%	84.8%	1.02	1.24	92.9%	92.9%	93.7%	65.2%	34.8%	88.2%	61.1%
Podiatrists & Chiropodists	8	11	1.37	9.1%	90.9%	1.00	1.42	81.8%	81.8%	80.0%	45.5%	54.5%	100.0%	40.0%
Speech & Language Therapists	104	120	1.16	1.7%	98.3%	1.00	1.16	86.7%	86.7%	86.4%	77.5%	22.5%	100.0%	77.1%
Therapy Professions	360	419	1.16	7.4%	92.6%	1.04	1.18	90.5%	93.5%	90.2%	69.9%	30.1%	90.3%	68.3%
Audiology	5	5	1.02		100.0%		1.02	100.0%	100.0%	100.0%	80.0%	20.0%		80.0%
Clinical Engineering	1	1	1.00	100.0%		1.00		100.0%	100.0%		100.0%	0.0%	100.0%	
Medical Laboratory	28	29	1.05	17.2%	82.8%	1.00	1.06	100.0%	100.0%	100.0%	86.2%	13.8%	100.0%	83.3%
Radiographers	1	1	1.67		100.0%		1.67	100.0%	100.0%	100.0%	0.0%	100.0%		0.0%
Health Science/ Diagnostics	34	36	1.06	16.7%	83.3%	1.00	1.07	100.0%	100.0%	100.0%	83.3%	16.7%	100.0%	80.0%
Social Care	261	324	1.24	16.7%	83.3%	1.18	1.25	86.1%	92.6%	84.8%	50.6%	49.4%	53.7%	50.0%
Social Workers	84	95	1.13	17.9%	82.1%	1.04	1.15	92.6%	94.1%	92.3%	69.5%	30.5%	82.4%	66.7%
Psychologists	81	95	1.18	14.7%	85.3%	1.05	1.20	94.7%	100.0%	93.8%	68.4%	31.6%	92.9%	64.2%
Pharmacy	4	5	1.34	20.0%	80.0%	1.00	1.47	80.0%	100.0%	75.0%	40.0%	60.0%	100.0%	25.0%
Counsellor Therapists	11	13	1.17	30.8%	69.2%	1.17	1.17	92.3%	92.3%	100.0%	69.2%	30.8%	50.0%	77.8%
Dental Hygienists	5	6	1.26		100.0%		1.26	83.3%	83.3%	83.3%	50.0%	50.0%		50.0%
Other Health & Social Care	12	18	1.46	16.7%	83.3%	1.17	1.54	88.9%	88.9%	93.3%	16.7%	83.3%	33.3%	13.3%
Play Therapists/ Specialists	1	1	1.00		100.0%		1.00	100.0%	100.0%	100.0%	100.0%	0.0%		100.0%
H&SC, Other	29	38	1.30	18.4%	81.6%	1.17	1.34	89.5%	71.4%	93.5%	42.1%	57.9%	42.9%	41.9%
Health & Social Care	853	1,012	1.19	12.8%	87.2%	1.10	1.20	89.9%	93.1%	89.5%	62.8%	37.2%	72.3%	61.5%
Executive Management	11	13	1.13	69.2%	30.8%	1.19	1.03	84.6%	84.6%	100.0%	76.9%	23.1%	77.8%	75.0%
Senior Management (VIII & GM)	48	48	1.01	43.8%	56.3%	1.00	1.01	91.7%	91.7%	92.6%	95.8%	4.2%	100.0%	92.6%
Management (VIII & above)	59	61	1.03	49.2%	50.8%	1.05	1.01	90.2%	86.7%	93.5%	91.8%	8.2%	93.3%	90.3%
Administrative/ Supervisory (V to VII)	151	161	1.07	19.3%	80.7%	1.06	1.07	96.3%	93.5%	96.9%	78.9%	21.1%	83.9%	77.7%
Clerical (III & IV)	448	510	1.14	5.9%	94.1%	1.13	1.14	90.0%	76.7%	90.8%	66.3%	33.7%	73.3%	65.8%
Management & Administrative	658	732	1.11	12.4%	87.6%	1.08	1.12	91.4%	85.7%	92.2%	71.2%	28.8%	83.5%	69.4%
Catering	39	43	1.09	30.2%	69.8%	1.02	1.13	100.0%	100.0%	100.0%	62.8%	37.2%	84.6%	53.3%
Household Services	64	92	1.44	15.2%	84.8%	1.50	1.43	90.2%	90.2%	91.0%	31.5%	68.5%	35.7%	30.8%
Other Support	37	72	1.97	66.7%	33.3%	1.50	5.24	52.8%	52.8%	12.5%	16.7%	83.3%	20.8%	8.3%
Portering	14	14	1.00	92.9%	7.1%	1.00	1.00	100.0%	100.0%	100.0%	100.0%	0.0%	100.0%	100.0%
Support	154	221	1.44	39.8%	60.2%	1.31	1.53	80.5%	83.0%	78.9%	37.1%	62.9%	44.3%	32.3%

Maintenance/ Technical	71	77	1.08	98.7%	1.3%	1.08	1.00	97.4%	97.4%	100.0%	93.5%	6.5%	93.4%	100.0%
General Support	225	298	1.32	55.0%	45.0%	1.19	1.52	84.9%	89.6%	79.1%	51.7%	48.3%	67.1%	32.8%
HCA, Nurse's Aide, etc.	1,372	1,586	1.16	25.2%	74.8%	1.10	1.18	78.1%	78.1%	77.4%	52.0%	48.0%	68.2%	46.5%
Health & Social Care Assistants	10	11	1.07	45.5%	54.5%	1.11	1.04	36.4%	36.4%	33.3%	90.9%	9.1%	100.0%	83.3%
Health Care Assistants	1,383	1,597	1.15	25.3%	74.7%	1.10	1.18	77.8%	79.7%	77.2%	52.2%	47.8%	68.6%	46.7%
Care, other	272	332	1.22	34.6%	65.4%	1.16	1.25	87.0%	83.5%	88.9%	53.9%	46.1%	64.3%	48.4%
Home Help	426	604	1.42	0.7%	99.3%	1.53	1.42	91.7%	50.0%	92.0%	4.8%	95.2%	0.0%	4.8%
Patient & Client Care	2,081	2,533	1.22	20.6%	79.4%	1.11	1.25	82.4%	80.3%	82.9%	41.1%	58.9%	67.1%	34.4%

Employment by WTE, Headcount, Gender, Full-Time /Part-Time etc.: Oct 2020

CHO 2	WTE	Headcount	WTE: no.	% Male	% female	Male WTE: no.	Female WTE: no.	% Total Perm	% Male Perm	% Female Perm	% Total Full Time	% Total Part Time	% Male FT	% Female FT
Overall	5,602	6,588	1.18	18.8%	81.2%	1.10	1.19	85.7%	81.7%	86.6%	58.3%	41.7%	74.7%	54.5%
Community Health & Wellbeing	10	11	1.13	9.1%	90.9%	1.00	1.14	100.0%	100.0%	100.0%	54.5%	45.5%	100.0%	100.0%
Mental Health	1,353	1,458	1.08	28.3%	71.7%	1.05	1.09	85.5%	85.5%	87.8%	83.1%	16.9%	89.8%	89.8%
Primary Care	1,170	1,359	1.16	12.2%	87.8%	1.08	1.17	85.7%	85.7%	86.9%	69.5%	30.5%	84.3%	84.3%
HSE	1,795	2,132	1.19	13.5%	86.5%	1.04	1.21	90.0%	90.0%	90.5%	50.4%	49.6%	89.2%	89.2%
Section 38 Voluntary Agencies	1,274	1,628	1.28	22.8%	77.2%	1.24	1.29	80.2%	80.2%	79.6%	37.3%	62.7%	42.3%	42.3%
Social Care	3,069	3,760	1.23	17.5%	82.5%	1.15	1.24	85.7%	85.7%	86.1%	44.7%	55.3%	62.8%	62.8%

CHO 2 Skills Mix by Staff Grouping: October 2020

Oct 2020 (Dec 2018 figure: 5,559)	WTE Dec 2015	WTE Dec 2016	WTE Dec 2017	WTE Dec 2018	WTE Dec 2019	WTE Sep 2020	WTE Oct 2020
Overall	5,111	5,236	5,377	5,559	5,545	5,595	5,602
Consultant Medicine	0.5%	0.5%	0.5%	0.5%	0.5%	0.4%	0.4%
Consultant Paediatrics	0.5%	0.5%	0.5%	0.5%	0.5%	0.4%	0.4%
Consultant Psychiatry	18.0%	16.7%	16.6%	16.4%	18.9%	17.9%	17.8%
Consultant Surgery	0.7%	0.7%	0.6%	0.1%	0.1%	0.1%	0.1%
Consultants	19.7%	18.4%	18.3%	17.5%	19.9%	18.9%	18.7%
Registrar	26.4%	27.0%	29.4%	27.8%	27.4%	29.4%	28.5%
Senior Registrar	3.5%	4.2%	4.2%	5.5%	8.0%	9.2%	9.1%
Registrars	29.9%	31.1%	33.6%	33.2%	35.4%	38.6%	37.7%
Interns	0.5%						
Senior House Officer	19.2%	19.3%	18.6%	20.0%	16.9%	17.3%	18.0%
SHO/ Interns	19.8%	19.3%	18.6%	20.0%	16.9%	17.3%	18.0%
Dentists	11.8%	11.2%	10.8%	11.0%	10.0%	8.7%	8.7%
Other Medical	18.9%	19.9%	18.8%	18.3%	17.7%	16.6%	17.0%
Medical/ Dental, other	30.6%	31.2%	29.6%	29.3%	27.7%	25.3%	25.7%
Medical & Dental	3.7%	3.7%	3.8%	3.8%	3.8%	100.0%	4.2%
Clinical Nurse/ Midwife Manager	14.7%	15.7%	15.7%	16.5%	16.0%	16.7%	16.7%
Director Nursing/Midwifery, Assistant	2.4%	2.5%	2.7%	2.6%	3.0%	2.8%	2.9%
Director of Nursing/Midwifery	1.4%	1.4%	1.4%	1.4%	1.5%	1.4%	1.5%
Nurse/ Midwife Manager	18.5%	19.5%	19.7%	20.5%	20.6%	21.0%	21.1%
Advanced Nurse/ Midwife Practitioner	0.2%	0.2%	0.3%	0.4%	0.6%	0.6%	0.6%
Clinical Nurse/ Midwife Specialist	4.3%	4.3%	5.1%	5.1%	5.6%	5.9%	6.2%
Nurse/ Midwife Specialist & AN/MP	4.5%	4.5%	5.3%	5.5%	6.2%	6.6%	6.8%
Staff Midwives	0.1%	0.0%	0.1%				
Staff Nurse [Intellectual Disability]	8.0%	8.5%	6.5%	6.4%	6.0%	6.4%	6.3%
Staff Nurse [Psychiatric]	26.0%	25.4%	24.3%	24.1%	24.7%	23.0%	23.2%
Staff Nurses [General/ Children's]	30.3%	29.7%	30.5%	29.6%	29.1%	28.3%	27.9%
Staff Nurse/ Staff Midwife	64.4%	63.6%	61.4%	60.1%	59.8%	57.8%	57.5%
Public Health Nurse	11.9%	11.7%	11.4%	12.2%	12.8%	12.5%	12.8%
Pre-registration Nurse/ Midwife Intern	0.2%		0.9%		0.0%		
Pre-registration Nurse Intern (COVID-19)						2.0%	1.7%
Post-registration Nurse/ Midwife Student	0.5%	0.7%	1.1%	0.8%	0.3%		
Nursing/ Midwifery awaiting registration				0.7%	0.3%		
Nursing/ Midwifery Student	0.6%	0.7%	1.9%	1.6%	0.6%	2.0%	1.7%
Nursing/ Midwifery other			0.1%	0.2%	0.1%	0.2%	0.2%
Nursing & Midwifery	29.3%	28.8%	28.3%	27.6%	27.7%	100.0%	27.7%
Dietitians	2.2%	2.4%	2.6%	2.5%	2.4%	2.7%	2.8%
Occupational Therapists	13.8%	15.1%	14.7%	14.6%	14.4%	15.0%	15.1%
Orthoptists	0.2%	0.2%	0.2%	0.2%	0.2%	0.2%	0.3%
Physiotherapists	12.3%	10.7%	11.7%	11.0%	10.9%	11.0%	10.9%
Podiatrists & Chiropodists	0.9%	1.2%	1.0%	0.9%	0.9%	1.0%	0.9%
Speech & Language Therapists	11.9%	12.3%	12.4%	12.8%	12.9%	11.8%	12.1%
Therapy Professions	41.2%	41.8%	42.6%	41.9%	41.7%	41.7%	42.2%
Audiology	0.7%	0.6%	0.8%	0.7%	0.6%	0.6%	0.6%
Clinical Engineering	0.1%	0.1%			0.1%	0.1%	0.1%
Medical Laboratory	3.8%	3.8%	3.5%	3.3%	3.3%	3.2%	3.2%
Physicists	0.1%	0.1%					
Radiographers	0.0%	0.1%	0.1%	0.1%	0.1%	0.1%	0.1%
Health Science/ Diagnostics	4.8%	4.8%	4.4%	4.1%	4.1%	4.0%	4.0%
Social Care	24.8%	26.3%	27.2%	28.6%	30.2%	31.2%	30.6%
Social Workers	11.1%	10.3%	10.1%	10.1%	10.3%	9.8%	9.8%
Psychologists	12.2%	11.4%	10.7%	10.3%	9.1%	9.5%	9.5%

Oct 2020 (Dec 2018 figure: 5,559)	WTE Dec 2015	WTE Dec 2016	WTE Dec 2017	WTE Dec 2018	WTE Dec 2019	WTE Sep 2020	WTE Oct 2020
Overall	5,111	5,236	5,377	5,559	5,545	5,595	5,602
Pharmacy	0.8%	0.7%	0.6%	0.5%	0.6%	0.4%	0.4%
Counsellor Therapists	1.2%	1.4%	1.4%	1.5%	1.4%	1.3%	1.3%
Dental Hygienists	0.4%	0.5%	0.3%	0.5%	0.6%	0.6%	0.6%
HSCP Trainees/ Students	0.5%	0.3%	0.1%				
Other Health & Social Care	2.5%	2.1%	2.1%	1.9%	1.6%	1.4%	1.4%
Play Therapists/ Specialists	0.6%	0.5%	0.5%	0.4%	0.4%	0.1%	0.1%
H&SC, Other	5.2%	4.7%	4.4%	4.4%	4.0%	3.4%	3.4%
Health & Social Care Professionals	13.7%	14.0%	14.0%	14.6%	14.6%	100.0%	15.2%
Executive Management	1.4%	1.7%	1.8%	1.7%	1.6%	1.3%	1.7%
Senior Management (VIII & GM)	6.4%	6.5%	6.6%	7.0%	6.9%	7.7%	7.3%
Management (VIII & above)	7.8%	8.2%	8.5%	8.7%	8.5%	9.0%	9.0%
Middle Management (V-VII)	15.0%	17.2%	18.3%	18.5%	20.2%	22.4%	22.9%
Other Administrative					0.2%		
Administrative/ Supervisory (V to VII)	15.0%	17.2%	18.3%	18.5%	20.3%	22.4%	22.9%
Clerical (III & IV)	77.2%	74.6%	73.2%	72.8%	71.2%	68.5%	68.1%
Management & Administrative	11.0%	11.3%	11.9%	12.0%	12.0%	100.0%	11.7%
Catering	14.7%	15.6%	14.8%	16.9%	17.6%	17.8%	17.5%
Household Services	34.7%	31.9%	30.7%	28.8%	27.9%	28.4%	28.4%
Other Support	16.8%	17.2%	17.6%	17.4%	17.4%	16.3%	16.2%
Portering	4.9%	6.4%	7.2%	7.1%	6.9%	6.3%	6.2%
Support	71.1%	71.0%	70.3%	70.2%	69.9%	68.9%	68.4%
Maintenance/ Technical	28.9%	29.0%	29.7%	29.8%	30.1%	31.1%	31.6%
General Support	5.3%	4.9%	4.5%	4.4%	4.4%	100.0%	4.0%
HCA, Nurse's Aide, etc.	61.2%	63.7%	64.2%	63.5%	63.3%	66.6%	65.9%
Health & Social Care Assistants	0.3%	0.3%	0.5%	0.9%	0.6%	0.6%	0.5%
Health Care Assistants	61.5%	64.0%	64.7%	64.5%	64.0%	67.1%	66.4%
Care, other	13.9%	13.0%	13.0%	12.5%	12.7%	12.9%	13.1%
Home Help	24.6%	23.0%	22.3%	23.0%	23.4%	20.0%	20.5%
Patient & Client Care	37.1%	37.4%	37.4%	37.7%	37.8%	100.0%	37.1%
Total	100 %	100 %	100 %	100 %	100%	100 %	100 %

CHO 2 Skills Mix by Care Group: October 2020

Oct 2020 (Dec 2018 figure: 1,338)	WTE Dec 2015	WTE Dec 2016	WTE Dec 2017	WTE Dec 2018	WTE Dec 2019	WTE Sep 2020	WTE Oct 2020
Mental Health	1,258	1,283	1,307	1,338	1,308	1,343	1,353
Consultants	38.0%	33.8%	31.8%	30.6%	35.3%	34.4%	33.9%
Registrar	17.5%	18.0%	19.5%	17.9%	16.0%	15.1%	14.6%
Senior Registrar	7.8%	9.0%	8.5%	10.9%	15.0%	17.0%	16.8%
Registrars	25.3%	27.0%	28.0%	28.7%	31.1%	32.1%	31.3%
Interns	1.2%						
Senior House Officer	32.6%	36.4%	37.7%	39.7%	32.7%	32.6%	33.9%
SHO/ Interns	33.8%	36.4%	37.7%	39.7%	32.7%	32.6%	33.9%
Medical/ Dental, other	3.0%	2.8%	2.5%	0.9%	0.9%	0.9%	0.9%
Medical & Dental	6.6%	6.9%	7.6%	7.9%	8.1%	8.6%	8.6%
Clinical Nurse/ Midwife Manager	20.5%	22.1%	20.7%	23.0%	21.5%	21.8%	21.7%
Director Nursing/Midwifery, Assistant	2.9%	2.8%	3.3%	3.1%	3.3%	3.1%	3.1%
Director of Nursing/Midwifery	0.4%	0.5%	0.5%	0.3%	0.5%	0.5%	0.5%
Nurse/ Midwife Manager	23.7%	25.5%	24.6%	26.4%	25.3%	25.4%	25.3%
Advanced Nurse/ Midwife Practitioner	0.5%	0.5%	0.5%	0.9%	1.0%	1.1%	1.1%
Clinical Nurse/ Midwife Specialist	7.5%	7.4%	9.9%	9.4%	10.6%	11.2%	11.7%
Nurse/ Midwife Specialist & AN/MP	8.1%	7.9%	10.4%	10.2%	11.7%	12.4%	12.8%
Staff Nurse [Psychiatric]	65.7%	64.6%	61.0%	60.0%	61.0%	56.0%	56.4%
Staff Nurses [General/ Children's]	2.0%	2.0%	1.3%	0.9%	0.9%	0.7%	0.7%
Staff Nurse/ Staff Midwife	67.8%	66.6%	62.3%	61.0%	61.9%	56.7%	57.1%
Pre-registration Nurse/ Midwife Intern	0.4%		2.3%		0.0%		
Pre-registration Nurse Intern (COVID-19)						5.1%	4.3%
Nursing/ Midwifery awaiting registration				1.9%	0.8%		
Nursing/ Midwifery Student	0.4%		2.3%	1.9%	0.8%	5.1%	4.3%
Nursing/ Midwifery other			0.4%	0.5%	0.3%	0.4%	0.5%
Nursing & Midwifery	44.5%	44.0%	43.5%	43.8%	44.8%	44.8%	44.8%
Dietitians	1.6%	2.9%	3.6%	2.4%	2.1%	2.6%	2.2%
Occupational Therapists	20.6%	24.4%	26.3%	26.4%	26.0%	26.0%	26.3%
Speech & Language Therapists	4.7%	5.3%	5.5%	5.2%	4.3%	6.2%	6.2%
Therapy Professions	26.9%	32.6%	35.4%	33.9%	32.4%	34.8%	34.7%
Social Care	13.5%	12.2%	9.7%	9.9%	10.5%	9.1%	9.8%
Social Workers	30.3%	26.9%	26.2%	27.7%	29.1%	27.8%	26.8%
Psychologists	25.4%	25.0%	25.3%	24.6%	24.0%	25.6%	25.7%
Pharmacy	3.2%	2.6%	1.9%	1.8%	1.8%	1.1%	1.1%
Counsellor Therapists				1.4%	1.4%	1.0%	1.3%
Other Health & Social Care			0.7%				
Play Therapists/ Specialists	0.8%	0.7%	0.7%	0.7%	0.7%	0.6%	0.6%
H&SC, Other	0.8%	0.7%	1.4%	2.1%	2.1%	1.6%	1.9%
Health & Social Care Professionals	10.1%	10.7%	10.6%	10.9%	11.2%	11.5%	11.5%
Management (VIII & above)	4.0%	3.1%	2.2%	2.8%	3.6%	3.1%	3.0%
Administrative/ Supervisory (V to VII)	13.5%	15.9%	17.6%	16.5%	17.1%	20.2%	21.2%
Clerical (III & IV)	82.5%	81.0%	80.2%	80.7%	79.2%	76.6%	75.8%
Management & Administrative	9.9%	10.2%	10.4%	10.5%	10.8%	9.8%	9.8%
Support	61.0%	56.6%	53.4%	52.7%	57.3%	53.7%	52.1%
Maintenance/ Technical	39.0%	43.4%	46.6%	47.3%	42.7%	46.3%	47.9%
General Support	6.7%	6.3%	5.6%	5.2%	5.3%	4.6%	4.6%
Health Care Assistants	75.6%	76.3%	74.5%	75.0%	75.6%	75.5%	75.7%
Care, other	24.4%	23.7%	25.5%	25.0%	24.4%	24.5%	24.3%

Oct 2020 (Dec 2018 figure: 1,338)	WTE Dec 2015	WTE Dec 2016	WTE Dec 2017	WTE Dec 2018	WTE Dec 2019	WTE Sep 2020	WTE Oct 2020
Mental Health	1,258	1,283	1,307	1,338	1,308	1,343	1,353
Patient & Client Care	22.1%	21.9%	22.3%	21.7%	22.2%	20.6%	20.6%
Total	100 %	100 %	100 %	100 %	100 %	100 %	100 %

Oct 2020 (Dec 2018 figure: 1,160)	WTE Dec 2015	WTE Dec 2016	WTE Dec 2017	WTE Dec 2018	WTE Dec 2019	WTE Sep 2020	WTE Oct 2020
Primary Care	1,261	1,238	1,090	1,160	1,134	1,156	1,170
Consultant Medicine	1.1%	1.2%	1.2%	1.1%	1.1%	1.0%	1.0%
Consultant Psychiatry	1.1%						
Consultant Surgery	1.4%	1.5%	1.5%	0.3%	0.3%	0.2%	0.2%
Consultants	3.6%	2.7%	2.7%	1.5%	1.4%	1.2%	1.2%
Registrars	36.5%	39.1%	44.7%	43.2%	45.6%	50.4%	49.1%
SHO/ Interns	9.8%	5.4%			1.1%	2.9%	2.9%
Dentists	24.5%	25.0%	25.7%	26.7%	24.1%	20.0%	20.1%
Other Medical	25.6%	27.8%	26.9%	28.6%	27.8%	25.6%	26.7%
Medical/ Dental, other	50.0%	52.8%	52.6%	55.3%	51.9%	45.5%	46.7%
Medical & Dental	7.1%	7.0%	7.8%	7.5%	7.7%	8.8%	8.8%
Clinical Nurse/ Midwife Manager	2.0%	1.7%	2.3%	2.0%	1.7%	1.8%	1.8%
Director Nursing/Midwifery, Assistant	4.7%	5.3%	4.9%	5.1%	6.4%	6.0%	6.2%
Director of Nursing/Midwifery	0.9%	0.7%	1.0%	0.9%	0.6%	0.8%	0.9%
Nurse/ Midwife Manager	7.6%	7.7%	8.2%	8.0%	8.7%	8.6%	8.9%
Nurse/ Midwife Specialist & AN/MP	5.7%	5.2%	4.9%	5.7%	5.5%	6.0%	6.4%
Staff Nurse/ Staff Midwife	24.1%	24.0%	23.9%	24.4%	23.6%	25.2%	23.1%
Public Health Nurse	60.3%	59.4%	57.7%	57.8%	60.9%	60.2%	61.6%
Nursing/ Midwifery Student	2.4%	3.7%	5.3%	4.0%	1.3%		
Nursing & Midwifery	23.4%	23.9%	27.6%	27.7%	28.4%	27.3%	27.3%
Dietitians	4.0%	3.3%	4.0%	5.2%	4.9%	5.5%	5.6%
Occupational Therapists	17.7%	19.1%	18.6%	18.8%	19.0%	20.5%	20.2%
Orthoptists	0.5%	0.5%	0.5%	0.5%	0.5%	0.5%	0.7%
Physiotherapists	19.4%	18.1%	21.1%	20.0%	20.0%	20.7%	20.7%
Podiatrists & Chiropodists	2.0%	2.8%	2.5%	2.2%	2.2%	2.5%	2.4%
Speech & Language Therapists	20.8%	22.6%	22.9%	24.4%	25.7%	23.7%	24.1%
Therapy Professions	64.5%	66.4%	69.7%	71.1%	72.4%	73.4%	73.7%
Audiology	1.6%	1.5%	1.9%	1.8%	1.6%	1.5%	1.5%
Clinical Engineering	0.3%	0.3%			0.3%	0.3%	0.3%
Medical Laboratory	8.8%	9.2%	8.8%	8.3%	8.5%	8.4%	8.3%
Physicists	0.3%	0.3%					
Health Science/ Diagnostics	11.0%	11.4%	10.7%	10.1%	10.4%	10.3%	10.1%
Social Care	4.0%	3.7%	3.5%	3.0%	2.7%	2.7%	2.6%
Social Workers	3.2%	3.0%	2.3%	2.1%	2.2%	1.6%	1.8%
Psychologists	12.2%	10.0%	8.8%	8.6%	7.7%	8.1%	8.0%
Pharmacy	0.3%	0.3%	0.3%	0.3%	0.3%	0.3%	0.3%
Counsellor Therapists	2.8%	3.0%	2.9%	2.4%	1.9%	1.6%	1.5%
Dental Hygienists	1.0%	1.1%	0.8%	1.4%	1.4%	1.5%	1.4%
Other Health & Social Care	1.0%	1.0%	1.0%	0.9%	1.0%	0.6%	0.6%
H&SC, Other	4.8%	5.1%	4.7%	4.7%	4.3%	3.7%	3.6%
Health & Social Care Professionals	24.2%	24.2%	27.8%	27.8%	28.4%	28.4%	28.4%
Executive Management	2.1%	2.7%	3.1%	2.8%	2.5%	2.0%	2.9%
Senior Management (VIII & GM)	7.3%	7.0%	8.4%	8.4%	7.4%	8.6%	7.6%
Management (VIII & above)	9.4%	9.7%	11.5%	11.2%	9.9%	10.7%	10.5%
Administrative/ Supervisory (V to VII)	12.7%	13.6%	14.3%	16.1%	18.6%	18.9%	19.2%
Clerical (III & IV)	77.9%	76.7%	74.2%	72.7%	71.5%	70.5%	70.3%

Oct 2020 (Dec 2018 figure: 1,160)	WTE Dec 2015	WTE Dec 2016	WTE Dec 2017	WTE Dec 2018	WTE Dec 2019	WTE Sep 2020	WTE Oct 2020
Primary Care	1,261	1,238	1,090	1,160	1,134	1,156	1,170
Management & Administrative	22.6%	23.6%	28.8%	28.5%	29.1%	27.9%	27.9%
Support	59.1%	70.6%	70.8%	74.0%	69.9%	71.1%	71.3%
Maintenance/ Technical	40.9%	29.4%	29.2%	26.0%	30.1%	28.9%	28.7%
General Support	2.9%	2.5%	2.8%	3.0%	3.1%	2.7%	2.7%
HCA, Nurse's Aide, etc.	2.7%	2.4%	8.1%	6.9%	7.7%	7.7%	11.0%
Health & Social Care Assistants		0.4%	7.1%	23.2%	17.2%	13.9%	11.9%
Health Care Assistants	2.7%	2.9%	15.2%	30.0%	25.0%	21.7%	22.9%
Care, other	24.7%	24.7%	84.8%	70.0%	75.0%	78.3%	77.1%
Home Help	72.5%	72.5%					
Patient & Client Care	19.8%	18.8%	5.2%	5.6%	5.7%	5.0%	5.0%
Total	100 %	100 %	100 %	100 %	100 %	100 %	100 %

Oct 2020 (Dec 2018 figure: 1,420)	WTE Dec 2015	WTE Dec 2016	WTE Dec 2017	WTE Dec 2018	WTE Dec 2019	WTE Sep 2020	WTE Oct 2020
Disabilities	1,221	1,338	1,395	1,420	1,497	1,498	1,491
Consultant Paediatrics	20.0%	16.7%	16.7%	16.4%	15.6%	15.6%	15.6%
Consultant Psychiatry	20.0%	33.3%	33.3%	34.3%	37.5%	37.5%	37.5%
Consultants	40.0%	50.0%	50.0%	50.7%	53.1%	53.1%	53.1%
Registrars	40.0%	33.3%	33.3%	32.8%	31.3%	31.3%	31.3%
Medical/ Dental, other	20.0%	16.7%	16.7%	16.4%	15.6%	15.6%	15.6%
Medical & Dental	0.4%	0.4%	0.4%	0.4%	0.4%	0.4%	0.4%
Clinical Nurse/ Midwife Manager	23.8%	24.3%	26.1%	27.5%	30.0%	30.2%	30.6%
Director Nursing/Midwifery, Assistant	0.4%	0.7%	0.4%				
Director of Nursing/Midwifery	0.7%	1.1%	0.7%	0.7%	1.1%	1.2%	1.2%
Nurse/ Midwife Manager	24.8%	26.0%	27.1%	28.2%	31.1%	31.4%	31.8%
Advanced Nurse/ Midwife Practitioner			0.4%	0.4%	0.4%	0.4%	0.4%
Clinical Nurse/ Midwife Specialist	2.2%	2.6%	2.3%	2.0%	2.0%	1.9%	1.9%
Nurse/ Midwife Specialist & AN/MP	2.2%	2.6%	2.7%	2.3%	2.4%	2.3%	2.3%
Staff Nurse [Intellectual Disability]	43.6%	46.3%	36.3%	38.9%	36.1%	40.5%	40.3%
Staff Nurse [Psychiatric]	7.7%	6.2%	8.6%	7.0%	7.7%	7.4%	7.4%
Staff Nurses [General/ Children's]	21.6%	19.0%	25.3%	23.5%	22.7%	18.1%	18.0%
Staff Nurse/ Staff Midwife	73.0%	71.4%	70.2%	69.4%	66.5%	65.9%	65.7%
Pre-registration Nurse Intern (COVID-19)						0.3%	0.1%
Nursing/ Midwifery Student						0.3%	0.1%
Nursing & Midwifery	22.6%	20.6%	19.5%	17.8%	16.9%	16.3%	16.3%
Dietitians	0.3%	0.6%			0.2%	0.3%	0.3%
Occupational Therapists	3.4%	3.8%	3.7%	3.1%	3.6%	3.2%	3.2%
Physiotherapists	4.8%	3.8%	4.0%	3.6%	4.0%	3.6%	3.3%
Speech & Language Therapists	5.3%	5.3%	5.4%	5.0%	5.1%	3.6%	3.6%
Therapy Professions	13.8%	13.6%	13.1%	11.7%	12.9%	10.7%	10.4%
Social Care	61.5%	63.8%	65.0%	67.9%	69.1%	73.0%	72.9%
Social Workers	9.3%	8.5%	8.8%	8.0%	8.1%	7.5%	7.9%
Psychologists	6.7%	7.3%	7.0%	6.5%	4.9%	4.6%	4.4%
Counsellor Therapists		0.4%	0.7%	0.8%	1.0%	1.2%	1.2%
HSCP Trainees/ Students	1.3%	0.9%	0.2%				
Other Health & Social Care	6.1%	4.7%	4.3%	4.2%	3.2%	3.1%	3.2%
Play Therapists/ Specialists	1.3%	0.8%	0.9%	0.8%	0.8%		
H&SC, Other	8.7%	6.7%	6.1%	5.8%	4.9%	4.3%	4.4%
Health & Social Care Professionals	19.2%	19.3%	20.1%	21.6%	20.5%	21.8%	21.8%
Executive Management	2.4%	2.0%	1.9%	1.9%	1.9%	1.9%	1.8%

Oct 2020 (Dec 2018 figure: 1,420)	WTE Dec 2015	WTE Dec 2016	WTE Dec 2017	WTE Dec 2018	WTE Dec 2019	WTE Sep 2020	WTE Oct 2020
Disabilities	1,221	1,338	1,395	1,420	1,497	1,498	1,491
Senior Management (VIII & GM)	9.4%	11.7%	11.1%	12.5%	13.1%	13.8%	14.4%
Management (VIII & above)	11.8%	13.7%	13.0%	14.4%	15.0%	15.7%	16.2%
Administrative/ Supervisory (V to VII)	32.6%	34.7%	38.6%	36.6%	38.2%	38.7%	38.5%
Clerical (III & IV)	55.6%	51.7%	48.4%	49.1%	46.8%	45.6%	45.2%
Management & Administrative	6.9%	7.6%	7.7%	7.4%	7.0%	7.4%	7.4%
Support	78.4%	77.5%	78.2%	79.1%	77.5%	76.4%	77.4%
Maintenance/ Technical	21.6%	22.5%	21.8%	20.9%	22.5%	23.6%	22.6%
General Support	4.7%	4.3%	4.3%	4.0%	3.8%	3.6%	3.6%
Health Care Assistants	78.9%	81.9%	82.7%	82.5%	82.3%	83.1%	82.6%
Care, other	21.1%	18.1%	17.3%	17.5%	17.7%	16.9%	17.4%
Patient & Client Care	46.2%	47.8%	48.0%	48.8%	46.3%	50.5%	50.5%
Total	100 %	100 %	100 %	100 %	100 %	100 %	100 %

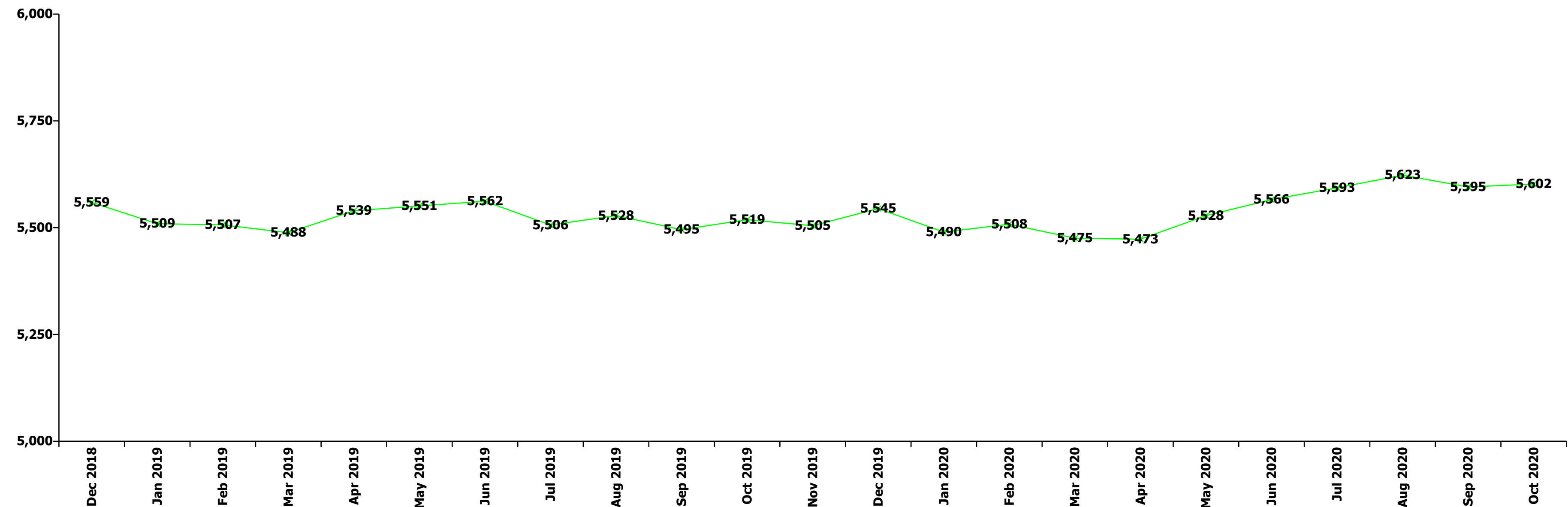
Oct 2020 (Dec 2018 figure: 1,641)	WTE Dec 2015	WTE Dec 2016	WTE Dec 2017	WTE Dec 2018	WTE Dec 2019	WTE Sep 2020	WTE Oct 2020
Older People	1,371	1,376	1,586	1,641	1,606	1,590	1,578
Medical/ Dental, other	100.0%	100.0%	100.0%	100.0%	100.0%	100.0%	100.0%
Medical & Dental	0.6%	0.8%	0.7%	0.7%	0.7%	0.7%	0.7%
Clinical Nurse/ Midwife Manager	9.4%	10.7%	11.4%	11.4%	10.2%	12.4%	12.1%
Director Nursing/Midwifery, Assistant	1.5%	1.0%	1.5%	1.3%	1.6%	1.5%	1.5%
Director of Nursing/Midwifery	3.8%	3.5%	3.4%	3.8%	4.3%	3.7%	3.9%
Nurse/ Midwife Manager	14.6%	15.2%	16.3%	16.5%	16.1%	17.6%	17.6%
Nurse/ Midwife Specialist & AN/MP					0.6%	0.5%	0.5%
Staff Midwives	0.2%	0.1%	0.2%				
Staff Nurse [Intellectual Disability]			0.2%				
Staff Nurses [General/ Children's]	85.0%	84.5%	83.0%	83.2%	83.2%	81.6%	81.6%
Staff Nurse/ Staff Midwife	85.2%	84.6%	83.4%	83.2%	83.2%	81.6%	81.6%
Public Health Nurse	0.2%	0.2%	0.2%	0.3%	0.2%	0.3%	0.3%
Nursing & Midwifery	26.7%	27.0%	24.1%	22.8%	23.3%	24.1%	24.1%
Dietitians	1.2%	6.6%	6.1%		1.3%	1.3%	1.3%
Occupational Therapists	24.4%	26.3%	21.9%	26.6%	25.5%	26.9%	27.1%
Physiotherapists	46.2%	38.2%	38.5%	38.4%	36.1%	36.1%	35.6%
Speech & Language Therapists	3.0%	2.8%	5.7%	5.5%	5.3%	5.1%	5.1%
Therapy Professions	74.8%	74.0%	72.2%	70.4%	68.2%	69.3%	69.0%
Radiographers	0.0%	1.7%	1.7%	1.7%	1.6%	1.5%	1.5%
Health Science/ Diagnostics	0.0%	1.7%	1.7%	1.7%	1.6%	1.5%	1.5%
Social Workers	22.4%	21.3%	24.6%	26.5%	27.5%	26.6%	26.9%
Pharmacy	1.5%	1.4%	1.5%	1.4%	2.7%	2.6%	2.6%
Play Therapists/ Specialists	1.3%	1.6%	0.0%	0.0%	0.0%		
H&SC, Other	1.3%	1.6%	0.0%	0.0%	0.0%		
Health & Social Care Professionals	2.4%	2.6%	2.2%	2.2%	2.2%	2.5%	2.5%
Management (VIII & above)	2.9%	2.9%	1.2%	2.2%	2.5%	2.6%	2.5%
Administrative/ Supervisory (V to VII)	5.6%	9.0%	8.3%	9.4%	9.4%	12.9%	13.3%
Clerical (III & IV)	91.4%	88.0%	90.5%	88.4%	88.1%	84.5%	84.2%
Management & Administrative	4.9%	5.0%	5.2%	5.6%	5.7%	5.0%	5.0%
Support	80.6%	80.3%	79.5%	77.3%	74.7%	74.6%	73.9%
Maintenance/ Technical	19.4%	19.7%	20.5%	22.7%	25.3%	25.4%	26.1%
General Support	6.6%	6.3%	5.1%	5.0%	5.1%	4.9%	4.9%

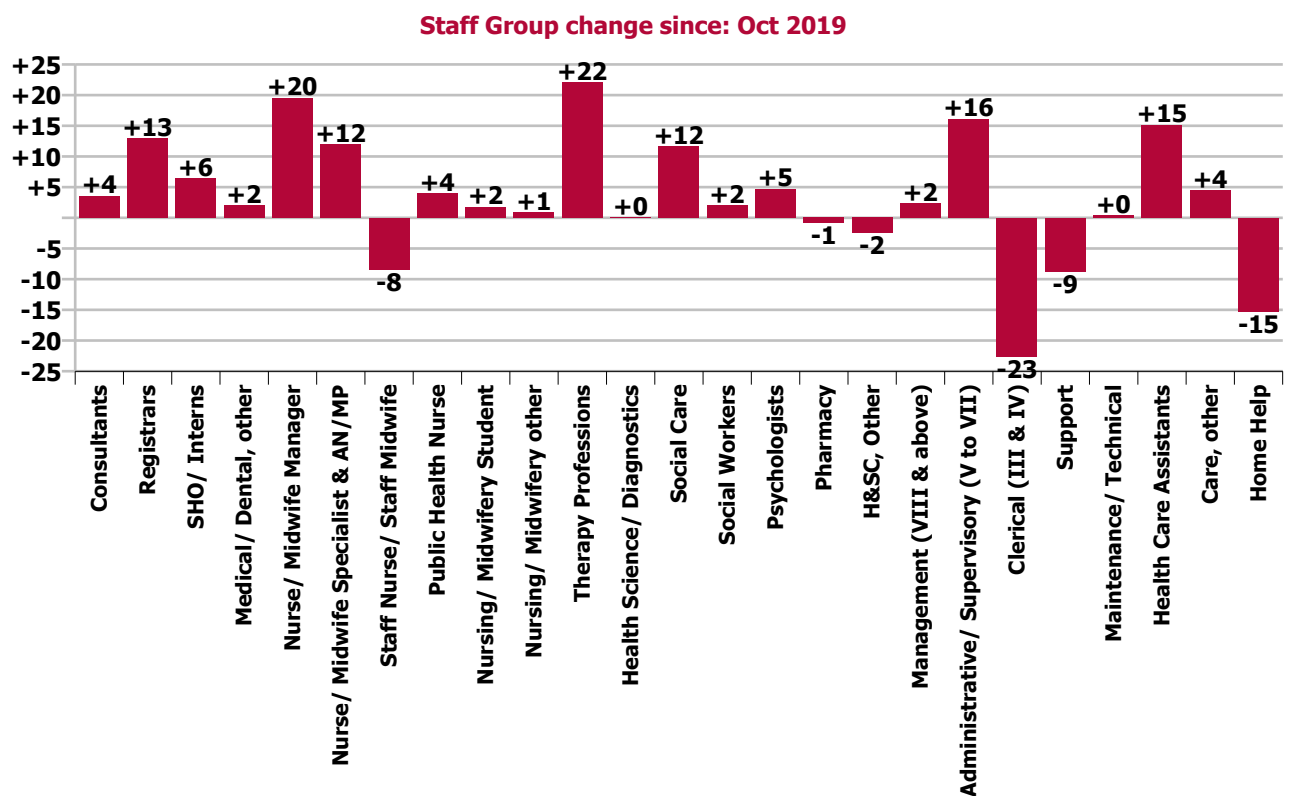
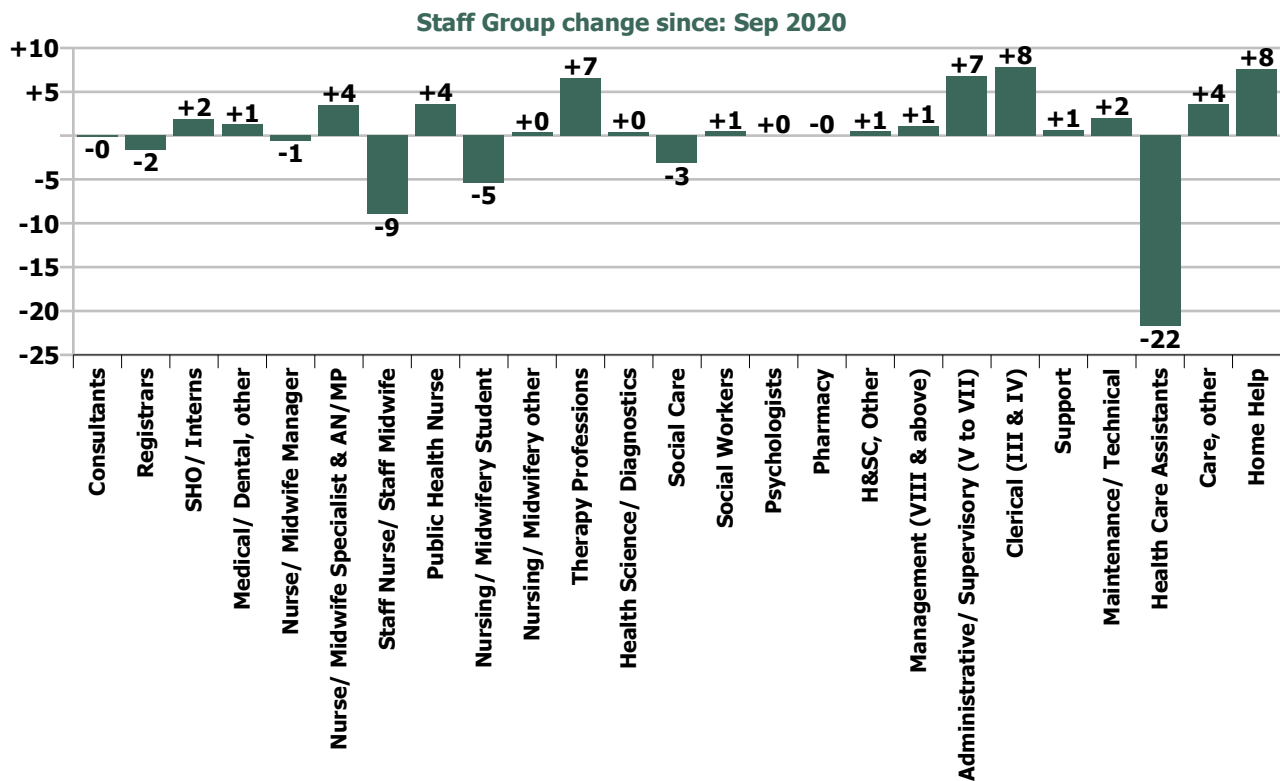
Oct 2020 (Dec 2018 figure: 1,641)	WTE Dec 2015	WTE Dec 2016	WTE Dec 2017	WTE Dec 2018	WTE Dec 2019	WTE Sep 2020	WTE Oct 2020
Older People	1,371	1,376	1,586	1,641	1,606	1,590	1,578
HCA, Nurse's Aide, etc.	62.1%	62.8%	52.2%	51.4%	49.3%	55.3%	53.9%
Health & Social Care Assistants	0.5%	0.5%	0.4%	0.4%	0.3%	0.3%	0.2%
Health Care Assistants	62.6%	63.3%	52.6%	51.8%	49.6%	55.6%	54.2%
Care, other	1.9%	1.8%	2.4%	2.3%	2.4%	2.8%	2.8%
Home Help	35.5%	34.9%	45.0%	46.0%	48.1%	41.6%	43.0%
Patient & Client Care	58.7%	58.4%	62.8%	63.7%	65.1%	62.7%	62.7%
Total	100 %	100 %	100 %	100 %	100 %	100 %	100 %

Summary Staff Movement: October 2020

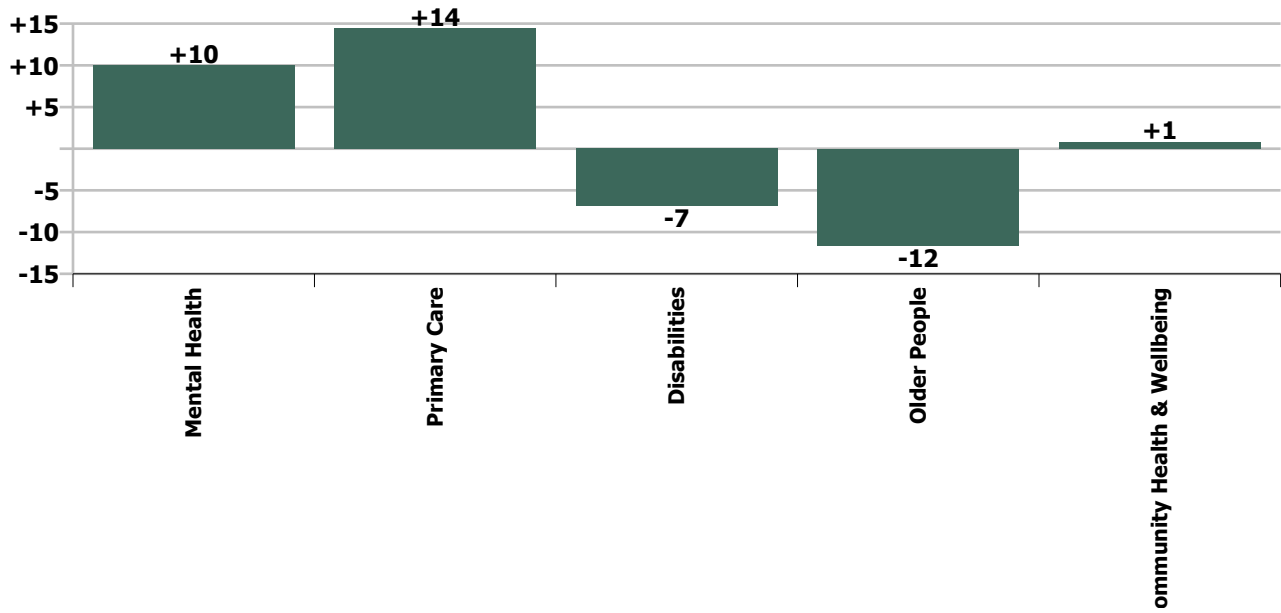
Month-on-month Summary																												
WTE change since Sep 20	% change since Sep 20	overall	Consultants	Registrars	SHO/ Interns	Medical/ Dental, other	Med/ical & Dental	Nurse/ Midwife Manager	Nurse/ Midwife Specialist & AN/MP	Staff Nurse/ Staff Midwife	Public Health Nurse	Nursing/ Midwifery Student	Nursing/ Midwifery other	Nursing & Midwifery	Therapy Professions	Health Science/ Diagnostics	Social Care	Social Workers	Psychologists	Pharmacy	H&SC, Other	Health & Social Care Professionals	Management (VIII & above)	Administrativ e/ Supervisory (V to VII)	Clerical (III & IV)	Management & Administrativ e	General Support	Patient & Client Care
Overall	+0.1%	+7	-0.2	-1.7	+1.9	+1.3	+1.4	-0.6	+3.5	-9.0	+3.6	-5.4	+0.4	-7.5	+6.6	+0.4	-3.2	+0.5	+0.0	-0.0	+0.5	+4.9	+1.1	+6.8	+7.9	+15.8	+2.7	-10.6
Community Health & Wellbeing	+9.3%	+1																					0.0	+0.8	0.0	+0.8		0.0
Mental Health	+0.7%	+10	-0.2	-0.4	+1.8	0.0	+1.2	-0.9	+2.5	+1.5		-4.8	+0.4	-1.3	+0.1		+1.3	-1.3	+0.3	-0.0	+0.5	+0.8	0.0	+2.4	+2.9	+5.2	+2.1	+1.9
Primary Care	+1.2%	+14	+0.0	-1.2	+0.1	+1.3	+0.1	+0.9	+1.1	-7.4	+3.6			-1.8	+8.1	+0.4	+0.1	+0.6	+0.4	0.0	+0.0	+9.8	+0.0	+2.0	+2.7	+4.8	+0.2	+1.4
Disabilities	-0.5%	-7	0.0	0.0		0.0	0.0	-0.6	-0.1	-3.9		-0.6		-5.2	-1.5		-4.5	+1.0	-0.7		0.0	-5.7	+1.1	+1.0	+0.9	+3.0	-1.1	+2.1
Older People	-0.7%	-12				0.0	0.0	+0.1	0.0	+0.9	0.0			+1.0	-0.1	0.0		+0.1		+0.0		0.0	0.0	+0.6	+1.3	+1.9	+1.5	-16.0
Social Care	-0.6%	-18	0.0	0.0		0.0	0.0	-0.5	-0.1	-3.0	0.0	-0.6		-4.3	-1.6	0.0	-4.6	+1.1	-0.7	+0.0	0.0	-5.7	+1.1	+1.6	+2.3	+4.9	+0.5	-13.9
Change	+6.7	+0.1%	-0.4%	-1.8%	+4.7%	+2.1%	+0.6%	-0.2%	+3.4%	-1.0%	+1.9%	-17.0%	+14.0%	-0.5%	+1.9%	+1.3%	-1.2%	+0.6%	+0.0%	-0.3%	+1.8%	+0.6%	+1.9%	+4.7%	+1.8%	+2.5%	+1.2%	-0.5%

Year-on-year Summary																												
WTE change since Oct 19	% change since Oct 19	overall	Consultants	Registrars	SHO/ Interns	Medical/ Dental, other	Medical & Dental	Nurse/ Midwife Manager	Nurse/ Midwife Specialist & AN/MP	Staff Nurse/ Staff Midwife	Public Health Nurse	Nursing/ Midwifery Student	Nursing/ Midwifery other	Nursing & Midwifery	Therapy Professions	Health Science/ Diagnostics	Social Care	Social Workers	Psychologists	Pharmacy	H&SC, Other	Health & Social Care Professionals	Management (VIII & above)	Administrativ e/ Supervisory (V to VII)	Clerical (III & IV)	Management & Administrative	General Support	Patient & Client Care
Overall	+1.5%	+83	+3.5	+12.9	+6.5	+2.0	+24.9	+19.5	+11.9	-8.4	+4.0	+1.8	+0.9	+29.6	+22.0	+0.1	+11.7	+2.1	+4.7	-0.9	-2.5	+37.1	+2.3	+16.1	-22.6	-4.2	-8.4	+4.3
Community Health & Wellbeing	+9.3%	+1																					+1.0	+6.9	+0.8	+8.8		+1.0
Mental Health	+0.7%	+10	+3.5	+4.0	+3.5	0.0	+11.0	+8.1	+9.6	-6.2		+4.9	+0.9	+17.3	+7.9		+2.2	+1.2	+4.5	-0.9	0.0	+14.9	-1.9	+4.2	-8.6	-6.3	-3.1	-7.6
Primary Care	+1.2%	+14	+0.0	+8.9	+3.0	+2.2	+14.2	+1.2	+2.6	-4.6	+3.8	-3.4		-0.5	+18.8	+0.1	+0.3	+0.0	+1.7	0.0	-1.5	+19.5	+1.3	+0.8	-10.2	-8.1	-0.2	-2.2
Disabilities	+0.7%	+9.8	0.0	0.0		0.0	0.0	+1.1	-0.2	-6.2		+0.2		-5.1	-6.2		+9.1	-0.6	-1.6		-1.0	-0.2	+2.0	+1.2	+0.5	+3.6	-3.5	+15.0
Older People	+0.9%	+14.8				-0.2	-0.2	+9.2	0.0	+8.5	+0.2			+17.9	+1.5	-0.0		+1.4		0.0	0.0	+3.0	0.0	+2.9	-5.1	-2.2	-1.6	-2.0
Social Care	-0.6%	-18	0.0	0.0		-0.2	-0.2	+10.2	-0.2	+2.4	+0.2	+0.2		+12.8	-4.7	-0.0	+9.1	+0.9	-1.6	0.0	-1.0	+2.7	+2.0	+4.1	-4.6	+1.5	-5.1	+13.0
Change	+83.4	+1.5%	+8.8%	+17.0%	+18.0%	+3.4%	+11.8%	+6.4%	+12.7%	-0.9%	+2.1%	+7.2%	+42.5%	+1.9%	+6.5%	+0.2%	+4.7%	+2.5%	+6.1%	-19.3%	-7.9%	+4.5%	+4.1%	+12.0%	-4.8%	-0.6%	-3.6%	+0.2%

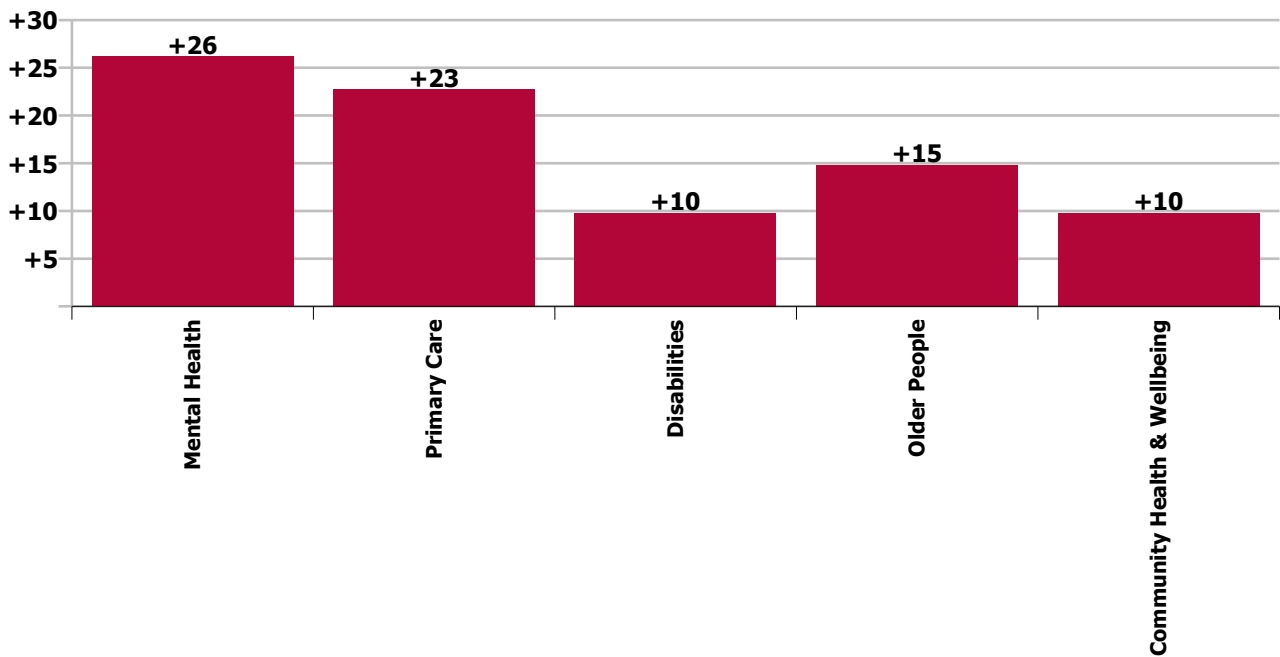




Care Group change since: Sep 2020



Care Group change since: Oct 2019



Longitudinal Employment Levels by Grade Group - Oct 2013 to Oct 2020

Oct 2020 (Dec 2015 figure: 5,111)	WTE Oct 2020	WTE change since Dec 15	WTE change since Dec 16	WTE change since Dec 17	WTE change since Dec 18	WTE change since Dec 19	WTE change since Sep 20	% change since Dec 15	% change since Dec 16	% change since Dec 17	% change since Dec 18	% change since Dec 19	% change since Sep 20
Overall	5,602	+491	+367	+225	+43	+57	+7	+9.6%	+7.0%	+4.2%	+0.8%	+1.0%	+0.1%
Consultant Medicine	1												
Consultant Paediatrics	1												
Consultant Psychiatry	42	+8	+10	+8	+7	+2	-0	+24.4%	+31.0%	+24.1%	+21.4%	+4.7%	-0.4%
Consultant Surgery	0	-1	-1	-1	-0	-0	+0	-81.9%	-82.2%	-82.2%	-23.3%	-8.0%	+4.5%
Consultants	44	+7	+9	+7	+7	+2	-0	+19.4%	+25.1%	+19.1%	+19.9%	+4.4%	-0.4%
Registrar	67	+18	+16	+8	+9	+9	-2	+36.3%	+30.4%	+13.1%	+15.0%	+15.7%	-2.4%
Senior Registrar	22	+15	+14	+13	+10	+5		+230.8%	+168.8%	+152.9%	+87.0%	+26.5%	
Registrars	89	+33	+29	+21	+19	+14	-2	+58.9%	+49.0%	+30.6%	+26.8%	+18.1%	-1.8%
Interns		-1						-100.0%	-100.0%	-100.0%	-100.0%	-100.0%	-100.0%
Senior House Officer	42	+6	+5	+5	+0	+6	+2	+17.9%	+14.9%	+12.4%	+0.8%	+18.0%	+4.7%
SHO/ Interns	42	+5	+5	+5	+0	+6	+2	+14.7%	+14.9%	+12.4%	+0.8%	+18.0%	+4.7%
Dentists	21	-1	-1	-1	-3	-1	+0	-6.5%	-4.6%	-6.0%	-11.5%	-2.9%	+0.6%
Other Medical	40	+5	+2	+2	+1	+2	+1	+13.3%	+4.9%	+5.1%	+3.7%	+6.3%	+3.0%
Medical/ Dental, other	61	+3	+1	+1	-1	+2	+1	+5.7%	+1.5%	+1.0%	-2.0%	+3.0%	+2.1%
Medical & Dental	236	+49	+44	+33	+25	+24	+1	+26.1%	+23.2%	+16.4%	+11.9%	+11.2%	+0.6%
Clinical Nurse/ Midwife Manager	258	+37	+22	+19	+5	+17	-3	+16.9%	+9.2%	+7.9%	+1.8%	+7.1%	-1.0%
Director Nursing/Midwifery, Assistant	44	+8	+7	+4	+5	-0	+0	+23.3%	+19.0%	+9.5%	+13.1%	-0.5%	+1.1%
Director of Nursing/Midwifery	24	+3	+3	+3	+3	+1	+1	+16.7%	+15.0%	+15.5%	+13.1%	+3.3%	+6.4%
Nurse/ Midwife Manager	326	+49	+32	+26	+12	+18	-1	+17.7%	+10.8%	+8.6%	+4.0%	+5.7%	-0.2%
Advanced Nurse/ Midwife Practitioner	10	+7	+7	+6	+4	+1		+232.0%	+232.0%	+149.0%	+66.0%	+10.7%	
Clinical Nurse/ Midwife Specialist	96	+31	+32	+19	+17	+12	+4	+47.5%	+49.2%	+24.1%	+22.2%	+14.4%	+3.8%
Nurse/ Midwife Specialist & AN/MP	106	+38	+39	+25	+21	+13	+4	+55.7%	+57.4%	+30.2%	+25.3%	+14.0%	+3.4%
Staff Midwives		-1	-0	-1				-100.0%	-100.0%	-100.0%	-100.0%	-100.0%	-100.0%
Staff Nurse [Intellectual Disability]	98	-23	-30	-1	-0	+8	-2	-18.7%	-23.2%	-1.3%	-0.4%	+9.1%	-2.4%
Staff Nurse [Psychiatric]	360	-29	-22	-11	-10	-11	+1	-7.6%	-5.8%	-2.9%	-2.7%	-3.1%	+0.3%
Staff Nurses [General/ Children's]	433	-20	-15	-32	-22	-4	-8	-4.5%	-3.4%	-6.9%	-4.9%	-0.9%	-1.8%
Staff Nurse/ Staff Midwife	890	-73	-67	-45	-32	-7	-9	-7.6%	-7.0%	-4.8%	-3.5%	-0.8%	-1.0%
Public Health Nurse	198	+20	+22	+24	+11	+6	+4	+11.0%	+12.2%	+13.6%	+5.8%	+3.3%	+1.9%
Pre-registration Nurse/ Midwife Intern		-2		-13		-0		-100.0%	-100.0%	-100.0%	-100.0%	-100.0%	-100.0%
Pre-registration Nurse Intern (COVID-19)	26	+26	+26	+26	+26	+26	-5	-100.0%	-100.0%	-100.0%	-100.0%	-100.0%	-17.0%
Post-registration Nurse/ Midwife Student		-7	-11	-16	-13	-4		-100.0%	-100.0%	-100.0%	-100.0%	-100.0%	-100.0%
Nursing/ Midwifery awaiting registration					-11	-5		-100.0%	-100.0%	-100.0%	-100.0%	-100.0%	-100.0%
Nursing/ Midwifery Student	26	+17	+15	-3	+2	+17	-5	+181.7%	+138.5%	-10.0%	+9.3%	+195.7%	-17.0%
Nursing/ Midwifery other	3	+3	+3	+1	-0	+1	+0	-100.0%	-100.0%	+42.5%	-5.0%	+42.5%	+14.0%
Nursing & Midwifery	1,550	+53	+43	+27	+14	+48	-7	+3.5%	+2.8%	+1.8%	+0.9%	+3.2%	-0.5%

Oct 2020 (Dec 2015 figure: 5,111)	WTE Oct 2020	WTE change since Dec 15	WTE change since Dec 16	WTE change since Dec 17	WTE change since Dec 18	WTE change since Dec 19	WTE change since Sep 20	% change since Dec 15	% change since Dec 16	% change since Dec 17	% change since Dec 18	% change since Dec 19	% change since Sep 20
Overall	5,602	+491	+367	+225	+43	+57	+7	+9.6%	+7.0%	+4.2%	+0.8%	+1.0%	+0.1%
Dietitians	24	+9	+6	+4	+3	+4	+1	+56.7%	+32.5%	+22.1%	+16.1%	+20.0%	+2.3%
Occupational Therapists	129	+33	+19	+19	+11	+12	+2	+33.9%	+17.3%	+16.7%	+9.1%	+10.6%	+1.4%
Orthoptists	2	+1	+1	+1	+1	+1	+1	+35.6%	+35.6%	+35.6%	+35.6%	+35.6%	+35.6%
Physiotherapists	93	+7	+15	+5	+4	+5	+0	+8.3%	+19.5%	+5.7%	+4.8%	+5.1%	+0.4%
Podiatrists & Chiropodists	8	+2	-0	+0	+1	+1	-0	+28.3%	-5.2%	+4.7%	+15.4%	+14.7%	-0.5%
Speech & Language Therapists	104	+21	+14	+10	+0	-1	+3	+24.7%	+15.4%	+10.2%	+0.1%	-1.0%	+3.4%
Therapy Professions	360	+71	+54	+38	+20	+21	+7	+24.7%	+17.7%	+11.9%	+5.9%	+6.3%	+1.9%
Audiology	5	+0	+0	-1	-1	+0	+0	+3.8%	+6.0%	-14.4%	-14.9%	+0.8%	+0.2%
Clinical Engineering	1			+1	+1					-100.0%	-100.0%		
Medical Laboratory	28	+1	+0	+1	+1	+1	+0	+2.7%	+0.1%	+3.5%	+3.1%	+3.7%	+1.5%
Physicists		-1	-1					-100.0%	-100.0%	-100.0%	-100.0%	-100.0%	-100.0%
Radiographers	1	+1						#DIV/0					
Health Science/ Diagnostics	34	+1	-1	+1	+1	+1	+0	+1.5%	-2.0%	+3.4%	+2.9%	+3.1%	+1.3%
Social Care	261	+88	+69	+55	+29	+16	-3	+50.5%	+35.8%	+26.9%	+12.5%	+6.6%	-1.2%
Social Workers	84	+6	+9	+8	+2	+0	+0	+8.2%	+11.4%	+10.0%	+2.9%	+0.1%	+0.6%
Psychologists	81	-4	-2	-0	-3	+7	+0	-5.2%	-2.8%	-0.4%	-3.6%	+10.1%	+0.0%
Pharmacy	4	-2	-1	-0	-0	-1	-0	-32.7%	-27.3%	-11.2%	-11.0%	-17.9%	-0.3%
Counsellor Therapists	11	+2	+1	+0	-1	-0	+0	+28.4%	+10.6%	+2.2%	-9.2%	-0.4%	+3.6%
Dental Hygienists	5	+2	+1	+2	+0	+0	+0	+60.1%	+39.9%	+98.8%	+9.7%	+7.0%	+1.5%
HSCP Trainees/ Students		-3	-2	-1				-100.0%	-100.0%	-100.0%	-100.0%	-100.0%	-100.0%
Other Health & Social Care	12	-5	-3	-4	-3	-1	+0	-28.7%	-18.1%	-22.9%	-21.7%	-6.6%	+0.4%
Play Therapists/ Specialists	1	-3	-3	-3	-3	-3		-77.4%	-72.1%	-72.3%	-72.1%	-72.1%	
H&SC, Other	29	-7	-5	-4	-7	-3	+1	-20.0%	-15.2%	-12.6%	-18.7%	-9.9%	+1.8%
Health & Social Care Professionals	853	+152	+122	+97	+42	+42	+5	+21.7%	+16.7%	+12.9%	+5.2%	+5.2%	+0.6%
Executive Management	11	+4	+2	-0	+0	+1	+3	+45.6%	+16.1%	-2.6%	+0.8%	+12.1%	+35.4%
Senior Management (VIII & GM)	48	+12	+9	+5	+1	+2	-2	+33.3%	+23.9%	+12.7%	+2.5%	+4.6%	-3.8%
Management (VIII & above)	59	+16	+11	+5	+1	+3	+1	+35.5%	+22.3%	+9.3%	+2.2%	+6.0%	+1.9%
Middle Management (V-VII)	151	+66	+49	+34	+28	+18	+7	+78.8%	+47.6%	+28.7%	+22.5%	+13.8%	+4.7%
Other Administrative						-1		-100.0%	-100.0%	-100.0%	-100.0%	-100.0%	-100.0%
Administrative/ Supervisory (V to VII)	151	+66	+49	+34	+28	+17	+7	+78.8%	+47.6%	+28.7%	+22.5%	+12.9%	+4.7%
Clerical (III & IV)	448	+14	+5	-21	-38	-20	+8	+3.3%	+1.0%	-4.5%	-7.8%	-4.3%	+1.8%
Management & Administrative	658	+96	+64	+18	-9	+0	+16	+17.2%	+10.8%	+2.8%	-1.4%	+0.1%	+2.5%
Catering	39	-0	-0	+3	-2	-0	-0	-0.2%	-0.7%	+9.2%	-3.8%	-1.0%	-0.5%
Household Services	64	-30	-17	-11	-6	+1	+1	-31.6%	-21.4%	-14.5%	-8.3%	+1.7%	+1.1%
Other Support	37	-9	-8	-6	-6	-3	+0	-19.1%	-17.0%	-14.5%	-13.3%	-7.2%	+0.5%
Portering	14	+1	-2	-4	-3	-2	-0	+5.3%	-14.1%	-20.2%	-19.0%	-11.0%	-0.3%
Support	154	-38	-28	-17	-16	-4	+1	-19.6%	-15.2%	-10.1%	-9.5%	-2.4%	+0.4%
Maintenance/ Technical	71	-7	-3	-1	-1	+3	+2	-8.7%	-3.8%	-1.6%	-1.3%	+4.7%	+2.9%

Oct 2020 (Dec 2015 figure: 5,111)	WTE Oct 2020	WTE change since Dec 15	WTE change since Dec 16	WTE change since Dec 17	WTE change since Dec 18	WTE change since Dec 19	WTE change since Sep 20	% change since Dec 15	% change since Dec 16	% change since Dec 17	% change since Dec 18	% change since Dec 19	% change since Sep 20
Overall	5,602	+491	+367	+225	+43	+57	+7	+9.6%	+7.0%	+4.2%	+0.8%	+1.0%	+0.1%
General Support	225	-44	-30	-18	-17	-1	+3	-16.4%	-11.9%	-7.6%	-7.1%	-0.3%	+1.2%
HCA, Nurse's Aide, etc.	1,372	+212	+126	+79	+42	+19	-20	+18.3%	+10.1%	+6.1%	+3.2%	+1.4%	-1.5%
Health & Social Care Assistants	10	+5	+4	+1	-9	-3	-1	+86.9%	+56.9%	+7.0%	-48.0%	-25.0%	-11.0%
Health Care Assistants	1,383	+217	+130	+80	+33	+15	-22	+18.6%	+10.3%	+6.1%	+2.4%	+1.1%	-1.5%
Care, other	272	+9	+18	+11	+10	+2	+4	+3.5%	+7.0%	+4.0%	+3.7%	+0.6%	+1.3%
Home Help	426	-41	-23	-22	-55	-73	+8	-8.8%	-5.2%	-5.0%	-11.4%	-14.7%	+1.8%
Patient & Client Care	2,081	+185	+124	+68	-13	-56	-11	+9.8%	+6.3%	+3.4%	-0.6%	-2.6%	-0.5%

Source: Health Service Personnel Census

Longitudinal Employment Levels by Care Group - Oct 2013 to Oct 2020

Community Health & Wellbeing

Oct 2020 (figure:)	WTE Oct 2020	WTE change since	WTE change since	WTE change since	WTE change since	WTE change since	WTE change since Sep 20	% change since	% change since	% change since	% change since	% change since	% change since Sep 20
Overall	10	+10	+10	+10	+10	+10	+1	-100.0%	-100.0%	-100.0%	-100.0%	-100.0%	+9.3%
Management & Administrative	9	+9	+9	+9	+9	+9	+1	-1.0%	-1.0%	-1.0%	-1.0%	-1.0%	+0.1%
Management (VIII & above)	1	+1	+1	+1	+1	+1		-1.0%	-1.0%	-1.0%	-1.0%	-1.0%	+0.0%
Administrative/ Supervisory (V to VII)	7	+7	+7	+7	+7	+7	+1	-1.0%	-1.0%	-1.0%	-1.0%	-1.0%	+0.1%
Clerical (III & IV)	1	+1	+1	+1	+1	+1		-1.0%	-1.0%	-1.0%	-1.0%	-1.0%	+0.0%
Patient & Client Care	1	+1	+1	+1	+1	+1		-1.0%	-1.0%	-1.0%	-1.0%	-1.0%	+0.0%
Care, other	1	+1	+1	+1	+1	+1		-1.0%	-1.0%	-1.0%	-1.0%	-1.0%	+0.0%

Source: Health Service Personnel Census

Mental Health

Oct 2020 (Dec 2015 figure: 1,258)	WTE Oct 2020	WTE change since Dec 15	WTE change since Dec 16	WTE change since Dec 17	WTE change since Dec 18	WTE change since Dec 19	WTE change since Sep 20	% change since Dec 15	% change since Dec 16	% change since Dec 17	% change since Dec 18	% change since Dec 19	% change since Sep 20
Overall	1,353	+95	+70	+46	+14	+44	+10	+7.5%	+5.4%	+3.5%	+1.1%	+3.4%	+0.7%
Medical & Dental	116	+33	+28	+16	+10	+10	+1	+0.4%	+0.3%	+0.2%	+0.1%	+0.1%	+0.0%
Consultants	39	+8	+9	+8	+7	+2	-0	+0.2%	+0.3%	+0.2%	+0.2%	+0.0%	-0.0%
Registrars	36	+15	+13	+8	+6	+3	-0	+0.7%	+0.5%	+0.3%	+0.2%	+0.1%	-0.0%
SHO/ Interns	39	+11	+7	+2	-3	+4	+2	+0.4%	+0.2%	+0.0%	-0.1%	+0.1%	+0.0%
Medical/ Dental, other	1	-2	-2	-2				-0.6%	-0.6%	-0.6%	+0.0%	+0.0%	+0.0%
Nursing & Midwifery	606	+47	+41	+38	+20	+29	-1	+0.1%	+0.1%	+0.1%	+0.0%	+0.1%	-0.0%
Nurse/ Midwife Manager	154	+21	+10	+14	-1	+8	-1	+0.2%	+0.1%	+0.1%	-0.0%	+0.1%	-0.0%
Nurse/ Midwife Specialist & AN/MP	78	+33	+33	+19	+18	+10	+3	+0.7%	+0.7%	+0.3%	+0.3%	+0.2%	+0.0%
Staff Nurse/ Staff Midwife	346	-33	-30	-8	-11	-11	+1	-0.1%	-0.1%	-0.0%	-0.0%	-0.0%	+0.0%
Nursing/ Midwifery Student	26	+24	+26	+13	+15	+21	-5	+10.3%	-1.0%	+1.0%	+1.4%	+4.3%	-0.2%
Nursing/ Midwifery other	3	+3	+3	+1	-0	+1	+0	-1.0%	-1.0%	+0.4%	-0.0%	+0.4%	+0.1%
Health & Social Care Professionals	156	+29	+19	+17	+10	+16	+1	+0.2%	+0.1%	+0.1%	+0.1%	+0.1%	+0.0%
Therapy Professions	54	+20	+9	+5	+4	+9	+0	+0.6%	+0.2%	+0.1%	+0.1%	+0.2%	+0.0%
Social Care	15	-2	-1	+2	+1	+1	+1	-0.1%	-0.1%	+0.1%	+0.1%	+0.0%	+0.1%
Social Workers	42	+3	+5	+6	+1	+1	-1	+0.1%	+0.1%	+0.2%	+0.0%	+0.0%	-0.0%
Psychologists	40	+8	+6	+5	+4	+6	+0	+0.2%	+0.2%	+0.1%	+0.1%	+0.2%	+0.0%
Pharmacy	2	-2	-2	-1	-1	-1	-0	-0.6%	-0.5%	-0.4%	-0.4%	-0.3%	-0.0%
H&SC, Other	3	+2	+2	+1			+1	+2.0%	+2.0%	+0.5%	+0.0%	+0.0%	+0.2%
Management & Administrative	133	+9	+3	-3	-8	-4	+5	+0.1%	+0.0%	-0.0%	-0.1%	-0.0%	+0.0%
Management (VIII & above)	4	-1		+1	+0	-1		-0.2%	+0.0%	+0.3%	+0.0%	-0.2%	+0.0%
Administrative/ Supervisory (V to VII)	28	+11	+8	+4	+5	+5	+2	+0.7%	+0.4%	+0.2%	+0.2%	+0.2%	+0.1%
Clerical (III & IV)	101	-2	-5	-8	-13	-8	+3	-0.0%	-0.0%	-0.1%	-0.1%	-0.1%	+0.0%
General Support	62	-23	-18	-11	-7	-1	+2	-0.3%	-0.2%	-0.1%	-0.1%	-0.0%	+0.0%
Support	32	-19	-13	-6	-4	-4	+0	-0.4%	-0.3%	-0.2%	-0.1%	-0.1%	+0.0%
Maintenance/ Technical	30	-3	-5	-4	-3	+3	+2	-0.1%	-0.2%	-0.1%	-0.1%	+0.1%	+0.1%
Patient & Client Care	279	+0	-2	-12	-11	-5	+2	+0.0%	-0.0%	-0.0%	-0.0%	-0.0%	+0.0%
Health Care Assistants	211	+1	-3	-6	-6	-4	+2	+0.0%	-0.0%	-0.0%	-0.0%	-0.0%	+0.0%
Care, other	68	-0	+1	-6	-5	-2	-0	-0.0%	+0.0%	-0.1%	-0.1%	-0.0%	-0.0%

Source: Health Service Personnel Census

Primary Care

Oct 2020 (Dec 2015 figure: 1,261)	WTE Oct 2020	WTE change since Dec 15	WTE change since Dec 16	WTE change since Dec 17	WTE change since Dec 18	WTE change since Dec 19	WTE change since Sep 20	% change since Dec 15	% change since Dec 16	% change since Dec 17	% change since Dec 18	% change since Dec 19	% change since Sep 20
Overall	1,171	-90	-68	+81	+11	+37	+14	-7.2%	-5.5%	+7.4%	+0.9%	+3.3%	+1.2%
Medical & Dental	102	+13	+16	+17	+15	+15	+0	+0.1%	+0.2%	+0.2%	+0.2%	+0.2%	+0.0%
Consultants	1	-2	-1	-1	-0	-0	+0	-0.6%	-0.5%	-0.5%	-0.1%	-0.0%	+0.0%
Registrars	50	+18	+17	+12	+13	+10	-1	+0.5%	+0.5%	+0.3%	+0.3%	+0.3%	-0.0%
SHO/ Interns	3	-6	-2	+3	+3	+2	+0	-0.7%	-0.4%	-1.0%	-1.0%	+2.0%	+0.0%
Medical/ Dental, other	48	+3	+2	+3	-0	+2	+1	+0.1%	+0.1%	+0.1%	-0.0%	+0.0%	+0.0%
Nursing & Midwifery	319	+25	+24	+19	-2	+6	-2	+0.1%	+0.1%	+0.1%	-0.0%	+0.0%	-0.0%
Nurse/ Midwife Manager	29	+6	+6	+4	+3	+1	+1	+0.3%	+0.3%	+0.2%	+0.1%	+0.0%	+0.0%
Nurse/ Midwife Specialist & AN/MP	20	+4	+5	+6	+2	+3	+1	+0.2%	+0.3%	+0.4%	+0.1%	+0.2%	+0.1%
Staff Nurse/ Staff Midwife	74	+3	+3	+2	-5	-0	-7	+0.0%	+0.0%	+0.0%	-0.1%	-0.0%	-0.1%
Public Health Nurse	197	+19	+21	+24	+11	+6	+4	+0.1%	+0.1%	+0.1%	+0.1%	+0.0%	+0.0%
Nursing/ Midwifery Student		-7	-11	-16	-13	-4		-1.0%	-1.0%	-1.0%	-1.0%	-1.0%	-1.0%
Health & Social Care Professionals	332	+26	+32	+29	+10	+20	+10	+0.1%	+0.1%	+0.1%	+0.0%	+0.1%	+0.0%
Therapy Professions	245	+48	+45	+34	+16	+19	+8	+0.2%	+0.2%	+0.2%	+0.1%	+0.1%	+0.0%
Health Science/ Diagnostics	33	-0	-1	+1	+1	+1	+0	-0.0%	-0.0%	+0.0%	+0.0%	+0.0%	+0.0%
Social Care	9	-3	-2	-2	-1	+0	+0	-0.3%	-0.2%	-0.2%	-0.1%	+0.0%	+0.0%
Social Workers	6	-4	-3	-1	-1	-1	+1	-0.4%	-0.3%	-0.2%	-0.2%	-0.2%	+0.1%
Psychologists	26	-11	-4	-0	-1	+2	+0	-0.3%	-0.1%	-0.0%	-0.1%	+0.1%	+0.0%
Pharmacy	1							+0.0%	+0.0%	+0.0%	+0.0%	+0.0%	+0.0%
H&SC, Other	12	-3	-4	-2	-3	-2	+0	-0.2%	-0.2%	-0.2%	-0.2%	-0.1%	+0.0%
Management & Administrative	327	+42	+34	+13	-3	-6	+5	+0.1%	+0.1%	+0.0%	-0.0%	-0.0%	+0.0%
Management (VIII & above)	34	+8	+6	-2	-3	+1	+0	+0.3%	+0.2%	-0.1%	-0.1%	+0.0%	+0.0%
Administrative/ Supervisory (V to VII)	63	+27	+23	+18	+10	+1	+2	+0.7%	+0.6%	+0.4%	+0.2%	+0.0%	+0.0%
Clerical (III & IV)	230	+8	+5	-4	-10	-8	+3	+0.0%	+0.0%	-0.0%	-0.0%	-0.0%	+0.0%
General Support	31	-5	+1	+0	-3	+1	+0	-0.1%	+0.0%	+0.0%	-0.1%	+0.0%	+0.0%
Support	22	+1	+1	+0	-3	+1	+0	+0.0%	+0.0%	+0.0%	-0.1%	+0.1%	+0.0%
Maintenance/ Technical	9	-6			+0			-0.4%	+0.0%	+0.0%	+0.0%	+0.0%	+0.0%
Patient & Client Care	59	-191	-175	+2	-6	+1	+1	-0.8%	-0.7%	+0.0%	-0.1%	+0.0%	+0.0%
Health Care Assistants	13	+7	+7	+5	-6	-1	+1	+1.0%	+1.0%	+0.6%	-0.3%	-0.1%	+0.1%
Care, other	45	-16	-12	-3	-0	+2	+0	-0.3%	-0.2%	-0.1%	-0.0%	+0.1%	+0.0%
Home Help		-181	-169					-1.0%	-1.0%	-1.0%	-1.0%	-1.0%	-1.0%

Source: Health Service Personnel Census

Disabilities

Oct 2020 (Dec 2015 figure: 1,221)	WTE Oct 2020	WTE change since Dec 15	WTE change since Dec 16	WTE change since Dec 17	WTE change since Dec 18	WTE change since Dec 19	WTE change since Sep 20	% change since Dec 15	% change since Dec 16	% change since Dec 17	% change since Dec 18	% change since Dec 19	% change since Sep 20
Overall	1,491	+270	+153	+97	+71	-6	-7	+22.1%	+11.4%	+6.9%	+5.0%	-0.4%	-0.5%
Medical & Dental	6	+1	+0	+0	+0			+0.3%	+0.1%	+0.1%	+0.1%	+0.0%	+0.0%
Consultants	3	+1	+0	+0	+0			+0.7%	+0.1%	+0.1%	+0.1%	+0.0%	+0.0%
Registrars	2							+0.0%	+0.0%	+0.0%	+0.0%	+0.0%	+0.0%
Medical/ Dental, other	1							+0.0%	+0.0%	+0.0%	+0.0%	+0.0%	+0.0%
Nursing & Midwifery	243	-33	-33	-29	-10	-6	-5	-0.1%	-0.1%	-0.1%	-0.0%	-0.0%	-0.0%
Nurse/ Midwife Manager	77	+9	+6	+4	+6	-0	-1	+0.1%	+0.1%	+0.0%	+0.1%	-0.0%	-0.0%
Nurse/ Midwife Specialist & AN/MP	6	-0	-1	-2	-0	-0	-0	-0.1%	-0.2%	-0.2%	-0.1%	-0.0%	-0.0%
Staff Nurse/ Staff Midwife	160	-42	-37	-31	-16	-6	-4	-0.2%	-0.2%	-0.2%	-0.1%	-0.0%	-0.0%
Nursing/ Midwifery Student	0	+0	+0	+0	+0	+0	-1	-1.0%	-1.0%	-1.0%	-1.0%	-1.0%	-0.7%
Health & Social Care Professionals	325	+91	+68	+46	+19	+5	-6	+0.4%	+0.3%	+0.2%	+0.1%	+0.0%	-0.0%
Therapy Professions	34	+2	-1	-3	-2	-7	-2	+0.1%	-0.0%	-0.1%	-0.1%	-0.2%	-0.0%
Social Care	237	+93	+73	+55	+29	+15	-5	+0.6%	+0.4%	+0.3%	+0.1%	+0.1%	-0.0%
Social Workers	26	+4	+4	+1	+1	-0	+1	+0.2%	+0.2%	+0.0%	+0.0%	-0.0%	+0.0%
Psychologists	14	-1	-5	-5	-6	-1	-1	-0.1%	-0.2%	-0.3%	-0.3%	-0.1%	-0.0%
H&SC, Other	14	-6	-3	-3	-3	-2		-0.3%	-0.2%	-0.2%	-0.2%	-0.1%	+0.0%
Management & Administrative	110	+25	+8	+2	+6	+4	+3	+0.3%	+0.1%	+0.0%	+0.1%	+0.0%	+0.0%
Management (VIII & above)	18	+8	+4	+4	+3	+2	+1	+0.8%	+0.3%	+0.3%	+0.2%	+0.1%	+0.1%
Administrative/ Supervisory (V to VII)	42	+15	+7	+1	+4	+2	+1	+0.5%	+0.2%	+0.0%	+0.1%	+0.0%	+0.0%
Clerical (III & IV)	50	+3	-3	-3	-2	+0	+1	+0.1%	-0.1%	-0.0%	-0.0%	+0.0%	+0.0%
General Support	54	-4	-4	-6	-4	-4	-1	-0.1%	-0.1%	-0.1%	-0.1%	-0.1%	-0.0%
Support	42	-3	-3	-5	-4	-3	-0	-0.1%	-0.1%	-0.1%	-0.1%	-0.1%	-0.0%
Maintenance/ Technical	12	-0	-1	-1	+0	-1	-1	-0.0%	-0.1%	-0.1%	+0.0%	-0.1%	-0.1%
Patient & Client Care	753	+189	+114	+83	+60	-4	+2	+0.3%	+0.2%	+0.1%	+0.1%	-0.0%	+0.0%
Health Care Assistants	622	+177	+98	+69	+50	-1	-1	+0.4%	+0.2%	+0.1%	+0.1%	-0.0%	-0.0%
Care, other	131	+12	+15	+15	+10	-3	+4	+0.1%	+0.1%	+0.1%	+0.1%	-0.0%	+0.0%

Source: Health Service Personnel Census

Older People

Oct 2020 (Dec 2015 figure: 1,371)	WTE Oct 2020	WTE change since Dec 15	WTE change since Dec 16	WTE change since Dec 17	WTE change since Dec 18	WTE change since Dec 19	WTE change since Sep 20	% change since Dec 15	% change since Dec 16	% change since Dec 17	% change since Dec 18	% change since Dec 19	% change since Sep 20
Overall	1,578	+207	+202	-8	-63	-28	-12	+15.1%	+14.7%	-0.5%	-3.8%	-1.7%	-0.7%
Medical & Dental	11	+2	-0	-1	-1	-1		+0.2%	-0.0%	-0.1%	-0.1%	-0.0%	+0.0%
Medical/ Dental, other	11	+2	-0	-1	-1	-1		+0.2%	-0.0%	-0.1%	-0.1%	-0.0%	+0.0%
Nursing & Midwifery	381	+15	+10	-0	+6	+19	+1	+0.0%	+0.0%	-0.0%	+0.0%	+0.1%	+0.0%
Nurse/ Midwife Manager	67	+14	+11	+5	+5	+9	+0	+0.3%	+0.2%	+0.1%	+0.1%	+0.2%	+0.0%
Nurse/ Midwife Specialist & AN/MP	2	+2	+2	+2	+2			-1.0%	-1.0%	-1.0%	-1.0%	+0.0%	+0.0%
Staff Nurse/ Staff Midwife	311	-1	-3	-7	-1	+10	+1	-0.0%	-0.0%	-0.0%	-0.0%	+0.0%	+0.0%
Public Health Nurse	1	+0	+0	+0		+0		+0.3%	+0.3%	+0.1%	+0.0%	+0.3%	+0.0%
Health & Social Care Professionals	39	+6	+4	+5	+4	+2		+0.2%	+0.1%	+0.1%	+0.1%	+0.1%	+0.0%
Therapy Professions	27	+2	+1	+2	+2	+2	-0	+0.1%	+0.0%	+0.1%	+0.1%	+0.1%	-0.0%
Health Science/ Diagnostics	1	+1						#DIV/0	+0.0%	+0.0%	+0.0%	+0.0%	+0.0%
Social Workers	11	+3	+3	+2	+1	+0	+0	+0.4%	+0.4%	+0.3%	+0.1%	+0.0%	+0.0%
Pharmacy	1	+1	+1	+1	+1	+0	+0	+1.0%	+1.0%	+1.0%	+1.0%	+0.0%	+0.0%
H&SC, Other		-0	-1					-1.0%	-1.0%	-1.0%			-1.0%
Management & Administrative	79	+12	+11	-3	-12	-2	+2	+0.2%	+0.2%	-0.0%	-0.1%	-0.0%	+0.0%
Management (VIII & above)	2	+0		+1				+0.0%	+0.0%	+1.0%	+0.0%	+0.0%	+0.0%
Administrative/ Supervisory (V to VII)	11	+7	+4	+4	+2	+3	+1	+1.8%	+0.7%	+0.5%	+0.2%	+0.4%	+0.1%
Clerical (III & IV)	67	+5	+7	-8	-14	-5	+1	+0.1%	+0.1%	-0.1%	-0.2%	-0.1%	+0.0%
General Support	78	-12	-9	-3	-3	+3	+2	-0.1%	-0.1%	-0.0%	-0.0%	+0.0%	+0.0%
Support	58	-15	-12	-6	-5	+2	+1	-0.2%	-0.2%	-0.1%	-0.1%	+0.0%	+0.0%
Maintenance/ Technical	20	+3	+3	+4	+2	+1	+1	+0.2%	+0.2%	+0.2%	+0.1%	+0.1%	+0.0%
Patient & Client Care	990	+185	+186	-6	-56	-49	-16	+0.2%	+0.2%	-0.0%	-0.1%	-0.0%	-0.0%
Health Care Assistants	536	+32	+28	+12	-5	+21	-23	+0.1%	+0.1%	+0.0%	-0.0%	+0.0%	-0.0%
Care, other	28	+13	+13	+4	+4	+3	-0	+0.8%	+0.9%	+0.2%	+0.2%	+0.1%	-0.0%
Home Help	426	+140	+146	-22	-55	-73	+8	+0.5%	+0.5%	-0.0%	-0.1%	-0.1%	+0.0%

Source: Health Service Personnel Census