

CHO 3 Employment Report: January 2021

Employment by Staff Group

Jan 2021 (Dec 2019 figure: 4,357)	WTE Dec 2020	WTE Jan 2021	WTE change since Dec 20	% change since Dec 20	WTE change since Dec 19	WTE change since Jan 20
Overall	4,610	4,663	+54	+1.2%	+306	+305
Consultants	28	27	-1	-3.4%	+0	+0
Registrars	40	45	+5	+13.0%	+4	+5
SHO/ Interns	22	20	-2	-9.0%	-5	-6
Medical/ Dental, other	59	59	+0	+0.2%	+1	+1
Medical & Dental	150	152	+2	+1.6%	+0	+1
Nurse/ Midwife Manager	250	251	+1	+0.4%	+4	+4
Nurse/ Midwife Specialist & AN/MP	54	53	-1	-1.9%	-3	-1
Staff Nurse/ Staff Midwife	831	835	+4	+0.5%	+48	+38
Public Health Nurse	127	128	+1	+0.7%	+0	-1
<i>Pre-registration Nurse/ Midwife Intern</i>		14	+14	-100.0%	-6	+14
<i>Pre-registration Nurse Intern (COVID-19)</i>	5	1	-4	-82.2%	+1	-4
<i>Post-registration Nurse/ Midwife Student</i>	4	4			+4	
Nursing/ Midwifery Student	9	19	+10	+115.7%	-1	-4
Nursing/ Midwifery other	4	4				
Nursing & Midwifery	1,274	1,290	+15	+1.2%	+49	+36
Therapy Professions	223	228	+5	+2.1%	+14	+10
Health Science/ Diagnostics	9	8	-1	-11.5%	+2	+2
Social Care	288	277	-11	-3.9%	+32	+34
Social Workers	58	57	-1	-1.2%	-2	-1
Psychologists	126	127	+1	+1.0%	+4	+4
Pharmacy	5	6	+1	+19.0%	+1	+1
H&SC, Other	34	35	+1	+2.9%	+2	+3
Health & Social Care Professionals	742	737	-5	-0.7%	+53	+53
Management (VIII & above)	42	42	+1	+1.2%	+4	+2
Administrative/ Supervisory (V to VII)	149	150	+1	+0.6%	+18	+17
Clerical (III & IV)	308	321	+13	+4.1%	+0	+3
Management & Administrative	499	513	+14	+2.8%	+22	+22
Support	160	157	-3	-1.6%	-6	-8
Maintenance/ Technical	76	78	+1	+1.5%	+0	+1
General Support	236	235	-1	-0.6%	-5	-6
Health Care Assistants	1,247	1,279	+32	+2.6%	+139	+149
Care, other	245	243	-2	-0.9%	+9	+6
Home Help	217	215	-2	-0.9%	+39	+45
Patient & Client Care	1,709	1,737	+28	+1.6%	+187	+200

CHO 3 Employment Report: January 2021

Community Health & Wellbeing

Jan 2021 (figure:)	WTE Dec 2020	WTE Jan 2021	WTE change since Dec 20	% change since Dec 20	WTE change since	WTE change since Jan 20
Total Community Health & Wellbeing	13	14	+1	+8.8%	+14	+4
Nurse/ Midwife Manager				-100.0%		-1
Staff Nurses [General/ Children's]	1	1	-0	-3.8%	+1	-0
Staff Nurse/ Staff Midwife	1	1	-0	-3.8%	+1	+1
Public Health Nurse				-100.0%		-1
Nursing & Midwifery	1	1	-0	-3.8%	+1	-0
Therapy Professions	2	2			+2	-0
Health & Social Care Professionals	2	2			+2	-0
Management (VIII & above)	2	2			+2	+1
Administrative/ Supervisory (V to VII)	6	6	-0	-1.1%	+6	+4
Clerical (III & IV)	1	2	+1	+115.6%	+2	+1
Management & Administrative	9	10	+1	+13.8%	+10	+6
Care, other	1	1			+1	-1
Patient & Client Care	1	1			+1	-1

Mental Health

Jan 2021 (Dec 2019 figure: 795)	WTE Dec 2020	WTE Jan 2021	WTE change since Dec 20	% change since Dec 20	WTE change since Dec 19	WTE change since Jan 20
Total Mental Health	809	821	+12	+1.4%	+25	+18
Consultants	24	24	-0	-0.6%	+1	+1
Registrars	15	19	+4	+27.9%	+1	+2
SHO/ Interns	21	19	-2	-9.3%	+0	-1
Medical & Dental	61	63	+2	+3.5%	+3	+2
Nurse/ Midwife Manager	88	88	+0	+0.3%	+0	+1
Nurse/ Midwife Specialist & AN/MP	37	37	-0	-0.2%	-2	-2
Staff Nurse/ Staff Midwife	272	274	+2	+0.7%	+28	+21
<i>Pre-registration Nurse/ Midwife Intern</i>		6	+6	-100.0%	-3	+6
<i>Pre-registration Nurse Intern (COVID-19)</i>	3	1	-3	-74.4%	+1	-3
Nursing/ Midwifery Student	3	7	+4	+111.6%	-2	-5
Nursing & Midwifery	400	406	+6	+1.4%	+24	+15
Therapy Professions	25	27	+2	+9.9%	+1	+1
Social Care	3	3			+0	+0
Social Workers	24	24	-1	-3.4%	-2	-2
Psychologists	91	92	+1	+1.4%	+0	+1
Pharmacy	3	3				
H&SC, Other	12	12	+0	+0.3%	+3	+3
Health & Social Care Professionals	158	161	+3	+1.9%	+2	+3
Management (VIII & above)	2	2			+0	
Administrative/ Supervisory (V to VII)	19	18	-1	-4.8%	+1	+1
Clerical (III & IV)	50	51	+0	+0.4%	-5	-4
Management & Administrative	71	70	-1	-1.0%	-4	-3
Support	30	30	-0	-1.6%	-3	-2
Maintenance/ Technical	9	9			-2	-2
General Support	39	39	-0	-1.2%	-5	-4
Health Care Assistants	79	81	+2	+2.7%	+5	+5
Care, other	1	1			-1	-1
Patient & Client Care	80	82	+2	+2.6%	+5	+5

Primary Care

Jan 2021 (Dec 2019 figure: 764)	WTE Dec 2020	WTE Jan 2021	WTE change since Dec 20	% change since Dec 20	WTE change since Dec 19	WTE change since Jan 20
Total Primary Care	812	848	+37	+4.5%	+85	+86
Consultants	1	1			-1	-1
Registrars	25	26	+1	+3.9%	+2	+3
SHO/ Interns	1	1	-0	-1.0%	-5	-5
Medical/ Dental, other	52	52	+0	+0.2%	-0	+0
Medical & Dental	79	80	+1	+1.3%	-4	-2
Nurse/ Midwife Manager	23	22	-0	-1.9%	+4	+4
Nurse/ Midwife Specialist & AN/MP	3	3	-0	-2.0%	+1	+1
Staff Nurse/ Staff Midwife	56	56	+0	+0.4%	+0	-0
Public Health Nurse	126	127	+1	+0.7%	+0	+0
Post-registration Nurse/ Midwife Student	4	4			+4	
Nursing/ Midwifery Student	4	4			+4	+4
Nursing & Midwifery	212	212	+1	+0.3%	+9	+9
Therapy Professions	84	86	+2	+2.4%	-0	-1
Health Science/ Diagnostics	6	5	-1	-15.8%	+0	+0
Social Care	1	1				
Social Workers	10	10	-0	-0.4%	-1	+0
Psychologists	15	14	-0	-1.9%	-1	+0
Pharmacy	1	2	+1	+91.0%	+1	+1
H&SC, Other	10	10	-0	-0.4%	-1	-1
Health & Social Care Professionals	126	128	+2	+1.3%	-2	-1
Management (VIII & above)	24	24	+1	+2.1%	+1	+0
Administrative/ Supervisory (V to VII)	63	65	+2	+2.7%	+11	+10
Clerical (III & IV)	150	157	+7	+4.9%	+1	+2
Management & Administrative	237	246	+10	+4.0%	+13	+12
Support	13	13	-0	-0.9%	-0	+1
Maintenance/ Technical	27	27	+0	+0.7%	-3	-2
General Support	40	40	+0	+0.2%	-3	-1
Health Care Assistants	67	90	+23	+34.3%	+69	+69
Care, other	50	50	+1	+1.2%	+1	+0
Home Help	1	1				
Patient & Client Care	117	141	+24	+20.1%	+70	+69

Social Care

Jan 2021 (Dec 2019 figure: 2,798)	WTE Dec 2020	WTE Jan 2021	WTE change since Dec 20	% change since Dec 20	WTE change since Dec 19	WTE change since Jan 20
Total Social Care	2,976	2,980	+4	+0.1%	+182	+197
Consultants	3	2	-1	-27.7%	+0	+0
Medical/ Dental, other	7	7			+1	+1
Medical & Dental	10	9	-1	-8.2%	+1	+1
Nurse/ Midwife Manager	139	140	+1	+1.0%	+1	+0
Nurse/ Midwife Specialist & AN/MP	14	13	-1	-6.5%	-1	-0
Staff Nurse/ Staff Midwife	502	504	+2	+0.4%	+18	+16
Public Health Nurse	1	1				
<i>Pre-registration Nurse/ Midwife Intern</i>		8	+8	-100.0%	-4	+8
<i>Pre-registration Nurse Intern (COVID-19)</i>	2		-2	-100.0%		-2
Nursing/ Midwifery Student	2	8	+7	+433.3%	-4	-4
Nursing/ Midwifery other	4	4				
Nursing & Midwifery	661	670	+9	+1.4%	+14	+12
Therapy Professions	113	113	+0	+0.2%	+12	+11
Health Science/ Diagnostics	3	3	-0	-1.5%	+2	+2
Social Care	284	273	-11	-4.0%	+32	+34
Social Workers	23	24	+0	+0.9%	+0	+0
Psychologists	20	21	+0	+1.2%	+5	+2
Pharmacy	1	1				
H&SC, Other	11	12	+1	+8.6%	+0	+0
Health & Social Care Professionals	456	446	-10	-2.1%	+50	+50
Management (VIII & above)	14	14	-0	-0.0%	+1	+1
Administrative/ Supervisory (V to VII)	61	62	+0	+0.3%	+0	+2
Clerical (III & IV)	107	111	+4	+3.5%	+2	+4
Management & Administrative	182	186	+4	+2.2%	+4	+8
Support	116	114	-2	-1.7%	-3	-6
Maintenance/ Technical	40	41	+1	+2.4%	+5	+5
General Support	157	156	-1	-0.6%	+2	-1
Health Care Assistants	1,101	1,108	+7	+0.6%	+64	+74
Care, other	193	191	-3	-1.4%	+8	+8
Home Help	216	215	-2	-0.9%	+39	+45
Patient & Client Care	1,511	1,513	+2	+0.2%	+111	+127

CHO 3 Employment Report: January 2021

Disabilities

Jan 2021 (Dec 2019 figure: 1,823)	WTE Dec 2020	WTE Jan 2021	WTE change since Dec 20	% change since Dec 20	WTE change since Dec 19	WTE change since Jan 20
Total Disabilities	1,947	1,941	-6	-0.3%	+118	+124
Consultants	2	1	-1	-42.2%	+0	+0
Medical/ Dental, other	1	1				
Medical & Dental	3	2	-1	-28.4%	+0	+0
Nurse/ Midwife Manager	75	74	-1	-1.4%	-2	-1
Nurse/ Midwife Specialist & AN/MP	10	9	-1	-9.6%	-3	-2
Staff Nurse/ Staff Midwife	271	268	-3	-1.0%	+21	+18
<i>Pre-registration Nurse/ Midwife Intern</i>		8	+8	-100.0%	-4	+8
<i>Pre-registration Nurse Intern (COVID-19)</i>	2		-2	-100.0%		-2
Nursing/ Midwifery Student	2	8	+7	+433.3%	-4	-4
Nursing/ Midwifery other	4	4				
Nursing & Midwifery	361	363	+2	+0.5%	+12	+11
Therapy Professions	84	83	-1	-1.0%	+9	+9
Health Science/ Diagnostics	2	2			+2	+2
Social Care	284	273	-11	-4.0%	+32	+34
Social Workers	17	17	-0	-2.4%	+0	+1
Psychologists	20	21	+0	+1.2%	+5	+2
H&SC, Other	11	12	+1	+8.6%	+0	+0
Health & Social Care Professionals	419	407	-11	-2.7%	+48	+48
Management (VIII & above)	8	8			+1	+1
Administrative/ Supervisory (V to VII)	45	44	-1	-1.6%	+3	+3
Clerical (III & IV)	59	59	+0	+0.7%	-0	+2
Management & Administrative	111	111	-0	-0.3%	+4	+6
Support	53	52	-1	-2.6%	-1	-3
Maintenance/ Technical	19	20	+1	+3.5%	+6	+6
General Support	73	72	-1	-1.0%	+5	+3
Health Care Assistants	800	806	+7	+0.8%	+42	+48
Care, other	181	179	-2	-1.1%	+6	+7
Patient & Client Care	981	986	+5	+0.5%	+48	+55

Older People

Jan 2021 (Dec 2019 figure: 974)	WTE Dec 2020	WTE Jan 2021	WTE change since Dec 20	% change since Dec 20	WTE change since Dec 19	WTE change since Jan 20
Total Older People	1,029	1,039	+10	+1.0%	+65	+74
Consultants	1	1				
Medical/ Dental, other	6	6			+1	+1
Medical & Dental	7	7			+1	+1
Nurse/ Midwife Manager	64	66	+2	+3.7%	+3	+2
Nurse/ Midwife Specialist & AN/MP	4	4	+0	+2.4%	+2	+2
Staff Nurse/ Staff Midwife	231	236	+5	+2.1%	-3	-2
Public Health Nurse	1	1				
Nursing & Midwifery	300	307	+7	+2.4%	+2	+1
Health & Social Care Professionals	37	39	+2	+4.5%	+2	+2
Management (VIII & above)	6	6			+0	+0
Administrative/ Supervisory (V to VII)	17	18	+1	+5.4%	-3	-0
Clerical (III & IV)	48	52	+3	+7.0%	+2	+2
Management & Administrative	71	75	+4	+6.1%	-1	+2
Support	63	62	-1	-0.9%	-2	-4
Maintenance/ Technical	21	21	+0	+1.5%	-1	-1
General Support	84	84	-0	-0.3%	-3	-4
Health Care Assistants	301	302	+0	+0.1%	+22	+26
Care, other	12	11	-1	-6.7%	+1	+1
Home Help	216	215	-2	-0.9%	+39	+45
Patient & Client Care	530	527	-2	-0.5%	+63	+72

CHO 3 Employment by Administration (HSE / S38): January 2021

Jan 2021 (Dec 2019 figure: 4,357)	WTE Dec 2020	WTE Jan 2021	WTE change since Dec 20	% change since Dec 20	WTE change since Dec 19	WTE change since Jan 20
Overall	4,610	4,663	+54	+1.2%	+306	+305
HSE	2,807	2,870	+63	+2.3%	+215	+209
Section 38 Voluntary Agencies	1,802	1,793	-10	-0.5%	+91	+97

HSE

Jan 2021 (Dec 2019 figure: 2,655)	WTE Dec 2020	WTE Jan 2021	WTE change since Dec 20	% change since Dec 20	WTE change since Dec 19	WTE change since Jan 20
Overall	2,807	2,870	+63	+2.3%	+215	+209
Consultants	26	26	-0	-0.0%	-0	+0
Registrars	40	45	+5	+0.1%	+4	+5
SHO/ Interns	22	20	-2	-0.1%	-5	-6
Medical/ Dental, other	58	58	+0	+0.0%	+1	+1
Medical & Dental	147	150	+3	+2.2%	+0	+1
Nurse/ Midwife Manager	175	177	+2	+0.0%	+6	+6
Nurse/ Midwife Specialist & AN/MP	44	44	-0	-0.0%	+1	+1
Staff Nurse/ Staff Midwife	560	567	+7	+0.0%	+27	+20
Public Health Nurse	127	128	+1	+0.0%	+0	-1
<i>Pre-registration Nurse/ Midwife Intern</i>		6	+6	-1.0%	-2	-6
<i>Pre-registration Nurse Intern (COVID-19)</i>	3	1	-3	-0.7%	+1	+1
<i>Post-registration Nurse/ Midwife Student</i>	4	4		+0.0%		+4
Nursing/ Midwifery Student	7	11	+4	+0.5%	+2	-1
Nursing & Midwifery	913	927	+14	+1.5%	+37	+25
Therapy Professions	190	196	+6	+0.0%	+11	+7
Health Science/ Diagnostics	9	8	-1	-0.1%	+2	+2
Social Care	6	7	+1	+0.2%	+2	+2
Social Workers	44	43	-1	-0.0%	-2	-2
Psychologists	110	111	+1	+0.0%	-0	+2
Pharmacy	5	6	+1	+0.2%	+1	+1
H&SC, Other	24	24	+0	+0.0%	+2	+2
Health & Social Care Professionals	387	394	+7	+1.9%	+16	+15
Management (VIII & above)	36	36	+1	+0.0%	+4	+2
Administrative/ Supervisory (V to VII)	120	121	+2	+0.0%	+17	+17
Clerical (III & IV)	272	285	+13	+0.0%	+3	+4
Management & Administrative	428	443	+15	+3.5%	+24	+23
Support	106	105	-1	-0.0%	-5	-5
Maintenance/ Technical	65	67	+1	+0.0%	+2	+2
General Support	172	172	-0	-0.0%	-3	-3
Health Care Assistants	454	480	+25	+0.1%	+99	+102
Care, other	90	91	+1	+0.0%	+3	+1
Home Help	217	215	-2	-0.0%	+39	+45
Patient & Client Care	761	786	+24	+3.2%	+142	+147

Section 38 Voluntary Agencies

Jan 2021 (Dec 2019 figure: 1,701)	WTE Dec 2020	WTE Jan 2021	WTE change since Dec 20	% change since Dec 20	WTE change since Dec 19	WTE change since Jan 20
Overall	1,802	1,793	-10	-0.5%	+91	+97
Consultants	2	1	-1	-0.4%	+0	+0
Medical/ Dental, other	1	1		+0.0%		
Medical & Dental	3	2	-1	-28.4%	+0	+0
Nurse/ Midwife Manager	75	74	-1	-0.0%	-2	-1
Nurse/ Midwife Specialist & AN/MP	10	9	-1	-0.1%	-3	-2
Staff Nurse/ Staff Midwife	271	268	-3	-0.0%	+21	+18
<i>Pre-registration Nurse/ Midwife Intern</i>		8	+8	-1.0%	+1	-4
<i>Pre-registration Nurse Intern (COVID-19)</i>	2		-2	-1.0%		
Nursing/ Midwifery Student	2	8	+7	+4.3%	-4	-4
Nursing/ Midwifery other	4	4		+0.0%		
Nursing & Midwifery	361	363	+2	+0.5%	+12	+11
Therapy Professions	33	32	-1	-0.0%	+4	+4
Social Care	282	270	-12	-0.0%	+30	+32
Social Workers	14	14	-0	-0.0%	-0	+0
Psychologists	16	16	+0	+0.0%	+4	+2
H&SC, Other	10	11	+1	+0.1%	+0	+0
Health & Social Care Professionals	355	343	-12	-3.5%	+38	+38
Management (VIII & above)	6	6		+0.0%		
Administrative/ Supervisory (V to VII)	30	29	-1	-0.0%	+1	+0
Clerical (III & IV)	36	36	-0	-0.0%	-3	-1
Management & Administrative	71	70	-1	-1.3%	-2	-1
Support	53	52	-1	-0.0%	-1	-3
Maintenance/ Technical	11	11		+0.0%	-1	-1
General Support	64	63	-1	-2.1%	-2	-4
Health Care Assistants	793	799	+7	+0.0%	+40	+47
Care, other	155	152	-3	-0.0%	+5	+6
Patient & Client Care	948	951	+4	+0.4%	+46	+52

CHO 3 Employment by S38 Agency: January 2021

Bros. of Charity, Clare

Jan 2021 (Dec 2019 figure: 348)	WTE Dec 2020	WTE Jan 2021	WTE change since Dec 20	% change since Dec 20	WTE change since Dec 19	WTE change since Jan 20
Overall	372	374	+1	+0.4%	+25	+31
Medical & Dental	0	0	-0	-15.4%	+0	+0
Nurse/ Midwife Manager				-1.0%		
Staff Nurse/ Staff Midwife	2	3	+1	+0.4%	+1	+1
Nursing/ Midwifery Student	1		-1	-1.0%		
Nursing & Midwifery	3	3	-0	-8.1%	+1	+1
Social Care	85	86	+1	+0.0%	+3	+4
Social Workers	3	3	-0	-0.0%	-0	+0
Psychologists	3	3		+0.0%		
H&SC, Other	4	4		+0.0%	-0	-0
Health & Social Care Professionals	94	95	+0	+0.4%	+3	+4
Management (VIII & above)	1	1		+0.0%		
Administrative/ Supervisory (V to VII)	5	5	+0	+0.0%	+0	+0
Clerical (III & IV)	5	5	-1	-0.1%	+0	+0
Management & Administrative	11	11	-0	-3.2%	+0	+0
Health Care Assistants	232	232	-0	-0.0%	+20	+26
Care, other	31	33	+2	+0.1%	+1	+1
Patient & Client Care	264	265	+2	+0.6%	+21	+26

Bros. of Charity, Limerick

Jan 2021 (Dec 2019 figure: 520)	WTE Dec 2020	WTE Jan 2021	WTE change since Dec 20	% change since Dec 20	WTE change since Dec 19	WTE change since Jan 20
Overall	592	580	-12	-2.0%	+60	+59
Consultants	2	1	-1	-0.4%		-0
Medical & Dental	2	1	-1	-44.1%		-0
Nurse/ Midwife Manager	28	28	-0	-0.0%	+3	+4
Nurse/ Midwife Specialist & AN/MP	4	4		+0.0%	-1	
Staff Nurse/ Staff Midwife	98	94	-4	-0.0%	+10	+7
Nursing & Midwifery	130	126	-4	-3.1%	+12	+11
Therapy Professions	15	15	-0	-0.0%	+3	+3
Social Care	105	103	-2	-0.0%	+18	+19
Social Workers	5	5	+0	+0.0%	+0	+0
Psychologists	6	6		+0.0%		
H&SC, Other	1	2	+1	+1.5%	+1	+1
Health & Social Care Professionals	131	130	-1	-0.6%	+22	+23
Management (VIII & above)	2	2		+0.0%		
Administrative/ Supervisory (V to VII)	6	6	-0	-0.0%	+0	
Clerical (III & IV)	11	11		+0.0%	-2	-1
Management & Administrative	19	19	-0	-0.1%	-2	-1
Support	6	5	-1	-0.1%	-2	-2
Maintenance/ Technical	2	2		+0.0%	-0	
General Support	8	7	-1	-10.9%	-2	-2
Health Care Assistants	204	203	-1	-0.0%	+24	+21
Care, other	98	94	-5	-0.0%	+6	+7
Patient & Client Care	303	297	-6	-1.8%	+30	+28

Daughters of Charity, Limerick

Jan 2021 (Dec 2019 figure: 543)	WTE Dec 2020	WTE Jan 2021	WTE change since Dec 20	% change since Dec 20	WTE change since Dec 19	WTE change since Jan 20
Overall	549	550	+1	+0.2%	+7	+11
Medical/ Dental, other	1	1		+0.0%		
Medical & Dental	1	1				
Nurse/ Midwife Manager	32	32		+0.0%	-3	-2
Nurse/ Midwife Specialist & AN/MP	6	5	-1	-0.2%	-2	-2
Staff Nurse/ Staff Midwife	152	153	+1	+0.0%	+9	+10
Nursing/ Midwifery Student	1	8	+8	+15.0%	-4	-4
Nursing/ Midwifery other	3	3		+0.0%		
Nursing & Midwifery	194	201	+7	+3.7%	+0	+2
Therapy Professions	16	15	-1	-0.1%		
Social Care	67	56	-11	-0.2%	+3	+2
Social Workers	5	5		+0.0%	-0	+0
Psychologists	7	7		+0.0%	+4	+2
H&SC, Other	6	6		+0.0%		
Health & Social Care Professionals	101	89	-12	-11.9%	+6	+4
Management (VIII & above)	2	2		+0.0%		
Administrative/ Supervisory (V to VII)	11	11		+0.0%	+1	
Clerical (III & IV)	14	13	-1	-0.0%	-2	-1
Management & Administrative	27	26	-1	-1.9%	-1	-1
Support	43	42	-1	-0.0%	+1	-1
Maintenance/ Technical	4	4		+0.0%		
General Support	47	47	-1	-1.1%	+1	-1
Health Care Assistants	156	163	+7	+0.0%	-2	+4
Care, other	23	23		+0.0%	+2	+2
Patient & Client Care	179	186	+7	+3.9%	-0	+6

Daughters of Charity, Roscrea

Jan 2021 (Dec 2019 figure: 290)	WTE Dec 2020	WTE Jan 2021	WTE change since Dec 20	% change since Dec 20	WTE change since Dec 19	WTE change since Jan 20
Overall	289	289	-0	-0.1%	-1	-5
Nurse/ Midwife Manager	15	14	-1	-0.1%	-2	-3
Staff Nurse/ Staff Midwife	19	19		+0.0%	+0	+0
Nursing/ Midwifery other	1	1		+0.0%		
Nursing & Midwifery	34	33	-1	-2.9%	-2	-3
Therapy Professions	2	2		+0.0%	+0	+0
Social Care	25	25		+0.0%	+6	+6
Social Workers	1	1		+0.0%		
Psychologists	1	1		+0.0%		
Health & Social Care Professionals	29	29			+7	+7
Management (VIII & above)	1	1		+0.0%		
Administrative/ Supervisory (V to VII)	8	7	-1	-0.1%		
Clerical (III & IV)	6	7	+1	+0.2%	+0	+0
Management & Administrative	15	15	-0	-0.3%	+0	+0
Support	4	4		+0.0%		
Maintenance/ Technical	5	5		+0.0%	-1	-1
General Support	9	9			-1	-1
Health Care Assistants	200	201	+1	+0.0%	-2	-4
Care, other	2	2		+0.0%	-4	-4
Patient & Client Care	202	202	+1	+0.4%	-6	-8

CHO 3 Employment by Grade Group & Staff Category: January 2021

Jan 2021 (Dec 2019 figure: 4,357)	WTE Dec 2020	WTE Jan 2021	WTE change since Dec 20	% change since Dec 20	WTE change since Dec 19	WTE change since Jan 20
Overall	4,610	4,663	+54	+1.2%	+306	+305
Consultant Medicine	2	2				
Consultant Paediatrics	1	1				
Consultant Psychiatry	25	24	-1	-3.8%	+1	+1
Consultant Surgery	0	0			-1	-1
Consultants	28	27	-1	-3.4%	+0	+0
Registrar	34	38	+4	+12.4%	+3	+4
Senior Registrar	5	7	+1	+19.3%	+2	+2
Specialist Registrar	1	1			-1	-1
Registrars	40	45	+5	+13.0%	+4	+5
Senior House Officer	22	20	-2	-9.0%	-5	-6
SHO/ Interns	22	20	-2	-9.0%	-5	-6
Dentists	26	27	+1	+2.5%	+0	+0
Other Medical	32	32	-1	-1.7%	+1	+1
Medical/ Dental, other	59	59	+0	+0.2%	+1	+1
Medical & Dental	150	152	+2	+1.6%	+2	+1
Clinical Nurse/ Midwife Manager	190	193	+3	+1.7%	+8	+9
Director Nursing/Midwifery, Assistant	47	46	-1	-2.4%	-0	-2
Director of Nursing/Midwifery	13	12	-1	-8.0%	-3	-3
Nurse/ Midwife Manager	250	251	+1	+0.4%	+4	+4
Advanced Nurse/ Midwife Practitioner	3	4	+1	+33.2%	+2	+2
Clinical Nurse/ Midwife Specialist	51	49	-2	-3.9%	-5	-3
Nurse/ Midwife Specialist & AN/MP	54	53	-1	-1.9%	-3	-1
Staff Nurse [Intellectual Disability]	238	250	+12	+5.1%	+41	+38
Staff Nurse [Psychiatric]	263	265	+2	+0.6%	+28	+22
Staff Nurses [General/ Children's]	330	320	-10	-3.0%	-21	-21
Staff Nurse/ Staff Midwife	831	835	+4	+0.5%	+48	+38
Public Health Nurse	127	128	+1	+0.7%	+0	-1
Pre-registration Nurse/ Midwife Intern		14	+14	-100.0%	-6	-9
Pre-registration Nurse Intern (COVID-19)	5	1	-4	-82.2%	+1	+1
Post-registration Nurse/ Midwife Student	4	4			+4	+4
Nursing/ Midwifery Student	9	19	+10	#####	-1	-4
Nursing Education/Clinical	3	3				
Other Nursing/ Midwifery	1	1				
Nursing/ Midwifery other	4	4				
Nursing & Midwifery	1,274	1,290	+15	+1.2%	+72	+36
Dietitians	6	6	+0	+0.7%	+3	+0
Occupational Therapists	86	88	+2	+2.0%	+0	-1
Physiotherapists	61	60	-0	-0.8%	+1	+1
Podiatrists & Chiropodists	7	6	-0	-2.3%	+1	+1
Speech & Language Therapists	64	67	+4	+5.6%	+9	+9
Therapy Professions	223	228	+5	+2.1%	+14	+10
Audiology	6	5	-1	-15.8%	+0	+0
Clinical Engineering	2	2			+2	+2
Clinical Measurement	0	0	-0	-25.0%	-0	+0
Radiographers	1	1				
Health Science/ Diagnostics	9	8	-1	-11.5%	+2	+2
Social Care	288	277	-11	-3.9%	+32	+34

Jan 2021 (Dec 2019 figure: 4,357)	WTE Dec 2020	WTE Jan 2021	WTE change since Dec 20	% change since Dec 20	WTE change since Dec 19	WTE change since Jan 20
Overall	4,610	4,663	+54	+1.2%	+306	+305
Social Workers	58	57	-1	-1.2%	-2	-1
Psychologists	126	127	+1	+1.0%	+4	+4
Pharmacy	5	6	+1	+19.0%	+1	+1
Counsellor Therapists	16	16	-0	-0.1%	+3	+4
Dental Hygienists	6	6			-0	-0
Other Health & Social Care	7	8	+1	+14.8%	-0	+0
Play Therapists/ Specialists	5	5	-0	-1.7%	-1	-1
H&SC, Other	34	35	+1	+2.9%	+2	+3
Health & Social Care Professionals	742	737	-5	-0.7%	+59	+53
Executive Management	15	15	+0	+0.5%	+3	+3
Senior Management (VIII & GM)	27	27	+0	+1.6%	+1	-1
Management (VIII & above)	42	42	+1	+1.2%	+4	+2
Middle Management (V-VII)	142	144	+2	+1.4%	+19	+17
Other Administrative	7	6	-1	-14.3%	-1	-1
Administrative/ Supervisory (V to VII)	149	150	+1	+0.6%	+18	+17
Clerical (III & IV)	308	321	+13	+4.1%	+0	+3
Management & Administrative	499	513	+14	+2.8%	+18	+22
Catering	28	28	+0	+0.0%	-2	-4
Household Services	87	85	-2	-2.1%	+3	+1
Portering	11	10	-1	-9.8%	-1	-1
Other Support	34	34	+0	+1.0%	-5	-3
Support	160	157	-3	-1.6%	-6	-8
Maintenance	75	77	+1	+1.6%	+0	+1
Technical Services	1	1				
Maintenance/ Technical	76	78	+1	+1.5%	+0	+1
General Support	236	235	-1	-0.6%	-14	-6
HCA, Nurse's Aide, etc.	1,232	1,263	+32	+2.6%	+133	+142
Health & Social Care Assistants	15	15	+0	+3.2%	+6	+6
Health Care Assistants	1,247	1,279	+32	+2.6%	+139	+149
Other Care Grades	245	243	-2	-0.9%	+9	+6
Care, other	245	243	-2	-0.9%	+9	+6
Home Help	217	215	-2	-0.9%	+39	+45
Patient & Client Care	1,709	1,737	+28	+1.6%	+216	+200

CHO 3 HSE Employment by Grade Group & Staff Category: January 2021

Jan 2021 (Dec 2019 figure: 2,655)	WTE Dec 2020	WTE Jan 2021	WTE change since Dec 20	% change since Dec 20	WTE change since Dec 19	WTE change since Jan 20
Overall	2,807	2,870	+63	+2.3%	+215	+209
Consultant Medicine	2	2				
Consultant Paediatrics	1	1				
Consultant Psychiatry	23	23	-0	-0.6%	+1	+1
Consultant Surgery	0	0			-1	-1
Consultants	26	26	-0	-0.6%	-0	+0
Registrar	34	38	+4	+12.4%	+3	+4
Senior Registrar	5	7	+1	+19.3%	+2	+2
Specialist Registrar	1	1			-1	-1
Registrars	40	45	+5	+13.0%	+4	+5
SHO/ Interns	22	20	-2	-9.0%	-5	-6
Dentists	26	27	+1	+2.5%	+0	+0
Other Medical	32	31	-1	-1.8%	+1	+1
Medical/ Dental, other	58	58	+0	+0.2%	+1	+1
Medical & Dental	147	150	+3	+2.2%	+2	+1
Clinical Nurse/ Midwife Manager	116	120	+4	+3.7%	+10	+10
Director Nursing/Midwifery, Assistant	46	45	-1	-2.5%	-0	-2
Director of Nursing/Midwifery	13	12	-1	-8.0%	-3	-3
Nurse/ Midwife Manager	175	177	+2	+1.2%	+6	+6
Advanced Nurse/ Midwife Practitioner	3	4	+1	+33.2%	+2	+2
Clinical Nurse/ Midwife Specialist	41	40	-1	-2.4%	-1	-1
Nurse/ Midwife Specialist & AN/MP	44	44	-0	-0.1%	+1	+1
Staff Nurse [Intellectual Disability]	1	1	+0	+14.9%	+0	+0
Staff Nurse [Psychiatric]	263	265	+2	+0.6%	+28	+22
Staff Nurses [General/ Children's]	296	301	+5	+1.7%	-1	-2
Staff Nurse/ Staff Midwife	560	567	+7	+1.2%	+27	+20
Public Health Nurse	127	128	+1	+0.7%	+0	-1
Pre-registration Nurse/ Midwife Intern		6	+6	-100.0%	-3	-6
Pre-registration Nurse Intern (COVID-19)	3	1	-3	-74.4%	+1	+1
Post-registration Nurse/ Midwife Student	4	4			+4	+4
Nursing/ Midwifery Student	7	11	+4	+51.6%	+2	-1
Nursing & Midwifery	913	927	+14	+1.5%	+65	+25
Dietitians	6	6	+0	+0.7%	+3	+0
Occupational Therapists	76	79	+3	+3.6%	+0	-1
Physiotherapists	52	51	-0	-0.9%	-0	-1
Podiatrists & Chiropodists	7	6	-0	-2.3%	+1	+1
Speech & Language Therapists	50	54	+4	+7.1%	+7	+7
Therapy Professions	190	196	+6	+3.0%	+11	+7
Audiology	6	5	-1	-15.8%	+0	+0
Clinical Engineering	2	2			+2	+2
Clinical Measurement	0	0	-0	-25.0%	-0	+0
Radiographers	1	1				
Health Science/ Diagnostics	9	8	-1	-11.5%	+2	+2
Social Care	6	7	+1	+16.0%	+2	+2
Social Workers	44	43	-1	-1.4%	-2	-2
Psychologists	110	111	+1	+1.2%	-0	+2
Pharmacy	5	6	+1	+19.0%	+1	+1
Counsellor Therapists	16	16	-0	-0.1%	+3	+4
Dental Hygienists	6	6			-0	-0
Other Health & Social Care	1	2	+0	+4.9%	-1	-1

Jan 2021 (Dec 2019 figure: 2,655)	WTE Dec 2020	WTE Jan 2021	WTE change since Dec 20	% change since Dec 20	WTE change since Dec 19	WTE change since Jan 20
Overall	2,807	2,870	+63	+2.3%	+215	+209
Play Therapists/ Specialists	0	0	+0	+2.1%	-0	+0
H&SC, Other	24	24	+0	+0.3%	+2	+2
Health & Social Care Professionals	387	394	+7	+1.9%	+29	+15
Executive Management	13	13	+0	+0.5%	+3	+3
Senior Management (VIII & GM)	23	23	+0	+1.9%	+1	-1
Management (VIII & above)	36	36	+0	+1.4%	+4	+2
Administrative/ Supervisory (V to VII)	120	121	+2	+1.5%	+17	+17
Clerical (III & IV)	272	285	+13	+4.7%	+3	+4
Management & Administrative	428	443	+15	+3.5%	+18	+23
Catering	24	24	-0	-0.0%	-2	-4
Household Services	45	44	-1	-1.9%	+1	+2
Portering	8	7	-1	-8.7%		
Other Support	30	30	+0	+1.2%	-4	-3
Support	106	105	-1	-1.1%	-5	-5
Maintenance/ Technical	65	67	+1	+1.8%	+2	+2
General Support	172	172	-0	-0.0%	-7	-3
HCA, Nurse's Aide, etc.	440	465	+25	+5.7%	+94	+97
Health & Social Care Assistants	14	14	+0	+3.4%	+5	+5
Health Care Assistants	454	480	+25	+5.6%	+99	+102
Care, other	90	91	+1	+0.9%	+3	+1
Home Help	217	215	-2	-0.9%	+39	+45
Patient & Client Care	761	786	+24	+3.2%	+134	+147

Employment by WTE, Headcount, Gender, Full-Time /Part-Time etc.: Jan 2021

CHO 3	WTE	Headcount	WTE: no.	% Male	% female	Male WTE: no.	Female WTE: no.	% Total Perm	% Male Perm	% Female Perm	% Total Full Time	% Total Part Time	% Male FT	% Female FT
Overall	4,663	5,601	1.20	14.0%	86.0%	1.10	1.22	84.0%	79.4%	84.8%	55.0%	45.0%	72.5%	52.1%
Consultant Medicine	2	2	1.00	50.0%	50.0%	1.00	1.00	100.0%	100.0%	100.0%	100.0%	0.0%	100.0%	100.0%
Consultant Paediatrics	1	1	1.00		100.0%		1.00	100.0%	100.0%	100.0%	100.0%	0.0%		100.0%
Consultant Psychiatry	24	28	1.16	50.0%	50.0%	1.12	1.21	78.6%	78.6%	71.4%	71.4%	28.6%	71.4%	71.4%
Consultant Surgery	0	1	3.33		100.0%		3.33	100.0%	100.0%	100.0%	0.0%	100.0%		0.0%
Consultants	27	32	1.17	46.9%	53.1%	1.11	1.23	81.3%	86.7%	76.5%	71.9%	28.1%	73.3%	70.6%
Registrar	38	39	1.03	28.2%	71.8%	1.00	1.04	5.1%	5.1%	3.6%	94.9%	5.1%	100.0%	92.9%
Senior Registrar	7	7	1.08	42.9%	57.1%	1.00	1.14	0.0%	0.0%	0.0%	85.7%	14.3%	100.0%	75.0%
Specialist Registrar	1	1	1.00		100.0%		1.00	0.0%	0.0%	0.0%	100.0%	0.0%		100.0%
Registrars	45	47	1.04	29.8%	70.2%	1.00	1.05	4.3%	7.1%	3.0%	93.6%	6.4%	100.0%	90.9%
Senior House Officer	20	21	1.03	19.0%	81.0%	1.00	1.04	4.8%	4.8%	0.0%	95.2%	4.8%	100.0%	94.1%
SHO/ Interns	20	21	1.03	19.0%	81.0%	1.00	1.04	4.8%	25.0%	0.0%	95.2%	4.8%	100.0%	94.1%
Dentists	27	32	1.18	21.9%	78.1%	1.15	1.19	90.6%	90.6%	96.0%	50.0%	50.0%	71.4%	44.0%
Other Medical	32	39	1.22	38.5%	61.5%	1.14	1.28	61.5%	61.5%	66.7%	79.5%	20.5%	86.7%	75.0%
Medical/ Dental, other	59	71	1.20	31.0%	69.0%	1.14	1.23	74.6%	59.1%	81.6%	66.2%	33.8%	81.8%	59.2%
Medical & Dental	152	171	1.12	32.2%	67.8%	1.08	1.15	48.0%	50.9%	46.6%	78.4%	21.6%	85.5%	75.0%
Clinical Nurse/ Midwife Manager	193	203	1.05	13.3%	86.7%	1.01	1.06	93.6%	93.6%	93.2%	85.7%	14.3%	100.0%	83.5%
Director Nursing/Midwifery, Assistant	46	49	1.08	12.2%	87.8%	1.01	1.09	100.0%	100.0%	100.0%	89.8%	10.2%	100.0%	88.4%
Director of Nursing/Midwifery	12	12	1.00	8.3%	91.7%	1.00	1.00	91.7%	91.7%	90.9%	100.0%	0.0%	100.0%	100.0%
Nurse/ Midwife Manager	251	264	1.05	12.9%	87.1%	1.01	1.06	94.7%	97.1%	94.3%	87.1%	12.9%	100.0%	85.2%
Advanced Nurse/ Midwife Practitioner	4	4	1.06	25.0%	75.0%	1.00	1.08	100.0%	100.0%	100.0%	75.0%	25.0%	100.0%	66.7%
Clinical Nurse/ Midwife Specialist	49	54	1.10	7.4%	92.6%	1.02	1.10	100.0%	100.0%	100.0%	72.2%	27.8%	75.0%	72.0%
Nurse/ Midwife Specialist & AN/MP	53	58	1.09	8.6%	91.4%	1.01	1.10	100.0%	100.0%	100.0%	72.4%	27.6%	80.0%	71.7%
Staff Nurse [Intellectual Disability]	250	273	1.09	1.8%	98.2%	1.01	1.09	95.6%	95.6%	95.5%	54.9%	45.1%	80.0%	54.5%
Staff Nurse [Psychiatric]	265	287	1.08	24.4%	75.6%	1.06	1.09	95.8%	95.8%	96.3%	84.3%	15.7%	85.7%	83.9%
Staff Nurses [General/ Children's]	320	392	1.23	5.1%	94.9%	1.08	1.23	92.6%	92.6%	92.5%	54.3%	45.7%	75.0%	53.2%
Staff Nurse/ Staff Midwife	835	952	1.14	10.0%	90.0%	1.06	1.15	94.4%	94.7%	94.4%	63.6%	36.4%	83.2%	61.4%
Public Health Nurse	128	155	1.21	0.6%	99.4%	1.25	1.21	89.7%	100.0%	89.6%	63.9%	36.1%	0.0%	64.3%
Pre-registration Nurse/ Midwife Intern	14	39	2.71	10.3%	89.7%	4.00	2.61	41.0%	41.0%	45.7%	59.0%	41.0%	100.0%	54.3%

Pre-registration Nurse Intern (COVID-19)	1	1	1.14	100.0%		1.14		100.0%	100.0%		100.0%	0.0%	100.0%	
Post-registration Nurse/ Midwife Student	4	4	1.00		100.0%		1.00	0.0%	0.0%	0.0%	100.0%	0.0%		100.0%
Nursing/ Midwifery Student	19	44	2.28	11.4%	88.6%	2.66	2.24	38.6%	20.0%	41.0%	63.6%	36.4%	100.0%	59.0%
Nursing Education/Clinical	3	3	1.10		100.0%		1.10	100.0%	100.0%	100.0%	66.7%	33.3%		66.7%
Other Nursing/ Midwifery	1	1	1.00	100.0%		1.00		100.0%	100.0%		100.0%	0.0%	100.0%	
Nursing/ Midwifery other	4	4	1.08	25.0%	75.0%	1.00	1.10	100.0%	100.0%	100.0%	75.0%	25.0%	100.0%	66.7%
Nursing & Midwifery	1,290	1,477	1.15	9.5%	90.5%	1.07	1.15	92.6%	92.9%	92.5%	68.2%	31.8%	87.2%	66.2%
Dietitians	6	7	1.22		100.0%		1.22	100.0%	100.0%	100.0%	71.4%	28.6%		71.4%
Occupational Therapists	88	99	1.12	8.1%	91.9%	1.07	1.13	91.9%	91.9%	91.2%	78.8%	21.2%	100.0%	76.9%
Physiotherapists	60	69	1.14	14.5%	85.5%	1.03	1.16	88.4%	88.4%	86.4%	72.5%	27.5%	90.0%	69.5%
Podiatrists & Chiropodists	6	7	1.10		100.0%		1.10	85.7%	85.7%	85.7%	85.7%	14.3%		85.7%
Speech & Language Therapists	67	76	1.13	2.6%	97.4%	1.26	1.12	90.8%	90.8%	90.5%	72.4%	27.6%	50.0%	73.0%
Therapy Professions	228	258	1.13	7.8%	92.2%	1.06	1.14	90.7%	100.0%	89.9%	75.2%	24.8%	90.0%	73.9%
Audiology	5	5	1.00		100.0%		1.00	80.0%	80.0%	80.0%	100.0%	0.0%		100.0%
Clinical Engineering	2	2	1.03	100.0%		1.03		50.0%	50.0%		50.0%	50.0%	50.0%	
Clinical Measurement	0	1	8.33		100.0%		8.33	0.0%	0.0%	0.0%	0.0%	100.0%		0.0%
Radiographers	1	1	2.00	100.0%		2.00		100.0%	100.0%		0.0%	100.0%	0.0%	
Health Science/ Diagnostics	8	9	1.19	33.3%	66.7%	1.22	1.17	66.7%	66.7%	66.7%	66.7%	33.3%	33.3%	83.3%
Social Care	277	316	1.14	10.4%	89.6%	1.13	1.14	78.5%	75.8%	78.8%	36.7%	63.3%	39.4%	36.4%
Social Workers	57	64	1.12	14.1%	85.9%	1.08	1.13	96.9%	100.0%	96.4%	79.7%	20.3%	77.8%	80.0%
Psychologists	127	134	1.05	20.1%	79.9%	1.02	1.06	47.0%	44.4%	47.7%	92.5%	7.5%	100.0%	90.7%
Pharmacy	6	6	1.05	33.3%	66.7%	1.00	1.08	100.0%	100.0%	100.0%	83.3%	16.7%	100.0%	75.0%
Counsellor Therapists	16	18	1.15	5.6%	94.4%	1.08	1.15	100.0%	100.0%	100.0%	66.7%	33.3%	100.0%	64.7%
Dental Hygienists	6	8	1.31		100.0%		1.31	100.0%	100.0%	100.0%	25.0%	75.0%		25.0%
Other Health & Social Care	8	9	1.08		100.0%		1.08	100.0%	100.0%	100.0%	77.8%	22.2%		77.8%
Play Therapists/ Specialists	5	7	1.55		100.0%		1.55	100.0%	100.0%	100.0%	28.6%	71.4%		28.6%
H&SC, Other	35	42	1.21	2.4%	97.6%	1.08	1.22	100.0%	100.0%	100.0%	54.8%	45.2%	100.0%	53.7%
Health & Social Care	737	829	1.12	11.5%	88.5%	1.08	1.13	79.7%	74.7%	80.4%	62.6%	37.4%	72.6%	61.3%
Executive Management	15	15	1.00	26.7%	73.3%	1.00	1.00	100.0%	100.0%	100.0%	100.0%	0.0%	100.0%	100.0%
Senior Management (VIII & GM)	27	28	1.03	21.4%	78.6%	1.00	1.04	92.9%	92.9%	90.9%	92.9%	7.1%	100.0%	90.9%
Management (VIII & above)	42	43	1.02	23.3%	76.7%	1.00	1.02	95.3%	100.0%	93.9%	95.3%	4.7%	100.0%	93.9%
Administrative/ Supervisory (V to VII)	150	159	1.06	11.9%	88.1%	1.04	1.06	95.0%	84.2%	96.4%	85.5%	14.5%	100.0%	83.6%
Clerical (III & IV)	321	363	1.13	6.6%	93.4%	1.06	1.14	79.1%	58.3%	80.5%	69.7%	30.3%	87.5%	68.4%
Management & Administrative	513	565	1.10	9.4%	90.6%	1.04	1.11	84.8%	75.5%	85.7%	76.1%	23.9%	94.3%	74.2%
Catering	28	31	1.10	35.5%	64.5%	1.00	1.15	93.5%	93.5%	100.0%	77.4%	22.6%	100.0%	65.0%

Household Services	85	97	1.14	16.5%	83.5%	1.22	1.13	89.7%	89.7%	91.4%	68.0%	32.0%	75.0%	66.7%
Portering	10	13	1.30	100.0%		1.30		76.9%	76.9%		53.8%	46.2%	53.8%	
Other Support	34	55	1.62	32.7%	67.3%	1.14	2.04	70.9%	70.9%	59.5%	65.5%	34.5%	83.3%	56.8%
Support	157	196	1.25	29.6%	70.4%	1.16	1.29	84.2%	84.5%	84.1%	67.9%	32.1%	77.6%	63.8%
Maintenance/ Technical	78	82	1.06	100.0%		1.06		87.8%	87.8%	#DIV/0	93.9%	6.1%	93.9%	
General Support	235	278	1.18	50.4%	49.6%	1.10	1.29	85.3%	86.4%	84.1%	75.5%	24.5%	87.1%	63.8%
HCA, Nurse's Aide, etc.	1,263	1,569	1.24	16.0%	84.0%	1.16	1.26	77.9%	77.9%	78.4%	35.4%	64.6%	47.0%	33.2%
Health & Social Care Assistants	15	17	1.10	17.6%	82.4%	1.00	1.12	41.2%	41.2%	50.0%	82.4%	17.6%	100.0%	78.6%
Health Care Assistants	1,279	1,586	1.24	16.0%	84.0%	1.16	1.26	77.5%	74.4%	78.1%	35.9%	64.1%	47.6%	33.6%
Care, other	243	274	1.13	15.0%	85.0%	1.05	1.15	87.6%	92.7%	86.7%	62.4%	37.6%	85.4%	58.4%
Home Help	215	421	1.96	0.7%	99.3%	1.46	1.96	97.9%	100.0%	97.8%	9.3%	90.7%	0.0%	9.3%
Patient & Client Care	1,737	2,281	1.31	13.1%	86.9%	1.14	1.34	82.5%	77.2%	83.3%	34.2%	65.8%	52.3%	31.4%

Employment by WTE, Headcount, Gender, Full-Time /Part-Time etc.: Jan 2021

CHO 3	WTE	Headcount	WTE: no.	% Male	% female	Male WTE: no.	Female WTE: no.	% Total Perm	% Male Perm	% Female Perm	% Total Full Time	% Total Part Time	% Male FT	% Female FT
Overall	4,663	5,601	1.20	14.0%	86.0%	1.10	1.22	84.0%	79.4%	84.8%	55.0%	45.0%	72.5%	52.1%
Community Health & Wellbeing	14	18	1.26		100.0%		1.26	88.9%	88.9%	88.9%	55.6%	44.4%		
Mental Health	821	902	1.10	22.6%	77.4%	1.06	1.11	82.0%	82.0%	82.2%	84.3%	15.7%	90.2%	90.2%
Primary Care	848	996	1.17	12.8%	87.2%	1.09	1.19	74.1%	74.1%	75.5%	71.7%	28.3%	89.8%	89.8%
HSE	1,187	1,540	1.30	12.6%	87.4%	1.06	1.34	91.6%	91.6%	92.5%	51.2%	48.8%	88.7%	88.7%
Section 38 Voluntary Agencies	1,793	2,145	1.20	12.0%	88.0%	1.18	1.20	84.1%	84.1%	84.5%	37.6%	62.4%	37.7%	37.7%
Social Care	2,980	3,685	1.24	12.2%	87.8%	1.13	1.25	87.2%	87.2%	87.8%	43.3%	56.7%	59.6%	59.6%

CHO 3 Skills Mix by Staff Grouping: January 2021

Jan 2021 (Dec 2018 figure: 4,310)	WTE Dec 2015	WTE Dec 2016	WTE Dec 2017	WTE Dec 2018	WTE Dec 2019	WTE Dec 2020	WTE Jan 2021
Overall	4,002	4,093	4,169	4,310	4,357	4,610	4,663
Consultant Medicine	1.4%	2.1%	1.3%	1.3%	1.3%	1.3%	1.3%
Consultant Paediatrics	0.7%	0.7%	0.7%	0.7%	0.7%	0.7%	0.7%
Consultant Psychiatry	17.1%	16.0%	15.6%	14.9%	15.3%	16.7%	15.8%
Consultant Surgery	0.7%	0.7%	0.7%	0.7%	0.7%	0.2%	0.2%
Consultants	19.9%	19.5%	18.3%	17.6%	18.0%	18.9%	18.0%
Registrar	22.6%	21.6%	20.5%	18.3%	23.1%	22.5%	24.9%
Senior Registrar	3.5%	3.5%	3.6%	3.3%	3.3%	3.6%	4.3%
Specialist Registrar	1.4%	0.7%		0.7%	1.0%	0.7%	0.7%
Registrars	27.5%	25.7%	24.1%	22.3%	27.4%	26.8%	29.8%
Interns	0.7%						
Senior House Officer	16.3%	17.7%	18.7%	21.3%	16.4%	15.0%	13.4%
SHO/ Interns	17.0%	17.7%	18.7%	21.3%	16.4%	15.0%	13.4%
Dentists	16.1%	16.3%	18.5%	17.2%	17.6%	17.6%	17.8%
Other Medical	19.5%	20.8%	20.4%	21.6%	20.6%	21.7%	21.0%
Medical/ Dental, other	35.5%	37.1%	38.9%	38.8%	38.2%	39.3%	38.8%
Medical & Dental	3.6%	3.5%	3.6%	3.5%	3.4%	100.0%	3.3%
Clinical Nurse/ Midwife Manager	14.8%	15.9%	15.6%	15.2%	15.0%	14.9%	15.0%
Director Nursing/Midwifery, Assistant	2.9%	3.3%	3.5%	3.5%	3.7%	3.7%	3.5%
Director of Nursing/Midwifery	1.0%	1.1%	1.1%	1.3%	1.2%	1.0%	0.9%
Nurse/ Midwife Manager	18.7%	20.3%	20.2%	19.9%	19.9%	19.6%	19.5%
Advanced Nurse/ Midwife Practitioner	0.1%		0.1%		0.1%	0.2%	0.3%
Clinical Nurse/ Midwife Specialist	3.6%	3.4%	3.6%	3.9%	4.3%	4.0%	3.8%
Nurse/ Midwife Specialist & AN/MP	3.7%	3.4%	3.7%	3.9%	4.5%	4.2%	4.1%
Staff Midwives			0.1%				
Staff Nurse [Intellectual Disability]	20.8%	19.2%	18.8%	18.2%	16.8%	18.7%	19.4%
Staff Nurse [Psychiatric]	21.3%	20.9%	20.3%	19.3%	19.1%	20.7%	20.5%
Staff Nurses [General/ Children's]	24.5%	25.7%	25.8%	26.5%	27.5%	25.9%	24.8%
Staff Nurse/ Staff Midwife	66.7%	65.8%	64.9%	64.1%	63.4%	65.2%	64.7%
Public Health Nurse	9.5%	9.2%	9.8%	10.2%	10.3%	10.0%	9.9%
Pre-registration Nurse/ Midwife Intern		0.1%	0.0%	1.3%	1.6%		1.1%
Pre-registration Nurse Intern (COVID-19)						0.4%	0.1%
Post-registration Nurse/ Midwife Student	0.6%	0.5%	0.6%	0.3%		0.3%	0.3%
Nursing/ Midwifery Student	0.6%	0.6%	0.6%	1.6%	1.6%	0.7%	1.5%
Nursing/ Midwifery other	0.9%	0.7%	0.7%	0.3%	0.3%	0.3%	0.3%
Nursing & Midwifery	30.6%	30.3%	29.3%	28.3%	28.0%	100.0%	27.7%
Dietitians	0.3%	0.1%	0.5%	0.3%	0.4%	0.8%	0.8%
Occupational Therapists	12.4%	12.3%	12.1%	12.6%	12.9%	11.6%	12.0%
Physiotherapists	8.9%	9.0%	8.8%	8.6%	8.7%	8.2%	8.2%
Podiatrists & Chiropodists	0.4%	0.6%	0.8%	0.8%	0.8%	0.9%	0.9%
Speech & Language Therapists	8.3%	8.4%	8.8%	8.1%	8.5%	8.6%	9.1%
Therapy Professions	30.4%	30.4%	31.0%	30.4%	31.3%	30.1%	30.9%
Audiology	0.8%	0.8%	0.6%	0.6%	0.7%	0.8%	0.7%
Clinical Engineering						0.3%	0.3%
Clinical Measurement				0.0%	0.0%	0.0%	0.0%
Radiographers	0.1%	0.1%	0.1%	0.1%	0.1%	0.1%	0.1%
Health Science/ Diagnostics	0.9%	0.8%	0.6%	0.7%	0.8%	1.2%	1.0%
Social Care	34.1%	35.6%	35.8%	36.5%	35.8%	38.8%	37.5%
Social Workers	9.5%	9.4%	8.7%	9.3%	8.7%	7.8%	7.8%
Psychologists	18.7%	18.2%	18.7%	17.5%	18.1%	17.0%	17.3%
Pharmacy	0.8%	0.6%	0.7%	0.7%	0.7%	0.6%	0.8%
Counsellor Therapists	2.4%	1.8%	1.6%	1.9%	1.8%	2.1%	2.1%

Jan 2021 (Dec 2018 figure: 4,310)	WTE Dec 2015	WTE Dec 2016	WTE Dec 2017	WTE Dec 2018	WTE Dec 2019	WTE Dec 2020	WTE Jan 2021
Overall	4,002	4,093	4,169	4,310	4,357	4,610	4,663
Dental Hygienists	1.0%	1.1%	1.0%	1.0%	0.9%	0.8%	0.8%
Other Health & Social Care	1.6%	1.3%	1.2%	1.2%	1.2%	1.0%	1.1%
Play Therapists/ Specialists	0.6%	0.8%	0.7%	0.8%	0.8%	0.6%	0.6%
H&SC, Other	5.7%	5.0%	4.5%	5.0%	4.7%	4.5%	4.7%
Health & Social Care Professionals	14.8%	15.0%	15.7%	15.7%	15.6%	100.0%	15.8%
Executive Management	0.9%	2.5%	2.2%	2.2%	2.4%	3.0%	2.9%
Senior Management (VIII & GM)	6.2%	5.2%	5.0%	4.9%	5.3%	5.4%	5.3%
Management (VIII & above)	7.1%	7.7%	7.2%	7.1%	7.7%	8.4%	8.2%
Middle Management (V-VII)	22.2%	24.4%	23.7%	26.4%	25.5%	28.5%	28.1%
Other Administrative	0.7%	0.9%	1.3%	1.2%	1.4%	1.4%	1.2%
Administrative/ Supervisory (V to VII)	22.9%	25.3%	25.0%	27.6%	26.9%	29.9%	29.2%
Clerical (III & IV)	70.0%	67.0%	67.9%	65.3%	65.3%	61.8%	62.5%
Management & Administrative	10.9%	10.5%	11.1%	11.5%	11.4%	100.0%	11.0%
Catering	13.1%	12.3%	11.6%	11.3%	12.8%	12.0%	12.1%
Household Services	33.2%	35.9%	35.9%	35.2%	34.3%	36.7%	36.2%
Portering	5.4%	4.9%	4.6%	4.7%	4.7%	4.7%	4.3%
Other Support	16.8%	15.9%	15.9%	16.7%	16.0%	14.2%	14.5%
Support	68.4%	69.0%	68.1%	67.8%	67.8%	67.6%	66.9%
Maintenance/ Technical	31.6%	31.0%	31.9%	32.2%	32.2%	32.4%	33.1%
General Support	6.5%	6.3%	5.9%	5.8%	5.7%	100.0%	5.0%
HCA, Nurse's Aide, etc.	69.8%	72.2%	73.0%	74.0%	73.0%	72.1%	72.7%
Health & Social Care Assistants	0.4%	0.3%	0.2%	0.9%	0.6%	0.9%	0.9%
Health Care Assistants	70.1%	72.5%	73.2%	75.0%	73.6%	73.0%	73.6%
Other Care Grades	14.6%	14.3%	14.8%	14.4%	15.1%	14.3%	14.0%
Care, other	14.6%	14.3%	14.8%	14.4%	15.1%	14.3%	14.0%
Home Help	15.2%	13.2%	12.0%	10.7%	11.4%	12.7%	12.4%
Patient & Client Care	33.7%	34.3%	34.4%	35.3%	34.9%	100.0%	37.2%
Total	100 %	100 %	100 %	100 %	100%	100 %	100 %

CHO 3 Skills Mix by Care Group: January 2021

Jan 2021 (Dec 2018 figure: 783)	WTE Dec 2015	WTE Dec 2016	WTE Dec 2017	WTE Dec 2018	WTE Dec 2019	WTE Dec 2020	WTE Jan 2021
Mental Health	777	781	784	783	795	809	821
Consultants	42.5%	38.1%	36.0%	35.4%	38.7%	39.7%	38.1%
Registrar	4.2%	10.9%	10.1%	15.3%	19.0%	14.4%	19.0%
Senior Registrar	9.1%	8.7%	8.8%	8.0%	8.3%	9.0%	10.3%
Specialist Registrar	1.8%			1.6%	2.5%	1.6%	1.6%
Registrars	15.1%	19.6%	18.9%	24.8%	29.8%	25.0%	31.0%
Interns	1.8%						
Senior House Officer	40.6%	42.3%	45.1%	39.7%	31.5%	35.3%	30.9%
SHO/ Interns	42.4%	42.3%	45.1%	39.7%	31.5%	35.3%	30.9%
Medical & Dental	7.0%	7.4%	7.9%	8.0%	7.9%	7.7%	7.7%
Clinical Nurse/ Midwife Manager	17.9%	19.3%	19.9%	18.3%	18.6%	18.2%	18.1%
Director Nursing/Midwifery, Assistant	3.4%	3.6%	3.7%	4.1%	3.9%	3.5%	3.3%
Director of Nursing/Midwifery	0.5%	0.5%	0.5%	0.5%	0.5%	0.3%	0.2%
Nurse/ Midwife Manager	21.8%	23.4%	24.2%	22.9%	23.0%	22.0%	21.7%
Advanced Nurse/ Midwife Practitioner	0.3%		0.3%		0.5%	0.5%	0.5%
Clinical Nurse/ Midwife Specialist	7.3%	7.2%	7.8%	8.9%	9.8%	8.8%	8.6%
Nurse/ Midwife Specialist & AN/MP	7.5%	7.2%	8.1%	8.9%	10.3%	9.2%	9.1%
Staff Nurse [Intellectual Disability]	0.2%	0.2%	0.1%	0.3%	0.2%	0.2%	0.2%
Staff Nurse [Psychiatric]	68.4%	67.0%	65.3%	63.3%	61.7%	65.3%	64.8%
Staff Nurses [General/ Children's]	2.1%	1.8%	2.2%	2.3%	2.5%	2.4%	2.4%
Staff Nurse/ Staff Midwife	70.7%	69.1%	67.6%	65.9%	64.4%	67.9%	67.4%
Pre-registration Nurse/ Midwife Intern		0.3%	0.1%	2.4%	2.3%		1.6%
Pre-registration Nurse Intern (COVID-19)						0.9%	0.2%
Nursing/ Midwifery Student		0.3%	0.1%	2.4%	2.3%	0.9%	1.8%
Nursing & Midwifery	49.0%	49.3%	48.2%	47.3%	46.6%	49.4%	49.4%
Occupational Therapists	12.1%	12.7%	14.3%	15.2%	14.7%	13.6%	13.8%
Speech & Language Therapists	3.2%	1.8%	2.9%	0.5%	1.8%	2.0%	3.1%
Therapy Professions	15.2%	14.6%	17.2%	15.6%	16.5%	15.6%	16.9%
Social Care	2.0%	2.0%	1.8%	1.8%	1.8%	1.9%	1.9%
Social Workers	18.0%	17.8%	16.2%	17.2%	15.9%	15.4%	14.6%
Psychologists	54.6%	56.7%	57.2%	57.0%	58.0%	57.6%	57.4%
Pharmacy	1.9%	1.9%	1.8%	1.8%	1.8%	1.8%	1.7%
Counsellor Therapists	8.3%	7.0%	5.8%	6.6%	6.0%	7.7%	7.5%
H&SC, Other	8.3%	7.0%	5.8%	6.6%	6.0%	7.7%	7.5%
Health & Social Care Professionals	19.4%	18.9%	20.1%	19.5%	19.2%	19.6%	19.6%
Management (VIII & above)	3.1%	4.5%	2.8%	2.7%	2.6%	2.8%	2.8%
Administrative/ Supervisory (V to VII)	21.1%	19.6%	21.1%	22.7%	22.5%	26.4%	25.4%
Clerical (III & IV)	75.8%	75.9%	76.1%	74.6%	74.9%	70.7%	71.7%
Management & Administrative	8.4%	8.5%	9.2%	9.3%	9.2%	8.6%	8.6%
Support	75.2%	74.4%	72.6%	76.2%	74.7%	77.0%	76.8%
Maintenance	24.8%	25.6%	27.4%	23.8%	25.3%	23.0%	23.2%
Maintenance/ Technical	24.8%	25.6%	27.4%	23.8%	25.3%	23.0%	23.2%
General Support	6.2%	6.0%	5.6%	5.9%	5.8%	4.7%	4.7%
HCA, Nurse's Aide, etc.	98.7%	98.7%	98.6%	98.7%	97.8%	98.7%	98.8%
Health Care Assistants	98.7%	98.7%	98.6%	98.7%	97.8%	98.7%	98.8%
Care, other	1.3%	1.3%	1.4%	1.3%	2.2%	1.3%	1.2%
Patient & Client Care	9.9%	10.0%	9.1%	9.9%	9.8%	10.0%	10.0%
Total	100 %	100 %	100 %	100 %	100 %	100 %	100 %

Jan 2021 (Dec 2018 figure: 780)	WTE Dec 2015	WTE Dec 2016	WTE Dec 2017	WTE Dec 2018	WTE Dec 2019	WTE Dec 2020	WTE Jan 2021
Primary Care	670	671	725	780	764	812	848
Consultant Paediatrics	1.3%	1.4%	1.3%	1.3%	1.2%	1.3%	1.2%
Consultant Surgery	1.3%	1.4%	1.3%	1.3%	1.2%	0.4%	0.4%
Consultants	2.7%	2.7%	2.6%	2.6%	2.4%	1.6%	1.6%
Registrars	37.5%	33.8%	31.4%	22.8%	28.2%	31.5%	32.3%
SHO/ Interns				9.0%	7.2%	1.3%	1.2%
Dentists	30.6%	32.0%	35.7%	33.1%	32.0%	33.3%	33.7%
Other Medical	29.2%	31.5%	30.3%	32.6%	30.2%	32.3%	31.1%
Medical/ Dental, other	59.9%	63.5%	66.0%	65.7%	62.2%	65.6%	64.9%
Medical & Dental	11.2%	10.9%	10.7%	10.0%	10.2%	9.5%	9.5%
Clinical Nurse/ Midwife Manager	1.5%	1.5%	1.0%	0.7%	0.4%	2.0%	2.3%
Director Nursing/Midwifery, Assistant	6.1%	7.3%	6.7%	6.5%	7.9%	7.9%	7.8%
Director of Nursing/Midwifery	1.1%	1.0%	1.0%	1.7%	1.0%	0.9%	0.5%
Nurse/ Midwife Manager	8.8%	9.8%	8.7%	8.8%	9.3%	10.8%	10.6%
Nurse/ Midwife Specialist & AN/MP			0.5%	0.4%	1.0%	1.4%	1.4%
Staff Nurse/ Staff Midwife	24.9%	30.0%	28.7%	29.7%	27.5%	26.4%	26.4%
Public Health Nurse	62.5%	57.3%	58.7%	59.2%	62.2%	59.5%	59.8%
Nursing/ Midwifery Student	3.8%	3.0%	3.4%	1.9%		1.9%	1.9%
Nursing & Midwifery	27.8%	29.6%	28.2%	26.8%	27.4%	25.0%	25.0%
Dietitians	0.9%	0.5%	1.8%	1.6%	2.2%	2.9%	2.9%
Occupational Therapists	24.1%	24.3%	24.5%	25.5%	22.2%	22.3%	22.7%
Physiotherapists	22.8%	24.6%	24.1%	21.8%	22.9%	19.8%	20.3%
Podiatrists & Chiropodists			0.9%	0.8%	1.5%	2.4%	1.6%
Speech & Language Therapists	16.3%	17.6%	17.3%	17.3%	17.6%	18.9%	19.5%
Therapy Professions	64.1%	67.0%	68.5%	66.9%	66.4%	66.2%	67.0%
Audiology	4.6%	4.6%	3.2%	3.1%	3.7%	4.7%	3.9%
Health Science/ Diagnostics	4.6%	4.6%	3.2%	3.1%	3.7%	4.7%	3.9%
Social Care	0.9%	1.0%	0.9%	0.8%	0.8%	0.8%	0.8%
Social Workers	11.6%	9.0%	8.3%	8.4%	8.1%	7.9%	7.8%
Psychologists	9.2%	9.5%	10.2%	11.2%	12.0%	11.5%	11.2%
Pharmacy	0.9%		0.9%	0.8%	0.8%	0.8%	1.5%
Counsellor Therapists	1.6%	0.9%	0.9%	2.3%	2.3%	2.8%	2.7%
Dental Hygienists	5.7%	6.5%	5.9%	5.2%	4.7%	4.8%	4.8%
Other Health & Social Care	0.9%	1.0%	0.9%	0.8%	0.8%		
Play Therapists/ Specialists	0.4%	0.5%	0.4%	0.4%	0.4%	0.4%	0.4%
H&SC, Other	8.6%	8.9%	8.1%	8.8%	8.2%	8.0%	7.9%
Health & Social Care Professionals	16.1%	15.0%	15.7%	16.2%	16.5%	15.1%	15.1%
Executive Management	1.0%	3.4%	3.1%	3.2%	3.4%	3.8%	3.7%
Senior Management (VIII & GM)	7.9%	6.7%	6.8%	5.5%	6.6%	6.4%	6.3%
Management (VIII & above)	8.9%	10.1%	9.8%	8.7%	10.0%	10.1%	9.9%
Administrative/ Supervisory (V to VII)	21.5%	24.0%	23.7%	27.0%	23.2%	26.7%	26.4%
Clerical (III & IV)	69.6%	65.9%	66.5%	64.2%	66.8%	63.2%	63.7%
Management & Administrative	30.5%	30.1%	31.4%	31.6%	32.3%	29.1%	29.1%
Support	34.5%	34.8%	34.2%	31.4%	30.7%	33.0%	32.7%
Maintenance/ Technical	65.5%	65.2%	65.8%	68.6%	69.3%	67.0%	67.3%
General Support	6.8%	6.6%	6.1%	5.8%	5.9%	4.8%	4.8%
HCA, Nurse's Aide, etc.	13.9%	14.5%	15.1%	22.3%	21.1%	49.5%	57.3%
Health & Social Care Assistants				13.3%	8.5%	7.7%	6.7%
Health Care Assistants	13.9%	14.5%	15.1%	35.7%	29.5%	57.2%	64.0%
Care, other	85.0%	84.5%	83.6%	63.4%	69.4%	42.2%	35.5%
Home Help	1.1%	1.0%	1.3%	1.0%	1.0%	0.6%	0.5%
Patient & Client Care	7.6%	7.8%	7.9%	9.6%	9.8%	16.6%	16.6%

Jan 2021 (Dec 2018 figure: 780)	WTE Dec 2015	WTE Dec 2016	WTE Dec 2017	WTE Dec 2018	WTE Dec 2019	WTE Dec 2020	WTE Jan 2021
Primary Care	670	671	725	780	764	812	848
Total	100 %	100 %	100 %	100 %	100 %	100 %	100 %

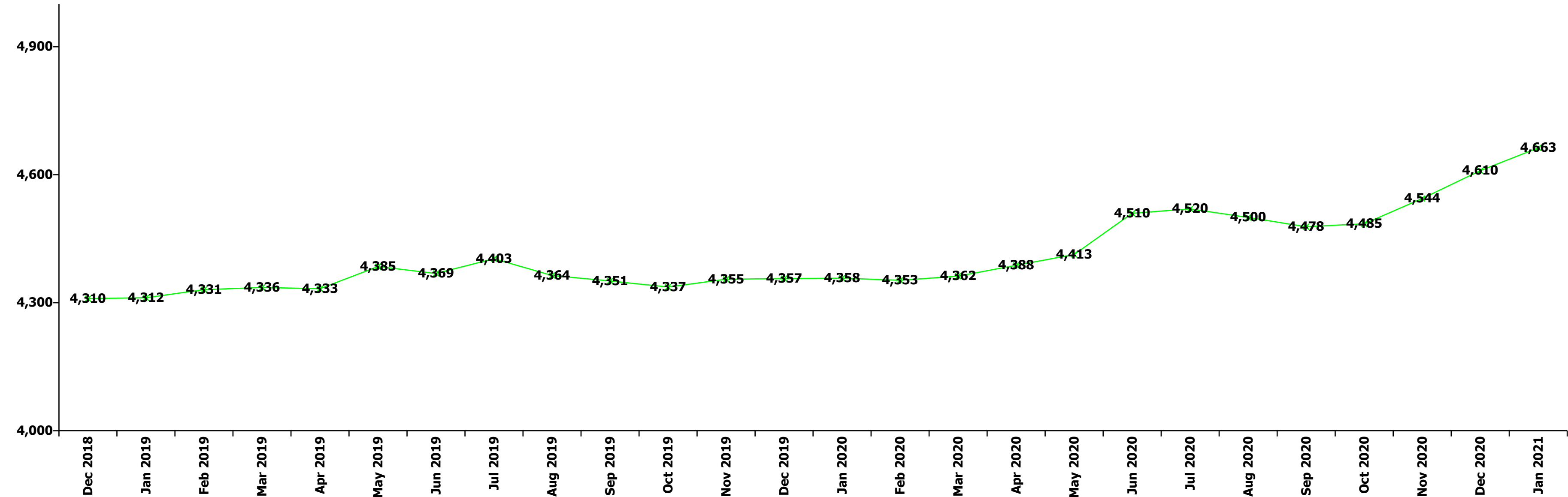
Jan 2021 (Dec 2018 figure: 1,796)	WTE Dec 2015	WTE Dec 2016	WTE Dec 2017	WTE Dec 2018	WTE Dec 2019	WTE Dec 2020	WTE Jan 2021
Disabilities	1,568	1,669	1,725	1,796	1,823	1,947	1,941
Consultant Psychiatry	70.3%	68.3%	68.3%	54.0%	51.8%	67.4%	54.4%
Consultants	70.3%	68.3%	68.3%	54.0%	51.8%	67.4%	54.4%
Medical/ Dental, other	29.7%	31.7%	31.7%	46.0%	48.2%	32.6%	45.6%
Medical & Dental	0.2%	0.2%	0.2%	0.1%	0.1%	0.1%	0.1%
Clinical Nurse/ Midwife Manager	17.2%	20.3%	20.5%	21.0%	21.4%	20.5%	20.1%
Director Nursing/Midwifery, Assistant	0.3%			0.3%	0.3%	0.3%	0.3%
Nurse/ Midwife Manager	17.5%	20.3%	20.5%	21.3%	21.6%	20.8%	20.4%
Clinical Nurse/ Midwife Specialist	3.2%	3.2%	3.4%	3.4%	3.6%	2.9%	2.6%
Nurse/ Midwife Specialist & AN/MP	3.2%	3.2%	3.4%	3.4%	3.6%	2.9%	2.6%
Staff Nurse [Intellectual Disability]	67.0%	63.1%	63.3%	62.1%	59.3%	65.6%	68.6%
Staff Nurses [General/ Children's]	9.4%	11.1%	10.5%	10.1%	11.2%	9.3%	5.2%
Staff Nurse/ Staff Midwife	76.5%	74.1%	73.7%	72.2%	70.4%	74.9%	73.8%
Pre-registration Nurse/ Midwife Intern				2.0%	3.3%		2.2%
Pre-registration Nurse Intern (COVID-19)						0.4%	
Nursing/ Midwifery Student				2.0%	3.3%	0.4%	2.2%
Nursing/ Midwifery other	2.8%	2.3%	2.4%	1.1%	1.1%	1.0%	1.0%
Nursing & Midwifery	24.2%	22.5%	21.0%	19.8%	19.5%	18.7%	18.7%
Occupational Therapists	5.2%	5.8%	4.8%	5.7%	6.6%	6.1%	6.3%
Physiotherapists	5.8%	6.1%	5.7%	5.6%	5.5%	5.5%	5.3%
Speech & Language Therapists	8.7%	9.2%	9.5%	8.7%	8.6%	8.4%	8.8%
Therapy Professions	19.7%	21.1%	20.0%	20.0%	20.6%	20.0%	20.4%
Clinical Engineering						0.5%	0.5%
Health Science/ Diagnostics						0.5%	0.5%
Social Care	65.7%	65.0%	66.3%	67.1%	67.0%	67.8%	66.9%
Social Workers	4.5%	4.8%	4.6%	4.6%	4.6%	4.1%	4.1%
Psychologists	6.2%	5.7%	5.9%	4.9%	4.4%	4.9%	5.0%
Other Health & Social Care	2.9%	2.1%	1.9%	2.0%	2.0%	1.7%	2.0%
Play Therapists/ Specialists	1.1%	1.3%	1.2%	1.4%	1.3%	1.0%	1.0%
H&SC, Other	3.9%	3.4%	3.2%	3.5%	3.3%	2.7%	3.0%
Health & Social Care Professionals	19.2%	19.9%	20.1%	20.2%	19.9%	21.0%	21.0%
Executive Management	1.9%	2.0%	2.0%	1.8%	1.9%	2.7%	2.7%
Senior Management (VIII & GM)	5.4%	5.8%	3.9%	4.4%	4.5%	4.3%	4.3%
Management (VIII & above)	7.3%	7.8%	5.9%	6.3%	6.4%	7.0%	7.0%
Administrative/ Supervisory (V to VII)	28.6%	35.3%	35.0%	36.6%	38.2%	40.3%	39.7%
Clerical (III & IV)	64.1%	56.9%	59.1%	57.2%	55.4%	52.7%	53.2%
Management & Administrative	6.8%	6.0%	5.7%	6.1%	6.0%	5.7%	5.7%
Support	80.4%	80.4%	79.4%	79.8%	78.5%	73.3%	72.1%
Maintenance	18.2%	18.2%	19.2%	18.8%	20.0%	25.3%	26.5%
Technical Services	1.4%	1.4%	1.4%	1.4%	1.5%	1.4%	1.4%
Maintenance/ Technical	19.6%	19.6%	20.6%	20.2%	21.5%	26.7%	27.9%
General Support	4.6%	4.4%	4.1%	4.0%	3.9%	3.7%	3.7%
HCA, Nurse's Aide, etc.	78.7%	80.8%	81.9%	82.0%	81.4%	81.1%	81.4%
Health & Social Care Assistants	0.3%	0.3%	0.2%	0.2%	0.1%	0.4%	0.4%
Health Care Assistants	79.0%	81.1%	82.2%	82.3%	81.5%	81.5%	81.8%
Care, other	21.0%	18.9%	17.8%	17.7%	18.5%	18.5%	18.2%
Patient & Client Care	45.1%	47.0%	49.0%	49.8%	49.0%	50.8%	50.8%
Total	100 %	100 %	100 %	100 %	100 %	100 %	100 %

Jan 2021 (Dec 2018 figure: 951)	WTE Dec 2015	WTE Dec 2016	WTE Dec 2017	WTE Dec 2018	WTE Dec 2019	WTE Dec 2020	WTE Jan 2021
Older People	988	972	936	951	974	1,029	1,039
Consultant Medicine	10.0%	20.0%	14.3%	14.3%	16.7%	14.3%	14.3%
Consultants	10.0%	20.0%	14.3%	14.3%	16.7%	14.3%	14.3%
Registrars	29.9%	10.0%					
Senior House Officer	10.0%	10.0%					
SHO/ Interns	10.0%	10.0%					
Medical/ Dental, other	50.1%	60.0%	85.7%	85.7%	83.3%	85.7%	85.7%
Medical & Dental	1.0%	1.0%	0.7%	0.7%	0.7%	0.7%	0.7%
Clinical Nurse/ Midwife Manager	16.2%	15.5%	14.3%	14.4%	12.7%	13.0%	13.7%
Director Nursing/Midwifery, Assistant	3.5%	4.4%	5.6%	4.5%	4.6%	5.0%	4.7%
Director of Nursing/Midwifery	2.8%	3.5%	3.2%	3.5%	3.6%	3.3%	3.2%
Nurse/ Midwife Manager	22.5%	23.4%	23.1%	22.4%	20.9%	21.3%	21.6%
Advanced Nurse/ Midwife Practitioner						0.3%	0.3%
Clinical Nurse/ Midwife Specialist	1.5%	0.9%	0.7%	0.6%	0.6%	0.9%	0.9%
Nurse/ Midwife Specialist & AN/MP	1.5%	0.9%	0.7%	0.6%	0.6%	1.2%	1.2%
Staff Midwives			0.4%				
Staff Nurses [General/ Children's]	75.9%	75.7%	75.9%	76.9%	78.2%	77.1%	76.8%
Staff Nurse/ Staff Midwife	75.9%	75.7%	76.3%	76.9%	78.2%	77.1%	76.8%
Public Health Nurse					0.3%	0.3%	0.3%
Nursing & Midwifery	28.1%	28.8%	29.7%	29.7%	29.0%	29.6%	29.6%
Dietitians	3.1%		2.8%				
Occupational Therapists	41.1%	37.1%	33.9%	27.4%	33.8%	29.8%	28.9%
Physiotherapists	32.6%	28.7%	28.9%	28.6%	28.5%	35.1%	33.8%
Podiatrists & Chiropodists	7.7%	9.6%	12.6%	12.4%	9.4%	9.5%	11.3%
Speech & Language Therapists	1.6%	1.6%	1.6%	1.6%	4.3%	4.2%	4.1%
Therapy Professions	86.1%	77.0%	79.8%	70.0%	76.0%	78.7%	78.1%
Clinical Measurement				0.2%	0.6%	0.4%	0.3%
Radiographers	1.5%	1.4%	1.4%	1.4%	1.4%	1.4%	1.3%
Health Science/ Diagnostics	1.5%	1.4%	1.4%	1.6%	2.0%	1.8%	1.6%
Social Workers	9.3%	18.9%	16.0%	25.6%	19.3%	16.8%	17.7%
Pharmacy	3.1%	2.8%	2.8%	2.8%	2.7%	2.7%	2.6%
Health & Social Care Professionals	3.3%	3.7%	3.8%	3.8%	3.7%	3.7%	3.7%
Executive Management					1.3%	1.4%	1.3%
Senior Management (VIII & GM)	5.2%	3.2%	4.6%	7.3%	6.3%	7.0%	6.6%
Management (VIII & above)	5.2%	3.2%	4.6%	7.3%	7.6%	8.3%	7.9%
Administrative/ Supervisory (V to VII)	19.2%	19.9%	18.7%	20.5%	27.1%	23.4%	23.3%
Clerical (III & IV)	75.6%	76.9%	76.7%	72.3%	65.3%	68.2%	68.9%
Management & Administrative	5.9%	6.4%	7.0%	7.0%	6.8%	7.3%	7.3%
Support	72.3%	73.4%	73.7%	72.4%	74.4%	75.0%	74.5%
Maintenance/ Technical	27.7%	26.6%	26.3%	27.6%	25.6%	25.0%	25.5%
General Support	9.6%	9.7%	9.6%	9.0%	8.7%	8.0%	8.0%
HCA, Nurse's Aide, etc.	58.6%	60.3%	59.8%	63.0%	59.7%	56.5%	56.8%
Health & Social Care Assistants	0.6%	0.4%	0.3%	0.5%	0.5%	0.4%	0.4%
Health Care Assistants	59.2%	60.6%	60.1%	63.5%	60.2%	56.9%	57.2%
Care, other	0.9%	1.4%	2.6%	2.5%	2.1%	2.2%	2.1%
Home Help	39.8%	37.9%	37.3%	34.1%	37.7%	40.9%	40.7%
Patient & Client Care	52.0%	50.3%	49.1%	49.8%	48.7%	50.7%	50.7%
Total	100 %	100 %	100 %	100 %	100 %	100 %	100 %

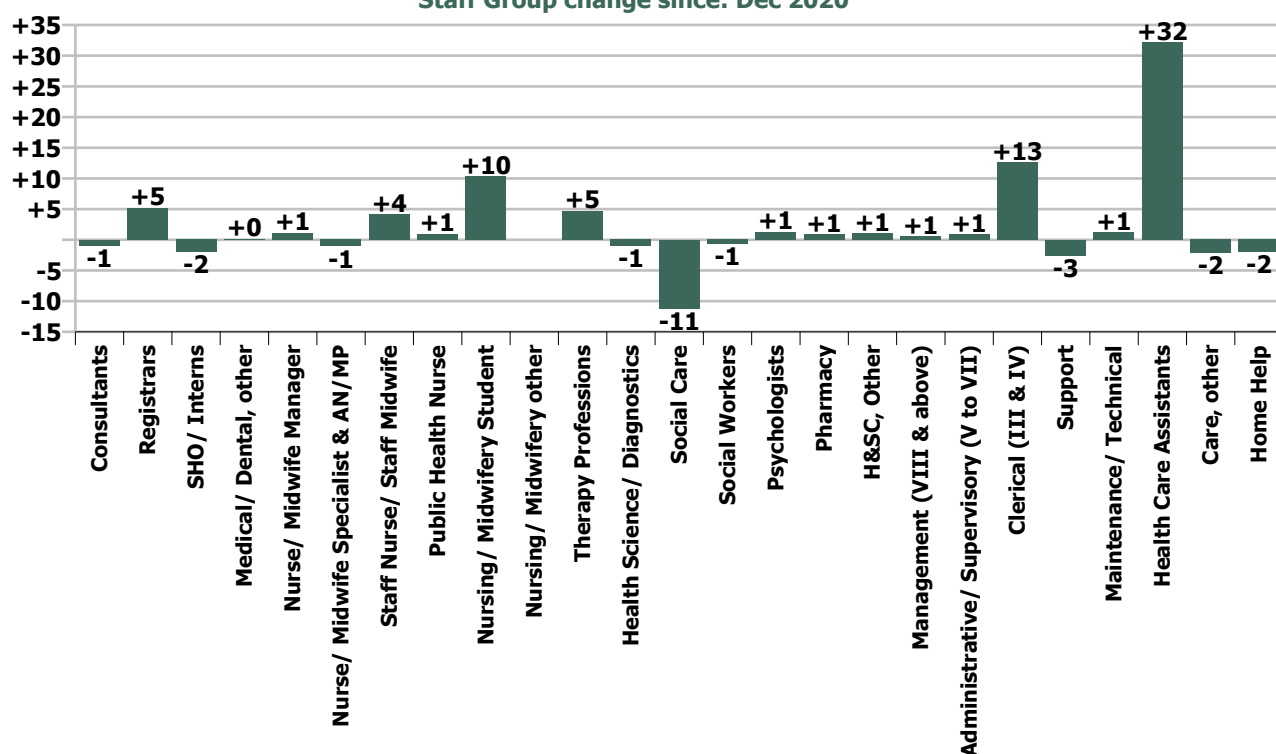
Summary Staff Movement: January 2021

Month-on-month Summary																												
WTE change since Dec 20	% change since Dec 20	overall	Consultants	Registrars	SHO/ Interns	Medical/ Dental, other	Medical & Dental	Nurse/ Midwife Manager	Nurse/ Midwife Specialist & AN/MP	Staff Nurse/ Staff Midwife	Public Health Nurse	Nursing/ Midwifery Student	Nursing/ Midwifery other	Nursing & Midwifery	Therapy Professions	Health Science/ Diagnostics	Social Care	Social Workers	Psychologists	Pharmacy	H&SC, Other	Health & Social Care Professionals	Management (VIII & above)	Administrative/ Supervisory (V to VII)	Clerical (III & IV)	Management & Administrative	General Support	Patient & Client Care
Overall	+1.2%	+54	-1.0	+5.2	-2.0	+0.1	+2.4	+1.1	-1.0	+4.1	+0.9	+10.3	0.0	+15.5	+4.7	-1.0	-11.2	-0.7	+1.3	+0.9	+1.0	-5.0	+0.5	+0.9	+12.6	+14.1	-1.4	+28.0
Community Health & Wellbeing	+8.8%	+1								-0.1				-0.1	0.0							0.0	0.0	-0.1	+1.3	+1.2		0.0
Mental Health	+1.4%	+12	-0.1	+4.3	-2.0		+2.1	+0.2	-0.1	+1.8		+3.8		+5.8	+2.4		0.0	-0.8	+1.3	0.0	+0.0	+2.9	0.0	-0.9	+0.2	-0.7	-0.5	+2.1
Primary Care	+4.5%	+37	0.0	+1.0	-0.0	+0.1	+1.1	-0.4	-0.1	+0.2	+0.9	0.0		+0.7	+2.0	-0.9	0.0	-0.0	-0.3	+0.9	-0.0	+1.6	+0.5	+1.7	+7.3	+9.6	+0.1	+23.6
Disabilities	-0.3%	-6	-0.8			0.0	-0.8	-1.0	-1.0	-2.6		+6.5	0.0	+1.8	-0.8	0.0	-11.2	-0.4	+0.2		+1.0	-11.2	0.0	-0.7	+0.4	-0.3	-0.7	+4.8
Older People	+1.0%	+10	0.0			0.0	0.0	+2.4	+0.1	+4.8	0.0			+7.2	+1.1	-0.0		+0.6		0.0		+1.7	0.0	+0.9	+3.4	+4.3	-0.3	-2.5
Social Care	+0.1%	+4	-0.8			0.0	-0.8	+1.3	-0.9	+2.1	0.0	+6.5	0.0	+9.1	+0.3	-0.0	-11.2	+0.2	+0.2	0.0	+1.0	-9.6	-0.0	+0.2	+3.8	+4.0	-1.0	+2.3
Change	+53.5	+1.2%	-3.4%	+13.0%	-9.0%	+0.2%	+1.6%	+0.4%	-1.9%	+0.5%	+0.7%	+115.7%		+1.2%	+2.1%	-11.5%	-3.9%	-1.2%	+1.0%	+19.0%	+2.9%	-0.7%	+1.2%	+0.6%	+4.1%	+2.8%	-0.6%	+1.6%

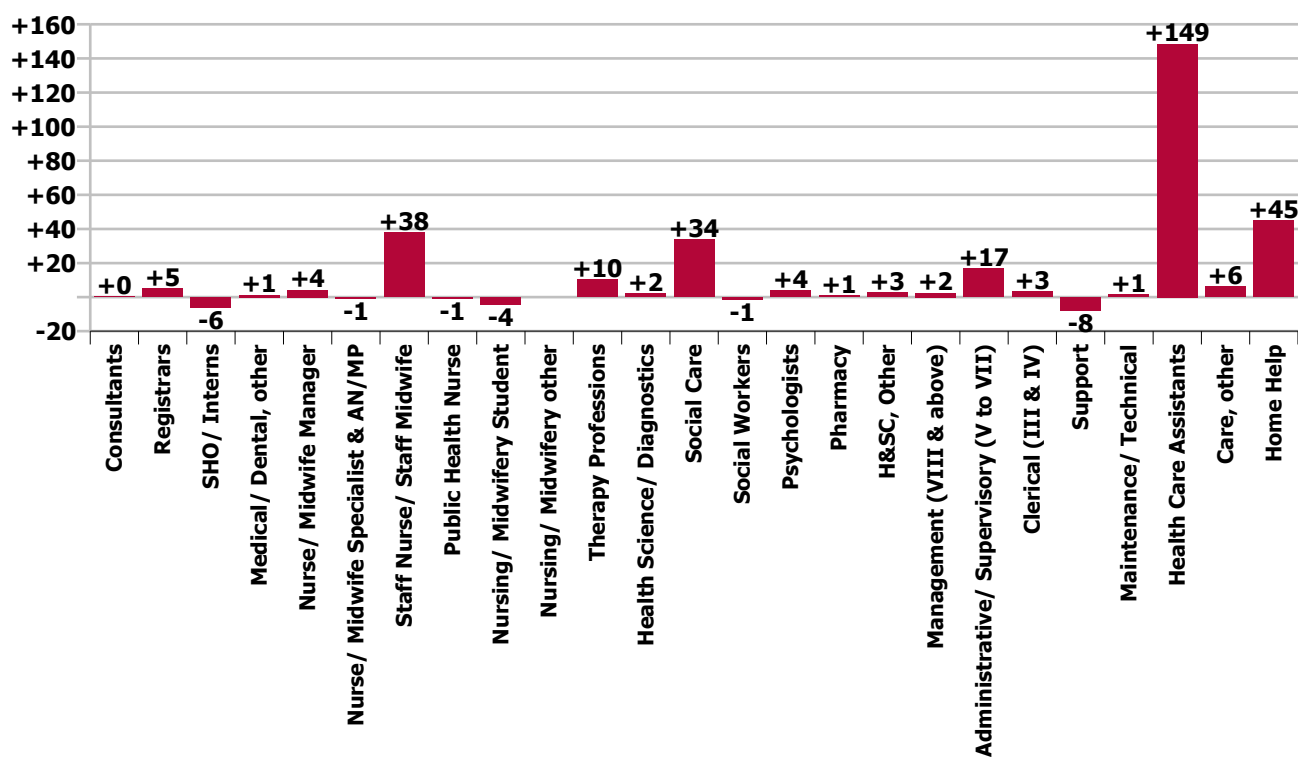
Year-on-year Summary																												
WTE change since Jan 20	% change since Jan 20	overall	Consultants	Registrars	SHO/ Interns	Medical/ Dental, other	Medical & Dental	Nurse/ Midwife Manager	Nurse/ Midwife Specialist & AN/MP	Staff Nurse/ Staff Midwife	Public Health Nurse	Nursing/ Midwifery Student	Nursing/ Midwifery other	Nursing & Midwifery	Therapy Professions	Health Science/ Diagnostics	Social Care	Social Workers	Psychologists	Pharmacy	H&SC, Other	Health & Social Care Professionals	Management (VIII & above)	Administrative/ Supervisory (V to VII)	Clerical (III & IV)	Management & Administrative	General Support	Patient & Client Care
Overall	+7.0%	+305	+0.4	+5.1	-6.0	+1.2	+0.6	+4.2	-0.9	+38.1	-0.7	-4.4	0.0	+36.3	+10.4	+2.1	+33.7	-1.4	+4.1	+0.9	+2.8	+52.6	+2.4	+16.8	+3.2	+22.4	-6.3	+199.7
Community Health & Wellbeing	+8.8%	+1						-0.5		+1.3	-0.9			-0.1	-0.4							-0.4	+1.0	+3.7	+0.9	+5.6		-1.0
Mental Health	+1.4%	+12	+1.1	+1.7	-1.0		+1.7	+0.6	-1.6	+21.3		-4.9		+15.4	+0.8		+0.1	-1.7	+1.2	0.0	+3.1	+3.4	0.0	+0.6	-3.7	-3.1	-4.3	+4.8
Primary Care	+4.5%	+37	-0.7	+3.4	-5.0	+0.2	-2.1	+3.7	+0.9	-0.3	+0.2	+4.0		+8.5	-1.3	+0.1	0.0	+0.0	+0.5	+0.9	-0.8	-0.5	+0.2	+10.2	+1.9	+12.2	-0.9	+69.0
Disabilities	+6.8%	+123.7	+0.0			0.0	+0.0	-1.4	-2.3	+18.3		-3.5	0.0	+11.1	+9.2	+2.0	+33.5	+0.9	+2.4		+0.5	+48.4	+1.0	+2.8	+2.0	+5.7	+3.3	+55.2
Older People	+7.6%	+73.5	0.0			+1.0	+1.0	+1.8	+2.1	-2.4	0.0			+1.4	+2.2	+0.0		-0.5		0.0		+1.7	+0.2	-0.4	+2.2	+2.0	-4.3	+71.7
Social Care	+0.1%	+4	+0.0			+1.0	+1.0	+0.4	-0.2	+15.8	0.0	-3.5	0.0	+12.5	+11.3	+2.0	+33.5	+0.4	+2.4	0.0	+0.5	+50.1	+1.2	+2.4	+4.1	+7.7	-1.0	+126.9
Change	+305.4	+7.0%	+1.4%	+12.7%	-22.8%	+2.0%	+0.4%	+1.7%	-1.6%	+4.8%	-0.6%	-18.4%		+2.9%	+4.8%	+38.6%	+13.9%	-2.3%	+3.3%	+19.0%	+8.8%	+7.7%	+5.9%	+12.6%	+1.0%	+4.6%	-2.6%	+13.0%



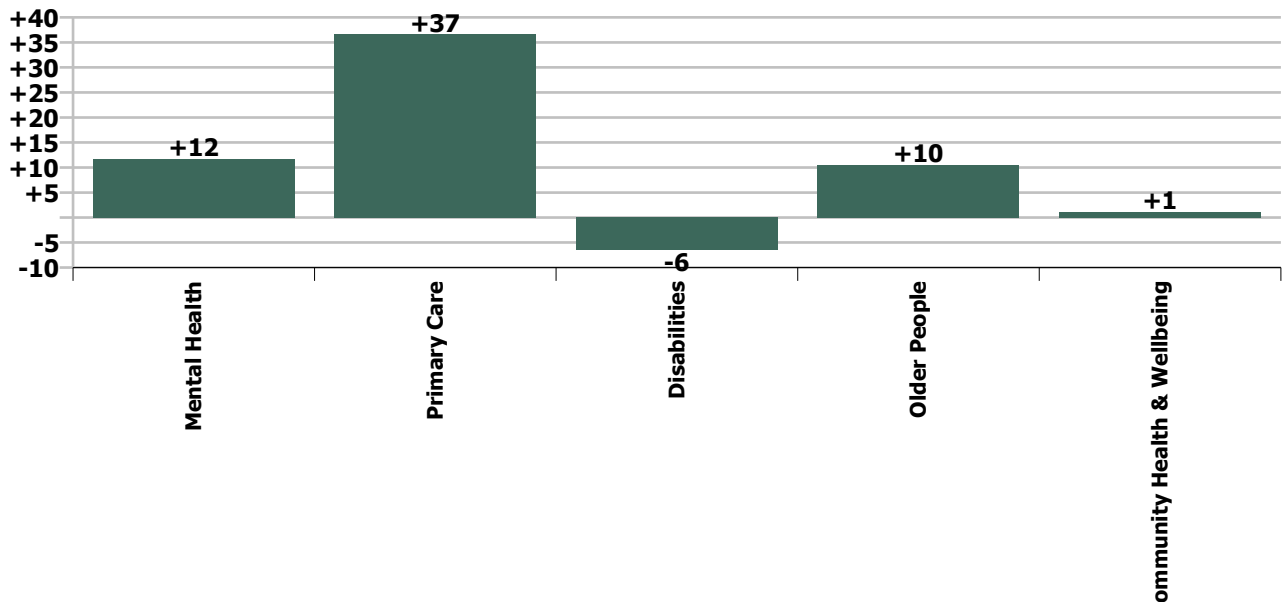
Staff Group change since: Dec 2020



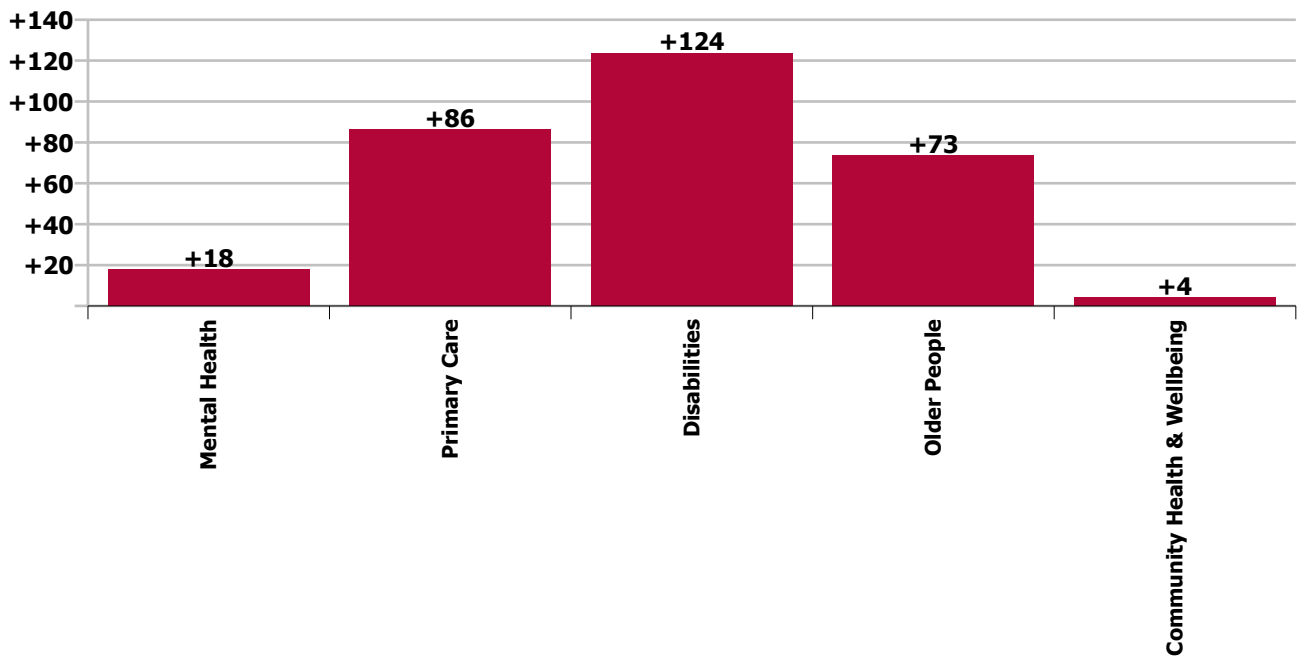
Staff Group change since: Jan 2020



Care Group change since: Dec 2020



Care Group change since: Jan 2020



Longitudinal Employment Levels by Grade Group - Oct 2013 to Jan 2021

Jan 2021 (Dec 2015 figure: 4,002)	WTE Jan 2021	WTE change since Dec 15	WTE change since Dec 16	WTE change since Dec 17	WTE change since Dec 18	WTE change since Dec 19	WTE change since Dec 20	% change since Dec 15	% change since Dec 16	% change since Dec 17	% change since Dec 18	% change since Dec 19	% change since Dec 20
Overall	4,663	+661	+570	+494	+353	+306	+54	+16.5%	+13.9%	+11.8%	+8.2%	+7.0%	+1.2%
Consultant Medicine	2		-1						-33.3%				
Consultant Paediatrics	1												
Consultant Psychiatry	24	-0	+1	+1	+2	+1	-1	-1.4%	+4.6%	+3.9%	+7.6%	+3.3%	-3.8%
Consultant Surgery	0	-1	-1	-1	-1	-1		-70.0%	-70.0%	-70.0%	-70.0%	-70.0%	
Consultants	27	-1	-1	+0	+1	+0	-1	-3.7%	-2.3%	+0.7%	+3.8%	+0.2%	-3.4%
Registrar	38	+6	+7	+7	+10	+3	+4	+17.2%	+22.2%	+24.1%	+38.2%	+7.7%	+12.4%
Senior Registrar	7	+2	+2	+1	+2	+2	+1	+30.0%	+30.0%	+20.6%	+30.0%	+30.0%	+19.3%
Specialist Registrar	1	-1		+1		-1		-49.7%		-100.0%		-33.3%	
Registrars	45	+6	+8	+9	+12	+4	+5	+15.5%	+22.7%	+26.4%	+35.8%	+8.9%	+13.0%
Interns		-1						-100.0%	-100.0%	-100.0%	-100.0%	-100.0%	-100.0%
Senior House Officer	20	-3	-5	-7	-12	-5	-2	-12.0%	-19.7%	-26.6%	-36.2%	-18.2%	-9.0%
SHO/ Interns	20	-4	-5	-7	-12	-5	-2	-15.6%	-19.7%	-26.6%	-36.2%	-18.2%	-9.0%
Dentists	27	+4	+4	-1	+1	+0	+1	+18.2%	+15.8%	-1.8%	+4.8%	+0.9%	+2.5%
Other Medical	32	+4	+2	+2	-0	+1	-1	+14.9%	+6.7%	+5.1%	-1.3%	+2.1%	-1.7%
Medical/ Dental, other	59	+8	+6	+1	+1	+1	+0	+16.4%	+10.7%	+1.8%	+1.4%	+1.6%	+0.2%
Medical & Dental	152	+10	+8	+3	+2	+0	+2	+6.7%	+5.9%	+2.2%	+1.5%	+0.1%	+1.6%
Clinical Nurse/ Midwife Manager	193	+12	-4	+2	+9	+8	+3	+6.7%	-1.9%	+1.1%	+4.7%	+4.2%	+1.7%
Director Nursing/Midwifery, Assistant	46	+11	+5	+2	+3	-0	-1	+30.0%	+11.2%	+5.3%	+7.6%	-0.8%	-2.4%
Director of Nursing/Midwifery	12	-0	-2	-1	-3	-3	-1	-0.3%	-13.5%	-7.2%	-22.5%	-20.2%	-8.0%
Nurse/ Midwife Manager	251	+23	-1	+4	+8	+4	+1	+9.9%	-0.4%	+1.4%	+3.5%	+1.8%	+0.4%
Advanced Nurse/ Midwife Practitioner	4	+3	+4	+3	+4	+2	+1	+277.0%	-100.0%	+277.0%	-100.0%	+106.0%	+33.2%
Clinical Nurse/ Midwife Specialist	49	+5	+7	+5	+2	-5	-2	+12.0%	+16.3%	+10.8%	+3.5%	-8.5%	-3.9%
Nurse/ Midwife Specialist & AN/MP	53	+8	+11	+8	+5	-3	-1	+17.9%	+25.2%	+16.6%	+11.5%	-4.7%	-1.9%
Staff Midwives				-1				-100.0%	-100.0%	-100.0%	-100.0%	-100.0%	-100.0%
Staff Nurse [Intellectual Disability]	250	-5	+12	+21	+28	+41	+12	-1.9%	+5.1%	+9.0%	+12.5%	+19.7%	+5.1%
Staff Nurse [Psychiatric]	265	+4	+5	+17	+30	+28	+2	+1.4%	+2.1%	+6.9%	+12.6%	+11.7%	+0.6%
Staff Nurses [General/ Children's]	320	+20	+1	+5	-3	-21	-10	+6.5%	+0.2%	+1.6%	-0.9%	-6.3%	-3.0%
Staff Nurse/ Staff Midwife	835	+19	+18	+42	+55	+48	+4	+2.3%	+2.2%	+5.3%	+7.0%	+6.0%	+0.5%
Public Health Nurse	128	+11	+14	+8	+4	+0	+1	+9.8%	+12.4%	+6.6%	+3.4%	+0.4%	+0.7%
Pre-registration Nurse/ Midwife Intern	14	+14	+13	+14	-1	-6	+14	-100.0%	+1340.0%	+2780.0%	-9.2%	-29.5%	-100.0%
Pre-registration Nurse Intern (COVID-19)	1	+1	+1	+1	+1	+1	-4	-100.0%	-100.0%	-100.0%	-100.0%	-100.0%	-82.2%
Post-registration Nurse/ Midwife Student	4	-3	-2	-3		+4		-42.9%	-33.3%	-42.9%		-100.0%	
Nursing/ Midwifery Student	19	+12	+12	+12	-1	-1	+10	+175.4%	+175.4%	+157.1%	-2.9%	-5.6%	+115.7%
Nursing Education/Clinical	3	-2	-1	-1	-0			-42.4%	-26.9%	-26.9%	-9.3%		

Jan 2021 (Dec 2015 figure: 4,002)	WTE Jan 2021	WTE change since Dec 15	WTE change since Dec 16	WTE change since Dec 17	WTE change since Dec 18	WTE change since Dec 19	WTE change since Dec 20	% change since Dec 15	% change since Dec 16	% change since Dec 17	% change since Dec 18	% change since Dec 19	% change since Dec 20
Overall	4,663	+661	+570	+494	+353	+306	+54	+16.5%	+13.9%	+11.8%	+8.2%	+7.0%	+1.2%
Other Nursing/ Midwifery	1	-5	-4	-4				-83.2%	-80.0%	-80.0%			
Nursing/ Midwifery other	4	-7	-5	-5	-0			-65.1%	-57.3%	-57.3%	-7.0%		
Nursing & Midwifery	1,290	+66	+49	+67	+72	+49	+15	+5.4%	+4.0%	+5.5%	+5.9%	+3.9%	+1.2%
Dietitians	6	+4	+5	+3	+4	+3	+0	+188.0%	+1052.0%	+92.0%	+188.0%	+105.7%	+0.7%
Occupational Therapists	88	+15	+12	+9	+2	+0	+2	+20.2%	+15.9%	+11.3%	+2.8%	+0.2%	+2.0%
Physiotherapists	60	+8	+5	+3	+2	+1	-0	+14.3%	+9.3%	+5.2%	+4.1%	+1.2%	-0.8%
Podiatrists & Chiropodists	6	+4	+3	+1	+1	+1	-0	+153.8%	+83.6%	+16.0%	+16.5%	+17.7%	-2.3%
Speech & Language Therapists	67	+18	+16	+10	+13	+9	+4	+37.1%	+30.3%	+16.8%	+23.2%	+16.1%	+5.6%
Therapy Professions	228	+48	+41	+25	+22	+14	+5	+26.8%	+22.0%	+12.5%	+10.7%	+6.6%	+2.1%
Audiology	5		+0	+1	+1	+0	-1		+7.1%	+38.5%	+28.9%	+5.3%	-15.8%
Clinical Engineering	2	+2	+2	+2	+2	+2		-100.0%	-100.0%	-100.0%	-100.0%	-100.0%	
Clinical Measurement	0	+0	+0	+0	+0	-0	-0	-100.0%	-100.0%	-100.0%	+50.0%	-42.9%	-25.0%
Radiographers	1												
Health Science/ Diagnostics	8	+2	+2	+3	+3	+2	-1	+37.6%	+46.4%	+84.2%	+69.7%	+38.6%	-11.5%
Social Care	277	+75	+57	+43	+29	+32	-11	+37.1%	+26.2%	+18.4%	+11.7%	+13.1%	-3.9%
Social Workers	57	+1	-1	+1	-6	-2	-1	+1.7%	-1.7%	+1.1%	-9.0%	-3.7%	-1.2%
Psychologists	127	+17	+15	+5	+9	+4	+1	+15.1%	+13.6%	+4.3%	+7.2%	+2.9%	+1.0%
Pharmacy	6	+1	+2	+1	+1	+1	+1	+19.0%	+50.3%	+19.0%	+19.0%	+19.0%	+19.0%
Counsellor Therapists	16	+1	+4	+5	+3	+3	-0	+10.5%	+39.4%	+53.8%	+20.6%	+25.0%	-0.1%
Dental Hygienists	6	-0	-0	-1	-1	-0	+0	-1.0%	-7.3%	-9.0%	-7.6%	-0.7%	+0.0%
Other Health & Social Care	8	-1	+1	+1	-0	-0	+1	-14.1%	+6.4%	+7.6%	-0.1%	-0.1%	+14.8%
Play Therapists/ Specialists	5	+1	-0	-0	-1	-1	-0	+25.3%	-7.8%	-6.6%	-21.3%	-12.3%	-1.7%
H&SC, Other	35	+1	+4	+5	+1	+2	+1	+2.9%	+13.3%	+17.5%	+2.8%	+7.6%	+2.9%
Health & Social Care Professionals	737	+145	+121	+84	+59	+53	-5	+24.4%	+19.7%	+12.8%	+8.7%	+7.8%	-0.7%
Executive Management	15	+11	+4	+5	+4	+3	+0	+274.0%	+37.2%	+49.6%	+36.0%	+25.1%	+0.5%
Senior Management (VIII & GM)	27	+0	+5	+4	+3	+1	+0	+1.1%	+22.6%	+17.4%	+12.4%	+4.6%	+1.6%
Management (VIII & above)	42	+11	+9	+9	+7	+4	+1	+36.3%	+27.5%	+27.1%	+19.8%	+11.0%	+1.2%
Middle Management (V-VII)	144	+47	+39	+34	+13	+19	+2	+49.1%	+37.3%	+31.3%	+10.2%	+15.0%	+1.4%
Other Administrative	6	+3	+2			-1	-1	+100.0%	+50.0%			-14.3%	-14.3%
Administrative/ Supervisory (V to VII)	150	+50	+41	+34	+13	+18	+1	+50.6%	+37.8%	+29.7%	+9.7%	+13.5%	+0.6%
Clerical (III & IV)	321	+17	+33	+6	-3	+0	+13	+5.4%	+11.5%	+2.0%	-0.8%	+0.1%	+4.1%
Management & Administrative	513	+78	+83	+50	+18	+22	+14	+18.0%	+19.4%	+10.7%	+3.5%	+4.6%	+2.8%
Catering	28	-6	-3	-1	+0	-2		-16.8%	-10.9%	-1.8%	+1.1%	-8.0%	
Household Services	85	-2	-8	-4	-3	+3	-2	-1.8%	-8.8%	-4.6%	-2.9%	+3.2%	-2.1%
Portering	10	-4	-3	-1	-2	-1	-1	-29.0%	-22.2%	-12.7%	-14.1%	-11.2%	-9.8%

Jan 2021 (Dec 2015 figure: 4,002)	WTE Jan 2021	WTE change since Dec 15	WTE change since Dec 16	WTE change since Dec 17	WTE change since Dec 18	WTE change since Dec 19	WTE change since Dec 20	% change since Dec 15	% change since Dec 16	% change since Dec 17	% change since Dec 18	% change since Dec 19	% change since Dec 20
Overall	4,663	+661	+570	+494	+353	+306	+54	+16.5%	+13.9%	+11.8%	+8.2%	+7.0%	+1.2%
Other Support	34	-10	-7	-5	-7	-5	+0	-22.3%	-17.6%	-13.9%	-18.0%	-11.7%	+1.0%
Support	157	-21	-22	-12	-11	-6	-3	-11.8%	-12.2%	-6.8%	-6.7%	-3.4%	-1.6%
Maintenance	77	-5	-3	-1	-2	+0	+1	-5.9%	-3.7%	-1.8%	-3.1%	+0.4%	+1.6%
Technical Services	1												
Maintenance/ Technical	78	-5	-3	-1	-2	+0	+1	-5.8%	-3.6%	-1.8%	-3.0%	+0.3%	+1.5%
General Support	235	-26	-25	-13	-14	-5	-1	-9.9%	-9.5%	-5.2%	-5.5%	-2.2%	-0.6%
HCA, Nurse's Aide, etc.	1,263	+322	+250	+217	+138	+133	+32	+34.3%	+24.6%	+20.7%	+12.3%	+11.7%	+2.6%
Health & Social Care Assistants	15	+11	+12	+12	+1	+6	+0	+215.7%	+296.7%	+348.4%	+7.1%	+71.1%	+3.2%
Health Care Assistants	1,279	+333	+261	+229	+139	+139	+32	+35.2%	+25.7%	+21.8%	+12.2%	+12.2%	+2.6%
Care, other	243	+45	+42	+31	+24	+9	-2	+23.0%	+20.9%	+14.7%	+11.0%	+3.8%	-0.9%
Home Help	215	+10	+29	+43	+53	+39	-2	+4.8%	+15.8%	+24.9%	+32.7%	+22.3%	-0.9%
Patient & Client Care	1,737	+388	+333	+303	+216	+187	+28	+28.8%	+23.7%	+21.1%	+14.2%	+12.1%	+1.6%

Source: Health Service Personnel Census

Longitudinal Employment Levels by Care Group - Oct 2013 to Jan 2021

Community Health & Wellbeing

Jan 2021 (figure:)	WTE Jan 2021	WTE change since	WTE change since	WTE change since	WTE change since	WTE change since	WTE change since Dec 20	% change since	% change since	% change since	% change since	% change since	% change since Dec 20
Overall	14	+14	+14	+14	+14	+14	+1	-100.0%	-100.0%	-100.0%	-100.0%	-100.0%	+8.8%
Nursing & Midwifery	1	+1	+1	+1	+1	+1	-0	-1.0%	-1.0%	-1.0%	-1.0%	-1.0%	-0.0%
Staff Nurse/ Staff Midwife	1	+1	+1	+1	+1	+1	-0	-1.0%	-1.0%	-1.0%	-1.0%	-1.0%	-0.0%
Health & Social Care Professionals	2	+2	+2	+2	+2	+2		-1.0%	-1.0%	-1.0%	-1.0%	-1.0%	+0.0%
Therapy Professions	2	+2	+2	+2	+2	+2		-1.0%	-1.0%	-1.0%	-1.0%	-1.0%	+0.0%
Management & Administrative	10	+10	+10	+10	+10	+10	+1	-1.0%	-1.0%	-1.0%	-1.0%	-1.0%	+0.1%
Management (VIII & above)	2	+2	+2	+2	+2	+2		-1.0%	-1.0%	-1.0%	-1.0%	-1.0%	+0.0%
Administrative/ Supervisory (V to VII)	6	+6	+6	+6	+6	+6	-0	-1.0%	-1.0%	-1.0%	-1.0%	-1.0%	-0.0%
Clerical (III & IV)	2	+2	+2	+2	+2	+2	+1	-1.0%	-1.0%	-1.0%	-1.0%	-1.0%	+1.2%
Patient & Client Care	1	+1	+1	+1	+1	+1		-1.0%	-1.0%	-1.0%	-1.0%	-1.0%	+0.0%
Care, other	1	+1	+1	+1	+1	+1		-1.0%	-1.0%	-1.0%	-1.0%	-1.0%	+0.0%

Source: Health Service Personnel Census

Mental Health

Jan 2021 (Dec 2015 figure: 777)	WTE Jan 2021	WTE change since Dec 15	WTE change since Dec 16	WTE change since Dec 17	WTE change since Dec 18	WTE change since Dec 19	WTE change since Dec 20	% change since Dec 15	% change since Dec 16	% change since Dec 17	% change since Dec 18	% change since Dec 19	% change since Dec 20
Overall	821	+44	+39	+37	+38	+25	+12	+5.7%	+5.0%	+4.7%	+4.8%	+3.2%	+1.4%
Medical & Dental	63	+8	+5	+1	-0	+3	+2	+0.1%	+0.1%	+0.0%	-0.0%	+0.0%	+0.0%
Consultants	24	+1	+2	+2	+2	+1	-0	+0.0%	+0.1%	+0.1%	+0.1%	+0.0%	-0.0%
Registrars	19	+11	+8	+8	+4	+1	+4	+1.4%	+0.7%	+0.7%	+0.2%	+0.1%	+0.3%
SHO/ Interns	19	-4	-5	-8	-6	+0	-2	-0.2%	-0.2%	-0.3%	-0.2%	+0.0%	-0.1%
Nursing & Midwifery	406	+25	+20	+28	+35	+24	+6	+0.1%	+0.1%	+0.1%	+0.1%	+0.1%	+0.0%
Nurse/ Midwife Manager	88	+5	-2	-3	+3	+0	+0	+0.1%	-0.0%	-0.0%	+0.0%	+0.0%	+0.0%
Nurse/ Midwife Specialist & AN/MP	37	+8	+9	+6	+4	-2	-0	+0.3%	+0.3%	+0.2%	+0.1%	-0.1%	-0.0%
Staff Nurse/ Staff Midwife	274	+5	+7	+18	+30	+28	+2	+0.0%	+0.0%	+0.1%	+0.1%	+0.1%	+0.0%
Nursing/ Midwifery Student	7	+7	+6	+7	-2	-2	+4	-1.0%	+6.3%	+13.6%	-0.2%	-0.2%	+1.1%
Health & Social Care Professionals	161	+11	+14	+4	+9	+2	+3	+0.1%	+0.1%	+0.0%	+0.1%	+0.0%	+0.0%
Therapy Professions	27	+4	+6	+0	+3	+1	+2	+0.2%	+0.3%	+0.0%	+0.1%	+0.0%	+0.1%
Social Care	3			+0	+0	+0		+0.0%	+0.0%	+0.1%	+0.1%	+0.0%	+0.0%
Social Workers	24	-4	-3	-2	-3	-2	-1	-0.1%	-0.1%	-0.1%	-0.1%	-0.1%	-0.0%
Psychologists	92	+10	+9	+2	+6	+0	+1	+0.1%	+0.1%	+0.0%	+0.1%	+0.0%	+0.0%
Pharmacy	3							+0.0%	+0.0%	+0.0%	+0.0%	+0.0%	+0.0%
H&SC, Other	12	-0	+2	+3	+2	+3	+0	-0.0%	+0.2%	+0.3%	+0.2%	+0.3%	+0.0%
Management & Administrative	70	+5	+4	-2	-3	-4	-1	+0.1%	+0.1%	-0.0%	-0.0%	-0.1%	-0.0%
Management (VIII & above)	2		-1			+0		+0.0%	-0.3%	+0.0%	+0.0%	+0.0%	+0.0%
Administrative/ Supervisory (V to VII)	18	+4	+5	+3	+1	+1	-1	+0.3%	+0.4%	+0.2%	+0.1%	+0.1%	-0.0%
Clerical (III & IV)	51	+1	+0	-4	-4	-5	+0	+0.0%	+0.0%	-0.1%	-0.1%	-0.1%	+0.0%
General Support	39	-10	-8	-5	-8	-5	-0	-0.2%	-0.2%	-0.1%	-0.2%	-0.1%	-0.0%
Support	30	-7	-5	-2	-6	-3	-0	-0.2%	-0.1%	-0.1%	-0.2%	-0.1%	-0.0%
Maintenance/ Technical	9	-3	-3	-3	-2	-2		-0.3%	-0.2%	-0.3%	-0.2%	-0.2%	+0.0%
Patient & Client Care	82	+5	+4	+11	+4	+5	+2	+0.1%	+0.0%	+0.1%	+0.1%	+0.1%	+0.0%
Health Care Assistants	81	+5	+4	+11	+4	+5	+2	+0.1%	+0.1%	+0.1%	+0.1%	+0.1%	+0.0%
Care, other	1					-1		+0.0%	+0.0%	+0.0%	+0.0%	-0.4%	+0.0%

Source: Health Service Personnel Census

Primary Care

Jan 2021 (Dec 2015 figure: 670)	WTE Jan 2021	WTE change since Dec 15	WTE change since Dec 16	WTE change since Dec 17	WTE change since Dec 18	WTE change since Dec 19	WTE change since Dec 20	% change since Dec 15	% change since Dec 16	% change since Dec 17	% change since Dec 18	% change since Dec 19	% change since Dec 20
Overall	848	+179	+178	+123	+68	+85	+37	+26.7%	+26.5%	+17.0%	+8.7%	+11.1%	+4.5%
Medical & Dental	80	+5	+7	+3	+2	-4	+1	+0.1%	+0.1%	+0.0%	+0.0%	-0.0%	+0.0%
Consultants	1	-1	-1	-1	-1	-1		-0.4%	-0.4%	-0.4%	-0.4%	-0.4%	+0.0%
Registrars	26	-2	+1	+2	+8	+2	+1	-0.1%	+0.0%	+0.1%	+0.5%	+0.1%	+0.0%
SHO/ Interns	1	+1	+1	+1	-6	-5	-0	-1.0%	-1.0%	-1.0%	-0.9%	-0.8%	-0.0%
Medical/ Dental, other	52	+7	+6	+1	+1	-0	+0	+0.2%	+0.1%	+0.0%	+0.0%	-0.0%	+0.0%
Nursing & Midwifery	212	+26	+14	+8	+3	+9	+1	+0.1%	+0.1%	+0.0%	+0.0%	+0.0%	+0.0%
Nurse/ Midwife Manager	22	+6	+3	+5	+4	+4	-0	+0.4%	+0.2%	+0.3%	+0.2%	+0.2%	-0.0%
Nurse/ Midwife Specialist & AN/MP	3	+3	+3	+2	+2	+1	-0	-1.0%	-1.0%	+1.9%	+2.7%	+0.5%	-0.0%
Staff Nurse/ Staff Midwife	56	+10	-4	-3	-6	+0	+0	+0.2%	-0.1%	-0.0%	-0.1%	+0.0%	+0.0%
Public Health Nurse	127	+10	+13	+7	+3	+0	+1	+0.1%	+0.1%	+0.1%	+0.0%	+0.0%	+0.0%
Nursing/ Midwifery Student	4	-3	-2	-3		+4		-0.4%	-0.3%	-0.4%	+0.0%	-1.0%	+0.0%
Health & Social Care Professionals	128	+20	+27	+14	+2	-2	+2	+0.2%	+0.3%	+0.1%	+0.0%	-0.0%	+0.0%
Therapy Professions	86	+16	+18	+7	+1	-0	+2	+0.2%	+0.3%	+0.1%	+0.0%	-0.0%	+0.0%
Health Science/ Diagnostics	5		+0	+1	+1	+0	-1	+0.0%	+0.1%	+0.4%	+0.3%	+0.1%	-0.2%
Social Care	1							+0.0%	+0.0%	+0.0%	+0.0%	+0.0%	+0.0%
Social Workers	10	-3	+1	+1	-1	-1	-0	-0.2%	+0.1%	+0.1%	-0.1%	-0.1%	-0.0%
Psychologists	14	+4	+5	+3	+0	-1	-0	+0.4%	+0.5%	+0.2%	+0.0%	-0.1%	-0.0%
Pharmacy	2	+1	+2	+1	+1	+1	+1	+0.9%	-1.0%	+0.9%	+0.9%	+0.9%	+0.9%
H&SC, Other	10	+1	+1	+1	-1	-1	-0	+0.1%	+0.1%	+0.1%	-0.1%	-0.1%	-0.0%
Management & Administrative	246	+42	+45	+18	-0	+13	+10	+0.2%	+0.2%	+0.1%	-0.0%	+0.1%	+0.0%
Management (VIII & above)	24	+6	+4	+2	+3	+1	+1	+0.3%	+0.2%	+0.1%	+0.1%	+0.0%	+0.0%
Administrative/ Supervisory (V to VII)	65	+21	+17	+11	-2	+11	+2	+0.5%	+0.3%	+0.2%	-0.0%	+0.2%	+0.0%
Clerical (III & IV)	157	+15	+24	+5	-2	+1	+7	+0.1%	+0.2%	+0.0%	-0.0%	+0.0%	+0.0%
General Support	40	-5	-4	-4	-5	-3	+0	-0.1%	-0.1%	-0.1%	-0.1%	-0.1%	+0.0%
Support	13	-3	-2	-2	-1		-0	-0.2%	-0.1%	-0.1%	-0.1%	+0.0%	-0.0%
Maintenance/ Technical	27	-3	-2	-2	-4	-3	+0	-0.1%	-0.1%	-0.1%	-0.1%	-0.1%	+0.0%
Patient & Client Care	141	+90	+89	+84	+66	+70	+24	+1.8%	+1.7%	+1.5%	+0.9%	+1.0%	+0.2%
Health Care Assistants	90	+83	+83	+82	+64	+69	+23	+11.8%	+11.0%	+9.4%	+2.4%	+3.3%	+0.3%
Care, other	50	+7	+6	+2	+3	+1	+1	+0.2%	+0.1%	+0.0%	+0.1%	+0.0%	+0.0%
Home Help	1	+0	+0					+0.3%	+0.3%	+0.0%	+0.0%	+0.0%	+0.0%

Source: Health Service Personnel Census

Disabilities

Jan 2021 (Dec 2015 figure: 1,568)	WTE Jan 2021	WTE change since Dec 15	WTE change since Dec 16	WTE change since Dec 17	WTE change since Dec 18	WTE change since Dec 19	WTE change since Dec 20	% change since Dec 15	% change since Dec 16	% change since Dec 17	% change since Dec 18	% change since Dec 19	% change since Dec 20
Overall	1,941	+373	+272	+216	+146	+118	-6	+23.8%	+16.3%	+12.5%	+8.1%	+6.4%	-0.3%
Medical & Dental	2	-1	-1	-1	+0	+0	-1	-0.3%	-0.3%	-0.3%	+0.0%	+0.1%	-0.3%
Consultants	1	-1	-1	-1	+0	+0	-1	-0.5%	-0.4%	-0.4%	+0.0%	+0.1%	-0.4%
Medical/ Dental, other	1							+0.0%	+0.0%	+0.0%	+0.0%	+0.0%	+0.0%
Nursing & Midwifery	363	-16	-13	+1	+7	+12	+2	-0.0%	-0.0%	+0.0%	+0.0%	+0.0%	+0.0%
Nurse/ Midwife Manager	74	+8	-2	-0	-2	-2	-1	+0.1%	-0.0%	-0.0%	-0.0%	-0.0%	-0.0%
Nurse/ Midwife Specialist & AN/MP	9	-3	-3	-3	-3	-3	-1	-0.2%	-0.2%	-0.2%	-0.2%	-0.3%	-0.1%
Staff Nurse/ Staff Midwife	268	-22	-10	+1	+11	+21	-3	-0.1%	-0.0%	+0.0%	+0.0%	+0.1%	-0.0%
Nursing/ Midwifery Student	8	+8	+8	+8	+1	-4	+7	-1.0%	-1.0%	-1.0%	+0.1%	-0.3%	+4.3%
Nursing/ Midwifery other	4	-7	-5	-5	-0			-0.7%	-0.6%	-0.6%	-0.1%	+0.0%	+0.0%
Health & Social Care Professionals	407	+106	+76	+61	+44	+48	-11	+0.4%	+0.2%	+0.2%	+0.1%	+0.1%	-0.0%
Therapy Professions	83	+24	+13	+14	+11	+9	-1	+0.4%	+0.2%	+0.2%	+0.1%	+0.1%	-0.0%
Health Science/ Diagnostics	2	+2	+2	+2	+2	+2		-1.0%	-1.0%	-1.0%	-1.0%	-1.0%	+0.0%
Social Care	273	+75	+57	+43	+29	+32	-11	+0.4%	+0.3%	+0.2%	+0.1%	+0.1%	-0.0%
Social Workers	17	+3	+1	+1	+0	+0	-0	+0.2%	+0.1%	+0.1%	+0.0%	+0.0%	-0.0%
Psychologists	21	+2	+2	+0	+3	+5	+0	+0.1%	+0.1%	+0.0%	+0.2%	+0.3%	+0.0%
H&SC, Other	12	+0	+1	+1	-0	+0	+1	+0.0%	+0.1%	+0.1%	-0.0%	+0.0%	+0.1%
Management & Administrative	111	+4	+11	+13	+2	+4	-0	+0.0%	+0.1%	+0.1%	+0.0%	+0.0%	-0.0%
Management (VIII & above)	8			+2	+1	+1		+0.0%	+0.0%	+0.3%	+0.1%	+0.1%	+0.0%
Administrative/ Supervisory (V to VII)	44	+13	+9	+10	+4	+3	-1	+0.4%	+0.2%	+0.3%	+0.1%	+0.1%	-0.0%
Clerical (III & IV)	59	-10	+2	+1	-3	-0	+0	-0.1%	+0.0%	+0.0%	-0.1%	-0.0%	+0.0%
General Support	72	+1	-2	+2	+0	+5	-1	+0.0%	-0.0%	+0.0%	+0.0%	+0.1%	-0.0%
Support	52	-6	-8	-4	-5	-1	-1	-0.1%	-0.1%	-0.1%	-0.1%	-0.0%	-0.0%
Maintenance/ Technical	20	+6	+6	+6	+6	+6	+1	+0.4%	+0.4%	+0.4%	+0.4%	+0.4%	+0.0%
Patient & Client Care	986	+279	+201	+140	+92	+48	+5	+0.4%	+0.3%	+0.2%	+0.1%	+0.1%	+0.0%
Health Care Assistants	806	+248	+170	+112	+71	+42	+7	+0.4%	+0.3%	+0.2%	+0.1%	+0.1%	+0.0%
Care, other	179	+31	+31	+29	+21	+6	-2	+0.2%	+0.2%	+0.2%	+0.1%	+0.0%	-0.0%

Source: Health Service Personnel Census

Older People

Jan 2021 (Dec 2015 figure: 988)	WTE Jan 2021	WTE change since Dec 15	WTE change since Dec 16	WTE change since Dec 17	WTE change since Dec 18	WTE change since Dec 19	WTE change since Dec 20	% change since Dec 15	% change since Dec 16	% change since Dec 17	% change since Dec 18	% change since Dec 19	% change since Dec 20
Overall	1,039	+51	+67	+103	+88	+65	+10	+5.2%	+6.9%	+11.0%	+9.3%	+6.7%	+1.0%
Medical & Dental	7	-3	-3			+1		-0.3%	-0.3%	+0.0%	+0.0%	+0.2%	+0.0%
Consultants	1		-1					+0.0%	+0.0%	+0.0%	+0.0%	+0.0%	+0.0%
Registrars		-3	-1					-1.0%	-1.0%	-1.0%	-1.0%	-1.0%	-1.0%
SHO/ Interns		-1	-1					-1.0%	-1.0%	-1.0%	-1.0%	-1.0%	-1.0%
Medical/ Dental, other	6	+1				+1		+0.2%	+0.0%	+0.0%	+0.0%	+0.2%	+0.0%
Nursing & Midwifery	307	+29	+27	+29	+25	+2	+7	+0.1%	+0.1%	+0.1%	+0.1%	+0.0%	+0.0%
Nurse/ Midwife Manager	66	+4	+1	+2	+3	+3	+2	+0.1%	+0.0%	+0.0%	+0.0%	+0.0%	+0.0%
Nurse/ Midwife Specialist & AN/MP	4	-0	+1	+2	+2	+2	+0	-0.1%	+0.6%	+1.1%	+1.1%	+1.1%	+0.0%
Staff Nurse/ Staff Midwife	236	+25	+24	+24	+19	-3	+5	+0.1%	+0.1%	+0.1%	+0.1%	-0.0%	+0.0%
Public Health Nurse	1	+1	+1	+1	+1			-1.0%	-1.0%	-1.0%	-1.0%	+0.0%	+0.0%
Health & Social Care Professionals	39	+6	+2	+3	+3	+2	+2	+0.2%	+0.1%	+0.1%	+0.1%	+0.1%	+0.0%
Therapy Professions	30	+2	+2	+2	+5	+3	+1	+0.1%	+0.1%	+0.1%	+0.2%	+0.1%	+0.0%
Health Science/ Diagnostics	1	+0	+0	+0	+0	-0	-0	+0.2%	+0.2%	+0.2%	+0.1%	-0.1%	-0.1%
Social Workers	7	+4	+0	+1	-2	-0	+1	+1.2%	+0.0%	+0.2%	-0.3%	-0.0%	+0.1%
Pharmacy	1							+0.0%	+0.0%	+0.0%	+0.0%	+0.0%	+0.0%
Management & Administrative	75	+17	+13	+10	+9	-1	+4	+0.3%	+0.2%	+0.2%	+0.1%	-0.0%	+0.1%
Management (VIII & above)	6	+3	+4	+3	+1	+0		+1.0%	+2.0%	+1.0%	+0.2%	+0.0%	+0.0%
Administrative/ Supervisory (V to VII)	18	+6	+5	+5	+4	-3	+1	+0.6%	+0.4%	+0.4%	+0.3%	-0.1%	+0.1%
Clerical (III & IV)	52	+8	+4	+2	+4	+2	+3	+0.2%	+0.1%	+0.0%	+0.1%	+0.0%	+0.1%
General Support	84	-11	-11	-6	-2	-3	-0	-0.1%	-0.1%	-0.1%	-0.0%	-0.0%	-0.0%
Support	62	-6	-7	-4	+1	-2	-1	-0.1%	-0.1%	-0.1%	+0.0%	-0.0%	-0.0%
Maintenance/ Technical	21	-5	-4	-2	-2	-1	+0	-0.2%	-0.1%	-0.1%	-0.1%	-0.0%	+0.0%
Patient & Client Care	527	+13	+38	+67	+53	+63	-2	+0.0%	+0.1%	+0.1%	+0.1%	+0.1%	-0.0%
Health Care Assistants	302	-3	+5	+25	+1	+22	+0	-0.0%	+0.0%	+0.1%	+0.0%	+0.1%	+0.0%
Care, other	11	+6	+4	-1	-1	+1	-1	+1.3%	+0.6%	-0.1%	-0.1%	+0.1%	-0.1%
Home Help	215	+10	+29	+43	+53	+39	-2	+0.0%	+0.2%	+0.3%	+0.3%	+0.2%	-0.0%

Source: Health Service Personnel Census