

CHO 3 Employment Report: June 2021

Employment by Staff Group

Jun 2021 (Dec 2020 figure: 4,610)	WTE Apr 2021	WTE Jun 2021	WTE change since Apr 21	% change since Apr 21	WTE change since Dec 20	WTE change since Jun 20
Overall	4,757	4,789	+33	+0.7%	+180	+280
Consultants	27	28	+1	+1.9%	-0	+1
Registrars	44	43	-1	-1.3%	+3	+5
SHO/ Interns	22	22	-1	-3.0%	-1	-4
Medical/ Dental, other	51	51	-0	-0.9%	-8	-8
Medical & Dental	144	143	-1	-0.8%	-6	-6
Nurse/ Midwife Manager	252	248	-4	-1.5%	-2	-8
Nurse/ Midwife Specialist & AN/MP	54	49	-5	-8.8%	-5	+0
Staff Nurse/ Staff Midwife	845	847	+1	+0.2%	+16	+50
Public Health Nurse	127	128	+2	+1.2%	+1	+3
Pre-registration Nurse/ Midwife Intern	22	21	-0	-0.2%	+21	-0
Pre-registration Nurse Intern (COVID-19)				-100.0%	-5	
Post-registration Nurse/ Midwife Student	4	2	-2	-50.0%	-2	-2
Nursing/ Midwifery Student	26	23	-2	-8.0%	+15	-20
Nursing/ Midwifery other	4	4				
Nursing & Midwifery	1,307	1,299	-8	-0.6%	+25	+25
Therapy Professions	227	233	+6	+2.5%	+10	+16
Health Science/ Diagnostics	7	7	-0	-1.2%	-1	+1
Social Care	284	283	-1	-0.5%	-5	+26
Social Workers	56	57	+1	+2.0%	-1	-0
Psychologists	126	127	+1	+0.4%	+1	+3
Pharmacy	6	6	-0	-2.4%	+1	+1
H&SC, Other	33	31	-2	-6.2%	-3	-6
Health & Social Care Professionals	740	743	+4	+0.5%	+1	+40
Management (VIII & above)	43	42	-0	-0.7%	+1	+3
Administrative/ Supervisory (V to VII)	166	166	+1	+0.4%	+17	+26
Clerical (III & IV)	343	350	+7	+2.1%	+42	+44
Management & Administrative	551	559	+7	+1.4%	+60	+73
Support	162	161	-1	-0.7%	+1	+1
Maintenance/ Technical	80	78	-1	-1.7%	+2	+3
General Support	241	239	-2	-1.0%	+3	+3
Health Care Assistants	1,307	1,323	+16	+1.2%	+76	+118
Care, other	250	263	+13	+5.2%	+19	+26
Home Help	216	220	+4	+1.9%	+3	-0
Patient & Client Care	1,773	1,806	+33	+1.9%	+97	+144

CHO 3 Employment Report: June 2021

Community Health & Wellbeing

Jun 2021 (Dec 2020 figure: 13)	WTE Apr 2021	WTE Jun 2021	WTE change since Apr 21	% change since Apr 21	WTE change since Dec 20	WTE change since Jun 20
Total Community Health & Wellbeing	17	20	+2	+12.9%	+7	+9
Nurse/ Midwife Manager				-100.0%		-1
Staff Nurses [General/ Children's]	1	1	-0	-2.4%	-0	-0
Staff Nurse/ Staff Midwife	1	1	-0	-2.4%	-0	+1
Public Health Nurse				-100.0%		-1
Nursing & Midwifery	1	1	-0	-2.4%	-0	-1
Therapy Professions	2	2				-0
Health & Social Care Professionals	2	2				-0
Management (VIII & above)	2	2				+1
Administrative/ Supervisory (V to VII)	8	8	+1	+7.5%	+3	+6
Clerical (III & IV)	3	3	-0	-8.7%	+2	+2
Management & Administrative	13	13	+0	+2.1%	+5	+9
Care, other	1	3	+2	+200.0%	+2	+1
Patient & Client Care	1	3	+2	+200.0%	+2	+1

Mental Health

Jun 2021 (Dec 2020 figure: 809)	WTE Apr 2021	WTE Jun 2021	WTE change since Apr 21	% change since Apr 21	WTE change since Dec 20	WTE change since Jun 20
Total Mental Health	838	828	-10	-1.1%	+19	+11
Consultants	24	25	+0	+2.0%	+0	+2
Registrars	19	19			+4	+1
SHO/ Interns	21	22	+0	+1.6%	+0	+2
Medical & Dental	64	65	+1	+1.3%	+5	+4
Nurse/ Midwife Manager	88	87	-1	-1.3%	-1	-4
Nurse/ Midwife Specialist & AN/MP	38	32	-5	-13.8%	-4	-3
Staff Nurse/ Staff Midwife	273	271	-2	-0.8%	-1	+11
Pre-registration Nurse/ Midwife Intern	14	13	-0	-0.4%	+13	-0
Pre-registration Nurse Intern (COVID-19)				-100.0%	-3	
Nursing/ Midwifery Student	14	13	-0	-0.4%	+10	-6
Nursing & Midwifery	412	403	-9	-2.1%	+3	-2
Therapy Professions	30	30	+0	+0.1%	+5	+5
Social Care	3	3				
Social Workers	23	24	+1	+4.2%	-1	-2
Psychologists	93	92	-1	-1.0%	+1	+2
Pharmacy	3	3				
H&SC, Other	12	11	-1	-9.3%	-1	-2
Health & Social Care Professionals	163	162	-1	-0.7%	+4	+3
Management (VIII & above)	2	2	+0	+0.5%		-1
Administrative/ Supervisory (V to VII)	18	19	+1	+5.4%	-0	
Clerical (III & IV)	54	54	-1	-1.4%	+3	+1
Management & Administrative	74	74	+0	+0.3%	+3	-0
Support	31	30	-1	-3.0%	+0	+0
Maintenance/ Technical	9	9				-1
General Support	40	39	-1	-2.4%	+0	-1
Health Care Assistants	83	83	+0	+0.1%	+4	+8
Care, other	1	1				
Patient & Client Care	84	84	+0	+0.1%	+4	+8

Primary Care

Jun 2021 (Dec 2020 figure: 812)	WTE Apr 2021	WTE Jun 2021	WTE change since Apr 21	% change since Apr 21	WTE change since Dec 20	WTE change since Jun 20
Total Primary Care	887	892	+5	+0.6%	+81	+149
Consultants	1	1				-1
Registrars	24	24	-1	-2.3%	-1	+5
SHO/ Interns	1		-1	-100.0%	-1	-6
Medical/ Dental, other	44	45	+1	+1.3%	-7	-8
Medical & Dental	71	70	-1	-1.4%	-9	-10
Nurse/ Midwife Manager	22	22	+0	+0.5%	-1	+1
Nurse/ Midwife Specialist & AN/MP	3	3	+0	+3.3%	+0	+2
Staff Nurse/ Staff Midwife	64	67	+2	+3.4%	+11	+12
Public Health Nurse	126	127	+2	+1.2%	+1	+4
<i>Post-registration Nurse/ Midwife Student</i>	4	2	-2	-50.0%	-2	-2
Nursing/ Midwifery Student	4	2	-2	-50.0%	-2	+2
Nursing & Midwifery	219	221	+2	+0.9%	+9	+21
Therapy Professions	86	88	+3	+3.1%	+5	+3
Health Science/ Diagnostics	5	5	-0	-1.8%	-1	+0
Social Care	1	0	-1	-75.0%	-1	-1
Social Workers	10	10	+0	+4.9%	+0	+0
Psychologists	15	16	+1	+7.7%	+1	+3
Pharmacy	2	2	-0	-7.0%	+1	+1
H&SC, Other	10	10	+0	+0.1%	-1	-2
Health & Social Care Professionals	128	131	+3	+2.6%	+5	+5
Management (VIII & above)	25	25	-0	-1.1%	+1	+2
Administrative/ Supervisory (V to VII)	78	79	+1	+1.4%	+15	+21
Clerical (III & IV)	170	178	+8	+5.0%	+29	+37
Management & Administrative	272	281	+9	+3.4%	+45	+59
Support	13	13	-0	-0.9%	-0	-0
Maintenance/ Technical	30	28	-2	-5.2%	+1	+0
General Support	43	41	-2	-3.9%	+1	-0
Health Care Assistants	101	92	-9	-8.9%	+25	+68
Care, other	53	56	+3	+5.2%	+6	+7
Home Help	1		-1	-100.0%	-1	-1
Patient & Client Care	154	148	-7	-4.5%	+30	+74

Social Care

Jun 2021 (Dec 2020 figure: 2,976)	WTE Apr 2021	WTE Jun 2021	WTE change since Apr 21	% change since Apr 21	WTE change since Dec 20	WTE change since Jun 20
Total Social Care	3,014	3,049	+35	+1.2%	+73	+110
Consultants	2	2	+0	+1.4%	-1	+0
Medical/ Dental, other	7	6	-1	-14.4%	-1	
Medical & Dental	9	8	-1	-10.7%	-2	+0
Nurse/ Midwife Manager	142	139	-3	-2.0%	+0	-4
Nurse/ Midwife Specialist & AN/MP	13	14	+0	+3.0%	-1	+1
Staff Nurse/ Staff Midwife	506	508	+1	+0.3%	+6	+26
Public Health Nurse	1	1				
Pre-registration Nurse/ Midwife Intern	8	8			+8	
Pre-registration Nurse Intern (COVID-19)				-100.0%	-2	
Nursing/ Midwifery Student	8	8			+7	-16
Nursing/ Midwifery other	4	4				
Nursing & Midwifery	674	673	-1	-0.1%	+12	+7
Therapy Professions	110	113	+3	+2.7%	-0	+8
Health Science/ Diagnostics	2	2			-0	+1
Social Care	280	279	-1	-0.2%	-4	+27
Social Workers	23	23	-0	-1.5%	-1	+1
Psychologists	19	19	+0	+1.5%	-1	-2
Pharmacy	1	1				
H&SC, Other	11	10	-1	-8.1%	-1	-2
Health & Social Care Professionals	446	448	+1	+0.3%	-8	+33
Management (VIII & above)	14	14	-0	-0.3%		+1
Administrative/ Supervisory (V to VII)	63	61	-2	-3.1%	-0	-1
Clerical (III & IV)	115	115	-0	-0.2%	+8	+4
Management & Administrative	192	190	-2	-1.2%	+7	+4
Support	117	117	-0	-0.0%	+1	+1
Maintenance/ Technical	41	41	+0	+0.5%	+1	+4
General Support	158	158	+0	+0.1%	+2	+4
Health Care Assistants	1,124	1,148	+25	+2.2%	+48	+42
Care, other	195	204	+8	+4.2%	+10	+18
Home Help	215	220	+5	+2.2%	+4	+1
Patient & Client Care	1,534	1,572	+38	+2.5%	+61	+61

CHO 3 Employment Report: June 2021

Disabilities

Jun 2021 (Dec 2020 figure: 1,947)	WTE Apr 2021	WTE Jun 2021	WTE change since Apr 21	% change since Apr 21	WTE change since Dec 20	WTE change since Jun 20
Total Disabilities	1,939	1,960	+21	+1.1%	+13	+69
Consultants	1	1	+0	+2.7%	-1	+0
Medical/ Dental, other	1	1				
Medical & Dental	2	2	+0	+1.5%	-1	+0
Nurse/ Midwife Manager	76	76	-0	-0.1%	+1	-5
Nurse/ Midwife Specialist & AN/MP	9	9	-1	-6.4%	-2	-2
Staff Nurse/ Staff Midwife	261	254	-7	-2.7%	-17	+2
Pre-registration Nurse/ Midwife Intern	8	8			+8	
Pre-registration Nurse Intern (COVID-19)				-100.0%	-2	
Nursing/ Midwifery Student	8	8			+7	-16
Nursing/ Midwifery other	4	4				
Nursing & Midwifery	358	350	-8	-2.2%	-11	-21
Therapy Professions	78	78	-0	-0.4%	-6	+1
Health Science/ Diagnostics	2	2				+1
Social Care	280	279	-1	-0.2%	-4	+27
Social Workers	17	17	+1	+3.1%	+0	+3
Psychologists	19	19	+0	+1.5%	-1	-2
H&SC, Other	11	10	-1	-8.1%	-1	-2
Health & Social Care Professionals	407	406	-1	-0.2%	-13	+28
Management (VIII & above)	8	8				+1
Administrative/ Supervisory (V to VII)	46	45	-0	-0.9%	+0	+4
Clerical (III & IV)	58	58	+0	+0.5%	-0	-3
Management & Administrative	111	111	-0	-0.1%	+0	+2
Support	54	54	-1	-1.3%	+0	-1
Maintenance/ Technical	20	20			+1	+3
General Support	74	74	-1	-1.0%	+1	+3
Health Care Assistants	806	829	+23	+2.8%	+29	+40
Care, other	181	188	+8	+4.2%	+7	+17
Patient & Client Care	987	1,017	+30	+3.1%	+36	+57

Older People

Jun 2021 (Dec 2020 figure: 1,029)	WTE Apr 2021	WTE Jun 2021	WTE change since Apr 21	% change since Apr 21	WTE change since Dec 20	WTE change since Jun 20
Total Older People	1,075	1,089	+14	+1.3%	+61	+41
Consultants	1	1				
Medical/ Dental, other	6	5	-1	-16.7%	-1	
Medical & Dental	7	6	-1	-14.3%	-1	
Nurse/ Midwife Manager	66	63	-3	-4.1%	-1	+1
Nurse/ Midwife Specialist & AN/MP	4	5	+1	+26.2%	+1	+3
Staff Nurse/ Staff Midwife	245	254	+9	+3.5%	+23	+25
Public Health Nurse	1	1				
Nursing & Midwifery	316	323	+7	+2.2%	+23	+29
Health & Social Care Professionals	39	42	+2	+5.9%	+5	+5
Management (VIII & above)	6	6	-0	-0.7%		+0
Administrative/ Supervisory (V to VII)	17	16	-2	-8.7%	-1	-4
Clerical (III & IV)	57	57	-1	-1.0%	+8	+7
Management & Administrative	80	78	-2	-2.6%	+7	+2
Support	63	63	+1	+1.1%	+0	+1
Maintenance/ Technical	21	21	+0	+1.0%	+0	+0
General Support	84	85	+1	+1.1%	+1	+2
Health Care Assistants	318	320	+2	+0.6%	+18	+3
Care, other	15	15	+1	+4.6%	+4	+1
Home Help	215	220	+5	+2.2%	+4	+1
Patient & Client Care	548	555	+7	+1.4%	+26	+4

CHO 3 Employment by Administration (HSE / S38): June 2021

Jun 2021 (Dec 2020 figure: 4,610)	WTE Apr 2021	WTE Jun 2021	WTE change since Apr 21	% change since Apr 21	WTE change since Dec 20	WTE change since Jun 20
Overall	4,757	4,789	+33	+0.7%	+180	+280
HSE	2,959	2,970	+11	+0.4%	+163	+220
Section 38 Voluntary Agencies	1,798	1,819	+21	+1.2%	+17	+60

HSE

Jun 2021 (Dec 2020 figure: 2,807)	WTE Apr 2021	WTE Jun 2021	WTE change since Apr 21	% change since Apr 21	WTE change since Dec 20	WTE change since Jun 20
Overall	2,959	2,970	+11	+0.4%	+163	+220
Consultants	26	27	+0	+0.0%	+0	+1
Registrars	44	43	-1	-0.0%	+3	+5
SHO/ Interns	22	22	-1	-0.0%	-1	-4
Medical/ Dental, other	50	50	-0	-0.0%	-8	-8
Medical & Dental	142	141	-1	-0.8%	-6	-6
Nurse/ Midwife Manager	176	172	-4	-0.0%	-3	-3
Nurse/ Midwife Specialist & AN/MP	44	40	-4	-0.1%	-3	+2
Staff Nurse/ Staff Midwife	584	593	+9	+0.0%	+32	+48
Public Health Nurse	127	128	+2	+0.0%	+1	+3
Pre-registration Nurse/ Midwife Intern	14	13	-0	-0.0%	+5	+13
Pre-registration Nurse Intern (COVID-19)				-1.0%		-20
Post-registration Nurse/ Midwife Student	4	2	-2	-0.5%	+2	+2
Nursing/ Midwifery Student	18	15	-2	-0.1%	+8	-4
Nursing & Midwifery	948	949	+0	+0.0%	+36	+47
Therapy Professions	198	202	+5	+0.0%	+12	+17
Health Science/ Diagnostics	7	7	-0	-0.0%	-1	+1
Social Care	6	5	-1	-0.1%	-1	-1
Social Workers	40	41	+1	+0.0%	-2	-4
Psychologists	111	111	+0	+0.0%	+2	+4
Pharmacy	6	6	-0	-0.0%	+1	+1
H&SC, Other	23	22	-1	-0.0%	-1	-3
Health & Social Care Professionals	391	395	+4	+0.9%	+8	+15
Management (VIII & above)	37	36	-0	-0.0%	+1	+3
Administrative/ Supervisory (V to VII)	136	137	+1	+0.0%	+17	+24
Clerical (III & IV)	307	314	+7	+0.0%	+42	+44
Management & Administrative	480	487	+7	+1.6%	+60	+71
Support	107	107	-0	-0.0%	+1	+1
Maintenance/ Technical	69	67	-1	-0.0%	+2	+3
General Support	176	174	-2	-1.0%	+3	+4
Health Care Assistants	508	502	-6	-0.0%	+48	+80
Care, other	97	101	+5	+0.0%	+11	+9
Home Help	216	220	+4	+0.0%	+3	-0
Patient & Client Care	820	823	+3	+0.4%	+62	+90

Section 38 Voluntary Agencies

Jun 2021 (Dec 2020 figure: 1,802)	WTE Apr 2021	WTE Jun 2021	WTE change since Apr 21	% change since Apr 21	WTE change since Dec 20	WTE change since Jun 20
Overall	1,798	1,819	+21	+1.2%	+17	+60
Consultants	1	1	+0	+0.0%	-1	+0
Medical/ Dental, other	1	1		+0.0%		
Medical & Dental	2	2	+0	+1.5%	-1	+0
Nurse/ Midwife Manager	76	76	-0	-0.0%	+1	-5
Nurse/ Midwife Specialist & AN/MP	9	9	-1	-0.1%	-2	-2
Staff Nurse/ Staff Midwife	261	254	-7	-0.0%	-17	+2
<i>Pre-registration Nurse/ Midwife Intern</i>	8	8		+0.0%	-4	+8
<i>Pre-registration Nurse Intern (COVID-19)</i>				-1.0%		-24
Nursing/ Midwifery Student	8	8		+0.0%	+7	-16
Nursing/ Midwifery other	4	4		+0.0%		
Nursing & Midwifery	358	350	-8	-2.2%	-11	-21
Therapy Professions	30	31	+1	+0.0%	-2	-1
Social Care	278	277	-1	-0.0%	-4	+27
Social Workers	16	16	+0	+0.0%	+2	+3
Psychologists	15	15	+0	+0.0%	-1	-1
H&SC, Other	10	9	-1	-0.1%	-1	-2
Health & Social Care Professionals	348	348	-0	-0.0%	-7	+26
Management (VIII & above)	6	6		+0.0%		
Administrative/ Supervisory (V to VII)	30	30	-0	-0.0%	+0	+2
Clerical (III & IV)	36	36	+0	+0.0%	+0	-1
Management & Administrative	71	71	+0	+0.0%	+0	+1
Support	54	54	-1	-0.0%	+0	-1
Maintenance/ Technical	11	11		+0.0%		
General Support	65	65	-1	-1.1%	+0	-1
Health Care Assistants	799	821	+22	+0.0%	+28	+38
Care, other	154	162	+8	+0.1%	+7	+17
Patient & Client Care	953	983	+30	+3.1%	+35	+54

CHO 3 Employment by S38 Agency: June 2021

Bros. of Charity, Clare

Jun 2021 (Dec 2020 figure: 372)	WTE Apr 2021	WTE Jun 2021	WTE change since Apr 21	% change since Apr 21	WTE change since Dec 20	WTE change since Jun 20
Overall	380	402	+22	+5.8%	+30	+66
Medical & Dental	0	0	+0	+30.0%		+0
Staff Nurse/ Staff Midwife	3	3	-0	-0.0%	+1	+1
Nursing/ Midwifery Student				-1.0%	-1	-1
Nursing & Midwifery	3	3	-0	-0.7%	-0	-0
Social Care	86	85	-1	-0.0%	-0	+6
Social Workers	3	3		+0.0%		+2
Psychologists	2	3	+0	+0.2%		
H&SC, Other	4	3	-1	-0.3%	-1	-1
Health & Social Care Professionals	95	93	-1	-1.5%	-1	+7
Management (VIII & above)	1	1		+0.0%		
Administrative/ Supervisory (V to VII)	5	5		+0.0%	+0	
Clerical (III & IV)	5	5		+0.0%	+0	+0
Management & Administrative	11	11			+0	+0
Health Care Assistants	239	260	+21	+0.1%	+27	+55
Care, other	33	35	+2	+0.1%	+3	+3
Patient & Client Care	271	295	+23	+8.7%	+31	+59

Bros. of Charity, Limerick

Jun 2021 (Dec 2020 figure: 592)	WTE Apr 2021	WTE Jun 2021	WTE change since Apr 21	% change since Apr 21	WTE change since Dec 20	WTE change since Jun 20
Overall	576	587	+11	+1.9%	-6	+23
Consultants	1	1		+0.0%	-1	
Medical & Dental	1	1			-1	
Nurse/ Midwife Manager	29	27	-2	-0.1%	-1	-3
Nurse/ Midwife Specialist & AN/MP	4	4	-0	-0.0%	-0	-0
Staff Nurse/ Staff Midwife	89	88	-2	-0.0%	-10	-0
Nursing & Midwifery	122	119	-4	-2.9%	-11	-3
Therapy Professions	14	15	+1	+0.1%	-0	+0
Social Care	100	104	+4	+0.0%	-0	+11
Social Workers	6	6	+0	+0.0%	+1	+1
Psychologists	6	6		+0.0%		-0
H&SC, Other				-1.0%	-1	-2
Health & Social Care Professionals	126	131	+5	+4.1%	+0	+11
Management (VIII & above)	2	2		+0.0%		
Administrative/ Supervisory (V to VII)	7	7	-0	-0.0%	+1	+1
Clerical (III & IV)	10	10	+0	+0.0%	-1	-1
Management & Administrative	19	19	+0	+0.2%	+0	+0
Support	8	7	-1	-0.1%	+1	+2
Maintenance/ Technical	2	2		+0.0%		
General Support	10	9	-1	-7.4%	+1	+2
Health Care Assistants	202	206	+4	+0.0%	+2	+1
Care, other	96	102	+6	+0.1%	+4	+12
Patient & Client Care	298	308	+10	+3.4%	+6	+13

Daughters of Charity, Limerick

Jun 2021 (Dec 2020 figure: 549)	WTE Apr 2021	WTE Jun 2021	WTE change since Apr 21	% change since Apr 21	WTE change since Dec 20	WTE change since Jun 20
Overall	550	545	-5	-1.0%	-4	-26
Medical/ Dental, other	1	1		+0.0%		
Medical & Dental	1	1				
Nurse/ Midwife Manager	32	33	+1	+0.0%	+1	-2
Nurse/ Midwife Specialist & AN/MP	5	5	-1	-0.1%	-1	-2
Staff Nurse/ Staff Midwife	150	146	-4	-0.0%	-6	+2
Nursing/ Midwifery Student	8	8		+0.0%	+8	-15
Nursing/ Midwifery other	3	3		+0.0%		
Nursing & Midwifery	199	195	-4	-1.9%	+1	-17
Therapy Professions	14	14		+0.0%	-2	-1
Social Care	67	63	-4	-0.1%	-4	+8
Social Workers	5	5		+0.0%	+0	
Psychologists	6	6		+0.0%	-1	-1
H&SC, Other	6	6		+0.0%	+0	+0
Health & Social Care Professionals	98	95	-4	-3.7%	-6	+6
Management (VIII & above)	2	2		+0.0%		
Administrative/ Supervisory (V to VII)	11	11		+0.0%		+1
Clerical (III & IV)	14	14		+0.0%	-0	-0
Management & Administrative	27	27			-0	+1
Support	42	42		+0.0%	-1	-2
Maintenance/ Technical	4	4		+0.0%		
General Support	47	47			-1	-2
Health Care Assistants	156	157	+2	+0.0%	+1	-15
Care, other	23	23	+0	+0.0%	+0	+1
Patient & Client Care	179	181	+2	+1.2%	+2	-14

Daughters of Charity, Roscrea

Jun 2021 (Dec 2020 figure: 289)	WTE Apr 2021	WTE Jun 2021	WTE change since Apr 21	% change since Apr 21	WTE change since Dec 20	WTE change since Jun 20
Overall	292	286	-6	-2.2%	-3	-3
Nurse/ Midwife Manager	15	15	+1	+0.0%	+1	-1
Staff Nurse/ Staff Midwife	19	18	-1	-0.1%	-1	-1
Nursing/ Midwifery other	1	1		+0.0%		
Nursing & Midwifery	34	34	-1	-1.5%	-1	-1
Therapy Professions	2	2		+0.0%		
Social Care	25	25	-0	-0.0%		+1
Social Workers	1	1		+0.0%		
Psychologists	1	1		+0.0%		
Health & Social Care Professionals	29	29	-0	-0.8%		+1
Management (VIII & above)	1	1		+0.0%		
Administrative/ Supervisory (V to VII)	7	7		+0.0%	-1	
Clerical (III & IV)	7	7		+0.0%	+1	+0
Management & Administrative	15	15			-0	+0
Support	4	4		+0.0%		
Maintenance/ Technical	5	5		+0.0%		
General Support	9	9				
Health Care Assistants	203	198	-6	-0.0%	-2	-3
Care, other	2	2		+0.0%		
Patient & Client Care	205	199	-6	-2.8%	-2	-3

CHO 3 Employment by Grade Group & Staff Category: June 2021

Jun 2021 (Dec 2020 figure: 4,610)	WTE Apr 2021	WTE Jun 2021	WTE change since Apr 21	% change since Apr 21	WTE change since Dec 20	WTE change since Jun 20
Overall	4,757	4,789	+33	+0.7%	+180	+280
Consultant Medicine	2	2				
Consultant Paediatrics	1	1				
Consultant Psychiatry	24	25	+1	+2.1%	-0	+2
Consultant Surgery	0	0				-1
Consultants	27	28	+1	+1.9%	-0	+1
Registrar	36	36	-1	-1.5%	+2	+4
Senior Registrar	7	7			+1	+2
Specialist Registrar	1	1				-1
Registrars	44	43	-1	-1.3%	+3	+5
Senior House Officer	22	22	-1	-3.0%	-1	-4
SHO/ Interns	22	22	-1	-3.0%	-1	-4
Dentists	26	26	-0	-0.3%	-0	+1
Other Medical	25	25	-0	-1.4%	-8	-8
Medical/ Dental, other	51	51	-0	-0.9%	-8	-8
Medical & Dental	144	143	-1	-0.8%	-9	-6
Clinical Nurse/ Midwife Manager	194	192	-2	-1.0%	+2	-2
Director Nursing/Midwifery, Assistant	43	41	-2	-4.4%	-6	-5
Director of Nursing/Midwifery	15	15	-0	-0.3%	+2	-1
Nurse/ Midwife Manager	252	248	-4	-1.5%	-2	-8
Advanced Nurse/ Midwife Practitioner	4	3	-1	-21.7%	+0	+1
Clinical Nurse/ Midwife Specialist	50	46	-4	-7.8%	-5	-1
Nurse/ Midwife Specialist & AN/MP	54	49	-5	-8.8%	-5	+0
Staff Nurse [Intellectual Disability]	253	247	-6	-2.3%	+10	+36
Staff Nurse [Psychiatric]	265	265	-0	-0.2%	+2	+13
Staff Nurses [General/ Children's]	327	334	+8	+2.4%	+5	+1
Staff Nurse/ Staff Midwife	845	847	+1	+0.2%	+16	+50
Public Health Nurse	127	128	+2	+1.2%	+1	+3
Pre-registration Nurse/ Midwife Intern	22	21	-0	-0.2%	+21	+21
Pre-registration Nurse Intern (COVID-19)				-100.0%	-5	-44
Post-registration Nurse/ Midwife Student	4	2	-2	-50.0%	-2	+2
Nursing/ Midwifery Student	26	23	-2	-8.0%	+15	-20
Nursing Education/Clinical	3	3				
Other Nursing/ Midwifery	1	1				
Nursing/ Midwifery other	4	4				
Nursing & Midwifery	1,307	1,299	-8	-0.6%	+58	+25
Dietitians	5	5	-0	-5.0%	-1	-2
Occupational Therapists	92	90	-2	-1.9%	+4	+3
Physiotherapists	60	65	+5	+9.1%	+4	+7
Podiatrists & Chiropodists	5	5	+0	+2.4%	-1	-0
Speech & Language Therapists	66	67	+2	+3.0%	+4	+8
Therapy Professions	227	233	+6	+2.5%	+10	+16
Audiology	5	5	-0	-1.8%	-1	+0
Clinical Engineering	2	2				+1
Clinical Measurement				-100.0%	-0	-0
Radiographers	1	1				
Health Science/ Diagnostics	7	7	-0	-1.2%	-1	+1
Social Care	284	283	-1	-0.5%	-5	+26

Jun 2021 (Dec 2020 figure: 4,610)	WTE Apr 2021	WTE Jun 2021	WTE change since Apr 21	% change since Apr 21	WTE change since Dec 20	WTE change since Jun 20
Overall	4,757	4,789	+33	+0.7%	+180	+280
Social Workers	56	57	+1	+2.0%	-1	-0
Psychologists	126	127	+1	+0.4%	+1	+3
Pharmacy	6	6	-0	-2.4%	+1	+1
Counsellor Therapists	15	14	-1	-7.4%	-2	-2
Dental Hygienists	6	6			+0	-1
Other Health & Social Care	8	8	+0	+0.4%	+1	-1
Play Therapists/ Specialists	4	3	-1	-23.7%	-2	-2
H&SC, Other	33	31	-2	-6.2%	-3	-6
Health & Social Care Professionals	740	743	+4	+0.5%	+59	+40
Executive Management	15	16	+1	+3.4%	+1	+2
Senior Management (VIII & GM)	28	27	-1	-2.9%	-0	+0
Management (VIII & above)	43	42	-0	-0.7%	+1	+3
Middle Management (V-VII)	154	155	+1	+0.4%	+12	+26
Other Administrative	12	12			+5	
Administrative/ Supervisory (V to VII)	166	166	+1	+0.4%	+17	+26
Clerical (III & IV)	343	350	+7	+2.1%	+42	+44
Management & Administrative	551	559	+7	+1.4%	+68	+73
Catering	28	27	-0	-0.4%	-1	-3
Household Services	89	88	-1	-0.6%	+2	+4
Portering	8	8			-3	-3
Other Support	37	37	-0	-1.3%	+3	+2
Support	162	161	-1	-0.7%	+1	+1
Maintenance	79	77	-1	-1.7%	+2	+3
Technical Services	1	1				
Maintenance/ Technical	80	78	-1	-1.7%	+2	+3
General Support	241	239	-2	-1.0%	-1	+3
HCA, Nurse's Aide, etc.	1,215	1,242	+27	+2.3%	+54	+50
Health & Social Care Assistants	16	16	-0	-0.7%	+1	+4
Swabber (COVID-19)	76	65	-11	-15.0%	+21	+65
Health Care Assistants	1,307	1,323	+16	+1.2%	+76	+118
Other Care Grades	250	263	+13	+5.2%	+19	+26
Care, other	250	263	+13	+5.2%	+19	+26
Home Help	216	220	+4	+1.9%	+3	-0
Patient & Client Care	1,773	1,806	+33	+1.9%	+257	+144

CHO 3 HSE Employment by Grade Group & Staff Category: June 2021

Jun 2021 (Dec 2020 figure: 2,807)	WTE Apr 2021	WTE Jun 2021	WTE change since Apr 21	% change since Apr 21	WTE change since Dec 20	WTE change since Jun 20
Overall	2,959	2,970	+11	+0.4%	+163	+220
Consultant Medicine	2	2				
Consultant Paediatrics	1	1				
Consultant Psychiatry	23	24	+0	+2.1%	+0	+2
Consultant Surgery	0	0				-1
Consultants	26	27	+0	+1.8%	+0	+1
Registrar	36	36	-1	-1.5%	+2	+4
Senior Registrar	7	7			+1	+2
Specialist Registrar	1	1				-1
Registrars	44	43	-1	-1.3%	+3	+5
SHO/ Interns	22	22	-1	-3.0%	-1	-4
Dentists	26	26	-0	-0.3%	-0	+1
Other Medical	24	24	-0	-1.5%	-8	-8
Medical/ Dental, other	50	50	-0	-0.9%	-8	-8
Medical & Dental	142	141	-1	-0.8%	-9	-6
Clinical Nurse/ Midwife Manager	119	117	-2	-1.5%	+1	+3
Director Nursing/Midwifery, Assistant	42	40	-2	-4.5%	-6	-5
Director of Nursing/Midwifery	15	15	-0	-0.3%	+2	-1
Nurse/ Midwife Manager	176	172	-4	-2.1%	-3	-3
Advanced Nurse/ Midwife Practitioner	4	3	-1	-21.7%	+0	+1
Clinical Nurse/ Midwife Specialist	41	37	-3	-8.1%	-3	+1
Nurse/ Midwife Specialist & AN/MP	44	40	-4	-9.3%	-3	+2
Staff Nurse [Intellectual Disability]	1	1	-0	-19.0%	-0	-0
Staff Nurse [Psychiatric]	265	265	-0	-0.2%	+2	+13
Staff Nurses [General/ Children's]	318	327	+9	+2.9%	+31	+35
Staff Nurse/ Staff Midwife	584	593	+9	+1.5%	+32	+48
Public Health Nurse	127	128	+2	+1.2%	+1	+3
Pre-registration Nurse/ Midwife Intern	14	13	-0	-0.4%	+13	+13
Pre-registration Nurse Intern (COVID-19)				-100.0%	-3	-20
Post-registration Nurse/ Midwife Student	4	2	-2	-50.0%	-2	+2
Nursing/ Midwifery Student	18	15	-2	-11.7%	+8	-4
Nursing & Midwifery	948	949	+0	+0.0%	+59	+47
Dietitians	5	5	-0	-5.0%	-1	-2
Occupational Therapists	81	80	-2	-2.1%	+4	+4
Physiotherapists	52	57	+5	+10.5%	+5	+6
Podiatrists & Chiropodists	5	5	+0	+2.4%	-1	-0
Speech & Language Therapists	54	55	+1	+1.8%	+5	+9
Therapy Professions	198	202	+5	+2.3%	+12	+17
Audiology	5	5	-0	-1.8%	-1	+0
Clinical Engineering	2	2				+1
Clinical Measurement				-100.0%	-0	-0
Radiographers	1	1				
Health Science/ Diagnostics	7	7	-0	-1.2%	-1	+1
Social Care	6	5	-1	-12.5%	-1	-1
Social Workers	40	41	+1	+2.7%	-2	-4
Psychologists	111	111	+0	+0.1%	+2	+4
Pharmacy	6	6	-0	-2.4%	+1	+1
Counsellor Therapists	15	14	-1	-7.4%	-2	-2
Dental Hygienists	6	6			+0	-1
Other Health & Social Care	2	2	+0	+1.9%	+0	-1

Jun 2021 (Dec 2020 figure: 2,807)	WTE Apr 2021	WTE Jun 2021	WTE change since Apr 21	% change since Apr 21	WTE change since Dec 20	WTE change since Jun 20
Overall	2,959	2,970	+11	+0.4%	+163	+220
Play Therapists/ Specialists	0	0			-0	-0
H&SC, Other	23	22	-1	-4.7%	-1	-3
Health & Social Care Professionals	391	395	+4	+0.9%	+17	+15
Executive Management	13	14	+1	+3.9%	+1	+2
Senior Management (VIII & GM)	24	23	-1	-3.4%	-0	+0
Management (VIII & above)	37	36	-0	-0.8%	+1	+3
Administrative/ Supervisory (V to VII)	136	137	+1	+0.5%	+17	+24
Clerical (III & IV)	307	314	+7	+2.3%	+42	+44
Management & Administrative	480	487	+7	+1.6%	+69	+71
Catering	23	23	-0	-0.5%	-1	-3
Household Services	47	46	-0	-0.5%	+1	+4
Portering	8	8			+0	
Other Support	30	30	-0	-0.2%	-0	-0
Support	107	107	-0	-0.4%	+1	+1
Maintenance/ Technical	69	67	-1	-1.9%	+2	+3
General Support	176	174	-2	-1.0%	-0	+4
HCA, Nurse's Aide, etc.	418	423	+6	+1.3%	+27	+13
Health & Social Care Assistants	14	14	-0	-0.8%		+3
Swabber (COVID-19)	76	65	-11	-15.0%	+21	+65
Health Care Assistants	508	502	-6	-1.2%	+48	+80
Care, other	97	101	+5	+4.9%	+11	+9
Home Help	216	220	+4	+1.9%	+3	-0
Patient & Client Care	820	823	+3	+0.4%	+180	+90

Employment by WTE, Headcount, Gender, Full-Time /Part-Time etc.: Jun 2021

CHO 3	WTE	Headcount	WTE: no.	% Male	% female	Male WTE: no.	Female WTE: no.	% Total Perm	% Male Perm	% Female Perm	% Total Full Time	% Total Part Time	% Male FT	% Female FT
Overall	4,789	5,675	1.18	14.3%	85.7%	1.09	1.20	83.3%	79.0%	84.0%	56.7%	43.3%	73.8%	53.8%
Consultant Medicine	2	2	1.00	50.0%	50.0%	1.00	1.00	100.0%	100.0%	100.0%	100.0%	0.0%	100.0%	100.0%
Consultant Paediatrics	1	1	1.00		100.0%		1.00	100.0%	100.0%	100.0%	100.0%	0.0%		100.0%
Consultant Psychiatry	25	28	1.14	53.6%	46.4%	1.08	1.21	75.0%	75.0%	69.2%	75.0%	25.0%	80.0%	69.2%
Consultant Surgery	0	1	3.33		100.0%		3.33	100.0%	100.0%	100.0%	0.0%	100.0%		0.0%
Consultants	28	32	1.15	50.0%	50.0%	1.07	1.23	78.1%	81.3%	75.0%	75.0%	25.0%	81.3%	68.8%
Registrar	36	36	1.01	30.6%	69.4%	1.00	1.02	5.6%	5.6%	4.0%	97.2%	2.8%	100.0%	96.0%
Senior Registrar	7	7	1.08	42.9%	57.1%	1.00	1.14	0.0%	0.0%	0.0%	85.7%	14.3%	100.0%	75.0%
Specialist Registrar	1	1	1.00		100.0%		1.00	0.0%	0.0%	0.0%	100.0%	0.0%		100.0%
Registrars	43	44	1.02	31.8%	68.2%	1.00	1.03	4.5%	7.1%	3.3%	95.5%	4.5%	100.0%	93.3%
Senior House Officer	22	22	1.02	18.2%	81.8%	1.00	1.03	4.5%	4.5%	0.0%	90.9%	9.1%	100.0%	88.9%
SHO/ Interns	22	22	1.02	18.2%	81.8%	1.00	1.03	4.5%	25.0%	0.0%	90.9%	9.1%	100.0%	88.9%
Dentists	26	32	1.22	21.9%	78.1%	1.17	1.24	90.6%	90.6%	96.0%	50.0%	50.0%	71.4%	44.0%
Other Medical	25	29	1.18	34.5%	65.5%	1.15	1.19	69.0%	69.0%	73.7%	72.4%	27.6%	80.0%	68.4%
Medical/ Dental, other	51	61	1.20	27.9%	72.1%	1.16	1.22	80.3%	64.7%	86.4%	60.7%	39.3%	76.5%	54.5%
Medical & Dental	143	159	1.11	32.1%	67.9%	1.07	1.13	48.4%	51.0%	47.2%	77.4%	22.6%	86.3%	73.1%
Clinical Nurse/ Midwife Manager	192	200	1.04	13.5%	86.5%	1.01	1.05	93.0%	93.0%	92.5%	87.0%	13.0%	100.0%	85.0%
Director Nursing/Midwifery, Assistant	41	45	1.10	15.6%	84.4%	1.16	1.09	97.8%	97.8%	100.0%	84.4%	15.6%	85.7%	84.2%
Director of Nursing/Midwifery	15	15	1.01	6.7%	93.3%	1.00	1.01	93.3%	93.3%	92.9%	100.0%	0.0%	100.0%	100.0%
Nurse/ Midwife Manager	248	260	1.05	13.5%	86.5%	1.04	1.05	93.8%	94.3%	93.8%	87.3%	12.7%	97.1%	85.8%
Advanced Nurse/ Midwife Practitioner	3	3	1.00	33.3%	66.7%	1.00	1.00	100.0%	100.0%	100.0%	100.0%	0.0%	100.0%	100.0%
Clinical Nurse/ Midwife Specialist	46	54	1.17	9.3%	90.7%	1.11	1.18	100.0%	100.0%	100.0%	72.2%	27.8%	80.0%	71.4%
Nurse/ Midwife Specialist & AN/MP	49	57	1.16	10.5%	89.5%	1.09	1.17	100.0%	100.0%	100.0%	73.7%	26.3%	83.3%	72.5%
Staff Nurse [Intellectual Disability]	247	271	1.10	1.8%	98.2%	1.01	1.10	95.2%	95.2%	95.1%	54.6%	45.4%	80.0%	54.1%
Staff Nurse [Psychiatric]	265	286	1.08	24.8%	75.2%	1.04	1.09	96.2%	96.2%	96.3%	85.0%	15.0%	87.3%	84.2%
Staff Nurses [General/ Children's]	334	403	1.21	5.5%	94.5%	1.03	1.22	89.1%	89.1%	89.2%	59.6%	40.4%	81.8%	58.3%
Staff Nurse/ Staff Midwife	847	960	1.13	10.2%	89.8%	1.04	1.15	92.9%	93.9%	92.8%	65.7%	34.3%	85.7%	63.5%
Public Health Nurse	128	157	1.23	0.6%	99.4%	1.25	1.23	89.2%	100.0%	89.1%	63.7%	36.3%	0.0%	64.1%
Pre-registration Nurse/ Midwife Intern	21	42	1.96	11.9%	88.1%	2.00	1.95	38.1%	38.1%	43.2%	61.9%	38.1%	100.0%	56.8%

Post-registration Nurse/ Midwife Student	2	2	1.00		100.0%		1.00	0.0%	0.0%	0.0%	100.0%	0.0%		100.0%
Nursing/ Midwifery Student	23	44	1.88	11.4%	88.6%	2.00	1.86	36.4%	0.0%	41.0%	63.6%	36.4%	100.0%	59.0%
Nursing Education/Clinical	3	3	1.10		100.0%		1.10	100.0%	100.0%	100.0%	66.7%	33.3%		66.7%
Other Nursing/ Midwifery	1	1	1.00	100.0%		1.00		100.0%	100.0%		100.0%	0.0%	100.0%	
Nursing/ Midwifery other	4	4	1.08	25.0%	75.0%	1.00	1.10	100.0%	100.0%	100.0%	75.0%	25.0%	100.0%	66.7%
Nursing & Midwifery	1,299	1,482	1.14	9.9%	90.1%	1.06	1.15	91.3%	91.1%	91.3%	69.6%	30.4%	88.4%	67.5%
Dietitians	5	6	1.27		100.0%		1.27	100.0%	100.0%	100.0%	66.7%	33.3%		66.7%
Occupational Therapists	90	101	1.12	7.9%	92.1%	1.00	1.13	93.1%	93.1%	92.5%	79.2%	20.8%	100.0%	77.4%
Physiotherapists	65	75	1.15	14.7%	85.3%	1.03	1.17	86.7%	86.7%	85.9%	76.0%	24.0%	90.9%	73.4%
Podiatrists & Chiropodists	5	6	1.09		100.0%		1.09	83.3%	83.3%	83.3%	83.3%	16.7%		83.3%
Speech & Language Therapists	68	78	1.16	2.6%	97.4%	1.26	1.15	89.7%	89.7%	89.5%	73.1%	26.9%	50.0%	73.7%
Therapy Professions	233	266	1.14	7.9%	92.1%	1.03	1.15	90.2%	95.2%	89.8%	76.3%	23.7%	90.5%	75.1%
Audiology	5	5	1.02		100.0%		1.02	80.0%	80.0%	80.0%	100.0%	0.0%		100.0%
Clinical Engineering	2	2	1.03	100.0%		1.03		0.0%	0.0%		50.0%	50.0%	50.0%	
Radiographers	1	1	2.00	100.0%		2.00		100.0%	100.0%		0.0%	100.0%	0.0%	
Health Science/ Diagnostics	7	8	1.09	37.5%	62.5%	1.22	1.02	62.5%	33.3%	80.0%	75.0%	25.0%	33.3%	100.0%
Social Care	283	325	1.15	9.5%	90.5%	1.07	1.16	72.0%	64.5%	72.8%	35.7%	64.3%	35.5%	35.7%
Social Workers	57	64	1.13	14.1%	85.9%	1.08	1.13	96.9%	100.0%	96.4%	79.7%	20.3%	77.8%	80.0%
Psychologists	127	132	1.04	19.7%	80.3%	1.00	1.05	48.5%	46.2%	49.1%	93.2%	6.8%	100.0%	91.5%
Pharmacy	6	6	1.06	33.3%	66.7%	1.00	1.09	100.0%	100.0%	100.0%	83.3%	16.7%	100.0%	75.0%
Counsellor Therapists	14	16	1.14	6.3%	93.8%	1.00	1.15	100.0%	100.0%	100.0%	56.3%	43.8%	100.0%	53.3%
Dental Hygienists	6	8	1.30		100.0%		1.30	100.0%	100.0%	100.0%	25.0%	75.0%		25.0%
Other Health & Social Care	8	10	1.29		100.0%		1.29	100.0%	100.0%	100.0%	50.0%	50.0%		50.0%
Play Therapists/ Specialists	3	5	1.65		100.0%		1.65	100.0%	100.0%	100.0%	20.0%	80.0%		20.0%
H&SC, Other	31	39	1.26	2.6%	97.4%	1.00	1.26	100.0%	100.0%	100.0%	43.6%	56.4%	100.0%	42.1%
Health & Social Care	743	840	1.13	11.1%	88.9%	1.05	1.14	77.4%	69.9%	78.3%	62.0%	38.0%	72.0%	60.8%
Executive Management	16	16	1.03	25.0%	75.0%	1.00	1.04	100.0%	100.0%	100.0%	100.0%	0.0%	100.0%	100.0%
Senior Management (VIII & GM)	27	28	1.05	25.0%	75.0%	1.08	1.04	92.9%	92.9%	90.5%	92.9%	7.1%	100.0%	90.5%
Management (VIII & above)	42	44	1.04	25.0%	75.0%	1.05	1.04	95.5%	100.0%	93.9%	95.5%	4.5%	100.0%	93.9%
Administrative/ Supervisory (V to VII)	166	175	1.05	13.7%	86.3%	1.07	1.05	89.7%	75.0%	92.1%	86.3%	13.7%	95.8%	84.8%
Clerical (III & IV)	350	394	1.13	8.1%	91.9%	1.05	1.13	73.1%	50.0%	75.1%	72.6%	27.4%	90.6%	71.0%
Management & Administrative	559	613	1.10	10.9%	89.1%	1.06	1.10	79.4%	67.2%	81.0%	78.1%	21.9%	94.0%	76.2%
Catering	27	31	1.13	32.3%	67.7%	1.02	1.19	96.8%	96.8%	100.0%	77.4%	22.6%	100.0%	66.7%
Household Services	88	102	1.15	17.6%	82.4%	1.28	1.13	89.2%	89.2%	90.5%	65.7%	34.3%	66.7%	65.5%
Portering	8	8	1.00	100.0%		1.00		100.0%	100.0%		100.0%	0.0%	100.0%	

Other Support	37	57	1.55	40.4%	59.6%	1.21	1.91	73.7%	73.7%	64.7%	64.9%	35.1%	69.6%	61.8%
Support	161	198	1.23	29.8%	70.2%	1.16	1.27	86.4%	88.1%	85.6%	68.7%	31.3%	78.0%	64.7%
Maintenance/ Technical	78	81	1.03	100.0%		1.03		90.1%	90.1%	#DIV/0	95.1%	4.9%	95.1%	
General Support	239	279	1.17	50.2%	49.8%	1.08	1.27	87.5%	89.3%	85.6%	76.3%	23.7%	87.9%	64.7%
HCA, Nurse's Aide, etc.	1,242	1,498	1.21	16.4%	83.6%	1.12	1.22	83.3%	83.3%	83.6%	34.5%	65.5%	47.2%	32.0%
Health & Social Care Assistants	16	17	1.06	17.6%	82.4%	1.00	1.08	47.1%	47.1%	57.1%	82.4%	17.6%	100.0%	78.6%
Swabber (COVID-19)	65	69	1.06	18.8%	81.2%	1.06	1.07	0.0%	0.0%	0.0%	88.4%	11.6%	100.0%	85.7%
Health Care Assistants	1,323	1,584	1.20	16.5%	83.5%	1.12	1.21	79.3%	76.7%	79.8%	37.4%	62.6%	50.4%	34.8%
Care, other	263	299	1.14	14.7%	85.3%	1.07	1.15	83.9%	88.6%	83.1%	64.2%	35.8%	81.8%	61.2%
Home Help	220	419	1.90	1.7%	98.3%	1.67	1.91	97.4%	85.7%	97.6%	15.3%	84.7%	57.1%	14.6%
Patient & Client Care	1,806	2,302	1.27	13.6%	86.4%	1.12	1.30	83.2%	78.6%	83.9%	36.8%	63.2%	55.0%	34.0%

Employment by WTE, Headcount, Gender, Full-Time /Part-Time etc.: Jun 2021

CHO 3	WTE	Headcount	WTE: no.	% Male	% female	Male WTE: no.	Female WTE: no.	% Total Perm	% Male Perm	% Female Perm	% Total Full Time	% Total Part Time	% Male FT	% Female FT
Overall	4,789	5,675	1.18	14.3%	85.7%	1.09	1.20	83.3%	79.0%	84.0%	56.7%	43.3%	73.8%	53.8%
Community Health & Wellbeing	20	24	1.22	4.2%	95.8%	4.00	1.19	91.7%	91.7%	91.3%	62.5%	37.5%	0.0%	0.0%
Mental Health	828	909	1.10	23.2%	76.8%	1.06	1.11	81.8%	81.8%	81.8%	84.9%	15.1%	91.0%	91.0%
Primary Care	892	1,035	1.16	13.0%	87.0%	1.07	1.18	72.9%	72.9%	74.2%	73.3%	26.7%	91.9%	91.9%
HSE	1,230	1,565	1.27	12.9%	87.1%	1.06	1.31	90.0%	90.0%	91.3%	54.3%	45.7%	88.6%	88.6%
Section 38 Voluntary Agencies	1,819	2,142	1.18	12.2%	87.8%	1.14	1.18	83.8%	83.8%	84.1%	38.2%	61.8%	39.5%	39.5%
Social Care	3,049	3,707	1.22	12.5%	87.5%	1.10	1.23	86.5%	86.5%	87.1%	45.0%	55.0%	60.9%	60.9%

CHO 3 Skills Mix by Staff Grouping: June 2021

Jun 2021 (Dec 2019 figure: 4,357)	WTE Dec 2017	WTE Dec 2016	WTE Dec 2018	WTE Dec 2019	WTE Dec 2020	WTE Apr 2021	WTE Jun 2021
Overall	4,169	4,093	4,310	4,357	4,610	4,757	4,789
Consultant Medicine	1.3%	2.1%	1.3%	1.3%	1.3%	1.4%	1.4%
Consultant Paediatrics	0.7%	0.7%	0.7%	0.7%	0.7%	0.7%	0.7%
Consultant Psychiatry	15.6%	16.0%	14.9%	15.3%	16.7%	16.7%	17.2%
Consultant Surgery	0.7%	0.7%	0.7%	0.7%	0.2%	0.2%	0.2%
Consultants	18.3%	19.5%	17.6%	18.0%	18.9%	19.0%	19.5%
Registrar	20.5%	21.6%	18.3%	23.1%	22.5%	25.0%	24.8%
Senior Registrar	3.6%	3.5%	3.3%	3.3%	3.6%	4.5%	4.5%
Specialist Registrar		0.7%	0.7%	1.0%	0.7%	0.7%	0.7%
Registrars	24.1%	25.7%	22.3%	27.4%	26.8%	30.2%	30.0%
Senior House Officer	18.7%	17.7%	21.3%	16.4%	15.0%	15.4%	15.0%
SHO/ Interns	18.7%	17.7%	21.3%	16.4%	15.0%	15.4%	15.0%
Dentists	18.5%	16.3%	17.2%	17.6%	17.6%	18.2%	18.3%
Other Medical	20.4%	20.8%	21.6%	20.6%	21.7%	17.3%	17.1%
Medical/ Dental, other	38.9%	37.1%	38.8%	38.2%	39.3%	35.5%	35.4%
Medical & Dental	3.6%	3.5%	3.5%	3.5%	3.3%	100.0%	3.0%
Clinical Nurse/ Midwife Manager	15.6%	15.9%	15.2%	15.0%	14.9%	14.9%	14.8%
Director Nursing/Midwifery, Assistant	3.5%	3.3%	3.5%	3.7%	3.7%	3.3%	3.1%
Director of Nursing/Midwifery	1.1%	1.1%	1.3%	1.2%	1.0%	1.1%	1.1%
Nurse/ Midwife Manager	20.2%	20.3%	19.9%	19.9%	19.6%	19.3%	19.1%
Advanced Nurse/ Midwife Practitioner	0.1%			0.1%	0.2%	0.3%	0.2%
Clinical Nurse/ Midwife Specialist	3.6%	3.4%	3.9%	4.3%	4.0%	3.8%	3.6%
Nurse/ Midwife Specialist & AN/MP	3.7%	3.4%	3.9%	4.5%	4.2%	4.1%	3.8%
Staff Midwives	0.1%						
Staff Nurse [Intellectual Disability]	18.8%	19.2%	18.2%	16.8%	18.7%	19.4%	19.0%
Staff Nurse [Psychiatric]	20.3%	20.9%	19.3%	19.1%	20.7%	20.3%	20.4%
Staff Nurses [General/ Children's]	25.8%	25.7%	26.5%	27.5%	25.9%	25.0%	25.7%
Staff Nurse/ Staff Midwife	64.9%	65.8%	64.1%	63.4%	65.2%	64.7%	65.2%
Public Health Nurse	9.8%	9.2%	10.2%	10.3%	10.0%	9.7%	9.9%
Pre-registration Nurse/ Midwife Intern	0.0%	0.1%	1.3%	1.6%		1.6%	1.7%
Pre-registration Nurse Intern (COVID-19)					0.4%		
Post-registration Nurse/ Midwife Student	0.6%	0.5%	0.3%		0.3%	0.3%	0.2%
Nursing/ Midwifery Student	0.6%	0.6%	1.6%	1.6%	0.7%	2.0%	1.8%
Nursing/ Midwifery other	0.7%	0.7%	0.3%	0.3%	0.3%	0.3%	0.3%
Nursing & Midwifery	29.3%	30.3%	28.3%	28.5%	26.9%	100.0%	27.1%
Dietitians	0.5%	0.1%	0.3%	0.4%	0.8%	0.7%	0.6%
Occupational Therapists	12.1%	12.3%	12.6%	12.9%	11.6%	12.4%	12.1%
Physiotherapists	8.8%	9.0%	8.6%	8.7%	8.2%	8.1%	8.8%
Podiatrists & Chiropodists	0.8%	0.6%	0.8%	0.8%	0.9%	0.7%	0.7%
Speech & Language Therapists	8.8%	8.4%	8.1%	8.5%	8.6%	8.9%	9.1%
Therapy Professions	31.0%	30.4%	30.4%	31.3%	30.1%	30.8%	31.4%
Audiology	0.6%	0.8%	0.6%	0.7%	0.8%	0.7%	0.7%
Clinical Engineering					0.3%	0.3%	0.3%
Clinical Measurement			0.0%	0.0%	0.0%		
Radiographers	0.1%	0.1%	0.1%	0.1%	0.1%	0.1%	0.1%
Health Science/ Diagnostics	0.6%	0.8%	0.7%	0.8%	1.2%	1.0%	1.0%
Social Care	35.8%	35.6%	36.5%	35.8%	38.8%	38.4%	38.0%
Social Workers	8.7%	9.4%	9.3%	8.7%	7.8%	7.5%	7.7%
Psychologists	18.7%	18.2%	17.5%	18.1%	17.0%	17.0%	17.0%
Pharmacy	0.7%	0.6%	0.7%	0.7%	0.6%	0.8%	0.8%
Counsellor Therapists	1.6%	1.8%	1.9%	1.8%	2.1%	2.1%	1.9%
Dental Hygienists	1.0%	1.1%	1.0%	0.9%	0.8%	0.8%	0.8%

Jun 2021 (Dec 2019 figure: 4,357)	WTE Dec 2017	WTE Dec 2016	WTE Dec 2018	WTE Dec 2019	WTE Dec 2020	WTE Apr 2021	WTE Jun 2021
Overall	4,169	4,093	4,310	4,357	4,610	4,757	4,789
Other Health & Social Care	1.2%	1.3%	1.2%	1.2%	1.0%	1.0%	1.0%
Play Therapists/ Specialists	0.7%	0.8%	0.8%	0.8%	0.6%	0.5%	0.4%
H&SC, Other	4.5%	5.0%	5.0%	4.7%	4.5%	4.5%	4.2%
Health & Social Care Professionals	15.7%	15.0%	15.7%	15.7%	14.8%	100.0%	15.5%
Executive Management	2.2%	2.5%	2.2%	2.4%	3.0%	2.7%	2.8%
Senior Management (VIII & GM)	5.0%	5.2%	4.9%	5.3%	5.4%	5.0%	4.8%
Management (VIII & above)	7.2%	7.7%	7.1%	7.7%	8.4%	7.7%	7.6%
Middle Management (V-VII)	23.7%	24.4%	26.4%	25.5%	28.5%	27.9%	27.7%
Other Administrative	1.3%	0.9%	1.2%	1.4%	1.4%	2.2%	2.1%
Administrative/ Supervisory (V to VII)	25.0%	25.3%	27.6%	26.9%	29.9%	30.1%	29.8%
Clerical (III & IV)	67.9%	67.0%	65.3%	65.3%	61.8%	62.2%	62.6%
Management & Administrative	11.1%	10.5%	11.5%	11.3%	10.6%	100.0%	11.7%
Catering	11.6%	12.3%	11.3%	12.8%	12.0%	11.4%	11.5%
Household Services	35.9%	35.9%	35.2%	34.3%	36.7%	36.8%	37.0%
Portering	4.6%	4.9%	4.7%	4.7%	4.7%	3.3%	3.3%
Other Support	15.9%	15.9%	16.7%	16.0%	14.2%	15.4%	15.4%
Support	68.1%	69.0%	67.8%	67.8%	67.6%	67.0%	67.2%
Maintenance/ Technical	31.9%	31.0%	32.2%	32.2%	32.4%	33.0%	32.8%
General Support	5.9%	6.3%	5.8%	5.5%	5.2%	100.0%	5.0%
HCA, Nurse's Aide, etc.	73.0%	72.2%	74.0%	73.0%	69.5%	68.5%	68.8%
Health & Social Care Assistants	0.2%	0.3%	0.9%	0.6%	0.9%	0.9%	0.9%
Swabber (COVID-19)					2.6%	4.3%	3.6%
Health Care Assistants	73.2%	72.5%	75.0%	73.6%	73.0%	73.7%	73.2%
Other Care Grades	14.8%	14.3%	14.4%	15.1%	14.3%	14.1%	14.6%
Care, other	14.8%	14.3%	14.4%	15.1%	14.3%	14.1%	14.6%
Home Help	12.0%	13.2%	10.7%	11.4%	12.7%	12.2%	12.2%
Patient & Client Care	34.4%	34.3%	35.3%	35.6%	33.6%	100.0%	37.7%
Total	100 %	100 %	100 %	100 %	100%	100 %	100 %

CHO 3 Skills Mix by Care Group: June 2021

Jun 2021 (Dec 2019 figure: 795)	WTE Dec 2017	WTE Dec 2016	WTE Dec 2018	WTE Dec 2019	WTE Dec 2020	WTE Apr 2021	WTE Jun 2021
Mental Health	784	781	783	795	809	838	828
Consultants	36.0%	38.1%	35.4%	38.7%	39.7%	37.3%	37.5%
Registrar	10.1%	10.9%	15.3%	19.0%	14.4%	18.3%	18.0%
Senior Registrar	8.8%	8.7%	8.0%	8.3%	9.0%	10.1%	10.0%
Specialist Registrar			1.6%	2.5%	1.6%	1.6%	1.5%
Registrars	18.9%	19.6%	24.8%	29.8%	25.0%	29.9%	29.5%
Senior House Officer	45.1%	42.3%	39.7%	31.5%	35.3%	32.8%	32.9%
SHO/ Interns	45.1%	42.3%	39.7%	31.5%	35.3%	32.8%	32.9%
Medical & Dental	7.9%	7.4%	8.0%	7.6%	7.4%	7.9%	7.9%
Clinical Nurse/ Midwife Manager	19.9%	19.3%	18.3%	18.6%	18.2%	18.0%	18.1%
Director Nursing/Midwifery, Assistant	3.7%	3.6%	4.1%	3.9%	3.5%	2.8%	2.9%
Director of Nursing/Midwifery	0.5%	0.5%	0.5%	0.5%	0.3%	0.5%	0.5%
Nurse/ Midwife Manager	24.2%	23.4%	22.9%	23.0%	22.0%	21.3%	21.5%
Advanced Nurse/ Midwife Practitioner	0.3%			0.5%	0.5%	0.4%	0.2%
Clinical Nurse/ Midwife Specialist	7.8%	7.2%	8.9%	9.8%	8.8%	8.7%	7.8%
Nurse/ Midwife Specialist & AN/MP	8.1%	7.2%	8.9%	10.3%	9.2%	9.1%	8.0%
Staff Nurse [Intellectual Disability]	0.1%	0.2%	0.3%	0.2%	0.2%	0.2%	0.2%
Staff Nurse [Psychiatric]	65.3%	67.0%	63.3%	61.7%	65.3%	63.7%	64.7%
Staff Nurses [General/ Children's]	2.2%	1.8%	2.3%	2.5%	2.4%	2.4%	2.2%
Staff Nurse/ Staff Midwife	67.6%	69.1%	65.9%	64.4%	67.9%	66.3%	67.1%
Pre-registration Nurse/ Midwife Intern	0.1%	0.3%	2.4%	2.3%		3.3%	3.3%
Pre-registration Nurse Intern (COVID-19)					0.9%		
Nursing/ Midwifery Student	0.1%	0.3%	2.4%	2.3%	0.9%	3.3%	3.3%
Nursing & Midwifery	48.2%	49.3%	47.3%	47.9%	47.1%	48.7%	48.7%
Occupational Therapists	14.3%	12.7%	15.2%	14.7%	13.6%	15.3%	15.4%
Speech & Language Therapists	2.9%	1.8%	0.5%	1.8%	2.0%	3.1%	3.1%
Therapy Professions	17.2%	14.6%	15.6%	16.5%	15.6%	18.3%	18.5%
Social Care	1.8%	2.0%	1.8%	1.8%	1.9%	1.8%	1.8%
Social Workers	16.2%	17.8%	17.2%	15.9%	15.4%	13.8%	14.5%
Psychologists	57.2%	56.7%	57.0%	58.0%	57.6%	56.8%	56.6%
Pharmacy	1.8%	1.9%	1.8%	1.8%	1.8%	1.7%	1.7%
Counsellor Therapists	5.8%	7.0%	6.6%	6.0%	7.7%	7.5%	6.8%
H&SC, Other	5.8%	7.0%	6.6%	6.0%	7.7%	7.5%	6.8%
Health & Social Care Professionals	20.1%	18.9%	19.5%	20.0%	19.7%	19.6%	19.6%
Management (VIII & above)	2.8%	4.5%	2.7%	2.6%	2.8%	2.7%	2.7%
Administrative/ Supervisory (V to VII)	21.1%	19.6%	22.7%	22.5%	26.4%	24.0%	25.3%
Clerical (III & IV)	76.1%	75.9%	74.6%	74.9%	70.7%	73.3%	72.0%
Management & Administrative	9.2%	8.5%	9.3%	9.4%	9.2%	9.0%	9.0%
Support	72.6%	74.4%	76.2%	74.7%	77.0%	77.7%	77.2%
Maintenance	27.4%	25.6%	23.8%	25.3%	23.0%	22.3%	22.8%
Maintenance/ Technical	27.4%	25.6%	23.8%	25.3%	23.0%	22.3%	22.8%
General Support	5.6%	6.0%	5.9%	5.5%	5.4%	4.8%	4.8%
HCA, Nurse's Aide, etc.	98.6%	98.7%	98.7%	97.8%	98.7%	98.8%	98.8%
Health Care Assistants	98.6%	98.7%	98.7%	97.8%	98.7%	98.8%	98.8%
Care, other	1.4%	1.3%	1.3%	2.2%	1.3%	1.2%	1.2%
Patient & Client Care	9.1%	10.0%	9.9%	9.7%	9.5%	10.1%	10.1%
Total	100 %	100 %	100 %	100 %	100 %	100 %	100 %

Jun 2021 (Dec 2019 figure: 764)	WTE Dec 2017	WTE Dec 2016	WTE Dec 2018	WTE Dec 2019	WTE Dec 2020	WTE Apr 2021	WTE Jun 2021
Primary Care	725	671	780	764	812	887	892
Consultant Paediatrics	1.3%	1.4%	1.3%	1.2%	1.3%	1.4%	1.4%
Consultant Surgery	1.3%	1.4%	1.3%	1.2%	0.4%	0.4%	0.4%
Consultants	2.6%	2.7%	2.6%	2.4%	1.6%	1.8%	1.9%
Registrars	31.4%	33.8%	22.8%	28.2%	31.5%	34.3%	34.0%
SHO/ Interns			9.0%	7.2%	1.3%	1.4%	
Dentists	35.7%	32.0%	33.1%	32.0%	33.3%	37.1%	37.5%
Other Medical	30.3%	31.5%	32.6%	30.2%	32.3%	25.4%	26.7%
Medical/ Dental, other	66.0%	63.5%	65.7%	62.2%	65.6%	62.5%	64.2%
Medical & Dental	10.7%	10.9%	10.0%	11.0%	10.3%	7.8%	7.8%
Clinical Nurse/ Midwife Manager	1.0%	1.5%	0.7%	0.4%	2.0%	2.2%	2.2%
Director Nursing/Midwifery, Assistant	6.7%	7.3%	6.5%	7.9%	7.9%	6.9%	6.9%
Director of Nursing/Midwifery	1.0%	1.0%	1.7%	1.0%	0.9%	0.9%	0.9%
Nurse/ Midwife Manager	8.7%	9.8%	8.8%	9.3%	10.8%	10.0%	10.0%
Nurse/ Midwife Specialist & AN/MP	0.5%		0.4%	1.0%	1.4%	1.4%	1.4%
Staff Nurse/ Staff Midwife	28.7%	30.0%	29.7%	27.5%	26.4%	29.5%	30.2%
Public Health Nurse	58.7%	57.3%	59.2%	62.2%	59.5%	57.4%	57.5%
Nursing/ Midwifery Student	3.4%	3.0%	1.9%		1.9%	1.8%	0.9%
Nursing & Midwifery	28.2%	29.6%	26.8%	26.6%	25.0%	24.8%	24.8%
Dietitians	1.8%	0.5%	1.6%	2.2%	2.9%	2.2%	2.0%
Occupational Therapists	24.5%	24.3%	25.5%	22.2%	22.3%	21.6%	20.7%
Physiotherapists	24.1%	24.6%	21.8%	22.9%	19.8%	21.2%	23.3%
Podiatrists & Chiropodists	0.9%		0.8%	1.5%	2.4%	1.6%	1.5%
Speech & Language Therapists	17.3%	17.6%	17.3%	17.6%	18.9%	20.5%	20.0%
Therapy Professions	68.5%	67.0%	66.9%	66.4%	66.2%	67.1%	67.5%
Audiology	3.2%	4.6%	3.1%	3.7%	4.7%	3.9%	3.7%
Health Science/ Diagnostics	3.2%	4.6%	3.1%	3.7%	4.7%	3.9%	3.7%
Social Care	0.9%	1.0%	0.8%	0.8%	0.8%	0.8%	0.2%
Social Workers	8.3%	9.0%	8.4%	8.1%	7.9%	7.7%	7.9%
Psychologists	10.2%	9.5%	11.2%	12.0%	11.5%	11.4%	12.0%
Pharmacy	0.9%		0.8%	0.8%	0.8%	1.6%	1.4%
Counsellor Therapists	0.9%	0.9%	2.3%	2.3%	2.8%	2.3%	2.3%
Dental Hygienists	5.9%	6.5%	5.2%	4.7%	4.8%	4.8%	4.7%
Other Health & Social Care	0.9%	1.0%	0.8%	0.8%			
Play Therapists/ Specialists	0.4%	0.5%	0.4%	0.4%	0.4%	0.4%	0.3%
H&SC, Other	8.1%	8.9%	8.8%	8.2%	8.0%	7.5%	7.3%
Health & Social Care Professionals	15.7%	15.0%	16.2%	16.9%	15.9%	14.7%	14.7%
Executive Management	3.1%	3.4%	3.2%	3.4%	3.8%	3.3%	3.4%
Senior Management (VIII & GM)	6.8%	6.7%	5.5%	6.6%	6.4%	5.8%	5.3%
Management (VIII & above)	9.8%	10.1%	8.7%	10.0%	10.1%	9.1%	8.7%
Administrative/ Supervisory (V to VII)	23.7%	24.0%	27.0%	23.2%	26.7%	28.5%	27.9%
Clerical (III & IV)	66.5%	65.9%	64.2%	66.8%	63.2%	62.4%	63.4%
Management & Administrative	31.4%	30.1%	31.6%	30.6%	28.8%	31.5%	31.5%
Support	34.2%	34.8%	31.4%	30.7%	33.0%	31.2%	32.2%
Maintenance/ Technical	65.8%	65.2%	68.6%	69.3%	67.0%	68.8%	67.8%
General Support	6.1%	6.6%	5.8%	5.6%	5.3%	4.6%	4.6%
HCA, Nurse's Aide, etc.	15.1%	14.5%	22.3%	21.1%	12.1%	10.0%	12.1%
Health & Social Care Assistants			13.3%	8.5%	7.7%	5.8%	6.1%
Swabber (COVID-19)					37.5%	49.4%	43.9%
Health Care Assistants	15.1%	14.5%	35.7%	29.5%	57.2%	65.2%	62.2%
Care, other	83.6%	84.5%	63.4%	69.4%	42.2%	34.4%	37.8%
Home Help	1.3%	1.0%	1.0%	1.0%	0.6%	0.5%	

Jun 2021 (Dec 2019 figure: 764)	WTE Dec 2017	WTE Dec 2016	WTE Dec 2018	WTE Dec 2019	WTE Dec 2020	WTE Apr 2021	WTE Jun 2021
Primary Care	725	671	780	764	812	887	892
Patient & Client Care	7.9%	7.8%	9.6%	9.3%	8.7%	16.5%	16.5%
Total	100 %	100 %	100 %	100 %	100 %	100 %	100 %

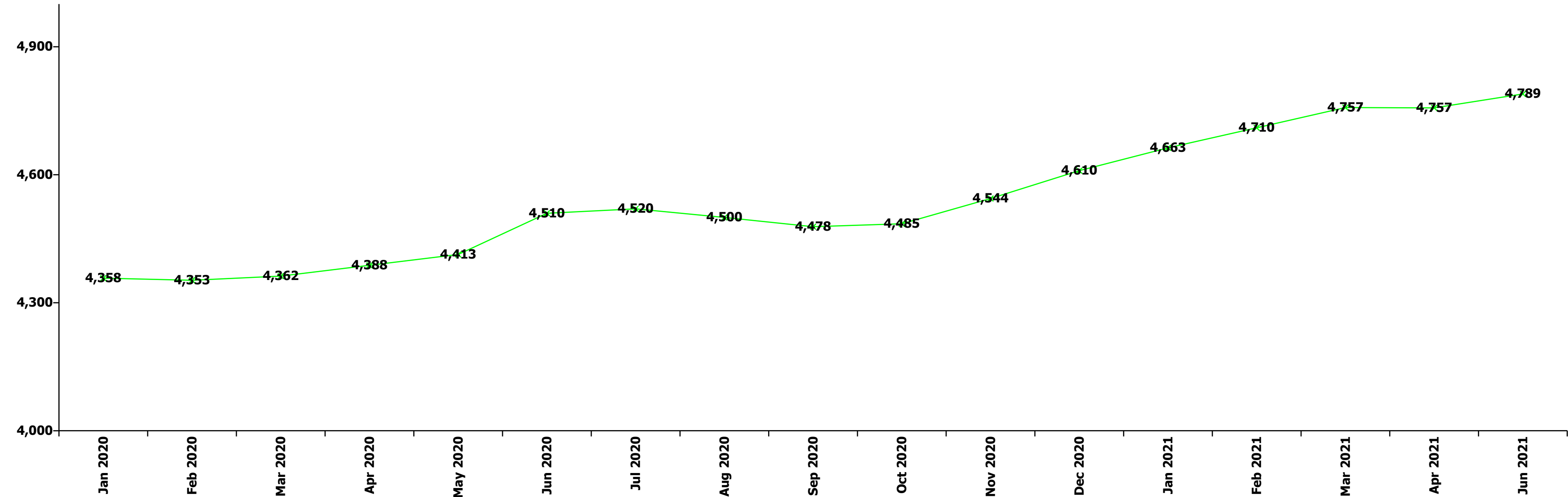
Jun 2021 (Dec 2019 figure: 1,823)	WTE Dec 2017	WTE Dec 2016	WTE Dec 2018	WTE Dec 2019	WTE Dec 2020	WTE Apr 2021	WTE Jun 2021
Disabilities	1,725	1,669	1,796	1,823	1,947	1,939	1,960
Consultant Psychiatry	68.3%	68.3%	54.0%	51.8%	67.4%	54.2%	54.9%
Consultants	68.3%	68.3%	54.0%	51.8%	67.4%	54.2%	54.9%
Medical/ Dental, other	31.7%	31.7%	46.0%	48.2%	32.6%	45.8%	45.1%
Medical & Dental	0.2%	0.2%	0.1%	0.1%	0.1%	0.1%	0.1%
Clinical Nurse/ Midwife Manager	20.5%	20.3%	21.0%	21.4%	20.5%	20.9%	21.3%
Director Nursing/Midwifery, Assistant			0.3%	0.3%	0.3%	0.3%	0.3%
Nurse/ Midwife Manager	20.5%	20.3%	21.3%	21.6%	20.8%	21.2%	21.6%
Clinical Nurse/ Midwife Specialist	3.4%	3.2%	3.4%	3.6%	2.9%	2.6%	2.5%
Nurse/ Midwife Specialist & AN/MP	3.4%	3.2%	3.4%	3.6%	2.9%	2.6%	2.5%
Staff Nurse [Intellectual Disability]	63.3%	63.1%	62.1%	59.3%	65.6%	70.5%	70.5%
Staff Nurses [General/ Children's]	10.5%	11.1%	10.1%	11.2%	9.3%	2.4%	2.1%
Staff Nurse/ Staff Midwife	73.7%	74.1%	72.2%	70.4%	74.9%	72.9%	72.5%
Pre-registration Nurse/ Midwife Intern			2.0%	3.3%		2.2%	2.3%
Pre-registration Nurse Intern (COVID-19)					0.4%		
Nursing/ Midwifery Student			2.0%	3.3%	0.4%	2.2%	2.3%
Nursing/ Midwifery other	2.4%	2.3%	1.1%	1.1%	1.0%	1.0%	1.1%
Nursing & Midwifery	21.0%	22.5%	19.8%	19.3%	18.0%	17.9%	17.9%
Occupational Therapists	4.8%	5.8%	5.7%	6.6%	6.1%	6.3%	6.0%
Physiotherapists	5.7%	6.1%	5.6%	5.5%	5.5%	4.9%	4.9%
Speech & Language Therapists	9.5%	9.2%	8.7%	8.6%	8.4%	8.0%	8.3%
Therapy Professions	20.0%	21.1%	20.0%	20.6%	20.0%	19.2%	19.2%
Clinical Engineering					0.5%	0.5%	0.5%
Health Science/ Diagnostics					0.5%	0.5%	0.5%
Social Care	66.3%	65.0%	67.1%	67.0%	67.8%	68.8%	68.8%
Social Workers	4.6%	4.8%	4.6%	4.6%	4.1%	4.1%	4.3%
Psychologists	5.9%	5.7%	4.9%	4.4%	4.9%	4.6%	4.7%
Other Health & Social Care	1.9%	2.1%	2.0%	2.0%	1.7%	1.9%	1.9%
Play Therapists/ Specialists	1.2%	1.3%	1.4%	1.3%	1.0%	0.9%	0.6%
H&SC, Other	3.2%	3.4%	3.5%	3.3%	2.7%	2.8%	2.6%
Health & Social Care Professionals	20.1%	19.9%	20.2%	19.7%	18.4%	20.7%	20.7%
Executive Management	2.0%	2.0%	1.8%	1.9%	2.7%	2.7%	2.7%
Senior Management (VIII & GM)	3.9%	5.8%	4.4%	4.5%	4.3%	4.3%	4.3%
Management (VIII & above)	5.9%	7.8%	6.3%	6.4%	7.0%	7.0%	7.0%
Administrative/ Supervisory (V to VII)	35.0%	35.3%	36.6%	38.2%	40.3%	40.9%	40.6%
Clerical (III & IV)	59.1%	56.9%	57.2%	55.4%	52.7%	52.1%	52.4%
Management & Administrative	5.7%	6.0%	6.1%	5.8%	5.5%	5.7%	5.7%
Support	79.4%	80.4%	79.8%	78.5%	73.3%	73.0%	72.7%
Maintenance	19.2%	18.2%	18.8%	20.0%	25.3%	25.7%	25.9%
Technical Services	1.4%	1.4%	1.4%	1.5%	1.4%	1.3%	1.4%
Maintenance/ Technical	20.6%	19.6%	20.2%	21.5%	26.7%	27.0%	27.3%
General Support	4.1%	4.4%	4.0%	3.7%	3.5%	3.8%	3.8%
HCA, Nurse's Aide, etc.	81.9%	80.8%	82.0%	81.4%	81.1%	81.2%	81.0%
Health & Social Care Assistants	0.2%	0.3%	0.2%	0.1%	0.4%	0.5%	0.5%
Health Care Assistants	82.2%	81.1%	82.3%	81.5%	81.5%	81.7%	81.5%
Care, other	17.8%	18.9%	17.7%	18.5%	18.5%	18.3%	18.5%
Patient & Client Care	49.0%	47.0%	49.8%	51.4%	48.1%	51.9%	51.9%
Total	100 %	100 %	100 %	100 %	100 %	100 %	100 %

Jun 2021 (Dec 2019 figure: 974)	WTE Dec 2017	WTE Dec 2016	WTE Dec 2018	WTE Dec 2019	WTE Dec 2020	WTE Apr 2021	WTE Jun 2021
Older People	936	972	951	974	1,029	1,075	1,089
Consultant Medicine	14.3%	20.0%	14.3%	16.7%	14.3%	14.3%	16.7%
Consultants	14.3%	20.0%	14.3%	16.7%	14.3%	14.3%	16.7%
Registrars		10.0%					
Senior House Officer		10.0%					
SHO/ Interns		10.0%					
Medical/ Dental, other	85.7%	60.0%	85.7%	83.3%	85.7%	85.7%	83.3%
Medical & Dental	0.7%	1.0%	0.7%	0.6%	0.6%	0.6%	0.6%
Clinical Nurse/ Midwife Manager	14.3%	15.5%	14.4%	12.7%	13.0%	12.7%	12.3%
Director Nursing/Midwifery, Assistant	5.6%	4.4%	4.5%	4.6%	5.0%	4.7%	4.0%
Director of Nursing/Midwifery	3.2%	3.5%	3.5%	3.6%	3.3%	3.4%	3.4%
Nurse/ Midwife Manager	23.1%	23.4%	22.4%	20.9%	21.3%	20.9%	19.6%
Advanced Nurse/ Midwife Practitioner					0.3%	0.3%	0.3%
Clinical Nurse/ Midwife Specialist	0.7%	0.9%	0.6%	0.6%	0.9%	0.9%	1.2%
Nurse/ Midwife Specialist & AN/MP	0.7%	0.9%	0.6%	0.6%	1.2%	1.2%	1.5%
Staff Midwives	0.4%						
Staff Nurse [Psychiatric]						0.3%	0.5%
Staff Nurses [General/ Children's]	75.9%	75.7%	76.9%	78.2%	77.1%	77.3%	78.0%
Staff Nurse/ Staff Midwife	76.3%	75.7%	76.9%	78.2%	77.1%	77.6%	78.6%
Public Health Nurse				0.3%	0.3%	0.3%	0.3%
Nursing & Midwifery	29.7%	28.8%	29.7%	31.3%	29.7%	29.7%	29.7%
Dietitians	2.8%						
Occupational Therapists	33.9%	37.1%	27.4%	33.8%	29.8%	34.0%	32.6%
Physiotherapists	28.9%	28.7%	28.6%	28.5%	35.1%	33.1%	36.0%
Podiatrists & Chiropodists	12.6%	9.6%	12.4%	9.4%	9.5%	8.5%	8.3%
Speech & Language Therapists	1.6%	1.6%	1.6%	4.3%	4.2%	4.0%	5.9%
Therapy Professions	79.8%	77.0%	70.0%	76.0%	78.7%	79.6%	82.8%
Clinical Measurement			0.2%	0.6%	0.4%		
Radiographers	1.4%	1.4%	1.4%	1.4%	1.4%	1.3%	1.2%
Health Science/ Diagnostics	1.4%	1.4%	1.6%	2.0%	1.8%	1.3%	1.2%
Social Workers	16.0%	18.9%	25.6%	19.3%	16.8%	16.6%	13.6%
Pharmacy	2.8%	2.8%	2.8%	2.7%	2.7%	2.5%	2.4%
Health & Social Care Professionals	3.8%	3.7%	3.8%	3.7%	3.5%	3.8%	3.8%
Executive Management				1.3%	1.4%	1.2%	1.3%
Senior Management (VIII & GM)	4.6%	3.2%	7.3%	6.3%	7.0%	6.2%	6.3%
Management (VIII & above)	4.6%	3.2%	7.3%	7.6%	8.3%	7.4%	7.6%
Administrative/ Supervisory (V to VII)	18.7%	19.9%	20.5%	27.1%	23.4%	21.5%	20.2%
Clerical (III & IV)	76.7%	76.9%	72.3%	65.3%	68.2%	71.1%	72.3%
Management & Administrative	7.0%	6.4%	7.0%	7.8%	7.4%	7.2%	7.2%
Support	73.7%	73.4%	72.4%	74.4%	75.0%	74.8%	74.8%
Maintenance/ Technical	26.3%	26.6%	27.6%	25.6%	25.0%	25.2%	25.2%
General Support	9.6%	9.7%	9.0%	8.9%	8.4%	7.8%	7.8%
HCA, Nurse's Aide, etc.	59.8%	60.3%	63.0%	59.7%	56.5%	57.6%	57.2%
Health & Social Care Assistants	0.3%	0.4%	0.5%	0.5%	0.4%	0.4%	0.4%
Health Care Assistants	60.1%	60.6%	63.5%	60.2%	56.9%	58.0%	57.6%
Care, other	2.6%	1.4%	2.5%	2.1%	2.2%	2.7%	2.8%
Home Help	37.3%	37.9%	34.1%	37.7%	40.9%	39.3%	39.6%
Patient & Client Care	49.1%	50.3%	49.8%	47.6%	45.1%	51.0%	51.0%
Total	100 %	100 %	100 %	100 %	100 %	100 %	100 %

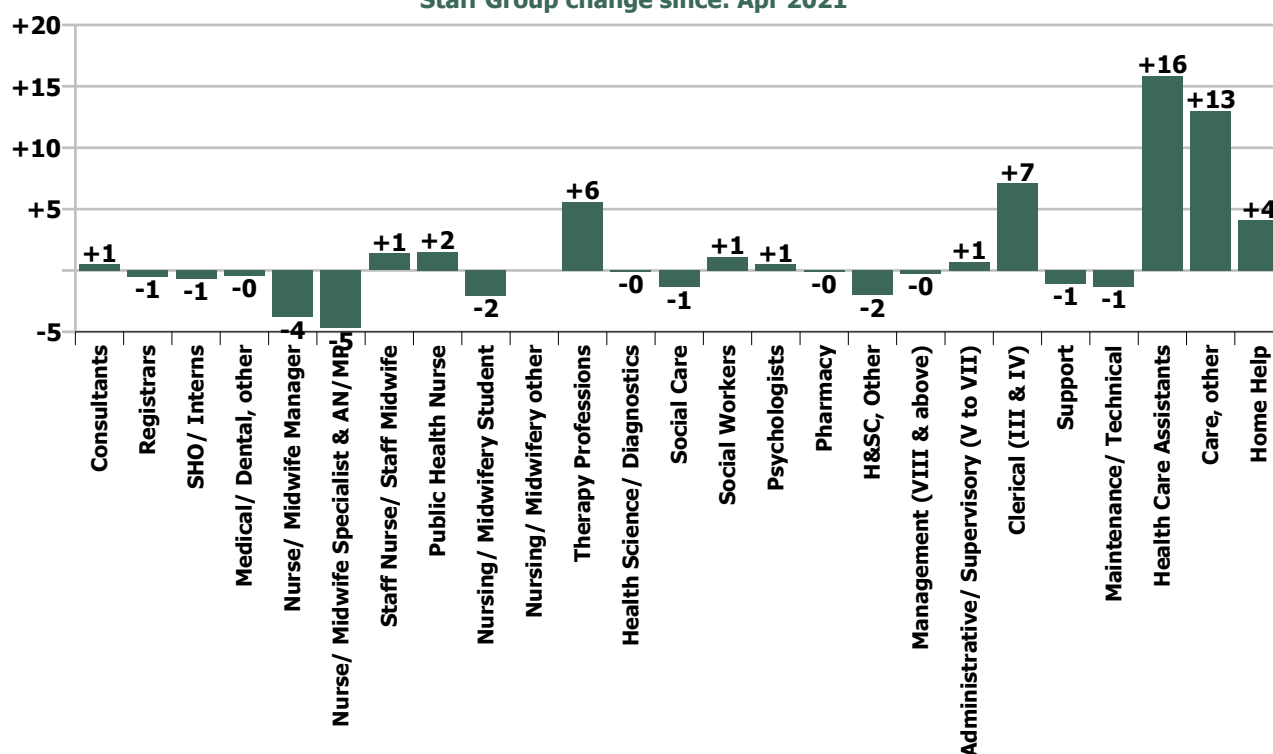
Summary Staff Movement: June 2021

Month-on-month Summary																												
WTE change since Apr 21	% change since Apr 21	overall	Consultants	Registrars	SHO/ Interns	Medical/ Dental, other	Medical & Dental	Nurse/ Midwife Manager	Nurse/ Midwife Specialist & AN/MP	Staff Nurse/ Staff Midwife	Public Health Nurse	Nursing/ Midwifery Student	Nursing/ Midwifery other	Nursing & Midwifery	Therapy Professions	Health Science/ Diagnostics	Social Care	Social Workers	Psychologists	Pharmacy	H&SC, Other	Health & Social Care Professionals	Management (VII & above)	Administrative/ Supervisory (V to VII)	Clerical (III & IV)	Management & Administrative	General Support	Patient & Client Care
Overall	+0.7%	+33	+0.5	-0.5	-0.7	-0.4	-1.1	-3.8	-4.7	+1.4	+1.5	-2.0	0.0	-7.7	+5.6	-0.1	-1.4	+1.1	+0.5	-0.1	-2.0	+3.6	-0.3	+0.7	+7.1	+7.5	-2.4	+32.9
Community Health & Wellbeing	+12.9%	+2								-0.0				-0.0	0.0							0.0	0.0	+0.6	-0.3	+0.3		+2.0
Mental Health	-1.1%	-10	+0.5	0.0	+0.3		+0.8	-1.1	-5.2	-2.3		-0.0		-8.7	+0.0		0.0	+1.0	-0.9	0.0	-1.1	-1.1	+0.0	+1.0	-0.8	+0.2	-1.0	+0.1
Primary Care	+0.6%	+5	0.0	-0.6	-1.0	+0.6	-1.0	+0.1	+0.1	+2.2	+1.5	-2.0		+1.9	+2.7	-0.1	-0.8	+0.5	+1.1	-0.1	+0.0	+3.3	-0.3	+1.1	+8.4	+9.2	-1.7	-6.9
Disabilities	+1.1%	+21	+0.0			0.0	+0.0	-0.1	-0.6	-7.1		0.0	0.0	-7.8	-0.3	0.0	-0.6	+0.5	+0.3		-0.9	-1.0	0.0	-0.4	+0.3	-0.1	-0.7	+30.3
Older People	+1.3%	+14	0.0			-1.0	-1.0	-2.7	+1.0	+8.6	0.0			+6.9	+3.2	0.0		-0.9		0.0		+2.3	-0.0	-1.5	-0.6	-2.1	+0.9	+7.4
Social Care	+1.2%	+35	+0.0			-1.0	-1.0	-2.8	+0.4	+1.5	0.0	0.0	0.0	-0.9	+2.9	0.0	-0.6	-0.3	+0.3	0.0	-0.9	+1.3	-0.0	-1.9	-0.3	-2.2	+0.2	+37.8
Change	+32.7	+0.7%	+1.9%	-1.3%	-3.0%	-0.9%	-0.8%	-1.5%	-8.8%	+0.2%	+1.2%	-8.0%		-0.6%	+2.5%	-1.2%	-0.5%	+2.0%	+0.4%	-2.4%	-6.2%	+0.5%	-0.7%	+0.4%	+2.1%	+1.4%	-1.0%	+1.9%

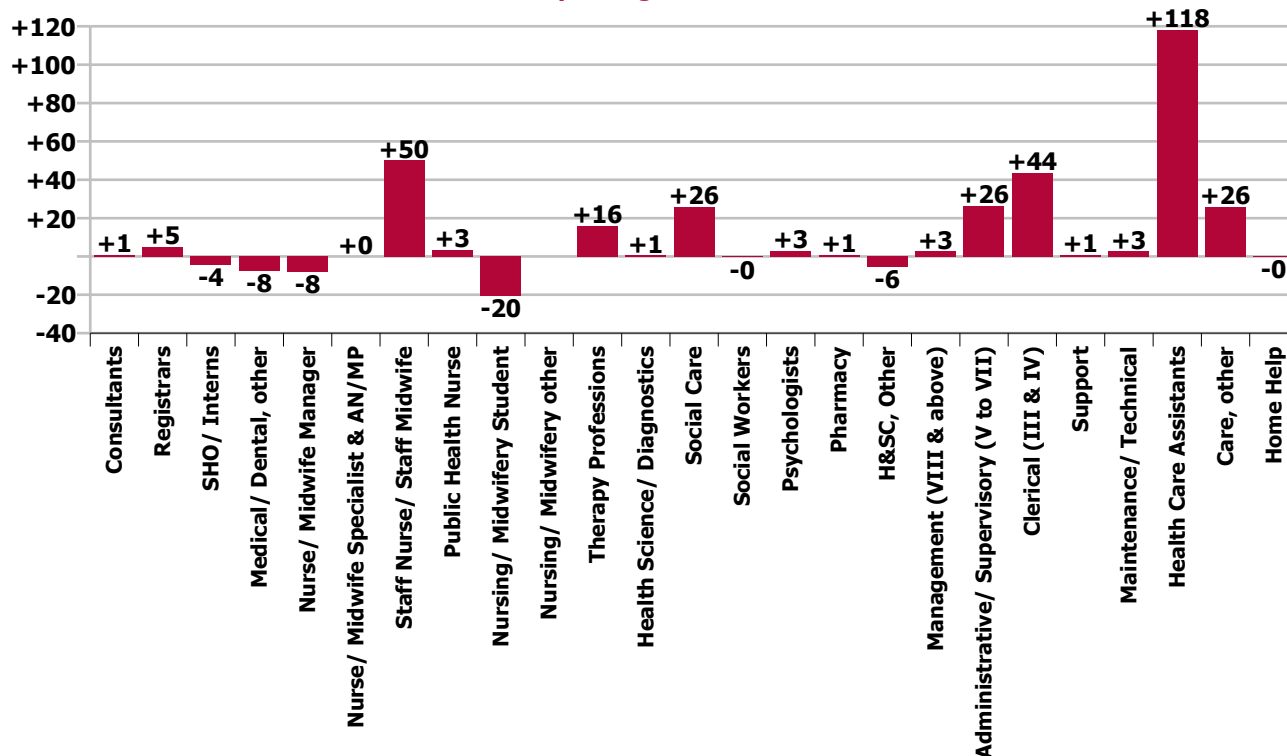
Year-on-year Summary																												
WTE change since Jun 20	% change since Jun 20	overall	Consultants	Registrars	SHO/ Interns	Medical/ Dental, other	Medical & Dental	Nurse/ Midwife Manager	Nurse/ Midwife Specialist & AN/MP	Staff Nurse/ Staff Midwife	Public Health Nurse	Nursing/ Midwifery Student	Nursing/ Midwifery other	Nursing & Midwifery	Therapy Professions	Health Science/ Diagnostics	Social Care	Social Workers	Psychologists	Pharmacy	H&SC, Other	Health & Social Care Professionals	Management (VIII & above)	Administrative/ Supervisory (V to VII)	Clerical (III & IV)	Management & Administrative	General Support	Patient & Client Care
Overall	+6.2%	+280	+0.9	+5.0	-4.3	-7.6	-5.9	-7.9	+0.1	+50.2	+3.4	-20.4	0.0	+25.3	+16.0	+0.6	+26.0	-0.5	+2.8	+0.9	-5.5	+40.2	+2.7	+26.4	+43.5	+72.5	+3.4	+144.0
Community Health & Wellbeing	+12.9%	+2						-1.0		+1.2	-1.0			-0.8	-0.4							-0.4	+1.0	+6.3	+1.7	+9.1		+1.0
Mental Health	-1.1%	-10	+1.5	+0.5	+1.8		+3.8	-3.7	-2.7	+11.0		-6.5		-1.8	+5.4		0.0	-2.1	+1.5	0.0	-2.0	+2.8	-1.0	0.0	+0.6	-0.4	-0.8	+7.8
Primary Care	+0.6%	+5	-0.7	+4.5	-6.0	-7.6	-9.8	+0.8	+2.1	+11.5	+4.3	+2.0		+20.7	+2.7	+0.1	-0.8	+0.4	+3.0	+0.9	-1.5	+4.7	+1.6	+20.9	+36.9	+59.4	-0.1	+74.4
Disabilities	+3.6%	+68.6	+0.1			0.0	+0.1	-5.0	-2.4	+1.9		-15.9	0.0	-21.4	+1.4	+1.0	+26.7	+2.6	-1.8		-2.0	+28.0	+1.0	+3.6	-2.5	+2.0	+2.7	+57.1
Older People	+3.9%	+41.4	0.0			0.0	0.0	+1.0	+3.0	+24.5	0.0			+28.5	+6.9	-0.4		-1.4		0.0		+5.1	+0.0	-4.5	+6.9	+2.4	+1.6	+3.7
Social Care	+1.2%	+35	+0.1			0.0	+0.1	-4.0	+0.6	+26.5	0.0	-15.9	0.0	+7.1	+8.3	+0.6	+26.7	+1.3	-1.8	0.0	-2.0	+33.1	+1.0	-0.9	+4.4	+4.5	+4.3	+60.8
Change	+279.6	+6.2%	+3.4%	+13.3%	-16.5%	-13.0%	-3.9%	-3.1%	+0.1%	+6.3%	+2.7%	-46.5%		+2.0%	+7.3%	+9.4%	+10.1%	-0.8%	+2.3%	+17.9%	-15.1%	+5.7%	+6.8%	+18.8%	+14.2%	+14.9%	+1.4%	+8.7%



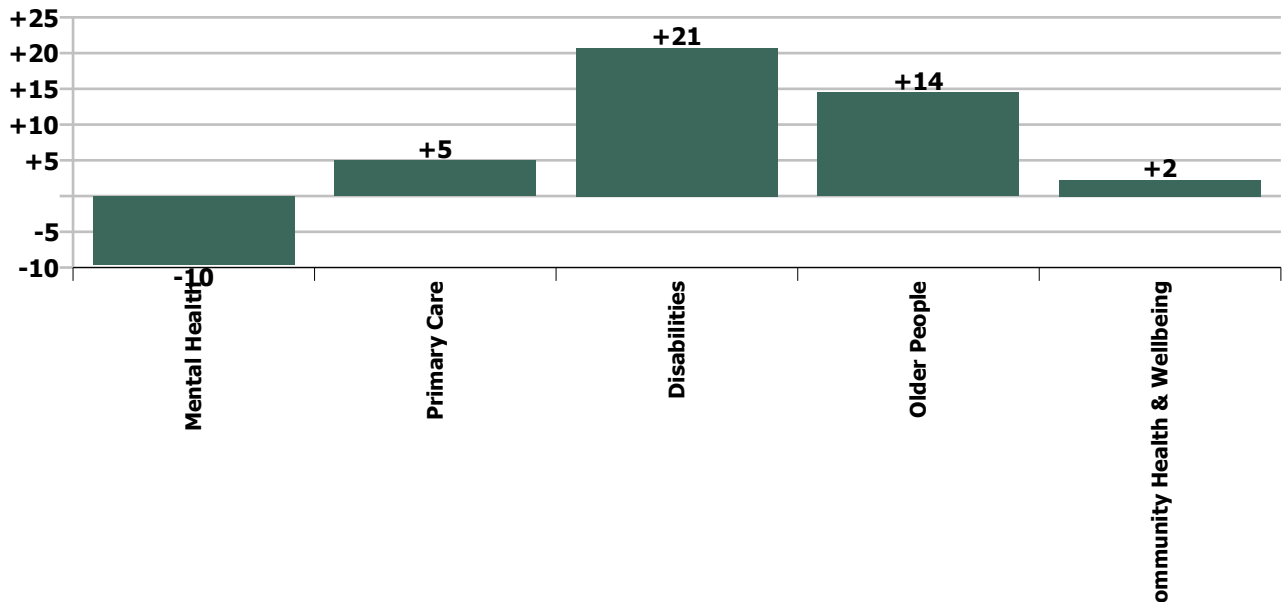
Staff Group change since: Apr 2021



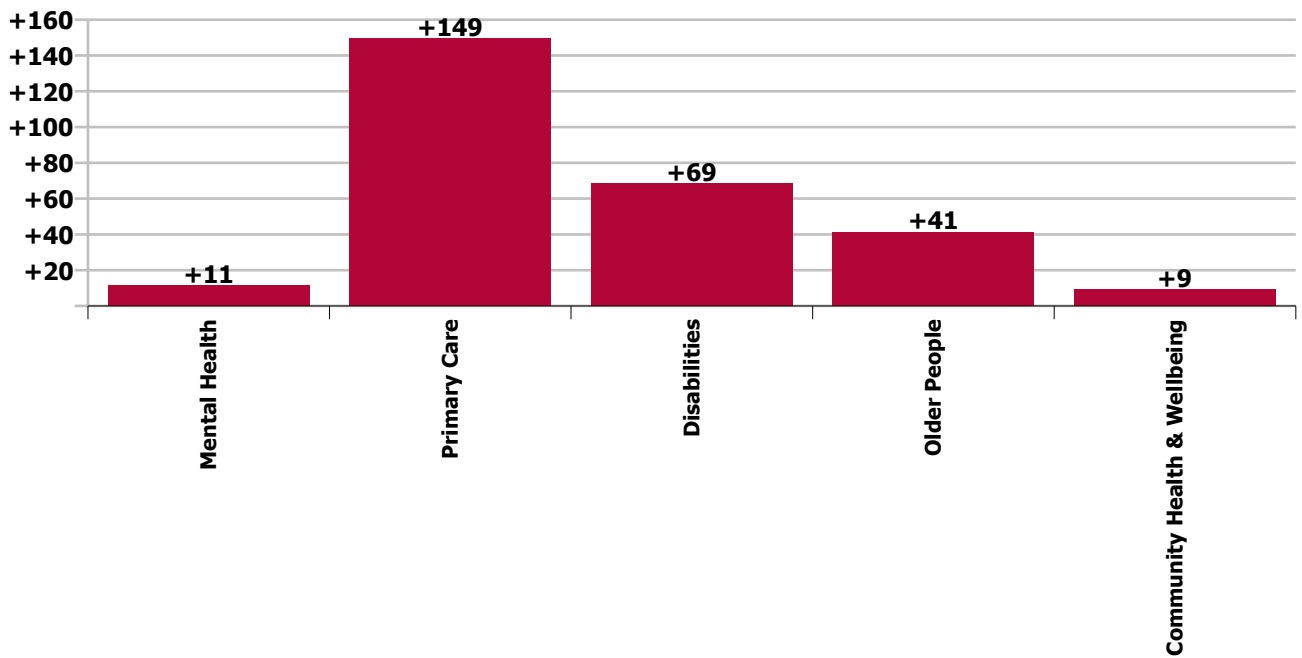
Staff Group change since: Jun 2020



Care Group change since: Apr 2021



Care Group change since: Jun 2020



Longitudinal Employment Levels by Grade Group - Dec 2016 to Jun 2021

Jun 2021 (Dec 2017 figure: 4,169)	WTE Jun 2021	WTE change since Dec 16	WTE change since Dec 17	WTE change since Dec 18	WTE change since Dec 19	WTE change since Dec 20	WTE change since Apr 21	% change since Dec 16	% change since Dec 17	% change since Dec 18	% change since Dec 19	% change since Dec 20	% change since Apr 21
Overall	4,789	+697	+620	+480	+433	+180	+33	+17.0%	+14.9%	+11.1%	+9.9%	+3.9%	+0.7%
Consultant Medicine	2	-1						-33.3%					
Consultant Paediatrics	1												
Consultant Psychiatry	25	+2	+1	+2	+1	-0	+1	+7.0%	+6.3%	+10.1%	+5.7%	-1.6%	+2.1%
Consultant Surgery	0	-1	-1	-1	-1			-70.0%	-70.0%	-70.0%	-70.0%		
Consultants	28	-0	+1	+2	+1	-0	+1	-0.3%	+2.8%	+5.9%	+2.3%	-1.4%	+1.9%
Registrar	36	+5	+5	+8	+0	+2	-1	+14.8%	+16.6%	+29.8%	+1.2%	+5.6%	-1.5%
Senior Registrar	7	+2	+1	+2	+2	+1		+30.0%	+20.6%	+30.0%	+30.0%	+19.3%	
Specialist Registrar	1		+1		-1				-100.0%		-33.3%		
Registrars	43	+6	+7	+10	+1	+3	-1	+16.5%	+20.0%	+28.9%	+3.4%	+7.3%	-1.3%
Senior House Officer	22	-4	-6	-10	-3	-1	-1	-15.3%	-22.7%	-32.7%	-13.8%	-4.1%	-3.0%
SHO/ Interns	22	-4	-6	-10	-3	-1	-1	-15.3%	-22.7%	-32.7%	-13.8%	-4.1%	-3.0%
Dentists	26	+3	-1	+0	-1	-0	-0	+12.2%	-4.9%	+1.5%	-2.2%	-0.7%	-0.3%
Other Medical	25	-5	-6	-8	-7	-8	-0	-17.8%	-19.1%	-24.0%	-21.4%	-24.3%	-1.4%
Medical/ Dental, other	51	-2	-7	-7	-7	-8	-0	-4.7%	-12.3%	-12.7%	-12.5%	-13.7%	-0.9%
Medical & Dental	143	-0	-6	-7	-9	-6	-1	-0.3%	-3.7%	-4.4%	-5.7%	-4.3%	-0.8%
Clinical Nurse/ Midwife Manager	192	-5	+1	+7	+7	+2	-2	-2.5%	+0.5%	+4.0%	+3.6%	+1.1%	-1.0%
Director Nursing/Midwifery, Assistant	41	-0	-2	-1	-5	-6	-2	-0.1%	-5.4%	-3.4%	-10.9%	-12.4%	-4.4%
Director of Nursing/Midwifery	15	+1	+2	-1	-0	+2	-0	+7.0%	+14.8%	-4.1%	-1.2%	+13.8%	-0.3%
Nurse/ Midwife Manager	248	-4	+0	+5	+1	-2	-4	-1.6%	+0.2%	+2.2%	+0.6%	-0.8%	-1.5%
Advanced Nurse/ Midwife Practitioner	3	+3	+2	+3	+1	+0	-1	-100.0%	+200.0%	-100.0%	+63.9%	+6.0%	-21.7%
Clinical Nurse/ Midwife Specialist	46	+4	+2	-1	-8	-5	-4	+9.0%	+3.9%	-2.9%	-14.2%	-9.9%	-7.8%
Nurse/ Midwife Specialist & AN/MP	49	+7	+4	+2	-6	-5	-5	+16.1%	+8.2%	+3.4%	-11.6%	-9.0%	-8.8%
Staff Midwives			-1					-100.0%	-100.0%	-100.0%	-100.0%	-100.0%	-100.0%
Staff Nurse [Intellectual Disability]	247	+10	+18	+25	+39	+10	-6	+4.1%	+7.9%	+11.4%	+18.5%	+4.1%	-2.3%
Staff Nurse [Psychiatric]	265	+5	+17	+30	+28	+2	-0	+2.1%	+6.9%	+12.6%	+11.7%	+0.6%	-0.2%
Staff Nurses [General/ Children's]	334	+15	+19	+11	-7	+5	+8	+4.7%	+6.1%	+3.6%	-2.1%	+1.4%	+2.4%
Staff Nurse/ Staff Midwife	847	+30	+53	+66	+59	+16	+1	+3.7%	+6.7%	+8.5%	+7.5%	+1.9%	+0.2%
Public Health Nurse	128	+14	+8	+4	+1	+1	+2	+12.5%	+6.8%	+3.6%	+0.5%	+0.9%	+1.2%
Pre-registration Nurse/ Midwife Intern	21	+20	+21	+6	+1	+21	-0	+2045.0%	+4190.0%	+35.2%	+5.0%	-100.0%	-0.2%
Pre-registration Nurse Intern (COVID-19)						-5		-100.0%	-100.0%	-100.0%	-100.0%	-100.0%	-100.0%
Post-registration Nurse/ Midwife Student	2	-4	-5	-2	+2	-2	-2	-66.7%	-71.4%	-50.0%	-100.0%	-50.0%	-50.0%
Nursing/ Midwifery Student	23	+16	+16	+4	+3	+15	-2	+235.0%	+212.7%	+18.1%	+14.8%	+162.3%	-8.0%
Nursing Education/Clinical	3	-1	-1	-0				-26.9%	-26.9%	-9.3%			
Other Nursing/ Midwifery	1	-4	-4					-80.0%	-80.0%				

Jun 2021 (Dec 2017 figure: 4,169)	WTE Jun 2021	WTE change since Dec 16	WTE change since Dec 17	WTE change since Dec 18	WTE change since Dec 19	WTE change since Dec 20	WTE change since Apr 21	% change since Dec 16	% change since Dec 17	% change since Dec 18	% change since Dec 19	% change since Dec 20	% change since Apr 21
Overall	4,789	+697	+620	+480	+433	+180	+33	+17.0%	+14.9%	+11.1%	+9.9%	+3.9%	+0.7%
Nursing/ Midwifery other	4	-5	-5	-0				-57.3%	-57.3%	-7.0%			
Nursing & Midwifery	1,299	+59	+77	+81	+58	+25	-8	+4.7%	+6.3%	+6.7%	+4.7%	+1.9%	-0.6%
Dietitians	5	+4	+2	+3	+2	-1	-0	+844.0%	+57.3%	+136.0%	+68.6%	-17.5%	-5.0%
Occupational Therapists	90	+14	+11	+4	+2	+4	-2	+18.5%	+13.7%	+5.0%	+2.4%	+4.3%	-1.9%
Physiotherapists	65	+10	+8	+7	+6	+4	+5	+18.2%	+13.8%	+12.6%	+9.5%	+7.3%	+9.1%
Podiatrists & Chiropodists	5	+2		+0	+0	-1	+0	+58.2%		+0.4%	+1.5%	-15.8%	+2.4%
Speech & Language Therapists	67	+16	+10	+13	+9	+4	+2	+30.6%	+17.0%	+23.4%	+16.3%	+5.8%	+3.0%
Therapy Professions	233	+46	+30	+27	+19	+10	+6	+24.7%	+14.9%	+13.2%	+9.0%	+4.4%	+2.5%
Audiology	5	+0	+1	+1	+0	-1	-0	+5.1%	+36.0%	+26.5%	+3.4%	-17.3%	-1.8%
Clinical Engineering	2	+2	+2	+2	+2			-100.0%	-100.0%	-100.0%	-100.0%		
Clinical Measurement				-0	-0	-0		-100.0%	-100.0%	-100.0%	-100.0%	-100.0%	-100.0%
Radiographers	1												
Health Science/ Diagnostics	7	+2	+3	+3	+2	-1	-0	+42.4%	+79.1%	+65.0%	+34.8%	-13.9%	-1.2%
Social Care	283	+63	+49	+35	+38	-5	-1	+28.9%	+21.0%	+14.2%	+15.5%	-1.8%	-0.5%
Social Workers	57	-1	+0	-6	-2	-1	+1	-2.2%	+0.6%	-9.4%	-4.2%	-1.7%	+2.0%
Psychologists	127	+15	+5	+8	+3	+1	+1	+13.0%	+3.8%	+6.7%	+2.4%	+0.5%	+0.4%
Pharmacy	6	+2	+1	+1	+1	+1	-0	+48.9%	+17.9%	+17.9%	+17.9%	+17.9%	-2.4%
Counsellor Therapists	14	+3	+4	+1	+2	-2	-1	+25.4%	+38.3%	+8.5%	+12.4%	-10.1%	-7.4%
Dental Hygienists	6	-0	-1	-0	+0	+0		-6.5%	-8.2%	-6.8%	+0.2%	+0.8%	
Other Health & Social Care	8	-0	+0	-1	-1	+1	+0	-0.4%	+0.8%	-6.5%	-6.5%	+7.5%	+0.4%
Play Therapists/ Specialists	3	-2	-2	-3	-2	-2	-1	-38.0%	-37.3%	-47.1%	-41.1%	-34.0%	-23.7%
H&SC, Other	31	+1	+2	-3	-1	-3	-2	+1.7%	+5.5%	-7.7%	-3.4%	-7.6%	-6.2%
Health & Social Care Professionals	743	+127	+90	+66	+59	+1	+4	+20.7%	+13.8%	+9.7%	+8.7%	+0.2%	+0.5%
Executive Management	16	+5	+6	+5	+4	+1	+1	+42.2%	+55.0%	+40.9%	+29.6%	+4.1%	+3.4%
Senior Management (VIII & GM)	27	+5	+4	+2	+1	-0	-1	+20.3%	+15.1%	+10.3%	+2.6%	-0.3%	-2.9%
Management (VIII & above)	42	+9	+9	+7	+4	+1	-0	+27.5%	+27.1%	+19.8%	+11.1%	+1.2%	-0.7%
Middle Management (V-VII)	155	+50	+45	+24	+29	+12	+1	+47.3%	+40.8%	+18.2%	+23.4%	+8.7%	+0.4%
Other Administrative	12	+8	+6	+6	+5	+5		+200.0%	+100.0%	+100.0%	+71.4%	+71.4%	
Administrative/ Supervisory (V to VII)	166	+58	+51	+30	+34	+17	+1	+52.9%	+43.9%	+21.8%	+25.9%	+11.7%	+0.4%
Clerical (III & IV)	350	+62	+36	+26	+30	+42	+7	+21.6%	+11.3%	+8.2%	+9.2%	+13.6%	+2.1%
Management & Administrative	559	+129	+95	+63	+68	+60	+7	+30.0%	+20.6%	+12.8%	+13.9%	+12.0%	+1.4%
Catering	27	-4	-1	-1	-3	-1	-0	-13.7%	-4.8%	-1.9%	-10.8%	-3.0%	-0.4%
Household Services	88	-5	-1	+1	+6	+2	-1	-5.0%	-0.7%	+1.1%	+7.5%	+1.9%	-0.6%
Portering	8	-5	-3	-4	-3	-3		-37.6%	-30.0%	-31.2%	-28.8%	-27.7%	
Other Support	37	-4	-3	-5	-2	+3	-0	-10.8%	-6.7%	-11.2%	-4.4%	+9.4%	-1.3%

Jun 2021 (Dec 2017 figure: 4,169)	WTE Jun 2021	WTE change since Dec 16	WTE change since Dec 17	WTE change since Dec 18	WTE change since Dec 19	WTE change since Dec 20	WTE change since Apr 21	% change since Dec 16	% change since Dec 17	% change since Dec 18	% change since Dec 19	% change since Dec 20	% change since Apr 21
Overall	4,789	+697	+620	+480	+433	+180	+33	+17.0%	+14.9%	+11.1%	+9.9%	+3.9%	+0.7%
Support	161	-18	-8	-8	-2	+1	-1	-10.2%	-4.8%	-4.6%	-1.3%	+0.6%	-0.7%
Maintenance	77	-2	-1	-2	+1	+2	-1	-2.6%	-0.7%	-2.0%	+1.5%	+2.7%	-1.7%
Technical Services	1												
Maintenance/ Technical	78	-2	-1	-2	+1	+2	-1	-2.6%	-0.7%	-2.0%	+1.5%	+2.7%	-1.7%
General Support	239	-20	-9	-9	-1	+3	-2	-7.8%	-3.5%	-3.8%	-0.4%	+1.2%	-1.0%
HCA, Nurse's Aide, etc.	1,242	+228	+195	+117	+111	+54	+27	+22.5%	+18.7%	+10.4%	+9.8%	+4.6%	+2.3%
Health & Social Care Assistants	16	+12	+13	+2	+7	+1	-0	+310.0%	+363.5%	+10.7%	+76.9%	+6.7%	-0.7%
Swabber (COVID-19)	65	+65	+65	+65	+65	+21	-11	-100.0%	-100.0%	-100.0%	-100.0%	+47.3%	-15.0%
Health Care Assistants	1,323	+305	+273	+183	+183	+76	+16	+30.0%	+26.0%	+16.1%	+16.1%	+6.1%	+1.2%
Care, other	263	+63	+52	+45	+30	+19	+13	+31.2%	+24.5%	+20.5%	+12.7%	+7.6%	+5.2%
Home Help	220	+34	+48	+58	+44	+3	+4	+18.4%	+27.8%	+35.7%	+25.1%	+1.3%	+1.9%
Patient & Client Care	1,806	+402	+372	+286	+257	+97	+33	+28.6%	+26.0%	+18.8%	+16.6%	+5.7%	+1.9%

Source: Health Service Personnel Census

Longitudinal Employment Levels by Care Group - Dec 2016 to Jun 2021

Community Health & Wellbeing

Jun 2021 (figure:)	WTE Jun 2021	WTE change since	WTE change since	WTE change since	WTE change since	WTE change since Dec 20	WTE change since Apr 21	% change since	% change since	% change since	% change since	% change since Dec 20	% change since Apr 21
Overall	20	+20	+20	+20	+20	+7	+2	-100.0%	-100.0%	-100.0%	-100.0%	+49.8%	+12.9%
Nursing & Midwifery	1	+1	+1	+1	+1	-0	-0	-1.0%	-1.0%	-1.0%	-1.0%	-0.1%	-0.0%
Staff Nurse/ Staff Midwife	1	+1	+1	+1	+1	-0	-0	-1.0%	-1.0%	-1.0%	-1.0%	-0.1%	-0.0%
Health & Social Care Professionals	2	+2	+2	+2	+2			-1.0%	-1.0%	-1.0%	-1.0%	+0.0%	+0.0%
Therapy Professions	2	+2	+2	+2	+2			-1.0%	-1.0%	-1.0%	-1.0%	+0.0%	+0.0%
Management & Administrative	13	+13	+13	+13	+13	+5	+0	-1.0%	-1.0%	-1.0%	-1.0%	+0.5%	+0.0%
Management (VIII & above)	2	+2	+2	+2	+2			-1.0%	-1.0%	-1.0%	-1.0%	+0.0%	+0.0%
Administrative/ Supervisory (V to VII)	8	+8	+8	+8	+8	+3	+1	-1.0%	-1.0%	-1.0%	-1.0%	+0.5%	+0.1%
Clerical (III & IV)	3	+3	+3	+3	+3	+2	-0	-1.0%	-1.0%	-1.0%	-1.0%	+1.9%	-0.1%
Patient & Client Care	3	+3	+3	+3	+3	+2	+2	-1.0%	-1.0%	-1.0%	-1.0%	+2.0%	+2.0%
Care, other	3	+3	+3	+3	+3	+2	+2	-1.0%	-1.0%	-1.0%	-1.0%	+2.0%	+2.0%

Source: Health Service Personnel Census

Mental Health

Jun 2021 (Dec 2017 figure: 784)	WTE Jun 2021	WTE change since Dec 16	WTE change since Dec 17	WTE change since Dec 18	WTE change since Dec 19	WTE change since Dec 20	WTE change since Apr 21	% change since Dec 16	% change since Dec 17	% change since Dec 18	% change since Dec 19	% change since Dec 20	% change since Apr 21
Overall	828	+47	+45	+45	+33	+19	-10	+6.0%	+5.7%	+5.8%	+4.1%	+2.4%	-1.1%
Medical & Dental	65	+8	+4	+2	+5	+5	+1	+0.1%	+0.1%	+0.0%	+0.1%	+0.1%	+0.0%
Consultants	25	+2	+2	+2	+1	+0	+0	+0.1%	+0.1%	+0.1%	+0.1%	+0.0%	+0.0%
Registrars	19	+8	+8	+4	+1	+4		+0.7%	+0.7%	+0.2%	+0.1%	+0.3%	+0.0%
SHO/ Interns	22	-3	-6	-3	+3	+0	+0	-0.1%	-0.2%	-0.1%	+0.1%	+0.0%	+0.0%
Nursing & Midwifery	403	+18	+26	+33	+22	+3	-9	+0.0%	+0.1%	+0.1%	+0.1%	+0.0%	-0.0%
Nurse/ Midwife Manager	87	-4	-5	+2	-1	-1	-1	-0.0%	-0.1%	+0.0%	-0.0%	-0.0%	-0.0%
Nurse/ Midwife Specialist & AN/MP	32	+5	+2	-0	-7	-4	-5	+0.2%	+0.1%	-0.0%	-0.2%	-0.1%	-0.1%
Staff Nurse/ Staff Midwife	271	+4	+15	+27	+25	-1	-2	+0.0%	+0.1%	+0.1%	+0.1%	-0.0%	-0.0%
Nursing/ Midwifery Student	13	+12	+13	+5	+5	+10	-0	+12.5%	+25.9%	+0.5%	+0.5%	+2.9%	-0.0%
Health & Social Care Professionals	162	+15	+5	+10	+3	+4	-1	+0.1%	+0.0%	+0.1%	+0.0%	+0.0%	-0.0%
Therapy Professions	30	+9	+3	+6	+4	+5	+0	+0.4%	+0.1%	+0.3%	+0.1%	+0.2%	+0.0%
Social Care	3		+0	+0	+0			+0.0%	+0.1%	+0.1%	+0.0%	+0.0%	+0.0%
Social Workers	24	-3	-2	-3	-2	-1	+1	-0.1%	-0.1%	-0.1%	-0.1%	-0.0%	+0.0%
Psychologists	92	+8	+2	+5	-0	+1	-1	+0.1%	+0.0%	+0.1%	-0.0%	+0.0%	-0.0%
Pharmacy	3							+0.0%	+0.0%	+0.0%	+0.0%	+0.0%	+0.0%
H&SC, Other	11	+1	+2	+1	+2	-1	-1	+0.1%	+0.2%	+0.1%	+0.2%	-0.1%	-0.1%
Management & Administrative	74	+8	+2	+1	-0	+3	+0	+0.1%	+0.0%	+0.0%	-0.0%	+0.0%	+0.0%
Management (VIII & above)	2	-1			+0		+0	-0.3%	+0.0%	+0.0%	+0.0%	+0.0%	+0.0%
Administrative/ Supervisory (V to VII)	19	+6	+4	+2	+2	-0	+1	+0.4%	+0.2%	+0.1%	+0.1%	-0.0%	+0.1%
Clerical (III & IV)	54	+3	-1	-1	-2	+3	-1	+0.1%	-0.0%	-0.0%	-0.0%	+0.1%	-0.0%
General Support	39	-7	-4	-7	-4	+0	-1	-0.2%	-0.1%	-0.1%	-0.1%	+0.0%	-0.0%
Support	30	-4	-1	-5	-2	+0	-1	-0.1%	-0.0%	-0.1%	-0.1%	+0.0%	-0.0%
Maintenance/ Technical	9	-3	-3	-2	-2			-0.2%	-0.3%	-0.2%	-0.2%	+0.0%	+0.0%
Patient & Client Care	84	+6	+12	+6	+7	+4	+0	+0.1%	+0.2%	+0.1%	+0.1%	+0.0%	+0.0%
Health Care Assistants	83	+6	+12	+6	+7	+4	+0	+0.1%	+0.2%	+0.1%	+0.1%	+0.0%	+0.0%
Care, other	1				-1			+0.0%	+0.0%	+0.0%	-0.4%	+0.0%	+0.0%

Source: Health Service Personnel Census

Primary Care

Jun 2021 (Dec 2017 figure: 725)	WTE Jun 2021	WTE change since Dec 16	WTE change since Dec 17	WTE change since Dec 18	WTE change since Dec 19	WTE change since Dec 20	WTE change since Apr 21	% change since Dec 16	% change since Dec 17	% change since Dec 18	% change since Dec 19	% change since Dec 20	% change since Apr 21
Overall	892	+222	+167	+112	+129	+81	+5	+33.0%	+23.1%	+14.4%	+16.8%	+9.9%	+0.6%
Medical & Dental	70	-3	-7	-8	-14	-9	-1	-0.0%	-0.1%	-0.1%	-0.2%	-0.1%	-0.0%
Consultants	1	-1	-1	-1	-1			-0.4%	-0.4%	-0.4%	-0.4%	+0.0%	+0.0%
Registrars	24	-1	-1	+6	+0	-1	-1	-0.0%	-0.0%	+0.3%	+0.0%	-0.0%	-0.0%
SHO/ Interns				-7	-6	-1	-1	-1.0%	-1.0%	-1.0%	-1.0%	-1.0%	-1.0%
Medical/ Dental, other	45	-1	-6	-6	-7	-7	+1	-0.0%	-0.1%	-0.1%	-0.1%	-0.1%	+0.0%
Nursing & Midwifery	221	+22	+17	+12	+18	+9	+2	+0.1%	+0.1%	+0.1%	+0.1%	+0.0%	+0.0%
Nurse/ Midwife Manager	22	+3	+4	+4	+3	-1	+0	+0.1%	+0.2%	+0.2%	+0.2%	-0.0%	+0.0%
Nurse/ Midwife Specialist & AN/MP	3	+3	+2	+2	+1	+0	+0	-1.0%	+2.1%	+2.9%	+0.6%	+0.0%	+0.0%
Staff Nurse/ Staff Midwife	67	+7	+8	+5	+11	+11	+2	+0.1%	+0.1%	+0.1%	+0.2%	+0.2%	+0.0%
Public Health Nurse	127	+13	+7	+3	+1	+1	+2	+0.1%	+0.1%	+0.0%	+0.0%	+0.0%	+0.0%
Nursing/ Midwifery Student	2	-4	-5	-2	+2	-2	-2	-0.7%	-0.7%	-0.5%	-1.0%	-0.5%	-0.5%
Health & Social Care Professionals	131	+30	+17	+5	+2	+5	+3	+0.3%	+0.2%	+0.0%	+0.0%	+0.0%	+0.0%
Therapy Professions	88	+21	+10	+4	+3	+5	+3	+0.3%	+0.1%	+0.0%	+0.0%	+0.1%	+0.0%
Health Science/ Diagnostics	5	+0	+1	+1	+0	-1	-0	+0.1%	+0.4%	+0.3%	+0.0%	-0.2%	-0.0%
Social Care	0	-1	-1	-1	-1	-1	-1	-0.8%	-0.8%	-0.8%	-0.8%	-0.8%	-0.8%
Social Workers	10	+1	+1	-0	-0	+0	+0	+0.1%	+0.1%	-0.0%	-0.0%	+0.0%	+0.0%
Psychologists	16	+6	+4	+2	+0	+1	+1	+0.6%	+0.4%	+0.1%	+0.0%	+0.1%	+0.1%
Pharmacy	2	+2	+1	+1	+1	+1	-0	-1.0%	+0.9%	+0.9%	+0.9%	+0.9%	-0.1%
H&SC, Other	10	+1	+0	-1	-1	-1	+0	+0.1%	+0.0%	-0.1%	-0.1%	-0.1%	+0.0%
Management & Administrative	281	+80	+53	+35	+48	+45	+9	+0.4%	+0.2%	+0.1%	+0.2%	+0.2%	+0.0%
Management (VIII & above)	25	+4	+2	+3	+1	+1	-0	+0.2%	+0.1%	+0.1%	+0.0%	+0.0%	-0.0%
Administrative/ Supervisory (V to VII)	79	+30	+25	+12	+24	+15	+1	+0.6%	+0.5%	+0.2%	+0.5%	+0.2%	+0.0%
Clerical (III & IV)	178	+45	+27	+20	+22	+29	+8	+0.3%	+0.2%	+0.1%	+0.1%	+0.2%	+0.0%
General Support	41	-3	-3	-4	-2	+1	-2	-0.1%	-0.1%	-0.1%	-0.0%	+0.0%	-0.0%
Support	13	-2	-2	-1	+0	-0	-0	-0.1%	-0.1%	-0.1%	+0.0%	-0.0%	-0.0%
Maintenance/ Technical	28	-1	-1	-3	-2	+1	-2	-0.0%	-0.0%	-0.1%	-0.1%	+0.0%	-0.1%
Patient & Client Care	148	+96	+90	+73	+77	+30	-7	+1.8%	+1.6%	+1.0%	+1.1%	+0.3%	-0.0%
Health Care Assistants	92	+84	+83	+65	+71	+25	-9	+11.1%	+9.6%	+2.4%	+3.4%	+0.4%	-0.1%
Care, other	56	+12	+8	+8	+7	+6	+3	+0.3%	+0.2%	+0.2%	+0.1%	+0.1%	+0.1%
Home Help		-1	-1	-1	-1	-1	-1	-1.0%	-1.0%	-1.0%	-1.0%	-1.0%	-1.0%

Source: Health Service Personnel Census

Disabilities

Jun 2021 (Dec 2017 figure: 1,725)	WTE Jun 2021	WTE change since Dec 16	WTE change since Dec 17	WTE change since Dec 18	WTE change since Dec 19	WTE change since Dec 20	WTE change since Apr 21	% change since Dec 16	% change since Dec 17	% change since Dec 18	% change since Dec 19	% change since Dec 20	% change since Apr 21
Overall	1,960	+291	+235	+165	+137	+13	+21	+17.4%	+13.6%	+9.2%	+7.5%	+0.6%	+1.1%
Medical & Dental	2	-1	-1	+0	+0	-1	+0	-0.3%	-0.3%	+0.0%	+0.1%	-0.3%	+0.0%
Consultants	1	-1	-1	+0	+0	-1	+0	-0.4%	-0.4%	+0.0%	+0.1%	-0.4%	+0.0%
Medical/ Dental, other	1							+0.0%	+0.0%	+0.0%	+0.0%	+0.0%	+0.0%
Nursing & Midwifery	350	-25	-12	-6	-1	-11	-8	-0.1%	-0.0%	-0.0%	-0.0%	-0.0%	-0.0%
Nurse/ Midwife Manager	76	-1	+2	-0	-0	+1	-0	-0.0%	+0.0%	-0.0%	-0.0%	+0.0%	-0.0%
Nurse/ Midwife Specialist & AN/MP	9	-3	-3	-3	-4	-2	-1	-0.3%	-0.3%	-0.3%	-0.3%	-0.2%	-0.1%
Staff Nurse/ Staff Midwife	254	-24	-13	-3	+7	-17	-7	-0.1%	-0.0%	-0.0%	+0.0%	-0.1%	-0.0%
Nursing/ Midwifery Student	8	+8	+8	+1	-4	+7		-1.0%	-1.0%	+0.1%	-0.3%	+4.3%	+0.0%
Nursing/ Midwifery other	4	-5	-5	-0				-0.6%	-0.6%	-0.1%	+0.0%	+0.0%	+0.0%
Health & Social Care Professionals	406	+75	+59	+43	+47	-13	-1	+0.2%	+0.2%	+0.1%	+0.1%	-0.0%	-0.0%
Therapy Professions	78	+8	+9	+5	+4	-6	-0	+0.1%	+0.1%	+0.1%	+0.1%	-0.1%	-0.0%
Health Science/ Diagnostics	2	+2	+2	+2	+2			-1.0%	-1.0%	-1.0%	-1.0%	+0.0%	+0.0%
Social Care	279	+64	+50	+36	+39	-4	-1	+0.3%	+0.2%	+0.1%	+0.2%	-0.0%	-0.0%
Social Workers	17	+1	+1	+0	+1	+0	+1	+0.1%	+0.1%	+0.0%	+0.0%	+0.0%	+0.0%
Psychologists	19	+0	-1	+1	+3	-1	+0	+0.0%	-0.1%	+0.1%	+0.2%	-0.1%	+0.0%
H&SC, Other	10	-1	-1	-2	-2	-1	-1	-0.1%	-0.1%	-0.2%	-0.1%	-0.1%	-0.1%
Management & Administrative	111	+11	+13	+3	+5	+0	-0	+0.1%	+0.1%	+0.0%	+0.0%	+0.0%	-0.0%
Management (VIII & above)	8		+2	+1	+1			+0.0%	+0.3%	+0.1%	+0.1%	+0.0%	+0.0%
Administrative/ Supervisory (V to VII)	45	+10	+11	+5	+4	+0	-0	+0.3%	+0.3%	+0.1%	+0.1%	+0.0%	-0.0%
Clerical (III & IV)	58	+1	+1	-4	-1	-0	+0	+0.0%	+0.0%	-0.1%	-0.0%	-0.0%	+0.0%
General Support	74	-0	+3	+2	+6	+1	-1	-0.0%	+0.0%	+0.0%	+0.1%	+0.0%	-0.0%
Support	54	-6	-2	-4	+1	+0	-1	-0.1%	-0.0%	-0.1%	+0.0%	+0.0%	-0.0%
Maintenance/ Technical	20	+6	+6	+6	+6	+1		+0.4%	+0.4%	+0.4%	+0.4%	+0.0%	+0.0%
Patient & Client Care	1,017	+232	+171	+123	+80	+36	+30	+0.3%	+0.2%	+0.1%	+0.1%	+0.0%	+0.0%
Health Care Assistants	829	+192	+134	+93	+64	+29	+23	+0.3%	+0.2%	+0.1%	+0.1%	+0.0%	+0.0%
Care, other	188	+39	+37	+30	+15	+7	+8	+0.3%	+0.2%	+0.2%	+0.1%	+0.0%	+0.0%

Source: Health Service Personnel Census

Older People

Jun 2021 (Dec 2017 figure: 936)	WTE Jun 2021	WTE change since Dec 16	WTE change since Dec 17	WTE change since Dec 18	WTE change since Dec 19	WTE change since Dec 20	WTE change since Apr 21	% change since Dec 16	% change since Dec 17	% change since Dec 18	% change since Dec 19	% change since Dec 20	% change since Apr 21
Overall	1,089	+117	+153	+138	+115	+61	+14	+12.1%	+16.4%	+14.5%	+11.8%	+5.9%	+1.3%
Medical & Dental	6	-4	-1	-1		-1	-1	-0.4%	-0.1%	-0.1%	+0.0%	-0.1%	-0.1%
Consultants	1	-1						-0.5%	+0.0%	+0.0%	+0.0%	+0.0%	+0.0%
Registrars		-1						-1.0%	-1.0%	-1.0%	-1.0%	-1.0%	-1.0%
SHO/ Interns		-1						-1.0%	-1.0%	-1.0%	-1.0%	-1.0%	-1.0%
Medical/ Dental, other	5	-1	-1	-1		-1	-1	-0.2%	-0.2%	-0.2%	+0.0%	-0.2%	-0.2%
Nursing & Midwifery	323	+43	+45	+41	+18	+23	+7	+0.2%	+0.2%	+0.1%	+0.1%	+0.1%	+0.0%
Nurse/ Midwife Manager	63	-2	-1	+0	-0	-1	-3	-0.0%	-0.0%	+0.0%	+0.0%	-0.0%	-0.0%
Nurse/ Midwife Specialist & AN/MP	5	+2	+3	+3	+3	+1	+1	+1.0%	+1.7%	+1.7%	+1.7%	+0.3%	+0.3%
Staff Nurse/ Staff Midwife	254	+42	+42	+37	+15	+23	+9	+0.2%	+0.2%	+0.2%	+0.1%	+0.1%	+0.0%
Public Health Nurse	1	+1	+1	+1				-1.0%	-1.0%	-1.0%	+0.0%	+0.0%	+0.0%
Health & Social Care Professionals	42	+6	+6	+6	+5	+5	+2	+0.2%	+0.2%	+0.2%	+0.1%	+0.1%	+0.1%
Therapy Professions	35	+7	+6	+9	+7	+6	+3	+0.2%	+0.2%	+0.4%	+0.3%	+0.2%	+0.1%
Health Science/ Diagnostics	1			-0	-0	-0		+0.0%	+0.0%	-0.1%	-0.3%	-0.2%	+0.0%
Social Workers	6	-1	-0	-4	-1	-1	-1	-0.2%	-0.0%	-0.4%	-0.2%	-0.1%	-0.1%
Pharmacy	1							+0.0%	+0.0%	+0.0%	+0.0%	+0.0%	+0.0%
Management & Administrative	78	+16	+13	+12	+2	+7	-2	+0.3%	+0.2%	+0.2%	+0.0%	+0.1%	-0.0%
Management (VIII & above)	6	+4	+3	+1	+0		-0	+2.0%	+1.0%	+0.2%	+0.0%	+0.0%	-0.0%
Administrative/ Supervisory (V to VII)	16	+4	+4	+2	-5	-1	-2	+0.3%	+0.3%	+0.2%	-0.2%	-0.1%	-0.1%
Clerical (III & IV)	57	+9	+7	+8	+7	+8	-1	+0.2%	+0.1%	+0.2%	+0.1%	+0.2%	-0.0%
General Support	85	-10	-5	-1	-2	+1	+1	-0.1%	-0.1%	-0.0%	-0.0%	+0.0%	+0.0%
Support	63	-6	-3	+2	-1	+0	+1	-0.1%	-0.0%	+0.0%	-0.0%	+0.0%	+0.0%
Maintenance/ Technical	21	-4	-2	-2	-1	+0	+0	-0.1%	-0.1%	-0.1%	-0.0%	+0.0%	+0.0%
Patient & Client Care	555	+66	+95	+81	+91	+26	+7	+0.1%	+0.2%	+0.2%	+0.2%	+0.0%	+0.0%
Health Care Assistants	320	+23	+43	+19	+40	+18	+2	+0.1%	+0.2%	+0.1%	+0.1%	+0.1%	+0.0%
Care, other	15	+8	+4	+4	+6	+4	+1	+1.2%	+0.3%	+0.3%	+0.6%	+0.3%	+0.0%
Home Help	220	+35	+49	+59	+45	+4	+5	+0.2%	+0.3%	+0.4%	+0.3%	+0.0%	+0.0%

Source: Health Service Personnel Census