

CHO 3 Employment Report: May 2020

Employment by Staff Group

May 2020 (Dec 2019 figure: 4,357)	WTE Apr 2020	WTE May 2020	WTE change since Apr 20	% change since Apr 20	WTE change since Dec 19	WTE change since May 19
Overall	4,388	4,413	+25	+0.6%	+56	+28
Consultants	26	27	+1	+2.9%	-0	-0
Registrars	39	38	-2	-3.8%	-4	+3
SHO/ Interns	26	26	-0	-0.1%	+1	-4
Medical/ Dental, other	59	57	-1	-2.1%	-1	-2
Medical & Dental	150	148	-2	-1.3%	-4	-4
Nurse/ Midwife Manager	251	256	+5	+1.9%	+10	+11
Nurse/ Midwife Specialist & AN/MP	51	49	-2	-4.0%	-6	-0
Staff Nurse/ Staff Midwife	802	793	-9	-1.1%	+6	-18
Public Health Nurse	131	128	-3	-2.2%	+1	+4
<i>Pre-registration Nurse/ Midwife Intern</i>	10		-10	-100.0%	-20	-10
<i>Pre-registration Nurse Intern (COVID-19)</i>	24	39	+15	+64.2%	+39	+15
<i>Post-registration Nurse/ Midwife Student</i>				-100.0%		
Nursing/ Midwifery Student	34	39	+5	+15.5%	+18	+18
Nursing/ Midwifery other	4	4				-0
Nursing & Midwifery	1,273	1,269	-4	-0.3%	+28	+14
Therapy Professions	215	218	+2	+1.1%	+4	-5
Health Science/ Diagnostics	6	7	+0	+4.2%	+1	+1
Social Care	244	258	+14	+5.7%	+13	+10
Social Workers	59	58	-0	-0.7%	-1	-4
Psychologists	122	123	+1	+1.2%	-1	+1
Pharmacy	5	5				
H&SC, Other	34	36	+2	+6.8%	+4	+1
Health & Social Care Professionals	685	705	+20	+2.9%	+21	+5
Management (VIII & above)	41	40	-0	-1.0%	+2	+4
Administrative/ Supervisory (V to VII)	142	140	-2	-1.5%	+7	-8
Clerical (III & IV)	315	311	-4	-1.2%	-9	-14
Management & Administrative	497	491	-6	-1.2%	+0	-18
Support	163	161	-2	-1.4%	-2	-6
Maintenance/ Technical	75	74	-0	-0.7%	-3	-3
General Support	238	235	-3	-1.2%	-5	-10
Health Care Assistants	1,128	1,175	+47	+4.2%	+35	+38
Care, other	239	235	-4	-1.7%	+1	+3
Home Help	178	155	-23	-12.8%	-21	+0
Patient & Client Care	1,545	1,565	+20	+1.3%	+16	+41

CHO 3 Employment Report: May 2020

Community Health & Wellbeing

May 2020 (figure:)	WTE Apr 2020	WTE May 2020	WTE change since Apr 20	% change since Apr 20	WTE change since	WTE change since
Total Community Health & Wellbeing	10	11	+0	+3.3%	+11	+11
Nurse/ Midwife Manager	1	1	+0	+29.9%	+1	+1
Public Health Nurse	1	1			+1	+1
Nursing & Midwifery	2	2	+0	+13.3%	+2	+2
Therapy Professions	3	3			+3	+3
Health & Social Care Professionals	3	3			+3	+3
Management (VIII & above)	1	1			+1	+1
Administrative/ Supervisory (V to VII)	2	2	+0	+6.3%	+2	+2
Clerical (III & IV)	1	1			+1	+1
Management & Administrative	4	4	+0	+2.6%	+4	+4
Care, other	2	2			+2	+2
Patient & Client Care	2	2			+2	+2

Mental Health

May 2020 (Dec 2019 figure: 795)	WTE Apr 2020	WTE May 2020	WTE change since Apr 20	% change since Apr 20	WTE change since Dec 19	WTE change since May 19
Total Mental Health	805	809	+4	+0.5%	+14	+2
Consultants	22	23	+1	+3.0%	-0	-0
Registrars	18	18	-0	-0.3%	-0	+3
SHO/ Interns	20	20	-0	-0.2%	+1	-4
Medical & Dental	60	61	+1	+1.0%	+0	-1
Nurse/ Midwife Manager	88	90	+2	+1.8%	+2	+4
Nurse/ Midwife Specialist & AN/MP	36	35	-2	-4.2%	-4	-1
Staff Nurse/ Staff Midwife	261	260	-1	-0.4%	+15	+7
Pre-registration Nurse/ Midwife Intern	10		-10	-100.0%	-9	-10
Pre-registration Nurse Intern (COVID-19)		15	+15	-100.0%	+15	+15
Nursing/ Midwifery Student	10	15	+5	+51.3%	+6	+5
Nursing & Midwifery	396	400	+4	+1.0%	+19	+15
Therapy Professions	24	24	+0	+0.5%	-2	-7
Social Care	3	3	+0	+5.3%	+0	+0
Social Workers	25	26	+0	+1.3%	+0	+1
Psychologists	89	89	-0	-0.1%	-3	-1
Pharmacy	3	3				
H&SC, Other	11	13	+2	+17.0%	+3	+1
Health & Social Care Professionals	155	157	+2	+1.5%	-1	-5
Management (VIII & above)	3	3	+0	+14.5%	+1	+1
Administrative/ Supervisory (V to VII)	20	19	-1	-5.1%	+2	+1
Clerical (III & IV)	53	53	+0	+0.0%	-3	-4
Management & Administrative	76	75	-1	-0.8%	+0	-1
Support	31	30	-1	-4.2%	-2	-3
Maintenance/ Technical	10	10			-1	-1
General Support	41	40	-1	-3.2%	-3	-4
Health Care Assistants	76	75	-1	-1.1%	-0	-1
Care, other	1	1			-1	-1
Patient & Client Care	77	76	-1	-1.1%	-1	-1

Primary Care

May 2020 (Dec 2019 figure: 764)	WTE Apr 2020	WTE May 2020	WTE change since Apr 20	% change since Apr 20	WTE change since Dec 19	WTE change since May 19
Total Primary Care	763	755	-8	-1.0%	-8	-51
Consultants	2	2				
Registrars	21	20	-1	-6.7%	-4	-1
SHO/ Interns	6	6				
Medical/ Dental, other	53	52	-1	-2.3%	-1	-2
Medical & Dental	82	80	-3	-3.2%	-4	-3
Nurse/ Midwife Manager	21	22	+0	+2.2%	+3	+1
Nurse/ Midwife Specialist & AN/MP	2	2	-1	-25.0%	-1	+0
Staff Nurse/ Staff Midwife	55	56	+1	+1.0%	-0	-5
Public Health Nurse	129	126	-3	-2.3%	-0	+2
<i>Post-registration Nurse/ Midwife Student</i>				-100.0%		
Nursing/ Midwifery Student				-100.0%		-4
Nursing & Midwifery	207	205	-2	-1.2%	+2	-7
Therapy Professions	85	87	+2	+2.5%	+1	-2
Health Science/ Diagnostics	5	5	-0	-0.8%	+0	+0
Social Care	1	1				
Social Workers	10	10	-0	-0.5%	-1	-2
Psychologists	13	13	-0	-0.4%	-2	-2
Pharmacy	1	1				
H&SC, Other	11	11	-0	-0.4%	+0	-0
Health & Social Care Professionals	126	128	+2	+1.6%	-1	-5
Management (VIII & above)	24	24	-0	-0.9%	+0	+0
Administrative/ Supervisory (V to VII)	59	58	-1	-1.3%	+4	-14
Clerical (III & IV)	150	146	-4	-2.3%	-10	-15
Management & Administrative	233	228	-5	-1.9%	-5	-29
Support	14	13	-0	-1.5%	+0	-1
Maintenance/ Technical	28	28			-2	-2
General Support	42	41	-0	-0.5%	-2	-3
Health Care Assistants	23	24	+1	+3.9%	+3	-2
Care, other	49	49	-1	-1.3%	-0	-2
Home Help	1	1				
Patient & Client Care	73	73	+0	+0.4%	+2	-4

Social Care

May 2020 (Dec 2019 figure: 2,798)	WTE Apr 2020	WTE May 2020	WTE change since Apr 20	% change since Apr 20	WTE change since Dec 19	WTE change since May 19
Total Social Care	2,810	2,838	+28	+1.0%	+40	+66
Consultants	2	2	+0	+4.2%	+0	-0
Medical/ Dental, other	6	6				
Medical & Dental	8	8	+0	+1.1%	+0	-0
Nurse/ Midwife Manager	141	143	+2	+1.7%	+4	+5
Nurse/ Midwife Specialist & AN/MP	13	13			-2	+1
Staff Nurse/ Staff Midwife	486	477	-8	-1.7%	-9	-20
Public Health Nurse	1	1				+1
<i>Pre-registration Nurse/ Midwife Intern</i>				-100.0%	-12	
<i>Pre-registration Nurse Intern (COVID-19)</i>	24	24	+0	+0.4%	+24	+0
Nursing/ Midwifery Student	24	24	+0	+0.4%	+12	+17
Nursing/ Midwifery other	4	4				-0
Nursing & Midwifery	668	662	-6	-0.9%	+6	+4
Therapy Professions	104	104	+0	+0.0%	+2	+1
Health Science/ Diagnostics	2	2	+0	+19.7%	+1	+1
Social Care	240	254	+14	+5.7%	+13	+10
Social Workers	24	23	-1	-3.0%	-1	-4
Psychologists	19	21	+2	+8.2%	+5	+4
Pharmacy	1	1				
H&SC, Other	12	12	+0	+4.1%	+0	+0
Health & Social Care Professionals	402	417	+15	+3.8%	+21	+13
Management (VIII & above)	13	13	-1	-4.4%	+0	+2
Administrative/ Supervisory (V to VII)	61	60	-0	-0.7%	-1	+3
Clerical (III & IV)	111	110	-0	-0.1%	+2	+3
Management & Administrative	185	184	-1	-0.6%	+1	+8
Support	118	118	-1	-0.7%	+1	-3
Maintenance/ Technical	37	36	-0	-1.3%	-0	-0
General Support	155	154	-1	-0.8%	+0	-3
Health Care Assistants	1,029	1,076	+47	+4.6%	+33	+41
Care, other	187	183	-4	-1.9%	+0	+4
Home Help	177	154	-23	-12.9%	-21	+0
Patient & Client Care	1,393	1,414	+21	+1.5%	+12	+45

CHO 3 Employment Report: May 2020

Disabilities

May 2020 (Dec 2019 figure: 1,823)	WTE Apr 2020	WTE May 2020	WTE change since Apr 20	% change since Apr 20	WTE change since Dec 19	WTE change since May 19
Total Disabilities	1,836	1,873	+36	+2.0%	+49	+63
Consultants	1	1	+0	+8.0%	+0	-0
Medical/ Dental, other	1	1				
Medical & Dental	2	2	+0	+4.4%	+0	-0
Nurse/ Midwife Manager	76	81	+5	+6.0%	+5	+7
Nurse/ Midwife Specialist & AN/MP	11	11			-2	+1
Staff Nurse/ Staff Midwife	250	249	-1	-0.4%	+2	-6
<i>Pre-registration Nurse/ Midwife Intern</i>				-100.0%	-12	
<i>Pre-registration Nurse Intern (COVID-19)</i>	24	24	+0	+0.4%	+24	+0
Nursing/ Midwifery Student	24	24	+0	+0.4%	+12	+17
Nursing/ Midwifery other	4	4				-0
Nursing & Midwifery	365	368	+4	+1.0%	+17	+19
Therapy Professions	76	76	+0	+0.3%	+2	+0
Health Science/ Diagnostics	1	1	+0	+50.8%	+1	+1
Social Care	240	254	+14	+5.7%	+13	+10
Social Workers	17	16	-1	-6.2%	-1	-2
Psychologists	19	21	+2	+8.2%	+5	+4
H&SC, Other	12	12	+0	+4.1%	+0	+0
Health & Social Care Professionals	365	380	+15	+4.2%	+21	+13
Management (VIII & above)	7	7				
Administrative/ Supervisory (V to VII)	41	40	-1	-1.3%	-0	-1
Clerical (III & IV)	61	60	-1	-1.4%	+1	+3
Management & Administrative	109	107	-1	-1.3%	+1	+2
Support	56	55	-1	-1.8%	+2	-3
Maintenance/ Technical	15	15	+0	+0.9%	+1	+1
General Support	71	70	-1	-1.3%	+3	-2
Health Care Assistants	749	775	+26	+3.5%	+11	+31
Care, other	176	170	-7	-3.8%	-3	+0
Patient & Client Care	925	945	+19	+2.1%	+8	+31

Older People

May 2020 (Dec 2019 figure: 974)	WTE Apr 2020	WTE May 2020	WTE change since Apr 20	% change since Apr 20	WTE change since Dec 19	WTE change since May 19
Total Older People	973	965	-8	-0.8%	-9	+3
Consultants	1	1				
Medical/ Dental, other	5	5				
Medical & Dental	6	6				
Nurse/ Midwife Manager	65	63	-2	-3.4%	-1	-2
Nurse/ Midwife Specialist & AN/MP	2	2				
Staff Nurse/ Staff Midwife	236	228	-7	-3.1%	-10	-14
Public Health Nurse	1	1				+1
Nursing & Midwifery	303	294	-10	-3.2%	-12	-15
Health & Social Care Professionals	37	37	+0	+0.2%	+1	-1
Management (VIII & above)	6	6	-1	-9.0%	+0	+2
Administrative/ Supervisory (V to VII)	20	20	+0	+0.7%	-1	+3
Clerical (III & IV)	50	50	+1	+1.3%	+1	+0
Management & Administrative	76	76	+0	+0.3%	+0	+6
Support	63	63	+0	+0.4%	-1	+0
Maintenance/ Technical	22	21	-1	-2.9%	-1	-1
General Support	84	84	-0	-0.5%	-2	-1
Health Care Assistants	280	301	+21	+7.6%	+22	+10
Care, other	11	14	+3	+29.4%	+4	+3
Home Help	177	154	-23	-12.9%	-21	+0
Patient & Client Care	467	469	+2	+0.3%	+5	+14

CHO 3 Employment by Administration (HSE / S38): May 2020

May 2020 (Dec 2019 figure: 4,357)	WTE Apr 2020	WTE May 2020	WTE change since Apr 20	% change since Apr 20	WTE change since Dec 19	WTE change since May 19
Overall	4,388	4,413	+25	+0.6%	+56	+28
HSE	2,678	2,668	-10	-0.4%	+12	-30
Section 38 Voluntary Agencies	1,710	1,745	+35	+2.1%	+44	+59

HSE

May 2020 (Dec 2019 figure: 2,655)	WTE Apr 2020	WTE May 2020	WTE change since Apr 20	% change since Apr 20	WTE change since Dec 19	WTE change since May 19
Overall	2,678	2,668	-10	-0.4%	+12	-30
Consultants	25	26	+1	+0.0%	-0	-0
Registrars	39	38	-2	-0.0%	-4	+3
SHO/ Interns	26	26	-0	-0.0%	+1	-4
Medical/ Dental, other	58	57	-1	-0.0%	-1	-2
Medical & Dental	148	146	-2	-1.4%	-4	-4
Nurse/ Midwife Manager	175	175	+0	+0.0%	+5	+4
Nurse/ Midwife Specialist & AN/MP	40	38	-2	-0.1%	-5	-1
Staff Nurse/ Staff Midwife	552	544	-8	-0.0%	+4	-12
Public Health Nurse	131	128	-3	-0.0%	+1	+4
Pre-registration Nurse/ Midwife Intern	10		-10	-1.0%	-9	-10
Pre-registration Nurse Intern (COVID-19)		15	+15	-1.0%	+15	+15
Post-registration Nurse/ Midwife Student				-1.0%	-4	-4
Nursing/ Midwifery Student	10	15	+5	+0.5%	+6	+1
Nursing & Midwifery	908	900	-8	-0.8%	+11	-5
Therapy Professions	186	187	+1	+0.0%	+1	-6
Health Science/ Diagnostics	6	7	+0	+0.0%	+1	+1
Social Care	6	6	+0	+0.0%	+1	+1
Social Workers	44	45	+1	+0.0%	-0	-3
Psychologists	106	106	+0	+0.0%	-5	-3
Pharmacy	5	5		+0.0%		
H&SC, Other	23	25	+2	+0.1%	+4	+1
Health & Social Care Professionals	376	381	+5	+1.2%	+2	-8
Management (VIII & above)	35	35	-0	-0.0%	+2	+4
Administrative/ Supervisory (V to VII)	113	112	-1	-0.0%	+7	-8
Clerical (III & IV)	277	274	-3	-0.0%	-7	-12
Management & Administrative	425	421	-4	-1.0%	+2	-15
Support	108	106	-1	-0.0%	-4	-5
Maintenance/ Technical	63	63	+1	+0.0%	-2	-2
General Support	170	169	-1	-0.5%	-5	-7
Health Care Assistants	384	405	+21	+0.1%	+24	+7
Care, other	89	91	+2	+0.0%	+3	+1
Home Help	178	155	-23	-0.1%	-21	+0
Patient & Client Care	650	650	+0	+0.1%	+6	+8

Section 38 Voluntary Agencies

May 2020 (Dec 2019 figure: 1,701)	WTE Apr 2020	WTE May 2020	WTE change since Apr 20	% change since Apr 20	WTE change since Dec 19	WTE change since May 19
Overall	1,710	1,745	+35	+2.1%	+44	+59
Consultants	1	1	+0	+0.1%	+0	-0
Medical/ Dental, other	1	1		+0.0%		
Medical & Dental	2	2	+0	+4.4%	+0	-0
Nurse/ Midwife Manager	76	81	+5	+0.1%	+5	+7
Nurse/ Midwife Specialist & AN/MP	11	11		+0.0%	-2	+1
Staff Nurse/ Staff Midwife	250	249	-1	-0.0%	+2	-6
<i>Pre-registration Nurse/ Midwife Intern</i>				-1.0%	-7	-7
<i>Pre-registration Nurse Intern (COVID-19)</i>	24	24	+0	+0.0%	+24	+24
Nursing/ Midwifery Student	24	24	+0	+0.0%	+12	+17
Nursing/ Midwifery other	4	4		+0.0%		-0
Nursing & Midwifery	365	368	+4	+1.0%	+17	+19
Therapy Professions	30	31	+1	+0.0%	+3	+2
Social Care	238	252	+14	+0.1%	+12	+9
Social Workers	15	14	-1	-0.1%	-1	-2
Psychologists	15	17	+1	+0.1%	+4	+3
H&SC, Other	10	11	+0	+0.0%	+0	-0
Health & Social Care Professionals	309	324	+15	+4.9%	+18	+12
Management (VIII & above)	6	6		+0.0%		
Administrative/ Supervisory (V to VII)	29	28	-1	-0.0%	+0	+0
Clerical (III & IV)	38	37	-1	-0.0%	-2	-2
Management & Administrative	72	70	-2	-2.7%	-2	-2
Support	56	55	-1	-0.0%	+2	-2
Maintenance/ Technical	12	11	-1	-0.1%	-1	-1
General Support	68	66	-2	-2.8%	+1	-3
Health Care Assistants	744	771	+26	+0.0%	+11	+31
Care, other	151	144	-6	-0.0%	-2	+2
Patient & Client Care	895	915	+20	+2.2%	+9	+33

CHO 3 Employment by S38 Agency: May 2020

Bros. of Charity, Clare

May 2020 (Dec 2019 figure: 348)	WTE Apr 2020	WTE May 2020	WTE change since Apr 20	% change since Apr 20	WTE change since Dec 19	WTE change since May 19
Overall	322	327	+4	+1.4%	-21	+1
Consultants	0	0	+0	+0.8%	+0	+0
Medical & Dental	0	0	+0	+75.0%	+0	+0
Nurse/ Midwife Manager				-1.0%		
Staff Nurse/ Staff Midwife	2	2		+0.0%	+0	+0
Nursing/ Midwifery Student	1	1	+0	+0.1%	+1	+1
Nursing & Midwifery	2	3	+0	+3.6%	+1	+1
Social Care	77	79	+2	+0.0%	-3	-7
Social Workers	3	2	-1	-0.3%	-1	-1
Psychologists	3	3		+0.0%		
H&SC, Other	4	4		+0.0%	-0	-1
Health & Social Care Professionals	86	87	+1	+0.9%	-5	-9
Management (VIII & above)	1	1		+0.0%		
Administrative/ Supervisory (V to VII)	5	5		+0.0%	+0	+0
Clerical (III & IV)	5	5		+0.0%	+1	+1
Management & Administrative	11	11			+1	+1
Health Care Assistants	190	195	+4	+0.0%	-18	+6
Care, other	32	31	-1	-0.0%	-1	+2
Patient & Client Care	223	226	+3	+1.6%	-18	+8

Bros. of Charity, Limerick

May 2020 (Dec 2019 figure: 520)	WTE Apr 2020	WTE May 2020	WTE change since Apr 20	% change since Apr 20	WTE change since Dec 19	WTE change since May 19
Overall	528	555	+27	+5.2%	+35	+35
Consultants	1	1		+0.0%		-0
Medical & Dental	1	1				-0
Nurse/ Midwife Manager	26	30	+4	+0.1%	+5	+6
Nurse/ Midwife Specialist & AN/MP	4	4		+0.0%	-1	+1
Staff Nurse/ Staff Midwife	87	85	-2	-0.0%	+1	+0
Nursing & Midwifery	117	119	+2	+1.4%	+5	+7
Therapy Professions	13	14	+1	+0.1%	+2	+1
Social Care	87	94	+7	+0.1%	+9	+12
Social Workers	5	5	-0	-0.0%	+0	-1
Psychologists	6	6	+0	+0.0%	+0	+0
H&SC, Other	1	2	+0	+0.4%	+1	+1
Health & Social Care Professionals	112	120	+8	+7.4%	+12	+14
Management (VIII & above)	2	2		+0.0%		
Administrative/ Supervisory (V to VII)	6	6	+0	+0.0%	+0	-1
Clerical (III & IV)	12	11	-1	-0.1%	-2	-2
Management & Administrative	19	19	-1	-4.9%	-2	-3
Support	6	5	-1	-0.1%	-2	-3
Maintenance/ Technical	2	2		+0.0%	-0	-0
General Support	8	7	-1	-11.1%	-2	-3
Health Care Assistants	178	200	+22	+0.1%	+21	+16
Care, other	91	89	-3	-0.0%	+1	+3
Patient & Client Care	269	289	+19	+7.2%	+22	+19

Daughters of Charity, Limerick

May 2020 (Dec 2019 figure: 543)	WTE Apr 2020	WTE May 2020	WTE change since Apr 20	% change since Apr 20	WTE change since Dec 19	WTE change since May 19
Overall	569	570	+1	+0.3%	+27	+23
Medical/ Dental, other	1	1		+0.0%		
Medical & Dental	1	1				
Nurse/ Midwife Manager	35	35		+0.0%		+1
Nurse/ Midwife Specialist & AN/MP	7	7		+0.0%	-1	-1
Staff Nurse/ Staff Midwife	143	144	+1	+0.0%	+0	-6
Nursing/ Midwifery Student	23	23		+0.0%	+12	+17
Nursing/ Midwifery other	3	3		+0.0%		-0
Nursing & Midwifery	211	212	+1	+0.5%	+11	+11
Therapy Professions	15	15		+0.0%		
Social Care	55	56	+1	+0.0%	+2	+1
Social Workers	5	5		+0.0%	+0	+0
Psychologists	6	7	+1	+0.2%	+4	+3
H&SC, Other	6	6		+0.0%		
Health & Social Care Professionals	87	89	+2	+2.4%	+6	+4
Management (VIII & above)	2	2		+0.0%		
Administrative/ Supervisory (V to VII)	11	10	-1	-0.1%		
Clerical (III & IV)	14	14		+0.0%	-1	-1
Management & Administrative	27	26	-1	-3.7%	-1	-1
Support	45	45		+0.0%	+4	+2
Maintenance	4	4		+0.0%		
Maintenance/ Technical	4	4		+0.0%		
General Support	49	49			+4	+2
Health Care Assistants	171	171	-1	-0.0%	+6	+6
Care, other	22	22		+0.0%	+1	+1
Patient & Client Care	194	193	-1	-0.3%	+7	+6

Daughters of Charity, Roscrea

May 2020 (Dec 2019 figure: 290)	WTE Apr 2020	WTE May 2020	WTE change since Apr 20	% change since Apr 20	WTE change since Dec 19	WTE change since May 19
Overall	291	293	+2	+0.7%	+3	-0
Nurse/ Midwife Manager	15	16	+1	+0.1%		-0
Staff Nurse/ Staff Midwife	18	18		+0.0%		-0
Nursing/ Midwifery other	1	1		+0.0%		
Nursing & Midwifery	34	35	+1	+3.0%		-1
Therapy Professions	2	2		+0.0%	+0	+1
Social Care	20	24	+4	+0.2%	+5	+2
Social Workers	1	1		+0.0%		
Psychologists	1	1		+0.0%		
Health & Social Care Professionals	24	28	+4	+17.0%	+5	+2
Management (VIII & above)	1	1		+0.0%		
Administrative/ Supervisory (V to VII)	7	7		+0.0%		+1
Clerical (III & IV)	7	7		+0.0%	+0	-1
Management & Administrative	15	15			+0	-0
Support	4	4		+0.0%		-1
Maintenance/ Technical	6	5	-1	-0.2%	-1	-1
General Support	10	9	-1	-9.9%	-1	-2
Health Care Assistants	204	205	+1	+0.0%	+3	+3
Care, other	5	2	-3	-0.6%	-4	-3
Patient & Client Care	209	207	-2	-1.0%	-1	-0

CHO 3 Employment by Grade Group & Staff Category: May 2020

May 2020 (Dec 2019 figure: 4,357)	WTE Apr 2020	WTE May 2020	WTE change since Apr 20	% change since Apr 20	WTE change since Dec 19	WTE change since May 19
Overall	4,388	4,413	+25	+0.6%	+56	+28
Consultant Medicine	2	2				
Consultant Paediatrics	1	1				
Consultant Psychiatry	22	23	+1	+3.4%	-0	-0
Consultant Surgery	1	1				
Consultants	26	27	+1	+2.9%	-0	-0
Registrar	33	31	-1	-4.5%	-4	+1
Senior Registrar	5	5				+1
Specialist Registrar	2	1	-0	-1.3%	-0	+0
Registrars	39	38	-2	-3.8%	-4	+3
Senior House Officer	26	26	-0	-0.1%	+1	-4
SHO/ Interns	26	26	-0	-0.1%	+1	-4
Dentists	26	25	-1	-5.5%	-2	-3
Other Medical	32	33	+0	+0.7%	+1	+1
Medical/ Dental, other	59	57	-1	-2.1%	-1	-2
Medical & Dental	150	148	-2	-1.3%	-2	-4
Clinical Nurse/ Midwife Manager	189	195	+6	+3.3%	+9	+11
Director Nursing/Midwifery, Assistant	48	46	-2	-3.3%	+0	+0
Director of Nursing/Midwifery	15	15			-0	-0
Nurse/ Midwife Manager	251	256	+5	+1.9%	+10	+11
Advanced Nurse/ Midwife Practitioner	2	2				+1
Clinical Nurse/ Midwife Specialist	50	48	-2	-4.1%	-6	-1
Nurse/ Midwife Specialist & AN/MP	51	49	-2	-4.0%	-6	-0
Staff Nurse [Intellectual Disability]	211	212	+0	+0.1%	+3	-7
Staff Nurse [Psychiatric]	252	251	-1	-0.3%	+14	+6
Staff Nurses [General/ Children's]	339	331	-8	-2.5%	-11	-17
Staff Nurse/ Staff Midwife	802	793	-9	-1.1%	+6	-18
Public Health Nurse	131	128	-3	-2.2%	+1	+4
Pre-registration Nurse/ Midwife Intern	10		-10	-100.0%	-20	-17
Pre-registration Nurse Intern (COVID-19)	24	39	+15	+64.2%	+39	+39
Post-registration Nurse/ Midwife Student				-100.0%		-4
Nursing/ Midwifery Student	34	39	+5	+15.5%	+18	+18
Nursing Education/Clinical	3	3				-0
Other Nursing/ Midwifery	1	1				
Nursing/ Midwifery other	4	4				-0
Nursing & Midwifery	1,273	1,269	-4	-0.3%	+51	+14
Dietitians	6	6	+0	+0.2%	+4	+4
Occupational Therapists	86	88	+2	+2.3%	-0	-4
Physiotherapists	59	58	-1	-1.3%	-1	-3
Podiatrists & Chiropodists	5	5	+0	+0.2%	-0	-0
Speech & Language Therapists	59	60	+1	+1.8%	+2	-1
Therapy Professions	215	218	+2	+1.1%	+4	-5
Audiology	5	5	-0	-0.8%	+0	+0
Clinical Engineering	1	1	+0	+50.8%	+1	+1
Clinical Measurement	0	0	-0	-2.3%	+0	+0
Radiographers	1	1				
Health Science/ Diagnostics	6	7	+0	+4.2%	+1	+1
Social Care	244	258	+14	+5.7%	+13	+10

May 2020 (Dec 2019 figure: 4,357)	WTE Apr 2020	WTE May 2020	WTE change since Apr 20	% change since Apr 20	WTE change since Dec 19	WTE change since May 19
Overall	4,388	4,413	+25	+0.6%	+56	+28
Social Workers	59	58	-0	-0.7%	-1	-4
Psychologists	122	123	+1	+1.2%	-1	+1
Pharmacy	5	5				
Counsellor Therapists	14	16	+2	+13.4%	+3	+1
Dental Hygienists	7	7	-0	-0.7%	+1	
Other Health & Social Care	9	9	+1	+5.7%	+1	+1
Play Therapists/ Specialists	5	5	-0	-0.2%	-1	-1
H&SC, Other	34	36	+2	+6.8%	+4	+1
Health & Social Care Professionals	685	705	+20	+2.9%	+27	+5
Executive Management	14	13	-1	-5.9%	+1	+1
Senior Management (VIII & GM)	27	27	+0	+1.5%	+1	+3
Management (VIII & above)	41	40	-0	-1.0%	+2	+4
Middle Management (V-VII)	130	128	-2	-1.6%	+2	-8
Other Administrative	12	12			+5	
Administrative/ Supervisory (V to VII)	142	140	-2	-1.5%	+7	-8
General Administrative (III & IV)	315	311	-4	-1.2%	-9	-14
Clerical (III & IV)	315	311	-4	-1.2%	-9	-14
Management & Administrative	497	491	-6	-1.2%	-5	-18
Catering	31	30	-1	-2.1%	-0	+3
Household Services	84	85	+1	+0.9%	+2	-3
Other Support	37	35	-2	-5.4%	-3	-5
Portering	12	11	-0	-3.8%	-0	-1
Support	163	161	-2	-1.4%	-2	-6
Maintenance	74	73	-0	-0.7%	-3	-3
Technical Services	1	1				
Maintenance/ Technical	75	74	-0	-0.7%	-3	-3
General Support	238	235	-3	-1.2%	-13	-10
HCA, Nurse's Aide, etc.	1,116	1,163	+47	+4.2%	+32	+39
Health & Social Care Assistants	12	12	+0	+3.6%	+3	-1
Health Care Assistants	1,128	1,175	+47	+4.2%	+35	+38
Other Care Grades	239	235	-4	-1.7%	+1	+3
Care, other	239	235	-4	-1.7%	+1	+3
Home Help	178	155	-23	-12.8%	-21	+0
Patient & Client Care	1,545	1,565	+20	+1.3%	+45	+41

CHO 3 HSE Employment by Grade Group & Staff Category: May 2020

May 2020 (Dec 2019 figure: 2,655)	WTE Apr 2020	WTE May 2020	WTE change since Apr 20	% change since Apr 20	WTE change since Dec 19	WTE change since May 19
Overall	2,678	2,668	-10	-0.4%	+12	-30
Consultant Medicine	2	2				
Consultant Paediatrics	1	1				
Consultant Psychiatry	21	22	+1	+3.2%	-0	-0
Consultant Surgery	1	1				
Consultants	25	26	+1	+2.7%	-0	-0
Registrar	33	31	-1	-4.5%	-4	+1
Senior Registrar	5	5				+1
Specialist Registrar	2	1	-0	-1.3%	-0	+0
Registrars	39	38	-2	-3.8%	-4	+3
SHO/ Interns	26	26	-0	-0.1%	+1	-4
Dentists	26	25	-1	-5.5%	-2	-3
Other Medical	31	32	+0	+0.7%	+1	+1
Medical/ Dental, other	58	57	-1	-2.1%	-1	-2
Medical & Dental	148	146	-2	-1.4%	-2	-4
Clinical Nurse/ Midwife Manager	114	115	+2	+1.4%	+5	+4
Director Nursing/Midwifery, Assistant	47	45	-2	-3.3%	+0	+0
Director of Nursing/Midwifery	15	15			-0	-0
Nurse/ Midwife Manager	175	175	+0	+0.0%	+5	+4
Advanced Nurse/ Midwife Practitioner	2	2				+1
Clinical Nurse/ Midwife Specialist	38	36	-2	-5.3%	-5	-2
Nurse/ Midwife Specialist & AN/MP	40	38	-2	-5.1%	-5	-1
Staff Nurse [Intellectual Disability]	1	1	-0	-20.0%		-0
Staff Nurse [Psychiatric]	252	251	-1	-0.3%	+14	+6
Staff Nurses [General/ Children's]	299	292	-7	-2.3%	-10	-18
Staff Nurse/ Staff Midwife	552	544	-8	-1.4%	+4	-12
Public Health Nurse	131	128	-3	-2.2%	+1	+4
Pre-registration Nurse/ Midwife Intern	10		-10	-100.0%	-9	-10
Pre-registration Nurse Intern (COVID-19)		15	+15	-100.0%	+15	+15
Post-registration Nurse/ Midwife Student				-100.0%		-4
Nursing/ Midwifery Student	10	15	+5	+51.3%	+6	+1
Nursing & Midwifery	908	900	-8	-0.8%	+39	-5
Dietitians	6	6	+0	+0.2%	+4	+4
Occupational Therapists	75	77	+1	+1.9%	-2	-5
Physiotherapists	52	51	-1	-1.5%	-0	-2
Podiatrists & Chiropodists	5	5	+0	+0.2%	-0	-0
Speech & Language Therapists	46	47	+1	+1.4%	-0	-2
Therapy Professions	186	187	+1	+0.7%	+1	-6
Audiology	5	5	-0	-0.8%	+0	+0
Clinical Engineering	1	1	+0	+50.8%	+1	+1
Clinical Measurement	0	0	-0	-2.3%	+0	+0
Radiographers	1	1				
Health Science/ Diagnostics	6	7	+0	+4.2%	+1	+1
Social Care	6	6	+0	+2.9%	+1	+1
Social Workers	44	45	+1	+1.4%	-0	-3
Psychologists	106	106	+0	+0.4%	-5	-3
Pharmacy	5	5				
Counsellor Therapists	14	16	+2	+13.4%	+3	+1
Dental Hygienists	7	7	-0	-0.7%	+1	
Other Health & Social Care	2	2			-0	+0

May 2020 (Dec 2019 figure: 2,655)	WTE Apr 2020	WTE May 2020	WTE change since Apr 20	% change since Apr 20	WTE change since Dec 19	WTE change since May 19
Overall	2,678	2,668	-10	-0.4%	+12	-30
Play Therapists/ Specialists	0	0			-0	-0
H&SC, Other	23	25	+2	+7.7%	+4	+1
Health & Social Care Professionals	376	381	+5	+1.2%	+16	-8
Executive Management	12	11	-1	-6.9%	+1	+1
Senior Management (VIII & GM)	23	24	+0	+1.7%	+1	+3
Management (VIII & above)	35	35	-0	-1.2%	+2	+4
Administrative/ Supervisory (V to VII)	113	112	-1	-1.0%	+7	-8
Clerical (III & IV)	277	274	-3	-0.9%	-7	-12
Management & Administrative	425	421	-4	-1.0%	-4	-15
Catering	26	26	-1	-2.5%	-0	+3
Household Services	41	42	+1	+3.1%	-1	-4
Other Support	33	31	-2	-6.1%	-3	-5
Portering	8	8			+1	+1
Support	108	106	-1	-1.3%	-4	-5
Maintenance/ Technical	63	63	+1	+0.8%	-2	-2
General Support	170	169	-1	-0.5%	-9	-7
HCA, Nurse's Aide, etc.	373	394	+21	+5.5%	+22	+9
Health & Social Care Assistants	11	11	+0	+4.0%	+2	-2
Health Care Assistants	384	405	+21	+5.5%	+24	+7
Care, other	89	91	+2	+2.5%	+3	+1
Home Help	178	155	-23	-12.8%	-21	+0
Patient & Client Care	650	650	+0	+0.1%	-2	+8

Employment by WTE, Headcount, Gender, Full-Time /Part-Time etc.: May 2020

CHO 3	WTE	Headcount	WTE: no.	% Male	% female	Male WTE: no.	Female WTE: no.	% Total Perm	% Male Perm	% Female Perm	% Total Full Time	% Total Part Time	% Male FT	% Female FT
Overall	4,413	5,396	1.22	13.8%	86.2%	1.10	1.25	86.0%	79.5%	87.1%	54.2%	45.8%	73.2%	51.2%
Consultant Medicine	2	2	1.00	50.0%	50.0%	1.00	1.00	100.0%	100.0%	100.0%	100.0%	0.0%	100.0%	100.0%
Consultant Paediatrics	1	1	1.00		100.0%		1.00	100.0%	100.0%	100.0%	100.0%	0.0%		100.0%
Consultant Psychiatry	23	26	1.12	46.2%	53.8%	1.05	1.19	84.6%	84.6%	78.6%	73.1%	26.9%	75.0%	71.4%
Consultant Surgery	1	1	1.00		100.0%		1.00	100.0%	100.0%	100.0%	0.0%	100.0%		0.0%
Consultants	27	30	1.10	43.3%	56.7%	1.05	1.15	86.7%	92.3%	82.4%	73.3%	26.7%	76.9%	70.6%
Registrar	31	33	1.06	27.3%	72.7%	1.00	1.08	9.1%	9.1%	4.2%	93.9%	6.1%	100.0%	91.7%
Senior Registrar	5	5	1.00	40.0%	60.0%	1.00	1.00	0.0%	0.0%	0.0%	100.0%	0.0%	100.0%	100.0%
Specialist Registrar	1	2	1.35		100.0%		1.35	0.0%	0.0%	0.0%	50.0%	50.0%		50.0%
Registrars	38	40	1.06	27.5%	72.5%	1.00	1.08	7.5%	18.2%	3.4%	92.5%	7.5%	100.0%	89.7%
Senior House Officer	26	26	1.00	19.2%	80.8%	1.00	1.00	0.0%	0.0%	0.0%	100.0%	0.0%	100.0%	100.0%
SHO/ Interns	26	26	1.00	19.2%	80.8%	1.00	1.00	0.0%	0.0%	0.0%	100.0%	0.0%	100.0%	100.0%
Dentists	25	32	1.29	21.9%	78.1%	1.33	1.28	90.6%	90.6%	96.0%	53.1%	46.9%	71.4%	48.0%
Other Medical	33	36	1.10	41.7%	58.3%	1.04	1.16	63.9%	63.9%	71.4%	80.6%	19.4%	86.7%	76.2%
Medical/ Dental, other	57	68	1.18	32.4%	67.6%	1.12	1.22	76.5%	59.1%	84.8%	67.6%	32.4%	81.8%	60.9%
Medical & Dental	148	164	1.11	31.1%	68.9%	1.06	1.13	49.4%	52.9%	47.8%	79.9%	20.1%	86.3%	77.0%
Clinical Nurse/ Midwife Manager	195	204	1.05	13.7%	86.3%	1.01	1.05	90.7%	90.7%	89.8%	84.8%	15.2%	96.4%	83.0%
Director Nursing/Midwifery, Assistant	46	47	1.02	14.9%	85.1%	1.00	1.02	100.0%	100.0%	100.0%	95.7%	4.3%	100.0%	95.0%
Director of Nursing/Midwifery	15	15	1.00	6.7%	93.3%	1.00	1.00	100.0%	100.0%	100.0%	100.0%	0.0%	100.0%	100.0%
Nurse/ Midwife Manager	256	266	1.04	13.5%	86.5%	1.01	1.04	92.9%	97.2%	92.2%	87.6%	12.4%	97.2%	86.1%
Advanced Nurse/ Midwife Practitioner	2	2	1.09		100.0%		1.09	100.0%	100.0%	100.0%	50.0%	50.0%		50.0%
Clinical Nurse/ Midwife Specialist	47	53	1.12	7.5%	92.5%	1.02	1.12	100.0%	100.0%	100.0%	69.8%	30.2%	75.0%	69.4%
Nurse/ Midwife Specialist & AN/MP	49	55	1.11	7.3%	92.7%	1.02	1.12	100.0%	100.0%	100.0%	69.1%	30.9%	75.0%	68.6%
Staff Nurse [Intellectual Disability]	212	232	1.10	1.3%	98.7%	1.01	1.10	97.0%	97.0%	96.9%	58.6%	41.4%	66.7%	58.5%
Staff Nurse [Psychiatric]	251	270	1.08	23.0%	77.0%	1.05	1.08	94.8%	94.8%	95.2%	83.3%	16.7%	83.9%	83.2%
Staff Nurses [General/ Children's]	331	405	1.23	5.4%	94.6%	1.04	1.24	93.8%	93.8%	93.7%	51.4%	48.6%	81.8%	49.6%
Staff Nurse/ Staff Midwife	793	907	1.14	9.6%	90.4%	1.05	1.16	94.9%	94.3%	95.0%	62.7%	37.3%	82.8%	60.6%
Public Health Nurse	128	157	1.23	0.6%	99.4%	1.25	1.23	95.5%	100.0%	95.5%	58.6%	41.4%	0.0%	59.0%
Pre-registration Nurse Intern (COVID-19)	39	44	1.13	18.2%	81.8%	1.32	1.10	52.3%	52.3%	63.9%	45.5%	54.5%	100.0%	33.3%

Nursing/ Midwifery Student	39	44	1.13	18.2%	81.8%	1.32	1.10	52.3%	0.0%	63.9%	45.5%	54.5%	100.0%	33.3%
Nursing Education/Clinical	3	3	1.10		100.0%		1.10	100.0%	100.0%	100.0%	66.7%	33.3%		66.7%
Other Nursing/ Midwifery	1	1	1.00	100.0%		1.00		100.0%	100.0%		100.0%	0.0%	100.0%	
Nursing/ Midwifery other	4	4	1.08	25.0%	75.0%	1.00	1.10	100.0%	100.0%	100.0%	75.0%	25.0%	100.0%	66.7%
Nursing & Midwifery	1,269	1,433	1.13	9.6%	90.4%	1.05	1.14	93.5%	89.8%	93.9%	66.6%	33.4%	86.9%	64.5%
Dietitians	6	7	1.11		100.0%		1.11	100.0%	100.0%	100.0%	71.4%	28.6%		71.4%
Occupational Therapists	88	98	1.12	7.1%	92.9%	1.00	1.13	91.8%	91.8%	91.2%	79.6%	20.4%	100.0%	78.0%
Physiotherapists	58	67	1.15	14.9%	85.1%	1.01	1.17	88.1%	88.1%	86.0%	74.6%	25.4%	90.0%	71.9%
Podiatrists & Chiropodists	5	6	1.11		100.0%		1.11	100.0%	100.0%	100.0%	83.3%	16.7%		83.3%
Speech & Language Therapists	60	69	1.15	2.9%	97.1%	1.26	1.15	85.5%	85.5%	86.6%	73.9%	26.1%	50.0%	74.6%
Therapy Professions	218	247	1.13	7.7%	92.3%	1.03	1.14	89.5%	94.7%	89.0%	76.5%	23.5%	89.5%	75.4%
Audiology	5	5	1.04		100.0%		1.04	100.0%	100.0%	100.0%	100.0%	0.0%		100.0%
Clinical Engineering	1	1	1.05	100.0%		1.05		0.0%	0.0%		0.0%	100.0%	0.0%	
Clinical Measurement	0	1	2.33		100.0%		2.33	0.0%	0.0%	0.0%	0.0%	100.0%		0.0%
Radiographers	1	1	2.00	100.0%		2.00		100.0%	100.0%		0.0%	100.0%	0.0%	
Health Science/ Diagnostics	7	8	1.20	25.0%	75.0%	1.38	1.15	75.0%	50.0%	83.3%	62.5%	37.5%	0.0%	83.3%
Social Care	258	296	1.15	9.5%	90.5%	1.07	1.16	79.7%	78.6%	79.9%	38.9%	61.1%	46.4%	38.1%
Social Workers	58	66	1.13	13.6%	86.4%	1.08	1.14	95.5%	100.0%	94.7%	77.3%	22.7%	77.8%	77.2%
Psychologists	123	129	1.05	20.9%	79.1%	1.00	1.06	43.4%	40.7%	44.1%	92.2%	7.8%	100.0%	90.2%
Pharmacy	5	5	1.04	40.0%	60.0%	1.00	1.07	100.0%	100.0%	100.0%	80.0%	20.0%	100.0%	66.7%
Counsellor Therapists	16	17	1.09	5.9%	94.1%	1.00	1.09	100.0%	100.0%	100.0%	70.6%	29.4%	100.0%	68.8%
Dental Hygienists	7	9	1.35		100.0%		1.35	100.0%	100.0%	100.0%	22.2%	77.8%		22.2%
Other Health & Social Care	9	10	1.08	10.0%	90.0%	1.00	1.09	100.0%	100.0%	100.0%	80.0%	20.0%	100.0%	77.8%
Play Therapists/ Specialists	5	7	1.53		100.0%		1.53	100.0%	100.0%	100.0%	28.6%	71.4%		28.6%
H&SC, Other	36	43	1.19	4.7%	95.3%	1.00	1.20	100.0%	100.0%	100.0%	55.8%	44.2%	100.0%	53.7%
Health & Social Care	705	794	1.13	11.2%	88.8%	1.04	1.14	79.3%	73.0%	80.1%	63.9%	36.1%	76.4%	62.3%
Executive Management	13	14	1.08	35.7%	64.3%	1.11	1.06	85.7%	85.7%	88.9%	92.9%	7.1%	100.0%	88.9%
Senior Management (VIII & GM)	27	28	1.02	21.4%	78.6%	1.00	1.03	92.9%	92.9%	95.5%	92.9%	7.1%	100.0%	90.9%
Management (VIII & above)	40	42	1.04	26.2%	73.8%	1.05	1.04	90.5%	81.8%	93.5%	92.9%	7.1%	100.0%	90.3%
Administrative/ Supervisory (V to VII)	140	149	1.07	14.8%	85.2%	1.05	1.07	93.3%	68.2%	97.6%	86.6%	13.4%	100.0%	84.3%
Clerical (III & IV)	311	354	1.14	6.5%	93.5%	1.02	1.15	83.9%	56.5%	85.8%	68.6%	31.4%	91.3%	67.1%
Management & Administrative	491	545	1.11	10.3%	89.7%	1.03	1.12	87.0%	66.1%	89.4%	75.4%	24.6%	96.4%	73.0%
Catering	30	35	1.16	31.4%	68.6%	1.00	1.24	94.3%	94.3%	100.0%	80.0%	20.0%	100.0%	70.8%
Household Services	85	96	1.13	16.7%	83.3%	1.21	1.12	91.7%	91.7%	93.8%	67.7%	32.3%	75.0%	66.3%
Other Support	35	58	1.65	32.8%	67.2%	1.15	2.10	70.7%	70.7%	59.0%	67.2%	32.8%	84.2%	59.0%

Portering	11	13	1.16	100.0%		1.16		100.0%	100.0%		76.9%	23.1%	76.9%	
Support	161	202	1.25	29.2%	70.8%	1.14	1.31	86.6%	89.8%	85.3%	70.3%	29.7%	83.1%	65.0%
Maintenance/ Technical	74	77	1.04	100.0%		1.04		88.3%	88.3%	#DIV/0	93.5%	6.5%	93.5%	
General Support	235	279	1.19	48.7%	51.3%	1.08	1.31	87.1%	89.0%	85.3%	76.7%	23.3%	89.0%	65.0%
HCA, Nurse's Aide, etc.	1,163	1,461	1.26	15.7%	84.3%	1.19	1.27	81.5%	81.5%	82.2%	33.6%	66.4%	45.0%	31.5%
Health & Social Care Assistants	12	13	1.08	7.7%	92.3%	1.00	1.09	38.5%	38.5%	41.7%	84.6%	15.4%	100.0%	83.3%
Health Care Assistants	1,175	1,474	1.25	15.6%	84.4%	1.19	1.27	81.1%	77.4%	81.8%	34.1%	65.9%	45.2%	32.0%
Care, other	235	267	1.14	16.9%	83.1%	1.05	1.15	89.5%	88.9%	89.6%	62.9%	37.1%	82.2%	59.0%
Home Help	155	440	2.84	0.7%	99.3%	2.26	2.85	99.8%	100.0%	99.8%	8.4%	91.6%	0.0%	8.5%
Patient & Client Care	1,565	2,181	1.39	12.7%	87.3%	1.17	1.43	85.9%	79.5%	86.9%	32.4%	67.6%	50.7%	29.7%

Employment by WTE, Headcount, Gender, Full-Time /Part-Time etc.: May 2020

CHO 3	WTE	Headcount	WTE: no.	% Male	% female	Male WTE: no.	Female WTE: no.	% Total Perm	% Male Perm	% Female Perm	% Total Full Time	% Total Part Time	% Male FT	% Female FT
Overall	4,413	5,396	1.22	13.8%	86.2%	1.10	1.25	86.0%	79.5%	87.1%	54.2%	45.8%	73.2%	51.2%
Community Health & Wellbeing	11	12	1.12		100.0%		1.12	100.0%	100.0%	100.0%	66.7%	33.3%		
Mental Health	809	873	1.08	23.0%	77.0%	1.04	1.09	81.9%	81.9%	82.6%	84.0%	16.0%	90.0%	90.0%
Primary Care	755	896	1.19	12.2%	87.8%	1.05	1.21	82.9%	82.9%	84.2%	69.3%	30.7%	90.8%	90.8%
HSE	1,093	1,528	1.40	12.5%	87.5%	1.08	1.46	92.5%	92.5%	93.9%	48.8%	51.2%	88.0%	88.0%
Section 38 Voluntary Agencies	1,745	2,087	1.20	11.8%	88.2%	1.18	1.20	84.2%	84.2%	84.8%	39.1%	60.9%	40.2%	40.2%
Social Care	2,838	3,615	1.27	12.1%	87.9%	1.13	1.30	87.7%	87.7%	88.7%	43.2%	56.8%	61.1%	61.1%

CHO 3 Skills Mix by Staff Grouping: May 2020

May 2020 (Dec 2018 figure: 4,310)	WTE Dec 2015	WTE Dec 2016	WTE Dec 2017	WTE Dec 2018	WTE Dec 2019	WTE Apr 2020	WTE May 2020
Overall	4,002	4,093	4,169	4,310	4,357	4,388	4,413
Consultant Medicine	1.4%	2.1%	1.3%	1.3%	1.3%	1.3%	1.3%
Consultant Paediatrics	0.7%	0.7%	0.7%	0.7%	0.7%	0.7%	0.7%
Consultant Psychiatry	17.1%	16.0%	15.6%	14.9%	15.3%	14.9%	15.7%
Consultant Surgery	0.7%	0.7%	0.7%	0.7%	0.7%	0.7%	0.7%
Consultants	19.9%	19.5%	18.3%	17.6%	18.0%	17.6%	18.3%
Registrar	22.6%	21.6%	20.5%	18.3%	23.1%	21.8%	21.1%
Senior Registrar	3.5%	3.5%	3.6%	3.3%	3.3%	3.3%	3.4%
Specialist Registrar	1.4%	0.7%		0.7%	1.0%	1.0%	1.0%
Registrars	27.5%	25.7%	24.1%	22.3%	27.4%	26.1%	25.4%
Interns	0.7%						
Senior House Officer	16.3%	17.7%	18.7%	21.3%	16.4%	17.3%	17.5%
SHO/ Interns	17.0%	17.7%	18.7%	21.3%	16.4%	17.3%	17.5%
Dentists	16.1%	16.3%	18.5%	17.2%	17.6%	17.5%	16.7%
Other Medical	19.5%	20.8%	20.4%	21.6%	20.6%	21.6%	22.0%
Medical/ Dental, other	35.5%	37.1%	38.9%	38.8%	38.2%	39.0%	38.7%
Medical & Dental	3.6%	3.5%	3.6%	3.5%	3.4%	100.0%	3.4%
Clinical Nurse/ Midwife Manager	14.8%	15.9%	15.6%	15.2%	15.0%	14.8%	15.4%
Director Nursing/Midwifery, Assistant	2.9%	3.3%	3.5%	3.5%	3.7%	3.7%	3.6%
Director of Nursing/Midwifery	1.0%	1.1%	1.1%	1.3%	1.2%	1.2%	1.2%
Nurse/ Midwife Manager	18.7%	20.3%	20.2%	19.9%	19.9%	19.7%	20.2%
Advanced Nurse/ Midwife Practitioner	0.1%		0.1%		0.1%	0.1%	0.1%
Clinical Nurse/ Midwife Specialist	3.6%	3.4%	3.6%	3.9%	4.3%	3.9%	3.7%
Nurse/ Midwife Specialist & AN/MP	3.7%	3.4%	3.7%	3.9%	4.5%	4.0%	3.9%
Staff Midwives			0.1%				
Staff Nurse [Intellectual Disability]	20.8%	19.2%	18.8%	18.2%	16.8%	16.6%	16.7%
Staff Nurse [Psychiatric]	21.3%	20.9%	20.3%	19.3%	19.1%	19.8%	19.8%
Staff Nurses [General/ Children's]	24.5%	25.7%	25.8%	26.5%	27.5%	26.6%	26.1%
Staff Nurse/ Staff Midwife	66.7%	65.8%	64.9%	64.1%	63.4%	63.0%	62.5%
Public Health Nurse	9.5%	9.2%	9.8%	10.2%	10.3%	10.3%	10.1%
Pre-registration Nurse/ Midwife Intern		0.1%	0.0%	1.3%	1.6%	0.8%	
Pre-registration Nurse Intern (COVID-19)						1.9%	3.1%
Post-registration Nurse/ Midwife Student	0.6%	0.5%	0.6%	0.3%			
Nursing/ Midwifery Student	0.6%	0.6%	0.6%	1.6%	1.6%	2.6%	3.1%
Nursing/ Midwifery other	0.9%	0.7%	0.7%	0.3%	0.3%	0.3%	0.3%
Nursing & Midwifery	30.6%	30.3%	29.3%	28.3%	28.0%	100.0%	28.7%
Dietitians	0.3%	0.1%	0.5%	0.3%	0.4%	0.9%	0.9%
Occupational Therapists	12.4%	12.3%	12.1%	12.6%	12.9%	12.5%	12.5%
Physiotherapists	8.9%	9.0%	8.8%	8.6%	8.7%	8.6%	8.3%
Podiatrists & Chiropodists	0.4%	0.6%	0.8%	0.8%	0.8%	0.8%	0.8%
Speech & Language Therapists	8.3%	8.4%	8.8%	8.1%	8.5%	8.6%	8.5%
Therapy Professions	30.4%	30.4%	31.0%	30.4%	31.3%	31.5%	30.9%
Audiology	0.8%	0.8%	0.6%	0.6%	0.7%	0.7%	0.7%
Clinical Engineering						0.1%	0.1%
Clinical Measurement				0.0%	0.0%	0.1%	0.1%
Radiographers	0.1%	0.1%	0.1%	0.1%	0.1%	0.1%	0.1%
Health Science/ Diagnostics	0.9%	0.8%	0.6%	0.7%	0.8%	0.9%	0.9%
Social Care	34.1%	35.6%	35.8%	36.5%	35.8%	35.7%	36.6%
Social Workers	9.5%	9.4%	8.7%	9.3%	8.7%	8.6%	8.3%
Social Workers	9.5%	9.4%	8.7%	9.3%	8.7%	8.6%	8.3%
Psychologists	18.7%	18.2%	18.7%	17.5%	18.1%	17.8%	17.5%
Pharmacy	0.8%	0.6%	0.7%	0.7%	0.7%	0.7%	0.7%

May 2020 (Dec 2018 figure: 4,310)	WTE Dec 2015	WTE Dec 2016	WTE Dec 2017	WTE Dec 2018	WTE Dec 2019	WTE Apr 2020	WTE May 2020
Overall	4,002	4,093	4,169	4,310	4,357	4,388	4,413
Counsellor Therapists	2.4%	1.8%	1.6%	1.9%	1.8%	2.0%	2.2%
Dental Hygienists	1.0%	1.1%	1.0%	1.0%	0.9%	1.0%	0.9%
Other Health & Social Care	1.6%	1.3%	1.2%	1.2%	1.2%	1.3%	1.3%
Play Therapists/ Specialists	0.6%	0.8%	0.7%	0.8%	0.8%	0.7%	0.7%
H&SC, Other	5.7%	5.0%	4.5%	5.0%	4.7%	4.9%	5.1%
Health & Social Care Professionals	14.8%	15.0%	15.7%	15.7%	15.6%	100.0%	16.0%
Executive Management	0.9%	2.5%	2.2%	2.2%	2.4%	2.8%	2.7%
Senior Management (VIII & GM)	6.2%	5.2%	5.0%	4.9%	5.3%	5.4%	5.6%
Management (VIII & above)	7.1%	7.7%	7.2%	7.1%	7.7%	8.2%	8.2%
Middle Management (V-VII)	22.2%	24.4%	23.7%	26.4%	25.5%	26.1%	26.0%
Other Administrative	0.7%	0.9%	1.3%	1.2%	1.4%	2.4%	2.4%
Administrative/ Supervisory (V to VII)	22.9%	25.3%	25.0%	27.6%	26.9%	28.5%	28.4%
Clerical (III & IV)	70.0%	67.0%	67.9%	65.3%	65.3%	63.3%	63.3%
Management & Administrative	10.9%	10.5%	11.1%	11.5%	11.4%	100.0%	11.1%
Catering	13.1%	12.3%	11.6%	11.3%	12.8%	13.0%	12.9%
Household Services	33.2%	35.9%	35.9%	35.2%	34.3%	35.2%	36.0%
Other Support	16.8%	15.9%	15.9%	16.7%	16.0%	15.6%	14.9%
Portering	5.4%	4.9%	4.6%	4.7%	4.7%	4.9%	4.8%
Support	68.4%	69.0%	68.1%	67.8%	67.8%	68.6%	68.5%
Maintenance/ Technical	31.6%	31.0%	31.9%	32.2%	32.2%	31.4%	31.5%
General Support	6.5%	6.3%	5.9%	5.8%	5.7%	100.0%	5.3%
HCA, Nurse's Aide, etc.	69.8%	72.2%	73.0%	74.0%	73.0%	72.2%	74.3%
Health & Social Care Assistants	0.4%	0.3%	0.2%	0.9%	0.6%	0.8%	0.8%
Health Care Assistants	70.1%	72.5%	73.2%	75.0%	73.6%	73.0%	75.1%
Other Care Grades	14.6%	14.3%	14.8%	14.4%	15.1%	15.5%	15.0%
Care, other	14.6%	14.3%	14.8%	14.4%	15.1%	15.5%	15.0%
Home Help	15.2%	13.2%	12.0%	10.7%	11.4%	11.5%	9.9%
Patient & Client Care	33.7%	34.3%	34.4%	35.3%	34.9%	100.0%	35.5%
Total	100 %	100 %	100 %	100 %	100%	100 %	100 %

CHO 3 Skills Mix by Care Group: May 2020

May 2020 (Dec 2018 figure: 783)	WTE Dec 2015	WTE Dec 2016	WTE Dec 2017	WTE Dec 2018	WTE Dec 2019	WTE Apr 2020	WTE May 2020
Mental Health	777	781	784	783	795.46	805.11	809.32
Consultants	42.5%	38.1%	36.0%	35.4%	38.7%	37.2%	37.9%
Registrar	4.2%	10.9%	10.1%	15.3%	19.0%	18.8%	18.5%
Senior Registrar	9.1%	8.7%	8.8%	8.0%	8.3%	8.3%	8.2%
Specialist Registrar	1.8%			1.6%	2.5%	2.5%	2.4%
Registrars	15.1%	19.6%	18.9%	24.8%	29.8%	29.6%	29.2%
Interns	1.8%						
Senior House Officer	40.6%	42.3%	45.1%	39.7%	31.5%	33.2%	32.8%
SHO/ Interns	42.4%	42.3%	45.1%	39.7%	31.5%	33.2%	32.8%
Medical & Dental	7.0%	7.4%	7.9%	8.0%	7.9%	7.5%	7.5%
Clinical Nurse/ Midwife Manager	17.9%	19.3%	19.9%	18.3%	18.6%	18.1%	18.5%
Director Nursing/Midwifery, Assistant	3.4%	3.6%	3.7%	4.1%	3.9%	3.7%	3.5%
Director of Nursing/Midwifery	0.5%	0.5%	0.5%	0.5%	0.5%	0.5%	0.5%
Nurse/ Midwife Manager	21.8%	23.4%	24.2%	22.9%	23.0%	22.3%	22.5%
Advanced Nurse/ Midwife Practitioner	0.3%		0.3%		0.5%	0.5%	0.5%
Clinical Nurse/ Midwife Specialist	7.3%	7.2%	7.8%	8.9%	9.8%	8.7%	8.3%
Nurse/ Midwife Specialist & AN/MP	7.5%	7.2%	8.1%	8.9%	10.3%	9.2%	8.7%
Staff Nurse [Intellectual Disability]	0.2%	0.2%	0.1%	0.3%	0.2%	0.2%	0.2%
Staff Nurse [Psychiatric]	68.4%	67.0%	65.3%	63.3%	61.7%	63.1%	62.2%
Staff Nurses [General/ Children's]	2.1%	1.8%	2.2%	2.3%	2.5%	2.7%	2.6%
Staff Nurse/ Staff Midwife	70.7%	69.1%	67.6%	65.9%	64.4%	65.9%	65.0%
Pre-registration Nurse/ Midwife Intern		0.3%	0.1%	2.4%	2.3%	2.5%	
Pre-registration Nurse Intern (COVID-19)							3.8%
Nursing/ Midwifery Student		0.3%	0.1%	2.4%	2.3%	2.5%	3.8%
Nursing & Midwifery	49.0%	49.3%	48.2%	47.3%	46.6%	49.4%	49.4%
Occupational Therapists	12.1%	12.7%	14.3%	15.2%	14.7%	13.0%	12.9%
Speech & Language Therapists	3.2%	1.8%	2.9%	0.5%	1.8%	2.6%	2.5%
Therapy Professions	15.2%	14.6%	17.2%	15.6%	16.5%	15.6%	15.5%
Social Care	2.0%	2.0%	1.8%	1.8%	1.8%	1.8%	1.9%
Social Workers	18.0%	17.8%	16.2%	17.2%	15.9%	16.3%	16.2%
Psychologists	54.6%	56.7%	57.2%	57.0%	58.0%	57.5%	56.6%
Pharmacy	1.9%	1.9%	1.8%	1.8%	1.8%	1.8%	1.8%
Counsellor Therapists	8.3%	7.0%	5.8%	6.6%	6.0%	7.0%	8.0%
H&SC, Other	8.3%	7.0%	5.8%	6.6%	6.0%	7.0%	8.0%
Health & Social Care Professionals	19.4%	18.9%	20.1%	19.5%	19.2%	19.5%	19.5%
Management (VIII & above)	3.1%	4.5%	2.8%	2.7%	2.6%	3.5%	4.0%
Administrative/ Supervisory (V to VII)	21.1%	19.6%	21.1%	22.7%	22.5%	26.3%	25.1%
Clerical (III & IV)	75.8%	75.9%	76.1%	74.6%	74.9%	70.3%	70.9%
Management & Administrative	8.4%	8.5%	9.2%	9.3%	9.2%	9.3%	9.3%
Support	75.2%	74.4%	72.6%	76.2%	74.7%	75.9%	75.1%
Maintenance	24.8%	25.6%	27.4%	23.8%	25.3%	24.1%	24.9%
Maintenance/ Technical	24.8%	25.6%	27.4%	23.8%	25.3%	24.1%	24.9%
General Support	6.2%	6.0%	5.6%	5.9%	5.8%	5.0%	5.0%
HCA, Nurse's Aide, etc.	98.7%	98.7%	98.6%	98.7%	97.8%	98.7%	98.7%
Health Care Assistants	98.7%	98.7%	98.6%	98.7%	97.8%	98.7%	98.7%
Care, other	1.3%	1.3%	1.4%	1.3%	2.2%	1.3%	1.3%
Patient & Client Care	9.9%	10.0%	9.1%	9.9%	9.8%	9.4%	9.4%
Total	100 %	100 %	100 %	100 %	100 %	100 %	100 %

May 2020 (Dec 2018 figure: 780)	WTE Dec 2015	WTE Dec 2016	WTE Dec 2017	WTE Dec 2018	WTE Dec 2019	WTE Apr 2020	WTE May 2020
Primary Care	670	671	725	780	763.60	762.65	755.10
Consultant Paediatrics	1.3%	1.4%	1.3%	1.3%	1.2%	1.2%	1.3%
Consultant Surgery	1.3%	1.4%	1.3%	1.3%	1.2%	1.2%	1.3%
Consultants	2.7%	2.7%	2.6%	2.6%	2.4%	2.4%	2.5%
Registrars	37.5%	33.8%	31.4%	22.8%	28.2%	26.1%	25.2%
SHO/ Interns				9.0%	7.2%	7.3%	7.5%
Dentists	30.6%	32.0%	35.7%	33.1%	32.0%	32.0%	31.2%
Other Medical	29.2%	31.5%	30.3%	32.6%	30.2%	32.2%	33.6%
Medical/ Dental, other	59.9%	63.5%	66.0%	65.7%	62.2%	64.2%	64.8%
Medical & Dental	11.2%	10.9%	10.7%	10.0%	10.2%	10.5%	10.5%
Clinical Nurse/ Midwife Manager	1.5%	1.5%	1.0%	0.7%	0.4%	1.3%	1.3%
Director Nursing/Midwifery, Assistant	6.1%	7.3%	6.7%	6.5%	7.9%	7.9%	8.3%
Director of Nursing/Midwifery	1.1%	1.0%	1.0%	1.7%	1.0%	1.0%	1.0%
Nurse/ Midwife Manager	8.8%	9.8%	8.7%	8.8%	9.3%	10.2%	10.5%
Nurse/ Midwife Specialist & AN/MP			0.5%	0.4%	1.0%	1.0%	0.7%
Staff Nurse/ Staff Midwife	24.9%	30.0%	28.7%	29.7%	27.5%	26.7%	27.3%
Public Health Nurse	62.5%	57.3%	58.7%	59.2%	62.2%	62.2%	61.5%
Nursing/ Midwifery Student	3.8%	3.0%	3.4%	1.9%			
Nursing & Midwifery	27.8%	29.6%	28.2%	26.8%	27.4%	27.1%	27.1%
Dietitians	0.9%	0.5%	1.8%	1.6%	2.2%	3.0%	3.0%
Occupational Therapists	24.1%	24.3%	24.5%	25.5%	22.2%	22.3%	23.0%
Physiotherapists	22.8%	24.6%	24.1%	21.8%	22.9%	23.2%	22.1%
Podiatrists & Chiropodists			0.9%	0.8%	1.5%	1.6%	2.2%
Speech & Language Therapists	16.3%	17.6%	17.3%	17.3%	17.6%	17.2%	17.7%
Therapy Professions	64.1%	67.0%	68.5%	66.9%	66.4%	67.3%	67.9%
Audiology	4.6%	4.6%	3.2%	3.1%	3.7%	3.8%	3.8%
Health Science/ Diagnostics	4.6%	4.6%	3.2%	3.1%	3.7%	3.8%	3.8%
Social Care	0.9%	1.0%	0.9%	0.8%	0.8%	0.8%	0.8%
Social Workers	11.6%	9.0%	8.3%	8.4%	8.1%	7.9%	7.7%
Psychologists	9.2%	9.5%	10.2%	11.2%	12.0%	10.5%	10.3%
Pharmacy	0.9%		0.9%	0.8%	0.8%	0.8%	0.8%
Counsellor Therapists	1.6%	0.9%	0.9%	2.3%	2.3%	2.4%	2.3%
Dental Hygienists	5.7%	6.5%	5.9%	5.2%	4.7%	5.3%	5.2%
Other Health & Social Care	0.9%	1.0%	0.9%	0.8%	0.8%	0.8%	0.8%
Play Therapists/ Specialists	0.4%	0.5%	0.4%	0.4%	0.4%	0.4%	0.4%
H&SC, Other	8.6%	8.9%	8.1%	8.8%	8.2%	8.9%	8.7%
Health & Social Care Professionals	16.1%	15.0%	15.7%	16.2%	16.5%	16.9%	16.9%
Executive Management	1.0%	3.4%	3.1%	3.2%	3.4%	3.6%	3.5%
Senior Management (VIII & GM)	7.9%	6.7%	6.8%	5.5%	6.6%	6.7%	6.8%
Management (VIII & above)	8.9%	10.1%	9.8%	8.7%	10.0%	10.3%	10.4%
Administrative/ Supervisory (V to VII)	21.5%	24.0%	23.7%	27.0%	23.2%	25.4%	25.6%
Clerical (III & IV)	69.6%	65.9%	66.5%	64.2%	66.8%	64.3%	64.0%
Management & Administrative	30.5%	30.1%	31.4%	31.6%	32.3%	30.2%	30.2%
Support	34.5%	34.8%	34.2%	31.4%	30.7%	32.8%	32.4%
Maintenance/ Technical	65.5%	65.2%	65.8%	68.6%	69.3%	67.2%	67.6%
General Support	6.8%	6.6%	6.1%	5.8%	5.9%	5.5%	5.5%
HCA, Nurse's Aide, etc.	13.9%	14.5%	15.1%	22.3%	21.1%	21.1%	21.5%
Health & Social Care Assistants				13.3%	8.5%	10.3%	10.9%
Health Care Assistants	13.9%	14.5%	15.1%	35.7%	29.5%	31.3%	32.4%
Care, other	85.0%	84.5%	83.6%	63.4%	69.4%	67.7%	66.6%
Home Help	1.1%	1.0%	1.3%	1.0%	1.0%	1.0%	1.0%

May 2020 (Dec 2018 figure: 780)	WTE Dec 2015	WTE Dec 2016	WTE Dec 2017	WTE Dec 2018	WTE Dec 2019	WTE Apr 2020	WTE May 2020
Primary Care	670	671	725	780	763.60	762.65	755.10
Patient & Client Care	7.6%	7.8%	7.9%	9.6%	9.8%	9.7%	9.7%
Total	100 %	100 %	100 %	100 %	100 %	100 %	100 %

May 2020 (Dec 2018 figure: 1,796)	WTE Dec 2015	WTE Dec 2016	WTE Dec 2017	WTE Dec 2018	WTE Dec 2019	WTE Apr 2020	WTE May 2020
Disabilities	1,568	1,669	1,725	1,796	1,823.46	1,836.14	1,872.53
Consultant Psychiatry	70.3%	68.3%	68.3%	54.0%	51.8%	54.6%	56.5%
Consultants	70.3%	68.3%	68.3%	54.0%	51.8%	54.6%	56.5%
Medical/ Dental, other	29.7%	31.7%	31.7%	46.0%	48.2%	45.4%	43.5%
Medical & Dental	0.2%	0.2%	0.2%	0.1%	0.1%	0.1%	0.1%
Clinical Nurse/ Midwife Manager	17.2%	20.3%	20.5%	21.0%	21.4%	20.6%	21.7%
Director Nursing/Midwifery, Assistant	0.3%			0.3%	0.3%	0.3%	0.3%
Nurse/ Midwife Manager	17.5%	20.3%	20.5%	21.3%	21.6%	20.9%	21.9%
Clinical Nurse/ Midwife Specialist	3.2%	3.2%	3.4%	3.4%	3.6%	3.1%	3.0%
Nurse/ Midwife Specialist & AN/MP	3.2%	3.2%	3.4%	3.4%	3.6%	3.1%	3.0%
Staff Nurse [Intellectual Disability]	67.0%	63.1%	63.3%	62.1%	59.3%	57.7%	57.2%
Staff Nurses [General/ Children's]	9.4%	11.1%	10.5%	10.1%	11.2%	10.9%	10.4%
Staff Nurse/ Staff Midwife	76.5%	74.1%	73.7%	72.2%	70.4%	68.6%	67.6%
Pre-registration Nurse/ Midwife Intern				2.0%	3.3%		
Pre-registration Nurse Intern (COVID-19)						6.5%	6.4%
Nursing/ Midwifery Student				2.0%	3.3%	6.5%	6.4%
Nursing/ Midwifery other	2.8%	2.3%	2.4%	1.1%	1.1%	1.0%	1.0%
Nursing & Midwifery	24.2%	22.5%	21.0%	19.8%	19.5%	19.7%	19.7%
Occupational Therapists	5.2%	5.8%	4.8%	5.7%	6.6%	6.8%	6.7%
Physiotherapists	5.8%	6.1%	5.7%	5.6%	5.5%	5.4%	5.2%
Speech & Language Therapists	8.7%	9.2%	9.5%	8.7%	8.6%	8.6%	8.2%
Therapy Professions	19.7%	21.1%	20.0%	20.0%	20.6%	20.9%	20.1%
Clinical Engineering						0.2%	0.2%
Health Science/ Diagnostics						0.2%	0.2%
Social Care	65.7%	65.0%	66.3%	67.1%	67.0%	65.9%	66.9%
Social Workers	4.5%	4.8%	4.6%	4.6%	4.6%	4.5%	4.1%
Psychologists	6.2%	5.7%	5.9%	4.9%	4.4%	5.2%	5.4%
Other Health & Social Care	2.9%	2.1%	1.9%	2.0%	2.0%	2.1%	2.2%
Play Therapists/ Specialists	1.1%	1.3%	1.2%	1.4%	1.3%	1.1%	1.1%
H&SC, Other	3.9%	3.4%	3.2%	3.5%	3.3%	3.3%	3.3%
Health & Social Care Professionals	19.2%	19.9%	20.1%	20.2%	19.9%	20.3%	20.3%
Executive Management	1.9%	2.0%	2.0%	1.8%	1.9%	1.8%	1.9%
Senior Management (VIII & GM)	5.4%	5.8%	3.9%	4.4%	4.5%	4.4%	4.5%
Management (VIII & above)	7.3%	7.8%	5.9%	6.3%	6.4%	6.3%	6.3%
Administrative/ Supervisory (V to VII)	28.6%	35.3%	35.0%	36.6%	38.2%	37.7%	37.7%
Clerical (III & IV)	64.1%	56.9%	59.1%	57.2%	55.4%	56.0%	55.9%
Management & Administrative	6.8%	6.0%	5.7%	6.1%	6.0%	5.7%	5.7%
Support	80.4%	80.4%	79.4%	79.8%	78.5%	78.9%	78.4%
Maintenance	18.2%	18.2%	19.2%	18.8%	20.0%	19.7%	20.2%
Technical Services	1.4%	1.4%	1.4%	1.4%	1.5%	1.4%	1.4%
Maintenance/ Technical	19.6%	19.6%	20.6%	20.2%	21.5%	21.1%	21.6%
General Support	4.6%	4.4%	4.1%	4.0%	3.9%	3.7%	3.7%
HCA, Nurse's Aide, etc.	78.7%	80.8%	81.9%	82.0%	81.4%	80.8%	81.9%
Health & Social Care Assistants	0.3%	0.3%	0.2%	0.2%	0.1%	0.2%	0.2%

May 2020 (Dec 2018 figure: 1,796)	WTE Dec 2015	WTE Dec 2016	WTE Dec 2017	WTE Dec 2018	WTE Dec 2019	WTE Apr 2020	WTE May 2020
Disabilities	1,568	1,669	1,725	1,796	1,823.46	1,836.14	1,872.53
Health Care Assistants	79.0%	81.1%	82.2%	82.3%	81.5%	81.0%	82.0%
Care, other	21.0%	18.9%	17.8%	17.7%	18.5%	19.0%	18.0%
Patient & Client Care	45.1%	47.0%	49.0%	49.8%	49.0%	50.5%	50.5%
Total	100 %	100 %	100 %	100 %	100 %	100 %	100 %

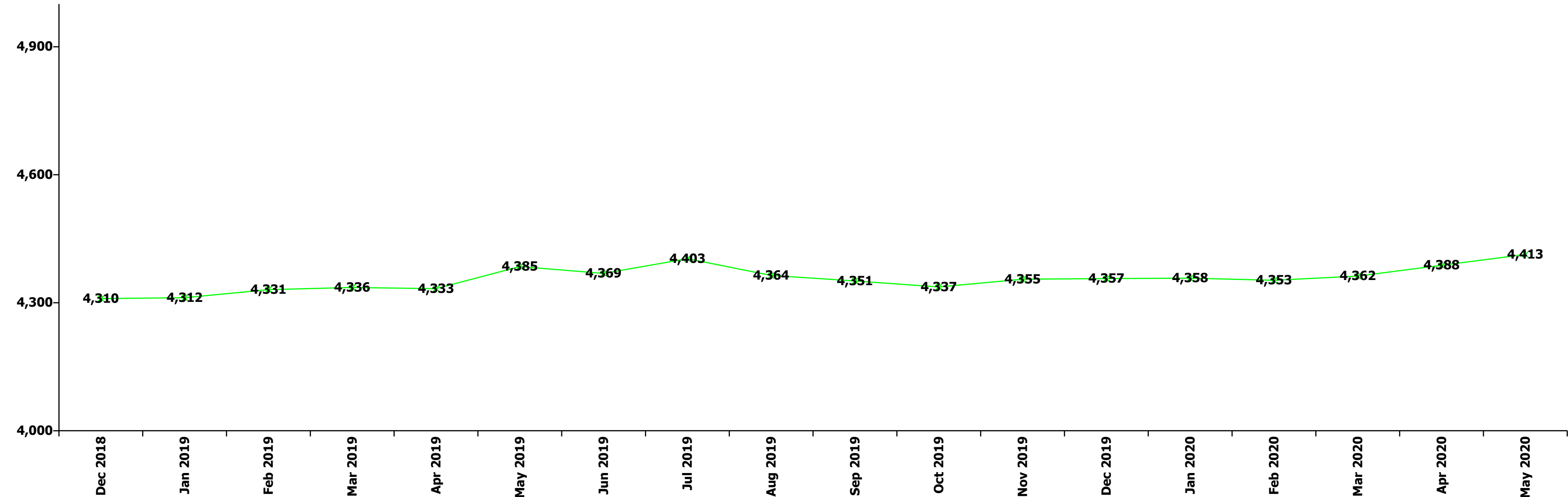
May 2020 (Dec 2018 figure: 951)	WTE Dec 2015	WTE Dec 2016	WTE Dec 2017	WTE Dec 2018	WTE Dec 2019	WTE Apr 2020	WTE May 2020
Older People	988	972	936	951	974.11	973.47	965.35
Consultant Medicine	10.0%	20.0%	14.3%	14.3%	16.7%	16.7%	16.7%
Consultants	10.0%	20.0%	14.3%	14.3%	16.7%	16.7%	16.7%
Registrar	19.8%						
Specialist Registrar	10.0%	10.0%					
Registrars	29.9%	10.0%					
Senior House Officer	10.0%	10.0%					
SHO/ Interns	10.0%	10.0%					
Medical/ Dental, other	50.1%	60.0%	85.7%	85.7%	83.3%	83.3%	83.3%
Medical & Dental	1.0%	1.0%	0.7%	0.7%	0.7%	0.6%	0.6%
Clinical Nurse/ Midwife Manager	16.2%	15.5%	14.3%	14.4%	12.7%	12.7%	12.7%
Director Nursing/Midwifery, Assistant	3.5%	4.4%	5.6%	4.5%	4.6%	5.1%	4.9%
Director of Nursing/Midwifery	2.8%	3.5%	3.2%	3.5%	3.6%	3.6%	3.7%
Nurse/ Midwife Manager	22.5%	23.4%	23.1%	22.4%	20.9%	21.4%	21.3%
Clinical Nurse/ Midwife Specialist	1.5%	0.9%	0.7%	0.6%	0.6%	0.6%	0.6%
Nurse/ Midwife Specialist & AN/MP	1.5%	0.9%	0.7%	0.6%	0.6%	0.6%	0.6%
Staff Midwives			0.4%				
Staff Nurse [Psychiatric]							0.1%
Staff Nurses [General/ Children's]	75.9%	75.7%	75.9%	76.9%	78.2%	77.7%	77.6%
Staff Nurse/ Staff Midwife	75.9%	75.7%	76.3%	76.9%	78.2%	77.7%	77.7%
Public Health Nurse					0.3%	0.3%	0.3%
Nursing & Midwifery	28.1%	28.8%	29.7%	29.7%	29.0%	30.4%	30.4%
Dietitians	3.1%		2.8%				
Occupational Therapists	41.1%	37.1%	33.9%	27.4%	33.8%	34.4%	34.2%
Physiotherapists	32.6%	28.7%	28.9%	28.6%	28.5%	27.9%	28.2%
Podiatrists & Chiropodists	7.7%	9.6%	12.6%	12.4%	9.4%	9.2%	7.0%
Speech & Language Therapists	1.6%	1.6%	1.6%	1.6%	4.3%	4.3%	5.6%
Therapy Professions	86.1%	77.0%	79.8%	70.0%	76.0%	75.8%	75.0%
Clinical Measurement				0.2%	0.6%	1.2%	1.2%
Radiographers	1.5%	1.4%	1.4%	1.4%	1.4%	1.4%	1.4%
Health Science/ Diagnostics	1.5%	1.4%	1.4%	1.6%	2.0%	2.6%	2.5%
Social Workers	9.3%	18.9%	16.0%	25.6%	19.3%	18.9%	19.7%
Social Workers	9.3%	18.9%	16.0%	25.6%	19.3%	18.9%	19.7%
Pharmacy	3.1%	2.8%	2.8%	2.8%	2.7%	2.7%	2.7%
Pharmacy	3.1%	2.8%	2.8%	2.8%	2.7%	2.7%	2.7%
Health & Social Care Professionals	3.3%	3.7%	3.8%	3.8%	3.7%	3.8%	3.8%
Executive Management					1.3%	2.1%	1.2%
Senior Management (VIII & GM)	5.2%	3.2%	4.6%	7.3%	6.3%	6.4%	6.5%
Management (VIII & above)	5.2%	3.2%	4.6%	7.3%	7.6%	8.5%	7.7%
Administrative/ Supervisory (V to VII)	19.2%	19.9%	18.7%	20.5%	27.1%	26.2%	26.3%
Clerical (III & IV)	75.6%	76.9%	76.7%	72.3%	65.3%	65.4%	66.0%
Management & Administrative	5.9%	6.4%	7.0%	7.0%	6.8%	7.9%	7.9%
Support	72.3%	73.4%	73.7%	72.4%	74.4%	74.3%	74.9%

May 2020 (Dec 2018 figure: 951)	WTE Dec 2015	WTE Dec 2016	WTE Dec 2017	WTE Dec 2018	WTE Dec 2019	WTE Apr 2020	WTE May 2020
Older People	988	972	936	951	974.11	973.47	965.35
Maintenance/ Technical	27.7%	26.6%	26.3%	27.6%	25.6%	25.7%	25.1%
General Support	9.6%	9.7%	9.6%	9.0%	8.7%	8.7%	8.7%
HCA, Nurse's Aide, etc.	58.6%	60.3%	59.8%	63.0%	59.7%	59.4%	63.7%
Health & Social Care Assistants	0.6%	0.4%	0.3%	0.5%	0.5%	0.5%	0.5%
Health Care Assistants	59.2%	60.6%	60.1%	63.5%	60.2%	59.8%	64.2%
Other Care Grades	0.9%	1.4%	2.6%	2.5%	2.1%	2.3%	2.9%
Care, other	0.9%	1.4%	2.6%	2.5%	2.1%	2.3%	2.9%
Home Help	39.8%	37.9%	37.3%	34.1%	37.7%	37.9%	32.9%
Patient & Client Care	52.0%	50.3%	49.1%	49.8%	48.7%	48.5%	48.5%
Total	100 %	100 %	100 %	100 %	100 %	100 %	100 %

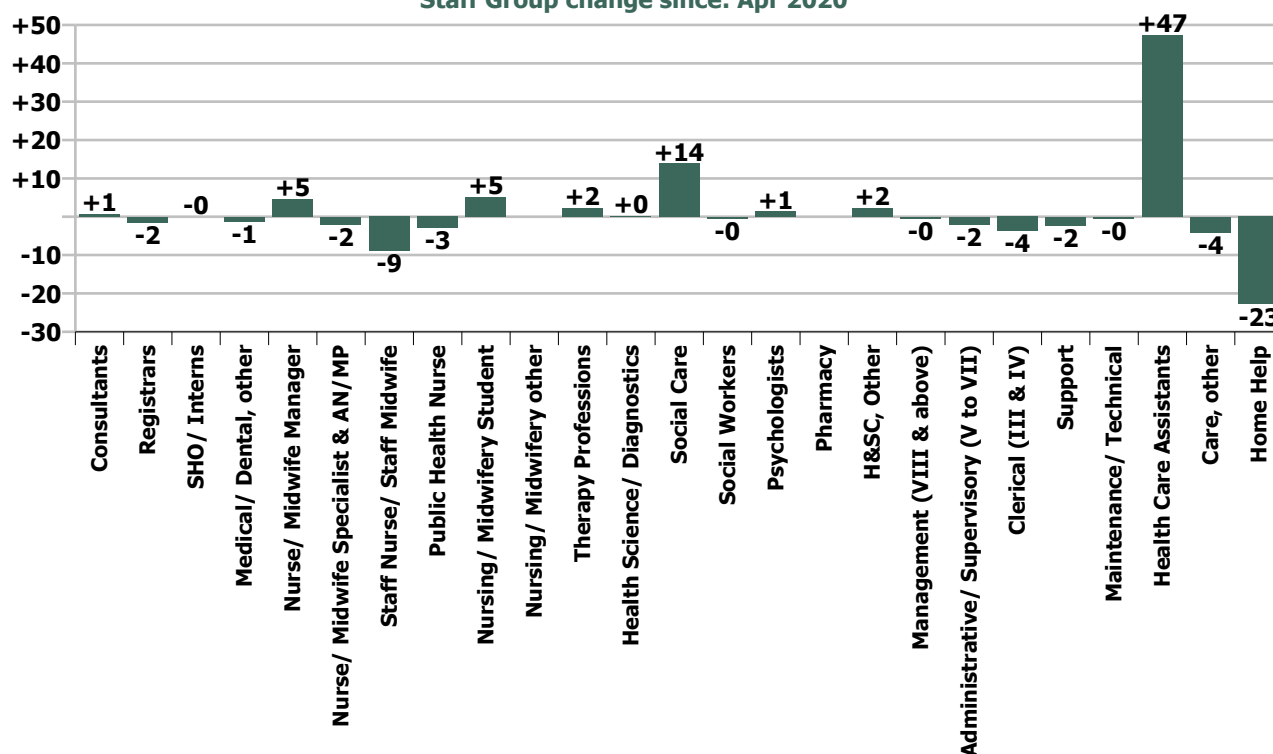
Summary Staff Movement: May 2020

Month-on-month Summary																												
WTE change since Apr 20	% change since Apr 20	overall	Consultants	Registrars	SHO/ Interns	Medical/ Dental, other	Medical & Dental	Nurse/ Midwife Manager	Nurse/ Midwife Specialist & AN/MP	Staff Nurse/ Staff Midwife	Public Health Nurse	Nursing/ Midwifery Student	Nursing/ Midwifery other	Nursing & Midwifery	Therapy Professions	Health Science/ Diagnostics	Social Care	Social Workers	Psychologists	Pharmacy	H&SC, Other	Health & Social Care Professionals	Management (VII & above)	Administrative/ Supervisory (V to VII)	Clerical (III & IV)	Management & Administrative	General Support	Patient & Client Care
Overall	+0.6%	+25	+0.8	-1.5	-0.0	-1.2	-2.0	+4.7	-2.0	-8.9	-2.9	+5.2	0.0	-4.0	+2.3	+0.3	+13.9	-0.4	+1.4	0.0	+2.3	+19.8	-0.4	-2.1	-3.6	-6.2	-2.8	+20.4
Community Health & Wellbeing	+3.3%	+0						+0.2			0.0			+0.2	0.0							0.0	0.0	+0.1	0.0	+0.1		0.0
Mental Health	+0.5%	+4	+0.7	-0.1	-0.0		+0.6	+1.6	-1.5	-1.1		+5.1		+4.1	+0.1		+0.1	+0.3	-0.1	0.0	+1.8	+2.4	+0.4	-1.0	+0.0	-0.6	-1.3	-0.9
Primary Care	-1.0%	-8	0.0	-1.4	0.0	-1.2	-2.7	+0.5	-0.5	+0.5	-2.9			-2.4	+2.1	-0.0	0.0	-0.0	-0.0	0.0	-0.0	+2.0	-0.2	-0.8	-3.5	-4.5	-0.2	+0.3
Disabilities	+2.0%	+36	+0.1			0.0	+0.1	+4.6	0.0	-1.0		+0.1	0.0	+3.7	+0.2	+0.3	+13.8	-1.0	+1.6		+0.5	+15.4	0.0	-0.5	-0.8	-1.4	-0.9	+19.5
Older People	-0.8%	-8	0.0			0.0	0.0	-2.2	0.0	-7.3	0.0			-9.6	-0.2	-0.0		+0.3			0.0	+0.1	-0.6	+0.1	+0.7	+0.2	-0.4	+1.5
Social Care	+1.0%	+28	+0.1			0.0	+0.1	+2.4	0.0	-8.3	0.0	+0.1	0.0	-5.9	+0.0	+0.3	+13.8	-0.7	+1.6	0.0	+0.5	+15.4	-0.6	-0.4	-0.2	-1.1	-1.3	+21.0
Change	+25.3	+0.6%	+2.9%	-3.8%	-0.1%	-2.1%	-1.3%	+1.9%	-4.0%	-1.1%	-2.2%	+15.5%		-0.3%	+1.1%	+4.2%	+5.7%	-0.7%	+1.2%		+6.8%	+2.9%	-1.0%	-1.5%	-1.2%	-1.2%	-1.2%	+1.3%

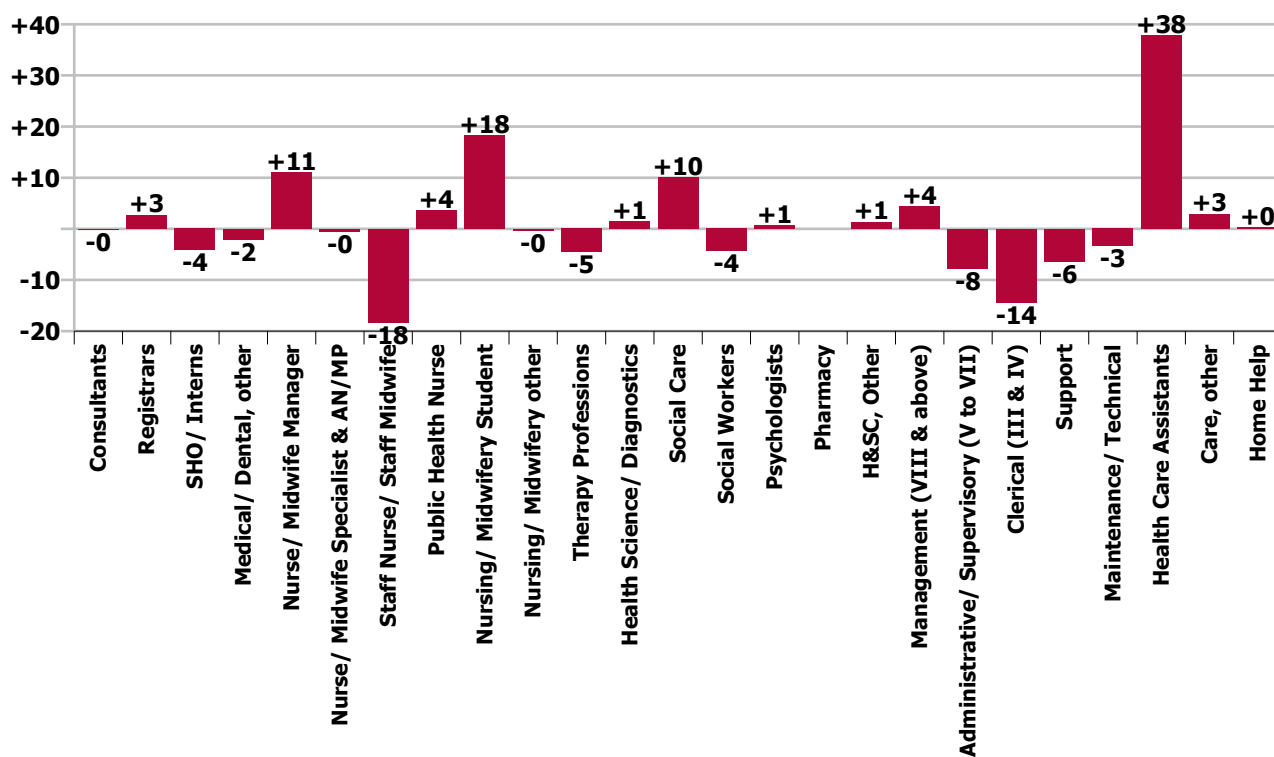
Year-on-year Summary																												
WTE change since May 19	% change since May 19	overall	Consultants	Registrars	SHO/ Interns	Medical/ Dental, other	Medical & Dental	Nurse/ Midwife Manager	Nurse/ Midwife Specialist & AN/MP	Staff Nurse/ Staff Midwife	Public Health Nurse	Nursing/ Midwifery Student	Nursing/ Midwifery other	Nursing & Midwifery	Therapy Professions	Health Science/ Diagnostics	Social Care	Social Workers	Psychologists	Pharmacy	H&SC, Other	Health & Social Care Professionals	Management (VIII & above)	Administrative/ Supervisory (V to VII)	Clerical (III & IV)	Management & Administrative	General Support	Patient & Client Care
Overall	+0.6%	+28	-0.2	+2.7	-4.2	-2.1	-3.7	+11.0	-0.5	-18.3	+3.6	+18.3	-0.3	+13.8	-4.5	+1.4	+10.1	-4.4	+0.7	0.0	+1.4	+4.7	+4.3	-7.8	-14.4	-17.9	-9.8	+41.0
Community Health & Wellbeing	+3.3%	+0						+1.0			+1.0			+2.0	+2.5							+2.5	+1.0	+1.9	+1.5	+4.3		+2.0
Mental Health	+0.5%	+4	-0.1	+3.3	-4.2		-0.9	+4.4	-1.1	+6.7		+5.1		+15.0	-6.7		+0.2	+0.9	-0.9	0.0	+1.4	-5.1	+1.0	+1.2	-3.5	-1.3	-4.4	-1.3
Primary Care	-1.0%	-8	0.0	-0.6	0.0	-2.1	-2.7	+0.9	+0.1	-5.4	+1.6	-4.0		-6.7	-1.6	+0.1	0.0	-1.5	-2.1	0.0	-0.0	-5.2	+0.2	-13.7	-15.4	-28.9	-2.6	-4.4
Disabilities	+3.5%	+62.7	-0.1			0.0	-0.1	+7.1	+0.5	-6.0		+17.2	-0.3	+18.5	+0.4	+1.0	+9.9	-1.8	+3.7		+0.0	+13.1	0.0	-0.6	+2.6	+2.1	-2.0	+31.1
Older People	+0.3%	+3.2	0.0			0.0	0.0	-2.4	0.0	-13.6	+1.0			-15.0	+0.9	+0.4		-1.9		0.0		-0.5	+2.1	+3.4	+0.4	+5.9	-0.9	+13.6
Social Care	+1.0%	+28	-0.1			0.0	-0.1	+4.7	+0.5	-19.6	+1.0	+17.2	-0.3	+3.5	+1.3	+1.4	+9.9	-3.8	+3.7	0.0	+0.0	+12.6	+2.1	+2.9	+3.1	+8.0	-2.9	+44.7
Change	+28.2	+0.6%	-0.6%	+7.7%	-13.8%	-3.5%	-2.5%	+4.5%	-0.9%	-2.3%	+2.9%	+89.2%	-7.0%	+1.1%	-2.0%	+27.5%	+4.1%	-7.0%	+0.6%		+4.0%	+0.7%	+12.0%	-5.3%	-4.4%	-3.5%	-4.0%	+2.7%



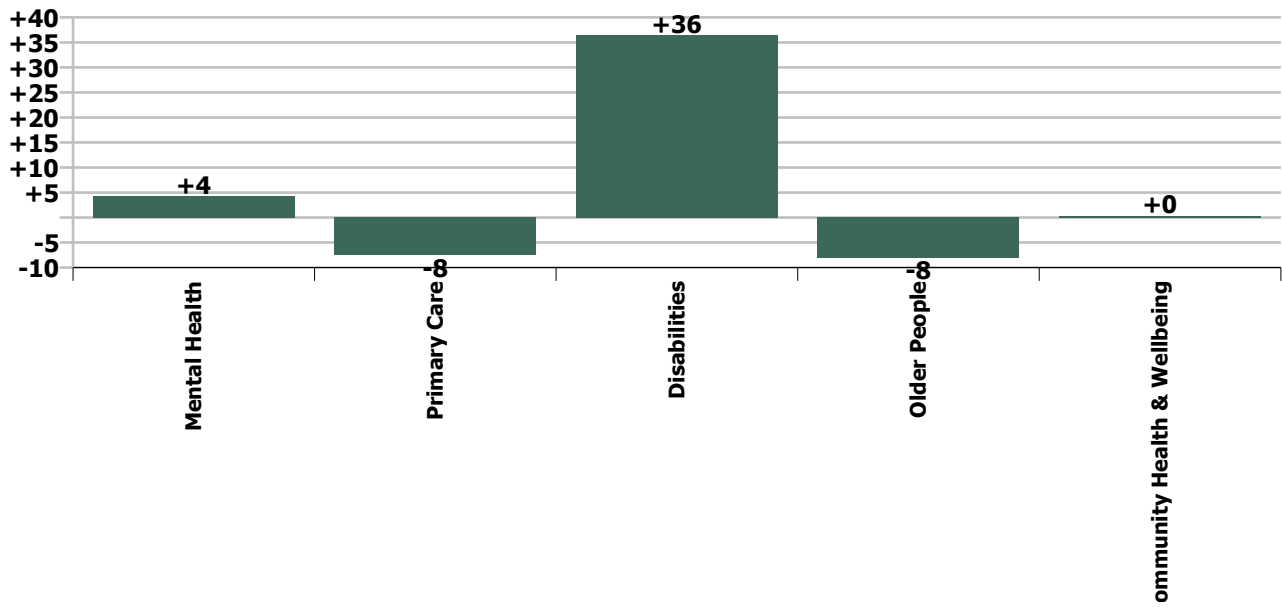
Staff Group change since: Apr 2020



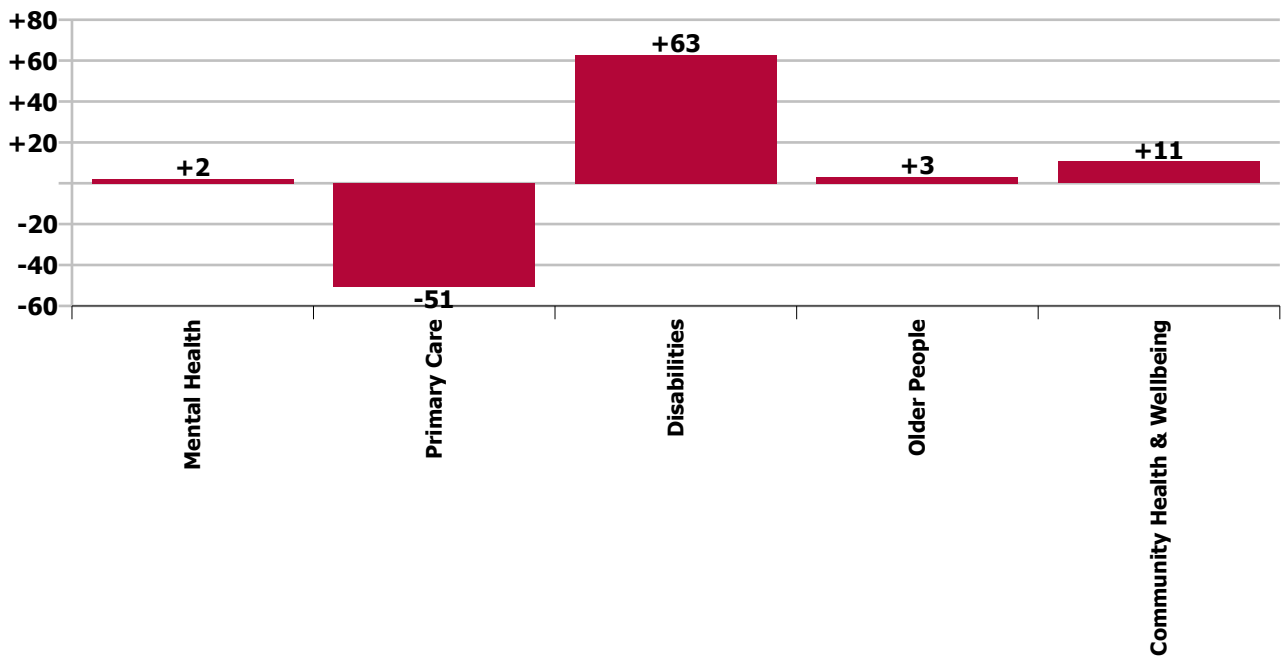
Staff Group change since: May 2019



Care Group change since: Apr 2020



Care Group change since: May 2019



Longitudinal Employment Levels by Grade Group - Oct 2013 to May 2020

May 2020 (Dec 2015 figure: 4,002)	WTE May 2020	WTE change since Dec 15	WTE change since Dec 16	WTE change since Dec 17	WTE change since Dec 18	WTE change since Dec 18	WTE change since Apr 20	% change since Dec 15	% change since Dec 16	% change since Dec 17	% change since Dec 18	% change since Dec 18	% change since Apr 20
Overall	4,413	+411	+320	+244	+103	+103	+25	+10.3%	+7.8%	+5.9%	+2.4%	+2.4%	+0.6%
Consultant Medicine	2		-1						-33.3%				
Consultant Paediatrics	1												
Consultant Psychiatry	23	-1	+0	+0	+1	+1	+1	-4.9%	+0.9%	+0.2%	+3.8%	+3.8%	+3.4%
Consultant Surgery	1												
Consultants	27	-1	-1	+0	+1	+1	+1	-4.2%	-2.9%	+0.1%	+3.2%	+3.2%	+2.9%
Registrar	31	-1	+0	+1	+4	+4	-1	-3.2%	+0.9%	+2.5%	+14.1%	+14.1%	-4.5%
Senior Registrar	5			-0						-7.2%			
Specialist Registrar	1	-1	+0	+1	+0	+0	-0	-25.6%	+48.0%	-100.0%	+48.0%	+48.0%	-1.3%
Registrars	38	-2	+1	+2	+4	+4	-2	-3.9%	+2.1%	+5.2%	+13.0%	+13.0%	-3.8%
Interns		-1						-100.0%	-100.0%	-100.0%	-100.0%	-100.0%	-100.0%
Senior House Officer	26	+3	+1	-2	-6	-6	-0	+11.9%	+2.1%	-6.8%	-18.9%	-18.9%	-0.1%
SHO/ Interns	26	+2	+1	-2	-6	-6	-0	+7.2%	+2.1%	-6.8%	-18.9%	-18.9%	-0.1%
Dentists	25	+2	+1	-3	-1	-1	-1	+8.6%	+6.4%	-9.8%	-3.8%	-3.8%	-5.5%
Other Medical	33	+5	+3	+2	+0	+0	+0	+17.4%	+9.1%	+7.4%	+0.9%	+0.9%	+0.7%
Medical/ Dental, other	57	+7	+4	-0	-1	-1	-1	+13.4%	+7.9%	-0.8%	-1.2%	-1.2%	-2.1%
Medical & Dental	148	+6	+5	-0	-2	-2	-2	+4.1%	+3.3%	-0.3%	-1.0%	-1.0%	-1.3%
Clinical Nurse/ Midwife Manager	195	+14	-2	+4	+10	+10	+6	+7.5%	-1.1%	+1.9%	+5.5%	+5.5%	+3.3%
Director Nursing/Midwifery, Assistant	46	+11	+5	+3	+4	+4	-2	+31.6%	+12.6%	+6.6%	+8.9%	+8.9%	-3.3%
Director of Nursing/Midwifery	15	+3	+1	+2	-0	-0		+24.7%	+8.1%	+16.0%	-3.1%	-3.1%	
Nurse/ Midwife Manager	256	+28	+4	+9	+13	+13	+5	+12.1%	+1.6%	+3.5%	+5.6%	+5.6%	+1.9%
Advanced Nurse/ Midwife Practitioner	2	+1	+2	+1	+2	+2		+83.0%	-100.0%	+83.0%	-100.0%	-100.0%	
Clinical Nurse/ Midwife Specialist	48	+4	+5	+3	-0	-0	-2	+8.1%	+12.2%	+6.9%	-0.1%	-0.1%	-4.1%
Nurse/ Midwife Specialist & AN/MP	49	+4	+7	+4	+2	+2	-2	+9.7%	+16.5%	+8.6%	+3.7%	+3.7%	-4.0%
Staff Midwives				-1				-100.0%	-100.0%	-100.0%	-100.0%	-100.0%	-100.0%
Staff Nurse [Intellectual Disability]	212	-43	-26	-18	-11	-11	+0	-17.0%	-11.0%	-7.8%	-4.8%	-4.8%	+0.1%
Staff Nurse [Psychiatric]	251	-10	-9	+3	+16	+16	-1	-3.9%	-3.3%	+1.3%	+6.6%	+6.6%	-0.3%
Staff Nurses [General/ Children's]	331	+30	+11	+16	+8	+8	-8	+10.1%	+3.5%	+4.9%	+2.4%	+2.4%	-2.5%
Staff Nurse/ Staff Midwife	793	-23	-23	-0	+13	+13	-9	-2.9%	-2.9%	-0.0%	+1.6%	+1.6%	-1.1%
Public Health Nursing	128	+11	+14	+8	+4	+4	-3	+9.8%	+12.4%	+6.6%	+3.4%	+3.4%	-2.2%
Public Health Nurse	128	+11	+14	+8	+4	+4	-3	+9.8%	+12.4%	+6.6%	+3.4%	+3.4%	-2.2%
Pre-registration Nurse/ Midwife Intern			-1	-1	-16	-16	-10	-100.0%	-100.0%	-100.0%	-100.0%	-100.0%	-100.0%
Pre-registration Nurse Intern (COVID-19)	39	+39	+39	+39	+39	+39	+15	-100.0%	-100.0%	-100.0%	-100.0%	-100.0%	+64.2%
Post-registration Nurse/ Midwife Student		-7	-6	-7	-4	-4		-100.0%	-100.0%	-100.0%	-100.0%	-100.0%	-100.0%
Nursing/ Midwifery Student	39	+32	+32	+31	+19	+19	+5	+454.1%	+454.1%	+417.2%	+95.3%	+95.3%	+15.5%

May 2020 (Dec 2015 figure: 4,002)	WTE May 2020	WTE change since Dec 15	WTE change since Dec 16	WTE change since Dec 17	WTE change since Dec 18	WTE change since Dec 18	WTE change since Apr 20	% change since Dec 15	% change since Dec 16	% change since Dec 17	% change since Dec 18	% change since Dec 18	% change since Apr 20
Overall	4,413	+411	+320	+244	+103	+103	+25	+10.3%	+7.8%	+5.9%	+2.4%	+2.4%	+0.6%
Nursing Education/Clinical	3	-2	-1	-1	-0	-0		-42.4%	-26.9%	-26.9%	-9.3%	-9.3%	
Other Nursing/ Midwifery	1	-5	-4	-4				-83.2%	-80.0%	-80.0%			
Nursing/ Midwifery other	4	-7	-5	-5	-0	-0		-65.1%	-57.3%	-57.3%	-7.0%	-7.0%	
Nursing & Midwifery	1,269	+45	+29	+47	+51	+51	-4	+3.7%	+2.3%	+3.8%	+4.2%	+4.2%	-0.3%
Dietitians	6	+4	+6	+3	+4	+4	+0	+215.0%	+1160.0%	+110.0%	+215.0%	+215.0%	+0.2%
Occupational Therapists	88	+14	+12	+9	+2	+2	+2	+19.7%	+15.5%	+10.9%	+2.4%	+2.4%	+2.3%
Physiotherapists	58	+6	+3	+1	+0	+0	-1	+10.5%	+5.6%	+1.7%	+0.7%	+0.7%	-1.3%
Podiatrists & Chiropodists	5	+3	+2	-0	-0	-0	+0	+114.7%	+55.3%	-1.8%	-1.5%	-1.5%	+0.2%
Speech & Language Therapists	60	+11	+8	+2	+5	+5	+1	+21.7%	+15.7%	+3.7%	+9.4%	+9.4%	+1.8%
Therapy Professions	218	+38	+31	+15	+12	+12	+2	+21.1%	+16.4%	+7.4%	+5.7%	+5.7%	+1.1%
Audiology	5	-0	+0	+1	+1	+1	-0	-4.0%	+2.8%	+33.0%	+23.7%	+23.7%	-0.8%
Clinical Engineering	1	+1	+1	+1	+1	+1	+0	-100.0%	-100.0%	-100.0%	-100.0%	-100.0%	+50.8%
Clinical Measurement	0	+0	+0	+0	+0	+0	-0	-100.0%	-100.0%	-100.0%	+437.5%	+437.5%	-2.3%
Radiographers	1												
Health Science/ Diagnostics	7	+1	+2	+3	+2	+2	+0	+21.5%	+29.2%	+62.5%	+49.8%	+49.8%	+4.2%
Social Care	258	+56	+39	+25	+11	+11	+14	+27.9%	+17.7%	+10.5%	+4.3%	+4.3%	+5.7%
Social Care	258	+56	+39	+25	+11	+11	+14	+27.9%	+17.7%	+10.5%	+4.3%	+4.3%	+5.7%
Social Workers	58	+2	+0	+2	-5	-5	-0	+3.6%	+0.2%	+3.0%	-7.3%	-7.3%	-0.7%
Social Workers	58	+2	+0	+2	-5	-5	-0	+3.6%	+0.2%	+3.0%	-7.3%	-7.3%	-0.7%
Psychologists	123	+12	+11	+1	+4	+4	+1	+11.3%	+9.8%	+0.8%	+3.7%	+3.7%	+1.2%
Psychologists	123	+12	+11	+1	+4	+4	+1	+11.3%	+9.8%	+0.8%	+3.7%	+3.7%	+1.2%
Pharmacy	5		+1						+26.3%				
Pharmacy	5		+1						+26.3%				
Counsellor Therapists	16	+1	+4	+5	+3	+3	+2	+10.4%	+39.4%	+53.7%	+20.6%	+20.6%	+13.4%
Dental Hygienists	7	+0	+0	-0	+0	+0	-0	+8.0%	+1.1%	-0.7%	+0.8%	+0.8%	-0.7%
Other Health & Social Care	9	-0	+1	+2	+1	+1	+0	-4.4%	+18.3%	+19.7%	+11.1%	+11.1%	+5.7%
Play Therapists/ Specialists	5	+1	-0	-0	-1	-1	-0	+27.5%	-6.1%	-5.0%	-19.9%	-19.9%	-0.2%
H&SC, Other	36	+3	+6	+7	+3	+3	+2	+7.5%	+18.4%	+22.8%	+7.4%	+7.4%	+6.8%
Health & Social Care Professionals	705	+112	+89	+51	+27	+27	+20	+19.0%	+14.4%	+7.9%	+4.0%	+4.0%	+2.9%
Executive Management	13	+9	+2	+3	+2	+2	-1	+225.5%	+19.4%	+30.2%	+18.4%	+18.4%	-5.9%
Senior Management (VIII & GM)	27	+0	+5	+4	+3	+3	+0	+1.4%	+23.0%	+17.7%	+12.8%	+12.8%	+1.5%
Management (VIII & above)	40	+9	+7	+7	+5	+5	-0	+30.3%	+21.8%	+21.5%	+14.5%	+14.5%	-1.0%
Middle Management (V-VII)	128	+31	+23	+18	-3	-3	-2	+32.1%	+21.7%	+16.3%	-2.4%	-2.4%	-1.6%
Other Administrative	12	+9	+8	+6	+6	+6		+300.0%	+200.0%	+100.0%	+100.0%	+100.0%	
Administrative/ Supervisory (V to VII)	140	+40	+31	+24	+3	+3	-2	+40.2%	+28.2%	+20.6%	+2.1%	+2.1%	-1.5%
General Administrative (III & IV)	311	+7	+23	-3	-13	-13	-4	+2.2%	+8.1%	-1.1%	-3.9%	-3.9%	-1.2%

May 2020 (Dec 2015 figure: 4,002)	WTE May 2020	WTE change since Dec 15	WTE change since Dec 16	WTE change since Dec 17	WTE change since Dec 18	WTE change since Dec 18	WTE change since Apr 20	% change since Dec 15	% change since Dec 16	% change since Dec 17	% change since Dec 18	% change since Dec 18	% change since Apr 20
Overall	4,413	+411	+320	+244	+103	+103	+25	+10.3%	+7.8%	+5.9%	+2.4%	+2.4%	+0.6%
Clerical (III & IV)	311	+7	+23	-3	-13	-13	-4	+2.2%	+8.1%	-1.1%	-3.9%	-3.9%	-1.2%
Management & Administrative	491	+56	+61	+28	-5	-5	-6	+12.9%	+14.2%	+5.9%	-0.9%	-0.9%	-1.2%
Catering	30	-4	-1	+1	+2	+2	-1	-10.9%	-4.7%	+5.1%	+8.3%	+8.3%	-2.1%
Household Services	85	-2	-8	-4	-3	-3	+1	-2.1%	-9.0%	-4.9%	-3.2%	-3.2%	+0.9%
Other Support	35	-9	-6	-4	-6	-6	-2	-19.7%	-14.9%	-11.1%	-15.3%	-15.3%	-5.4%
Portering	11	-3	-2	-0	-0	-0	-0	-20.5%	-12.8%	-2.2%	-3.8%	-3.8%	-3.8%
Support	161	-17	-18	-8	-7	-7	-2	-9.5%	-9.9%	-4.4%	-4.3%	-4.3%	-1.4%
Maintenance	73	-8	-6	-5	-6	-6	-0	-10.1%	-8.0%	-6.3%	-7.4%	-7.4%	-0.7%
Technical Services	1												
Maintenance/ Technical	74	-8	-6	-5	-6	-6	-0	-10.0%	-7.9%	-6.2%	-7.3%	-7.3%	-0.7%
General Support	235	-25	-24	-12	-13	-13	-3	-9.7%	-9.3%	-5.0%	-5.3%	-5.3%	-1.2%
HCA, Nurse's Aide, etc.	1,163	+222	+149	+116	+38	+38	+47	+23.6%	+14.7%	+11.1%	+3.4%	+3.4%	+4.2%
Health & Social Care Assistants	12	+7	+8	+9	-2	-2	+0	+145.7%	+208.7%	+249.0%	-16.6%	-16.6%	+3.6%
Health Care Assistants	1,175	+229	+158	+125	+35	+35	+47	+24.2%	+15.5%	+11.9%	+3.1%	+3.1%	+4.2%
Care, other	235	+38	+34	+24	+17	+17	-4	+19.2%	+17.1%	+11.1%	+7.6%	+7.6%	-1.7%
Home Helps	155	-50	-31	-17	-7	-7	-23	-24.6%	-16.7%	-10.1%	-4.5%	-4.5%	-12.8%
Home Help	155	-50	-31	-17	-7	-7	-23	-24.6%	-16.7%	-10.1%	-4.5%	-4.5%	-12.8%
Patient & Client Care	1,565	+217	+161	+131	+45	+45	+20	+16.1%	+11.5%	+9.2%	+2.9%	+2.9%	+1.3%

Source: Health Service Personnel Census

Longitudinal Employment Levels by Care Group - Oct 2013 to May 2020

Community Health & Wellbeing

May 2020 (figure:)	WTE May 2020	WTE change since	WTE change since	WTE change since	WTE change since	WTE change since	WTE change since Apr 20	% change since	% change since	% change since	% change since	% change since	% change since Apr 20
Overall	11	+11	+11	+11	+11	+11	+0	-100.0%	-100.0%	-100.0%	-100.0%	-100.0%	+3.3%
Nursing & Midwifery	2	+2	+2	+2	+2	+2	+0	-1.0%	-1.0%	-1.0%	-1.0%	-1.0%	+0.1%
Nurse/ Midwife Manager	1	+1	+1	+1	+1	+1	+0	-1.0%	-1.0%	-1.0%	-1.0%	-1.0%	+0.3%
Public Health Nurse	1	+1	+1	+1	+1	+1		-1.0%	-1.0%	-1.0%	-1.0%	-1.0%	+0.0%
Health & Social Care Professionals	3	+3	+3	+3	+3	+3	+3	-1.0%	-1.0%	-1.0%	-1.0%	-1.0%	+0.0%
Therapy Professions	3	+3	+3	+3	+3	+3		-1.0%	-1.0%	-1.0%	-1.0%	-1.0%	+0.0%
Management & Administrative	4	+4	+4	+4	+4	+4	+0	-1.0%	-1.0%	-1.0%	-1.0%	-1.0%	+0.0%
Management (VIII & above)	1	+1	+1	+1	+1	+1		-1.0%	-1.0%	-1.0%	-1.0%	-1.0%	+0.0%
Administrative/ Supervisory (V to VII)	2	+2	+2	+2	+2	+2	+0	-1.0%	-1.0%	-1.0%	-1.0%	-1.0%	+0.1%
Clerical (III & IV)	1	+1	+1	+1	+1	+1		-1.0%	-1.0%	-1.0%	-1.0%	-1.0%	+0.0%
Patient & Client Care	2	+2	+2	+2	+2	+2		-1.0%	-1.0%	-1.0%	-1.0%	-1.0%	+0.0%
Care, other	2	+2	+2	+2	+2	+2		-1.0%	-1.0%	-1.0%	-1.0%	-1.0%	+0.0%

Source: Health Service Personnel Census

Mental Health

May 2020 (Dec 2015 figure: 777)	WTE May 2020	WTE change since Dec 15	WTE change since Dec 16	WTE change since Dec 17	WTE change since Dec 18	WTE change since Dec 18	WTE change since Apr 20	% change since Dec 15	% change since Dec 16	% change since Dec 17	% change since Dec 18	% change since Dec 18	% change since Apr 20
Overall	809	+33	+28	+26	+26	+26	+4	+4.2%	+3.6%	+3.3%	+3.4%	+3.4%	+0.5%
Medical & Dental	61	+6	+3	-1	-2	-2	+1	+0.1%	+0.1%	-0.0%	-0.0%	-0.0%	+0.0%
Consultants	23	-0	+1	+1	+1	+1	+1	-0.0%	+0.0%	+0.0%	+0.0%	+0.0%	+0.0%
Registrars	18	+9	+6	+6	+2	+2	-0	+1.1%	+0.6%	+0.5%	+0.1%	+0.1%	-0.0%
SHO/ Interns	20	-3	-4	-8	-5	-5	-0	-0.1%	-0.2%	-0.3%	-0.2%	-0.2%	-0.0%
Nursing & Midwifery	400	+19	+14	+22	+30	+30	+4	+0.1%	+0.0%	+0.1%	+0.1%	+0.1%	+0.0%
Nurse/ Midwife Manager	90	+7	-0	-1	+5	+5	+2	+0.1%	-0.0%	-0.0%	+0.1%	+0.1%	+0.0%
Nurse/ Midwife Specialist & AN/MP	35	+6	+7	+4	+2	+2	-2	+0.2%	+0.3%	+0.1%	+0.1%	+0.1%	-0.0%
Staff Nurse/ Staff Midwife	260	-9	-6	+4	+16	+16	-1	-0.0%	-0.0%	+0.0%	+0.1%	+0.1%	-0.0%
Nursing/ Midwifery Student	15	+15	+14	+15	+6	+6	+5	-1.0%	+14.1%	+29.1%	+0.7%	+0.7%	+0.5%
Health & Social Care Professionals	157	+7	+10	+0	+5	+5	+2	+0.0%	+0.1%	+0.0%	+0.0%	+0.0%	+0.0%
Therapy Professions	24	+1	+3	-3	+0	+0	+0	+0.1%	+0.1%	-0.1%	+0.0%	+0.0%	+0.0%
Social Care	3			+0	+0	+0	+0	+0.0%	+0.0%	+0.1%	+0.1%	+0.1%	+0.1%
Social Workers	26	-2	-1	+0	-1	-1	+0	-0.1%	-0.0%	+0.0%	-0.0%	-0.0%	+0.0%
Psychologists	89	+7	+6	-1	+2	+2	-0	+0.1%	+0.1%	-0.0%	+0.0%	+0.0%	-0.0%
Pharmacy	3							+0.0%	+0.0%	+0.0%	+0.0%	+0.0%	+0.0%
H&SC, Other	13	+0	+2	+3	+3	+3	+2	+0.0%	+0.2%	+0.4%	+0.3%	+0.3%	+0.2%
Management & Administrative	75	+9	+9	+3	+2	+2	-1	+0.1%	+0.1%	+0.0%	+0.0%	+0.0%	-0.0%
Management (VIII & above)	3	+1		+1	+1	+1	+0	+0.5%	+0.0%	+0.5%	+0.5%	+0.5%	+0.1%
Administrative/ Supervisory (V to VII)	19	+5	+6	+4	+2	+2	-1	+0.4%	+0.5%	+0.2%	+0.1%	+0.1%	-0.1%
Clerical (III & IV)	53	+3	+3	-2	-1	-1	+0	+0.1%	+0.1%	-0.0%	-0.0%	-0.0%	+0.0%
General Support	40	-8	-7	-4	-6	-6	-1	-0.2%	-0.1%	-0.1%	-0.1%	-0.1%	-0.0%
Support	30	-6	-5	-2	-5	-5	-1	-0.2%	-0.1%	-0.1%	-0.1%	-0.1%	-0.0%
Maintenance/ Technical	10	-2	-2	-2	-1	-1		-0.2%	-0.2%	-0.2%	-0.1%	-0.1%	+0.0%
Patient & Client Care	76	-1	-2	+5	-2	-2	-1	-0.0%	-0.0%	+0.1%	-0.0%	-0.0%	-0.0%
Health Care Assistants	75	-1	-2	+5	-2	-2	-1	-0.0%	-0.0%	+0.1%	-0.0%	-0.0%	-0.0%
Care, other	1							+0.0%	+0.0%	+0.0%	+0.0%	+0.0%	+0.0%

Source: Health Service Personnel Census

Primary Care

May 2020 (Dec 2015 figure: 670)	WTE May 2020	WTE change since Dec 15	WTE change since Dec 16	WTE change since Dec 17	WTE change since Dec 18	WTE change since Dec 18	WTE change since Apr 20	% change since Dec 15	% change since Dec 16	% change since Dec 17	% change since Dec 18	% change since Dec 18	% change since Apr 20
Overall	755	+85	+84	+30	-25	-25	-8	+12.8%	+12.6%	+4.2%	-3.2%	-3.2%	-1.0%
Medical & Dental	80	+5	+7	+2	+2	+2	-3	+0.1%	+0.1%	+0.0%	+0.0%	+0.0%	-0.0%
Consultants	2							+0.0%	+0.0%	+0.0%	+0.0%	+0.0%	+0.0%
Registrars	20	-8	-5	-4	+2	+2	-1	-0.3%	-0.2%	-0.2%	+0.1%	+0.1%	-0.1%
SHO/ Interns	6	+6	+6	+6	-1	-1		-1.0%	-1.0%	-1.0%	-0.1%	-0.1%	+0.0%
Medical/ Dental, other	52	+7	+5	+1	+0	+0	-1	+0.2%	+0.1%	+0.0%	+0.0%	+0.0%	-0.0%
Nursing & Midwifery	205	+19	+6	+0	-4	-4	-2	+0.1%	+0.0%	+0.0%	-0.0%	-0.0%	-0.0%
Nurse/ Midwife Manager	22	+5	+2	+4	+3	+3	+0	+0.3%	+0.1%	+0.2%	+0.2%	+0.2%	+0.0%
Nurse/ Midwife Specialist & AN/MP	2	+2	+2	+1	+1	+1	-1	-1.0%	-1.0%	+0.5%	+0.9%	+0.9%	-0.3%
Staff Nurse/ Staff Midwife	56	+9	-4	-3	-6	-6	+1	+0.2%	-0.1%	-0.0%	-0.1%	-0.1%	+0.0%
Public Health Nurse	126	+9	+12	+6	+2	+2	-3	+0.1%	+0.1%	+0.1%	+0.0%	+0.0%	-0.0%
Nursing/ Midwifery Student		-7	-6	-7	-4	-4		-1.0%	-1.0%	-1.0%	-1.0%	-1.0%	-1.0%
Health & Social Care Professionals	128	+20	+27	+14	+2	+2	+2	+0.2%	+0.3%	+0.1%	+0.0%	+0.0%	+0.0%
Therapy Professions	87	+18	+19	+9	+2	+2	+2	+0.3%	+0.3%	+0.1%	+0.0%	+0.0%	+0.0%
Health Science/ Diagnostics	5	-0	+0	+1	+1	+1	-0	-0.0%	+0.0%	+0.3%	+0.2%	+0.2%	-0.0%
Social Care	1							+0.0%	+0.0%	+0.0%	+0.0%	+0.0%	+0.0%
Social Workers	10	-3	+1	+0	-1	-1	-0	-0.2%	+0.1%	+0.0%	-0.1%	-0.1%	-0.0%
Psychologists	13	+3	+4	+2	-1	-1	-0	+0.3%	+0.4%	+0.1%	-0.1%	-0.1%	-0.0%
Pharmacy	1		+1					+0.0%	-1.0%	+0.0%	+0.0%	+0.0%	+0.0%
H&SC, Other	11	+2	+2	+2	+0	+0	-0	+0.2%	+0.2%	+0.2%	+0.0%	+0.0%	-0.0%
Management & Administrative	228	+24	+27	+0	-19	-19	-5	+0.1%	+0.1%	+0.0%	-0.1%	-0.1%	-0.0%
Management (VIII & above)	24	+6	+3	+1	+2	+2	-0	+0.3%	+0.2%	+0.1%	+0.1%	+0.1%	-0.0%
Administrative/ Supervisory (V to VII)	58	+14	+10	+4	-8	-8	-1	+0.3%	+0.2%	+0.1%	-0.1%	-0.1%	-0.0%
Clerical (III & IV)	146	+4	+13	-6	-13	-13	-4	+0.0%	+0.1%	-0.0%	-0.1%	-0.1%	-0.0%
General Support	41	-4	-3	-3	-4	-4	-0	-0.1%	-0.1%	-0.1%	-0.1%	-0.1%	-0.0%
Support	13	-2	-2	-2	-1	-1	-0	-0.1%	-0.1%	-0.1%	-0.1%	-0.1%	-0.0%
Maintenance/ Technical	28	-2	-1	-1	-3	-3		-0.1%	-0.0%	-0.0%	-0.1%	-0.1%	+0.0%
Patient & Client Care	73	+23	+21	+16	-2	-2	+0	+0.4%	+0.4%	+0.3%	-0.0%	-0.0%	+0.0%
Health Care Assistants	24	+17	+16	+15	-3	-3	+1	+2.4%	+2.2%	+1.7%	-0.1%	-0.1%	+0.0%
Care, other	49	+6	+5	+1	+1	+1	-1	+0.1%	+0.1%	+0.0%	+0.0%	+0.0%	-0.0%
Home Help	1	+0	+0					+0.3%	+0.3%	+0.0%	+0.0%	+0.0%	+0.0%

Source: Health Service Personnel Census

Disabilities

May 2020 (Dec 2015 figure: 1,568)	WTE May 2020	WTE change since Dec 15	WTE change since Dec 16	WTE change since Dec 17	WTE change since Dec 18	WTE change since Dec 18	WTE change since Apr 20	% change since Dec 15	% change since Dec 16	% change since Dec 17	% change since Dec 18	% change since Dec 18	% change since Apr 20
Overall	1,873	+304	+203	+148	+77	+77	+36	+19.4%	+12.2%	+8.6%	+4.3%	+4.3%	+2.0%
Medical & Dental	2	-1	-1	-1	+0	+0	+0	-0.3%	-0.3%	-0.3%	+0.1%	+0.1%	+0.0%
Consultants	1	-1	-1	-1	+0	+0	+0	-0.5%	-0.4%	-0.4%	+0.1%	+0.1%	+0.1%
Medical/ Dental, other	1							+0.0%	+0.0%	+0.0%	+0.0%	+0.0%	+0.0%
Nursing & Midwifery	368	-11	-7	+7	+12	+12	+4	-0.0%	-0.0%	+0.0%	+0.0%	+0.0%	+0.0%
Nurse/ Midwife Manager	81	+14	+4	+7	+5	+5	+5	+0.2%	+0.1%	+0.1%	+0.1%	+0.1%	+0.1%
Nurse/ Midwife Specialist & AN/MP	11	-1	-1	-1	-1	-1		-0.1%	-0.1%	-0.1%	-0.1%	-0.1%	+0.0%
Staff Nurse/ Staff Midwife	249	-41	-29	-18	-8	-8	-1	-0.1%	-0.1%	-0.1%	-0.0%	-0.0%	-0.0%
Nursing/ Midwifery Student	24	+24	+24	+24	+17	+17	+0	-1.0%	-1.0%	-1.0%	+2.4%	+2.4%	+0.0%
Nursing/ Midwifery other	4	-7	-5	-5	-0	-0		-0.7%	-0.6%	-0.6%	-0.1%	-0.1%	+0.0%
Health & Social Care Professionals	380	+79	+49	+34	+17	+17	+15	+0.3%	+0.1%	+0.1%	+0.0%	+0.0%	+0.0%
Therapy Professions	76	+17	+6	+7	+4	+4	+0	+0.3%	+0.1%	+0.1%	+0.1%	+0.1%	+0.0%
Health Science/ Diagnostics	1	+1	+1	+1	+1	+1	+0	-1.0%	-1.0%	-1.0%	-1.0%	-1.0%	+0.5%
Social Care	254	+56	+39	+24	+10	+10	+14	+0.3%	+0.2%	+0.1%	+0.0%	+0.0%	+0.1%
Social Workers	16	+2	-0	-0	-1	-1	-1	+0.1%	-0.0%	-0.0%	-0.1%	-0.1%	-0.1%
Psychologists	21	+2	+2	+0	+3	+3	+2	+0.1%	+0.1%	+0.0%	+0.2%	+0.2%	+0.1%
H&SC, Other	12	+0	+1	+1	-0	-0	+0	+0.0%	+0.1%	+0.1%	-0.0%	-0.0%	+0.0%
Management & Administrative	107	+0	+7	+9	-1	-1	-1	+0.0%	+0.1%	+0.1%	-0.0%	-0.0%	-0.0%
Management (VIII & above)	7	-1	-1	+1				-0.1%	-0.1%	+0.2%	+0.0%	+0.0%	+0.0%
Administrative/ Supervisory (V to VII)	40	+10	+5	+6	+1	+1	-1	+0.3%	+0.1%	+0.2%	+0.0%	+0.0%	-0.0%
Clerical (III & IV)	60	-9	+3	+2	-2	-2	-1	-0.1%	+0.1%	+0.0%	-0.0%	-0.0%	-0.0%
General Support	70	-2	-4	-0	-2	-2	-1	-0.0%	-0.1%	-0.0%	-0.0%	-0.0%	-0.0%
Support	55	-3	-5	-1	-3	-3	-1	-0.0%	-0.1%	-0.0%	-0.0%	-0.0%	-0.0%
Maintenance/ Technical	15	+1	+1	+1	+1	+1	+0	+0.1%	+0.0%	+0.0%	+0.0%	+0.0%	+0.0%
Patient & Client Care	945	+238	+160	+99	+51	+51	+19	+0.3%	+0.2%	+0.1%	+0.1%	+0.1%	+0.0%
Health Care Assistants	775	+217	+139	+81	+40	+40	+26	+0.4%	+0.2%	+0.1%	+0.1%	+0.1%	+0.0%
Care, other	170	+21	+21	+19	+11	+11	-7	+0.1%	+0.1%	+0.1%	+0.1%	+0.1%	-0.0%

Source: Health Service Personnel Census

Older People

May 2020 (Dec 2015 figure: 988)	WTE May 2020	WTE change since Dec 15	WTE change since Dec 16	WTE change since Dec 17	WTE change since Dec 18	WTE change since Dec 18	WTE change since Apr 20	% change since Dec 15	% change since Dec 16	% change since Dec 17	% change since Dec 18	% change since Dec 18	% change since Apr 20
Overall	965	-22	-6	+30	+14	+14	-8	-2.3%	-0.6%	+3.2%	+1.5%	+1.5%	-0.8%
Medical & Dental	6	-4	-4	-1	-1	-1		-0.4%	-0.4%	-0.1%	-0.1%	-0.1%	+0.0%
Consultants	1		-1					+0.0%	+0.0%	+0.0%	+0.0%	+0.0%	+0.0%
Registrars		-3	-1					-1.0%	-1.0%	-1.0%	-1.0%	-1.0%	-1.0%
SHO/ Interns		-1	-1					-1.0%	-1.0%	-1.0%	-1.0%	-1.0%	-1.0%
Medical/ Dental, other	5		-1	-1	-1	-1		+0.0%	-0.2%	-0.2%	-0.2%	-0.2%	+0.0%
Nursing & Midwifery	294	+16	+13	+15	+11	+11	-10	+0.1%	+0.0%	+0.1%	+0.0%	+0.0%	-0.0%
Nurse/ Midwife Manager	63	+0	-3	-2	-1	-1	-2	+0.0%	-0.0%	-0.0%	-0.0%	-0.0%	-0.0%
Nurse/ Midwife Specialist & AN/MP	2	-2	-1					-0.6%	-0.3%	+0.0%	+0.0%	+0.0%	+0.0%
Staff Nurse/ Staff Midwife	228	+17	+16	+16	+11	+11	-7	+0.1%	+0.1%	+0.1%	+0.1%	+0.1%	-0.0%
Public Health Nurse	1	+1	+1	+1	+1	+1		-1.0%	-1.0%	-1.0%	-1.0%	-1.0%	+0.0%
Health & Social Care Professionals	37	+4	+1	+1	+1	+1	+0	+0.1%	+0.0%	+0.0%	+0.0%	+0.0%	+0.0%
Therapy Professions	28	-1	-0	-1	+3	+3	-0	-0.0%	-0.0%	-0.0%	+0.1%	+0.1%	-0.0%
Health Science/ Diagnostics	1	+0	+0	+0	+0	+0	-0	+0.9%	+0.9%	+0.9%	+0.6%	+0.6%	-0.0%
Social Workers	7	+4	+0	+2	-2	-2	+0	+1.4%	+0.1%	+0.3%	-0.2%	-0.2%	+0.0%
Pharmacy	1							+0.0%	+0.0%	+0.0%	+0.0%	+0.0%	+0.0%
Management & Administrative	76	+18	+14	+11	+10	+10	+0	+0.3%	+0.2%	+0.2%	+0.1%	+0.1%	+0.0%
Management (VIII & above)	6	+3	+4	+3	+1	+1	-1	+1.0%	+1.9%	+1.0%	+0.2%	+0.2%	-0.1%
Administrative/ Supervisory (V to VII)	20	+9	+8	+8	+6	+6	+0	+0.8%	+0.6%	+0.6%	+0.5%	+0.5%	+0.0%
Clerical (III & IV)	50	+6	+3	+0	+2	+2	+1	+0.1%	+0.1%	+0.0%	+0.0%	+0.0%	+0.0%
General Support	84	-11	-10	-6	-1	-1	-0	-0.1%	-0.1%	-0.1%	-0.0%	-0.0%	-0.0%
Support	63	-6	-6	-3	+1	+1	+0	-0.1%	-0.1%	-0.0%	+0.0%	+0.0%	+0.0%
Maintenance/ Technical	21	-5	-4	-3	-3	-3	-1	-0.2%	-0.2%	-0.1%	-0.1%	-0.1%	-0.0%
Patient & Client Care	469	-45	-20	+9	-5	-5	+2	-0.1%	-0.0%	+0.0%	-0.0%	-0.0%	+0.0%
Health Care Assistants	301	-4	+4	+24	-0	-0	+21	-0.0%	+0.0%	+0.1%	-0.0%	-0.0%	+0.1%
Care, other	14	+9	+7	+2	+2	+2	+3	+1.8%	+0.9%	+0.2%	+0.2%	+0.2%	+0.3%
Home Help	154	-51	-31	-17	-7	-7	-23	-0.2%	-0.2%	-0.1%	-0.0%	-0.0%	-0.1%

Source: Health Service Personnel Census