

## CHO 3 Employment Report: October 2020

### Employment by Staff Group

Oct 2020 (Dec 2019 figure: 4,357)	WTE Sep 2020	WTE Oct 2020	WTE change since Sep 20	% change since Sep 20	WTE change since Dec 19	WTE change since Oct 19
<b>Overall</b>	<b>4,478</b>	<b>4,485</b>	<b>+7</b>	<b>+0.2%</b>	<b>+128</b>	<b>+148</b>
Consultants	29	29	+0	+0.4%	+2	+1
Registrars	41	40	-2	-3.8%	-2	-1
SHO/ Interns	20	21	+1	+4.6%	-4	-4
Medical/ Dental, other	57	59	+2	+3.8%	+1	+1
<b>Medical &amp; Dental</b>	<b>148</b>	<b>150</b>	<b>+2</b>	<b>+1.1%</b>	<b>-2</b>	<b>-2</b>
Nurse/ Midwife Manager	253	252	-0	-0.2%	+6	+10
Nurse/ Midwife Specialist & AN/MP	53	53	+0	+0.1%	-3	-3
Staff Nurse/ Staff Midwife	788	791	+4	+0.5%	+4	+10
Public Health Nurse	129	129	-0	-0.1%	+2	-1
<i>Pre-registration Nurse/ Midwife Intern</i>				-100.0%	-20	
<i>Pre-registration Nurse Intern (COVID-19)</i>	17	20	+3	+15.0%	+20	+3
<i>Post-registration Nurse/ Midwife Student</i>		3	+3	-100.0%	+3	+3
Nursing/ Midwifery Student	17	23	+6	+34.3%	+3	+11
Nursing/ Midwifery other	4	4				
<b>Nursing &amp; Midwifery</b>	<b>1,244</b>	<b>1,253</b>	<b>+9</b>	<b>+0.7%</b>	<b>+12</b>	<b>+27</b>
Therapy Professions	213	216	+4	+1.7%	+3	-1
Health Science/ Diagnostics	9	9	-0	-4.0%	+3	+3
Social Care	271	273	+2	+0.6%	+28	+26
Social Workers	56	55	-1	-1.3%	-4	-4
Psychologists	112	116	+4	+3.8%	-8	-5
Pharmacy	5	5				
H&SC, Other	36	35	-1	-3.0%	+3	+4
<b>Health &amp; Social Care Professionals</b>	<b>702</b>	<b>709</b>	<b>+7</b>	<b>+1.0%</b>	<b>+25</b>	<b>+22</b>
Management (VIII & above)	40	41	+1	+3.3%	+3	+5
Administrative/ Supervisory (V to VII)	148	148	+0	+0.1%	+16	+10
Clerical (III & IV)	302	299	-3	-1.1%	-22	-22
<b>Management &amp; Administrative</b>	<b>489</b>	<b>487</b>	<b>-2</b>	<b>-0.4%</b>	<b>-3</b>	<b>-7</b>
Support	160	162	+1	+0.9%	-1	-1
Maintenance/ Technical	77	76	-0	-0.5%	-1	-2
<b>General Support</b>	<b>237</b>	<b>238</b>	<b>+1</b>	<b>+0.4%</b>	<b>-2</b>	<b>-3</b>
Health Care Assistants	1,205	1,193	-12	-1.0%	+53	+55
Care, other	239	242	+3	+1.2%	+8	+10
Home Help	215	214	-1	-0.6%	+38	+46
<b>Patient &amp; Client Care</b>	<b>1,658</b>	<b>1,648</b>	<b>-10</b>	<b>-0.6%</b>	<b>+99</b>	<b>+110</b>

## CHO 3 Employment Report: October 2020

### Community Health & Wellbeing

Oct 2020 ( figure: )	WTE Sep 2020	WTE Oct 2020	WTE change since Sep 20	% change since Sep 20	WTE change since	WTE change since
<b>Total Community Health &amp; Wellbeing</b>	<b>16</b>	<b>17</b>	<b>+1</b>	<b>+5.6%</b>	<b>+17</b>	<b>+17</b>
Nurse/ Midwife Manager	1		-1	-100.0%		
Public Health Nurse	1	1			+1	+1
<b>Nursing &amp; Midwifery</b>	<b>1</b>	<b>1</b>	<b>-1</b>	<b>-34.2%</b>	<b>+1</b>	<b>+1</b>
Therapy Professions	3	3			+3	+3
<b>Health &amp; Social Care Professionals</b>	<b>3</b>	<b>3</b>			<b>+3</b>	<b>+3</b>
Management (VIII & above)	2	2	-0	-0.0%	+2	+2
Administrative/ Supervisory (V to VII)	7	8	+1	+22.2%	+8	+8
Clerical (III & IV)	1	1	-0	-7.0%	+1	+1
<b>Management &amp; Administrative</b>	<b>10</b>	<b>11</b>	<b>+1</b>	<b>+14.0%</b>	<b>+11</b>	<b>+11</b>
Care, other	2	2			+2	+2
<b>Patient &amp; Client Care</b>	<b>2</b>	<b>2</b>			<b>+2</b>	<b>+2</b>

### Mental Health

Oct 2020 (Dec 2019 figure: 795)	WTE Sep 2020	WTE Oct 2020	WTE change since Sep 20	% change since Sep 20	WTE change since Dec 19	WTE change since Oct 19
<b>Total Mental Health</b>	<b>791</b>	<b>791</b>	<b>+1</b>	<b>+0.1%</b>	<b>-4</b>	<b>-1</b>
Consultants	25	25			+1	+1
Registrars	16	16	-0	-1.5%	-2	-2
SHO/ Interns	20	21	+0	+1.0%	+2	+1
<b>Medical &amp; Dental</b>	<b>61</b>	<b>61</b>	<b>-0</b>	<b>-0.0%</b>	<b>+1</b>	<b>-0</b>
Nurse/ Midwife Manager	89	88	-1	-0.7%	+0	+3
Nurse/ Midwife Specialist & AN/MP	36	36	+0	+0.1%	-4	-5
Staff Nurse/ Staff Midwife	255	253	-2	-1.0%	+7	+14
Pre-registration Nurse/ Midwife Intern				-100.0%	-9	
Pre-registration Nurse Intern (COVID-19)	15	17	+2	+12.6%	+17	+2
Nursing/ Midwifery Student	15	17	+2	+12.6%	+8	+5
<b>Nursing &amp; Midwifery</b>	<b>395</b>	<b>394</b>	<b>-1</b>	<b>-0.3%</b>	<b>+12</b>	<b>+17</b>
Therapy Professions	24	24	-0	-0.7%	-3	-5
Social Care	3	3			+0	+0
Social Workers	26	24	-1	-4.2%	-1	-1
Psychologists	77	81	+4	+5.8%	-11	-11
Pharmacy	3	3				
H&SC, Other	14	13	-1	-7.6%	+3	+4
<b>Health &amp; Social Care Professionals</b>	<b>146</b>	<b>148</b>	<b>+2</b>	<b>+1.5%</b>	<b>-11</b>	<b>-12</b>
Management (VIII & above)	1	2	+1	+99.0%	+0	+1
Administrative/ Supervisory (V to VII)	18	19	+1	+3.2%	+2	+2
Clerical (III & IV)	51	50	-1	-1.5%	-6	-7
<b>Management &amp; Administrative</b>	<b>70</b>	<b>71</b>	<b>+1</b>	<b>+1.2%</b>	<b>-4</b>	<b>-4</b>
Support	31	30	-1	-3.3%	-3	-3
Maintenance/ Technical	10	9	-0	-2.6%	-2	-2
<b>General Support</b>	<b>40</b>	<b>39</b>	<b>-1</b>	<b>-3.1%</b>	<b>-5</b>	<b>-5</b>
Health Care Assistants	78	78	-0	-0.2%	+3	+3
Care, other	1	1			-1	-1
<b>Patient &amp; Client Care</b>	<b>79</b>	<b>79</b>	<b>-0</b>	<b>-0.2%</b>	<b>+2</b>	<b>+3</b>

## Primary Care

Oct 2020 (Dec 2019 figure: 764)	WTE Sep 2020	WTE Oct 2020	WTE change since Sep 20	% change since Sep 20	WTE change since Dec 19	WTE change since Oct 19
<b>Total Primary Care</b>	<b>742</b>	<b>748</b>	<b>+6</b>	<b>+0.8%</b>	<b>-16</b>	<b>-33</b>
Consultants	2	2				
Registrars	25	24	-1	-5.3%	+1	+2
SHO/ Interns		1	+1	-100.0%	-5	-5
Medical/ Dental, other	52	53	+1	+1.4%	+1	+0
<b>Medical &amp; Dental</b>	<b>79</b>	<b>80</b>	<b>+0</b>	<b>+0.2%</b>	<b>-4</b>	<b>-3</b>
Nurse/ Midwife Manager	22	22	+0	+0.0%	+4	+2
Nurse/ Midwife Specialist & AN/MP	3	3			+1	+1
Staff Nurse/ Staff Midwife	49	49	+0	+0.8%	-7	-9
Public Health Nurse	127	127	-0	-0.1%	+1	-2
<i>Post-registration Nurse/ Midwife Student</i>		3	+3	-100.0%	+3	+3
Nursing/ Midwifery Student		3	+3	-100.0%	+3	+3
<b>Nursing &amp; Midwifery</b>	<b>202</b>	<b>205</b>	<b>+4</b>	<b>+1.8%</b>	<b>+2</b>	<b>-5</b>
Therapy Professions	79	81	+3	+3.2%	-5	-6
Health Science/ Diagnostics	6	6	-0	-2.0%	+1	+1
Social Care	1	1				
Social Workers	10	10	+0	+0.4%	-1	-1
Psychologists	15	15	-0	-0.1%	-1	+1
Pharmacy	1	1				
H&SC, Other	10	11	+1	+9.6%	+1	+0
<b>Health &amp; Social Care Professionals</b>	<b>122</b>	<b>125</b>	<b>+3</b>	<b>+2.8%</b>	<b>-4</b>	<b>-5</b>
Management (VIII & above)	23	23	+0	+1.8%	-0	+0
Administrative/ Supervisory (V to VII)	60	57	-3	-4.8%	+3	-7
Clerical (III & IV)	140	140	-0	-0.2%	-16	-17
<b>Management &amp; Administrative</b>	<b>223</b>	<b>220</b>	<b>-3</b>	<b>-1.2%</b>	<b>-13</b>	<b>-24</b>
Support	13	14	+1	+11.4%	+1	+1
Maintenance/ Technical	28	28			-2	-2
<b>General Support</b>	<b>41</b>	<b>42</b>	<b>+1</b>	<b>+3.6%</b>	<b>-1</b>	<b>-1</b>
Health Care Assistants	24	25	+1	+3.6%	+4	+4
Care, other	51	50	-1	-2.1%	+0	+1
Home Help	1	1				
<b>Patient &amp; Client Care</b>	<b>75</b>	<b>75</b>	<b>-0</b>	<b>-0.3%</b>	<b>+4</b>	<b>+5</b>

## Social Care

Oct 2020 (Dec 2019 figure: 2,798)	WTE Sep 2020	WTE Oct 2020	WTE change since Sep 20	% change since Sep 20	WTE change since Dec 19	WTE change since Oct 19
<b>Total Social Care</b>	<b>2,930</b>	<b>2,930</b>	<b>-0</b>	<b>-0.0%</b>	<b>+132</b>	<b>+165</b>
Consultants	2	3	+0	+4.6%	+1	+1
Medical/ Dental, other	5	7	+1	+27.4%	+1	+1
<b>Medical &amp; Dental</b>	<b>8</b>	<b>9</b>	<b>+2</b>	<b>+20.2%</b>	<b>+1</b>	<b>+2</b>
Nurse/ Midwife Manager	141	142	+1	+0.4%	+2	+5
Nurse/ Midwife Specialist & AN/MP	14	14	+0	+0.1%	-1	+2
Staff Nurse/ Staff Midwife	484	490	+6	+1.2%	+4	+5
Public Health Nurse	1	1				
<i>Pre-registration Nurse/ Midwife Intern</i>				-100.0%	-12	
<i>Pre-registration Nurse Intern (COVID-19)</i>	2	3	+1	+35.1%	+3	+1
Nursing/ Midwifery Student	2	3	+1	+35.1%	-9	+3
Nursing/ Midwifery other	4	4				
<b>Nursing &amp; Midwifery</b>	<b>646</b>	<b>653</b>	<b>+7</b>	<b>+1.1%</b>	<b>-4</b>	<b>+14</b>
Therapy Professions	108	109	+1	+1.1%	+7	+7
Health Science/ Diagnostics	3	3	-0	-7.8%	+2	+2
Social Care	267	269	+2	+0.7%	+28	+26
Social Workers	21	21	+0	+1.4%	-2	-3
Psychologists	20	20	-0	-1.1%	+4	+4
Pharmacy	1	1				
H&SC, Other	12	11	-1	-8.7%	-1	
<b>Health &amp; Social Care Professionals</b>	<b>432</b>	<b>434</b>	<b>+2</b>	<b>+0.4%</b>	<b>+38</b>	<b>+36</b>
Management (VIII & above)	14	14	-0	-0.7%	+1	+2
Administrative/ Supervisory (V to VII)	63	64	+1	+1.6%	+3	+7
Clerical (III & IV)	110	107	-2	-2.1%	-1	+1
<b>Management &amp; Administrative</b>	<b>186</b>	<b>185</b>	<b>-1</b>	<b>-0.7%</b>	<b>+3</b>	<b>+10</b>
Support	117	118	+1	+0.8%	+1	+0
Maintenance/ Technical	39	39	-0	-0.4%	+2	+2
<b>General Support</b>	<b>156</b>	<b>157</b>	<b>+1</b>	<b>+0.5%</b>	<b>+3</b>	<b>+3</b>
Health Care Assistants	1,103	1,090	-13	-1.2%	+46	+47
Care, other	185	189	+4	+2.2%	+6	+8
Home Help	214	213	-1	-0.6%	+38	+46
<b>Patient &amp; Client Care</b>	<b>1,502</b>	<b>1,492</b>	<b>-10</b>	<b>-0.7%</b>	<b>+90</b>	<b>+101</b>

## CHO 3 Employment Report: October 2020

### Disabilities

Oct 2020 (Dec 2019 figure: 1,823)	WTE Sep 2020	WTE Oct 2020	WTE change since Sep 20	% change since Sep 20	WTE change since Dec 19	WTE change since Oct 19
<b>Total Disabilities</b>	<b>1,900</b>	<b>1,904</b>	<b>+4</b>	<b>+0.2%</b>	<b>+80</b>	<b>+94</b>
Consultants	1	2	+0	+7.8%	+1	+1
Medical/ Dental, other	1	1				
<b>Medical &amp; Dental</b>	<b>2</b>	<b>2</b>	<b>+0</b>	<b>+4.7%</b>	<b>+1</b>	<b>+1</b>
Nurse/ Midwife Manager	78	77	-2	-2.3%	+1	+1
Nurse/ Midwife Specialist & AN/MP	11	11			-2	+1
Staff Nurse/ Staff Midwife	253	259	+5	+2.0%	+11	+11
<i>Pre-registration Nurse/ Midwife Intern</i>				-100.0%	-12	
<i>Pre-registration Nurse Intern (COVID-19)</i>	2	3	+1	+35.1%	+3	+1
Nursing/ Midwifery Student	2	3	+1	+35.1%	-9	+3
Nursing/ Midwifery other	4	4				
<b>Nursing &amp; Midwifery</b>	<b>349</b>	<b>353</b>	<b>+4</b>	<b>+1.2%</b>	<b>+1</b>	<b>+15</b>
Therapy Professions	79	78	-0	-0.4%	+4	+3
Health Science/ Diagnostics	2	2			+2	+2
Social Care	267	269	+2	+0.7%	+28	+26
Social Workers	15	15	-0	-0.1%	-2	-2
Psychologists	20	20	-0	-1.1%	+4	+4
H&SC, Other	12	11	-1	-8.7%	-1	-0
<b>Health &amp; Social Care Professionals</b>	<b>395</b>	<b>395</b>	<b>+0</b>	<b>+0.0%</b>	<b>+36</b>	<b>+33</b>
Management (VIII & above)	8	8			+1	+1
Administrative/ Supervisory (V to VII)	45	45	+0	+0.5%	+4	+3
Clerical (III & IV)	60	59	-1	-1.7%	-0	+1
<b>Management &amp; Administrative</b>	<b>112</b>	<b>112</b>	<b>-1</b>	<b>-0.7%</b>	<b>+5</b>	<b>+5</b>
Support	55	55	+1	+1.0%	+3	+2
Maintenance/ Technical	18	18	-0	-0.9%	+3	+3
<b>General Support</b>	<b>73</b>	<b>73</b>	<b>+0</b>	<b>+0.5%</b>	<b>+6</b>	<b>+5</b>
Health Care Assistants	797	793	-4	-0.6%	+28	+31
Care, other	171	176	+5	+2.7%	+3	+5
<b>Patient &amp; Client Care</b>	<b>968</b>	<b>969</b>	<b>+0</b>	<b>+0.0%</b>	<b>+31</b>	<b>+36</b>

## Older People

Oct 2020 (Dec 2019 figure: 974)	WTE Sep 2020	WTE Oct 2020	WTE change since Sep 20	% change since Sep 20	WTE change since Dec 19	WTE change since Oct 19
<b>Total Older People</b>	<b>1,030</b>	<b>1,026</b>	<b>-4</b>	<b>-0.4%</b>	<b>+52</b>	<b>+71</b>
Consultants	1	1				
Medical/ Dental, other	4	6	+1	+33.4%	+1	+1
<b>Medical &amp; Dental</b>	<b>5</b>	<b>7</b>	<b>+1</b>	<b>+27.0%</b>	<b>+1</b>	<b>+1</b>
Nurse/ Midwife Manager	63	65	+2	+3.8%	+2	+4
Nurse/ Midwife Specialist & AN/MP	3	3	+0	+0.7%	+1	+1
Staff Nurse/ Staff Midwife	230	231	+1	+0.3%	-8	-6
Public Health Nurse	1	1				
<b>Nursing &amp; Midwifery</b>	<b>297</b>	<b>300</b>	<b>+3</b>	<b>+1.0%</b>	<b>-5</b>	<b>-1</b>
<b>Health &amp; Social Care Professionals</b>	<b>37</b>	<b>39</b>	<b>+2</b>	<b>+4.2%</b>	<b>+2</b>	<b>+3</b>
Management (VIII & above)	6	6	-0	-1.5%	+0	+1
Administrative/ Supervisory (V to VII)	18	19	+1	+4.3%	-1	+4
Clerical (III & IV)	50	48	-1	-2.6%	-1	+0
<b>Management &amp; Administrative</b>	<b>74</b>	<b>73</b>	<b>-1</b>	<b>-0.8%</b>	<b>-2</b>	<b>+5</b>
Support	62	62	+0	+0.7%	-2	-1
Maintenance/ Technical	21	21			-1	-1
<b>General Support</b>	<b>83</b>	<b>83</b>	<b>+0</b>	<b>+0.5%</b>	<b>-3</b>	<b>-2</b>
Health Care Assistants	306	297	-8	-2.7%	+18	+16
Care, other	14	13	-1	-5.1%	+3	+3
Home Help	214	213	-1	-0.6%	+38	+46
<b>Patient &amp; Client Care</b>	<b>534</b>	<b>523</b>	<b>-10</b>	<b>-1.9%</b>	<b>+59</b>	<b>+65</b>

### CHO 3 Employment by Administration (HSE / S38): October 2020

Oct 2020 (Dec 2019 figure: 4,357)	WTE Sep 2020	WTE Oct 2020	WTE change since Sep 20	% change since Sep 20	WTE change since Dec 19	WTE change since Oct 19
<b>Overall</b>	<b>4,478</b>	<b>4,485</b>	<b>+7</b>	<b>+0.2%</b>	<b>+128</b>	<b>+148</b>
<b>HSE</b>	<b>2,716</b>	<b>2,720</b>	<b>+4</b>	<b>+0.1%</b>	<b>+64</b>	<b>+69</b>
<b>Section 38 Voluntary Agencies</b>	<b>1,762</b>	<b>1,765</b>	<b>+3</b>	<b>+0.2%</b>	<b>+64</b>	<b>+80</b>

### HSE

Oct 2020 (Dec 2019 figure: 2,655)	WTE Sep 2020	WTE Oct 2020	WTE change since Sep 20	% change since Sep 20	WTE change since Dec 19	WTE change since Oct 19
<b>Overall</b>	<b>2,716</b>	<b>2,720</b>	<b>+4</b>	<b>+0.1%</b>	<b>+64</b>	<b>+69</b>
Consultants	28	28		+0.0%	+1	+1
Registrars	41	40	-2	-0.0%	-2	-1
SHO/ Interns	20	21	+1	+0.0%	-4	-4
Medical/ Dental, other	56	58	+2	+0.0%	+1	+1
<b>Medical &amp; Dental</b>	<b>146</b>	<b>147</b>	<b>+2</b>	<b>+1.0%</b>	<b>-3</b>	<b>-3</b>
Nurse/ Midwife Manager	174	176	+1	+0.0%	+5	+8
Nurse/ Midwife Specialist & AN/MP	41	41	+0	+0.0%	-2	-3
Staff Nurse/ Staff Midwife	534	533	-1	-0.0%	-7	-1
Public Health Nurse	129	129	-0	-0.0%	+2	-1
<i>Pre-registration Nurse/ Midwife Intern</i>				-1.0%	-9	-12
<i>Pre-registration Nurse Intern (COVID-19)</i>	15	17	+2	+0.1%	+17	+17
<i>Post-registration Nurse/ Midwife Student</i>		3	+3	-1.0%	-1	+3
Nursing/ Midwifery Student	15	21	+5	+0.3%	+12	+9
<b>Nursing &amp; Midwifery</b>	<b>895</b>	<b>900</b>	<b>+5</b>	<b>+0.6%</b>	<b>+10</b>	<b>+12</b>
Therapy Professions	182	186	+4	+0.0%	+0	-4
Health Science/ Diagnostics	9	9	-0	-0.0%	+3	+3
Social Care	6	6		+0.0%	+1	+1
Social Workers	44	43	-1	-0.0%	-2	-3
Psychologists	95	99	+4	+0.0%	-12	-9
Pharmacy	5	5		+0.0%		
H&SC, Other	25	25	-0	-0.0%	+4	+4
<b>Health &amp; Social Care Professionals</b>	<b>366</b>	<b>373</b>	<b>+7</b>	<b>+1.8%</b>	<b>-6</b>	<b>-7</b>
Management (VIII & above)	34	35	+1	+0.0%	+3	+5
Administrative/ Supervisory (V to VII)	119	119	+0	+0.0%	+14	+9
Clerical (III & IV)	266	263	-3	-0.0%	-19	-20
<b>Management &amp; Administrative</b>	<b>419</b>	<b>417</b>	<b>-2</b>	<b>-0.4%</b>	<b>-2</b>	<b>-6</b>
Support	106	106	+1	+0.0%	-3	-3
Maintenance/ Technical	66	65	-0	-0.0%	+0	+0
<b>General Support</b>	<b>171</b>	<b>172</b>	<b>+0</b>	<b>+0.3%</b>	<b>-3</b>	<b>-3</b>
Health Care Assistants	414	406	-8	-0.0%	+26	+25
Care, other	91	91	+0	+0.0%	+4	+5
Home Help	215	214	-1	-0.0%	+38	+46
<b>Patient &amp; Client Care</b>	<b>720</b>	<b>711</b>	<b>-8</b>	<b>-1.2%</b>	<b>+68</b>	<b>+75</b>

## Section 38 Voluntary Agencies

Oct 2020 (Dec 2019 figure: 1,701)	WTE Sep 2020	WTE Oct 2020	WTE change since Sep 20	% change since Sep 20	WTE change since Dec 19	WTE change since Oct 19
<b>Overall</b>	<b>1,762</b>	<b>1,765</b>	<b>+3</b>	<b>+0.2%</b>	<b>+64</b>	<b>+80</b>
Consultants	1	2	+0	+0.1%	+1	+1
Medical/ Dental, other	1	1		+0.0%		
<b>Medical &amp; Dental</b>	<b>2</b>	<b>2</b>	<b>+0</b>	<b>+4.7%</b>	<b>+1</b>	<b>+1</b>
Nurse/ Midwife Manager	78	77	-2	-0.0%	+1	+1
Nurse/ Midwife Specialist & AN/MP	11	11		+0.0%	-2	+1
Staff Nurse/ Staff Midwife	253	259	+5	+0.0%	+11	+11
<i>Pre-registration Nurse/ Midwife Intern</i>				-1.0%	-7	
<i>Pre-registration Nurse Intern (COVID-19)</i>	2	3	+1	+0.4%	+3	+3
Nursing/ Midwifery Student	2	3	+1	+0.4%	-9	+3
Nursing/ Midwifery other	4	4		+0.0%		
<b>Nursing &amp; Midwifery</b>	<b>349</b>	<b>353</b>	<b>+4</b>	<b>+1.2%</b>	<b>+1</b>	<b>+15</b>
Therapy Professions	31	31	-0	-0.0%	+3	+2
Social Care	265	267	+2	+0.0%	+27	+25
Social Workers	13	13	-0	-0.0%	-2	-2
Psychologists	17	17		+0.0%	+4	+4
H&SC, Other	11	10	-1	-0.1%	-1	+0
<b>Health &amp; Social Care Professionals</b>	<b>336</b>	<b>337</b>	<b>+1</b>	<b>+0.2%</b>	<b>+31</b>	<b>+30</b>
Management (VIII & above)	6	6		+0.0%		
Administrative/ Supervisory (V to VII)	29	29	+0	+0.0%	+1	+1
Clerical (III & IV)	36	36	-0	-0.0%	-3	-2
<b>Management &amp; Administrative</b>	<b>71</b>	<b>71</b>	<b>-0</b>	<b>-0.4%</b>	<b>-1</b>	<b>-1</b>
Support	55	55	+1	+0.0%	+3	+2
Maintenance/ Technical	11	11		+0.0%	-1	-2
<b>General Support</b>	<b>66</b>	<b>66</b>	<b>+1</b>	<b>+0.8%</b>	<b>+1</b>	<b>+0</b>
Health Care Assistants	791	786	-5	-0.0%	+27	+29
Care, other	148	150	+3	+0.0%	+4	+5
<b>Patient &amp; Client Care</b>	<b>939</b>	<b>937</b>	<b>-2</b>	<b>-0.2%</b>	<b>+31</b>	<b>+35</b>



## CHO 3 Employment by S38 Agency: October 2020

### Bros. of Charity, Clare

Oct 2020 (Dec 2019 figure: 348)	WTE Sep 2020	WTE Oct 2020	WTE change since Sep 20	% change since Sep 20	WTE change since Dec 19	WTE change since Oct 19
<b>Overall</b>	<b>357</b>	<b>357</b>	<b>+0</b>	<b>+0.0%</b>	<b>+9</b>	<b>+15</b>
<b>Medical &amp; Dental</b>	<b>0</b>	<b>0</b>	<b>+0</b>	<b>+110.0%</b>	<b>+0</b>	<b>+0</b>
Nurse/ Midwife Manager				-1.0%		
Staff Nurse/ Staff Midwife	2	2	-0	-0.0%	+0	+0
Nursing/ Midwifery Student	1	1	-0	-0.4%	+1	+1
<b>Nursing &amp; Midwifery</b>	<b>3</b>	<b>2</b>	<b>-0</b>	<b>-12.8%</b>	<b>+1</b>	<b>+1</b>
Social Care	82	81	-1	-0.0%	-1	-4
Social Workers	2	2		+0.0%	-1	-1
Psychologists	3	3		+0.0%		
H&SC, Other	4	4		+0.0%	-0	-0
<b>Health &amp; Social Care Professionals</b>	<b>90</b>	<b>90</b>	<b>-1</b>	<b>-0.8%</b>	<b>-2</b>	<b>-5</b>
Management (VIII & above)	1	1		+0.0%		
Administrative/ Supervisory (V to VII)	5	5	+0	+0.0%	+0	+0
Clerical (III & IV)	5	5	-0	-0.0%	+0	+1
<b>Management &amp; Administrative</b>	<b>11</b>	<b>11</b>	<b>-0</b>	<b>-1.3%</b>	<b>+1</b>	<b>+1</b>
Health Care Assistants	221	222	+1	+0.0%	+10	+17
Care, other	32	32	-0	-0.0%	-1	+1
<b>Patient &amp; Client Care</b>	<b>253</b>	<b>254</b>	<b>+1</b>	<b>+0.5%</b>	<b>+10</b>	<b>+18</b>

## Bros. of Charity, Limerick

Oct 2020 (Dec 2019 figure: 520)	WTE Sep 2020	WTE Oct 2020	WTE change since Sep 20	% change since Sep 20	WTE change since Dec 19	WTE change since Oct 19
<b>Overall</b>	<b>575</b>	<b>578</b>	<b>+3</b>	<b>+0.6%</b>	<b>+58</b>	<b>+60</b>
Consultants	1	1		+0.0%	+0	+0
<b>Medical &amp; Dental</b>	<b>1</b>	<b>1</b>			<b>+0</b>	<b>+0</b>
Nurse/ Midwife Manager	29	28	-1	-0.0%	+3	+1
Nurse/ Midwife Specialist & AN/MP	4	4		+0.0%	-1	+1
Staff Nurse/ Staff Midwife	90	93	+3	+0.0%	+9	+12
Pre-registration Nurse Intern (COVID-19)		1	+1	-1.0%	+1	+1
Nursing/ Midwifery Student		1	+1	-1.0%	+1	+1
<b>Nursing &amp; Midwifery</b>	<b>123</b>	<b>126</b>	<b>+3</b>	<b>+2.3%</b>	<b>+12</b>	<b>+15</b>
Therapy Professions	14	14	-0	-0.0%	+2	+2
Social Care	100	101	+1	+0.0%	+16	+17
Social Workers	4	4	-0	-0.0%	-1	-1
Psychologists	6	6		+0.0%	+0	+0
H&SC, Other	2	1	-1	-0.6%	-0	+1
<b>Health &amp; Social Care Professionals</b>	<b>125</b>	<b>126</b>	<b>+0</b>	<b>+0.2%</b>	<b>+17</b>	<b>+19</b>
Management (VIII & above)	2	2		+0.0%		
Administrative/ Supervisory (V to VII)	6	6	+0	+0.0%	+0	+0
Clerical (III & IV)	11	10	-0	-0.0%	-2	-2
<b>Management &amp; Administrative</b>	<b>18</b>	<b>18</b>	<b>-0</b>	<b>-0.8%</b>	<b>-2</b>	<b>-2</b>
Support	7	8	+1	+0.1%	+0	+0
Maintenance/ Technical	2	2		+0.0%	-0	-1
<b>General Support</b>	<b>9</b>	<b>10</b>	<b>+1</b>	<b>+6.1%</b>	<b>+0</b>	<b>-1</b>
Health Care Assistants	205	203	-2	-0.0%	+24	+21
Care, other	92	94	+2	+0.0%	+7	+7
<b>Patient &amp; Client Care</b>	<b>298</b>	<b>297</b>	<b>-0</b>	<b>-0.1%</b>	<b>+31</b>	<b>+28</b>

## Daughters of Charity, Limerick

Oct 2020 (Dec 2019 figure: 543)	WTE Sep 2020	WTE Oct 2020	WTE change since Sep 20	% change since Sep 20	WTE change since Dec 19	WTE change since Oct 19
<b>Overall</b>	<b>544</b>	<b>543</b>	<b>-1</b>	<b>-0.3%</b>	<b>-0</b>	<b>+8</b>
Medical/ Dental, other	1	1		+0.0%		
<b>Medical &amp; Dental</b>	<b>1</b>	<b>1</b>				
Nurse/ Midwife Manager	35	34	-1	-0.0%	-1	+1
Nurse/ Midwife Specialist & AN/MP	7	7		+0.0%	-1	-1
Staff Nurse/ Staff Midwife	143	145	+2	+0.0%	+2	-1
Nursing/ Midwifery Student	1	1		+0.0%	-11	+1
Nursing/ Midwifery other	3	3		+0.0%		
<b>Nursing &amp; Midwifery</b>	<b>190</b>	<b>190</b>	<b>+1</b>	<b>+0.3%</b>	<b>-10</b>	<b>+0</b>
Therapy Professions	15	15		+0.0%		
Social Care	58	59	+1	+0.0%	+6	+5
Social Workers	5	5		+0.0%	+0	+0
Psychologists	7	7		+0.0%	+4	+4
H&SC, Other	6	6		+0.0%		
<b>Health &amp; Social Care Professionals</b>	<b>91</b>	<b>92</b>	<b>+1</b>	<b>+1.3%</b>	<b>+10</b>	<b>+9</b>
Management (VIII & above)	2	2		+0.0%		
Administrative/ Supervisory (V to VII)	11	11		+0.0%	+1	+1
Clerical (III & IV)	14	14		+0.0%	-1	-1
<b>Management &amp; Administrative</b>	<b>27</b>	<b>27</b>				
Support	43	43		+0.0%	+2	+3
Maintenance/ Technical	4	4		+0.0%		
<b>General Support</b>	<b>48</b>	<b>48</b>			<b>+2</b>	<b>+3</b>
Health Care Assistants	166	162	-4	-0.0%	-3	-5
Care, other	22	23	+1	+0.0%	+1	+1
<b>Patient &amp; Client Care</b>	<b>188</b>	<b>185</b>	<b>-3</b>	<b>-1.7%</b>	<b>-2</b>	<b>-4</b>

## Daughters of Charity, Roscrea

Oct 2020 (Dec 2019 figure: 290)	WTE Sep 2020	WTE Oct 2020	WTE change since Sep 20	% change since Sep 20	WTE change since Dec 19	WTE change since Oct 19
<b>Overall</b>	<b>286</b>	<b>287</b>	<b>+1</b>	<b>+0.4%</b>	<b>-3</b>	<b>-4</b>
Nurse/ Midwife Manager	15	15		+0.0%	-1	-1
Staff Nurse/ Staff Midwife	18	19	+1	+0.1%	+1	+1
Nursing/ Midwifery other	1	1		+0.0%		
<b>Nursing &amp; Midwifery</b>	<b>33</b>	<b>34</b>	<b>+1</b>	<b>+3.0%</b>	<b>-1</b>	<b>-1</b>
Therapy Professions	2	2		+0.0%	+0	+0
Social Care	25	25		+0.0%	+6	+6
Social Workers	1	1		+0.0%		
Psychologists	1	1		+0.0%		
<b>Health &amp; Social Care Professionals</b>	<b>29</b>	<b>29</b>			<b>+6</b>	<b>+6</b>
Management (VIII & above)	1	1		+0.0%		
Administrative/ Supervisory (V to VII)	7	7		+0.0%		
Clerical (III & IV)	7	7		+0.0%	+0	
<b>Management &amp; Administrative</b>	<b>15</b>	<b>15</b>			<b>+0</b>	
Support	4	4		+0.0%		-1
Maintenance/ Technical	5	5		+0.0%	-1	-1
<b>General Support</b>	<b>9</b>	<b>9</b>			<b>-1</b>	<b>-2</b>
Health Care Assistants	198	199	+0	+0.0%	-4	-4
Care, other	2	2		+0.0%	-4	-4
<b>Patient &amp; Client Care</b>	<b>200</b>	<b>200</b>	<b>+0</b>	<b>+0.1%</b>	<b>-8</b>	<b>-8</b>

**CHO 3 Employment by Grade Group & Staff Category: October 2020**

Oct 2020 (Dec 2019 figure: 4,357)	WTE Sep 2020	WTE Oct 2020	WTE change since Sep 20	% change since Sep 20	WTE change since Dec 19	WTE change since Oct 19
<b>Overall</b>	<b>4,478</b>	<b>4,485</b>	<b>+7</b>	<b>+0.2%</b>	<b>+128</b>	<b>+148</b>
Consultant Medicine	2	2				
Consultant Paediatrics	1	1				
Consultant Psychiatry	25	25	+0	+0.4%	+2	+1
Consultant Surgery	1	1				
<b>Consultants</b>	<b>29</b>	<b>29</b>	<b>+0</b>	<b>+0.4%</b>	<b>+2</b>	<b>+1</b>
Registrar	35	33	-2	-4.6%	-2	-1
Senior Registrar	6	6			+1	+1
Specialist Registrar	1	1			-1	-1
<b>Registrars</b>	<b>41</b>	<b>40</b>	<b>-2</b>	<b>-3.8%</b>	<b>-2</b>	<b>-1</b>
Senior House Officer	20	21	+1	+4.6%	-4	-4
<b>SHO/ Interns</b>	<b>20</b>	<b>21</b>	<b>+1</b>	<b>+4.6%</b>	<b>-4</b>	<b>-4</b>
Dentists	25	26	+1	+3.7%	-0	-1
Other Medical	32	33	+1	+3.8%	+2	+2
<b>Medical/ Dental, other</b>	<b>57</b>	<b>59</b>	<b>+2</b>	<b>+3.8%</b>	<b>+1</b>	<b>+1</b>
<b>Medical &amp; Dental</b>	<b>148</b>	<b>150</b>	<b>+2</b>	<b>+1.1%</b>	<b>-0</b>	<b>-2</b>
Clinical Nurse/ Midwife Manager	193	192	-1	-0.6%	+6	+11
Director Nursing/Midwifery, Assistant	46	47	+1	+1.3%	+1	-0
Director of Nursing/Midwifery	14	14	+0	+0.2%	-1	-1
<b>Nurse/ Midwife Manager</b>	<b>253</b>	<b>252</b>	<b>-0</b>	<b>-0.2%</b>	<b>+6</b>	<b>+10</b>
Advanced Nurse/ Midwife Practitioner	3	3	+0	+0.7%	+1	+1
Clinical Nurse/ Midwife Specialist	50	50	+0	+0.1%	-4	-4
<b>Nurse/ Midwife Specialist &amp; AN/MP</b>	<b>53</b>	<b>53</b>	<b>+0</b>	<b>+0.1%</b>	<b>-3</b>	<b>-3</b>
Staff Nurse [Intellectual Disability]	210	215	+5	+2.3%	+6	+4
Staff Nurse [Psychiatric]	246	244	-2	-0.9%	+7	+13
Staff Nurses [General/ Children's]	331	333	+1	+0.4%	-9	-7
<b>Staff Nurse/ Staff Midwife</b>	<b>788</b>	<b>791</b>	<b>+4</b>	<b>+0.5%</b>	<b>+4</b>	<b>+10</b>
<b>Public Health Nurse</b>	<b>129</b>	<b>129</b>	<b>-0</b>	<b>-0.1%</b>	<b>+2</b>	<b>-1</b>
Pre-registration Nurse/ Midwife Intern				-100.0%	-20	-12
Pre-registration Nurse Intern (COVID-19)	17	20	+3	+15.0%	+20	+20
Post-registration Nurse/ Midwife Student		3	+3	-100.0%	+3	+3
<b>Nursing/ Midwifery Student</b>	<b>17</b>	<b>23</b>	<b>+6</b>	<b>+34.3%</b>	<b>+3</b>	<b>+11</b>
Nursing Education/Clinical	3	3				
Other Nursing/ Midwifery	1	1				
<b>Nursing/ Midwifery other</b>	<b>4</b>	<b>4</b>				
<b>Nursing &amp; Midwifery</b>	<b>1,244</b>	<b>1,253</b>	<b>+9</b>	<b>+0.7%</b>	<b>+35</b>	<b>+27</b>
Dietitians	6	6	-0	-1.0%	+3	+3
Occupational Therapists	85	86	+1	+1.1%	-2	-4
Physiotherapists	58	58	+0	+0.0%	-2	-2
Podiatrists & Chiropodists	5	6	+0	+5.3%	+0	+0
Speech & Language Therapists	58	61	+2	+4.0%	+3	+1
<b>Therapy Professions</b>	<b>213</b>	<b>216</b>	<b>+4</b>	<b>+1.7%</b>	<b>+3</b>	<b>-1</b>
Audiology	6	6	-0	-2.0%	+1	+1
Clinical Engineering	2	2			+2	+2
Clinical Measurement	0	0	-0	-47.9%	+0	+0
Radiographers	1	1				
<b>Health Science/ Diagnostics</b>	<b>9</b>	<b>9</b>	<b>-0</b>	<b>-4.0%</b>	<b>+3</b>	<b>+3</b>
<b>Social Care</b>	<b>271</b>	<b>273</b>	<b>+2</b>	<b>+0.6%</b>	<b>+28</b>	<b>+26</b>

Oct 2020 (Dec 2019 figure: 4,357)	WTE Sep 2020	WTE Oct 2020	WTE change since Sep 20	% change since Sep 20	WTE change since Dec 19	WTE change since Oct 19
<b>Overall</b>	<b>4,478</b>	<b>4,485</b>	<b>+7</b>	<b>+0.2%</b>	<b>+128</b>	<b>+148</b>
<b>Social Workers</b>	<b>56</b>	<b>55</b>	<b>-1</b>	<b>-1.3%</b>	<b>-4</b>	<b>-4</b>
<b>Psychologists</b>	<b>112</b>	<b>116</b>	<b>+4</b>	<b>+3.8%</b>	<b>-8</b>	<b>-5</b>
<b>Pharmacy</b>	<b>5</b>	<b>5</b>				
Counsellor Therapists	17	17	-0	-0.2%	+4	+5
Dental Hygienists	6	6			-0	-1
Other Health & Social Care	9	8	-1	-11.6%	-0	-0
Play Therapists/ Specialists	5	5			-1	+0
<b>H&amp;SC, Other</b>	<b>36</b>	<b>35</b>	<b>-1</b>	<b>-3.0%</b>	<b>+3</b>	<b>+4</b>
<b>Health &amp; Social Care Professionals</b>	<b>702</b>	<b>709</b>	<b>+7</b>	<b>+1.0%</b>	<b>+31</b>	<b>+22</b>
Executive Management	13	15	+1	+10.2%	+3	+4
Senior Management (VIII & GM)	26	26	-0	-0.2%	+0	+1
<b>Management (VIII &amp; above)</b>	<b>40</b>	<b>41</b>	<b>+1</b>	<b>+3.3%</b>	<b>+3</b>	<b>+5</b>
Middle Management (V-VII)	138	141	+3	+2.3%	+16	+11
Other Administrative	10	7	-3	-31.6%	-1	-0
<b>Administrative/ Supervisory (V to VII)</b>	<b>148</b>	<b>148</b>	<b>+0</b>	<b>+0.1%</b>	<b>+16</b>	<b>+10</b>
<b>Clerical (III &amp; IV)</b>	<b>302</b>	<b>299</b>	<b>-3</b>	<b>-1.1%</b>	<b>-22</b>	<b>-22</b>
<b>Management &amp; Administrative</b>	<b>489</b>	<b>487</b>	<b>-2</b>	<b>-0.4%</b>	<b>-8</b>	<b>-7</b>
Catering	30	29	-1	-3.5%	-2	-1
Household Services	84	86	+2	+2.7%	+4	+2
Portering	12	13	+1	+6.5%	+2	+2
Other Support	34	34	-0	-1.4%	-5	-5
<b>Support</b>	<b>160</b>	<b>162</b>	<b>+1</b>	<b>+0.9%</b>	<b>-1</b>	<b>-1</b>
Maintenance	76	75	-0	-0.6%	-1	-2
Technical Services	1	1				
<b>Maintenance/ Technical</b>	<b>77</b>	<b>76</b>	<b>-0</b>	<b>-0.5%</b>	<b>-1</b>	<b>-2</b>
<b>General Support</b>	<b>237</b>	<b>238</b>	<b>+1</b>	<b>+0.4%</b>	<b>-10</b>	<b>-3</b>
HCA, Nurse's Aide, etc.	1,191	1,178	-14	-1.1%	+47	+49
Health & Social Care Assistants	13	15	+1	+10.9%	+6	+6
<b>Health Care Assistants</b>	<b>1,205</b>	<b>1,193</b>	<b>-12</b>	<b>-1.0%</b>	<b>+53</b>	<b>+55</b>
Other Care Grades	239	242	+3	+1.2%	+8	+10
<b>Care, other</b>	<b>239</b>	<b>242</b>	<b>+3</b>	<b>+1.2%</b>	<b>+8</b>	<b>+10</b>
<b>Home Help</b>	<b>215</b>	<b>214</b>	<b>-1</b>	<b>-0.6%</b>	<b>+38</b>	<b>+46</b>
<b>Patient &amp; Client Care</b>	<b>1,658</b>	<b>1,648</b>	<b>-10</b>	<b>-0.6%</b>	<b>+128</b>	<b>+110</b>

### CHO 3 HSE Employment by Grade Group & Staff Category: October 2020

Oct 2020 (Dec 2019 figure: 2,655)	WTE Sep 2020	WTE Oct 2020	WTE change since Sep 20	% change since Sep 20	WTE change since Dec 19	WTE change since Oct 19
<b>Overall</b>	<b>2,716</b>	<b>2,720</b>	<b>+4</b>	<b>+0.1%</b>	<b>+64</b>	<b>+69</b>
Consultant Medicine	2	2				
Consultant Paediatrics	1	1				
Consultant Psychiatry	24	24			+1	+1
Consultant Surgery	1	1				
<b>Consultants</b>	<b>28</b>	<b>28</b>			<b>+1</b>	<b>+1</b>
Registrar	35	33	-2	-4.6%	-2	-1
Senior Registrar	6	6			+1	+1
Specialist Registrar	1	1			-1	-1
<b>Registrars</b>	<b>41</b>	<b>40</b>	<b>-2</b>	<b>-3.8%</b>	<b>-2</b>	<b>-1</b>
<b>SHO/ Interns</b>	<b>20</b>	<b>21</b>	<b>+1</b>	<b>+4.6%</b>	<b>-4</b>	<b>-4</b>
Dentists	25	26	+1	+3.7%	-0	-1
Other Medical	31	32	+1	+3.9%	+2	+2
<b>Medical/ Dental, other</b>	<b>56</b>	<b>58</b>	<b>+2</b>	<b>+3.8%</b>	<b>+1</b>	<b>+1</b>
<b>Medical &amp; Dental</b>	<b>146</b>	<b>147</b>	<b>+2</b>	<b>+1.0%</b>	<b>-1</b>	<b>-3</b>
Clinical Nurse/ Midwife Manager	115	116	+1	+0.6%	+5	+10
Director Nursing/Midwifery, Assistant	45	46	+1	+1.3%	+1	-0
Director of Nursing/Midwifery	14	14	+0	+0.2%	-1	-1
<b>Nurse/ Midwife Manager</b>	<b>174</b>	<b>176</b>	<b>+1</b>	<b>+0.8%</b>	<b>+5</b>	<b>+8</b>
Advanced Nurse/ Midwife Practitioner	3	3	+0	+0.7%	+1	+1
Clinical Nurse/ Midwife Specialist	39	39	+0	+0.1%	-3	-4
<b>Nurse/ Midwife Specialist &amp; AN/MP</b>	<b>41</b>	<b>41</b>	<b>+0</b>	<b>+0.1%</b>	<b>-2</b>	<b>-3</b>
Staff Nurse [Intellectual Disability]	1	1	+0	+21.7%	+0	+0
Staff Nurse [Psychiatric]	246	244	-2	-0.9%	+7	+13
Staff Nurses [General/ Children's]	288	288	+1	+0.2%	-14	-14
<b>Staff Nurse/ Staff Midwife</b>	<b>534</b>	<b>533</b>	<b>-1</b>	<b>-0.3%</b>	<b>-7</b>	<b>-1</b>
<b>Public Health Nurse</b>	<b>129</b>	<b>129</b>	<b>-0</b>	<b>-0.1%</b>	<b>+2</b>	<b>-1</b>
Pre-registration Nurse/ Midwife Intern				-100.0%	-9	-12
Pre-registration Nurse Intern (COVID-19)	15	17	+2	+12.6%	+17	+17
Post-registration Nurse/ Midwife Student		3	+3	-100.0%	+3	+3
<b>Nursing/ Midwifery Student</b>	<b>15</b>	<b>21</b>	<b>+5</b>	<b>+34.2%</b>	<b>+12</b>	<b>+9</b>
<b>Nursing &amp; Midwifery</b>	<b>895</b>	<b>900</b>	<b>+5</b>	<b>+0.6%</b>	<b>+39</b>	<b>+12</b>
Dietitians	6	6	-0	-1.0%	+3	+3
Occupational Therapists	74	75	+1	+1.3%	-4	-6
Physiotherapists	51	51	+0	+0.0%	-1	-1
Podiatrists & Chiropodists	5	6	+0	+5.3%	+0	+0
Speech & Language Therapists	46	48	+2	+5.1%	+1	+0
<b>Therapy Professions</b>	<b>182</b>	<b>186</b>	<b>+4</b>	<b>+2.0%</b>	<b>+0</b>	<b>-4</b>
Audiology	6	6	-0	-2.0%	+1	+1
Clinical Engineering	2	2			+2	+2
Clinical Measurement	0	0	-0	-47.9%	+0	+0
Radiographers	1	1				
<b>Health Science/ Diagnostics</b>	<b>9</b>	<b>9</b>	<b>-0</b>	<b>-4.0%</b>	<b>+3</b>	<b>+3</b>
<b>Social Care</b>	<b>6</b>	<b>6</b>			<b>+1</b>	<b>+1</b>
<b>Social Workers</b>	<b>44</b>	<b>43</b>	<b>-1</b>	<b>-1.7%</b>	<b>-2</b>	<b>-3</b>
<b>Psychologists</b>	<b>95</b>	<b>99</b>	<b>+4</b>	<b>+4.4%</b>	<b>-12</b>	<b>-9</b>
<b>Pharmacy</b>	<b>5</b>	<b>5</b>				
Counsellor Therapists	17	17	-0	-0.2%	+4	+5
Dental Hygienists	6	6			-0	-1
Other Health & Social Care	2	2	-0	-2.9%	-0	-0

Oct 2020 (Dec 2019 figure: 2,655)	WTE Sep 2020	WTE Oct 2020	WTE change since Sep 20	% change since Sep 20	WTE change since Dec 19	WTE change since Oct 19
<b>Overall</b>	<b>2,716</b>	<b>2,720</b>	<b>+4</b>	<b>+0.1%</b>	<b>+64</b>	<b>+69</b>
Play Therapists/ Specialists	0	0			-0	-0
<b>H&amp;SC, Other</b>	<b>25</b>	<b>25</b>	<b>-0</b>	<b>-0.4%</b>	<b>+4</b>	<b>+4</b>
<b>Health &amp; Social Care Professionals</b>	<b>366</b>	<b>373</b>	<b>+7</b>	<b>+1.8%</b>	<b>+8</b>	<b>-7</b>
Executive Management	11	13	+1	+12.0%	+3	+4
Senior Management (VIII & GM)	22	22	-0	-0.2%	+0	+1
<b>Management (VIII &amp; above)</b>	<b>34</b>	<b>35</b>	<b>+1</b>	<b>+3.9%</b>	<b>+3</b>	<b>+5</b>
<b>Administrative/ Supervisory (V to VII)</b>	<b>119</b>	<b>119</b>	<b>+0</b>	<b>+0.0%</b>	<b>+14</b>	<b>+9</b>
<b>Clerical (III &amp; IV)</b>	<b>266</b>	<b>263</b>	<b>-3</b>	<b>-1.1%</b>	<b>-19</b>	<b>-20</b>
<b>Management &amp; Administrative</b>	<b>419</b>	<b>417</b>	<b>-2</b>	<b>-0.4%</b>	<b>-8</b>	<b>-6</b>
Catering	25	24	-1	-4.2%	-2	-0
Household Services	42	45	+2	+5.2%	+2	+1
Portering	8	8	+0	+3.2%	+1	+1
Other Support	30	30	-0	-1.6%	-5	-5
<b>Support</b>	<b>106</b>	<b>106</b>	<b>+1</b>	<b>+0.9%</b>	<b>-3</b>	<b>-3</b>
<b>Maintenance/ Technical</b>	<b>66</b>	<b>65</b>	<b>-0</b>	<b>-0.6%</b>	<b>+0</b>	<b>+0</b>
<b>General Support</b>	<b>171</b>	<b>172</b>	<b>+0</b>	<b>+0.3%</b>	<b>-7</b>	<b>-3</b>
HCA, Nurse's Aide, etc.	401	392	-9	-2.2%	+21	+20
Health & Social Care Assistants	12	14	+1	+11.7%	+5	+5
<b>Health Care Assistants</b>	<b>414</b>	<b>406</b>	<b>-8</b>	<b>-1.8%</b>	<b>+26</b>	<b>+25</b>
<b>Care, other</b>	<b>91</b>	<b>91</b>	<b>+0</b>	<b>+0.4%</b>	<b>+4</b>	<b>+5</b>
<b>Home Help</b>	<b>215</b>	<b>214</b>	<b>-1</b>	<b>-0.6%</b>	<b>+38</b>	<b>+46</b>
<b>Patient &amp; Client Care</b>	<b>720</b>	<b>711</b>	<b>-8</b>	<b>-1.2%</b>	<b>+60</b>	<b>+75</b>



## Employment by WTE, Headcount, Gender, Full-Time /Part-Time etc.: Oct 2020

CHO 3	WTE	Headcount	WTE: no.	% Male	% female	Male WTE: no.	Female WTE: no.	% Total Perm	% Male Perm	% Female Perm	% Total Full Time	% Total Part Time	% Male FT	% Female FT
<b>Overall</b>	<b>4,485</b>	<b>5,404</b>	<b>1.20</b>	<b>13.9%</b>	<b>86.1%</b>	<b>1.10</b>	<b>1.22</b>	<b>86.0%</b>	<b>81.0%</b>	<b>86.8%</b>	<b>54.4%</b>	<b>45.6%</b>	<b>72.1%</b>	<b>51.6%</b>
Consultant Medicine	2	2	1.00	50.0%	50.0%	1.00	1.00	100.0%	100.0%	100.0%	100.0%	0.0%	100.0%	100.0%
Consultant Paediatrics	1	1	1.00		100.0%		1.00	100.0%	100.0%	100.0%	100.0%	0.0%		100.0%
Consultant Psychiatry	25	29	1.15	44.8%	55.2%	1.05	1.24	79.3%	79.3%	68.8%	75.9%	24.1%	76.9%	75.0%
Consultant Surgery	1	1	1.00		100.0%		1.00	100.0%	100.0%	100.0%	0.0%	100.0%		0.0%
<b>Consultants</b>	<b>29</b>	<b>33</b>	<b>1.13</b>	<b>42.4%</b>	<b>57.6%</b>	<b>1.04</b>	<b>1.19</b>	<b>81.8%</b>	<b>92.9%</b>	<b>73.7%</b>	<b>75.8%</b>	<b>24.2%</b>	<b>78.6%</b>	<b>73.7%</b>
Registrar	33	35	1.06	25.7%	74.3%	1.00	1.08	5.7%	5.7%	3.8%	94.3%	5.7%	100.0%	92.3%
Senior Registrar	6	6	1.09	50.0%	50.0%	1.00	1.20	0.0%	0.0%	0.0%	83.3%	16.7%	100.0%	66.7%
Specialist Registrar	1	1	1.00		100.0%		1.00	0.0%	0.0%	0.0%	100.0%	0.0%		100.0%
<b>Registrars</b>	<b>40</b>	<b>42</b>	<b>1.06</b>	<b>28.6%</b>	<b>71.4%</b>	<b>1.00</b>	<b>1.09</b>	<b>4.8%</b>	<b>8.3%</b>	<b>3.3%</b>	<b>92.9%</b>	<b>7.1%</b>	<b>100.0%</b>	<b>90.0%</b>
Senior House Officer	21	23	1.08	13.0%	87.0%	1.00	1.09	4.3%	4.3%	0.0%	95.7%	4.3%	100.0%	95.0%
<b>SHO/ Interns</b>	<b>21</b>	<b>23</b>	<b>1.08</b>	<b>13.0%</b>	<b>87.0%</b>	<b>1.00</b>	<b>1.09</b>	<b>4.3%</b>	<b>33.3%</b>	<b>0.0%</b>	<b>95.7%</b>	<b>4.3%</b>	<b>100.0%</b>	<b>95.0%</b>
Dentists	26	32	1.21	21.9%	78.1%	1.13	1.24	90.6%	90.6%	96.0%	50.0%	50.0%	71.4%	44.0%
Other Medical	33	37	1.13	40.5%	59.5%	1.04	1.19	62.2%	62.2%	68.2%	81.1%	18.9%	86.7%	77.3%
<b>Medical/ Dental, other</b>	<b>59</b>	<b>69</b>	<b>1.16</b>	<b>31.9%</b>	<b>68.1%</b>	<b>1.07</b>	<b>1.21</b>	<b>75.4%</b>	<b>59.1%</b>	<b>83.0%</b>	<b>66.7%</b>	<b>33.3%</b>	<b>81.8%</b>	<b>59.6%</b>
<b>Medical &amp; Dental</b>	<b>150</b>	<b>167</b>	<b>1.12</b>	<b>30.5%</b>	<b>69.5%</b>	<b>1.04</b>	<b>1.15</b>	<b>49.1%</b>	<b>54.9%</b>	<b>46.6%</b>	<b>79.0%</b>	<b>21.0%</b>	<b>86.3%</b>	<b>75.9%</b>
Clinical Nurse/ Midwife Manager	192	202	1.05	13.4%	86.6%	1.01	1.06	94.1%	94.1%	93.7%	85.1%	14.9%	100.0%	82.9%
Director Nursing/Midwifery, Assistant	47	50	1.07	12.0%	88.0%	1.02	1.08	100.0%	100.0%	100.0%	92.0%	8.0%	100.0%	90.9%
Director of Nursing/Midwifery	14	14	1.00	7.1%	92.9%	1.00	1.00	92.9%	92.9%	92.3%	100.0%	0.0%	100.0%	100.0%
<b>Nurse/ Midwife Manager</b>	<b>252</b>	<b>266</b>	<b>1.05</b>	<b>12.8%</b>	<b>87.2%</b>	<b>1.01</b>	<b>1.06</b>	<b>95.1%</b>	<b>97.1%</b>	<b>94.8%</b>	<b>87.2%</b>	<b>12.8%</b>	<b>100.0%</b>	<b>85.3%</b>
Advanced Nurse/ Midwife Practitioner	3	3	1.06	33.3%	66.7%	1.00	1.09	100.0%	100.0%	100.0%	66.7%	33.3%	100.0%	50.0%
Clinical Nurse/ Midwife Specialist	50	55	1.10	7.3%	92.7%	1.02	1.11	98.2%	98.2%	98.0%	70.9%	29.1%	75.0%	70.6%
<b>Nurse/ Midwife Specialist &amp; AN/MP</b>	<b>53</b>	<b>58</b>	<b>1.10</b>	<b>8.6%</b>	<b>91.4%</b>	<b>1.01</b>	<b>1.11</b>	<b>98.3%</b>	<b>100.0%</b>	<b>98.1%</b>	<b>70.7%</b>	<b>29.3%</b>	<b>80.0%</b>	<b>69.8%</b>
Staff Nurse [Intellectual Disability]	215	235	1.09	1.3%	98.7%	1.02	1.09	96.6%	96.6%	96.6%	59.1%	40.9%	66.7%	59.1%
Staff Nurse [Psychiatric]	244	264	1.08	24.2%	75.8%	1.07	1.09	95.5%	95.5%	96.0%	84.1%	15.9%	82.8%	84.5%
Staff Nurses [General/ Children's]	333	409	1.23	5.6%	94.4%	1.04	1.24	93.6%	93.6%	93.5%	51.3%	48.7%	82.6%	49.5%
<b>Staff Nurse/ Staff Midwife</b>	<b>791</b>	<b>908</b>	<b>1.15</b>	<b>9.9%</b>	<b>90.1%</b>	<b>1.06</b>	<b>1.16</b>	<b>94.9%</b>	<b>94.4%</b>	<b>95.0%</b>	<b>62.9%</b>	<b>37.1%</b>	<b>82.2%</b>	<b>60.8%</b>
<b>Public Health Nurse</b>	<b>129</b>	<b>160</b>	<b>1.24</b>	<b>0.6%</b>	<b>99.4%</b>	<b>1.25</b>	<b>1.24</b>	<b>91.9%</b>	<b>100.0%</b>	<b>91.8%</b>	<b>64.4%</b>	<b>35.6%</b>	<b>0.0%</b>	<b>64.8%</b>
Pre-registration Nurse Intern (COVID-19)	20	23	1.16	34.8%	65.2%	1.14	1.17	4.3%	4.3%	6.7%	87.0%	13.0%	100.0%	80.0%

Post-registration Nurse/ Midwife Student	3	4	1.19		100.0%		1.19	0.0%	0.0%	0.0%	100.0%	0.0%		100.0%
<b>Nursing/ Midwifery Student</b>	<b>23</b>	<b>27</b>	<b>1.16</b>	<b>29.6%</b>	<b>70.4%</b>	<b>1.14</b>	<b>1.17</b>	<b>3.7%</b>	<b>0.0%</b>	<b>5.3%</b>	<b>88.9%</b>	<b>11.1%</b>	<b>100.0%</b>	<b>84.2%</b>
Nursing Education/Clinical	3	3	1.10		100.0%		1.10	100.0%	100.0%	100.0%	66.7%	33.3%		66.7%
Other Nursing/ Midwifery	1	1	1.00	100.0%		1.00		100.0%	100.0%		100.0%	0.0%	100.0%	
<b>Nursing/ Midwifery other</b>	<b>4</b>	<b>4</b>	<b>1.08</b>	<b>25.0%</b>	<b>75.0%</b>	<b>1.00</b>	<b>1.10</b>	<b>100.0%</b>	<b>100.0%</b>	<b>100.0%</b>	<b>75.0%</b>	<b>25.0%</b>	<b>100.0%</b>	<b>66.7%</b>
<b>Nursing &amp; Midwifery</b>	<b>1,253</b>	<b>1,423</b>	<b>1.14</b>	<b>9.8%</b>	<b>90.2%</b>	<b>1.05</b>	<b>1.15</b>	<b>93.0%</b>	<b>89.9%</b>	<b>93.4%</b>	<b>68.4%</b>	<b>31.6%</b>	<b>87.1%</b>	<b>66.4%</b>
Dietitians	6	7	1.15		100.0%		1.15	100.0%	100.0%	100.0%	71.4%	28.6%		71.4%
Occupational Therapists	86	96	1.12	7.3%	92.7%	1.00	1.13	93.8%	93.8%	93.3%	79.2%	20.8%	100.0%	77.5%
Physiotherapists	58	66	1.14	15.2%	84.8%	1.03	1.16	87.9%	87.9%	85.7%	72.7%	27.3%	90.0%	69.6%
Podiatrists & Chiropodists	6	7	1.21		100.0%		1.21	85.7%	85.7%	85.7%	85.7%	14.3%		85.7%
Speech & Language Therapists	61	72	1.19	2.8%	97.2%	1.26	1.18	93.1%	93.1%	92.9%	70.8%	29.2%	50.0%	71.4%
<b>Therapy Professions</b>	<b>216</b>	<b>248</b>	<b>1.15</b>	<b>7.7%</b>	<b>92.3%</b>	<b>1.04</b>	<b>1.16</b>	<b>91.9%</b>	<b>100.0%</b>	<b>91.3%</b>	<b>75.0%</b>	<b>25.0%</b>	<b>89.5%</b>	<b>73.8%</b>
Audiology	6	6	1.03		100.0%		1.03	83.3%	83.3%	83.3%	100.0%	0.0%		100.0%
Clinical Engineering	2	2	1.03	100.0%		1.03		50.0%	50.0%		50.0%	50.0%	50.0%	
Clinical Measurement	0	1	4.00		100.0%		4.00	0.0%	0.0%	0.0%	0.0%	100.0%		0.0%
Radiographers	1	1	2.00	100.0%		2.00		100.0%	100.0%		0.0%	100.0%	0.0%	
<b>Health Science/ Diagnostics</b>	<b>9</b>	<b>10</b>	<b>1.18</b>	<b>30.0%</b>	<b>70.0%</b>	<b>1.22</b>	<b>1.16</b>	<b>70.0%</b>	<b>66.7%</b>	<b>71.4%</b>	<b>70.0%</b>	<b>30.0%</b>	<b>33.3%</b>	<b>85.7%</b>
<b>Social Care</b>	<b>273</b>	<b>316</b>	<b>1.16</b>	<b>10.1%</b>	<b>89.9%</b>	<b>1.07</b>	<b>1.17</b>	<b>76.3%</b>	<b>71.9%</b>	<b>76.8%</b>	<b>36.7%</b>	<b>63.3%</b>	<b>40.6%</b>	<b>36.3%</b>
<b>Social Workers</b>	<b>55</b>	<b>63</b>	<b>1.14</b>	<b>14.3%</b>	<b>85.7%</b>	<b>1.08</b>	<b>1.15</b>	<b>95.2%</b>	<b>100.0%</b>	<b>94.4%</b>	<b>79.4%</b>	<b>20.6%</b>	<b>77.8%</b>	<b>79.6%</b>
<b>Psychologists</b>	<b>116</b>	<b>133</b>	<b>1.15</b>	<b>20.3%</b>	<b>79.7%</b>	<b>1.08</b>	<b>1.17</b>	<b>45.9%</b>	<b>44.4%</b>	<b>46.2%</b>	<b>92.5%</b>	<b>7.5%</b>	<b>100.0%</b>	<b>90.6%</b>
<b>Pharmacy</b>	<b>5</b>	<b>5</b>	<b>1.04</b>	<b>40.0%</b>	<b>60.0%</b>	<b>1.00</b>	<b>1.07</b>	<b>100.0%</b>	<b>100.0%</b>	<b>100.0%</b>	<b>80.0%</b>	<b>20.0%</b>	<b>100.0%</b>	<b>66.7%</b>
Counsellor Therapists	17	18	1.09	5.6%	94.4%	1.23	1.08	100.0%	100.0%	100.0%	61.1%	38.9%	100.0%	58.8%
Dental Hygienists	6	8	1.33		100.0%		1.33	100.0%	100.0%	100.0%	25.0%	75.0%		25.0%
Other Health & Social Care	8	9	1.10	11.1%	88.9%	1.00	1.12	100.0%	100.0%	100.0%	77.8%	22.2%	100.0%	75.0%
Play Therapists/ Specialists	5	7	1.53		100.0%		1.53	100.0%	100.0%	100.0%	28.6%	71.4%		28.6%
<b>H&amp;SC, Other</b>	<b>35</b>	<b>42</b>	<b>1.19</b>	<b>4.8%</b>	<b>95.2%</b>	<b>1.10</b>	<b>1.19</b>	<b>100.0%</b>	<b>100.0%</b>	<b>100.0%</b>	<b>52.4%</b>	<b>47.6%</b>	<b>100.0%</b>	<b>50.0%</b>
<b>Health &amp; Social Care</b>	<b>709</b>	<b>817</b>	<b>1.15</b>	<b>11.5%</b>	<b>88.5%</b>	<b>1.07</b>	<b>1.16</b>	<b>78.8%</b>	<b>73.4%</b>	<b>79.5%</b>	<b>62.2%</b>	<b>37.8%</b>	<b>73.4%</b>	<b>60.7%</b>
Executive Management	15	15	1.02	26.7%	73.3%	1.00	1.02	100.0%	100.0%	100.0%	100.0%	0.0%	100.0%	100.0%
Senior Management (VIII & GM)	26	27	1.03	18.5%	81.5%	1.00	1.04	92.6%	92.6%	90.9%	92.6%	7.4%	100.0%	90.9%
<b>Management (VIII &amp; above)</b>	<b>41</b>	<b>42</b>	<b>1.03</b>	<b>21.4%</b>	<b>78.6%</b>	<b>1.00</b>	<b>1.03</b>	<b>95.2%</b>	<b>100.0%</b>	<b>93.9%</b>	<b>95.2%</b>	<b>4.8%</b>	<b>100.0%</b>	<b>93.9%</b>
<b>Administrative/ Supervisory (V to VII)</b>	<b>148</b>	<b>156</b>	<b>1.06</b>	<b>10.9%</b>	<b>89.1%</b>	<b>1.03</b>	<b>1.06</b>	<b>96.2%</b>	<b>82.4%</b>	<b>97.8%</b>	<b>86.5%</b>	<b>13.5%</b>	<b>100.0%</b>	<b>84.9%</b>
<b>Clerical (III &amp; IV)</b>	<b>299</b>	<b>345</b>	<b>1.15</b>	<b>6.7%</b>	<b>93.3%</b>	<b>1.09</b>	<b>1.16</b>	<b>84.1%</b>	<b>60.9%</b>	<b>85.7%</b>	<b>68.1%</b>	<b>31.9%</b>	<b>91.3%</b>	<b>66.5%</b>
<b>Management &amp; Administrative</b>	<b>487</b>	<b>543</b>	<b>1.11</b>	<b>9.0%</b>	<b>91.0%</b>	<b>1.05</b>	<b>1.12</b>	<b>88.4%</b>	<b>75.5%</b>	<b>89.7%</b>	<b>75.5%</b>	<b>24.5%</b>	<b>95.9%</b>	<b>73.5%</b>
Catering	29	34	1.18	32.4%	67.6%	1.05	1.25	94.1%	94.1%	100.0%	79.4%	20.6%	100.0%	69.6%
Household Services	86	98	1.14	16.3%	83.7%	1.18	1.13	89.8%	89.8%	91.5%	68.4%	31.6%	75.0%	67.1%

Portering	13	15	1.15	100.0%		1.15		86.7%	86.7%		66.7%	33.3%	66.7%	
Other Support	34	54	1.59	33.3%	66.7%	1.14	1.99	74.1%	74.1%	63.9%	66.7%	33.3%	83.3%	58.3%
<b>Support</b>	<b>162</b>	<b>201</b>	<b>1.24</b>	<b>29.9%</b>	<b>70.1%</b>	<b>1.13</b>	<b>1.30</b>	<b>86.1%</b>	<b>86.7%</b>	<b>85.8%</b>	<b>69.7%</b>	<b>30.3%</b>	<b>80.0%</b>	<b>65.2%</b>
<b>Maintenance/ Technical</b>	<b>76</b>	<b>80</b>	<b>1.05</b>	<b>100.0%</b>		<b>1.05</b>		<b>87.5%</b>	<b>87.5%</b>	<b>#DIV/0</b>	<b>93.8%</b>	<b>6.3%</b>	<b>93.8%</b>	
<b>General Support</b>	<b>238</b>	<b>281</b>	<b>1.18</b>	<b>49.8%</b>	<b>50.2%</b>	<b>1.08</b>	<b>1.30</b>	<b>86.5%</b>	<b>87.1%</b>	<b>85.8%</b>	<b>76.5%</b>	<b>23.5%</b>	<b>87.9%</b>	<b>65.2%</b>
HCA, Nurse's Aide, etc.	1,178	1,458	1.24	15.7%	84.3%	1.17	1.25	82.4%	82.4%	82.8%	32.8%	67.2%	43.2%	30.8%
Health & Social Care Assistants	15	16	1.08	18.8%	81.3%	1.00	1.10	43.8%	43.8%	53.8%	81.3%	18.8%	100.0%	76.9%
<b>Health Care Assistants</b>	<b>1,193</b>	<b>1,474</b>	<b>1.24</b>	<b>15.7%</b>	<b>84.3%</b>	<b>1.17</b>	<b>1.25</b>	<b>82.0%</b>	<b>79.3%</b>	<b>82.5%</b>	<b>33.3%</b>	<b>66.7%</b>	<b>44.0%</b>	<b>31.3%</b>
<b>Care, other</b>	<b>242</b>	<b>277</b>	<b>1.15</b>	<b>16.2%</b>	<b>83.8%</b>	<b>1.09</b>	<b>1.16</b>	<b>89.9%</b>	<b>93.3%</b>	<b>89.2%</b>	<b>62.5%</b>	<b>37.5%</b>	<b>82.2%</b>	<b>58.6%</b>
<b>Home Help</b>	<b>214</b>	<b>422</b>	<b>1.97</b>	<b>0.7%</b>	<b>99.3%</b>	<b>1.46</b>	<b>1.98</b>	<b>99.1%</b>	<b>100.0%</b>	<b>99.0%</b>	<b>9.0%</b>	<b>91.0%</b>	<b>0.0%</b>	<b>9.1%</b>
<b>Patient &amp; Client Care</b>	<b>1,648</b>	<b>2,173</b>	<b>1.32</b>	<b>12.9%</b>	<b>87.1%</b>	<b>1.16</b>	<b>1.35</b>	<b>86.3%</b>	<b>81.8%</b>	<b>87.0%</b>	<b>32.3%</b>	<b>67.7%</b>	<b>49.6%</b>	<b>29.7%</b>

## Employment by WTE, Headcount, Gender, Full-Time /Part-Time etc.: Oct 2020

CHO 3	WTE	Headcount	WTE: no.	% Male	% female	Male WTE: no.	Female WTE: no.	% Total Perm	% Male Perm	% Female Perm	% Total Full Time	% Total Part Time	% Male FT	% Female FT
<b>Overall</b>	<b>4,485</b>	<b>5,404</b>	<b>1.20</b>	<b>13.9%</b>	<b>86.1%</b>	<b>1.10</b>	<b>1.22</b>	<b>86.0%</b>	<b>81.0%</b>	<b>86.8%</b>	<b>54.4%</b>	<b>45.6%</b>	<b>72.1%</b>	<b>51.6%</b>
Community Health & Wellbeing	17	19	1.14		100.0%		1.14	100.0%	100.0%	100.0%	73.7%	26.3%		
Mental Health	791	869	1.10	22.9%	77.1%	1.06	1.11	82.2%	82.2%	82.5%	84.1%	15.9%	89.9%	89.9%
Primary Care	748	888	1.19	12.3%	87.7%	1.06	1.21	83.0%	83.0%	84.3%	70.0%	30.0%	90.8%	90.8%
HSE	1,164	1,524	1.31	12.4%	87.6%	1.07	1.35	93.0%	93.0%	94.1%	50.3%	49.7%	87.3%	87.3%
Section 38 Voluntary Agencies	1,765	2,104	1.19	12.2%	87.8%	1.17	1.19	83.7%	83.7%	84.1%	38.4%	61.6%	39.1%	39.1%
Social Care	2,930	3,628	1.24	12.3%	87.7%	1.12	1.26	87.6%	87.6%	88.3%	43.4%	56.6%	59.6%	59.6%

### CHO 3 Skills Mix by Staff Grouping: October 2020

Oct 2020 (Dec 2018 figure: 4,310)	WTE Dec 2015	WTE Dec 2016	WTE Dec 2017	WTE Dec 2018	WTE Dec 2019	WTE Sep 2020	WTE Oct 2020
<b>Overall</b>	<b>4,002</b>	<b>4,093</b>	<b>4,169</b>	<b>4,310</b>	<b>4,357</b>	<b>4,478</b>	<b>4,485</b>
Consultant Medicine	1.4%	2.1%	1.3%	1.3%	1.3%	1.4%	1.3%
Consultant Paediatrics	0.7%	0.7%	0.7%	0.7%	0.7%	0.7%	0.7%
Consultant Psychiatry	17.1%	16.0%	15.6%	14.9%	15.3%	17.0%	16.9%
Consultant Surgery	0.7%	0.7%	0.7%	0.7%	0.7%	0.7%	0.7%
<b>Consultants</b>	<b>19.9%</b>	<b>19.5%</b>	<b>18.3%</b>	<b>17.6%</b>	<b>18.0%</b>	<b>19.7%</b>	<b>19.6%</b>
Registrar	22.6%	21.6%	20.5%	18.3%	23.1%	23.5%	22.1%
Senior Registrar	3.5%	3.5%	3.6%	3.3%	3.3%	3.7%	3.7%
Specialist Registrar	1.4%	0.7%		0.7%	1.0%	0.7%	0.7%
<b>Registrars</b>	<b>27.5%</b>	<b>25.7%</b>	<b>24.1%</b>	<b>22.3%</b>	<b>27.4%</b>	<b>27.9%</b>	<b>26.5%</b>
Interns	0.7%						
Senior House Officer	16.3%	17.7%	18.7%	21.3%	16.4%	13.8%	14.3%
<b>SHO/ Interns</b>	<b>17.0%</b>	<b>17.7%</b>	<b>18.7%</b>	<b>21.3%</b>	<b>16.4%</b>	<b>13.8%</b>	<b>14.3%</b>
Dentists	16.1%	16.3%	18.5%	17.2%	17.6%	17.2%	17.7%
Other Medical	19.5%	20.8%	20.4%	21.6%	20.6%	21.4%	22.0%
<b>Medical/ Dental, other</b>	<b>35.5%</b>	<b>37.1%</b>	<b>38.9%</b>	<b>38.8%</b>	<b>38.2%</b>	<b>38.6%</b>	<b>39.6%</b>
<b>Medical &amp; Dental</b>	<b>3.6%</b>	<b>3.5%</b>	<b>3.6%</b>	<b>3.5%</b>	<b>3.4%</b>	<b>100.0%</b>	<b>3.3%</b>
Clinical Nurse/ Midwife Manager	14.8%	15.9%	15.6%	15.2%	15.0%	15.5%	15.3%
Director Nursing/Midwifery, Assistant	2.9%	3.3%	3.5%	3.5%	3.7%	3.7%	3.7%
Director of Nursing/Midwifery	1.0%	1.1%	1.1%	1.3%	1.2%	1.1%	1.1%
<b>Nurse/ Midwife Manager</b>	<b>18.7%</b>	<b>20.3%</b>	<b>20.2%</b>	<b>19.9%</b>	<b>19.9%</b>	<b>20.3%</b>	<b>20.1%</b>
Advanced Nurse/ Midwife Practitioner	0.1%		0.1%		0.1%	0.2%	0.2%
Clinical Nurse/ Midwife Specialist	3.6%	3.4%	3.6%	3.9%	4.3%	4.0%	4.0%
<b>Nurse/ Midwife Specialist &amp; AN/MP</b>	<b>3.7%</b>	<b>3.4%</b>	<b>3.7%</b>	<b>3.9%</b>	<b>4.5%</b>	<b>4.2%</b>	<b>4.2%</b>
Staff Midwives			0.1%				
Staff Nurse [Intellectual Disability]	20.8%	19.2%	18.8%	18.2%	16.8%	16.9%	17.2%
Staff Nurse [Psychiatric]	21.3%	20.9%	20.3%	19.3%	19.1%	19.8%	19.5%
Staff Nurses [General/ Children's]	24.5%	25.7%	25.8%	26.5%	27.5%	26.7%	26.6%
<b>Staff Nurse/ Staff Midwife</b>	<b>66.7%</b>	<b>65.8%</b>	<b>64.9%</b>	<b>64.1%</b>	<b>63.4%</b>	<b>63.3%</b>	<b>63.2%</b>
<b>Public Health Nurse</b>	<b>9.5%</b>	<b>9.2%</b>	<b>9.8%</b>	<b>10.2%</b>	<b>10.3%</b>	<b>10.4%</b>	<b>10.3%</b>
Pre-registration Nurse/ Midwife Intern		0.1%	0.0%	1.3%	1.6%		
Pre-registration Nurse Intern (COVID-19)						1.4%	1.6%
Post-registration Nurse/ Midwife Student	0.6%	0.5%	0.6%	0.3%			0.3%
<b>Nursing/ Midwifery Student</b>	<b>0.6%</b>	<b>0.6%</b>	<b>0.6%</b>	<b>1.6%</b>	<b>1.6%</b>	<b>1.4%</b>	<b>1.9%</b>
<b>Nursing/ Midwifery other</b>	<b>0.9%</b>	<b>0.7%</b>	<b>0.7%</b>	<b>0.3%</b>	<b>0.3%</b>	<b>0.3%</b>	<b>0.3%</b>
<b>Nursing &amp; Midwifery</b>	<b>30.6%</b>	<b>30.3%</b>	<b>29.3%</b>	<b>28.3%</b>	<b>28.0%</b>	<b>100.0%</b>	<b>27.9%</b>
Dietitians	0.3%	0.1%	0.5%	0.3%	0.4%	0.9%	0.9%
Occupational Therapists	12.4%	12.3%	12.1%	12.6%	12.9%	12.1%	12.1%
Physiotherapists	8.9%	9.0%	8.8%	8.6%	8.7%	8.2%	8.2%
Podiatrists & Chiropodists	0.4%	0.6%	0.8%	0.8%	0.8%	0.8%	0.8%
Speech & Language Therapists	8.3%	8.4%	8.8%	8.1%	8.5%	8.3%	8.6%
<b>Therapy Professions</b>	<b>30.4%</b>	<b>30.4%</b>	<b>31.0%</b>	<b>30.4%</b>	<b>31.3%</b>	<b>30.3%</b>	<b>30.5%</b>
Audiology	0.8%	0.8%	0.6%	0.6%	0.7%	0.8%	0.8%
Clinical Engineering						0.3%	0.3%
Clinical Measurement				0.0%	0.0%	0.1%	0.0%
Radiographers	0.1%	0.1%	0.1%	0.1%	0.1%	0.1%	0.1%
<b>Health Science/ Diagnostics</b>	<b>0.9%</b>	<b>0.8%</b>	<b>0.6%</b>	<b>0.7%</b>	<b>0.8%</b>	<b>1.3%</b>	<b>1.2%</b>
<b>Social Care</b>	<b>34.1%</b>	<b>35.6%</b>	<b>35.8%</b>	<b>36.5%</b>	<b>35.8%</b>	<b>38.6%</b>	<b>38.5%</b>
<b>Social Workers</b>	<b>9.5%</b>	<b>9.4%</b>	<b>8.7%</b>	<b>9.3%</b>	<b>8.7%</b>	<b>8.0%</b>	<b>7.8%</b>
<b>Psychologists</b>	<b>18.7%</b>	<b>18.2%</b>	<b>18.7%</b>	<b>17.5%</b>	<b>18.1%</b>	<b>15.9%</b>	<b>16.3%</b>
<b>Pharmacy</b>	<b>0.8%</b>	<b>0.6%</b>	<b>0.7%</b>	<b>0.7%</b>	<b>0.7%</b>	<b>0.7%</b>	<b>0.7%</b>
Counsellor Therapists	2.4%	1.8%	1.6%	1.9%	1.8%	2.4%	2.3%

Oct 2020 (Dec 2018 figure: 4,310)	WTE Dec 2015	WTE Dec 2016	WTE Dec 2017	WTE Dec 2018	WTE Dec 2019	WTE Sep 2020	WTE Oct 2020
<b>Overall</b>	<b>4,002</b>	<b>4,093</b>	<b>4,169</b>	<b>4,310</b>	<b>4,357</b>	<b>4,478</b>	<b>4,485</b>
Dental Hygienists	1.0%	1.1%	1.0%	1.0%	0.9%	0.9%	0.8%
Other Health & Social Care	1.6%	1.3%	1.2%	1.2%	1.2%	1.3%	1.2%
Play Therapists/ Specialists	0.6%	0.8%	0.7%	0.8%	0.8%	0.7%	0.6%
<b>H&amp;SC, Other</b>	<b>5.7%</b>	<b>5.0%</b>	<b>4.5%</b>	<b>5.0%</b>	<b>4.7%</b>	<b>5.2%</b>	<b>5.0%</b>
<b>Health &amp; Social Care Professionals</b>	<b>14.8%</b>	<b>15.0%</b>	<b>15.7%</b>	<b>15.7%</b>	<b>15.6%</b>	<b>100.0%</b>	<b>15.8%</b>
Executive Management	0.9%	2.5%	2.2%	2.2%	2.4%	2.7%	3.0%
Senior Management (VIII & GM)	6.2%	5.2%	5.0%	4.9%	5.3%	5.4%	5.4%
<b>Management (VIII &amp; above)</b>	<b>7.1%</b>	<b>7.7%</b>	<b>7.2%</b>	<b>7.1%</b>	<b>7.7%</b>	<b>8.1%</b>	<b>8.4%</b>
Middle Management (V-VII)	22.2%	24.4%	23.7%	26.4%	25.5%	28.2%	29.0%
Other Administrative	0.7%	0.9%	1.3%	1.2%	1.4%	1.9%	1.3%
<b>Administrative/ Supervisory (V to VII)</b>	<b>22.9%</b>	<b>25.3%</b>	<b>25.0%</b>	<b>27.6%</b>	<b>26.9%</b>	<b>30.2%</b>	<b>30.3%</b>
<b>Clerical (III &amp; IV)</b>	<b>70.0%</b>	<b>67.0%</b>	<b>67.9%</b>	<b>65.3%</b>	<b>65.3%</b>	<b>61.7%</b>	<b>61.3%</b>
<b>Management &amp; Administrative</b>	<b>10.9%</b>	<b>10.5%</b>	<b>11.1%</b>	<b>11.5%</b>	<b>11.4%</b>	<b>100.0%</b>	<b>10.9%</b>
Catering	13.1%	12.3%	11.6%	11.3%	12.8%	12.6%	12.1%
Household Services	33.2%	35.9%	35.9%	35.2%	34.3%	35.3%	36.1%
Portering	5.4%	4.9%	4.6%	4.7%	4.7%	5.2%	5.5%
Other Support	16.8%	15.9%	15.9%	16.7%	16.0%	14.5%	14.2%
<b>Support</b>	<b>68.4%</b>	<b>69.0%</b>	<b>68.1%</b>	<b>67.8%</b>	<b>67.8%</b>	<b>67.7%</b>	<b>68.0%</b>
<b>Maintenance/ Technical</b>	<b>31.6%</b>	<b>31.0%</b>	<b>31.9%</b>	<b>32.2%</b>	<b>32.2%</b>	<b>32.3%</b>	<b>32.0%</b>
<b>General Support</b>	<b>6.5%</b>	<b>6.3%</b>	<b>5.9%</b>	<b>5.8%</b>	<b>5.7%</b>	<b>100.0%</b>	<b>5.3%</b>
HCA, Nurse's Aide, etc.	69.8%	72.2%	73.0%	74.0%	73.0%	71.8%	71.5%
Health & Social Care Assistants	0.4%	0.3%	0.2%	0.9%	0.6%	0.8%	0.9%
<b>Health Care Assistants</b>	<b>70.1%</b>	<b>72.5%</b>	<b>73.2%</b>	<b>75.0%</b>	<b>73.6%</b>	<b>72.6%</b>	<b>72.4%</b>
Other Care Grades	14.6%	14.3%	14.8%	14.4%	15.1%	14.4%	14.7%
<b>Care, other</b>	<b>14.6%</b>	<b>14.3%</b>	<b>14.8%</b>	<b>14.4%</b>	<b>15.1%</b>	<b>14.4%</b>	<b>14.7%</b>
<b>Home Help</b>	<b>15.2%</b>	<b>13.2%</b>	<b>12.0%</b>	<b>10.7%</b>	<b>11.4%</b>	<b>13.0%</b>	<b>13.0%</b>
<b>Patient &amp; Client Care</b>	<b>33.7%</b>	<b>34.3%</b>	<b>34.4%</b>	<b>35.3%</b>	<b>34.9%</b>	<b>100.0%</b>	<b>36.7%</b>
<b>Total</b>	<b>100 %</b>	<b>100 %</b>	<b>100 %</b>	<b>100 %</b>	<b>100%</b>	<b>100 %</b>	<b>100 %</b>

### CHO 3 Skills Mix by Care Group: October 2020

Oct 2020 (Dec 2018 figure: 783)	WTE Dec 2015	WTE Dec 2016	WTE Dec 2017	WTE Dec 2018	WTE Dec 2019	WTE Sep 2020	WTE Oct 2020
<b>Mental Health</b>	<b>777</b>	<b>781</b>	<b>784</b>	<b>783</b>	<b>795</b>	<b>791</b>	<b>791</b>
<b>Consultants</b>	<b>42.5%</b>	<b>38.1%</b>	<b>36.0%</b>	<b>35.4%</b>	<b>38.7%</b>	<b>40.7%</b>	<b>40.7%</b>
Registrar	4.2%	10.9%	10.1%	15.3%	19.0%	15.1%	14.8%
Senior Registrar	9.1%	8.7%	8.8%	8.0%	8.3%	9.0%	9.0%
Specialist Registrar	1.8%			1.6%	2.5%	1.6%	1.6%
<b>Registrars</b>	<b>15.1%</b>	<b>19.6%</b>	<b>18.9%</b>	<b>24.8%</b>	<b>29.8%</b>	<b>25.8%</b>	<b>25.5%</b>
Interns	1.8%						
Senior House Officer	40.6%	42.3%	45.1%	39.7%	31.5%	33.5%	33.8%
<b>SHO/ Interns</b>	<b>42.4%</b>	<b>42.3%</b>	<b>45.1%</b>	<b>39.7%</b>	<b>31.5%</b>	<b>33.5%</b>	<b>33.8%</b>
<b>Medical &amp; Dental</b>	<b>7.0%</b>	<b>7.4%</b>	<b>7.9%</b>	<b>8.0%</b>	<b>7.9%</b>	<b>7.7%</b>	<b>7.7%</b>
Clinical Nurse/ Midwife Manager	17.9%	19.3%	19.9%	18.3%	18.6%	18.7%	18.6%
Director Nursing/Midwifery, Assistant	3.4%	3.6%	3.7%	4.1%	3.9%	3.5%	3.5%
Director of Nursing/Midwifery	0.5%	0.5%	0.5%	0.5%	0.5%	0.3%	0.3%
<b>Nurse/ Midwife Manager</b>	<b>21.8%</b>	<b>23.4%</b>	<b>24.2%</b>	<b>22.9%</b>	<b>23.0%</b>	<b>22.4%</b>	<b>22.3%</b>
Advanced Nurse/ Midwife Practitioner	0.3%		0.3%		0.5%	0.5%	0.5%
Clinical Nurse/ Midwife Specialist	7.3%	7.2%	7.8%	8.9%	9.8%	8.6%	8.6%
<b>Nurse/ Midwife Specialist &amp; AN/MP</b>	<b>7.5%</b>	<b>7.2%</b>	<b>8.1%</b>	<b>8.9%</b>	<b>10.3%</b>	<b>9.0%</b>	<b>9.1%</b>
Staff Nurse [Intellectual Disability]	0.2%	0.2%	0.1%	0.3%	0.2%	0.2%	0.2%
Staff Nurse [Psychiatric]	68.4%	67.0%	65.3%	63.3%	61.7%	61.8%	61.4%
Staff Nurses [General/ Children's]	2.1%	1.8%	2.2%	2.3%	2.5%	2.7%	2.6%
<b>Staff Nurse/ Staff Midwife</b>	<b>70.7%</b>	<b>69.1%</b>	<b>67.6%</b>	<b>65.9%</b>	<b>64.4%</b>	<b>64.6%</b>	<b>64.2%</b>
Pre-registration Nurse/ Midwife Intern		0.3%	0.1%	2.4%	2.3%		
Pre-registration Nurse Intern (COVID-19)						3.9%	4.4%
<b>Nursing/ Midwifery Student</b>		<b>0.3%</b>	<b>0.1%</b>	<b>2.4%</b>	<b>2.3%</b>	<b>3.9%</b>	<b>4.4%</b>
<b>Nursing &amp; Midwifery</b>	<b>49.0%</b>	<b>49.3%</b>	<b>48.2%</b>	<b>47.3%</b>	<b>46.6%</b>	<b>49.8%</b>	<b>49.8%</b>
Occupational Therapists	12.1%	12.7%	14.3%	15.2%	14.7%	15.0%	14.7%
Speech & Language Therapists	3.2%	1.8%	2.9%	0.5%	1.8%	1.4%	1.3%
<b>Therapy Professions</b>	<b>15.2%</b>	<b>14.6%</b>	<b>17.2%</b>	<b>15.6%</b>	<b>16.5%</b>	<b>16.4%</b>	<b>16.0%</b>
<b>Social Care</b>	<b>2.0%</b>	<b>2.0%</b>	<b>1.8%</b>	<b>1.8%</b>	<b>1.8%</b>	<b>2.1%</b>	<b>2.0%</b>
<b>Social Workers</b>	<b>18.0%</b>	<b>17.8%</b>	<b>16.2%</b>	<b>17.2%</b>	<b>15.9%</b>	<b>17.6%</b>	<b>16.6%</b>
<b>Psychologists</b>	<b>54.6%</b>	<b>56.7%</b>	<b>57.2%</b>	<b>57.0%</b>	<b>58.0%</b>	<b>52.7%</b>	<b>54.9%</b>
<b>Pharmacy</b>	<b>1.9%</b>	<b>1.9%</b>	<b>1.8%</b>	<b>1.8%</b>	<b>1.8%</b>	<b>1.9%</b>	<b>1.9%</b>
Counsellor Therapists	8.3%	7.0%	5.8%	6.6%	6.0%	9.3%	8.5%
<b>H&amp;SC, Other</b>	<b>8.3%</b>	<b>7.0%</b>	<b>5.8%</b>	<b>6.6%</b>	<b>6.0%</b>	<b>9.3%</b>	<b>8.5%</b>
<b>Health &amp; Social Care Professionals</b>	<b>19.4%</b>	<b>18.9%</b>	<b>20.1%</b>	<b>19.5%</b>	<b>19.2%</b>	<b>18.7%</b>	<b>18.7%</b>
<b>Management (VIII &amp; above)</b>	<b>3.1%</b>	<b>4.5%</b>	<b>2.8%</b>	<b>2.7%</b>	<b>2.6%</b>	<b>1.4%</b>	<b>2.8%</b>
<b>Administrative/ Supervisory (V to VII)</b>	<b>21.1%</b>	<b>19.6%</b>	<b>21.1%</b>	<b>22.7%</b>	<b>22.5%</b>	<b>25.9%</b>	<b>26.5%</b>
<b>Clerical (III &amp; IV)</b>	<b>75.8%</b>	<b>75.9%</b>	<b>76.1%</b>	<b>74.6%</b>	<b>74.9%</b>	<b>72.6%</b>	<b>70.7%</b>
<b>Management &amp; Administrative</b>	<b>8.4%</b>	<b>8.5%</b>	<b>9.2%</b>	<b>9.3%</b>	<b>9.2%</b>	<b>9.0%</b>	<b>9.0%</b>
<b>Support</b>	<b>75.2%</b>	<b>74.4%</b>	<b>72.6%</b>	<b>76.2%</b>	<b>74.7%</b>	<b>76.4%</b>	<b>76.2%</b>
Maintenance	24.8%	25.6%	27.4%	23.8%	25.3%	23.6%	23.8%
<b>Maintenance/ Technical</b>	<b>24.8%</b>	<b>25.6%</b>	<b>27.4%</b>	<b>23.8%</b>	<b>25.3%</b>	<b>23.6%</b>	<b>23.8%</b>
<b>General Support</b>	<b>6.2%</b>	<b>6.0%</b>	<b>5.6%</b>	<b>5.9%</b>	<b>5.8%</b>	<b>4.9%</b>	<b>4.9%</b>
HCA, Nurse's Aide, etc.	98.7%	98.7%	98.6%	98.7%	97.8%	98.7%	98.7%
<b>Health Care Assistants</b>	<b>98.7%</b>	<b>98.7%</b>	<b>98.6%</b>	<b>98.7%</b>	<b>97.8%</b>	<b>98.7%</b>	<b>98.7%</b>
<b>Care, other</b>	<b>1.3%</b>	<b>1.3%</b>	<b>1.4%</b>	<b>1.3%</b>	<b>2.2%</b>	<b>1.3%</b>	<b>1.3%</b>
<b>Patient &amp; Client Care</b>	<b>9.9%</b>	<b>10.0%</b>	<b>9.1%</b>	<b>9.9%</b>	<b>9.8%</b>	<b>10.0%</b>	<b>10.0%</b>
<b>Total</b>	<b>100 %</b>	<b>100 %</b>	<b>100 %</b>	<b>100 %</b>	<b>100 %</b>	<b>100 %</b>	<b>100 %</b>



Oct 2020 (Dec 2018 figure: 780)	WTE Dec 2015	WTE Dec 2016	WTE Dec 2017	WTE Dec 2018	WTE Dec 2019	WTE Sep 2020	WTE Oct 2020
<b>Primary Care</b>	<b>670</b>	<b>671</b>	<b>725</b>	<b>780</b>	<b>764</b>	<b>742</b>	<b>748</b>
Consultant Paediatrics	1.3%	1.4%	1.3%	1.3%	1.2%	1.3%	1.3%
Consultant Surgery	1.3%	1.4%	1.3%	1.3%	1.2%	1.3%	1.3%
<b>Consultants</b>	<b>2.7%</b>	<b>2.7%</b>	<b>2.6%</b>	<b>2.6%</b>	<b>2.4%</b>	<b>2.5%</b>	<b>2.5%</b>
<b>Registrars</b>	<b>37.5%</b>	<b>33.8%</b>	<b>31.4%</b>	<b>22.8%</b>	<b>28.2%</b>	<b>32.1%</b>	<b>30.3%</b>
<b>SHO/ Interns</b>				<b>9.0%</b>	<b>7.2%</b>		<b>0.9%</b>
Dentists	30.6%	32.0%	35.7%	33.1%	32.0%	32.1%	33.2%
Other Medical	29.2%	31.5%	30.3%	32.6%	30.2%	33.3%	33.0%
<b>Medical/ Dental, other</b>	<b>59.9%</b>	<b>63.5%</b>	<b>66.0%</b>	<b>65.7%</b>	<b>62.2%</b>	<b>65.4%</b>	<b>66.2%</b>
<b>Medical &amp; Dental</b>	<b>11.2%</b>	<b>10.9%</b>	<b>10.7%</b>	<b>10.0%</b>	<b>10.2%</b>	<b>10.6%</b>	<b>10.6%</b>
Clinical Nurse/ Midwife Manager	1.5%	1.5%	1.0%	0.7%	0.4%	1.9%	2.0%
Director Nursing/Midwifery, Assistant	6.1%	7.3%	6.7%	6.5%	7.9%	8.1%	7.9%
Director of Nursing/Midwifery	1.1%	1.0%	1.0%	1.7%	1.0%	1.0%	1.0%
<b>Nurse/ Midwife Manager</b>	<b>8.8%</b>	<b>9.8%</b>	<b>8.7%</b>	<b>8.8%</b>	<b>9.3%</b>	<b>11.1%</b>	<b>10.9%</b>
<b>Nurse/ Midwife Specialist &amp; AN/MP</b>			<b>0.5%</b>	<b>0.4%</b>	<b>1.0%</b>	<b>1.5%</b>	<b>1.5%</b>
<b>Staff Nurse/ Staff Midwife</b>	<b>24.9%</b>	<b>30.0%</b>	<b>28.7%</b>	<b>29.7%</b>	<b>27.5%</b>	<b>24.2%</b>	<b>24.0%</b>
<b>Public Health Nurse</b>	<b>62.5%</b>	<b>57.3%</b>	<b>58.7%</b>	<b>59.2%</b>	<b>62.2%</b>	<b>63.2%</b>	<b>62.0%</b>
<b>Nursing/ Midwifery Student</b>	<b>3.8%</b>	<b>3.0%</b>	<b>3.4%</b>	<b>1.9%</b>			<b>1.6%</b>
<b>Nursing &amp; Midwifery</b>	<b>27.8%</b>	<b>29.6%</b>	<b>28.2%</b>	<b>26.8%</b>	<b>27.4%</b>	<b>27.4%</b>	<b>27.4%</b>
Dietitians	0.9%	0.5%	1.8%	1.6%	2.2%	3.0%	2.9%
Occupational Therapists	24.1%	24.3%	24.5%	25.5%	22.2%	21.7%	21.4%
Physiotherapists	22.8%	24.6%	24.1%	21.8%	22.9%	20.7%	20.3%
Podiatrists & Chiropodists			0.9%	0.8%	1.5%	2.5%	2.4%
Speech & Language Therapists	16.3%	17.6%	17.3%	17.3%	17.6%	16.9%	18.1%
<b>Therapy Professions</b>	<b>64.1%</b>	<b>67.0%</b>	<b>68.5%</b>	<b>66.9%</b>	<b>66.4%</b>	<b>64.8%</b>	<b>65.1%</b>
Audiology	4.6%	4.6%	3.2%	3.1%	3.7%	4.9%	4.6%
<b>Health Science/ Diagnostics</b>	<b>4.6%</b>	<b>4.6%</b>	<b>3.2%</b>	<b>3.1%</b>	<b>3.7%</b>	<b>4.9%</b>	<b>4.6%</b>
<b>Social Care</b>	<b>0.9%</b>	<b>1.0%</b>	<b>0.9%</b>	<b>0.8%</b>	<b>0.8%</b>	<b>0.8%</b>	<b>0.8%</b>
<b>Social Workers</b>	<b>11.6%</b>	<b>9.0%</b>	<b>8.3%</b>	<b>8.4%</b>	<b>8.1%</b>	<b>8.1%</b>	<b>7.9%</b>
<b>Psychologists</b>	<b>9.2%</b>	<b>9.5%</b>	<b>10.2%</b>	<b>11.2%</b>	<b>12.0%</b>	<b>11.9%</b>	<b>11.6%</b>
<b>Pharmacy</b>	<b>0.9%</b>		<b>0.9%</b>	<b>0.8%</b>	<b>0.8%</b>	<b>0.8%</b>	<b>0.8%</b>
Counsellor Therapists	1.6%	0.9%	0.9%	2.3%	2.3%	2.5%	3.2%
Dental Hygienists	5.7%	6.5%	5.9%	5.2%	4.7%	4.9%	4.8%
Other Health & Social Care	0.9%	1.0%	0.9%	0.8%	0.8%	0.8%	0.8%
Play Therapists/ Specialists	0.4%	0.5%	0.4%	0.4%	0.4%	0.4%	0.4%
<b>H&amp;SC, Other</b>	<b>8.6%</b>	<b>8.9%</b>	<b>8.1%</b>	<b>8.8%</b>	<b>8.2%</b>	<b>8.6%</b>	<b>9.2%</b>
<b>Health &amp; Social Care Professionals</b>	<b>16.1%</b>	<b>15.0%</b>	<b>15.7%</b>	<b>16.2%</b>	<b>16.5%</b>	<b>16.7%</b>	<b>16.7%</b>
Executive Management	1.0%	3.4%	3.1%	3.2%	3.4%	3.3%	4.0%
Senior Management (VIII & GM)	7.9%	6.7%	6.8%	5.5%	6.6%	7.0%	6.6%
<b>Management (VIII &amp; above)</b>	<b>8.9%</b>	<b>10.1%</b>	<b>9.8%</b>	<b>8.7%</b>	<b>10.0%</b>	<b>10.3%</b>	<b>10.6%</b>
<b>Administrative/ Supervisory (V to VII)</b>	<b>21.5%</b>	<b>24.0%</b>	<b>23.7%</b>	<b>27.0%</b>	<b>23.2%</b>	<b>26.7%</b>	<b>25.8%</b>
<b>Clerical (III &amp; IV)</b>	<b>69.6%</b>	<b>65.9%</b>	<b>66.5%</b>	<b>64.2%</b>	<b>66.8%</b>	<b>63.0%</b>	<b>63.6%</b>
<b>Management &amp; Administrative</b>	<b>30.5%</b>	<b>30.1%</b>	<b>31.4%</b>	<b>31.6%</b>	<b>32.3%</b>	<b>29.5%</b>	<b>29.5%</b>
<b>Support</b>	<b>34.5%</b>	<b>34.8%</b>	<b>34.2%</b>	<b>31.4%</b>	<b>30.7%</b>	<b>31.6%</b>	<b>33.9%</b>
<b>Maintenance/ Technical</b>	<b>65.5%</b>	<b>65.2%</b>	<b>65.8%</b>	<b>68.6%</b>	<b>69.3%</b>	<b>68.4%</b>	<b>66.1%</b>
<b>General Support</b>	<b>6.8%</b>	<b>6.6%</b>	<b>6.1%</b>	<b>5.8%</b>	<b>5.9%</b>	<b>5.7%</b>	<b>5.7%</b>
HCA, Nurse's Aide, etc.	13.9%	14.5%	15.1%	22.3%	21.1%	20.7%	20.9%
Health & Social Care Assistants				13.3%	8.5%	11.0%	12.0%
<b>Health Care Assistants</b>	<b>13.9%</b>	<b>14.5%</b>	<b>15.1%</b>	<b>35.7%</b>	<b>29.5%</b>	<b>31.7%</b>	<b>32.9%</b>
<b>Care, other</b>	<b>85.0%</b>	<b>84.5%</b>	<b>83.6%</b>	<b>63.4%</b>	<b>69.4%</b>	<b>67.3%</b>	<b>66.1%</b>
<b>Home Help</b>	<b>1.1%</b>	<b>1.0%</b>	<b>1.3%</b>	<b>1.0%</b>	<b>1.0%</b>	<b>1.0%</b>	<b>1.0%</b>
<b>Patient &amp; Client Care</b>	<b>7.6%</b>	<b>7.8%</b>	<b>7.9%</b>	<b>9.6%</b>	<b>9.8%</b>	<b>10.0%</b>	<b>10.0%</b>



Oct 2020 (Dec 2018 figure: 780)	WTE Dec 2015	WTE Dec 2016	WTE Dec 2017	WTE Dec 2018	WTE Dec 2019	WTE Sep 2020	WTE Oct 2020
<b>Primary Care</b>	<b>670</b>	<b>671</b>	<b>725</b>	<b>780</b>	<b>764</b>	<b>742</b>	<b>748</b>
<b>Total</b>	<b>100 %</b>	<b>100 %</b>	<b>100 %</b>	<b>100 %</b>	<b>100 %</b>	<b>100 %</b>	<b>100 %</b>

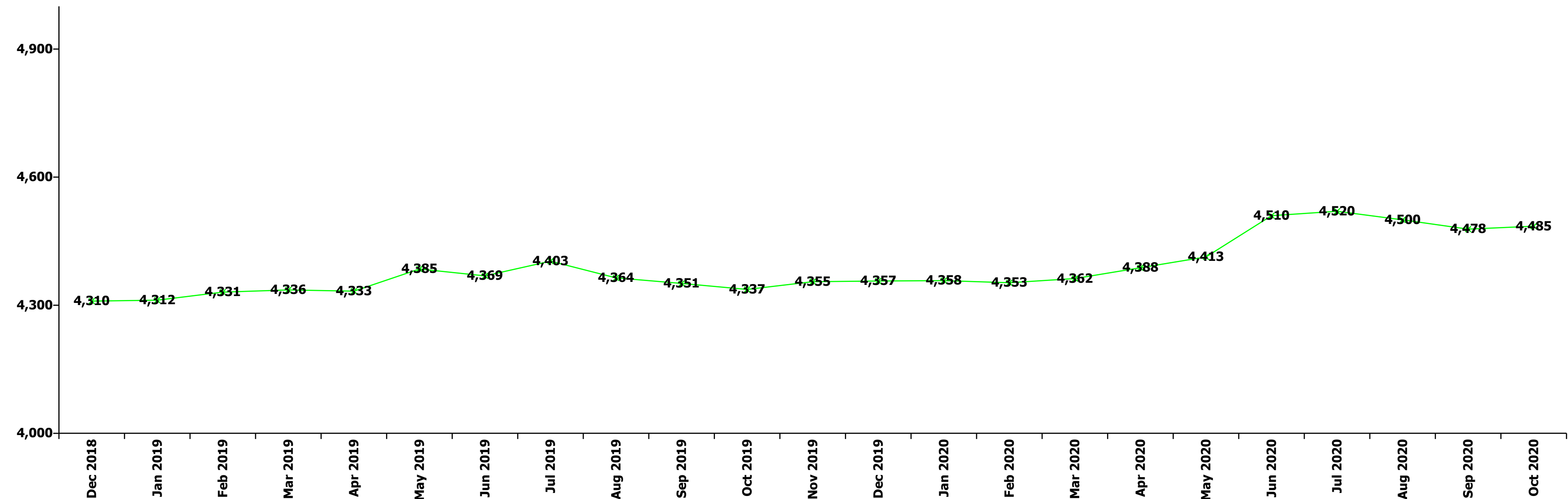
Oct 2020 (Dec 2018 figure: 1,796)	WTE Dec 2015	WTE Dec 2016	WTE Dec 2017	WTE Dec 2018	WTE Dec 2019	WTE Sep 2020	WTE Oct 2020
<b>Disabilities</b>	<b>1,568</b>	<b>1,669</b>	<b>1,725</b>	<b>1,796</b>	<b>1,823</b>	<b>1,900</b>	<b>1,904</b>
Consultant Psychiatry	70.3%	68.3%	68.3%	54.0%	51.8%	60.3%	62.0%
<b>Consultants</b>	<b>70.3%</b>	<b>68.3%</b>	<b>68.3%</b>	<b>54.0%</b>	<b>51.8%</b>	<b>60.3%</b>	<b>62.0%</b>
<b>Medical/ Dental, other</b>	<b>29.7%</b>	<b>31.7%</b>	<b>31.7%</b>	<b>46.0%</b>	<b>48.2%</b>	<b>39.7%</b>	<b>38.0%</b>
<b>Medical &amp; Dental</b>	<b>0.2%</b>	<b>0.2%</b>	<b>0.2%</b>	<b>0.1%</b>	<b>0.1%</b>	<b>0.1%</b>	<b>0.1%</b>
Clinical Nurse/ Midwife Manager	17.2%	20.3%	20.5%	21.0%	21.4%	22.2%	21.5%
Director Nursing/Midwifery, Assistant	0.3%			0.3%	0.3%	0.3%	0.3%
<b>Nurse/ Midwife Manager</b>	<b>17.5%</b>	<b>20.3%</b>	<b>20.5%</b>	<b>21.3%</b>	<b>21.6%</b>	<b>22.5%</b>	<b>21.7%</b>
Clinical Nurse/ Midwife Specialist	3.2%	3.2%	3.4%	3.4%	3.6%	3.2%	3.2%
<b>Nurse/ Midwife Specialist &amp; AN/MP</b>	<b>3.2%</b>	<b>3.2%</b>	<b>3.4%</b>	<b>3.4%</b>	<b>3.6%</b>	<b>3.2%</b>	<b>3.2%</b>
Staff Nurse [Intellectual Disability]	67.0%	63.1%	63.3%	62.1%	59.3%	60.2%	60.8%
Staff Nurses [General/ Children's]	9.4%	11.1%	10.5%	10.1%	11.2%	12.5%	12.6%
<b>Staff Nurse/ Staff Midwife</b>	<b>76.5%</b>	<b>74.1%</b>	<b>73.7%</b>	<b>72.2%</b>	<b>70.4%</b>	<b>72.7%</b>	<b>73.3%</b>
Pre-registration Nurse/ Midwife Intern				2.0%	3.3%		
Pre-registration Nurse Intern (COVID-19)						0.5%	0.7%
<b>Nursing/ Midwifery Student</b>				<b>2.0%</b>	<b>3.3%</b>	<b>0.5%</b>	<b>0.7%</b>
<b>Nursing/ Midwifery other</b>	<b>2.8%</b>	<b>2.3%</b>	<b>2.4%</b>	<b>1.1%</b>	<b>1.1%</b>	<b>1.1%</b>	<b>1.1%</b>
<b>Nursing &amp; Midwifery</b>	<b>24.2%</b>	<b>22.5%</b>	<b>21.0%</b>	<b>19.8%</b>	<b>19.5%</b>	<b>18.5%</b>	<b>18.5%</b>
Occupational Therapists	5.2%	5.8%	4.8%	5.7%	6.6%	6.3%	6.1%
Physiotherapists	5.8%	6.1%	5.7%	5.6%	5.5%	5.0%	5.0%
Speech & Language Therapists	8.7%	9.2%	9.5%	8.7%	8.6%	8.7%	8.7%
<b>Therapy Professions</b>	<b>19.7%</b>	<b>21.1%</b>	<b>20.0%</b>	<b>20.0%</b>	<b>20.6%</b>	<b>19.9%</b>	<b>19.8%</b>
Clinical Engineering						0.5%	0.5%
<b>Health Science/ Diagnostics</b>						<b>0.5%</b>	<b>0.5%</b>
<b>Social Care</b>	<b>65.7%</b>	<b>65.0%</b>	<b>66.3%</b>	<b>67.1%</b>	<b>67.0%</b>	<b>67.6%</b>	<b>68.0%</b>
<b>Social Workers</b>	<b>4.5%</b>	<b>4.8%</b>	<b>4.6%</b>	<b>4.6%</b>	<b>4.6%</b>	<b>3.7%</b>	<b>3.7%</b>
<b>Psychologists</b>	<b>6.2%</b>	<b>5.7%</b>	<b>5.9%</b>	<b>4.9%</b>	<b>4.4%</b>	<b>5.2%</b>	<b>5.1%</b>
Other Health & Social Care	2.9%	2.1%	1.9%	2.0%	2.0%	2.1%	1.8%
Play Therapists/ Specialists	1.1%	1.3%	1.2%	1.4%	1.3%	1.0%	1.0%
<b>H&amp;SC, Other</b>	<b>3.9%</b>	<b>3.4%</b>	<b>3.2%</b>	<b>3.5%</b>	<b>3.3%</b>	<b>3.1%</b>	<b>2.9%</b>
<b>Health &amp; Social Care Professionals</b>	<b>19.2%</b>	<b>19.9%</b>	<b>20.1%</b>	<b>20.2%</b>	<b>19.9%</b>	<b>20.8%</b>	<b>20.8%</b>
Executive Management	1.9%	2.0%	2.0%	1.8%	1.9%	2.7%	2.7%
Senior Management (VIII & GM)	5.4%	5.8%	3.9%	4.4%	4.5%	4.3%	4.3%
<b>Management (VIII &amp; above)</b>	<b>7.3%</b>	<b>7.8%</b>	<b>5.9%</b>	<b>6.3%</b>	<b>6.4%</b>	<b>6.9%</b>	<b>7.0%</b>
<b>Administrative/ Supervisory (V to VII)</b>	<b>28.6%</b>	<b>35.3%</b>	<b>35.0%</b>	<b>36.6%</b>	<b>38.2%</b>	<b>39.8%</b>	<b>40.3%</b>
<b>Clerical (III &amp; IV)</b>	<b>64.1%</b>	<b>56.9%</b>	<b>59.1%</b>	<b>57.2%</b>	<b>55.4%</b>	<b>53.3%</b>	<b>52.8%</b>
<b>Management &amp; Administrative</b>	<b>6.8%</b>	<b>6.0%</b>	<b>5.7%</b>	<b>6.1%</b>	<b>6.0%</b>	<b>5.9%</b>	<b>5.9%</b>
<b>Support</b>	<b>80.4%</b>	<b>80.4%</b>	<b>79.4%</b>	<b>79.8%</b>	<b>78.5%</b>	<b>75.2%</b>	<b>75.5%</b>
Maintenance	18.2%	18.2%	19.2%	18.8%	20.0%	23.4%	23.1%
Technical Services	1.4%	1.4%	1.4%	1.4%	1.5%	1.4%	1.4%
<b>Maintenance/ Technical</b>	<b>19.6%</b>	<b>19.6%</b>	<b>20.6%</b>	<b>20.2%</b>	<b>21.5%</b>	<b>24.8%</b>	<b>24.5%</b>
<b>General Support</b>	<b>4.6%</b>	<b>4.4%</b>	<b>4.1%</b>	<b>4.0%</b>	<b>3.9%</b>	<b>3.8%</b>	<b>3.8%</b>
HCA, Nurse's Aide, etc.	78.7%	80.8%	81.9%	82.0%	81.4%	82.0%	81.5%
Health & Social Care Assistants	0.3%	0.3%	0.2%	0.2%	0.1%	0.3%	0.4%
<b>Health Care Assistants</b>	<b>79.0%</b>	<b>81.1%</b>	<b>82.2%</b>	<b>82.3%</b>	<b>81.5%</b>	<b>82.3%</b>	<b>81.8%</b>
<b>Care, other</b>	<b>21.0%</b>	<b>18.9%</b>	<b>17.8%</b>	<b>17.7%</b>	<b>18.5%</b>	<b>17.7%</b>	<b>18.2%</b>
<b>Patient &amp; Client Care</b>	<b>45.1%</b>	<b>47.0%</b>	<b>49.0%</b>	<b>49.8%</b>	<b>49.0%</b>	<b>50.9%</b>	<b>50.9%</b>
<b>Total</b>	<b>100 %</b>	<b>100 %</b>	<b>100 %</b>	<b>100 %</b>	<b>100 %</b>	<b>100 %</b>	<b>100 %</b>

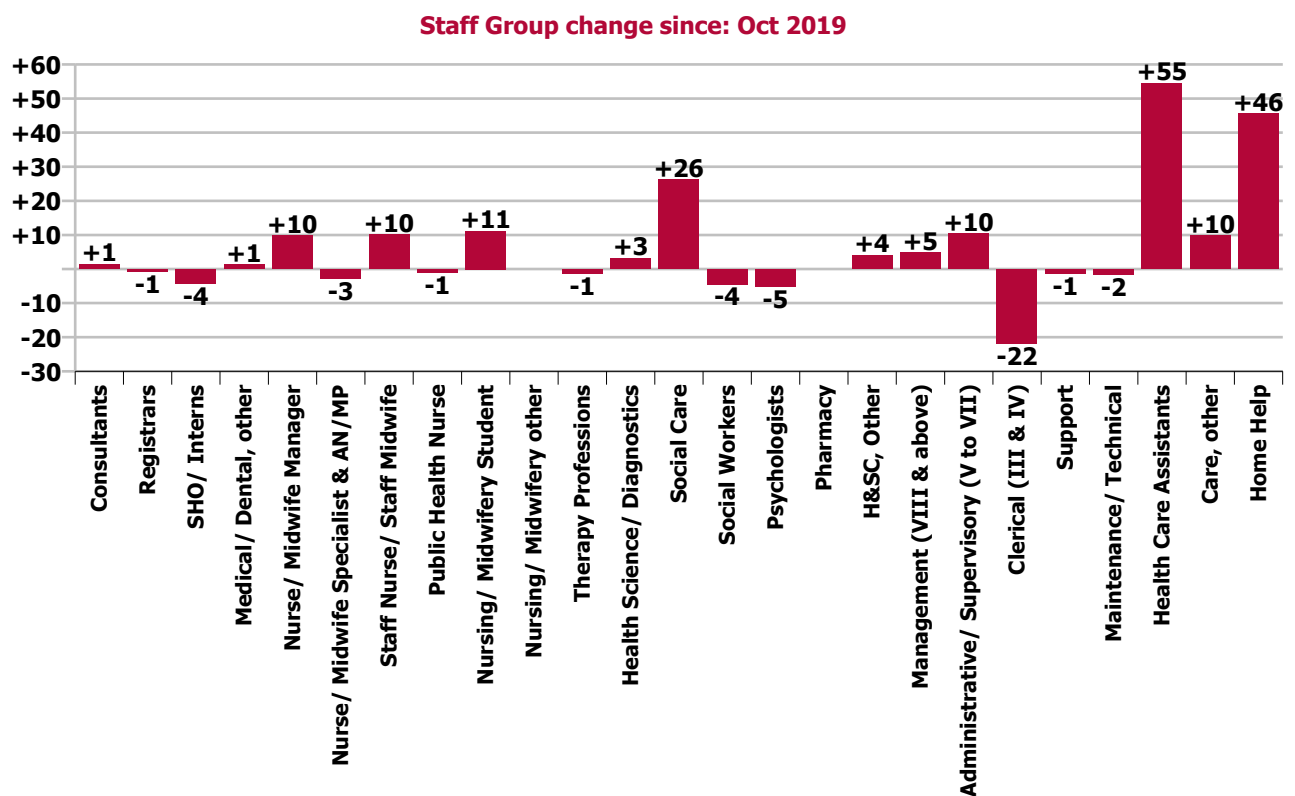
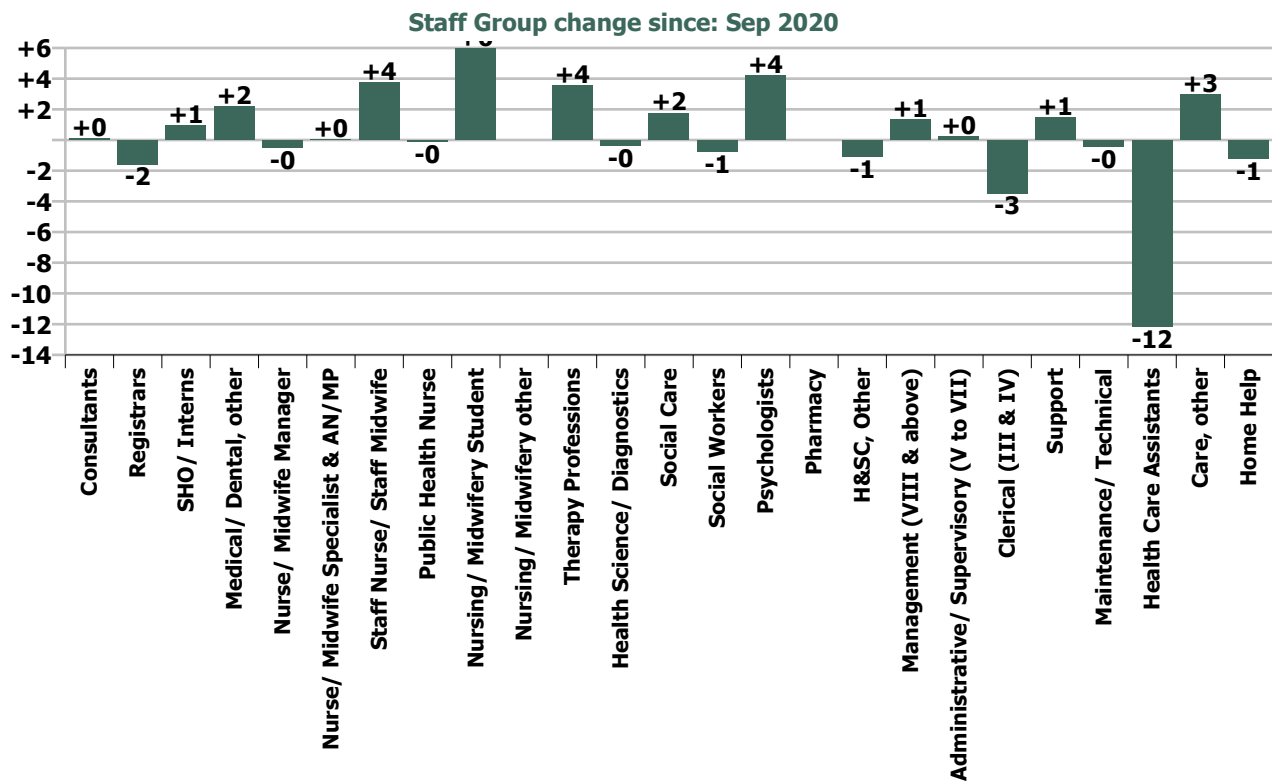
Oct 2020 (Dec 2018 figure: 951)	WTE Dec 2015	WTE Dec 2016	WTE Dec 2017	WTE Dec 2018	WTE Dec 2019	WTE Sep 2020	WTE Oct 2020
<b>Older People</b>	<b>988</b>	<b>972</b>	<b>936</b>	<b>951</b>	<b>974</b>	<b>1,030</b>	<b>1,026</b>
Consultant Medicine	10.0%	20.0%	14.3%	14.3%	16.7%	19.0%	15.0%
<b>Consultants</b>	<b>10.0%</b>	<b>20.0%</b>	<b>14.3%</b>	<b>14.3%</b>	<b>16.7%</b>	<b>19.0%</b>	<b>15.0%</b>
<b>Registrars</b>	<b>29.9%</b>	<b>10.0%</b>					
Senior House Officer	10.0%	10.0%					
<b>SHO/ Interns</b>	<b>10.0%</b>	<b>10.0%</b>					
<b>Medical/ Dental, other</b>	<b>50.1%</b>	<b>60.0%</b>	<b>85.7%</b>	<b>85.7%</b>	<b>83.3%</b>	<b>81.0%</b>	<b>85.0%</b>
<b>Medical &amp; Dental</b>	<b>1.0%</b>	<b>1.0%</b>	<b>0.7%</b>	<b>0.7%</b>	<b>0.7%</b>	<b>0.7%</b>	<b>0.7%</b>
Clinical Nurse/ Midwife Manager	16.2%	15.5%	14.3%	14.4%	12.7%	12.5%	12.9%
Director Nursing/Midwifery, Assistant	3.5%	4.4%	5.6%	4.5%	4.6%	5.1%	5.3%
Director of Nursing/Midwifery	2.8%	3.5%	3.2%	3.5%	3.6%	3.7%	3.7%
<b>Nurse/ Midwife Manager</b>	<b>22.5%</b>	<b>23.4%</b>	<b>23.1%</b>	<b>22.4%</b>	<b>20.9%</b>	<b>21.2%</b>	<b>21.8%</b>
Advanced Nurse/ Midwife Practitioner						0.3%	0.3%
Clinical Nurse/ Midwife Specialist	1.5%	0.9%	0.7%	0.6%	0.6%	0.6%	0.6%
<b>Nurse/ Midwife Specialist &amp; AN/MP</b>	<b>1.5%</b>	<b>0.9%</b>	<b>0.7%</b>	<b>0.6%</b>	<b>0.6%</b>	<b>0.9%</b>	<b>0.9%</b>
Staff Midwives			0.4%				
Staff Nurses [General/ Children's]	75.9%	75.7%	75.9%	76.9%	78.2%	77.5%	76.9%
<b>Staff Nurse/ Staff Midwife</b>	<b>75.9%</b>	<b>75.7%</b>	<b>76.3%</b>	<b>76.9%</b>	<b>78.2%</b>	<b>77.5%</b>	<b>76.9%</b>
<b>Public Health Nurse</b>					<b>0.3%</b>	<b>0.3%</b>	<b>0.3%</b>
<b>Nursing &amp; Midwifery</b>	<b>28.1%</b>	<b>28.8%</b>	<b>29.7%</b>	<b>29.7%</b>	<b>29.0%</b>	<b>29.3%</b>	<b>29.3%</b>
Dietitians	3.1%		2.8%				
Occupational Therapists	41.1%	37.1%	33.9%	27.4%	33.8%	32.1%	34.1%
Physiotherapists	32.6%	28.7%	28.9%	28.6%	28.5%	35.3%	33.5%
Podiatrists & Chiropodists	7.7%	9.6%	12.6%	12.4%	9.4%	6.7%	7.2%
Speech & Language Therapists	1.6%	1.6%	1.6%	1.6%	4.3%	4.1%	4.1%
<b>Therapy Professions</b>	<b>86.1%</b>	<b>77.0%</b>	<b>79.8%</b>	<b>70.0%</b>	<b>76.0%</b>	<b>78.2%</b>	<b>78.9%</b>
Clinical Measurement				0.2%	0.6%	1.3%	0.6%
Radiographers	1.5%	1.4%	1.4%	1.4%	1.4%	1.3%	1.3%
<b>Health Science/ Diagnostics</b>	<b>1.5%</b>	<b>1.4%</b>	<b>1.4%</b>	<b>1.6%</b>	<b>2.0%</b>	<b>2.6%</b>	<b>1.9%</b>
<b>Social Workers</b>	<b>9.3%</b>	<b>18.9%</b>	<b>16.0%</b>	<b>25.6%</b>	<b>19.3%</b>	<b>16.5%</b>	<b>16.6%</b>
<b>Pharmacy</b>	<b>3.1%</b>	<b>2.8%</b>	<b>2.8%</b>	<b>2.8%</b>	<b>2.7%</b>	<b>2.7%</b>	<b>2.6%</b>
<b>Health &amp; Social Care Professionals</b>	<b>3.3%</b>	<b>3.7%</b>	<b>3.8%</b>	<b>3.8%</b>	<b>3.7%</b>	<b>3.8%</b>	<b>3.8%</b>
Executive Management					1.3%	1.3%	1.3%
Senior Management (VIII & GM)	5.2%	3.2%	4.6%	7.3%	6.3%	6.6%	6.6%
<b>Management (VIII &amp; above)</b>	<b>5.2%</b>	<b>3.2%</b>	<b>4.6%</b>	<b>7.3%</b>	<b>7.6%</b>	<b>7.9%</b>	<b>7.9%</b>
<b>Administrative/ Supervisory (V to VII)</b>	<b>19.2%</b>	<b>19.9%</b>	<b>18.7%</b>	<b>20.5%</b>	<b>27.1%</b>	<b>24.9%</b>	<b>26.2%</b>
<b>Clerical (III &amp; IV)</b>	<b>75.6%</b>	<b>76.9%</b>	<b>76.7%</b>	<b>72.3%</b>	<b>65.3%</b>	<b>67.1%</b>	<b>65.9%</b>
<b>Management &amp; Administrative Support</b>	<b>5.9%</b>	<b>6.4%</b>	<b>7.0%</b>	<b>7.0%</b>	<b>6.8%</b>	<b>7.2%</b>	<b>7.2%</b>
<b>Maintenance/ Technical</b>	<b>27.7%</b>	<b>26.6%</b>	<b>26.3%</b>	<b>27.6%</b>	<b>25.6%</b>	<b>25.4%</b>	<b>25.2%</b>
<b>General Support</b>	<b>9.6%</b>	<b>9.7%</b>	<b>9.6%</b>	<b>9.0%</b>	<b>8.7%</b>	<b>8.1%</b>	<b>8.1%</b>
HCA, Nurse's Aide, etc.	58.6%	60.3%	59.8%	63.0%	59.7%	56.8%	56.3%
Health & Social Care Assistants	0.6%	0.4%	0.3%	0.5%	0.5%	0.4%	0.4%
<b>Health Care Assistants</b>	<b>59.2%</b>	<b>60.6%</b>	<b>60.1%</b>	<b>63.5%</b>	<b>60.2%</b>	<b>57.3%</b>	<b>56.8%</b>
<b>Care, other</b>	<b>0.9%</b>	<b>1.4%</b>	<b>2.6%</b>	<b>2.5%</b>	<b>2.1%</b>	<b>2.6%</b>	<b>2.5%</b>
<b>Home Help</b>	<b>39.8%</b>	<b>37.9%</b>	<b>37.3%</b>	<b>34.1%</b>	<b>37.7%</b>	<b>40.2%</b>	<b>40.7%</b>
<b>Patient &amp; Client Care</b>	<b>52.0%</b>	<b>50.3%</b>	<b>49.1%</b>	<b>49.8%</b>	<b>48.7%</b>	<b>51.0%</b>	<b>51.0%</b>
<b>Total</b>	<b>100 %</b>	<b>100 %</b>	<b>100 %</b>	<b>100 %</b>	<b>100 %</b>	<b>100 %</b>	<b>100 %</b>

Summary Staff Movement: October 2020

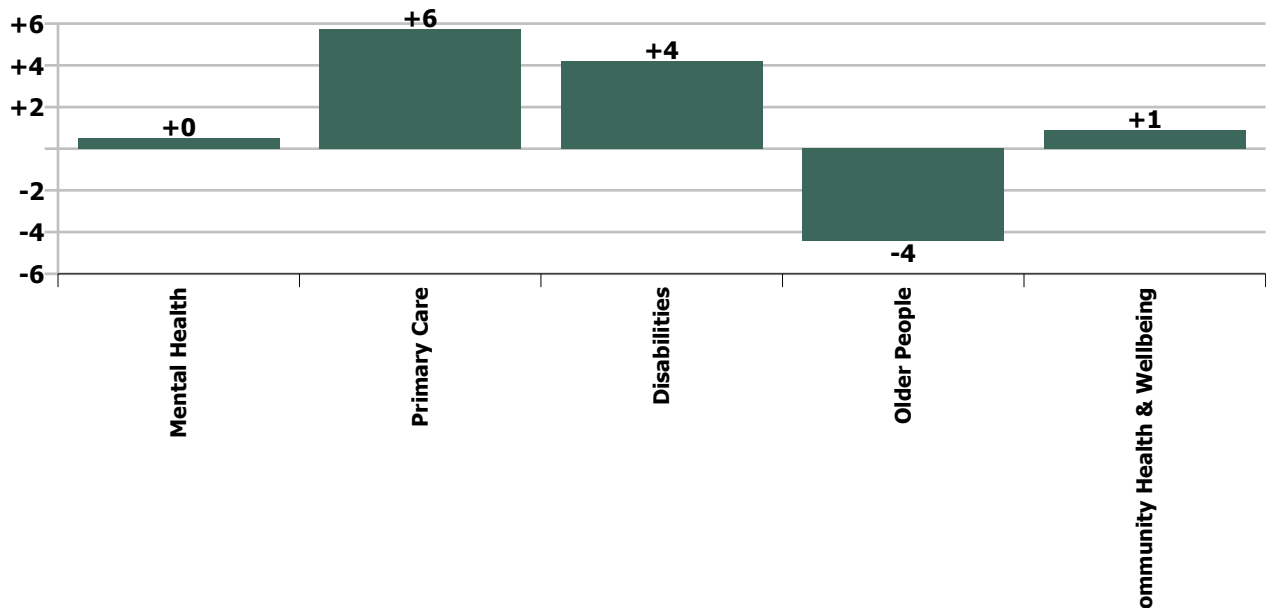
Month-on-month Summary																												
WTE change since Sep 20	% change since Sep 20	overall	Consultants	Registrars	SHO/ Interns	Medical/ Dental, other	Med/ical & Dental	Nurse/ Midwife Manager	Nurse/ Midwife Specialist & AN/MP	Staff Nurse/ Staff Midwife	Public Health Nurse	Nursing/ Midwifery Student	Nursing/ Midwifery other	Nursing & Midwifery	Therapy Professions	Health Science/ Diagnostics	Social Care	Social Workers	Psychologists	Pharmacy	H&SC, Other	Health & Social Care Professionals	Management (VIII & above)	Administrativ e/ Supervisory (V to VII)	Clerical (III & IV)	Management & Administrativ e	General Support	Patient & Client Care
Overall	+0.2%	+7	+0.1	-1.6	+0.9	+2.2	+1.6	-0.5	+0.0	+3.8	-0.1	+5.9	0.0	+9.2	+3.6	-0.4	+1.8	-0.7	+4.2	0.0	-1.1	+7.4	+1.3	+0.2	-3.5	-1.9	+1.0	-10.4
Community Health & Wellbeing	+5.6%	+1						-0.5			0.0			-0.5	0.0							0.0	-0.0	+1.5	-0.1	+1.4		0.0
Mental Health	+0.1%	+1	0.0	-0.2	+0.2		-0.0	-0.6	+0.0	-2.4		+1.9		-1.1	-0.2		0.0	-1.1	+4.5	0.0	-1.0	+2.2	+1.0	+0.6	-0.7	+0.8	-1.2	-0.2
Primary Care	+0.8%	+6	0.0	-1.4	+0.7	+0.7	+0.1	+0.0	0.0	+0.4	-0.1	+3.4		+3.7	+2.5	-0.1	0.0	+0.0	-0.0	0.0	+1.0	+3.4	+0.4	-2.9	-0.3	-2.8	+1.5	-0.2
Disabilities	+0.2%	+4	+0.1			0.0	+0.1	-1.8	0.0	+5.2		+0.6	0.0	+4.0	-0.3	0.0	+1.8	-0.0	-0.2		-1.1	+0.2	0.0	+0.2	-1.0	-0.8	+0.4	+0.3
Older People	-0.4%	-4	0.0			+1.4	+1.4	+2.4	+0.0	+0.7	0.0			+3.1	+1.5	-0.2		+0.3			0.0	+1.6	-0.1	+0.8	-1.3	-0.6	+0.4	-10.3
Social Care	-0.0%	-0	+0.1			+1.4	+1.5	+0.6	+0.0	+5.8	0.0	+0.6	0.0	+7.1	+1.2	-0.2	+1.8	+0.3	-0.2	0.0	-1.1	+1.7	-0.1	+1.0	-2.3	-1.4	+0.8	-10.1
Change	+6.9	+0.2%	+0.4%	-3.8%	+4.6%	+3.8%	+1.1%	-0.2%	+0.1%	+0.5%	-0.1%	+34.3%		+0.7%	+1.7%	-4.0%	+0.6%	-1.3%	+3.8%		-3.0%	+1.0%	+3.3%	+0.1%	-1.1%	-0.4%	+0.4%	-0.6%

Year-on-year Summary																												
WTE change since Oct 19	% change since Oct 19	overall	Consultants	Registrars	SHO/ Interns	Medical/ Dental, other	Medical & Dental	Nurse/ Midwife Manager	Nurse/ Midwife Specialist & AN/MP	Staff Nurse/ Staff Midwife	Public Health Nurse	Nursing/ Midwifery Student	Nursing/ Midwifery other	Nursing & Midwifery	Therapy Professions	Health Science/ Diagnostics	Social Care	Social Workers	Psychologists	Pharmacy	H&SC, Other	Health & Social Care Professionals	Management (VIII & above)	Administrativ e/ Supervisory (V to VII)	Clerical (III & IV)	Management & Administrative	General Support	Patient & Client Care
Overall	+3.4%	+148	+1.5	-0.7	-4.2	+1.3	-2.2	+9.9	-2.8	+10.2	-1.1	+11.2	0.0	+27.4	-1.4	+3.2	+26.2	-4.4	-5.2	0.0	+4.1	+22.4	+4.9	+10.4	-21.9	-6.6	-2.9	+110.0
Community Health & Wellbeing	+5.6%	+1									+1.0			+1.0	+2.5							+2.5	+2.0	+8.1	+1.2	+11.2		+2.0
Mental Health	+0.1%	+1	+0.9	-2.4	+1.1		-0.4	+3.1	-5.5	+14.4		+5.3		+17.4	-4.6		+0.4	-0.7	-10.6	0.0	+3.8	-11.7	+1.0	+2.1	-7.0	-3.9	-4.6	+2.6
Primary Care	+0.8%	+6	0.0	+1.6	-5.3	+0.3	-3.4	+1.5	+1.1	-9.3	-2.0	+3.4		-5.4	-6.3	+1.0	0.0	-0.8	+1.0	0.0	+0.2	-4.8	+0.0	-6.5	-17.2	-23.7	-0.8	+4.8
Disabilities	+5.2%	+94.1	+0.5			0.0	+0.5	+1.5	+0.5	+11.0		+2.5	0.0	+15.5	+2.7	+2.0	+25.9	-1.9	+4.3		-0.0	+32.9	+1.0	+3.1	+0.9	+4.9	+4.7	+35.6
Older People	+7.4%	+71.1	0.0			+1.0	+1.0	+3.8	+1.0	-5.9	0.0			-1.1	+4.2	+0.3		-1.0		0.0		+3.5	+1.0	+3.7	+0.2	+4.9	-2.2	+65.0
Social Care	-0.0%	-0	+0.5			+1.0	+1.5	+5.3	+1.5	+5.1	0.0	+2.5	0.0	+14.4	+6.9	+2.2	+25.9	-2.9	+4.3	0.0	0.0	+36.4	+2.0	+6.8	+1.1	+9.8	+2.5	+100.6
Change	+148.2	+3.4%	+5.2%	-1.8%	-16.3%	+2.2%	-1.5%	+4.1%	-5.1%	+1.3%	-0.8%	+92.4%		+2.2%	-0.6%	+60.7%	+10.6%	-7.4%	-4.3%		+13.0%	+3.3%	+13.7%	+7.6%	-6.8%	-1.3%	-1.2%	+7.2%

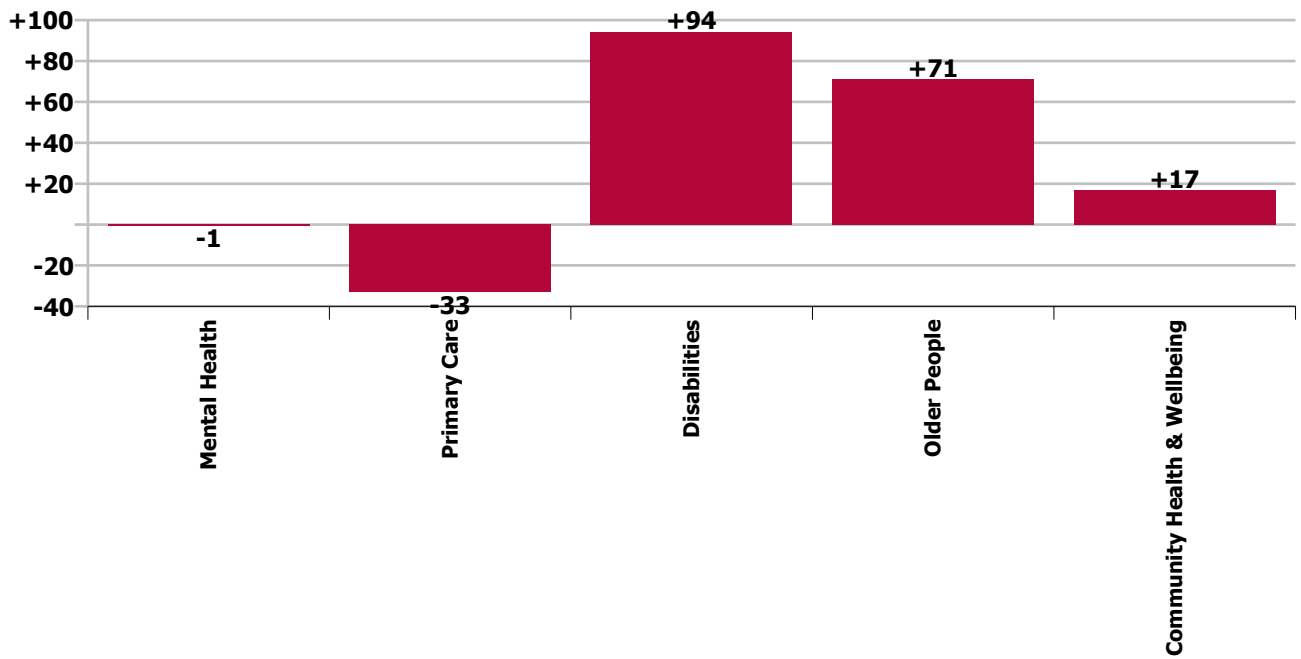




Care Group change since: Sep 2020



Care Group change since: Oct 2019



## Longitudinal Employment Levels by Grade Group - Oct 2013 to Oct 2020

Oct 2020 (Dec 2015 figure: 4,002)	WTE Oct 2020	WTE change since Dec 15	WTE change since Dec 16	WTE change since Dec 17	WTE change since Dec 18	WTE change since Dec 19	WTE change since Sep 20	% change since Dec 15	% change since Dec 16	% change since Dec 17	% change since Dec 18	% change since Dec 19	% change since Sep 20
<b>Overall</b>	<b>4,485</b>	<b>+483</b>	<b>+392</b>	<b>+316</b>	<b>+175</b>	<b>+128</b>	<b>+7</b>	<b>+12.1%</b>	<b>+9.6%</b>	<b>+7.6%</b>	<b>+4.1%</b>	<b>+2.9%</b>	<b>+0.2%</b>
Consultant Medicine	2		-1						-33.3%				
Consultant Paediatrics	1												
Consultant Psychiatry	25	+1	+2	+2	+3	+2	+0	+3.7%	+10.0%	+9.2%	+13.1%	+8.6%	+0.4%
Consultant Surgery	1												
<b>Consultants</b>	<b>29</b>	<b>+1</b>	<b>+1</b>	<b>+2</b>	<b>+3</b>	<b>+2</b>	<b>+0</b>	<b>+3.2%</b>	<b>+4.6%</b>	<b>+7.9%</b>	<b>+11.1%</b>	<b>+7.3%</b>	<b>+0.4%</b>
Registrar	33	+1	+2	+3	+6	-2	-2	+2.7%	+7.1%	+8.8%	+21.1%	-5.6%	-4.6%
Senior Registrar	6	+1	+1	+0	+1	+1		+10.0%	+10.0%	+2.0%	+10.0%	+10.0%	
Specialist Registrar	1	-1		+1		-1		-49.7%		-100.0%		-33.3%	
<b>Registrars</b>	<b>40</b>	<b>+0</b>	<b>+3</b>	<b>+4</b>	<b>+6</b>	<b>-2</b>	<b>-2</b>	<b>+1.0%</b>	<b>+7.3%</b>	<b>+10.5%</b>	<b>+18.8%</b>	<b>-4.7%</b>	<b>-3.8%</b>
Interns		-1						-100.0%	-100.0%	-100.0%	-100.0%	-100.0%	-100.0%
Senior House Officer	21	-2	-4	-6	-11	-4	+1	-7.9%	-15.9%	-23.2%	-33.2%	-14.4%	+4.6%
<b>SHO/ Interns</b>	<b>21</b>	<b>-3</b>	<b>-4</b>	<b>-6</b>	<b>-11</b>	<b>-4</b>	<b>+1</b>	<b>-11.7%</b>	<b>-15.9%</b>	<b>-23.2%</b>	<b>-33.2%</b>	<b>-14.4%</b>	<b>+4.6%</b>
Dentists	26	+4	+3	-1	+1	-0	+1	+15.6%	+13.2%	-4.0%	+2.4%	-1.3%	+3.7%
Other Medical	33	+5	+3	+3	+1	+2	+1	+18.4%	+10.0%	+8.3%	+1.7%	+5.3%	+3.8%
<b>Medical/ Dental, other</b>	<b>59</b>	<b>+9</b>	<b>+6</b>	<b>+1</b>	<b>+1</b>	<b>+1</b>	<b>+2</b>	<b>+17.1%</b>	<b>+11.4%</b>	<b>+2.4%</b>	<b>+2.0%</b>	<b>+2.2%</b>	<b>+3.8%</b>
<b>Medical &amp; Dental</b>	<b>150</b>	<b>+7</b>	<b>+6</b>	<b>+1</b>	<b>-0</b>	<b>-2</b>	<b>+2</b>	<b>+5.0%</b>	<b>+4.2%</b>	<b>+0.6%</b>	<b>-0.2%</b>	<b>-1.5%</b>	<b>+1.1%</b>
Clinical Nurse/ Midwife Manager	192	+10	-5	+0	+7	+6	-1	+5.7%	-2.8%	+0.2%	+3.7%	+3.3%	-0.6%
Director Nursing/Midwifery, Assistant	47	+12	+6	+4	+5	+1	+1	+33.7%	+14.4%	+8.3%	+10.6%	+2.0%	+1.3%
Director of Nursing/Midwifery	14	+2	+0	+1	-1	-1	+0	+16.4%	+0.9%	+8.3%	-9.5%	-6.8%	+0.2%
<b>Nurse/ Midwife Manager</b>	<b>252</b>	<b>+24</b>	<b>+1</b>	<b>+5</b>	<b>+10</b>	<b>+6</b>	<b>-0</b>	<b>+10.5%</b>	<b>+0.2%</b>	<b>+2.0%</b>	<b>+4.1%</b>	<b>+2.4%</b>	<b>-0.2%</b>
Advanced Nurse/ Midwife Practitioner	3	+2	+3	+2	+3	+1	+0	+183.0%	-100.0%	+183.0%	-100.0%	+54.6%	+0.7%
Clinical Nurse/ Midwife Specialist	50	+6	+7	+5	+2	-4	+0	+13.3%	+17.6%	+12.1%	+4.8%	-7.4%	+0.1%
<b>Nurse/ Midwife Specialist &amp; AN/MP</b>	<b>53</b>	<b>+8</b>	<b>+10</b>	<b>+7</b>	<b>+5</b>	<b>-3</b>	<b>+0</b>	<b>+17.1%</b>	<b>+24.3%</b>	<b>+15.8%</b>	<b>+10.7%</b>	<b>-5.4%</b>	<b>+0.1%</b>
Staff Midwives				-1				-100.0%	-100.0%	-100.0%	-100.0%	-100.0%	-100.0%
Staff Nurse [Intellectual Disability]	215	-40	-23	-14	-7	+6	+5	-15.5%	-9.5%	-6.2%	-3.1%	+3.1%	+2.3%
Staff Nurse [Psychiatric]	244	-18	-16	-4	+8	+7	-2	-6.7%	-6.1%	-1.7%	+3.6%	+2.7%	-0.9%
Staff Nurses [General/ Children's]	333	+32	+13	+18	+10	-9	+1	+10.8%	+4.2%	+5.6%	+3.1%	-2.6%	+0.4%
<b>Staff Nurse/ Staff Midwife</b>	<b>791</b>	<b>-25</b>	<b>-25</b>	<b>-2</b>	<b>+11</b>	<b>+4</b>	<b>+4</b>	<b>-3.0%</b>	<b>-3.1%</b>	<b>-0.2%</b>	<b>+1.5%</b>	<b>+0.5%</b>	<b>+0.5%</b>
<b>Public Health Nurse</b>	<b>129</b>	<b>+13</b>	<b>+15</b>	<b>+9</b>	<b>+6</b>	<b>+2</b>	<b>-0</b>	<b>+11.0%</b>	<b>+13.6%</b>	<b>+7.8%</b>	<b>+4.5%</b>	<b>+1.5%</b>	<b>-0.1%</b>
Pre-registration Nurse/ Midwife Intern			-1	-1	-16	-20		-100.0%	-100.0%	-100.0%	-100.0%	-100.0%	-100.0%
Pre-registration Nurse Intern (COVID-19)	20	+20	+20	+20	+20	+20	+3	-100.0%	-100.0%	-100.0%	-100.0%	-100.0%	+15.0%
Post-registration Nurse/ Midwife Student	3	-4	-3	-4	-1	+3	+3	-52.1%	-44.2%	-52.1%	-16.2%	-100.0%	-100.0%
<b>Nursing/ Midwifery Student</b>	<b>23</b>	<b>+16</b>	<b>+16</b>	<b>+16</b>	<b>+3</b>	<b>+3</b>	<b>+6</b>	<b>+232.0%</b>	<b>+232.0%</b>	<b>+209.9%</b>	<b>+17.0%</b>	<b>+13.8%</b>	<b>+34.3%</b>
Nursing Education/Clinical	3	-2	-1	-1	-0			-42.4%	-26.9%	-26.9%	-9.3%		



Oct 2020 (Dec 2015 figure: 4,002)	WTE Oct 2020	WTE change since Dec 15	WTE change since Dec 16	WTE change since Dec 17	WTE change since Dec 18	WTE change since Dec 19	WTE change since Sep 20	% change since Dec 15	% change since Dec 16	% change since Dec 17	% change since Dec 18	% change since Dec 19	% change since Sep 20
<b>Overall</b>	<b>4,485</b>	<b>+483</b>	<b>+392</b>	<b>+316</b>	<b>+175</b>	<b>+128</b>	<b>+7</b>	<b>+12.1%</b>	<b>+9.6%</b>	<b>+7.6%</b>	<b>+4.1%</b>	<b>+2.9%</b>	<b>+0.2%</b>
Other Nursing/ Midwifery	1	-5	-4	-4				-83.2%	-80.0%	-80.0%			
<b>Nursing/ Midwifery other</b>	<b>4</b>	<b>-7</b>	<b>-5</b>	<b>-5</b>	<b>-0</b>			<b>-65.1%</b>	<b>-57.3%</b>	<b>-57.3%</b>	<b>-7.0%</b>		
<b>Nursing &amp; Midwifery</b>	<b>1,253</b>	<b>+29</b>	<b>+13</b>	<b>+31</b>	<b>+35</b>	<b>+12</b>	<b>+9</b>	<b>+2.4%</b>	<b>+1.0%</b>	<b>+2.5%</b>	<b>+2.9%</b>	<b>+1.0%</b>	<b>+0.7%</b>
Dietitians	6	+4	+6	+3	+4	+3	-0	+205.0%	+1120.0%	+103.3%	+205.0%	+117.9%	-1.0%
Occupational Therapists	86	+13	+10	+7	+0	-2	+1	+17.3%	+13.1%	+8.6%	+0.3%	-2.2%	+1.1%
Physiotherapists	58	+5	+3	+0	-0	-2	+0	+9.5%	+4.7%	+0.8%	-0.2%	-3.0%	+0.0%
Podiatrists & Chiropodists	6	+3	+2	+0	+0	+0	+0	+130.3%	+66.6%	+5.3%	+5.7%	+6.8%	+5.3%
Speech & Language Therapists	61	+12	+9	+3	+6	+3	+2	+23.5%	+17.5%	+5.3%	+11.0%	+4.7%	+4.0%
<b>Therapy Professions</b>	<b>216</b>	<b>+37</b>	<b>+30</b>	<b>+14</b>	<b>+11</b>	<b>+3</b>	<b>+4</b>	<b>+20.4%</b>	<b>+15.8%</b>	<b>+6.7%</b>	<b>+5.1%</b>	<b>+1.2%</b>	<b>+1.7%</b>
Audiology	6	+1	+1	+2	+2	+1	-0	+16.0%	+24.2%	+60.7%	+49.5%	+22.1%	-2.0%
Clinical Engineering	2	+2	+2	+2	+2	+2		-100.0%	-100.0%	-100.0%	-100.0%	-100.0%	
Clinical Measurement	0	+0	+0	+0	+0	+0	-0	-100.0%	-100.0%	-100.0%	+212.5%	+19.0%	-47.9%
Radiographers	1												
<b>Health Science/ Diagnostics</b>	<b>9</b>	<b>+3</b>	<b>+3</b>	<b>+4</b>	<b>+4</b>	<b>+3</b>	<b>-0</b>	<b>+54.5%</b>	<b>+64.4%</b>	<b>+106.8%</b>	<b>+90.6%</b>	<b>+55.7%</b>	<b>-4.0%</b>
<b>Social Care</b>	<b>273</b>	<b>+71</b>	<b>+53</b>	<b>+39</b>	<b>+25</b>	<b>+28</b>	<b>+2</b>	<b>+35.2%</b>	<b>+24.4%</b>	<b>+16.7%</b>	<b>+10.2%</b>	<b>+11.5%</b>	<b>+0.6%</b>
<b>Social Workers</b>	<b>55</b>	<b>-1</b>	<b>-3</b>	<b>-1</b>	<b>-7</b>	<b>-4</b>	<b>-1</b>	<b>-1.4%</b>	<b>-4.6%</b>	<b>-1.9%</b>	<b>-11.7%</b>	<b>-6.6%</b>	<b>-1.3%</b>
<b>Psychologists</b>	<b>116</b>	<b>+5</b>	<b>+4</b>	<b>-6</b>	<b>-3</b>	<b>-8</b>	<b>+4</b>	<b>+4.8%</b>	<b>+3.4%</b>	<b>-5.0%</b>	<b>-2.4%</b>	<b>-6.3%</b>	<b>+3.8%</b>
<b>Pharmacy</b>	<b>5</b>		<b>+1</b>						<b>+26.3%</b>				
Counsellor Therapists	17	+2	+5	+6	+4	+4	-0	+16.9%	+47.5%	+62.7%	+27.6%	+32.2%	-0.2%
Dental Hygienists	6	-0	-1	-1	-1	-0		-2.6%	-8.8%	-10.4%	-9.1%	-2.3%	
Other Health & Social Care	8	-2	+0	+0	-0	-0	-1	-15.5%	+4.6%	+5.8%	-1.8%	-1.8%	-11.6%
Play Therapists/ Specialists	5	+1	-0	-0	-1	-1		+27.5%	-6.1%	-5.0%	-19.9%	-10.7%	
<b>H&amp;SC, Other</b>	<b>35</b>	<b>+2</b>	<b>+5</b>	<b>+6</b>	<b>+2</b>	<b>+3</b>	<b>-1</b>	<b>+5.1%</b>	<b>+15.8%</b>	<b>+20.0%</b>	<b>+5.0%</b>	<b>+9.9%</b>	<b>-3.0%</b>
<b>Health &amp; Social Care Professionals</b>	<b>709</b>	<b>+117</b>	<b>+93</b>	<b>+56</b>	<b>+31</b>	<b>+25</b>	<b>+7</b>	<b>+19.7%</b>	<b>+15.1%</b>	<b>+8.5%</b>	<b>+4.6%</b>	<b>+3.7%</b>	<b>+1.0%</b>
Executive Management	15	+11	+4	+5	+4	+3	+1	+268.5%	+35.2%	+47.4%	+34.0%	+23.2%	+10.2%
Senior Management (VIII & GM)	26	-1	+4	+3	+2	+0	-0	-2.8%	+17.9%	+12.8%	+8.1%	+0.5%	-0.2%
<b>Management (VIII &amp; above)</b>	<b>41</b>	<b>+10</b>	<b>+8</b>	<b>+8</b>	<b>+6</b>	<b>+3</b>	<b>+1</b>	<b>+32.2%</b>	<b>+23.6%</b>	<b>+23.2%</b>	<b>+16.2%</b>	<b>+7.7%</b>	<b>+3.3%</b>
Middle Management (V-VII)	141	+45	+36	+32	+11	+16	+3	+46.3%	+34.8%	+28.8%	+8.1%	+12.9%	+2.3%
Other Administrative	7	+4	+3	+1	+1	-1	-3	+116.7%	+62.5%	+8.3%	+8.3%	-7.1%	-31.6%
<b>Administrative/ Supervisory (V to VII)</b>	<b>148</b>	<b>+48</b>	<b>+39</b>	<b>+32</b>	<b>+11</b>	<b>+16</b>	<b>+0</b>	<b>+48.4%</b>	<b>+35.8%</b>	<b>+27.8%</b>	<b>+8.1%</b>	<b>+11.8%</b>	<b>+0.1%</b>
<b>Clerical (III &amp; IV)</b>	<b>299</b>	<b>-5</b>	<b>+11</b>	<b>-16</b>	<b>-25</b>	<b>-22</b>	<b>-3</b>	<b>-1.8%</b>	<b>+3.8%</b>	<b>-5.0%</b>	<b>-7.7%</b>	<b>-6.8%</b>	<b>-1.1%</b>
<b>Management &amp; Administrative</b>	<b>487</b>	<b>+53</b>	<b>+58</b>	<b>+24</b>	<b>-8</b>	<b>-3</b>	<b>-2</b>	<b>+12.1%</b>	<b>+13.4%</b>	<b>+5.2%</b>	<b>-1.6%</b>	<b>-0.6%</b>	<b>-0.4%</b>
Catering	29	-5	-3	+0	+1	-2	-1	-15.0%	-9.1%	+0.2%	+3.3%	-6.0%	-3.5%
Household Services	86	-0	-7	-3	-1	+4	+2	-0.4%	-7.5%	-3.3%	-1.6%	+4.6%	+2.7%
Portering	13	-1	+0	+2	+1	+2	+1	-7.3%	+1.6%	+14.0%	+12.1%	+15.9%	+6.5%



Oct 2020 (Dec 2015 figure: 4,002)	WTE Oct 2020	WTE change since Dec 15	WTE change since Dec 16	WTE change since Dec 17	WTE change since Dec 18	WTE change since Dec 19	WTE change since Sep 20	% change since Dec 15	% change since Dec 16	% change since Dec 17	% change since Dec 18	% change since Dec 19	% change since Sep 20
<b>Overall</b>	<b>4,485</b>	<b>+483</b>	<b>+392</b>	<b>+316</b>	<b>+175</b>	<b>+128</b>	<b>+7</b>	<b>+12.1%</b>	<b>+9.6%</b>	<b>+7.6%</b>	<b>+4.1%</b>	<b>+2.9%</b>	<b>+0.2%</b>
Other Support	34	-10	-7	-6	-8	-5	-0	-22.4%	-17.8%	-14.1%	-18.1%	-11.9%	-1.4%
<b>Support</b>	<b>162</b>	<b>-16</b>	<b>-17</b>	<b>-7</b>	<b>-7</b>	<b>-1</b>	<b>+1</b>	<b>-9.2%</b>	<b>-9.5%</b>	<b>-4.1%</b>	<b>-3.9%</b>	<b>-0.5%</b>	<b>+0.9%</b>
Maintenance	75	-6	-4	-3	-4	-1	-0	-7.5%	-5.4%	-3.6%	-4.8%	-1.4%	-0.6%
Technical Services	1												
<b>Maintenance/ Technical</b>	<b>76</b>	<b>-6</b>	<b>-4</b>	<b>-3</b>	<b>-4</b>	<b>-1</b>	<b>-0</b>	<b>-7.4%</b>	<b>-5.3%</b>	<b>-3.5%</b>	<b>-4.7%</b>	<b>-1.4%</b>	<b>-0.5%</b>
<b>General Support</b>	<b>238</b>	<b>-22</b>	<b>-21</b>	<b>-10</b>	<b>-10</b>	<b>-2</b>	<b>+1</b>	<b>-8.6%</b>	<b>-8.2%</b>	<b>-3.9%</b>	<b>-4.2%</b>	<b>-0.8%</b>	<b>+0.4%</b>
HCA, Nurse's Aide, etc.	1,178	+237	+164	+131	+52	+47	-14	+25.2%	+16.2%	+12.5%	+4.7%	+4.2%	-1.1%
Health & Social Care Assistants	15	+10	+11	+11	+0	+6	+1	+202.0%	+279.5%	+329.0%	+2.5%	+63.7%	+10.9%
<b>Health Care Assistants</b>	<b>1,193</b>	<b>+247</b>	<b>+175</b>	<b>+142</b>	<b>+53</b>	<b>+53</b>	<b>-12</b>	<b>+26.1%</b>	<b>+17.2%</b>	<b>+13.6%</b>	<b>+4.6%</b>	<b>+4.6%</b>	<b>-1.0%</b>
<b>Care, other</b>	<b>242</b>	<b>+44</b>	<b>+41</b>	<b>+30</b>	<b>+23</b>	<b>+8</b>	<b>+3</b>	<b>+22.5%</b>	<b>+20.4%</b>	<b>+14.2%</b>	<b>+10.5%</b>	<b>+3.3%</b>	<b>+1.2%</b>
<b>Home Help</b>	<b>214</b>	<b>+9</b>	<b>+28</b>	<b>+42</b>	<b>+52</b>	<b>+38</b>	<b>-1</b>	<b>+4.2%</b>	<b>+15.1%</b>	<b>+24.2%</b>	<b>+31.9%</b>	<b>+21.6%</b>	<b>-0.6%</b>
<b>Patient &amp; Client Care</b>	<b>1,648</b>	<b>+300</b>	<b>+244</b>	<b>+214</b>	<b>+128</b>	<b>+99</b>	<b>-10</b>	<b>+22.2%</b>	<b>+17.4%</b>	<b>+14.9%</b>	<b>+8.4%</b>	<b>+6.4%</b>	<b>-0.6%</b>

Source: Health Service Personnel Census

Longitudinal Employment Levels by Care Group - Oct 2013 to Oct 2020

Community Health & Wellbeing

Oct 2020 ( figure: )	WTE Oct 2020	WTE change since	WTE change since	WTE change since	WTE change since	WTE change since	WTE change since Sep 20	% change since	% change since	% change since	% change since	% change since	% change since Sep 20
Overall	17	+17	+17	+17	+17	+17	+1	-100.0%	-100.0%	-100.0%	-100.0%	-100.0%	+5.6%
Nursing & Midwifery	1	+1	+1	+1	+1	+1	-1	-1.0%	-1.0%	-1.0%	-1.0%	-1.0%	-0.3%
Nurse/ Midwife Manager							-1	-1.0%	-1.0%	-1.0%	-1.0%	-1.0%	-1.0%
Public Health Nurse	1	+1	+1	+1	+1	+1		-1.0%	-1.0%	-1.0%	-1.0%	-1.0%	+0.0%
Health & Social Care Professionals	3	+3	+3	+3	+3	+3	+3	-1.0%	-1.0%	-1.0%	-1.0%	-1.0%	+0.0%
Therapy Professions	3	+3	+3	+3	+3	+3		-1.0%	-1.0%	-1.0%	-1.0%	-1.0%	+0.0%
Management & Administrative	11	+11	+11	+11	+11	+11	+1	-1.0%	-1.0%	-1.0%	-1.0%	-1.0%	+0.1%
Management (VIII & above)	2	+2	+2	+2	+2	+2	-0	-1.0%	-1.0%	-1.0%	-1.0%	-1.0%	-0.0%
Administrative/ Supervisory (V to VII)	8	+8	+8	+8	+8	+8	+1	-1.0%	-1.0%	-1.0%	-1.0%	-1.0%	+0.2%
Clerical (III & IV)	1	+1	+1	+1	+1	+1	-0	-1.0%	-1.0%	-1.0%	-1.0%	-1.0%	-0.1%
Patient & Client Care	2	+2	+2	+2	+2	+2		-1.0%	-1.0%	-1.0%	-1.0%	-1.0%	+0.0%
Care, other	2	+2	+2	+2	+2	+2		-1.0%	-1.0%	-1.0%	-1.0%	-1.0%	+0.0%

Source: Health Service Personnel Census

Mental Health

Oct 2020 (Dec 2015 figure: 777)	WTE Oct 2020	WTE change since Dec 15	WTE change since Dec 16	WTE change since Dec 17	WTE change since Dec 18	WTE change since Dec 19	WTE change since Sep 20	% change since Dec 15	% change since Dec 16	% change since Dec 17	% change since Dec 18	% change since Dec 19	% change since Sep 20
Overall	791	+15	+10	+7	+8	-4	+1	+1.9%	+1.2%	+0.9%	+1.1%	-0.5%	+0.1%
Medical & Dental	61	+6	+3	-1	-2	+1	-0	+0.1%	+0.1%	-0.0%	-0.0%	+0.0%	-0.0%
Consultants	25	+2	+3	+3	+3	+1		+0.1%	+0.1%	+0.1%	+0.1%	+0.1%	+0.0%
Registrars	16	+7	+4	+4	-0	-2	-0	+0.9%	+0.4%	+0.3%	-0.0%	-0.1%	-0.0%
SHO/ Interns	21	-3	-4	-7	-4	+2	+0	-0.1%	-0.2%	-0.3%	-0.2%	+0.1%	+0.0%
Nursing & Midwifery	394	+13	+8	+16	+23	+12	-1	+0.0%	+0.0%	+0.0%	+0.1%	+0.0%	-0.0%
Nurse/ Midwife Manager	88	+5	-2	-3	+3	+0	-1	+0.1%	-0.0%	-0.0%	+0.0%	+0.0%	-0.0%
Nurse/ Midwife Specialist & AN/MP	36	+7	+8	+5	+3	-4	+0	+0.2%	+0.3%	+0.2%	+0.1%	-0.1%	+0.0%
Staff Nurse/ Staff Midwife	253	-16	-14	-3	+9	+7	-2	-0.1%	-0.1%	-0.0%	+0.0%	+0.0%	-0.0%
Nursing/ Midwifery Student	17	+17	+16	+17	+9	+8	+2	-1.0%	+16.4%	+33.8%	+1.0%	+0.9%	+0.1%
Health & Social Care Professionals	148	-3	+0	-9	-5	-11	+2	-0.0%	+0.0%	-0.1%	-0.0%	-0.1%	+0.0%
Therapy Professions	24	+1	+2	-3	-0	-3	-0	+0.0%	+0.1%	-0.1%	-0.0%	-0.1%	-0.0%
Social Care	3			+0	+0	+0		+0.0%	+0.0%	+0.1%	+0.1%	+0.0%	+0.0%
Social Workers	24	-3	-2	-1	-2	-1	-1	-0.1%	-0.1%	-0.0%	-0.1%	-0.0%	-0.0%
Psychologists	81	-1	-2	-9	-6	-11	+4	-0.0%	-0.0%	-0.1%	-0.1%	-0.1%	+0.1%
Pharmacy	3							+0.0%	+0.0%	+0.0%	+0.0%	+0.0%	+0.0%
H&SC, Other	13	+0	+2	+3	+3	+3	-1	+0.0%	+0.2%	+0.4%	+0.3%	+0.3%	-0.1%
Management & Administrative	71	+5	+5	-1	-2	-4	+1	+0.1%	+0.1%	-0.0%	-0.0%	-0.0%	+0.0%
Management (VIII & above)	2	-0	-1	-0	-0	+0	+1	-0.0%	-0.3%	-0.0%	-0.0%	+0.0%	+1.0%
Administrative/ Supervisory (V to VII)	19	+5	+6	+4	+2	+2	+1	+0.4%	+0.4%	+0.2%	+0.1%	+0.1%	+0.0%
Clerical (III & IV)	50	+0	-0	-5	-4	-6	-1	+0.0%	-0.0%	-0.1%	-0.1%	-0.1%	-0.0%
General Support	39	-9	-8	-5	-7	-5	-1	-0.2%	-0.2%	-0.1%	-0.2%	-0.1%	-0.0%
Support	30	-7	-5	-2	-6	-3	-1	-0.2%	-0.1%	-0.1%	-0.2%	-0.1%	-0.0%
Maintenance/ Technical	9	-3	-3	-3	-2	-2	-0	-0.2%	-0.2%	-0.2%	-0.2%	-0.2%	-0.0%
Patient & Client Care	79	+2	+1	+8	+1	+2	-0	+0.0%	+0.0%	+0.1%	+0.0%	+0.0%	-0.0%
Health Care Assistants	78	+2	+1	+8	+1	+3	-0	+0.0%	+0.0%	+0.1%	+0.0%	+0.0%	-0.0%
Care, other	1					-1		+0.0%	+0.0%	+0.0%	+0.0%	-0.4%	+0.0%

Source: Health Service Personnel Census

Primary Care

Oct 2020 (Dec 2015 figure: 670)	WTE Oct 2020	WTE change since Dec 15	WTE change since Dec 16	WTE change since Dec 17	WTE change since Dec 18	WTE change since Dec 19	WTE change since Sep 20	% change since Dec 15	% change since Dec 16	% change since Dec 17	% change since Dec 18	% change since Dec 19	% change since Sep 20
Overall	748	+78	+77	+23	-33	-16	+6	+11.7%	+11.5%	+3.1%	-4.2%	-2.1%	+0.8%
Medical & Dental	80	+5	+7	+2	+2	-4	+0	+0.1%	+0.1%	+0.0%	+0.0%	-0.0%	+0.0%
Consultants	2							+0.0%	+0.0%	+0.0%	+0.0%	+0.0%	+0.0%
Registrars	24	-4	-0	-0	+6	+1	-1	-0.1%	-0.0%	-0.0%	+0.4%	+0.0%	-0.1%
SHO/ Interns	1	+1	+1	+1	-6	-5	+1	-1.0%	-1.0%	-1.0%	-0.9%	-0.9%	-1.0%
Medical/ Dental, other	53	+8	+6	+2	+1	+1	+1	+0.2%	+0.1%	+0.0%	+0.0%	+0.0%	+0.0%
Nursing & Midwifery	205	+19	+6	+1	-4	+2	+4	+0.1%	+0.0%	+0.0%	-0.0%	+0.0%	+0.0%
Nurse/ Midwife Manager	22	+6	+3	+5	+4	+4	+0	+0.4%	+0.2%	+0.3%	+0.2%	+0.2%	+0.0%
Nurse/ Midwife Specialist & AN/MP	3	+3	+3	+2	+2	+1		-1.0%	-1.0%	+2.0%	+2.8%	+0.5%	+0.0%
Staff Nurse/ Staff Midwife	49	+3	-10	-9	-13	-7	+0	+0.1%	-0.2%	-0.2%	-0.2%	-0.1%	+0.0%
Public Health Nurse	127	+11	+14	+7	+4	+1	-0	+0.1%	+0.1%	+0.1%	+0.0%	+0.0%	-0.0%
Nursing/ Midwifery Student	3	-4	-3	-4	-1	+3	+3	-0.5%	-0.4%	-0.5%	-0.2%	-1.0%	-1.0%
Health & Social Care Professionals	125	+17	+24	+11	-1	-4	+3	+0.2%	+0.2%	+0.1%	-0.0%	-0.0%	+0.0%
Therapy Professions	81	+12	+14	+3	-3	-5	+3	+0.2%	+0.2%	+0.0%	-0.0%	-0.1%	+0.0%
Health Science/ Diagnostics	6	+1	+1	+2	+2	+1	-0	+0.2%	+0.2%	+0.6%	+0.5%	+0.2%	-0.0%
Social Care	1							+0.0%	+0.0%	+0.0%	+0.0%	+0.0%	+0.0%
Social Workers	10	-3	+1	+0	-1	-1	+0	-0.2%	+0.1%	+0.0%	-0.1%	-0.1%	+0.0%
Psychologists	15	+5	+5	+3	+0	-1	-0	+0.5%	+0.5%	+0.2%	+0.0%	-0.1%	-0.0%
Pharmacy	1		+1					+0.0%	-1.0%	+0.0%	+0.0%	+0.0%	+0.0%
H&SC, Other	11	+2	+2	+2	+0	+1	+1	+0.2%	+0.3%	+0.2%	+0.0%	+0.1%	+0.1%
Management & Administrative	220	+16	+19	-8	-27	-13	-3	+0.1%	+0.1%	-0.0%	-0.1%	-0.1%	-0.0%
Management (VIII & above)	23	+5	+3	+1	+2	-0	+0	+0.3%	+0.2%	+0.0%	+0.1%	-0.0%	+0.0%
Administrative/ Supervisory (V to VII)	57	+13	+8	+3	-10	+3	-3	+0.3%	+0.2%	+0.1%	-0.1%	+0.0%	-0.0%
Clerical (III & IV)	140	-2	+7	-11	-18	-16	-0	-0.0%	+0.1%	-0.1%	-0.1%	-0.1%	-0.0%
General Support	42	-3	-2	-2	-3	-1	+1	-0.1%	-0.0%	-0.0%	-0.1%	-0.0%	+0.0%
Support	14	-1	-1	-1	+0	+1	+1	-0.1%	-0.1%	-0.0%	+0.0%	+0.1%	+0.1%
Maintenance/ Technical	28	-2	-1	-1	-3	-2		-0.1%	-0.0%	-0.0%	-0.1%	-0.1%	+0.0%
Patient & Client Care	75	+24	+23	+18	+0	+4	-0	+0.5%	+0.4%	+0.3%	+0.0%	+0.1%	-0.0%
Health Care Assistants	25	+18	+17	+16	-2	+4	+1	+2.5%	+2.3%	+1.9%	-0.1%	+0.2%	+0.0%
Care, other	50	+6	+6	+2	+2	+0	-1	+0.2%	+0.1%	+0.0%	+0.0%	+0.0%	-0.0%
Home Help	1	+0	+0					+0.3%	+0.3%	+0.0%	+0.0%	+0.0%	+0.0%

Source: Health Service Personnel Census

Disabilities

Oct 2020 (Dec 2015 figure: 1,568)	WTE Oct 2020	WTE change since Dec 15	WTE change since Dec 16	WTE change since Dec 17	WTE change since Dec 18	WTE change since Dec 19	WTE change since Sep 20	% change since Dec 15	% change since Dec 16	% change since Dec 17	% change since Dec 18	% change since Dec 19	% change since Sep 20
Overall	1,904	+335	+235	+179	+108	+80	+4	+21.4%	+14.1%	+10.4%	+6.0%	+4.4%	+0.2%
Medical & Dental	2	-1	-0	-0	+0	+1	+0	-0.2%	-0.2%	-0.2%	+0.2%	+0.3%	+0.0%
Consultants	2	-1	-0	-0	+0	+1	+0	-0.3%	-0.2%	-0.2%	+0.4%	+0.5%	+0.1%
Medical/ Dental, other	1							+0.0%	+0.0%	+0.0%	+0.0%	+0.0%	+0.0%
Nursing & Midwifery	353	-26	-23	-9	-4	+1	+4	-0.1%	-0.1%	-0.0%	-0.0%	+0.0%	+0.0%
Nurse/ Midwife Manager	77	+10	+0	+3	+1	+1	-2	+0.2%	+0.0%	+0.0%	+0.0%	+0.0%	-0.0%
Nurse/ Midwife Specialist & AN/MP	11	-1	-1	-1	-1	-2		-0.1%	-0.1%	-0.1%	-0.1%	-0.1%	+0.0%
Staff Nurse/ Staff Midwife	259	-31	-20	-8	+2	+11	+5	-0.1%	-0.1%	-0.0%	+0.0%	+0.0%	+0.0%
Nursing/ Midwifery Student	3	+3	+3	+3	-5	-9	+1	-1.0%	-1.0%	-1.0%	-0.6%	-0.8%	+0.4%
Nursing/ Midwifery other	4	-7	-5	-5	-0			-0.7%	-0.6%	-0.6%	-0.1%	+0.0%	+0.0%
Health & Social Care Professionals	395	+94	+64	+49	+32	+36	+0	+0.3%	+0.2%	+0.1%	+0.1%	+0.1%	+0.0%
Therapy Professions	78	+19	+8	+9	+6	+4	-0	+0.3%	+0.1%	+0.1%	+0.1%	+0.1%	-0.0%
Health Science/ Diagnostics	2	+2	+2	+2	+2	+2		-1.0%	-1.0%	-1.0%	-1.0%	-1.0%	+0.0%
Social Care	269	+71	+53	+39	+25	+28	+2	+0.4%	+0.2%	+0.2%	+0.1%	+0.1%	+0.0%
Social Workers	15	+1	-1	-1	-2	-2	-0	+0.1%	-0.1%	-0.1%	-0.1%	-0.1%	-0.0%
Psychologists	20	+2	+1	-0	+3	+4	-0	+0.1%	+0.1%	-0.0%	+0.1%	+0.3%	-0.0%
H&SC, Other	11	-1	+0	+0	-1	-1	-1	-0.0%	+0.0%	+0.0%	-0.1%	-0.1%	-0.1%
Management & Administrative	112	+5	+12	+14	+3	+5	-1	+0.0%	+0.1%	+0.1%	+0.0%	+0.0%	-0.0%
Management (VIII & above)	8			+2	+1	+1		+0.0%	+0.0%	+0.3%	+0.1%	+0.1%	+0.0%
Administrative/ Supervisory (V to VII)	45	+14	+10	+11	+5	+4	+0	+0.5%	+0.3%	+0.3%	+0.1%	+0.1%	+0.0%
Clerical (III & IV)	59	-10	+2	+1	-3	-0	-1	-0.1%	+0.0%	+0.0%	-0.1%	-0.0%	-0.0%
General Support	73	+2	-1	+3	+2	+6	+0	+0.0%	-0.0%	+0.0%	+0.0%	+0.1%	+0.0%
Support	55	-2	-4	-0	-2	+3	+1	-0.0%	-0.1%	-0.0%	-0.0%	+0.0%	+0.0%
Maintenance/ Technical	18	+4	+3	+3	+3	+3	-0	+0.3%	+0.2%	+0.2%	+0.2%	+0.2%	-0.0%
Patient & Client Care	969	+262	+183	+123	+75	+31	+0	+0.4%	+0.2%	+0.1%	+0.1%	+0.0%	+0.0%
Health Care Assistants	793	+234	+156	+98	+57	+28	-4	+0.4%	+0.2%	+0.1%	+0.1%	+0.0%	-0.0%
Care, other	176	+28	+27	+25	+18	+3	+5	+0.2%	+0.2%	+0.2%	+0.1%	+0.0%	+0.0%

Source: Health Service Personnel Census

Older People

Oct 2020 (Dec 2015 figure: 988)	WTE Oct 2020	WTE change since Dec 15	WTE change since Dec 16	WTE change since Dec 17	WTE change since Dec 18	WTE change since Dec 19	WTE change since Sep 20	% change since Dec 15	% change since Dec 16	% change since Dec 17	% change since Dec 18	% change since Dec 19	% change since Sep 20
Overall	1,026	+38	+54	+90	+75	+52	-4	+3.9%	+5.6%	+9.6%	+7.9%	+5.3%	-0.4%
Medical & Dental	7	-3	-3	-0	-0	+1	+1	-0.3%	-0.3%	-0.0%	-0.0%	+0.1%	+0.3%
Consultants	1		-1					+0.0%	-0.5%	+0.0%	+0.0%	+0.0%	+0.0%
Registrars		-3	-1					-1.0%	-1.0%	-1.0%	-1.0%	-1.0%	-1.0%
SHO/ Interns		-1	-1					-1.0%	-1.0%	-1.0%	-1.0%	-1.0%	-1.0%
Medical/ Dental, other	6	+1	-0	-0	-0	+1	+1	+0.1%	-0.1%	-0.1%	-0.1%	+0.1%	+0.3%
Nursing & Midwifery	300	+22	+20	+22	+18	-5	+3	+0.1%	+0.1%	+0.1%	+0.1%	-0.0%	+0.0%
Nurse/ Midwife Manager	65	+3	-0	+1	+2	+2	+2	+0.0%	-0.0%	+0.0%	+0.0%	+0.0%	+0.0%
Nurse/ Midwife Specialist & AN/MP	3	-1	+0	+1	+1	+1	+0	-0.3%	+0.2%	+0.6%	+0.6%	+0.6%	+0.0%
Staff Nurse/ Staff Midwife	231	+20	+19	+19	+14	-8	+1	+0.1%	+0.1%	+0.1%	+0.1%	-0.0%	+0.0%
Public Health Nurse	1	+1	+1	+1	+1			-1.0%	-1.0%	-1.0%	-1.0%	+0.0%	+0.0%
Health & Social Care Professionals	39	+6	+2	+3	+3	+2	+2	+0.2%	+0.1%	+0.1%	+0.1%	+0.1%	+0.0%
Therapy Professions	31	+2	+3	+2	+5	+3	+1	+0.1%	+0.1%	+0.1%	+0.2%	+0.1%	+0.1%
Health Science/ Diagnostics	1	+0	+0	+0	+0	+0	-0	+0.5%	+0.5%	+0.5%	+0.3%	+0.1%	-0.2%
Social Workers	6	+3	-0	+1	-3	-1	+0	+1.1%	-0.1%	+0.1%	-0.3%	-0.1%	+0.0%
Pharmacy	1							+0.0%	+0.0%	+0.0%	+0.0%	+0.0%	+0.0%
Management & Administrative	73	+15	+12	+8	+7	-2	-1	+0.3%	+0.2%	+0.1%	+0.1%	-0.0%	-0.0%
Management (VIII & above)	6	+3	+4	+3	+1	+0	-0	+0.9%	+1.9%	+0.9%	+0.2%	+0.0%	-0.0%
Administrative/ Supervisory (V to VII)	19	+8	+7	+7	+6	-1	+1	+0.7%	+0.6%	+0.6%	+0.4%	-0.1%	+0.0%
Clerical (III & IV)	48	+4	+1	-2	+0	-1	-1	+0.1%	+0.0%	-0.0%	+0.0%	-0.0%	-0.0%
General Support	83	-11	-11	-6	-2	-3	+0	-0.1%	-0.1%	-0.1%	-0.0%	-0.0%	+0.0%
Support	62	-6	-7	-4	+1	-2	+0	-0.1%	-0.1%	-0.1%	+0.0%	-0.0%	+0.0%
Maintenance/ Technical	21	-5	-4	-3	-3	-1		-0.2%	-0.2%	-0.1%	-0.1%	-0.0%	+0.0%
Patient & Client Care	523	+9	+34	+63	+49	+59	-10	+0.0%	+0.1%	+0.1%	+0.1%	+0.1%	-0.0%
Health Care Assistants	297	-7	+1	+21	-4	+18	-8	-0.0%	+0.0%	+0.1%	-0.0%	+0.1%	-0.0%
Care, other	13	+8	+6	+1	+1	+3	-1	+1.7%	+0.8%	+0.1%	+0.1%	+0.3%	-0.1%
Home Help	213	+8	+28	+42	+52	+38	-1	+0.0%	+0.2%	+0.2%	+0.3%	+0.2%	-0.0%

Source: Health Service Personnel Census