

## CHO 4 Employment Report: December 2020

### Employment by Staff Group

Dec 2020 (Dec 2019 figure: 8,189)	WTE Nov 2020	WTE Dec 2020	WTE change since Nov 20	% change since Nov 20	WTE change since Dec 19	WTE change since Dec 19
<b>Overall</b>	<b>8,504</b>	<b>8,602</b>	<b>+98</b>	<b>+1.2%</b>	<b>+413</b>	<b>+413</b>
Consultants	60	60	+1	+1.0%	+5	+5
Registrars	101	103	+2	+1.8%	-1	-1
SHO/ Interns	51	51	+0	+0.1%	+13	+13
Medical/ Dental, other	116	116	+0	+0.0%	+5	+5
<b>Medical &amp; Dental</b>	<b>328</b>	<b>330</b>	<b>+3</b>	<b>+0.8%</b>	<b>+23</b>	<b>+23</b>
Nurse/ Midwife Manager	460	467	+7	+1.5%	+34	+34
Nurse/ Midwife Specialist & AN/MP	98	98	+0	+0.4%	+17	+17
Staff Nurse/ Staff Midwife	1,469	1,498	+30	+2.0%	+53	+53
Public Health Nurse	232	228	-5	-2.1%	+12	+12
<i>Pre-registration Nurse/ Midwife Intern</i>				-100.0%	-9	
<i>Pre-registration Nurse Intern (COVID-19)</i>	22	11	-11	-50.9%	+11	-11
<i>Post-registration Nurse/ Midwife Student</i>	15	15	+0	+1.0%	-4	+0
<i>Nursing/ Midwifery awaiting registration</i>	3	3			-29	
Nursing/ Midwifery Student	39	28	-11	-27.5%	-31	-31
Nursing/ Midwifery other				-100.0%	-1	-1
<b>Nursing &amp; Midwifery</b>	<b>2,298</b>	<b>2,319</b>	<b>+21</b>	<b>+0.9%</b>	<b>+84</b>	<b>+84</b>
Therapy Professions	461	464	+3	+0.8%	+16	+16
Health Science/ Diagnostics	13	13	+0	+0.1%	+1	+1
Social Care	257	252	-5	-2.0%	+12	+12
Social Workers	131	132	+1	+0.4%	+17	+17
Psychologists	150	152	+2	+1.2%	+14	+14
Pharmacy	10	11	+1	+10.4%	+3	+3
H&SC, Other	65	64	-1	-1.7%	+3	+3
<b>Health &amp; Social Care Professionals</b>	<b>1,087</b>	<b>1,087</b>	<b>+1</b>	<b>+0.1%</b>	<b>+66</b>	<b>+66</b>
Management (VIII & above)	75	75	+0	+0.2%	+2	+2
Administrative/ Supervisory (V to VII)	175	177	+3	+1.6%	+16	+16
Clerical (III & IV)	540	546	+5	+1.0%	+41	+41
<b>Management &amp; Administrative</b>	<b>790</b>	<b>798</b>	<b>+8</b>	<b>+1.1%</b>	<b>+60</b>	<b>+60</b>
Support	358	352	-6	-1.6%	+15	+15
Maintenance/ Technical	24	23	-1	-3.1%	+1	+1
<b>General Support</b>	<b>382</b>	<b>375</b>	<b>-7</b>	<b>-1.7%</b>	<b>+16</b>	<b>+16</b>
Health Care Assistants	2,075	2,121	+46	+2.2%	+167	+167
Care, other	485	494	+9	+1.9%	+44	+44
Home Help	1,059	1,076	+17	+1.6%	-48	-48
<b>Patient &amp; Client Care</b>	<b>3,619</b>	<b>3,691</b>	<b>+72</b>	<b>+2.0%</b>	<b>+163</b>	<b>+163</b>

## CHO 4 Employment Report: December 2020

### Community Health & Wellbeing

Dec 2020 ( figure: )	WTE Nov 2020	WTE Dec 2020	WTE change since Nov 20	% change since Nov 20	WTE change since	WTE change since
<b>Total Community Health &amp; Wellbeing</b>	<b>35</b>	<b>35</b>	<b>+0</b>	<b>+0.2%</b>	<b>+35</b>	<b>+35</b>
<i>Director Nursing/Midwifery, Assistant</i>	1	1			+1	
Nurse/ Midwife Manager	1	1			+1	+1
<b>Nursing &amp; Midwifery</b>	<b>1</b>	<b>1</b>			<b>+1</b>	<b>+1</b>
Therapy Professions	4	4	+0	+1.0%	+4	+4
<b>Health &amp; Social Care Professionals</b>	<b>4</b>	<b>4</b>	<b>+0</b>	<b>+1.0%</b>	<b>+4</b>	<b>+4</b>
Management (VIII & above)	1	1			+1	+1
Administrative/ Supervisory (V to VII)	5	5			+5	+5
Clerical (III & IV)	7	7	+0	+4.0%	+7	+7
<b>Management &amp; Administrative</b>	<b>13</b>	<b>13</b>	<b>+0</b>	<b>+2.1%</b>	<b>+13</b>	<b>+13</b>
Care, other	17	16	-0	-1.4%	+16	+16
<b>Patient &amp; Client Care</b>	<b>17</b>	<b>16</b>	<b>-0</b>	<b>-1.4%</b>	<b>+16</b>	<b>+16</b>

## Mental Health

Dec 2020 (Dec 2019 figure: 1,485)	WTE Nov 2020	WTE Dec 2020	WTE change since Nov 20	% change since Nov 20	WTE change since Dec 19	WTE change since Dec 19
<b>Total Mental Health</b>	<b>1,562</b>	<b>1,564</b>	<b>+1</b>	<b>+0.1%</b>	<b>+78</b>	<b>+78</b>
Consultants	54	54	+1	+1.2%	+4	+4
Registrars	42	42	-0	-0.7%	-4	-4
SHO/ Interns	43	43	+0	+0.1%	+12	+12
Medical/ Dental, other	2	2				
<b>Medical &amp; Dental</b>	<b>140</b>	<b>141</b>	<b>+0</b>	<b>+0.3%</b>	<b>+12</b>	<b>+12</b>
Nurse/ Midwife Manager	190	192	+3	+1.3%	+23	+23
Nurse/ Midwife Specialist & AN/MP	70	71	+0	+0.4%	+11	+11
Staff Nurse/ Staff Midwife	521	519	-2	-0.3%	+17	+17
<i>Pre-registration Nurse/ Midwife Intern</i>				-100.0%	-3	
<i>Pre-registration Nurse Intern (COVID-19)</i>	5	3	-2	-33.3%	+3	-2
<i>Post-registration Nurse/ Midwife Student</i>				-100.0%	-1	
<i>Nursing/ Midwifery awaiting registration</i>	1	1			-29	
Nursing/ Midwifery Student	6	4	-2	-27.3%	-30	-30
<b>Nursing &amp; Midwifery</b>	<b>787</b>	<b>786</b>	<b>-0</b>	<b>-0.0%</b>	<b>+21</b>	<b>+21</b>
Therapy Professions	79	77	-1	-1.7%	+4	+4
Social Care	7	7	+0	+2.0%	+3	+3
Social Workers	65	64	-0	-0.6%	+11	+11
Psychologists	92	94	+2	+1.9%	+11	+11
Pharmacy	2	3	+1	+49.3%	+1	+1
H&SC, Other	13	12	-0	-1.5%	+2	+2
<b>Health &amp; Social Care Professionals</b>	<b>257</b>	<b>258</b>	<b>+1</b>	<b>+0.4%</b>	<b>+32</b>	<b>+32</b>
Management (VIII & above)	3	3	-0	-9.0%	+2	+2
Administrative/ Supervisory (V to VII)	22	22	-1	-2.7%	-1	-1
Clerical (III & IV)	93	94	+1	+1.1%	+7	+7
<b>Management &amp; Administrative</b>	<b>119</b>	<b>119</b>	<b>+0</b>	<b>+0.2%</b>	<b>+8</b>	<b>+8</b>
Support	82	82	-0	-0.3%	+2	+2
Maintenance/ Technical	5	5			-1	-1
<b>General Support</b>	<b>87</b>	<b>87</b>	<b>-0</b>	<b>-0.3%</b>	<b>+1</b>	<b>+1</b>
Health Care Assistants	166	166	+0	+0.2%	+6	+6
Care, other	6	6	+0	+1.4%	-1	-1
<b>Patient &amp; Client Care</b>	<b>172</b>	<b>173</b>	<b>+0</b>	<b>+0.3%</b>	<b>+5</b>	<b>+5</b>

## Primary Care

Dec 2020 (Dec 2019 figure: 1,346)	WTE Nov 2020	WTE Dec 2020	WTE change since Nov 20	% change since Nov 20	WTE change since Dec 19	WTE change since Dec 19
<b>Total Primary Care</b>	<b>1,458</b>	<b>1,517</b>	<b>+60</b>	<b>+4.1%</b>	<b>+172</b>	<b>+172</b>
Consultants	3	3			-0	-0
Registrars	56	58	+2	+3.8%	+3	+3
SHO/ Interns	7	7			+1	+1
Medical/ Dental, other	91	91	-0	-0.3%	+3	+3
<b>Medical &amp; Dental</b>	<b>157</b>	<b>159</b>	<b>+2</b>	<b>+1.2%</b>	<b>+7</b>	<b>+7</b>
Nurse/ Midwife Manager	57	61	+3	+5.7%	+4	+4
Nurse/ Midwife Specialist & AN/MP	7	7	+0	+6.9%	+3	+3
Staff Nurse/ Staff Midwife	130	139	+9	+6.6%	+20	+20
Public Health Nurse	226	222	-5	-2.1%	+11	+11
<i>Post-registration Nurse/ Midwife Student</i>	15	15	+0	+1.0%	-2	+0
Nursing/ Midwifery Student	15	15	+0	+1.0%	-2	-2
<b>Nursing &amp; Midwifery</b>	<b>436</b>	<b>443</b>	<b>+8</b>	<b>+1.8%</b>	<b>+35</b>	<b>+35</b>
Therapy Professions	232	237	+5	+2.3%	+16	+16
Health Science/ Diagnostics	12	12	+0	+0.1%	+1	+1
Social Care	5	5	+0	+0.2%	-3	-3
Social Workers	28	28	+0	+1.8%	+4	+4
Psychologists	21	22	+0	+0.7%	+1	+1
Pharmacy	4	4	+0	+0.3%	+1	+1
H&SC, Other	42	41	-1	-2.5%	-0	-0
<b>Health &amp; Social Care Professionals</b>	<b>344</b>	<b>349</b>	<b>+5</b>	<b>+1.4%</b>	<b>+20</b>	<b>+20</b>
Management (VIII & above)	35	35	-1	-1.9%	-2	-2
Administrative/ Supervisory (V to VII)	71	73	+2	+2.7%	+5	+5
Clerical (III & IV)	220	224	+3	+1.4%	+19	+19
<b>Management &amp; Administrative</b>	<b>327</b>	<b>331</b>	<b>+4</b>	<b>+1.3%</b>	<b>+21</b>	<b>+21</b>
Support	18	18	-0	-0.6%	+2	+2
<b>General Support</b>	<b>18</b>	<b>18</b>	<b>-0</b>	<b>-0.6%</b>	<b>+2</b>	<b>+2</b>
Health Care Assistants	63	103	+40	+63.8%	+86	+86
Care, other	105	105	+0	+0.4%	+1	+1
Home Help	9	9	+0	+3.7%	-1	-1
<b>Patient &amp; Client Care</b>	<b>177</b>	<b>218</b>	<b>+41</b>	<b>+23.1%</b>	<b>+86</b>	<b>+86</b>

## Social Care

Dec 2020 (Dec 2019 figure: 5,358)	WTE Nov 2020	WTE Dec 2020	WTE change since Nov 20	% change since Nov 20	WTE change since Dec 19	WTE change since Dec 19
<b>Total Social Care</b>	<b>5,449</b>	<b>5,486</b>	<b>+37</b>	<b>+0.7%</b>	<b>+128</b>	<b>+128</b>
Consultants	4	4			+1	+1
Registrars	3	3				
SHO/ Interns	1	1				
Medical/ Dental, other	23	23	+0	+1.0%	+2	+2
<b>Medical &amp; Dental</b>	<b>31</b>	<b>31</b>	<b>+0</b>	<b>+0.8%</b>	<b>+3</b>	<b>+3</b>
Nurse/ Midwife Manager	211	213	+1	+0.5%	+6	+6
Nurse/ Midwife Specialist & AN/MP	21	20	-0	-1.6%	+4	+4
Staff Nurse/ Staff Midwife	818	840	+23	+2.8%	+16	+16
Public Health Nurse	6	6			+1	+1
<i>Pre-registration Nurse/ Midwife Intern</i>				-100.0%	-6	
<i>Pre-registration Nurse Intern (COVID-19)</i>	17	8	-9	-55.6%	+8	-9
<i>Post-registration Nurse/ Midwife Student</i>				-100.0%	-1	
<i>Nursing/ Midwifery awaiting registration</i>	2	2				
Nursing/ Midwifery Student	19	10	-9	-49.7%	+1	+1
Nursing/ Midwifery other				-100.0%	-1	-1
<b>Nursing &amp; Midwifery</b>	<b>1,075</b>	<b>1,089</b>	<b>+14</b>	<b>+1.3%</b>	<b>+27</b>	<b>+27</b>
Therapy Professions	146	145	-1	-0.4%	-7	-7
Health Science/ Diagnostics	1	1			+0	+0
Social Care	245	240	-5	-2.2%	+12	+12
Social Workers	39	39	+0	+1.1%	+2	+2
Psychologists	36	36	-0	-0.2%	+1	+1
Pharmacy	4	4	-0	-0.3%	+1	+1
H&SC, Other	10	10	+0	+1.6%	+2	+2
<b>Health &amp; Social Care Professionals</b>	<b>481</b>	<b>476</b>	<b>-5</b>	<b>-1.1%</b>	<b>+11</b>	<b>+11</b>
Management (VIII & above)	35	37	+1	+3.1%	+2	+2
Administrative/ Supervisory (V to VII)	76	78	+2	+2.0%	+7	+7
Clerical (III & IV)	220	221	+1	+0.4%	+8	+8
<b>Management &amp; Administrative</b>	<b>332</b>	<b>335</b>	<b>+4</b>	<b>+1.1%</b>	<b>+17</b>	<b>+17</b>
Support	258	252	-5	-2.1%	+11	+11
Maintenance/ Technical	19	18	-1	-3.9%	+2	+2
<b>General Support</b>	<b>277</b>	<b>271</b>	<b>-6</b>	<b>-2.2%</b>	<b>+13</b>	<b>+13</b>
Health Care Assistants	1,847	1,852	+5	+0.3%	+76	+76
Care, other	357	366	+9	+2.5%	+28	+28
Home Help	1,050	1,067	+17	+1.6%	-47	-47
<b>Patient &amp; Client Care</b>	<b>3,254</b>	<b>3,285</b>	<b>+31</b>	<b>+1.0%</b>	<b>+57</b>	<b>+57</b>

## CHO 4 Employment Report: December 2020

### Disabilities

Dec 2020 (Dec 2019 figure: 2,439)	WTE Nov 2020	WTE Dec 2020	WTE change since Nov 20	% change since Nov 20	WTE change since Dec 19	WTE change since Dec 19
<b>Total Disabilities</b>	<b>2,546</b>	<b>2,556</b>	<b>+9</b>	<b>+0.4%</b>	<b>+117</b>	<b>+117</b>
Consultants	3	3			+1	+1
Medical/ Dental, other	0	0				
<b>Medical &amp; Dental</b>	<b>3</b>	<b>3</b>			<b>+1</b>	<b>+1</b>
Nurse/ Midwife Manager	90	91	+0	+0.5%	+1	+1
Nurse/ Midwife Specialist & AN/MP	14	14			+1	+1
Staff Nurse/ Staff Midwife	300	312	+12	+4.0%	+3	+3
<i>Pre-registration Nurse/ Midwife Intern</i>				-100.0%	-6	-6
<i>Pre-registration Nurse Intern (COVID-19)</i>	17	8	-9	-55.6%	+8	-9
<i>Nursing/ Midwifery awaiting registration</i>	2	2			+1	
Nursing/ Midwifery Student	19	10	-9	-49.7%	+3	+3
Nursing/ Midwifery other				-100.0%	-1	-1
<b>Nursing &amp; Midwifery</b>	<b>424</b>	<b>427</b>	<b>+3</b>	<b>+0.7%</b>	<b>+8</b>	<b>+8</b>
Therapy Professions	103	104	+1	+0.6%	-4	-4
Social Care	244	238	-5	-2.2%	+12	+12
Social Workers	27	27	+0	+1.5%	+0	+0
Psychologists	36	36	-0	-0.2%	+1	+1
H&SC, Other	10	10	+0	+1.6%	+2	+2
<b>Health &amp; Social Care Professionals</b>	<b>419</b>	<b>415</b>	<b>-4</b>	<b>-1.0%</b>	<b>+11</b>	<b>+11</b>
Management (VIII & above)	21	22	+1	+4.6%	+0	+0
Administrative/ Supervisory (V to VII)	58	58	-1	-1.4%	+4	+4
Clerical (III & IV)	90	90	-0	-0.4%	+5	+5
<b>Management &amp; Administrative</b>	<b>170</b>	<b>170</b>	<b>-0</b>	<b>-0.1%</b>	<b>+10</b>	<b>+10</b>
Support	143	139	-5	-3.4%	-2	-2
Maintenance/ Technical	13	12	-1	-7.6%	+2	+2
<b>General Support</b>	<b>157</b>	<b>151</b>	<b>-6</b>	<b>-3.8%</b>	<b>-1</b>	<b>-1</b>
Health Care Assistants	1,053	1,058	+6	+0.5%	+64	+64
Care, other	321	332	+11	+3.4%	+25	+25
<b>Patient &amp; Client Care</b>	<b>1,374</b>	<b>1,390</b>	<b>+16</b>	<b>+1.2%</b>	<b>+88</b>	<b>+88</b>

## Older People

Dec 2020 (Dec 2019 figure: 2,919)	WTE Nov 2020	WTE Dec 2020	WTE change since Nov 20	% change since Nov 20	WTE change since Dec 19	WTE change since Dec 19
<b>Total Older People</b>	<b>2,902</b>	<b>2,930</b>	<b>+28</b>	<b>+1.0%</b>	<b>+11</b>	<b>+11</b>
Consultants	1	1				
Registrars	3	3				
SHO/ Interns	1	1				
Medical/ Dental, other	23	23	+0	+1.0%	+2	+2
<b>Medical &amp; Dental</b>	<b>28</b>	<b>28</b>	<b>+0</b>	<b>+0.9%</b>	<b>+2</b>	<b>+2</b>
Nurse/ Midwife Manager	121	122	+1	+0.5%	+4	+4
Nurse/ Midwife Specialist & AN/MP	6	6	-0	-5.4%	+3	+3
Staff Nurse/ Staff Midwife	518	528	+11	+2.1%	+13	+13
Public Health Nurse	6	6			+1	+1
Post-registration Nurse/ Midwife Student				-100.0%	-1	
Nursing/ Midwifery awaiting registration				-100.0%	-1	
Nursing/ Midwifery Student				-100.0%	-2	-2
<b>Nursing &amp; Midwifery</b>	<b>651</b>	<b>662</b>	<b>+11</b>	<b>+1.7%</b>	<b>+19</b>	<b>+19</b>
<b>Health &amp; Social Care Professionals</b>	<b>62</b>	<b>61</b>	<b>-1</b>	<b>-1.9%</b>	<b>+0</b>	<b>+0</b>
Management (VIII & above)	14	14	+0	+0.9%	+1	+1
Administrative/ Supervisory (V to VII)	18	20	+2	+13.0%	+3	+3
Clerical (III & IV)	130	131	+1	+1.0%	+3	+3
<b>Management &amp; Administrative</b>	<b>162</b>	<b>166</b>	<b>+4</b>	<b>+2.3%</b>	<b>+8</b>	<b>+8</b>
Support	114	114	-1	-0.5%	+13	+13
Maintenance/ Technical	6	6	+0	+4.2%	+0	+0
<b>General Support</b>	<b>120</b>	<b>120</b>	<b>-0</b>	<b>-0.2%</b>	<b>+13</b>	<b>+13</b>
Health Care Assistants	794	794	-0	-0.0%	+12	+12
Care, other	36	34	-2	-5.4%	+3	+3
Home Help	1,050	1,067	+17	+1.6%	-47	-47
<b>Patient &amp; Client Care</b>	<b>1,880</b>	<b>1,894</b>	<b>+14</b>	<b>+0.8%</b>	<b>-31</b>	<b>-31</b>

## CHO 4 Employment by Administration (HSE / S38): December 2020

Dec 2020 (Dec 2019 figure: 8,189)	WTE Nov 2020	WTE Dec 2020	WTE change since Nov 20	% change since Nov 20	WTE change since Dec 19	WTE change since Dec 19
<b>Overall</b>	<b>8,504</b>	<b>8,602</b>	<b>+98</b>	<b>+1.2%</b>	<b>+413</b>	<b>+413</b>
<b>HSE</b>	<b>6,154</b>	<b>6,247</b>	<b>+94</b>	<b>+1.5%</b>	<b>+307</b>	<b>+307</b>
<b>Section 38 Voluntary Agencies</b>	<b>2,350</b>	<b>2,354</b>	<b>+5</b>	<b>+0.2%</b>	<b>+105</b>	<b>+105</b>

## HSE

Dec 2020 (Dec 2019 figure: 5,940)	WTE Nov 2020	WTE Dec 2020	WTE change since Nov 20	% change since Nov 20	WTE change since Dec 19	WTE change since Dec 19
<b>Overall</b>	<b>6,154</b>	<b>6,247</b>	<b>+94</b>	<b>+1.5%</b>	<b>+307</b>	<b>+307</b>
Consultants	60	60	+1	+0.0%	+5	+5
Registrars	95	96	+2	+0.0%	-2	-2
SHO/ Interns	44	44	+0	+0.0%	+12	+12
Medical/ Dental, other	104	103	-0	-0.0%	+5	+5
<b>Medical &amp; Dental</b>	<b>302</b>	<b>304</b>	<b>+2</b>	<b>+0.6%</b>	<b>+20</b>	<b>+20</b>
Nurse/ Midwife Manager	385	392	+7	+0.0%	+34	+34
Nurse/ Midwife Specialist & AN/MP	84	85	+0	+0.0%	+16	+16
Staff Nurse/ Staff Midwife	1,195	1,212	+17	+0.0%	+51	+51
Public Health Nurse	232	228	-5	-0.0%	+12	+12
<i>Pre-registration Nurse/ Midwife Intern</i>				-1.0%	-1	-3
<i>Pre-registration Nurse Intern (COVID-19)</i>	5	3	-2	-0.3%	+3	+3
<i>Post-registration Nurse/ Midwife Student</i>	15	15	+0	+0.0%	+1	-4
<i>Nursing/ Midwifery awaiting registration</i>	3	3		+0.0%	+3	-29
Nursing/ Midwifery Student	22	21	-1	-0.1%	-33	-33
<b>Nursing &amp; Midwifery</b>	<b>1,919</b>	<b>1,937</b>	<b>+19</b>	<b>+1.0%</b>	<b>+80</b>	<b>+80</b>
Therapy Professions	375	378	+2	+0.0%	+18	+18
Health Science/ Diagnostics	11	11	+0	+0.0%	+1	+1
Social Care	41	41	-0	-0.0%	+2	+2
Social Workers	105	105	+0	+0.0%	+17	+17
Psychologists	117	119	+2	+0.0%	+12	+12
Pharmacy	10	11	+1	+0.1%	+3	+3
H&SC, Other	59	58	-1	-0.0%	+1	+1
<b>Health &amp; Social Care Professionals</b>	<b>718</b>	<b>722</b>	<b>+4</b>	<b>+0.5%</b>	<b>+55</b>	<b>+55</b>
Management (VIII & above)	60	59	-1	-0.0%	+1	+1
Administrative/ Supervisory (V to VII)	132	135	+3	+0.0%	+12	+12
Clerical (III & IV)	446	452	+6	+0.0%	+37	+37
<b>Management &amp; Administrative</b>	<b>637</b>	<b>646</b>	<b>+8</b>	<b>+1.3%</b>	<b>+50</b>	<b>+50</b>
Support	218	219	+0	+0.0%	+12	+12
Maintenance/ Technical	12	12	+0	+0.0%	-1	-1
<b>General Support</b>	<b>230</b>	<b>231</b>	<b>+0</b>	<b>+0.2%</b>	<b>+11</b>	<b>+11</b>
Health Care Assistants	1,154	1,200	+46	+0.0%	+121	+121
Care, other	134	132	-3	-0.0%	+18	+18
Home Help	1,059	1,076	+17	+0.0%	-48	-48
<b>Patient &amp; Client Care</b>	<b>2,347</b>	<b>2,407</b>	<b>+60</b>	<b>+2.6%</b>	<b>+91</b>	<b>+91</b>



## Section 38 Voluntary Agencies

Dec 2020 (Dec 2019 figure: 2,249)	WTE Nov 2020	WTE Dec 2020	WTE change since Nov 20	% change since Nov 20	WTE change since Dec 19	WTE change since Dec 19
<b>Overall</b>	<b>2,350</b>	<b>2,354</b>	<b>+5</b>	<b>+0.2%</b>	<b>+105</b>	<b>+105</b>
Registrars	6	6	+0	+0.1%	+1	+1
SHO/ Interns	7	7		+0.0%	+1	+1
Medical/ Dental, other	13	13	+0	+0.0%	-0	-0
<b>Medical &amp; Dental</b>	<b>26</b>	<b>26</b>	<b>+1</b>	<b>+2.7%</b>	<b>+2</b>	<b>+2</b>
Nurse/ Midwife Manager	75	75	-0	-0.0%	+0	+0
Nurse/ Midwife Specialist & AN/MP	13	13		+0.0%	+1	+1
Staff Nurse/ Staff Midwife	274	286	+12	+0.0%	+2	+2
<i>Pre-registration Nurse/ Midwife Intern</i>				-1.0%	-8	-6
<i>Pre-registration Nurse Intern (COVID-19)</i>	17	8	-9	-0.6%	+8	+8
Nursing/ Midwifery Student	17	8	-9	-0.6%	+2	+2
Nursing/ Midwifery other				-1.0%	-1	-1
<b>Nursing &amp; Midwifery</b>	<b>379</b>	<b>382</b>	<b>+2</b>	<b>+0.6%</b>	<b>+4</b>	<b>+4</b>
Therapy Professions	85	86	+1	+0.0%	-2	-2
Health Science/ Diagnostics	2	2		+0.0%		
Social Care	217	212	-5	-0.0%	+10	+10
Social Workers	27	27	+0	+0.0%	+0	+0
Psychologists	32	32	-0	-0.0%	+1	+1
H&SC, Other	6	6	+0	+0.0%	+2	+2
<b>Health &amp; Social Care Professionals</b>	<b>369</b>	<b>365</b>	<b>-3</b>	<b>-0.9%</b>	<b>+11</b>	<b>+11</b>
Management (VIII & above)	15	16	+1	+0.1%	+1	+1
Administrative/ Supervisory (V to VII)	43	42	-1	-0.0%	+5	+5
Clerical (III & IV)	94	94	-0	-0.0%	+4	+4
<b>Management &amp; Administrative</b>	<b>152</b>	<b>152</b>	<b>-0</b>	<b>-0.1%</b>	<b>+10</b>	<b>+10</b>
Support	139	133	-6	-0.0%	+3	+3
Maintenance/ Technical	12	11	-1	-0.1%	+2	+2
<b>General Support</b>	<b>151</b>	<b>144</b>	<b>-7</b>	<b>-4.6%</b>	<b>+5</b>	<b>+5</b>
Health Care Assistants	922	922	-0	-0.0%	+46	+46
Care, other	351	362	+12	+0.0%	+26	+26
<b>Patient &amp; Client Care</b>	<b>1,272</b>	<b>1,284</b>	<b>+12</b>	<b>+0.9%</b>	<b>+72</b>	<b>+72</b>

## CHO 4 Employment by S38 Agency: December 2020

### Bros. of Charity, Southern

Dec 2020 (Dec 2019 figure: 740)	WTE Nov 2020	WTE Dec 2020	WTE change since Nov 20	% change since Nov 20	WTE change since Dec 19	WTE change since Dec 19
<b>Overall</b>	<b>770</b>	<b>776</b>	<b>+5</b>	<b>+0.7%</b>	<b>+35</b>	<b>+35</b>
Nurse/ Midwife Manager	15	15	+0	+0.0%	-0	-0
Nurse/ Midwife Specialist & AN/MP	3	3		+0.0%		
Staff Nurse/ Staff Midwife	56	56	-0	-0.0%	-3	-3
<b>Nursing &amp; Midwifery</b>	<b>74</b>	<b>73</b>	<b>-0</b>	<b>-0.5%</b>	<b>-4</b>	<b>-4</b>
Therapy Professions	45	46	+1	+0.0%	-2	-2
Social Care	127	123	-5	-0.0%	-2	-2
Social Workers	17	17	+0	+0.0%	+0	+0
Psychologists	21	21	-0	-0.0%	+1	+1
<b>Health &amp; Social Care Professionals</b>	<b>210</b>	<b>207</b>	<b>-3</b>	<b>-1.6%</b>	<b>-3</b>	<b>-3</b>
Management (VIII & above)	7	8	+1	+0.1%	+0	+0
Administrative/ Supervisory (V to VII)	11	10	-1	-0.1%	+1	+1
Clerical (III & IV)	33	35	+2	+0.1%	+2	+2
<b>Management &amp; Administrative</b>	<b>51</b>	<b>53</b>	<b>+2</b>	<b>+4.1%</b>	<b>+3</b>	<b>+3</b>
Support	14	14	+0	+0.0%	-1	-1
Maintenance/ Technical	4	3	-1	-0.3%	+1	+1
<b>General Support</b>	<b>17</b>	<b>16</b>	<b>-1</b>	<b>-4.5%</b>	<b>+0</b>	<b>+0</b>
Health Care Assistants	222	222	+0	+0.0%	+15	+15
Care, other	197	204	+8	+0.0%	+23	+23
<b>Patient &amp; Client Care</b>	<b>418</b>	<b>426</b>	<b>+8</b>	<b>+1.9%</b>	<b>+38</b>	<b>+38</b>

## Cope Foundation

Dec 2020 (Dec 2019 figure: 1,091)	WTE Nov 2020	WTE Dec 2020	WTE change since Nov 20	% change since Nov 20	WTE change since Dec 19	WTE change since Dec 19
<b>Overall</b>	<b>1,146</b>	<b>1,147</b>	<b>+0</b>	<b>+0.0%</b>	<b>+56</b>	<b>+56</b>
Nurse/ Midwife Manager	42	42		+0.0%	+1	+1
Nurse/ Midwife Specialist & AN/MP	11	11		+0.0%	+1	+1
Staff Nurse/ Staff Midwife	163	177	+14	+0.1%	+8	+8
Pre-registration Nurse/ Midwife Intern				-1.0%	-8	-6
Pre-registration Nurse Intern (COVID-19)	17	8	-9	-0.6%	+8	+8
Nursing/ Midwifery Student	17	8	-9	-0.6%	+2	+2
Nursing/ Midwifery other				-1.0%	-1	-1
<b>Nursing &amp; Midwifery</b>	<b>233</b>	<b>238</b>	<b>+4</b>	<b>+1.8%</b>	<b>+11</b>	<b>+11</b>
Therapy Professions	37	37		+0.0%	-1	-1
Social Care	43	43		+0.0%	+11	+11
Social Workers	9	9		+0.0%		
Psychologists	11	11		+0.0%	+1	+1
H&SC, Other	3	3		+0.0%		
<b>Health &amp; Social Care Professionals</b>	<b>102</b>	<b>102</b>			<b>+12</b>	<b>+12</b>
Management (VIII & above)	7	7		+0.0%	+1	+1
Administrative/ Supervisory (V to VII)	23	23		+0.0%	+4	+4
Clerical (III & IV)	28	26	-2	-0.1%	+2	+2
<b>Management &amp; Administrative</b>	<b>58</b>	<b>55</b>	<b>-2</b>	<b>-3.8%</b>	<b>+7</b>	<b>+7</b>
Support	83	78	-5	-0.1%	+1	+1
Maintenance/ Technical	7	7		+0.0%	+1	+1
<b>General Support</b>	<b>90</b>	<b>85</b>	<b>-5</b>	<b>-5.5%</b>	<b>+2</b>	<b>+2</b>
Health Care Assistants	585	587	+1	+0.0%	+23	+23
Care, other	79	81	+2	+0.0%	+1	+1
<b>Patient &amp; Client Care</b>	<b>664</b>	<b>667</b>	<b>+3</b>	<b>+0.5%</b>	<b>+24</b>	<b>+24</b>

## Cork Dental Hospital

Dec 2020 (Dec 2019 figure: 103)	WTE Nov 2020	WTE Dec 2020	WTE change since Nov 20	% change since Nov 20	WTE change since Dec 19	WTE change since Dec 19
<b>Overall</b>	<b>110</b>	<b>112</b>	<b>+2</b>	<b>+1.8%</b>	<b>+9</b>	<b>+9</b>
Registrars	6	6	+0	+0.1%	+1	+1
SHO/ Interns	7	7		+0.0%	+1	+1
Medical/ Dental, other	13	13	+0	+0.0%	-0	-0
<b>Medical &amp; Dental</b>	<b>26</b>	<b>26</b>	<b>+1</b>	<b>+2.7%</b>	<b>+2</b>	<b>+2</b>
Nurse/ Midwife Manager	3	3		+0.0%	+0	+0
Staff Nurse/ Staff Midwife	6	6	+0	+0.0%	-1	-1
<b>Nursing &amp; Midwifery</b>	<b>9</b>	<b>9</b>	<b>+0</b>	<b>+2.2%</b>	<b>-1</b>	<b>-1</b>
Health Science/ Diagnostics	2	2		+0.0%		
H&SC, Other	3	3	+0	+0.0%	+2	+2
<b>Health &amp; Social Care Professionals</b>	<b>5</b>	<b>5</b>	<b>+0</b>	<b>+0.2%</b>	<b>+2</b>	<b>+2</b>
Management (VIII & above)	1	1		+0.0%		
Administrative/ Supervisory (V to VII)	2	2		+0.0%		
Clerical (III & IV)	24	24	+0	+0.0%	+1	+1
<b>Management &amp; Administrative</b>	<b>27</b>	<b>27</b>	<b>+0</b>	<b>+0.3%</b>	<b>+1</b>	<b>+1</b>
Support	14	13	-0	-0.0%	+3	+3
<b>General Support</b>	<b>14</b>	<b>13</b>	<b>-0</b>	<b>-0.8%</b>	<b>+3</b>	<b>+3</b>
Care, other	30	31	+1	+0.0%	+2	+2
<b>Patient &amp; Client Care</b>	<b>30</b>	<b>31</b>	<b>+1</b>	<b>+3.6%</b>	<b>+2</b>	<b>+2</b>

# St. John of God, Kerry

Dec 2020 (Dec 2019 figure: 315)	WTE Nov 2020	WTE Dec 2020	WTE change since Nov 20	% change since Nov 20	WTE change since Dec 19	WTE change since Dec 19
<b>Overall</b>	<b>323</b>	<b>320</b>	<b>-3</b>	<b>-1.0%</b>	<b>+5</b>	<b>+5</b>
Nurse/ Midwife Manager	15	15	-0	-0.0%	-1	-1
Staff Nurse/ Staff Midwife	49	47	-1	-0.0%	-2	-2
<b>Nursing &amp; Midwifery</b>	<b>64</b>	<b>62</b>	<b>-2</b>	<b>-2.5%</b>	<b>-2</b>	<b>-2</b>
Therapy Professions	4	4	+0	+0.0%	+0	+0
Social Care	47	46	-0	-0.0%	+1	+1
Social Workers	1	1		+0.0%		
Psychologists	1	1	+0	+0.6%	-1	-1
<b>Health &amp; Social Care Professionals</b>	<b>52</b>	<b>52</b>	<b>+0</b>	<b>+0.2%</b>	<b>+1</b>	<b>+1</b>
Management (VIII & above)	1	1		+0.0%		
Administrative/ Supervisory (V to VII)	7	7		+0.0%	-0	-0
Clerical (III & IV)	9	9	-0	-0.0%	-1	-1
<b>Management &amp; Administrative</b>	<b>17</b>	<b>17</b>	<b>-0</b>	<b>-0.5%</b>	<b>-1</b>	<b>-1</b>
Support	29	28	-1	-0.0%	-0	-0
Maintenance/ Technical	2	2		+0.0%		
<b>General Support</b>	<b>31</b>	<b>30</b>	<b>-1</b>	<b>-4.0%</b>	<b>-0</b>	<b>-0</b>
Health Care Assistants	115	113	-1	-0.0%	+8	+8
Care, other	45	46	+1	+0.0%	-0	-0
<b>Patient &amp; Client Care</b>	<b>160</b>	<b>159</b>	<b>-0</b>	<b>-0.2%</b>	<b>+8</b>	<b>+8</b>

**CHO 4 Employment by Grade Group & Staff Category: December 2020**

Dec 2020 (Dec 2019 figure: 8,189)	WTE Nov 2020	WTE Dec 2020	WTE change since Nov 20	% change since Nov 20	WTE change since Dec 19	WTE change since Dec 19
<b>Overall</b>	<b>8,504</b>	<b>8,602</b>	<b>+98</b>	<b>+1.2%</b>	<b>+413</b>	<b>+413</b>
Consultant Dentistry	2	2				
Consultant Medicine	1	1			-0	-0
Consultant Paediatrics	1	1				
Consultant Psychiatry	56	56	+1	+1.1%	+5	+5
<b>Consultants</b>	<b>60</b>	<b>60</b>	<b>+1</b>	<b>+1.0%</b>	<b>+5</b>	<b>+5</b>
Registrar	79	80	+2	+1.9%	-4	-4
Senior Registrar	14	14			+2	+2
Specialist Registrar	8	8	+0	+4.1%	+1	+1
<b>Registrars</b>	<b>101</b>	<b>103</b>	<b>+2</b>	<b>+1.8%</b>	<b>-1</b>	<b>-1</b>
Interns	2	2			-1	-1
Senior House Officer	49	49	+0	+0.1%	+14	+14
<b>SHO/ Interns</b>	<b>51</b>	<b>51</b>	<b>+0</b>	<b>+0.1%</b>	<b>+13</b>	<b>+13</b>
Dentists	60	60	-0	-0.6%	-3	-3
Other Medical	57	57	+0	+0.7%	+8	+8
<b>Medical/ Dental, other</b>	<b>116</b>	<b>116</b>	<b>+0</b>	<b>+0.0%</b>	<b>+5</b>	<b>+5</b>
<b>Medical &amp; Dental</b>	<b>328</b>	<b>330</b>	<b>+3</b>	<b>+0.8%</b>	<b>+19</b>	<b>+23</b>
Clinical Nurse/ Midwife Manager	361	365	+4	+1.1%	+28	+28
Director Nursing/Midwifery, Assistant	60	64	+4	+6.8%	+4	+4
Director of Nursing/Midwifery	38	37	-1	-2.8%	+2	+2
<b>Nurse/ Midwife Manager</b>	<b>460</b>	<b>467</b>	<b>+7</b>	<b>+1.5%</b>	<b>+34</b>	<b>+34</b>
Advanced Nurse/ Midwife Practitioner	7	7	+0	+0.9%	+0	+0
Clinical Nurse/ Midwife Specialist	91	91	+0	+0.4%	+17	+17
<b>Nurse/ Midwife Specialist &amp; AN/MP</b>	<b>98</b>	<b>98</b>	<b>+0</b>	<b>+0.4%</b>	<b>+17</b>	<b>+17</b>
Staff Midwives	5	6	+1	+16.3%	-3	-3
Staff Nurse [Intellectual Disability]	82	159	+77	+93.7%	+72	+72
Staff Nurse [Psychiatric]	487	487	-1	-0.2%	+18	+18
Staff Nurses [General/ Children's]	895	848	-47	-5.3%	-34	-34
<b>Staff Nurse/ Staff Midwife</b>	<b>1,469</b>	<b>1,498</b>	<b>+30</b>	<b>+2.0%</b>	<b>+53</b>	<b>+53</b>
<b>Public Health Nurse</b>	<b>232</b>	<b>228</b>	<b>-5</b>	<b>-2.1%</b>	<b>+12</b>	<b>+12</b>
Pre-registration Nurse/ Midwife Intern				-100.0%	-9	-9
Pre-registration Nurse Intern (COVID-19)	22	11	-11	-50.9%	+11	+11
Post-registration Nurse/ Midwife Student	15	15	+0	+1.0%	-4	-4
Nursing/ Midwifery awaiting registration	3	3			-29	-29
<b>Nursing/ Midwifery Student</b>	<b>39</b>	<b>28</b>	<b>-11</b>	<b>-27.5%</b>	<b>-31</b>	<b>-31</b>
<b>Nursing/ Midwifery other</b>				<b>-100.0%</b>	<b>-1</b>	<b>-1</b>
<b>Nursing &amp; Midwifery</b>	<b>2,298</b>	<b>2,319</b>	<b>+21</b>	<b>+0.9%</b>	<b>+69</b>	<b>+84</b>
Dietitians	38	38	+0	+0.9%	+11	+11
Occupational Therapists	174	177	+2	+1.3%	+7	+7
Orthoptists	2	2	+1	+33.3%	-1	-1
Physiotherapists	105	103	-2	-2.1%	-4	-4
Podiatrists & Chiropractors	7	7			+1	+1
Speech & Language Therapists	134	136	+3	+1.9%	+2	+2
<b>Therapy Professions</b>	<b>461</b>	<b>464</b>	<b>+3</b>	<b>+0.8%</b>	<b>+16</b>	<b>+16</b>
Audiology	8	8	+0	+0.1%	+1	+1
Physicists	2	2				
Radiographers	3	3			+0	+0
<b>Health Science/ Diagnostics</b>	<b>13</b>	<b>13</b>	<b>+0</b>	<b>+0.1%</b>	<b>+1</b>	<b>+1</b>

Dec 2020 (Dec 2019 figure: 8,189)	WTE Nov 2020	WTE Dec 2020	WTE change since Nov 20	% change since Nov 20	WTE change since Dec 19	WTE change since Dec 19
<b>Overall</b>	<b>8,504</b>	<b>8,602</b>	<b>+98</b>	<b>+1.2%</b>	<b>+413</b>	<b>+413</b>
<b>Social Care</b>	<b>257</b>	<b>252</b>	<b>-5</b>	<b>-2.0%</b>	<b>+12</b>	<b>+12</b>
<b>Social Workers</b>	<b>131</b>	<b>132</b>	<b>+1</b>	<b>+0.4%</b>	<b>+17</b>	<b>+17</b>
<b>Psychologists</b>	<b>150</b>	<b>152</b>	<b>+2</b>	<b>+1.2%</b>	<b>+14</b>	<b>+14</b>
<b>Pharmacy</b>	<b>10</b>	<b>11</b>	<b>+1</b>	<b>+10.4%</b>	<b>+3</b>	<b>+3</b>
Counsellor Therapists	40	39	-1	-2.8%	-2	-2
Dental Hygienists	11	11	-0	-1.2%	+3	+3
Other Health & Social Care	13	13	+0	+1.1%	+2	+2
Play Therapists/ Specialists	1	1				
<b>H&amp;SC, Other</b>	<b>65</b>	<b>64</b>	<b>-1</b>	<b>-1.7%</b>	<b>+3</b>	<b>+3</b>
<b>Health &amp; Social Care Professionals</b>	<b>1,087</b>	<b>1,087</b>	<b>+1</b>	<b>+0.1%</b>	<b>+79</b>	<b>+66</b>
Executive Management	17	16	-1	-5.4%	+1	+1
Senior Management (VIII & GM)	58	59	+1	+1.8%	+2	+2
<b>Management (VIII &amp; above)</b>	<b>75</b>	<b>75</b>	<b>+0</b>	<b>+0.2%</b>	<b>+2</b>	<b>+2</b>
<b>Administrative/ Supervisory (V to VII)</b>	<b>175</b>	<b>177</b>	<b>+3</b>	<b>+1.6%</b>	<b>+16</b>	<b>+16</b>
<b>Clerical (III &amp; IV)</b>	<b>540</b>	<b>546</b>	<b>+5</b>	<b>+1.0%</b>	<b>+41</b>	<b>+41</b>
<b>Management &amp; Administrative</b>	<b>790</b>	<b>798</b>	<b>+8</b>	<b>+1.1%</b>	<b>+84</b>	<b>+60</b>
Catering	59	55	-4	-6.1%	-5	-5
Household Services	208	210	+2	+0.9%	+21	+21
Other Support	79	74	-4	-5.3%	+0	+0
Portering	12	12	+0	+0.1%	-1	-1
<b>Support</b>	<b>358</b>	<b>352</b>	<b>-6</b>	<b>-1.6%</b>	<b>+15</b>	<b>+15</b>
Maintenance	22	21	-1	-3.4%	+0	+0
Technical Services	2	2			+1	+1
<b>Maintenance/ Technical</b>	<b>24</b>	<b>23</b>	<b>-1</b>	<b>-3.1%</b>	<b>+1</b>	<b>+1</b>
<b>General Support</b>	<b>382</b>	<b>375</b>	<b>-7</b>	<b>-1.7%</b>	<b>-1</b>	<b>+16</b>
HCA, Nurse's Aide, etc.	2,064	2,109	+45	+2.2%	+163	+163
Health & Social Care Assistants	11	12	+1	+7.1%	+4	+4
<b>Health Care Assistants</b>	<b>2,075</b>	<b>2,121</b>	<b>+46</b>	<b>+2.2%</b>	<b>+167</b>	<b>+167</b>
<b>Care, other</b>	<b>485</b>	<b>494</b>	<b>+9</b>	<b>+1.9%</b>	<b>+44</b>	<b>+44</b>
<b>Home Help</b>	<b>1,059</b>	<b>1,076</b>	<b>+17</b>	<b>+1.6%</b>	<b>-48</b>	<b>-48</b>
<b>Patient &amp; Client Care</b>	<b>3,619</b>	<b>3,691</b>	<b>+72</b>	<b>+2.0%</b>	<b>+214</b>	<b>+163</b>

# CHO 4 HSE Employment by Grade Group & Staff Category: December 2020

Dec 2020 (Dec 2019 figure: 5,940)	WTE Nov 2020	WTE Dec 2020	WTE change since Nov 20	% change since Nov 20	WTE change since Dec 19	WTE change since Dec 19
<b>Overall</b>	<b>6,154</b>	<b>6,247</b>	<b>+94</b>	<b>+1.5%</b>	<b>+307</b>	<b>+307</b>
Consultant Dentistry	2	2				
Consultant Medicine	1	1			-0	-0
Consultant Paediatrics	1	1				
Consultant Psychiatry	56	56	+1	+1.1%	+5	+5
<b>Consultants</b>	<b>60</b>	<b>60</b>	<b>+1</b>	<b>+1.0%</b>	<b>+5</b>	<b>+5</b>
Registrar	79	80	+2	+1.9%	-4	-4
Senior Registrar	14	14	+0	+0.0%	+2	+2
Specialist Registrar	2	2				
<b>Registrars</b>	<b>95</b>	<b>96</b>	<b>+2</b>	<b>+1.6%</b>	<b>-2</b>	<b>-2</b>
<b>SHO/ Interns</b>	<b>44</b>	<b>44</b>	<b>+0</b>	<b>+0.1%</b>	<b>+12</b>	<b>+12</b>
Dentists	47	47	-1	-1.5%	-3	-3
Other Medical	57	57	+0	+0.7%	+8	+8
<b>Medical/ Dental, other</b>	<b>104</b>	<b>103</b>	<b>-0</b>	<b>-0.3%</b>	<b>+5</b>	<b>+5</b>
<b>Medical &amp; Dental</b>	<b>302</b>	<b>304</b>	<b>+2</b>	<b>+0.6%</b>	<b>+15</b>	<b>+20</b>
Clinical Nurse/ Midwife Manager	292	296	+4	+1.4%	+27	+27
Director Nursing/Midwifery, Assistant	57	61	+4	+7.1%	+5	+5
Director of Nursing/Midwifery	35	34	-1	-3.0%	+2	+2
<b>Nurse/ Midwife Manager</b>	<b>385</b>	<b>392</b>	<b>+7</b>	<b>+1.9%</b>	<b>+34</b>	<b>+34</b>
Advanced Nurse/ Midwife Practitioner	5	5	+0	+1.3%	-1	-1
Clinical Nurse/ Midwife Specialist	80	80	+0	+0.4%	+17	+17
<b>Nurse/ Midwife Specialist &amp; AN/MP</b>	<b>84</b>	<b>85</b>	<b>+0</b>	<b>+0.5%</b>	<b>+16</b>	<b>+16</b>
Staff Midwives	5	6	+1	+16.3%	-3	-3
Staff Nurse [Intellectual Disability]				-100.0%	-1	-1
Staff Nurse [Psychiatric]	487	486	-1	-0.2%	+18	+18
Staff Nurses [General/ Children's]	703	721	+17	+2.5%	+37	+37
<b>Staff Nurse/ Staff Midwife</b>	<b>1,195</b>	<b>1,212</b>	<b>+17</b>	<b>+1.5%</b>	<b>+51</b>	<b>+51</b>
<b>Public Health Nurse</b>	<b>232</b>	<b>228</b>	<b>-5</b>	<b>-2.1%</b>	<b>+12</b>	<b>+12</b>
Pre-registration Nurse/ Midwife Intern				-100.0%	-3	-3
Pre-registration Nurse Intern (COVID-19)	5	3	-2	-33.3%	+3	+3
Post-registration Nurse/ Midwife Student	15	15	+0	+1.0%	-4	-4
Nursing/ Midwifery awaiting registration	3	3			-29	-29
<b>Nursing/ Midwifery Student</b>	<b>22</b>	<b>21</b>	<b>-1</b>	<b>-6.1%</b>	<b>-33</b>	<b>-33</b>
<b>Nursing &amp; Midwifery</b>	<b>1,919</b>	<b>1,937</b>	<b>+19</b>	<b>+1.0%</b>	<b>+73</b>	<b>+80</b>
Dietitians	36	36	+0	+1.0%	+11	+11
Occupational Therapists	144	145	+1	+0.9%	+8	+8
Orthoptists	2	2	+1	+33.3%	-1	-1
Physiotherapists	92	89	-2	-2.6%	-3	-3
Podiatrists & Chiropodists	7	7			+1	+1
Speech & Language Therapists	94	97	+3	+2.7%	+3	+3
<b>Therapy Professions</b>	<b>375</b>	<b>378</b>	<b>+2</b>	<b>+0.6%</b>	<b>+18</b>	<b>+18</b>
Audiology	8	8	+0	+0.1%	+1	+1
Physicists	2	2				
Radiographers	1	1			+0	+0
<b>Health Science/ Diagnostics</b>	<b>11</b>	<b>11</b>	<b>+0</b>	<b>+0.1%</b>	<b>+1</b>	<b>+1</b>
<b>Social Care</b>	<b>41</b>	<b>41</b>	<b>-0</b>	<b>-0.8%</b>	<b>+2</b>	<b>+2</b>
<b>Social Workers</b>	<b>105</b>	<b>105</b>	<b>+0</b>	<b>+0.1%</b>	<b>+17</b>	<b>+17</b>
<b>Psychologists</b>	<b>117</b>	<b>119</b>	<b>+2</b>	<b>+1.6%</b>	<b>+12</b>	<b>+12</b>
<b>Pharmacy</b>	<b>10</b>	<b>11</b>	<b>+1</b>	<b>+10.4%</b>	<b>+3</b>	<b>+3</b>
Counsellor Therapists	38	37	-1	-2.9%	-2	-2



Dec 2020 (Dec 2019 figure: 5,940)	WTE Nov 2020	WTE Dec 2020	WTE change since Nov 20	% change since Nov 20	WTE change since Dec 19	WTE change since Dec 19
<b>Overall</b>	<b>6,154</b>	<b>6,247</b>	<b>+94</b>	<b>+1.5%</b>	<b>+307</b>	<b>+307</b>
Dental Hygienists	8	8	-0	-1.7%	+1	+1
Other Health & Social Care	12	12	+0	+1.2%	+2	+2
Play Therapists/ Specialists	1	1				
<b>H&amp;SC, Other</b>	<b>59</b>	<b>58</b>	<b>-1</b>	<b>-1.9%</b>	<b>+1</b>	<b>+1</b>
<b>Health &amp; Social Care Professionals</b>	<b>718</b>	<b>722</b>	<b>+4</b>	<b>+0.5%</b>	<b>+60</b>	<b>+55</b>
Executive Management	14	13	-1	-6.6%	+1	+1
Senior Management (VIII & GM)	46	46	+0	+0.1%	+0	+0
<b>Management (VIII &amp; above)</b>	<b>60</b>	<b>59</b>	<b>-1</b>	<b>-1.4%</b>	<b>+1</b>	<b>+1</b>
<b>Administrative/ Supervisory (V to VII)</b>	<b>132</b>	<b>135</b>	<b>+3</b>	<b>+2.6%</b>	<b>+12</b>	<b>+12</b>
<b>Clerical (III &amp; IV)</b>	<b>446</b>	<b>452</b>	<b>+6</b>	<b>+1.3%</b>	<b>+37</b>	<b>+37</b>
<b>Management &amp; Administrative</b>	<b>637</b>	<b>646</b>	<b>+8</b>	<b>+1.3%</b>	<b>+75</b>	<b>+50</b>
Catering	41	41	-0	-1.1%	-3	-3
Household Services	157	158	+1	+0.5%	+17	+17
Other Support	13	13	-0	-0.2%	-0	-0
Portering	7	7	+0	+0.1%	-1	-1
<b>Support</b>	<b>218</b>	<b>219</b>	<b>+0</b>	<b>+0.1%</b>	<b>+12</b>	<b>+12</b>
<b>Maintenance/ Technical</b>	<b>12</b>	<b>12</b>	<b>+0</b>	<b>+2.1%</b>	<b>-1</b>	<b>-1</b>
<b>General Support</b>	<b>230</b>	<b>231</b>	<b>+0</b>	<b>+0.2%</b>	<b>-11</b>	<b>+11</b>
HCA, Nurse's Aide, etc.	1,142	1,188	+45	+4.0%	+117	+117
Health & Social Care Assistants	11	12	+1	+7.1%	+4	+4
<b>Health Care Assistants</b>	<b>1,154</b>	<b>1,200</b>	<b>+46</b>	<b>+4.0%</b>	<b>+121</b>	<b>+121</b>
<b>Care, other</b>	<b>134</b>	<b>132</b>	<b>-3</b>	<b>-1.9%</b>	<b>+18</b>	<b>+18</b>
<b>Home Help</b>	<b>1,059</b>	<b>1,076</b>	<b>+17</b>	<b>+1.6%</b>	<b>-48</b>	<b>-48</b>
<b>Patient &amp; Client Care</b>	<b>2,347</b>	<b>2,407</b>	<b>+60</b>	<b>+2.6%</b>	<b>+107</b>	<b>+91</b>

## Employment by WTE, Headcount, Gender, Full-Time /Part-Time etc.: Dec 2020

CHO 4	WTE	Headcount	WTE: no.	% Male	% female	Male WTE: no.	Female WTE: no.	% Total Perm	% Male Perm	% Female Perm	% Total Full Time	% Total Part Time	% Male FT	% Female FT
<b>Overall</b>	<b>8,602</b>	<b>10,542</b>	<b>1.23</b>	<b>16.0%</b>	<b>84.0%</b>	<b>1.13</b>	<b>1.25</b>	<b>73.7%</b>	<b>65.9%</b>	<b>75.2%</b>	<b>70.8%</b>	<b>29.2%</b>	<b>81.1%</b>	<b>68.9%</b>
Consultant Dentistry	2	2	1.00	50.0%	50.0%	1.00	1.00	100.0%	100.0%	100.0%	100.0%	0.0%	100.0%	100.0%
Consultant Medicine	1	4	3.64	25.0%	75.0%	2.00	5.00	50.0%	50.0%	33.3%	0.0%	100.0%	0.0%	0.0%
Consultant Paediatrics	1	2	2.00		100.0%		2.00	100.0%	100.0%	100.0%	0.0%	100.0%		0.0%
Consultant Psychiatry	56	62	1.10	25.8%	74.2%	1.08	1.11	35.5%	35.5%	41.3%	79.0%	21.0%	87.5%	76.1%
<b>Consultants</b>	<b>60</b>	<b>70</b>	<b>1.16</b>	<b>25.7%</b>	<b>74.3%</b>	<b>1.10</b>	<b>1.18</b>	<b>40.0%</b>	<b>27.8%</b>	<b>44.2%</b>	<b>72.9%</b>	<b>27.1%</b>	<b>83.3%</b>	<b>69.2%</b>
Registrar	80	81	1.01	40.7%	59.3%	1.00	1.01	1.2%	1.2%	0.0%	98.8%	1.2%	100.0%	97.9%
Senior Registrar	14	17	1.22	41.2%	58.8%	1.09	1.32	0.0%	0.0%	0.0%	76.5%	23.5%	85.7%	70.0%
Specialist Registrar	8	9	1.08	55.6%	44.4%	1.15	1.00	33.3%	33.3%	25.0%	88.9%	11.1%	80.0%	100.0%
<b>Registrars</b>	<b>103</b>	<b>107</b>	<b>1.04</b>	<b>42.1%</b>	<b>57.9%</b>	<b>1.03</b>	<b>1.05</b>	<b>3.7%</b>	<b>6.7%</b>	<b>1.6%</b>	<b>94.4%</b>	<b>5.6%</b>	<b>95.6%</b>	<b>93.5%</b>
Interns	2	2	1.00	50.0%	50.0%	1.00	1.00	0.0%	0.0%	0.0%	100.0%	0.0%	100.0%	100.0%
Senior House Officer	49	50	1.02	38.0%	62.0%	1.00	1.03	0.0%	0.0%	0.0%	94.0%	6.0%	100.0%	90.3%
<b>SHO/ Interns</b>	<b>51</b>	<b>52</b>	<b>1.02</b>	<b>38.5%</b>	<b>61.5%</b>	<b>1.00</b>	<b>1.03</b>	<b>0.0%</b>	<b>0.0%</b>	<b>0.0%</b>	<b>94.2%</b>	<b>5.8%</b>	<b>100.0%</b>	<b>90.6%</b>
Dentists	60	93	1.56	28.0%	72.0%	1.70	1.52	83.9%	83.9%	80.6%	32.3%	67.7%	30.8%	32.8%
Other Medical	57	109	1.92	38.5%	61.5%	2.23	1.76	41.3%	41.3%	46.3%	33.0%	67.0%	38.1%	29.9%
<b>Medical/ Dental, other</b>	<b>116</b>	<b>202</b>	<b>1.74</b>	<b>33.7%</b>	<b>66.3%</b>	<b>1.99</b>	<b>1.63</b>	<b>60.9%</b>	<b>55.9%</b>	<b>63.4%</b>	<b>32.7%</b>	<b>67.3%</b>	<b>35.3%</b>	<b>31.3%</b>
<b>Medical &amp; Dental</b>	<b>330</b>	<b>431</b>	<b>1.30</b>	<b>35.0%</b>	<b>65.0%</b>	<b>1.32</b>	<b>1.29</b>	<b>36.0%</b>	<b>30.5%</b>	<b>38.9%</b>	<b>61.9%</b>	<b>38.1%</b>	<b>67.5%</b>	<b>58.9%</b>
Clinical Nurse/ Midwife Manager	365	394	1.08	17.8%	82.2%	1.00	1.10	95.2%	95.2%	95.1%	79.7%	20.3%	98.6%	75.6%
Director Nursing/Midwifery, Assistant	64	69	1.08	15.9%	84.1%	1.08	1.08	98.6%	98.6%	98.3%	82.6%	17.4%	100.0%	79.3%
Director of Nursing/Midwifery	37	38	1.02	5.3%	94.7%	1.00	1.02	94.7%	94.7%	94.4%	86.8%	13.2%	100.0%	86.1%
<b>Nurse/ Midwife Manager</b>	<b>467</b>	<b>501</b>	<b>1.07</b>	<b>16.6%</b>	<b>83.4%</b>	<b>1.01</b>	<b>1.09</b>	<b>95.6%</b>	<b>96.4%</b>	<b>95.5%</b>	<b>80.6%</b>	<b>19.4%</b>	<b>98.8%</b>	<b>77.0%</b>
Advanced Nurse/ Midwife Practitioner	7	7	1.03	42.9%	57.1%	1.00	1.05	100.0%	100.0%	100.0%	85.7%	14.3%	100.0%	75.0%
Clinical Nurse/ Midwife Specialist	91	97	1.06	12.4%	87.6%	1.00	1.07	96.9%	96.9%	97.6%	81.4%	18.6%	100.0%	78.8%
<b>Nurse/ Midwife Specialist &amp; AN/MP</b>	<b>98</b>	<b>104</b>	<b>1.06</b>	<b>14.4%</b>	<b>85.6%</b>	<b>1.00</b>	<b>1.07</b>	<b>97.1%</b>	<b>93.3%</b>	<b>97.8%</b>	<b>81.7%</b>	<b>18.3%</b>	<b>100.0%</b>	<b>78.7%</b>
Staff Midwives	6	8	1.45		100.0%		1.45	100.0%	100.0%	100.0%	12.5%	87.5%		12.5%
Staff Nurse [Intellectual Disability]	159	188	1.19	6.9%	93.1%	1.10	1.19	96.8%	96.8%	96.6%	71.3%	28.7%	84.6%	70.3%
Staff Nurse [Psychiatric]	487	523	1.07	30.0%	70.0%	1.05	1.09	81.1%	81.1%	82.8%	88.5%	11.5%	94.3%	86.1%
Staff Nurses [General/ Children's]	848	1,059	1.25	4.9%	95.1%	1.06	1.26	73.3%	73.3%	74.1%	45.4%	54.6%	88.5%	43.2%
<b>Staff Nurse/ Staff Midwife</b>	<b>1,498</b>	<b>1,778</b>	<b>1.19</b>	<b>12.5%</b>	<b>87.5%</b>	<b>1.05</b>	<b>1.21</b>	<b>78.2%</b>	<b>73.9%</b>	<b>78.8%</b>	<b>60.7%</b>	<b>39.3%</b>	<b>92.3%</b>	<b>56.2%</b>

<b>Public Health Nurse</b>	<b>228</b>	<b>278</b>	<b>1.22</b>	<b>0.4%</b>	<b>99.6%</b>	<b>1.00</b>	<b>1.22</b>	<b>87.1%</b>	<b>100.0%</b>	<b>87.0%</b>	<b>68.3%</b>	<b>31.7%</b>	<b>100.0%</b>	<b>68.2%</b>
Pre-registration Nurse Intern (COVID-19)	11	11	1.04	18.2%	81.8%	1.00	1.05	0.0%	0.0%	0.0%	100.0%	0.0%	100.0%	100.0%
Post-registration Nurse/ Midwife Student	15	15	1.00		100.0%		1.00	53.3%	53.3%	53.3%	86.7%	13.3%		86.7%
Nursing/ Midwifery awaiting registration	3	3	1.00		100.0%		1.00	33.3%	33.3%	33.3%	100.0%	0.0%		100.0%
<b>Nursing/ Midwifery Student</b>	<b>28</b>	<b>29</b>	<b>1.02</b>	<b>6.9%</b>	<b>93.1%</b>	<b>1.00</b>	<b>1.02</b>	<b>31.0%</b>	<b>0.0%</b>	<b>33.3%</b>	<b>93.1%</b>	<b>6.9%</b>	<b>100.0%</b>	<b>92.6%</b>
<b>Nursing &amp; Midwifery</b>	<b>2,319</b>	<b>2,690</b>	<b>1.16</b>	<b>12.0%</b>	<b>88.0%</b>	<b>1.04</b>	<b>1.18</b>	<b>82.6%</b>	<b>80.2%</b>	<b>82.9%</b>	<b>66.4%</b>	<b>33.6%</b>	<b>94.4%</b>	<b>62.5%</b>
Dietitians	38	47	1.22		100.0%		1.22	76.6%	76.6%	76.6%	74.5%	25.5%		74.5%
Occupational Therapists	177	209	1.18	7.2%	92.8%	1.13	1.19	83.3%	83.3%	83.5%	71.3%	28.7%	80.0%	70.6%
Orthoptists	2	2	1.00		100.0%		1.00	50.0%	50.0%	50.0%	50.0%	50.0%		50.0%
Physiotherapists	103	127	1.23	19.7%	80.3%	1.10	1.27	82.7%	82.7%	84.3%	63.8%	36.2%	80.0%	59.8%
Podiatrists & Chiropodists	7	10	1.34	40.0%	60.0%	1.14	1.50	50.0%	50.0%	50.0%	60.0%	40.0%	75.0%	50.0%
Speech & Language Therapists	136	162	1.19	1.2%	98.8%	1.00	1.19	82.7%	82.7%	82.5%	68.5%	31.5%	50.0%	68.8%
<b>Therapy Professions</b>	<b>464</b>	<b>557</b>	<b>1.20</b>	<b>8.3%</b>	<b>91.7%</b>	<b>1.11</b>	<b>1.21</b>	<b>81.7%</b>	<b>76.1%</b>	<b>82.2%</b>	<b>68.8%</b>	<b>31.2%</b>	<b>78.3%</b>	<b>67.9%</b>
Audiology	8	8	1.00	37.5%	62.5%	1.00	1.00	87.5%	87.5%	80.0%	100.0%	0.0%	100.0%	100.0%
Physicists	2	2	1.00		100.0%		1.00	100.0%	100.0%	100.0%	100.0%	0.0%		100.0%
Radiographers	3	4	1.22		100.0%		1.22	75.0%	75.0%	75.0%	75.0%	25.0%		75.0%
<b>Health Science/ Diagnostics</b>	<b>13</b>	<b>14</b>	<b>1.05</b>	<b>21.4%</b>	<b>78.6%</b>	<b>1.00</b>	<b>1.07</b>	<b>85.7%</b>	<b>100.0%</b>	<b>81.8%</b>	<b>92.9%</b>	<b>7.1%</b>	<b>100.0%</b>	<b>90.9%</b>
<b>Social Care</b>	<b>252</b>	<b>291</b>	<b>1.15</b>	<b>14.4%</b>	<b>85.6%</b>	<b>1.04</b>	<b>1.18</b>	<b>89.0%</b>	<b>85.7%</b>	<b>89.6%</b>	<b>67.4%</b>	<b>32.6%</b>	<b>90.5%</b>	<b>63.5%</b>
<b>Social Workers</b>	<b>132</b>	<b>151</b>	<b>1.14</b>	<b>17.2%</b>	<b>82.8%</b>	<b>1.01</b>	<b>1.18</b>	<b>80.8%</b>	<b>73.1%</b>	<b>82.4%</b>	<b>83.4%</b>	<b>16.6%</b>	<b>96.2%</b>	<b>80.8%</b>
<b>Psychologists</b>	<b>152</b>	<b>172</b>	<b>1.13</b>	<b>23.8%</b>	<b>76.2%</b>	<b>1.04</b>	<b>1.17</b>	<b>72.7%</b>	<b>68.3%</b>	<b>74.0%</b>	<b>76.2%</b>	<b>23.8%</b>	<b>92.7%</b>	<b>71.0%</b>
<b>Pharmacy</b>	<b>11</b>	<b>16</b>	<b>1.50</b>	<b>12.5%</b>	<b>87.5%</b>	<b>2.44</b>	<b>1.43</b>	<b>50.0%</b>	<b>50.0%</b>	<b>50.0%</b>	<b>37.5%</b>	<b>62.5%</b>	<b>0.0%</b>	<b>42.9%</b>
Counsellor Therapists	39	42	1.08	54.8%	45.2%	1.04	1.15	95.2%	95.2%	89.5%	92.9%	7.1%	95.7%	89.5%
Dental Hygienists	11	14	1.28	7.1%	92.9%	1.00	1.31	100.0%	100.0%	100.0%	35.7%	64.3%	100.0%	30.8%
Other Health & Social Care	13	18	1.36	38.9%	61.1%	1.25	1.44	66.7%	66.7%	72.7%	61.1%	38.9%	71.4%	54.5%
Play Therapists/ Specialists	1	1	1.59		100.0%		1.59	100.0%	100.0%	100.0%	0.0%	100.0%		0.0%
<b>H&amp;SC, Other</b>	<b>64</b>	<b>75</b>	<b>1.18</b>	<b>41.3%</b>	<b>58.7%</b>	<b>1.08</b>	<b>1.27</b>	<b>89.3%</b>	<b>90.3%</b>	<b>88.6%</b>	<b>73.3%</b>	<b>26.7%</b>	<b>90.3%</b>	<b>61.4%</b>
<b>Health &amp; Social Care</b>	<b>1,087</b>	<b>1,276</b>	<b>1.17</b>	<b>15.0%</b>	<b>85.0%</b>	<b>1.06</b>	<b>1.20</b>	<b>82.1%</b>	<b>78.5%</b>	<b>82.8%</b>	<b>71.3%</b>	<b>28.7%</b>	<b>88.0%</b>	<b>68.4%</b>
Executive Management	16	16	1.02	31.3%	68.8%	1.00	1.03	93.8%	93.8%	90.9%	100.0%	0.0%	100.0%	100.0%
Senior Management (VIII & GM)	59	62	1.04	27.4%	72.6%	1.04	1.05	91.9%	91.9%	97.8%	88.7%	11.3%	94.1%	86.7%
<b>Management (VIII &amp; above)</b>	<b>75</b>	<b>78</b>	<b>1.04</b>	<b>28.2%</b>	<b>71.8%</b>	<b>1.03</b>	<b>1.04</b>	<b>92.3%</b>	<b>81.8%</b>	<b>96.4%</b>	<b>91.0%</b>	<b>9.0%</b>	<b>95.5%</b>	<b>89.3%</b>
<b>Administrative/ Supervisory (V to VII)</b>	<b>177</b>	<b>194</b>	<b>1.09</b>	<b>17.5%</b>	<b>82.5%</b>	<b>1.05</b>	<b>1.10</b>	<b>86.6%</b>	<b>73.5%</b>	<b>89.4%</b>	<b>77.8%</b>	<b>22.2%</b>	<b>88.2%</b>	<b>75.6%</b>
<b>Clerical (III &amp; IV)</b>	<b>546</b>	<b>672</b>	<b>1.23</b>	<b>7.3%</b>	<b>92.7%</b>	<b>1.14</b>	<b>1.24</b>	<b>71.9%</b>	<b>69.4%</b>	<b>72.1%</b>	<b>55.1%</b>	<b>44.9%</b>	<b>71.4%</b>	<b>53.8%</b>
<b>Management &amp; Administrative</b>	<b>798</b>	<b>944</b>	<b>1.18</b>	<b>11.1%</b>	<b>88.9%</b>	<b>1.09</b>	<b>1.20</b>	<b>76.6%</b>	<b>73.3%</b>	<b>77.0%</b>	<b>62.7%</b>	<b>37.3%</b>	<b>81.9%</b>	<b>60.3%</b>
Catering	55	65	1.18	33.8%	66.2%	1.06	1.25	84.6%	84.6%	86.0%	80.0%	20.0%	95.5%	72.1%
Household Services	210	272	1.29	27.2%	72.8%	1.27	1.30	69.1%	69.1%	73.7%	59.6%	40.4%	75.7%	53.5%

Other Support	74	156	2.10	21.8%	78.2%	1.29	2.54	81.4%	81.4%	78.7%	26.9%	73.1%	85.3%	10.7%
Portering	12	17	1.41	100.0%		1.41		94.1%	94.1%		52.9%	47.1%	52.9%	
<b>Support</b>	<b>352</b>	<b>510</b>	<b>1.45</b>	<b>28.8%</b>	<b>71.2%</b>	<b>1.25</b>	<b>1.55</b>	<b>75.7%</b>	<b>72.8%</b>	<b>76.9%</b>	<b>52.0%</b>	<b>48.0%</b>	<b>78.2%</b>	<b>41.3%</b>
<b>Maintenance/ Technical</b>	<b>23</b>	<b>29</b>	<b>1.24</b>	<b>86.2%</b>	<b>13.8%</b>	<b>1.22</b>	<b>1.37</b>	<b>89.7%</b>	<b>88.0%</b>	<b>100.0%</b>	<b>69.0%</b>	<b>31.0%</b>	<b>76.0%</b>	<b>25.0%</b>
<b>General Support</b>	<b>375</b>	<b>539</b>	<b>1.44</b>	<b>31.9%</b>	<b>68.1%</b>	<b>1.25</b>	<b>1.55</b>	<b>76.4%</b>	<b>75.0%</b>	<b>77.1%</b>	<b>52.9%</b>	<b>47.1%</b>	<b>77.9%</b>	<b>41.1%</b>
HCA, Nurse's Aide, etc.	2,109	2,409	1.14	22.0%	78.0%	1.10	1.15	71.2%	71.2%	72.3%	69.3%	30.7%	77.7%	66.9%
Health & Social Care Assistants	12	12	1.00		100.0%		1.00	0.0%	0.0%	0.0%	100.0%	0.0%		100.0%
<b>Health Care Assistants</b>	<b>2,121</b>	<b>2,421</b>	<b>1.14</b>	<b>21.9%</b>	<b>78.1%</b>	<b>1.10</b>	<b>1.15</b>	<b>70.8%</b>	<b>67.1%</b>	<b>71.9%</b>	<b>69.4%</b>	<b>30.6%</b>	<b>77.7%</b>	<b>67.1%</b>
<b>Care, other</b>	<b>494</b>	<b>605</b>	<b>1.22</b>	<b>20.3%</b>	<b>79.7%</b>	<b>1.23</b>	<b>1.22</b>	<b>79.3%</b>	<b>63.4%</b>	<b>83.4%</b>	<b>55.0%</b>	<b>45.0%</b>	<b>63.4%</b>	<b>52.9%</b>
<b>Home Help</b>	<b>1,076</b>	<b>1,636</b>	<b>1.52</b>	<b>5.7%</b>	<b>94.3%</b>	<b>1.30</b>	<b>1.54</b>	<b>62.3%</b>	<b>18.3%</b>	<b>64.9%</b>	<b>98.8%</b>	<b>1.2%</b>	<b>91.4%</b>	<b>99.2%</b>
<b>Patient &amp; Client Care</b>	<b>3,691</b>	<b>4,662</b>	<b>1.26</b>	<b>16.0%</b>	<b>84.0%</b>	<b>1.14</b>	<b>1.29</b>	<b>68.9%</b>	<b>60.4%</b>	<b>70.6%</b>	<b>77.9%</b>	<b>22.1%</b>	<b>77.0%</b>	<b>78.0%</b>

## Employment by WTE, Headcount, Gender, Full-Time /Part-Time etc.: Dec 2020

CHO 4	WTE	Headcount	WTE: no.	% Male	% female	Male WTE: no.	Female WTE: no.	% Total Perm	% Male Perm	% Female Perm	% Total Full Time	% Total Part Time	% Male FT	% Female FT
<b>Overall</b>	<b>8,602</b>	<b>10,542</b>	<b>1.23</b>	<b>16.0%</b>	<b>84.0%</b>	<b>1.13</b>	<b>1.25</b>	<b>73.7%</b>	<b>65.9%</b>	<b>75.2%</b>	<b>70.8%</b>	<b>29.2%</b>	<b>81.1%</b>	<b>68.9%</b>
Community Health & Wellbeing	35	44	1.27	2.3%	97.7%	1.00	1.27	90.9%	90.9%	90.7%	54.5%	45.5%	100.0%	100.0%
Mental Health	1,564	1,713	1.10	25.5%	74.5%	1.06	1.11	75.2%	75.2%	77.8%	84.3%	15.7%	93.6%	93.6%
Primary Care	1,517	1,887	1.24	10.9%	89.1%	1.21	1.25	69.3%	69.3%	71.0%	59.6%	40.4%	72.7%	72.7%
HSE	3,243	4,176	1.29	12.4%	87.6%	1.14	1.31	67.3%	67.3%	69.1%	75.5%	24.5%	87.4%	87.4%
Section 38 Voluntary Agencies	2,242	2,722	1.21	19.4%	80.6%	1.16	1.23	85.4%	85.4%	86.9%	63.3%	36.7%	68.0%	68.0%
Social Care	5,486	6,898	1.26	15.1%	84.9%	1.15	1.28	74.5%	74.5%	75.8%	70.7%	29.3%	77.6%	77.6%

# CHO 4 Skills Mix by Staff Grouping: December 2020

Dec 2020 (Dec 2018 figure: 8,138)	WTE Dec 2015	WTE Dec 2016	WTE Dec 2017	WTE Dec 2018	WTE Dec 2019	WTE Nov 2020	WTE Dec 2020
<b>Overall</b>	<b>7,461</b>	<b>7,639</b>	<b>7,983</b>	<b>8,138</b>	<b>8,189</b>	<b>8,504</b>	<b>8,602</b>
Consultant Dentistry	0.7%	0.7%	0.7%	0.6%	0.6%	0.6%	0.6%
Consultant Medicine	0.9%	0.9%	0.3%	0.3%	0.4%	0.3%	0.3%
Consultant Paediatrics	0.1%	0.1%	0.3%	0.3%	0.3%	0.3%	0.3%
Consultant Psychiatry	15.9%	16.1%	15.7%	15.8%	16.5%	17.0%	17.0%
<b>Consultants</b>	<b>17.7%</b>	<b>17.8%</b>	<b>17.1%</b>	<b>17.1%</b>	<b>17.8%</b>	<b>18.2%</b>	<b>18.3%</b>
Registrar	23.1%	22.8%	23.6%	25.2%	27.5%	24.0%	24.3%
Senior Registrar	3.2%	3.3%	3.6%	3.5%	3.8%	4.3%	4.2%
Specialist Registrar	1.5%	1.1%	1.3%	1.3%	2.3%	2.4%	2.5%
<b>Registrars</b>	<b>27.8%</b>	<b>27.2%</b>	<b>28.5%</b>	<b>30.0%</b>	<b>33.6%</b>	<b>30.7%</b>	<b>31.0%</b>
Interns	1.1%	1.1%	1.0%	1.0%	1.0%	0.6%	0.6%
Senior House Officer	14.0%	13.5%	12.9%	13.2%	11.4%	15.0%	14.9%
<b>SHO/ Interns</b>	<b>15.1%</b>	<b>14.5%</b>	<b>13.9%</b>	<b>14.2%</b>	<b>12.4%</b>	<b>15.6%</b>	<b>15.5%</b>
Dentists	22.4%	22.0%	20.8%	20.9%	20.3%	18.3%	18.0%
Other Medical	17.1%	18.4%	19.8%	17.8%	15.9%	17.2%	17.2%
<b>Medical/ Dental, other</b>	<b>39.5%</b>	<b>40.5%</b>	<b>40.6%</b>	<b>38.7%</b>	<b>36.2%</b>	<b>35.5%</b>	<b>35.2%</b>
<b>Medical &amp; Dental</b>	<b>3.7%</b>	<b>3.7%</b>	<b>3.8%</b>	<b>3.8%</b>	<b>3.8%</b>	<b>100.0%</b>	<b>3.8%</b>
Clinical Nurse/ Midwife Manager	14.3%	14.1%	13.8%	14.3%	15.1%	15.7%	15.7%
Director Nursing/Midwifery, Assistant	2.4%	2.4%	2.1%	2.1%	2.7%	2.6%	2.8%
Director of Nursing/Midwifery	1.0%	0.8%	0.8%	0.8%	1.6%	1.7%	1.6%
<b>Nurse/ Midwife Manager</b>	<b>17.8%</b>	<b>17.3%</b>	<b>16.7%</b>	<b>17.2%</b>	<b>19.4%</b>	<b>20.0%</b>	<b>20.1%</b>
Advanced Nurse/ Midwife Practitioner	0.2%	0.1%	0.1%	0.2%	0.3%	0.3%	0.3%
Clinical Nurse/ Midwife Specialist	2.3%	2.5%	2.9%	3.0%	3.3%	4.0%	3.9%
<b>Nurse/ Midwife Specialist &amp; AN/MP</b>	<b>2.5%</b>	<b>2.7%</b>	<b>3.0%</b>	<b>3.2%</b>	<b>3.6%</b>	<b>4.3%</b>	<b>4.2%</b>
Graduate Nursing/ Midwifery	0.0%						
Staff Midwives	0.1%	0.1%	0.2%	0.3%	0.4%	0.2%	0.2%
Staff Nurse [Intellectual Disability]	2.9%	3.0%	3.1%	3.9%	3.9%	3.6%	6.8%
Staff Nurse [Psychiatric]	24.6%	24.6%	23.9%	23.3%	21.0%	21.2%	21.0%
Staff Nurses [General/ Children's]	41.6%	41.9%	42.6%	41.4%	39.5%	38.9%	36.6%
<b>Staff Nurse/ Staff Midwife</b>	<b>69.3%</b>	<b>69.6%</b>	<b>69.8%</b>	<b>68.9%</b>	<b>64.7%</b>	<b>63.9%</b>	<b>64.6%</b>
<b>Public Health Nurse</b>	<b>9.7%</b>	<b>9.6%</b>	<b>9.4%</b>	<b>9.7%</b>	<b>9.7%</b>	<b>10.1%</b>	<b>9.8%</b>
Pre-registration Nurse/ Midwife Intern	0.4%	0.4%	0.3%	0.4%	0.4%		
Pre-registration Nurse Intern (COVID-19)						0.9%	0.5%
Post-registration Nurse/ Midwife Student	0.3%	0.4%	0.7%	0.6%	0.9%	0.6%	0.6%
Nursing/ Midwifery awaiting registration					1.4%	0.1%	0.1%
<b>Nursing/ Midwifery Student</b>	<b>0.7%</b>	<b>0.7%</b>	<b>1.1%</b>	<b>1.0%</b>	<b>2.7%</b>	<b>1.7%</b>	<b>1.2%</b>
<b>Nursing/ Midwifery other</b>	<b>0.0%</b>	<b>0.0%</b>	<b>0.0%</b>	<b>0.0%</b>	<b>0.0%</b>		
<b>Nursing &amp; Midwifery</b>	<b>29.9%</b>	<b>29.4%</b>	<b>28.8%</b>	<b>27.7%</b>	<b>27.5%</b>	<b>100.0%</b>	<b>27.0%</b>
Dietitians	1.5%	2.0%	2.4%	2.8%	2.7%	3.5%	3.5%
Occupational Therapists	17.3%	16.3%	16.6%	16.2%	16.6%	16.1%	16.3%
Orthoptists	0.1%	0.0%	0.1%	0.0%	0.3%	0.1%	0.2%
Physiotherapists	11.6%	11.2%	11.1%	10.7%	10.5%	9.7%	9.5%
Podiatrists & Chiropodists	0.7%	0.9%	0.8%	0.7%	0.6%	0.7%	0.7%
Speech & Language Therapists	13.5%	14.1%	14.2%	13.3%	13.2%	12.3%	12.5%
<b>Therapy Professions</b>	<b>44.6%</b>	<b>44.4%</b>	<b>45.2%</b>	<b>43.8%</b>	<b>43.9%</b>	<b>42.4%</b>	<b>42.7%</b>
Audiology	0.6%	0.5%	0.6%	0.7%	0.7%	0.7%	0.7%
Medical Laboratory	1.4%						
Phlebotomists	0.1%	0.1%	0.1%				
Physicists	0.2%	0.2%	0.2%	0.2%	0.2%	0.2%	0.2%
Radiographers	0.3%	0.2%	0.2%	0.3%	0.3%	0.3%	0.3%
<b>Health Science/ Diagnostics</b>	<b>2.6%</b>	<b>1.1%</b>	<b>1.1%</b>	<b>1.2%</b>	<b>1.2%</b>	<b>1.2%</b>	<b>1.2%</b>
<b>Social Care</b>	<b>23.4%</b>	<b>23.3%</b>	<b>22.8%</b>	<b>22.9%</b>	<b>23.5%</b>	<b>23.7%</b>	<b>23.2%</b>

Dec 2020 (Dec 2018 figure: 8,138)	WTE Dec 2015	WTE Dec 2016	WTE Dec 2017	WTE Dec 2018	WTE Dec 2019	WTE Nov 2020	WTE Dec 2020
<b>Overall</b>	<b>7,461</b>	<b>7,639</b>	<b>7,983</b>	<b>8,138</b>	<b>8,189</b>	<b>8,504</b>	<b>8,602</b>
<b>Social Workers</b>	<b>11.7%</b>	<b>11.9%</b>	<b>12.0%</b>	<b>12.0%</b>	<b>11.2%</b>	<b>12.1%</b>	<b>12.1%</b>
<b>Psychologists</b>	<b>11.0%</b>	<b>11.7%</b>	<b>11.8%</b>	<b>13.2%</b>	<b>13.5%</b>	<b>13.8%</b>	<b>13.9%</b>
<b>Pharmacy</b>	<b>1.0%</b>	<b>0.9%</b>	<b>1.0%</b>	<b>1.0%</b>	<b>0.8%</b>	<b>0.9%</b>	<b>1.0%</b>
Counsellor Therapists	3.6%	4.6%	4.4%	4.0%	4.0%	3.7%	3.6%
Dental Hygienists	0.8%	0.8%	0.7%	0.7%	0.8%	1.0%	1.0%
Other Health & Social Care	1.1%	1.1%	1.0%	1.0%	1.1%	1.2%	1.2%
Play Therapists/ Specialists	0.2%	0.2%	0.1%	0.1%	0.1%	0.1%	0.1%
<b>H&amp;SC, Other</b>	<b>5.6%</b>	<b>6.7%</b>	<b>6.2%</b>	<b>5.8%</b>	<b>5.9%</b>	<b>5.9%</b>	<b>5.8%</b>
<b>Health &amp; Social Care Professionals</b>	<b>11.7%</b>	<b>12.1%</b>	<b>12.3%</b>	<b>12.4%</b>	<b>12.3%</b>	<b>100.0%</b>	<b>12.6%</b>
Executive Management	1.5%	2.0%	2.1%	2.0%	2.0%	2.1%	2.0%
Senior Management (VIII & GM)	7.7%	7.4%	7.7%	6.7%	7.8%	7.4%	7.4%
<b>Management (VIII &amp; above)</b>	<b>9.3%</b>	<b>9.4%</b>	<b>9.9%</b>	<b>8.6%</b>	<b>9.9%</b>	<b>9.5%</b>	<b>9.4%</b>
<b>Administrative/ Supervisory (V to VII)</b>	<b>19.5%</b>	<b>19.6%</b>	<b>19.2%</b>	<b>19.2%</b>	<b>21.8%</b>	<b>22.1%</b>	<b>22.2%</b>
<b>Clerical (III &amp; IV)</b>	<b>71.2%</b>	<b>71.0%</b>	<b>71.0%</b>	<b>72.2%</b>	<b>68.3%</b>	<b>68.4%</b>	<b>68.4%</b>
<b>Management &amp; Administrative</b>	<b>7.9%</b>	<b>8.0%</b>	<b>8.3%</b>	<b>8.8%</b>	<b>8.7%</b>	<b>100.0%</b>	<b>9.3%</b>
Catering	13.1%	13.5%	13.9%	15.6%	16.8%	15.4%	14.7%
Household Services	62.1%	60.4%	59.0%	55.7%	52.8%	54.6%	56.1%
Other Support	14.4%	15.3%	16.3%	19.6%	20.6%	20.6%	19.8%
Portering	3.1%	3.1%	2.7%	2.9%	3.6%	3.2%	3.2%
<b>Support</b>	<b>92.7%</b>	<b>92.2%</b>	<b>92.0%</b>	<b>93.7%</b>	<b>93.8%</b>	<b>93.7%</b>	<b>93.8%</b>
<b>Maintenance/ Technical</b>	<b>7.3%</b>	<b>7.8%</b>	<b>8.0%</b>	<b>6.3%</b>	<b>6.2%</b>	<b>6.3%</b>	<b>6.2%</b>
<b>General Support</b>	<b>6.0%</b>	<b>5.5%</b>	<b>5.0%</b>	<b>4.6%</b>	<b>4.6%</b>	<b>100.0%</b>	<b>4.4%</b>
HCA, Nurse's Aide, etc.	50.2%	53.1%	53.6%	55.3%	55.2%	57.0%	57.1%
Health & Social Care Assistants		0.1%	0.0%	0.4%	0.2%	0.3%	0.3%
<b>Health Care Assistants</b>	<b>50.2%</b>	<b>53.2%</b>	<b>53.6%</b>	<b>55.7%</b>	<b>55.4%</b>	<b>57.3%</b>	<b>57.5%</b>
<b>Care, other</b>	<b>12.5%</b>	<b>12.5%</b>	<b>12.5%</b>	<b>12.4%</b>	<b>12.8%</b>	<b>13.4%</b>	<b>13.4%</b>
<b>Home Help</b>	<b>37.3%</b>	<b>34.3%</b>	<b>33.9%</b>	<b>31.9%</b>	<b>31.9%</b>	<b>29.3%</b>	<b>29.1%</b>
<b>Patient &amp; Client Care</b>	<b>40.9%</b>	<b>41.4%</b>	<b>41.9%</b>	<b>42.7%</b>	<b>42.5%</b>	<b>100.0%</b>	<b>42.9%</b>
<b>Total</b>	<b>100 %</b>	<b>100 %</b>	<b>100 %</b>	<b>100 %</b>	<b>100%</b>	<b>100 %</b>	<b>100 %</b>



# CHO 4 Skills Mix by Care Group: December 2020

Dec 2020 (Dec 2018 figure: 1,483)	WTE Dec 2015	WTE Dec 2016	WTE Dec 2017	WTE Dec 2018	WTE Dec 2019	WTE Nov 2020	WTE Dec 2020
<b>Mental Health</b>	<b>1,374</b>	<b>1,407</b>	<b>1,477</b>	<b>1,483</b>	<b>1,485.26</b>	<b>1,562.34</b>	<b>1,563.69</b>
<b>Consultants</b>	<b>37.8%</b>	<b>37.9%</b>	<b>37.5%</b>	<b>37.4%</b>	<b>38.8%</b>	<b>38.2%</b>	<b>38.6%</b>
Registrar	19.8%	22.2%	21.9%	25.2%	27.8%	20.5%	20.3%
Senior Registrar	6.3%	6.6%	7.5%	7.0%	7.8%	9.3%	9.2%
<b>Registrars</b>	<b>26.1%</b>	<b>28.8%</b>	<b>29.4%</b>	<b>32.2%</b>	<b>35.6%</b>	<b>29.8%</b>	<b>29.5%</b>
Interns	2.7%	2.6%	2.5%	2.3%	2.3%	1.4%	1.4%
Senior House Officer	29.5%	27.0%	26.6%	25.6%	21.8%	29.1%	29.1%
<b>SHO/ Interns</b>	<b>32.2%</b>	<b>29.7%</b>	<b>29.0%</b>	<b>27.9%</b>	<b>24.1%</b>	<b>30.6%</b>	<b>30.5%</b>
<b>Medical/ Dental, other</b>	<b>3.8%</b>	<b>3.6%</b>	<b>4.2%</b>	<b>2.5%</b>	<b>1.6%</b>	<b>1.4%</b>	<b>1.4%</b>
<b>Medical &amp; Dental</b>	<b>8.0%</b>	<b>8.1%</b>	<b>8.2%</b>	<b>8.7%</b>	<b>8.7%</b>	<b>9.0%</b>	<b>9.0%</b>
Clinical Nurse/ Midwife Manager	17.0%	17.0%	16.3%	17.5%	18.8%	20.7%	21.0%
Director Nursing/Midwifery, Assistant	2.8%	2.7%	2.5%	2.4%	2.8%	2.9%	2.9%
Director of Nursing/Midwifery	0.5%	0.5%	0.4%	0.4%	0.5%	0.5%	0.5%
<b>Nurse/ Midwife Manager</b>	<b>20.3%</b>	<b>20.1%</b>	<b>19.2%</b>	<b>20.3%</b>	<b>22.2%</b>	<b>24.1%</b>	<b>24.5%</b>
Advanced Nurse/ Midwife Practitioner	0.3%	0.1%	0.1%	0.4%	0.6%	0.5%	0.5%
Clinical Nurse/ Midwife Specialist	4.2%	4.7%	5.7%	5.8%	7.2%	8.5%	8.5%
<b>Nurse/ Midwife Specialist &amp; AN/MP</b>	<b>4.5%</b>	<b>4.9%</b>	<b>5.8%</b>	<b>6.1%</b>	<b>7.8%</b>	<b>9.0%</b>	<b>9.0%</b>
Staff Nurse [Intellectual Disability]				0.1%	0.1%		
Staff Nurse [Psychiatric]	69.3%	69.2%	69.0%	68.1%	60.8%	61.7%	61.6%
Staff Nurses [General/ Children's]	5.8%	5.7%	5.9%	5.2%	4.7%	4.5%	4.4%
<b>Staff Nurse/ Staff Midwife</b>	<b>75.1%</b>	<b>74.9%</b>	<b>74.9%</b>	<b>73.5%</b>	<b>65.6%</b>	<b>66.2%</b>	<b>66.0%</b>
Pre-registration Nurse/ Midwife Intern	0.1%	0.1%		0.1%	0.4%		
Pre-registration Nurse Intern (COVID-19)						0.6%	0.4%
Post-registration Nurse/ Midwife Student					0.1%		
Nursing/ Midwifery awaiting registration					3.9%	0.1%	0.1%
<b>Nursing/ Midwifery Student</b>	<b>0.1%</b>	<b>0.1%</b>		<b>0.1%</b>	<b>4.4%</b>	<b>0.7%</b>	<b>0.5%</b>
<b>Nursing &amp; Midwifery</b>	<b>55.6%</b>	<b>55.3%</b>	<b>53.4%</b>	<b>51.6%</b>	<b>51.6%</b>	<b>50.3%</b>	<b>50.3%</b>
Dietitians	0.9%	1.9%	2.0%	2.8%	2.7%	2.3%	2.3%
Occupational Therapists	25.7%	23.9%	23.9%	22.9%	24.2%	23.1%	22.4%
Speech & Language Therapists	4.0%	4.8%	4.3%	5.7%	5.6%	5.2%	5.2%
<b>Therapy Professions</b>	<b>30.5%</b>	<b>30.5%</b>	<b>30.2%</b>	<b>31.4%</b>	<b>32.6%</b>	<b>30.6%</b>	<b>29.9%</b>
<b>Social Care</b>	<b>4.5%</b>	<b>4.0%</b>	<b>3.2%</b>	<b>2.5%</b>	<b>1.7%</b>	<b>2.7%</b>	<b>2.7%</b>
<b>Social Workers</b>	<b>30.7%</b>	<b>27.7%</b>	<b>28.4%</b>	<b>26.2%</b>	<b>23.4%</b>	<b>25.2%</b>	<b>25.0%</b>
<b>Psychologists</b>	<b>26.4%</b>	<b>29.9%</b>	<b>30.8%</b>	<b>33.6%</b>	<b>36.5%</b>	<b>35.9%</b>	<b>36.4%</b>
<b>Pharmacy</b>	<b>1.5%</b>	<b>1.4%</b>	<b>1.6%</b>	<b>1.8%</b>	<b>1.1%</b>	<b>0.8%</b>	<b>1.2%</b>
Counsellor Therapists	5.3%	4.6%	4.1%	3.0%	3.2%	3.3%	3.2%
Other Health & Social Care	1.0%	1.7%	1.7%	1.5%	1.5%	1.6%	1.6%
<b>H&amp;SC, Other</b>	<b>6.3%</b>	<b>6.3%</b>	<b>5.8%</b>	<b>4.5%</b>	<b>4.7%</b>	<b>4.9%</b>	<b>4.8%</b>
<b>Health &amp; Social Care Professionals</b>	<b>12.8%</b>	<b>13.9%</b>	<b>14.1%</b>	<b>15.3%</b>	<b>15.3%</b>	<b>16.5%</b>	<b>16.5%</b>
<b>Management (VIII &amp; above)</b>					<b>0.9%</b>	<b>2.5%</b>	<b>2.3%</b>
<b>Administrative/ Supervisory (V to VII)</b>	<b>19.0%</b>	<b>18.9%</b>	<b>17.9%</b>	<b>17.0%</b>	<b>20.3%</b>	<b>18.9%</b>	<b>18.3%</b>
<b>Clerical (III &amp; IV)</b>	<b>81.0%</b>	<b>81.1%</b>	<b>82.1%</b>	<b>83.0%</b>	<b>78.8%</b>	<b>78.6%</b>	<b>79.4%</b>
<b>Management &amp; Administrative</b>	<b>6.8%</b>	<b>6.6%</b>	<b>7.0%</b>	<b>6.9%</b>	<b>6.9%</b>	<b>7.6%</b>	<b>7.6%</b>
<b>Support</b>	<b>93.4%</b>	<b>93.1%</b>	<b>93.2%</b>	<b>93.6%</b>	<b>92.9%</b>	<b>94.2%</b>	<b>94.1%</b>
<b>Maintenance/ Technical</b>	<b>6.6%</b>	<b>6.9%</b>	<b>6.8%</b>	<b>6.4%</b>	<b>7.1%</b>	<b>5.8%</b>	<b>5.9%</b>
<b>General Support</b>	<b>7.8%</b>	<b>7.3%</b>	<b>7.0%</b>	<b>6.4%</b>	<b>6.4%</b>	<b>5.6%</b>	<b>5.6%</b>
<b>Health Care Assistants</b>	<b>96.7%</b>	<b>96.6%</b>	<b>95.4%</b>	<b>95.3%</b>	<b>95.7%</b>	<b>96.3%</b>	<b>96.3%</b>
<b>Care, other</b>	<b>3.3%</b>	<b>3.4%</b>	<b>4.6%</b>	<b>4.7%</b>	<b>4.3%</b>	<b>3.7%</b>	<b>3.7%</b>
<b>Patient &amp; Client Care</b>	<b>8.9%</b>	<b>8.8%</b>	<b>10.3%</b>	<b>11.1%</b>	<b>11.1%</b>	<b>11.0%</b>	<b>11.0%</b>
<b>Total</b>	<b>100 %</b>	<b>100 %</b>	<b>100 %</b>	<b>100 %</b>	<b>100 %</b>	<b>100 %</b>	<b>100 %</b>



Dec 2020 (Dec 2018 figure: 1,344)	WTE Dec 2015	WTE Dec 2016	WTE Dec 2017	WTE Dec 2018	WTE Dec 2019	WTE Nov 2020	WTE Dec 2020
<b>Primary Care</b>	<b>1,143</b>	<b>1,188</b>	<b>1,307</b>	<b>1,344</b>	<b>1,345.90</b>	<b>1,457.92</b>	<b>1,517.49</b>
Consultant Dentistry	1.5%	1.4%	1.3%	1.3%	1.3%	1.3%	1.3%
Consultant Medicine					0.1%	0.1%	0.1%
Consultant Paediatrics			0.3%	0.3%	0.3%	0.3%	0.3%
<b>Consultants</b>	<b>1.5%</b>	<b>1.4%</b>	<b>1.7%</b>	<b>1.6%</b>	<b>1.7%</b>	<b>1.7%</b>	<b>1.6%</b>
<b>Registrars</b>	<b>33.2%</b>	<b>30.5%</b>	<b>31.8%</b>	<b>32.3%</b>	<b>36.0%</b>	<b>35.6%</b>	<b>36.5%</b>
<b>SHO/ Interns</b>	<b>4.4%</b>	<b>5.0%</b>	<b>4.3%</b>	<b>4.7%</b>	<b>4.1%</b>	<b>4.6%</b>	<b>4.5%</b>
Dentists	44.9%	44.4%	41.3%	42.0%	41.1%	38.2%	37.5%
Other Medical	16.0%	18.7%	20.9%	19.4%	17.1%	20.0%	19.8%
<b>Medical/ Dental, other</b>	<b>61.0%</b>	<b>63.1%</b>	<b>62.2%</b>	<b>61.4%</b>	<b>58.2%</b>	<b>58.2%</b>	<b>57.3%</b>
<b>Medical &amp; Dental</b>	<b>12.0%</b>	<b>11.7%</b>	<b>11.5%</b>	<b>11.5%</b>	<b>11.5%</b>	<b>10.5%</b>	<b>10.5%</b>
Clinical Nurse/ Midwife Manager	4.8%	5.5%	6.4%	7.1%	7.2%	7.1%	7.1%
Director Nursing/Midwifery, Assistant	5.8%	5.9%	4.1%	4.7%	5.0%	4.6%	5.2%
Director of Nursing/Midwifery	1.5%	1.1%	0.6%	0.9%	1.6%	1.5%	1.4%
<b>Nurse/ Midwife Manager</b>	<b>12.0%</b>	<b>12.5%</b>	<b>11.1%</b>	<b>12.7%</b>	<b>13.8%</b>	<b>13.2%</b>	<b>13.7%</b>
<b>Nurse/ Midwife Specialist &amp; AN/MP</b>	<b>0.9%</b>	<b>0.8%</b>	<b>0.9%</b>	<b>1.5%</b>	<b>1.0%</b>	<b>1.5%</b>	<b>1.6%</b>
<b>Staff Nurse/ Staff Midwife</b>	<b>23.0%</b>	<b>25.6%</b>	<b>30.4%</b>	<b>28.8%</b>	<b>29.2%</b>	<b>29.9%</b>	<b>31.3%</b>
<b>Public Health Nurse</b>	<b>62.0%</b>	<b>58.8%</b>	<b>53.3%</b>	<b>53.5%</b>	<b>51.7%</b>	<b>52.0%</b>	<b>50.0%</b>
<b>Nursing/ Midwifery Student</b>	<b>2.1%</b>	<b>2.2%</b>	<b>4.3%</b>	<b>3.5%</b>	<b>4.2%</b>	<b>3.4%</b>	<b>3.4%</b>
<b>Nursing &amp; Midwifery</b>	<b>29.7%</b>	<b>30.0%</b>	<b>30.2%</b>	<b>29.5%</b>	<b>29.4%</b>	<b>29.2%</b>	<b>29.2%</b>
Dietitians	3.6%	3.9%	4.9%	5.3%	5.4%	7.0%	6.9%
Occupational Therapists	19.7%	19.1%	20.0%	18.9%	18.0%	18.2%	18.7%
Orthoptists	0.2%	0.1%	0.2%	0.2%	1.0%	0.4%	0.6%
Physiotherapists	24.5%	23.7%	23.3%	22.1%	22.2%	21.1%	20.5%
Speech & Language Therapists	19.9%	22.1%	23.0%	21.3%	20.9%	20.8%	21.4%
<b>Therapy Professions</b>	<b>67.9%</b>	<b>68.7%</b>	<b>71.3%</b>	<b>67.9%</b>	<b>67.4%</b>	<b>67.5%</b>	<b>68.1%</b>
Audiology	1.8%	1.7%	1.8%	2.1%	2.1%	2.3%	2.3%
Medical Laboratory	4.4%						
Physicists	0.7%	0.7%	0.5%	0.6%	0.6%	0.6%	0.6%
Radiographers	0.7%	0.7%	0.6%	0.6%	0.6%	0.6%	0.6%
<b>Health Science/ Diagnostics</b>	<b>7.6%</b>	<b>3.1%</b>	<b>3.0%</b>	<b>3.3%</b>	<b>3.3%</b>	<b>3.5%</b>	<b>3.4%</b>
<b>Social Care</b>	<b>1.8%</b>	<b>2.0%</b>	<b>1.8%</b>	<b>2.3%</b>	<b>2.4%</b>	<b>1.5%</b>	<b>1.4%</b>
<b>Social Workers</b>	<b>6.9%</b>	<b>7.6%</b>	<b>6.9%</b>	<b>7.6%</b>	<b>7.4%</b>	<b>8.0%</b>	<b>8.1%</b>
<b>Psychologists</b>	<b>4.8%</b>	<b>4.3%</b>	<b>3.8%</b>	<b>5.7%</b>	<b>6.2%</b>	<b>6.2%</b>	<b>6.2%</b>
<b>Pharmacy</b>	<b>1.2%</b>	<b>1.0%</b>	<b>1.0%</b>	<b>1.0%</b>	<b>0.9%</b>	<b>1.1%</b>	<b>1.1%</b>
Counsellor Therapists	7.0%	10.9%	10.0%	9.6%	9.5%	8.5%	8.1%
Dental Hygienists	2.4%	2.4%	2.2%	2.2%	2.5%	3.2%	3.1%
Other Health & Social Care	0.4%	0.0%	0.0%	0.5%	0.5%	0.4%	0.4%
<b>H&amp;SC, Other</b>	<b>9.8%</b>	<b>13.4%</b>	<b>12.2%</b>	<b>12.3%</b>	<b>12.5%</b>	<b>12.2%</b>	<b>11.7%</b>
<b>Health &amp; Social Care Professionals</b>	<b>24.9%</b>	<b>24.6%</b>	<b>24.9%</b>	<b>24.5%</b>	<b>24.5%</b>	<b>23.0%</b>	<b>23.0%</b>
Executive Management	2.3%	3.0%	3.7%	3.6%	3.9%	3.0%	2.7%
Senior Management (VIII & GM)	9.1%	8.1%	7.8%	7.0%	8.0%	7.9%	7.8%
<b>Management (VIII &amp; above)</b>	<b>11.4%</b>	<b>11.1%</b>	<b>11.5%</b>	<b>10.6%</b>	<b>11.9%</b>	<b>10.9%</b>	<b>10.5%</b>
<b>Administrative/ Supervisory (V to VII)</b>	<b>18.0%</b>	<b>19.2%</b>	<b>19.6%</b>	<b>19.7%</b>	<b>22.0%</b>	<b>21.6%</b>	<b>21.9%</b>
<b>Clerical (III &amp; IV)</b>	<b>70.6%</b>	<b>69.7%</b>	<b>69.0%</b>	<b>69.7%</b>	<b>66.1%</b>	<b>67.5%</b>	<b>67.6%</b>
<b>Management &amp; Administrative</b>	<b>22.7%</b>	<b>22.5%</b>	<b>22.8%</b>	<b>22.9%</b>	<b>22.8%</b>	<b>21.8%</b>	<b>21.8%</b>
<b>Support</b>	<b>100.0%</b>	<b>100.0%</b>	<b>100.0%</b>	<b>100.0%</b>	<b>100.0%</b>	<b>100.0%</b>	<b>100.0%</b>
<b>General Support</b>	<b>1.6%</b>	<b>1.5%</b>	<b>1.4%</b>	<b>1.3%</b>	<b>1.3%</b>	<b>1.2%</b>	<b>1.2%</b>
HCA, Nurse's Aide, etc.	1.0%	0.9%	4.3%	7.1%	7.3%	29.9%	42.4%
Health & Social Care Assistants		1.8%	0.8%	9.9%	5.9%	5.8%	5.0%
<b>Health Care Assistants</b>	<b>1.0%</b>	<b>2.7%</b>	<b>5.1%</b>	<b>17.0%</b>	<b>13.2%</b>	<b>35.7%</b>	<b>47.4%</b>
<b>Care, other</b>	<b>88.4%</b>	<b>86.8%</b>	<b>84.9%</b>	<b>75.2%</b>	<b>79.1%</b>	<b>59.3%</b>	<b>48.3%</b>
<b>Home Help</b>	<b>10.6%</b>	<b>10.5%</b>	<b>9.9%</b>	<b>7.8%</b>	<b>7.7%</b>	<b>5.0%</b>	<b>4.2%</b>
<b>Patient &amp; Client Care</b>	<b>9.2%</b>	<b>9.6%</b>	<b>9.2%</b>	<b>10.4%</b>	<b>10.4%</b>	<b>14.3%</b>	<b>14.3%</b>
<b>Total</b>	<b>100 %</b>	<b>100 %</b>	<b>100 %</b>	<b>100 %</b>	<b>100 %</b>	<b>100 %</b>	<b>100 %</b>

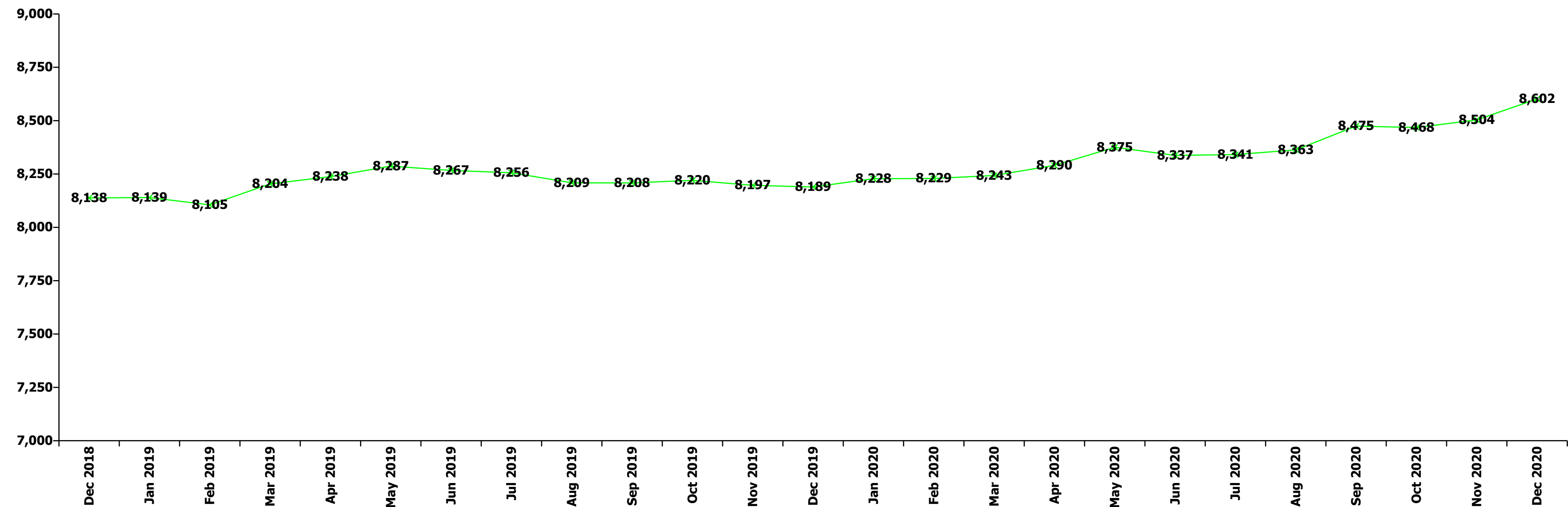
Dec 2020 (Dec 2018 figure: 2,395)	WTE Dec 2015	WTE Dec 2016	WTE Dec 2017	WTE Dec 2018	WTE Dec 2019	WTE Nov 2020	WTE Dec 2020
<b>Disabilities</b>	<b>2,151</b>	<b>2,256</b>	<b>2,299</b>	<b>2,395</b>	<b>2,438.58</b>	<b>2,546.39</b>	<b>2,555.57</b>
Consultant Medicine	50.3%	49.5%					
Consultant Paediatrics	7.9%	9.3%	27.3%	27.3%	27.3%	17.7%	17.7%
Consultant Psychiatry	31.4%	31.0%	54.6%	54.6%	54.6%	70.7%	70.7%
<b>Consultants</b>	<b>89.6%</b>	<b>89.8%</b>	<b>82.0%</b>	<b>82.0%</b>	<b>82.0%</b>	<b>88.3%</b>	<b>88.3%</b>
<b>Medical/ Dental, other</b>	<b>10.4%</b>	<b>10.2%</b>	<b>18.0%</b>	<b>18.0%</b>	<b>18.0%</b>	<b>11.7%</b>	<b>11.7%</b>
<b>Medical &amp; Dental</b>	<b>0.1%</b>	<b>0.1%</b>	<b>0.1%</b>	<b>0.1%</b>	<b>0.1%</b>	<b>0.1%</b>	<b>0.1%</b>
Clinical Nurse/ Midwife Manager	17.5%	16.6%	16.7%	19.6%	19.4%	19.6%	19.6%
Director Nursing/Midwifery, Assistant	0.9%	0.9%	0.7%	1.2%	1.2%	0.9%	0.9%
Director of Nursing/Midwifery	0.6%	0.4%	0.6%	0.5%	0.7%	0.7%	0.7%
<b>Nurse/ Midwife Manager</b>	<b>19.0%</b>	<b>17.9%</b>	<b>18.0%</b>	<b>21.3%</b>	<b>21.3%</b>	<b>21.3%</b>	<b>21.3%</b>
Advanced Nurse/ Midwife Practitioner	0.2%	0.2%	0.2%	0.2%	0.2%	0.5%	0.5%
Clinical Nurse/ Midwife Specialist	3.3%	3.3%	3.5%	3.3%	3.0%	2.9%	2.9%
<b>Nurse/ Midwife Specialist &amp; AN/MP</b>	<b>3.5%</b>	<b>3.5%</b>	<b>3.7%</b>	<b>3.5%</b>	<b>3.2%</b>	<b>3.4%</b>	<b>3.4%</b>
Staff Nurse [Intellectual Disability]	13.4%	14.3%	15.3%	19.9%	20.5%	19.3%	37.1%
Staff Nurse [Psychiatric]	3.8%	3.0%	0.6%	0.4%	0.6%	0.5%	0.5%
Staff Nurses [General/ Children's]	58.5%	59.5%	60.6%	52.9%	52.6%	51.0%	35.4%
<b>Staff Nurse/ Staff Midwife</b>	<b>75.8%</b>	<b>76.8%</b>	<b>76.4%</b>	<b>73.2%</b>	<b>73.7%</b>	<b>70.8%</b>	<b>73.1%</b>
Pre-registration Nurse/ Midwife Intern	1.6%	1.7%	1.7%	1.9%	1.4%		
Pre-registration Nurse Intern (COVID-19)						4.0%	1.8%
Nursing/ Midwifery awaiting registration					0.2%	0.5%	0.5%
<b>Nursing/ Midwifery Student</b>	<b>1.6%</b>	<b>1.7%</b>	<b>1.7%</b>	<b>1.9%</b>	<b>1.7%</b>	<b>4.5%</b>	<b>2.2%</b>
<b>Nursing/ Midwifery other</b>	<b>0.1%</b>	<b>0.1%</b>	<b>0.1%</b>	<b>0.1%</b>	<b>0.1%</b>		
<b>Nursing &amp; Midwifery</b>	<b>22.6%</b>	<b>21.2%</b>	<b>20.2%</b>	<b>18.0%</b>	<b>17.7%</b>	<b>16.7%</b>	<b>16.7%</b>
Dietitians	0.3%	0.3%	0.4%	0.6%	0.6%	0.6%	0.6%
Occupational Therapists	10.7%	10.0%	10.0%	9.1%	9.4%	8.6%	8.9%
Physiotherapists	5.2%	5.1%	4.8%	4.9%	4.6%	4.1%	4.2%
Speech & Language Therapists	13.8%	13.6%	12.8%	11.7%	12.1%	11.3%	11.3%
<b>Therapy Professions</b>	<b>29.9%</b>	<b>28.9%</b>	<b>28.0%</b>	<b>26.4%</b>	<b>26.7%</b>	<b>24.5%</b>	<b>25.0%</b>
<b>Social Care</b>	<b>51.9%</b>	<b>52.0%</b>	<b>53.1%</b>	<b>54.9%</b>	<b>56.0%</b>	<b>58.1%</b>	<b>57.4%</b>
<b>Social Workers</b>	<b>5.6%</b>	<b>6.7%</b>	<b>6.5%</b>	<b>7.1%</b>	<b>6.7%</b>	<b>6.3%</b>	<b>6.5%</b>
<b>Psychologists</b>	<b>9.8%</b>	<b>9.7%</b>	<b>10.0%</b>	<b>9.7%</b>	<b>8.6%</b>	<b>8.6%</b>	<b>8.7%</b>
Counsellor Therapists	0.5%	0.5%	0.5%	0.5%	0.5%	0.5%	0.5%
Other Health & Social Care	1.8%	1.7%	1.7%	1.3%	1.4%	1.8%	1.8%
Play Therapists/ Specialists	0.4%	0.4%	0.2%	0.2%	0.2%	0.2%	0.2%
<b>H&amp;SC, Other</b>	<b>2.8%</b>	<b>2.7%</b>	<b>2.3%</b>	<b>1.9%</b>	<b>2.1%</b>	<b>2.4%</b>	<b>2.5%</b>
<b>Health &amp; Social Care Professionals</b>	<b>17.0%</b>	<b>17.1%</b>	<b>17.2%</b>	<b>16.4%</b>	<b>16.1%</b>	<b>16.2%</b>	<b>16.2%</b>
Executive Management	1.6%	2.3%	1.5%	1.3%	1.3%	1.8%	1.8%
Senior Management (VIII & GM)	13.0%	12.3%	12.6%	10.8%	12.6%	10.8%	11.4%
<b>Management (VIII &amp; above)</b>	<b>14.6%</b>	<b>14.5%</b>	<b>14.0%</b>	<b>12.1%</b>	<b>13.9%</b>	<b>12.6%</b>	<b>13.2%</b>
<b>Administrative/ Supervisory (V to VII)</b>	<b>31.0%</b>	<b>29.5%</b>	<b>28.8%</b>	<b>31.9%</b>	<b>33.4%</b>	<b>34.4%</b>	<b>34.0%</b>
<b>Clerical (III &amp; IV)</b>	<b>54.5%</b>	<b>56.0%</b>	<b>57.2%</b>	<b>56.0%</b>	<b>52.7%</b>	<b>53.0%</b>	<b>52.8%</b>
<b>Management &amp; Administrative</b>	<b>6.0%</b>	<b>5.9%</b>	<b>6.0%</b>	<b>6.4%</b>	<b>6.2%</b>	<b>6.6%</b>	<b>6.6%</b>
<b>Support</b>	<b>90.9%</b>	<b>90.2%</b>	<b>89.2%</b>	<b>92.9%</b>	<b>93.3%</b>	<b>91.6%</b>	<b>92.0%</b>
Maintenance	8.5%	9.2%	10.2%	6.4%	6.1%	7.1%	6.7%
Technical Services	0.5%	0.6%	0.6%	0.7%	0.7%	1.3%	1.3%
<b>Maintenance/ Technical</b>	<b>9.1%</b>	<b>9.8%</b>	<b>10.8%</b>	<b>7.1%</b>	<b>6.7%</b>	<b>8.4%</b>	<b>8.0%</b>
<b>General Support</b>	<b>8.5%</b>	<b>7.5%</b>	<b>6.7%</b>	<b>6.4%</b>	<b>6.3%</b>	<b>5.9%</b>	<b>5.9%</b>
HCA, Nurse's Aide, etc.	74.2%	75.7%	75.6%	77.2%	76.4%	76.6%	76.1%
<b>Health Care Assistants</b>	<b>74.2%</b>	<b>75.7%</b>	<b>75.6%</b>	<b>77.2%</b>	<b>76.4%</b>	<b>76.6%</b>	<b>76.1%</b>
Other Care Grades	25.8%	24.3%	24.4%	22.8%	23.6%	23.4%	23.9%
<b>Care, other</b>	<b>25.8%</b>	<b>24.3%</b>	<b>24.4%</b>	<b>22.8%</b>	<b>23.6%</b>	<b>23.4%</b>	<b>23.9%</b>
<b>Patient &amp; Client Care</b>	<b>45.7%</b>	<b>48.1%</b>	<b>49.8%</b>	<b>52.7%</b>	<b>51.7%</b>	<b>54.4%</b>	<b>54.4%</b>
<b>Total</b>	<b>100 %</b>	<b>100 %</b>	<b>100 %</b>	<b>100 %</b>	<b>100 %</b>	<b>100 %</b>	<b>100 %</b>

Dec 2020 (Dec 2018 figure: 2,915)	WTE Dec 2015	WTE Dec 2016	WTE Dec 2017	WTE Dec 2018	WTE Dec 2019	WTE Nov 2020	WTE Dec 2020
<b>Older People</b>	<b>2,792</b>	<b>2,789</b>	<b>2,899</b>	<b>2,915</b>	<b>2,919.30</b>	<b>2,902.29</b>	<b>2,930.19</b>
Consultant Medicine	4.1%	4.1%	3.8%	3.9%	3.9%	3.6%	3.6%
Consultant Psychiatry	4.1%	3.6%	3.2%				
<b>Consultants</b>	<b>8.2%</b>	<b>7.7%</b>	<b>7.0%</b>	<b>3.9%</b>	<b>3.9%</b>	<b>3.6%</b>	<b>3.6%</b>
Registrar	4.1%	4.1%	3.8%	3.9%	3.9%	3.6%	3.6%
Specialist Registrar	4.1%		3.8%	3.9%	7.7%	7.2%	7.1%
<b>Registrars</b>	<b>8.2%</b>	<b>4.1%</b>	<b>7.6%</b>	<b>7.7%</b>	<b>11.6%</b>	<b>10.8%</b>	<b>10.7%</b>
Senior House Officer				3.9%	3.9%	3.6%	3.6%
<b>SHO/ Interns</b>				<b>3.9%</b>	<b>3.9%</b>	<b>3.6%</b>	<b>3.6%</b>
<b>Medical/ Dental, other</b>	<b>83.6%</b>	<b>88.1%</b>	<b>85.4%</b>	<b>84.6%</b>	<b>80.6%</b>	<b>82.1%</b>	<b>82.2%</b>
<b>Medical &amp; Dental</b>	<b>0.9%</b>	<b>0.9%</b>	<b>0.9%</b>	<b>0.9%</b>	<b>0.9%</b>	<b>1.0%</b>	<b>1.0%</b>
Clinical Nurse/ Midwife Manager	13.7%	13.4%	13.3%	11.5%	12.8%	12.9%	12.8%
Director Nursing/Midwifery, Assistant	1.3%	1.3%	1.5%	0.9%	2.0%	1.9%	2.0%
Director of Nursing/Midwifery	1.7%	1.4%	1.4%	1.4%	3.4%	3.8%	3.6%
<b>Nurse/ Midwife Manager</b>	<b>16.8%</b>	<b>16.2%</b>	<b>16.1%</b>	<b>13.7%</b>	<b>18.3%</b>	<b>18.6%</b>	<b>18.4%</b>
Advanced Nurse/ Midwife Practitioner	0.2%	0.2%	0.2%	0.2%	0.2%	0.2%	0.2%
Clinical Nurse/ Midwife Specialist	0.1%	0.3%	0.1%	0.4%	0.4%	0.8%	0.7%
<b>Nurse/ Midwife Specialist &amp; AN/MP</b>	<b>0.3%</b>	<b>0.4%</b>	<b>0.3%</b>	<b>0.6%</b>	<b>0.5%</b>	<b>1.0%</b>	<b>0.9%</b>
Graduate Nursing/ Midwifery	0.2%						
Staff Nurses [General/ Children's]	81.8%	82.4%	82.5%	84.8%	80.1%	79.5%	79.8%
<b>Staff Nurse/ Staff Midwife</b>	<b>81.9%</b>	<b>82.4%</b>	<b>82.5%</b>	<b>84.8%</b>	<b>80.1%</b>	<b>79.5%</b>	<b>79.8%</b>
<b>Public Health Nurse</b>	<b>1.0%</b>	<b>1.0%</b>	<b>1.0%</b>	<b>0.9%</b>	<b>0.8%</b>	<b>0.9%</b>	<b>0.9%</b>
Post-registration Nurse/ Midwife Student					0.2%		
Nursing/ Midwifery awaiting registration					0.2%		
<b>Nursing/ Midwifery Student</b>					<b>0.3%</b>		
<b>Nursing &amp; Midwifery</b>	<b>22.8%</b>	<b>22.8%</b>	<b>22.5%</b>	<b>22.5%</b>	<b>22.5%</b>	<b>22.6%</b>	<b>22.6%</b>
Dietitians	0.2%	4.4%	4.2%	4.0%	2.5%	2.6%	2.6%
Occupational Therapists	22.3%	18.6%	17.1%	21.9%	28.5%	27.0%	27.7%
Physiotherapists	26.9%	27.7%	25.5%	27.3%	25.6%	25.3%	23.7%
Podiatrists & Chiropodists	13.1%	15.2%	14.0%	12.9%	10.7%	12.1%	12.3%
Speech & Language Therapists	8.3%	7.8%	9.0%	7.7%	6.3%	1.9%	2.0%
<b>Therapy Professions</b>	<b>70.8%</b>	<b>73.7%</b>	<b>69.7%</b>	<b>73.7%</b>	<b>73.7%</b>	<b>68.9%</b>	<b>68.3%</b>
Phlebotomists	2.1%	1.9%	1.8%				
Radiographers	1.1%	0.5%	0.5%	1.9%	1.9%	2.1%	2.1%
<b>Health Science/ Diagnostics</b>	<b>3.2%</b>	<b>2.4%</b>	<b>2.3%</b>	<b>1.9%</b>	<b>1.9%</b>	<b>2.1%</b>	<b>2.1%</b>
<b>Social Care</b>	<b>3.7%</b>	<b>3.3%</b>	<b>3.1%</b>	<b>3.0%</b>	<b>2.9%</b>	<b>2.8%</b>	<b>2.9%</b>
<b>Social Workers</b>	<b>16.8%</b>	<b>16.0%</b>	<b>19.0%</b>	<b>15.8%</b>	<b>17.2%</b>	<b>20.0%</b>	<b>20.4%</b>
<b>Pharmacy</b>	<b>5.6%</b>	<b>4.5%</b>	<b>5.9%</b>	<b>5.6%</b>	<b>4.3%</b>	<b>6.1%</b>	<b>6.2%</b>
<b>Health &amp; Social Care Professionals</b>	<b>1.7%</b>	<b>1.9%</b>	<b>1.9%</b>	<b>2.0%</b>	<b>2.0%</b>	<b>2.1%</b>	<b>2.1%</b>
Executive Management	0.9%	0.9%	0.8%	0.7%	0.6%	1.2%	1.2%
Senior Management (VIII & GM)	4.7%	6.1%	8.8%	6.4%	7.4%	7.5%	7.3%
<b>Management (VIII &amp; above)</b>	<b>5.6%</b>	<b>7.0%</b>	<b>9.7%</b>	<b>7.1%</b>	<b>8.1%</b>	<b>8.7%</b>	<b>8.6%</b>
<b>Administrative/ Supervisory (V to VII)</b>	<b>10.0%</b>	<b>9.9%</b>	<b>8.4%</b>	<b>6.8%</b>	<b>10.8%</b>	<b>11.1%</b>	<b>12.2%</b>
<b>Clerical (III &amp; IV)</b>	<b>84.3%</b>	<b>83.1%</b>	<b>81.9%</b>	<b>86.1%</b>	<b>81.2%</b>	<b>80.2%</b>	<b>79.2%</b>
<b>Management &amp; Administrative</b>	<b>3.8%</b>	<b>4.1%</b>	<b>4.2%</b>	<b>5.2%</b>	<b>5.2%</b>	<b>5.7%</b>	<b>5.7%</b>
<b>Support</b>	<b>93.4%</b>	<b>93.1%</b>	<b>93.4%</b>	<b>93.9%</b>	<b>94.4%</b>	<b>95.0%</b>	<b>94.8%</b>
<b>Maintenance/ Technical</b>	<b>6.6%</b>	<b>6.9%</b>	<b>6.6%</b>	<b>6.1%</b>	<b>5.6%</b>	<b>5.0%</b>	<b>5.2%</b>
<b>General Support</b>	<b>4.9%</b>	<b>4.5%</b>	<b>4.1%</b>	<b>3.8%</b>	<b>3.8%</b>	<b>4.1%</b>	<b>4.1%</b>
HCA, Nurse's Aide, etc.	37.1%	40.1%	40.2%	41.0%	40.6%	42.2%	41.8%
Health & Social Care Assistants					0.0%	0.1%	0.1%
<b>Health Care Assistants</b>	<b>37.1%</b>	<b>40.1%</b>	<b>40.2%</b>	<b>41.0%</b>	<b>40.6%</b>	<b>42.2%</b>	<b>41.9%</b>
<b>Care, other</b>	<b>1.7%</b>	<b>1.5%</b>	<b>1.6%</b>	<b>1.6%</b>	<b>1.6%</b>	<b>1.9%</b>	<b>1.8%</b>
<b>Home Help</b>	<b>61.2%</b>	<b>58.4%</b>	<b>58.2%</b>	<b>57.5%</b>	<b>57.8%</b>	<b>55.9%</b>	<b>56.3%</b>
<b>Patient &amp; Client Care</b>	<b>65.9%</b>	<b>65.8%</b>	<b>66.4%</b>	<b>65.6%</b>	<b>65.5%</b>	<b>64.6%</b>	<b>64.6%</b>
<b>Total</b>	<b>100 %</b>	<b>100 %</b>	<b>100 %</b>	<b>100 %</b>	<b>100 %</b>	<b>100 %</b>	<b>100 %</b>

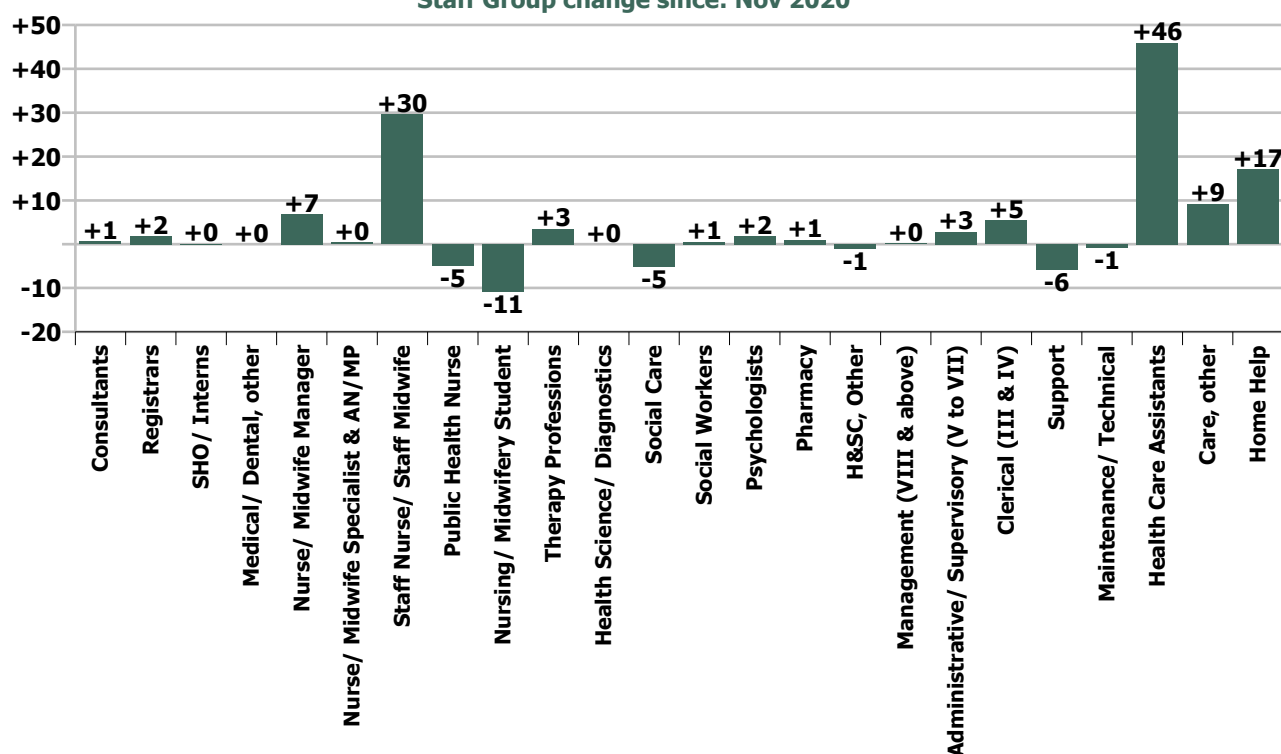
Summary Staff Movement: December 2020

Month-on-month Summary																											
WTE change since Nov 20	% change since Nov 20	overall	Consultants	Registrars	SHO/ Interns	Medical/ Dental, other	Medical & Dental	Nurse/ Midwife Manager	Nurse/ Midwife Specialist & AN/MP	Staff Nurse/ Staff Midwife	Public Health Nurse	Nursing/ Midwifery Student	Nursing & Midwifery	Therapy Professions	Health Science/ Diagnostics	Social Care	Social Workers	Psychologists	Pharmacy	H&SC, Other	Health & Social Care Professionals	Management (VIII & above)	Administrativ e Supervisory (V to VII)	Clerical (III & IV)	Management & Administrativ e	General Support	Patient & Client Care
Overall	+1.2%	+98	+0.6	+1.8	+0.0	+0.0	+2.5	+6.9	+0.4	+29.5	-4.8	-10.8	+21.2	+3.5	+0.0	-5.2	+0.5	+1.8	+1.0	-1.1	+0.6	+0.1	+2.8	+5.4	+8.3	-6.5	+72.1
Community Health & Wellbeing	+0.2%	+0						0.0					0.0	+0.0							+0.0	0.0	0.0	+0.3	+0.3		-0.2
Mental Health	+0.1%	+1	+0.6	-0.3	+0.0	0.0	+0.4	+2.5	+0.3	-1.6		-1.5	-0.4	-1.3		+0.1	-0.4	+1.7	+1.0	-0.2	+1.0	-0.3	-0.6	+1.1	+0.2	-0.2	+0.4
Primary Care	+4.1%	+60	0.0	+2.1	0.0	-0.2	+1.9	+3.3	+0.5	+8.6	-4.8	+0.2	+7.7	+5.3	+0.0	+0.0	+0.5	+0.1	+0.0	-1.1	+4.9	-0.7	+1.9	+3.1	+4.3	-0.1	+40.9
Disabilities	+0.4%	+9	0.0			0.0	0.0	+0.5	0.0	+12.0		-9.5	+3.0	+0.7		-5.3	+0.4	-0.1		+0.2	-4.2	+1.0	-0.8	-0.4	-0.2	-5.9	+16.5
Older People	+1.0%	+28	0.0	0.0	0.0	+0.2	+0.2	+0.6	-0.3	+10.6	0.0		+10.9	-1.2	0.0	0.0	+0.0		-0.0		-1.2	+0.1	+2.3	+1.3	+3.8	-0.3	+14.4
Social Care	+0.7%	+37	0.0	0.0	0.0	+0.2	+0.2	+1.1	-0.3	+22.6	0.0	-9.5	+13.9	-0.5	0.0	-5.3	+0.4	-0.1	-0.0	+0.2	-5.3	+1.1	+1.5	+0.9	+3.6	-6.2	+30.9
Change	+98.1	+1.2%	+1.0%	+1.8%	+0.1%	+0.0%	+0.8%	+1.5%	+0.4%	+2.0%	-2.1%	-27.5%	+0.9%	+0.8%	+0.1%	-2.0%	+0.4%	+1.2%	+10.4%	-1.7%	+0.1%	+0.2%	+1.6%	+1.0%	+1.1%	-1.7%	+2.0%

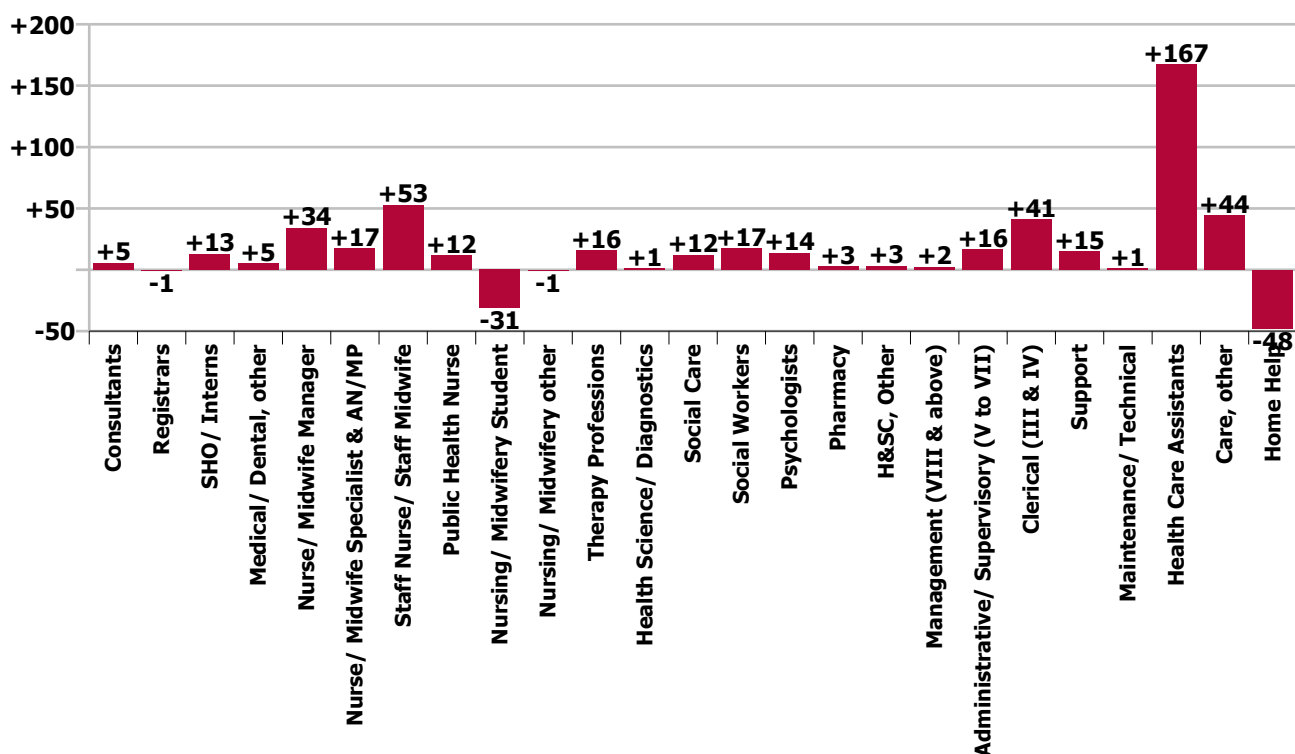
Year-on-year Summary																												
WTE change since Dec 19	% change since Dec 19	overall	Consultants	Registrars	SHO/ Interns	Medical/ Dental, other	Medical & Dental	Nurse/ Midwife Manager	Nurse/ Midwife Specialist & AN/MP	Staff Nurse/ Staff Midwife	Public Health Nurse	Nursing/ Midwifery Student	Nursing/ Midwifery other	Nursing & Midwifery	Therapy Professions	Health Science/ Diagnostics	Social Care	Social Workers	Psychologists	Pharmacy	H&SC, Other	Health & Social Care Professionals	Management (VIII & above)	Administrativ e/ Supervisory (V to VII)	Clerical (III & IV)	Management & Administrative	General Support	Patient & Client Care
Overall	+5.0%	+413	+5.5	-0.8	+12.9	+5.1	+22.6	+34.1	+17.4	+52.8	+11.6	-31.3	-0.5	+84.1	+16.0	+1.4	+12.2	+17.3	+13.8	+2.6	+3.2	+66.5	+2.3	+16.4	+41.1	+59.8	+16.2	+163.5
Community Health & Wellbeing	+0.2%	+0						+1.0						+1.0	+4.2							+4.2	+1.0	+5.1	+7.1	+13.1		+16.4
Mental Health	+0.1%	+1	+4.5	-4.2	+11.9	0.0	+12.2	+22.8	+10.8	+16.9		-29.5		+21.0	+3.5		+3.2	+11.4	+11.3	+0.6	+1.6	+31.5	+1.7	-0.7	+7.0	+8.1	+0.9	+4.7
Primary Care	+4.1%	+60	-0.0	+3.4	+1.0	+2.7	+7.1	+4.4	+2.9	+19.7	+10.8	-2.3		+35.5	+15.6	+1.2	-2.8	+3.9	+1.3	+0.9	-0.2	+19.8	-2.0	+4.5	+18.7	+21.2	+2.4	+85.5
Disabilities	+4.8%	+117.0	+1.0			0.0	+1.0	+1.5	+1.0	+3.3		+2.6	-0.5	+7.8	-4.3		+11.8	+0.0	+1.2		+1.8	+10.6	+0.2	+4.2	+5.4	+9.8	-0.5	+88.3
Older People	+0.4%	+10.9	0.0	0.0	0.0	+2.3	+2.3	+4.3	+2.7	+12.9	+0.8	-2.0		+18.7	-3.0	+0.2	0.0	+2.0		+1.2		+0.3	+1.4	+3.3	+2.9	+7.5	+13.4	-31.4
Social Care	+0.7%	+37	+1.0	0.0	0.0	+2.3	+3.3	+5.8	+3.7	+16.3	+0.8	+0.6	-0.5	+26.5	-7.3	+0.2	+11.8	+2.0	+1.2	+1.2	+1.8	+10.9	+1.6	+7.4	+8.3	+17.4	+12.9	+56.9
Change	+412.6	+5.0%	+9.9%	-0.8%	+33.9%	+4.5%	+7.4%	+7.9%	+21.5%	+3.7%	+5.4%	-52.3%	-100.0%	+3.8%	+3.6%	+11.6%	+5.1%	+15.1%	+10.0%	+32.5%	+5.4%	+6.5%	+3.2%	+10.2%	+8.2%	+8.1%	+4.5%	+4.6%



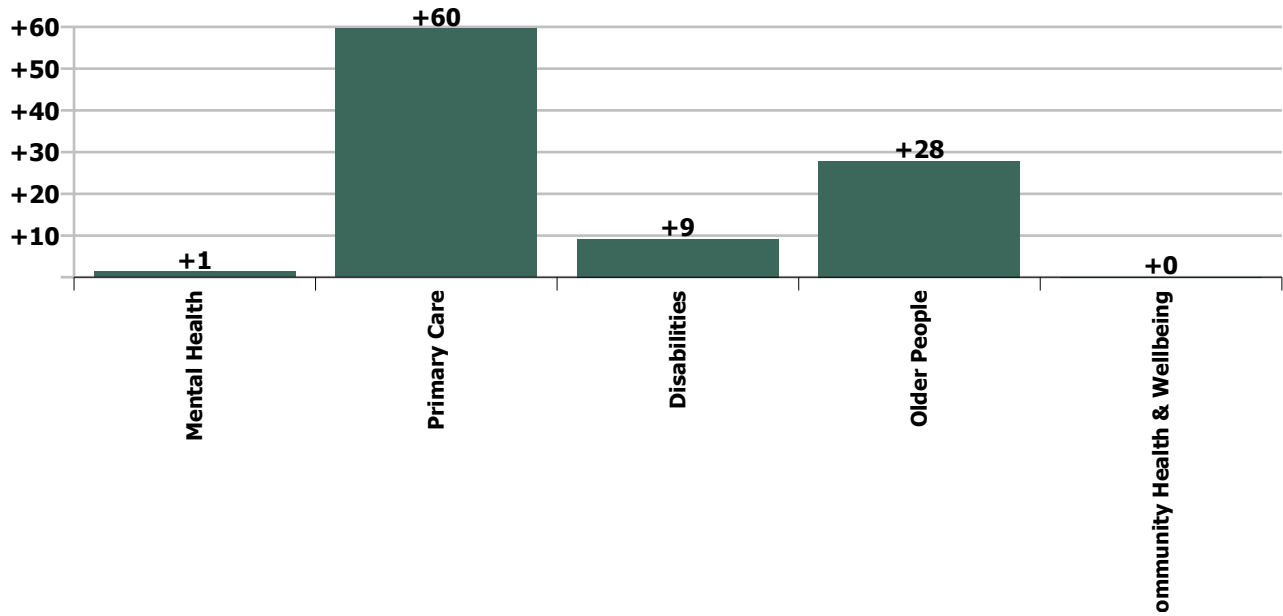
Staff Group change since: Nov 2020



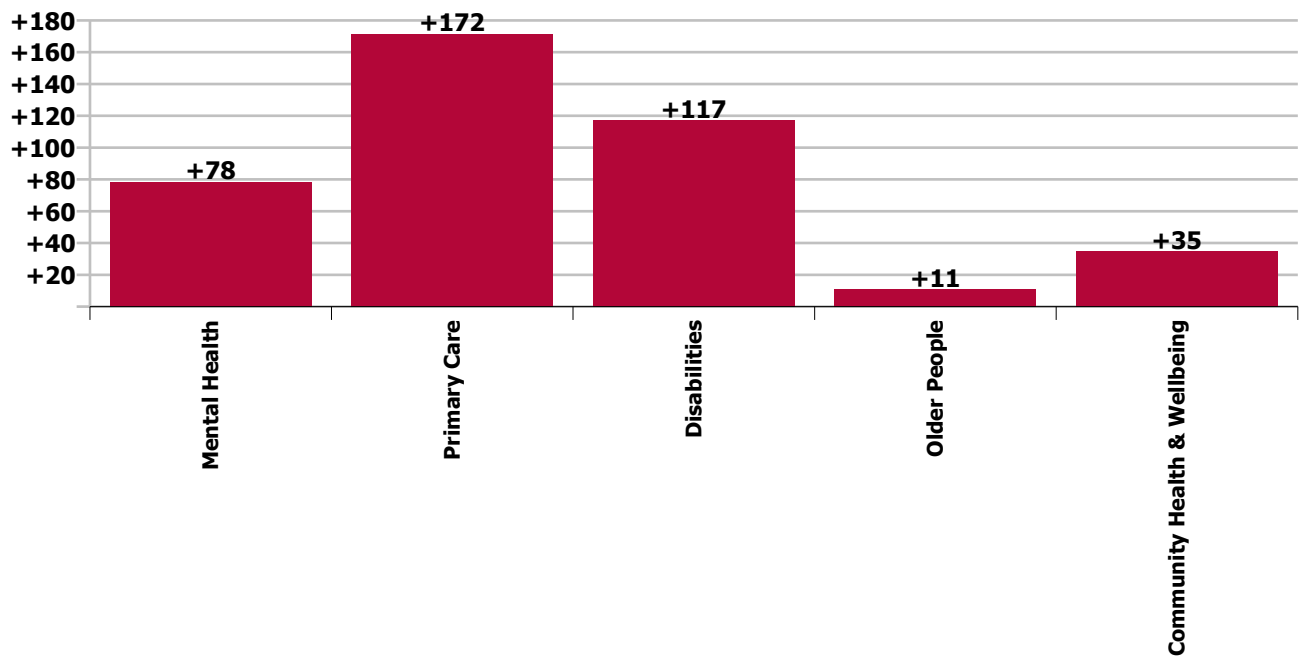
Staff Group change since: Dec 2019



Care Group change since: Nov 2020



Care Group change since: Dec 2019





## Longitudinal Employment Levels by Grade Group - Oct 2013 to Dec 2020

Dec 2020 (Dec 2015 figure: 7,461)	WTE Dec 2020	WTE change since Dec 15	WTE change since Dec 16	WTE change since Dec 17	WTE change since Dec 18	WTE change since Dec 19	WTE change since Nov 20	% change since Dec 15	% change since Dec 16	% change since Dec 17	% change since Dec 18	% change since Dec 19	% change since Nov 20
<b>Overall</b>	<b>8,602</b>	<b>+1,141</b>	<b>+963</b>	<b>+619</b>	<b>+464</b>	<b>+413</b>	<b>+98</b>	<b>+15.3%</b>	<b>+12.6%</b>	<b>+7.8%</b>	<b>+5.7%</b>	<b>+5.0%</b>	<b>+1.2%</b>
Consultant Dentistry	2												
Consultant Medicine	1	-2	-2	+0	+0	-0		-57.7%	-57.7%	+10.0%	+10.0%	-0.9%	
Consultant Paediatrics	1	+1	+1					+300.0%	+233.3%				
Consultant Psychiatry	56	+12	+11	+9	+7	+5	+1	+28.5%	+24.8%	+19.6%	+14.4%	+10.8%	+1.1%
<b>Consultants</b>	<b>60</b>	<b>+12</b>	<b>+10</b>	<b>+9</b>	<b>+7</b>	<b>+5</b>	<b>+1</b>	<b>+24.1%</b>	<b>+20.7%</b>	<b>+18.3%</b>	<b>+13.5%</b>	<b>+9.9%</b>	<b>+1.0%</b>
Registrar	80	+17	+16	+10	+2	-4	+2	+25.9%	+25.2%	+13.7%	+2.3%	-5.1%	+1.9%
Senior Registrar	14	+5	+5	+3	+3	+2		+60.0%	+51.4%	+30.2%	+26.8%	+18.6%	
Specialist Registrar	8	+4	+5	+4	+4	+1	+0	+108.3%	+177.7%	+108.3%	+108.3%	+19.0%	+4.1%
<b>Registrars</b>	<b>103</b>	<b>+26</b>	<b>+26</b>	<b>+17</b>	<b>+9</b>	<b>-1</b>	<b>+2</b>	<b>+34.1%</b>	<b>+34.4%</b>	<b>+20.2%</b>	<b>+9.7%</b>	<b>-0.8%</b>	<b>+1.8%</b>
Interns	2	-1	-1	-1	-1	-1		-33.3%	-33.3%	-33.3%	-33.3%	-33.3%	
Senior House Officer	49	+11	+11	+11	+8	+14	+0	+27.3%	+29.7%	+27.3%	+19.2%	+39.7%	+0.1%
<b>SHO/ Interns</b>	<b>51</b>	<b>+10</b>	<b>+10</b>	<b>+10</b>	<b>+7</b>	<b>+13</b>	<b>+0</b>	<b>+22.9%</b>	<b>+25.1%</b>	<b>+23.0%</b>	<b>+15.6%</b>	<b>+33.9%</b>	<b>+0.1%</b>
Dentists	60	-2	-2	-3	-5	-3	-0	-3.5%	-3.8%	-4.3%	-8.4%	-4.5%	-0.6%
Other Medical	57	+10	+5	-2	+2	+8	+0	+21.0%	+9.9%	-4.1%	+2.8%	+16.1%	+0.7%
<b>Medical/ Dental, other</b>	<b>116</b>	<b>+8</b>	<b>+3</b>	<b>-5</b>	<b>-4</b>	<b>+5</b>	<b>+0</b>	<b>+7.1%</b>	<b>+2.5%</b>	<b>-4.2%</b>	<b>-3.3%</b>	<b>+4.5%</b>	<b>+0.0%</b>
<b>Medical &amp; Dental</b>	<b>330</b>	<b>+55</b>	<b>+50</b>	<b>+31</b>	<b>+19</b>	<b>+23</b>	<b>+3</b>	<b>+20.0%</b>	<b>+17.7%</b>	<b>+10.4%</b>	<b>+6.2%</b>	<b>+7.4%</b>	<b>+0.8%</b>
Clinical Nurse/ Midwife Manager	365	+46	+49	+47	+43	+28	+4	+14.5%	+15.5%	+14.8%	+13.5%	+8.3%	+1.1%
Director Nursing/Midwifery, Assistant	64	+10	+9	+15	+16	+4	+4	+18.4%	+17.1%	+31.1%	+32.8%	+6.4%	+6.8%
Director of Nursing/Midwifery	37	+15	+19	+20	+20	+2	-1	+63.8%	+100.0%	+112.5%	+113.4%	+6.0%	-2.8%
<b>Nurse/ Midwife Manager</b>	<b>467</b>	<b>+71</b>	<b>+77</b>	<b>+82</b>	<b>+79</b>	<b>+34</b>	<b>+7</b>	<b>+17.9%</b>	<b>+19.7%</b>	<b>+21.3%</b>	<b>+20.4%</b>	<b>+7.9%</b>	<b>+1.5%</b>
Advanced Nurse/ Midwife Practitioner	7	+3	+4	+4	+2	+0	+0	+70.0%	+126.7%	+126.7%	+44.1%	+1.5%	+0.9%
Clinical Nurse/ Midwife Specialist	91	+39	+34	+26	+24	+17	+0	+76.0%	+59.5%	+38.9%	+35.9%	+23.3%	+0.4%
<b>Nurse/ Midwife Specialist &amp; AN/MP</b>	<b>98</b>	<b>+42</b>	<b>+38</b>	<b>+29</b>	<b>+26</b>	<b>+17</b>	<b>+0</b>	<b>+75.5%</b>	<b>+62.9%</b>	<b>+42.7%</b>	<b>+36.4%</b>	<b>+21.5%</b>	<b>+0.4%</b>
Graduate Nursing/ Midwifery		-1						-100.0%	-100.0%	-100.0%	-100.0%	-100.0%	-100.0%
Staff Midwives	6	+4	+3	+0	-1	-3	+1	+175.0%	+97.8%	+4.6%	-15.3%	-32.3%	+16.3%
Staff Nurse [Intellectual Disability]	159	+93	+90	+88	+72	+72	+77	+142.2%	+131.7%	+123.1%	+82.7%	+82.8%	+93.7%
Staff Nurse [Psychiatric]	487	-62	-66	-62	-38	+18	-1	-11.3%	-11.9%	-11.3%	-7.2%	+3.8%	-0.2%
Staff Nurses [General/ Children's]	848	-78	-95	-132	-84	-34	-47	-8.5%	-10.0%	-13.5%	-9.1%	-3.9%	-5.3%
<b>Staff Nurse/ Staff Midwife</b>	<b>1,498</b>	<b>-45</b>	<b>-68</b>	<b>-107</b>	<b>-52</b>	<b>+53</b>	<b>+30</b>	<b>-2.9%</b>	<b>-4.3%</b>	<b>-6.6%</b>	<b>-3.3%</b>	<b>+3.7%</b>	<b>+2.0%</b>
<b>Public Health Nurse</b>	<b>228</b>	<b>+11</b>	<b>+12</b>	<b>+11</b>	<b>+10</b>	<b>+12</b>	<b>-5</b>	<b>+5.0%</b>	<b>+5.5%</b>	<b>+4.9%</b>	<b>+4.4%</b>	<b>+5.4%</b>	<b>-2.1%</b>
Pre-registration Nurse/ Midwife Intern		-9	-9	-8	-9	-9		-100.0%	-100.0%	-100.0%	-100.0%	-100.0%	-100.0%
Pre-registration Nurse Intern (COVID-19)	11	+11	+11	+11	+11	+11	-11	-100.0%	-100.0%	-100.0%	-100.0%	-100.0%	-50.9%
Post-registration Nurse/ Midwife Student	15	+8	+7	-2	+1	-4	+0	+113.4%	+86.8%	-12.1%	+6.7%	-22.4%	+1.0%
Nursing/ Midwifery awaiting registration	3	+3	+3	+3	+3	-29		-100.0%	-100.0%	-100.0%	-100.0%	-90.5%	

Dec 2020 (Dec 2015 figure: 7,461)	WTE Dec 2020	WTE change since Dec 15	WTE change since Dec 16	WTE change since Dec 17	WTE change since Dec 18	WTE change since Dec 19	WTE change since Nov 20	% change since Dec 15	% change since Dec 16	% change since Dec 17	% change since Dec 18	% change since Dec 19	% change since Nov 20
<b>Overall</b>	<b>8,602</b>	<b>+1,141</b>	<b>+963</b>	<b>+619</b>	<b>+464</b>	<b>+413</b>	<b>+98</b>	<b>+15.3%</b>	<b>+12.6%</b>	<b>+7.8%</b>	<b>+5.7%</b>	<b>+5.0%</b>	<b>+1.2%</b>
<b>Nursing/ Midwifery Student</b>	<b>28</b>	<b>+13</b>	<b>+12</b>	<b>+3</b>	<b>+6</b>	<b>-31</b>	<b>-11</b>	<b>+83.8%</b>	<b>+72.7%</b>	<b>+14.0%</b>	<b>+26.6%</b>	<b>-52.3%</b>	<b>-27.5%</b>
<b>Nursing/ Midwifery other</b>		<b>-1</b>	<b>-1</b>	<b>-1</b>	<b>-1</b>	<b>-1</b>		<b>-100.0%</b>	<b>-100.0%</b>	<b>-100.0%</b>	<b>-100.0%</b>	<b>-100.0%</b>	<b>-100.0%</b>
<b>Nursing &amp; Midwifery</b>	<b>2,319</b>	<b>+91</b>	<b>+70</b>	<b>+19</b>	<b>+69</b>	<b>+84</b>	<b>+21</b>	<b>+4.1%</b>	<b>+3.1%</b>	<b>+0.8%</b>	<b>+3.1%</b>	<b>+3.8%</b>	<b>+0.9%</b>
Dietitians	38	+26	+20	+14	+10	+11	+0	+198.8%	+107.9%	+60.3%	+34.3%	+38.5%	+0.9%
Occupational Therapists	177	+26	+26	+13	+14	+7	+2	+17.1%	+17.3%	+8.0%	+8.5%	+4.4%	+1.3%
Orthoptists	2	+1	+2	+1	+2	-1	+1	+250.9%	+1233.3%	+292.2%	+300.0%	-39.0%	+33.3%
Physiotherapists	103	+2	-0	-6	-5	-4	-2	+1.9%	-0.3%	-5.3%	-4.4%	-3.4%	-2.1%
Podiatrists & Chiropodists	7	+1	-1	-0		+1		+20.6%	-7.2%	-3.9%		+15.4%	
Speech & Language Therapists	136	+19	+6	-3	+2	+2	+3	+15.7%	+4.4%	-2.4%	+1.6%	+1.3%	+1.9%
<b>Therapy Professions</b>	<b>464</b>	<b>+75</b>	<b>+53</b>	<b>+20</b>	<b>+23</b>	<b>+16</b>	<b>+3</b>	<b>+19.1%</b>	<b>+12.8%</b>	<b>+4.4%</b>	<b>+5.1%</b>	<b>+3.6%</b>	<b>+0.8%</b>
Audiology	8	+3	+3	+2	+1	+1	+0	+60.0%	+60.0%	+33.3%	+14.3%	+18.2%	+0.1%
Medical Laboratory		-13						-100.0%	-100.0%	-100.0%	-100.0%	-100.0%	-100.0%
Phlebotomists		-1	-1	-1				-100.0%	-100.0%	-100.0%	-100.0%	-100.0%	-100.0%
Physicists	2			+0						+12.4%			
Radiographers	3	+1	+1	+1	+0	+0		+29.5%	+43.7%	+43.7%	+6.5%	+4.8%	
<b>Health Science/ Diagnostics</b>	<b>13</b>	<b>-10</b>	<b>+3</b>	<b>+2</b>	<b>+1</b>	<b>+1</b>	<b>+0</b>	<b>-42.5%</b>	<b>+29.2%</b>	<b>+20.1%</b>	<b>+9.9%</b>	<b>+11.6%</b>	<b>+0.1%</b>
<b>Social Care</b>	<b>252</b>	<b>+48</b>	<b>+36</b>	<b>+28</b>	<b>+21</b>	<b>+12</b>	<b>-5</b>	<b>+23.4%</b>	<b>+16.7%</b>	<b>+12.6%</b>	<b>+9.1%</b>	<b>+5.1%</b>	<b>-2.0%</b>
<b>Social Workers</b>	<b>132</b>	<b>+30</b>	<b>+21</b>	<b>+14</b>	<b>+11</b>	<b>+17</b>	<b>+1</b>	<b>+28.9%</b>	<b>+19.3%</b>	<b>+12.1%</b>	<b>+8.7%</b>	<b>+15.1%</b>	<b>+0.4%</b>
<b>Psychologists</b>	<b>152</b>	<b>+56</b>	<b>+43</b>	<b>+36</b>	<b>+18</b>	<b>+14</b>	<b>+2</b>	<b>+58.3%</b>	<b>+39.7%</b>	<b>+31.1%</b>	<b>+13.8%</b>	<b>+10.0%</b>	<b>+1.2%</b>
<b>Pharmacy</b>	<b>11</b>	<b>+2</b>	<b>+3</b>	<b>+1</b>	<b>+0</b>	<b>+3</b>	<b>+1</b>	<b>+21.3%</b>	<b>+32.8%</b>	<b>+7.3%</b>	<b>+1.6%</b>	<b>+32.5%</b>	<b>+10.4%</b>
Counsellor Therapists	39	+7	-4	-4	-2	-2	-1	+23.9%	-9.9%	-10.2%	-4.6%	-4.5%	-2.8%
Dental Hygienists	11	+4	+4	+4	+4	+3	-0	+59.6%	+54.7%	+51.2%	+53.4%	+32.8%	-1.2%
Other Health & Social Care	13	+4	+3	+3	+3	+2	+0	+41.0%	+32.1%	+30.0%	+33.2%	+21.8%	+1.1%
Play Therapists/ Specialists	1	-1	-1					-61.3%	-61.3%				
<b>H&amp;SC, Other</b>	<b>64</b>	<b>+14</b>	<b>+2</b>	<b>+2</b>	<b>+5</b>	<b>+3</b>	<b>-1</b>	<b>+29.3%</b>	<b>+3.0%</b>	<b>+3.8%</b>	<b>+9.0%</b>	<b>+5.4%</b>	<b>-1.7%</b>
<b>Health &amp; Social Care Professionals</b>	<b>1,087</b>	<b>+214</b>	<b>+161</b>	<b>+103</b>	<b>+79</b>	<b>+66</b>	<b>+1</b>	<b>+24.5%</b>	<b>+17.3%</b>	<b>+10.5%</b>	<b>+7.9%</b>	<b>+6.5%</b>	<b>+0.1%</b>
Executive Management	16	+7	+4	+2	+2	+1	-1	+74.8%	+31.1%	+12.4%	+12.4%	+4.9%	-5.4%
Senior Management (VIII & GM)	59	+14	+15	+8	+12	+2	+1	+30.9%	+32.4%	+16.1%	+24.3%	+2.8%	+1.8%
<b>Management (VIII &amp; above)</b>	<b>75</b>	<b>+21</b>	<b>+18</b>	<b>+10</b>	<b>+13</b>	<b>+2</b>	<b>+0</b>	<b>+38.2%</b>	<b>+32.1%</b>	<b>+15.3%</b>	<b>+21.6%</b>	<b>+3.2%</b>	<b>+0.2%</b>
<b>Administrative/ Supervisory (V to VII)</b>	<b>177</b>	<b>+63</b>	<b>+58</b>	<b>+51</b>	<b>+40</b>	<b>+16</b>	<b>+3</b>	<b>+54.6%</b>	<b>+48.6%</b>	<b>+40.2%</b>	<b>+29.4%</b>	<b>+10.2%</b>	<b>+1.6%</b>
<b>Clerical (III &amp; IV)</b>	<b>546</b>	<b>+128</b>	<b>+115</b>	<b>+78</b>	<b>+30</b>	<b>+41</b>	<b>+5</b>	<b>+30.6%</b>	<b>+26.6%</b>	<b>+16.6%</b>	<b>+5.8%</b>	<b>+8.2%</b>	<b>+1.0%</b>
<b>Management &amp; Administrative</b>	<b>798</b>	<b>+211</b>	<b>+191</b>	<b>+138</b>	<b>+84</b>	<b>+60</b>	<b>+8</b>	<b>+36.0%</b>	<b>+31.4%</b>	<b>+21.0%</b>	<b>+11.7%</b>	<b>+8.1%</b>	<b>+1.1%</b>
Catering	55	-3	-1	+0	-4	-5	-4	-5.3%	-2.0%	+0.0%	-6.0%	-8.5%	-6.1%
Household Services	210	-66	-41	-23	+1	+21	+2	-23.9%	-16.3%	-9.9%	+0.4%	+11.0%	+0.9%
Other Support	74	+10	+11	+10	+1	+0	-4	+15.6%	+16.7%	+15.3%	+0.9%	+0.5%	-5.3%



Dec 2020 (Dec 2015 figure: 7,461)	WTE Dec 2020	WTE change since Dec 15	WTE change since Dec 16	WTE change since Dec 17	WTE change since Dec 18	WTE change since Dec 19	WTE change since Nov 20	% change since Dec 15	% change since Dec 16	% change since Dec 17	% change since Dec 18	% change since Dec 19	% change since Nov 20
<b>Overall</b>	<b>8,602</b>	<b>+1,141</b>	<b>+963</b>	<b>+619</b>	<b>+464</b>	<b>+413</b>	<b>+98</b>	<b>+15.3%</b>	<b>+12.6%</b>	<b>+7.8%</b>	<b>+5.7%</b>	<b>+5.0%</b>	<b>+1.2%</b>
Portering	12	-2	-1	+1	+1	-1	+0	-12.4%	-5.6%	+12.0%	+11.8%	-7.7%	+0.1%
<b>Support</b>	<b>352</b>	<b>-61</b>	<b>-32</b>	<b>-12</b>	<b>-1</b>	<b>+15</b>	<b>-6</b>	<b>-14.7%</b>	<b>-8.4%</b>	<b>-3.3%</b>	<b>-0.2%</b>	<b>+4.5%</b>	<b>-1.6%</b>
Maintenance	21	-10	-10	-9	-1	+0	-1	-32.3%	-31.8%	-29.9%	-5.6%	+0.7%	-3.4%
Technical Services	2	+1	+1	+1	+1	+1		+100.0%	+100.0%	+100.0%	+100.0%	+100.0%	
<b>Maintenance/ Technical</b>	<b>23</b>	<b>-9</b>	<b>-9</b>	<b>-8</b>	<b>-0</b>	<b>+1</b>	<b>-1</b>	<b>-28.3%</b>	<b>-27.8%</b>	<b>-25.8%</b>	<b>-1.1%</b>	<b>+5.2%</b>	<b>-3.1%</b>
<b>General Support</b>	<b>375</b>	<b>-70</b>	<b>-41</b>	<b>-20</b>	<b>-1</b>	<b>+16</b>	<b>-7</b>	<b>-15.7%</b>	<b>-9.9%</b>	<b>-5.1%</b>	<b>-0.3%</b>	<b>+4.5%</b>	<b>-1.7%</b>
HCA, Nurse's Aide, etc.	2,109	+577	+431	+319	+186	+163	+45	+37.6%	+25.7%	+17.8%	+9.7%	+8.4%	+2.2%
Health & Social Care Assistants	12	+12	+10	+11	-2	+4	+1	-100.0%	+499.5%	+1099.0%	-13.2%	+49.1%	+7.1%
<b>Health Care Assistants</b>	<b>2,121</b>	<b>+589</b>	<b>+441</b>	<b>+330</b>	<b>+184</b>	<b>+167</b>	<b>+46</b>	<b>+38.4%</b>	<b>+26.3%</b>	<b>+18.4%</b>	<b>+9.5%</b>	<b>+8.6%</b>	<b>+2.2%</b>
<b>Care, other</b>	<b>494</b>	<b>+112</b>	<b>+98</b>	<b>+75</b>	<b>+63</b>	<b>+44</b>	<b>+9</b>	<b>+29.5%</b>	<b>+24.9%</b>	<b>+18.0%</b>	<b>+14.6%</b>	<b>+9.8%</b>	<b>+1.9%</b>
<b>Home Help</b>	<b>1,076</b>	<b>-62</b>	<b>-7</b>	<b>-57</b>	<b>-33</b>	<b>-48</b>	<b>+17</b>	<b>-5.4%</b>	<b>-0.7%</b>	<b>-5.0%</b>	<b>-3.0%</b>	<b>-4.2%</b>	<b>+1.6%</b>
<b>Patient &amp; Client Care</b>	<b>3,691</b>	<b>+639</b>	<b>+532</b>	<b>+348</b>	<b>+214</b>	<b>+163</b>	<b>+72</b>	<b>+20.9%</b>	<b>+16.9%</b>	<b>+10.4%</b>	<b>+6.2%</b>	<b>+4.6%</b>	<b>+2.0%</b>

Source: Health Service Personnel Census

## Longitudinal Employment Levels by Care Group - Oct 2013 to Dec 2020

### Community Health & Wellbeing

Dec 2020 ( figure: )	WTE Dec 2020	WTE change since	WTE change since	WTE change since	WTE change since	WTE change since	WTE change since Nov 20	% change since	% change since	% change since	% change since	% change since	% change since Nov 20
<b>Overall</b>	<b>35</b>	<b>+35</b>	<b>+35</b>	<b>+35</b>	<b>+35</b>	<b>+35</b>	<b>+0</b>	<b>-100.0%</b>	<b>-100.0%</b>	<b>-100.0%</b>	<b>-100.0%</b>	<b>-100.0%</b>	<b>+0.2%</b>
<b>Nursing &amp; Midwifery</b>	<b>1</b>	<b>+1</b>	<b>+1</b>	<b>+1</b>	<b>+1</b>	<b>+1</b>		<b>-1.0%</b>	<b>-1.0%</b>	<b>-1.0%</b>	<b>-1.0%</b>	<b>-1.0%</b>	<b>+0.0%</b>
Nurse/ Midwife Manager	1	+1	+1	+1	+1	+1		-1.0%	-1.0%	-1.0%	-1.0%	-1.0%	+0.0%
<b>Health &amp; Social Care Professionals</b>	<b>4</b>	<b>+4</b>	<b>+4</b>	<b>+4</b>	<b>+4</b>	<b>+4</b>	<b>+0</b>	<b>-1.0%</b>	<b>-1.0%</b>	<b>-1.0%</b>	<b>-1.0%</b>	<b>-1.0%</b>	<b>+0.0%</b>
Therapy Professions	4	+4	+4	+4	+4	+4	+0	-1.0%	-1.0%	-1.0%	-1.0%	-1.0%	+0.0%
<b>Management &amp; Administrative</b>	<b>13</b>	<b>+13</b>	<b>+13</b>	<b>+13</b>	<b>+13</b>	<b>+13</b>	<b>+0</b>	<b>-1.0%</b>	<b>-1.0%</b>	<b>-1.0%</b>	<b>-1.0%</b>	<b>-1.0%</b>	<b>+0.0%</b>
Management (VIII & above)	1	+1	+1	+1	+1	+1		-1.0%	-1.0%	-1.0%	-1.0%	-1.0%	+0.0%
Administrative/ Supervisory (V to VII)	5	+5	+5	+5	+5	+5		-1.0%	-1.0%	-1.0%	-1.0%	-1.0%	+0.0%
Clerical (III & IV)	7	+7	+7	+7	+7	+7	+0	-1.0%	-1.0%	-1.0%	-1.0%	-1.0%	+0.0%
<b>Patient &amp; Client Care</b>	<b>16</b>	<b>+16</b>	<b>+16</b>	<b>+16</b>	<b>+16</b>	<b>+16</b>	<b>-0</b>	<b>-1.0%</b>	<b>-1.0%</b>	<b>-1.0%</b>	<b>-1.0%</b>	<b>-1.0%</b>	<b>-0.0%</b>
Care, other	16	+16	+16	+16	+16	+16	-0	-1.0%	-1.0%	-1.0%	-1.0%	-1.0%	-0.0%

Source: Health Service Personnel Census

## Mental Health

Dec 2020 (Dec 2015 figure: 1,374)	WTE Dec 2020	WTE change since Dec 15	WTE change since Dec 16	WTE change since Dec 17	WTE change since Dec 18	WTE change since Dec 19	WTE change since Nov 20	% change since Dec 15	% change since Dec 16	% change since Dec 17	% change since Dec 18	% change since Dec 19	% change since Nov 20
<b>Overall</b>	<b>1,564</b>	<b>+189</b>	<b>+157</b>	<b>+86</b>	<b>+80</b>	<b>+78</b>	<b>+1</b>	<b>+13.8%</b>	<b>+11.1%</b>	<b>+5.9%</b>	<b>+5.4%</b>	<b>+5.3%</b>	<b>+0.1%</b>
<b>Medical &amp; Dental</b>	<b>141</b>	<b>+30</b>	<b>+27</b>	<b>+20</b>	<b>+12</b>	<b>+12</b>	<b>+0</b>	<b>+0.3%</b>	<b>+0.2%</b>	<b>+0.2%</b>	<b>+0.1%</b>	<b>+0.1%</b>	<b>+0.0%</b>
Consultants	54	+12	+11	+9	+6	+4	+1	+0.3%	+0.3%	+0.2%	+0.1%	+0.1%	+0.0%
Registrars	42	+13	+9	+6		-4	-0	+0.4%	+0.3%	+0.2%	+0.0%	-0.1%	-0.0%
SHO/ Interns	43	+7	+9	+8	+7	+12	+0	+0.2%	+0.3%	+0.2%	+0.2%	+0.4%	+0.0%
Medical/ Dental, other	2	-2	-2	-3	-1			-0.5%	-0.5%	-0.6%	-0.4%	+0.0%	+0.0%
<b>Nursing &amp; Midwifery</b>	<b>786</b>	<b>+22</b>	<b>+9</b>	<b>-3</b>	<b>+20</b>	<b>+21</b>	<b>-0</b>	<b>+0.0%</b>	<b>+0.0%</b>	<b>-0.0%</b>	<b>+0.0%</b>	<b>+0.0%</b>	<b>-0.0%</b>
Nurse/ Midwife Manager	192	+37	+36	+41	+37	+23	+3	+0.2%	+0.2%	+0.3%	+0.2%	+0.1%	+0.0%
Nurse/ Midwife Specialist & AN/MP	71	+37	+33	+25	+24	+11	+0	+1.1%	+0.9%	+0.5%	+0.5%	+0.2%	+0.0%
Staff Nurse/ Staff Midwife	519	-55	-63	-72	-44	+17	-2	-0.1%	-0.1%	-0.1%	-0.1%	+0.0%	-0.0%
Nursing/ Midwifery Student	4	+4	+4	+4	+4	-30	-2	+7.0%	+7.0%	-1.0%	+7.0%	-0.9%	-0.3%
<b>Health &amp; Social Care Professionals</b>	<b>258</b>	<b>+82</b>	<b>+63</b>	<b>+51</b>	<b>+31</b>	<b>+32</b>	<b>+1</b>	<b>+0.5%</b>	<b>+0.3%</b>	<b>+0.2%</b>	<b>+0.1%</b>	<b>+0.1%</b>	<b>+0.0%</b>
Therapy Professions	77	+24	+18	+15	+6	+4	-1	+0.4%	+0.3%	+0.2%	+0.1%	+0.0%	-0.0%
Social Care	7	-1	-1	+0	+1	+3	+0	-0.1%	-0.1%	+0.0%	+0.2%	+0.8%	+0.0%
Social Workers	64	+10	+10	+5	+5	+11	-0	+0.2%	+0.2%	+0.1%	+0.1%	+0.2%	-0.0%
Psychologists	94	+48	+36	+30	+18	+11	+2	+1.0%	+0.6%	+0.5%	+0.2%	+0.1%	+0.0%
Pharmacy	3	+0	+0	-0	-1	+1	+1	+0.1%	+0.1%	-0.1%	-0.2%	+0.2%	+0.5%
H&SC, Other	12	+1	-0	+0	+2	+2	-0	+0.1%	-0.0%	+0.0%	+0.2%	+0.2%	-0.0%
<b>Management &amp; Administrative</b>	<b>119</b>	<b>+26</b>	<b>+25</b>	<b>+16</b>	<b>+17</b>	<b>+8</b>	<b>+0</b>	<b>+0.3%</b>	<b>+0.3%</b>	<b>+0.2%</b>	<b>+0.2%</b>	<b>+0.1%</b>	<b>+0.0%</b>
Management (VIII & above)	3	+3	+3	+3	+3	+2	-0	-1.0%	-1.0%	-1.0%	-1.0%	+1.7%	-0.1%
Administrative/ Supervisory (V to VII)	22	+4	+4	+3	+4	-1	-1	+0.2%	+0.2%	+0.2%	+0.3%	-0.0%	-0.0%
Clerical (III & IV)	94	+19	+19	+10	+10	+7	+1	+0.3%	+0.2%	+0.1%	+0.1%	+0.1%	+0.0%
<b>General Support</b>	<b>87</b>	<b>-21</b>	<b>-16</b>	<b>-17</b>	<b>-8</b>	<b>+1</b>	<b>-0</b>	<b>-0.2%</b>	<b>-0.2%</b>	<b>-0.2%</b>	<b>-0.1%</b>	<b>+0.0%</b>	<b>-0.0%</b>
Support	82	-19	-14	-15	-7	+2	-0	-0.2%	-0.1%	-0.2%	-0.1%	+0.0%	-0.0%
Maintenance/ Technical	5	-2	-2	-2	-1	-1		-0.3%	-0.3%	-0.3%	-0.2%	-0.2%	+0.0%
<b>Patient &amp; Client Care</b>	<b>173</b>	<b>+50</b>	<b>+49</b>	<b>+20</b>	<b>+8</b>	<b>+5</b>	<b>+0</b>	<b>+0.4%</b>	<b>+0.4%</b>	<b>+0.1%</b>	<b>+0.0%</b>	<b>+0.0%</b>	<b>+0.0%</b>
Health Care Assistants	166	+48	+47	+21	+9	+6	+0	+0.4%	+0.4%	+0.1%	+0.1%	+0.0%	+0.0%
Care, other	6	+2	+2	-1	-1	-1	+0	+0.6%	+0.5%	-0.1%	-0.2%	-0.1%	+0.0%

Source: Health Service Personnel Census

## Primary Care

Dec 2020 (Dec 2015 figure: 1,143)	WTE Dec 2020	WTE change since Dec 15	WTE change since Dec 16	WTE change since Dec 17	WTE change since Dec 18	WTE change since Dec 19	WTE change since Nov 20	% change since Dec 15	% change since Dec 16	% change since Dec 17	% change since Dec 18	% change since Dec 19	% change since Nov 20
<b>Overall</b>	<b>1,517</b>	<b>+375</b>	<b>+330</b>	<b>+210</b>	<b>+173</b>	<b>+172</b>	<b>+60</b>	<b>+32.8%</b>	<b>+27.8%</b>	<b>+16.1%</b>	<b>+12.9%</b>	<b>+12.7%</b>	<b>+4.1%</b>
<b>Medical &amp; Dental</b>	<b>159</b>	<b>+21</b>	<b>+19</b>	<b>+8</b>	<b>+4</b>	<b>+7</b>	<b>+2</b>	<b>+0.2%</b>	<b>+0.1%</b>	<b>+0.1%</b>	<b>+0.0%</b>	<b>+0.0%</b>	<b>+0.0%</b>
Consultants	3	+1	+1	+0	+0	-0		+0.3%	+0.3%	+0.0%	+0.0%	-0.0%	+0.0%
Registrars	58	+12	+16	+10	+8	+3	+2	+0.3%	+0.4%	+0.2%	+0.2%	+0.1%	+0.0%
SHO/ Interns	7	+1	+0	+1	-0	+1		+0.2%	+0.0%	+0.1%	-0.0%	+0.2%	+0.0%
Medical/ Dental, other	91	+7	+3	-3	-4	+3	-0	+0.1%	+0.0%	-0.0%	-0.0%	+0.0%	-0.0%
<b>Nursing &amp; Midwifery</b>	<b>443</b>	<b>+104</b>	<b>+87</b>	<b>+49</b>	<b>+47</b>	<b>+35</b>	<b>+8</b>	<b>+0.3%</b>	<b>+0.2%</b>	<b>+0.1%</b>	<b>+0.1%</b>	<b>+0.1%</b>	<b>+0.0%</b>
Nurse/ Midwife Manager	61	+20	+16	+17	+11	+4	+3	+0.5%	+0.4%	+0.4%	+0.2%	+0.1%	+0.1%
Nurse/ Midwife Specialist & AN/MP	7	+4	+4	+3	+1	+3	+0	+1.3%	+1.4%	+0.9%	+0.2%	+0.7%	+0.1%
Staff Nurse/ Staff Midwife	139	+61	+48	+19	+25	+20	+9	+0.8%	+0.5%	+0.2%	+0.2%	+0.2%	+0.1%
Public Health Nurse	222	+11	+12	+12	+10	+11	-5	+0.1%	+0.1%	+0.1%	+0.0%	+0.1%	-0.0%
Nursing/ Midwifery Student	15	+8	+7	-2	+1	-2	+0	+1.1%	+0.9%	-0.1%	+0.1%	-0.1%	+0.0%
<b>Health &amp; Social Care Professionals</b>	<b>349</b>	<b>+65</b>	<b>+56</b>	<b>+23</b>	<b>+19</b>	<b>+20</b>	<b>+5</b>	<b>+0.2%</b>	<b>+0.2%</b>	<b>+0.1%</b>	<b>+0.1%</b>	<b>+0.1%</b>	<b>+0.0%</b>
Therapy Professions	237	+45	+36	+5	+14	+16	+5	+0.2%	+0.2%	+0.0%	+0.1%	+0.1%	+0.0%
Health Science/ Diagnostics	12	-10	+3	+2	+1	+1	+0	-0.4%	+0.3%	+0.2%	+0.1%	+0.1%	+0.0%
Social Care	5		-1	-1	-3	-3	+0	+0.0%	-0.1%	-0.1%	-0.3%	-0.4%	+0.0%
Social Workers	28	+8	+6	+6	+3	+4	+0	+0.4%	+0.3%	+0.3%	+0.1%	+0.2%	+0.0%
Psychologists	22	+8	+9	+9	+3	+1	+0	+0.6%	+0.7%	+0.8%	+0.1%	+0.1%	+0.0%
Pharmacy	4	+0	+1	+0	+1	+1	+0	+0.1%	+0.4%	+0.1%	+0.2%	+0.3%	+0.0%
H&SC, Other	41	+13	+2	+1	+0	-0	-1	+0.5%	+0.0%	+0.0%	+0.0%	-0.0%	-0.0%
<b>Management &amp; Administrative</b>	<b>331</b>	<b>+72</b>	<b>+63</b>	<b>+33</b>	<b>+24</b>	<b>+21</b>	<b>+4</b>	<b>+0.3%</b>	<b>+0.2%</b>	<b>+0.1%</b>	<b>+0.1%</b>	<b>+0.1%</b>	<b>+0.0%</b>
Management (VIII & above)	35	+5	+5	+1	+2	-2	-1	+0.2%	+0.2%	+0.0%	+0.1%	-0.1%	-0.0%
Administrative/ Supervisory (V to VII)	73	+26	+21	+14	+12	+5	+2	+0.6%	+0.4%	+0.2%	+0.2%	+0.1%	+0.0%
Clerical (III & IV)	224	+41	+37	+18	+10	+19	+3	+0.2%	+0.2%	+0.1%	+0.0%	+0.1%	+0.0%
<b>General Support</b>	<b>18</b>	<b>+0</b>	<b>+0</b>	<b>-1</b>	<b>+1</b>	<b>+2</b>	<b>-0</b>	<b>+0.0%</b>	<b>+0.0%</b>	<b>-0.0%</b>	<b>+0.1%</b>	<b>+0.2%</b>	<b>-0.0%</b>
Support	18	+0	+0	-1	+1	+2	-0	+0.0%	+0.0%	-0.0%	+0.1%	+0.2%	-0.0%
<b>Patient &amp; Client Care</b>	<b>218</b>	<b>+113</b>	<b>+104</b>	<b>+97</b>	<b>+78</b>	<b>+86</b>	<b>+41</b>	<b>+1.1%</b>	<b>+0.9%</b>	<b>+0.8%</b>	<b>+0.6%</b>	<b>+0.6%</b>	<b>+0.2%</b>
Health Care Assistants	103	+102	+100	+97	+80	+86	+40	+99.2%	+33.1%	+15.7%	+3.4%	+4.9%	+0.6%
Care, other	105	+13	+6	+3	+0	+1	+0	+0.1%	+0.1%	+0.0%	+0.0%	+0.0%	+0.0%
Home Help	9	-2	-3	-3	-2	-1	+0	-0.2%	-0.2%	-0.2%	-0.2%	-0.1%	+0.0%

Source: Health Service Personnel Census

## Disabilities

Dec 2020 (Dec 2015 figure: 2,151)	WTE Dec 2020	WTE change since Dec 15	WTE change since Dec 16	WTE change since Dec 17	WTE change since Dec 18	WTE change since Dec 19	WTE change since Nov 20	% change since Dec 15	% change since Dec 16	% change since Dec 17	% change since Dec 18	% change since Dec 19	% change since Nov 20
<b>Overall</b>	<b>2,556</b>	<b>+404</b>	<b>+300</b>	<b>+256</b>	<b>+161</b>	<b>+117</b>	<b>+9</b>	<b>+18.8%</b>	<b>+13.3%</b>	<b>+11.1%</b>	<b>+6.7%</b>	<b>+4.8%</b>	<b>+0.4%</b>
<b>Medical &amp; Dental</b>	<b>3</b>	<b>-0</b>	<b>-0</b>	<b>+1</b>	<b>+1</b>	<b>+1</b>		<b>-0.1%</b>	<b>-0.1%</b>	<b>+0.5%</b>	<b>+0.5%</b>	<b>+0.5%</b>	<b>+0.0%</b>
Consultants	3	-0	-0	+1	+1	+1		-0.1%	-0.1%	+0.7%	+0.7%	+0.7%	+0.0%
Medical/ Dental, other	0							+0.0%	+0.0%	+0.0%	+0.0%	+0.0%	+0.0%
<b>Nursing &amp; Midwifery</b>	<b>427</b>	<b>-60</b>	<b>-52</b>	<b>-38</b>	<b>-5</b>	<b>+8</b>	<b>+3</b>	<b>-0.1%</b>	<b>-0.1%</b>	<b>-0.1%</b>	<b>-0.0%</b>	<b>+0.0%</b>	<b>+0.0%</b>
Nurse/ Midwife Manager	91	-2	+5	+7	-1	+1	+0	-0.0%	+0.1%	+0.1%	-0.0%	+0.0%	+0.0%
Nurse/ Midwife Specialist & AN/MP	14	-2	-2	-3	-1	+1		-0.1%	-0.1%	-0.2%	-0.1%	+0.1%	+0.0%
Staff Nurse/ Staff Midwife	312	-57	-55	-43	-4	+3	+12	-0.2%	-0.2%	-0.1%	-0.0%	+0.0%	+0.0%
Nursing/ Midwifery Student	10	+2	+2	+2	+2	+3	-9	+0.2%	+0.2%	+0.2%	+0.2%	+0.4%	-0.5%
Nursing/ Midwifery other		-1	-1	-1	-1	-1		-1.0%	-1.0%	-1.0%	-1.0%	-1.0%	-1.0%
<b>Health &amp; Social Care Professionals</b>	<b>415</b>	<b>+50</b>	<b>+29</b>	<b>+20</b>	<b>+22</b>	<b>+11</b>	<b>-4</b>	<b>+0.1%</b>	<b>+0.1%</b>	<b>+0.1%</b>	<b>+0.1%</b>	<b>+0.0%</b>	<b>-0.0%</b>
Therapy Professions	104	-6	-8	-7	-0	-4	+1	-0.1%	-0.1%	-0.1%	-0.0%	-0.0%	+0.0%
Social Care	238	+49	+38	+29	+22	+12	-5	+0.3%	+0.2%	+0.1%	+0.1%	+0.1%	-0.0%
Social Workers	27	+6	+1	+1	-1	+0	+0	+0.3%	+0.0%	+0.0%	-0.0%	+0.0%	+0.0%
Psychologists	36	+0	-2	-4	-2	+1	-0	+0.0%	-0.0%	-0.1%	-0.1%	+0.0%	-0.0%
H&SC, Other	10	+0	+0	+1	+3	+2	+0	+0.0%	+0.0%	+0.1%	+0.3%	+0.2%	+0.0%
<b>Management &amp; Administrative</b>	<b>170</b>	<b>+41</b>	<b>+37</b>	<b>+32</b>	<b>+17</b>	<b>+10</b>	<b>-0</b>	<b>+0.3%</b>	<b>+0.3%</b>	<b>+0.2%</b>	<b>+0.1%</b>	<b>+0.1%</b>	<b>-0.0%</b>
Management (VIII & above)	22	+4	+3	+3	+4	+0	+1	+0.2%	+0.2%	+0.2%	+0.2%	+0.0%	+0.0%
Administrative/ Supervisory (V to VII)	58	+18	+19	+18	+9	+4	-1	+0.4%	+0.5%	+0.5%	+0.2%	+0.1%	-0.0%
Clerical (III & IV)	90	+20	+16	+11	+4	+5	-0	+0.3%	+0.2%	+0.1%	+0.1%	+0.1%	-0.0%
<b>General Support</b>	<b>151</b>	<b>-33</b>	<b>-19</b>	<b>-4</b>	<b>-2</b>	<b>-1</b>	<b>-6</b>	<b>-0.2%</b>	<b>-0.1%</b>	<b>-0.0%</b>	<b>-0.0%</b>	<b>-0.0%</b>	<b>-0.0%</b>
Support	139	-28	-15	+1	-4	-2	-5	-0.2%	-0.1%	+0.0%	-0.0%	-0.0%	-0.0%
Maintenance/ Technical	12	-5	-5	-5	+1	+2	-1	-0.3%	-0.3%	-0.3%	+0.1%	+0.2%	-0.1%
<b>Patient &amp; Client Care</b>	<b>1,390</b>	<b>+407</b>	<b>+304</b>	<b>+245</b>	<b>+129</b>	<b>+88</b>	<b>+16</b>	<b>+0.4%</b>	<b>+0.3%</b>	<b>+0.2%</b>	<b>+0.1%</b>	<b>+0.1%</b>	<b>+0.0%</b>
Health Care Assistants	1,058	+328	+236	+192	+85	+64	+6	+0.4%	+0.3%	+0.2%	+0.1%	+0.1%	+0.0%
Care, other	332	+79	+68	+53	+44	+25	+11	+0.3%	+0.3%	+0.2%	+0.2%	+0.1%	+0.0%

Source: Health Service Personnel Census

## Older People

Dec 2020 (Dec 2015 figure: 2,792)	WTE Dec 2020	WTE change since Dec 15	WTE change since Dec 16	WTE change since Dec 17	WTE change since Dec 18	WTE change since Dec 19	WTE change since Nov 20	% change since Dec 15	% change since Dec 16	% change since Dec 17	% change since Dec 18	% change since Dec 19	% change since Nov 20
<b>Overall</b>	<b>2,930</b>	<b>+138</b>	<b>+142</b>	<b>+31</b>	<b>+15</b>	<b>+11</b>	<b>+28</b>	<b>+4.9%</b>	<b>+5.1%</b>	<b>+1.1%</b>	<b>+0.5%</b>	<b>+0.4%</b>	<b>+1.0%</b>
<b>Medical &amp; Dental</b>	<b>28</b>	<b>+4</b>	<b>+4</b>	<b>+2</b>	<b>+2</b>	<b>+2</b>	<b>+0</b>	<b>+0.2%</b>	<b>+0.2%</b>	<b>+0.1%</b>	<b>+0.1%</b>	<b>+0.1%</b>	<b>+0.0%</b>
Consultants	1	-1	-1	-1				-0.5%	-0.5%	-0.5%	+0.0%	+0.0%	+0.0%
Registrars	3	+1	+2	+1	+1			+0.5%	+2.0%	+0.5%	+0.5%	+0.0%	+0.0%
SHO/ Interns	1	+1	+1	+1				-1.0%	-1.0%	-1.0%	+0.0%	+0.0%	+0.0%
Medical/ Dental, other	23	+3	+2	+1	+1	+2	+0	+0.1%	+0.1%	+0.0%	+0.1%	+0.1%	+0.0%
<b>Nursing &amp; Midwifery</b>	<b>662</b>	<b>+25</b>	<b>+25</b>	<b>+10</b>	<b>+6</b>	<b>+19</b>	<b>+11</b>	<b>+0.0%</b>	<b>+0.0%</b>	<b>+0.0%</b>	<b>+0.0%</b>	<b>+0.0%</b>	<b>+0.0%</b>
Nurse/ Midwife Manager	122	+15	+19	+17	+32	+4	+1	+0.1%	+0.2%	+0.2%	+0.4%	+0.0%	+0.0%
Nurse/ Midwife Specialist & AN/MP	6	+4	+3	+4	+2	+3	-0	+2.2%	+1.3%	+2.3%	+0.6%	+0.8%	-0.1%
Staff Nurse/ Staff Midwife	528	+6	+3	-10	-28	+13	+11	+0.0%	+0.0%	-0.0%	-0.1%	+0.0%	+0.0%
Public Health Nurse	6	-0	-0	-1	-0	+1		-0.1%	-0.0%	-0.1%	-0.0%	+0.2%	+0.0%
Nursing/ Midwifery Student						-2		-1.0%	-1.0%	-1.0%	-1.0%	-1.0%	-1.0%
<b>Health &amp; Social Care Professionals</b>	<b>61</b>	<b>+13</b>	<b>+8</b>	<b>+5</b>	<b>+3</b>	<b>+0</b>	<b>-1</b>	<b>+0.3%</b>	<b>+0.1%</b>	<b>+0.1%</b>	<b>+0.0%</b>	<b>+0.0%</b>	<b>-0.0%</b>
Therapy Professions	41	+8	+2	+3	-1	-3	-1	+0.2%	+0.1%	+0.1%	-0.0%	-0.1%	-0.0%
Health Science/ Diagnostics	1	-0			+0	+0		-0.2%	+0.0%	+0.0%	+0.2%	+0.1%	+0.0%
Social Care	2							+0.0%	+0.0%	+0.0%	+0.0%	+0.0%	+0.0%
Social Workers	12	+4	+4	+2	+3	+2	+0	+0.6%	+0.5%	+0.2%	+0.3%	+0.2%	+0.0%
Pharmacy	4	+1	+1	+1	+1	+1	-0	+0.4%	+0.6%	+0.2%	+0.2%	+0.5%	-0.0%
<b>Management &amp; Administrative</b>	<b>166</b>	<b>+59</b>	<b>+52</b>	<b>+44</b>	<b>+13</b>	<b>+8</b>	<b>+4</b>	<b>+0.6%</b>	<b>+0.5%</b>	<b>+0.4%</b>	<b>+0.1%</b>	<b>+0.0%</b>	<b>+0.0%</b>
Management (VIII & above)	14	+8	+6	+2	+3	+1	+0	+1.4%	+0.8%	+0.2%	+0.3%	+0.1%	+0.0%
Administrative/ Supervisory (V to VII)	20	+10	+9	+10	+10	+3	+2	+0.9%	+0.8%	+1.0%	+0.9%	+0.2%	+0.1%
Clerical (III & IV)	131	+41	+36	+32	-0	+3	+1	+0.5%	+0.4%	+0.3%	-0.0%	+0.0%	+0.0%
<b>General Support</b>	<b>120</b>	<b>-16</b>	<b>-6</b>	<b>+1</b>	<b>+9</b>	<b>+13</b>	<b>-0</b>	<b>-0.1%</b>	<b>-0.0%</b>	<b>+0.0%</b>	<b>+0.1%</b>	<b>+0.1%</b>	<b>-0.0%</b>
Support	114	-13	-3	+3	+9	+13	-1	-0.1%	-0.0%	+0.0%	+0.1%	+0.1%	-0.0%
Maintenance/ Technical	6	-3	-2	-2	-1	+0	+0	-0.3%	-0.3%	-0.2%	-0.1%	+0.0%	+0.0%
<b>Patient &amp; Client Care</b>	<b>1,894</b>	<b>+53</b>	<b>+59</b>	<b>-31</b>	<b>-17</b>	<b>-31</b>	<b>+14</b>	<b>+0.0%</b>	<b>+0.0%</b>	<b>-0.0%</b>	<b>-0.0%</b>	<b>-0.0%</b>	<b>+0.0%</b>
Health Care Assistants	794	+111	+58	+20	+11	+12	-0	+0.2%	+0.1%	+0.0%	+0.0%	+0.0%	-0.0%
Care, other	34	+2	+5	+4	+4	+3	-2	+0.1%	+0.2%	+0.1%	+0.1%	+0.1%	-0.1%
Home Help	1,067	-60	-4	-54	-32	-47	+17	-0.1%	-0.0%	-0.0%	-0.0%	-0.0%	+0.0%

Source: Health Service Personnel Census