

CHO 4 Employment Report: January 2021

Employment by Staff Group

Jan 2021 (Dec 2019 figure: 8,189)	WTE Dec 2020	WTE Jan 2021	WTE change since Dec 20	% change since Dec 20	WTE change since Dec 19	WTE change since Jan 20
Overall	8,602	8,652	+51	+0.6%	+463	+424
Consultants	60	62	+2	+2.8%	+7	+7
Registrars	103	101	-1	-1.2%	-2	-4
SHO/ Interns	51	51	+0	+0.6%	+13	+13
Medical/ Dental, other	116	116	-1	-0.7%	+4	+5
Medical & Dental	330	330	-0	-0.0%	+23	+20
Nurse/ Midwife Manager	467	481	+15	+3.2%	+49	+33
Nurse/ Midwife Specialist & AN/MP	98	96	-2	-2.5%	+15	+14
Staff Nurse/ Staff Midwife	1,498	1,499	+1	+0.1%	+54	+46
Public Health Nurse	228	224	-4	-1.7%	+8	+10
<i>Pre-registration Nurse/ Midwife Intern</i>		17	+17	-100.0%	+8	+17
<i>Pre-registration Nurse Intern (COVID-19)</i>	11	3	-8	-71.6%	+3	-8
<i>Post-registration Nurse/ Midwife Student</i>	15	15	+0	+0.4%	-4	+0
<i>Nursing/ Midwifery awaiting registration</i>	3	3			-29	
Nursing/ Midwifery Student	28	38	+10	+34.0%	-22	-33
Nursing/ Midwifery other				-100.0%	-1	-1
Nursing & Midwifery	2,319	2,338	+19	+0.8%	+103	+70
Therapy Professions	464	470	+6	+1.2%	+22	+14
Health Science/ Diagnostics	13	12	-1	-7.7%	+0	+1
Social Care	252	256	+4	+1.6%	+16	+15
Social Workers	132	130	-2	-1.8%	+15	+13
Psychologists	152	151	-0	-0.2%	+13	+15
Pharmacy	11	11	+0	+0.2%	+3	+3
H&SC, Other	64	64	+1	+1.3%	+4	+5
Health & Social Care Professionals	1,087	1,094	+7	+0.6%	+73	+65
Management (VIII & above)	75	75	-0	-0.0%	+2	+2
Administrative/ Supervisory (V to VII)	177	181	+4	+2.1%	+20	+18
Clerical (III & IV)	546	551	+5	+0.9%	+46	+40
Management & Administrative	798	807	+9	+1.1%	+68	+59
Support	352	354	+2	+0.7%	+18	+23
Maintenance/ Technical	23	24	+1	+3.3%	+2	+2
General Support	375	379	+3	+0.9%	+19	+25
Health Care Assistants	2,121	2,164	+43	+2.0%	+210	+211
Care, other	494	490	-4	-0.8%	+40	+27
Home Help	1,076	1,049	-27	-2.5%	-74	-54
Patient & Client Care	3,691	3,704	+13	+0.3%	+176	+185

CHO 4 Employment Report: January 2021

Community Health & Wellbeing

Jan 2021 (figure:)	WTE Dec 2020	WTE Jan 2021	WTE change since Dec 20	% change since Dec 20	WTE change since	WTE change since Jan 20
Total Community Health & Wellbeing	35	34	-0	-1.0%	+34	+8
<i>Director Nursing/Midwifery, Assistant</i>	1	2	+1	+100.0%	+2	+1
Nurse/ Midwife Manager	1	2	+1	+100.0%	+2	+2
<i>Staff Nurses [General/ Children's]</i>				-100.0%		
Staff Nurse/ Staff Midwife				-100.0%		-0
Nursing & Midwifery	1	2	+1	+100.0%	+2	+2
Therapy Professions	4	4	+0	+1.4%	+4	+1
Health & Social Care Professionals	4	4	+0	+1.4%	+4	+1
Management (VIII & above)	1	1	-1	-50.0%	+1	-1
Administrative/ Supervisory (V to VII)	5	5			+5	+2
Clerical (III & IV)	7	7			+7	+3
Management & Administrative	13	13	-1	-3.8%	+13	+4
Care, other	16	15	-1	-5.6%	+15	+2
Patient & Client Care	16	15	-1	-5.6%	+15	+2

Mental Health

Jan 2021 (Dec 2019 figure: 1,485)	WTE Dec 2020	WTE Jan 2021	WTE change since Dec 20	% change since Dec 20	WTE change since Dec 19	WTE change since Jan 20
Total Mental Health	1,564	1,575	+11	+0.7%	+89	+57
Consultants	54	56	+2	+3.1%	+6	+7
Registrars	42	41	-0	-0.7%	-4	-5
SHO/ Interns	43	43	+0	+0.9%	+12	+12
Medical/ Dental, other	2	2	-0	-3.5%	-0	-0
Medical & Dental	141	142	+2	+1.2%	+14	+13
Nurse/ Midwife Manager	192	199	+6	+3.3%	+29	+20
Nurse/ Midwife Specialist & AN/MP	71	69	-2	-2.2%	+9	+10
Staff Nurse/ Staff Midwife	519	512	-7	-1.3%	+10	+4
<i>Pre-registration Nurse/ Midwife Intern</i>		9	+9	-100.0%	+6	+9
<i>Pre-registration Nurse Intern (COVID-19)</i>	3	3			+3	
<i>Post-registration Nurse/ Midwife Student</i>				-100.0%	-1	
<i>Nursing/ Midwifery awaiting registration</i>	1	1			-29	
Nursing/ Midwifery Student	4	13	+9	+222.3%	-21	-29
Nursing & Midwifery	786	793	+7	+0.9%	+28	+5
Therapy Professions	77	78	+1	+1.5%	+5	+2
Social Care	7	7	+0	+2.6%	+3	+3
Social Workers	64	64	-1	-0.9%	+11	+9
Psychologists	94	94	+0	+0.4%	+12	+11
Pharmacy	3	3			+1	+0
H&SC, Other	12	12	-0	-2.6%	+1	+1
Health & Social Care Professionals	258	259	+1	+0.3%	+32	+28
Management (VIII & above)	3	3	-0	-8.4%	+2	+2
Administrative/ Supervisory (V to VII)	22	25	+3	+12.5%	+2	+3
Clerical (III & IV)	94	90	-4	-4.2%	+3	+1
Management & Administrative	119	117	-1	-1.2%	+7	+6
Support	82	85	+3	+4.2%	+5	+7
Maintenance/ Technical	5	5			-1	-1
General Support	87	90	+3	+4.0%	+4	+6
Health Care Assistants	166	166	-0	-0.3%	+5	+1
Care, other	6	6	-0	-0.6%	-1	-1
Patient & Client Care	173	172	-0	-0.3%	+4	+0

Primary Care

Jan 2021 (Dec 2019 figure: 1,346)	WTE Dec 2020	WTE Jan 2021	WTE change since Dec 20	% change since Dec 20	WTE change since Dec 19	WTE change since Jan 20
Total Primary Care	1,517	1,539	+22	+1.4%	+193	+197
Consultants	3	3	+0	+0.8%	+0	+0
Registrars	58	57	-1	-1.7%	+2	+2
SHO/ Interns	7	7	-0	-0.7%	+1	+1
Medical/ Dental, other	91	91	+0	+0.1%	+3	+3
Medical & Dental	159	158	-1	-0.6%	+6	+6
Nurse/ Midwife Manager	61	65	+4	+7.3%	+9	+4
Nurse/ Midwife Specialist & AN/MP	7	7	-1	-8.2%	+2	+1
Staff Nurse/ Staff Midwife	139	141	+2	+1.5%	+22	+26
Public Health Nurse	222	218	-4	-1.8%	+7	+8
<i>Post-registration Nurse/ Midwife Student</i>	15	15	+0	+0.4%	-2	+0
Nursing/ Midwifery Student	15	15	+0	+0.4%	-2	-4
Nursing & Midwifery	443	445	+2	+0.4%	+37	+35
Therapy Professions	237	239	+1	+0.5%	+17	+16
Health Science/ Diagnostics	12	11	-1	-8.5%	+0	+0
Social Care	5	5			-3	-3
Social Workers	28	28	-0	-0.7%	+4	+4
Psychologists	22	21	-1	-3.5%	+0	+0
Pharmacy	4	4	+0	+2.6%	+1	+1
H&SC, Other	41	42	+1	+2.4%	+1	+2
Health & Social Care Professionals	349	349	+0	+0.1%	+20	+20
Management (VIII & above)	35	34	-0	-1.0%	-2	-3
Administrative/ Supervisory (V to VII)	73	76	+4	+5.2%	+8	+10
Clerical (III & IV)	224	227	+4	+1.7%	+22	+23
Management & Administrative	331	338	+7	+2.1%	+28	+30
Support	18	18	-0	-1.1%	+2	+5
General Support	18	18	-0	-1.1%	+2	+5
Health Care Assistants	103	118	+15	+14.1%	+100	+101
Care, other	105	105	-1	-0.7%	-0	+2
Home Help	9	9	-0	-3.6%	-1	-1
Patient & Client Care	218	231	+14	+6.2%	+99	+101

Social Care

Jan 2021 (Dec 2019 figure: 5,358)	WTE Dec 2020	WTE Jan 2021	WTE change since Dec 20	% change since Dec 20	WTE change since Dec 19	WTE change since Jan 20
Total Social Care	5,486	5,504	+18	+0.3%	+146	+163
Consultants	4	4			+1	
Registrars	3	3				
SHO/ Interns	1	1				
Medical/ Dental, other	23	23	-1	-3.5%	+2	+2
Medical & Dental	31	30	-1	-2.6%	+3	+2
Nurse/ Midwife Manager	213	216	+3	+1.4%	+9	+7
Nurse/ Midwife Specialist & AN/MP	20	20	-0	-1.5%	+3	+3
Staff Nurse/ Staff Midwife	840	846	+6	+0.7%	+22	+17
Public Health Nurse	6	6			+1	+2
<i>Pre-registration Nurse/ Midwife Intern</i>		8	+8	-100.0%	+2	+8
<i>Pre-registration Nurse Intern (COVID-19)</i>	8		-8	-100.0%		-8
<i>Post-registration Nurse/ Midwife Student</i>				-100.0%	-1	
<i>Nursing/ Midwifery awaiting registration</i>	2	2				
Nursing/ Midwifery Student	10	10	+1	+7.6%	+1	+1
Nursing/ Midwifery other				-100.0%	-1	-1
Nursing & Midwifery	1,089	1,098	+9	+0.8%	+36	+29
Therapy Professions	145	148	+3	+2.3%	-4	-5
Health Science/ Diagnostics	1	1			+0	+0
Social Care	240	244	+4	+1.6%	+16	+15
Social Workers	39	38	-2	-3.9%	+0	-0
Psychologists	36	36	+0	+0.0%	+1	+3
Pharmacy	4	4	-0	-2.1%	+1	+1
H&SC, Other	10	10	+0	+1.3%	+2	+2
Health & Social Care Professionals	476	482	+6	+1.2%	+17	+16
Management (VIII & above)	37	38	+1	+2.9%	+3	+4
Administrative/ Supervisory (V to VII)	78	75	-3	-3.4%	+5	+3
Clerical (III & IV)	221	226	+5	+2.3%	+13	+13
Management & Administrative	335	339	+3	+1.0%	+21	+20
Support	252	251	-1	-0.3%	+10	+12
Maintenance/ Technical	18	19	+1	+4.3%	+3	+3
General Support	271	271	+0	+0.0%	+13	+15
Health Care Assistants	1,852	1,881	+29	+1.6%	+105	+109
Care, other	366	364	-2	-0.6%	+26	+24
Home Help	1,067	1,040	-26	-2.5%	-73	-52
Patient & Client Care	3,285	3,285	+1	+0.0%	+58	+81

CHO 4 Employment Report: January 2021

Disabilities

Jan 2021 (Dec 2019 figure: 2,439)	WTE Dec 2020	WTE Jan 2021	WTE change since Dec 20	% change since Dec 20	WTE change since Dec 19	WTE change since Jan 20
Total Disabilities	2,556	2,586	+31	+1.2%	+148	+142
Consultants	3	3			+1	
Medical/ Dental, other	0	0				
Medical & Dental	3	3			+1	
Nurse/ Midwife Manager	91	91	+0	+0.0%	+2	-1
Nurse/ Midwife Specialist & AN/MP	14	14			+1	+1
Staff Nurse/ Staff Midwife	312	315	+3	+1.0%	+6	+3
<i>Pre-registration Nurse/ Midwife Intern</i>		8	+8	-100.0%	+2	+8
<i>Pre-registration Nurse Intern (COVID-19)</i>	8		-8	-100.0%		-8
<i>Nursing/ Midwifery awaiting registration</i>	2	2			+1	
Nursing/ Midwifery Student	10	10	+1	+7.6%	+3	+3
Nursing/ Midwifery other				-100.0%	-1	-1
Nursing & Midwifery	427	431	+4	+0.9%	+12	+6
Therapy Professions	104	104	+1	+0.7%	-4	-5
Social Care	238	242	+4	+1.6%	+16	+15
Social Workers	27	26	-1	-2.1%	-1	-1
Psychologists	36	36	+0	+0.0%	+1	+3
H&SC, Other	10	10	+0	+1.3%	+2	+2
Health & Social Care Professionals	415	419	+4	+1.0%	+15	+14
Management (VIII & above)	22	22	-0	-0.6%	+0	+1
Administrative/ Supervisory (V to VII)	58	56	-2	-3.3%	+2	+1
Clerical (III & IV)	90	91	+2	+1.7%	+7	+7
Management & Administrative	170	169	-1	-0.3%	+9	+9
Support	139	138	-1	-0.5%	-3	-3
Maintenance/ Technical	12	12	+0	+0.2%	+2	+2
General Support	151	150	-1	-0.5%	-1	-1
Health Care Assistants	1,058	1,085	+27	+2.5%	+90	+94
Care, other	332	329	-3	-0.9%	+22	+21
Patient & Client Care	1,390	1,414	+24	+1.7%	+112	+114

Older People

Jan 2021 (Dec 2019 figure: 2,919)	WTE Dec 2020	WTE Jan 2021	WTE change since Dec 20	% change since Dec 20	WTE change since Dec 19	WTE change since Jan 20
Total Older People	2,930	2,918	-13	-0.4%	-2	+21
Consultants	1	1				
Registrars	3	3				
SHO/ Interns	1	1				
Medical/ Dental, other	23	22	-1	-3.5%	+2	+2
Medical & Dental	28	27	-1	-2.9%	+2	+2
Nurse/ Midwife Manager	122	125	+3	+2.5%	+7	+7
Nurse/ Midwife Specialist & AN/MP	6	6	-0	-5.2%	+2	+2
Staff Nurse/ Staff Midwife	528	531	+3	+0.5%	+16	+14
Public Health Nurse	6	6			+1	+2
<i>Post-registration Nurse/ Midwife Student</i>				-100.0%	-1	
<i>Nursing/ Midwifery awaiting registration</i>				-100.0%	-1	
<i>Nursing/ Midwifery Student</i>				-100.0%	-2	-2
Nursing & Midwifery	662	667	+5	+0.8%	+24	+23
Health & Social Care Professionals	61	62	+2	+2.6%	+2	+2
Management (VIII & above)	14	15	+1	+8.5%	+3	+3
Administrative/ Supervisory (V to VII)	20	20	-1	-3.7%	+2	+3
Clerical (III & IV)	131	135	+4	+2.7%	+6	+6
Management & Administrative	166	170	+4	+2.4%	+12	+11
Support	114	114	-0	-0.0%	+13	+15
Maintenance/ Technical	6	7	+1	+12.0%	+1	+1
General Support	120	121	+1	+0.6%	+14	+16
Health Care Assistants	794	796	+2	+0.3%	+14	+15
Care, other	34	35	+1	+2.3%	+4	+4
Home Help	1,067	1,040	-26	-2.5%	-73	-52
Patient & Client Care	1,894	1,871	-23	-1.2%	-55	-33

CHO 4 Employment by Administration (HSE / S38): January 2021

Jan 2021 (Dec 2019 figure: 8,189)	WTE Dec 2020	WTE Jan 2021	WTE change since Dec 20	% change since Dec 20	WTE change since Dec 19	WTE change since Jan 20
Overall	8,602	8,652	+51	+0.6%	+463	+424
HSE	6,247	6,276	+28	+0.5%	+336	+294
Section 38 Voluntary Agencies	2,354	2,377	+22	+1.0%	+128	+130

HSE

Jan 2021 (Dec 2019 figure: 5,940)	WTE Dec 2020	WTE Jan 2021	WTE change since Dec 20	% change since Dec 20	WTE change since Dec 19	WTE change since Jan 20
Overall	6,247	6,276	+28	+0.5%	+336	+294
Consultants	60	62	+2	+0.0%	+7	+7
Registrars	96	95	-1	-0.0%	-3	-5
SHO/ Interns	44	44	+0	+0.0%	+12	+12
Medical/ Dental, other	103	104	+1	+0.0%	+6	+6
Medical & Dental	304	305	+2	+0.5%	+22	+19
Nurse/ Midwife Manager	392	407	+15	+0.0%	+49	+34
Nurse/ Midwife Specialist & AN/MP	85	82	-2	-0.0%	+14	+13
Staff Nurse/ Staff Midwife	1,212	1,211	-2	-0.0%	+49	+42
Public Health Nurse	228	224	-4	-0.0%	+8	+10
<i>Pre-registration Nurse/ Midwife Intern</i>		9	+9	-1.0%	+9	-12
<i>Pre-registration Nurse Intern (COVID-19)</i>	3	3		+0.0%	+3	+3
<i>Post-registration Nurse/ Midwife Student</i>	15	15	+0	+0.0%	+1	-5
<i>Nursing/ Midwifery awaiting registration</i>	3	3		+0.0%	+3	-20
Nursing/ Midwifery Student	21	30	+9	+0.4%	-24	-34
Nursing & Midwifery	1,937	1,953	+16	+0.8%	+96	+65
Therapy Professions	378	383	+5	+0.0%	+23	+17
Health Science/ Diagnostics	11	10	-1	-0.1%	+0	+1
Social Care	41	41	+1	+0.0%	+3	+3
Social Workers	105	103	-2	-0.0%	+15	+14
Psychologists	119	119	-0	-0.0%	+12	+11
Pharmacy	11	11	+0	+0.0%	+3	+3
H&SC, Other	58	58	+1	+0.0%	+2	+3
Health & Social Care Professionals	722	725	+3	+0.5%	+58	+51
Management (VIII & above)	59	59	-0	-0.0%	+1	+1
Administrative/ Supervisory (V to VII)	135	139	+4	+0.0%	+16	+14
Clerical (III & IV)	452	459	+7	+0.0%	+43	+36
Management & Administrative	646	656	+10	+1.6%	+60	+51
Support	219	222	+3	+0.0%	+15	+19
Maintenance/ Technical	12	13	+1	+0.1%		
General Support	231	235	+4	+1.8%	+15	+19
Health Care Assistants	1,200	1,219	+19	+0.0%	+140	+137
Care, other	132	132	+0	+0.0%	+18	+6
Home Help	1,076	1,049	-27	-0.0%	-74	-54
Patient & Client Care	2,407	2,400	-7	-0.3%	+84	+90

Section 38 Voluntary Agencies

Jan 2021 (Dec 2019 figure: 2,249)	WTE Dec 2020	WTE Jan 2021	WTE change since Dec 20	% change since Dec 20	WTE change since Dec 19	WTE change since Jan 20
Overall	2,354	2,377	+22	+1.0%	+128	+130
Registrars	6	6		+0.0%	+1	+1
SHO/ Interns	7	7	-0	-0.0%	+1	+1
Medical/ Dental, other	13	11	-1	-0.1%	-2	-1
Medical & Dental	26	25	-2	-5.8%	+1	+1
Nurse/ Midwife Manager	75	75	-0	-0.0%	+0	-1
Nurse/ Midwife Specialist & AN/MP	13	13		+0.0%	+1	+1
Staff Nurse/ Staff Midwife	286	289	+3	+0.0%	+5	+4
<i>Pre-registration Nurse/ Midwife Intern</i>		8	+8	-1.0%		+2
<i>Pre-registration Nurse Intern (COVID-19)</i>	8		-8	-1.0%		
Nursing/ Midwifery Student	8	8	+0	+0.1%	+2	+2
Nursing/ Midwifery other				-1.0%	-1	-1
Nursing & Midwifery	382	385	+3	+0.8%	+7	+5
Therapy Professions	86	87	+0	+0.0%	-2	-3
Health Science/ Diagnostics	2	2		+0.0%		
Social Care	212	215	+4	+0.0%	+14	+13
Social Workers	27	26	-1	-0.0%	-1	-1
Psychologists	32	32	+0	+0.0%	+2	+3
H&SC, Other	6	6	-0	-0.0%	+2	+2
Health & Social Care Professionals	365	369	+3	+1.0%	+15	+14
Management (VIII & above)	16	16		+0.0%	+1	+1
Administrative/ Supervisory (V to VII)	42	42	+0	+0.0%	+5	+4
Clerical (III & IV)	94	92	-2	-0.0%	+3	+3
Management & Administrative	152	151	-2	-1.2%	+8	+8
Support	133	132	-1	-0.0%	+2	+5
Maintenance/ Technical	11	11	+0	+0.0%	+2	+2
General Support	144	144	-1	-0.5%	+4	+7
Health Care Assistants	922	945	+24	+0.0%	+70	+74
Care, other	362	358	-4	-0.0%	+22	+21
Patient & Client Care	1,284	1,304	+20	+1.5%	+92	+95

CHO 4 Employment by S38 Agency: January 2021

Bros. of Charity, Southern

Jan 2021 (Dec 2019 figure: 740)	WTE Dec 2020	WTE Jan 2021	WTE change since Dec 20	% change since Dec 20	WTE change since Dec 19	WTE change since Jan 20
Overall	776	785	+9	+1.2%	+45	+45
Nurse/ Midwife Manager	15	15	-0	-0.0%	-0	-2
Nurse/ Midwife Specialist & AN/MP	3	3		+0.0%		-0
Staff Nurse/ Staff Midwife	56	56	+0	+0.0%	-3	-4
Nursing & Midwifery	73	74	+0	+0.2%	-4	-5
Therapy Professions	46	46	+0	+0.0%	-1	-2
Social Care	123	126	+4	+0.0%	+2	+1
Social Workers	17	17	-1	-0.0%	-1	-1
Psychologists	21	21	+0	+0.0%	+1	+3
Health & Social Care Professionals	207	210	+4	+1.7%	+1	+1
Management (VIII & above)	8	8		+0.0%	+0	+0
Administrative/ Supervisory (V to VII)	10	10	+0	+0.0%	+1	-0
Clerical (III & IV)	35	35	-0	-0.0%	+2	+2
Management & Administrative	53	53	-0	-0.3%	+3	+2
Support	14	13	-1	-0.0%	-1	-1
Maintenance/ Technical	3	3	+0	+0.0%	+1	+1
General Support	16	16	-1	-3.5%	-0	+0
Health Care Assistants	222	231	+9	+0.0%	+25	+32
Care, other	204	201	-3	-0.0%	+20	+16
Patient & Client Care	426	433	+6	+1.5%	+45	+47

Cope Foundation

Jan 2021 (Dec 2019 figure: 1,091)	WTE Dec 2020	WTE Jan 2021	WTE change since Dec 20	% change since Dec 20	WTE change since Dec 19	WTE change since Jan 20
Overall	1,147	1,155	+8	+0.7%	+64	+62
Nurse/ Midwife Manager	42	42		+0.0%	+1	+1
Nurse/ Midwife Specialist & AN/MP	11	11		+0.0%	+1	+1
Staff Nurse/ Staff Midwife	177	180	+3	+0.0%	+10	+10
Pre-registration Nurse/ Midwife Intern		8	+8	-1.0%		+2
Pre-registration Nurse Intern (COVID-19)	8		-8	-1.0%		
Nursing/ Midwifery Student	8	8	+0	+0.1%	+2	+2
Nursing/ Midwifery other				-1.0%	-1	-1
Nursing & Midwifery	238	241	+3	+1.4%	+14	+14
Therapy Professions	37	37		+0.0%	-1	-1
Social Care	43	43		+0.0%	+11	+11
Social Workers	9	9		+0.0%		
Psychologists	11	11		+0.0%	+1	+1
H&SC, Other	3	3		+0.0%		
Health & Social Care Professionals	102	102			+12	+12
Management (VIII & above)	7	7		+0.0%	+1	+1
Administrative/ Supervisory (V to VII)	23	23		+0.0%	+4	+4
Clerical (III & IV)	26	26		+0.0%	+2	+2
Management & Administrative	55	55			+7	+7
Support	78	78		+0.0%	+1	+1
Maintenance/ Technical	7	7		+0.0%	+1	+1
General Support	85	85			+2	+2
Health Care Assistants	587	591	+5	+0.0%	+28	+26
Care, other	81	81		+0.0%	+1	+1
Patient & Client Care	667	672	+5	+0.7%	+29	+27

Cork Dental Hospital

Jan 2021 (Dec 2019 figure: 103)	WTE Dec 2020	WTE Jan 2021	WTE change since Dec 20	% change since Dec 20	WTE change since Dec 19	WTE change since Jan 20
Overall	112	107	-5	-4.1%	+4	+9
Registrars	6	6		+0.0%	+1	+1
SHO/ Interns	7	7	-0	-0.0%	+1	+1
Medical/ Dental, other	13	11	-1	-0.1%	-2	-1
Medical & Dental	26	25	-2	-5.8%	+1	+1
Nurse/ Midwife Manager	3	3		+0.0%	+0	+0
Staff Nurse/ Staff Midwife	6	6	-0	-0.0%	-1	-1
Nursing & Midwifery	9	9	-0	-2.2%	-1	-0
Health Science/ Diagnostics	2	2		+0.0%		
H&SC, Other	3	3	-0	-0.0%	+2	+2
Health & Social Care Professionals	5	5	-0	-0.4%	+2	+2
Management (VIII & above)	1	1		+0.0%		
Administrative/ Supervisory (V to VII)	2	2		+0.0%		
Clerical (III & IV)	24	22	-2	-0.1%	-1	-0
Management & Administrative	27	25	-2	-6.3%	-1	-0
Support	13	13	-0	-0.0%	+2	+5
General Support	13	13	-0	-1.5%	+2	+5
Care, other	31	30	-1	-0.0%	+1	+1
Patient & Client Care	31	30	-1	-3.2%	+1	+1

St. John of God, Kerry

Jan 2021 (Dec 2019 figure: 315)	WTE Dec 2020	WTE Jan 2021	WTE change since Dec 20	% change since Dec 20	WTE change since Dec 19	WTE change since Jan 20
Overall	320	330	+10	+3.0%	+14	+15
Nurse/ Midwife Manager	15	15		+0.0%	-1	-1
Staff Nurse/ Staff Midwife	47	47		+0.0%	-2	-2
Nursing & Midwifery	62	62			-2	-3
Therapy Professions	4	4		+0.0%	+0	+0
Social Care	46	46		+0.0%	+1	+0
Social Workers	1	1		+0.0%		
Psychologists	1	1		+0.0%	-1	-1
Health & Social Care Professionals	52	52			+1	+0
Management (VIII & above)	1	1		+0.0%		
Administrative/ Supervisory (V to VII)	7	7		+0.0%	-0	+0
Clerical (III & IV)	9	9		+0.0%	-1	-1
Management & Administrative	17	17			-1	-1
Support	28	28		+0.0%	-0	-0
Maintenance/ Technical	2	2		+0.0%		
General Support	30	30			-0	-0
Health Care Assistants	113	123	+10	+0.1%	+17	+16
Care, other	46	46		+0.0%	-0	+2
Patient & Client Care	159	169	+10	+6.0%	+17	+19

CHO 4 Employment by Grade Group & Staff Category: January 2021

Jan 2021 (Dec 2019 figure: 8,189)	WTE Dec 2020	WTE Jan 2021	WTE change since Dec 20	% change since Dec 20	WTE change since Dec 19	WTE change since Jan 20
Overall	8,602	8,652	+51	+0.6%	+463	+424
Consultant Dentistry	2	2				
Consultant Medicine	1	1	+0	+1.8%	+0	+0
Consultant Paediatrics	1	1				
Consultant Psychiatry	56	58	+2	+2.9%	+7	+7
Consultants	60	62	+2	+2.8%	+7	+7
Registrar	80	79	-1	-1.6%	-6	-7
Senior Registrar	14	14			+2	+2
Specialist Registrar	8	8			+1	+1
Registrars	103	101	-1	-1.2%	-2	-4
Interns	2	1	-1	-50.0%	-2	-2
Senior House Officer	49	50	+1	+2.7%	+15	+15
SHO/ Interns	51	51	+0	+0.6%	+13	+13
Dentists	60	60	+0	+0.1%	-3	-2
Other Medical	57	56	-1	-1.4%	+7	+6
Medical/ Dental, other	116	116	-1	-0.7%	+4	+5
Medical & Dental	330	330	-0	-0.0%	+19	+20
Clinical Nurse/ Midwife Manager	365	375	+10	+2.6%	+38	+27
Director Nursing/Midwifery, Assistant	64	68	+4	+6.4%	+8	+2
Director of Nursing/Midwifery	37	38	+1	+2.9%	+3	+4
Nurse/ Midwife Manager	467	481	+15	+3.2%	+49	+33
Advanced Nurse/ Midwife Practitioner	7	8	+1	+14.7%	+1	+1
Clinical Nurse/ Midwife Specialist	91	88	-3	-3.8%	+14	+13
Nurse/ Midwife Specialist & AN/MP	98	96	-2	-2.5%	+15	+14
Staff Midwives	6	6	+0	+2.7%	-2	-0
Staff Nurse [Intellectual Disability]	159	162	+3	+1.9%	+75	+75
Staff Nurse [Psychiatric]	487	481	-5	-1.1%	+12	+6
Staff Nurses [General/ Children's]	848	851	+3	+0.4%	-31	-35
Staff Nurse/ Staff Midwife	1,498	1,499	+1	+0.1%	+54	+46
Public Health Nurse	228	224	-4	-1.7%	+8	+10
Pre-registration Nurse/ Midwife Intern		17	+17	-100.0%	+8	-11
Pre-registration Nurse Intern (COVID-19)	11	3	-8	-71.6%	+3	+3
Post-registration Nurse/ Midwife Student	15	15	+0	+0.4%	-4	-5
Nursing/ Midwifery awaiting registration	3	3			-29	-20
Nursing/ Midwifery Student	28	38	+10	+34.0%	-22	-33
Nursing/ Midwifery other				-100.0%	-1	-1
Nursing & Midwifery	2,319	2,338	+19	+0.8%	+88	+70
Dietitians	38	38	-1	-2.4%	+10	+4
Occupational Therapists	177	181	+4	+2.4%	+12	+11
Orthoptists	2	2	-1	-25.0%	-2	-1
Physiotherapists	103	103	-0	-0.2%	-4	-3
Podiatrists & Chiropodists	7	9	+1	+16.7%	+2	+2
Speech & Language Therapists	136	138	+2	+1.3%	+4	+1
Therapy Professions	464	470	+6	+1.2%	+22	+14
Audiology	8	7	-1	-12.7%	+0	+0
Physicists	2	2				
Radiographers	3	3			+0	+0
Health Science/ Diagnostics	13	12	-1	-7.7%	+0	+1

Jan 2021 (Dec 2019 figure: 8,189)	WTE Dec 2020	WTE Jan 2021	WTE change since Dec 20	% change since Dec 20	WTE change since Dec 19	WTE change since Jan 20
Overall	8,602	8,652	+51	+0.6%	+463	+424
Social Care	252	256	+4	+1.6%	+16	+15
Social Workers	132	130	-2	-1.8%	+15	+13
Psychologists	152	151	-0	-0.2%	+13	+15
Pharmacy	11	11	+0	+0.2%	+3	+3
Counsellor Therapists	39	39	+0	+0.2%	-2	-2
Dental Hygienists	11	12	+1	+5.6%	+3	+4
Other Health & Social Care	13	13	+0	+1.0%	+2	+3
Play Therapists/ Specialists	1	1				
H&SC, Other	64	64	+1	+1.3%	+4	+5
Health & Social Care Professionals	1,087	1,094	+7	+0.6%	+86	+65
Executive Management	16	15	-1	-7.8%	-1	-1
Senior Management (VIII & GM)	59	61	+1	+2.0%	+3	+2
Management (VIII & above)	75	75	-0	-0.0%	+2	+2
Administrative/ Supervisory (V to VII)	177	181	+4	+2.1%	+20	+18
Clerical (III & IV)	546	551	+5	+0.9%	+46	+40
Management & Administrative	798	807	+9	+1.1%	+92	+59
Catering	55	55	-0	-0.5%	-5	-5
Household Services	210	213	+3	+1.4%	+24	+27
Other Support	74	74	-0	-0.1%	+0	+3
Portering	12	12	-0	-0.7%	-1	-1
Support	352	354	+2	+0.7%	+18	+23
Maintenance	21	22	+1	+3.6%	+1	+1
Technical Services	2	2			+1	+1
Maintenance/ Technical	23	24	+1	+3.3%	+2	+2
General Support	375	379	+3	+0.9%	+2	+25
HCA, Nurse's Aide, etc.	2,109	2,151	+42	+2.0%	+205	+206
Health & Social Care Assistants	12	13	+1	+7.7%	+5	+5
Health Care Assistants	2,121	2,164	+43	+2.0%	+210	+211
Care, other	494	490	-4	-0.8%	+40	+27
Home Help	1,076	1,049	-27	-2.5%	-74	-54
Patient & Client Care	3,691	3,704	+13	+0.3%	+227	+185

CHO 4 HSE Employment by Grade Group & Staff Category: January 2021

Jan 2021 (Dec 2019 figure: 5,940)	WTE Dec 2020	WTE Jan 2021	WTE change since Dec 20	% change since Dec 20	WTE change since Dec 19	WTE change since Jan 20
Overall	6,247	6,276	+28	+0.5%	+336	+294
Consultant Dentistry	2	2				
Consultant Medicine	1	1	+0	+1.8%	+0	+0
Consultant Paediatrics	1	1				
Consultant Psychiatry	56	58	+2	+2.9%	+7	+7
Consultants	60	62	+2	+2.8%	+7	+7
Registrar	80	79	-1	-1.6%	-6	-7
Senior Registrar	14	14	-0	-0.0%	+2	+2
Specialist Registrar	2	2				
Registrars	96	95	-1	-1.3%	-3	-5
SHO/ Interns	44	44	+0	+0.9%	+12	+12
Dentists	47	48	+2	+3.2%	-1	-1
Other Medical	57	56	-1	-1.4%	+7	+6
Medical/ Dental, other	103	104	+1	+0.7%	+6	+6
Medical & Dental	304	305	+2	+0.5%	+17	+19
Clinical Nurse/ Midwife Manager	296	306	+10	+3.2%	+36	+27
Director Nursing/Midwifery, Assistant	61	65	+4	+6.7%	+9	+3
Director of Nursing/Midwifery	34	35	+1	+3.1%	+3	+4
Nurse/ Midwife Manager	392	407	+15	+3.8%	+49	+34
Advanced Nurse/ Midwife Practitioner	5	6	+1	+20.8%	+0	+0
Clinical Nurse/ Midwife Specialist	80	77	-3	-4.3%	+14	+13
Nurse/ Midwife Specialist & AN/MP	85	82	-2	-2.9%	+14	+13
Staff Midwives	6	6	+0	+2.7%	-2	-0
Staff Nurse [Intellectual Disability]				-100.0%	-1	-1
Staff Nurse [Psychiatric]	486	481	-5	-1.1%	+12	+6
Staff Nurses [General/ Children's]	721	724	+4	+0.5%	+40	+38
Staff Nurse/ Staff Midwife	1,212	1,211	-2	-0.1%	+49	+42
Public Health Nurse	228	224	-4	-1.7%	+8	+10
Pre-registration Nurse/ Midwife Intern		9	+9	-100.0%	+6	-12
Pre-registration Nurse Intern (COVID-19)	3	3			+3	+3
Post-registration Nurse/ Midwife Student	15	15	+0	+0.4%	-4	-5
Nursing/ Midwifery awaiting registration	3	3			-29	-20
Nursing/ Midwifery Student	21	30	+9	+44.1%	-24	-34
Nursing & Midwifery	1,937	1,953	+16	+0.8%	+89	+65
Dietitians	36	36	-1	-2.5%	+10	+4
Occupational Therapists	145	150	+4	+2.9%	+12	+12
Orthoptists	2	2	-1	-25.0%	-2	-1
Physiotherapists	89	89	-0	-0.2%	-3	-2
Podiatrists & Chiropodists	7	9	+1	+16.7%	+2	+2
Speech & Language Therapists	97	98	+1	+1.3%	+4	+2
Therapy Professions	378	383	+5	+1.4%	+23	+17
Audiology	8	7	-1	-12.7%	+0	+0
Physicists	2	2				
Radiographers	1	1			+0	+0
Health Science/ Diagnostics	11	10	-1	-9.0%	+0	+1
Social Care	41	41	+1	+1.5%	+3	+3
Social Workers	105	103	-2	-1.7%	+15	+14
Psychologists	119	119	-0	-0.4%	+12	+11
Pharmacy	11	11	+0	+0.2%	+3	+3
Counsellor Therapists	37	37	+0	+0.2%	-2	-2

Jan 2021 (Dec 2019 figure: 5,940)	WTE Dec 2020	WTE Jan 2021	WTE change since Dec 20	% change since Dec 20	WTE change since Dec 19	WTE change since Jan 20
Overall	6,247	6,276	+28	+0.5%	+336	+294
Dental Hygienists	8	9	+1	+7.8%	+1	+2
Other Health & Social Care	12	12	+0	+1.1%	+3	+3
Play Therapists/ Specialists	1	1				
H&SC, Other	58	58	+1	+1.4%	+2	+3
Health & Social Care Professionals	722	725	+3	+0.5%	+63	+51
Executive Management	13	12	-1	-9.7%	-1	-1
Senior Management (VIII & GM)	46	47	+1	+2.6%	+2	+1
Management (VIII & above)	59	59	-0	-0.1%	+1	+1
Administrative/ Supervisory (V to VII)	135	139	+4	+2.8%	+16	+14
Clerical (III & IV)	452	459	+7	+1.5%	+43	+36
Management & Administrative	646	656	+10	+1.6%	+85	+51
Catering	41	40	-0	-0.7%	-4	-4
Household Services	158	162	+4	+2.3%	+20	+23
Other Support	13	13	+0	+0.7%	-0	-0
Portering	7	7	-0	-1.3%	-1	-1
Support	219	222	+3	+1.5%	+15	+19
Maintenance/ Technical	12	13	+1	+6.1%		
General Support	231	235	+4	+1.8%	-7	+19
HCA, Nurse's Aide, etc.	1,188	1,206	+18	+1.6%	+135	+132
Health & Social Care Assistants	12	13	+1	+7.7%	+5	+5
Health Care Assistants	1,200	1,219	+19	+1.6%	+140	+137
Care, other	132	132	+0	+0.1%	+18	+6
Home Help	1,076	1,049	-27	-2.5%	-74	-54
Patient & Client Care	2,407	2,400	-7	-0.3%	+100	+90

Employment by WTE, Headcount, Gender, Full-Time /Part-Time etc.: Jan 2021

CHO 4	WTE	Headcount	WTE: no.	% Male	% female	Male WTE: no.	Female WTE: no.	% Total Perm	% Male Perm	% Female Perm	% Total Full Time	% Total Part Time	% Male FT	% Female FT
Overall	8,652	10,633	1.23	16.0%	84.0%	1.13	1.25	73.1%	65.6%	74.5%	71.0%	29.0%	81.5%	69.0%
Consultant Dentistry	2	2	1.00	50.0%	50.0%	1.00	1.00	100.0%	100.0%	100.0%	100.0%	0.0%	100.0%	100.0%
Consultant Medicine	1	4	3.57	25.0%	75.0%	2.00	4.84	50.0%	50.0%	33.3%	0.0%	100.0%	0.0%	0.0%
Consultant Paediatrics	1	2	2.00		100.0%		2.00	100.0%	100.0%	100.0%	0.0%	100.0%		0.0%
Consultant Psychiatry	58	62	1.07	25.8%	74.2%	1.04	1.08	33.9%	33.9%	39.1%	80.6%	19.4%	87.5%	78.3%
Consultants	62	70	1.13	25.7%	74.3%	1.07	1.15	38.6%	27.8%	42.3%	74.3%	25.7%	83.3%	71.2%
Registrar	79	81	1.03	40.7%	59.3%	1.01	1.04	1.2%	1.2%	0.0%	98.8%	1.2%	100.0%	97.9%
Senior Registrar	14	17	1.22	41.2%	58.8%	1.09	1.32	0.0%	0.0%	0.0%	76.5%	23.5%	85.7%	70.0%
Specialist Registrar	8	9	1.08	55.6%	44.4%	1.15	1.00	33.3%	33.3%	25.0%	88.9%	11.1%	80.0%	100.0%
Registrars	101	107	1.06	42.1%	57.9%	1.03	1.07	3.7%	6.7%	1.6%	94.4%	5.6%	95.6%	93.5%
Interns	1	1	1.00		100.0%		1.00	0.0%	0.0%	0.0%	100.0%	0.0%		100.0%
Senior House Officer	50	52	1.03	38.5%	61.5%	1.03	1.03	0.0%	0.0%	0.0%	94.2%	5.8%	100.0%	90.6%
SHO/ Interns	51	53	1.03	37.7%	62.3%	1.03	1.03	0.0%	0.0%	0.0%	94.3%	5.7%	100.0%	90.9%
Dentists	60	96	1.61	27.1%	72.9%	1.80	1.55	82.3%	82.3%	78.6%	32.3%	67.7%	30.8%	32.9%
Other Medical	56	106	1.89	38.7%	61.3%	2.19	1.74	42.5%	42.5%	47.7%	33.0%	67.0%	39.0%	29.2%
Medical/ Dental, other	116	202	1.75	33.2%	66.8%	2.02	1.64	61.4%	56.7%	63.7%	32.7%	67.3%	35.8%	31.1%
Medical & Dental	330	432	1.31	34.7%	65.3%	1.33	1.30	35.9%	30.7%	38.7%	62.3%	37.7%	68.0%	59.2%
Clinical Nurse/ Midwife Manager	375	399	1.06	17.5%	82.5%	1.00	1.08	95.5%	95.5%	95.4%	79.7%	20.3%	98.6%	75.7%
Director Nursing/Midwifery, Assistant	68	73	1.07	15.1%	84.9%	1.08	1.07	98.6%	98.6%	98.4%	82.2%	17.8%	100.0%	79.0%
Director of Nursing/Midwifery	38	39	1.02	5.1%	94.9%	1.00	1.02	94.9%	94.9%	94.6%	87.2%	12.8%	100.0%	86.5%
Nurse/ Midwife Manager	481	511	1.06	16.2%	83.8%	1.01	1.07	95.9%	96.4%	95.8%	80.6%	19.4%	98.8%	77.1%
Advanced Nurse/ Midwife Practitioner	8	8	1.03	37.5%	62.5%	1.00	1.04	100.0%	100.0%	100.0%	87.5%	12.5%	100.0%	80.0%
Clinical Nurse/ Midwife Specialist	88	92	1.05	13.0%	87.0%	1.00	1.05	98.9%	98.9%	100.0%	80.4%	19.6%	100.0%	77.5%
Nurse/ Midwife Specialist & AN/MP	96	100	1.04	15.0%	85.0%	1.00	1.05	99.0%	93.3%	100.0%	81.0%	19.0%	100.0%	77.6%
Staff Midwives	6	8	1.42		100.0%		1.42	100.0%	100.0%	100.0%	0.0%	100.0%		0.0%
Staff Nurse [Intellectual Disability]	162	189	1.17	6.9%	93.1%	1.10	1.17	96.3%	96.3%	96.0%	70.4%	29.6%	84.6%	69.3%
Staff Nurse [Psychiatric]	481	513	1.07	29.8%	70.2%	1.03	1.08	81.9%	81.9%	83.1%	88.9%	11.1%	95.4%	86.1%
Staff Nurses [General/ Children's]	851	1,059	1.24	4.9%	95.1%	1.05	1.26	73.3%	73.3%	74.0%	45.6%	54.4%	88.5%	43.4%
Staff Nurse/ Staff Midwife	1,499	1,769	1.18	12.3%	87.7%	1.04	1.20	78.3%	75.7%	78.7%	60.6%	39.4%	93.1%	56.0%

Public Health Nurse	224	273	1.22	0.4%	99.6%	1.00	1.22	87.5%	100.0%	87.5%	68.1%	31.9%	100.0%	68.0%
Pre-registration Nurse/ Midwife Intern	17	69	4.02	14.5%	85.5%	5.81	3.82	0.0%	0.0%	0.0%	100.0%	0.0%	100.0%	100.0%
Pre-registration Nurse Intern (COVID-19)	3	3	1.00	33.3%	66.7%	1.00	1.00	0.0%	0.0%	0.0%	100.0%	0.0%	100.0%	100.0%
Post-registration Nurse/ Midwife Student	15	15	1.00		100.0%		1.00	53.3%	53.3%	53.3%	86.7%	13.3%		86.7%
Nursing/ Midwifery awaiting registration	3	3	1.00		100.0%		1.00	33.3%	33.3%	33.3%	100.0%	0.0%		100.0%
Nursing/ Midwifery Student	38	90	2.36	12.2%	87.8%	4.04	2.23	10.0%	0.0%	11.4%	97.8%	2.2%	100.0%	97.5%
Nursing & Midwifery	2,338	2,743	1.17	12.0%	88.0%	1.06	1.19	81.0%	79.3%	81.3%	67.0%	33.0%	95.1%	63.2%
Dietitians	38	46	1.23		100.0%		1.23	76.1%	76.1%	76.1%	76.1%	23.9%		76.1%
Occupational Therapists	181	213	1.18	7.0%	93.0%	1.10	1.18	81.7%	81.7%	81.8%	71.8%	28.2%	80.0%	71.2%
Orthoptists	2	2	1.33		100.0%		1.33	50.0%	50.0%	50.0%	50.0%	50.0%		50.0%
Physiotherapists	103	126	1.22	19.0%	81.0%	1.08	1.26	81.0%	81.0%	82.4%	63.5%	36.5%	79.2%	59.8%
Podiatrists & Chiropodists	9	14	1.60	28.6%	71.4%	1.11	1.95	35.7%	35.7%	30.0%	71.4%	28.6%	75.0%	70.0%
Speech & Language Therapists	138	164	1.19	1.2%	98.8%	1.05	1.19	82.3%	82.3%	82.1%	67.7%	32.3%	50.0%	67.9%
Therapy Professions	470	565	1.20	8.0%	92.0%	1.09	1.21	80.0%	75.6%	80.4%	69.0%	31.0%	77.8%	68.3%
Audiology	7	7	1.00	28.6%	71.4%	1.01	1.00	85.7%	85.7%	80.0%	100.0%	0.0%	100.0%	100.0%
Physicists	2	2	1.00		100.0%		1.00	100.0%	100.0%	100.0%	100.0%	0.0%		100.0%
Radiographers	3	4	1.22		100.0%		1.22	75.0%	75.0%	75.0%	75.0%	25.0%		75.0%
Health Science/ Diagnostics	12	13	1.06	15.4%	84.6%	1.01	1.07	84.6%	100.0%	81.8%	92.3%	7.7%	100.0%	90.9%
Social Care	256	289	1.13	14.5%	85.5%	1.03	1.15	89.3%	85.7%	89.9%	67.5%	32.5%	90.5%	63.6%
Social Workers	130	148	1.14	17.6%	82.4%	1.02	1.17	81.1%	73.1%	82.8%	83.8%	16.2%	96.2%	81.1%
Psychologists	151	171	1.13	24.0%	76.0%	1.04	1.16	72.5%	68.3%	73.8%	76.0%	24.0%	92.7%	70.8%
Pharmacy	11	16	1.50	12.5%	87.5%	2.44	1.42	50.0%	50.0%	50.0%	37.5%	62.5%	0.0%	42.9%
Counsellor Therapists	39	41	1.06	56.1%	43.9%	1.02	1.10	97.6%	97.6%	94.4%	92.7%	7.3%	95.7%	88.9%
Dental Hygienists	12	14	1.21	7.1%	92.9%	1.00	1.23	100.0%	100.0%	100.0%	35.7%	64.3%	100.0%	30.8%
Other Health & Social Care	13	18	1.35	38.9%	61.1%	1.25	1.41	66.7%	66.7%	72.7%	61.1%	38.9%	71.4%	54.5%
Play Therapists/ Specialists	1	1	1.59		100.0%		1.59	100.0%	100.0%	100.0%	0.0%	100.0%		0.0%
H&SC, Other	64	74	1.15	41.9%	58.1%	1.07	1.22	90.5%	90.3%	90.7%	73.0%	27.0%	90.3%	60.5%
Health & Social Care	1,094	1,276	1.17	14.8%	85.2%	1.06	1.19	81.5%	78.3%	82.1%	71.4%	28.6%	87.8%	68.5%
Executive Management	15	15	1.03	33.3%	66.7%	1.00	1.05	93.3%	93.3%	90.0%	100.0%	0.0%	100.0%	100.0%
Senior Management (VIII & GM)	61	64	1.06	26.6%	73.4%	1.04	1.06	92.2%	92.2%	97.9%	89.1%	10.9%	94.1%	87.2%
Management (VIII & above)	75	79	1.05	27.8%	72.2%	1.03	1.06	92.4%	81.8%	96.5%	91.1%	8.9%	95.5%	89.5%
Administrative/ Supervisory (V to VII)	181	200	1.10	18.0%	82.0%	1.05	1.12	86.5%	77.8%	88.4%	77.0%	23.0%	88.9%	74.4%
Clerical (III & IV)	551	680	1.23	7.6%	92.4%	1.24	1.23	70.6%	63.5%	71.2%	55.3%	44.7%	69.2%	54.1%
Management & Administrative	807	959	1.19	11.5%	88.5%	1.13	1.20	75.7%	71.8%	76.2%	62.8%	37.2%	80.9%	60.4%
Catering	55	64	1.17	32.8%	67.2%	1.04	1.24	84.4%	84.4%	86.0%	79.7%	20.3%	95.2%	72.1%

Household Services	213	274	1.28	27.0%	73.0%	1.26	1.29	68.6%	68.6%	73.0%	59.1%	40.9%	75.7%	53.0%
Other Support	74	155	2.09	21.9%	78.1%	1.29	2.53	81.9%	81.9%	79.3%	27.7%	72.3%	88.2%	10.7%
Portering	12	17	1.42	100.0%		1.42		94.1%	94.1%		52.9%	47.1%	52.9%	
Support	354	510	1.44	28.6%	71.4%	1.24	1.54	75.5%	72.6%	76.6%	52.0%	48.0%	78.8%	41.2%
Maintenance/ Technical	24	29	1.20	86.2%	13.8%	1.17	1.37	89.7%	88.0%	100.0%	69.0%	31.0%	76.0%	25.0%
General Support	379	539	1.42	31.7%	68.3%	1.23	1.53	76.3%	74.9%	76.9%	52.9%	47.1%	78.4%	41.0%
HCA, Nurse's Aide, etc.	2,151	2,436	1.13	22.0%	78.0%	1.08	1.15	71.0%	71.0%	72.3%	69.2%	30.8%	77.8%	66.8%
Health & Social Care Assistants	13	13	1.01		100.0%		1.01	0.0%	0.0%	0.0%	100.0%	0.0%		100.0%
Health Care Assistants	2,164	2,449	1.13	21.8%	78.2%	1.08	1.15	70.6%	66.4%	71.8%	69.3%	30.7%	77.8%	67.0%
Care, other	490	598	1.22	19.9%	80.1%	1.22	1.22	80.4%	66.4%	83.9%	55.4%	44.6%	65.5%	52.8%
Home Help	1,049	1,637	1.56	5.7%	94.3%	1.37	1.57	61.6%	18.1%	64.3%	98.7%	1.3%	91.5%	99.2%
Patient & Client Care	3,704	4,684	1.26	16.0%	84.0%	1.13	1.29	68.7%	60.3%	70.3%	77.8%	22.2%	77.5%	77.9%

Employment by WTE, Headcount, Gender, Full-Time /Part-Time etc.: Jan 2021

CHO 4	WTE	Headcount	WTE: no.	% Male	% female	Male WTE: no.	Female WTE: no.	% Total Perm	% Male Perm	% Female Perm	% Total Full Time	% Total Part Time	% Male FT	% Female FT
Overall	8,652	10,633	1.23	16.0%	84.0%	1.13	1.25	73.1%	65.6%	74.5%	71.0%	29.0%	81.5%	69.0%
Community Health & Wellbeing	34	45	1.31	2.2%	97.8%	2.50	1.29	91.1%	91.1%	90.9%	53.3%	46.7%	100.0%	100.0%
Mental Health	1,575	1,750	1.11	25.3%	74.7%	1.07	1.13	73.3%	73.3%	75.6%	84.9%	15.1%	94.1%	94.1%
Primary Care	1,539	1,903	1.24	10.9%	89.1%	1.20	1.24	68.5%	68.5%	70.3%	60.1%	39.9%	73.4%	73.4%
HSE	3,235	4,186	1.29	12.4%	87.6%	1.14	1.32	67.0%	67.0%	68.7%	75.6%	24.4%	87.5%	87.5%
Section 38 Voluntary Agencies	2,269	2,749	1.21	19.1%	80.9%	1.15	1.23	85.2%	85.2%	86.5%	63.0%	37.0%	68.2%	68.2%
Social Care	5,504	6,935	1.26	15.1%	84.9%	1.15	1.28	74.2%	74.2%	75.4%	70.6%	29.4%	77.8%	77.8%

CHO 4 Skills Mix by Staff Grouping: January 2021

Jan 2021 (Dec 2018 figure: 8,138)	WTE Dec 2015	WTE Dec 2016	WTE Dec 2017	WTE Dec 2018	WTE Dec 2019	WTE Dec 2020	WTE Jan 2021
Overall	7,461	7,639	7,983	8,138	8,189	8,602	8,652
Consultant Dentistry	0.7%	0.7%	0.7%	0.6%	0.6%	0.6%	0.6%
Consultant Medicine	0.9%	0.9%	0.3%	0.3%	0.4%	0.3%	0.3%
Consultant Paediatrics	0.1%	0.1%	0.3%	0.3%	0.3%	0.3%	0.3%
Consultant Psychiatry	15.9%	16.1%	15.7%	15.8%	16.5%	17.0%	17.5%
Consultants	17.7%	17.8%	17.1%	17.1%	17.8%	18.3%	18.8%
Registrar	23.1%	22.8%	23.6%	25.2%	27.5%	24.3%	23.9%
Senior Registrar	3.2%	3.3%	3.6%	3.5%	3.8%	4.2%	4.2%
Specialist Registrar	1.5%	1.1%	1.3%	1.3%	2.3%	2.5%	2.5%
Registrars	27.8%	27.2%	28.5%	30.0%	33.6%	31.0%	30.6%
Interns	1.1%	1.1%	1.0%	1.0%	1.0%	0.6%	0.3%
Senior House Officer	14.0%	13.5%	12.9%	13.2%	11.4%	14.9%	15.3%
SHO/ Interns	15.1%	14.5%	13.9%	14.2%	12.4%	15.5%	15.6%
Dentists	22.4%	22.0%	20.8%	20.9%	20.3%	18.0%	18.0%
Other Medical	17.1%	18.4%	19.8%	17.8%	15.9%	17.2%	17.0%
Medical/ Dental, other	39.5%	40.5%	40.6%	38.7%	36.2%	35.2%	35.0%
Medical & Dental	3.7%	3.7%	3.8%	3.8%	3.8%	100.0%	3.8%
Clinical Nurse/ Midwife Manager	14.3%	14.1%	13.8%	14.3%	15.1%	15.7%	16.0%
Director Nursing/Midwifery, Assistant	2.4%	2.4%	2.1%	2.1%	2.7%	2.8%	2.9%
Director of Nursing/Midwifery	1.0%	0.8%	0.8%	0.8%	1.6%	1.6%	1.6%
Nurse/ Midwife Manager	17.8%	17.3%	16.7%	17.2%	19.4%	20.1%	20.6%
Advanced Nurse/ Midwife Practitioner	0.2%	0.1%	0.1%	0.2%	0.3%	0.3%	0.3%
Clinical Nurse/ Midwife Specialist	2.3%	2.5%	2.9%	3.0%	3.3%	3.9%	3.8%
Nurse/ Midwife Specialist & AN/MP	2.5%	2.7%	3.0%	3.2%	3.6%	4.2%	4.1%
Graduate Nursing/ Midwifery	0.0%						
Staff Midwives	0.1%	0.1%	0.2%	0.3%	0.4%	0.2%	0.2%
Staff Nurse [Intellectual Disability]	2.9%	3.0%	3.1%	3.9%	3.9%	6.8%	6.9%
Staff Nurse [Psychiatric]	24.6%	24.6%	23.9%	23.3%	21.0%	21.0%	20.6%
Staff Nurses [General/ Children's]	41.6%	41.9%	42.6%	41.4%	39.5%	36.6%	36.4%
Staff Nurse/ Staff Midwife	69.3%	69.6%	69.8%	68.9%	64.7%	64.6%	64.1%
Public Health Nurse	9.7%	9.6%	9.4%	9.7%	9.7%	9.8%	9.6%
Pre-registration Nurse/ Midwife Intern	0.4%	0.4%	0.3%	0.4%	0.4%		0.7%
Pre-registration Nurse Intern (COVID-19)						0.5%	0.1%
Post-registration Nurse/ Midwife Student	0.3%	0.4%	0.7%	0.6%	0.9%	0.6%	0.6%
Nursing/ Midwifery awaiting registration					1.4%	0.1%	0.1%
Nursing/ Midwifery Student	0.7%	0.7%	1.1%	1.0%	2.7%	1.2%	1.6%
Nursing/ Midwifery other	0.0%	0.0%	0.0%	0.0%	0.0%		
Nursing & Midwifery	29.9%	29.4%	28.8%	27.7%	27.5%	100.0%	27.0%
Dietitians	1.5%	2.0%	2.4%	2.8%	2.7%	3.5%	3.4%
Occupational Therapists	17.3%	16.3%	16.6%	16.2%	16.6%	16.3%	16.5%
Orthoptists	0.1%	0.0%	0.1%	0.0%	0.3%	0.2%	0.1%
Physiotherapists	11.6%	11.2%	11.1%	10.7%	10.5%	9.5%	9.4%
Podiatrists & Chiropodists	0.7%	0.9%	0.8%	0.7%	0.6%	0.7%	0.8%
Speech & Language Therapists	13.5%	14.1%	14.2%	13.3%	13.2%	12.5%	12.6%
Therapy Professions	44.6%	44.4%	45.2%	43.8%	43.9%	42.7%	42.9%
Audiology	0.6%	0.5%	0.6%	0.7%	0.7%	0.7%	0.6%
Medical Laboratory	1.4%						
Phlebotomists	0.1%	0.1%	0.1%				
Physicists	0.2%	0.2%	0.2%	0.2%	0.2%	0.2%	0.2%
Radiographers	0.3%	0.2%	0.2%	0.3%	0.3%	0.3%	0.3%
Health Science/ Diagnostics	2.6%	1.1%	1.1%	1.2%	1.2%	1.2%	1.1%
Social Care	23.4%	23.3%	22.8%	22.9%	23.5%	23.2%	23.4%

Jan 2021 (Dec 2018 figure: 8,138)	WTE Dec 2015	WTE Dec 2016	WTE Dec 2017	WTE Dec 2018	WTE Dec 2019	WTE Dec 2020	WTE Jan 2021
Overall	7,461	7,639	7,983	8,138	8,189	8,602	8,652
Social Workers	11.7%	11.9%	12.0%	12.0%	11.2%	12.1%	11.8%
Psychologists	11.0%	11.7%	11.8%	13.2%	13.5%	13.9%	13.8%
Pharmacy	1.0%	0.9%	1.0%	1.0%	0.8%	1.0%	1.0%
Counsellor Therapists	3.6%	4.6%	4.4%	4.0%	4.0%	3.6%	3.5%
Dental Hygienists	0.8%	0.8%	0.7%	0.7%	0.8%	1.0%	1.1%
Other Health & Social Care	1.1%	1.1%	1.0%	1.0%	1.1%	1.2%	1.2%
Play Therapists/ Specialists	0.2%	0.2%	0.1%	0.1%	0.1%	0.1%	0.1%
H&SC, Other	5.6%	6.7%	6.2%	5.8%	5.9%	5.8%	5.9%
Health & Social Care Professionals	11.7%	12.1%	12.3%	12.4%	12.3%	100.0%	12.6%
Executive Management	1.5%	2.0%	2.1%	2.0%	2.0%	2.0%	1.8%
Senior Management (VIII & GM)	7.7%	7.4%	7.7%	6.7%	7.8%	7.4%	7.5%
Management (VIII & above)	9.3%	9.4%	9.9%	8.6%	9.9%	9.4%	9.3%
Administrative/ Supervisory (V to VII)	19.5%	19.6%	19.2%	19.2%	21.8%	22.2%	22.5%
Clerical (III & IV)	71.2%	71.0%	71.0%	72.2%	68.3%	68.4%	68.2%
Management & Administrative	7.9%	8.0%	8.3%	8.8%	8.7%	100.0%	9.3%
Catering	13.1%	13.5%	13.9%	15.6%	16.8%	14.7%	14.5%
Household Services	62.1%	60.4%	59.0%	55.7%	52.8%	56.1%	56.4%
Other Support	14.4%	15.3%	16.3%	19.6%	20.6%	19.8%	19.6%
Portering	3.1%	3.1%	2.7%	2.9%	3.6%	3.2%	3.2%
Support	92.7%	92.2%	92.0%	93.7%	93.8%	93.8%	93.6%
Maintenance/ Technical	7.3%	7.8%	8.0%	6.3%	6.2%	6.2%	6.4%
General Support	6.0%	5.5%	5.0%	4.6%	4.6%	100.0%	4.4%
HCA, Nurse's Aide, etc.	50.2%	53.1%	53.6%	55.3%	55.2%	57.1%	58.1%
Health & Social Care Assistants		0.1%	0.0%	0.4%	0.2%	0.3%	0.3%
Health Care Assistants	50.2%	53.2%	53.6%	55.7%	55.4%	57.5%	58.4%
Care, other	12.5%	12.5%	12.5%	12.4%	12.8%	13.4%	13.2%
Home Help	37.3%	34.3%	33.9%	31.9%	31.9%	29.1%	28.3%
Patient & Client Care	40.9%	41.4%	41.9%	42.7%	42.5%	100.0%	42.8%
Total	100 %	100 %	100 %	100 %	100%	100 %	100 %

CHO 4 Skills Mix by Care Group: January 2021

Jan 2021 (Dec 2018 figure: 1,483)	WTE Dec 2015	WTE Dec 2016	WTE Dec 2017	WTE Dec 2018	WTE Dec 2019	WTE Dec 2020	WTE Jan 2021
Mental Health	1,374	1,407	1,477	1,483	1,485.26	1,563.69	1,574.55
Consultants	37.8%	37.9%	37.5%	37.4%	38.8%	38.6%	39.3%
Registrar	19.8%	22.2%	21.9%	25.2%	27.8%	20.3%	19.8%
Senior Registrar	6.3%	6.6%	7.5%	7.0%	7.8%	9.2%	9.1%
Registrars	26.1%	28.8%	29.4%	32.2%	35.6%	29.5%	28.9%
Interns	2.7%	2.6%	2.5%	2.3%	2.3%	1.4%	0.7%
Senior House Officer	29.5%	27.0%	26.6%	25.6%	21.8%	29.1%	29.7%
SHO/ Interns	32.2%	29.7%	29.0%	27.9%	24.1%	30.5%	30.4%
Medical/ Dental, other	3.8%	3.6%	4.2%	2.5%	1.6%	1.4%	1.4%
Medical & Dental	8.0%	8.1%	8.2%	8.7%	8.7%	9.0%	9.0%
Clinical Nurse/ Midwife Manager	17.0%	17.0%	16.3%	17.5%	18.8%	21.0%	21.5%
Director Nursing/Midwifery, Assistant	2.8%	2.7%	2.5%	2.4%	2.8%	2.9%	3.0%
Director of Nursing/Midwifery	0.5%	0.5%	0.4%	0.4%	0.5%	0.5%	0.5%
Nurse/ Midwife Manager	20.3%	20.1%	19.2%	20.3%	22.2%	24.5%	25.1%
Advanced Nurse/ Midwife Practitioner	0.3%	0.1%	0.1%	0.4%	0.6%	0.5%	0.5%
Clinical Nurse/ Midwife Specialist	4.2%	4.7%	5.7%	5.8%	7.2%	8.5%	8.2%
Nurse/ Midwife Specialist & AN/MP	4.5%	4.9%	5.8%	6.1%	7.8%	9.0%	8.7%
Staff Nurse [Intellectual Disability]				0.1%	0.1%		
Staff Nurse [Psychiatric]	69.3%	69.2%	69.0%	68.1%	60.8%	61.6%	60.4%
Staff Nurses [General/ Children's]	5.8%	5.7%	5.9%	5.2%	4.7%	4.4%	4.2%
Staff Nurse/ Staff Midwife	75.1%	74.9%	74.9%	73.5%	65.6%	66.0%	64.6%
Pre-registration Nurse/ Midwife Intern	0.1%	0.1%		0.1%	0.4%		1.1%
Pre-registration Nurse Intern (COVID-19)						0.4%	0.4%
Post-registration Nurse/ Midwife Student					0.1%		
Nursing/ Midwifery awaiting registration					3.9%	0.1%	0.1%
Nursing/ Midwifery Student	0.1%	0.1%		0.1%	4.4%	0.5%	1.6%
Nursing & Midwifery	55.6%	55.3%	53.4%	51.6%	51.6%	50.4%	50.4%
Dietitians	0.9%	1.9%	2.0%	2.8%	2.7%	2.3%	2.3%
Occupational Therapists	25.7%	23.9%	23.9%	22.9%	24.2%	22.4%	22.3%
Speech & Language Therapists	4.0%	4.8%	4.3%	5.7%	5.6%	5.2%	5.7%
Therapy Professions	30.5%	30.5%	30.2%	31.4%	32.6%	29.9%	30.3%
Social Care	4.5%	4.0%	3.2%	2.5%	1.7%	2.7%	2.8%
Social Workers	30.7%	27.7%	28.4%	26.2%	23.4%	25.0%	24.7%
Psychologists	26.4%	29.9%	30.8%	33.6%	36.5%	36.4%	36.5%
Pharmacy	1.5%	1.4%	1.6%	1.8%	1.1%	1.2%	1.2%
Counsellor Therapists	5.3%	4.6%	4.1%	3.0%	3.2%	3.2%	3.1%
Other Health & Social Care	1.0%	1.7%	1.7%	1.5%	1.5%	1.6%	1.6%
H&SC, Other	6.3%	6.3%	5.8%	4.5%	4.7%	4.8%	4.6%
Health & Social Care Professionals	12.8%	13.9%	14.1%	15.3%	15.3%	16.5%	16.5%
Management (VIII & above)					0.9%	2.3%	2.1%
Administrative/ Supervisory (V to VII)	19.0%	18.9%	17.9%	17.0%	20.3%	18.3%	20.9%
Clerical (III & IV)	81.0%	81.1%	82.1%	83.0%	78.8%	79.4%	77.0%
Management & Administrative	6.8%	6.6%	7.0%	6.9%	6.9%	7.5%	7.5%
Support	93.4%	93.1%	93.2%	93.6%	92.9%	94.1%	94.4%
Maintenance/ Technical	6.6%	6.9%	6.8%	6.4%	7.1%	5.9%	5.6%
General Support	7.8%	7.3%	7.0%	6.4%	6.4%	5.7%	5.7%
Health Care Assistants	96.7%	96.6%	95.4%	95.3%	95.7%	96.3%	96.3%
Care, other	3.3%	3.4%	4.6%	4.7%	4.3%	3.7%	3.7%
Patient & Client Care	8.9%	8.8%	10.3%	11.1%	11.1%	10.9%	10.9%
Total	100 %	100 %	100 %	100 %	100 %	100 %	100 %

Jan 2021 (Dec 2018 figure: 1,344)	WTE Dec 2015	WTE Dec 2016	WTE Dec 2017	WTE Dec 2018	WTE Dec 2019	WTE Dec 2020	WTE Jan 2021
Primary Care	1,143	1,188	1,307	1,344	1,345.90	1,517.49	1,539.20
Consultant Dentistry	1.5%	1.4%	1.3%	1.3%	1.3%	1.3%	1.3%
Consultant Medicine					0.1%	0.1%	0.1%
Consultant Paediatrics			0.3%	0.3%	0.3%	0.3%	0.3%
Consultants	1.5%	1.4%	1.7%	1.6%	1.7%	1.6%	1.7%
Registrars	33.2%	30.5%	31.8%	32.3%	36.0%	36.5%	36.1%
SHO/ Interns	4.4%	5.0%	4.3%	4.7%	4.1%	4.5%	4.5%
Dentists	44.9%	44.4%	41.3%	42.0%	41.1%	37.5%	37.7%
Other Medical	16.0%	18.7%	20.9%	19.4%	17.1%	19.8%	20.0%
Medical/ Dental, other	61.0%	63.1%	62.2%	61.4%	58.2%	57.3%	57.7%
Medical & Dental	12.0%	11.7%	11.5%	11.5%	11.5%	10.3%	10.3%
Clinical Nurse/ Midwife Manager	4.8%	5.5%	6.4%	7.1%	7.2%	7.1%	7.3%
Director Nursing/Midwifery, Assistant	5.8%	5.9%	4.1%	4.7%	5.0%	5.2%	5.7%
Director of Nursing/Midwifery	1.5%	1.1%	0.6%	0.9%	1.6%	1.4%	1.7%
Nurse/ Midwife Manager	12.0%	12.5%	11.1%	12.7%	13.8%	13.7%	14.6%
Nurse/ Midwife Specialist & AN/MP	0.9%	0.8%	0.9%	1.5%	1.0%	1.6%	1.5%
Staff Nurse/ Staff Midwife	23.0%	25.6%	30.4%	28.8%	29.2%	31.3%	31.7%
Public Health Nurse	62.0%	58.8%	53.3%	53.5%	51.7%	50.0%	48.9%
Nursing/ Midwifery Student	2.1%	2.2%	4.3%	3.5%	4.2%	3.4%	3.4%
Nursing & Midwifery	29.7%	30.0%	30.2%	29.5%	29.4%	28.9%	28.9%
Dietitians	3.6%	3.9%	4.9%	5.3%	5.4%	6.9%	6.9%
Occupational Therapists	19.7%	19.1%	20.0%	18.9%	18.0%	18.7%	19.5%
Orthoptists	0.2%	0.1%	0.2%	0.2%	1.0%	0.6%	0.4%
Physiotherapists	24.5%	23.7%	23.3%	22.1%	22.2%	20.5%	20.2%
Speech & Language Therapists	19.9%	22.1%	23.0%	21.3%	20.9%	21.4%	21.3%
Therapy Professions	67.9%	68.7%	71.3%	67.9%	67.4%	68.1%	68.3%
Audiology	1.8%	1.7%	1.8%	2.1%	2.1%	2.3%	2.0%
Medical Laboratory	4.4%						
Physicists	0.7%	0.7%	0.5%	0.6%	0.6%	0.6%	0.6%
Radiographers	0.7%	0.7%	0.6%	0.6%	0.6%	0.6%	0.6%
Health Science/ Diagnostics	7.6%	3.1%	3.0%	3.3%	3.3%	3.4%	3.1%
Social Care	1.8%	2.0%	1.8%	2.3%	2.4%	1.4%	1.4%
Social Workers	6.9%	7.6%	6.9%	7.6%	7.4%	8.1%	8.0%
Psychologists	4.8%	4.3%	3.8%	5.7%	6.2%	6.2%	6.0%
Pharmacy	1.2%	1.0%	1.0%	1.0%	0.9%	1.1%	1.1%
Counsellor Therapists	7.0%	10.9%	10.0%	9.6%	9.5%	8.1%	8.2%
Dental Hygienists	2.4%	2.4%	2.2%	2.2%	2.5%	3.1%	3.3%
Other Health & Social Care	0.4%	0.0%	0.0%	0.5%	0.5%	0.4%	0.4%
H&SC, Other	9.8%	13.4%	12.2%	12.3%	12.5%	11.7%	12.0%
Health & Social Care Professionals	24.9%	24.6%	24.9%	24.5%	24.5%	22.7%	22.7%
Executive Management	2.3%	3.0%	3.7%	3.6%	3.9%	2.7%	2.4%
Senior Management (VIII & GM)	9.1%	8.1%	7.8%	7.0%	8.0%	7.8%	7.8%
Management (VIII & above)	11.4%	11.1%	11.5%	10.6%	11.9%	10.5%	10.2%
Administrative/ Supervisory (V to VII)	18.0%	19.2%	19.6%	19.7%	22.0%	21.9%	22.6%
Clerical (III & IV)	70.6%	69.7%	69.0%	69.7%	66.1%	67.6%	67.2%
Management & Administrative	22.7%	22.5%	22.8%	22.9%	22.8%	22.0%	22.0%
Support	100.0%	100.0%	100.0%	100.0%	100.0%	100.0%	100.0%
General Support	1.6%	1.5%	1.4%	1.3%	1.3%	1.2%	1.2%
HCA, Nurse's Aide, etc.	1.0%	0.9%	4.3%	7.1%	7.3%	42.4%	45.8%
Health & Social Care Assistants		1.8%	0.8%	9.9%	5.9%	5.0%	5.2%
Health Care Assistants	1.0%	2.7%	5.1%	17.0%	13.2%	47.4%	50.9%
Care, other	88.4%	86.8%	84.9%	75.2%	79.1%	48.3%	45.2%
Home Help	10.6%	10.5%	9.9%	7.8%	7.7%	4.2%	3.9%
Patient & Client Care	9.2%	9.6%	9.2%	10.4%	10.4%	15.0%	15.0%
Total	100 %	100 %	100 %	100 %	100 %	100 %	100 %

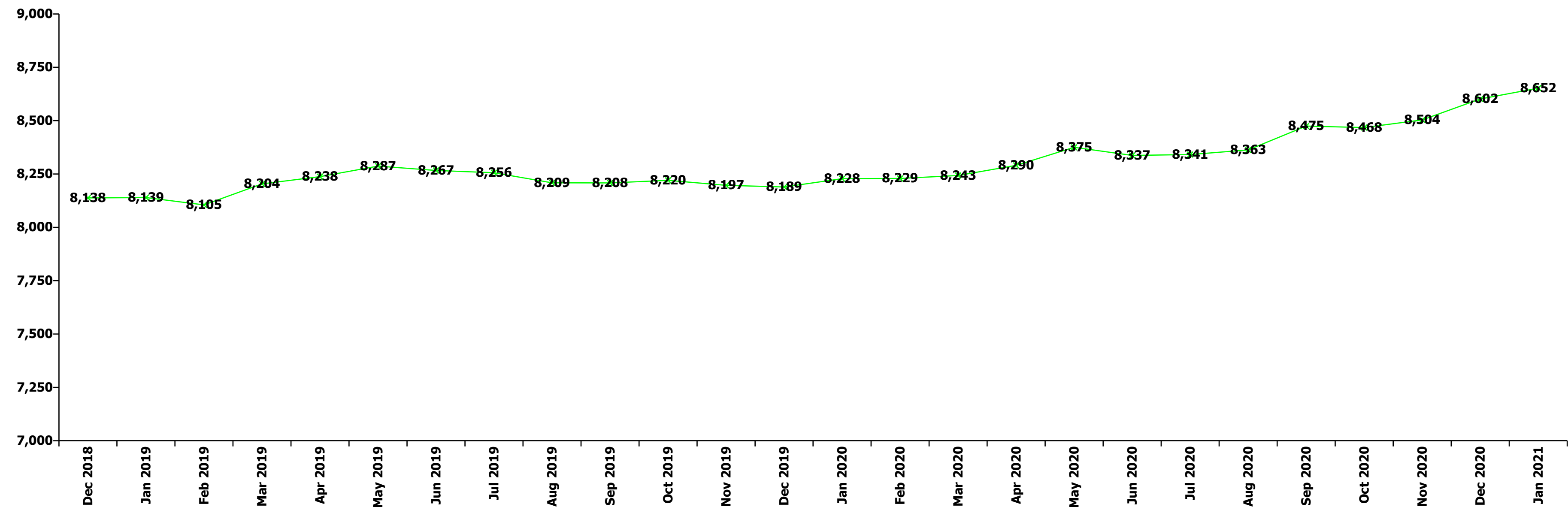
Jan 2021 (Dec 2018 figure: 2,395)	WTE Dec 2015	WTE Dec 2016	WTE Dec 2017	WTE Dec 2018	WTE Dec 2019	WTE Dec 2020	WTE Jan 2021
Disabilities	2,151	2,256	2,299	2,395	2,438.58	2,555.57	2,586.44
Consultant Medicine	50.3%	49.5%					
Consultant Paediatrics	7.9%	9.3%	27.3%	27.3%	27.3%	17.7%	17.7%
Consultant Psychiatry	31.4%	31.0%	54.6%	54.6%	54.6%	70.7%	70.7%
Consultants	89.6%	89.8%	82.0%	82.0%	82.0%	88.3%	88.3%
Medical/ Dental, other	10.4%	10.2%	18.0%	18.0%	18.0%	11.7%	11.7%
Medical & Dental	0.1%	0.1%	0.1%	0.1%	0.1%	0.1%	0.1%
Clinical Nurse/ Midwife Manager	17.5%	16.6%	16.7%	19.6%	19.4%	19.6%	19.4%
Director Nursing/Midwifery, Assistant	0.9%	0.9%	0.7%	1.2%	1.2%	0.9%	0.9%
Director of Nursing/Midwifery	0.6%	0.4%	0.6%	0.5%	0.7%	0.7%	0.7%
Nurse/ Midwife Manager	19.0%	17.9%	18.0%	21.3%	21.3%	21.3%	21.1%
Advanced Nurse/ Midwife Practitioner	0.2%	0.2%	0.2%	0.2%	0.2%	0.5%	0.5%
Clinical Nurse/ Midwife Specialist	3.3%	3.3%	3.5%	3.3%	3.0%	2.9%	2.9%
Nurse/ Midwife Specialist & AN/MP	3.5%	3.5%	3.7%	3.5%	3.2%	3.4%	3.4%
Staff Nurse [Intellectual Disability]	13.4%	14.3%	15.3%	19.9%	20.5%	37.1%	37.5%
Staff Nurse [Psychiatric]	3.8%	3.0%	0.6%	0.4%	0.6%	0.5%	0.5%
Staff Nurses [General/ Children's]	58.5%	59.5%	60.6%	52.9%	52.6%	35.4%	35.2%
Staff Nurse/ Staff Midwife	75.8%	76.8%	76.4%	73.2%	73.7%	73.1%	73.2%
Pre-registration Nurse/ Midwife Intern	1.6%	1.7%	1.7%	1.9%	1.4%		1.9%
Pre-registration Nurse Intern (COVID-19)						1.8%	
Nursing/ Midwifery awaiting registration					0.2%	0.5%	0.5%
Nursing/ Midwifery Student	1.6%	1.7%	1.7%	1.9%	1.7%	2.2%	2.4%
Nursing/ Midwifery other	0.1%	0.1%	0.1%	0.1%	0.1%		
Nursing & Midwifery	22.6%	21.2%	20.2%	18.0%	17.7%	16.7%	16.7%
Dietitians	0.3%	0.3%	0.4%	0.6%	0.6%	0.6%	0.6%
Occupational Therapists	10.7%	10.0%	10.0%	9.1%	9.4%	8.9%	8.8%
Physiotherapists	5.2%	5.1%	4.8%	4.9%	4.6%	4.2%	4.2%
Speech & Language Therapists	13.8%	13.6%	12.8%	11.7%	12.1%	11.3%	11.3%
Therapy Professions	29.9%	28.9%	28.0%	26.4%	26.7%	25.0%	24.9%
Social Care	51.9%	52.0%	53.1%	54.9%	56.0%	57.4%	57.8%
Social Workers	5.6%	6.7%	6.5%	7.1%	6.7%	6.5%	6.3%
Psychologists	9.8%	9.7%	10.0%	9.7%	8.6%	8.7%	8.6%
Counsellor Therapists	0.5%	0.5%	0.5%	0.5%	0.5%	0.5%	0.5%
Other Health & Social Care	1.8%	1.7%	1.7%	1.3%	1.4%	1.8%	1.9%
Play Therapists/ Specialists	0.4%	0.4%	0.2%	0.2%	0.2%	0.2%	0.2%
H&SC, Other	2.8%	2.7%	2.3%	1.9%	2.1%	2.5%	2.5%
Health & Social Care Professionals	17.0%	17.1%	17.2%	16.4%	16.1%	16.2%	16.2%
Executive Management	1.6%	2.3%	1.5%	1.3%	1.3%	1.8%	1.8%
Senior Management (VIII & GM)	13.0%	12.3%	12.6%	10.8%	12.6%	11.4%	11.4%
Management (VIII & above)	14.6%	14.5%	14.0%	12.1%	13.9%	13.2%	13.2%
Administrative/ Supervisory (V to VII)	31.0%	29.5%	28.8%	31.9%	33.4%	34.0%	32.9%
Clerical (III & IV)	54.5%	56.0%	57.2%	56.0%	52.7%	52.8%	53.9%
Management & Administrative	6.0%	5.9%	6.0%	6.4%	6.2%	6.5%	6.5%
Support	90.9%	90.2%	89.2%	92.9%	93.3%	92.0%	91.9%
Maintenance	8.5%	9.2%	10.2%	6.4%	6.1%	6.7%	6.8%
Technical Services	0.5%	0.6%	0.6%	0.7%	0.7%	1.3%	1.3%
Maintenance/ Technical	9.1%	9.8%	10.8%	7.1%	6.7%	8.0%	8.1%
General Support	8.5%	7.5%	6.7%	6.4%	6.3%	5.8%	5.8%
HCA, Nurse's Aide, etc.	74.2%	75.7%	75.6%	77.2%	76.4%	76.1%	76.7%
Health Care Assistants	74.2%	75.7%	75.6%	77.2%	76.4%	76.1%	76.7%
Other Care Grades	25.8%	24.3%	24.4%	22.8%	23.6%	23.9%	23.3%
Care, other	25.8%	24.3%	24.4%	22.8%	23.6%	23.9%	23.3%
Patient & Client Care	45.7%	48.1%	49.8%	52.7%	51.7%	54.7%	54.7%
Total	100 %	100 %	100 %	100 %	100 %	100 %	100 %

Jan 2021 (Dec 2018 figure: 2,915)	WTE Dec 2015	WTE Dec 2016	WTE Dec 2017	WTE Dec 2018	WTE Dec 2019	WTE Dec 2020	WTE Jan 2021
Older People	2,792	2,789	2,899	2,915	2,919.30	2,930.19	2,917.67
Consultant Medicine	4.1%	4.1%	3.8%	3.9%	3.9%	3.6%	3.7%
Consultant Psychiatry	4.1%	3.6%	3.2%				
Consultants	8.2%	7.7%	7.0%	3.9%	3.9%	3.6%	3.7%
Registrar	4.1%	4.1%	3.8%	3.9%	3.9%	3.6%	3.7%
Specialist Registrar	4.1%		3.8%	3.9%	7.7%	7.1%	7.3%
Registrars	8.2%	4.1%	7.6%	7.7%	11.6%	10.7%	11.0%
Senior House Officer				3.9%	3.9%	3.6%	3.7%
SHO/ Interns				3.9%	3.9%	3.6%	3.7%
Medical/ Dental, other	83.6%	88.1%	85.4%	84.6%	80.6%	82.2%	81.7%
Medical & Dental	0.9%	0.9%	0.9%	0.9%	0.9%	0.9%	0.9%
Clinical Nurse/ Midwife Manager	13.7%	13.4%	13.3%	11.5%	12.8%	12.8%	13.2%
Director Nursing/Midwifery, Assistant	1.3%	1.3%	1.5%	0.9%	2.0%	2.0%	1.9%
Director of Nursing/Midwifery	1.7%	1.4%	1.4%	1.4%	3.4%	3.6%	3.6%
Nurse/ Midwife Manager	16.8%	16.2%	16.1%	13.7%	18.3%	18.4%	18.7%
Advanced Nurse/ Midwife Practitioner	0.2%	0.2%	0.2%	0.2%	0.2%	0.2%	0.3%
Clinical Nurse/ Midwife Specialist	0.1%	0.3%	0.1%	0.4%	0.4%	0.7%	0.5%
Nurse/ Midwife Specialist & AN/MP	0.3%	0.4%	0.3%	0.6%	0.5%	0.9%	0.8%
Graduate Nursing/ Midwifery	0.2%						
Staff Nurses [General/ Children's]	81.8%	82.4%	82.5%	84.8%	80.1%	79.8%	79.6%
Staff Nurse/ Staff Midwife	81.9%	82.4%	82.5%	84.8%	80.1%	79.8%	79.6%
Public Health Nurse	1.0%	1.0%	1.0%	0.9%	0.8%	0.9%	0.9%
Post-registration Nurse/ Midwife Student					0.2%		
Nursing/ Midwifery awaiting registration					0.2%		
Nursing/ Midwifery Student					0.3%		
Nursing & Midwifery	22.8%	22.8%	22.5%	22.5%	22.5%	22.9%	22.9%
Dietitians	0.2%	4.4%	4.2%	4.0%	2.5%	2.6%	1.3%
Occupational Therapists	22.3%	18.6%	17.1%	21.9%	28.5%	27.7%	29.3%
Physiotherapists	26.9%	27.7%	25.5%	27.3%	25.6%	23.7%	24.1%
Podiatrists & Chiropodists	13.1%	15.2%	14.0%	12.9%	10.7%	12.3%	14.0%
Speech & Language Therapists	8.3%	7.8%	9.0%	7.7%	6.3%	2.0%	2.2%
Therapy Professions	70.8%	73.7%	69.7%	73.7%	73.7%	68.3%	70.9%
Phlebotomists	2.1%	1.9%	1.8%				
Radiographers	1.1%	0.5%	0.5%	1.9%	1.9%	2.1%	2.1%
Health Science/ Diagnostics	3.2%	2.4%	2.3%	1.9%	1.9%	2.1%	2.1%
Social Care	3.7%	3.3%	3.1%	3.0%	2.9%	2.9%	2.8%
Social Workers	16.8%	16.0%	19.0%	15.8%	17.2%	20.4%	18.3%
Pharmacy	5.6%	4.5%	5.9%	5.6%	4.3%	6.2%	6.0%
Health & Social Care Professionals	1.7%	1.9%	1.9%	2.0%	2.0%	2.1%	2.1%
Executive Management	0.9%	0.9%	0.8%	0.7%	0.6%	1.2%	1.2%
Senior Management (VIII & GM)	4.7%	6.1%	8.8%	6.4%	7.4%	7.3%	7.9%
Management (VIII & above)	5.6%	7.0%	9.7%	7.1%	8.1%	8.6%	9.1%
Administrative/ Supervisory (V to VII)	10.0%	9.9%	8.4%	6.8%	10.8%	12.2%	11.5%
Clerical (III & IV)	84.3%	83.1%	81.9%	86.1%	81.2%	79.2%	79.4%
Management & Administrative	3.8%	4.1%	4.2%	5.2%	5.2%	5.8%	5.8%
Support	93.4%	93.1%	93.4%	93.9%	94.4%	94.8%	94.2%
Maintenance/ Technical	6.6%	6.9%	6.6%	6.1%	5.6%	5.2%	5.8%
General Support	4.9%	4.5%	4.1%	3.8%	3.8%	4.1%	4.1%
HCA, Nurse's Aide, etc.	37.1%	40.1%	40.2%	41.0%	40.6%	41.8%	42.5%
Health & Social Care Assistants					0.0%	0.1%	0.1%
Health Care Assistants	37.1%	40.1%	40.2%	41.0%	40.6%	41.9%	42.5%
Care, other	1.7%	1.5%	1.6%	1.6%	1.6%	1.8%	1.8%
Home Help	61.2%	58.4%	58.2%	57.5%	57.8%	56.3%	55.6%
Patient & Client Care	65.9%	65.8%	66.4%	65.6%	65.5%	64.1%	64.1%
Total	100 %	100 %	100 %	100 %	100 %	100 %	100 %

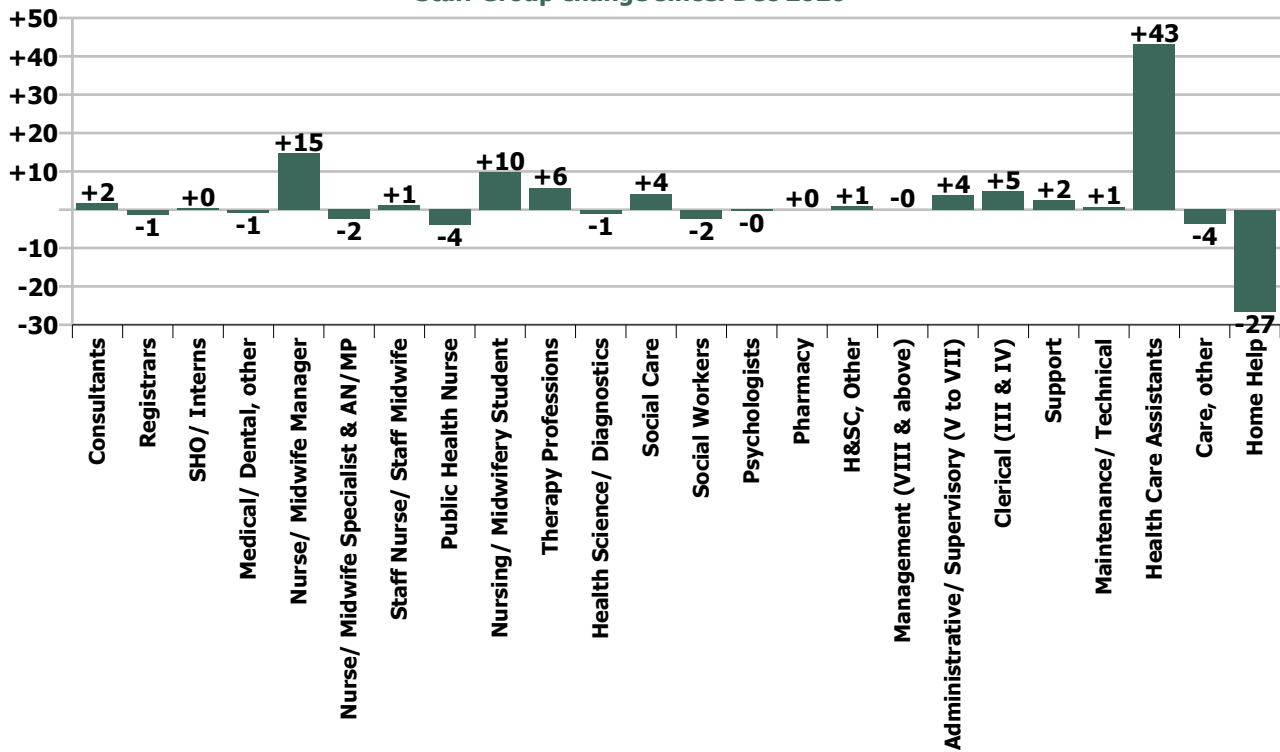
Summary Staff Movement: January 2021

Month-on-month Summary																											
WTE change since Dec 20	% change since Dec 20	overall	Consultants	Registrars	SHO/ Interns	Medical/ Dental, other	Medical & Dental	Nurse/ Midwife Manager	Nurse/ Midwife Specialist & AN/MP	Staff Nurse/ Staff Midwife	Public Health Nurse	Nursing/ Midwifery Student	Nursing & Midwifery	Therapy Professions	Health Science/ Diagnostics	Social Care	Social Workers	Psychologists	Pharmacy	H&SC, Other	Health & Social Care Professionals	Management (VIII & above)	Administrativ a/ Supervisory (V to VII)	Clerical (III & IV)	Management & Administrativ e	General Support	Patient & Client Care
Overall	+0.6%	+51	+1.7	-1.3	+0.3	-0.8	-0.0	+14.7	-2.5	+1.1	-4.0	+9.7	+19.1	+5.7	-1.0	+4.1	-2.3	-0.3	+0.0	+0.8	+6.9	-0.0	+3.8	+4.8	+8.6	+3.3	+12.8
Community Health & Wellbeing	-1.0%	-0						+1.0					+1.0	+0.1							+0.1	-0.5	0.0	0.0	-0.5		-0.9
Mental Health	+0.7%	+11	+1.7	-0.3	+0.4	-0.1	+1.7	+6.3	-1.6	-6.8		+8.9	+6.8	+1.1		+0.2	-0.6	+0.4	0.0	-0.3	+0.8	-0.2	+2.7	-4.0	-1.5	+3.5	-0.5
Primary Care	+1.4%	+22	+0.0	-1.0	-0.0	+0.1	-0.9	+4.4	-0.6	+2.0	-4.0	+0.1	+2.0	+1.1	-1.0	0.0	-0.2	-0.8	+0.1	+1.0	+0.2	-0.4	+3.8	+3.7	+7.1	-0.2	+13.5
Disabilities	+1.2%	+31	0.0			0.0	0.0	+0.0	0.0	+3.2		+0.7	+3.9	+0.7		+3.9	-0.6	+0.0		+0.1	+4.2	-0.1	-1.9	+1.5	-0.5	-0.7	+23.9
Older People	-0.4%	-13	0.0	0.0	0.0	-0.8	-0.8	+3.0	-0.3	+2.6	0.0		+5.3	+2.7	0.0	0.0	-1.0		-0.1		+1.6	+1.2	-0.8	+3.6	+4.0	+0.7	-23.3
Social Care	+0.3%	+18	0.0	0.0	0.0	-0.8	-0.8	+3.0	-0.3	+5.8	0.0	+0.7	+9.2	+3.3	0.0	+3.9	-1.5	+0.0	-0.1	+0.1	+5.8	+1.1	-2.7	+5.1	+3.5	+0.0	+0.6
Change	+50.6	+0.6%	+2.8%	-1.2%	+0.6%	-0.7%	-0.0%	+3.2%	-2.5%	+0.1%	-1.7%	+34.0%	+0.8%	+1.2%	-7.7%	+1.6%	-1.8%	-0.2%	+0.2%	+1.3%	+0.6%	-0.0%	+2.1%	+0.9%	+1.1%	+0.9%	+0.3%

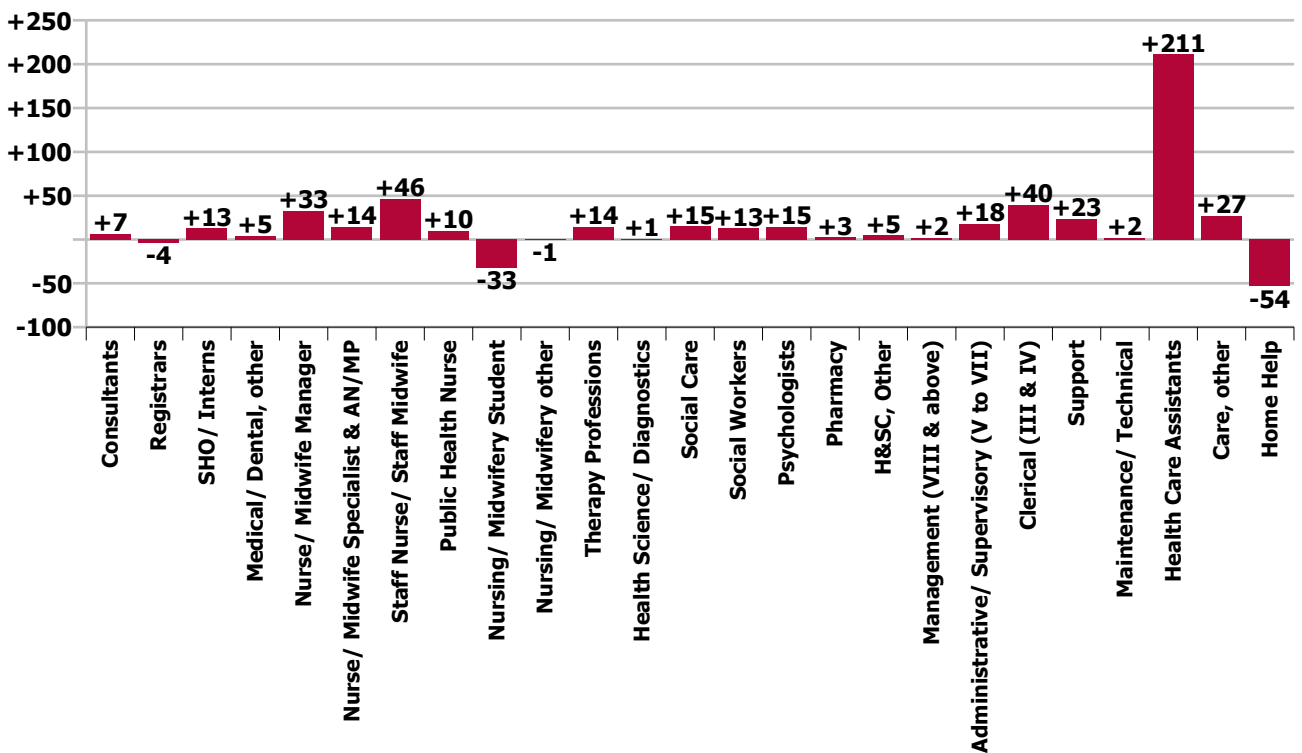
Year-on-year Summary																												
WTE change since Jan 20	% change since Jan 20	overall	Consultants	Registrars	SHO/ Interns	Medical/ Dental, other	Medical & Dental	Nurse/ Midwife Manager	Nurse/ Midwife Specialist & AN/MP	Staff Nurse/ Staff Midwife	Public Health Nurse	Nursing/ Midwifery Student	Nursing/ Midwifery other	Nursing & Midwifery	Therapy Professions	Health Science/ Diagnostics	Social Care	Social Workers	Psychologists	Pharmacy	H&SC, Other	Health & Social Care Professionals	Management (VIII & above)	Administrativ e/ Supervisory (V to VII)	Clerical (III & IV)	Management & Administrative	General Support	Patient & Client Care
Overall	+5.2%	+424	+6.6	-3.6	+12.7	+4.6	+20.3	+32.7	+14.3	+46.1	+9.6	-32.6	-0.5	+69.5	+14.2	+0.5	+15.3	+12.9	+14.8	+2.5	+4.7	+64.9	+1.9	+17.9	+39.6	+59.4	+25.5	+184.6
Community Health & Wellbeing	-1.0%	-0						+2.0		-0.4				+1.6	+0.8							+0.8	-0.5	+1.5	+2.7	+3.7		+1.7
Mental Health	+0.7%	+11	+6.6	-5.1	+11.7	-0.1	+13.1	+20.4	+9.7	+4.1		-29.4		+4.8	+2.1		+3.4	+9.4	+11.4	+0.5	+1.1	+27.7	+1.5	+3.2	+0.8	+5.5	+5.5	+0.3
Primary Care	+1.4%	+22	+0.0	+1.5	+1.0	+3.1	+5.7	+3.7	+1.3	+25.8	+7.8	-4.0		+34.6	+16.3	+0.2	-2.8	+3.7	+0.0	+1.0	+1.6	+20.1	-2.7	+9.7	+23.5	+30.5	+4.9	+101.1
Disabilities	+5.8%	+141.6	0.0			0.0	0.0	-0.6	+1.0	+3.0		+2.8	-0.5	+5.7	-4.9		+14.8	-1.2	+3.4		+1.9	+14.0	+0.9	+0.8	+6.8	+8.5	-1.0	+114.5
Older People	+0.7%	+21.0	0.0	0.0	0.0	+1.5	+1.5	+7.2	+2.4	+13.6	+1.8	-2.0		+22.9	-0.2	+0.4	0.0	+1.0		+1.0		+2.2	+2.6	+2.7	+5.9	+11.2	+16.1	-33.0
Social Care	+0.3%	+18	0.0	0.0	0.0	+1.5	+1.5	+6.6	+3.3	+16.6	+1.8	+0.8	-0.5	+28.6	-5.1	+0.4	+14.8	-0.1	+3.4	+1.0	+1.9	+16.2	+3.6	+3.5	+12.7	+19.7	+15.1	+81.5
Change	+424.3	+5.2%	+12.0%	-3.4%	+32.9%	+4.1%	+6.6%	+7.3%	+17.5%	+3.2%	+4.5%	-46.1%	-100.0%	+3.1%	+3.1%	+4.5%	+6.4%	+11.1%	+10.8%	+31.1%	+7.8%	+6.3%	+2.5%	+11.0%	+7.8%	+8.0%	+7.2%	+5.2%



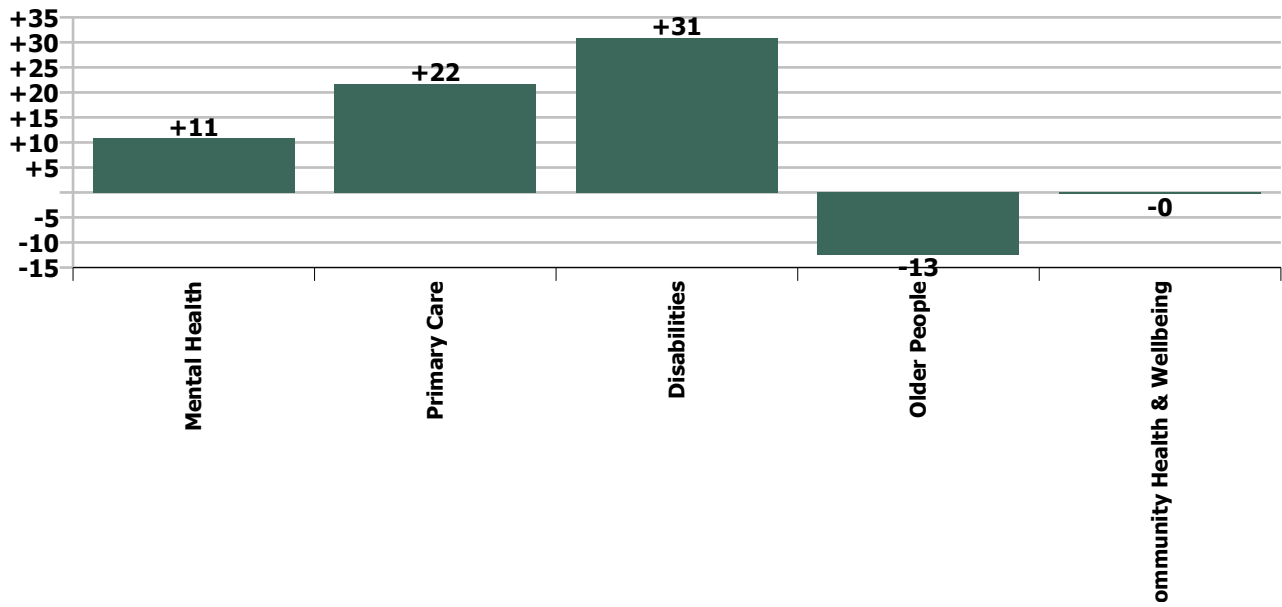
Staff Group change since: Dec 2020



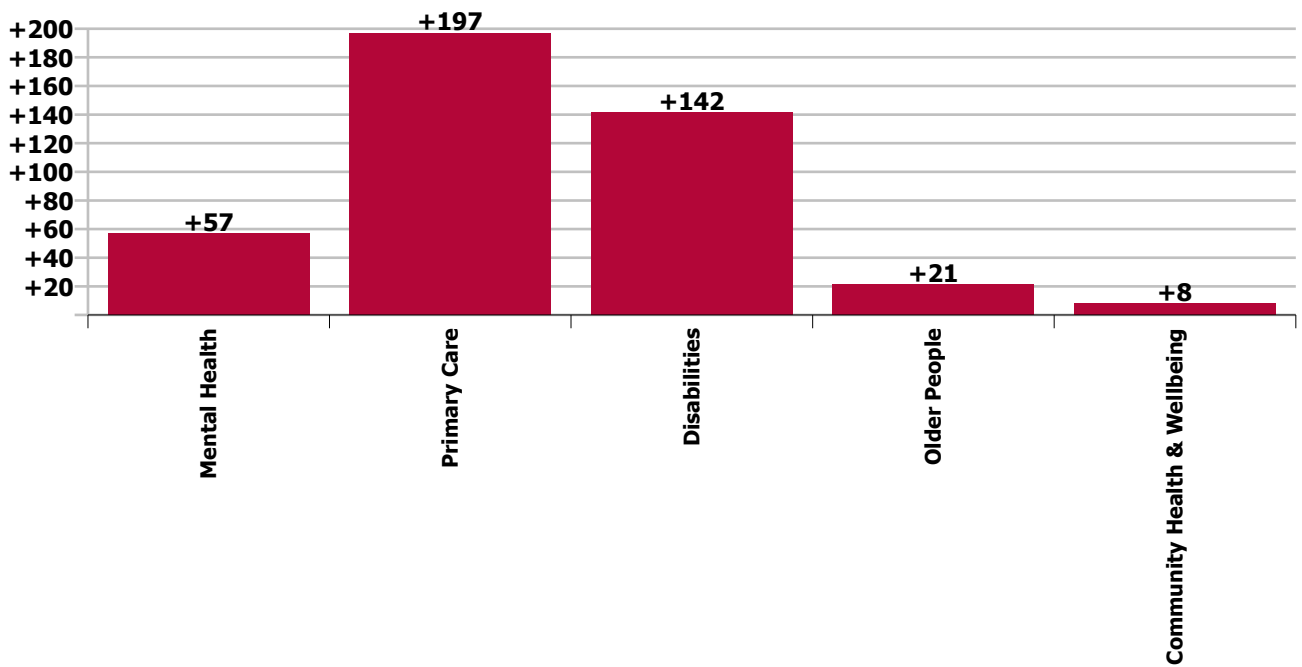
Staff Group change since: Jan 2020



Care Group change since: Dec 2020



Care Group change since: Jan 2020



Longitudinal Employment Levels by Grade Group - Oct 2013 to Jan 2021

Jan 2021 (Dec 2015 figure: 7,461)	WTE Jan 2021	WTE change since Dec 15	WTE change since Dec 16	WTE change since Dec 17	WTE change since Dec 18	WTE change since Dec 19	WTE change since Dec 20	% change since Dec 15	% change since Dec 16	% change since Dec 17	% change since Dec 18	% change since Dec 19	% change since Dec 20
Overall	8,652	+1,192	+1,013	+669	+514	+463	+51	+16.0%	+13.3%	+8.4%	+6.3%	+5.7%	+0.6%
Consultant Dentistry	2												
Consultant Medicine	1	-1	-1	+0	+0	+0	+0	-56.9%	-56.9%	+12.0%	+12.0%	+0.9%	+1.8%
Consultant Paediatrics	1	+1	+1					+300.0%	+233.3%				
Consultant Psychiatry	58	+14	+13	+11	+9	+7	+2	+32.3%	+28.4%	+23.1%	+17.8%	+14.0%	+2.9%
Consultants	62	+13	+12	+11	+9	+7	+2	+27.6%	+24.1%	+21.5%	+16.7%	+13.0%	+2.8%
Registrar	79	+15	+15	+8	+1	-6	-1	+23.9%	+23.2%	+11.9%	+0.7%	-6.6%	-1.6%
Senior Registrar	14	+5	+5	+3	+3	+2		+60.0%	+51.4%	+30.2%	+26.8%	+18.6%	
Specialist Registrar	8	+4	+5	+4	+4	+1		+108.3%	+177.7%	+108.3%	+108.3%	+19.0%	
Registrars	101	+25	+25	+16	+8	-2	-1	+32.5%	+32.7%	+18.7%	+8.4%	-2.0%	-1.2%
Interns	1	-2	-2	-2	-2	-2	-1	-66.7%	-66.7%	-66.7%	-66.7%	-66.7%	-50.0%
Senior House Officer	50	+12	+13	+12	+9	+15	+1	+30.8%	+33.2%	+30.8%	+22.4%	+43.4%	+2.7%
SHO/ Interns	51	+10	+11	+10	+7	+13	+0	+23.7%	+25.9%	+23.8%	+16.3%	+34.8%	+0.6%
Dentists	60	-2	-2	-3	-5	-3	+0	-3.5%	-3.7%	-4.2%	-8.4%	-4.5%	+0.1%
Other Medical	56	+9	+4	-3	+1	+7	-1	+19.3%	+8.4%	-5.4%	+1.3%	+14.5%	-1.4%
Medical/ Dental, other	116	+7	+2	-6	-5	+4	-1	+6.4%	+1.8%	-4.8%	-3.9%	+3.9%	-0.7%
Medical & Dental	330	+55	+50	+31	+19	+23	-0	+20.0%	+17.7%	+10.4%	+6.2%	+7.4%	-0.0%
Clinical Nurse/ Midwife Manager	375	+56	+58	+57	+53	+38	+10	+17.5%	+18.5%	+17.8%	+16.4%	+11.2%	+2.6%
Director Nursing/Midwifery, Assistant	68	+14	+13	+19	+20	+8	+4	+25.9%	+24.6%	+39.4%	+41.3%	+13.1%	+6.4%
Director of Nursing/Midwifery	38	+16	+20	+21	+21	+3	+1	+68.5%	+105.7%	+118.6%	+119.5%	+9.1%	+2.9%
Nurse/ Midwife Manager	481	+86	+92	+97	+94	+49	+15	+21.6%	+23.5%	+25.2%	+24.2%	+11.3%	+3.2%
Advanced Nurse/ Midwife Practitioner	8	+4	+5	+5	+3	+1	+1	+95.0%	+160.0%	+160.0%	+65.3%	+16.4%	+14.7%
Clinical Nurse/ Midwife Specialist	88	+36	+31	+22	+21	+14	-3	+69.3%	+53.5%	+33.6%	+30.7%	+18.6%	-3.8%
Nurse/ Midwife Specialist & AN/MP	96	+40	+35	+27	+24	+15	-2	+71.1%	+58.8%	+39.1%	+33.0%	+18.5%	-2.5%
Graduate Nursing/ Midwifery		-1						-100.0%	-100.0%	-100.0%	-100.0%	-100.0%	-100.0%
Staff Midwives	6	+4	+3	+0	-1	-2	+0	+182.5%	+103.2%	+7.4%	-12.9%	-30.4%	+2.7%
Staff Nurse [Intellectual Disability]	162	+96	+93	+91	+75	+75	+3	+146.8%	+136.1%	+127.4%	+86.2%	+86.3%	+1.9%
Staff Nurse [Psychiatric]	481	-68	-71	-68	-43	+12	-5	-12.3%	-12.9%	-12.3%	-8.3%	+2.6%	-1.1%
Staff Nurses [General/ Children's]	851	-75	-91	-129	-81	-31	+3	-8.1%	-9.7%	-13.1%	-8.7%	-3.5%	+0.4%
Staff Nurse/ Staff Midwife	1,499	-44	-67	-105	-51	+54	+1	-2.8%	-4.3%	-6.6%	-3.3%	+3.7%	+0.1%
Public Health Nurse	224	+7	+8	+7	+6	+8	-4	+3.2%	+3.6%	+3.1%	+2.6%	+3.5%	-1.7%
Pre-registration Nurse/ Midwife Intern	17	+9	+9	+9	+9	+8	+17	+102.0%	+102.0%	+114.6%	+102.0%	+90.8%	-100.0%
Pre-registration Nurse Intern (COVID-19)	3	+3	+3	+3	+3	+3	-8	-100.0%	-100.0%	-100.0%	-100.0%	-100.0%	-71.6%
Post-registration Nurse/ Midwife Student	15	+8	+7	-2	+1	-4	+0	+114.3%	+87.5%	-11.8%	+7.1%	-22.1%	+0.4%
Nursing/ Midwifery awaiting registration	3	+3	+3	+3	+3	-29		-100.0%	-100.0%	-100.0%	-100.0%	-90.5%	

Jan 2021 (Dec 2015 figure: 7,461)	WTE Jan 2021	WTE change since Dec 15	WTE change since Dec 16	WTE change since Dec 17	WTE change since Dec 18	WTE change since Dec 19	WTE change since Dec 20	% change since Dec 15	% change since Dec 16	% change since Dec 17	% change since Dec 18	% change since Dec 19	% change since Dec 20
Overall	8,652	+1,192	+1,013	+669	+514	+463	+51	+16.0%	+13.3%	+8.4%	+6.3%	+5.7%	+0.6%
Nursing/ Midwifery Student	38	+23	+22	+13	+16	-22	+10	+146.3%	+131.3%	+52.7%	+69.6%	-36.1%	+34.0%
Nursing/ Midwifery other		-1	-1	-1	-1	-1		-100.0%	-100.0%	-100.0%	-100.0%	-100.0%	-100.0%
Nursing & Midwifery	2,338	+110	+90	+38	+88	+103	+19	+5.0%	+4.0%	+1.6%	+3.9%	+4.6%	+0.8%
Dietitians	38	+25	+19	+14	+9	+10	-1	+191.7%	+102.9%	+56.5%	+31.1%	+35.2%	-2.4%
Occupational Therapists	181	+30	+30	+17	+18	+12	+4	+20.0%	+20.1%	+10.7%	+11.1%	+6.9%	+2.4%
Orthoptists	2	+1	+1	+1	+1	-2	-1	+163.2%	+900.0%	+194.1%	+200.0%	-54.3%	-25.0%
Physiotherapists	103	+2	-1	-6	-5	-4	-0	+1.6%	-0.6%	-5.5%	-4.6%	-3.6%	-0.2%
Podiatrists & Chiropodists	9	+3	+1	+1	+1	+2	+1	+40.7%	+8.3%	+12.2%	+16.7%	+34.7%	+16.7%
Speech & Language Therapists	138	+20	+8	-2	+4	+4	+2	+17.3%	+5.8%	-1.1%	+2.9%	+2.7%	+1.3%
Therapy Professions	470	+80	+58	+25	+28	+22	+6	+20.6%	+14.2%	+5.7%	+6.4%	+4.8%	+1.2%
Audiology	7	+2	+2	+1	-0	+0	-1	+39.6%	+39.6%	+16.3%	-0.3%	+3.1%	-12.7%
Medical Laboratory		-13						-100.0%	-100.0%	-100.0%	-100.0%	-100.0%	-100.0%
Phlebotomists		-1	-1	-1				-100.0%	-100.0%	-100.0%	-100.0%	-100.0%	-100.0%
Physicists	2			+0						+12.4%			
Radiographers	3	+1	+1	+1	+0	+0		+29.5%	+43.7%	+43.7%	+6.5%	+4.8%	
Health Science/ Diagnostics	12	-11	+2	+1	+0	+0	-1	-46.9%	+19.2%	+10.8%	+1.5%	+3.0%	-7.7%
Social Care	256	+52	+40	+32	+25	+16	+4	+25.4%	+18.6%	+14.4%	+10.9%	+6.8%	+1.6%
Social Workers	130	+27	+19	+12	+8	+15	-2	+26.6%	+17.2%	+10.1%	+6.8%	+13.0%	-1.8%
Psychologists	151	+55	+43	+36	+18	+13	-0	+57.9%	+39.4%	+30.8%	+13.6%	+9.7%	-0.2%
Pharmacy	11	+2	+3	+1	+0	+3	+0	+21.6%	+33.1%	+7.5%	+1.8%	+32.8%	+0.2%
Counsellor Therapists	39	+8	-4	-4	-2	-2	+0	+24.0%	-9.7%	-10.1%	-4.4%	-4.4%	+0.2%
Dental Hygienists	12	+5	+4	+4	+4	+3	+1	+68.6%	+63.3%	+59.7%	+61.9%	+40.3%	+5.6%
Other Health & Social Care	13	+4	+3	+3	+3	+2	+0	+42.3%	+33.4%	+31.3%	+34.5%	+23.0%	+1.0%
Play Therapists/ Specialists	1	-1	-1					-61.3%	-61.3%				
H&SC, Other	64	+15	+3	+3	+6	+4	+1	+30.9%	+4.3%	+5.1%	+10.4%	+6.7%	+1.3%
Health & Social Care Professionals	1,094	+221	+168	+110	+86	+73	+7	+25.3%	+18.1%	+11.2%	+8.5%	+7.2%	+0.6%
Executive Management	15	+6	+3	+1	+1	-1	-1	+61.1%	+20.8%	+3.6%	+3.6%	-3.3%	-7.8%
Senior Management (VIII & GM)	61	+15	+16	+9	+13	+3	+1	+33.6%	+35.1%	+18.4%	+26.8%	+4.8%	+2.0%
Management (VIII & above)	75	+21	+18	+10	+13	+2	-0	+38.1%	+32.1%	+15.2%	+21.5%	+3.1%	-0.0%
Administrative/ Supervisory (V to VII)	181	+66	+62	+55	+44	+20	+4	+57.9%	+51.8%	+43.2%	+32.2%	+12.5%	+2.1%
Clerical (III & IV)	551	+133	+119	+82	+35	+46	+5	+31.7%	+27.7%	+17.6%	+6.8%	+9.1%	+0.9%
Management & Administrative	807	+220	+199	+147	+92	+68	+9	+37.4%	+32.8%	+22.3%	+12.9%	+9.3%	+1.1%
Catering	55	-3	-1	-0	-4	-5	-0	-5.8%	-2.5%	-0.5%	-6.5%	-9.0%	-0.5%
Household Services	213	-63	-38	-20	+4	+24	+3	-22.8%	-15.2%	-8.6%	+1.8%	+12.5%	+1.4%
Other Support	74	+10	+11	+10	+1	+0	-0	+15.4%	+16.6%	+15.1%	+0.8%	+0.3%	-0.1%

Jan 2021 (Dec 2015 figure: 7,461)	WTE Jan 2021	WTE change since Dec 15	WTE change since Dec 16	WTE change since Dec 17	WTE change since Dec 18	WTE change since Dec 19	WTE change since Dec 20	% change since Dec 15	% change since Dec 16	% change since Dec 17	% change since Dec 18	% change since Dec 19	% change since Dec 20
Overall	8,652	+1,192	+1,013	+669	+514	+463	+51	+16.0%	+13.3%	+8.4%	+6.3%	+5.7%	+0.6%
Portering	12	-2	-1	+1	+1	-1	-0	-13.1%	-6.3%	+11.2%	+10.9%	-8.4%	-0.7%
Support	354	-58	-30	-9	+2	+18	+2	-14.1%	-7.7%	-2.6%	+0.5%	+5.2%	+0.7%
Maintenance	22	-9	-9	-8	-0	+1	+1	-29.9%	-29.3%	-27.3%	-2.2%	+4.4%	+3.6%
Technical Services	2	+1	+1	+1	+1	+1		+100.0%	+100.0%	+100.0%	+100.0%	+100.0%	
Maintenance/ Technical	24	-8	-8	-7	+1	+2	+1	-25.9%	-25.3%	-23.3%	+2.2%	+8.7%	+3.3%
General Support	379	-67	-38	-17	+2	+19	+3	-15.0%	-9.1%	-4.2%	+0.6%	+5.4%	+0.9%
HCA, Nurse's Aide, etc.	2,151	+619	+473	+361	+228	+205	+42	+40.4%	+28.2%	+20.1%	+11.9%	+10.5%	+2.0%
Health & Social Care Assistants	13	+13	+11	+12	-1	+5	+1	-100.0%	+545.5%	+1191.0%	-6.6%	+60.6%	+7.7%
Health Care Assistants	2,164	+632	+484	+373	+227	+210	+43	+41.2%	+28.8%	+20.8%	+11.7%	+10.8%	+2.0%
Care, other	490	+109	+95	+72	+59	+40	-4	+28.5%	+23.9%	+17.1%	+13.7%	+9.0%	-0.8%
Home Help	1,049	-88	-34	-84	-60	-74	-27	-7.8%	-3.1%	-7.4%	-5.4%	-6.6%	-2.5%
Patient & Client Care	3,704	+652	+545	+360	+227	+176	+13	+21.4%	+17.3%	+10.8%	+6.5%	+5.0%	+0.3%

Source: Health Service Personnel Census

Longitudinal Employment Levels by Care Group - Oct 2013 to Jan 2021

Community Health & Wellbeing

Jan 2021 (figure:)	WTE Jan 2021	WTE change since	WTE change since	WTE change since	WTE change since	WTE change since	WTE change since Dec 20	% change since	% change since	% change since	% change since	% change since	% change since Dec 20
Overall	34	+34	+34	+34	+34	+34	-0	-100.0%	-100.0%	-100.0%	-100.0%	-100.0%	-1.0%
Nursing & Midwifery	2	+2	+2	+2	+2	+2	+1	-1.0%	-1.0%	-1.0%	-1.0%	-1.0%	+1.0%
Nurse/ Midwife Manager	2	+2	+2	+2	+2	+2	+1	-1.0%	-1.0%	-1.0%	-1.0%	-1.0%	+1.0%
Health & Social Care Professionals	4	+4	+4	+4	+4	+4	+0	-1.0%	-1.0%	-1.0%	-1.0%	-1.0%	+0.0%
Therapy Professions	4	+4	+4	+4	+4	+4	+0	-1.0%	-1.0%	-1.0%	-1.0%	-1.0%	+0.0%
Management & Administrative	13	+13	+13	+13	+13	+13	-1	-1.0%	-1.0%	-1.0%	-1.0%	-1.0%	-0.0%
Management (VIII & above)	1	+1	+1	+1	+1	+1	-1	-1.0%	-1.0%	-1.0%	-1.0%	-1.0%	-0.5%
Administrative/ Supervisory (V to VII)	5	+5	+5	+5	+5	+5		-1.0%	-1.0%	-1.0%	-1.0%	-1.0%	+0.0%
Clerical (III & IV)	7	+7	+7	+7	+7	+7		-1.0%	-1.0%	-1.0%	-1.0%	-1.0%	+0.0%
Patient & Client Care	15	+15	+15	+15	+15	+15	-1	-1.0%	-1.0%	-1.0%	-1.0%	-1.0%	-0.1%
Care, other	15	+15	+15	+15	+15	+15	-1	-1.0%	-1.0%	-1.0%	-1.0%	-1.0%	-0.1%

Source: Health Service Personnel Census

Mental Health

Jan 2021 (Dec 2015 figure: 1,374)	WTE Jan 2021	WTE change since Dec 15	WTE change since Dec 16	WTE change since Dec 17	WTE change since Dec 18	WTE change since Dec 19	WTE change since Dec 20	% change since Dec 15	% change since Dec 16	% change since Dec 17	% change since Dec 18	% change since Dec 19	% change since Dec 20
Overall	1,575	+200	+168	+97	+91	+89	+11	+14.6%	+11.9%	+6.6%	+6.1%	+6.0%	+0.7%
Medical & Dental	142	+32	+28	+22	+14	+14	+2	+0.3%	+0.2%	+0.2%	+0.1%	+0.1%	+0.0%
Consultants	56	+14	+13	+11	+8	+6	+2	+0.3%	+0.3%	+0.2%	+0.2%	+0.1%	+0.0%
Registrars	41	+12	+8	+6	-0	-4	-0	+0.4%	+0.3%	+0.2%	-0.0%	-0.1%	-0.0%
SHO/ Interns	43	+8	+9	+8	+7	+12	+0	+0.2%	+0.3%	+0.2%	+0.2%	+0.4%	+0.0%
Medical/ Dental, other	2	-2	-2	-3	-1	-0	-0	-0.5%	-0.5%	-0.6%	-0.4%	-0.0%	-0.0%
Nursing & Midwifery	793	+28	+16	+4	+27	+28	+7	+0.0%	+0.0%	+0.0%	+0.0%	+0.0%	+0.0%
Nurse/ Midwife Manager	199	+43	+42	+47	+43	+29	+6	+0.3%	+0.3%	+0.3%	+0.3%	+0.2%	+0.0%
Nurse/ Midwife Specialist & AN/MP	69	+35	+31	+23	+22	+9	-2	+1.0%	+0.8%	+0.5%	+0.5%	+0.2%	-0.0%
Staff Nurse/ Staff Midwife	512	-62	-70	-79	-50	+10	-7	-0.1%	-0.1%	-0.1%	-0.1%	+0.0%	-0.0%
Nursing/ Midwifery Student	13	+12	+12	+13	+12	-21	+9	+24.8%	+24.8%	-1.0%	+24.8%	-0.6%	+2.2%
Health & Social Care Professionals	259	+83	+64	+51	+32	+32	+1	+0.5%	+0.3%	+0.2%	+0.1%	+0.1%	+0.0%
Therapy Professions	78	+25	+19	+16	+7	+5	+1	+0.5%	+0.3%	+0.3%	+0.1%	+0.1%	+0.0%
Social Care	7	-1	-1	+1	+2	+3	+0	-0.1%	-0.1%	+0.1%	+0.3%	+0.9%	+0.0%
Social Workers	64	+10	+10	+5	+4	+11	-1	+0.2%	+0.2%	+0.1%	+0.1%	+0.2%	-0.0%
Psychologists	94	+48	+36	+30	+18	+12	+0	+1.0%	+0.6%	+0.5%	+0.2%	+0.1%	+0.0%
Pharmacy	3	+0	+0	-0	-1	+1		+0.1%	+0.1%	-0.1%	-0.2%	+0.2%	+0.0%
H&SC, Other	12	+1	-0	-0	+2	+1	-0	+0.1%	-0.0%	-0.0%	+0.2%	+0.1%	-0.0%
Management & Administrative	117	+25	+24	+14	+15	+7	-1	+0.3%	+0.3%	+0.1%	+0.1%	+0.1%	-0.0%
Management (VIII & above)	3	+3	+3	+3	+3	+2	-0	-1.0%	-1.0%	-1.0%	-1.0%	+1.5%	-0.1%
Administrative/ Supervisory (V to VII)	25	+7	+7	+6	+7	+2	+3	+0.4%	+0.4%	+0.3%	+0.4%	+0.1%	+0.1%
Clerical (III & IV)	90	+15	+15	+6	+6	+3	-4	+0.2%	+0.2%	+0.1%	+0.1%	+0.0%	-0.0%
General Support	90	-17	-13	-14	-5	+4	+3	-0.2%	-0.1%	-0.1%	-0.0%	+0.1%	+0.0%
Support	85	-15	-11	-12	-4	+5	+3	-0.2%	-0.1%	-0.1%	-0.0%	+0.1%	+0.0%
Maintenance/ Technical	5	-2	-2	-2	-1	-1		-0.3%	-0.3%	-0.3%	-0.2%	-0.2%	+0.0%
Patient & Client Care	172	+49	+49	+20	+8	+4	-0	+0.4%	+0.4%	+0.1%	+0.0%	+0.0%	-0.0%
Health Care Assistants	166	+47	+46	+20	+9	+5	-0	+0.4%	+0.4%	+0.1%	+0.1%	+0.0%	-0.0%
Care, other	6	+2	+2	-1	-1	-1	-0	+0.6%	+0.5%	-0.1%	-0.2%	-0.1%	-0.0%

Source: Health Service Personnel Census

Primary Care

Jan 2021 (Dec 2015 figure: 1,143)	WTE Jan 2021	WTE change since Dec 15	WTE change since Dec 16	WTE change since Dec 17	WTE change since Dec 18	WTE change since Dec 19	WTE change since Dec 20	% change since Dec 15	% change since Dec 16	% change since Dec 17	% change since Dec 18	% change since Dec 19	% change since Dec 20
Overall	1,539	+397	+352	+232	+195	+193	+22	+34.7%	+29.6%	+17.7%	+14.5%	+14.4%	+1.4%
Medical & Dental	158	+21	+19	+7	+3	+6	-1	+0.1%	+0.1%	+0.0%	+0.0%	+0.0%	-0.0%
Consultants	3	+1	+1	+0	+0	+0	+0	+0.3%	+0.3%	+0.0%	+0.0%	+0.0%	+0.0%
Registrars	57	+11	+15	+9	+7	+2	-1	+0.3%	+0.3%	+0.2%	+0.1%	+0.0%	-0.0%
SHO/ Interns	7	+1	+0	+1	-0	+1	-0	+0.2%	+0.0%	+0.1%	-0.0%	+0.2%	-0.0%
Medical/ Dental, other	91	+7	+3	-2	-4	+3	+0	+0.1%	+0.0%	-0.0%	-0.0%	+0.0%	+0.0%
Nursing & Midwifery	445	+106	+89	+51	+49	+37	+2	+0.3%	+0.3%	+0.1%	+0.1%	+0.1%	+0.0%
Nurse/ Midwife Manager	65	+24	+21	+21	+15	+9	+4	+0.6%	+0.5%	+0.5%	+0.3%	+0.2%	+0.1%
Nurse/ Midwife Specialist & AN/MP	7	+3	+4	+3	+0	+2	-1	+1.1%	+1.2%	+0.8%	+0.1%	+0.6%	-0.1%
Staff Nurse/ Staff Midwife	141	+63	+50	+21	+27	+22	+2	+0.8%	+0.5%	+0.2%	+0.2%	+0.2%	+0.0%
Public Health Nurse	218	+7	+8	+8	+6	+7	-4	+0.0%	+0.0%	+0.0%	+0.0%	+0.0%	-0.0%
Nursing/ Midwifery Student	15	+8	+7	-2	+1	-2	+0	+1.1%	+0.9%	-0.1%	+0.1%	-0.1%	+0.0%
Health & Social Care Professionals	349	+65	+56	+24	+20	+20	+0	+0.2%	+0.2%	+0.1%	+0.1%	+0.1%	+0.0%
Therapy Professions	239	+46	+37	+6	+15	+17	+1	+0.2%	+0.2%	+0.0%	+0.1%	+0.1%	+0.0%
Health Science/ Diagnostics	11	-11	+2	+1	-0	+0	-1	-0.5%	+0.2%	+0.1%	-0.0%	+0.0%	-0.1%
Social Care	5		-1	-1	-3	-3		+0.0%	-0.1%	-0.1%	-0.3%	-0.4%	+0.0%
Social Workers	28	+8	+6	+6	+3	+4	-0	+0.4%	+0.3%	+0.3%	+0.1%	+0.2%	-0.0%
Psychologists	21	+7	+8	+9	+2	+1	-1	+0.5%	+0.7%	+0.7%	+0.1%	+0.0%	-0.0%
Pharmacy	4	+1	+1	+1	+1	+1	+0	+0.1%	+0.4%	+0.1%	+0.2%	+0.3%	+0.0%
H&SC, Other	42	+14	+3	+2	+1	+1	+1	+0.5%	+0.1%	+0.1%	+0.0%	+0.0%	+0.0%
Management & Administrative	338	+79	+70	+40	+31	+28	+7	+0.3%	+0.3%	+0.1%	+0.1%	+0.1%	+0.0%
Management (VIII & above)	34	+5	+5	+0	+2	-2	-0	+0.2%	+0.2%	+0.0%	+0.1%	-0.1%	-0.0%
Administrative/ Supervisory (V to VII)	76	+30	+25	+18	+16	+8	+4	+0.6%	+0.5%	+0.3%	+0.3%	+0.1%	+0.1%
Clerical (III & IV)	227	+44	+41	+22	+13	+22	+4	+0.2%	+0.2%	+0.1%	+0.1%	+0.1%	+0.0%
General Support	18	-0	+0	-1	+1	+2	-0	-0.0%	+0.0%	-0.1%	+0.0%	+0.1%	-0.0%
Support	18	-0	+0	-1	+1	+2	-0	-0.0%	+0.0%	-0.1%	+0.0%	+0.1%	-0.0%
Patient & Client Care	231	+126	+117	+111	+91	+99	+14	+1.2%	+1.0%	+0.9%	+0.7%	+0.7%	+0.1%
Health Care Assistants	118	+117	+115	+112	+94	+100	+15	+113.3%	+37.9%	+18.0%	+4.0%	+5.8%	+0.1%
Care, other	105	+12	+5	+2	-1	-0	-1	+0.1%	+0.1%	+0.0%	-0.0%	-0.0%	-0.0%
Home Help	9	-2	-3	-3	-2	-1	-0	-0.2%	-0.3%	-0.3%	-0.2%	-0.1%	-0.0%

Source: Health Service Personnel Census

Disabilities

Jan 2021 (Dec 2015 figure: 2,151)	WTE Jan 2021	WTE change since Dec 15	WTE change since Dec 16	WTE change since Dec 17	WTE change since Dec 18	WTE change since Dec 19	WTE change since Dec 20	% change since Dec 15	% change since Dec 16	% change since Dec 17	% change since Dec 18	% change since Dec 19	% change since Dec 20
Overall	2,586	+435	+331	+287	+192	+148	+31	+20.2%	+14.7%	+12.5%	+8.0%	+6.1%	+1.2%
Medical & Dental	3	-0	-0	+1	+1	+1		-0.1%	-0.1%	+0.5%	+0.5%	+0.5%	+0.0%
Consultants	3	-0	-0	+1	+1	+1		-0.1%	-0.1%	+0.7%	+0.7%	+0.7%	+0.0%
Medical/ Dental, other	0							+0.0%	+0.0%	+0.0%	+0.0%	+0.0%	+0.0%
Nursing & Midwifery	431	-56	-48	-34	-1	+12	+4	-0.1%	-0.1%	-0.1%	-0.0%	+0.0%	+0.0%
Nurse/ Midwife Manager	91	-2	+5	+7	-1	+2	+0	-0.0%	+0.1%	+0.1%	-0.0%	+0.0%	+0.0%
Nurse/ Midwife Specialist & AN/MP	14	-2	-2	-3	-1	+1		-0.1%	-0.1%	-0.2%	-0.1%	+0.1%	+0.0%
Staff Nurse/ Staff Midwife	315	-54	-52	-40	-1	+6	+3	-0.1%	-0.1%	-0.1%	-0.0%	+0.0%	+0.0%
Nursing/ Midwifery Student	10	+2	+2	+2	+2	+3	+1	+0.3%	+0.3%	+0.3%	+0.3%	+0.5%	+0.1%
Nursing/ Midwifery other		-1	-1	-1	-1	-1		-1.0%	-1.0%	-1.0%	-1.0%	-1.0%	-1.0%
Health & Social Care Professionals	419	+54	+34	+24	+26	+15	+4	+0.1%	+0.1%	+0.1%	+0.1%	+0.0%	+0.0%
Therapy Professions	104	-5	-7	-7	+0	-4	+1	-0.0%	-0.1%	-0.1%	+0.0%	-0.0%	+0.0%
Social Care	242	+53	+42	+33	+26	+16	+4	+0.3%	+0.2%	+0.2%	+0.1%	+0.1%	+0.0%
Social Workers	26	+6	+1	+1	-1	-1	-1	+0.3%	+0.0%	+0.0%	-0.1%	-0.0%	-0.0%
Psychologists	36	+0	-2	-3	-2	+1	+0	+0.0%	-0.0%	-0.1%	-0.1%	+0.0%	+0.0%
H&SC, Other	10	+0	+0	+1	+3	+2	+0	+0.0%	+0.0%	+0.1%	+0.4%	+0.2%	+0.0%
Management & Administrative	169	+40	+37	+32	+17	+9	-0	+0.3%	+0.3%	+0.2%	+0.1%	+0.1%	-0.0%
Management (VIII & above)	22	+4	+3	+3	+4	+0	-0	+0.2%	+0.2%	+0.2%	+0.2%	+0.0%	-0.0%
Administrative/ Supervisory (V to VII)	56	+16	+17	+16	+7	+2	-2	+0.4%	+0.4%	+0.4%	+0.1%	+0.0%	-0.0%
Clerical (III & IV)	91	+21	+17	+13	+6	+7	+2	+0.3%	+0.2%	+0.2%	+0.1%	+0.1%	+0.0%
General Support	150	-34	-20	-4	-3	-1	-1	-0.2%	-0.1%	-0.0%	-0.0%	-0.0%	-0.0%
Support	138	-29	-15	+0	-4	-3	-1	-0.2%	-0.1%	+0.0%	-0.0%	-0.0%	-0.0%
Maintenance/ Technical	12	-4	-4	-5	+1	+2	+0	-0.3%	-0.3%	-0.3%	+0.1%	+0.2%	+0.0%
Patient & Client Care	1,414	+431	+328	+269	+153	+112	+24	+0.4%	+0.3%	+0.2%	+0.1%	+0.1%	+0.0%
Health Care Assistants	1,085	+355	+263	+219	+111	+90	+27	+0.5%	+0.3%	+0.3%	+0.1%	+0.1%	+0.0%
Care, other	329	+76	+65	+50	+41	+22	-3	+0.3%	+0.2%	+0.2%	+0.1%	+0.1%	-0.0%

Source: Health Service Personnel Census

Older People

Jan 2021 (Dec 2015 figure: 2,792)	WTE Jan 2021	WTE change since Dec 15	WTE change since Dec 16	WTE change since Dec 17	WTE change since Dec 18	WTE change since Dec 19	WTE change since Dec 20	% change since Dec 15	% change since Dec 16	% change since Dec 17	% change since Dec 18	% change since Dec 19	% change since Dec 20
Overall	2,918	+125	+129	+19	+2	-2	-13	+4.5%	+4.6%	+0.6%	+0.1%	-0.1%	-0.4%
Medical & Dental	27	+3	+3	+1	+1	+2	-1	+0.1%	+0.1%	+0.0%	+0.1%	+0.1%	-0.0%
Consultants	1	-1	-1	-1				-0.5%	-0.5%	-0.5%	+0.0%	+0.0%	+0.0%
Registrars	3	+1	+2	+1	+1			+0.5%	+2.0%	+0.5%	+0.5%	+0.0%	+0.0%
SHO/ Interns	1	+1	+1	+1				-1.0%	-1.0%	-1.0%	+0.0%	+0.0%	+0.0%
Medical/ Dental, other	22	+2	+1	-0	+0	+2	-1	+0.1%	+0.0%	-0.0%	+0.0%	+0.1%	-0.0%
Nursing & Midwifery	667	+30	+31	+15	+11	+24	+5	+0.0%	+0.0%	+0.0%	+0.0%	+0.0%	+0.0%
Nurse/ Midwife Manager	125	+18	+22	+20	+35	+7	+3	+0.2%	+0.2%	+0.2%	+0.4%	+0.1%	+0.0%
Nurse/ Midwife Specialist & AN/MP	6	+4	+3	+4	+2	+2	-0	+2.0%	+1.1%	+2.2%	+0.5%	+0.7%	-0.1%
Staff Nurse/ Staff Midwife	531	+9	+6	-7	-26	+16	+3	+0.0%	+0.0%	-0.0%	-0.0%	+0.0%	+0.0%
Public Health Nurse	6	-0	-0	-1	-0	+1		-0.1%	-0.0%	-0.1%	-0.0%	+0.2%	+0.0%
Nursing/ Midwifery Student						-2		-1.0%	-1.0%	-1.0%	-1.0%	-1.0%	-1.0%
Health & Social Care Professionals	62	+15	+9	+7	+4	+2	+2	+0.3%	+0.2%	+0.1%	+0.1%	+0.0%	+0.0%
Therapy Professions	44	+11	+5	+5	+1	-0	+3	+0.3%	+0.1%	+0.1%	+0.0%	-0.0%	+0.1%
Health Science/ Diagnostics	1	-0			+0	+0		-0.2%	+0.0%	+0.0%	+0.2%	+0.1%	+0.0%
Social Care	2							+0.0%	+0.0%	+0.0%	+0.0%	+0.0%	+0.0%
Social Workers	11	+3	+3	+1	+2	+1	-1	+0.4%	+0.3%	+0.1%	+0.2%	+0.1%	-0.1%
Pharmacy	4	+1	+1	+0	+0	+1	-0	+0.4%	+0.5%	+0.1%	+0.1%	+0.4%	-0.0%
Management & Administrative	170	+63	+56	+48	+17	+12	+4	+0.6%	+0.5%	+0.4%	+0.1%	+0.1%	+0.0%
Management (VIII & above)	15	+9	+7	+4	+5	+3	+1	+1.6%	+0.9%	+0.3%	+0.4%	+0.2%	+0.1%
Administrative/ Supervisory (V to VII)	20	+9	+8	+9	+9	+2	-1	+0.8%	+0.7%	+0.9%	+0.9%	+0.1%	-0.0%
Clerical (III & IV)	135	+45	+40	+35	+3	+6	+4	+0.5%	+0.4%	+0.4%	+0.0%	+0.1%	+0.0%
General Support	121	-15	-5	+2	+9	+14	+1	-0.1%	-0.0%	+0.0%	+0.1%	+0.1%	+0.0%
Support	114	-14	-3	+3	+9	+13	-0	-0.1%	-0.0%	+0.0%	+0.1%	+0.1%	-0.0%
Maintenance/ Technical	7	-2	-2	-1	+0	+1	+1	-0.2%	-0.2%	-0.1%	+0.0%	+0.2%	+0.1%
Patient & Client Care	1,871	+30	+36	-55	-41	-55	-23	+0.0%	+0.0%	-0.0%	-0.0%	-0.0%	-0.0%
Health Care Assistants	796	+113	+60	+22	+13	+14	+2	+0.2%	+0.1%	+0.0%	+0.0%	+0.0%	+0.0%
Care, other	35	+3	+6	+4	+5	+4	+1	+0.1%	+0.2%	+0.1%	+0.2%	+0.1%	+0.0%
Home Help	1,040	-86	-31	-81	-58	-73	-26	-0.1%	-0.0%	-0.1%	-0.1%	-0.1%	-0.0%

Source: Health Service Personnel Census