

CHO 4 Employment Report: November 2020

Employment by Staff Group

Nov 2020 (Dec 2019 figure: 8,189)	WTE Oct 2020	WTE Nov 2020	WTE change since Oct 20	% change since Oct 20	WTE change since Dec 19	WTE change since Nov 19
Overall	8,468	8,504	+36	+0.4%	+315	+307
Consultants	61	60	-1	-2.2%	+5	+6
Registrars	102	101	-1	-1.4%	-3	-3
SHO/ Interns	50	51	+2	+3.0%	+13	+12
Medical/ Dental, other	128	116	-11	-8.7%	+5	+4
Medical & Dental	340	328	-12	-3.6%	+20	+19
Nurse/ Midwife Manager	470	460	-10	-2.1%	+27	+24
Nurse/ Midwife Specialist & AN/MP	94	98	+4	+4.6%	+17	+19
Staff Nurse/ Staff Midwife	1,456	1,469	+13	+0.9%	+23	+46
Public Health Nurse	220	232	+12	+5.4%	+16	+20
<i>Pre-registration Nurse/ Midwife Intern</i>				-100.0%	-9	
<i>Pre-registration Nurse Intern (COVID-19)</i>	28	22	-7	-23.7%	+22	-7
<i>Post-registration Nurse/ Midwife Student</i>	14	15	+1	+9.6%	-4	+1
<i>Nursing/ Midwifery awaiting registration</i>	3	3	+0	+9.1%	-29	+0
Nursing/ Midwifery Student	44	39	-5	-11.6%	-20	-28
Nursing/ Midwifery other				-100.0%	-1	-1
Nursing & Midwifery	2,284	2,298	+14	+0.6%	+63	+81
Therapy Professions	460	461	+0	+0.1%	+12	+11
Health Science/ Diagnostics	13	13	+1	+5.1%	+1	+2
Social Care	253	257	+5	+1.8%	+17	+17
Social Workers	131	131	+1	+0.5%	+17	+18
Psychologists	151	150	-1	-0.5%	+12	+14
Pharmacy	10	10	-0	-2.1%	+2	+2
H&SC, Other	65	65	-1	-1.0%	+4	+5
Health & Social Care Professionals	1,082	1,087	+5	+0.5%	+66	+70
Management (VIII & above)	77	75	-2	-2.2%	+2	+3
Administrative/ Supervisory (V to VII)	175	175	-0	-0.0%	+14	+12
Clerical (III & IV)	533	540	+8	+1.5%	+36	+32
Management & Administrative	784	790	+6	+0.8%	+52	+48
Support	350	358	+8	+2.2%	+21	+22
Maintenance/ Technical	22	24	+2	+9.0%	+2	+2
General Support	372	382	+10	+2.6%	+23	+24
Health Care Assistants	2,033	2,075	+42	+2.1%	+121	+119
Care, other	485	485	-1	-0.1%	+35	+35
Home Help	1,087	1,059	-28	-2.6%	-65	-89
Patient & Client Care	3,606	3,619	+14	+0.4%	+91	+66

CHO 4 Employment Report: November 2020

Community Health & Wellbeing

Nov 2020 (figure:)	WTE Oct 2020	WTE Nov 2020	WTE change since Oct 20	% change since Oct 20	WTE change since	WTE change since
Total Community Health & Wellbeing	35	35	+0	+0.2%	+35	+35
<i>Director Nursing/Midwifery, Assistant</i>	1	1			+1	
Nurse/ Midwife Manager	1	1			+1	+1
Nursing & Midwifery	1	1			+1	+1
Therapy Professions	5	4	-1	-13.1%	+4	+4
Health & Social Care Professionals	5	4	-1	-13.1%	+4	+4
Management (VIII & above)	1	1	+0	+2.0%	+1	+1
Administrative/ Supervisory (V to VII)	5	5			+5	+5
Clerical (III & IV)	6	7	+1	+8.1%	+7	+7
Management & Administrative	12	13	+1	+4.3%	+13	+13
Care, other	16	17	+0	+1.0%	+17	+17
Patient & Client Care	16	17	+0	+1.0%	+17	+17

Mental Health

Nov 2020 (Dec 2019 figure: 1,485)	WTE Oct 2020	WTE Nov 2020	WTE change since Oct 20	% change since Oct 20	WTE change since Dec 19	WTE change since Nov 19
Total Mental Health	1,559	1,562	+3	+0.2%	+77	+90
Consultants	55	54	-1	-2.5%	+4	+5
Registrars	43	42	-1	-3.0%	-4	-4
SHO/ Interns	41	43	+2	+4.5%	+12	+12
Medical/ Dental, other	7	2	-5	-72.1%		+0
Medical & Dental	146	140	-6	-4.1%	+12	+12
Nurse/ Midwife Manager	193	190	-3	-1.4%	+20	+24
Nurse/ Midwife Specialist & AN/MP	67	70	+3	+4.6%	+11	+13
Staff Nurse/ Staff Midwife	509	521	+12	+2.4%	+19	+31
<i>Pre-registration Nurse/ Midwife Intern</i>				-100.0%	-3	
<i>Pre-registration Nurse Intern (COVID-19)</i>	11	5	-7	-59.7%	+5	-7
<i>Post-registration Nurse/ Midwife Student</i>				-100.0%	-1	
<i>Nursing/ Midwifery awaiting registration</i>	1	1			-29	
Nursing/ Midwifery Student	12	6	-7	-54.8%	-28	-35
Nursing & Midwifery	781	787	+6	+0.7%	+21	+33
Therapy Professions	78	79	+1	+1.4%	+5	+3
Social Care	7	7	+0	+1.6%	+3	+3
Social Workers	66	65	-1	-1.4%	+12	+14
Psychologists	94	92	-1	-1.6%	+10	+10
Pharmacy	2	2	-0	-1.9%	-0	-0
H&SC, Other	13	13	-0	-1.9%	+2	+3
Health & Social Care Professionals	259	257	-1	-0.6%	+31	+33
Management (VIII & above)	2	3	+1	+57.1%	+2	+2
Administrative/ Supervisory (V to VII)	23	22	-0	-0.8%	-0	+0
Clerical (III & IV)	91	93	+3	+2.8%	+6	+4
Management & Administrative	115	119	+3	+3.0%	+8	+6
Support	81	82	+0	+0.6%	+2	+3
Maintenance/ Technical	5	5	-0	-0.2%	-1	-1
General Support	87	87	+0	+0.5%	+1	+2
Health Care Assistants	165	166	+0	+0.2%	+5	+4
Care, other	6	6	+0	+5.7%	-1	-1
Patient & Client Care	171	172	+1	+0.4%	+4	+3

Primary Care

Nov 2020 (Dec 2019 figure: 1,346)	WTE Oct 2020	WTE Nov 2020	WTE change since Oct 20	% change since Oct 20	WTE change since Dec 19	WTE change since Nov 19
Total Primary Care	1,404	1,458	+54	+3.8%	+112	+113
Consultants	3	3	+0	+0.0%	-0	
Registrars	56	56	-0	-0.2%	+1	+1
SHO/ Interns	8	7	-0	-4.7%	+1	+0
Medical/ Dental, other	90	91	+1	+0.9%	+3	+2
Medical & Dental	156	157	+0	+0.2%	+5	+4
Nurse/ Midwife Manager	64	57	-6	-9.7%	+1	-1
Nurse/ Midwife Specialist & AN/MP	6	7	+1	+18.8%	+2	+2
Staff Nurse/ Staff Midwife	135	130	-5	-3.8%	+11	+13
Public Health Nurse	214	226	+12	+5.7%	+16	+18
<i>Post-registration Nurse/ Midwife Student</i>	14	15	+1	+9.6%	-2	+1
Nursing/ Midwifery Student	14	15	+1	+9.6%	-2	-2
Nursing & Midwifery	432	436	+3	+0.8%	+28	+30
Therapy Professions	229	232	+3	+1.3%	+10	+12
Health Science/ Diagnostics	11	12	+1	+5.7%	+1	+1
Social Care	5	5	-0	-0.2%	-3	-2
Social Workers	27	28	+0	+1.1%	+3	+3
Psychologists	21	21	+0	+2.1%	+1	+2
Pharmacy	4	4	-0	-2.6%	+1	+1
H&SC, Other	42	42	-0	-1.1%	+1	+1
Health & Social Care Professionals	340	344	+4	+1.1%	+15	+19
Management (VIII & above)	37	35	-1	-3.2%	-1	-0
Administrative/ Supervisory (V to VII)	72	71	-1	-2.1%	+3	+3
Clerical (III & IV)	216	220	+4	+2.0%	+16	+12
Management & Administrative	325	327	+2	+0.5%	+17	+15
Support	16	18	+2	+12.7%	+3	+2
General Support	16	18	+2	+12.7%	+3	+2
Health Care Assistants	23	63	+40	+178.0%	+46	+45
Care, other	103	105	+2	+2.2%	+0	+0
Home Help	9	9			-1	-1
Patient & Client Care	134	177	+43	+31.8%	+45	+44

Social Care

Nov 2020 (Dec 2019 figure: 5,358)	WTE Oct 2020	WTE Nov 2020	WTE change since Oct 20	% change since Oct 20	WTE change since Dec 19	WTE change since Nov 19
Total Social Care	5,469	5,449	-21	-0.4%	+91	+69
Consultants	3	4	+0	+0.9%	+1	+1
Registrars	3	3				
SHO/ Interns	1	1				
Medical/ Dental, other	30	23	-7	-22.5%	+2	+2
Medical & Dental	37	31	-7	-18.0%	+3	+3
Nurse/ Midwife Manager	212	211	-1	-0.4%	+5	+1
Nurse/ Midwife Specialist & AN/MP	21	21	+0	+0.6%	+4	+4
Staff Nurse/ Staff Midwife	812	818	+6	+0.7%	-6	+2
Public Health Nurse	6	6	-0	-3.1%	+1	+2
<i>Pre-registration Nurse/ Midwife Intern</i>				-100.0%	-6	
<i>Pre-registration Nurse Intern (COVID-19)</i>	17	17			+17	
<i>Post-registration Nurse/ Midwife Student</i>				-100.0%	-1	
<i>Nursing/ Midwifery awaiting registration</i>	2	2	+0	+14.3%		+0
Nursing/ Midwifery Student	19	19	+0	+1.3%	+10	+10
Nursing/ Midwifery other				-100.0%	-1	-1
Nursing & Midwifery	1,069	1,075	+5	+0.5%	+13	+17
Therapy Professions	149	146	-3	-2.0%	-7	-8
Health Science/ Diagnostics	1	1			+0	+1
Social Care	241	245	+5	+1.9%	+17	+16
Social Workers	38	39	+1	+3.3%	+2	+1
Psychologists	36	36	+0	+0.9%	+1	+2
Pharmacy	4	4	-0	-1.8%	+1	+1
H&SC, Other	10	10	+0	+0.8%	+2	+2
Health & Social Care Professionals	478	481	+3	+0.7%	+16	+14
Management (VIII & above)	37	35	-2	-4.3%	+0	+1
Administrative/ Supervisory (V to VII)	75	76	+2	+2.1%	+6	+4
Clerical (III & IV)	219	220	+0	+0.2%	+7	+9
Management & Administrative	331	332	+0	+0.1%	+14	+14
Support	252	258	+5	+2.0%	+16	+17
Maintenance/ Technical	17	19	+2	+11.7%	+3	+3
General Support	270	277	+7	+2.6%	+19	+20
Health Care Assistants	1,845	1,847	+1	+0.1%	+70	+70
Care, other	360	357	-3	-0.9%	+19	+20
Home Help	1,078	1,050	-28	-2.6%	-63	-88
Patient & Client Care	3,284	3,254	-30	-0.9%	+26	+1

CHO 4 Employment Report: November 2020

Disabilities

Nov 2020 (Dec 2019 figure: 2,439)	WTE Oct 2020	WTE Nov 2020	WTE change since Oct 20	% change since Oct 20	WTE change since Dec 19	WTE change since Nov 19
Total Disabilities	2,547	2,546	-0	-0.0%	+108	+109
Consultants	2	3	+0	+0.4%	+1	+1
Medical/ Dental, other	1	0	-1	-67.0%		
Medical & Dental	3	3	-1	-18.9%	+1	+1
Nurse/ Midwife Manager	90	90	+0	+0.1%	+1	-1
Nurse/ Midwife Specialist & AN/MP	14	14			+1	+1
Staff Nurse/ Staff Midwife	296	300	+5	+1.6%	-9	-7
<i>Pre-registration Nurse/ Midwife Intern</i>				-100.0%	-6	
<i>Pre-registration Nurse Intern (COVID-19)</i>	17	17			+17	
<i>Nursing/ Midwifery awaiting registration</i>	2	2	+0	+14.3%	+1	+0
Nursing/ Midwifery Student	19	19	+0	+1.3%	+12	+12
Nursing/ Midwifery other				-100.0%	-1	-1
Nursing & Midwifery	419	424	+5	+1.2%	+5	+5
Therapy Professions	103	103	-0	-0.1%	-5	-6
Social Care	239	244	+5	+1.9%	+17	+16
Social Workers	27	27	+0	+0.2%	-0	-1
Psychologists	36	36	+0	+0.9%	+1	+2
H&SC, Other	10	10	+0	+0.8%	+2	+2
Health & Social Care Professionals	414	419	+5	+1.2%	+15	+12
Management (VIII & above)	23	21	-1	-6.3%	-1	-1
Administrative/ Supervisory (V to VII)	59	58	-0	-0.8%	+5	+4
Clerical (III & IV)	91	90	-1	-1.0%	+6	+5
Management & Administrative	173	170	-3	-1.6%	+10	+9
Support	142	143	+2	+1.2%	+2	+4
Maintenance/ Technical	11	13	+2	+18.0%	+3	+3
General Support	153	157	+4	+2.4%	+5	+6
Health Care Assistants	1,060	1,053	-7	-0.7%	+58	+60
Care, other	325	321	-4	-1.1%	+14	+15
Patient & Client Care	1,385	1,374	-11	-0.8%	+72	+76

Older People

Nov 2020 (Dec 2019 figure: 2,919)	WTE Oct 2020	WTE Nov 2020	WTE change since Oct 20	% change since Oct 20	WTE change since Dec 19	WTE change since Nov 19
Total Older People	2,923	2,902	-20	-0.7%	-17	-39
Consultants	1	1	+0	+2.0%		
Registrars	3	3				
SHO/ Interns	1	1				
Medical/ Dental, other	29	23	-6	-21.0%	+2	+2
Medical & Dental	34	28	-6	-17.9%	+2	+2
Nurse/ Midwife Manager	122	121	-1	-0.8%	+4	+1
Nurse/ Midwife Specialist & AN/MP	6	6	+0	+1.9%	+3	+3
Staff Nurse/ Staff Midwife	516	518	+1	+0.3%	+2	+9
Public Health Nurse	6	6	-0	-3.1%	+1	+2
Post-registration Nurse/ Midwife Student				-100.0%	-1	
Nursing/ Midwifery awaiting registration				-100.0%	-1	
Nursing/ Midwifery Student				-100.0%	-2	-2
Nursing & Midwifery	651	651	+0	+0.0%	+8	+13
Health & Social Care Professionals	64	62	-2	-2.8%	+1	+2
Management (VIII & above)	14	14	-0	-1.1%	+1	+1
Administrative/ Supervisory (V to VII)	16	18	+2	+13.0%	+1	+0
Clerical (III & IV)	129	130	+1	+1.0%	+2	+4
Management & Administrative	159	162	+3	+2.0%	+4	+5
Support	111	114	+3	+3.1%	+14	+13
Maintenance/ Technical	6	6				
General Support	117	120	+3	+2.9%	+14	+13
Health Care Assistants	786	794	+8	+1.0%	+13	+9
Care, other	36	36	+0	+0.6%	+5	+4
Home Help	1,078	1,050	-28	-2.6%	-63	-88
Patient & Client Care	1,899	1,880	-19	-1.0%	-46	-74

CHO 4 Employment by Administration (HSE / S38): November 2020

Nov 2020 (Dec 2019 figure: 8,189)	WTE Oct 2020	WTE Nov 2020	WTE change since Oct 20	% change since Oct 20	WTE change since Dec 19	WTE change since Nov 19
Overall	8,468	8,504	+36	+0.4%	+315	+307
HSE	6,110	6,154	+43	+0.7%	+214	+208
Section 38 Voluntary Agencies	2,357	2,350	-7	-0.3%	+101	+99

HSE

Nov 2020 (Dec 2019 figure: 5,940)	WTE Oct 2020	WTE Nov 2020	WTE change since Oct 20	% change since Oct 20	WTE change since Dec 19	WTE change since Nov 19
Overall	6,110	6,154	+43	+0.7%	+214	+208
Consultants	61	60	-1	-0.0%	+5	+6
Registrars	96	95	-1	-0.0%	-4	-4
SHO/ Interns	42	44	+2	+0.0%	+12	+12
Medical/ Dental, other	112	104	-8	-0.1%	+5	+6
Medical & Dental	311	302	-9	-3.0%	+19	+19
Nurse/ Midwife Manager	394	385	-9	-0.0%	+27	+24
Nurse/ Midwife Specialist & AN/MP	80	84	+4	+0.1%	+16	+18
Staff Nurse/ Staff Midwife	1,187	1,195	+8	+0.0%	+34	+56
Public Health Nurse	220	232	+12	+0.1%	+16	+20
<i>Pre-registration Nurse/ Midwife Intern</i>				-1.0%	-1	-10
<i>Pre-registration Nurse Intern (COVID-19)</i>	11	5	-7	-0.6%	+5	+5
<i>Post-registration Nurse/ Midwife Student</i>	14	15	+1	+0.1%	+1	-4
<i>Nursing/ Midwifery awaiting registration</i>	3	3	+0	+0.1%	+3	-29
Nursing/ Midwifery Student	27	22	-5	-0.2%	-31	-39
Nursing & Midwifery	1,909	1,919	+10	+0.5%	+61	+80
Therapy Professions	375	375	+1	+0.0%	+16	+16
Health Science/ Diagnostics	11	11	+1	+0.1%	+1	+2
Social Care	37	41	+4	+0.1%	+2	+3
Social Workers	104	105	+1	+0.0%	+17	+19
Psychologists	118	117	-1	-0.0%	+10	+12
Pharmacy	10	10	-0	-0.0%	+2	+2
H&SC, Other	59	59	-1	-0.0%	+2	+4
Health & Social Care Professionals	714	718	+4	+0.6%	+51	+58
Management (VIII & above)	60	60	-1	-0.0%	+2	+3
Administrative/ Supervisory (V to VII)	132	132	-1	-0.0%	+8	+8
Clerical (III & IV)	437	446	+10	+0.0%	+31	+29
Management & Administrative	629	637	+8	+1.3%	+41	+40
Support	214	218	+4	+0.0%	+12	+12
Maintenance/ Technical	12	12	-0	-0.0%	-1	-1
General Support	227	230	+4	+1.7%	+11	+11
Health Care Assistants	1,102	1,154	+51	+0.0%	+75	+70
Care, other	131	134	+3	+0.0%	+21	+19
Home Help	1,087	1,059	-28	-0.0%	-65	-89
Patient & Client Care	2,320	2,347	+27	+1.1%	+31	-1

Section 38 Voluntary Agencies

Nov 2020 (Dec 2019 figure: 2,249)	WTE Oct 2020	WTE Nov 2020	WTE change since Oct 20	% change since Oct 20	WTE change since Dec 19	WTE change since Nov 19
Overall	2,357	2,350	-7	-0.3%	+101	+99
Registrars	6	6		+0.0%	+1	+1
SHO/ Interns	8	7	-0	-0.0%	+1	+0
Medical/ Dental, other	15	13	-3	-0.2%	-0	-2
Medical & Dental	29	26	-3	-10.8%	+2	-0
Nurse/ Midwife Manager	75	75	-0	-0.0%	+1	-0
Nurse/ Midwife Specialist & AN/MP	13	13		+0.0%	+1	+1
Staff Nurse/ Staff Midwife	269	274	+5	+0.0%	-10	-10
<i>Pre-registration Nurse/ Midwife Intern</i>				-1.0%	-8	-6
<i>Pre-registration Nurse Intern (COVID-19)</i>	17	17		+0.0%	+17	+17
Nursing/ Midwifery Student	17	17		+0.0%	+11	+11
Nursing/ Midwifery other				-1.0%	-1	-1
Nursing & Midwifery	375	379	+4	+1.2%	+2	+1
Therapy Professions	85	85	-0	-0.0%	-3	-5
Health Science/ Diagnostics	2	2		+0.0%		
Social Care	216	217	+0	+0.0%	+15	+14
Social Workers	27	27	+0	+0.0%	-0	-1
Psychologists	32	32	+0	+0.0%	+2	+2
H&SC, Other	6	6		+0.0%	+2	+2
Health & Social Care Professionals	368	369	+1	+0.2%	+15	+11
Management (VIII & above)	16	15	-1	-0.1%	+0	+0
Administrative/ Supervisory (V to VII)	42	43	+1	+0.0%	+5	+4
Clerical (III & IV)	96	94	-2	-0.0%	+5	+3
Management & Administrative	155	152	-2	-1.3%	+10	+8
Support	136	139	+4	+0.0%	+9	+10
Maintenance/ Technical	10	12	+2	+0.2%	+3	+3
General Support	146	151	+6	+3.9%	+12	+12
Health Care Assistants	931	922	-9	-0.0%	+46	+50
Care, other	354	351	-4	-0.0%	+14	+17
Patient & Client Care	1,285	1,272	-13	-1.0%	+60	+66

CHO 4 Employment by S38 Agency: November 2020

Bros. of Charity, Southern

Nov 2020 (Dec 2019 figure: 740)	WTE Oct 2020	WTE Nov 2020	WTE change since Oct 20	% change since Oct 20	WTE change since Dec 19	WTE change since Nov 19
Overall	777	770	-7	-0.9%	+30	+28
Nurse/ Midwife Manager	15	15	-0	-0.0%	-0	-1
Nurse/ Midwife Specialist & AN/MP	3	3		+0.0%		
Staff Nurse/ Staff Midwife	54	56	+2	+0.0%	-3	-4
Nursing & Midwifery	72	74	+2	+3.0%	-3	-5
Therapy Professions	45	45	-0	-0.0%	-3	-4
Social Care	127	127	+1	+0.0%	+3	+2
Social Workers	17	17	+0	+0.0%	-0	-1
Psychologists	21	21	+0	+0.0%	+1	+1
Health & Social Care Professionals	209	210	+1	+0.4%	+1	-2
Management (VIII & above)	8	7	-1	-0.1%	-1	-1
Administrative/ Supervisory (V to VII)	10	11	+1	+0.1%	+1	+1
Clerical (III & IV)	35	33	-1	-0.0%	+0	-1
Management & Administrative	53	51	-2	-3.2%	+1	-1
Support	12	14	+1	+0.1%	-1	-0
Maintenance/ Technical	2	4	+2	+1.3%	+2	+2
General Support	14	17	+3	+23.9%	+1	+2
Health Care Assistants	228	222	-7	-0.0%	+15	+19
Care, other	201	197	-5	-0.0%	+15	+15
Patient & Client Care	430	418	-11	-2.6%	+30	+34

Cope Foundation

Nov 2020 (Dec 2019 figure: 1,091)	WTE Oct 2020	WTE Nov 2020	WTE change since Oct 20	% change since Oct 20	WTE change since Dec 19	WTE change since Nov 19
Overall	1,150	1,146	-3	-0.3%	+56	+54
Nurse/ Midwife Manager	42	42		+0.0%	+1	+1
Nurse/ Midwife Specialist & AN/MP	11	11		+0.0%	+1	+1
Staff Nurse/ Staff Midwife	163	163		+0.0%	-6	-6
Pre-registration Nurse/ Midwife Intern				-1.0%	-8	-6
Pre-registration Nurse Intern (COVID-19)	17	17		+0.0%	+17	+17
Nursing/ Midwifery Student	17	17		+0.0%	+11	+11
Nursing/ Midwifery other				-1.0%	-1	-1
Nursing & Midwifery	233	233			+7	+7
Therapy Professions	37	37		+0.0%	-1	-1
Social Care	43	43		+0.0%	+11	+11
Social Workers	9	9		+0.0%		
Psychologists	11	11		+0.0%	+1	+1
H&SC, Other	3	3		+0.0%		
Health & Social Care Professionals	102	102			+12	+12
Management (VIII & above)	7	7		+0.0%	+1	+1
Administrative/ Supervisory (V to VII)	23	23		+0.0%	+4	+4
Clerical (III & IV)	28	28		+0.0%	+5	+5
Management & Administrative	58	58			+9	+9
Support	83	83		+0.0%	+6	+6
Maintenance/ Technical	7	7		+0.0%	+1	+1
General Support	90	90			+7	+7
Health Care Assistants	589	585	-3	-0.0%	+22	+21
Care, other	79	79		+0.0%	-1	-1
Patient & Client Care	667	664	-3	-0.5%	+21	+20

Cork Dental Hospital

Nov 2020 (Dec 2019 figure: 103)	WTE Oct 2020	WTE Nov 2020	WTE change since Oct 20	% change since Oct 20	WTE change since Dec 19	WTE change since Nov 19
Overall	112	110	-2	-1.8%	+7	+5
Registrars	6	6		+0.0%	+1	+1
SHO/ Interns	8	7	-0	-0.0%	+1	+0
Medical/ Dental, other	15	13	-3	-0.2%	-0	-2
Medical & Dental	29	26	-3	-10.8%	+2	-0
Nurse/ Midwife Manager	3	3	-1	-0.2%	+0	+0
Staff Nurse/ Staff Midwife	6	6	-0	-0.0%	-1	-0
Nursing & Midwifery	9	9	-1	-7.1%	-1	+0
Health Science/ Diagnostics	2	2		+0.0%		
H&SC, Other	3	3		+0.0%	+2	+2
Health & Social Care Professionals	5	5			+2	+2
Management (VIII & above)	1	1		+0.0%		
Administrative/ Supervisory (V to VII)	2	2		+0.0%		
Clerical (III & IV)	24	24	-0	-0.0%	+1	-0
Management & Administrative	27	27	-0	-1.5%	+1	-0
Support	12	14	+2	+0.2%	+3	+2
General Support	12	14	+2	+17.7%	+3	+2
Care, other	30	30	+0	+0.0%	+1	+1
Patient & Client Care	30	30	+0	+0.3%	+1	+1

St. John of God, Kerry

Nov 2020 (Dec 2019 figure: 315)	WTE Oct 2020	WTE Nov 2020	WTE change since Oct 20	% change since Oct 20	WTE change since Dec 19	WTE change since Nov 19
Overall	319	323	+5	+1.4%	+8	+12
Nurse/ Midwife Manager	15	15	+0	+0.0%	-0	-0
Staff Nurse/ Staff Midwife	46	49	+3	+0.1%	-0	+0
Nursing & Midwifery	61	64	+3	+4.7%	-1	+0
Therapy Professions	4	4	+0	+0.0%	+0	+0
Social Care	47	47	-0	-0.0%	+1	+1
Social Workers	1	1		+0.0%		
Psychologists	1	1		+0.0%	-1	-1
Health & Social Care Professionals	52	52	-0	-0.1%	+0	-0
Management (VIII & above)	1	1		+0.0%		
Administrative/ Supervisory (V to VII)	7	7	+0	+0.0%	-0	-0
Clerical (III & IV)	9	9	+0	+0.0%	-1	-0
Management & Administrative	17	17	+0	+0.2%	-1	-1
Support	28	29	+0	+0.0%	+1	+1
Maintenance/ Technical	2	2		+0.0%		
General Support	30	31	+0	+1.0%	+1	+1
Health Care Assistants	114	115	+0	+0.0%	+9	+10
Care, other	44	45	+1	+0.0%	-1	+2
Patient & Client Care	158	160	+1	+0.9%	+8	+11

CHO 4 Employment by Grade Group & Staff Category: November 2020

Nov 2020 (Dec 2019 figure: 8,189)	WTE Oct 2020	WTE Nov 2020	WTE change since Oct 20	% change since Oct 20	WTE change since Dec 19	WTE change since Nov 19
Overall	8,468	8,504	+36	+0.4%	+315	+307
Consultant Dentistry	2	2				
Consultant Medicine	1	1	+0	+0.9%	-0	
Consultant Paediatrics	1	1	+0	+2.0%		
Consultant Psychiatry	57	56	-1	-2.4%	+5	+6
Consultants	61	60	-1	-2.2%	+5	+6
Registrar	79	79	-0	-0.2%	-6	-6
Senior Registrar	15	14	-1	-8.3%	+2	+2
Specialist Registrar	8	8			+1	+1
Registrars	102	101	-1	-1.4%	-3	-3
Interns	3	2	-1	-20.6%	-1	-1
Senior House Officer	47	49	+2	+4.3%	+14	+13
SHO/ Interns	50	51	+2	+3.0%	+13	+12
Dentists	61	60	-1	-1.6%	-2	-3
Other Medical	67	57	-10	-15.2%	+8	+8
Medical/ Dental, other	128	116	-11	-8.7%	+5	+4
Medical & Dental	340	328	-12	-3.6%	+17	+19
Clinical Nurse/ Midwife Manager	369	361	-7	-2.0%	+24	+24
Director Nursing/Midwifery, Assistant	63	60	-3	-4.7%	-0	-2
Director of Nursing/Midwifery	38	38	+1	+1.9%	+3	+2
Nurse/ Midwife Manager	470	460	-10	-2.1%	+27	+24
Advanced Nurse/ Midwife Practitioner	8	7	-1	-10.7%	+0	+0
Clinical Nurse/ Midwife Specialist	86	91	+5	+5.9%	+17	+19
Nurse/ Midwife Specialist & AN/MP	94	98	+4	+4.6%	+17	+19
Staff Midwives	7	5	-3	-35.4%	-3	-3
Staff Nurse [Intellectual Disability]	81	82	+1	+1.1%	-5	-6
Staff Nurse [Psychiatric]	475	487	+12	+2.6%	+19	+33
Staff Nurses [General/ Children's]	893	895	+2	+0.3%	+13	+22
Staff Nurse/ Staff Midwife	1,456	1,469	+13	+0.9%	+23	+46
Public Health Nurse	220	232	+12	+5.4%	+16	+20
Pre-registration Nurse/ Midwife Intern				-100.0%	-9	-16
Pre-registration Nurse Intern (COVID-19)	28	22	-7	-23.7%	+22	+22
Post-registration Nurse/ Midwife Student	14	15	+1	+9.6%	-4	-4
Nursing/ Midwifery awaiting registration	3	3	+0	+9.1%	-29	-29
Nursing/ Midwifery Student	44	39	-5	-11.6%	-20	-28
Nursing/ Midwifery other				-100.0%	-1	-1
Nursing & Midwifery	2,284	2,298	+14	+0.6%	+47	+81
Dietitians	36	38	+2	+5.2%	+10	+10
Occupational Therapists	173	174	+2	+1.0%	+5	+6
Orthoptists	2	2			-2	-1
Physiotherapists	108	105	-3	-2.5%	-1	-2
Podiatrists & Chiropodists	8	7	-0	-2.5%	+1	+1
Speech & Language Therapists	134	134	-0	-0.3%	-1	-2
Therapy Professions	460	461	+0	+0.1%	+12	+11
Audiology	8	8	-0	-0.1%	+1	+1
Physicists	1	2	+1	+49.3%		
Radiographers	3	3			+0	+1
Health Science/ Diagnostics	13	13	+1	+5.1%	+1	+2

Nov 2020 (Dec 2019 figure: 8,189)	WTE Oct 2020	WTE Nov 2020	WTE change since Oct 20	% change since Oct 20	WTE change since Dec 19	WTE change since Nov 19
Overall	8,468	8,504	+36	+0.4%	+315	+307
Social Care	253	257	+5	+1.8%	+17	+17
Social Workers	131	131	+1	+0.5%	+17	+18
Psychologists	151	150	-1	-0.5%	+12	+14
Pharmacy	10	10	-0	-2.1%	+2	+2
Counsellor Therapists	40	40	-0	-1.0%	-1	+0
Dental Hygienists	12	11	-1	-4.9%	+3	+3
Other Health & Social Care	13	13	+0	+3.1%	+2	+2
Play Therapists/ Specialists	1	1	-0	-4.5%		
H&SC, Other	65	65	-1	-1.0%	+4	+5
Health & Social Care Professionals	1,082	1,087	+5	+0.5%	+79	+70
Executive Management	16	17	+1	+4.5%	+2	+3
Senior Management (VIII & GM)	61	58	-2	-3.9%	+1	+1
Management (VIII & above)	77	75	-2	-2.2%	+2	+3
Administrative/ Supervisory (V to VII)	175	175	-0	-0.0%	+14	+12
Clerical (III & IV)	533	540	+8	+1.5%	+36	+32
Management & Administrative	784	790	+6	+0.8%	+75	+48
Catering	59	59	-0	-0.5%	-2	-1
Household Services	203	208	+6	+2.7%	+19	+21
Other Support	76	79	+2	+2.7%	+5	+3
Portering	12	12	+0	+2.3%	-1	-1
Support	350	358	+8	+2.2%	+21	+22
Maintenance	21	22	+1	+4.7%	+1	+1
Technical Services	1	2	+1	+100.0%	+1	+1
Maintenance/ Technical	22	24	+2	+9.0%	+2	+2
General Support	372	382	+10	+2.6%	+5	+24
HCA, Nurse's Aide, etc.	2,026	2,064	+38	+1.9%	+118	+117
Health & Social Care Assistants	8	11	+4	+47.6%	+3	+3
Health Care Assistants	2,033	2,075	+42	+2.1%	+121	+119
Care, other	485	485	-1	-0.1%	+35	+35
Home Help	1,087	1,059	-28	-2.6%	-65	-89
Patient & Client Care	3,606	3,619	+14	+0.4%	+142	+66

CHO 4 HSE Employment by Grade Group & Staff Category: November 2020

Nov 2020 (Dec 2019 figure: 5,940)	WTE Oct 2020	WTE Nov 2020	WTE change since Oct 20	% change since Oct 20	WTE change since Dec 19	WTE change since Nov 19
Overall	6,110	6,154	+43	+0.7%	+214	+208
Consultant Dentistry	2	2				
Consultant Medicine	1	1	+0	+0.9%	-0	
Consultant Paediatrics	1	1	+0	+2.0%		
Consultant Psychiatry	57	56	-1	-2.4%	+5	+6
Consultants	61	60	-1	-2.2%	+5	+6
Registrar	79	79	-0	-0.2%	-6	-6
Senior Registrar	15	14	-1	-8.3%	+2	+2
Specialist Registrar	2	2				
Registrars	96	95	-1	-1.5%	-4	-4
SHO/ Interns	42	44	+2	+4.4%	+12	+12
Dentists	46	47	+2	+4.0%	-2	-2
Other Medical	67	57	-10	-15.2%	+8	+8
Medical/ Dental, other	112	104	-8	-7.5%	+5	+6
Medical & Dental	311	302	-9	-3.0%	+13	+19
Clinical Nurse/ Midwife Manager	300	292	-7	-2.4%	+23	+23
Director Nursing/Midwifery, Assistant	60	57	-3	-5.0%	+1	-1
Director of Nursing/Midwifery	35	35	+1	+2.0%	+3	+2
Nurse/ Midwife Manager	394	385	-9	-2.4%	+27	+24
Advanced Nurse/ Midwife Practitioner	6	5	-1	-14.6%	-1	-1
Clinical Nurse/ Midwife Specialist	75	80	+5	+6.8%	+17	+19
Nurse/ Midwife Specialist & AN/MP	80	84	+4	+5.3%	+16	+18
Staff Midwives	7	5	-3	-35.4%	-3	-3
Staff Nurse [Intellectual Disability]				-100.0%	-1	-1
Staff Nurse [Psychiatric]	475	487	+12	+2.6%	+19	+33
Staff Nurses [General/ Children's]	705	703	-1	-0.2%	+19	+27
Staff Nurse/ Staff Midwife	1,187	1,195	+8	+0.7%	+34	+56
Public Health Nurse	220	232	+12	+5.4%	+16	+20
Pre-registration Nurse/ Midwife Intern				-100.0%	-3	-10
Pre-registration Nurse Intern (COVID-19)	11	5	-7	-59.7%	+5	+5
Post-registration Nurse/ Midwife Student	14	15	+1	+9.6%	-4	-4
Nursing/ Midwifery awaiting registration	3	3	+0	+9.1%	-29	-29
Nursing/ Midwifery Student	27	22	-5	-18.7%	-31	-39
Nursing & Midwifery	1,909	1,919	+10	+0.5%	+55	+80
Dietitians	34	36	+2	+5.5%	+10	+10
Occupational Therapists	143	144	+1	+0.4%	+6	+7
Orthoptists	2	2			-2	-1
Physiotherapists	93	92	-1	-1.0%	-0	
Podiatrists & Chiropodists	8	7	-0	-2.5%	+1	+1
Speech & Language Therapists	95	94	-1	-0.8%	+1	-0
Therapy Professions	375	375	+1	+0.2%	+16	+16
Audiology	8	8	-0	-0.1%	+1	+1
Physicists	1	2	+1	+49.3%		
Radiographers	1	1			+0	+1
Health Science/ Diagnostics	11	11	+1	+6.1%	+1	+2
Social Care	37	41	+4	+11.4%	+2	+3
Social Workers	104	105	+1	+0.6%	+17	+19
Psychologists	118	117	-1	-0.9%	+10	+12
Pharmacy	10	10	-0	-2.1%	+2	+2
Counsellor Therapists	38	38	-0	-1.1%	-1	+0

Nov 2020 (Dec 2019 figure: 5,940)	WTE Oct 2020	WTE Nov 2020	WTE change since Oct 20	% change since Oct 20	WTE change since Dec 19	WTE change since Nov 19
Overall	6,110	6,154	+43	+0.7%	+214	+208
Dental Hygienists	9	8	-1	-6.5%	+1	+1
Other Health & Social Care	12	12	+0	+3.3%	+2	+2
Play Therapists/ Specialists	1	1	-0	-4.5%		
H&SC, Other	59	59	-1	-1.1%	+2	+4
Health & Social Care Professionals	714	718	+4	+0.6%	+56	+58
Executive Management	13	14	+1	+5.6%	+2	+3
Senior Management (VIII & GM)	47	46	-1	-2.9%	+0	+0
Management (VIII & above)	60	60	-1	-1.1%	+2	+3
Administrative/ Supervisory (V to VII)	132	132	-1	-0.5%	+8	+8
Clerical (III & IV)	437	446	+10	+2.2%	+31	+29
Management & Administrative	629	637	+8	+1.3%	+66	+40
Catering	41	41	-0	-0.7%	-3	-3
Household Services	153	157	+4	+2.6%	+16	+18
Other Support	13	13	+0	+0.5%	-0	-1
Portering	7	7	+0	+4.0%	-1	-1
Support	214	218	+4	+1.8%	+12	+12
Maintenance/ Technical	12	12	-0	-0.1%	-1	-1
General Support	227	230	+4	+1.7%	-11	+11
HCA, Nurse's Aide, etc.	1,095	1,142	+48	+4.3%	+72	+67
Health & Social Care Assistants	8	11	+4	+47.6%	+3	+3
Health Care Assistants	1,102	1,154	+51	+4.6%	+75	+70
Care, other	131	134	+3	+2.4%	+21	+19
Home Help	1,087	1,059	-28	-2.6%	-65	-89
Patient & Client Care	2,320	2,347	+27	+1.1%	+47	-1

Employment by WTE, Headcount, Gender, Full-Time /Part-Time etc.: Nov 2020

CHO 4	WTE	Headcount	WTE: no.	% Male	% female	Male WTE: no.	Female WTE: no.	% Total Perm	% Male Perm	% Female Perm	% Total Full Time	% Total Part Time	% Male FT	% Female FT
Overall	8,504	10,439	1.23	15.9%	84.1%	1.12	1.25	74.3%	66.5%	75.7%	70.6%	29.4%	81.5%	68.6%
Consultant Dentistry	2	2	1.00	50.0%	50.0%	1.00	1.00	100.0%	100.0%	100.0%	100.0%	0.0%	100.0%	100.0%
Consultant Medicine	1	4	3.64	25.0%	75.0%	2.00	5.00	50.0%	50.0%	33.3%	0.0%	100.0%	0.0%	0.0%
Consultant Paediatrics	1	2	2.00		100.0%		2.00	100.0%	100.0%	100.0%	0.0%	100.0%		0.0%
Consultant Psychiatry	56	62	1.11	25.8%	74.2%	1.08	1.13	35.5%	35.5%	41.3%	77.4%	22.6%	87.5%	73.9%
Consultants	60	70	1.17	25.7%	74.3%	1.10	1.20	40.0%	27.8%	44.2%	71.4%	28.6%	83.3%	67.3%
Registrar	79	80	1.02	42.5%	57.5%	1.02	1.01	1.3%	1.3%	0.0%	98.8%	1.3%	100.0%	97.8%
Senior Registrar	14	17	1.22	41.2%	58.8%	1.09	1.32	0.0%	0.0%	0.0%	76.5%	23.5%	85.7%	70.0%
Specialist Registrar	8	8	1.00	50.0%	50.0%	1.00	1.00	25.0%	25.0%	25.0%	100.0%	0.0%	100.0%	100.0%
Registrars	101	105	1.04	42.9%	57.1%	1.03	1.05	2.9%	4.4%	1.7%	95.2%	4.8%	97.8%	93.3%
Interns	2	2	1.00	50.0%	50.0%	1.00	1.00	0.0%	0.0%	0.0%	100.0%	0.0%	100.0%	100.0%
Senior House Officer	49	50	1.02	38.0%	62.0%	1.00	1.03	0.0%	0.0%	0.0%	94.0%	6.0%	100.0%	90.3%
SHO/ Interns	51	52	1.02	38.5%	61.5%	1.00	1.03	0.0%	0.0%	0.0%	94.2%	5.8%	100.0%	90.6%
Dentists	60	95	1.59	27.4%	72.6%	1.57	1.59	82.1%	82.1%	78.3%	31.6%	68.4%	30.8%	31.9%
Other Medical	57	109	1.93	38.5%	61.5%	2.29	1.75	40.4%	40.4%	46.3%	33.0%	67.0%	40.5%	28.4%
Medical/ Dental, other	116	204	1.75	33.3%	66.7%	1.95	1.67	59.8%	54.4%	62.5%	32.4%	67.6%	36.8%	30.1%
Medical & Dental	328	431	1.31	35.0%	65.0%	1.32	1.31	35.5%	29.1%	38.9%	61.5%	38.5%	68.9%	57.5%
Clinical Nurse/ Midwife Manager	361	391	1.08	17.9%	82.1%	1.01	1.10	95.7%	95.7%	95.6%	79.3%	20.7%	98.6%	75.1%
Director Nursing/Midwifery, Assistant	60	65	1.08	16.9%	83.1%	1.08	1.08	98.5%	98.5%	98.1%	81.5%	18.5%	100.0%	77.8%
Director of Nursing/Midwifery	38	39	1.02	5.1%	94.9%	1.00	1.02	94.9%	94.9%	94.6%	87.2%	12.8%	100.0%	86.5%
Nurse/ Midwife Manager	460	495	1.08	16.8%	83.2%	1.01	1.09	96.0%	96.4%	95.9%	80.2%	19.8%	98.8%	76.5%
Advanced Nurse/ Midwife Practitioner	7	7	1.04	42.9%	57.1%	1.01	1.06	100.0%	100.0%	100.0%	85.7%	14.3%	100.0%	75.0%
Clinical Nurse/ Midwife Specialist	91	96	1.05	12.5%	87.5%	1.00	1.06	96.9%	96.9%	97.6%	81.3%	18.8%	100.0%	78.6%
Nurse/ Midwife Specialist & AN/MP	98	103	1.05	14.6%	85.4%	1.00	1.06	97.1%	93.3%	97.7%	81.6%	18.4%	100.0%	78.4%
Staff Midwives	5	7	1.48		100.0%		1.48	100.0%	100.0%	100.0%	14.3%	85.7%		14.3%
Staff Nurse [Intellectual Disability]	82	104	1.27	6.7%	93.3%	1.22	1.27	92.3%	92.3%	92.8%	51.9%	48.1%	57.1%	51.5%
Staff Nurse [Psychiatric]	487	523	1.07	29.8%	70.2%	1.05	1.08	81.5%	81.5%	83.4%	88.3%	11.7%	94.2%	85.8%
Staff Nurses [General/ Children's]	895	1,121	1.25	4.9%	95.1%	1.04	1.27	75.4%	75.4%	76.1%	48.4%	51.6%	89.1%	46.3%
Staff Nurse/ Staff Midwife	1,469	1,755	1.19	12.4%	87.6%	1.05	1.22	78.3%	73.4%	79.0%	60.4%	39.6%	91.7%	56.0%

Public Health Nurse	232	281	1.21	0.4%	99.6%	1.00	1.21	87.2%	100.0%	87.1%	68.3%	31.7%	100.0%	68.2%
Pre-registration Nurse Intern (COVID-19)	22	22	1.02	13.6%	86.4%	1.00	1.03	0.0%	0.0%	0.0%	95.5%	4.5%	100.0%	94.7%
Post-registration Nurse/ Midwife Student	15	15	1.01		100.0%		1.01	53.3%	53.3%	53.3%	86.7%	13.3%		86.7%
Nursing/ Midwifery awaiting registration	3	3	1.00		100.0%		1.00	33.3%	33.3%	33.3%	100.0%	0.0%		100.0%
Nursing/ Midwifery Student	39	40	1.02	7.5%	92.5%	1.00	1.02	22.5%	0.0%	24.3%	92.5%	7.5%	100.0%	91.9%
Nursing & Midwifery	2,298	2,674	1.16	12.0%	88.0%	1.04	1.18	82.4%	79.7%	82.8%	66.2%	33.8%	94.1%	62.4%
Dietitians	38	46	1.21		100.0%		1.21	78.3%	78.3%	78.3%	73.9%	26.1%		73.9%
Occupational Therapists	174	204	1.17	6.9%	93.1%	1.11	1.17	85.3%	85.3%	85.3%	71.1%	28.9%	78.6%	70.5%
Orthoptists	2	2	1.33		100.0%		1.33	50.0%	50.0%	50.0%	50.0%	50.0%		50.0%
Physiotherapists	105	126	1.20	19.8%	80.2%	1.05	1.24	83.3%	83.3%	85.1%	62.7%	37.3%	80.0%	58.4%
Podiatrists & Chiropodists	7	10	1.34	40.0%	60.0%	1.14	1.50	50.0%	50.0%	50.0%	60.0%	40.0%	75.0%	50.0%
Speech & Language Therapists	134	159	1.19	1.3%	98.7%	1.02	1.19	84.9%	84.9%	84.7%	69.2%	30.8%	50.0%	69.4%
Therapy Professions	461	547	1.19	8.2%	91.8%	1.08	1.20	83.4%	77.8%	83.9%	68.6%	31.4%	77.8%	67.7%
Audiology	8	8	1.00	37.5%	62.5%	1.00	1.00	87.5%	87.5%	80.0%	100.0%	0.0%	100.0%	100.0%
Physicists	2	2	1.00		100.0%		1.00	100.0%	100.0%	100.0%	100.0%	0.0%		100.0%
Radiographers	3	4	1.22		100.0%		1.22	75.0%	75.0%	75.0%	75.0%	25.0%		75.0%
Health Science/ Diagnostics	13	14	1.05	21.4%	78.6%	1.00	1.07	85.7%	100.0%	81.8%	92.9%	7.1%	100.0%	90.9%
Social Care	257	291	1.13	14.4%	85.6%	1.04	1.15	89.3%	85.7%	90.0%	67.4%	32.6%	90.5%	63.5%
Social Workers	131	149	1.13	17.4%	82.6%	1.01	1.16	81.9%	73.1%	83.7%	83.2%	16.8%	96.2%	80.5%
Psychologists	150	169	1.13	23.7%	76.3%	1.03	1.16	73.4%	67.5%	75.2%	76.3%	23.7%	95.0%	70.5%
Pharmacy	10	15	1.56	13.3%	86.7%	2.44	1.47	46.7%	50.0%	46.2%	33.3%	66.7%	0.0%	38.5%
Counsellor Therapists	40	43	1.08	53.5%	46.5%	1.04	1.13	95.3%	95.3%	90.0%	93.0%	7.0%	95.7%	90.0%
Dental Hygienists	11	14	1.27	7.1%	92.9%	1.00	1.29	100.0%	100.0%	100.0%	35.7%	64.3%	100.0%	30.8%
Other Health & Social Care	13	18	1.37	38.9%	61.1%	1.25	1.47	66.7%	66.7%	72.7%	61.1%	38.9%	71.4%	54.5%
Play Therapists/ Specialists	1	1	1.59		100.0%		1.59	100.0%	100.0%	100.0%	0.0%	100.0%		0.0%
H&SC, Other	65	76	1.18	40.8%	59.2%	1.08	1.25	89.5%	90.3%	88.9%	73.7%	26.3%	90.3%	62.2%
Health & Social Care	1,087	1,261	1.16	15.0%	85.0%	1.05	1.18	83.2%	78.8%	84.0%	71.2%	28.8%	88.4%	68.2%
Executive Management	17	17	1.02	35.3%	64.7%	1.07	1.00	94.1%	94.1%	90.9%	100.0%	0.0%	100.0%	100.0%
Senior Management (VIII & GM)	58	61	1.05	27.9%	72.1%	1.04	1.05	91.8%	91.8%	97.7%	88.5%	11.5%	94.1%	86.4%
Management (VIII & above)	75	78	1.04	29.5%	70.5%	1.04	1.04	92.3%	82.6%	96.4%	91.0%	9.0%	95.7%	89.1%
Administrative/ Supervisory (V to VII)	175	194	1.11	17.5%	82.5%	1.04	1.13	86.1%	73.5%	88.8%	76.3%	23.7%	88.2%	73.8%
Clerical (III & IV)	540	664	1.23	7.5%	92.5%	1.16	1.23	72.7%	66.0%	73.3%	54.5%	45.5%	70.0%	53.3%
Management & Administrative	790	936	1.18	11.4%	88.6%	1.10	1.20	77.1%	72.0%	77.8%	62.1%	37.9%	81.3%	59.6%
Catering	59	69	1.17	39.1%	60.9%	1.17	1.18	87.0%	87.0%	88.1%	81.2%	18.8%	96.3%	71.4%
Household Services	208	261	1.25	26.8%	73.2%	1.22	1.26	68.2%	68.2%	73.3%	57.9%	42.1%	74.3%	51.8%

Other Support	79	158	2.01	22.8%	77.2%	1.30	2.40	81.6%	81.6%	78.7%	27.8%	72.2%	86.1%	10.7%
Portering	12	17	1.41	100.0%		1.41		94.1%	94.1%		52.9%	47.1%	52.9%	
Support	358	505	1.41	29.7%	70.3%	1.25	1.49	75.8%	73.3%	76.9%	51.5%	48.5%	78.7%	40.0%
Maintenance/ Technical	24	29	1.20	86.2%	13.8%	1.18	1.37	93.1%	92.0%	100.0%	69.0%	31.0%	76.0%	25.0%
General Support	382	534	1.40	32.8%	67.2%	1.24	1.49	76.8%	76.0%	77.2%	52.4%	47.6%	78.3%	39.8%
HCA, Nurse's Aide, etc.	2,064	2,357	1.14	21.4%	78.6%	1.08	1.16	72.8%	72.8%	73.6%	68.9%	31.1%	78.2%	66.4%
Health & Social Care Assistants	11	12	1.07		100.0%		1.07	0.0%	0.0%	0.0%	91.7%	8.3%		91.7%
Health Care Assistants	2,075	2,369	1.14	21.3%	78.7%	1.08	1.16	72.5%	70.1%	73.1%	69.1%	30.9%	78.2%	66.6%
Care, other	485	596	1.23	20.1%	79.9%	1.21	1.23	80.5%	63.3%	84.9%	54.7%	45.3%	63.3%	52.5%
Home Help	1,059	1,638	1.55	5.8%	94.2%	1.33	1.56	62.2%	18.9%	64.9%	98.8%	1.2%	91.6%	99.2%
Patient & Client Care	3,619	4,603	1.27	15.6%	84.4%	1.13	1.30	69.9%	62.2%	71.3%	77.8%	22.2%	77.5%	77.8%

Employment by WTE, Headcount, Gender, Full-Time /Part-Time etc.: Nov 2020

CHO 4	WTE	Headcount	WTE: no.	% Male	% female	Male WTE: no.	Female WTE: no.	% Total Perm	% Male Perm	% Female Perm	% Total Full Time	% Total Part Time	% Male FT	% Female FT
Overall	8,504	10,439	1.23	15.9%	84.1%	1.12	1.25	74.3%	66.5%	75.7%	70.6%	29.4%	81.5%	68.6%
Community Health & Wellbeing	35	44	1.27	2.3%	97.7%	1.00	1.28	90.9%	90.9%	90.7%	54.5%	45.5%	100.0%	100.0%
Mental Health	1,562	1,707	1.09	25.5%	74.5%	1.05	1.11	75.4%	75.4%	78.1%	84.1%	15.9%	93.6%	93.6%
Primary Care	1,458	1,823	1.25	10.6%	89.4%	1.18	1.26	71.3%	71.3%	72.8%	58.9%	41.1%	73.2%	73.2%
HSE	3,209	4,162	1.30	12.3%	87.7%	1.15	1.32	67.7%	67.7%	69.5%	75.3%	24.7%	87.3%	87.3%
Section 38 Voluntary Agencies	2,240	2,703	1.21	19.2%	80.8%	1.14	1.22	85.4%	85.4%	86.7%	63.1%	36.9%	68.7%	68.7%
Social Care	5,449	6,865	1.26	15.0%	85.0%	1.14	1.28	74.7%	74.7%	75.9%	70.5%	29.5%	77.9%	77.9%

CHO 4 Skills Mix by Staff Grouping: November 2020

Nov 2020 (Dec 2018 figure: 8,138)	WTE Dec 2015	WTE Dec 2016	WTE Dec 2017	WTE Dec 2018	WTE Dec 2019	WTE Oct 2020	WTE Nov 2020
Overall	7,461	7,639	7,983	8,138	8,189	8,468	8,504
Consultant Dentistry	0.7%	0.7%	0.7%	0.6%	0.6%	0.6%	0.6%
Consultant Medicine	0.9%	0.9%	0.3%	0.3%	0.4%	0.3%	0.3%
Consultant Paediatrics	0.1%	0.1%	0.3%	0.3%	0.3%	0.3%	0.3%
Consultant Psychiatry	15.9%	16.1%	15.7%	15.8%	16.5%	16.8%	17.0%
Consultants	17.7%	17.8%	17.1%	17.1%	17.8%	18.0%	18.2%
Registrar	23.1%	22.8%	23.6%	25.2%	27.5%	23.2%	24.0%
Senior Registrar	3.2%	3.3%	3.6%	3.5%	3.8%	4.5%	4.3%
Specialist Registrar	1.5%	1.1%	1.3%	1.3%	2.3%	2.4%	2.4%
Registrars	27.8%	27.2%	28.5%	30.0%	33.6%	30.0%	30.7%
Interns	1.1%	1.1%	1.0%	1.0%	1.0%	0.7%	0.6%
Senior House Officer	14.0%	13.5%	12.9%	13.2%	11.4%	13.8%	15.0%
SHO/ Interns	15.1%	14.5%	13.9%	14.2%	12.4%	14.6%	15.6%
Dentists	22.4%	22.0%	20.8%	20.9%	20.3%	17.9%	18.3%
Other Medical	17.1%	18.4%	19.8%	17.8%	15.9%	19.6%	17.2%
Medical/ Dental, other	39.5%	40.5%	40.6%	38.7%	36.2%	37.5%	35.5%
Medical & Dental	3.7%	3.7%	3.8%	3.8%	3.8%	100.0%	3.9%
Clinical Nurse/ Midwife Manager	14.3%	14.1%	13.8%	14.3%	15.1%	16.2%	15.7%
Director Nursing/Midwifery, Assistant	2.4%	2.4%	2.1%	2.1%	2.7%	2.8%	2.6%
Director of Nursing/Midwifery	1.0%	0.8%	0.8%	0.8%	1.6%	1.7%	1.7%
Nurse/ Midwife Manager	17.8%	17.3%	16.7%	17.2%	19.4%	20.6%	20.0%
Advanced Nurse/ Midwife Practitioner	0.2%	0.1%	0.1%	0.2%	0.3%	0.3%	0.3%
Clinical Nurse/ Midwife Specialist	2.3%	2.5%	2.9%	3.0%	3.3%	3.8%	4.0%
Nurse/ Midwife Specialist & AN/MP	2.5%	2.7%	3.0%	3.2%	3.6%	4.1%	4.3%
Graduate Nursing/ Midwifery	0.0%						
Staff Midwives	0.1%	0.1%	0.2%	0.3%	0.4%	0.3%	0.2%
Staff Nurse [Intellectual Disability]	2.9%	3.0%	3.1%	3.9%	3.9%	3.5%	3.6%
Staff Nurse [Psychiatric]	24.6%	24.6%	23.9%	23.3%	21.0%	20.8%	21.2%
Staff Nurses [General/ Children's]	41.6%	41.9%	42.6%	41.4%	39.5%	39.1%	38.9%
Staff Nurse/ Staff Midwife	69.3%	69.6%	69.8%	68.9%	64.7%	63.7%	63.9%
Public Health Nurse	9.7%	9.6%	9.4%	9.7%	9.7%	9.6%	10.1%
Pre-registration Nurse/ Midwife Intern	0.4%	0.4%	0.3%	0.4%	0.4%		
Pre-registration Nurse Intern (COVID-19)						1.2%	0.9%
Post-registration Nurse/ Midwife Student	0.3%	0.4%	0.7%	0.6%	0.9%	0.6%	0.6%
Nursing/ Midwifery awaiting registration					1.4%	0.1%	0.1%
Nursing/ Midwifery Student	0.7%	0.7%	1.1%	1.0%	2.7%	1.9%	1.7%
Nursing/ Midwifery other	0.0%	0.0%	0.0%	0.0%	0.0%		
Nursing & Midwifery	29.9%	29.4%	28.8%	27.7%	27.5%	100.0%	27.0%
Dietitians	1.5%	2.0%	2.4%	2.8%	2.7%	3.3%	3.5%
Occupational Therapists	17.3%	16.3%	16.6%	16.2%	16.6%	16.0%	16.1%
Orthoptists	0.1%	0.0%	0.1%	0.0%	0.3%	0.1%	0.1%
Physiotherapists	11.6%	11.2%	11.1%	10.7%	10.5%	10.0%	9.7%
Podiatrists & Chiropodists	0.7%	0.9%	0.8%	0.7%	0.6%	0.7%	0.7%
Speech & Language Therapists	13.5%	14.1%	14.2%	13.3%	13.2%	12.4%	12.3%
Therapy Professions	44.6%	44.4%	45.2%	43.8%	43.9%	42.5%	42.4%
Audiology	0.6%	0.5%	0.6%	0.7%	0.7%	0.7%	0.7%
Medical Laboratory	1.4%						
Phlebotomists	0.1%	0.1%	0.1%				
Physicists	0.2%	0.2%	0.2%	0.2%	0.2%	0.1%	0.2%
Radiographers	0.3%	0.2%	0.2%	0.3%	0.3%	0.3%	0.3%
Health Science/ Diagnostics	2.6%	1.1%	1.1%	1.2%	1.2%	1.2%	1.2%
Social Care	23.4%	23.3%	22.8%	22.9%	23.5%	23.4%	23.7%

Nov 2020 (Dec 2018 figure: 8,138)	WTE Dec 2015	WTE Dec 2016	WTE Dec 2017	WTE Dec 2018	WTE Dec 2019	WTE Oct 2020	WTE Nov 2020
Overall	7,461	7,639	7,983	8,138	8,189	8,468	8,504
Social Workers	11.7%	11.9%	12.0%	12.0%	11.2%	12.1%	12.1%
Psychologists	11.0%	11.7%	11.8%	13.2%	13.5%	13.9%	13.8%
Pharmacy	1.0%	0.9%	1.0%	1.0%	0.8%	0.9%	0.9%
Counsellor Therapists	3.6%	4.6%	4.4%	4.0%	4.0%	3.7%	3.7%
Dental Hygienists	0.8%	0.8%	0.7%	0.7%	0.8%	1.1%	1.0%
Other Health & Social Care	1.1%	1.1%	1.0%	1.0%	1.1%	1.2%	1.2%
Play Therapists/ Specialists	0.2%	0.2%	0.1%	0.1%	0.1%	0.1%	0.1%
H&SC, Other	5.6%	6.7%	6.2%	5.8%	5.9%	6.0%	5.9%
Health & Social Care Professionals	11.7%	12.1%	12.3%	12.4%	12.3%	100.0%	12.8%
Executive Management	1.5%	2.0%	2.1%	2.0%	2.0%	2.0%	2.1%
Senior Management (VIII & GM)	7.7%	7.4%	7.7%	6.7%	7.8%	7.7%	7.4%
Management (VIII & above)	9.3%	9.4%	9.9%	8.6%	9.9%	9.8%	9.5%
Administrative/ Supervisory (V to VII)	19.5%	19.6%	19.2%	19.2%	21.8%	22.3%	22.1%
Clerical (III & IV)	71.2%	71.0%	71.0%	72.2%	68.3%	67.9%	68.4%
Management & Administrative	7.9%	8.0%	8.3%	8.8%	8.7%	100.0%	9.3%
Catering	13.1%	13.5%	13.9%	15.6%	16.8%	15.9%	15.4%
Household Services	62.1%	60.4%	59.0%	55.7%	52.8%	54.5%	54.6%
Other Support	14.4%	15.3%	16.3%	19.6%	20.6%	20.5%	20.6%
Portering	3.1%	3.1%	2.7%	2.9%	3.6%	3.2%	3.2%
Support	92.7%	92.2%	92.0%	93.7%	93.8%	94.0%	93.7%
Maintenance/ Technical	7.3%	7.8%	8.0%	6.3%	6.2%	6.0%	6.3%
General Support	6.0%	5.5%	5.0%	4.6%	4.6%	100.0%	4.5%
HCA, Nurse's Aide, etc.	50.2%	53.1%	53.6%	55.3%	55.2%	56.2%	57.0%
Health & Social Care Assistants		0.1%	0.0%	0.4%	0.2%	0.2%	0.3%
Health Care Assistants	50.2%	53.2%	53.6%	55.7%	55.4%	56.4%	57.3%
Care, other	12.5%	12.5%	12.5%	12.4%	12.8%	13.5%	13.4%
Home Help	37.3%	34.3%	33.9%	31.9%	31.9%	30.1%	29.3%
Patient & Client Care	40.9%	41.4%	41.9%	42.7%	42.5%	100.0%	42.6%
Total	100 %	100 %	100 %	100 %	100%	100 %	100 %

CHO 4 Skills Mix by Care Group: November 2020

Nov 2020 (Dec 2018 figure: 1,483)	WTE Dec 2015	WTE Dec 2016	WTE Dec 2017	WTE Dec 2018	WTE Dec 2019	WTE Oct 2020	WTE Nov 2020
Mental Health	1,374	1,407	1,477	1,483	1,485.26	1,559.36	1,562.34
Consultants	37.8%	37.9%	37.5%	37.4%	38.8%	37.6%	38.2%
Registrar	19.8%	22.2%	21.9%	25.2%	27.8%	20.2%	20.5%
Senior Registrar	6.3%	6.6%	7.5%	7.0%	7.8%	9.3%	9.3%
Registrars	26.1%	28.8%	29.4%	32.2%	35.6%	29.4%	29.8%
Interns	2.7%	2.6%	2.5%	2.3%	2.3%	1.7%	1.4%
Senior House Officer	29.5%	27.0%	26.6%	25.6%	21.8%	26.3%	29.1%
SHO/ Interns	32.2%	29.7%	29.0%	27.9%	24.1%	28.1%	30.6%
Medical/ Dental, other	3.8%	3.6%	4.2%	2.5%	1.6%	4.9%	1.4%
Medical & Dental	8.0%	8.1%	8.2%	8.7%	8.7%	9.0%	9.0%
Clinical Nurse/ Midwife Manager	17.0%	17.0%	16.3%	17.5%	18.8%	21.4%	20.7%
Director Nursing/Midwifery, Assistant	2.8%	2.7%	2.5%	2.4%	2.8%	2.8%	2.9%
Director of Nursing/Midwifery	0.5%	0.5%	0.4%	0.4%	0.5%	0.5%	0.5%
Nurse/ Midwife Manager	20.3%	20.1%	19.2%	20.3%	22.2%	24.7%	24.1%
Advanced Nurse/ Midwife Practitioner	0.3%	0.1%	0.1%	0.4%	0.6%	0.6%	0.5%
Clinical Nurse/ Midwife Specialist	4.2%	4.7%	5.7%	5.8%	7.2%	8.0%	8.5%
Nurse/ Midwife Specialist & AN/MP	4.5%	4.9%	5.8%	6.1%	7.8%	8.6%	9.0%
Staff Nurse [Intellectual Disability]				0.1%	0.1%		
Staff Nurse [Psychiatric]	69.3%	69.2%	69.0%	68.1%	60.8%	60.5%	61.7%
Staff Nurses [General/ Children's]	5.8%	5.7%	5.9%	5.2%	4.7%	4.6%	4.5%
Staff Nurse/ Staff Midwife	75.1%	74.9%	74.9%	73.5%	65.6%	65.1%	66.2%
Pre-registration Nurse/ Midwife Intern	0.1%	0.1%		0.1%	0.4%		
Pre-registration Nurse Intern (COVID-19)						1.4%	0.6%
Post-registration Nurse/ Midwife Student					0.1%		
Nursing/ Midwifery awaiting registration					3.9%	0.1%	0.1%
Nursing/ Midwifery Student	0.1%	0.1%		0.1%	4.4%	1.6%	0.7%
Nursing & Midwifery	55.6%	55.3%	53.4%	51.6%	51.6%	50.4%	50.4%
Dietitians	0.9%	1.9%	2.0%	2.8%	2.7%	2.3%	2.3%
Occupational Therapists	25.7%	23.9%	23.9%	22.9%	24.2%	22.5%	23.1%
Speech & Language Therapists	4.0%	4.8%	4.3%	5.7%	5.6%	5.2%	5.2%
Therapy Professions	30.5%	30.5%	30.2%	31.4%	32.6%	30.0%	30.6%
Social Care	4.5%	4.0%	3.2%	2.5%	1.7%	2.6%	2.7%
Social Workers	30.7%	27.7%	28.4%	26.2%	23.4%	25.4%	25.2%
Psychologists	26.4%	29.9%	30.8%	33.6%	36.5%	36.2%	35.9%
Pharmacy	1.5%	1.4%	1.6%	1.8%	1.1%	0.8%	0.8%
Counsellor Therapists	5.3%	4.6%	4.1%	3.0%	3.2%	3.5%	3.3%
Other Health & Social Care	1.0%	1.7%	1.7%	1.5%	1.5%	1.5%	1.6%
H&SC, Other	6.3%	6.3%	5.8%	4.5%	4.7%	4.9%	4.9%
Health & Social Care Professionals	12.8%	13.9%	14.1%	15.3%	15.3%	16.5%	16.5%
Management (VIII & above)					0.9%	1.7%	2.5%
Administrative/ Supervisory (V to VII)	19.0%	18.9%	17.9%	17.0%	20.3%	19.6%	18.9%
Clerical (III & IV)	81.0%	81.1%	82.1%	83.0%	78.8%	78.8%	78.6%
Management & Administrative	6.8%	6.6%	7.0%	6.9%	6.9%	7.6%	7.6%
Support	93.4%	93.1%	93.2%	93.6%	92.9%	94.1%	94.2%
Maintenance/ Technical	6.6%	6.9%	6.8%	6.4%	7.1%	5.9%	5.8%
General Support	7.8%	7.3%	7.0%	6.4%	6.4%	5.6%	5.6%
Health Care Assistants	96.7%	96.6%	95.4%	95.3%	95.7%	96.5%	96.3%
Care, other	3.3%	3.4%	4.6%	4.7%	4.3%	3.5%	3.7%
Patient & Client Care	8.9%	8.8%	10.3%	11.1%	11.1%	11.0%	11.0%
Total	100 %	100 %	100 %	100 %	100 %	100 %	100 %

Nov 2020 (Dec 2018 figure: 1,344)	WTE Dec 2015	WTE Dec 2016	WTE Dec 2017	WTE Dec 2018	WTE Dec 2019	WTE Oct 2020	WTE Nov 2020
Primary Care	1,143	1,188	1,307	1,344	1,345.90	1,404.07	1,457.92
Consultant Dentistry	1.5%	1.4%	1.3%	1.3%	1.3%	1.3%	1.3%
Consultant Medicine					0.1%	0.1%	0.1%
Consultant Paediatrics			0.3%	0.3%	0.3%	0.3%	0.3%
Consultants	1.5%	1.4%	1.7%	1.6%	1.7%	1.7%	1.7%
Registrars	33.2%	30.5%	31.8%	32.3%	36.0%	35.8%	35.6%
SHO/ Interns	4.4%	5.0%	4.3%	4.7%	4.1%	4.8%	4.6%
Dentists	44.9%	44.4%	41.3%	42.0%	41.1%	38.9%	38.2%
Other Medical	16.0%	18.7%	20.9%	19.4%	17.1%	18.9%	20.0%
Medical/ Dental, other	61.0%	63.1%	62.2%	61.4%	58.2%	57.8%	58.2%
Medical & Dental	12.0%	11.7%	11.5%	11.5%	11.5%	10.8%	10.8%
Clinical Nurse/ Midwife Manager	4.8%	5.5%	6.4%	7.1%	7.2%	7.7%	7.1%
Director Nursing/Midwifery, Assistant	5.8%	5.9%	4.1%	4.7%	5.0%	5.5%	4.6%
Director of Nursing/Midwifery	1.5%	1.1%	0.6%	0.9%	1.6%	1.5%	1.5%
Nurse/ Midwife Manager	12.0%	12.5%	11.1%	12.7%	13.8%	14.7%	13.2%
Nurse/ Midwife Specialist & AN/MP	0.9%	0.8%	0.9%	1.5%	1.0%	1.3%	1.5%
Staff Nurse/ Staff Midwife	23.0%	25.6%	30.4%	28.8%	29.2%	31.3%	29.9%
Public Health Nurse	62.0%	58.8%	53.3%	53.5%	51.7%	49.6%	52.0%
Nursing/ Midwifery Student	2.1%	2.2%	4.3%	3.5%	4.2%	3.1%	3.4%
Nursing & Midwifery	29.7%	30.0%	30.2%	29.5%	29.4%	29.9%	29.9%
Dietitians	3.6%	3.9%	4.9%	5.3%	5.4%	6.3%	7.0%
Occupational Therapists	19.7%	19.1%	20.0%	18.9%	18.0%	18.3%	18.2%
Orthoptists	0.2%	0.1%	0.2%	0.2%	1.0%	0.4%	0.4%
Physiotherapists	24.5%	23.7%	23.3%	22.1%	22.2%	21.6%	21.1%
Speech & Language Therapists	19.9%	22.1%	23.0%	21.3%	20.9%	20.7%	20.8%
Therapy Professions	67.9%	68.7%	71.3%	67.9%	67.4%	67.4%	67.5%
Audiology	1.8%	1.7%	1.8%	2.1%	2.1%	2.4%	2.3%
Medical Laboratory	4.4%						
Physicists	0.7%	0.7%	0.5%	0.6%	0.6%	0.4%	0.6%
Radiographers	0.7%	0.7%	0.6%	0.6%	0.6%	0.6%	0.6%
Health Science/ Diagnostics	7.6%	3.1%	3.0%	3.3%	3.3%	3.3%	3.5%
Social Care	1.8%	2.0%	1.8%	2.3%	2.4%	1.5%	1.5%
Social Workers	6.9%	7.6%	6.9%	7.6%	7.4%	8.0%	8.0%
Psychologists	4.8%	4.3%	3.8%	5.7%	6.2%	6.2%	6.2%
Pharmacy	1.2%	1.0%	1.0%	1.0%	0.9%	1.1%	1.1%
Counsellor Therapists	7.0%	10.9%	10.0%	9.6%	9.5%	8.6%	8.5%
Dental Hygienists	2.4%	2.4%	2.2%	2.2%	2.5%	3.4%	3.2%
Other Health & Social Care	0.4%	0.0%	0.0%	0.5%	0.5%	0.4%	0.4%
H&SC, Other	9.8%	13.4%	12.2%	12.3%	12.5%	12.5%	12.2%
Health & Social Care Professionals	24.9%	24.6%	24.9%	24.5%	24.5%	23.6%	23.6%
Executive Management	2.3%	3.0%	3.7%	3.6%	3.9%	3.1%	3.0%
Senior Management (VIII & GM)	9.1%	8.1%	7.8%	7.0%	8.0%	8.2%	7.9%
Management (VIII & above)	11.4%	11.1%	11.5%	10.6%	11.9%	11.3%	10.9%
Administrative/ Supervisory (V to VII)	18.0%	19.2%	19.6%	19.7%	22.0%	22.2%	21.6%
Clerical (III & IV)	70.6%	69.7%	69.0%	69.7%	66.1%	66.5%	67.5%
Management & Administrative	22.7%	22.5%	22.8%	22.9%	22.8%	22.4%	22.4%
Support	100.0%	100.0%	100.0%	100.0%	100.0%	100.0%	100.0%
General Support	1.6%	1.5%	1.4%	1.3%	1.3%	1.2%	1.2%
HCA, Nurse's Aide, etc.	1.0%	0.9%	4.3%	7.1%	7.3%	12.0%	29.9%
Health & Social Care Assistants		1.8%	0.8%	9.9%	5.9%	4.9%	5.8%
Health Care Assistants	1.0%	2.7%	5.1%	17.0%	13.2%	16.9%	35.7%
Care, other	88.4%	86.8%	84.9%	75.2%	79.1%	76.5%	59.3%
Home Help	10.6%	10.5%	9.9%	7.8%	7.7%	6.6%	5.0%
Patient & Client Care	9.2%	9.6%	9.2%	10.4%	10.4%	12.1%	12.1%
Total	100 %	100 %	100 %	100 %	100 %	100 %	100 %

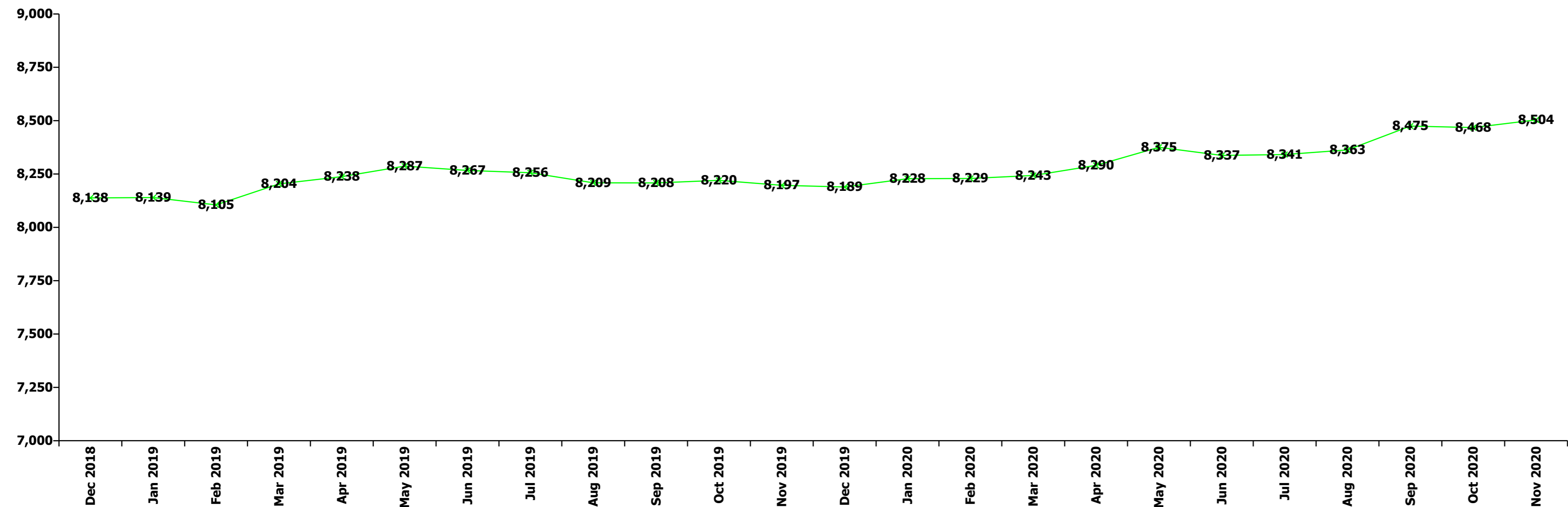
Nov 2020 (Dec 2018 figure: 2,395)	WTE Dec 2015	WTE Dec 2016	WTE Dec 2017	WTE Dec 2018	WTE Dec 2019	WTE Oct 2020	WTE Nov 2020
Disabilities	2,151	2,256	2,299	2,395	2,438.58	2,546.88	2,546.39
Consultant Medicine	50.3%	49.5%					
Consultant Paediatrics	7.9%	9.3%	27.3%	27.3%	27.3%	14.0%	17.7%
Consultant Psychiatry	31.4%	31.0%	54.6%	54.6%	54.6%	57.3%	70.7%
Consultants	89.6%	89.8%	82.0%	82.0%	82.0%	71.3%	88.3%
Medical/ Dental, other	10.4%	10.2%	18.0%	18.0%	18.0%	28.7%	11.7%
Medical & Dental	0.1%	0.1%	0.1%	0.1%	0.1%	0.1%	0.1%
Clinical Nurse/ Midwife Manager	17.5%	16.6%	16.7%	19.6%	19.4%	19.8%	19.6%
Director Nursing/Midwifery, Assistant	0.9%	0.9%	0.7%	1.2%	1.2%	1.0%	0.9%
Director of Nursing/Midwifery	0.6%	0.4%	0.6%	0.5%	0.7%	0.7%	0.7%
Nurse/ Midwife Manager	19.0%	17.9%	18.0%	21.3%	21.3%	21.5%	21.3%
Advanced Nurse/ Midwife Practitioner	0.2%	0.2%	0.2%	0.2%	0.2%	0.5%	0.5%
Clinical Nurse/ Midwife Specialist	3.3%	3.3%	3.5%	3.3%	3.0%	3.0%	2.9%
Nurse/ Midwife Specialist & AN/MP	3.5%	3.5%	3.7%	3.5%	3.2%	3.5%	3.4%
Staff Nurse [Intellectual Disability]	13.4%	14.3%	15.3%	19.9%	20.5%	19.3%	19.3%
Staff Nurse [Psychiatric]	3.8%	3.0%	0.6%	0.4%	0.6%	0.6%	0.5%
Staff Nurses [General/ Children's]	58.5%	59.5%	60.6%	52.9%	52.6%	50.7%	51.0%
Staff Nurse/ Staff Midwife	75.8%	76.8%	76.4%	73.2%	73.7%	70.6%	70.8%
Pre-registration Nurse/ Midwife Intern	1.6%	1.7%	1.7%	1.9%	1.4%		
Pre-registration Nurse Intern (COVID-19)						4.1%	4.0%
Nursing/ Midwifery awaiting registration					0.2%	0.4%	0.5%
Nursing/ Midwifery Student	1.6%	1.7%	1.7%	1.9%	1.7%	4.5%	4.5%
Nursing/ Midwifery other	0.1%	0.1%	0.1%	0.1%	0.1%		
Nursing & Midwifery	22.6%	21.2%	20.2%	18.0%	17.7%	16.6%	16.6%
Dietitians	0.3%	0.3%	0.4%	0.6%	0.6%	0.6%	0.6%
Occupational Therapists	10.7%	10.0%	10.0%	9.1%	9.4%	8.4%	8.6%
Physiotherapists	5.2%	5.1%	4.8%	4.9%	4.6%	4.5%	4.1%
Speech & Language Therapists	13.8%	13.6%	12.8%	11.7%	12.1%	11.4%	11.3%
Therapy Professions	29.9%	28.9%	28.0%	26.4%	26.7%	24.9%	24.5%
Social Care	51.9%	52.0%	53.1%	54.9%	56.0%	57.7%	58.1%
Social Workers	5.6%	6.7%	6.5%	7.1%	6.7%	6.4%	6.3%
Psychologists	9.8%	9.7%	10.0%	9.7%	8.6%	8.6%	8.6%
Counsellor Therapists	0.5%	0.5%	0.5%	0.5%	0.5%	0.5%	0.5%
Other Health & Social Care	1.8%	1.7%	1.7%	1.3%	1.4%	1.8%	1.8%
Play Therapists/ Specialists	0.4%	0.4%	0.2%	0.2%	0.2%	0.2%	0.2%
H&SC, Other	2.8%	2.7%	2.3%	1.9%	2.1%	2.4%	2.4%
Health & Social Care Professionals	17.0%	17.1%	17.2%	16.4%	16.1%	16.5%	16.5%
Executive Management	1.6%	2.3%	1.5%	1.3%	1.3%	1.7%	1.8%
Senior Management (VIII & GM)	13.0%	12.3%	12.6%	10.8%	12.6%	11.5%	10.8%
Management (VIII & above)	14.6%	14.5%	14.0%	12.1%	13.9%	13.2%	12.6%
Administrative/ Supervisory (V to VII)	31.0%	29.5%	28.8%	31.9%	33.4%	34.1%	34.4%
Clerical (III & IV)	54.5%	56.0%	57.2%	56.0%	52.7%	52.6%	53.0%
Management & Administrative	6.0%	5.9%	6.0%	6.4%	6.2%	6.7%	6.7%
Support	90.9%	90.2%	89.2%	92.9%	93.3%	92.7%	91.6%
Maintenance	8.5%	9.2%	10.2%	6.4%	6.1%	6.6%	7.1%
Technical Services	0.5%	0.6%	0.6%	0.7%	0.7%	0.7%	1.3%
Maintenance/ Technical	9.1%	9.8%	10.8%	7.1%	6.7%	7.3%	8.4%
General Support	8.5%	7.5%	6.7%	6.4%	6.3%	6.1%	6.1%
HCA, Nurse's Aide, etc.	74.2%	75.7%	75.6%	77.2%	76.4%	76.5%	76.6%
Health Care Assistants	74.2%	75.7%	75.6%	77.2%	76.4%	76.5%	76.6%
Other Care Grades	25.8%	24.3%	24.4%	22.8%	23.6%	23.5%	23.4%
Care, other	25.8%	24.3%	24.4%	22.8%	23.6%	23.5%	23.4%
Patient & Client Care	45.7%	48.1%	49.8%	52.7%	51.7%	54.0%	54.0%
Total	100 %	100 %	100 %	100 %	100 %	100 %	100 %

Nov 2020 (Dec 2018 figure: 2,915)	WTE Dec 2015	WTE Dec 2016	WTE Dec 2017	WTE Dec 2018	WTE Dec 2019	WTE Oct 2020	WTE Nov 2020
Older People	2,792	2,789	2,899	2,915	2,919.30	2,922.59	2,902.29
Consultant Medicine	4.1%	4.1%	3.8%	3.9%	3.9%	2.9%	3.6%
Consultant Psychiatry	4.1%	3.6%	3.2%				
Consultants	8.2%	7.7%	7.0%	3.9%	3.9%	2.9%	3.6%
Registrar	4.1%	4.1%	3.8%	3.9%	3.9%	2.9%	3.6%
Specialist Registrar	4.1%		3.8%	3.9%	7.7%	5.9%	7.2%
Registrars	8.2%	4.1%	7.6%	7.7%	11.6%	8.8%	10.8%
Senior House Officer				3.9%	3.9%	2.9%	3.6%
SHO/ Interns				3.9%	3.9%	2.9%	3.6%
Medical/ Dental, other	83.6%	88.1%	85.4%	84.6%	80.6%	85.3%	82.1%
Medical & Dental	0.9%	0.9%	0.9%	0.9%	0.9%	1.0%	1.0%
Clinical Nurse/ Midwife Manager	13.7%	13.4%	13.3%	11.5%	12.8%	13.1%	12.9%
Director Nursing/Midwifery, Assistant	1.3%	1.3%	1.5%	0.9%	2.0%	1.9%	1.9%
Director of Nursing/Midwifery	1.7%	1.4%	1.4%	1.4%	3.4%	3.8%	3.8%
Nurse/ Midwife Manager	16.8%	16.2%	16.1%	13.7%	18.3%	18.8%	18.6%
Advanced Nurse/ Midwife Practitioner	0.2%	0.2%	0.2%	0.2%	0.2%	0.2%	0.2%
Clinical Nurse/ Midwife Specialist	0.1%	0.3%	0.1%	0.4%	0.4%	0.8%	0.8%
Nurse/ Midwife Specialist & AN/MP	0.3%	0.4%	0.3%	0.6%	0.5%	0.9%	1.0%
Graduate Nursing/ Midwifery	0.2%						
Staff Nurses [General/ Children's]	81.8%	82.4%	82.5%	84.8%	80.1%	79.3%	79.5%
Staff Nurse/ Staff Midwife	81.9%	82.4%	82.5%	84.8%	80.1%	79.3%	79.5%
Public Health Nurse	1.0%	1.0%	1.0%	0.9%	0.8%	0.9%	0.9%
Post-registration Nurse/ Midwife Student					0.2%		
Nursing/ Midwifery awaiting registration					0.2%		
Nursing/ Midwifery Student					0.3%		
Nursing & Midwifery	22.8%	22.8%	22.5%	22.5%	22.5%	22.4%	22.4%
Dietitians	0.2%	4.4%	4.2%	4.0%	2.5%	2.5%	2.6%
Occupational Therapists	22.3%	18.6%	17.1%	21.9%	28.5%	27.5%	27.0%
Physiotherapists	26.9%	27.7%	25.5%	27.3%	25.6%	24.6%	25.3%
Podiatrists & Chiropodists	13.1%	15.2%	14.0%	12.9%	10.7%	12.1%	12.1%
Speech & Language Therapists	8.3%	7.8%	9.0%	7.7%	6.3%	4.9%	1.9%
Therapy Professions	70.8%	73.7%	69.7%	73.7%	73.7%	71.6%	68.9%
Phlebotomists	2.1%	1.9%	1.8%				
Radiographers	1.1%	0.5%	0.5%	1.9%	1.9%	2.0%	2.1%
Health Science/ Diagnostics	3.2%	2.4%	2.3%	1.9%	1.9%	2.0%	2.1%
Social Care	3.7%	3.3%	3.1%	3.0%	2.9%	2.8%	2.8%
Social Workers	16.8%	16.0%	19.0%	15.8%	17.2%	17.6%	20.0%
Pharmacy	5.6%	4.5%	5.9%	5.6%	4.3%	6.1%	6.1%
Health & Social Care Professionals	1.7%	1.9%	1.9%	2.0%	2.0%	2.1%	2.1%
Executive Management	0.9%	0.9%	0.8%	0.7%	0.6%	0.6%	1.2%
Senior Management (VIII & GM)	4.7%	6.1%	8.8%	6.4%	7.4%	8.3%	7.5%
Management (VIII & above)	5.6%	7.0%	9.7%	7.1%	8.1%	9.0%	8.7%
Administrative/ Supervisory (V to VII)	10.0%	9.9%	8.4%	6.8%	10.8%	10.0%	11.1%
Clerical (III & IV)	84.3%	83.1%	81.9%	86.1%	81.2%	81.0%	80.2%
Management & Administrative	3.8%	4.1%	4.2%	5.2%	5.2%	5.6%	5.6%
Support	93.4%	93.1%	93.4%	93.9%	94.4%	94.9%	95.0%
Maintenance/ Technical	6.6%	6.9%	6.6%	6.1%	5.6%	5.1%	5.0%
General Support	4.9%	4.5%	4.1%	3.8%	3.8%	4.1%	4.1%
HCA, Nurse's Aide, etc.	37.1%	40.1%	40.2%	41.0%	40.6%	41.3%	42.2%
Health & Social Care Assistants					0.0%	0.1%	0.1%
Health Care Assistants	37.1%	40.1%	40.2%	41.0%	40.6%	41.4%	42.2%
Care, other	1.7%	1.5%	1.6%	1.6%	1.6%	1.9%	1.9%
Home Help	61.2%	58.4%	58.2%	57.5%	57.8%	56.8%	55.9%
Patient & Client Care	65.9%	65.8%	66.4%	65.6%	65.5%	64.8%	64.8%
Total	100 %	100 %	100 %	100 %	100 %	100 %	100 %

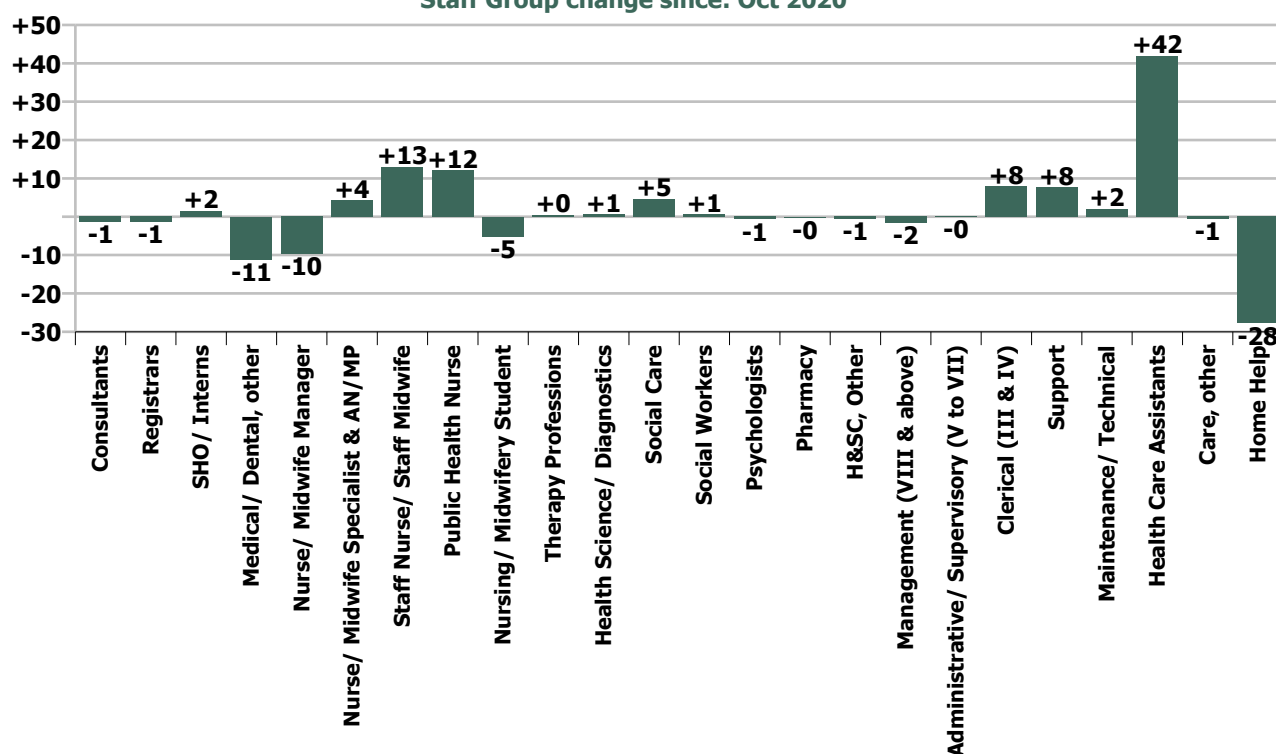
Summary Staff Movement: November 2020

Month-on-month Summary																											
WTE change since Oct 20	% change since Oct 20	overall	Consultants	Registrars	SHO/ Interns	Medical/ Dental, other	Medical & Dental	Nurse/ Midwife Manager	Nurse/ Midwife Specialist & AN/MP	Staff Nurse/ Staff Midwife	Public Health Nurse	Nursing/ Midwifery Student	Nursing & Midwifery	Therapy Professions	Health Science/ Diagnostics	Social Care	Social Workers	Psychologists	Pharmacy	H&SC, Other	Health & Social Care Professionals	Management (VIII & above)	Administrativ e Supervisory (V to VII)	Clerical (III & IV)	Management & Administrativ e	General Support	Patient & Client Care
Overall	+0.4%	+36	-1.3	-1.4	+1.5	-11.1	-12.4	-9.7	+4.3	+12.9	+12.0	-5.1	+14.3	+0.5	+0.7	+4.7	+0.6	-0.7	-0.2	-0.6	+4.9	-1.7	-0.1	+7.8	+6.1	+9.6	+13.5
Community Health & Wellbeing	+0.2%	+0						0.0					0.0	-0.6							-0.6	+0.0	0.0	+0.5	+0.5		+0.2
Mental Health	+0.2%	+3	-1.4	-1.3	+1.9	-5.2	-6.0	-2.8	+3.1	+12.1		-6.7	+5.7	+1.1		+0.1	-0.9	-1.5	-0.0	-0.2	-1.4	+1.1	-0.2	+2.5	+3.4	+0.5	+0.7
Primary Care	+3.8%	+54	0.0	-0.1	-0.3	+0.8	+0.3	-6.1	+1.0	-5.1	+12.2	+1.3	+3.3	+3.0	+0.7	-0.0	+0.3	+0.4	-0.1	-0.5	+3.8	-1.2	-1.5	+4.4	+1.7	+2.0	+42.6
Disabilities	-0.0%	-0	+0.0			-0.7	-0.7	+0.1	0.0	+4.6		+0.3	+5.0	-0.1		+4.6	+0.1	+0.3		+0.1	+4.9	-1.4	-0.5	-0.9	-2.8	+3.7	-10.6
Older People	-0.7%	-20	+0.0	0.0	0.0	-6.1	-6.1	-1.0	+0.1	+1.4	-0.2		+0.3	-2.9	0.0	-0.0	+1.2		-0.1		-1.7	-0.2	+2.1	+1.3	+3.2	+3.4	-19.4
Social Care	-0.4%	-21	+0.0	0.0	0.0	-6.8	-6.7	-0.9	+0.1	+6.0	-0.2	+0.3	+5.3	-3.0	0.0	+4.6	+1.3	+0.3	-0.1	+0.1	+3.2	-1.6	+1.6	+0.4	+0.4	+7.1	-30.0
Change	+36.1	+0.4%	-2.2%	-1.4%	+3.0%	-8.7%	-3.6%	-2.1%	+4.6%	+0.9%	+5.4%	-11.6%	+0.6%	+0.1%	+5.1%	+1.8%	+0.5%	-0.5%	-2.1%	-1.0%	+0.5%	-2.2%	-0.0%	+1.5%	+0.8%	+2.6%	+0.4%

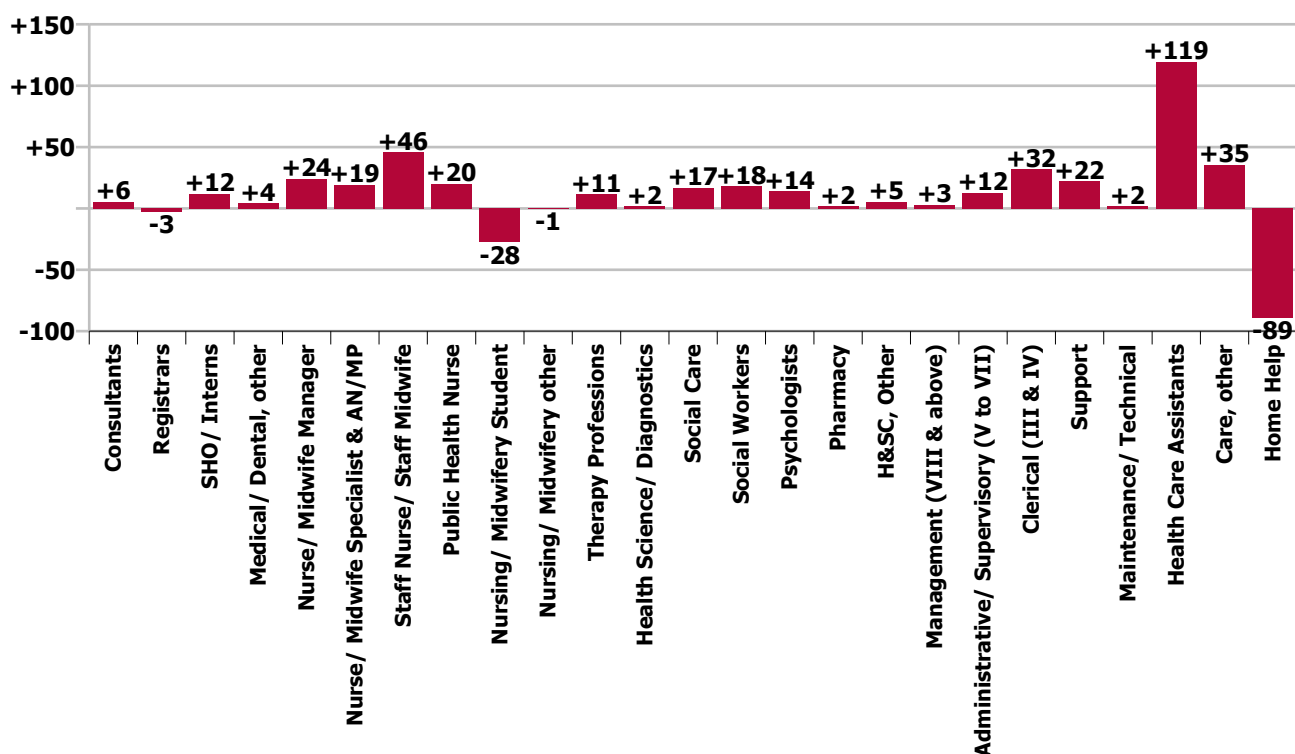
Year-on-year Summary																												
WTE change since Nov 19	% change since Nov 19	overall	Consultants	Registrars	SHO/ Interns	Medical/ Dental, other	Medical & Dental	Nurse/ Midwife Manager	Nurse/ Midwife Specialist & AN/MP	Staff Nurse/ Staff Midwife	Public Health Nurse	Nursing/ Midwifery Student	Nursing/ Midwifery other	Nursing & Midwifery	Therapy Professions	Health Science/ Diagnostics	Social Care	Social Workers	Psychologists	Pharmacy	H&SC, Other	Health & Social Care Professionals	Management (VIII & above)	Administrativ e/ Supervisory (V to VII)	Clerical (III & IV)	Management & Administrative	General Support	Patient & Client Care
Overall	+3.7%	+307	+5.5	-2.8	+12.0	+4.3	+19.0	+24.3	+19.0	+45.8	+20.3	-27.6	-0.5	+81.2	+11.4	+1.7	+17.0	+18.2	+14.1	+1.7	+5.4	+69.5	+3.2	+12.5	+31.9	+47.5	+24.0	+65.5
Community Health & Wellbeing	+0.2%	+0						+1.0						+1.0	+4.2							+4.2	+1.0	+5.1	+6.8	+12.9		+16.6
Mental Health	+0.2%	+3	+4.5	-4.0	+11.6	+0.1	+12.3	+23.7	+12.8	+31.4		-35.4		+32.5	+2.8		+3.5	+13.8	+9.9	-0.4	+3.1	+32.7	+2.0	+0.2	+4.2	+6.5	+2.4	+3.5
Primary Care	+3.8%	+54	0.0	+1.1	+0.4	+2.1	+3.7	-1.2	+2.3	+12.8	+18.5	-2.2		+30.2	+12.4	+1.2	-2.1	+3.4	+2.2	+0.7	+0.7	+18.6	-0.4	+2.8	+12.3	+14.6	+2.0	+44.0
Disabilities	+4.5%	+108.5	+1.0			0.0	+1.0	-0.6	+1.0	-7.0		+12.0	-0.5	+4.9	-6.3		+15.6	+1.1	+1.9		+1.7	+11.8	-0.7	+4.2	+5.1	+8.6	+6.4	+75.8
Older People	-1.3%	-39.4	0.0	0.0	0.0	+2.1	+2.1	+1.4	+2.9	+8.5	+1.8	-2.0		+12.6	-1.7	+0.5	0.0	+2.0		+1.4		+2.2	+1.3	+0.2	+3.5	+5.0	+13.2	-74.4
Social Care	-0.4%	-21	+1.0	0.0	0.0	+2.1	+3.1	+0.8	+3.9	+1.5	+1.8	+10.0	-0.5	+17.4	-7.9	+0.5	+15.6	+0.9	+1.9	+1.4	+1.7	+14.0	+0.6	+4.4	+8.6	+13.6	+19.6	+1.4
Change	+306.8	+3.7%	+10.2%	-2.7%	+30.9%	+3.8%	+6.2%	+5.6%	+24.1%	+3.2%	+9.6%	-41.3%	-100.0%	+3.7%	+2.5%	+14.9%	+7.1%	+16.0%	+10.4%	+21.7%	+9.2%	+6.8%	+4.4%	+7.7%	+6.3%	+6.4%	+6.7%	+1.8%



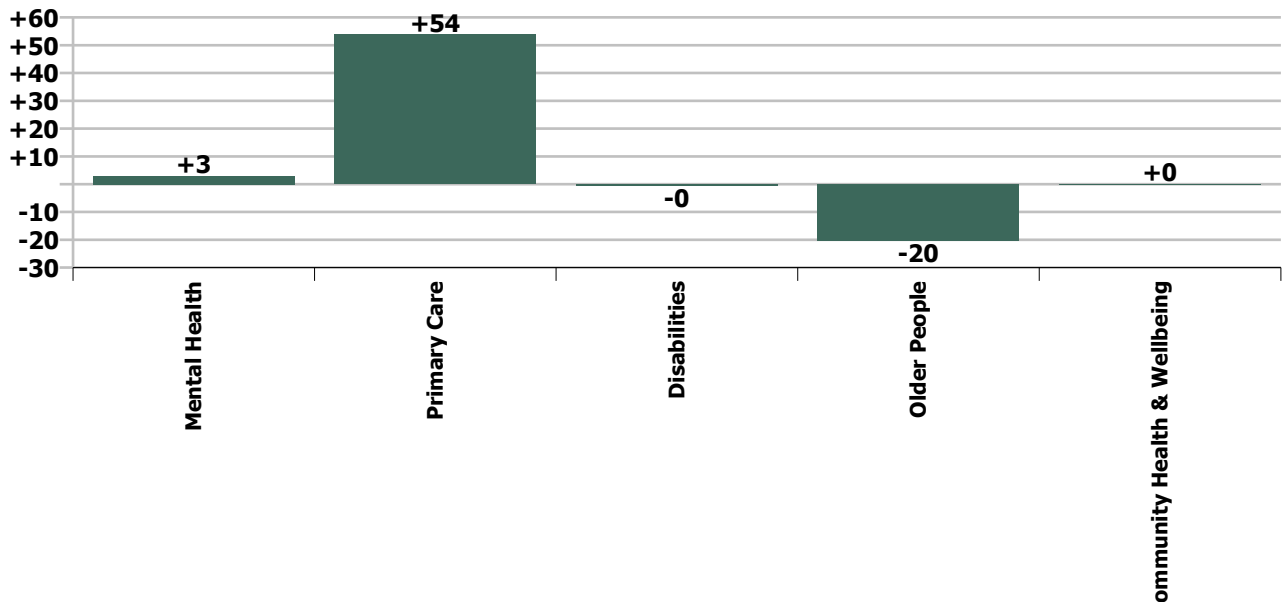
Staff Group change since: Oct 2020



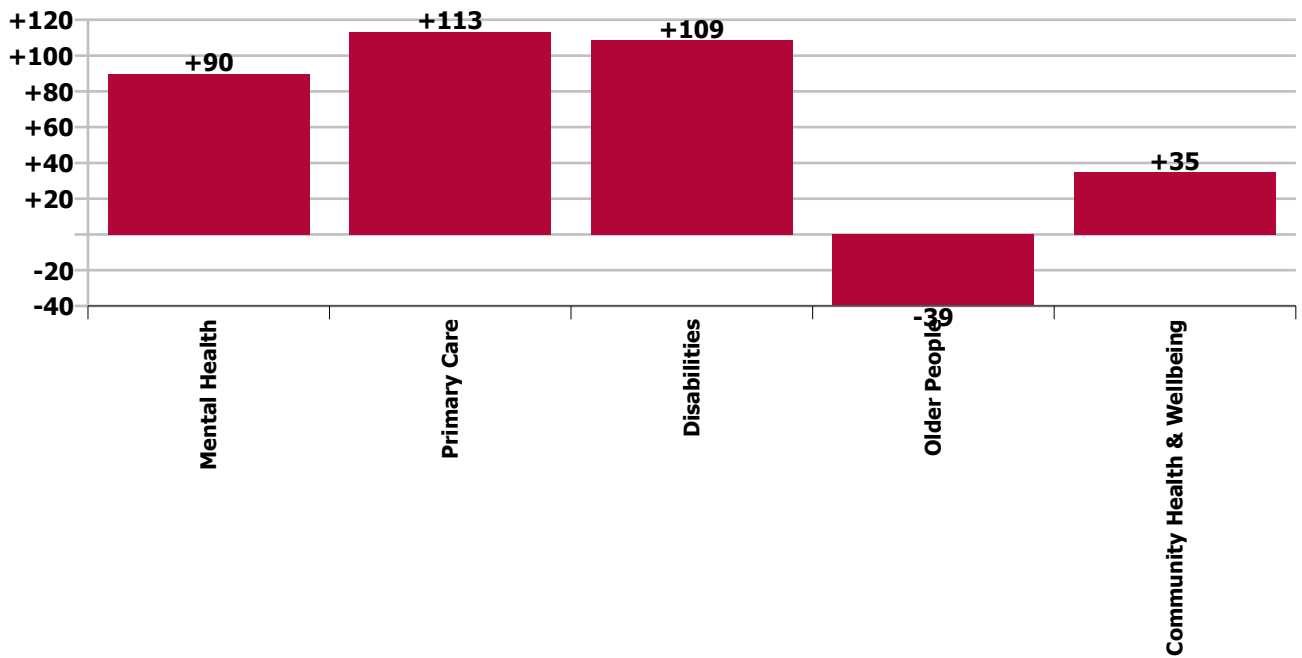
Staff Group change since: Nov 2019



Care Group change since: Oct 2020



Care Group change since: Nov 2019



Longitudinal Employment Levels by Grade Group - Oct 2013 to Nov 2020

Nov 2020 (Dec 2015 figure: 7,461)	WTE Nov 2020	WTE change since Dec 15	WTE change since Dec 16	WTE change since Dec 17	WTE change since Dec 18	WTE change since Dec 19	WTE change since Oct 20	% change since Dec 15	% change since Dec 16	% change since Dec 17	% change since Dec 18	% change since Dec 19	% change since Oct 20
Overall	8,504	+1,043	+865	+521	+366	+315	+36	+14.0%	+11.3%	+6.5%	+4.5%	+3.8%	+0.4%
Consultant Dentistry	2												
Consultant Medicine	1	-2	-2	+0	+0	-0	+0	-57.7%	-57.7%	+10.0%	+10.0%	-0.9%	+0.9%
Consultant Paediatrics	1	+1	+1				+0	+300.0%	+233.3%				+2.0%
Consultant Psychiatry	56	+12	+11	+9	+6	+5	-1	+27.1%	+23.4%	+18.3%	+13.1%	+9.5%	-2.4%
Consultants	60	+11	+10	+9	+7	+5	-1	+22.8%	+19.5%	+17.0%	+12.3%	+8.8%	-2.2%
Registrar	79	+15	+15	+8	+0	-6	-0	+23.5%	+22.9%	+11.5%	+0.4%	-6.9%	-0.2%
Senior Registrar	14	+5	+5	+3	+3	+2	-1	+60.0%	+51.4%	+30.2%	+26.8%	+18.6%	-8.3%
Specialist Registrar	8	+4	+5	+4	+4	+1		+100.0%	+166.7%	+100.0%	+100.0%	+14.3%	
Registrars	101	+24	+24	+15	+7	-3	-1	+31.7%	+32.0%	+18.0%	+7.7%	-2.6%	-1.4%
Interns	2	-1	-1	-1	-1	-1	-1	-33.3%	-33.3%	-33.3%	-33.3%	-33.3%	-20.6%
Senior House Officer	49	+10	+11	+10	+8	+14	+2	+27.2%	+29.6%	+27.2%	+19.1%	+39.5%	+4.3%
SHO/ Interns	51	+9	+10	+9	+7	+13	+2	+22.8%	+25.0%	+22.9%	+15.5%	+33.8%	+3.0%
Dentists	60	-2	-2	-2	-5	-2	-1	-2.9%	-3.2%	-3.7%	-7.9%	-3.9%	-1.6%
Other Medical	57	+10	+5	-3	+1	+8	-10	+20.2%	+9.2%	-4.7%	+2.1%	+15.3%	-15.2%
Medical/ Dental, other	116	+8	+3	-5	-4	+5	-11	+7.1%	+2.4%	-4.2%	-3.3%	+4.5%	-8.7%
Medical & Dental	328	+53	+47	+28	+17	+20	-12	+19.1%	+16.8%	+9.5%	+5.4%	+6.5%	-3.6%
Clinical Nurse/ Midwife Manager	361	+42	+45	+43	+39	+24	-7	+13.3%	+14.2%	+13.6%	+12.3%	+7.2%	-2.0%
Director Nursing/Midwifery, Assistant	60	+6	+5	+11	+12	-0	-3	+10.9%	+9.7%	+22.8%	+24.4%	-0.4%	-4.7%
Director of Nursing/Midwifery	38	+16	+20	+21	+21	+3	+1	+68.4%	+105.7%	+118.6%	+119.4%	+9.0%	+1.9%
Nurse/ Midwife Manager	460	+64	+70	+75	+72	+27	-10	+16.2%	+18.0%	+19.6%	+18.6%	+6.3%	-2.1%
Advanced Nurse/ Midwife Practitioner	7	+3	+4	+4	+2	+0	-1	+68.5%	+124.7%	+124.7%	+42.8%	+0.6%	-10.7%
Clinical Nurse/ Midwife Specialist	91	+39	+34	+25	+24	+17	+5	+75.3%	+58.9%	+38.3%	+35.4%	+22.9%	+5.9%
Nurse/ Midwife Specialist & AN/MP	98	+42	+38	+29	+26	+17	+4	+74.8%	+62.2%	+42.1%	+35.8%	+21.0%	+4.6%
Graduate Nursing/ Midwifery		-1						-100.0%	-100.0%	-100.0%	-100.0%	-100.0%	-100.0%
Staff Midwives	5	+3	+2	-1	-2	-3	-3	+136.5%	+70.1%	-10.1%	-27.1%	-41.7%	-35.4%
Staff Nurse [Intellectual Disability]	82	+16	+13	+11	-5	-5	+1	+25.1%	+19.6%	+15.2%	-5.7%	-5.6%	+1.1%
Staff Nurse [Psychiatric]	487	-61	-65	-61	-37	+19	+12	-11.2%	-11.8%	-11.2%	-7.1%	+4.0%	+2.6%
Staff Nurses [General/ Children's]	895	-31	-47	-85	-37	+13	+2	-3.4%	-5.0%	-8.7%	-4.0%	+1.5%	+0.3%
Staff Nurse/ Staff Midwife	1,469	-75	-97	-136	-81	+23	+13	-4.8%	-6.2%	-8.5%	-5.2%	+1.6%	+0.9%
Public Health Nurse	232	+16	+17	+16	+14	+16	+12	+7.3%	+7.7%	+7.2%	+6.6%	+7.6%	+5.4%
Pre-registration Nurse/ Midwife Intern		-9	-9	-8	-9	-9		-100.0%	-100.0%	-100.0%	-100.0%	-100.0%	-100.0%
Pre-registration Nurse Intern (COVID-19)	22	+22	+22	+22	+22	+22	-7	-100.0%	-100.0%	-100.0%	-100.0%	-100.0%	-23.7%
Post-registration Nurse/ Midwife Student	15	+8	+7	-2	+1	-4	+1	+111.3%	+84.9%	-13.0%	+5.6%	-23.2%	+9.6%
Nursing/ Midwifery awaiting registration	3	+3	+3	+3	+3	-29	+0	-100.0%	-100.0%	-100.0%	-100.0%	-90.5%	+9.1%

Nov 2020 (Dec 2015 figure: 7,461)	WTE Nov 2020	WTE change since Dec 15	WTE change since Dec 16	WTE change since Dec 17	WTE change since Dec 18	WTE change since Dec 19	WTE change since Oct 20	% change since Dec 15	% change since Dec 16	% change since Dec 17	% change since Dec 18	% change since Dec 19	% change since Oct 20
Overall	8,504	+1,043	+865	+521	+366	+315	+36	+14.0%	+11.3%	+6.5%	+4.5%	+3.8%	+0.4%
Nursing/ Midwifery Student	39	+24	+23	+14	+17	-20	-5	+153.5%	+138.1%	+57.2%	+74.6%	-34.2%	-11.6%
Nursing/ Midwifery other		-1	-1	-1	-1	-1		-100.0%	-100.0%	-100.0%	-100.0%	-100.0%	-100.0%
Nursing & Midwifery	2,298	+70	+49	-3	+47	+63	+14	+3.2%	+2.2%	-0.1%	+2.1%	+2.8%	+0.6%
Dietitians	38	+25	+20	+14	+9	+10	+2	+196.1%	+106.0%	+58.9%	+33.1%	+37.3%	+5.2%
Occupational Therapists	174	+24	+24	+11	+11	+5	+2	+15.6%	+15.8%	+6.6%	+7.0%	+3.0%	+1.0%
Orthoptists	2	+1	+1	+1	+1	-2		+163.2%	+900.0%	+194.1%	+200.0%	-54.3%	
Physiotherapists	105	+4	+2	-4	-3	-1	-3	+4.0%	+1.8%	-3.3%	-2.4%	-1.4%	-2.5%
Podiatrists & Chiropodists	7	+1	-1	-0		+1	-0	+20.6%	-7.2%	-3.9%		+15.4%	-2.5%
Speech & Language Therapists	134	+16	+3	-6	-0	-1	-0	+13.6%	+2.5%	-4.2%	-0.3%	-0.5%	-0.3%
Therapy Professions	461	+71	+49	+16	+19	+12	+0	+18.2%	+12.0%	+3.7%	+4.3%	+2.8%	+0.1%
Audiology	8	+3	+3	+2	+1	+1	-0	+59.8%	+59.8%	+33.2%	+14.1%	+18.0%	-0.1%
Medical Laboratory		-13						-100.0%	-100.0%	-100.0%	-100.0%	-100.0%	-100.0%
Phlebotomists		-1	-1	-1				-100.0%	-100.0%	-100.0%	-100.0%	-100.0%	-100.0%
Physicists	2			+0			+1			+12.4%			+49.3%
Radiographers	3	+1	+1	+1	+0	+0		+29.5%	+43.7%	+43.7%	+6.5%	+4.8%	
Health Science/ Diagnostics	13	-10	+3	+2	+1	+1	+1	-42.5%	+29.1%	+20.0%	+9.8%	+11.5%	+5.1%
Social Care	257	+53	+41	+33	+26	+17	+5	+25.9%	+19.1%	+14.9%	+11.4%	+7.3%	+1.8%
Social Workers	131	+29	+21	+14	+10	+17	+1	+28.4%	+18.8%	+11.6%	+8.3%	+14.6%	+0.5%
Psychologists	150	+54	+41	+34	+17	+12	-1	+56.4%	+38.0%	+29.5%	+12.5%	+8.7%	-0.5%
Pharmacy	10	+1	+2	-0	-1	+2	-0	+9.9%	+20.3%	-2.8%	-7.9%	+20.0%	-2.1%
Counsellor Therapists	40	+9	-3	-3	-1	-1	-0	+27.4%	-7.3%	-7.6%	-1.8%	-1.8%	-1.0%
Dental Hygienists	11	+4	+4	+4	+4	+3	-1	+61.5%	+56.5%	+53.0%	+55.2%	+34.4%	-4.9%
Other Health & Social Care	13	+4	+3	+3	+3	+2	+0	+39.4%	+30.6%	+28.6%	+31.7%	+20.4%	+3.1%
Play Therapists/ Specialists	1	-1	-1				-0	-61.3%	-61.3%				-4.5%
H&SC, Other	65	+15	+3	+3	+6	+4	-1	+31.5%	+4.7%	+5.6%	+10.9%	+7.2%	-1.0%
Health & Social Care Professionals	1,087	+214	+160	+103	+79	+66	+5	+24.5%	+17.3%	+10.4%	+7.8%	+6.5%	+0.5%
Executive Management	17	+8	+5	+3	+3	+2	+1	+84.8%	+38.6%	+18.8%	+18.8%	+10.9%	+4.5%
Senior Management (VIII & GM)	58	+13	+13	+7	+11	+1	-2	+28.6%	+30.1%	+14.0%	+22.1%	+0.9%	-3.9%
Management (VIII & above)	75	+21	+18	+10	+13	+2	-2	+37.9%	+31.9%	+15.0%	+21.3%	+3.0%	-2.2%
Administrative/ Supervisory (V to VII)	175	+60	+55	+48	+38	+14	-0	+52.1%	+46.3%	+38.0%	+27.4%	+8.4%	-0.0%
Clerical (III & IV)	540	+122	+109	+72	+25	+36	+8	+29.3%	+25.3%	+15.4%	+4.8%	+7.1%	+1.5%
Management & Administrative	790	+203	+182	+130	+75	+52	+6	+34.6%	+30.0%	+19.7%	+10.6%	+7.0%	+0.8%
Catering	59	+1	+2	+4	+0	-2	-0	+0.9%	+4.4%	+6.5%	+0.1%	-2.5%	-0.5%
Household Services	208	-68	-43	-25	-1	+19	+6	-24.6%	-17.1%	-10.7%	-0.6%	+9.9%	+2.7%
Other Support	79	+14	+15	+14	+5	+5	+2	+22.1%	+23.3%	+21.8%	+6.6%	+6.1%	+2.7%

Nov 2020 (Dec 2015 figure: 7,461)	WTE Nov 2020	WTE change since Dec 15	WTE change since Dec 16	WTE change since Dec 17	WTE change since Dec 18	WTE change since Dec 19	WTE change since Oct 20	% change since Dec 15	% change since Dec 16	% change since Dec 17	% change since Dec 18	% change since Dec 19	% change since Oct 20
Overall	8,504	+1,043	+865	+521	+366	+315	+36	+14.0%	+11.3%	+6.5%	+4.5%	+3.8%	+0.4%
Portering	12	-2	-1	+1	+1	-1	+0	-12.5%	-5.6%	+11.9%	+11.7%	-7.7%	+2.3%
Support	358	-55	-26	-6	+5	+21	+8	-13.3%	-6.9%	-1.7%	+1.4%	+6.2%	+2.2%
Maintenance	22	-9	-9	-8	-1	+1	+1	-30.0%	-29.4%	-27.4%	-2.3%	+4.2%	+4.7%
Technical Services	2	+1	+1	+1	+1	+1	+1	+100.0%	+100.0%	+100.0%	+100.0%	+100.0%	+100.0%
Maintenance/ Technical	24	-8	-8	-7	+0	+2	+2	-26.0%	-25.4%	-23.4%	+2.0%	+8.5%	+9.0%
General Support	382	-63	-35	-14	+5	+23	+10	-14.2%	-8.3%	-3.4%	+1.5%	+6.3%	+2.6%
HCA, Nurse's Aide, etc.	2,064	+532	+386	+273	+141	+118	+38	+34.7%	+23.0%	+15.3%	+7.3%	+6.1%	+1.9%
Health & Social Care Assistants	11	+11	+9	+10	-3	+3	+4	-100.0%	+460.0%	+1020.0%	-19.0%	+39.3%	+47.6%
Health Care Assistants	2,075	+543	+395	+284	+138	+121	+42	+35.4%	+23.5%	+15.8%	+7.1%	+6.2%	+2.1%
Care, other	485	+103	+89	+66	+54	+35	-1	+27.1%	+22.5%	+15.8%	+12.5%	+7.8%	-0.1%
Home Help	1,059	-79	-24	-74	-50	-65	-28	-6.9%	-2.2%	-6.5%	-4.5%	-5.8%	-2.6%
Patient & Client Care	3,619	+567	+460	+276	+142	+91	+14	+18.6%	+14.6%	+8.2%	+4.1%	+2.6%	+0.4%

Source: Health Service Personnel Census

Longitudinal Employment Levels by Care Group - Oct 2013 to Nov 2020

Community Health & Wellbeing

Nov 2020 (figure:)	WTE Nov 2020	WTE change since	WTE change since	WTE change since	WTE change since	WTE change since	WTE change since Oct 20	% change since	% change since	% change since	% change since	% change since	% change since Oct 20
Overall	35	+35	+35	+35	+35	+35	+0	-100.0%	-100.0%	-100.0%	-100.0%	-100.0%	+0.2%
Nursing & Midwifery	1	+1	+1	+1	+1	+1		-1.0%	-1.0%	-1.0%	-1.0%	-1.0%	+0.0%
Nurse/ Midwife Manager	1	+1	+1	+1	+1	+1		-1.0%	-1.0%	-1.0%	-1.0%	-1.0%	+0.0%
Health & Social Care Professionals	4	+4	+4	+4	+4	+4	-1	-1.0%	-1.0%	-1.0%	-1.0%	-1.0%	-0.1%
Therapy Professions	4	+4	+4	+4	+4	+4	-1	-1.0%	-1.0%	-1.0%	-1.0%	-1.0%	-0.1%
Management & Administrative	13	+13	+13	+13	+13	+13	+1	-1.0%	-1.0%	-1.0%	-1.0%	-1.0%	+0.0%
Management (VIII & above)	1	+1	+1	+1	+1	+1	+0	-1.0%	-1.0%	-1.0%	-1.0%	-1.0%	+0.0%
Administrative/ Supervisory (V to VII)	5	+5	+5	+5	+5	+5		-1.0%	-1.0%	-1.0%	-1.0%	-1.0%	+0.0%
Clerical (III & IV)	7	+7	+7	+7	+7	+7	+1	-1.0%	-1.0%	-1.0%	-1.0%	-1.0%	+0.1%
Patient & Client Care	17	+17	+17	+17	+17	+17	+0	-1.0%	-1.0%	-1.0%	-1.0%	-1.0%	+0.0%
Care, other	17	+17	+17	+17	+17	+17	+0	-1.0%	-1.0%	-1.0%	-1.0%	-1.0%	+0.0%

Source: Health Service Personnel Census

Mental Health

Nov 2020 (Dec 2015 figure: 1,374)	WTE Nov 2020	WTE change since Dec 15	WTE change since Dec 16	WTE change since Dec 17	WTE change since Dec 18	WTE change since Dec 19	WTE change since Oct 20	% change since Dec 15	% change since Dec 16	% change since Dec 17	% change since Dec 18	% change since Dec 19	% change since Oct 20
Overall	1,562	+188	+155	+85	+79	+77	+3	+13.7%	+11.0%	+5.8%	+5.3%	+5.2%	+0.2%
Medical & Dental	140	+30	+26	+20	+11	+12	-6	+0.3%	+0.2%	+0.2%	+0.1%	+0.1%	-0.0%
Consultants	54	+12	+10	+8	+5	+4	-1	+0.3%	+0.2%	+0.2%	+0.1%	+0.1%	-0.0%
Registrars	42	+13	+9	+6	+0	-4	-1	+0.4%	+0.3%	+0.2%	+0.0%	-0.1%	-0.0%
SHO/ Interns	43	+7	+9	+8	+7	+12	+2	+0.2%	+0.3%	+0.2%	+0.2%	+0.4%	+0.0%
Medical/ Dental, other	2	-2	-2	-3	-1		-5	-0.5%	-0.5%	-0.6%	-0.4%	+0.0%	-0.7%
Nursing & Midwifery	787	+22	+9	-3	+21	+21	+6	+0.0%	+0.0%	-0.0%	+0.0%	+0.0%	+0.0%
Nurse/ Midwife Manager	190	+34	+33	+38	+34	+20	-3	+0.2%	+0.2%	+0.3%	+0.2%	+0.1%	-0.0%
Nurse/ Midwife Specialist & AN/MP	70	+36	+33	+24	+23	+11	+3	+1.1%	+0.9%	+0.5%	+0.5%	+0.2%	+0.0%
Staff Nurse/ Staff Midwife	521	-54	-62	-71	-42	+19	+12	-0.1%	-0.1%	-0.1%	-0.1%	+0.0%	+0.0%
Nursing/ Midwifery Student	6	+5	+5	+6	+5	-28	-7	+10.0%	+10.0%	-1.0%	+10.0%	-0.8%	-0.5%
Health & Social Care Professionals	257	+81	+62	+50	+30	+31	-1	+0.5%	+0.3%	+0.2%	+0.1%	+0.1%	-0.0%
Therapy Professions	79	+25	+19	+16	+7	+5	+1	+0.5%	+0.3%	+0.3%	+0.1%	+0.1%	+0.0%
Social Care	7	-1	-1	+0	+1	+3	+0	-0.1%	-0.1%	+0.0%	+0.2%	+0.8%	+0.0%
Social Workers	65	+11	+11	+6	+5	+12	-1	+0.2%	+0.2%	+0.1%	+0.1%	+0.2%	-0.0%
Psychologists	92	+46	+34	+28	+16	+10	-1	+1.0%	+0.6%	+0.4%	+0.2%	+0.1%	-0.0%
Pharmacy	2	-1	-1	-1	-2	-0	-0	-0.3%	-0.3%	-0.4%	-0.5%	-0.2%	-0.0%
H&SC, Other	13	+1	+0	+0	+2	+2	-0	+0.1%	+0.0%	+0.0%	+0.2%	+0.2%	-0.0%
Management & Administrative	119	+26	+25	+15	+17	+8	+3	+0.3%	+0.3%	+0.1%	+0.2%	+0.1%	+0.0%
Management (VIII & above)	3	+3	+3	+3	+3	+2	+1	-1.0%	-1.0%	-1.0%	-1.0%	+2.0%	+0.6%
Administrative/ Supervisory (V to VII)	22	+5	+5	+4	+5	-0	-0	+0.3%	+0.3%	+0.2%	+0.3%	-0.0%	-0.0%
Clerical (III & IV)	93	+18	+17	+8	+9	+6	+3	+0.2%	+0.2%	+0.1%	+0.1%	+0.1%	+0.0%
General Support	87	-21	-16	-17	-8	+1	+0	-0.2%	-0.2%	-0.2%	-0.1%	+0.0%	+0.0%
Support	82	-19	-14	-15	-7	+2	+0	-0.2%	-0.1%	-0.2%	-0.1%	+0.0%	+0.0%
Maintenance/ Technical	5	-2	-2	-2	-1	-1	-0	-0.3%	-0.3%	-0.3%	-0.2%	-0.2%	-0.0%
Patient & Client Care	172	+49	+49	+20	+8	+4	+1	+0.4%	+0.4%	+0.1%	+0.0%	+0.0%	+0.0%
Health Care Assistants	166	+47	+46	+21	+9	+5	+0	+0.4%	+0.4%	+0.1%	+0.1%	+0.0%	+0.0%
Care, other	6	+2	+2	-1	-1	-1	+0	+0.6%	+0.5%	-0.1%	-0.2%	-0.1%	+0.1%

Source: Health Service Personnel Census

Primary Care

Nov 2020 (Dec 2015 figure: 1,143)	WTE Nov 2020	WTE change since Dec 15	WTE change since Dec 16	WTE change since Dec 17	WTE change since Dec 18	WTE change since Dec 19	WTE change since Oct 20	% change since Dec 15	% change since Dec 16	% change since Dec 17	% change since Dec 18	% change since Dec 19	% change since Oct 20
Overall	1,458	+315	+270	+151	+113	+112	+54	+27.6%	+22.8%	+11.5%	+8.4%	+8.3%	+3.8%
Medical & Dental	157	+20	+18	+6	+2	+5	+0	+0.1%	+0.1%	+0.0%	+0.0%	+0.0%	+0.0%
Consultants	3	+1	+1	+0	+0	-0	+0	+0.3%	+0.3%	+0.0%	+0.0%	-0.0%	+0.0%
Registrars	56	+10	+13	+8	+6	+1	-0	+0.2%	+0.3%	+0.2%	+0.1%	+0.0%	-0.0%
SHO/ Interns	7	+1	+0	+1	-0	+1	-0	+0.2%	+0.0%	+0.1%	-0.0%	+0.2%	-0.0%
Medical/ Dental, other	91	+7	+3	-2	-4	+3	+1	+0.1%	+0.0%	-0.0%	-0.0%	+0.0%	+0.0%
Nursing & Midwifery	436	+96	+79	+41	+39	+28	+3	+0.3%	+0.2%	+0.1%	+0.1%	+0.1%	+0.0%
Nurse/ Midwife Manager	57	+17	+13	+14	+7	+1	-6	+0.4%	+0.3%	+0.3%	+0.1%	+0.0%	-0.1%
Nurse/ Midwife Specialist & AN/MP	7	+4	+4	+3	+1	+2	+1	+1.1%	+1.3%	+0.8%	+0.1%	+0.6%	+0.2%
Staff Nurse/ Staff Midwife	130	+52	+39	+10	+16	+11	-5	+0.7%	+0.4%	+0.1%	+0.1%	+0.1%	-0.0%
Public Health Nurse	226	+16	+17	+16	+15	+16	+12	+0.1%	+0.1%	+0.1%	+0.1%	+0.1%	+0.1%
Nursing/ Midwifery Student	15	+8	+7	-2	+1	-2	+1	+1.1%	+0.8%	-0.1%	+0.1%	-0.1%	+0.1%
Health & Social Care Professionals	344	+60	+51	+19	+15	+15	+4	+0.2%	+0.2%	+0.1%	+0.0%	+0.0%	+0.0%
Therapy Professions	232	+39	+31	+0	+9	+10	+3	+0.2%	+0.2%	+0.0%	+0.0%	+0.0%	+0.0%
Health Science/ Diagnostics	12	-10	+3	+2	+1	+1	+1	-0.4%	+0.3%	+0.2%	+0.1%	+0.1%	+0.1%
Social Care	5	-0	-1	-1	-3	-3	-0	-0.0%	-0.1%	-0.1%	-0.3%	-0.4%	-0.0%
Social Workers	28	+8	+5	+5	+3	+3	+0	+0.4%	+0.2%	+0.2%	+0.1%	+0.1%	+0.0%
Psychologists	21	+8	+9	+9	+3	+1	+0	+0.6%	+0.7%	+0.8%	+0.1%	+0.1%	+0.0%
Pharmacy	4	+0	+1	+0	+1	+1	-0	+0.1%	+0.4%	+0.1%	+0.2%	+0.3%	-0.0%
H&SC, Other	42	+14	+3	+2	+2	+1	-0	+0.5%	+0.1%	+0.1%	+0.0%	+0.0%	-0.0%
Management & Administrative	327	+67	+59	+29	+19	+17	+2	+0.3%	+0.2%	+0.1%	+0.1%	+0.1%	+0.0%
Management (VIII & above)	35	+6	+6	+1	+3	-1	-1	+0.2%	+0.2%	+0.0%	+0.1%	-0.0%	-0.0%
Administrative/ Supervisory (V to VII)	71	+24	+19	+12	+10	+3	-1	+0.5%	+0.4%	+0.2%	+0.2%	+0.0%	-0.0%
Clerical (III & IV)	220	+38	+34	+15	+6	+16	+4	+0.2%	+0.2%	+0.1%	+0.0%	+0.1%	+0.0%
General Support	18	+0	+0	-1	+1	+3	+2	+0.0%	+0.0%	-0.0%	+0.1%	+0.2%	+0.1%
Support	18	+0	+0	-1	+1	+3	+2	+0.0%	+0.0%	-0.0%	+0.1%	+0.2%	+0.1%
Patient & Client Care	177	+72	+63	+56	+37	+45	+43	+0.7%	+0.5%	+0.5%	+0.3%	+0.3%	+0.3%
Health Care Assistants	63	+62	+60	+57	+39	+46	+40	+60.2%	+19.8%	+9.2%	+1.7%	+2.6%	+1.8%
Care, other	105	+12	+6	+2	-0	+0	+2	+0.1%	+0.1%	+0.0%	-0.0%	+0.0%	+0.0%
Home Help	9	-2	-3	-3	-2	-1	-0	-0.2%	-0.3%	-0.3%	-0.2%	-0.1%	-0.0%

Source: Health Service Personnel Census

Disabilities

Nov 2020 (Dec 2015 figure: 2,151)	WTE Nov 2020	WTE change since Dec 15	WTE change since Dec 16	WTE change since Dec 17	WTE change since Dec 18	WTE change since Dec 19	WTE change since Oct 20	% change since Dec 15	% change since Dec 16	% change since Dec 17	% change since Dec 18	% change since Dec 19	% change since Oct 20
Overall	2,546	+395	+291	+247	+152	+108	-0	+18.4%	+12.9%	+10.7%	+6.3%	+4.4%	-0.0%
Medical & Dental	3	-0	-0	+1	+1	+1	-1	-0.1%	-0.1%	+0.5%	+0.5%	+0.5%	-0.2%
Consultants	3	-0	-0	+1	+1	+1	+0	-0.1%	-0.1%	+0.7%	+0.7%	+0.7%	+0.0%
Medical/ Dental, other	0						-1	+0.0%	+0.0%	+0.0%	+0.0%	+0.0%	-0.7%
Nursing & Midwifery	424	-63	-55	-41	-8	+5	+5	-0.1%	-0.1%	-0.1%	-0.0%	+0.0%	+0.0%
Nurse/ Midwife Manager	90	-2	+4	+6	-2	+1	+0	-0.0%	+0.1%	+0.1%	-0.0%	+0.0%	+0.0%
Nurse/ Midwife Specialist & AN/MP	14	-2	-2	-3	-1	+1		-0.1%	-0.1%	-0.2%	-0.1%	+0.1%	+0.0%
Staff Nurse/ Staff Midwife	300	-69	-67	-55	-16	-9	+5	-0.2%	-0.2%	-0.2%	-0.1%	-0.0%	+0.0%
Nursing/ Midwifery Student	19	+11	+11	+11	+11	+12	+0	+1.4%	+1.4%	+1.4%	+1.4%	+1.7%	+0.0%
Nursing/ Midwifery other		-1	-1	-1	-1	-1		-1.0%	-1.0%	-1.0%	-1.0%	-1.0%	-1.0%
Health & Social Care Professionals	419	+54	+34	+24	+26	+15	+5	+0.1%	+0.1%	+0.1%	+0.1%	+0.0%	+0.0%
Therapy Professions	103	-6	-9	-8	-1	-5	-0	-0.1%	-0.1%	-0.1%	-0.0%	-0.0%	-0.0%
Social Care	244	+54	+43	+34	+28	+17	+5	+0.3%	+0.2%	+0.2%	+0.1%	+0.1%	+0.0%
Social Workers	27	+6	+1	+1	-1	-0	+0	+0.3%	+0.0%	+0.0%	-0.0%	-0.0%	+0.0%
Psychologists	36	+0	-2	-3	-2	+1	+0	+0.0%	-0.0%	-0.1%	-0.1%	+0.0%	+0.0%
H&SC, Other	10	-0	-0	+1	+3	+2	+0	-0.0%	-0.0%	+0.1%	+0.3%	+0.2%	+0.0%
Management & Administrative	170	+41	+38	+32	+17	+10	-3	+0.3%	+0.3%	+0.2%	+0.1%	+0.1%	-0.0%
Management (VIII & above)	21	+3	+2	+2	+3	-1	-1	+0.1%	+0.1%	+0.1%	+0.2%	-0.0%	-0.1%
Administrative/ Supervisory (V to VII)	58	+19	+19	+19	+10	+5	-0	+0.5%	+0.5%	+0.5%	+0.2%	+0.1%	-0.0%
Clerical (III & IV)	90	+20	+16	+11	+5	+6	-1	+0.3%	+0.2%	+0.1%	+0.1%	+0.1%	-0.0%
General Support	157	-27	-13	+2	+3	+5	+4	-0.1%	-0.1%	+0.0%	+0.0%	+0.0%	+0.0%
Support	143	-24	-10	+6	+1	+2	+2	-0.1%	-0.1%	+0.0%	+0.0%	+0.0%	+0.0%
Maintenance/ Technical	13	-4	-4	-4	+2	+3	+2	-0.2%	-0.2%	-0.2%	+0.2%	+0.3%	+0.2%
Patient & Client Care	1,374	+390	+288	+229	+112	+72	-11	+0.4%	+0.3%	+0.2%	+0.1%	+0.1%	-0.0%
Health Care Assistants	1,053	+323	+231	+186	+79	+58	-7	+0.4%	+0.3%	+0.2%	+0.1%	+0.1%	-0.0%
Care, other	321	+68	+57	+42	+33	+14	-4	+0.3%	+0.2%	+0.2%	+0.1%	+0.0%	-0.0%

Source: Health Service Personnel Census

Older People

Nov 2020 (Dec 2015 figure: 2,792)	WTE Nov 2020	WTE change since Dec 15	WTE change since Dec 16	WTE change since Dec 17	WTE change since Dec 18	WTE change since Dec 19	WTE change since Oct 20	% change since Dec 15	% change since Dec 16	% change since Dec 17	% change since Dec 18	% change since Dec 19	% change since Oct 20
Overall	2,902	+110	+114	+3	-13	-17	-20	+3.9%	+4.1%	+0.1%	-0.5%	-0.6%	-0.7%
Medical & Dental	28	+3	+4	+1	+2	+2	-6	+0.1%	+0.2%	+0.1%	+0.1%	+0.1%	-0.2%
Consultants	1	-1	-1	-1			+0	-0.5%	-0.5%	-0.5%	+0.0%	+0.0%	+0.0%
Registrars	3	+1	+2	+1	+1			+0.5%	+2.0%	+0.5%	+0.5%	+0.0%	+0.0%
SHO/ Interns	1	+1	+1	+1				-1.0%	-1.0%	-1.0%	+0.0%	+0.0%	+0.0%
Medical/ Dental, other	23	+2	+2	+0	+1	+2	-6	+0.1%	+0.1%	+0.0%	+0.0%	+0.1%	-0.2%
Nursing & Midwifery	651	+14	+14	-1	-5	+8	+0	+0.0%	+0.0%	-0.0%	-0.0%	+0.0%	+0.0%
Nurse/ Midwife Manager	121	+14	+18	+16	+31	+4	-1	+0.1%	+0.2%	+0.2%	+0.3%	+0.0%	-0.0%
Nurse/ Midwife Specialist & AN/MP	6	+4	+4	+5	+3	+3	+0	+2.3%	+1.4%	+2.5%	+0.7%	+0.9%	+0.0%
Staff Nurse/ Staff Midwife	518	-4	-7	-20	-39	+2	+1	-0.0%	-0.0%	-0.0%	-0.1%	+0.0%	+0.0%
Public Health Nurse	6	-0	-0	-1	-0	+1	-0	-0.1%	-0.0%	-0.1%	-0.0%	+0.2%	-0.0%
Nursing/ Midwifery Student						-2		-1.0%	-1.0%	-1.0%	-1.0%	-1.0%	-1.0%
Health & Social Care Professionals	62	+14	+9	+6	+4	+1	-2	+0.3%	+0.2%	+0.1%	+0.1%	+0.0%	-0.0%
Therapy Professions	43	+9	+4	+4	-0	-2	-3	+0.3%	+0.1%	+0.1%	-0.0%	-0.0%	-0.1%
Health Science/ Diagnostics	1	-0			+0	+0		-0.2%	+0.0%	+0.0%	+0.2%	+0.1%	+0.0%
Social Care	2						-0	+0.0%	+0.0%	+0.0%	+0.0%	+0.0%	-0.0%
Social Workers	12	+4	+4	+2	+3	+2	+1	+0.6%	+0.5%	+0.2%	+0.3%	+0.2%	+0.1%
Pharmacy	4	+1	+1	+1	+1	+1	-0	+0.4%	+0.6%	+0.2%	+0.2%	+0.5%	-0.0%
Management & Administrative	162	+55	+48	+41	+9	+4	+3	+0.5%	+0.4%	+0.3%	+0.1%	+0.0%	+0.0%
Management (VIII & above)	14	+8	+6	+2	+3	+1	-0	+1.3%	+0.8%	+0.2%	+0.3%	+0.1%	-0.0%
Administrative/ Supervisory (V to VII)	18	+7	+7	+8	+8	+1	+2	+0.7%	+0.6%	+0.8%	+0.7%	+0.1%	+0.1%
Clerical (III & IV)	130	+40	+35	+30	-2	+2	+1	+0.4%	+0.4%	+0.3%	-0.0%	+0.0%	+0.0%
General Support	120	-16	-6	+2	+9	+14	+3	-0.1%	-0.0%	+0.0%	+0.1%	+0.1%	+0.0%
Support	114	-13	-3	+4	+10	+14	+3	-0.1%	-0.0%	+0.0%	+0.1%	+0.1%	+0.0%
Maintenance/ Technical	6	-3	-3	-2	-1			-0.3%	-0.3%	-0.2%	-0.1%	+0.0%	+0.0%
Patient & Client Care	1,880	+39	+44	-46	-32	-46	-19	+0.0%	+0.0%	-0.0%	-0.0%	-0.0%	-0.0%
Health Care Assistants	794	+111	+58	+20	+11	+13	+8	+0.2%	+0.1%	+0.0%	+0.0%	+0.0%	+0.0%
Care, other	36	+4	+7	+5	+6	+5	+0	+0.1%	+0.3%	+0.2%	+0.2%	+0.2%	+0.0%
Home Help	1,050	-77	-21	-71	-48	-63	-28	-0.1%	-0.0%	-0.1%	-0.0%	-0.1%	-0.0%

Source: Health Service Personnel Census