

CHO 4 Employment Report: October 2020

Employment by Staff Group

| Oct 2020 (Dec 2019 figure: 8,189) | WTE Sep 2020 | WTE Oct 2020 | WTE change since Sep 20 | % change since Sep 20 | WTE change since Dec 19 | WTE change since Oct 19 |
|---|--------------|--------------|-------------------------|-----------------------|-------------------------|-------------------------|
| Overall | 8,475 | 8,468 | -7 | -0.1% | +278 | +247 |
| Consultants | 63 | 61 | -2 | -3.2% | +6 | +6 |
| Registrars | 102 | 102 | -0 | -0.4% | -1 | -2 |
| SHO/ Interns | 48 | 50 | +2 | +4.1% | +11 | +10 |
| Medical/ Dental, other | 137 | 128 | -10 | -7.1% | +16 | +10 |
| Medical & Dental | 350 | 340 | -10 | -2.9% | +32 | +24 |
| Nurse/ Midwife Manager | 475 | 470 | -6 | -1.2% | +37 | +2 |
| Nurse/ Midwife Specialist & AN/MP | 92 | 94 | +2 | +1.8% | +13 | +15 |
| Staff Nurse/ Staff Midwife | 1,449 | 1,456 | +6 | +0.4% | +10 | +35 |
| Public Health Nurse | 221 | 220 | -0 | -0.2% | +4 | +12 |
| <i>Pre-registration Nurse/ Midwife Intern</i> | | | | -100.0% | -9 | |
| <i>Pre-registration Nurse Intern (COVID-19)</i> | 42 | 28 | -14 | -32.9% | +28 | -14 |
| <i>Post-registration Nurse/ Midwife Student</i> | 9 | 14 | +5 | +56.3% | -6 | +5 |
| <i>Nursing/ Midwifery awaiting registration</i> | 5 | 3 | -2 | -40.2% | -29 | -2 |
| Nursing/ Midwifery Student | 55 | 44 | -11 | -19.6% | -15 | +3 |
| Nursing/ Midwifery other | 1 | | -1 | -100.0% | -1 | -1 |
| Nursing & Midwifery | 2,293 | 2,284 | -10 | -0.4% | +49 | +66 |
| Therapy Professions | 467 | 460 | -7 | -1.4% | +12 | +10 |
| Health Science/ Diagnostics | 12 | 13 | +0 | +2.8% | +1 | +1 |
| Social Care | 244 | 253 | +9 | +3.6% | +13 | +16 |
| Social Workers | 128 | 131 | +3 | +2.5% | +16 | +16 |
| Psychologists | 140 | 151 | +11 | +7.9% | +13 | +18 |
| Pharmacy | 11 | 10 | -1 | -9.3% | +2 | +2 |
| H&SC, Other | 67 | 65 | -2 | -2.5% | +5 | +5 |
| Health & Social Care Professionals | 1,068 | 1,082 | +14 | +1.3% | +61 | +69 |
| Management (VIII & above) | 76 | 77 | +0 | +0.5% | +4 | +4 |
| Administrative/ Supervisory (V to VII) | 174 | 175 | +1 | +0.4% | +14 | +15 |
| Clerical (III & IV) | 522 | 533 | +10 | +2.0% | +28 | +26 |
| Management & Administrative | 772 | 784 | +12 | +1.5% | +45 | +45 |
| Support | 365 | 350 | -15 | -4.1% | +13 | +18 |
| Maintenance/ Technical | 22 | 22 | +0 | +2.0% | -0 | -0 |
| General Support | 387 | 372 | -15 | -3.8% | +13 | +18 |
| Health Care Assistants | 2,040 | 2,033 | -7 | -0.3% | +79 | +54 |
| Care, other | 495 | 485 | -9 | -1.9% | +36 | +45 |
| Home Help | 1,069 | 1,087 | +18 | +1.6% | -37 | -74 |
| Patient & Client Care | 3,604 | 3,606 | +2 | +0.0% | +78 | +25 |

CHO 4 Employment Report: October 2020

Community Health & Wellbeing

| Oct 2020 (figure:) | WTE Sep 2020 | WTE Oct 2020 | WTE change since Sep 20 | % change since Sep 20 | WTE change since | WTE change since |
|---|--------------|--------------|-------------------------|-----------------------|------------------|------------------|
| Total Community Health & Wellbeing | 34 | 35 | +1 | +3.2% | +35 | +35 |
| <i>Director Nursing/Midwifery, Assistant</i> | | 1 | +1 | -100.0% | +1 | +1 |
| Nurse/ Midwife Manager | | 1 | +1 | -100.0% | +1 | +1 |
| Nursing & Midwifery | | 1 | +1 | -100.0% | +1 | +1 |
| Therapy Professions | 5 | 5 | -0 | -0.4% | +5 | +5 |
| Health & Social Care Professionals | 5 | 5 | -0 | -0.4% | +5 | +5 |
| Management (VIII & above) | 1 | 1 | -0 | -1.0% | +1 | +1 |
| Administrative/ Supervisory (V to VII) | 5 | 5 | +0 | +2.8% | +5 | +5 |
| Clerical (III & IV) | 6 | 6 | -0 | -2.5% | +6 | +6 |
| Management & Administrative | 12 | 12 | -0 | -0.2% | +12 | +12 |
| Care, other | 16 | 16 | +0 | +0.7% | +16 | +16 |
| Patient & Client Care | 16 | 16 | +0 | +0.7% | +16 | +16 |

Mental Health

| Oct 2020 (Dec 2019 figure: 1,485) | WTE Sep 2020 | WTE Oct 2020 | WTE change since Sep 20 | % change since Sep 20 | WTE change since Dec 19 | WTE change since Oct 19 |
|---|--------------|--------------|-------------------------|-----------------------|-------------------------|-------------------------|
| Total Mental Health | 1,569 | 1,559 | -10 | -0.6% | +74 | +78 |
| Consultants | 56 | 55 | -1 | -1.8% | +5 | +5 |
| Registrars | 42 | 43 | +1 | +1.8% | -3 | -3 |
| SHO/ Interns | 40 | 41 | +1 | +2.4% | +10 | +9 |
| Medical/ Dental, other | 6 | 7 | +1 | +15.6% | +5 | +5 |
| Medical & Dental | 145 | 146 | +2 | +1.2% | +18 | +16 |
| Nurse/ Midwife Manager | 193 | 193 | +0 | +0.1% | +23 | -1 |
| Nurse/ Midwife Specialist & AN/MP | 67 | 67 | +1 | +1.0% | +7 | +10 |
| Staff Nurse/ Staff Midwife | 499 | 509 | +10 | +1.9% | +6 | +17 |
| <i>Pre-registration Nurse/ Midwife Intern</i> | | | | -100.0% | -3 | |
| <i>Pre-registration Nurse Intern (COVID-19)</i> | 23 | 11 | -12 | -51.4% | +11 | -12 |
| <i>Post-registration Nurse/ Midwife Student</i> | | | | -100.0% | -1 | |
| <i>Nursing/ Midwifery awaiting registration</i> | 3 | 1 | -2 | -66.7% | -29 | -2 |
| Nursing/ Midwifery Student | 26 | 12 | -14 | -53.2% | -21 | -4 |
| Nursing & Midwifery | 784 | 781 | -3 | -0.4% | +16 | +22 |
| Therapy Professions | 80 | 78 | -2 | -2.8% | +4 | +1 |
| Social Care | 8 | 7 | -1 | -15.0% | +3 | +3 |
| Social Workers | 63 | 66 | +3 | +5.1% | +13 | +13 |
| Psychologists | 83 | 94 | +11 | +12.9% | +11 | +13 |
| Pharmacy | 3 | 2 | -0 | -18.2% | -0 | -1 |
| H&SC, Other | 16 | 13 | -3 | -17.8% | +2 | +3 |
| Health & Social Care Professionals | 251 | 259 | +7 | +2.9% | +32 | +32 |
| Management (VIII & above) | 2 | 2 | +0 | +0.5% | +1 | +1 |
| Administrative/ Supervisory (V to VII) | 21 | 23 | +1 | +6.7% | +0 | +1 |
| Clerical (III & IV) | 92 | 91 | -1 | -1.3% | +3 | +3 |
| Management & Administrative | 115 | 115 | +0 | +0.2% | +4 | +5 |
| Support | 83 | 81 | -1 | -1.2% | +2 | +2 |
| Maintenance/ Technical | 5 | 5 | +1 | +11.1% | -1 | -1 |
| General Support | 87 | 87 | -1 | -0.6% | +1 | +1 |
| Health Care Assistants | 177 | 165 | -11 | -6.5% | +5 | +2 |
| Care, other | 10 | 6 | -4 | -39.4% | -1 | -1 |
| Patient & Client Care | 187 | 171 | -15 | -8.2% | +4 | +1 |

Primary Care

| Oct 2020 (Dec 2019 figure: 1,346) | WTE Sep 2020 | WTE Oct 2020 | WTE change since Sep 20 | % change since Sep 20 | WTE change since Dec 19 | WTE change since Oct 19 |
|---|--------------|--------------|-------------------------|-----------------------|-------------------------|-------------------------|
| Total Primary Care | 1,410 | 1,404 | -6 | -0.4% | +58 | +60 |
| Consultants | 3 | 3 | -1 | -16.7% | -0 | -0 |
| Registrars | 57 | 56 | -1 | -2.1% | +1 | +1 |
| SHO/ Interns | 7 | 8 | +1 | +15.4% | +1 | +1 |
| Medical/ Dental, other | 96 | 90 | -5 | -5.4% | +2 | -4 |
| Medical & Dental | 162 | 156 | -6 | -3.6% | +5 | -2 |
| Nurse/ Midwife Manager | 65 | 64 | -1 | -1.9% | +7 | +6 |
| Nurse/ Midwife Specialist & AN/MP | 6 | 6 | -0 | -2.4% | +1 | +1 |
| Staff Nurse/ Staff Midwife | 125 | 135 | +10 | +8.0% | +16 | +20 |
| Public Health Nurse | 215 | 214 | -1 | -0.3% | +3 | +10 |
| <i>Post-registration Nurse/ Midwife Student</i> | 9 | 14 | +5 | +56.3% | -4 | +5 |
| Nursing/ Midwifery Student | 9 | 14 | +5 | +56.3% | -4 | -3 |
| Nursing & Midwifery | 419 | 432 | +13 | +3.1% | +25 | +33 |
| Therapy Professions | 227 | 229 | +2 | +0.9% | +7 | +9 |
| Health Science/ Diagnostics | 11 | 11 | +0 | +3.1% | +1 | +1 |
| Social Care | 5 | 5 | | | -3 | -1 |
| Social Workers | 27 | 27 | +0 | +1.2% | +3 | +3 |
| Psychologists | 21 | 21 | +0 | +0.4% | +1 | +3 |
| Pharmacy | 4 | 4 | +0 | +4.3% | +1 | +1 |
| H&SC, Other | 41 | 42 | +2 | +4.4% | +1 | +1 |
| Health & Social Care Professionals | 336 | 340 | +5 | +1.4% | +11 | +16 |
| Management (VIII & above) | 37 | 37 | -1 | -1.8% | -0 | -0 |
| Administrative/ Supervisory (V to VII) | 72 | 72 | +1 | +0.7% | +4 | +5 |
| Clerical (III & IV) | 216 | 216 | -0 | -0.0% | +11 | +8 |
| Management & Administrative | 325 | 325 | -0 | -0.1% | +15 | +13 |
| Support | 31 | 16 | -15 | -48.3% | +1 | +0 |
| General Support | 31 | 16 | -15 | -48.3% | +1 | +0 |
| Health Care Assistants | 16 | 23 | +6 | +38.6% | +5 | +5 |
| Care, other | 108 | 103 | -5 | -5.0% | -2 | -2 |
| Home Help | 12 | 9 | -3 | -28.0% | -1 | -1 |
| Patient & Client Care | 137 | 134 | -3 | -1.9% | +2 | +1 |

Social Care

| Oct 2020 (Dec 2019 figure: 5,358) | WTE Sep 2020 | WTE Oct 2020 | WTE change since Sep 20 | % change since Sep 20 | WTE change since Dec 19 | WTE change since Oct 19 |
|---|--------------|--------------|-------------------------|-----------------------|-------------------------|-------------------------|
| Total Social Care | 5,462 | 5,469 | +8 | +0.1% | +112 | +75 |
| Consultants | 4 | 3 | -1 | -13.3% | +1 | +1 |
| Registrars | 3 | 3 | | | | |
| SHO/ Interns | 1 | 1 | | | | |
| Medical/ Dental, other | 36 | 30 | -6 | -15.8% | +9 | +9 |
| Medical & Dental | 44 | 37 | -6 | -14.1% | +10 | +10 |
| Nurse/ Midwife Manager | 218 | 212 | -6 | -2.7% | +6 | -4 |
| Nurse/ Midwife Specialist & AN/MP | 20 | 21 | +1 | +5.6% | +4 | +4 |
| Staff Nurse/ Staff Midwife | 825 | 812 | -13 | -1.6% | -12 | -1 |
| Public Health Nurse | 6 | 6 | +0 | +2.4% | +1 | +2 |
| <i>Pre-registration Nurse/ Midwife Intern</i> | | | | -100.0% | -6 | |
| <i>Pre-registration Nurse Intern (COVID-19)</i> | 19 | 17 | -2 | -10.5% | +17 | -2 |
| <i>Post-registration Nurse/ Midwife Student</i> | | | | -100.0% | -1 | |
| <i>Nursing/ Midwifery awaiting registration</i> | 2 | 2 | +0 | +9.4% | -0 | +0 |
| Nursing/ Midwifery Student | 21 | 19 | -2 | -9.0% | +10 | +9 |
| Nursing/ Midwifery other | 1 | | -1 | -100.0% | -1 | -1 |
| Nursing & Midwifery | 1,090 | 1,069 | -20 | -1.9% | +7 | +10 |
| Therapy Professions | 155 | 149 | -6 | -4.1% | -4 | -4 |
| Health Science/ Diagnostics | 1 | 1 | | | +0 | +1 |
| Social Care | 231 | 241 | +10 | +4.4% | +13 | +14 |
| Social Workers | 38 | 38 | -0 | -0.9% | +0 | +0 |
| Psychologists | 36 | 36 | +0 | +0.5% | +1 | +3 |
| Pharmacy | 5 | 4 | -1 | -15.5% | +1 | +1 |
| H&SC, Other | 11 | 10 | -1 | -6.7% | +2 | +2 |
| Health & Social Care Professionals | 476 | 478 | +2 | +0.5% | +13 | +17 |
| Management (VIII & above) | 36 | 37 | +1 | +3.0% | +2 | +2 |
| Administrative/ Supervisory (V to VII) | 76 | 75 | -1 | -1.7% | +4 | +4 |
| Clerical (III & IV) | 208 | 219 | +12 | +5.7% | +7 | +8 |
| Management & Administrative | 320 | 331 | +12 | +3.6% | +13 | +15 |
| Support | 252 | 252 | +1 | +0.4% | +11 | +16 |
| Maintenance/ Technical | 17 | 17 | -0 | -0.5% | +1 | +1 |
| General Support | 269 | 270 | +1 | +0.3% | +12 | +17 |
| Health Care Assistants | 1,847 | 1,845 | -1 | -0.1% | +69 | +47 |
| Care, other | 361 | 360 | -0 | -0.0% | +22 | +33 |
| Home Help | 1,057 | 1,078 | +21 | +2.0% | -36 | -73 |
| Patient & Client Care | 3,264 | 3,284 | +19 | +0.6% | +56 | +7 |

CHO 4 Employment Report: October 2020

Disabilities

| Oct 2020 (Dec 2019 figure: 2,439) | WTE Sep 2020 | WTE Oct 2020 | WTE change since Sep 20 | % change since Sep 20 | WTE change since Dec 19 | WTE change since Oct 19 |
|---|--------------|--------------|-------------------------|-----------------------|-------------------------|-------------------------|
| Total Disabilities | 2,511 | 2,547 | +36 | +1.4% | +108 | +123 |
| Consultants | 2 | 2 | +0 | +24.5% | +1 | +1 |
| Medical/ Dental, other | 1 | 1 | | | +1 | +1 |
| Medical & Dental | 3 | 3 | +0 | +16.3% | +2 | +2 |
| Nurse/ Midwife Manager | 89 | 90 | +1 | +1.1% | +1 | -1 |
| Nurse/ Midwife Specialist & AN/MP | 13 | 14 | +1 | +7.4% | +1 | +1 |
| Staff Nurse/ Staff Midwife | 301 | 296 | -5 | -1.8% | -13 | -9 |
| <i>Pre-registration Nurse/ Midwife Intern</i> | | | | -100.0% | -6 | |
| <i>Pre-registration Nurse Intern (COVID-19)</i> | 19 | 17 | -2 | -10.5% | +17 | -2 |
| <i>Nursing/ Midwifery awaiting registration</i> | 2 | 2 | +0 | +9.4% | +1 | +0 |
| Nursing/ Midwifery Student | 21 | 19 | -2 | -9.0% | +12 | +10 |
| Nursing/ Midwifery other | 1 | | -1 | -100.0% | -1 | -1 |
| Nursing & Midwifery | 425 | 419 | -6 | -1.4% | -0 | +2 |
| Therapy Professions | 107 | 103 | -4 | -3.8% | -5 | -5 |
| Social Care | 229 | 239 | +10 | +4.4% | +13 | +14 |
| Social Workers | 26 | 27 | +1 | +2.6% | -0 | -0 |
| Psychologists | 36 | 36 | +0 | +0.5% | +1 | +3 |
| H&SC, Other | 11 | 10 | -1 | -6.7% | +2 | +2 |
| Health & Social Care Professionals | 408 | 414 | +6 | +1.5% | +10 | +14 |
| Management (VIII & above) | 23 | 23 | +0 | +0.2% | +1 | +1 |
| Administrative/ Supervisory (V to VII) | 58 | 59 | +1 | +1.9% | +5 | +6 |
| Clerical (III & IV) | 90 | 91 | +1 | +0.7% | +7 | +6 |
| Management & Administrative | 171 | 173 | +2 | +1.0% | +13 | +13 |
| Support | 137 | 142 | +4 | +3.1% | +1 | +7 |
| Maintenance/ Technical | 10 | 11 | +1 | +8.8% | +1 | +1 |
| General Support | 148 | 153 | +5 | +3.5% | +2 | +8 |
| Health Care Assistants | 1,039 | 1,060 | +21 | +2.0% | +65 | +56 |
| Care, other | 318 | 325 | +7 | +2.3% | +17 | +30 |
| Patient & Client Care | 1,357 | 1,385 | +28 | +2.0% | +82 | +85 |

Older People

| Oct 2020 (Dec 2019 figure: 2,919) | WTE Sep 2020 | WTE Oct 2020 | WTE change since Sep 20 | % change since Sep 20 | WTE change since Dec 19 | WTE change since Oct 19 |
|---|--------------|--------------|-------------------------|-----------------------|-------------------------|-------------------------|
| Total Older People | 2,950 | 2,923 | -28 | -0.9% | +3 | -48 |
| Consultants | 2 | 1 | -1 | -51.0% | -0 | -0 |
| Registrars | 3 | 3 | | | | |
| SHO/ Interns | 1 | 1 | | | | |
| Medical/ Dental, other | 35 | 29 | -6 | -16.2% | +8 | +8 |
| Medical & Dental | 41 | 34 | -7 | -16.3% | +8 | +8 |
| Nurse/ Midwife Manager | 129 | 122 | -7 | -5.2% | +5 | -3 |
| Nurse/ Midwife Specialist & AN/MP | 6 | 6 | +0 | +1.5% | +3 | +3 |
| Staff Nurse/ Staff Midwife | 524 | 516 | -8 | -1.5% | +1 | +7 |
| Public Health Nurse | 6 | 6 | +0 | +2.4% | +1 | +2 |
| <i>Post-registration Nurse/ Midwife Student</i> | | | | -100.0% | -1 | |
| <i>Nursing/ Midwifery awaiting registration</i> | | | | -100.0% | -1 | |
| <i>Nursing/ Midwifery Student</i> | | | | -100.0% | -2 | -1 |
| Nursing & Midwifery | 665 | 651 | -14 | -2.2% | +8 | +8 |
| Health & Social Care Professionals | 68 | 64 | -4 | -5.8% | +3 | +4 |
| Management (VIII & above) | 13 | 14 | +1 | +7.9% | +1 | +1 |
| Administrative/ Supervisory (V to VII) | 18 | 16 | -2 | -13.0% | -1 | -2 |
| Clerical (III & IV) | 117 | 129 | +11 | +9.6% | +0 | +2 |
| Management & Administrative | 149 | 159 | +10 | +6.7% | +1 | +1 |
| Support | 114 | 111 | -3 | -2.9% | +10 | +9 |
| Maintenance/ Technical | 7 | 6 | -1 | -14.0% | | |
| General Support | 121 | 117 | -4 | -3.5% | +10 | +9 |
| Health Care Assistants | 808 | 786 | -22 | -2.7% | +4 | -9 |
| Care, other | 43 | 36 | -7 | -17.2% | +5 | +3 |
| Home Help | 1,057 | 1,078 | +21 | +2.0% | -36 | -73 |
| Patient & Client Care | 1,907 | 1,899 | -8 | -0.4% | -26 | -79 |

CHO 4 Employment by Administration (HSE / S38): October 2020

| Oct 2020 (Dec 2019 figure: 8,189) | WTE Sep 2020 | WTE Oct 2020 | WTE change since Sep 20 | % change since Sep 20 | WTE change since Dec 19 | WTE change since Oct 19 |
|--------------------------------------|--------------|--------------|-------------------------|-----------------------|-------------------------|-------------------------|
| Overall | 8,475 | 8,468 | -7 | -0.1% | +278 | +247 |
| HSE | 6,157 | 6,110 | -47 | -0.8% | +170 | +125 |
| Section 38 Voluntary Agencies | 2,317 | 2,357 | +40 | +1.7% | +108 | +122 |

HSE

| Oct 2020 (Dec 2019 figure: 5,940) | WTE Sep 2020 | WTE Oct 2020 | WTE change since Sep 20 | % change since Sep 20 | WTE change since Dec 19 | WTE change since Oct 19 |
|---|--------------|--------------|-------------------------|-----------------------|-------------------------|-------------------------|
| Overall | 6,157 | 6,110 | -47 | -0.8% | +170 | +125 |
| Consultants | 63 | 61 | -2 | -0.0% | +6 | +6 |
| Registrars | 96 | 96 | -0 | -0.0% | -2 | -3 |
| SHO/ Interns | 41 | 42 | +1 | +0.0% | +10 | +9 |
| Medical/ Dental, other | 125 | 112 | -13 | -0.1% | +14 | +8 |
| Medical & Dental | 326 | 311 | -14 | -4.4% | +28 | +20 |
| Nurse/ Midwife Manager | 401 | 394 | -7 | -0.0% | +36 | +1 |
| Nurse/ Midwife Specialist & AN/MP | 79 | 80 | +1 | +0.0% | +12 | +14 |
| Staff Nurse/ Staff Midwife | 1,177 | 1,187 | +10 | +0.0% | +25 | +46 |
| Public Health Nurse | 221 | 220 | -0 | -0.0% | +4 | +12 |
| <i>Pre-registration Nurse/ Midwife Intern</i> | | | | <i>-1.0%</i> | <i>-1</i> | <i>-16</i> |
| <i>Pre-registration Nurse Intern (COVID-19)</i> | 23 | 11 | -12 | <i>-0.5%</i> | <i>+11</i> | <i>+11</i> |
| <i>Post-registration Nurse/ Midwife Student</i> | 9 | 14 | +5 | <i>+0.6%</i> | <i>-1</i> | <i>-4</i> |
| <i>Nursing/ Midwifery awaiting registration</i> | 5 | 3 | -2 | <i>-0.4%</i> | <i>+3</i> | <i>+3</i> |
| Nursing/ Midwifery Student | 36 | 27 | -9 | -0.2% | -26 | -6 |
| Nursing & Midwifery | 1,914 | 1,909 | -6 | -0.3% | +51 | +67 |
| Therapy Professions | 377 | 375 | -2 | -0.0% | +15 | +14 |
| Health Science/ Diagnostics | 10 | 11 | +0 | +0.0% | +1 | +1 |
| Social Care | 38 | 37 | -1 | -0.0% | -2 | +1 |
| Social Workers | 102 | 104 | +3 | +0.0% | +17 | +17 |
| Psychologists | 108 | 118 | +11 | +0.1% | +12 | +15 |
| Pharmacy | 11 | 10 | -1 | -0.1% | +2 | +2 |
| H&SC, Other | 61 | 59 | -2 | -0.0% | +3 | +4 |
| Health & Social Care Professionals | 706 | 714 | +8 | +1.1% | +47 | +53 |
| Management (VIII & above) | 60 | 60 | -0 | -0.0% | +3 | +3 |
| Administrative/ Supervisory (V to VII) | 132 | 132 | +1 | +0.0% | +9 | +11 |
| Clerical (III & IV) | 426 | 437 | +11 | +0.0% | +21 | +20 |
| Management & Administrative | 618 | 629 | +12 | +1.9% | +33 | +34 |
| Support | 234 | 214 | -19 | -0.1% | +8 | +6 |
| Maintenance/ Technical | 13 | 12 | -0 | -0.0% | -1 | -1 |
| General Support | 246 | 227 | -20 | -8.1% | +7 | +5 |
| Health Care Assistants | 1,130 | 1,102 | -27 | -0.0% | +24 | +6 |
| Care, other | 148 | 131 | -17 | -0.1% | +18 | +13 |
| Home Help | 1,069 | 1,087 | +18 | +0.0% | -37 | -74 |
| Patient & Client Care | 2,347 | 2,320 | -26 | -1.1% | +5 | -55 |

Section 38 Voluntary Agencies

| Oct 2020 (Dec 2019 figure: 2,249) | WTE Sep 2020 | WTE Oct 2020 | WTE change since Sep 20 | % change since Sep 20 | WTE change since Dec 19 | WTE change since Oct 19 |
|---|--------------|--------------|-------------------------|-----------------------|-------------------------|-------------------------|
| Overall | 2,317 | 2,357 | +40 | +1.7% | +108 | +122 |
| Registrars | 6 | 6 | | +0.0% | +1 | +1 |
| SHO/ Interns | 7 | 8 | +1 | +0.2% | +1 | +1 |
| Medical/ Dental, other | 12 | 15 | +3 | +0.2% | +2 | +1 |
| Medical & Dental | 25 | 29 | +4 | +15.8% | +5 | +3 |
| Nurse/ Midwife Manager | 74 | 75 | +1 | +0.0% | +1 | +1 |
| Nurse/ Midwife Specialist & AN/MP | 12 | 13 | +1 | +0.1% | +1 | +1 |
| Staff Nurse/ Staff Midwife | 273 | 269 | -3 | -0.0% | -15 | -11 |
| <i>Pre-registration Nurse/ Midwife Intern</i> | | | | -1.0% | -8 | -9 |
| <i>Pre-registration Nurse Intern (COVID-19)</i> | 19 | 17 | -2 | -0.1% | +17 | +17 |
| Nursing/ Midwifery Student | 19 | 17 | -2 | -0.1% | +11 | +9 |
| Nursing/ Midwifery other | 1 | | -1 | -1.0% | -1 | -1 |
| Nursing & Midwifery | 379 | 375 | -4 | -1.0% | -3 | -1 |
| Therapy Professions | 89 | 85 | -4 | -0.0% | -3 | -4 |
| Health Science/ Diagnostics | 2 | 2 | | +0.0% | | |
| Social Care | 206 | 216 | +10 | +0.0% | +15 | +15 |
| Social Workers | 26 | 27 | +1 | +0.0% | -0 | -0 |
| Psychologists | 32 | 32 | +0 | +0.0% | +1 | +3 |
| H&SC, Other | 6 | 6 | | +0.0% | +2 | +2 |
| Health & Social Care Professionals | 361 | 368 | +6 | +1.7% | +14 | +16 |
| Management (VIII & above) | 16 | 16 | +0 | +0.0% | +1 | +1 |
| Administrative/ Supervisory (V to VII) | 42 | 42 | +0 | +0.0% | +5 | +4 |
| Clerical (III & IV) | 96 | 96 | -0 | -0.0% | +7 | +6 |
| Management & Administrative | 155 | 155 | +0 | +0.0% | +12 | +11 |
| Support | 131 | 136 | +4 | +0.0% | +5 | +12 |
| Maintenance/ Technical | 9 | 10 | +1 | +0.1% | +1 | +1 |
| General Support | 140 | 146 | +5 | +3.7% | +6 | +13 |
| Health Care Assistants | 911 | 931 | +21 | +0.0% | +56 | +47 |
| Care, other | 347 | 354 | +7 | +0.0% | +18 | +32 |
| Patient & Client Care | 1,257 | 1,285 | +28 | +2.2% | +73 | +80 |

CHO 4 Employment by S38 Agency: October 2020

Bros. of Charity, Southern

| Oct 2020 (Dec 2019 figure: 740) | WTE Sep 2020 | WTE Oct 2020 | WTE change since Sep 20 | % change since Sep 20 | WTE change since Dec 19 | WTE change since Oct 19 |
|---|--------------|--------------|-------------------------|-----------------------|-------------------------|-------------------------|
| Overall | 765 | 777 | +12 | +1.6% | +37 | +42 |
| Nurse/ Midwife Manager | 15 | 15 | +0 | +0.0% | -0 | -0 |
| Nurse/ Midwife Specialist & AN/MP | 3 | 3 | | +0.0% | | |
| Staff Nurse/ Staff Midwife | 55 | 54 | -1 | -0.0% | -5 | -5 |
| Nursing & Midwifery | 73 | 72 | -1 | -1.9% | -6 | -5 |
| Therapy Professions | 49 | 45 | -4 | -0.1% | -3 | -4 |
| Social Care | 125 | 127 | +1 | +0.0% | +2 | +3 |
| Social Workers | 16 | 17 | +1 | +0.0% | -0 | -0 |
| Psychologists | 21 | 21 | +0 | +0.0% | +1 | +3 |
| Health & Social Care Professionals | 211 | 209 | -2 | -1.0% | -0 | +1 |
| Management (VIII & above) | 7 | 8 | +0 | +0.1% | +0 | +0 |
| Administrative/ Supervisory (V to VII) | 10 | 10 | | +0.0% | +1 | +0 |
| Clerical (III & IV) | 36 | 35 | -1 | -0.0% | +2 | +1 |
| Management & Administrative | 53 | 53 | -1 | -1.0% | +3 | +1 |
| Support | 14 | 12 | -2 | -0.1% | -2 | -2 |
| Maintenance/ Technical | 2 | 2 | | +0.0% | | |
| General Support | 16 | 14 | -2 | -11.3% | -2 | -2 |
| Health Care Assistants | 214 | 228 | +14 | +0.1% | +22 | +24 |
| Care, other | 197 | 201 | +4 | +0.0% | +20 | +23 |
| Patient & Client Care | 412 | 430 | +18 | +4.4% | +42 | +47 |

Cope Foundation

| Oct 2020 (Dec 2019 figure: 1,091) | WTE Sep 2020 | WTE Oct 2020 | WTE change since Sep 20 | % change since Sep 20 | WTE change since Dec 19 | WTE change since Oct 19 |
|---|--------------|--------------|-------------------------|-----------------------|-------------------------|-------------------------|
| Overall | 1,120 | 1,150 | +29 | +2.6% | +59 | +58 |
| Nurse/ Midwife Manager | 41 | 42 | +1 | +0.0% | +1 | +1 |
| Nurse/ Midwife Specialist & AN/MP | 10 | 11 | +1 | +0.1% | +1 | +1 |
| Staff Nurse/ Staff Midwife | 166 | 163 | -3 | -0.0% | -6 | -5 |
| Pre-registration Nurse/ Midwife Intern | | | | -1.0% | -8 | -9 |
| Pre-registration Nurse Intern (COVID-19) | 19 | 17 | -2 | -0.1% | +17 | +17 |
| Nursing/ Midwifery Student | 19 | 17 | -2 | -0.1% | +11 | +9 |
| Nursing/ Midwifery other | 1 | | -1 | -1.0% | -1 | -1 |
| Nursing & Midwifery | 236 | 233 | -3 | -1.3% | +7 | +5 |
| Therapy Professions | 37 | 37 | | +0.0% | -1 | +0 |
| Social Care | 34 | 43 | +9 | +0.3% | +11 | +9 |
| Social Workers | 9 | 9 | | +0.0% | | |
| Psychologists | 11 | 11 | | +0.0% | +1 | +1 |
| H&SC, Other | 3 | 3 | | +0.0% | | |
| Health & Social Care Professionals | 93 | 102 | +9 | +9.9% | +12 | +10 |
| Management (VIII & above) | 7 | 7 | | +0.0% | +1 | +1 |
| Administrative/ Supervisory (V to VII) | 23 | 23 | | +0.0% | +4 | +4 |
| Clerical (III & IV) | 25 | 28 | +3 | +0.1% | +5 | +5 |
| Management & Administrative | 55 | 58 | +3 | +4.8% | +9 | +9 |
| Support | 78 | 83 | +5 | +0.1% | +6 | +12 |
| Maintenance/ Technical | 6 | 7 | +1 | +0.2% | +1 | +1 |
| General Support | 84 | 90 | +6 | +7.5% | +7 | +13 |
| Health Care Assistants | 577 | 589 | +12 | +0.0% | +25 | +13 |
| Care, other | 76 | 79 | +3 | +0.0% | -1 | +7 |
| Patient & Client Care | 653 | 667 | +14 | +2.2% | +24 | +20 |

Cork Dental Hospital

| Oct 2020 (Dec 2019 figure: 103) | WTE Sep 2020 | WTE Oct 2020 | WTE change since Sep 20 | % change since Sep 20 | WTE change since Dec 19 | WTE change since Oct 19 |
|---|--------------|--------------|-------------------------|-----------------------|-------------------------|-------------------------|
| Overall | 109 | 112 | +3 | +2.7% | +9 | +9 |
| Registrars | 6 | 6 | | +0.0% | +1 | +1 |
| SHO/ Interns | 7 | 8 | +1 | +0.2% | +1 | +1 |
| Medical/ Dental, other | 12 | 15 | +3 | +0.2% | +2 | +1 |
| Medical & Dental | 25 | 29 | +4 | +15.8% | +5 | +3 |
| Nurse/ Midwife Manager | 3 | 3 | -0 | -0.0% | +1 | +1 |
| Staff Nurse/ Staff Midwife | 5 | 6 | +1 | +0.2% | -1 | +0 |
| Nursing & Midwifery | 9 | 9 | +1 | +7.9% | -0 | +1 |
| Health Science/ Diagnostics | 2 | 2 | | +0.0% | | |
| H&SC, Other | 3 | 3 | | +0.0% | +2 | +2 |
| Health & Social Care Professionals | 5 | 5 | | | +2 | +2 |
| Management (VIII & above) | 1 | 1 | | +0.0% | | |
| Administrative/ Supervisory (V to VII) | 2 | 2 | | +0.0% | | |
| Clerical (III & IV) | 26 | 24 | -2 | -0.1% | +1 | +1 |
| Management & Administrative | 29 | 27 | -2 | -6.6% | +1 | +1 |
| Support | 11 | 12 | +0 | +0.0% | +1 | +1 |
| General Support | 11 | 12 | +0 | +0.7% | +1 | +1 |
| Care, other | 30 | 30 | +0 | +0.0% | +1 | +1 |
| Patient & Client Care | 30 | 30 | +0 | +0.8% | +1 | +1 |

St. John of God, Kerry

| Oct 2020 (Dec 2019 figure: 315) | WTE Sep 2020 | WTE Oct 2020 | WTE change since Sep 20 | % change since Sep 20 | WTE change since Dec 19 | WTE change since Oct 19 |
|---|--------------|--------------|-------------------------|-----------------------|-------------------------|-------------------------|
| Overall | 323 | 319 | -5 | -1.5% | +3 | +14 |
| Nurse/ Midwife Manager | 15 | 15 | +0 | +0.0% | -1 | -0 |
| Staff Nurse/ Staff Midwife | 46 | 46 | -0 | -0.0% | -3 | -1 |
| Nursing & Midwifery | 61 | 61 | -0 | -0.1% | -4 | -2 |
| Therapy Professions | 4 | 4 | -0 | -0.0% | +0 | +0 |
| Social Care | 47 | 47 | -1 | -0.0% | +1 | +4 |
| Social Workers | 1 | 1 | | +0.0% | | |
| Psychologists | 1 | 1 | | +0.0% | -1 | -1 |
| Health & Social Care Professionals | 53 | 52 | -1 | -1.5% | +1 | +3 |
| Management (VIII & above) | 1 | 1 | | +0.0% | | |
| Administrative/ Supervisory (V to VII) | 7 | 7 | +0 | +0.0% | -0 | -0 |
| Clerical (III & IV) | 9 | 9 | -0 | -0.0% | -1 | -0 |
| Management & Administrative | 17 | 17 | -0 | -1.1% | -1 | -1 |
| Support | 28 | 28 | +1 | +0.0% | +1 | +1 |
| Maintenance/ Technical | 2 | 2 | | +0.0% | | |
| General Support | 30 | 30 | +1 | +2.4% | +1 | +1 |
| Health Care Assistants | 120 | 114 | -5 | -0.0% | +9 | +11 |
| Care, other | 43 | 44 | +1 | +0.0% | -2 | +1 |
| Patient & Client Care | 163 | 158 | -5 | -2.8% | +7 | +12 |

CHO 4 Employment by Grade Group & Staff Category: October 2020

| Oct 2020 (Dec 2019 figure: 8,189) | WTE Sep 2020 | WTE Oct 2020 | WTE change since Sep 20 | % change since Sep 20 | WTE change since Dec 19 | WTE change since Oct 19 |
|--|--------------|--------------|-------------------------|-----------------------|-------------------------|-------------------------|
| Overall | 8,475 | 8,468 | -7 | -0.1% | +278 | +247 |
| Consultant Dentistry | 2 | 2 | | | | |
| Consultant Medicine | 2 | 1 | -1 | -48.6% | -0 | -0 |
| Consultant Paediatrics | 2 | 1 | -1 | -51.0% | -0 | -0 |
| Consultant Psychiatry | 57 | 57 | +0 | +0.0% | +6 | +6 |
| Consultants | 63 | 61 | -2 | -3.2% | +6 | +6 |
| Registrar | 78 | 79 | +1 | +0.8% | -6 | -7 |
| Senior Registrar | 16 | 15 | -1 | -6.4% | +3 | +3 |
| Specialist Registrar | 8 | 8 | | | +1 | +1 |
| Registrars | 102 | 102 | -0 | -0.4% | -1 | -2 |
| Interns | 2 | 3 | +1 | +26.0% | -0 | -0 |
| Senior House Officer | 46 | 47 | +1 | +3.2% | +12 | +11 |
| SHO/ Interns | 48 | 50 | +2 | +4.1% | +11 | +10 |
| Dentists | 61 | 61 | +0 | +0.5% | -2 | -3 |
| Other Medical | 77 | 67 | -10 | -13.1% | +18 | +13 |
| Medical/ Dental, other | 137 | 128 | -10 | -7.1% | +16 | +10 |
| Medical & Dental | 350 | 340 | -10 | -2.9% | +29 | +24 |
| Clinical Nurse/ Midwife Manager | 371 | 369 | -2 | -0.6% | +32 | -1 |
| Director Nursing/Midwifery, Assistant | 67 | 63 | -4 | -5.8% | +3 | +2 |
| Director of Nursing/Midwifery | 37 | 38 | +0 | +1.1% | +2 | +2 |
| Nurse/ Midwife Manager | 475 | 470 | -6 | -1.2% | +37 | +2 |
| Advanced Nurse/ Midwife Practitioner | 7 | 8 | +1 | +15.4% | +1 | +1 |
| Clinical Nurse/ Midwife Specialist | 85 | 86 | +1 | +0.7% | +12 | +14 |
| Nurse/ Midwife Specialist & AN/MP | 92 | 94 | +2 | +1.8% | +13 | +15 |
| Staff Midwives | 5 | 7 | +2 | +49.1% | -1 | -0 |
| Staff Nurse [Intellectual Disability] | 81 | 81 | +0 | +0.3% | -6 | -7 |
| Staff Nurse [Psychiatric] | 464 | 475 | +11 | +2.4% | +6 | +17 |
| Staff Nurses [General/ Children's] | 900 | 893 | -8 | -0.8% | +11 | +25 |
| Staff Nurse/ Staff Midwife | 1,449 | 1,456 | +6 | +0.4% | +10 | +35 |
| Public Health Nurse | 221 | 220 | -0 | -0.2% | +4 | +12 |
| Pre-registration Nurse/ Midwife Intern | | | | -100.0% | -9 | -25 |
| Pre-registration Nurse Intern (COVID-19) | 42 | 28 | -14 | -32.9% | +28 | +28 |
| Post-registration Nurse/ Midwife Student | 9 | 14 | +5 | +56.3% | -6 | -4 |
| Nursing/ Midwifery awaiting registration | 5 | 3 | -2 | -40.2% | -29 | +3 |
| Nursing/ Midwifery Student | 55 | 44 | -11 | -19.6% | -15 | +3 |
| Nursing/ Midwifery other | 1 | | -1 | -100.0% | -1 | -1 |
| Nursing & Midwifery | 2,293 | 2,284 | -10 | -0.4% | +33 | +66 |
| Dietitians | 37 | 36 | -1 | -2.8% | +8 | +6 |
| Occupational Therapists | 176 | 173 | -3 | -1.9% | +3 | +4 |
| Orthoptists | 2 | 2 | | | -2 | -1 |
| Physiotherapists | 111 | 108 | -3 | -2.4% | +1 | +2 |
| Podiatrists & Chiropractors | 8 | 8 | -1 | -9.5% | +1 | +1 |
| Speech & Language Therapists | 133 | 134 | +1 | +1.0% | -0 | -2 |
| Therapy Professions | 467 | 460 | -7 | -1.4% | +12 | +10 |
| Audiology | 8 | 8 | | | +1 | +1 |
| Physicists | 1 | 1 | +0 | +34.0% | -1 | -1 |
| Radiographers | 3 | 3 | | | +0 | +1 |
| Health Science/ Diagnostics | 12 | 13 | +0 | +2.8% | +1 | +1 |

| Oct 2020 (Dec 2019 figure: 8,189) | WTE Sep 2020 | WTE Oct 2020 | WTE change since Sep 20 | % change since Sep 20 | WTE change since Dec 19 | WTE change since Oct 19 |
|---|--------------|--------------|-------------------------|-----------------------|-------------------------|-------------------------|
| Overall | 8,475 | 8,468 | -7 | -0.1% | +278 | +247 |
| Social Care | 244 | 253 | +9 | +3.6% | +13 | +16 |
| Social Workers | 128 | 131 | +3 | +2.5% | +16 | +16 |
| Psychologists | 140 | 151 | +11 | +7.9% | +13 | +18 |
| Pharmacy | 11 | 10 | -1 | -9.3% | +2 | +2 |
| Counsellor Therapists | 39 | 40 | +1 | +2.6% | -0 | -0 |
| Dental Hygienists | 11 | 12 | +1 | +9.7% | +3 | +4 |
| Other Health & Social Care | 16 | 13 | -3 | -21.2% | +2 | +2 |
| Play Therapists/ Specialists | 1 | 1 | -0 | -32.0% | +0 | +0 |
| H&SC, Other | 67 | 65 | -2 | -2.5% | +5 | +5 |
| Health & Social Care Professionals | 1,068 | 1,082 | +14 | +1.3% | +74 | +69 |
| Executive Management | 17 | 16 | -1 | -4.3% | +1 | +2 |
| Senior Management (VIII & GM) | 60 | 61 | +1 | +1.8% | +3 | +2 |
| Management (VIII & above) | 76 | 77 | +0 | +0.5% | +4 | +4 |
| Administrative/ Supervisory (V to VII) | 174 | 175 | +1 | +0.4% | +14 | +15 |
| Clerical (III & IV) | 522 | 533 | +10 | +2.0% | +28 | +26 |
| Management & Administrative | 772 | 784 | +12 | +1.5% | +69 | +45 |
| Catering | 60 | 59 | -1 | -1.6% | -1 | -0 |
| Household Services | 201 | 203 | +2 | +1.0% | +13 | +14 |
| Other Support | 91 | 76 | -15 | -16.2% | +2 | +4 |
| Portering | 13 | 12 | -1 | -9.8% | -1 | +1 |
| Support | 365 | 350 | -15 | -4.1% | +13 | +18 |
| Maintenance | 21 | 21 | +0 | +2.1% | -0 | -0 |
| Technical Services | 1 | 1 | | | | |
| Maintenance/ Technical | 22 | 22 | +0 | +2.0% | -0 | -0 |
| General Support | 387 | 372 | -15 | -3.8% | -4 | +18 |
| HCA, Nurse's Aide, etc. | 2,034 | 2,026 | -8 | -0.4% | +80 | +55 |
| Health & Social Care Assistants | 6 | 8 | +2 | +26.5% | -0 | -1 |
| Health Care Assistants | 2,040 | 2,033 | -7 | -0.3% | +79 | +54 |
| Care, other | 495 | 485 | -9 | -1.9% | +36 | +45 |
| Home Help | 1,069 | 1,087 | +18 | +1.6% | -37 | -74 |
| Patient & Client Care | 3,604 | 3,606 | +2 | +0.0% | +128 | +25 |

CHO 4 HSE Employment by Grade Group & Staff Category: October 2020

| Oct 2020 (Dec 2019 figure: 5,940) | WTE Sep 2020 | WTE Oct 2020 | WTE change since Sep 20 | % change since Sep 20 | WTE change since Dec 19 | WTE change since Oct 19 |
|--|--------------|--------------|-------------------------|-----------------------|-------------------------|-------------------------|
| Overall | 6,157 | 6,110 | -47 | -0.8% | +170 | +125 |
| Consultant Dentistry | 2 | 2 | | | | |
| Consultant Medicine | 2 | 1 | -1 | -48.6% | -0 | -0 |
| Consultant Paediatrics | 2 | 1 | -1 | -51.0% | -0 | -0 |
| Consultant Psychiatry | 57 | 57 | +0 | +0.0% | +6 | +6 |
| Consultants | 63 | 61 | -2 | -3.2% | +6 | +6 |
| Registrar | 78 | 79 | +1 | +0.8% | -6 | -7 |
| Senior Registrar | 16 | 15 | -1 | -6.4% | +3 | +3 |
| Specialist Registrar | 2 | 2 | | | | |
| Registrars | 96 | 96 | -0 | -0.4% | -2 | -3 |
| SHO/ Interns | 41 | 42 | +1 | +2.3% | +10 | +9 |
| Dentists | 48 | 46 | -3 | -5.5% | -4 | -4 |
| Other Medical | 77 | 67 | -10 | -13.1% | +18 | +13 |
| Medical/ Dental, other | 125 | 112 | -13 | -10.2% | +14 | +8 |
| Medical & Dental | 326 | 311 | -14 | -4.4% | +23 | +20 |
| Clinical Nurse/ Midwife Manager | 304 | 300 | -4 | -1.4% | +30 | -4 |
| Director Nursing/Midwifery, Assistant | 63 | 60 | -3 | -4.6% | +4 | +3 |
| Director of Nursing/Midwifery | 34 | 35 | +0 | +1.2% | +2 | +2 |
| Nurse/ Midwife Manager | 401 | 394 | -7 | -1.7% | +36 | +1 |
| Advanced Nurse/ Midwife Practitioner | 6 | 6 | +0 | +0.2% | -0 | -0 |
| Clinical Nurse/ Midwife Specialist | 74 | 75 | +1 | +0.9% | +12 | +14 |
| Nurse/ Midwife Specialist & AN/MP | 79 | 80 | +1 | +0.8% | +12 | +14 |
| Staff Midwives | 5 | 7 | +2 | +49.1% | -1 | -0 |
| Staff Nurse [Intellectual Disability] | | | | -100.0% | -1 | -1 |
| Staff Nurse [Psychiatric] | 463 | 475 | +11 | +2.4% | +6 | +17 |
| Staff Nurses [General/ Children's] | 709 | 705 | -4 | -0.6% | +21 | +30 |
| Staff Nurse/ Staff Midwife | 1,177 | 1,187 | +10 | +0.8% | +25 | +46 |
| Public Health Nurse | 221 | 220 | -0 | -0.2% | +4 | +12 |
| Pre-registration Nurse/ Midwife Intern | | | | -100.0% | -3 | -16 |
| Pre-registration Nurse Intern (COVID-19) | 23 | 11 | -12 | -51.4% | +11 | +11 |
| Post-registration Nurse/ Midwife Student | 9 | 14 | +5 | +56.3% | -6 | -4 |
| Nursing/ Midwifery awaiting registration | 5 | 3 | -2 | -40.2% | -29 | +3 |
| Nursing/ Midwifery Student | 36 | 27 | -9 | -24.3% | -26 | -6 |
| Nursing & Midwifery | 1,914 | 1,909 | -6 | -0.3% | +45 | +67 |
| Dietitians | 35 | 34 | -1 | -3.0% | +8 | +6 |
| Occupational Therapists | 145 | 143 | -2 | -1.1% | +6 | +6 |
| Orthoptists | 2 | 2 | | | -2 | -1 |
| Physiotherapists | 94 | 93 | -1 | -1.5% | +1 | +2 |
| Podiatrists & Chiropodists | 8 | 8 | -1 | -9.5% | +1 | +1 |
| Speech & Language Therapists | 93 | 95 | +3 | +2.8% | +1 | -1 |
| Therapy Professions | 377 | 375 | -2 | -0.6% | +15 | +14 |
| Audiology | 8 | 8 | | | +1 | +1 |
| Physicists | 1 | 1 | +0 | +34.0% | -1 | -1 |
| Radiographers | 1 | 1 | | | +0 | +1 |
| Health Science/ Diagnostics | 10 | 11 | +0 | +3.3% | +1 | +1 |
| Social Care | 38 | 37 | -1 | -2.4% | -2 | +1 |
| Social Workers | 102 | 104 | +3 | +2.5% | +17 | +17 |
| Psychologists | 108 | 118 | +11 | +10.1% | +12 | +15 |
| Pharmacy | 11 | 10 | -1 | -9.3% | +2 | +2 |
| Counsellor Therapists | 37 | 38 | +1 | +2.7% | -0 | -0 |

| Oct 2020 (Dec 2019 figure: 5,940) | WTE Sep 2020 | WTE Oct 2020 | WTE change since Sep 20 | % change since Sep 20 | WTE change since Dec 19 | WTE change since Oct 19 |
|---|--------------|--------------|-------------------------|-----------------------|-------------------------|-------------------------|
| Overall | 6,157 | 6,110 | -47 | -0.8% | +170 | +125 |
| Dental Hygienists | 8 | 9 | +1 | +13.4% | +2 | +2 |
| Other Health & Social Care | 15 | 12 | -3 | -22.6% | +2 | +2 |
| Play Therapists/ Specialists | 1 | 1 | -0 | -32.0% | +0 | +0 |
| H&SC, Other | 61 | 59 | -2 | -2.8% | +3 | +4 |
| Health & Social Care Professionals | 706 | 714 | +8 | +1.1% | +52 | +53 |
| Executive Management | 14 | 13 | -1 | -5.2% | +1 | +2 |
| Senior Management (VIII & GM) | 47 | 47 | +1 | +1.5% | +2 | +1 |
| Management (VIII & above) | 60 | 60 | -0 | -0.0% | +3 | +3 |
| Administrative/ Supervisory (V to VII) | 132 | 132 | +1 | +0.6% | +9 | +11 |
| Clerical (III & IV) | 426 | 437 | +11 | +2.5% | +21 | +20 |
| Management & Administrative | 618 | 629 | +12 | +1.9% | +58 | +34 |
| Catering | 44 | 41 | -2 | -5.5% | -3 | -3 |
| Household Services | 154 | 153 | -0 | -0.2% | +12 | +12 |
| Other Support | 28 | 13 | -15 | -54.2% | -0 | -1 |
| Portering | 8 | 7 | -1 | -16.0% | -1 | -1 |
| Support | 234 | 214 | -19 | -8.3% | +8 | +6 |
| Maintenance/ Technical | 13 | 12 | -0 | -3.7% | -1 | -1 |
| General Support | 246 | 227 | -20 | -8.1% | -15 | +5 |
| HCA, Nurse's Aide, etc. | 1,124 | 1,095 | -29 | -2.6% | +24 | +8 |
| Health & Social Care Assistants | 6 | 8 | +2 | +26.5% | -0 | -1 |
| Health Care Assistants | 1,130 | 1,102 | -27 | -2.4% | +24 | +6 |
| Care, other | 148 | 131 | -17 | -11.4% | +18 | +13 |
| Home Help | 1,069 | 1,087 | +18 | +1.6% | -37 | -74 |
| Patient & Client Care | 2,347 | 2,320 | -26 | -1.1% | +20 | -55 |

Employment by WTE, Headcount, Gender, Full-Time /Part-Time etc.: Oct 2020

| CHO 4 | WTE | Headcount | WTE: no. | % Male | % female | Male WTE: no. | Female WTE: no. | % Total Perm | % Male Perm | % Female Perm | % Total Full Time | % Total Part Time | % Male FT | % Female FT |
|--|--------------|---------------|-------------|--------------|--------------|---------------|-----------------|--------------|--------------|---------------|-------------------|-------------------|---------------|--------------|
| Overall | 8,468 | 10,434 | 1.23 | 15.8% | 84.2% | 1.12 | 1.26 | 74.5% | 67.2% | 75.9% | 70.3% | 29.7% | 81.1% | 68.3% |
| Consultant Dentistry | 2 | 2 | 1.00 | 50.0% | 50.0% | 1.00 | 1.00 | 100.0% | 100.0% | 100.0% | 100.0% | 0.0% | 100.0% | 100.0% |
| Consultant Medicine | 1 | 4 | 3.67 | 25.0% | 75.0% | 2.04 | 5.00 | 50.0% | 50.0% | 33.3% | 0.0% | 100.0% | 0.0% | 0.0% |
| Consultant Paediatrics | 1 | 2 | 2.04 | | 100.0% | | 2.04 | 100.0% | 100.0% | 100.0% | 0.0% | 100.0% | | 0.0% |
| Consultant Psychiatry | 57 | 64 | 1.12 | 26.6% | 73.4% | 1.15 | 1.11 | 35.9% | 35.9% | 42.6% | 75.0% | 25.0% | 82.4% | 72.3% |
| Consultants | 61 | 72 | 1.18 | 26.4% | 73.6% | 1.17 | 1.18 | 40.3% | 26.3% | 45.3% | 69.4% | 30.6% | 78.9% | 66.0% |
| Registrar | 79 | 81 | 1.03 | 42.0% | 58.0% | 1.00 | 1.05 | 1.2% | 1.2% | 0.0% | 98.8% | 1.2% | 100.0% | 97.9% |
| Senior Registrar | 15 | 20 | 1.31 | 45.0% | 55.0% | 1.29 | 1.33 | 0.0% | 0.0% | 0.0% | 70.0% | 30.0% | 66.7% | 72.7% |
| Specialist Registrar | 8 | 8 | 1.00 | 50.0% | 50.0% | 1.00 | 1.00 | 25.0% | 25.0% | 25.0% | 100.0% | 0.0% | 100.0% | 100.0% |
| Registrars | 102 | 109 | 1.07 | 43.1% | 56.9% | 1.04 | 1.09 | 2.8% | 4.3% | 1.6% | 93.6% | 6.4% | 93.6% | 93.5% |
| Interns | 3 | 3 | 1.19 | 33.3% | 66.7% | 1.19 | 1.19 | 0.0% | 0.0% | 0.0% | 100.0% | 0.0% | 100.0% | 100.0% |
| Senior House Officer | 47 | 48 | 1.02 | 37.5% | 62.5% | 1.00 | 1.03 | 0.0% | 0.0% | 0.0% | 93.8% | 6.3% | 100.0% | 90.0% |
| SHO/ Interns | 50 | 51 | 1.03 | 37.3% | 62.7% | 1.01 | 1.04 | 0.0% | 0.0% | 0.0% | 94.1% | 5.9% | 100.0% | 90.6% |
| Dentists | 61 | 95 | 1.56 | 26.3% | 73.7% | 1.75 | 1.50 | 81.1% | 81.1% | 77.1% | 30.5% | 69.5% | 28.0% | 31.4% |
| Other Medical | 67 | 111 | 1.66 | 40.5% | 59.5% | 1.76 | 1.61 | 40.5% | 40.5% | 47.0% | 34.2% | 65.8% | 40.0% | 30.3% |
| Medical/ Dental, other | 128 | 206 | 1.62 | 34.0% | 66.0% | 1.75 | 1.55 | 59.2% | 52.9% | 62.5% | 32.5% | 67.5% | 35.7% | 30.9% |
| Medical & Dental | 340 | 438 | 1.29 | 35.4% | 64.6% | 1.29 | 1.28 | 35.2% | 28.4% | 38.9% | 61.0% | 39.0% | 66.5% | 58.0% |
| Clinical Nurse/ Midwife Manager | 369 | 398 | 1.08 | 18.1% | 81.9% | 1.01 | 1.10 | 96.0% | 96.0% | 96.0% | 78.9% | 21.1% | 98.6% | 74.5% |
| Director Nursing/Midwifery, Assistant | 63 | 67 | 1.06 | 17.9% | 82.1% | 1.07 | 1.06 | 98.5% | 98.5% | 98.2% | 82.1% | 17.9% | 100.0% | 78.2% |
| Director of Nursing/Midwifery | 38 | 39 | 1.03 | 5.1% | 94.9% | 1.00 | 1.04 | 94.9% | 94.9% | 94.6% | 87.2% | 12.8% | 100.0% | 86.5% |
| Nurse/ Midwife Manager | 470 | 504 | 1.07 | 17.1% | 82.9% | 1.02 | 1.09 | 96.2% | 96.5% | 96.2% | 80.0% | 20.0% | 98.8% | 76.1% |
| Advanced Nurse/ Midwife Practitioner | 8 | 8 | 1.06 | 37.5% | 62.5% | 1.06 | 1.06 | 100.0% | 100.0% | 100.0% | 87.5% | 12.5% | 100.0% | 80.0% |
| Clinical Nurse/ Midwife Specialist | 86 | 93 | 1.08 | 11.8% | 88.2% | 1.03 | 1.09 | 96.8% | 96.8% | 97.6% | 79.6% | 20.4% | 100.0% | 76.8% |
| Nurse/ Midwife Specialist & AN/MP | 94 | 101 | 1.08 | 13.9% | 86.1% | 1.03 | 1.09 | 97.0% | 92.9% | 97.7% | 80.2% | 19.8% | 100.0% | 77.0% |
| Staff Midwives | 7 | 9 | 1.23 | | 100.0% | | 1.23 | 100.0% | 100.0% | 100.0% | 33.3% | 66.7% | | 33.3% |
| Staff Nurse [Intellectual Disability] | 81 | 104 | 1.28 | 5.8% | 94.2% | 1.07 | 1.30 | 93.3% | 93.3% | 92.9% | 51.0% | 49.0% | 66.7% | 50.0% |
| Staff Nurse [Psychiatric] | 475 | 516 | 1.09 | 29.8% | 70.2% | 1.05 | 1.10 | 81.8% | 81.8% | 83.7% | 88.4% | 11.6% | 94.2% | 85.9% |
| Staff Nurses [General/ Children's] | 893 | 1,127 | 1.26 | 4.9% | 95.1% | 1.05 | 1.28 | 75.4% | 75.4% | 76.1% | 48.1% | 51.9% | 89.1% | 46.0% |
| Staff Nurse/ Staff Midwife | 1,456 | 1,756 | 1.21 | 12.2% | 87.8% | 1.05 | 1.23 | 78.5% | 74.0% | 79.1% | 60.0% | 40.0% | 92.1% | 55.5% |

| | | | | | | | | | | | | | | |
|---|--------------|--------------|-------------|--------------|--------------|-------------|-------------|--------------|---------------|--------------|--------------|--------------|---------------|--------------|
| Public Health Nurse | 220 | 274 | 1.24 | 0.4% | 99.6% | 1.00 | 1.24 | 86.1% | 100.0% | 86.1% | 67.5% | 32.5% | 100.0% | 67.4% |
| Pre-registration Nurse Intern (C0VID-19) | 28 | 29 | 1.03 | 17.2% | 82.8% | 1.18 | 1.00 | 0.0% | 0.0% | 0.0% | 96.6% | 3.4% | 100.0% | 95.8% |
| Post-registration Nurse/ Midwife Student | 14 | 15 | 1.11 | | 100.0% | | 1.11 | 53.3% | 53.3% | 53.3% | 86.7% | 13.3% | | 86.7% |
| Nursing/ Midwifery awaiting registration | 3 | 3 | 1.09 | | 100.0% | | 1.09 | 33.3% | 33.3% | 33.3% | 100.0% | 0.0% | | 100.0% |
| Nursing/ Midwifery Student | 44 | 47 | 1.06 | 10.6% | 89.4% | 1.18 | 1.05 | 19.1% | 0.0% | 21.4% | 93.6% | 6.4% | 100.0% | 92.9% |
| Nursing & Midwifery | 2,284 | 2,682 | 1.17 | 12.0% | 88.0% | 1.04 | 1.20 | 82.3% | 79.8% | 82.6% | 65.9% | 34.1% | 94.4% | 62.0% |
| Dietitians | 36 | 45 | 1.24 | | 100.0% | | 1.24 | 82.2% | 82.2% | 82.2% | 73.3% | 26.7% | | 73.3% |
| Occupational Therapists | 173 | 206 | 1.19 | 6.3% | 93.7% | 1.10 | 1.20 | 85.4% | 85.4% | 85.5% | 70.9% | 29.1% | 76.9% | 70.5% |
| Orthoptists | 2 | 2 | 1.33 | | 100.0% | | 1.33 | 50.0% | 50.0% | 50.0% | 50.0% | 50.0% | | 50.0% |
| Physiotherapists | 108 | 130 | 1.20 | 18.5% | 81.5% | 1.03 | 1.25 | 84.6% | 84.6% | 85.8% | 62.3% | 37.7% | 79.2% | 58.5% |
| Podiatrists & Chiropodists | 8 | 11 | 1.43 | 36.4% | 63.6% | 1.14 | 1.68 | 45.5% | 45.5% | 42.9% | 63.6% | 36.4% | 75.0% | 57.1% |
| Speech & Language Therapists | 134 | 162 | 1.21 | 1.2% | 98.8% | 1.00 | 1.21 | 85.2% | 85.2% | 85.0% | 69.1% | 30.9% | 50.0% | 69.4% |
| Therapy Professions | 460 | 556 | 1.21 | 7.7% | 92.3% | 1.06 | 1.22 | 84.0% | 79.1% | 84.4% | 68.3% | 31.7% | 76.7% | 67.6% |
| Audiology | 8 | 8 | 1.00 | 37.5% | 62.5% | 1.00 | 1.00 | 87.5% | 87.5% | 80.0% | 100.0% | 0.0% | 100.0% | 100.0% |
| Physicists | 1 | 2 | 1.49 | | 100.0% | | 1.49 | 100.0% | 100.0% | 100.0% | 100.0% | 0.0% | | 100.0% |
| Radiographers | 3 | 4 | 1.22 | | 100.0% | | 1.22 | 75.0% | 75.0% | 75.0% | 75.0% | 25.0% | | 75.0% |
| Health Science/ Diagnostics | 13 | 14 | 1.11 | 21.4% | 78.6% | 1.00 | 1.14 | 85.7% | 100.0% | 81.8% | 92.9% | 7.1% | 100.0% | 90.9% |
| Social Care | 253 | 284 | 1.12 | 14.1% | 85.9% | 1.03 | 1.14 | 90.1% | 87.5% | 90.6% | 67.6% | 32.4% | 92.5% | 63.5% |
| Social Workers | 131 | 149 | 1.14 | 17.4% | 82.6% | 1.01 | 1.17 | 81.9% | 73.1% | 83.7% | 83.2% | 16.8% | 96.2% | 80.5% |
| Psychologists | 151 | 170 | 1.13 | 24.1% | 75.9% | 1.02 | 1.17 | 73.5% | 68.3% | 75.2% | 77.1% | 22.9% | 95.1% | 71.3% |
| Pharmacy | 10 | 16 | 1.62 | 12.5% | 87.5% | 2.44 | 1.55 | 43.8% | 50.0% | 42.9% | 37.5% | 62.5% | 0.0% | 42.9% |
| Counsellor Therapists | 40 | 43 | 1.07 | 53.5% | 46.5% | 1.03 | 1.11 | 95.3% | 95.3% | 90.0% | 93.0% | 7.0% | 95.7% | 90.0% |
| Dental Hygienists | 12 | 15 | 1.29 | 6.7% | 93.3% | 1.00 | 1.32 | 100.0% | 100.0% | 100.0% | 33.3% | 66.7% | 100.0% | 28.6% |
| Other Health & Social Care | 13 | 18 | 1.42 | 38.9% | 61.1% | 1.25 | 1.55 | 66.7% | 66.7% | 72.7% | 61.1% | 38.9% | 71.4% | 54.5% |
| Play Therapists/ Specialists | 1 | 1 | 1.52 | | 100.0% | | 1.52 | 100.0% | 100.0% | 100.0% | 0.0% | 100.0% | | 0.0% |
| H&SC, Other | 65 | 77 | 1.18 | 40.3% | 59.7% | 1.07 | 1.26 | 89.6% | 90.3% | 89.1% | 72.7% | 27.3% | 90.3% | 60.9% |
| Health & Social Care | 1,082 | 1,266 | 1.17 | 14.7% | 85.3% | 1.04 | 1.19 | 83.6% | 79.6% | 84.3% | 71.2% | 28.8% | 88.7% | 68.2% |
| Executive Management | 16 | 16 | 1.01 | 31.3% | 68.8% | 1.00 | 1.01 | 93.8% | 93.8% | 90.9% | 100.0% | 0.0% | 100.0% | 100.0% |
| Senior Management (VIII & GM) | 61 | 65 | 1.07 | 27.7% | 72.3% | 1.03 | 1.09 | 92.3% | 92.3% | 97.9% | 87.7% | 12.3% | 94.4% | 85.1% |
| Management (VIII & above) | 77 | 81 | 1.06 | 28.4% | 71.6% | 1.03 | 1.07 | 92.6% | 82.6% | 96.6% | 90.1% | 9.9% | 95.7% | 87.9% |
| Administrative/ Supervisory (V to VII) | 175 | 192 | 1.10 | 18.2% | 81.8% | 1.05 | 1.11 | 85.9% | 74.3% | 88.5% | 76.6% | 23.4% | 88.6% | 73.9% |
| Clerical (III & IV) | 533 | 660 | 1.24 | 7.4% | 92.6% | 1.19 | 1.24 | 73.0% | 69.4% | 73.3% | 54.4% | 45.6% | 69.4% | 53.2% |
| Management & Administrative | 784 | 933 | 1.19 | 11.5% | 88.5% | 1.10 | 1.20 | 77.4% | 73.8% | 77.8% | 62.1% | 37.9% | 81.3% | 59.6% |
| Catering | 59 | 70 | 1.19 | 38.6% | 61.4% | 1.17 | 1.19 | 85.7% | 85.7% | 86.0% | 81.4% | 18.6% | 96.3% | 72.1% |
| Household Services | 203 | 260 | 1.28 | 25.8% | 74.2% | 1.25 | 1.29 | 68.5% | 68.5% | 73.1% | 57.3% | 42.7% | 73.1% | 51.8% |

| | | | | | | | | | | | | | | |
|----------------------------------|--------------|--------------|-------------|--------------|--------------|-------------|-------------|--------------|--------------|---------------|--------------|--------------|--------------|--------------|
| Other Support | 76 | 158 | 2.07 | 23.4% | 76.6% | 1.31 | 2.51 | 82.3% | 82.3% | 79.3% | 27.2% | 72.8% | 86.5% | 9.1% |
| Portering | 12 | 17 | 1.44 | 100.0% | | 1.44 | | 94.1% | 94.1% | | 52.9% | 47.1% | 52.9% | |
| Support | 350 | 505 | 1.44 | 29.3% | 70.7% | 1.27 | 1.53 | 76.0% | 74.3% | 76.8% | 51.1% | 48.9% | 78.4% | 39.8% |
| Maintenance/ Technical | 22 | 27 | 1.22 | 85.2% | 14.8% | 1.19 | 1.37 | 92.6% | 91.3% | 100.0% | 66.7% | 33.3% | 73.9% | 25.0% |
| General Support | 372 | 532 | 1.43 | 32.1% | 67.9% | 1.26 | 1.53 | 76.9% | 76.6% | 77.0% | 51.9% | 48.1% | 77.8% | 39.6% |
| HCA, Nurse's Aide, etc. | 2,026 | 2,328 | 1.15 | 21.2% | 78.8% | 1.07 | 1.17 | 74.2% | 74.2% | 74.8% | 68.3% | 31.7% | 77.5% | 65.8% |
| Health & Social Care Assistants | 8 | 9 | 1.19 | | 100.0% | | 1.19 | 0.0% | 0.0% | 0.0% | 88.9% | 11.1% | | 88.9% |
| Health Care Assistants | 2,033 | 2,337 | 1.15 | 21.1% | 78.9% | 1.07 | 1.17 | 73.9% | 72.0% | 74.4% | 68.4% | 31.6% | 77.5% | 65.9% |
| Care, other | 485 | 597 | 1.23 | 20.1% | 79.9% | 1.22 | 1.23 | 80.1% | 63.3% | 84.3% | 53.1% | 46.9% | 64.2% | 50.3% |
| Home Help | 1,087 | 1,649 | 1.52 | 5.7% | 94.3% | 1.31 | 1.53 | 62.1% | 19.1% | 64.7% | 98.8% | 1.2% | 91.5% | 99.2% |
| Patient & Client Care | 3,606 | 4,583 | 1.27 | 15.4% | 84.6% | 1.12 | 1.30 | 70.5% | 63.5% | 71.7% | 77.3% | 22.7% | 77.1% | 77.4% |

Employment by WTE, Headcount, Gender, Full-Time /Part-Time etc.: Oct 2020

| CHO 4 | WTE | Headcount | WTE: no. | % Male | % female | Male WTE: no. | Female WTE: no. | % Total Perm | % Male Perm | % Female Perm | % Total Full Time | % Total Part Time | % Male FT | % Female FT |
|-------------------------------|--------------|---------------|-------------|--------------|--------------|---------------|-----------------|--------------|--------------|---------------|-------------------|-------------------|--------------|--------------|
| Overall | 8,468 | 10,434 | 1.23 | 15.8% | 84.2% | 1.12 | 1.26 | 74.5% | 67.2% | 75.9% | 70.3% | 29.7% | 81.1% | 68.3% |
| Community Health & Wellbeing | 35 | 43 | 1.24 | 2.3% | 97.7% | 1.00 | 1.25 | 93.0% | 93.0% | 92.9% | 53.5% | 46.5% | 100.0% | 100.0% |
| Mental Health | 1,559 | 1,721 | 1.10 | 25.4% | 74.6% | 1.05 | 1.12 | 75.0% | 75.0% | 77.6% | 84.0% | 16.0% | 93.4% | 93.4% |
| Primary Care | 1,404 | 1,765 | 1.26 | 10.3% | 89.7% | 1.19 | 1.27 | 73.9% | 73.9% | 75.2% | 57.6% | 42.4% | 70.7% | 70.7% |
| HSE | 3,224 | 4,194 | 1.30 | 12.1% | 87.9% | 1.14 | 1.33 | 67.6% | 67.6% | 69.2% | 75.2% | 24.8% | 87.0% | 87.0% |
| Section 38 Voluntary Agencies | 2,245 | 2,711 | 1.21 | 19.2% | 80.8% | 1.14 | 1.22 | 85.1% | 85.1% | 86.4% | 62.6% | 37.4% | 68.7% | 68.7% |
| Social Care | 5,469 | 6,905 | 1.26 | 14.9% | 85.1% | 1.14 | 1.29 | 74.5% | 74.5% | 75.6% | 70.2% | 29.8% | 77.7% | 77.7% |

CHO 4 Skills Mix by Staff Grouping: October 2020

| Oct 2020 (Dec 2018 figure: 8,138) | WTE Dec 2015 | WTE Dec 2016 | WTE Dec 2017 | WTE Dec 2018 | WTE Dec 2019 | WTE Sep 2020 | WTE Oct 2020 |
|--|--------------|--------------|--------------|--------------|--------------|---------------|--------------|
| Overall | 7,461 | 7,639 | 7,983 | 8,138 | 8,189 | 8,475 | 8,468 |
| Consultant Dentistry | 0.7% | 0.7% | 0.7% | 0.6% | 0.6% | 0.6% | 0.6% |
| Consultant Medicine | 0.9% | 0.9% | 0.3% | 0.3% | 0.4% | 0.6% | 0.3% |
| Consultant Paediatrics | 0.1% | 0.1% | 0.3% | 0.3% | 0.3% | 0.6% | 0.3% |
| Consultant Psychiatry | 15.9% | 16.1% | 15.7% | 15.8% | 16.5% | 16.3% | 16.8% |
| Consultants | 17.7% | 17.8% | 17.1% | 17.1% | 17.8% | 18.0% | 18.0% |
| Registrar | 23.1% | 22.8% | 23.6% | 25.2% | 27.5% | 22.3% | 23.2% |
| Senior Registrar | 3.2% | 3.3% | 3.6% | 3.5% | 3.8% | 4.6% | 4.5% |
| Specialist Registrar | 1.5% | 1.1% | 1.3% | 1.3% | 2.3% | 2.3% | 2.4% |
| Registrars | 27.8% | 27.2% | 28.5% | 30.0% | 33.6% | 29.2% | 30.0% |
| Interns | 1.1% | 1.1% | 1.0% | 1.0% | 1.0% | 0.6% | 0.7% |
| Senior House Officer | 14.0% | 13.5% | 12.9% | 13.2% | 11.4% | 13.0% | 13.8% |
| SHO/ Interns | 15.1% | 14.5% | 13.9% | 14.2% | 12.4% | 13.6% | 14.6% |
| Dentists | 22.4% | 22.0% | 20.8% | 20.9% | 20.3% | 17.3% | 17.9% |
| Other Medical | 17.1% | 18.4% | 19.8% | 17.8% | 15.9% | 21.9% | 19.6% |
| Medical/ Dental, other | 39.5% | 40.5% | 40.6% | 38.7% | 36.2% | 39.2% | 37.5% |
| Medical & Dental | 3.7% | 3.7% | 3.8% | 3.8% | 3.8% | 100.0% | 4.0% |
| Clinical Nurse/ Midwife Manager | 14.3% | 14.1% | 13.8% | 14.3% | 15.1% | 16.2% | 16.2% |
| Director Nursing/Midwifery, Assistant | 2.4% | 2.4% | 2.1% | 2.1% | 2.7% | 2.9% | 2.8% |
| Director of Nursing/Midwifery | 1.0% | 0.8% | 0.8% | 0.8% | 1.6% | 1.6% | 1.7% |
| Nurse/ Midwife Manager | 17.8% | 17.3% | 16.7% | 17.2% | 19.4% | 20.7% | 20.6% |
| Advanced Nurse/ Midwife Practitioner | 0.2% | 0.1% | 0.1% | 0.2% | 0.3% | 0.3% | 0.3% |
| Clinical Nurse/ Midwife Specialist | 2.3% | 2.5% | 2.9% | 3.0% | 3.3% | 3.7% | 3.8% |
| Nurse/ Midwife Specialist & AN/MP | 2.5% | 2.7% | 3.0% | 3.2% | 3.6% | 4.0% | 4.1% |
| Graduate Nursing/ Midwifery | 0.0% | | | | | | |
| Staff Midwives | 0.1% | 0.1% | 0.2% | 0.3% | 0.4% | 0.2% | 0.3% |
| Staff Nurse [Intellectual Disability] | 2.9% | 3.0% | 3.1% | 3.9% | 3.9% | 3.5% | 3.5% |
| Staff Nurse [Psychiatric] | 24.6% | 24.6% | 23.9% | 23.3% | 21.0% | 20.2% | 20.8% |
| Staff Nurses [General/ Children's] | 41.6% | 41.9% | 42.6% | 41.4% | 39.5% | 39.2% | 39.1% |
| Staff Nurse/ Staff Midwife | 69.3% | 69.6% | 69.8% | 68.9% | 64.7% | 63.2% | 63.7% |
| Public Health Nurse | 9.7% | 9.6% | 9.4% | 9.7% | 9.7% | 9.6% | 9.6% |
| Pre-registration Nurse/ Midwife Intern | 0.4% | 0.4% | 0.3% | 0.4% | 0.4% | | |
| Pre-registration Nurse Intern (COVID-19) | | | | | | 1.8% | 1.2% |
| Post-registration Nurse/ Midwife Student | 0.3% | 0.4% | 0.7% | 0.6% | 0.9% | 0.4% | 0.6% |
| Nursing/ Midwifery awaiting registration | | | | | 1.4% | 0.2% | 0.1% |
| Nursing/ Midwifery Student | 0.7% | 0.7% | 1.1% | 1.0% | 2.7% | 2.4% | 1.9% |
| Nursing/ Midwifery other | 0.0% | 0.0% | 0.0% | 0.0% | 0.0% | 0.0% | |
| Nursing & Midwifery | 29.9% | 29.4% | 28.8% | 27.7% | 27.5% | 100.0% | 27.0% |
| Dietitians | 1.5% | 2.0% | 2.4% | 2.8% | 2.7% | 3.5% | 3.3% |
| Occupational Therapists | 17.3% | 16.3% | 16.6% | 16.2% | 16.6% | 16.5% | 16.0% |
| Orthoptists | 0.1% | 0.0% | 0.1% | 0.0% | 0.3% | 0.1% | 0.1% |
| Physiotherapists | 11.6% | 11.2% | 11.1% | 10.7% | 10.5% | 10.4% | 10.0% |
| Podiatrists & Chiropodists | 0.7% | 0.9% | 0.8% | 0.7% | 0.6% | 0.8% | 0.7% |
| Speech & Language Therapists | 13.5% | 14.1% | 14.2% | 13.3% | 13.2% | 12.4% | 12.4% |
| Therapy Professions | 44.6% | 44.4% | 45.2% | 43.8% | 43.9% | 43.7% | 42.5% |
| Audiology | 0.6% | 0.5% | 0.6% | 0.7% | 0.7% | 0.7% | 0.7% |
| Medical Laboratory | 1.4% | | | | | | |
| Phlebotomists | 0.1% | 0.1% | 0.1% | | | | |
| Physicists | 0.2% | 0.2% | 0.2% | 0.2% | 0.2% | 0.1% | 0.1% |
| Radiographers | 0.3% | 0.2% | 0.2% | 0.3% | 0.3% | 0.3% | 0.3% |
| Health Science/ Diagnostics | 2.6% | 1.1% | 1.1% | 1.2% | 1.2% | 1.2% | 1.2% |
| Social Care | 23.4% | 23.3% | 22.8% | 22.9% | 23.5% | 22.8% | 23.4% |

| Oct 2020 (Dec 2018 figure: 8,138) | WTE Dec 2015 | WTE Dec 2016 | WTE Dec 2017 | WTE Dec 2018 | WTE Dec 2019 | WTE Sep 2020 | WTE Oct 2020 |
|---|--------------|--------------|--------------|--------------|--------------|---------------|--------------|
| Overall | 7,461 | 7,639 | 7,983 | 8,138 | 8,189 | 8,475 | 8,468 |
| Social Workers | 11.7% | 11.9% | 12.0% | 12.0% | 11.2% | 12.0% | 12.1% |
| Psychologists | 11.0% | 11.7% | 11.8% | 13.2% | 13.5% | 13.1% | 13.9% |
| Pharmacy | 1.0% | 0.9% | 1.0% | 1.0% | 0.8% | 1.0% | 0.9% |
| Counsellor Therapists | 3.6% | 4.6% | 4.4% | 4.0% | 4.0% | 3.7% | 3.7% |
| Dental Hygienists | 0.8% | 0.8% | 0.7% | 0.7% | 0.8% | 1.0% | 1.1% |
| Other Health & Social Care | 1.1% | 1.1% | 1.0% | 1.0% | 1.1% | 1.5% | 1.2% |
| Play Therapists/ Specialists | 0.2% | 0.2% | 0.1% | 0.1% | 0.1% | 0.1% | 0.1% |
| H&SC, Other | 5.6% | 6.7% | 6.2% | 5.8% | 5.9% | 6.3% | 6.0% |
| Health & Social Care Professionals | 11.7% | 12.1% | 12.3% | 12.4% | 12.3% | 100.0% | 12.8% |
| Executive Management | 1.5% | 2.0% | 2.1% | 2.0% | 2.0% | 2.2% | 2.0% |
| Senior Management (VIII & GM) | 7.7% | 7.4% | 7.7% | 6.7% | 7.8% | 7.7% | 7.7% |
| Management (VIII & above) | 9.3% | 9.4% | 9.9% | 8.6% | 9.9% | 9.9% | 9.8% |
| Administrative/ Supervisory (V to VII) | 19.5% | 19.6% | 19.2% | 19.2% | 21.8% | 22.5% | 22.3% |
| Clerical (III & IV) | 71.2% | 71.0% | 71.0% | 72.2% | 68.3% | 67.6% | 67.9% |
| Management & Administrative | 7.9% | 8.0% | 8.3% | 8.8% | 8.7% | 100.0% | 9.3% |
| Catering | 13.1% | 13.5% | 13.9% | 15.6% | 16.8% | 15.5% | 15.9% |
| Household Services | 62.1% | 60.4% | 59.0% | 55.7% | 52.8% | 51.9% | 54.5% |
| Other Support | 14.4% | 15.3% | 16.3% | 19.6% | 20.6% | 23.6% | 20.5% |
| Portering | 3.1% | 3.1% | 2.7% | 2.9% | 3.6% | 3.4% | 3.2% |
| Support | 92.7% | 92.2% | 92.0% | 93.7% | 93.8% | 94.4% | 94.0% |
| Maintenance/ Technical | 7.3% | 7.8% | 8.0% | 6.3% | 6.2% | 5.6% | 6.0% |
| General Support | 6.0% | 5.5% | 5.0% | 4.6% | 4.6% | 100.0% | 4.4% |
| HCA, Nurse's Aide, etc. | 50.2% | 53.1% | 53.6% | 55.3% | 55.2% | 56.4% | 56.2% |
| Health & Social Care Assistants | | 0.1% | 0.0% | 0.4% | 0.2% | 0.2% | 0.2% |
| Health Care Assistants | 50.2% | 53.2% | 53.6% | 55.7% | 55.4% | 56.6% | 56.4% |
| Care, other | 12.5% | 12.5% | 12.5% | 12.4% | 12.8% | 13.7% | 13.5% |
| Home Help | 37.3% | 34.3% | 33.9% | 31.9% | 31.9% | 29.7% | 30.1% |
| Patient & Client Care | 40.9% | 41.4% | 41.9% | 42.7% | 42.5% | 100.0% | 42.6% |
| Total | 100 % | 100 % | 100 % | 100 % | 100% | 100 % | 100 % |

CHO 4 Skills Mix by Care Group: October 2020

| Oct 2020 (Dec 2018 figure: 1,483) | WTE Dec 2015 | WTE Dec 2016 | WTE Dec 2017 | WTE Dec 2018 | WTE Dec 2019 | WTE Sep 2020 | WTE Oct 2020 |
|---|--------------|--------------|--------------|--------------|-----------------|-----------------|-----------------|
| Mental Health | 1,374 | 1,407 | 1,477 | 1,483 | 1,485.26 | 1,569.27 | 1,559.36 |
| Consultants | 37.8% | 37.9% | 37.5% | 37.4% | 38.8% | 38.7% | 37.6% |
| Registrar | 19.8% | 22.2% | 21.9% | 25.2% | 27.8% | 20.2% | 20.2% |
| Senior Registrar | 6.3% | 6.6% | 7.5% | 7.0% | 7.8% | 9.0% | 9.3% |
| Registrars | 26.1% | 28.8% | 29.4% | 32.2% | 35.6% | 29.2% | 29.4% |
| Interns | 2.7% | 2.6% | 2.5% | 2.3% | 2.3% | 1.4% | 1.7% |
| Senior House Officer | 29.5% | 27.0% | 26.6% | 25.6% | 21.8% | 26.3% | 26.3% |
| SHO/ Interns | 32.2% | 29.7% | 29.0% | 27.9% | 24.1% | 27.7% | 28.1% |
| Medical/ Dental, other | 3.8% | 3.6% | 4.2% | 2.5% | 1.6% | 4.3% | 4.9% |
| Medical & Dental | 8.0% | 8.1% | 8.2% | 8.7% | 8.7% | 9.4% | 9.4% |
| Clinical Nurse/ Midwife Manager | 17.0% | 17.0% | 16.3% | 17.5% | 18.8% | 21.2% | 21.4% |
| Director Nursing/Midwifery, Assistant | 2.8% | 2.7% | 2.5% | 2.4% | 2.8% | 2.9% | 2.8% |
| Director of Nursing/Midwifery | 0.5% | 0.5% | 0.4% | 0.4% | 0.5% | 0.4% | 0.5% |
| Nurse/ Midwife Manager | 20.3% | 20.1% | 19.2% | 20.3% | 22.2% | 24.5% | 24.7% |
| Advanced Nurse/ Midwife Practitioner | 0.3% | 0.1% | 0.1% | 0.4% | 0.6% | 0.6% | 0.6% |
| Clinical Nurse/ Midwife Specialist | 4.2% | 4.7% | 5.7% | 5.8% | 7.2% | 7.9% | 8.0% |
| Nurse/ Midwife Specialist & AN/MP | 4.5% | 4.9% | 5.8% | 6.1% | 7.8% | 8.5% | 8.6% |
| Staff Nurse [Intellectual Disability] | | | | 0.1% | 0.1% | | |
| Staff Nurse [Psychiatric] | 69.3% | 69.2% | 69.0% | 68.1% | 60.8% | 58.8% | 60.5% |
| Staff Nurses [General/ Children's] | 5.8% | 5.7% | 5.9% | 5.2% | 4.7% | 4.8% | 4.6% |
| Staff Nurse/ Staff Midwife | 75.1% | 74.9% | 74.9% | 73.5% | 65.6% | 63.6% | 65.1% |
| Pre-registration Nurse/ Midwife Intern | 0.1% | 0.1% | | 0.1% | 0.4% | | |
| Pre-registration Nurse Intern (COVID-19) | | | | | | 2.9% | 1.4% |
| Post-registration Nurse/ Midwife Student | | | | | 0.1% | | |
| Nursing/ Midwifery awaiting registration | | | | | 3.9% | 0.4% | 0.1% |
| Nursing/ Midwifery Student | 0.1% | 0.1% | | 0.1% | 4.4% | 3.3% | 1.6% |
| Nursing & Midwifery | 55.6% | 55.3% | 53.4% | 51.6% | 51.6% | 50.1% | 50.1% |
| Dietitians | 0.9% | 1.9% | 2.0% | 2.8% | 2.7% | 2.4% | 2.3% |
| Occupational Therapists | 25.7% | 23.9% | 23.9% | 22.9% | 24.2% | 24.0% | 22.5% |
| Speech & Language Therapists | 4.0% | 4.8% | 4.3% | 5.7% | 5.6% | 5.3% | 5.2% |
| Therapy Professions | 30.5% | 30.5% | 30.2% | 31.4% | 32.6% | 31.7% | 30.0% |
| Social Care | 4.5% | 4.0% | 3.2% | 2.5% | 1.7% | 3.2% | 2.6% |
| Social Workers | 30.7% | 27.7% | 28.4% | 26.2% | 23.4% | 24.9% | 25.4% |
| Psychologists | 26.4% | 29.9% | 30.8% | 33.6% | 36.5% | 33.0% | 36.2% |
| Pharmacy | 1.5% | 1.4% | 1.6% | 1.8% | 1.1% | 1.0% | 0.8% |
| Counsellor Therapists | 5.3% | 4.6% | 4.1% | 3.0% | 3.2% | 3.7% | 3.5% |
| Other Health & Social Care | 1.0% | 1.7% | 1.7% | 1.5% | 1.5% | 2.5% | 1.5% |
| H&SC, Other | 6.3% | 6.3% | 5.8% | 4.5% | 4.7% | 6.2% | 4.9% |
| Health & Social Care Professionals | 12.8% | 13.9% | 14.1% | 15.3% | 15.3% | 16.6% | 16.6% |
| Management (VIII & above) | | | | | 0.9% | 1.7% | 1.7% |
| Administrative/ Supervisory (V to VII) | 19.0% | 18.9% | 17.9% | 17.0% | 20.3% | 18.4% | 19.6% |
| Clerical (III & IV) | 81.0% | 81.1% | 82.1% | 83.0% | 78.8% | 80.0% | 78.8% |
| Management & Administrative | 6.8% | 6.6% | 7.0% | 6.9% | 6.9% | 7.4% | 7.4% |
| Support | 93.4% | 93.1% | 93.2% | 93.6% | 92.9% | 94.7% | 94.1% |
| Maintenance/ Technical | 6.6% | 6.9% | 6.8% | 6.4% | 7.1% | 5.3% | 5.9% |
| General Support | 7.8% | 7.3% | 7.0% | 6.4% | 6.4% | 5.6% | 5.6% |
| Health Care Assistants | 96.7% | 96.6% | 95.4% | 95.3% | 95.7% | 94.7% | 96.5% |
| Care, other | 3.3% | 3.4% | 4.6% | 4.7% | 4.3% | 5.3% | 3.5% |
| Patient & Client Care | 8.9% | 8.8% | 10.3% | 11.1% | 11.1% | 11.0% | 11.0% |
| Total | 100 % | 100 % | 100 % | 100 % | 100 % | 100 % | 100 % |

| Oct 2020 (Dec 2018 figure: 1,344) | WTE Dec 2015 | WTE Dec 2016 | WTE Dec 2017 | WTE Dec 2018 | WTE Dec 2019 | WTE Sep 2020 | WTE Oct 2020 |
|---|---------------|---------------|---------------|---------------|-----------------|-----------------|-----------------|
| Primary Care | 1,143 | 1,188 | 1,307 | 1,344 | 1,345.90 | 1,410.12 | 1,404.07 |
| Consultant Dentistry | 1.5% | 1.4% | 1.3% | 1.3% | 1.3% | 1.2% | 1.3% |
| Consultant Medicine | | | | | 0.1% | 0.1% | 0.1% |
| Consultant Paediatrics | | | 0.3% | 0.3% | 0.3% | 0.6% | 0.3% |
| Consultants | 1.5% | 1.4% | 1.7% | 1.6% | 1.7% | 1.9% | 1.7% |
| Registrars | 33.2% | 30.5% | 31.8% | 32.3% | 36.0% | 35.2% | 35.8% |
| SHO/ Interns | 4.4% | 5.0% | 4.3% | 4.7% | 4.1% | 4.0% | 4.8% |
| Dentists | 44.9% | 44.4% | 41.3% | 42.0% | 41.1% | 37.3% | 38.9% |
| Other Medical | 16.0% | 18.7% | 20.9% | 19.4% | 17.1% | 21.6% | 18.9% |
| Medical/ Dental, other | 61.0% | 63.1% | 62.2% | 61.4% | 58.2% | 58.8% | 57.8% |
| Medical & Dental | 12.0% | 11.7% | 11.5% | 11.5% | 11.5% | 11.1% | 11.1% |
| Clinical Nurse/ Midwife Manager | 4.8% | 5.5% | 6.4% | 7.1% | 7.2% | 7.9% | 7.7% |
| Director Nursing/Midwifery, Assistant | 5.8% | 5.9% | 4.1% | 4.7% | 5.0% | 6.0% | 5.5% |
| Director of Nursing/Midwifery | 1.5% | 1.1% | 0.6% | 0.9% | 1.6% | 1.5% | 1.5% |
| Nurse/ Midwife Manager | 12.0% | 12.5% | 11.1% | 12.7% | 13.8% | 15.4% | 14.7% |
| Nurse/ Midwife Specialist & AN/MP | 0.9% | 0.8% | 0.9% | 1.5% | 1.0% | 1.4% | 1.3% |
| Staff Nurse/ Staff Midwife | 23.0% | 25.6% | 30.4% | 28.8% | 29.2% | 29.9% | 31.3% |
| Public Health Nurse | 62.0% | 58.8% | 53.3% | 53.5% | 51.7% | 51.2% | 49.6% |
| Nursing/ Midwifery Student | 2.1% | 2.2% | 4.3% | 3.5% | 4.2% | 2.1% | 3.1% |
| Nursing & Midwifery | 29.7% | 30.0% | 30.2% | 29.5% | 29.4% | 30.8% | 30.8% |
| Dietitians | 3.6% | 3.9% | 4.9% | 5.3% | 5.4% | 6.7% | 6.3% |
| Occupational Therapists | 19.7% | 19.1% | 20.0% | 18.9% | 18.0% | 18.5% | 18.3% |
| Orthoptists | 0.2% | 0.1% | 0.2% | 0.2% | 1.0% | 0.4% | 0.4% |
| Physiotherapists | 24.5% | 23.7% | 23.3% | 22.1% | 22.2% | 22.0% | 21.6% |
| Speech & Language Therapists | 19.9% | 22.1% | 23.0% | 21.3% | 20.9% | 20.1% | 20.7% |
| Therapy Professions | 67.9% | 68.7% | 71.3% | 67.9% | 67.4% | 67.7% | 67.4% |
| Audiology | 1.8% | 1.7% | 1.8% | 2.1% | 2.1% | 2.4% | 2.4% |
| Medical Laboratory | 4.4% | | | | | | |
| Physicists | 0.7% | 0.7% | 0.5% | 0.6% | 0.6% | 0.3% | 0.4% |
| Radiographers | 0.7% | 0.7% | 0.6% | 0.6% | 0.6% | 0.6% | 0.6% |
| Health Science/ Diagnostics | 7.6% | 3.1% | 3.0% | 3.3% | 3.3% | 3.3% | 3.3% |
| Social Care | 1.8% | 2.0% | 1.8% | 2.3% | 2.4% | 1.5% | 1.5% |
| Social Workers | 6.9% | 7.6% | 6.9% | 7.6% | 7.4% | 8.1% | 8.0% |
| Psychologists | 4.8% | 4.3% | 3.8% | 5.7% | 6.2% | 6.2% | 6.2% |
| Pharmacy | 1.2% | 1.0% | 1.0% | 1.0% | 0.9% | 1.1% | 1.1% |
| Counsellor Therapists | 7.0% | 10.9% | 10.0% | 9.6% | 9.5% | 8.3% | 8.6% |
| Dental Hygienists | 2.4% | 2.4% | 2.2% | 2.2% | 2.5% | 3.2% | 3.4% |
| Other Health & Social Care | 0.4% | 0.0% | 0.0% | 0.5% | 0.5% | 0.6% | 0.4% |
| H&SC, Other | 9.8% | 13.4% | 12.2% | 12.3% | 12.5% | 12.1% | 12.5% |
| Health & Social Care Professionals | 24.9% | 24.6% | 24.9% | 24.5% | 24.5% | 24.2% | 24.2% |
| Executive Management | 2.3% | 3.0% | 3.7% | 3.6% | 3.9% | 3.3% | 3.1% |
| Senior Management (VIII & GM) | 9.1% | 8.1% | 7.8% | 7.0% | 8.0% | 8.2% | 8.2% |
| Management (VIII & above) | 11.4% | 11.1% | 11.5% | 10.6% | 11.9% | 11.5% | 11.3% |
| Administrative/ Supervisory (V to VII) | 18.0% | 19.2% | 19.6% | 19.7% | 22.0% | 22.0% | 22.2% |
| Clerical (III & IV) | 70.6% | 69.7% | 69.0% | 69.7% | 66.1% | 66.5% | 66.5% |
| Management & Administrative | 22.7% | 22.5% | 22.8% | 22.9% | 22.8% | 23.1% | 23.1% |
| Support | 100.0% | 100.0% | 100.0% | 100.0% | 100.0% | 100.0% | 100.0% |
| General Support | 1.6% | 1.5% | 1.4% | 1.3% | 1.3% | 1.1% | 1.1% |
| HCA, Nurse's Aide, etc. | 1.0% | 0.9% | 4.3% | 7.1% | 7.3% | 8.3% | 12.0% |
| Health & Social Care Assistants | | 1.8% | 0.8% | 9.9% | 5.9% | 3.7% | 4.9% |
| Health Care Assistants | 1.0% | 2.7% | 5.1% | 17.0% | 13.2% | 12.0% | 16.9% |
| Care, other | 88.4% | 86.8% | 84.9% | 75.2% | 79.1% | 79.0% | 76.5% |
| Home Help | 10.6% | 10.5% | 9.9% | 7.8% | 7.7% | 9.0% | 6.6% |
| Patient & Client Care | 9.2% | 9.6% | 9.2% | 10.4% | 10.4% | 9.6% | 9.6% |
| Total | 100 % | 100 % | 100 % | 100 % | 100 % | 100 % | 100 % |

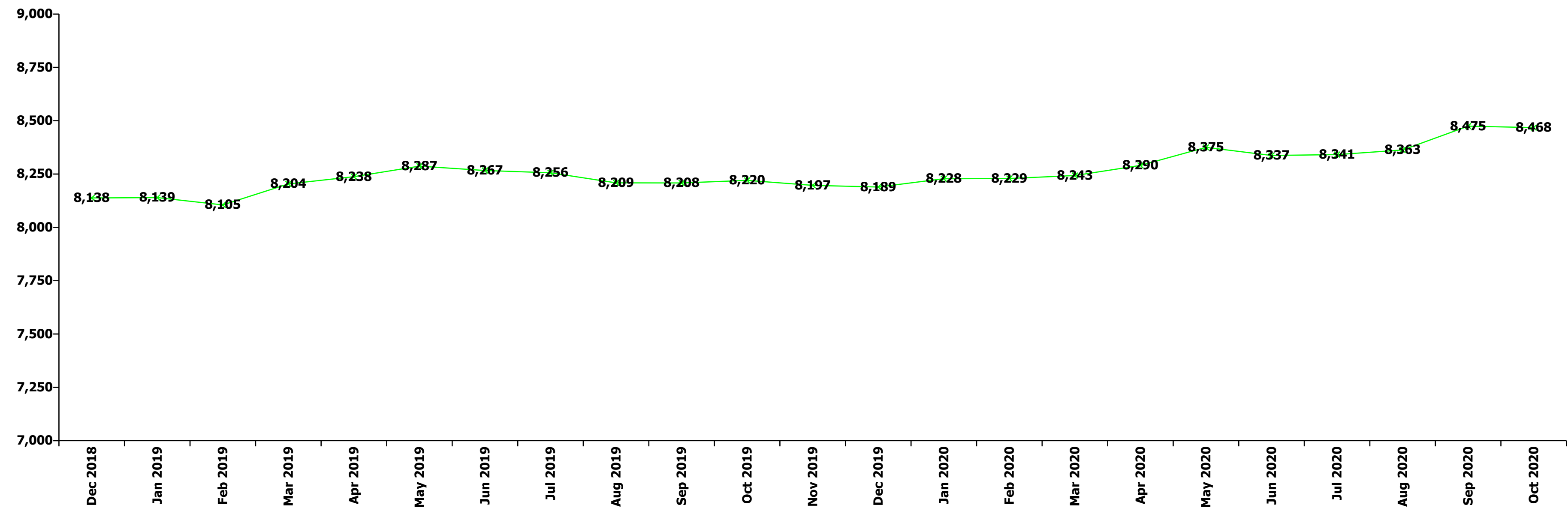
| Oct 2020 (Dec 2018 figure: 2,395) | WTE Dec 2015 | WTE Dec 2016 | WTE Dec 2017 | WTE Dec 2018 | WTE Dec 2019 | WTE Sep 2020 | WTE Oct 2020 |
|---|--------------|--------------|--------------|--------------|-----------------|-----------------|-----------------|
| Disabilities | 2,151 | 2,256 | 2,299 | 2,395 | 2,438.58 | 2,511.38 | 2,546.88 |
| Consultant Medicine | 50.3% | 49.5% | | | | | |
| Consultant Paediatrics | 7.9% | 9.3% | 27.3% | 27.3% | 27.3% | 33.3% | 14.0% |
| Consultant Psychiatry | 31.4% | 31.0% | 54.6% | 54.6% | 54.6% | 33.3% | 57.3% |
| Consultants | 89.6% | 89.8% | 82.0% | 82.0% | 82.0% | 66.7% | 71.3% |
| Medical/ Dental, other | 10.4% | 10.2% | 18.0% | 18.0% | 18.0% | 33.3% | 28.7% |
| Medical & Dental | 0.1% | 0.1% | 0.1% | 0.1% | 0.1% | 0.1% | 0.1% |
| Clinical Nurse/ Midwife Manager | 17.5% | 16.6% | 16.7% | 19.6% | 19.4% | 19.1% | 19.8% |
| Director Nursing/Midwifery, Assistant | 0.9% | 0.9% | 0.7% | 1.2% | 1.2% | 1.2% | 1.0% |
| Director of Nursing/Midwifery | 0.6% | 0.4% | 0.6% | 0.5% | 0.7% | 0.7% | 0.7% |
| Nurse/ Midwife Manager | 19.0% | 17.9% | 18.0% | 21.3% | 21.3% | 21.0% | 21.5% |
| Advanced Nurse/ Midwife Practitioner | 0.2% | 0.2% | 0.2% | 0.2% | 0.2% | 0.2% | 0.5% |
| Clinical Nurse/ Midwife Specialist | 3.3% | 3.3% | 3.5% | 3.3% | 3.0% | 2.9% | 3.0% |
| Nurse/ Midwife Specialist & AN/MP | 3.5% | 3.5% | 3.7% | 3.5% | 3.2% | 3.2% | 3.5% |
| Staff Nurse [Intellectual Disability] | 13.4% | 14.3% | 15.3% | 19.9% | 20.5% | 19.0% | 19.3% |
| Staff Nurse [Psychiatric] | 3.8% | 3.0% | 0.6% | 0.4% | 0.6% | 0.6% | 0.6% |
| Staff Nurses [General/ Children's] | 58.5% | 59.5% | 60.6% | 52.9% | 52.6% | 51.3% | 50.7% |
| Staff Nurse/ Staff Midwife | 75.8% | 76.8% | 76.4% | 73.2% | 73.7% | 70.9% | 70.6% |
| Pre-registration Nurse/ Midwife Intern | 1.6% | 1.7% | 1.7% | 1.9% | 1.4% | | |
| Pre-registration Nurse Intern (COVID-19) | | | | | | 4.5% | 4.1% |
| Nursing/ Midwifery awaiting registration | | | | | 0.2% | 0.4% | 0.4% |
| Nursing/ Midwifery Student | 1.6% | 1.7% | 1.7% | 1.9% | 1.7% | 4.9% | 4.5% |
| Nursing/ Midwifery other | 0.1% | 0.1% | 0.1% | 0.1% | 0.1% | 0.1% | |
| Nursing & Midwifery | 22.6% | 21.2% | 20.2% | 18.0% | 17.7% | 16.4% | 16.4% |
| Dietitians | 0.3% | 0.3% | 0.4% | 0.6% | 0.6% | 0.6% | 0.6% |
| Occupational Therapists | 10.7% | 10.0% | 10.0% | 9.1% | 9.4% | 8.9% | 8.4% |
| Physiotherapists | 5.2% | 5.1% | 4.8% | 4.9% | 4.6% | 4.9% | 4.5% |
| Speech & Language Therapists | 13.8% | 13.6% | 12.8% | 11.7% | 12.1% | 11.8% | 11.4% |
| Therapy Professions | 29.9% | 28.9% | 28.0% | 26.4% | 26.7% | 26.2% | 24.9% |
| Social Care | 51.9% | 52.0% | 53.1% | 54.9% | 56.0% | 56.1% | 57.7% |
| Social Workers | 5.6% | 6.7% | 6.5% | 7.1% | 6.7% | 6.3% | 6.4% |
| Psychologists | 9.8% | 9.7% | 10.0% | 9.7% | 8.6% | 8.7% | 8.6% |
| Counsellor Therapists | 0.5% | 0.5% | 0.5% | 0.5% | 0.5% | 0.5% | 0.5% |
| Other Health & Social Care | 1.8% | 1.7% | 1.7% | 1.3% | 1.4% | 1.9% | 1.8% |
| Play Therapists/ Specialists | 0.4% | 0.4% | 0.2% | 0.2% | 0.2% | 0.2% | 0.2% |
| H&SC, Other | 2.8% | 2.7% | 2.3% | 1.9% | 2.1% | 2.6% | 2.4% |
| Health & Social Care Professionals | 17.0% | 17.1% | 17.2% | 16.4% | 16.1% | 16.3% | 16.3% |
| Executive Management | 1.6% | 2.3% | 1.5% | 1.3% | 1.3% | 1.8% | 1.7% |
| Senior Management (VIII & GM) | 13.0% | 12.3% | 12.6% | 10.8% | 12.6% | 11.6% | 11.5% |
| Management (VIII & above) | 14.6% | 14.5% | 14.0% | 12.1% | 13.9% | 13.4% | 13.2% |
| Administrative/ Supervisory (V to VII) | 31.0% | 29.5% | 28.8% | 31.9% | 33.4% | 33.8% | 34.1% |
| Clerical (III & IV) | 54.5% | 56.0% | 57.2% | 56.0% | 52.7% | 52.8% | 52.6% |
| Management & Administrative | 6.0% | 5.9% | 6.0% | 6.4% | 6.2% | 6.8% | 6.8% |
| Support | 90.9% | 90.2% | 89.2% | 92.9% | 93.3% | 93.1% | 92.7% |
| Maintenance | 8.5% | 9.2% | 10.2% | 6.4% | 6.1% | 6.2% | 6.6% |
| Technical Services | 0.5% | 0.6% | 0.6% | 0.7% | 0.7% | 0.7% | 0.7% |
| Maintenance/ Technical | 9.1% | 9.8% | 10.8% | 7.1% | 6.7% | 6.9% | 7.3% |
| General Support | 8.5% | 7.5% | 6.7% | 6.4% | 6.3% | 6.0% | 6.0% |
| HCA, Nurse's Aide, etc. | 74.2% | 75.7% | 75.6% | 77.2% | 76.4% | 76.6% | 76.5% |
| Health Care Assistants | 74.2% | 75.7% | 75.6% | 77.2% | 76.4% | 76.6% | 76.5% |
| Other Care Grades | 25.8% | 24.3% | 24.4% | 22.8% | 23.6% | 23.4% | 23.5% |
| Care, other | 25.8% | 24.3% | 24.4% | 22.8% | 23.6% | 23.4% | 23.5% |
| Patient & Client Care | 45.7% | 48.1% | 49.8% | 52.7% | 51.7% | 54.4% | 54.4% |
| Total | 100 % | 100 % | 100 % | 100 % | 100 % | 100 % | 100 % |

| Oct 2020 (Dec 2018 figure: 2,915) | WTE Dec 2015 | WTE Dec 2016 | WTE Dec 2017 | WTE Dec 2018 | WTE Dec 2019 | WTE Sep 2020 | WTE Oct 2020 |
|---|--------------|--------------|--------------|--------------|-----------------|-----------------|-----------------|
| Older People | 2,792 | 2,789 | 2,899 | 2,915 | 2,919.30 | 2,950.29 | 2,922.59 |
| Consultant Medicine | 4.1% | 4.1% | 3.8% | 3.9% | 3.9% | 4.9% | 2.9% |
| Consultant Psychiatry | 4.1% | 3.6% | 3.2% | | | | |
| Consultants | 8.2% | 7.7% | 7.0% | 3.9% | 3.9% | 4.9% | 2.9% |
| Registrar | 4.1% | 4.1% | 3.8% | 3.9% | 3.9% | 2.5% | 2.9% |
| Specialist Registrar | 4.1% | | 3.8% | 3.9% | 7.7% | 4.9% | 5.9% |
| Registrars | 8.2% | 4.1% | 7.6% | 7.7% | 11.6% | 7.4% | 8.8% |
| Senior House Officer | | | | 3.9% | 3.9% | 2.5% | 2.9% |
| SHO/ Interns | | | | 3.9% | 3.9% | 2.5% | 2.9% |
| Medical/ Dental, other | 83.6% | 88.1% | 85.4% | 84.6% | 80.6% | 85.2% | 85.3% |
| Medical & Dental | 0.9% | 0.9% | 0.9% | 0.9% | 0.9% | 1.2% | 1.2% |
| Clinical Nurse/ Midwife Manager | 13.7% | 13.4% | 13.3% | 11.5% | 12.8% | 13.6% | 13.1% |
| Director Nursing/Midwifery, Assistant | 1.3% | 1.3% | 1.5% | 0.9% | 2.0% | 2.0% | 1.9% |
| Director of Nursing/Midwifery | 1.7% | 1.4% | 1.4% | 1.4% | 3.4% | 3.7% | 3.8% |
| Nurse/ Midwife Manager | 16.8% | 16.2% | 16.1% | 13.7% | 18.3% | 19.4% | 18.8% |
| Advanced Nurse/ Midwife Practitioner | 0.2% | 0.2% | 0.2% | 0.2% | 0.2% | 0.2% | 0.2% |
| Clinical Nurse/ Midwife Specialist | 0.1% | 0.3% | 0.1% | 0.4% | 0.4% | 0.8% | 0.8% |
| Nurse/ Midwife Specialist & AN/MP | 0.3% | 0.4% | 0.3% | 0.6% | 0.5% | 0.9% | 0.9% |
| Graduate Nursing/ Midwifery | 0.2% | | | | | | |
| Staff Nurses [General/ Children's] | 81.8% | 82.4% | 82.5% | 84.8% | 80.1% | 78.8% | 79.3% |
| Staff Nurse/ Staff Midwife | 81.9% | 82.4% | 82.5% | 84.8% | 80.1% | 78.8% | 79.3% |
| Public Health Nurse | 1.0% | 1.0% | 1.0% | 0.9% | 0.8% | 0.9% | 0.9% |
| Post-registration Nurse/ Midwife Student | | | | | 0.2% | | |
| Nursing/ Midwifery awaiting registration | | | | | 0.2% | | |
| Nursing/ Midwifery Student | | | | | 0.3% | | |
| Nursing & Midwifery | 22.8% | 22.8% | 22.5% | 22.5% | 22.5% | 22.3% | 22.3% |
| Dietitians | 0.2% | 4.4% | 4.2% | 4.0% | 2.5% | 2.4% | 2.5% |
| Occupational Therapists | 22.3% | 18.6% | 17.1% | 21.9% | 28.5% | 25.5% | 27.5% |
| Physiotherapists | 26.9% | 27.7% | 25.5% | 27.3% | 25.6% | 24.8% | 24.6% |
| Podiatrists & Chiropodists | 13.1% | 15.2% | 14.0% | 12.9% | 10.7% | 12.6% | 12.1% |
| Speech & Language Therapists | 8.3% | 7.8% | 9.0% | 7.7% | 6.3% | 5.4% | 4.9% |
| Therapy Professions | 70.8% | 73.7% | 69.7% | 73.7% | 73.7% | 70.7% | 71.6% |
| Phlebotomists | 2.1% | 1.9% | 1.8% | | | | |
| Radiographers | 1.1% | 0.5% | 0.5% | 1.9% | 1.9% | 1.9% | 2.0% |
| Health Science/ Diagnostics | 3.2% | 2.4% | 2.3% | 1.9% | 1.9% | 1.9% | 2.0% |
| Social Care | 3.7% | 3.3% | 3.1% | 3.0% | 2.9% | 2.6% | 2.8% |
| Social Workers | 16.8% | 16.0% | 19.0% | 15.8% | 17.2% | 18.1% | 17.6% |
| Pharmacy | 5.6% | 4.5% | 5.9% | 5.6% | 4.3% | 6.8% | 6.1% |
| Health & Social Care Professionals | 1.7% | 1.9% | 1.9% | 2.0% | 2.0% | 2.2% | 2.2% |
| Executive Management | 0.9% | 0.9% | 0.8% | 0.7% | 0.6% | 0.7% | 0.6% |
| Senior Management (VIII & GM) | 4.7% | 6.1% | 8.8% | 6.4% | 7.4% | 8.2% | 8.3% |
| Management (VIII & above) | 5.6% | 7.0% | 9.7% | 7.1% | 8.1% | 8.9% | 9.0% |
| Administrative/ Supervisory (V to VII) | 10.0% | 9.9% | 8.4% | 6.8% | 10.8% | 12.3% | 10.0% |
| Clerical (III & IV) | 84.3% | 83.1% | 81.9% | 86.1% | 81.2% | 78.9% | 81.0% |
| Management & Administrative | 3.8% | 4.1% | 4.2% | 5.2% | 5.2% | 5.4% | 5.4% |
| Support | 93.4% | 93.1% | 93.4% | 93.9% | 94.4% | 94.2% | 94.9% |
| Maintenance/ Technical | 6.6% | 6.9% | 6.6% | 6.1% | 5.6% | 5.8% | 5.1% |
| General Support | 4.9% | 4.5% | 4.1% | 3.8% | 3.8% | 4.0% | 4.0% |
| HCA, Nurse's Aide, etc. | 37.1% | 40.1% | 40.2% | 41.0% | 40.6% | 42.3% | 41.3% |
| Health & Social Care Assistants | | | | | 0.0% | 0.1% | 0.1% |
| Health Care Assistants | 37.1% | 40.1% | 40.2% | 41.0% | 40.6% | 42.3% | 41.4% |
| Care, other | 1.7% | 1.5% | 1.6% | 1.6% | 1.6% | 2.2% | 1.9% |
| Home Help | 61.2% | 58.4% | 58.2% | 57.5% | 57.8% | 55.4% | 56.8% |
| Patient & Client Care | 65.9% | 65.8% | 66.4% | 65.6% | 65.5% | 65.0% | 65.0% |
| Total | 100 % | 100 % | 100 % | 100 % | 100 % | 100 % | 100 % |

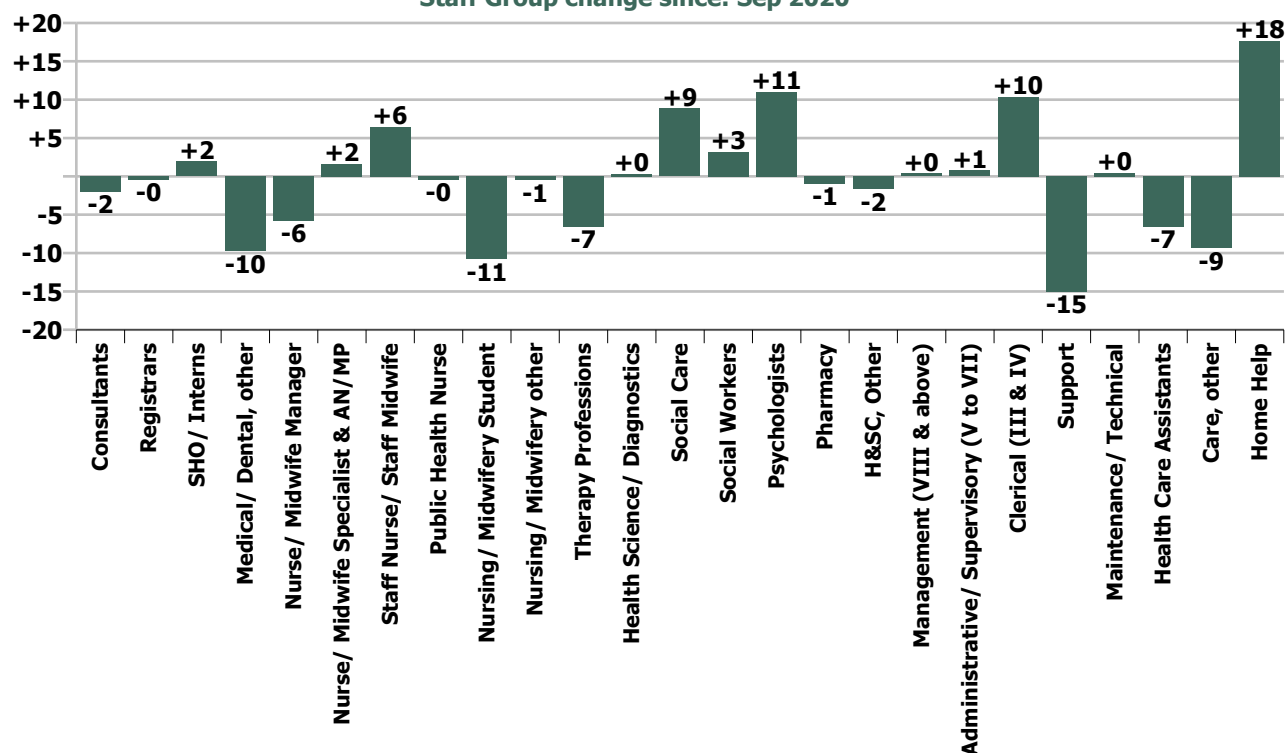
Summary Staff Movement: October 2020

| Month-on-month Summary | | | | | | | | | | | | | | | | | | | | | | | | | | | | |
|------------------------------|-----------------------|---------|-------------|------------|--------------|------------------------|------------------|------------------------|-----------------------------------|----------------------------|---------------------|----------------------------|--------------------------|---------------------|---------------------|-----------------------------|-------------|----------------|---------------|----------|-------------|------------------------------------|---------------------------|--|---------------------|-----------------------------|-----------------|-----------------------|
| WTE change since Sep 20 | % change since Sep 20 | overall | Consultants | Registrars | SHO/ Interns | Medical/ Dental, other | Medical & Dental | Nurse/ Midwife Manager | Nurse/ Midwife Specialist & AN/MP | Staff Nurse/ Staff Midwife | Public Health Nurse | Nursing/ Midwifery Student | Nursing/ Midwifery other | Nursing & Midwifery | Therapy Professions | Health Science/ Diagnostics | Social Care | Social Workers | Psychologists | Pharmacy | H&SC, Other | Health & Social Care Professionals | Management (VIII & above) | Administrative/ Supervisory (V to VII) | Clerical (III & IV) | Management & Administrative | General Support | Patient & Client Care |
| Overall | -0.1% | -7 | -2.0 | -0.4 | +2.0 | -9.8 | -10.2 | -5.8 | +1.6 | +6.4 | -0.5 | -10.8 | -0.5 | -9.6 | -6.6 | +0.3 | +8.8 | +3.2 | +11.0 | -1.0 | -1.7 | +14.1 | +0.4 | +0.8 | +10.4 | +11.6 | -14.6 | +1.7 |
| Community Health & Wellbeing | +3.2% | +1 | | | | | | +1.0 | | | | | | +1.0 | -0.0 | | | | | | | -0.0 | -0.0 | +0.1 | -0.2 | -0.0 | | +0.1 |
| Mental Health | -0.6% | -10 | -1.0 | +0.8 | +1.0 | +1.0 | +1.7 | +0.2 | +0.7 | +9.7 | | -13.8 | | -3.3 | -2.2 | | -1.2 | +3.2 | +10.7 | -0.5 | -2.8 | +7.3 | +0.0 | +1.4 | -1.2 | +0.2 | -0.5 | -15.3 |
| Primary Care | -0.4% | -6 | -0.5 | -1.2 | +1.0 | -5.1 | -5.8 | -1.2 | -0.1 | +10.1 | -0.6 | +4.9 | | +13.0 | +2.0 | +0.3 | 0.0 | +0.3 | +0.1 | +0.2 | +1.8 | +4.7 | -0.7 | +0.5 | -0.1 | -0.3 | -15.0 | -2.6 |
| Disabilities | +1.4% | +35 | +0.5 | | | 0.0 | +0.5 | +1.0 | +1.0 | -5.4 | | -1.9 | -0.5 | -5.8 | -4.1 | | +10.0 | +0.7 | +0.2 | | -0.7 | +6.1 | +0.0 | +1.1 | +0.6 | +1.7 | +5.2 | +27.8 |
| Older People | -0.9% | -28 | -1.0 | 0.0 | 0.0 | -5.6 | -6.6 | -6.7 | +0.1 | -8.0 | +0.1 | | | -14.5 | -2.2 | 0.0 | +0.0 | -1.0 | | -0.7 | | -3.9 | +1.0 | -2.4 | +11.2 | +9.9 | -4.3 | -8.3 |
| Social Care | +0.1% | +8 | -0.5 | 0.0 | 0.0 | -5.6 | -6.1 | -5.8 | +1.1 | -13.3 | +0.1 | -1.9 | -0.5 | -20.2 | -6.3 | 0.0 | +10.0 | -0.4 | +0.2 | -0.7 | -0.7 | +2.2 | +1.1 | -1.3 | +11.8 | +11.6 | +0.9 | +19.5 |
| Change | -7.1 | -0.1% | -3.2% | -0.4% | +4.1% | -7.1% | -2.9% | -1.2% | +1.8% | +0.4% | -0.2% | -19.6% | -100.0% | -0.4% | -1.4% | +2.8% | +3.6% | +2.5% | +7.9% | -9.3% | -2.5% | +1.3% | +0.5% | +0.4% | +2.0% | +1.5% | -3.8% | +0.0% |

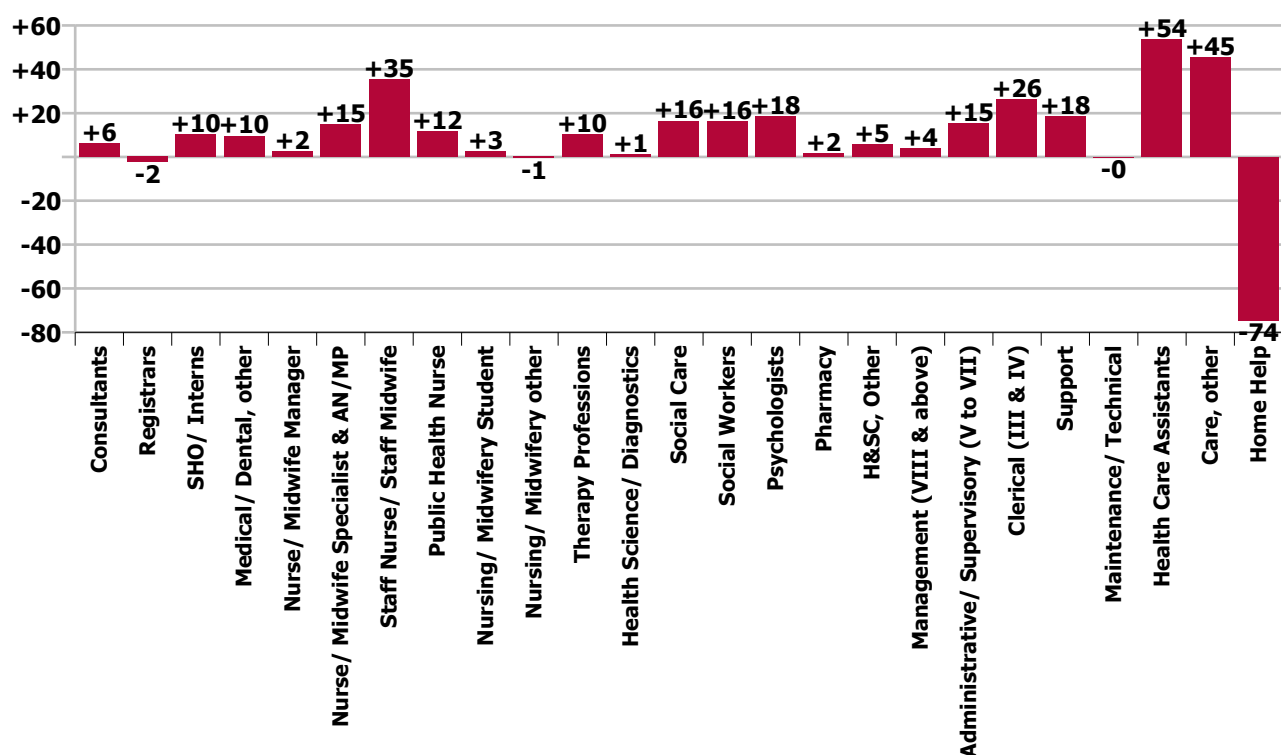
| Year-on-year Summary | | | | | | | | | | | | | | | | | | | | | | | | | | | | |
|------------------------------|-----------------------|---------|-------------|------------|--------------|------------------------|------------------|------------------------|-----------------------------------|----------------------------|---------------------|----------------------------|--------------------------|---------------------|---------------------|-----------------------------|-------------|----------------|---------------|----------|-------------|------------------------------------|---------------------------|---|---------------------|-----------------------------|-----------------|-----------------------|
| WTE change since Oct 19 | % change since Oct 19 | overall | Consultants | Registrars | SHO/ Interns | Medical/ Dental, other | Medical & Dental | Nurse/ Midwife Manager | Nurse/ Midwife Specialist & AN/MP | Staff Nurse/ Staff Midwife | Public Health Nurse | Nursing/ Midwifery Student | Nursing/ Midwifery other | Nursing & Midwifery | Therapy Professions | Health Science/ Diagnostics | Social Care | Social Workers | Psychologists | Pharmacy | H&SC, Other | Health & Social Care Professionals | Management (VIII & above) | Administrativ e/ Supervisory (V to VII) | Clerical (III & IV) | Management & Administrative | General Support | Patient & Client Care |
| Overall | +3.0% | +247 | +6.1 | -2.3 | +10.2 | +9.6 | +23.6 | +2.3 | +14.9 | +35.3 | +11.5 | +2.5 | -0.5 | +66.1 | +10.3 | +1.1 | +16.4 | +16.2 | +18.3 | +1.7 | +5.5 | +69.5 | +3.8 | +15.4 | +26.0 | +45.3 | +18.3 | +24.6 |
| Community Health & Wellbeing | +3.2% | +1 | | | | | | +1.0 | | | | | | +1.0 | +4.8 | | | | | | | +4.8 | +1.0 | +5.1 | +6.3 | +12.3 | | +16.5 |
| Mental Health | -0.6% | -10 | +5.1 | -2.8 | +9.4 | +4.6 | +16.3 | -0.7 | +10.1 | +16.8 | | -3.8 | | +22.3 | +0.8 | | +2.9 | +12.8 | +12.6 | -0.5 | +3.3 | +31.9 | +0.9 | +1.2 | +3.2 | +5.3 | +1.1 | +0.9 |
| Primary Care | -0.4% | -6 | -0.0 | +0.5 | +0.8 | -3.7 | -2.4 | +5.7 | +0.9 | +19.6 | +9.6 | -2.9 | | +32.9 | +8.7 | +0.6 | -0.8 | +2.9 | +2.6 | +0.8 | +0.6 | +15.5 | -0.1 | +4.8 | +8.4 | +13.0 | +0.3 | +0.8 |
| Disabilities | +5.1% | +123.3 | +1.0 | | | +0.7 | +1.7 | -0.5 | +1.0 | -8.7 | | +10.3 | -0.5 | +1.6 | -5.0 | | +14.2 | -0.3 | +3.1 | | +1.6 | +13.6 | +0.7 | +6.4 | +6.2 | +13.2 | +7.8 | +85.4 |
| Older People | -1.6% | -48.4 | -0.0 | 0.0 | 0.0 | +8.0 | +8.0 | -3.1 | +2.9 | +7.5 | +1.9 | -1.0 | | +8.3 | +1.0 | +0.5 | +0.0 | +0.8 | | +1.4 | | +3.7 | +1.4 | -2.0 | +2.0 | +1.4 | +9.0 | -78.8 |
| Social Care | +0.1% | +8 | +1.0 | 0.0 | 0.0 | +8.7 | +9.6 | -3.6 | +3.9 | -1.2 | +1.9 | +9.3 | -0.5 | +9.8 | -4.0 | +0.5 | +14.2 | +0.4 | +3.1 | +1.4 | +1.6 | +17.3 | +2.1 | +4.3 | +8.2 | +14.6 | +16.9 | +6.6 |
| Change | +247.3 | +3.0% | +11.0% | -2.2% | +26.0% | +8.1% | +7.4% | +0.5% | +19.0% | +2.5% | +5.5% | +6.0% | -100.0% | +3.0% | +2.3% | +9.8% | +6.9% | +14.1% | +13.8% | +21.5% | +9.2% | +6.9% | +5.3% | +9.7% | +5.1% | +6.1% | +5.2% | +0.7% |



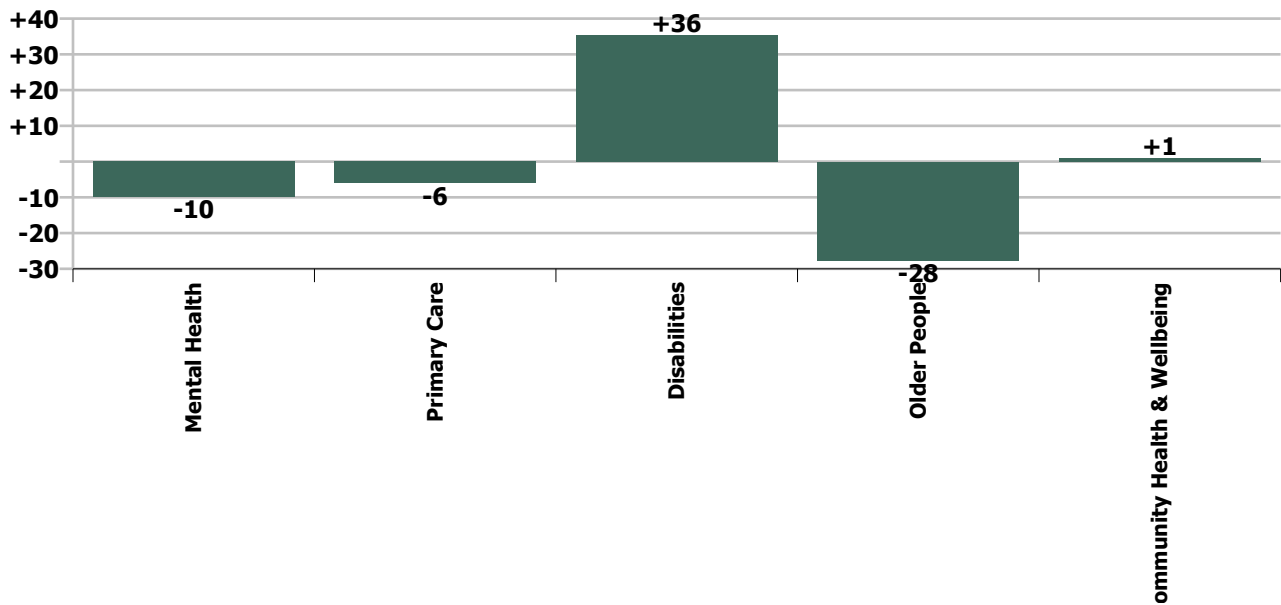
Staff Group change since: Sep 2020



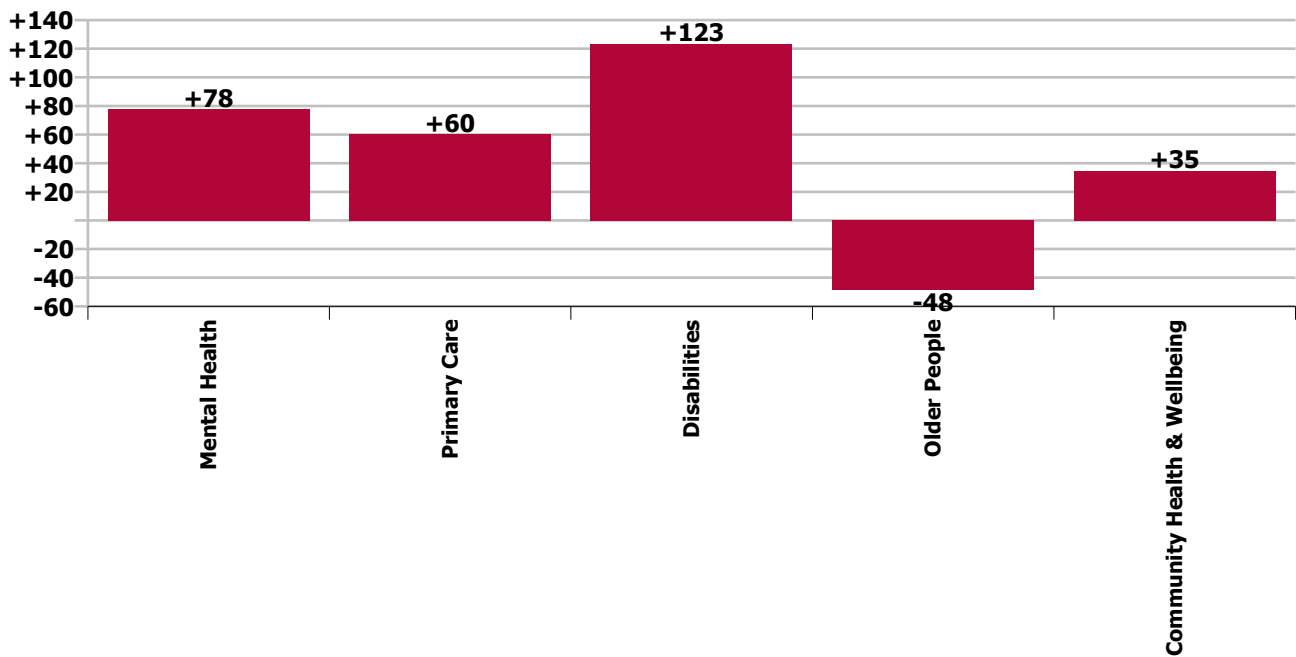
Staff Group change since: Oct 2019



Care Group change since: Sep 2020



Care Group change since: Oct 2019



Longitudinal Employment Levels by Grade Group - Oct 2013 to Oct 2020

| Oct 2020 (Dec 2015 figure: 7,461) | WTE Oct 2020 | WTE change since Dec 15 | WTE change since Dec 16 | WTE change since Dec 17 | WTE change since Dec 18 | WTE change since Dec 19 | WTE change since Sep 20 | % change since Dec 15 | % change since Dec 16 | % change since Dec 17 | % change since Dec 18 | % change since Dec 19 | % change since Sep 20 |
|--|--------------|-------------------------|-------------------------|-------------------------|-------------------------|-------------------------|-------------------------|-----------------------|-----------------------|-----------------------|-----------------------|-----------------------|-----------------------|
| Overall | 8,468 | +1,007 | +829 | +485 | +329 | +278 | -7 | +13.5% | +10.8% | +6.1% | +4.0% | +3.4% | -0.1% |
| Consultant Dentistry | 2 | | | | | | | | | | | | |
| Consultant Medicine | 1 | -2 | -2 | +0 | +0 | -0 | -1 | -58.1% | -58.1% | +9.0% | +9.0% | -1.8% | -48.6% |
| Consultant Paediatrics | 1 | +1 | +1 | -0 | -0 | -0 | -1 | +292.0% | +226.7% | -2.0% | -2.0% | -2.0% | -51.0% |
| Consultant Psychiatry | 57 | +13 | +12 | +10 | +8 | +6 | +0 | +30.2% | +26.4% | +21.2% | +15.9% | +12.2% | +0.0% |
| Consultants | 61 | +12 | +11 | +10 | +8 | +6 | -2 | +25.6% | +22.2% | +19.6% | +14.8% | +11.2% | -3.2% |
| Registrar | 79 | +15 | +15 | +8 | +0 | -6 | +1 | +23.7% | +23.1% | +11.7% | +0.5% | -6.8% | +0.8% |
| Senior Registrar | 15 | +7 | +6 | +5 | +4 | +3 | -1 | +74.6% | +65.1% | +42.0% | +38.3% | +29.4% | -6.4% |
| Specialist Registrar | 8 | +4 | +5 | +4 | +4 | +1 | | +100.0% | +166.7% | +100.0% | +100.0% | +14.3% | |
| Registrars | 102 | +26 | +26 | +17 | +9 | -1 | -0 | +33.5% | +33.8% | +19.7% | +9.2% | -1.2% | -0.4% |
| Interns | 3 | -0 | -0 | -0 | -0 | -0 | +1 | -16.0% | -16.0% | -16.0% | -16.0% | -16.0% | +26.0% |
| Senior House Officer | 47 | +8 | +9 | +8 | +6 | +12 | +1 | +22.0% | +24.3% | +22.0% | +14.2% | +33.8% | +3.2% |
| SHO/ Interns | 50 | +8 | +9 | +8 | +5 | +11 | +2 | +19.2% | +21.3% | +19.3% | +12.1% | +29.9% | +4.1% |
| Dentists | 61 | -1 | -1 | -1 | -4 | -2 | +0 | -1.4% | -1.6% | -2.2% | -6.4% | -2.4% | +0.5% |
| Other Medical | 67 | +20 | +15 | +7 | +11 | +18 | -10 | +41.8% | +28.8% | +12.4% | +20.5% | +36.1% | -13.1% |
| Medical/ Dental, other | 128 | +19 | +14 | +6 | +7 | +16 | -10 | +17.3% | +12.2% | +5.0% | +6.0% | +14.5% | -7.1% |
| Medical & Dental | 340 | +65 | +59 | +41 | +29 | +32 | -10 | +23.6% | +21.2% | +13.6% | +9.3% | +10.6% | -2.9% |
| Clinical Nurse/ Midwife Manager | 369 | +50 | +53 | +51 | +47 | +32 | -2 | +15.7% | +16.6% | +15.9% | +14.6% | +9.4% | -0.6% |
| Director Nursing/Midwifery, Assistant | 63 | +9 | +8 | +14 | +15 | +3 | -4 | +16.4% | +15.2% | +28.9% | +30.6% | +4.6% | -5.8% |
| Director of Nursing/Midwifery | 38 | +15 | +19 | +20 | +20 | +2 | +0 | +65.3% | +101.9% | +114.5% | +115.4% | +7.0% | +1.1% |
| Nurse/ Midwife Manager | 470 | +74 | +80 | +85 | +82 | +37 | -6 | +18.6% | +20.5% | +22.1% | +21.1% | +8.5% | -1.2% |
| Advanced Nurse/ Midwife Practitioner | 8 | +4 | +5 | +5 | +3 | +1 | +1 | +88.8% | +151.7% | +151.7% | +60.0% | +12.7% | +15.4% |
| Clinical Nurse/ Midwife Specialist | 86 | +34 | +29 | +20 | +19 | +12 | +1 | +65.5% | +50.0% | +30.6% | +27.8% | +16.0% | +0.7% |
| Nurse/ Midwife Specialist & AN/MP | 94 | +38 | +33 | +25 | +22 | +13 | +2 | +67.2% | +55.1% | +35.9% | +29.9% | +15.7% | +1.8% |
| Graduate Nursing/ Midwifery | | -1 | | | | | | -100.0% | -100.0% | -100.0% | -100.0% | -100.0% | -100.0% |
| Staff Midwives | 7 | +5 | +5 | +2 | +1 | -1 | +2 | +266.0% | +163.3% | +39.2% | +12.8% | -9.9% | +49.1% |
| Staff Nurse [Intellectual Disability] | 81 | +16 | +13 | +10 | -6 | -6 | +0 | +23.7% | +18.3% | +14.0% | -6.7% | -6.7% | +0.3% |
| Staff Nurse [Psychiatric] | 475 | -74 | -78 | -74 | -50 | +6 | +11 | -13.4% | -14.0% | -13.4% | -9.4% | +1.3% | +2.4% |
| Staff Nurses [General/ Children's] | 893 | -34 | -50 | -87 | -40 | +11 | -8 | -3.6% | -5.3% | -8.9% | -4.2% | +1.2% | -0.8% |
| Staff Nurse/ Staff Midwife | 1,456 | -88 | -110 | -149 | -94 | +10 | +6 | -5.7% | -7.0% | -9.3% | -6.1% | +0.7% | +0.4% |
| Public Health Nurse | 220 | +4 | +5 | +4 | +2 | +4 | -0 | +1.7% | +2.1% | +1.6% | +1.1% | +2.0% | -0.2% |
| Pre-registration Nurse/ Midwife Intern | | -9 | -9 | -8 | -9 | -9 | | -100.0% | -100.0% | -100.0% | -100.0% | -100.0% | -100.0% |
| Pre-registration Nurse Intern (COVID-19) | 28 | +28 | +28 | +28 | +28 | +28 | -14 | -100.0% | -100.0% | -100.0% | -100.0% | -100.0% | -32.9% |
| Post-registration Nurse/ Midwife Student | 14 | +7 | +6 | -4 | -1 | -6 | +5 | +92.9% | +68.8% | -20.6% | -3.6% | -29.9% | +56.3% |
| Nursing/ Midwifery awaiting registration | 3 | +3 | +3 | +3 | +3 | -29 | -2 | -100.0% | -100.0% | -100.0% | -100.0% | -91.3% | -40.2% |

| Oct 2020 (Dec 2015 figure: 7,461) | WTE Oct 2020 | WTE change since Dec 15 | WTE change since Dec 16 | WTE change since Dec 17 | WTE change since Dec 18 | WTE change since Dec 19 | WTE change since Sep 20 | % change since Dec 15 | % change since Dec 16 | % change since Dec 17 | % change since Dec 18 | % change since Dec 19 | % change since Sep 20 |
|---|--------------|-------------------------|-------------------------|-------------------------|-------------------------|-------------------------|-------------------------|-----------------------|-----------------------|-----------------------|-----------------------|-----------------------|-----------------------|
| Overall | 8,468 | +1,007 | +829 | +485 | +329 | +278 | -7 | +13.5% | +10.8% | +6.1% | +4.0% | +3.4% | -0.1% |
| Nursing/ Midwifery Student | 44 | +29 | +28 | +19 | +22 | -15 | -11 | +186.6% | +169.3% | +77.7% | +97.5% | -25.6% | -19.6% |
| Nursing/ Midwifery other | | -1 | -1 | -1 | -1 | -1 | -1 | -100.0% | -100.0% | -100.0% | -100.0% | -100.0% | -100.0% |
| Nursing & Midwifery | 2,284 | +56 | +35 | -17 | +33 | +49 | -10 | +2.5% | +1.6% | -0.7% | +1.5% | +2.2% | -0.4% |
| Dietitians | 36 | +23 | +18 | +12 | +8 | +8 | -1 | +181.4% | +95.8% | +51.0% | +26.5% | +30.5% | -2.8% |
| Occupational Therapists | 173 | +22 | +22 | +9 | +10 | +3 | -3 | +14.4% | +14.6% | +5.5% | +5.9% | +1.9% | -1.9% |
| Orthoptists | 2 | +1 | +1 | +1 | +1 | -2 | | +163.2% | +900.0% | +194.1% | +200.0% | -54.3% | |
| Physiotherapists | 108 | +7 | +5 | -1 | +0 | +1 | -3 | +6.7% | +4.3% | -0.9% | +0.1% | +1.1% | -2.4% |
| Podiatrists & Chiropodists | 8 | +1 | -0 | -0 | +0 | +1 | -1 | +23.7% | -4.8% | -1.4% | +2.5% | +18.3% | -9.5% |
| Speech & Language Therapists | 134 | +16 | +4 | -5 | | -0 | +1 | +13.9% | +2.8% | -3.9% | | -0.3% | +1.0% |
| Therapy Professions | 460 | +71 | +49 | +16 | +19 | +12 | -7 | +18.1% | +11.9% | +3.5% | +4.2% | +2.7% | -1.4% |
| Audiology | 8 | +3 | +3 | +2 | +1 | +1 | | +60.0% | +60.0% | +33.3% | +14.3% | +18.2% | |
| Medical Laboratory | | -13 | | | | | | -100.0% | -100.0% | -100.0% | -100.0% | -100.0% | -100.0% |
| Phlebotomists | | -1 | -1 | -1 | | | | -100.0% | -100.0% | -100.0% | -100.0% | -100.0% | -100.0% |
| Physicists | 1 | -1 | -1 | -0 | -1 | -1 | +0 | -33.0% | -33.0% | -24.7% | -33.0% | -33.0% | +34.0% |
| Radiographers | 3 | +1 | +1 | +1 | +0 | +0 | | +29.5% | +43.7% | +43.7% | +6.5% | +4.8% | |
| Health Science/ Diagnostics | 13 | -10 | +2 | +2 | +1 | +1 | +0 | -45.3% | +22.7% | +14.1% | +4.5% | +6.0% | +2.8% |
| Social Care | 253 | +48 | +37 | +29 | +22 | +13 | +9 | +23.6% | +17.0% | +12.8% | +9.3% | +5.3% | +3.6% |
| Social Workers | 131 | +28 | +20 | +13 | +9 | +16 | +3 | +27.7% | +18.2% | +11.1% | +7.8% | +14.0% | +2.5% |
| Psychologists | 151 | +55 | +42 | +35 | +17 | +13 | +11 | +57.1% | +38.6% | +30.1% | +13.0% | +9.2% | +7.9% |
| Pharmacy | 10 | +1 | +2 | -0 | -1 | +2 | -1 | +12.3% | +23.0% | -0.7% | -5.9% | +22.7% | -9.3% |
| Counsellor Therapists | 40 | +9 | -3 | -3 | -0 | -0 | +1 | +28.7% | -6.3% | -6.7% | -0.8% | -0.8% | +2.6% |
| Dental Hygienists | 12 | +5 | +5 | +4 | +5 | +3 | +1 | +69.9% | +64.6% | +60.9% | +63.2% | +41.4% | +9.7% |
| Other Health & Social Care | 13 | +3 | +3 | +3 | +3 | +2 | -3 | +35.2% | +26.7% | +24.7% | +27.7% | +16.8% | -21.2% |
| Play Therapists/ Specialists | 1 | -1 | -1 | +0 | +0 | +0 | -0 | -59.5% | -59.5% | +4.8% | +4.8% | +4.8% | -32.0% |
| H&SC, Other | 65 | +16 | +4 | +4 | +7 | +5 | -2 | +32.8% | +5.8% | +6.7% | +12.0% | +8.2% | -2.5% |
| Health & Social Care Professionals | 1,082 | +209 | +155 | +98 | +74 | +61 | +14 | +23.9% | +16.8% | +9.9% | +7.3% | +6.0% | +1.3% |
| Executive Management | 16 | +7 | +4 | +2 | +2 | +1 | -1 | +76.8% | +32.6% | +13.6% | +13.6% | +6.1% | -4.3% |
| Senior Management (VIII & GM) | 61 | +15 | +16 | +10 | +13 | +3 | +1 | +33.9% | +35.4% | +18.7% | +27.1% | +5.1% | +1.8% |
| Management (VIII & above) | 77 | +22 | +20 | +11 | +15 | +4 | +0 | +41.0% | +34.8% | +17.6% | +24.1% | +5.3% | +0.5% |
| Administrative/ Supervisory (V to VII) | 175 | +60 | +55 | +48 | +38 | +14 | +1 | +52.2% | +46.4% | +38.0% | +27.4% | +8.5% | +0.4% |
| Clerical (III & IV) | 533 | +115 | +101 | +64 | +17 | +28 | +10 | +27.4% | +23.5% | +13.7% | +3.3% | +5.5% | +2.0% |
| Management & Administrative | 784 | +197 | +176 | +124 | +69 | +45 | +12 | +33.5% | +29.0% | +18.8% | +9.7% | +6.1% | +1.5% |
| Catering | 59 | +1 | +3 | +4 | +0 | -1 | -1 | +1.4% | +5.0% | +7.1% | +0.6% | -2.0% | -1.6% |
| Household Services | 203 | -74 | -49 | -31 | -7 | +13 | +2 | -26.6% | -19.3% | -13.1% | -3.2% | +7.0% | +1.0% |
| Other Support | 76 | +12 | +13 | +12 | +3 | +2 | -15 | +18.8% | +20.0% | +18.5% | +3.8% | +3.3% | -16.2% |

| Oct 2020 (Dec 2015 figure: 7,461) | WTE Oct 2020 | WTE change since Dec 15 | WTE change since Dec 16 | WTE change since Dec 17 | WTE change since Dec 18 | WTE change since Dec 19 | WTE change since Sep 20 | % change since Dec 15 | % change since Dec 16 | % change since Dec 17 | % change since Dec 18 | % change since Dec 19 | % change since Sep 20 |
|-----------------------------------|--------------|-------------------------|-------------------------|-------------------------|-------------------------|-------------------------|-------------------------|-----------------------|-----------------------|-----------------------|-----------------------|-----------------------|-----------------------|
| Overall | 8,468 | +1,007 | +829 | +485 | +329 | +278 | -7 | +13.5% | +10.8% | +6.1% | +4.0% | +3.4% | -0.1% |
| Portering | 12 | -2 | -1 | +1 | +1 | -1 | -1 | -14.5% | -7.8% | +9.4% | +9.2% | -9.8% | -9.8% |
| Support | 350 | -63 | -34 | -14 | -3 | +13 | -15 | -15.2% | -8.9% | -3.8% | -0.7% | +3.9% | -4.1% |
| Maintenance | 21 | -10 | -10 | -9 | -2 | -0 | +0 | -33.1% | -32.6% | -30.7% | -6.7% | -0.4% | +2.1% |
| Technical Services | 1 | | | | | | | | | | | | |
| Maintenance/ Technical | 22 | -10 | -10 | -9 | -2 | -0 | +0 | -32.1% | -31.6% | -29.7% | -6.4% | -0.4% | +2.0% |
| General Support | 372 | -73 | -44 | -23 | -4 | +13 | -15 | -16.4% | -10.6% | -5.9% | -1.1% | +3.6% | -3.8% |
| HCA, Nurse's Aide, etc. | 2,026 | +493 | +348 | +235 | +103 | +80 | -8 | +32.2% | +20.7% | +13.1% | +5.3% | +4.1% | -0.4% |
| Health & Social Care Assistants | 8 | +8 | +6 | +7 | -6 | -0 | +2 | -100.0% | +279.5% | +659.0% | -45.1% | -5.6% | +26.5% |
| Health Care Assistants | 2,033 | +501 | +353 | +242 | +97 | +79 | -7 | +32.7% | +21.0% | +13.5% | +5.0% | +4.1% | -0.3% |
| Care, other | 485 | +104 | +90 | +67 | +54 | +36 | -9 | +27.2% | +22.7% | +15.9% | +12.6% | +7.9% | -1.9% |
| Home Help | 1,087 | -51 | +4 | -46 | -23 | -37 | +18 | -4.5% | +0.3% | -4.1% | -2.0% | -3.3% | +1.6% |
| Patient & Client Care | 3,606 | +554 | +447 | +262 | +128 | +78 | +2 | +18.1% | +14.1% | +7.8% | +3.7% | +2.2% | +0.0% |

Source: Health Service Personnel Census

Longitudinal Employment Levels by Care Group - Oct 2013 to Oct 2020

Community Health & Wellbeing

| Oct 2020 (figure:) | WTE Oct 2020 | WTE change since | WTE change since | WTE change since | WTE change since | WTE change since | WTE change since Sep 20 | % change since | % change since | % change since | % change since | % change since | % change since Sep 20 |
|---|--------------|------------------|------------------|------------------|------------------|------------------|-------------------------|----------------|----------------|----------------|----------------|----------------|-----------------------|
| Overall | 35 | +35 | +35 | +35 | +35 | +35 | +1 | -100.0% | -100.0% | -100.0% | -100.0% | -100.0% | +3.2% |
| Nursing & Midwifery | 1 | +1 | +1 | +1 | +1 | +1 | +1 | -1.0% | -1.0% | -1.0% | -1.0% | -1.0% | -1.0% |
| Nurse/ Midwife Manager | 1 | +1 | +1 | +1 | +1 | +1 | +1 | -1.0% | -1.0% | -1.0% | -1.0% | -1.0% | -1.0% |
| Health & Social Care Professionals | 5 | +5 | +5 | +5 | +5 | +5 | -0 | -1.0% | -1.0% | -1.0% | -1.0% | -1.0% | -0.0% |
| Therapy Professions | 5 | +5 | +5 | +5 | +5 | +5 | -0 | -1.0% | -1.0% | -1.0% | -1.0% | -1.0% | -0.0% |
| Management & Administrative | 12 | +12 | +12 | +12 | +12 | +12 | -0 | -1.0% | -1.0% | -1.0% | -1.0% | -1.0% | -0.0% |
| Management (VIII & above) | 1 | +1 | +1 | +1 | +1 | +1 | -0 | -1.0% | -1.0% | -1.0% | -1.0% | -1.0% | -0.0% |
| Administrative/ Supervisory (V to VII) | 5 | +5 | +5 | +5 | +5 | +5 | +0 | -1.0% | -1.0% | -1.0% | -1.0% | -1.0% | +0.0% |
| Clerical (III & IV) | 6 | +6 | +6 | +6 | +6 | +6 | -0 | -1.0% | -1.0% | -1.0% | -1.0% | -1.0% | -0.0% |
| Patient & Client Care | 16 | +16 | +16 | +16 | +16 | +16 | +0 | -1.0% | -1.0% | -1.0% | -1.0% | -1.0% | +0.0% |
| Care, other | 16 | +16 | +16 | +16 | +16 | +16 | +0 | -1.0% | -1.0% | -1.0% | -1.0% | -1.0% | +0.0% |

Source: Health Service Personnel Census

Mental Health

| Oct 2020 (Dec 2015 figure: 1,374) | WTE Oct 2020 | WTE change since Dec 15 | WTE change since Dec 16 | WTE change since Dec 17 | WTE change since Dec 18 | WTE change since Dec 19 | WTE change since Sep 20 | % change since Dec 15 | % change since Dec 16 | % change since Dec 17 | % change since Dec 18 | % change since Dec 19 | % change since Sep 20 |
|---|--------------|-------------------------|-------------------------|-------------------------|-------------------------|-------------------------|-------------------------|-----------------------|-----------------------|-----------------------|-----------------------|-----------------------|-----------------------|
| Overall | 1,559 | +185 | +152 | +82 | +76 | +74 | -10 | +13.5% | +10.8% | +5.6% | +5.1% | +5.0% | -0.6% |
| Medical & Dental | 146 | +36 | +32 | +26 | +17 | +18 | +2 | +0.3% | +0.3% | +0.2% | +0.1% | +0.1% | +0.0% |
| Consultants | 55 | +13 | +12 | +10 | +7 | +5 | -1 | +0.3% | +0.3% | +0.2% | +0.1% | +0.1% | -0.0% |
| Registrars | 43 | +14 | +10 | +8 | +2 | -3 | +1 | +0.5% | +0.3% | +0.2% | +0.0% | -0.1% | +0.0% |
| SHO/ Interns | 41 | +5 | +7 | +6 | +5 | +10 | +1 | +0.2% | +0.2% | +0.2% | +0.1% | +0.3% | +0.0% |
| Medical/ Dental, other | 7 | +3 | +3 | +2 | +4 | +5 | +1 | +0.7% | +0.7% | +0.4% | +1.3% | +2.6% | +0.2% |
| Nursing & Midwifery | 781 | +16 | +4 | -8 | +15 | +16 | -3 | +0.0% | +0.0% | -0.0% | +0.0% | +0.0% | -0.0% |
| Nurse/ Midwife Manager | 193 | +37 | +36 | +41 | +37 | +23 | +0 | +0.2% | +0.2% | +0.3% | +0.2% | +0.1% | +0.0% |
| Nurse/ Midwife Specialist & AN/MP | 67 | +33 | +29 | +21 | +20 | +7 | +1 | +1.0% | +0.8% | +0.5% | +0.4% | +0.1% | +0.0% |
| Staff Nurse/ Staff Midwife | 509 | -66 | -74 | -83 | -54 | +6 | +10 | -0.1% | -0.1% | -0.1% | -0.1% | +0.0% | +0.0% |
| Nursing/ Midwifery Student | 12 | +12 | +12 | +12 | +12 | -21 | -14 | +23.4% | +23.4% | -1.0% | +23.4% | -0.6% | -0.5% |
| Health & Social Care Professionals | 259 | +83 | +64 | +51 | +32 | +32 | +7 | +0.5% | +0.3% | +0.2% | +0.1% | +0.1% | +0.0% |
| Therapy Professions | 78 | +24 | +18 | +15 | +6 | +4 | -2 | +0.4% | +0.3% | +0.2% | +0.1% | +0.1% | -0.0% |
| Social Care | 7 | -1 | -1 | +0 | +1 | +3 | -1 | -0.2% | -0.1% | +0.0% | +0.2% | +0.8% | -0.2% |
| Social Workers | 66 | +12 | +12 | +7 | +6 | +13 | +3 | +0.2% | +0.2% | +0.1% | +0.1% | +0.2% | +0.1% |
| Psychologists | 94 | +47 | +35 | +30 | +17 | +11 | +11 | +1.0% | +0.6% | +0.5% | +0.2% | +0.1% | +0.1% |
| Pharmacy | 2 | -1 | -1 | -1 | -2 | -0 | -0 | -0.2% | -0.3% | -0.4% | -0.5% | -0.2% | -0.2% |
| H&SC, Other | 13 | +2 | +0 | +1 | +3 | +2 | -3 | +0.2% | +0.0% | +0.1% | +0.2% | +0.2% | -0.2% |
| Management & Administrative | 115 | +22 | +22 | +12 | +13 | +4 | +0 | +0.2% | +0.2% | +0.1% | +0.1% | +0.0% | +0.0% |
| Management (VIII & above) | 2 | +2 | +2 | +2 | +2 | +1 | +0 | -1.0% | -1.0% | -1.0% | -1.0% | +0.9% | +0.0% |
| Administrative/ Supervisory (V to VII) | 23 | +5 | +5 | +4 | +5 | +0 | +1 | +0.3% | +0.3% | +0.2% | +0.3% | +0.0% | +0.1% |
| Clerical (III & IV) | 91 | +16 | +15 | +6 | +6 | +3 | -1 | +0.2% | +0.2% | +0.1% | +0.1% | +0.0% | -0.0% |
| General Support | 87 | -21 | -17 | -17 | -8 | +1 | -1 | -0.2% | -0.2% | -0.2% | -0.1% | +0.0% | -0.0% |
| Support | 81 | -19 | -15 | -15 | -7 | +2 | -1 | -0.2% | -0.2% | -0.2% | -0.1% | +0.0% | -0.0% |
| Maintenance/ Technical | 5 | -2 | -2 | -2 | -1 | -1 | +1 | -0.3% | -0.3% | -0.3% | -0.2% | -0.2% | +0.1% |
| Patient & Client Care | 171 | +49 | +48 | +19 | +7 | +4 | -15 | +0.4% | +0.4% | +0.1% | +0.0% | +0.0% | -0.1% |
| Health Care Assistants | 165 | +47 | +46 | +20 | +9 | +5 | -11 | +0.4% | +0.4% | +0.1% | +0.1% | +0.0% | -0.1% |
| Care, other | 6 | +2 | +2 | -1 | -2 | -1 | -4 | +0.5% | +0.4% | -0.1% | -0.2% | -0.2% | -0.4% |

Source: Health Service Personnel Census

Primary Care

| Oct 2020 (Dec 2015 figure: 1,143) | WTE Oct 2020 | WTE change since Dec 15 | WTE change since Dec 16 | WTE change since Dec 17 | WTE change since Dec 18 | WTE change since Dec 19 | WTE change since Sep 20 | % change since Dec 15 | % change since Dec 16 | % change since Dec 17 | % change since Dec 18 | % change since Dec 19 | % change since Sep 20 |
|---|--------------|-------------------------|-------------------------|-------------------------|-------------------------|-------------------------|-------------------------|-----------------------|-----------------------|-----------------------|-----------------------|-----------------------|-----------------------|
| Overall | 1,404 | +261 | +216 | +97 | +60 | +58 | -6 | +22.9% | +18.2% | +7.4% | +4.4% | +4.3% | -0.4% |
| Medical & Dental | 156 | +19 | +17 | +6 | +2 | +5 | -6 | +0.1% | +0.1% | +0.0% | +0.0% | +0.0% | -0.0% |
| Consultants | 3 | +1 | +1 | +0 | +0 | -0 | -1 | +0.3% | +0.3% | +0.0% | +0.0% | -0.0% | -0.2% |
| Registrars | 56 | +10 | +14 | +8 | +6 | +1 | -1 | +0.2% | +0.3% | +0.2% | +0.1% | +0.0% | -0.0% |
| SHO/ Interns | 8 | +2 | +1 | +1 | +0 | +1 | +1 | +0.3% | +0.1% | +0.2% | +0.0% | +0.2% | +0.2% |
| Medical/ Dental, other | 90 | +7 | +3 | -3 | -5 | +2 | -5 | +0.1% | +0.0% | -0.0% | -0.0% | +0.0% | -0.1% |
| Nursing & Midwifery | 432 | +93 | +76 | +38 | +36 | +25 | +13 | +0.3% | +0.2% | +0.1% | +0.1% | +0.1% | +0.0% |
| Nurse/ Midwife Manager | 64 | +23 | +19 | +20 | +13 | +7 | -1 | +0.6% | +0.4% | +0.4% | +0.3% | +0.1% | -0.0% |
| Nurse/ Midwife Specialist & AN/MP | 6 | +3 | +3 | +2 | -0 | +1 | -0 | +0.8% | +0.9% | +0.5% | -0.1% | +0.3% | -0.0% |
| Staff Nurse/ Staff Midwife | 135 | +57 | +44 | +16 | +21 | +16 | +10 | +0.7% | +0.5% | +0.1% | +0.2% | +0.1% | +0.1% |
| Public Health Nurse | 214 | +4 | +5 | +4 | +2 | +3 | -1 | +0.0% | +0.0% | +0.0% | +0.0% | +0.0% | -0.0% |
| Nursing/ Midwifery Student | 14 | +7 | +6 | -4 | -1 | -4 | +5 | +0.9% | +0.7% | -0.2% | -0.0% | -0.2% | +0.6% |
| Health & Social Care Professionals | 340 | +56 | +47 | +15 | +11 | +11 | +5 | +0.2% | +0.2% | +0.0% | +0.0% | +0.0% | +0.0% |
| Therapy Professions | 229 | +36 | +28 | -3 | +6 | +7 | +2 | +0.2% | +0.1% | -0.0% | +0.0% | +0.0% | +0.0% |
| Health Science/ Diagnostics | 11 | -10 | +2 | +2 | +0 | +1 | +0 | -0.5% | +0.3% | +0.2% | +0.0% | +0.1% | +0.0% |
| Social Care | 5 | | -1 | -1 | -3 | -3 | | +0.0% | -0.1% | -0.1% | -0.3% | -0.4% | +0.0% |
| Social Workers | 27 | +8 | +5 | +5 | +2 | +3 | +0 | +0.4% | +0.2% | +0.2% | +0.1% | +0.1% | +0.0% |
| Psychologists | 21 | +7 | +8 | +9 | +2 | +1 | +0 | +0.5% | +0.7% | +0.7% | +0.1% | +0.0% | +0.0% |
| Pharmacy | 4 | +0 | +1 | +1 | +1 | +1 | +0 | +0.1% | +0.4% | +0.1% | +0.2% | +0.3% | +0.0% |
| H&SC, Other | 42 | +15 | +3 | +3 | +2 | +1 | +2 | +0.5% | +0.1% | +0.1% | +0.1% | +0.0% | +0.0% |
| Management & Administrative | 325 | +66 | +57 | +27 | +18 | +15 | -0 | +0.3% | +0.2% | +0.1% | +0.1% | +0.0% | -0.0% |
| Management (VIII & above) | 37 | +7 | +7 | +3 | +4 | -0 | -1 | +0.2% | +0.2% | +0.1% | +0.1% | -0.0% | -0.0% |
| Administrative/ Supervisory (V to VII) | 72 | +26 | +21 | +14 | +12 | +4 | +0 | +0.5% | +0.4% | +0.2% | +0.2% | +0.1% | +0.0% |
| Clerical (III & IV) | 216 | +33 | +29 | +11 | +2 | +11 | -0 | +0.2% | +0.2% | +0.1% | +0.0% | +0.1% | -0.0% |
| General Support | 16 | -2 | -2 | -3 | -1 | +1 | -15 | -0.1% | -0.1% | -0.1% | -0.1% | +0.0% | -0.5% |
| Support | 16 | -2 | -2 | -3 | -1 | +1 | -15 | -0.1% | -0.1% | -0.1% | -0.1% | +0.0% | -0.5% |
| Patient & Client Care | 134 | +29 | +20 | +14 | -6 | +2 | -3 | +0.3% | +0.2% | +0.1% | -0.0% | +0.0% | -0.0% |
| Health Care Assistants | 23 | +22 | +20 | +16 | -1 | +5 | +6 | +21.0% | +6.5% | +2.7% | -0.0% | +0.3% | +0.4% |
| Care, other | 103 | +10 | +4 | +0 | -3 | -2 | -5 | +0.1% | +0.0% | +0.0% | -0.0% | -0.0% | -0.1% |
| Home Help | 9 | -2 | -3 | -3 | -2 | -1 | -3 | -0.2% | -0.3% | -0.3% | -0.2% | -0.1% | -0.3% |

Source: Health Service Personnel Census

Disabilities

| Oct 2020 (Dec 2015 figure: 2,151) | WTE Oct 2020 | WTE change since Dec 15 | WTE change since Dec 16 | WTE change since Dec 17 | WTE change since Dec 18 | WTE change since Dec 19 | WTE change since Sep 20 | % change since Dec 15 | % change since Dec 16 | % change since Dec 17 | % change since Dec 18 | % change since Dec 19 | % change since Sep 20 |
|---|--------------|-------------------------|-------------------------|-------------------------|-------------------------|-------------------------|-------------------------|-----------------------|-----------------------|-----------------------|-----------------------|-----------------------|-----------------------|
| Overall | 2,547 | +396 | +291 | +248 | +152 | +108 | +36 | +18.4% | +12.9% | +10.8% | +6.4% | +4.4% | +1.4% |
| Medical & Dental | 3 | +0 | +0 | +2 | +2 | +2 | +0 | +0.1% | +0.1% | +0.9% | +0.9% | +0.9% | +0.2% |
| Consultants | 2 | -0 | -0 | +1 | +1 | +1 | +0 | -0.1% | -0.1% | +0.7% | +0.7% | +0.7% | +0.2% |
| Medical/ Dental, other | 1 | +1 | +1 | +1 | +1 | +1 | | +2.0% | +2.0% | +2.0% | +2.0% | +2.0% | +0.0% |
| Nursing & Midwifery | 419 | -68 | -60 | -46 | -13 | -0 | -6 | -0.1% | -0.1% | -0.1% | -0.0% | -0.0% | -0.0% |
| Nurse/ Midwife Manager | 90 | -2 | +4 | +6 | -2 | +1 | +1 | -0.0% | +0.1% | +0.1% | -0.0% | +0.0% | +0.0% |
| Nurse/ Midwife Specialist & AN/MP | 14 | -2 | -2 | -3 | -1 | +1 | +1 | -0.1% | -0.1% | -0.2% | -0.1% | +0.1% | +0.1% |
| Staff Nurse/ Staff Midwife | 296 | -74 | -72 | -60 | -21 | -13 | -5 | -0.2% | -0.2% | -0.2% | -0.1% | -0.0% | -0.0% |
| Nursing/ Midwifery Student | 19 | +11 | +11 | +11 | +11 | +12 | -2 | +1.3% | +1.3% | +1.3% | +1.3% | +1.7% | -0.1% |
| Nursing/ Midwifery other | | -1 | -1 | -1 | -1 | -1 | -1 | -1.0% | -1.0% | -1.0% | -1.0% | -1.0% | -1.0% |
| Health & Social Care Professionals | 414 | +49 | +29 | +19 | +21 | +10 | +6 | +0.1% | +0.1% | +0.0% | +0.1% | +0.0% | +0.0% |
| Therapy Professions | 103 | -6 | -8 | -8 | -1 | -5 | -4 | -0.1% | -0.1% | -0.1% | -0.0% | -0.0% | -0.0% |
| Social Care | 239 | +50 | +39 | +29 | +23 | +13 | +10 | +0.3% | +0.2% | +0.1% | +0.1% | +0.1% | +0.0% |
| Social Workers | 27 | +6 | +1 | +1 | -1 | -0 | +1 | +0.3% | +0.0% | +0.0% | -0.0% | -0.0% | +0.0% |
| Psychologists | 36 | +0 | -2 | -4 | -2 | +1 | +0 | +0.0% | -0.0% | -0.1% | -0.1% | +0.0% | +0.0% |
| H&SC, Other | 10 | -0 | -0 | +1 | +2 | +2 | -1 | -0.0% | -0.0% | +0.1% | +0.3% | +0.2% | -0.1% |
| Management & Administrative | 173 | +44 | +40 | +35 | +20 | +13 | +2 | +0.3% | +0.3% | +0.3% | +0.1% | +0.1% | +0.0% |
| Management (VIII & above) | 23 | +4 | +4 | +4 | +4 | +1 | +0 | +0.2% | +0.2% | +0.2% | +0.2% | +0.0% | +0.0% |
| Administrative/ Supervisory (V to VII) | 59 | +19 | +20 | +19 | +10 | +5 | +1 | +0.5% | +0.5% | +0.5% | +0.2% | +0.1% | +0.0% |
| Clerical (III & IV) | 91 | +21 | +17 | +12 | +6 | +7 | +1 | +0.3% | +0.2% | +0.2% | +0.1% | +0.1% | +0.0% |
| General Support | 153 | -31 | -17 | -1 | -0 | +2 | +5 | -0.2% | -0.1% | -0.0% | -0.0% | +0.0% | +0.0% |
| Support | 142 | -25 | -12 | +4 | -1 | +1 | +4 | -0.2% | -0.1% | +0.0% | -0.0% | +0.0% | +0.0% |
| Maintenance/ Technical | 11 | -6 | -6 | -6 | +0 | +1 | +1 | -0.3% | -0.3% | -0.3% | +0.0% | +0.1% | +0.1% |
| Patient & Client Care | 1,385 | +401 | +299 | +239 | +123 | +82 | +28 | +0.4% | +0.3% | +0.2% | +0.1% | +0.1% | +0.0% |
| Health Care Assistants | 1,060 | +330 | +238 | +193 | +86 | +65 | +21 | +0.5% | +0.3% | +0.2% | +0.1% | +0.1% | +0.0% |
| Care, other | 325 | +71 | +61 | +46 | +37 | +17 | +7 | +0.3% | +0.2% | +0.2% | +0.1% | +0.1% | +0.0% |

Source: Health Service Personnel Census

Older People

| Oct 2020 (Dec 2015 figure: 2,792) | WTE Oct 2020 | WTE change since Dec 15 | WTE change since Dec 16 | WTE change since Dec 17 | WTE change since Dec 18 | WTE change since Dec 19 | WTE change since Sep 20 | % change since Dec 15 | % change since Dec 16 | % change since Dec 17 | % change since Dec 18 | % change since Dec 19 | % change since Sep 20 |
|---|--------------|-------------------------|-------------------------|-------------------------|-------------------------|-------------------------|-------------------------|-----------------------|-----------------------|-----------------------|-----------------------|-----------------------|-----------------------|
| Overall | 2,923 | +130 | +134 | +24 | +7 | +3 | -28 | +4.7% | +4.8% | +0.8% | +0.2% | +0.1% | -0.9% |
| Medical & Dental | 34 | +10 | +10 | +8 | +8 | +8 | -7 | +0.4% | +0.4% | +0.3% | +0.3% | +0.3% | -0.2% |
| Consultants | 1 | -1 | -1 | -1 | -0 | -0 | -1 | -0.5% | -0.5% | -0.5% | -0.0% | -0.0% | -0.5% |
| Registrars | 3 | +1 | +2 | +1 | +1 | | | +0.5% | +2.0% | +0.5% | +0.5% | +0.0% | +0.0% |
| SHO/ Interns | 1 | +1 | +1 | +1 | | | | -1.0% | -1.0% | -1.0% | +0.0% | +0.0% | +0.0% |
| Medical/ Dental, other | 29 | +9 | +8 | +6 | +7 | +8 | -6 | +0.4% | +0.4% | +0.3% | +0.3% | +0.4% | -0.2% |
| Nursing & Midwifery | 651 | +14 | +14 | -1 | -6 | +8 | -14 | +0.0% | +0.0% | -0.0% | -0.0% | +0.0% | -0.0% |
| Nurse/ Midwife Manager | 122 | +15 | +19 | +17 | +32 | +5 | -7 | +0.1% | +0.2% | +0.2% | +0.4% | +0.0% | -0.1% |
| Nurse/ Midwife Specialist & AN/MP | 6 | +4 | +4 | +4 | +3 | +3 | +0 | +2.3% | +1.3% | +2.4% | +0.7% | +0.9% | +0.0% |
| Staff Nurse/ Staff Midwife | 516 | -6 | -9 | -22 | -40 | +1 | -8 | -0.0% | -0.0% | -0.0% | -0.1% | +0.0% | -0.0% |
| Public Health Nurse | 6 | -0 | -0 | -1 | +0 | +1 | +0 | -0.0% | -0.0% | -0.1% | +0.0% | +0.2% | +0.0% |
| Nursing/ Midwifery Student | | | | | | -2 | | -1.0% | -1.0% | -1.0% | -1.0% | -1.0% | -1.0% |
| Health & Social Care Professionals | 64 | +16 | +11 | +8 | +6 | +3 | -4 | +0.3% | +0.2% | +0.1% | +0.1% | +0.1% | -0.1% |
| Therapy Professions | 46 | +12 | +6 | +7 | +3 | +1 | -2 | +0.4% | +0.2% | +0.2% | +0.1% | +0.0% | -0.0% |
| Health Science/ Diagnostics | 1 | -0 | | | +0 | +0 | | -0.2% | +0.0% | +0.0% | +0.2% | +0.1% | +0.0% |
| Social Care | 2 | +0 | +0 | +0 | +0 | +0 | +0 | +0.0% | +0.0% | +0.0% | +0.0% | +0.0% | +0.0% |
| Social Workers | 11 | +3 | +3 | +1 | +2 | +1 | -1 | +0.4% | +0.3% | +0.1% | +0.2% | +0.1% | -0.1% |
| Pharmacy | 4 | +1 | +1 | +1 | +1 | +1 | -1 | +0.5% | +0.6% | +0.2% | +0.2% | +0.5% | -0.2% |
| Management & Administrative | 159 | +52 | +45 | +37 | +6 | +1 | +10 | +0.5% | +0.4% | +0.3% | +0.0% | +0.0% | +0.1% |
| Management (VIII & above) | 14 | +8 | +6 | +3 | +3 | +1 | +1 | +1.4% | +0.8% | +0.2% | +0.3% | +0.1% | +0.1% |
| Administrative/ Supervisory (V to VII) | 16 | +5 | +5 | +6 | +5 | -1 | -2 | +0.5% | +0.4% | +0.6% | +0.5% | -0.1% | -0.1% |
| Clerical (III & IV) | 129 | +39 | +34 | +29 | -3 | +0 | +11 | +0.4% | +0.4% | +0.3% | -0.0% | +0.0% | +0.1% |
| General Support | 117 | -19 | -9 | -2 | +6 | +10 | -4 | -0.1% | -0.1% | -0.0% | +0.0% | +0.1% | -0.0% |
| Support | 111 | -16 | -6 | +0 | +6 | +10 | -3 | -0.1% | -0.1% | +0.0% | +0.1% | +0.1% | -0.0% |
| Maintenance/ Technical | 6 | -3 | -3 | -2 | -1 | | -1 | -0.3% | -0.3% | -0.2% | -0.1% | +0.0% | -0.1% |
| Patient & Client Care | 1,899 | +58 | +64 | -26 | -12 | -26 | -8 | +0.0% | +0.0% | -0.0% | -0.0% | -0.0% | -0.0% |
| Health Care Assistants | 786 | +103 | +50 | +12 | +3 | +4 | -22 | +0.2% | +0.1% | +0.0% | +0.0% | +0.0% | -0.0% |
| Care, other | 36 | +4 | +7 | +5 | +5 | +5 | -7 | +0.1% | +0.3% | +0.2% | +0.2% | +0.2% | -0.2% |
| Home Help | 1,078 | -49 | +7 | -43 | -21 | -36 | +21 | -0.0% | +0.0% | -0.0% | -0.0% | -0.0% | +0.0% |

Source: Health Service Personnel Census