

## CHO 4 Employment Report: September 2020

### Employment by Staff Group

Sep 2020 (Dec 2019 figure: 8,189)	WTE Aug 2020	WTE Sep 2020	WTE change since Aug 20	% change since Aug 20	WTE change since Dec 19	WTE change since Sep 19
<b>Overall</b>	<b>8,363</b>	<b>8,475</b>	<b>+112</b>	<b>+1.3%</b>	<b>+286</b>	<b>+267</b>
Consultants	57	63	+6	+10.9%	+8	+10
Registrars	103	102	-1	-0.6%	-1	-2
SHO/ Interns	35	48	+12	+35.5%	+9	+11
Medical/ Dental, other	117	137	+21	+17.7%	+26	+26
<b>Medical &amp; Dental</b>	<b>312</b>	<b>350</b>	<b>+39</b>	<b>+12.4%</b>	<b>+43</b>	<b>+45</b>
Nurse/ Midwife Manager	463	475	+13	+2.7%	+43	+4
Nurse/ Midwife Specialist & AN/MP	92	92	-0	-0.4%	+11	+14
Staff Nurse/ Staff Midwife	1,473	1,449	-24	-1.6%	+4	+21
Public Health Nurse	209	221	+12	+5.8%	+5	+10
<i>Pre-registration Nurse/ Midwife Intern</i>				-100.0%	-9	
<i>Pre-registration Nurse Intern (COVID-19)</i>	51	42	-9	-18.3%	+42	-9
<i>Post-registration Nurse/ Midwife Student</i>	2	9	+7	+343.1%	-11	+7
<i>Nursing/ Midwifery awaiting registration</i>	4	5	+1	+15.0%	-27	+1
Nursing/ Midwifery Student	57	55	-2	-3.6%	-5	+17
Nursing/ Midwifery other	1	1				
<b>Nursing &amp; Midwifery</b>	<b>2,295</b>	<b>2,293</b>	<b>-1</b>	<b>-0.1%</b>	<b>+58</b>	<b>+65</b>
Therapy Professions	457	467	+9	+2.0%	+19	+17
Health Science/ Diagnostics	12	12			+0	+0
Social Care	245	244	-1	-0.6%	+4	+6
Social Workers	125	128	+3	+2.1%	+13	+15
Psychologists	137	140	+2	+1.7%	+2	+10
Pharmacy	10	11	+1	+10.1%	+3	+2
H&SC, Other	64	67	+3	+4.3%	+7	+8
<b>Health &amp; Social Care Professionals</b>	<b>1,051</b>	<b>1,068</b>	<b>+17</b>	<b>+1.6%</b>	<b>+47</b>	<b>+59</b>
Management (VIII & above)	74	76	+2	+3.0%	+3	+5
Administrative/ Supervisory (V to VII)	173	174	+1	+0.3%	+13	+18
Clerical (III & IV)	528	522	-5	-1.0%	+18	+12
<b>Management &amp; Administrative</b>	<b>775</b>	<b>772</b>	<b>-3</b>	<b>-0.3%</b>	<b>+34</b>	<b>+35</b>
Support	358	365	+8	+2.1%	+28	+30
Maintenance/ Technical	22	22	+0	+0.7%	-1	-1
<b>General Support</b>	<b>379</b>	<b>387</b>	<b>+8</b>	<b>+2.0%</b>	<b>+28</b>	<b>+30</b>
Health Care Assistants	2,061	2,040	-21	-1.0%	+86	+26
Care, other	461	495	+34	+7.4%	+45	+66
Home Help	1,029	1,069	+40	+3.9%	-55	-60
<b>Patient &amp; Client Care</b>	<b>3,551</b>	<b>3,604</b>	<b>+53</b>	<b>+1.5%</b>	<b>+76</b>	<b>+32</b>

## CHO 4 Employment Report: September 2020

### Community Health & Wellbeing

Sep 2020 ( figure: )	WTE Aug 2020	WTE Sep 2020	WTE change since Aug 20	% change since Aug 20	WTE change since	WTE change since
<b>Total Community Health &amp; Wellbeing</b>	<b>29</b>	<b>34</b>	<b>+5</b>	<b>+16.9%</b>	<b>+34</b>	<b>+34</b>
Therapy Professions	4	5	+1	+19.0%	+5	+5
<b>Health &amp; Social Care Professionals</b>	<b>4</b>	<b>5</b>	<b>+1</b>	<b>+19.0%</b>	<b>+5</b>	<b>+5</b>
Management (VIII & above)	1	1	-0	-1.0%	+1	+1
Administrative/ Supervisory (V to VII)	4	5	+1	+25.1%	+5	+5
Clerical (III & IV)	5	6	+2	+43.1%	+6	+6
<b>Management &amp; Administrative</b>	<b>9</b>	<b>12</b>	<b>+3</b>	<b>+30.9%</b>	<b>+12</b>	<b>+12</b>
Care, other	15	16	+1	+7.6%	+16	+16
<b>Patient &amp; Client Care</b>	<b>15</b>	<b>16</b>	<b>+1</b>	<b>+7.6%</b>	<b>+16</b>	<b>+16</b>

### Mental Health

Sep 2020 (Dec 2019 figure: 1,485)	WTE Aug 2020	WTE Sep 2020	WTE change since Aug 20	% change since Aug 20	WTE change since Dec 19	WTE change since Sep 19
<b>Total Mental Health</b>	<b>1,563</b>	<b>1,569</b>	<b>+6</b>	<b>+0.4%</b>	<b>+84</b>	<b>+82</b>
Consultants	52	56	+4	+8.1%	+6	+8
Registrars	42	42	+0	+0.6%	-3	-3
SHO/ Interns	30	40	+10	+31.8%	+9	+11
Medical/ Dental, other	2	6	+4	+179.3%	+4	+3
<b>Medical &amp; Dental</b>	<b>126</b>	<b>145</b>	<b>+18</b>	<b>+14.3%</b>	<b>+16</b>	<b>+19</b>
Nurse/ Midwife Manager	185	193	+8	+4.3%	+23	-5
Nurse/ Midwife Specialist & AN/MP	68	67	-2	-2.5%	+7	+10
Staff Nurse/ Staff Midwife	510	499	-10	-2.1%	-3	+1
Pre-registration Nurse/ Midwife Intern				-100.0%	-3	
Pre-registration Nurse Intern (COVID-19)	23	23	-0	-1.6%	+23	-0
Post-registration Nurse/ Midwife Student				-100.0%	-1	
Nursing/ Midwifery awaiting registration	4	3	-1	-25.0%	-27	-1
Nursing/ Midwifery Student	27	26	-1	-5.0%	-8	+7
<b>Nursing &amp; Midwifery</b>	<b>790</b>	<b>784</b>	<b>-6</b>	<b>-0.7%</b>	<b>+19</b>	<b>+13</b>
Therapy Professions	78	80	+2	+2.1%	+6	+3
Social Care	7	8	+1	+16.0%	+4	+3
Social Workers	61	63	+1	+2.3%	+9	+9
Psychologists	83	83	-0	-0.2%	+0	+6
Pharmacy	3	3	-0	-15.7%	+0	-0
H&SC, Other	14	16	+2	+12.1%	+5	+6
<b>Health &amp; Social Care Professionals</b>	<b>246</b>	<b>251</b>	<b>+5</b>	<b>+2.1%</b>	<b>+25</b>	<b>+27</b>
Management (VIII & above)	1	2	+1	+111.1%	+1	+2
Administrative/ Supervisory (V to VII)	24	21	-2	-10.2%	-1	-1
Clerical (III & IV)	94	92	-2	-2.0%	+5	+4
<b>Management &amp; Administrative</b>	<b>118</b>	<b>115</b>	<b>-3</b>	<b>-2.7%</b>	<b>+4</b>	<b>+5</b>
Support	83	83	-0	-0.3%	+3	+3
Maintenance/ Technical	5	5	-1	-11.6%	-2	-2
<b>General Support</b>	<b>88</b>	<b>87</b>	<b>-1</b>	<b>-1.0%</b>	<b>+1</b>	<b>+2</b>
Health Care Assistants	188	177	-12	-6.2%	+16	+13
Care, other	6	10	+4	+69.4%	+3	+3
<b>Patient &amp; Client Care</b>	<b>194</b>	<b>187</b>	<b>-8</b>	<b>-3.9%</b>	<b>+19</b>	<b>+16</b>

## Primary Care

Sep 2020 (Dec 2019 figure: 1,346)	WTE Aug 2020	WTE Sep 2020	WTE change since Aug 20	% change since Aug 20	WTE change since Dec 19	WTE change since Sep 19
<b>Total Primary Care</b>	<b>1,364</b>	<b>1,410</b>	<b>+46</b>	<b>+3.4%</b>	<b>+64</b>	<b>+89</b>
Consultants	3	3	+1	+20.0%	+1	+1
Registrars	58	57	-1	-1.8%	+3	+1
SHO/ Interns	5	7	+2	+38.3%	+0	-0
Medical/ Dental, other	83	96	+13	+15.4%	+7	+9
<b>Medical &amp; Dental</b>	<b>148</b>	<b>162</b>	<b>+14</b>	<b>+9.5%</b>	<b>+11</b>	<b>+11</b>
Nurse/ Midwife Manager	64	65	+1	+1.8%	+8	+8
Nurse/ Midwife Specialist & AN/MP	6	6	-0	-4.3%	+2	+1
Staff Nurse/ Staff Midwife	142	125	-16	-11.5%	+6	+16
Public Health Nurse	204	215	+11	+5.5%	+4	+8
Post-registration Nurse/ Midwife Student	2	9	+7	+343.1%	-9	+7
Nursing/ Midwifery Student	2	9	+7	+343.1%	-9	+1
<b>Nursing &amp; Midwifery</b>	<b>417</b>	<b>419</b>	<b>+3</b>	<b>+0.6%</b>	<b>+12</b>	<b>+34</b>
Therapy Professions	226	227	+1	+0.4%	+5	+6
Health Science/ Diagnostics	11	11			+0	+0
Social Care	5	5			-3	-1
Social Workers	28	27	-1	-2.2%	+3	+3
Psychologists	21	21	+0	+0.3%	+1	+3
Pharmacy	3	4	+1	+24.2%	+1	+1
H&SC, Other	40	41	+1	+2.0%	-0	+0
<b>Health &amp; Social Care Professionals</b>	<b>334</b>	<b>336</b>	<b>+2</b>	<b>+0.6%</b>	<b>+6</b>	<b>+11</b>
Management (VIII & above)	37	37	+1	+1.9%	+1	+1
Administrative/ Supervisory (V to VII)	72	72	-1	-1.0%	+4	+6
Clerical (III & IV)	212	216	+4	+1.9%	+11	+6
<b>Management &amp; Administrative</b>	<b>321</b>	<b>325</b>	<b>+4</b>	<b>+1.2%</b>	<b>+15</b>	<b>+12</b>
Support	17	31	+14	+80.6%	+16	+16
<b>General Support</b>	<b>17</b>	<b>31</b>	<b>+14</b>	<b>+80.6%</b>	<b>+16</b>	<b>+16</b>
Health Care Assistants	17	16	-1	-4.0%	-1	-3
Care, other	101	108	+7	+7.1%	+3	+5
Home Help	9	12	+3	+32.2%	+2	+2
<b>Patient &amp; Client Care</b>	<b>127</b>	<b>137</b>	<b>+10</b>	<b>+7.5%</b>	<b>+5</b>	<b>+4</b>

## Social Care

Sep 2020 (Dec 2019 figure: 5,358)	WTE Aug 2020	WTE Sep 2020	WTE change since Aug 20	% change since Aug 20	WTE change since Dec 19	WTE change since Sep 19
<b>Total Social Care</b>	<b>5,406</b>	<b>5,462</b>	<b>+55</b>	<b>+1.0%</b>	<b>+104</b>	<b>+63</b>
Consultants	3	4	+2	+60.0%	+2	+2
Registrars	3	3	+0	+5.6%		
SHO/ Interns		1	+1	-100.0%		
Medical/ Dental, other	32	36	+4	+12.2%	+14	+14
<b>Medical &amp; Dental</b>	<b>37</b>	<b>44</b>	<b>+7</b>	<b>+17.6%</b>	<b>+16</b>	<b>+16</b>
Nurse/ Midwife Manager	215	218	+4	+1.7%	+11	+0
Nurse/ Midwife Specialist & AN/MP	18	20	+2	+8.7%	+3	+3
Staff Nurse/ Staff Midwife	822	825	+3	+0.4%	+1	+4
Public Health Nurse	5	6	+1	+16.2%	+1	+2
<i>Pre-registration Nurse/ Midwife Intern</i>				-100.0%	-6	
<i>Pre-registration Nurse Intern (COVID-19)</i>	28	19	-9	-32.1%	+19	-9
<i>Post-registration Nurse/ Midwife Student</i>				-100.0%	-1	
<i>Nursing/ Midwifery awaiting registration</i>		2	+2	-100.0%	-0	+2
Nursing/ Midwifery Student	28	21	-7	-26.4%	+12	+9
Nursing/ Midwifery other	1	1				
<b>Nursing &amp; Midwifery</b>	<b>1,088</b>	<b>1,090</b>	<b>+2</b>	<b>+0.2%</b>	<b>+28</b>	<b>+17</b>
Therapy Professions	149	155	+6	+4.0%	+2	+4
Health Science/ Diagnostics	1	1			+0	+0
Social Care	233	231	-3	-1.1%	+3	+4
Social Workers	36	38	+2	+4.8%	+1	+3
Psychologists	33	36	+2	+7.2%	+1	+1
Pharmacy	4	5	+1	+19.3%	+2	+2
H&SC, Other	10	11	+0	+3.0%	+2	+2
<b>Health &amp; Social Care Professionals</b>	<b>467</b>	<b>476</b>	<b>+9</b>	<b>+1.8%</b>	<b>+11</b>	<b>+17</b>
Management (VIII & above)	35	36	+1	+1.6%	+1	+2
Administrative/ Supervisory (V to VII)	73	76	+3	+3.7%	+6	+8
Clerical (III & IV)	217	208	-10	-4.4%	-5	-4
<b>Management &amp; Administrative</b>	<b>326</b>	<b>320</b>	<b>-6</b>	<b>-1.9%</b>	<b>+2</b>	<b>+5</b>
Support	258	252	-6	-2.3%	+10	+11
Maintenance/ Technical	16	17	+1	+4.6%	+1	+1
<b>General Support</b>	<b>274</b>	<b>269</b>	<b>-5</b>	<b>-1.9%</b>	<b>+11</b>	<b>+12</b>
Health Care Assistants	1,856	1,847	-9	-0.5%	+71	+15
Care, other	339	361	+22	+6.4%	+22	+43
Home Help	1,019	1,057	+37	+3.7%	-57	-62
<b>Patient &amp; Client Care</b>	<b>3,214</b>	<b>3,264</b>	<b>+50</b>	<b>+1.6%</b>	<b>+36</b>	<b>-5</b>

## CHO 4 Employment Report: September 2020

### Disabilities

Sep 2020 (Dec 2019 figure: 2,439)	WTE Aug 2020	WTE Sep 2020	WTE change since Aug 20	% change since Aug 20	WTE change since Dec 19	WTE change since Sep 19
<b>Total Disabilities</b>	<b>2,495</b>	<b>2,511</b>	<b>+16</b>	<b>+0.6%</b>	<b>+73</b>	<b>+55</b>
Consultants	2	2	+1	+33.3%	+1	+1
Medical/ Dental, other	1	1			+1	+1
<b>Medical &amp; Dental</b>	<b>3</b>	<b>3</b>	<b>+1</b>	<b>+20.0%</b>	<b>+1</b>	<b>+1</b>
Nurse/ Midwife Manager	88	89	+1	+0.9%	-0	-4
Nurse/ Midwife Specialist & AN/MP	13	13				
Staff Nurse/ Staff Midwife	301	301	-0	-0.0%	-8	-7
<i>Pre-registration Nurse/ Midwife Intern</i>				-100.0%	-6	
<i>Pre-registration Nurse Intern (COVID-19)</i>	28	19	-9	-32.1%	+19	-9
<i>Nursing/ Midwifery awaiting registration</i>		2	+2	-100.0%	+1	+2
Nursing/ Midwifery Student	28	21	-7	-26.4%	+14	+10
Nursing/ Midwifery other	1	1				
<b>Nursing &amp; Midwifery</b>	<b>431</b>	<b>425</b>	<b>-7</b>	<b>-1.6%</b>	<b>+6</b>	<b>-0</b>
Therapy Professions	101	107	+6	+5.7%	-1	-1
Social Care	232	229	-3	-1.1%	+3	+4
Social Workers	26	26	-0	-1.0%	-1	-0
Psychologists	33	36	+2	+7.2%	+1	+1
H&SC, Other	10	11	+0	+3.0%	+2	+2
<b>Health &amp; Social Care Professionals</b>	<b>403</b>	<b>408</b>	<b>+6</b>	<b>+1.4%</b>	<b>+4</b>	<b>+7</b>
Management (VIII & above)	22	23	+1	+2.5%	+1	+1
Administrative/ Supervisory (V to VII)	55	58	+3	+4.8%	+4	+8
Clerical (III & IV)	89	90	+2	+1.7%	+6	+3
<b>Management &amp; Administrative</b>	<b>166</b>	<b>171</b>	<b>+5</b>	<b>+2.9%</b>	<b>+11</b>	<b>+12</b>
Support	137	137	+0	+0.3%	-4	-1
Maintenance/ Technical	10	10	-0	-0.0%	-0	-0
<b>General Support</b>	<b>147</b>	<b>148</b>	<b>+0</b>	<b>+0.3%</b>	<b>-4</b>	<b>-1</b>
Health Care Assistants	1,037	1,039	+2	+0.2%	+44	+4
Care, other	308	318	+10	+3.1%	+10	+32
<b>Patient &amp; Client Care</b>	<b>1,345</b>	<b>1,357</b>	<b>+11</b>	<b>+0.8%</b>	<b>+55</b>	<b>+36</b>

## Older People

Sep 2020 (Dec 2019 figure: 2,919)	WTE Aug 2020	WTE Sep 2020	WTE change since Aug 20	% change since Aug 20	WTE change since Dec 19	WTE change since Sep 19
<b>Total Older People</b>	<b>2,911</b>	<b>2,950</b>	<b>+39</b>	<b>+1.3%</b>	<b>+31</b>	<b>+8</b>
Consultants	1	2	+1	+100.0%	+1	+1
Registrars	3	3	+0	+5.6%		
SHO/ Interns		1	+1	-100.0%		
Medical/ Dental, other	31	35	+4	+12.6%	+14	+14
<b>Medical &amp; Dental</b>	<b>35</b>	<b>41</b>	<b>+6</b>	<b>+17.4%</b>	<b>+15</b>	<b>+15</b>
Nurse/ Midwife Manager	126	129	+3	+2.2%	+11	+4
Nurse/ Midwife Specialist & AN/MP	5	6	+2	+34.5%	+3	+3
Staff Nurse/ Staff Midwife	521	524	+3	+0.6%	+9	+10
Public Health Nurse	5	6	+1	+16.2%	+1	+2
Post-registration Nurse/ Midwife Student				-100.0%	-1	
Nursing/ Midwifery awaiting registration				-100.0%	-1	
Nursing/ Midwifery Student				-100.0%	-2	-1
<b>Nursing &amp; Midwifery</b>	<b>657</b>	<b>665</b>	<b>+8</b>	<b>+1.3%</b>	<b>+22</b>	<b>+18</b>
<b>Health &amp; Social Care Professionals</b>	<b>65</b>	<b>68</b>	<b>+3</b>	<b>+4.4%</b>	<b>+7</b>	<b>+10</b>
Management (VIII & above)	13	13			+0	+0
Administrative/ Supervisory (V to VII)	18	18	+0	+0.1%	+1	+0
Clerical (III & IV)	128	117	-11	-8.6%	-11	-8
<b>Management &amp; Administrative</b>	<b>160</b>	<b>149</b>	<b>-11</b>	<b>-6.9%</b>	<b>-9</b>	<b>-7</b>
Support	120	114	-6	-5.3%	+14	+12
Maintenance/ Technical	6	7	+1	+12.0%	+1	+1
<b>General Support</b>	<b>127</b>	<b>121</b>	<b>-6</b>	<b>-4.5%</b>	<b>+15</b>	<b>+13</b>
Health Care Assistants	818	808	-11	-1.3%	+26	+11
Care, other	31	43	+12	+39.1%	+12	+10
Home Help	1,019	1,057	+37	+3.7%	-57	-62
<b>Patient &amp; Client Care</b>	<b>1,869</b>	<b>1,907</b>	<b>+39</b>	<b>+2.1%</b>	<b>-18</b>	<b>-40</b>

## CHO 4 Employment by Administration (HSE / S38): September 2020

Sep 2020 (Dec 2019 figure: 8,189)	WTE Aug 2020	WTE Sep 2020	WTE change since Aug 20	% change since Aug 20	WTE change since Dec 19	WTE change since Sep 19
<b>Overall</b>	<b>8,363</b>	<b>8,475</b>	<b>+112</b>	<b>+1.3%</b>	<b>+286</b>	<b>+267</b>
<b>HSE</b>	<b>6,055</b>	<b>6,157</b>	<b>+102</b>	<b>+1.7%</b>	<b>+217</b>	<b>+219</b>
<b>Section 38 Voluntary Agencies</b>	<b>2,307</b>	<b>2,317</b>	<b>+10</b>	<b>+0.4%</b>	<b>+68</b>	<b>+48</b>

## HSE

Sep 2020 (Dec 2019 figure: 5,940)	WTE Aug 2020	WTE Sep 2020	WTE change since Aug 20	% change since Aug 20	WTE change since Dec 19	WTE change since Sep 19
<b>Overall</b>	<b>6,055</b>	<b>6,157</b>	<b>+102</b>	<b>+1.7%</b>	<b>+217</b>	<b>+219</b>
Consultants	57	63	+6	+0.1%	+8	+10
Registrars	96	96	+0	+0.0%	-2	-3
SHO/ Interns	30	41	+11	+0.4%	+9	+11
Medical/ Dental, other	109	125	+16	+0.1%	+27	+26
<b>Medical &amp; Dental</b>	<b>292</b>	<b>326</b>	<b>+33</b>	<b>+11.4%</b>	<b>+42</b>	<b>+44</b>
Nurse/ Midwife Manager	388	401	+13	+0.0%	+43	+4
Nurse/ Midwife Specialist & AN/MP	80	79	-0	-0.0%	+11	+14
Staff Nurse/ Staff Midwife	1,197	1,177	-21	-0.0%	+15	+32
Public Health Nurse	209	221	+12	+0.1%	+5	+10
<i>Pre-registration Nurse/ Midwife Intern</i>				-1.0%	-1	-21
<i>Pre-registration Nurse Intern (COVID-19)</i>	25	23	-2	-0.1%	+23	+23
<i>Post-registration Nurse/ Midwife Student</i>	2	9	+7	+3.4%	-5	-0
<i>Nursing/ Midwifery awaiting registration</i>	4	5	+1	+0.1%	+5	+5
Nursing/ Midwifery Student	31	36	+5	+0.2%	-18	+6
<b>Nursing &amp; Midwifery</b>	<b>1,906</b>	<b>1,914</b>	<b>+9</b>	<b>+0.5%</b>	<b>+57</b>	<b>+67</b>
Therapy Professions	373	377	+4	+0.0%	+18	+17
Health Science/ Diagnostics	10	10		+0.0%	+0	+0
Social Care	39	38	-1	-0.0%	-1	+1
Social Workers	99	102	+3	+0.0%	+14	+15
Psychologists	108	108	-0	-0.0%	+1	+9
Pharmacy	10	11	+1	+0.1%	+3	+2
H&SC, Other	58	61	+3	+0.0%	+5	+6
<b>Health &amp; Social Care Professionals</b>	<b>697</b>	<b>706</b>	<b>+9</b>	<b>+1.3%</b>	<b>+39</b>	<b>+50</b>
Management (VIII & above)	59	60	+2	+0.0%	+3	+4
Administrative/ Supervisory (V to VII)	134	132	-2	-0.0%	+8	+14
Clerical (III & IV)	433	426	-7	-0.0%	+11	+10
<b>Management &amp; Administrative</b>	<b>625</b>	<b>618</b>	<b>-7</b>	<b>-1.2%</b>	<b>+21</b>	<b>+28</b>
Support	228	234	+6	+0.0%	+27	+24
Maintenance/ Technical	12	13	+0	+0.0%	-1	-1
<b>General Support</b>	<b>240</b>	<b>246</b>	<b>+6</b>	<b>+2.6%</b>	<b>+27</b>	<b>+24</b>
Health Care Assistants	1,143	1,130	-13	-0.0%	+51	+32
Care, other	124	148	+24	+0.2%	+35	+33
Home Help	1,029	1,069	+40	+0.0%	-55	-60
<b>Patient &amp; Client Care</b>	<b>2,295</b>	<b>2,347</b>	<b>+52</b>	<b>+2.2%</b>	<b>+31</b>	<b>+5</b>

## Section 38 Voluntary Agencies

Sep 2020 (Dec 2019 figure: 2,249)	WTE Aug 2020	WTE Sep 2020	WTE change since Aug 20	% change since Aug 20	WTE change since Dec 19	WTE change since Sep 19
<b>Overall</b>	<b>2,307</b>	<b>2,317</b>	<b>+10</b>	<b>+0.4%</b>	<b>+68</b>	<b>+48</b>
Registrars	7	6	-1	-0.1%	+1	+1
SHO/ Interns	5	7	+2	+0.4%	+0	-0
Medical/ Dental, other	8	12	+4	+0.6%	-1	+0
<b>Medical &amp; Dental</b>	<b>20</b>	<b>25</b>	<b>+5</b>	<b>+26.7%</b>	<b>+1</b>	<b>+1</b>
Nurse/ Midwife Manager	74	74	-0	-0.0%	-0	-1
Nurse/ Midwife Specialist & AN/MP	12	12		+0.0%		
Staff Nurse/ Staff Midwife	276	273	-3	-0.0%	-12	-11
<i>Pre-registration Nurse/ Midwife Intern</i>				-1.0%	-8	-9
<i>Pre-registration Nurse Intern (COVID-19)</i>	26	19	-7	-0.3%	+19	+19
Nursing/ Midwifery Student	26	19	-7	-0.3%	+13	+11
Nursing/ Midwifery other	1	1		+0.0%		
<b>Nursing &amp; Midwifery</b>	<b>389</b>	<b>379</b>	<b>-10</b>	<b>-2.6%</b>	<b>+1</b>	<b>-2</b>
Therapy Professions	84	90	+5	+0.1%	+1	+1
Health Science/ Diagnostics	2	2		+0.0%		
Social Care	207	206	-0	-0.0%	+5	+5
Social Workers	26	26	-0	-0.0%	-1	-0
Psychologists	30	32	+2	+0.1%	+1	+1
H&SC, Other	6	6		+0.0%	+2	+2
<b>Health &amp; Social Care Professionals</b>	<b>354</b>	<b>361</b>	<b>+7</b>	<b>+2.1%</b>	<b>+8</b>	<b>+9</b>
Management (VIII & above)	15	16	+1	+0.0%	+1	+1
Administrative/ Supervisory (V to VII)	40	42	+2	+0.1%	+5	+4
Clerical (III & IV)	95	96	+2	+0.0%	+7	+2
<b>Management &amp; Administrative</b>	<b>150</b>	<b>155</b>	<b>+5</b>	<b>+3.0%</b>	<b>+12</b>	<b>+6</b>
Support	130	131	+2	+0.0%	+1	+6
Maintenance/ Technical	9	9	+0	+0.0%	+0	-0
<b>General Support</b>	<b>139</b>	<b>140</b>	<b>+2</b>	<b>+1.2%</b>	<b>+1</b>	<b>+6</b>
Health Care Assistants	919	911	-8	-0.0%	+35	-7
Care, other	337	347	+10	+0.0%	+10	+34
<b>Patient &amp; Client Care</b>	<b>1,256</b>	<b>1,257</b>	<b>+1</b>	<b>+0.1%</b>	<b>+45</b>	<b>+27</b>

## CHO 4 Employment by S38 Agency: September 2020

### Bros. of Charity, Southern

Sep 2020 (Dec 2019 figure: 740)	WTE Aug 2020	WTE Sep 2020	WTE change since Aug 20	% change since Aug 20	WTE change since Dec 19	WTE change since Sep 19
<b>Overall</b>	<b>763</b>	<b>765</b>	<b>+2</b>	<b>+0.3%</b>	<b>+24</b>	<b>+14</b>
Nurse/ Midwife Manager	15	15	+0	+0.0%	-0	-1
Nurse/ Midwife Specialist & AN/MP	3	3		+0.0%		
Staff Nurse/ Staff Midwife	56	55	-1	-0.0%	-4	-7
<b>Nursing &amp; Midwifery</b>	<b>74</b>	<b>73</b>	<b>-1</b>	<b>-1.1%</b>	<b>-4</b>	<b>-8</b>
Therapy Professions	44	49	+5	+0.1%	+1	+0
Social Care	127	125	-2	-0.0%	+1	+1
Social Workers	16	16	-0	-0.0%	-1	-0
Psychologists	18	21	+2	+0.1%	+1	+1
<b>Health &amp; Social Care Professionals</b>	<b>205</b>	<b>211</b>	<b>+6</b>	<b>+2.9%</b>	<b>+2</b>	<b>+2</b>
Management (VIII & above)	8	7	-0	-0.1%	-0	-0
Administrative/ Supervisory (V to VII)	10	10	-0	-0.0%	+1	+0
Clerical (III & IV)	34	36	+1	+0.0%	+3	-0
<b>Management &amp; Administrative</b>	<b>53</b>	<b>53</b>	<b>+0</b>	<b>+0.7%</b>	<b>+3</b>	<b>-1</b>
Support	14	14	+0	+0.0%	-0	-1
Maintenance/ Technical	2	2		+0.0%		-0
<b>General Support</b>	<b>16</b>	<b>16</b>	<b>+0</b>	<b>+0.6%</b>	<b>-0</b>	<b>-1</b>
Health Care Assistants	228	214	-13	-0.1%	+8	-7
Care, other	188	197	+10	+0.1%	+16	+29
<b>Patient &amp; Client Care</b>	<b>415</b>	<b>412</b>	<b>-4</b>	<b>-0.8%</b>	<b>+24</b>	<b>+22</b>

## Cope Foundation

Sep 2020 (Dec 2019 figure: 1,091)	WTE Aug 2020	WTE Sep 2020	WTE change since Aug 20	% change since Aug 20	WTE change since Dec 19	WTE change since Sep 19
<b>Overall</b>	<b>1,125</b>	<b>1,120</b>	<b>-5</b>	<b>-0.4%</b>	<b>+30</b>	<b>+10</b>
Nurse/ Midwife Manager	41	41		+0.0%		
Nurse/ Midwife Specialist & AN/MP	10	10		+0.0%		
Staff Nurse/ Staff Midwife	168	166	-2	-0.0%	-3	-2
Pre-registration Nurse/ Midwife Intern				-1.0%	-8	-9
Pre-registration Nurse Intern (COVID-19)	26	19	-7	-0.3%	+19	+19
Nursing/ Midwifery Student	26	19	-7	-0.3%	+13	+11
Nursing/ Midwifery other	1	1		+0.0%		
<b>Nursing &amp; Midwifery</b>	<b>246</b>	<b>236</b>	<b>-9</b>	<b>-3.8%</b>	<b>+10</b>	<b>+8</b>
Therapy Professions	37	37		+0.0%	-1	+0
Social Care	34	34		+0.0%	+2	-0
Social Workers	9	9		+0.0%		
Psychologists	11	11		+0.0%	+1	+1
H&SC, Other	3	3		+0.0%		
<b>Health &amp; Social Care Professionals</b>	<b>93</b>	<b>93</b>			<b>+3</b>	<b>+1</b>
Management (VIII & above)	7	7		+0.0%	+1	+1
Administrative/ Supervisory (V to VII)	19	23	+4	+0.2%	+4	+4
Clerical (III & IV)	25	25		+0.0%	+2	+2
<b>Management &amp; Administrative</b>	<b>51</b>	<b>55</b>	<b>+4</b>	<b>+7.3%</b>	<b>+7</b>	<b>+7</b>
Support	77	78	+1	+0.0%	+1	+7
Maintenance/ Technical	6	6		+0.0%		
<b>General Support</b>	<b>83</b>	<b>84</b>	<b>+1</b>	<b>+1.0%</b>	<b>+1</b>	<b>+7</b>
Health Care Assistants	575	577	+2	+0.0%	+13	-17
Care, other	78	76	-2	-0.0%	-3	+4
<b>Patient &amp; Client Care</b>	<b>653</b>	<b>653</b>	<b>-0</b>	<b>-0.0%</b>	<b>+10</b>	<b>-13</b>

## Cork Dental Hospital

Sep 2020 (Dec 2019 figure: 103)	WTE Aug 2020	WTE Sep 2020	WTE change since Aug 20	% change since Aug 20	WTE change since Dec 19	WTE change since Sep 19
<b>Overall</b>	<b>103</b>	<b>109</b>	<b>+6</b>	<b>+5.7%</b>	<b>+6</b>	<b>+6</b>
Registrars	7	6	-1	-0.1%	+1	+1
SHO/ Interns	5	7	+2	+0.4%	+0	-0
Medical/ Dental, other	8	12	+4	+0.6%	-1	+0
<b>Medical &amp; Dental</b>	<b>20</b>	<b>25</b>	<b>+5</b>	<b>+26.7%</b>	<b>+1</b>	<b>+1</b>
Nurse/ Midwife Manager	3	3	+0	+0.0%	+1	+1
Staff Nurse/ Staff Midwife	5	5	-0	-0.0%	-2	-0
<b>Nursing &amp; Midwifery</b>	<b>9</b>	<b>9</b>	<b>+0</b>	<b>+0.2%</b>	<b>-1</b>	<b>+1</b>
Health Science/ Diagnostics	2	2		+0.0%		
H&SC, Other	3	3		+0.0%	+2	+2
<b>Health &amp; Social Care Professionals</b>	<b>5</b>	<b>5</b>			<b>+2</b>	<b>+2</b>
Management (VIII & above)	1	1		+0.0%		
Administrative/ Supervisory (V to VII)	2	2		+0.0%		
Clerical (III & IV)	26	26	+1	+0.0%	+3	+1
<b>Management &amp; Administrative</b>	<b>29</b>	<b>29</b>	<b>+1</b>	<b>+2.3%</b>	<b>+3</b>	<b>+1</b>
Support	11	11	+0	+0.0%	+1	+1
<b>General Support</b>	<b>11</b>	<b>11</b>	<b>+0</b>	<b>+0.7%</b>	<b>+1</b>	<b>+1</b>
Care, other	30	30	-0	-0.0%	+0	+0
<b>Patient &amp; Client Care</b>	<b>30</b>	<b>30</b>	<b>-0</b>	<b>-0.3%</b>	<b>+0</b>	<b>+0</b>

# St. John of God, Kerry

Sep 2020 (Dec 2019 figure: 315)	WTE Aug 2020	WTE Sep 2020	WTE change since Aug 20	% change since Aug 20	WTE change since Dec 19	WTE change since Sep 19
<b>Overall</b>	<b>317</b>	<b>323</b>	<b>+7</b>	<b>+2.2%</b>	<b>+8</b>	<b>+18</b>
Nurse/ Midwife Manager	15	15	-0	-0.0%	-1	-0
Staff Nurse/ Staff Midwife	46	46	+0	+0.0%	-3	-2
<b>Nursing &amp; Midwifery</b>	<b>61</b>	<b>61</b>	<b>-0</b>	<b>-0.1%</b>	<b>-4</b>	<b>-2</b>
Therapy Professions	4	4		+0.0%	+0	+0
Social Care	46	47	+1	+0.0%	+2	+5
Social Workers	1	1		+0.0%		
Psychologists	1	1		+0.0%	-1	-1
<b>Health &amp; Social Care Professionals</b>	<b>51</b>	<b>53</b>	<b>+1</b>	<b>+2.9%</b>	<b>+1</b>	<b>+4</b>
Management (VIII & above)		1	+1	-1.0%		
Administrative/ Supervisory (V to VII)	8	7	-1	-0.1%	-0	-0
Clerical (III & IV)	9	9	-0	-0.0%	-1	-1
<b>Management &amp; Administrative</b>	<b>18</b>	<b>17</b>	<b>-0</b>	<b>-1.6%</b>	<b>-1</b>	<b>-1</b>
Support	27	28	+1	+0.0%	-0	-0
Maintenance/ Technical	2	2		+0.0%		
<b>General Support</b>	<b>29</b>	<b>30</b>	<b>+1</b>	<b>+2.1%</b>	<b>-0</b>	<b>-0</b>
Health Care Assistants	116	120	+3	+0.0%	+14	+17
Care, other	41	43	+2	+0.0%	-3	+1
<b>Patient &amp; Client Care</b>	<b>158</b>	<b>163</b>	<b>+5</b>	<b>+3.3%</b>	<b>+11</b>	<b>+18</b>

**CHO 4 Employment by Grade Group & Staff Category: September 2020**

Sep 2020 (Dec 2019 figure: 8,189)	WTE Aug 2020	WTE Sep 2020	WTE change since Aug 20	% change since Aug 20	WTE change since Dec 19	WTE change since Sep 19
<b>Overall</b>	<b>8,363</b>	<b>8,475</b>	<b>+112</b>	<b>+1.3%</b>	<b>+286</b>	<b>+267</b>
Consultant Dentistry	2	2				+0
Consultant Medicine	1	2	+1	+92.7%	+1	+1
Consultant Paediatrics	1	2	+1	+100.0%	+1	+1
Consultant Psychiatry	53	57	+4	+8.0%	+6	+8
<b>Consultants</b>	<b>57</b>	<b>63</b>	<b>+6</b>	<b>+10.9%</b>	<b>+8</b>	<b>+10</b>
Registrar	83	78	-5	-5.7%	-6	-7
Senior Registrar	11	16	+5	+43.1%	+5	+5
Specialist Registrar	9	8	-1	-9.5%	+1	+1
<b>Registrars</b>	<b>103</b>	<b>102</b>	<b>-1</b>	<b>-0.6%</b>	<b>-1</b>	<b>-2</b>
Interns	4	2	-2	-50.0%	-1	-1
Senior House Officer	31	46	+14	+46.5%	+10	+12
<b>SHO/ Interns</b>	<b>35</b>	<b>48</b>	<b>+12</b>	<b>+35.5%</b>	<b>+9</b>	<b>+11</b>
Dentists	54	61	+6	+11.9%	-2	+3
Other Medical	63	77	+14	+22.6%	+28	+24
<b>Medical/ Dental, other</b>	<b>117</b>	<b>137</b>	<b>+21</b>	<b>+17.7%</b>	<b>+26</b>	<b>+26</b>
<b>Medical &amp; Dental</b>	<b>312</b>	<b>350</b>	<b>+39</b>	<b>+12.4%</b>	<b>+39</b>	<b>+45</b>
Clinical Nurse/ Midwife Manager	358	371	+13	+3.8%	+34	-4
Director Nursing/Midwifery, Assistant	67	67	-1	-0.8%	+7	+3
Director of Nursing/Midwifery	38	37	-0	-0.7%	+2	+4
<b>Nurse/ Midwife Manager</b>	<b>463</b>	<b>475</b>	<b>+13</b>	<b>+2.7%</b>	<b>+43</b>	<b>+4</b>
Advanced Nurse/ Midwife Practitioner	7	7			-0	-0
Clinical Nurse/ Midwife Specialist	86	85	-0	-0.5%	+11	+14
<b>Nurse/ Midwife Specialist &amp; AN/MP</b>	<b>92</b>	<b>92</b>	<b>-0</b>	<b>-0.4%</b>	<b>+11</b>	<b>+14</b>
Staff Midwives	12	5	-7	-57.3%	-3	-1
Staff Nurse [Intellectual Disability]	86	81	-5	-6.1%	-6	-10
Staff Nurse [Psychiatric]	472	464	-9	-1.8%	-5	+1
Staff Nurses [General/ Children's]	903	900	-3	-0.3%	+18	+31
<b>Staff Nurse/ Staff Midwife</b>	<b>1,473</b>	<b>1,449</b>	<b>-24</b>	<b>-1.6%</b>	<b>+4</b>	<b>+21</b>
<b>Public Health Nurse</b>	<b>209</b>	<b>221</b>	<b>+12</b>	<b>+5.8%</b>	<b>+5</b>	<b>+10</b>
Pre-registration Nurse/ Midwife Intern				-100.0%	-9	-30
Pre-registration Nurse Intern (COVID-19)	51	42	-9	-18.3%	+42	+42
Post-registration Nurse/ Midwife Student	2	9	+7	+343.1%	-11	-0
Nursing/ Midwifery awaiting registration	4	5	+1	+15.0%	-27	+5
<b>Nursing/ Midwifery Student</b>	<b>57</b>	<b>55</b>	<b>-2</b>	<b>-3.6%</b>	<b>-5</b>	<b>+17</b>
<b>Nursing/ Midwifery other</b>	<b>1</b>	<b>1</b>				
<b>Nursing &amp; Midwifery</b>	<b>2,295</b>	<b>2,293</b>	<b>-1</b>	<b>-0.1%</b>	<b>+43</b>	<b>+65</b>
Dietitians	35	37	+2	+6.6%	+10	+6
Occupational Therapists	172	176	+4	+2.2%	+7	+6
Orthoptists	2	2			-2	-1
Physiotherapists	110	111	+1	+0.8%	+4	+4
Podiatrists & Chiropodists	8	8	+0	+0.6%	+2	+2
Speech & Language Therapists	130	133	+2	+1.8%	-2	+0
<b>Therapy Professions</b>	<b>457</b>	<b>467</b>	<b>+9</b>	<b>+2.0%</b>	<b>+19</b>	<b>+17</b>
Audiology	8	8			+1	+1
Physicists	1	1			-1	-1
Radiographers	3	3			+0	+0
<b>Health Science/ Diagnostics</b>	<b>12</b>	<b>12</b>			<b>+0</b>	<b>+0</b>

Sep 2020 (Dec 2019 figure: 8,189)	WTE Aug 2020	WTE Sep 2020	WTE change since Aug 20	% change since Aug 20	WTE change since Dec 19	WTE change since Sep 19
<b>Overall</b>	<b>8,363</b>	<b>8,475</b>	<b>+112</b>	<b>+1.3%</b>	<b>+286</b>	<b>+267</b>
<b>Social Care</b>	<b>245</b>	<b>244</b>	<b>-1</b>	<b>-0.6%</b>	<b>+4</b>	<b>+6</b>
<b>Social Workers</b>	<b>125</b>	<b>128</b>	<b>+3</b>	<b>+2.1%</b>	<b>+13</b>	<b>+15</b>
<b>Psychologists</b>	<b>137</b>	<b>140</b>	<b>+2</b>	<b>+1.7%</b>	<b>+2</b>	<b>+10</b>
<b>Pharmacy</b>	<b>10</b>	<b>11</b>	<b>+1</b>	<b>+10.1%</b>	<b>+3</b>	<b>+2</b>
Counsellor Therapists	40	39	-0	-0.9%	-1	-2
Dental Hygienists	10	11	+0	+4.6%	+2	+4
Other Health & Social Care	14	16	+2	+17.5%	+5	+5
Play Therapists/ Specialists	1	1	+0	+40.6%	+0	+0
<b>H&amp;SC, Other</b>	<b>64</b>	<b>67</b>	<b>+3</b>	<b>+4.3%</b>	<b>+7</b>	<b>+8</b>
<b>Health &amp; Social Care Professionals</b>	<b>1,051</b>	<b>1,068</b>	<b>+17</b>	<b>+1.6%</b>	<b>+60</b>	<b>+59</b>
Executive Management	16	17	+1	+4.5%	+2	+3
Senior Management (VIII & GM)	58	60	+2	+2.6%	+2	+3
<b>Management (VIII &amp; above)</b>	<b>74</b>	<b>76</b>	<b>+2</b>	<b>+3.0%</b>	<b>+3</b>	<b>+5</b>
<b>Administrative/ Supervisory (V to VII)</b>	<b>173</b>	<b>174</b>	<b>+1</b>	<b>+0.3%</b>	<b>+13</b>	<b>+18</b>
<b>Clerical (III &amp; IV)</b>	<b>528</b>	<b>522</b>	<b>-5</b>	<b>-1.0%</b>	<b>+18</b>	<b>+12</b>
<b>Management &amp; Administrative</b>	<b>775</b>	<b>772</b>	<b>-3</b>	<b>-0.3%</b>	<b>+58</b>	<b>+35</b>
Catering	61	60	-1	-2.0%	-0	-0
Household Services	208	201	-7	-3.3%	+11	+10
Other Support	76	91	+15	+20.4%	+17	+18
Portering	13	13	+0	+2.5%		+2
<b>Support</b>	<b>358</b>	<b>365</b>	<b>+8</b>	<b>+2.1%</b>	<b>+28</b>	<b>+30</b>
Maintenance	21	21	+0	+0.7%	-1	-1
Technical Services	1	1				
<b>Maintenance/ Technical</b>	<b>22</b>	<b>22</b>	<b>+0</b>	<b>+0.7%</b>	<b>-1</b>	<b>-1</b>
<b>General Support</b>	<b>379</b>	<b>387</b>	<b>+8</b>	<b>+2.0%</b>	<b>+11</b>	<b>+30</b>
HCA, Nurse's Aide, etc.	2,055	2,034	-21	-1.0%	+88	+29
Health & Social Care Assistants	6	6			-2	-4
<b>Health Care Assistants</b>	<b>2,061</b>	<b>2,040</b>	<b>-21</b>	<b>-1.0%</b>	<b>+86</b>	<b>+26</b>
<b>Care, other</b>	<b>461</b>	<b>495</b>	<b>+34</b>	<b>+7.4%</b>	<b>+45</b>	<b>+66</b>
<b>Home Help</b>	<b>1,029</b>	<b>1,069</b>	<b>+40</b>	<b>+3.9%</b>	<b>-55</b>	<b>-60</b>
<b>Patient &amp; Client Care</b>	<b>3,551</b>	<b>3,604</b>	<b>+53</b>	<b>+1.5%</b>	<b>+127</b>	<b>+32</b>

# CHO 4 HSE Employment by Grade Group & Staff Category: September 2020

Sep 2020 (Dec 2019 figure: 5,940)	WTE Aug 2020	WTE Sep 2020	WTE change since Aug 20	% change since Aug 20	WTE change since Dec 19	WTE change since Sep 19
<b>Overall</b>	<b>6,055</b>	<b>6,157</b>	<b>+102</b>	<b>+1.7%</b>	<b>+217</b>	<b>+219</b>
Consultant Dentistry	2	2				+0
Consultant Medicine	1	2	+1	+92.7%	+1	+1
Consultant Paediatrics	1	2	+1	+100.0%	+1	+1
Consultant Psychiatry	53	57	+4	+8.0%	+6	+8
<b>Consultants</b>	<b>57</b>	<b>63</b>	<b>+6</b>	<b>+10.9%</b>	<b>+8</b>	<b>+10</b>
Registrar	83	78	-5	-5.7%	-6	-7
Senior Registrar	11	16	+5	+43.1%	+5	+5
Specialist Registrar	2	2	+0	+8.7%		
<b>Registrars</b>	<b>96</b>	<b>96</b>	<b>+0</b>	<b>+0.4%</b>	<b>-2</b>	<b>-3</b>
<b>SHO/ Interns</b>	<b>30</b>	<b>41</b>	<b>+11</b>	<b>+35.1%</b>	<b>+9</b>	<b>+11</b>
Dentists	46	48	+2	+4.4%	-1	+2
Other Medical	63	77	+14	+22.6%	+28	+24
<b>Medical/ Dental, other</b>	<b>109</b>	<b>125</b>	<b>+16</b>	<b>+14.9%</b>	<b>+27</b>	<b>+26</b>
<b>Medical &amp; Dental</b>	<b>292</b>	<b>326</b>	<b>+33</b>	<b>+11.4%</b>	<b>+37</b>	<b>+44</b>
Clinical Nurse/ Midwife Manager	290	304	+14	+4.7%	+34	-3
Director Nursing/Midwifery, Assistant	63	63	-1	-0.8%	+7	+3
Director of Nursing/Midwifery	35	34	-0	-0.8%	+2	+4
<b>Nurse/ Midwife Manager</b>	<b>388</b>	<b>401</b>	<b>+13</b>	<b>+3.3%</b>	<b>+43</b>	<b>+4</b>
Advanced Nurse/ Midwife Practitioner	6	6			-0	-0
Clinical Nurse/ Midwife Specialist	74	74	-0	-0.5%	+11	+14
<b>Nurse/ Midwife Specialist &amp; AN/MP</b>	<b>80</b>	<b>79</b>	<b>-0</b>	<b>-0.5%</b>	<b>+11</b>	<b>+14</b>
Staff Midwives	12	5	-7	-57.3%	-3	-1
Staff Nurse [Intellectual Disability]				-100.0%	-1	-1
Staff Nurse [Psychiatric]	472	463	-9	-1.8%	-5	+1
Staff Nurses [General/ Children's]	714	709	-5	-0.8%	+25	+34
<b>Staff Nurse/ Staff Midwife</b>	<b>1,197</b>	<b>1,177</b>	<b>-21</b>	<b>-1.7%</b>	<b>+15</b>	<b>+32</b>
<b>Public Health Nurse</b>	<b>209</b>	<b>221</b>	<b>+12</b>	<b>+5.8%</b>	<b>+5</b>	<b>+10</b>
Pre-registration Nurse/ Midwife Intern				-100.0%	-3	-21
Pre-registration Nurse Intern (COVID-19)	25	23	-2	-9.4%	+23	+23
Post-registration Nurse/ Midwife Student	2	9	+7	+343.1%	-11	-0
Nursing/ Midwifery awaiting registration	4	5	+1	+15.0%	-27	+5
<b>Nursing/ Midwifery Student</b>	<b>31</b>	<b>36</b>	<b>+5</b>	<b>+15.7%</b>	<b>-18</b>	<b>+6</b>
<b>Nursing &amp; Midwifery</b>	<b>1,906</b>	<b>1,914</b>	<b>+9</b>	<b>+0.5%</b>	<b>+50</b>	<b>+67</b>
Dietitians	33	35	+2	+7.0%	+10	+6
Occupational Therapists	144	145	+1	+0.8%	+7	+6
Orthoptists	2	2			-2	-1
Physiotherapists	94	94	+0	+0.2%	+2	+3
Podiatrists & Chiropodists	8	8	+0	+0.6%	+2	+2
Speech & Language Therapists	93	93	+0	+0.1%	-1	-0
<b>Therapy Professions</b>	<b>373</b>	<b>377</b>	<b>+4</b>	<b>+1.0%</b>	<b>+18</b>	<b>+17</b>
Audiology	8	8			+1	+1
Physicists	1	1			-1	-1
Radiographers	1	1			+0	+0
<b>Health Science/ Diagnostics</b>	<b>10</b>	<b>10</b>			<b>+0</b>	<b>+0</b>
<b>Social Care</b>	<b>39</b>	<b>38</b>	<b>-1</b>	<b>-3.0%</b>	<b>-1</b>	<b>+1</b>
<b>Social Workers</b>	<b>99</b>	<b>102</b>	<b>+3</b>	<b>+2.9%</b>	<b>+14</b>	<b>+15</b>
<b>Psychologists</b>	<b>108</b>	<b>108</b>	<b>-0</b>	<b>-0.1%</b>	<b>+1</b>	<b>+9</b>
<b>Pharmacy</b>	<b>10</b>	<b>11</b>	<b>+1</b>	<b>+10.1%</b>	<b>+3</b>	<b>+2</b>
Counsellor Therapists	38	37	-0	-1.0%	-1	-2

Sep 2020 (Dec 2019 figure: 5,940)	WTE Aug 2020	WTE Sep 2020	WTE change since Aug 20	% change since Aug 20	WTE change since Dec 19	WTE change since Sep 19
<b>Overall</b>	<b>6,055</b>	<b>6,157</b>	<b>+102</b>	<b>+1.7%</b>	<b>+217</b>	<b>+219</b>
Dental Hygienists	7	8	+0	+6.5%	+0	+2
Other Health & Social Care	13	15	+2	+18.9%	+5	+5
Play Therapists/ Specialists	1	1	+0	+40.6%	+0	+0
<b>H&amp;SC, Other</b>	<b>58</b>	<b>61</b>	<b>+3</b>	<b>+4.8%</b>	<b>+5</b>	<b>+6</b>
<b>Health &amp; Social Care Professionals</b>	<b>697</b>	<b>706</b>	<b>+9</b>	<b>+1.3%</b>	<b>+44</b>	<b>+50</b>
Executive Management	13	14	+1	+5.6%	+2	+3
Senior Management (VIII & GM)	46	47	+1	+2.1%	+1	+2
<b>Management (VIII &amp; above)</b>	<b>59</b>	<b>60</b>	<b>+2</b>	<b>+2.9%</b>	<b>+3</b>	<b>+4</b>
<b>Administrative/ Supervisory (V to VII)</b>	<b>134</b>	<b>132</b>	<b>-2</b>	<b>-1.4%</b>	<b>+8</b>	<b>+14</b>
<b>Clerical (III &amp; IV)</b>	<b>433</b>	<b>426</b>	<b>-7</b>	<b>-1.6%</b>	<b>+11</b>	<b>+10</b>
<b>Management &amp; Administrative</b>	<b>625</b>	<b>618</b>	<b>-7</b>	<b>-1.2%</b>	<b>+46</b>	<b>+28</b>
Catering	45	44	-1	-2.8%	-0	-1
Household Services	160	154	-6	-3.8%	+12	+11
Other Support	15	28	+13	+84.7%	+15	+14
Portering	8	8	+0	+4.2%		
<b>Support</b>	<b>228</b>	<b>234</b>	<b>+6</b>	<b>+2.6%</b>	<b>+27</b>	<b>+24</b>
<b>Maintenance/ Technical</b>	<b>12</b>	<b>13</b>	<b>+0</b>	<b>+1.2%</b>	<b>-1</b>	<b>-1</b>
<b>General Support</b>	<b>240</b>	<b>246</b>	<b>+6</b>	<b>+2.6%</b>	<b>+5</b>	<b>+24</b>
HCA, Nurse's Aide, etc.	1,137	1,124	-13	-1.2%	+53	+36
Health & Social Care Assistants	6	6			-2	-4
<b>Health Care Assistants</b>	<b>1,143</b>	<b>1,130</b>	<b>-13</b>	<b>-1.2%</b>	<b>+51</b>	<b>+32</b>
<b>Care, other</b>	<b>124</b>	<b>148</b>	<b>+25</b>	<b>+19.8%</b>	<b>+35</b>	<b>+33</b>
<b>Home Help</b>	<b>1,029</b>	<b>1,069</b>	<b>+40</b>	<b>+3.9%</b>	<b>-55</b>	<b>-60</b>
<b>Patient &amp; Client Care</b>	<b>2,295</b>	<b>2,347</b>	<b>+52</b>	<b>+2.2%</b>	<b>+47</b>	<b>+5</b>

## Employment by WTE, Headcount, Gender, Full-Time /Part-Time etc.: Sep 2020

CHO 4	WTE	Headcount	WTE: no.	% Male	% female	Male WTE: no.	Female WTE: no.	% Total Perm	% Male Perm	% Female Perm	% Total Full Time	% Total Part Time	% Male FT	% Female FT
<b>Overall</b>	<b>8,475</b>	<b>10,472</b>	<b>1.24</b>	<b>15.8%</b>	<b>84.2%</b>	<b>1.11</b>	<b>1.26</b>	<b>74.6%</b>	<b>67.6%</b>	<b>75.9%</b>	<b>70.1%</b>	<b>29.9%</b>	<b>81.1%</b>	<b>68.0%</b>
Consultant Dentistry	2	2	1.00	50.0%	50.0%	1.00	1.00	100.0%	100.0%	100.0%	100.0%	0.0%	100.0%	100.0%
Consultant Medicine	2	4	1.89	25.0%	75.0%	1.00	2.68	50.0%	50.0%	33.3%	0.0%	100.0%	0.0%	0.0%
Consultant Paediatrics	2	2	1.00		100.0%		1.00	100.0%	100.0%	100.0%	0.0%	100.0%		0.0%
Consultant Psychiatry	57	62	1.09	29.0%	71.0%	1.12	1.08	37.1%	37.1%	45.5%	74.2%	25.8%	83.3%	70.5%
<b>Consultants</b>	<b>63</b>	<b>70</b>	<b>1.11</b>	<b>28.6%</b>	<b>71.4%</b>	<b>1.10</b>	<b>1.11</b>	<b>41.4%</b>	<b>25.0%</b>	<b>48.0%</b>	<b>68.6%</b>	<b>31.4%</b>	<b>80.0%</b>	<b>64.0%</b>
Registrar	78	80	1.02	42.5%	57.5%	1.00	1.04	1.3%	1.3%	0.0%	98.8%	1.3%	100.0%	97.8%
Senior Registrar	16	19	1.17	42.1%	57.9%	1.11	1.22	0.0%	0.0%	0.0%	73.7%	26.3%	75.0%	72.7%
Specialist Registrar	8	8	1.00	50.0%	50.0%	1.00	1.00	25.0%	25.0%	25.0%	100.0%	0.0%	100.0%	100.0%
<b>Registrars</b>	<b>102</b>	<b>107</b>	<b>1.04</b>	<b>43.0%</b>	<b>57.0%</b>	<b>1.02</b>	<b>1.07</b>	<b>2.8%</b>	<b>4.3%</b>	<b>1.6%</b>	<b>94.4%</b>	<b>5.6%</b>	<b>95.7%</b>	<b>93.4%</b>
Interns	2	2	1.00		100.0%		1.00	0.0%	0.0%	0.0%	100.0%	0.0%		100.0%
Senior House Officer	46	48	1.05	35.4%	64.6%	1.02	1.07	0.0%	0.0%	0.0%	93.8%	6.3%	100.0%	90.3%
<b>SHO/ Interns</b>	<b>48</b>	<b>50</b>	<b>1.05</b>	<b>34.0%</b>	<b>66.0%</b>	<b>1.02</b>	<b>1.07</b>	<b>0.0%</b>	<b>0.0%</b>	<b>0.0%</b>	<b>94.0%</b>	<b>6.0%</b>	<b>100.0%</b>	<b>90.9%</b>
Dentists	61	93	1.54	28.0%	72.0%	1.77	1.46	84.9%	84.9%	82.1%	33.3%	66.7%	30.8%	34.3%
Other Medical	77	122	1.59	40.2%	59.8%	1.79	1.48	36.9%	36.9%	42.5%	30.3%	69.7%	34.7%	27.4%
<b>Medical/ Dental, other</b>	<b>137</b>	<b>215</b>	<b>1.57</b>	<b>34.9%</b>	<b>65.1%</b>	<b>1.78</b>	<b>1.47</b>	<b>57.7%</b>	<b>50.7%</b>	<b>61.4%</b>	<b>31.6%</b>	<b>68.4%</b>	<b>33.3%</b>	<b>30.7%</b>
<b>Medical &amp; Dental</b>	<b>350</b>	<b>442</b>	<b>1.26</b>	<b>35.7%</b>	<b>64.3%</b>	<b>1.29</b>	<b>1.24</b>	<b>35.3%</b>	<b>28.5%</b>	<b>39.1%</b>	<b>59.7%</b>	<b>40.3%</b>	<b>64.6%</b>	<b>57.0%</b>
Clinical Nurse/ Midwife Manager	371	404	1.09	17.6%	82.4%	1.01	1.11	95.8%	95.8%	95.8%	78.5%	21.5%	98.6%	74.2%
Director Nursing/Midwifery, Assistant	67	71	1.06	18.3%	81.7%	1.06	1.06	98.6%	98.6%	98.3%	80.3%	19.7%	100.0%	75.9%
Director of Nursing/Midwifery	37	39	1.05	5.1%	94.9%	1.00	1.05	94.9%	94.9%	94.6%	87.2%	12.8%	100.0%	86.5%
<b>Nurse/ Midwife Manager</b>	<b>475</b>	<b>514</b>	<b>1.08</b>	<b>16.7%</b>	<b>83.3%</b>	<b>1.02</b>	<b>1.09</b>	<b>96.1%</b>	<b>96.5%</b>	<b>96.0%</b>	<b>79.4%</b>	<b>20.6%</b>	<b>98.8%</b>	<b>75.5%</b>
Advanced Nurse/ Midwife Practitioner	7	7	1.07	28.6%	71.4%	1.09	1.06	100.0%	100.0%	100.0%	85.7%	14.3%	100.0%	80.0%
Clinical Nurse/ Midwife Specialist	85	93	1.09	11.8%	88.2%	1.00	1.10	96.8%	96.8%	97.6%	78.5%	21.5%	100.0%	75.6%
<b>Nurse/ Midwife Specialist &amp; AN/MP</b>	<b>92</b>	<b>100</b>	<b>1.09</b>	<b>13.0%</b>	<b>87.0%</b>	<b>1.02</b>	<b>1.10</b>	<b>97.0%</b>	<b>92.3%</b>	<b>97.7%</b>	<b>79.0%</b>	<b>21.0%</b>	<b>100.0%</b>	<b>75.9%</b>
Staff Midwives	5	7	1.43		100.0%		1.43	100.0%	100.0%	100.0%	14.3%	85.7%		14.3%
Staff Nurse [Intellectual Disability]	81	102	1.26	4.9%	95.1%	1.10	1.27	92.2%	92.2%	91.8%	52.9%	47.1%	80.0%	51.5%
Staff Nurse [Psychiatric]	464	505	1.09	29.7%	70.3%	1.05	1.11	83.4%	83.4%	85.1%	88.1%	11.9%	94.7%	85.4%
Staff Nurses [General/ Children's]	900	1,136	1.26	4.8%	95.2%	1.05	1.28	76.2%	76.2%	76.8%	47.7%	52.3%	88.9%	45.7%
<b>Staff Nurse/ Staff Midwife</b>	<b>1,449</b>	<b>1,750</b>	<b>1.21</b>	<b>11.9%</b>	<b>88.1%</b>	<b>1.05</b>	<b>1.23</b>	<b>79.3%</b>	<b>76.1%</b>	<b>79.8%</b>	<b>59.5%</b>	<b>40.5%</b>	<b>92.8%</b>	<b>55.0%</b>

<b>Public Health Nurse</b>	<b>221</b>	<b>276</b>	<b>1.25</b>	<b>0.4%</b>	<b>99.6%</b>	<b>1.00</b>	<b>1.25</b>	<b>87.3%</b>	<b>100.0%</b>	<b>87.3%</b>	<b>68.8%</b>	<b>31.2%</b>	<b>100.0%</b>	<b>68.7%</b>
Pre-registration Nurse Intern (C0VID-19)	42	42	1.00	19.0%	81.0%	1.00	1.00	0.0%	0.0%	0.0%	97.6%	2.4%	100.0%	97.1%
Post-registration Nurse/ Midwife Student	9	9	1.04		100.0%		1.04	66.7%	66.7%	66.7%	44.4%	55.6%		44.4%
Nursing/ Midwifery awaiting registration	5	5	1.09	20.0%	80.0%	1.00	1.11	60.0%	60.0%	50.0%	100.0%	0.0%	100.0%	100.0%
<b>Nursing/ Midwifery Student</b>	<b>55</b>	<b>56</b>	<b>1.01</b>	<b>16.1%</b>	<b>83.9%</b>	<b>1.00</b>	<b>1.02</b>	<b>16.1%</b>	<b>11.1%</b>	<b>17.0%</b>	<b>89.3%</b>	<b>10.7%</b>	<b>100.0%</b>	<b>87.2%</b>
<b>Nursing/ Midwifery other</b>	<b>1</b>	<b>1</b>	<b>1.96</b>		<b>100.0%</b>		<b>1.96</b>	<b>100.0%</b>		<b>100.0%</b>	<b>0.0%</b>	<b>100.0%</b>		<b>0.0%</b>
<b>Nursing &amp; Midwifery</b>	<b>2,293</b>	<b>2,697</b>	<b>1.18</b>	<b>11.8%</b>	<b>88.2%</b>	<b>1.04</b>	<b>1.20</b>	<b>82.7%</b>	<b>80.5%</b>	<b>83.0%</b>	<b>65.6%</b>	<b>34.4%</b>	<b>95.0%</b>	<b>61.7%</b>
Dietitians	37	45	1.21		100.0%		1.21	77.8%	77.8%	77.8%	71.1%	28.9%		71.1%
Occupational Therapists	176	208	1.18	6.3%	93.8%	1.07	1.19	85.6%	85.6%	85.6%	70.7%	29.3%	76.9%	70.3%
Orthoptists	2	2	1.33		100.0%		1.33	50.0%	50.0%	50.0%	50.0%	50.0%		50.0%
Physiotherapists	111	132	1.19	18.2%	81.8%	1.03	1.24	84.8%	84.8%	86.1%	61.4%	38.6%	79.2%	57.4%
Podiatrists & Chiropodists	8	11	1.30	36.4%	63.6%	1.14	1.40	45.5%	45.5%	42.9%	63.6%	36.4%	75.0%	57.1%
Speech & Language Therapists	133	160	1.21	1.3%	98.8%	1.06	1.21	83.8%	83.8%	83.5%	68.8%	31.3%	50.0%	69.0%
<b>Therapy Professions</b>	<b>467</b>	<b>558</b>	<b>1.20</b>	<b>7.7%</b>	<b>92.3%</b>	<b>1.05</b>	<b>1.21</b>	<b>83.3%</b>	<b>79.1%</b>	<b>83.7%</b>	<b>67.7%</b>	<b>32.3%</b>	<b>76.7%</b>	<b>67.0%</b>
Audiology	8	8	1.00	37.5%	62.5%	1.00	1.00	87.5%	87.5%	80.0%	100.0%	0.0%	100.0%	100.0%
Physicists	1	1	1.00		100.0%		1.00	100.0%	100.0%	100.0%	100.0%	0.0%		100.0%
Radiographers	3	4	1.22		100.0%		1.22	75.0%	75.0%	75.0%	75.0%	25.0%		75.0%
<b>Health Science/ Diagnostics</b>	<b>12</b>	<b>13</b>	<b>1.06</b>	<b>23.1%</b>	<b>76.9%</b>	<b>1.00</b>	<b>1.08</b>	<b>84.6%</b>	<b>100.0%</b>	<b>80.0%</b>	<b>92.3%</b>	<b>7.7%</b>	<b>100.0%</b>	<b>90.0%</b>
<b>Social Care</b>	<b>244</b>	<b>279</b>	<b>1.14</b>	<b>14.7%</b>	<b>85.3%</b>	<b>1.05</b>	<b>1.16</b>	<b>90.0%</b>	<b>85.4%</b>	<b>90.8%</b>	<b>66.7%</b>	<b>33.3%</b>	<b>92.7%</b>	<b>62.2%</b>
<b>Social Workers</b>	<b>128</b>	<b>147</b>	<b>1.15</b>	<b>17.0%</b>	<b>83.0%</b>	<b>1.02</b>	<b>1.18</b>	<b>83.0%</b>	<b>76.0%</b>	<b>84.4%</b>	<b>82.3%</b>	<b>17.7%</b>	<b>96.0%</b>	<b>79.5%</b>
<b>Psychologists</b>	<b>140</b>	<b>160</b>	<b>1.15</b>	<b>22.5%</b>	<b>77.5%</b>	<b>1.03</b>	<b>1.18</b>	<b>78.1%</b>	<b>77.8%</b>	<b>78.2%</b>	<b>75.6%</b>	<b>24.4%</b>	<b>94.4%</b>	<b>70.2%</b>
<b>Pharmacy</b>	<b>11</b>	<b>15</b>	<b>1.38</b>	<b>13.3%</b>	<b>86.7%</b>	<b>1.55</b>	<b>1.36</b>	<b>46.7%</b>	<b>50.0%</b>	<b>46.2%</b>	<b>40.0%</b>	<b>60.0%</b>	<b>0.0%</b>	<b>46.2%</b>
Counsellor Therapists	39	42	1.07	54.8%	45.2%	1.04	1.10	95.2%	95.2%	89.5%	92.9%	7.1%	95.7%	89.5%
Dental Hygienists	11	15	1.42	6.7%	93.3%	1.00	1.46	100.0%	100.0%	100.0%	33.3%	66.7%	100.0%	28.6%
Other Health & Social Care	16	18	1.12	38.9%	61.1%	1.08	1.14	66.7%	66.7%	72.7%	61.1%	38.9%	71.4%	54.5%
Play Therapists/ Specialists	1	1	1.03		100.0%		1.03	100.0%	100.0%	100.0%	0.0%	100.0%		0.0%
<b>H&amp;SC, Other</b>	<b>67</b>	<b>76</b>	<b>1.14</b>	<b>40.8%</b>	<b>59.2%</b>	<b>1.05</b>	<b>1.20</b>	<b>89.5%</b>	<b>90.3%</b>	<b>88.9%</b>	<b>72.4%</b>	<b>27.6%</b>	<b>90.3%</b>	<b>60.0%</b>
<b>Health &amp; Social Care</b>	<b>1,068</b>	<b>1,248</b>	<b>1.17</b>	<b>14.5%</b>	<b>85.5%</b>	<b>1.04</b>	<b>1.19</b>	<b>84.1%</b>	<b>81.8%</b>	<b>84.4%</b>	<b>70.4%</b>	<b>29.6%</b>	<b>88.4%</b>	<b>67.4%</b>
Executive Management	17	17	1.02	35.3%	64.7%	1.04	1.01	94.1%	94.1%	90.9%	100.0%	0.0%	100.0%	100.0%
Senior Management (VIII & GM)	60	63	1.06	28.6%	71.4%	1.03	1.07	92.1%	92.1%	97.8%	87.3%	12.7%	94.4%	84.4%
<b>Management (VIII &amp; above)</b>	<b>76</b>	<b>80</b>	<b>1.05</b>	<b>30.0%</b>	<b>70.0%</b>	<b>1.04</b>	<b>1.06</b>	<b>92.5%</b>	<b>83.3%</b>	<b>96.4%</b>	<b>90.0%</b>	<b>10.0%</b>	<b>95.8%</b>	<b>87.5%</b>
<b>Administrative/ Supervisory (V to VII)</b>	<b>174</b>	<b>193</b>	<b>1.11</b>	<b>18.7%</b>	<b>81.3%</b>	<b>1.08</b>	<b>1.12</b>	<b>85.5%</b>	<b>75.0%</b>	<b>87.9%</b>	<b>76.7%</b>	<b>23.3%</b>	<b>88.9%</b>	<b>73.9%</b>
<b>Clerical (III &amp; IV)</b>	<b>522</b>	<b>663</b>	<b>1.27</b>	<b>6.9%</b>	<b>93.1%</b>	<b>1.16</b>	<b>1.28</b>	<b>73.3%</b>	<b>71.7%</b>	<b>73.4%</b>	<b>52.9%</b>	<b>47.1%</b>	<b>65.2%</b>	<b>52.0%</b>
<b>Management &amp; Administrative</b>	<b>772</b>	<b>936</b>	<b>1.21</b>	<b>11.3%</b>	<b>88.7%</b>	<b>1.10</b>	<b>1.23</b>	<b>77.5%</b>	<b>75.5%</b>	<b>77.7%</b>	<b>61.0%</b>	<b>39.0%</b>	<b>80.2%</b>	<b>58.6%</b>
Catering	60	70	1.17	40.0%	60.0%	1.15	1.17	84.3%	84.3%	83.3%	81.4%	18.6%	96.4%	71.4%

Household Services	201	256	1.27	26.6%	73.4%	1.24	1.29	67.2%	67.2%	71.8%	56.3%	43.8%	72.1%	50.5%
Other Support	91	159	1.74	23.9%	76.1%	1.30	1.95	81.8%	81.8%	79.3%	26.4%	73.6%	81.6%	9.1%
Portering	13	18	1.38	100.0%		1.38		94.4%	94.4%		55.6%	44.4%	55.6%	
<b>Support</b>	<b>365</b>	<b>503</b>	<b>1.38</b>	<b>30.2%</b>	<b>69.8%</b>	<b>1.26</b>	<b>1.44</b>	<b>75.1%</b>	<b>73.7%</b>	<b>75.8%</b>	<b>50.3%</b>	<b>49.7%</b>	<b>77.0%</b>	<b>38.7%</b>
<b>Maintenance/ Technical</b>	<b>22</b>	<b>27</b>	<b>1.24</b>	<b>85.2%</b>	<b>14.8%</b>	<b>1.22</b>	<b>1.37</b>	<b>92.6%</b>	<b>91.3%</b>	<b>100.0%</b>	<b>66.7%</b>	<b>33.3%</b>	<b>73.9%</b>	<b>25.0%</b>
<b>General Support</b>	<b>387</b>	<b>530</b>	<b>1.37</b>	<b>33.0%</b>	<b>67.0%</b>	<b>1.25</b>	<b>1.44</b>	<b>76.0%</b>	<b>76.0%</b>	<b>76.1%</b>	<b>51.1%</b>	<b>48.9%</b>	<b>76.6%</b>	<b>38.6%</b>
HCA, Nurse's Aide, etc.	2,034	2,340	1.15	21.5%	78.5%	1.07	1.17	73.5%	73.5%	74.0%	68.2%	31.8%	78.3%	65.4%
Health & Social Care Assistants	6	6	1.00		100.0%		1.00	0.0%	0.0%	0.0%	83.3%	16.7%		83.3%
<b>Health Care Assistants</b>	<b>2,040</b>	<b>2,346</b>	<b>1.15</b>	<b>21.4%</b>	<b>78.6%</b>	<b>1.07</b>	<b>1.17</b>	<b>73.4%</b>	<b>71.7%</b>	<b>73.8%</b>	<b>68.2%</b>	<b>31.8%</b>	<b>78.3%</b>	<b>65.5%</b>
<b>Care, other</b>	<b>495</b>	<b>591</b>	<b>1.19</b>	<b>19.8%</b>	<b>80.2%</b>	<b>1.10</b>	<b>1.22</b>	<b>80.0%</b>	<b>65.0%</b>	<b>83.8%</b>	<b>54.1%</b>	<b>45.9%</b>	<b>65.8%</b>	<b>51.3%</b>
<b>Home Help</b>	<b>1,069</b>	<b>1,682</b>	<b>1.57</b>	<b>5.7%</b>	<b>94.3%</b>	<b>1.35</b>	<b>1.59</b>	<b>62.8%</b>	<b>19.8%</b>	<b>65.4%</b>	<b>98.8%</b>	<b>1.2%</b>	<b>91.7%</b>	<b>99.2%</b>
<b>Patient &amp; Client Care</b>	<b>3,604</b>	<b>4,619</b>	<b>1.28</b>	<b>15.5%</b>	<b>84.5%</b>	<b>1.11</b>	<b>1.32</b>	<b>70.4%</b>	<b>63.6%</b>	<b>71.6%</b>	<b>77.5%</b>	<b>22.5%</b>	<b>78.0%</b>	<b>77.5%</b>

## Employment by WTE, Headcount, Gender, Full-Time /Part-Time etc.: Sep 2020

CHO 4	WTE	Headcount	WTE: no.	% Male	% female	Male WTE: no.	Female WTE: no.	% Total Perm	% Male Perm	% Female Perm	% Total Full Time	% Total Part Time	% Male FT	% Female FT
<b>Overall</b>	<b>8,475</b>	<b>10,472</b>	<b>1.24</b>	<b>15.8%</b>	<b>84.2%</b>	<b>1.11</b>	<b>1.26</b>	<b>74.6%</b>	<b>67.6%</b>	<b>75.9%</b>	<b>70.1%</b>	<b>29.9%</b>	<b>81.1%</b>	<b>68.0%</b>
Community Health & Wellbeing	34	42	1.25	2.4%	97.6%	1.00	1.26	92.9%	92.9%	92.7%	52.4%	47.6%	100.0%	100.0%
Mental Health	1,569	1,727	1.10	25.2%	74.8%	1.04	1.12	75.0%	75.0%	77.3%	83.8%	16.2%	93.6%	93.6%
Primary Care	1,410	1,746	1.24	10.4%	89.6%	1.18	1.25	75.0%	75.0%	76.3%	56.6%	43.4%	69.2%	69.2%
HSE	3,253	4,286	1.32	12.2%	87.8%	1.13	1.35	67.8%	67.8%	69.4%	75.0%	25.0%	86.6%	86.6%
Section 38 Voluntary Agencies	2,208	2,671	1.21	19.2%	80.8%	1.14	1.23	84.7%	84.7%	85.8%	62.3%	37.7%	69.2%	69.2%
Social Care	5,462	6,957	1.27	14.9%	85.1%	1.14	1.30	74.3%	74.3%	75.4%	70.1%	29.9%	78.0%	78.0%

## CHO 4 Skills Mix by Staff Grouping: September 2020

Sep 2020 (Dec 2018 figure: 8,138)	WTE Dec 2015	WTE Dec 2016	WTE Dec 2017	WTE Dec 2018	WTE Dec 2019	WTE Aug 2020	WTE Sep 2020
<b>Overall</b>	<b>7,461</b>	<b>7,639</b>	<b>7,983</b>	<b>8,138</b>	<b>8,189</b>	<b>8,363</b>	<b>8,475</b>
Consultant Dentistry	0.7%	0.7%	0.7%	0.6%	0.6%	0.6%	0.6%
Consultant Medicine	0.9%	0.9%	0.3%	0.3%	0.4%	0.4%	0.6%
Consultant Paediatrics	0.1%	0.1%	0.3%	0.3%	0.3%	0.3%	0.6%
Consultant Psychiatry	15.9%	16.1%	15.7%	15.8%	16.5%	16.9%	16.3%
<b>Consultants</b>	<b>17.7%</b>	<b>17.8%</b>	<b>17.1%</b>	<b>17.1%</b>	<b>17.8%</b>	<b>18.2%</b>	<b>18.0%</b>
Registrar	23.1%	22.8%	23.6%	25.2%	27.5%	26.6%	22.3%
Senior Registrar	3.2%	3.3%	3.6%	3.5%	3.8%	3.6%	4.6%
Specialist Registrar	1.5%	1.1%	1.3%	1.3%	2.3%	2.8%	2.3%
<b>Registrars</b>	<b>27.8%</b>	<b>27.2%</b>	<b>28.5%</b>	<b>30.0%</b>	<b>33.6%</b>	<b>33.1%</b>	<b>29.2%</b>
Interns	1.1%	1.1%	1.0%	1.0%	1.0%	1.3%	0.6%
Senior House Officer	14.0%	13.5%	12.9%	13.2%	11.4%	10.0%	13.0%
<b>SHO/ Interns</b>	<b>15.1%</b>	<b>14.5%</b>	<b>13.9%</b>	<b>14.2%</b>	<b>12.4%</b>	<b>11.3%</b>	<b>13.6%</b>
Dentists	22.4%	22.0%	20.8%	20.9%	20.3%	17.3%	17.3%
Other Medical	17.1%	18.4%	19.8%	17.8%	15.9%	20.1%	21.9%
<b>Medical/ Dental, other</b>	<b>39.5%</b>	<b>40.5%</b>	<b>40.6%</b>	<b>38.7%</b>	<b>36.2%</b>	<b>37.4%</b>	<b>39.2%</b>
<b>Medical &amp; Dental</b>	<b>3.7%</b>	<b>3.7%</b>	<b>3.8%</b>	<b>3.8%</b>	<b>3.8%</b>	<b>100.0%</b>	<b>4.1%</b>
Clinical Nurse/ Midwife Manager	14.3%	14.1%	13.8%	14.3%	15.1%	15.6%	16.2%
Director Nursing/Midwifery, Assistant	2.4%	2.4%	2.1%	2.1%	2.7%	2.9%	2.9%
Director of Nursing/Midwifery	1.0%	0.8%	0.8%	0.8%	1.6%	1.6%	1.6%
<b>Nurse/ Midwife Manager</b>	<b>17.8%</b>	<b>17.3%</b>	<b>16.7%</b>	<b>17.2%</b>	<b>19.4%</b>	<b>20.2%</b>	<b>20.7%</b>
Advanced Nurse/ Midwife Practitioner	0.2%	0.1%	0.1%	0.2%	0.3%	0.3%	0.3%
Clinical Nurse/ Midwife Specialist	2.3%	2.5%	2.9%	3.0%	3.3%	3.7%	3.7%
<b>Nurse/ Midwife Specialist &amp; AN/MP</b>	<b>2.5%</b>	<b>2.7%</b>	<b>3.0%</b>	<b>3.2%</b>	<b>3.6%</b>	<b>4.0%</b>	<b>4.0%</b>
Graduate Nursing/ Midwifery	0.0%						
Staff Midwives	0.1%	0.1%	0.2%	0.3%	0.4%	0.5%	0.2%
Staff Nurse [Intellectual Disability]	2.9%	3.0%	3.1%	3.9%	3.9%	3.7%	3.5%
Staff Nurse [Psychiatric]	24.6%	24.6%	23.9%	23.3%	21.0%	20.6%	20.2%
Staff Nurses [General/ Children's]	41.6%	41.9%	42.6%	41.4%	39.5%	39.4%	39.2%
<b>Staff Nurse/ Staff Midwife</b>	<b>69.3%</b>	<b>69.6%</b>	<b>69.8%</b>	<b>68.9%</b>	<b>64.7%</b>	<b>64.2%</b>	<b>63.2%</b>
<b>Public Health Nurse</b>	<b>9.7%</b>	<b>9.6%</b>	<b>9.4%</b>	<b>9.7%</b>	<b>9.7%</b>	<b>9.1%</b>	<b>9.6%</b>
Pre-registration Nurse/ Midwife Intern	0.4%	0.4%	0.3%	0.4%	0.4%		
Pre-registration Nurse Intern (COVID-19)						2.2%	1.8%
Post-registration Nurse/ Midwife Student	0.3%	0.4%	0.7%	0.6%	0.9%	0.1%	0.4%
Nursing/ Midwifery awaiting registration					1.4%	0.2%	0.2%
<b>Nursing/ Midwifery Student</b>	<b>0.7%</b>	<b>0.7%</b>	<b>1.1%</b>	<b>1.0%</b>	<b>2.7%</b>	<b>2.5%</b>	<b>2.4%</b>
<b>Nursing/ Midwifery other</b>	<b>0.0%</b>	<b>0.0%</b>	<b>0.0%</b>	<b>0.0%</b>	<b>0.0%</b>	<b>0.0%</b>	<b>0.0%</b>
<b>Nursing &amp; Midwifery</b>	<b>29.9%</b>	<b>29.4%</b>	<b>28.8%</b>	<b>27.7%</b>	<b>27.5%</b>	<b>100.0%</b>	<b>27.1%</b>
Dietitians	1.5%	2.0%	2.4%	2.8%	2.7%	3.3%	3.5%
Occupational Therapists	17.3%	16.3%	16.6%	16.2%	16.6%	16.4%	16.5%
Orthoptists	0.1%	0.0%	0.1%	0.0%	0.3%	0.1%	0.1%
Physiotherapists	11.6%	11.2%	11.1%	10.7%	10.5%	10.5%	10.4%
Podiatrists & Chiropodists	0.7%	0.9%	0.8%	0.7%	0.6%	0.8%	0.8%
Speech & Language Therapists	13.5%	14.1%	14.2%	13.3%	13.2%	12.4%	12.4%
<b>Therapy Professions</b>	<b>44.6%</b>	<b>44.4%</b>	<b>45.2%</b>	<b>43.8%</b>	<b>43.9%</b>	<b>43.5%</b>	<b>43.7%</b>
Audiology	0.6%	0.5%	0.6%	0.7%	0.7%	0.8%	0.7%
Medical Laboratory	1.4%						
Phlebotomists	0.1%	0.1%	0.1%				
Physicists	0.2%	0.2%	0.2%	0.2%	0.2%	0.1%	0.1%
Radiographers	0.3%	0.2%	0.2%	0.3%	0.3%	0.3%	0.3%
<b>Health Science/ Diagnostics</b>	<b>2.6%</b>	<b>1.1%</b>	<b>1.1%</b>	<b>1.2%</b>	<b>1.2%</b>	<b>1.2%</b>	<b>1.2%</b>
<b>Social Care</b>	<b>23.4%</b>	<b>23.3%</b>	<b>22.8%</b>	<b>22.9%</b>	<b>23.5%</b>	<b>23.3%</b>	<b>22.8%</b>

Sep 2020 (Dec 2018 figure: 8,138)	WTE Dec 2015	WTE Dec 2016	WTE Dec 2017	WTE Dec 2018	WTE Dec 2019	WTE Aug 2020	WTE Sep 2020
<b>Overall</b>	<b>7,461</b>	<b>7,639</b>	<b>7,983</b>	<b>8,138</b>	<b>8,189</b>	<b>8,363</b>	<b>8,475</b>
<b>Social Workers</b>	<b>11.7%</b>	<b>11.9%</b>	<b>12.0%</b>	<b>12.0%</b>	<b>11.2%</b>	<b>11.9%</b>	<b>12.0%</b>
<b>Psychologists</b>	<b>11.0%</b>	<b>11.7%</b>	<b>11.8%</b>	<b>13.2%</b>	<b>13.5%</b>	<b>13.1%</b>	<b>13.1%</b>
<b>Pharmacy</b>	<b>1.0%</b>	<b>0.9%</b>	<b>1.0%</b>	<b>1.0%</b>	<b>0.8%</b>	<b>0.9%</b>	<b>1.0%</b>
Counsellor Therapists	3.6%	4.6%	4.4%	4.0%	4.0%	3.8%	3.7%
Dental Hygienists	0.8%	0.8%	0.7%	0.7%	0.8%	1.0%	1.0%
Other Health & Social Care	1.1%	1.1%	1.0%	1.0%	1.1%	1.3%	1.5%
Play Therapists/ Specialists	0.2%	0.2%	0.1%	0.1%	0.1%	0.1%	0.1%
<b>H&amp;SC, Other</b>	<b>5.6%</b>	<b>6.7%</b>	<b>6.2%</b>	<b>5.8%</b>	<b>5.9%</b>	<b>6.1%</b>	<b>6.3%</b>
<b>Health &amp; Social Care Professionals</b>	<b>11.7%</b>	<b>12.1%</b>	<b>12.3%</b>	<b>12.4%</b>	<b>12.3%</b>	<b>100.0%</b>	<b>12.6%</b>
Executive Management	1.5%	2.0%	2.1%	2.0%	2.0%	2.1%	2.2%
Senior Management (VIII & GM)	7.7%	7.4%	7.7%	6.7%	7.8%	7.5%	7.7%
<b>Management (VIII &amp; above)</b>	<b>9.3%</b>	<b>9.4%</b>	<b>9.9%</b>	<b>8.6%</b>	<b>9.9%</b>	<b>9.5%</b>	<b>9.9%</b>
<b>Administrative/ Supervisory (V to VII)</b>	<b>19.5%</b>	<b>19.6%</b>	<b>19.2%</b>	<b>19.2%</b>	<b>21.8%</b>	<b>22.4%</b>	<b>22.5%</b>
<b>Clerical (III &amp; IV)</b>	<b>71.2%</b>	<b>71.0%</b>	<b>71.0%</b>	<b>72.2%</b>	<b>68.3%</b>	<b>68.1%</b>	<b>67.6%</b>
<b>Management &amp; Administrative</b>	<b>7.9%</b>	<b>8.0%</b>	<b>8.3%</b>	<b>8.8%</b>	<b>8.7%</b>	<b>100.0%</b>	<b>9.1%</b>
Catering	13.1%	13.5%	13.9%	15.6%	16.8%	16.2%	15.5%
Household Services	62.1%	60.4%	59.0%	55.7%	52.8%	54.8%	51.9%
Other Support	14.4%	15.3%	16.3%	19.6%	20.6%	20.0%	23.6%
Portering	3.1%	3.1%	2.7%	2.9%	3.6%	3.4%	3.4%
<b>Support</b>	<b>92.7%</b>	<b>92.2%</b>	<b>92.0%</b>	<b>93.7%</b>	<b>93.8%</b>	<b>94.3%</b>	<b>94.4%</b>
<b>Maintenance/ Technical</b>	<b>7.3%</b>	<b>7.8%</b>	<b>8.0%</b>	<b>6.3%</b>	<b>6.2%</b>	<b>5.7%</b>	<b>5.6%</b>
<b>General Support</b>	<b>6.0%</b>	<b>5.5%</b>	<b>5.0%</b>	<b>4.6%</b>	<b>4.6%</b>	<b>100.0%</b>	<b>4.6%</b>
HCA, Nurse's Aide, etc.	50.2%	53.1%	53.6%	55.3%	55.2%	57.9%	56.4%
Health & Social Care Assistants		0.1%	0.0%	0.4%	0.2%	0.2%	0.2%
<b>Health Care Assistants</b>	<b>50.2%</b>	<b>53.2%</b>	<b>53.6%</b>	<b>55.7%</b>	<b>55.4%</b>	<b>58.1%</b>	<b>56.6%</b>
<b>Care, other</b>	<b>12.5%</b>	<b>12.5%</b>	<b>12.5%</b>	<b>12.4%</b>	<b>12.8%</b>	<b>13.0%</b>	<b>13.7%</b>
<b>Home Help</b>	<b>37.3%</b>	<b>34.3%</b>	<b>33.9%</b>	<b>31.9%</b>	<b>31.9%</b>	<b>29.0%</b>	<b>29.7%</b>
<b>Patient &amp; Client Care</b>	<b>40.9%</b>	<b>41.4%</b>	<b>41.9%</b>	<b>42.7%</b>	<b>42.5%</b>	<b>100.0%</b>	<b>42.5%</b>
<b>Total</b>	<b>100 %</b>	<b>100 %</b>	<b>100 %</b>	<b>100 %</b>	<b>100%</b>	<b>100 %</b>	<b>100 %</b>

# CHO 4 Skills Mix by Care Group: September 2020

Sep 2020 (Dec 2018 figure: 1,483)	WTE Dec 2015	WTE Dec 2016	WTE Dec 2017	WTE Dec 2018	WTE Dec 2019	WTE Aug 2020	WTE Sep 2020
<b>Mental Health</b>	<b>1,374</b>	<b>1,407</b>	<b>1,477</b>	<b>1,483</b>	<b>1,485.26</b>	<b>1,563.29</b>	<b>1,569.27</b>
<b>Consultants</b>	<b>37.8%</b>	<b>37.9%</b>	<b>37.5%</b>	<b>37.4%</b>	<b>38.8%</b>	<b>41.0%</b>	<b>38.7%</b>
Registrar	19.8%	22.2%	21.9%	25.2%	27.8%	25.7%	20.2%
Senior Registrar	6.3%	6.6%	7.5%	7.0%	7.8%	7.5%	9.0%
<b>Registrars</b>	<b>26.1%</b>	<b>28.8%</b>	<b>29.4%</b>	<b>32.2%</b>	<b>35.6%</b>	<b>33.2%</b>	<b>29.2%</b>
Interns	2.7%	2.6%	2.5%	2.3%	2.3%	3.2%	1.4%
Senior House Officer	29.5%	27.0%	26.6%	25.6%	21.8%	20.9%	26.3%
<b>SHO/ Interns</b>	<b>32.2%</b>	<b>29.7%</b>	<b>29.0%</b>	<b>27.9%</b>	<b>24.1%</b>	<b>24.0%</b>	<b>27.7%</b>
<b>Medical/ Dental, other</b>	<b>3.8%</b>	<b>3.6%</b>	<b>4.2%</b>	<b>2.5%</b>	<b>1.6%</b>	<b>1.8%</b>	<b>4.3%</b>
<b>Medical &amp; Dental</b>	<b>8.0%</b>	<b>8.1%</b>	<b>8.2%</b>	<b>8.7%</b>	<b>8.7%</b>	<b>9.2%</b>	<b>9.2%</b>
Clinical Nurse/ Midwife Manager	17.0%	17.0%	16.3%	17.5%	18.8%	19.9%	21.2%
Director Nursing/Midwifery, Assistant	2.8%	2.7%	2.5%	2.4%	2.8%	3.0%	2.9%
Director of Nursing/Midwifery	0.5%	0.5%	0.4%	0.4%	0.5%	0.4%	0.4%
<b>Nurse/ Midwife Manager</b>	<b>20.3%</b>	<b>20.1%</b>	<b>19.2%</b>	<b>20.3%</b>	<b>22.2%</b>	<b>23.4%</b>	<b>24.5%</b>
Advanced Nurse/ Midwife Practitioner	0.3%	0.1%	0.1%	0.4%	0.6%	0.6%	0.6%
Clinical Nurse/ Midwife Specialist	4.2%	4.7%	5.7%	5.8%	7.2%	8.1%	7.9%
<b>Nurse/ Midwife Specialist &amp; AN/MP</b>	<b>4.5%</b>	<b>4.9%</b>	<b>5.8%</b>	<b>6.1%</b>	<b>7.8%</b>	<b>8.6%</b>	<b>8.5%</b>
Staff Nurse [Intellectual Disability]				0.1%	0.1%		
Staff Nurse [Psychiatric]	69.3%	69.2%	69.0%	68.1%	60.8%	59.5%	58.8%
Staff Nurses [General/ Children's]	5.8%	5.7%	5.9%	5.2%	4.7%	5.0%	4.8%
<b>Staff Nurse/ Staff Midwife</b>	<b>75.1%</b>	<b>74.9%</b>	<b>74.9%</b>	<b>73.5%</b>	<b>65.6%</b>	<b>64.5%</b>	<b>63.6%</b>
Pre-registration Nurse/ Midwife Intern	0.1%	0.1%		0.1%	0.4%		
Pre-registration Nurse Intern (COVID-19)						3.0%	2.9%
Post-registration Nurse/ Midwife Student					0.1%		
Nursing/ Midwifery awaiting registration					3.9%	0.5%	0.4%
<b>Nursing/ Midwifery Student</b>	<b>0.1%</b>	<b>0.1%</b>		<b>0.1%</b>	<b>4.4%</b>	<b>3.5%</b>	<b>3.3%</b>
<b>Nursing &amp; Midwifery</b>	<b>55.6%</b>	<b>55.3%</b>	<b>53.4%</b>	<b>51.6%</b>	<b>51.6%</b>	<b>50.0%</b>	<b>50.0%</b>
Dietitians	0.9%	1.9%	2.0%	2.8%	2.7%	2.4%	2.4%
Occupational Therapists	25.7%	23.9%	23.9%	22.9%	24.2%	24.4%	24.0%
Speech & Language Therapists	4.0%	4.8%	4.3%	5.7%	5.6%	4.9%	5.3%
<b>Therapy Professions</b>	<b>30.5%</b>	<b>30.5%</b>	<b>30.2%</b>	<b>31.4%</b>	<b>32.6%</b>	<b>31.7%</b>	<b>31.7%</b>
<b>Social Care</b>	<b>4.5%</b>	<b>4.0%</b>	<b>3.2%</b>	<b>2.5%</b>	<b>1.7%</b>	<b>2.8%</b>	<b>3.2%</b>
<b>Social Workers</b>	<b>30.7%</b>	<b>27.7%</b>	<b>28.4%</b>	<b>26.2%</b>	<b>23.4%</b>	<b>24.8%</b>	<b>24.9%</b>
<b>Psychologists</b>	<b>26.4%</b>	<b>29.9%</b>	<b>30.8%</b>	<b>33.6%</b>	<b>36.5%</b>	<b>33.8%</b>	<b>33.0%</b>
<b>Pharmacy</b>	<b>1.5%</b>	<b>1.4%</b>	<b>1.6%</b>	<b>1.8%</b>	<b>1.1%</b>	<b>1.2%</b>	<b>1.0%</b>
Counsellor Therapists	5.3%	4.6%	4.1%	3.0%	3.2%	3.8%	3.7%
Other Health & Social Care	1.0%	1.7%	1.7%	1.5%	1.5%	1.8%	2.5%
<b>H&amp;SC, Other</b>	<b>6.3%</b>	<b>6.3%</b>	<b>5.8%</b>	<b>4.5%</b>	<b>4.7%</b>	<b>5.6%</b>	<b>6.2%</b>
<b>Health &amp; Social Care Professionals</b>	<b>12.8%</b>	<b>13.9%</b>	<b>14.1%</b>	<b>15.3%</b>	<b>15.3%</b>	<b>16.0%</b>	<b>16.0%</b>
<b>Management (VIII &amp; above)</b>					<b>0.9%</b>	<b>0.8%</b>	<b>1.7%</b>
<b>Administrative/ Supervisory (V to VII)</b>	<b>19.0%</b>	<b>18.9%</b>	<b>17.9%</b>	<b>17.0%</b>	<b>20.3%</b>	<b>19.9%</b>	<b>18.4%</b>
<b>Clerical (III &amp; IV)</b>	<b>81.0%</b>	<b>81.1%</b>	<b>82.1%</b>	<b>83.0%</b>	<b>78.8%</b>	<b>79.3%</b>	<b>80.0%</b>
<b>Management &amp; Administrative</b>	<b>6.8%</b>	<b>6.6%</b>	<b>7.0%</b>	<b>6.9%</b>	<b>6.9%</b>	<b>7.3%</b>	<b>7.3%</b>
<b>Support</b>	<b>93.4%</b>	<b>93.1%</b>	<b>93.2%</b>	<b>93.6%</b>	<b>92.9%</b>	<b>94.1%</b>	<b>94.7%</b>
<b>Maintenance/ Technical</b>	<b>6.6%</b>	<b>6.9%</b>	<b>6.8%</b>	<b>6.4%</b>	<b>7.1%</b>	<b>5.9%</b>	<b>5.3%</b>
<b>General Support</b>	<b>7.8%</b>	<b>7.3%</b>	<b>7.0%</b>	<b>6.4%</b>	<b>6.4%</b>	<b>5.5%</b>	<b>5.5%</b>
<b>Health Care Assistants</b>	<b>96.7%</b>	<b>96.6%</b>	<b>95.4%</b>	<b>95.3%</b>	<b>95.7%</b>	<b>97.0%</b>	<b>94.7%</b>
<b>Care, other</b>	<b>3.3%</b>	<b>3.4%</b>	<b>4.6%</b>	<b>4.7%</b>	<b>4.3%</b>	<b>3.0%</b>	<b>5.3%</b>
<b>Patient &amp; Client Care</b>	<b>8.9%</b>	<b>8.8%</b>	<b>10.3%</b>	<b>11.1%</b>	<b>11.1%</b>	<b>11.9%</b>	<b>11.9%</b>
<b>Total</b>	<b>100 %</b>	<b>100 %</b>	<b>100 %</b>	<b>100 %</b>	<b>100 %</b>	<b>100 %</b>	<b>100 %</b>

Sep 2020 (Dec 2018 figure: 1,344)	WTE Dec 2015	WTE Dec 2016	WTE Dec 2017	WTE Dec 2018	WTE Dec 2019	WTE Aug 2020	WTE Sep 2020
<b>Primary Care</b>	<b>1,143</b>	<b>1,188</b>	<b>1,307</b>	<b>1,344</b>	<b>1,345.90</b>	<b>1,364.32</b>	<b>1,410.12</b>
Consultant Dentistry	1.5%	1.4%	1.3%	1.3%	1.3%	1.3%	1.2%
Consultant Medicine					0.1%	0.1%	0.1%
Consultant Paediatrics			0.3%	0.3%	0.3%	0.3%	0.6%
<b>Consultants</b>	<b>1.5%</b>	<b>1.4%</b>	<b>1.7%</b>	<b>1.6%</b>	<b>1.7%</b>	<b>1.8%</b>	<b>1.9%</b>
<b>Registrars</b>	<b>33.2%</b>	<b>30.5%</b>	<b>31.8%</b>	<b>32.3%</b>	<b>36.0%</b>	<b>39.3%</b>	<b>35.2%</b>
<b>SHO/ Interns</b>	<b>4.4%</b>	<b>5.0%</b>	<b>4.3%</b>	<b>4.7%</b>	<b>4.1%</b>	<b>3.2%</b>	<b>4.0%</b>
Dentists	44.9%	44.4%	41.3%	42.0%	41.1%	36.5%	37.3%
Other Medical	16.0%	18.7%	20.9%	19.4%	17.1%	19.4%	21.6%
<b>Medical/ Dental, other</b>	<b>61.0%</b>	<b>63.1%</b>	<b>62.2%</b>	<b>61.4%</b>	<b>58.2%</b>	<b>55.8%</b>	<b>58.8%</b>
<b>Medical &amp; Dental</b>	<b>12.0%</b>	<b>11.7%</b>	<b>11.5%</b>	<b>11.5%</b>	<b>11.5%</b>	<b>11.5%</b>	<b>11.5%</b>
Clinical Nurse/ Midwife Manager	4.8%	5.5%	6.4%	7.1%	7.2%	7.9%	7.9%
Director Nursing/Midwifery, Assistant	5.8%	5.9%	4.1%	4.7%	5.0%	5.7%	6.0%
Director of Nursing/Midwifery	1.5%	1.1%	0.6%	0.9%	1.6%	1.6%	1.5%
<b>Nurse/ Midwife Manager</b>	<b>12.0%</b>	<b>12.5%</b>	<b>11.1%</b>	<b>12.7%</b>	<b>13.8%</b>	<b>15.2%</b>	<b>15.4%</b>
<b>Nurse/ Midwife Specialist &amp; AN/MP</b>	<b>0.9%</b>	<b>0.8%</b>	<b>0.9%</b>	<b>1.5%</b>	<b>1.0%</b>	<b>1.4%</b>	<b>1.4%</b>
<b>Staff Nurse/ Staff Midwife</b>	<b>23.0%</b>	<b>25.6%</b>	<b>30.4%</b>	<b>28.8%</b>	<b>29.2%</b>	<b>34.0%</b>	<b>29.9%</b>
<b>Public Health Nurse</b>	<b>62.0%</b>	<b>58.8%</b>	<b>53.3%</b>	<b>53.5%</b>	<b>51.7%</b>	<b>48.9%</b>	<b>51.2%</b>
<b>Nursing/ Midwifery Student</b>	<b>2.1%</b>	<b>2.2%</b>	<b>4.3%</b>	<b>3.5%</b>	<b>4.2%</b>	<b>0.5%</b>	<b>2.1%</b>
<b>Nursing &amp; Midwifery</b>	<b>29.7%</b>	<b>30.0%</b>	<b>30.2%</b>	<b>29.5%</b>	<b>29.4%</b>	<b>29.7%</b>	<b>29.7%</b>
Dietitians	3.6%	3.9%	4.9%	5.3%	5.4%	6.2%	6.7%
Occupational Therapists	19.7%	19.1%	20.0%	18.9%	18.0%	18.6%	18.5%
Orthoptists	0.2%	0.1%	0.2%	0.2%	1.0%	0.4%	0.4%
Physiotherapists	24.5%	23.7%	23.3%	22.1%	22.2%	22.0%	22.0%
Speech & Language Therapists	19.9%	22.1%	23.0%	21.3%	20.9%	20.5%	20.1%
<b>Therapy Professions</b>	<b>67.9%</b>	<b>68.7%</b>	<b>71.3%</b>	<b>67.9%</b>	<b>67.4%</b>	<b>67.8%</b>	<b>67.7%</b>
Audiology	1.8%	1.7%	1.8%	2.1%	2.1%	2.4%	2.4%
Medical Laboratory	4.4%						
Physicists	0.7%	0.7%	0.5%	0.6%	0.6%	0.3%	0.3%
Radiographers	0.7%	0.7%	0.6%	0.6%	0.6%	0.6%	0.6%
<b>Health Science/ Diagnostics</b>	<b>7.6%</b>	<b>3.1%</b>	<b>3.0%</b>	<b>3.3%</b>	<b>3.3%</b>	<b>3.3%</b>	<b>3.3%</b>
<b>Social Care</b>	<b>1.8%</b>	<b>2.0%</b>	<b>1.8%</b>	<b>2.3%</b>	<b>2.4%</b>	<b>1.5%</b>	<b>1.5%</b>
<b>Social Workers</b>	<b>6.9%</b>	<b>7.6%</b>	<b>6.9%</b>	<b>7.6%</b>	<b>7.4%</b>	<b>8.3%</b>	<b>8.1%</b>
<b>Psychologists</b>	<b>4.8%</b>	<b>4.3%</b>	<b>3.8%</b>	<b>5.7%</b>	<b>6.2%</b>	<b>6.3%</b>	<b>6.2%</b>
<b>Pharmacy</b>	<b>1.2%</b>	<b>1.0%</b>	<b>1.0%</b>	<b>1.0%</b>	<b>0.9%</b>	<b>0.9%</b>	<b>1.1%</b>
Counsellor Therapists	7.0%	10.9%	10.0%	9.6%	9.5%	8.4%	8.3%
Dental Hygienists	2.4%	2.4%	2.2%	2.2%	2.5%	3.0%	3.2%
Other Health & Social Care	0.4%	0.0%	0.0%	0.5%	0.5%	0.5%	0.6%
<b>H&amp;SC, Other</b>	<b>9.8%</b>	<b>13.4%</b>	<b>12.2%</b>	<b>12.3%</b>	<b>12.5%</b>	<b>11.9%</b>	<b>12.1%</b>
<b>Health &amp; Social Care Professionals</b>	<b>24.9%</b>	<b>24.6%</b>	<b>24.9%</b>	<b>24.5%</b>	<b>24.5%</b>	<b>23.8%</b>	<b>23.8%</b>
Executive Management	2.3%	3.0%	3.7%	3.6%	3.9%	3.4%	3.3%
Senior Management (VIII & GM)	9.1%	8.1%	7.8%	7.0%	8.0%	8.0%	8.2%
<b>Management (VIII &amp; above)</b>	<b>11.4%</b>	<b>11.1%</b>	<b>11.5%</b>	<b>10.6%</b>	<b>11.9%</b>	<b>11.4%</b>	<b>11.5%</b>
<b>Administrative/ Supervisory (V to VII)</b>	<b>18.0%</b>	<b>19.2%</b>	<b>19.6%</b>	<b>19.7%</b>	<b>22.0%</b>	<b>22.5%</b>	<b>22.0%</b>
<b>Clerical (III &amp; IV)</b>	<b>70.6%</b>	<b>69.7%</b>	<b>69.0%</b>	<b>69.7%</b>	<b>66.1%</b>	<b>66.0%</b>	<b>66.5%</b>
<b>Management &amp; Administrative</b>	<b>22.7%</b>	<b>22.5%</b>	<b>22.8%</b>	<b>22.9%</b>	<b>22.8%</b>	<b>23.1%</b>	<b>23.1%</b>
<b>Support</b>	<b>100.0%</b>	<b>100.0%</b>	<b>100.0%</b>	<b>100.0%</b>	<b>100.0%</b>	<b>100.0%</b>	<b>100.0%</b>
<b>General Support</b>	<b>1.6%</b>	<b>1.5%</b>	<b>1.4%</b>	<b>1.3%</b>	<b>1.3%</b>	<b>2.2%</b>	<b>2.2%</b>
HCA, Nurse's Aide, etc.	1.0%	0.9%	4.3%	7.1%	7.3%	9.5%	8.3%
Health & Social Care Assistants		1.8%	0.8%	9.9%	5.9%	3.9%	3.7%
<b>Health Care Assistants</b>	<b>1.0%</b>	<b>2.7%</b>	<b>5.1%</b>	<b>17.0%</b>	<b>13.2%</b>	<b>13.4%</b>	<b>12.0%</b>
<b>Care, other</b>	<b>88.4%</b>	<b>86.8%</b>	<b>84.9%</b>	<b>75.2%</b>	<b>79.1%</b>	<b>79.3%</b>	<b>79.0%</b>
<b>Home Help</b>	<b>10.6%</b>	<b>10.5%</b>	<b>9.9%</b>	<b>7.8%</b>	<b>7.7%</b>	<b>7.4%</b>	<b>9.0%</b>
<b>Patient &amp; Client Care</b>	<b>9.2%</b>	<b>9.6%</b>	<b>9.2%</b>	<b>10.4%</b>	<b>10.4%</b>	<b>9.7%</b>	<b>9.7%</b>
<b>Total</b>	<b>100 %</b>	<b>100 %</b>	<b>100 %</b>	<b>100 %</b>	<b>100 %</b>	<b>100 %</b>	<b>100 %</b>

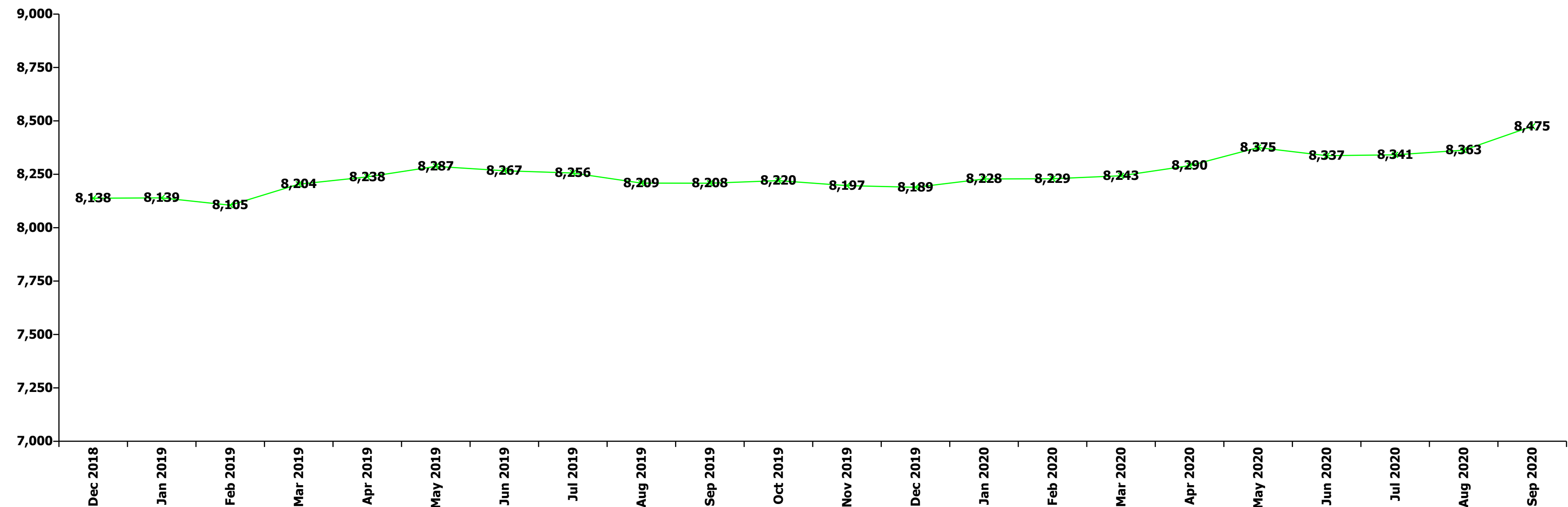
Sep 2020 (Dec 2018 figure: 2,395)	WTE Dec 2015	WTE Dec 2016	WTE Dec 2017	WTE Dec 2018	WTE Dec 2019	WTE Aug 2020	WTE Sep 2020
<b>Disabilities</b>	<b>2,151</b>	<b>2,256</b>	<b>2,299</b>	<b>2,395</b>	<b>2,438.58</b>	<b>2,495.28</b>	<b>2,511.38</b>
Consultant Medicine	50.3%	49.5%					
Consultant Paediatrics	7.9%	9.3%	27.3%	27.3%	27.3%	20.0%	33.3%
Consultant Psychiatry	31.4%	31.0%	54.6%	54.6%	54.6%	40.0%	33.3%
<b>Consultants</b>	<b>89.6%</b>	<b>89.8%</b>	<b>82.0%</b>	<b>82.0%</b>	<b>82.0%</b>	<b>60.0%</b>	<b>66.7%</b>
<b>Medical/ Dental, other</b>	<b>10.4%</b>	<b>10.2%</b>	<b>18.0%</b>	<b>18.0%</b>	<b>18.0%</b>	<b>40.0%</b>	<b>33.3%</b>
<b>Medical &amp; Dental</b>	<b>0.1%</b>	<b>0.1%</b>	<b>0.1%</b>	<b>0.1%</b>	<b>0.1%</b>	<b>0.1%</b>	<b>0.1%</b>
Clinical Nurse/ Midwife Manager	17.5%	16.6%	16.7%	19.6%	19.4%	18.6%	19.1%
Director Nursing/Midwifery, Assistant	0.9%	0.9%	0.7%	1.2%	1.2%	1.2%	1.2%
Director of Nursing/Midwifery	0.6%	0.4%	0.6%	0.5%	0.7%	0.7%	0.7%
<b>Nurse/ Midwife Manager</b>	<b>19.0%</b>	<b>17.9%</b>	<b>18.0%</b>	<b>21.3%</b>	<b>21.3%</b>	<b>20.5%</b>	<b>21.0%</b>
Advanced Nurse/ Midwife Practitioner	0.2%	0.2%	0.2%	0.2%	0.2%	0.2%	0.2%
Clinical Nurse/ Midwife Specialist	3.3%	3.3%	3.5%	3.3%	3.0%	2.9%	2.9%
<b>Nurse/ Midwife Specialist &amp; AN/MP</b>	<b>3.5%</b>	<b>3.5%</b>	<b>3.7%</b>	<b>3.5%</b>	<b>3.2%</b>	<b>3.1%</b>	<b>3.2%</b>
Staff Nurse [Intellectual Disability]	13.4%	14.3%	15.3%	19.9%	20.5%	19.9%	19.0%
Staff Nurse [Psychiatric]	3.8%	3.0%	0.6%	0.4%	0.6%	0.3%	0.6%
Staff Nurses [General/ Children's]	58.5%	59.5%	60.6%	52.9%	52.6%	49.5%	51.3%
<b>Staff Nurse/ Staff Midwife</b>	<b>75.8%</b>	<b>76.8%</b>	<b>76.4%</b>	<b>73.2%</b>	<b>73.7%</b>	<b>69.8%</b>	<b>70.9%</b>
Pre-registration Nurse/ Midwife Intern	1.6%	1.7%	1.7%	1.9%	1.4%		
Pre-registration Nurse Intern (COVID-19)						6.5%	4.5%
Nursing/ Midwifery awaiting registration					0.2%		0.4%
<b>Nursing/ Midwifery Student</b>	<b>1.6%</b>	<b>1.7%</b>	<b>1.7%</b>	<b>1.9%</b>	<b>1.7%</b>	<b>6.5%</b>	<b>4.9%</b>
<b>Nursing/ Midwifery other</b>	<b>0.1%</b>	<b>0.1%</b>	<b>0.1%</b>	<b>0.1%</b>	<b>0.1%</b>	<b>0.1%</b>	<b>0.1%</b>
<b>Nursing &amp; Midwifery</b>	<b>22.6%</b>	<b>21.2%</b>	<b>20.2%</b>	<b>18.0%</b>	<b>17.7%</b>	<b>16.9%</b>	<b>16.9%</b>
Dietitians	0.3%	0.3%	0.4%	0.6%	0.6%	0.6%	0.6%
Occupational Therapists	10.7%	10.0%	10.0%	9.1%	9.4%	8.2%	8.9%
Physiotherapists	5.2%	5.1%	4.8%	4.9%	4.6%	4.9%	4.9%
Speech & Language Therapists	13.8%	13.6%	12.8%	11.7%	12.1%	11.5%	11.8%
<b>Therapy Professions</b>	<b>29.9%</b>	<b>28.9%</b>	<b>28.0%</b>	<b>26.4%</b>	<b>26.7%</b>	<b>25.2%</b>	<b>26.2%</b>
<b>Social Care</b>	<b>51.9%</b>	<b>52.0%</b>	<b>53.1%</b>	<b>54.9%</b>	<b>56.0%</b>	<b>57.5%</b>	<b>56.1%</b>
<b>Social Workers</b>	<b>5.6%</b>	<b>6.7%</b>	<b>6.5%</b>	<b>7.1%</b>	<b>6.7%</b>	<b>6.5%</b>	<b>6.3%</b>
<b>Psychologists</b>	<b>9.8%</b>	<b>9.7%</b>	<b>10.0%</b>	<b>9.7%</b>	<b>8.6%</b>	<b>8.2%</b>	<b>8.7%</b>
Counsellor Therapists	0.5%	0.5%	0.5%	0.5%	0.5%	0.5%	0.5%
Other Health & Social Care	1.8%	1.7%	1.7%	1.3%	1.4%	1.9%	1.9%
Play Therapists/ Specialists	0.4%	0.4%	0.2%	0.2%	0.2%	0.2%	0.2%
<b>H&amp;SC, Other</b>	<b>2.8%</b>	<b>2.7%</b>	<b>2.3%</b>	<b>1.9%</b>	<b>2.1%</b>	<b>2.6%</b>	<b>2.6%</b>
<b>Health &amp; Social Care Professionals</b>	<b>17.0%</b>	<b>17.1%</b>	<b>17.2%</b>	<b>16.4%</b>	<b>16.1%</b>	<b>16.3%</b>	<b>16.3%</b>
Executive Management	1.6%	2.3%	1.5%	1.3%	1.3%	1.8%	1.8%
Senior Management (VIII & GM)	13.0%	12.3%	12.6%	10.8%	12.6%	11.6%	11.6%
<b>Management (VIII &amp; above)</b>	<b>14.6%</b>	<b>14.5%</b>	<b>14.0%</b>	<b>12.1%</b>	<b>13.9%</b>	<b>13.4%</b>	<b>13.4%</b>
<b>Administrative/ Supervisory (V to VII)</b>	<b>31.0%</b>	<b>29.5%</b>	<b>28.8%</b>	<b>31.9%</b>	<b>33.4%</b>	<b>33.2%</b>	<b>33.8%</b>
<b>Clerical (III &amp; IV)</b>	<b>54.5%</b>	<b>56.0%</b>	<b>57.2%</b>	<b>56.0%</b>	<b>52.7%</b>	<b>53.4%</b>	<b>52.8%</b>
<b>Management &amp; Administrative</b>	<b>6.0%</b>	<b>5.9%</b>	<b>6.0%</b>	<b>6.4%</b>	<b>6.2%</b>	<b>6.8%</b>	<b>6.8%</b>
<b>Support</b>	<b>90.9%</b>	<b>90.2%</b>	<b>89.2%</b>	<b>92.9%</b>	<b>93.3%</b>	<b>93.1%</b>	<b>93.1%</b>
Maintenance	8.5%	9.2%	10.2%	6.4%	6.1%	6.2%	6.2%
Technical Services	0.5%	0.6%	0.6%	0.7%	0.7%	0.7%	0.7%
<b>Maintenance/ Technical</b>	<b>9.1%</b>	<b>9.8%</b>	<b>10.8%</b>	<b>7.1%</b>	<b>6.7%</b>	<b>6.9%</b>	<b>6.9%</b>
<b>General Support</b>	<b>8.5%</b>	<b>7.5%</b>	<b>6.7%</b>	<b>6.4%</b>	<b>6.3%</b>	<b>5.9%</b>	<b>5.9%</b>
HCA, Nurse's Aide, etc.	74.2%	75.7%	75.6%	77.2%	76.4%	77.1%	76.6%
<b>Health Care Assistants</b>	<b>74.2%</b>	<b>75.7%</b>	<b>75.6%</b>	<b>77.2%</b>	<b>76.4%</b>	<b>77.1%</b>	<b>76.6%</b>
Other Care Grades	25.8%	24.3%	24.4%	22.8%	23.6%	22.9%	23.4%
<b>Care, other</b>	<b>25.8%</b>	<b>24.3%</b>	<b>24.4%</b>	<b>22.8%</b>	<b>23.6%</b>	<b>22.9%</b>	<b>23.4%</b>
<b>Patient &amp; Client Care</b>	<b>45.7%</b>	<b>48.1%</b>	<b>49.8%</b>	<b>52.7%</b>	<b>51.7%</b>	<b>54.0%</b>	<b>54.0%</b>
<b>Total</b>	<b>100 %</b>	<b>100 %</b>	<b>100 %</b>	<b>100 %</b>	<b>100 %</b>	<b>100 %</b>	<b>100 %</b>

Sep 2020 (Dec 2018 figure: 2,915)	WTE Dec 2015	WTE Dec 2016	WTE Dec 2017	WTE Dec 2018	WTE Dec 2019	WTE Aug 2020	WTE Sep 2020
<b>Older People</b>	<b>2,792</b>	<b>2,789</b>	<b>2,899</b>	<b>2,915</b>	<b>2,919.30</b>	<b>2,911.11</b>	<b>2,950.29</b>
Consultant Medicine	4.1%	4.1%	3.8%	3.9%	3.9%	2.9%	4.9%
Consultant Psychiatry	4.1%	3.6%	3.2%				
<b>Consultants</b>	<b>8.2%</b>	<b>7.7%</b>	<b>7.0%</b>	<b>3.9%</b>	<b>3.9%</b>	<b>2.9%</b>	<b>4.9%</b>
Registrar	4.1%	4.1%	3.8%	3.9%	3.9%	2.9%	2.5%
Specialist Registrar	4.1%		3.8%	3.9%	7.7%	5.3%	4.9%
<b>Registrars</b>	<b>8.2%</b>	<b>4.1%</b>	<b>7.6%</b>	<b>7.7%</b>	<b>11.6%</b>	<b>8.2%</b>	<b>7.4%</b>
Senior House Officer				3.9%	3.9%		2.5%
<b>SHO/ Interns</b>				<b>3.9%</b>	<b>3.9%</b>		<b>2.5%</b>
<b>Medical/ Dental, other</b>	<b>83.6%</b>	<b>88.1%</b>	<b>85.4%</b>	<b>84.6%</b>	<b>80.6%</b>	<b>88.9%</b>	<b>85.2%</b>
<b>Medical &amp; Dental</b>	<b>0.9%</b>	<b>0.9%</b>	<b>0.9%</b>	<b>0.9%</b>	<b>0.9%</b>	<b>1.4%</b>	<b>1.4%</b>
Clinical Nurse/ Midwife Manager	13.7%	13.4%	13.3%	11.5%	12.8%	13.2%	13.6%
Director Nursing/Midwifery, Assistant	1.3%	1.3%	1.5%	0.9%	2.0%	2.2%	2.0%
Director of Nursing/Midwifery	1.7%	1.4%	1.4%	1.4%	3.4%	3.8%	3.7%
<b>Nurse/ Midwife Manager</b>	<b>16.8%</b>	<b>16.2%</b>	<b>16.1%</b>	<b>13.7%</b>	<b>18.3%</b>	<b>19.2%</b>	<b>19.4%</b>
Advanced Nurse/ Midwife Practitioner	0.2%	0.2%	0.2%	0.2%	0.2%	0.2%	0.2%
Clinical Nurse/ Midwife Specialist	0.1%	0.3%	0.1%	0.4%	0.4%	0.5%	0.8%
<b>Nurse/ Midwife Specialist &amp; AN/MP</b>	<b>0.3%</b>	<b>0.4%</b>	<b>0.3%</b>	<b>0.6%</b>	<b>0.5%</b>	<b>0.7%</b>	<b>0.9%</b>
Graduate Nursing/ Midwifery	0.2%						
Staff Nurses [General/ Children's]	81.8%	82.4%	82.5%	84.8%	80.1%	79.3%	78.8%
<b>Staff Nurse/ Staff Midwife</b>	<b>81.9%</b>	<b>82.4%</b>	<b>82.5%</b>	<b>84.8%</b>	<b>80.1%</b>	<b>79.3%</b>	<b>78.8%</b>
<b>Public Health Nurse</b>	<b>1.0%</b>	<b>1.0%</b>	<b>1.0%</b>	<b>0.9%</b>	<b>0.8%</b>	<b>0.8%</b>	<b>0.9%</b>
Post-registration Nurse/ Midwife Student					0.2%		
Nursing/ Midwifery awaiting registration					0.2%		
<b>Nursing/ Midwifery Student</b>					<b>0.3%</b>		
<b>Nursing &amp; Midwifery</b>	<b>22.8%</b>	<b>22.8%</b>	<b>22.5%</b>	<b>22.5%</b>	<b>22.5%</b>	<b>22.5%</b>	<b>22.5%</b>
Dietitians	0.2%	4.4%	4.2%	4.0%	2.5%	2.5%	2.4%
Occupational Therapists	22.3%	18.6%	17.1%	21.9%	28.5%	26.3%	25.5%
Physiotherapists	26.9%	27.7%	25.5%	27.3%	25.6%	26.1%	24.8%
Podiatrists & Chiropodists	13.1%	15.2%	14.0%	12.9%	10.7%	13.1%	12.6%
Speech & Language Therapists	8.3%	7.8%	9.0%	7.7%	6.3%	5.7%	5.4%
<b>Therapy Professions</b>	<b>70.8%</b>	<b>73.7%</b>	<b>69.7%</b>	<b>73.7%</b>	<b>73.7%</b>	<b>73.6%</b>	<b>70.7%</b>
Phlebotomists	2.1%	1.9%	1.8%				
Radiographers	1.1%	0.5%	0.5%	1.9%	1.9%	2.0%	1.9%
<b>Health Science/ Diagnostics</b>	<b>3.2%</b>	<b>2.4%</b>	<b>2.3%</b>	<b>1.9%</b>	<b>1.9%</b>	<b>2.0%</b>	<b>1.9%</b>
<b>Social Care</b>	<b>3.7%</b>	<b>3.3%</b>	<b>3.1%</b>	<b>3.0%</b>	<b>2.9%</b>	<b>2.7%</b>	<b>2.6%</b>
<b>Social Workers</b>	<b>16.8%</b>	<b>16.0%</b>	<b>19.0%</b>	<b>15.8%</b>	<b>17.2%</b>	<b>15.8%</b>	<b>18.1%</b>
<b>Pharmacy</b>	<b>5.6%</b>	<b>4.5%</b>	<b>5.9%</b>	<b>5.6%</b>	<b>4.3%</b>	<b>5.9%</b>	<b>6.8%</b>
<b>Health &amp; Social Care Professionals</b>	<b>1.7%</b>	<b>1.9%</b>	<b>1.9%</b>	<b>2.0%</b>	<b>2.0%</b>	<b>2.3%</b>	<b>2.3%</b>
Executive Management	0.9%	0.9%	0.8%	0.7%	0.6%	0.6%	0.7%
Senior Management (VIII & GM)	4.7%	6.1%	8.8%	6.4%	7.4%	7.6%	8.2%
<b>Management (VIII &amp; above)</b>	<b>5.6%</b>	<b>7.0%</b>	<b>9.7%</b>	<b>7.1%</b>	<b>8.1%</b>	<b>8.2%</b>	<b>8.9%</b>
<b>Administrative/ Supervisory (V to VII)</b>	<b>10.0%</b>	<b>9.9%</b>	<b>8.4%</b>	<b>6.8%</b>	<b>10.8%</b>	<b>11.4%</b>	<b>12.3%</b>
<b>Clerical (III &amp; IV)</b>	<b>84.3%</b>	<b>83.1%</b>	<b>81.9%</b>	<b>86.1%</b>	<b>81.2%</b>	<b>80.3%</b>	<b>78.9%</b>
<b>Management &amp; Administrative</b>	<b>3.8%</b>	<b>4.1%</b>	<b>4.2%</b>	<b>5.2%</b>	<b>5.2%</b>	<b>5.0%</b>	<b>5.0%</b>
<b>Support</b>	<b>93.4%</b>	<b>93.1%</b>	<b>93.4%</b>	<b>93.9%</b>	<b>94.4%</b>	<b>95.1%</b>	<b>94.2%</b>
<b>Maintenance/ Technical</b>	<b>6.6%</b>	<b>6.9%</b>	<b>6.6%</b>	<b>6.1%</b>	<b>5.6%</b>	<b>4.9%</b>	<b>5.8%</b>
<b>General Support</b>	<b>4.9%</b>	<b>4.5%</b>	<b>4.1%</b>	<b>3.8%</b>	<b>3.8%</b>	<b>4.1%</b>	<b>4.1%</b>
HCA, Nurse's Aide, etc.	37.1%	40.1%	40.2%	41.0%	40.6%	43.7%	42.3%
Health & Social Care Assistants					0.0%	0.1%	0.1%
<b>Health Care Assistants</b>	<b>37.1%</b>	<b>40.1%</b>	<b>40.2%</b>	<b>41.0%</b>	<b>40.6%</b>	<b>43.8%</b>	<b>42.3%</b>
<b>Care, other</b>	<b>1.7%</b>	<b>1.5%</b>	<b>1.6%</b>	<b>1.6%</b>	<b>1.6%</b>	<b>1.6%</b>	<b>2.2%</b>
<b>Home Help</b>	<b>61.2%</b>	<b>58.4%</b>	<b>58.2%</b>	<b>57.5%</b>	<b>57.8%</b>	<b>54.6%</b>	<b>55.4%</b>
<b>Patient &amp; Client Care</b>	<b>65.9%</b>	<b>65.8%</b>	<b>66.4%</b>	<b>65.6%</b>	<b>65.5%</b>	<b>64.6%</b>	<b>64.6%</b>
<b>Total</b>	<b>100 %</b>	<b>100 %</b>	<b>100 %</b>	<b>100 %</b>	<b>100 %</b>	<b>100 %</b>	<b>100 %</b>

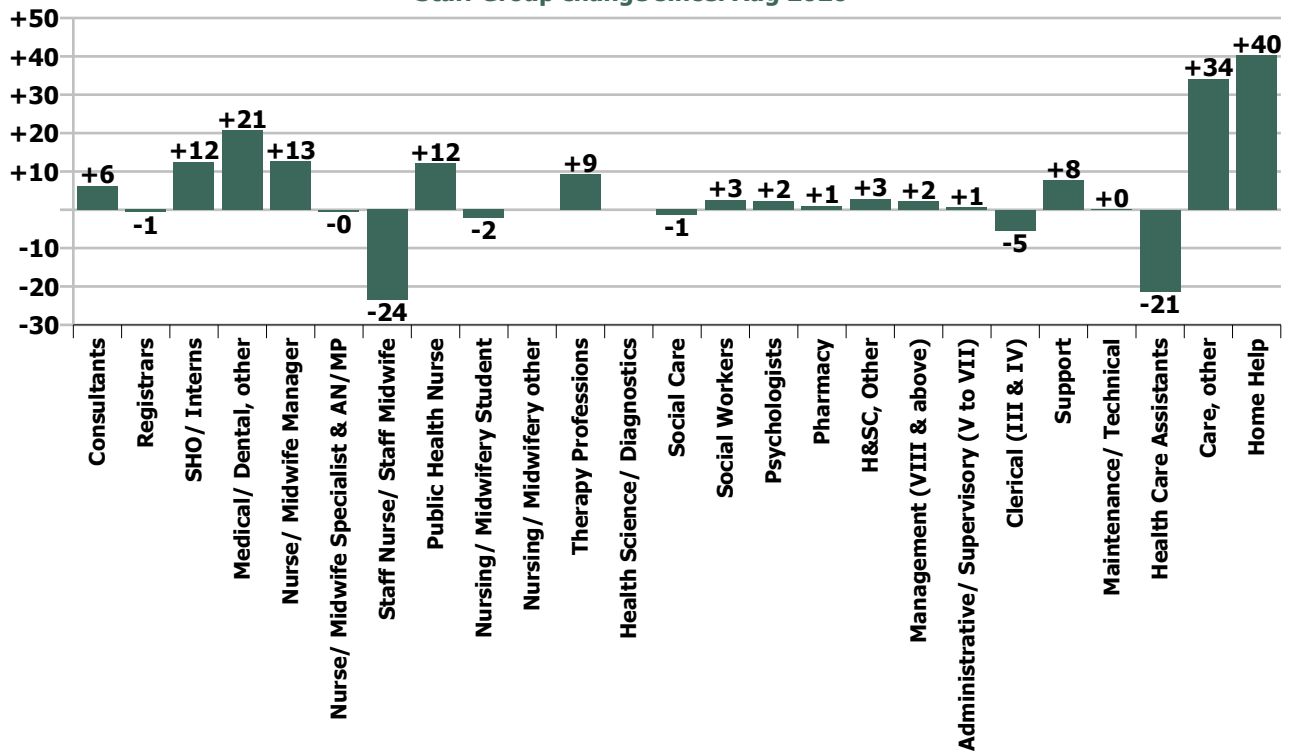
Summary Staff Movement: September 2020

Month-on-month Summary																												
WTE change since Aug 20	% change since Aug 20	overall	Consultants	Registrars	SHO/ Interns	Medical/ Dental, other	Med/ical & Dental	Nurse/ Midwife Manager	Nurse/ Midwife Specialist & AN/MP	Staff Nurse/ Staff Midwife	Public Health Nurse	Nursing/ Midwifery Student	Nursing/ Midwifery other	Nursing & Midwifery	Therapy Professions	Health Science/ Diagnostics	Social Care	Social Workers	Psychologists	Pharmacy	H&SC, Other	Health & Social Care Professionals	Management (VIII & above)	Administrativ e/ Supervisory (V to VII)	Clerical (III & IV)	Management & Administrativ e	General Support	Patient & Client Care
Overall	+1.3%	+112	+6.2	-0.6	+12.5	+20.6	+38.7	+12.6	-0.4	-23.6	+12.0	-2.1	0.0	-1.4	+9.2	0.0	-1.4	+2.6	+2.3	+1.0	+2.8	+16.5	+2.2	+0.5	-5.5	-2.7	+7.8	+53.0
Community Health & Wellbeing	+16.9%	+5													+0.8							+0.8	-0.0	+1.0	+1.9	+2.9		+1.2
Mental Health	+0.4%	+6	+4.2	+0.2	+9.7	+4.0	+18.1	+7.9	-1.7	-10.5		-1.4		-5.6	+1.7		+1.1	+1.4	-0.1	-0.5	+1.7	+5.3	+1.0	-2.4	-1.8	-3.2	-0.9	-7.6
Primary Care	+3.4%	+46	+0.5	-1.0	+1.8	+12.8	+14.1	+1.2	-0.3	-16.3	+11.2	+6.7		+2.5	+0.9	0.0	0.0	-0.6	+0.1	+0.7	+0.8	+1.9	+0.7	-0.7	+4.0	+3.9	+13.9	+9.5
Disabilities	+0.6%	+16	+0.5			0.0	+0.5	+0.8	0.0	-0.1		-7.4	0.0	-6.7	+5.8		-2.5	-0.3	+2.4		+0.3	+5.7	+0.5	+2.7	+1.5	+4.8	+0.4	+11.4
Older People	+1.3%	+39	+1.0	+0.2	+1.0	+3.9	+6.0	+2.8	+1.6	+3.3	+0.8			+8.5	+0.1	0.0	0.0	+2.0		+0.7		+2.9	0.0	+0.0	-11.1	-11.1	-5.6	+38.5
Social Care	+1.0%	+55	+1.5	+0.2	+1.0	+3.9	+6.5	+3.6	+1.6	+3.2	+0.8	-7.4	0.0	+1.8	+5.9	0.0	-2.5	+1.8	+2.4	+0.7	+0.3	+8.6	+0.5	+2.7	-9.5	-6.3	-5.3	+50.0
Change	+111.9	+1.3%	+10.9%	-0.6%	+35.5%	+17.7%	+12.4%	+2.7%	-0.4%	-1.6%	+5.8%	-3.6%		-0.1%	+2.0%		-0.6%	+2.1%	+1.7%	+10.1%	+4.3%	+1.6%	+3.0%	+0.3%	-1.0%	-0.3%	+2.0%	+1.5%

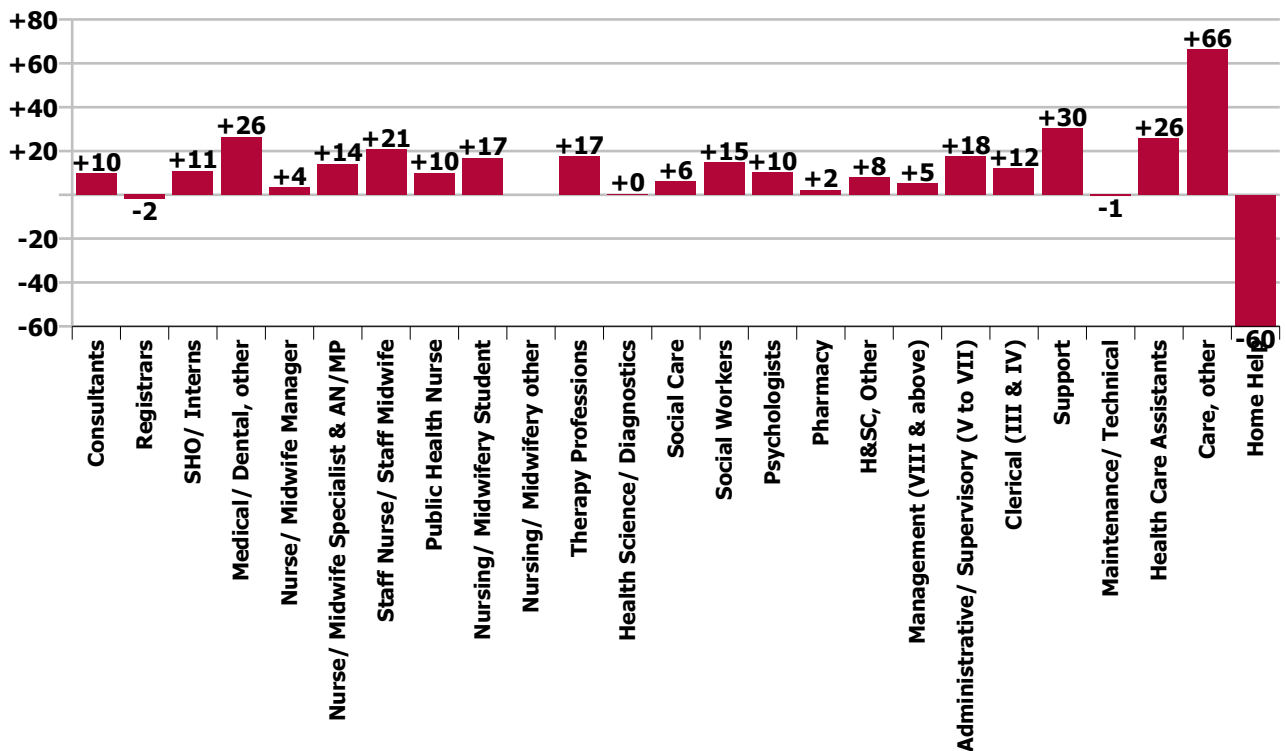
Year-on-year Summary																												
WTE change since Sep 19	% change since Sep 19	overall	Consultants	Registrars	SHO/ Interns	Medical/ Dental, other	Medical & Dental	Nurse/ Midwife Manager	Nurse/ Midwife Specialist & AN/MP	Staff Nurse/ Staff Midwife	Public Health Nurse	Nursing/ Midwifery Student	Nursing/ Midwifery other	Nursing & Midwifery	Therapy Professions	Health Science/ Diagnostics	Social Care	Social Workers	Psychologists	Pharmacy	H&SC, Other	Health & Social Care Professionals	Management (VIII & above)	Administrativ e/ Supervisory (V to VII)	Clerical (III & IV)	Management & Administrative	General Support	Patient & Client Care
Overall	+3.2%	+267	+9.8	-1.8	+10.9	+26.4	+45.3	+3.5	+14.1	+20.8	+10.0	+16.8	0.0	+65.2	+17.4	+0.5	+6.1	+14.8	+10.3	+2.3	+8.1	+59.4	+5.2	+17.6	+12.0	+34.8	+29.7	+32.1
Community Health & Wellbeing	+16.9%	+5													+4.8							+4.8	+1.0	+4.9	+6.4	+12.4		+16.3
Mental Health	+0.4%	+6	+7.6	-3.3	+11.1	+3.2	+18.6	-4.5	+9.9	+1.1		+7.0		+13.4	+2.9		+3.0	+9.1	+6.5	-0.4	+5.6	+26.6	+1.9	-1.5	+4.4	+4.9	+2.0	+16.1
Primary Care	+3.4%	+46	+0.8	+1.4	-0.2	+8.8	+10.8	+7.8	+1.4	+16.2	+8.2	+0.7		+34.4	+5.7	+0.3	-1.3	+3.0	+2.9	+0.5	+0.1	+11.3	+0.5	+6.0	+5.5	+12.1	+15.8	+4.4
Disabilities	+2.2%	+55.0	+0.5			+0.7	+1.2	-3.6	0.0	-7.0		+10.1	0.0	-0.4	-0.6		+4.5	-0.0	+0.9		+2.3	+7.1	+1.4	+7.6	+3.3	+12.2	-0.7	+35.7
Older People	+0.3%	+7.6	+1.0	0.0	0.0	+13.7	+14.7	+3.8	+2.8	+10.5	+1.7	-1.0		+17.9	+4.5	+0.2	0.0	+2.7		+2.2		+9.6	+0.4	+0.5	-7.7	-6.8	+12.7	-40.4
Social Care	+1.0%	+55	+1.5	0.0	0.0	+14.4	+15.9	+0.3	+2.8	+3.5	+1.8	+9.1	0.0	+17.4	+3.8	+0.2	+4.5	+2.7	+0.9		+2.2	+2.3	+1.8	+8.1	-4.4	+5.4	+12.0	-4.8
Change	+266.5	+3.2%	+18.5%	-1.8%	+29.8%	+23.8%	+14.9%	+0.7%	+18.1%	+1.5%	+4.7%	+43.7%		+2.9%	+3.9%	+4.1%	+2.6%	+13.1%	+8.0%	+26.7%	+13.7%	+5.9%	+7.3%	+11.2%	+2.4%	+4.7%	+8.3%	+0.9%



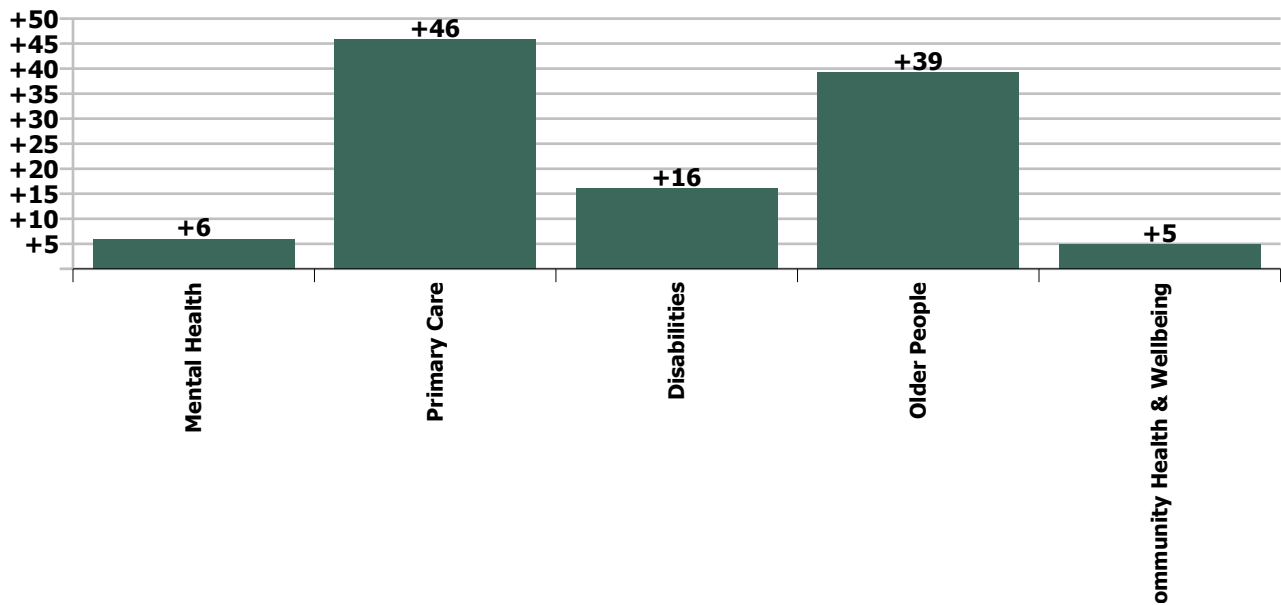
Staff Group change since: Aug 2020



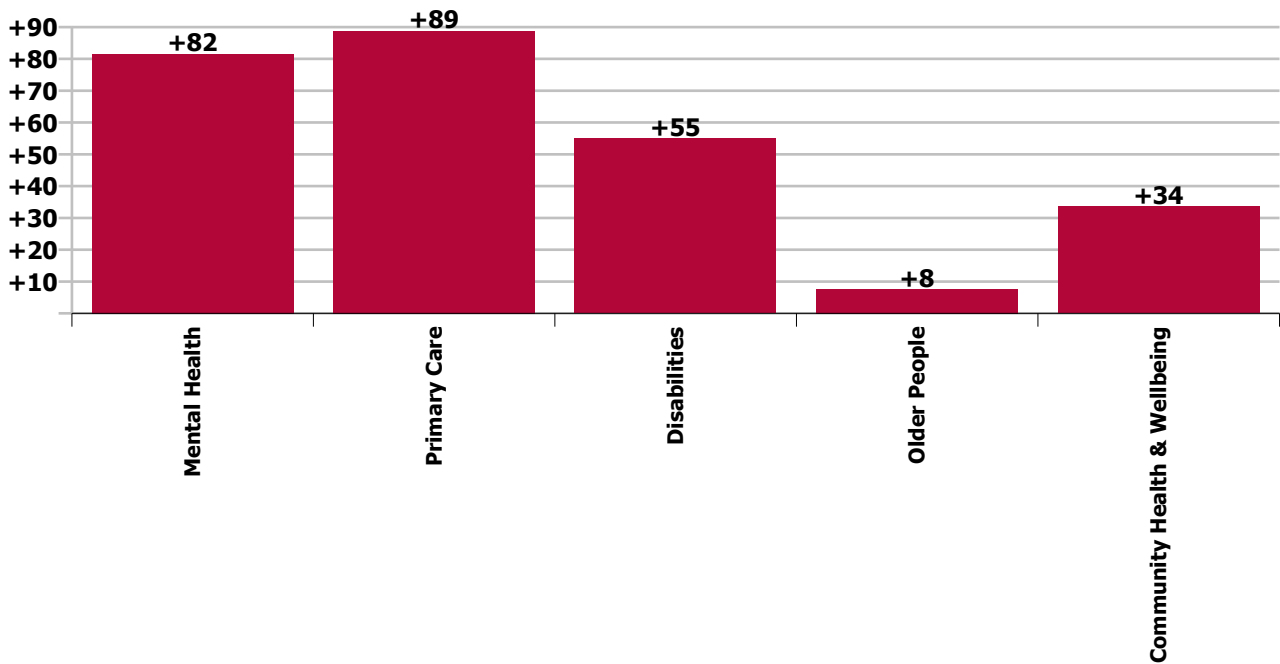
Staff Group change since: Sep 2019



Care Group change since: Aug 2020



Care Group change since: Sep 2019



## Longitudinal Employment Levels by Grade Group - Oct 2013 to Sep 2020

Sep 2020 (Dec 2015 figure: 7,461)	WTE Sep 2020	WTE change since Dec 15	WTE change since Dec 16	WTE change since Dec 17	WTE change since Dec 18	WTE change since Dec 19	WTE change since Aug 20	% change since Dec 15	% change since Dec 16	% change since Dec 17	% change since Dec 18	% change since Dec 19	% change since Aug 20
<b>Overall</b>	<b>8,475</b>	<b>+1,014</b>	<b>+836</b>	<b>+492</b>	<b>+337</b>	<b>+286</b>	<b>+112</b>	<b>+13.6%</b>	<b>+10.9%</b>	<b>+6.2%</b>	<b>+4.1%</b>	<b>+3.5%</b>	<b>+1.3%</b>
Consultant Dentistry	2												
Consultant Medicine	2	-0	-0	+1	+1	+1	+1	-18.5%	-18.5%	+112.0%	+112.0%	+91.0%	+92.7%
Consultant Paediatrics	2	+2	+2	+1	+1	+1	+1	+700.0%	+566.7%	+100.0%	+100.0%	+100.0%	+100.0%
Consultant Psychiatry	57	+13	+12	+10	+8	+6	+4	+30.2%	+26.4%	+21.1%	+15.9%	+12.2%	+8.0%
<b>Consultants</b>	<b>63</b>	<b>+14</b>	<b>+13</b>	<b>+12</b>	<b>+10</b>	<b>+8</b>	<b>+6</b>	<b>+29.8%</b>	<b>+26.2%</b>	<b>+23.6%</b>	<b>+18.7%</b>	<b>+14.9%</b>	<b>+10.9%</b>
Registrar	78	+14	+14	+8	-0	-6	-5	+22.7%	+22.1%	+10.8%	-0.3%	-7.5%	-5.7%
Senior Registrar	16	+8	+7	+6	+5	+5	+5	+86.5%	+76.4%	+51.7%	+47.7%	+38.2%	+43.1%
Specialist Registrar	8	+4	+5	+4	+4	+1	-1	+100.0%	+166.7%	+100.0%	+100.0%	+14.3%	-9.5%
<b>Registrars</b>	<b>102</b>	<b>+26</b>	<b>+26</b>	<b>+17</b>	<b>+9</b>	<b>-1</b>	<b>-1</b>	<b>+34.1%</b>	<b>+34.3%</b>	<b>+20.1%</b>	<b>+9.7%</b>	<b>-0.8%</b>	<b>-0.6%</b>
Interns	2	-1	-1	-1	-1	-1	-2	-33.3%	-33.3%	-33.3%	-33.3%	-33.3%	-50.0%
Senior House Officer	46	+7	+8	+7	+4	+10	+14	+18.2%	+20.4%	+18.3%	+10.7%	+29.7%	+46.5%
<b>SHO/ Interns</b>	<b>48</b>	<b>+6</b>	<b>+7</b>	<b>+6</b>	<b>+3</b>	<b>+9</b>	<b>+12</b>	<b>+14.5%</b>	<b>+16.5%</b>	<b>+14.5%</b>	<b>+7.7%</b>	<b>+24.7%</b>	<b>+35.5%</b>
Dentists	61	-1	-1	-2	-4	-2	+6	-1.8%	-2.1%	-2.6%	-6.8%	-2.9%	+11.9%
Other Medical	77	+30	+25	+17	+21	+28	+14	+63.2%	+48.2%	+29.4%	+38.6%	+56.6%	+22.6%
<b>Medical/ Dental, other</b>	<b>137</b>	<b>+29</b>	<b>+24</b>	<b>+16</b>	<b>+17</b>	<b>+26</b>	<b>+21</b>	<b>+26.3%</b>	<b>+20.8%</b>	<b>+13.0%</b>	<b>+14.1%</b>	<b>+23.3%</b>	<b>+17.7%</b>
<b>Medical &amp; Dental</b>	<b>350</b>	<b>+75</b>	<b>+70</b>	<b>+51</b>	<b>+39</b>	<b>+43</b>	<b>+39</b>	<b>+27.3%</b>	<b>+24.8%</b>	<b>+17.1%</b>	<b>+12.6%</b>	<b>+13.9%</b>	<b>+12.4%</b>
Clinical Nurse/ Midwife Manager	371	+52	+55	+53	+49	+34	+13	+16.4%	+17.4%	+16.7%	+15.3%	+10.1%	+3.8%
Director Nursing/Midwifery, Assistant	67	+13	+12	+18	+19	+7	-1	+23.6%	+22.3%	+36.8%	+38.6%	+11.0%	-0.8%
Director of Nursing/Midwifery	37	+14	+19	+20	+20	+2	-0	+63.5%	+99.7%	+112.2%	+113.0%	+5.8%	-0.7%
<b>Nurse/ Midwife Manager</b>	<b>475</b>	<b>+80</b>	<b>+86</b>	<b>+91</b>	<b>+88</b>	<b>+43</b>	<b>+13</b>	<b>+20.1%</b>	<b>+22.0%</b>	<b>+23.6%</b>	<b>+22.6%</b>	<b>+9.9%</b>	<b>+2.7%</b>
Advanced Nurse/ Midwife Practitioner	7	+3	+4	+4	+2	-0		+63.5%	+118.0%	+118.0%	+38.6%	-2.4%	
Clinical Nurse/ Midwife Specialist	85	+33	+28	+20	+18	+11	-0	+64.3%	+48.9%	+29.7%	+26.9%	+15.1%	-0.5%
<b>Nurse/ Midwife Specialist &amp; AN/MP</b>	<b>92</b>	<b>+36</b>	<b>+32</b>	<b>+23</b>	<b>+20</b>	<b>+11</b>	<b>-0</b>	<b>+64.2%</b>	<b>+52.4%</b>	<b>+33.5%</b>	<b>+27.6%</b>	<b>+13.7%</b>	<b>-0.4%</b>
Graduate Nursing/ Midwifery		-1						-100.0%	-100.0%	-100.0%	-100.0%	-100.0%	-100.0%
Staff Midwives	5	+3	+2	-0	-2	-3	-7	+145.5%	+76.6%	-6.7%	-24.3%	-39.5%	-57.3%
Staff Nurse [Intellectual Disability]	81	+15	+12	+10	-6	-6	-5	+23.4%	+18.0%	+13.7%	-6.9%	-6.9%	-6.1%
Staff Nurse [Psychiatric]	464	-85	-89	-85	-61	-5	-9	-15.5%	-16.1%	-15.5%	-11.6%	-1.1%	-1.8%
Staff Nurses [General/ Children's]	900	-26	-42	-80	-32	+18	-3	-2.8%	-4.5%	-8.1%	-3.4%	+2.1%	-0.3%
<b>Staff Nurse/ Staff Midwife</b>	<b>1,449</b>	<b>-94</b>	<b>-117</b>	<b>-155</b>	<b>-101</b>	<b>+4</b>	<b>-24</b>	<b>-6.1%</b>	<b>-7.4%</b>	<b>-9.7%</b>	<b>-6.5%</b>	<b>+0.3%</b>	<b>-1.6%</b>
<b>Public Health Nurse</b>	<b>221</b>	<b>+4</b>	<b>+5</b>	<b>+4</b>	<b>+3</b>	<b>+5</b>	<b>+12</b>	<b>+1.9%</b>	<b>+2.4%</b>	<b>+1.8%</b>	<b>+1.3%</b>	<b>+2.3%</b>	<b>+5.8%</b>
Pre-registration Nurse/ Midwife Intern		-9	-9	-8	-9	-9		-100.0%	-100.0%	-100.0%	-100.0%	-100.0%	-100.0%
Pre-registration Nurse Intern (COVID-19)	42	+42	+42	+42	+42	+42	-9	-100.0%	-100.0%	-100.0%	-100.0%	-100.0%	-18.3%
Post-registration Nurse/ Midwife Student	9	+2	+1	-8	-5	-11	+7	+23.4%	+8.0%	-49.2%	-38.3%	-55.1%	+343.1%
Nursing/ Midwifery awaiting registration	5	+5	+5	+5	+5	-27	+1	-100.0%	-100.0%	-100.0%	-100.0%	-85.4%	+15.0%

Sep 2020 (Dec 2015 figure: 7,461)	WTE Sep 2020	WTE change since Dec 15	WTE change since Dec 16	WTE change since Dec 17	WTE change since Dec 18	WTE change since Dec 19	WTE change since Aug 20	% change since Dec 15	% change since Dec 16	% change since Dec 17	% change since Dec 18	% change since Dec 19	% change since Aug 20
<b>Overall</b>	<b>8,475</b>	<b>+1,014</b>	<b>+836</b>	<b>+492</b>	<b>+337</b>	<b>+286</b>	<b>+112</b>	<b>+13.6%</b>	<b>+10.9%</b>	<b>+6.2%</b>	<b>+4.1%</b>	<b>+3.5%</b>	<b>+1.3%</b>
<b>Nursing/ Midwifery Student</b>	<b>55</b>	<b>+40</b>	<b>+39</b>	<b>+30</b>	<b>+33</b>	<b>-5</b>	<b>-2</b>	<b>+256.4%</b>	<b>+234.8%</b>	<b>+121.0%</b>	<b>+145.5%</b>	<b>-7.5%</b>	<b>-3.6%</b>
<b>Nursing/ Midwifery other</b>	<b>1</b>	<b>+0</b>	<b>+0</b>	<b>+0</b>				<b>+2.0%</b>	<b>+2.0%</b>	<b>+2.0%</b>			
<b>Nursing &amp; Midwifery</b>	<b>2,293</b>	<b>+65</b>	<b>+45</b>	<b>-7</b>	<b>+43</b>	<b>+58</b>	<b>-1</b>	<b>+2.9%</b>	<b>+2.0%</b>	<b>-0.3%</b>	<b>+1.9%</b>	<b>+2.6%</b>	<b>-0.1%</b>
Dietitians	37	+24	+19	+13	+9	+10	+2	+189.6%	+101.5%	+55.4%	+30.1%	+34.3%	+6.6%
Occupational Therapists	176	+25	+25	+12	+13	+7	+4	+16.6%	+16.8%	+7.6%	+8.0%	+3.9%	+2.2%
Orthoptists	2	+1	+1	+1	+1	-2		+163.2%	+900.0%	+194.1%	+200.0%	-54.3%	
Physiotherapists	111	+9	+7	+2	+3	+4	+1	+9.3%	+6.9%	+1.6%	+2.6%	+3.6%	+0.8%
Podiatrists & Chiropodists	8	+2	+0	+1	+1	+2	+0	+36.7%	+5.2%	+9.0%	+13.4%	+30.8%	+0.6%
Speech & Language Therapists	133	+15	+2	-7	-1	-2	+2	+12.8%	+1.8%	-4.8%	-1.0%	-1.2%	+1.8%
<b>Therapy Professions</b>	<b>467</b>	<b>+77</b>	<b>+55</b>	<b>+22</b>	<b>+25</b>	<b>+19</b>	<b>+9</b>	<b>+19.8%</b>	<b>+13.5%</b>	<b>+5.0%</b>	<b>+5.7%</b>	<b>+4.1%</b>	<b>+2.0%</b>
Audiology	8	+3	+3	+2	+1	+1		+60.0%	+60.0%	+33.3%	+14.3%	+18.2%	
Medical Laboratory		-13						-100.0%	-100.0%	-100.0%	-100.0%	-100.0%	-100.0%
Phlebotomists		-1	-1	-1				-100.0%	-100.0%	-100.0%	-100.0%	-100.0%	-100.0%
Physicists	1	-1	-1	-1	-1	-1		-50.0%	-50.0%	-43.8%	-50.0%	-50.0%	
Radiographers	3	+1	+1	+1	+0	+0		+29.5%	+43.7%	+43.7%	+6.5%	+4.8%	
<b>Health Science/ Diagnostics</b>	<b>12</b>	<b>-11</b>	<b>+2</b>	<b>+1</b>	<b>+0</b>	<b>+0</b>		<b>-46.8%</b>	<b>+19.4%</b>	<b>+11.0%</b>	<b>+1.7%</b>	<b>+3.2%</b>	
<b>Social Care</b>	<b>244</b>	<b>+39</b>	<b>+28</b>	<b>+20</b>	<b>+13</b>	<b>+4</b>	<b>-1</b>	<b>+19.3%</b>	<b>+12.9%</b>	<b>+8.9%</b>	<b>+5.5%</b>	<b>+1.6%</b>	<b>-0.6%</b>
<b>Social Workers</b>	<b>128</b>	<b>+25</b>	<b>+17</b>	<b>+10</b>	<b>+6</b>	<b>+13</b>	<b>+3</b>	<b>+24.6%</b>	<b>+15.4%</b>	<b>+8.4%</b>	<b>+5.1%</b>	<b>+11.3%</b>	<b>+2.1%</b>
<b>Psychologists</b>	<b>140</b>	<b>+44</b>	<b>+31</b>	<b>+24</b>	<b>+6</b>	<b>+2</b>	<b>+2</b>	<b>+45.6%</b>	<b>+28.5%</b>	<b>+20.6%</b>	<b>+4.7%</b>	<b>+1.2%</b>	<b>+1.7%</b>
<b>Pharmacy</b>	<b>11</b>	<b>+2</b>	<b>+3</b>	<b>+1</b>	<b>+0</b>	<b>+3</b>	<b>+1</b>	<b>+23.8%</b>	<b>+35.6%</b>	<b>+9.5%</b>	<b>+3.7%</b>	<b>+35.2%</b>	<b>+10.1%</b>
Counsellor Therapists	39	+8	-4	-4	-1	-1	-0	+25.5%	-8.7%	-9.0%	-3.3%	-3.3%	-0.9%
Dental Hygienists	11	+4	+4	+3	+3	+2	+0	+54.8%	+50.0%	+46.7%	+48.7%	+28.8%	+4.6%
Other Health & Social Care	16	+7	+6	+6	+6	+5	+2	+71.6%	+60.8%	+58.3%	+62.1%	+48.3%	+17.5%
Play Therapists/ Specialists	1	-1	-1	+0	+0	+0	+0	-40.5%	-40.5%	+54.0%	+54.0%	+54.0%	+40.6%
<b>H&amp;SC, Other</b>	<b>67</b>	<b>+18</b>	<b>+5</b>	<b>+6</b>	<b>+9</b>	<b>+7</b>	<b>+3</b>	<b>+36.2%</b>	<b>+8.5%</b>	<b>+9.4%</b>	<b>+14.9%</b>	<b>+11.0%</b>	<b>+4.3%</b>
<b>Health &amp; Social Care Professionals</b>	<b>1,068</b>	<b>+195</b>	<b>+141</b>	<b>+84</b>	<b>+60</b>	<b>+47</b>	<b>+17</b>	<b>+22.3%</b>	<b>+15.2%</b>	<b>+8.5%</b>	<b>+5.9%</b>	<b>+4.6%</b>	<b>+1.6%</b>
Executive Management	17	+8	+5	+3	+3	+2	+1	+84.7%	+38.5%	+18.7%	+18.7%	+10.8%	+4.5%
Senior Management (VIII & GM)	60	+14	+15	+8	+12	+2	+2	+31.5%	+32.9%	+16.5%	+24.8%	+3.2%	+2.6%
<b>Management (VIII &amp; above)</b>	<b>76</b>	<b>+22</b>	<b>+19</b>	<b>+11</b>	<b>+14</b>	<b>+3</b>	<b>+2</b>	<b>+40.3%</b>	<b>+34.1%</b>	<b>+17.0%</b>	<b>+23.4%</b>	<b>+4.7%</b>	<b>+3.0%</b>
<b>Administrative/ Supervisory (V to VII)</b>	<b>174</b>	<b>+59</b>	<b>+55</b>	<b>+47</b>	<b>+37</b>	<b>+13</b>	<b>+1</b>	<b>+51.5%</b>	<b>+45.7%</b>	<b>+37.4%</b>	<b>+26.9%</b>	<b>+8.0%</b>	<b>+0.3%</b>
<b>Clerical (III &amp; IV)</b>	<b>522</b>	<b>+104</b>	<b>+91</b>	<b>+54</b>	<b>+7</b>	<b>+18</b>	<b>-5</b>	<b>+24.9%</b>	<b>+21.1%</b>	<b>+11.5%</b>	<b>+1.3%</b>	<b>+3.5%</b>	<b>-1.0%</b>
<b>Management &amp; Administrative</b>	<b>772</b>	<b>+185</b>	<b>+165</b>	<b>+112</b>	<b>+58</b>	<b>+34</b>	<b>-3</b>	<b>+31.6%</b>	<b>+27.1%</b>	<b>+17.0%</b>	<b>+8.1%</b>	<b>+4.6%</b>	<b>-0.3%</b>
Catering	60	+2	+4	+5	+1	-0	-1	+3.1%	+6.7%	+8.8%	+2.3%	-0.4%	-2.0%
Household Services	201	-76	-51	-33	-9	+11	-7	-27.3%	-20.1%	-14.0%	-4.2%	+6.0%	-3.3%
Other Support	91	+27	+28	+27	+18	+17	+15	+41.8%	+43.2%	+41.5%	+23.8%	+23.3%	+20.4%

Sep 2020 (Dec 2015 figure: 7,461)	WTE Sep 2020	WTE change since Dec 15	WTE change since Dec 16	WTE change since Dec 17	WTE change since Dec 18	WTE change since Dec 19	WTE change since Aug 20	% change since Dec 15	% change since Dec 16	% change since Dec 17	% change since Dec 18	% change since Dec 19	% change since Aug 20
<b>Overall</b>	<b>8,475</b>	<b>+1,014</b>	<b>+836</b>	<b>+492</b>	<b>+337</b>	<b>+286</b>	<b>+112</b>	<b>+13.6%</b>	<b>+10.9%</b>	<b>+6.2%</b>	<b>+4.1%</b>	<b>+3.5%</b>	<b>+1.3%</b>
Portering	13	-1	+0	+2	+2		+0	-5.2%	+2.3%	+21.3%	+21.1%		+2.5%
<b>Support</b>	<b>365</b>	<b>-48</b>	<b>-19</b>	<b>+1</b>	<b>+12</b>	<b>+28</b>	<b>+8</b>	<b>-11.5%</b>	<b>-5.0%</b>	<b>+0.4%</b>	<b>+3.5%</b>	<b>+8.4%</b>	<b>+2.1%</b>
Maintenance	21	-11	-11	-10	-2	-1	+0	-34.4%	-33.9%	-32.1%	-8.5%	-2.4%	+0.7%
Technical Services	1												
<b>Maintenance/ Technical</b>	<b>22</b>	<b>-11</b>	<b>-11</b>	<b>-10</b>	<b>-2</b>	<b>-1</b>	<b>+0</b>	<b>-33.4%</b>	<b>-32.9%</b>	<b>-31.1%</b>	<b>-8.2%</b>	<b>-2.3%</b>	<b>+0.7%</b>
<b>General Support</b>	<b>387</b>	<b>-58</b>	<b>-30</b>	<b>-8</b>	<b>+11</b>	<b>+28</b>	<b>+8</b>	<b>-13.1%</b>	<b>-7.1%</b>	<b>-2.1%</b>	<b>+2.8%</b>	<b>+7.7%</b>	<b>+2.0%</b>
HCA, Nurse's Aide, etc.	2,034	+501	+356	+243	+111	+88	-21	+32.7%	+21.2%	+13.6%	+5.8%	+4.5%	-1.0%
Health & Social Care Assistants	6	+6	+4	+5	-8	-2		-100.0%	+200.0%	+500.0%	-56.6%	-25.4%	
<b>Health Care Assistants</b>	<b>2,040</b>	<b>+507</b>	<b>+360</b>	<b>+248</b>	<b>+103</b>	<b>+86</b>	<b>-21</b>	<b>+33.1%</b>	<b>+21.4%</b>	<b>+13.9%</b>	<b>+5.3%</b>	<b>+4.4%</b>	<b>-1.0%</b>
<b>Care, other</b>	<b>495</b>	<b>+113</b>	<b>+99</b>	<b>+76</b>	<b>+64</b>	<b>+45</b>	<b>+34</b>	<b>+29.7%</b>	<b>+25.0%</b>	<b>+18.2%</b>	<b>+14.8%</b>	<b>+10.0%</b>	<b>+7.4%</b>
<b>Home Help</b>	<b>1,069</b>	<b>-69</b>	<b>-14</b>	<b>-64</b>	<b>-40</b>	<b>-55</b>	<b>+40</b>	<b>-6.0%</b>	<b>-1.3%</b>	<b>-5.6%</b>	<b>-3.6%</b>	<b>-4.9%</b>	<b>+3.9%</b>
<b>Patient &amp; Client Care</b>	<b>3,604</b>	<b>+552</b>	<b>+445</b>	<b>+260</b>	<b>+127</b>	<b>+76</b>	<b>+53</b>	<b>+18.1%</b>	<b>+14.1%</b>	<b>+7.8%</b>	<b>+3.6%</b>	<b>+2.2%</b>	<b>+1.5%</b>

Source: Health Service Personnel Census

## Longitudinal Employment Levels by Care Group - Oct 2013 to Sep 2020

### Community Health & Wellbeing

Sep 2020 ( figure: )	WTE Sep 2020	WTE change since	WTE change since	WTE change since	WTE change since	WTE change since	WTE change since Aug 20	% change since	% change since	% change since	% change since	% change since	% change since Aug 20
<b>Overall</b>	<b>34</b>	<b>+34</b>	<b>+34</b>	<b>+34</b>	<b>+34</b>	<b>+34</b>	<b>+5</b>	<b>-100.0%</b>	<b>-100.0%</b>	<b>-100.0%</b>	<b>-100.0%</b>	<b>-100.0%</b>	<b>+16.9%</b>
<b>Health &amp; Social Care Professionals</b>	<b>5</b>	<b>+5</b>	<b>+5</b>	<b>+5</b>	<b>+5</b>	<b>+5</b>	<b>+1</b>	<b>-1.0%</b>	<b>-1.0%</b>	<b>-1.0%</b>	<b>-1.0%</b>	<b>-1.0%</b>	<b>+0.2%</b>
Therapy Professions	5	+5	+5	+5	+5	+5	+1	-1.0%	-1.0%	-1.0%	-1.0%	-1.0%	+0.2%
<b>Management &amp; Administrative</b>	<b>12</b>	<b>+12</b>	<b>+12</b>	<b>+12</b>	<b>+12</b>	<b>+12</b>	<b>+3</b>	<b>-1.0%</b>	<b>-1.0%</b>	<b>-1.0%</b>	<b>-1.0%</b>	<b>-1.0%</b>	<b>+0.3%</b>
Management (VIII & above)	1	+1	+1	+1	+1	+1	-0	-1.0%	-1.0%	-1.0%	-1.0%	-1.0%	-0.0%
Administrative/ Supervisory (V to VII)	5	+5	+5	+5	+5	+5	+1	-1.0%	-1.0%	-1.0%	-1.0%	-1.0%	+0.3%
Clerical (III & IV)	6	+6	+6	+6	+6	+6	+2	-1.0%	-1.0%	-1.0%	-1.0%	-1.0%	+0.4%
<b>Patient &amp; Client Care</b>	<b>16</b>	<b>+16</b>	<b>+16</b>	<b>+16</b>	<b>+16</b>	<b>+16</b>	<b>+1</b>	<b>-1.0%</b>	<b>-1.0%</b>	<b>-1.0%</b>	<b>-1.0%</b>	<b>-1.0%</b>	<b>+0.1%</b>
Care, other	16	+16	+16	+16	+16	+16	+1	-1.0%	-1.0%	-1.0%	-1.0%	-1.0%	+0.1%

Source: Health Service Personnel Census

## Mental Health

Sep 2020 (Dec 2015 figure: 1,374)	WTE Sep 2020	WTE change since Dec 15	WTE change since Dec 16	WTE change since Dec 17	WTE change since Dec 18	WTE change since Dec 19	WTE change since Aug 20	% change since Dec 15	% change since Dec 16	% change since Dec 17	% change since Dec 18	% change since Dec 19	% change since Aug 20
<b>Overall</b>	<b>1,569</b>	<b>+195</b>	<b>+162</b>	<b>+92</b>	<b>+86</b>	<b>+84</b>	<b>+6</b>	<b>+14.2%</b>	<b>+11.5%</b>	<b>+6.2%</b>	<b>+5.8%</b>	<b>+5.7%</b>	<b>+0.4%</b>
<b>Medical &amp; Dental</b>	<b>145</b>	<b>+34</b>	<b>+30</b>	<b>+24</b>	<b>+16</b>	<b>+16</b>	<b>+18</b>	<b>+0.3%</b>	<b>+0.3%</b>	<b>+0.2%</b>	<b>+0.1%</b>	<b>+0.1%</b>	<b>+0.1%</b>
Consultants	56	+14	+13	+11	+8	+6	+4	+0.3%	+0.3%	+0.2%	+0.2%	+0.1%	+0.1%
Registrars	42	+13	+9	+7	+1	-3	+0	+0.5%	+0.3%	+0.2%	+0.0%	-0.1%	+0.0%
SHO/ Interns	40	+5	+6	+5	+4	+9	+10	+0.1%	+0.2%	+0.1%	+0.1%	+0.3%	+0.3%
Medical/ Dental, other	6	+2	+2	+1	+3	+4	+4	+0.5%	+0.5%	+0.2%	+1.0%	+2.1%	+1.8%
<b>Nursing &amp; Midwifery</b>	<b>784</b>	<b>+20</b>	<b>+7</b>	<b>-5</b>	<b>+18</b>	<b>+19</b>	<b>-6</b>	<b>+0.0%</b>	<b>+0.0%</b>	<b>-0.0%</b>	<b>+0.0%</b>	<b>+0.0%</b>	<b>-0.0%</b>
Nurse/ Midwife Manager	193	+37	+36	+41	+37	+23	+8	+0.2%	+0.2%	+0.3%	+0.2%	+0.1%	+0.0%
Nurse/ Midwife Specialist & AN/MP	67	+33	+29	+20	+20	+7	-2	+1.0%	+0.8%	+0.4%	+0.4%	+0.1%	-0.0%
Staff Nurse/ Staff Midwife	499	-75	-83	-92	-64	-3	-10	-0.1%	-0.1%	-0.2%	-0.1%	-0.0%	-0.0%
Nursing/ Midwifery Student	26	+26	+26	+26	+26	-8	-1	+51.0%	+51.0%	-1.0%	+51.0%	-0.2%	-0.1%
<b>Health &amp; Social Care Professionals</b>	<b>251</b>	<b>+76</b>	<b>+56</b>	<b>+44</b>	<b>+25</b>	<b>+25</b>	<b>+5</b>	<b>+0.4%</b>	<b>+0.3%</b>	<b>+0.2%</b>	<b>+0.1%</b>	<b>+0.1%</b>	<b>+0.0%</b>
Therapy Professions	80	+26	+20	+17	+9	+6	+2	+0.5%	+0.3%	+0.3%	+0.1%	+0.1%	+0.0%
Social Care	8	-0	+0	+1	+2	+4	+1	-0.0%	+0.0%	+0.2%	+0.4%	+1.1%	+0.2%
Social Workers	63	+8	+8	+4	+3	+9	+1	+0.2%	+0.2%	+0.1%	+0.1%	+0.2%	+0.0%
Psychologists	83	+37	+25	+19	+7	+0	-0	+0.8%	+0.4%	+0.3%	+0.1%	+0.0%	-0.0%
Pharmacy	3	-0	-0	-1	-1	+0	-0	-0.1%	-0.1%	-0.2%	-0.4%	+0.0%	-0.2%
H&SC, Other	16	+5	+3	+3	+5	+5	+2	+0.4%	+0.3%	+0.3%	+0.5%	+0.4%	+0.1%
<b>Management &amp; Administrative</b>	<b>115</b>	<b>+22</b>	<b>+22</b>	<b>+12</b>	<b>+13</b>	<b>+4</b>	<b>-3</b>	<b>+0.2%</b>	<b>+0.2%</b>	<b>+0.1%</b>	<b>+0.1%</b>	<b>+0.0%</b>	<b>-0.0%</b>
Management (VIII & above)	2	+2	+2	+2	+2	+1	+1	-1.0%	-1.0%	-1.0%	-1.0%	+0.9%	+1.1%
Administrative/ Supervisory (V to VII)	21	+4	+4	+3	+4	-1	-2	+0.2%	+0.2%	+0.1%	+0.2%	-0.1%	-0.1%
Clerical (III & IV)	92	+17	+16	+7	+7	+5	-2	+0.2%	+0.2%	+0.1%	+0.1%	+0.1%	-0.0%
<b>General Support</b>	<b>87</b>	<b>-21</b>	<b>-16</b>	<b>-17</b>	<b>-8</b>	<b>+1</b>	<b>-1</b>	<b>-0.2%</b>	<b>-0.2%</b>	<b>-0.2%</b>	<b>-0.1%</b>	<b>+0.0%</b>	<b>-0.0%</b>
Support	83	-18	-14	-14	-6	+3	-0	-0.2%	-0.1%	-0.1%	-0.1%	+0.0%	-0.0%
Maintenance/ Technical	5	-3	-3	-3	-2	-2	-1	-0.4%	-0.4%	-0.4%	-0.2%	-0.2%	-0.1%
<b>Patient &amp; Client Care</b>	<b>187</b>	<b>+64</b>	<b>+63</b>	<b>+34</b>	<b>+22</b>	<b>+19</b>	<b>-8</b>	<b>+0.5%</b>	<b>+0.5%</b>	<b>+0.2%</b>	<b>+0.1%</b>	<b>+0.1%</b>	<b>-0.0%</b>
Health Care Assistants	177	+58	+57	+32	+20	+16	-12	+0.5%	+0.5%	+0.2%	+0.1%	+0.1%	-0.1%
Care, other	10	+6	+6	+3	+2	+3	+4	+1.4%	+1.4%	+0.4%	+0.3%	+0.4%	+0.7%

Source: Health Service Personnel Census

## Primary Care

Sep 2020 (Dec 2015 figure: 1,143)	WTE Sep 2020	WTE change since Dec 15	WTE change since Dec 16	WTE change since Dec 17	WTE change since Dec 18	WTE change since Dec 19	WTE change since Aug 20	% change since Dec 15	% change since Dec 16	% change since Dec 17	% change since Dec 18	% change since Dec 19	% change since Aug 20
<b>Overall</b>	<b>1,410</b>	<b>+268</b>	<b>+223</b>	<b>+103</b>	<b>+66</b>	<b>+64</b>	<b>+46</b>	<b>+23.4%</b>	<b>+18.7%</b>	<b>+7.9%</b>	<b>+4.9%</b>	<b>+4.8%</b>	<b>+3.4%</b>
<b>Medical &amp; Dental</b>	<b>162</b>	<b>+25</b>	<b>+23</b>	<b>+12</b>	<b>+8</b>	<b>+11</b>	<b>+14</b>	<b>+0.2%</b>	<b>+0.2%</b>	<b>+0.1%</b>	<b>+0.0%</b>	<b>+0.1%</b>	<b>+0.1%</b>
Consultants	3	+1	+1	+1	+1	+1	+1	+0.6%	+0.6%	+0.2%	+0.2%	+0.2%	+0.2%
Registrars	57	+12	+15	+9	+7	+3	-1	+0.3%	+0.3%	+0.2%	+0.1%	+0.0%	-0.0%
SHO/ Interns	7	+1	-1		-1	+0	+2	+0.1%	-0.1%	+0.0%	-0.1%	+0.1%	+0.4%
Medical/ Dental, other	96	+12	+8	+2	+1	+7	+13	+0.1%	+0.1%	+0.0%	+0.0%	+0.1%	+0.2%
<b>Nursing &amp; Midwifery</b>	<b>419</b>	<b>+80</b>	<b>+63</b>	<b>+25</b>	<b>+23</b>	<b>+12</b>	<b>+3</b>	<b>+0.2%</b>	<b>+0.2%</b>	<b>+0.1%</b>	<b>+0.1%</b>	<b>+0.0%</b>	<b>+0.0%</b>
Nurse/ Midwife Manager	65	+24	+20	+21	+15	+8	+1	+0.6%	+0.5%	+0.5%	+0.3%	+0.2%	+0.0%
Nurse/ Midwife Specialist & AN/MP	6	+3	+3	+2	-0	+2	-0	+0.9%	+0.9%	+0.6%	-0.1%	+0.4%	-0.0%
Staff Nurse/ Staff Midwife	125	+47	+34	+5	+11	+6	-16	+0.6%	+0.4%	+0.0%	+0.1%	+0.1%	-0.1%
Public Health Nurse	215	+5	+5	+5	+3	+4	+11	+0.0%	+0.0%	+0.0%	+0.0%	+0.0%	+0.1%
Nursing/ Midwifery Student	9	+2	+1	-8	-5	-9	+7	+0.2%	+0.1%	-0.5%	-0.4%	-0.5%	+3.4%
<b>Health &amp; Social Care Professionals</b>	<b>336</b>	<b>+51</b>	<b>+43</b>	<b>+10</b>	<b>+6</b>	<b>+6</b>	<b>+2</b>	<b>+0.2%</b>	<b>+0.1%</b>	<b>+0.0%</b>	<b>+0.0%</b>	<b>+0.0%</b>	<b>+0.0%</b>
Therapy Professions	227	+34	+26	-5	+4	+5	+1	+0.2%	+0.1%	-0.0%	+0.0%	+0.0%	+0.0%
Health Science/ Diagnostics	11	-11	+2	+1		+0		-0.5%	+0.2%	+0.1%	+0.0%	+0.0%	+0.0%
Social Care	5		-1	-1	-3	-3		+0.0%	-0.1%	-0.1%	-0.3%	-0.4%	+0.0%
Social Workers	27	+7	+5	+5	+2	+3	-1	+0.4%	+0.2%	+0.2%	+0.1%	+0.1%	-0.0%
Psychologists	21	+7	+8	+9	+2	+1	+0	+0.5%	+0.7%	+0.7%	+0.1%	+0.0%	+0.0%
Pharmacy	4	+0	+1	+0	+1	+1	+1	+0.1%	+0.3%	+0.1%	+0.2%	+0.3%	+0.2%
H&SC, Other	41	+13	+2	+1	+0	-0	+1	+0.5%	+0.0%	+0.0%	+0.0%	-0.0%	+0.0%
<b>Management &amp; Administrative</b>	<b>325</b>	<b>+66</b>	<b>+57</b>	<b>+27</b>	<b>+18</b>	<b>+15</b>	<b>+4</b>	<b>+0.3%</b>	<b>+0.2%</b>	<b>+0.1%</b>	<b>+0.1%</b>	<b>+0.0%</b>	<b>+0.0%</b>
Management (VIII & above)	37	+8	+8	+3	+5	+1	+1	+0.3%	+0.3%	+0.1%	+0.1%	+0.0%	+0.0%
Administrative/ Supervisory (V to VII)	72	+25	+20	+13	+11	+4	-1	+0.5%	+0.4%	+0.2%	+0.2%	+0.1%	-0.0%
Clerical (III & IV)	216	+33	+29	+11	+2	+11	+4	+0.2%	+0.2%	+0.1%	+0.0%	+0.1%	+0.0%
<b>General Support</b>	<b>31</b>	<b>+13</b>	<b>+13</b>	<b>+12</b>	<b>+14</b>	<b>+16</b>	<b>+14</b>	<b>+0.7%</b>	<b>+0.8%</b>	<b>+0.7%</b>	<b>+0.8%</b>	<b>+1.0%</b>	<b>+0.8%</b>
Support	31	+13	+13	+12	+14	+16	+14	+0.7%	+0.8%	+0.7%	+0.8%	+1.0%	+0.8%
<b>Patient &amp; Client Care</b>	<b>137</b>	<b>+32</b>	<b>+23</b>	<b>+16</b>	<b>-3</b>	<b>+5</b>	<b>+10</b>	<b>+0.3%</b>	<b>+0.2%</b>	<b>+0.1%</b>	<b>-0.0%</b>	<b>+0.0%</b>	<b>+0.1%</b>
Health Care Assistants	16	+15	+13	+10	-7	-1	-1	+14.9%	+4.4%	+1.6%	-0.3%	-0.1%	-0.0%
Care, other	108	+15	+9	+6	+3	+3	+7	+0.2%	+0.1%	+0.1%	+0.0%	+0.0%	+0.1%
Home Help	12	+1	+0	+0	+1	+2	+3	+0.1%	+0.0%	+0.0%	+0.1%	+0.2%	+0.3%

Source: Health Service Personnel Census

## Disabilities

Sep 2020 (Dec 2015 figure: 2,151)	WTE Sep 2020	WTE change since Dec 15	WTE change since Dec 16	WTE change since Dec 17	WTE change since Dec 18	WTE change since Dec 19	WTE change since Aug 20	% change since Dec 15	% change since Dec 16	% change since Dec 17	% change since Dec 18	% change since Dec 19	% change since Aug 20
<b>Overall</b>	<b>2,511</b>	<b>+360</b>	<b>+256</b>	<b>+212</b>	<b>+117</b>	<b>+73</b>	<b>+16</b>	<b>+16.7%</b>	<b>+11.3%</b>	<b>+9.2%</b>	<b>+4.9%</b>	<b>+3.0%</b>	<b>+0.6%</b>
<b>Medical &amp; Dental</b>	<b>3</b>	<b>-0</b>	<b>-0</b>	<b>+1</b>	<b>+1</b>	<b>+1</b>	<b>+1</b>	<b>-0.1%</b>	<b>-0.1%</b>	<b>+0.6%</b>	<b>+0.6%</b>	<b>+0.6%</b>	<b>+0.2%</b>
Consultants	2	-1	-1	+1	+1	+1	+1	-0.3%	-0.3%	+0.3%	+0.3%	+0.3%	+0.3%
Medical/ Dental, other	1	+1	+1	+1	+1	+1		+2.0%	+2.0%	+2.0%	+2.0%	+2.0%	+0.0%
<b>Nursing &amp; Midwifery</b>	<b>425</b>	<b>-62</b>	<b>-54</b>	<b>-41</b>	<b>-8</b>	<b>+6</b>	<b>-7</b>	<b>-0.1%</b>	<b>-0.1%</b>	<b>-0.1%</b>	<b>-0.0%</b>	<b>+0.0%</b>	<b>-0.0%</b>
Nurse/ Midwife Manager	89	-3	+3	+5	-3	-0	+1	-0.0%	+0.0%	+0.1%	-0.0%	-0.0%	+0.0%
Nurse/ Midwife Specialist & AN/MP	13	-3	-3	-4	-2			-0.2%	-0.2%	-0.2%	-0.1%	+0.0%	+0.0%
Staff Nurse/ Staff Midwife	301	-68	-67	-55	-16	-8	-0	-0.2%	-0.2%	-0.2%	-0.0%	-0.0%	-0.0%
Nursing/ Midwifery Student	21	+13	+13	+13	+13	+14	-7	+1.6%	+1.6%	+1.6%	+1.6%	+1.9%	-0.3%
Nursing/ Midwifery other	1	+0	+0	+0				+0.0%	+0.0%	+0.0%	+0.0%	+0.0%	+0.0%
<b>Health &amp; Social Care Professionals</b>	<b>408</b>	<b>+43</b>	<b>+23</b>	<b>+13</b>	<b>+15</b>	<b>+4</b>	<b>+6</b>	<b>+0.1%</b>	<b>+0.1%</b>	<b>+0.0%</b>	<b>+0.0%</b>	<b>+0.0%</b>	<b>+0.0%</b>
Therapy Professions	107	-2	-4	-4	+3	-1	+6	-0.0%	-0.0%	-0.0%	+0.0%	-0.0%	+0.1%
Social Care	229	+39	+29	+19	+13	+3	-3	+0.2%	+0.1%	+0.1%	+0.1%	+0.0%	-0.0%
Social Workers	26	+5	+0		-2	-1	-0	+0.3%	+0.0%	+0.0%	-0.1%	-0.0%	-0.0%
Psychologists	36	-0	-2	-4	-3	+1	+2	-0.0%	-0.1%	-0.1%	-0.1%	+0.0%	+0.1%
H&SC, Other	11	+1	+1	+2	+3	+2	+0	+0.1%	+0.1%	+0.2%	+0.4%	+0.3%	+0.0%
<b>Management &amp; Administrative</b>	<b>171</b>	<b>+42</b>	<b>+39</b>	<b>+33</b>	<b>+19</b>	<b>+11</b>	<b>+5</b>	<b>+0.3%</b>	<b>+0.3%</b>	<b>+0.2%</b>	<b>+0.1%</b>	<b>+0.1%</b>	<b>+0.0%</b>
Management (VIII & above)	23	+4	+4	+4	+4	+1	+1	+0.2%	+0.2%	+0.2%	+0.2%	+0.0%	+0.0%
Administrative/ Supervisory (V to VII)	58	+18	+19	+18	+9	+4	+3	+0.5%	+0.5%	+0.5%	+0.2%	+0.1%	+0.0%
Clerical (III & IV)	90	+20	+16	+12	+5	+6	+2	+0.3%	+0.2%	+0.1%	+0.1%	+0.1%	+0.0%
<b>General Support</b>	<b>148</b>	<b>-36</b>	<b>-22</b>	<b>-7</b>	<b>-5</b>	<b>-4</b>	<b>+0</b>	<b>-0.2%</b>	<b>-0.1%</b>	<b>-0.0%</b>	<b>-0.0%</b>	<b>-0.0%</b>	<b>+0.0%</b>
Support	137	-30	-16	-0	-5	-4	+0	-0.2%	-0.1%	-0.0%	-0.0%	-0.0%	+0.0%
Maintenance/ Technical	10	-6	-6	-6	-1		-0	-0.4%	-0.4%	-0.4%	-0.1%	+0.0%	-0.0%
<b>Patient &amp; Client Care</b>	<b>1,357</b>	<b>+373</b>	<b>+271</b>	<b>+211</b>	<b>+95</b>	<b>+55</b>	<b>+11</b>	<b>+0.4%</b>	<b>+0.2%</b>	<b>+0.2%</b>	<b>+0.1%</b>	<b>+0.0%</b>	<b>+0.0%</b>
Health Care Assistants	1,039	+309	+217	+173	+66	+44	+2	+0.4%	+0.3%	+0.2%	+0.1%	+0.0%	+0.0%
Care, other	318	+64	+54	+39	+30	+10	+10	+0.3%	+0.2%	+0.1%	+0.1%	+0.0%	+0.0%

Source: Health Service Personnel Census

## Older People

Sep 2020 (Dec 2015 figure: 2,792)	WTE Sep 2020	WTE change since Dec 15	WTE change since Dec 16	WTE change since Dec 17	WTE change since Dec 18	WTE change since Dec 19	WTE change since Aug 20	% change since Dec 15	% change since Dec 16	% change since Dec 17	% change since Dec 18	% change since Dec 19	% change since Aug 20
<b>Overall</b>	<b>2,950</b>	<b>+158</b>	<b>+162</b>	<b>+51</b>	<b>+35</b>	<b>+31</b>	<b>+39</b>	<b>+5.7%</b>	<b>+5.8%</b>	<b>+1.8%</b>	<b>+1.2%</b>	<b>+1.1%</b>	<b>+1.3%</b>
<b>Medical &amp; Dental</b>	<b>41</b>	<b>+16</b>	<b>+16</b>	<b>+14</b>	<b>+15</b>	<b>+15</b>	<b>+6</b>	<b>+0.7%</b>	<b>+0.7%</b>	<b>+0.5%</b>	<b>+0.6%</b>	<b>+0.6%</b>	<b>+0.2%</b>
Consultants	2		+0	+0	+1	+1	+1	+0.0%	+0.1%	+0.1%	+1.0%	+1.0%	+1.0%
Registrars	3	+1	+2	+1	+1		+0	+0.5%	+2.0%	+0.5%	+0.5%	+0.0%	+0.1%
SHO/ Interns	1	+1	+1	+1			+1	-1.0%	-1.0%	-1.0%	+0.0%	+0.0%	-1.0%
Medical/ Dental, other	35	+14	+13	+12	+13	+14	+4	+0.7%	+0.6%	+0.5%	+0.6%	+0.7%	+0.1%
<b>Nursing &amp; Midwifery</b>	<b>665</b>	<b>+28</b>	<b>+29</b>	<b>+13</b>	<b>+9</b>	<b>+22</b>	<b>+8</b>	<b>+0.0%</b>	<b>+0.0%</b>	<b>+0.0%</b>	<b>+0.0%</b>	<b>+0.0%</b>	<b>+0.0%</b>
Nurse/ Midwife Manager	129	+22	+26	+24	+39	+11	+3	+0.2%	+0.3%	+0.2%	+0.4%	+0.1%	+0.0%
Nurse/ Midwife Specialist & AN/MP	6	+4	+3	+4	+2	+3	+2	+2.2%	+1.3%	+2.4%	+0.7%	+0.8%	+0.3%
Staff Nurse/ Staff Midwife	524	+2	-1	-14	-33	+9	+3	+0.0%	-0.0%	-0.0%	-0.1%	+0.0%	+0.0%
Public Health Nurse	6	-0	-0	-1	-0	+1	+1	-0.1%	-0.0%	-0.1%	-0.0%	+0.2%	+0.2%
Nursing/ Midwifery Student						-2		-1.0%	-1.0%	-1.0%	-1.0%	-1.0%	-1.0%
<b>Health &amp; Social Care Professionals</b>	<b>68</b>	<b>+20</b>	<b>+15</b>	<b>+12</b>	<b>+9</b>	<b>+7</b>	<b>+3</b>	<b>+0.4%</b>	<b>+0.3%</b>	<b>+0.2%</b>	<b>+0.2%</b>	<b>+0.1%</b>	<b>+0.0%</b>
Therapy Professions	48	+14	+9	+9	+5	+3	+0	+0.4%	+0.2%	+0.2%	+0.1%	+0.1%	+0.0%
Health Science/ Diagnostics	1	-0			+0	+0		-0.2%	+0.0%	+0.0%	+0.2%	+0.1%	+0.0%
Social Care	2							+0.0%	+0.0%	+0.0%	+0.0%	+0.0%	+0.0%
Social Workers	12	+4	+4	+2	+3	+2	+2	+0.5%	+0.4%	+0.1%	+0.3%	+0.2%	+0.2%
Pharmacy	5	+2	+2	+1	+1	+2	+1	+0.7%	+0.9%	+0.4%	+0.4%	+0.8%	+0.2%
<b>Management &amp; Administrative</b>	<b>149</b>	<b>+42</b>	<b>+35</b>	<b>+27</b>	<b>-4</b>	<b>-9</b>	<b>-11</b>	<b>+0.4%</b>	<b>+0.3%</b>	<b>+0.2%</b>	<b>-0.0%</b>	<b>-0.1%</b>	<b>-0.1%</b>
Management (VIII & above)	13	+7	+5	+1	+2	+0		+1.2%	+0.6%	+0.1%	+0.2%	+0.0%	+0.0%
Administrative/ Supervisory (V to VII)	18	+8	+7	+8	+8	+1	+0	+0.7%	+0.6%	+0.8%	+0.8%	+0.1%	+0.0%
Clerical (III & IV)	117	+28	+23	+18	-14	-11	-11	+0.3%	+0.2%	+0.2%	-0.1%	-0.1%	-0.1%
<b>General Support</b>	<b>121</b>	<b>-15</b>	<b>-5</b>	<b>+3</b>	<b>+10</b>	<b>+15</b>	<b>-6</b>	<b>-0.1%</b>	<b>-0.0%</b>	<b>+0.0%</b>	<b>+0.1%</b>	<b>+0.1%</b>	<b>-0.0%</b>
Support	114	-13	-3	+3	+10	+14	-6	-0.1%	-0.0%	+0.0%	+0.1%	+0.1%	-0.1%
Maintenance/ Technical	7	-2	-2	-1	+0	+1	+1	-0.2%	-0.2%	-0.1%	+0.0%	+0.2%	+0.1%
<b>Patient &amp; Client Care</b>	<b>1,907</b>	<b>+66</b>	<b>+72</b>	<b>-18</b>	<b>-4</b>	<b>-18</b>	<b>+39</b>	<b>+0.0%</b>	<b>+0.0%</b>	<b>-0.0%</b>	<b>-0.0%</b>	<b>-0.0%</b>	<b>+0.0%</b>
Health Care Assistants	808	+125	+72	+34	+25	+26	-11	+0.2%	+0.1%	+0.0%	+0.0%	+0.0%	-0.0%
Care, other	43	+12	+14	+13	+13	+12	+12	+0.4%	+0.5%	+0.4%	+0.4%	+0.4%	+0.4%
Home Help	1,057	-70	-14	-64	-42	-57	+37	-0.1%	-0.0%	-0.1%	-0.0%	-0.1%	+0.0%

Source: Health Service Personnel Census