

CHO 5 Employment Report: January 2021

Employment by Staff Group

Jan 2021 (Dec 2019 figure: 5,282)	WTE Dec 2020	WTE Jan 2021	WTE change since Dec 20	% change since Dec 20	WTE change since Dec 19	WTE change since Jan 20
Overall	5,477	5,516	+39	+0.7%	+234	+226
Consultants	29	29	+0	+0.3%	-1	-1
Registrars	30	31	+1	+2.8%	+3	+2
SHO/ Interns	38	37	-1	-1.7%	-1	+1
Medical/ Dental, other	71	73	+1	+1.7%	+7	+8
Medical & Dental	168	170	+1	+0.9%	+8	+9
Nurse/ Midwife Manager	365	364	-1	-0.3%	+26	+23
Nurse/ Midwife Specialist & AN/MP	78	82	+4	+5.0%	+30	+28
Staff Nurse/ Staff Midwife	972	972	+0	+0.0%	+5	+10
Public Health Nurse	176	176	-0	-0.0%	+2	+5
<i>Pre-registration Nurse/ Midwife Intern</i>		14	+14	-100.0%	+11	+14
<i>Pre-registration Nurse Intern (COVID-19)</i>	14	9	-5	-34.0%	+9	-5
<i>Post-registration Nurse/ Midwife Student</i>	3	4	+1	+20.1%	-1	+1
<i>Nursing/ Midwifery awaiting registration</i>				-100.0%	-4	
Nursing/ Midwifery Student	17	27	+10	+59.2%	+15	-12
Nursing/ Midwifery other	4	4	+0	+0.7%	-0	+0
Nursing & Midwifery	1,612	1,625	+13	+0.8%	+77	+55
Therapy Professions	325	331	+6	+2.0%	+4	+4
Health Science/ Diagnostics	8	7	-1	-12.8%	+3	+3
Social Care	153	153	+0	+0.2%	-11	-10
Social Workers	63	62	-2	-2.7%	+2	+2
Psychologists	79	78	-0	-0.5%	-1	+2
Pharmacy	2	2	+0	+1.5%	+1	+1
H&SC, Other	32	33	+1	+3.0%	-2	-2
Health & Social Care Professionals	661	666	+5	+0.7%	-4	+1
Management (VIII & above)	47	46	-1	-1.8%	+3	+3
Administrative/ Supervisory (V to VII)	138	140	+2	+1.6%	+15	+14
Clerical (III & IV)	324	325	+0	+0.1%	-5	-3
Management & Administrative	510	511	+2	+0.3%	+13	+14
Support	300	295	-5	-1.8%	-37	-37
Maintenance/ Technical	31	30	-1	-4.7%	-9	-9
General Support	331	324	-7	-2.1%	-46	-46
Health Care Assistants	1,317	1,322	+5	+0.4%	+180	+189
Care, other	232	238	+7	+2.9%	+16	+9
Home Help	646	659	+13	+2.1%	-9	-4
Patient & Client Care	2,195	2,220	+25	+1.1%	+187	+194

CHO 5 Employment Report: January 2021

Community Health & Wellbeing

Jan 2021 (figure:)	WTE Dec 2020	WTE Jan 2021	WTE change since Dec 20	% change since Dec 20	WTE change since	WTE change since Jan 20
Total Community Health & Wellbeing	14	15	+1	+6.3%	+15	+2
Therapy Professions	3	3	0	0	+3	+0
Health & Social Care Professionals	3	3	0	0	+3	+0
Management (VIII & above)	1	1	0	0	+1	
Administrative/ Supervisory (V to VII)	2	2	-0	-6.8%	+2	+1
Clerical (III & IV)	3	3	+0	+0.8%	+3	+1
Management & Administrative	5	5	-0	-2.0%	+5	+1
Care, other	6	7	+1	+17.6%	+7	+0
Patient & Client Care	6	7	+1	+17.6%	+7	+0

Mental Health

Jan 2021 (Dec 2019 figure: 1,178)	WTE Dec 2020	WTE Jan 2021	WTE change since Dec 20	% change since Dec 20	WTE change since Dec 19	WTE change since Jan 20
Total Mental Health	1,188	1,194	+6	+0.5%	+16	+5
Consultants	27	27	+0	+0.4%	+1	+1
Registrars	9	9	-0	-0.1%	-1	-1
SHO/ Interns	36	35	-0	-1.1%	+3	+5
Medical/ Dental, other	2	2	0	0		
Medical & Dental	74	74	-0	-0.4%	+4	+5
Nurse/ Midwife Manager	160	165	+5	+2.9%	+1	+3
Nurse/ Midwife Specialist & AN/MP	54	55	+1	+1.8%	+13	+12
Staff Nurse/ Staff Midwife	411	412	+1	+0.2%	-4	-3
<i>Pre-registration Nurse/ Midwife Intern</i>		7	+7	-100.0%	+3	+7
<i>Pre-registration Nurse Intern (COVID-19)</i>	13	8	-5	-36.7%	+8	-5
<i>Nursing/ Midwifery awaiting registration</i>				-100.0%	-2	
Nursing/ Midwifery Student	13	15	+2	+14.0%	+9	-9
Nursing/ Midwifery other	4	4	-0	-0.6%	-0	+0
Nursing & Midwifery	642	650	+8	+1.3%	+19	+4
Therapy Professions	39	37	-2	-3.9%	-3	-2
Social Care	5	5	0	0		
Social Workers	28	26	-2	-5.6%	-1	-1
Psychologists	21	22	+0	+0.9%	+0	+1
H&SC, Other	8	9	+1	+12.7%	-1	-1
Health & Social Care Professionals	100	99	-2	-1.9%	-5	-3
Management (VIII & above)	6	6	0	0	+3	+3
Administrative/ Supervisory (V to VII)	20	20	0	0	-0	-0
Clerical (III & IV)	68	69	+1	+0.8%	-5	-5
Management & Administrative	94	95	+1	+0.6%	-2	-2
Support	178	176	-2	-1.3%	+8	+9
Maintenance/ Technical	20	19	-1	-2.5%	-4	-4
General Support	198	195	-3	-1.4%	+4	+5
Health Care Assistants	68	69	+2	+2.8%	-3	-3
Care, other	12	12	-0	-0.3%	-1	-1
Patient & Client Care	80	82	+2	+2.3%	-4	-4

Primary Care

Jan 2021 (Dec 2019 figure: 952)	WTE Dec 2020	WTE Jan 2021	WTE change since Dec 20	% change since Dec 20	WTE change since Dec 19	WTE change since Jan 20
Total Primary Care	1,061	1,070	+9	+0.8%	+118	+125
Consultants	1	1	0	0	-2	-2
Registrars	21	22	+1	+4.1%	+4	+3
SHO/ Interns	2	2	-0	-11.1%	-4	-4
Medical/ Dental, other	55	56	+1	+2.2%	+2	+2
Medical & Dental	79	80	+2	+2.3%	-1	-1
Nurse/ Midwife Manager	46	42	-4	-8.9%	+16	+14
Nurse/ Midwife Specialist & AN/MP	18	19	+1	+5.9%	+13	+12
Staff Nurse/ Staff Midwife	84	82	-2	-2.0%	+15	+16
Public Health Nurse	167	167	-0	-0.0%	+2	+5
<i>Post-registration Nurse/ Midwife Student</i>	3	4	+1	+20.1%	-1	+1
Nursing/ Midwifery Student	3	4	+1	+20.1%	-1	-1
Nursing/ Midwifery other	1	1	+0	+6.3%	+0	+0
Nursing & Midwifery	320	316	-4	-1.3%	+46	+46
Therapy Professions	186	190	+4	+2.0%	+6	+8
Health Science/ Diagnostics	8	7	-1	-12.8%	+3	+3
Social Care	5	5	0	0	-0	-0
Social Workers	7	7	-0	-0.6%	-1	-1
Psychologists	38	37	-2	-4.4%	-7	-5
Pharmacy	1	1	0	0		
H&SC, Other	19	19	-0	-0.2%	+0	+1
Health & Social Care Professionals	264	265	+1	+0.4%	+1	+5
Management (VIII & above)	24	23	-1	-3.6%	-3	-1
Administrative/ Supervisory (V to VII)	59	57	-2	-3.1%	+5	+5
Clerical (III & IV)	161	156	-5	-3.0%	-8	-5
Management & Administrative	243	235	-7	-3.1%	-6	-1
Support	26	25	-2	-6.5%	-1	-3
General Support	26	25	-2	-6.5%	-1	-3
Health Care Assistants	70	87	+17	+25.0%	+79	+79
Care, other	52	54	+2	+4.2%	-1	-1
Home Help	8	7	-0	-6.3%	+0	-0
Patient & Client Care	130	149	+19	+14.8%	+79	+79

Social Care

Jan 2021 (Dec 2019 figure: 3,152)	WTE Dec 2020	WTE Jan 2021	WTE change since Dec 20	% change since Dec 20	WTE change since Dec 19	WTE change since Jan 20
Total Social Care	3,213	3,237	+24	+0.7%	+85	+94
Consultants	1	1	0	0	-0	-0
Medical/ Dental, other	15	15	0	0	+5	+5
Medical & Dental	16	16	0	0	+5	+5
Nurse/ Midwife Manager	158	157	-2	-1.0%	+9	+6
Nurse/ Midwife Specialist & AN/MP	6	8	+2	+31.4%	+4	+4
Staff Nurse/ Staff Midwife	476	477	+1	+0.2%	-7	-3
Public Health Nurse	9	9	+0	+0.1%	-1	-0
<i>Pre-registration Nurse/ Midwife Intern</i>		8	+8	-100.0%	+8	+8
<i>Pre-registration Nurse Intern (COVID-19)</i>	1	1			+1	
<i>Nursing/ Midwifery awaiting registration</i>				-100.0%	-2	
Nursing/ Midwifery Student	1	9	+8	+774.0%	+7	-1
Nursing & Midwifery	650	660	+9	+1.4%	+12	+5
Therapy Professions	97	102	+4	+4.3%	-2	-2
Social Care	143	143	+0	+0.2%	-11	-9
Social Workers	28	28	-0	-0.4%	+4	+5
Psychologists	19	20	+1	+6.0%	+6	+6
Pharmacy	1	1	+0	+3.1%	+1	+1
H&SC, Other	5	5	0	0	-2	-2
Health & Social Care Professionals	294	300	+5	+1.9%	-3	-1
Management (VIII & above)	17	17	-0	-0.1%	+2	+1
Administrative/ Supervisory (V to VII)	58	62	+4	+7.1%	+9	+8
Clerical (III & IV)	93	97	+4	+4.8%	+5	+6
Management & Administrative	167	176	+9	+5.1%	+15	+15
Support	95	94	-1	-1.4%	-45	-43
Maintenance/ Technical	11	10	-1	-8.5%	-5	-5
General Support	107	104	-2	-2.2%	-50	-48
Health Care Assistants	1,180	1,166	-14	-1.2%	+104	+112
Care, other	162	165	+3	+2.1%	+11	+10
Home Help	638	652	+14	+2.2%	-9	-3
Patient & Client Care	1,980	1,983	+3	+0.2%	+106	+119

CHO 5 Employment Report: January 2021

Disabilities

Jan 2021 (Dec 2019 figure: 1,505)	WTE Dec 2020	WTE Jan 2021	WTE change since Dec 20	% change since Dec 20	WTE change since Dec 19	WTE change since Jan 20
Total Disabilities	1,563	1,567	+4	+0.2%	+61	+63
Consultants	1	1			-0	-0
Medical & Dental	1	1			-0	-0
Nurse/ Midwife Manager	70	70	-0	-0.1%	+4	+3
Nurse/ Midwife Specialist & AN/MP	2	4	+2	+84.3%	+2	+2
Staff Nurse/ Staff Midwife	168	165	-4	-2.2%	-5	-4
Public Health Nurse	6	6			+1	+1
Pre-registration Nurse/ Midwife Intern		8	+8	-100.0%	+8	+8
Pre-registration Nurse Intern (COVID-19)	1	1			+1	
Nursing/ Midwifery awaiting registration				-100.0%	-2	
Nursing/ Midwifery Student	1	9	+8	+774.0%	+7	-1
Nursing & Midwifery	247	253	+6	+2.4%	+8	+0
Therapy Professions	65	68	+3	+4.0%	+5	+5
Social Care	143	143	+0	+0.2%	-11	-9
Social Workers	24	24	-0	-1.6%	+3	+4
Psychologists	19	20	+1	+6.0%	+6	+6
H&SC, Other	5	5			-2	-2
Health & Social Care Professionals	256	260	+4	+1.4%	+1	+4
Management (VIII & above)	13	13	-0	-0.1%	+2	+1
Administrative/ Supervisory (V to VII)	41	41	-0	-0.2%	+2	+1
Clerical (III & IV)	62	62	+0	+0.3%	+1	+2
Management & Administrative	115	115	+0	+0.1%	+5	+4
Support	12	12	+0	+0.3%	-3	-2
Maintenance/ Technical	7	6	-1	-13.6%	-1	-1
General Support	19	18	-1	-5.0%	-4	-3
Health Care Assistants	732	723	-9	-1.2%	+52	+59
Care, other	153	156	+3	+1.9%	+12	+11
Home Help	40	40	+1	+1.6%	-13	-12
Patient & Client Care	924	919	-5	-0.5%	+51	+59

Older People

Jan 2021 (Dec 2019 figure: 1,647)	WTE Dec 2020	WTE Jan 2021	WTE change since Dec 20	% change since Dec 20	WTE change since Dec 19	WTE change since Jan 20
Total Older People	1,650	1,671	+20	+1.2%	+24	+31
Medical/ Dental, other	15	15			+5	+5
Medical & Dental	15	15			+5	+5
Nurse/ Midwife Manager	88	87	-1	-1.6%	+5	+3
Nurse/ Midwife Specialist & AN/MP	4	4	+0	+1.3%	+2	+2
Staff Nurse/ Staff Midwife	308	313	+5	+1.5%	-2	+0
Public Health Nurse	3	3	+0	+0.4%	-1	-1
Nursing & Midwifery	403	406	+3	+0.8%	+4	+5
Health & Social Care Professionals	38	39	+2	+4.9%	-5	-5
Management (VIII & above)	4	4				
Administrative/ Supervisory (V to VII)	17	21	+4	+24.6%	+7	+7
Clerical (III & IV)	31	35	+4	+13.8%	+3	+4
Management & Administrative	52	60	+8	+16.3%	+10	+11
Support	83	82	-1	-1.6%	-41	-41
Maintenance/ Technical	4	4	+0	+1.0%	-4	-4
General Support	87	86	-1	-1.5%	-45	-45
Health Care Assistants	448	443	-6	-1.3%	+52	+54
Care, other	9	9	+1	+5.9%	-1	-2
Home Help	599	612	+13	+2.2%	+4	+8
Patient & Client Care	1,056	1,063	+8	+0.8%	+54	+60

CHO 5 Employment by Administration (HSE / S38): January 2021

Jan 2021 (Dec 2019 figure: 5,282)	WTE Dec 2020	WTE Jan 2021	WTE change since Dec 20	% change since Dec 20	WTE change since Dec 19	WTE change since Jan 20
Overall	5,477	5,516	+39	+0.7%	+234	+226
HSE	4,308	4,349	+40	+0.9%	+190	+176
Section 38 Voluntary Agencies	1,169	1,167	-1	-0.1%	+44	+50

HSE

Jan 2021 (Dec 2019 figure: 4,158)	WTE Dec 2020	WTE Jan 2021	WTE change since Dec 20	% change since Dec 20	WTE change since Dec 19	WTE change since Jan 20
Overall	4,308	4,349	+40	+0.9%	+190	+176
Consultants	28	28	+0	+0.0%	-1	-1
Registrars	30	31	+1	+0.0%	+3	+2
SHO/ Interns	38	37	-1	-0.0%	-1	+1
Medical/ Dental, other	71	73	+1	+0.0%	+7	+8
Medical & Dental	168	169	+1	+0.9%	+8	+9
Nurse/ Midwife Manager	318	316	-2	-0.0%	+24	+23
Nurse/ Midwife Specialist & AN/MP	78	82	+4	+0.1%	+30	+28
Staff Nurse/ Staff Midwife	868	871	+3	+0.0%	+3	+9
Public Health Nurse	176	176	-0	-0.0%	+2	+5
<i>Pre-registration Nurse/ Midwife Intern</i>		7	+7	-1.0%	+7	-16
<i>Pre-registration Nurse Intern (COVID-19)</i>	14	9	-5	-0.3%	+9	+9
<i>Post-registration Nurse/ Midwife Student</i>	3	4	+1	+0.2%	-3	-1
<i>Nursing/ Midwifery awaiting registration</i>				-1.0%		-6
Nursing/ Midwifery Student	17	20	+3	+0.2%	+8	-14
Nursing/ Midwifery other	4	4	+0	+0.0%	-0	+0
Nursing & Midwifery	1,461	1,469	+8	+0.6%	+67	+52
Therapy Professions	324	329	+5	+0.0%	+5	+4
Health Science/ Diagnostics	8	7	-1	-0.1%	+3	+3
Social Care	24	23	-0	-0.0%	-3	-3
Social Workers	54	53	-1	-0.0%	+4	+2
Psychologists	74	74	-0	-0.0%	-0	+2
Pharmacy	2	2	+0	+0.0%	+1	+1
H&SC, Other	27	28	+1	+0.0%	-1	-0
Health & Social Care Professionals	512	516	+4	+0.7%	+9	+10
Management (VIII & above)	39	38	-1	-0.0%	+2	+3
Administrative/ Supervisory (V to VII)	113	115	+2	+0.0%	+12	+12
Clerical (III & IV)	279	280	+1	+0.0%	-4	-4
Management & Administrative	431	433	+2	+0.5%	+11	+11
Support	291	285	-6	-0.0%	-34	-35
Maintenance/ Technical	24	23	-0	-0.0%	-8	-8
General Support	315	308	-6	-2.0%	-42	-43
Health Care Assistants	682	696	+13	+0.0%	+132	+132
Care, other	93	98	+5	+0.1%	+16	+9
Home Help	646	659	+13	+0.0%	-9	-4
Patient & Client Care	1,422	1,453	+31	+2.2%	+138	+137

Section 38 Voluntary Agencies

Jan 2021 (Dec 2019 figure: 1,123)	WTE Dec 2020	WTE Jan 2021	WTE change since Dec 20	% change since Dec 20	WTE change since Dec 19	WTE change since Jan 20
Overall	1,169	1,167	-1	-0.1%	+44	+50
Consultants	1	1		+0.0%	-0	-0
Medical & Dental	1	1			-0	-0
Nurse/ Midwife Manager	47	48	+1	+0.0%	+1	-0
Staff Nurse/ Staff Midwife	104	101	-3	-0.0%	+1	+1
<i>Pre-registration Nurse/ Midwife Intern</i>		7	+7	-1.0%	+7	+2
Nursing/ Midwifery Student		7	+7	-1.0%	+7	+2
Nursing & Midwifery	151	156	+5	+3.4%	+10	+3
Therapy Professions	1	2	+1	+1.0%	-1	-1
Social Care	129	130	+0	+0.0%	-8	-6
Social Workers	9	9	-0	-0.0%	-2	-0
Psychologists	4	4		+0.0%	-0	-1
H&SC, Other	5	5		+0.0%	-2	-2
Health & Social Care Professionals	149	150	+1	+0.7%	-13	-9
Management (VIII & above)	8	8	-0	-0.0%	+1	
Administrative/ Supervisory (V to VII)	25	25	+0	+0.0%	+3	+3
Clerical (III & IV)	45	45	-1	-0.0%	-2	+0
Management & Administrative	78	78	-0	-0.5%	+2	+3
Support	9	10	+0	+0.0%	-3	-2
Maintenance/ Technical	7	6	-1	-0.1%	-1	-1
General Support	17	16	-1	-3.7%	-4	-3
Health Care Assistants	635	627	-8	-0.0%	+49	+56
Care, other	139	140	+2	+0.0%	+1	+0
Patient & Client Care	773	767	-6	-0.8%	+49	+57

CHO 5 Employment by S38 Agency: January 2021

Bros. of Charity, Waterford

Jan 2021 (Dec 2019 figure: 630)	WTE Dec 2020	WTE Jan 2021	WTE change since Dec 20	% change since Dec 20	WTE change since Dec 19	WTE change since Jan 20
Overall	668	666	-2	-0.3%	+36	+42
Consultants	1	1		+0.0%	-0	-0
Medical & Dental	1	1			-0	-0
Nurse/ Midwife Manager	22	23	+1	+0.0%	-1	-1
Staff Nurse/ Staff Midwife	50	48	-2	-0.0%	+0	+1
Pre-registration Nurse/ Midwife Intern		6	+6	-1.0%	+6	+3
Nursing/ Midwifery Student		6	+6	-1.0%	+6	+3
Nursing & Midwifery	72	78	+5	+7.5%	+5	+2
Therapy Professions	1	2	+1	+1.0%	-1	-1
Social Care	70	70	-1	-0.0%	+3	+4
Social Workers	8	8		+0.0%	-2	-1
Psychologists	4	4		+0.0%	-0	-1
H&SC, Other	4	4		+0.0%	-0	-0
Health & Social Care Professionals	87	88	+0	+0.5%	+0	+1
Management (VIII & above)	5	5	-0	-0.0%		
Administrative/ Supervisory (V to VII)	16	16	+0	+0.0%	+4	+4
Clerical (III & IV)	27	26	-1	-0.0%	+1	+2
Management & Administrative	48	47	-0	-1.0%	+4	+5
Support	1	2	+0	+0.0%	-0	+0
Maintenance/ Technical	3	3		+0.0%		
General Support	4	4	+0	+0.7%	-0	+0
Health Care Assistants	362	353	-10	-0.0%	+22	+30
Care, other	94	96	+2	+0.0%	+5	+4
Patient & Client Care	456	448	-7	-1.6%	+26	+33

Carriglea Cairde Services

Jan 2021 (Dec 2019 figure: 214)	WTE Dec 2020	WTE Jan 2021	WTE change since Dec 20	% change since Dec 20	WTE change since Dec 19	WTE change since Jan 20
Overall	214	216	+2	+1.1%	+2	-3
Nurse/ Midwife Manager	13	13	+0	+0.0%	+1	+1
Staff Nurse/ Staff Midwife	27	26	-1	-0.0%	+0	-1
Pre-registration Nurse/ Midwife Intern				-1.0%		-2
Nursing/ Midwifery Student				-1.0%		-2
Nursing & Midwifery	40	39	-1	-1.7%	+1	-1
Social Care	30	31	+0	+0.0%	-6	-8
Health & Social Care Professionals	30	31	+0	+1.2%	-6	-8
Management (VIII & above)	2	2		+0.0%		
Administrative/ Supervisory (V to VII)	3	3		+0.0%	+0	+0
Clerical (III & IV)	6	6	+0	+0.0%	-0	-0
Management & Administrative	11	11	+0	+0.2%	-0	-0
Support	6	7	+0	+0.1%	+2	+2
Maintenance/ Technical	1	1		+0.0%		
General Support	8	8	+0	+4.1%	+2	+2
Health Care Assistants	80	82	+3	+0.0%	+9	+8
Care, other	45	44	-0	-0.0%	-4	-4
Patient & Client Care	125	127	+2	+1.8%	+4	+4

St. Patrick's, Kilkenny

Jan 2021 (Dec 2019 figure: 279)	WTE Dec 2020	WTE Jan 2021	WTE change since Dec 20	% change since Dec 20	WTE change since Dec 19	WTE change since Jan 20
Overall	287	285	-1	-0.5%	+6	+11
Nurse/ Midwife Manager	12	12	+0	+0.0%	+2	-1
Staff Nurse/ Staff Midwife	27	26	-1	-0.0%	+1	+1
Pre-registration Nurse/ Midwife Intern		1	+1	-1.0%	+1	+1
Nursing/ Midwifery Student		1	+1	-1.0%	+1	+1
Nursing & Midwifery	39	39	+0	+1.1%	+3	+1
Social Care	28	29	+1	+0.0%	-6	-2
Social Workers	1	1	-0	-0.3%	-1	+0
H&SC, Other	2	2		+0.0%	-1	-1
Health & Social Care Professionals	32	32	+0	+0.9%	-8	-3
Management (VIII & above)	1	1		+0.0%	+1	
Administrative/ Supervisory (V to VII)	6	6		+0.0%	-1	-1
Clerical (III & IV)	12	12	+0	+0.0%	-2	-1
Management & Administrative	19	19	+0	+0.2%	-2	-2
Support	1	1	+0	+0.0%	-5	-4
Maintenance/ Technical	3	2	-1	-0.3%	-1	-1
General Support	4	3	-1	-21.9%	-6	-5
Health Care Assistants	193	192	-1	-0.0%	+18	+19
Patient & Client Care	193	192	-1	-0.7%	+18	+19

CHO 5 Employment by Grade Group & Staff Category: January 2021

Jan 2021 (Dec 2019 figure: 5,282)	WTE Dec 2020	WTE Jan 2021	WTE change since Dec 20	% change since Dec 20	WTE change since Dec 19	WTE change since Jan 20
Overall	5,477	5,516	+39	+0.7%	+234	+226
Consultant Dentistry	1	1				
Consultant Psychiatry	28	28	+0	+0.4%	+1	+1
Consultant Surgery				-100.0%	-2	-2
Consultants	29	29	+0	+0.3%	-1	-1
Registrar	26	27	+1	+3.3%	+2	+1
Senior Registrar	4	4	-0	-0.2%	+1	+1
Registrars	30	31	+1	+2.8%	+3	+2
Interns	1	1				
Senior House Officer	37	36	-1	-1.8%	-1	+1
SHO/ Interns	38	37	-1	-1.7%	-1	+1
Dentists	37	37	-0	-0.6%	+1	+1
Other Medical	34	35	+1	+4.1%	+5	+6
Medical/ Dental, other	71	73	+1	+1.7%	+7	+8
Medical & Dental	168	170	+1	+0.9%	+13	+9
Clinical Nurse/ Midwife Manager	286	286	+0	+0.0%	+15	+13
Director Nursing/Midwifery, Assistant	55	54	-1	-1.7%	+9	+8
Director of Nursing/Midwifery	24	24	+0	+0.1%	+2	+2
Nurse/ Midwife Manager	365	364	-1	-0.3%	+26	+23
Advanced Nurse/ Midwife Practitioner	7	7	+0	+0.8%	+4	+4
Clinical Nurse/ Midwife Specialist	71	75	+4	+5.4%	+26	+24
Nurse/ Midwife Specialist & AN/MP	78	82	+4	+5.0%	+30	+28
Staff Nurse [Intellectual Disability]	114	111	-4	-3.2%	-5	-3
Staff Nurse [Psychiatric]	420	422	+2	+0.5%	+2	+3
Staff Nurses [General/ Children's]	436	438	+2	+0.4%	+7	+10
Staff Midwives	1	1	-0	-10.2%	+1	+1
Staff Nurse/ Staff Midwife	972	972	+0	+0.0%	+5	+10
Public Health Nurse	176	176	-0	-0.0%	+2	+5
Pre-registration Nurse/ Midwife Intern		14	+14	-100.0%	+11	-14
Pre-registration Nurse Intern (COVID-19)	14	9	-5	-34.0%	+9	+9
Post-registration Nurse/ Midwife Student	3	4	+1	+20.1%	-1	-1
Nursing/ Midwifery awaiting registration				-100.0%	-4	-6
Nursing/ Midwifery Student	17	27	+10	+59.2%	+15	-12
Nursing/ Midwifery other	4	4	+0	+0.7%	-0	+0
Nursing & Midwifery	1,612	1,625	+13	+0.8%	+86	+55
Dietitians	17	17	+1	+4.1%	+2	-1
Occupational Therapists	120	122	+2	+1.6%	+1	+1
Orthoptists	1	1			+1	
Physiotherapists	91	92	+2	+1.7%	+5	+6
Podiatrists & Chiropodists	1	1	+0	+12.0%	-0	-0
Speech & Language Therapists	95	98	+2	+2.2%	-5	-2
Therapy Professions	325	331	+6	+2.0%	+4	+4
Audiology	8	7	-1	-12.8%	+3	+3
Health Science/ Diagnostics	8	7	-1	-12.8%	+3	+3
Social Care	153	153	+0	+0.2%	-11	-10
Social Workers	63	62	-2	-2.7%	+2	+2
Psychologists	79	78	-0	-0.5%	-1	+2
Pharmacy	2	2	+0	+1.5%	+1	+1

Jan 2021 (Dec 2019 figure: 5,282)	WTE Dec 2020	WTE Jan 2021	WTE change since Dec 20	% change since Dec 20	WTE change since Dec 19	WTE change since Jan 20
Overall	5,477	5,516	+39	+0.7%	+234	+226
Counsellor Therapists	20	21	+1	+4.9%	-1	-1
Dental Hygienists	7	7			+1	+1
Environmental Health Officers				-100.0%	-1	
Other Health & Social Care				-100.0%	-1	-1
Play Therapists/ Specialists	5	5			-1	-1
H&SC, Other	32	33	+1	+3.0%	-2	-2
Health & Social Care Professionals	661	666	+5	+0.7%	-15	+1
Executive Management	11	11	-0	-0.5%	+4	+3
Senior Management (VIII & GM)	36	35	-1	-2.2%	-1	+0
Management (VIII & above)	47	46	-1	-1.8%	+3	+3
Administrative/ Supervisory (V to VII)	138	140	+2	+1.6%	+15	+14
Clerical (III & IV)	324	325	+0	+0.1%	-5	-3
Management & Administrative	510	511	+2	+0.3%	+29	+14
Catering	35	33	-2	-4.4%	+0	+0
Household Services	223	220	-3	-1.2%	-37	-35
Other Support	35	33	-2	-4.7%	+0	-2
Portering	8	9	+1	+6.2%	-1	-1
Support	300	295	-5	-1.8%	-37	-37
Maintenance	30	29	-1	-4.9%	-7	-7
Technical Services	1	1			-2	-2
Maintenance/ Technical	31	30	-1	-4.7%	-9	-9
General Support	331	324	-7	-2.1%	-56	-46
HCA, Nurse's Aide, etc.	1,306	1,310	+5	+0.3%	+176	+185
Health & Social Care Assistants	12	12	+1	+4.9%	+4	+4
Health Care Assistants	1,317	1,322	+5	+0.4%	+180	+189
Care, other	232	238	+7	+2.9%	+16	+9
Home Help	646	659	+13	+2.1%	-9	-4
Patient & Client Care	2,195	2,220	+25	+1.1%	+227	+194

CHO 5 HSE Employment by Grade Group & Staff Category: January 2021

Jan 2021 (Dec 2019 figure: 4,158)	WTE Dec 2020	WTE Jan 2021	WTE change since Dec 20	% change since Dec 20	WTE change since Dec 19	WTE change since Jan 20
Overall	4,308	4,349	+40	+0.9%	+190	+176
Consultant Dentistry	1	1				
Consultant Psychiatry	27	27	+0	+0.4%	+1	+1
Consultant Surgery				-100.0%	-2	-2
Consultants	28	28	+0	+0.4%	-1	-1
Registrar	26	27	+1	+3.3%	+2	+1
Senior Registrar	4	4	-0	-0.2%	+1	+1
Registrars	30	31	+1	+2.8%	+3	+2
SHO/ Interns	38	37	-1	-1.7%	-1	+1
Dentists	37	37	-0	-0.6%	+1	+1
Other Medical	34	35	+1	+4.1%	+5	+6
Medical/ Dental, other	71	73	+1	+1.7%	+7	+8
Medical & Dental	168	169	+1	+0.9%	+13	+9
Clinical Nurse/ Midwife Manager	243	242	-1	-0.4%	+13	+13
Director Nursing/Midwifery, Assistant	53	52	-1	-1.8%	+9	+8
Director of Nursing/Midwifery	22	22	+0	+0.1%	+2	+2
Nurse/ Midwife Manager	318	316	-2	-0.6%	+24	+23
Advanced Nurse/ Midwife Practitioner	7	7	+0	+0.8%	+4	+4
Clinical Nurse/ Midwife Specialist	71	75	+4	+5.4%	+26	+24
Nurse/ Midwife Specialist & AN/MP	78	82	+4	+5.0%	+30	+28
Staff Nurse [Intellectual Disability]	20	19	-1	-4.0%	-7	-5
Staff Nurse [Psychiatric]	418	420	+2	+0.5%	+2	+3
Staff Nurses [General/ Children's]	429	431	+2	+0.4%	+7	+10
Staff Midwives	1	1	-0	-10.2%	+1	+1
Staff Nurse/ Staff Midwife	868	871	+3	+0.4%	+3	+9
Public Health Nurse	176	176	-0	-0.0%	+2	+5
Pre-registration Nurse/ Midwife Intern		7	+7	-100.0%	+4	-16
Pre-registration Nurse Intern (COVID-19)	14	9	-5	-34.0%	+9	+9
Post-registration Nurse/ Midwife Student	3	4	+1	+20.1%	-1	-1
Nursing/ Midwifery awaiting registration				-100.0%	-4	-6
Nursing/ Midwifery Student	17	20	+3	+18.7%	+8	-14
Nursing/ Midwifery other	4	4	+0	+0.7%	-0	+0
Nursing & Midwifery	1,461	1,469	+8	+0.6%	+70	+52
Dietitians	17	17	+1	+4.1%	+2	-1
Occupational Therapists	120	122	+2	+1.6%	+1	+1
Orthoptists	1	1			+1	
Physiotherapists	91	92	+2	+1.7%	+5	+6
Podiatrists & Chiropodists	1	1	+0	+12.0%	-0	-0
Speech & Language Therapists	94	96	+1	+1.1%	-4	-1
Therapy Professions	324	329	+5	+1.7%	+5	+4
Audiology	8	7	-1	-12.8%	+3	+3
Health Science/ Diagnostics	8	7	-1	-12.8%	+3	+3
Social Care	24	23	-0	-0.8%	-3	-3
Social Workers	54	53	-1	-2.4%	+4	+2
Psychologists	74	74	-0	-0.5%	-0	+2
Pharmacy	2	2	+0	+1.5%	+1	+1
Counsellor Therapists	19	20	+1	+5.0%	-0	-0
Dental Hygienists	7	7			+1	+1
Environmental Health Officers				-100.0%	-1	
Other Health & Social Care				-100.0%	-1	-1

Jan 2021 (Dec 2019 figure: 4,158)	WTE Dec 2020	WTE Jan 2021	WTE change since Dec 20	% change since Dec 20	WTE change since Dec 19	WTE change since Jan 20
Overall	4,308	4,349	+40	+0.9%	+190	+176
H&SC, Other	27	28	+1	+3.7%	-1	-0
Health & Social Care Professionals	512	516	+4	+0.7%	-10	+10
Executive Management	8	8	-0	-0.6%	+3	+3
Senior Management (VIII & GM)	31	30	-1	-2.3%	-1	+0
Management (VIII & above)	39	38	-1	-1.9%	+2	+3
Administrative/ Supervisory (V to VII)	113	115	+2	+1.6%	+12	+12
Clerical (III & IV)	279	280	+1	+0.3%	-4	-4
Management & Administrative	431	433	+2	+0.5%	+25	+11
Catering	31	30	-1	-3.0%	+1	+1
Household Services	218	214	-4	-1.7%	-35	-33
Other Support	34	32	-2	-4.8%	+0	-2
Portering	8	9	+1	+6.2%	-1	-1
Support	291	285	-6	-2.0%	-34	-35
Maintenance/ Technical	24	23	-0	-1.9%	-8	-8
General Support	315	308	-6	-2.0%	-45	-43
HCA, Nurse's Aide, etc.	671	684	+13	+1.9%	+127	+128
Health & Social Care Assistants	12	12	+1	+4.9%	+4	+4
Health Care Assistants	682	696	+13	+1.9%	+132	+132
Care, other	93	98	+5	+5.3%	+16	+9
Home Help	646	659	+13	+2.1%	-9	-4
Patient & Client Care	1,422	1,453	+31	+2.2%	+124	+137

Employment by WTE, Headcount, Gender, Full-Time /Part-Time etc.: Jan 2021

CHO 5	WTE	Headcount	WTE: no.	% Male	% female	Male WTE: no.	Female WTE: no.	% Total Perm	% Male Perm	% Female Perm	% Total Full Time	% Total Part Time	% Male FT	% Female FT
Overall	5,516	6,523	1.18	15.8%	84.2%	1.09	1.20	82.8%	81.7%	83.1%	58.8%	41.2%	79.7%	54.9%
Consultant Dentistry	1	1	1.00		100.0%		1.00	100.0%	100.0%	100.0%	100.0%	0.0%		100.0%
Consultant Psychiatry	28	29	1.03	69.0%	31.0%	1.00	1.09	79.3%	79.3%	77.8%	93.1%	6.9%	100.0%	77.8%
Consultants	29	30	1.03	66.7%	33.3%	1.00	1.08	80.0%	80.0%	80.0%	93.3%	6.7%	100.0%	80.0%
Registrar	27	27	1.02	48.1%	51.9%	1.00	1.03	0.0%	0.0%	0.0%	100.0%	0.0%	100.0%	100.0%
Senior Registrar	4	4	1.00	50.0%	50.0%	1.00	1.01	0.0%	0.0%	0.0%	100.0%	0.0%	100.0%	100.0%
Registrars	31	31	1.01	48.4%	51.6%	1.00	1.03	0.0%	0.0%	0.0%	100.0%	0.0%	100.0%	100.0%
Interns	1	1	1.00		100.0%		1.00	0.0%	0.0%	0.0%	100.0%	0.0%		100.0%
Senior House Officer	36	37	1.02	51.4%	48.6%	1.01	1.02	0.0%	0.0%	0.0%	100.0%	0.0%	100.0%	100.0%
SHO/ Interns	37	38	1.02	50.0%	50.0%	1.01	1.02	0.0%	0.0%	0.0%	100.0%	0.0%	100.0%	100.0%
Dentists	37	48	1.29	22.9%	77.1%	1.18	1.33	87.5%	87.5%	89.2%	50.0%	50.0%	72.7%	43.2%
Other Medical	35	46	1.30	45.7%	54.3%	1.53	1.15	56.5%	56.5%	64.0%	63.0%	37.0%	52.4%	72.0%
Medical/ Dental, other	73	94	1.29	34.0%	66.0%	1.39	1.25	72.3%	59.4%	79.0%	56.4%	43.6%	59.4%	54.8%
Medical & Dental	170	193	1.14	44.6%	55.4%	1.12	1.15	47.7%	40.7%	53.3%	77.7%	22.3%	84.9%	72.0%
Clinical Nurse/ Midwife Manager	286	300	1.05	19.3%	80.7%	1.01	1.06	97.7%	97.7%	97.9%	85.3%	14.7%	96.6%	82.6%
Director Nursing/Midwifery, Assistant	54	57	1.06	10.5%	89.5%	1.01	1.06	100.0%	100.0%	100.0%	86.0%	14.0%	83.3%	86.3%
Director of Nursing/Midwifery	24	24	1.01	4.2%	95.8%	1.00	1.01	100.0%	100.0%	100.0%	100.0%	0.0%	100.0%	100.0%
Nurse/ Midwife Manager	364	381	1.05	17.1%	82.9%	1.01	1.05	98.2%	96.9%	98.4%	86.4%	13.6%	95.4%	84.5%
Advanced Nurse/ Midwife Practitioner	7	7	1.05		100.0%		1.05	100.0%	100.0%	100.0%	100.0%	0.0%		100.0%
Clinical Nurse/ Midwife Specialist	75	80	1.07	18.8%	81.3%	1.02	1.08	97.5%	97.5%	96.9%	86.3%	13.8%	100.0%	83.1%
Nurse/ Midwife Specialist & AN/MP	82	87	1.06	17.2%	82.8%	1.02	1.07	97.7%	100.0%	97.2%	87.4%	12.6%	100.0%	84.7%
Staff Nurse [Intellectual Disability]	111	129	1.16	10.9%	89.1%	1.11	1.17	92.2%	92.2%	92.2%	65.1%	34.9%	85.7%	62.6%
Staff Nurse [Psychiatric]	422	477	1.13	24.3%	75.7%	1.08	1.15	85.7%	85.7%	85.6%	79.2%	20.8%	87.1%	76.7%
Staff Nurses [General/ Children's]	438	531	1.21	8.7%	91.3%	1.05	1.23	92.8%	92.8%	93.2%	52.2%	47.8%	89.1%	48.7%
Staff Midwives	1	1	1.27		100.0%		1.27	100.0%	100.0%	100.0%	0.0%	100.0%		0.0%
Staff Nurse/ Staff Midwife	972	1,138	1.17	15.5%	84.5%	1.07	1.19	89.8%	87.5%	90.2%	64.9%	35.1%	87.5%	60.8%
Public Health Nurse	176	210	1.19	1.4%	98.6%	1.00	1.20	97.1%	100.0%	97.1%	71.4%	28.6%	100.0%	71.0%
Pre-registration Nurse/ Midwife Intern	14	57	3.99	5.3%	94.7%	8.33	3.88	0.0%	0.0%	0.0%	100.0%	0.0%	100.0%	100.0%
Pre-registration Nurse Intern (COVID-19)	9	17	1.85	5.9%	94.1%	1.00	1.95	0.0%	0.0%	0.0%	100.0%	0.0%	100.0%	100.0%

Post-registration Nurse/ Midwife Student	4	4	1.00		100.0%		1.00	75.0%	75.0%	75.0%	100.0%	0.0%		100.0%
Nursing/ Midwifery Student	27	78	2.84	5.1%	94.9%	2.94	2.83	3.8%	0.0%	4.1%	100.0%	0.0%	100.0%	100.0%
Nursing/ Midwifery other	4	5	1.13	20.0%	80.0%	1.00	1.17	100.0%	100.0%	100.0%	80.0%	20.0%	100.0%	75.0%
Nursing & Midwifery	1,625	1,899	1.17	13.9%	86.1%	1.06	1.19	89.2%	89.4%	89.1%	72.5%	27.5%	90.5%	69.5%
Dietitians	17	19	1.10		100.0%		1.10	100.0%	100.0%	100.0%	78.9%	21.1%		78.9%
Occupational Therapists	122	139	1.14	12.2%	87.8%	1.07	1.15	95.0%	95.0%	94.3%	77.0%	23.0%	94.1%	74.6%
Orthoptists	1	1	1.00	100.0%		1.00		100.0%	100.0%		100.0%	0.0%	100.0%	
Physiotherapists	92	111	1.20	20.7%	79.3%	1.05	1.25	91.9%	91.9%	90.9%	66.7%	33.3%	87.0%	61.4%
Podiatrists & Chiropodists	1	2	1.43		100.0%		1.43	100.0%	100.0%	100.0%	50.0%	50.0%		50.0%
Speech & Language Therapists	98	111	1.14	2.7%	97.3%	1.34	1.13	96.4%	96.4%	97.2%	81.1%	18.9%	100.0%	80.6%
Therapy Professions	331	383	1.16	11.5%	88.5%	1.07	1.17	94.8%	95.5%	94.7%	75.2%	24.8%	90.9%	73.2%
Audiology	7	7	1.05	14.3%	85.7%	1.00	1.06	100.0%	100.0%	100.0%	100.0%	0.0%	100.0%	100.0%
Health Science/ Diagnostics	7	7	1.05	14.3%	85.7%	1.00	1.06	100.0%	100.0%	100.0%	100.0%	0.0%	100.0%	100.0%
Social Care	153	188	1.23	17.6%	82.4%	1.15	1.25	95.2%	97.0%	94.8%	43.6%	56.4%	57.6%	40.6%
Social Workers	62	69	1.12	15.9%	84.1%	1.01	1.14	95.7%	100.0%	94.8%	79.7%	20.3%	100.0%	75.9%
Psychologists	78	88	1.12	14.8%	85.2%	1.04	1.14	89.8%	84.6%	90.7%	72.7%	27.3%	92.3%	69.3%
Pharmacy	2	2	1.00	50.0%	50.0%	1.00	1.00	100.0%	100.0%	100.0%	100.0%	0.0%	100.0%	100.0%
Counsellor Therapists	21	22	1.06	45.5%	54.5%	1.00	1.12	100.0%	100.0%	100.0%	81.8%	18.2%	100.0%	66.7%
Dental Hygienists	7	9	1.27		100.0%		1.27	88.9%	88.9%	88.9%	44.4%	55.6%		44.4%
Play Therapists/ Specialists	5	6	1.17	33.3%	66.7%	1.00	1.28	100.0%	100.0%	100.0%	66.7%	33.3%	100.0%	50.0%
H&SC, Other	33	37	1.12	32.4%	67.6%	1.00	1.19	97.3%	100.0%	96.0%	70.3%	29.7%	100.0%	56.0%
Health & Social Care	666	774	1.16	14.9%	85.1%	1.07	1.18	94.6%	95.7%	94.4%	67.7%	32.3%	83.5%	64.9%
Executive Management	11	11	1.00	36.4%	63.6%	1.00	1.01	81.8%	81.8%	85.7%	100.0%	0.0%	100.0%	100.0%
Senior Management (VIII & GM)	35	37	1.05	21.6%	78.4%	1.03	1.05	89.2%	89.2%	89.7%	89.2%	10.8%	87.5%	89.7%
Management (VIII & above)	46	48	1.04	25.0%	75.0%	1.02	1.04	87.5%	83.3%	88.9%	91.7%	8.3%	91.7%	91.7%
Administrative/ Supervisory (V to VII)	140	149	1.06	18.1%	81.9%	1.01	1.08	95.3%	92.6%	95.9%	81.2%	18.8%	96.3%	77.9%
Clerical (III & IV)	325	376	1.16	4.5%	95.5%	1.00	1.17	91.5%	94.1%	91.4%	62.8%	37.2%	100.0%	61.0%
Management & Administrative	511	573	1.12	9.8%	90.2%	1.01	1.13	92.1%	91.1%	92.3%	70.0%	30.0%	96.4%	67.1%
Catering	33	37	1.12	27.0%	73.0%	1.03	1.16	91.9%	91.9%	92.6%	62.2%	37.8%	80.0%	55.6%
Household Services	220	256	1.16	12.5%	87.5%	1.04	1.18	90.6%	90.6%	90.6%	46.1%	53.9%	75.0%	42.0%
Other Support	33	66	2.01	33.3%	66.7%	1.28	2.80	39.4%	39.4%	27.3%	21.2%	78.8%	54.5%	4.5%
Portering	9	10	1.16	100.0%		1.16		90.0%	90.0%		70.0%	30.0%	70.0%	
Support	295	369	1.25	20.1%	79.9%	1.12	1.29	81.6%	82.4%	81.4%	43.9%	56.1%	68.9%	37.6%
Maintenance/ Technical	30	32	1.08	96.9%	3.1%	1.08	1.00	87.5%	87.1%	100.0%	84.4%	15.6%	83.9%	100.0%

General Support	324	401	1.24	26.2%	73.8%	1.11	1.29	82.0%	83.8%	81.4%	47.1%	52.9%	73.3%	37.8%
HCA, Nurse's Aide, etc.	1,310	1,492	1.14	22.2%	77.8%	1.10	1.15	79.4%	79.4%	79.1%	57.8%	42.2%	72.8%	53.5%
Health & Social Care Assistants	12	14	1.15	14.3%	85.7%	1.52	1.11	14.3%	14.3%	16.7%	78.6%	21.4%	100.0%	75.0%
Health Care Assistants	1,322	1,506	1.14	22.1%	77.9%	1.10	1.15	78.8%	80.2%	78.4%	58.0%	42.0%	73.0%	53.7%
Care, other	238	290	1.22	20.0%	80.0%	1.16	1.23	86.6%	72.4%	90.1%	40.7%	59.3%	62.1%	35.3%
Home Help	659	887	1.35	1.8%	98.2%	1.35	1.34	66.7%	93.8%	66.2%	23.0%	77.0%	31.3%	22.8%
Patient & Client Care	2,220	2,683	1.21	15.2%	84.8%	1.12	1.23	75.7%	79.6%	75.0%	44.5%	55.5%	69.8%	40.0%

Employment by WTE, Headcount, Gender, Full-Time /Part-Time etc.: Jan 2021

CHO 5	WTE	Headcount	WTE: no.	% Male	% female	Male WTE: no.	Female WTE: no.	% Total Perm	% Male Perm	% Female Perm	% Total Full Time	% Total Part Time	% Male FT	% Female FT
Overall	5,516	6,523	1.18	15.8%	84.2%	1.09	1.20	82.8%	81.7%	83.1%	58.8%	41.2%	79.7%	54.9%
Community Health & Wellbeing	15	17	1.13	5.9%	94.1%	1.00	1.14	94.1%	94.1%	100.0%	58.8%	41.2%	100.0%	100.0%
Mental Health	1,194	1,349	1.13	25.2%	74.8%	1.05	1.16	84.1%	84.1%	84.8%	79.6%	20.4%	91.2%	91.2%
Primary Care	1,070	1,299	1.21	11.5%	88.5%	1.11	1.23	80.4%	80.4%	82.3%	64.2%	35.8%	83.9%	83.9%
HSE	2,070	2,489	1.20	10.2%	89.8%	1.10	1.22	83.3%	83.3%	83.0%	50.7%	49.3%	82.3%	82.3%
Section 38 Voluntary Agencies	1,167	1,369	1.17	21.1%	78.9%	1.12	1.19	83.0%	83.0%	82.0%	47.9%	52.1%	61.6%	61.6%
Social Care	3,237	3,858	1.19	14.1%	85.9%	1.11	1.21	83.2%	83.2%	82.7%	49.7%	50.3%	71.3%	71.3%

CHO 5 Skills Mix by Staff Grouping: January 2021

Jan 2021 (Dec 2018 figure: 5,231)	WTE Dec 2015	WTE Dec 2016	WTE Dec 2017	WTE Dec 2018	WTE Dec 2019	WTE Dec 2020	WTE Jan 2021
Overall	4,640	4,725	5,080	5,231	5,282	5,477	5,516
Consultant Dentistry	0.6%	0.6%	0.6%	0.6%	0.6%	0.6%	0.6%
Consultant Psychiatry	19.3%	20.0%	17.6%	15.7%	16.8%	16.7%	16.6%
Consultant Surgery	1.3%	1.3%	1.2%	1.3%	1.2%		
Consultants	21.2%	22.0%	19.5%	17.6%	18.6%	17.3%	17.2%
Registrar	16.1%	15.9%	16.7%	17.8%	15.4%	15.3%	15.6%
Senior Registrar	1.9%	1.3%	1.2%	1.3%	1.8%	2.4%	2.4%
Registrars	18.0%	17.2%	17.9%	19.1%	17.3%	17.7%	18.0%
Interns	0.6%	0.6%	0.6%	0.6%	0.6%	0.6%	0.6%
Senior House Officer	19.5%	21.2%	23.4%	21.7%	22.8%	22.0%	21.4%
SHO/ Interns	20.1%	21.9%	24.0%	22.3%	23.4%	22.6%	22.0%
Dentists	21.2%	21.2%	20.9%	22.2%	22.2%	22.2%	21.9%
Other Medical	19.5%	17.9%	17.7%	18.8%	18.5%	20.2%	20.9%
Medical/ Dental, other	40.7%	39.0%	38.6%	41.0%	40.7%	42.4%	42.8%
Medical & Dental	3.4%	3.3%	3.2%	3.0%	3.0%	100.0%	3.1%
Clinical Nurse/ Midwife Manager	17.2%	17.6%	17.0%	18.1%	17.5%	17.7%	17.6%
Director Nursing/Midwifery, Assistant	2.4%	3.0%	3.0%	2.9%	2.9%	3.4%	3.3%
Director of Nursing/Midwifery	1.4%	1.5%	1.4%	1.5%	1.4%	1.5%	1.5%
Nurse/ Midwife Manager	21.1%	22.1%	21.3%	22.5%	21.8%	22.6%	22.4%
Advanced Nurse/ Midwife Practitioner			0.1%	0.1%	0.2%	0.4%	0.4%
Clinical Nurse/ Midwife Specialist	2.7%	3.1%	3.3%	3.7%	3.2%	4.4%	4.6%
Nurse/ Midwife Specialist & AN/MP	2.7%	3.1%	3.4%	3.9%	3.3%	4.8%	5.0%
Graduate Nursing/ Midwifery	0.7%						
Staff Nurse [Intellectual Disability]	7.2%	7.2%	7.8%	6.9%	7.5%	7.1%	6.8%
Staff Nurse [Psychiatric]	28.5%	28.8%	28.9%	27.8%	27.2%	26.1%	26.0%
Staff Nurses [General/ Children's]	28.4%	27.0%	26.1%	27.3%	27.8%	27.1%	26.9%
Staff Midwives						0.1%	0.0%
Staff Nurse/ Staff Midwife	64.8%	63.0%	62.8%	62.0%	62.5%	60.3%	59.8%
Public Health Nurse	10.8%	11.0%	10.8%	10.9%	11.3%	10.9%	10.8%
Pre-registration Nurse/ Midwife Intern	0.1%	0.2%	0.1%	0.0%	0.2%		0.9%
Pre-registration Nurse Intern (COVID-19)						0.9%	0.6%
Post-registration Nurse/ Midwife Student	0.3%	0.5%	0.4%	0.5%	0.3%	0.2%	0.2%
Nursing/ Midwifery awaiting registration			0.9%		0.2%		
Nursing/ Midwifery Student	0.4%	0.7%	1.4%	0.5%	0.8%	1.1%	1.7%
Nursing/ Midwifery other	0.1%	0.2%	0.2%	0.2%	0.3%	0.3%	0.3%
Nursing & Midwifery	32.5%	32.2%	30.0%	29.4%	29.1%	100.0%	29.5%
Dietitians	1.9%	1.9%	2.0%	2.4%	2.2%	2.5%	2.6%
Occupational Therapists	19.8%	18.7%	18.9%	19.2%	18.0%	18.1%	18.3%
Orthoptists				0.1%	0.1%	0.2%	0.2%
Physiotherapists	15.3%	13.9%	14.0%	13.4%	13.1%	13.7%	13.9%
Podiatrists & Chiropodists	0.1%	0.1%	0.2%	0.2%	0.2%	0.2%	0.2%
Speech & Language Therapists	14.0%	15.9%	15.1%	15.0%	15.3%	14.4%	14.7%
Therapy Professions	51.0%	50.4%	50.1%	50.3%	48.9%	49.1%	49.8%
Audiology	0.7%	0.8%	0.7%	0.6%	0.6%	1.2%	1.0%
Health Science/ Diagnostics	0.7%	0.8%	0.7%	0.6%	0.6%	1.2%	1.0%
Social Care	20.0%	20.3%	22.5%	23.8%	24.5%	23.1%	23.0%
Social Workers	10.5%	10.5%	10.3%	9.4%	8.9%	9.6%	9.2%
Social Workers	10.5%	10.5%	10.3%	9.4%	8.9%	9.6%	9.2%
Psychologists	12.8%	12.4%	11.6%	11.0%	11.8%	11.9%	11.8%
Pharmacy	0.4%	0.3%	0.2%	0.1%	0.1%	0.3%	0.3%
Counsellor Therapists	2.5%	3.4%	2.9%	3.0%	3.2%	3.0%	3.1%
Dental Hygienists	1.1%	1.1%	1.0%	1.0%	0.9%	1.1%	1.1%

Jan 2021 (Dec 2018 figure: 5,231)	WTE Dec 2015	WTE Dec 2016	WTE Dec 2017	WTE Dec 2018	WTE Dec 2019	WTE Dec 2020	WTE Jan 2021
Overall	4,640	4,725	5,080	5,231	5,282	5,477	5,516
Environmental Health Officers				0.0%	0.1%		
Other Health & Social Care	0.2%	0.2%	0.2%	0.1%	0.1%		
Play Therapists/ Specialists	0.7%	0.6%	0.6%	0.7%	0.9%	0.8%	0.8%
H&SC, Other	4.5%	5.3%	4.7%	4.8%	5.2%	4.8%	4.9%
Health & Social Care Professionals	11.9%	13.6%	13.3%	13.0%	12.9%	100.0%	12.1%
Executive Management	1.0%	1.5%	2.0%	1.9%	1.4%	2.2%	2.1%
Senior Management (VIII & GM)	5.3%	5.4%	6.1%	6.9%	7.2%	7.1%	6.9%
Management (VIII & above)	6.3%	6.9%	8.1%	8.8%	8.6%	9.2%	9.0%
Administrative/ Supervisory (V to VII)	21.2%	22.7%	25.7%	24.9%	25.1%	27.1%	27.4%
Clerical (III & IV)	72.6%	70.4%	66.2%	66.3%	66.3%	63.7%	63.5%
Management & Administrative	9.1%	9.6%	9.1%	9.2%	9.1%	100.0%	9.3%
Catering	6.8%	7.4%	9.1%	9.2%	8.9%	10.5%	10.2%
Household Services	72.7%	71.9%	70.7%	68.9%	69.4%	67.3%	67.9%
Other Support	8.7%	8.1%	8.7%	9.3%	8.8%	10.4%	10.1%
Portering	2.9%	3.3%	2.1%	2.2%	2.5%	2.4%	2.7%
Support	91.1%	90.7%	90.5%	89.6%	89.5%	90.6%	90.9%
Maintenance/ Technical	8.9%	9.3%	9.5%	10.4%	10.5%	9.4%	9.1%
General Support	9.4%	9.0%	7.8%	7.3%	7.2%	100.0%	5.9%
HCA, Nurse's Aide, etc.	58.3%	64.6%	55.7%	54.1%	55.8%	59.5%	59.0%
Health & Social Care Assistants	0.1%	0.1%	0.0%	0.6%	0.4%	0.5%	0.5%
Health Care Assistants	58.3%	64.6%	55.8%	54.7%	56.2%	60.0%	59.6%
Care, other	11.3%	12.3%	10.5%	10.4%	10.9%	10.6%	10.7%
Home Help	30.3%	23.1%	33.7%	34.9%	32.9%	29.4%	29.7%
Patient & Client Care	33.8%	32.4%	36.7%	38.1%	37.7%	100.0%	40.2%
Total	100 %	100 %	100 %	100 %	100%	100 %	100 %

CHO 5 Skills Mix by Care Group: January 2021

Jan 2021 (Dec 2018 figure: 1,185)	WTE Dec 2015	WTE Dec 2016	WTE Dec 2017	WTE Dec 2018	WTE Dec 2019	WTE Dec 2020	WTE Jan 2021
Mental Health	1,186	1,221	1,197	1,185	1,177.58	1,188.29	1,194.03
Consultants	44.3%	44.1%	39.0%	36.6%	37.4%	36.9%	37.2%
Registrar	7.5%	5.9%	4.2%	10.6%	10.0%	6.7%	6.8%
Senior Registrar	4.5%	2.9%	2.8%	3.0%	4.3%	5.4%	5.4%
Registrars	12.1%	8.8%	7.0%	13.6%	14.2%	12.1%	12.2%
Interns	1.5%	1.5%	1.4%	1.5%	1.4%	1.3%	1.4%
Senior House Officer	39.2%	42.7%	48.3%	45.2%	44.1%	46.9%	46.6%
SHO/ Interns	40.7%	44.1%	49.7%	46.8%	45.5%	48.3%	47.9%
Medical/ Dental, other	3.0%	2.9%	4.2%	3.0%	2.8%	2.7%	2.7%
Medical & Dental	5.6%	5.6%	5.9%	5.6%	5.6%	6.2%	6.2%
Clinical Nurse/ Midwife Manager	22.7%	22.5%	21.8%	22.4%	22.9%	22.4%	22.1%
Director Nursing/Midwifery, Assistant	1.6%	2.5%	2.6%	2.7%	2.7%	2.3%	2.9%
Director of Nursing/Midwifery	0.6%	0.3%	0.3%	0.5%	0.5%	0.3%	0.3%
Nurse/ Midwife Manager	24.9%	25.3%	24.7%	25.5%	26.0%	24.9%	25.4%
Advanced Nurse/ Midwife Practitioner				0.2%	0.3%	0.5%	0.5%
Clinical Nurse/ Midwife Specialist	6.0%	6.6%	6.9%	7.7%	6.4%	8.0%	8.0%
Nurse/ Midwife Specialist & AN/MP	6.0%	6.6%	6.9%	7.8%	6.7%	8.4%	8.5%
Graduate Nursing/ Midwifery	1.4%						
Staff Nurse [Intellectual Disability]			0.1%				
Staff Nurse [Psychiatric]	67.1%	67.2%	67.4%	65.9%	65.8%	63.8%	63.2%
Staff Nurses [General/ Children's]	0.3%	0.2%	0.2%	0.2%		0.2%	0.2%
Staff Nurse/ Staff Midwife	68.8%	67.4%	67.6%	66.0%	65.8%	64.1%	63.4%
Pre-registration Nurse/ Midwife Intern	0.1%	0.3%	0.2%	0.1%	0.6%		1.0%
Pre-registration Nurse Intern (COVID-19)						2.0%	1.3%
Nursing/ Midwifery awaiting registration					0.3%		
Nursing/ Midwifery Student	0.1%	0.3%	0.2%	0.1%	0.9%	2.0%	2.3%
Nursing/ Midwifery other	0.2%	0.4%	0.6%	0.6%	0.6%	0.6%	0.5%
Nursing & Midwifery	53.6%	53.0%	53.8%	54.0%	54.4%	54.4%	54.4%
Dietitians	0.9%	2.4%	2.5%	2.6%	1.7%	1.8%	1.8%
Occupational Therapists	29.9%	31.9%	34.2%	33.8%	33.3%	32.2%	32.6%
Physiotherapists	0.9%	0.7%					
Speech & Language Therapists	3.9%	3.9%	3.9%	3.3%	3.9%	4.5%	3.3%
Therapy Professions	35.6%	38.8%	40.7%	39.8%	38.9%	38.5%	37.7%
Social Care	4.2%	3.9%	3.9%	4.2%	4.5%	4.7%	4.7%
Social Workers	29.0%	27.1%	26.6%	24.8%	26.6%	27.8%	26.7%
Psychologists	21.5%	21.3%	19.9%	21.4%	20.4%	21.2%	21.8%
Counsellor Therapists	8.9%	8.2%	8.3%	9.0%	8.7%	7.8%	9.0%
Other Health & Social Care	0.7%	0.7%	0.7%	0.8%	0.9%		
H&SC, Other	9.6%	8.9%	9.0%	9.8%	9.6%	7.8%	9.0%
Health & Social Care Professionals	9.4%	9.9%	10.0%	9.4%	9.4%	8.3%	8.3%
Management (VIII & above)	2.0%	3.1%	2.3%	3.2%	3.1%	6.4%	6.3%
Administrative/ Supervisory (V to VII)	17.0%	15.9%	20.4%	19.8%	20.7%	21.0%	20.9%
Clerical (III & IV)	80.9%	81.0%	77.3%	77.0%	76.2%	72.6%	72.8%
Management & Administrative	8.2%	8.1%	7.3%	7.9%	7.9%	7.9%	7.9%
Support	88.4%	88.2%	88.2%	87.8%	87.8%	90.0%	90.2%
Maintenance	10.7%	10.8%	10.8%	11.1%	11.1%	10.0%	9.8%
Technical Services	1.0%	0.9%	1.0%	1.1%	1.0%		
Maintenance/ Technical	11.6%	11.8%	11.8%	12.2%	12.2%	10.0%	9.8%
General Support	17.5%	17.3%	16.1%	15.9%	16.0%	16.4%	16.4%

Jan 2021 (Dec 2018 figure: 1,185)	WTE Dec 2015	WTE Dec 2016	WTE Dec 2017	WTE Dec 2018	WTE Dec 2019	WTE Dec 2020	WTE Jan 2021
Mental Health	1,186	1,221	1,197	1,185	1,177.58	1,188.29	1,194.03
Health Care Assistants	79.1%	81.7%	80.9%	82.0%	85.0%	84.7%	85.1%
Care, other	20.9%	18.3%	19.1%	18.0%	15.0%	15.3%	14.9%
Patient & Client Care	5.7%	6.2%	6.8%	7.3%	7.4%	6.8%	6.8%
Total	100 %	100 %	100 %	100 %	100 %	100 %	100 %

Jan 2021 (Dec 2018 figure: 958)	WTE Dec 2015	WTE Dec 2016	WTE Dec 2017	WTE Dec 2018	WTE Dec 2019	WTE Dec 2020	WTE Jan 2021
Primary Care	845	891	919	958	951.81	1,060.98	1,069.69
Consultant Dentistry	1.3%	1.3%	1.2%	1.3%	1.2%	1.3%	1.2%
Consultant Surgery	2.5%	2.7%	2.5%	2.5%	2.5%		
Consultants	3.8%	4.0%	3.7%	3.8%	3.7%	1.3%	1.2%
Registrars	26.2%	27.6%	30.1%	26.0%	22.2%	26.4%	26.8%
SHO/ Interns	6.3%	5.3%	4.9%	5.0%	7.4%	2.9%	2.5%
Dentists	42.6%	43.9%	42.3%	43.5%	44.3%	47.5%	46.2%
Other Medical	21.1%	19.1%	19.1%	21.7%	22.4%	22.0%	23.2%
Medical/ Dental, other	63.7%	63.0%	61.3%	65.2%	66.7%	69.5%	69.4%
Medical & Dental	9.4%	8.4%	8.9%	8.3%	8.4%	7.5%	7.5%
Clinical Nurse/ Midwife Manager	2.5%	2.1%	2.1%	2.7%	2.3%	5.7%	5.9%
Director Nursing/Midwifery, Assistant	4.5%	5.4%	5.1%	5.5%	5.6%	7.3%	5.9%
Director of Nursing/Midwifery	1.2%	1.1%	1.2%	1.5%	1.9%	1.6%	1.6%
Nurse/ Midwife Manager	8.2%	8.6%	8.5%	9.7%	9.7%	14.5%	13.4%
Nurse/ Midwife Specialist & AN/MP	0.4%	1.1%	1.8%	2.0%	2.1%	5.6%	6.0%
Staff Nurse/ Staff Midwife	25.7%	24.5%	26.5%	26.2%	24.8%	26.3%	26.1%
Public Health Nurse	63.6%	63.0%	61.0%	59.4%	61.2%	52.4%	53.0%
Nursing/ Midwifery Student	2.0%	2.8%	2.3%	2.6%	1.9%	1.0%	1.3%
Nursing/ Midwifery other					0.3%	0.3%	0.3%
Nursing & Midwifery	29.0%	28.4%	27.7%	27.9%	28.1%	29.5%	29.5%
Dietitians	3.1%	2.7%	2.9%	3.1%	2.8%	3.3%	3.6%
Occupational Therapists	22.7%	17.9%	19.9%	21.0%	19.2%	21.4%	21.9%
Orthoptists				0.4%	0.2%	0.4%	0.4%
Physiotherapists	25.2%	22.1%	22.5%	22.0%	20.1%	20.9%	20.8%
Podiatrists & Chiropodists			0.4%	0.4%	0.4%	0.3%	0.4%
Speech & Language Therapists	24.7%	27.8%	26.2%	26.8%	26.8%	24.2%	24.7%
Therapy Professions	75.8%	70.5%	72.0%	73.6%	69.6%	70.5%	71.7%
Audiology	1.6%	1.9%	1.8%	1.5%	1.4%	2.9%	2.5%
Health Science/ Diagnostics	1.6%	1.9%	1.8%	1.5%	1.4%	2.9%	2.5%
Social Care	0.6%	1.5%	1.3%	1.5%	2.0%	1.9%	1.9%
Social Workers	1.3%	1.8%	3.2%	2.7%	3.1%	2.6%	2.6%
Psychologists	15.8%	16.6%	15.5%	14.5%	16.6%	14.6%	13.9%
Pharmacy	0.8%	0.8%	0.4%	0.4%	0.4%	0.4%	0.4%
Counsellor Therapists	1.4%	4.4%	3.4%	3.5%	4.4%	4.4%	4.4%
Dental Hygienists	2.7%	2.6%	2.5%	2.5%	2.3%	2.7%	2.7%
Environmental Health Officers				0.0%	0.2%		
H&SC, Other	4.0%	7.0%	5.9%	6.0%	6.9%	7.1%	7.1%
Health & Social Care Professionals	27.6%	29.5%	29.0%	28.2%	28.4%	24.7%	24.7%
Executive Management	1.0%	2.3%	2.6%	2.5%	2.1%	2.9%	3.0%
Senior Management (VIII & GM)	5.1%	5.2%	6.3%	6.9%	8.4%	6.8%	6.7%
Management (VIII & above)	6.1%	7.5%	9.0%	9.4%	10.5%	9.7%	9.6%
Administrative/ Supervisory (V to VII)	18.0%	20.7%	23.9%	23.2%	21.6%	24.2%	24.2%
Clerical (III & IV)	75.9%	71.8%	67.2%	67.4%	67.9%	66.1%	66.2%

Jan 2021 (Dec 2018 figure: 958)	WTE Dec 2015	WTE Dec 2016	WTE Dec 2017	WTE Dec 2018	WTE Dec 2019	WTE Dec 2020	WTE Jan 2021
Primary Care	845	891	919	958	951.81	1,060.98	1,069.69
Management & Administrative	23.9%	24.2%	25.0%	25.0%	25.2%	22.0%	22.0%
Support	100.0%	100.0%	100.0%	100.0%	100.0%	100.0%	100.0%
General Support	3.2%	3.0%	3.0%	2.9%	2.9%	2.3%	2.3%
HCA, Nurse's Aide, etc.	1.7%	1.7%	1.7%	2.3%	1.4%	45.7%	51.1%
Health & Social Care Assistants				14.5%	10.0%	8.2%	7.5%
Health Care Assistants	1.7%	1.7%	1.7%	16.8%	11.4%	53.8%	58.6%
Care, other	88.9%	88.4%	84.1%	73.1%	78.4%	40.2%	36.6%
Home Help	9.4%	9.8%	14.2%	10.1%	10.2%	5.9%	4.8%
Patient & Client Care	7.0%	6.5%	6.5%	7.6%	7.6%	13.9%	13.9%
Total	100 %	100 %	100 %	100 %	100 %	100 %	100 %

Jan 2021 (Dec 2018 figure: 1,409)	WTE Dec 2015	WTE Dec 2016	WTE Dec 2017	WTE Dec 2018	WTE Dec 2019	WTE Dec 2020	WTE Jan 2021
Disabilities	1,155	1,272	1,378	1,409	1,505.38	1,563.05	1,566.71
Consultant Psychiatry	87.5%	80.0%	80.0%	60.8%	100.0%	100.0%	100.0%
Consultants	87.5%	80.0%	80.0%	60.8%	100.0%	100.0%	100.0%
Medical/ Dental, other	12.5%	20.0%	20.0%	39.2%			
Medical & Dental	0.1%	0.1%	0.1%	0.0%	0.0%	0.0%	0.0%
Clinical Nurse/ Midwife Manager	24.6%	25.1%	22.5%	26.4%	25.2%	25.0%	24.4%
Director Nursing/Midwifery, Assistant	1.2%	1.6%	1.2%	0.4%	0.8%	1.6%	1.6%
Director of Nursing/Midwifery	1.6%	2.0%	2.1%	1.7%	0.8%	1.6%	1.6%
Nurse/ Midwife Manager	27.3%	28.7%	25.8%	28.4%	26.8%	28.3%	27.6%
Advanced Nurse/ Midwife Practitioner						0.4%	0.4%
Clinical Nurse/ Midwife Specialist	0.4%	0.4%	0.9%	0.9%	0.8%	0.5%	1.2%
Nurse/ Midwife Specialist & AN/MP	0.4%	0.4%	0.9%	0.9%	0.8%	0.9%	1.6%
Staff Nurse [Intellectual Disability]	43.2%	44.9%	51.2%	46.1%	47.2%	45.9%	43.4%
Staff Nurse [Psychiatric]	1.2%	1.2%	1.3%	1.4%	1.3%	0.8%	0.8%
Staff Nurses [General/ Children's]	25.4%	22.3%	18.2%	20.7%	21.0%	21.3%	20.8%
Staff Nurse/ Staff Midwife	69.8%	68.4%	70.7%	68.2%	69.5%	68.0%	65.0%
Public Health Nurse	1.9%	1.9%	2.6%	2.5%	2.2%	2.4%	2.3%
Pre-registration Nurse/ Midwife Intern	0.5%	0.6%					3.1%
Pre-registration Nurse Intern (COVID-19)						0.4%	0.4%
Nursing/ Midwifery awaiting registration					0.8%		
Nursing/ Midwifery Student	0.5%	0.6%			0.8%	0.4%	3.5%
Nursing & Midwifery	21.8%	19.1%	16.8%	16.4%	15.3%	16.1%	16.1%
Dietitians	0.1%		0.4%	0.4%	0.8%	0.4%	0.4%
Occupational Therapists	7.3%	11.0%	9.2%	9.4%	8.6%	9.0%	9.2%
Physiotherapists	3.1%	5.5%	6.1%	3.8%	5.3%	6.1%	6.0%
Podiatrists & Chiropodists	0.1%	0.0%	0.0%				
Speech & Language Therapists	7.0%	9.2%	9.6%	9.0%	9.6%	9.8%	10.4%
Therapy Professions	17.5%	25.7%	25.4%	22.6%	24.3%	25.3%	26.0%
Social Care	61.4%	56.5%	57.7%	61.1%	59.5%	55.7%	55.1%
Social Workers	12.3%	10.9%	9.7%	9.5%	8.1%	9.5%	9.2%
Psychologists	5.9%	4.5%	5.2%	4.7%	5.4%	7.4%	7.7%
Pharmacy	0.1%	0.1%	0.0%				
Counsellor Therapists	0.4%	0.2%	0.3%	0.3%	0.3%	0.1%	0.1%
Other Health & Social Care	0.2%	0.1%	0.1%				
Play Therapists/ Specialists	2.3%	1.9%	1.7%	1.8%	2.4%	2.0%	2.0%
H&SC, Other	2.8%	2.3%	2.0%	2.1%	2.7%	2.1%	2.1%
Health & Social Care Professionals	14.6%	16.9%	18.0%	17.8%	16.7%	16.6%	16.6%

Jan 2021 (Dec 2018 figure: 1,409)	WTE Dec 2015	WTE Dec 2016	WTE Dec 2017	WTE Dec 2018	WTE Dec 2019	WTE Dec 2020	WTE Jan 2021
Disabilities	1,155	1,272	1,378	1,409	1,505.38	1,563.05	1,566.71
Executive Management	2.5%	2.1%	3.0%	2.9%	1.8%	2.6%	2.6%
Senior Management (VIII & GM)	9.3%	7.9%	9.7%	10.5%	8.1%	8.5%	8.5%
Management (VIII & above)	11.8%	10.1%	12.6%	13.3%	9.9%	11.1%	11.1%
Administrative/ Supervisory (V to VII)	34.4%	34.3%	33.3%	33.3%	35.2%	35.3%	35.3%
Clerical (III & IV)	53.8%	55.7%	54.0%	53.4%	54.9%	53.6%	53.7%
Management & Administrative	7.0%	7.4%	7.4%	7.4%	7.0%	7.4%	7.4%
Support	86.5%	81.5%	78.5%	70.2%	67.6%	62.0%	65.4%
Maintenance	13.5%	15.4%	17.9%	26.4%	28.0%	32.8%	29.1%
Technical Services		3.1%	3.6%	3.3%	4.4%	5.2%	5.5%
Maintenance/ Technical	13.5%	18.5%	21.5%	29.8%	32.4%	38.0%	34.6%
General Support	3.2%	2.6%	2.0%	2.1%	2.0%	1.2%	1.2%
HCA, Nurse's Aide, etc.	80.4%	80.3%	76.8%	77.1%	77.3%	79.1%	78.6%
Health Care Assistants	80.4%	80.3%	76.8%	77.1%	77.3%	79.1%	78.6%
Care, other	16.5%	16.4%	15.7%	16.1%	16.6%	16.6%	17.0%
Home Help	3.1%	3.3%	7.5%	6.8%	6.2%	4.3%	4.4%
Patient & Client Care	53.3%	53.9%	55.7%	56.2%	52.6%	58.7%	58.7%
Total	100 %	100 %	100 %	100 %	100 %	100 %	100 %

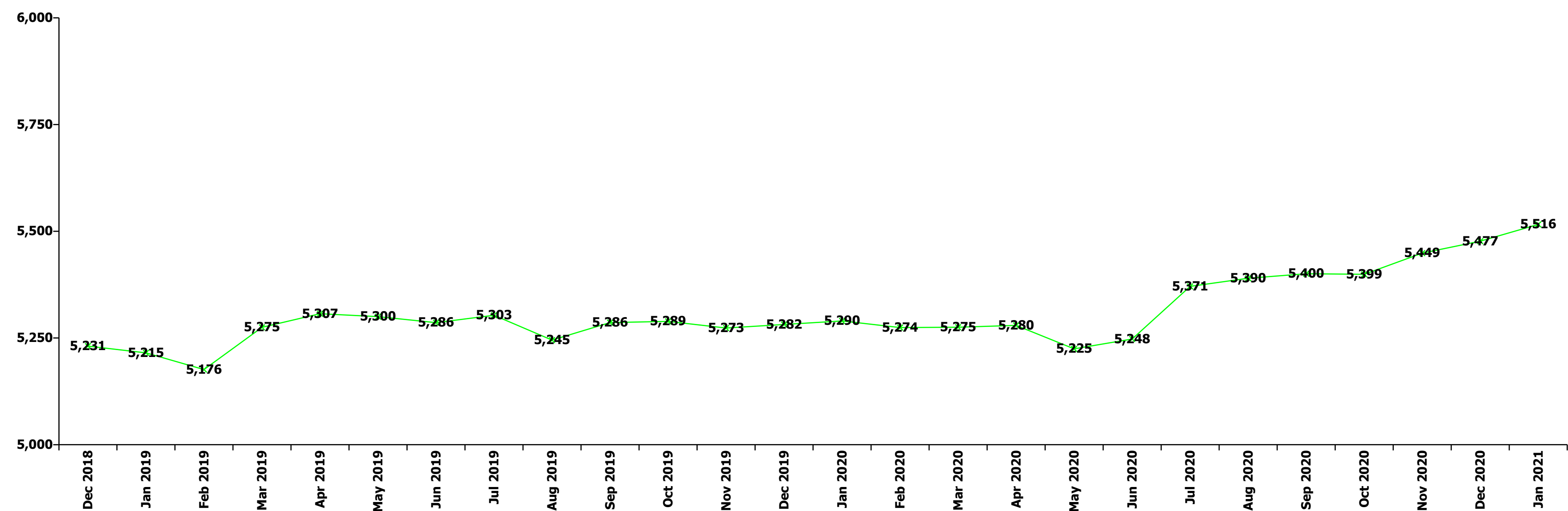
Jan 2021 (Dec 2018 figure: 1,678)	WTE Dec 2015	WTE Dec 2016	WTE Dec 2017	WTE Dec 2018	WTE Dec 2019	WTE Dec 2020	WTE Jan 2021
Older People	1,454	1,341	1,587	1,678	1,646.92	1,650.28	1,670.55
Medical/ Dental, other	100.0%	100.0%	100.0%	100.0%	100.0%	100.0%	100.0%
Medical & Dental	0.8%	0.8%	0.6%	0.6%	0.6%	0.9%	0.9%
Clinical Nurse/ Midwife Manager	12.7%	14.7%	15.5%	16.8%	14.7%	15.5%	15.1%
Director Nursing/Midwifery, Assistant	3.3%	3.3%	3.2%	3.1%	2.8%	3.3%	3.1%
Director of Nursing/Midwifery	2.9%	3.3%	2.9%	3.0%	2.9%	3.2%	3.2%
Nurse/ Midwife Manager	18.9%	21.3%	21.5%	22.8%	20.3%	21.9%	21.4%
Advanced Nurse/ Midwife Practitioner			0.3%	0.2%	0.2%	0.5%	0.5%
Clinical Nurse/ Midwife Specialist	0.3%			0.2%	0.2%	0.5%	0.5%
Nurse/ Midwife Specialist & AN/MP	0.3%		0.3%	0.5%	0.5%	0.9%	1.0%
Graduate Nursing/ Midwifery	0.3%						
Staff Nurse [Intellectual Disability]						0.2%	0.2%
Staff Nurse [Psychiatric]		0.3%	0.3%	0.2%	0.2%	0.4%	0.5%
Staff Nurses [General/ Children's]	79.8%	77.7%	73.6%	75.7%	78.0%	75.6%	76.1%
Staff Midwives						0.2%	0.2%
Staff Nurse/ Staff Midwife	80.1%	77.9%	73.9%	75.9%	78.2%	76.5%	77.0%
Public Health Nurse	0.8%	0.8%	0.7%	0.7%	0.9%	0.7%	0.7%
Nursing/ Midwifery awaiting registration			3.6%				
Nursing/ Midwifery Student			3.6%				
Nursing & Midwifery	25.8%	28.2%	24.7%	23.9%	24.3%	24.3%	24.3%
Dietitians	5.3%	4.8%	4.6%	8.1%	8.4%	5.3%	5.1%
Occupational Therapists	27.9%	25.6%	26.2%	26.8%	30.3%	20.5%	19.9%
Physiotherapists	50.2%	43.6%	48.0%	46.3%	47.1%	53.9%	54.9%
Podiatrists & Chiropodists	1.3%	1.0%	1.0%	0.9%	1.1%	1.2%	1.2%
Speech & Language Therapists	7.8%	10.0%	7.1%	7.2%	5.9%	5.3%	5.1%
Therapy Professions	92.4%	84.9%	87.0%	89.2%	92.7%	86.2%	86.1%
Social Care	2.6%						
Social Workers	4.9%	15.1%	13.0%	10.8%	7.3%	11.2%	11.4%
Pharmacy						2.6%	2.5%
Health & Social Care Professionals	2.6%	3.1%	2.5%	2.8%	2.9%	2.4%	2.4%

Jan 2021 (Dec 2018 figure: 1,678)	WTE Dec 2015	WTE Dec 2016	WTE Dec 2017	WTE Dec 2018	WTE Dec 2019	WTE Dec 2020	WTE Jan 2021
Older People	1,454	1,341	1,587	1,678	1,646.92	1,650.28	1,670.55
Management (VIII & above)	6.2%	6.1%	4.3%	6.4%	7.6%	7.3%	6.3%
Administrative/ Supervisory (V to VII)	20.8%	22.8%	28.1%	25.0%	28.1%	32.7%	35.0%
Clerical (III & IV)	73.0%	71.0%	67.6%	68.6%	64.3%	60.0%	58.7%
Management & Administrative	2.8%	3.4%	2.7%	2.6%	2.7%	3.6%	3.6%
Support	94.1%	94.4%	94.1%	94.2%	93.7%	95.4%	95.3%
Maintenance/ Technical	5.9%	5.6%	5.9%	5.8%	6.3%	4.6%	4.7%
General Support	11.2%	11.6%	9.4%	8.0%	8.2%	5.1%	5.1%
HCA, Nurse's Aide, etc.	44.1%	52.6%	40.0%	37.8%	38.6%	42.4%	41.5%
Health & Social Care Assistants	0.1%	0.1%	0.1%	0.1%	0.1%	0.1%	0.1%
Health Care Assistants	44.2%	52.8%	40.1%	37.9%	38.7%	42.5%	41.6%
Care, other	1.2%	1.4%	1.0%	1.2%	1.0%	0.8%	0.8%
Home Help	54.6%	45.8%	58.9%	60.9%	60.3%	56.7%	57.5%
Patient & Client Care	56.8%	52.9%	60.1%	62.0%	63.2%	63.7%	63.7%
Total	100 %	100 %	100 %	100 %	100 %	100 %	100 %

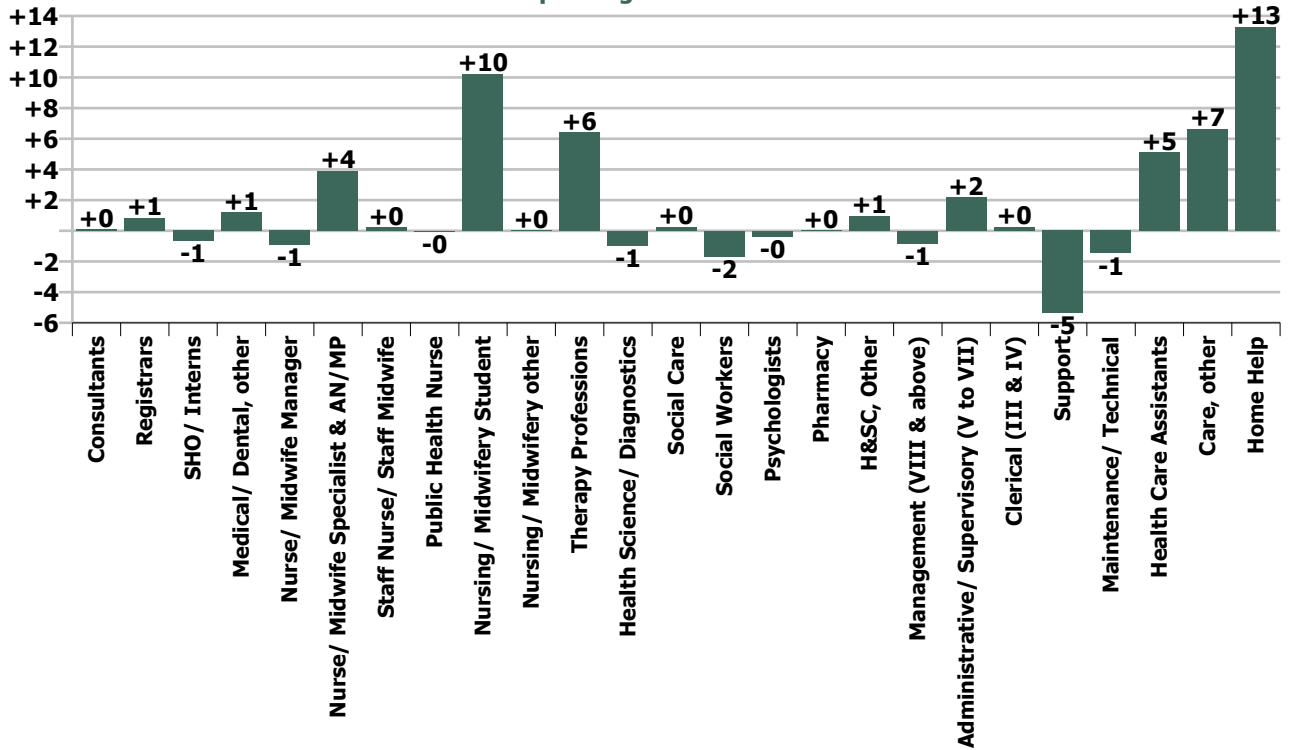
Summary Staff Movement: January 2021

Month-on-month Summary																												
WTE change since Dec 20	% change since Dec 20	overall	Consultants	Registrars	SHO/ Interns	Medical/ Dental, other	Medical & Dental	Nurse/ Midwife Manager	Nurse/ Midwife Specialist & AN/MP	Staff Nurse/ Staff Midwife	Public Health Nurse	Nursing/ Midwifery Student	Nursing/ Midwifery other	Nursing & Midwifery	Therapy Professions	Health Science/ Diagnostics	Social Care	Social Workers	Psychologists	Pharmacy	H&SC, Other	Health & Social Care Professionals	Management (VIII & above)	Administrative/ Supervisory (V to VII)	Clerical (III & IV)	Management & Administrative	General Support	Patient & Client Care
Overall	+0.7%	+39	+0.1	+0.8	-0.7	+1.2	+1.5	-0.9	+3.9	+0.2	-0.1	+10.2	+0.0	+13.4	+6.4	-1.0	+0.3	-1.7	-0.4	+0.0	+1.0	+4.6	-0.8	+2.2	+0.3	+1.6	-6.8	+25.0
Community Health & Wellbeing	+6.3%	+1													0.0						0.0	0.0	-0.1	+0.0	-0.1		+1.0	
Mental Health	+0.5%	+6	+0.1	-0.0	-0.4	0.0	-0.3	+4.7	+1.0	+0.8		+1.8	-0.0	+8.3	-1.5		0.0	-1.6	+0.2		+1.0	-1.9	0.0	0.0	+0.6	+0.6	-2.8	+1.9
Primary Care	+0.8%	+9	0.0	+0.8	-0.3	+1.2	+1.8	-4.1	+1.0	-1.7	-0.1	+0.7	+0.0	-4.1	+3.8	-1.0	0.0	-0.0	-1.7	0.0	-0.0	+1.0	-0.8	-1.8	-4.8	-7.4	-1.7	+19.2
Disabilities	+0.2%	+4	0.0				0.0	-0.1	+1.8	-3.6	0.0	+7.7		+5.9	+2.6		+0.3	-0.4	+1.1		0.0	+3.6	-0.0	-0.1	+0.2	+0.1	-1.0	-4.9
Older People	+1.2%	+20				0.0	0.0	-1.5	+0.0	+4.7	+0.0			+3.3	+1.6			+0.3			+0.0	+1.9	0.0	+4.2	+4.3	+8.5	-1.3	+7.9
Social Care	+0.7%	+24	0.0			0.0	0.0	-1.5	+1.9	+1.1	+0.0	+7.7		+9.2	+4.1		+0.3	-0.1	+1.1	+0.0	0.0	+5.5	-0.0	+4.1	+4.5	+8.6	-2.3	+3.0
Change	+39.3	+0.7%	+0.3%	+2.8%	-1.7%	+1.7%	+0.9%	-0.3%	+5.0%	+0.0%	-0.0%	+59.2%	+0.7%	+0.8%	+2.0%	-12.8%	+0.2%	-2.7%	-0.5%	+1.5%	+3.0%	+0.7%	-1.8%	+1.6%	+0.1%	+0.3%	-2.1%	+1.1%

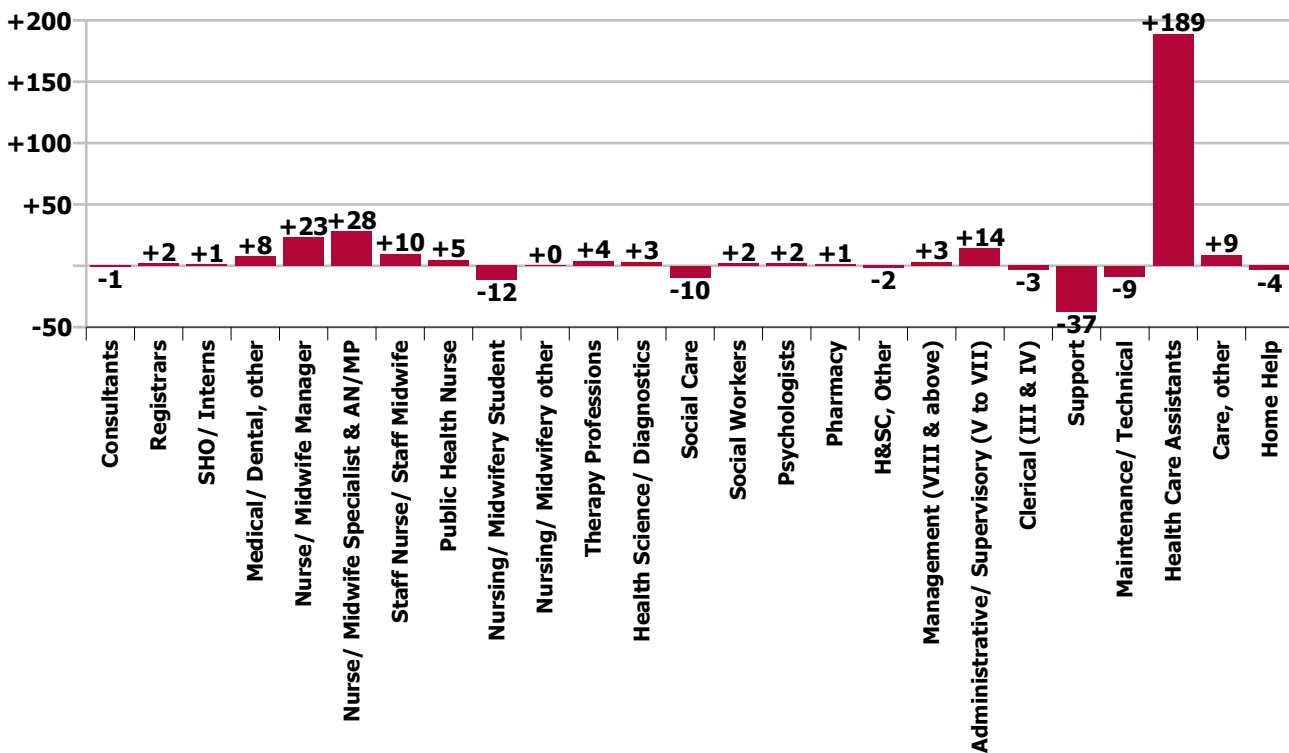
Year-on-year Summary																												
WTE change since Jan 20	% change since Jan 20	overall	Consultants	Registrars	SHO/ Interns	Medical/ Dental, other	Medical & Dental	Nurse/ Midwife Manager	Nurse/ Midwife Specialist & AN/MP	Staff Nurse/ Staff Midwife	Public Health Nurse	Nursing/ Midwifery Student	Nursing/ Midwifery other	Nursing & Midwifery	Therapy Professions	Health Science/ Diagnostics	Social Care	Social Workers	Psychologists	Pharmacy	H&SC, Other	Health & Social Care Professionals	Management (VIII & above)	Administrative/ Supervisory (V to VII)	Clerical (III & IV)	Management & Administrative	General Support	Patient & Client Care
Overall	+4.3%	+226	-1.2	+1.9	+1.0	+7.5	+9.2	+23.2	+28.2	+9.7	+4.8	-11.5	+0.2	+54.5	+3.9	+3.1	-9.5	+2.0	+1.9	+1.0	-1.6	+0.7	+3.1	+14.3	-3.5	+13.9	-46.1	+193.9
Community Health & Wellbeing	+6.3%	+1													+0.2							+0.2	0.0	+0.9	+0.6	+1.5		+0.2
Mental Health	+0.5%	+6	+1.0	-0.7	+5.0	0.0	+5.3	+3.2	+12.0	-2.6		-9.3	+0.2	+3.6	-2.4		0.0	-1.3	+1.4		-1.0	-3.3	+3.0	-0.2	-4.8	-2.0	+5.1	-3.5
Primary Care	+0.8%	+9	-2.0	+2.6	-4.0	+2.2	-1.2	+14.0	+12.2	+15.6	+5.2	-1.0	+0.0	+46.0	+7.9	+3.1	-0.1	-1.4	-5.4	0.0	+1.0	+4.9	-0.8	+5.4	-5.1	-0.5	-2.8	+78.5
Disabilities	+4.2%	+62.9	-0.2				-0.2	+2.8	+2.0	-3.8	+0.7	-1.3		+0.4	+4.9		-9.4	+3.9	+5.9		-1.6	+3.7	+0.8	+1.2	+1.7	+3.8	-3.3	+58.6
Older People	+1.9%	+31.1				+5.3	+5.3	+3.2	+2.0	+0.4	-1.1			+4.5	-6.8			+0.9		+1.0		-4.9	0.0	+6.9	+4.2	+11.2	-45.0	+60.1
Social Care	+0.7%	+24	-0.2			+5.3	+5.1	+6.0	+4.0	-3.4	-0.4	-1.3		+4.9	-1.8		-9.4	+4.7	+5.9	+1.0	-1.6	-1.2	+0.8	+8.2	+5.9	+14.9	-48.4	+118.6
Change	+226.0	+4.3%	-3.8%	+6.5%	+2.7%	+11.6%	+5.7%	+6.8%	+52.6%	+1.0%	+2.8%	-29.5%	+5.8%	+3.5%	+1.2%	+84.7%	-5.9%	+3.4%	+2.5%	+100.0%	-4.8%	+0.1%	+7.1%	+11.3%	-1.1%	+2.8%	-12.4%	+9.6%



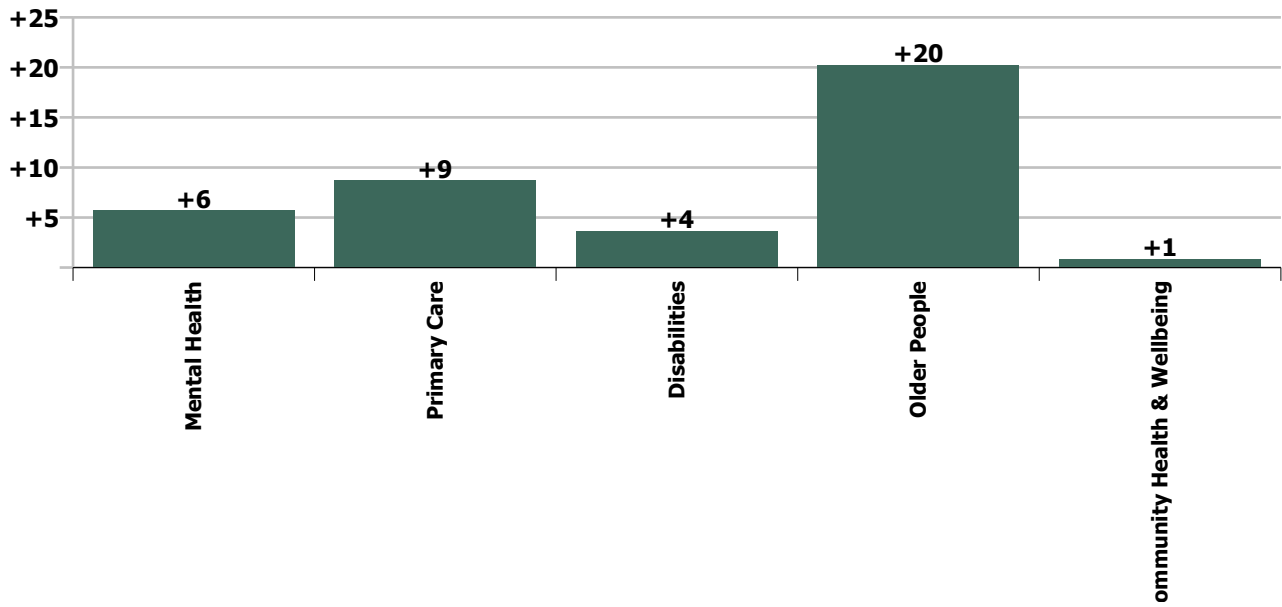
Staff Group change since: Dec 2020



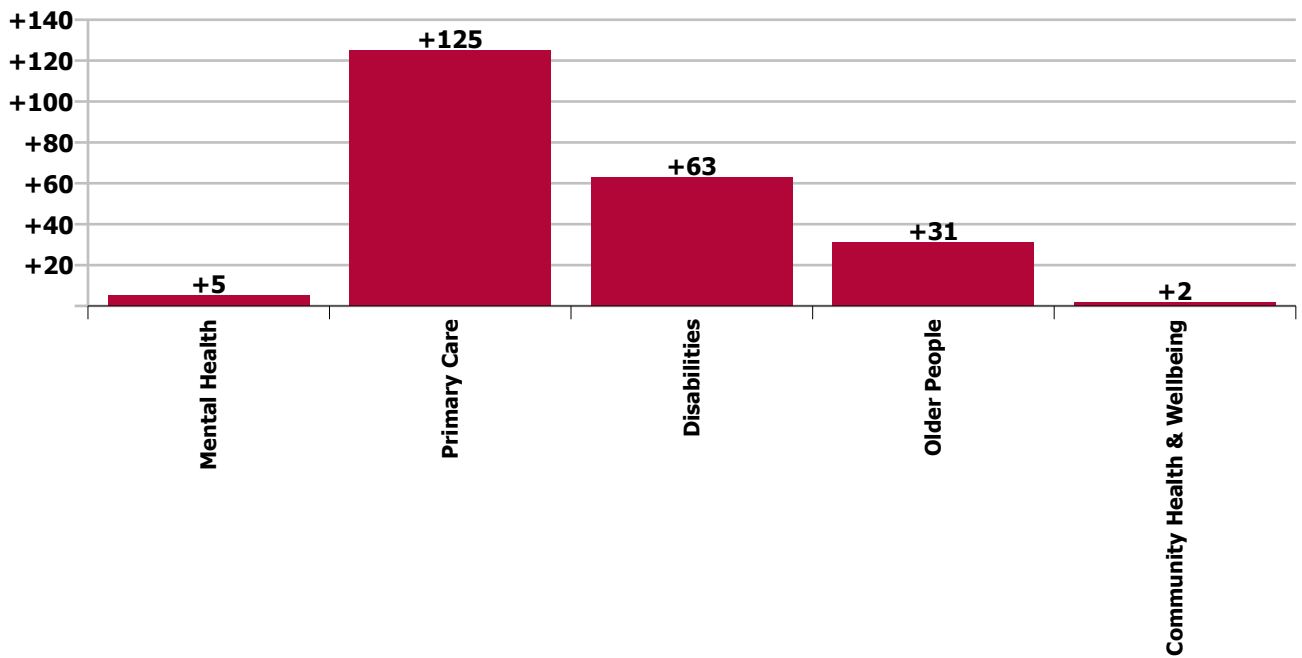
Staff Group change since: Jan 2020



Care Group change since: Dec 2020



Care Group change since: Jan 2020



Longitudinal Employment Levels by Grade Group - Oct 2013 to Jan 2021

Jan 2021 (Dec 2015 figure: 4,640)	WTE Jan 2021	WTE change since Dec 15	WTE change since Dec 16	WTE change since Dec 17	WTE change since Dec 18	WTE change since Dec 19	WTE change since Dec 20	% change since Dec 15	% change since Dec 16	% change since Dec 17	% change since Dec 18	% change since Dec 19	% change since Dec 20
Overall	5,516	+876	+791	+436	+285	+234	+39	+18.9%	+16.7%	+8.6%	+5.4%	+4.4%	+0.7%
Consultant Dentistry	1												
Consultant Psychiatry	28	-3	-3	-1	+4	+1	+0	-8.3%	-9.5%	-2.7%	+15.2%	+3.7%	+0.4%
Consultant Surgery		-2	-2	-2	-2	-2		-100.0%	-100.0%	-100.0%	-100.0%	-100.0%	-100.0%
Consultants	29	-5	-5	-3	+2	-1	+0	-13.5%	-14.5%	-8.7%	+6.3%	-3.3%	+0.3%
Registrar	27	+1	+2	-1	-1	+2	+1	+3.4%	+7.6%	-3.4%	-4.4%	+6.3%	+3.3%
Senior Registrar	4	+1	+2	+2	+2	+1	-0	+33.0%	+99.5%	+99.5%	+99.5%	+33.0%	-0.2%
Registrars	31	+2	+4	+1	+1	+3	+1	+6.5%	+14.5%	+3.6%	+2.6%	+9.1%	+2.8%
Interns	1												
Senior House Officer	36	+5	+3	-2	+2	-1	-1	+17.4%	+10.3%	-5.2%	+7.3%	-1.6%	-1.8%
SHO/ Interns	37	+5	+3	-2	+2	-1	-1	+16.8%	+10.0%	-5.1%	+7.1%	-1.6%	-1.7%
Dentists	37	+3	+4	+3	+2	+1	-0	+10.2%	+12.9%	+8.0%	+6.8%	+3.4%	-0.6%
Other Medical	35	+4	+8	+6	+6	+5	+1	+14.1%	+27.5%	+21.8%	+20.5%	+18.0%	+4.1%
Medical/ Dental, other	73	+8	+12	+9	+8	+7	+1	+12.1%	+19.6%	+14.3%	+13.1%	+10.0%	+1.7%
Medical & Dental	170	+11	+14	+5	+13	+8	+1	+6.6%	+9.1%	+3.3%	+8.5%	+4.7%	+0.9%
Clinical Nurse/ Midwife Manager	286	+26	+18	+28	+8	+15	+0	+10.1%	+6.9%	+10.6%	+2.7%	+5.4%	+0.0%
Director Nursing/Midwifery, Assistant	54	+18	+8	+9	+9	+9	-1	+49.4%	+17.3%	+19.6%	+19.5%	+19.1%	-1.7%
Director of Nursing/Midwifery	24	+2	+2	+3	+1	+2	+0	+9.6%	+6.9%	+12.5%	+4.6%	+11.0%	+0.1%
Nurse/ Midwife Manager	364	+46	+28	+39	+17	+26	-1	+14.5%	+8.3%	+12.0%	+5.1%	+7.6%	-0.3%
Advanced Nurse/ Midwife Practitioner	7	+7	+7	+6	+5	+4	+0	-100.0%	-100.0%	+567.0%	+233.5%	+122.3%	+0.8%
Clinical Nurse/ Midwife Specialist	75	+34	+29	+24	+17	+26	+4	+81.2%	+61.3%	+47.5%	+30.3%	+53.7%	+5.4%
Nurse/ Midwife Specialist & AN/MP	82	+40	+35	+30	+22	+30	+4	+97.3%	+75.7%	+57.5%	+37.1%	+57.7%	+5.0%
Graduate Nursing/ Midwifery		-10						-100.0%	-100.0%	-100.0%	-100.0%	-100.0%	-100.0%
Staff Nurse [Intellectual Disability]	111	+2	+1	-8	+4	-5	-4	+1.9%	+1.3%	-6.7%	+4.2%	-4.1%	-3.2%
Staff Nurse [Psychiatric]	422	-7	-16	-18	-5	+2	+2	-1.7%	-3.7%	-4.1%	-1.1%	+0.4%	+0.5%
Staff Nurses [General/ Children's]	438	+9	+27	+41	+17	+7	+2	+2.2%	+6.5%	+10.3%	+4.0%	+1.6%	+0.4%
Staff Midwives	1	+1	+1	+1	+1	+1	-0	-100.0%	-100.0%	-100.0%	-100.0%	-100.0%	-10.2%
Staff Nurse/ Staff Midwife	972	-5	+13	+16	+17	+5	+0	-0.5%	+1.3%	+1.7%	+1.8%	+0.5%	+0.0%
Public Health Nurse	176	+12	+9	+12	+8	+2	-0	+7.6%	+5.4%	+7.1%	+4.9%	+0.9%	-0.0%
Pre-registration Nurse/ Midwife Intern	14	+13	+11	+13	+14	+11	+14	+702.8%	+308.3%	+852.7%	+2758.0%	+308.3%	-100.0%
Pre-registration Nurse Intern (COVID-19)	9	+9	+9	+9	+9	+9	-5	-100.0%	-100.0%	-100.0%	-100.0%	-100.0%	-34.0%
Post-registration Nurse/ Midwife Student	4	-1	-3	-2	-3	-1	+1	-20.0%	-42.9%	-31.0%	-42.9%	-20.0%	+20.1%
Nursing/ Midwifery awaiting registration				-14		-4		-100.0%	-100.0%	-100.0%	-100.0%	-100.0%	-100.0%
Nursing/ Midwifery Student	27	+21	+17	+6	+20	+15	+10	+305.3%	+161.7%	+29.0%	+266.4%	+122.7%	+59.2%
Nursing Education/Clinical	4	+3	+2	+1	+1	-0	+0	+341.0%	+65.2%	+20.8%	+21.2%	-0.7%	+0.7%

Jan 2021 (Dec 2015 figure: 4,640)	WTE Jan 2021	WTE change since Dec 15	WTE change since Dec 16	WTE change since Dec 17	WTE change since Dec 18	WTE change since Dec 19	WTE change since Dec 20	% change since Dec 15	% change since Dec 16	% change since Dec 17	% change since Dec 18	% change since Dec 19	% change since Dec 20
Overall	5,516	+876	+791	+436	+285	+234	+39	+18.9%	+16.7%	+8.6%	+5.4%	+4.4%	+0.7%
Nursing/ Midwifery other	4	+3	+2	+1	+1	-0	+0	+341.0%	+65.2%	+20.8%	+21.2%	-0.7%	+0.7%
Nursing & Midwifery	1,625	+118	+103	+103	+86	+77	+13	+7.8%	+6.8%	+6.8%	+5.6%	+5.0%	+0.8%
Dietitians	17	+7	+5	+4	+1	+2	+1	+67.8%	+43.7%	+28.1%	+7.9%	+15.7%	+4.1%
Occupational Therapists	122	+13	+2	-5	-9	+1	+2	+11.6%	+1.5%	-4.1%	-6.8%	+0.9%	+1.6%
Orthoptists	1	+1	+1	+1		+1		-100.0%	-100.0%	-100.0%		+100.0%	
Physiotherapists	92	+8	+3	-2	+1	+5	+2	+9.7%	+3.9%	-2.0%	+1.5%	+5.5%	+1.7%
Podiatrists & Chiropodists	1	+1	+1	-0	-0	-0	+0	+133.3%	+174.5%	-7.3%	-0.7%	-4.8%	+12.0%
Speech & Language Therapists	98	+21	-4	-4	-5	-5	+2	+27.0%	-4.0%	-3.7%	-4.6%	-4.5%	+2.2%
Therapy Professions	331	+50	+8	-6	-11	+4	+6	+17.9%	+2.6%	-1.8%	-3.2%	+1.2%	+2.0%
Health Science/ Diagnostics	7	+3	+2	+2	+3	+3	-1	+75.0%	+33.0%	+38.5%	+66.3%	+75.0%	-12.8%
Social Care	153	+43	+23	+2	-9	-11	+0	+38.6%	+17.6%	+1.2%	-5.7%	-6.6%	+0.2%
Social Workers	62	+4	-6	-8	-2	+2	-2	+6.4%	-8.3%	-11.2%	-3.3%	+2.9%	-2.7%
Psychologists	78	+8	-1	+0	+4	-1	-0	+10.7%	-1.2%	+0.5%	+4.8%	-0.7%	-0.5%
Pharmacy	2	-0	-0	+1	+1	+1	+0	-1.0%	-5.7%	+78.6%	+100.0%	+100.0%	+1.5%
Counsellor Therapists	21	+7	-1	+1	+1	-1	+1	+51.2%	-5.8%	+5.9%	+2.7%	-4.0%	+4.9%
Dental Hygienists	7	+1	+0	+0	+0	+1		+14.5%	+4.4%	+6.0%	+6.0%	+18.3%	
Environmental Health Officers						-1		-100.0%	-100.0%	-100.0%	-100.0%	-100.0%	-100.0%
Other Health & Social Care		-1	-1	-1	-1	-1		-100.0%	-100.0%	-100.0%	-100.0%	-100.0%	-100.0%
Play Therapists/ Specialists	5	+1	+1	+1	+0	-1		+34.7%	+23.7%	+24.6%	+10.6%	-16.3%	
H&SC, Other	33	+8	-1	+1	+1	-2	+1	+32.9%	-3.4%	+4.7%	+1.6%	-6.1%	+3.0%
Health & Social Care Professionals	666	+115	+25	-8	-15	-4	+5	+20.9%	+3.9%	-1.1%	-2.1%	-0.6%	+0.7%
Executive Management	11	+7	+4	+2	+2	+4	-0	+173.7%	+56.4%	+21.7%	+21.7%	+56.4%	-0.5%
Senior Management (VIII & GM)	35	+13	+11	+7	+2	-1	-1	+58.3%	+43.9%	+25.3%	+6.1%	-2.1%	-2.2%
Management (VIII & above)	46	+20	+15	+9	+4	+3	-1	+75.9%	+46.7%	+24.4%	+9.4%	+7.4%	-1.8%
Administrative/ Supervisory (V to VII)	140	+51	+37	+22	+20	+15	+2	+57.6%	+36.4%	+18.6%	+16.9%	+12.2%	+1.6%
Clerical (III & IV)	325	+20	+5	+20	+5	-5	+0	+6.4%	+1.6%	+6.4%	+1.6%	-1.6%	+0.1%
Management & Administrative	511	+91	+57	+51	+29	+13	+2	+21.6%	+12.6%	+11.0%	+6.1%	+2.6%	+0.3%
Catering	33	+4	+2	-3	-2	+0	-2	+12.6%	+4.8%	-8.8%	-5.5%	+0.5%	-4.4%
Household Services	220	-95	-85	-62	-42	-37	-3	-30.2%	-27.9%	-21.9%	-16.1%	-14.5%	-1.2%
Other Support	33	-5	-1	-2	-2	+0	-2	-12.7%	-4.3%	-4.6%	-6.7%	+0.8%	-4.7%
Portering	9	-4	-5	+0	+0	-1	+1	-31.6%	-38.6%	+3.1%	+3.0%	-5.8%	+6.2%
Support	295	-100	-91	-66	-46	-37	-5	-25.4%	-23.5%	-18.3%	-13.6%	-11.2%	-1.8%
Maintenance	29	-8	-8	-6	-8	-7	-1	-22.3%	-21.5%	-17.5%	-22.0%	-20.0%	-4.9%
Technical Services	1	-1	-2	-2	-2	-2		-50.0%	-66.7%	-66.7%	-66.7%	-66.7%	

Jan 2021 (Dec 2015 figure: 4,640)	WTE Jan 2021	WTE change since Dec 15	WTE change since Dec 16	WTE change since Dec 17	WTE change since Dec 18	WTE change since Dec 19	WTE change since Dec 20	% change since Dec 15	% change since Dec 16	% change since Dec 17	% change since Dec 18	% change since Dec 19	% change since Dec 20
Overall	5,516	+876	+791	+436	+285	+234	+39	+18.9%	+16.7%	+8.6%	+5.4%	+4.4%	+0.7%
Maintenance/ Technical	30	-9	-10	-8	-10	-9	-1	-23.8%	-25.0%	-21.4%	-25.3%	-23.6%	-4.7%
General Support	324	-110	-101	-74	-56	-46	-7	-25.3%	-23.7%	-18.6%	-14.8%	-12.5%	-2.1%
HCA, Nurse's Aide, etc.	1,310	+396	+323	+273	+232	+176	+5	+43.3%	+32.7%	+26.3%	+21.6%	+15.5%	+0.3%
Health & Social Care Assistants	12	+11	+11	+11	+1	+4	+1	+1114.0%	+1114.0%	+1234.1%	+6.4%	+55.2%	+4.9%
Health Care Assistants	1,322	+407	+334	+284	+233	+180	+5	+44.5%	+33.8%	+27.3%	+21.4%	+15.8%	+0.4%
Care, other	238	+61	+51	+42	+30	+16	+7	+34.1%	+26.9%	+21.7%	+14.4%	+7.4%	+2.9%
Home Help	659	+183	+307	+32	-36	-9	+13	+38.6%	+86.8%	+5.1%	-5.1%	-1.4%	+2.1%
Patient & Client Care	2,220	+651	+691	+358	+227	+187	+25	+41.5%	+45.2%	+19.2%	+11.4%	+9.2%	+1.1%

Source: Health Service Personnel Census

Longitudinal Employment Levels by Care Group - Oct 2013 to Jan 2021

Community Health & Wellbeing

Jan 2021 (figure:)	WTE Jan 2021	WTE change since	WTE change since	WTE change since	WTE change since	WTE change since	WTE change since Dec 20	% change since	% change since	% change since	% change since	% change since	% change since Dec 20
Overall	15	+15	+15	+15	+15	+15	+1	-100.0%	-100.0%	-100.0%	-100.0%	-100.0%	+6.3%
Health & Social Care Professionals	3	+3	+3	+3	+3	+3		-1.0%	-1.0%	-1.0%	-1.0%	-1.0%	+0.0%
Therapy Professions	3	+3	+3	+3	+3	+3		-1.0%	-1.0%	-1.0%	-1.0%	-1.0%	+0.0%
Management & Administrative	5	+5	+5	+5	+5	+5	-0	-1.0%	-1.0%	-1.0%	-1.0%	-1.0%	-0.0%
Management (VIII & above)	1	+1	+1	+1	+1	+1		-1.0%	-1.0%	-1.0%	-1.0%	-1.0%	+0.0%
Administrative/ Supervisory (V to VII)	2	+2	+2	+2	+2	+2	-0	-1.0%	-1.0%	-1.0%	-1.0%	-1.0%	-0.1%
Clerical (III & IV)	3	+3	+3	+3	+3	+3	+0	-1.0%	-1.0%	-1.0%	-1.0%	-1.0%	+0.0%
Patient & Client Care	7	+7	+7	+7	+7	+7	+1	-1.0%	-1.0%	-1.0%	-1.0%	-1.0%	+0.2%
Care, other	7	+7	+7	+7	+7	+7	+1	-1.0%	-1.0%	-1.0%	-1.0%	-1.0%	+0.2%

Source: Health Service Personnel Census

Mental Health

Jan 2021 (Dec 2015 figure: 1,186)	WTE Jan 2021	WTE change since Dec 15	WTE change since Dec 16	WTE change since Dec 17	WTE change since Dec 18	WTE change since Dec 18	WTE change since Dec 20	% change since Dec 15	% change since Dec 16	% change since Dec 17	% change since Dec 18	% change since Dec 18	% change since Dec 20
Overall	1,194	+8	-27	-3	+9	+9	+6	+0.7%	-2.2%	-0.3%	+0.8%	+0.8%	+0.5%
Medical & Dental	74	+7	+6	+3	+8	+8	-0	+0.1%	+0.1%	+0.0%	+0.1%	+0.1%	-0.0%
Consultants	27	-2	-2	-0	+3	+3	+0	-0.1%	-0.1%	-0.0%	+0.1%	+0.1%	+0.0%
Registrars	9	+1	+3	+4	-0	-0	-0	+0.1%	+0.5%	+0.8%	-0.0%	-0.0%	-0.0%
SHO/ Interns	35	+8	+5	-0	+4	+4	-0	+0.3%	+0.2%	-0.0%	+0.1%	+0.1%	-0.0%
Medical/ Dental, other	2			-1				+0.0%	+0.0%	-0.3%	+0.0%	+0.0%	+0.0%
Nursing & Midwifery	650	+14	+3	+5	+10	+10	+8	+0.0%	+0.0%	+0.0%	+0.0%	+0.0%	+0.0%
Nurse/ Midwife Manager	165	+7	+1	+6	+2	+2	+5	+0.0%	+0.0%	+0.0%	+0.0%	+0.0%	+0.0%
Nurse/ Midwife Specialist & AN/MP	55	+17	+12	+11	+5	+5	+1	+0.4%	+0.3%	+0.2%	+0.1%	+0.1%	+0.0%
Staff Nurse/ Staff Midwife	412	-26	-24	-24	-11	-11	+1	-0.1%	-0.1%	-0.1%	-0.0%	-0.0%	+0.0%
Nursing/ Midwifery Student	15	+14	+13	+13	+14	+14	+2	+28.5%	+6.4%	+8.8%	+28.5%	+28.5%	+0.1%
Nursing/ Midwifery other	4	+3	+1	-0	-0	-0	-0	+2.6%	+0.3%	-0.0%	-0.0%	-0.0%	-0.0%
Health & Social Care Professionals	99	-12	-23	-21	-12	-12	-2	-0.1%	-0.2%	-0.2%	-0.1%	-0.1%	-0.0%
Therapy Professions	37	-2	-10	-11	-7	-7	-2	-0.1%	-0.2%	-0.2%	-0.2%	-0.2%	-0.0%
Social Care	5							+0.0%	+0.0%	+0.0%	+0.0%	+0.0%	+0.0%
Social Workers	26	-6	-6	-5	-1	-1	-2	-0.2%	-0.2%	-0.2%	-0.0%	-0.0%	-0.1%
Psychologists	22	-2	-4	-2	-2	-2	+0	-0.1%	-0.2%	-0.1%	-0.1%	-0.1%	+0.0%
H&SC, Other	9	-2	-2	-2	-2	-2	+1	-0.2%	-0.2%	-0.2%	-0.2%	-0.2%	+0.1%
Management & Administrative	95	-3	-4	+7	+2	+2	+1	-0.0%	-0.0%	+0.1%	+0.0%	+0.0%	+0.0%
Management (VIII & above)	6	+4	+3	+4	+3	+3		+2.0%	+1.0%	+2.0%	+1.0%	+1.0%	+0.0%
Administrative/ Supervisory (V to VII)	20	+3	+4	+2	+1	+1		+0.2%	+0.3%	+0.1%	+0.1%	+0.1%	+0.0%
Clerical (III & IV)	69	-10	-11	+1	-3	-3	+1	-0.1%	-0.1%	+0.0%	-0.0%	-0.0%	+0.0%
General Support	195	-13	-16	+2	+7	+7	-3	-0.1%	-0.1%	+0.0%	+0.0%	+0.0%	-0.0%
Support	176	-8	-10	+6	+11	+11	-2	-0.0%	-0.1%	+0.0%	+0.1%	+0.1%	-0.0%
Maintenance/ Technical	19	-5	-6	-4	-4	-4	-1	-0.2%	-0.2%	-0.2%	-0.2%	-0.2%	-0.0%
Patient & Client Care	82	+14	+6	+0	-5	-5	+2	+0.2%	+0.1%	+0.0%	-0.1%	-0.1%	+0.0%
Health Care Assistants	69	+16	+7	+4	-2	-2	+2	+0.3%	+0.1%	+0.1%	-0.0%	-0.0%	+0.0%
Care, other	12	-2	-2	-3	-4	-4	-0	-0.1%	-0.1%	-0.2%	-0.2%	-0.2%	-0.0%

Source: Health Service Personnel Census

Primary Care

Jan 2021 (Dec 2015 figure: 845)	WTE Jan 2021	WTE change since Dec 15	WTE change since Dec 16	WTE change since Dec 17	WTE change since Dec 18	WTE change since Dec 18	WTE change since Dec 20	% change since Dec 15	% change since Dec 16	% change since Dec 17	% change since Dec 18	% change since Dec 18	% change since Dec 20
Overall	1,070	+225	+178	+151	+111	+111	+9	+26.6%	+20.0%	+16.4%	+11.6%	+11.6%	+0.8%
Medical & Dental	80	+1	+5	-1	+0	+0	+2	+0.0%	+0.1%	-0.0%	+0.0%	+0.0%	+0.0%
Consultants	1	-2	-2	-2	-2	-2		-0.7%	-0.7%	-0.7%	-0.7%	-0.7%	+0.0%
Registrars	22	+1	+1	-3	+1	+1	+1	+0.0%	+0.0%	-0.1%	+0.0%	+0.0%	+0.0%
SHO/ Interns	2	-3	-2	-2	-2	-2	-0	-0.6%	-0.5%	-0.5%	-0.5%	-0.5%	-0.1%
Medical/ Dental, other	56	+5	+9	+6	+4	+4	+1	+0.1%	+0.2%	+0.1%	+0.1%	+0.1%	+0.0%
Nursing & Midwifery	316	+71	+62	+61	+48	+48	-4	+0.3%	+0.2%	+0.2%	+0.2%	+0.2%	-0.0%
Nurse/ Midwife Manager	42	+22	+20	+21	+16	+16	-4	+1.1%	+0.9%	+1.0%	+0.6%	+0.6%	-0.1%
Nurse/ Midwife Specialist & AN/MP	19	+18	+16	+14	+13	+13	+1	+17.8%	+5.7%	+3.1%	+2.5%	+2.5%	+0.1%
Staff Nurse/ Staff Midwife	82	+19	+20	+15	+12	+12	-2	+0.3%	+0.3%	+0.2%	+0.2%	+0.2%	-0.0%
Public Health Nurse	167	+12	+8	+12	+8	+8	-0	+0.1%	+0.0%	+0.1%	+0.1%	+0.1%	-0.0%
Nursing/ Midwifery Student	4	-1	-3	-2	-3	-3	+1	-0.2%	-0.4%	-0.3%	-0.4%	-0.4%	+0.2%
Nursing/ Midwifery other	1	+1	+1	+1	+1	+1	+0	-1.0%	-1.0%	-1.0%	-1.0%	-1.0%	+0.1%
Health & Social Care Professionals	265	+31	+2	-2	-6	-6	+1	+0.1%	+0.0%	-0.0%	-0.0%	-0.0%	+0.0%
Therapy Professions	190	+13	+4	-2	-10	-10	+4	+0.1%	+0.0%	-0.0%	-0.0%	-0.0%	+0.0%
Health Science/ Diagnostics	7	+3	+2	+2	+3	+3	-1	+0.8%	+0.3%	+0.4%	+0.7%	+0.7%	-0.1%
Social Care	5	+4	+1	+2	+1	+1		+2.8%	+0.3%	+0.5%	+0.3%	+0.3%	+0.0%
Social Workers	7	+4	+2	-2	-0	-0	-0	+1.2%	+0.5%	-0.2%	-0.0%	-0.0%	-0.0%
Psychologists	37	-0	-7	-5	-2	-2	-2	-0.0%	-0.2%	-0.1%	-0.1%	-0.1%	-0.0%
Pharmacy	1	-1	-1					-0.5%	-0.5%	+0.0%	+0.0%	+0.0%	+0.0%
H&SC, Other	19	+9	+0	+3	+2	+2	-0	+1.0%	+0.0%	+0.2%	+0.2%	+0.2%	-0.0%
Management & Administrative	235	+33	+19	+6	-4	-4	-7	+0.2%	+0.1%	+0.0%	-0.0%	-0.0%	-0.0%
Management (VIII & above)	23	+10	+6	+2	+0	+0	-1	+0.8%	+0.4%	+0.1%	+0.0%	+0.0%	-0.0%
Administrative/ Supervisory (V to VII)	57	+21	+12	+2	+1	+1	-2	+0.6%	+0.3%	+0.0%	+0.0%	+0.0%	-0.0%
Clerical (III & IV)	156	+2	+1	+2	-6	-6	-5	+0.0%	+0.0%	+0.0%	-0.0%	-0.0%	-0.0%
General Support	25	-2	-2	-3	-3	-3	-2	-0.1%	-0.1%	-0.1%	-0.1%	-0.1%	-0.1%
Support	25	-2	-2	-3	-3	-3	-2	-0.1%	-0.1%	-0.1%	-0.1%	-0.1%	-0.1%
Patient & Client Care	149	+90	+91	+89	+76	+76	+19	+1.5%	+1.6%	+1.5%	+1.1%	+1.1%	+0.1%
Health Care Assistants	87	+86	+86	+86	+75	+75	+17	+86.3%	+86.3%	+86.3%	+6.2%	+6.2%	+0.2%
Care, other	54	+2	+3	+4	+1	+1	+2	+0.0%	+0.1%	+0.1%	+0.0%	+0.0%	+0.0%
Home Help	7	+2	+2	-1	-0	-0	-0	+0.3%	+0.3%	-0.2%	-0.0%	-0.0%	-0.1%

Source: Health Service Personnel Census

Disabilities

Jan 2021 (Dec 2015 figure: 1,155)	WTE Jan 2021	WTE change since Dec 15	WTE change since Dec 16	WTE change since Dec 17	WTE change since Dec 18	WTE change since Dec 18	WTE change since Dec 20	% change since Dec 15	% change since Dec 16	% change since Dec 17	% change since Dec 18	% change since Dec 18	% change since Dec 20
Overall	1,567	+412	+294	+189	+157	+157	+4	+35.7%	+23.1%	+13.7%	+11.2%	+11.2%	+0.2%
Medical & Dental	1	-1	-1	-1	+0	+0		-0.5%	-0.5%	-0.5%	+0.5%	+0.5%	+0.0%
Consultants	1	-1	-0	-0	+0	+0		-0.5%	-0.4%	-0.4%	+1.4%	+1.4%	+0.0%
Medical/ Dental, other		-0	-0	-0	-0	-0		-1.0%	-1.0%	-1.0%	-1.0%	-1.0%	-1.0%
Nursing & Midwifery	253	+1	+9	+22	+22	+22	+6	+0.0%	+0.0%	+0.1%	+0.1%	+0.1%	+0.0%
Nurse/ Midwife Manager	70	+1	-0	+10	+4	+4	-0	+0.0%	-0.0%	+0.2%	+0.1%	+0.1%	-0.0%
Nurse/ Midwife Specialist & AN/MP	4	+3	+3	+2	+2	+2	+2	+3.0%	+3.0%	+1.0%	+1.0%	+1.0%	+0.8%
Staff Nurse/ Staff Midwife	165	-11	-2	+1	+7	+7	-4	-0.1%	-0.0%	+0.0%	+0.0%	+0.0%	-0.0%
Public Health Nurse	6	+1	+1	-0	+0	+0		+0.2%	+0.3%	-0.0%	+0.0%	+0.0%	+0.0%
Nursing/ Midwifery Student	9	+7	+7	+9	+9	+9	+8	+5.8%	+4.8%	-1.0%	-1.0%	-1.0%	+7.7%
Health & Social Care Professionals	260	+92	+45	+12	+9	+9	+4	+0.5%	+0.2%	+0.0%	+0.0%	+0.0%	+0.0%
Therapy Professions	68	+38	+12	+5	+11	+11	+3	+1.3%	+0.2%	+0.1%	+0.2%	+0.2%	+0.0%
Social Care	143	+40	+22	-0	-10	-10	+0	+0.4%	+0.2%	-0.0%	-0.1%	-0.1%	+0.0%
Social Workers	24	+3	+0	-0	+0	+0	-0	+0.2%	+0.0%	-0.0%	+0.0%	+0.0%	-0.0%
Psychologists	20	+10	+10	+7	+8	+8	+1	+1.0%	+1.1%	+0.6%	+0.7%	+0.7%	+0.1%
Pharmacy		-0	-0	-0				-1.0%	-1.0%	-1.0%	-1.0%	-1.0%	-1.0%
H&SC, Other	5	+1	+0	+0	+0	+0		+0.2%	+0.1%	+0.1%	+0.0%	+0.0%	+0.0%
Management & Administrative	115	+35	+21	+14	+10	+10	+0	+0.4%	+0.2%	+0.1%	+0.1%	+0.1%	+0.0%
Management (VIII & above)	13	+3	+3	-0	-1	-1	-0	+0.3%	+0.4%	-0.0%	-0.1%	-0.1%	-0.0%
Administrative/ Supervisory (V to VII)	41	+13	+8	+7	+6	+6	-0	+0.5%	+0.3%	+0.2%	+0.2%	+0.2%	-0.0%
Clerical (III & IV)	62	+19	+10	+7	+6	+6	+0	+0.4%	+0.2%	+0.1%	+0.1%	+0.1%	+0.0%
General Support	18	-19	-14	-10	-12	-12	-1	-0.5%	-0.4%	-0.3%	-0.4%	-0.4%	-0.1%
Support	12	-20	-14	-10	-9	-9	+0	-0.6%	-0.5%	-0.5%	-0.4%	-0.4%	+0.0%
Maintenance/ Technical	6	+1	+0	+0	-3	-3	-1	+0.3%	+0.1%	+0.1%	-0.3%	-0.3%	-0.1%
Patient & Client Care	919	+304	+233	+152	+127	+127	-5	+0.5%	+0.3%	+0.2%	+0.2%	+0.2%	-0.0%
Health Care Assistants	723	+228	+172	+133	+112	+112	-9	+0.5%	+0.3%	+0.2%	+0.2%	+0.2%	-0.0%
Care, other	156	+55	+44	+36	+28	+28	+3	+0.5%	+0.4%	+0.3%	+0.2%	+0.2%	+0.0%
Home Help	40	+21	+18	-17	-13	-13	+1	+1.1%	+0.8%	-0.3%	-0.2%	-0.2%	+0.0%

Source: Health Service Personnel Census

Older People

Jan 2021 (Dec 2015 figure: 1,454)	WTE Jan 2021	WTE change since Dec 15	WTE change since Dec 16	WTE change since Dec 17	WTE change since Dec 18	WTE change since Dec 18	WTE change since Dec 20	% change since Dec 15	% change since Dec 16	% change since Dec 17	% change since Dec 18	% change since Dec 18	% change since Dec 20
Overall	1,671	+216	+330	+84	-7	-7	+20	+14.9%	+24.6%	+5.3%	-0.4%	-0.4%	+1.2%
Medical & Dental	15	+3	+4	+4	+5	+5		+0.2%	+0.3%	+0.4%	+0.5%	+0.5%	+0.0%
Medical/ Dental, other	15	+3	+4	+4	+5	+5		+0.2%	+0.3%	+0.4%	+0.5%	+0.5%	+0.0%
Nursing & Midwifery	406	+31	+28	+15	+6	+6	+3	+0.1%	+0.1%	+0.0%	+0.0%	+0.0%	+0.0%
Nurse/ Midwife Manager	87	+16	+6	+3	-5	-5	-1	+0.2%	+0.1%	+0.0%	-0.0%	-0.0%	-0.0%
Nurse/ Midwife Specialist & AN/MP	4	+3	+4	+3	+2	+2	+0	+2.9%	-1.0%	+2.9%	+0.9%	+0.9%	+0.0%
Staff Nurse/ Staff Midwife	313	+13	+18	+24	+9	+9	+5	+0.0%	+0.1%	+0.1%	+0.0%	+0.0%	+0.0%
Public Health Nurse	3	-0	-0	-0	-0	-0	+0	-0.1%	-0.1%	-0.1%	-0.1%	-0.1%	+0.0%
Nursing/ Midwifery Student				-14				-1.0%	-1.0%	-1.0%	-1.0%	-1.0%	-1.0%
Health & Social Care Professionals	40	+1	-2	+0	-8	-8	+2	+0.0%	-0.1%	+0.0%	-0.2%	-0.2%	+0.0%
Therapy Professions	34	-1	-1	-0	-8	-8	+2	-0.0%	-0.0%	-0.0%	-0.2%	-0.2%	+0.0%
Social Care		-1						-1.0%	-1.0%	-1.0%	-1.0%	-1.0%	-1.0%
Social Workers	4	+3	-2	-1	-1	-1	+0	+1.4%	-0.3%	-0.1%	-0.1%	-0.1%	+0.1%
Pharmacy	1	+1	+1	+1	+1	+1	+0	-1.0%	-1.0%	-1.0%	-1.0%	-1.0%	+0.0%
Management & Administrative	60	+20	+15	+18	+16	+16	+8	+0.5%	+0.3%	+0.4%	+0.4%	+0.4%	+0.2%
Management (VIII & above)	4	+1	+1	+2	+1	+1		+0.5%	+0.4%	+1.1%	+0.4%	+0.4%	+0.0%
Administrative/ Supervisory (V to VII)	21	+13	+11	+9	+10	+10	+4	+1.5%	+1.0%	+0.8%	+0.9%	+0.9%	+0.2%
Clerical (III & IV)	35	+6	+3	+7	+5	+5	+4	+0.2%	+0.1%	+0.2%	+0.2%	+0.2%	+0.1%
General Support	86	-76	-69	-64	-49	-49	-1	-0.5%	-0.4%	-0.4%	-0.4%	-0.4%	-0.0%
Support	82	-71	-64	-59	-45	-45	-1	-0.5%	-0.4%	-0.4%	-0.4%	-0.4%	-0.0%
Maintenance/ Technical	4	-6	-5	-5	-4	-4	+0	-0.6%	-0.5%	-0.5%	-0.5%	-0.5%	+0.0%
Patient & Client Care	1,063	+237	+355	+110	+22	+22	+8	+0.3%	+0.5%	+0.1%	+0.0%	+0.0%	+0.0%
Health Care Assistants	443	+77	+68	+61	+48	+48	-6	+0.2%	+0.2%	+0.2%	+0.1%	+0.1%	-0.0%
Care, other	9	-1	-1	-1	-3	-3	+1	-0.1%	-0.1%	-0.1%	-0.2%	-0.2%	+0.1%
Home Help	612	+161	+287	+50	-22	-22	+13	+0.4%	+0.9%	+0.1%	-0.0%	-0.0%	+0.0%

Source: Health Service Personnel Census