

CHO 5 Employment Report: May 2020

Employment by Staff Group

May 2020 (Dec 2019 figure: 5,282)	WTE Apr 2020	WTE May 2020	WTE change since Apr 20	% change since Apr 20	WTE change since Dec 19	WTE change since May 19
Overall	5,280	5,225	-55	-1.0%	-57	-75
Consultants	30	30	+0	+0.2%	+0	-1
Registrars	35	34	-1	-2.3%	+6	+2
SHO/ Interns	25	23	-2	-7.2%	-15	-9
Medical/ Dental, other	65	65	+0	+0.1%	-1	-1
Medical & Dental	155	152	-2	-1.6%	-10	-8
Nurse/ Midwife Manager	347	340	-8	-2.2%	+2	-9
Nurse/ Midwife Specialist & AN/MP	60	60	+0	+0.3%	+8	+0
Staff Nurse/ Staff Midwife	970	960	-10	-1.0%	-7	+33
Public Health Nurse	171	170	-1	-0.4%	-5	+3
<i>Pre-registration Nurse/ Midwife Intern</i>	18	4	-14	-77.8%	+1	-14
<i>Pre-registration Nurse Intern (COVID-19)</i>	11	41	+31	+288.0%	+41	+31
<i>Post-registration Nurse/ Midwife Student</i>	5	9	+4	+80.0%	+4	+4
<i>Nursing/ Midwifery awaiting registration</i>	4		-4	-100.0%	-4	-4
Nursing/ Midwifery Student	38	54	+17	+44.0%	+42	+18
Nursing/ Midwifery other	4	5	+0	+2.3%	+0	+1
Nursing & Midwifery	1,590	1,589	-1	-0.1%	+40	+47
Therapy Professions	324	328	+4	+1.2%	+1	-9
Health Science/ Diagnostics	5	7	+2	+32.7%	+3	+6
Social Care	150	148	-2	-1.6%	-16	-16
Social Workers	62	62	+0	+0.2%	+2	+1
Psychologists	74	73	-1	-1.6%	-6	-6
Pharmacy	2	2	-0	-5.2%	+1	+1
H&SC, Other	35	35	+0	+0.8%	-0	-0
Health & Social Care Professionals	652	654	+2	+0.3%	-16	-25
Management (VIII & above)	46	45	-0	-0.7%	+2	-1
Administrative/ Supervisory (V to VII)	124	126	+2	+1.5%	+1	-0
Clerical (III & IV)	327	324	-2	-0.7%	-6	-6
Management & Administrative	497	496	-1	-0.2%	-2	-6
Support	330	327	-3	-0.9%	-5	-17
Maintenance/ Technical	40	39	-0	-0.8%	+1	-0
General Support	370	367	-3	-0.9%	-4	-17
Health Care Assistants	1,153	1,183	+30	+2.6%	+41	+78
Care, other	229	230	+1	+0.4%	+8	+16
Home Help	635	554	-80	-12.7%	-114	-159
Patient & Client Care	2,017	1,967	-49	-2.4%	-65	-66

CHO 5 Employment Report: May 2020

Community Health & Wellbeing

May 2020 (figure:)	WTE Apr 2020	WTE May 2020	WTE change since Apr 20	% change since Apr 20	WTE change since	WTE change since
Total Community Health & Wellbeing	14	17	+3	+22.9%	+17	+17
Therapy Professions	3	3	+0	+3.4%	+3	+3
Health & Social Care Professionals	3	3	+0	+3.4%	+3	+3
Management (VIII & above)	1	1			+1	+1
Administrative/ Supervisory (V to VII)	1	2	+1	+117.4%	+2	+2
Clerical (III & IV)	2	3	+1	+53.5%	+3	+3
Management & Administrative	4	6	+2	+54.9%	+6	+6
Care, other	7	8	+1	+13.4%	+8	+8
Patient & Client Care	7	8	+1	+13.4%	+8	+8

Mental Health

May 2020 (Dec 2019 figure: 1,178)	WTE Apr 2020	WTE May 2020	WTE change since Apr 20	% change since Apr 20	WTE change since Dec 19	WTE change since May 19
Total Mental Health	1,200	1,173	-27	-2.2%	-4	-12
Consultants	26	26	+0	+0.2%	+0	-0
Registrars	12	12	-0	-2.5%	+2	+3
SHO/ Interns	25	23	-2	-7.2%	-9	-8
Medical/ Dental, other	2	2				
Medical & Dental	65	63	-2	-3.1%	-7	-5
Nurse/ Midwife Manager	166	159	-7	-4.0%	-5	-6
Nurse/ Midwife Specialist & AN/MP	49	49	+0	+0.6%	+7	+0
Staff Nurse/ Staff Midwife	414	401	-13	-3.2%	-14	+2
<i>Pre-registration Nurse/ Midwife Intern</i>	16	4	-12	-75.0%	+1	-12
<i>Pre-registration Nurse Intern (COVID-19)</i>	7	16	+9	+128.6%	+16	+9
<i>Nursing/ Midwifery awaiting registration</i>				-100.0%	-2	
Nursing/ Midwifery Student	23	20	-3	-13.0%	+15	+1
Nursing/ Midwifery other	4	4				+0
Nursing & Midwifery	656	633	-22	-3.4%	+2	-2
Therapy Professions	40	41	+1	+1.7%	+1	-2
Social Care	5	5				
Social Workers	27	27	-0	-0.2%	-1	+0
Psychologists	20	22	+1	+7.2%	+1	-1
H&SC, Other	10	10	+0	+1.6%	+0	
Health & Social Care Professionals	102	104	+2	+2.2%	+1	-2
Management (VIII & above)	5	5			+2	+1
Administrative/ Supervisory (V to VII)	18	19	+1	+5.0%	-1	-1
Clerical (III & IV)	71	70	-1	-1.1%	-4	-3
Management & Administrative	94	94	+0	+0.1%	-3	-4
Support	174	170	-4	-2.3%	+2	+1
Maintenance/ Technical	24	24			+1	+1
General Support	198	194	-4	-2.0%	+3	+2
Health Care Assistants	73	73	+0	+0.4%	+1	-0
Care, other	13	12	-1	-5.2%	-1	-1
Patient & Client Care	86	85	-0	-0.4%	-0	-1

Primary Care

May 2020 (Dec 2019 figure: 952)	WTE Apr 2020	WTE May 2020	WTE change since Apr 20	% change since Apr 20	WTE change since Dec 19	WTE change since May 19
Total Primary Care	941	955	+14	+1.5%	+3	-20
Consultants	3	3				
Registrars	23	22	-1	-2.2%	+4	-1
SHO/ Interns				-100.0%	-6	-1
Medical/ Dental, other	54	54	+0	+0.2%	-0	-1
Medical & Dental	79	79	-0	-0.5%	-2	-3
Nurse/ Midwife Manager	29	31	+2	+6.8%	+4	+3
Nurse/ Midwife Specialist & AN/MP	7	7	-0	-1.5%	+1	+0
Staff Nurse/ Staff Midwife	66	72	+6	+8.9%	+5	+1
Public Health Nurse	162	161	-1	-0.7%	-4	+4
<i>Pre-registration Nurse Intern (COVID-19)</i>		14	+14	-100.0%	+14	+14
<i>Post-registration Nurse/ Midwife Student</i>	5	5				
Nursing/ Midwifery Student	5	19	+14	+280.0%	+14	+13
Nursing/ Midwifery other	1	1	+0	+12.5%	+0	+1
Nursing & Midwifery	270	290	+21	+7.6%	+20	+22
Therapy Professions	180	182	+2	+0.9%	-1	-12
Health Science/ Diagnostics	5	7	+2	+32.7%	+3	+6
Social Care	5	5	+0	+0.2%	-1	-1
Social Workers	9	8	-0	-0.5%	+0	+0
Psychologists	41	38	-2	-5.4%	-5	-7
Pharmacy	1	1				
H&SC, Other	18	18	+0	+0.7%	+0	-0
Health & Social Care Professionals	258	259	+1	+0.4%	-4	-15
Management (VIII & above)	24	23	-1	-5.5%	-3	-6
Administrative/ Supervisory (V to VII)	50	51	+1	+1.6%	-1	-3
Clerical (III & IV)	165	162	-3	-1.9%	-2	-5
Management & Administrative	239	235	-4	-1.6%	-6	-14
Support	28	26	-2	-7.4%	-0	-2
General Support	28	26	-2	-7.4%	-0	-2
Health Care Assistants	5	5	-0	-9.4%	-3	-8
Care, other	54	53	-1	-2.3%	-2	-2
Home Help	8	8	+0	+2.4%	+1	+1
Patient & Client Care	67	66	-2	-2.3%	-5	-8

Social Care

May 2020 (Dec 2019 figure: 3,152)	WTE Apr 2020	WTE May 2020	WTE change since Apr 20	% change since Apr 20	WTE change since Dec 19	WTE change since May 19
Total Social Care	3,125	3,080	-46	-1.5%	-73	-60
Consultants	1	1				-0
Medical/ Dental, other	9	9	-0	-0.3%	-1	-0
Medical & Dental	10	10	-0	-0.3%	-1	-0
Nurse/ Midwife Manager	153	150	-3	-2.1%	+2	-6
Nurse/ Midwife Specialist & AN/MP	4	4			-0	-0
Staff Nurse/ Staff Midwife	490	487	-2	-0.5%	+2	+31
Public Health Nurse	9	9	+1	+6.6%	-0	-1
<i>Pre-registration Nurse/ Midwife Intern</i>	2		-2	-100.0%		-2
<i>Pre-registration Nurse Intern (COVID-19)</i>	4	11	+8	+209.2%	+11	+8
<i>Post-registration Nurse/ Midwife Student</i>		4	+4	-100.0%	+4	+4
<i>Nursing/ Midwifery awaiting registration</i>	4		-4	-100.0%	-2	-4
Nursing/ Midwifery Student	10	15	+6	+57.6%	+13	+4
Nursing & Midwifery	665	665	+1	+0.1%	+18	+28
Therapy Professions	100	102	+1	+1.4%	-2	+2
Social Care	141	138	-2	-1.7%	-16	-16
Social Workers	27	27	+0	+0.8%	+3	+0
Psychologists	13	13	-0	-3.7%	-1	+1
Pharmacy	1	1	-0	-11.0%	+1	+1
H&SC, Other	7	7	-0	-0.3%	-0	-0
Health & Social Care Professionals	289	288	-1	-0.5%	-15	-11
Management (VIII & above)	16	17	+1	+6.3%	+2	+3
Administrative/ Supervisory (V to VII)	55	54	-1	-1.7%	+1	+2
Clerical (III & IV)	89	90	+1	+0.7%	-3	-0
Management & Administrative	160	161	+1	+0.4%	+1	+5
Support	129	132	+3	+2.4%	-7	-16
Maintenance/ Technical	16	15	-0	-1.9%	-0	-2
General Support	144	147	+3	+1.9%	-7	-17
Health Care Assistants	1,075	1,105	+30	+2.8%	+43	+85
Care, other	156	158	+2	+1.3%	+3	+10
Home Help	627	546	-80	-12.8%	-115	-160
Patient & Client Care	1,857	1,809	-48	-2.6%	-68	-64

CHO 5 Employment Report: May 2020

Disabilities

May 2020 (Dec 2019 figure: 1,505)	WTE Apr 2020	WTE May 2020	WTE change since Apr 20	% change since Apr 20	WTE change since Dec 19	WTE change since May 19
Total Disabilities	1,494	1,485	-8	-0.6%	-20	+42
Consultants	1	1				-0
Medical/ Dental, other				-100.0%		-0
Medical & Dental	1	1				-0
Nurse/ Midwife Manager	67	65	-3	-3.9%	-1	-3
Nurse/ Midwife Specialist & AN/MP	2	2				
Staff Nurse/ Staff Midwife	170	166	-4	-2.3%	-4	+15
Public Health Nurse	5	5	+1	+11.9%	-0	
Pre-registration Nurse/ Midwife Intern	2		-2	-100.0%		-2
Pre-registration Nurse Intern (COVID-19)	4	11	+8	+209.2%	+11	+8
Post-registration Nurse/ Midwife Student		4	+4	-100.0%	+4	+4
Nursing/ Midwifery awaiting registration	4		-4	-100.0%	-2	-4
Nursing/ Midwifery Student	10	15	+6	+57.6%	+13	+4
Nursing & Midwifery	254	253	-0	-0.1%	+9	+17
Therapy Professions	60	61	+0	+0.7%	-2	+2
Social Care	141	138	-2	-1.7%	-16	-16
Social Workers	23	23	+0	+1.2%	+2	+1
Psychologists	13	13	-0	-3.7%	-1	+1
H&SC, Other	7	7	-0	-0.3%	-0	-0
Health & Social Care Professionals	244	242	-2	-0.9%	-17	-12
Management (VIII & above)	12	13	+1	+8.3%	+2	+2
Administrative/ Supervisory (V to VII)	41	40	-1	-2.3%	+2	+2
Clerical (III & IV)	58	59	+1	+1.0%	-2	+1
Management & Administrative	112	112	+1	+0.6%	+2	+5
Support	12	12	+0	+2.4%	-3	-10
Maintenance/ Technical	7	7				-2
General Support	19	19	+0	+1.5%	-3	-12
Health Care Assistants	674	669	-5	-0.7%	-2	+45
Care, other	145	147	+2	+1.3%	+3	+11
Home Help	46	42	-4	-8.1%	-11	-12
Patient & Client Care	865	858	-7	-0.8%	-10	+43

Older People

May 2020 (Dec 2019 figure: 1,647)	WTE Apr 2020	WTE May 2020	WTE change since Apr 20	% change since Apr 20	WTE change since Dec 19	WTE change since May 19
Total Older People	1,632	1,594	-37	-2.3%	-53	-101
Medical/ Dental, other	9	9	-0	-0.3%	-1	-0
Medical & Dental	9	9	-0	-0.3%	-1	-0
Nurse/ Midwife Manager	86	85	-1	-0.6%	+3	-4
Nurse/ Midwife Specialist & AN/MP	2	2			-0	-0
Staff Nurse/ Staff Midwife	319	321	+2	+0.5%	+6	+16
Public Health Nurse	4	4				-1
Nursing & Midwifery	411	412	+1	+0.2%	+9	+11
Health & Social Care Professionals	45	46	+1	+1.9%	+2	+0
Management (VIII & above)	4	4				+1
Administrative/ Supervisory (V to VII)	14	14			-0	+0
Clerical (III & IV)	31	31	+0	+0.1%	-1	-1
Management & Administrative	49	49	+0	+0.1%	-1	+0
Support	117	120	+3	+2.4%	-3	-6
Maintenance/ Technical	8	8	-0	-3.6%	-0	+0
General Support	125	128	+3	+2.0%	-3	-6
Health Care Assistants	401	436	+35	+8.8%	+45	+41
Care, other	10	11	+0	+0.7%	+0	-0
Home Help	581	504	-77	-13.2%	-104	-147
Patient & Client Care	992	951	-42	-4.2%	-59	-107

CHO 5 Employment by Administration (HSE / S38): May 2020

May 2020 (Dec 2019 figure: 5,282)	WTE Apr 2020	WTE May 2020	WTE change since Apr 20	% change since Apr 20	WTE change since Dec 19	WTE change since May 19
Overall	5,280	5,225	-55	-1.0%	-57	-75
HSE	4,167	4,119	-48	-1.1%	-39	-94
Section 38 Voluntary Agencies	1,113	1,106	-7	-0.6%	-18	+18

HSE

May 2020 (Dec 2019 figure: 4,158)	WTE Apr 2020	WTE May 2020	WTE change since Apr 20	% change since Apr 20	WTE change since Dec 19	WTE change since May 19
Overall	4,167	4,119	-48	-1.1%	-39	-94
Consultants	29	29	+0	+0.0%	+0	-0
Registrars	35	34	-1	-0.0%	+6	+2
SHO/ Interns	25	23	-2	-0.1%	-15	-9
Medical/ Dental, other	65	65	+0	+0.0%	-1	-1
Medical & Dental	154	151	-2	-1.6%	-10	-8
Nurse/ Midwife Manager	299	294	-5	-0.0%	+3	-7
Nurse/ Midwife Specialist & AN/MP	60	60	+0	+0.0%	+8	+0
Staff Nurse/ Staff Midwife	871	864	-6	-0.0%	-4	+28
Public Health Nurse	171	170	-1	-0.0%	-5	+3
Pre-registration Nurse/ Midwife Intern	16	4	-12	-0.8%	+4	-18
Pre-registration Nurse Intern (COVID-19)	7	34	+27	+3.9%	+34	+34
Post-registration Nurse/ Midwife Student	5	5		+0.0%	-2	-1
Nursing/ Midwifery awaiting registration	4		-4	-1.0%		
Nursing/ Midwifery Student	32	43	+11	+0.3%	+31	+15
Nursing/ Midwifery other	4	5	+0	+0.0%	+0	+1
Nursing & Midwifery	1,437	1,436	-1	-0.1%	+34	+40
Therapy Professions	322	326	+4	+0.0%	+1	-9
Health Science/ Diagnostics	5	7	+2	+0.3%	+3	+6
Social Care	23	23	+0	+0.0%	-3	-7
Social Workers	52	52	+0	+0.0%	+3	+1
Psychologists	70	69	-1	-0.0%	-6	-7
Pharmacy	2	2	-0	-0.1%	+1	+1
H&SC, Other	28	28	+0	+0.0%	+0	-0
Health & Social Care Professionals	501	506	+5	+0.9%	-1	-17
Management (VIII & above)	38	37	-0	-0.0%	+1	-3
Administrative/ Supervisory (V to VII)	100	103	+3	+0.0%	-0	-1
Clerical (III & IV)	284	282	-3	-0.0%	-2	-3
Management & Administrative	422	421	-0	-0.0%	-1	-7
Support	321	318	-3	-0.0%	-1	-7
Maintenance/ Technical	32	32	-0	-0.0%	+1	+1
General Support	354	350	-3	-1.0%	-1	-6
Health Care Assistants	574	609	+35	+0.1%	+45	+53
Care, other	91	91	+0	+0.0%	+9	+9
Home Help	635	554	-80	-0.1%	-114	-159
Patient & Client Care	1,300	1,255	-45	-3.5%	-60	-97

Section 38 Voluntary Agencies

May 2020 (Dec 2019 figure: 1,123)	WTE Apr 2020	WTE May 2020	WTE change since Apr 20	% change since Apr 20	WTE change since Dec 19	WTE change since May 19
Overall	1,113	1,106	-7	-0.6%	-18	+18
Consultants	1	1		+0.0%		-0
Medical & Dental	1	1				-0
Nurse/ Midwife Manager	48	46	-3	-0.1%	-1	-2
Staff Nurse/ Staff Midwife	99	96	-3	-0.0%	-4	+5
<i>Pre-registration Nurse/ Midwife Intern</i>	2		-2	-1.0%		-8
<i>Pre-registration Nurse Intern (COVID-19)</i>	4	7	+4	+1.0%	+7	+7
<i>Post-registration Nurse/ Midwife Student</i>		4	+4	-1.0%	+4	+4
Nursing/ Midwifery Student	6	11	+6	+1.0%	+11	+3
Nursing & Midwifery	153	153	-0	-0.2%	+7	+7
Therapy Professions	3	3		+0.0%		+1
Social Care	127	125	-2	-0.0%	-13	-9
Social Workers	10	10		+0.0%	-1	-1
Psychologists	4	4		+0.0%	-0	+1
H&SC, Other	7	7	-0	-0.0%	-0	-0
Health & Social Care Professionals	151	148	-2	-1.7%	-15	-9
Management (VIII & above)	8	8		+0.0%	+1	+2
Administrative/ Supervisory (V to VII)	25	24	-1	-0.0%	+1	+1
Clerical (III & IV)	43	43	+0	+0.0%	-3	-2
Management & Administrative	75	74	-1	-0.9%	-1	+1
Support	9	9	+0	+0.0%	-4	-10
Maintenance/ Technical	7	7		+0.0%		-2
General Support	16	16	+0	+1.0%	-4	-12
Health Care Assistants	578	574	-5	-0.0%	-4	+24
Care, other	138	139	+1	+0.0%	-1	+7
Patient & Client Care	717	713	-4	-0.5%	-5	+31

CHO 5 Employment by S38 Agency: May 2020

Bros. of Charity, Waterford

May 2020 (Dec 2019 figure: 630)	WTE Apr 2020	WTE May 2020	WTE change since Apr 20	% change since Apr 20	WTE change since Dec 19	WTE change since May 19
Overall	615	610	-5	-0.7%	-20	+9
Consultants	1	1		+0.0%		-0
Medical & Dental	1	1				-0
Nurse/ Midwife Manager	23	21	-2	-0.1%	-3	-2
Staff Nurse/ Staff Midwife	48	46	-3	-0.1%	-2	+4
Pre-registration Nurse/ Midwife Intern				-1.0%		-6
Pre-registration Nurse Intern (COVID-19)	4	7	+4	+1.0%	+7	+7
Nursing/ Midwifery Student	4	7	+4	+1.0%	+7	+1
Nursing & Midwifery	75	74	-1	-1.3%	+2	+3
Therapy Professions	3	3		+0.0%		+1
Social Care	65	65	+0	+0.0%	-1	+0
Social Workers	10	10		+0.0%		
Psychologists	4	4		+0.0%	-0	+1
H&SC, Other	4	4		+0.0%	-0	-0
Health & Social Care Professionals	85	85	+0	+0.5%	-2	+1
Management (VIII & above)	5	5		+0.0%	+0	+1
Administrative/ Supervisory (V to VII)	16	16		+0.0%	+3	+4
Clerical (III & IV)	24	24	-0	-0.0%	-2	-1
Management & Administrative	45	45	-0	-0.0%	+2	+5
Support	2	2	+0	+0.1%	+0	+0
Maintenance/ Technical	3	3		+0.0%		
General Support	5	5	+0	+3.8%	+0	+0
Health Care Assistants	315	309	-7	-0.0%	-22	-4
Care, other	89	91	+2	+0.0%	+0	+4
Patient & Client Care	404	400	-4	-1.0%	-22	-0

Carriglea Cairde Services

May 2020 (Dec 2019 figure: 214)	WTE Apr 2020	WTE May 2020	WTE change since Apr 20	% change since Apr 20	WTE change since Dec 19	WTE change since May 19
Overall	212	210	-1	-0.5%	-4	+5
Nurse/ Midwife Manager	13	13		+0.0%	+1	+0
Staff Nurse/ Staff Midwife	25	24	-1	-0.0%	-2	+1
Pre-registration Nurse/ Midwife Intern	2		-2	-1.0%		-2
Post-registration Nurse/ Midwife Student		4	+4	-1.0%	+4	+4
Nursing/ Midwifery Student	2	4	+2	+1.0%	+4	+2
Nursing & Midwifery	40	41	+1	+2.6%	+3	+3
Social Care	34	33	-1	-0.0%	-4	-0
Health & Social Care Professionals	34	33	-1	-3.0%	-4	-0
Management (VIII & above)	2	2		+0.0%		
Administrative/ Supervisory (V to VII)	3	3		+0.0%	+0	
Clerical (III & IV)	6	6	+0	+0.0%	-1	-1
Management & Administrative	11	11	+0	+0.2%	-1	-1
Support	5	5		+0.0%		
Maintenance/ Technical	1	1		+0.0%		-1
General Support	6	6				-1
Health Care Assistants	72	72	+0	+0.0%	-2	+1
Care, other	49	48	-2	-0.0%	-1	+3
Patient & Client Care	121	120	-1	-1.0%	-3	+4

St. Patrick's, Kilkenny

May 2020 (Dec 2019 figure: 279)	WTE Apr 2020	WTE May 2020	WTE change since Apr 20	% change since Apr 20	WTE change since Dec 19	WTE change since May 19
Overall	287	285	-1	-0.5%	+6	+5
Nurse/ Midwife Manager	12	12	-1	-0.1%	+1	+1
Staff Nurse/ Staff Midwife	25	26	+0	+0.0%	+0	+1
Nursing & Midwifery	38	37	-0	-1.1%	+2	+1
Social Care	28	26	-2	-0.1%	-8	-9
Social Workers	1	1		+0.0%	-1	-1
H&SC, Other	3	3	-0	-0.0%	-0	+0
Health & Social Care Professionals	32	30	-2	-6.0%	-10	-10
Management (VIII & above)	1	1		+0.0%	+1	+1
Administrative/ Supervisory (V to VII)	6	5	-1	-0.2%	-2	-3
Clerical (III & IV)	12	13	+0	+0.0%	-1	-1
Management & Administrative	19	19	-1	-3.6%	-2	-3
Support	3	3		+0.0%	-4	-10
Maintenance/ Technical	3	3		+0.0%		-1
General Support	6	6			-4	-11
Health Care Assistants	191	193	+2	+0.0%	+20	+28
Patient & Client Care	191	193	+2	+0.8%	+20	+28

CHO 5 Employment by Grade Group & Staff Category: May 2020

May 2020 (Dec 2019 figure: 5,282)	WTE Apr 2020	WTE May 2020	WTE change since Apr 20	% change since Apr 20	WTE change since Dec 19	WTE change since May 19
Overall	5,280	5,225	-55	-1.0%	-57	-75
Consultant Dentistry	1	1				
Consultant Psychiatry	27	27	+0	+0.2%	+0	-1
Consultant Surgery	2	2				
Consultants	30	30	+0	+0.2%	+0	-1
Registrar	33	32	-1	-2.5%	+7	+2
Senior Registrar	2	2			-1	
Registrars	35	34	-1	-2.3%	+6	+2
Interns	1		-1	-100.0%	-1	-1
Senior House Officer	24	23	-1	-3.3%	-14	-8
SHO/ Interns	25	23	-2	-7.2%	-15	-9
Dentists	36	36	-1	-1.8%	-0	-1
Other Medical	29	29	+1	+2.5%	-1	-0
Medical/ Dental, other	65	65	+0	+0.1%	-1	-1
Medical & Dental	155	152	-2	-1.6%	-4	-8
Clinical Nurse/ Midwife Manager	275	270	-5	-1.7%	-1	-6
Director Nursing/Midwifery, Assistant	51	47	-4	-8.0%	+1	-2
Director of Nursing/Midwifery	22	23	+1	+4.1%	+1	-1
Nurse/ Midwife Manager	347	340	-8	-2.2%	+2	-9
Advanced Nurse/ Midwife Practitioner	3	3			-0	-0
Clinical Nurse/ Midwife Specialist	57	57	+0	+0.3%	+9	+0
Nurse/ Midwife Specialist & AN/MP	60	60	+0	+0.3%	+8	+0
Staff Nurse [Intellectual Disability]	113	110	-3	-2.8%	-5	+11
Staff Nurse [Psychiatric]	420	408	-12	-2.9%	-12	+3
Staff Nurses [General/ Children's]	436	442	+5	+1.2%	+11	+20
Staff Nurse/ Staff Midwife	970	960	-10	-1.0%	-7	+33
Public Health Nurse	171	170	-1	-0.4%	-5	+3
Pre-registration Nurse/ Midwife Intern	18	4	-14	-77.8%	+1	-26
Pre-registration Nurse Intern (COVID-19)	11	41	+31	+288.0%	+41	+41
Post-registration Nurse/ Midwife Student	5	9	+4	+80.0%	+4	+3
Nursing/ Midwifery awaiting registration	4		-4	-100.0%	-4	
Nursing/ Midwifery Student	38	54	+17	+44.0%	+42	+18
Nursing Education/Clinical	4	5	+0	+2.3%	+0	+1
Nursing/ Midwifery other	4	5	+0	+2.3%	+0	+1
Nursing & Midwifery	1,590	1,589	-1	-0.1%	+49	+47
Dietitians	20	20	+0	+1.4%	+5	+5
Occupational Therapists	121	121	+0	+0.4%	+1	-4
Orthoptists	1	1			+1	
Physiotherapists	86	85	-0	-0.4%	-2	-7
Podiatrists & Chiropodists	1	1			-0	-0
Speech & Language Therapists	96	99	+3	+3.6%	-3	-3
Therapy Professions	324	328	+4	+1.2%	+1	-9
Audiology	5	7	+2	+32.7%	+3	+6
Health Science/ Diagnostics	5	7	+2	+32.7%	+3	+6
Social Care	150	148	-2	-1.6%	-16	-16
Social Workers	62	62	+0	+0.2%	+2	+1
Psychologists	74	73	-1	-1.6%	-6	-6
Pharmacy	2	2	-0	-5.2%	+1	+1

May 2020 (Dec 2019 figure: 5,282)	WTE Apr 2020	WTE May 2020	WTE change since Apr 20	% change since Apr 20	WTE change since Dec 19	WTE change since May 19
Overall	5,280	5,225	-55	-1.0%	-57	-75
Counsellor Therapists	21	21	+0	+0.4%	-0	+0
Dental Hygienists	6	7	+0	+0.6%	+1	-0
Environmental Health Officers	0	0		#DIV/0	-1	
Other Health & Social Care	1	1	+0	+19.0%	+0	
Play Therapists/ Specialists	6	6	-0	-0.3%	-0	-0
H&SC, Other	35	35	+0	+0.8%	-0	-0
Health & Social Care Professionals	652	654	+2	+0.3%	-26	-25
Executive Management	8	8			+1	-2
Senior Management (VIII & GM)	38	37	-0	-0.8%	+1	+1
Management (VIII & above)	46	45	-0	-0.7%	+2	-1
Middle Management (V-VII)	124	126	+2	+1.5%	+1	-0
Administrative/ Supervisory (V to VII)	124	126	+2	+1.5%	+1	-0
General Administrative (III & IV)	327	324	-2	-0.7%	-6	-6
Clerical (III & IV)	327	324	-2	-0.7%	-6	-6
Management & Administrative	497	496	-1	-0.2%	+14	-6
Catering	32	33	+1	+2.4%	+0	-1
Household Services	253	251	-2	-0.7%	-6	-15
Other Support	36	33	-2	-6.4%	+1	-2
Portering	9	9	+0	+2.3%	-0	-0
Support	330	327	-3	-0.9%	-5	-17
Maintenance	37	36	-0	-0.8%	+1	-0
Technical Services	3	3				
Maintenance/ Technical	40	39	-0	-0.8%	+1	-0
General Support	370	367	-3	-0.9%	-14	-17
HCA, Nurse's Aide, etc.	1,148	1,178	+30	+2.6%	+44	+85
Health & Social Care Assistants	5	5	-0	-3.9%	-3	-7
Health Care Assistants	1,153	1,183	+30	+2.6%	+41	+78
Other Care Grades	229	230	+1	+0.4%	+8	+16
Care, other	229	230	+1	+0.4%	+8	+16
Home Help	635	554	-80	-12.7%	-114	-159
Patient & Client Care	2,017	1,967	-49	-2.4%	-25	-66

CHO 5 HSE Employment by Grade Group & Staff Category: May 2020

May 2020 (Dec 2019 figure: 4,158)	WTE Apr 2020	WTE May 2020	WTE change since Apr 20	% change since Apr 20	WTE change since Dec 19	WTE change since May 19
Overall	4,167	4,119	-48	-1.1%	-39	-94
Consultant Dentistry	1	1				
Consultant Psychiatry	26	26	+0	+0.2%	+0	-0
Consultant Surgery	2	2				
Consultants	29	29	+0	+0.2%	+0	-0
Registrar	33	32	-1	-2.5%	+7	+2
Senior Registrar	2	2			-1	
Registrars	35	34	-1	-2.3%	+6	+2
SHO/ Interns	25	23	-2	-7.2%	-15	-9
Dentists	36	36	-1	-1.8%	-0	-1
Other Medical	29	29	+1	+2.5%	-1	-0
Medical/ Dental, other	65	65	+0	+0.1%	-1	-1
Medical & Dental	154	151	-2	-1.6%	-5	-8
Clinical Nurse/ Midwife Manager	230	228	-2	-0.9%	-0	-4
Director Nursing/Midwifery, Assistant	49	45	-4	-8.3%	+1	-3
Director of Nursing/Midwifery	20	21	+1	+4.5%	+1	-1
Nurse/ Midwife Manager	299	294	-5	-1.7%	+3	-7
Advanced Nurse/ Midwife Practitioner	3	3			-0	-0
Clinical Nurse/ Midwife Specialist	57	57	+0	+0.3%	+9	+1
Nurse/ Midwife Specialist & AN/MP	60	60	+0	+0.3%	+8	+0
Staff Nurse [Intellectual Disability]	23	24	+0	+0.4%	-2	+6
Staff Nurse [Psychiatric]	418	406	-12	-2.9%	-12	+3
Staff Nurses [General/ Children's]	429	434	+5	+1.3%	+11	+19
Staff Nurse/ Staff Midwife	871	864	-6	-0.7%	-4	+28
Public Health Nurse	171	170	-1	-0.4%	-5	+3
Pre-registration Nurse/ Midwife Intern	16	4	-12	-75.0%	+1	-18
Pre-registration Nurse Intern (COVID-19)	7	34	+27	+385.7%	+34	+34
Post-registration Nurse/ Midwife Student	5	5				-1
Nursing/ Midwifery awaiting registration	4		-4	-100.0%	-4	
Nursing/ Midwifery Student	32	43	+11	+34.4%	+31	+15
Nursing Education/Clinical	4	5	+0	+2.3%	+0	+1
Nursing/ Midwifery other	4	5	+0	+2.3%	+0	+1
Nursing & Midwifery	1,437	1,436	-1	-0.1%	+37	+40
Dietitians	20	20	+0	+1.4%	+5	+5
Occupational Therapists	121	121	+0	+0.4%	+1	-4
Orthoptists	1	1			+1	
Physiotherapists	86	85	-0	-0.4%	-2	-7
Podiatrists & Chiropodists	1	1			-0	-0
Speech & Language Therapists	93	97	+3	+3.7%	-3	-4
Therapy Professions	322	326	+4	+1.2%	+1	-9
Audiology	5	7	+2	+32.7%	+3	+6
Health Science/ Diagnostics	5	7	+2	+32.7%	+3	+6
Social Care	23	23	+0	+0.6%	-3	-7
Social Workers	52	52	+0	+0.3%	+3	+2
Psychologists	70	68	-1	-1.7%	-6	-7
Pharmacy	2	2	-0	-5.2%	+1	+1
Counsellor Therapists	21	21	+0	+0.4%	-0	-0
Dental Hygienists	6	7	+0	+0.6%	+1	-0
Environmental Health Officers	0	0		#DIV/0	-1	
Other Health & Social Care	1	1	+0	+19.0%	+0	

May 2020 (Dec 2019 figure: 4,158)	WTE Apr 2020	WTE May 2020	WTE change since Apr 20	% change since Apr 20	WTE change since Dec 19	WTE change since May 19
Overall	4,167	4,119	-48	-1.1%	-39	-94
H&SC, Other	28	28	+0	+1.0%	+0	-0
Health & Social Care Professionals	501	506	+5	+0.9%	-20	-17
Executive Management	5	5				-3
Senior Management (VIII & GM)	33	32	-0	-1.0%	+1	+0
Management (VIII & above)	38	37	-0	-0.8%	+1	-3
Administrative/ Supervisory (V to VII)	100	103	+3	+2.9%	-0	-1
Clerical (III & IV)	284	282	-3	-0.9%	-2	-3
Management & Administrative	422	421	-0	-0.0%	+14	-7
Catering	29	29	+1	+2.7%	+0	-1
Household Services	249	247	-2	-0.7%	-2	-4
Other Support	35	33	-2	-7.0%	+1	-2
Portering	9	9	+0	+2.3%	-0	-0
Support	321	318	-3	-1.0%	-1	-7
Maintenance/ Technical	32	32	-0	-0.9%	+1	+1
General Support	354	350	-3	-1.0%	-3	-6
HCA, Nurse's Aide, etc.	569	604	+35	+6.1%	+48	+61
Health & Social Care Assistants	5	5	-0	-3.9%	-3	-7
Health Care Assistants	574	609	+35	+6.1%	+45	+54
Care, other	91	91	+0	+0.1%	+9	+9
Home Help	635	554	-80	-12.7%	-114	-159
Patient & Client Care	1,300	1,255	-45	-3.5%	-75	-97

Employment by WTE, Headcount, Gender, Full-Time /Part-Time etc.: May 2020

CHO 5	WTE	Headcount	WTE: no.	% Male	% female	Male WTE: no.	Female WTE: no.	% Total Perm	% Male Perm	% Female Perm	% Total Full Time	% Total Part Time	% Male FT	% Female FT
Overall	5,225	6,309	1.21	15.4%	84.6%	1.10	1.23	95.5%	94.1%	95.7%	50.6%	49.4%	73.0%	46.5%
Consultant Dentistry	1	1	1.00		100.0%		1.00	100.0%	100.0%	100.0%	100.0%	0.0%		100.0%
Consultant Psychiatry	27	28	1.02	67.9%	32.1%	1.00	1.07	100.0%	100.0%	100.0%	96.4%	3.6%	100.0%	88.9%
Consultant Surgery	2	2	1.00		100.0%		1.00	100.0%	100.0%	100.0%	100.0%	0.0%		100.0%
Consultants	30	31	1.02	61.3%	38.7%	1.00	1.05	100.0%	100.0%	100.0%	96.8%	3.2%	100.0%	91.7%
Registrar	32	32	1.01	37.5%	62.5%	1.02	1.01	21.9%	21.9%	10.0%	90.6%	9.4%	83.3%	95.0%
Senior Registrar	2	2	1.00		100.0%		1.00	100.0%	100.0%	100.0%	100.0%	0.0%		100.0%
Registrars	34	34	1.01	35.3%	64.7%	1.02	1.00	26.5%	41.7%	18.2%	91.2%	8.8%	83.3%	95.5%
Senior House Officer	23	25	1.08	60.0%	40.0%	1.04	1.14	64.0%	64.0%	50.0%	56.0%	44.0%	60.0%	50.0%
SHO/ Interns	23	25	1.08	60.0%	40.0%	1.04	1.14	64.0%	73.3%	50.0%	56.0%	44.0%	60.0%	50.0%
Dentists	36	45	1.26	24.4%	75.6%	1.16	1.30	100.0%	100.0%	100.0%	44.4%	55.6%	63.6%	38.2%
Other Medical	29	45	1.54	48.9%	51.1%	2.10	1.23	100.0%	100.0%	100.0%	42.2%	57.8%	27.3%	56.5%
Medical/ Dental, other	65	90	1.39	36.7%	63.3%	1.65	1.27	100.0%	100.0%	100.0%	43.3%	56.7%	39.4%	45.6%
Medical & Dental	152	180	1.18	43.9%	56.1%	1.21	1.16	81.1%	86.1%	77.2%	63.3%	36.7%	64.6%	62.4%
Clinical Nurse/ Midwife Manager	270	283	1.05	19.4%	80.6%	1.01	1.06	98.2%	98.2%	97.8%	74.9%	25.1%	94.5%	70.2%
Director Nursing/Midwifery, Assistant	47	48	1.03	14.6%	85.4%	1.00	1.04	100.0%	100.0%	100.0%	85.4%	14.6%	100.0%	82.9%
Director of Nursing/Midwifery	23	23	1.00	4.3%	95.7%	1.11	1.00	100.0%	100.0%	100.0%	95.7%	4.3%	0.0%	100.0%
Nurse/ Midwife Manager	340	354	1.04	17.8%	82.2%	1.01	1.05	98.6%	100.0%	98.3%	77.7%	22.3%	93.7%	74.2%
Advanced Nurse/ Midwife Practitioner	3	3	1.06		100.0%		1.06	100.0%	100.0%	100.0%	66.7%	33.3%		66.7%
Clinical Nurse/ Midwife Specialist	57	61	1.06	19.7%	80.3%	1.03	1.07	100.0%	100.0%	100.0%	55.7%	44.3%	66.7%	53.1%
Nurse/ Midwife Specialist & AN/MP	60	64	1.06	18.8%	81.3%	1.03	1.07	100.0%	100.0%	100.0%	56.3%	43.8%	66.7%	53.8%
Staff Nurse [Intellectual Disability]	110	129	1.17	10.1%	89.9%	1.13	1.18	96.9%	96.9%	97.4%	64.3%	35.7%	84.6%	62.1%
Staff Nurse [Psychiatric]	408	452	1.11	24.8%	75.2%	1.10	1.11	97.3%	97.3%	96.8%	69.5%	30.5%	80.4%	65.9%
Staff Nurses [General/ Children's]	442	522	1.18	9.0%	91.0%	1.04	1.20	99.6%	99.6%	99.6%	51.7%	48.3%	85.1%	48.4%
Staff Nurse/ Staff Midwife	960	1,103	1.15	15.6%	84.4%	1.08	1.16	98.4%	98.8%	98.3%	60.5%	39.5%	82.0%	56.5%
Public Health Nurse	170	203	1.19	2.0%	98.0%	1.00	1.20	100.0%	100.0%	100.0%	37.4%	62.6%	100.0%	36.2%
Pre-registration Nurse/ Midwife Intern	4	8	2.00	25.0%	75.0%	2.00	2.00	0.0%	0.0%	0.0%	0.0%	100.0%	0.0%	0.0%
Pre-registration Nurse Intern (COVID-19)	41	42	1.02	14.3%	85.7%	1.00	1.02	81.0%	81.0%	77.8%	97.6%	2.4%	100.0%	97.2%
Post-registration Nurse/ Midwife Student	9	9	1.00		100.0%		1.00	0.0%	0.0%	0.0%	100.0%	0.0%		100.0%

Nursing/ Midwifery Student	54	59	1.09	13.6%	86.4%	1.14	1.08	57.6%	75.0%	54.9%	84.7%	15.3%	75.0%	86.3%
Nursing Education/Clinical	5	5	1.10	20.0%	80.0%	1.00	1.13	100.0%	100.0%	100.0%	60.0%	40.0%	100.0%	50.0%
Nursing/ Midwifery other	5	5	1.10	20.0%	80.0%	1.00	1.13	100.0%	100.0%	100.0%	60.0%	40.0%	100.0%	50.0%
Nursing & Midwifery	1,589	1,788	1.13	14.5%	85.5%	1.06	1.14	97.3%	98.5%	97.1%	61.9%	38.1%	84.2%	58.1%
Dietitians	20	22	1.11		100.0%		1.11	100.0%	100.0%	100.0%	59.1%	40.9%		59.1%
Occupational Therapists	121	136	1.12	11.8%	88.2%	1.03	1.13	100.0%	100.0%	100.0%	61.0%	39.0%	93.8%	56.7%
Orthoptists	1	1	1.00	100.0%		1.00		100.0%	100.0%		100.0%	0.0%	100.0%	
Physiotherapists	85	100	1.17	24.0%	76.0%	1.09	1.20	100.0%	100.0%	100.0%	51.0%	49.0%	70.8%	44.7%
Podiatrists & Chiropodists	1	2	1.43		100.0%		1.43	100.0%	100.0%	100.0%	0.0%	100.0%		0.0%
Speech & Language Therapists	99	108	1.09	2.8%	97.2%	1.20	1.09	100.0%	100.0%	100.0%	68.5%	31.5%	66.7%	68.6%
Therapy Professions	328	369	1.12	11.9%	88.1%	1.07	1.13	100.0%	100.0%	100.0%	60.2%	39.8%	79.5%	57.5%
Audiology	7	7	1.08	14.3%	85.7%	1.00	1.09	100.0%	100.0%	100.0%	71.4%	28.6%	100.0%	66.7%
Health Science/ Diagnostics	7	7	1.08	14.3%	85.7%	1.00	1.09	100.0%	100.0%	100.0%	71.4%	28.6%	100.0%	66.7%
Social Care	148	186	1.26	14.5%	85.5%	1.17	1.28	97.3%	100.0%	96.9%	38.7%	61.3%	59.3%	35.2%
Social Workers	62	68	1.09	14.7%	85.3%	1.01	1.11	98.5%	100.0%	98.3%	64.7%	35.3%	90.0%	60.3%
Psychologists	73	82	1.13	15.9%	84.1%	1.04	1.15	91.5%	92.3%	91.3%	59.8%	40.2%	92.3%	53.6%
Pharmacy	2	2	1.10	50.0%	50.0%	1.00	1.23	100.0%	100.0%	100.0%	50.0%	50.0%	100.0%	0.0%
Counsellor Therapists	21	22	1.02	45.5%	54.5%	1.00	1.05	100.0%	100.0%	100.0%	81.8%	18.2%	100.0%	66.7%
Dental Hygienists	7	8	1.23		100.0%		1.23	100.0%	100.0%	100.0%	37.5%	62.5%		37.5%
Environmental Health Officers	0	0												
Other Health & Social Care	1	1	1.00		100.0%		1.00	100.0%	100.0%	100.0%	100.0%	0.0%		100.0%
Play Therapists/ Specialists	6	7	1.19	14.3%	85.7%	1.00	1.22	85.7%	85.7%	83.3%	71.4%	28.6%	100.0%	66.7%
H&SC, Other	35	38	1.09	28.9%	71.1%	1.00	1.13	97.4%	100.0%	96.3%	71.1%	28.9%	100.0%	59.3%
Health & Social Care	654	752	1.15	14.2%	85.8%	1.07	1.16	98.1%	99.1%	98.0%	55.9%	44.1%	79.4%	51.9%
Executive Management	8	8	1.00	25.0%	75.0%	1.00	1.00	87.5%	87.5%	83.3%	100.0%	0.0%	100.0%	100.0%
Senior Management (VIII & GM)	37	38	1.02	21.1%	78.9%	1.02	1.02	100.0%	100.0%	100.0%	92.1%	7.9%	87.5%	93.3%
Management (VIII & above)	45	46	1.01	21.7%	78.3%	1.02	1.01	97.8%	100.0%	97.2%	93.5%	6.5%	90.0%	94.4%
Administrative/ Supervisory (V to VII)	126	133	1.05	17.3%	82.7%	1.01	1.06	97.0%	100.0%	96.4%	75.2%	24.8%	95.7%	70.9%
Clerical (III & IV)	324	372	1.15	4.3%	95.7%	1.10	1.15	98.4%	100.0%	98.3%	60.2%	39.8%	87.5%	59.0%
Management & Administrative	496	551	1.11	8.9%	91.1%	1.04	1.12	98.0%	100.0%	97.8%	66.6%	33.4%	91.8%	64.1%
Catering	33	38	1.14	23.7%	76.3%	1.04	1.18	94.7%	94.7%	93.1%	39.5%	60.5%	66.7%	31.0%
Household Services	251	289	1.15	12.5%	87.5%	1.06	1.16	99.0%	99.0%	98.8%	41.5%	58.5%	58.3%	39.1%
Other Support	33	76	2.27	27.6%	72.4%	1.27	3.26	100.0%	100.0%	100.0%	17.1%	82.9%	52.4%	3.6%
Portering	9	10	1.11	90.0%	10.0%	1.12	1.00	100.0%	100.0%	100.0%	60.0%	40.0%	55.6%	100.0%
Support	327	413	1.26	18.2%	81.8%	1.11	1.30	98.8%	100.0%	98.5%	37.3%	62.7%	57.3%	32.8%

Maintenance/ Technical	39	42	1.06	95.2%	4.8%	1.07	1.00	97.6%	97.5%	100.0%	83.3%	16.7%	82.5%	100.0%
General Support	367	455	1.24	25.3%	74.7%	1.10	1.30	98.7%	99.1%	98.5%	41.5%	58.5%	66.1%	33.2%
HCA, Nurse's Aide, etc.	1,178	1,335	1.13	21.3%	78.7%	1.08	1.15	89.1%	89.1%	89.7%	56.4%	43.6%	68.3%	53.2%
Health & Social Care Assistants	5	6	1.22	16.7%	83.3%	1.00	1.28	100.0%	100.0%	100.0%	66.7%	33.3%	100.0%	60.0%
Health Care Assistants	1,183	1,341	1.13	21.3%	78.7%	1.08	1.15	89.1%	86.7%	89.8%	56.5%	43.5%	68.4%	53.2%
Care, other	230	281	1.22	20.6%	79.4%	1.14	1.25	92.9%	96.6%	91.9%	38.1%	61.9%	60.3%	32.3%
Home Help	554	961	1.73	1.9%	98.1%	1.84	1.73	99.4%	100.0%	99.4%	13.7%	86.3%	16.7%	13.7%
Patient & Client Care	1,967	2,583	1.31	14.0%	86.0%	1.11	1.35	93.3%	88.9%	94.1%	38.6%	61.4%	64.5%	34.3%

Employment by WTE, Headcount, Gender, Full-Time /Part-Time etc.: May 2020

CHO 5	WTE	Headcount	WTE: no.	% Male	% female	Male WTE: no.	Female WTE: no.	% Total Perm	% Male Perm	% Female Perm	% Total Full Time	% Total Part Time	% Male FT	% Female FT
Overall	5,225	6,309	1.21	15.4%	84.6%	1.10	1.23	95.5%	94.1%	95.7%	50.6%	49.4%	73.0%	46.5%
Community Health & Wellbeing	17	18	1.08	5.6%	94.4%	1.00	1.09	100.0%	100.0%	100.0%	72.2%	27.8%	100.0%	100.0%
Mental Health	1,173	1,283	1.09	26.0%	74.0%	1.06	1.11	97.3%	97.3%	97.4%	66.5%	33.5%	80.5%	80.5%
Primary Care	955	1,152	1.21	10.4%	89.6%	1.11	1.22	97.0%	97.0%	97.3%	50.0%	50.0%	78.3%	78.3%
HSE	1,974	2,547	1.29	9.5%	90.5%	1.13	1.31	99.5%	99.5%	99.4%	45.0%	55.0%	74.5%	74.5%
Section 38 Voluntary Agencies	1,106	1,309	1.18	20.9%	79.1%	1.11	1.21	84.5%	84.5%	84.5%	46.1%	53.9%	60.1%	60.1%
Social Care	3,080	3,856	1.25	13.4%	86.6%	1.12	1.28	94.4%	94.4%	94.8%	45.4%	54.6%	66.9%	66.9%

CHO 5 Skills Mix by Staff Grouping: May 2020

May 2020 (Dec 2018 figure: 5,231)	WTE Dec 2015	WTE Dec 2016	WTE Dec 2017	WTE Dec 2018	WTE Dec 2019	WTE Apr 2020	WTE May 2020
Overall	4,640	4,725	5,080	5,231	5,282	5,280	5,225
Consultant Dentistry	0.6%	0.6%	0.6%	0.6%	0.6%	0.6%	0.7%
Consultant Psychiatry	19.3%	20.0%	17.6%	15.7%	16.8%	17.7%	18.0%
Consultant Surgery	1.3%	1.3%	1.2%	1.3%	1.2%	1.3%	1.3%
Consultants	21.2%	22.0%	19.5%	17.6%	18.6%	19.6%	20.0%
Registrar	16.1%	15.9%	16.7%	17.8%	15.4%	21.0%	20.8%
Senior Registrar	1.9%	1.3%	1.2%	1.3%	1.8%	1.3%	1.3%
Registrars	18.0%	17.2%	17.9%	19.1%	17.3%	22.3%	22.1%
Interns	0.6%	0.6%	0.6%	0.6%	0.6%	0.6%	
Senior House Officer	19.5%	21.2%	23.4%	21.7%	22.8%	15.5%	15.2%
SHO/ Interns	20.1%	21.9%	24.0%	22.3%	23.4%	16.2%	15.2%
Dentists	21.2%	21.2%	20.9%	22.2%	22.2%	23.5%	23.5%
Other Medical	19.5%	17.9%	17.7%	18.8%	18.5%	18.4%	19.2%
Medical/ Dental, other	40.7%	39.0%	38.6%	41.0%	40.7%	41.9%	42.6%
Medical & Dental	3.4%	3.3%	3.2%	3.0%	3.0%	100.0%	2.9%
Clinical Nurse/ Midwife Manager	17.2%	17.6%	17.0%	18.1%	17.5%	17.3%	17.0%
Director Nursing/Midwifery, Assistant	2.4%	3.0%	3.0%	2.9%	2.9%	3.2%	2.9%
Director of Nursing/Midwifery	1.4%	1.5%	1.4%	1.5%	1.4%	1.4%	1.4%
Nurse/ Midwife Manager	21.1%	22.1%	21.3%	22.5%	21.8%	21.9%	21.4%
Advanced Nurse/ Midwife Practitioner			0.1%	0.1%	0.2%	0.2%	0.2%
Clinical Nurse/ Midwife Specialist	2.7%	3.1%	3.3%	3.7%	3.2%	3.6%	3.6%
Nurse/ Midwife Specialist & AN/MP	2.7%	3.1%	3.4%	3.9%	3.3%	3.8%	3.8%
Graduate Nursing/ Midwifery	0.7%						
Staff Nurse [Intellectual Disability]	7.2%	7.2%	7.8%	6.9%	7.5%	7.1%	6.9%
Staff Nurse [Psychiatric]	28.5%	28.8%	28.9%	27.8%	27.2%	26.4%	25.7%
Staff Nurses [General/ Children's]	28.4%	27.0%	26.1%	27.3%	27.8%	27.4%	27.8%
Staff Nurse/ Staff Midwife	64.8%	63.0%	62.8%	62.0%	62.5%	61.0%	60.4%
Public Health Nurse	10.8%	11.0%	10.8%	10.9%	11.3%	10.7%	10.7%
Pre-registration Nurse/ Midwife Intern	0.1%	0.2%	0.1%	0.0%	0.2%	1.1%	0.3%
Pre-registration Nurse Intern (COVID-19)						0.7%	2.6%
Post-registration Nurse/ Midwife Student	0.3%	0.5%	0.4%	0.5%	0.3%	0.3%	0.6%
Nursing/ Midwifery awaiting registration			0.9%		0.2%	0.3%	
Nursing/ Midwifery Student	0.4%	0.7%	1.4%	0.5%	0.8%	2.4%	3.4%
Nursing/ Midwifery other	0.1%	0.2%	0.2%	0.2%	0.3%	0.3%	0.3%
Nursing & Midwifery	32.5%	32.2%	30.0%	29.4%	29.1%	100.0%	30.4%
Dietitians	1.9%	1.9%	2.0%	2.4%	2.2%	3.0%	3.0%
Occupational Therapists	19.8%	18.7%	18.9%	19.2%	18.0%	18.5%	18.5%
Orthoptists				0.1%	0.1%	0.2%	0.2%
Physiotherapists	15.3%	13.9%	14.0%	13.4%	13.1%	13.1%	13.0%
Podiatrists & Chiropodists	0.1%	0.1%	0.2%	0.2%	0.2%	0.2%	0.2%
Speech & Language Therapists	14.0%	15.9%	15.1%	15.0%	15.3%	14.7%	15.2%
Therapy Professions	51.0%	50.4%	50.1%	50.3%	48.9%	49.7%	50.2%
Audiology	0.7%	0.8%	0.7%	0.6%	0.6%	0.8%	1.0%
Health Science/ Diagnostics	0.7%	0.8%	0.7%	0.6%	0.6%	0.8%	1.0%
Social Care	20.0%	20.3%	22.5%	23.8%	24.5%	23.0%	22.6%
Social Workers	10.5%	10.5%	10.3%	9.4%	8.9%	9.5%	9.5%
Social Workers	10.5%	10.5%	10.3%	9.4%	8.9%	9.5%	9.5%
Psychologists	12.8%	12.4%	11.6%	11.0%	11.8%	11.3%	11.1%
Pharmacy	0.4%	0.3%	0.2%	0.1%	0.1%	0.3%	0.3%
Counsellor Therapists	2.5%	3.4%	2.9%	3.0%	3.2%	3.3%	3.3%
Dental Hygienists	1.1%	1.1%	1.0%	1.0%	0.9%	1.0%	1.0%
Environmental Health Officers				0.0%	0.1%	0.0%	0.0%

May 2020 (Dec 2018 figure: 5,231)	WTE Dec 2015	WTE Dec 2016	WTE Dec 2017	WTE Dec 2018	WTE Dec 2019	WTE Apr 2020	WTE May 2020
Overall	4,640	4,725	5,080	5,231	5,282	5,280	5,225
Other Health & Social Care	0.2%	0.2%	0.2%	0.1%	0.1%	0.1%	0.2%
Play Therapists/ Specialists	0.7%	0.6%	0.6%	0.7%	0.9%	0.9%	0.9%
H&SC, Other	4.5%	5.3%	4.7%	4.8%	5.2%	5.3%	5.3%
Health & Social Care Professionals	11.9%	13.6%	13.3%	13.0%	12.9%	100.0%	12.5%
Executive Management	1.0%	1.5%	2.0%	1.9%	1.4%	1.6%	1.6%
Senior Management (VIII & GM)	5.3%	5.4%	6.1%	6.9%	7.2%	7.6%	7.5%
Management (VIII & above)	6.3%	6.9%	8.1%	8.8%	8.6%	9.2%	9.1%
Middle Management (V-VII)	21.2%	22.7%	25.7%	24.9%	25.1%	25.0%	25.4%
Administrative/ Supervisory (V to VII)	21.2%	22.7%	25.7%	24.9%	25.1%	25.0%	25.4%
Clerical (III & IV)	72.6%	70.4%	66.2%	66.3%	66.3%	65.8%	65.4%
Management & Administrative	9.1%	9.6%	9.1%	9.2%	9.1%	100.0%	9.5%
Catering	6.8%	7.4%	9.1%	9.2%	8.9%	8.8%	9.1%
Household Services	72.7%	71.9%	70.7%	68.9%	69.4%	68.4%	68.6%
Other Support	8.7%	8.1%	8.7%	9.3%	8.8%	9.7%	9.1%
Portering	2.9%	3.3%	2.1%	2.2%	2.5%	2.4%	2.5%
Support	91.1%	90.7%	90.5%	89.6%	89.5%	89.2%	89.2%
Maintenance/ Technical	8.9%	9.3%	9.5%	10.4%	10.5%	10.8%	10.8%
General Support	9.4%	9.0%	7.8%	7.3%	7.2%	100.0%	7.0%
HCA, Nurse's Aide, etc.	58.3%	64.6%	55.7%	54.1%	55.8%	56.9%	59.9%
Health & Social Care Assistants	0.1%	0.1%	0.0%	0.6%	0.4%	0.3%	0.3%
Health Care Assistants	58.3%	64.6%	55.8%	54.7%	56.2%	57.2%	60.1%
Other Care Grades	11.3%	12.3%	10.5%	10.4%	10.9%	11.4%	11.7%
Care, other	11.3%	12.3%	10.5%	10.4%	10.9%	11.4%	11.7%
Home Help	30.3%	23.1%	33.7%	34.9%	32.9%	31.5%	28.2%
Patient & Client Care	33.8%	32.4%	36.7%	38.1%	37.7%	100.0%	37.7%
Total	100 %	100 %	100 %	100 %	100%	100 %	100 %

CHO 5 Skills Mix by Care Group: May 2020

May 2020 (Dec 2018 figure: 1,185)	WTE Dec 2015	WTE Dec 2016	WTE Dec 2017	WTE Dec 2018	WTE Dec 2019	WTE Apr 2020	WTE May 2020
Mental Health	1,186	1,221	1,197	1,185	1,177.58	1,199.78	1,173.24
Consultants	44.3%	44.1%	39.0%	36.6%	37.4%	40.4%	41.8%
Registrar	7.5%	5.9%	4.2%	10.6%	10.0%	15.3%	15.3%
Senior Registrar	4.5%	2.9%	2.8%	3.0%	4.3%	3.1%	3.2%
Registrars	12.1%	8.8%	7.0%	13.6%	14.2%	18.3%	18.5%
Interns	1.5%	1.5%	1.4%	1.5%	1.4%	1.5%	
Senior House Officer	39.2%	42.7%	48.3%	45.2%	44.1%	36.7%	36.6%
SHO/ Interns	40.7%	44.1%	49.7%	46.8%	45.5%	38.2%	36.6%
Medical/ Dental, other	3.0%	2.9%	4.2%	3.0%	2.8%	3.1%	3.2%
Medical & Dental	5.6%	5.6%	5.9%	5.6%	5.6%	5.4%	5.4%
Clinical Nurse/ Midwife Manager	22.7%	22.5%	21.8%	22.4%	22.9%	21.6%	21.7%
Director Nursing/Midwifery, Assistant	1.6%	2.5%	2.6%	2.7%	2.7%	3.2%	3.0%
Director of Nursing/Midwifery	0.6%	0.3%	0.3%	0.5%	0.5%	0.5%	0.5%
Nurse/ Midwife Manager	24.9%	25.3%	24.7%	25.5%	26.0%	25.3%	25.1%
Advanced Nurse/ Midwife Practitioner				0.2%	0.3%	0.3%	0.3%
Clinical Nurse/ Midwife Specialist	6.0%	6.6%	6.9%	7.7%	6.4%	7.2%	7.5%
Nurse/ Midwife Specialist & AN/MP	6.0%	6.6%	6.9%	7.8%	6.7%	7.5%	7.8%
Graduate Nursing/ Midwifery	1.4%						
Staff Nurse [Intellectual Disability]			0.1%				
Staff Nurse [Psychiatric]	67.1%	67.2%	67.4%	65.9%	65.8%	63.2%	63.4%
Staff Nurses [General/ Children's]	0.3%	0.2%	0.2%	0.2%			
Staff Nurse/ Staff Midwife	68.8%	67.4%	67.6%	66.0%	65.8%	63.2%	63.4%
Pre-registration Nurse/ Midwife Intern	0.1%	0.3%	0.2%	0.1%	0.6%	2.4%	0.6%
Pre-registration Nurse Intern (COVID-19)						1.1%	2.5%
Nursing/ Midwifery awaiting registration					0.3%		
Nursing/ Midwifery Student	0.1%	0.3%	0.2%	0.1%	0.9%	3.5%	3.2%
Nursing Education/Clinical	0.2%	0.4%	0.6%	0.6%	0.6%	0.6%	0.6%
Nursing/ Midwifery other	0.2%	0.4%	0.6%	0.6%	0.6%	0.6%	0.6%
Nursing & Midwifery	53.6%	53.0%	53.8%	54.0%	54.4%	54.0%	54.0%
Dietitians	0.9%	2.4%	2.5%	2.6%	1.7%	1.8%	1.8%
Occupational Therapists	29.9%	31.9%	34.2%	33.8%	33.3%	33.1%	33.1%
Physiotherapists	0.9%	0.7%					
Speech & Language Therapists	3.9%	3.9%	3.9%	3.3%	3.9%	4.9%	4.7%
Therapy Professions	35.6%	38.8%	40.7%	39.8%	38.9%	39.8%	39.6%
Social Care	4.2%	3.9%	3.9%	4.2%	4.5%	4.6%	4.5%
Social Workers	29.0%	27.1%	26.6%	24.8%	26.6%	26.2%	25.6%
Psychologists	21.5%	21.3%	19.9%	21.4%	20.4%	19.8%	20.8%
Counsellor Therapists	8.9%	8.2%	8.3%	9.0%	8.7%	8.8%	8.6%
Other Health & Social Care	0.7%	0.7%	0.7%	0.8%	0.9%	0.8%	1.0%
H&SC, Other	9.6%	8.9%	9.0%	9.8%	9.6%	9.6%	9.5%
Health & Social Care Professionals	9.4%	9.9%	10.0%	9.4%	9.4%	8.9%	8.9%
Management (VIII & above)	2.0%	3.1%	2.3%	3.2%	3.1%	5.3%	5.3%
Administrative/ Supervisory (V to VII)	17.0%	15.9%	20.4%	19.8%	20.7%	19.3%	20.2%
Clerical (III & IV)	80.9%	81.0%	77.3%	77.0%	76.2%	75.4%	74.4%
Management & Administrative	8.2%	8.1%	7.3%	7.9%	7.9%	8.0%	8.0%
Support	88.4%	88.2%	88.2%	87.8%	87.8%	87.8%	87.5%
Maintenance	10.7%	10.8%	10.8%	11.1%	11.1%	11.2%	11.5%
Technical Services	1.0%	0.9%	1.0%	1.1%	1.0%	1.0%	1.0%
Maintenance/ Technical	11.6%	11.8%	11.8%	12.2%	12.2%	12.2%	12.5%

May 2020 (Dec 2018 figure: 1,185)	WTE Dec 2015	WTE Dec 2016	WTE Dec 2017	WTE Dec 2018	WTE Dec 2019	WTE Apr 2020	WTE May 2020
Mental Health	1,186	1,221	1,197	1,185	1,177.58	1,199.78	1,173.24
General Support	17.5%	17.3%	16.1%	15.9%	16.0%	16.5%	16.5%
HCA, Nurse's Aide, etc.	79.1%	81.7%	80.9%	82.0%	85.0%	85.1%	85.8%
Health Care Assistants	79.1%	81.7%	80.9%	82.0%	85.0%	85.1%	85.8%
Care, other	20.9%	18.3%	19.1%	18.0%	15.0%	14.9%	14.2%
Patient & Client Care	5.7%	6.2%	6.8%	7.3%	7.4%	7.3%	7.3%
Total	100 %	100 %	100 %	100 %	100 %	100 %	100 %

May 2020 (Dec 2018 figure: 958)	WTE Dec 2015	WTE Dec 2016	WTE Dec 2017	WTE Dec 2018	WTE Dec 2019	WTE Apr 2020	WTE May 2020
Primary Care	845	891	919	958	951.81	940.89	954.92
Consultant Dentistry	1.3%	1.3%	1.2%	1.3%	1.2%	1.3%	1.3%
Consultant Surgery	2.5%	2.7%	2.5%	2.5%	2.5%	2.5%	2.5%
Consultants	3.8%	4.0%	3.7%	3.8%	3.7%	3.8%	3.8%
Registrars	26.2%	27.6%	30.1%	26.0%	22.2%	28.4%	27.9%
SHO/ Interns	6.3%	5.3%	4.9%	5.0%	7.4%		
Dentists	42.6%	43.9%	42.3%	43.5%	44.3%	45.9%	45.3%
Other Medical	21.1%	19.1%	19.1%	21.7%	22.4%	21.9%	22.9%
Medical/ Dental, other	63.7%	63.0%	61.3%	65.2%	66.7%	67.8%	68.2%
Medical & Dental	9.4%	8.4%	8.9%	8.3%	8.4%	8.2%	8.2%
Clinical Nurse/ Midwife Manager	2.5%	2.1%	2.1%	2.7%	2.3%	2.5%	3.0%
Director Nursing/Midwifery, Assistant	4.5%	5.4%	5.1%	5.5%	5.6%	6.3%	5.9%
Director of Nursing/Midwifery	1.2%	1.1%	1.2%	1.5%	1.9%	1.9%	1.7%
Nurse/ Midwife Manager	8.2%	8.6%	8.5%	9.7%	9.7%	10.7%	10.6%
Nurse/ Midwife Specialist & AN/MP	0.4%	1.1%	1.8%	2.0%	2.1%	2.7%	2.5%
Staff Nurse/ Staff Midwife	25.7%	24.5%	26.5%	26.2%	24.8%	24.4%	24.7%
Public Health Nurse	63.6%	63.0%	61.0%	59.4%	61.2%	60.1%	55.4%
Nursing/ Midwifery Student	2.0%	2.8%	2.3%	2.6%	1.9%	1.9%	6.5%
Nursing Education/Clinical					0.3%	0.3%	0.3%
Nursing/ Midwifery other					0.3%	0.3%	0.3%
Nursing & Midwifery	29.0%	28.4%	27.7%	27.9%	28.1%	30.4%	30.4%
Dietitians	3.1%	2.7%	2.9%	3.1%	2.8%	3.6%	3.6%
Occupational Therapists	22.7%	17.9%	19.9%	21.0%	19.2%	20.5%	20.3%
Orthoptists				0.4%	0.2%	0.4%	0.4%
Physiotherapists	25.2%	22.1%	22.5%	22.0%	20.1%	20.4%	20.2%
Podiatrists & Chiropodists			0.4%	0.4%	0.4%	0.4%	0.4%
Speech & Language Therapists	24.7%	27.8%	26.2%	26.8%	26.8%	24.6%	25.4%
Therapy Professions	75.8%	70.5%	72.0%	73.6%	69.6%	69.9%	70.2%
Audiology	1.6%	1.9%	1.8%	1.5%	1.4%	1.9%	2.5%
Health Science/ Diagnostics	1.6%	1.9%	1.8%	1.5%	1.4%	1.9%	2.5%
Social Care	0.6%	1.5%	1.3%	1.5%	2.0%	1.8%	1.8%
Social Workers	1.3%	1.8%	3.2%	2.7%	3.1%	3.3%	3.3%
Psychologists	15.8%	16.6%	15.5%	14.5%	16.6%	15.7%	14.8%
Pharmacy	0.8%	0.8%	0.4%	0.4%	0.4%	0.4%	0.4%
Counsellor Therapists	1.4%	4.4%	3.4%	3.5%	4.4%	4.5%	4.5%
Dental Hygienists	2.7%	2.6%	2.5%	2.5%	2.3%	2.5%	2.5%
Environmental Health Officers				0.0%	0.2%	0.0%	0.0%
H&SC, Other	4.0%	7.0%	5.9%	6.0%	6.9%	7.0%	7.0%
Health & Social Care Professionals	27.6%	29.5%	29.0%	28.2%	28.4%	27.2%	27.2%
Executive Management	1.0%	2.3%	2.6%	2.5%	2.1%	2.1%	2.1%
Senior Management (VIII & GM)	5.1%	5.2%	6.3%	6.9%	8.4%	7.9%	7.5%

May 2020 (Dec 2018 figure: 958)	WTE Dec 2015	WTE Dec 2016	WTE Dec 2017	WTE Dec 2018	WTE Dec 2019	WTE Apr 2020	WTE May 2020
Primary Care	845	891	919	958	951.81	940.89	954.92
Management (VIII & above)	6.1%	7.5%	9.0%	9.4%	10.5%	10.0%	9.6%
Administrative/ Supervisory (V to VII)	18.0%	20.7%	23.9%	23.2%	21.6%	20.9%	21.6%
Clerical (III & IV)	75.9%	71.8%	67.2%	67.4%	67.9%	69.1%	68.8%
Management & Administrative	23.9%	24.2%	25.0%	25.0%	25.2%	24.6%	24.6%
Support	100.0%	100.0%	100.0%	100.0%	100.0%	100.0%	100.0%
General Support	3.2%	3.0%	3.0%	2.9%	2.9%	2.7%	2.7%
HCA, Nurse's Aide, etc.	1.7%	1.7%	1.7%	2.3%	1.4%	1.5%	1.1%
Health & Social Care Assistants				14.5%	10.0%	6.4%	6.3%
Health Care Assistants	1.7%	1.7%	1.7%	16.8%	11.4%	7.9%	7.3%
Care, other	88.9%	88.4%	84.1%	73.1%	78.4%	80.3%	80.3%
Home Help	9.4%	9.8%	14.2%	10.1%	10.2%	11.8%	12.4%
Patient & Client Care	7.0%	6.5%	6.5%	7.6%	7.6%	6.9%	6.9%
Total	100 %	100 %	100 %	100 %	100 %	100 %	100 %

May 2020 (Dec 2018 figure: 1,409)	WTE Dec 2015	WTE Dec 2016	WTE Dec 2017	WTE Dec 2018	WTE Dec 2019	WTE Apr 2020	WTE May 2020
Disabilities	1,155	1,272	1,378	1,409	1,505.38	1,493.69	1,485.45
Consultant Psychiatry	87.5%	80.0%	80.0%	60.8%	100.0%	100.0%	100.0%
Consultants	87.5%	80.0%	80.0%	60.8%	100.0%	100.0%	100.0%
Medical/ Dental, other	12.5%	20.0%	20.0%	39.2%			
Medical & Dental	0.1%	0.1%	0.1%	0.0%	0.0%	0.1%	0.1%
Clinical Nurse/ Midwife Manager	24.6%	25.1%	22.5%	26.4%	25.2%	24.9%	23.9%
Director Nursing/Midwifery, Assistant	1.2%	1.6%	1.2%	0.4%	0.8%	0.8%	0.8%
Director of Nursing/Midwifery	1.6%	2.0%	2.1%	1.7%	0.8%	0.8%	0.8%
Nurse/ Midwife Manager	27.3%	28.7%	25.8%	28.4%	26.8%	26.5%	25.5%
Clinical Nurse/ Midwife Specialist	0.4%	0.4%	0.9%	0.9%	0.8%	0.8%	0.8%
Nurse/ Midwife Specialist & AN/MP	0.4%	0.4%	0.9%	0.9%	0.8%	0.8%	0.8%
Staff Nurse [Intellectual Disability]	43.2%	44.9%	51.2%	46.1%	47.2%	44.6%	43.4%
Staff Nurse [Psychiatric]	1.2%	1.2%	1.3%	1.4%	1.3%	1.2%	1.2%
Staff Nurses [General/ Children's]	25.4%	22.3%	18.2%	20.7%	21.0%	21.3%	21.0%
Staff Nurse/ Staff Midwife	69.8%	68.4%	70.7%	68.2%	69.5%	67.1%	65.7%
Public Health Nurse	1.9%	1.9%	2.6%	2.5%	2.2%	1.9%	2.1%
Pre-registration Nurse/ Midwife Intern	0.5%	0.6%				0.8%	
Pre-registration Nurse Intern (COVID-19)						1.4%	4.4%
Post-registration Nurse/ Midwife Student							1.6%
Nursing/ Midwifery awaiting registration					0.8%	1.6%	
Nursing/ Midwifery Student	0.5%	0.6%			0.8%	3.8%	6.0%
Nursing & Midwifery	21.8%	19.1%	16.8%	16.4%	15.3%	17.1%	17.1%
Dietitians	0.1%		0.4%	0.4%	0.8%	0.8%	0.8%
Occupational Therapists	7.3%	11.0%	9.2%	9.4%	8.6%	8.9%	9.0%
Physiotherapists	3.1%	5.5%	6.1%	3.8%	5.3%	4.9%	5.0%
Podiatrists & Chiropodists	0.1%	0.0%	0.0%				
Speech & Language Therapists	7.0%	9.2%	9.6%	9.0%	9.6%	10.1%	10.3%
Therapy Professions	17.5%	25.7%	25.4%	22.6%	24.3%	24.7%	25.1%
Social Care	61.4%	56.5%	57.7%	61.1%	59.5%	57.8%	57.3%
Social Workers	12.3%	10.9%	9.7%	9.5%	8.1%	9.4%	9.6%
Psychologists	5.9%	4.5%	5.2%	4.7%	5.4%	5.4%	5.3%
Pharmacy	0.1%	0.1%	0.0%				
Counsellor Therapists	0.4%	0.2%	0.3%	0.3%	0.3%	0.4%	0.4%
Other Health & Social Care	0.2%	0.1%	0.1%				
Play Therapists/ Specialists	2.3%	1.9%	1.7%	1.8%	2.4%	2.4%	2.4%

May 2020 (Dec 2018 figure: 1,409)	WTE Dec 2015	WTE Dec 2016	WTE Dec 2017	WTE Dec 2018	WTE Dec 2019	WTE Apr 2020	WTE May 2020
Disabilities	1,155	1,272	1,378	1,409	1,505.38	1,493.69	1,485.45
H&SC, Other	2.8%	2.3%	2.0%	2.1%	2.7%	2.8%	2.8%
Health & Social Care Professionals	14.6%	16.9%	18.0%	17.8%	16.7%	16.3%	16.3%
Executive Management	2.5%	2.1%	3.0%	2.9%	1.8%	2.7%	2.7%
Senior Management (VIII & GM)	9.3%	7.9%	9.7%	10.5%	8.1%	8.1%	8.9%
Management (VIII & above)	11.8%	10.1%	12.6%	13.3%	9.9%	10.8%	11.6%
Administrative/ Supervisory (V to VII)	34.4%	34.3%	33.3%	33.3%	35.2%	37.1%	36.0%
Clerical (III & IV)	53.8%	55.7%	54.0%	53.4%	54.9%	52.2%	52.4%
Management & Administrative	7.0%	7.4%	7.4%	7.4%	7.0%	7.6%	7.6%
Support	86.5%	81.5%	78.5%	70.2%	67.6%	61.2%	61.7%
Maintenance	13.5%	15.4%	17.9%	26.4%	28.0%	33.5%	33.0%
Technical Services		3.1%	3.6%	3.3%	4.4%	5.3%	5.2%
Maintenance/ Technical	13.5%	18.5%	21.5%	29.8%	32.4%	38.8%	38.3%
General Support	3.2%	2.6%	2.0%	2.1%	2.0%	1.3%	1.3%
HCA, Nurse's Aide, etc.	80.4%	80.3%	76.8%	77.1%	77.3%	77.9%	77.9%
Health Care Assistants	80.4%	80.3%	76.8%	77.1%	77.3%	77.9%	77.9%
Care, other	16.5%	16.4%	15.7%	16.1%	16.6%	16.8%	17.1%
Home Help	3.1%	3.3%	7.5%	6.8%	6.2%	5.3%	4.9%
Patient & Client Care	53.3%	53.9%	55.7%	56.2%	52.6%	57.8%	57.8%
Total	100 %	100 %	100 %	100 %	100 %	100 %	100 %

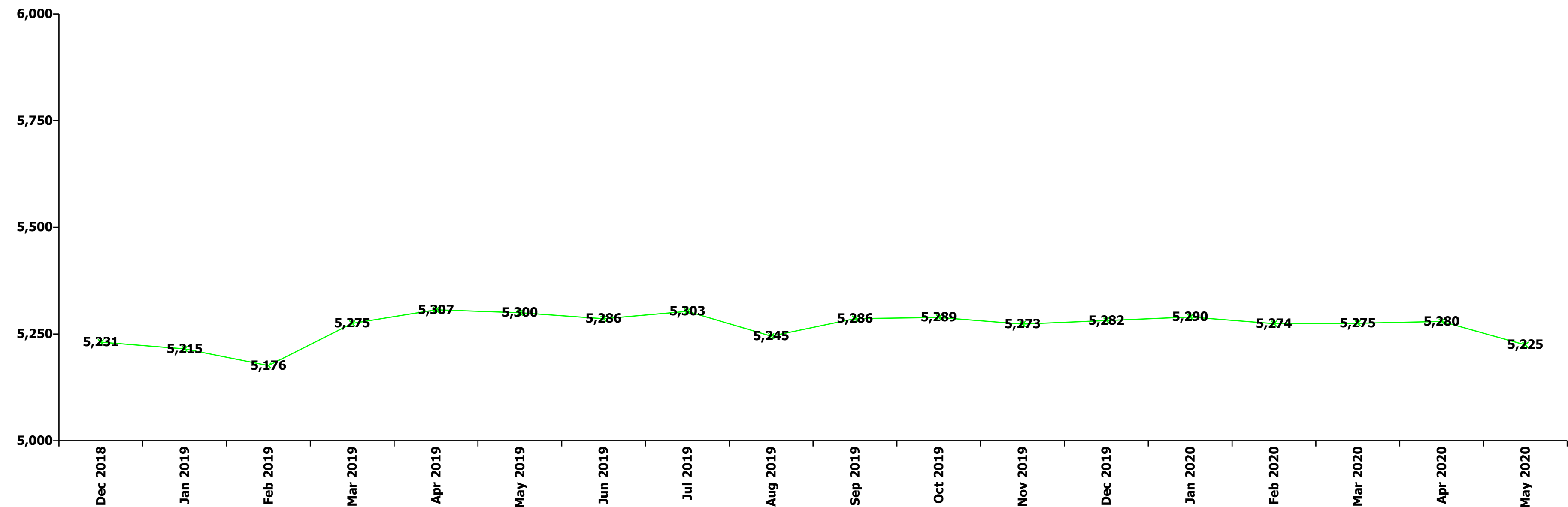
May 2020 (Dec 2018 figure: 1,678)	WTE Dec 2015	WTE Dec 2016	WTE Dec 2017	WTE Dec 2018	WTE Dec 2019	WTE Apr 2020	WTE May 2020
Older People	1,454	1,341	1,587	1,678	1,646.92	1,631.59	1,594.29
Medical/ Dental, other	100.0%	100.0%	100.0%	100.0%	100.0%	100.0%	100.0%
Medical & Dental	0.8%	0.8%	0.6%	0.6%	0.6%	0.6%	0.6%
Clinical Nurse/ Midwife Manager	12.7%	14.7%	15.5%	16.8%	14.7%	15.4%	15.5%
Director Nursing/Midwifery, Assistant	3.3%	3.3%	3.2%	3.1%	2.8%	2.6%	2.1%
Director of Nursing/Midwifery	2.9%	3.3%	2.9%	3.0%	2.9%	2.9%	3.1%
Nurse/ Midwife Manager	18.9%	21.3%	21.5%	22.8%	20.3%	20.9%	20.7%
Advanced Nurse/ Midwife Practitioner			0.3%	0.2%	0.2%	0.2%	0.2%
Clinical Nurse/ Midwife Specialist	0.3%			0.2%	0.2%	0.2%	0.2%
Nurse/ Midwife Specialist & AN/MP	0.3%		0.3%	0.5%	0.5%	0.4%	0.4%
Graduate Nursing/ Midwifery	0.3%						
Staff Nurse [Psychiatric]		0.3%	0.3%	0.2%	0.2%	0.2%	0.2%
Staff Nurses [General/ Children's]	79.8%	77.7%	73.6%	75.7%	78.0%	77.6%	77.7%
Staff Nurse/ Staff Midwife	80.1%	77.9%	73.9%	75.9%	78.2%	77.8%	77.9%
Public Health Nurse	0.8%	0.8%	0.7%	0.7%	0.9%	0.9%	0.9%
Nursing/ Midwifery awaiting registration			3.6%				
Nursing/ Midwifery Student			3.6%				
Nursing & Midwifery	25.8%	28.2%	24.7%	23.9%	24.3%	25.8%	25.8%
Dietitians	5.3%	4.8%	4.6%	8.1%	8.4%	8.2%	8.0%
Occupational Therapists	27.9%	25.6%	26.2%	26.8%	30.3%	27.8%	27.1%
Physiotherapists	50.2%	43.6%	48.0%	46.3%	47.1%	46.2%	45.5%
Podiatrists & Chiropodists	1.3%	1.0%	1.0%	0.9%	1.1%	1.0%	1.0%
Speech & Language Therapists	7.8%	10.0%	7.1%	7.2%	5.9%	5.8%	7.8%
Therapy Professions	92.4%	84.9%	87.0%	89.2%	92.7%	88.9%	89.5%
Social Care	2.6%						
Social Workers	4.9%	15.1%	13.0%	10.8%	7.3%	9.1%	8.8%
Pharmacy						2.0%	1.8%
Health & Social Care Professionals	2.6%	3.1%	2.5%	2.8%	2.9%	2.9%	2.9%

May 2020 (Dec 2018 figure: 1,678)	WTE Dec 2015	WTE Dec 2016	WTE Dec 2017	WTE Dec 2018	WTE Dec 2019	WTE Apr 2020	WTE May 2020
Older People	1,454	1,341	1,587	1,678	1,646.92	1,631.59	1,594.29
Management (VIII & above)	6.2%	6.1%	4.3%	6.4%	7.6%	7.8%	7.8%
Administrative/ Supervisory (V to VII)	20.8%	22.8%	28.1%	25.0%	28.1%	28.5%	28.5%
Clerical (III & IV)	73.0%	71.0%	67.6%	68.6%	64.3%	63.7%	63.7%
Management & Administrative	2.8%	3.4%	2.7%	2.6%	2.7%	3.1%	3.1%
Support	94.1%	94.4%	94.1%	94.2%	93.7%	93.4%	93.8%
Maintenance/ Technical	5.9%	5.6%	5.9%	5.8%	6.3%	6.6%	6.2%
General Support	11.2%	11.6%	9.4%	8.0%	8.2%	8.0%	8.0%
HCA, Nurse's Aide, etc.	44.1%	52.6%	40.0%	37.8%	38.6%	40.3%	45.8%
Health & Social Care Assistants	0.1%	0.1%	0.1%	0.1%	0.1%	0.1%	0.1%
Health Care Assistants	44.2%	52.8%	40.1%	37.9%	38.7%	40.4%	45.9%
Other Care Grades	1.2%	1.4%	1.0%	1.2%	1.0%	1.1%	1.1%
Care, other	1.2%	1.4%	1.0%	1.2%	1.0%	1.1%	1.1%
Home Help	54.6%	45.8%	58.9%	60.9%	60.3%	58.5%	53.0%
Patient & Client Care	56.8%	52.9%	60.1%	62.0%	63.2%	59.6%	59.6%
Total	100 %	100 %	100 %	100 %	100 %	100 %	100 %

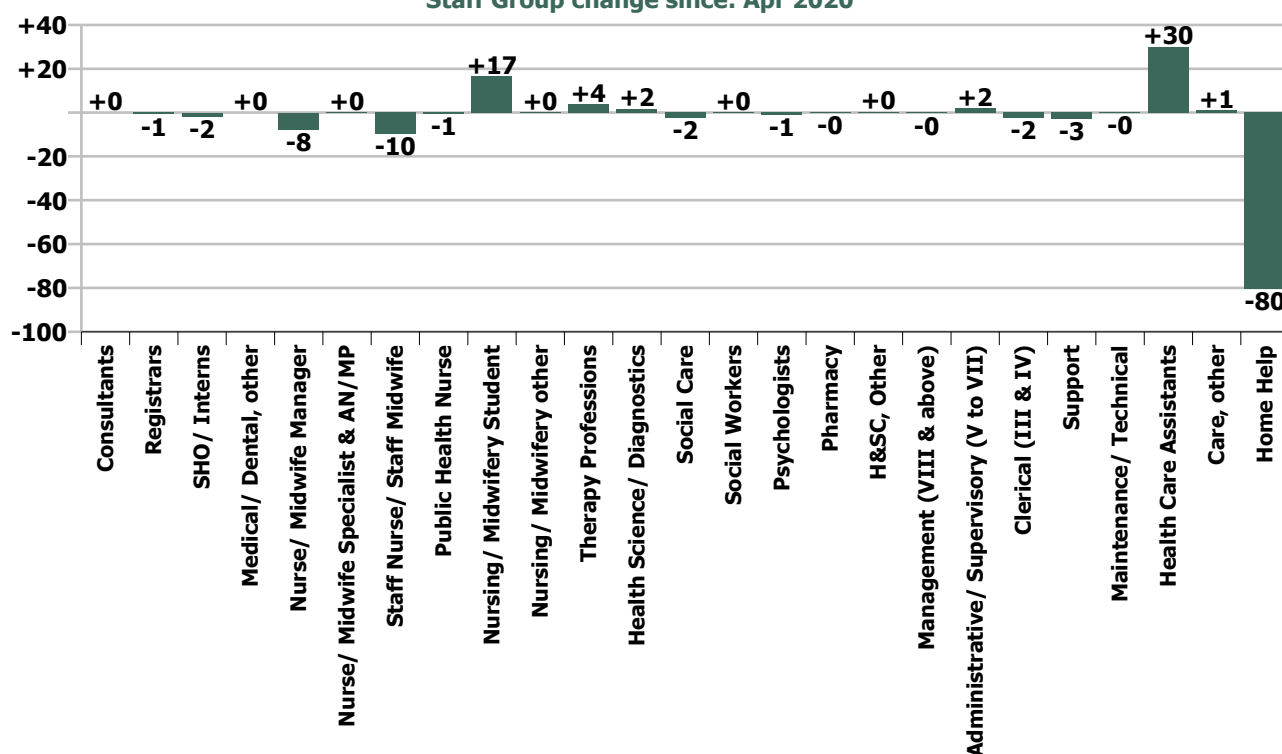
Summary Staff Movement: May 2020

Month-on-month Summary																												
WTE change since Apr 20	% change since Apr 20	overall	Consultants	Registrars	SHO/ Interns	Medical/ Dental, other	Medical & Dental	Nurse/ Midwife Manager	Nurse/ Midwife Specialist & AN/MP	Staff Nurse/ Staff Midwife	Public Health Nurse	Nursing/ Midwifery Student	Nursing/ Midwifery other	Nursing & Midwifery	Therapy Professions	Health Science/ Diagnostics	Social Care	Social Workers	Psychologists	Pharmacy	H&SC, Other	Health & Social Care Professionals	Management (VIII & above)	Administrative/ Supervisory (V to VII)	Clerical (III & IV)	Management & Administrative	General Support	Patient & Client Care
Overall	-1.0%	-55	+0.1	-0.8	-1.8	+0.1	-2.5	-7.8	+0.2	-9.7	-0.6	+16.5	+0.1	-1.3	+3.8	+1.6	-2.3	+0.1	-1.2	-0.1	+0.3	+2.2	-0.3	+1.8	-2.4	-0.8	-3.3	-49.2
Community Health & Wellbeing	+22.9%	+3													+0.1							+0.1	0.0	+1.1	+1.0	+2.1		+0.9
Mental Health	-2.2%	-27	+0.1	-0.3	-1.8	0.0	-2.1	-6.6	+0.3	-13.2		-3.0	0.0	-22.5	+0.7		0.0	-0.0	+1.5		+0.2	+2.2	0.0	+0.9	-0.8	+0.1	-4.0	-0.4
Primary Care	+1.5%	+14	0.0	-0.5		+0.1	-0.4	+2.0	-0.1	+5.8	-1.2	+14.0	+0.1	+20.6	+1.6	+1.6	+0.0	-0.0	-2.2	0.0	+0.1	+1.2	-1.3	+0.8	-3.2	-3.7	-2.1	-1.5
Disabilities	-0.6%	-8	0.0				0.0	-2.6	0.0	-3.9	+0.6	+5.5		-0.4	+0.4		-2.4	+0.3	-0.5		-0.0	-2.2	+1.0	-0.9	+0.6	+0.6	+0.3	-6.6
Older People	-2.3%	-37				-0.0	-0.0	-0.6	0.0	+1.5	0.0			+1.0	+1.0			-0.1		-0.1		+0.8	0.0	0.0	+0.0	+0.0	+2.5	-41.6
Social Care	-1.5%	-46	0.0			-0.0	-0.0	-3.1	0.0	-2.4	+0.6	+5.5		+0.6	+1.4		-2.4	+0.2	-0.5	-0.1	-0.0	-1.3	+1.0	-0.9	+0.6	+0.7	+2.8	-48.2
Change	-54.9	-1.0%	+0.2%	-2.3%	-7.2%	+0.1%	-1.6%	-2.2%	+0.3%	-1.0%	-0.4%	+44.0%	+2.3%	-0.1%	+1.2%	+32.7%	-1.6%	+0.2%	-1.6%	-5.2%	+0.8%	+0.3%	-0.7%	+1.5%	-0.7%	-0.2%	-0.9%	-2.4%

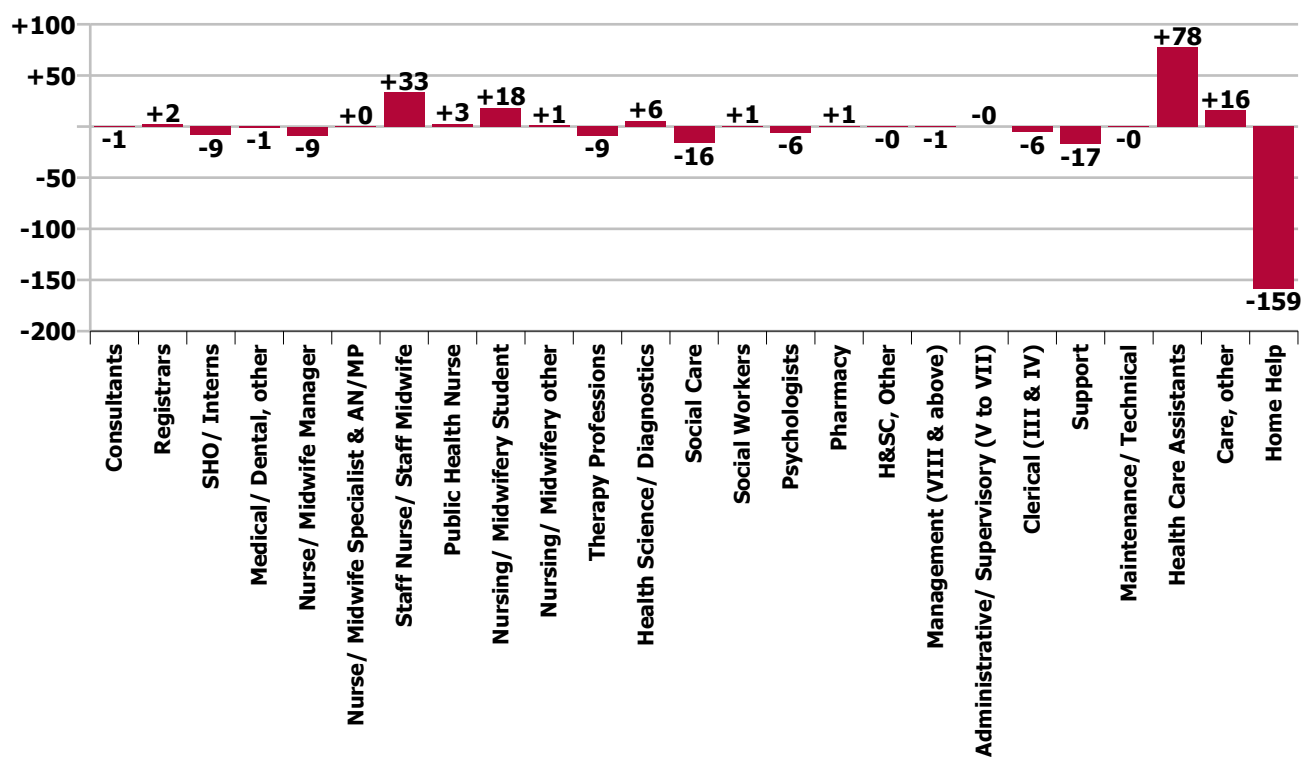
Year-on-year Summary																												
WTE change since May 19	% change since May 19	overall	Consultants	Registrars	SHO/ Interns	Medical/ Dental, other	Medical & Dental	Nurse/ Midwife Manager	Nurse/ Midwife Specialist & AN/MP	Staff Nurse/ Staff Midwife	Public Health Nurse	Nursing/ Midwifery Student	Nursing/ Midwifery other	Nursing & Midwifery	Therapy Professions	Health Science/ Diagnostics	Social Care	Social Workers	Psychologists	Pharmacy	H&SC, Other	Health & Social Care Professionals	Management (VIII & above)	Administrative/ Supervisory (V to VII)	Clerical (III & IV)	Management & Administrative	General Support	Patient & Client Care
Overall	-1.4%	-75	-0.5	+2.1	-8.7	-1.2	-8.3	-8.8	+0.4	+33.3	+3.0	+18.1	+1.2	+47.2	-8.9	+5.5	-16.4	+0.8	-6.5	+0.8	-0.4	-25.2	-0.6	-0.0	-5.6	-6.1	-17.4	-65.7
Community Health & Wellbeing	+22.9%	+3													+3.0							+3.0	+1.0	+2.0	+2.9	+5.9		+7.8
Mental Health	-2.2%	-27	-0.4	+2.9	-7.7	0.0	-5.3	-5.5	+0.3	+1.8		+1.0	+0.3	-2.1	-1.6		0.0	+0.1	-0.6		0.0	-2.1	+1.0	-1.2	-3.5	-3.7	+2.1	-1.2
Primary Care	+1.5%	+14	0.0	-0.8	-1.0	-0.9	-2.7	+3.1	+0.3	+0.5	+3.9	+13.0	+0.9	+21.7	-12.3	+5.5	-0.5	+0.3	-7.3	0.0	-0.4	-14.6	-5.7	-3.2	-4.8	-13.7	-2.3	-8.4
Disabilities	+2.9%	+41.6	-0.0			-0.2	-0.2	-2.9	0.0	+15.5	0.0	+4.1		+16.7	+2.1		-15.9	+0.6	+1.4		-0.0	-11.9	+2.2	+2.1	+1.0	+5.3	-11.6	+43.2
Older People	-6.0%	-101.4				-0.0	-0.0	-3.6	-0.2	+15.5	-0.9			+10.8	-0.1			-0.3		+0.8		+0.4	+1.0	+0.3	-1.2	+0.1	-5.6	-107.1
Social Care	-1.5%	-46	-0.0			-0.2	-0.3	-6.4	-0.2	+31.0	-0.9	+4.1		+27.6	+2.0		-15.9	+0.3	+1.4	+0.8	-0.0	-11.4	+3.2	+2.4	-0.2	+5.4	-17.2	-63.9
Change	-75.5	-1.4%	-1.6%	+6.6%	-27.3%	-1.7%	-5.1%	-2.5%	+0.7%	+3.6%	+1.8%	+50.4%	+34.7%	+3.1%	-2.7%	+550.0%	-10.0%	+1.3%	-8.2%	+81.0%	-1.2%	-3.7%	-1.2%	-0.0%	-1.7%	-1.2%	-4.5%	-3.2%



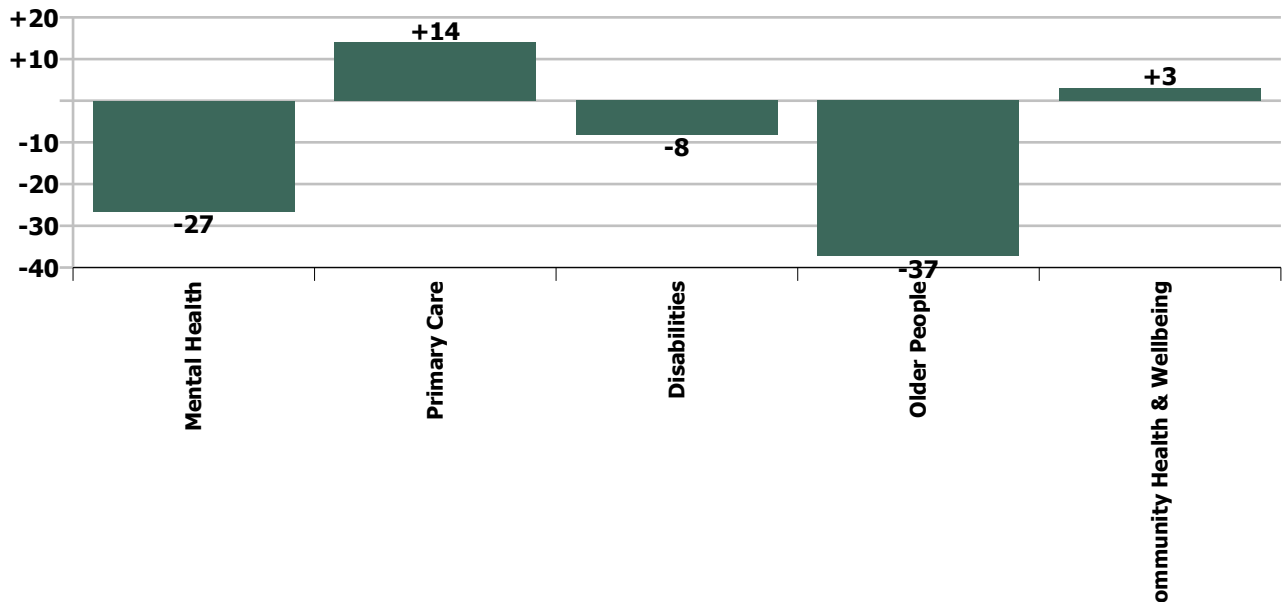
Staff Group change since: Apr 2020



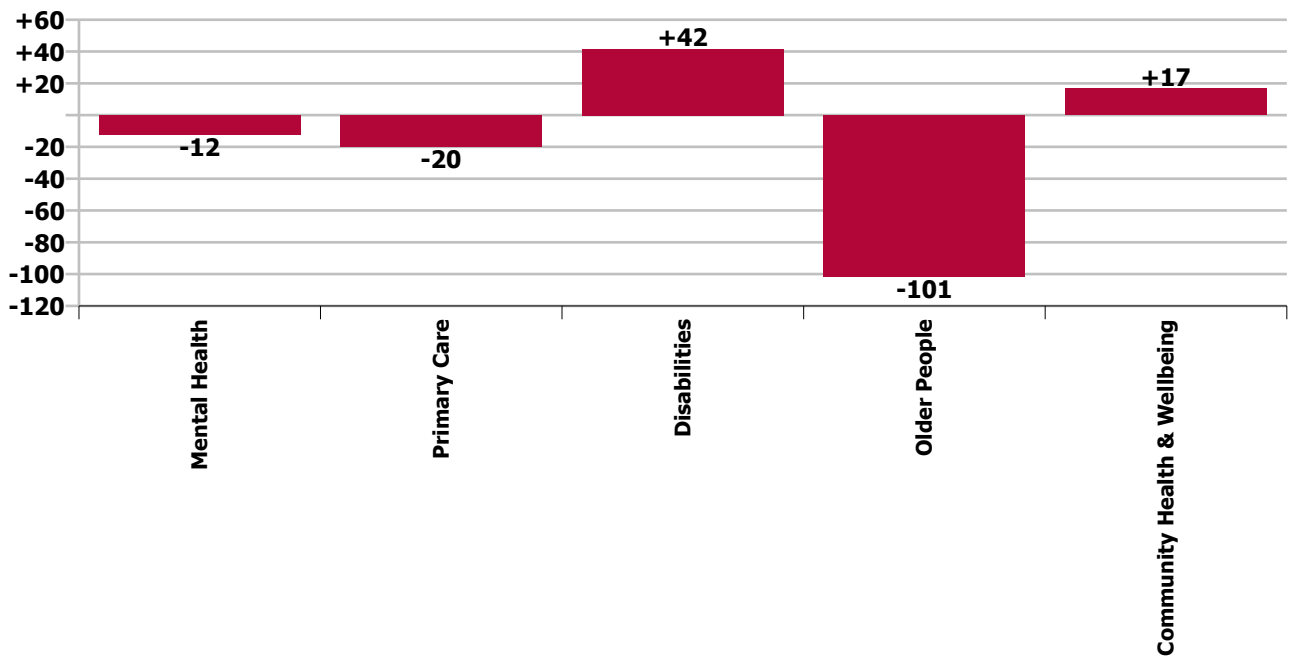
Staff Group change since: May 2019



Care Group change since: Apr 2020



Care Group change since: May 2019



Longitudinal Employment Levels by Grade Group - Oct 2013 to May 2020

May 2020 (Dec 2015 figure: 4,640)	WTE May 2020	WTE change since Dec 15	WTE change since Dec 16	WTE change since Dec 17	WTE change since Dec 18	WTE change since Dec 18	WTE change since Apr 20	% change since Dec 15	% change since Dec 16	% change since Dec 17	% change since Dec 18	% change since Dec 18	% change since Apr 20
Overall	5,225	+584	+499	+144	-6	-6	-55	+12.6%	+10.6%	+2.8%	-0.1%	-0.1%	-1.0%
Consultant Dentistry	1												
Consultant Psychiatry	27	-3	-4	-2	+3	+3	+0	-10.9%	-12.1%	-5.5%	+11.8%	+11.8%	+0.2%
Consultant Surgery	2												
Consultants	30	-3	-4	-2	+3	+3	+0	-10.0%	-11.0%	-5.0%	+10.5%	+10.5%	+0.2%
Registrar	32	+6	+7	+4	+4	+4	-1	+23.3%	+28.3%	+15.3%	+14.0%	+14.0%	-2.5%
Senior Registrar	2	-1						-33.3%					
Registrars	34	+5	+7	+4	+4	+4	-1	+17.4%	+26.2%	+14.2%	+13.1%	+13.1%	-2.3%
Interns		-1	-1	-1	-1	-1	-1	-100.0%	-100.0%	-100.0%	-100.0%	-100.0%	-100.0%
Senior House Officer	23	-8	-10	-15	-11	-11	-1	-25.2%	-29.7%	-39.6%	-31.6%	-31.6%	-3.3%
SHO/ Interns	23	-9	-11	-16	-12	-12	-2	-27.5%	-31.8%	-41.1%	-33.5%	-33.5%	-7.2%
Dentists	36	+2	+3	+1	+1	+1	-1	+5.9%	+8.5%	+3.7%	+2.7%	+2.7%	-1.8%
Other Medical	29	-2	+1	+0	-0	-0	+1	-6.0%	+5.0%	+0.4%	-0.7%	-0.7%	+2.5%
Medical/ Dental, other	65	+0	+4	+1	+1	+1	+0	+0.2%	+6.9%	+2.2%	+1.1%	+1.1%	+0.1%
Medical & Dental	152	-7	-3	-12	-4	-4	-2	-4.4%	-2.2%	-7.4%	-2.7%	-2.7%	-1.6%
Clinical Nurse/ Midwife Manager	270	+10	+3	+12	-8	-8	-5	+4.0%	+1.0%	+4.6%	-2.9%	-2.9%	-1.7%
Director Nursing/Midwifery, Assistant	47	+10	+0	+1	+1	+1	-4	+28.8%	+1.1%	+3.1%	+3.0%	+3.0%	-8.0%
Director of Nursing/Midwifery	23	+1	+1	+2	+0	+0	+1	+5.2%	+2.6%	+8.0%	+0.4%	+0.4%	+4.1%
Nurse/ Midwife Manager	340	+22	+4	+15	-7	-7	-8	+6.9%	+1.1%	+4.6%	-1.9%	-1.9%	-2.2%
Advanced Nurse/ Midwife Practitioner	3	+3	+3	+2	+1	+1		-100.0%	-100.0%	+182.0%	+41.0%	+41.0%	
Clinical Nurse/ Midwife Specialist	57	+16	+11	+6	-0	-0	+0	+38.5%	+23.3%	+12.7%	-0.4%	-0.4%	+0.3%
Nurse/ Midwife Specialist & AN/MP	60	+19	+14	+8	+1	+1	+0	+45.3%	+29.4%	+16.0%	+1.0%	+1.0%	+0.3%
Graduate Nursing/ Midwifery		-10						-100.0%	-100.0%	-100.0%	-100.0%	-100.0%	-100.0%
Staff Nurse [Intellectual Disability]	110	+1	+1	-9	+4	+4	-3	+1.2%	+0.6%	-7.3%	+3.5%	+3.5%	-2.8%
Staff Nurse [Psychiatric]	408	-21	-30	-32	-19	-19	-12	-4.9%	-6.9%	-7.2%	-4.4%	-4.4%	-2.9%
Staff Nurses [General/ Children's]	442	+13	+31	+45	+21	+21	+5	+3.1%	+7.4%	+11.2%	+4.9%	+4.9%	+1.2%
Staff Nurse/ Staff Midwife	960	-17	+1	+4	+6	+6	-10	-1.7%	+0.1%	+0.4%	+0.6%	+0.6%	-1.0%
Public Health Nursing	170	+6	+3	+6	+2	+2	-1	+3.9%	+1.7%	+3.4%	+1.3%	+1.3%	-0.4%
Public Health Nurse	170	+6	+3	+6	+2	+2	-1	+3.9%	+1.7%	+3.4%	+1.3%	+1.3%	-0.4%
Pre-registration Nurse/ Midwife Intern	4	+2	+1	+3	+4	+4	-14	+124.7%	+14.3%	+166.7%	+700.0%	+700.0%	-77.8%
Pre-registration Nurse Intern (COVID-19)	41	+41	+41	+41	+41	+41	+31	-100.0%	-100.0%	-100.0%	-100.0%	-100.0%	+288.0%
Post-registration Nurse/ Midwife Student	9	+4	+2	+3	+2	+2	+4	+80.0%	+28.6%	+55.2%	+28.6%	+28.6%	+80.0%
Nursing/ Midwifery awaiting registration				-14			-4	-100.0%	-100.0%	-100.0%	-100.0%	-100.0%	-100.0%
Nursing/ Midwifery Student	54	+47	+44	+33	+47	+47	+17	+698.4%	+415.5%	+154.1%	+621.7%	+621.7%	+44.0%
Nursing Education/Clinical	5	+4	+2	+1	+1	+1	+0	+354.0%	+70.0%	+24.4%	+24.7%	+24.7%	+2.3%

May 2020 (Dec 2015 figure: 4,640)	WTE May 2020	WTE change since Dec 15	WTE change since Dec 16	WTE change since Dec 17	WTE change since Dec 18	WTE change since Dec 18	WTE change since Apr 20	% change since Dec 15	% change since Dec 16	% change since Dec 17	% change since Dec 18	% change since Dec 18	% change since Apr 20
Overall	5,225	+584	+499	+144	-6	-6	-55	+12.6%	+10.6%	+2.8%	-0.1%	-0.1%	-1.0%
Nursing/ Midwifery other	5	+4	+2	+1	+1	+1	+0	+354.0%	+70.0%	+24.4%	+24.7%	+24.7%	+2.3%
Nursing & Midwifery	1,589	+81	+67	+67	+49	+49	-1	+5.4%	+4.4%	+4.4%	+3.2%	+3.2%	-0.1%
Dietitians	20	+10	+8	+6	+4	+4	+0	+92.7%	+65.0%	+47.1%	+23.9%	+23.9%	+1.4%
Occupational Therapists	121	+12	+1	-6	-9	-9	+0	+11.2%	+1.1%	-4.4%	-7.2%	-7.2%	+0.4%
Orthoptists	1	+1	+1	+1				-100.0%	-100.0%	-100.0%			
Physiotherapists	85	+1	-4	-9	-6	-6	-0	+1.3%	-4.1%	-9.5%	-6.3%	-6.3%	-0.4%
Podiatrists & Chiropodists	1	+1	+1	-0	-0	-0		+133.3%	+174.5%	-7.3%	-0.7%	-0.7%	
Speech & Language Therapists	99	+22	-2	-2	-3	-3	+3	+29.3%	-2.3%	-2.0%	-2.9%	-2.9%	+3.6%
Therapy Professions	328	+47	+5	-9	-14	-14	+4	+16.8%	+1.6%	-2.8%	-4.2%	-4.2%	+1.2%
Health Science/ Diagnostics	7	+3	+2	+2	+3	+3	+2	+71.1%	+30.0%	+35.4%	+62.5%	+62.5%	+32.7%
Social Care	148	+37	+18	-3	-14	-14	-2	+34.0%	+13.6%	-2.2%	-8.8%	-8.8%	-1.6%
Social Workers	62	+4	-5	-7	-2	-2	+0	+7.5%	-7.3%	-10.3%	-2.4%	-2.4%	+0.2%
Psychologists	73	+2	-6	-5	-2	-2	-1	+2.8%	-8.2%	-6.7%	-2.6%	-2.6%	-1.6%
Pharmacy	2	-0	-0	+1	+1	+1	-0	-10.4%	-14.6%	+61.6%	+81.0%	+81.0%	-5.2%
Counsellor Therapists	21	+8	-1	+2	+1	+1	+0	+56.8%	-2.3%	+9.9%	+6.5%	+6.5%	+0.4%
Dental Hygienists	7	+0	-0	-0	-0	-0	+0	+5.0%	-4.3%	-2.8%	-2.8%	-2.8%	+0.6%
Environmental Health Officers	0							-100.0%	-100.0%	-100.0%	#DIV/0	#DIV/0	#DIV/0
Other Health & Social Care	1	-0	-0	-0	+0	+0	+0	-7.4%	-15.3%	-7.4%	+11.1%	+11.1%	+19.0%
Play Therapists/ Specialists	6	+2	+2	+2	+1	+1	-0	+55.3%	+42.5%	+43.6%	+27.4%	+27.4%	-0.3%
H&SC, Other	35	+10	+1	+3	+2	+2	+0	+40.8%	+2.3%	+11.0%	+7.7%	+7.7%	+0.8%
Health & Social Care Professionals	654	+103	+13	-19	-26	-26	+2	+18.8%	+2.1%	-2.9%	-3.9%	-3.9%	+0.3%
Executive Management	8	+4	+1	-1	-1	-1		+100.0%	+14.3%	-11.1%	-11.1%	-11.1%	
Senior Management (VIII & GM)	37	+15	+13	+9	+4	+4	-0	+67.5%	+52.3%	+32.6%	+12.3%	+12.3%	-0.8%
Management (VIII & above)	45	+19	+14	+8	+3	+3	-0	+72.5%	+43.9%	+22.0%	+7.3%	+7.3%	-0.7%
Administrative/ Supervisory (V to VII)	126	+37	+23	+8	+6	+6	+2	+41.8%	+22.7%	+6.7%	+5.1%	+5.1%	+1.5%
Clerical (III & IV)	324	+19	+5	+19	+5	+5	-2	+6.4%	+1.6%	+6.3%	+1.5%	+1.5%	-0.7%
Management & Administrative	496	+76	+42	+35	+14	+14	-1	+18.0%	+9.3%	+7.7%	+2.9%	+2.9%	-0.2%
Catering	33	+4	+2	-3	-2	-2	+1	+13.0%	+5.1%	-8.5%	-5.2%	-5.2%	+2.4%
Household Services	251	-64	-54	-30	-11	-11	-2	-20.3%	-17.7%	-10.8%	-4.2%	-4.2%	-0.7%
Other Support	33	-4	-1	-1	-2	-2	-2	-11.2%	-2.7%	-3.0%	-5.1%	-5.1%	-6.4%
Portering	9	-4	-5	+1	+1	+1	+0	-28.3%	-35.7%	+8.0%	+7.9%	+7.9%	+2.3%
Support	327	-68	-58	-34	-14	-14	-3	-17.2%	-15.1%	-9.4%	-4.1%	-4.1%	-0.9%
Maintenance	36	-0	+0	+2	-0	-0	-0	-1.0%	+0.1%	+5.2%	-0.5%	-0.5%	-0.8%
Technical Services	3	+1						+50.0%					

May 2020 (Dec 2015 figure: 4,640)	WTE May 2020	WTE change since Dec 15	WTE change since Dec 16	WTE change since Dec 17	WTE change since Dec 18	WTE change since Dec 18	WTE change since Apr 20	% change since Dec 15	% change since Dec 16	% change since Dec 17	% change since Dec 18	% change since Dec 18	% change since Apr 20
Overall	5,225	+584	+499	+144	-6	-6	-55	+12.6%	+10.6%	+2.8%	-0.1%	-0.1%	-1.0%
Maintenance/ Technical	39	+1	+0	+2	-0	-0	-0	+1.6%	+0.1%	+4.8%	-0.5%	-0.5%	-0.8%
General Support	367	-67	-58	-32	-14	-14	-3	-15.5%	-13.7%	-8.0%	-3.7%	-3.7%	-0.9%
HCA, Nurse's Aide, etc.	1,178	+264	+191	+140	+100	+100	+30	+28.8%	+19.3%	+13.5%	+9.3%	+9.3%	+2.6%
Health & Social Care Assistants	5	+4	+4	+4	-6	-6	-0	+392.0%	+392.0%	+440.7%	-56.9%	-56.9%	-3.9%
Health Care Assistants	1,183	+268	+195	+144	+94	+94	+30	+29.2%	+19.7%	+13.9%	+8.6%	+8.6%	+2.6%
Care, other	230	+52	+42	+34	+22	+22	+1	+29.5%	+22.6%	+17.5%	+10.5%	+10.5%	+0.4%
Home Help	554	+78	+201	-73	-141	-141	-80	+16.5%	+57.1%	-11.7%	-20.3%	-20.3%	-12.7%
Patient & Client Care	1,967	+399	+439	+105	-25	-25	-49	+25.4%	+28.7%	+5.7%	-1.3%	-1.3%	-2.4%

Source: Health Service Personnel Census

Longitudinal Employment Levels by Care Group - Oct 2013 to May 2020

Community Health & Wellbeing

May 2020 (figure:)	WTE May 2020	WTE change since	WTE change since	WTE change since	WTE change since	WTE change since	WTE change since Apr 20	% change since	% change since	% change since	% change since	% change since	% change since Apr 20
Overall	17	+17	+17	+17	+17	+17	+3	-100.0%	-100.0%	-100.0%	-100.0%	-100.0%	+22.9%
Health & Social Care Professionals	3	+3	+3	+3	+3	+3	+0	-1.0%	-1.0%	-1.0%	-1.0%	-1.0%	+0.0%
Therapy Professions	3	+3	+3	+3	+3	+3	+0	-1.0%	-1.0%	-1.0%	-1.0%	-1.0%	+0.0%
Management & Administrative	6	+6	+6	+6	+6	+6	+2	-1.0%	-1.0%	-1.0%	-1.0%	-1.0%	+0.5%
Management (VIII & above)	1	+1	+1	+1	+1	+1		-1.0%	-1.0%	-1.0%	-1.0%	-1.0%	+0.0%
Administrative/ Supervisory (V to VII)	2	+2	+2	+2	+2	+2	+1	-1.0%	-1.0%	-1.0%	-1.0%	-1.0%	+1.2%
Clerical (III & IV)	3	+3	+3	+3	+3	+3	+1	-1.0%	-1.0%	-1.0%	-1.0%	-1.0%	+0.5%
Patient & Client Care	8	+8	+8	+8	+8	+8	+1	-1.0%	-1.0%	-1.0%	-1.0%	-1.0%	+0.1%
Care, other	8	+8	+8	+8	+8	+8	+1	-1.0%	-1.0%	-1.0%	-1.0%	-1.0%	+0.1%

Source: Health Service Personnel Census

Mental Health

May 2020 (Dec 2015 figure: 1,186)	WTE May 2020	WTE change since Dec 15	WTE change since Dec 16	WTE change since Dec 17	WTE change since Dec 18	WTE change since Dec 18	WTE change since Apr 20	% change since Dec 15	% change since Dec 16	% change since Dec 17	% change since Dec 18	% change since Dec 18	% change since Apr 20
Overall	1,173	-13	-48	-24	-12	-12	-27	-1.1%	-3.9%	-2.0%	-1.0%	-1.0%	-2.2%
Medical & Dental	63	-3	-5	-8	-3	-3	-2	-0.0%	-0.1%	-0.1%	-0.0%	-0.0%	-0.0%
Consultants	26	-3	-4	-1	+2	+2	+0	-0.1%	-0.1%	-0.0%	+0.1%	+0.1%	+0.0%
Registrars	12	+4	+6	+7	+3	+3	-0	+0.5%	+1.0%	+1.3%	+0.3%	+0.3%	-0.0%
SHO/ Interns	23	-4	-7	-12	-8	-8	-2	-0.1%	-0.2%	-0.3%	-0.2%	-0.2%	-0.1%
Medical/ Dental, other	2			-1				+0.0%	+0.0%	-0.3%	+0.0%	+0.0%	+0.0%
Nursing & Midwifery	633	-2	-14	-11	-7	-7	-23	-0.0%	-0.0%	-0.0%	-0.0%	-0.0%	-0.0%
Nurse/ Midwife Manager	159	+1	-4	-0	-4	-4	-7	+0.0%	-0.0%	-0.0%	-0.0%	-0.0%	-0.0%
Nurse/ Midwife Specialist & AN/MP	49	+11	+6	+5	-1	-1	+0	+0.3%	+0.2%	+0.1%	-0.0%	-0.0%	+0.0%
Staff Nurse/ Staff Midwife	401	-36	-35	-35	-22	-22	-13	-0.1%	-0.1%	-0.1%	-0.1%	-0.1%	-0.0%
Nursing/ Midwifery Student	20	+20	+18	+19	+20	+20	-3	+39.0%	+9.0%	+12.3%	+39.0%	+39.0%	-0.1%
Nursing/ Midwifery other	4	+3	+1	-0				+2.6%	+0.4%	-0.0%	+0.0%	+0.0%	+0.0%
Health & Social Care Professionals	104	-7	-17	-15	-7	-7	+2	-0.1%	-0.1%	-0.1%	-0.1%	-0.1%	+0.0%
Therapy Professions	41	+2	-6	-7	-3	-3	+1	+0.0%	-0.1%	-0.2%	-0.1%	-0.1%	+0.0%
Social Care	5							+0.0%	+0.0%	+0.0%	+0.0%	+0.0%	+0.0%
Social Workers	27	-6	-6	-5	-1	-1	-0	-0.2%	-0.2%	-0.2%	-0.0%	-0.0%	-0.0%
Psychologists	22	-2	-4	-2	-2	-2	+1	-0.1%	-0.2%	-0.1%	-0.1%	-0.1%	+0.1%
H&SC, Other	10	-1	-1	-1	-1	-1	+0	-0.1%	-0.1%	-0.1%	-0.1%	-0.1%	+0.0%
Management & Administrative	94	-4	-4	+6	+1	+1	+0	-0.0%	-0.0%	+0.1%	+0.0%	+0.0%	+0.0%
Management (VIII & above)	5	+3	+2	+3	+2	+2		+1.5%	+0.7%	+1.5%	+0.7%	+0.7%	+0.0%
Administrative/ Supervisory (V to VII)	19	+2	+3	+1	+1	+1	+1	+0.1%	+0.2%	+0.1%	+0.0%	+0.0%	+0.0%
Clerical (III & IV)	70	-9	-10	+2	-2	-2	-1	-0.1%	-0.1%	+0.0%	-0.0%	-0.0%	-0.0%
General Support	194	-14	-17	+1	+6	+6	-4	-0.1%	-0.1%	+0.0%	+0.0%	+0.0%	-0.0%
Support	170	-14	-17	-1	+4	+4	-4	-0.1%	-0.1%	-0.0%	+0.0%	+0.0%	-0.0%
Maintenance/ Technical	24		-1	+1	+1	+1		+0.0%	-0.0%	+0.1%	+0.1%	+0.1%	+0.0%
Patient & Client Care	85	+18	+9	+4	-1	-1	-0	+0.3%	+0.1%	+0.0%	-0.0%	-0.0%	-0.0%
Health Care Assistants	73	+20	+11	+7	+2	+2	+0	+0.4%	+0.2%	+0.1%	+0.0%	+0.0%	+0.0%
Care, other	12	-2	-2	-3	-4	-4	-1	-0.1%	-0.1%	-0.2%	-0.2%	-0.2%	-0.1%

Source: Health Service Personnel Census

Primary Care

May 2020 (Dec 2015 figure: 845)	WTE May 2020	WTE change since Dec 15	WTE change since Dec 16	WTE change since Dec 17	WTE change since Dec 18	WTE change since Dec 18	WTE change since Apr 20	% change since Dec 15	% change since Dec 16	% change since Dec 17	% change since Dec 18	% change since Dec 18	% change since Apr 20
Overall	955	+110	+64	+36	-4	-4	+14	+13.0%	+7.1%	+3.9%	-0.4%	-0.4%	+1.5%
Medical & Dental	79	-0	+4	-3	-1	-1	-0	-0.0%	+0.1%	-0.0%	-0.0%	-0.0%	-0.0%
Consultants	3							+0.0%	+0.0%	+0.0%	+0.0%	+0.0%	+0.0%
Registrars	22	+1	+1	-3	+1	+1	-1	+0.1%	+0.1%	-0.1%	+0.1%	+0.1%	-0.0%
SHO/ Interns		-5	-4	-4	-4	-4		-1.0%	-1.0%	-1.0%	-1.0%	-1.0%	-1.0%
Medical/ Dental, other	54	+3	+7	+4	+2	+2	+0	+0.1%	+0.1%	+0.1%	+0.0%	+0.0%	+0.0%
Nursing & Midwifery	290	+45	+37	+36	+22	+22	+21	+0.2%	+0.1%	+0.1%	+0.1%	+0.1%	+0.1%
Nurse/ Midwife Manager	31	+11	+9	+9	+5	+5	+2	+0.5%	+0.4%	+0.4%	+0.2%	+0.2%	+0.1%
Nurse/ Midwife Specialist & AN/MP	7	+6	+4	+3	+2	+2	-0	+6.2%	+1.6%	+0.6%	+0.3%	+0.3%	-0.0%
Staff Nurse/ Staff Midwife	72	+9	+9	+4	+1	+1	+6	+0.1%	+0.2%	+0.1%	+0.0%	+0.0%	+0.1%
Public Health Nurse	161	+5	+1	+6	+2	+2	-1	+0.0%	+0.0%	+0.0%	+0.0%	+0.0%	-0.0%
Nursing/ Midwifery Student	19	+14	+12	+13	+12	+12	+14	+2.8%	+1.7%	+2.3%	+1.7%	+1.7%	+2.8%
Nursing/ Midwifery other	1	+1	+1	+1	+1	+1	+0	-1.0%	-1.0%	-1.0%	-1.0%	-1.0%	+0.1%
Health & Social Care Professionals	259	+26	-3	-7	-11	-11	+1	+0.1%	-0.0%	-0.0%	-0.0%	-0.0%	+0.0%
Therapy Professions	182	+5	-3	-10	-17	-17	+2	+0.0%	-0.0%	-0.1%	-0.1%	-0.1%	+0.0%
Health Science/ Diagnostics	7	+3	+2	+2	+3	+3	+2	+0.7%	+0.3%	+0.4%	+0.6%	+0.6%	+0.3%
Social Care	5	+3	+1	+1	+1	+1	+0	+2.6%	+0.2%	+0.4%	+0.2%	+0.2%	+0.0%
Social Workers	8	+5	+4	+0	+1	+1	-0	+1.7%	+0.8%	+0.0%	+0.2%	+0.2%	-0.0%
Psychologists	38	+2	-5	-3	-1	-1	-2	+0.0%	-0.1%	-0.1%	-0.0%	-0.0%	-0.1%
Pharmacy	1	-1	-1					-0.5%	-0.5%	+0.0%	+0.0%	+0.0%	+0.0%
H&SC, Other	18	+9	-0	+3	+2	+2	+0	+0.9%	-0.0%	+0.2%	+0.1%	+0.1%	+0.0%
Management & Administrative	235	+33	+19	+6	-4	-4	-4	+0.2%	+0.1%	+0.0%	-0.0%	-0.0%	-0.0%
Management (VIII & above)	23	+10	+6	+2	+0	+0	-1	+0.8%	+0.4%	+0.1%	+0.0%	+0.0%	-0.1%
Administrative/ Supervisory (V to VII)	51	+14	+6	-4	-5	-5	+1	+0.4%	+0.1%	-0.1%	-0.1%	-0.1%	+0.0%
Clerical (III & IV)	162	+8	+7	+8	+0	+0	-3	+0.1%	+0.0%	+0.1%	+0.0%	+0.0%	-0.0%
General Support	26	-1	-1	-2	-2	-2	-2	-0.0%	-0.0%	-0.1%	-0.1%	-0.1%	-0.1%
Support	26	-1	-1	-2	-2	-2	-2	-0.0%	-0.0%	-0.1%	-0.1%	-0.1%	-0.1%
Patient & Client Care	66	+7	+8	+6	-7	-7	-2	+0.1%	+0.1%	+0.1%	-0.1%	-0.1%	-0.0%
Health Care Assistants	5	+4	+4	+4	-7	-7	-1	+3.8%	+3.8%	+3.8%	-0.6%	-0.6%	-0.1%
Care, other	53	+0	+2	+3	-0	-0	-1	+0.0%	+0.0%	+0.1%	-0.0%	-0.0%	-0.0%
Home Help	8	+3	+2	-0	+1	+1	+0	+0.5%	+0.4%	-0.0%	+0.1%	+0.1%	+0.0%

Source: Health Service Personnel Census

Disabilities

May 2020 (Dec 2015 figure: 1,155)	WTE May 2020	WTE change since Dec 15	WTE change since Dec 16	WTE change since Dec 17	WTE change since Dec 18	WTE change since Dec 18	WTE change since Apr 20	% change since Dec 15	% change since Dec 16	% change since Dec 17	% change since Dec 18	% change since Dec 18	% change since Apr 20
Overall	1,485	+330	+213	+108	+76	+76	-8	+28.6%	+16.7%	+7.8%	+5.4%	+5.4%	-0.6%
Medical & Dental	1	-1	-1	-1	+0	+0		-0.4%	-0.4%	-0.4%	+0.9%	+0.9%	+0.0%
Consultants	1	-0	-0	-0	+1	+1		-0.3%	-0.2%	-0.2%	+2.1%	+2.1%	+0.0%
Medical/ Dental, other		-0	-0	-0	-0	-0		-1.0%	-1.0%	-1.0%	-1.0%	-1.0%	-1.0%
Nursing & Midwifery	253	+2	+10	+22	+23	+23	-0	+0.0%	+0.0%	+0.1%	+0.1%	+0.1%	-0.0%
Nurse/ Midwife Manager	65	-4	-5	+5	-1	-1	-3	-0.1%	-0.1%	+0.1%	-0.0%	-0.0%	-0.0%
Nurse/ Midwife Specialist & AN/MP	2	+1	+1					+1.0%	+1.0%	+0.0%	+0.0%	+0.0%	+0.0%
Staff Nurse/ Staff Midwife	166	-9	-0	+3	+9	+9	-4	-0.1%	-0.0%	+0.0%	+0.1%	+0.1%	-0.0%
Public Health Nurse	5	+0	+1	-1	-0	-0	+1	+0.1%	+0.2%	-0.1%	-0.1%	-0.1%	+0.1%
Nursing/ Midwifery Student	15	+14	+14	+15	+15	+15	+6	+10.8%	+9.1%	-1.0%	-1.0%	-1.0%	+0.6%
Health & Social Care Professionals	242	+73	+26	-7	-10	-10	-2	+0.4%	+0.1%	-0.0%	-0.0%	-0.0%	-0.0%
Therapy Professions	61	+31	+5	-2	+4	+4	+0	+1.1%	+0.1%	-0.0%	+0.1%	+0.1%	+0.0%
Social Care	138	+35	+17	-5	-15	-15	-2	+0.3%	+0.1%	-0.0%	-0.1%	-0.1%	-0.0%
Social Workers	23	+2	-0	-1	-1	-1	+0	+0.1%	-0.0%	-0.0%	-0.0%	-0.0%	+0.0%
Psychologists	13	+3	+3	-0	+1	+1	-0	+0.3%	+0.3%	-0.0%	+0.1%	+0.1%	-0.0%
Pharmacy		-0	-0	-0				-1.0%	-1.0%	-1.0%	-1.0%	-1.0%	-1.0%
H&SC, Other	7	+2	+2	+2	+1	+1	-0	+0.4%	+0.4%	+0.3%	+0.3%	+0.3%	-0.0%
Management & Administrative	112	+32	+19	+11	+7	+7	+1	+0.4%	+0.2%	+0.1%	+0.1%	+0.1%	+0.0%
Management (VIII & above)	13	+4	+4	+0	-1	-1	+1	+0.4%	+0.4%	+0.0%	-0.1%	-0.1%	+0.1%
Administrative/ Supervisory (V to VII)	40	+13	+8	+7	+6	+6	-1	+0.5%	+0.3%	+0.2%	+0.2%	+0.2%	-0.0%
Clerical (III & IV)	59	+16	+7	+4	+3	+3	+1	+0.4%	+0.1%	+0.1%	+0.0%	+0.0%	+0.0%
General Support	19	-18	-13	-9	-11	-11	+0	-0.5%	-0.4%	-0.3%	-0.4%	-0.4%	+0.0%
Support	12	-20	-15	-10	-9	-9	+0	-0.6%	-0.6%	-0.5%	-0.4%	-0.4%	+0.0%
Maintenance/ Technical	7	+2	+1	+1	-2	-2		+0.5%	+0.2%	+0.2%	-0.2%	-0.2%	+0.0%
Patient & Client Care	858	+242	+172	+91	+66	+66	-7	+0.4%	+0.3%	+0.1%	+0.1%	+0.1%	-0.0%
Health Care Assistants	669	+174	+118	+79	+58	+58	-5	+0.4%	+0.2%	+0.1%	+0.1%	+0.1%	-0.0%
Care, other	147	+46	+35	+27	+19	+19	+2	+0.4%	+0.3%	+0.2%	+0.2%	+0.2%	+0.0%
Home Help	42	+23	+19	-15	-11	-11	-4	+1.2%	+0.8%	-0.3%	-0.2%	-0.2%	-0.1%

Source: Health Service Personnel Census

Older People

May 2020 (Dec 2015 figure: 1,454)	WTE May 2020	WTE change since Dec 15	WTE change since Dec 16	WTE change since Dec 17	WTE change since Dec 18	WTE change since Dec 18	WTE change since Apr 20	% change since Dec 15	% change since Dec 16	% change since Dec 17	% change since Dec 18	% change since Dec 18	% change since Apr 20
Overall	1,594	+140	+254	+8	-84	-84	-37	+9.6%	+18.9%	+0.5%	-5.0%	-5.0%	-2.3%
Medical & Dental	9	-3	-2	-1	-1	-1	-0	-0.2%	-0.2%	-0.1%	-0.1%	-0.1%	-0.0%
Medical/ Dental, other	9	-3	-2	-1	-1	-1	-0	-0.2%	-0.2%	-0.1%	-0.1%	-0.1%	-0.0%
Nursing & Midwifery	412	+37	+34	+20	+11	+11	+1	+0.1%	+0.1%	+0.1%	+0.0%	+0.0%	+0.0%
Nurse/ Midwife Manager	85	+14	+5	+1	-6	-6	-1	+0.2%	+0.1%	+0.0%	-0.1%	-0.1%	-0.0%
Nurse/ Midwife Specialist & AN/MP	2	+1	+2	+1	-0	-0		+0.8%	-1.0%	+0.8%	-0.1%	-0.1%	+0.0%
Staff Nurse/ Staff Midwife	321	+21	+26	+32	+17	+17	+1	+0.1%	+0.1%	+0.1%	+0.1%	+0.1%	+0.0%
Public Health Nurse	4	+1	+1	+1	+1	+1		+0.3%	+0.3%	+0.3%	+0.3%	+0.3%	+0.0%
Nursing/ Midwifery Student				-14				-1.0%	-1.0%	-1.0%	-1.0%	-1.0%	-1.0%
Health & Social Care Professionals	46	+8	+4	+7	-1	-1	+1	+0.2%	+0.1%	+0.2%	-0.0%	-0.0%	+0.0%
Therapy Professions	41	+6	+6	+7	-1	-1	+1	+0.2%	+0.2%	+0.2%	-0.0%	-0.0%	+0.0%
Social Care		-1						-1.0%	-1.0%	-1.0%	-1.0%	-1.0%	-1.0%
Social Workers	4	+2	-2	-1	-1	-1	-0	+1.1%	-0.4%	-0.2%	-0.2%	-0.2%	-0.0%
Pharmacy	1	+1	+1	+1	+1	+1	-0	-1.0%	-1.0%	-1.0%	-1.0%	-1.0%	-0.1%
Management & Administrative	49	+9	+3	+7	+5	+5	+0	+0.2%	+0.1%	+0.2%	+0.1%	+0.1%	+0.0%
Management (VIII & above)	4	+1	+1	+2	+1	+1		+0.5%	+0.4%	+1.1%	+0.4%	+0.4%	+0.0%
Administrative/ Supervisory (V to VII)	14	+6	+3	+2	+3	+3		+0.7%	+0.3%	+0.2%	+0.3%	+0.3%	+0.0%
Clerical (III & IV)	31	+2	-1	+3	+1	+1	+0	+0.1%	-0.0%	+0.1%	+0.0%	+0.0%	+0.0%
General Support	128	-34	-27	-22	-7	-7	+3	-0.2%	-0.2%	-0.1%	-0.1%	-0.1%	+0.0%
Support	120	-33	-26	-21	-7	-7	+3	-0.2%	-0.2%	-0.1%	-0.1%	-0.1%	+0.0%
Maintenance/ Technical	8	-2	-1	-1	+0	+0	-0	-0.2%	-0.1%	-0.1%	+0.0%	+0.0%	-0.0%
Patient & Client Care	951	+124	+242	-3	-91	-91	-42	+0.1%	+0.3%	-0.0%	-0.1%	-0.1%	-0.0%
Health Care Assistants	436	+70	+62	+54	+41	+41	+35	+0.2%	+0.2%	+0.1%	+0.1%	+0.1%	+0.1%
Care, other	11	+1	+0	+1	-1	-1	+0	+0.1%	+0.0%	+0.1%	-0.1%	-0.1%	+0.0%
Home Help	504	+53	+180	-58	-130	-130	-77	+0.1%	+0.6%	-0.1%	-0.2%	-0.2%	-0.1%

Source: Health Service Personnel Census