

CHO 5 Employment Report: September 2022

Employment by Staff Group

Sep 2022	WTE Dec 2019	WTE Dec 2020	WTE Aug 2022	WTE Sep 2022	WTE change since Aug 22	WTE change since Dec 20	% change since Dec 20	WTE change since Dec 19	% change since Dec 19	No. Sep 2022
Overall	5,282	5,477	5,787	5,784	-3	+307	5.6 %	+502	9.5 %	6,839
Consultants	30	29	36	37	+1	+8	26.7 %	+7	22.1 %	39
Registrars	28	30	43	43	+0	+13	44.1 %	+15	53.0 %	43
SHO/ Interns	38	38	32	31	-2	-7	-18.7 %	-7	-18.6 %	32
Medical/ Dental, other	66	71	72	73	+1	+1	2.1 %	+7	10.5 %	100
Medical & Dental	162	168	183	184	+0	+15	9.1 %	+21	13.2 %	214
Nurse/ Midwife Manager	338	365	377	369	-8	+4	1.2 %	+31	9.2 %	393
Nurse/ Midwife Specialist & AN/MP	52	78	94	96	+3	+18	23.5 %	+44	85.5 %	103
Staff Nurse/ Staff Midwife	967	972	978	973	-5	+1	0.1 %	+6	0.6 %	1,126
Public Health Nurse	174	176	159	159	+0	-17	-9.5 %	-15	-8.6 %	197
Pre-registration Nurse/ Midwife Intern	4		26	10	-16	+10	-100.00 %	+7	185.7 %	20
Pre-registration Nurse Intern (COVID-19)		14				-14	-100.00 %		-100.0 %	
Post-registration Nurse/ Midwife Student	5	3	3	5	+2	+1	35.14 %	-1	-10.0 %	6
Nursing/ Midwifery awaiting registration	4			17	+17	+17	-100.00 %	+13	330.2 %	33
Nursing/ Midwifery Student	12	17	29	31	+2	+14	79.7 %	+19	151.4 %	59
Nursing/ Midwifery other	4	4	4	4	-0	-0	-9.4 %	-0	-10.6 %	5
Nursing & Midwifery	1,548	1,612	1,642	1,632	-9	+21	1.3 %	+84	5.4 %	1,883
Therapy Professions	327	325	376	373	-3	+49	14.9 %	+46	14.1 %	439
Health Science/ Diagnostics	4	8	6	5	-1	-2	-32.6 %	+1	35.3 %	8
Social Care	164	153	167	169	+2	+16	10.5 %	+5	3.0 %	200
Social Workers	60	63	63	63	-0	-0	-0.5 %	+3	5.2 %	73
Psychologists	79	79	80	80	-1	+1	1.1 %	+1	0.9 %	97
Pharmacy	1	2	3	3	-0	+1	59.9 %	+2	215.0 %	4
H&SC, Other	35	32	49	48	-1	+16	51.5 %	+13	38.1 %	54
Health & Social Care Professionals	670	661	745	741	-4	+80	12.1 %	+72	10.7 %	875
Management (VIII & above)	43	47	71	70	-1	+23	49.2 %	+27	63.1 %	72
Administrative/ Supervisory (V to VII)	125	138	202	210	+8	+72	52.3 %	+85	68.2 %	221
Clerical (III & IV)	330	324	365	370	+6	+46	14.2 %	+40	12.2 %	428
Management & Administrative	498	510	638	651	+13	+141	27.7 %	+153	30.7 %	721
Support	332	300	281	283	+2	-17	-5.6 %	-49	-14.7 %	356
Maintenance/ Technical	39	31	28	28	+0	-3	-8.3 %	-10	-26.5 %	31
General Support	371	331	310	312	+2	-19	-5.9 %	-59	-15.9 %	387
Health Care Assistants	1,142	1,317	1,336	1,312	-24	-5	-0.4 %	+170	14.9 %	1,499
Home Help	669	646	651	661	+11	+15	2.3 %	-7	-1.1 %	906
Care, other	222	232	281	291	+10	+59	25.6 %	+69	31.1 %	354
Patient & Client Care	2,033	2,195	2,268	2,264	-4	+69	3.2 %	+232	11.4 %	2,759

CHO 5 Employment Report: September 2022

Community Health & Wellbeing

Sep 2022	WTE	WTE Dec 2020	WTE Aug 2022	WTE Sep 2022	WTE change since Aug 22	WTE change since Dec 20	% change since Dec 20	WTE change since	% change since	No. Sep 2022
Total Community Health & Wellbeing		14	30	29	-1	14.78	104.6 %	+29	-100.0 %	33

Mental Health

Sep 2022	WTE Dec 2019	WTE Dec 2020	WTE Aug 2022	WTE Sep 2022	WTE change since Aug 22	WTE change since Dec 20	% change since Dec 20	WTE change since Dec 19	% change since Dec 19	No. Sep 2022
Total Mental Health	1,178	1,188	1,223	1,221	-3	32.30	2.7 %	+43	3.7 %	1,366
Consultants	26	27	34	34	+0	6.53	23.8 %	+8	29.1 %	36
Registrars	10	9	13	13	+0	3.98	44.2 %	+3	29.8 %	13
SHO/ Interns	32	36	32	31	-2	-4.88	-13.6 %	-1	-3.4 %	32
Medical/ Dental, other	2	2	2	2		-0.05	-2.5 %	-0	-2.5 %	2
Medical & Dental	70	74	81	80	-1	5.58	7.5 %	+9	13.5 %	83
Nurse/ Midwife Manager	164	160	171	167	-4	7.13	4.5 %	+3	1.8 %	175
Nurse/ Midwife Specialist & AN/MP	42	54	58	58	+1	4.30	7.9 %	+16	38.5 %	61
Staff Nurse/ Staff Midwife	415	411	397	399	+2	-11.79	-2.9 %	-16	-3.9 %	448
Pre-registration Nurse/ Midwife Intern	4		18	2	-16	2.00	-100.0 %	-2	-42.9 %	4
Pre-registration Nurse Intern (COVID-19)		13				-12.93	-100.0 %		-100.0 %	
Nursing/ Midwifery awaiting registration	2			17	+17	16.52	-100.0 %	+15	726.0 %	33
Nursing/ Midwifery Student	6	13	18	19	+0	5.59	43.2 %	+13	236.7 %	37
Nursing/ Midwifery other	4	4	4	3	-0	-0.44	-12.3 %	-1	-13.7 %	4
Nursing & Midwifery	631	642	648	646	-2	4.79	0.7 %	+16	2.5 %	725
Therapy Professions	40	39	36	35	-1	-4.13	-10.7 %	-6	-14.0 %	39
Social Care	5	5	4	5	+0	-0.16	-3.4 %	-0	-3.4 %	5
Social Workers	27	28	27	26	-1	-1.89	-6.8 %	-1	-5.3 %	30
Psychologists	21	21	24	25	+1	3.58	16.8 %	+4	18.2 %	29
H&SC, Other	10	8	22	22	-0	13.88	176.6 %	+12	120.0 %	22
Health & Social Care Professionals	103	100	113	112	-1	11.28	11.2 %	+8	8.2 %	125
Management (VIII & above)	3	6	6	6		0.00	0.0 %	+3	100.0 %	6
Administrative/ Supervisory (V to VII)	20	20	23	24	+1	3.95	19.9 %	+4	18.5 %	25
Clerical (III & IV)	74	68	71	73	+2	4.14	6.1 %	-1	-1.7 %	79
Management & Administrative	97	94	100	102	+2	8.09	8.6 %	+5	5.6 %	110
Support	168	178	175	176	+1	-2.78	-1.6 %	+8	4.8 %	202
Maintenance/ Technical	23	20	15	15	+0	-4.52	-22.9 %	-8	-34.6 %	16
General Support	191	198	190	191	+1	-7.30	-3.7 %	-0	-0.0 %	218
Health Care Assistants	73	68	77	76	-2	8.20	12.1 %	+3	4.3 %	84
Care, other	13	12	14	14	-0	1.66	13.6 %	+1	7.9 %	21
Patient & Client Care	85	80	92	90	-2	9.86	12.4 %	+4	4.9 %	105

Primary Care

Sep 2022	WTE Dec 2019	WTE Dec 2020	WTE Aug 2022	WTE Sep 2022	WTE change since Aug 22	WTE change since Dec 20	% change since Dec 20	WTE change since Dec 19	% change since Dec 19	No. Sep 2022
Total Primary Care	952	1,061	1,113	1,120	+7	59.17	5.6 %	+168	17.7 %	1,377
Consultants	3	1	2	2		1.00	100.0 %	-1	-33.3 %	2
Registrars	18	21	30	30	+0	9.13	44.0 %	+12	65.9 %	30
SHO/ Interns	6	2				-2.25	-100.0 %	-6	-100.0 %	
Medical/ Dental, other	54	55	55	56	+1	1.70	3.1 %	+2	4.0 %	80
Medical & Dental	81	79	87	88	+1	9.58	12.2 %	+7	8.7 %	112
Nurse/ Midwife Manager	26	46	50	50	-0	3.31	7.1 %	+23	88.7 %	58
Nurse/ Midwife Specialist & AN/MP	6	18	25	24	-0	6.71	37.7 %	+19	330.4 %	28
Staff Nurse/ Staff Midwife	67	84	108	112	+4	27.73	33.0 %	+45	67.1 %	146
Public Health Nurse	165	167	147	148	+1	-19.27	-11.5 %	-17	-10.4 %	184
Post-registration Nurse/ Midwife Student	5	3	3	5	+2	1.17	35.1 %	-1	-10.0 %	6
Nursing/ Midwifery Student	5	3	3	5	+2	1.17	35.1 %	-1	-10.0 %	6
Nursing/ Midwifery other	1	1				-0.80	-100.0 %	-1	-100.0 %	
Nursing & Midwifery	270	320	333	339	+6	18.85	5.9 %	+69	25.4 %	422
Therapy Professions	183	186	239	243	+3	56.70	30.5 %	+59	32.2 %	282
Health Science/ Diagnostics	4	8	6	5	-1	-2.49	-32.6 %	+1	35.3 %	8
Social Care	5	5	4	6	+1	0.50	9.8 %	+0	7.1 %	7
Social Workers	8	7	4	4	+0	-2.49	-36.1 %	-4	-45.9 %	6
Psychologists	44	38	34	33	-0	-4.90	-12.8 %	-10	-23.6 %	42
Pharmacy	1	1	0	0		-0.62	-62.0 %	-1	-62.0 %	1
H&SC, Other	18	19	18	18	+0	-0.27	-1.4 %	+0	1.2 %	21
Health & Social Care Professionals	264	264	306	310	+4	46.43	17.6 %	+46	17.6 %	367
Management (VIII & above)	25	24	18	18	-0	-5.85	-24.9 %	-8	-30.2 %	18
Administrative/ Supervisory (V to VII)	52	59	65	64	-2	5.05	8.6 %	+12	22.4 %	65
Clerical (III & IV)	164	161	154	158	+4	-2.61	-1.6 %	-6	-3.4 %	184
Management & Administrative	241	243	238	239	+2	-3.41	-1.4 %	-2	-0.6 %	267
Support	26	26	23	22	-0	-4.22	-15.9 %	-4	-14.1 %	52
General Support	26	26	23	22	-0	-4.22	-15.9 %	-4	-14.1 %	52
Health Care Assistants	8	70	55	51	-3	-18.39	-26.3 %	+43	542.9 %	58
Home Help	7	8	7	7	+0	-0.73	-9.5 %	-0	-2.8 %	19
Care, other	55	52	65	63	-1	11.06	21.2 %	+8	15.1 %	80
Patient & Client Care	70	130	126	122	-5	-8.06	-6.2 %	+52	73.5 %	157

Social Care

Sep 2022	WTE Dec 2019	WTE Dec 2020	WTE Aug 2022	WTE Sep 2022	WTE change since Aug 22	WTE change since Dec 20	% change since Dec 20	WTE change since Dec 19	% change since Dec 19	No. Sep 2022
Total Social Care	3,152	3,213	3,360	3,335	-25	121.78	3.8 %	+183	5.8 %	3,978
Consultants	1	1	1	1	+1	0.26	35.1 %	+0	5.3 %	1
Medical/ Dental, other	10	15	15	15		-0.16	-1.1 %	+5	48.5 %	18
Medical & Dental	11	16	15	16	+1	0.10	0.6 %	+5	44.7 %	19
Nurse/ Midwife Manager	147	158	155	151	-4	-7.07	-4.5 %	+4	2.6 %	159
Nurse/ Midwife Specialist & AN/MP	4	6	10	12	+2	6.31	105.3 %	+8	207.5 %	13
Staff Nurse/ Staff Midwife	485	476	473	462	-12	-14.76	-3.1 %	-23	-4.8 %	532
Public Health Nurse	9	9	12	11	-1	2.59	30.1 %	+2	22.8 %	13
<i>Pre-registration Nurse/ Midwife Intern</i>			8	8		8.00	-100.0 %	+8	-100.0 %	16
<i>Pre-registration Nurse Intern (COVID-19)</i>		1				-1.00	-100.0 %		-100.0 %	
<i>Nursing/ Midwifery awaiting registration</i>	2						-100.0 %	-2	-100.0 %	
Nursing/ Midwifery Student	2	1	8	8		7.00	700.0 %	+6	334.8 %	16
<i>Nursing Education/Clinical</i>			1	1		0.83	-100.0 %	+1	-100.0 %	1
Nursing/ Midwifery other			1	1		0.83	-100.0 %	+1	-100.0 %	1
Nursing & Midwifery	647	650	659	645	-14	-5.10	-0.8 %	-2	-0.3 %	734
Therapy Professions	104	97	99	94	-5	-3.03	-3.1 %	-9	-9.0 %	116
Social Care	154	143	158	159	+1	15.65	11.0 %	+5	3.0 %	188
Social Workers	24	28	31	23	-8	-5.52	-19.4 %	-1	-5.3 %	26
Psychologists	14	19	22	21	-1	2.19	11.6 %	+7	51.5 %	26
Pharmacy		1	1	1	-0	-0.02	-2.1 %	+1	-100.0 %	1
H&SC, Other	7	5	9	8	-1	2.86	53.1 %	+1	18.2 %	11
Health & Social Care Professionals	303	294	320	306	-14	12.13	4.1 %	+3	1.1 %	368
Management (VIII & above)	15	17	30	28	-1	11.90	71.9 %	+14	93.5 %	29
Administrative/ Supervisory (V to VII)	53	58	73	75	+2	17.52	30.4 %	+22	42.1 %	80
Clerical (III & IV)	93	93	124	124	-0	30.79	33.2 %	+31	33.3 %	145
Management & Administrative	160	167	227	227	+1	60.21	36.1 %	+67	41.7 %	254
Support	139	95	84	85	+1	-9.88	-10.4 %	-53	-38.4 %	102
Maintenance/ Technical	16	11	13	13	+0	1.93	17.0 %	-2	-14.6 %	15
General Support	154	107	97	99	+1	-7.95	-7.5 %	-55	-36.0 %	117
Health Care Assistants	1,062	1,180	1,204	1,183	-21	3.00	0.3 %	+121	11.4 %	1,355
Home Help	661	638	644	654	+10	15.91	2.5 %	-7	-1.1 %	887
Care, other	154	162	194	205	+11	43.48	26.9 %	+51	33.1 %	244
Patient & Client Care	1,877	1,980	2,042	2,042	+1	62.39	3.2 %	+165	8.8 %	2,486

CHO Operations

Sep 2022	WTE	WTE	WTE Aug 2022	WTE Sep 2022	WTE change since Aug 22	WTE change since	% change since	WTE change since	% change since	No. Sep 2022
Total CHO Operations			61	79	+18	79.23	-100.0 %	+79	-100.0 %	85
<i>Director Nursing/Midwifery, Assistant</i>			1	1		1.00	-100.0 %	+1	-100.0 %	1
Nurse/ Midwife Manager			1	1		1.00	-100.0 %	+1	-100.0 %	1
<i>Clinical Nurse/ Midwife Specialist</i>			1	1		1.00	-100.0 %	+1	-100.0 %	1
Nurse/ Midwife Specialist & AN/MP			1	1		1.00	-100.0 %	+1	-100.0 %	1
Nursing & Midwifery			2	2		2.00	-100.0 %	+2	-100.0 %	2
<i>Social Workers</i>			2	10	+8	9.59	-100.0 %	+10	-100.0 %	11
Social Workers			2	10	+8	9.59	-100.0 %	+10	-100.0 %	11
<i>Pharmacists</i>			2	2	-0	1.82	-100.0 %	+2	-100.0 %	2
Pharmacy			2	2	-0	1.82	-100.0 %	+2	-100.0 %	2
Health & Social Care Professionals			4	11	+8	11.41	-100.0 %	+11	-100.0 %	13
<i>Executive Management</i>			4	4		4.00	-100.0 %	+4	-100.0 %	4
<i>Senior Management (VIII & GM)</i>			11	12	+1	11.77	-100.0 %	+12	-100.0 %	12
Management (VIII & above)			15	16	+1	15.77	-100.0 %	+16	-100.0 %	16
<i>Middle Management (V-VII)</i>			29	35	+6	35.45	-100.0 %	+35	-100.0 %	38
Administrative/ Supervisory (V to VII)			29	35	+6	35.45	-100.0 %	+35	-100.0 %	38
<i>General Administrative (III & IV)</i>			11	13	+2	12.60	-100.0 %	+13	-100.0 %	14
Clerical (III & IV)			11	13	+2	12.60	-100.0 %	+13	-100.0 %	14
Management & Administrative			55	64	+9	63.82	-100.0 %	+64	-100.0 %	68
<i>Health Care Assistant/ Care Assistant</i>				2	+2	2.00	-100.0 %	+2	-100.0 %	2
Health Care Assistants				2	+2	2.00	-100.0 %	+2	-100.0 %	2
Patient & Client Care				2	+2	2.00	-100.0 %	+2	-100.0 %	2

CHO 5 Employment Report: September 2022

Disabilities

Sep 2022	WTE Dec 2019	WTE Dec 2020	WTE Aug 2022	WTE Sep 2022	WTE change since Aug 22	WTE change since Dec 20	% change since Dec 20	WTE change since Dec 19	% change since Dec 19	No. Sep 2022
Total Disabilities	1,505	1,563	1,687	1,665	-21	+102	6.5 %	+160	10.6 %	1,976
Consultants	1	1	1	1	+1	+0	35.1 %	+0	5.3 %	1
Medical & Dental	1	1	1	1	+1	+0	35.1 %	+0	5.3 %	1
Nurse/ Midwife Manager	66	70	75	74	-1	+4	6.4 %	+9	13.4 %	77
Nurse/ Midwife Specialist & AN/MP	2	2	4	3	-1	+1	36.4 %	+1	48.0 %	3
Staff Nurse/ Staff Midwife	170	168	162	156	-7	-13	-7.5 %	-14	-8.5 %	175
Public Health Nurse	5	6	10	10	+0	+4	72.5 %	+5	91.9 %	12
<i>Nursing/ Midwifery awaiting registration</i>	2						-100.0 %	-2	-100.0 %	
<i>Pre-registration Nurse Intern (COVID-19)</i>		1				-1	-100.0 %		-100.0 %	
<i>Pre-registration Nurse/ Midwife Intern</i>			8	8		+8	-100.0 %	+8	-100.0 %	16
Nursing/ Midwifery Student	2	1	8	8		+7	700.0 %	+6	334.8 %	16
<i>Nursing Education/Clinical</i>			1	1		+1	-100.0 %	+1	-100.0 %	1
Nursing/ Midwifery other			1	1		+1	-100.0 %	+1	-100.0 %	1
Nursing & Midwifery	245	247	260	252	-8	+5	1.9 %	+7	2.9 %	284
Therapy Professions	63	65	68	64	-4	-1	-1.5 %	+1	1.8 %	79
Social Care	154	143	158	159	+1	+16	11.0 %	+5	3.0 %	188
Social Workers	21	24	23	19	-3	-5	-21.5 %	-2	-9.5 %	21
Psychologists	14	19	21	20	-0	+1	6.1 %	+6	44.2 %	24
H&SC, Other	7	5	7	6	-1	+1	18.2 %	-1	-8.7 %	9
Health & Social Care Professionals	259	256	276	268	-8	+12	4.5 %	+9	3.6 %	321
Management (VIII & above)	11	13	19	17	-1	+5	37.0 %	+7	60.3 %	18
Administrative/ Supervisory (V to VII)	39	41	58	60	+2	+19	47.1 %	+21	54.1 %	64
Clerical (III & IV)	61	62	71	71	+0	+10	15.7 %	+11	17.9 %	87
Management & Administrative	110	115	148	149	+0	+34	29.2 %	+38	34.8 %	169
Support	15	12	8	8	+0	-4	-30.1 %	-7	-45.4 %	12
Maintenance/ Technical	7	7	9	9		+2	25.4 %	+2	25.4 %	10
General Support	23	19	17	18	+0	-2	-9.0 %	-5	-22.4 %	22
Health Care Assistants	671	732	779	762	-17	+30	4.1 %	+91	13.5 %	879
Home Help	53	40	31	31	-0	-9	-23.0 %	-23	-42.8 %	78
Care, other	144	153	175	186	+11	+33	21.4 %	+42	29.3 %	222
Patient & Client Care	868	924	984	978	-6	+54	5.8 %	+110	12.7 %	1,179

Older People

Sep 2022	WTE Dec 2019	WTE Dec 2020	WTE Aug 2022	WTE Sep 2022	WTE change since Aug 22	WTE change since Dec 20	% change since Dec 20	WTE change since Dec 19	% change since Dec 19	No. Sep 2022
Total Older People	1,647	1,650	1,673	1,670	-4	+20	1.2 %	+23	1.4 %	2,002
Medical/ Dental, other	10	15	15	15		-0	-1.1 %	+5	48.5 %	18
Medical & Dental	10	15	15	15		-0	-1.1 %	+5	48.5 %	18
Nurse/ Midwife Manager	82	88	80	77	-3	-12	-13.0 %	-5	-6.1 %	82
Nurse/ Midwife Specialist & AN/MP	2	4	6	9	+3	+6	144.5 %	+7	367.0 %	10
Staff Nurse/ Staff Midwife	315	308	311	306	-5	-2	-0.7 %	-9	-2.8 %	357
Public Health Nurse	4	3	2	1	-1	-2	-63.2 %	-3	-73.9 %	1
Nursing & Midwifery	403	403	399	393	-6	-10	-2.4 %	-9	-2.3 %	450
Health & Social Care Professionals	44	38	44	38	-6	+1	1.4 %	-6	-13.4 %	47
Management (VIII & above)	4	4	11	11	-0	+7	188.5 %	+7	188.5 %	11
Administrative/ Supervisory (V to VII)	14	17	15	15	+1	-2	-9.7 %	+1	9.1 %	16
Clerical (III & IV)	32	31	53	52	-0	+21	67.8 %	+20	62.4 %	58
Management & Administrative	50	52	78	79	+0	+27	51.3 %	+29	57.0 %	85
Support	123	83	76	77	+1	-6	-7.5 %	-46	-37.5 %	90
Maintenance/ Technical	8	4	4	4	+0	+0	1.7 %	-4	-50.2 %	5
General Support	131	87	80	81	+1	-6	-7.1 %	-50	-38.3 %	95
Health Care Assistants	391	448	425	421	-4	-27	-6.1 %	+30	7.8 %	476
Home Help	608	599	613	624	+11	+25	4.2 %	+16	2.6 %	809
Care, other	10	9	19	19	+0	+11	125.9 %	+9	85.0 %	22
Patient & Client Care	1,009	1,056	1,057	1,064	+7	+9	0.8 %	+55	5.5 %	1,307

CHO 5 Employment by Administration (HSE / S38): September 2022

Sep 2022	WTE Dec 2019	WTE Dec 2020	WTE Aug 2022	WTE Sep 2022	WTE change since Aug 22	WTE change since Dec 20	% change since Dec 20	WTE change since Dec 19	% change since Dec 19	No. Sep 2022
Overall	5,282	5,477	5,787	5,784	-3	+307	5.6 %	+502	9.5 %	6,839
HSE	4,158	4,308	4,539	4,549	+10	+241	5.6 %	+391	9.4 %	5,391
Section 38 Voluntary Agencies	1,123	1,169	1,248	1,235	-13	+66	5.7 %	+111	9.9 %	1,448

HSE

Sep 2022	WTE Dec 2019	WTE Dec 2020	WTE Aug 2022	WTE Sep 2022	WTE change since Aug 22	WTE change since Dec 20	% change since Dec 20	WTE change since Dec 19	% change since Dec 19	No. Sep 2022
Overall	4,158	4,308	4,539	4,549	+10	+241	5.6 %	+391	9.4 %	5,391
Consultants	29	28	36	36	+0	+8	26.5 %	+7	22.7 %	38
Registrars	28	30	43	43	+0	+13	44.1 %	+15	53.0 %	43
SHO/ Interns	38	38	32	31	-2	-7	-18.7 %	-7	-18.6 %	32
Medical/ Dental, other	66	71	72	73	+1	+1	2.1 %	+7	10.5 %	100
Medical & Dental	161	168	183	183	-0	+15	9.0 %	+21	13.2 %	213
Nurse/ Midwife Manager	291	318	328	322	-6	+4	1.4 %	+31	10.5 %	344
Nurse/ Midwife Specialist & AN/MP	52	78	94	96	+3	+18	23.5 %	+44	85.5 %	103
Staff Nurse/ Staff Midwife	868	868	882	881	-1	+13	1.5 %	+13	1.5 %	1,019
Public Health Nurse	174	176	159	159	+0	-17	-9.5 %	-15	-8.6 %	197
Pre-registration Nurse/ Midwife Intern	4		21	5	-16	+5	-100.0 %	+1	28.6 %	9
Pre-registration Nurse Intern (COVID-19)		14				-14	-100.0 %		-100.0 %	
Post-registration Nurse/ Midwife Student	5	3	3	5	+2	+1	35.1 %	-1	-10.0 %	6
Nursing/ Midwifery awaiting registration	4			17	+17	+17	-100.0 %	+13	330.2 %	33
Nursing/ Midwifery Student	12	17	24	26	+2	+8	47.9 %	+13	106.8 %	48
Nursing/ Midwifery other	4	4	4	4	-0	-0	-9.4 %	-0	-10.6 %	5
Nursing & Midwifery	1,402	1,461	1,491	1,488	-3	+27	1.9 %	+86	6.1 %	1,716
Therapy Professions	325	324	373	370	-3	+47	14.4 %	+46	14.1 %	436
Health Science/ Diagnostics	4	8	6	5	-1	-2	-32.6 %	+1	35.3 %	8
Social Care	26	24	24	26	+2	+2	9.6 %	-0	-1.5 %	30
Social Workers	49	54	54	55	+1	+1	2.0 %	+7	13.4 %	64
Psychologists	74	74	76	74	-2	-0	-0.1 %	+0	0.2 %	91
Pharmacy	1	2	3	3	-0	+1	59.9 %	+2	215.0 %	4
H&SC, Other	28	27	42	42	+0	+15	58.3 %	+14	49.7 %	45
Health & Social Care Professionals	507	512	579	576	-3	+64	12.5 %	+69	13.7 %	678
Management (VIII & above)	36	39	60	60	-1	+21	52.8 %	+24	65.2 %	61
Administrative/ Supervisory (V to VII)	103	113	172	178	+6	+65	57.8 %	+76	73.8 %	187
Clerical (III & IV)	284	279	317	324	+7	+45	16.0 %	+40	14.0 %	372
Management & Administrative	423	431	549	562	+13	+131	30.3 %	+139	32.9 %	620
Support	319	291	274	276	+2	-15	-5.3 %	-44	-13.7 %	345
Maintenance/ Technical	31	24	19	19	+0	-4	-18.8 %	-12	-38.7 %	21
General Support	351	315	293	295	+2	-20	-6.3 %	-56	-16.0 %	366
Health Care Assistants	564	682	667	660	-7	-22	-3.2 %	+96	17.1 %	739
Home Help	669	646	651	661	+11	+15	2.3 %	-7	-1.1 %	906
Care, other	82	93	126	124	-2	+31	33.3 %	+42	51.0 %	153
Patient & Client Care	1,315	1,422	1,444	1,446	+2	+24	1.7 %	+131	10.0 %	1,798

Section 38 Voluntary Agencies

Sep 2022	WTE Dec 2019	WTE Dec 2020	WTE Aug 2022	WTE Sep 2022	WTE change since Aug 22	WTE change since Dec 20	% change since Dec 20	WTE change since Dec 19	% change since Dec 19	No. Sep 2022
Overall	1,123	1,169	1,248	1,235	-13	+66	5.7 %	+111	9.9 %	1,448
Consultants	1	1	1	1	+1	+0	35.1 %	+0	5.3 %	1
Medical & Dental	1	1	1	1	+1	+0	35.1 %	+0	5.3 %	1
Nurse/ Midwife Manager	47	47	49	47	-2		0.0 %	+0	0.7 %	49
Staff Nurse/ Staff Midwife	99	104	96	92	-4	-12	-11.7 %	-8	-7.9 %	107
Pre-registration Nurse/ Midwife Intern			6	6		+6	-100.0 %	+6	-100.0 %	11
Nursing/ Midwifery Student			6	6		+6	-100.0 %	+6	-100.0 %	11
Nursing & Midwifery	146	151	150	144	-6	-7	-4.4 %	-2	-1.4 %	167
Therapy Professions	3	1	3	3		+2	200.0 %	+1	20.0 %	3
Social Care	138	129	142	143	+0	+14	10.6 %	+5	3.8 %	170
Social Workers	11	9	9	8	-1	-1	-14.7 %	-3	-30.0 %	9
Psychologists	5	4	4	5	+1	+1	22.4 %	+1	11.3 %	6
H&SC, Other	7	5	7	6	-1	+1	18.2 %	-1	-8.7 %	9
Health & Social Care Professionals	163	149	166	165	-1	+16	10.9 %	+2	1.4 %	197
Management (VIII & above)	7	8	11	11	-1	+3	31.3 %	+4	52.2 %	11
Administrative/ Supervisory (V to VII)	22	25	30	32	+2	+7	27.4 %	+9	42.2 %	34
Clerical (III & IV)	46	45	48	47	-1	+2	3.4 %	+1	1.2 %	56
Management & Administrative	76	78	89	89	-0	+11	13.9 %	+14	18.0 %	101
Support	13	9	7	8	+0	-2	-17.2 %	-5	-39.6 %	11
Maintenance/ Technical	7	7	9	9	-0	+2	25.4 %	+2	25.4 %	10
General Support	20	17	17	17	+0	+0	1.7 %	-3	-15.7 %	21
Health Care Assistants	578	635	669	652	-18	+17	2.7 %	+74	12.7 %	760
Care, other	140	139	156	167	+11	+28	20.4 %	+27	19.4 %	201
Patient & Client Care	718	773	825	819	-6	+45	5.8 %	+101	14.0 %	961

CHO 5 Employment by S38 Agency: September 2022

Bros. of Charity, Waterford

Sep 2022	WTE Dec 2019	WTE Dec 2020	WTE Aug 2022	WTE Sep 2022	WTE change since Aug 22	WTE change since Dec 20	% change since Dec 20	WTE change since Dec 19	% change since Dec 19	No. Sep 2022
Overall	630	668	745	738	-7	+70	10.4 %	+108	17.1 %	881
Consultants	1	1	1	1	+1	+0	35.1 %	+0	5.3 %	1
Medical & Dental	1	1	1	1	+1	+0	35.1 %	+0	5.3 %	1
Clinical Nurse/ Midwife Manager	23	21	24	23	-1	-0	7.5 %	-0	-1.8 %	24
Director Nursing/Midwifery, Assistant	1	1	1	1			0.0 %		0.0 %	1
Nurse/ Midwife Manager	24	22	25	24	-1	+2	7.1 %	-0	-1.8 %	25
Staff Nurse [Intellectual Disability]	47	50	47	48	+0	+0	-4.5 %	+0	0.2 %	54
Staff Nurses [General/ Children's]	1					-1	-100.0 %	-1	-100.0 %	
Staff Nurse/ Staff Midwife	48	50	47	48	+0	-2	-4.5 %	-0	-0.9 %	54
Pre-registration Nurse/ Midwife Intern			3	3		+3	-100.0 %	+3	-100.0 %	6
Nursing/ Midwifery Student			3	3		+3	-100.0 %	+3	-100.0 %	6
Nursing & Midwifery	72	72	75	75	-0	+2	3.3 %	+2	3.0 %	85
Speech & Language Therapists	3	1	3	3		+1	200.0 %	+1	20.0 %	3
Therapy Professions	3	1	3	3		+2	200.0 %	+1	20.0 %	3
Social Care	66	70	83	82	-2	+11	15.9 %	+15	22.8 %	97
Social Workers	10	8	9	8	-1	+0	0.1 %	-2	-16.6 %	9
Psychologists	5	4	4	5	+1	+1	22.4 %	+1	11.3 %	6
Play Therapists/ Specialists	4	4	6	5	-1	+1	32.6 %	+1	20.0 %	6
H&SC, Other	4	4	6	5	-1	+1	32.6 %	+1	20.0 %	6
Health & Social Care Professionals	87	87	105	102	-3	+15	17.6 %	+15	17.7 %	121
Executive Management	1	1	1	1			0.0 %		0.0 %	1
Senior Management (VIII & GM)	4	4	4	4	-1	-0	-12.5 %	-0	-10.3 %	4
Management (VIII & above)	5	5	5	5	-1	-1	-10.0 %	-0	-8.2 %	5
Middle Management (V-VII)	13	16	22	25	+3	+12	56.0 %	+12	97.1 %	26
Administrative/ Supervisory (V to VII)	13	16	22	25	+3	+9	56.0 %	+12	97.1 %	26
General Administrative (III & IV)	26	27	29	28	-1	+2	4.0 %	+2	9.2 %	33
Clerical (III & IV)	26	27	29	28	-1	+1	4.0 %	+2	9.2 %	33
Management & Administrative	43	48	56	57	+2	+9	19.7 %	+14	32.8 %	64
Catering	0	0	0	0			0.0 %		0.0 %	1
Household Services	1	1	0	0		-0	-49.0 %	-0	-53.6 %	1
Other Support	1	1	1	1		-0	-7.2 %	-0	-5.9 %	1
Support	2	1	1	1		-0	-20.3 %	-0	-22.4 %	3
Maintenance	3	3	5	5		+2	67.8 %	+2	67.8 %	5
Maintenance/ Technical	3	3	5	5		+2	67.8 %	+2	67.8 %	5
General Support	4	4	6	6		+2	38.4 %	+2	37.1 %	8
Health Care Assistant/ Care Assistant	331	362	401	390	-11	+59	7.7 %	+59	17.9 %	476
Health Care Assistants	331	362	401	390	-11	+28	7.7 %	+59	17.9 %	476
Other Care Grades	5	6	6	6	+0	+1	-1.0 %	+1	22.4 %	7
Workshop Services	86	88	95	100	+5	+14	14.4 %	+14	16.3 %	119
Care, other	91	94	101	106	+5	+13	13.4 %	+15	16.6 %	126
Patient & Client Care	422	456	503	496	-6	+41	8.9 %	+74	17.6 %	602

Carriglea Cairde Services

Sep 2022	WTE Dec 2019	WTE Dec 2020	WTE Aug 2022	WTE Sep 2022	WTE change since Aug 22	WTE change since Dec 20	% change since Dec 20	WTE change since Dec 19	% change since Dec 19	No. Sep 2022
Overall	214	214	220	222	+1	+8	3.8 %	+7	3.5 %	266
Clinical Nurse/ Midwife Manager	11	12	12	12	+0	+1	0.3 %	+1	8.3 %	12
Director of Nursing/Midwifery	1	1	1	1			0.0 %		0.0 %	1
Nurse/ Midwife Manager	12	13	13	13	+0	+0	0.2 %	+1	7.6 %	13
Staff Nurse [Intellectual Disability]	17	18	18	14	-4	-3	-21.2 %	-3	-16.7 %	17
Staff Nurse [Psychiatric]	2	2	3	3	-0	+1	47.3 %	+1	36.7 %	4
Staff Nurses [General/ Children's]	7	7	5	5	-0	-1	-22.2 %	-1	-21.3 %	7
Staff Nurse/ Staff Midwife	26	27	27	23	-4	-4	-16.3 %	-4	-13.4 %	28
Pre-registration Nurse/ Midwife Intern			2	2		+2	-100.0 %	+2	-100.0 %	4
Nursing/ Midwifery Student			2	2		+2	-100.0 %	+2	-100.0 %	4
Nursing & Midwifery	38	40	41	37	-4	-2	-6.0 %	-1	-1.6 %	45
Social Care	36	30	30	30	-0	-0	-1.5 %	-6	-17.8 %	39
Health & Social Care Professionals	36	30	30	30	-0	-0	-1.5 %	-6	-17.8 %	39
Executive Management	1	1	1	1			0.0 %		0.0 %	1
Senior Management (VIII & GM)	1	1	1	1			0.0 %		0.0 %	1
Management (VIII & above)	2	2	2	2			0.0 %		0.0 %	2
Middle Management (V-VII)	3	3	3	3		+0	0.0 %	+0	3.2 %	3
Administrative/ Supervisory (V to VII)	3	3	3	3			0.0 %	+0	3.2 %	3
General Administrative (III & IV)	7	6	6	6	-0	-1	-9.2 %	-1	-15.5 %	7
Clerical (III & IV)	7	6	6	6	-0	-1	-9.2 %	-1	-15.5 %	7
Management & Administrative	12	11	11	11	-0	-1	-5.2 %	-1	-8.3 %	12
Catering	3	3	3	3	+0	+0	-17.3 %	+0	10.0 %	3
Household Services	2	3	3	3		+1	-0.3 %	+1	43.5 %	4
Support	5	6	5	6	+0	-1	-9.6 %	+1	24.6 %	7
Maintenance	1	1	2	2		+1	72.5 %	+1	72.5 %	3
Maintenance/ Technical	1	1	2	2		+1	72.5 %	+1	72.5 %	3
General Support	6	8	8	8	+0	+0	5.1 %	+2	35.6 %	10
Attendant/ Aide	2	2				-2	-100.0 %	-2	-100.0 %	
Health Care Assistant/ Care Assistant	72	78	76	75	-1	+3	-3.6 %	+3	4.3 %	85
Health Care Assistants	74	80	76	75	-1	-5	-5.7 %	+1	1.8 %	85
Workshop Services	49	45	54	61	+7	+12	35.0 %	+12	24.6 %	75
Care, other	49	45	54	61	+7	+16	35.0 %	+12	24.6 %	75
Patient & Client Care	123	125	130	136	+5	+11	9.0 %	+13	10.9 %	160

Sep 2022	WTE Dec 2019	WTE Dec 2020	WTE Aug 2022	WTE Sep 2022	WTE change since Aug 22	WTE change since Dec 20	% change since Dec 20	WTE change since Dec 19	% change since Dec 19	No. Sep 2022
Overall	279	287	282	275	-7	-12	-4.0 %	-4	-1.4 %	301
Clinical Nurse/ Midwife Manager	8	10	10	9	-1	+0	-12.0 %	+0	3.7 %	9
Director Nursing/Midwifery, Assistant	1	1	1	1		-0	-22.0 %	-0	-22.0 %	1
Director of Nursing/Midwifery	1	1	1	1	+0	-0	-22.0 %	-0	-22.0 %	1
Nurse/ Midwife Manager	10	12	12	10	-1	-2	-13.7 %	-0	-1.2 %	11
Staff Nurse [Intellectual Disability]	25	27	22	21	-1	-4	-20.3 %	-4	-15.7 %	25
Staff Nurse/ Staff Midwife	25	27	22	21	-1	-5	-20.3 %	-4	-15.7 %	25
Pre-registration Nurse/ Midwife Intern			1	1		+1	-100.0 %	+1	-100.0 %	1
Nursing/ Midwifery Student			1	1		+1	-100.0 %	+1	-100.0 %	1
Nursing & Midwifery	36	39	34	32	-2	-7	-17.0 %	-4	-10.1 %	37
Social Care	35	28	29	31	+2	-3	10.5 %	-3	-10.0 %	34
Social Care	35	28	29	31	+2	+3	10.5 %	-3	-10.0 %	34
Social Workers	2	1				-2	-100.0 %	-2	-100.0 %	
Social Workers	2	1				-1	-100.0 %	-2	-100.0 %	
Counsellor Therapists	1	0	0	0		-1	11.1 %	-1	-65.1 %	1
Other Health & Social Care			1	1		+1	-100.0 %	+1	-100.0 %	1
Play Therapists/ Specialists	2	2	1	1		-2	-61.3 %	-2	-72.6 %	1
H&SC, Other	3	2	2	2		-0	-11.3 %	-1	-47.3 %	3
Health & Social Care Professionals	40	32	31	33	+2	+1	4.4 %	-7	-16.9 %	37
Executive Management		1	1	1		+1	0.0 %	+1	-100.0 %	1
Senior Management (VIII & GM)			3	3		+3	-100.0 %	+3	-100.0 %	3
Management (VIII & above)		1	4	4		+3	300.0 %	+4	-100.0 %	4
Middle Management (V-VII)	7	6	5	4	-1	-3	-32.7 %	-3	-40.3 %	5
Administrative/ Supervisory (V to VII)	7	6	5	4	-1	-2	-32.7 %	-3	-40.3 %	5
General Administrative (III & IV)	14	12	14	13	-1	-1	8.9 %	-1	-5.4 %	16
Clerical (III & IV)	14	12	14	13	-1	+1	8.9 %	-1	-5.4 %	16
Management & Administrative	21	19	23	21	-2	+2	10.6 %	+0	2.1 %	25
Catering	1					-1	-100.0 %	-1	-100.0 %	
Household Services	6	1	1	1		-5	-48.2 %	-5	-86.9 %	1
Support	7	1	1	1		-1	-48.2 %	-6	-88.9 %	1
Maintenance	2	2	1	1		-1	-50.0 %	-1	-50.0 %	1
Technical Services	1	1	1	1		-0	-14.0 %	-0	-14.0 %	1
Maintenance/ Technical	3	3	2	2		-1	-38.0 %	-1	-38.0 %	2
General Support	10	4	3	3		-2	-41.2 %	-7	-72.9 %	3
Attendant/ Aide	1	1	2	2		+1	100.0 %	+1	100.0 %	2
Health Care Assistant/ Care Assistant	172	192	190	184	-6	+12	-3.9 %	+12	7.0 %	197
Health Care Assistants	173	193	192	186	-6	-7	-3.4 %	+13	7.5 %	199
Patient & Client Care	173	193	192	186	-6	-7	-3.4 %	+13	7.5 %	199

CHO 5 Employment by Grade Group & Staff Category: September 2022

Sep 2022	WTE Dec 2019	WTE Dec 2020	WTE Aug 2022	WTE Sep 2022	WTE change since Aug 22	WTE change since Dec 20	% change since Dec 20	WTE change since Dec 19	% change since Dec 19	No. Sep 2022
Overall	5,282	5,477	5,787	5,784	-3	+307	5.6 %	+502	9.5 %	6,839
Consultant Dentistry	1	1	1	1			0.0 %		0.0 %	1
Consultant Medicine			1	1		+1	-100.0 %	+1	-100.0 %	1
Consultant Psychiatry	27	28	34	35	+1	+7	24.1 %	+8	28.2 %	37
Consultant Surgery	2						-100.0 %	-2	-100.0 %	
Consultants	30	29	36	37	+1	+8	26.7 %	+7	22.1 %	39
Registrar	25	26	39	39	+0	+13	51.0 %	+14	55.4 %	39
Senior Registrar	3	4	4	4			0.0 %	+1	33.3 %	4
Registrars	28	30	43	43	+0	+13	44.1 %	+15	53.0 %	43
SHO/ Interns	38	38	32	31	-2	-7	-18.7 %	-7	-18.6 %	32
Dentists	36	37	36	36	-0	-1	-3.5 %	+0	0.4 %	46
Other Medical	30	34	36	37	+1	+3	8.2 %	+7	22.6 %	54
Medical/ Dental, other	66	71	72	73	+1	+1	2.1 %	+7	10.5 %	100
Medical & Dental	162	168	183	184	+0	+15	9.1 %	+21	13.2 %	214
Clinical Nurse/ Midwife Manager	271	286	290	283	-7	-3	-1.0 %	+12	4.3 %	300
Director Nursing/Midwifery, Assistant	45	55	64	64	-1	+9	15.6 %	+18	40.1 %	69
Director of Nursing/Midwifery	22	24	24	23	-1	-1	-5.3 %	+1	5.0 %	24
Nurse/ Midwife Manager	338	365	377	369	-8	+4	1.2 %	+31	9.2 %	393
Advanced Nurse/ Midwife Practitioner	3	7	12	13	+1	+7	98.3 %	+10	337.7 %	14
Clinical Nurse/ Midwife Specialist	49	71	81	83	+2	+12	16.6 %	+34	70.0 %	89
Nurse/ Midwife Specialist & AN/MP	52	78	94	96	+3	+18	23.5 %	+44	85.5 %	103
Staff Midwives		1	2	2	-0	+1	87.5 %	+2	-100.0 %	2
Staff Nurse [Intellectual Disability]	115	114	112	107	-5	-8	-6.7 %	-9	-7.5 %	120
Staff Nurse [Psychiatric]	421	420	405	408	+3	-12	-2.9 %	-13	-3.0 %	462
Staff Nurses [General/ Children's]	431	436	459	456	-3	+20	4.6 %	+25	5.9 %	542
Staff Nurse/ Staff Midwife	967	972	978	973	-5	+1	0.1 %	+6	0.6 %	1,126
Public Health Nurse	174	176	159	159	+0	-17	-9.5 %	-15	-8.6 %	197
Pre-registration Nurse/ Midwife Intern	4		26	10	-16	+10	-100.0 %	+7	185.7 %	20
Pre-registration Nurse Intern (COVID-19)		14				-14	-100.0 %		-100.0 %	
Post-registration Nurse/ Midwife Student	5	3	3	5	+2	+1	35.1 %	-1	-10.0 %	6
Nursing/ Midwifery awaiting registration	4			17	+17	+17	-100.0 %	+13	330.2 %	33
Nursing/ Midwifery Student	12	17	29	31	+2	+14	79.7 %	+19	151.4 %	59
Nursing Education/Clinical	4	4	4	4	-0	-0	-9.4 %	-0	-10.6 %	5
Nursing/ Midwifery other	4	4	4	4	-0	-0	-9.4 %	-0	-10.6 %	5
Nursing & Midwifery	1,548	1,612	1,642	1,632	-9	+21	1.3 %	+84	5.4 %	1,883
Dietitians	15	17	23	23	-0	+7	39.5 %	+8	55.1 %	26
Occupational Therapists	121	120	138	136	-2	+16	13.6 %	+15	12.8 %	158
Orthoptists	1	1	1	1			0.0 %	+1	100.0 %	1
Physiotherapists	88	91	102	101	-1	+10	11.3 %	+14	15.5 %	122
Podiatrists & Chiropodists	1	1	5	5	+0	+4	314.4 %	+4	252.4 %	6
Speech & Language Therapists	102	95	108	107	-1	+11	12.0 %	+5	4.7 %	126
Therapy Professions	327	325	376	373	-3	+49	14.9 %	+46	14.1 %	439
Audiology	4	8	6	5	-1	-2	-32.6 %	+1	35.3 %	8
Health Science/ Diagnostics	4	8	6	5	-1	-2	-32.6 %	+1	35.3 %	8
Social Care	164	153	167	169	+2	+16	10.5 %	+5	3.0 %	200
Social Workers	60	63	63	63	-0	-0	-0.5 %	+3	5.2 %	73
Psychologists	79	79	80	80	-1	+1	1.1 %	+1	0.9 %	97
Pharmacy	1	2	3	3	-0	+1	59.9 %	+2	215.0 %	4
Counsellor Therapists	22	20	34	34	-0	+14	69.9 %	+12	55.4 %	36
Dental Hygienists	6	7	7	7	+0	-0	-2.3 %	+1	15.7 %	8

Sep 2022	WTE Dec 2019	WTE Dec 2020	WTE Aug 2022	WTE Sep 2022	WTE change since Aug 22	WTE change since Dec 20	% change since Dec 20	WTE change since Dec 19	% change since Dec 19	No. Sep 2022
Overall	5,282	5,477	5,787	5,784	-3	+307	5.6 %	+502	9.5 %	6,839
Environmental Health Officers	1						-100.0 %	-1	-100.0 %	
Other Health & Social Care	1		3	3	-0	+3	-100.0 %	+2	192.0 %	3
Play Therapists/ Specialists	6	5	6	5	-1	+0	5.1 %	-1	-12.1 %	7
H&SC, Other	35	32	49	48	-1	+16	51.5 %	+13	38.1 %	54
Health & Social Care Professionals	670	661	745	741	-4	+80	12.1 %	+72	10.7 %	875
Executive Management	7	11	13	13		+2	16.8 %	+6	83.6 %	13
Senior Management (VIII & GM)	36	36	59	57	-1	+21	59.0 %	+21	59.1 %	59
Management (VIII & above)	43	47	71	70	-1	+23	49.2 %	+27	63.1 %	72
Administrative/ Supervisory (V to VII)	125	138	202	210	+8	+72	52.3 %	+85	68.2 %	221
Clerical (III & IV)	330	324	365	370	+6	+46	14.2 %	+40	12.2 %	428
Management & Administrative	498	510	638	651	+13	+141	27.7 %	+153	30.7 %	721
Catering	33	35	35	36	+1	+2	5.2 %	+4	10.6 %	41
Household Services	257	223	207	207	+0	-16	-7.1 %	-50	-19.5 %	243
Other Support	33	35	31	31	-0	-3	-9.2 %	-1	-4.0 %	63
Portering	9	8	8	8	+0	+0	3.5 %	-1	-8.2 %	9
Support	332	300	281	283	+2	-17	-5.6 %	-49	-14.7 %	356
Maintenance/ Technical	39	31	28	28	+0	-3	-8.3 %	-10	-26.5 %	31
General Support	371	331	310	312	+2	-19	-5.9 %	-59	-15.9 %	387
HCA (Student Nurse/Midwife COVID-19)		6				-6	-100.0 %		-100.0 %	
Health & Social Care Assistants	8	12	10	12	+2	-0	-0.5 %	+4	47.2 %	13
Attendant/ Aide	352	381	300	303	+3	-78	-20.4 %	-48	-13.8 %	335
Health Care Assistant/ Care Assistant	783	919	1,026	997	-29	+78	8.5 %	+214	27.4 %	1,151
Health Care Assistants	1,142	1,317	1,336	1,312	-24	-5	-0.4 %	+170	14.9 %	1,499
Home Help	669	646	651	661	+11	+15	2.3 %	-7	-1.1 %	906
Other Care Grades	64	74	89	86	-2	+13	17.0 %	+22	34.3 %	106
Pastoral Care	10	10	8	8	-0	-2	-21.6 %	-2	-23.6 %	11
Home Care Services	8	4	19	20	+1	+16	355.2 %	+12	137.3 %	23
Workshop Services	139	141	160	171	+11	+30	21.4 %	+32	22.7 %	208
Health Promotion		3	6	6	-0	+3	99.7 %	+6	-100.0 %	6
Care, other	222	232	281	291	+10	+59	25.6 %	+69	31.1 %	354
Patient & Client Care	2,033	2,195	2,268	2,264	-4	+69	3.2 %	+232	11.4 %	2,759

CHO 5 HSE Employment by Grade Group & Staff Category: September 2022

Sep 2022	WTE Dec 2019	WTE Dec 2020	WTE Aug 2022	WTE Sep 2022	WTE change since Aug 22	WTE change since Dec 20	% change since Dec 20	WTE change since Dec 19	% change since Dec 19	No. Sep 2022
Overall	4,158	4,308	4,539	4,549	+10	+241	5.6 %	+391	9.4 %	5,391
Consultant Dentistry	1	1	1	1			0.0 %		0.0 %	1
Consultant Medicine			1	1		+1	-100.0 %	+1	-100.0 %	1
Consultant Psychiatry	26	27	34	34	+0	+7	23.8 %	+8	29.1 %	36
Consultant Surgery	2						-100.0 %	-2	-100.0 %	
Consultants	29	28	36	36	+0	+8	26.5 %	+7	22.7 %	38
Registrar	25	26	39	39	+0	+13	51.0 %	+14	55.4 %	39
Senior Registrar	3	4	4	4			0.0 %	+1	33.3 %	4
Registrars	28	30	43	43	+0	+13	44.1 %	+15	53.0 %	43
SHO/ Interns	38	38	32	31	-2	-7	-18.7 %	-7	-18.6 %	32
Dentists	36	37	36	36	-0	-1	-3.5 %	+0	0.4 %	46
Other Medical	30	34	36	37	+1	+3	8.2 %	+7	22.6 %	54
Medical/ Dental, other	66	71	72	73	+1	+1	2.1 %	+7	10.5 %	100
Medical & Dental	161	168	183	183	-0	+15	9.0 %	+21	13.2 %	213
Clinical Nurse/ Midwife Manager	228	243	244	239	-5	-3	-1.4 %	+11	4.8 %	255
Director Nursing/Midwifery, Assistant	43	53	62	62	-1	+9	16.6 %	+18	42.5 %	67
Director of Nursing/Midwifery	20	22	22	21	-1	-1	-4.8 %	+1	6.6 %	22
Nurse/ Midwife Manager	291	318	328	322	-6	+4	1.4 %	+31	10.5 %	344
Advanced Nurse/ Midwife Practitioner	3	7	12	13	+1	+7	98.3 %	+10	337.7 %	14
Clinical Nurse/ Midwife Specialist	49	71	81	83	+2	+12	16.6 %	+34	70.0 %	89
Nurse/ Midwife Specialist & AN/MP	52	78	94	96	+3	+18	23.5 %	+44	85.5 %	103
Staff Midwives		1	2	2	-0	+1	87.5 %	+2	-100.0 %	2
Staff Nurse [Intellectual Disability]	26	20	25	24	-1	+4	19.3 %	-2	-7.7 %	24
Staff Nurse [Psychiatric]	419	418	402	405	+3	-13	-3.1 %	-14	-3.2 %	458
Staff Nurses [General/ Children's]	424	429	454	451	-3	+22	5.1 %	+27	6.4 %	535
Staff Nurse/ Staff Midwife	868	868	882	881	-1	+13	1.5 %	+13	1.5 %	1,019
Public Health Nurse	174	176	159	159	+0	-17	-9.5 %	-15	-8.6 %	197
Pre-registration Nurse/ Midwife Intern	4		21	5	-16	+5	-100.0 %	+1	28.6 %	9
Pre-registration Nurse Intern (COVID-19)		14				-14	-100.0 %		-100.0 %	
Post-registration Nurse/ Midwife Student	5	3	3	5	+2	+1	35.1 %	-1	-10.0 %	6
Nursing/ Midwifery awaiting registration	4			17	+17	+17	-100.0 %	+13	330.2 %	33
Nursing/ Midwifery Student	12	17	24	26	+2	+8	47.9 %	+13	106.8 %	48
Nursing/ Midwifery other	4	4	4	4	-0	-0	-9.4 %	-0	-10.6 %	5
Nursing & Midwifery	1,402	1,461	1,491	1,488	-3	+27	1.9 %	+86	6.1 %	1,716
Dietitians	15	17	23	23	-0	+7	39.5 %	+8	55.1 %	26
Occupational Therapists	121	120	138	136	-2	+16	13.6 %	+15	12.8 %	158
Orthoptists	1	1	1	1			0.0 %	+1	100.0 %	1
Physiotherapists	87	91	102	101	-1	+10	11.3 %	+14	15.5 %	122
Podiatrists & Chiropodists	1	1	5	5	+0	+4	314.4 %	+4	252.4 %	6
Speech & Language Therapists	100	94	105	104	-1	+9	10.0 %	+4	4.3 %	123
Therapy Professions	325	324	373	370	-3	+47	14.4 %	+46	14.1 %	436
Audiology	4	8	6	5	-1	-2	-32.6 %	+1	35.3 %	8
Health Science/ Diagnostics	4	8	6	5	-1	-2	-32.6 %	+1	35.3 %	8
Social Care	26	24	24	26	+2	+2	9.6 %	-0	-1.5 %	30
Social Workers	49	54	54	55	+1	+1	2.0 %	+7	13.4 %	64
Psychologists	74	74	76	74	-2	-0	-0.1 %	+0	0.2 %	91
Pharmacy	1	2	3	3	-0	+1	59.9 %	+2	215.0 %	4
Counsellor Therapists	21	19	33	33	-0	+14	70.7 %	+13	60.4 %	35
Dental Hygienists	6	7	7	7	+0	-0	-2.3 %	+1	15.7 %	8
Environmental Health Officers	1						-100.0 %	-1	-100.0 %	
Other Health & Social Care	1		2	2	-0	+2	-100.0 %	+1	113.6 %	2
H&SC, Other	28	27	42	42		+15	58.3 %	+14	49.7 %	45

Sep 2022	WTE Dec 2019	WTE Dec 2020	WTE Aug 2022	WTE Sep 2022	WTE change since Aug 22	WTE change since Dec 20	% change since Dec 20	WTE change since Dec 19	% change since Dec 19	No. Sep 2022
Overall	4,158	4,308	4,539	4,549	+10	+241	5.6 %	+391	9.4 %	5,391
Health & Social Care Professionals	507	512	579	576	-3	+64	12.5 %	+69	13.7 %	678
Executive Management	5	8	10	10		+2	23.1 %	+5	97.0 %	10
Senior Management (VIII & GM)	31	31	51	50	-1	+19	60.5 %	+19	60.1 %	51
Management (VIII & above)	36	39	60	60	-1	+21	52.8 %	+24	65.2 %	61
Administrative/ Supervisory (V to VII)	103	113	172	178	+6	+65	57.8 %	+76	73.8 %	187
Clerical (III & IV)	284	279	317	324	+7	+45	16.0 %	+40	14.0 %	372
Management & Administrative	423	431	549	562	+13	+131	30.3 %	+139	32.9 %	620
Catering	29	31	32	33	+1	+2	7.8 %	+4	14.6 %	37
Household Services	249	218	203	203	+0	-15	-6.8 %	-46	-18.5 %	237
Other Support	32	34	31	31	-0	-3	-9.2 %	-1	-3.9 %	62
Portering	9	8	8	8	+0	+0	3.5 %	-1	-8.2 %	9
Support	319	291	274	276	+2	-15	-5.3 %	-44	-13.7 %	345
Maintenance/ Technical	31	24	19	19	+0	-4	-18.8 %	-12	-38.7 %	21
General Support	351	315	293	295	+2	-20	-6.3 %	-56	-16.0 %	366
HCA (Student Nurse/Midwife COVID-19)		6				-6	-100.0 %		-100.0 %	
Health & Social Care Assistants	8	12	10	12	+2	-0	-0.5 %	+4	47.2 %	13
Attendant/ Aide	349	378	298	301	+3	-77	-20.3 %	-48	-13.6 %	333
Health Care Assistant/ Care Assistant	207	287	359	348	-11	+60	21.1 %	+140	67.6 %	393
Health Care Assistants	564	682	667	660	-7	-22	-3.2 %	+96	17.1 %	739
Home Help	669	646	651	661	+11	+15	2.3 %	-7	-1.1 %	906
Care, other	82	93	126	124	-2	+31	33.3 %	+42	51.0 %	153
Patient & Client Care	1,315	1,422	1,444	1,446	+2	+24	1.7 %	+131	10.0 %	1,798

Employment by WTE, Headcount, Gender, Full-Time /Part-Time etc.: Sep 2022

CHO 5	WTE	Headcount	WTE: no.	% Male	% female	Male WTE: no.	Female WTE: no.	% Total Perm	% Male Perm	% Female Perm	% Total Full Time	% Total Part Time	% Male FT	% Female FT
Overall	5,784	6,839	1.18	16.9%	83.1%	1.10	1.20	90.2%	85.5%	91.2%	59.5%	40.5%	77.0%	55.9%
Consultant Dentistry	1	1	1.00		100.0%		1.00	100.0%	100.0%	100.0%	100.0%	0.0%		100.0%
Consultant Medicine	1	1	1.00		100.0%		1.00	0.0%	0.0%	0.0%	100.0%	0.0%		100.0%
Consultant Psychiatry	35	37	1.06	67.6%	32.4%	1.04	1.11	64.9%	64.9%	58.3%	91.9%	8.1%	100.0%	75.0%
Consultants	37	39	1.06	64.1%	35.9%	1.04	1.09	64.1%	68.0%	57.1%	92.3%	7.7%	100.0%	78.6%
Registrar	39	39	1.00	46.2%	53.8%	1.00	1.01	0.0%	0.0%	0.0%	100.0%	0.0%	100.0%	100.0%
Senior Registrar	4	4	1.00	25.0%	75.0%	1.00	1.00	0.0%	0.0%	0.0%	100.0%	0.0%	100.0%	100.0%
Registrars	43	43	1.00	44.2%	55.8%	1.00	1.01	0.0%	0.0%	0.0%	100.0%	0.0%	100.0%	100.0%
Interns	2	2	1.00	50.0%	50.0%	1.00	1.00	0.0%	0.0%	0.0%	100.0%	0.0%	100.0%	100.0%
Senior House Officer	29	30	1.04	46.7%	53.3%	1.01	1.06	0.0%	0.0%	0.0%	93.3%	6.7%	100.0%	87.5%
SHO/ Interns	31	32	1.03	46.9%	53.1%	1.01	1.06	0.0%	0.0%	0.0%	93.8%	6.3%	100.0%	88.2%
Dentists	36	46	1.28	26.1%	73.9%	1.21	1.30	95.7%	95.7%	100.0%	43.5%	56.5%	58.3%	38.2%
Other Medical	37	54	1.47	40.7%	59.3%	1.64	1.37	66.7%	66.7%	78.1%	59.3%	40.7%	50.0%	65.6%
Medical/ Dental, other	73	100	1.37	34.0%	66.0%	1.45	1.33	80.0%	61.8%	89.4%	52.0%	48.0%	52.9%	51.5%
Medical & Dental	184	214	1.17	43.5%	56.5%	1.14	1.18	49.1%	40.9%	55.4%	75.2%	24.8%	82.8%	69.4%
Clinical Nurse/ Midwife Manager	283	300	1.06	21.0%	79.0%	1.04	1.07	100.0%	100.0%	100.0%	87.7%	12.3%	98.4%	84.8%
Director Nursing/Midwifery, Assistant	64	69	1.09	7.2%	92.8%	1.00	1.09	100.0%	100.0%	100.0%	78.3%	21.7%	80.0%	78.1%
Director of Nursing/Midwifery	23	24	1.06	4.2%	95.8%	1.00	1.07	95.8%	95.8%	95.7%	91.7%	8.3%	100.0%	91.3%
Nurse/ Midwife Manager	369	393	1.06	17.6%	82.4%	1.03	1.07	99.7%	100.0%	99.7%	86.3%	13.7%	97.1%	84.0%
Advanced Nurse/ Midwife Practitioner	13	14	1.07	7.1%	92.9%	1.00	1.07	100.0%	100.0%	100.0%	92.9%	7.1%	100.0%	92.3%
Clinical Nurse/ Midwife Specialist	83	89	1.07	13.5%	86.5%	1.00	1.08	100.0%	100.0%	100.0%	86.5%	13.5%	100.0%	84.4%
Nurse/ Midwife Specialist & AN/MP	96	103	1.07	12.6%	87.4%	1.00	1.08	100.0%	100.0%	100.0%	87.4%	12.6%	100.0%	85.6%
Staff Midwives	2	2	1.21		100.0%		1.21	100.0%	100.0%	100.0%	50.0%	50.0%		50.0%
Staff Nurse [Intellectual Disability]	107	120	1.12	10.8%	89.2%	1.07	1.13	95.0%	95.0%	94.4%	68.3%	31.7%	92.3%	65.4%
Staff Nurse [Psychiatric]	408	462	1.13	25.3%	74.7%	1.09	1.15	89.8%	89.8%	89.9%	81.0%	19.0%	88.0%	78.6%
Staff Nurses [General/ Children's]	456	542	1.19	10.7%	89.3%	1.05	1.21	97.6%	97.6%	97.5%	57.6%	42.4%	86.2%	54.1%
Staff Nurse/ Staff Midwife	973	1,126	1.16	16.7%	83.3%	1.07	1.18	94.1%	93.1%	94.3%	68.3%	31.7%	87.8%	64.4%
Public Health Nurse	159	197	1.24	2.0%	98.0%	1.01	1.24	100.0%	100.0%	100.0%	64.5%	35.5%	100.0%	63.7%
Pre-registration Nurse/ Midwife Intern	10	20	2.00	20.0%	80.0%	2.00	2.00	0.0%	0.0%	0.0%	80.0%	20.0%	75.0%	81.3%

Post-registration Nurse/ Midwife Student	5	6	1.33		100.0%		1.33	33.3%	33.3%	33.3%	100.0%	0.0%		100.0%
Nursing/ Midwifery awaiting registration	17	33	2.00	9.1%	90.9%	2.00	2.00	0.0%	0.0%	0.0%	100.0%	0.0%	100.0%	100.0%
Nursing/ Midwifery Student	31	59	1.90	11.9%	88.1%	2.00	1.89	3.4%	0.0%	3.8%	93.2%	6.8%	85.7%	94.2%
Nursing/ Midwifery other	4	5	1.26	20.0%	80.0%	1.75	1.18	100.0%	100.0%	100.0%	60.0%	40.0%	100.0%	50.0%
Nursing & Midwifery	1,632	1,883	1.15	15.0%	85.0%	1.07	1.17	93.4%	92.9%	93.5%	73.4%	26.6%	90.8%	70.4%
Dietitians	23	26	1.12	3.8%	96.2%	1.00	1.13	100.0%	100.0%	100.0%	84.6%	15.4%	100.0%	84.0%
Occupational Therapists	136	158	1.16	10.8%	89.2%	1.04	1.18	99.4%	99.4%	99.3%	76.6%	23.4%	94.1%	74.5%
Orthoptists	1	1	1.00	100.0%		1.00		100.0%	100.0%		100.0%	0.0%	100.0%	
Physiotherapists	101	122	1.21	24.6%	75.4%	1.09	1.25	99.2%	99.2%	98.9%	69.7%	30.3%	86.7%	64.1%
Podiatrists & Chiropodists	5	6	1.16		100.0%		1.16	100.0%	100.0%	100.0%	83.3%	16.7%		83.3%
Speech & Language Therapists	107	126	1.18	2.4%	97.6%	1.29	1.18	96.8%	96.8%	97.6%	78.6%	21.4%	66.7%	78.9%
Therapy Professions	373	439	1.18	11.8%	88.2%	1.08	1.19	98.6%	98.1%	98.7%	75.9%	24.1%	88.5%	74.2%
Audiology	5	8	1.56	12.5%	87.5%	1.00	1.69	87.5%	87.5%	85.7%	87.5%	12.5%	100.0%	85.7%
Health Science/ Diagnostics	5	8	1.56	12.5%	87.5%	1.00	1.69	87.5%	100.0%	85.7%	87.5%	12.5%	100.0%	85.7%
Social Care	169	200	1.19	17.5%	82.5%	1.15	1.19	94.5%	100.0%	93.3%	50.5%	49.5%	62.9%	47.9%
Social Workers	63	73	1.16	15.1%	84.9%	1.04	1.18	95.9%	100.0%	95.2%	80.8%	19.2%	100.0%	77.4%
Psychologists	80	97	1.22	16.5%	83.5%	1.09	1.25	85.6%	75.0%	87.7%	74.2%	25.8%	93.8%	70.4%
Pharmacy	3	4	1.27	25.0%	75.0%	2.63	1.08	75.0%	100.0%	66.7%	100.0%	0.0%	100.0%	100.0%
Counsellor Therapists	34	36	1.07	30.6%	69.4%	1.02	1.10	100.0%	100.0%	100.0%	88.9%	11.1%	100.0%	84.0%
Dental Hygienists	7	8	1.15		100.0%		1.15	100.0%	100.0%	100.0%	62.5%	37.5%		62.5%
Other Health & Social Care	3	3	1.17		100.0%		1.17	100.0%	100.0%	100.0%	66.7%	33.3%		66.7%
Play Therapists/ Specialists	5	7	1.30	28.6%	71.4%	1.80	1.17	85.7%	85.7%	80.0%	71.4%	28.6%	50.0%	80.0%
H&SC, Other	48	54	1.12	24.1%	75.9%	1.09	1.12	98.1%	100.0%	97.6%	81.5%	18.5%	92.3%	78.0%
Health & Social Care	741	875	1.18	14.7%	85.3%	1.10	1.20	95.8%	96.1%	95.7%	70.9%	29.1%	83.7%	68.6%
Executive Management	13	13	1.01	30.8%	69.2%	1.00	1.02	100.0%	100.0%	100.0%	100.0%	0.0%	100.0%	100.0%
Senior Management (VIII & GM)	57	59	1.03	18.6%	81.4%	1.03	1.03	93.2%	93.2%	93.8%	96.6%	3.4%	100.0%	95.8%
Management (VIII & above)	70	72	1.02	20.8%	79.2%	1.02	1.03	94.4%	93.3%	94.7%	97.2%	2.8%	100.0%	96.5%
Administrative/ Supervisory (V to VII)	210	221	1.05	16.3%	83.7%	1.01	1.06	96.4%	97.2%	96.2%	91.0%	9.0%	97.2%	89.7%
Clerical (III & IV)	370	428	1.16	7.7%	92.3%	1.11	1.16	94.2%	93.9%	94.2%	62.9%	37.1%	90.9%	60.5%
Management & Administrative	651	721	1.11	11.7%	88.3%	1.05	1.12	94.9%	95.2%	94.8%	74.9%	25.1%	95.2%	72.2%
Catering	36	41	1.12	31.7%	68.3%	1.07	1.15	100.0%	100.0%	100.0%	58.5%	41.5%	69.2%	53.6%
Household Services	207	243	1.17	15.2%	84.8%	1.06	1.20	98.8%	98.8%	98.5%	44.4%	55.6%	83.8%	37.4%
Other Support	31	63	2.01	34.9%	65.1%	1.31	2.83	50.8%	50.8%	39.0%	23.8%	76.2%	59.1%	4.9%
Portering	8	9	1.07	100.0%		1.07		100.0%	100.0%		77.8%	22.2%	77.8%	
Support	283	356	1.26	22.8%	77.2%	1.12	1.30	90.4%	92.6%	89.8%	43.3%	56.7%	74.1%	34.2%

Maintenance/ Technical	28	31	1.09	96.8%	3.2%	1.09	1.16	93.5%	93.3%	100.0%	80.6%	19.4%	83.3%	0.0%
General Support	312	387	1.24	28.7%	71.3%	1.11	1.30	90.7%	92.8%	89.9%	46.3%	53.7%	76.6%	34.1%
Health & Social Care Assistants	12	13	1.13	7.7%	92.3%	1.05	1.14	69.2%	69.2%	66.7%	69.2%	30.8%	0.0%	75.0%
Attendant/ Aide	303	335	1.10	21.5%	78.5%	1.05	1.12	91.6%	91.6%	92.4%	70.1%	29.9%	86.1%	65.8%
Health Care Assistant/ Care Assistant	997	1,151	1.15	24.3%	75.7%	1.12	1.17	80.4%	80.4%	80.1%	52.5%	47.5%	64.3%	48.7%
Health Care Assistants	1,312	1,499	1.14	23.5%	76.5%	1.10	1.16	82.8%	82.7%	82.8%	56.6%	43.4%	68.6%	52.9%
Home Help	661	906	1.37	3.3%	96.7%	1.22	1.38	97.7%	100.0%	97.6%	21.6%	78.4%	16.7%	21.8%
Care, other	291	354	1.22	20.6%	79.4%	1.20	1.22	87.3%	79.5%	89.3%	39.5%	60.5%	49.3%	37.0%
Patient & Client Care	2,264	2,759	1.22	16.5%	83.5%	1.12	1.24	88.3%	83.3%	89.2%	42.9%	57.1%	62.1%	39.1%

Employment by WTE, Headcount, Gender, Full-Time /Part-Time etc.: Sep 2022

CHO 5	WTE	Headcount	WTE: no.	% Male	% female	Male WTE: no.	Female WTE: no.	% Total Perm	% Male Perm	% Female Perm	% Total Full Time	% Total Part Time	% Male FT	% Female FT
Overall	5,784	6,839	1.18	16.9%	83.1%	1.10	1.20	90.2%	85.5%	91.2%	59.5%	40.5%	77.0%	55.9%
Community Health & Wellbeing	29	33	1.14	9.1%	90.9%	1.00	1.16	97.0%	97.0%	96.7%	75.8%	24.2%	100.0%	100.0%
Mental Health	1,221	1,366	1.12	26.1%	73.9%	1.06	1.14	88.3%	88.3%	89.7%	79.9%	20.1%	91.3%	91.3%
Primary Care	1,120	1,377	1.23	12.5%	87.5%	1.16	1.24	86.6%	86.6%	88.2%	64.7%	35.3%	79.7%	79.7%
HSE	2,100	2,530	1.20	11.3%	88.7%	1.09	1.22	97.4%	97.4%	97.9%	50.5%	49.5%	77.6%	77.6%
Section 38 Voluntary Agencies	1,235	1,448	1.17	22.4%	77.6%	1.13	1.19	82.8%	82.8%	82.2%	48.5%	51.5%	58.0%	58.0%
Social Care	3,335	3,978	1.19	15.3%	84.7%	1.11	1.21	92.1%	92.1%	92.7%	49.8%	50.2%	67.2%	67.2%
CHO Operations	79	85	1.07	16.5%	83.5%	1.01	1.09	91.8%	91.8%	93.0%	94.1%	5.9%	100.0%	100.0%

CHO 5 Skills Mix by Staff Grouping: September 2022

Sep 2022 (Dec 2019 figure: 5,282)	WTE Dec 2016	WTE Dec 2017	WTE Dec 2018	WTE Dec 2019	WTE Dec 2019	WTE Aug 2022	WTE Sep 2022
Overall	4,725	5,080	5,231	5,282	5,477	5,787	5,784
Consultant Dentistry	0.6%	0.6%	0.6%	0.6%	0.6%	0.5%	0.5%
Consultant Medicine						0.5%	0.5%
Consultant Psychiatry	20.0%	17.6%	15.7%	16.8%	16.8%	18.6%	19.0%
Consultant Surgery	1.3%	1.2%	1.3%	1.2%	1.2%		
Consultants	22.0%	19.5%	17.6%	18.6%	18.6%	19.7%	20.1%
Registrar	15.9%	16.7%	17.8%	15.4%	15.4%	21.2%	21.2%
Senior Registrar	1.3%	1.2%	1.3%	1.8%	1.8%	2.2%	2.2%
Registrars	17.2%	17.9%	19.1%	17.3%	17.3%	23.3%	23.3%
Interns	0.6%	0.6%	0.6%	0.6%	0.6%	1.1%	1.1%
Senior House Officer	21.2%	23.4%	21.7%	22.8%	22.8%	16.6%	15.8%
SHO/ Interns	21.9%	24.0%	22.3%	23.4%	23.4%	17.7%	16.8%
Dentists	21.2%	20.9%	22.2%	22.2%	22.2%	19.8%	19.6%
Other Medical	17.9%	17.7%	18.8%	18.5%	18.5%	19.4%	20.1%
Medical/ Dental, other	39.0%	38.6%	41.0%	40.7%	40.7%	39.2%	39.7%
Medical & Dental	3.3%	3.2%	3.0%	3.1%	3.1%	100.0%	3.2%
Clinical Nurse/ Midwife Manager	17.6%	17.0%	18.1%	17.5%	17.5%	17.6%	17.3%
Director Nursing/Midwifery, Assistant	3.0%	3.0%	2.9%	2.9%	2.9%	3.9%	3.9%
Director of Nursing/Midwifery	1.5%	1.4%	1.5%	1.4%	1.4%	1.4%	1.4%
Nurse/ Midwife Manager	22.1%	21.3%	22.5%	21.8%	21.8%	23.0%	22.6%
Advanced Nurse/ Midwife Practitioner		0.1%	0.1%	0.2%	0.2%	0.7%	0.8%
Clinical Nurse/ Midwife Specialist	3.1%	3.3%	3.7%	3.2%	3.2%	5.0%	5.1%
Nurse/ Midwife Specialist & AN/MP	3.1%	3.4%	3.9%	3.3%	3.3%	5.7%	5.9%
Staff Midwives						0.1%	0.1%
Staff Nurse [Intellectual Disability]	7.2%	7.8%	6.9%	7.5%	7.5%	6.8%	6.5%
Staff Nurse [Psychiatric]	28.8%	28.9%	27.8%	27.2%	27.2%	24.7%	25.0%
Staff Nurses [General/ Children's]	27.0%	26.1%	27.3%	27.8%	27.8%	28.0%	28.0%
Staff Nurse/ Staff Midwife	63.0%	62.8%	62.0%	62.5%	62.5%	59.6%	59.6%
Public Health Nurse	11.0%	10.8%	10.9%	11.3%	11.3%	9.7%	9.8%
Nursing/ Midwifery Student	0.7%	1.4%	0.5%	0.8%	0.8%	1.8%	1.9%
Nursing/ Midwifery other	0.2%	0.2%	0.2%	0.3%	0.3%	0.3%	0.2%
Nursing & Midwifery	32.2%	30.0%	29.4%	29.3%	29.3%	100.0%	28.2%
Dietitians	1.9%	2.0%	2.4%	2.2%	2.2%	3.1%	3.1%
Occupational Therapists	18.7%	18.9%	19.2%	18.0%	18.0%	18.5%	18.4%
Orthoptists			0.1%	0.1%	0.1%	0.1%	0.1%
Physiotherapists	13.9%	14.0%	13.4%	13.1%	13.1%	13.6%	13.6%
Podiatrists & Chiropodists	0.1%	0.2%	0.2%	0.2%	0.2%	0.7%	0.7%
Speech & Language Therapists	15.9%	15.1%	15.0%	15.3%	15.3%	14.5%	14.4%
Therapy Professions	50.4%	50.1%	50.3%	48.9%	48.9%	50.5%	50.4%
Audiology	0.8%	0.7%	0.6%	0.6%	0.6%	0.8%	0.7%
Health Science/ Diagnostics	0.8%	0.7%	0.6%	0.6%	0.6%	0.8%	0.7%
Social Care	20.3%	22.5%	23.8%	24.5%	24.5%	22.4%	22.8%
Social Workers	10.5%	10.3%	9.4%	8.9%	8.9%	8.5%	8.5%
Psychologists	12.4%	11.6%	11.0%	11.8%	11.8%	10.8%	10.7%
Pharmacy	0.3%	0.2%	0.1%	0.1%	0.1%	0.5%	0.4%
Counsellor Therapists	3.4%	2.9%	3.0%	3.2%	3.2%	4.5%	4.5%
Dental Hygienists	1.1%	1.0%	1.0%	0.9%	0.9%	0.9%	0.9%
Environmental Health Officers			0.0%	0.1%	0.1%		
Other Health & Social Care	0.2%	0.2%	0.1%	0.1%	0.1%	0.3%	0.3%
Play Therapists/ Specialists	0.6%	0.6%	0.7%	0.9%	0.9%	0.8%	0.7%
H&SC, Other	5.3%	4.7%	4.8%	5.2%	5.2%	6.6%	6.5%

Sep 2022 (Dec 2019 figure: 5,282)	WTE Dec 2016	WTE Dec 2017	WTE Dec 2018	WTE Dec 2019	WTE Dec 2019	WTE Aug 2022	WTE Sep 2022
Overall	4,725	5,080	5,231	5,282	5,477	5,787	5,784
Health & Social Care Professionals	13.6%	13.3%	13.0%	12.7%	12.7%	100.0%	12.8%
Executive Management	1.5%	2.0%	1.9%	1.4%	1.4%	2.0%	2.0%
Senior Management (VIII & GM)	5.4%	6.1%	6.9%	7.2%	7.2%	9.2%	8.8%
Management (VIII & above)	6.9%	8.1%	8.8%	8.6%	8.6%	11.2%	10.8%
Administrative/ Supervisory (V to VII)	22.7%	25.7%	24.9%	25.1%	25.1%	31.7%	32.3%
Clerical (III & IV)	70.4%	66.2%	66.3%	66.3%	66.3%	57.2%	56.9%
Management & Administrative	9.6%	9.1%	9.2%	9.4%	9.4%	100.0%	11.3%
Catering	7.4%	9.1%	9.2%	8.9%	8.9%	11.3%	11.7%
Household Services	71.9%	70.7%	68.9%	69.4%	69.4%	66.7%	66.4%
Other Support	8.1%	8.7%	9.3%	8.8%	8.8%	10.1%	10.1%
Portering	3.3%	2.1%	2.2%	2.5%	2.5%	2.7%	2.7%
Support	90.7%	90.5%	89.6%	89.5%	89.5%	90.8%	90.9%
Maintenance	8.6%	8.7%	9.6%	9.6%	9.6%	8.9%	8.9%
Technical Services	0.7%	0.8%	0.8%	0.8%	0.8%	0.3%	0.3%
Maintenance/ Technical	9.3%	9.5%	10.4%	10.5%	10.5%	9.2%	9.1%
General Support	9.0%	7.8%	7.3%	7.0%	7.0%	100.0%	5.4%
HCA (Student Nurse/Midwife COVID-19)							
Health & Social Care Assistants	0.1%	0.0%	0.6%	0.4%	0.4%	0.4%	0.5%
Attendant/ Aide	20.8%	17.6%	16.9%	17.3%	17.3%	13.2%	13.4%
Health Care Assistant/ Care Assistant	43.7%	38.1%	37.2%	38.5%	38.5%	45.2%	44.0%
Health Care Assistants	64.6%	55.8%	54.7%	56.2%	56.2%	58.9%	57.9%
Home Help	23.1%	33.7%	34.9%	32.9%	32.9%	28.7%	29.2%
Care, other	12.3%	10.5%	10.4%	10.9%	10.9%	12.4%	12.8%
Patient & Client Care	32.4%	36.7%	38.1%	38.5%	38.5%	100.0%	39.1%
Total	100 %	100 %	100 %	100 %	100%	100 %	100 %

CHO 5 Skills Mix by Care Group: September 2022

Sep 2022 (Dec 2019 figure: 1,178)	WTE Dec 2016	WTE Dec 2017	WTE Dec 2018	WTE Dec 2019	WTE Dec 2019	WTE Aug 2022	WTE Sep 2022
Mental Health	1,221	1,197	1,185	1,178	1,188	1,223	1,221
Consultant Psychiatry	44.1%	39.0%	36.6%	37.4%	37.4%	41.5%	42.5%
Consultants	44.1%	39.0%	36.6%	37.4%	37.4%	41.5%	42.5%
Registrar	5.9%	4.2%	10.6%	10.0%	10.0%	11.1%	11.3%
Senior Registrar	2.9%	2.8%	3.0%	4.3%	4.3%	4.9%	5.0%
Registrars	8.8%	7.0%	13.6%	14.2%	14.2%	16.0%	16.3%
Interns	1.5%	1.4%	1.5%	1.4%	1.4%	2.5%	2.5%
Senior House Officer	42.7%	48.3%	45.2%	44.1%	44.1%	37.6%	36.3%
SHO/ Interns	44.1%	49.7%	46.8%	45.5%	45.5%	40.1%	38.8%
Medical/ Dental, other	2.9%	4.2%	3.0%	2.8%	2.8%	2.4%	2.4%
Medical & Dental	5.6%	5.9%	5.6%	6.0%	6.0%	6.5%	6.5%
Clinical Nurse/ Midwife Manager	22.5%	21.8%	22.4%	22.9%	22.9%	22.8%	22.2%
Director Nursing/Midwifery, Assistant	2.5%	2.6%	2.7%	2.7%	2.7%	3.0%	3.2%
Director of Nursing/Midwifery	0.3%	0.3%	0.5%	0.5%	0.5%	0.6%	0.5%
Nurse/ Midwife Manager	25.3%	24.7%	25.5%	26.0%	26.0%	26.5%	25.9%
Advanced Nurse/ Midwife Practitioner			0.2%	0.3%	0.3%	0.9%	0.9%
Clinical Nurse/ Midwife Specialist	6.6%	6.9%	7.7%	6.4%	6.4%	8.0%	8.1%
Nurse/ Midwife Specialist & AN/MP	6.6%	6.9%	7.8%	6.7%	6.7%	8.9%	9.0%
Staff Nurse [Intellectual Disability]		0.1%					
Staff Nurse [Psychiatric]	67.2%	67.4%	65.9%	65.8%	65.8%	60.9%	61.3%
Staff Nurses [General/ Children's]	0.2%	0.2%	0.2%			0.4%	0.4%
Staff Nurse/ Staff Midwife	67.4%	67.6%	66.0%	65.8%	65.8%	61.3%	61.8%
Pre-registration Nurse/ Midwife Intern	0.3%	0.2%	0.1%	0.6%	0.6%	2.8%	0.3%
Pre-registration Nurse Intern (COVID-19)							
Nursing/ Midwifery awaiting registration				0.3%	0.3%		2.6%
Nursing/ Midwifery Student	0.3%	0.2%	0.1%	0.9%	0.9%	2.8%	2.9%
Nursing Education/Clinical	0.4%	0.6%	0.6%	0.6%	0.6%	0.5%	0.5%
Nursing/ Midwifery other	0.4%	0.6%	0.6%	0.6%	0.6%	0.5%	0.5%
Nursing & Midwifery	53.0%	53.8%	54.0%	53.6%	53.6%	53.0%	53.0%
Dietitians	2.4%	2.5%	2.6%	1.7%	1.7%		
Occupational Therapists	31.9%	34.2%	33.8%	33.3%	33.3%	28.1%	27.6%
Physiotherapists	0.7%						
Speech & Language Therapists	3.9%	3.9%	3.3%	3.9%	3.9%	3.4%	3.3%
Therapy Professions	38.8%	40.7%	39.8%	38.9%	38.9%	31.5%	30.9%
Social Care	3.9%	3.9%	4.2%	4.5%	4.5%	3.8%	4.0%
Social Workers	27.1%	26.6%	24.8%	26.6%	26.6%	23.6%	23.3%
Psychologists	21.3%	19.9%	21.4%	20.4%	20.4%	21.6%	22.3%
Counsellor Therapists	8.2%	8.3%	9.0%	8.7%	8.7%	19.5%	19.5%
Other Health & Social Care	0.7%	0.7%	0.8%	0.9%	0.9%		
H&SC, Other	8.9%	9.0%	9.8%	9.6%	9.6%	19.5%	19.5%
Health & Social Care Professionals	9.9%	10.0%	9.4%	8.8%	8.8%	9.1%	9.1%
Management (VIII & above)	3.1%	2.3%	3.2%	3.1%	3.1%	6.0%	5.9%
Administrative/ Supervisory (V to VII)	15.9%	20.4%	19.8%	20.7%	20.7%	23.1%	23.2%
Clerical (III & IV)	81.0%	77.3%	77.0%	76.2%	76.2%	70.9%	70.9%
Management & Administrative	8.1%	7.3%	7.9%	8.2%	8.2%	8.4%	8.4%
Support	88.2%	88.2%	87.8%	87.8%	87.8%	92.0%	92.0%
Maintenance/ Technical	11.8%	11.8%	12.2%	12.2%	12.2%	8.0%	8.0%
General Support	17.3%	16.1%	15.9%	16.2%	16.2%	15.6%	15.6%

Sep 2022 (Dec 2019 figure: 1,178)	WTE Dec 2016	WTE Dec 2017	WTE Dec 2018	WTE Dec 2019	WTE Dec 2019	WTE Aug 2022	WTE Sep 2022
Mental Health	1,221	1,197	1,185	1,178	1,188	1,223	1,221
Health Care Assistants	81.7%	80.9%	82.0%	85.0%	85.0%	84.6%	84.6%
Care, other	18.3%	19.1%	18.0%	15.0%	15.0%	15.4%	15.4%
Patient & Client Care	6.2%	6.8%	7.3%	7.3%	7.3%	7.3%	7.3%
Total	100 %	100 %	100 %	100 %	100 %	100 %	100 %

Sep 2022 (Dec 2019 figure: 952)	WTE Dec 2016	WTE Dec 2017	WTE Dec 2018	WTE Dec 2019	WTE Dec 2019	WTE Aug 2022	WTE Sep 2022
Primary Care	891	919	958	952	1,061	1,113	1,120
Consultant Dentistry	1.3%	1.2%	1.3%	1.2%	1.2%	1.1%	1.1%
Consultant Medicine						1.1%	1.1%
Consultant Surgery	2.7%	2.5%	2.5%	2.5%	2.5%		
Consultants	4.0%	3.7%	3.8%	3.7%	3.7%	2.3%	2.3%
Registrars	27.6%	30.1%	26.0%	22.2%	22.2%	34.2%	33.9%
SHO/ Interns	5.3%	4.9%	5.0%	7.4%	7.4%		
Dentists	43.9%	42.3%	43.5%	44.3%	44.3%	41.7%	40.9%
Other Medical	19.1%	19.1%	21.7%	22.4%	22.4%	21.8%	23.0%
Medical/ Dental, other	63.0%	61.3%	65.2%	66.7%	66.7%	63.5%	63.9%
Medical & Dental	8.4%	8.9%	8.3%	8.5%	8.5%	7.9%	7.9%
Clinical Nurse/ Midwife Manager	2.1%	2.1%	2.7%	2.3%	2.3%	6.3%	6.2%
Director Nursing/Midwifery, Assistant	5.4%	5.1%	5.5%	5.6%	5.6%	7.3%	7.0%
Director of Nursing/Midwifery	1.1%	1.2%	1.5%	1.9%	1.9%	1.5%	1.5%
Nurse/ Midwife Manager	8.6%	8.5%	9.7%	9.7%	9.7%	15.1%	14.7%
Nurse/ Midwife Specialist & AN/MP	1.1%	1.8%	2.0%	2.1%	2.1%	7.5%	7.2%
Staff Nurse/ Staff Midwife	24.5%	26.5%	26.2%	24.8%	24.8%	32.3%	33.0%
Public Health Nurse	63.0%	61.0%	59.4%	61.2%	61.2%	44.2%	43.7%
Nursing/ Midwifery Student	2.8%	2.3%	2.6%	1.9%	1.9%	0.9%	1.3%
Nursing Education/Clinical				0.3%	0.3%		
Nursing/ Midwifery other				0.3%	0.3%		
Nursing & Midwifery	28.4%	27.7%	27.9%	28.4%	28.4%	30.2%	30.2%
Dietitians	2.7%	2.9%	3.1%	2.8%	2.8%	5.2%	5.2%
Occupational Therapists	17.9%	19.9%	21.0%	19.2%	19.2%	23.4%	23.7%
Orthoptists			0.4%	0.2%	0.2%	0.3%	0.3%
Physiotherapists	22.1%	22.5%	22.0%	20.1%	20.1%	23.7%	23.5%
Podiatrists & Chiropodists		0.4%	0.4%	0.4%	0.4%	1.6%	1.7%
Speech & Language Therapists	27.8%	26.2%	26.8%	26.8%	26.8%	23.9%	23.8%
Therapy Professions	70.5%	72.0%	73.6%	69.6%	69.6%	78.1%	78.2%
Audiology	1.9%	1.8%	1.5%	1.4%	1.4%	1.9%	1.7%
Health Science/ Diagnostics	1.9%	1.8%	1.5%	1.4%	1.4%	1.9%	1.7%
Social Care	1.5%	1.3%	1.5%	2.0%	2.0%	1.5%	1.8%
Social Workers	1.8%	3.2%	2.7%	3.1%	3.1%	1.4%	1.4%
Psychologists	16.6%	15.5%	14.5%	16.6%	16.6%	11.0%	10.8%
Pharmacy	0.8%	0.4%	0.4%	0.4%	0.4%	0.1%	0.1%
Counsellor Therapists	4.4%	3.4%	3.5%	4.4%	4.4%	3.7%	3.7%
Dental Hygienists	2.6%	2.5%	2.5%	2.3%	2.3%	2.2%	2.2%
Environmental Health Officers			0.0%	0.2%	0.2%		
H&SC, Other	7.0%	5.9%	6.0%	6.9%	6.9%	5.9%	5.9%
Health & Social Care Professionals	29.5%	29.0%	28.2%	27.7%	27.7%	27.7%	27.7%
Executive Management	2.3%	2.6%	2.5%	2.1%	2.1%	0.8%	0.8%
Senior Management (VIII & GM)	5.2%	6.3%	6.9%	8.4%	8.4%	6.7%	6.6%
Management (VIII & above)	7.5%	9.0%	9.4%	10.5%	10.5%	7.5%	7.4%

Sep 2022 (Dec 2019 figure: 952)	WTE Dec 2016	WTE Dec 2017	WTE Dec 2018	WTE Dec 2019	WTE Dec 2019	WTE Aug 2022	WTE Sep 2022
Primary Care	891	919	958	952	1,061	1,113	1,120
Administrative/ Supervisory (V to VII)	20.7%	23.9%	23.2%	21.6%	21.6%	27.5%	26.6%
Clerical (III & IV)	71.8%	67.2%	67.4%	67.9%	67.9%	65.0%	66.0%
Management & Administrative	24.2%	25.0%	25.0%	25.3%	25.3%	21.4%	21.4%
Household Services	10.0%	9.6%	9.5%	7.5%	7.5%	12.0%	11.1%
Other Support	90.0%	90.4%	90.5%	92.5%	92.5%	88.0%	88.9%
Support	100.0%	100.0%	100.0%	100.0%	100.0%	100.0%	100.0%
General Support	3.0%	3.0%	2.9%	2.7%	2.7%	2.0%	2.0%
HCA (Student Nurse/Midwife COVID-19)							
Health & Social Care Assistants			14.5%	10.0%	10.0%	5.6%	6.4%
Attendant/ Aide	1.7%	1.7%	2.3%	1.4%	1.4%	5.5%	9.0%
Health Care Assistant/ Care Assistant						32.2%	26.9%
Health Care Assistants	1.7%	1.7%	16.8%	11.4%	11.4%	43.4%	42.3%
Home Help	9.8%	14.2%	10.1%	10.2%	10.2%	5.5%	5.7%
Care, other	88.4%	84.1%	73.1%	78.4%	78.4%	51.2%	52.0%
Patient & Client Care	6.5%	6.5%	7.6%	7.4%	7.4%	10.9%	10.9%
Total	100 %	100 %	100 %	100 %	100 %	100 %	100 %

Sep 2022 (Dec 2019 figure: 1,505)	WTE Dec 2016	WTE Dec 2017	WTE Dec 2018	WTE Dec 2019	WTE Dec 2019	WTE Aug 2022	WTE Sep 2022
Disabilities	1,272	1,378	1,409	1,505	1,563	1,687	1,665
Consultant Psychiatry	80.0%	80.0%	60.8%	100.0%	100.0%	100.0%	100.0%
Consultants	80.0%	80.0%	60.8%	100.0%	100.0%	100.0%	100.0%
Medical/ Dental, other	20.0%	20.0%	39.2%				
Medical & Dental	0.1%	0.1%	0.0%	0.1%	0.1%	0.1%	0.1%
Clinical Nurse/ Midwife Manager	25.1%	22.5%	26.4%	25.2%	25.2%	26.0%	26.5%
Director Nursing/Midwifery, Assistant	1.6%	1.2%	0.4%	0.8%	0.8%	1.5%	1.5%
Director of Nursing/Midwifery	2.0%	2.1%	1.7%	0.8%	0.8%	1.5%	1.5%
Nurse/ Midwife Manager	28.7%	25.8%	28.4%	26.8%	26.8%	28.9%	29.5%
Advanced Nurse/ Midwife Practitioner						0.4%	0.4%
Clinical Nurse/ Midwife Specialist	0.4%	0.9%	0.9%	0.8%	0.8%	1.1%	0.8%
Nurse/ Midwife Specialist & AN/MP	0.4%	0.9%	0.9%	0.8%	0.8%	1.5%	1.2%
Staff Nurse [Intellectual Disability]	44.9%	51.2%	46.1%	47.2%	47.2%	42.8%	42.0%
Staff Nurse [Psychiatric]	1.2%	1.3%	1.4%	1.3%	1.3%	1.2%	1.6%
Staff Nurses [General/ Children's]	22.3%	18.2%	20.7%	21.0%	21.0%	18.4%	18.2%
Staff Nurse/ Staff Midwife	68.4%	70.7%	68.2%	69.5%	69.5%	62.3%	61.8%
Public Health Nurse	1.9%	2.6%	2.5%	2.2%	2.2%	3.8%	4.1%
Public Health Nurse	1.9%	2.6%	2.5%	2.2%	2.2%	3.8%	4.1%
Pre-registration Nurse/ Midwife Intern	0.6%					3.1%	3.2%
Pre-registration Nurse Intern (COVID-19)							
Nursing/ Midwifery awaiting registration				0.8%	0.8%		
Nursing/ Midwifery Student	0.6%			0.8%	0.8%	3.1%	3.2%
Nursing/ Midwifery other						0.3%	0.3%
Nursing & Midwifery	19.1%	16.8%	16.4%	16.3%	16.3%	15.1%	15.1%
Dietitians		0.4%	0.4%	0.8%	0.8%	0.7%	0.6%
Occupational Therapists	11.0%	9.2%	9.4%	8.6%	8.6%	9.0%	8.7%
Physiotherapists	5.5%	6.1%	3.8%	5.3%	5.3%	4.1%	4.3%
Podiatrists & Chiropodists	0.0%	0.0%					
Speech & Language Therapists	9.2%	9.6%	9.0%	9.6%	9.6%	10.8%	10.2%
Therapy Professions	25.7%	25.4%	22.6%	24.3%	24.3%	24.6%	23.9%
Social Care	56.5%	57.7%	61.1%	59.5%	59.5%	57.2%	59.1%
Social Workers	10.9%	9.7%	9.5%	8.1%	8.1%	8.2%	7.1%

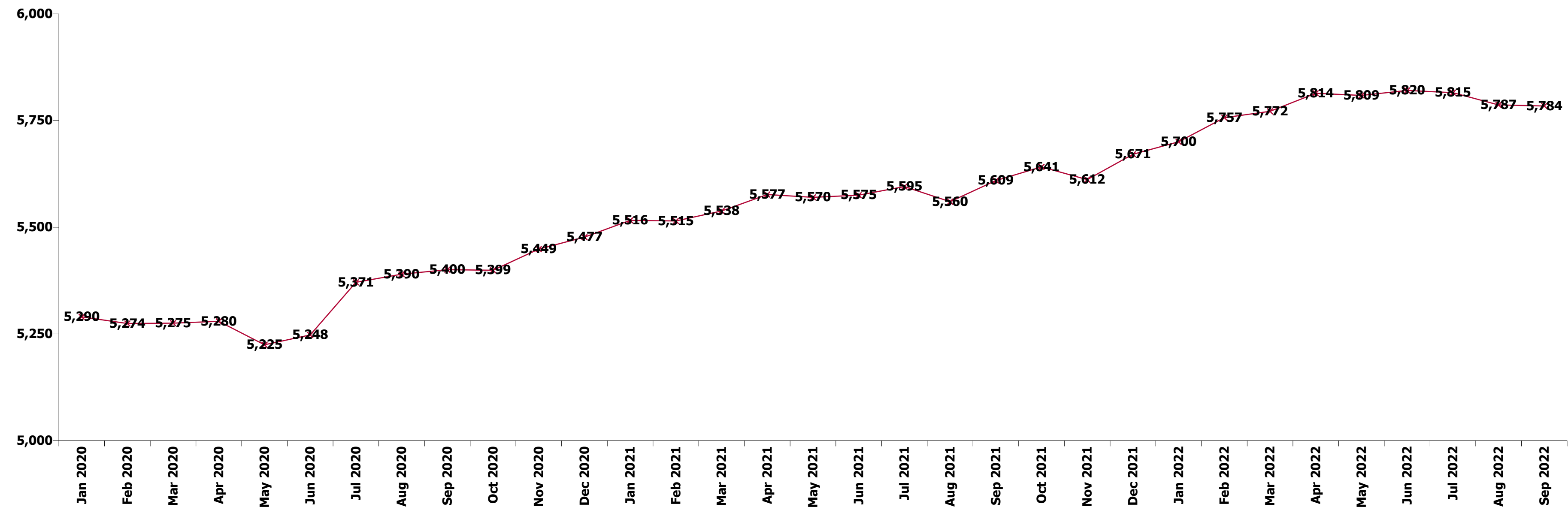
Sep 2022 (Dec 2019 figure: 1,505)	WTE Dec 2016	WTE Dec 2017	WTE Dec 2018	WTE Dec 2019	WTE Dec 2019	WTE Aug 2022	WTE Sep 2022
Disabilities	1,272	1,378	1,409	1,505	1,563	1,687	1,665
Psychologists	4.5%	5.2%	4.7%	5.4%	5.4%	7.4%	7.5%
Pharmacists	0.1%	0.0%					
Pharmacy	0.1%	0.0%					
Counsellor Therapists	0.2%	0.3%	0.3%	0.3%	0.3%	0.1%	0.1%
Other Health & Social Care	0.1%	0.1%				0.2%	0.3%
Play Therapists/ Specialists	1.9%	1.7%	1.8%	2.4%	2.4%	2.3%	2.0%
H&SC, Other	2.3%	2.0%	2.1%	2.7%	2.7%	2.6%	2.4%
Health & Social Care Professionals	16.9%	18.0%	17.8%	17.2%	17.2%	16.1%	16.1%
Executive Management	2.1%	3.0%	2.9%	1.8%	1.8%	2.7%	2.7%
Senior Management (VIII & GM)	7.9%	9.7%	10.5%	8.1%	8.1%	10.1%	9.1%
Management (VIII & above)	10.1%	12.6%	13.3%	9.9%	9.9%	12.8%	11.7%
Administrative/ Supervisory (V to VII)	34.3%	33.3%	33.3%	35.2%	35.2%	39.3%	40.3%
Clerical (III & IV)	55.7%	54.0%	53.4%	54.9%	54.9%	47.9%	48.0%
Management & Administrative	7.4%	7.4%	7.4%	7.3%	7.3%	8.9%	8.9%
Catering	20.6%	17.6%	16.2%	17.1%	17.1%	16.8%	17.9%
Household Services	55.1%	54.5%	50.0%	44.9%	44.9%	22.4%	21.9%
Other Support	4.0%	4.3%	2.1%	3.0%	3.0%	7.4%	7.8%
Portering	1.8%	2.1%	1.9%	2.6%	2.6%		
Support	81.5%	78.5%	70.2%	67.6%	67.6%	46.6%	47.6%
Maintenance	15.4%	17.9%	26.4%	28.0%	28.0%	48.4%	47.5%
Technical Services	3.1%	3.6%	3.3%	4.4%	4.4%	5.0%	4.9%
Maintenance/ Technical	18.5%	21.5%	29.8%	32.4%	32.4%	53.4%	52.4%
General Support	2.6%	2.0%	2.1%	1.5%	1.5%	1.1%	1.1%
Health Care Assistants	80.3%	76.8%	77.1%	77.3%	77.3%	79.1%	77.9%
Home Helps	3.3%	7.5%	6.8%	6.2%	6.2%	3.1%	3.1%
Home Help	3.3%	7.5%	6.8%	6.2%	6.2%	3.1%	3.1%
Care, other	16.4%	15.7%	16.1%	16.6%	16.6%	17.7%	19.0%
Patient & Client Care	53.9%	55.7%	56.2%	57.7%	57.7%	58.7%	58.7%
Total	100 %	100 %	100 %	100 %	100 %	100 %	100 %

Sep 2022 (Dec 2019 figure: 1,647)	WTE Dec 2016	WTE Dec 2017	WTE Dec 2018	WTE Dec 2019	WTE Dec 2019	WTE Aug 2022	WTE Sep 2022
Older People	1,341	1,587	1,678	1,647	1,650	1,673	1,670
Medical/ Dental, other	100.0%	100.0%	100.0%	100.0%	100.0%	100.0%	100.0%
Medical & Dental	0.8%	0.6%	0.6%	0.6%	0.6%	0.9%	0.9%
Clinical Nurse/ Midwife Manager	14.7%	15.5%	16.8%	14.7%	14.7%	13.4%	13.1%
Director Nursing/Midwifery, Assistant	3.3%	3.2%	3.1%	2.8%	2.8%	3.9%	3.7%
Director of Nursing/Midwifery	3.3%	2.9%	3.0%	2.9%	2.9%	2.7%	2.7%
Nurse/ Midwife Manager	21.3%	21.5%	22.8%	20.3%	20.3%	20.0%	19.6%
Nurse/ Midwife Specialist & AN/MP		0.3%	0.5%	0.5%	0.5%	1.5%	2.4%
Staff Midwives						0.2%	0.2%
Staff Nurse [Intellectual Disability]						0.3%	0.3%
Staff Nurse [Psychiatric]	0.3%	0.3%	0.2%	0.2%	0.2%		
Staff Nurses [General/ Children's]	77.7%	73.6%	75.7%	78.0%	78.0%	77.6%	77.4%
Staff Nurse/ Staff Midwife	77.9%	73.9%	75.9%	78.2%	78.2%	78.0%	77.8%
Public Health Nurse	0.8%	0.7%	0.7%	0.9%	0.9%	0.5%	0.3%
Nursing/ Midwifery awaiting registration		3.6%					
Nursing/ Midwifery Student		3.6%					
Nursing & Midwifery	28.2%	24.7%	23.9%	24.4%	24.4%	23.6%	23.6%
Dietitians	4.8%	4.6%	8.1%	8.4%	8.4%	7.5%	9.0%

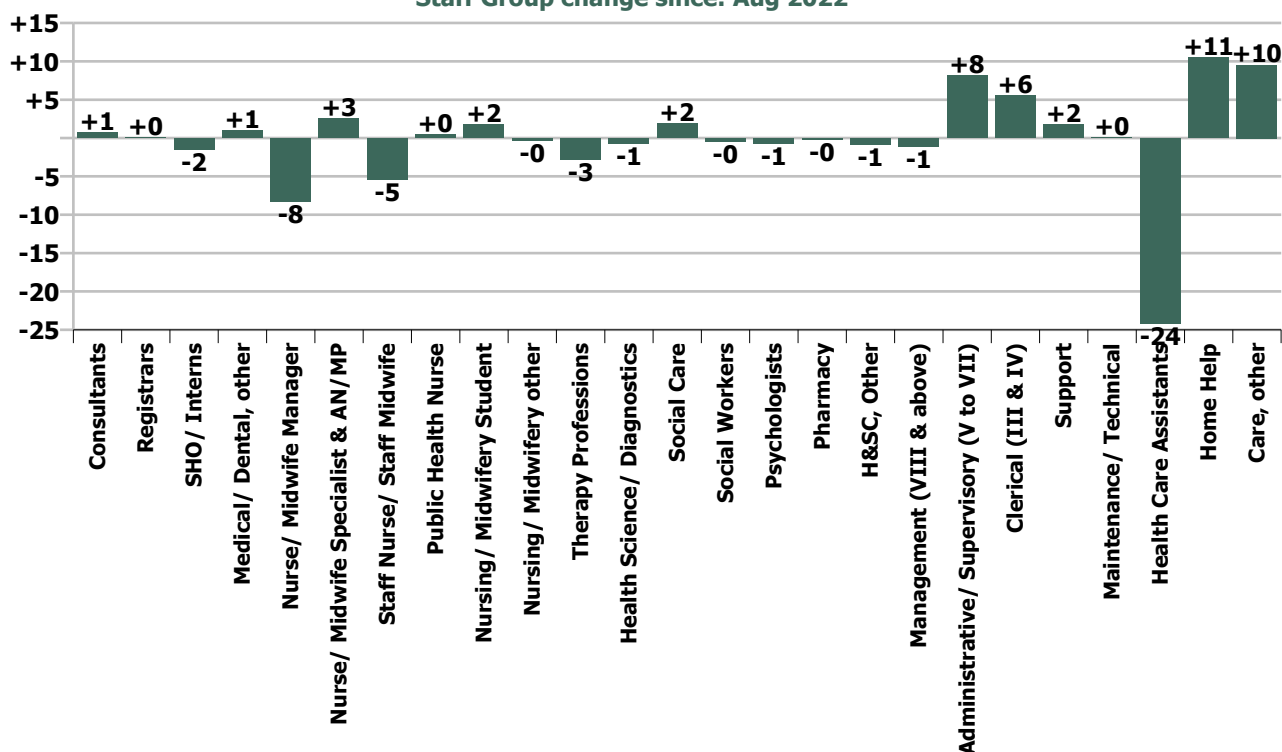
Sep 2022 (Dec 2019 figure: 1,647)	WTE Dec 2016	WTE Dec 2017	WTE Dec 2018	WTE Dec 2019	WTE Dec 2019	WTE Aug 2022	WTE Sep 2022
Older People	1,341	1,587	1,678	1,647	1,650	1,673	1,670
Occupational Therapists	25.6%	26.2%	26.8%	30.3%	30.3%	21.5%	22.0%
Physiotherapists	43.6%	48.0%	46.3%	47.1%	47.1%	40.2%	43.4%
Podiatrists & Chiropodists	1.0%	1.0%	0.9%	1.1%	1.1%		
Speech & Language Therapists	10.0%	7.1%	7.2%	5.9%	5.9%	2.3%	5.2%
Therapy Professions	84.9%	87.0%	89.2%	92.7%	92.7%	71.5%	79.6%
Social Workers	15.1%	13.0%	10.8%	7.3%	7.3%	18.4%	10.2%
Psychologists						3.5%	2.7%
Psychologists						3.5%	2.7%
Pharmacy						2.3%	2.5%
Other Health & Social Care						4.3%	4.9%
H&SC, Other						4.3%	4.9%
Health & Social Care Professionals	3.1%	2.5%	2.8%	2.7%	2.7%	2.3%	2.3%
Management (VIII & above)	6.1%	4.3%	6.4%	7.6%	7.6%	14.1%	14.0%
Administrative/ Supervisory (V to VII)	22.8%	28.1%	25.0%	28.1%	28.1%	18.7%	19.5%
Clerical (III & IV)	71.0%	67.6%	68.6%	64.3%	64.3%	67.3%	66.5%
Management & Administrative	3.4%	2.7%	2.6%	3.0%	3.0%	4.7%	4.7%
Catering	8.4%	11.1%	11.3%	11.8%	11.8%	21.5%	21.7%
Household Services	80.6%	78.1%	77.7%	77.0%	77.0%	68.5%	68.3%
Other Support	2.8%	2.9%	2.9%	1.9%	1.9%		
Portering	2.6%	2.0%	2.2%	3.0%	3.0%	5.0%	4.9%
Support	94.4%	94.1%	94.2%	93.7%	93.7%	95.0%	95.0%
Maintenance/ Technical	5.6%	5.9%	5.8%	6.3%	6.3%	5.0%	5.0%
General Support	11.6%	9.4%	8.0%	8.0%	8.0%	4.9%	4.9%
HCA (Student Nurse/Midwife COVID-19)							
Health & Social Care Assistants	0.1%	0.1%	0.1%	0.1%	0.1%	0.3%	0.4%
Attendant/ Aide	32.6%	24.8%	23.7%	24.1%	24.1%	18.6%	18.4%
Health Care Assistant/ Care Assistant	20.0%	15.2%	14.2%	14.5%	14.5%	21.4%	20.8%
Health Care Assistants	52.8%	40.1%	37.9%	38.7%	38.7%	40.2%	39.6%
Home Help	45.8%	58.9%	60.9%	60.3%	60.3%	58.0%	58.6%
Care, other	1.4%	1.0%	1.2%	1.0%	1.0%	1.8%	1.8%
Patient & Client Care	52.9%	60.1%	62.0%	61.3%	61.3%	63.7%	63.7%
Total	100 %	100 %	100 %	100 %	100 %	100 %	100 %

Summary Staff Movement: September 2022

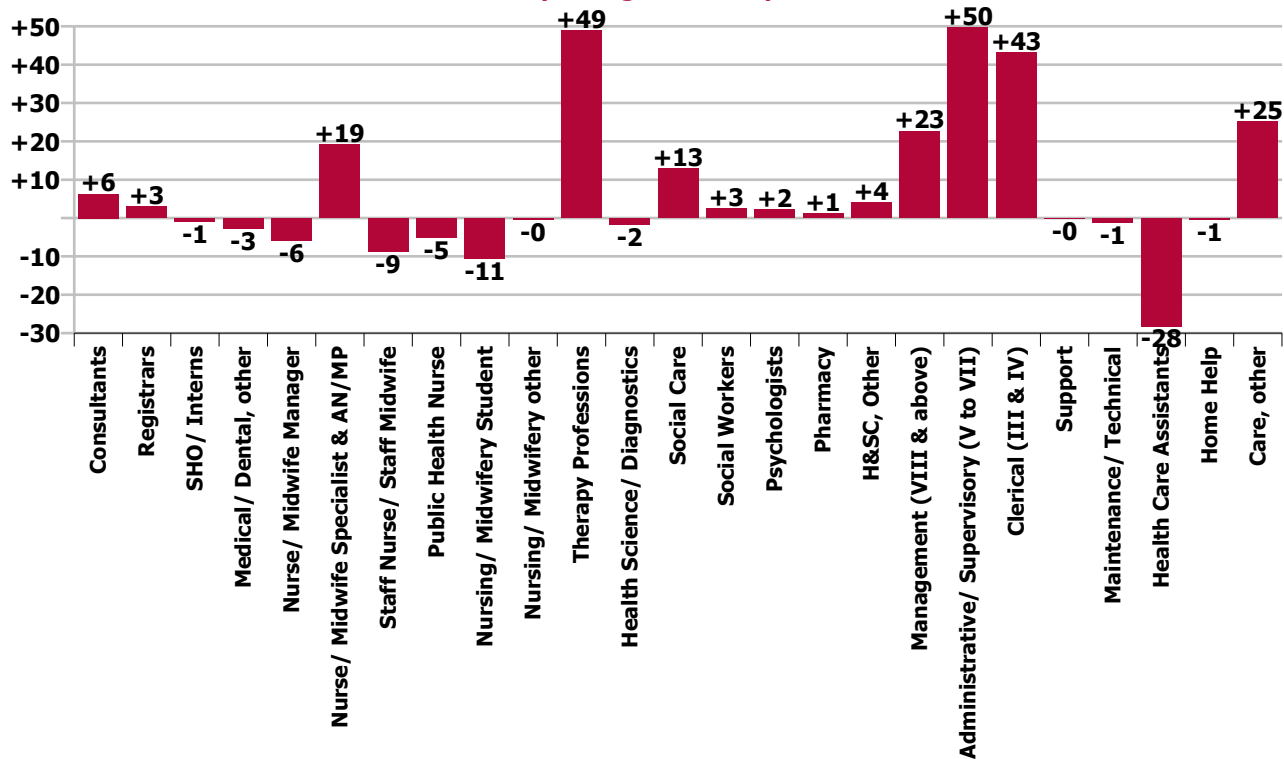
Month-on-month Summary																													
WTE change since Aug 22	% change since Aug 22	overall	Consultants	Registrars	SHO/ Interns	Medical/ Dental, other	Medical & Dental	Nurse/ Midwife Manager	Nurse/ Midwife Specialist & AN/MP	Staff Nurse/ Staff Midwife	Public Health Nurse	Nursing/ Midwifery Student	Nursing/ Midwifery other	Nursing & Midwifery	Therapy Professions	Health Science/ Diagnostics	Social Care	Social Workers	Psychologists	Pharmacy	H&SC, Other	Health & Social Care Professionals	Management (VIII & above)	Administrativ e/ Supervisory (V to VII)	Clerical (III & IV)	Management & Administrative	General Support	Patient & Client Care	
Overall	-0.0%	-3	+0.8	+0.1	-1.6	+1.0	+0.2	-8.2	+2.6	-5.4	+0.4	+1.7	-0.4	-9.3	-2.8	-0.7	+1.9	-0.4	-0.7	-0.2	-0.9	-3.9	-1.1	+8.2	+5.5	+12.6	+1.9	-4.2	
Community Health & Wellbeing	-3.1%	-1													0.0							0.0	-0.1	+0.5	-1.3	-0.9		-0.0	
Mental Health	-0.2%	-3	+0.3	+0.0	-1.6	0.0	-1.3	-4.2	+0.7	+1.9		+0.2	-0.4	-1.7	-1.0		+0.3	-0.5	+0.6		-0.2	-0.9	0.0	+0.7	+1.5	+2.2	+1.0	-1.9	
Primary Care	+0.7%	+7	0.0	+0.0		+1.0	+1.0	-0.4	-0.4	+4.3	+1.0	+1.5		+6.1	+3.2	-0.7	+1.2	+0.1	-0.3	0.0	+0.2	+3.6	-0.3	-1.6	+3.6	+1.8	-0.3	-4.8	
Disabilities	-1.3%	-21	+0.5				+0.5	-0.8	-1.0	-6.5	+0.2	0.0	0.0	-8.1	-3.9		+0.5	-3.5	-0.4		-0.9	-8.1	-1.5	+1.5	+0.2	+0.3	+0.3	-6.2	
Older People	-0.2%	-4				0.0	0.0	-2.8	+3.2	-5.1	-0.8			-5.6	-1.2			-4.2	-0.5	-0.0	-0.0	-6.0	-0.0	+0.7	-0.4	+0.3	+0.9	+6.8	
Social Care	-0.7%	-25	+0.5			0.0	+0.5	-3.6	+2.2	-11.7	-0.6	0.0	0.0	-13.6	-5.0		+0.5	-7.7	-1.0	-0.0	-0.9	-14.1	-1.5	+2.3	-0.2	+0.6	+1.2	+0.6	
CHO Operations	+30.4%	+18						0.0	0.0					0.0				+7.7		-0.2		+7.5	+0.8	+6.3	+1.9	+9.0		+2.0	
CHO Operations	+30.4%	+18						0.0	0.0					0.0				+7.7		-0.2		+7.5	+0.8	+6.3	+1.9	+9.0		+2.0	
Change	-2.6	-0.0%	+2.1%	+0.1%	-4.8%	+1.3%	+0.1%	-2.2%	+2.8%	-0.6%	+0.3%	+5.9%	-8.5%	-0.6%	-0.7%	-12.4%	+1.2%	-0.7%	-0.9%	-6.8%	-1.8%	-0.5%	-1.6%	+4.0%	+1.5%	+2.0%	+0.6%	-0.2%	
Year-on-year Summary																													
WTE change since Sep 21	% change since Sep 21	overall	Consultants	Registrars	SHO/ Interns	Medical/ Dental, other	Medical & Dental	Nurse/ Midwife Manager	Nurse/ Midwife Specialist & AN/MP	Staff Nurse/ Staff Midwife	Public Health Nurse	Nursing/ Midwifery Student	Nursing/ Midwifery other	Nursing & Midwifery	Therapy Professions	Health Science/ Diagnostics	Social Care	Social Workers	Psychologists	Pharmacy	H&SC, Other	Health & Social Care Professionals	Management (VIII & above)	Administrativ e/ Supervisory (V to VII)	Clerical (III & IV)	Management & Administrative	General Support	Patient & Client Care	
Overall	+3.1%	+175	+6.3	+3.0	-1.0	-2.8	+5.5	-5.8	+19.2	-8.8	-5.1	-10.6	-0.4	-11.5	+48.9	-1.6	+12.9	+2.5	+2.1	+1.2	+4.1	+70.1	+22.7	+49.7	+43.1	+115.5	-1.4	-3.4	
Community Health & Wellbeing	-3.1%	-1						-1.0	-0.8					-1.8	+0.6					-1.0		-0.4	-0.0	+9.4	-1.5	+7.8		+2.6	
Mental Health	-0.2%	-3	+6.2	+1.0	+0.0	-0.0	+7.2	-1.7	+3.6	-12.1		-13.3	-0.4	-23.9	+3.1		-0.0	+0.1	+3.5		+1.9	+8.6	+1.0	-2.1	+0.7	-0.4	+4.8	+8.9	
Primary Care	+0.7%	+7	0.0	+2.0	-1.0	-2.0	-1.1	+3.3	+8.7	+17.9	-6.8	+2.4		+25.6	+52.6	-1.6	+1.1	+1.0	-0.6	-0.6	-0.2	+51.7	-3.1	-2.3	+7.3	+1.9	-1.5	-35.9	
Disabilities	+1.0%	+16.5	+0.0				+0.0	+2.7	-0.0	-6.8	+2.4	+0.3	+0.0	-1.5	-6.0		+11.8	-7.2	-1.8		+0.5	-2.7	+2.7	+6.2	+6.6	+15.5	-2.5	+7.7	
Older People	+1.5%	+24.7				-0.8	-0.8	-10.0	+6.7	-7.8	-0.8			-11.9	-1.5			-0.9	+1.0	+1.0	+1.9	+1.4	+6.3	+3.1	+17.4	+26.8	-2.1	+11.3	
Social Care	-0.7%	-25	+0.0			-0.8	-0.7	-7.4	+6.7	-14.6	+1.6	+0.3	+0.0	-13.4	-7.5		+11.8	-8.1	-0.8	+1.0	+2.3	-1.3	+9.0	+9.3	+24.1	+42.3	-4.6	+19.0	
CHO Operations	-100.0%	+79.2						+1.0	+1.0					+2.0				+9.6			+1.8		+11.4	+15.8	+35.5	+12.6	+63.8		+2.0
CHO Operations	+30.4%	+18						+1.0	+1.0					+2.0				+9.6			+1.8		+11.4	+15.8	+35.5	+12.6	+63.8		+2.0
Change	+174.7	+3.1%	+20.5%	+7.5%	-3.1%	-3.7%	+3.1%	-1.6%	+24.9%	-0.9%	-3.1%	-25.4%	-8.5%	-0.7%	+15.1%	-24.1%	+8.3%	+4.2%	+2.8%	+58.3%	+9.3%	+10.4%	+47.7%	+30.9%	+13.2%	+21.6%	-0.4%	-0.2%	



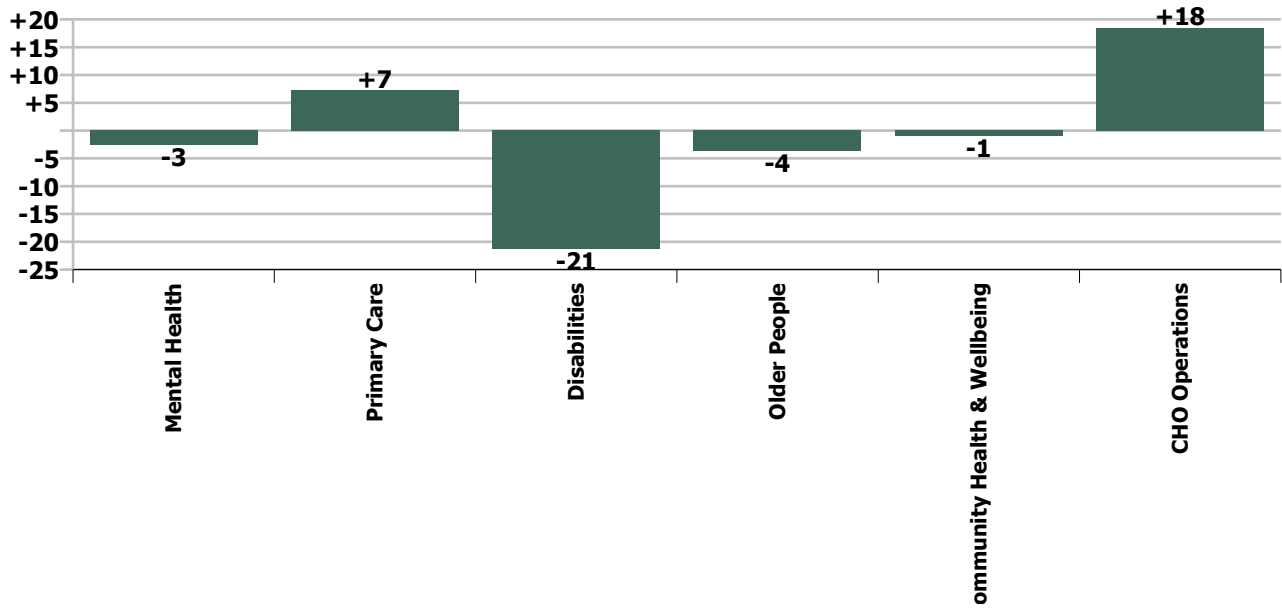
Staff Group change since: Aug 2022



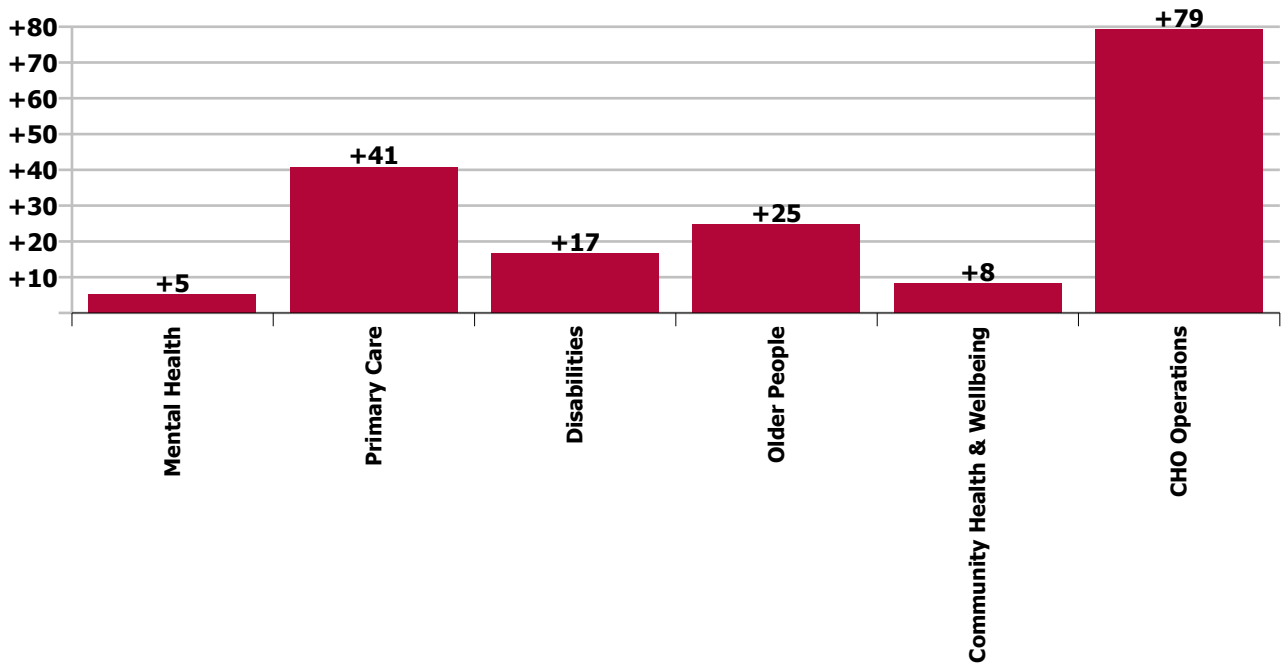
Staff Group change since: Sep 2021



Care Group change since: Aug 2022



Care Group change since: Sep 2021



Longitudinal Employment Levels by Grade Group - Dec 2016 to Sep 2022

Sep 2022 (Dec 2016 figure: 4,725)	WTE Sep 2022	WTE change since Dec 16	WTE change since Dec 17	WTE change since Dec 18	WTE change since Dec 19	WTE change since Dec 20	WTE change since Aug 22	% change since Dec 16	% change since Dec 17	% change since Dec 18	% change since Dec 19	% change since Dec 20	% change since Aug 22
Overall	5,784	+1,059	+704	+553	+502	+307	-3	+22.4%	+13.8%	+10.6%	+9.5%	+5.6%	-0.0%
Consultant Dentistry	1												
Consultant Medicine	1	+1	+1	+1	+1	+1		-100.0%	-100.0%	-100.0%	-100.0%	-100.0%	
Consultant Psychiatry	35	+4	+6	+10	+8	+7	+1	+12.0%	+20.4%	+42.5%	+28.2%	+24.1%	+2.2%
Consultant Surgery		-2	-2	-2	-2			-100.0%	-100.0%	-100.0%	-100.0%	-100.0%	-100.0%
Consultants	37	+3	+5	+9	+7	+8	+1	+8.0%	+15.4%	+34.2%	+22.1%	+26.7%	+2.1%
Registrar	39	+14	+11	+11	+14	+13	+0	+57.2%	+41.2%	+39.7%	+55.4%	+51.0%	+0.1%
Senior Registrar	4	+2	+2	+2	+1			+100.0%	+100.0%	+100.0%	+33.3%		
Registrars	43	+16	+13	+13	+15	+13	+0	+60.4%	+45.2%	+43.8%	+53.0%	+44.1%	+0.1%
Interns	2	+1	+1	+1	+1	+1		+100.0%	+100.0%	+100.0%	+100.0%	+100.0%	
Senior House Officer	29	-4	-9	-5	-8	-8	-2	-12.4%	-24.7%	-14.7%	-21.8%	-21.9%	-5.1%
SHO/ Interns	31	-3	-8	-4	-7	-7	-2	-9.1%	-21.5%	-11.4%	-18.6%	-18.7%	-4.8%
Dentists	36	+3	+2	+1	+0	-1	-0	+9.6%	+4.8%	+3.7%	+0.4%	-3.5%	-0.8%
Other Medical	37	+9	+8	+7	+7	+3	+1	+32.4%	+26.5%	+25.2%	+22.6%	+8.2%	+3.5%
Medical/ Dental, other	73	+12	+9	+9	+7	+1	+1	+20.0%	+14.8%	+13.6%	+10.5%	+2.1%	+1.3%
Medical & Dental	184	+28	+19	+27	+21	+15	+0	+18.0%	+11.7%	+17.4%	+13.2%	+9.1%	+0.1%
Clinical Nurse/ Midwife Manager	283	+15	+25	+5	+12	-3	-7	+5.8%	+9.5%	+1.7%	+4.3%	-1.0%	-2.3%
Director Nursing/Midwifery, Assistant	64	+17	+18	+18	+18	+9	-1	+37.9%	+40.7%	+40.6%	+40.1%	+15.6%	-0.8%
Director of Nursing/Midwifery	23	+0	+1	-0	+1	-1	-1	+1.2%	+6.5%	-1.1%	+5.0%	-5.3%	-4.9%
Nurse/ Midwife Manager	369	+33	+44	+23	+31	+4	-8	+9.9%	+13.6%	+6.6%	+9.2%	+1.2%	-2.2%
Advanced Nurse/ Midwife Practitioner	13	+13	+12	+11	+10	+7	+1	-100.0%	+1213.0%	+556.5%	+337.7%	+98.3%	+8.4%
Clinical Nurse/ Midwife Specialist	83	+37	+32	+25	+34	+12	+2	+78.4%	+63.2%	+44.1%	+70.0%	+16.6%	+1.9%
Nurse/ Midwife Specialist & AN/MP	96	+50	+44	+37	+44	+18	+3	+106.7%	+85.3%	+61.3%	+85.5%	+23.5%	+2.8%
Staff Midwives	2	+2	+2	+2	+2	+1	-0	-100.0%	-100.0%	-100.0%	-100.0%	+87.5%	-5.7%
Staff Nurse [Intellectual Disability]	107	-3	-12	+0	-9	-8	-5	-2.4%	-10.1%	+0.4%	-7.5%	-6.7%	-4.9%
Staff Nurse [Psychiatric]	408	-31	-32	-19	-13	-12	+3	-7.0%	-7.3%	-4.5%	-3.0%	-2.9%	+0.7%
Staff Nurses [General/ Children's]	456	+45	+59	+35	+25	+20	-3	+11.0%	+15.0%	+8.4%	+5.9%	+4.6%	-0.6%
Staff Nurse/ Staff Midwife	973	+14	+17	+18	+6	+1	-5	+1.4%	+1.8%	+1.9%	+0.6%	+0.1%	-0.6%
Public Health Nurse	159	-8	-5	-8	-15	-17	+0	-4.6%	-3.0%	-5.0%	-8.6%	-9.5%	+0.3%
Pre-registration Nurse/ Midwife Intern	10	+7	+9	+10	+7	+10	-16	+185.7%	+566.7%	+1900.0%	+185.7%	-100.0%	-61.9%
Pre-registration Nurse Intern (COVID-19)						-14		-100.0%	-100.0%	-100.0%	-100.0%	-100.0%	-100.0%
Post-registration Nurse/ Midwife Student	5	-3	-1	-3	-1	+1	+2	-35.7%	-22.4%	-35.7%	-10.0%	+35.1%	+50.0%
Nursing/ Midwifery awaiting registration	17	+17	+3	+17	+13	+17	+17	-100.0%	+18.0%	-100.0%	+330.2%	-100.0%	-100.0%
Nursing/ Midwifery Student	31	+21	+10	+24	+19	+14	+2	+195.4%	+45.6%	+313.6%	+151.4%	+79.7%	+5.9%
Nursing/ Midwifery other	4	+1	+0	+0	-0	-0	-0	+48.7%	+8.8%	+9.1%	-10.6%	-9.4%	-8.5%
Nursing & Midwifery	1,632	+111	+111	+93	+84	+21	-9	+7.3%	+7.3%	+6.1%	+5.4%	+1.3%	-0.6%

Sep 2022 (Dec 2016 figure: 4,725)	WTE Sep 2022	WTE change since Dec 16	WTE change since Dec 17	WTE change since Dec 18	WTE change since Dec 19	WTE change since Dec 20	WTE change since Aug 22	% change since Dec 16	% change since Dec 17	% change since Dec 18	% change since Dec 19	% change since Dec 20	% change since Aug 22
Overall	5,784	+1,059	+704	+553	+502	+307	-3	+22.4%	+13.8%	+10.6%	+9.5%	+5.6%	-0.0%
Dietitians	23	+11	+10	+7	+8	+7	-0	+92.6%	+71.7%	+44.6%	+55.1%	+39.5%	-0.2%
Occupational Therapists	136	+16	+9	+5	+15	+16	-2	+13.4%	+7.2%	+4.1%	+12.8%	+13.6%	-1.2%
Orthoptists	1	+1	+1		+1			-100.0%	-100.0%		+100.0%		
Physiotherapists	101	+12	+7	+10	+14	+10	-1	+13.7%	+7.3%	+11.1%	+15.5%	+11.3%	-0.6%
Podiatrists & Chiropodists	5	+5	+4	+4	+4	+4	+0	+915.7%	+243.0%	+267.4%	+252.4%	+314.4%	+5.9%
Speech & Language Therapists	107	+5	+6	+5	+5	+11	-1	+5.3%	+5.6%	+4.6%	+4.7%	+12.0%	-0.7%
Therapy Professions	373	+50	+36	+31	+46	+49	-3	+15.6%	+10.7%	+9.1%	+14.1%	+14.9%	-0.7%
Audiology	5	+0	+0	+1	+1	-2	-1	+2.8%	+7.1%	+28.5%	+35.3%	-32.6%	-12.4%
Health Science/ Diagnostics	5	+0	+0	+1	+1	-2	-1	+2.8%	+7.1%	+28.5%	+35.3%	-32.6%	-12.4%
Social Care	169	+39	+17	+7	+5	+16	+2	+29.6%	+11.6%	+4.0%	+3.0%	+10.5%	+1.2%
Social Workers	63	-4	-6	-1	+3	-0	-0	-6.2%	-9.2%	-1.2%	+5.2%	-0.5%	-0.7%
Psychologists	80	+0	+2	+5	+1	+1	-1	+0.4%	+2.1%	+6.5%	+0.9%	+1.1%	-0.9%
Pharmacy	3	+1	+2	+2	+2	+1	-0	+48.6%	+181.3%	+215.0%	+215.0%	+59.9%	-6.8%
Counsellor Therapists	34	+12	+14	+13	+12	+14	-0	+52.6%	+71.6%	+66.3%	+55.4%	+69.9%	-0.1%
Dental Hygienists	7	+0	+0	+0	+1	-0	+0	+2.1%	+3.6%	+3.6%	+15.7%	-2.3%	+0.7%
Environmental Health Officers					-1			-100.0%	-100.0%	-100.0%	-100.0%	-100.0%	-100.0%
Other Health & Social Care	3	+1	+1	+2	+2	+3	-0	+117.8%	+138.0%	+185.6%	+192.0%	-100.0%	-0.8%
Play Therapists/ Specialists	5	+1	+1	+1	-1	+0	-1	+30.0%	+30.9%	+16.2%	-12.1%	+5.1%	-14.2%
H&SC, Other	48	+14	+17	+16	+13	+16	-1	+42.0%	+54.0%	+49.5%	+38.1%	+51.5%	-1.8%
Health & Social Care Professionals	741	+101	+68	+61	+72	+80	-4	+15.7%	+10.1%	+9.0%	+10.7%	+12.1%	-0.5%
Executive Management	13	+6	+4	+4	+6	+2		+83.6%	+42.8%	+42.8%	+83.6%	+16.8%	
Senior Management (VIII & GM)	57	+33	+29	+24	+21	+21	-1	+134.0%	+103.8%	+72.5%	+59.1%	+59.0%	-1.9%
Management (VIII & above)	70	+39	+33	+28	+27	+23	-1	+122.8%	+89.0%	+66.2%	+63.1%	+49.2%	-1.6%
Administrative/ Supervisory (V to VII)	210	+107	+92	+90	+85	+72	+8	+104.5%	+77.8%	+75.2%	+68.2%	+52.3%	+4.0%
Clerical (III & IV)	370	+51	+65	+51	+40	+46	+6	+16.0%	+21.4%	+15.9%	+12.2%	+14.2%	+1.5%
Management & Administrative	651	+197	+190	+169	+153	+141	+13	+43.5%	+41.4%	+35.1%	+30.7%	+27.7%	+2.0%
Catering	36	+5	+0	+1	+4	+2	+1	+15.4%	+0.4%	+4.1%	+10.6%	+5.2%	+3.7%
Household Services	207	-98	-75	-55	-50	-16	+0	-32.2%	-26.5%	-21.1%	-19.5%	-7.1%	+0.2%
Other Support	31	-3	-3	-4	-1	-3	-0	-8.8%	-9.1%	-11.1%	-4.0%	-9.2%	-0.1%
Portering	8	-6	+0	+0	-1	+0	+0	-40.2%	+0.5%	+0.4%	-8.2%	+3.5%	+0.8%
Support	283	-102	-78	-58	-49	-17	+2	-26.5%	-21.5%	-17.0%	-14.7%	-5.6%	+0.6%
Maintenance/ Technical	28	-11	-9	-11	-10	-3	+0	-27.8%	-24.4%	-28.2%	-26.5%	-8.3%	+0.4%
General Support	312	-113	-87	-69	-59	-19	+2	-26.6%	-21.8%	-18.1%	-15.9%	-5.9%	+0.6%
HCA (Student Nurse/Midwife COVID-19)						-6		-100.0%	-100.0%	-100.0%	-100.0%	-100.0%	-100.0%
Health & Social Care Assistants	12	+11	+11	+0	+4	-0	+2	+1051.0%	+1164.8%	+0.9%	+47.2%	-0.5%	+15.4%
Attendant/ Aide	303	-15	-25	-33	-48	-78	+3	-4.8%	-7.6%	-9.9%	-13.8%	-20.4%	+1.1%
Health Care Assistant/ Care Assistant	997	+329	+288	+256	+214	+78	-29	+49.2%	+40.6%	+34.6%	+27.4%	+8.5%	-2.8%

Sep 2022 (Dec 2016 figure: 4,725)	WTE Sep 2022	WTE change since Dec 16	WTE change since Dec 17	WTE change since Dec 18	WTE change since Dec 19	WTE change since Dec 20	WTE change since Aug 22	% change since Dec 16	% change since Dec 17	% change since Dec 18	% change since Dec 19	% change since Dec 20	% change since Aug 22
Overall	5,784	+1,059	+704	+553	+502	+307	-3	+22.4%	+13.8%	+10.6%	+9.5%	+5.6%	-0.0%
Health Care Assistants	1,312	+324	+273	+223	+170	-5	-24	+32.8%	+26.3%	+20.5%	+14.9%	-0.4%	-1.8%
Home Help	661	+308	+34	-34	-7	+15	+11	+87.4%	+5.4%	-4.9%	-1.1%	+2.3%	+1.6%
Care, other	291	+103	+95	+83	+69	+59	+10	+55.0%	+48.5%	+39.7%	+31.1%	+25.6%	+3.4%
Patient & Client Care	2,264	+735	+402	+272	+232	+69	-4	+48.1%	+21.6%	+13.6%	+11.4%	+3.2%	-0.2%

Source: Health Service Personnel Census

Longitudinal Employment Levels by Care Group - Dec 2016 to Sep 2022

Community Health & Wellbeing

Sep 2022 (figure:)	WTE Sep 2022	WTE change since	WTE change since	WTE change since	WTE change since	WTE change since Dec 20	WTE change since Aug 22	% change since	% change since	% change since	% change since	% change since Dec 20	% change since Aug 22
Overall	29	+29	+29	+29	+29	+15	-1	-100.0%	-100.0%	-100.0%	-100.0%	+104.6%	-3.1%
Health & Social Care Professionals	2	+2	+2	+2	+2	-1		-1.0%	-1.0%	-1.0%	-1.0%	-0.3%	+0.0%
Therapy Professions	2	+2	+2	+2	+2	-1		-1.0%	-1.0%	-1.0%	-1.0%	-0.3%	+0.0%
Management & Administrative	18	+18	+18	+18	+18	+13	-1	-1.0%	-1.0%	-1.0%	-1.0%	+2.3%	-0.0%
Management (VIII & above)	2	+2	+2	+2	+2	+1	-0	-1.0%	-1.0%	-1.0%	-1.0%	+1.3%	-0.1%
Administrative/ Supervisory (V to VII)	12	+12	+12	+12	+12	+10	+1	-1.0%	-1.0%	-1.0%	-1.0%	+5.3%	+0.0%
Clerical (III & IV)	4	+4	+4	+4	+4	+1	-1	-1.0%	-1.0%	-1.0%	-1.0%	+0.5%	-0.3%
Patient & Client Care	9	+9	+9	+9	+9	+3	-0	-1.0%	-1.0%	-1.0%	-1.0%	+0.5%	-0.0%
Care, other	9	+9	+9	+9	+9	+3	-0	-1.0%	-1.0%	-1.0%	-1.0%	+0.5%	-0.0%

Source: Health Service Personnel Census

Mental Health

Sep 2022 (Dec 2016 figure: 1,221)	WTE Sep 2022	WTE change since Dec 16	WTE change since Dec 17	WTE change since Dec 18	WTE change since Dec 19	WTE change since Dec 20	WTE change since Aug 22	% change since Dec 16	% change since Dec 17	% change since Dec 18	% change since Dec 19	% change since Dec 20	% change since Aug 22
Overall	1,221	-0	+23	+36	+43	+32	-3	-0.0%	+2.0%	+3.0%	+3.7%	+2.7%	-0.2%
Medical & Dental	80	+12	+9	+14	+9	+6	-1	+0.2%	+0.1%	+0.2%	+0.1%	+0.1%	-0.0%
Consultants	34	+4	+6	+10	+8	+7	+0	+0.1%	+0.2%	+0.4%	+0.3%	+0.2%	+0.0%
Registrars	13	+7	+8	+4	+3	+4	+0	+1.2%	+1.6%	+0.4%	+0.3%	+0.4%	+0.0%
SHO/ Interns	31	+1	-4	+0	-1	-5	-2	+0.0%	-0.1%	+0.0%	-0.0%	-0.1%	-0.0%
Medical/ Dental, other	2	-0	-1	-0	-0	-0		-0.0%	-0.4%	-0.0%	-0.0%	-0.0%	+0.0%
Nursing & Midwifery	646	-0	+2	+6	+16	+5	-2	-0.0%	+0.0%	+0.0%	+0.0%	+0.0%	-0.0%
Nurse/ Midwife Manager	167	+4	+8	+4	+3	+7	-4	+0.0%	+0.1%	+0.0%	+0.0%	+0.0%	-0.0%
Nurse/ Midwife Specialist & AN/MP	58	+16	+14	+8	+16	+4	+1	+0.4%	+0.3%	+0.2%	+0.4%	+0.1%	+0.0%
Staff Nurse/ Staff Midwife	399	-37	-37	-24	-16	-12	+2	-0.1%	-0.1%	-0.1%	-0.0%	-0.0%	+0.0%
Nursing/ Midwifery Student	19	+17	+17	+18	+13	+6	+0	+8.3%	+11.3%	+36.0%	+2.4%	+0.4%	+0.0%
Nursing/ Midwifery other	3	+0	-1	-1	-1	-0	-0	+0.2%	-0.1%	-0.1%	-0.1%	-0.1%	-0.1%
Health & Social Care Professionals	112	-9	-8	+1	+8	+11	-1	-0.1%	-0.1%	+0.0%	+0.1%	+0.1%	-0.0%
Therapy Professions	35	-12	-14	-10	-6	-4	-1	-0.3%	-0.3%	-0.2%	-0.1%	-0.1%	-0.0%
Social Care	5	-0	-0	-0	-0	-0	+0	-0.0%	-0.0%	-0.0%	-0.0%	-0.0%	+0.1%
Social Workers	26	-7	-6	-2	-1	-2	-1	-0.2%	-0.2%	-0.1%	-0.1%	-0.1%	-0.0%
Psychologists	25	-1	+1	+1	+4	+4	+1	-0.0%	+0.1%	+0.0%	+0.2%	+0.2%	+0.0%
H&SC, Other	22	+11	+11	+11	+12	+14	-0	+1.0%	+1.0%	+1.0%	+1.2%	+1.8%	-0.0%
Management & Administrative	102	+4	+15	+9	+5	+8	+2	+0.0%	+0.2%	+0.1%	+0.1%	+0.1%	+0.0%
Management (VIII & above)	6	+3	+4	+3	+3			+1.0%	+2.0%	+1.0%	+1.0%	+0.0%	+0.0%
Administrative/ Supervisory (V to VII)	24	+8	+6	+5	+4	+4	+1	+0.5%	+0.3%	+0.3%	+0.2%	+0.2%	+0.0%
Clerical (III & IV)	73	-7	+5	+1	-1	+4	+2	-0.1%	+0.1%	+0.0%	-0.0%	+0.1%	+0.0%
General Support	191	-20	-2	+3	-0	-7	+1	-0.1%	-0.0%	+0.0%	-0.0%	-0.0%	+0.0%
Support	176	-10	+5	+11	+8	-3	+1	-0.1%	+0.0%	+0.1%	+0.0%	-0.0%	+0.0%
Maintenance/ Technical	15	-10	-8	-8	-8	-5	+0	-0.4%	-0.3%	-0.3%	-0.3%	-0.2%	+0.0%
Patient & Client Care	90	+14	+8	+3	+4	+10	-2	+0.2%	+0.1%	+0.0%	+0.0%	+0.1%	-0.0%
Health Care Assistants	76	+14	+10	+5	+3	+8	-2	+0.2%	+0.1%	+0.1%	+0.0%	+0.1%	-0.0%
Care, other	14	-0	-2	-2	+1	+2	-0	-0.0%	-0.1%	-0.1%	+0.1%	+0.1%	-0.0%

Source: Health Service Personnel Census



Primary Care

Sep 2022 (Dec 2016 figure: 891)	WTE Sep 2022	WTE change since Dec 16	WTE change since Dec 17	WTE change since Dec 18	WTE change since Dec 19	WTE change since Dec 20	WTE change since Aug 22	% change since Dec 16	% change since Dec 17	% change since Dec 18	% change since Dec 19	% change since Dec 20	% change since Aug 22
Overall	1,120	+229	+201	+162	+168	+59	+7	+25.7%	+21.9%	+16.9%	+17.7%	+5.6%	+0.7%
Medical & Dental	88	+13	+7	+8	+7	+10	+1	+0.2%	+0.1%	+0.1%	+0.1%	+0.1%	+0.0%
Consultants	2	-1	-1	-1	-1	+1		-0.3%	-0.3%	-0.3%	-0.3%	+1.0%	+0.0%
Registrars	30	+9	+5	+9	+12	+9	+0	+0.4%	+0.2%	+0.4%	+0.7%	+0.4%	+0.0%
SHO/ Interns		-4	-4	-4	-6	-2		-1.0%	-1.0%	-1.0%	-1.0%	-1.0%	-1.0%
Medical/ Dental, other	56	+9	+6	+4	+2	+2	+1	+0.2%	+0.1%	+0.1%	+0.0%	+0.0%	+0.0%
Nursing & Midwifery	339	+85	+84	+71	+69	+19	+6	+0.3%	+0.3%	+0.3%	+0.3%	+0.1%	+0.0%
Nurse/ Midwife Manager	50	+28	+28	+24	+23	+3	-0	+1.3%	+1.3%	+0.9%	+0.9%	+0.1%	-0.0%
Nurse/ Midwife Specialist & AN/MP	24	+22	+20	+19	+19	+7	-0	+7.7%	+4.3%	+3.5%	+3.3%	+0.4%	-0.0%
Staff Nurse/ Staff Midwife	112	+50	+44	+42	+45	+28	+4	+0.8%	+0.7%	+0.6%	+0.7%	+0.3%	+0.0%
Public Health Nurse	148	-11	-7	-11	-17	-19	+1	-0.1%	-0.0%	-0.1%	-0.1%	-0.1%	+0.0%
Nursing/ Midwifery Student	5	-3	-1	-3	-1	+1	+2	-0.4%	-0.2%	-0.4%	-0.1%	+0.4%	+0.5%
Nursing/ Midwifery other					-1	-1		-1.0%	-1.0%	-1.0%	-1.0%	-1.0%	-1.0%
Health & Social Care Professionals	310	+47	+44	+39	+46	+46	+4	+0.2%	+0.2%	+0.1%	+0.2%	+0.2%	+0.0%
Therapy Professions	243	+57	+51	+43	+59	+57	+3	+0.3%	+0.3%	+0.2%	+0.3%	+0.3%	+0.0%
Health Science/ Diagnostics	5	+0	+0	+1	+1	-2	-1	+0.0%	+0.1%	+0.3%	+0.4%	-0.3%	-0.1%
Social Care	6	+2	+2	+2	+0	+1	+1	+0.5%	+0.7%	+0.4%	+0.1%	+0.1%	+0.3%
Social Workers	4	-0	-4	-3	-4	-2	+0	-0.0%	-0.5%	-0.4%	-0.5%	-0.4%	+0.0%
Psychologists	33	-10	-8	-6	-10	-5	-0	-0.2%	-0.2%	-0.1%	-0.2%	-0.1%	-0.0%
Pharmacy	0	-2	-1	-1	-1	-1		-0.8%	-0.6%	-0.6%	-0.6%	-0.6%	+0.0%
H&SC, Other	18	+0	+3	+2	+0	-0	+0	+0.0%	+0.2%	+0.1%	+0.0%	-0.0%	+0.0%
Management & Administrative	239	+23	+10	-0	-2	-3	+2	+0.1%	+0.0%	-0.0%	-0.0%	-0.0%	+0.0%
Management (VIII & above)	18	+1	-3	-5	-8	-6	-0	+0.1%	-0.1%	-0.2%	-0.3%	-0.2%	-0.0%
Administrative/ Supervisory (V to VII)	64	+19	+9	+8	+12	+5	-2	+0.4%	+0.2%	+0.1%	+0.2%	+0.1%	-0.0%
Clerical (III & IV)	158	+3	+4	-3	-6	-3	+4	+0.0%	+0.0%	-0.0%	-0.0%	-0.0%	+0.0%
General Support	22	-4	-6	-6	-4	-4	-0	-0.2%	-0.2%	-0.2%	-0.1%	-0.2%	-0.0%
Support	22	-4	-6	-6	-4	-4	-0	-0.2%	-0.2%	-0.2%	-0.1%	-0.2%	-0.0%
Patient & Client Care	122	+64	+62	+49	+52	-8	-5	+1.1%	+1.0%	+0.7%	+0.7%	-0.1%	-0.0%
Health Care Assistants	51	+50	+50	+39	+43	-18	-3	+50.4%	+50.4%	+3.2%	+5.4%	-0.3%	-0.1%
Home Help	7	+1	-2	-0	-0	-1	+0	+0.2%	-0.2%	-0.0%	-0.0%	-0.1%	+0.0%
Care, other	63	+12	+13	+10	+8	+11	-1	+0.2%	+0.3%	+0.2%	+0.2%	+0.2%	-0.0%

Source: Health Service Personnel Census

Disabilities

Sep 2022 (Dec 2016 figure: 1,272)	WTE Sep 2022	WTE change since Dec 16	WTE change since Dec 17	WTE change since Dec 18	WTE change since Dec 19	WTE change since Dec 20	WTE change since Aug 22	% change since Dec 16	% change since Dec 17	% change since Dec 18	% change since Dec 19	% change since Dec 20	% change since Aug 22
Overall	1,665	+393	+288	+256	+160	+102	-21	+30.9%	+20.9%	+18.1%	+10.6%	+6.5%	-1.3%
Medical & Dental	1	-1	-1	+0	+0	+0	+1	-0.3%	-0.3%	+1.0%	+0.1%	+0.4%	+1.0%
Consultants	1	-0	-0	+1	+0	+0	+1	-0.2%	-0.2%	+2.2%	+0.1%	+0.4%	+1.0%
Medical/ Dental, other		-0	-0	-0				-1.0%	-1.0%	-1.0%	-1.0%	-1.0%	-1.0%
Nursing & Midwifery	252	+8	+21	+21	+7	+5	-8	+0.0%	+0.1%	+0.1%	+0.0%	+0.0%	-0.0%
Nurse/ Midwife Manager	74	+4	+15	+9	+9	+4	-1	+0.1%	+0.2%	+0.1%	+0.1%	+0.1%	-0.0%
Nurse/ Midwife Specialist & AN/MP	3	+2	+1	+1	+1	+1	-1	+2.0%	+0.5%	+0.5%	+0.5%	+0.4%	-0.2%
Staff Nurse/ Staff Midwife	156	-11	-8	-2	-14	-13	-7	-0.1%	-0.0%	-0.0%	-0.1%	-0.1%	-0.0%
Public Health Nurse	10	+6	+4	+5	+5	+4	+0	+1.3%	+0.7%	+0.8%	+0.9%	+0.7%	+0.0%
Nursing/ Midwifery Student	8	+7	+8	+8	+6	+7		+4.3%	-1.0%	-1.0%	+3.3%	+7.0%	+0.0%
Nursing/ Midwifery other	1	+1	+1	+1	+1	+1		-1.0%	-1.0%	-1.0%	-1.0%	-1.0%	+0.0%
Health & Social Care Professionals	268	+53	+20	+17	+9	+12	-8	+0.2%	+0.1%	+0.1%	+0.0%	+0.0%	-0.0%
Therapy Professions	64	+9	+1	+7	+1	-1	-4	+0.2%	+0.0%	+0.1%	+0.0%	-0.0%	-0.1%
Social Care	159	+37	+15	+5	+5	+16	+1	+0.3%	+0.1%	+0.0%	+0.0%	+0.1%	+0.0%
Social Workers	19	-4	-5	-5	-2	-5	-3	-0.2%	-0.2%	-0.2%	-0.1%	-0.2%	-0.2%
Psychologists	20	+10	+7	+8	+6	+1	-0	+1.1%	+0.6%	+0.7%	+0.4%	+0.1%	-0.0%
Pharmacy		-0	-0					-1.0%	-1.0%	-1.0%	-1.0%	-1.0%	-1.0%
H&SC, Other	6	+1	+1	+1	-1	+1	-1	+0.3%	+0.3%	+0.2%	-0.1%	+0.2%	-0.1%
Management & Administrative	149	+55	+47	+44	+38	+34	+0	+0.6%	+0.5%	+0.4%	+0.3%	+0.3%	+0.0%
Management (VIII & above)	17	+8	+5	+3	+7	+5	-1	+0.9%	+0.4%	+0.2%	+0.6%	+0.4%	-0.1%
Administrative/ Supervisory (V to VII)	60	+28	+26	+25	+21	+19	+2	+0.9%	+0.8%	+0.7%	+0.5%	+0.5%	+0.0%
Clerical (III & IV)	71	+19	+16	+15	+11	+10	+0	+0.4%	+0.3%	+0.3%	+0.2%	+0.2%	+0.0%
General Support	18	-15	-10	-13	-5	-2	+0	-0.5%	-0.4%	-0.4%	-0.2%	-0.1%	+0.0%
Support	8	-18	-14	-13	-7	-4	+0	-0.7%	-0.6%	-0.6%	-0.5%	-0.3%	+0.0%
Maintenance/ Technical	9	+3	+3	+0	+2	+2		+0.5%	+0.5%	+0.0%	+0.3%	+0.3%	+0.0%
Patient & Client Care	978	+292	+211	+186	+110	+54	-6	+0.4%	+0.3%	+0.2%	+0.1%	+0.1%	-0.0%
Health Care Assistants	762	+211	+172	+151	+91	+30	-17	+0.4%	+0.3%	+0.2%	+0.1%	+0.0%	-0.0%
Home Help	31	+8	-27	-23	-23	-9	-0	+0.3%	-0.5%	-0.4%	-0.4%	-0.2%	-0.0%
Care, other	186	+73	+66	+58	+42	+33	+11	+0.7%	+0.5%	+0.5%	+0.3%	+0.2%	+0.1%

Source: Health Service Personnel Census

Older People

Sep 2022 (Dec 2016 figure: 1,341)	WTE Sep 2022	WTE change since Dec 16	WTE change since Dec 17	WTE change since Dec 18	WTE change since Dec 19	WTE change since Dec 20	WTE change since Aug 22	% change since Dec 16	% change since Dec 17	% change since Dec 18	% change since Dec 19	% change since Dec 20	% change since Aug 22
Overall	1,670	+329	+83	-8	+23	+20	-4	+24.6%	+5.2%	-0.5%	+1.4%	+1.2%	-0.2%
Medical & Dental	15	+3	+4	+5	+5	-0		+0.3%	+0.4%	+0.5%	+0.5%	-0.0%	+0.0%
Medical/ Dental, other	15	+3	+4	+5	+5	-0		+0.3%	+0.4%	+0.5%	+0.5%	-0.0%	+0.0%
Nursing & Midwifery	393	+15	+2	-7	-9	-10	-6	+0.0%	+0.0%	-0.0%	-0.0%	-0.0%	-0.0%
Nurse/ Midwife Manager	77	-4	-7	-15	-5	-12	-3	-0.0%	-0.1%	-0.2%	-0.1%	-0.1%	-0.0%
Nurse/ Midwife Specialist & AN/MP	9	+9	+8	+7	+7	+6	+3	-1.0%	+8.3%	+3.7%	+3.7%	+1.4%	+0.5%
Staff Nurse/ Staff Midwife	306	+11	+17	+2	-9	-2	-5	+0.0%	+0.1%	+0.0%	-0.0%	-0.0%	-0.0%
Public Health Nurse	1	-2	-2	-2	-3	-2	-1	-0.7%	-0.7%	-0.7%	-0.7%	-0.6%	-0.5%
Nursing/ Midwifery Student			-14					-1.0%	-1.0%	-1.0%	-1.0%	-1.0%	-1.0%
Health & Social Care Professionals	38	-4	-1	-9	-6	+1	-6	-0.1%	-0.0%	-0.2%	-0.1%	+0.0%	-0.1%
Therapy Professions	30	-5	-4	-12	-10	-2	-1	-0.1%	-0.1%	-0.3%	-0.3%	-0.1%	-0.0%
Social Workers	4	-2	-1	-1	+1	-0	-4	-0.4%	-0.2%	-0.2%	+0.2%	-0.1%	-0.5%
Psychologists	1	+1	+1	+1	+1	+1	-1	-1.0%	-1.0%	-1.0%	-1.0%	-1.0%	-0.3%
Pharmacy	1	+1	+1	+1	+1	-0	-0	-1.0%	-1.0%	-1.0%	-1.0%	-0.0%	-0.0%
H&SC, Other	2	+2	+2	+2	+2	+2	-0	-1.0%	-1.0%	-1.0%	-1.0%	-1.0%	-0.0%
Management & Administrative	79	+33	+36	+34	+29	+27	+0	+0.7%	+0.9%	+0.8%	+0.6%	+0.5%	+0.0%
Management (VIII & above)	11	+8	+9	+8	+7	+7	-0	+2.9%	+5.1%	+2.9%	+1.9%	+1.9%	-0.0%
Administrative/ Supervisory (V to VII)	15	+5	+4	+4	+1	-2	+1	+0.5%	+0.3%	+0.4%	+0.1%	-0.1%	+0.0%
Clerical (III & IV)	52	+20	+24	+22	+20	+21	-0	+0.6%	+0.8%	+0.7%	+0.6%	+0.7%	-0.0%
General Support	81	-74	-69	-54	-50	-6	+1	-0.5%	-0.5%	-0.4%	-0.4%	-0.1%	+0.0%
Support	77	-69	-64	-50	-46	-6	+1	-0.5%	-0.5%	-0.4%	-0.4%	-0.1%	+0.0%
Maintenance/ Technical	4	-5	-5	-4	-4	+0	+0	-0.5%	-0.5%	-0.5%	-0.5%	+0.0%	+0.0%
Patient & Client Care	1,064	+355	+110	+23	+55	+9	+7	+0.5%	+0.1%	+0.0%	+0.1%	+0.0%	+0.0%
Health Care Assistants	421	+47	+39	+26	+30	-27	-4	+0.1%	+0.1%	+0.1%	+0.1%	-0.1%	-0.0%
Home Help	624	+299	+62	-11	+16	+25	+11	+0.9%	+0.1%	-0.0%	+0.0%	+0.0%	+0.0%
Care, other	19	+9	+9	+7	+9	+11	+0	+0.9%	+0.9%	+0.6%	+0.8%	+1.3%	+0.0%

Source: Health Service Personnel Census

Overall													

Source: Health Service Personnel Census