

## CHO 6 Employment Report: April 2021

### Employment by Staff Group

Apr 2021 (Dec 2020 figure: 3,465)	WTE Mar 2021	WTE Apr 2021	WTE change since Mar 21	% change since Mar 21	WTE change since Dec 20	WTE change since Apr 20
<b>Overall</b>	<b>3,496</b>	<b>3,524</b>	<b>+28</b>	<b>+0.8%</b>	<b>+59</b>	<b>+180</b>
Consultants	51	52	+1	+1.1%	+1	+1
Registrars	51	50	-1	-1.8%	+6	+8
SHO/ Interns	19	19	-1	-4.7%	-1	-0
Medical/ Dental, other	47	47	-0	-0.3%	+2	-2
<b>Medical &amp; Dental</b>	<b>169</b>	<b>168</b>	<b>-1</b>	<b>-0.8%</b>	<b>+8</b>	<b>+7</b>
Nurse/ Midwife Manager	201	202	+2	+1.0%	-3	-5
Nurse/ Midwife Specialist & AN/MP	25	24	-2	-6.0%	-0	+1
Staff Nurse/ Staff Midwife	549	551	+2	+0.3%	-4	+9
Public Health Nurse	109	107	-2	-1.9%	-5	-5
Pre-registration Nurse/ Midwife Intern	4	3	-0	-5.4%	+3	-0
Post-registration Nurse/ Midwife Student	15	15			+0	
Nursing/ Midwifery awaiting registration	1	1				
Nursing/ Midwifery Student	20	19	-0	-1.0%	+4	+6
Nursing/ Midwifery other	3	3	-0	-0.7%	-0	-1
<b>Nursing &amp; Midwifery</b>	<b>907</b>	<b>907</b>	<b>-0</b>	<b>-0.0%</b>	<b>-8</b>	<b>+6</b>
Therapy Professions	248	250	+2	+0.8%	+13	+16
Health Science/ Diagnostics	19	19	-0	-1.2%	-1	+2
Social Care	389	397	+8	+2.0%	+5	+49
Social Workers	57	58	+1	+1.8%	+4	+3
Psychologists	65	65	-0	-0.0%	-2	+4
Pharmacy	5	5	+0	+2.6%	+1	+1
H&SC, Other	10	10	-0	-1.0%	-1	-1
<b>Health &amp; Social Care Professionals</b>	<b>793</b>	<b>803</b>	<b>+10</b>	<b>+1.3%</b>	<b>+19</b>	<b>+75</b>
Management (VIII & above)	70	70	-1	-0.8%	+1	+1
Administrative/ Supervisory (V to VII)	179	186	+7	+3.8%	+20	+16
Clerical (III & IV)	272	266	-6	-2.2%	+6	+21
<b>Management &amp; Administrative</b>	<b>522</b>	<b>522</b>	<b>+0</b>	<b>+0.0%</b>	<b>+26</b>	<b>+38</b>
Support	184	189	+5	+2.5%	-3	-20
Maintenance/ Technical	21	22	+1	+4.8%		-2
<b>General Support</b>	<b>205</b>	<b>211</b>	<b>+6</b>	<b>+2.7%</b>	<b>-3</b>	<b>-22</b>
Health Care Assistants	587	593	+7	+1.1%	+28	+73
Care, other	314	320	+6	+2.1%	-11	+4
<b>Patient &amp; Client Care</b>	<b>900</b>	<b>913</b>	<b>+13</b>	<b>+1.4%</b>	<b>+17</b>	<b>+77</b>

## CHO 6 Employment Report: April 2021

### Community Health & Wellbeing

Apr 2021 (Dec 2020 figure: 8)	WTE Mar 2021	WTE Apr 2021	WTE change since Mar 21	% change since Mar 21	WTE change since Dec 20	WTE change since Apr 20
<b>Total Community Health &amp; Wellbeing</b>	<b>8</b>	<b>9</b>	<b>+1</b>	<b>+12.5%</b>	<b>+1</b>	<b>+0</b>
Management (VIII & above)	1	1				
Administrative/ Supervisory (V to VII)	4	5	+0	+3.4%	+1	+1
Clerical (III & IV)	1	1			-0	-0
<b>Management &amp; Administrative</b>	<b>6</b>	<b>6</b>	<b>+0</b>	<b>+2.4%</b>	<b>+1</b>	<b>+1</b>
Care, other	2	2	+1	+52.2%	-0	-0
<b>Patient &amp; Client Care</b>	<b>2</b>	<b>2</b>	<b>+1</b>	<b>+52.2%</b>	<b>-0</b>	<b>-0</b>

## Mental Health

Apr 2021 (Dec 2020 figure: 626)	WTE Mar 2021	WTE Apr 2021	WTE change since Mar 21	% change since Mar 21	WTE change since Dec 20	WTE change since Apr 20
<b>Total Mental Health</b>	<b>632</b>	<b>634</b>	<b>+3</b>	<b>+0.4%</b>	<b>+8</b>	<b>+31</b>
Consultants	40	41	+1	+1.4%	+1	+1
Registrars	25	24	-1	-3.6%	+5	+7
SHO/ Interns	13	12	-1	-7.1%	-1	-0
<b>Medical &amp; Dental</b>	<b>78</b>	<b>77</b>	<b>-1</b>	<b>-1.6%</b>	<b>+5</b>	<b>+8</b>
Nurse/ Midwife Manager	75	75	-0	-0.3%	-3	-0
Nurse/ Midwife Specialist & AN/MP	20	19	-2	-7.4%	-1	+3
Staff Nurse/ Staff Midwife	148	150	+2	+1.1%	-1	-0
Pre-registration Nurse/ Midwife Intern	4	3	-0	-5.4%	+3	-0
Nursing/ Midwifery awaiting registration	1	1				
Nursing/ Midwifery Student	5	4	-0	-4.3%	+3	+4
Nursing/ Midwifery other	2	2				-1
<b>Nursing &amp; Midwifery</b>	<b>250</b>	<b>250</b>	<b>-0</b>	<b>-0.2%</b>	<b>-1</b>	<b>+6</b>
Therapy Professions	39	42	+4	+9.8%	+4	+2
Social Care	27	28	+0	+1.6%	-1	-0
Social Workers	31	31	-0	-0.7%	+1	-0
Psychologists	30	30	-0	-1.3%	-2	+6
H&SC, Other	5	4	-0	-3.2%	-1	-0
<b>Health &amp; Social Care Professionals</b>	<b>132</b>	<b>135</b>	<b>+3</b>	<b>+2.6%</b>	<b>+1</b>	<b>+7</b>
Management (VIII & above)	3	3				
Administrative/ Supervisory (V to VII)	26	27	+1	+2.0%	+2	+1
Clerical (III & IV)	42	40	-2	-4.2%	-3	-1
<b>Management &amp; Administrative</b>	<b>71</b>	<b>69</b>	<b>-1</b>	<b>-1.7%</b>	<b>-1</b>	<b>+0</b>
Support	37	37	+0	+1.0%	-2	+1
Maintenance/ Technical	6	6				+1
<b>General Support</b>	<b>43</b>	<b>43</b>	<b>+0</b>	<b>+0.8%</b>	<b>-2</b>	<b>+2</b>
Health Care Assistants	52	54	+2	+2.9%	+5	+8
Care, other	6	6	+0	+1.4%	-0	-0
<b>Patient &amp; Client Care</b>	<b>58</b>	<b>59</b>	<b>+2</b>	<b>+2.8%</b>	<b>+5</b>	<b>+8</b>

## Primary Care

Apr 2021 (Dec 2020 figure: 811)	WTE Mar 2021	WTE Apr 2021	WTE change since Mar 21	% change since Mar 21	WTE change since Dec 20	WTE change since Apr 20
<b>Total Primary Care</b>	<b>844</b>	<b>853</b>	<b>+9</b>	<b>+1.1%</b>	<b>+42</b>	<b>+97</b>
Consultants	8	8				+0
Registrars	23	23	+0	+0.1%	-1	-1
SHO/ Interns	7	7				
Medical/ Dental, other	44	44	-0	-0.2%	+3	+0
<b>Medical &amp; Dental</b>	<b>82</b>	<b>82</b>	<b>-0</b>	<b>-0.1%</b>	<b>+2</b>	<b>-1</b>
Nurse/ Midwife Manager	22	23	+1	+6.1%	+1	+0
Nurse/ Midwife Specialist & AN/MP	4	4			+1	-2
Staff Nurse/ Staff Midwife	59	61	+2	+3.1%	+6	+15
Public Health Nurse	109	107	-2	-1.9%	-5	-5
<i>Post-registration Nurse/ Midwife Student</i>	15	15			+0	
Nursing/ Midwifery Student	15	15			+0	+2
Nursing/ Midwifery other	1	1	-0	-2.0%	-0	+0
<b>Nursing &amp; Midwifery</b>	<b>210</b>	<b>211</b>	<b>+1</b>	<b>+0.5%</b>	<b>+3</b>	<b>+10</b>
Therapy Professions	115	115	-0	-0.2%	+4	+6
Health Science/ Diagnostics	19	19	-0	-1.2%	-1	+2
Social Care	3	2	-0	-16.3%	-0	-0
Social Workers	5	6	+1	+26.5%	+2	+1
Psychologists	19	19	+1	+2.7%	-1	-1
Pharmacy	2	2	+0	+2.6%	+1	+1
H&SC, Other	4	4	+0	+5.8%	+0	+1
<b>Health &amp; Social Care Professionals</b>	<b>166</b>	<b>167</b>	<b>+1</b>	<b>+0.6%</b>	<b>+5</b>	<b>+9</b>
Management (VIII & above)	30	30	-0	-0.4%	-0	-2
Administrative/ Supervisory (V to VII)	69	76	+7	+10.1%	+11	+11
Clerical (III & IV)	138	136	-1	-1.0%	+8	+25
<b>Management &amp; Administrative</b>	<b>237</b>	<b>242</b>	<b>+5</b>	<b>+2.3%</b>	<b>+19</b>	<b>+35</b>
Support	25	26	+1	+4.3%	-0	-1
Maintenance/ Technical	2	2				
<b>General Support</b>	<b>27</b>	<b>28</b>	<b>+1</b>	<b>+4.0%</b>	<b>-0</b>	<b>-1</b>
Health Care Assistants	50	51	+1	+2.8%	+13	+43
Care, other	72	72	-1	-0.7%	-0	+2
<b>Patient &amp; Client Care</b>	<b>122</b>	<b>123</b>	<b>+1</b>	<b>+0.7%</b>	<b>+13</b>	<b>+45</b>

## Social Care

Apr 2021 (Dec 2020 figure: 2,020)	WTE Mar 2021	WTE Apr 2021	WTE change since Mar 21	% change since Mar 21	WTE change since Dec 20	WTE change since Apr 20
<b>Total Social Care</b>	<b>2,013</b>	<b>2,028</b>	<b>+15</b>	<b>+0.7%</b>	<b>+8</b>	<b>+52</b>
Consultants	3	3				
Registrars	3	3			+2	+2
Medical/ Dental, other	3	3	-0	-1.4%	-1	-2
<b>Medical &amp; Dental</b>	<b>9</b>	<b>9</b>	<b>-0</b>	<b>-0.5%</b>	<b>+1</b>	<b>-0</b>
Nurse/ Midwife Manager	104	105	+1	+0.8%	-1	-5
Nurse/ Midwife Specialist & AN/MP	1	1	-0	-1.0%	-0	-0
Staff Nurse/ Staff Midwife	341	340	-2	-0.5%	-8	-5
<b>Nursing &amp; Midwifery</b>	<b>446</b>	<b>446</b>	<b>-1</b>	<b>-0.2%</b>	<b>-9</b>	<b>-10</b>
Therapy Professions	94	93	-1	-1.6%	+4	+8
Social Care	359	366	+8	+2.1%	+5	+49
Social Workers	21	21	-0	-0.2%	+1	+3
Psychologists	16	16	-0	-0.9%	+1	-1
Pharmacy	3	3	+0	+2.7%	+0	+0
H&SC, Other	1	1	-0	-13.2%	-0	-1
<b>Health &amp; Social Care Professionals</b>	<b>495</b>	<b>501</b>	<b>+6</b>	<b>+1.2%</b>	<b>+12</b>	<b>+58</b>
Management (VIII & above)	36	36	-0	-1.3%	+1	+2
Administrative/ Supervisory (V to VII)	80	79	-1	-1.0%	+6	+3
Clerical (III & IV)	92	89	-3	-3.1%	+0	-3
<b>Management &amp; Administrative</b>	<b>208</b>	<b>204</b>	<b>-4</b>	<b>-2.0%</b>	<b>+7</b>	<b>+2</b>
Support	123	126	+3	+2.5%	-1	-20
Maintenance/ Technical	13	14	+1	+7.7%		-3
<b>General Support</b>	<b>136</b>	<b>140</b>	<b>+4</b>	<b>+3.0%</b>	<b>-1</b>	<b>-23</b>
Health Care Assistants	485	489	+4	+0.8%	+9	+22
Care, other	234	240	+6	+2.6%	-10	+3
<b>Patient &amp; Client Care</b>	<b>719</b>	<b>729</b>	<b>+10</b>	<b>+1.4%</b>	<b>-1</b>	<b>+25</b>

## CHO 6 Employment Report: April 2021

### Disabilities

Apr 2021 (Dec 2020 figure: 1,217)	WTE Mar 2021	WTE Apr 2021	WTE change since Mar 21	% change since Mar 21	WTE change since Dec 20	WTE change since Apr 20
<b>Total Disabilities</b>	<b>1,209</b>	<b>1,225</b>	<b>+16</b>	<b>+1.3%</b>	<b>+8</b>	<b>+66</b>
Consultants	3	3				
Registrars	1	1			+1	+1
Medical/ Dental, other	1	1				
<b>Medical &amp; Dental</b>	<b>5</b>	<b>5</b>			<b>+1</b>	<b>+1</b>
Nurse/ Midwife Manager	42	44	+2	+3.6%	+0	-0
Staff Nurse/ Staff Midwife	144	142	-2	-1.3%	-1	+4
<b>Nursing &amp; Midwifery</b>	<b>186</b>	<b>186</b>	<b>-0</b>	<b>-0.2%</b>	<b>-0</b>	<b>+4</b>
Therapy Professions	45	44	-1	-2.2%	+1	+5
Social Care	359	366	+8	+2.1%	+5	+49
Social Workers	10	10			+0	+2
Psychologists	14	14	-0	-1.1%	+0	-1
H&SC, Other	1	1	-0	-13.2%	-0	-1
<b>Health &amp; Social Care Professionals</b>	<b>429</b>	<b>435</b>	<b>+6</b>	<b>+1.5%</b>	<b>+7</b>	<b>+55</b>
Management (VIII & above)	30	30	-1	-1.7%	-0	+0
Administrative/ Supervisory (V to VII)	56	57	+1	+2.3%	+3	+2
Clerical (III & IV)	60	57	-3	-4.6%	+2	-4
<b>Management &amp; Administrative</b>	<b>147</b>	<b>145</b>	<b>-2</b>	<b>-1.3%</b>	<b>+5</b>	<b>-1</b>
Support	22	21	-0	-0.3%	-4	-18
Maintenance/ Technical	5	6	+1	+20.0%	+1	-2
<b>General Support</b>	<b>27</b>	<b>27</b>	<b>+1</b>	<b>+3.5%</b>	<b>-3</b>	<b>-20</b>
Health Care Assistants	187	192	+5	+2.7%	+8	+24
Care, other	229	235	+6	+2.6%	-10	+3
<b>Patient &amp; Client Care</b>	<b>416</b>	<b>427</b>	<b>+11</b>	<b>+2.6%</b>	<b>-2</b>	<b>+27</b>

## Older People

Apr 2021 (Dec 2020 figure: 804)	WTE Mar 2021	WTE Apr 2021	WTE change since Mar 21	% change since Mar 21	WTE change since Dec 20	WTE change since Apr 20
<b>Total Older People</b>	<b>805</b>	<b>804</b>	<b>-1</b>	<b>-0.1%</b>	<b>-0</b>	<b>-14</b>
Registrars	2	2			+1	+1
Medical/ Dental, other	2	2	-0	-2.2%	-1	-2
<b>Medical &amp; Dental</b>	<b>4</b>	<b>4</b>	<b>-0</b>	<b>-1.0%</b>	<b>-0</b>	<b>-1</b>
Nurse/ Midwife Manager	62	61	-1	-1.1%	-2	-5
Nurse/ Midwife Specialist & AN/MP	1	1	-0	-1.0%	-0	-0
Staff Nurse/ Staff Midwife	198	198	+0	+0.2%	-8	-9
<b>Nursing &amp; Midwifery</b>	<b>261</b>	<b>260</b>	<b>-0</b>	<b>-0.1%</b>	<b>-9</b>	<b>-14</b>
<b>Health &amp; Social Care Professionals</b>	<b>66</b>	<b>66</b>	<b>-0</b>	<b>-0.7%</b>	<b>+5</b>	<b>+4</b>
Management (VIII & above)	6	6	+0	+0.9%	+1	+2
Administrative/ Supervisory (V to VII)	24	22	-2	-8.9%	+2	+1
Clerical (III & IV)	32	32	-0	-0.2%	-1	+0
<b>Management &amp; Administrative</b>	<b>62</b>	<b>59</b>	<b>-2</b>	<b>-3.5%</b>	<b>+2</b>	<b>+4</b>
Support	101	105	+3	+3.1%	+3	-2
Maintenance/ Technical	8	8			-1	-1
<b>General Support</b>	<b>109</b>	<b>113</b>	<b>+3</b>	<b>+2.9%</b>	<b>+2</b>	<b>-3</b>
Health Care Assistants	298	297	-1	-0.5%	+1	-2
Care, other	5	5	+0	+3.5%	-0	-0
<b>Patient &amp; Client Care</b>	<b>303</b>	<b>302</b>	<b>-1</b>	<b>-0.4%</b>	<b>+1</b>	<b>-3</b>

## CHO 6 Employment by Administration (HSE / S38): April 2021

Apr 2021 (Dec 2020 figure: 3,465)	WTE Mar 2021	WTE Apr 2021	WTE change since Mar 21	% change since Mar 21	WTE change since Dec 20	WTE change since Apr 20
<b>Overall</b>	<b>3,496</b>	<b>3,524</b>	<b>+28</b>	<b>+0.8%</b>	<b>+59</b>	<b>+180</b>
<b>HSE</b>	<b>1,731</b>	<b>1,739</b>	<b>+8</b>	<b>+0.5%</b>	<b>+50</b>	<b>+131</b>
<b>Section 38 Voluntary Agencies</b>	<b>1,766</b>	<b>1,785</b>	<b>+19</b>	<b>+1.1%</b>	<b>+9</b>	<b>+49</b>

## HSE

Apr 2021 (Dec 2020 figure: 1,689)	WTE Mar 2021	WTE Apr 2021	WTE change since Mar 21	% change since Mar 21	WTE change since Dec 20	WTE change since Apr 20
<b>Overall</b>	<b>1,731</b>	<b>1,739</b>	<b>+8</b>	<b>+0.5%</b>	<b>+50</b>	<b>+131</b>
Consultants	27	27		+0.0%	+1	+2
Registrars	29	29	-0	-0.0%	+1	+1
SHO/ Interns	6	5	-1	-0.2%		-0
Medical/ Dental, other	46	46	-0	-0.0%	+3	-1
<b>Medical &amp; Dental</b>	<b>108</b>	<b>107</b>	<b>-1</b>	<b>-1.2%</b>	<b>+5</b>	<b>+2</b>
Nurse/ Midwife Manager	132	133	+1	+0.0%	-3	-1
Nurse/ Midwife Specialist & AN/MP	17	17	-0	-0.0%	+1	+2
Staff Nurse/ Staff Midwife	300	302	+2	+0.0%	-2	+10
Public Health Nurse	109	107	-2	-0.0%	-5	-5
Pre-registration Nurse/ Midwife Intern	4	3	-0	-0.1%	+3	+3
Post-registration Nurse/ Midwife Student	15	15		+0.0%	+2	+2
Nursing/ Midwifery awaiting registration	1	1		+0.0%	+1	+1
Nursing/ Midwifery Student	20	19	-0	-0.0%	+4	+6
Nursing/ Midwifery other	3	3	-0	-0.0%	-0	-1
<b>Nursing &amp; Midwifery</b>	<b>581</b>	<b>582</b>	<b>+1</b>	<b>+0.2%</b>	<b>-6</b>	<b>+11</b>
Therapy Professions	168	173	+5	+0.0%	+13	+14
Health Science/ Diagnostics	18	18	-0	-0.0%	-1	+2
Social Care	10	10	-1	-0.1%	-1	-1
Social Workers	29	30	+1	+0.0%	+4	+4
Psychologists	40	41	+1	+0.0%	-0	+2
Pharmacy	3	3	+0	+0.0%	+1	+1
H&SC, Other	9	9	+0	+0.0%	-0	+1
<b>Health &amp; Social Care Professionals</b>	<b>277</b>	<b>282</b>	<b>+6</b>	<b>+2.0%</b>	<b>+16</b>	<b>+24</b>
Management (VIII & above)	37	36	-0	-0.0%	-0	-1
Administrative/ Supervisory (V to VII)	100	105	+5	+0.0%	+15	+14
Clerical (III & IV)	166	162	-4	-0.0%	+6	+25
<b>Management &amp; Administrative</b>	<b>302</b>	<b>303</b>	<b>+1</b>	<b>+0.2%</b>	<b>+21</b>	<b>+38</b>
Support	80	82	+2	+0.0%	-0	-1
Maintenance/ Technical	2	2		+0.0%		
<b>General Support</b>	<b>82</b>	<b>84</b>	<b>+2</b>	<b>+2.4%</b>	<b>-0</b>	<b>-1</b>
Health Care Assistants	321	320	-1	-0.0%	+14	+51
Care, other	59	60	+1	+0.0%	+0	+6
<b>Patient &amp; Client Care</b>	<b>381</b>	<b>381</b>	<b>+0</b>	<b>+0.0%</b>	<b>+14</b>	<b>+57</b>



## Section 38 Voluntary Agencies

Apr 2021 (Dec 2020 figure: 1,776)	WTE Mar 2021	WTE Apr 2021	WTE change since Mar 21	% change since Mar 21	WTE change since Dec 20	WTE change since Apr 20
<b>Overall</b>	<b>1,766</b>	<b>1,785</b>	<b>+19</b>	<b>+1.1%</b>	<b>+9</b>	<b>+49</b>
Consultants	24	25	+1	+0.0%	-1	-1
Registrars	23	22	-1	-0.0%	+6	+6
SHO/ Interns	13	14	+0	+0.0%	-1	
Medical/ Dental, other	1	1		+0.0%	-1	-1
<b>Medical &amp; Dental</b>	<b>61</b>	<b>61</b>	<b>-0</b>	<b>-0.2%</b>	<b>+3</b>	<b>+4</b>
Nurse/ Midwife Manager	69	69	+0	+0.0%	+0	-4
Nurse/ Midwife Specialist & AN/MP	8	7	-2	-0.2%	-1	-0
Staff Nurse/ Staff Midwife	249	249	-0	-0.0%	-1	-1
<b>Nursing &amp; Midwifery</b>	<b>326</b>	<b>325</b>	<b>-1</b>	<b>-0.4%</b>	<b>-2</b>	<b>-5</b>
Therapy Professions	81	77	-3	-0.0%	-1	+2
Health Science/ Diagnostics	2	2		+0.0%		
Social Care	379	387	+8	+0.0%	+5	+50
Social Workers	28	29	+0	+0.0%	-0	-1
Psychologists	24	24	-1	-0.0%	-2	+2
Pharmacy	2	2	+0	+0.0%	+0	+0
H&SC, Other	1	1	-0	-0.1%	-1	-2
<b>Health &amp; Social Care Professionals</b>	<b>516</b>	<b>521</b>	<b>+5</b>	<b>+0.9%</b>	<b>+2</b>	<b>+51</b>
Management (VIII & above)	34	33	-0	-0.0%	+1	+1
Administrative/ Supervisory (V to VII)	79	81	+2	+0.0%	+4	+2
Clerical (III & IV)	106	104	-2	-0.0%	+0	-3
<b>Management &amp; Administrative</b>	<b>219</b>	<b>219</b>	<b>-0</b>	<b>-0.2%</b>	<b>+5</b>	<b>-0</b>
Support	104	107	+3	+0.0%	-3	-19
Maintenance/ Technical	19	20	+1	+0.1%		-2
<b>General Support</b>	<b>123</b>	<b>127</b>	<b>+4</b>	<b>+2.9%</b>	<b>-3</b>	<b>-21</b>
Health Care Assistants	265	273	+8	+0.0%	+14	+22
Care, other	254	260	+5	+0.0%	-11	-2
<b>Patient &amp; Client Care</b>	<b>520</b>	<b>532</b>	<b>+13</b>	<b>+2.5%</b>	<b>+3</b>	<b>+20</b>

## CHO 6 Employment by S38 Agency: April 2021

### Children's Sunshine Home

Apr 2021 (Dec 2020 figure: 56)	WTE Mar 2021	WTE Apr 2021	WTE change since Mar 21	% change since Mar 21	WTE change since Dec 20	WTE change since Apr 20
<b>Overall</b>	<b>57</b>	<b>56</b>	<b>-1</b>	<b>-1.8%</b>	<b>-0</b>	<b>-2</b>
Nurse/ Midwife Manager	8	8		+0.0%		
Staff Nurse/ Staff Midwife	18	17	-1	-0.1%	-1	-2
<b>Nursing &amp; Midwifery</b>	<b>26</b>	<b>25</b>	<b>-1</b>	<b>-3.8%</b>	<b>-1</b>	<b>-2</b>
Therapy Professions	2	2		+0.0%	+1	-0
Social Workers				-1.0%	-1	-1
<b>Health &amp; Social Care Professionals</b>	<b>2</b>	<b>2</b>			<b>-0</b>	<b>-1</b>
Management (VIII & above)	3	3		+0.0%	+1	
Administrative/ Supervisory (V to VII)	4	4		+0.0%		
Clerical (III & IV)	1	1		+0.0%		
<b>Management &amp; Administrative</b>	<b>8</b>	<b>8</b>			<b>+1</b>	
Support	3	3		+0.0%		
<b>General Support</b>	<b>3</b>	<b>3</b>				
Health Care Assistants	13	13		+0.0%		-1
Care, other	5	5		+0.0%		+2
<b>Patient &amp; Client Care</b>	<b>18</b>	<b>18</b>				<b>+1</b>

## Dublin Dental Hospital

Apr 2021 (Dec 2020 figure: 93)	WTE Mar 2021	WTE Apr 2021	WTE change since Mar 21	% change since Mar 21	WTE change since Dec 20	WTE change since Apr 20
<b>Overall</b>	<b>93</b>	<b>93</b>	<b>+0</b>	<b>+0.0%</b>	<b>+0</b>	<b>+0</b>
Consultants	5	5		+0.0%		
Registrars	1	1		+0.0%		
SHO/ Interns	7	7		+0.0%		
<b>Medical &amp; Dental</b>	<b>12</b>	<b>12</b>				
Nurse/ Midwife Manager	2	2		+0.0%		
Staff Nurse/ Staff Midwife	4	4		+0.0%		
<b>Nursing &amp; Midwifery</b>	<b>6</b>	<b>6</b>				
Health Science/ Diagnostics	2	2		+0.0%		
H&SC, Other	1	1		+0.0%		
<b>Health &amp; Social Care Professionals</b>	<b>2</b>	<b>2</b>				
Management (VIII & above)	4	4		+0.0%		
Administrative/ Supervisory (V to VII)	11	11		+0.0%		
Clerical (III & IV)	15	15		+0.0%		
<b>Management &amp; Administrative</b>	<b>30</b>	<b>30</b>				
Support	13	13		+0.0%		
Maintenance/ Technical	2	2		+0.0%		
<b>General Support</b>	<b>15</b>	<b>15</b>				
Health Care Assistants	1	1		+0.0%		
Care, other	27	27		+0.0%		
<b>Patient &amp; Client Care</b>	<b>27</b>	<b>27</b>				

## Leopardstown Park Hospital

Apr 2021 (Dec 2020 figure: 207)	WTE Mar 2021	WTE Apr 2021	WTE change since Mar 21	% change since Mar 21	WTE change since Dec 20	WTE change since Apr 20
<b>Overall</b>	<b>201</b>	<b>208</b>	<b>+7</b>	<b>+3.5%</b>	<b>+1</b>	<b>+3</b>
Medical/ Dental, other				-1.0%	-1	-1
<b>Medical &amp; Dental</b>				<b>-100.0%</b>	<b>-1</b>	<b>-1</b>
Nurse/ Midwife Manager	13	13	+0	+0.0%	-1	-3
Staff Nurse/ Staff Midwife	37	39	+2	+0.1%	-3	-2
<b>Nursing &amp; Midwifery</b>	<b>49</b>	<b>52</b>	<b>+2</b>	<b>+4.7%</b>	<b>-4</b>	<b>-4</b>
Therapy Professions	10	10	+0	+0.0%	+1	+4
Social Workers	1	1		+0.0%		+0
Pharmacy	2	2	+0	+0.0%	+0	+0
<b>Health &amp; Social Care Professionals</b>	<b>13</b>	<b>13</b>	<b>+0</b>	<b>+1.3%</b>	<b>+1</b>	<b>+4</b>
Management (VIII & above)	1	1		+0.0%		
Administrative/ Supervisory (V to VII)	7	7	-0	-0.0%	-0	-0
Clerical (III & IV)	11	11		+0.0%	-0	+1
<b>Management &amp; Administrative</b>	<b>19</b>	<b>19</b>	<b>-0</b>	<b>-0.4%</b>	<b>-1</b>	<b>+1</b>
Support	33	36	+3	+0.1%	+2	+1
Maintenance/ Technical	4	4		+0.0%		
<b>General Support</b>	<b>37</b>	<b>40</b>	<b>+3</b>	<b>+7.5%</b>	<b>+2</b>	<b>+1</b>
Health Care Assistants	79	81	+2	+0.0%	+4	+2
Care, other	3	3	+0	+0.1%	+0	+0
<b>Patient &amp; Client Care</b>	<b>82</b>	<b>84</b>	<b>+2</b>	<b>+2.2%</b>	<b>+4</b>	<b>+2</b>

Apr 2021 (Dec 2020 figure: 268)	WTE Mar 2021	WTE Apr 2021	WTE change since Mar 21	% change since Mar 21	WTE change since Dec 20	WTE change since Apr 20
<b>Overall</b>	<b>269</b>	<b>267</b>	<b>-2</b>	<b>-0.8%</b>	<b>-1</b>	<b>-9</b>
Registrars	2	2		+0.0%	+1	+1
Medical/ Dental, other	1	1		+0.0%		
<b>Medical &amp; Dental</b>	<b>3</b>	<b>3</b>			<b>+1</b>	<b>+1</b>
Nurse/ Midwife Manager	17	17		+0.0%	-0	-3
Staff Nurse/ Staff Midwife	75	74	-1	-0.0%		-3
<b>Nursing &amp; Midwifery</b>	<b>92</b>	<b>91</b>	<b>-1</b>	<b>-1.1%</b>	<b>-0</b>	<b>-6</b>
Therapy Professions	30	29	-1	-0.0%	-1	-1
Social Workers	6	6		+0.0%		
Psychologists	1	1		+0.0%		
<b>Health &amp; Social Care Professionals</b>	<b>36</b>	<b>35</b>	<b>-1</b>	<b>-2.9%</b>	<b>-1</b>	<b>-1</b>
Management (VIII & above)	1	1		+0.0%		+1
Administrative/ Supervisory (V to VII)	8	8		+0.0%	+3	+2
Clerical (III & IV)	8	8		+0.0%	-1	
<b>Management &amp; Administrative</b>	<b>17</b>	<b>17</b>			<b>+2</b>	<b>+3</b>
Support	33	33		+0.0%	-1	-2
Maintenance/ Technical	4	4		+0.0%	-1	-1
<b>General Support</b>	<b>37</b>	<b>37</b>			<b>-2</b>	<b>-3</b>
Health Care Assistants	84	84		+0.0%	-1	-3
Care, other	1	1		+0.0%	-1	-1
<b>Patient &amp; Client Care</b>	<b>85</b>	<b>85</b>			<b>-2</b>	<b>-3</b>

# St. John of God (IDS)

Apr 2021 (Dec 2020 figure: 468)	WTE Mar 2021	WTE Apr 2021	WTE change since Mar 21	% change since Mar 21	WTE change since Dec 20	WTE change since Apr 20
<b>Overall</b>	<b>458</b>	<b>459</b>	<b>+1</b>	<b>+0.2%</b>	<b>-9</b>	<b>+10</b>
Consultants	1	1		+0.0%		
<b>Medical &amp; Dental</b>	<b>1</b>	<b>1</b>				
Nurse/ Midwife Manager	9	8	-1	-0.1%		
Staff Nurse/ Staff Midwife	51	51	+0	+0.0%	+2	+6
<b>Nursing &amp; Midwifery</b>	<b>60</b>	<b>59</b>	<b>-0</b>	<b>-0.8%</b>	<b>+2</b>	<b>+6</b>
Therapy Professions	13	11	-2	-0.1%	-2	+1
Social Care	154	156	+2	+0.0%	-3	+4
Social Workers	3	3		+0.0%		+1
Psychologists	7	7	-0	-0.0%	+1	+1
<b>Health &amp; Social Care Professionals</b>	<b>178</b>	<b>178</b>	<b>+0</b>	<b>+0.0%</b>	<b>-4</b>	<b>+7</b>
Management (VIII & above)	14	14	-0	-0.0%	-0	-1
Administrative/ Supervisory (V to VII)	27	28	+1	+0.1%	+2	+1
Clerical (III & IV)	18	18	+0	+0.0%	-0	+1
<b>Management &amp; Administrative</b>	<b>60</b>	<b>61</b>	<b>+1</b>	<b>+2.1%</b>	<b>+1</b>	<b>+1</b>
Support	12	12	+0	+0.0%	-0	+0
Maintenance/ Technical	5	5		+0.0%		
<b>General Support</b>	<b>17</b>	<b>17</b>	<b>+0</b>	<b>+0.7%</b>	<b>-0</b>	<b>+0</b>
Health Care Assistants	19	19	-0	-0.0%	+1	+3
Care, other	125	125	-0	-0.0%	-8	-6
<b>Patient &amp; Client Care</b>	<b>144</b>	<b>144</b>	<b>-0</b>	<b>-0.2%</b>	<b>-8</b>	<b>-3</b>

# St. John of God (MHS)

Apr 2021 (Dec 2020 figure: 236)	WTE Mar 2021	WTE Apr 2021	WTE change since Mar 21	% change since Mar 21	WTE change since Dec 20	WTE change since Apr 20
<b>Overall</b>	<b>238</b>	<b>235</b>	<b>-3</b>	<b>-1.1%</b>	<b>-1</b>	<b>+0</b>
Consultants	19	19	+1	+0.0%	-1	-1
Registrars	20	19	-1	-0.0%	+5	+5
SHO/ Interns	7	7	+0	+0.0%	-1	
<b>Medical &amp; Dental</b>	<b>45</b>	<b>45</b>	<b>-0</b>	<b>-0.3%</b>	<b>+3</b>	<b>+4</b>
Nurse/ Midwife Manager	16	16	+0	+0.0%	-0	-0
Nurse/ Midwife Specialist & AN/MP	8	7	-2	-0.2%	-1	-0
Staff Nurse/ Staff Midwife	33	32	-1	-0.0%	+2	-0
<b>Nursing &amp; Midwifery</b>	<b>57</b>	<b>55</b>	<b>-2</b>	<b>-3.6%</b>	<b>+1</b>	<b>-1</b>
Therapy Professions	22	22	+0	+0.0%	-0	-3
Social Care	27	28	+0	+0.0%	-0	+1
Social Workers	16	16	+0	+0.0%	-1	-3
Psychologists	17	16	-1	-0.0%	-3	+3
H&SC, Other	1	0	-0	-0.2%	-1	-1
<b>Health &amp; Social Care Professionals</b>	<b>83</b>	<b>83</b>	<b>+0</b>	<b>+0.2%</b>	<b>-4</b>	<b>-3</b>
Management (VIII & above)	2	2		+0.0%		
Administrative/ Supervisory (V to VII)	14	15	+0	+0.0%	+0	+0
Clerical (III & IV)	24	23	-1	-0.0%	-1	-1
<b>Management &amp; Administrative</b>	<b>40</b>	<b>40</b>	<b>-1</b>	<b>-1.9%</b>	<b>-0</b>	<b>-0</b>
Support	6	6	-0	-0.0%	-0	-0
Maintenance/ Technical	4	4		+0.0%		+1
<b>General Support</b>	<b>10</b>	<b>10</b>	<b>-0</b>	<b>-1.2%</b>	<b>-0</b>	<b>+1</b>
Care, other	2	3	+0	+0.1%	+0	+0
<b>Patient &amp; Client Care</b>	<b>2</b>	<b>3</b>	<b>+0</b>	<b>+9.6%</b>	<b>+0</b>	<b>+0</b>

## Sunbeam House Services

Apr 2021 (Dec 2020 figure: 450)	WTE Mar 2021	WTE Apr 2021	WTE change since Mar 21	% change since Mar 21	WTE change since Dec 20	WTE change since Apr 20
<b>Overall</b>	<b>451</b>	<b>468</b>	<b>+17</b>	<b>+3.9%</b>	<b>+19</b>	<b>+46</b>
Nurse/ Midwife Manager	4	5	+1	+0.3%	+1	+2
Staff Nurse/ Staff Midwife	32	32	-0	-0.0%	-1	-1
<b>Nursing &amp; Midwifery</b>	<b>36</b>	<b>37</b>	<b>+1</b>	<b>+2.4%</b>	<b>+0</b>	<b>+1</b>
Therapy Professions	4	3	-1	-0.1%	+1	+1
Social Care	197	203	+6	+0.0%	+8	+45
Social Workers	3	3		+0.0%	+1	+2
Psychologists				-1.0%		-2
H&SC, Other				-1.0%		-1
<b>Health &amp; Social Care Professionals</b>	<b>204</b>	<b>210</b>	<b>+5</b>	<b>+2.6%</b>	<b>+10</b>	<b>+45</b>
Management (VIII & above)	9	9		+0.0%		+1
Administrative/ Supervisory (V to VII)	9	9	-0	-0.0%	-0	-1
Clerical (III & IV)	28	27	-1	-0.0%	+2	-4
<b>Management &amp; Administrative</b>	<b>45</b>	<b>45</b>	<b>-1</b>	<b>-1.8%</b>	<b>+2</b>	<b>-4</b>
Support	4	4	-0	-0.0%	-4	-18
Maintenance/ Technical		1	+1	-1.0%	+1	-2
<b>General Support</b>	<b>4</b>	<b>5</b>	<b>+1</b>	<b>+18.2%</b>	<b>-3</b>	<b>-20</b>
Health Care Assistants	70	76	+6	+0.1%	+10	+20
Care, other	91	97	+5	+0.1%	-2	+3
<b>Patient &amp; Client Care</b>	<b>161</b>	<b>172</b>	<b>+11</b>	<b>+7.0%</b>	<b>+8</b>	<b>+23</b>



**CHO 6 Employment by Grade Group & Staff Category: April 2021**

Apr 2021 (Dec 2020 figure: 3,465)	WTE Mar 2021	WTE Apr 2021	WTE change since Mar 21	% change since Mar 21	WTE change since Dec 20	WTE change since Apr 20
<b>Overall</b>	<b>3,496</b>	<b>3,524</b>	<b>+28</b>	<b>+0.8%</b>	<b>+59</b>	<b>+180</b>
Consultant Dentistry	6	6				+0
Consultant Medicine	1	1				
Consultant Psychiatry	43	44	+1	+1.3%	+1	+1
Consultant Radiology	1	1				
<b>Consultants</b>	<b>51</b>	<b>52</b>	<b>+1</b>	<b>+1.1%</b>	<b>+1</b>	<b>+1</b>
Registrar	42	41	-1	-2.2%	+7	+5
Senior Registrar	9	9	+0	+0.1%	-0	+3
Specialist Registrar	1	1				
<b>Registrars</b>	<b>51</b>	<b>50</b>	<b>-1</b>	<b>-1.8%</b>	<b>+6</b>	<b>+8</b>
Senior House Officer	19	19	-1	-4.7%	-1	-0
<b>SHO/ Interns</b>	<b>19</b>	<b>19</b>	<b>-1</b>	<b>-4.7%</b>	<b>-1</b>	<b>-0</b>
Dentists	27	28	+1	+2.7%	+3	+3
Other Medical	20	19	-1	-4.3%	-1	-4
<b>Medical/ Dental, other</b>	<b>47</b>	<b>47</b>	<b>-0</b>	<b>-0.3%</b>	<b>+2</b>	<b>-2</b>
<b>Medical &amp; Dental</b>	<b>169</b>	<b>168</b>	<b>-1</b>	<b>-0.8%</b>	<b>+4</b>	<b>+7</b>
Clinical Nurse/ Midwife Manager	155	157	+2	+1.1%	-2	-3
Director Nursing/Midwifery, Assistant	32	31	-1	-2.6%	-2	-4
Director of Nursing/Midwifery	13	14	+1	+8.5%	+1	+2
<b>Nurse/ Midwife Manager</b>	<b>201</b>	<b>202</b>	<b>+2</b>	<b>+1.0%</b>	<b>-3</b>	<b>-5</b>
Advanced Nurse/ Midwife Practitioner	6	6				+3
Clinical Nurse/ Midwife Specialist	20	18	-2	-7.6%	-0	-2
<b>Nurse/ Midwife Specialist &amp; AN/MP</b>	<b>25</b>	<b>24</b>	<b>-2</b>	<b>-6.0%</b>	<b>-0</b>	<b>+1</b>
Staff Nurse [Intellectual Disability]	53	62	+9	+17.0%	+8	+12
Staff Nurse [Psychiatric]	122	131	+10	+8.0%	+7	+9
Staff Nurses [General/ Children's]	375	358	-17	-4.5%	-18	-11
<b>Staff Nurse/ Staff Midwife</b>	<b>549</b>	<b>551</b>	<b>+2</b>	<b>+0.3%</b>	<b>-4</b>	<b>+9</b>
<b>Public Health Nurse</b>	<b>109</b>	<b>107</b>	<b>-2</b>	<b>-1.9%</b>	<b>-5</b>	<b>-5</b>
Nursing/ Midwifery awaiting registration	1	1				+1
Post-registration Nurse/ Midwife Student	15	15			+0	+2
Pre-registration Nurse/ Midwife Intern	4	3	-0	-5.4%	+3	+3
<b>Nursing/ Midwifery Student</b>	<b>20</b>	<b>19</b>	<b>-0</b>	<b>-1.0%</b>	<b>+4</b>	<b>+6</b>
Nursing Education/Clinical	3	3	-0	-0.7%	-0	-1
<b>Nursing/ Midwifery other</b>	<b>3</b>	<b>3</b>	<b>-0</b>	<b>-0.7%</b>	<b>-0</b>	<b>-1</b>
<b>Nursing &amp; Midwifery</b>	<b>907</b>	<b>907</b>	<b>-0</b>	<b>-0.0%</b>	<b>+2</b>	<b>+6</b>
Dietitians	17	16	-1	-6.2%	-1	+1
Occupational Therapists	97	98	+1	+0.8%	+5	+7
Physiotherapists	69	68	-1	-1.0%	+9	+9
Podiatrists & Chiropodists	3	3	+0	+0.3%	-1	+1
Speech & Language Therapists	63	65	+2	+3.2%	-0	-2
Orthoptists		1	+1	-100.0%	+1	+1
<b>Therapy Professions</b>	<b>248</b>	<b>250</b>	<b>+2</b>	<b>+0.8%</b>	<b>+13</b>	<b>+16</b>
Medical Science	17	17	-0	-0.5%	-1	+2
Radiographers	2	2	-0	-6.3%	-0	-0
<b>Health Science/ Diagnostics</b>	<b>19</b>	<b>19</b>	<b>-0</b>	<b>-1.2%</b>	<b>-1</b>	<b>+2</b>
<b>Social Care</b>	<b>389</b>	<b>397</b>	<b>+8</b>	<b>+2.0%</b>	<b>+5</b>	<b>+49</b>
<b>Social Workers</b>	<b>57</b>	<b>58</b>	<b>+1</b>	<b>+1.8%</b>	<b>+4</b>	<b>+3</b>
<b>Psychologists</b>	<b>65</b>	<b>65</b>	<b>-0</b>	<b>-0.0%</b>	<b>-2</b>	<b>+4</b>

Apr 2021 (Dec 2020 figure: 3,465)	WTE Mar 2021	WTE Apr 2021	WTE change since Mar 21	% change since Mar 21	WTE change since Dec 20	WTE change since Apr 20
<b>Overall</b>	<b>3,496</b>	<b>3,524</b>	<b>+28</b>	<b>+0.8%</b>	<b>+59</b>	<b>+180</b>
<b>Pharmacy</b>	<b>5</b>	<b>5</b>	<b>+0</b>	<b>+2.6%</b>	<b>+1</b>	<b>+1</b>
Counsellor Therapists	4	4	-0	-0.2%	-0	-1
Dental Hygienists	4	4			-0	+1
Other Health & Social Care	1	1	-0	-5.0%	-0	-0
Play Therapists/ Specialists	1	0	-0	-4.0%		
<b>H&amp;SC, Other</b>	<b>10</b>	<b>10</b>	<b>-0</b>	<b>-1.0%</b>	<b>-1</b>	<b>-1</b>
<b>Health &amp; Social Care Professionals</b>	<b>793</b>	<b>803</b>	<b>+10</b>	<b>+1.3%</b>	<b>+51</b>	<b>+75</b>
Executive Management	25	26	+1	+2.0%	+2	+6
Senior Management (VIII & GM)	45	44	-1	-2.4%	-2	-6
<b>Management (VIII &amp; above)</b>	<b>70</b>	<b>70</b>	<b>-1</b>	<b>-0.8%</b>	<b>+1</b>	<b>+1</b>
Middle Management (V-VII)	179	186	+7	+3.8%	+20	+18
Other Administrative				-100.0%		-2
<b>Administrative/ Supervisory (V to VII)</b>	<b>179</b>	<b>186</b>	<b>+7</b>	<b>+3.8%</b>	<b>+20</b>	<b>+16</b>
<b>Clerical (III &amp; IV)</b>	<b>272</b>	<b>266</b>	<b>-6</b>	<b>-2.2%</b>	<b>+6</b>	<b>+21</b>
<b>Management &amp; Administrative</b>	<b>522</b>	<b>522</b>	<b>+0</b>	<b>+0.0%</b>	<b>+47</b>	<b>+38</b>
Catering	24	23	-1	-2.9%	-3	-9
Household Services	117	121	+4	+3.0%	-2	-10
Other Labs & Associated	1	1	-0	-1.2%	-0	-0
Other Support	19	19			-1	-1
Portering	23	25	+2	+7.2%	+2	+1
<b>Support</b>	<b>184</b>	<b>189</b>	<b>+5</b>	<b>+2.5%</b>	<b>-3</b>	<b>-20</b>
<b>Maintenance/ Technical</b>	<b>21</b>	<b>22</b>	<b>+1</b>	<b>+4.8%</b>		<b>-2</b>
<b>General Support</b>	<b>205</b>	<b>211</b>	<b>+6</b>	<b>+2.7%</b>	<b>-3</b>	<b>-22</b>
HCA, Nurse's Aide, etc.	534	539	+5	+1.0%	+14	+31
Health & Social Care Assistants	16	16			+1	+3
Swabber (COVID-19)	37	39	+1	+3.7%	+12	+39
<b>Health Care Assistants</b>	<b>587</b>	<b>593</b>	<b>+7</b>	<b>+1.1%</b>	<b>+28</b>	<b>+73</b>
<b>Care, other</b>	<b>314</b>	<b>320</b>	<b>+6</b>	<b>+2.1%</b>	<b>-11</b>	<b>+4</b>
<b>Patient &amp; Client Care</b>	<b>900</b>	<b>913</b>	<b>+13</b>	<b>+1.4%</b>	<b>+45</b>	<b>+77</b>

## CHO 6 HSE Employment by Grade Group & Staff Category: April 2021

Apr 2021 (Dec 2020 figure: 1,689)	WTE Mar 2021	WTE Apr 2021	WTE change since Mar 21	% change since Mar 21	WTE change since Dec 20	WTE change since Apr 20
<b>Overall</b>	<b>1,731</b>	<b>1,739</b>	<b>+8</b>	<b>+0.5%</b>	<b>+50</b>	<b>+131</b>
Consultant Dentistry	3	3				+0
Consultant Medicine	1	1				
Consultant Psychiatry	23	23			+1	+2
<b>Consultants</b>	<b>27</b>	<b>27</b>			<b>+1</b>	<b>+2</b>
<b>Registrars</b>	<b>29</b>	<b>29</b>	<b>-0</b>	<b>-0.6%</b>	<b>+1</b>	<b>+1</b>
<b>SHO/ Interns</b>	<b>6</b>	<b>5</b>	<b>-1</b>	<b>-16.2%</b>		<b>-0</b>
Dentists	27	28	+1	+2.7%	+3	+3
Other Medical	19	18	-1	-4.5%	+0	-3
<b>Medical/ Dental, other</b>	<b>46</b>	<b>46</b>	<b>-0</b>	<b>-0.3%</b>	<b>+3</b>	<b>-1</b>
<b>Medical &amp; Dental</b>	<b>108</b>	<b>107</b>	<b>-1</b>	<b>-1.2%</b>	<b>+1</b>	<b>+2</b>
Clinical Nurse/ Midwife Manager	99	99	+0	+0.2%	-2	-1
Director Nursing/Midwifery, Assistant	25	25	+0	+0.7%	-1	-2
Director of Nursing/Midwifery	8	9	+1	+14.5%	-0	+2
<b>Nurse/ Midwife Manager</b>	<b>132</b>	<b>133</b>	<b>+1</b>	<b>+1.1%</b>	<b>-3</b>	<b>-1</b>
Advanced Nurse/ Midwife Practitioner	4	4				+2
Clinical Nurse/ Midwife Specialist	14	14	-0	-0.1%	+1	-0
<b>Nurse/ Midwife Specialist &amp; AN/MP</b>	<b>17</b>	<b>17</b>	<b>-0</b>	<b>-0.1%</b>	<b>+1</b>	<b>+2</b>
Staff Nurse [Intellectual Disability]	11	9	-2	-18.6%	-3	-2
Staff Nurse [Psychiatric]	89	99	+10	+11.6%	+5	+9
Staff Nurses [General/ Children's]	200	194	-6	-3.0%	-4	+3
<b>Staff Nurse/ Staff Midwife</b>	<b>300</b>	<b>302</b>	<b>+2</b>	<b>+0.7%</b>	<b>-2</b>	<b>+10</b>
<b>Public Health Nurse</b>	<b>109</b>	<b>107</b>	<b>-2</b>	<b>-1.9%</b>	<b>-5</b>	<b>-5</b>
Nursing/ Midwifery awaiting registration	1	1				+1
Post-registration Nurse/ Midwife Student	15	15			+0	+2
Pre-registration Nurse/ Midwife Intern	4	3	-0	-5.4%	+3	+3
<b>Nursing/ Midwifery Student</b>	<b>20</b>	<b>19</b>	<b>-0</b>	<b>-1.0%</b>	<b>+4</b>	<b>+6</b>
<b>Nursing/ Midwifery other</b>	<b>3</b>	<b>3</b>	<b>-0</b>	<b>-0.7%</b>	<b>-0</b>	<b>-1</b>
<b>Nursing &amp; Midwifery</b>	<b>581</b>	<b>582</b>	<b>+1</b>	<b>+0.2%</b>	<b>+11</b>	<b>+11</b>
Dietitians	14	13	-1	-7.6%	-1	+1
Occupational Therapists	64	67	+3	+4.9%	+7	+5
Physiotherapists	43	44	+1	+1.6%	+6	+4
Podiatrists & Chiropodists	2	3	+0	+0.4%	-1	+1
Speech & Language Therapists	44	46	+1	+3.2%	+1	+3
Orthoptists		1	+1	-100.0%	+1	+1
<b>Therapy Professions</b>	<b>168</b>	<b>173</b>	<b>+5</b>	<b>+3.1%</b>	<b>+13</b>	<b>+14</b>
Medical Science	17	17	-0	-0.5%	-1	+2
Radiographers	1	1	-0	-16.7%	-0	-0
<b>Health Science/ Diagnostics</b>	<b>18</b>	<b>18</b>	<b>-0</b>	<b>-1.4%</b>	<b>-1</b>	<b>+2</b>
<b>Social Care</b>	<b>10</b>	<b>10</b>	<b>-1</b>	<b>-5.1%</b>	<b>-1</b>	<b>-1</b>
<b>Social Workers</b>	<b>29</b>	<b>30</b>	<b>+1</b>	<b>+2.1%</b>	<b>+4</b>	<b>+4</b>
<b>Psychologists</b>	<b>40</b>	<b>41</b>	<b>+1</b>	<b>+1.3%</b>	<b>-0</b>	<b>+2</b>
<b>Pharmacy</b>	<b>3</b>	<b>3</b>	<b>+0</b>	<b>+1.7%</b>	<b>+1</b>	<b>+1</b>
Counsellor Therapists	4	4	-0	-0.2%	-0	+0
Dental Hygienists	3	3			-0	+1
Other Health & Social Care	1	1	+0	+3.9%	+0	+0
<b>H&amp;SC, Other</b>	<b>9</b>	<b>9</b>	<b>+0</b>	<b>+0.5%</b>	<b>-0</b>	<b>+1</b>
<b>Health &amp; Social Care Professionals</b>	<b>277</b>	<b>282</b>	<b>+6</b>	<b>+2.0%</b>	<b>+22</b>	<b>+24</b>
Executive Management	9	9	+1	+5.6%	+2	+2
Senior Management (VIII & GM)	28	27	-1	-3.0%	-2	-3

Apr 2021 (Dec 2020 figure: 1,689)	WTE Mar 2021	WTE Apr 2021	WTE change since Mar 21	% change since Mar 21	WTE change since Dec 20	WTE change since Apr 20
<b>Overall</b>	<b>1,731</b>	<b>1,739</b>	<b>+8</b>	<b>+0.5%</b>	<b>+50</b>	<b>+131</b>
<b>Management (VIII &amp; above)</b>	<b>37</b>	<b>36</b>	<b>-0</b>	<b>-1.0%</b>	<b>-0</b>	<b>-1</b>
<b>Administrative/ Supervisory (V to VII)</b>	<b>100</b>	<b>105</b>	<b>+5</b>	<b>+5.0%</b>	<b>+15</b>	<b>+14</b>
<b>Clerical (III &amp; IV)</b>	<b>166</b>	<b>162</b>	<b>-4</b>	<b>-2.4%</b>	<b>+6</b>	<b>+25</b>
<b>Management &amp; Administrative</b>	<b>302</b>	<b>303</b>	<b>+1</b>	<b>+0.2%</b>	<b>+43</b>	<b>+38</b>
Catering	15	14	-1	-4.7%	+0	-1
Household Services	52	54	+1	+2.2%	-2	-1
Other Labs & Associated	1	1	-0	-1.2%	-0	-0
Other Support	1	1				
Portering	11	13	+1	+13.1%	+2	+1
<b>Support</b>	<b>80</b>	<b>82</b>	<b>+2</b>	<b>+2.4%</b>	<b>-0</b>	<b>-1</b>
<b>Maintenance/ Technical</b>	<b>2</b>	<b>2</b>				
<b>General Support</b>	<b>82</b>	<b>84</b>	<b>+2</b>	<b>+2.4%</b>	<b>-4</b>	<b>-1</b>
HCA, Nurse's Aide, etc.	276	274	-2	-0.9%	+0	+9
Health & Social Care Assistants	8	8			+1	+3
Swabber (COVID-19)	37	39	+1	+3.7%	+12	+39
<b>Health Care Assistants</b>	<b>321</b>	<b>320</b>	<b>-1</b>	<b>-0.3%</b>	<b>+14</b>	<b>+51</b>
<b>Care, other</b>	<b>59</b>	<b>60</b>	<b>+1</b>	<b>+1.8%</b>	<b>+0</b>	<b>+6</b>
<b>Patient &amp; Client Care</b>	<b>381</b>	<b>381</b>	<b>+0</b>	<b>+0.0%</b>	<b>+60</b>	<b>+57</b>

## Employment by WTE, Headcount, Gender, Full-Time /Part-Time etc.: Apr 2021

CHO 6	WTE	Headcount	WTE: no.	% Male	% female	Male WTE: no.	Female WTE: no.	% Total Perm	% Male Perm	% Female Perm	% Total Full Time	% Total Part Time	% Male FT	% Female FT
<b>Overall</b>	<b>3,524</b>	<b>4,132</b>	<b>1.17</b>	<b>21.6%</b>	<b>78.4%</b>	<b>1.11</b>	<b>1.19</b>	<b>85.8%</b>	<b>85.7%</b>	<b>85.8%</b>	<b>72.4%</b>	<b>27.6%</b>	<b>86.0%</b>	<b>68.6%</b>
Consultant Dentistry	6	8	1.27	50.0%	50.0%	1.25	1.29	100.0%	100.0%	100.0%	62.5%	37.5%	75.0%	50.0%
Consultant Medicine	1	1	1.00		100.0%		1.00	100.0%	100.0%	100.0%	100.0%	0.0%		100.0%
Consultant Psychiatry	44	47	1.08	42.6%	57.4%	1.01	1.13	74.5%	74.5%	70.4%	87.2%	12.8%	100.0%	77.8%
Consultant Radiology	1	1	1.00	100.0%		1.00		100.0%	100.0%		100.0%	0.0%	100.0%	
<b>Consultants</b>	<b>52</b>	<b>57</b>	<b>1.10</b>	<b>43.9%</b>	<b>56.1%</b>	<b>1.05</b>	<b>1.14</b>	<b>78.9%</b>	<b>84.0%</b>	<b>75.0%</b>	<b>84.2%</b>	<b>15.8%</b>	<b>96.0%</b>	<b>75.0%</b>
Registrar	41	43	1.05	23.3%	76.7%	1.00	1.07	7.0%	7.0%	9.1%	90.7%	9.3%	100.0%	87.9%
Senior Registrar	9	9	1.06	33.3%	66.7%	1.01	1.08	22.2%	22.2%	33.3%	88.9%	11.1%	100.0%	83.3%
Specialist Registrar	1	1	1.00		100.0%		1.00	100.0%	100.0%	100.0%	100.0%	0.0%		100.0%
<b>Registrars</b>	<b>50</b>	<b>53</b>	<b>1.05</b>	<b>24.5%</b>	<b>75.5%</b>	<b>1.00</b>	<b>1.07</b>	<b>11.3%</b>	<b>0.0%</b>	<b>15.0%</b>	<b>90.6%</b>	<b>9.4%</b>	<b>100.0%</b>	<b>87.5%</b>
<b>SHO/ Interns</b>	<b>19</b>	<b>25</b>	<b>1.35</b>	<b>36.0%</b>	<b>64.0%</b>	<b>1.38</b>	<b>1.33</b>	<b>0.0%</b>	<b>0.0%</b>	<b>0.0%</b>	<b>100.0%</b>	<b>0.0%</b>	<b>100.0%</b>	<b>100.0%</b>
Dentists	28	39	1.40	23.1%	76.9%	1.48	1.37	84.6%	84.6%	83.3%	41.0%	59.0%	44.4%	40.0%
Other Medical	19	28	1.45	10.7%	89.3%	1.89	1.41	64.3%	64.3%	68.0%	39.3%	60.7%	33.3%	40.0%
<b>Medical/ Dental, other</b>	<b>47</b>	<b>67</b>	<b>1.42</b>	<b>17.9%</b>	<b>82.1%</b>	<b>1.56</b>	<b>1.39</b>	<b>76.1%</b>	<b>75.0%</b>	<b>76.4%</b>	<b>40.3%</b>	<b>59.7%</b>	<b>41.7%</b>	<b>40.0%</b>
<b>Medical &amp; Dental</b>	<b>168</b>	<b>202</b>	<b>1.20</b>	<b>29.2%</b>	<b>70.8%</b>	<b>1.16</b>	<b>1.22</b>	<b>50.5%</b>	<b>50.8%</b>	<b>50.3%</b>	<b>73.3%</b>	<b>26.7%</b>	<b>86.4%</b>	<b>67.8%</b>
Clinical Nurse/ Midwife Manager	157	164	1.05	22.0%	78.0%	1.00	1.06	94.5%	94.5%	93.0%	91.5%	8.5%	100.0%	89.1%
Director Nursing/Midwifery, Assistant	31	34	1.08	26.5%	73.5%	1.06	1.09	97.1%	97.1%	96.0%	88.2%	11.8%	100.0%	84.0%
Director of Nursing/Midwifery	14	17	1.18	17.6%	82.4%	1.00	1.23	94.1%	94.1%	92.9%	88.2%	11.8%	100.0%	85.7%
<b>Nurse/ Midwife Manager</b>	<b>202</b>	<b>215</b>	<b>1.06</b>	<b>22.3%</b>	<b>77.7%</b>	<b>1.01</b>	<b>1.08</b>	<b>94.9%</b>	<b>100.0%</b>	<b>93.4%</b>	<b>90.7%</b>	<b>9.3%</b>	<b>100.0%</b>	<b>88.0%</b>
Advanced Nurse/ Midwife Practitioner	6	6	1.09		100.0%		1.09	100.0%	100.0%	100.0%	83.3%	16.7%		83.3%
Clinical Nurse/ Midwife Specialist	18	21	1.14	19.0%	81.0%	1.00	1.18	95.2%	95.2%	94.1%	71.4%	28.6%	100.0%	64.7%
<b>Nurse/ Midwife Specialist &amp; AN/MP</b>	<b>24</b>	<b>27</b>	<b>1.13</b>	<b>14.8%</b>	<b>85.2%</b>	<b>1.00</b>	<b>1.15</b>	<b>96.3%</b>	<b>100.0%</b>	<b>95.7%</b>	<b>74.1%</b>	<b>25.9%</b>	<b>100.0%</b>	<b>69.6%</b>
Staff Nurse [Intellectual Disability]	62	87	1.41	17.2%	82.8%	1.66	1.37	97.7%	97.7%	97.2%	75.9%	24.1%	80.0%	75.0%
Staff Nurse [Psychiatric]	131	141	1.07	24.1%	75.9%	1.05	1.08	92.2%	92.2%	92.5%	90.8%	9.2%	94.1%	89.7%
Staff Nurses [General/ Children's]	358	417	1.16	13.2%	86.8%	1.09	1.18	87.5%	87.5%	86.5%	73.9%	26.1%	87.3%	71.8%
<b>Staff Nurse/ Staff Midwife</b>	<b>551</b>	<b>645</b>	<b>1.17</b>	<b>16.1%</b>	<b>83.9%</b>	<b>1.13</b>	<b>1.18</b>	<b>89.9%</b>	<b>94.2%</b>	<b>89.1%</b>	<b>77.8%</b>	<b>22.2%</b>	<b>88.5%</b>	<b>75.8%</b>
<b>Public Health Nurse</b>	<b>107</b>	<b>129</b>	<b>1.20</b>	<b>0.8%</b>	<b>99.2%</b>	<b>1.11</b>	<b>1.20</b>	<b>94.6%</b>	<b>100.0%</b>	<b>94.5%</b>	<b>68.2%</b>	<b>31.8%</b>	<b>100.0%</b>	<b>68.0%</b>
Nursing/ Midwifery awaiting registration	1	1	1.00		100.0%		1.00	100.0%	100.0%	100.0%	100.0%	0.0%		100.0%
Post-registration Nurse/ Midwife Student	15	15	1.00		100.0%		1.00	0.0%	0.0%	0.0%	100.0%	0.0%		100.0%

Pre-registration Nurse/ Midwife Intern	3	7	2.02		100.0%		2.02	0.0%	0.0%	0.0%	100.0%	0.0%		100.0%
<b>Nursing/ Midwifery Student</b>	<b>19</b>	<b>23</b>	<b>1.18</b>		<b>100.0%</b>		<b>1.18</b>	<b>4.3%</b>		<b>4.3%</b>	<b>100.0%</b>	<b>0.0%</b>		<b>100.0%</b>
<b>Nursing/ Midwifery other</b>	<b>3</b>	<b>3</b>	<b>1.01</b>	<b>33.3%</b>	<b>66.7%</b>	<b>1.00</b>	<b>1.01</b>	<b>100.0%</b>	<b>100.0%</b>	<b>100.0%</b>	<b>100.0%</b>	<b>0.0%</b>	<b>100.0%</b>	<b>100.0%</b>
<b>Nursing &amp; Midwifery</b>	<b>907</b>	<b>1,042</b>	<b>1.15</b>	<b>15.2%</b>	<b>84.8%</b>	<b>1.09</b>	<b>1.16</b>	<b>89.8%</b>	<b>96.2%</b>	<b>88.7%</b>	<b>79.8%</b>	<b>20.2%</b>	<b>92.4%</b>	<b>77.5%</b>
Dietitians	16	20	1.28		100.0%		1.28	90.0%	90.0%	90.0%	60.0%	40.0%		60.0%
Occupational Therapists	98	116	1.19	7.8%	92.2%	1.17	1.19	87.1%	87.1%	86.9%	70.7%	29.3%	77.8%	70.1%
Physiotherapists	68	82	1.20	15.9%	84.1%	1.10	1.23	86.6%	86.6%	89.9%	61.0%	39.0%	76.9%	58.0%
Podiatrists & Chiropodists	3	5	1.57	20.0%	80.0%	2.00	1.49	80.0%	80.0%	75.0%	40.0%	60.0%	0.0%	50.0%
Speech & Language Therapists	65	80	1.24	1.3%	98.8%	1.00	1.24	96.3%	96.3%	96.2%	63.7%	36.3%	100.0%	63.3%
Orthoptists	1	1	1.00		100.0%		1.00	100.0%	100.0%	100.0%	100.0%	0.0%		100.0%
<b>Therapy Professions</b>	<b>250</b>	<b>304</b>	<b>1.21</b>	<b>7.9%</b>	<b>92.1%</b>	<b>1.14</b>	<b>1.22</b>	<b>89.5%</b>	<b>79.2%</b>	<b>90.4%</b>	<b>65.1%</b>	<b>34.9%</b>	<b>75.0%</b>	<b>64.3%</b>
Medical Science	17	18	1.07	27.8%	72.2%	1.10	1.07	83.3%	83.3%	84.6%	88.9%	11.1%	80.0%	92.3%
Radiographers	2	4	1.78	25.0%	75.0%	2.00	1.71	100.0%	100.0%	100.0%	75.0%	25.0%	100.0%	66.7%
<b>Health Science/ Diagnostics</b>	<b>19</b>	<b>22</b>	<b>1.16</b>	<b>27.3%</b>	<b>72.7%</b>	<b>1.19</b>	<b>1.15</b>	<b>86.4%</b>	<b>83.3%</b>	<b>87.5%</b>	<b>86.4%</b>	<b>13.6%</b>	<b>83.3%</b>	<b>87.5%</b>
<b>Social Care</b>	<b>397</b>	<b>457</b>	<b>1.15</b>	<b>21.9%</b>	<b>78.1%</b>	<b>1.08</b>	<b>1.17</b>	<b>91.0%</b>	<b>87.0%</b>	<b>92.2%</b>	<b>61.1%</b>	<b>38.9%</b>	<b>73.0%</b>	<b>57.7%</b>
<b>Social Workers</b>	<b>58</b>	<b>64</b>	<b>1.10</b>	<b>12.5%</b>	<b>87.5%</b>	<b>1.03</b>	<b>1.11</b>	<b>95.3%</b>	<b>100.0%</b>	<b>94.6%</b>	<b>82.8%</b>	<b>17.2%</b>	<b>87.5%</b>	<b>82.1%</b>
<b>Psychologists</b>	<b>65</b>	<b>80</b>	<b>1.24</b>	<b>20.0%</b>	<b>80.0%</b>	<b>1.02</b>	<b>1.31</b>	<b>92.5%</b>	<b>81.3%</b>	<b>95.3%</b>	<b>66.3%</b>	<b>33.8%</b>	<b>100.0%</b>	<b>57.8%</b>
<b>Pharmacy</b>	<b>5</b>	<b>7</b>	<b>1.38</b>		<b>100.0%</b>		<b>1.38</b>	<b>85.7%</b>		<b>85.7%</b>	<b>57.1%</b>	<b>42.9%</b>		<b>57.1%</b>
Counsellor Therapists	4	4	1.00	25.0%	75.0%	1.00	1.00	100.0%	100.0%	100.0%	100.0%	0.0%	100.0%	100.0%
Dental Hygienists	4	5	1.31		100.0%		1.31	100.0%	100.0%	100.0%	40.0%	60.0%		40.0%
Other Health & Social Care	1	3	2.24	33.3%	66.7%	4.55	1.79	100.0%	100.0%	100.0%	33.3%	66.7%	100.0%	0.0%
Play Therapists/ Specialists	0	1	2.08		100.0%		2.08	100.0%	100.0%	100.0%	0.0%	100.0%		0.0%
<b>H&amp;SC, Other</b>	<b>10</b>	<b>13</b>	<b>1.35</b>	<b>15.4%</b>	<b>84.6%</b>	<b>1.64</b>	<b>1.31</b>	<b>100.0%</b>	<b>100.0%</b>	<b>100.0%</b>	<b>53.8%</b>	<b>46.2%</b>	<b>100.0%</b>	<b>45.5%</b>
<b>Health &amp; Social Care</b>	<b>803</b>	<b>947</b>	<b>1.18</b>	<b>16.5%</b>	<b>83.5%</b>	<b>1.09</b>	<b>1.20</b>	<b>90.9%</b>	<b>85.9%</b>	<b>91.9%</b>	<b>64.7%</b>	<b>35.3%</b>	<b>77.6%</b>	<b>62.2%</b>
Executive Management	26	27	1.04	48.1%	51.9%	1.04	1.04	96.3%	96.3%	92.9%	100.0%	0.0%	100.0%	100.0%
Senior Management (VIII & GM)	44	48	1.09	27.1%	72.9%	1.18	1.06	97.9%	97.9%	97.1%	100.0%	0.0%	100.0%	100.0%
<b>Management (VIII &amp; above)</b>	<b>70</b>	<b>75</b>	<b>1.07</b>	<b>34.7%</b>	<b>65.3%</b>	<b>1.11</b>	<b>1.06</b>	<b>97.3%</b>	<b>100.0%</b>	<b>95.9%</b>	<b>100.0%</b>	<b>0.0%</b>	<b>100.0%</b>	<b>100.0%</b>
<b>Administrative/ Supervisory (V to VII)</b>	<b>186</b>	<b>209</b>	<b>1.12</b>	<b>26.8%</b>	<b>73.2%</b>	<b>1.15</b>	<b>1.11</b>	<b>95.2%</b>	<b>92.9%</b>	<b>96.1%</b>	<b>87.6%</b>	<b>12.4%</b>	<b>94.6%</b>	<b>85.0%</b>
<b>Clerical (III &amp; IV)</b>	<b>266</b>	<b>316</b>	<b>1.19</b>	<b>13.3%</b>	<b>86.7%</b>	<b>1.10</b>	<b>1.20</b>	<b>72.8%</b>	<b>71.4%</b>	<b>73.0%</b>	<b>69.6%</b>	<b>30.4%</b>	<b>88.1%</b>	<b>66.8%</b>
<b>Management &amp; Administrative</b>	<b>522</b>	<b>600</b>	<b>1.15</b>	<b>20.7%</b>	<b>79.3%</b>	<b>1.12</b>	<b>1.16</b>	<b>83.7%</b>	<b>87.1%</b>	<b>82.8%</b>	<b>79.7%</b>	<b>20.3%</b>	<b>93.5%</b>	<b>76.1%</b>
Catering	23	24	1.05	37.5%	62.5%	1.00	1.08	91.7%	91.7%	93.3%	79.2%	20.8%	100.0%	66.7%
Household Services	121	141	1.17	31.9%	68.1%	1.07	1.22	80.9%	80.9%	82.3%	66.0%	34.0%	84.4%	57.3%
Other Labs & Associated	1	1	1.27		100.0%		1.27	100.0%	100.0%	100.0%	100.0%	0.0%		100.0%
Other Support	19	27	1.39	51.9%	48.1%	1.36	1.41	92.6%	92.6%	92.3%	74.1%	25.9%	78.6%	69.2%
Portering	25	29	1.17	100.0%		1.17		82.8%	82.8%		89.7%	10.3%	89.7%	

<b>Support</b>	<b>189</b>	<b>222</b>	<b>1.18</b>	<b>43.7%</b>	<b>56.3%</b>	<b>1.13</b>	<b>1.22</b>	<b>83.8%</b>	<b>82.5%</b>	<b>84.8%</b>	<b>71.6%</b>	<b>28.4%</b>	<b>86.6%</b>	<b>60.0%</b>
<b>Maintenance/ Technical</b>	<b>22</b>	<b>24</b>	<b>1.09</b>	<b>100.0%</b>		<b>1.09</b>		<b>100.0%</b>	<b>100.0%</b>	<b>#DIV/0</b>	<b>100.0%</b>	<b>0.0%</b>	<b>100.0%</b>	
<b>General Support</b>	<b>211</b>	<b>246</b>	<b>1.17</b>	<b>49.2%</b>	<b>50.8%</b>	<b>1.12</b>	<b>1.22</b>	<b>85.4%</b>	<b>86.0%</b>	<b>84.8%</b>	<b>74.4%</b>	<b>25.6%</b>	<b>89.3%</b>	<b>60.0%</b>
HCA, Nurse's Aide, etc.	539	604	1.12	27.3%	72.7%	1.05	1.15	86.6%	86.6%	84.7%	69.2%	30.8%	90.9%	61.0%
Health & Social Care Assistants	16	17	1.08	29.4%	70.6%	1.16	1.05	52.9%	52.9%	41.7%	82.4%	17.6%	80.0%	83.3%
Swabber (COVID-19)	39	49	1.26	34.7%	65.3%	1.03	1.43	2.0%	2.0%	3.1%	67.3%	32.7%	94.1%	53.1%
<b>Health Care Assistants</b>	<b>593</b>	<b>670</b>	<b>1.13</b>	<b>27.9%</b>	<b>72.1%</b>	<b>1.05</b>	<b>1.16</b>	<b>79.6%</b>	<b>82.9%</b>	<b>78.3%</b>	<b>69.4%</b>	<b>30.6%</b>	<b>90.9%</b>	<b>61.1%</b>
<b>Care, other</b>	<b>320</b>	<b>425</b>	<b>1.33</b>	<b>20.7%</b>	<b>79.3%</b>	<b>1.34</b>	<b>1.33</b>	<b>94.1%</b>	<b>93.2%</b>	<b>94.4%</b>	<b>64.0%</b>	<b>36.0%</b>	<b>63.6%</b>	<b>64.1%</b>
<b>Patient &amp; Client Care</b>	<b>913</b>	<b>1,095</b>	<b>1.20</b>	<b>25.1%</b>	<b>74.9%</b>	<b>1.13</b>	<b>1.23</b>	<b>85.2%</b>	<b>86.2%</b>	<b>84.9%</b>	<b>67.3%</b>	<b>32.7%</b>	<b>82.2%</b>	<b>62.3%</b>

## Employment by WTE, Headcount, Gender, Full-Time /Part-Time etc.: Apr 2021

CHO 6	WTE	Headcount	WTE: no.	% Male	% female	Male WTE: no.	Female WTE: no.	% Total Perm	% Male Perm	% Female Perm	% Total Full Time	% Total Part Time	% Male FT	% Female FT
<b>Overall</b>	<b>3,524</b>	<b>4,132</b>	<b>1.17</b>	<b>21.6%</b>	<b>78.4%</b>	<b>1.11</b>	<b>1.19</b>	<b>85.8%</b>	<b>85.7%</b>	<b>85.8%</b>	<b>72.4%</b>	<b>27.6%</b>	<b>86.0%</b>	<b>68.6%</b>
Community Health & Wellbeing	9	11	1.26	9.1%	90.9%	14.29	1.15	81.8%	81.8%	80.0%	63.6%	36.4%	0.0%	0.0%
Mental Health	634	700	1.10	29.9%	70.1%	1.06	1.12	83.3%	83.3%	84.3%	84.0%	16.0%	91.4%	91.4%
Primary Care	853	1,095	1.28	13.4%	86.6%	1.23	1.29	76.0%	76.0%	76.8%	68.6%	31.4%	91.8%	91.8%
Social Care	2,028	2,326	1.15	23.0%	77.0%	1.11	1.16	91.1%	91.1%	91.0%	70.7%	29.3%	82.5%	82.5%



## CHO 6 Skills Mix by Staff Grouping: April 2021

Apr 2021 (Dec 2019 figure: 3,378)	WTE Dec 2016	WTE Dec 2017	WTE Dec 2018	WTE Dec 2019	WTE Dec 2020	WTE Mar 2021	WTE Apr 2021
<b>Overall</b>	<b>3,940</b>	<b>3,357</b>	<b>3,368</b>	<b>3,378</b>	<b>3,465</b>	<b>3,496</b>	<b>3,524</b>
Consultant Dentistry	4.2%	4.7%	4.6%	4.4%	3.9%	3.7%	3.8%
Consultant Medicine	0.6%	0.6%	0.6%	0.6%	0.6%	0.6%	0.6%
Consultant, Other	0.6%						
Consultant Paediatrics	0.1%	0.1%					
Consultant Psychiatry	18.5%	18.8%	20.0%	23.8%	27.0%	25.5%	26.0%
Consultant Radiology	0.6%	0.6%	0.6%	0.6%	0.6%	0.6%	0.6%
<b>Consultants</b>	<b>24.7%</b>	<b>24.7%</b>	<b>25.8%</b>	<b>29.5%</b>	<b>32.2%</b>	<b>30.4%</b>	<b>30.9%</b>
Registrar	25.2%	24.4%	21.7%	24.6%	21.4%	24.6%	24.3%
Senior Registrar	4.4%	4.1%	5.7%	4.6%	5.4%	5.0%	5.1%
Specialist Registrar	0.6%	0.6%	0.6%	0.6%	0.6%	0.6%	0.6%
<b>Registrars</b>	<b>30.2%</b>	<b>29.1%</b>	<b>28.0%</b>	<b>29.8%</b>	<b>27.4%</b>	<b>30.2%</b>	<b>29.9%</b>
<b>SHO/ Interns</b>	<b>12.3%</b>	<b>12.9%</b>	<b>13.5%</b>	<b>9.5%</b>	<b>12.2%</b>	<b>11.5%</b>	<b>11.0%</b>
Dentists	18.0%	17.7%	16.3%	16.2%	15.5%	16.1%	16.6%
Other Medical	14.8%	15.6%	16.4%	15.1%	12.6%	11.9%	11.5%
<b>Medical/ Dental, other</b>	<b>32.8%</b>	<b>33.3%</b>	<b>32.7%</b>	<b>31.3%</b>	<b>28.2%</b>	<b>28.0%</b>	<b>28.1%</b>
<b>Medical &amp; Dental</b>	<b>4.0%</b>	<b>4.9%</b>	<b>4.9%</b>	<b>4.8%</b>	<b>4.7%</b>	<b>100.0%</b>	<b>4.8%</b>
Clinical Nurse/ Midwife Manager	18.4%	17.2%	17.7%	17.8%	17.3%	17.1%	17.3%
Director Nursing/Midwifery, Assistant	2.9%	3.2%	3.9%	3.9%	3.7%	3.6%	3.5%
Director of Nursing/Midwifery	2.0%	1.7%	1.5%	1.6%	1.5%	1.5%	1.6%
<b>Nurse/ Midwife Manager</b>	<b>23.3%</b>	<b>22.0%</b>	<b>23.1%</b>	<b>23.3%</b>	<b>22.5%</b>	<b>22.1%</b>	<b>22.3%</b>
Advanced Nurse/ Midwife Practitioner	0.0%	0.1%	0.1%	0.1%	0.6%	0.6%	0.6%
Clinical Nurse/ Midwife Specialist	1.9%	2.3%	2.1%	2.2%	2.0%	2.2%	2.0%
<b>Nurse/ Midwife Specialist &amp; AN/MP</b>	<b>2.0%</b>	<b>2.3%</b>	<b>2.1%</b>	<b>2.3%</b>	<b>2.6%</b>	<b>2.8%</b>	<b>2.6%</b>
Staff Nurse [Intellectual Disability]	6.7%	6.7%	6.4%	5.5%	5.8%	5.8%	6.8%
Staff Nurse [Psychiatric]	12.2%	12.8%	12.2%	14.7%	13.6%	13.4%	14.5%
Staff Nurses [General/ Children's]	42.7%	40.4%	41.6%	39.7%	41.1%	41.3%	39.5%
<b>Staff Nurse/ Staff Midwife</b>	<b>61.7%</b>	<b>60.0%</b>	<b>60.2%</b>	<b>59.9%</b>	<b>60.6%</b>	<b>60.5%</b>	<b>60.7%</b>
<b>Public Health Nurse</b>	<b>11.4%</b>	<b>13.4%</b>	<b>13.1%</b>	<b>12.9%</b>	<b>12.2%</b>	<b>12.1%</b>	<b>11.8%</b>
Nursing/ Midwifery awaiting registration					0.1%	0.1%	0.1%
Post-registration Nurse/ Midwife Student	1.4%	2.1%	1.2%	1.5%	1.6%	1.7%	1.7%
Pre-registration Nurse/ Midwife Intern						0.4%	0.4%
<b>Nursing/ Midwifery Student</b>	<b>1.4%</b>	<b>2.1%</b>	<b>1.2%</b>	<b>1.5%</b>	<b>1.7%</b>	<b>2.2%</b>	<b>2.1%</b>
<b>Nursing/ Midwifery other</b>	<b>0.2%</b>	<b>0.2%</b>	<b>0.3%</b>	<b>0.2%</b>	<b>0.3%</b>	<b>0.3%</b>	<b>0.3%</b>
<b>Nursing &amp; Midwifery</b>	<b>26.3%</b>	<b>27.3%</b>	<b>26.9%</b>	<b>26.8%</b>	<b>26.1%</b>	<b>100.0%</b>	<b>25.7%</b>
Dietitians	1.2%	2.1%	2.1%	1.9%	2.1%	2.1%	2.0%
Occupational Therapists	9.6%	11.9%	12.4%	12.2%	11.9%	12.2%	12.2%
Physiotherapists	6.7%	7.9%	8.4%	8.0%	7.5%	8.7%	8.5%
Podiatrists & Chiropodists	0.2%	0.5%	0.3%	0.2%	0.5%	0.4%	0.4%
Speech & Language Therapists	7.6%	8.9%	10.2%	9.3%	8.3%	7.9%	8.0%
Orthoptists							0.1%
<b>Therapy Professions</b>	<b>25.3%</b>	<b>31.3%</b>	<b>33.5%</b>	<b>31.7%</b>	<b>30.3%</b>	<b>31.3%</b>	<b>31.1%</b>
Medical Science	1.9%	2.7%	2.8%	2.1%	2.2%	2.1%	2.1%
Radiographers	0.4%	0.5%	0.5%	0.3%	0.3%	0.3%	0.3%
<b>Health Science/ Diagnostics</b>	<b>2.3%</b>	<b>3.1%</b>	<b>3.2%</b>	<b>2.4%</b>	<b>2.6%</b>	<b>2.4%</b>	<b>2.4%</b>
<b>Social Care</b>	<b>57.6%</b>	<b>47.9%</b>	<b>46.3%</b>	<b>48.4%</b>	<b>50.0%</b>	<b>49.0%</b>	<b>49.4%</b>
<b>Social Workers</b>	<b>6.6%</b>	<b>7.6%</b>	<b>7.7%</b>	<b>7.6%</b>	<b>6.9%</b>	<b>7.2%</b>	<b>7.2%</b>
<b>Psychologists</b>	<b>6.6%</b>	<b>8.0%</b>	<b>7.6%</b>	<b>7.5%</b>	<b>8.5%</b>	<b>8.2%</b>	<b>8.0%</b>
<b>Pharmacy</b>	<b>0.3%</b>	<b>0.5%</b>	<b>0.5%</b>	<b>0.5%</b>	<b>0.5%</b>	<b>0.6%</b>	<b>0.6%</b>
Counsellor Therapists	0.6%	0.9%	0.5%	0.6%	0.5%	0.5%	0.5%
Dental Hygienists	0.4%	0.5%	0.5%	0.5%	0.5%	0.5%	0.5%

Apr 2021 (Dec 2019 figure: 3,378)	WTE Dec 2016	WTE Dec 2017	WTE Dec 2018	WTE Dec 2019	WTE Dec 2020	WTE Mar 2021	WTE Apr 2021
<b>Overall</b>	<b>3,940</b>	<b>3,357</b>	<b>3,368</b>	<b>3,378</b>	<b>3,465</b>	<b>3,496</b>	<b>3,524</b>
Other Health & Social Care	0.1%	0.2%	0.1%	0.8%	0.2%	0.2%	0.2%
Play Therapists/ Specialists	0.2%	0.1%	0.1%	0.1%	0.1%	0.1%	0.1%
<b>H&amp;SC, Other</b>	<b>1.3%</b>	<b>1.7%</b>	<b>1.2%</b>	<b>1.9%</b>	<b>1.3%</b>	<b>1.2%</b>	<b>1.2%</b>
<b>Health &amp; Social Care Professionals</b>	<b>23.8%</b>	<b>22.0%</b>	<b>22.0%</b>	<b>22.3%</b>	<b>21.7%</b>	<b>100.0%</b>	<b>22.8%</b>
Executive Management	4.4%	6.1%	5.1%	4.9%	4.8%	4.9%	5.0%
Senior Management (VIII & GM)	9.7%	9.1%	10.3%	9.3%	9.2%	8.6%	8.4%
<b>Management (VIII &amp; above)</b>	<b>14.1%</b>	<b>15.2%</b>	<b>15.4%</b>	<b>14.3%</b>	<b>14.0%</b>	<b>13.5%</b>	<b>13.4%</b>
Middle Management (V-VII)	29.7%	32.8%	35.8%	35.6%	33.5%	34.4%	35.7%
Other Administrative	0.2%	0.2%	0.2%	0.2%			
<b>Administrative/ Supervisory (V to VII)</b>	<b>29.9%</b>	<b>33.0%</b>	<b>36.0%</b>	<b>35.8%</b>	<b>33.5%</b>	<b>34.4%</b>	<b>35.7%</b>
<b>Clerical (III &amp; IV)</b>	<b>56.0%</b>	<b>51.8%</b>	<b>48.6%</b>	<b>49.9%</b>	<b>52.5%</b>	<b>52.1%</b>	<b>50.9%</b>
<b>Management &amp; Administrative</b>	<b>11.7%</b>	<b>13.5%</b>	<b>14.1%</b>	<b>14.1%</b>	<b>13.7%</b>	<b>100.0%</b>	<b>14.8%</b>
Catering	13.1%	11.6%	12.7%	12.1%	11.9%	11.5%	10.8%
Household Services	57.1%	58.8%	59.3%	56.7%	57.2%	57.2%	57.3%
Other Labs & Associated	0.3%	0.4%	0.4%	0.5%	0.5%	0.4%	0.4%
Other Support	9.7%	9.1%	8.3%	9.1%	9.6%	9.5%	9.2%
Portering	8.7%	11.2%	10.8%	11.0%	10.6%	11.3%	11.8%
<b>Support</b>	<b>89.0%</b>	<b>91.2%</b>	<b>91.5%</b>	<b>89.4%</b>	<b>89.7%</b>	<b>89.8%</b>	<b>89.6%</b>
<b>Maintenance/ Technical</b>	<b>11.0%</b>	<b>8.8%</b>	<b>8.5%</b>	<b>10.6%</b>	<b>10.3%</b>	<b>10.2%</b>	<b>10.4%</b>
<b>General Support</b>	<b>7.4%</b>	<b>7.1%</b>	<b>6.6%</b>	<b>6.3%</b>	<b>6.2%</b>	<b>100.0%</b>	<b>6.0%</b>
HCA, Nurse's Aide, etc.	58.9%	61.3%	60.3%	60.7%	58.5%	59.3%	59.0%
Health & Social Care Assistants	1.0%	1.2%	1.8%	1.3%	1.6%	1.8%	1.7%
Swabber (COVID-19)					3.0%	4.2%	4.3%
<b>Health Care Assistants</b>	<b>59.9%</b>	<b>62.4%</b>	<b>62.1%</b>	<b>62.0%</b>	<b>63.1%</b>	<b>65.2%</b>	<b>65.0%</b>
<b>Care, other</b>	<b>40.1%</b>	<b>37.6%</b>	<b>37.9%</b>	<b>38.0%</b>	<b>36.9%</b>	<b>34.8%</b>	<b>35.0%</b>
<b>Patient &amp; Client Care</b>	<b>26.7%</b>	<b>25.2%</b>	<b>25.4%</b>	<b>25.7%</b>	<b>25.1%</b>	<b>100.0%</b>	<b>25.9%</b>
<b>Total</b>	<b>100 %</b>	<b>100 %</b>	<b>100 %</b>	<b>100 %</b>	<b>100%</b>	<b>100 %</b>	<b>100 %</b>

# CHO 6 Skills Mix by Care Group: April 2021

Apr 2021 (Dec 2019 figure: 593)	WTE Dec 2016	WTE Dec 2017	WTE Dec 2018	WTE Dec 2019	WTE Dec 2020	WTE Mar 2021	WTE Apr 2021
<b>Mental Health</b>	<b>559</b>	<b>564</b>	<b>573</b>	<b>593</b>	<b>626</b>	<b>632</b>	<b>634</b>
<b>Consultants</b>	<b>47.3%</b>	<b>45.1%</b>	<b>49.0%</b>	<b>53.9%</b>	<b>55.6%</b>	<b>51.1%</b>	<b>52.7%</b>
Registrar	21.2%	24.9%	13.4%	22.9%	15.9%	22.8%	22.0%
Senior Registrar	10.4%	6.0%	11.8%	9.7%	10.5%	9.6%	9.7%
<b>Registrars</b>	<b>31.6%</b>	<b>30.9%</b>	<b>25.2%</b>	<b>32.6%</b>	<b>26.4%</b>	<b>32.4%</b>	<b>31.7%</b>
<b>SHO/ Interns</b>	<b>21.1%</b>	<b>23.4%</b>	<b>25.1%</b>	<b>13.5%</b>	<b>18.0%</b>	<b>16.5%</b>	<b>15.6%</b>
<b>Medical/ Dental, other</b>		<b>0.6%</b>	<b>0.6%</b>				
<b>Medical &amp; Dental</b>	<b>10.1%</b>	<b>11.1%</b>	<b>11.1%</b>	<b>11.3%</b>	<b>10.7%</b>	<b>12.2%</b>	<b>12.2%</b>
Clinical Nurse/ Midwife Manager	26.1%	23.6%	26.8%	25.8%	23.8%	23.3%	23.3%
Director Nursing/Midwifery, Assistant	5.4%	5.6%	5.9%	6.0%	5.8%	5.4%	5.4%
Director of Nursing/Midwifery	1.7%	1.7%	1.3%	1.3%	1.2%	1.2%	1.2%
<b>Nurse/ Midwife Manager</b>	<b>33.1%</b>	<b>31.0%</b>	<b>33.9%</b>	<b>33.1%</b>	<b>30.8%</b>	<b>29.9%</b>	<b>29.9%</b>
Advanced Nurse/ Midwife Practitioner	0.2%	0.2%	0.2%	0.3%	1.8%	1.8%	1.8%
Clinical Nurse/ Midwife Specialist	5.9%	6.4%	5.0%	5.6%	6.0%	6.4%	5.8%
<b>Nurse/ Midwife Specialist &amp; AN/MP</b>	<b>6.1%</b>	<b>6.6%</b>	<b>5.2%</b>	<b>5.9%</b>	<b>7.8%</b>	<b>8.2%</b>	<b>7.6%</b>
Staff Nurse [Intellectual Disability]			0.4%	0.4%	0.8%	0.8%	
Staff Nurse [Psychiatric]	50.1%	49.3%	44.6%	49.2%	48.0%	47.0%	50.9%
Staff Nurses [General/ Children's]	9.9%	12.2%	14.7%	10.5%	11.4%	11.5%	9.0%
<b>Staff Nurse/ Staff Midwife</b>	<b>59.9%</b>	<b>61.5%</b>	<b>59.7%</b>	<b>60.2%</b>	<b>60.3%</b>	<b>59.2%</b>	<b>60.0%</b>
Nursing/ Midwifery awaiting registration					0.4%	0.4%	0.4%
Pre-registration Nurse/ Midwife Intern						1.5%	1.4%
<b>Nursing/ Midwifery Student</b>					<b>0.4%</b>	<b>1.9%</b>	<b>1.8%</b>
Nursing Education/Clinical	0.9%	0.9%	1.2%	0.9%	0.8%	0.8%	0.8%
<b>Nursing/ Midwifery other</b>	<b>0.9%</b>	<b>0.9%</b>	<b>1.2%</b>	<b>0.9%</b>	<b>0.8%</b>	<b>0.8%</b>	<b>0.8%</b>
<b>Nursing &amp; Midwifery</b>	<b>43.3%</b>	<b>40.8%</b>	<b>41.5%</b>	<b>39.0%</b>	<b>36.9%</b>	<b>39.4%</b>	<b>39.4%</b>
Dietitians		1.1%	1.7%	1.5%	1.1%	1.3%	1.2%
Occupational Therapists	16.3%	17.7%	17.0%	19.5%	18.8%	19.2%	21.4%
Physiotherapists	0.5%	0.4%	0.4%	0.9%	1.0%	1.0%	1.0%
Podiatrists & Chiropodists	1.0%	0.5%	0.4%				
Speech & Language Therapists	7.6%	9.0%	11.7%	11.3%	8.1%	8.0%	7.9%
<b>Therapy Professions</b>	<b>25.4%</b>	<b>28.7%</b>	<b>31.2%</b>	<b>33.2%</b>	<b>28.8%</b>	<b>29.4%</b>	<b>31.5%</b>
<b>Social Care</b>	<b>28.3%</b>	<b>26.8%</b>	<b>26.0%</b>	<b>20.0%</b>	<b>21.1%</b>	<b>20.7%</b>	<b>20.5%</b>
<b>Social Workers</b>	<b>25.6%</b>	<b>22.8%</b>	<b>25.5%</b>	<b>23.0%</b>	<b>22.2%</b>	<b>23.6%</b>	<b>22.9%</b>
<b>Psychologists</b>	<b>14.4%</b>	<b>17.8%</b>	<b>13.6%</b>	<b>17.0%</b>	<b>24.0%</b>	<b>22.8%</b>	<b>21.9%</b>
Counsellor Therapists	4.5%	3.5%	3.2%	3.0%	3.1%	3.0%	3.0%
Other Health & Social Care	0.5%			3.4%	0.4%	0.1%	
Play Therapists/ Specialists	1.4%	0.4%	0.4%	0.4%	0.4%	0.4%	0.4%
<b>H&amp;SC, Other</b>	<b>6.4%</b>	<b>3.9%</b>	<b>3.6%</b>	<b>6.7%</b>	<b>3.9%</b>	<b>3.5%</b>	<b>3.3%</b>
<b>Health &amp; Social Care Professionals</b>	<b>19.7%</b>	<b>20.3%</b>	<b>20.0%</b>	<b>21.9%</b>	<b>20.7%</b>	<b>21.3%</b>	<b>21.3%</b>
<b>Management (VIII &amp; above)</b>	<b>4.6%</b>	<b>6.0%</b>	<b>3.4%</b>	<b>4.2%</b>	<b>4.3%</b>	<b>4.2%</b>	<b>4.3%</b>
<b>Administrative/ Supervisory (V to VII)</b>	<b>31.3%</b>	<b>36.6%</b>	<b>44.8%</b>	<b>37.2%</b>	<b>34.7%</b>	<b>36.9%</b>	<b>38.3%</b>
<b>Clerical (III &amp; IV)</b>	<b>64.0%</b>	<b>57.5%</b>	<b>51.8%</b>	<b>58.6%</b>	<b>61.0%</b>	<b>58.9%</b>	<b>57.4%</b>
<b>Management &amp; Administrative</b>	<b>10.0%</b>	<b>10.5%</b>	<b>10.2%</b>	<b>12.1%</b>	<b>11.5%</b>	<b>10.9%</b>	<b>10.9%</b>
<b>Support</b>	<b>89.2%</b>	<b>90.6%</b>	<b>90.1%</b>	<b>86.0%</b>	<b>86.6%</b>	<b>86.0%</b>	<b>86.1%</b>
<b>Maintenance/ Technical</b>	<b>10.8%</b>	<b>9.4%</b>	<b>9.9%</b>	<b>14.0%</b>	<b>13.4%</b>	<b>14.0%</b>	<b>13.9%</b>
<b>General Support</b>	<b>8.9%</b>	<b>9.4%</b>	<b>8.6%</b>	<b>7.1%</b>	<b>6.8%</b>	<b>6.8%</b>	<b>6.8%</b>
HCA, Nurse's Aide, etc.	90.2%	92.1%	89.2%	89.5%	89.2%	90.1%	90.2%
<b>Health Care Assistants</b>	<b>90.2%</b>	<b>92.1%</b>	<b>89.2%</b>	<b>89.5%</b>	<b>89.2%</b>	<b>90.1%</b>	<b>90.2%</b>
<b>Care, other</b>	<b>9.8%</b>	<b>7.9%</b>	<b>10.8%</b>	<b>10.5%</b>	<b>10.8%</b>	<b>9.9%</b>	<b>9.8%</b>
<b>Patient &amp; Client Care</b>	<b>8.0%</b>	<b>7.8%</b>	<b>8.7%</b>	<b>8.6%</b>	<b>8.1%</b>	<b>9.4%</b>	<b>9.4%</b>
<b>Total</b>	<b>100 %</b>	<b>100 %</b>	<b>100 %</b>	<b>100 %</b>	<b>100 %</b>	<b>100 %</b>	<b>100 %</b>

Apr 2021 (Dec 2019 figure: 765)	WTE Dec 2016	WTE Dec 2017	WTE Dec 2018	WTE Dec 2019	WTE Dec 2020	WTE Mar 2021	WTE Apr 2021
<b>Primary Care</b>	<b>768</b>	<b>795</b>	<b>833</b>	<b>765</b>	<b>811</b>	<b>844</b>	<b>853</b>
Consultant Dentistry	7.4%	8.6%	8.3%	8.2%	7.9%	7.7%	7.7%
Consultant Medicine	1.1%	1.1%	1.1%	1.1%	1.3%	1.2%	1.2%
Consultant, Other	1.1%						
Consultant Radiology	1.1%	1.1%	1.1%	1.1%	1.3%	1.2%	1.2%
<b>Consultants</b>	<b>10.7%</b>	<b>10.8%</b>	<b>10.5%</b>	<b>10.5%</b>	<b>10.4%</b>	<b>10.1%</b>	<b>10.1%</b>
<b>Registrars</b>	<b>31.0%</b>	<b>28.3%</b>	<b>30.8%</b>	<b>29.6%</b>	<b>29.8%</b>	<b>27.9%</b>	<b>28.0%</b>
<b>SHO/ Interns</b>	<b>7.2%</b>	<b>7.2%</b>	<b>7.0%</b>	<b>7.4%</b>	<b>8.2%</b>	<b>7.9%</b>	<b>7.9%</b>
Dentists	31.7%	32.3%	29.2%	30.1%	31.1%	33.1%	34.0%
Other Medical	19.3%	21.4%	22.5%	22.4%	20.5%	21.0%	20.0%
<b>Medical/ Dental, other</b>	<b>51.0%</b>	<b>53.7%</b>	<b>51.7%</b>	<b>52.5%</b>	<b>51.6%</b>	<b>54.1%</b>	<b>54.0%</b>
<b>Medical &amp; Dental</b>	<b>11.7%</b>	<b>11.3%</b>	<b>11.1%</b>	<b>11.5%</b>	<b>10.8%</b>	<b>9.6%</b>	<b>9.6%</b>
Clinical Nurse/ Midwife Manager	1.8%	2.5%	2.6%	3.0%	2.6%	2.6%	2.6%
Director Nursing/Midwifery, Assistant	5.0%	4.8%	6.4%	6.0%	5.6%	5.7%	6.2%
Director of Nursing/Midwifery	2.3%	2.1%	1.7%	1.6%	2.6%	1.9%	2.0%
<b>Nurse/ Midwife Manager</b>	<b>9.1%</b>	<b>9.4%</b>	<b>10.7%</b>	<b>10.6%</b>	<b>10.8%</b>	<b>10.3%</b>	<b>10.9%</b>
<b>Nurse/ Midwife Specialist &amp; AN/MP</b>	<b>2.0%</b>	<b>2.9%</b>	<b>2.9%</b>	<b>2.8%</b>	<b>1.7%</b>	<b>1.9%</b>	<b>1.9%</b>
<b>Staff Nurse/ Staff Midwife</b>	<b>22.3%</b>	<b>19.8%</b>	<b>24.2%</b>	<b>24.6%</b>	<b>26.3%</b>	<b>28.1%</b>	<b>28.9%</b>
<b>Public Health Nurse</b>	<b>59.0%</b>	<b>58.6%</b>	<b>57.0%</b>	<b>55.5%</b>	<b>53.6%</b>	<b>52.1%</b>	<b>50.8%</b>
<b>Nursing/ Midwifery Student</b>	<b>7.6%</b>	<b>9.2%</b>	<b>5.3%</b>	<b>6.4%</b>	<b>7.1%</b>	<b>7.1%</b>	<b>7.1%</b>
<b>Nursing/ Midwifery other</b>					<b>0.5%</b>	<b>0.5%</b>	<b>0.5%</b>
<b>Nursing &amp; Midwifery</b>	<b>25.8%</b>	<b>26.4%</b>	<b>24.9%</b>	<b>27.5%</b>	<b>25.9%</b>	<b>24.8%</b>	<b>24.8%</b>
Dietitians	5.0%	6.3%	5.8%	6.4%	7.5%	7.2%	6.5%
Occupational Therapists	20.5%	20.3%	21.4%	21.3%	19.7%	20.8%	20.8%
Physiotherapists	20.0%	19.1%	19.0%	20.8%	20.7%	22.1%	22.3%
Podiatrists & Chiropodists		0.5%	0.5%	0.7%	1.9%	1.5%	1.5%
Speech & Language Therapists	21.3%	19.5%	19.2%	18.4%	18.4%	17.5%	16.8%
Orthoptists							0.6%
<b>Therapy Professions</b>	<b>66.9%</b>	<b>65.8%</b>	<b>65.9%</b>	<b>67.5%</b>	<b>68.1%</b>	<b>69.1%</b>	<b>68.5%</b>
Medical Science	10.5%	10.7%	10.6%	10.2%	10.9%	10.1%	10.0%
Radiographers	2.0%	1.9%	1.8%	1.6%	1.5%	1.4%	1.3%
<b>Health Science/ Diagnostics</b>	<b>12.5%</b>	<b>12.6%</b>	<b>12.5%</b>	<b>11.8%</b>	<b>12.3%</b>	<b>11.6%</b>	<b>11.4%</b>
<b>Social Care</b>	<b>0.8%</b>	<b>0.8%</b>	<b>1.6%</b>	<b>2.4%</b>	<b>1.7%</b>	<b>1.7%</b>	<b>1.4%</b>
<b>Social Workers</b>	<b>3.7%</b>	<b>4.1%</b>	<b>3.4%</b>	<b>3.1%</b>	<b>2.7%</b>	<b>2.9%</b>	<b>3.6%</b>
<b>Psychologists</b>	<b>13.1%</b>	<b>13.4%</b>	<b>14.1%</b>	<b>12.2%</b>	<b>12.2%</b>	<b>11.2%</b>	<b>11.4%</b>
<b>Pharmacy</b>		<b>0.5%</b>	<b>0.5%</b>	<b>0.5%</b>	<b>0.6%</b>	<b>1.2%</b>	<b>1.2%</b>
Counsellor Therapists	0.6%	0.5%					
Dental Hygienists	2.4%	2.1%	2.0%	2.5%	2.4%	2.3%	2.3%
Other Health & Social Care							0.1%
<b>H&amp;SC, Other</b>	<b>3.0%</b>	<b>2.7%</b>	<b>2.0%</b>	<b>2.5%</b>	<b>2.4%</b>	<b>2.3%</b>	<b>2.4%</b>
<b>Health &amp; Social Care Professionals</b>	<b>22.4%</b>	<b>23.1%</b>	<b>23.0%</b>	<b>20.1%</b>	<b>18.9%</b>	<b>19.6%</b>	<b>19.6%</b>
Executive Management	4.3%	4.2%	3.7%	3.6%	3.4%	4.0%	4.1%
Senior Management (VIII & GM)	7.4%	10.7%	12.5%	10.8%	10.1%	8.8%	8.3%
<b>Management (VIII &amp; above)</b>	<b>11.7%</b>	<b>14.9%</b>	<b>16.2%</b>	<b>14.3%</b>	<b>13.5%</b>	<b>12.8%</b>	<b>12.4%</b>
<b>Administrative/ Supervisory (V to VII)</b>	<b>25.4%</b>	<b>28.6%</b>	<b>32.9%</b>	<b>32.4%</b>	<b>29.2%</b>	<b>29.1%</b>	<b>31.3%</b>
<b>Clerical (III &amp; IV)</b>	<b>62.9%</b>	<b>56.5%</b>	<b>50.9%</b>	<b>53.3%</b>	<b>57.3%</b>	<b>58.2%</b>	<b>56.3%</b>
<b>Management &amp; Administrative</b>	<b>25.6%</b>	<b>25.5%</b>	<b>27.3%</b>	<b>27.4%</b>	<b>25.9%</b>	<b>28.4%</b>	<b>28.4%</b>
<b>Support</b>	<b>93.6%</b>	<b>93.6%</b>	<b>92.7%</b>	<b>92.2%</b>	<b>92.8%</b>	<b>92.5%</b>	<b>92.7%</b>
<b>Maintenance/ Technical</b>	<b>6.4%</b>	<b>6.4%</b>	<b>7.3%</b>	<b>7.8%</b>	<b>7.2%</b>	<b>7.5%</b>	<b>7.3%</b>
<b>General Support</b>	<b>4.1%</b>	<b>3.9%</b>	<b>3.3%</b>	<b>3.4%</b>	<b>3.2%</b>	<b>3.2%</b>	<b>3.2%</b>
HCA, Nurse's Aide, etc.	2.5%	2.6%	2.3%	4.3%	4.0%	3.6%	3.6%
Health & Social Care Assistants			8.1%	3.9%	6.4%	6.6%	6.5%
Swabber (COVID-19)					24.2%	30.7%	31.6%
<b>Health Care Assistants</b>	<b>2.5%</b>	<b>2.6%</b>	<b>10.5%</b>	<b>8.1%</b>	<b>34.5%</b>	<b>40.9%</b>	<b>41.7%</b>
<b>Care, other</b>	<b>97.5%</b>	<b>97.4%</b>	<b>89.5%</b>	<b>91.9%</b>	<b>65.5%</b>	<b>59.1%</b>	<b>58.3%</b>
<b>Patient &amp; Client Care</b>	<b>10.4%</b>	<b>9.8%</b>	<b>10.3%</b>	<b>10.1%</b>	<b>9.6%</b>	<b>14.4%</b>	<b>14.4%</b>

Apr 2021 (Dec 2019 figure: 765)	WTE Dec 2016	WTE Dec 2017	WTE Dec 2018	WTE Dec 2019	WTE Dec 2020	WTE Mar 2021	WTE Apr 2021
Primary Care	768	795	833	765	811	844	853
Total	100 %	100 %	100 %	100 %	100 %	100 %	100 %

Apr 2021 (Dec 2019 figure: 1,198)	WTE Dec 2016	WTE Dec 2017	WTE Dec 2018	WTE Dec 2019	WTE Dec 2020	WTE Mar 2021	WTE Apr 2021
<b>Disabilities</b>	<b>1,816</b>	<b>1,170</b>	<b>1,155</b>	<b>1,198</b>	<b>1,217</b>	<b>1,209</b>	<b>1,225</b>
Consultant Paediatrics	1.3%	1.3%					
Consultant Psychiatry	38.9%	38.9%	50.0%	75.0%	75.0%	62.5%	62.5%
<b>Consultants</b>	<b>40.2%</b>	<b>40.2%</b>	<b>50.0%</b>	<b>75.0%</b>	<b>75.0%</b>	<b>62.5%</b>	<b>62.5%</b>
<b>Registrars</b>	<b>14.9%</b>	<b>29.9%</b>				<b>16.7%</b>	<b>16.7%</b>
<b>SHO/ Interns</b>	<b>14.9%</b>						
<b>Medical/ Dental, other</b>	<b>29.9%</b>	<b>29.9%</b>	<b>50.0%</b>	<b>25.0%</b>	<b>25.0%</b>	<b>20.8%</b>	<b>20.8%</b>
<b>Medical &amp; Dental</b>	<b>0.4%</b>	<b>0.6%</b>	<b>0.3%</b>	<b>0.3%</b>	<b>0.3%</b>	<b>0.4%</b>	<b>0.4%</b>
Clinical Nurse/ Midwife Manager	21.4%	20.7%	18.7%	20.7%	21.7%	21.6%	21.9%
Director Nursing/Midwifery, Assistant	0.6%	0.5%	0.5%	0.5%	0.5%	0.5%	0.5%
Director of Nursing/Midwifery	1.8%	1.0%	1.0%	1.6%	1.1%	0.6%	1.1%
<b>Nurse/ Midwife Manager</b>	<b>23.9%</b>	<b>22.1%</b>	<b>20.2%</b>	<b>22.8%</b>	<b>23.4%</b>	<b>22.8%</b>	<b>23.6%</b>
Clinical Nurse/ Midwife Specialist	0.6%						
<b>Nurse/ Midwife Specialist &amp; AN/MP</b>	<b>0.6%</b>						
Staff Nurse [Intellectual Disability]	21.5%	29.7%	29.5%	25.5%	27.6%	27.2%	33.2%
Staff Nurse [Psychiatric]	1.7%	1.7%	2.3%	9.4%	1.6%	1.6%	1.6%
Staff Nurses [General/ Children's]	52.1%	46.5%	48.0%	42.3%	47.4%	48.4%	41.6%
<b>Staff Nurse/ Staff Midwife</b>	<b>75.3%</b>	<b>77.9%</b>	<b>79.8%</b>	<b>77.2%</b>	<b>76.6%</b>	<b>77.2%</b>	<b>76.4%</b>
<b>Public Health Nurse</b>	<b>0.3%</b>						
<b>Nursing &amp; Midwifery</b>	<b>17.9%</b>	<b>17.7%</b>	<b>16.8%</b>	<b>15.9%</b>	<b>15.7%</b>	<b>15.1%</b>	<b>15.1%</b>
Dietitians			0.1%	0.1%	0.1%	0.1%	0.1%
Occupational Therapists	3.4%	3.7%	4.1%	3.7%	4.2%	4.3%	3.6%
Physiotherapists	1.7%	1.5%	1.4%	1.4%	1.3%	1.8%	1.6%
Speech & Language Therapists	3.6%	3.7%	5.2%	5.1%	4.3%	4.3%	4.7%
<b>Therapy Professions</b>	<b>8.7%</b>	<b>9.0%</b>	<b>10.8%</b>	<b>10.3%</b>	<b>9.9%</b>	<b>10.4%</b>	<b>10.1%</b>
<b>Social Care</b>	<b>84.7%</b>	<b>83.7%</b>	<b>82.4%</b>	<b>83.1%</b>	<b>84.3%</b>	<b>83.6%</b>	<b>84.2%</b>
<b>Social Workers</b>	<b>2.6%</b>	<b>2.8%</b>	<b>3.2%</b>	<b>2.8%</b>	<b>2.3%</b>	<b>2.4%</b>	<b>2.3%</b>
<b>Psychologists</b>	<b>3.9%</b>	<b>3.7%</b>	<b>3.5%</b>	<b>3.4%</b>	<b>3.2%</b>	<b>3.3%</b>	<b>3.2%</b>
Counsellor Therapists		0.4%		0.1%			
Other Health & Social Care	0.1%	0.4%	0.2%	0.3%	0.3%	0.3%	0.3%
<b>H&amp;SC, Other</b>	<b>0.1%</b>	<b>0.8%</b>	<b>0.2%</b>	<b>0.5%</b>	<b>0.3%</b>	<b>0.3%</b>	<b>0.3%</b>
<b>Health &amp; Social Care Professionals</b>	<b>33.0%</b>	<b>32.9%</b>	<b>32.5%</b>	<b>33.6%</b>	<b>33.1%</b>	<b>35.6%</b>	<b>35.6%</b>
Executive Management	5.6%	12.4%	9.2%	10.2%	9.3%	8.9%	9.0%
Senior Management (VIII & GM)	17.2%	12.2%	14.3%	12.2%	12.3%	11.9%	11.7%
<b>Management (VIII &amp; above)</b>	<b>22.8%</b>	<b>24.6%</b>	<b>23.5%</b>	<b>22.3%</b>	<b>21.6%</b>	<b>20.8%</b>	<b>20.7%</b>
<b>Administrative/ Supervisory (V to VII)</b>	<b>31.5%</b>	<b>35.2%</b>	<b>35.8%</b>	<b>38.6%</b>	<b>38.6%</b>	<b>38.3%</b>	<b>39.7%</b>
<b>Clerical (III &amp; IV)</b>	<b>45.7%</b>	<b>40.2%</b>	<b>40.7%</b>	<b>39.0%</b>	<b>39.8%</b>	<b>41.0%</b>	<b>39.6%</b>
<b>Management &amp; Administrative</b>	<b>8.8%</b>	<b>11.7%</b>	<b>12.0%</b>	<b>11.5%</b>	<b>11.3%</b>	<b>11.8%</b>	<b>11.8%</b>
<b>Support</b>	<b>84.2%</b>	<b>87.3%</b>	<b>87.7%</b>	<b>77.0%</b>	<b>83.6%</b>	<b>81.2%</b>	<b>78.2%</b>
<b>Maintenance/ Technical</b>	<b>15.8%</b>	<b>12.7%</b>	<b>12.3%</b>	<b>23.0%</b>	<b>16.4%</b>	<b>18.8%</b>	<b>21.8%</b>
<b>General Support</b>	<b>5.2%</b>	<b>2.7%</b>	<b>2.8%</b>	<b>2.5%</b>	<b>2.4%</b>	<b>2.2%</b>	<b>2.2%</b>
HCA, Nurse's Aide, etc.	47.2%	42.6%	42.6%	43.1%	42.8%	44.9%	44.9%
<b>Health Care Assistants</b>	<b>47.2%</b>	<b>42.6%</b>	<b>42.6%</b>	<b>43.1%</b>	<b>42.8%</b>	<b>44.9%</b>	<b>44.9%</b>
<b>Care, other</b>	<b>52.8%</b>	<b>57.4%</b>	<b>57.4%</b>	<b>56.9%</b>	<b>57.2%</b>	<b>55.1%</b>	<b>55.1%</b>
<b>Patient &amp; Client Care</b>	<b>34.7%</b>	<b>34.5%</b>	<b>35.4%</b>	<b>36.2%</b>	<b>35.6%</b>	<b>34.9%</b>	<b>34.9%</b>
<b>Total</b>	<b>100 %</b>	<b>100 %</b>	<b>100 %</b>	<b>100 %</b>	<b>100 %</b>	<b>100 %</b>	<b>100 %</b>

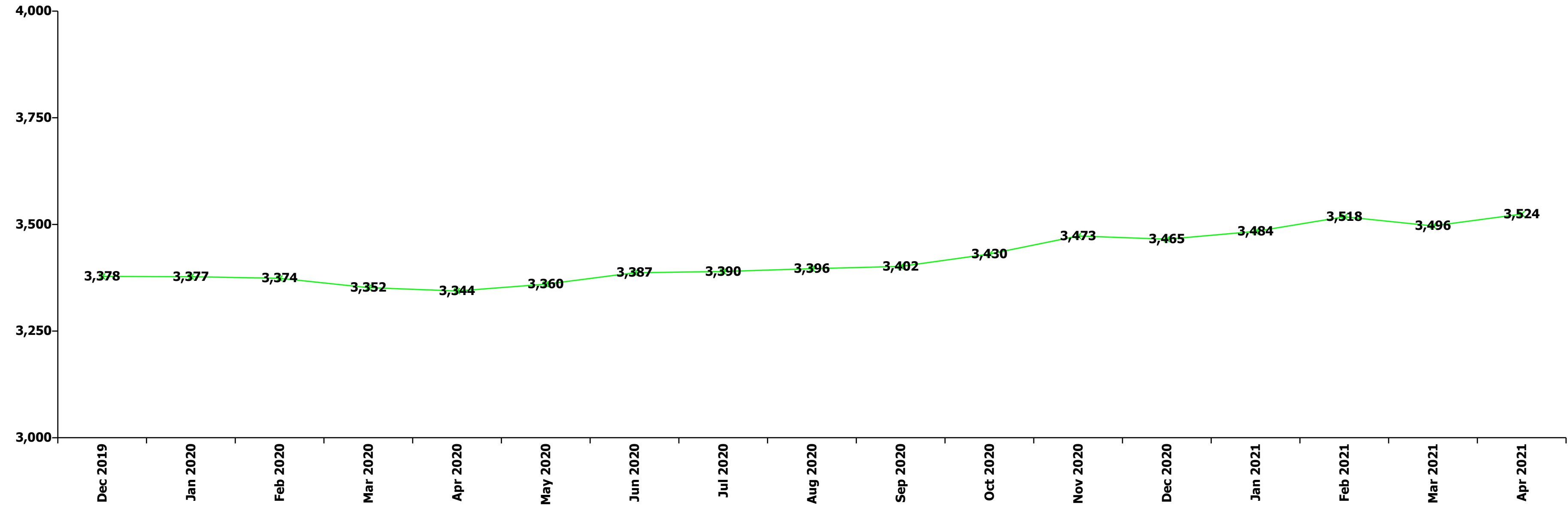
Apr 2021 (Dec 2019 figure: 823)	WTE Dec 2016	WTE Dec 2017	WTE Dec 2018	WTE Dec 2019	WTE Dec 2020	WTE Mar 2021	WTE Apr 2021
<b>Older People</b>	<b>797</b>	<b>828</b>	<b>808</b>	<b>823</b>	<b>804</b>	<b>805</b>	<b>804</b>
Registrar						25.9%	26.2%
Senior Registrar	20.0%	20.0%	33.3%	20.0%	26.1%	25.9%	26.2%
<b>Registrars</b>	<b>20.0%</b>	<b>20.0%</b>	<b>33.3%</b>	<b>20.0%</b>	<b>26.1%</b>	<b>51.8%</b>	<b>52.4%</b>
<b>Medical/ Dental, other</b>	<b>80.0%</b>	<b>80.0%</b>	<b>66.7%</b>	<b>80.0%</b>	<b>73.9%</b>	<b>48.2%</b>	<b>47.6%</b>
<b>Medical &amp; Dental</b>	<b>0.6%</b>	<b>0.6%</b>	<b>0.7%</b>	<b>0.6%</b>	<b>0.6%</b>	<b>0.5%</b>	<b>0.5%</b>
Clinical Nurse/ Midwife Manager	20.1%	20.4%	20.8%	20.3%	19.6%	19.5%	20.1%
Director Nursing/Midwifery, Assistant	1.8%	1.8%	2.6%	2.8%	2.5%	2.2%	1.5%
Director of Nursing/Midwifery	2.2%	1.8%	1.9%	1.8%	1.1%	1.9%	1.9%
<b>Nurse/ Midwife Manager</b>	<b>24.2%</b>	<b>24.1%</b>	<b>25.3%</b>	<b>25.0%</b>	<b>23.2%</b>	<b>23.7%</b>	<b>23.4%</b>
Clinical Nurse/ Midwife Specialist			0.4%	0.4%	0.4%	0.4%	0.4%
<b>Nurse/ Midwife Specialist &amp; AN/MP</b>			<b>0.4%</b>	<b>0.4%</b>	<b>0.4%</b>	<b>0.4%</b>	<b>0.4%</b>
Staff Nurses [General/ Children's]	75.8%	75.9%	74.4%	74.6%	76.4%	75.9%	76.2%
<b>Staff Nurse/ Staff Midwife</b>	<b>75.8%</b>	<b>75.9%</b>	<b>74.4%</b>	<b>74.6%</b>	<b>76.4%</b>	<b>75.9%</b>	<b>76.2%</b>
<b>Nursing &amp; Midwifery</b>	<b>34.0%</b>	<b>32.7%</b>	<b>33.0%</b>	<b>33.2%</b>	<b>34.0%</b>	<b>32.4%</b>	<b>32.4%</b>
Dietitians	4.6%	4.5%	4.5%	3.9%	4.3%	4.3%	4.3%
Occupational Therapists	28.3%	28.1%	28.0%	28.3%	29.7%	28.3%	27.7%
Physiotherapists	31.4%	30.1%	34.7%	32.4%	30.4%	35.0%	34.1%
Podiatrists & Chiropodists	2.1%	3.1%	1.6%	1.0%	2.0%	1.0%	1.1%
Speech & Language Therapists	7.7%	9.4%	9.3%	9.7%	9.9%	6.8%	8.0%
<b>Therapy Professions</b>	<b>74.1%</b>	<b>75.2%</b>	<b>78.0%</b>	<b>75.4%</b>	<b>76.3%</b>	<b>75.3%</b>	<b>75.1%</b>
<b>Social Workers</b>	<b>20.1%</b>	<b>20.0%</b>	<b>16.4%</b>	<b>17.1%</b>	<b>17.1%</b>	<b>16.9%</b>	<b>17.0%</b>
<b>Psychologists</b>	<b>0.9%</b>		<b>0.9%</b>	<b>3.2%</b>	<b>1.8%</b>	<b>3.2%</b>	<b>3.2%</b>
<b>Pharmacy</b>	<b>5.0%</b>	<b>4.8%</b>	<b>4.8%</b>	<b>4.3%</b>	<b>4.8%</b>	<b>4.5%</b>	<b>4.7%</b>
<b>Health &amp; Social Care Professionals</b>	<b>7.1%</b>	<b>6.9%</b>	<b>7.2%</b>	<b>8.0%</b>	<b>8.2%</b>	<b>8.2%</b>	<b>8.2%</b>
Executive Management	4.1%	1.9%	3.9%	1.8%	3.5%	3.3%	3.4%
Senior Management (VIII & GM)	2.1%			5.4%	5.2%	6.2%	6.5%
<b>Management (VIII &amp; above)</b>	<b>6.2%</b>	<b>1.9%</b>	<b>3.9%</b>	<b>7.2%</b>	<b>8.7%</b>	<b>9.5%</b>	<b>9.9%</b>
<b>Administrative/ Supervisory (V to VII)</b>	<b>41.5%</b>	<b>40.3%</b>	<b>40.2%</b>	<b>39.9%</b>	<b>33.8%</b>	<b>38.9%</b>	<b>36.7%</b>
<b>Clerical (III &amp; IV)</b>	<b>52.3%</b>	<b>57.8%</b>	<b>55.9%</b>	<b>52.9%</b>	<b>57.5%</b>	<b>51.6%</b>	<b>53.4%</b>
<b>Management &amp; Administrative</b>	<b>6.1%</b>	<b>6.3%</b>	<b>6.4%</b>	<b>6.8%</b>	<b>6.9%</b>	<b>7.4%</b>	<b>7.4%</b>
<b>Support</b>	<b>91.5%</b>	<b>91.8%</b>	<b>92.8%</b>	<b>93.1%</b>	<b>91.9%</b>	<b>92.7%</b>	<b>92.9%</b>
<b>Maintenance/ Technical</b>	<b>8.5%</b>	<b>8.2%</b>	<b>7.2%</b>	<b>6.9%</b>	<b>8.1%</b>	<b>7.3%</b>	<b>7.1%</b>
<b>General Support</b>	<b>14.7%</b>	<b>14.7%</b>	<b>14.1%</b>	<b>14.1%</b>	<b>14.5%</b>	<b>14.0%</b>	<b>14.0%</b>
HCA, Nurse's Aide, etc.	94.0%	94.6%	94.9%	94.9%	95.6%	95.8%	95.8%
Health & Social Care Assistants	3.5%	3.1%	2.7%	2.7%	2.6%	2.6%	2.6%
<b>Health Care Assistants</b>	<b>97.5%</b>	<b>97.7%</b>	<b>97.6%</b>	<b>97.6%</b>	<b>98.2%</b>	<b>98.4%</b>	<b>98.3%</b>
Other Care Grades	2.5%	2.3%	2.4%	2.4%	1.8%	1.6%	1.7%
<b>Care, other</b>	<b>2.5%</b>	<b>2.3%</b>	<b>2.4%</b>	<b>2.4%</b>	<b>1.8%</b>	<b>1.6%</b>	<b>1.7%</b>
<b>Patient &amp; Client Care</b>	<b>37.4%</b>	<b>38.8%</b>	<b>38.6%</b>	<b>37.3%</b>	<b>38.2%</b>	<b>37.6%</b>	<b>37.6%</b>
<b>Total</b>	<b>100 %</b>	<b>100 %</b>	<b>100 %</b>	<b>100 %</b>	<b>100 %</b>	<b>100 %</b>	<b>100 %</b>



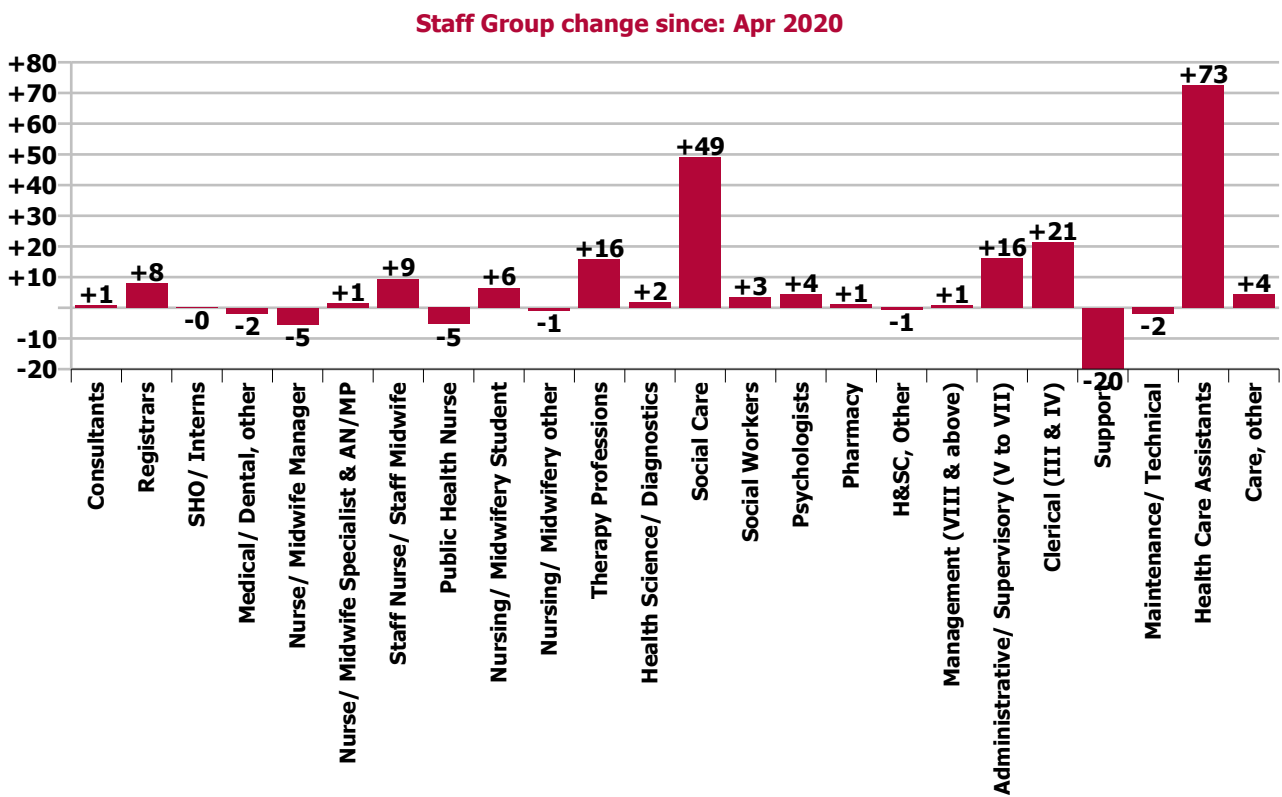
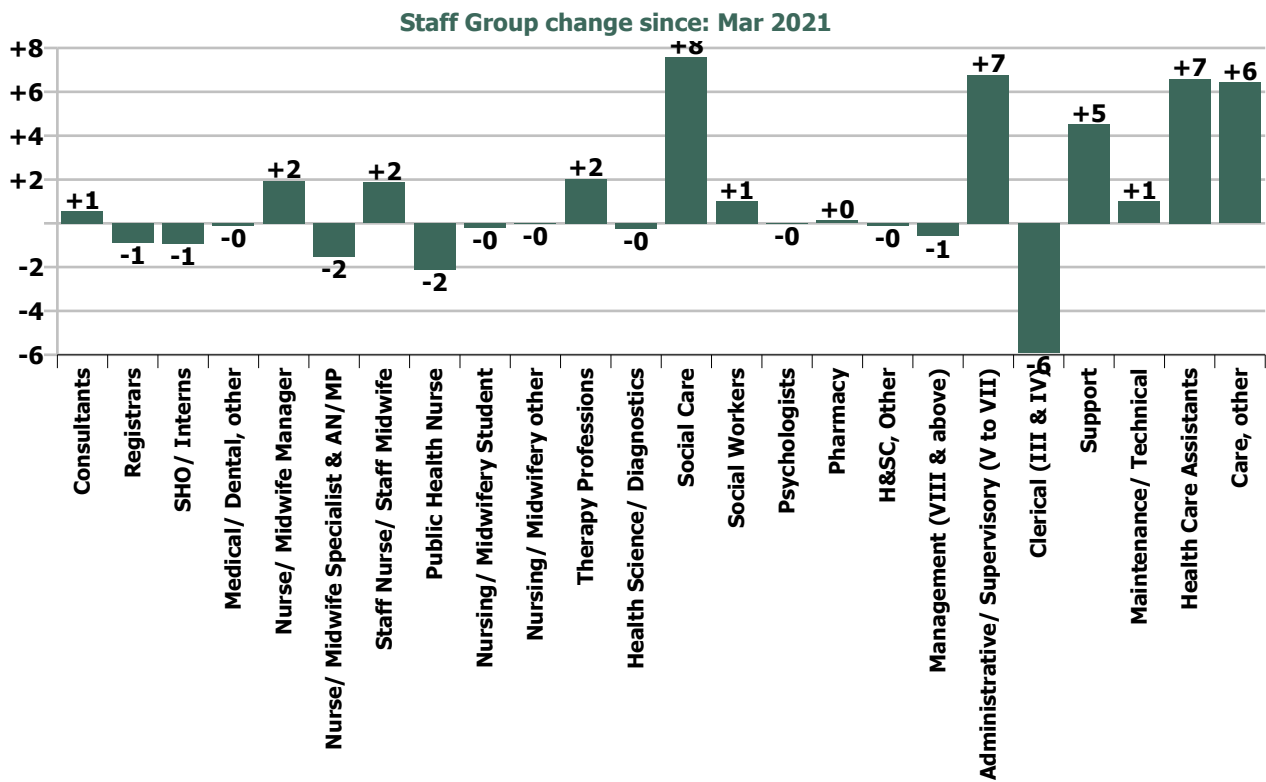
Summary Staff Movement: April 2021

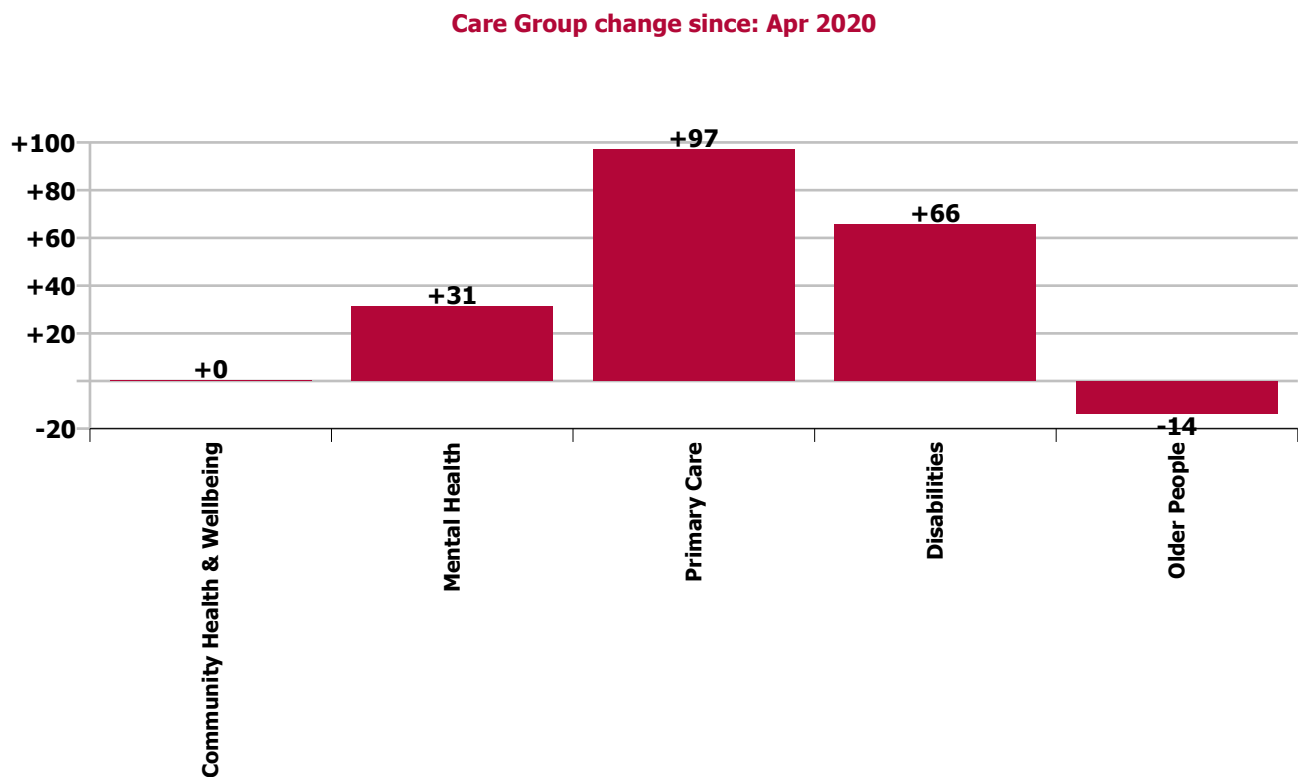
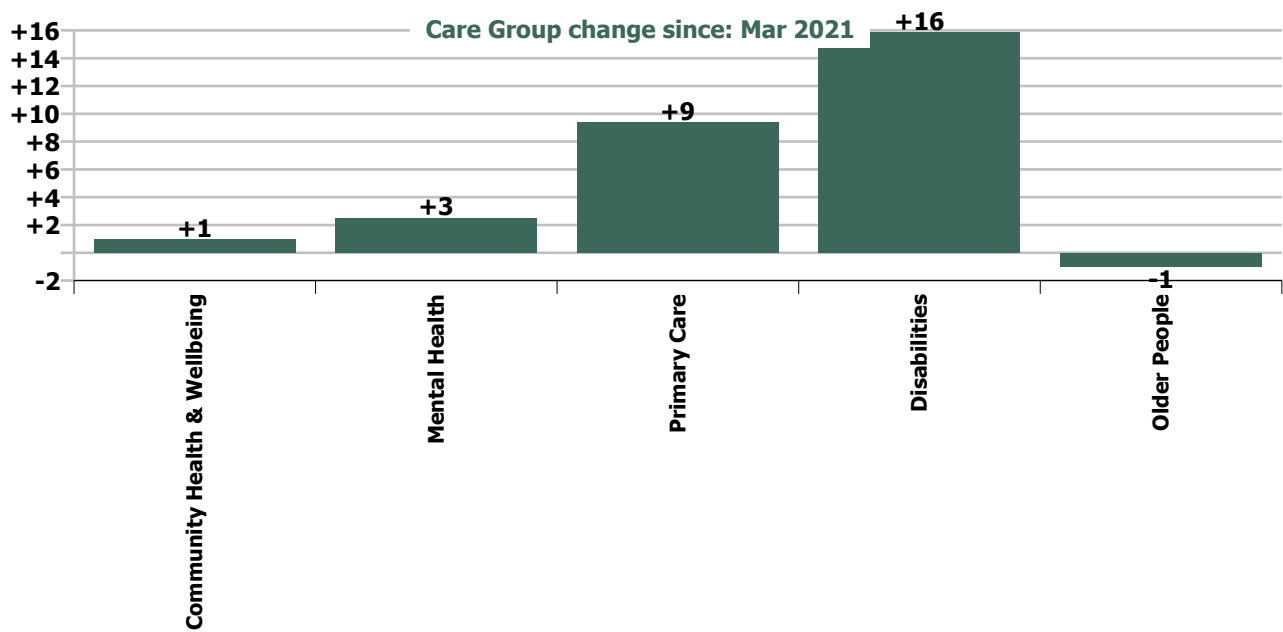
Month-on-month Summary																												
WTE change since Mar 21	% change since Mar 21	overall	Consultants	Registrars	SHO/ Interns	Medical/ Dental, other	Medical & Dental	Nurse/ Midwife Manager	Nurse/ Midwife Specialist & AN/MP	Staff Nurse/ Staff Midwife	Public Health Nurse	Nursing/ Midwifery Student	Nursing/ Midwifery other	Nursing & Midwifery	Therapy Professions	Health Science/ Diagnostics	Social Care	Social Workers	Psychologists	Pharmacy	H&SC, Other	Health & Social Care Professionals	Management (VIII & above)	Administrative/ Supervisory (V to VII)	Clerical (III & IV)	Management & Administrative	General Support	Patient & Client Care
Overall	+0.8%	+28	+0.5	-0.9	-0.9	-0.1	-1.4	+1.9	-1.5	+1.9	-2.1	-0.2	-0.0	-0.1	+2.0	-0.2	+7.6	+1.0	-0.0	+0.1	-0.1	+10.4	-0.6	+6.8	-5.9	+0.3	+5.5	+13.0
Community Health & Wellbeing	+12.5%	+1																					0.0	+0.2	0.0	+0.1		+0.8
Mental Health	+0.4%	+3	+0.5	-0.9	-0.9		-1.3	-0.2	-1.5	+1.6		-0.2	0.0	-0.4	+3.8		+0.4	-0.2	-0.4		-0.1	+3.5	0.0	+0.5	-1.7	-1.2	+0.4	+1.6
Primary Care	+1.1%	+9	0.0	+0.0	0.0	-0.1	-0.1	+1.3	0.0	+1.8	-2.1	0.0	-0.0	+1.0	-0.3	-0.2	-0.5	+1.3	+0.5	+0.0	+0.2	+1.1	-0.1	+6.9	-1.3	+5.4	+1.1	+0.9
Disabilities	+1.3%	+16	0.0	0.0		0.0	0.0	+1.5		-1.9				-0.4	-1.0		+7.6	0.0	-0.2		-0.2	+6.3	-0.5	+1.3	-2.8	-2.0	+0.9	+10.9
Older People	-0.1%	-1		0.0		-0.0	-0.0	-0.7	-0.0	+0.4				-0.3	-0.5			-0.0	0.0	+0.1		-0.4	+0.0	-2.1	-0.1	-2.1	+3.2	-1.2
Social Care	+0.7%	+15	0.0	0.0		-0.0	-0.0	+0.9	-0.0	-1.5				-0.7	-1.5		+7.6	-0.0	-0.1	+0.1	-0.2	+5.9	-0.5	-0.8	-2.8	-4.1	+4.1	+9.7
Change	+27.7	+0.8%	+1.1%	-1.8%	-4.7%	-0.3%	-0.8%	+1.0%	-6.0%	+0.3%	-1.9%	-1.0%	-0.7%	-0.0%	+0.8%	-1.2%	+2.0%	+1.8%	-0.0%	+2.6%	-1.0%	+1.3%	-0.8%	+3.8%	-2.2%	+0.0%	+2.7%	+1.4%

Year-on-year Summary																												
WTE change since Apr 20	% change since Apr 20	overall	Consultants	Registrars	SHO/ Interns	Medical/ Dental, other	Medical & Dental	Nurse/ Midwife Manager	Nurse/ Midwife Specialist & AN/MP	Staff Nurse/ Staff Midwife	Public Health Nurse	Nursing/ Midwifery Student	Nursing/ Midwifery other	Nursing & Midwifery	Therapy Professions	Health Science/ Diagnostics	Social Care	Social Workers	Psychologists	Pharmacy	H&SC, Other	Health & Social Care Professionals	Management (VIII & above)	Administrative/ Supervisory (V to VII)	Clerical (III & IV)	Management & Administrative	General Support	Patient & Client Care
Overall	+5.4%	+180	+0.7	+7.9	-0.1	-1.9	+6.6	-5.5	+1.5	+9.4	-5.4	+6.5	-0.8	+5.7	+15.8	+1.7	+49.0	+3.4	+4.4	+1.2	-0.7	+74.7	+0.7	+16.1	+21.3	+38.2	-21.7	+76.8
Community Health & Wellbeing	+12.5%	+1																					0.0	+0.8	-0.0	+0.7		-0.4
Mental Health	+0.4%	+3	+0.7	+7.4	-0.1		+8.0	-0.2	+3.4	-0.4		+4.5	-0.9	+6.4	+2.0		-0.0	-0.4	+6.0		-0.5	+7.0	0.0	+1.3	-0.8	+0.5	+1.7	+7.6
Primary Care	+1.1%	+9	+0.0	-1.4	0.0	+0.3	-1.0	+0.2	-1.9	+14.6	-5.4	+2.0	+0.0	+9.5	+5.8	+1.7	-0.3	+1.3	-0.8	+1.0	+0.9	+9.4	-1.6	+11.0	+25.2	+34.6	-0.7	+45.1
Disabilities	+5.7%	+65.7	0.0	+0.8		0.0	+0.8	-0.2		+4.1				+3.9	+5.2		+49.3	+2.0	-0.8	+1.0	-1.1	+54.6	+0.4	+1.7	-3.5	-1.4	-19.7	+27.5
Older People	-1.7%	-13.9		+1.0		-2.2	-1.2	-5.2	-0.0	-8.9				-14.1	+2.9			+0.5	+0.1	+0.2		+3.6	+1.9	+1.4	+0.5	+3.7	-3.0	-2.9
Social Care	+0.7%	+15	0.0	+1.8		-2.2	-0.4	-5.5	-0.0	-4.7				-10.2	+8.1		+49.3	+2.5	-0.8	+0.2	-1.1	+58.2	+2.3	+3.1	-3.1	+2.3	-22.7	+24.6
Change	+180.2	+5.4%	+1.4%	+18.5%	-0.5%	-3.8%	+4.1%	-2.6%	+6.6%	+1.7%	-4.8%	+49.8%	-21.8%	+0.6%	+6.8%	+9.6%	+14.1%	+6.2%	+7.2%	+30.3%	-6.8%	+10.2%	+1.1%	+9.5%	+8.7%	+7.9%	-9.4%	+9.2%









## Longitudinal Employment Levels by Grade Group - Dec 2015 to Apr 2021

Apr 2021 (Dec 2016 figure: 3,940)	WTE Apr 2021	WTE change since Dec 15	WTE change since Dec 16	WTE change since Dec 17	WTE change since Dec 18	WTE change since Dec 19	WTE change since Dec 20	WTE change since Mar 21	% change since Dec 15	% change since Dec 16	% change since Dec 17	% change since Dec 18	% change since Dec 19	% change since Dec 20	% change since Mar 21
<b>Overall</b>	<b>3,524</b>	<b>-384</b>	<b>-416</b>	<b>+168</b>	<b>+156</b>	<b>+146</b>	<b>+59</b>	<b>+28</b>	<b>-9.8%</b>	<b>-10.6%</b>	<b>+5.0%</b>	<b>+4.6%</b>	<b>+4.3%</b>	<b>+1.7%</b>	<b>+0.8%</b>
Consultant Dentistry	6	-0	-0	-1	-1	-1			-6.0%	-6.0%	-18.2%	-18.2%	-13.0%		
Consultant Medicine	1														
Consultant, Other		-1	-1						-100.0%	-100.0%	-100.0%	-100.0%	-100.0%	-100.0%	-100.0%
Consultant Paediatrics		-0	-0	-0					-100.0%	-100.0%	-100.0%	-100.0%	-100.0%	-100.0%	-100.0%
Consultant Psychiatry	44	+14	+14	+13	+10	+5	+1	+1	+48.5%	+48.5%	+41.5%	+31.6%	+11.9%	+1.2%	+1.3%
Consultant Radiology	1														
<b>Consultants</b>	<b>52</b>	<b>+13</b>	<b>+13</b>	<b>+11</b>	<b>+9</b>	<b>+4</b>	<b>+1</b>	<b>+1</b>	<b>+32.6%</b>	<b>+32.6%</b>	<b>+27.9%</b>	<b>+21.2%</b>	<b>+7.7%</b>	<b>+1.0%</b>	<b>+1.1%</b>
Registrar	41	-36	+1	+1	+5	+0	+7	-1	-47.0%	+1.9%	+1.7%	+13.1%	+1.2%	+19.0%	-2.2%
Senior Registrar	9	+1	+2	+2	-1	+1	-0	+0	+12.7%	+23.5%	+26.0%	-10.4%	+13.8%	-0.5%	+0.1%
Specialist Registrar	1														
<b>Registrars</b>	<b>50</b>	<b>-35</b>	<b>+2</b>	<b>+2</b>	<b>+4</b>	<b>+2</b>	<b>+6</b>	<b>-1</b>	<b>-41.2%</b>	<b>+4.9%</b>	<b>+5.1%</b>	<b>+8.0%</b>	<b>+3.1%</b>	<b>+14.8%</b>	<b>-1.8%</b>
<b>SHO/ Interns</b>	<b>19</b>	<b>-1</b>	<b>-1</b>	<b>-3</b>	<b>-4</b>	<b>+3</b>	<b>-1</b>	<b>-1</b>	<b>-3.8%</b>	<b>-4.8%</b>	<b>-12.5%</b>	<b>-17.6%</b>	<b>+19.4%</b>	<b>-5.1%</b>	<b>-4.7%</b>
Dentists	28	-1	-1	-1	+1	+1	+3	+1	-2.2%	-2.4%	-4.0%	+3.4%	+5.4%	+12.5%	+2.7%
Other Medical	19	-12	-4	-6	-8	-5	-1	-1	-39.2%	-17.7%	-24.8%	-29.2%	-21.9%	-4.4%	-4.3%
<b>Medical/ Dental, other</b>	<b>47</b>	<b>-13</b>	<b>-5</b>	<b>-8</b>	<b>-7</b>	<b>-4</b>	<b>+2</b>	<b>-0</b>	<b>-21.7%</b>	<b>-9.3%</b>	<b>-13.7%</b>	<b>-12.9%</b>	<b>-7.8%</b>	<b>+4.9%</b>	<b>-0.3%</b>
<b>Medical &amp; Dental</b>	<b>168</b>	<b>-36</b>	<b>+9</b>	<b>+4</b>	<b>+2</b>	<b>+4</b>	<b>+8</b>	<b>-1</b>	<b>-17.8%</b>	<b>+5.9%</b>	<b>+2.2%</b>	<b>+1.1%</b>	<b>+2.6%</b>	<b>+5.1%</b>	<b>-0.8%</b>
Clinical Nurse/ Midwife Manager	157	-37	-34	-1	-4	-4	-2	+2	-19.2%	-17.9%	-0.5%	-2.6%	-2.7%	-1.2%	+1.1%
Director Nursing/Midwifery, Assistant	31	+2	+2	+3	-4	-4	-2	-1	+6.3%	+5.2%	+8.8%	-11.0%	-10.5%	-7.1%	-2.6%
Director of Nursing/Midwifery	14	-6	-6	-1	+1	-0	+1	+1	-29.4%	-29.6%	-6.7%	+6.7%	-0.1%	+7.5%	+8.5%
<b>Nurse/ Midwife Manager</b>	<b>202</b>	<b>-41</b>	<b>-39</b>	<b>+1</b>	<b>-7</b>	<b>-8</b>	<b>-3</b>	<b>+2</b>	<b>-17.0%</b>	<b>-16.0%</b>	<b>+0.4%</b>	<b>-3.4%</b>	<b>-3.8%</b>	<b>-1.6%</b>	<b>+1.0%</b>
Advanced Nurse/ Midwife Practitioner	6	+6	+5	+5	+5	+5			-100.0%	+1000.0%	+1000.0%	+1000.0%	+708.8%		
Clinical Nurse/ Midwife Specialist	18	-1	-2	-2	-0	-2	-0	-2	-4.5%	-7.9%	-11.0%	-1.9%	-7.5%	-0.6%	-7.6%
<b>Nurse/ Midwife Specialist &amp; AN/MP</b>	<b>24</b>	<b>+5</b>	<b>+3</b>	<b>+3</b>	<b>+5</b>	<b>+3</b>	<b>-0</b>	<b>-2</b>	<b>+24.1%</b>	<b>+16.7%</b>	<b>+12.9%</b>	<b>+24.1%</b>	<b>+16.1%</b>	<b>-0.5%</b>	<b>-6.0%</b>
Staff Nurse [Intellectual Disability]	62	-65	-8	+0	+3	+12	+8	+9	-51.4%	-11.7%	+0.3%	+5.4%	+24.2%	+15.5%	+17.0%
Staff Nurse [Psychiatric]	131	-12	+4	+13	+21	-1	+7	+10	-8.4%	+3.5%	+11.4%	+18.9%	-1.1%	+5.3%	+8.0%
Staff Nurses [General/ Children's]	358	-39	-85	-12	-19	-2	-18	-17	-9.9%	-19.2%	-3.4%	-5.0%	-0.4%	-4.9%	-4.5%
<b>Staff Nurse/ Staff Midwife</b>	<b>551</b>	<b>-116</b>	<b>-89</b>	<b>+1</b>	<b>+5</b>	<b>+9</b>	<b>-4</b>	<b>+2</b>	<b>-17.4%</b>	<b>-13.9%</b>	<b>+0.2%</b>	<b>+0.9%</b>	<b>+1.7%</b>	<b>-0.6%</b>	<b>+0.3%</b>
<b>Public Health Nurse</b>	<b>107</b>	<b>-7</b>	<b>-11</b>	<b>-16</b>	<b>-11</b>	<b>-9</b>	<b>-5</b>	<b>-2</b>	<b>-5.9%</b>	<b>-9.1%</b>	<b>-12.6%</b>	<b>-9.4%</b>	<b>-8.1%</b>	<b>-4.0%</b>	<b>-1.9%</b>
Nursing/ Midwifery awaiting registration	1	+1	+1	+1	+1	+1			-100.0%	-100.0%	-100.0%	-100.0%	-100.0%		
Post-registration Nurse/ Midwife Student	15	-2		-4	+4	+2	+0		-11.8%		-22.5%	+36.4%	+11.1%	+0.7%	
Pre-registration Nurse/ Midwife Intern	3	+3	+3	+3	+3	+3	+3	-0	-100.0%	-100.0%	-100.0%	-100.0%	-100.0%	-100.0%	-5.4%
<b>Nursing/ Midwifery Student</b>	<b>19</b>	<b>+2</b>	<b>+4</b>	<b>+0</b>	<b>+8</b>	<b>+6</b>	<b>+4</b>	<b>-0</b>	<b>+14.5%</b>	<b>+29.8%</b>	<b>+0.6%</b>	<b>+77.0%</b>	<b>+44.2%</b>	<b>+22.5%</b>	<b>-1.0%</b>
Nursing Education/Clinical	3	+2	+1	+1	+0	+1	-0	-0	+198.0%	+33.0%	+49.0%	+4.2%	+49.0%	-0.7%	-0.7%
Other Nursing/ Midwifery		-1							-100.0%	-100.0%	-100.0%	-100.0%	-100.0%	-100.0%	-100.0%
<b>Nursing/ Midwifery other</b>	<b>3</b>	<b>+1</b>	<b>+1</b>	<b>+1</b>	<b>+0</b>	<b>+1</b>	<b>-0</b>	<b>-0</b>	<b>+49.0%</b>	<b>+33.0%</b>	<b>+49.0%</b>	<b>+4.2%</b>	<b>+49.0%</b>	<b>-0.7%</b>	<b>-0.7%</b>
<b>Nursing &amp; Midwifery</b>	<b>907</b>	<b>-156</b>	<b>-129</b>	<b>-10</b>	<b>+0</b>	<b>+2</b>	<b>-8</b>	<b>-0</b>	<b>-14.7%</b>	<b>-12.5%</b>	<b>-1.1%</b>	<b>+0.0%</b>	<b>+0.2%</b>	<b>-0.9%</b>	<b>-0.0%</b>
Dietitians	16	+4	+4	+0	-0	+1	-1	-1	+36.9%	+39.2%	+1.3%	-1.1%	+7.7%	-4.4%	-6.2%
Occupational Therapists	98	+9	+8	+10	+6	+6	+5	+1	+10.4%	+8.7%	+10.9%	+6.1%	+6.6%	+4.9%	+0.8%
Physiotherapists	68	+0	+5	+10	+6	+8	+9	-1	+0.4%	+8.3%	+16.4%	+9.2%	+13.0%	+15.6%	-1.0%

Apr 2021 (Dec 2016 figure: 3,940)	WTE Apr 2021	WTE change since Dec 15	WTE change since Dec 16	WTE change since Dec 17	WTE change since Dec 18	WTE change since Dec 19	WTE change since Dec 20	WTE change since Mar 21	% change since Dec 15	% change since Dec 16	% change since Dec 17	% change since Dec 18	% change since Dec 19	% change since Dec 20	% change since Mar 21
<b>Overall</b>	<b>3,524</b>	<b>-384</b>	<b>-416</b>	<b>+168</b>	<b>+156</b>	<b>+146</b>	<b>+59</b>	<b>+28</b>	<b>-9.8%</b>	<b>-10.6%</b>	<b>+5.0%</b>	<b>+4.6%</b>	<b>+4.3%</b>	<b>+1.7%</b>	<b>+0.8%</b>
Podiatrists & Chiropodists	3	+2	+1	-0	+1	+2	-1	+0	+89.9%	+40.5%	-5.6%	+36.3%	+88.8%	-23.9%	+0.3%
Speech & Language Therapists	65	+1	-6	-1	-10	-5	-0	+2	+1.0%	-9.0%	-1.9%	-13.9%	-7.6%	-0.6%	+3.2%
Orthoptists	1	+1	+1	+1	+1	+1	+1	+1	-100.0%	-100.0%	-100.0%	-100.0%	-100.0%	-100.0%	-100.0%
<b>Therapy Professions</b>	<b>250</b>	<b>+17</b>	<b>+13</b>	<b>+19</b>	<b>+3</b>	<b>+12</b>	<b>+13</b>	<b>+2</b>	<b>+7.2%</b>	<b>+5.5%</b>	<b>+8.2%</b>	<b>+1.0%</b>	<b>+5.1%</b>	<b>+5.3%</b>	<b>+0.8%</b>
Medical Science	17	-0	-1	-3	-4	+1	-1	-0	-2.6%	-7.6%	-14.6%	-17.8%	+7.1%	-5.1%	-0.5%
Radiographers	2	-1	-1	-1	-1	-0	-0	-0	-33.8%	-33.8%	-35.7%	-35.5%	-7.8%	-5.1%	-6.3%
<b>Health Science/ Diagnostics</b>	<b>19</b>	<b>-2</b>	<b>-3</b>	<b>-4</b>	<b>-5</b>	<b>+1</b>	<b>-1</b>	<b>-0</b>	<b>-7.8%</b>	<b>-11.8%</b>	<b>-17.8%</b>	<b>-20.4%</b>	<b>+5.1%</b>	<b>-5.1%</b>	<b>-1.2%</b>
<b>Social Care</b>	<b>397</b>	<b>-79</b>	<b>-144</b>	<b>+42</b>	<b>+54</b>	<b>+32</b>	<b>+5</b>	<b>+8</b>	<b>-16.7%</b>	<b>-26.6%</b>	<b>+12.0%</b>	<b>+15.9%</b>	<b>+8.9%</b>	<b>+1.2%</b>	<b>+2.0%</b>
<b>Social Workers</b>	<b>58</b>	<b>-3</b>	<b>-3</b>	<b>+2</b>	<b>+1</b>	<b>+1</b>	<b>+4</b>	<b>+1</b>	<b>-4.1%</b>	<b>-5.5%</b>	<b>+3.9%</b>	<b>+2.0%</b>	<b>+2.0%</b>	<b>+7.3%</b>	<b>+1.8%</b>
<b>Psychologists</b>	<b>65</b>	<b>+3</b>	<b>+3</b>	<b>+6</b>	<b>+8</b>	<b>+8</b>	<b>-2</b>	<b>-0</b>	<b>+5.1%</b>	<b>+4.2%</b>	<b>+9.5%</b>	<b>+15.0%</b>	<b>+14.6%</b>	<b>-2.7%</b>	<b>-0.0%</b>
<b>Pharmacy</b>	<b>5</b>	<b>+1</b>	<b>+2</b>	<b>+1</b>	<b>+1</b>	<b>+1</b>	<b>+1</b>	<b>+0</b>	<b>+29.9%</b>	<b>+78.9%</b>	<b>+34.4%</b>	<b>+34.4%</b>	<b>+38.8%</b>	<b>+30.3%</b>	<b>+2.6%</b>
Counsellor Therapists	4	-3	-2	-2	+0	-0	-0	-0	-38.8%	-33.5%	-38.0%	+9.9%	-9.7%	-5.0%	-0.2%
Dental Hygienists	4	-0	-0	-0	-0	+0	-0		-7.1%	-7.1%	-2.1%	-2.3%	+0.8%	-2.3%	
Other Health & Social Care	1	-1	+0	-0	+0	-4	-0	-0	-45.5%	+31.4%	-21.2%	+47.3%	-76.3%	-24.7%	-5.0%
Play Therapists/ Specialists	0	-1	-1	-0		+0		-0	-67.1%	-68.0%	-5.9%		+4.3%		-4.0%
<b>H&amp;SC, Other</b>	<b>10</b>	<b>-5</b>	<b>-3</b>	<b>-3</b>	<b>+1</b>	<b>-5</b>	<b>-1</b>	<b>-0</b>	<b>-33.8%</b>	<b>-23.8%</b>	<b>-23.3%</b>	<b>+7.8%</b>	<b>-32.8%</b>	<b>-7.1%</b>	<b>-1.0%</b>
<b>Health &amp; Social Care Professionals</b>	<b>803</b>	<b>-67</b>	<b>-135</b>	<b>+63</b>	<b>+64</b>	<b>+51</b>	<b>+19</b>	<b>+10</b>	<b>-7.7%</b>	<b>-14.4%</b>	<b>+8.6%</b>	<b>+8.6%</b>	<b>+6.8%</b>	<b>+2.4%</b>	<b>+1.3%</b>
Executive Management	26	+11	+5	-2	+2	+2	+2	+1	+78.6%	+26.3%	-5.8%	+6.6%	+10.2%	+9.4%	+2.0%
Senior Management (VIII & GM)	44	-1	-1	+3	-5	-0	-2	-1	-1.4%	-1.5%	+7.2%	-10.7%	-0.7%	-3.7%	-2.4%
<b>Management (VIII &amp; above)</b>	<b>70</b>	<b>+11</b>	<b>+5</b>	<b>+1</b>	<b>-4</b>	<b>+2</b>	<b>+1</b>	<b>-1</b>	<b>+18.2%</b>	<b>+7.3%</b>	<b>+2.0%</b>	<b>-5.0%</b>	<b>+3.1%</b>	<b>+0.8%</b>	<b>-0.8%</b>
Middle Management (V-VII)	186	+55	+49	+38	+16	+17	+20	+7	+41.7%	+35.6%	+25.7%	+9.3%	+10.0%	+11.9%	+3.8%
Other Administrative		-4	-1	-1	-1	-1			-100.0%	-100.0%	-100.0%	-100.0%	-100.0%	-100.0%	-100.0%
<b>Administrative/ Supervisory (V to VII)</b>	<b>186</b>	<b>+51</b>	<b>+48</b>	<b>+37</b>	<b>+15</b>	<b>+16</b>	<b>+20</b>	<b>+7</b>	<b>+37.5%</b>	<b>+34.7%</b>	<b>+24.8%</b>	<b>+8.6%</b>	<b>+9.4%</b>	<b>+11.9%</b>	<b>+3.8%</b>
<b>Clerical (III &amp; IV)</b>	<b>266</b>	<b>+8</b>	<b>+7</b>	<b>+32</b>	<b>+35</b>	<b>+29</b>	<b>+6</b>	<b>-6</b>	<b>+3.2%</b>	<b>+2.9%</b>	<b>+13.6%</b>	<b>+15.0%</b>	<b>+12.1%</b>	<b>+2.2%</b>	<b>-2.2%</b>
<b>Management &amp; Administrative</b>	<b>522</b>	<b>+70</b>	<b>+60</b>	<b>+70</b>	<b>+46</b>	<b>+47</b>	<b>+26</b>	<b>+0</b>	<b>+15.4%</b>	<b>+13.0%</b>	<b>+15.5%</b>	<b>+9.6%</b>	<b>+9.8%</b>	<b>+5.3%</b>	<b>+0.0%</b>
Catering	23	-12	-15	-5	-5	-3	-3	-1	-33.8%	-40.3%	-17.0%	-18.9%	-11.5%	-10.2%	-2.9%
Household Services	121	-56	-46	-19	-11	-0	-2	+4	-31.5%	-27.7%	-13.4%	-8.5%	-0.3%	-1.3%	+3.0%
Other Labs & Associated	1	+1	-0	-0	-0	-0	-0	-0	-100.0%	-21.0%	-21.0%	-21.0%	-21.0%	-21.0%	-1.2%
Other Support	19	-9	-9	-2	+1	+0	-1		-30.4%	-31.6%	-10.1%	+5.9%	+0.1%	-4.7%	
Portering	25	-2	-1	-2	+1	+1	+2	+2	-6.6%	-3.2%	-6.7%	+3.1%	+5.4%	+8.8%	+7.2%
<b>Support</b>	<b>189</b>	<b>-77</b>	<b>-72</b>	<b>-28</b>	<b>-15</b>	<b>-2</b>	<b>-3</b>	<b>+5</b>	<b>-28.9%</b>	<b>-27.5%</b>	<b>-12.7%</b>	<b>-7.4%</b>	<b>-1.2%</b>	<b>-1.8%</b>	<b>+2.5%</b>
<b>Maintenance/ Technical</b>	<b>22</b>	<b>-12</b>	<b>-10</b>	<b>+1</b>	<b>+3</b>	<b>-1</b>		<b>+1</b>	<b>-35.1%</b>	<b>-31.8%</b>	<b>+4.8%</b>	<b>+15.7%</b>	<b>-2.9%</b>		<b>+4.8%</b>
<b>General Support</b>	<b>211</b>	<b>-89</b>	<b>-82</b>	<b>-27</b>	<b>-12</b>	<b>-3</b>	<b>-3</b>	<b>+6</b>	<b>-29.6%</b>	<b>-28.0%</b>	<b>-11.2%</b>	<b>-5.4%</b>	<b>-1.4%</b>	<b>-1.6%</b>	<b>+2.7%</b>
HCA, Nurse's Aide, etc.	539	-65	-81	+20	+23	+12	+14	+5	-10.7%	-13.1%	+3.9%	+4.4%	+2.2%	+2.7%	+1.0%
Health & Social Care Assistants	16	+6	+5	+6	+0	+4	+1	-0	+55.0%	+51.6%	+59.7%	+2.0%	+39.5%	+6.8%	-0.0%
Swabber (COVID-19)	39	+39	+39	+39	+39	+39	+12	+1	-100.0%	-100.0%	-100.0%	-100.0%	-100.0%	+46.6%	+3.7%
<b>Health Care Assistants</b>	<b>593</b>	<b>-20</b>	<b>-37</b>	<b>+65</b>	<b>+62</b>	<b>+55</b>	<b>+28</b>	<b>+7</b>	<b>-3.3%</b>	<b>-5.9%</b>	<b>+12.3%</b>	<b>+11.6%</b>	<b>+10.2%</b>	<b>+4.9%</b>	<b>+1.1%</b>
Pre-Hospital Care (Ambulance)		-1							-100.0%	-100.0%	-100.0%	-100.0%	-100.0%	-100.0%	-100.0%
<b>Ambulance Staff</b>		<b>-1</b>							<b>-100.0%</b>	<b>-100.0%</b>	<b>-100.0%</b>	<b>-100.0%</b>	<b>-100.0%</b>	<b>-100.0%</b>	<b>-100.0%</b>

Apr 2021 (Dec 2016 figure: 3,940)	WTE Apr 2021	WTE change since Dec 15	WTE change since Dec 16	WTE change since Dec 17	WTE change since Dec 18	WTE change since Dec 19	WTE change since Dec 20	WTE change since Mar 21	% change since Dec 15	% change since Dec 16	% change since Dec 17	% change since Dec 18	% change since Dec 19	% change since Dec 20	% change since Mar 21
Overall	3,524	-384	-416	+168	+156	+146	+59	+28	-9.8%	-10.6%	+5.0%	+4.6%	+4.3%	+1.7%	+0.8%
Care, other	320	-84	-103	+2	-5	-10	-11	+6	-20.8%	-24.3%	+0.6%	-1.5%	-3.1%	-3.2%	+2.1%
Patient & Client Care	913	-105	-140	+67	+57	+45	+17	+13	-10.3%	-13.3%	+7.9%	+6.6%	+5.1%	+1.9%	+1.4%

Source: Health Service Personnel Census

Longitudinal Employment Levels by Care Group - Dec 2015 to Apr 2021

Community Health & Wellbeing

Apr 2021 ( figure: )	WTE Apr 2021	WTE change since	WTE change since	WTE change since	WTE change since	WTE change since	WTE change since Dec 20	WTE change since Mar 21	% change since	% change since	% change since	% change since	% change since	% change since Dec 20	% change since Mar 21
Overall	9	+9	+9	+9	+9	+9	+1	+1	-100.0%	-100.0%	-100.0%	-100.0%	-100.0%	+12.9%	+12.5%
Management & Administrative	6	+6	+6	+6	+6	+6	+1	+0	-1.0%	-1.0%	-1.0%	-1.0%	-1.0%	+0.2%	+0.0%
Management (VIII & above)	1	+1	+1	+1	+1	+1			-1.0%	-1.0%	-1.0%	-1.0%	-1.0%	+0.0%	+0.0%
Administrative/ Supervisory (V to VII)	5	+5	+5	+5	+5	+5	+1	+0	-1.0%	-1.0%	-1.0%	-1.0%	-1.0%	+0.3%	+0.0%
Clerical (III & IV)	1	+1	+1	+1	+1	+1	+1	-0	-1.0%	-1.0%	-1.0%	-1.0%	-1.0%	-0.1%	+0.0%
Patient & Client Care	2	+2	+2	+2	+2	+2	-0	+1	-1.0%	-1.0%	-1.0%	-1.0%	-1.0%	-0.0%	+0.5%
Care, other	2	+2	+2	+2	+2	+2	+2	-0	-1.0%	-1.0%	-1.0%	-1.0%	-1.0%	-0.0%	+0.5%

Source: Health Service Personnel Census

Mental Health

Apr 2021 (Dec 2016 figure: 559)	WTE Apr 2021	WTE change since Dec 15	WTE change since Dec 16	WTE change since Dec 17	WTE change since Dec 18	WTE change since Dec 19	WTE change since Dec 20	WTE change since Mar 21	% change since Dec 15	% change since Dec 16	% change since Dec 17	% change since Dec 18	% change since Dec 19	% change since Dec 20	% change since Mar 21
Overall	634	+71	+75	+70	+61	+42	+8	+3	+12.5%	+13.3%	+12.5%	+10.7%	+7.0%	+1.2%	+0.4%
Medical & Dental	77	+20	+21	+15	+14	+10	+5	-1	+0.4%	+0.4%	+0.2%	+0.2%	+0.2%	+0.1%	-0.0%
Consultants	41	+14	+14	+12	+9	+5	+1	+1	+0.5%	+0.4%	+0.4%	+0.3%	+0.1%	+0.0%	+0.0%
Registrars	24	+6	+7	+5	+8	+3	+5	-1	+0.3%	+0.4%	+0.3%	+0.5%	+0.1%	+0.3%	-0.0%
SHO/ Interns	12	+0	+0	-3	-4	+3	-1	-1	+0.0%	+0.0%	-0.2%	-0.2%	+0.3%	-0.1%	-0.1%
Medical/ Dental, other				-0	-0				-1.0%	-1.0%	-1.0%	-1.0%	-1.0%	-1.0%	-1.0%
Nursing & Midwifery	250	+1	+8	+20	+12	+19	-1	-0	+0.0%	+0.0%	+0.1%	+0.1%	+0.1%	-0.0%	-0.0%
Nurse/ Midwife Manager	75	-2	-5	+4	-6	-2	-3	-0	-0.0%	-0.1%	+0.0%	-0.1%	-0.0%	-0.0%	-0.0%
Nurse/ Midwife Specialist & AN/MP	19	+5	+4	+4	+7	+5	-1	-2	+0.4%	+0.3%	+0.2%	+0.5%	+0.4%	-0.0%	-0.1%
Staff Nurse/ Staff Midwife	150	-9	+5	+8	+8	+11	-1	+2	-0.1%	+0.0%	+0.1%	+0.1%	+0.1%	-0.0%	+0.0%
Nursing/ Midwifery Student	4	+4	+4	+4	+4	+4	+3	-0	-1.0%	-1.0%	-1.0%	-1.0%	-1.0%	+3.5%	-0.0%
Nursing/ Midwifery other	2	+1	-0		-1				+1.0%	-0.1%	+0.0%	-0.3%	+0.0%	+0.0%	+0.0%
Health & Social Care Professionals	135	+28	+25	+20	+21	+5	+1	+3	+0.3%	+0.2%	+0.2%	+0.2%	+0.0%	+0.0%	+0.0%
Therapy Professions	42	+13	+15	+10	+7	-1	+4	+4	+0.4%	+0.5%	+0.3%	+0.2%	-0.0%	+0.1%	+0.1%
Social Care	28	-2	-3	-3	-2	+2	-1	+0	-0.1%	-0.1%	-0.1%	-0.1%	+0.1%	-0.0%	+0.0%
Social Workers	31	+8	+3	+5	+2	+1	+1	-0	+0.4%	+0.1%	+0.2%	+0.1%	+0.0%	+0.0%	-0.0%
Psychologists	30	+13	+14	+9	+14	+8	-2	-0	+0.8%	+0.9%	+0.5%	+0.9%	+0.3%	-0.1%	-0.0%
H&SC, Other	4	-3	-3	-0	+0	-4	-1	-0	-0.4%	-0.4%	-0.0%	+0.1%	-0.5%	-0.1%	-0.0%
Management & Administrative	69	+15	+13	+10	+11	-2	-1	-1	+0.3%	+0.2%	+0.2%	+0.2%	-0.0%	-0.0%	-0.0%
Management (VIII & above)	3	-1	+0	-1	+1				-0.1%	+0.2%	-0.2%	+0.5%	+0.0%	+0.0%	+0.0%
Administrative/ Supervisory (V to VII)	27	+8	+9	+5	+0	-0	+2	+1	+0.4%	+0.5%	+0.2%	+0.0%	-0.0%	+0.1%	+0.0%
Clerical (III & IV)	40	+7	+4	+6	+10	-2	-3	-2	+0.2%	+0.1%	+0.2%	+0.3%	-0.1%	-0.1%	-0.0%
General Support	43	-13	-7	-10	-6	+1	-2	+0	-0.2%	-0.1%	-0.2%	-0.1%	+0.0%	-0.0%	+0.0%
Support	37	-13	-7	-11	-7	+1	-2	+0	-0.3%	-0.2%	-0.2%	-0.2%	+0.0%	-0.0%	+0.0%
Maintenance/ Technical	6		+1	+1	+1	+0			+0.0%	+0.1%	+0.2%	+0.2%	+0.0%	+0.0%	+0.0%
Patient & Client Care	59	+19	+15	+15	+10	+9	+5	+2	+0.5%	+0.3%	+0.3%	+0.2%	+0.2%	+0.1%	+0.0%
Health Care Assistants	54	+18	+13	+13	+9	+8	+5	+2	+0.5%	+0.3%	+0.3%	+0.2%	+0.2%	+0.1%	+0.0%
Care, other	6	+1	+1	+2	+0	+0	-0	+0	+0.3%	+0.3%	+0.6%	+0.1%	+0.1%	-0.0%	+0.0%

Source: Health Service Personnel Census

Primary Care

Apr 2021 (Dec 2016 figure: 768)	WTE Apr 2021	WTE change since Dec 15	WTE change since Dec 16	WTE change since Dec 17	WTE change since Dec 18	WTE change since Dec 19	WTE change since Dec 20	WTE change since Mar 21	% change since Dec 15	% change since Dec 16	% change since Dec 17	% change since Dec 18	% change since Dec 19	% change since Dec 20	% change since Mar 21
Overall	853	+43	+85	+58	+20	+89	+42	+9	+5.3%	+11.0%	+7.4%	+2.4%	+11.6%	+5.2%	+1.1%
Medical & Dental	82	-52	-8	-8	-10	-6	+2	-0	-0.4%	-0.1%	-0.1%	-0.1%	-0.1%	+0.0%	-0.0%
Consultants	8	-1	-1	-1	-1	-1			-0.1%	-0.1%	-0.1%	-0.1%	-0.1%	+0.0%	+0.0%
Registrars	23	-40	-5	-2	-6	-3	-1	+0	-0.6%	-0.2%	-0.1%	-0.2%	-0.1%	-0.0%	+0.0%
SHO/ Interns	7	-1							-0.1%	+0.0%	+0.0%	+0.0%	+0.0%	+0.0%	+0.0%
Medical/ Dental, other	44	-10	-2	-4	-3	-2	+3	-0	-0.2%	-0.0%	-0.1%	-0.1%	-0.1%	+0.1%	-0.0%
Nursing & Midwifery	211	+19	+13	+2	+3	+1	+3	+1	+0.1%	+0.1%	+0.0%	+0.0%	+0.0%	+0.0%	+0.0%
Nurse/ Midwife Manager	23	+4	+5	+3	+1	+1	+1	+1	+0.2%	+0.3%	+0.2%	+0.0%	+0.0%	+0.0%	+0.1%
Nurse/ Midwife Specialist & AN/MP	4	+1		-2	-2	-2	+1		+0.3%	+0.0%	-0.3%	-0.3%	-0.3%	+0.1%	+0.0%
Staff Nurse/ Staff Midwife	61	+20	+17	+19	+11	+9	+6	+2	+0.5%	+0.4%	+0.5%	+0.2%	+0.2%	+0.1%	+0.0%
Public Health Nurse	107	-5	-10	-16	-11	-9	-5	-2	-0.0%	-0.1%	-0.1%	-0.1%	-0.1%	-0.0%	-0.0%
Nursing/ Midwifery Student	15	-2		-4	+4	+2	+0		-0.1%	+0.0%	-0.2%	+0.4%	+0.1%	+0.0%	+0.0%
Nursing/ Midwifery other	1	-0	+1	+1	+1	+1	-0	-0	-0.0%	-1.0%	-1.0%	-1.0%	-1.0%	-0.0%	-0.0%
Health & Social Care Professionals	167	-8	-5	-16	-24	+14	+5	+1	-0.0%	-0.0%	-0.1%	-0.1%	+0.1%	+0.0%	+0.0%
Therapy Professions	115	-0	-0	-6	-12	+11	+4	-0	-0.0%	-0.0%	-0.0%	-0.1%	+0.1%	+0.0%	-0.0%
Health Science/ Diagnostics	19	-2	-3	-4	-5	+1	-1	-0	-0.1%	-0.1%	-0.2%	-0.2%	+0.1%	-0.1%	-0.0%
Social Care	2	+0	+1	+1	-1	-1	-0	-0	+0.0%	+0.7%	+0.7%	-0.2%	-0.4%	-0.1%	-0.2%
Social Workers	6	-1	-0	-1	-0	+1	+2	+1	-0.2%	-0.0%	-0.2%	-0.1%	+0.3%	+0.4%	+0.3%
Psychologists	19	-5	-3	-6	-8	+0	-1	+1	-0.2%	-0.2%	-0.2%	-0.3%	+0.0%	-0.0%	+0.0%
Pharmacy	2	+1	+2	+1	+1	+1	+1	+0	+1.0%	-1.0%	+1.0%	+1.0%	+1.5%	+1.0%	+0.0%
H&SC, Other	4	-1	-1	-1	+0	+0	+0	+0	-0.2%	-0.2%	-0.2%	+0.0%	+0.1%	+0.0%	+0.1%
Management & Administrative	242	+47	+45	+39	+14	+32	+19	+5	+0.2%	+0.2%	+0.2%	+0.1%	+0.2%	+0.1%	+0.0%
Management (VIII & above)	30	+12	+7	-0	-7	+0	-0	-0	+0.7%	+0.3%	-0.0%	-0.2%	+0.0%	-0.0%	-0.0%
Administrative/ Supervisory (V to VII)	76	+30	+26	+18	+1	+8	+11	+7	+0.7%	+0.5%	+0.3%	+0.0%	+0.1%	+0.2%	+0.1%
Clerical (III & IV)	136	+5	+12	+22	+21	+25	+8	-1	+0.0%	+0.1%	+0.2%	+0.2%	+0.2%	+0.1%	-0.0%
General Support	28	-4	-4	-4	+0	+2	-0	+1	-0.1%	-0.1%	-0.1%	+0.0%	+0.1%	-0.0%	+0.0%
Support	26	-4	-4	-4	+0	+2	-0	+1	-0.1%	-0.1%	-0.1%	+0.0%	+0.1%	-0.0%	+0.0%
Maintenance/ Technical	2								+0.0%	+0.0%	+0.0%	+0.0%	+0.0%	+0.0%	+0.0%
Patient & Client Care	123	+42	+43	+45	+37	+45	+13	+1	+0.5%	+0.5%	+0.6%	+0.4%	+0.6%	+0.1%	+0.0%
Health Care Assistants	51	+49	+49	+49	+42	+45	+13	+1	+19.8%	+24.5%	+24.5%	+4.7%	+7.1%	+0.4%	+0.0%
Ambulance Staff		-1							-1.0%	-1.0%	-1.0%	-1.0%	-1.0%	-1.0%	-1.0%
Care, other	72	-7	-6	-4	-6	+0	-0	-0	-0.1%	-0.1%	-0.1%	-0.1%	+0.0%	-0.0%	-0.0%

Source: Health Service Personnel Census



Disabilities

Apr 2021 (Dec 2016 figure: 1,816)	WTE Apr 2021	WTE change since Dec 15	WTE change since Dec 16	WTE change since Dec 17	WTE change since Dec 18	WTE change since Dec 19	WTE change since Dec 20	WTE change since Mar 21	% change since Dec 15	% change since Dec 16	% change since Dec 17	% change since Dec 18	% change since Dec 19	% change since Dec 20	% change since Mar 21
Overall	1,225	-505	-591	+55	+70	+27	+8	+16	-29.2%	-32.6%	+4.7%	+6.0%	+2.3%	+0.7%	+1.3%
Medical & Dental	5	-3	-2	-2	+1	+1	+1		-0.4%	-0.3%	-0.3%	+0.2%	+0.2%	+0.2%	+0.0%
Consultants	3	-0	+0	+0	+1				-0.0%	+0.1%	+0.1%	+0.5%	+0.0%	+0.0%	+0.0%
Registrars	1	-2	-0	-1	+1	+1	+1		-0.7%	-0.2%	-0.6%	-1.0%	-1.0%	-1.0%	+0.0%
SHO/ Interns			-1						-1.0%	-1.0%	-1.0%	-1.0%	-1.0%	-1.0%	-1.0%
Medical/ Dental, other	1	-1	-1	-1	-1				-0.5%	-0.5%	-0.5%	-0.5%	+0.0%	+0.0%	+0.0%
Nursing & Midwifery	186	-158	-139	-21	-9	-5	-0	-0	-0.5%	-0.4%	-0.1%	-0.0%	-0.0%	-0.0%	-0.0%
Nurse/ Midwife Manager	44	-40	-34	-2	+4	+0	+0	+2	-0.5%	-0.4%	-0.0%	+0.1%	+0.0%	+0.0%	+0.0%
Nurse/ Midwife Specialist & AN/MP		-3	-2						-1.0%	-1.0%	-1.0%	-1.0%	-1.0%	-1.0%	-1.0%
Staff Nurse/ Staff Midwife	142	-114	-103	-19	-13	-6	-1	-2	-0.4%	-0.4%	-0.1%	-0.1%	-0.0%	-0.0%	-0.0%
Public Health Nurse		-2	-1						-1.0%	-1.0%	-1.0%	-1.0%	-1.0%	-1.0%	-1.0%
Health & Social Care Professionals	435	-93	-164	+51	+60	+33	+7	+6	-0.2%	-0.3%	+0.1%	+0.2%	+0.1%	+0.0%	+0.0%
Therapy Professions	44	+0	-8	+9	+3	+2	+1	-1	+0.0%	-0.2%	+0.3%	+0.1%	+0.1%	+0.0%	-0.0%
Social Care	366	-77	-141	+44	+57	+32	+5	+8	-0.2%	-0.3%	+0.1%	+0.2%	+0.1%	+0.0%	+0.0%
Social Workers	10	-9	-6	-1	-2	-1	+0		-0.5%	-0.4%	-0.1%	-0.1%	-0.1%	+0.0%	+0.0%
Psychologists	14	-6	-9	-0	+1	+0	+0	-0	-0.3%	-0.4%	-0.0%	+0.1%	+0.0%	+0.0%	-0.0%
H&SC, Other	1	-1	+1	-2	+0	-1	-0	-0	-0.4%	+1.2%	-0.6%	+0.2%	-0.4%	-0.1%	-0.1%
Management & Administrative	145	-12	-16	+8	+6	+7	+5	-2	-0.1%	-0.1%	+0.1%	+0.0%	+0.0%	+0.0%	-0.0%
Management (VIII & above)	30	-5	-7	-4	-3	-1	-0	-1	-0.1%	-0.2%	-0.1%	-0.1%	-0.0%	-0.0%	-0.0%
Administrative/ Supervisory (V to VII)	57	+5	+7	+9	+8	+4	+3	+1	+0.1%	+0.1%	+0.2%	+0.2%	+0.1%	+0.1%	+0.0%
Clerical (III & IV)	57	-13	-16	+2	+1	+3	+2	-3	-0.2%	-0.2%	+0.0%	+0.0%	+0.1%	+0.0%	-0.0%
General Support	27	-71	-67	-4	-5	-2	-3	+1	-0.7%	-0.7%	-0.1%	-0.2%	-0.1%	-0.1%	+0.0%
Support	21	-61	-58	-6	-7	-1	-4	-0	-0.7%	-0.7%	-0.2%	-0.2%	-0.0%	-0.2%	-0.0%
Maintenance/ Technical	6	-10	-9	+2	+2	-1	+1	+1	-0.6%	-0.6%	+0.5%	+0.5%	-0.1%	+0.2%	+0.2%
Patient & Client Care	427	-167	-203	+23	+18	-6	-2	+11	-0.3%	-0.3%	+0.1%	+0.0%	-0.0%	-0.0%	+0.0%
Health Care Assistants	192	-89	-105	+20	+17	+5	+8	+5	-0.3%	-0.4%	+0.1%	+0.1%	+0.0%	+0.0%	+0.0%
Care, other	235	-78	-98	+4	+0	-11	-10	+6	-0.2%	-0.3%	+0.0%	+0.0%	-0.0%	-0.0%	+0.0%

Source: Health Service Personnel Census

Older People

Apr 2021 (Dec 2016 figure: 797)	WTE Apr 2021	WTE change since Dec 15	WTE change since Dec 16	WTE change since Dec 17	WTE change since Dec 18	WTE change since Dec 19	WTE change since Dec 20	WTE change since Mar 21	% change since Dec 15	% change since Dec 16	% change since Dec 17	% change since Dec 18	% change since Dec 19	% change since Dec 20	% change since Mar 21
Overall	804	-1	+7	-25	-4	-20	-0	-1	-0.2%	+0.8%	-3.0%	-0.5%	-2.4%	-0.0%	-0.1%
Medical & Dental	4	-1	-1	-1	-2	-1	-0	-0	-0.2%	-0.2%	-0.2%	-0.4%	-0.2%	-0.0%	-0.0%
Registrars	2	+1	+1	+1		+1	+1		+1.0%	+1.0%	+1.0%	+0.0%	+1.0%	+1.0%	+0.0%
Medical/ Dental, other	2	-2	-2	-2	-2	-2	-1	-0	-0.5%	-0.5%	-0.5%	-0.5%	-0.5%	-0.4%	-0.0%
Nursing & Midwifery	260	-17	-11	-10	-7	-13	-9	-0	-0.1%	-0.0%	-0.0%	-0.0%	-0.0%	-0.0%	-0.0%
Nurse/ Midwife Manager	61	-4	-4	-4	-6	-7	-2	-1	-0.1%	-0.1%	-0.1%	-0.1%	-0.1%	-0.0%	-0.0%
Nurse/ Midwife Specialist & AN/MP	1	+1	+1	+1	-0	-0	-0	-0	-1.0%	-1.0%	-1.0%	-0.0%	-0.0%	-0.0%	-0.0%
Staff Nurse/ Staff Midwife	198	-14	-7	-7	-0	-5	-8	+0	-0.1%	-0.0%	-0.0%	-0.0%	-0.0%	-0.0%	+0.0%
Health & Social Care Professionals	66	+5	+9	+8	+8	-1	+5	-0	+0.1%	+0.2%	+0.1%	+0.1%	-0.0%	+0.1%	-0.0%
Therapy Professions	49	+4	+7	+6	+4	-1	+3	-0	+0.1%	+0.2%	+0.1%	+0.1%	-0.0%	+0.1%	-0.0%
Social Workers	11	-0	-0	-0	+2	-0	+1	-0	-0.0%	-0.0%	-0.0%	+0.2%	-0.0%	+0.1%	-0.0%
Psychologists	2	+2	+2	+2	+2		+1		+3.2%	+3.2%	-1.0%	+3.2%	+0.0%	+0.9%	+0.0%
Pharmacy	3	+0	+0	+0	+0	+0	+0	+0	+0.1%	+0.1%	+0.1%	+0.1%	+0.1%	+0.1%	+0.0%
H&SC, Other		-0							-1.0%	-1.0%	-1.0%	-1.0%	-1.0%	-1.0%	-1.0%
Management & Administrative	59	+14	+11	+7	+8	+4	+2	-2	+0.3%	+0.2%	+0.1%	+0.2%	+0.1%	+0.0%	-0.0%
Management (VIII & above)	6	+3	+3	+5	+4	+2	+1	+0	+1.0%	+1.0%	+4.9%	+1.9%	+0.5%	+0.2%	+0.0%
Administrative/ Supervisory (V to VII)	22	+2	+2	+1	+1	-0	+2	-2	+0.1%	+0.1%	+0.0%	+0.1%	-0.0%	+0.1%	-0.1%
Clerical (III & IV)	32	+9	+6	+1	+3	+2	-1	-0	+0.4%	+0.3%	+0.0%	+0.1%	+0.1%	-0.0%	-0.0%
General Support	113	-1	-5	-9	-1	-4	+2	+3	-0.0%	-0.0%	-0.1%	-0.0%	-0.0%	+0.0%	+0.0%
Support	105	+1	-3	-7	-1	-4	+3	+3	+0.0%	-0.0%	-0.1%	-0.0%	-0.0%	+0.0%	+0.0%
Maintenance/ Technical	8	-2	-2	-2	-0		-1		-0.2%	-0.2%	-0.2%	-0.0%	+0.0%	-0.1%	+0.0%
Patient & Client Care	302	-1	+4	-19	-10	-5	+1	-1	-0.0%	+0.0%	-0.1%	-0.0%	-0.0%	+0.0%	-0.0%
Health Care Assistants	297	+2	+6	-17	-7	-3	+1	-1	+0.0%	+0.0%	-0.1%	-0.0%	-0.0%	+0.0%	-0.0%
Care, other	5	-3	-2	-2	-3	-2	-0	+0	-0.3%	-0.3%	-0.3%	-0.3%	-0.3%	-0.1%	+0.0%

Source: Health Service Personnel Census