

CHO 6 Employment Report: August 2021

Employment by Staff Group

Aug 2021 (Dec 2020 figure: 3,465)	WTE Jul 2021	WTE Aug 2021	WTE change since Jul 21	% change since Jul 21	WTE change since Dec 20	WTE change since Aug 20
Overall	3,522	3,548	+26	+0.7%	+83	+152
Consultants	51	51	-1	-1.5%	-1	+1
Registrars	50	60	+10	+19.4%	+16	+18
SHO/ Interns	18	18	+0	+0.1%	-1	-2
Medical/ Dental, other	45	45	-0	-0.2%	+0	-4
Medical & Dental	165	173	+9	+5.4%	+14	+13
Nurse/ Midwife Manager	204	205	+2	+0.8%	-0	-4
Nurse/ Midwife Specialist & AN/MP	25	29	+4	+16.4%	+5	+6
Staff Nurse/ Staff Midwife	555	549	-6	-1.1%	-5	+13
Public Health Nurse	113	115	+2	+1.9%	+3	-2
<i>Pre-registration Nurse/ Midwife Intern</i>	3	4	+0	+0.9%	+4	+0
<i>Post-registration Nurse/ Midwife Student</i>	4	2	-2	-50.0%	-13	-2
<i>Nursing/ Midwifery awaiting registration</i>	1	1				
Nursing/ Midwifery Student	8	7	-2	-23.3%	-9	+4
Nursing/ Midwifery other	3	3	-0	-6.7%	-0	-1
Nursing & Midwifery	908	908	-0	-0.0%	-7	+15
Therapy Professions	243	249	+6	+2.4%	+11	+13
Health Science/ Diagnostics	19	18	-1	-4.8%	-2	-1
Social Care	402	407	+5	+1.1%	+15	+43
Social Workers	56	56	+0	+0.6%	+2	+2
Psychologists	67	66	-1	-1.6%	-1	+4
Pharmacy	6	7	+0	+5.2%	+3	+3
H&SC, Other	11	11	+1	+7.1%	+1	+3
Health & Social Care Professionals	804	814	+10	+1.2%	+30	+68
Management (VIII & above)	72	76	+4	+5.0%	+6	+6
Administrative/ Supervisory (V to VII)	185	185	+1	+0.4%	+19	+16
Clerical (III & IV)	264	256	-8	-3.0%	-4	-5
Management & Administrative	521	517	-4	-0.7%	+21	+17
Support	190	191	+0	+0.1%	-2	-23
Maintenance/ Technical	22	22	-0	-0.5%		+1
General Support	212	213	+0	+0.1%	-2	-22
Health Care Assistants	580	591	+11	+1.9%	+25	+44
Care, other	332	332	+0	+0.0%	+2	+18
Patient & Client Care	912	923	+11	+1.3%	+27	+62

CHO 6 Employment Report: August 2021

Community Health & Wellbeing

Aug 2021 (Dec 2020 figure: 8)	WTE Jul 2021	WTE Aug 2021	WTE change since Jul 21	% change since Jul 21	WTE change since Dec 20	WTE change since Aug 20
Total Community Health & Wellbeing	9	9	-0	-5.1%	+1	+0
<i>Public Health Nurse</i>				-100.0%		
Public Health Nurse				-100.0%		-0
Nursing & Midwifery				-100.0%		-0
Management (VIII & above)				-100.0%	-1	-1
Administrative/ Supervisory (V to VII)	7	6	-1	-7.6%	+3	+2
Clerical (III & IV)	1	1	+0	+2.8%	-0	-0
Management & Administrative	7	7	-0	-6.6%	+2	+1
Care, other	2	2	+0	+0.5%	-0	-1
Patient & Client Care	2	2	+0	+0.5%	-0	-1

Mental Health

Aug 2021 (Dec 2020 figure: 626)	WTE Jul 2021	WTE Aug 2021	WTE change since Jul 21	% change since Jul 21	WTE change since Dec 20	WTE change since Aug 20
Total Mental Health	630	633	+3	+0.5%	+7	+30
Consultants	40	39	-1	-1.9%	-1	+1
Registrars	24	26	+2	+7.2%	+7	+9
SHO/ Interns	11	11	+0	+0.3%	-2	-3
Medical & Dental	75	76	+1	+1.3%	+3	+7
Nurse/ Midwife Manager	74	74	-0	-0.0%	-3	-3
Nurse/ Midwife Specialist & AN/MP	19	22	+2	+11.8%	+2	+6
Staff Nurse/ Staff Midwife	157	156	-1	-0.8%	+4	+7
Pre-registration Nurse/ Midwife Intern	3	4	+0	+0.9%	+4	+0
Nursing/ Midwifery awaiting registration	1	1				
Nursing/ Midwifery Student	4	5	+0	+0.7%	+4	+5
Nursing/ Midwifery other	2	2				-1
Nursing & Midwifery	257	258	+1	+0.4%	+7	+14
Therapy Professions	39	41	+2	+5.8%	+3	+5
Social Care	26	26	-0	-0.7%	-3	-3
Social Workers	30	31	+1	+2.1%	+1	-0
Psychologists	32	32	+0	+0.2%	-0	+6
H&SC, Other	4	5	+1	+22.3%	+0	+1
Health & Social Care Professionals	131	135	+4	+2.9%	+1	+9
Management (VIII & above)	3	3				
Administrative/ Supervisory (V to VII)	22	23	+2	+7.7%	-1	-3
Clerical (III & IV)	38	36	-2	-4.6%	-7	-5
Management & Administrative	63	62	-0	-0.2%	-8	-8
Support	37	37	-1	-1.7%	-2	-0
Maintenance/ Technical	6	6				+2
General Support	43	43	-1	-1.5%	-2	+2
Health Care Assistants	55	53	-2	-3.4%	+5	+7
Care, other	6	6	+0	+1.4%		+0
Patient & Client Care	61	59	-2	-2.9%	+5	+7

Primary Care

Aug 2021 (Dec 2020 figure: 811)	WTE Jul 2021	WTE Aug 2021	WTE change since Jul 21	% change since Jul 21	WTE change since Dec 20	WTE change since Aug 20
Total Primary Care	857	871	+13	+1.5%	+60	+95
Consultants	8	8				
Registrars	24	32	+8	+35.4%	+8	+8
SHO/ Interns	7	7				
Medical/ Dental, other	42	42	-0	-0.3%	+1	-2
Medical & Dental	81	89	+8	+10.2%	+9	+6
Nurse/ Midwife Manager	21	21	-0	-0.9%	-2	-3
Nurse/ Midwife Specialist & AN/MP	4	5	+1	+17.9%	+2	-1
Staff Nurse/ Staff Midwife	66	61	-6	-8.6%	+6	+11
Public Health Nurse	113	115	+2	+1.9%	+3	-2
Post-registration Nurse/ Midwife Student	4	2	-2	-50.0%	-13	-2
Nursing/ Midwifery Student	4	2	-2	-50.0%	-13	-1
Nursing/ Midwifery other	1	1	-0	-20.0%	-0	-0
Nursing & Midwifery	209	204	-5	-2.5%	-5	+4
Therapy Professions	111	114	+2	+2.2%	+3	-3
Health Science/ Diagnostics	19	18	-1	-4.8%	-2	-1
Social Care	3	3			+0	+0
Social Workers	5	9	+4	+67.4%	+5	+5
Psychologists	21	21	+0	+0.7%	+1	+2
Pharmacy	2	2	+0	+19.0%	+1	+1
H&SC, Other	5	5			+1	+2
Health & Social Care Professionals	166	172	+6	+3.4%	+10	+6
Management (VIII & above)	32	33	+1	+1.8%	+3	+3
Administrative/ Supervisory (V to VII)	78	76	-3	-3.2%	+10	+11
Clerical (III & IV)	140	136	-4	-2.5%	+8	+14
Management & Administrative	250	245	-5	-2.2%	+21	+27
Support	25	25	+0	+1.0%	-0	-1
Maintenance/ Technical	2	2				
General Support	27	27	+0	+1.0%	-0	-1
Health Care Assistants	46	53	+7	+15.4%	+15	+41
Care, other	78	81	+3	+3.4%	+9	+11
Patient & Client Care	124	134	+10	+7.8%	+24	+53

Social Care

Aug 2021 (Dec 2020 figure: 2,020)	WTE Jul 2021	WTE Aug 2021	WTE change since Jul 21	% change since Jul 21	WTE change since Dec 20	WTE change since Aug 20
Total Social Care	2,026	2,036	+10	+0.5%	+15	+26
Consultants	3	3				
Registrars	2	2	-0	-16.7%	+1	+1
Senior House Officer	1	1	-0	-2.1%	+1	-0
SHO/ Interns	1	1	-0	-2.1%	+1	+1
Medical/ Dental, other	3	3			-1	-2
Medical & Dental	9	9	-0	-4.6%	+1	-0
Nurse/ Midwife Manager	109	110	+2	+1.7%	+4	+1
Nurse/ Midwife Specialist & AN/MP	1	2	+1	+100.0%	+1	+1
Staff Nurse/ Staff Midwife	332	333	+1	+0.3%	-15	-5
Nursing & Midwifery	442	446	+4	+0.9%	-10	-3
Therapy Professions	93	94	+1	+1.3%	+5	+11
Social Care	373	378	+5	+1.3%	+17	+46
Social Workers	21	17	-4	-19.2%	-4	-2
Psychologists	15	13	-1	-8.7%	-1	-4
Pharmacy	4	4	-0	-1.2%	+1	+1
H&SC, Other	1	1	-0	-18.8%	-0	+0
Health & Social Care Professionals	507	507	+0	+0.1%	+19	+52
Management (VIII & above)	37	40	+3	+8.3%	+5	+4
Administrative/ Supervisory (V to VII)	78	80	+2	+2.5%	+7	+6
Clerical (III & IV)	86	83	-3	-3.3%	-6	-13
Management & Administrative	201	203	+2	+1.1%	+6	-3
Support	128	129	+1	+0.5%	+1	-21
Maintenance/ Technical	14	14	-0	-0.8%		-1
General Support	142	143	+1	+0.4%	+1	-22
Health Care Assistants	479	485	+6	+1.3%	+6	-4
Care, other	246	244	-3	-1.1%	-7	+7
Patient & Client Care	725	728	+3	+0.5%	-1	+3

CHO 6 Employment Report: August 2021

Disabilities

Aug 2021 (Dec 2020 figure: 1,217)	WTE Jul 2021	WTE Aug 2021	WTE change since Jul 21	% change since Jul 21	WTE change since Dec 20	WTE change since Aug 20
Total Disabilities	1,230	1,227	-3	-0.2%	+11	+40
Consultants	3	3				
Registrars	0		-0	-100.0%		
<i>Senior House Officer</i>	1	1	-0	-2.1%	+1	-0
SHO/ Interns	1	1	-0	-2.1%	+1	+1
Medical/ Dental, other	1	1				
Medical & Dental	5	5	-0	-7.8%	+1	+1
Nurse/ Midwife Manager	45	45	+0	+0.3%	+2	+2
Staff Nurse/ Staff Midwife	137	138	+1	+0.7%	-4	+2
Nursing & Midwifery	182	184	+1	+0.6%	-2	+5
Therapy Professions	44	44	+0	+1.1%	+2	+3
Social Care	373	378	+5	+1.3%	+17	+46
Social Workers	11	10	-1	-9.0%	+0	+1
Psychologists	14	13	-1	-9.0%	-1	-3
H&SC, Other	1	1	-0	-18.8%	-0	+0
Health & Social Care Professionals	444	446	+3	+0.6%	+18	+48
Management (VIII & above)	31	33	+2	+6.0%	+3	+2
Administrative/ Supervisory (V to VII)	56	55	-1	-1.8%	+1	+0
Clerical (III & IV)	54	52	-2	-4.5%	-4	-13
Management & Administrative	142	140	-2	-1.1%	+0	-11
Support	23	22	-0	-2.1%	-3	-23
Maintenance/ Technical	6	6			+1	
General Support	29	28	-0	-1.6%	-2	-23
Health Care Assistants	187	185	-2	-1.0%	+1	+12
Care, other	241	239	-2	-1.0%	-6	+8
Patient & Client Care	428	424	-4	-1.0%	-4	+21

Older People

Aug 2021 (Dec 2020 figure: 804)	WTE Jul 2021	WTE Aug 2021	WTE change since Jul 21	% change since Jul 21	WTE change since Dec 20	WTE change since Aug 20
Total Older People	796	809	+13	+1.6%	+5	-14
Registrars	2	2			+1	+1
Medical/ Dental, other	2	2			-1	-2
Medical & Dental	4	4			-0	-1
Nurse/ Midwife Manager	63	65	+2	+2.6%	+3	-2
Nurse/ Midwife Specialist & AN/MP	1	2	+1	+100.0%	+1	+1
Staff Nurse/ Staff Midwife	195	195			-11	-7
Nursing & Midwifery	259	262	+3	+1.0%	-7	-8
Health & Social Care Professionals	63	61	-2	-3.6%	+0	+4
Management (VIII & above)	6	7	+1	+21.1%	+2	+2
Administrative/ Supervisory (V to VII)	22	25	+3	+13.5%	+6	+6
Clerical (III & IV)	31	31	-0	-1.1%	-2	-0
Management & Administrative	59	63	+4	+6.5%	+5	+7
Support	105	106	+1	+1.1%	+4	+3
Maintenance/ Technical	8	8	-0	-1.4%	-1	-1
General Support	113	114	+1	+0.9%	+3	+2
Health Care Assistants	292	300	+8	+2.8%	+4	-16
Care, other	5	4	-0	-5.8%	-1	-1
Patient & Client Care	297	304	+8	+2.6%	+3	-18

CHO 6 Employment by Administration (HSE / S38): August 2021

Aug 2021 (Dec 2020 figure: 3,465)	WTE Jul 2021	WTE Aug 2021	WTE change since Jul 21	% change since Jul 21	WTE change since Dec 20	WTE change since Aug 20
Overall	3,522	3,548	+26	+0.7%	+83	+152
HSE	1,737	1,758	+21	+1.2%	+69	+109
Section 38 Voluntary Agencies	1,785	1,790	+5	+0.3%	+14	+43

HSE

Aug 2021 (Dec 2020 figure: 1,689)	WTE Jul 2021	WTE Aug 2021	WTE change since Jul 21	% change since Jul 21	WTE change since Dec 20	WTE change since Aug 20
Overall	1,737	1,758	+21	+1.2%	+69	+109
Consultants	26	25	-1	-0.0%	-1	+0
Registrars	26	36	+10	+0.4%	+9	+10
SHO/ Interns	6	8	+1	+0.2%	+3	+1
Medical/ Dental, other	44	44	-0	-0.0%	+1	-3
Medical & Dental	102	113	+11	+10.7%	+12	+8
Nurse/ Midwife Manager	131	131	-0	-0.0%	-5	-6
Nurse/ Midwife Specialist & AN/MP	18	21	+3	+0.1%	+5	+5
Staff Nurse/ Staff Midwife	311	305	-6	-0.0%	+0	+13
Public Health Nurse	113	115	+2	+0.0%	+3	-2
<i>Pre-registration Nurse/ Midwife Intern</i>	3	4	+0	+0.0%	+4	+4
<i>Post-registration Nurse/ Midwife Student</i>	4	2	-2	-0.5%	-12	-1
<i>Nursing/ Midwifery awaiting registration</i>	1	1		+0.0%	+1	+1
Nursing/ Midwifery Student	8	7	-2	-0.2%	-9	+4
Nursing/ Midwifery other	3	3	-0	-0.1%	-0	-1
Nursing & Midwifery	585	581	-4	-0.7%	-7	+12
Therapy Professions	165	167	+2	+0.0%	+7	-1
Health Science/ Diagnostics	18	17	-1	-0.1%	-2	-1
Social Care	10	10	+0	+0.0%	-1	-0
Social Workers	28	29	+0	+0.0%	+3	+2
Psychologists	44	44	+1	+0.0%	+4	+7
Pharmacy	4	4	+0	+0.1%	+2	+2
H&SC, Other	10	9	-0	-0.0%	+1	+2
Health & Social Care Professionals	278	280	+3	+0.9%	+14	+11
Management (VIII & above)	38	38	+1	+0.0%	+2	+2
Administrative/ Supervisory (V to VII)	107	105	-2	-0.0%	+16	+14
Clerical (III & IV)	160	157	-3	-0.0%	+1	+9
Management & Administrative	305	301	-4	-1.4%	+18	+25
Support	83	83	+1	+0.0%	+1	+2
Maintenance/ Technical	2	2	-0	-0.1%		
General Support	85	85	+1	+0.7%	+1	+2
Health Care Assistants	313	326	+13	+0.0%	+19	+33
Care, other	69	72	+3	+0.0%	+12	+18
Patient & Client Care	382	398	+15	+4.1%	+31	+51

Section 38 Voluntary Agencies

Aug 2021 (Dec 2020 figure: 1,776)	WTE Jul 2021	WTE Aug 2021	WTE change since Jul 21	% change since Jul 21	WTE change since Dec 20	WTE change since Aug 20
Overall	1,785	1,790	+5	+0.3%	+14	+43
Consultants	25	26	+0	+0.0%	-0	+1
Registrars	24	23	-1	-0.0%	+7	+7
SHO/ Interns	12	11	-1	-0.1%	-4	-3
Medical/ Dental, other	1	1		+0.0%	-1	-1
Medical & Dental	62	60	-2	-3.3%	+2	+5
Nurse/ Midwife Manager	73	74	+2	+0.0%	+5	+2
Nurse/ Midwife Specialist & AN/MP	6	8	+1	+0.2%	+0	+1
Staff Nurse/ Staff Midwife	244	245	+1	+0.0%	-5	+0
Nursing & Midwifery	323	327	+4	+1.2%	-0	+3
Therapy Professions	78	82	+4	+0.0%	+4	+14
Health Science/ Diagnostics	2	2		+0.0%		
Social Care	393	397	+4	+0.0%	+16	+44
Social Workers	28	28	+0	+0.0%	-1	+0
Psychologists	23	22	-2	-0.1%	-4	-3
Pharmacy	2	2	-0	-0.0%	+0	+0
H&SC, Other	1	2	+1	+1.0%	+1	+1
Health & Social Care Professionals	527	534	+7	+1.4%	+15	+56
Management (VIII & above)	35	37	+3	+0.1%	+5	+4
Administrative/ Supervisory (V to VII)	77	80	+3	+0.0%	+3	+2
Clerical (III & IV)	104	99	-5	-0.0%	-5	-14
Management & Administrative	216	216	+1	+0.3%	+3	-8
Support	108	107	-0	-0.0%	-3	-25
Maintenance/ Technical	20	20		+0.0%		+1
General Support	128	127	-0	-0.4%	-3	-24
Health Care Assistants	266	265	-1	-0.0%	+6	+11
Care, other	264	261	-3	-0.0%	-10	-0
Patient & Client Care	530	526	-4	-0.8%	-4	+11

CHO 6 Employment by S38 Agency: August 2021

Children's Sunshine Home

Aug 2021 (Dec 2020 figure: 56)	WTE Jul 2021	WTE Aug 2021	WTE change since Jul 21	% change since Jul 21	WTE change since Dec 20	WTE change since Aug 20
Overall	58	58			+2	+3
Nurse/ Midwife Manager	8	8		+0.0%		
Staff Nurse/ Staff Midwife	18	18		+0.0%		+1
Nursing & Midwifery	26	26				+1
Therapy Professions	2	2		+0.0%	+1	+0
Social Workers				-1.0%	-1	-1
Health & Social Care Professionals	2	2			-0	-1
Management (VIII & above)	3	3		+0.0%	+1	+1
Administrative/ Supervisory (V to VII)	4	4		+0.0%		
Clerical (III & IV)	1	1		+0.0%		
Management & Administrative	8	8			+1	+1
Support	3	3		+0.0%		
General Support	3	3				
Health Care Assistants	14	14		+0.0%	+1	+1
Care, other	5	5		+0.0%		
Patient & Client Care	19	19			+1	+1

Dublin Dental Hospital

Aug 2021 (Dec 2020 figure: 93)	WTE Jul 2021	WTE Aug 2021	WTE change since Jul 21	% change since Jul 21	WTE change since Dec 20	WTE change since Aug 20
Overall	93	93	+0	+0.0%	+0	+0
Consultants	5	5		+0.0%		
Registrars	1	1		+0.0%		
SHO/ Interns	7	7		+0.0%		
Medical & Dental	12	12				
Nurse/ Midwife Manager	2	2		+0.0%		
Staff Nurse/ Staff Midwife	4	4		+0.0%		
Nursing & Midwifery	6	6				
Health Science/ Diagnostics	2	2		+0.0%		
H&SC, Other	1	1		+0.0%		
Health & Social Care Professionals	2	2				
Management (VIII & above)	4	4		+0.0%		
Administrative/ Supervisory (V to VII)	11	11		+0.0%		
Clerical (III & IV)	15	15		+0.0%		
Management & Administrative	30	30				
Support	13	13		+0.0%		
Maintenance/ Technical	2	2		+0.0%		
General Support	15	15				
Health Care Assistants	1	1		+0.0%		
Care, other	27	27		+0.0%		
Patient & Client Care	27	27				

Leopardstown Park Hospital

Aug 2021 (Dec 2020 figure: 207)	WTE Jul 2021	WTE Aug 2021	WTE change since Jul 21	% change since Jul 21	WTE change since Dec 20	WTE change since Aug 20
Overall	206	211	+5	+2.5%	+5	+8
Medical/ Dental, other				-1.0%	-1	-1
Medical & Dental				-100.0%	-1	-1
Nurse/ Midwife Manager	15	16	+1	+0.0%	+2	+0
Staff Nurse/ Staff Midwife	39	41	+2	+0.0%	-2	+2
Nursing & Midwifery	54	57	+2	+4.2%	+1	+2
Therapy Professions	9	10	+1	+0.1%	+0	+2
Social Workers	0	1	+1	+1.2%		
Pharmacy	2	2	-0	-0.0%	+0	+0
Health & Social Care Professionals	12	13	+1	+10.3%	+1	+3
Management (VIII & above)	1	1		+0.0%		
Administrative/ Supervisory (V to VII)	6	6		+0.0%	-1	-1
Clerical (III & IV)	12	12	+0	+0.0%		+1
Management & Administrative	18	19	+0	+0.5%	-1	-0
Support	36	36	-0	-0.0%	+2	+1
Maintenance/ Technical	4	4		+0.0%		
General Support	40	40	-0	-0.4%	+2	+1
Health Care Assistants	79	81	+2	+0.0%	+4	+4
Care, other	3	2	-0	-0.1%	-1	-1
Patient & Client Care	82	84	+2	+2.0%	+4	+3

Aug 2021 (Dec 2020 figure: 268)	WTE Jul 2021	WTE Aug 2021	WTE change since Jul 21	% change since Jul 21	WTE change since Dec 20	WTE change since Aug 20
Overall	265	268	+3	+1.1%	-0	-3
Registrars	2	2		+0.0%	+1	+1
Medical/ Dental, other	1	1		+0.0%		
Medical & Dental	3	3			+1	+1
Nurse/ Midwife Manager	17	19	+2	+0.1%	+1	-1
Staff Nurse/ Staff Midwife	71	70	-1	-0.0%	-4	-6
Nursing & Midwifery	88	89	+1	+1.1%	-2	-7
Therapy Professions	33	34	+1	+0.0%	+5	+8
Social Workers	6	6		+0.0%		+1
Psychologists	1	1		+0.0%		
Health & Social Care Professionals	39	40	+1	+1.3%	+5	+9
Management (VIII & above)	1	1		+0.0%		
Administrative/ Supervisory (V to VII)	8	8		+0.0%	+3	+3
Clerical (III & IV)	9	9		+0.0%	-1	+0
Management & Administrative	18	18			+2	+3
Support	33	33	+1	+0.0%	-0	-0
Maintenance/ Technical	4	4		+0.0%	-1	-1
General Support	37	37	+1	+1.5%	-1	-1
Health Care Assistants	80	81	+1	+0.0%	-4	-8
Care, other	1	1		+0.0%	-1	-1
Patient & Client Care	81	82	+1	+1.2%	-5	-8

St. John of God (IDS)

Aug 2021 (Dec 2020 figure: 468)	WTE Jul 2021	WTE Aug 2021	WTE change since Jul 21	% change since Jul 21	WTE change since Dec 20	WTE change since Aug 20
Overall	452	447	-5	-1.1%	-21	-2
Consultants	1	1		+0.0%		
Medical & Dental	1	1				
Nurse/ Midwife Manager	9	9	-0	-0.0%	+1	+1
Staff Nurse/ Staff Midwife	48	46	-2	-0.0%	-3	+1
Nursing & Midwifery	57	55	-2	-3.4%	-2	+1
Therapy Professions	10	11	+1	+0.1%	-3	+0
Social Care	155	156	+1	+0.0%	-3	+6
Social Workers	4	3	-1	-0.3%		
Psychologists	6	5	-0	-0.1%	-1	-1
Health & Social Care Professionals	174	175	+1	+0.3%	-7	+5
Management (VIII & above)	15	16	+1	+0.1%	+2	+1
Administrative/ Supervisory (V to VII)	26	27	+1	+0.0%	+0	+1
Clerical (III & IV)	18	18	-0	-0.0%	-0	-1
Management & Administrative	59	61	+2	+2.9%	+1	+2
Support	12	12	-0	-0.0%	-0	-0
Maintenance/ Technical	5	5		+0.0%		
General Support	17	17	-0	-0.4%	-0	-0
Health Care Assistants	20	16	-3	-0.2%	-2	-0
Care, other	124	122	-2	-0.0%	-12	-10
Patient & Client Care	143	138	-5	-3.6%	-13	-10

St. John of God (MHS)

Aug 2021 (Dec 2020 figure: 236)	WTE Jul 2021	WTE Aug 2021	WTE change since Jul 21	% change since Jul 21	WTE change since Dec 20	WTE change since Aug 20
Overall	234	231	-3	-1.5%	-6	+0
Consultants	20	20	+0	+0.0%		+1
Registrars	21	20	-1	-0.0%	+6	+6
SHO/ Interns	5	4	-1	-0.3%	-4	-3
Medical & Dental	46	44	-2	-4.5%	+2	+5
Nurse/ Midwife Manager	17	16	-0	-0.0%	+0	-1
Nurse/ Midwife Specialist & AN/MP	6	8	+1	+0.2%	+0	+1
Staff Nurse/ Staff Midwife	34	33	-0	-0.0%	+3	+1
Nursing & Midwifery	57	57	+1	+1.2%	+3	+2
Therapy Professions	21	23	+2	+0.1%	+0	+1
Social Care	26	26	-0	-0.0%	-2	-2
Social Workers	15	15	+0	+0.0%	-1	-2
Psychologists	17	16	-2	-0.1%	-3	+0
H&SC, Other	0	1	+1	+2.1%	+1	+1
Health & Social Care Professionals	79	81	+2	+2.0%	-6	-2
Management (VIII & above)	2	2		+0.0%		
Administrative/ Supervisory (V to VII)	12	14	+2	+0.1%	-1	-2
Clerical (III & IV)	25	21	-3	-0.1%	-2	-2
Management & Administrative	39	37	-1	-3.8%	-3	-4
Support	5	5	-0	-0.1%	-1	-2
Maintenance/ Technical	4	4		+0.0%		+2
General Support	9	9	-0	-4.1%	-1	-0
HCA, Nurse's Aide, etc.	2		-2	-1.0%		
Health Care Assistants	2		-2	-1.0%		
Care, other	2	2		+0.0%		+0
Patient & Client Care	4	2	-2	-43.1%		+0

Sunbeam House Services

Aug 2021 (Dec 2020 figure: 450)	WTE Jul 2021	WTE Aug 2021	WTE change since Jul 21	% change since Jul 21	WTE change since Dec 20	WTE change since Aug 20
Overall	478	483	+5	+1.1%	+33	+38
Nurse/ Midwife Manager	5	5		+0.0%	+1	+2
Staff Nurse/ Staff Midwife	30	32	+2	+0.1%	-0	+1
Nursing & Midwifery	35	37	+2	+5.0%	+1	+3
Therapy Professions	3	3		+0.0%	+1	+2
Social Care	212	216	+3	+0.0%	+21	+40
Social Workers	3	3		+0.0%	+1	+2
Psychologists				-1.0%		-2
H&SC, Other				-1.0%		
Health & Social Care Professionals	219	222	+3	+1.6%	+23	+42
Management (VIII & above)	9	11	+2	+0.2%	+2	+2
Administrative/ Supervisory (V to VII)	11	11		+0.0%	+2	+0
Clerical (III & IV)	24	23	-2	-0.1%	-2	-12
Management & Administrative	44	44	+0	+0.6%	+2	-10
Support	6	5	-0	-0.1%	-2	-23
Maintenance/ Technical	1	1		+0.0%	+1	
General Support	7	6	-0	-6.0%	-1	-23
Health Care Assistants	71	71	+1	+0.0%	+6	+14
Care, other	102	102	-1	-0.0%	+3	+11
Patient & Client Care	173	173	+0	+0.1%	+9	+25

CHO 6 Employment by Grade Group & Staff Category: August 2021

Aug 2021 (Dec 2020 figure: 3,465)	WTE Jul 2021	WTE Aug 2021	WTE change since Jul 21	% change since Jul 21	WTE change since Dec 20	WTE change since Aug 20
Overall	3,522	3,548	+26	+0.7%	+83	+152
Consultant Dentistry	6	6	-0	-0.0%	-0	-0
Consultant Medicine	1	1				
Consultant Psychiatry	43	42	-1	-1.8%	-1	+1
Consultant Radiology	1	1				
Consultants	51	51	-1	-1.5%	-1	+1
Registrar	39	48	+9	+23.1%	+14	+14
Senior Registrar	10	11	+1	+6.8%	+2	+3
Specialist Registrar	1	1				
Registrars	50	60	+10	+19.4%	+16	+18
Senior House Officer	18	18	+0	+0.1%	-1	-2
SHO/ Interns	18	18	+0	+0.1%	-1	-2
Dentists	27	27	+0	+0.5%	+2	+1
Other Medical	18	18	-0	-1.4%	-2	-5
Medical/ Dental, other	45	45	-0	-0.2%	+0	-4
Medical & Dental	165	173	+9	+5.4%	+10	+13
Clinical Nurse/ Midwife Manager	161	163	+2	+1.3%	+4	+2
Director Nursing/Midwifery, Assistant	29	28	-1	-3.4%	-6	-8
Director of Nursing/Midwifery	14	15	+0	+3.5%	+1	+1
Nurse/ Midwife Manager	204	205	+2	+0.8%	-0	-4
Advanced Nurse/ Midwife Practitioner	6	6	+1	+14.9%	+1	+4
Clinical Nurse/ Midwife Specialist	19	22	+3	+16.8%	+4	+2
Nurse/ Midwife Specialist & AN/MP	25	29	+4	+16.4%	+5	+6
Staff Nurse [Intellectual Disability]	93	93	-0	-0.4%	+39	+43
Staff Nurse [Psychiatric]	127	126	-1	-0.9%	+1	+5
Staff Nurses [General/ Children's]	336	331	-4	-1.3%	-45	-35
Staff Nurse/ Staff Midwife	555	549	-6	-1.1%	-5	+13
Public Health Nurse	113	115	+2	+1.9%	+3	-2
Nursing/ Midwifery awaiting registration	1	1				+1
Post-registration Nurse/ Midwife Student	4	2	-2	-50.0%	-13	-1
Pre-registration Nurse/ Midwife Intern	3	4	+0	+0.9%	+4	+4
Nursing/ Midwifery Student	8	7	-2	-23.3%	-9	+4
Nursing Education/Clinical	3	3	-0	-6.7%	-0	-1
Nursing/ Midwifery other	3	3	-0	-6.7%	-0	-1
Nursing & Midwifery	908	908	-0	-0.0%	+3	+15
Dietitians	15	15	-0	-0.6%	-1	+2
Occupational Therapists	94	97	+4	+3.8%	+4	+6
Physiotherapists	63	63	+0	+0.3%	+5	+3
Podiatrists & Chiropodists	3	3	+1	+18.6%	-1	
Speech & Language Therapists	67	68	+2	+2.5%	+3	+2
Orthoptists	1	1			+1	+1
Therapy Professions	243	249	+6	+2.4%	+11	+13
Medical Science	17	17	-0	-2.2%	-1	+0
Radiographers	2	2	-1	-26.8%	-1	-1
Health Science/ Diagnostics	19	18	-1	-4.8%	-2	-1
Social Care	402	407	+5	+1.1%	+15	+43
Social Workers	56	56	+0	+0.6%	+2	+2
Psychologists	67	66	-1	-1.6%	-1	+4

Aug 2021 (Dec 2020 figure: 3,465)	WTE Jul 2021	WTE Aug 2021	WTE change since Jul 21	% change since Jul 21	WTE change since Dec 20	WTE change since Aug 20
Overall	3,522	3,548	+26	+0.7%	+83	+152
Pharmacy	6	7	+0	+5.2%	+3	+3
Counsellor Therapists	4	4			-0	+1
Dental Hygienists	4	4			-0	+1
Other Health & Social Care	2	3	+1	+33.3%	+1	+2
Play Therapists/ Specialists	0	0				
H&SC, Other	11	11	+1	+7.1%	+1	+3
Health & Social Care Professionals	804	814	+10	+1.2%	+62	+68
Executive Management	24	27	+3	+11.7%	+4	+4
Senior Management (VIII & GM)	48	48	+1	+1.6%	+3	+2
Management (VIII & above)	72	76	+4	+5.0%	+6	+6
Middle Management (V-VII)	185	185	+1	+0.4%	+19	+16
Other Administrative				-100.0%		
Administrative/ Supervisory (V to VII)	185	185	+1	+0.4%	+19	+16
Clerical (III & IV)	264	256	-8	-3.0%	-4	-5
Management & Administrative	521	517	-4	-0.7%	+42	+17
Catering	25	27	+3	+10.3%	+2	-5
Household Services	121	118	-3	-2.7%	-5	-17
Other Labs & Associated	1	1			-0	-0
Other Support	21	21	+0	+2.3%	+1	-1
Portering	23	24	+1	+2.1%	+1	+1
Support	190	191	+0	+0.1%	-2	-23
Maintenance/ Technical	22	22	-0	-0.5%		+1
General Support	212	213	+0	+0.1%	-1	-22
HCA, Nurse's Aide, etc.	532	537	+5	+0.9%	+12	+24
HCA (Student Nurse/Midwife COVID-19)				-100.0%		-18
Health & Social Care Assistants	14	13	-1	-7.0%	-1	-2
Swabber (COVID-19)	33	41	+8	+23.1%	+14	+41
Health Care Assistants	580	591	+11	+1.9%	+25	+44
Care, other	332	332	+0	+0.0%	+2	+18
Patient & Client Care	912	923	+11	+1.3%	+55	+62

CHO 6 HSE Employment by Grade Group & Staff Category: August 2021

Aug 2021 (Dec 2020 figure: 1,689)	WTE Jul 2021	WTE Aug 2021	WTE change since Jul 21	% change since Jul 21	WTE change since Dec 20	WTE change since Aug 20
Overall	1,737	1,758	+21	+1.2%	+69	+109
Consultant Dentistry	3	3				
Consultant Medicine	1	1				
Consultant Psychiatry	22	21	-1	-3.9%	-1	+0
Consultants	26	25	-1	-3.4%	-1	+0
Registrars	26	36	+10	+40.2%	+9	+10
SHO/ Interns	6	8	+1	+22.8%	+3	+1
Dentists	27	27	+0	+0.5%	+2	+1
Other Medical	17	17	-0	-1.4%	-1	-4
Medical/ Dental, other	44	44	-0	-0.2%	+1	-3
Medical & Dental	102	113	+11	+10.7%	+7	+8
Clinical Nurse/ Midwife Manager	100	101	+1	+0.9%	+0	+0
Director Nursing/Midwifery, Assistant	22	21	-2	-7.4%	-6	-7
Director of Nursing/Midwifery	9	9	+0	+5.7%	+0	+1
Nurse/ Midwife Manager	131	131	-0	-0.2%	-5	-6
Advanced Nurse/ Midwife Practitioner	4	5	+1	+28.6%	+1	+3
Clinical Nurse/ Midwife Specialist	15	17	+2	+11.3%	+4	+2
Nurse/ Midwife Specialist & AN/MP	18	21	+3	+14.5%	+5	+5
Staff Nurse [Intellectual Disability]	9	9	-0	-3.3%	-3	-3
Staff Nurse [Psychiatric]	93	92	-1	-0.9%	-2	+4
Staff Nurses [General/ Children's]	209	204	-5	-2.5%	+6	+13
Staff Nurse/ Staff Midwife	311	305	-6	-2.1%	+0	+13
Public Health Nurse	113	115	+2	+1.9%	+3	-2
Nursing/ Midwifery awaiting registration	1	1				+1
Post-registration Nurse/ Midwife Student	4	2	-2	-50.0%	-13	-1
Pre-registration Nurse/ Midwife Intern	3	4	+0	+0.9%	+4	+4
Nursing/ Midwifery Student	8	7	-2	-23.3%	-9	+4
Nursing/ Midwifery other	3	3	-0	-6.7%	-0	-1
Nursing & Midwifery	585	581	-4	-0.7%	+10	+12
Dietitians	12	12	-0	-2.6%	-2	+1
Occupational Therapists	61	62	+1	+1.4%	+2	+1
Physiotherapists	39	39	+0	+0.4%	+1	-3
Podiatrists & Chiropodists	3	3			-1	-1
Speech & Language Therapists	48	49	+1	+3.1%	+5	-2
Orthoptists	1	1			+1	+1
Therapy Professions	165	167	+2	+1.3%	+7	-1
Medical Science	17	17	-0	-2.2%	-1	+0
Radiographers	1		-1	-100.0%	-1	-1
Health Science/ Diagnostics	18	17	-1	-5.3%	-2	-1
Social Care	10	10	+0	+1.3%	-1	-0
Social Workers	28	29	+0	+1.1%	+3	+2
Psychologists	44	44	+1	+1.9%	+4	+7
Pharmacy	4	4	+0	+9.5%	+2	+2
Counsellor Therapists	4	4			-0	+1
Dental Hygienists	3	3				+1
Other Health & Social Care	2	2	-0	-10.5%	+1	+1
H&SC, Other	10	9	-0	-2.5%	+1	+2
Health & Social Care Professionals	278	280	+3	+0.9%	+20	+11
Executive Management	9	9	-0	-1.6%	+2	+2
Senior Management (VIII & GM)	29	30	+1	+3.2%	+0	+0

Aug 2021 (Dec 2020 figure: 1,689)	WTE Jul 2021	WTE Aug 2021	WTE change since Jul 21	% change since Jul 21	WTE change since Dec 20	WTE change since Aug 20
Overall	1,737	1,758	+21	+1.2%	+69	+109
Management (VIII & above)	38	38	+1	+2.0%	+2	+2
Administrative/ Supervisory (V to VII)	107	105	-2	-1.8%	+16	+14
Clerical (III & IV)	160	157	-3	-2.0%	+1	+9
Management & Administrative	305	301	-4	-1.4%	+41	+25
Catering	15	16	+2	+10.8%	+2	+3
Household Services	54	53	-1	-1.9%	-3	-1
Other Labs & Associated	1	1			-0	-0
Other Support	1	1				
Portering	12	12	+0	+1.2%	+1	+1
Support	83	83	+1	+0.9%	+1	+2
Maintenance/ Technical	2	2	-0	-5.2%		
General Support	85	85	+1	+0.7%	-3	+2
HCA, Nurse's Aide, etc.	272	278	+6	+2.2%	+5	+12
HCA (Student Nurse/Midwife COVID-19)				-100.0%		-18
Health & Social Care Assistants	8	7	-1	-13.3%	-0	-1
Swabber (COVID-19)	33	41	+8	+23.1%	+14	+41
Health Care Assistants	313	326	+13	+4.0%	+19	+33
Care, other	69	72	+3	+4.3%	+12	+18
Patient & Client Care	382	398	+15	+4.1%	+77	+51

Employment by WTE, Headcount, Gender, Full-Time /Part-Time etc.: Aug 2021

CHO 6	WTE	Headcount	WTE: no.	% Male	% female	Male WTE: no.	Female WTE: no.	% Total Perm	% Male Perm	% Female Perm	% Total Full Time	% Total Part Time	% Male FT	% Female FT
Overall	3,548	4,113	1.16	21.5%	78.5%	1.09	1.18	86.2%	84.7%	86.7%	72.9%	27.1%	87.5%	68.9%
Consultant Dentistry	6	8	1.27	50.0%	50.0%	1.25	1.29	100.0%	100.0%	100.0%	62.5%	37.5%	75.0%	50.0%
Consultant Medicine	1	1	1.00		100.0%		1.00	100.0%	100.0%	100.0%	100.0%	0.0%		100.0%
Consultant Psychiatry	42	46	1.09	43.5%	56.5%	1.03	1.14	73.9%	73.9%	69.2%	82.6%	17.4%	95.0%	73.1%
Consultant Radiology	1	1	1.00	100.0%		1.00		100.0%	100.0%		100.0%	0.0%	100.0%	
Consultants	51	56	1.11	44.6%	55.4%	1.06	1.15	78.6%	84.0%	74.2%	80.4%	19.6%	92.0%	71.0%
Registrar	48	49	1.02	24.5%	75.5%	1.00	1.03	4.1%	4.1%	2.7%	95.9%	4.1%	100.0%	94.6%
Senior Registrar	11	11	1.04	27.3%	72.7%	1.00	1.06	18.2%	18.2%	25.0%	90.9%	9.1%	100.0%	87.5%
Specialist Registrar	1	1	1.00		100.0%		1.00	100.0%	100.0%	100.0%	100.0%	0.0%		100.0%
Registrars	60	61	1.02	24.6%	75.4%	1.00	1.03	8.2%	6.7%	8.7%	95.1%	4.9%	100.0%	93.5%
SHO/ Interns	18	25	1.37	32.0%	68.0%	1.52	1.31	0.0%	0.0%	0.0%	100.0%	0.0%	100.0%	100.0%
Dentists	27	38	1.41	23.7%	76.3%	1.48	1.39	92.1%	92.1%	89.7%	44.7%	55.3%	44.4%	44.8%
Other Medical	18	27	1.49	11.1%	88.9%	1.89	1.45	74.1%	74.1%	79.2%	40.7%	59.3%	33.3%	41.7%
Medical/ Dental, other	45	65	1.44	18.5%	81.5%	1.56	1.42	84.6%	83.3%	84.9%	43.1%	56.9%	41.7%	43.4%
Medical & Dental	173	207	1.19	29.0%	71.0%	1.16	1.21	50.2%	53.3%	49.0%	75.4%	24.6%	85.0%	71.4%
Clinical Nurse/ Midwife Manager	163	170	1.05	21.8%	78.2%	1.00	1.06	92.9%	92.9%	91.7%	92.4%	7.6%	100.0%	90.2%
Director Nursing/Midwifery, Assistant	28	31	1.10	29.0%	71.0%	1.13	1.09	96.8%	96.8%	95.5%	87.1%	12.9%	100.0%	81.8%
Director of Nursing/Midwifery	15	16	1.09	18.8%	81.3%	1.00	1.12	93.8%	93.8%	92.3%	93.8%	6.3%	100.0%	92.3%
Nurse/ Midwife Manager	205	217	1.06	22.6%	77.4%	1.02	1.07	93.5%	98.0%	92.3%	91.7%	8.3%	100.0%	89.3%
Advanced Nurse/ Midwife Practitioner	6	7	1.11		100.0%		1.11	100.0%	100.0%	100.0%	85.7%	14.3%		85.7%
Clinical Nurse/ Midwife Specialist	22	25	1.12	24.0%	76.0%	1.02	1.16	92.0%	92.0%	89.5%	76.0%	24.0%	100.0%	68.4%
Nurse/ Midwife Specialist & AN/MP	29	32	1.12	18.8%	81.3%	1.02	1.14	93.8%	100.0%	92.3%	78.1%	21.9%	100.0%	73.1%
Staff Nurse [Intellectual Disability]	93	103	1.11	14.6%	85.4%	1.06	1.12	98.1%	98.1%	97.7%	70.9%	29.1%	66.7%	71.6%
Staff Nurse [Psychiatric]	126	135	1.08	23.7%	76.3%	1.05	1.08	93.3%	93.3%	93.2%	89.6%	10.4%	90.6%	89.3%
Staff Nurses [General/ Children's]	331	376	1.14	13.3%	86.7%	1.06	1.15	85.4%	85.4%	85.0%	74.5%	25.5%	90.0%	72.1%
Staff Nurse/ Staff Midwife	549	614	1.12	15.8%	84.2%	1.06	1.13	89.3%	91.8%	88.8%	77.2%	22.8%	86.6%	75.4%
Public Health Nurse	115	138	1.20	0.7%	99.3%	1.11	1.20	92.0%	100.0%	92.0%	71.0%	29.0%	100.0%	70.8%
Nursing/ Midwifery awaiting registration	1	1	1.00		100.0%		1.00	100.0%	100.0%	100.0%	100.0%	0.0%		100.0%
Post-registration Nurse/ Midwife Student	2	2	1.00		100.0%		1.00	0.0%	0.0%	0.0%	100.0%	0.0%		100.0%

Pre-registration Nurse/ Midwife Intern	4	7	2.00		100.0%		2.00	0.0%	0.0%	0.0%	100.0%	0.0%		100.0%
Nursing/ Midwifery Student	7	10	1.54		100.0%		1.54	10.0%		10.0%	100.0%	0.0%		100.0%
Nursing/ Midwifery other	3	3	1.07	33.3%	66.7%	1.00	1.11	100.0%	100.0%	100.0%	100.0%	0.0%	100.0%	100.0%
Nursing & Midwifery	908	1,014	1.12	15.2%	84.8%	1.04	1.13	89.9%	94.2%	89.2%	79.8%	20.2%	91.6%	77.7%
Dietitians	15	20	1.33		100.0%		1.33	90.0%	90.0%	90.0%	55.0%	45.0%		55.0%
Occupational Therapists	97	118	1.21	8.5%	91.5%	1.35	1.20	82.2%	82.2%	81.5%	72.9%	27.1%	80.0%	72.2%
Physiotherapists	63	76	1.20	17.1%	82.9%	1.10	1.22	85.5%	85.5%	88.9%	56.6%	43.4%	76.9%	52.4%
Podiatrists & Chiropodists	3	5	1.57	20.0%	80.0%	2.00	1.49	80.0%	80.0%	75.0%	40.0%	60.0%	0.0%	50.0%
Speech & Language Therapists	68	82	1.20	1.2%	98.8%	1.00	1.20	96.3%	96.3%	96.3%	67.1%	32.9%	100.0%	66.7%
Orthoptists	1	1	1.00		100.0%		1.00	100.0%	100.0%	100.0%	100.0%	0.0%		100.0%
Therapy Professions	249	302	1.21	8.3%	91.7%	1.21	1.22	87.4%	80.0%	88.1%	65.6%	34.4%	76.0%	64.6%
Medical Science	17	18	1.07	27.8%	72.2%	1.11	1.06	83.3%	83.3%	84.6%	88.9%	11.1%	80.0%	92.3%
Radiographers	2	3	2.00	33.3%	66.7%	2.00	2.00	100.0%	100.0%	100.0%	100.0%	0.0%	100.0%	100.0%
Health Science/ Diagnostics	18	21	1.15	28.6%	71.4%	1.20	1.13	85.7%	83.3%	86.7%	90.5%	9.5%	83.3%	93.3%
Social Care	407	467	1.15	21.8%	78.2%	1.05	1.18	92.3%	88.2%	93.4%	62.1%	37.9%	74.5%	58.6%
Social Workers	56	65	1.15	10.8%	89.2%	1.20	1.15	92.3%	100.0%	91.4%	83.1%	16.9%	85.7%	82.8%
Psychologists	66	83	1.26	19.3%	80.7%	1.16	1.28	89.2%	81.3%	91.0%	65.1%	34.9%	93.8%	58.2%
Pharmacy	7	9	1.35	11.1%	88.9%	2.50	1.28	88.9%	100.0%	87.5%	77.8%	22.2%	100.0%	75.0%
Counsellor Therapists	4	4	1.00	25.0%	75.0%	1.00	1.00	100.0%	100.0%	100.0%	100.0%	0.0%	100.0%	100.0%
Dental Hygienists	4	5	1.28		100.0%		1.28	100.0%	100.0%	100.0%	40.0%	60.0%		40.0%
Other Health & Social Care	3	4	1.32	25.0%	75.0%	1.00	1.47	75.0%	75.0%	66.7%	50.0%	50.0%	100.0%	33.3%
Play Therapists/ Specialists	0	1	2.08		100.0%		2.08	100.0%	100.0%	100.0%	0.0%	100.0%		0.0%
H&SC, Other	11	14	1.23	14.3%	85.7%	1.00	1.27	92.9%	100.0%	91.7%	57.1%	42.9%	100.0%	50.0%
Health & Social Care	814	961	1.18	16.5%	83.5%	1.10	1.20	90.3%	86.8%	91.0%	65.6%	34.4%	78.0%	63.1%
Executive Management	27	28	1.02	50.0%	50.0%	1.04	1.01	100.0%	100.0%	100.0%	100.0%	0.0%	100.0%	100.0%
Senior Management (VIII & GM)	48	52	1.07	30.8%	69.2%	1.15	1.04	94.2%	94.2%	94.4%	100.0%	0.0%	100.0%	100.0%
Management (VIII & above)	76	80	1.06	37.5%	62.5%	1.10	1.03	96.3%	96.7%	96.0%	100.0%	0.0%	100.0%	100.0%
Administrative/ Supervisory (V to VII)	185	210	1.13	25.7%	74.3%	1.14	1.13	94.8%	92.6%	95.5%	86.7%	13.3%	96.3%	83.3%
Clerical (III & IV)	256	311	1.21	14.1%	85.9%	1.12	1.23	73.6%	68.2%	74.5%	68.5%	31.5%	88.6%	65.2%
Management & Administrative	517	601	1.16	21.3%	78.7%	1.12	1.17	84.0%	85.2%	83.7%	79.0%	21.0%	94.5%	74.8%
Catering	27	29	1.07	41.4%	58.6%	1.02	1.10	82.8%	82.8%	88.2%	79.3%	20.7%	100.0%	64.7%
Household Services	118	139	1.18	31.7%	68.3%	1.07	1.24	80.6%	80.6%	82.1%	66.2%	33.8%	86.4%	56.8%
Other Labs & Associated	1	1	1.11		100.0%		1.11	100.0%	100.0%	100.0%	100.0%	0.0%		100.0%
Other Support	21	29	1.38	51.7%	48.3%	1.33	1.44	93.1%	93.1%	92.9%	75.9%	24.1%	86.7%	64.3%
Portering	24	28	1.18	100.0%		1.18		85.7%	85.7%		89.3%	10.7%	89.3%	

Support	191	226	1.19	43.8%	56.2%	1.13	1.24	83.2%	81.8%	84.3%	72.1%	27.9%	88.9%	59.1%
Maintenance/ Technical	22	24	1.09	100.0%		1.09		100.0%	100.0%	#DIV/0	100.0%	0.0%	100.0%	
General Support	213	250	1.18	49.2%	50.8%	1.12	1.24	84.8%	85.4%	84.3%	74.8%	25.2%	91.1%	59.1%
HCA, Nurse's Aide, etc.	537	599	1.12	27.2%	72.8%	1.05	1.14	89.3%	89.3%	88.5%	68.9%	31.1%	90.2%	61.0%
Health & Social Care Assistants	13	15	1.12	26.7%	73.3%	1.20	1.09	53.3%	53.3%	45.5%	80.0%	20.0%	75.0%	81.8%
Swabber (COVID-19)	41	48	1.17	43.8%	56.3%	1.11	1.23	0.0%	0.0%	0.0%	72.9%	27.1%	85.7%	63.0%
Health Care Assistants	591	662	1.12	28.4%	71.6%	1.06	1.15	82.0%	80.9%	82.5%	69.5%	30.5%	89.4%	61.6%
Care, other	332	418	1.26	17.7%	82.3%	1.09	1.30	96.4%	93.2%	97.1%	67.2%	32.8%	78.4%	64.8%
Patient & Client Care	923	1,080	1.17	24.3%	75.7%	1.07	1.21	87.6%	84.4%	88.6%	68.6%	31.4%	86.3%	63.0%

Employment by WTE, Headcount, Gender, Full-Time /Part-Time etc.: Aug 2021

CHO 6	WTE	Headcount	WTE: no.	% Male	% female	Male WTE: no.	Female WTE: no.	% Total Perm	% Male Perm	% Female Perm	% Total Full Time	% Total Part Time	% Male FT	% Female FT
Overall	3,548	4,113	1.16	21.5%	78.5%	1.09	1.18	86.2%	84.7%	86.7%	72.9%	27.1%	87.5%	68.9%
Community Health & Wellbeing	9	10	1.14	10.0%	90.0%	1.00	1.15	100.0%	100.0%	100.0%	80.0%	20.0%	100.0%	100.0%
Mental Health	633	706	1.12	29.3%	70.7%	1.07	1.14	81.7%	81.7%	82.2%	84.3%	15.7%	91.3%	91.3%
Primary Care	871	1,107	1.27	14.5%	85.5%	1.24	1.28	76.9%	76.9%	78.2%	69.5%	30.5%	90.6%	90.6%
Social Care	2,036	2,290	1.12	22.6%	77.4%	1.06	1.15	92.1%	92.1%	92.4%	71.0%	29.0%	84.9%	84.9%

CHO 6 Skills Mix by Staff Grouping: August 2021

Aug 2021 (Dec 2019 figure: 3,378)	WTE Dec 2016	WTE Dec 2017	WTE Dec 2018	WTE Dec 2019	WTE Dec 2020	WTE Jul 2021	WTE Aug 2021
Overall	3,940	3,357	3,368	3,378	3,465	3,522	3,548
Consultant Dentistry	4.2%	4.7%	4.6%	4.4%	3.9%	3.8%	3.6%
Consultant Medicine	0.6%	0.6%	0.6%	0.6%	0.6%	0.6%	0.6%
Consultant, Other	0.6%						
Consultant Paediatrics	0.1%	0.1%					
Consultant Psychiatry	18.5%	18.8%	20.0%	23.8%	27.0%	26.1%	24.3%
Consultant Radiology	0.6%	0.6%	0.6%	0.6%	0.6%	0.6%	0.6%
Consultants	24.7%	24.7%	25.8%	29.5%	32.2%	31.2%	29.1%
Registrar	25.2%	24.4%	21.7%	24.6%	21.4%	23.7%	27.7%
Senior Registrar	4.4%	4.1%	5.7%	4.6%	5.4%	6.0%	6.1%
Specialist Registrar	0.6%	0.6%	0.6%	0.6%	0.6%	0.6%	0.6%
Registrars	30.2%	29.1%	28.0%	29.8%	27.4%	30.3%	34.4%
SHO/ Interns	12.3%	12.9%	13.5%	9.5%	12.2%	11.1%	10.5%
Dentists	18.0%	17.7%	16.3%	16.2%	15.5%	16.3%	15.5%
Other Medical	14.8%	15.6%	16.4%	15.1%	12.6%	11.2%	10.5%
Medical/ Dental, other	32.8%	33.3%	32.7%	31.3%	28.2%	27.5%	26.0%
Medical & Dental	4.0%	4.9%	4.9%	4.8%	4.7%	100.0%	4.9%
Clinical Nurse/ Midwife Manager	18.4%	17.2%	17.7%	17.8%	17.3%	17.7%	17.9%
Director Nursing/Midwifery, Assistant	2.9%	3.2%	3.9%	3.9%	3.7%	3.2%	3.1%
Director of Nursing/Midwifery	2.0%	1.7%	1.5%	1.6%	1.5%	1.6%	1.6%
Nurse/ Midwife Manager	23.3%	22.0%	23.1%	23.3%	22.5%	22.4%	22.6%
Advanced Nurse/ Midwife Practitioner	0.0%	0.1%	0.1%	0.1%	0.6%	0.6%	0.7%
Clinical Nurse/ Midwife Specialist	1.9%	2.3%	2.1%	2.2%	2.0%	2.1%	2.5%
Nurse/ Midwife Specialist & AN/MP	2.0%	2.3%	2.1%	2.3%	2.6%	2.7%	3.2%
Staff Nurse [Intellectual Disability]	6.7%	6.7%	6.4%	5.5%	5.8%	10.3%	10.2%
Staff Nurse [Psychiatric]	12.2%	12.8%	12.2%	14.7%	13.6%	14.0%	13.8%
Staff Nurses [General/ Children's]	42.7%	40.4%	41.6%	39.7%	41.1%	36.9%	36.5%
Staff Nurse/ Staff Midwife	61.7%	60.0%	60.2%	59.9%	60.6%	61.2%	60.5%
Public Health Nurse	11.4%	13.4%	13.1%	12.9%	12.2%	12.4%	12.7%
Nursing/ Midwifery awaiting registration					0.1%	0.1%	0.1%
Post-registration Nurse/ Midwife Student	1.4%	2.1%	1.2%	1.5%	1.6%	0.4%	0.2%
Pre-registration Nurse/ Midwife Intern						0.4%	0.4%
Nursing/ Midwifery Student	1.4%	2.1%	1.2%	1.5%	1.7%	0.9%	0.7%
Nursing/ Midwifery other	0.2%	0.2%	0.3%	0.2%	0.3%	0.3%	0.3%
Nursing & Midwifery	26.3%	27.3%	26.9%	26.8%	26.1%	100.0%	25.6%
Dietitians	1.2%	2.1%	2.1%	1.9%	2.1%	1.9%	1.9%
Occupational Therapists	9.6%	11.9%	12.4%	12.2%	11.9%	11.7%	12.0%
Physiotherapists	6.7%	7.9%	8.4%	8.0%	7.5%	7.9%	7.8%
Podiatrists & Chiropodists	0.2%	0.5%	0.3%	0.2%	0.5%	0.3%	0.4%
Speech & Language Therapists	7.6%	8.9%	10.2%	9.3%	8.3%	8.3%	8.4%
Orthoptists						0.1%	0.1%
Therapy Professions	25.3%	31.3%	33.5%	31.7%	30.3%	30.2%	30.5%
Medical Science	1.9%	2.7%	2.8%	2.1%	2.2%	2.1%	2.1%
Radiographers	0.4%	0.5%	0.5%	0.3%	0.3%	0.3%	0.2%
Health Science/ Diagnostics	2.3%	3.1%	3.2%	2.4%	2.6%	2.4%	2.2%
Social Care	57.6%	47.9%	46.3%	48.4%	50.0%	50.0%	50.0%
Social Workers	6.6%	7.6%	7.7%	7.6%	6.9%	7.0%	6.9%
Psychologists	6.6%	8.0%	7.6%	7.5%	8.5%	8.3%	8.1%
Pharmacy	0.3%	0.5%	0.5%	0.5%	0.5%	0.8%	0.8%
Counsellor Therapists	0.6%	0.9%	0.5%	0.6%	0.5%	0.5%	0.5%
Dental Hygienists	0.4%	0.5%	0.5%	0.5%	0.5%	0.5%	0.5%
Other Health & Social Care	0.1%	0.2%	0.1%	0.8%	0.2%	0.3%	0.4%

Aug 2021 (Dec 2019 figure: 3,378)	WTE Dec 2016	WTE Dec 2017	WTE Dec 2018	WTE Dec 2019	WTE Dec 2020	WTE Jul 2021	WTE Aug 2021
Overall	3,940	3,357	3,368	3,378	3,465	3,522	3,548
Play Therapists/ Specialists	0.2%	0.1%	0.1%	0.1%	0.1%	0.1%	0.1%
H&SC, Other	1.3%	1.7%	1.2%	1.9%	1.3%	1.3%	1.4%
Health & Social Care Professionals	23.8%	22.0%	22.0%	22.3%	21.7%	100.0%	22.9%
Executive Management	4.4%	6.1%	5.1%	4.9%	4.8%	4.7%	5.3%
Senior Management (VIII & GM)	9.7%	9.1%	10.3%	9.3%	9.2%	9.2%	9.4%
Management (VIII & above)	14.1%	15.2%	15.4%	14.3%	14.0%	13.9%	14.7%
Middle Management (V-VII)	29.7%	32.8%	35.8%	35.6%	33.5%	35.4%	35.8%
Other Administrative	0.2%	0.2%	0.2%	0.2%			
Administrative/ Supervisory (V to VII)	29.9%	33.0%	36.0%	35.8%	33.5%	35.4%	35.8%
Clerical (III & IV)	56.0%	51.8%	48.6%	49.9%	52.5%	50.7%	49.5%
Management & Administrative	11.7%	13.5%	14.1%	14.1%	13.7%	100.0%	14.6%
Catering	13.1%	11.6%	12.7%	12.1%	11.9%	11.6%	12.8%
Household Services	57.1%	58.8%	59.3%	56.7%	57.2%	56.9%	55.4%
Other Labs & Associated	0.3%	0.4%	0.4%	0.5%	0.5%	0.4%	0.4%
Other Support	9.7%	9.1%	8.3%	9.1%	9.6%	9.7%	9.9%
Portering	8.7%	11.2%	10.8%	11.0%	10.6%	11.0%	11.2%
Support	89.0%	91.2%	91.5%	89.4%	89.7%	89.6%	89.6%
Maintenance/ Technical	11.0%	8.8%	8.5%	10.6%	10.3%	10.4%	10.4%
General Support	7.4%	7.1%	6.6%	6.3%	6.2%	100.0%	6.0%
HCA, Nurse's Aide, etc.	58.9%	61.3%	60.3%	60.7%	58.5%	58.3%	58.1%
Health & Social Care Assistants	1.0%	1.2%	1.8%	1.3%	1.6%	1.6%	1.5%
Swabber (COVID-19)					3.0%	3.7%	4.4%
Health Care Assistants	59.9%	62.4%	62.1%	62.0%	63.1%	63.6%	64.0%
Care, other	40.1%	37.6%	37.9%	38.0%	36.9%	36.4%	36.0%
Patient & Client Care	26.7%	25.2%	25.4%	25.7%	25.1%	100.0%	26.0%
Total	100 %	100 %	100 %	100 %	100%	100 %	100 %

CHO 6 Skills Mix by Care Group: August 2021

Aug 2021 (Dec 2019 figure: 593)	WTE Dec 2016	WTE Dec 2017	WTE Dec 2018	WTE Dec 2019	WTE Dec 2020	WTE Jul 2021	WTE Aug 2021
Mental Health	559	564	573	593	626	630	633
Consultants	47.3%	45.1%	49.0%	53.9%	55.6%	53.6%	51.9%
Registrar	21.2%	24.9%	13.4%	22.9%	15.9%	20.2%	21.3%
Senior Registrar	10.4%	6.0%	11.8%	9.7%	10.5%	11.9%	12.6%
Registrars	31.6%	30.9%	25.2%	32.6%	26.4%	32.1%	33.9%
SHO/ Interns	21.1%	23.4%	25.1%	13.5%	18.0%	14.4%	14.2%
Medical/ Dental, other		0.6%	0.6%				
Medical & Dental	10.1%	11.1%	11.1%	11.3%	10.7%	11.9%	11.9%
Clinical Nurse/ Midwife Manager	26.1%	23.6%	26.8%	25.8%	23.8%	22.7%	22.7%
Director Nursing/Midwifery, Assistant	5.4%	5.6%	5.9%	6.0%	5.8%	5.0%	4.9%
Director of Nursing/Midwifery	1.7%	1.7%	1.3%	1.3%	1.2%	1.2%	1.2%
Nurse/ Midwife Manager	33.1%	31.0%	33.9%	33.1%	30.8%	28.9%	28.8%
Advanced Nurse/ Midwife Practitioner	0.2%	0.2%	0.2%	0.3%	1.8%	1.7%	1.7%
Clinical Nurse/ Midwife Specialist	5.9%	6.4%	5.0%	5.6%	6.0%	5.8%	6.7%
Nurse/ Midwife Specialist & AN/MP	6.1%	6.6%	5.2%	5.9%	7.8%	7.5%	8.4%
Staff Nurse [Intellectual Disability]			0.4%	0.4%	0.8%		
Staff Nurse [Psychiatric]	50.1%	49.3%	44.6%	49.2%	48.0%	48.5%	47.8%
Staff Nurses [General/ Children's]	9.9%	12.2%	14.7%	10.5%	11.4%	12.6%	12.5%
Staff Nurse/ Staff Midwife	59.9%	61.5%	59.7%	60.2%	60.3%	61.0%	60.3%
Nursing/ Midwifery awaiting registration					0.4%	0.4%	0.4%
Pre-registration Nurse/ Midwife Intern						1.3%	1.4%
Nursing/ Midwifery Student					0.4%	1.7%	1.7%
Nursing Education/Clinical	0.9%	0.9%	1.2%	0.9%	0.8%	0.8%	0.8%
Nursing/ Midwifery other	0.9%	0.9%	1.2%	0.9%	0.8%	0.8%	0.8%
Nursing & Midwifery	43.3%	40.8%	41.5%	39.0%	36.9%	40.8%	40.8%
Dietitians		1.1%	1.7%	1.5%	1.1%	0.5%	0.6%
Occupational Therapists	16.3%	17.7%	17.0%	19.5%	18.8%	20.3%	21.2%
Physiotherapists	0.5%	0.4%	0.4%	0.9%	1.0%	1.0%	1.0%
Podiatrists & Chiropodists	1.0%	0.5%	0.4%				
Speech & Language Therapists	7.6%	9.0%	11.7%	11.3%	8.1%	7.9%	7.7%
Therapy Professions	25.4%	28.7%	31.2%	33.2%	28.8%	29.7%	30.5%
Social Care	28.3%	26.8%	26.0%	20.0%	21.1%	19.8%	19.1%
Social Workers	25.6%	22.8%	25.5%	23.0%	22.2%	22.9%	22.7%
Psychologists	14.4%	17.8%	13.6%	17.0%	24.0%	24.2%	23.6%
Counsellor Therapists	4.5%	3.5%	3.2%	3.0%	3.1%	3.1%	3.0%
Other Health & Social Care	0.5%			3.4%	0.4%		0.7%
Play Therapists/ Specialists	1.4%	0.4%	0.4%	0.4%	0.4%	0.4%	0.4%
H&SC, Other	6.4%	3.9%	3.6%	6.7%	3.9%	3.4%	4.1%
Health & Social Care Professionals	19.7%	20.3%	20.0%	21.9%	20.7%	21.3%	21.3%
Management (VIII & above)	4.6%	6.0%	3.4%	4.2%	4.3%	4.8%	4.8%
Administrative/ Supervisory (V to VII)	31.3%	36.6%	44.8%	37.2%	34.7%	34.5%	37.2%
Clerical (III & IV)	64.0%	57.5%	51.8%	58.6%	61.0%	60.7%	58.0%
Management & Administrative	10.0%	10.5%	10.2%	12.1%	11.5%	9.9%	9.9%
Support	89.2%	90.6%	90.1%	86.0%	86.6%	86.1%	85.9%
Maintenance/ Technical	10.8%	9.4%	9.9%	14.0%	13.4%	13.9%	14.1%
General Support	8.9%	9.4%	8.6%	7.1%	6.8%	6.7%	6.7%
HCA, Nurse's Aide, etc.	90.2%	92.1%	89.2%	89.5%	89.2%	90.5%	90.1%
Health Care Assistants	90.2%	92.1%	89.2%	89.5%	89.2%	90.5%	90.1%
Care, other	9.8%	7.9%	10.8%	10.5%	10.8%	9.5%	9.9%
Patient & Client Care	8.0%	7.8%	8.7%	8.6%	8.1%	9.4%	9.4%
Total	100 %	100 %	100 %	100 %	100 %	100 %	100 %

Aug 2021 (Dec 2019 figure: 765)	WTE Dec 2016	WTE Dec 2017	WTE Dec 2018	WTE Dec 2019	WTE Dec 2020	WTE Jul 2021	WTE Aug 2021
Primary Care	768	795	833	765	811	857	871
Consultant Dentistry	7.4%	8.6%	8.3%	8.2%	7.9%	7.8%	7.1%
Consultant Medicine	1.1%	1.1%	1.1%	1.1%	1.3%	1.2%	1.1%
Consultant, Other	1.1%						
Consultant Radiology	1.1%	1.1%	1.1%	1.1%	1.3%	1.2%	1.1%
Consultants	10.7%	10.8%	10.5%	10.5%	10.4%	10.3%	9.3%
Registrars	31.0%	28.3%	30.8%	29.6%	29.8%	29.2%	35.9%
SHO/ Interns	7.2%	7.2%	7.0%	7.4%	8.2%	8.0%	7.3%
Dentists	31.7%	32.3%	29.2%	30.1%	31.1%	33.2%	30.2%
Other Medical	19.3%	21.4%	22.5%	22.4%	20.5%	19.3%	17.3%
Medical/ Dental, other	51.0%	53.7%	51.7%	52.5%	51.6%	52.5%	47.5%
Medical & Dental	11.7%	11.3%	11.1%	11.5%	10.8%	10.2%	10.2%
Clinical Nurse/ Midwife Manager	1.8%	2.5%	2.6%	3.0%	2.6%	3.0%	3.2%
Director Nursing/Midwifery, Assistant	5.0%	4.8%	6.4%	6.0%	5.6%	5.1%	4.7%
Director of Nursing/Midwifery	2.3%	2.1%	1.7%	1.6%	2.6%	1.9%	2.2%
Nurse/ Midwife Manager	9.1%	9.4%	10.7%	10.6%	10.8%	10.0%	10.1%
Nurse/ Midwife Specialist & AN/MP	2.0%	2.9%	2.9%	2.8%	1.7%	2.0%	2.5%
Staff Nurse/ Staff Midwife	22.3%	19.8%	24.2%	24.6%	26.3%	31.7%	29.7%
Public Health Nurse	59.0%	58.6%	57.0%	55.5%	53.6%	53.9%	56.3%
Nursing/ Midwifery Student	7.6%	9.2%	5.3%	6.4%	7.1%	1.9%	1.0%
Nursing/ Midwifery other					0.5%	0.5%	0.4%
Nursing & Midwifery	25.8%	26.4%	24.9%	27.5%	25.9%	23.4%	23.4%
Dietitians	5.0%	6.3%	5.8%	6.4%	7.5%	7.0%	6.5%
Occupational Therapists	20.5%	20.3%	21.4%	21.3%	19.7%	19.5%	19.4%
Physiotherapists	20.0%	19.1%	19.0%	20.8%	20.7%	20.3%	20.0%
Podiatrists & Chiropodists		0.5%	0.5%	0.7%	1.9%	1.5%	1.5%
Speech & Language Therapists	21.3%	19.5%	19.2%	18.4%	18.4%	17.9%	18.1%
Orthoptists						0.6%	0.6%
Therapy Professions	66.9%	65.8%	65.9%	67.5%	68.1%	66.9%	66.1%
Medical Science	10.5%	10.7%	10.6%	10.2%	10.9%	10.3%	9.7%
Radiographers	2.0%	1.9%	1.8%	1.6%	1.5%	1.2%	0.9%
Health Science/ Diagnostics	12.5%	12.6%	12.5%	11.8%	12.3%	11.5%	10.6%
Social Care	0.8%	0.8%	1.6%	2.4%	1.7%	1.8%	1.7%
Social Workers	3.7%	4.1%	3.4%	3.1%	2.7%	3.2%	5.3%
Psychologists	13.1%	13.4%	14.1%	12.2%	12.2%	12.5%	12.1%
Pharmacy		0.5%	0.5%	0.5%	0.6%	1.2%	1.4%
Counsellor Therapists	0.6%	0.5%					
Dental Hygienists	2.4%	2.1%	2.0%	2.5%	2.4%	2.3%	2.3%
Other Health & Social Care						0.6%	0.6%
H&SC, Other	3.0%	2.7%	2.0%	2.5%	2.4%	2.9%	2.8%
Health & Social Care Professionals	22.4%	23.1%	23.0%	20.1%	18.9%	19.8%	19.8%
Executive Management	4.3%	4.2%	3.7%	3.6%	3.4%	3.8%	3.8%
Senior Management (VIII & GM)	7.4%	10.7%	12.5%	10.8%	10.1%	9.2%	9.7%
Management (VIII & above)	11.7%	14.9%	16.2%	14.3%	13.5%	13.0%	13.5%
Administrative/ Supervisory (V to VII)	25.4%	28.6%	32.9%	32.4%	29.2%	31.2%	30.9%
Clerical (III & IV)	62.9%	56.5%	50.9%	53.3%	57.3%	55.8%	55.6%
Management & Administrative	25.6%	25.5%	27.3%	27.4%	25.9%	28.1%	28.1%
Support	93.6%	93.6%	92.7%	92.2%	92.8%	92.6%	92.7%
Maintenance/ Technical	6.4%	6.4%	7.3%	7.8%	7.2%	7.4%	7.3%
General Support	4.1%	3.9%	3.3%	3.4%	3.2%	3.1%	3.1%
HCA, Nurse's Aide, etc.	2.5%	2.6%	2.3%	4.3%	4.0%	3.8%	3.8%
Health & Social Care Assistants			8.1%	3.9%	6.4%	6.1%	4.9%
Swabber (COVID-19)					24.2%	26.9%	30.7%
Health Care Assistants	2.5%	2.6%	10.5%	8.1%	34.5%	36.8%	39.4%
Care, other	97.5%	97.4%	89.5%	91.9%	65.5%	63.2%	60.6%
Patient & Client Care	10.4%	9.8%	10.3%	10.1%	9.6%	15.4%	15.4%

Aug 2021 (Dec 2019 figure: 765)	WTE Dec 2016	WTE Dec 2017	WTE Dec 2018	WTE Dec 2019	WTE Dec 2020	WTE Jul 2021	WTE Aug 2021
Primary Care	768	795	833	765	811	857	871
Total	100 %	100 %	100 %	100 %	100 %	100 %	100 %

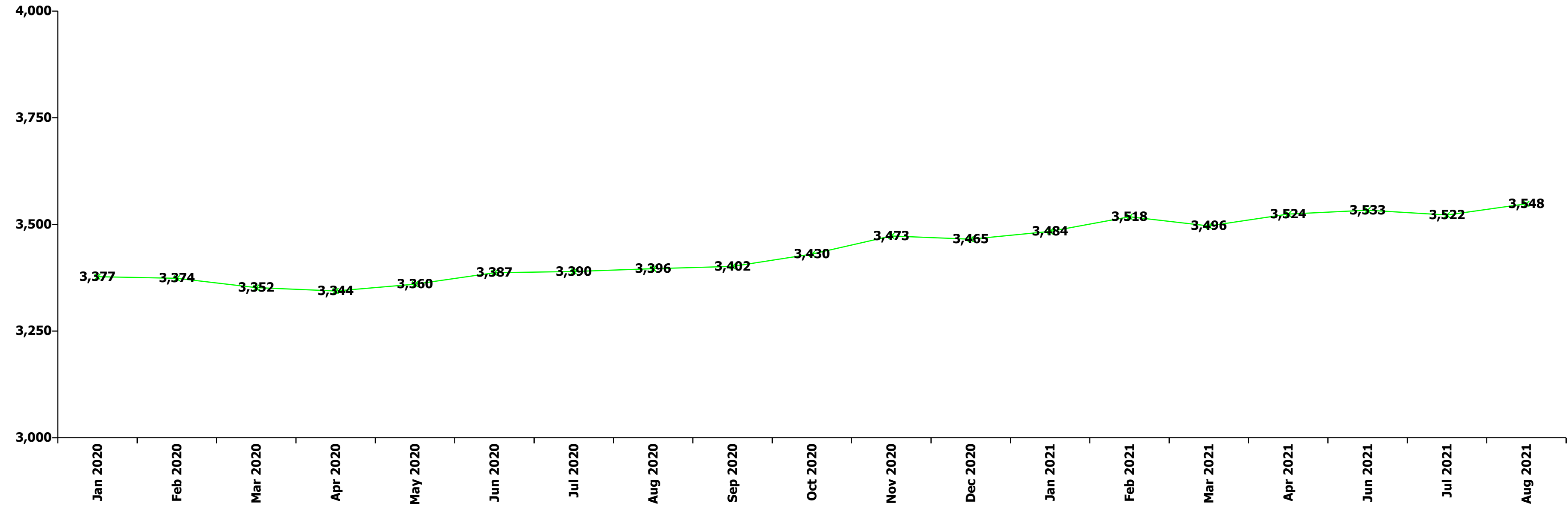
Aug 2021 (Dec 2019 figure: 1,198)	WTE Dec 2016	WTE Dec 2017	WTE Dec 2018	WTE Dec 2019	WTE Dec 2020	WTE Jul 2021	WTE Aug 2021
Disabilities	1,816	1,170	1,155	1,198	1,217	1,230	1,227
Consultant Paediatrics	1.3%	1.3%					
Consultant Psychiatry	38.9%	38.9%	50.0%	75.0%	75.0%	55.9%	60.6%
Consultants	40.2%	40.2%	50.0%	75.0%	75.0%	55.9%	60.6%
Registrars	14.9%	29.9%				7.4%	
SHO/ Interns	14.9%					18.1%	19.2%
Medical/ Dental, other	29.9%	29.9%	50.0%	25.0%	25.0%	18.6%	20.2%
Medical & Dental	0.4%	0.6%	0.3%	0.3%	0.3%	0.4%	0.4%
Clinical Nurse/ Midwife Manager	21.4%	20.7%	18.7%	20.7%	21.7%	23.1%	23.5%
Director Nursing/Midwifery, Assistant	0.6%	0.5%	0.5%	0.5%	0.5%	0.4%	
Director of Nursing/Midwifery	1.8%	1.0%	1.0%	1.6%	1.1%	1.2%	1.2%
Nurse/ Midwife Manager	23.9%	22.1%	20.2%	22.8%	23.4%	24.8%	24.7%
Clinical Nurse/ Midwife Specialist	0.6%						
Nurse/ Midwife Specialist & AN/MP	0.6%						
Staff Nurse [Intellectual Disability]	21.5%	29.7%	29.5%	25.5%	27.6%	51.1%	50.5%
Staff Nurse [Psychiatric]	1.7%	1.7%	2.3%	9.4%	1.6%	1.1%	1.1%
Staff Nurses [General/ Children's]	52.1%	46.5%	48.0%	42.3%	47.4%	23.1%	23.7%
Staff Nurse/ Staff Midwife	75.3%	77.9%	79.8%	77.2%	76.6%	75.2%	75.3%
Public Health Nurse	0.3%						
Nursing & Midwifery	17.9%	17.7%	16.8%	15.9%	15.7%	15.0%	15.0%
Dietitians			0.1%	0.1%	0.1%	0.1%	0.1%
Occupational Therapists	3.4%	3.7%	4.1%	3.7%	4.2%	3.7%	3.7%
Physiotherapists	1.7%	1.5%	1.4%	1.4%	1.3%	1.4%	1.4%
Speech & Language Therapists	3.6%	3.7%	5.2%	5.1%	4.3%	4.8%	4.8%
Therapy Professions	8.7%	9.0%	10.8%	10.3%	9.9%	9.8%	9.9%
Social Care	84.7%	83.7%	82.4%	83.1%	84.3%	84.2%	84.7%
Social Workers	2.6%	2.8%	3.2%	2.8%	2.3%	2.5%	2.3%
Psychologists	3.9%	3.7%	3.5%	3.4%	3.2%	3.2%	2.9%
Counsellor Therapists		0.4%		0.1%			
Other Health & Social Care	0.1%	0.4%	0.2%	0.3%	0.3%	0.3%	0.2%
H&SC, Other	0.1%	0.8%	0.2%	0.5%	0.3%	0.3%	0.2%
Health & Social Care Professionals	33.0%	32.9%	32.5%	33.6%	33.1%	36.4%	36.4%
Executive Management	5.6%	12.4%	9.2%	10.2%	9.3%	8.5%	10.7%
Senior Management (VIII & GM)	17.2%	12.2%	14.3%	12.2%	12.3%	13.4%	12.8%
Management (VIII & above)	22.8%	24.6%	23.5%	22.3%	21.6%	21.9%	23.5%
Administrative/ Supervisory (V to VII)	31.5%	35.2%	35.8%	38.6%	38.6%	39.7%	39.5%
Clerical (III & IV)	45.7%	40.2%	40.7%	39.0%	39.8%	38.4%	37.0%
Management & Administrative	8.8%	11.7%	12.0%	11.5%	11.3%	11.4%	11.4%
Support	84.2%	87.3%	87.7%	77.0%	83.6%	79.1%	78.7%
Maintenance/ Technical	15.8%	12.7%	12.3%	23.0%	16.4%	20.9%	21.3%
General Support	5.2%	2.7%	2.8%	2.5%	2.4%	2.3%	2.3%
HCA, Nurse's Aide, etc.	47.2%	42.6%	42.6%	43.1%	42.8%	43.6%	43.6%
Health Care Assistants	47.2%	42.6%	42.6%	43.1%	42.8%	43.6%	43.6%
Care, other	52.8%	57.4%	57.4%	56.9%	57.2%	56.4%	56.4%
Patient & Client Care	34.7%	34.5%	35.4%	36.2%	35.6%	34.6%	34.6%
Total	100 %	100 %	100 %	100 %	100 %	100 %	100 %

Aug 2021 (Dec 2019 figure: 823)	WTE Dec 2016	WTE Dec 2017	WTE Dec 2018	WTE Dec 2019	WTE Dec 2020	WTE Jul 2021	WTE Aug 2021
Older People	797	828	808	823	804	796	809
Registrar						26.6%	26.6%
Senior Registrar	20.0%	20.0%	33.3%	20.0%	26.1%	26.6%	26.6%
Registrars	20.0%	20.0%	33.3%	20.0%	26.1%	53.2%	53.2%
Medical/ Dental, other	80.0%	80.0%	66.7%	80.0%	73.9%	46.8%	46.8%
Medical & Dental	0.6%	0.6%	0.7%	0.6%	0.6%	0.5%	0.5%
Clinical Nurse/ Midwife Manager	20.1%	20.4%	20.8%	20.3%	19.6%	20.7%	20.7%
Director Nursing/Midwifery, Assistant	1.8%	1.8%	2.6%	2.8%	2.5%	1.9%	2.2%
Director of Nursing/Midwifery	2.2%	1.8%	1.9%	1.8%	1.1%	1.9%	1.9%
Nurse/ Midwife Manager	24.2%	24.1%	25.3%	25.0%	23.2%	24.5%	24.9%
Advanced Nurse/ Midwife Practitioner							0.4%
Clinical Nurse/ Midwife Specialist			0.4%	0.4%	0.4%	0.4%	0.4%
Nurse/ Midwife Specialist & AN/MP			0.4%	0.4%	0.4%	0.4%	0.8%
Staff Nurses [General/ Children's]	75.8%	75.9%	74.4%	74.6%	76.4%	75.1%	74.4%
Staff Nurse/ Staff Midwife	75.8%	75.9%	74.4%	74.6%	76.4%	75.1%	74.4%
Nursing & Midwifery	34.0%	32.7%	33.0%	33.2%	34.0%	32.4%	32.4%
Dietitians	4.6%	4.5%	4.5%	3.9%	4.3%	4.1%	4.6%
Occupational Therapists	28.3%	28.1%	28.0%	28.3%	29.7%	29.4%	31.2%
Physiotherapists	31.4%	30.1%	34.7%	32.4%	30.4%	35.0%	35.4%
Podiatrists & Chiropodists	2.1%	3.1%	1.6%	1.0%	2.0%	0.3%	1.1%
Speech & Language Therapists	7.7%	9.4%	9.3%	9.7%	9.9%	8.7%	9.2%
Therapy Professions	74.1%	75.2%	78.0%	75.4%	76.3%	77.4%	81.5%
Social Workers	20.1%	20.0%	16.4%	17.1%	17.1%	15.0%	10.7%
Psychologists	0.9%		0.9%	3.2%	1.8%	0.8%	0.8%
Pharmacy	5.0%	4.8%	4.8%	4.3%	4.8%	6.8%	7.0%
Health & Social Care Professionals	7.1%	6.9%	7.2%	8.0%	8.2%	7.5%	7.5%
Executive Management	4.1%	1.9%	3.9%	1.8%	3.5%	3.4%	3.2%
Senior Management (VIII & GM)	2.1%			5.4%	5.2%	6.2%	7.8%
Management (VIII & above)	6.2%	1.9%	3.9%	7.2%	8.7%	9.6%	10.9%
Administrative/ Supervisory (V to VII)	41.5%	40.3%	40.2%	39.9%	33.8%	37.4%	39.9%
Clerical (III & IV)	52.3%	57.8%	55.9%	52.9%	57.5%	53.0%	49.2%
Management & Administrative	6.1%	6.3%	6.4%	6.8%	6.9%	7.8%	7.8%
Support	91.5%	91.8%	92.8%	93.1%	91.9%	92.8%	93.0%
Maintenance/ Technical	8.5%	8.2%	7.2%	6.9%	8.1%	7.2%	7.0%
General Support	14.7%	14.7%	14.1%	14.1%	14.5%	14.2%	14.2%
HCA, Nurse's Aide, etc.	94.0%	94.6%	94.9%	94.9%	95.6%	96.1%	96.3%
Health & Social Care Assistants	3.5%	3.1%	2.7%	2.7%	2.6%	2.3%	2.2%
Health Care Assistants	97.5%	97.7%	97.6%	97.6%	98.2%	98.4%	98.5%
Other Care Grades	2.5%	2.3%	2.4%	2.4%	1.8%	1.6%	1.5%
Care, other	2.5%	2.3%	2.4%	2.4%	1.8%	1.6%	1.5%
Patient & Client Care	37.4%	38.8%	38.6%	37.3%	38.2%	37.6%	37.6%
Total	100 %	100 %	100 %	100 %	100 %	100 %	100 %

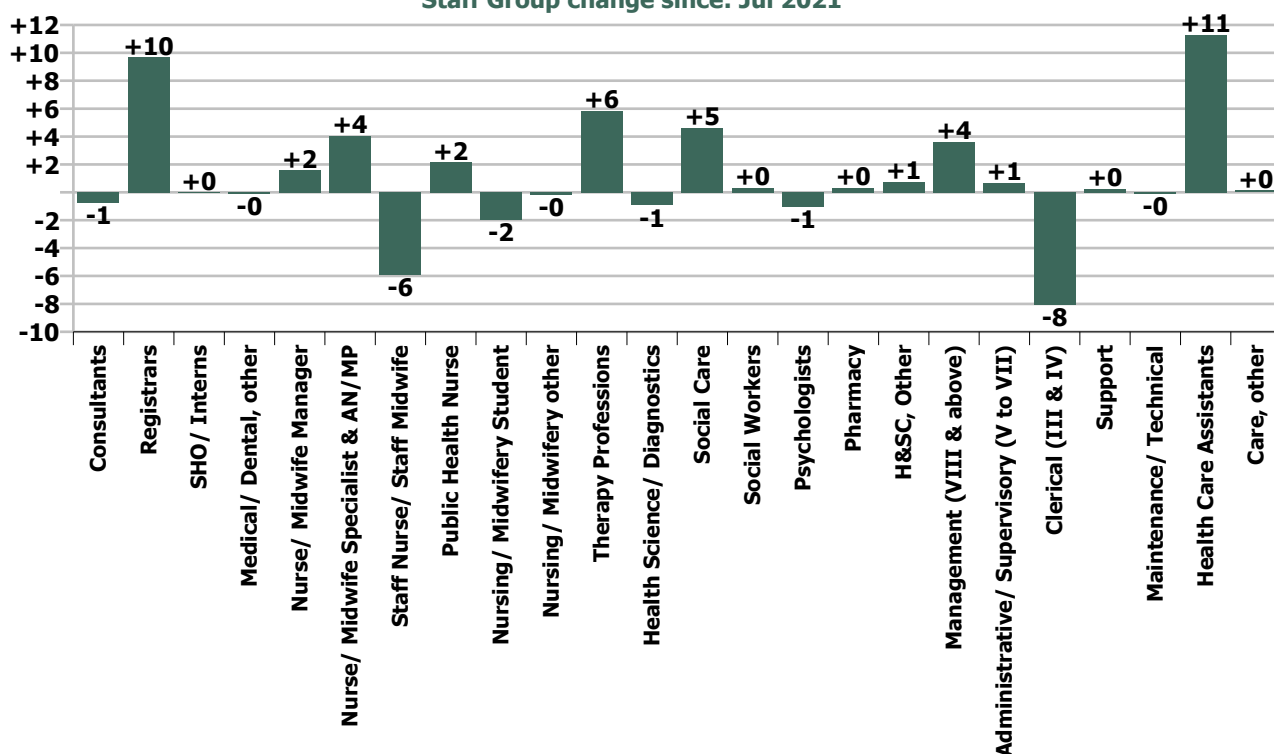
Summary Staff Movement: August 2021

Month-on-month Summary																												
WTE change since Jul 21	% change since Jul 21	overall	Consultants	Registrars	SHO/ Interns	Medical/ Dental, other	Medical & Dental	Nurse/ Midwife Manager	Nurse/ Midwife Specialist & AN/MP	Staff Nurse/ Staff Midwife	Public Health Nurse	Nursing/ Midwifery Student	Nursing/ Midwifery other	Nursing & Midwifery	Therapy Professions	Health Science/ Diagnostics	Social Care	Social Workers	Psychologists	Pharmacy	H&SC, Other	Health & Social Care Professionals	Management (VIII & above)	Administrative/ Supervisory (V to VII)	Clerical (III & IV)	Management & Administrative	General Support	Patient & Client Care
Overall	+0.7%	+26	-0.8	+9.7	+0.0	-0.1	+8.8	+1.6	+4.0	-5.9	+2.2	-2.0	-0.2	-0.3	+5.8	-0.9	+4.6	+0.3	-1.0	+0.3	+0.8	+9.9	+3.6	+0.7	-8.1	-3.8	+0.1	+11.4
Community Health & Wellbeing	-5.1%	-0																						-0.5	+0.0	-0.5		+0.0
Mental Health	+0.5%	+3	-0.8	+1.7	+0.0		+1.0	-0.0	+2.3	-1.2		+0.0	0.0	+1.0	+2.3		-0.2	+0.6	+0.1		+1.0	+3.8	0.0	+1.7	-1.8	-0.1	-0.7	-1.8
Primary Care	+1.5%	+13	0.0	+8.4	0.0	-0.1	+8.2	-0.2	+0.8	-5.7	+2.2	-2.0	-0.2	-5.2	+2.4	-0.9	0.0	+3.6	+0.1	+0.4	0.0	+5.6	+0.6	-2.5	-3.5	-5.4	+0.3	+9.7
Disabilities	-0.2%	-3	0.0	-0.4	-0.0	0.0	-0.4	+0.1		+1.0				+1.2	+0.5		+4.8	-1.0	-1.3		-0.2	+2.8	+1.9	-1.0	-2.5	-1.6	-0.5	-4.3
Older People	+1.6%	+13		0.0		-0.0	0.0	+1.7	+1.0	+0.0				+2.7	+0.7			-3.0	0.0	-0.1		-2.3	+1.2	+3.0	-0.3	+3.9	+1.0	+7.8
Social Care	+0.5%	+10	0.0	-0.4	-0.0	0.0	-0.4	+1.8	+1.0	+1.0				+3.8	+1.2		+4.8	-3.9	-1.3	-0.1	-0.2	+0.5	+3.1	+2.0	-2.8	+2.3	+0.5	+3.5
Change	+26.2	+0.7%	-1.5%	+19.4%	+0.1%	-0.2%	+5.4%	+0.8%	+16.4%	-1.1%	+1.9%	-23.3%	-6.7%	-0.0%	+2.4%	-4.8%	+1.1%	+0.6%	-1.6%	+5.2%	+7.1%	+1.2%	+5.0%	+0.4%	-3.0%	-0.7%	+0.1%	+1.3%

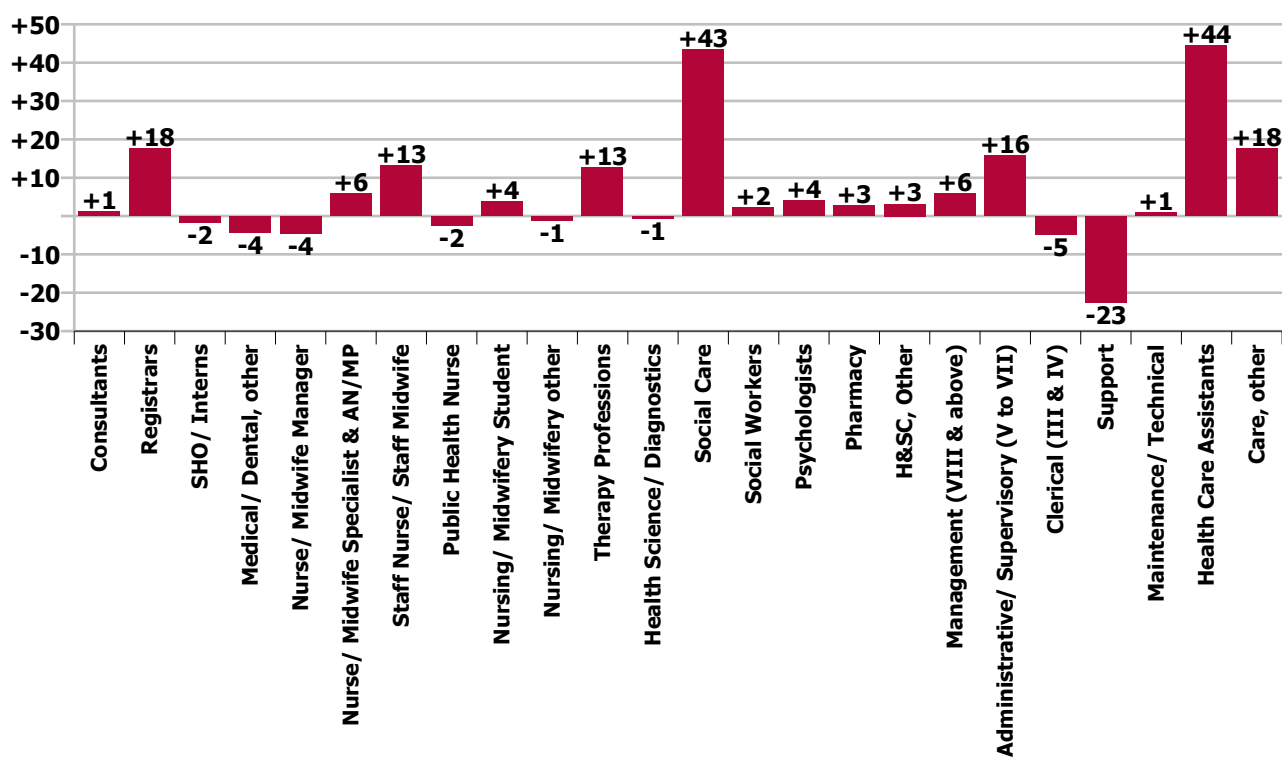
Year-on-year Summary																												
WTE change since Aug 20	% change since Aug 20	overall	Consultants	Registrars	SHO/ Interns	Medical/ Dental, other	Medical & Dental	Nurse/ Midwife Manager	Nurse/ Midwife Specialist & AN/MP	Staff Nurse/ Staff Midwife	Public Health Nurse	Nursing/ Midwifery Student	Nursing/ Midwifery other	Nursing & Midwifery	Therapy Professions	Health Science/ Diagnostics	Social Care	Social Workers	Psychologists	Pharmacy	H&SC, Other	Health & Social Care Professionals	Management (VIII & above)	Administrative/ Supervisory (V to VII)	Clerical (III & IV)	Management & Administrative	General Support	Patient & Client Care
Overall	+4.5%	+152	+1.2	+17.5	-1.8	-4.4	+12.5	-4.5	+5.8	+13.2	-2.5	+3.7	-1.2	+14.5	+12.7	-0.8	+43.5	+2.2	+4.1	+2.8	+3.1	+67.7	+6.0	+15.8	-4.9	+16.9	-21.5	+61.9
Community Health & Wellbeing	-5.1%	-0									-0.4			-0.4									-1.0	+2.2	-0.0	+1.2		-0.6
Mental Health	+0.5%	+3	+1.2	+8.5	-2.8		+7.0	-2.6	+5.7	+7.0		+4.5	-1.0	+13.6	+4.9		-2.7	-0.1	+6.1		+1.3	+9.5	0.0	-2.9	-5.0	-7.9	+1.5	+6.7
Primary Care	+1.5%	+13	0.0	+8.0	0.0	-2.1	+5.8	-2.6	-0.9	+11.1	-2.1	-0.8	-0.2	+4.5	-3.4	-0.8	+0.0	+4.7	+2.4	+1.4	+1.9	+6.2	+2.9	+10.7	+13.5	+27.2	-1.2	+52.7
Disabilities	+3.4%	+39.9	0.0		+1.0	0.0	+1.0	+2.2		+2.3				+4.5	+3.4		+46.1	+1.2	-2.8		+0.0	+48.0	+2.1	+0.2	-13.1	-10.8	-23.4	+20.6
Older People	-1.6%	-13.6		+1.0		-2.2	-1.2	-1.5	+1.0	-7.2				-7.7	+7.8			-3.6	-1.6	+1.4		+4.0	+1.9	+5.7	-0.3	+7.3	+1.6	-17.5
Social Care	+0.5%	+10	0.0	+1.0	+1.0	-2.2	-0.3	+0.7	+1.0	-4.9				-3.1	+11.2		+46.1	-2.4	-4.4	+1.4	+0.0	+52.0	+4.0	+5.9	-13.4	-3.5	-21.8	+3.1
Change	+152.0	+4.5%	+2.5%	+41.6%	-9.1%	-8.9%	+7.8%	-2.1%	+25.5%	+2.5%	-2.1%	+132.1%	-30.0%	+1.6%	+5.4%	-4.1%	+12.0%	+4.0%	+6.7%	+73.6%	+37.9%	+9.1%	+8.6%	+9.3%	-1.9%	+3.4%	-9.2%	+7.2%

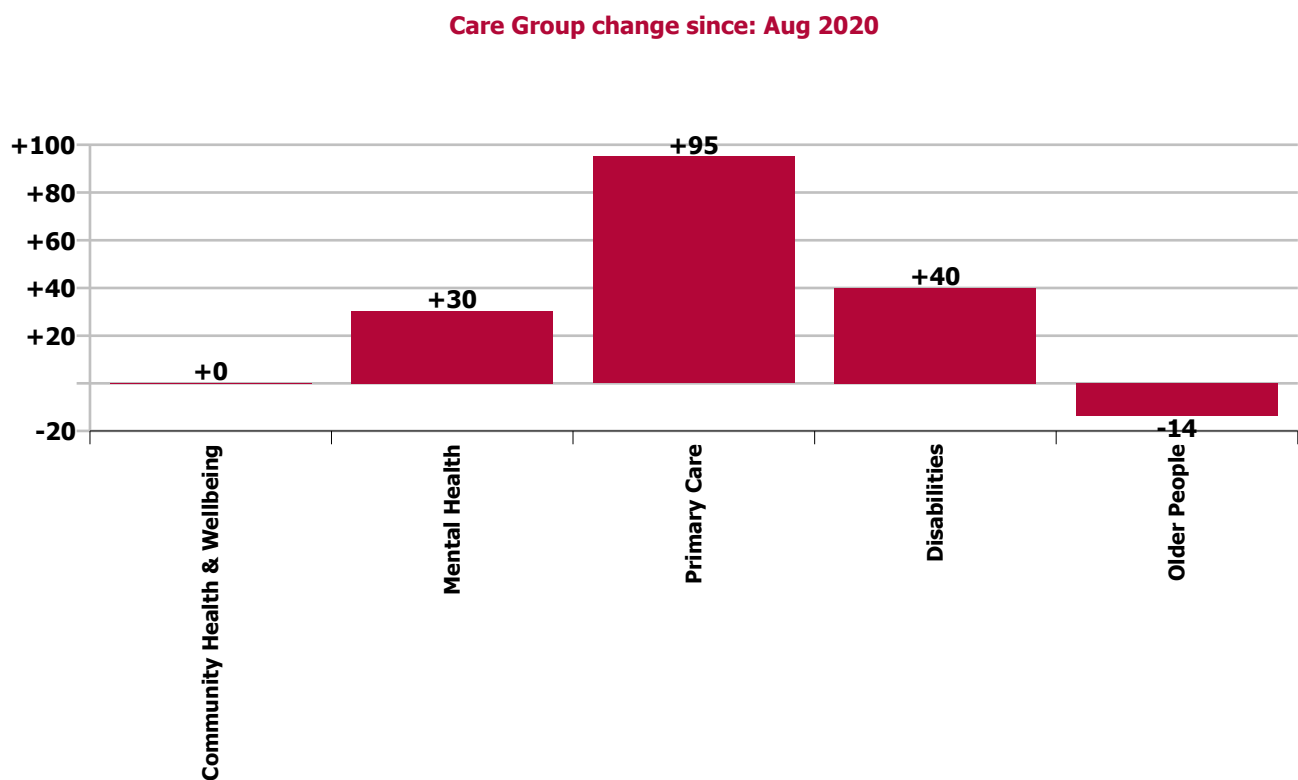
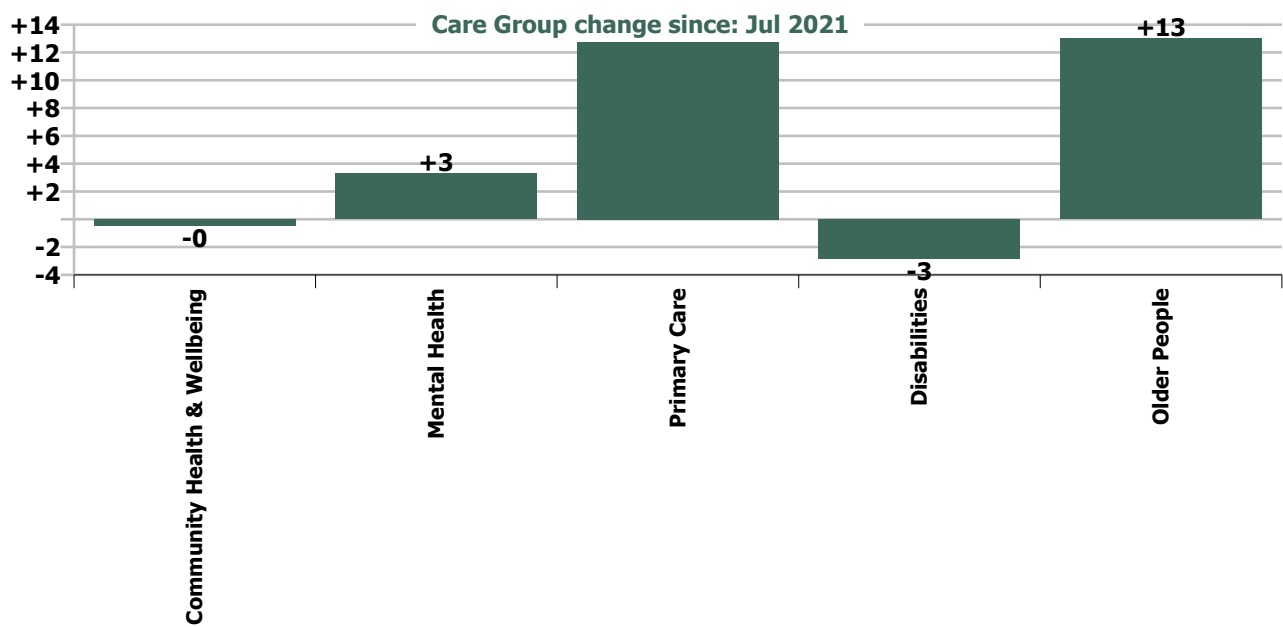


Staff Group change since: Jul 2021



Staff Group change since: Aug 2020





Longitudinal Employment Levels by Grade Group - Dec 2016 to Aug 2021

Aug 2021 (Dec 2016 figure: 3,940)	WTE Aug 2021	WTE change since Dec 16	WTE change since Dec 17	WTE change since Dec 18	WTE change since Dec 19	WTE change since Dec 20	WTE change since Jul 21	% change since Dec 16	% change since Dec 17	% change since Dec 18	% change since Dec 19	% change since Dec 20	% change since Jul 21
Overall	3,548	-392	+192	+180	+170	+83	+26	-10.0%	+5.7%	+5.3%	+5.0%	+2.4%	+0.7%
Consultant Dentistry	6	-0	-1	-1	-1	-0	-0	-6.0%	-18.2%	-18.2%	-13.0%	-0.0%	-0.0%
Consultant Medicine	1												
Consultant, Other		-1						-100.0%	-100.0%	-100.0%	-100.0%	-100.0%	-100.0%
Consultant Paediatrics		-0	-0					-100.0%	-100.0%	-100.0%	-100.0%	-100.0%	-100.0%
Consultant Psychiatry	42	+13	+11	+9	+3	-1	-1	+43.6%	+36.8%	+27.3%	+8.2%	-2.1%	-1.8%
Consultant Radiology	1												
Consultants	51	+11	+10	+8	+2	-1	-1	+28.9%	+24.3%	+17.8%	+4.7%	-1.8%	-1.5%
Registrar	48	+8	+8	+12	+8	+14	+9	+20.1%	+20.0%	+33.4%	+19.3%	+40.4%	+23.1%
Senior Registrar	11	+4	+4	+1	+3	+2	+1	+52.8%	+55.9%	+10.8%	+40.7%	+23.1%	+6.8%
Specialist Registrar	1												
Registrars	60	+12	+12	+13	+11	+16	+10	+24.4%	+24.7%	+28.1%	+22.2%	+36.1%	+19.4%
SHO/ Interns	18	-1	-3	-4	+3	-1	+0	-6.3%	-13.9%	-18.9%	+17.4%	-6.7%	+0.1%
Dentists	27	-2	-2	-0	+0	+2	+0	-5.9%	-7.4%	-0.2%	+1.6%	+8.5%	+0.5%
Other Medical	18	-5	-8	-9	-7	-2	-0	-22.7%	-29.3%	-33.4%	-26.6%	-10.2%	-1.4%
Medical/ Dental, other	45	-7	-10	-9	-6	+0	-0	-13.4%	-17.6%	-16.9%	-12.0%	+0.2%	-0.2%
Medical & Dental	173	+15	+9	+7	+10	+14	+9	+9.3%	+5.5%	+4.4%	+5.9%	+8.5%	+5.4%
Clinical Nurse/ Midwife Manager	163	-28	+5	+2	+2	+4	+2	-14.7%	+3.3%	+1.1%	+1.0%	+2.7%	+1.3%
Director Nursing/Midwifery, Assistant	28	-2	-1	-7	-7	-6	-1	-5.8%	-2.5%	-20.2%	-19.8%	-16.8%	-3.4%
Director of Nursing/Midwifery	15	-6	-1	+1	+0	+1	+0	-28.5%	-5.1%	+8.5%	+1.5%	+9.2%	+3.5%
Nurse/ Midwife Manager	205	-36	+4	-4	-5	-0	+2	-14.8%	+1.8%	-2.0%	-2.4%	-0.1%	+0.8%
Advanced Nurse/ Midwife Practitioner	6	+6	+6	+6	+6	+1	+1	+1164.0%	+1164.0%	+1164.0%	+829.4%	+14.9%	+14.9%
Clinical Nurse/ Midwife Specialist	22	+2	+2	+4	+2	+4	+3	+11.6%	+7.9%	+18.8%	+12.0%	+20.4%	+16.8%
Nurse/ Midwife Specialist & AN/MP	29	+8	+7	+9	+8	+5	+4	+39.7%	+35.1%	+48.5%	+39.0%	+19.2%	+16.4%
Staff Nurse [Intellectual Disability]	93	+23	+31	+34	+43	+39	-0	+33.1%	+51.1%	+58.8%	+87.1%	+74.0%	-0.4%
Staff Nurse [Psychiatric]	126	-1	+8	+15	-7	+1	-1	-1.0%	+6.6%	+13.7%	-5.4%	+0.7%	-0.9%
Staff Nurses [General/ Children's]	331	-112	-39	-46	-28	-45	-4	-25.2%	-10.6%	-12.1%	-7.9%	-12.0%	-1.3%
Staff Nurse/ Staff Midwife	549	-90	-0	+4	+8	-5	-6	-14.1%	-0.0%	+0.7%	+1.4%	-0.9%	-1.1%
Public Health Nurse	115	-3	-8	-4	-2	+3	+2	-2.7%	-6.5%	-3.0%	-1.6%	+2.7%	+1.9%
Nursing/ Midwifery awaiting registration	1	+1	+1	+1	+1			-100.0%	-100.0%	-100.0%	-100.0%		
Post-registration Nurse/ Midwife Student	2	-13	-17	-9	-12	-13	-2	-86.7%	-89.7%	-81.8%	-85.2%	-86.6%	-50.0%
Pre-registration Nurse/ Midwife Intern	4	+4	+4	+4	+4	+4	+0	-100.0%	-100.0%	-100.0%	-100.0%	-100.0%	+0.9%
Nursing/ Midwifery Student	7	-9	-13	-5	-7	-9	-2	-56.7%	-66.4%	-40.9%	-51.9%	-59.1%	-23.3%
Nursing Education/Clinical	3	+1	+1	-0	+1	-0	-0	+25.0%	+40.0%	-2.1%	+40.0%	-6.7%	-6.7%
Nursing/ Midwifery other	3	+1	+1	-0	+1	-0	-0	+25.0%	+40.0%	-2.1%	+40.0%	-6.7%	-6.7%

Aug 2021 (Dec 2016 figure: 3,940)	WTE Aug 2021	WTE change since Dec 16	WTE change since Dec 17	WTE change since Dec 18	WTE change since Dec 19	WTE change since Dec 20	WTE change since Jul 21	% change since Dec 16	% change since Dec 17	% change since Dec 18	% change since Dec 19	% change since Dec 20	% change since Jul 21
Overall	3,548	-392	+192	+180	+170	+83	+26	-10.0%	+5.7%	+5.3%	+5.0%	+2.4%	+0.7%
Nursing & Midwifery	908	-128	-9	+1	+3	-7	-0	-12.4%	-1.0%	+0.1%	+0.3%	-0.8%	-0.0%
Dietitians	15	+4	-0	-1	+1	-1	-0	+34.0%	-2.5%	-4.7%	+3.7%	-7.9%	-0.6%
Occupational Therapists	97	+8	+9	+5	+6	+4	+4	+8.4%	+10.7%	+5.8%	+6.3%	+4.6%	+3.8%
Physiotherapists	63	+1	+5	+1	+3	+5	+0	+0.9%	+8.4%	+1.8%	+5.3%	+7.8%	+0.3%
Podiatrists & Chiropodists	3	+1	-0	+1	+2	-1	+1	+40.5%	-5.6%	+36.3%	+88.8%	-23.9%	+18.6%
Speech & Language Therapists	68	-2	+3	-7	-1	+3	+2	-3.5%	+4.0%	-8.8%	-2.1%	+5.3%	+2.5%
Orthoptists	1	+1	+1	+1	+1	+1		-100.0%	-100.0%	-100.0%	-100.0%	-100.0%	
Therapy Professions	249	+11	+17	+1	+11	+11	+6	+4.8%	+7.5%	+0.4%	+4.4%	+4.7%	+2.4%
Medical Science	17	-1	-3	-4	+1	-1	-0	-7.5%	-14.5%	-17.7%	+7.2%	-5.0%	-2.2%
Radiographers	2	-2	-2	-2	-1	-1	-1	-55.9%	-57.1%	-57.0%	-38.5%	-36.7%	-26.8%
Health Science/ Diagnostics	18	-3	-5	-6	+0	-2	-1	-15.1%	-20.9%	-23.5%	+1.1%	-8.7%	-4.8%
Social Care	407	-133	+53	+65	+43	+15	+5	-24.7%	+14.9%	+18.9%	+11.7%	+3.8%	+1.1%
Social Workers	56	-5	+0	-1	-1	+2	+0	-8.6%	+0.5%	-1.3%	-1.4%	+3.8%	+0.6%
Psychologists	66	+4	+7	+10	+10	-1	-1	+6.3%	+11.6%	+17.3%	+16.9%	-0.8%	-1.6%
Pharmacy	7	+4	+3	+3	+3	+3	+0	+134.2%	+75.9%	+75.9%	+81.7%	+70.5%	+5.2%
Counsellor Therapists	4	-2	-2	+0	-0	-0		-33.3%	-37.9%	+10.2%	-9.5%	-4.8%	
Dental Hygienists	4	-0	+0		+0	-0	-0	-4.9%	+0.3%		+3.2%	-0.0%	-0.0%
Other Health & Social Care	3	+2	+1	+2	-3	+1	+1	+198.0%	+78.8%	+234.1%	-46.3%	+70.8%	+33.3%
Play Therapists/ Specialists	0	-1	-0		+0			-68.0%	-5.9%		+4.3%		
H&SC, Other	11	-1	-1	+3	-3	+1	+1	-9.5%	-8.9%	+28.0%	-20.3%	+10.2%	+7.1%
Health & Social Care Professionals	814	-124	+74	+74	+62	+30	+10	-13.2%	+10.0%	+10.1%	+8.3%	+3.8%	+1.2%
Executive Management	27	+7	-0	+3	+4	+4	+3	+33.3%	-0.7%	+12.4%	+16.3%	+15.4%	+11.7%
Senior Management (VIII & GM)	48	+4	+7	-1	+4	+3	+1	+8.5%	+18.1%	-1.6%	+9.4%	+6.1%	+1.6%
Management (VIII & above)	76	+11	+7	+2	+8	+6	+4	+16.3%	+10.6%	+3.0%	+11.8%	+9.3%	+5.0%
Middle Management (V-VII)	185	+48	+37	+15	+16	+19	+1	+35.0%	+25.1%	+8.8%	+9.5%	+11.4%	+0.4%
Other Administrative		-1	-1	-1	-1			-100.0%	-100.0%	-100.0%	-100.0%	-100.0%	-100.0%
Administrative/ Supervisory (V to VII)	185	+47	+36	+14	+15	+19	+1	+34.1%	+24.3%	+8.1%	+8.9%	+11.4%	+0.4%
Clerical (III & IV)	256	-2	+22	+25	+19	-4	-8	-0.9%	+9.4%	+10.7%	+8.0%	-1.6%	-3.0%
Management & Administrative	517	+55	+65	+41	+42	+21	-4	+12.0%	+14.5%	+8.6%	+8.8%	+4.3%	-0.7%
Catering	27	-11	-0	-1	+1	+2	+3	-29.1%	-1.5%	-3.8%	+5.1%	+6.6%	+10.3%
Household Services	118	-50	-22	-14	-4	-5	-3	-29.6%	-15.7%	-11.0%	-2.9%	-4.0%	-2.7%
Other Labs & Associated	1	-0	-0	-0	-0	-0		-10.0%	-10.0%	-10.0%	-10.0%	-10.0%	
Other Support	21	-8	-1	+3	+2	+1	+0	-26.3%	-3.2%	+14.1%	+7.8%	+2.6%	+2.3%
Portering	24	-2	-3	-0	+0	+1	+1	-7.0%	-10.4%	-1.0%	+1.2%	+4.5%	+2.1%
Support	191	-70	-26	-13	-1	-2	+0	-26.9%	-12.0%	-6.5%	-0.3%	-0.9%	+0.1%

Aug 2021 (Dec 2016 figure: 3,940)	WTE Aug 2021	WTE change since Dec 16	WTE change since Dec 17	WTE change since Dec 18	WTE change since Dec 19	WTE change since Dec 20	WTE change since Jul 21	% change since Dec 16	% change since Dec 17	% change since Dec 18	% change since Dec 19	% change since Dec 20	% change since Jul 21
Overall	3,548	-392	+192	+180	+170	+83	+26	-10.0%	+5.7%	+5.3%	+5.0%	+2.4%	+0.7%
Maintenance/ Technical	22	-10	+1	+3	-1		-0	-31.8%	+4.8%	+15.7%	-2.9%		-0.5%
General Support	213	-80	-25	-10	-1	-2	+0	-27.4%	-10.5%	-4.6%	-0.6%	-0.8%	+0.1%
HCA, Nurse's Aide, etc.	537	-83	+18	+20	+10	+12	+5	-13.4%	+3.5%	+4.0%	+1.8%	+2.3%	+0.9%
Health & Social Care Assistants	13	+3	+4	-2	+2	-1	-1	+28.6%	+35.5%	-13.4%	+18.4%	-9.4%	-7.0%
Swabber (COVID-19)	41	+41	+41	+41	+41	+14	+8	-100.0%	-100.0%	-100.0%	-100.0%	+54.7%	+23.1%
Health Care Assistants	591	-39	+62	+59	+53	+25	+11	-6.2%	+11.8%	+11.2%	+9.8%	+4.4%	+1.9%
Care, other	332	-90	+14	+8	+2	+2	+0	-21.3%	+4.5%	+2.3%	+0.7%	+0.6%	+0.0%
Patient & Client Care	923	-129	+77	+67	+55	+27	+11	-12.3%	+9.1%	+7.8%	+6.3%	+3.0%	+1.3%

Source: Health Service Personnel Census

Longitudinal Employment Levels by Care Group - Dec 2016 to Aug 2021

Community Health & Wellbeing

Aug 2021 (figure:)	WTE Aug 2021	WTE change since	WTE change since	WTE change since	WTE change since	WTE change since Dec 20	WTE change since Jul 21	% change since	% change since	% change since	% change since	% change since Dec 20	% change since Jul 21
Overall	9	+9	+9	+9	+9	+1	-0	-100.0%	-100.0%	-100.0%	-100.0%	+13.7%	-5.1%
Management & Administrative	7	+7	+7	+7	+7	+2	-0	-1.0%	-1.0%	-1.0%	-1.0%	+0.3%	-0.1%
Management (VIII & above)						-1		-1.0%	-1.0%	-1.0%	-1.0%	-1.0%	-1.0%
Administrative/ Supervisory (V to VII)	6	+6	+6	+6	+6	+3	-1	-1.0%	-1.0%	-1.0%	-1.0%	+0.7%	-0.1%
Clerical (III & IV)	1	+1	+1	+1	+1	+1	-0	-1.0%	-1.0%	-1.0%	-1.0%	-0.1%	+0.0%
Patient & Client Care	2	+2	+2	+2	+2	-0	+0	-1.0%	-1.0%	-1.0%	-1.0%	-0.2%	+0.0%
Care, other	2	+2	+2	+2	+2	-0	+0	-1.0%	-1.0%	-1.0%	-1.0%	-0.2%	+0.0%

Source: Health Service Personnel Census

Mental Health

Aug 2021 (Dec 2016 figure: 559)	WTE Aug 2021	WTE change since Dec 16	WTE change since Dec 17	WTE change since Dec 18	WTE change since Dec 19	WTE change since Dec 20	WTE change since Jul 21	% change since Dec 16	% change since Dec 17	% change since Dec 18	% change since Dec 19	% change since Dec 20	% change since Jul 21
Overall	633	+74	+69	+60	+41	+7	+3	+13.2%	+12.3%	+10.6%	+6.8%	+1.1%	+0.5%
Medical & Dental	76	+19	+13	+12	+9	+3	+1	+0.3%	+0.2%	+0.2%	+0.1%	+0.0%	+0.0%
Consultants	39	+12	+11	+8	+3	-1	-1	+0.5%	+0.4%	+0.3%	+0.1%	-0.0%	-0.0%
Registrars	26	+8	+6	+10	+4	+7	+2	+0.4%	+0.3%	+0.6%	+0.2%	+0.3%	+0.1%
SHO/ Interns	11	-1	-4	-5	+2	-2	+0	-0.1%	-0.3%	-0.3%	+0.2%	-0.2%	+0.0%
Medical/ Dental, other			-0	-0				-1.0%	-1.0%	-1.0%	-1.0%	-1.0%	-1.0%
Nursing & Midwifery	258	+16	+29	+21	+27	+7	+1	+0.1%	+0.1%	+0.1%	+0.1%	+0.0%	+0.0%
Nurse/ Midwife Manager	74	-6	+3	-6	-2	-3	-0	-0.1%	+0.0%	-0.1%	-0.0%	-0.0%	-0.0%
Nurse/ Midwife Specialist & AN/MP	22	+7	+6	+9	+8	+2	+2	+0.5%	+0.4%	+0.8%	+0.6%	+0.1%	+0.1%
Staff Nurse/ Staff Midwife	156	+11	+14	+14	+17	+4	-1	+0.1%	+0.1%	+0.1%	+0.1%	+0.0%	-0.0%
Nursing/ Midwifery Student	5	+5	+5	+5	+5	+4	+0	-1.0%	-1.0%	-1.0%	-1.0%	+3.5%	+0.0%
Nursing/ Midwifery other	2	-0		-1				-0.1%	+0.0%	-0.3%	+0.0%	+0.0%	+0.0%
Health & Social Care Professionals	135	+25	+20	+21	+5	+1	+4	+0.2%	+0.2%	+0.2%	+0.0%	+0.0%	+0.0%
Therapy Professions	41	+13	+8	+5	-2	+3	+2	+0.5%	+0.3%	+0.2%	-0.0%	+0.1%	+0.1%
Social Care	26	-5	-5	-4	-0	-3	-0	-0.2%	-0.2%	-0.1%	-0.0%	-0.1%	-0.0%
Social Workers	31	+3	+4	+1	+1	+1	+1	+0.1%	+0.2%	+0.1%	+0.0%	+0.0%	+0.0%
Psychologists	32	+16	+11	+16	+10	-0	+0	+1.0%	+0.6%	+1.0%	+0.4%	-0.0%	+0.0%
H&SC, Other	5	-2	+1	+1	-3	+0	+1	-0.2%	+0.2%	+0.3%	-0.4%	+0.1%	+0.2%
Management & Administrative	62	+6	+3	+4	-9	-8	-0	+0.1%	+0.1%	+0.1%	-0.1%	-0.1%	-0.0%
Management (VIII & above)	3	+0	-1	+1				+0.2%	-0.2%	+0.5%	+0.0%	+0.0%	+0.0%
Administrative/ Supervisory (V to VII)	23	+6	+2	-3	-3	-1	+2	+0.3%	+0.1%	-0.1%	-0.1%	-0.0%	+0.1%
Clerical (III & IV)	36	+0	+2	+6	-6	-7	-2	+0.0%	+0.1%	+0.2%	-0.1%	-0.2%	-0.0%
General Support	43	-7	-11	-7	+0	-2	-1	-0.1%	-0.2%	-0.1%	+0.0%	-0.1%	-0.0%
Support	37	-8	-12	-8	+0	-2	-1	-0.2%	-0.2%	-0.2%	+0.0%	-0.1%	-0.0%
Maintenance/ Technical	6	+1	+1	+1	+0			+0.1%	+0.2%	+0.2%	+0.0%	+0.0%	+0.0%
Patient & Client Care	59	+15	+15	+10	+8	+5	-2	+0.3%	+0.3%	+0.2%	+0.2%	+0.1%	-0.0%
Health Care Assistants	53	+13	+13	+9	+8	+5	-2	+0.3%	+0.3%	+0.2%	+0.2%	+0.1%	-0.0%
Care, other	6	+2	+2	+1	+1		+0	+0.4%	+0.7%	+0.1%	+0.1%	+0.0%	+0.0%

Source: Health Service Personnel Census

Primary Care

Aug 2021 (Dec 2016 figure: 768)	WTE Aug 2021	WTE change since Dec 16	WTE change since Dec 17	WTE change since Dec 18	WTE change since Dec 19	WTE change since Dec 20	WTE change since Jul 21	% change since Dec 16	% change since Dec 17	% change since Dec 18	% change since Dec 19	% change since Dec 20	% change since Jul 21
Overall	871	+102	+76	+37	+106	+60	+13	+13.3%	+9.5%	+4.5%	+13.9%	+7.4%	+1.5%
Medical & Dental	89	-1	-1	-3	+1	+9	+8	-0.0%	-0.0%	-0.0%	+0.0%	+0.1%	+0.1%
Consultants	8	-1	-1	-1	-1			-0.1%	-0.1%	-0.1%	-0.1%	+0.0%	+0.0%
Registrars	32	+4	+6	+3	+6	+8	+8	+0.1%	+0.3%	+0.1%	+0.2%	+0.3%	+0.4%
SHO/ Interns	7							+0.0%	+0.0%	+0.0%	+0.0%	+0.0%	+0.0%
Medical/ Dental, other	42	-4	-6	-6	-4	+1	-0	-0.1%	-0.1%	-0.1%	-0.1%	+0.0%	-0.0%
Nursing & Midwifery	204	+6	-6	-4	-6	-5	-5	+0.0%	-0.0%	-0.0%	-0.0%	-0.0%	-0.0%
Nurse/ Midwife Manager	21	+3	+1	-2	-2	-2	-0	+0.1%	+0.0%	-0.1%	-0.1%	-0.1%	-0.0%
Nurse/ Midwife Specialist & AN/MP	5	+1	-1	-1	-1	+2	+1	+0.3%	-0.2%	-0.2%	-0.2%	+0.4%	+0.2%
Staff Nurse/ Staff Midwife	61	+16	+19	+10	+9	+6	-6	+0.4%	+0.5%	+0.2%	+0.2%	+0.1%	-0.1%
Public Health Nurse	115	-2	-8	-4	-2	+3	+2	-0.0%	-0.1%	-0.0%	-0.0%	+0.0%	+0.0%
Nursing/ Midwifery Student	2	-13	-17	-9	-12	-13	-2	-0.9%	-0.9%	-0.8%	-0.9%	-0.9%	-0.5%
Nursing/ Midwifery other	1	+1	+1	+1	+1	-0	-0	-1.0%	-1.0%	-1.0%	-1.0%	-0.2%	-0.2%
Health & Social Care Professionals	172	+0	-11	-20	+19	+10	+6	+0.0%	-0.1%	-0.1%	+0.1%	+0.1%	+0.0%
Therapy Professions	114	-1	-7	-13	+10	+3	+2	-0.0%	-0.1%	-0.1%	+0.1%	+0.0%	+0.0%
Health Science/ Diagnostics	18	-3	-5	-6	+0	-2	-1	-0.2%	-0.2%	-0.2%	+0.0%	-0.1%	-0.0%
Social Care	3	+1	+1	-0	-1	+0		+1.0%	+1.0%	-0.0%	-0.2%	+0.1%	+0.0%
Social Workers	9	+3	+2	+2	+4	+5	+4	+0.4%	+0.2%	+0.4%	+0.9%	+1.1%	+0.7%
Psychologists	21	-2	-4	-6	+2	+1	+0	-0.1%	-0.2%	-0.2%	+0.1%	+0.1%	+0.0%
Pharmacy	2	+2	+1	+1	+2	+1	+0	-1.0%	+1.4%	+1.4%	+2.0%	+1.4%	+0.2%
H&SC, Other	5	-0	+0	+1	+1	+1		-0.0%	+0.0%	+0.3%	+0.3%	+0.3%	+0.0%
Management & Administrative	245	+48	+42	+17	+35	+21	-5	+0.2%	+0.2%	+0.1%	+0.2%	+0.1%	-0.0%
Management (VIII & above)	33	+10	+3	-4	+3	+3	+1	+0.4%	+0.1%	-0.1%	+0.1%	+0.1%	+0.0%
Administrative/ Supervisory (V to VII)	76	+26	+17	+1	+8	+10	-2	+0.5%	+0.3%	+0.0%	+0.1%	+0.2%	-0.0%
Clerical (III & IV)	136	+12	+21	+20	+24	+8	-4	+0.1%	+0.2%	+0.2%	+0.2%	+0.1%	-0.0%
General Support	27	-4	-4	-0	+2	-0	+0	-0.1%	-0.1%	-0.0%	+0.1%	-0.0%	+0.0%
Support	25	-4	-4	-0	+2	-0	+0	-0.1%	-0.1%	-0.0%	+0.1%	-0.0%	+0.0%
Maintenance/ Technical	2							+0.0%	+0.0%	+0.0%	+0.0%	+0.0%	+0.0%
Patient & Client Care	134	+54	+56	+47	+56	+24	+10	+0.7%	+0.7%	+0.6%	+0.7%	+0.2%	+0.1%
Health Care Assistants	53	+51	+51	+44	+46	+15	+7	+25.2%	+25.2%	+4.8%	+7.4%	+0.4%	+0.2%
Care, other	81	+3	+5	+4	+10	+9	+3	+0.0%	+0.1%	+0.0%	+0.1%	+0.1%	+0.0%

Source: Health Service Personnel Census

Disabilities

Aug 2021 (Dec 2016 figure: 1,816)	WTE Aug 2021	WTE change since Dec 16	WTE change since Dec 17	WTE change since Dec 18	WTE change since Dec 19	WTE change since Dec 20	WTE change since Jul 21	% change since Dec 16	% change since Dec 17	% change since Dec 18	% change since Dec 19	% change since Dec 20	% change since Jul 21
Overall	1,227	-588	+57	+73	+30	+11	-3	-32.4%	+4.9%	+6.3%	+2.5%	+0.9%	-0.2%
Medical & Dental	5	-2	-2	+1	+1	+1	-0	-0.3%	-0.3%	+0.2%	+0.2%	+0.2%	-0.1%
Consultants	3	+0	+0	+1				+0.1%	+0.1%	+0.5%	+0.0%	+0.0%	+0.0%
Registrars		-1	-2				-0	-1.0%	-1.0%	-1.0%	-1.0%	-1.0%	-1.0%
SHO/ Interns	1	-0	+1	+1	+1	+1	-0	-0.0%	-1.0%	-1.0%	-1.0%	-1.0%	-0.0%
Medical/ Dental, other	1	-1	-1	-1				-0.5%	-0.5%	-0.5%	+0.0%	+0.0%	+0.0%
Nursing & Midwifery	184	-141	-23	-11	-7	-2	+1	-0.4%	-0.1%	-0.1%	-0.0%	-0.0%	+0.0%
Nurse/ Midwife Manager	45	-32	-0	+6	+2	+2	+0	-0.4%	-0.0%	+0.2%	+0.0%	+0.0%	+0.0%
Nurse/ Midwife Specialist & AN/MP		-2						-1.0%	-1.0%	-1.0%	-1.0%	-1.0%	-1.0%
Staff Nurse/ Staff Midwife	138	-106	-23	-17	-9	-4	+1	-0.4%	-0.1%	-0.1%	-0.1%	-0.0%	+0.0%
Public Health Nurse		-1						-1.0%	-1.0%	-1.0%	-1.0%	-1.0%	-1.0%
Health & Social Care Professionals	446	-153	+62	+71	+44	+18	+3	-0.3%	+0.2%	+0.2%	+0.1%	+0.0%	+0.0%
Therapy Professions	44	-8	+10	+4	+3	+2	+0	-0.2%	+0.3%	+0.1%	+0.1%	+0.0%	+0.0%
Social Care	378	-130	+56	+69	+44	+17	+5	-0.3%	+0.2%	+0.2%	+0.1%	+0.0%	+0.0%
Social Workers	10	-6	-1	-2	-1	+0	-1	-0.4%	-0.1%	-0.1%	-0.1%	+0.0%	-0.1%
Psychologists	13	-10	-1	-0	-1	-1	-1	-0.4%	-0.1%	-0.0%	-0.1%	-0.1%	-0.1%
H&SC, Other	1	+1	-2	+0	-1	-0	-0	+1.1%	-0.7%	+0.1%	-0.4%	-0.2%	-0.2%
Management & Administrative	140	-20	+3	+1	+2	+0	-2	-0.1%	+0.0%	+0.0%	+0.0%	+0.0%	-0.0%
Management (VIII & above)	33	-4	-1	+0	+2	+3	+2	-0.1%	-0.0%	+0.0%	+0.1%	+0.1%	+0.1%
Administrative/ Supervisory (V to VII)	55	+5	+7	+6	+2	+1	-1	+0.1%	+0.1%	+0.1%	+0.0%	+0.0%	-0.0%
Clerical (III & IV)	52	-21	-3	-5	-2	-4	-2	-0.3%	-0.1%	-0.1%	-0.0%	-0.1%	-0.0%
General Support	28	-66	-3	-4	-1	-2	-0	-0.7%	-0.1%	-0.1%	-0.0%	-0.1%	-0.0%
Support	22	-57	-5	-6	-0	-3	-0	-0.7%	-0.2%	-0.2%	-0.0%	-0.1%	-0.0%
Maintenance/ Technical	6	-9	+2	+2	-1	+1		-0.6%	+0.5%	+0.5%	-0.1%	+0.2%	+0.0%
Patient & Client Care	424	-206	+21	+15	-9	-4	-4	-0.3%	+0.1%	+0.0%	-0.0%	-0.0%	-0.0%
Health Care Assistants	185	-112	+13	+11	-2	+1	-2	-0.4%	+0.1%	+0.1%	-0.0%	+0.0%	-0.0%
Care, other	239	-94	+7	+4	-7	-6	-2	-0.3%	+0.0%	+0.0%	-0.0%	-0.0%	-0.0%

Source: Health Service Personnel Census

Older People

Aug 2021 (Dec 2016 figure: 797)	WTE Aug 2021	WTE change since Dec 16	WTE change since Dec 17	WTE change since Dec 18	WTE change since Dec 19	WTE change since Dec 20	WTE change since Jul 21	% change since Dec 16	% change since Dec 17	% change since Dec 18	% change since Dec 19	% change since Dec 20	% change since Jul 21
Overall	809	+12	-20	+1	-15	+5	+13	+1.5%	-2.4%	+0.1%	-1.8%	+0.6%	+1.6%
Medical & Dental	4	-1	-1	-2	-1	-0		-0.2%	-0.2%	-0.4%	-0.2%	-0.0%	+0.0%
Registrars	2	+1	+1		+1	+1		+1.0%	+1.0%	+0.0%	+1.0%	+1.0%	+0.0%
Medical/ Dental, other	2	-2	-2	-2	-2	-1		-0.6%	-0.6%	-0.6%	-0.6%	-0.4%	+0.0%
Nursing & Midwifery	262	-9	-9	-5	-11	-7	+3	-0.0%	-0.0%	-0.0%	-0.0%	-0.0%	+0.0%
Nurse/ Midwife Manager	65	-0	-0	-2	-3	+3	+2	-0.0%	-0.0%	-0.0%	-0.0%	+0.0%	+0.0%
Nurse/ Midwife Specialist & AN/MP	2	+2	+2	+1	+1	+1	+1	-1.0%	-1.0%	+1.0%	+1.0%	+1.0%	+1.0%
Staff Nurse/ Staff Midwife	195	-11	-11	-4	-9	-11		-0.1%	-0.1%	-0.0%	-0.0%	-0.1%	+0.0%
Health & Social Care Professionals	61	+4	+4	+3	-5	+0	-2	+0.1%	+0.1%	+0.1%	-0.1%	+0.0%	-0.0%
Therapy Professions	50	+8	+7	+4	-0	+3	+1	+0.2%	+0.2%	+0.1%	-0.0%	+0.1%	+0.0%
Social Workers	7	-5	-5	-3	-5	-4	-3	-0.4%	-0.4%	-0.3%	-0.4%	-0.4%	-0.3%
Psychologists	1		+1		-2	-1		+0.0%	-1.0%	+0.0%	-0.8%	-0.5%	+0.0%
Pharmacy	4	+1	+1	+1	+1	+1	-0	+0.5%	+0.5%	+0.5%	+0.5%	+0.5%	-0.0%
Management & Administrative	63	+15	+11	+11	+7	+5	+4	+0.3%	+0.2%	+0.2%	+0.1%	+0.1%	+0.1%
Management (VIII & above)	7	+4	+6	+5	+3	+2	+1	+1.3%	+5.9%	+2.4%	+0.7%	+0.4%	+0.2%
Administrative/ Supervisory (V to VII)	25	+5	+4	+4	+3	+6	+3	+0.3%	+0.2%	+0.2%	+0.1%	+0.3%	+0.1%
Clerical (III & IV)	31	+6	+1	+2	+2	-2	-0	+0.2%	+0.0%	+0.1%	+0.1%	-0.1%	-0.0%
General Support	114	-3	-7	+1	-2	+3	+1	-0.0%	-0.1%	+0.0%	-0.0%	+0.0%	+0.0%
Support	106	-1	-5	+1	-2	+4	+1	-0.0%	-0.0%	+0.0%	-0.0%	+0.0%	+0.0%
Maintenance/ Technical	8	-2	-2	-0		-1	-0	-0.2%	-0.2%	-0.0%	+0.0%	-0.1%	-0.0%
Patient & Client Care	304	+6	-17	-7	-3	+3	+8	+0.0%	-0.1%	-0.0%	-0.0%	+0.0%	+0.0%
Health Care Assistants	300	+9	-14	-4	-0	+4	+8	+0.0%	-0.0%	-0.0%	-0.0%	+0.0%	+0.0%
Care, other	4	-3	-3	-3	-3	-1	-0	-0.4%	-0.4%	-0.4%	-0.4%	-0.2%	-0.1%

Source: Health Service Personnel Census