

## CHO 6 Employment Report: January 2021

### Employment by Staff Group

Jan 2021 (Dec 2019 figure: 3,378)	WTE Dec 2020	WTE Jan 2021	WTE change since Dec 20	% change since Dec 20	WTE change since Dec 19	WTE change since Jan 20
<b>Overall</b>	<b>3,465</b>	<b>3,484</b>	<b>+18</b>	<b>+0.5%</b>	<b>+106</b>	<b>+106</b>
Consultants	51	52	+1	+1.7%	+4	+3
Registrars	44	49	+5	+11.2%	-0	+1
SHO/ Interns	20	18	-1	-7.3%	+3	+2
Medical/ Dental, other	45	47	+2	+4.1%	-4	-3
<b>Medical &amp; Dental</b>	<b>160</b>	<b>166</b>	<b>+6</b>	<b>+3.9%</b>	<b>+2</b>	<b>+3</b>
Nurse/ Midwife Manager	206	201	-5	-2.4%	-10	-10
Nurse/ Midwife Specialist & AN/MP	24	25	+1	+3.2%	+4	+2
Staff Nurse/ Staff Midwife	554	558	+3	+0.6%	+16	+16
Public Health Nurse	112	112	+0	+0.4%	-4	-0
<i>Pre-registration Nurse/ Midwife Intern</i>		1	+1	-100.0%	+1	+1
<i>Post-registration Nurse/ Midwife Student</i>	15	15	+0	+0.7%	+2	+0
<i>Nursing/ Midwifery awaiting registration</i>	1	1	-0	-2.0%	+1	-0
Nursing/ Midwifery Student	16	17	+1	+5.8%	+3	+4
Nursing/ Midwifery other	3	3	-0	-0.3%	+1	+1
<b>Nursing &amp; Midwifery</b>	<b>915</b>	<b>915</b>	<b>+1</b>	<b>+0.1%</b>	<b>+10</b>	<b>+13</b>
Therapy Professions	238	243	+6	+2.4%	+5	+8
Health Science/ Diagnostics	20	20	-0	-2.4%	+1	+2
Social Care	392	410	+18	+4.7%	+46	+43
Social Workers	54	56	+2	+3.5%	-1	+2
Psychologists	66	65	-1	-2.2%	+9	+5
Pharmacy	4	3	-1	-28.5%	-1	-1
H&SC, Other	10	10	-0	-4.2%	-4	+0
<b>Health &amp; Social Care Professionals</b>	<b>785</b>	<b>807</b>	<b>+22</b>	<b>+2.9%</b>	<b>+55</b>	<b>+59</b>
Management (VIII & above)	69	58	-11	-15.9%	-9	-11
Administrative/ Supervisory (V to VII)	166	149	-18	-10.7%	-22	-27
Clerical (III & IV)	260	257	-3	-1.0%	+20	+13
<b>Management &amp; Administrative</b>	<b>496</b>	<b>464</b>	<b>-31</b>	<b>-6.3%</b>	<b>-11</b>	<b>-25</b>
Support	192	189	-3	-1.5%	-2	-13
Maintenance/ Technical	22	21	-1	-4.6%	-2	-1
<b>General Support</b>	<b>214</b>	<b>210</b>	<b>-4</b>	<b>-1.8%</b>	<b>-3</b>	<b>-14</b>
Health Care Assistants	566	586	+20	+3.5%	+47	+56
Care, other	330	335	+5	+1.4%	+5	+14
<b>Patient &amp; Client Care</b>	<b>896</b>	<b>921</b>	<b>+24</b>	<b>+2.7%</b>	<b>+52</b>	<b>+69</b>

## CHO 6 Employment Report: January 2021

### Community Health & Wellbeing

Jan 2021 ( figure: )	WTE Dec 2020	WTE Jan 2021	WTE change since Dec 20	% change since Dec 20	WTE change since	WTE change since Jan 20
<b>Total Community Health &amp; Wellbeing</b>	<b>8</b>	<b>8</b>	<b>+0</b>	<b>+4.1%</b>	<b>+8</b>	<b>-0</b>
Management (VIII & above)	1	1			+1	
Administrative/ Supervisory (V to VII)	3	4	+0	+12.3%	+4	+0
Clerical (III & IV)	1	1	-0	-5.1%	+1	-0
<b>Management &amp; Administrative</b>	<b>5</b>	<b>6</b>	<b>+0</b>	<b>+7.4%</b>	<b>+6</b>	<b>+0</b>
Care, other	2	2	-0	-2.8%	+2	-0
<b>Patient &amp; Client Care</b>	<b>2</b>	<b>2</b>	<b>-0</b>	<b>-2.8%</b>	<b>+2</b>	<b>-0</b>

## Mental Health

Jan 2021 (Dec 2019 figure: 593)	WTE Dec 2020	WTE Jan 2021	WTE change since Dec 20	% change since Dec 20	WTE change since Dec 19	WTE change since Jan 20
<b>Total Mental Health</b>	<b>626</b>	<b>633</b>	<b>+7</b>	<b>+1.1%</b>	<b>+41</b>	<b>+38</b>
Consultants	40	41	+1	+2.2%	+5	+3
Registrars	19	22	+3	+16.9%	+0	+2
SHO/ Interns	13	12	-1	-10.9%	+3	+2
<b>Medical &amp; Dental</b>	<b>72</b>	<b>75</b>	<b>+3</b>	<b>+3.7%</b>	<b>+8</b>	<b>+6</b>
Nurse/ Midwife Manager	77	76	-1	-1.4%	-0	-1
Nurse/ Midwife Specialist & AN/MP	20	20	+0	+1.4%	+6	+4
Staff Nurse/ Staff Midwife	151	152	+1	+0.5%	+13	+12
<i>Pre-registration Nurse/ Midwife Intern</i>		1	+1	-100.0%	+1	+1
<i>Nursing/ Midwifery awaiting registration</i>	1	1	-0	-2.0%	+1	-0
Nursing/ Midwifery Student	1	2	+1	+82.0%	+2	+2
Nursing/ Midwifery other	2	2	-0	-0.5%	-0	-0
<b>Nursing &amp; Midwifery</b>	<b>251</b>	<b>252</b>	<b>+1</b>	<b>+0.3%</b>	<b>+21</b>	<b>+17</b>
Therapy Professions	39	38	-0	-1.2%	-5	-4
Social Care	28	29	+1	+1.8%	+3	+0
Social Workers	30	30	+1	+2.9%	+1	+1
Psychologists	32	32	-0	-0.9%	+10	+9
H&SC, Other	5	5	-0	-3.9%	-4	+0
<b>Health &amp; Social Care Professionals</b>	<b>134</b>	<b>134</b>	<b>+0</b>	<b>+0.3%</b>	<b>+4</b>	<b>+6</b>
Management (VIII & above)	3	3				
Administrative/ Supervisory (V to VII)	24	25	+1	+2.4%	-2	-3
Clerical (III & IV)	43	42	-1	-1.2%	+0	+1
<b>Management &amp; Administrative</b>	<b>70</b>	<b>70</b>	<b>+0</b>	<b>+0.1%</b>	<b>-2</b>	<b>-2</b>
Support	39	40	+1	+1.7%	+3	+3
Maintenance/ Technical	6	6	-0	-0.2%	+0	+1
<b>General Support</b>	<b>45</b>	<b>45</b>	<b>+1</b>	<b>+1.4%</b>	<b>+3</b>	<b>+4</b>
Health Care Assistants	49	51	+2	+4.0%	+5	+6
Care, other	6	6	+0	+2.7%	+1	+1
<b>Patient &amp; Client Care</b>	<b>54</b>	<b>57</b>	<b>+2</b>	<b>+3.8%</b>	<b>+6</b>	<b>+6</b>

## Primary Care

Jan 2021 (Dec 2019 figure: 765)	WTE Dec 2020	WTE Jan 2021	WTE change since Dec 20	% change since Dec 20	WTE change since Dec 19	WTE change since Jan 20
<b>Total Primary Care</b>	<b>811</b>	<b>827</b>	<b>+16</b>	<b>+2.0%</b>	<b>+62</b>	<b>+67</b>
Consultants	8	8			-1	+0
Registrars	24	24	-0	-1.1%	-3	-3
SHO/ Interns	7	7				
Medical/ Dental, other	41	43	+2	+4.6%	-3	-1
<b>Medical &amp; Dental</b>	<b>80</b>	<b>81</b>	<b>+2</b>	<b>+2.1%</b>	<b>-7</b>	<b>-4</b>
Nurse/ Midwife Manager	22	23	+0	+0.9%	+0	+0
Nurse/ Midwife Specialist & AN/MP	4	4	+1	+14.3%	-2	-2
Staff Nurse/ Staff Midwife	55	56	+1	+1.5%	+4	+4
Public Health Nurse	112	112	+0	+0.4%	-4	-0
Post-registration Nurse/ Midwife Student	15	15	+0	+0.7%	+2	+0
Nursing/ Midwifery Student	15	15	+0	+0.7%	+2	+2
Nursing/ Midwifery other	1	1			+1	+1
<b>Nursing &amp; Midwifery</b>	<b>209</b>	<b>211</b>	<b>+2</b>	<b>+1.0%</b>	<b>+0</b>	<b>+6</b>
Therapy Professions	110	113	+3	+2.5%	+9	+9
Health Science/ Diagnostics	20	20	-0	-2.4%	+1	+2
Social Care	3	3	+0	+8.6%	-1	-1
Social Workers	4	5	+0	+7.1%	-0	+0
Psychologists	20	20	-0	-1.0%	+1	+1
Pharmacy	1	0	-1	-75.0%	-1	-1
H&SC, Other	4	4			+0	+0
<b>Health &amp; Social Care Professionals</b>	<b>162</b>	<b>164</b>	<b>+2</b>	<b>+1.1%</b>	<b>+10</b>	<b>+11</b>
Management (VIII & above)	30	31	+1	+1.9%	+1	+0
Administrative/ Supervisory (V to VII)	65	64	-1	-2.2%	-4	-3
Clerical (III & IV)	128	133	+5	+4.1%	+21	+19
<b>Management &amp; Administrative</b>	<b>223</b>	<b>227</b>	<b>+4</b>	<b>+2.0%</b>	<b>+18</b>	<b>+16</b>
Support	26	26	-0	-0.4%	+2	-1
Maintenance/ Technical	2	2				
<b>General Support</b>	<b>28</b>	<b>28</b>	<b>-0</b>	<b>-0.4%</b>	<b>+2</b>	<b>-1</b>
Health Care Assistants	38	44	+6	+15.0%	+37	+36
Care, other	72	72	+0	+0.6%	+1	+3
<b>Patient &amp; Client Care</b>	<b>110</b>	<b>116</b>	<b>+6</b>	<b>+5.5%</b>	<b>+38</b>	<b>+39</b>

## Social Care

Jan 2021 (Dec 2019 figure: 2,021)	WTE Dec 2020	WTE Jan 2021	WTE change since Dec 20	% change since Dec 20	WTE change since Dec 19	WTE change since Jan 20
<b>Total Social Care</b>	<b>2,020</b>	<b>2,016</b>	<b>-5</b>	<b>-0.2%</b>	<b>-5</b>	<b>+2</b>
Consultants	3	3				+0
Registrars	1	3	+2	+195.0%	+2	+2
Medical/ Dental, other	4	4	-0	-1.8%	-1	-1
<b>Medical &amp; Dental</b>	<b>8</b>	<b>10</b>	<b>+2</b>	<b>+24.0%</b>	<b>+1</b>	<b>+1</b>
Nurse/ Midwife Manager	106	102	-4	-3.8%	-10	-10
Nurse/ Midwife Specialist & AN/MP	1	1				
Staff Nurse/ Staff Midwife	348	350	+2	+0.5%	-1	-0
<b>Nursing &amp; Midwifery</b>	<b>455</b>	<b>453</b>	<b>-2</b>	<b>-0.5%</b>	<b>-11</b>	<b>-10</b>
Therapy Professions	89	92	+3	+3.7%	+1	+3
Social Care	361	379	+18	+4.9%	+44	+43
Social Workers	20	21	+1	+3.6%	-1	+1
Psychologists	15	14	-1	-6.8%	-2	-4
Pharmacy	3	3	-0	-12.4%	-0	-0
H&SC, Other	1	1	-0	-18.8%	-1	+0
<b>Health &amp; Social Care Professionals</b>	<b>489</b>	<b>509</b>	<b>+20</b>	<b>+4.1%</b>	<b>+40</b>	<b>+43</b>
Management (VIII & above)	35	24	-12	-32.9%	-11	-11
Administrative/ Supervisory (V to VII)	73	56	-17	-23.6%	-19	-21
Clerical (III & IV)	89	81	-7	-8.3%	-2	-6
<b>Management &amp; Administrative</b>	<b>197</b>	<b>161</b>	<b>-36</b>	<b>-18.4%</b>	<b>-33</b>	<b>-39</b>
Support	128	124	-3	-2.7%	-7	-16
Maintenance/ Technical	14	13	-1	-7.1%	-2	-2
<b>General Support</b>	<b>142</b>	<b>137</b>	<b>-5</b>	<b>-3.2%</b>	<b>-8</b>	<b>-18</b>
Health Care Assistants	479	492	+12	+2.6%	+5	+14
Care, other	250	254	+4	+1.6%	+1	+11
<b>Patient &amp; Client Care</b>	<b>730</b>	<b>746</b>	<b>+16</b>	<b>+2.2%</b>	<b>+6</b>	<b>+25</b>

## CHO 6 Employment Report: January 2021

### Disabilities

Jan 2021 (Dec 2019 figure: 1,198)	WTE Dec 2020	WTE Jan 2021	WTE change since Dec 20	% change since Dec 20	WTE change since Dec 19	WTE change since Jan 20
<b>Total Disabilities</b>	<b>1,217</b>	<b>1,210</b>	<b>-7</b>	<b>-0.5%</b>	<b>+12</b>	<b>+16</b>
Consultants	3	3				+0
Registrars		1	+1	-100.0%	+1	+1
Medical/ Dental, other	1	1				
<b>Medical &amp; Dental</b>	<b>4</b>	<b>5</b>	<b>+1</b>	<b>+23.8%</b>	<b>+1</b>	<b>+1</b>
Nurse/ Midwife Manager	43	42	-1	-2.7%	-1	-1
Staff Nurse/ Staff Midwife	142	147	+5	+3.3%	-0	+1
<b>Nursing &amp; Midwifery</b>	<b>186</b>	<b>189</b>	<b>+3</b>	<b>+1.9%</b>	<b>-2</b>	<b>-0</b>
Therapy Professions	42	45	+2	+5.0%	+3	+3
Social Care	361	379	+18	+4.9%	+44	+43
Social Workers	10	10			-1	+1
Psychologists	14	12	-1	-8.4%	-1	-3
H&SC, Other	1	1	-0	-18.8%	-1	+0
<b>Health &amp; Social Care Professionals</b>	<b>428</b>	<b>447</b>	<b>+19</b>	<b>+4.3%</b>	<b>+44</b>	<b>+44</b>
Management (VIII & above)	30	19	-12	-38.3%	-12	-11
Administrative/ Supervisory (V to VII)	54	35	-19	-35.8%	-19	-20
Clerical (III & IV)	56	48	-8	-14.2%	-6	-12
<b>Management &amp; Administrative</b>	<b>140</b>	<b>101</b>	<b>-39</b>	<b>-27.7%</b>	<b>-37</b>	<b>-43</b>
Support	26	21	-4	-17.1%	-1	-9
Maintenance/ Technical	5	5			-2	-1
<b>General Support</b>	<b>31</b>	<b>26</b>	<b>-4</b>	<b>-14.3%</b>	<b>-3</b>	<b>-10</b>
Health Care Assistants	184	193	+10	+5.2%	+6	+12
Care, other	245	249	+4	+1.7%	+3	+12
<b>Patient &amp; Client Care</b>	<b>428</b>	<b>442</b>	<b>+14</b>	<b>+3.2%</b>	<b>+9</b>	<b>+24</b>

## Older People

Jan 2021 (Dec 2019 figure: 823)	WTE Dec 2020	WTE Jan 2021	WTE change since Dec 20	% change since Dec 20	WTE change since Dec 19	WTE change since Jan 20
<b>Total Older People</b>	<b>804</b>	<b>806</b>	<b>+2</b>	<b>+0.2%</b>	<b>-18</b>	<b>-14</b>
Registrars	1	2	+1	+100.0%	+1	+1
Medical/ Dental, other	3	3	-0	-2.5%	-1	-1
<b>Medical &amp; Dental</b>	<b>4</b>	<b>5</b>	<b>+1</b>	<b>+24.3%</b>	<b>-0</b>	<b>-0</b>
Nurse/ Midwife Manager	63	60	-3	-4.6%	-9	-8
Nurse/ Midwife Specialist & AN/MP	1	1				
Staff Nurse/ Staff Midwife	206	203	-3	-1.5%	-1	-1
<b>Nursing &amp; Midwifery</b>	<b>269</b>	<b>264</b>	<b>-6</b>	<b>-2.2%</b>	<b>-9</b>	<b>-10</b>
<b>Health &amp; Social Care Professionals</b>	<b>61</b>	<b>62</b>	<b>+2</b>	<b>+2.8%</b>	<b>-4</b>	<b>-2</b>
Management (VIII & above)	5	5			+1	+0
Administrative/ Supervisory (V to VII)	19	21	+2	+10.0%	-1	-1
Clerical (III & IV)	33	34	+1	+1.7%	+4	+6
<b>Management &amp; Administrative</b>	<b>58</b>	<b>60</b>	<b>+3</b>	<b>+4.4%</b>	<b>+4</b>	<b>+4</b>
Support	102	103	+1	+0.8%	-5	-7
Maintenance/ Technical	9	8	-1	-11.1%		-1
<b>General Support</b>	<b>111</b>	<b>111</b>	<b>-0</b>	<b>-0.1%</b>	<b>-5</b>	<b>-8</b>
Health Care Assistants	296	299	+3	+0.9%	-1	+2
Care, other	6	5	-0	-0.5%	-2	-1
<b>Patient &amp; Client Care</b>	<b>301</b>	<b>304</b>	<b>+3</b>	<b>+0.9%</b>	<b>-3</b>	<b>+1</b>

## CHO 6 Employment by Administration (HSE / S38): January 2021

Jan 2021 (Dec 2019 figure: 3,378)	WTE Dec 2020	WTE Jan 2021	WTE change since Dec 20	% change since Dec 20	WTE change since Dec 19	WTE change since Jan 20
<b>Overall</b>	<b>3,465</b>	<b>3,484</b>	<b>+18</b>	<b>+0.5%</b>	<b>+106</b>	<b>+106</b>
<b>HSE</b>	<b>1,689</b>	<b>1,707</b>	<b>+18</b>	<b>+1.1%</b>	<b>+101</b>	<b>+104</b>
<b>Section 38 Voluntary Agencies</b>	<b>1,776</b>	<b>1,777</b>	<b>+1</b>	<b>+0.0%</b>	<b>+4</b>	<b>+2</b>

## HSE

Jan 2021 (Dec 2019 figure: 1,605)	WTE Dec 2020	WTE Jan 2021	WTE change since Dec 20	% change since Dec 20	WTE change since Dec 19	WTE change since Jan 20
<b>Overall</b>	<b>1,689</b>	<b>1,707</b>	<b>+18</b>	<b>+1.1%</b>	<b>+101</b>	<b>+104</b>
Consultants	26	27	+1	+0.0%	+4	+2
Registrars	28	28	+0	+0.0%	-2	-1
SHO/ Interns	5	5	-0	-0.1%	+1	+0
Medical/ Dental, other	43	45	+2	+0.0%	-4	-3
<b>Medical &amp; Dental</b>	<b>102</b>	<b>104</b>	<b>+3</b>	<b>+2.8%</b>	<b>-2</b>	<b>-1</b>
Nurse/ Midwife Manager	136	136	-1	-0.0%	-2	-2
Nurse/ Midwife Specialist & AN/MP	17	17	+0	+0.0%	+2	+1
Staff Nurse/ Staff Midwife	304	300	-4	-0.0%	+15	+16
Public Health Nurse	112	112	+0	+0.0%	-4	-0
<i>Pre-registration Nurse/ Midwife Intern</i>		1	+1	-1.0%	+1	+1
<i>Post-registration Nurse/ Midwife Student</i>	15	15	+0	+0.0%	+4	+2
<i>Nursing/ Midwifery awaiting registration</i>	1	1	-0	-0.0%	+1	+1
Nursing/ Midwifery Student	16	17	+1	+0.1%	+3	+4
Nursing/ Midwifery other	3	3	-0	-0.0%	+1	+1
<b>Nursing &amp; Midwifery</b>	<b>588</b>	<b>585</b>	<b>-3</b>	<b>-0.5%</b>	<b>+15</b>	<b>+19</b>
Therapy Professions	160	165	+5	+0.0%	+7	+9
Health Science/ Diagnostics	19	18	-0	-0.0%	+1	+2
Social Care	11	10	-0	-0.0%	-1	-1
Social Workers	25	27	+2	+0.1%	+1	+2
Psychologists	41	41	+0	+0.0%	+3	+3
Pharmacy	2	1	-1	-0.4%	-1	-1
H&SC, Other	9	8	-0	-0.0%	+0	+0
<b>Health &amp; Social Care Professionals</b>	<b>266</b>	<b>271</b>	<b>+5</b>	<b>+1.9%</b>	<b>+11</b>	<b>+13</b>
Management (VIII & above)	37	37	+0	+0.0%	+2	+0
Administrative/ Supervisory (V to VII)	90	90	+1	+0.0%	-0	-4
Clerical (III & IV)	156	162	+6	+0.0%	+27	+24
<b>Management &amp; Administrative</b>	<b>282</b>	<b>289</b>	<b>+7</b>	<b>+2.4%</b>	<b>+29</b>	<b>+20</b>
Support	82	82	+0	+0.0%	-2	-2
Maintenance/ Technical	2	2	-0	-0.0%	-1	-0
<b>General Support</b>	<b>84</b>	<b>84</b>	<b>+0</b>	<b>+0.2%</b>	<b>-3</b>	<b>-2</b>
Health Care Assistants	307	314	+7	+0.0%	+47	+50
Care, other	60	59	-1	-0.0%	+5	+5
<b>Patient &amp; Client Care</b>	<b>367</b>	<b>373</b>	<b>+6</b>	<b>+1.6%</b>	<b>+52</b>	<b>+55</b>



## Section 38 Voluntary Agencies

Jan 2021 (Dec 2019 figure: 1,773)	WTE Dec 2020	WTE Jan 2021	WTE change since Dec 20	% change since Dec 20	WTE change since Dec 19	WTE change since Jan 20
<b>Overall</b>	<b>1,776</b>	<b>1,777</b>	<b>+1</b>	<b>+0.0%</b>	<b>+4</b>	<b>+2</b>
Consultants	26	25	-0	-0.0%	-0	+1
Registrars	16	21	+5	+0.3%	+2	+2
SHO/ Interns	15	13	-1	-0.1%	+2	+1
Medical/ Dental, other	2	2		+0.0%		
<b>Medical &amp; Dental</b>	<b>58</b>	<b>62</b>	<b>+3</b>	<b>+5.8%</b>	<b>+4</b>	<b>+4</b>
Nurse/ Midwife Manager	69	65	-4	-0.1%	-8	-8
Nurse/ Midwife Specialist & AN/MP	7	8	+0	+0.0%	+3	+2
Staff Nurse/ Staff Midwife	250	257	+7	+0.0%	+1	-0
<b>Nursing &amp; Midwifery</b>	<b>327</b>	<b>330</b>	<b>+3</b>	<b>+1.1%</b>	<b>-4</b>	<b>-6</b>
Therapy Professions	78	79	+1	+0.0%	-2	-0
Health Science/ Diagnostics	2	2		+0.0%		
Social Care	381	400	+19	+0.0%	+47	+44
Social Workers	29	29	+0	+0.0%	-2	+0
Psychologists	26	24	-2	-0.1%	+5	+3
Pharmacy	2	2	-0	-0.2%	-0	-0
H&SC, Other	1	1		+0.0%	-4	+0
<b>Health &amp; Social Care Professionals</b>	<b>519</b>	<b>536</b>	<b>+18</b>	<b>+3.4%</b>	<b>+44</b>	<b>+46</b>
Management (VIII & above)	33	21	-11	-0.3%	-12	-11
Administrative/ Supervisory (V to VII)	77	58	-19	-0.2%	-21	-22
Clerical (III & IV)	104	96	-8	-0.1%	-7	-11
<b>Management &amp; Administrative</b>	<b>213</b>	<b>175</b>	<b>-38</b>	<b>-17.8%</b>	<b>-40</b>	<b>-44</b>
Support	110	107	-3	-0.0%	+1	-11
Maintenance/ Technical	20	19	-1	-0.1%	-1	-1
<b>General Support</b>	<b>130</b>	<b>126</b>	<b>-4</b>	<b>-3.2%</b>	<b>-0</b>	<b>-12</b>
Health Care Assistants	259	272	+13	+0.1%	+0	+6
Care, other	270	276	+5	+0.0%	-0	+9
<b>Patient &amp; Client Care</b>	<b>530</b>	<b>548</b>	<b>+18</b>	<b>+3.5%</b>	<b>+0</b>	<b>+15</b>

## CHO 6 Employment by S38 Agency: January 2021

### Children's Sunshine Home

Jan 2021 (Dec 2019 figure: 58)	WTE Dec 2020	WTE Jan 2021	WTE change since Dec 20	% change since Dec 20	WTE change since Dec 19	WTE change since Jan 20
<b>Overall</b>	<b>56</b>	<b>56</b>	<b>+1</b>	<b>+0.9%</b>	<b>-2</b>	<b>-1</b>
Nurse/ Midwife Manager	8	8		+0.0%	+1	+1
Staff Nurse/ Staff Midwife	18	18		+0.0%	-3	-2
<b>Nursing &amp; Midwifery</b>	<b>26</b>	<b>26</b>			<b>-2</b>	<b>-1</b>
Therapy Professions	1	2	+1	+0.5%	-0	-0
Social Workers	1	1		+0.0%		
<b>Health &amp; Social Care Professionals</b>	<b>2</b>	<b>2</b>	<b>+1</b>	<b>+27.3%</b>	<b>-0</b>	<b>-0</b>
Management (VIII & above)	2	2		+0.0%	-1	-1
Administrative/ Supervisory (V to VII)	4	4		+0.0%		
Clerical (III & IV)	1	1		+0.0%		
<b>Management &amp; Administrative</b>	<b>7</b>	<b>7</b>			<b>-1</b>	<b>-1</b>
Support	3	3		+0.0%		
<b>General Support</b>	<b>3</b>	<b>3</b>				
Health Care Assistants	13	13		+0.0%	-1	-1
Care, other	5	5		+0.0%	+1	+2
<b>Patient &amp; Client Care</b>	<b>18</b>	<b>18</b>			<b>+1</b>	<b>+1</b>

## Dublin Dental Hospital

Jan 2021 (Dec 2019 figure: 91)	WTE Dec 2020	WTE Jan 2021	WTE change since Dec 20	% change since Dec 20	WTE change since Dec 19	WTE change since Jan 20
<b>Overall</b>	<b>93</b>	<b>93</b>	<b>+0</b>	<b>+0.0%</b>	<b>+2</b>	<b>+0</b>
Consultants	5	5		+0.0%	-1	
Registrars	1	1		+0.0%		
SHO/ Interns	7	7		+0.0%		
<b>Medical &amp; Dental</b>	<b>12</b>	<b>12</b>			<b>-1</b>	
Nurse/ Midwife Manager	2	2		+0.0%		
Staff Nurse/ Staff Midwife	4	4		+0.0%		
<b>Nursing &amp; Midwifery</b>	<b>6</b>	<b>6</b>				
Health Science/ Diagnostics	2	2		+0.0%		
H&SC, Other	1	1		+0.0%		
<b>Health &amp; Social Care Professionals</b>	<b>2</b>	<b>2</b>				
Management (VIII & above)	4	4		+0.0%		
Administrative/ Supervisory (V to VII)	11	11		+0.0%		
Clerical (III & IV)	15	15		+0.0%		
<b>Management &amp; Administrative</b>	<b>30</b>	<b>30</b>				
Support	13	13		+0.0%	+3	
Maintenance/ Technical	2	2		+0.0%		
<b>General Support</b>	<b>15</b>	<b>15</b>			<b>+3</b>	
Health Care Assistants	1	1		+0.0%		
Care, other	27	27		+0.0%		
<b>Patient &amp; Client Care</b>	<b>27</b>	<b>27</b>				

## Leopardstown Park Hospital

Jan 2021 (Dec 2019 figure: 211)	WTE Dec 2020	WTE Jan 2021	WTE change since Dec 20	% change since Dec 20	WTE change since Dec 19	WTE change since Jan 20
<b>Overall</b>	<b>207</b>	<b>207</b>	<b>+0</b>	<b>+0.1%</b>	<b>-4</b>	<b>-6</b>
Medical/ Dental, other	1	1		+0.0%		
<b>Medical &amp; Dental</b>	<b>1</b>	<b>1</b>				
Nurse/ Midwife Manager	14	12	-2	-0.2%	-4	-4
Staff Nurse/ Staff Midwife	42	41	-1	-0.0%	-2	-2
<b>Nursing &amp; Midwifery</b>	<b>56</b>	<b>52</b>	<b>-4</b>	<b>-6.3%</b>	<b>-5</b>	<b>-5</b>
Therapy Professions	9	9		+0.0%	+2	+2
Social Workers	1	1		+0.0%		
Pharmacy	2	2	-0	-0.2%	-0	-0
<b>Health &amp; Social Care Professionals</b>	<b>12</b>	<b>12</b>	<b>-0</b>	<b>-3.0%</b>	<b>+2</b>	<b>+2</b>
Management (VIII & above)	1	1		+0.0%		
Administrative/ Supervisory (V to VII)	7	7		+0.0%		
Clerical (III & IV)	12	12		+0.0%	+1	+2
<b>Management &amp; Administrative</b>	<b>20</b>	<b>20</b>			<b>+1</b>	<b>+2</b>
Support	34	34	+1	+0.0%	+1	-1
Maintenance/ Technical	4	4		+0.0%		
<b>General Support</b>	<b>38</b>	<b>38</b>	<b>+1</b>	<b>+2.0%</b>	<b>+1</b>	<b>-1</b>
Health Care Assistants	77	80	+3	+0.0%	-1	-2
Care, other	3	3	+0	+0.0%	-2	-1
<b>Patient &amp; Client Care</b>	<b>80</b>	<b>83</b>	<b>+3</b>	<b>+4.1%</b>	<b>-3</b>	<b>-3</b>

Jan 2021 (Dec 2019 figure: 272)	WTE Dec 2020	WTE Jan 2021	WTE change since Dec 20	% change since Dec 20	WTE change since Dec 19	WTE change since Jan 20
<b>Overall</b>	<b>268</b>	<b>269</b>	<b>+1</b>	<b>+0.4%</b>	<b>-3</b>	<b>-4</b>
Registrars	1	2	+1	+1.0%	+1	+1
Medical/ Dental, other	1	1		+0.0%		
<b>Medical &amp; Dental</b>	<b>2</b>	<b>3</b>	<b>+1</b>	<b>+50.0%</b>	<b>+1</b>	<b>+1</b>
Nurse/ Midwife Manager	17	16	-1	-0.1%	-4	-4
Staff Nurse/ Staff Midwife	74	75	+1	+0.0%	+1	-0
<b>Nursing &amp; Midwifery</b>	<b>91</b>	<b>91</b>			<b>-3</b>	<b>-4</b>
Therapy Professions	29	29		+0.0%	-1	-0
Social Workers	6	6		+0.0%		
Psychologists	1	1		+0.0%		
<b>Health &amp; Social Care Professionals</b>	<b>35</b>	<b>35</b>			<b>-1</b>	<b>-0</b>
Management (VIII & above)	1	1		+0.0%	+1	+1
Administrative/ Supervisory (V to VII)	5	6	+1	+0.2%	-0	-0
Clerical (III & IV)	9	9		+0.0%	+2	+2
<b>Management &amp; Administrative</b>	<b>15</b>	<b>16</b>	<b>+1</b>	<b>+6.6%</b>	<b>+3</b>	<b>+3</b>
Support	34	34		+0.0%	-2	-2
Maintenance/ Technical	5	4	-1	-0.2%		-1
<b>General Support</b>	<b>39</b>	<b>38</b>	<b>-1</b>	<b>-2.6%</b>	<b>-2</b>	<b>-3</b>
Health Care Assistants	85	85		+0.0%	-1	-1
Care, other	1	1		+0.0%	+1	+1
<b>Patient &amp; Client Care</b>	<b>86</b>	<b>86</b>				

# St. John of God (IDS)

Jan 2021 (Dec 2019 figure: 456)	WTE Dec 2020	WTE Jan 2021	WTE change since Dec 20	% change since Dec 20	WTE change since Dec 19	WTE change since Jan 20
<b>Overall</b>	<b>468</b>	<b>423</b>	<b>-44</b>	<b>-9.5%</b>	<b>-33</b>	<b>-28</b>
Consultants	1	1		+0.0%		
<b>Medical &amp; Dental</b>	<b>1</b>	<b>1</b>				
Nurse/ Midwife Manager	8	7	-1	-0.1%	-1	-1
Staff Nurse/ Staff Midwife	49	50	+1	+0.0%	+4	+3
<b>Nursing &amp; Midwifery</b>	<b>57</b>	<b>57</b>	<b>+0</b>	<b>+0.7%</b>	<b>+3</b>	<b>+2</b>
Therapy Professions	13	13	+0	+0.0%	+1	+1
Social Care	159	159	-0	-0.0%	+12	+9
Social Workers	3	3		+0.0%	-1	
Psychologists	6	5	-1	-0.2%		-1
<b>Health &amp; Social Care Professionals</b>	<b>181</b>	<b>180</b>	<b>-2</b>	<b>-1.0%</b>	<b>+12</b>	<b>+9</b>
Management (VIII & above)	14	3	-11	-0.8%	-12	-12
Administrative/ Supervisory (V to VII)	27	7	-19	-0.7%	-21	-20
Clerical (III & IV)	19	9	-10	-0.5%	-10	-10
<b>Management &amp; Administrative</b>	<b>60</b>	<b>19</b>	<b>-40</b>	<b>-67.7%</b>	<b>-43</b>	<b>-42</b>
Support	12	11	-1	-0.1%	-1	-0
Maintenance/ Technical	5	5		+0.0%	+0	
<b>General Support</b>	<b>17</b>	<b>16</b>	<b>-1</b>	<b>-6.3%</b>	<b>-1</b>	<b>-0</b>
Health Care Assistants	18	20	+2	+0.1%	+1	+3
Care, other	134	130	-3	-0.0%	-6	-1
<b>Patient &amp; Client Care</b>	<b>151</b>	<b>150</b>	<b>-1</b>	<b>-0.8%</b>	<b>-5</b>	<b>+2</b>

## St. John of God (MHS)

Jan 2021 (Dec 2019 figure: 235)	WTE Dec 2020	WTE Jan 2021	WTE change since Dec 20	% change since Dec 20	WTE change since Dec 19	WTE change since Jan 20
<b>Overall</b>	<b>236</b>	<b>243</b>	<b>+6</b>	<b>+2.7%</b>	<b>+7</b>	<b>+6</b>
Consultants	20	20	-0	-0.0%	+1	+1
Registrars	14	18	+4	+0.3%	+1	+1
SHO/ Interns	8	7	-1	-0.1%	+2	+1
<b>Medical &amp; Dental</b>	<b>42</b>	<b>44</b>	<b>+2</b>	<b>+5.6%</b>	<b>+4</b>	<b>+3</b>
Nurse/ Midwife Manager	16	16	-0	-0.0%	-0	+0
Nurse/ Midwife Specialist & AN/MP	7	8	+0	+0.0%	+3	+2
Staff Nurse/ Staff Midwife	31	34	+3	+0.1%	+2	+1
<b>Nursing &amp; Midwifery</b>	<b>54</b>	<b>58</b>	<b>+3</b>	<b>+6.3%</b>	<b>+4</b>	<b>+2</b>
Therapy Professions	23	22	-1	-0.0%	-5	-5
Social Care	28	29	+1	+0.0%	+3	+1
Social Workers	17	17	+0	+0.0%	-1	-1
Psychologists	19	18	-0	-0.0%	+6	+5
H&SC, Other	1	1		+0.0%	-4	+0
<b>Health &amp; Social Care Professionals</b>	<b>87</b>	<b>87</b>	<b>-0</b>	<b>-0.1%</b>	<b>-0</b>	<b>+0</b>
Management (VIII & above)	2	2		+0.0%		
Administrative/ Supervisory (V to VII)	15	14	-0	-0.0%	-1	-2
Clerical (III & IV)	24	24	+0	+0.0%	-2	-0
<b>Management &amp; Administrative</b>	<b>40</b>	<b>40</b>	<b>+0</b>	<b>+0.1%</b>	<b>-3</b>	<b>-2</b>
Support	6	7	+0	+0.1%	+0	+0
Maintenance/ Technical	4	4		+0.0%	+1	+1
<b>General Support</b>	<b>10</b>	<b>11</b>	<b>+0</b>	<b>+4.5%</b>	<b>+1</b>	<b>+1</b>
Care, other	2	3	+0	+0.1%	+1	+1
<b>Patient &amp; Client Care</b>	<b>2</b>	<b>3</b>	<b>+0</b>	<b>+9.6%</b>	<b>+1</b>	<b>+1</b>

## Sunbeam House Services

Jan 2021 (Dec 2019 figure: 449)	WTE Dec 2020	WTE Jan 2021	WTE change since Dec 20	% change since Dec 20	WTE change since Dec 19	WTE change since Jan 20
<b>Overall</b>	<b>450</b>	<b>486</b>	<b>+37</b>	<b>+8.1%</b>	<b>+37</b>	<b>+35</b>
Nurse/ Midwife Manager	4	4		+0.0%		
Staff Nurse/ Staff Midwife	32	35	+3	+0.1%	-2	-0
<b>Nursing &amp; Midwifery</b>	<b>36</b>	<b>39</b>	<b>+3</b>	<b>+8.7%</b>	<b>-2</b>	<b>-0</b>
Therapy Professions	2	3	+1	+0.4%	+2	+2
Social Care	195	213	+18	+0.1%	+31	+34
Social Workers	2	2		+0.0%		+1
Psychologists				-1.0%	-1	-2
H&SC, Other				-1.0%	-1	
<b>Health &amp; Social Care Professionals</b>	<b>199</b>	<b>218</b>	<b>+19</b>	<b>+9.7%</b>	<b>+32</b>	<b>+35</b>
Management (VIII & above)	9	9		+0.0%		+1
Administrative/ Supervisory (V to VII)	9	9		+0.0%		-1
Clerical (III & IV)	25	26	+1	+0.1%	+2	-4
<b>Management &amp; Administrative</b>	<b>42</b>	<b>44</b>	<b>+1</b>	<b>+3.1%</b>	<b>+2</b>	<b>-4</b>
Support	8	5	-3	-0.4%	-0	-9
Maintenance/ Technical				-1.0%	-2	-1
<b>General Support</b>	<b>8</b>	<b>5</b>	<b>-3</b>	<b>-41.5%</b>	<b>-2</b>	<b>-10</b>
Health Care Assistants	65	73	+8	+0.1%	+2	+7
Care, other	99	107	+8	+0.1%	+4	+8
<b>Patient &amp; Client Care</b>	<b>164</b>	<b>180</b>	<b>+16</b>	<b>+9.8%</b>	<b>+6</b>	<b>+15</b>



**CHO 6 Employment by Grade Group & Staff Category: January 2021**

Jan 2021 (Dec 2019 figure: 3,378)	WTE Dec 2020	WTE Jan 2021	WTE change since Dec 20	% change since Dec 20	WTE change since Dec 19	WTE change since Jan 20
<b>Overall</b>	<b>3,465</b>	<b>3,484</b>	<b>+18</b>	<b>+0.5%</b>	<b>+106</b>	<b>+106</b>
Consultant Dentistry	6	6			-1	+0
Consultant Medicine	1	1				
Consultant Psychiatry	43	44	+1	+2.1%	+5	+3
Consultant Radiology	1	1				
<b>Consultants</b>	<b>51</b>	<b>52</b>	<b>+1</b>	<b>+1.7%</b>	<b>+4</b>	<b>+3</b>
Registrar	34	39	+5	+14.5%	-1	+0
Senior Registrar	9	9	-0	-0.7%	+1	+1
Specialist Registrar	1	1				
<b>Registrars</b>	<b>44</b>	<b>49</b>	<b>+5</b>	<b>+11.2%</b>	<b>-0</b>	<b>+1</b>
Senior House Officer	20	18	-1	-7.3%	+3	+2
<b>SHO/ Interns</b>	<b>20</b>	<b>18</b>	<b>-1</b>	<b>-7.3%</b>	<b>+3</b>	<b>+2</b>
Dentists	25	26	+1	+3.6%	-1	+0
Other Medical	20	21	+1	+4.7%	-4	-3
<b>Medical/ Dental, other</b>	<b>45</b>	<b>47</b>	<b>+2</b>	<b>+4.1%</b>	<b>-4</b>	<b>-3</b>
<b>Medical &amp; Dental</b>	<b>160</b>	<b>166</b>	<b>+6</b>	<b>+3.9%</b>	<b>-0</b>	<b>+3</b>
Clinical Nurse/ Midwife Manager	158	154	-4	-2.7%	-7	-7
Director Nursing/Midwifery, Assistant	34	34	+1	+1.6%	-1	+0
Director of Nursing/Midwifery	13	12	-1	-8.7%	-2	-3
<b>Nurse/ Midwife Manager</b>	<b>206</b>	<b>201</b>	<b>-5</b>	<b>-2.4%</b>	<b>-10</b>	<b>-10</b>
Advanced Nurse/ Midwife Practitioner	6	6			+5	+3
Clinical Nurse/ Midwife Specialist	19	19	+1	+4.2%	-1	-1
<b>Nurse/ Midwife Specialist &amp; AN/MP</b>	<b>24</b>	<b>25</b>	<b>+1</b>	<b>+3.2%</b>	<b>+4</b>	<b>+2</b>
Staff Nurse [Intellectual Disability]	53	57	+4	+7.0%	+7	+3
Staff Nurse [Psychiatric]	125	126	+1	+1.2%	-7	+8
Staff Nurses [General/ Children's]	376	374	-2	-0.5%	+15	+6
<b>Staff Nurse/ Staff Midwife</b>	<b>554</b>	<b>558</b>	<b>+3</b>	<b>+0.6%</b>	<b>+16</b>	<b>+16</b>
<b>Public Health Nurse</b>	<b>112</b>	<b>112</b>	<b>+0</b>	<b>+0.4%</b>	<b>-4</b>	<b>-0</b>
Nursing/ Midwifery awaiting registration	1	1	-0	-2.0%	+1	+1
Post-registration Nurse/ Midwife Student	15	15	+0	+0.7%	+2	+2
Pre-registration Nurse/ Midwife Intern		1	+1	-100.0%	+1	+1
<b>Nursing/ Midwifery Student</b>	<b>16</b>	<b>17</b>	<b>+1</b>	<b>+5.8%</b>	<b>+3</b>	<b>+4</b>
Nursing Education/Clinical	3	3	-0	-0.3%	+1	+1
<b>Nursing/ Midwifery other</b>	<b>3</b>	<b>3</b>	<b>-0</b>	<b>-0.3%</b>	<b>+1</b>	<b>+1</b>
<b>Nursing &amp; Midwifery</b>	<b>915</b>	<b>915</b>	<b>+1</b>	<b>+0.1%</b>	<b>+8</b>	<b>+13</b>
Dietitians	16	17	+0	+1.1%	+2	+3
Occupational Therapists	93	94	+1	+0.8%	+2	+1
Physiotherapists	59	64	+5	+8.0%	+3	+6
Podiatrists & Chiropodists	4	4	-0	-1.9%	+2	+2
Speech & Language Therapists	65	65	+0	+0.0%	-5	-4
<b>Therapy Professions</b>	<b>238</b>	<b>243</b>	<b>+6</b>	<b>+2.4%</b>	<b>+5</b>	<b>+8</b>
Medical Laboratory	18	17	-1	-2.9%	+2	+2
Radiographers	2	2	+0	+1.3%	-0	+0
<b>Health Science/ Diagnostics</b>	<b>20</b>	<b>20</b>	<b>-0</b>	<b>-2.4%</b>	<b>+1</b>	<b>+2</b>
<b>Social Care</b>	<b>392</b>	<b>410</b>	<b>+18</b>	<b>+4.7%</b>	<b>+46</b>	<b>+43</b>
<b>Social Workers</b>	<b>54</b>	<b>56</b>	<b>+2</b>	<b>+3.5%</b>	<b>-1</b>	<b>+2</b>
<b>Psychologists</b>	<b>66</b>	<b>65</b>	<b>-1</b>	<b>-2.2%</b>	<b>+9</b>	<b>+5</b>
<b>Pharmacy</b>	<b>4</b>	<b>3</b>	<b>-1</b>	<b>-28.5%</b>	<b>-1</b>	<b>-1</b>

Jan 2021 (Dec 2019 figure: 3,378)	WTE Dec 2020	WTE Jan 2021	WTE change since Dec 20	% change since Dec 20	WTE change since Dec 19	WTE change since Jan 20
<b>Overall</b>	<b>3,465</b>	<b>3,484</b>	<b>+18</b>	<b>+0.5%</b>	<b>+106</b>	<b>+106</b>
Counsellor Therapists	4	4	-0	-4.8%	-0	
Dental Hygienists	4	4			+0	+0
Other Health & Social Care	2	2	-0	-13.5%	-4	+0
Play Therapists/ Specialists	0	0			+0	-0
<b>H&amp;SC, Other</b>	<b>10</b>	<b>10</b>	<b>-0</b>	<b>-4.2%</b>	<b>-4</b>	<b>+0</b>
<b>Health &amp; Social Care Professionals</b>	<b>785</b>	<b>807</b>	<b>+22</b>	<b>+2.9%</b>	<b>+67</b>	<b>+59</b>
Executive Management	24	21	-3	-13.4%	-3	-2
Senior Management (VIII & GM)	46	38	-8	-17.1%	-6	-9
<b>Management (VIII &amp; above)</b>	<b>69</b>	<b>58</b>	<b>-11</b>	<b>-15.9%</b>	<b>-9</b>	<b>-11</b>
Middle Management (V-VII)	166	149	-18	-10.7%	-21	-26
Other Administrative				-100.0%	-1	-1
<b>Administrative/ Supervisory (V to VII)</b>	<b>166</b>	<b>149</b>	<b>-18</b>	<b>-10.7%</b>	<b>-22</b>	<b>-27</b>
<b>Clerical (III &amp; IV)</b>	<b>260</b>	<b>257</b>	<b>-3</b>	<b>-1.0%</b>	<b>+20</b>	<b>+13</b>
<b>Management &amp; Administrative</b>	<b>496</b>	<b>464</b>	<b>-31</b>	<b>-6.3%</b>	<b>-12</b>	<b>-25</b>
Catering	25	24	-2	-7.0%	-2	-4
Household Services	123	121	-2	-1.5%	-1	-7
Other Labs & Associated	1	1	-0	-5.0%	-0	-0
Other Support	20	20	+0	+0.1%	+1	-1
Portering	23	24	+1	+3.2%	+0	-0
<b>Support</b>	<b>192</b>	<b>189</b>	<b>-3</b>	<b>-1.5%</b>	<b>-2</b>	<b>-13</b>
<b>Maintenance/ Technical</b>	<b>22</b>	<b>21</b>	<b>-1</b>	<b>-4.6%</b>	<b>-2</b>	<b>-1</b>
<b>General Support</b>	<b>214</b>	<b>210</b>	<b>-4</b>	<b>-1.8%</b>	<b>-13</b>	<b>-14</b>
HCA, Nurse's Aide, etc.	551	571	+20	+3.6%	+44	+52
Health & Social Care Assistants	15	15	+0	+0.0%	+3	+3
<b>Health Care Assistants</b>	<b>566</b>	<b>586</b>	<b>+20</b>	<b>+3.5%</b>	<b>+47</b>	<b>+56</b>
<b>Care, other</b>	<b>330</b>	<b>335</b>	<b>+5</b>	<b>+1.4%</b>	<b>+5</b>	<b>+14</b>
<b>Patient &amp; Client Care</b>	<b>896</b>	<b>921</b>	<b>+24</b>	<b>+2.7%</b>	<b>+64</b>	<b>+69</b>

# CHO 6 HSE Employment by Grade Group & Staff Category: January 2021

Jan 2021 (Dec 2019 figure: 1,605)	WTE Dec 2020	WTE Jan 2021	WTE change since Dec 20	% change since Dec 20	WTE change since Dec 19	WTE change since Jan 20
<b>Overall</b>	<b>1,689</b>	<b>1,707</b>	<b>+18</b>	<b>+1.1%</b>	<b>+101</b>	<b>+104</b>
Consultant Dentistry	3	3			+0	+0
Consultant Medicine	1	1				
Consultant Psychiatry	22	23	+1	+4.8%	+4	+2
<b>Consultants</b>	<b>26</b>	<b>27</b>	<b>+1</b>	<b>+4.2%</b>	<b>+4</b>	<b>+2</b>
<b>Registrars</b>	<b>28</b>	<b>28</b>	<b>+0</b>	<b>+1.1%</b>	<b>-2</b>	<b>-1</b>
<b>SHO/ Interns</b>	<b>5</b>	<b>5</b>	<b>-0</b>	<b>-7.0%</b>	<b>+1</b>	<b>+0</b>
Dentists	25	26	+1	+3.6%	-1	+0
Other Medical	18	19	+1	+5.2%	-4	-3
<b>Medical/ Dental, other</b>	<b>43</b>	<b>45</b>	<b>+2</b>	<b>+4.3%</b>	<b>-4</b>	<b>-3</b>
<b>Medical &amp; Dental</b>	<b>102</b>	<b>104</b>	<b>+3</b>	<b>+2.8%</b>	<b>-2</b>	<b>-1</b>
Clinical Nurse/ Midwife Manager	101	101	-0	-0.1%	-0	-1
Director Nursing/Midwifery, Assistant	27	27	+1	+2.4%	-0	+1
Director of Nursing/Midwifery	9	8	-1	-13.5%	-1	-2
<b>Nurse/ Midwife Manager</b>	<b>136</b>	<b>136</b>	<b>-1</b>	<b>-0.5%</b>	<b>-2</b>	<b>-2</b>
Advanced Nurse/ Midwife Practitioner	4	4			+3	+2
Clinical Nurse/ Midwife Specialist	13	14	+0	+3.4%	-1	-1
<b>Nurse/ Midwife Specialist &amp; AN/MP</b>	<b>17</b>	<b>17</b>	<b>+0</b>	<b>+2.7%</b>	<b>+2</b>	<b>+1</b>
Staff Nurse [Intellectual Disability]	12	12	+0	+2.1%	-0	-1
Staff Nurse [Psychiatric]	94	92	-2	-1.8%	+6	+8
Staff Nurses [General/ Children's]	198	196	-3	-1.3%	+9	+9
<b>Staff Nurse/ Staff Midwife</b>	<b>304</b>	<b>300</b>	<b>-4</b>	<b>-1.3%</b>	<b>+15</b>	<b>+16</b>
<b>Public Health Nurse</b>	<b>112</b>	<b>112</b>	<b>+0</b>	<b>+0.4%</b>	<b>-4</b>	<b>-0</b>
Nursing/ Midwifery awaiting registration	1	1	-0	-2.0%	+1	+1
Post-registration Nurse/ Midwife Student	15	15	+0	+0.7%	+2	+2
Pre-registration Nurse/ Midwife Intern		1	+1	-100.0%	+1	+1
<b>Nursing/ Midwifery Student</b>	<b>16</b>	<b>17</b>	<b>+1</b>	<b>+5.8%</b>	<b>+3</b>	<b>+4</b>
<b>Nursing/ Midwifery other</b>	<b>3</b>	<b>3</b>	<b>-0</b>	<b>-0.3%</b>	<b>+1</b>	<b>+1</b>
<b>Nursing &amp; Midwifery</b>	<b>588</b>	<b>585</b>	<b>-3</b>	<b>-0.5%</b>	<b>+22</b>	<b>+19</b>
Dietitians	14	14	+0	+1.3%	+2	+3
Occupational Therapists	60	61	+1	+1.7%	-0	-1
Physiotherapists	39	42	+3	+8.3%	+3	+5
Podiatrists & Chiropodists	3	3	-0	-2.7%	+2	+2
Speech & Language Therapists	45	45	+0	+1.0%	-0	+0
<b>Therapy Professions</b>	<b>160</b>	<b>165</b>	<b>+5</b>	<b>+3.0%</b>	<b>+7</b>	<b>+9</b>
Medical Laboratory	18	17	-1	-2.9%	+2	+2
Radiographers	1	1	+0	+3.4%	-0	+0
<b>Health Science/ Diagnostics</b>	<b>19</b>	<b>18</b>	<b>-0</b>	<b>-2.6%</b>	<b>+1</b>	<b>+2</b>
<b>Social Care</b>	<b>11</b>	<b>10</b>	<b>-0</b>	<b>-4.0%</b>	<b>-1</b>	<b>-1</b>
<b>Social Workers</b>	<b>25</b>	<b>27</b>	<b>+2</b>	<b>+7.2%</b>	<b>+1</b>	<b>+2</b>
<b>Psychologists</b>	<b>41</b>	<b>41</b>	<b>+0</b>	<b>+0.9%</b>	<b>+3</b>	<b>+3</b>
<b>Pharmacy</b>	<b>2</b>	<b>1</b>	<b>-1</b>	<b>-37.5%</b>	<b>-1</b>	<b>-1</b>
Counsellor Therapists	4	4	-0	-4.8%	+0	
Dental Hygienists	3	3			+0	+0
Other Health & Social Care	1	1	-0	-18.8%	-0	+0
<b>H&amp;SC, Other</b>	<b>9</b>	<b>8</b>	<b>-0</b>	<b>-5.0%</b>	<b>+0</b>	<b>+0</b>
<b>Health &amp; Social Care Professionals</b>	<b>266</b>	<b>271</b>	<b>+5</b>	<b>+1.9%</b>	<b>-4</b>	<b>+13</b>
Executive Management	7	8	+1	+11.6%	+1	+1
Senior Management (VIII & GM)	29	29	-0	-1.6%	+1	-1

Jan 2021 (Dec 2019 figure: 1,605)	WTE Dec 2020	WTE Jan 2021	WTE change since Dec 20	% change since Dec 20	WTE change since Dec 19	WTE change since Jan 20
<b>Overall</b>	<b>1,689</b>	<b>1,707</b>	<b>+18</b>	<b>+1.1%</b>	<b>+101</b>	<b>+104</b>
<b>Management (VIII &amp; above)</b>	<b>37</b>	<b>37</b>	<b>+0</b>	<b>+1.0%</b>	<b>+2</b>	<b>+0</b>
<b>Administrative/ Supervisory (V to VII)</b>	<b>90</b>	<b>90</b>	<b>+1</b>	<b>+0.9%</b>	<b>-0</b>	<b>-4</b>
<b>Clerical (III &amp; IV)</b>	<b>156</b>	<b>162</b>	<b>+6</b>	<b>+3.5%</b>	<b>+27</b>	<b>+24</b>
<b>Management &amp; Administrative</b>	<b>282</b>	<b>289</b>	<b>+7</b>	<b>+2.4%</b>	<b>+31</b>	<b>+20</b>
Catering	14	15	+1	+6.8%	-1	-1
Household Services	56	55	-1	-1.4%	-1	-0
Other Labs & Associated	1	1	-0	-5.0%	-0	-0
Other Support	1	1				
Portering	11	11	+0	+1.0%	-0	-1
<b>Support</b>	<b>82</b>	<b>82</b>	<b>+0</b>	<b>+0.2%</b>	<b>-2</b>	<b>-2</b>
<b>Maintenance/ Technical</b>	<b>2</b>	<b>2</b>	<b>-0</b>	<b>-0.5%</b>	<b>-1</b>	<b>-0</b>
<b>General Support</b>	<b>84</b>	<b>84</b>	<b>+0</b>	<b>+0.2%</b>	<b>-13</b>	<b>-2</b>
HCA, Nurse's Aide, etc.	300	307	+7	+2.2%	+43	+46
Health & Social Care Assistants	7	7			+4	+4
<b>Health Care Assistants</b>	<b>307</b>	<b>314</b>	<b>+7</b>	<b>+2.2%</b>	<b>+47</b>	<b>+50</b>
<b>Care, other</b>	<b>60</b>	<b>59</b>	<b>-1</b>	<b>-1.1%</b>	<b>+5</b>	<b>+5</b>
<b>Patient &amp; Client Care</b>	<b>367</b>	<b>373</b>	<b>+6</b>	<b>+1.6%</b>	<b>+37</b>	<b>+55</b>

## Employment by WTE, Headcount, Gender, Full-Time /Part-Time etc.: Jan 2021

CHO 6	WTE	Headcount	WTE: no.	% Male	% female	Male WTE: no.	Female WTE: no.	% Total Perm	% Male Perm	% Female Perm	% Total Full Time	% Total Part Time	% Male FT	% Female FT
<b>Overall</b>	<b>3,484</b>	<b>4,015</b>	<b>1.15</b>	<b>20.9%</b>	<b>79.1%</b>	<b>1.08</b>	<b>1.17</b>	<b>85.6%</b>	<b>83.9%</b>	<b>86.0%</b>	<b>72.7%</b>	<b>27.3%</b>	<b>88.0%</b>	<b>68.6%</b>
Consultant Dentistry	6	8	1.27	50.0%	50.0%	1.25	1.29	100.0%	100.0%	100.0%	62.5%	37.5%	75.0%	50.0%
Consultant Medicine	1	1	1.00		100.0%		1.00	100.0%	100.0%	100.0%	100.0%	0.0%		100.0%
Consultant Psychiatry	44	48	1.09	39.6%	60.4%	1.00	1.16	72.9%	72.9%	65.5%	85.4%	14.6%	100.0%	75.9%
Consultant Radiology	1	1	1.00	100.0%		1.00		100.0%	100.0%		100.0%	0.0%	100.0%	
<b>Consultants</b>	<b>52</b>	<b>58</b>	<b>1.11</b>	<b>41.4%</b>	<b>58.6%</b>	<b>1.03</b>	<b>1.17</b>	<b>77.6%</b>	<b>87.5%</b>	<b>70.6%</b>	<b>82.8%</b>	<b>17.2%</b>	<b>95.8%</b>	<b>73.5%</b>
Registrar	39	44	1.12	22.7%	77.3%	1.15	1.11	6.8%	6.8%	8.8%	90.9%	9.1%	100.0%	88.2%
Senior Registrar	9	10	1.18	40.0%	60.0%	1.22	1.15	20.0%	20.0%	33.3%	90.0%	10.0%	100.0%	83.3%
Specialist Registrar	1	1	1.00		100.0%		1.00	100.0%	100.0%	100.0%	100.0%	0.0%		100.0%
<b>Registrars</b>	<b>49</b>	<b>55</b>	<b>1.13</b>	<b>25.5%</b>	<b>74.5%</b>	<b>1.17</b>	<b>1.12</b>	<b>10.9%</b>	<b>0.0%</b>	<b>14.6%</b>	<b>90.9%</b>	<b>9.1%</b>	<b>100.0%</b>	<b>87.8%</b>
<b>SHO/ Interns</b>	<b>18</b>	<b>29</b>	<b>1.60</b>	<b>24.1%</b>	<b>75.9%</b>	<b>1.98</b>	<b>1.51</b>	<b>0.0%</b>	<b>0.0%</b>	<b>0.0%</b>	<b>100.0%</b>	<b>0.0%</b>	<b>100.0%</b>	<b>100.0%</b>
Dentists	26	35	1.36	20.0%	80.0%	1.26	1.39	82.9%	82.9%	85.7%	40.0%	60.0%	57.1%	35.7%
Other Medical	21	33	1.56	15.2%	84.8%	1.77	1.53	60.6%	60.6%	64.3%	36.4%	63.6%	40.0%	35.7%
<b>Medical/ Dental, other</b>	<b>47</b>	<b>68</b>	<b>1.45</b>	<b>17.6%</b>	<b>82.4%</b>	<b>1.43</b>	<b>1.46</b>	<b>72.1%</b>	<b>58.3%</b>	<b>75.0%</b>	<b>38.2%</b>	<b>61.8%</b>	<b>50.0%</b>	<b>35.7%</b>
<b>Medical &amp; Dental</b>	<b>166</b>	<b>210</b>	<b>1.27</b>	<b>27.1%</b>	<b>72.9%</b>	<b>1.21</b>	<b>1.29</b>	<b>47.6%</b>	<b>49.1%</b>	<b>47.1%</b>	<b>72.9%</b>	<b>27.1%</b>	<b>87.7%</b>	<b>67.3%</b>
Clinical Nurse/ Midwife Manager	154	162	1.05	21.6%	78.4%	1.01	1.06	98.1%	98.1%	98.4%	91.4%	8.6%	100.0%	89.0%
Director Nursing/Midwifery, Assistant	34	37	1.08	27.0%	73.0%	1.05	1.08	97.3%	97.3%	96.3%	89.2%	10.8%	100.0%	85.2%
Director of Nursing/Midwifery	12	15	1.23	13.3%	86.7%	1.00	1.27	93.3%	93.3%	92.3%	86.7%	13.3%	100.0%	84.6%
<b>Nurse/ Midwife Manager</b>	<b>201</b>	<b>214</b>	<b>1.07</b>	<b>22.0%</b>	<b>78.0%</b>	<b>1.02</b>	<b>1.08</b>	<b>97.7%</b>	<b>97.9%</b>	<b>97.6%</b>	<b>90.7%</b>	<b>9.3%</b>	<b>100.0%</b>	<b>88.0%</b>
Advanced Nurse/ Midwife Practitioner	6	6	1.09		100.0%		1.09	100.0%	100.0%	100.0%	83.3%	16.7%		83.3%
Clinical Nurse/ Midwife Specialist	19	22	1.14	27.3%	72.7%	1.00	1.20	95.5%	95.5%	93.8%	72.7%	27.3%	100.0%	62.5%
<b>Nurse/ Midwife Specialist &amp; AN/MP</b>	<b>25</b>	<b>28</b>	<b>1.13</b>	<b>21.4%</b>	<b>78.6%</b>	<b>1.00</b>	<b>1.17</b>	<b>96.4%</b>	<b>100.0%</b>	<b>95.5%</b>	<b>75.0%</b>	<b>25.0%</b>	<b>100.0%</b>	<b>68.2%</b>
Staff Nurse [Intellectual Disability]	57	62	1.09	17.7%	82.3%	1.10	1.08	96.8%	96.8%	96.1%	66.1%	33.9%	63.6%	66.7%
Staff Nurse [Psychiatric]	126	137	1.09	24.1%	75.9%	1.06	1.09	92.7%	92.7%	93.3%	90.5%	9.5%	93.9%	89.4%
Staff Nurses [General/ Children's]	374	419	1.12	13.4%	86.6%	1.06	1.13	87.6%	87.6%	87.3%	76.1%	23.9%	87.5%	74.4%
<b>Staff Nurse/ Staff Midwife</b>	<b>558</b>	<b>618</b>	<b>1.11</b>	<b>16.2%</b>	<b>83.8%</b>	<b>1.06</b>	<b>1.12</b>	<b>89.6%</b>	<b>91.0%</b>	<b>89.4%</b>	<b>78.3%</b>	<b>21.7%</b>	<b>87.0%</b>	<b>76.6%</b>
<b>Public Health Nurse</b>	<b>112</b>	<b>131</b>	<b>1.17</b>	<b>0.8%</b>	<b>99.2%</b>	<b>1.25</b>	<b>1.17</b>	<b>95.4%</b>	<b>100.0%</b>	<b>95.4%</b>	<b>71.8%</b>	<b>28.2%</b>	<b>100.0%</b>	<b>71.5%</b>
Nursing/ Midwifery awaiting registration	1	1	1.02		100.0%		1.02	100.0%	100.0%	100.0%	100.0%	0.0%		100.0%
Post-registration Nurse/ Midwife Student	15	15	1.00		100.0%		1.00	0.0%	0.0%	0.0%	100.0%	0.0%		100.0%

Pre-registration Nurse/ Midwife Intern	1	7	8.33		100.0%		8.33	0.0%	0.0%	0.0%	100.0%	0.0%		100.0%
<b>Nursing/ Midwifery Student</b>	<b>17</b>	<b>23</b>	<b>1.37</b>		<b>100.0%</b>		<b>1.37</b>	<b>4.3%</b>		<b>4.3%</b>	<b>100.0%</b>	<b>0.0%</b>		<b>100.0%</b>
<b>Nursing/ Midwifery other</b>	<b>3</b>	<b>3</b>	<b>1.00</b>	<b>33.3%</b>	<b>66.7%</b>	<b>1.01</b>	<b>1.00</b>	<b>100.0%</b>	<b>100.0%</b>	<b>100.0%</b>	<b>100.0%</b>	<b>0.0%</b>	<b>100.0%</b>	<b>100.0%</b>
<b>Nursing &amp; Midwifery</b>	<b>915</b>	<b>1,017</b>	<b>1.11</b>	<b>15.2%</b>	<b>84.8%</b>	<b>1.05</b>	<b>1.12</b>	<b>90.4%</b>	<b>93.5%</b>	<b>89.8%</b>	<b>80.5%</b>	<b>19.5%</b>	<b>91.6%</b>	<b>78.5%</b>
Dietitians	17	21	1.27		100.0%		1.27	95.2%	95.2%	95.2%	57.1%	42.9%		57.1%
Occupational Therapists	94	110	1.17	7.3%	92.7%	1.20	1.17	90.0%	90.0%	90.2%	69.1%	30.9%	75.0%	68.6%
Physiotherapists	64	78	1.23	15.4%	84.6%	1.17	1.24	89.7%	89.7%	93.9%	59.0%	41.0%	75.0%	56.1%
Podiatrists & Chiropodists	4	5	1.22		100.0%		1.22	60.0%	60.0%	60.0%	80.0%	20.0%		80.0%
Speech & Language Therapists	65	78	1.20	2.6%	97.4%	1.00	1.21	96.2%	96.2%	96.1%	65.4%	34.6%	100.0%	64.5%
<b>Therapy Professions</b>	<b>243</b>	<b>292</b>	<b>1.20</b>	<b>7.5%</b>	<b>92.5%</b>	<b>1.16</b>	<b>1.20</b>	<b>91.4%</b>	<b>77.3%</b>	<b>92.6%</b>	<b>64.7%</b>	<b>35.3%</b>	<b>77.3%</b>	<b>63.7%</b>
Medical Laboratory	17	18	1.05	27.8%	72.2%	1.10	1.03	83.3%	83.3%	84.6%	88.9%	11.1%	80.0%	92.3%
Radiographers	2	4	1.67	25.0%	75.0%	2.00	1.58	100.0%	100.0%	100.0%	75.0%	25.0%	100.0%	66.7%
<b>Health Science/ Diagnostics</b>	<b>20</b>	<b>22</b>	<b>1.13</b>	<b>27.3%</b>	<b>72.7%</b>	<b>1.19</b>	<b>1.10</b>	<b>86.4%</b>	<b>83.3%</b>	<b>87.5%</b>	<b>86.4%</b>	<b>13.6%</b>	<b>83.3%</b>	<b>87.5%</b>
<b>Social Care</b>	<b>410</b>	<b>456</b>	<b>1.11</b>	<b>21.7%</b>	<b>78.3%</b>	<b>1.05</b>	<b>1.13</b>	<b>91.0%</b>	<b>85.9%</b>	<b>92.4%</b>	<b>61.8%</b>	<b>38.2%</b>	<b>73.7%</b>	<b>58.5%</b>
<b>Social Workers</b>	<b>56</b>	<b>61</b>	<b>1.09</b>	<b>11.5%</b>	<b>88.5%</b>	<b>1.06</b>	<b>1.09</b>	<b>96.7%</b>	<b>100.0%</b>	<b>96.3%</b>	<b>82.0%</b>	<b>18.0%</b>	<b>85.7%</b>	<b>81.5%</b>
<b>Psychologists</b>	<b>65</b>	<b>79</b>	<b>1.22</b>	<b>21.5%</b>	<b>78.5%</b>	<b>1.09</b>	<b>1.26</b>	<b>91.1%</b>	<b>70.6%</b>	<b>96.8%</b>	<b>68.4%</b>	<b>31.6%</b>	<b>100.0%</b>	<b>59.7%</b>
<b>Pharmacy</b>	<b>3</b>	<b>5</b>	<b>1.79</b>		<b>100.0%</b>		<b>1.79</b>	<b>80.0%</b>		<b>80.0%</b>	<b>60.0%</b>	<b>40.0%</b>		<b>60.0%</b>
Counsellor Therapists	4	4	1.00	25.0%	75.0%	1.00	1.00	100.0%	100.0%	100.0%	100.0%	0.0%	100.0%	100.0%
Dental Hygienists	4	5	1.28		100.0%		1.28	100.0%	100.0%	100.0%	40.0%	60.0%		40.0%
Other Health & Social Care	2	3	1.95		100.0%		1.95	66.7%	66.7%	66.7%	0.0%	100.0%		0.0%
Play Therapists/ Specialists	0	1	2.08		100.0%		2.08	100.0%	100.0%	100.0%	0.0%	100.0%		0.0%
<b>H&amp;SC, Other</b>	<b>10</b>	<b>13</b>	<b>1.31</b>	<b>7.7%</b>	<b>92.3%</b>	<b>1.00</b>	<b>1.35</b>	<b>92.3%</b>	<b>100.0%</b>	<b>91.7%</b>	<b>46.2%</b>	<b>53.8%</b>	<b>100.0%</b>	<b>41.7%</b>
<b>Health &amp; Social Care</b>	<b>807</b>	<b>928</b>	<b>1.15</b>	<b>16.4%</b>	<b>83.6%</b>	<b>1.08</b>	<b>1.17</b>	<b>91.4%</b>	<b>83.6%</b>	<b>92.9%</b>	<b>65.0%</b>	<b>35.0%</b>	<b>78.3%</b>	<b>62.4%</b>
Executive Management	21	21	1.02	52.4%	47.6%	1.05	1.00	95.2%	95.2%	90.0%	100.0%	0.0%	100.0%	100.0%
Senior Management (VIII & GM)	38	42	1.11	28.6%	71.4%	1.20	1.08	95.2%	95.2%	93.3%	100.0%	0.0%	100.0%	100.0%
<b>Management (VIII &amp; above)</b>	<b>58</b>	<b>63</b>	<b>1.08</b>	<b>36.5%</b>	<b>63.5%</b>	<b>1.12</b>	<b>1.06</b>	<b>95.2%</b>	<b>100.0%</b>	<b>92.5%</b>	<b>100.0%</b>	<b>0.0%</b>	<b>100.0%</b>	<b>100.0%</b>
<b>Administrative/ Supervisory (V to VII)</b>	<b>149</b>	<b>170</b>	<b>1.14</b>	<b>24.7%</b>	<b>75.3%</b>	<b>1.15</b>	<b>1.14</b>	<b>96.5%</b>	<b>92.9%</b>	<b>97.7%</b>	<b>87.6%</b>	<b>12.4%</b>	<b>95.2%</b>	<b>85.2%</b>
<b>Clerical (III &amp; IV)</b>	<b>257</b>	<b>306</b>	<b>1.19</b>	<b>12.4%</b>	<b>87.6%</b>	<b>1.08</b>	<b>1.21</b>	<b>74.5%</b>	<b>76.3%</b>	<b>74.3%</b>	<b>69.3%</b>	<b>30.7%</b>	<b>89.5%</b>	<b>66.4%</b>
<b>Management &amp; Administrative</b>	<b>464</b>	<b>539</b>	<b>1.16</b>	<b>19.1%</b>	<b>80.9%</b>	<b>1.12</b>	<b>1.17</b>	<b>83.9%</b>	<b>88.3%</b>	<b>82.8%</b>	<b>78.7%</b>	<b>21.3%</b>	<b>94.2%</b>	<b>75.0%</b>
Catering	24	26	1.10	34.6%	65.4%	1.01	1.15	92.3%	92.3%	94.1%	80.8%	19.2%	100.0%	70.6%
Household Services	121	141	1.17	30.5%	69.5%	1.06	1.22	76.6%	76.6%	79.6%	66.0%	34.0%	88.4%	56.1%
Other Labs & Associated	1	1	1.05		100.0%		1.05	100.0%	100.0%	100.0%	100.0%	0.0%		100.0%
Other Support	20	28	1.37	50.0%	50.0%	1.36	1.37	92.9%	92.9%	92.9%	75.0%	25.0%	78.6%	71.4%
Portering	24	26	1.11	100.0%		1.11		84.6%	84.6%		92.3%	7.7%	92.3%	
<b>Support</b>	<b>189</b>	<b>222</b>	<b>1.17</b>	<b>41.4%</b>	<b>58.6%</b>	<b>1.11</b>	<b>1.23</b>	<b>81.5%</b>	<b>79.3%</b>	<b>83.1%</b>	<b>72.1%</b>	<b>27.9%</b>	<b>89.1%</b>	<b>60.0%</b>

<b>Maintenance/ Technical</b>	<b>21</b>	<b>23</b>	<b>1.10</b>	<b>100.0%</b>		<b>1.10</b>		<b>100.0%</b>	<b>100.0%</b>	<b>#DIV/0</b>	<b>100.0%</b>	<b>0.0%</b>	<b>100.0%</b>	
<b>General Support</b>	<b>210</b>	<b>245</b>	<b>1.17</b>	<b>46.9%</b>	<b>53.1%</b>	<b>1.10</b>	<b>1.23</b>	<b>83.3%</b>	<b>83.5%</b>	<b>83.1%</b>	<b>74.7%</b>	<b>25.3%</b>	<b>91.3%</b>	<b>60.0%</b>
HCA, Nurse's Aide, etc.	571	641	1.12	27.8%	72.2%	1.04	1.16	79.9%	79.9%	78.8%	69.4%	30.6%	92.1%	60.7%
Health & Social Care Assistants	15	16	1.08	25.0%	75.0%	1.08	1.08	56.3%	56.3%	50.0%	81.3%	18.8%	100.0%	75.0%
<b>Health Care Assistants</b>	<b>586</b>	<b>657</b>	<b>1.12</b>	<b>27.7%</b>	<b>72.3%</b>	<b>1.04</b>	<b>1.15</b>	<b>79.3%</b>	<b>82.4%</b>	<b>78.1%</b>	<b>69.7%</b>	<b>30.3%</b>	<b>92.3%</b>	<b>61.1%</b>
<b>Care, other</b>	<b>335</b>	<b>419</b>	<b>1.25</b>	<b>18.4%</b>	<b>81.6%</b>	<b>1.11</b>	<b>1.29</b>	<b>93.3%</b>	<b>89.6%</b>	<b>94.2%</b>	<b>66.1%</b>	<b>33.9%</b>	<b>76.6%</b>	<b>63.7%</b>
<b>Patient &amp; Client Care</b>	<b>921</b>	<b>1,076</b>	<b>1.17</b>	<b>24.1%</b>	<b>75.9%</b>	<b>1.06</b>	<b>1.21</b>	<b>84.8%</b>	<b>84.6%</b>	<b>84.8%</b>	<b>68.3%</b>	<b>31.7%</b>	<b>87.6%</b>	<b>62.2%</b>

## Employment by WTE, Headcount, Gender, Full-Time /Part-Time etc.: Jan 2021

CHO 6	WTE	Headcount	WTE: no.	% Male	% female	Male WTE: no.	Female WTE: no.	% Total Perm	% Male Perm	% Female Perm	% Total Full Time	% Total Part Time	% Male FT	% Female FT
<b>Overall</b>	<b>3,484</b>	<b>4,015</b>	<b>1.15</b>	<b>20.9%</b>	<b>79.1%</b>	<b>1.08</b>	<b>1.17</b>	<b>85.6%</b>	<b>83.9%</b>	<b>86.0%</b>	<b>72.7%</b>	<b>27.3%</b>	<b>88.0%</b>	<b>68.6%</b>
Community Health & Wellbeing	8	11	1.36	9.1%	90.9%	14.29	1.25	90.9%	90.9%	90.0%	54.5%	45.5%	0.0%	0.0%
Mental Health	633	712	1.12	29.2%	70.8%	1.07	1.15	81.5%	81.5%	82.3%	84.1%	15.9%	91.8%	91.8%
Primary Care	827	1,058	1.28	13.0%	87.0%	1.24	1.29	76.7%	76.7%	77.7%	68.8%	31.2%	93.5%	93.5%
Social Care	2,016	2,234	1.11	22.1%	77.9%	1.05	1.13	91.0%	91.0%	91.4%	70.9%	29.1%	85.0%	85.0%



## CHO 6 Skills Mix by Staff Grouping: January 2021

Jan 2021 (Dec 2018 figure: 3,368)	WTE Dec 2015	WTE Dec 2016	WTE Dec 2017	WTE Dec 2018	WTE Dec 2019	WTE Dec 2020	WTE Jan 2021
<b>Overall</b>	<b>3,908</b>	<b>3,940</b>	<b>3,357</b>	<b>3,368</b>	<b>3,378</b>	<b>3,465</b>	<b>3,484</b>
Consultant Dentistry	3.3%	4.2%	4.7%	4.6%	4.4%	3.9%	3.8%
Consultant Medicine	0.5%	0.6%	0.6%	0.6%	0.6%	0.6%	0.6%
Consultant, Other	0.5%	0.6%					
Consultant Paediatrics	0.0%	0.1%	0.1%				
Consultant Psychiatry	14.4%	18.5%	18.8%	20.0%	23.8%	27.0%	26.5%
Consultant Radiology	0.5%	0.6%	0.6%	0.6%	0.6%	0.6%	0.6%
<b>Consultants</b>	<b>19.2%</b>	<b>24.7%</b>	<b>24.7%</b>	<b>25.8%</b>	<b>29.5%</b>	<b>32.2%</b>	<b>31.5%</b>
Registrar	37.7%	25.2%	24.4%	21.7%	24.6%	21.4%	23.6%
Senior Registrar	3.7%	4.4%	4.1%	5.7%	4.6%	5.4%	5.1%
Specialist Registrar	0.5%	0.6%	0.6%	0.6%	0.6%	0.6%	0.6%
<b>Registrars</b>	<b>41.9%</b>	<b>30.2%</b>	<b>29.1%</b>	<b>28.0%</b>	<b>29.8%</b>	<b>27.4%</b>	<b>29.4%</b>
<b>SHO/ Interns</b>	<b>9.4%</b>	<b>12.3%</b>	<b>12.9%</b>	<b>13.5%</b>	<b>9.5%</b>	<b>12.2%</b>	<b>10.9%</b>
Dentists	14.0%	18.0%	17.7%	16.3%	16.2%	15.5%	15.5%
Other Medical	15.5%	14.8%	15.6%	16.4%	15.1%	12.6%	12.7%
<b>Medical/ Dental, other</b>	<b>29.5%</b>	<b>32.8%</b>	<b>33.3%</b>	<b>32.7%</b>	<b>31.3%</b>	<b>28.2%</b>	<b>28.2%</b>
<b>Medical &amp; Dental</b>	<b>5.2%</b>	<b>4.0%</b>	<b>4.9%</b>	<b>4.9%</b>	<b>4.9%</b>	<b>100.0%</b>	<b>4.8%</b>
Clinical Nurse/ Midwife Manager	18.2%	18.4%	17.2%	17.7%	17.8%	17.3%	16.8%
Director Nursing/Midwifery, Assistant	2.8%	2.9%	3.2%	3.9%	3.9%	3.7%	3.8%
Director of Nursing/Midwifery	1.9%	2.0%	1.7%	1.5%	1.6%	1.5%	1.3%
<b>Nurse/ Midwife Manager</b>	<b>22.9%</b>	<b>23.3%</b>	<b>22.0%</b>	<b>23.1%</b>	<b>23.3%</b>	<b>22.5%</b>	<b>21.9%</b>
Advanced Nurse/ Midwife Practitioner		0.0%	0.1%	0.1%	0.1%	0.6%	0.6%
Clinical Nurse/ Midwife Specialist	1.8%	1.9%	2.3%	2.1%	2.2%	2.0%	2.1%
<b>Nurse/ Midwife Specialist &amp; AN/MP</b>	<b>1.8%</b>	<b>2.0%</b>	<b>2.3%</b>	<b>2.1%</b>	<b>2.3%</b>	<b>2.6%</b>	<b>2.7%</b>
Staff Nurse [Intellectual Disability]	11.9%	6.7%	6.7%	6.4%	5.5%	5.8%	6.2%
Staff Nurse [Psychiatric]	13.5%	12.2%	12.8%	12.2%	14.7%	13.6%	13.8%
Staff Nurses [General/ Children's]	37.3%	42.7%	40.4%	41.6%	39.7%	41.1%	40.9%
<b>Staff Nurse/ Staff Midwife</b>	<b>62.7%</b>	<b>61.7%</b>	<b>60.0%</b>	<b>60.2%</b>	<b>59.9%</b>	<b>60.6%</b>	<b>60.9%</b>
<b>Public Health Nurse</b>	<b>10.7%</b>	<b>11.4%</b>	<b>13.4%</b>	<b>13.1%</b>	<b>12.9%</b>	<b>12.2%</b>	<b>12.3%</b>
Nursing/ Midwifery awaiting registration						0.1%	0.1%
Post-registration Nurse/ Midwife Student	1.6%	1.4%	2.1%	1.2%	1.5%	1.6%	1.6%
Pre-registration Nurse/ Midwife Intern							0.1%
<b>Nursing/ Midwifery Student</b>	<b>1.6%</b>	<b>1.4%</b>	<b>2.1%</b>	<b>1.2%</b>	<b>1.5%</b>	<b>1.7%</b>	<b>1.8%</b>
<b>Nursing/ Midwifery other</b>	<b>0.2%</b>	<b>0.2%</b>	<b>0.2%</b>	<b>0.3%</b>	<b>0.2%</b>	<b>0.3%</b>	<b>0.3%</b>
<b>Nursing &amp; Midwifery</b>	<b>27.2%</b>	<b>26.3%</b>	<b>27.3%</b>	<b>26.9%</b>	<b>26.8%</b>	<b>100.0%</b>	<b>26.3%</b>
Dietitians	1.3%	1.2%	2.1%	2.1%	1.9%	2.1%	2.1%
Occupational Therapists	10.2%	9.6%	11.9%	12.4%	12.2%	11.9%	11.6%
Physiotherapists	7.8%	6.7%	7.9%	8.4%	8.0%	7.5%	7.9%
Podiatrists & Chiropodists	0.2%	0.2%	0.5%	0.3%	0.2%	0.5%	0.5%
Speech & Language Therapists	7.4%	7.6%	8.9%	10.2%	9.3%	8.3%	8.1%
<b>Therapy Professions</b>	<b>26.8%</b>	<b>25.3%</b>	<b>31.3%</b>	<b>33.5%</b>	<b>31.7%</b>	<b>30.3%</b>	<b>30.1%</b>
Medical Laboratory	2.0%	1.9%	2.7%	2.8%	2.1%	2.2%	2.1%
Radiographers	0.4%	0.4%	0.5%	0.5%	0.3%	0.3%	0.3%
<b>Health Science/ Diagnostics</b>	<b>2.4%</b>	<b>2.3%</b>	<b>3.1%</b>	<b>3.2%</b>	<b>2.4%</b>	<b>2.6%</b>	<b>2.4%</b>
<b>Social Care</b>	<b>54.7%</b>	<b>57.6%</b>	<b>47.9%</b>	<b>46.3%</b>	<b>48.4%</b>	<b>50.0%</b>	<b>50.9%</b>
<b>Social Workers</b>	<b>7.0%</b>	<b>6.6%</b>	<b>7.6%</b>	<b>7.7%</b>	<b>7.6%</b>	<b>6.9%</b>	<b>7.0%</b>
<b>Psychologists</b>	<b>7.1%</b>	<b>6.6%</b>	<b>8.0%</b>	<b>7.6%</b>	<b>7.5%</b>	<b>8.5%</b>	<b>8.1%</b>
<b>Pharmacy</b>	<b>0.4%</b>	<b>0.3%</b>	<b>0.5%</b>	<b>0.5%</b>	<b>0.5%</b>	<b>0.5%</b>	<b>0.3%</b>
Counsellor Therapists	0.7%	0.6%	0.9%	0.5%	0.6%	0.5%	0.5%
Dental Hygienists	0.5%	0.4%	0.5%	0.5%	0.5%	0.5%	0.5%
Other Health & Social Care	0.3%	0.1%	0.2%	0.1%	0.8%	0.2%	0.2%
Play Therapists/ Specialists	0.2%	0.2%	0.1%	0.1%	0.1%	0.1%	0.1%

Jan 2021 (Dec 2018 figure: 3,368)	WTE Dec 2015	WTE Dec 2016	WTE Dec 2017	WTE Dec 2018	WTE Dec 2019	WTE Dec 2020	WTE Jan 2021
<b>Overall</b>	<b>3,908</b>	<b>3,940</b>	<b>3,357</b>	<b>3,368</b>	<b>3,378</b>	<b>3,465</b>	<b>3,484</b>
<b>H&amp;SC, Other</b>	<b>1.7%</b>	<b>1.3%</b>	<b>1.7%</b>	<b>1.2%</b>	<b>1.9%</b>	<b>1.3%</b>	<b>1.2%</b>
<b>Health &amp; Social Care Professionals</b>	<b>22.3%</b>	<b>23.8%</b>	<b>22.0%</b>	<b>22.0%</b>	<b>21.9%</b>	<b>100.0%</b>	<b>23.2%</b>
Executive Management	3.2%	4.4%	6.1%	5.1%	4.9%	4.8%	4.4%
Senior Management (VIII & GM)	9.9%	9.7%	9.1%	10.3%	9.3%	9.2%	8.1%
<b>Management (VIII &amp; above)</b>	<b>13.1%</b>	<b>14.1%</b>	<b>15.2%</b>	<b>15.4%</b>	<b>14.3%</b>	<b>14.0%</b>	<b>12.6%</b>
Middle Management (V-VII)	29.1%	29.7%	32.8%	35.8%	35.6%	33.5%	32.0%
Other Administrative	0.9%	0.2%	0.2%	0.2%	0.2%		
<b>Administrative/ Supervisory (V to VII)</b>	<b>29.9%</b>	<b>29.9%</b>	<b>33.0%</b>	<b>36.0%</b>	<b>35.8%</b>	<b>33.5%</b>	<b>32.0%</b>
<b>Clerical (III &amp; IV)</b>	<b>57.0%</b>	<b>56.0%</b>	<b>51.8%</b>	<b>48.6%</b>	<b>49.9%</b>	<b>52.5%</b>	<b>55.4%</b>
<b>Management &amp; Administrative</b>	<b>11.6%</b>	<b>11.7%</b>	<b>13.5%</b>	<b>14.1%</b>	<b>14.1%</b>	<b>100.0%</b>	<b>13.3%</b>
Catering	11.5%	13.1%	11.6%	12.7%	12.1%	11.9%	11.3%
Household Services	59.0%	57.1%	58.8%	59.3%	56.7%	57.2%	57.4%
Other Labs & Associated		0.3%	0.4%	0.4%	0.5%	0.5%	0.5%
Other Support	9.3%	9.7%	9.1%	8.3%	9.1%	9.6%	9.7%
Portering	8.9%	8.7%	11.2%	10.8%	11.0%	10.6%	11.2%
<b>Support</b>	<b>88.7%</b>	<b>89.0%</b>	<b>91.2%</b>	<b>91.5%</b>	<b>89.4%</b>	<b>89.7%</b>	<b>90.0%</b>
<b>Maintenance/ Technical</b>	<b>11.3%</b>	<b>11.0%</b>	<b>8.8%</b>	<b>8.5%</b>	<b>10.6%</b>	<b>10.3%</b>	<b>10.0%</b>
<b>General Support</b>	<b>7.7%</b>	<b>7.4%</b>	<b>7.1%</b>	<b>6.6%</b>	<b>6.6%</b>	<b>100.0%</b>	<b>6.0%</b>
HCA, Nurse's Aide, etc.	59.3%	58.9%	61.3%	60.3%	60.7%	61.5%	62.0%
Health & Social Care Assistants	1.0%	1.0%	1.2%	1.8%	1.3%	1.6%	1.6%
<b>Health Care Assistants</b>	<b>60.3%</b>	<b>59.9%</b>	<b>62.4%</b>	<b>62.1%</b>	<b>62.0%</b>	<b>63.1%</b>	<b>63.6%</b>
Pre-Hospital Care (Ambulance)	0.0%						
<b>Ambulance Staff</b>	<b>0.0%</b>						
<b>Care, other</b>	<b>39.7%</b>	<b>40.1%</b>	<b>37.6%</b>	<b>37.9%</b>	<b>38.0%</b>	<b>36.9%</b>	<b>36.4%</b>
<b>Patient &amp; Client Care</b>	<b>26.1%</b>	<b>26.7%</b>	<b>25.2%</b>	<b>25.4%</b>	<b>25.4%</b>	<b>100.0%</b>	<b>26.4%</b>
<b>Total</b>	<b>100 %</b>	<b>100 %</b>	<b>100 %</b>	<b>100 %</b>	<b>100%</b>	<b>100 %</b>	<b>100 %</b>

# CHO 6 Skills Mix by Care Group: January 2021

Jan 2021 (Dec 2018 figure: 573)	WTE Dec 2015	WTE Dec 2016	WTE Dec 2017	WTE Dec 2018	WTE Dec 2019	WTE Dec 2020	WTE Jan 2021
<b>Mental Health</b>	<b>563</b>	<b>559</b>	<b>564</b>	<b>573</b>	<b>593</b>	<b>626</b>	<b>633</b>
<b>Consultants</b>	<b>46.4%</b>	<b>47.3%</b>	<b>45.1%</b>	<b>49.0%</b>	<b>53.9%</b>	<b>55.6%</b>	<b>54.8%</b>
Registrar	25.0%	21.2%	24.9%	13.4%	22.9%	15.9%	19.7%
Senior Registrar	8.0%	10.4%	6.0%	11.8%	9.7%	10.5%	10.0%
<b>Registrars</b>	<b>33.0%</b>	<b>31.6%</b>	<b>30.9%</b>	<b>25.2%</b>	<b>32.6%</b>	<b>26.4%</b>	<b>29.7%</b>
<b>SHO/ Interns</b>	<b>20.6%</b>	<b>21.1%</b>	<b>23.4%</b>	<b>25.1%</b>	<b>13.5%</b>	<b>18.0%</b>	<b>15.5%</b>
<b>Medical/ Dental, other</b>			<b>0.6%</b>	<b>0.6%</b>			
<b>Medical &amp; Dental</b>	<b>10.1%</b>	<b>10.1%</b>	<b>11.1%</b>	<b>11.1%</b>	<b>10.7%</b>	<b>11.8%</b>	<b>11.8%</b>
Clinical Nurse/ Midwife Manager	24.2%	26.1%	23.6%	26.8%	25.8%	23.8%	23.7%
Director Nursing/Midwifery, Assistant	4.8%	5.4%	5.6%	5.9%	6.0%	5.8%	5.3%
Director of Nursing/Midwifery	1.6%	1.7%	1.7%	1.3%	1.3%	1.2%	1.2%
<b>Nurse/ Midwife Manager</b>	<b>30.6%</b>	<b>33.1%</b>	<b>31.0%</b>	<b>33.9%</b>	<b>33.1%</b>	<b>30.8%</b>	<b>30.2%</b>
Advanced Nurse/ Midwife Practitioner		0.2%	0.2%	0.2%	0.3%	1.8%	1.8%
Clinical Nurse/ Midwife Specialist	5.4%	5.9%	6.4%	5.0%	5.6%	6.0%	6.1%
<b>Nurse/ Midwife Specialist &amp; AN/MP</b>	<b>5.4%</b>	<b>6.1%</b>	<b>6.6%</b>	<b>5.2%</b>	<b>5.9%</b>	<b>7.8%</b>	<b>7.9%</b>
Staff Nurse [Intellectual Disability]				0.4%	0.4%	0.8%	0.8%
Staff Nurse [Psychiatric]	54.2%	50.1%	49.3%	44.6%	49.2%	48.0%	48.5%
Staff Nurses [General/ Children's]	9.4%	9.9%	12.2%	14.7%	10.5%	11.4%	11.1%
<b>Staff Nurse/ Staff Midwife</b>	<b>63.6%</b>	<b>59.9%</b>	<b>61.5%</b>	<b>59.7%</b>	<b>60.2%</b>	<b>60.3%</b>	<b>60.4%</b>
Nursing/ Midwifery awaiting registration						0.4%	0.4%
Pre-registration Nurse/ Midwife Intern							0.3%
<b>Nursing/ Midwifery Student</b>						<b>0.4%</b>	<b>0.7%</b>
Nursing Education/Clinical	0.4%	0.9%	0.9%	1.2%	0.9%	0.8%	0.8%
<b>Nursing/ Midwifery other</b>	<b>0.4%</b>	<b>0.9%</b>	<b>0.9%</b>	<b>1.2%</b>	<b>0.9%</b>	<b>0.8%</b>	<b>0.8%</b>
<b>Nursing &amp; Midwifery</b>	<b>44.3%</b>	<b>43.3%</b>	<b>40.8%</b>	<b>41.5%</b>	<b>40.1%</b>	<b>39.8%</b>	<b>39.8%</b>
Dietitians			1.1%	1.7%	1.5%	1.1%	1.2%
Occupational Therapists	18.0%	16.3%	17.7%	17.0%	19.5%	18.8%	18.6%
Physiotherapists	0.5%	0.5%	0.4%	0.4%	0.9%	1.0%	1.0%
Podiatrists & Chiropodists	0.7%	1.0%	0.5%	0.4%			
Speech & Language Therapists	8.7%	7.6%	9.0%	11.7%	11.3%	8.1%	7.7%
<b>Therapy Professions</b>	<b>27.8%</b>	<b>25.4%</b>	<b>28.7%</b>	<b>31.2%</b>	<b>33.2%</b>	<b>28.8%</b>	<b>28.4%</b>
<b>Social Care</b>	<b>28.2%</b>	<b>28.3%</b>	<b>26.8%</b>	<b>26.0%</b>	<b>20.0%</b>	<b>21.1%</b>	<b>21.5%</b>
<b>Social Workers</b>	<b>21.3%</b>	<b>25.6%</b>	<b>22.8%</b>	<b>25.5%</b>	<b>23.0%</b>	<b>22.2%</b>	<b>22.7%</b>
<b>Psychologists</b>	<b>15.7%</b>	<b>14.4%</b>	<b>17.8%</b>	<b>13.6%</b>	<b>17.0%</b>	<b>24.0%</b>	<b>23.7%</b>
Counsellor Therapists	4.7%	4.5%	3.5%	3.2%	3.0%	3.1%	3.0%
Other Health & Social Care	0.9%	0.5%			3.4%	0.4%	0.4%
Play Therapists/ Specialists	1.4%	1.4%	0.4%	0.4%	0.4%	0.4%	0.4%
<b>H&amp;SC, Other</b>	<b>7.0%</b>	<b>6.4%</b>	<b>3.9%</b>	<b>3.6%</b>	<b>6.7%</b>	<b>3.9%</b>	<b>3.7%</b>
<b>Health &amp; Social Care Professionals</b>	<b>18.9%</b>	<b>19.7%</b>	<b>20.3%</b>	<b>20.0%</b>	<b>19.3%</b>	<b>21.2%</b>	<b>21.2%</b>
<b>Management (VIII &amp; above)</b>	<b>6.4%</b>	<b>4.6%</b>	<b>6.0%</b>	<b>3.4%</b>	<b>4.2%</b>	<b>4.3%</b>	<b>4.3%</b>
<b>Administrative/ Supervisory (V to VII)</b>	<b>33.8%</b>	<b>31.3%</b>	<b>36.6%</b>	<b>44.8%</b>	<b>37.2%</b>	<b>34.7%</b>	<b>35.5%</b>
<b>Clerical (III &amp; IV)</b>	<b>59.9%</b>	<b>64.0%</b>	<b>57.5%</b>	<b>51.8%</b>	<b>58.6%</b>	<b>61.0%</b>	<b>60.2%</b>
<b>Management &amp; Administrative</b>	<b>9.7%</b>	<b>10.0%</b>	<b>10.5%</b>	<b>10.2%</b>	<b>9.8%</b>	<b>11.1%</b>	<b>11.1%</b>
<b>Support</b>	<b>89.2%</b>	<b>89.2%</b>	<b>90.6%</b>	<b>90.1%</b>	<b>86.0%</b>	<b>86.6%</b>	<b>86.8%</b>
<b>Maintenance/ Technical</b>	<b>10.8%</b>	<b>10.8%</b>	<b>9.4%</b>	<b>9.9%</b>	<b>14.0%</b>	<b>13.4%</b>	<b>13.2%</b>
<b>General Support</b>	<b>9.9%</b>	<b>8.9%</b>	<b>9.4%</b>	<b>8.6%</b>	<b>8.3%</b>	<b>7.2%</b>	<b>7.2%</b>
HCA, Nurse's Aide, etc.	89.1%	90.2%	92.1%	89.2%	89.5%	89.2%	89.3%
<b>Health Care Assistants</b>	<b>89.1%</b>	<b>90.2%</b>	<b>92.1%</b>	<b>89.2%</b>	<b>89.5%</b>	<b>89.2%</b>	<b>89.3%</b>
<b>Care, other</b>	<b>10.9%</b>	<b>9.8%</b>	<b>7.9%</b>	<b>10.8%</b>	<b>10.5%</b>	<b>10.8%</b>	<b>10.7%</b>
<b>Patient &amp; Client Care</b>	<b>7.1%</b>	<b>8.0%</b>	<b>7.8%</b>	<b>8.7%</b>	<b>8.4%</b>	<b>8.9%</b>	<b>8.9%</b>
<b>Total</b>	<b>100 %</b>	<b>100 %</b>	<b>100 %</b>	<b>100 %</b>	<b>100 %</b>	<b>100 %</b>	<b>100 %</b>

Jan 2021 (Dec 2018 figure: 833)	WTE Dec 2015	WTE Dec 2016	WTE Dec 2017	WTE Dec 2018	WTE Dec 2019	WTE Dec 2020	WTE Jan 2021
<b>Primary Care</b>	<b>810</b>	<b>768</b>	<b>795</b>	<b>833</b>	<b>765</b>	<b>811</b>	<b>827</b>
Consultant Dentistry	5.0%	7.4%	8.6%	8.3%	8.2%	7.9%	7.7%
Consultant Medicine	0.7%	1.1%	1.1%	1.1%	1.1%	1.3%	1.2%
Consultant, Other	0.7%	1.1%					
Consultant Radiology	0.7%	1.1%	1.1%	1.1%	1.1%	1.3%	1.2%
<b>Consultants</b>	<b>7.2%</b>	<b>10.7%</b>	<b>10.8%</b>	<b>10.5%</b>	<b>10.5%</b>	<b>10.4%</b>	<b>10.2%</b>
<b>Registrars</b>	<b>46.7%</b>	<b>31.0%</b>	<b>28.3%</b>	<b>30.8%</b>	<b>29.6%</b>	<b>29.8%</b>	<b>28.9%</b>
<b>SHO/ Interns</b>	<b>5.6%</b>	<b>7.2%</b>	<b>7.2%</b>	<b>7.0%</b>	<b>7.4%</b>	<b>8.2%</b>	<b>8.0%</b>
Dentists	21.3%	31.7%	32.3%	29.2%	30.1%	31.1%	31.6%
Other Medical	19.2%	19.3%	21.4%	22.5%	22.4%	20.5%	21.3%
<b>Medical/ Dental, other</b>	<b>40.5%</b>	<b>51.0%</b>	<b>53.7%</b>	<b>51.7%</b>	<b>52.5%</b>	<b>51.6%</b>	<b>52.9%</b>
<b>Medical &amp; Dental</b>	<b>16.6%</b>	<b>11.7%</b>	<b>11.3%</b>	<b>11.1%</b>	<b>12.1%</b>	<b>9.8%</b>	<b>9.8%</b>
Clinical Nurse/ Midwife Manager	1.8%	1.8%	2.5%	2.6%	3.0%	2.6%	2.5%
Director Nursing/Midwifery, Assistant	5.5%	5.0%	4.8%	6.4%	6.0%	5.6%	5.8%
Director of Nursing/Midwifery	2.3%	2.3%	2.1%	1.7%	1.6%	2.6%	2.4%
<b>Nurse/ Midwife Manager</b>	<b>9.6%</b>	<b>9.1%</b>	<b>9.4%</b>	<b>10.7%</b>	<b>10.6%</b>	<b>10.8%</b>	<b>10.7%</b>
<b>Nurse/ Midwife Specialist &amp; AN/MP</b>	<b>1.6%</b>	<b>2.0%</b>	<b>2.9%</b>	<b>2.9%</b>	<b>2.8%</b>	<b>1.7%</b>	<b>1.9%</b>
<b>Staff Nurse/ Staff Midwife</b>	<b>21.2%</b>	<b>22.3%</b>	<b>19.8%</b>	<b>24.2%</b>	<b>24.6%</b>	<b>26.3%</b>	<b>26.4%</b>
<b>Public Health Nurse</b>	<b>58.2%</b>	<b>59.0%</b>	<b>58.6%</b>	<b>57.0%</b>	<b>55.5%</b>	<b>53.6%</b>	<b>53.3%</b>
<b>Nursing/ Midwifery Student</b>	<b>8.8%</b>	<b>7.6%</b>	<b>9.2%</b>	<b>5.3%</b>	<b>6.4%</b>	<b>7.1%</b>	<b>7.1%</b>
<b>Nursing/ Midwifery other</b>	<b>0.5%</b>					<b>0.5%</b>	<b>0.5%</b>
<b>Nursing &amp; Midwifery</b>	<b>23.8%</b>	<b>25.8%</b>	<b>26.4%</b>	<b>24.9%</b>	<b>27.2%</b>	<b>25.5%</b>	<b>25.5%</b>
Dietitians	5.1%	5.0%	6.3%	5.8%	6.4%	7.5%	7.4%
Occupational Therapists	19.6%	20.5%	20.3%	21.4%	21.3%	19.7%	19.9%
Physiotherapists	21.6%	20.0%	19.1%	19.0%	20.8%	20.7%	21.8%
Podiatrists & Chiropodists			0.5%	0.5%	0.7%	1.9%	1.8%
Speech & Language Therapists	19.1%	21.3%	19.5%	19.2%	18.4%	18.4%	18.1%
<b>Therapy Professions</b>	<b>65.5%</b>	<b>66.9%</b>	<b>65.8%</b>	<b>65.9%</b>	<b>67.5%</b>	<b>68.1%</b>	<b>69.0%</b>
Medical Laboratory	9.8%	10.5%	10.7%	10.6%	10.2%	10.9%	10.5%
Radiographers	1.9%	2.0%	1.9%	1.8%	1.6%	1.5%	1.5%
<b>Health Science/ Diagnostics</b>	<b>11.7%</b>	<b>12.5%</b>	<b>12.6%</b>	<b>12.5%</b>	<b>11.8%</b>	<b>12.3%</b>	<b>11.9%</b>
<b>Social Care</b>	<b>1.4%</b>	<b>0.8%</b>	<b>0.8%</b>	<b>1.6%</b>	<b>2.4%</b>	<b>1.7%</b>	<b>1.8%</b>
<b>Social Workers</b>	<b>4.2%</b>	<b>3.7%</b>	<b>4.1%</b>	<b>3.4%</b>	<b>3.1%</b>	<b>2.7%</b>	<b>2.8%</b>
<b>Psychologists</b>	<b>13.7%</b>	<b>13.1%</b>	<b>13.4%</b>	<b>14.1%</b>	<b>12.2%</b>	<b>12.2%</b>	<b>11.9%</b>
<b>Pharmacy</b>	<b>0.6%</b>		<b>0.5%</b>	<b>0.5%</b>	<b>0.5%</b>	<b>0.6%</b>	<b>0.2%</b>
Counsellor Therapists	0.6%	0.6%	0.5%				
Dental Hygienists	2.3%	2.4%	2.1%	2.0%	2.5%	2.4%	2.4%
<b>H&amp;SC, Other</b>	<b>2.9%</b>	<b>3.0%</b>	<b>2.7%</b>	<b>2.0%</b>	<b>2.5%</b>	<b>2.4%</b>	<b>2.4%</b>
<b>Health &amp; Social Care Professionals</b>	<b>21.7%</b>	<b>22.4%</b>	<b>23.1%</b>	<b>23.0%</b>	<b>25.1%</b>	<b>19.8%</b>	<b>19.8%</b>
Executive Management	1.3%	4.3%	4.2%	3.7%	3.6%	3.4%	3.7%
Senior Management (VIII & GM)	7.9%	7.4%	10.7%	12.5%	10.8%	10.1%	9.8%
<b>Management (VIII &amp; above)</b>	<b>9.2%</b>	<b>11.7%</b>	<b>14.9%</b>	<b>16.2%</b>	<b>14.3%</b>	<b>13.5%</b>	<b>13.5%</b>
<b>Administrative/ Supervisory (V to VII)</b>	<b>23.3%</b>	<b>25.4%</b>	<b>28.6%</b>	<b>32.9%</b>	<b>32.4%</b>	<b>29.2%</b>	<b>28.0%</b>
<b>Clerical (III &amp; IV)</b>	<b>67.5%</b>	<b>62.9%</b>	<b>56.5%</b>	<b>50.9%</b>	<b>53.3%</b>	<b>57.3%</b>	<b>58.5%</b>
<b>Management &amp; Administrative</b>	<b>24.1%</b>	<b>25.6%</b>	<b>25.5%</b>	<b>27.3%</b>	<b>29.8%</b>	<b>27.5%</b>	<b>27.5%</b>
<b>Support</b>	<b>93.7%</b>	<b>93.6%</b>	<b>93.6%</b>	<b>92.7%</b>	<b>92.2%</b>	<b>92.8%</b>	<b>92.8%</b>
<b>Maintenance/ Technical</b>	<b>6.3%</b>	<b>6.4%</b>	<b>6.4%</b>	<b>7.3%</b>	<b>7.8%</b>	<b>7.2%</b>	<b>7.2%</b>
<b>General Support</b>	<b>3.9%</b>	<b>4.1%</b>	<b>3.9%</b>	<b>3.3%</b>	<b>3.6%</b>	<b>3.3%</b>	<b>3.3%</b>
HCA, Nurse's Aide, etc.	3.0%	2.5%	2.6%	2.3%	4.3%	28.2%	31.6%
Health & Social Care Assistants				8.1%	3.9%	6.4%	6.1%
<b>Health Care Assistants</b>	<b>3.0%</b>	<b>2.5%</b>	<b>2.6%</b>	<b>10.5%</b>	<b>8.1%</b>	<b>34.5%</b>	<b>37.6%</b>
<b>Ambulance Staff</b>	<b>0.6%</b>						
<b>Care, other</b>	<b>96.4%</b>	<b>97.5%</b>	<b>97.4%</b>	<b>89.5%</b>	<b>91.9%</b>	<b>65.5%</b>	<b>62.4%</b>
<b>Patient &amp; Client Care</b>	<b>10.0%</b>	<b>10.4%</b>	<b>9.8%</b>	<b>10.3%</b>	<b>11.3%</b>	<b>14.0%</b>	<b>14.0%</b>
<b>Total</b>	<b>100 %</b>	<b>100 %</b>	<b>100 %</b>	<b>100 %</b>	<b>100 %</b>	<b>100 %</b>	<b>100 %</b>

Jan 2021 (Dec 2018 figure: 1,155)	WTE Dec 2015	WTE Dec 2016	WTE Dec 2017	WTE Dec 2018	WTE Dec 2019	WTE Dec 2020	WTE Jan 2021
<b>Disabilities</b>	<b>1,729</b>	<b>1,816</b>	<b>1,170</b>	<b>1,155</b>	<b>1,198</b>	<b>1,217</b>	<b>1,210</b>
Consultant Paediatrics	1.1%	1.3%	1.3%				
Consultant Psychiatry	37.1%	38.9%	38.9%	50.0%	75.0%	75.0%	60.6%
<b>Consultants</b>	<b>38.2%</b>	<b>40.2%</b>	<b>40.2%</b>	<b>50.0%</b>	<b>75.0%</b>	<b>75.0%</b>	<b>60.6%</b>
<b>Registrars</b>	<b>37.1%</b>	<b>14.9%</b>	<b>29.9%</b>				<b>19.2%</b>
<b>SHO/ Interns</b>		<b>14.9%</b>					
<b>Medical/ Dental, other</b>	<b>24.7%</b>	<b>29.9%</b>	<b>29.9%</b>	<b>50.0%</b>	<b>25.0%</b>	<b>25.0%</b>	<b>20.2%</b>
<b>Medical &amp; Dental</b>	<b>0.5%</b>	<b>0.4%</b>	<b>0.6%</b>	<b>0.3%</b>	<b>0.3%</b>	<b>0.4%</b>	<b>0.4%</b>
Clinical Nurse/ Midwife Manager	22.0%	21.4%	20.7%	18.7%	20.7%	21.7%	20.6%
Director Nursing/Midwifery, Assistant	0.3%	0.6%	0.5%	0.5%	0.5%	0.5%	0.5%
Director of Nursing/Midwifery	2.0%	1.8%	1.0%	1.0%	1.6%	1.1%	1.2%
<b>Nurse/ Midwife Manager</b>	<b>24.3%</b>	<b>23.9%</b>	<b>22.1%</b>	<b>20.2%</b>	<b>22.8%</b>	<b>23.4%</b>	<b>22.3%</b>
Clinical Nurse/ Midwife Specialist	0.8%	0.6%					
<b>Nurse/ Midwife Specialist &amp; AN/MP</b>	<b>0.8%</b>	<b>0.6%</b>					
Staff Nurse [Intellectual Disability]	36.9%	21.5%	29.7%	29.5%	25.5%	27.6%	29.1%
Staff Nurse [Psychiatric]	2.3%	1.7%	1.7%	2.3%	9.4%	1.6%	1.5%
Staff Nurses [General/ Children's]	35.1%	52.1%	46.5%	48.0%	42.3%	47.4%	47.0%
<b>Staff Nurse/ Staff Midwife</b>	<b>74.3%</b>	<b>75.3%</b>	<b>77.9%</b>	<b>79.8%</b>	<b>77.2%</b>	<b>76.6%</b>	<b>77.7%</b>
<b>Public Health Nurse</b>	<b>0.6%</b>	<b>0.3%</b>					
<b>Nursing &amp; Midwifery</b>	<b>19.9%</b>	<b>17.9%</b>	<b>17.7%</b>	<b>16.8%</b>	<b>16.2%</b>	<b>15.6%</b>	<b>15.6%</b>
Dietitians				0.1%	0.1%	0.1%	0.1%
Occupational Therapists	3.2%	3.4%	3.7%	4.1%	3.7%	4.2%	4.1%
Physiotherapists	1.9%	1.7%	1.5%	1.4%	1.4%	1.3%	1.6%
Speech & Language Therapists	3.2%	3.6%	3.7%	5.2%	5.1%	4.3%	4.2%
<b>Therapy Professions</b>	<b>8.3%</b>	<b>8.7%</b>	<b>9.0%</b>	<b>10.8%</b>	<b>10.3%</b>	<b>9.9%</b>	<b>10.0%</b>
<b>Social Care</b>	<b>83.9%</b>	<b>84.7%</b>	<b>83.7%</b>	<b>82.4%</b>	<b>83.1%</b>	<b>84.3%</b>	<b>84.8%</b>
<b>Social Workers</b>	<b>3.6%</b>	<b>2.6%</b>	<b>2.8%</b>	<b>3.2%</b>	<b>2.8%</b>	<b>2.3%</b>	<b>2.2%</b>
<b>Psychologists</b>	<b>3.8%</b>	<b>3.9%</b>	<b>3.7%</b>	<b>3.5%</b>	<b>3.4%</b>	<b>3.2%</b>	<b>2.8%</b>
Counsellor Therapists	0.1%		0.4%		0.1%		
Other Health & Social Care	0.2%	0.1%	0.4%	0.2%	0.3%	0.3%	0.2%
<b>H&amp;SC, Other</b>	<b>0.3%</b>	<b>0.1%</b>	<b>0.8%</b>	<b>0.2%</b>	<b>0.5%</b>	<b>0.3%</b>	<b>0.2%</b>
<b>Health &amp; Social Care Professionals</b>	<b>30.5%</b>	<b>33.0%</b>	<b>32.9%</b>	<b>32.5%</b>	<b>31.4%</b>	<b>36.9%</b>	<b>36.9%</b>
Executive Management	6.4%	5.6%	12.4%	9.2%	10.2%	9.3%	8.9%
Senior Management (VIII & GM)	15.7%	17.2%	12.2%	14.3%	12.2%	12.3%	9.5%
<b>Management (VIII &amp; above)</b>	<b>22.0%</b>	<b>22.8%</b>	<b>24.6%</b>	<b>23.5%</b>	<b>22.3%</b>	<b>21.6%</b>	<b>18.4%</b>
<b>Administrative/ Supervisory (V to VII)</b>	<b>33.2%</b>	<b>31.5%</b>	<b>35.2%</b>	<b>35.8%</b>	<b>38.6%</b>	<b>38.6%</b>	<b>34.3%</b>
<b>Clerical (III &amp; IV)</b>	<b>44.8%</b>	<b>45.7%</b>	<b>40.2%</b>	<b>40.7%</b>	<b>39.0%</b>	<b>39.8%</b>	<b>47.3%</b>
<b>Management &amp; Administrative</b>	<b>9.1%</b>	<b>8.8%</b>	<b>11.7%</b>	<b>12.0%</b>	<b>11.6%</b>	<b>8.3%</b>	<b>8.3%</b>
<b>Support</b>	<b>83.8%</b>	<b>84.2%</b>	<b>87.3%</b>	<b>87.7%</b>	<b>77.0%</b>	<b>83.6%</b>	<b>80.9%</b>
<b>Maintenance/ Technical</b>	<b>16.2%</b>	<b>15.8%</b>	<b>12.7%</b>	<b>12.3%</b>	<b>23.0%</b>	<b>16.4%</b>	<b>19.1%</b>
<b>General Support</b>	<b>5.7%</b>	<b>5.2%</b>	<b>2.7%</b>	<b>2.8%</b>	<b>2.7%</b>	<b>2.2%</b>	<b>2.2%</b>
HCA, Nurse's Aide, etc.	47.2%	47.2%	42.6%	42.6%	43.1%	42.8%	43.7%
<b>Health Care Assistants</b>	<b>47.2%</b>	<b>47.2%</b>	<b>42.6%</b>	<b>42.6%</b>	<b>43.1%</b>	<b>42.8%</b>	<b>43.7%</b>
<b>Care, other</b>	<b>52.8%</b>	<b>52.8%</b>	<b>57.4%</b>	<b>57.4%</b>	<b>56.9%</b>	<b>57.2%</b>	<b>56.3%</b>
<b>Patient &amp; Client Care</b>	<b>34.3%</b>	<b>34.7%</b>	<b>34.5%</b>	<b>35.4%</b>	<b>34.2%</b>	<b>36.5%</b>	<b>36.5%</b>
<b>Total</b>	<b>100 %</b>	<b>100 %</b>	<b>100 %</b>	<b>100 %</b>	<b>100 %</b>	<b>100 %</b>	<b>100 %</b>

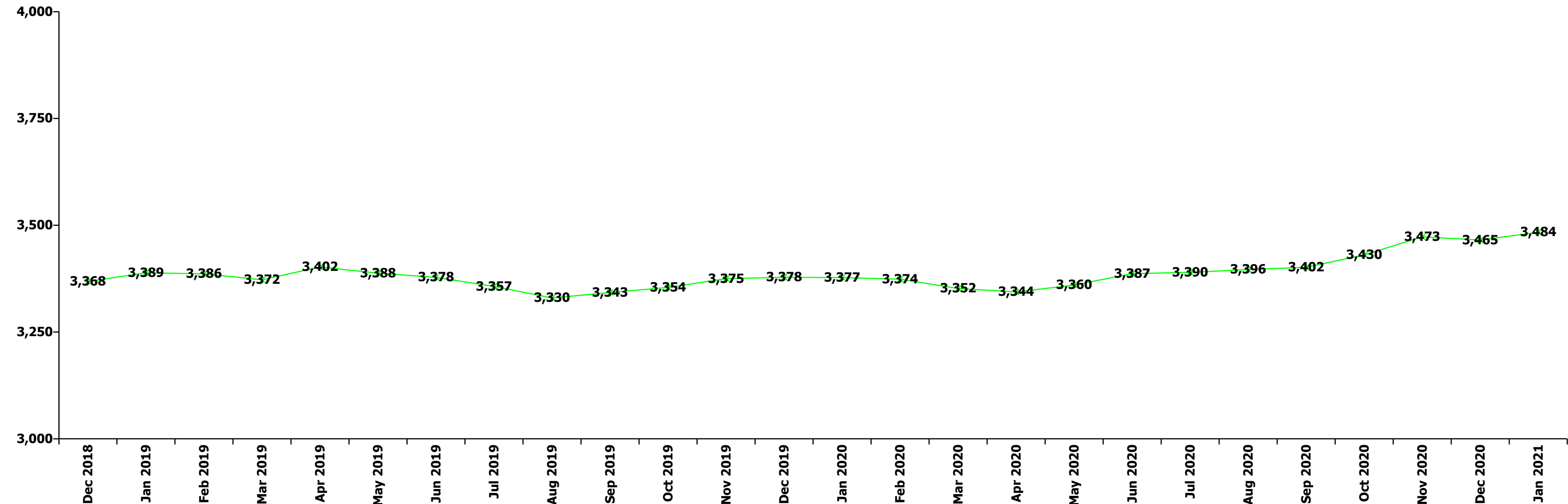
Jan 2021 (Dec 2018 figure: 808)	WTE Dec 2015	WTE Dec 2016	WTE Dec 2017	WTE Dec 2018	WTE Dec 2019	WTE Dec 2020	WTE Jan 2021
<b>Older People</b>	<b>805</b>	<b>797</b>	<b>828</b>	<b>808</b>	<b>823</b>	<b>804</b>	<b>806</b>
Registrar							21.0%
Senior Registrar	20.0%	20.0%	20.0%	33.3%	20.0%	26.1%	21.0%
<b>Registrars</b>	<b>20.0%</b>	<b>20.0%</b>	<b>20.0%</b>	<b>33.3%</b>	<b>20.0%</b>	<b>26.1%</b>	<b>42.0%</b>
<b>Medical/ Dental, other</b>	<b>80.0%</b>	<b>80.0%</b>	<b>80.0%</b>	<b>66.7%</b>	<b>80.0%</b>	<b>73.9%</b>	<b>58.0%</b>
<b>Medical &amp; Dental</b>	<b>0.6%</b>	<b>0.6%</b>	<b>0.6%</b>	<b>0.7%</b>	<b>0.7%</b>	<b>0.6%</b>	<b>0.6%</b>
Clinical Nurse/ Midwife Manager	19.6%	20.1%	20.4%	20.8%	20.3%	19.6%	19.0%
Director Nursing/Midwifery, Assistant	2.2%	1.8%	1.8%	2.6%	2.8%	2.5%	2.9%
Director of Nursing/Midwifery	1.8%	2.2%	1.8%	1.9%	1.8%	1.1%	0.8%
<b>Nurse/ Midwife Manager</b>	<b>23.6%</b>	<b>24.2%</b>	<b>24.1%</b>	<b>25.3%</b>	<b>25.0%</b>	<b>23.2%</b>	<b>22.7%</b>
Clinical Nurse/ Midwife Specialist				0.4%	0.4%	0.4%	0.4%
<b>Nurse/ Midwife Specialist &amp; AN/MP</b>				<b>0.4%</b>	<b>0.4%</b>	<b>0.4%</b>	<b>0.4%</b>
Staff Nurses [General/ Children's]	76.4%	75.8%	75.9%	74.4%	74.6%	76.4%	77.0%
<b>Staff Nurse/ Staff Midwife</b>	<b>76.4%</b>	<b>75.8%</b>	<b>75.9%</b>	<b>74.4%</b>	<b>74.6%</b>	<b>76.4%</b>	<b>77.0%</b>
<b>Nursing &amp; Midwifery</b>	<b>34.5%</b>	<b>34.0%</b>	<b>32.7%</b>	<b>33.0%</b>	<b>32.4%</b>	<b>32.7%</b>	<b>32.7%</b>
Dietitians	4.3%	4.6%	4.5%	4.5%	3.9%	4.3%	4.2%
Occupational Therapists	29.3%	28.3%	28.1%	28.0%	28.3%	29.7%	28.9%
Physiotherapists	32.2%	31.4%	30.1%	34.7%	32.4%	30.4%	31.2%
Podiatrists & Chiropodists	1.6%	2.1%	3.1%	1.6%	1.0%	2.0%	1.9%
Speech & Language Therapists	7.6%	7.7%	9.4%	9.3%	9.7%	9.9%	9.9%
<b>Therapy Professions</b>	<b>74.9%</b>	<b>74.1%</b>	<b>75.2%</b>	<b>78.0%</b>	<b>75.4%</b>	<b>76.3%</b>	<b>76.1%</b>
<b>Social Workers</b>	<b>19.1%</b>	<b>20.1%</b>	<b>20.0%</b>	<b>16.4%</b>	<b>17.1%</b>	<b>17.1%</b>	<b>17.8%</b>
<b>Psychologists</b>	<b>0.8%</b>	<b>0.9%</b>		<b>0.9%</b>	<b>3.2%</b>	<b>1.8%</b>	<b>2.0%</b>
<b>Pharmacy</b>	<b>4.8%</b>	<b>5.0%</b>	<b>4.8%</b>	<b>4.8%</b>	<b>4.3%</b>	<b>4.8%</b>	<b>4.1%</b>
Other Health & Social Care	0.4%						
<b>H&amp;SC, Other</b>	<b>0.4%</b>						
<b>Health &amp; Social Care Professionals</b>	<b>7.5%</b>	<b>7.1%</b>	<b>6.9%</b>	<b>7.2%</b>	<b>7.0%</b>	<b>7.7%</b>	<b>7.7%</b>
Executive Management	4.4%	4.1%	1.9%	3.9%	1.8%	3.5%	3.3%
Senior Management (VIII & GM)	2.2%	2.1%			5.4%	5.2%	5.0%
<b>Management (VIII &amp; above)</b>	<b>6.6%</b>	<b>6.2%</b>	<b>1.9%</b>	<b>3.9%</b>	<b>7.2%</b>	<b>8.7%</b>	<b>8.3%</b>
<b>Administrative/ Supervisory (V to VII)</b>	<b>42.7%</b>	<b>41.5%</b>	<b>40.3%</b>	<b>40.2%</b>	<b>39.9%</b>	<b>33.8%</b>	<b>35.6%</b>
<b>Clerical (III &amp; IV)</b>	<b>50.7%</b>	<b>52.3%</b>	<b>57.8%</b>	<b>55.9%</b>	<b>52.9%</b>	<b>57.5%</b>	<b>56.1%</b>
<b>Management &amp; Administrative</b>	<b>5.6%</b>	<b>6.1%</b>	<b>6.3%</b>	<b>6.4%</b>	<b>6.3%</b>	<b>7.5%</b>	<b>7.5%</b>
<b>Support</b>	<b>91.2%</b>	<b>91.5%</b>	<b>91.8%</b>	<b>92.8%</b>	<b>93.1%</b>	<b>91.9%</b>	<b>92.8%</b>
<b>Maintenance/ Technical</b>	<b>8.8%</b>	<b>8.5%</b>	<b>8.2%</b>	<b>7.2%</b>	<b>6.9%</b>	<b>8.1%</b>	<b>7.2%</b>
<b>General Support</b>	<b>14.2%</b>	<b>14.7%</b>	<b>14.7%</b>	<b>14.1%</b>	<b>13.8%</b>	<b>13.8%</b>	<b>13.8%</b>
HCA, Nurse's Aide, etc.	94.1%	94.0%	94.6%	94.9%	94.9%	95.6%	95.6%
Health & Social Care Assistants	3.4%	3.5%	3.1%	2.7%	2.7%	2.6%	2.6%
<b>Health Care Assistants</b>	<b>97.5%</b>	<b>97.5%</b>	<b>97.7%</b>	<b>97.6%</b>	<b>97.6%</b>	<b>98.2%</b>	<b>98.2%</b>
Other Care Grades	2.5%	2.5%	2.3%	2.4%	2.4%	1.8%	1.8%
<b>Care, other</b>	<b>2.5%</b>	<b>2.5%</b>	<b>2.3%</b>	<b>2.4%</b>	<b>2.4%</b>	<b>1.8%</b>	<b>1.8%</b>
<b>Patient &amp; Client Care</b>	<b>37.6%</b>	<b>37.4%</b>	<b>38.8%</b>	<b>38.6%</b>	<b>37.8%</b>	<b>37.7%</b>	<b>37.7%</b>
<b>Total</b>	<b>100 %</b>	<b>100 %</b>	<b>100 %</b>	<b>100 %</b>	<b>100 %</b>	<b>100 %</b>	<b>100 %</b>

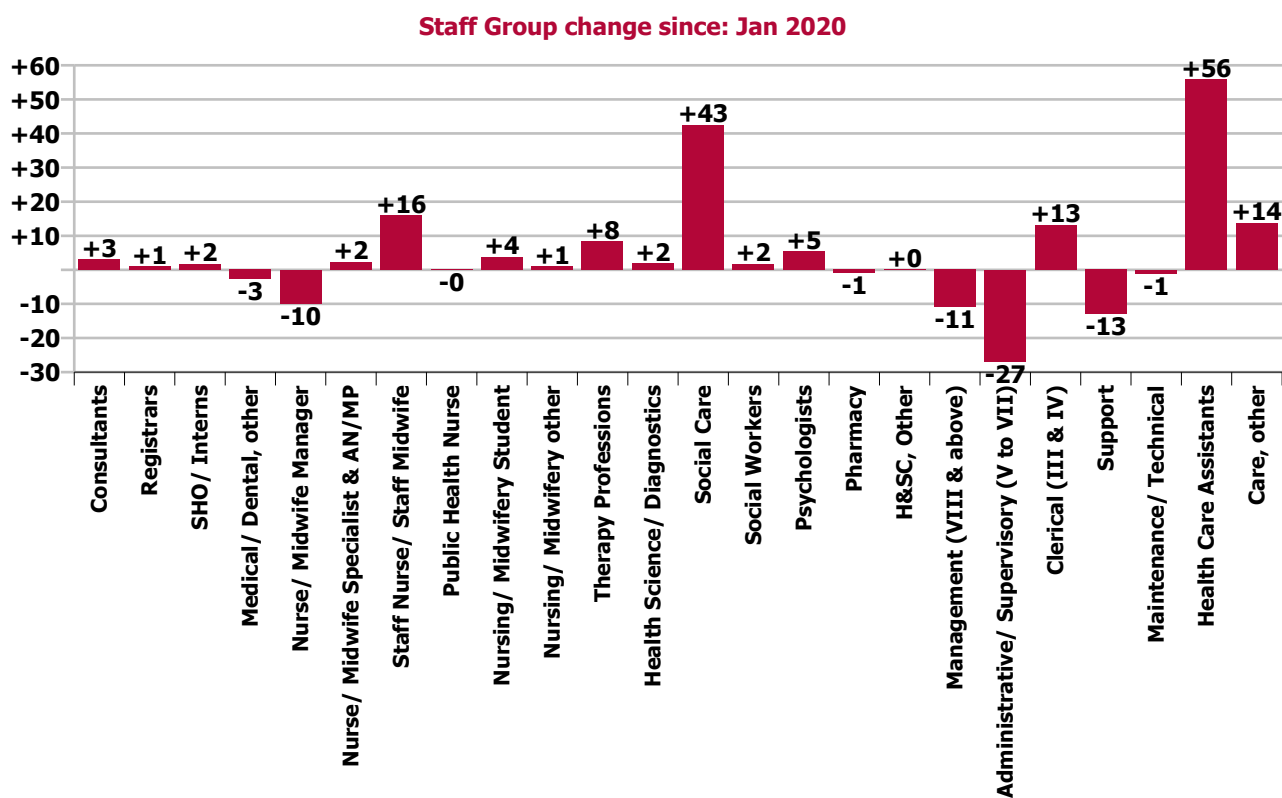
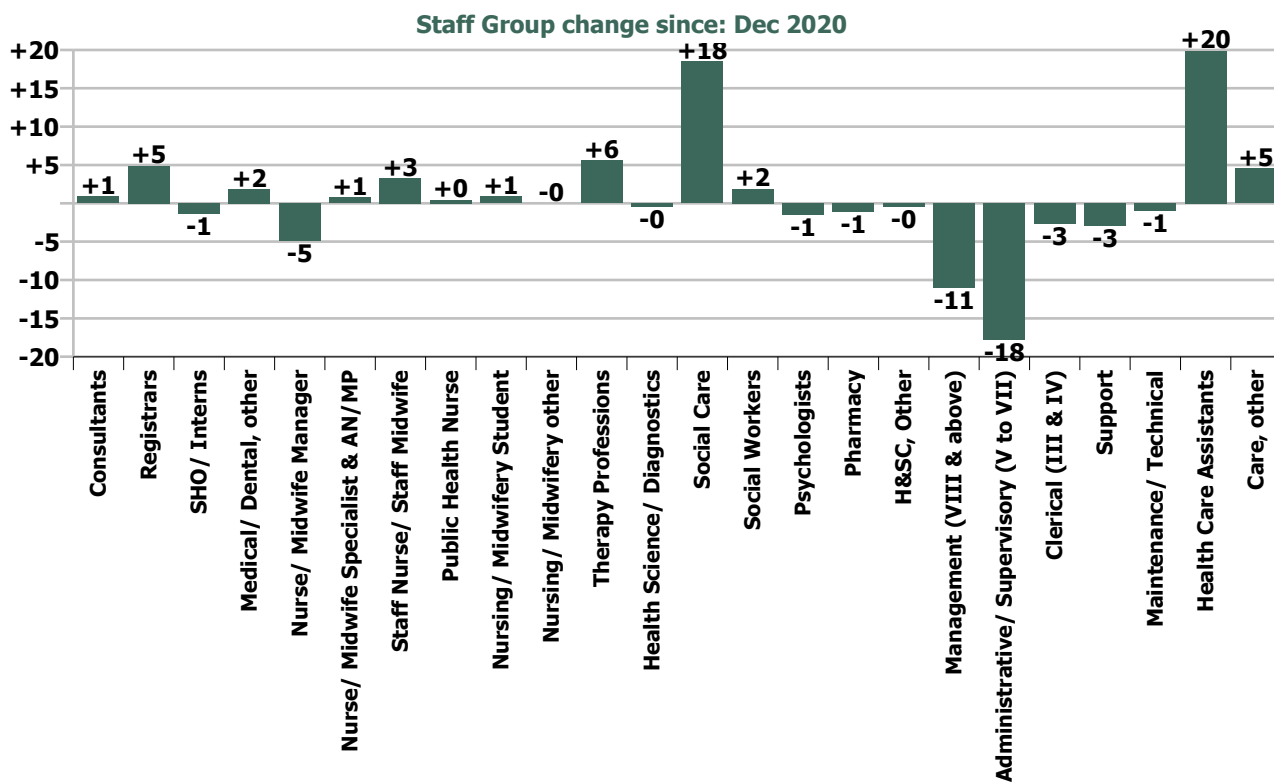


Summary Staff Movement: January 2021

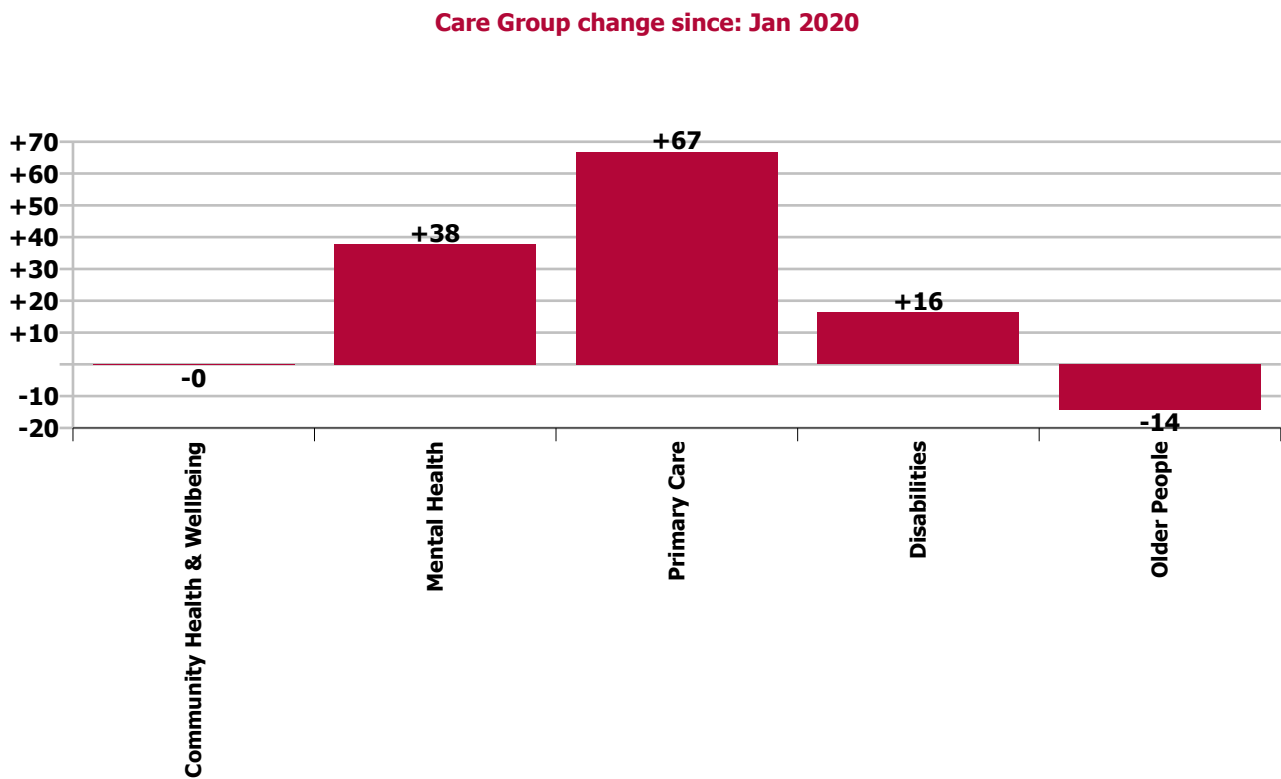
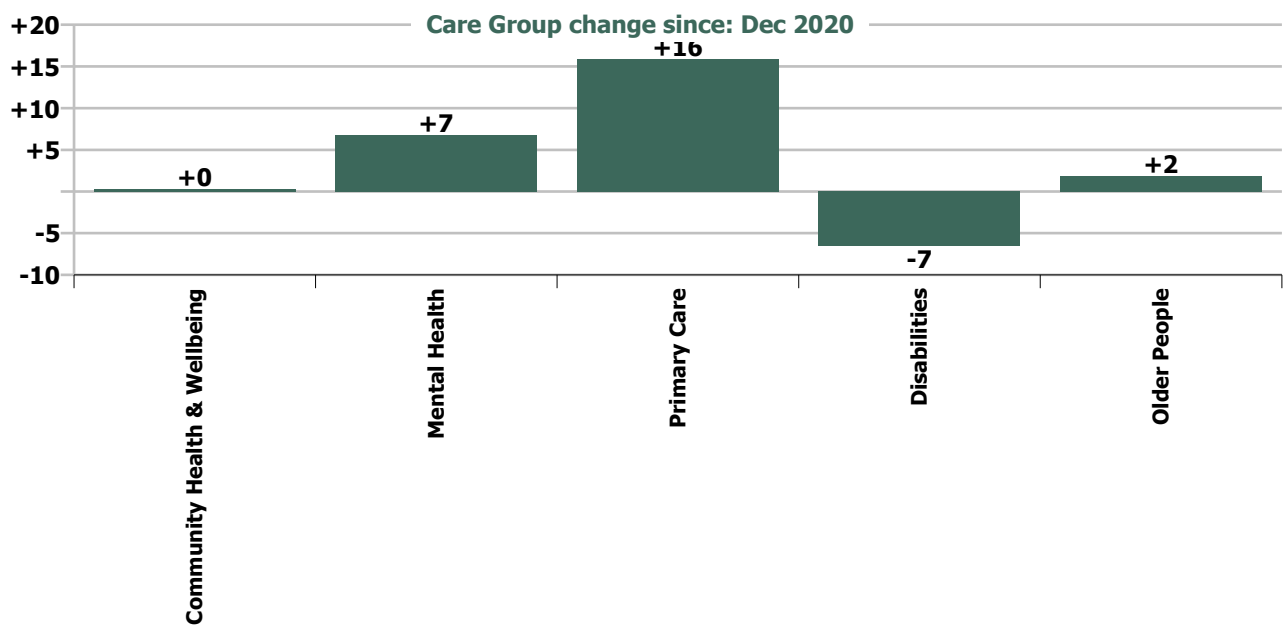
Month-on-month Summary																												
WTE change since Dec 20	% change since Dec 20	overall	Consultants	Registrars	SHO/ Interns	Medical/ Dental, other	Medical & Dental	Nurse/ Midwife Manager	Nurse/ Midwife Specialist & AN/MP	Staff Nurse/ Staff Midwife	Public Health Nurse	Nursing/ Midwifery Student	Nursing/ Midwifery other	Nursing & Midwifery	Therapy Professions	Health Science/ Diagnostics	Social Care	Social Workers	Psychologists	Pharmacy	H&SC, Other	Health & Social Care Professionals	Management (VII & above)	Administrative/ Supervisory (V to VII)	Clerical (III & IV)	Management & Administrative	General Support	Patient & Client Care
Overall	+0.5%	+18	+0.9	+4.9	-1.4	+1.8	+6.2	-4.9	+0.8	+3.3	+0.5	+0.9	-0.0	+0.5	+5.6	-0.5	+18.5	+1.9	-1.5	-1.1	-0.4	+22.5	-11.0	-17.8	-2.6	-31.4	-3.9	+24.4
Community Health & Wellbeing	+4.1%	+0																					0.0	+0.4	-0.0	+0.4		-0.1
Mental Health	+1.1%	+7	+0.9	+3.2	-1.4		+2.7	-1.1	+0.3	+0.8		+0.8	-0.0	+0.9	-0.5		+0.5	+0.9	-0.3		-0.2	+0.4	0.0	+0.6	-0.5	+0.1	+0.7	+2.1
Primary Care	+2.0%	+16	0.0	-0.3	0.0	+1.9	+1.7	+0.2	+0.5	+0.8	+0.5	+0.1	0.0	+2.1	+2.7	-0.5	+0.2	+0.3	-0.2	-0.8	0.0	+1.8	+0.6	-1.4	+5.2	+4.4	-0.1	+6.1
Disabilities	-0.5%	-7	0.0	+1.0		0.0	+1.0	-1.2		+4.7				+3.5	+2.1		+17.7	0.0	-1.1		-0.2	+18.5	-11.6	-19.3	-7.9	-38.7	-4.4	+13.6
Older People	+0.2%	+2		+1.0		-0.1	+0.9	-2.9	0.0	-3.0				-5.9	+1.2			+0.7	+0.1	-0.4		+1.7	0.0	+2.0	+0.6	+2.5	-0.1	+2.7
Social Care	-0.2%	-5	0.0	+2.0		-0.1	+1.9	-4.0	0.0	+1.6				-2.4	+3.3		+17.7	+0.7	-1.0	-0.4	-0.2	+20.2	-11.6	-17.3	-7.3	-36.2	-4.5	+16.3
Change	+18.3	+0.5%	+1.7%	+11.2%	-7.3%	+4.1%	+3.9%	-2.4%	+3.2%	+0.6%	+0.4%	+5.8%	-0.3%	+0.1%	+2.4%	-2.4%	+4.7%	+3.5%	-2.2%	-28.5%	-4.2%	+2.9%	-15.9%	-10.7%	-1.0%	-6.3%	-1.8%	+2.7%

Year-on-year Summary																												
WTE change since Jan 20	% change since Jan 20	overall	Consultants	Registrars	SHO/ Interns	Medical/ Dental, other	Medical & Dental	Nurse/ Midwife Manager	Nurse/ Midwife Specialist & AN/MP	Staff Nurse/ Staff Midwife	Public Health Nurse	Nursing/ Midwifery Student	Nursing/ Midwifery other	Nursing & Midwifery	Therapy Professions	Health Science/ Diagnostics	Social Care	Social Workers	Psychologists	Pharmacy	H&SC, Other	Health & Social Care Professionals	Management (VIII & above)	Administrative/ Supervisory (V to VII)	Clerical (III & IV)	Management & Administrative	General Support	Patient & Client Care
Overall	+3.1%	+106	+3.0	+1.1	+1.7	-2.7	+3.1	-9.9	+2.3	+16.0	-0.1	+3.8	+1.0	+13.1	+8.3	+1.8	+42.5	+1.7	+5.5	-0.9	+0.2	+59.1	-10.9	-26.8	+13.1	-24.6	-14.0	+69.5
Community Health & Wellbeing	+4.1%	+0																					0.0	+0.1	-0.0	+0.0		-0.3
Mental Health	+1.1%	+7	+2.8	+1.6	+1.7		+6.2	-0.8	+4.2	+12.1		+1.8	-0.0	+17.4	-3.8		+0.3	+0.6	+8.5		+0.1	+5.7	0.0	-2.9	+0.8	-2.1	+4.4	+6.2
Primary Care	+2.0%	+16	+0.0	-2.5	0.0	-1.4	-3.9	+0.4	-1.9	+4.1	-0.1	+2.0	+1.0	+5.5	+9.4	+1.8	-0.6	+0.2	+0.7	-0.6	+0.0	+10.9	+0.5	-3.0	+18.7	+16.2	-0.7	+38.8
Disabilities	+1.4%	+16.3	+0.1	+1.0		0.0	+1.0	-1.1		+1.1				-0.0	+3.2		+42.9	+1.0	-2.9		+0.1	+44.3	-11.4	-19.6	-11.9	-42.9	-9.7	+23.5
Older People	-1.7%	-14.3		+1.0		-1.2	-0.2	-8.4	0.0	-1.4				-9.7	-0.4				-0.1	-0.8	-0.4		-1.8	+0.0	-1.4	+5.6	+4.2	+1.2
Social Care	-0.2%	-5	+0.1	+2.0		-1.2	+0.8	-9.5	0.0	-0.3				-9.8	+2.7		+42.9	+0.9	-3.7	-0.4	+0.1	+42.6	-11.3	-21.0	-6.3	-38.6	-17.7	+24.8
Change	+106.2	+3.1%	+6.0%	+2.3%	+10.5%	-5.4%	+1.9%	-4.7%	+10.3%	+2.9%	-0.1%	+29.4%	+49.5%	+1.5%	+3.5%	+10.1%	+11.6%	+3.1%	+9.2%	-24.8%	+2.1%	+7.9%	-15.7%	-15.3%	+5.4%	-5.0%	-6.3%	+8.2%









## Longitudinal Employment Levels by Grade Group - Oct 2013 to Jan 2021

Jan 2021 (Dec 2015 figure: 3,908)	WTE Jan 2021	WTE change since Dec 15	WTE change since Dec 16	WTE change since Dec 17	WTE change since Dec 18	WTE change since Dec 19	WTE change since Dec 20	% change since Dec 15	% change since Dec 16	% change since Dec 17	% change since Dec 18	% change since Dec 19	% change since Dec 20
<b>Overall</b>	<b>3,484</b>	<b>-424</b>	<b>-457</b>	<b>+127</b>	<b>+115</b>	<b>+106</b>	<b>+18</b>	<b>-10.9%</b>	<b>-11.6%</b>	<b>+3.8%</b>	<b>+3.4%</b>	<b>+3.1%</b>	<b>+0.5%</b>
Consultant Dentistry	6	-0	-0	-1	-1	-1		-6.0%	-6.0%	-18.2%	-18.2%	-13.0%	
Consultant Medicine	1												
Consultant, Other		-1	-1					-100.0%	-100.0%	-100.0%	-100.0%	-100.0%	-100.0%
Consultant Paediatrics		-0	-0	-0				-100.0%	-100.0%	-100.0%	-100.0%	-100.0%	-100.0%
Consultant Psychiatry	44	+15	+15	+13	+11	+5	+1	+49.7%	+49.7%	+42.7%	+32.7%	+12.8%	+2.1%
Consultant Radiology	1												
<b>Consultants</b>	<b>52</b>	<b>+13</b>	<b>+13</b>	<b>+12</b>	<b>+9</b>	<b>+4</b>	<b>+1</b>	<b>+33.5%</b>	<b>+33.5%</b>	<b>+28.7%</b>	<b>+22.0%</b>	<b>+8.4%</b>	<b>+1.7%</b>
Registrar	39	-38	-1	-1	+3	-1	+5	-49.0%	-2.0%	-2.1%	+8.9%	-2.6%	+14.5%
Senior Registrar	9	+1	+2	+2	-1	+1	-0	+12.4%	+23.2%	+25.7%	-10.6%	+13.5%	-0.7%
Specialist Registrar	1												
<b>Registrars</b>	<b>49</b>	<b>-37</b>	<b>+1</b>	<b>+1</b>	<b>+2</b>	<b>-0</b>	<b>+5</b>	<b>-43.0%</b>	<b>+1.7%</b>	<b>+1.9%</b>	<b>+4.7%</b>	<b>-0.1%</b>	<b>+11.2%</b>
<b>SHO/ Interns</b>	<b>18</b>	<b>-1</b>	<b>-1</b>	<b>-3</b>	<b>-4</b>	<b>+3</b>	<b>-1</b>	<b>-6.0%</b>	<b>-6.9%</b>	<b>-14.5%</b>	<b>-19.5%</b>	<b>+16.6%</b>	<b>-7.3%</b>
Dentists	26	-3	-3	-3	-1	-1	+1	-10.0%	-10.2%	-11.6%	-4.8%	-3.0%	+3.6%
Other Medical	21	-11	-2	-5	-6	-4	+1	-33.4%	-9.9%	-17.6%	-22.4%	-14.5%	+4.7%
<b>Medical/ Dental, other</b>	<b>47</b>	<b>-13</b>	<b>-5</b>	<b>-8</b>	<b>-7</b>	<b>-4</b>	<b>+2</b>	<b>-22.3%</b>	<b>-10.0%</b>	<b>-14.4%</b>	<b>-13.6%</b>	<b>-8.6%</b>	<b>+4.1%</b>
<b>Medical &amp; Dental</b>	<b>166</b>	<b>-38</b>	<b>+7</b>	<b>+2</b>	<b>-0</b>	<b>+2</b>	<b>+6</b>	<b>-18.7%</b>	<b>+4.6%</b>	<b>+1.0%</b>	<b>-0.1%</b>	<b>+1.4%</b>	<b>+3.9%</b>
Clinical Nurse/ Midwife Manager	154	-40	-37	-3	-7	-7	-4	-20.5%	-19.2%	-2.0%	-4.1%	-4.2%	-2.7%
Director Nursing/Midwifery, Assistant	34	+5	+5	+6	-1	-1	+1	+16.3%	+15.1%	+19.0%	-2.6%	-2.1%	+1.6%
Director of Nursing/Midwifery	12	-8	-8	-3	-1	-2	-1	-40.1%	-40.2%	-20.7%	-9.3%	-15.2%	-8.7%
<b>Nurse/ Midwife Manager</b>	<b>201</b>	<b>-43</b>	<b>-40</b>	<b>-1</b>	<b>-9</b>	<b>-10</b>	<b>-5</b>	<b>-17.7%</b>	<b>-16.7%</b>	<b>-0.4%</b>	<b>-4.2%</b>	<b>-4.6%</b>	<b>-2.4%</b>
Advanced Nurse/ Midwife Practitioner	6	+6	+5	+5	+5	+5		-100.0%	+1000.0%	+1000.0%	+1000.0%	+708.8%	
Clinical Nurse/ Midwife Specialist	19	+0	-1	-1	+1	-1	+1	+0.2%	-3.4%	-6.7%	+2.8%	-3.1%	+4.2%
<b>Nurse/ Midwife Specialist &amp; AN/MP</b>	<b>25</b>	<b>+6</b>	<b>+4</b>	<b>+4</b>	<b>+6</b>	<b>+4</b>	<b>+1</b>	<b>+28.7%</b>	<b>+21.0%</b>	<b>+17.1%</b>	<b>+28.7%</b>	<b>+20.4%</b>	<b>+3.2%</b>
Staff Nurse [Intellectual Disability]	57	-70	-13	-4	-1	+7	+4	-55.0%	-18.2%	-7.1%	-2.3%	+15.0%	+7.0%
Staff Nurse [Psychiatric]	126	-17	-1	+8	+16	-7	+2	-12.0%	-0.5%	+7.1%	+14.3%	-4.9%	+1.2%
Staff Nurses [General/ Children's]	374	-23	-68	+4	-2	+15	-2	-5.7%	-15.4%	+1.1%	-0.6%	+4.2%	-0.5%
<b>Staff Nurse/ Staff Midwife</b>	<b>558</b>	<b>-109</b>	<b>-82</b>	<b>+8</b>	<b>+12</b>	<b>+16</b>	<b>+3</b>	<b>-16.4%</b>	<b>-12.8%</b>	<b>+1.5%</b>	<b>+2.2%</b>	<b>+2.9%</b>	<b>+0.6%</b>
<b>Public Health Nurse</b>	<b>112</b>	<b>-2</b>	<b>-6</b>	<b>-11</b>	<b>-6</b>	<b>-4</b>	<b>+0</b>	<b>-1.5%</b>	<b>-4.9%</b>	<b>-8.6%</b>	<b>-5.2%</b>	<b>-3.8%</b>	<b>+0.4%</b>
Nursing/ Midwifery awaiting registration	1	+1	+1	+1	+1	+1	-0	-100.0%	-100.0%	-100.0%	-100.0%	-100.0%	-2.0%
Post-registration Nurse/ Midwife Student	15	-2		-4	+4	+2	+0	-11.8%		-22.5%	+36.4%	+11.1%	+0.7%
Pre-registration Nurse/ Midwife Intern	1	+1	+1	+1	+1	+1	+1	-100.0%	-100.0%	-100.0%	-100.0%	-100.0%	-100.0%
<b>Nursing/ Midwifery Student</b>	<b>17</b>	<b>-0</b>	<b>+2</b>	<b>-3</b>	<b>+6</b>	<b>+3</b>	<b>+1</b>	<b>-1.1%</b>	<b>+12.1%</b>	<b>-13.1%</b>	<b>+52.9%</b>	<b>+24.6%</b>	<b>+5.8%</b>
Nursing Education/Clinical	3	+2	+1	+1	+0	+1	-0	+199.0%	+33.5%	+49.5%	+4.5%	+49.5%	-0.3%
Other Nursing/ Midwifery		-1						-100.0%	-100.0%	-100.0%	-100.0%	-100.0%	-100.0%

Jan 2021 (Dec 2015 figure: 3,908)	WTE Jan 2021	WTE change since Dec 15	WTE change since Dec 16	WTE change since Dec 17	WTE change since Dec 18	WTE change since Dec 19	WTE change since Dec 20	% change since Dec 15	% change since Dec 16	% change since Dec 17	% change since Dec 18	% change since Dec 19	% change since Dec 20
<b>Overall</b>	<b>3,484</b>	<b>-424</b>	<b>-457</b>	<b>+127</b>	<b>+115</b>	<b>+106</b>	<b>+18</b>	<b>-10.9%</b>	<b>-11.6%</b>	<b>+3.8%</b>	<b>+3.4%</b>	<b>+3.1%</b>	<b>+0.5%</b>
<b>Nursing/ Midwifery other</b>	<b>3</b>	<b>+1</b>	<b>+1</b>	<b>+1</b>	<b>+0</b>	<b>+1</b>	<b>-0</b>	<b>+49.5%</b>	<b>+33.5%</b>	<b>+49.5%</b>	<b>+4.5%</b>	<b>+49.5%</b>	<b>-0.3%</b>
<b>Nursing &amp; Midwifery</b>	<b>915</b>	<b>-148</b>	<b>-121</b>	<b>-1</b>	<b>+8</b>	<b>+10</b>	<b>+1</b>	<b>-13.9%</b>	<b>-11.7%</b>	<b>-0.1%</b>	<b>+0.9%</b>	<b>+1.1%</b>	<b>+0.1%</b>
Dietitians	17	+5	+5	+1	+1	+2	+0	+44.7%	+47.2%	+7.1%	+4.6%	+13.9%	+1.1%
Occupational Therapists	94	+5	+4	+6	+2	+2	+1	+6.2%	+4.5%	+6.7%	+2.0%	+2.5%	+0.8%
Physiotherapists	64	-4	+1	+5	+1	+3	+5	-6.2%	+1.1%	+8.6%	+2.0%	+5.5%	+8.0%
Podiatrists & Chiropodists	4	+2	+2	+1	+2	+2	-0	+144.6%	+81.1%	+21.6%	+75.6%	+143.2%	-1.9%
Speech & Language Therapists	65	+1	-6	-1	-10	-5	+0	+1.6%	-8.4%	-1.2%	-13.4%	-7.0%	+0.0%
<b>Therapy Professions</b>	<b>243</b>	<b>+10</b>	<b>+6</b>	<b>+12</b>	<b>-4</b>	<b>+5</b>	<b>+6</b>	<b>+4.2%</b>	<b>+2.5%</b>	<b>+5.2%</b>	<b>-1.8%</b>	<b>+2.1%</b>	<b>+2.4%</b>
Medical Laboratory	17	-0	-1	-2	-3	+2	-1	-0.3%	-5.5%	-12.6%	-15.9%	+9.6%	-2.9%
Radiographers	2	-1	-1	-1	-1	-0	+0	-29.4%	-29.4%	-31.4%	-31.2%	-1.6%	+1.3%
<b>Health Science/ Diagnostics</b>	<b>20</b>	<b>-1</b>	<b>-2</b>	<b>-4</b>	<b>-4</b>	<b>+1</b>	<b>-0</b>	<b>-5.1%</b>	<b>-9.2%</b>	<b>-15.4%</b>	<b>-18.1%</b>	<b>+8.1%</b>	<b>-2.4%</b>
<b>Social Care</b>	<b>410</b>	<b>-65</b>	<b>-130</b>	<b>+56</b>	<b>+68</b>	<b>+46</b>	<b>+18</b>	<b>-13.8%</b>	<b>-24.0%</b>	<b>+15.9%</b>	<b>+20.0%</b>	<b>+12.7%</b>	<b>+4.7%</b>
<b>Social Workers</b>	<b>56</b>	<b>-5</b>	<b>-5</b>	<b>+0</b>	<b>-1</b>	<b>-1</b>	<b>+2</b>	<b>-7.5%</b>	<b>-8.8%</b>	<b>+0.3%</b>	<b>-1.6%</b>	<b>-1.6%</b>	<b>+3.5%</b>
<b>Psychologists</b>	<b>65</b>	<b>+3</b>	<b>+3</b>	<b>+6</b>	<b>+9</b>	<b>+9</b>	<b>-1</b>	<b>+5.6%</b>	<b>+4.7%</b>	<b>+10.0%</b>	<b>+15.5%</b>	<b>+15.1%</b>	<b>-2.2%</b>
<b>Pharmacy</b>	<b>3</b>	<b>-1</b>	<b>-0</b>	<b>-1</b>	<b>-1</b>	<b>-1</b>	<b>-1</b>	<b>-28.6%</b>	<b>-1.8%</b>	<b>-26.2%</b>	<b>-26.2%</b>	<b>-23.8%</b>	<b>-28.5%</b>
Counsellor Therapists	4	-3	-2	-2	+0	-0	-0	-38.7%	-33.3%	-37.9%	+10.2%	-9.5%	-4.8%
Dental Hygienists	4	-0	-0	+0	+0	+0		-4.9%	-4.9%	+0.3%	+0.0%	+3.2%	
Other Health & Social Care	2	-1	+1	-0	+1	-4	-0	-37.4%	+51.0%	-9.4%	+69.2%	-72.8%	-13.5%
Play Therapists/ Specialists	0	-1	-1	-0		+0		-67.1%	-68.0%	-5.9%		+4.3%	
<b>H&amp;SC, Other</b>	<b>10</b>	<b>-5</b>	<b>-3</b>	<b>-3</b>	<b>+1</b>	<b>-4</b>	<b>-0</b>	<b>-31.8%</b>	<b>-21.4%</b>	<b>-20.9%</b>	<b>+11.2%</b>	<b>-30.7%</b>	<b>-4.2%</b>
<b>Health &amp; Social Care Professionals</b>	<b>807</b>	<b>-64</b>	<b>-131</b>	<b>+67</b>	<b>+67</b>	<b>+55</b>	<b>+22</b>	<b>-7.3%</b>	<b>-14.0%</b>	<b>+9.1%</b>	<b>+9.1%</b>	<b>+7.3%</b>	<b>+2.9%</b>
Executive Management	21	+6		-7	-4	-3	-3	+41.4%		-25.5%	-15.6%	-12.8%	-13.4%
Senior Management (VIII & GM)	38	-7	-7	-3	-11	-6	-8	-15.2%	-15.3%	-7.8%	-23.2%	-14.6%	-17.1%
<b>Management (VIII &amp; above)</b>	<b>58</b>	<b>-1</b>	<b>-7</b>	<b>-10</b>	<b>-15</b>	<b>-9</b>	<b>-11</b>	<b>-1.3%</b>	<b>-10.5%</b>	<b>-14.9%</b>	<b>-20.7%</b>	<b>-13.9%</b>	<b>-15.9%</b>
Middle Management (V-VII)	149	+17	+11	+0	-22	-21	-18	+13.1%	+8.3%	+0.3%	-12.8%	-12.2%	-10.7%
Other Administrative		-4	-1	-1	-1	-1		-100.0%	-100.0%	-100.0%	-100.0%	-100.0%	-100.0%
<b>Administrative/ Supervisory (V to VII)</b>	<b>149</b>	<b>+13</b>	<b>+10</b>	<b>-1</b>	<b>-23</b>	<b>-22</b>	<b>-18</b>	<b>+9.7%</b>	<b>+7.5%</b>	<b>-0.4%</b>	<b>-13.3%</b>	<b>-12.7%</b>	<b>-10.7%</b>
<b>Clerical (III &amp; IV)</b>	<b>257</b>	<b>-0</b>	<b>-1</b>	<b>+23</b>	<b>+26</b>	<b>+20</b>	<b>-3</b>	<b>-0.0%</b>	<b>-0.4%</b>	<b>+10.0%</b>	<b>+11.3%</b>	<b>+8.6%</b>	<b>-1.0%</b>
<b>Management &amp; Administrative</b>	<b>464</b>	<b>+12</b>	<b>+3</b>	<b>+13</b>	<b>-12</b>	<b>-11</b>	<b>-31</b>	<b>+2.7%</b>	<b>+0.6%</b>	<b>+2.8%</b>	<b>-2.5%</b>	<b>-2.3%</b>	<b>-6.3%</b>
Catering	24	-11	-15	-4	-5	-2	-2	-31.5%	-38.2%	-14.1%	-16.1%	-8.4%	-7.0%
Household Services	121	-56	-47	-19	-12	-1	-2	-31.7%	-27.8%	-13.6%	-8.7%	-0.5%	-1.5%
Other Labs & Associated	1	+1	-0	-0	-0	-0	-0	-100.0%	-5.0%	-5.0%	-5.0%	-5.0%	-5.0%
Other Support	20	-8	-8	-1	+2	+1	+0	-26.8%	-28.1%	-5.5%	+11.3%	+5.2%	+0.1%
Portering	24	-3	-2	-3	-1	+0	+1	-11.3%	-8.1%	-11.4%	-2.2%	+0.0%	+3.2%
<b>Support</b>	<b>189</b>	<b>-76</b>	<b>-71</b>	<b>-27</b>	<b>-15</b>	<b>-2</b>	<b>-3</b>	<b>-28.8%</b>	<b>-27.4%</b>	<b>-12.5%</b>	<b>-7.1%</b>	<b>-0.9%</b>	<b>-1.5%</b>

Jan 2021 (Dec 2015 figure: 3,908)	WTE Jan 2021	WTE change since Dec 15	WTE change since Dec 16	WTE change since Dec 17	WTE change since Dec 18	WTE change since Dec 19	WTE change since Dec 20	% change since Dec 15	% change since Dec 16	% change since Dec 17	% change since Dec 18	% change since Dec 19	% change since Dec 20
<b>Overall</b>	<b>3,484</b>	<b>-424</b>	<b>-457</b>	<b>+127</b>	<b>+115</b>	<b>+106</b>	<b>+18</b>	<b>-10.9%</b>	<b>-11.6%</b>	<b>+3.8%</b>	<b>+3.4%</b>	<b>+3.1%</b>	<b>+0.5%</b>
<b>Maintenance/ Technical</b>	<b>21</b>	<b>-13</b>	<b>-11</b>	<b>-0</b>	<b>+2</b>	<b>-2</b>	<b>-1</b>	<b>-38.0%</b>	<b>-34.9%</b>	<b>-0.0%</b>	<b>+10.4%</b>	<b>-7.4%</b>	<b>-4.6%</b>
<b>General Support</b>	<b>210</b>	<b>-89</b>	<b>-83</b>	<b>-27</b>	<b>-13</b>	<b>-3</b>	<b>-4</b>	<b>-29.8%</b>	<b>-28.2%</b>	<b>-11.4%</b>	<b>-5.6%</b>	<b>-1.6%</b>	<b>-1.8%</b>
HCA, Nurse's Aide, etc.	571	-33	-49	+52	+55	+44	+20	-5.4%	-7.9%	+10.1%	+10.6%	+8.3%	+3.6%
Health & Social Care Assistants	15	+5	+4	+5	-1	+3		+45.2%	+42.0%	+49.6%	-4.5%	+30.7%	
<b>Health Care Assistants</b>	<b>586</b>	<b>-28</b>	<b>-45</b>	<b>+57</b>	<b>+54</b>	<b>+47</b>	<b>+20</b>	<b>-4.6%</b>	<b>-7.1%</b>	<b>+10.8%</b>	<b>+10.2%</b>	<b>+8.8%</b>	<b>+3.5%</b>
Pre-Hospital Care (Ambulance)		-1						-100.0%	-100.0%	-100.0%	-100.0%	-100.0%	-100.0%
<b>Ambulance Staff</b>		<b>-1</b>						<b>-100.0%</b>	<b>-100.0%</b>	<b>-100.0%</b>	<b>-100.0%</b>	<b>-100.0%</b>	<b>-100.0%</b>
<b>Care, other</b>	<b>335</b>	<b>-69</b>	<b>-87</b>	<b>+17</b>	<b>+10</b>	<b>+5</b>	<b>+5</b>	<b>-17.0%</b>	<b>-20.7%</b>	<b>+5.3%</b>	<b>+3.1%</b>	<b>+1.5%</b>	<b>+1.4%</b>
<b>Patient &amp; Client Care</b>	<b>921</b>	<b>-97</b>	<b>-132</b>	<b>+74</b>	<b>+64</b>	<b>+52</b>	<b>+24</b>	<b>-9.6%</b>	<b>-12.5%</b>	<b>+8.7%</b>	<b>+7.5%</b>	<b>+6.0%</b>	<b>+2.7%</b>

Source: Health Service Personnel Census

Longitudinal Employment Levels by Care Group - Oct 2013 to Jan 2021

Community Health & Wellbeing

Jan 2021 ( figure: )	WTE Jan 2021	WTE change since	WTE change since	WTE change since	WTE change since	WTE change since	WTE change since Dec 20	% change since	% change since	% change since	% change since	% change since	% change since Dec 20
Overall	8	+8	+8	+8	+8	+8	+0	-100.0%	-100.0%	-100.0%	-100.0%	-100.0%	+4.1%
Management & Administrative	6	+6	+6	+6	+6	+6	+0	-1.0%	-1.0%	-1.0%	-1.0%	-1.0%	+0.1%
Management (VIII & above)	1	+1	+1	+1	+1	+1		-1.0%	-1.0%	-1.0%	-1.0%	-1.0%	+0.0%
Administrative/ Supervisory (V to VII)	4	+4	+4	+4	+4	+4	+0	-1.0%	-1.0%	-1.0%	-1.0%	-1.0%	+0.1%
Clerical (III & IV)	1	+1	+1	+1	+1	+1	-0	-1.0%	-1.0%	-1.0%	-1.0%	-1.0%	-0.1%
Patient & Client Care	2	+2	+2	+2	+2	+2	-0	-1.0%	-1.0%	-1.0%	-1.0%	-1.0%	-0.0%
Care, other	2	+2	+2	+2	+2	+2	-0	-1.0%	-1.0%	-1.0%	-1.0%	-1.0%	-0.0%

Source: Health Service Personnel Census

Mental Health

Jan 2021 (Dec 2015 figure: 563)	WTE Jan 2021	WTE change since Dec 15	WTE change since Dec 16	WTE change since Dec 17	WTE change since Dec 18	WTE change since Dec 19	WTE change since Dec 20	% change since Dec 15	% change since Dec 16	% change since Dec 17	% change since Dec 18	% change since Dec 19	% change since Dec 20
Overall	633	+70	+74	+69	+61	+41	+7	+12.4%	+13.2%	+12.3%	+10.6%	+6.9%	+1.1%
Medical & Dental	75	+18	+18	+12	+11	+8	+3	+0.3%	+0.3%	+0.2%	+0.2%	+0.1%	+0.0%
Consultants	41	+15	+14	+13	+10	+5	+1	+0.6%	+0.5%	+0.5%	+0.3%	+0.1%	+0.0%
Registrars	22	+3	+4	+3	+6	+1	+3	+0.2%	+0.2%	+0.2%	+0.4%	+0.0%	+0.2%
SHO/ Interns	12	-0	-0	-3	-4	+3	-1	-0.0%	-0.0%	-0.2%	-0.3%	+0.3%	-0.1%
Medical/ Dental, other				-0	-0			-1.0%	-1.0%	-1.0%	-1.0%	-1.0%	-1.0%
Nursing & Midwifery	252	+3	+10	+22	+14	+21	+1	+0.0%	+0.0%	+0.1%	+0.1%	+0.1%	+0.0%
Nurse/ Midwife Manager	76	-0	-4	+5	-4	-0	-1	-0.0%	-0.1%	+0.1%	-0.1%	-0.0%	-0.0%
Nurse/ Midwife Specialist & AN/MP	20	+6	+5	+5	+8	+6	+0	+0.5%	+0.3%	+0.3%	+0.6%	+0.5%	+0.0%
Staff Nurse/ Staff Midwife	152	-7	+7	+11	+10	+13	+1	-0.0%	+0.0%	+0.1%	+0.1%	+0.1%	+0.0%
Nursing/ Midwifery Student	2	+2	+2	+2	+2	+2	+1	-1.0%	-1.0%	-1.0%	-1.0%	-1.0%	+0.8%
Nursing/ Midwifery other	2	+1	-0	-0	-1	-0	-0	+1.0%	-0.1%	-0.0%	-0.3%	-0.0%	-0.0%
Health & Social Care Professionals	134	+28	+24	+19	+20	+4	+0	+0.3%	+0.2%	+0.2%	+0.2%	+0.0%	+0.0%
Therapy Professions	38	+8	+10	+5	+2	-5	-0	+0.3%	+0.4%	+0.2%	+0.1%	-0.1%	-0.0%
Social Care	29	-1	-2	-2	-1	+3	+1	-0.0%	-0.1%	-0.1%	-0.0%	+0.1%	+0.0%
Social Workers	30	+8	+2	+4	+1	+1	+1	+0.3%	+0.1%	+0.2%	+0.0%	+0.0%	+0.0%
Psychologists	32	+15	+16	+11	+16	+10	-0	+0.9%	+1.0%	+0.6%	+1.0%	+0.4%	-0.0%
H&SC, Other	5	-2	-2	+0	+1	-4	-0	-0.3%	-0.3%	+0.1%	+0.2%	-0.4%	-0.0%
Management & Administrative	70	+15	+14	+11	+12	-2	+0	+0.3%	+0.2%	+0.2%	+0.2%	-0.0%	+0.0%
Management (VIII & above)	3	-1	+0	-1	+1			-0.1%	+0.2%	-0.2%	+0.5%	+0.0%	+0.0%
Administrative/ Supervisory (V to VII)	25	+6	+7	+3	-1	-2	+1	+0.3%	+0.4%	+0.1%	-0.0%	-0.1%	+0.0%
Clerical (III & IV)	42	+9	+6	+8	+12	+0	-1	+0.3%	+0.2%	+0.2%	+0.4%	+0.0%	-0.0%
General Support	45	-10	-4	-8	-4	+3	+1	-0.2%	-0.1%	-0.1%	-0.1%	+0.1%	+0.0%
Support	40	-10	-5	-9	-5	+3	+1	-0.2%	-0.1%	-0.2%	-0.1%	+0.1%	+0.0%
Maintenance/ Technical	6	-0	+1	+1	+1	+0	-0	-0.0%	+0.1%	+0.2%	+0.2%	+0.0%	-0.0%
Patient & Client Care	57	+17	+12	+12	+7	+6	+2	+0.4%	+0.3%	+0.3%	+0.1%	+0.1%	+0.0%
Health Care Assistants	51	+15	+10	+10	+6	+5	+2	+0.4%	+0.3%	+0.2%	+0.1%	+0.1%	+0.0%
Care, other	6	+2	+2	+3	+1	+1	+0	+0.4%	+0.4%	+0.7%	+0.1%	+0.1%	+0.0%

Source: Health Service Personnel Census

Primary Care

Jan 2021 (Dec 2015 figure: 810)	WTE Jan 2021	WTE change since Dec 15	WTE change since Dec 16	WTE change since Dec 17	WTE change since Dec 18	WTE change since Dec 19	WTE change since Dec 20	% change since Dec 15	% change since Dec 16	% change since Dec 17	% change since Dec 18	% change since Dec 19	% change since Dec 20
Overall	827	+17	+58	+32	-6	+62	+16	+2.1%	+7.6%	+4.0%	-0.8%	+8.1%	+2.0%
Medical & Dental	81	-53	-9	-9	-11	-7	+2	-0.4%	-0.1%	-0.1%	-0.1%	-0.1%	+0.0%
Consultants	8	-1	-1	-1	-1	-1		-0.1%	-0.1%	-0.1%	-0.1%	-0.1%	+0.0%
Registrars	24	-39	-5	-2	-5	-3	-0	-0.6%	-0.2%	-0.1%	-0.2%	-0.1%	-0.0%
SHO/ Interns	7	-1						-0.1%	+0.0%	+0.0%	+0.0%	+0.0%	+0.0%
Medical/ Dental, other	43	-11	-3	-5	-5	-3	+2	-0.2%	-0.1%	-0.1%	-0.1%	-0.1%	+0.0%
Nursing & Midwifery	211	+18	+12	+1	+3	+0	+2	+0.1%	+0.1%	+0.0%	+0.0%	+0.0%	+0.0%
Nurse/ Midwife Manager	23	+4	+5	+3	+0	+0	+0	+0.2%	+0.3%	+0.1%	+0.0%	+0.0%	+0.0%
Nurse/ Midwife Specialist & AN/MP	4	+1		-2	-2	-2	+1	+0.3%	+0.0%	-0.3%	-0.3%	-0.3%	+0.1%
Staff Nurse/ Staff Midwife	56	+15	+11	+14	+6	+4	+1	+0.4%	+0.3%	+0.3%	+0.1%	+0.1%	+0.0%
Public Health Nurse	112	+0	-5	-11	-6	-4	+0	+0.0%	-0.0%	-0.1%	-0.1%	-0.0%	+0.0%
Nursing/ Midwifery Student	15	-2		-4	+4	+2	+0	-0.1%	+0.0%	-0.2%	+0.4%	+0.1%	+0.0%
Nursing/ Midwifery other	1		+1	+1	+1	+1		+0.0%	-1.0%	-1.0%	-1.0%	-1.0%	+0.0%
Health & Social Care Professionals	164	-11	-8	-19	-28	+10	+2	-0.1%	-0.0%	-0.1%	-0.1%	+0.1%	+0.0%
Therapy Professions	113	-2	-2	-8	-13	+9	+3	-0.0%	-0.0%	-0.1%	-0.1%	+0.1%	+0.0%
Health Science/ Diagnostics	20	-1	-2	-4	-4	+1	-0	-0.1%	-0.1%	-0.2%	-0.2%	+0.1%	-0.0%
Social Care	3	+1	+1	+1	-0	-1	+0	+0.2%	+1.0%	+1.0%	-0.0%	-0.2%	+0.1%
Social Workers	5	-3	-2	-3	-2	-0	+0	-0.4%	-0.3%	-0.4%	-0.3%	-0.0%	+0.1%
Psychologists	20	-4	-3	-5	-7	+1	-0	-0.2%	-0.1%	-0.2%	-0.3%	+0.0%	-0.0%
Pharmacy	0	-1	+0	-1	-1	-1	-1	-0.8%	-1.0%	-0.8%	-0.8%	-0.7%	-0.8%
H&SC, Other	4	-1	-1	-1		+0		-0.2%	-0.2%	-0.2%	+0.0%	+0.0%	+0.0%
Management & Administrative	227	+33	+31	+25	-0	+18	+4	+0.2%	+0.2%	+0.1%	-0.0%	+0.1%	+0.0%
Management (VIII & above)	31	+13	+8	+0	-6	+1	+1	+0.7%	+0.3%	+0.0%	-0.2%	+0.0%	+0.0%
Administrative/ Supervisory (V to VII)	64	+18	+14	+6	-11	-4	-1	+0.4%	+0.3%	+0.1%	-0.1%	-0.1%	-0.0%
Clerical (III & IV)	133	+2	+9	+18	+17	+21	+5	+0.0%	+0.1%	+0.2%	+0.1%	+0.2%	+0.0%
General Support	28	-4	-4	-4	+0	+2	-0	-0.1%	-0.1%	-0.1%	+0.0%	+0.1%	-0.0%
Support	26	-4	-4	-4	+0	+2	-0	-0.1%	-0.1%	-0.1%	+0.0%	+0.1%	-0.0%
Maintenance/ Technical	2							+0.0%	+0.0%	+0.0%	+0.0%	+0.0%	+0.0%
Patient & Client Care	116	+34	+36	+38	+29	+38	+6	+0.4%	+0.5%	+0.5%	+0.3%	+0.5%	+0.1%
Health Care Assistants	44	+41	+42	+42	+35	+37	+6	+16.7%	+20.6%	+20.6%	+3.8%	+5.9%	+0.1%
Ambulance Staff		-1						-1.0%	-1.0%	-1.0%	-1.0%	-1.0%	-1.0%
Care, other	72	-6	-6	-3	-5	+1	+0	-0.1%	-0.1%	-0.0%	-0.1%	+0.0%	+0.0%

Source: Health Service Personnel Census



Disabilities

Jan 2021 (Dec 2015 figure: 1,729)	WTE Jan 2021	WTE change since Dec 15	WTE change since Dec 16	WTE change since Dec 17	WTE change since Dec 18	WTE change since Dec 19	WTE change since Dec 20	% change since Dec 15	% change since Dec 16	% change since Dec 17	% change since Dec 18	% change since Dec 19	% change since Dec 20
Overall	1,210	-519	-606	+40	+55	+12	-7	-30.0%	-33.4%	+3.4%	+4.8%	+1.0%	-0.5%
Medical & Dental	5	-3	-2	-2	+1	+1	+1	-0.4%	-0.3%	-0.3%	+0.2%	+0.2%	+0.2%
Consultants	3	-0	+0	+0	+1			-0.0%	+0.1%	+0.1%	+0.5%	+0.0%	+0.0%
Registrars	1	-2	-0	-1	+1	+1	+1	-0.7%	-0.0%	-0.5%	-1.0%	-1.0%	-1.0%
SHO/ Interns			-1					-1.0%	-1.0%	-1.0%	-1.0%	-1.0%	-1.0%
Medical/ Dental, other	1	-1	-1	-1	-1			-0.5%	-0.5%	-0.5%	-0.5%	+0.0%	+0.0%
Nursing & Midwifery	189	-155	-136	-18	-5	-2	+3	-0.4%	-0.4%	-0.1%	-0.0%	-0.0%	+0.0%
Nurse/ Midwife Manager	42	-41	-35	-3	+3	-1	-1	-0.5%	-0.5%	-0.1%	+0.1%	-0.0%	-0.0%
Nurse/ Midwife Specialist & AN/MP		-3	-2					-1.0%	-1.0%	-1.0%	-1.0%	-1.0%	-1.0%
Staff Nurse/ Staff Midwife	147	-108	-97	-14	-8	-0	+5	-0.4%	-0.4%	-0.1%	-0.1%	-0.0%	+0.0%
Public Health Nurse		-2	-1					-1.0%	-1.0%	-1.0%	-1.0%	-1.0%	-1.0%
Health & Social Care Professionals	447	-82	-153	+62	+71	+44	+18	-0.2%	-0.3%	+0.2%	+0.2%	+0.1%	+0.0%
Therapy Professions	45	+1	-8	+10	+4	+3	+2	+0.0%	-0.1%	+0.3%	+0.1%	+0.1%	+0.1%
Social Care	379	-65	-129	+57	+69	+44	+18	-0.1%	-0.3%	+0.2%	+0.2%	+0.1%	+0.0%
Social Workers	10	-9	-6	-1	-2	-1		-0.5%	-0.4%	-0.1%	-0.2%	-0.1%	+0.0%
Psychologists	12	-8	-11	-2	-1	-1	-1	-0.4%	-0.5%	-0.1%	-0.1%	-0.1%	-0.1%
H&SC, Other	1	-1	+1	-2	+0	-1	-0	-0.4%	+1.1%	-0.7%	+0.1%	-0.4%	-0.2%
Management & Administrative	101	-56	-60	-36	-38	-37	-39	-0.4%	-0.4%	-0.3%	-0.3%	-0.3%	-0.3%
Management (VIII & above)	19	-16	-18	-15	-14	-12	-12	-0.5%	-0.5%	-0.4%	-0.4%	-0.4%	-0.4%
Administrative/ Supervisory (V to VII)	35	-17	-16	-14	-15	-19	-19	-0.3%	-0.3%	-0.3%	-0.3%	-0.3%	-0.4%
Clerical (III & IV)	48	-23	-26	-7	-9	-6	-8	-0.3%	-0.3%	-0.1%	-0.2%	-0.1%	-0.1%
General Support	26	-72	-68	-5	-6	-3	-4	-0.7%	-0.7%	-0.2%	-0.2%	-0.1%	-0.1%
Support	21	-61	-58	-6	-7	-1	-4	-0.7%	-0.7%	-0.2%	-0.3%	-0.1%	-0.2%
Maintenance/ Technical	5	-11	-10	+1	+1	-2		-0.7%	-0.7%	+0.3%	+0.3%	-0.3%	+0.0%
Patient & Client Care	442	-152	-188	+38	+33	+9	+14	-0.3%	-0.3%	+0.1%	+0.1%	+0.0%	+0.0%
Health Care Assistants	193	-87	-104	+21	+19	+6	+10	-0.3%	-0.4%	+0.1%	+0.1%	+0.0%	+0.1%
Care, other	249	-65	-84	+17	+14	+3	+4	-0.2%	-0.3%	+0.1%	+0.1%	+0.0%	+0.0%

Source: Health Service Personnel Census

Older People

Jan 2021 (Dec 2015 figure: 805)	WTE Jan 2021	WTE change since Dec 15	WTE change since Dec 16	WTE change since Dec 17	WTE change since Dec 18	WTE change since Dec 19	WTE change since Dec 20	% change since Dec 15	% change since Dec 16	% change since Dec 17	% change since Dec 18	% change since Dec 19	% change since Dec 20
Overall	806	+1	+9	-23	-2	-18	+2	+0.1%	+1.1%	-2.7%	-0.2%	-2.2%	+0.2%
Medical & Dental	5	-0	-0	-0	-1	-0	+1	-0.0%	-0.0%	-0.0%	-0.2%	-0.0%	+0.2%
Registrars	2	+1	+1	+1		+1	+1	+1.0%	+1.0%	+1.0%	+0.0%	+1.0%	+1.0%
Medical/ Dental, other	3	-1	-1	-1	-1	-1	-0	-0.3%	-0.3%	-0.3%	-0.3%	-0.3%	-0.0%
Nursing & Midwifery	264	-14	-7	-7	-3	-9	-6	-0.1%	-0.0%	-0.0%	-0.0%	-0.0%	-0.0%
Nurse/ Midwife Manager	60	-6	-6	-5	-8	-9	-3	-0.1%	-0.1%	-0.1%	-0.1%	-0.1%	-0.0%
Nurse/ Midwife Specialist & AN/MP	1	+1	+1	+1				-1.0%	-1.0%	-1.0%	+0.0%	+0.0%	+0.0%
Staff Nurse/ Staff Midwife	203	-9	-3	-3	+4	-1	-3	-0.0%	-0.0%	-0.0%	+0.0%	-0.0%	-0.0%
Health & Social Care Professionals	62	+2	+5	+5	+4	-4	+2	+0.0%	+0.1%	+0.1%	+0.1%	-0.1%	+0.0%
Therapy Professions	47	+2	+5	+4	+2	-2	+1	+0.1%	+0.1%	+0.1%	+0.0%	-0.0%	+0.0%
Social Workers	11	-0	-0	-0	+2	-0	+1	-0.0%	-0.0%	-0.0%	+0.2%	-0.0%	+0.1%
Psychologists	1	+1	+1	+1	+1	-1	+0	+1.5%	+1.5%	-1.0%	+1.5%	-0.4%	+0.1%
Pharmacy	3	-0	-0	-0	-0	-0	-0	-0.1%	-0.1%	-0.1%	-0.1%	-0.1%	-0.1%
H&SC, Other		-0						-1.0%	-1.0%	-1.0%	-1.0%	-1.0%	-1.0%
Management & Administrative	60	+15	+12	+8	+8	+4	+3	+0.3%	+0.2%	+0.1%	+0.2%	+0.1%	+0.0%
Management (VIII & above)	5	+2	+2	+4	+3	+1		+0.7%	+0.7%	+4.0%	+1.5%	+0.3%	+0.0%
Administrative/ Supervisory (V to VII)	21	+2	+1	+0	+1	-1	+2	+0.1%	+0.1%	+0.0%	+0.0%	-0.0%	+0.1%
Clerical (III & IV)	34	+11	+8	+3	+5	+4	+1	+0.5%	+0.3%	+0.1%	+0.2%	+0.1%	+0.0%
General Support	111	-3	-7	-11	-3	-5	-0	-0.0%	-0.1%	-0.1%	-0.0%	-0.0%	-0.0%
Support	103	-1	-5	-9	-3	-5	+1	-0.0%	-0.0%	-0.1%	-0.0%	-0.0%	+0.0%
Maintenance/ Technical	8	-2	-2	-2	-0		-1	-0.2%	-0.2%	-0.2%	-0.0%	+0.0%	-0.1%
Patient & Client Care	304	+1	+6	-17	-7	-3	+3	+0.0%	+0.0%	-0.1%	-0.0%	-0.0%	+0.0%
Health Care Assistants	299	+3	+8	-15	-5	-1	+3	+0.0%	+0.0%	-0.0%	-0.0%	-0.0%	+0.0%
Care, other	5	-2	-2	-2	-2	-2	-0	-0.3%	-0.3%	-0.3%	-0.3%	-0.2%	-0.0%

Source: Health Service Personnel Census