

CHO 6 Employment Report: July 2021

Employment by Staff Group

Jul 2021 (Dec 2020 figure: 3,465)	WTE Jun 2021	WTE Jul 2021	WTE change since Jun 21	% change since Jun 21	WTE change since Dec 20	WTE change since Jul 20
Overall	3,533	3,522	-11	-0.3%	+57	+132
Consultants	53	51	-1	-2.7%	-0	+2
Registrars	47	50	+3	+6.3%	+6	+7
SHO/ Interns	19	18	-1	-2.8%	-1	-2
Medical/ Dental, other	48	45	-3	-6.2%	+0	-3
Medical & Dental	167	165	-2	-1.2%	+5	+4
Nurse/ Midwife Manager	204	204	+0	+0.1%	-2	-6
Nurse/ Midwife Specialist & AN/MP	24	25	+1	+3.8%	+1	+3
Staff Nurse/ Staff Midwife	558	555	-3	-0.5%	+1	+12
Public Health Nurse	107	113	+6	+5.4%	+1	-1
Pre-registration Nurse/ Midwife Intern	4	3	-0	-0.9%	+3	-0
Post-registration Nurse/ Midwife Student	14	4	-10	-71.4%	-11	-10
Nursing/ Midwifery awaiting registration	1	1				
Nursing/ Midwifery Student	19	8	-10	-54.2%	-7	+5
Nursing/ Midwifery other	3	3				
Nursing & Midwifery	914	908	-6	-0.7%	-7	+14
Therapy Professions	244	243	-1	-0.6%	+5	+10
Health Science/ Diagnostics	20	19	-0	-2.2%	-1	-1
Social Care	401	402	+1	+0.3%	+10	+53
Social Workers	55	56	+1	+2.1%	+2	-1
Psychologists	66	67	+1	+2.0%	+1	+6
Pharmacy	5	6	+1	+16.8%	+2	+2
H&SC, Other	11	11	-0	-3.8%	+0	+1
Health & Social Care Professionals	802	804	+2	+0.3%	+20	+72
Management (VIII & above)	71	72	+1	+1.4%	+3	+2
Administrative/ Supervisory (V to VII)	188	185	-3	-1.6%	+18	+15
Clerical (III & IV)	264	264	-0	-0.0%	+4	+3
Management & Administrative	523	521	-2	-0.4%	+25	+20
Support	189	190	+1	+0.6%	-2	-24
Maintenance/ Technical	23	22	-1	-3.9%	+0	+0
General Support	212	212	+0	+0.1%	-2	-24
Health Care Assistants	589	580	-10	-1.6%	+14	+21
Care, other	326	332	+6	+1.8%	+2	+25
Patient & Client Care	916	912	-4	-0.4%	+16	+46

CHO 6 Employment Report: July 2021

Community Health & Wellbeing

Jul 2021 (Dec 2020 figure: 8)	WTE Jun 2021	WTE Jul 2021	WTE change since Jun 21	% change since Jun 21	WTE change since Dec 20	WTE change since Jul 20
Total Community Health & Wellbeing	9	9	-0	-0.4%	+2	+1
Management (VIII & above)				-100.0%	-1	-1
Administrative/ Supervisory (V to VII)	7	7			+3	+3
Clerical (III & IV)	1	1	-0	-2.7%	-0	-0
Management & Administrative	7	7	-0	-0.3%	+2	+2
Care, other	2	2	-0	-1.0%	-0	-1
Patient & Client Care	2	2	-0	-1.0%	-0	-1

Mental Health

Jul 2021 (Dec 2020 figure: 626)	WTE Jun 2021	WTE Jul 2021	WTE change since Jun 21	% change since Jun 21	WTE change since Dec 20	WTE change since Jul 20
Total Mental Health	630	630	+0	+0.0%	+3	+34
Consultants	41	40	-1	-3.5%	-0	+2
Registrars	22	24	+2	+8.1%	+5	+5
SHO/ Interns	12	11	-2	-12.3%	-2	-3
Medical & Dental	76	75	-1	-1.5%	+2	+5
Nurse/ Midwife Manager	75	74	-1	-1.3%	-3	-1
Nurse/ Midwife Specialist & AN/MP	19	19	+1	+3.5%	-0	+4
Staff Nurse/ Staff Midwife	156	157	+1	+0.8%	+6	+7
<i>Pre-registration Nurse/ Midwife Intern</i>	4	3	-0	-0.9%	+3	-0
<i>Nursing/ Midwifery awaiting registration</i>	1	1				
Nursing/ Midwifery Student	5	4	-0	-0.7%	+3	+4
Nursing/ Midwifery other	2	2				
Nursing & Midwifery	256	257	+1	+0.4%	+6	+15
Therapy Professions	41	39	-2	-5.0%	+0	+4
Social Care	27	26	-1	-2.7%	-2	-0
Social Workers	30	30	+0	+0.5%	+0	-2
Psychologists	30	32	+2	+6.0%	-0	+6
H&SC, Other	5	4	-1	-11.3%	-1	
Health & Social Care Professionals	133	131	-1	-1.1%	-3	+8
Management (VIII & above)	3	3				
Administrative/ Supervisory (V to VII)	23	22	-1	-6.2%	-3	-4
Clerical (III & IV)	37	38	+1	+1.8%	-5	-3
Management & Administrative	63	63	-1	-1.2%	-7	-7
Support	36	37	+1	+2.3%	-2	+1
Maintenance/ Technical	6	6				+2
General Support	42	43	+1	+1.9%	-2	+3
Health Care Assistants	53	55	+2	+3.8%	+7	+9
Care, other	6	6	-0	-3.2%	-0	+1
Patient & Client Care	59	61	+2	+3.1%	+7	+9

Primary Care

Jul 2021 (Dec 2020 figure: 811)	WTE Jun 2021	WTE Jul 2021	WTE change since Jun 21	% change since Jun 21	WTE change since Dec 20	WTE change since Jul 20
Total Primary Care	861	857	-3	-0.4%	+46	+85
Consultants	8	8				
Registrars	22	24	+2	+7.2%	-0	-0
SHO/ Interns	7	7				
Medical/ Dental, other	45	42	-3	-6.6%	+1	-1
Medical & Dental	82	81	-1	-1.7%	+1	-1
Nurse/ Midwife Manager	23	21	-2	-8.1%	-2	-3
Nurse/ Midwife Specialist & AN/MP	4	4	+0	+6.0%	+1	-2
Staff Nurse/ Staff Midwife	65	66	+1	+1.7%	+11	+12
Public Health Nurse	107	113	+6	+5.4%	+1	-1
Post-registration Nurse/ Midwife Student	14	4	-10	-71.4%	-11	-10
Nursing/ Midwifery Student	14	4	-10	-71.4%	-11	+1
Nursing/ Midwifery other	1	1				
Nursing & Midwifery	214	209	-5	-2.2%	+1	+8
Therapy Professions	112	111	-1	-0.9%	+1	-3
Health Science/ Diagnostics	20	19	-0	-2.2%	-1	-1
Social Care	3	3			+0	+0
Social Workers	6	5	-0	-7.1%	+1	+1
Psychologists	20	21	+1	+3.8%	+1	+3
Pharmacy	2	2			+1	+1
H&SC, Other	5	5			+1	+1
Health & Social Care Professionals	168	166	-1	-0.7%	+4	+3
Management (VIII & above)	32	32	+0	+0.1%	+2	+2
Administrative/ Supervisory (V to VII)	77	78	+1	+0.8%	+13	+12
Clerical (III & IV)	141	140	-1	-0.7%	+12	+18
Management & Administrative	250	250	-0	-0.2%	+27	+32
Support	25	25	+0	+0.3%	-1	-2
Maintenance/ Technical	2	2				
General Support	27	27	+0	+0.3%	-1	-2
Health Care Assistants	46	46	-1	-1.7%	+8	+35
Care, other	73	78	+5	+6.6%	+7	+9
Patient & Client Care	120	124	+4	+3.4%	+14	+44

Social Care

Jul 2021 (Dec 2020 figure: 2,020)	WTE Jun 2021	WTE Jul 2021	WTE change since Jun 21	% change since Jun 21	WTE change since Dec 20	WTE change since Jul 20
Total Social Care	2,034	2,026	-8	-0.4%	+5	+13
Consultants	3	3				
Registrars	3	2	-0	-14.3%	+1	+1
Senior House Officer		1	+1	-100.0%	+1	+1
SHO/ Interns		1	+1	-100.0%	+1	+1
Medical/ Dental, other	3	3			-1	-2
Medical & Dental	9	9	+1	+6.7%	+1	+0
Nurse/ Midwife Manager	106	109	+3	+2.8%	+3	-2
Nurse/ Midwife Specialist & AN/MP	1	1				
Staff Nurse/ Staff Midwife	337	332	-5	-1.6%	-16	-7
Nursing & Midwifery	444	442	-2	-0.5%	-13	-9
Therapy Professions	91	93	+2	+1.7%	+4	+9
Social Care	371	373	+2	+0.5%	+12	+54
Social Workers	19	21	+1	+7.3%	+0	-0
Psychologists	16	15	-1	-7.7%	-0	-3
Pharmacy	3	4	+1	+26.7%	+1	+1
H&SC, Other	1	1	+0	+13.3%		+0
Health & Social Care Professionals	502	507	+5	+1.0%	+18	+61
Management (VIII & above)	36	37	+1	+2.8%	+2	+1
Administrative/ Supervisory (V to VII)	81	78	-2	-2.6%	+5	+3
Clerical (III & IV)	85	86	+0	+0.4%	-3	-11
Management & Administrative	202	201	-1	-0.4%	+4	-7
Support	128	128	+0	+0.2%	+0	-23
Maintenance/ Technical	15	14	-1	-5.9%	+0	-2
General Support	143	142	-1	-0.5%	+0	-25
Health Care Assistants	490	479	-11	-2.2%	-1	-23
Care, other	245	246	+1	+0.6%	-4	+16
Patient & Client Care	735	725	-10	-1.3%	-5	-7

CHO 6 Employment Report: July 2021

Disabilities

Jul 2021 (Dec 2020 figure: 1,217)	WTE Jun 2021	WTE Jul 2021	WTE change since Jun 21	% change since Jun 21	WTE change since Dec 20	WTE change since Jul 20
Total Disabilities	1,229	1,230	+1	+0.1%	+14	+58
Consultants	3	3				
Registrars	1	0	-0	-50.0%	+0	+0
<i>Senior House Officer</i>		1	+1	-100.0%	+1	+1
SHO/ Interns		1	+1	-100.0%	+1	+1
Medical/ Dental, other	1	1				
Medical & Dental	5	5	+1	+11.9%	+1	+1
Nurse/ Midwife Manager	46	45	-0	-0.9%	+2	+2
Staff Nurse/ Staff Midwife	139	137	-2	-1.3%	-5	+2
Nursing & Midwifery	185	182	-2	-1.2%	-3	+4
Therapy Professions	42	44	+2	+3.6%	+1	+4
Social Care	371	373	+2	+0.5%	+12	+54
Social Workers	10	11	+1	+9.9%	+1	+1
Psychologists	14	14	+0	+2.9%	+0	-1
H&SC, Other	1	1	+0	+13.3%		+0
Health & Social Care Professionals	439	444	+5	+1.1%	+15	+58
Management (VIII & above)	31	31	+0	+0.5%	+1	-1
Administrative/ Supervisory (V to VII)	58	56	-2	-3.5%	+2	+2
Clerical (III & IV)	54	54	+1	+1.6%	-1	-11
Management & Administrative	143	142	-1	-0.8%	+2	-10
Support	21	23	+1	+6.9%	-3	-22
Maintenance/ Technical	6	6			+1	-1
General Support	27	29	+1	+5.4%	-2	-23
Health Care Assistants	191	187	-5	-2.4%	+3	+11
Care, other	240	241	+1	+0.6%	-3	+17
Patient & Client Care	431	428	-3	-0.7%	-0	+28

Older People

Jul 2021 (Dec 2020 figure: 804)	WTE Jun 2021	WTE Jul 2021	WTE change since Jun 21	% change since Jun 21	WTE change since Dec 20	WTE change since Jul 20
Total Older People	804	796	-9	-1.1%	-8	-45
Registrars	2	2			+1	+1
Medical/ Dental, other	2	2			-1	-2
Medical & Dental	4	4			-0	-1
Nurse/ Midwife Manager	60	63	+3	+5.7%	+1	-4
Nurse/ Midwife Specialist & AN/MP	1	1				
Staff Nurse/ Staff Midwife	198	195	-4	-1.8%	-11	-9
Nursing & Midwifery	259	259	-0	-0.1%	-10	-12
Health & Social Care Professionals	63	63	-0	-0.3%	+3	+3
Management (VIII & above)	5	6	+1	+17.8%	+1	+2
Administrative/ Supervisory (V to VII)	22	22	-0	-0.1%	+3	+2
Clerical (III & IV)	32	31	-0	-1.4%	-2	-1
Management & Administrative	59	59	+0	+0.6%	+2	+3
Support	107	105	-1	-1.2%	+3	-1
Maintenance/ Technical	9	8	-1	-9.9%	-1	-1
General Support	116	113	-2	-1.9%	+2	-2
Health Care Assistants	298	292	-6	-2.1%	-4	-34
Care, other	5	5	-0	-1.5%	-1	-1
Patient & Client Care	303	297	-6	-2.1%	-5	-35

CHO 6 Employment by Administration (HSE / S38): July 2021

Jul 2021 (Dec 2020 figure: 3,465)	WTE Jun 2021	WTE Jul 2021	WTE change since Jun 21	% change since Jun 21	WTE change since Dec 20	WTE change since Jul 20
Overall	3,533	3,522	-11	-0.3%	+57	+132
HSE	1,750	1,737	-13	-0.7%	+48	+87
Section 38 Voluntary Agencies	1,784	1,785	+1	+0.1%	+9	+45

HSE

Jul 2021 (Dec 2020 figure: 1,689)	WTE Jun 2021	WTE Jul 2021	WTE change since Jun 21	% change since Jun 21	WTE change since Dec 20	WTE change since Jul 20
Overall	1,750	1,737	-13	-0.7%	+48	+87
Consultants	27	26	-1	-0.0%	-0	+1
Registrars	26	26	+0	+0.0%	-2	+0
SHO/ Interns	5	6	+1	+0.2%	+1	+0
Medical/ Dental, other	47	44	-3	-0.1%	+1	-2
Medical & Dental	105	102	-3	-2.7%	+1	-1
Nurse/ Midwife Manager	135	131	-3	-0.0%	-5	-3
Nurse/ Midwife Specialist & AN/MP	17	18	+1	+0.1%	+2	+3
Staff Nurse/ Staff Midwife	310	311	+1	+0.0%	+7	+10
Public Health Nurse	107	113	+6	+0.1%	+1	-1
<i>Pre-registration Nurse/ Midwife Intern</i>	4	3	-0	-0.0%	+3	+3
<i>Post-registration Nurse/ Midwife Student</i>	14	4	-10	-0.7%	-10	+1
<i>Nursing/ Midwifery awaiting registration</i>	1	1		+0.0%	+1	+1
Nursing/ Midwifery Student	19	8	-10	-0.5%	-7	+5
Nursing/ Midwifery other	3	3		+0.0%		
Nursing & Midwifery	591	585	-5	-0.9%	-3	+15
Therapy Professions	168	165	-3	-0.0%	+5	+0
Health Science/ Diagnostics	18	18	-0	-0.0%	-1	-1
Social Care	10	10	-0	-0.0%	-1	-0
Social Workers	29	28	-1	-0.0%	+3	+3
Psychologists	43	44	+1	+0.0%	+3	+7
Pharmacy	3	4	+1	+0.2%	+2	+2
H&SC, Other	10	10	+0	+0.0%	+1	+2
Health & Social Care Professionals	281	278	-3	-1.1%	+12	+13
Management (VIII & above)	37	38	+1	+0.0%	+1	+1
Administrative/ Supervisory (V to VII)	108	107	-1	-0.0%	+18	+15
Clerical (III & IV)	163	160	-3	-0.0%	+4	+14
Management & Administrative	308	305	-3	-0.9%	+23	+30
Support	83	83	-0	-0.0%	+0	-0
Maintenance/ Technical	3	2	-1	-0.3%	+0	+0
General Support	86	85	-1	-1.2%	+0	+0
Health Care Assistants	317	313	-4	-0.0%	+7	+14
Care, other	63	69	+6	+0.1%	+9	+15
Patient & Client Care	380	382	+3	+0.7%	+15	+30

Section 38 Voluntary Agencies

Jul 2021 (Dec 2020 figure: 1,776)	WTE Jun 2021	WTE Jul 2021	WTE change since Jun 21	% change since Jun 21	WTE change since Dec 20	WTE change since Jul 20
Overall	1,784	1,785	+1	+0.1%	+9	+45
Consultants	26	25	-0	-0.0%	-0	+1
Registrars	21	24	+3	+0.1%	+8	+6
SHO/ Interns	14	12	-2	-0.1%	-3	-2
Medical/ Dental, other	1	1		+0.0%	-1	-1
Medical & Dental	61	62	+1	+1.3%	+4	+5
Nurse/ Midwife Manager	69	73	+4	+0.1%	+3	-2
Nurse/ Midwife Specialist & AN/MP	7	6	-0	-0.1%	-1	-0
Staff Nurse/ Staff Midwife	248	244	-4	-0.0%	-6	+2
Nursing & Midwifery	324	323	-1	-0.2%	-4	-1
Therapy Professions	77	78	+1	+0.0%	+0	+9
Health Science/ Diagnostics	2	2		+0.0%		
Social Care	391	393	+2	+0.0%	+11	+54
Social Workers	26	28	+2	+0.1%	-1	-4
Psychologists	23	23	+1	+0.0%	-2	-1
Pharmacy	2	2	+0	+0.2%	+0	+0
H&SC, Other	2	1	-1	-0.4%	-1	-1
Health & Social Care Professionals	521	527	+5	+1.0%	+8	+58
Management (VIII & above)	34	35	+0	+0.0%	+2	+1
Administrative/ Supervisory (V to VII)	80	77	-2	-0.0%	+1	-0
Clerical (III & IV)	101	104	+3	+0.0%	-0	-11
Management & Administrative	215	216	+1	+0.4%	+2	-9
Support	106	108	+1	+0.0%	-2	-24
Maintenance/ Technical	20	20		+0.0%		+0
General Support	126	128	+1	+1.0%	-2	-24
Health Care Assistants	272	266	-6	-0.0%	+7	+7
Care, other	264	264	-0	-0.0%	-7	+10
Patient & Client Care	536	530	-6	-1.2%	+0	+16

CHO 6 Employment by S38 Agency: July 2021

Children's Sunshine Home

Jul 2021 (Dec 2020 figure: 56)	WTE Jun 2021	WTE Jul 2021	WTE change since Jun 21	% change since Jun 21	WTE change since Dec 20	WTE change since Jul 20
Overall	57	58	+1	+1.8%	+2	+2
Nurse/ Midwife Manager	8	8		+0.0%		
Staff Nurse/ Staff Midwife	18	18		+0.0%		-1
Nursing & Midwifery	26	26				-1
Therapy Professions	2	2		+0.0%	+1	+0
Social Workers				-1.0%	-1	-1
Health & Social Care Professionals	2	2			-0	-1
Management (VIII & above)	3	3		+0.0%	+1	+1
Administrative/ Supervisory (V to VII)	4	4		+0.0%		
Clerical (III & IV)	1	1		+0.0%		
Management & Administrative	8	8			+1	+1
Support	3	3		+0.0%		
General Support	3	3				
Health Care Assistants	13	14	+1	+0.1%	+1	+0
Care, other	5	5		+0.0%		+2
Patient & Client Care	18	19	+1	+5.5%	+1	+2

Dublin Dental Hospital

Jul 2021 (Dec 2020 figure: 93)	WTE Jun 2021	WTE Jul 2021	WTE change since Jun 21	% change since Jun 21	WTE change since Dec 20	WTE change since Jul 20
Overall	93	93	+0	+0.0%	+0	+0
Consultants	5	5		+0.0%		
Registrars	1	1		+0.0%		
SHO/ Interns	7	7		+0.0%		
Medical & Dental	12	12				
Nurse/ Midwife Manager	2	2		+0.0%		
Staff Nurse/ Staff Midwife	4	4		+0.0%		
Nursing & Midwifery	6	6				
Health Science/ Diagnostics	2	2		+0.0%		
H&SC, Other	1	1		+0.0%		
Health & Social Care Professionals	2	2				
Management (VIII & above)	4	4		+0.0%		
Administrative/ Supervisory (V to VII)	11	11		+0.0%		
Clerical (III & IV)	15	15		+0.0%		
Management & Administrative	30	30				
Support	13	13		+0.0%		
Maintenance/ Technical	2	2		+0.0%		
General Support	15	15				
Health Care Assistants	1	1		+0.0%		
Care, other	27	27		+0.0%		
Patient & Client Care	27	27				

Leopardstown Park Hospital

Jul 2021 (Dec 2020 figure: 207)	WTE Jun 2021	WTE Jul 2021	WTE change since Jun 21	% change since Jun 21	WTE change since Dec 20	WTE change since Jul 20
Overall	206	206	+0	+0.1%	-0	+2
Medical/ Dental, other				-1.0%	-1	-1
Medical & Dental				-100.0%	-1	-1
Nurse/ Midwife Manager	13	15	+2	+0.2%	+2	-1
Staff Nurse/ Staff Midwife	40	39	-1	-0.0%	-3	-0
Nursing & Midwifery	53	54	+1	+2.4%	-2	-1
Therapy Professions	9	9	+0	+0.0%	-0	+2
Social Workers		0	+0	-1.0%	-1	-1
Pharmacy	2	2	+0	+0.2%	+0	+0
Health & Social Care Professionals	11	12	+1	+10.7%	-0	+2
Management (VIII & above)	1	1		+0.0%		
Administrative/ Supervisory (V to VII)	6	6	-0	-0.0%	-1	-1
Clerical (III & IV)	11	12	+0	+0.0%	-0	+1
Management & Administrative	18	18	+0	+1.5%	-1	-0
Support	36	36	-0	-0.0%	+2	+0
Maintenance/ Technical	4	4		+0.0%		
General Support	40	40	-0	-1.2%	+2	+0
Health Care Assistants	81	79	-2	-0.0%	+2	+4
Care, other	3	3	-0	-0.0%	-0	-1
Patient & Client Care	84	82	-2	-2.4%	+2	+3

Jul 2021 (Dec 2020 figure: 268)	WTE Jun 2021	WTE Jul 2021	WTE change since Jun 21	% change since Jun 21	WTE change since Dec 20	WTE change since Jul 20
Overall	266	265	-2	-0.6%	-3	-12
Registrars	2	2		+0.0%	+1	+1
Medical/ Dental, other	1	1		+0.0%		
Medical & Dental	3	3			+1	+1
Nurse/ Midwife Manager	17	17		+0.0%	-1	-3
Staff Nurse/ Staff Midwife	72	71	-1	-0.0%	-3	-5
Nursing & Midwifery	89	88	-1	-1.1%	-3	-8
Therapy Professions	31	33	+3	+0.1%	+4	+5
Social Workers	6	6		+0.0%		
Psychologists	1	1		+0.0%		
Health & Social Care Professionals	37	39	+3	+6.8%	+4	+5
Management (VIII & above)	1	1		+0.0%		+1
Administrative/ Supervisory (V to VII)	8	8		+0.0%	+3	+2
Clerical (III & IV)	9	9		+0.0%	-1	+0
Management & Administrative	18	18			+2	+3
Support	33	33		+0.0%	-1	-1
Maintenance/ Technical	4	4		+0.0%	-1	-1
General Support	37	37			-2	-2
Health Care Assistants	83	80	-3	-0.0%	-5	-11
Care, other	1	1		+0.0%	-1	-1
Patient & Client Care	84	81	-3	-3.6%	-6	-11

St. John of God (IDS)

Jul 2021 (Dec 2020 figure: 468)	WTE Jun 2021	WTE Jul 2021	WTE change since Jun 21	% change since Jun 21	WTE change since Dec 20	WTE change since Jul 20
Overall	455	452	-3	-0.7%	-16	+4
Consultants	1	1		+0.0%		
Medical & Dental	1	1				
Nurse/ Midwife Manager	9	9		+0.0%	+1	+1
Staff Nurse/ Staff Midwife	49	48	-1	-0.0%	-1	+3
Nursing & Midwifery	58	57	-1	-1.9%	-0	+4
Therapy Professions	11	10	-0	-0.0%	-3	-0
Social Care	154	155	+1	+0.0%	-5	+6
Social Workers	3	4	+1	+0.3%	+1	+1
Psychologists	6	6	-1	-0.1%	-1	-0
Health & Social Care Professionals	174	174	+0	+0.2%	-7	+6
Management (VIII & above)	15	15	+0	+0.0%	+1	+0
Administrative/ Supervisory (V to VII)	27	26	-1	-0.0%	-1	+0
Clerical (III & IV)	17	18	+2	+0.1%	-0	-0
Management & Administrative	59	59	+1	+1.1%	-0	+0
Support	12	12	+0	+0.0%	-0	-0
Maintenance/ Technical	5	5		+0.0%		
General Support	17	17	+0	+1.1%	-0	-0
Health Care Assistants	20	20	-1	-0.0%	+2	+3
Care, other	127	124	-3	-0.0%	-10	-9
Patient & Client Care	147	143	-3	-2.3%	-8	-6

St. John of God (MHS)

Jul 2021 (Dec 2020 figure: 236)	WTE Jun 2021	WTE Jul 2021	WTE change since Jun 21	% change since Jun 21	WTE change since Dec 20	WTE change since Jul 20
Overall	231	234	+3	+1.5%	-2	+4
Consultants	20	20	-0	-0.0%	-0	+1
Registrars	18	21	+3	+0.1%	+7	+5
SHO/ Interns	7	5	-2	-0.2%	-3	-2
Medical & Dental	45	46	+1	+1.8%	+4	+5
Nurse/ Midwife Manager	16	17	+1	+0.1%	+0	-1
Nurse/ Midwife Specialist & AN/MP	7	6	-0	-0.1%	-1	-0
Staff Nurse/ Staff Midwife	33	34	+0	+0.0%	+3	+3
Nursing & Midwifery	56	57	+1	+1.6%	+2	+2
Therapy Professions	22	21	-1	-0.0%	-2	+1
Social Care	27	26	-1	-0.0%	-2	+0
Social Workers	14	15	+0	+0.0%	-2	-5
Psychologists	16	17	+1	+0.1%	-2	+2
H&SC, Other	1	0	-1	-0.5%	-1	-1
Health & Social Care Professionals	80	79	-1	-0.6%	-8	-3
Management (VIII & above)	2	2		+0.0%		
Administrative/ Supervisory (V to VII)	13	12	-1	-0.1%	-3	-2
Clerical (III & IV)	23	25	+2	+0.1%	+1	-1
Management & Administrative	38	39	+1	+1.7%	-1	-3
Support	5	5	-0	-0.0%	-1	-1
Maintenance/ Technical	4	4		+0.0%		+2
General Support	9	9	-0	-0.4%	-1	+1
HCA, Nurse's Aide, etc.		2	+2	-1.0%	+2	+2
Health Care Assistants		2	+2	-1.0%	+2	+2
Care, other	3	2	-0	-0.0%		+1
Patient & Client Care	3	4	+2	+68.0%	+2	+2

Sunbeam House Services

Jul 2021 (Dec 2020 figure: 450)	WTE Jun 2021	WTE Jul 2021	WTE change since Jun 21	% change since Jun 21	WTE change since Dec 20	WTE change since Jul 20
Overall	476	478	+1	+0.3%	+28	+45
Nurse/ Midwife Manager	5	5		+0.0%	+1	+2
Staff Nurse/ Staff Midwife	31	30	-1	-0.0%	-2	+2
Nursing & Midwifery	36	35	-1	-2.3%	-1	+4
Therapy Professions	3	3	-0	-0.0%	+1	+2
Social Care	210	212	+2	+0.0%	+17	+47
Social Workers	3	3		+0.0%	+1	+1
Psychologists				-1.0%		-2
H&SC, Other				-1.0%		
Health & Social Care Professionals	217	219	+2	+0.8%	+19	+49
Management (VIII & above)	9	9		+0.0%		-1
Administrative/ Supervisory (V to VII)	11	11	+0	+0.0%	+2	+1
Clerical (III & IV)	25	24	-1	-0.0%	-0	-11
Management & Administrative	45	44	-1	-1.4%	+2	-11
Support	4	6	+2	+0.4%	-2	-22
Maintenance/ Technical	1	1		+0.0%	+1	-1
General Support	5	7	+2	+29.6%	-1	-22
Health Care Assistants	74	71	-3	-0.0%	+5	+8
Care, other	99	102	+3	+0.0%	+3	+18
Patient & Client Care	174	173	-1	-0.3%	+9	+26

CHO 6 Employment by Grade Group & Staff Category: July 2021

Jul 2021 (Dec 2020 figure: 3,465)	WTE Jun 2021	WTE Jul 2021	WTE change since Jun 21	% change since Jun 21	WTE change since Dec 20	WTE change since Jul 20
Overall	3,533	3,522	-11	-0.3%	+57	+132
Consultant Dentistry	6	6				
Consultant Medicine	1	1				
Consultant Psychiatry	44	43	-1	-3.2%	-0	+2
Consultant Radiology	1	1				
Consultants	53	51	-1	-2.7%	-0	+2
Registrar	37	39	+2	+4.4%	+5	+4
Senior Registrar	9	10	+1	+15.6%	+1	+3
Specialist Registrar	1	1				
Registrars	47	50	+3	+6.3%	+6	+7
Senior House Officer	19	18	-1	-2.8%	-1	-2
SHO/ Interns	19	18	-1	-2.8%	-1	-2
Dentists	29	27	-2	-8.1%	+2	+1
Other Medical	19	18	-1	-3.3%	-2	-5
Medical/ Dental, other	48	45	-3	-6.2%	+0	-3
Medical & Dental	167	165	-2	-1.2%	+1	+4
Clinical Nurse/ Midwife Manager	157	161	+3	+2.0%	+2	+1
Director Nursing/Midwifery, Assistant	32	29	-3	-8.0%	-5	-7
Director of Nursing/Midwifery	15	14	-1	-3.6%	+1	+1
Nurse/ Midwife Manager	204	204	+0	+0.1%	-2	-6
Advanced Nurse/ Midwife Practitioner	6	6				+3
Clinical Nurse/ Midwife Specialist	18	19	+1	+4.9%	+1	-0
Nurse/ Midwife Specialist & AN/MP	24	25	+1	+3.8%	+1	+3
Staff Nurse [Intellectual Disability]	96	93	-3	-2.8%	+40	+47
Staff Nurse [Psychiatric]	124	127	+3	+2.0%	+2	+5
Staff Nurses [General/ Children's]	338	336	-3	-0.8%	-41	-40
Staff Nurse/ Staff Midwife	558	555	-3	-0.5%	+1	+12
Public Health Nurse	107	113	+6	+5.4%	+1	-1
Nursing/ Midwifery awaiting registration	1	1				+1
Post-registration Nurse/ Midwife Student	14	4	-10	-71.4%	-11	+1
Pre-registration Nurse/ Midwife Intern	4	3	-0	-0.9%	+3	+3
Nursing/ Midwifery Student	19	8	-10	-54.2%	-7	+5
Nursing Education/Clinical	3	3				
Nursing/ Midwifery other	3	3				
Nursing & Midwifery	914	908	-6	-0.7%	+3	+14
Dietitians	16	15	-1	-5.4%	-1	+1
Occupational Therapists	95	94	-1	-1.3%	+1	+4
Physiotherapists	63	63	+0	+0.1%	+4	+3
Podiatrists & Chiropodists	3	3	-1	-15.7%	-1	-1
Speech & Language Therapists	66	67	+1	+1.6%	+2	+2
Orthoptists	1	1			+1	+1
Therapy Professions	244	243	-1	-0.6%	+5	+10
Medical Science	17	17	-0	-0.5%	-1	-0
Radiographers	2	2	-0	-14.6%	-0	-0
Health Science/ Diagnostics	20	19	-0	-2.2%	-1	-1
Social Care	401	402	+1	+0.3%	+10	+53
Social Workers	55	56	+1	+2.1%	+2	-1
Psychologists	66	67	+1	+2.0%	+1	+6

Jul 2021 (Dec 2020 figure: 3,465)	WTE Jun 2021	WTE Jul 2021	WTE change since Jun 21	% change since Jun 21	WTE change since Dec 20	WTE change since Jul 20
Overall	3,533	3,522	-11	-0.3%	+57	+132
Pharmacy	5	6	+1	+16.8%	+2	+2
Counsellor Therapists	4	4			-0	+1
Dental Hygienists	4	4			-0	+0
Other Health & Social Care	3	2	-0	-15.6%	+1	+1
Play Therapists/ Specialists	0	0				
H&SC, Other	11	11	-0	-3.8%	+0	+1
Health & Social Care Professionals	802	804	+2	+0.3%	+52	+72
Executive Management	25	24	-0	-0.2%	+1	+1
Senior Management (VIII & GM)	47	48	+1	+2.3%	+2	+1
Management (VIII & above)	71	72	+1	+1.4%	+3	+2
Middle Management (V-VII)	188	185	-3	-1.6%	+18	+16
Other Administrative				-100.0%		-1
Administrative/ Supervisory (V to VII)	188	185	-3	-1.6%	+18	+15
Clerical (III & IV)	264	264	-0	-0.0%	+4	+3
Management & Administrative	523	521	-2	-0.4%	+46	+20
Catering	24	25	+1	+3.4%	-1	-8
Household Services	121	121	-0	-0.3%	-2	-15
Other Labs & Associated	1	1	-0	-5.3%	-0	-0
Other Support	19	21	+1	+5.4%	+0	-0
Portering	24	23	-0	-1.6%	+1	-0
Support	189	190	+1	+0.6%	-2	-24
Maintenance/ Technical	23	22	-1	-3.9%	+0	+0
General Support	212	212	+0	+0.1%	-1	-24
HCA, Nurse's Aide, etc.	540	532	-8	-1.4%	+7	+17
HCA (Student Nurse/Midwife COVID-19)				-100.0%		-28
Health & Social Care Assistants	16	14	-1	-8.7%	-0	-1
Swabber (COVID-19)	34	33	-1	-2.3%	+7	+33
Health Care Assistants	589	580	-10	-1.6%	+14	+21
Care, other	326	332	+6	+1.8%	+2	+25
Patient & Client Care	916	912	-4	-0.4%	+43	+46

CHO 6 HSE Employment by Grade Group & Staff Category: July 2021

Jul 2021 (Dec 2020 figure: 1,689)	WTE Jun 2021	WTE Jul 2021	WTE change since Jun 21	% change since Jun 21	WTE change since Dec 20	WTE change since Jul 20
Overall	1,750	1,737	-13	-0.7%	+48	+87
Consultant Dentistry	3	3				
Consultant Medicine	1	1				
Consultant Psychiatry	23	22	-1	-4.8%	-0	+1
Consultants	27	26	-1	-4.1%	-0	+1
Registrars	26	26	+0	+1.0%	-2	+0
SHO/ Interns	5	6	+1	+20.1%	+1	+0
Dentists	29	27	-2	-8.1%	+2	+1
Other Medical	18	17	-1	-3.5%	-1	-4
Medical/ Dental, other	47	44	-3	-6.4%	+1	-2
Medical & Dental	105	102	-3	-2.7%	-4	-1
Clinical Nurse/ Midwife Manager	101	100	-0	-0.4%	-1	+2
Director Nursing/Midwifery, Assistant	25	22	-3	-10.2%	-4	-6
Director of Nursing/Midwifery	9	9	-1	-5.8%	-0	+1
Nurse/ Midwife Manager	135	131	-3	-2.5%	-5	-3
Advanced Nurse/ Midwife Practitioner	4	4				+2
Clinical Nurse/ Midwife Specialist	14	15	+1	+8.9%	+2	+1
Nurse/ Midwife Specialist & AN/MP	17	18	+1	+7.1%	+2	+3
Staff Nurse [Intellectual Disability]	9	9	-0	-0.8%	-3	-3
Staff Nurse [Psychiatric]	91	93	+2	+2.7%	-1	+2
Staff Nurses [General/ Children's]	210	209	-1	-0.6%	+11	+12
Staff Nurse/ Staff Midwife	310	311	+1	+0.3%	+7	+10
Public Health Nurse	107	113	+6	+5.4%	+1	-1
Nursing/ Midwifery awaiting registration	1	1				+1
Post-registration Nurse/ Midwife Student	14	4	-10	-71.4%	-11	+1
Pre-registration Nurse/ Midwife Intern	4	3	-0	-0.9%	+3	+3
Nursing/ Midwifery Student	19	8	-10	-54.2%	-7	+5
Nursing/ Midwifery other	3	3				
Nursing & Midwifery	591	585	-5	-0.9%	+14	+15
Dietitians	13	12	-1	-5.8%	-1	+1
Occupational Therapists	64	61	-3	-4.3%	+2	+0
Physiotherapists	40	39	-0	-1.1%	+1	-3
Podiatrists & Chiropodists	3	3			-1	-1
Speech & Language Therapists	47	48	+1	+2.3%	+3	+1
Orthoptists	1	1			+1	+1
Therapy Professions	168	165	-3	-1.8%	+5	+0
Medical Science	17	17	-0	-0.5%	-1	-0
Radiographers	1	1	-0	-38.9%	-0	-0
Health Science/ Diagnostics	18	18	-0	-2.4%	-1	-1
Social Care	10	10	-0	-4.3%	-1	-0
Social Workers	29	28	-1	-2.2%	+3	+3
Psychologists	43	44	+1	+1.7%	+3	+7
Pharmacy	3	4	+1	+15.3%	+2	+2
Counsellor Therapists	4	4			-0	+1
Dental Hygienists	3	3				+0
Other Health & Social Care	2	2	+0	+7.0%	+1	+1
H&SC, Other	10	10	+0	+1.6%	+1	+2
Health & Social Care Professionals	281	278	-3	-1.1%	+18	+13
Executive Management	9	9	-0	-0.4%	+2	+2
Senior Management (VIII & GM)	28	29	+1	+3.3%	-1	-1

Jul 2021 (Dec 2020 figure: 1,689)	WTE Jun 2021	WTE Jul 2021	WTE change since Jun 21	% change since Jun 21	WTE change since Dec 20	WTE change since Jul 20
Overall	1,750	1,737	-13	-0.7%	+48	+87
Management (VIII & above)	37	38	+1	+2.4%	+1	+1
Administrative/ Supervisory (V to VII)	108	107	-1	-0.6%	+18	+15
Clerical (III & IV)	163	160	-3	-1.9%	+4	+14
Management & Administrative	308	305	-3	-0.9%	+45	+30
Catering	14	15	+1	+5.9%	+1	+0
Household Services	55	54	-1	-1.7%	-2	-1
Other Labs & Associated	1	1	-0	-5.3%	-0	-0
Other Support	1	1				
Portering	12	12	+0	+0.3%	+1	+1
Support	83	83	-0	-0.2%	+0	-0
Maintenance/ Technical	3	2	-1	-29.7%	+0	+0
General Support	86	85	-1	-1.2%	-3	+0
HCA, Nurse's Aide, etc.	275	272	-2	-0.9%	-1	+9
HCA (Student Nurse/Midwife COVID-19)				-100.0%		-28
Health & Social Care Assistants	8	8	-0	-4.6%	+1	+0
Swabber (COVID-19)	34	33	-1	-2.3%	+7	+33
Health Care Assistants	317	313	-4	-1.1%	+7	+14
Care, other	63	69	+6	+9.7%	+9	+15
Patient & Client Care	380	382	+3	+0.7%	+61	+30

Employment by WTE, Headcount, Gender, Full-Time /Part-Time etc.: Jul 2021

CHO 6	WTE	Headcount	WTE: no.	% Male	% female	Male WTE: no.	Female WTE: no.	% Total Perm	% Male Perm	% Female Perm	% Total Full Time	% Total Part Time	% Male FT	% Female FT
Overall	3,522	4,149	1.18	22.2%	77.8%	1.13	1.19	85.7%	84.4%	86.1%	72.6%	27.4%	86.0%	68.8%
Consultant Dentistry	6	8	1.27	50.0%	50.0%	1.25	1.29	100.0%	100.0%	100.0%	62.5%	37.5%	75.0%	50.0%
Consultant Medicine	1	1	1.00		100.0%		1.00	100.0%	100.0%	100.0%	100.0%	0.0%		100.0%
Consultant Psychiatry	43	48	1.12	41.7%	58.3%	1.03	1.18	72.9%	72.9%	67.9%	83.3%	16.7%	95.0%	75.0%
Consultant Radiology	1	1	1.00	100.0%		1.00		100.0%	100.0%		100.0%	0.0%	100.0%	
Consultants	51	58	1.13	43.1%	56.9%	1.06	1.19	77.6%	84.0%	72.7%	81.0%	19.0%	92.0%	72.7%
Registrar	39	64	1.64	26.6%	73.4%	1.62	1.65	4.7%	4.7%	4.3%	93.8%	6.3%	100.0%	91.5%
Senior Registrar	10	17	1.72	47.1%	52.9%	1.66	1.78	11.8%	11.8%	11.1%	94.1%	5.9%	87.5%	100.0%
Specialist Registrar	1	1	1.00		100.0%		1.00	100.0%	100.0%	100.0%	100.0%	0.0%		100.0%
Registrars	50	82	1.64	30.5%	69.5%	1.63	1.65	7.3%	8.0%	7.0%	93.9%	6.1%	96.0%	93.0%
SHO/ Interns	18	32	1.76	31.3%	68.8%	1.82	1.73	0.0%	0.0%	0.0%	100.0%	0.0%	100.0%	100.0%
Dentists	27	38	1.42	23.7%	76.3%	1.52	1.39	92.1%	92.1%	89.7%	44.7%	55.3%	44.4%	44.8%
Other Medical	18	28	1.52	10.7%	89.3%	1.89	1.49	71.4%	71.4%	76.0%	39.3%	60.7%	33.3%	40.0%
Medical/ Dental, other	45	66	1.46	18.2%	81.8%	1.60	1.43	83.3%	83.3%	83.3%	42.4%	57.6%	41.7%	42.6%
Medical & Dental	165	238	1.45	30.3%	69.7%	1.39	1.47	44.5%	45.8%	44.0%	77.3%	22.7%	86.1%	73.5%
Clinical Nurse/ Midwife Manager	161	169	1.05	21.9%	78.1%	1.01	1.07	93.5%	93.5%	92.4%	92.3%	7.7%	100.0%	90.2%
Director Nursing/Midwifery, Assistant	29	32	1.10	28.1%	71.9%	1.13	1.09	96.9%	96.9%	95.7%	84.4%	15.6%	100.0%	78.3%
Director of Nursing/Midwifery	14	16	1.13	18.8%	81.3%	1.00	1.16	93.8%	93.8%	92.3%	93.8%	6.3%	100.0%	92.3%
Nurse/ Midwife Manager	204	217	1.06	22.6%	77.4%	1.03	1.08	94.0%	98.0%	92.9%	91.2%	8.8%	100.0%	88.7%
Advanced Nurse/ Midwife Practitioner	6	6	1.09		100.0%		1.09	100.0%	100.0%	100.0%	83.3%	16.7%		83.3%
Clinical Nurse/ Midwife Specialist	19	22	1.15	22.7%	77.3%	1.00	1.20	90.9%	90.9%	88.2%	72.7%	27.3%	100.0%	64.7%
Nurse/ Midwife Specialist & AN/MP	25	28	1.14	17.9%	82.1%	1.00	1.17	92.9%	100.0%	91.3%	75.0%	25.0%	100.0%	69.6%
Staff Nurse [Intellectual Disability]	93	101	1.08	15.8%	84.2%	1.10	1.08	99.0%	99.0%	98.8%	73.3%	26.7%	68.8%	74.1%
Staff Nurse [Psychiatric]	127	136	1.07	24.3%	75.7%	1.06	1.08	93.4%	93.4%	93.2%	89.7%	10.3%	90.9%	89.3%
Staff Nurses [General/ Children's]	336	380	1.13	13.2%	86.8%	1.04	1.15	84.5%	84.5%	83.9%	73.7%	26.3%	90.0%	71.2%
Staff Nurse/ Staff Midwife	555	617	1.11	16.0%	84.0%	1.06	1.12	88.8%	91.9%	88.2%	77.1%	22.9%	86.9%	75.3%
Public Health Nurse	113	135	1.20	0.7%	99.3%	1.18	1.20	94.8%	100.0%	94.8%	71.9%	28.1%	100.0%	71.6%
Nursing/ Midwifery awaiting registration	1	1	1.00		100.0%		1.00	100.0%	100.0%	100.0%	100.0%	0.0%		100.0%
Post-registration Nurse/ Midwife Student	4	4	1.00		100.0%		1.00	0.0%	0.0%	0.0%	100.0%	0.0%		100.0%

Pre-registration Nurse/ Midwife Intern	3	7	2.02		100.0%		2.02	0.0%	0.0%	0.0%	100.0%	0.0%		100.0%
Nursing/ Midwifery Student	8	12	1.42		100.0%		1.42	8.3%		8.3%	100.0%	0.0%		100.0%
Nursing/ Midwifery other	3	3	1.00	33.3%	66.7%	1.00	1.00	100.0%	100.0%	100.0%	100.0%	0.0%	100.0%	100.0%
Nursing & Midwifery	908	1,012	1.11	15.3%	84.7%	1.05	1.13	89.9%	94.2%	89.1%	79.7%	20.3%	91.6%	77.6%
Dietitians	15	19	1.25		100.0%		1.25	94.7%	94.7%	94.7%	57.9%	42.1%		57.9%
Occupational Therapists	94	113	1.20	8.0%	92.0%	1.25	1.20	84.1%	84.1%	83.7%	69.9%	30.1%	77.8%	69.2%
Physiotherapists	63	78	1.23	16.7%	83.3%	1.10	1.26	85.9%	85.9%	89.2%	59.0%	41.0%	76.9%	55.4%
Podiatrists & Chiropodists	3	4	1.49	25.0%	75.0%	2.00	1.37	75.0%	75.0%	66.7%	50.0%	50.0%	0.0%	66.7%
Speech & Language Therapists	67	82	1.23	1.2%	98.8%	1.00	1.23	96.3%	96.3%	96.3%	68.3%	31.7%	100.0%	67.9%
Orthoptists	1	1	1.00		100.0%		1.00	100.0%	100.0%	100.0%	100.0%	0.0%		100.0%
Therapy Professions	243	297	1.22	8.1%	91.9%	1.17	1.23	88.6%	79.2%	89.4%	65.7%	34.3%	75.0%	64.8%
Medical Science	17	18	1.05	27.8%	72.2%	1.11	1.03	83.3%	83.3%	84.6%	88.9%	11.1%	80.0%	92.3%
Radiographers	2	4	1.95	25.0%	75.0%	2.00	1.94	100.0%	100.0%	100.0%	75.0%	25.0%	100.0%	66.7%
Health Science/ Diagnostics	19	22	1.15	27.3%	72.7%	1.20	1.13	86.4%	83.3%	87.5%	86.4%	13.6%	83.3%	87.5%
Social Care	402	466	1.16	24.9%	75.1%	1.12	1.17	91.6%	89.7%	92.3%	62.0%	38.0%	75.9%	57.4%
Social Workers	56	63	1.13	11.1%	88.9%	1.04	1.14	95.2%	100.0%	94.6%	81.0%	19.0%	85.7%	80.4%
Psychologists	67	83	1.24	19.3%	80.7%	1.08	1.28	86.7%	68.8%	91.0%	66.3%	33.7%	100.0%	58.2%
Pharmacy	6	8	1.27		100.0%		1.27	87.5%		87.5%	75.0%	25.0%		75.0%
Counsellor Therapists	4	4	1.00	25.0%	75.0%	1.00	1.00	100.0%	100.0%	100.0%	100.0%	0.0%	100.0%	100.0%
Dental Hygienists	4	5	1.28		100.0%		1.28	100.0%	100.0%	100.0%	40.0%	60.0%		40.0%
Other Health & Social Care	2	3	1.32	33.3%	66.7%	1.00	1.56	100.0%	100.0%	100.0%	33.3%	66.7%	100.0%	0.0%
Play Therapists/ Specialists	0	1	2.08		100.0%		2.08	100.0%	100.0%	100.0%	0.0%	100.0%		0.0%
H&SC, Other	11	13	1.22	15.4%	84.6%	1.00	1.27	100.0%	100.0%	100.0%	53.8%	46.2%	100.0%	45.5%
Health & Social Care	804	952	1.18	18.0%	82.0%	1.12	1.20	90.4%	86.5%	91.3%	65.3%	34.7%	78.9%	62.4%
Executive Management	24	25	1.02	40.0%	60.0%	1.05	1.00	100.0%	100.0%	100.0%	100.0%	0.0%	100.0%	100.0%
Senior Management (VIII & GM)	48	52	1.09	30.8%	69.2%	1.14	1.07	96.2%	96.2%	94.4%	100.0%	0.0%	100.0%	100.0%
Management (VIII & above)	72	77	1.07	33.8%	66.2%	1.11	1.05	97.4%	100.0%	96.1%	100.0%	0.0%	100.0%	100.0%
Administrative/ Supervisory (V to VII)	185	208	1.13	25.5%	74.5%	1.15	1.12	94.7%	92.5%	95.5%	87.5%	12.5%	96.2%	84.5%
Clerical (III & IV)	264	316	1.20	14.6%	85.4%	1.07	1.22	73.4%	67.4%	74.4%	68.0%	32.0%	89.1%	64.4%
Management & Administrative	521	601	1.15	20.8%	79.2%	1.11	1.17	83.9%	84.8%	83.6%	78.9%	21.1%	94.4%	74.8%
Catering	25	26	1.06	42.3%	57.7%	1.01	1.09	88.5%	88.5%	93.3%	80.8%	19.2%	100.0%	66.7%
Household Services	121	141	1.17	31.2%	68.8%	1.07	1.21	81.6%	81.6%	83.5%	66.7%	33.3%	86.4%	57.7%
Other Labs & Associated	1	1	1.11		100.0%		1.11	100.0%	100.0%	100.0%	100.0%	0.0%		100.0%
Other Support	21	29	1.41	55.2%	44.8%	1.41	1.41	93.1%	93.1%	92.3%	75.9%	24.1%	81.3%	69.2%
Portering	23	27	1.16	100.0%		1.16		88.9%	88.9%		88.9%	11.1%	88.9%	

Support	190	224	1.18	43.8%	56.3%	1.13	1.21	84.8%	83.7%	85.7%	72.3%	27.7%	87.8%	60.3%
Maintenance/ Technical	22	25	1.13	100.0%		1.13		100.0%	100.0%	#DIV/0	100.0%	0.0%	100.0%	
General Support	212	249	1.17	49.4%	50.6%	1.13	1.21	86.3%	87.0%	85.7%	75.1%	24.9%	90.2%	60.3%
HCA, Nurse's Aide, etc.	532	591	1.11	26.9%	73.1%	1.03	1.14	90.4%	90.4%	89.1%	68.5%	31.5%	91.2%	60.2%
Health & Social Care Assistants	14	16	1.11	25.0%	75.0%	1.20	1.08	50.0%	50.0%	41.7%	81.3%	18.8%	75.0%	83.3%
Swabber (COVID-19)	33	51	1.53	43.1%	56.9%	1.52	1.54	0.0%	0.0%	0.0%	72.5%	27.5%	81.8%	65.5%
Health Care Assistants	580	658	1.14	28.1%	71.9%	1.08	1.16	82.4%	82.2%	82.5%	69.1%	30.9%	89.7%	61.1%
Care, other	332	439	1.32	20.7%	79.3%	1.35	1.31	95.4%	94.5%	95.7%	64.9%	35.1%	64.8%	64.9%
Patient & Client Care	912	1,097	1.20	25.2%	74.8%	1.16	1.22	87.6%	86.2%	88.1%	67.5%	32.5%	81.5%	62.7%

Employment by WTE, Headcount, Gender, Full-Time /Part-Time etc.: Jul 2021

CHO 6	WTE	Headcount	WTE: no.	% Male	% female	Male WTE: no.	Female WTE: no.	% Total Perm	% Male Perm	% Female Perm	% Total Full Time	% Total Part Time	% Male FT	% Female FT
Overall	3,522	4,149	1.18	22.2%	77.8%	1.13	1.19	85.7%	84.4%	86.1%	72.6%	27.4%	86.0%	68.8%
Community Health & Wellbeing	9	10	1.08	10.0%	90.0%	1.00	1.09	100.0%	100.0%	100.0%	80.0%	20.0%	100.0%	100.0%
Mental Health	630	721	1.14	30.1%	69.9%	1.11	1.16	79.3%	79.3%	80.6%	84.5%	15.5%	91.7%	91.7%
Primary Care	857	1,119	1.31	14.1%	85.9%	1.30	1.31	76.1%	76.1%	77.5%	69.3%	30.7%	90.5%	90.5%
Social Care	2,026	2,299	1.13	23.7%	76.3%	1.11	1.14	92.3%	92.3%	92.4%	70.6%	29.4%	82.4%	82.4%

CHO 6 Skills Mix by Staff Grouping: July 2021

Jul 2021 (Dec 2019 figure: 3,378)	WTE Dec 2016	WTE Dec 2017	WTE Dec 2018	WTE Dec 2019	WTE Dec 2020	WTE Jun 2021	WTE Jul 2021
Overall	3,940	3,357	3,368	3,378	3,465	3,533	3,522
Consultant Dentistry	4.2%	4.7%	4.6%	4.4%	3.9%	3.8%	3.8%
Consultant Medicine	0.6%	0.6%	0.6%	0.6%	0.6%	0.6%	0.6%
Consultant, Other	0.6%						
Consultant Paediatrics	0.1%	0.1%					
Consultant Psychiatry	18.5%	18.8%	20.0%	23.8%	27.0%	26.7%	26.1%
Consultant Radiology	0.6%	0.6%	0.6%	0.6%	0.6%	0.6%	0.6%
Consultants	24.7%	24.7%	25.8%	29.5%	32.2%	31.6%	31.2%
Registrar	25.2%	24.4%	21.7%	24.6%	21.4%	22.5%	23.7%
Senior Registrar	4.4%	4.1%	5.7%	4.6%	5.4%	5.1%	6.0%
Specialist Registrar	0.6%	0.6%	0.6%	0.6%	0.6%	0.6%	0.6%
Registrars	30.2%	29.1%	28.0%	29.8%	27.4%	28.2%	30.3%
SHO/ Interns	12.3%	12.9%	13.5%	9.5%	12.2%	11.2%	11.1%
Dentists	18.0%	17.7%	16.3%	16.2%	15.5%	17.5%	16.3%
Other Medical	14.8%	15.6%	16.4%	15.1%	12.6%	11.4%	11.2%
Medical/ Dental, other	32.8%	33.3%	32.7%	31.3%	28.2%	28.9%	27.5%
Medical & Dental	4.0%	4.9%	4.9%	4.8%	4.7%	100.0%	4.7%
Clinical Nurse/ Midwife Manager	18.4%	17.2%	17.7%	17.8%	17.3%	17.2%	17.7%
Director Nursing/Midwifery, Assistant	2.9%	3.2%	3.9%	3.9%	3.7%	3.5%	3.2%
Director of Nursing/Midwifery	2.0%	1.7%	1.5%	1.6%	1.5%	1.6%	1.6%
Nurse/ Midwife Manager	23.3%	22.0%	23.1%	23.3%	22.5%	22.3%	22.4%
Advanced Nurse/ Midwife Practitioner	0.0%	0.1%	0.1%	0.1%	0.6%	0.6%	0.6%
Clinical Nurse/ Midwife Specialist	1.9%	2.3%	2.1%	2.2%	2.0%	2.0%	2.1%
Nurse/ Midwife Specialist & AN/MP	2.0%	2.3%	2.1%	2.3%	2.6%	2.6%	2.7%
Staff Nurse [Intellectual Disability]	6.7%	6.7%	6.4%	5.5%	5.8%	10.5%	10.3%
Staff Nurse [Psychiatric]	12.2%	12.8%	12.2%	14.7%	13.6%	13.6%	14.0%
Staff Nurses [General/ Children's]	42.7%	40.4%	41.6%	39.7%	41.1%	37.0%	36.9%
Staff Nurse/ Staff Midwife	61.7%	60.0%	60.2%	59.9%	60.6%	61.1%	61.2%
Public Health Nurse	11.4%	13.4%	13.1%	12.9%	12.2%	11.7%	12.4%
Nursing/ Midwifery awaiting registration					0.1%	0.1%	0.1%
Post-registration Nurse/ Midwife Student	1.4%	2.1%	1.2%	1.5%	1.6%	1.5%	0.4%
Pre-registration Nurse/ Midwife Intern						0.4%	0.4%
Nursing/ Midwifery Student	1.4%	2.1%	1.2%	1.5%	1.7%	2.0%	0.9%
Nursing/ Midwifery other	0.2%	0.2%	0.3%	0.2%	0.3%	0.3%	0.3%
Nursing & Midwifery	26.3%	27.3%	26.9%	26.8%	26.1%	100.0%	25.8%
Dietitians	1.2%	2.1%	2.1%	1.9%	2.1%	2.0%	1.9%
Occupational Therapists	9.6%	11.9%	12.4%	12.2%	11.9%	11.9%	11.7%
Physiotherapists	6.7%	7.9%	8.4%	8.0%	7.5%	7.9%	7.9%
Podiatrists & Chiropodists	0.2%	0.5%	0.3%	0.2%	0.5%	0.4%	0.3%
Speech & Language Therapists	7.6%	8.9%	10.2%	9.3%	8.3%	8.2%	8.3%
Orthoptists						0.1%	0.1%
Therapy Professions	25.3%	31.3%	33.5%	31.7%	30.3%	30.5%	30.2%
Medical Science	1.9%	2.7%	2.8%	2.1%	2.2%	2.1%	2.1%
Radiographers	0.4%	0.5%	0.5%	0.3%	0.3%	0.3%	0.3%
Health Science/ Diagnostics	2.3%	3.1%	3.2%	2.4%	2.6%	2.4%	2.4%
Social Care	57.6%	47.9%	46.3%	48.4%	50.0%	50.0%	50.0%
Social Workers	6.6%	7.6%	7.7%	7.6%	6.9%	6.8%	7.0%
Psychologists	6.6%	8.0%	7.6%	7.5%	8.5%	8.2%	8.3%
Pharmacy	0.3%	0.5%	0.5%	0.5%	0.5%	0.7%	0.8%
Counsellor Therapists	0.6%	0.9%	0.5%	0.6%	0.5%	0.5%	0.5%
Dental Hygienists	0.4%	0.5%	0.5%	0.5%	0.5%	0.5%	0.5%
Other Health & Social Care	0.1%	0.2%	0.1%	0.8%	0.2%	0.3%	0.3%

Jul 2021 (Dec 2019 figure: 3,378)	WTE Dec 2016	WTE Dec 2017	WTE Dec 2018	WTE Dec 2019	WTE Dec 2020	WTE Jun 2021	WTE Jul 2021
Overall	3,940	3,357	3,368	3,378	3,465	3,533	3,522
Play Therapists/ Specialists	0.2%	0.1%	0.1%	0.1%	0.1%	0.1%	0.1%
H&SC, Other	1.3%	1.7%	1.2%	1.9%	1.3%	1.4%	1.3%
Health & Social Care Professionals	23.8%	22.0%	22.0%	22.3%	21.7%	100.0%	22.8%
Executive Management	4.4%	6.1%	5.1%	4.9%	4.8%	4.7%	4.7%
Senior Management (VIII & GM)	9.7%	9.1%	10.3%	9.3%	9.2%	8.9%	9.2%
Management (VIII & above)	14.1%	15.2%	15.4%	14.3%	14.0%	13.6%	13.9%
Middle Management (V-VII)	29.7%	32.8%	35.8%	35.6%	33.5%	35.9%	35.4%
Other Administrative	0.2%	0.2%	0.2%	0.2%			
Administrative/ Supervisory (V to VII)	29.9%	33.0%	36.0%	35.8%	33.5%	35.9%	35.4%
Clerical (III & IV)	56.0%	51.8%	48.6%	49.9%	52.5%	50.5%	50.7%
Management & Administrative	11.7%	13.5%	14.1%	14.1%	13.7%	100.0%	14.8%
Catering	13.1%	11.6%	12.7%	12.1%	11.9%	11.2%	11.6%
Household Services	57.1%	58.8%	59.3%	56.7%	57.2%	57.2%	56.9%
Other Labs & Associated	0.3%	0.4%	0.4%	0.5%	0.5%	0.4%	0.4%
Other Support	9.7%	9.1%	8.3%	9.1%	9.6%	9.2%	9.7%
Portering	8.7%	11.2%	10.8%	11.0%	10.6%	11.2%	11.0%
Support	89.0%	91.2%	91.5%	89.4%	89.7%	89.2%	89.6%
Maintenance/ Technical	11.0%	8.8%	8.5%	10.6%	10.3%	10.8%	10.4%
General Support	7.4%	7.1%	6.6%	6.3%	6.2%	100.0%	6.0%
HCA, Nurse's Aide, etc.	58.9%	61.3%	60.3%	60.7%	58.5%	58.9%	58.3%
Health & Social Care Assistants	1.0%	1.2%	1.8%	1.3%	1.6%	1.7%	1.6%
Swabber (COVID-19)					3.0%	3.7%	3.7%
Health Care Assistants	59.9%	62.4%	62.1%	62.0%	63.1%	64.4%	63.6%
Care, other	40.1%	37.6%	37.9%	38.0%	36.9%	35.6%	36.4%
Patient & Client Care	26.7%	25.2%	25.4%	25.7%	25.1%	100.0%	25.9%
Total	100 %	100 %	100 %	100 %	100%	100 %	100 %

CHO 6 Skills Mix by Care Group: July 2021

Jul 2021 (Dec 2019 figure: 593)	WTE Dec 2016	WTE Dec 2017	WTE Dec 2018	WTE Dec 2019	WTE Dec 2020	WTE Jun 2021	WTE Jul 2021
Mental Health	559	564	573	593	626	630	630
Consultants	47.3%	45.1%	49.0%	53.9%	55.6%	54.7%	53.6%
Registrar	21.2%	24.9%	13.4%	22.9%	15.9%	19.3%	20.2%
Senior Registrar	10.4%	6.0%	11.8%	9.7%	10.5%	10.0%	11.9%
Registrars	31.6%	30.9%	25.2%	32.6%	26.4%	29.2%	32.1%
SHO/ Interns	21.1%	23.4%	25.1%	13.5%	18.0%	16.1%	14.4%
Medical/ Dental, other		0.6%	0.6%				
Medical & Dental	10.1%	11.1%	11.1%	11.3%	10.7%	11.8%	11.8%
Clinical Nurse/ Midwife Manager	26.1%	23.6%	26.8%	25.8%	23.8%	23.2%	22.7%
Director Nursing/Midwifery, Assistant	5.4%	5.6%	5.9%	6.0%	5.8%	5.1%	5.0%
Director of Nursing/Midwifery	1.7%	1.7%	1.3%	1.3%	1.2%	1.2%	1.2%
Nurse/ Midwife Manager	33.1%	31.0%	33.9%	33.1%	30.8%	29.4%	28.9%
Advanced Nurse/ Midwife Practitioner	0.2%	0.2%	0.2%	0.3%	1.8%	1.8%	1.7%
Clinical Nurse/ Midwife Specialist	5.9%	6.4%	5.0%	5.6%	6.0%	5.5%	5.8%
Nurse/ Midwife Specialist & AN/MP	6.1%	6.6%	5.2%	5.9%	7.8%	7.3%	7.5%
Staff Nurse [Intellectual Disability]			0.4%	0.4%	0.8%		
Staff Nurse [Psychiatric]	50.1%	49.3%	44.6%	49.2%	48.0%	47.7%	48.5%
Staff Nurses [General/ Children's]	9.9%	12.2%	14.7%	10.5%	11.4%	13.0%	12.6%
Staff Nurse/ Staff Midwife	59.9%	61.5%	59.7%	60.2%	60.3%	60.8%	61.0%
Nursing/ Midwifery awaiting registration					0.4%	0.4%	0.4%
Pre-registration Nurse/ Midwife Intern						1.4%	1.3%
Nursing/ Midwifery Student					0.4%	1.8%	1.7%
Nursing Education/Clinical	0.9%	0.9%	1.2%	0.9%	0.8%	0.8%	0.8%
Nursing/ Midwifery other	0.9%	0.9%	1.2%	0.9%	0.8%	0.8%	0.8%
Nursing & Midwifery	43.3%	40.8%	41.5%	39.0%	36.9%	40.9%	40.9%
Dietitians		1.1%	1.7%	1.5%	1.1%	1.1%	0.5%
Occupational Therapists	16.3%	17.7%	17.0%	19.5%	18.8%	21.0%	20.3%
Physiotherapists	0.5%	0.4%	0.4%	0.9%	1.0%	1.0%	1.0%
Podiatrists & Chiropodists	1.0%	0.5%	0.4%				
Speech & Language Therapists	7.6%	9.0%	11.7%	11.3%	8.1%	7.9%	7.9%
Therapy Professions	25.4%	28.7%	31.2%	33.2%	28.8%	31.0%	29.7%
Social Care	28.3%	26.8%	26.0%	20.0%	21.1%	20.1%	19.8%
Social Workers	25.6%	22.8%	25.5%	23.0%	22.2%	22.5%	22.9%
Psychologists	14.4%	17.8%	13.6%	17.0%	24.0%	22.6%	24.2%
Counsellor Therapists	4.5%	3.5%	3.2%	3.0%	3.1%	3.0%	3.1%
Other Health & Social Care	0.5%			3.4%	0.4%	0.4%	
Play Therapists/ Specialists	1.4%	0.4%	0.4%	0.4%	0.4%	0.4%	0.4%
H&SC, Other	6.4%	3.9%	3.6%	6.7%	3.9%	3.8%	3.4%
Health & Social Care Professionals	19.7%	20.3%	20.0%	21.9%	20.7%	20.8%	20.8%
Management (VIII & above)	4.6%	6.0%	3.4%	4.2%	4.3%	4.7%	4.8%
Administrative/ Supervisory (V to VII)	31.3%	36.6%	44.8%	37.2%	34.7%	36.3%	34.5%
Clerical (III & IV)	64.0%	57.5%	51.8%	58.6%	61.0%	58.9%	60.7%
Management & Administrative	10.0%	10.5%	10.2%	12.1%	11.5%	9.9%	9.9%
Support	89.2%	90.6%	90.1%	86.0%	86.6%	85.8%	86.1%
Maintenance/ Technical	10.8%	9.4%	9.9%	14.0%	13.4%	14.2%	13.9%
General Support	8.9%	9.4%	8.6%	7.1%	6.8%	6.9%	6.9%
HCA, Nurse's Aide, etc.	90.2%	92.1%	89.2%	89.5%	89.2%	89.9%	90.5%
Health Care Assistants	90.2%	92.1%	89.2%	89.5%	89.2%	89.9%	90.5%
Care, other	9.8%	7.9%	10.8%	10.5%	10.8%	10.1%	9.5%
Patient & Client Care	8.0%	7.8%	8.7%	8.6%	8.1%	9.7%	9.7%
Total	100 %	100 %	100 %	100 %	100 %	100 %	100 %

Jul 2021 (Dec 2019 figure: 765)	WTE Dec 2016	WTE Dec 2017	WTE Dec 2018	WTE Dec 2019	WTE Dec 2020	WTE Jun 2021	WTE Jul 2021
Primary Care	768	795	833	765	811	861	857
Consultant Dentistry	7.4%	8.6%	8.3%	8.2%	7.9%	7.7%	7.8%
Consultant Medicine	1.1%	1.1%	1.1%	1.1%	1.3%	1.2%	1.2%
Consultant, Other	1.1%						
Consultant Radiology	1.1%	1.1%	1.1%	1.1%	1.3%	1.2%	1.2%
Consultants	10.7%	10.8%	10.5%	10.5%	10.4%	10.1%	10.3%
Registrars	31.0%	28.3%	30.8%	29.6%	29.8%	26.8%	29.2%
SHO/ Interns	7.2%	7.2%	7.0%	7.4%	8.2%	7.9%	8.0%
Dentists	31.7%	32.3%	29.2%	30.1%	31.1%	35.5%	33.2%
Other Medical	19.3%	21.4%	22.5%	22.4%	20.5%	19.8%	19.3%
Medical/ Dental, other	51.0%	53.7%	51.7%	52.5%	51.6%	55.2%	52.5%
Medical & Dental	11.7%	11.3%	11.1%	11.5%	10.8%	9.4%	9.4%
Clinical Nurse/ Midwife Manager	1.8%	2.5%	2.6%	3.0%	2.6%	2.6%	3.0%
Director Nursing/Midwifery, Assistant	5.0%	4.8%	6.4%	6.0%	5.6%	6.0%	5.1%
Director of Nursing/Midwifery	2.3%	2.1%	1.7%	1.6%	2.6%	2.0%	1.9%
Nurse/ Midwife Manager	9.1%	9.4%	10.7%	10.6%	10.8%	10.6%	10.0%
Nurse/ Midwife Specialist & AN/MP	2.0%	2.9%	2.9%	2.8%	1.7%	1.9%	2.0%
Staff Nurse/ Staff Midwife	22.3%	19.8%	24.2%	24.6%	26.3%	30.5%	31.7%
Public Health Nurse	59.0%	58.6%	57.0%	55.5%	53.6%	50.0%	53.9%
Nursing/ Midwifery Student	7.6%	9.2%	5.3%	6.4%	7.1%	6.5%	1.9%
Nursing/ Midwifery other					0.5%	0.5%	0.5%
Nursing & Midwifery	25.8%	26.4%	24.9%	27.5%	25.9%	24.4%	24.4%
Dietitians	5.0%	6.3%	5.8%	6.4%	7.5%	7.0%	7.0%
Occupational Therapists	20.5%	20.3%	21.4%	21.3%	19.7%	20.1%	19.5%
Physiotherapists	20.0%	19.1%	19.0%	20.8%	20.7%	20.4%	20.3%
Podiatrists & Chiropodists		0.5%	0.5%	0.7%	1.9%	1.5%	1.5%
Speech & Language Therapists	21.3%	19.5%	19.2%	18.4%	18.4%	17.5%	17.9%
Orthoptists						0.6%	0.6%
Therapy Professions	66.9%	65.8%	65.9%	67.5%	68.1%	67.0%	66.9%
Medical Science	10.5%	10.7%	10.6%	10.2%	10.9%	10.3%	10.3%
Radiographers	2.0%	1.9%	1.8%	1.6%	1.5%	1.4%	1.2%
Health Science/ Diagnostics	12.5%	12.6%	12.5%	11.8%	12.3%	11.7%	11.5%
Social Care	0.8%	0.8%	1.6%	2.4%	1.7%	1.7%	1.8%
Social Workers	3.7%	4.1%	3.4%	3.1%	2.7%	3.5%	3.2%
Psychologists	13.1%	13.4%	14.1%	12.2%	12.2%	11.9%	12.5%
Pharmacy		0.5%	0.5%	0.5%	0.6%	1.2%	1.2%
Counsellor Therapists	0.6%	0.5%					
Dental Hygienists	2.4%	2.1%	2.0%	2.5%	2.4%	2.3%	2.3%
Other Health & Social Care						0.6%	0.6%
H&SC, Other	3.0%	2.7%	2.0%	2.5%	2.4%	2.9%	2.9%
Health & Social Care Professionals	22.4%	23.1%	23.0%	20.1%	18.9%	19.4%	19.4%
Executive Management	4.3%	4.2%	3.7%	3.6%	3.4%	3.8%	3.8%
Senior Management (VIII & GM)	7.4%	10.7%	12.5%	10.8%	10.1%	9.1%	9.2%
Management (VIII & above)	11.7%	14.9%	16.2%	14.3%	13.5%	12.9%	13.0%
Administrative/ Supervisory (V to VII)	25.4%	28.6%	32.9%	32.4%	29.2%	30.9%	31.2%
Clerical (III & IV)	62.9%	56.5%	50.9%	53.3%	57.3%	56.2%	55.8%
Management & Administrative	25.6%	25.5%	27.3%	27.4%	25.9%	29.2%	29.2%
Support	93.6%	93.6%	92.7%	92.2%	92.8%	92.6%	92.6%
Maintenance/ Technical	6.4%	6.4%	7.3%	7.8%	7.2%	7.4%	7.4%
General Support	4.1%	3.9%	3.3%	3.4%	3.2%	3.2%	3.2%
HCA, Nurse's Aide, etc.	2.5%	2.6%	2.3%	4.3%	4.0%	3.6%	3.8%
Health & Social Care Assistants			8.1%	3.9%	6.4%	6.7%	6.1%
Swabber (COVID-19)					24.2%	28.4%	26.9%
Health Care Assistants	2.5%	2.6%	10.5%	8.1%	34.5%	38.7%	36.8%
Care, other	97.5%	97.4%	89.5%	91.9%	65.5%	61.3%	63.2%
Patient & Client Care	10.4%	9.8%	10.3%	10.1%	9.6%	14.5%	14.5%

Jul 2021 (Dec 2019 figure: 765)	WTE Dec 2016	WTE Dec 2017	WTE Dec 2018	WTE Dec 2019	WTE Dec 2020	WTE Jun 2021	WTE Jul 2021
Primary Care	768	795	833	765	811	861	857
Total	100 %	100 %	100 %	100 %	100 %	100 %	100 %

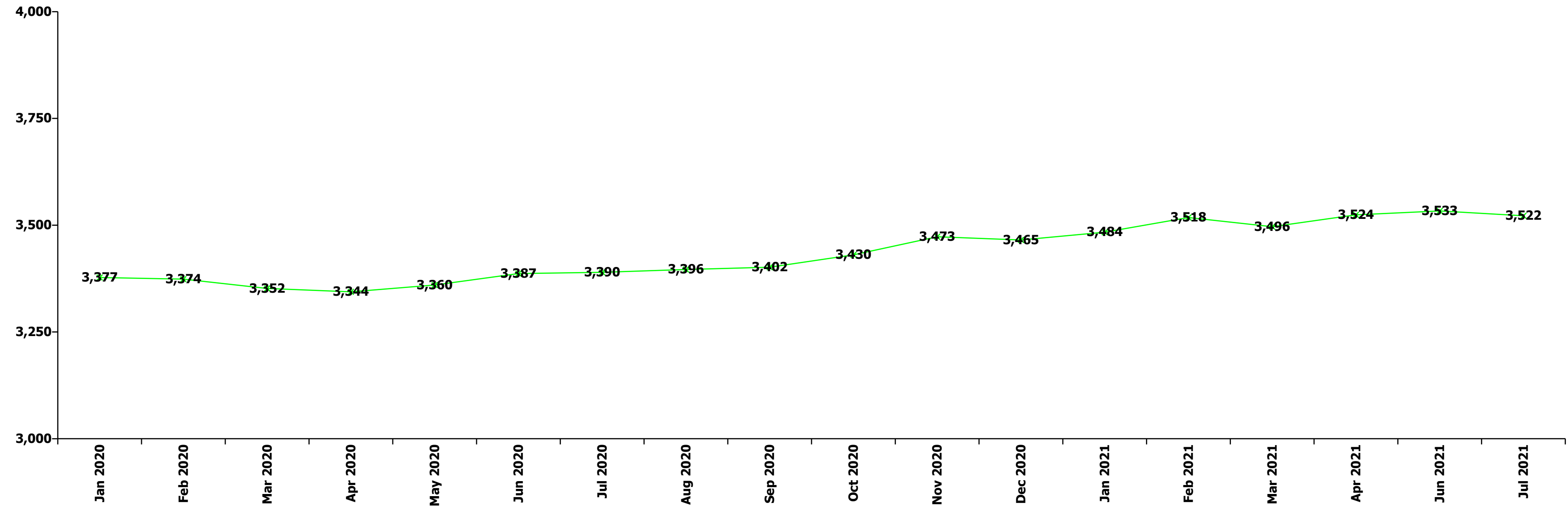
Jul 2021 (Dec 2019 figure: 1,198)	WTE Dec 2016	WTE Dec 2017	WTE Dec 2018	WTE Dec 2019	WTE Dec 2020	WTE Jun 2021	WTE Jul 2021
Disabilities	1,816	1,170	1,155	1,198	1,217	1,229	1,230
Consultant Paediatrics	1.3%	1.3%					
Consultant Psychiatry	38.9%	38.9%	50.0%	75.0%	75.0%	62.5%	55.9%
Consultants	40.2%	40.2%	50.0%	75.0%	75.0%	62.5%	55.9%
Registrars	14.9%	29.9%				16.7%	7.4%
SHO/ Interns	14.9%						18.1%
Medical/ Dental, other	29.9%	29.9%	50.0%	25.0%	25.0%	20.8%	18.6%
Medical & Dental	0.4%	0.6%	0.3%	0.3%	0.3%	0.4%	0.4%
Clinical Nurse/ Midwife Manager	21.4%	20.7%	18.7%	20.7%	21.7%	22.9%	23.1%
Director Nursing/Midwifery, Assistant	0.6%	0.5%	0.5%	0.5%	0.5%	0.5%	0.4%
Director of Nursing/Midwifery	1.8%	1.0%	1.0%	1.6%	1.1%	1.3%	1.2%
Nurse/ Midwife Manager	23.9%	22.1%	20.2%	22.8%	23.4%	24.7%	24.8%
Clinical Nurse/ Midwife Specialist	0.6%						
Nurse/ Midwife Specialist & AN/MP	0.6%						
Staff Nurse [Intellectual Disability]	21.5%	29.7%	29.5%	25.5%	27.6%	51.9%	51.1%
Staff Nurse [Psychiatric]	1.7%	1.7%	2.3%	9.4%	1.6%	1.0%	1.1%
Staff Nurses [General/ Children's]	52.1%	46.5%	48.0%	42.3%	47.4%	22.4%	23.1%
Staff Nurse/ Staff Midwife	75.3%	77.9%	79.8%	77.2%	76.6%	75.3%	75.2%
Public Health Nurse	0.3%						
Nursing & Midwifery	17.9%	17.7%	16.8%	15.9%	15.7%	14.8%	14.8%
Dietitians			0.1%	0.1%	0.1%	0.1%	0.1%
Occupational Therapists	3.4%	3.7%	4.1%	3.7%	4.2%	3.5%	3.7%
Physiotherapists	1.7%	1.5%	1.4%	1.4%	1.3%	1.5%	1.4%
Speech & Language Therapists	3.6%	3.7%	5.2%	5.1%	4.3%	4.5%	4.8%
Therapy Professions	8.7%	9.0%	10.8%	10.3%	9.9%	9.6%	9.8%
Social Care	84.7%	83.7%	82.4%	83.1%	84.3%	84.7%	84.2%
Social Workers	2.6%	2.8%	3.2%	2.8%	2.3%	2.3%	2.5%
Psychologists	3.9%	3.7%	3.5%	3.4%	3.2%	3.1%	3.2%
Counsellor Therapists		0.4%		0.1%			
Other Health & Social Care	0.1%	0.4%	0.2%	0.3%	0.3%	0.3%	0.3%
H&SC, Other	0.1%	0.8%	0.2%	0.5%	0.3%	0.3%	0.3%
Health & Social Care Professionals	33.0%	32.9%	32.5%	33.6%	33.1%	36.1%	36.1%
Executive Management	5.6%	12.4%	9.2%	10.2%	9.3%	8.4%	8.5%
Senior Management (VIII & GM)	17.2%	12.2%	14.3%	12.2%	12.3%	13.2%	13.4%
Management (VIII & above)	22.8%	24.6%	23.5%	22.3%	21.6%	21.6%	21.9%
Administrative/ Supervisory (V to VII)	31.5%	35.2%	35.8%	38.6%	38.6%	40.9%	39.7%
Clerical (III & IV)	45.7%	40.2%	40.7%	39.0%	39.8%	37.5%	38.4%
Management & Administrative	8.8%	11.7%	12.0%	11.5%	11.3%	11.5%	11.5%
Support	84.2%	87.3%	87.7%	77.0%	83.6%	77.9%	79.1%
Maintenance/ Technical	15.8%	12.7%	12.3%	23.0%	16.4%	22.1%	20.9%
General Support	5.2%	2.7%	2.8%	2.5%	2.4%	2.3%	2.3%
HCA, Nurse's Aide, etc.	47.2%	42.6%	42.6%	43.1%	42.8%	44.4%	43.6%
Health Care Assistants	47.2%	42.6%	42.6%	43.1%	42.8%	44.4%	43.6%
Care, other	52.8%	57.4%	57.4%	56.9%	57.2%	55.6%	56.4%
Patient & Client Care	34.7%	34.5%	35.4%	36.2%	35.6%	34.8%	34.8%
Total	100 %	100 %	100 %	100 %	100 %	100 %	100 %

Jul 2021 (Dec 2019 figure: 823)	WTE Dec 2016	WTE Dec 2017	WTE Dec 2018	WTE Dec 2019	WTE Dec 2020	WTE Jun 2021	WTE Jul 2021
Older People	797	828	808	823	804	804	796
Registrar						26.6%	26.6%
Senior Registrar	20.0%	20.0%	33.3%	20.0%	26.1%	26.6%	26.6%
Registrars	20.0%	20.0%	33.3%	20.0%	26.1%	53.2%	53.2%
Medical/ Dental, other	80.0%	80.0%	66.7%	80.0%	73.9%	46.8%	46.8%
Medical & Dental	0.6%	0.6%	0.7%	0.6%	0.6%	0.5%	0.5%
Clinical Nurse/ Midwife Manager	20.1%	20.4%	20.8%	20.3%	19.6%	19.4%	20.7%
Director Nursing/Midwifery, Assistant	1.8%	1.8%	2.6%	2.8%	2.5%	1.9%	1.9%
Director of Nursing/Midwifery	2.2%	1.8%	1.9%	1.8%	1.1%	1.9%	1.9%
Nurse/ Midwife Manager	24.2%	24.1%	25.3%	25.0%	23.2%	23.2%	24.5%
Clinical Nurse/ Midwife Specialist			0.4%	0.4%	0.4%	0.4%	0.4%
Nurse/ Midwife Specialist & AN/MP			0.4%	0.4%	0.4%	0.4%	0.4%
Staff Nurses [General/ Children's]	75.8%	75.9%	74.4%	74.6%	76.4%	76.5%	75.1%
Staff Nurse/ Staff Midwife	75.8%	75.9%	74.4%	74.6%	76.4%	76.5%	75.1%
Nursing & Midwifery	34.0%	32.7%	33.0%	33.2%	34.0%	32.6%	32.6%
Dietitians	4.6%	4.5%	4.5%	3.9%	4.3%	4.2%	4.1%
Occupational Therapists	28.3%	28.1%	28.0%	28.3%	29.7%	28.8%	29.4%
Physiotherapists	31.4%	30.1%	34.7%	32.4%	30.4%	33.4%	35.0%
Podiatrists & Chiropodists	2.1%	3.1%	1.6%	1.0%	2.0%	1.1%	0.3%
Speech & Language Therapists	7.7%	9.4%	9.3%	9.7%	9.9%	9.5%	8.7%
Therapy Professions	74.1%	75.2%	78.0%	75.4%	76.3%	77.0%	77.4%
Social Workers	20.1%	20.0%	16.4%	17.1%	17.1%	14.3%	15.0%
Psychologists	0.9%		0.9%	3.2%	1.8%	3.3%	0.8%
Pharmacy	5.0%	4.8%	4.8%	4.3%	4.8%	5.4%	6.8%
Health & Social Care Professionals	7.1%	6.9%	7.2%	8.0%	8.2%	8.0%	8.0%
Executive Management	4.1%	1.9%	3.9%	1.8%	3.5%	3.4%	3.4%
Senior Management (VIII & GM)	2.1%			5.4%	5.2%	4.8%	6.2%
Management (VIII & above)	6.2%	1.9%	3.9%	7.2%	8.7%	8.2%	9.6%
Administrative/ Supervisory (V to VII)	41.5%	40.3%	40.2%	39.9%	33.8%	37.7%	37.4%
Clerical (III & IV)	52.3%	57.8%	55.9%	52.9%	57.5%	54.1%	53.0%
Management & Administrative	6.1%	6.3%	6.4%	6.8%	6.9%	7.4%	7.4%
Support	91.5%	91.8%	92.8%	93.1%	91.9%	92.2%	92.8%
Maintenance/ Technical	8.5%	8.2%	7.2%	6.9%	8.1%	7.8%	7.2%
General Support	14.7%	14.7%	14.1%	14.1%	14.5%	14.3%	14.3%
HCA, Nurse's Aide, etc.	94.0%	94.6%	94.9%	94.9%	95.6%	95.9%	96.1%
Health & Social Care Assistants	3.5%	3.1%	2.7%	2.7%	2.6%	2.6%	2.3%
Health Care Assistants	97.5%	97.7%	97.6%	97.6%	98.2%	98.4%	98.4%
Other Care Grades	2.5%	2.3%	2.4%	2.4%	1.8%	1.6%	1.6%
Care, other	2.5%	2.3%	2.4%	2.4%	1.8%	1.6%	1.6%
Patient & Client Care	37.4%	38.8%	38.6%	37.3%	38.2%	37.3%	37.3%
Total	100 %	100 %	100 %	100 %	100 %	100 %	100 %

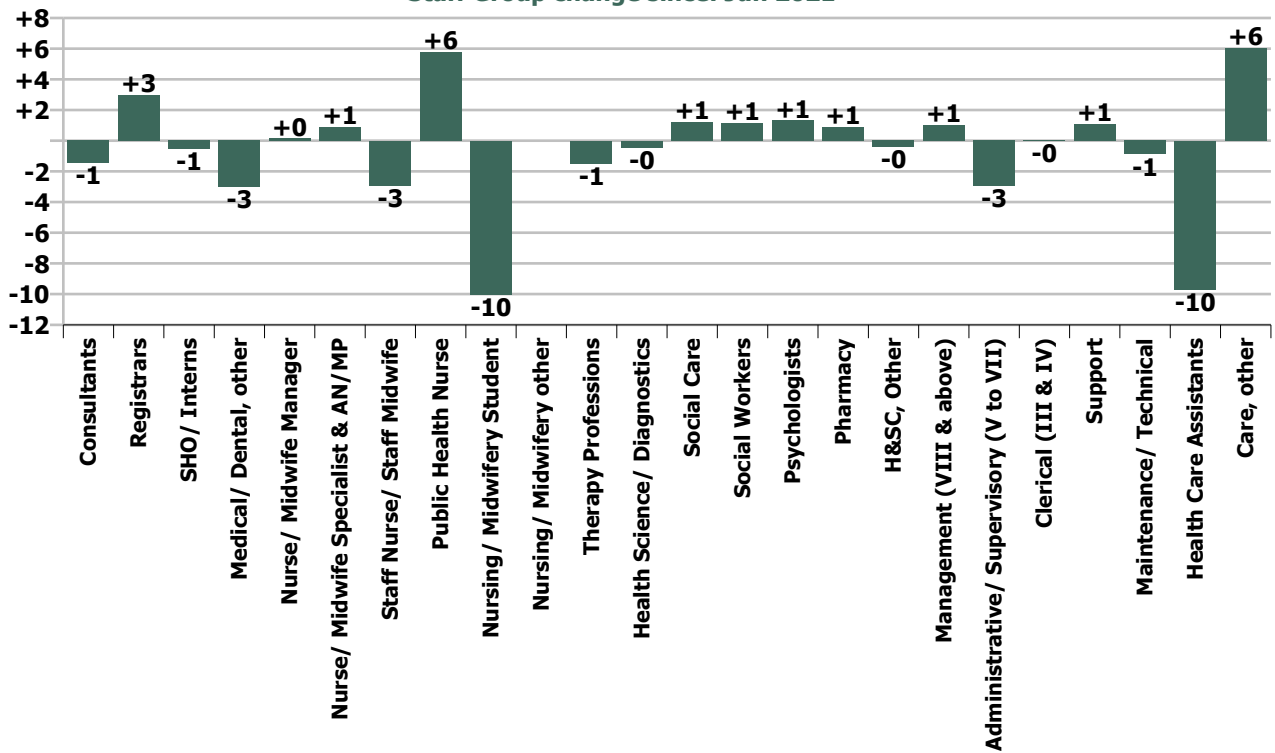
Summary Staff Movement: July 2021

Month-on-month Summary																												
WTE change since Jun 21	% change since Jun 21	overall	Consultants	Registrars	SHO/ Interns	Medical/ Dental, other	Med/ical & Dental	Nurse/ Midwife Manager	Nurse/ Midwife Specialist & AN/MP	Staff Nurse/ Staff Midwife	Public Health Nurse	Nursing/ Midwifery Student	Nursing/ Midwifery other	Nursing & Midwifery	Therapy Professions	Health Science/ Diagnostics	Social Care	Social Workers	Psychologists	Pharmacy	H&SC, Other	Health & Social Care Professionals	Management (VIII & above)	Administrative/ Supervisory (V to VII)	Clerical (III & IV)	Management & Administrative	General Support	Patient & Client Care
Overall	-0.3%	-11	-1.4	+3.0	-0.5	-3.0	-2.0	+0.2	+0.9	-2.9	+5.8	-10.0	0.0	-6.1	-1.5	-0.4	+1.2	+1.1	+1.3	+0.9	-0.4	+2.3	+1.0	-2.9	-0.0	-1.9	+0.2	-3.7
Community Health & Wellbeing	-0.4%	-0																					0.0	-0.0	-0.0		-0.0	
Mental Health	+0.0%	+0	-1.4	+1.8	-1.5		-1.2	-1.0	+0.6	+1.3		-0.0	0.0	+0.9	-2.1		-0.7	+0.2	+1.8		-0.6	-1.4	0.0	-1.4	+0.7	-0.8	+0.8	+1.8
Primary Care	-0.4%	-3	0.0	+1.6	0.0	-3.0	-1.4	-1.8	+0.2	+1.1	+5.8	-10.0	0.0	-4.7	-1.0	-0.4	0.0	-0.4	+0.8	0.0	0.0	-1.1	+0.0	+0.6	-1.0	-0.4	+0.1	+4.1
Disabilities	+0.1%	+1	0.0	-0.4	+1.0	0.0	+0.6	-0.4		-1.8				-2.2	+1.5		+1.9	+1.0	+0.4		+0.1	+5.0	+0.1	-2.1	+0.8	-1.1	+1.5	-3.1
Older People	-1.1%	-9		0.0		0.0	0.0	+3.4	0.0	-3.6				-0.1	+0.1			+0.4	-1.6	+0.9		-0.2	+0.9	-0.0	-0.5	+0.4	-2.2	-6.5
Social Care	-0.4%	-8	0.0	-0.4	+1.0	0.0	+0.6	+3.0	0.0	-5.3				-2.3	+1.6		+1.9	+1.4	-1.2	+0.9	+0.1	+4.8	+1.0	-2.1	+0.4	-0.7	-0.7	-9.6
Change	-11.3	-0.3%	-2.7%	+6.3%	-2.8%	-6.2%	-1.2%	+0.1%	+3.8%	-0.5%	+5.4%	-54.2%		-0.7%	-0.6%	-2.2%	+0.3%	+2.1%	+2.0%	+16.8%	-3.8%	+0.3%	+1.4%	-1.6%	-0.0%	-0.4%	+0.1%	-0.4%

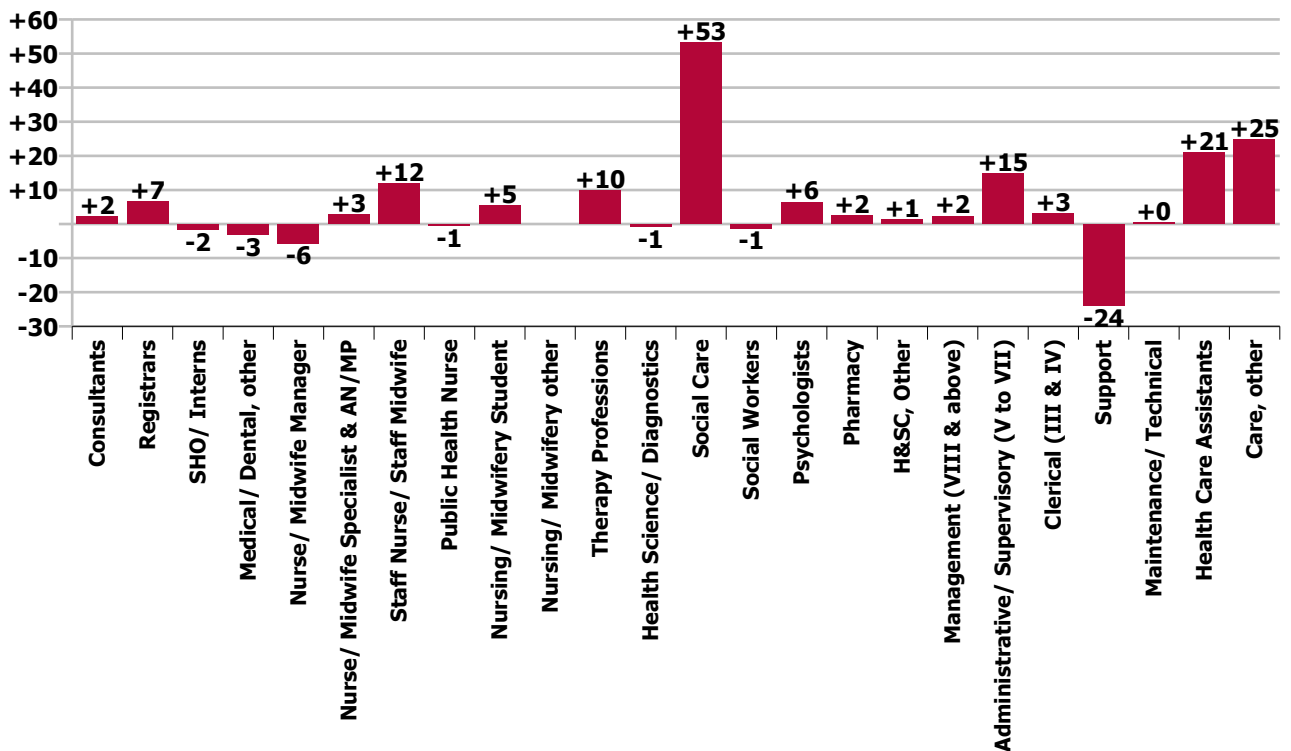
Year-on-year Summary																												
WTE change since Jul 20	% change since Jul 20	overall	Consultants	Registrars	SHO/ Interns	Medical/ Dental, other	Medical & Dental	Nurse/ Midwife Manager	Nurse/ Midwife Specialist & AN/MP	Staff Nurse/ Staff Midwife	Public Health Nurse	Nursing/ Midwifery Student	Nursing/ Midwifery other	Nursing & Midwifery	Therapy Professions	Health Science/ Diagnostics	Social Care	Social Workers	Psychologists	Pharmacy	H&SC, Other	Health & Social Care Professionals	Management (VIII & above)	Administrativ e/ Supervisory (V to VII)	Clerical (III & IV)	Management & Administrative	General Support	Patient & Client Care
Overall	+3.9%	+132	+2.3	+6.7	-1.5	-3.2	+4.2	-5.6	+2.8	+12.0	-0.5	+5.4	0.0	+14.0	+9.8	-0.7	+53.3	-1.2	+6.4	+2.4	+1.4	+71.6	+2.3	+14.9	+3.1	+20.3	-23.7	+45.9
Community Health & Wellbeing	-0.4%	-0																					-1.0	+2.7	-0.1	+1.6		-0.7
Mental Health	+0.0%	+0	+2.3	+5.4	-2.5		+5.2	-0.9	+4.5	+6.8		+4.5	0.0	+14.9	+4.1		-0.3	-1.8	+5.8		0.0	+7.8	0.0	-3.6	-3.0	-6.6	+2.9	+9.5
Primary Care	-0.4%	-3	0.0	-0.1	0.0	-0.9	-1.1	-2.7	-1.7	+11.8	-0.5	+0.9	0.0	+7.9	-2.8	-0.7	+0.1	+0.9	+3.3	+1.0	+1.4	+3.1	+2.3	+12.5	+17.6	+32.4	-1.6	+44.1
Disabilities	+5.0%	+58.2	0.0	+0.4	+1.0	0.0	+1.4	+1.8		+2.0				+3.8	+3.9		+53.5	+1.5	-1.0	+1.0	+0.1	+57.9	-0.7	+1.6	-10.8	-9.9	-23.0	+28.0
Older People	-5.4%	-45.3		+1.0		-2.2	-1.2	-3.9	0.0	-8.6				-12.5	+4.7			-1.8	-1.6	+1.4		+2.7	+1.7	+1.7	-0.6	+2.8	-2.1	-35.0
Social Care	-0.4%	-8	0.0	+1.4	+1.0	-2.2	+0.1	-2.1	0.0	-6.6				-8.7	+8.6		+53.5	-0.3	-2.6	+1.4	+0.1	+60.7	+1.0	+3.3	-11.4	-7.2	-25.0	-7.1
Change	+132.4	+3.9%	+4.6%	+15.4%	-7.8%	-6.6%	+2.6%	-2.7%	+12.7%	+2.2%	-0.5%	+176.8%		+1.6%	+4.2%	-3.3%	+15.3%	-2.1%	+10.6%	+62.1%	+15.6%	+9.8%	+3.3%	+8.8%	+1.2%	+4.1%	-10.0%	+5.3%

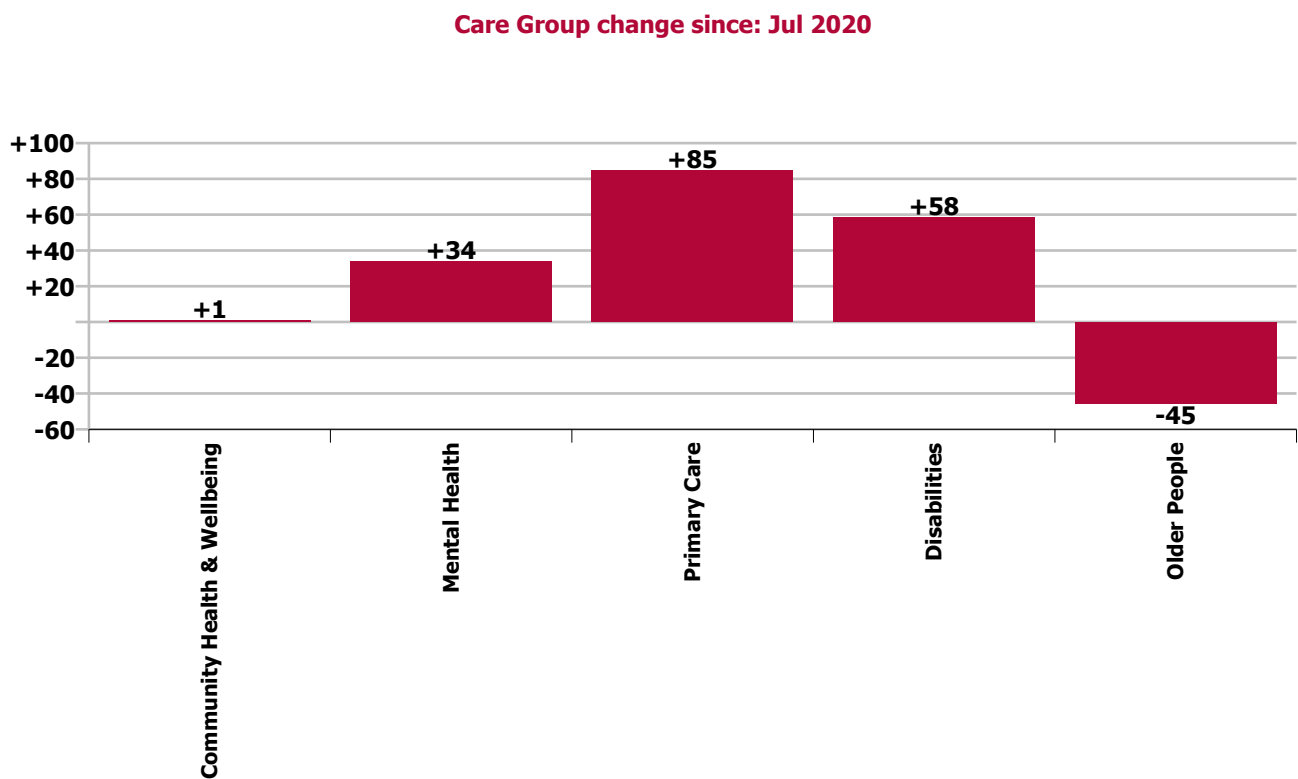
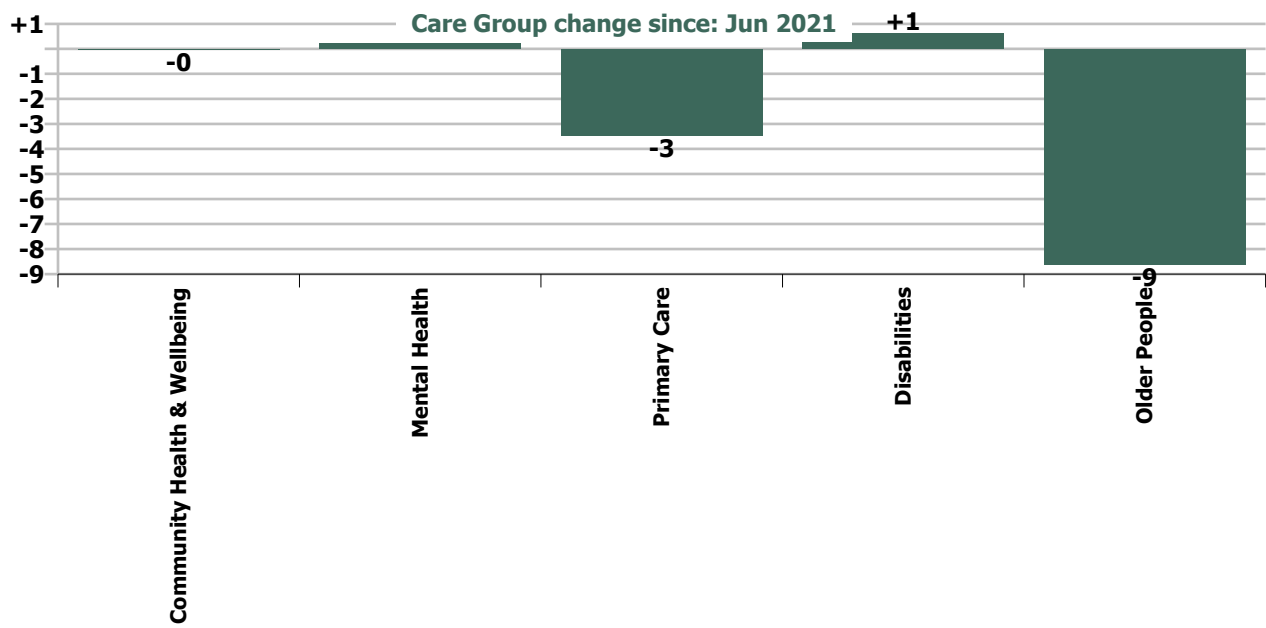


Staff Group change since: Jun 2021



Staff Group change since: Jul 2020





Longitudinal Employment Levels by Grade Group - Dec 2016 to Jul 2021

Jul 2021 (Dec 2016 figure: 3,940)	WTE Jul 2021	WTE change since Dec 16	WTE change since Dec 17	WTE change since Dec 18	WTE change since Dec 19	WTE change since Dec 20	WTE change since Jun 21	% change since Dec 16	% change since Dec 17	% change since Dec 18	% change since Dec 19	% change since Dec 20	% change since Jun 21
Overall	3,522	-418	+165	+154	+144	+57	-11	-10.6%	+4.9%	+4.6%	+4.3%	+1.6%	-0.3%
Consultant Dentistry	6	-0	-1	-1	-1			-6.0%	-18.2%	-18.2%	-13.0%		
Consultant Medicine	1												
Consultant, Other		-1						-100.0%	-100.0%	-100.0%	-100.0%	-100.0%	-100.0%
Consultant Paediatrics		-0	-0					-100.0%	-100.0%	-100.0%	-100.0%	-100.0%	-100.0%
Consultant Psychiatry	43	+14	+12	+10	+4	-0	-1	+46.2%	+39.3%	+29.5%	+10.2%	-0.4%	-3.2%
Consultant Radiology	1												
Consultants	51	+12	+11	+8	+3	-0	-1	+30.8%	+26.2%	+19.6%	+6.3%	-0.3%	-2.7%
Registrar	39	-1	-1	+3	-1	+5	+2	-2.4%	-2.5%	+8.4%	-3.1%	+14.0%	+4.4%
Senior Registrar	10	+3	+3	+0	+2	+1	+1	+43.0%	+46.0%	+3.8%	+31.8%	+15.3%	+15.6%
Specialist Registrar	1												
Registrars	50	+2	+2	+3	+1	+6	+3	+4.2%	+4.4%	+7.3%	+2.4%	+13.9%	+6.3%
SHO/ Interns	18	-1	-3	-4	+3	-1	-1	-6.4%	-14.0%	-19.0%	+17.4%	-6.7%	-2.8%
Dentists	27	-2	-2	-0	+0	+2	-2	-6.4%	-7.8%	-0.7%	+1.1%	+8.0%	-8.1%
Other Medical	18	-5	-7	-9	-6	-2	-1	-21.6%	-28.3%	-32.5%	-25.6%	-8.9%	-3.3%
Medical/ Dental, other	45	-7	-10	-9	-6	+0	-3	-13.2%	-17.4%	-16.7%	-11.8%	+0.4%	-6.2%
Medical & Dental	165	+6	+0	-2	+1	+5	-2	+3.8%	+0.1%	-0.9%	+0.5%	+3.0%	-1.2%
Clinical Nurse/ Midwife Manager	161	-30	+3	-0	-0	+2	+3	-15.8%	+2.0%	-0.2%	-0.3%	+1.3%	+2.0%
Director Nursing/Midwifery, Assistant	29	-1	+0	-6	-6	-5	-3	-2.4%	+0.9%	-17.4%	-17.0%	-13.9%	-8.0%
Director of Nursing/Midwifery	14	-6	-1	+1	-0	+1	-1	-30.9%	-8.3%	+4.9%	-1.9%	+5.6%	-3.6%
Nurse/ Midwife Manager	204	-37	+2	-6	-7	-2	+0	-15.4%	+1.1%	-2.8%	-3.2%	-0.9%	+0.1%
Advanced Nurse/ Midwife Practitioner	6	+5	+5	+5	+5			+1000.0%	+1000.0%	+1000.0%	+708.8%		
Clinical Nurse/ Midwife Specialist	19	-1	-2	+0	-1	+1	+1	-4.5%	-7.7%	+1.7%	-4.1%	+3.1%	+4.9%
Nurse/ Midwife Specialist & AN/MP	25	+4	+3	+5	+4	+1	+1	+20.0%	+16.1%	+27.6%	+19.4%	+2.4%	+3.8%
Staff Nurse [Intellectual Disability]	93	+23	+32	+35	+44	+40	-3	+33.6%	+51.8%	+59.5%	+87.9%	+74.8%	-2.8%
Staff Nurse [Psychiatric]	127	-0	+9	+16	-6	+2	+3	-0.1%	+7.6%	+14.8%	-4.5%	+1.6%	+2.0%
Staff Nurses [General/ Children's]	336	-107	-35	-41	-24	-41	-3	-24.2%	-9.4%	-11.0%	-6.7%	-10.9%	-0.8%
Staff Nurse/ Staff Midwife	555	-84	+6	+10	+14	+1	-3	-13.1%	+1.1%	+1.8%	+2.5%	+0.2%	-0.5%
Public Health Nurse	113	-5	-10	-6	-4	+1	+6	-4.5%	-8.2%	-4.8%	-3.4%	+0.8%	+5.4%
Nursing/ Midwifery awaiting registration	1	+1	+1	+1	+1			-100.0%	-100.0%	-100.0%	-100.0%		
Post-registration Nurse/ Midwife Student	4	-11	-15	-7	-10	-11	-10	-73.3%	-79.3%	-63.6%	-70.4%	-73.2%	-71.4%
Pre-registration Nurse/ Midwife Intern	3	+3	+3	+3	+3	+3	-0	-100.0%	-100.0%	-100.0%	-100.0%	-100.0%	-0.9%
Nursing/ Midwifery Student	8	-7	-11	-3	-5	-7	-10	-43.5%	-56.2%	-23.0%	-37.3%	-46.7%	-54.2%
Nursing Education/Clinical	3	+1	+1	+0	+1			+33.9%	+50.0%	+4.9%	+50.0%		

Jul 2021 (Dec 2016 figure: 3,940)	WTE Jul 2021	WTE change since Dec 16	WTE change since Dec 17	WTE change since Dec 18	WTE change since Dec 19	WTE change since Dec 20	WTE change since Jun 21	% change since Dec 16	% change since Dec 17	% change since Dec 18	% change since Dec 19	% change since Dec 20	% change since Jun 21
Overall	3,522	-418	+165	+154	+144	+57	-11	-10.6%	+4.9%	+4.6%	+4.3%	+1.6%	-0.3%
Nursing/ Midwifery other	3	+1	+1	+0	+1			+33.9%	+50.0%	+4.9%	+50.0%		
Nursing & Midwifery	908	-128	-9	+1	+3	-7	-6	-12.4%	-0.9%	+0.1%	+0.3%	-0.7%	-0.7%
Dietitians	15	+4	-0	-1	+1	-1	-1	+34.8%	-1.9%	-4.2%	+4.3%	-7.4%	-5.4%
Occupational Therapists	94	+4	+6	+2	+2	+1	-1	+4.4%	+6.6%	+1.9%	+2.4%	+0.8%	-1.3%
Physiotherapists	63	+0	+5	+1	+3	+4	+0	+0.7%	+8.1%	+1.5%	+5.0%	+7.5%	+0.1%
Podiatrists & Chiropodists	3	+0	-1	+0	+1	-1	-1	+18.5%	-20.4%	+15.0%	+59.2%	-35.8%	-15.7%
Speech & Language Therapists	67	-4	+1	-8	-3	+2	+1	-5.8%	+1.5%	-11.0%	-4.5%	+2.8%	+1.6%
Orthoptists	1	+1	+1	+1	+1	+1		-100.0%	-100.0%	-100.0%	-100.0%	-100.0%	
Therapy Professions	243	+6	+12	-5	+5	+5	-1	+2.4%	+5.0%	-2.0%	+2.0%	+2.2%	-0.6%
Medical Science	17	-1	-2	-3	+2	-1	-0	-5.4%	-12.5%	-15.8%	+9.7%	-2.8%	-0.5%
Radiographers	2	-1	-1	-1	-0	-0	-0	-39.7%	-41.4%	-41.3%	-16.0%	-13.5%	-14.6%
Health Science/ Diagnostics	19	-2	-4	-5	+1	-1	-0	-10.8%	-16.9%	-19.6%	+6.2%	-4.1%	-2.2%
Social Care	402	-138	+48	+60	+38	+10	+1	-25.5%	+13.6%	+17.6%	+10.5%	+2.6%	+0.3%
Social Workers	56	-6	-0	-1	-1	+2	+1	-9.1%	-0.1%	-1.9%	-1.9%	+3.2%	+2.1%
Psychologists	67	+5	+8	+11	+11	+1	+1	+8.0%	+13.4%	+19.2%	+18.7%	+0.8%	+2.0%
Pharmacy	6	+3	+3	+3	+3	+2	+1	+122.5%	+67.2%	+67.2%	+72.7%	+62.1%	+16.8%
Counsellor Therapists	4	-2	-2	+0	-0	-0		-33.3%	-37.9%	+10.2%	-9.5%	-4.8%	
Dental Hygienists	4	-0	+0		+0	-0	-0	-4.9%	+0.3%		+3.2%	-0.0%	-0.0%
Other Health & Social Care	2	+1	+1	+1	-3	+1	-0	+123.5%	+34.1%	+150.5%	-59.7%	+28.1%	-15.6%
Play Therapists/ Specialists	0	-1	-0		+0			-68.0%	-5.9%		+4.3%		
H&SC, Other	11	-2	-2	+2	-4	+0	-0	-15.5%	-15.0%	+19.5%	-25.6%	+2.9%	-3.8%
Health & Social Care Professionals	804	-134	+64	+65	+52	+20	+2	-14.3%	+8.7%	+8.7%	+7.0%	+2.5%	+0.3%
Executive Management	24	+4	-3	+0	+1	+1	-0	+19.3%	-11.1%	+0.7%	+4.1%	+3.3%	-0.2%
Senior Management (VIII & GM)	48	+3	+7	-2	+3	+2	+1	+6.8%	+16.3%	-3.2%	+7.7%	+4.4%	+2.3%
Management (VIII & above)	72	+7	+4	-1	+4	+3	+1	+10.7%	+5.3%	-1.9%	+6.4%	+4.1%	+1.4%
Middle Management (V-VII)	185	+47	+37	+14	+15	+18	-3	+34.6%	+24.6%	+8.4%	+9.1%	+11.0%	-1.6%
Other Administrative		-1	-1	-1	-1			-100.0%	-100.0%	-100.0%	-100.0%	-100.0%	-100.0%
Administrative/ Supervisory (V to VII)	185	+46	+36	+13	+14	+18	-3	+33.6%	+23.8%	+7.8%	+8.5%	+11.0%	-1.6%
Clerical (III & IV)	264	+6	+30	+33	+27	+4	-0	+2.2%	+12.8%	+14.2%	+11.4%	+1.5%	-0.0%
Management & Administrative	521	+59	+69	+45	+46	+25	-2	+12.8%	+15.3%	+9.4%	+9.6%	+5.1%	-0.4%
Catering	25	-14	-3	-4	-1	-1	+1	-35.8%	-10.7%	-12.8%	-4.8%	-3.3%	+3.4%
Household Services	121	-46	-19	-11	-0	-2	-0	-27.7%	-13.3%	-8.5%	-0.2%	-1.3%	-0.3%
Other Labs & Associated	1	-0	-0	-0	-0	-0	-0	-10.0%	-10.0%	-10.0%	-10.0%	-10.0%	-5.3%
Other Support	21	-8	-1	+2	+1	+0	+1	-28.0%	-5.4%	+11.5%	+5.3%	+0.3%	+5.4%
Portering	23	-2	-3	-1	-0	+1	-0	-9.0%	-12.2%	-3.1%	-0.9%	+2.3%	-1.6%

Jul 2021 (Dec 2016 figure: 3,940)	WTE Jul 2021	WTE change since Dec 16	WTE change since Dec 17	WTE change since Dec 18	WTE change since Dec 19	WTE change since Dec 20	WTE change since Jun 21	% change since Dec 16	% change since Dec 17	% change since Dec 18	% change since Dec 19	% change since Dec 20	% change since Jun 21
Overall	3,522	-418	+165	+154	+144	+57	-11	-10.6%	+4.9%	+4.6%	+4.3%	+1.6%	-0.3%
Support	190	-70	-26	-14	-1	-2	+1	-27.0%	-12.1%	-6.6%	-0.4%	-1.0%	+0.6%
Maintenance/ Technical	22	-10	+1	+3	-1	+0	-1	-31.4%	+5.3%	+16.2%	-2.4%	+0.5%	-3.9%
General Support	212	-80	-25	-10	-1	-2	+0	-27.5%	-10.5%	-4.7%	-0.6%	-0.9%	+0.1%
HCA, Nurse's Aide, etc.	532	-88	+13	+16	+5	+7	-8	-14.2%	+2.6%	+3.1%	+0.9%	+1.4%	-1.4%
Health & Social Care Assistants	14	+4	+5	-1	+3	-0	-1	+38.3%	+45.7%	-6.9%	+27.3%	-2.6%	-8.7%
Swabber (COVID-19)	33	+33	+33	+33	+33	+7	-1	-100.0%	-100.0%	-100.0%	-100.0%	+25.7%	-2.3%
Health Care Assistants	580	-51	+51	+48	+41	+14	-10	-8.0%	+9.7%	+9.0%	+7.7%	+2.5%	-1.6%
Care, other	332	-90	+14	+7	+2	+2	+6	-21.4%	+4.4%	+2.3%	+0.6%	+0.5%	+1.8%
Patient & Client Care	912	-141	+65	+55	+43	+16	-4	-13.4%	+7.7%	+6.5%	+5.0%	+1.7%	-0.4%

Source: Health Service Personnel Census

Longitudinal Employment Levels by Care Group - Dec 2016 to Jul 2021

Community Health & Wellbeing

Jul 2021 (figure:)	WTE Jul 2021	WTE change since	WTE change since	WTE change since	WTE change since	WTE change since Dec 20	WTE change since Jun 21	% change since	% change since	% change since	% change since	% change since Dec 20	% change since Jun 21
Overall	9	+9	+9	+9	+9	+2	-0	-100.0%	-100.0%	-100.0%	-100.0%	+19.8%	-0.4%
Management & Administrative	7	+7	+7	+7	+7	+2	-0	-1.0%	-1.0%	-1.0%	-1.0%	+0.4%	-0.0%
Management (VIII & above)						-1		-1.0%	-1.0%	-1.0%	-1.0%	-1.0%	-1.0%
Administrative/ Supervisory (V to VII)	7	+7	+7	+7	+7	+3		-1.0%	-1.0%	-1.0%	-1.0%	+0.9%	+0.0%
Clerical (III & IV)	1	+1	+1	+1	+1	-0	-0	-1.0%	-1.0%	-1.0%	-1.0%	-0.1%	-0.0%
Patient & Client Care	2	+2	+2	+2	+2	-0	-0	-1.0%	-1.0%	-1.0%	-1.0%	-0.2%	-0.0%
Care, other	2	+2	+2	+2	+2	-0	-0	-1.0%	-1.0%	-1.0%	-1.0%	-0.2%	-0.0%

Source: Health Service Personnel Census

Mental Health

Jul 2021 (Dec 2016 figure: 559)	WTE Jul 2021	WTE change since Dec 16	WTE change since Dec 17	WTE change since Dec 18	WTE change since Dec 19	WTE change since Dec 20	WTE change since Jun 21	% change since Dec 16	% change since Dec 17	% change since Dec 18	% change since Dec 19	% change since Dec 20	% change since Jun 21
Overall	630	+70	+66	+57	+37	+3	+0	+12.6%	+11.7%	+10.0%	+6.3%	+0.5%	+0.0%
Medical & Dental	75	+18	+12	+11	+8	+2	-1	+0.3%	+0.2%	+0.2%	+0.1%	+0.0%	-0.0%
Consultants	40	+13	+12	+9	+4	-0	-1	+0.5%	+0.4%	+0.3%	+0.1%	-0.0%	-0.0%
Registrars	24	+6	+5	+8	+2	+5	+2	+0.3%	+0.2%	+0.5%	+0.1%	+0.3%	+0.1%
SHO/ Interns	11	-1	-4	-5	+2	-2	-2	-0.1%	-0.3%	-0.3%	+0.2%	-0.2%	-0.1%
Medical/ Dental, other			-0	-0				-1.0%	-1.0%	-1.0%	-1.0%	-1.0%	-1.0%
Nursing & Midwifery	257	+15	+27	+20	+26	+6	+1	+0.1%	+0.1%	+0.1%	+0.1%	+0.0%	+0.0%
Nurse/ Midwife Manager	74	-6	+3	-6	-2	-3	-1	-0.1%	+0.0%	-0.1%	-0.0%	-0.0%	-0.0%
Nurse/ Midwife Specialist & AN/MP	19	+5	+4	+7	+6	-0	+1	+0.3%	+0.3%	+0.6%	+0.4%	-0.0%	+0.0%
Staff Nurse/ Staff Midwife	157	+12	+16	+15	+18	+6	+1	+0.1%	+0.1%	+0.1%	+0.1%	+0.0%	+0.0%
Nursing/ Midwifery Student	4	+4	+4	+4	+4	+3	-0	-1.0%	-1.0%	-1.0%	-1.0%	+3.5%	-0.0%
Nursing/ Midwifery other	2	-0		-1				-0.1%	+0.0%	-0.3%	+0.0%	+0.0%	+0.0%
Health & Social Care Professionals	131	+21	+16	+17	+1	-3	-1	+0.2%	+0.1%	+0.1%	+0.0%	-0.0%	-0.0%
Therapy Professions	39	+11	+6	+3	-4	+0	-2	+0.4%	+0.2%	+0.1%	-0.1%	+0.0%	-0.1%
Social Care	26	-5	-5	-4	-0	-2	-1	-0.2%	-0.2%	-0.1%	-0.0%	-0.1%	-0.0%
Social Workers	30	+2	+4	+1	+0	+0	+0	+0.1%	+0.1%	+0.0%	+0.0%	+0.0%	+0.0%
Psychologists	32	+16	+11	+16	+10	-0	+2	+1.0%	+0.6%	+1.0%	+0.4%	-0.0%	+0.1%
H&SC, Other	4	-3	-0	+0	-4	-1	-1	-0.4%	-0.0%	+0.1%	-0.5%	-0.1%	-0.1%
Management & Administrative	63	+6	+3	+4	-9	-7	-1	+0.1%	+0.1%	+0.1%	-0.1%	-0.1%	-0.0%
Management (VIII & above)	3	+0	-1	+1				+0.2%	-0.2%	+0.5%	+0.0%	+0.0%	+0.0%
Administrative/ Supervisory (V to VII)	22	+4	-0	-5	-5	-3	-1	+0.2%	-0.0%	-0.2%	-0.2%	-0.1%	-0.1%
Clerical (III & IV)	38	+2	+4	+8	-4	-5	+1	+0.1%	+0.1%	+0.3%	-0.1%	-0.1%	+0.0%
General Support	43	-7	-10	-6	+1	-2	+1	-0.1%	-0.2%	-0.1%	+0.0%	-0.0%	+0.0%
Support	37	-7	-11	-7	+1	-2	+1	-0.2%	-0.2%	-0.2%	+0.0%	-0.0%	+0.0%
Maintenance/ Technical	6	+1	+1	+1	+0			+0.1%	+0.2%	+0.2%	+0.0%	+0.0%	+0.0%
Patient & Client Care	61	+16	+17	+11	+10	+7	+2	+0.4%	+0.4%	+0.2%	+0.2%	+0.1%	+0.0%
Health Care Assistants	55	+15	+15	+11	+10	+7	+2	+0.4%	+0.4%	+0.2%	+0.2%	+0.1%	+0.0%
Care, other	6	+1	+2	+0	+0	-0	-0	+0.3%	+0.7%	+0.1%	+0.1%	-0.0%	-0.0%

Source: Health Service Personnel Census

Primary Care

Jul 2021 (Dec 2016 figure: 768)	WTE Jul 2021	WTE change since Dec 16	WTE change since Dec 17	WTE change since Dec 18	WTE change since Dec 19	WTE change since Dec 20	WTE change since Jun 21	% change since Dec 16	% change since Dec 17	% change since Dec 18	% change since Dec 19	% change since Dec 20	% change since Jun 21
Overall	857	+89	+63	+24	+93	+46	-3	+11.6%	+7.9%	+2.9%	+12.1%	+5.7%	-0.4%
Medical & Dental	81	-9	-9	-12	-7	+1	-1	-0.1%	-0.1%	-0.1%	-0.1%	+0.0%	-0.0%
Consultants	8	-1	-1	-1	-1			-0.1%	-0.1%	-0.1%	-0.1%	+0.0%	+0.0%
Registrars	24	-4	-2	-5	-2	-0	+2	-0.2%	-0.1%	-0.2%	-0.1%	-0.0%	+0.1%
SHO/ Interns	7							+0.0%	+0.0%	+0.0%	+0.0%	+0.0%	+0.0%
Medical/ Dental, other	42	-4	-6	-5	-4	+1	-3	-0.1%	-0.1%	-0.1%	-0.1%	+0.0%	-0.1%
Nursing & Midwifery	209	+11	-0	+1	-1	+1	-5	+0.1%	-0.0%	+0.0%	-0.0%	+0.0%	-0.0%
Nurse/ Midwife Manager	21	+3	+1	-1	-1	-2	-2	+0.2%	+0.1%	-0.1%	-0.1%	-0.1%	-0.1%
Nurse/ Midwife Specialist & AN/MP	4	+0	-2	-2	-2	+1	+0	+0.1%	-0.3%	-0.3%	-0.3%	+0.2%	+0.1%
Staff Nurse/ Staff Midwife	66	+22	+25	+16	+15	+11	+1	+0.5%	+0.6%	+0.3%	+0.3%	+0.2%	+0.0%
Public Health Nurse	113	-4	-10	-6	-4	+1	+6	-0.0%	-0.1%	-0.0%	-0.0%	+0.0%	+0.1%
Nursing/ Midwifery Student	4	-11	-15	-7	-10	-11	-10	-0.7%	-0.8%	-0.6%	-0.7%	-0.7%	-0.7%
Nursing/ Midwifery other	1	+1	+1	+1	+1			-1.0%	-1.0%	-1.0%	-1.0%	+0.0%	+0.0%
Health & Social Care Professionals	166	-6	-17	-25	+13	+4	-1	-0.0%	-0.1%	-0.1%	+0.1%	+0.0%	-0.0%
Therapy Professions	111	-4	-9	-15	+8	+1	-1	-0.0%	-0.1%	-0.1%	+0.1%	+0.0%	-0.0%
Health Science/ Diagnostics	19	-2	-4	-5	+1	-1	-0	-0.1%	-0.2%	-0.2%	+0.1%	-0.0%	-0.0%
Social Care	3	+1	+1	-0	-1	+0		+1.0%	+1.0%	-0.0%	-0.2%	+0.1%	+0.0%
Social Workers	5	-1	-2	-1	+1	+1	-0	-0.1%	-0.3%	-0.2%	+0.1%	+0.2%	-0.1%
Psychologists	21	-2	-4	-6	+2	+1	+1	-0.1%	-0.2%	-0.2%	+0.1%	+0.0%	+0.0%
Pharmacy	2	+2	+1	+1	+1	+1		-1.0%	+1.0%	+1.0%	+1.5%	+1.0%	+0.0%
H&SC, Other	5	-0	+0	+1	+1	+1		-0.0%	+0.0%	+0.3%	+0.3%	+0.3%	+0.0%
Management & Administrative	250	+53	+47	+22	+40	+27	-0	+0.3%	+0.2%	+0.1%	+0.2%	+0.1%	-0.0%
Management (VIII & above)	32	+9	+2	-5	+2	+2	+0	+0.4%	+0.1%	-0.1%	+0.1%	+0.1%	+0.0%
Administrative/ Supervisory (V to VII)	78	+28	+20	+3	+10	+13	+1	+0.6%	+0.3%	+0.0%	+0.1%	+0.2%	+0.0%
Clerical (III & IV)	140	+16	+25	+24	+28	+12	-1	+0.1%	+0.2%	+0.2%	+0.2%	+0.1%	-0.0%
General Support	27	-4	-4	-0	+1	-1	+0	-0.1%	-0.1%	-0.0%	+0.1%	-0.0%	+0.0%
Support	25	-4	-4	-0	+1	-1	+0	-0.1%	-0.1%	-0.0%	+0.1%	-0.0%	+0.0%
Maintenance/ Technical	2							+0.0%	+0.0%	+0.0%	+0.0%	+0.0%	+0.0%
Patient & Client Care	124	+44	+46	+38	+46	+14	+4	+0.6%	+0.6%	+0.4%	+0.6%	+0.1%	+0.0%
Health Care Assistants	46	+44	+44	+37	+39	+8	-1	+21.7%	+21.7%	+4.1%	+6.2%	+0.2%	-0.0%
Care, other	78	+1	+3	+1	+7	+7	+5	+0.0%	+0.0%	+0.0%	+0.1%	+0.1%	+0.1%

Source: Health Service Personnel Census

Disabilities

Jul 2021 (Dec 2016 figure: 1,816)	WTE Jul 2021	WTE change since Dec 16	WTE change since Dec 17	WTE change since Dec 18	WTE change since Dec 19	WTE change since Dec 20	WTE change since Jun 21	% change since Dec 16	% change since Dec 17	% change since Dec 18	% change since Dec 19	% change since Dec 20	% change since Jun 21
Overall	1,230	-586	+60	+75	+32	+14	+1	-32.3%	+5.2%	+6.5%	+2.7%	+1.1%	+0.1%
Medical & Dental	5	-1	-1	+1	+1	+1	+1	-0.2%	-0.2%	+0.3%	+0.3%	+0.3%	+0.1%
Consultants	3	+0	+0	+1				+0.1%	+0.1%	+0.5%	+0.0%	+0.0%	+0.0%
Registrars	0	-1	-2	+0	+0	+0	-0	-0.6%	-0.8%	-1.0%	-1.0%	-1.0%	-0.5%
SHO/ Interns	1	-0	+1	+1	+1	+1	+1	-0.0%	-1.0%	-1.0%	-1.0%	-1.0%	-1.0%
Medical/ Dental, other	1	-1	-1	-1				-0.5%	-0.5%	-0.5%	+0.0%	+0.0%	+0.0%
Nursing & Midwifery	182	-142	-24	-12	-8	-3	-2	-0.4%	-0.1%	-0.1%	-0.0%	-0.0%	-0.0%
Nurse/ Midwife Manager	45	-32	-1	+6	+2	+2	-0	-0.4%	-0.0%	+0.1%	+0.0%	+0.0%	-0.0%
Nurse/ Midwife Specialist & AN/MP		-2						-1.0%	-1.0%	-1.0%	-1.0%	-1.0%	-1.0%
Staff Nurse/ Staff Midwife	137	-107	-24	-18	-10	-5	-2	-0.4%	-0.1%	-0.1%	-0.1%	-0.0%	-0.0%
Public Health Nurse		-1						-1.0%	-1.0%	-1.0%	-1.0%	-1.0%	-1.0%
Health & Social Care Professionals	443	-156	+59	+68	+41	+15	+5	-0.3%	+0.2%	+0.2%	+0.1%	+0.0%	+0.0%
Therapy Professions	44	-8	+9	+3	+2	+1	+2	-0.2%	+0.3%	+0.1%	+0.1%	+0.0%	+0.0%
Social Care	373	-134	+51	+64	+39	+12	+2	-0.3%	+0.2%	+0.2%	+0.1%	+0.0%	+0.0%
Social Workers	11	-5	+0	-1	-0	+1	+1	-0.3%	+0.0%	-0.1%	-0.0%	+0.1%	+0.1%
Psychologists	14	-9	-0	+1	+0	+0	+0	-0.4%	-0.0%	+0.1%	+0.0%	+0.0%	+0.0%
H&SC, Other	1	+1	-2	+0	-1		+0	+1.6%	-0.6%	+0.4%	-0.3%	+0.0%	+0.1%
Management & Administrative	142	-19	+5	+3	+4	+2	-1	-0.1%	+0.0%	+0.0%	+0.0%	+0.0%	-0.0%
Management (VIII & above)	31	-6	-3	-2	+0	+1	+0	-0.2%	-0.1%	-0.0%	+0.0%	+0.0%	+0.0%
Administrative/ Supervisory (V to VII)	56	+6	+8	+7	+3	+2	-2	+0.1%	+0.2%	+0.1%	+0.1%	+0.0%	-0.0%
Clerical (III & IV)	54	-19	-1	-2	+1	-1	+1	-0.3%	-0.0%	-0.0%	+0.0%	-0.0%	+0.0%
General Support	29	-65	-3	-4	-1	-2	+1	-0.7%	-0.1%	-0.1%	-0.0%	-0.1%	+0.1%
Support	23	-57	-5	-6	+0	-3	+1	-0.7%	-0.2%	-0.2%	+0.0%	-0.1%	+0.1%
Maintenance/ Technical	6	-9	+2	+2	-1	+1		-0.6%	+0.5%	+0.5%	-0.1%	+0.2%	+0.0%
Patient & Client Care	428	-202	+25	+19	-5	-0	-3	-0.3%	+0.1%	+0.0%	-0.0%	-0.0%	-0.0%
Health Care Assistants	187	-110	+15	+12	+0	+3	-5	-0.4%	+0.1%	+0.1%	+0.0%	+0.0%	-0.0%
Care, other	241	-92	+10	+7	-5	-3	+1	-0.3%	+0.0%	+0.0%	-0.0%	-0.0%	+0.0%

Source: Health Service Personnel Census

Older People

Jul 2021 (Dec 2016 figure: 797)	WTE Jul 2021	WTE change since Dec 16	WTE change since Dec 17	WTE change since Dec 18	WTE change since Dec 19	WTE change since Dec 20	WTE change since Jun 21	% change since Dec 16	% change since Dec 17	% change since Dec 18	% change since Dec 19	% change since Dec 20	% change since Jun 21
Overall	796	-1	-33	-12	-28	-8	-9	-0.2%	-4.0%	-1.5%	-3.4%	-1.0%	-1.1%
Medical & Dental	4	-1	-1	-2	-1	-0		-0.2%	-0.2%	-0.4%	-0.2%	-0.0%	+0.0%
Registrars	2	+1	+1		+1	+1		+1.0%	+1.0%	+0.0%	+1.0%	+1.0%	+0.0%
Medical/ Dental, other	2	-2	-2	-2	-2	-1	-0	-0.6%	-0.6%	-0.6%	-0.6%	-0.4%	-0.0%
Nursing & Midwifery	259	-12	-11	-8	-14	-10	-0	-0.0%	-0.0%	-0.0%	-0.1%	-0.0%	-0.0%
Nurse/ Midwife Manager	63	-2	-2	-4	-5	+1	+3	-0.0%	-0.0%	-0.1%	-0.1%	+0.0%	+0.1%
Nurse/ Midwife Specialist & AN/MP	1	+1	+1					-1.0%	-1.0%	+0.0%	+0.0%	+0.0%	+0.0%
Staff Nurse/ Staff Midwife	195	-11	-11	-4	-9	-11	-4	-0.1%	-0.1%	-0.0%	-0.0%	-0.1%	-0.0%
Health & Social Care Professionals	63	+6	+6	+5	-3	+3	-0	+0.1%	+0.1%	+0.1%	-0.0%	+0.0%	-0.0%
Therapy Professions	49	+7	+6	+4	-1	+3	+0	+0.2%	+0.1%	+0.1%	-0.0%	+0.1%	+0.0%
Social Workers	9	-2	-2	-0	-2	-1	+0	-0.2%	-0.2%	-0.0%	-0.2%	-0.1%	+0.0%
Psychologists	1		+1		-2	-1	-2	+0.0%	-1.0%	+0.0%	-0.8%	-0.5%	-0.8%
Pharmacy	4	+1	+2	+2	+1	+1	+1	+0.5%	+0.6%	+0.6%	+0.5%	+0.5%	+0.3%
Management & Administrative	59	+11	+7	+8	+3	+2	+0	+0.2%	+0.1%	+0.1%	+0.1%	+0.0%	+0.0%
Management (VIII & above)	6	+3	+5	+4	+2	+1	+1	+0.9%	+4.7%	+1.8%	+0.4%	+0.1%	+0.2%
Administrative/ Supervisory (V to VII)	22	+2	+1	+1	-0	+3	-0	+0.1%	+0.0%	+0.1%	-0.0%	+0.1%	-0.0%
Clerical (III & IV)	31	+6	+1	+3	+2	-2	-0	+0.2%	+0.0%	+0.1%	+0.1%	-0.1%	-0.0%
General Support	113	-4	-8	-0	-3	+2	-2	-0.0%	-0.1%	-0.0%	-0.0%	+0.0%	-0.0%
Support	105	-2	-6	-0	-3	+3	-1	-0.0%	-0.1%	-0.0%	-0.0%	+0.0%	-0.0%
Maintenance/ Technical	8	-2	-2	-0	+0	-1	-1	-0.2%	-0.2%	-0.0%	+0.0%	-0.1%	-0.1%
Patient & Client Care	297	-2	-25	-15	-11	-5	-6	-0.0%	-0.1%	-0.0%	-0.0%	-0.0%	-0.0%
Health Care Assistants	292	+1	-22	-12	-8	-4	-6	+0.0%	-0.1%	-0.0%	-0.0%	-0.0%	-0.0%
Care, other	5	-3	-3	-3	-3	-1	-0	-0.4%	-0.4%	-0.4%	-0.4%	-0.1%	-0.0%

Source: Health Service Personnel Census