

CHO 6 Employment Report: June 2020

Employment by Staff Group

Jun 2020 (Dec 2019 figure: 3,378)	WTE May 2020	WTE Jun 2020	WTE change since May 20	% change since May 20	WTE change since Dec 19	WTE change since Jun 19
Overall	3,360	3,387	+27	+0.8%	+9	+9
Consultants	50	49	-1	-1.6%	+1	+3
Registrars	42	43	+1	+3.3%	-5	-1
SHO/ Interns	19	19			+3	-5
Medical/ Dental, other	48	49	+1	+2.7%	-2	-2
Medical & Dental	158	160	+2	+1.2%	-4	-5
Nurse/ Midwife Manager	210	211	+1	+0.6%	+1	-2
Nurse/ Midwife Specialist & AN/MP	22	22	-1	-2.8%	+1	+3
Staff Nurse/ Staff Midwife	538	545	+7	+1.3%	+4	-2
Public Health Nurse	113	114	+1	+0.8%	-3	-3
<i>Post-registration Nurse/ Midwife Student</i>	13	5	-8	-61.5%	-9	-8
Nursing/ Midwifery Student	13	5	-8	-61.5%	-9	+1
Nursing/ Midwifery other	3	3			+1	+1
Nursing & Midwifery	899	900	+1	+0.1%	-5	-1
Therapy Professions	234	235	+1	+0.4%	-3	-5
Health Science/ Diagnostics	18	19	+1	+7.0%	+1	+1
Social Care	338	347	+9	+2.7%	-17	-14
Social Workers	58	57	-1	-1.8%	-0	-3
Psychologists	59	57	-2	-3.4%	+0	+1
Pharmacy	4	4			+0	+0
H&SC, Other	9	10	+0	+4.4%	-5	-0
Health & Social Care Professionals	720	728	+9	+1.2%	-23	-20
Management (VIII & above)	69	69	+0	+0.3%	+1	-0
Administrative/ Supervisory (V to VII)	169	170	+1	+0.3%	-0	+3
Clerical (III & IV)	246	257	+11	+4.4%	+20	+24
Management & Administrative	484	496	+12	+2.4%	+21	+26
Support	205	208	+3	+1.4%	+17	+7
Maintenance/ Technical	24	23	-1	-5.2%	+0	+3
General Support	229	231	+2	+0.7%	+17	+11
Health Care Assistants	554	561	+7	+1.2%	+22	+17
Care, other	315	311	-4	-1.4%	-20	-19
Patient & Client Care	869	871	+2	+0.3%	+3	-3

CHO 6 Employment Report: June 2020

Community Health & Wellbeing

Jun 2020 (figure:)	WTE May 2020	WTE Jun 2020	WTE change since May 20	% change since May 20	WTE change since	WTE change since
Total Community Health & Wellbeing	8	8	-0	-0.1%	+8	+8
Management (VIII & above)	1	1			+1	+1
Administrative/ Supervisory (V to VII)	4	4			+4	+4
Clerical (III & IV)	1	1			+1	+1
Management & Administrative	6	6			+6	+6
Care, other	3	3	-0	-0.4%	+3	+3
Patient & Client Care	3	3	-0	-0.4%	+3	+3

Mental Health

Jun 2020 (Dec 2019 figure: 593)	WTE May 2020	WTE Jun 2020	WTE change since May 20	% change since May 20	WTE change since Dec 19	WTE change since Jun 19
Total Mental Health	599	596	-3	-0.5%	+3	+22
Consultants	39	38	-1	-2.0%	+2	+4
Registrars	17	18	+1	+4.4%	-4	+2
SHO/ Interns	12	12			+3	-5
Medical & Dental	68	68	-0	-0.0%	+1	+1
Nurse/ Midwife Manager	75	76	+1	+1.3%	-1	-3
Nurse/ Midwife Specialist & AN/MP	16	15	-1	-4.0%	+1	+3
Staff Nurse/ Staff Midwife	150	149	-0	-0.2%	+10	+9
Nursing/ Midwifery other	2	2				+0
Nursing & Midwifery	242	242			+11	+9
Therapy Professions	40	39	-1	-2.7%	-4	+1
Social Care	26	26	-0	-0.5%	+0	-4
Social Workers	33	32	-1	-2.3%	+2	+4
Psychologists	24	22	-2	-6.7%	-0	+7
H&SC, Other	5	5	+0	+1.8%	-4	
Health & Social Care Professionals	128	124	-3	-2.7%	-5	+8
Management (VIII & above)	3	3				+1
Administrative/ Supervisory (V to VII)	25	25	-0	-0.5%	-2	-1
Clerical (III & IV)	40	41	+1	+1.6%	-2	+10
Management & Administrative	68	69	+1	+0.8%	-3	+10
Support	36	36	+1	+2.0%	-0	-4
Maintenance/ Technical	5	4	-1	-25.2%	-2	-2
General Support	41	40	-1	-1.5%	-2	-6
Health Care Assistants	46	47	+1	+1.8%	+2	+0
Care, other	5	5	-0	-1.8%	-1	-1
Patient & Client Care	51	52	+1	+1.4%	+1	-0

Primary Care

Jun 2020 (Dec 2019 figure: 765)	WTE May 2020	WTE Jun 2020	WTE change since May 20	% change since May 20	WTE change since Dec 19	WTE change since Jun 19
Total Primary Care	756	771	+15	+2.0%	+6	-41
Consultants	8	8			-1	-1
Registrars	24	24	+1	+2.5%	-2	-3
SHO/ Interns	7	7				
Medical/ Dental, other	43	44	+1	+3.0%	-2	-2
Medical & Dental	81	83	+2	+2.3%	-5	-6
Nurse/ Midwife Manager	25	25	-0	-0.8%	+2	+3
Nurse/ Midwife Specialist & AN/MP	6	6			-0	-0
Staff Nurse/ Staff Midwife	44	52	+8	+17.7%	-0	-5
Public Health Nurse	113	114	+1	+0.8%	-3	-3
<i>Post-registration Nurse/ Midwife Student</i>	13	5	-8	-61.5%	-9	-8
Nursing/ Midwifery Student	13	5	-8	-61.5%	-9	+1
Nursing/ Midwifery other	1	1			+1	+1
Nursing & Midwifery	201	202	+0	+0.2%	-8	-2
Therapy Professions	108	111	+3	+2.5%	+7	-11
Health Science/ Diagnostics	18	19	+1	+7.0%	+1	+1
Social Care	3	3	+0	+12.2%	-1	+0
Social Workers	5	4	-1	-16.9%	-0	-2
Psychologists	18	18	-0	-1.6%	-1	-10
Pharmacy	1	1			+0	
H&SC, Other	3	3	+0	+7.8%	-0	-0
Health & Social Care Professionals	157	161	+3	+2.2%	+7	-22
Management (VIII & above)	30	30	+0	+0.2%	+0	-5
Administrative/ Supervisory (V to VII)	64	64	+1	+0.9%	-3	-8
Clerical (III & IV)	113	122	+9	+8.0%	+11	+6
Management & Administrative	207	217	+10	+4.7%	+7	-7
Support	27	27	+0	+0.9%	+3	+3
Maintenance/ Technical	2	2				
General Support	29	29	+0	+0.9%	+3	+3
Health Care Assistants	10	11	+1	+7.7%	+4	+1
Care, other	70	69	-2	-2.2%	-2	-7
Patient & Client Care	80	80	-1	-1.0%	+2	-6

Social Care

Jun 2020 (Dec 2019 figure: 2,021)	WTE May 2020	WTE Jun 2020	WTE change since May 20	% change since May 20	WTE change since Dec 19	WTE change since Jun 19
Total Social Care	1,997	2,012	+15	+0.7%	-9	+19
Consultants	3	3				
Registrars	1	1				
Medical/ Dental, other	5	5				
Medical & Dental	9	9				
Nurse/ Midwife Manager	110	111	+1	+0.5%	-1	-1
Nurse/ Midwife Specialist & AN/MP	1	1				
Staff Nurse/ Staff Midwife	345	344	-0	-0.1%	-7	-6
Nursing & Midwifery	456	456	+0	+0.0%	-8	-7
Therapy Professions	85	85	-1	-0.8%	-7	+5
Social Care	309	318	+9	+2.9%	-17	-10
Social Workers	20	20	+1	+3.1%	-2	-5
Psychologists	17	17	-0	-0.9%	+1	+4
Pharmacy	3	3			-0	+0
H&SC, Other	1	1	+0	+5.5%	-1	+0
Health & Social Care Professionals	435	443	+9	+2.0%	-25	-7
Management (VIII & above)	34	35	+0	+0.3%	-0	+3
Administrative/ Supervisory (V to VII)	76	76	+0	+0.1%	+1	+7
Clerical (III & IV)	92	93	+1	+1.2%	+10	+7
Management & Administrative	203	204	+1	+0.7%	+11	+18
Support	143	145	+2	+1.4%	+14	+9
Maintenance/ Technical	17	17	+0	+0.5%	+2	+5
General Support	160	162	+2	+1.3%	+16	+14
Health Care Assistants	498	503	+5	+1.0%	+16	+15
Care, other	237	234	-3	-1.1%	-20	-14
Patient & Client Care	734	737	+2	+0.3%	-3	+1

CHO 6 Employment Report: June 2020

Disabilities

Jun 2020 (Dec 2019 figure: 1,198)	WTE May 2020	WTE Jun 2020	WTE change since May 20	% change since May 20	WTE change since Dec 19	WTE change since Jun 19
Total Disabilities	1,148	1,163	+15	+1.3%	-35	-8
Consultants	3	3				
Medical/ Dental, other	1	1				
Medical & Dental	4	4				
Nurse/ Midwife Manager	44	43	-0	-0.2%	-0	+1
Staff Nurse/ Staff Midwife	138	140	+2	+1.1%	-7	-12
Nursing & Midwifery	182	183	+1	+0.8%	-7	-11
Therapy Professions	38	39	+1	+2.2%	-2	+7
Social Care	309	318	+9	+2.9%	-17	-10
Social Workers	9	10	+1	+8.3%	-2	-5
Psychologists	15	15	-0	-1.7%	+1	+2
H&SC, Other	1	1	+0	+5.5%	-1	+0
Health & Social Care Professionals	372	382	+10	+2.8%	-20	-6
Management (VIII & above)	30	31	+0	+0.4%	-0	+1
Administrative/ Supervisory (V to VII)	56	56	+0	+0.2%	+3	+10
Clerical (III & IV)	61	62	+1	+1.7%	+8	+6
Management & Administrative	147	148	+1	+0.9%	+11	+17
Support	37	39	+2	+5.8%	+17	+10
Maintenance/ Technical	8	8	+0	+1.1%	+1	+4
General Support	45	47	+2	+5.0%	+18	+14
Health Care Assistants	166	169	+2	+1.4%	-18	-9
Care, other	232	229	-3	-1.3%	-18	-12
Patient & Client Care	398	397	-1	-0.2%	-36	-21

Older People

Jun 2020 (Dec 2019 figure: 823)	WTE May 2020	WTE Jun 2020	WTE change since May 20	% change since May 20	WTE change since Dec 19	WTE change since Jun 19
Total Older People	849	849	+0	+0.0%	+26	+27
Registrars	1	1				
Medical/ Dental, other	4	4				
Medical & Dental	5	5				
Nurse/ Midwife Manager	67	67	+1	+0.9%	-1	-2
Nurse/ Midwife Specialist & AN/MP	1	1				
Staff Nurse/ Staff Midwife	206	204	-2	-0.9%	+1	+6
Nursing & Midwifery	274	273	-1	-0.5%	-0	+4
Health & Social Care Professionals	63	61	-2	-2.5%	-5	-1
Management (VIII & above)	4	4				+2
Administrative/ Supervisory (V to VII)	20	20	-0	-0.1%	-2	-3
Clerical (III & IV)	31	31	+0	+0.3%	+2	+2
Management & Administrative	56	56	+0	+0.1%	+0	+1
Support	106	106	-0	-0.2%	-3	-1
Maintenance/ Technical	9	9			+1	+1
General Support	115	115	-0	-0.2%	-2	+0
Health Care Assistants	331	334	+3	+0.9%	+34	+24
Care, other	5	6	+0	+4.1%	-2	-2
Patient & Client Care	337	340	+3	+0.9%	+33	+22

CHO 6 Employment by Administration (HSE / S38): June 2020

Jun 2020 (Dec 2019 figure: 3,378)	WTE May 2020	WTE Jun 2020	WTE change since May 20	% change since May 20	WTE change since Dec 19	WTE change since Jun 19
Overall	3,360	3,387	+27	+0.8%	+9	+9
HSE	1,636	1,655	+18	+1.1%	+49	+37
Section 38 Voluntary Agencies	1,724	1,732	+8	+0.5%	-41	-29

HSE

Jun 2020 (Dec 2019 figure: 1,605)	WTE May 2020	WTE Jun 2020	WTE change since May 20	% change since May 20	WTE change since Dec 19	WTE change since Jun 19
Overall	1,636	1,655	+18	+1.1%	+49	+37
Consultants	25	25	-0	-0.0%	+2	+5
Registrars	26	27	+1	+0.0%	-3	-3
SHO/ Interns	5	5		+0.0%	+1	-1
Medical/ Dental, other	46	47	+1	+0.0%	-2	-2
Medical & Dental	102	104	+2	+1.8%	-2	-1
Nurse/ Midwife Manager	137	137	-0	-0.0%	-1	-2
Nurse/ Midwife Specialist & AN/MP	15	15		+0.0%	+0	+2
Staff Nurse/ Staff Midwife	289	298	+8	+0.0%	+12	+7
Public Health Nurse	113	114	+1	+0.0%	-3	-3
<i>Post-registration Nurse/ Midwife Student</i>	13	5	-8	-0.6%	-6	+1
Nursing/ Midwifery Student	13	5	-8	-0.6%	-9	+1
Nursing/ Midwifery other	3	3		+0.0%	+1	+1
Nursing & Midwifery	570	571	+1	+0.2%	+0	+7
Therapy Professions	159	162	+3	+0.0%	+4	+1
Health Science/ Diagnostics	17	18	+1	+0.1%	+1	+1
Social Care	10	11	+0	+0.0%	-0	+1
Social Workers	27	26	-1	-0.1%	-0	-3
Psychologists	36	36	-0	-0.0%	-2	-1
Pharmacy	2	2		+0.0%	+0	
H&SC, Other	8	8	+0	+0.1%	-0	-0
Health & Social Care Professionals	259	262	+3	+1.2%	+2	-1
Management (VIII & above)	37	37	+0	+0.0%	+2	+2
Administrative/ Supervisory (V to VII)	91	91	+1	+0.0%	+1	+3
Clerical (III & IV)	138	147	+8	+0.1%	+12	+10
Management & Administrative	266	275	+9	+3.3%	+15	+14
Support	82	84	+1	+0.0%	-1	-4
Maintenance/ Technical	2	2		+0.0%	-1	-2
General Support	84	86	+1	+1.5%	-2	-6
Health Care Assistants	300	304	+4	+0.0%	+38	+31
Care, other	54	53	-2	-0.0%	-2	-7
Patient & Client Care	355	357	+2	+0.6%	+36	+23

Section 38 Voluntary Agencies

Jun 2020 (Dec 2019 figure: 1,773)	WTE May 2020	WTE Jun 2020	WTE change since May 20	% change since May 20	WTE change since Dec 19	WTE change since Jun 19
Overall	1,724	1,732	+8	+0.5%	-41	-29
Consultants	25	24	-1	-0.0%	-1	-2
Registrars	16	16	+1	+0.0%	-2	+2
SHO/ Interns	14	14		+0.0%	+2	-4
Medical/ Dental, other	2	2		+0.0%		
Medical & Dental	56	56	-0	-0.0%	-2	-4
Nurse/ Midwife Manager	73	75	+2	+0.0%	+2	+0
Nurse/ Midwife Specialist & AN/MP	7	6	-1	-0.1%	+1	+1
Staff Nurse/ Staff Midwife	249	248	-1	-0.0%	-8	-9
Nursing & Midwifery	329	329	-0	-0.1%	-5	-8
Therapy Professions	75	73	-2	-0.0%	-7	-6
Health Science/ Diagnostics	2	2		+0.0%		
Social Care	328	336	+9	+0.0%	-17	-14
Social Workers	31	31	+0	+0.0%	+0	-1
Psychologists	22	21	-2	-0.1%	+2	+2
Pharmacy	2	2		+0.0%	-0	+0
H&SC, Other	1	1		+0.0%	-4	
Health & Social Care Professionals	461	466	+6	+1.2%	-26	-19
Management (VIII & above)	32	32	+0	+0.0%	-1	-2
Administrative/ Supervisory (V to VII)	78	78	+0	+0.0%	-1	-0
Clerical (III & IV)	108	110	+3	+0.0%	+8	+14
Management & Administrative	218	221	+3	+1.2%	+6	+11
Support	123	125	+2	+0.0%	+19	+11
Maintenance/ Technical	22	21	-1	-0.1%	+1	+5
General Support	145	146	+0	+0.3%	+20	+16
Health Care Assistants	254	257	+3	+0.0%	-15	-14
Care, other	260	258	-3	-0.0%	-18	-12
Patient & Client Care	514	514	+0	+0.0%	-33	-26

CHO 6 Employment by S38 Agency: June 2020

Children's Sunshine Home

Jun 2020 (Dec 2019 figure: 58)	WTE May 2020	WTE Jun 2020	WTE change since May 20	% change since May 20	WTE change since Dec 19	WTE change since Jun 19
Overall	57	57	+0	+0.0%	-2	-2
Nurse/ Midwife Manager	8	8		+0.0%	+1	
Staff Nurse/ Staff Midwife	19	19		+0.0%	-2	-1
Nursing & Midwifery	27	27			-1	-1
Therapy Professions	2	2		+0.0%		+0
Social Workers	1	1		+0.0%		
Health & Social Care Professionals	3	3				+0
Management (VIII & above)	2	2		+0.0%	-1	-1
Administrative/ Supervisory (V to VII)	4	4		+0.0%		+1
Clerical (III & IV)	1	1		+0.0%		+1
Management & Administrative	7	7			-1	+1
Support	3	3		+0.0%		-1
General Support	3	3				-1
Health Care Assistants	14	14		+0.0%	-0	+1
Care, other	3	3		+0.0%	-0	-1
Patient & Client Care	17	17			-0	-1

Dublin Dental Hospital

Jun 2020 (Dec 2019 figure: 91)	WTE May 2020	WTE Jun 2020	WTE change since May 20	% change since May 20	WTE change since Dec 19	WTE change since Jun 19
Overall	93	93	+0	+0.0%	+2	+4
Consultants	5	5		+0.0%	-1	-1
Registrars	1	1		+0.0%		
SHO/ Interns	7	7		+0.0%		
Medical & Dental	12	12			-1	-1
Nurse/ Midwife Manager	2	2		+0.0%		
Staff Nurse/ Staff Midwife	4	4		+0.0%		
Nursing & Midwifery	6	6				
Health Science/ Diagnostics	2	2		+0.0%		
H&SC, Other	1	1		+0.0%		
Health & Social Care Professionals	2	2				
Management (VIII & above)	4	4		+0.0%		
Administrative/ Supervisory (V to VII)	11	11		+0.0%		
Clerical (III & IV)	15	15		+0.0%		+2
Management & Administrative	30	30				+2
Support	13	13		+0.0%	+3	+3
Maintenance/ Technical	2	2		+0.0%		
General Support	15	15			+3	+3
Health Care Assistants	1	1		+0.0%		
Care, other	27	27		+0.0%		
Patient & Client Care	27	27				

Leopardstown Park Hospital

Jun 2020 (Dec 2019 figure: 211)	WTE May 2020	WTE Jun 2020	WTE change since May 20	% change since May 20	WTE change since Dec 19	WTE change since Jun 19
Overall	205	205	+1	+0.3%	-5	-4
Medical/ Dental, other	1	1		+0.0%		
Medical & Dental	1	1				
Nurse/ Midwife Manager	15	16	+2	+0.1%	+1	+0
Staff Nurse/ Staff Midwife	41	40	-1	-0.0%	-2	-1
Nursing & Midwifery	56	57	+1	+1.0%	-1	-1
Therapy Professions	7	7	-0	-0.0%	-0	+0
Social Workers	1	1	-0	-0.1%	-0	-0
Pharmacy	2	2		+0.0%	-0	+0
Health & Social Care Professionals	10	9	-0	-2.4%	-1	+0
Management (VIII & above)	1	1		+0.0%		
Administrative/ Supervisory (V to VII)	7	7		+0.0%		
Clerical (III & IV)	10	10		+0.0%		
Management & Administrative	19	19				
Support	34	34	+0	+0.0%	+1	-0
Maintenance/ Technical	4	4		+0.0%		+1
General Support	38	38	+0	+0.4%	+1	+1
Health Care Assistants	79	79	-0	-0.0%	-3	-3
Care, other	3	3	+0	+0.1%	-2	-2
Patient & Client Care	82	82	+0	+0.1%	-4	-5

Royal Hospital, Donnybrook,
Dublin

Jun 2020 (Dec 2019 figure: 272)	WTE May 2020	WTE Jun 2020	WTE change since May 20	% change since May 20	WTE change since Dec 19	WTE change since Jun 19
Overall	277	277	+0	+0.0%	+5	-3
Registrars	1	1		+0.0%		
Medical/ Dental, other	1	1		+0.0%		
Medical & Dental	2	2				
Nurse/ Midwife Manager	20	19	-1	-0.0%	-1	-1
Staff Nurse/ Staff Midwife	76	76		+0.0%	+2	+2
Nursing & Midwifery	96	95	-1	-1.0%	+1	+1
Therapy Professions	29	29		+0.0%	-2	-3
Social Workers	6	6		+0.0%		-0
Psychologists	1	1		+0.0%		
Health & Social Care Professionals	35	35			-2	-3
Management (VIII & above)				-1.0%		-1
Administrative/ Supervisory (V to VII)	6	6		+0.0%		+0
Clerical (III & IV)	8	8		+0.0%	+1	-0
Management & Administrative	14	14			+1	-1
Support	35	34	-1	-0.0%	-2	-1
Maintenance/ Technical	5	5		+0.0%	+1	+1
General Support	40	39	-1	-2.2%	-1	+0
Health Care Assistants	89	91	+2	+0.0%	+5	-0
Care, other	1	1		+0.0%	+1	+1
Patient & Client Care	90	92	+2	+2.2%	+6	+0

St. John of God (IDS)

Jun 2020 (Dec 2019 figure: 456)	WTE May 2020	WTE Jun 2020	WTE change since May 20	% change since May 20	WTE change since Dec 19	WTE change since Jun 19
Overall	447	444	-3	-0.8%	-13	-7
Consultants	1	1		+0.0%		
Medical & Dental	1	1				
Nurse/ Midwife Manager	8	8	+0	+0.0%	+0	+1
Staff Nurse/ Staff Midwife	46	45	-1	-0.0%	-1	-5
Nursing & Midwifery	54	53	-1	-2.2%	-1	-4
Therapy Professions	11	10	-0	-0.0%	-2	-1
Social Care	150	150	+0	+0.0%	+4	+4
Social Workers	2	3	+1	+0.3%	-1	-2
Psychologists	7	6	-0	-0.0%	+2	+2
Health & Social Care Professionals	169	170	+0	+0.1%	+2	+3
Management (VIII & above)	14	15	+0	+0.0%	-0	-1
Administrative/ Supervisory (V to VII)	27	26	-1	-0.0%	-2	-1
Clerical (III & IV)	18	19	+1	+0.1%	-1	+1
Management & Administrative	59	59	+0	+0.1%	-3	-1
Support	12	12	+0	+0.0%	-0	+1
Maintenance/ Technical	5	5		+0.0%	+0	+1
General Support	17	17	+0	+0.5%	-0	+2
Health Care Assistants	16	16	-0	-0.0%	-3	-2
Care, other	131	129	-2	-0.0%	-7	-5
Patient & Client Care	147	145	-3	-1.7%	-11	-7

St. John of God (MHS)

Jun 2020 (Dec 2019 figure: 235)	WTE May 2020	WTE Jun 2020	WTE change since May 20	% change since May 20	WTE change since Dec 19	WTE change since Jun 19
Overall	233	229	-4	-1.7%	-6	+1
Consultants	19	19	-1	-0.0%	-0	-1
Registrars	14	14	+1	+0.1%	-2	+2
SHO/ Interns	7	7		+0.0%	+2	-4
Medical & Dental	40	40			-1	-3
Nurse/ Midwife Manager	17	18	+1	+0.1%	+1	+2
Nurse/ Midwife Specialist & AN/MP	7	6	-1	-0.1%	+1	+1
Staff Nurse/ Staff Midwife	32	30	-1	-0.0%	-1	+1
Nursing & Midwifery	55	55	-1	-1.5%	+1	+4
Therapy Professions	25	24	-1	-0.0%	-3	-2
Social Care	26	26	-0	-0.0%	+0	-3
Social Workers	20	20	-0	-0.0%	+2	+2
Psychologists	13	12	-2	-0.1%	-1	-1
H&SC, Other	1	1		+0.0%	-4	
Health & Social Care Professionals	85	82	-3	-3.6%	-5	-4
Management (VIII & above)	2	2		+0.0%		
Administrative/ Supervisory (V to VII)	14	14	-0	-0.0%	-1	-2
Clerical (III & IV)	24	25	+1	+0.0%	-0	+6
Management & Administrative	41	42	+1	+2.9%	-1	+4
Support	7	7	+0	+0.0%	+0	-1
Maintenance/ Technical	3	2	-1	-0.4%	-1	-1
General Support	10	9	-1	-12.7%	-1	-2
Care, other	2	2	-0	-0.0%	+0	
Patient & Client Care	2	2	-0	-1.1%	+0	

Sunbeam House Services

Jun 2020 (Dec 2019 figure: 449)	WTE May 2020	WTE Jun 2020	WTE change since May 20	% change since May 20	WTE change since Dec 19	WTE change since Jun 19
Overall	413	428	+15	+3.6%	-21	-16
Nurse/ Midwife Manager	3	3		+0.0%	-1	-2
Staff Nurse/ Staff Midwife	30	32	+2	+0.1%	-4	-6
Nursing & Midwifery	33	35	+2	+6.3%	-5	-8
Therapy Professions	2	1	-0	-0.2%	+0	-0
Social Care	152	161	+9	+0.1%	-21	-15
Social Workers	2	2	+0	+0.1%	-0	-0
Psychologists	2	2		+0.0%	+1	+1
H&SC, Other				-1.0%	-1	
Health & Social Care Professionals	157	166	+9	+5.5%	-20	-15
Management (VIII & above)	9	9		+0.0%		+1
Administrative/ Supervisory (V to VII)	10	11	+1	+0.1%	+2	+2
Clerical (III & IV)	31	31	+0	+0.0%	+8	+3
Management & Administrative	49	51	+1	+2.9%	+10	+6
Support	20	23	+2	+0.1%	+18	+11
Maintenance/ Technical	3	3	+0	+0.0%	+1	+3
General Support	23	26	+2	+10.0%	+19	+14
Health Care Assistants	56	57	+1	+0.0%	-14	-10
Care, other	94	93	-1	-0.0%	-10	-4
Patient & Client Care	150	150	+1	+0.3%	-24	-14

CHO 6 Employment by Grade Group & Staff Category: June 2020

Jun 2020 (Dec 2019 figure: 3,378)	WTE May 2020	WTE Jun 2020	WTE change since May 20	% change since May 20	WTE change since Dec 19	WTE change since Jun 19
Overall	3,360	3,387	+27	+0.8%	+9	+9
Consultant Dentistry	6	6	-0	-0.0%	-1	-1
Consultant Medicine	1	1				-0
Consultant Psychiatry	42	41	-1	-1.9%	+2	+4
Consultant Radiology	1	1				
Consultants	50	49	-1	-1.6%	+1	+3
Registrar	35	36	+1	+1.7%	-5	-1
Senior Registrar	6	7	+1	+12.7%	-1	+0
Specialist Registrar	1	1				
Registrars	42	43	+1	+3.3%	-5	-1
Senior House Officer	19	19			+3	-5
SHO/ Interns	19	19			+3	-5
Dentists	25	26	+1	+3.1%	-1	-0
Other Medical	23	23	+0	+2.2%	-2	-1
Medical/ Dental, other	48	49	+1	+2.7%	-2	-2
Medical & Dental	158	160	+2	+1.2%	-6	-5
Clinical Nurse/ Midwife Manager	161	160	-0	-0.1%	-1	-3
Director Nursing/Midwifery, Assistant	36	37	+1	+2.2%	+2	+2
Director of Nursing/Midwifery	13	14	+1	+4.9%	-1	-1
Nurse/ Midwife Manager	210	211	+1	+0.6%	+1	-2
Advanced Nurse/ Midwife Practitioner	3	3			+2	+2
Clinical Nurse/ Midwife Specialist	20	19	-1	-3.1%	-1	+1
Nurse/ Midwife Specialist & AN/MP	22	22	-1	-2.8%	+1	+3
Staff Nurse [Intellectual Disability]	48	50	+2	+3.2%	-0	-2
Staff Nurse [Psychiatric]	119	121	+2	+1.7%	-12	+2
Staff Nurses [General/ Children's]	372	375	+4	+1.0%	+16	-3
Staff Nurse/ Staff Midwife	538	545	+7	+1.3%	+4	-2
Public Health Nurse	113	114	+1	+0.8%	-3	-3
Post-registration Nurse/ Midwife Student	13	5	-8	-61.5%	-9	+1
Nursing/ Midwifery Student	13	5	-8	-61.5%	-9	+1
Nursing Education/Clinical	3	3			+1	+1
Nursing/ Midwifery other	3	3			+1	+1
Nursing & Midwifery	899	900	+1	+0.1%	-7	-1
Dietitians	16	14	-2	-13.7%	-1	-1
Occupational Therapists	90	90	-0	-0.2%	-1	-1
Physiotherapists	59	59	+1	+1.3%	-1	-3
Podiatrists & Chiropodists	3	3	+1	+27.9%	+2	+2
Speech & Language Therapists	66	68	+2	+2.9%	-2	-2
Therapy Professions	234	235	+1	+0.4%	-3	-5
Medical Laboratory	16	17	+1	+8.1%	+1	+1
Radiographers	2	2			-0	-0
Health Science/ Diagnostics	18	19	+1	+7.0%	+1	+1
Social Care	338	347	+9	+2.7%	-17	-14
Social Workers	58	57	-1	-1.8%	-0	-3
Psychologists	59	57	-2	-3.4%	+0	+1
Pharmacy	4	4			+0	+0
Counsellor Therapists	4	4	+0	+2.3%	-0	
Dental Hygienists	3	3	+0	+7.8%	-0	-0

Jun 2020 (Dec 2019 figure: 3,378)	WTE May 2020	WTE Jun 2020	WTE change since May 20	% change since May 20	WTE change since Dec 19	WTE change since Jun 19
Overall	3,360	3,387	+27	+0.8%	+9	+9
Other Health & Social Care	2	2	+0	+3.7%	-4	+0
Play Therapists/ Specialists	0	0			+0	
H&SC, Other	9	10	+0	+4.4%	-5	-0
Health & Social Care Professionals	720	728	+9	+1.2%	-11	-20
Executive Management	23	22	-0	-0.1%	-1	-1
Senior Management (VIII & GM)	46	46	+0	+0.5%	+2	+1
Management (VIII & above)	69	69	+0	+0.3%	+1	-0
Middle Management (V-VII)	168	169	+1	+0.3%	-0	+3
Other Administrative	1	1				
Administrative/ Supervisory (V to VII)	169	170	+1	+0.3%	-0	+3
Clerical (III & IV)	246	257	+11	+4.4%	+20	+24
Management & Administrative	484	496	+12	+2.4%	+19	+26
Catering	32	32	+0	+0.5%	+6	+3
Household Services	128	130	+2	+1.9%	+9	+0
Other Labs & Associated	1	1	+0	+1.0%		
Other Support	20	21	+0	+0.5%	+1	+2
Portering	24	24	+0	+1.2%	+1	+2
Support	205	208	+3	+1.4%	+17	+7
Maintenance/ Technical	24	23	-1	-5.2%	+0	+3
General Support	229	231	+2	+0.7%	+8	+11
HCA, Nurse's Aide, etc.	539	545	+6	+1.1%	+18	+15
Health & Social Care Assistants	15	16	+1	+5.1%	+5	+1
Health Care Assistants	554	561	+7	+1.2%	+22	+17
Care, other	315	311	-4	-1.4%	-20	-19
Patient & Client Care	869	871	+2	+0.3%	+15	-3

CHO 6 HSE Employment by Grade Group & Staff Category: June 2020

Jun 2020 (Dec 2019 figure: 1,605)	WTE May 2020	WTE Jun 2020	WTE change since May 20	% change since May 20	WTE change since Dec 19	WTE change since Jun 19
Overall	1,636	1,655	+18	+1.1%	+49	+37
Consultant Dentistry	3	3			+0	-0
Consultant Medicine	1	1				-0
Consultant Psychiatry	21	21	-0	-0.0%	+2	+5
Consultants	25	25	-0	-0.0%	+2	+5
Registrars	26	27	+1	+2.3%	-3	-3
SHO/ Interns	5	5			+1	-1
Dentists	25	26	+1	+3.1%	-1	-0
Other Medical	21	21	+0	+2.4%	-2	-1
Medical/ Dental, other	46	47	+1	+2.8%	-2	-2
Medical & Dental	102	104	+2	+1.8%	-3	-1
Clinical Nurse/ Midwife Manager	101	100	-1	-1.2%	-2	-4
Director Nursing/Midwifery, Assistant	28	29	+0	+0.9%	+1	+2
Director of Nursing/Midwifery	8	8	+1	+8.3%	-0	-1
Nurse/ Midwife Manager	137	137	-0	-0.2%	-1	-2
Advanced Nurse/ Midwife Practitioner	2	2			+1	+1
Clinical Nurse/ Midwife Specialist	14	14			-1	+1
Nurse/ Midwife Specialist & AN/MP	15	15			+0	+2
Staff Nurse [Intellectual Disability]	12	12	+0	+0.7%	-1	+1
Staff Nurse [Psychiatric]	89	90	+1	+1.5%	+4	+2
Staff Nurses [General/ Children's]	189	196	+7	+3.7%	+9	+4
Staff Nurse/ Staff Midwife	289	298	+8	+2.9%	+12	+7
Public Health Nurse	113	114	+1	+0.8%	-3	-3
Post-registration Nurse/ Midwife Student	13	5	-8	-61.5%	-9	+1
Nursing/ Midwifery Student	13	5	-8	-61.5%	-9	+1
Nursing/ Midwifery other	3	3			+1	+1
Nursing & Midwifery	570	571	+1	+0.2%	+8	+7
Dietitians	13	11	-2	-16.6%	-1	-2
Occupational Therapists	62	62	-0	-0.2%	+1	+2
Physiotherapists	40	41	+1	+3.1%	+2	+0
Podiatrists & Chiropodists	2	3	+1	+37.5%	+2	+2
Speech & Language Therapists	42	45	+3	+7.4%	-0	-1
Therapy Professions	159	162	+3	+1.7%	+4	+1
Medical Laboratory	16	17	+1	+8.1%	+1	+1
Radiographers	1	1			-0	-0
Health Science/ Diagnostics	17	18	+1	+7.7%	+1	+1
Social Care	10	11	+0	+2.3%	-0	+1
Social Workers	27	26	-1	-5.1%	-0	-3
Psychologists	36	36	-0	-0.5%	-2	-1
Pharmacy	2	2			+0	
Counsellor Therapists	4	4	+0	+2.3%	+0	
Dental Hygienists	3	3	+0	+9.3%	-0	-0
Other Health & Social Care	1	1	+0	+5.5%	-0	+0
H&SC, Other	8	8	+0	+5.2%	-0	-0
Health & Social Care Professionals	259	262	+3	+1.2%	-13	-1
Executive Management	7	7	-0	-0.3%	-0	-1
Senior Management (VIII & GM)	30	30	+0	+0.3%	+2	+3
Management (VIII & above)	37	37	+0	+0.2%	+2	+2
Administrative/ Supervisory (V to VII)	91	91	+1	+0.6%	+1	+3

Jun 2020 (Dec 2019 figure: 1,605)	WTE May 2020	WTE Jun 2020	WTE change since May 20	% change since May 20	WTE change since Dec 19	WTE change since Jun 19
Overall	1,636	1,655	+18	+1.1%	+49	+37
Clerical (III & IV)	138	147	+8	+6.0%	+12	+10
Management & Administrative	266	275	+9	+3.3%	+17	+14
Catering	15	15	+0	+1.0%	-1	-1
Household Services	54	55	+1	+2.1%	-1	-3
Other Labs & Associated	1	1	+0	+1.0%		
Other Support	1	1				
Portering	12	12	-0	-0.3%	+1	+0
Support	82	84	+1	+1.5%	-1	-4
Maintenance/ Technical	2	2			-1	-2
General Support	84	86	+1	+1.5%	-12	-6
HCA, Nurse's Aide, etc.	294	297	+3	+1.1%	+33	+30
Health & Social Care Assistants	7	8	+1	+11.6%	+5	+1
Health Care Assistants	300	304	+4	+1.3%	+38	+31
Care, other	54	53	-2	-3.1%	-2	-7
Patient & Client Care	355	357	+2	+0.6%	+22	+23

Employment by WTE, Headcount, Gender, Full-Time /Part-Time etc.: Jun 2020

CHO 6	WTE	Headcount	WTE: no.	% Male	% female	Male WTE: no.	Female WTE: no.	% Total Perm	% Male Perm	% Female Perm	% Total Full Time	% Total Part Time	% Male FT	% Female FT
Overall	3,387	3,941	1.16	21.5%	78.5%	1.11	1.18	86.0%	85.0%	86.3%	72.3%	27.7%	85.7%	68.7%
Consultant Dentistry	6	8	1.27	50.0%	50.0%	1.25	1.29	100.0%	100.0%	100.0%	62.5%	37.5%	75.0%	50.0%
Consultant Medicine	1	1	1.00		100.0%		1.00	100.0%	100.0%	100.0%	100.0%	0.0%		100.0%
Consultant Psychiatry	41	45	1.10	42.2%	57.8%	1.04	1.15	71.1%	71.1%	65.4%	86.7%	13.3%	100.0%	76.9%
Consultant Radiology	1	1	1.00	100.0%		1.00		100.0%	100.0%		100.0%	0.0%	100.0%	
Consultants	49	55	1.12	43.6%	56.4%	1.07	1.16	76.4%	83.3%	71.0%	83.6%	16.4%	95.8%	74.2%
Registrar	36	38	1.07	23.7%	76.3%	1.04	1.08	5.3%	5.3%	6.9%	92.1%	7.9%	100.0%	89.7%
Senior Registrar	7	8	1.17	62.5%	37.5%	1.17	1.18	25.0%	25.0%	66.7%	75.0%	25.0%	80.0%	66.7%
Specialist Registrar	1	1	1.00		100.0%		1.00	100.0%	100.0%	100.0%	100.0%	0.0%		100.0%
Registrars	43	47	1.08	29.8%	70.2%	1.08	1.08	10.6%	0.0%	15.2%	89.4%	10.6%	92.9%	87.9%
SHO/ Interns	19	25	1.35	40.0%	60.0%	1.33	1.36	0.0%	0.0%	0.0%	100.0%	0.0%	100.0%	100.0%
Dentists	26	37	1.44	21.6%	78.4%	1.32	1.48	86.5%	86.5%	86.2%	40.5%	59.5%	62.5%	34.5%
Other Medical	23	29	1.25	13.8%	86.2%	1.00	1.30	58.6%	58.6%	60.0%	34.5%	65.5%	50.0%	32.0%
Medical/ Dental, other	49	66	1.35	18.2%	81.8%	1.19	1.39	74.2%	75.0%	74.1%	37.9%	62.1%	58.3%	33.3%
Medical & Dental	160	193	1.21	31.1%	68.9%	1.13	1.24	49.7%	48.3%	50.4%	71.5%	28.5%	88.3%	63.9%
Clinical Nurse/ Midwife Manager	160	170	1.06	20.6%	79.4%	1.01	1.07	97.6%	97.6%	97.8%	88.2%	11.8%	100.0%	85.2%
Director Nursing/Midwifery, Assistant	37	39	1.05	28.2%	71.8%	1.00	1.08	97.4%	97.4%	96.4%	89.7%	10.3%	100.0%	85.7%
Director of Nursing/Midwifery	14	15	1.08	13.3%	86.7%	1.00	1.09	93.3%	93.3%	92.3%	100.0%	0.0%	100.0%	100.0%
Nurse/ Midwife Manager	211	224	1.06	21.4%	78.6%	1.01	1.07	97.3%	97.9%	97.2%	89.3%	10.7%	100.0%	86.4%
Advanced Nurse/ Midwife Practitioner	3	3	1.20		100.0%		1.20	100.0%	100.0%	100.0%	66.7%	33.3%		66.7%
Clinical Nurse/ Midwife Specialist	19	22	1.14	18.2%	81.8%	1.01	1.17	100.0%	100.0%	100.0%	77.3%	22.7%	100.0%	72.2%
Nurse/ Midwife Specialist & AN/MP	22	25	1.14	16.0%	84.0%	1.01	1.17	100.0%	100.0%	100.0%	76.0%	24.0%	100.0%	71.4%
Staff Nurse [Intellectual Disability]	50	57	1.15	21.1%	78.9%	1.35	1.11	98.2%	98.2%	97.8%	64.9%	35.1%	58.3%	66.7%
Staff Nurse [Psychiatric]	121	129	1.07	24.0%	76.0%	1.06	1.07	90.7%	90.7%	91.8%	89.9%	10.1%	87.1%	90.8%
Staff Nurses [General/ Children's]	375	421	1.12	13.1%	86.9%	1.04	1.14	88.4%	88.4%	88.5%	76.2%	23.8%	89.1%	74.3%
Staff Nurse/ Staff Midwife	545	607	1.11	16.1%	83.9%	1.08	1.12	89.8%	88.8%	90.0%	78.1%	21.9%	84.7%	76.8%
Public Health Nurse	114	133	1.17	0.8%	99.2%	1.00	1.17	96.2%	100.0%	96.2%	71.4%	28.6%	100.0%	71.2%
Post-registration Nurse/ Midwife Student	5	5	1.00		100.0%		1.00	20.0%	20.0%	20.0%	100.0%	0.0%		100.0%
Nursing/ Midwifery Student	5	5	1.00		100.0%		1.00	20.0%		20.0%	100.0%	0.0%		100.0%

<i>Nursing/ Midwifery other</i>	3	3	1.00	33.3%	66.7%	1.00	1.00	100.0%	100.0%	100.0%	100.0%	0.0%	100.0%	100.0%
Nursing & Midwifery	900	997	1.11	15.2%	84.8%	1.05	1.12	92.3%	92.1%	92.3%	79.8%	20.2%	90.1%	78.0%
Dietitians	14	19	1.36		100.0%		1.36	100.0%	100.0%	100.0%	52.6%	47.4%		52.6%
Occupational Therapists	90	108	1.20	6.5%	93.5%	1.19	1.20	92.6%	92.6%	93.1%	69.4%	30.6%	71.4%	69.3%
Physiotherapists	59	75	1.26	16.0%	84.0%	1.17	1.28	89.3%	89.3%	93.7%	53.3%	46.7%	75.0%	49.2%
Podiatrists & Chiropodists	3	5	1.45		100.0%		1.45	60.0%	60.0%	60.0%	60.0%	40.0%		60.0%
Speech & Language Therapists	68	84	1.24	2.4%	97.6%	1.00	1.25	89.3%	89.3%	89.0%	66.7%	33.3%	100.0%	65.9%
Therapy Professions	235	291	1.24	7.2%	92.8%	1.16	1.25	90.7%	76.2%	91.9%	63.2%	36.8%	76.2%	62.2%
Medical Laboratory	17	19	1.11	26.3%	73.7%	1.10	1.12	84.2%	84.2%	85.7%	84.2%	15.8%	80.0%	85.7%
Radiographers	2	4	1.69	25.0%	75.0%	2.00	1.60	100.0%	100.0%	100.0%	75.0%	25.0%	100.0%	66.7%
Health Science/ Diagnostics	19	23	1.18	26.1%	73.9%	1.19	1.18	87.0%	83.3%	88.2%	82.6%	17.4%	83.3%	82.4%
Social Care	347	399	1.15	21.6%	78.4%	1.10	1.16	90.7%	90.7%	90.7%	64.2%	35.8%	76.7%	60.7%
Social Workers	57	63	1.11	12.7%	87.3%	1.03	1.12	95.2%	100.0%	94.5%	79.4%	20.6%	87.5%	78.2%
Psychologists	57	74	1.30	13.5%	86.5%	1.02	1.36	94.6%	90.0%	95.3%	63.5%	36.5%	90.0%	59.4%
Pharmacy	4	6	1.56		100.0%		1.56	83.3%		83.3%	50.0%	50.0%		50.0%
Counsellor Therapists	4	4	1.00	50.0%	50.0%	1.00	1.00	100.0%	100.0%	100.0%	75.0%	25.0%	50.0%	100.0%
Dental Hygienists	3	5	1.45		100.0%		1.45	100.0%	100.0%	100.0%	40.0%	60.0%		40.0%
Other Health & Social Care	2	3	1.81		100.0%		1.81	66.7%	66.7%	66.7%	0.0%	100.0%		0.0%
Play Therapists/ Specialists	0	1	2.08		100.0%		2.08	100.0%	100.0%	100.0%	0.0%	100.0%		0.0%
H&SC, Other	10	13	1.36	15.4%	84.6%	1.00	1.45	92.3%	100.0%	90.9%	38.5%	61.5%	50.0%	36.4%
Health & Social Care	728	869	1.19	15.3%	84.7%	1.10	1.21	91.3%	88.7%	91.7%	64.9%	35.1%	78.2%	62.5%
Executive Management	22	23	1.02	47.8%	52.2%	1.05	1.00	95.7%	95.7%	91.7%	100.0%	0.0%	100.0%	100.0%
Senior Management (VIII & GM)	46	50	1.08	28.0%	72.0%	1.17	1.05	94.0%	94.0%	91.7%	100.0%	0.0%	100.0%	100.0%
Management (VIII & above)	69	73	1.06	34.2%	65.8%	1.11	1.03	94.5%	100.0%	91.7%	100.0%	0.0%	100.0%	100.0%
Administrative/ Supervisory (V to VII)	170	193	1.14	25.4%	74.6%	1.15	1.13	96.4%	91.8%	97.9%	87.0%	13.0%	95.9%	84.0%
Clerical (III & IV)	257	306	1.19	13.1%	86.9%	1.08	1.21	76.8%	75.0%	77.1%	69.9%	30.1%	85.0%	67.7%
Management & Administrative	496	572	1.15	19.9%	80.1%	1.12	1.16	85.7%	87.7%	85.2%	79.5%	20.5%	93.0%	76.2%
Catering	32	35	1.08	31.4%	68.6%	1.02	1.12	91.4%	91.4%	91.7%	68.6%	31.4%	90.9%	58.3%
Household Services	130	161	1.24	29.8%	70.2%	1.11	1.30	72.7%	72.7%	74.3%	57.8%	42.2%	81.3%	47.8%
Other Labs & Associated	1	1	1.00		100.0%		1.00	100.0%	100.0%	100.0%	100.0%	0.0%		100.0%
Other Support	21	28	1.36	50.0%	50.0%	1.35	1.37	96.4%	96.4%	92.9%	75.0%	25.0%	78.6%	71.4%
Portering	24	27	1.12	100.0%		1.12		81.5%	81.5%		88.9%	11.1%	88.9%	
Support	208	252	1.21	39.7%	60.3%	1.13	1.27	79.0%	79.0%	78.9%	64.7%	35.3%	84.0%	52.0%
Maintenance/ Technical	23	25	1.09	100.0%		1.09		88.0%	88.0%	#DIV/0	100.0%	0.0%	100.0%	
General Support	231	277	1.20	45.1%	54.9%	1.12	1.27	79.8%	80.8%	78.9%	67.9%	32.1%	87.2%	52.0%

HCA, Nurse's Aide, etc.	545	605	1.11	27.6%	72.4%	1.04	1.14	79.0%	79.0%	75.8%	70.7%	29.3%	91.6%	62.8%
Health & Social Care Assistants	16	18	1.13	27.8%	72.2%	1.06	1.15	55.6%	55.6%	53.8%	83.3%	16.7%	100.0%	76.9%
Health Care Assistants	561	623	1.11	27.6%	72.4%	1.04	1.14	78.3%	86.6%	75.2%	71.1%	28.9%	91.9%	63.2%
Care, other	311	410	1.32	22.2%	77.8%	1.34	1.31	93.4%	91.2%	94.0%	65.1%	34.9%	64.8%	65.2%
Patient & Client Care	871	1,033	1.19	25.5%	74.5%	1.12	1.21	84.3%	88.2%	83.0%	68.7%	31.3%	82.5%	64.0%

Employment by WTE, Headcount, Gender, Full-Time /Part-Time etc.: Jun 2020

CHO 6	WTE	Headcount	WTE: no.	% Male	% female	Male WTE: no.	Female WTE: no.	% Total Perm	% Male Perm	% Female Perm	% Total Full Time	% Total Part Time	% Male FT	% Female FT
Overall	3,387	3,941	1.16	21.5%	78.5%	1.11	1.18	86.0%	85.0%	86.3%	72.3%	27.7%	85.7%	68.7%
Community Health & Wellbeing	8	10	1.18	10.0%	90.0%	2.04	1.13	100.0%	100.0%	100.0%	50.0%	50.0%	0.0%	0.0%
Mental Health	596	662	1.11	29.8%	70.2%	1.07	1.13	82.0%	82.0%	82.6%	82.9%	17.1%	90.9%	90.9%
Primary Care	771	997	1.29	12.8%	87.2%	1.25	1.30	81.4%	81.4%	82.3%	68.4%	31.6%	92.2%	92.2%
Social Care	2,012	2,272	1.13	22.9%	77.1%	1.09	1.14	89.2%	89.2%	89.3%	71.1%	28.9%	82.3%	82.3%

CHO 6 Skills Mix by Staff Grouping: June 2020

Jun 2020 (Dec 2018 figure: 3,368)	WTE Dec 2015	WTE Dec 2016	WTE Dec 2017	WTE Dec 2018	WTE Dec 2019	WTE May 2020	WTE Jun 2020
Overall	3,908	3,940	3,357	3,368	3,378	3,360	3,387
Consultant Dentistry	3.3%	4.2%	4.7%	4.6%	4.4%	4.0%	3.9%
Consultant Medicine	0.5%	0.6%	0.6%	0.6%	0.6%	0.6%	0.6%
Consultant, Other	0.5%	0.6%					
Consultant Paediatrics	0.0%	0.1%	0.1%				
Consultant Psychiatry	14.4%	18.5%	18.8%	20.0%	23.8%	26.4%	25.6%
Consultant Radiology	0.5%	0.6%	0.6%	0.6%	0.6%	0.6%	0.6%
Consultants	19.2%	24.7%	24.7%	25.8%	29.5%	31.6%	30.8%
Registrar	37.7%	25.2%	24.4%	21.7%	24.6%	22.1%	22.3%
Senior Registrar	3.7%	4.4%	4.1%	5.7%	4.6%	3.8%	4.3%
Specialist Registrar	0.5%	0.6%	0.6%	0.6%	0.6%	0.6%	0.6%
Registrars	41.9%	30.2%	29.1%	28.0%	29.8%	26.6%	27.1%
SHO/ Interns	9.4%	12.3%	12.9%	13.5%	9.5%	11.7%	11.6%
Dentists	14.0%	18.0%	17.7%	16.3%	16.2%	15.7%	16.0%
Other Medical	15.5%	14.8%	15.6%	16.4%	15.1%	14.4%	14.5%
Medical/ Dental, other	29.5%	32.8%	33.3%	32.7%	31.3%	30.1%	30.5%
Medical & Dental	5.2%	4.0%	4.9%	4.9%	4.9%	100.0%	4.7%
Clinical Nurse/ Midwife Manager	18.2%	18.4%	17.2%	17.7%	17.8%	17.8%	17.8%
Director Nursing/Midwifery, Assistant	2.8%	2.9%	3.2%	3.9%	3.9%	4.0%	4.1%
Director of Nursing/Midwifery	1.9%	2.0%	1.7%	1.5%	1.6%	1.5%	1.5%
Nurse/ Midwife Manager	22.9%	23.3%	22.0%	23.1%	23.3%	23.3%	23.5%
Advanced Nurse/ Midwife Practitioner		0.0%	0.1%	0.1%	0.1%	0.3%	0.3%
Clinical Nurse/ Midwife Specialist	1.8%	1.9%	2.3%	2.1%	2.2%	2.2%	2.1%
Nurse/ Midwife Specialist & AN/MP	1.8%	2.0%	2.3%	2.1%	2.3%	2.5%	2.4%
Staff Nurse [Intellectual Disability]	11.9%	6.7%	6.7%	6.4%	5.5%	5.3%	5.5%
Staff Nurse [Psychiatric]	13.5%	12.2%	12.8%	12.2%	14.7%	13.2%	13.4%
Staff Nurses [General/ Children's]	37.3%	42.7%	40.4%	41.6%	39.7%	41.3%	41.7%
Staff Nurse/ Staff Midwife	62.7%	61.7%	60.0%	60.2%	59.9%	59.8%	60.6%
Public Health Nurse	10.7%	11.4%	13.4%	13.1%	12.9%	12.5%	12.6%
Post-registration Nurse/ Midwife Student	1.6%	1.4%	2.1%	1.2%	1.5%	1.4%	0.6%
Nursing/ Midwifery Student	1.6%	1.4%	2.1%	1.2%	1.5%	1.4%	0.6%
Nursing/ Midwifery other	0.2%	0.2%	0.2%	0.3%	0.2%	0.3%	0.3%
Nursing & Midwifery	27.2%	26.3%	27.3%	26.9%	26.8%	100.0%	26.6%
Dietitians	1.3%	1.2%	2.1%	2.1%	1.9%	2.2%	1.9%
Occupational Therapists	10.2%	9.6%	11.9%	12.4%	12.2%	12.6%	12.4%
Physiotherapists	7.8%	6.7%	7.9%	8.4%	8.0%	8.1%	8.1%
Podiatrists & Chiropodists	0.2%	0.2%	0.5%	0.3%	0.2%	0.4%	0.5%
Speech & Language Therapists	7.4%	7.6%	8.9%	10.2%	9.3%	9.2%	9.3%
Therapy Professions	26.8%	25.3%	31.3%	33.5%	31.7%	32.5%	32.2%
Medical Laboratory	2.0%	1.9%	2.7%	2.8%	2.1%	2.2%	2.3%
Radiographers	0.4%	0.4%	0.5%	0.5%	0.3%	0.3%	0.3%
Health Science/ Diagnostics	2.4%	2.3%	3.1%	3.2%	2.4%	2.5%	2.7%
Social Care	54.7%	57.6%	47.9%	46.3%	48.4%	47.0%	47.7%
Social Workers	7.0%	6.6%	7.6%	7.7%	7.6%	8.0%	7.8%
Psychologists	7.1%	6.6%	8.0%	7.6%	7.5%	8.2%	7.8%
Pharmacy	0.4%	0.3%	0.5%	0.5%	0.5%	0.5%	0.5%
Counsellor Therapists	0.7%	0.6%	0.9%	0.5%	0.6%	0.5%	0.5%
Dental Hygienists	0.5%	0.4%	0.5%	0.5%	0.5%	0.4%	0.5%
Other Health & Social Care	0.3%	0.1%	0.2%	0.1%	0.8%	0.2%	0.2%
Play Therapists/ Specialists	0.2%	0.2%	0.1%	0.1%	0.1%	0.1%	0.1%
H&SC, Other	1.7%	1.3%	1.7%	1.2%	1.9%	1.3%	1.3%

Jun 2020 (Dec 2018 figure: 3,368)	WTE Dec 2015	WTE Dec 2016	WTE Dec 2017	WTE Dec 2018	WTE Dec 2019	WTE May 2020	WTE Jun 2020
Overall	3,908	3,940	3,357	3,368	3,378	3,360	3,387
Health & Social Care Professionals	22.3%	23.8%	22.0%	22.0%	21.9%	100.0%	21.5%
Executive Management	3.2%	4.4%	6.1%	5.1%	4.9%	4.6%	4.5%
Senior Management (VIII & GM)	9.9%	9.7%	9.1%	10.3%	9.3%	9.5%	9.4%
Management (VIII & above)	13.1%	14.1%	15.2%	15.4%	14.3%	14.2%	13.9%
Middle Management (V-VII)	29.1%	29.7%	32.8%	35.8%	35.6%	34.8%	34.1%
Other Administrative	0.9%	0.2%	0.2%	0.2%	0.2%	0.2%	0.2%
Administrative/ Supervisory (V to VII)	29.9%	29.9%	33.0%	36.0%	35.8%	35.0%	34.3%
Clerical (III & IV)	57.0%	56.0%	51.8%	48.6%	49.9%	50.8%	51.8%
Management & Administrative	11.6%	11.7%	13.5%	14.1%	14.1%	100.0%	14.6%
Catering	11.5%	13.1%	11.6%	12.7%	12.1%	14.0%	14.0%
Household Services	59.0%	57.1%	58.8%	59.3%	56.7%	55.7%	56.4%
Other Labs & Associated		0.3%	0.4%	0.4%	0.5%	0.4%	0.4%
Other Support	9.3%	9.7%	9.1%	8.3%	9.1%	8.9%	8.9%
Portering	8.9%	8.7%	11.2%	10.8%	11.0%	10.4%	10.4%
Support	88.7%	89.0%	91.2%	91.5%	89.4%	89.4%	90.1%
Maintenance/ Technical	11.3%	11.0%	8.8%	8.5%	10.6%	10.6%	9.9%
General Support	7.7%	7.4%	7.1%	6.6%	6.6%	100.0%	6.8%
HCA, Nurse's Aide, etc.	59.3%	58.9%	61.3%	60.3%	60.7%	62.0%	62.5%
Health & Social Care Assistants	1.0%	1.0%	1.2%	1.8%	1.3%	1.8%	1.8%
Health Care Assistants	60.3%	59.9%	62.4%	62.1%	62.0%	63.8%	64.4%
Pre-Hospital Care (Ambulance)	0.0%						
Ambulance Staff	0.0%						
Care, other	39.7%	40.1%	37.6%	37.9%	38.0%	36.2%	35.6%
Patient & Client Care	26.1%	26.7%	25.2%	25.4%	25.4%	100.0%	25.7%
Total	100 %	100 %	100 %	100 %	100%	100 %	100 %

CHO 6 Skills Mix by Care Group: June 2020

Jun 2020 (Dec 2018 figure: 573)	WTE Dec 2015	WTE Dec 2016	WTE Dec 2017	WTE Dec 2018	WTE Dec 2019	WTE May 2020	WTE Jun 2020
Mental Health	563	559	564	573	593	599	596
Consultants	46.4%	47.3%	45.1%	49.0%	53.9%	56.8%	55.7%
Registrar	25.0%	21.2%	24.9%	13.4%	22.9%	18.2%	18.2%
Senior Registrar	8.0%	10.4%	6.0%	11.8%	9.7%	7.4%	8.5%
Registrars	33.0%	31.6%	30.9%	25.2%	32.6%	25.6%	26.7%
SHO/ Interns	20.6%	21.1%	23.4%	25.1%	13.5%	17.6%	17.6%
Medical/ Dental, other			0.6%	0.6%			
Medical & Dental	10.1%	10.1%	11.1%	11.1%	10.7%	11.4%	11.4%
Clinical Nurse/ Midwife Manager	24.2%	26.1%	23.6%	26.8%	25.8%	23.6%	23.7%
Director Nursing/Midwifery, Assistant	4.8%	5.4%	5.6%	5.9%	6.0%	5.8%	6.0%
Director of Nursing/Midwifery	1.6%	1.7%	1.7%	1.3%	1.3%	1.6%	1.6%
Nurse/ Midwife Manager	30.6%	33.1%	31.0%	33.9%	33.1%	30.9%	31.3%
Advanced Nurse/ Midwife Practitioner		0.2%	0.2%	0.2%	0.3%	1.0%	1.0%
Clinical Nurse/ Midwife Specialist	5.4%	5.9%	6.4%	5.0%	5.6%	5.4%	5.1%
Nurse/ Midwife Specialist & AN/MP	5.4%	6.1%	6.6%	5.2%	5.9%	6.4%	6.2%
Staff Nurse [Intellectual Disability]				0.4%	0.4%	0.8%	0.8%
Staff Nurse [Psychiatric]	54.2%	50.1%	49.3%	44.6%	49.2%	47.6%	48.3%
Staff Nurses [General/ Children's]	9.4%	9.9%	12.2%	14.7%	10.5%	13.4%	12.6%
Staff Nurse/ Staff Midwife	63.6%	59.9%	61.5%	59.7%	60.2%	61.8%	61.7%
Nursing Education/Clinical	0.4%	0.9%	0.9%	1.2%	0.9%	0.8%	0.8%
Nursing/ Midwifery other	0.4%	0.9%	0.9%	1.2%	0.9%	0.8%	0.8%
Nursing & Midwifery	44.3%	43.3%	40.8%	41.5%	40.1%	40.6%	40.6%
Dietitians			1.1%	1.7%	1.5%	1.1%	1.1%
Occupational Therapists	18.0%	16.3%	17.7%	17.0%	19.5%	18.1%	18.4%
Physiotherapists	0.5%	0.5%	0.4%	0.4%	0.9%	0.9%	1.2%
Podiatrists & Chiroprodists	0.7%	1.0%	0.5%	0.4%			
Speech & Language Therapists	8.7%	7.6%	9.0%	11.7%	11.3%	11.3%	10.7%
Therapy Professions	27.8%	25.4%	28.7%	31.2%	33.2%	31.4%	31.4%
Social Care	28.2%	28.3%	26.8%	26.0%	20.0%	20.6%	21.1%
Social Workers	21.3%	25.6%	22.8%	25.5%	23.0%	25.8%	25.9%
Psychologists	15.7%	14.4%	17.8%	13.6%	17.0%	18.4%	17.6%
Counsellor Therapists	4.7%	4.5%	3.5%	3.2%	3.0%	3.1%	3.2%
Other Health & Social Care	0.9%	0.5%			3.4%	0.4%	0.4%
Play Therapists/ Specialists	1.4%	1.4%	0.4%	0.4%	0.4%	0.4%	0.4%
H&SC, Other	7.0%	6.4%	3.9%	3.6%	6.7%	3.8%	4.0%
Health & Social Care Professionals	18.9%	19.7%	20.3%	20.0%	19.3%	20.9%	20.9%
Management (VIII & above)	6.4%	4.6%	6.0%	3.4%	4.2%	4.4%	4.4%
Administrative/ Supervisory (V to VII)	33.8%	31.3%	36.6%	44.8%	37.2%	37.1%	36.6%
Clerical (III & IV)	59.9%	64.0%	57.5%	51.8%	58.6%	58.5%	59.0%
Management & Administrative	9.7%	10.0%	10.5%	10.2%	9.8%	11.5%	11.5%
Support	89.2%	89.2%	90.6%	90.1%	86.0%	87.0%	90.1%
Maintenance/ Technical	10.8%	10.8%	9.4%	9.9%	14.0%	13.0%	9.9%
General Support	9.9%	8.9%	9.4%	8.6%	8.3%	6.8%	6.8%
HCA, Nurse's Aide, etc.	89.1%	90.2%	92.1%	89.2%	89.5%	90.5%	90.8%
Health Care Assistants	89.1%	90.2%	92.1%	89.2%	89.5%	90.5%	90.8%
Care, other	10.9%	9.8%	7.9%	10.8%	10.5%	9.5%	9.2%
Patient & Client Care	7.1%	8.0%	7.8%	8.7%	8.4%	8.7%	8.7%
Total	100 %	100 %	100 %	100 %	100 %	100 %	100 %

Jun 2020 (Dec 2018 figure: 833)	WTE Dec 2015	WTE Dec 2016	WTE Dec 2017	WTE Dec 2018	WTE Dec 2019	WTE May 2020	WTE Jun 2020
Primary Care	810	768	795	833	765	756	771
Consultant Dentistry	5.0%	7.4%	8.6%	8.3%	8.2%	7.8%	7.6%
Consultant Medicine	0.7%	1.1%	1.1%	1.1%	1.1%	1.2%	1.2%
Consultant, Other	0.7%	1.1%					
Consultant Radiology	0.7%	1.1%	1.1%	1.1%	1.1%	1.2%	1.2%
Consultants	7.2%	10.7%	10.8%	10.5%	10.5%	10.2%	10.0%
Registrars	46.7%	31.0%	28.3%	30.8%	29.6%	29.2%	29.3%
SHO/ Interns	5.6%	7.2%	7.2%	7.0%	7.4%	8.0%	7.8%
Dentists	21.3%	31.7%	32.3%	29.2%	30.1%	30.7%	31.0%
Other Medical	19.2%	19.3%	21.4%	22.5%	22.4%	21.8%	21.9%
Medical/ Dental, other	40.5%	51.0%	53.7%	51.7%	52.5%	52.5%	52.9%
Medical & Dental	16.6%	11.7%	11.3%	11.1%	12.1%	10.8%	10.8%
Clinical Nurse/ Midwife Manager	1.8%	1.8%	2.5%	2.6%	3.0%	3.6%	3.6%
Director Nursing/Midwifery, Assistant	5.5%	5.0%	4.8%	6.4%	6.0%	7.1%	6.7%
Director of Nursing/Midwifery	2.3%	2.3%	2.1%	1.7%	1.6%	1.7%	2.0%
Nurse/ Midwife Manager	9.6%	9.1%	9.4%	10.7%	10.6%	12.4%	12.3%
Nurse/ Midwife Specialist & AN/MP	1.6%	2.0%	2.9%	2.9%	2.8%	2.9%	2.9%
Staff Nurse/ Staff Midwife	21.2%	22.3%	19.8%	24.2%	24.6%	21.8%	25.5%
Public Health Nurse	58.2%	59.0%	58.6%	57.0%	55.5%	56.0%	56.3%
Nursing/ Midwifery Student	8.8%	7.6%	9.2%	5.3%	6.4%	6.5%	2.5%
Nursing/ Midwifery other	0.5%					0.5%	0.5%
Nursing & Midwifery	23.8%	25.8%	26.4%	24.9%	27.2%	26.2%	26.2%
Dietitians	5.1%	5.0%	6.3%	5.8%	6.4%	7.6%	6.1%
Occupational Therapists	19.6%	20.5%	20.3%	21.4%	21.3%	22.1%	21.3%
Physiotherapists	21.6%	20.0%	19.1%	19.0%	20.8%	20.8%	21.2%
Podiatrists & Chiropodists			0.5%	0.5%	0.7%	1.3%	1.7%
Speech & Language Therapists	19.1%	21.3%	19.5%	19.2%	18.4%	17.1%	19.0%
Therapy Professions	65.5%	66.9%	65.8%	65.9%	67.5%	69.0%	69.2%
Medical Laboratory	9.8%	10.5%	10.7%	10.6%	10.2%	10.1%	10.6%
Radiographers	1.9%	2.0%	1.9%	1.8%	1.6%	1.5%	1.5%
Health Science/ Diagnostics	11.7%	12.5%	12.6%	12.5%	11.8%	11.6%	12.1%
Social Care	1.4%	0.8%	0.8%	1.6%	2.4%	1.8%	2.0%
Social Workers	4.2%	3.7%	4.1%	3.4%	3.1%	3.2%	2.6%
Psychologists	13.7%	13.1%	13.4%	14.1%	12.2%	11.7%	11.3%
Pharmacy	0.6%		0.5%	0.5%	0.5%	0.6%	0.6%
Counsellor Therapists	0.6%	0.6%	0.5%				
Dental Hygienists	2.3%	2.4%	2.1%	2.0%	2.5%	2.0%	2.1%
H&SC, Other	2.9%	3.0%	2.7%	2.0%	2.5%	2.0%	2.1%
Health & Social Care Professionals	21.7%	22.4%	23.1%	23.0%	25.1%	20.8%	20.8%
Executive Management	1.3%	4.3%	4.2%	3.7%	3.6%	3.6%	3.4%
Senior Management (VIII & GM)	7.9%	7.4%	10.7%	12.5%	10.8%	11.0%	10.5%
Management (VIII & above)	9.2%	11.7%	14.9%	16.2%	14.3%	14.6%	14.0%
Administrative/ Supervisory (V to VII)	23.3%	25.4%	28.6%	32.9%	32.4%	30.8%	29.7%
Clerical (III & IV)	67.5%	62.9%	56.5%	50.9%	53.3%	54.6%	56.3%
Management & Administrative	24.1%	25.6%	25.5%	27.3%	29.8%	28.2%	28.2%
Support	93.7%	93.6%	93.6%	92.7%	92.2%	93.0%	93.1%
Maintenance/ Technical	6.3%	6.4%	6.4%	7.3%	7.8%	7.0%	6.9%
General Support	3.9%	4.1%	3.9%	3.3%	3.6%	3.7%	3.7%
HCA, Nurse's Aide, etc.	3.0%	2.5%	2.6%	2.3%	4.3%	4.1%	4.1%
Health & Social Care Assistants				8.1%	3.9%	8.4%	9.4%
Health Care Assistants	3.0%	2.5%	2.6%	10.5%	8.1%	12.5%	13.5%
Ambulance Staff	0.6%						
Care, other	96.4%	97.5%	97.4%	89.5%	91.9%	87.5%	86.5%
Patient & Client Care	10.0%	10.4%	9.8%	10.3%	11.3%	10.3%	10.3%
Total	100 %	100 %	100 %	100 %	100 %	100 %	100 %

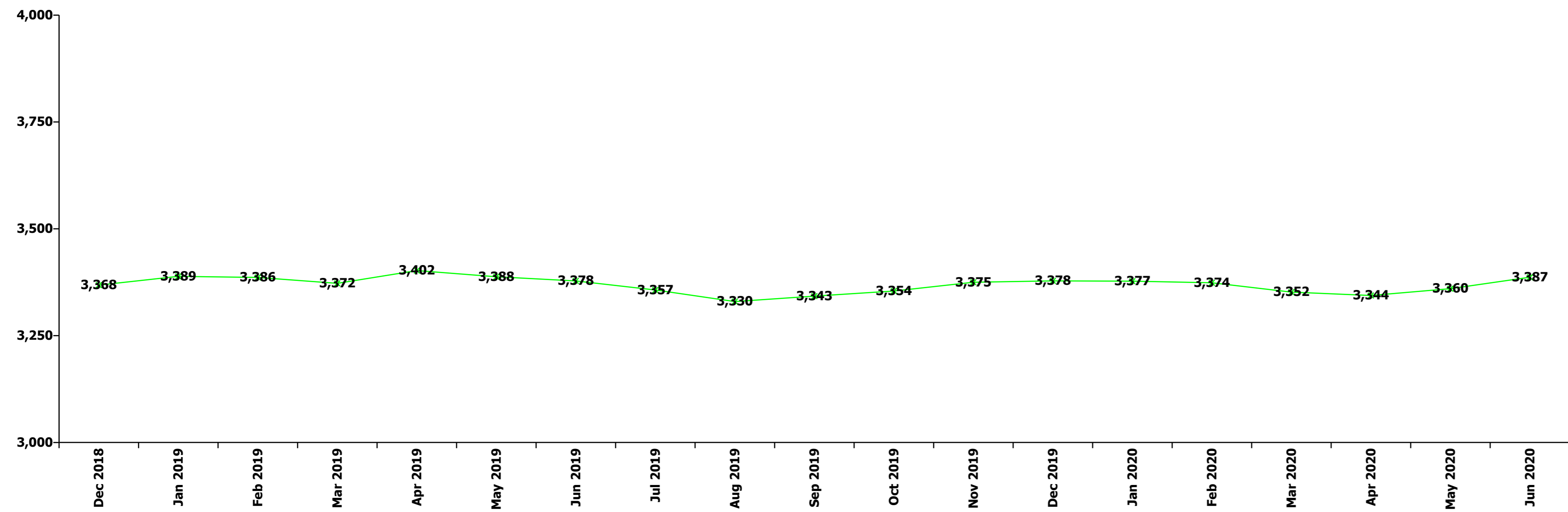
Jun 2020 (Dec 2018 figure: 1,155)	WTE Dec 2015	WTE Dec 2016	WTE Dec 2017	WTE Dec 2018	WTE Dec 2019	WTE May 2020	WTE Jun 2020
Disabilities	1,729	1,816	1,170	1,155	1,198	1,148	1,163
Consultant Paediatrics	1.1%	1.3%	1.3%				
Consultant Psychiatry	37.1%	38.9%	38.9%	50.0%	75.0%	75.0%	75.0%
Consultants	38.2%	40.2%	40.2%	50.0%	75.0%	75.0%	75.0%
Registrars	37.1%	14.9%	29.9%				
SHO/ Interns		14.9%					
Medical/ Dental, other	24.7%	29.9%	29.9%	50.0%	25.0%	25.0%	25.0%
Medical & Dental	0.5%	0.4%	0.6%	0.3%	0.3%	0.3%	0.3%
Clinical Nurse/ Midwife Manager	22.0%	21.4%	20.7%	18.7%	20.7%	22.3%	22.0%
Director Nursing/Midwifery, Assistant	0.3%	0.6%	0.5%	0.5%	0.5%	0.5%	0.5%
Director of Nursing/Midwifery	2.0%	1.8%	1.0%	1.0%	1.6%	1.1%	1.1%
Nurse/ Midwife Manager	24.3%	23.9%	22.1%	20.2%	22.8%	23.9%	23.7%
Clinical Nurse/ Midwife Specialist	0.8%	0.6%					
Nurse/ Midwife Specialist & AN/MP	0.8%	0.6%					
Staff Nurse [Intellectual Disability]	36.9%	21.5%	29.7%	29.5%	25.5%	25.3%	25.9%
Staff Nurse [Psychiatric]	2.3%	1.7%	1.7%	2.3%	9.4%	1.3%	1.6%
Staff Nurses [General/ Children's]	35.1%	52.1%	46.5%	48.0%	42.3%	49.5%	48.8%
Staff Nurse/ Staff Midwife	74.3%	75.3%	77.9%	79.8%	77.2%	76.1%	76.3%
Public Health Nurse	0.6%	0.3%					
Nursing & Midwifery	19.9%	17.9%	17.7%	16.8%	16.2%	15.8%	15.8%
Dietitians				0.1%	0.1%	0.1%	0.1%
Occupational Therapists	3.2%	3.4%	3.7%	4.1%	3.7%	3.7%	3.8%
Physiotherapists	1.9%	1.7%	1.5%	1.4%	1.4%	1.4%	1.2%
Speech & Language Therapists	3.2%	3.6%	3.7%	5.2%	5.1%	5.1%	5.1%
Therapy Professions	8.3%	8.7%	9.0%	10.8%	10.3%	10.3%	10.3%
Social Care	83.9%	84.7%	83.7%	82.4%	83.1%	83.0%	83.1%
Social Workers	3.6%	2.6%	2.8%	3.2%	2.8%	2.4%	2.5%
Psychologists	3.8%	3.9%	3.7%	3.5%	3.4%	4.0%	3.8%
Counsellor Therapists	0.1%		0.4%		0.1%		
Other Health & Social Care	0.2%	0.1%	0.4%	0.2%	0.3%	0.3%	0.3%
H&SC, Other	0.3%	0.1%	0.8%	0.2%	0.5%	0.3%	0.3%
Health & Social Care Professionals	30.5%	33.0%	32.9%	32.5%	31.4%	32.9%	32.9%
Executive Management	6.4%	5.6%	12.4%	9.2%	10.2%	8.8%	8.8%
Senior Management (VIII & GM)	15.7%	17.2%	12.2%	14.3%	12.2%	11.9%	11.8%
Management (VIII & above)	22.0%	22.8%	24.6%	23.5%	22.3%	20.7%	20.6%
Administrative/ Supervisory (V to VII)	33.2%	31.5%	35.2%	35.8%	38.6%	37.9%	37.7%
Clerical (III & IV)	44.8%	45.7%	40.2%	40.7%	39.0%	41.4%	41.7%
Management & Administrative	9.1%	8.8%	11.7%	12.0%	11.6%	12.8%	12.8%
Support	83.8%	84.2%	87.3%	87.7%	77.0%	82.5%	83.1%
Maintenance/ Technical	16.2%	15.8%	12.7%	12.3%	23.0%	17.5%	16.9%
General Support	5.7%	5.2%	2.7%	2.8%	2.7%	4.1%	4.1%
HCA, Nurse's Aide, etc.	47.2%	47.2%	42.6%	42.6%	43.1%	41.8%	42.4%
Health Care Assistants	47.2%	47.2%	42.6%	42.6%	43.1%	41.8%	42.4%
Care, other	52.8%	52.8%	57.4%	57.4%	56.9%	58.2%	57.6%
Patient & Client Care	34.3%	34.7%	34.5%	35.4%	34.2%	34.2%	34.2%
Total	100 %	100 %	100 %	100 %	100 %	100 %	100 %

Jun 2020 (Dec 2018 figure: 808)	WTE Dec 2015	WTE Dec 2016	WTE Dec 2017	WTE Dec 2018	WTE Dec 2019	WTE May 2020	WTE Jun 2020
Older People	805	797	828	808	823	849	849
Senior Registrar	20.0%	20.0%	20.0%	33.3%	20.0%	20.0%	20.0%
Registrars	20.0%	20.0%	20.0%	33.3%	20.0%	20.0%	20.0%
Medical/ Dental, other	80.0%	80.0%	80.0%	66.7%	80.0%	80.0%	80.0%
Medical & Dental	0.6%	0.6%	0.6%	0.7%	0.7%	0.6%	0.6%
Clinical Nurse/ Midwife Manager	19.6%	20.1%	20.4%	20.8%	20.3%	20.3%	20.3%
Director Nursing/Midwifery, Assistant	2.2%	1.8%	1.8%	2.6%	2.8%	2.5%	2.9%
Director of Nursing/Midwifery	1.8%	2.2%	1.8%	1.9%	1.8%	1.5%	1.5%
Nurse/ Midwife Manager	23.6%	24.2%	24.1%	25.3%	25.0%	24.3%	24.6%
Clinical Nurse/ Midwife Specialist				0.4%	0.4%	0.4%	0.4%
Nurse/ Midwife Specialist & AN/MP				0.4%	0.4%	0.4%	0.4%
Staff Nurses [General/ Children's]	76.4%	75.8%	75.9%	74.4%	74.6%	75.3%	75.0%
Staff Nurse/ Staff Midwife	76.4%	75.8%	75.9%	74.4%	74.6%	75.3%	75.0%
Nursing & Midwifery	34.5%	34.0%	32.7%	33.0%	32.4%	32.1%	32.1%
Dietitians	4.3%	4.6%	4.5%	4.5%	3.9%	4.1%	4.2%
Occupational Therapists	29.3%	28.3%	28.1%	28.0%	28.3%	29.9%	30.5%
Physiotherapists	32.2%	31.4%	30.1%	34.7%	32.4%	31.1%	31.3%
Podiatrists & Chiropractors	1.6%	2.1%	3.1%	1.6%	1.0%	1.1%	1.1%
Speech & Language Therapists	7.6%	7.7%	9.4%	9.3%	9.7%	8.6%	7.2%
Therapy Professions	74.9%	74.1%	75.2%	78.0%	75.4%	74.9%	74.3%
Social Workers	19.1%	20.1%	20.0%	16.4%	17.1%	17.3%	17.6%
Psychologists	0.8%	0.9%		0.9%	3.2%	3.2%	3.4%
Pharmacy	4.8%	5.0%	4.8%	4.8%	4.3%	4.5%	4.6%
Other Health & Social Care	0.4%						
H&SC, Other	0.4%						
Health & Social Care Professionals	7.5%	7.1%	6.9%	7.2%	7.0%	7.2%	7.2%
Executive Management	4.4%	4.1%	1.9%	3.9%	1.8%	1.8%	1.8%
Senior Management (VIII & GM)	2.2%	2.1%			5.4%	5.4%	5.4%
Management (VIII & above)	6.6%	6.2%	1.9%	3.9%	7.2%	7.2%	7.2%
Administrative/ Supervisory (V to VII)	42.7%	41.5%	40.3%	40.2%	39.9%	36.7%	36.6%
Clerical (III & IV)	50.7%	52.3%	57.8%	55.9%	52.9%	56.2%	56.3%
Management & Administrative	5.6%	6.1%	6.3%	6.4%	6.3%	6.6%	6.6%
Support	91.2%	91.5%	91.8%	92.8%	93.1%	92.2%	92.1%
Maintenance/ Technical	8.8%	8.5%	8.2%	7.2%	6.9%	7.8%	7.9%
General Support	14.2%	14.7%	14.7%	14.1%	13.8%	13.5%	13.5%
HCA, Nurse's Aide, etc.	94.1%	94.0%	94.6%	94.9%	94.9%	95.9%	95.9%
Health & Social Care Assistants	3.4%	3.5%	3.1%	2.7%	2.7%	2.5%	2.5%
Health Care Assistants	97.5%	97.5%	97.7%	97.6%	97.6%	98.4%	98.4%
Other Care Grades	2.5%	2.5%	2.3%	2.4%	2.4%	1.6%	1.6%
Care, other	2.5%	2.5%	2.3%	2.4%	2.4%	1.6%	1.6%
Patient & Client Care	37.6%	37.4%	38.8%	38.6%	37.8%	40.0%	40.0%
Total	100 %	100 %	100 %	100 %	100 %	100 %	100 %

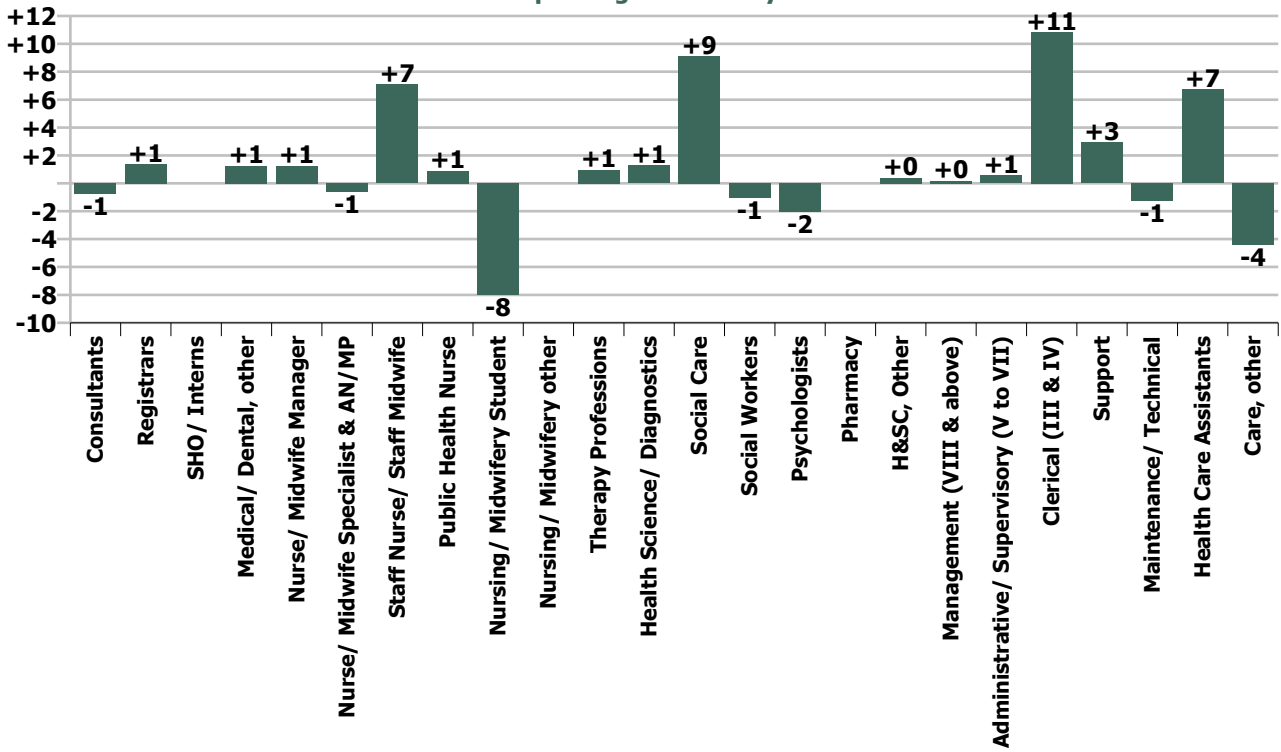
Summary Staff Movement: June 2020

Month-on-month Summary																												
WTE change since May 20	% change since May 20	overall	Consultants	Registrars	SHO/ Interns	Medical/ Dental, other	Medical & Dental	Nurse/ Midwife Manager	Nurse/ Midwife Specialist & AN/MP	Staff Nurse/ Staff Midwife	Public Health Nurse	Nursing/ Midwifery Student	Nursing/ Midwifery other	Nursing & Midwifery	Therapy Professions	Health Science/ Diagnostics	Social Care	Social Workers	Psychologists	Pharmacy	H&SC, Other	Health & Social Care Professionals	Management (VIII & above)	Administrative/ Supervisory (V to VII)	Clerical (III & IV)	Management & Administrative	General Support	Patient & Client Care
Overall	+0.8%	+27	-0.8	+1.4	0.0	+1.3	+1.9	+1.3	-0.6	+7.1	+0.9	-8.0	0.0	+0.6	+1.0	+1.3	+9.1	-1.0	-2.0	0.0	+0.4	+8.7	+0.2	+0.6	+10.8	+11.6	+1.7	+2.3
Community Health & Wellbeing	-0.1%	-0																					0.0	0.0	0.0	-0.0		-0.0
Mental Health	-0.5%	-3	-0.8	+0.8	0.0		-0.0	+1.0	-0.6	-0.3			0.0	+0.0	-1.1		-0.1	-0.8	-1.6		+0.1	-3.5	0.0	-0.1	+0.6	+0.5	-0.6	+0.7
Primary Care	+2.0%	+15	0.0	+0.6	0.0	+1.3	+1.9	-0.2	0.0	+7.7	+0.9	-8.0	0.0	+0.4	+2.7	+1.3	+0.4	-0.9	-0.3	0.0	+0.3	+3.4	+0.1	+0.6	+9.0	+9.7	+0.3	-0.8
Disabilities	+1.3%	+15	0.0			0.0	0.0	-0.1		+1.5				+1.4	+0.8		+8.9	+0.7	-0.3		+0.1	+10.3	+0.1	+0.1	+1.0	+1.3	+2.2	-0.7
Older People	+0.0%	+0		0.0		0.0	0.0	+0.6	0.0	-1.8				-1.3	-1.5			-0.1	+0.1	0.0		-1.6	0.0	-0.0	+0.1	+0.1	-0.2	+3.1
Social Care	+0.7%	+15	0.0	0.0		0.0	0.0	+0.5	0.0	-0.3				+0.2	-0.7		+8.9	+0.6	-0.2	0.0	+0.1	+8.7	+0.1	+0.1	+1.1	+1.4	+2.0	+2.4
Change	+26.8	+0.8%	-1.6%	+3.3%		+2.7%	+1.2%	+0.6%	-2.8%	+1.3%	+0.8%	-61.5%		+0.1%	+0.4%	+7.0%	+2.7%	-1.8%	-3.4%		+4.4%	+1.2%	+0.3%	+0.3%	+4.4%	+2.4%	+0.7%	+0.3%

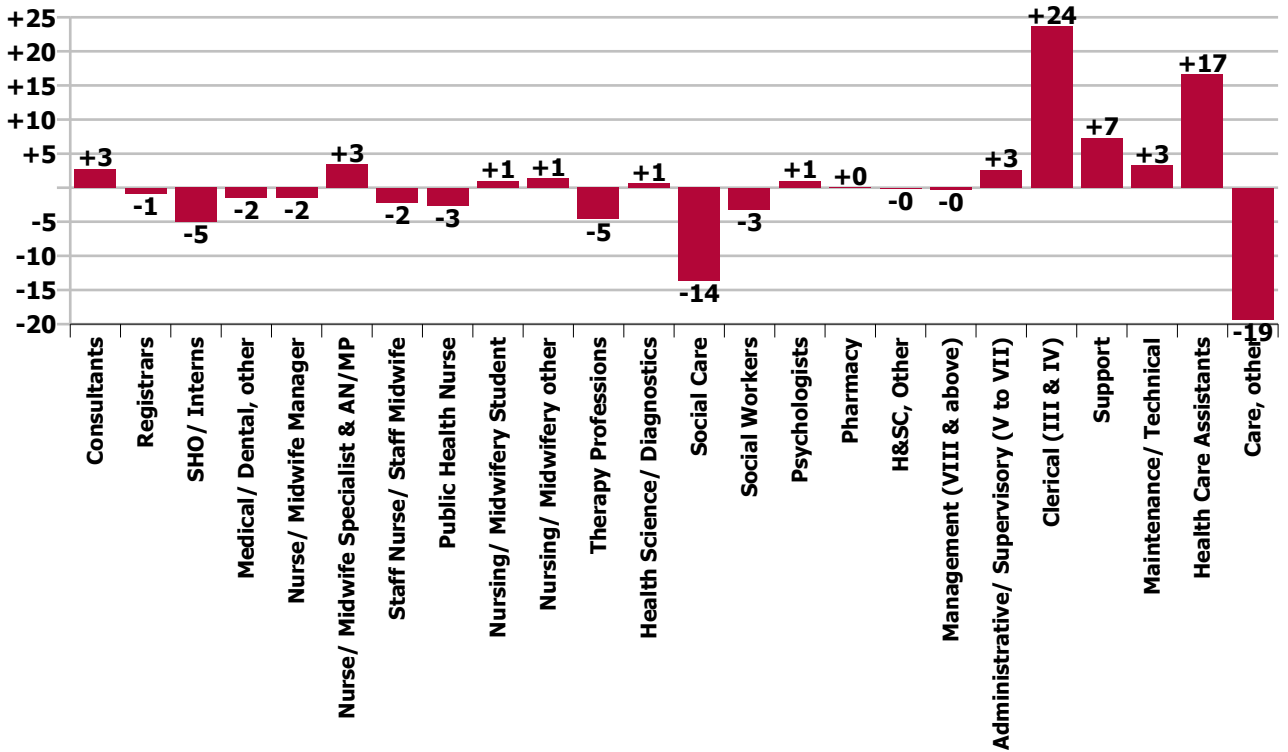
Year-on-year Summary																												
WTE change since Jun 19	% change since Jun 19	overall	Consultants	Registrars	SHO/ Interns	Medical/ Dental, other	Medical & Dental	Nurse/ Midwife Manager	Nurse/ Midwife Specialist & AN/MP	Staff Nurse/ Staff Midwife	Public Health Nurse	Nursing/ Midwifery Student	Nursing/ Midwifery other	Nursing & Midwifery	Therapy Professions	Health Science/ Diagnostics	Social Care	Social Workers	Psychologists	Pharmacy	H&SC, Other	Health & Social Care Professionals	Management (VIII & above)	Administrative/ Supervisory (V to VII)	Clerical (III & IV)	Management & Administrative	General Support	Patient & Client Care
Overall	+0.3%	+9	+2.8	-0.8	-5.0	-1.5	-4.6	-1.5	+3.4	-2.2	-2.6	+1.0	+1.4	-0.5	-4.6	+0.6	-13.7	-3.2	+1.0	+0.1	-0.1	-19.9	-0.4	+2.6	+23.6	+25.9	+10.5	-2.7
Community Health & Wellbeing	-0.1%	-0																					+1.0	+3.9	+0.8	+5.6		+2.8
Mental Health	-0.5%	-3	+4.2	+1.9	-5.0		+1.1	-3.5	+3.5	+8.7			+0.4	+9.1	+0.8		-3.6	+4.0	+7.2		0.0	+8.3	+1.0	-0.8	+9.8	+10.0	-6.1	-0.2
Primary Care	+2.0%	+15	-1.4	-2.7	0.0	-1.5	-5.7	+2.8	-0.1	-4.6	-2.6	+1.0	+1.0	-2.4	-10.7	+0.6	+0.4	-1.7	-9.8	0.0	-0.5	-21.6	-5.4	-7.7	+5.7	-7.4	+2.6	-6.3
Disabilities	-0.7%	-7.9	0.0			0.0	0.0	+1.4		-12.4				-11.0	+6.6		-10.5	-4.6	+2.0		+0.3	-6.2	+1.0	+9.8	+5.8	+16.6	+13.9	-21.2
Older People	+3.2%	+26.5		0.0		0.0	0.0	-2.3	0.0	+6.1				+3.8	-1.3			-0.9	+1.6	+0.1		-0.5	+2.0	-2.6	+1.6	+1.0	+0.0	+22.2
Social Care	+0.7%	+15	0.0	0.0		0.0	0.0	-0.9	0.0	-6.3				-7.2	+5.3		-10.5	-5.5	+3.6	+0.1	+0.3	-6.7	+3.0	+7.2	+7.4	+17.6	+13.9	+1.0
Change	+8.7	+0.3%	+6.0%	-1.9%	-21.3%	-3.0%	-2.8%	-0.7%	+18.4%	-0.4%	-2.2%	+25.0%	+87.5%	-0.1%	-1.9%	+3.3%	-3.8%	-5.3%	+1.8%	+1.6%	-1.2%	-2.7%	-0.5%	+1.6%	+10.1%	+5.5%	+4.8%	-0.3%

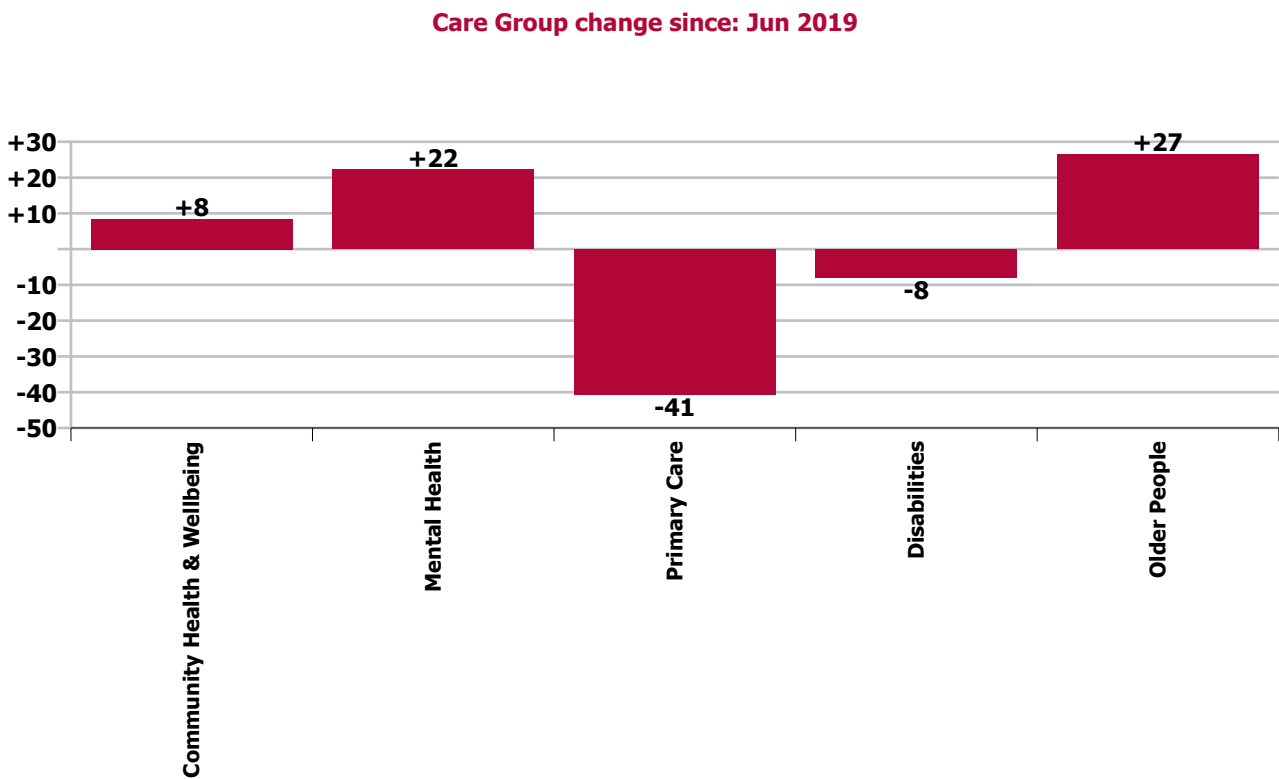
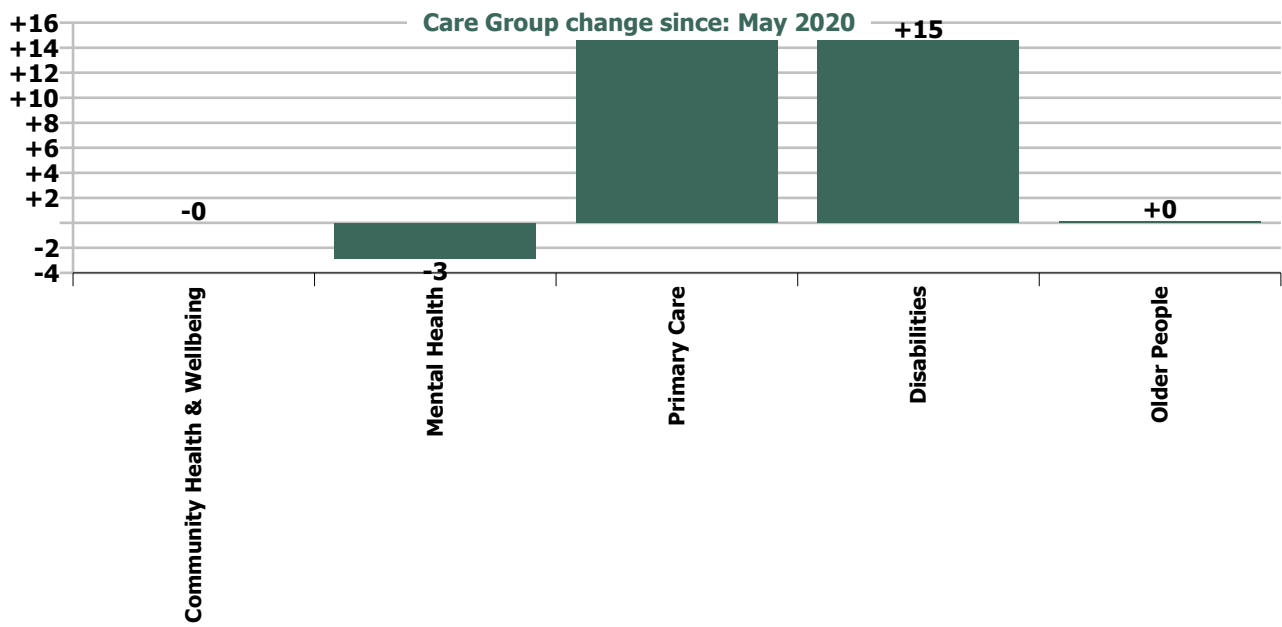


Staff Group change since: May 2020



Staff Group change since: Jun 2019





Longitudinal Employment Levels by Grade Group - Oct 2013 to Jun 2020

Jun 2020 (Dec 2015 figure: 3,908)	WTE Jun 2020	WTE change since Dec 15	WTE change since Dec 16	WTE change since Dec 17	WTE change since Dec 18	WTE change since Dec 19	WTE change since May 20	% change since Dec 15	% change since Dec 16	% change since Dec 17	% change since Dec 18	% change since Dec 19	% change since May 20
Overall	3,387	-521	-554	+30	+18	+9	+27	-13.3%	-14.1%	+0.9%	+0.5%	+0.3%	+0.8%
Consultant Dentistry	6	-0	-0	-1	-1	-1	-0	-6.0%	-6.0%	-18.2%	-18.2%	-13.0%	-0.0%
Consultant Medicine	1												
Consultant, Other		-1	-1					-100.0%	-100.0%	-100.0%	-100.0%	-100.0%	-100.0%
Consultant Paediatrics		-0	-0	-0				-100.0%	-100.0%	-100.0%	-100.0%	-100.0%	-100.0%
Consultant Psychiatry	41	+12	+12	+10	+8	+2	-1	+39.1%	+39.1%	+32.6%	+23.3%	+4.9%	-1.9%
Consultant Radiology	1												
Consultants	49	+10	+10	+9	+6	+1	-1	+25.6%	+25.6%	+21.1%	+14.8%	+2.0%	-1.6%
Registrar	36	-41	-4	-4	-0	-5	+1	-53.7%	-10.9%	-11.1%	-1.1%	-11.5%	+1.7%
Senior Registrar	7	-1	-0	+0	-3	-1	+1	-9.9%	-1.3%	+0.7%	-28.4%	-9.1%	+12.7%
Specialist Registrar	1												
Registrars	43	-42	-4	-4	-3	-5	+1	-49.2%	-9.3%	-9.2%	-6.7%	-10.9%	+3.3%
SHO/ Interns	19	-1	-1	-3	-4	+3		-3.8%	-4.8%	-12.5%	-17.6%	+19.4%	
Dentists	26	-3	-3	-3	-1	-1	+1	-10.1%	-10.3%	-11.7%	-4.9%	-3.1%	+3.1%
Other Medical	23	-9	-0	-2	-4	-2	+0	-27.0%	-1.1%	-9.6%	-14.9%	-6.2%	+2.2%
Medical/ Dental, other	49	-11	-3	-6	-5	-2	+1	-19.0%	-6.1%	-10.7%	-9.9%	-4.6%	+2.7%
Medical & Dental	160	-44	+1	-4	-6	-4	+2	-21.7%	+0.9%	-2.6%	-3.7%	-2.3%	+1.2%
Clinical Nurse/ Midwife Manager	160	-34	-30	+3	-1	-1	-0	-17.3%	-15.9%	+1.9%	-0.3%	-0.4%	-0.1%
Director Nursing/Midwifery, Assistant	37	+7	+7	+8	+2	+2	+1	+25.2%	+23.9%	+28.1%	+4.8%	+5.4%	+2.2%
Director of Nursing/Midwifery	14	-7	-7	-2	+0	-1	+1	-31.8%	-32.0%	-9.8%	+3.1%	-3.5%	+4.9%
Nurse/ Midwife Manager	211	-33	-30	+10	+2	+1	+1	-13.4%	-12.4%	+4.7%	+0.8%	+0.4%	+0.6%
Advanced Nurse/ Midwife Practitioner	3	+3	+2	+2	+2	+2		-100.0%	+400.0%	+400.0%	+400.0%	+267.6%	
Clinical Nurse/ Midwife Specialist	19	+0	-1	-1	+1	-1	-1	+0.3%	-3.3%	-6.6%	+2.9%	-3.0%	-3.1%
Nurse/ Midwife Specialist & AN/MP	22	+3	+1	+1	+3	+1	-1	+13.2%	+6.5%	+3.0%	+13.2%	+6.0%	-2.8%
Staff Nurse [Intellectual Disability]	50	-77	-20	-12	-9	-0	+2	-60.9%	-29.0%	-19.3%	-15.2%	-0.1%	+3.2%
Staff Nurse [Psychiatric]	121	-23	-6	+3	+10	-12	+2	-15.7%	-4.8%	+2.5%	+9.3%	-9.0%	+1.7%
Staff Nurses [General/ Children's]	375	-22	-68	+5	-2	+16	+4	-5.5%	-15.3%	+1.3%	-0.5%	+4.3%	+1.0%
Staff Nurse/ Staff Midwife	545	-122	-94	-4	-0	+4	+7	-18.3%	-14.7%	-0.8%	-0.1%	+0.7%	+1.3%
Public Health Nurse	114	-0	-4	-9	-5	-3	+1	-0.4%	-3.8%	-7.5%	-4.1%	-2.7%	+0.8%
Post-registration Nurse/ Midwife Student	5	-12	-10	-14	-6	-9	-8	-70.6%	-66.7%	-74.2%	-54.5%	-63.0%	-61.5%
Nursing/ Midwifery Student	5	-12	-10	-14	-6	-9	-8	-70.6%	-66.7%	-74.2%	-54.5%	-63.0%	-61.5%
Nursing Education/Clinical	3	+2	+1	+1	+0	+1		+200.0%	+33.9%	+50.0%	+4.9%	+50.0%	
Other Nursing/ Midwifery		-1						-100.0%	-100.0%	-100.0%	-100.0%	-100.0%	-100.0%
Nursing/ Midwifery other	3	+1	+1	+1	+0	+1		+50.0%	+33.9%	+50.0%	+4.9%	+50.0%	

Jun 2020 (Dec 2015 figure: 3,908)	WTE Jun 2020	WTE change since Dec 15	WTE change since Dec 16	WTE change since Dec 17	WTE change since Dec 18	WTE change since Dec 19	WTE change since May 20	% change since Dec 15	% change since Dec 16	% change since Dec 17	% change since Dec 18	% change since Dec 19	% change since May 20
Overall	3,387	-521	-554	+30	+18	+9	+27	-13.3%	-14.1%	+0.9%	+0.5%	+0.3%	+0.8%
Nursing & Midwifery	900	-163	-136	-17	-7	-5	+1	-15.4%	-13.1%	-1.8%	-0.8%	-0.6%	+0.1%
Dietitians	14	+2	+3	-2	-2	-1	-2	+21.7%	+23.8%	-9.9%	-12.0%	-4.2%	-13.7%
Occupational Therapists	90	+2	+0	+2	-2	-1	-0	+2.0%	+0.4%	+2.5%	-2.0%	-1.5%	-0.2%
Physiotherapists	59	-8	-4	+1	-3	-1	+1	-12.5%	-5.6%	+1.4%	-4.8%	-1.6%	+1.3%
Podiatrists & Chiropodists	3	+2	+1	+0	+1	+2	+1	+104.8%	+51.5%	+1.8%	+47.0%	+103.6%	+27.9%
Speech & Language Therapists	68	+4	-3	+2	-7	-2	+2	+5.9%	-4.5%	+3.0%	-9.7%	-3.1%	+2.9%
Therapy Professions	235	+1	-3	+3	-13	-3	+1	+0.6%	-1.1%	+1.5%	-5.2%	-1.4%	+0.4%
Medical Laboratory	17	-0	-1	-3	-3	+1	+1	-0.8%	-5.8%	-13.0%	-16.2%	+9.1%	+8.1%
Radiographers	2	-1	-1	-1	-1	-0		-30.3%	-30.3%	-32.3%	-32.1%	-2.9%	
Health Science/ Diagnostics	19	-1	-2	-4	-4	+1	+1	-5.6%	-9.7%	-15.9%	-18.6%	+7.5%	+7.0%
Social Care	347	-129	-193	-7	+5	-17	+9	-27.1%	-35.8%	-2.0%	+1.5%	-4.7%	+2.7%
Social Workers	57	-4	-5	+1	-0	-0	-1	-6.3%	-7.6%	+1.6%	-0.3%	-0.3%	-1.8%
Psychologists	57	-5	-5	-2	+1	+0	-2	-7.7%	-8.4%	-3.8%	+1.0%	+0.7%	-3.4%
Pharmacy	4	-0	+1	+0	+0	+0		-1.8%	+35.2%	+1.6%	+1.6%	+4.9%	
Counsellor Therapists	4	-3	-2	-2	+0	-0	+0	-38.7%	-33.3%	-37.9%	+10.2%	-9.5%	+2.3%
Dental Hygienists	3	-1	-1	-0	-0	-0	+0	-15.9%	-15.9%	-11.3%	-11.5%	-8.7%	+7.8%
Other Health & Social Care	2	-1	+1	-0	+1	-4	+0	-32.5%	+62.7%	-2.4%	+82.4%	-70.7%	+3.7%
Play Therapists/ Specialists	0	-1	-1	-0		+0		-67.1%	-68.0%	-5.9%		+4.3%	
H&SC, Other	10	-5	-3	-3	+1	-5	+0	-34.0%	-24.0%	-23.5%	+7.5%	-33.0%	+4.4%
Health & Social Care Professionals	728	-142	-210	-11	-11	-23	+9	-16.3%	-22.4%	-1.5%	-1.5%	-3.1%	+1.2%
Executive Management	22	+8	+2	-5	-2	-1	-0	+55.0%	+9.7%	-18.3%	-7.5%	-4.3%	-0.1%
Senior Management (VIII & GM)	46	+2	+2	+5	-3	+2	+0	+4.0%	+3.9%	+13.1%	-5.8%	+4.7%	+0.5%
Management (VIII & above)	69	+10	+4	+0	-5	+1	+0	+16.5%	+5.7%	+0.5%	-6.4%	+1.6%	+0.3%
Middle Management (V-VII)	169	+37	+32	+21	-2	-0	+1	+28.5%	+23.0%	+14.0%	-0.9%	-0.2%	+0.3%
Other Administrative	1	-3						-75.0%					
Administrative/ Supervisory (V to VII)	170	+34	+32	+21	-2	-0	+1	+25.5%	+22.9%	+13.9%	-0.9%	-0.2%	+0.3%
Clerical (III & IV)	257	-1	-1	+23	+26	+20	+11	-0.2%	-0.6%	+9.8%	+11.1%	+8.4%	+4.4%
Management & Administrative	496	+44	+34	+44	+19	+21	+12	+9.6%	+7.3%	+9.7%	+4.1%	+4.3%	+2.4%
Catering	32	-2	-6	+5	+4	+6	+0	-6.7%	-15.8%	+17.0%	+14.4%	+24.9%	+0.5%
Household Services	130	-46	-37	-9	-2	+9	+2	-26.2%	-22.1%	-6.7%	-1.4%	+7.5%	+1.9%
Other Labs & Associated	1	+1					+0	-100.0%					+1.0%
Other Support	21	-7	-8	-1	+2	+1	+0	-26.4%	-27.8%	-5.1%	+11.8%	+5.7%	+0.5%
Portering	24	-2	-2	-3	+0	+1	+0	-9.3%	-6.0%	-9.4%	+0.0%	+2.3%	+1.2%
Support	208	-57	-52	-8	+4	+17	+3	-21.6%	-20.1%	-3.8%	+2.1%	+9.0%	+1.4%
Maintenance/ Technical	23	-11	-9	+2	+4	+0	-1	-32.1%	-28.7%	+9.5%	+20.9%	+1.5%	-5.2%

Jun 2020 (Dec 2015 figure: 3,908)	WTE Jun 2020	WTE change since Dec 15	WTE change since Dec 16	WTE change since Dec 17	WTE change since Dec 18	WTE change since Dec 19	WTE change since May 20	% change since Dec 15	% change since Dec 16	% change since Dec 17	% change since Dec 18	% change since Dec 19	% change since May 20
Overall	3,387	-521	-554	+30	+18	+9	+27	-13.3%	-14.1%	+0.9%	+0.5%	+0.3%	+0.8%
General Support	231	-68	-62	-6	+8	+17	+2	-22.8%	-21.1%	-2.6%	+3.7%	+8.2%	+0.7%
HCA, Nurse's Aide, etc.	545	-59	-75	+26	+29	+18	+6	-9.7%	-12.1%	+5.1%	+5.6%	+3.4%	+1.1%
Health & Social Care Assistants	16	+6	+6	+6	+1	+5	+1	+57.1%	+53.6%	+61.8%	+3.4%	+41.4%	+5.1%
Health Care Assistants	561	-53	-70	+32	+29	+22	+7	-8.6%	-11.0%	+6.1%	+5.5%	+4.2%	+1.2%
Pre-Hospital Care (Ambulance)		-1						-100.0%	-100.0%	-100.0%	-100.0%	-100.0%	-100.0%
Ambulance Staff		-1						-100.0%	-100.0%	-100.0%	-100.0%	-100.0%	-100.0%
Care, other	311	-93	-112	-8	-14	-20	-4	-23.1%	-26.5%	-2.4%	-4.4%	-5.9%	-1.4%
Patient & Client Care	871	-147	-181	+25	+15	+3	+2	-14.4%	-17.2%	+2.9%	+1.7%	+0.3%	+0.3%

Source: Health Service Personnel Census

Longitudinal Employment Levels by Care Group - Oct 2013 to Jun 2020

Community Health & Wellbeing

Jun 2020 (figure:)	WTE Jun 2020	WTE change since	WTE change since	WTE change since	WTE change since	WTE change since	WTE change since May 20	% change since	% change since	% change since	% change since	% change since	% change since May 20
Overall	8	+8	+8	+8	+8	+8	-0	-100.0%	-100.0%	-100.0%	-100.0%	-100.0%	-0.1%
Management & Administrative	6	+6	+6	+6	+6	+6	+0	-1.0%	-1.0%	-1.0%	-1.0%	-1.0%	+0.0%
Management (VIII & above)	1	+1	+1	+1	+1	+1		-1.0%	-1.0%	-1.0%	-1.0%	-1.0%	+0.0%
Administrative/ Supervisory (V to VII)	4	+4	+4	+4	+4	+4		-1.0%	-1.0%	-1.0%	-1.0%	-1.0%	+0.0%
Clerical (III & IV)	1	+1	+1	+1	+1	+1		-1.0%	-1.0%	-1.0%	-1.0%	-1.0%	+0.0%
Patient & Client Care	3	+3	+3	+3	+3	+3	-0	-1.0%	-1.0%	-1.0%	-1.0%	-1.0%	-0.0%
Care, other	3	+3	+3	+3	+3	+3	-0	-1.0%	-1.0%	-1.0%	-1.0%	-1.0%	-0.0%

Source: Health Service Personnel Census

Mental Health

Jun 2020 (Dec 2015 figure: 563)	WTE Jun 2020	WTE change since Dec 15	WTE change since Dec 16	WTE change since Dec 17	WTE change since Dec 18	WTE change since Dec 19	WTE change since May 20	% change since Dec 15	% change since Dec 16	% change since Dec 17	% change since Dec 18	% change since Dec 19	% change since May 20
Overall	596	+32	+36	+32	+23	+3	-3	+5.8%	+6.5%	+5.7%	+4.1%	+0.6%	-0.5%
Medical & Dental	68	+11	+11	+5	+5	+1	-0	+0.2%	+0.2%	+0.1%	+0.1%	+0.0%	-0.0%
Consultants	38	+12	+11	+10	+7	+2	-1	+0.4%	+0.4%	+0.3%	+0.2%	+0.1%	-0.0%
Registrars	18	-1	+0	-1	+2	-4	+1	-0.0%	+0.0%	-0.1%	+0.1%	-0.2%	+0.0%
SHO/ Interns	12	+0	+0	-3	-4	+3		+0.0%	+0.0%	-0.2%	-0.2%	+0.3%	+0.0%
Medical/ Dental, other				-0	-0			-1.0%	-1.0%	-1.0%	-1.0%	-1.0%	-1.0%
Nursing & Midwifery	242	-7	-0	+12	+4	+11		-0.0%	-0.0%	+0.1%	+0.0%	+0.0%	+0.0%
Nurse/ Midwife Manager	76	-0	-4	+5	-5	-1	+1	-0.0%	-0.1%	+0.1%	-0.1%	-0.0%	+0.0%
Nurse/ Midwife Specialist & AN/MP	15	+1	+0	-0	+3	+1	-1	+0.1%	+0.0%	-0.0%	+0.2%	+0.1%	-0.0%
Staff Nurse/ Staff Midwife	149	-9	+4	+8	+7	+10	-0	-0.1%	+0.0%	+0.1%	+0.1%	+0.1%	-0.0%
Nursing/ Midwifery other	2	+1	-0		-1			+1.0%	-0.1%	+0.0%	-0.3%	+0.0%	+0.0%
Health & Social Care Professionals	124	+18	+14	+10	+10	-5	-3	+0.2%	+0.1%	+0.1%	+0.1%	-0.0%	-0.0%
Therapy Professions	39	+9	+11	+6	+3	-4	-1	+0.3%	+0.4%	+0.2%	+0.1%	-0.1%	-0.0%
Social Care	26	-4	-5	-4	-3	+0	-0	-0.1%	-0.2%	-0.1%	-0.1%	+0.0%	-0.0%
Social Workers	32	+10	+4	+6	+3	+2	-1	+0.4%	+0.1%	+0.2%	+0.1%	+0.1%	-0.0%
Psychologists	22	+5	+6	+2	+6	-0	-2	+0.3%	+0.4%	+0.1%	+0.4%	-0.0%	-0.1%
H&SC, Other	5	-2	-2	+0	+1	-4	+0	-0.3%	-0.3%	+0.1%	+0.2%	-0.4%	+0.0%
Management & Administrative	69	+14	+13	+9	+10	-3	+1	+0.3%	+0.2%	+0.2%	+0.2%	-0.0%	+0.0%
Management (VIII & above)	3	-1	+0	-1	+1			-0.1%	+0.2%	-0.2%	+0.5%	+0.0%	+0.0%
Administrative/ Supervisory (V to VII)	25	+7	+8	+3	-1	-2	-0	+0.4%	+0.4%	+0.2%	-0.0%	-0.1%	-0.0%
Clerical (III & IV)	41	+8	+5	+6	+10	-2	+1	+0.2%	+0.1%	+0.2%	+0.3%	-0.0%	+0.0%
General Support	40	-15	-10	-13	-9	-2	-1	-0.3%	-0.2%	-0.2%	-0.2%	-0.0%	-0.0%
Support	36	-13	-8	-12	-8	-0	+1	-0.3%	-0.2%	-0.2%	-0.2%	-0.0%	+0.0%
Maintenance/ Technical	4	-2	-1	-1	-1	-2	-1	-0.3%	-0.3%	-0.2%	-0.2%	-0.3%	-0.3%
Patient & Client Care	52	+12	+8	+8	+3	+1	+1	+0.3%	+0.2%	+0.2%	+0.1%	+0.0%	+0.0%
Health Care Assistants	47	+12	+7	+7	+3	+2	+1	+0.3%	+0.2%	+0.2%	+0.1%	+0.0%	+0.0%
Care, other	5	+0	+0	+1	-1	-1	-0	+0.1%	+0.1%	+0.4%	-0.1%	-0.1%	-0.0%

Source: Health Service Personnel Census

Primary Care

Jun 2020 (Dec 2015 figure: 810)	WTE Jun 2020	WTE change since Dec 15	WTE change since Dec 16	WTE change since Dec 17	WTE change since Dec 18	WTE change since Dec 19	WTE change since May 20	% change since Dec 15	% change since Dec 16	% change since Dec 17	% change since Dec 18	% change since Dec 19	% change since May 20
Overall	771	-39	+2	-24	-62	+6	+15	-4.8%	+0.3%	-3.0%	-7.5%	+0.8%	+2.0%
Medical & Dental	83	-51	-7	-7	-10	-5	+2	-0.4%	-0.1%	-0.1%	-0.1%	-0.1%	+0.0%
Consultants	8	-1	-1	-1	-1	-1		-0.1%	-0.1%	-0.1%	-0.1%	-0.1%	+0.0%
Registrars	24	-38	-4	-1	-4	-2	+1	-0.6%	-0.1%	-0.0%	-0.1%	-0.1%	+0.0%
SHO/ Interns	7	-1						-0.1%	+0.0%	+0.0%	+0.0%	+0.0%	+0.0%
Medical/ Dental, other	44	-10	-2	-4	-4	-2	+1	-0.2%	-0.0%	-0.1%	-0.1%	-0.1%	+0.0%
Nursing & Midwifery	202	+9	+3	-8	-6	-8	+0	+0.0%	+0.0%	-0.0%	-0.0%	-0.0%	+0.0%
Nurse/ Midwife Manager	25	+6	+7	+5	+3	+3	-0	+0.3%	+0.4%	+0.3%	+0.1%	+0.1%	-0.0%
Nurse/ Midwife Specialist & AN/MP	6	+3	+2	-0	-0	-0		+1.0%	+0.5%	-0.0%	-0.0%	-0.0%	+0.0%
Staff Nurse/ Staff Midwife	52	+11	+7	+10	+1	-0	+8	+0.3%	+0.2%	+0.2%	+0.0%	-0.0%	+0.2%
Public Health Nurse	114	+2	-3	-9	-5	-3	+1	+0.0%	-0.0%	-0.1%	-0.0%	-0.0%	+0.0%
Nursing/ Midwifery Student	5	-12	-10	-14	-6	-9	-8	-0.7%	-0.7%	-0.7%	-0.5%	-0.6%	-0.6%
Nursing/ Midwifery other	1		+1	+1	+1	+1		+0.0%	-1.0%	-1.0%	-1.0%	-1.0%	+0.0%
Health & Social Care Professionals	161	-15	-11	-23	-31	+7	+3	-0.1%	-0.1%	-0.1%	-0.2%	+0.0%	+0.0%
Therapy Professions	111	-4	-4	-10	-15	+7	+3	-0.0%	-0.0%	-0.1%	-0.1%	+0.1%	+0.0%
Health Science/ Diagnostics	19	-1	-2	-4	-4	+1	+1	-0.1%	-0.1%	-0.2%	-0.2%	+0.1%	+0.1%
Social Care	3	+1	+2	+2	+0	-1	+0	+0.3%	+1.2%	+1.2%	+0.1%	-0.1%	+0.1%
Social Workers	4	-3	-2	-3	-2	-0	-1	-0.4%	-0.3%	-0.4%	-0.4%	-0.1%	-0.2%
Psychologists	18	-6	-4	-7	-9	-1	-0	-0.2%	-0.2%	-0.3%	-0.3%	-0.0%	-0.0%
Pharmacy	1		+1			+0		+0.0%	-1.0%	+0.0%	+0.0%	+0.3%	+0.0%
H&SC, Other	3	-2	-2	-1	-0	-0	+0	-0.3%	-0.3%	-0.3%	-0.1%	-0.1%	+0.1%
Management & Administrative	217	+22	+20	+14	-10	+7	+10	+0.1%	+0.1%	+0.1%	-0.0%	+0.0%	+0.0%
Management (VIII & above)	30	+12	+7	+0	-7	+0	+0	+0.7%	+0.3%	+0.0%	-0.2%	+0.0%	+0.0%
Administrative/ Supervisory (V to VII)	64	+19	+14	+6	-10	-3	+1	+0.4%	+0.3%	+0.1%	-0.1%	-0.1%	+0.0%
Clerical (III & IV)	122	-9	-1	+8	+7	+11	+9	-0.1%	-0.0%	+0.1%	+0.1%	+0.1%	+0.1%
General Support	29	-3	-2	-3	+1	+3	+0	-0.1%	-0.1%	-0.1%	+0.1%	+0.1%	+0.0%
Support	27	-3	-2	-3	+1	+3	+0	-0.1%	-0.1%	-0.1%	+0.1%	+0.1%	+0.0%
Maintenance/ Technical	2							+0.0%	+0.0%	+0.0%	+0.0%	+0.0%	+0.0%
Patient & Client Care	80	-2	-0	+2	-7	+2	-1	-0.0%	-0.0%	+0.0%	-0.1%	+0.0%	-0.0%
Health Care Assistants	11	+8	+9	+9	+2	+4	+1	+3.4%	+4.4%	+4.4%	+0.2%	+0.7%	+0.1%
Ambulance Staff		-1						-1.0%	-1.0%	-1.0%	-1.0%	-1.0%	-1.0%
Care, other	69	-10	-9	-7	-8	-2	-2	-0.1%	-0.1%	-0.1%	-0.1%	-0.0%	-0.0%

Source: Health Service Personnel Census

Disabilities

Jun 2020 (Dec 2015 figure: 1,729)	WTE Jun 2020	WTE change since Dec 15	WTE change since Dec 16	WTE change since Dec 17	WTE change since Dec 18	WTE change since Dec 19	WTE change since May 20	% change since Dec 15	% change since Dec 16	% change since Dec 17	% change since Dec 18	% change since Dec 19	% change since May 20
Overall	1,163	-567	-653	-7	+8	-35	+15	-32.8%	-36.0%	-0.6%	+0.7%	-2.9%	+1.3%
Medical & Dental	4	-4	-3	-3				-0.5%	-0.4%	-0.4%	+0.0%	+0.0%	+0.0%
Consultants	3	-0	+0	+0	+1			-0.0%	+0.1%	+0.1%	+0.5%	+0.0%	+0.0%
Registrars		-3	-1	-2				-1.0%	-1.0%	-1.0%	-1.0%	-1.0%	-1.0%
SHO/ Interns			-1					-1.0%	-1.0%	-1.0%	-1.0%	-1.0%	-1.0%
Medical/ Dental, other	1	-1	-1	-1	-1			-0.5%	-0.5%	-0.5%	-0.5%	+0.0%	+0.0%
Nursing & Midwifery	183	-160	-141	-23	-11	-7	+1	-0.5%	-0.4%	-0.1%	-0.1%	-0.0%	+0.0%
Nurse/ Midwife Manager	43	-40	-34	-2	+4	-0	-0	-0.5%	-0.4%	-0.0%	+0.1%	-0.0%	-0.0%
Nurse/ Midwife Specialist & AN/MP		-3	-2					-1.0%	-1.0%	-1.0%	-1.0%	-1.0%	-1.0%
Staff Nurse/ Staff Midwife	140	-115	-104	-21	-15	-7	+2	-0.5%	-0.4%	-0.1%	-0.1%	-0.0%	+0.0%
Public Health Nurse		-2	-1					-1.0%	-1.0%	-1.0%	-1.0%	-1.0%	-1.0%
Health & Social Care Professionals	382	-146	-217	-2	+7	-20	+10	-0.3%	-0.4%	-0.0%	+0.0%	-0.1%	+0.0%
Therapy Professions	39	-5	-13	+5	-1	-2	+1	-0.1%	-0.2%	+0.1%	-0.0%	-0.1%	+0.0%
Social Care	318	-126	-190	-4	+8	-17	+9	-0.3%	-0.4%	-0.0%	+0.0%	-0.1%	+0.0%
Social Workers	10	-9	-6	-1	-2	-2	+1	-0.5%	-0.4%	-0.1%	-0.2%	-0.1%	+0.1%
Psychologists	15	-6	-8	+1	+2	+1	-0	-0.3%	-0.4%	+0.0%	+0.1%	+0.1%	-0.0%
H&SC, Other	1	-1	+1	-2	+0	-1	+0	-0.3%	+1.3%	-0.6%	+0.3%	-0.4%	+0.1%
Management & Administrative	148	-9	-12	+11	+10	+11	+1	-0.1%	-0.1%	+0.1%	+0.1%	+0.1%	+0.0%
Management (VIII & above)	31	-4	-6	-3	-2	-0	+0	-0.1%	-0.2%	-0.1%	-0.1%	-0.0%	+0.0%
Administrative/ Supervisory (V to VII)	56	+4	+5	+8	+6	+3	+0	+0.1%	+0.1%	+0.2%	+0.1%	+0.0%	+0.0%
Clerical (III & IV)	62	-8	-11	+7	+5	+8	+1	-0.1%	-0.2%	+0.1%	+0.1%	+0.2%	+0.0%
General Support	47	-51	-47	+16	+15	+18	+2	-0.5%	-0.5%	+0.5%	+0.5%	+0.6%	+0.0%
Support	39	-43	-40	+12	+11	+17	+2	-0.5%	-0.5%	+0.4%	+0.4%	+0.7%	+0.1%
Maintenance/ Technical	8	-8	-7	+4	+4	+1	+0	-0.5%	-0.5%	+1.0%	+1.0%	+0.2%	+0.0%
Patient & Client Care	397	-197	-233	-7	-12	-36	-1	-0.3%	-0.4%	-0.0%	-0.0%	-0.1%	-0.0%
Health Care Assistants	169	-112	-129	-3	-6	-18	+2	-0.4%	-0.4%	-0.0%	-0.0%	-0.1%	+0.0%
Care, other	229	-85	-104	-3	-6	-18	-3	-0.3%	-0.3%	-0.0%	-0.0%	-0.1%	-0.0%

Source: Health Service Personnel Census

Older People

Jun 2020 (Dec 2015 figure: 805)	WTE Jun 2020	WTE change since Dec 15	WTE change since Dec 16	WTE change since Dec 17	WTE change since Dec 18	WTE change since Dec 19	WTE change since May 20	% change since Dec 15	% change since Dec 16	% change since Dec 17	% change since Dec 18	% change since Dec 19	% change since May 20
Overall	849	+44	+52	+21	+41	+26	+0	+5.5%	+6.5%	+2.5%	+5.1%	+3.1%	+0.0%
Medical & Dental	5				-1			+0.0%	+0.0%	+0.0%	-0.2%	+0.0%	+0.0%
Registrars	1				-1			+0.0%	+0.0%	+0.0%	-0.5%	+0.0%	+0.0%
Medical/ Dental, other	4							+0.0%	+0.0%	+0.0%	+0.0%	+0.0%	+0.0%
Nursing & Midwifery	273	-5	+2	+2	+6	-0	-1	-0.0%	+0.0%	+0.0%	+0.0%	-0.0%	-0.0%
Nurse/ Midwife Manager	67	+2	+2	+2	-0	-1	+1	+0.0%	+0.0%	+0.0%	-0.0%	-0.0%	+0.0%
Nurse/ Midwife Specialist & AN/MP	1	+1	+1	+1				-1.0%	-1.0%	-1.0%	+0.0%	+0.0%	+0.0%
Staff Nurse/ Staff Midwife	204	-8	-1	-1	+6	+1	-2	-0.0%	-0.0%	-0.0%	+0.0%	+0.0%	-0.0%
Health & Social Care Professionals	61	+1	+4	+4	+3	-5	-2	+0.0%	+0.1%	+0.1%	+0.1%	-0.1%	-0.0%
Therapy Professions	45	+0	+3	+2	+0	-4	-2	+0.0%	+0.1%	+0.1%	+0.0%	-0.1%	-0.0%
Social Workers	11	-1	-1	-1	+1	-1	-0	-0.1%	-0.1%	-0.1%	+0.1%	-0.1%	-0.0%
Psychologists	2	+2	+2	+2	+2		+0	+3.2%	+3.2%	-1.0%	+3.2%	+0.0%	+0.1%
Pharmacy	3	-0		+0	+0	-0		-0.0%	+0.0%	+0.0%	+0.0%	-0.0%	+0.0%
H&SC, Other		-0						-1.0%	-1.0%	-1.0%	-1.0%	-1.0%	-1.0%
Management & Administrative	56	+11	+8	+3	+4	+0	+0	+0.2%	+0.2%	+0.1%	+0.1%	+0.0%	+0.0%
Management (VIII & above)	4	+1	+1	+3	+2			+0.3%	+0.3%	+3.0%	+1.0%	+0.0%	+0.0%
Administrative/ Supervisory (V to VII)	20	+1	+0	-1	-0	-2	-0	+0.1%	+0.0%	-0.0%	-0.0%	-0.1%	-0.0%
Clerical (III & IV)	31	+8	+6	+1	+3	+2	+0	+0.4%	+0.2%	+0.0%	+0.1%	+0.1%	+0.0%
General Support	115	+1	-3	-7	+1	-2	-0	+0.0%	-0.0%	-0.1%	+0.0%	-0.0%	-0.0%
Support	106	+2	-2	-6	+0	-3	-0	+0.0%	-0.0%	-0.1%	+0.0%	-0.0%	-0.0%
Maintenance/ Technical	9	-1	-1	-1	+1	+1		-0.1%	-0.1%	-0.1%	+0.1%	+0.1%	+0.0%
Patient & Client Care	340	+37	+41	+19	+28	+33	+3	+0.1%	+0.1%	+0.1%	+0.1%	+0.1%	+0.0%
Health Care Assistants	334	+39	+43	+20	+30	+34	+3	+0.1%	+0.1%	+0.1%	+0.1%	+0.1%	+0.0%
Care, other	6	-2	-2	-2	-2	-2	+0	-0.3%	-0.2%	-0.2%	-0.3%	-0.2%	+0.0%

Source: Health Service Personnel Census